

# Invest

A Weekly e-Publication by [SHAREINVESTOR.com](http://SHAREINVESTOR.com)

ISSUE

166

FRIDAY  
21 JULY  
2023

Scan/Click QR to Register



Via email, every Friday

Brand Finance®



# Malaysia 100 2023

Sustainability  
- Part III

(page 23-29)

The annual report on the most valuable and strongest Malaysian brands  
May 2023

**30** Malaysia ranked first place  
in SEA in WEF's Energy  
Transition Index

**35** MSWG  
The many benefits of  
women directors on  
boards

04 LEADERBOARD

06 SHARIAH HOT STOCKS

07 COMPANY SPOTLIGHT

08 SHARIAH MOMENTUM UP  
STOCKS

10 NON SHARIAH HOT STOCKS

12 UP TRENDING STOCKS

14 VALUE STOCKS

16 GROWTH STOCKS

18 DIVIDEND STOCKS

20 BROKERS' CALL

21 LONG COMPANIES

23 Brand Finance  
Malaysia 100 2023 Part III

30 MARKET SENTIMENTS

34 REGIONAL MARKETS

35 FROM THE OBSERVER

39 INSIDER ACTIVITY

43 INVESTOR RELATIONS

45 CAREERS AT  
SHAREINVESTOR

**INVESTOR PLATFORMS**

**Director**  
Darren Chong  
darren.chong@shareinvestor.com

**Business Development Manager**  
Jay Cheong  
jay.cheong.@shareinvestor.com

**Senior Executive**  
Daniel Wong  
daniel.wong@shareinvestor.com

**Executive**  
Farah Azwani  
farah.azwani@shareinvestor.com

**Executive**  
Tan Yong Sheng  
yongsheng.tan@shareinvestor.com

**ADMIN & OPERATIONS**

**Senior Executive**  
Watie Nordin  
watie.nordin@shareinvestor.com

**Executive**  
Silas Emmanuel Joseph  
silas.joseph@shareinvestor.com

**INVESTOR RELATIONS**

**Group Managing Director & Publisher**  
Edward Stanislaus  
edward@shareinvestor.com

**Director**  
Elizabeth Tan  
elizabeth.tan@shareinvestor.com

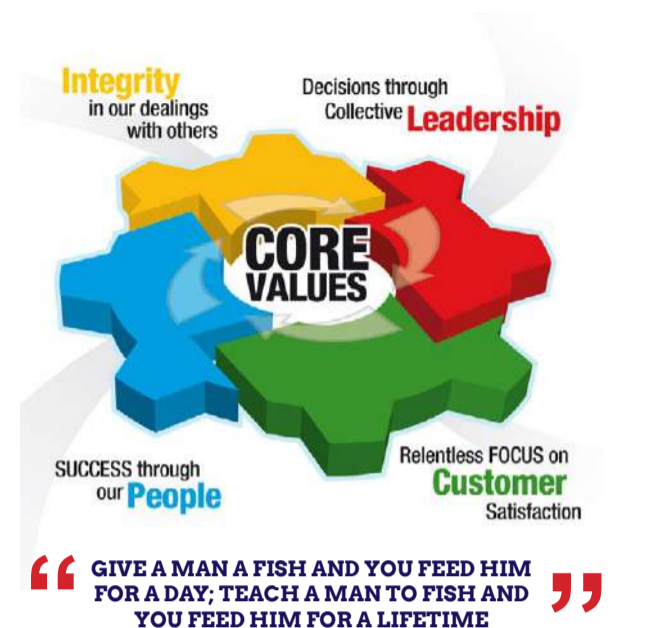
**Senior Manager**  
Letticia Wong  
letticia.wong@shareinvestor.com

**PROCESS AUTOMATION & DATA ANALYTICS**

**Data Analyst**  
Nickson Aw

**SHAREINVESTOR HOLDINGS BOARD OF DIRECTORS**

<b>Chairman</b>	Patrick Daniel
<b>Group CEO</b>	Christopher Lee
<b>Group COO</b>	Lim Dau Hee
<b>Group CFO</b>	Teo Siew May
<b>Group MD</b>	Shanison Lin



**ShareInvestor Malaysia Sdn. Bhd.**  
(200001023956) (526564-M)

Unit No. DF2-07-03A, Level 7,  
Persoft Tower, 6B Persiaran Tropicana,  
47410 Petaling Jaya, Selangor Darul Ehsan.

Hotline : 603 7803 1791

Mobile : 011 6343 8939

Website : [www.ShareInvestor.com.my](http://www.ShareInvestor.com.my)

[www.ShareInvestorHoldings.com](http://www.ShareInvestorHoldings.com)

[www.Facebook.com/ShareInvestorMalaysia](https://www.facebook.com/ShareInvestorMalaysia)

**ADVERTISEMENT ENQUIRY**



## MSWG Webinar: CYBER SECURITY FOR FINANCE AND ACCOUNTING PROFESSIONALS

27th July 2023, 09.30am - 12.30pm

**Speaker: Mr Raj Kumar**

**Objectives of the Programme :-**

- Understand the importance of financial information and system protection
- Understand the current cyber threat landscape and how it can affect business
- Understand cyber security principles
- Understand the value of cyber risk management

**Target Audience :**

- CFOs, Finance Managers, Information Security Officers, IT Heads, Risk and Compliance Managers and any Finance Executive interested in gaining knowledge in cyber security.

*Please click here for more info*

Contact: Ms. Nor Khalidah Tel: 03 - 2732 0010 / 017-630 0754

Email: [khalidah@mswg.org.my](mailto:khalidah@mswg.org.my)





ETF Rewards 2023

# Invest Smarter with ETFs

Empower your portfolio with  
Bursa-listed Exchange-Traded  
Funds (ETFs) to unlock an  
opportunity to win  
an adventure!

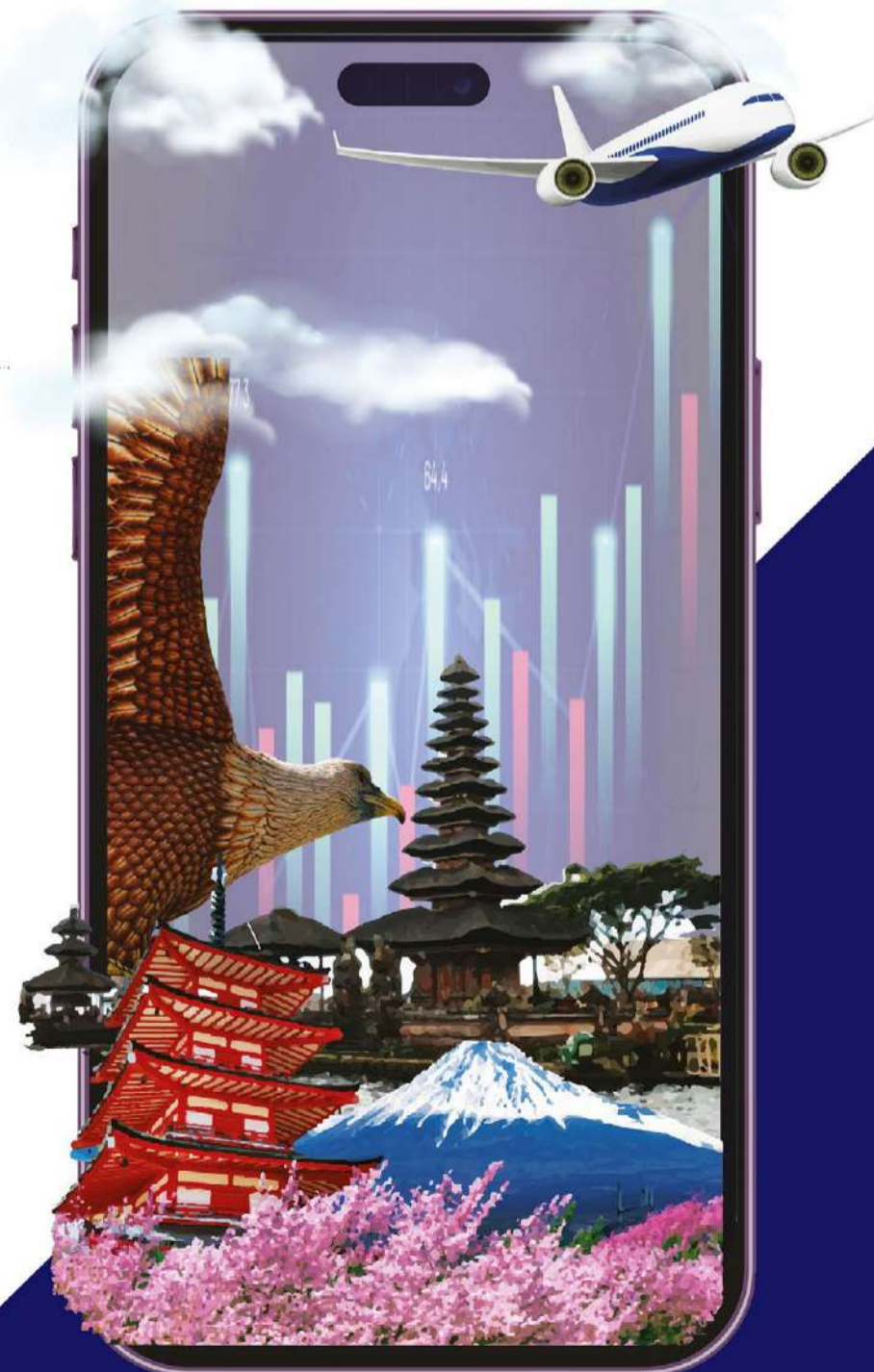
**Bali, Indonesia**

1 July 2023 - 31 August 2023

**Tokyo, Japan**

1 September 2023 - 31 October 2023

*Terms and conditions apply.*



[www.shareinvestor.com](http://www.shareinvestor.com) - market data at your fingertips



ShareInvestor WebPro ([www.shareinvestor.com/my](http://www.shareinvestor.com/my))  
Prices > Stock Prices > Bursa > click Stocks tab

1. mouse over Ranking > select Top Active > all Shariah stocks are denoted with an [S] > mouse over Column Layout > select Edit Customs > select Name > select Volume > select Last Done Price > Mouse Over Column Layout > select Custom
2. mouse over Ranking > select Top Turnover > all Shariah stocks are denoted with an [S] > mouse over Column Layout > select Edit Customs > select Name > select Last Done Price > select Value > Mouse Over Column Layout > select Custom
3. mouse over Ranking > select Top Gainers (Over 5 Trading Days) > mouse over Column Layout > select Edit Customs > select Name > select Last Done Price > select 5 Days Change > select 5 Days % Change > Mouse Over Column Layout > select Custom
4. mouse over Ranking > select Top Losers (Over 5 Trading Days)
5. mouse over Ranking > select Top % Gainers (Over 5 Trading Days)
6. mouse over Ranking > select Top % Losers (Over 5 Trading Days)

### Shariah Top Actives (as at Yesterday)

Name	Price (RM)	Volume
CLASSITA [S]	0.190	2,106,621.000
UEMS [S]	0.450	1,139,106.000
MSTGOLF [S]	0.780	757,803.000
BAHVEST [S]	0.310	648,753.000
JAKS [S]	0.205	616,210.000
WIDAD [S]	0.420	526,622.000
SCIB [S]	0.435	513,034.000
MYEG [S]	0.745	477,839.000
JADEM [S]	0.195	476,256.000
XOX [S]	0.015	417,015.000

### Shariah Top Turnover (as at Yesterday)

Name	Price (RM)	Value (RM)
INARI [S]	3.090	58,461,573
MSTGOLF [S]	0.780	57,495,225
TENAGA [S]	9.070	52,472,098
UEMS [S]	0.450	48,075,346
PCHEM [S]	6.500	44,043,324
CLASSITA [S]	0.190	42,805,104
GAMUDA [S]	4.470	35,770,888
MYEG [S]	0.745	35,588,979
NATGATE [S]	1.630	28,319,293
SCIB [S]	0.435	22,431,634

### Top Gainers (over 5 Trading days as at Yesterday)

Name	Price (RM)	Change (RM)
MPI	30.500	+1.600
AEONCR	11.980	+0.740
PETDAG	22.400	+0.640
RAPID	22.380	+0.600
AJI	15.980	+0.400
ATECH	2.600	+0.320
PENTA	5.450	+0.320
INARI	3.090	+0.290
EG	1.700	+0.280
DKSH	4.990	+0.230

### Top % Gainers (over 5 Trading days as at Yesterday)

Name	Price (RM)	Change (%)
AT	0.010	+100.00
FINTEC	0.010	+100.00
JOE	0.020	+100.00
TALAMT	0.020	+100.00
GOCEAN	0.015	+50.00
MQTECH	0.030	+50.00
MINETEC	0.055	+37.50
PGLOBE	0.205	+36.67
CLASSITA	0.190	+35.71
DOLPHIN	0.020	+33.33

### Top Losers (over 5 Trading days as at Yesterday)

Name	Price (RM)	Change (RM)
HARISON	9.000	-0.480
MCEMENT	3.050	-0.260
DLADY	21.800	-0.200
IMASPRO	5.120	-0.190
TOCEAN	1.870	-0.190
YNHPROP	4.890	-0.160
BAUTO	2.050	-0.143
GCB	2.130	-0.130
HUMEIND	1.580	-0.120
IDEAL	2.000	-0.120

### Top % Losers (over 5 Trading days as at Yesterday)

Name	Price (RM)	Change (%)
SCOMIES	0.005	-87.50
MMAG	0.010	-33.33
JADI	0.025	-28.57
NEXGRAM	0.015	-25.00
SCBUILD	0.035	-22.22
DESTINI	0.080	-20.00
G3	0.020	-20.00
JETSON	0.260	-18.75
ALRICH	0.025	-16.67
XOXNET	0.025	-16.67

# PURNELL

ONLY TOURBILLON



## ESCAPE II FORGED CARBON

Purnell Asia

Tel.: +65.9817.3378

Email: [sales.sg@purnellwatches.com](mailto:sales.sg@purnellwatches.com)

Instagram: [Purnell\\_Official](https://www.instagram.com/Purnell_Official)

[www.purnellwatches.com](http://www.purnellwatches.com)

PLAY



## Price & Volume Distribution Charts (as at Yesterday)

Technical Analysis

**DEFINITION:** Shariah compliant stocks with Technical Analysis showing 5-days & 10-days Moving Average Price below Yesterday's Close over past 3 days and with Volume Spike.

**CHART GUIDE:** Volume Distribution Chart is a statistical interpretation of the current sentiment on each stock in graphical format. The highest bar categorized as >150k is likely to be traded by institutions or super dealers, while the lowest bar categorized as <15k usually represents retail investors. "Buy Up" refers to more buyers snatching up the lots queued at selling price. "Sell Down" refers to sellers selling their shares to the buying queue



ShareInvestor WebPro > Screener > Market Screener (FA & TA) > select BURSA > add criteria

**A. Criteria**

- > click Add Criteria
- Technical Analysis Conditions tab select (i) Moving Average Below Close (ii) Volume Spike
- Fundamental Analysis Conditions tab > select (iii) Revenue
- Prices & Other Conditions tab > select (iv) Is Shariah Compliant
- Technical Analysis Conditions tab select (v) Moving Average Below Close
- Prices & Other Conditions tab > select (vi) Last Done Price
- Technical Analysis Conditions tab select (vii) Moving Average Below Close

**B. Conditions (Criteria Filters)**

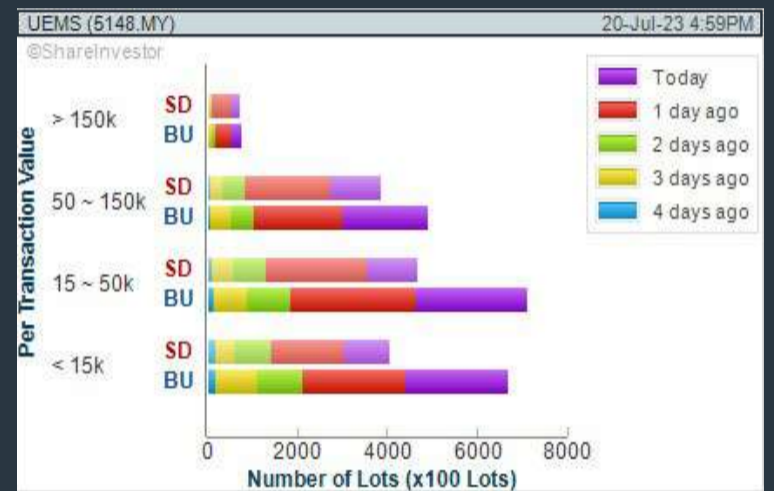
1. Moving Average Below Close - select (MA) type (5) below close price for type (3) days
2. Volume Spike - Volume type (1) greater than type (5) days average
3. Revenue ("000) - select (more than) type (1) for the past select (1) financial year(s)
4. Is Shariah Compliant - select **Yes**
5. Moving Average Below Close - select (MA) type (10) below close price for type (3) days
6. Last Done Price - select (more than) type (0.3)
7. Moving Average Below Close - select (EMA) type (5) below close price for type (3) days

- > click Save Template > Create New Template type (Shariah Hot Stocks) > click Create
- > click Save Template as > select Shariah Hot Stocks > click Save
- > click Screen Now (may take a few minutes)
- > Sort By: Select (Vol) Select (Desc)
- > Mouse over stock name > Charts > click C<sup>2</sup> Charts or Volume Distribution

### UEM SUNRISE BERHAD (5148)

C<sup>2</sup> Chart

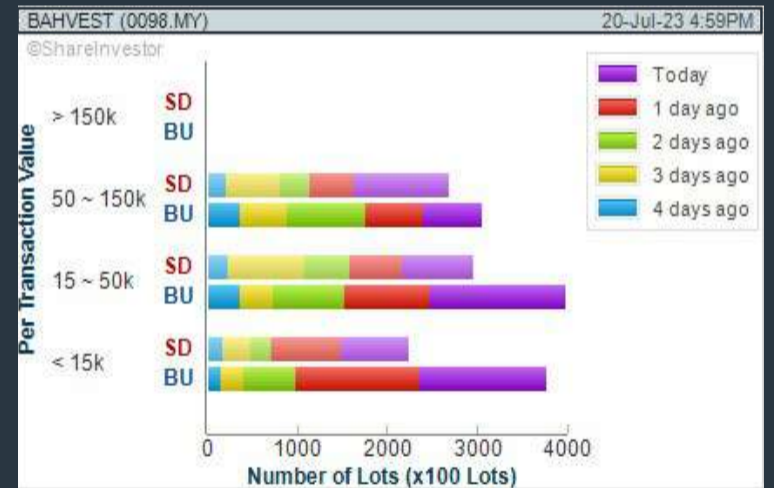
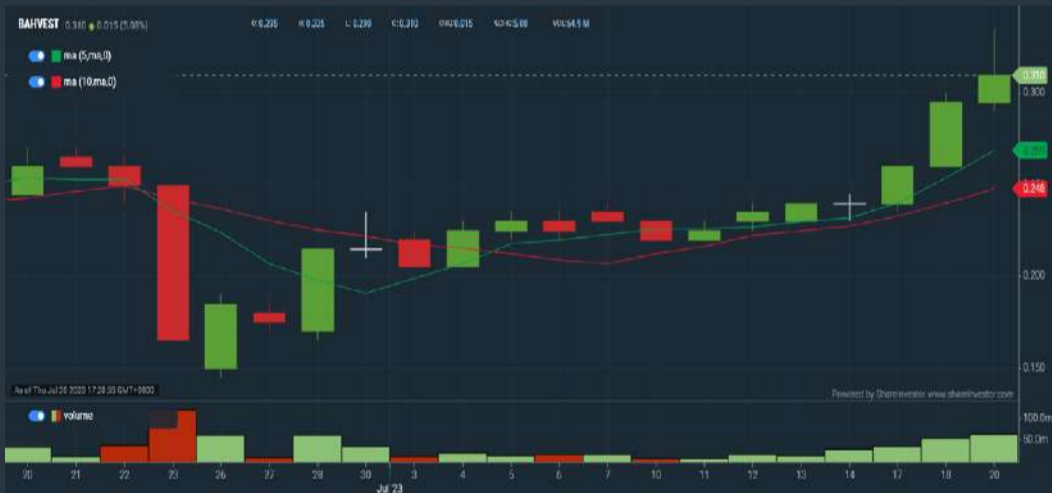
Analysis



### BAHVEST RESOURCES BERHAD (0098)

C<sup>2</sup> Chart

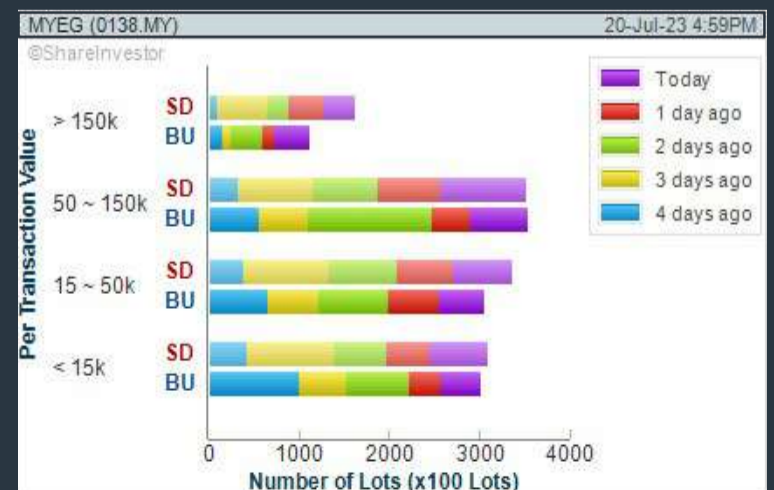
Analysis



### MY E.G. SERVICES BERHAD (0138)

C<sup>2</sup> Chart

Analysis



**Disclaimer:** The information on this page is provided as a service to readers. It does not constitute financial advice and/or any investment recommendations. Past performance is not indicative of future results. We assume no liability for damages resulting from or arising out of the use of such information. It would be best if you did your own research to make your personal investment decisions wisely or consult a licenced investment advisor.

## COMPANY BACKGROUND

**UEM Sunrise Berhad**, a wholly-owned entity of Khazanah Nasional Berhad is involved in township and property development. It operates in Township Development, Property Development and Property Management. The Property Development segment focuses on developing and selling residential, commercial, retail and integrated properties.



Select Counter: Bursa UEMS (5148.MY) View

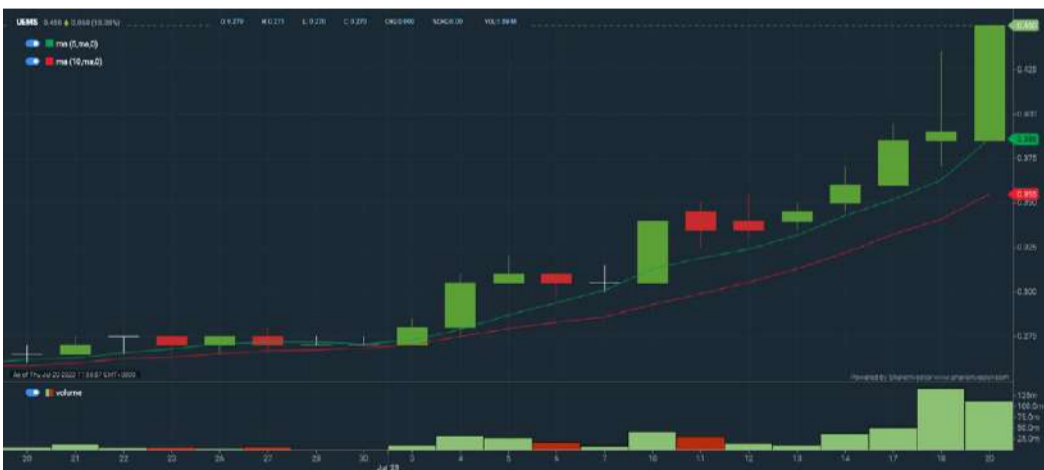
**UEMS UEM SUNRISE BERHAD** Updated at 20 Jul 2023 16:59

Last (MYR): <b>0.450</b> ↑	Change: <b>+0.060</b>	High: 0.450	Remarks: s
	Change (%): <b>+15.38</b>	Low: 0.385	
Open	0.385	Yesterday's Close	0.390
Buy Price	0.450	Sell Price	0.455
Buy Volume ('00)	7,889	Sell Volume ('00)	11,116
Cumulative Volume ('00)	1,139,106	Cumulative Value	48,075,346

### Financial Analysis

<b>Revenue Growth</b> Increasing revenue in last 2 consecutive years	<b>Profit Growth</b> Profit turnaround in most recent year
<b>Piotroski F Score</b> The company has strong financial strength (Piotroski F-Score of 8-9)	<b>Dividend Payout</b> Dividend is decreasing over the past 60 months.
<b>Debt to Cashflow</b> High debt to cash flow for most recent year	

Excellent   
 Good   
 Neutral   
 Be Alert   
 Watch Out



### Historical Financials



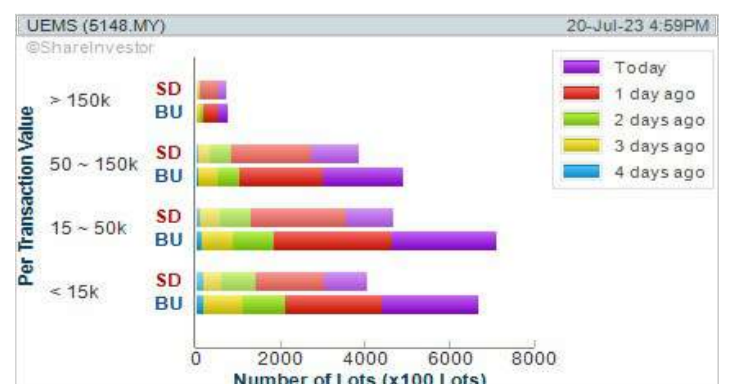
**WebPro 9-Days Free Trial Registration**  
(worth RM9)  
Sign Up Now



### Key Statistics with Total Shareholder Returns

#### Total Shareholder Return

Period	Dividend Received	Capital Appreciation	Total Shareholder Return
Short Term Return	5 Days	+0.115	+34.00%
	10 Days	+0.145	+47.54%
	20 Days	+0.185	+60.61%
Medium Term Return	3 Months	+0.185	+60.61%
	6 Months	+0.200	+80.00%
Long Term Return	1 Year	+0.180	+50.00%
	2 Years	+0.080	+15.38%
	3 Years	+0.005	+1.12%
Annualised Return	-	-0.500	-52.63%
Annualised Return	-	-	-13.88%



**Disclaimer:** The information on this page is provided as a service to readers. It does not constitute financial advice and/or any investment recommendations. Past performance is not indicative of future results. We assume no liability for damages resulting from or arising out of the use of such information. It would be best if you did your own research to make your personal investment decisions wisely or consult a licenced investment advisor.

## Price & Volume Distribution Charts (as at Yesterday)

Technical Analysis

**DEFINITION:** Shariah compliant stocks with Technical Analysis showing Bullish Momentum and Price Uptrend. The share price closed at the highest price yesterday. The typical price was higher than the previous day's typical price.

**CHART GUIDE:** Volume Distribution Chart is a statistical interpretation of the current sentiment on each stock in graphical format. The highest bar categorized as >150k is likely to be traded by institutions or super dealers, while the lowest bar categorized as <15k usually represents retail investors. "Buy Up" refers to more buyers snatching up the lots queued at selling price. "Sell Down" refers to sellers selling their shares to the buying queue.



ShareInvestor WebPro > Screener > Market Screener (FA & TA)>select BURSA>add criteria

**A. Criteria**

- > click Add Criteria
- Fundamental Analysis Conditions tab >select (i) Revenue
- Technical Analysis Conditions tab select (ii) Average Volume
- Prices & Other Conditions tab > select (iii) Last Done Price
- Prices & Other Conditions tab > select (iv) Is Shariah Compliant
- Technical Analysis Conditions tab select (v) RSI Overbought
- Technical Analysis Conditions tab select (vi) Moving Average Below Close
- Technical Analysis Conditions tab select (vii) CCI Overbought

**B. Conditions (Criteria Filters)**

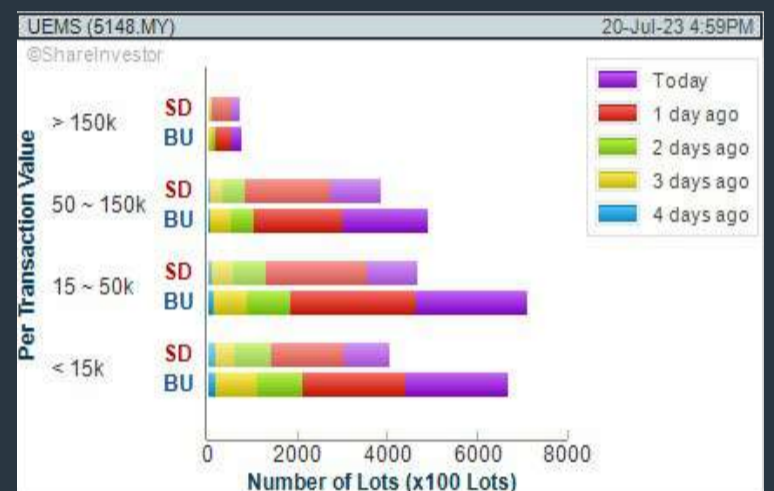
1. Revenue ("000) - select (more than) type (1) for the past select (1) financial year(s)
2. Average Volume - type (1) days average volume greater than type (10000) lots
3. Last Done Price - select (more than) type (0.3)
4. Is Shariah Compliant - select Yes
5. RSI Overbought - select RSI 1 above 99 for 1 days
6. Moving Average Below Close - select (MA) type (10) below close price for type (1) days
7. CCI Overbought - select CCI (2) above (0) for (1) days

- > click Save Template > Create New Template type (Shariah Momentum Up Stocks) > click Create
- > click Save Template as > select Shariah Momentum Up Stocks > click Save
- > click Screen Now (may take a few minutes)
- Sort By: Select (Vol) Select (Desc)
- Mouse over stock name > Charts > click C<sup>2</sup> Charts tab or Volume Distribution

### UEM SUNRISE BERHAD (5148)

C<sup>2</sup> Chart

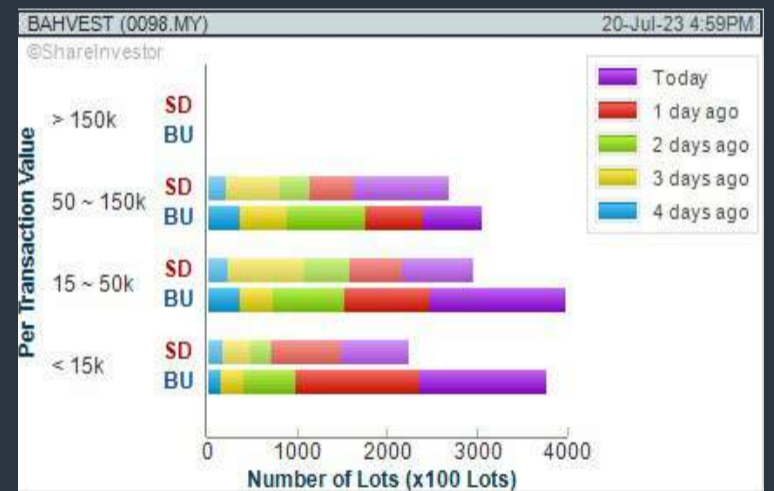
Analysis



### BAHVEST RESOURCES BERHAD (0098)

C<sup>2</sup> Chart

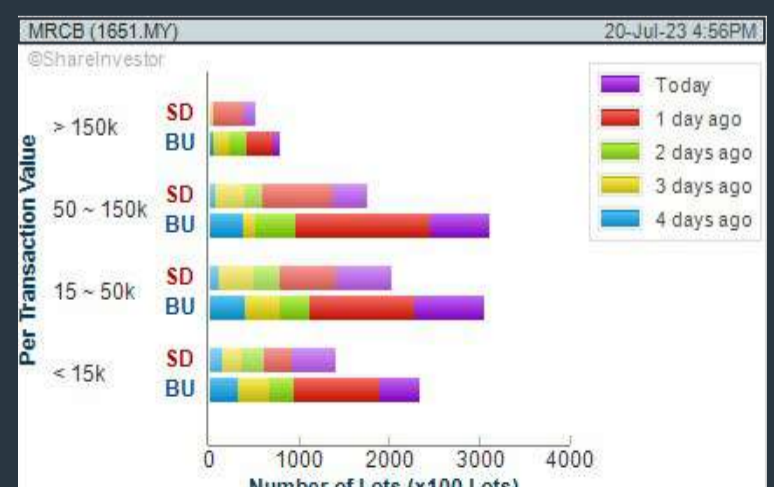
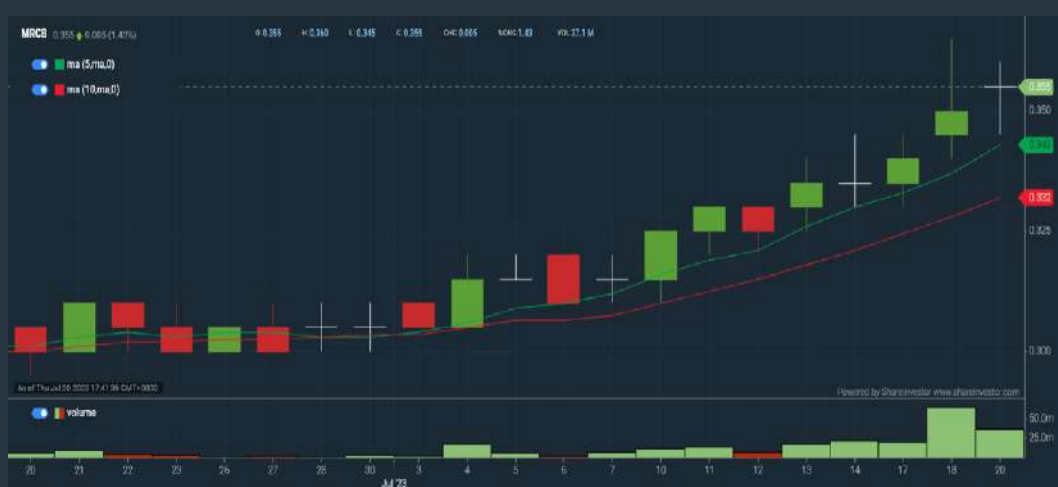
Analysis



### MALAYSIAN RESOURCES CORPORATION BERHAD (1651)

C<sup>2</sup> Chart

Analysis



**Disclaimer:** The information on this page is provided as a service to readers. It does not constitute financial advice and/or any investment recommendations. Past performance is not indicative of future results. We assume no liability for damages resulting from or arising out of the use of such information. It would be best if you did your own research to make your personal investment decisions wisely or consult a licenced investment advisor.



Anywhere you are,  
opportunities are never far,  
*any time.*

## Introducing a brand new way to build your wealth.





No matter where you are in the world, you will be able to invest in a wide range of conventional and Shariah-compliant investments locally and globally. With our investment expertise and research capabilities, you will have full control of your investments at your fingertips.

Scan here to start your investment journey with us.



Get in touch with RHB Asset Management.  
Log on to [rhbgroup.com/myinvest](https://rhbgroup.com/myinvest)

### Explore the new RHBAM MyInvest digital platform.

-  Online account opening and onboarding with ease
-  Easy online access to your investments 24/7
-  Readily available digital tools and resources to help you make better decisions
-  Opportunity to invest in professionally managed local and global funds



**Investment Disclaimer:** This advertisement is for general information only. The information is based on certain assumptions, information and conditions available as at the date of this advertisement and may be subject to change at any time without notice. Past performance is not necessarily indicative of future performance. This advertisement does not constitute an offer, solicitation or recommendation to invest into any fund / scheme available in RHBAM MyInvest. A Product Highlights Sheet ("PHS") highlighting the key features and risks of the of the fund(s) / scheme(s) is available and investors have the right to request for a PHS. Investors are advised to obtain, read and understand the contents of the PHS and relevant Prospectus / Master Prospectus / Information Memorandum / Replacement Master Prospectus / Disclosure Document / Replacement Disclosure Document and its relevant supplementary(ies) (if any) ("collectively known as "Prospectuses") before investing. The

Prospectuses have been registered with the Securities Commission Malaysia ("SC") who takes no responsibility for its contents. The SC's approval and authorization of the registration of the Prospectuses should not be taken to indicate that the SC has recommended or endorsed the fund(s) / scheme(s). Amongst others, investors should consider the fees and charges involved. Investors should also note that the price of units and distributions payable, if any, may go down as well as up. Where a distribution is declared, investors are advised that following the issue of additional units/distribution, the net asset value ("NAV") per unit will be reduced from cum-distribution NAV to ex-distribution NAV. Any issue of units to which the Prospectuses relates will only be made on receipt of a form of application referred to in the Prospectuses. A copy of the PHS and the Prospectuses can be obtained from RHBAM MyInvest. Investors are advised that investments are subject to investment risk and that there can be no guarantee that any investment objectives will be achieved. Investors should conduct their own assessment before investing and seek professional advice, where necessary and should not make an investment decision based solely on this advertisement. Please refer to the Prospectuses for more information and risks of investing. The specific risks and other general risks of the fund(s) / scheme(s) are elaborated in the Prospectuses. This advertisement has not been reviewed by the SC.

## Price & Volume Distribution Charts (as at Yesterday)

Technical Analysis

**DEFINITION:** Stocks with Technical Analysis showing 5-days & 10-days Moving Average Price below Close over past 1 days and with Volume Spike

**CHART GUIDE:** Volume Distribution Chart is a statistical interpretation of the current sentiment on each stock in graphical format. The highest bar categorized as >150k is likely to be traded by institutions or super dealers, while the lowest bar categorized as <15k usually represents retail investors. "Buy Up" refers to more buyers snatching up the lots queued at selling price. "Sell Down" refers to sellers selling their shares to the buying queue.



ShareInvestor WebPro > Screener > Market Screener (FA & TA) > select BURSA > add criteria

**A. Criteria**

- > click Add Criteria
- Technical Analysis Conditions tab select (i) Moving Average Below Close (ii) Volume Spike
- Fundamental Analysis Conditions tab >select (iii) Revenue
- Prices & Other Conditions tab > select (iv) Is Shariah Compliant
- Technical Analysis Conditions tab select (v) Moving Average Below Close
- Prices & Other Conditions tab > select (vi) Last Done Price
- Technical Analysis Conditions tab select (vii) Moving Average Below Close

**B. Conditions (Criteria Filters)**

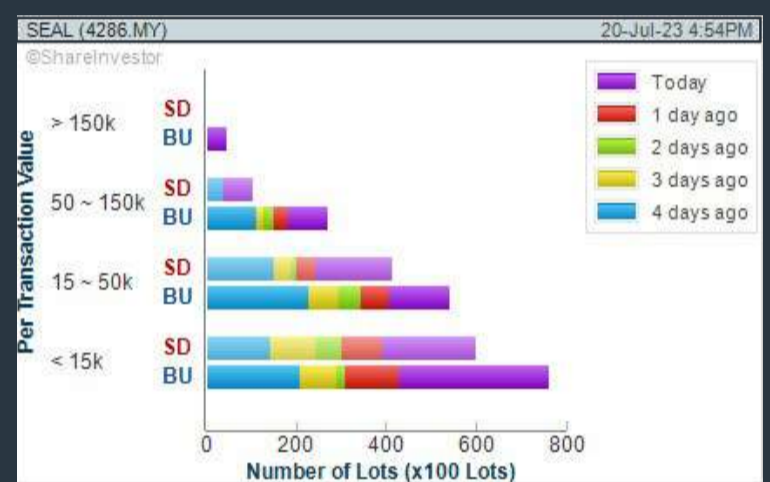
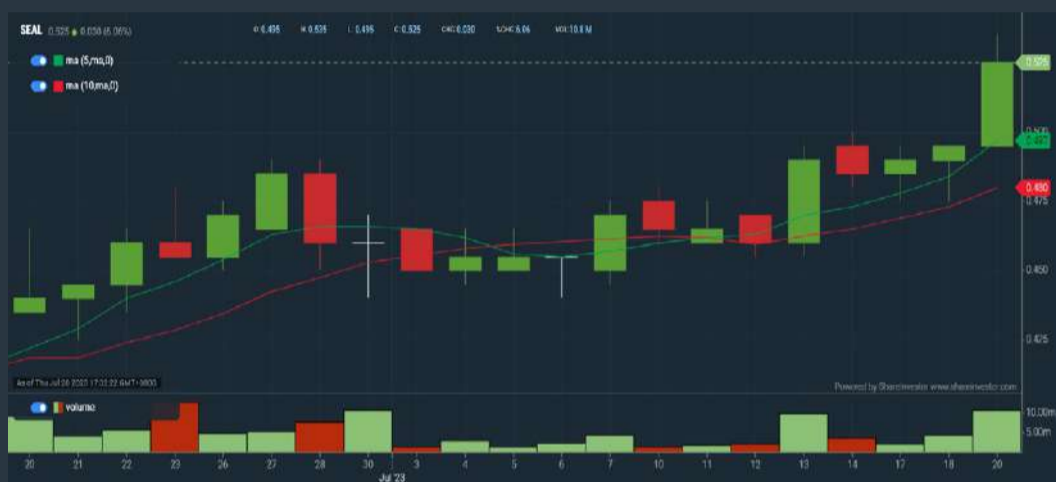
1. Moving Average Below Close - select (MA) type (5) below close price for type (3) days
2. Volume Spike - Volume type (1) greater than type (5) days average
3. Revenue ("000) - select (more than) type (1) for the past select (1) financial year(s)
4. Is Shariah Compliant - select NO
5. Moving Average Below Close - select (MA) type (10) below close price for type (1) days
6. Last Done Price - select (more than) type (0.3)
7. Moving Average Below Close - select (EMA) type (5) below close price for type (1) days

- > click Save Template > Create New Template type (Non-Shariah Hot Stocks) > click Create
- > click Save Template as > select Non-Shariah Hot Stocks > click Save
- > click Screen Now (may take a few minutes)
- Sort By: Select (Vol) Select (Desc)
- Mouse over stock name > Charts > click C<sup>2</sup> Charts tab or Volume Distribution

### SEAL INCORPORATED BERHAD (4286)

C<sup>2</sup> Chart

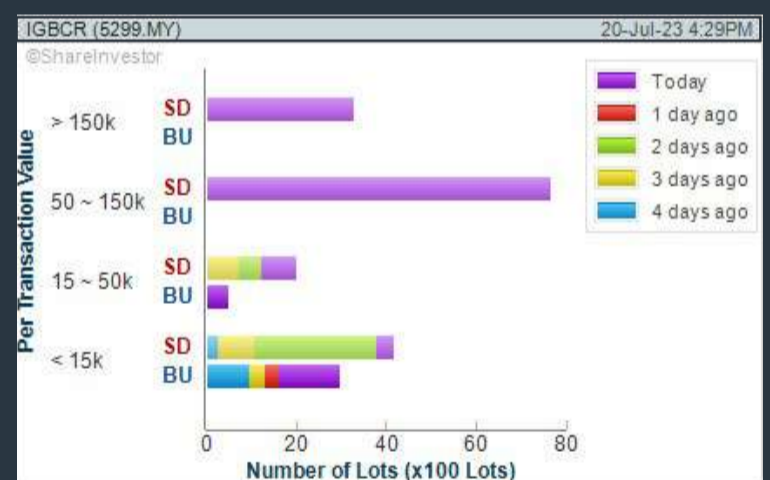
Analysis



### IGBCR COMMERCIAL REAL ESTATE INVESTMENT TRUST (5299)

C<sup>2</sup> Chart

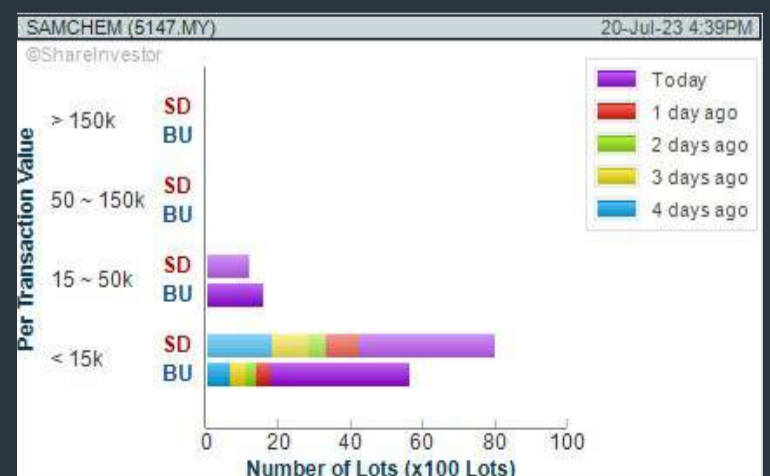
Analysis



### SAMCHEM HOLDINGS BERHAD (5147)

C<sup>2</sup> Chart

Analysis



**Disclaimer:** The information on this page is provided as a service to readers. It does not constitute financial advice and/or any investment recommendations. Past performance is not indicative of future results. We assume no liability for damages resulting from or arising out of the use of such information. It would be best if you did your own research to make your personal investment decisions wisely or consult a licenced investment advisor.

# SHAREINVESTOR WEBPRO

## STOCK MARKET DATA AT YOUR FINGERTIPS

Powerful browser-based market analytics platform.  
Access from anywhere



### 8 Markets Data

- ▶ Get access to data from Bursa, NYSE, Nasdaq, HKEX, SGX, IDX, SET & ASX

### Portfolio Management

- ▶ Profit & Loss Summary
- ▶ Stock Alert
- ▶ News & Events filtering
- ▶ Customizable column layout

## Fundamental Analysis

### Financial Analysis Statement

- ▶ Profit & Loss
- ▶ Balance Sheet
- ▶ Cash Flow Statement
- ▶ More than 20 Financial Ratios
- ▶ Dividend Analysis

### Technical Charting

- ▶ C<sup>2</sup> chart (Customisable & Comprehensive)

### Brokers' Call

### Intrinsic Value Calculator

### FactSheet

- ▶ Key Stock Information
- ▶ Ownership
- ▶ Consensus Estimates
- ▶ Annual Report
- ▶ Historical Price
- ▶ Insider Trades

## What's new on WebPro (Stable Release 12.1.0)

In our effort to keep our platform at the forefront of trading technology, we have added on some new features onto our C2 Chart in WebPro

### ADDITIONAL NEW FEATURES:

- ▶ Anchor selector for AVWAP, PVAT, and PAV indicators
- ▶ Volume profile indicator by date range
- ▶ Moving Average Cross indicator
- ▶ Guppy Multiple Moving Average (GMMA) indicator
- ▶ GoNoGo Trend Signal indicators
- ▶ SignalIQ

So what are you waiting for? Head to our platform today and check out our new trading chart features and indicators. We're confident that you'll love the improvements we've made and that they'll help you become a more successful trader.

Click here to start your 9 days FREE trial  
(Valued at RM10)



## Price & Volume Distribution Charts (Over 5 trading days as at Yesterday)

Technical Analysis

**DEFINITION:** Stocks with Technical Analysis showing Bullish Momentum and Price Uptrend

**CHART GUIDE:** Volume Distribution Chart is a statistical interpretation of the current sentiment on each stock in graphical format. The highest bar categorized as >150k is likely to be traded by institutions or super dealers, while the lowest bar categorized as <15k usually represents retail investors. "Buy Up" refers to more buyers snatching up the lots queued at selling price. "Sell Down" refers to sellers selling their shares to the buying queue.



ShareInvestor WebPro > Screener > Market Screener (FA & TA) > select BURSA > add criteria

**A. Criteria**

- > click Add Criteria
- Fundamental Analysis Conditions tab > select (i) Revenue
- Technical Analysis Conditions tab select (ii) Moving Average Below Close
- Technical Analysis Conditions tab select (iii) Average Volume
- Prices & Other Conditions tab > select (iv) Last Done Price
- Technical Analysis Conditions tab select (v) Moving Average Below Close
- Technical Analysis Conditions tab select (v) Moving Average Bullish Crossover

**B. Conditions**

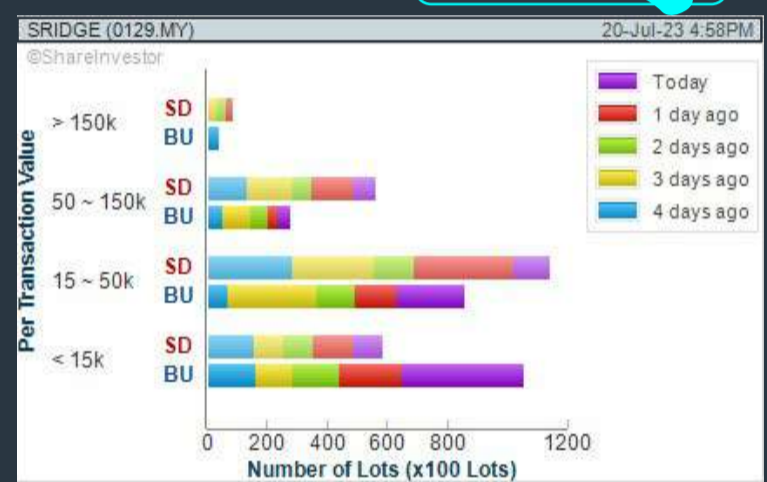
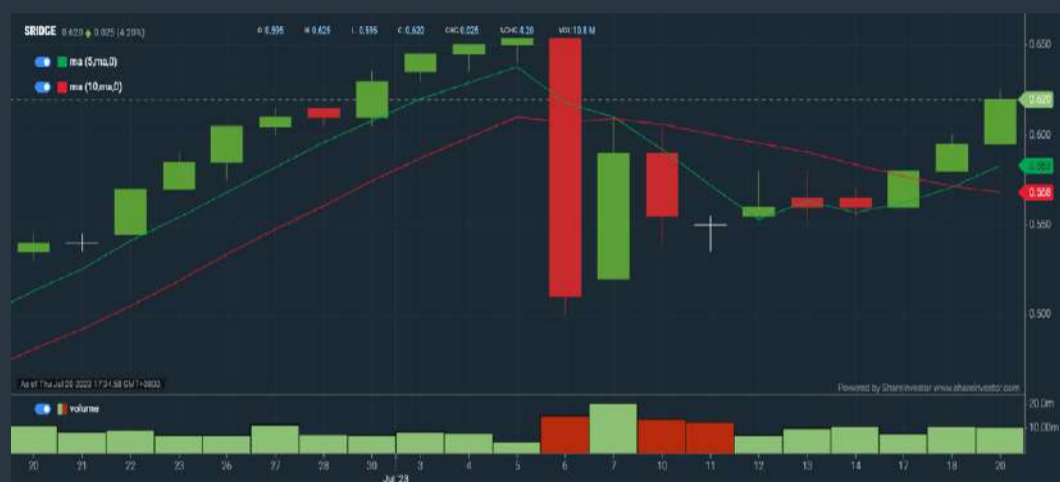
1. Revenue - select (more than) type (1) for the past select (1) financial year(s)
2. Moving Average Below Close - select (MA) type (20) below close price for type (1) days
3. Average Volume - type (5) days average volume type (10000) lots
4. Last Done Price - select (more than) type (0.3)
5. Moving Average Below Close - select (MA) type (10) below close price for type (1) days
6. Moving Average Bullish Crossover - select (MA) type (5) crossed above select (MA) type (10)

> click Save Template > Create New Template type (Non-Shariah Up-Trending Stocks) > click Create Click Save Template As > select Non-Shariah Up Trending Stocks > click Save  
> click Screen Now (may take a few minutes)  
Sort By: Select (Vol) Select (Desc)  
Mouse over stock name > Charts > click C<sup>2</sup> Charts tab or Volume Distribution

### SILVER RIDGE HOLDINGS BERHAD (0129)

C<sup>2</sup> Chart

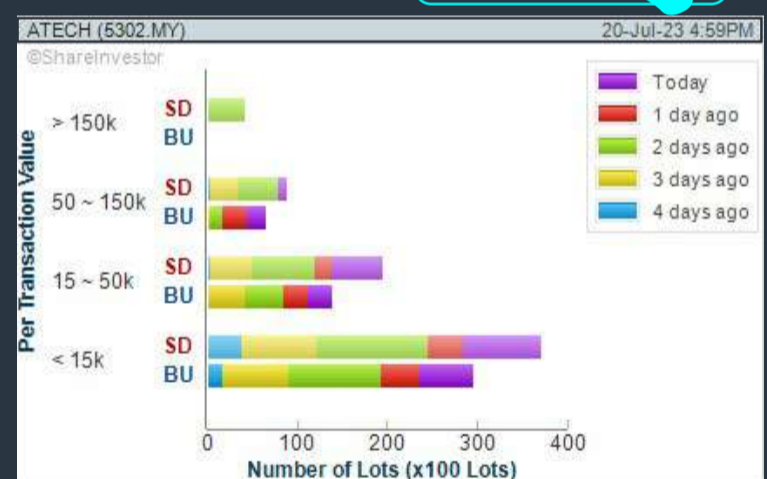
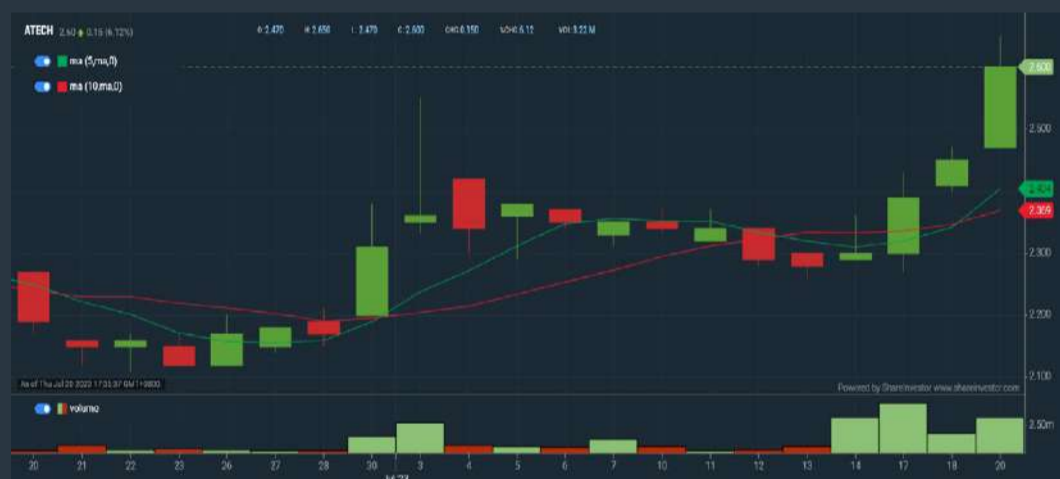
Analysis



### AURELIUS TECHNOLOGIES BERHAD (5302)

C<sup>2</sup> Chart

Analysis



**Disclaimer:** The information on this page is provided as a service to readers. It does not constitute financial advice and/or any investment recommendations. Past performance is not indicative of future results. We assume no liability for damages resulting from or arising out of the use of such information. It would be best if you did your own research to make your personal investment decisions wisely or consult a licenced investment advisor.

## SHAREINVESTOR MARKET DATA PLATFORMS



**SHAREINVESTOR STATION**  
Advanced Charting Software  
(8 Markets)



**SHAREINVESTOR WEBPRO**  
Browser-Based Market Data  
Analytics Platform



**BURSA STATION**  
Advanced Charting Software  
(Bursa Malaysia Only)

# BURSASTATION Professional



## Stock Scanning

- Technical Analysis (TA) Market Scanner
- Fundamental Analysis (FA) Market Scanner



## Market Data

- Equities
- Derivatives

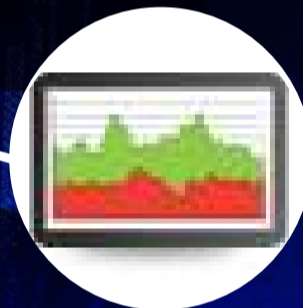
## Monitoring

- Portfolio
- Stock Alerts
- Price Spread Calculator



# Scan. Chart. Analyse.

*Be The Intelligent Investor*

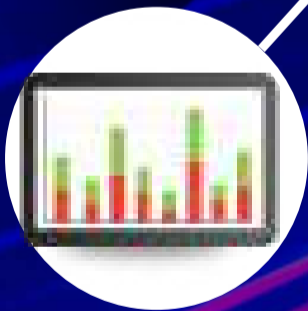


## Price Movements

- Streaming Prices
- Time & Sales
- Trade Summary Matrix
- Quote Movements
- 5 Levels Market Depth
- Historical Price Download

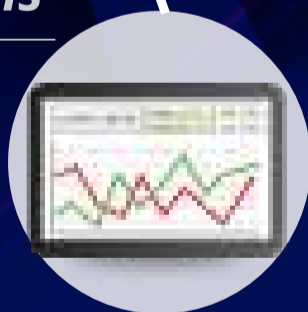
## Charts

- Intraday Charts
- Interactive Charts
- Historical Charts
- Volume Distribution Charts



## Fundamentals

- Factsheets
- Financials
- Insider Trades



Brought to you as a collaborative effort by ShareInvestor and Bursa Malaysia, **BursaStation Professional** is designed with you, the user, in mind, as a user-friendly yet full of powerful features that will appeal to investors/traders who need instant access to fundamental, technical, and trading data, anytime, anywhere. **BursaStation Professional** is a state-of-the-art Stock Market Tracker with Charting Software that places in your hands the power to make better investment decisions.

**CLICK HERE TO START YOUR 14-DAYS FREE TRIAL**

## Price & Total Shareholder Return (as at Yesterday)

Fundamental Analysis

**DEFINITION:** Share price of a company trading at a lower price as compared to its fundamentals (FA) such as financial performance and dividend, allowing it to be attractive to value investors.

**CHART GUIDE:** Total Shareholder Return (TSR) combines share price appreciation and dividend distributions paid to show the total return to the shareholder expressed as a percentage.



ShareInvestor WebPro > Screener > Market Screener (FA & TA) > select BURSA > add criteria

**A. Criteria**

- > click Add Criteria
- Fundamental Analysis Conditions tab (i) Price Earnings Ratio
- Fundamental Analysis Conditions tab >select (ii) CAGR of Net Earnings
- Fundamental Analysis Conditions tab >select (iii) Net Debt To Equity
- Fundamental Analysis Conditions tab >select (iv) Return On Equity (ROE)

**B. Conditions**

1. Price Earnings Ratio - select (less than) type (15) times now
2. CAGR of Net Earnings - select (more than) type (10) % for the past type (3) financial year(s)
3. Net Debt To Equity – select (less than) type (1) for the past select (1) financial year(s)
4. Return On Equity (ROE) – select (more than) type (10) % for the past select (1) financial year(s)

- > click Save Template > Create New Template type (Value Stock) > click Create
- > click Save Template as > select Value Companies > click Save
- > click Screen Now (may take a few minutes)
- Sort by: Select (PE Ratio) Select (Ascending)
- > Mouse over stock name > Factsheet > looking for Total Shareholder Return
- > Mouse over stock name > Charts > click C2 Charts tab

## SUNMOW HOLDING BERHAD (03050)

C<sup>2</sup> Chart

Analysis



Period	Dividend Received	Capital Appreciation	Total Shareholder Return
Short Term Return	5 Days	+0.050	+4.55%
	10 Days	+0.050	+4.55%
	20 Days	+0.165	+16.76%
Medium Term Return	3 Months	+0.520	+82.54%
	6 Months	+0.500	+76.92%
	1 Year	+0.270	+38.88%
Annualised Return	Annualised	-	+38.88%

## LINGKARAN TRANS KOTA HOLDINGS (6645)

C<sup>2</sup> Chart

Analysis



Period	Dividend Received	Capital Appreciation	Total Shareholder Return
Short Term Return	5 Days	-0.005	-0.99%
	10 Days	-0.005	-0.99%
	20 Days	-0.005	-0.99%
Medium Term Return	3 Months	+0.005	+1.00%
	6 Months	-0.005	-0.99%
	1 Year	+0.086	+15.83%
Long Term Return	2 Years	0.250	+122.71%
	3 Years	0.450	+157.41%
	5 Years	0.950	+264.92%
Annualised Return	Annualised	-	+39.94%

## SCGM BERHAD (7247)

C<sup>2</sup> Chart

Analysis

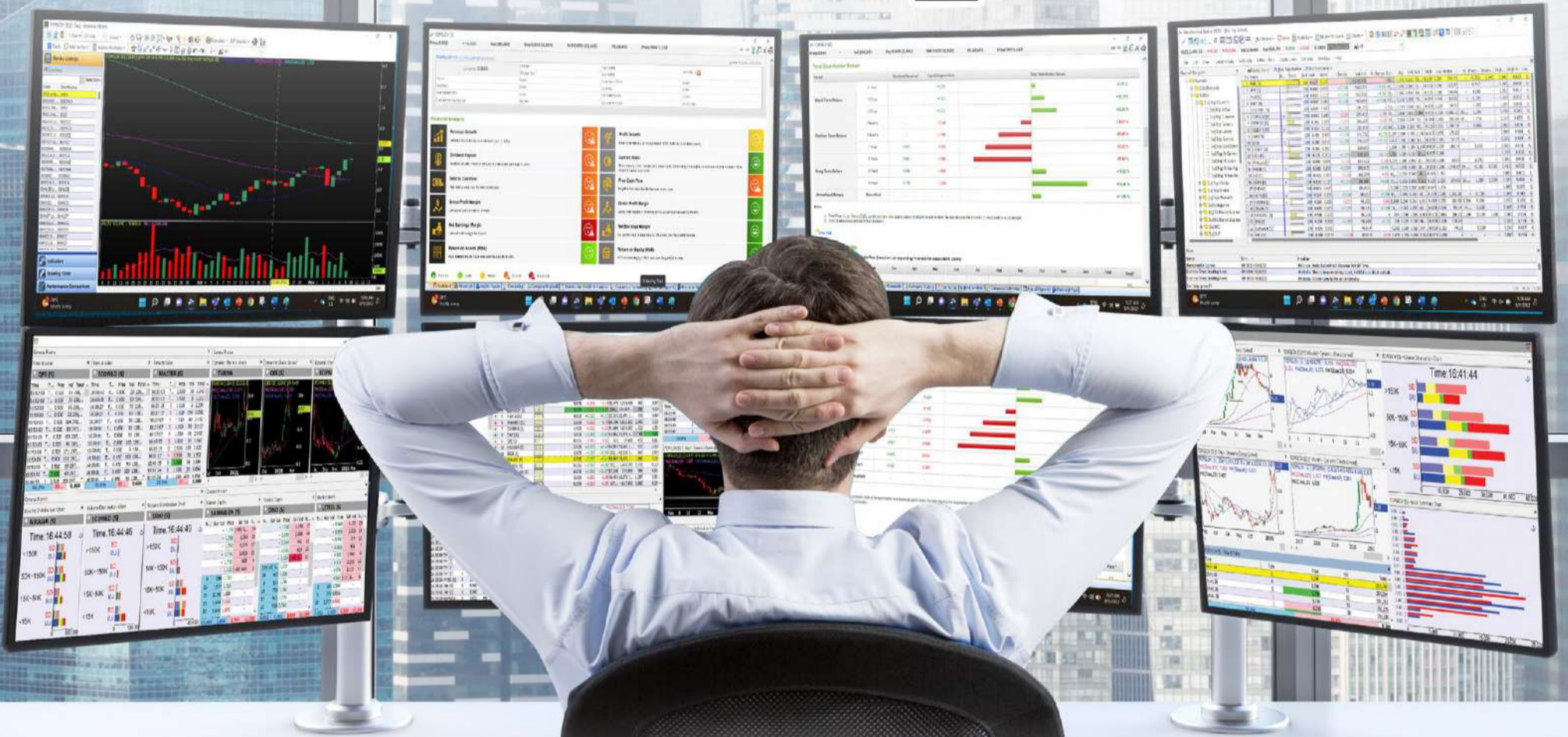


Period	Dividend Received	Capital Appreciation	Total Shareholder Return
Short Term Return	5 Days	-	-
	10 Days	-	-2.62%
	20 Days	-	-1.69%
Medium Term Return	3 Months	+0.040	+7.41%
	6 Months	+0.005	+0.67%
	1 Year	+0.020	+3.57%
Long Term Return	2 Years	0.051	+3.44%
	3 Years	0.126	+22.45%
	5 Years	0.173	+13.92%
Annualised Return	Annualised	-	+16.43%

**Disclaimer:** The information on this page is provided as a service to readers. It does not constitute financial advice and/or any investment recommendations. Past performance is not indicative of future results. We assume no liability for damages resulting from or arising out of the use of such information. It would be best if you did your own research to make your personal investment decisions wisely or consult a licenced investment advisor.

# MAKE BETTER TRADING STRATEGIES

with  
**SHARE INVESTOR**  
**STATION**



### 8 Markets Data

- ▶ Get access to data from Bursa, NYSE, Nasdaq, HKEX, SGX, IDX, SET & ASX

### Dynamic Chart

- ▶ Candlestick Pattern Recognition
- ▶ 111 Indicators
- ▶ 39 Drawing Tools
- ▶ Performance Comparison Chart

### Intraday Data

- ▶ Market Depth
- ▶ Trade Summary Matrix & Chart
- ▶ Times & Sales
- ▶ Intraday Market Ticker

### Market Screener

- ▶ 96 criteria ranging from FA, TA, Consensus Estimate
- ▶ Real-time Data

### Power Frame

- ▶ Combining few Dynamic Charts together with intraday information in one frame

## Technical Analysis

## Fundamental Analysis

### Financial Analysis Statement

- ▶ Profit & Loss
- ▶ Balance Sheet
- ▶ Cash Flow Statement
- ▶ More than 20 Financial Ratios
- ▶ Dividend Analysis

### FactSheet

- ▶ Key Stock Information
- ▶ Ownership
- ▶ Consensus Estimates
- ▶ Annual Report
- ▶ Historical Price
- ▶ Insider Trades

**Start your 18 days  
 FREE trial now  
 (Valued at RM82)**



## Price & Total Shareholder Return (as at Yesterday)

Fundamental Analysis

**DEFINITION:** Company revenue is growing and making good quality of earnings with positive Free Cash Flow.

**CHART GUIDE:** Total Shareholder Return (TSR) combines share price appreciation and distributions paid to show the total return to the shareholder expressed as a percentage.



ShareInvestor WebPro > Screener > Market Screener (FA & TA) > select BURSA > add criteria

**A. Criteria**

1. Fundamental Analysis Conditions tab >select (i) Free Cash Flow, (ii) Revenue Growth, (iii) Gross Profit (Earnings) Margin, (iv) Quality of Earnings, (v) Total Shareholder Returns, > click Add Criteria
2. Fundamental Analysis Conditions tab >select (vi) Total Shareholder Returns > click Add Criteria

**B. Conditions (Criteria Filters)**

1. Free Cash Flow - select (more than) type (1) for the past select (1) financial year(s)
2. Revenue Growth - select (more than) type (1) for the past select (1) financial year(s)
3. Gross Profit (Earnings) Margin - select (more than) type (30) % for the past select (1) financial year(s)
4. Quality of Earnings - select (more than) type (1) for the past select (1) financial year(s)
5. Total Shareholder Return - select (more than) type (5) % for the past select (3) financial year(s)
6. Total Shareholder Return - select (more than) type (5) % for the past select (5) financial year(s)

- > click Save Template > Create New Template type (Growth Companies) > click Create
- > click Save Template as > select Growth Companies > click Save
- > click Screen Now (may take a few minutes)
- > Sort By: Select (Revenue Growth) Select (Desc)
- > Mouse over stock name > Factsheet > looking for Total Shareholder Return

## CLASSIC SCENIC BERHAD (7202)

C<sup>2</sup> Chart

Analysis



Period	Dividend Received	Capital Appreciation	Total Shareholder Return
Short Term Return	5 Days	-0.005	-1.15%
	10 Days	-0.005	-1.15%
	20 Days	+0.005	+1.16%
Medium Term Return	3 Months	-0.107	-19.93%
	6 Months	-0.330	-43.42%
	1 Year	-0.027	-6.94%
Long Term Return	2 Years	-0.103	-19.32%
	3 Years	0.030	+15.06%
	5 Years	0.140	+18.01%
Annualised Return	Annualised	-	+3.37%

## FOCUS POINT HOLDINGS BERHAD (0157)

C<sup>2</sup> Chart

Analysis

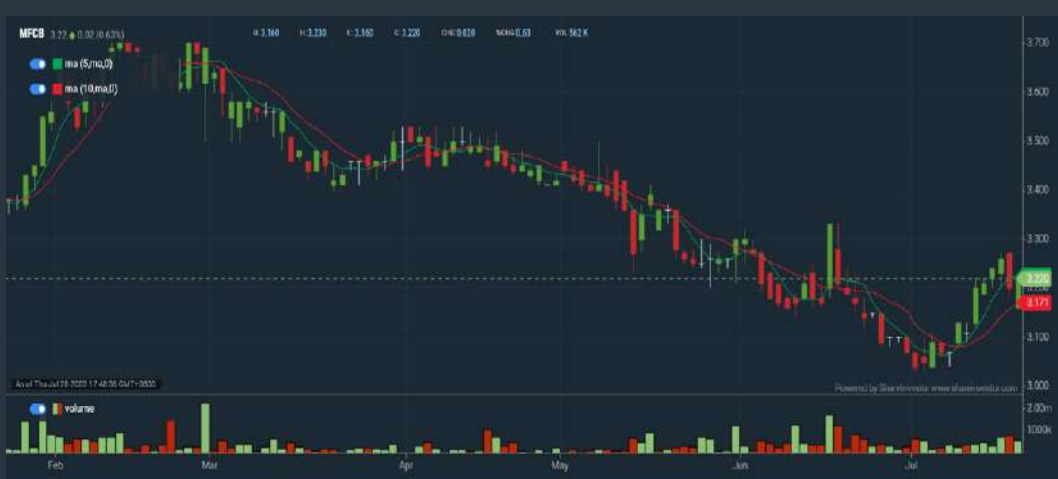


Period	Dividend Received	Capital Appreciation	Total Shareholder Return
Short Term Return	5 Days	+0.015	+1.91%
	10 Days	+0.025	+3.23%
	20 Days	-0.020	-2.44%
Medium Term Return	3 Months	-0.055	-6.43%
	6 Months	-0.029	+3.76%
	1 Year	+0.384	+81.29%
Long Term Return	2 Years	+0.284	+48.25%
	3 Years	+0.595	+296.04%
	5 Years	0.035	+1076.06%
Annualised Return	Annualised	-	+63.71%

## MEGA FIRST CORPORATION BERHAD (3069)

C<sup>2</sup> Chart

Analysis



Period	Dividend Received	Capital Appreciation	Total Shareholder Return
Short Term Return	5 Days	+0.010	+3.84%
	10 Days	-0.170	-5.07%
	20 Days	-0.030	-0.84%
Medium Term Return	3 Months	-0.218	-6.87%
	6 Months	-0.140	-4.17%
	1 Year	-0.250	-7.47%
Long Term Return	2 Years	0.068	+8.16%
	3 Years	0.253	+6.53%
	5 Years	0.283	+95.17%
Annualised Return	Annualised	-	+14.31%

**Disclaimer:** The information on this page is provided as a service to readers. It does not constitute financial advice and/or any investment recommendations. Past performance is not indicative of future results. We assume no liability for damages resulting from or arising out of the use of such information. It would be best if you did your own research to make your personal investment decisions wisely or consult a licenced investment advisor.



*Introducing*



# GM SUITE

CONNECTING STAKEHOLDERS

by SHAREINVESTOR®

**General Meeting Suite (GM Suite)**, an end-to-end technology system to facilitate hybrid, virtual or physical Annual General Meetings.

## THE GOLD STANDARD SOLUTION FOR AGM / EGM



<https://gm-suite.com>

## Price & Total Shareholder Return (as at Yesterday)

Fundamental Analysis

**DEFINITION:** Company is paying out dividend with low or moderate leverage.

**CHART GUIDE:** Total Shareholder Return (TSR) combines share price appreciation and distributions paid to show the total return to the shareholder expressed as a percentage.



ShareInvestor WebPro > Screener > Market Screener (FA & TA) > select BURSA > add criteria

**A. Criteria**

- > click Add Criteria
- Fundamental Analysis Conditions tab >select (i) Dividend Yield (Historical)
- Fundamental Analysis Conditions tab >select (ii) Dividend Payout (Historical)
- Fundamental Analysis Conditions tab >select (iii) Total Debt To Equity
- Fundamental Analysis Conditions tab >select (iv) Total Shareholder Returns
- Fundamental Analysis Conditions tab >select (v) Total Shareholder Returns
- Fundamental Analysis Conditions tab / >select (vi) CAGR of Dividend Per Share

• Fundamental Analysis Conditions tab >select (vii) CAGR of Dividend Per Share

**B. Conditions (Criteria Filters)**

1. Dividend Yield - select (more than) type (1) % for the past select (1) financial year(s)
2. Dividend Payout (Historical) - select (between) type (0.5) to type (1) times for the past select (1) financial year(s)
3. Total Debt to Equity - select (less than) type (1) for the past select (1) financial year(s)
4. Total Shareholder Return - select (more than) type (5) % for the past select (3) financial year(s)
5. Total Shareholder Return - select (more than) type (5) % for the past select (5) financial year(s)

6. CAGR of Dividend Per Share - select (less than) type (30) % for the past select (5) financial year(s)
7. CAGR of Dividend Per Share - select (more than) type (1) % for the past select (5) financial year(s)

- > click Save Template > Create New Template type (Dividend Companies) > click Create
- > click Save Template as > select Dividend Companies > click Save
- > click Screen Now (may take a few minutes)
- > Sort By: Select (Dividend Yield) Select (Desc)
- > Mouse over stock name > Factsheet > looking for Total Shareholder Return

## UNITED PLANTATIONS BERHAD (2089)

C<sup>2</sup> Chart



Period	Dividend Received	Capital Appreciation	Total Shareholder Return
Short Term Return	5 Days	-0.200	+1.27%
	10 Days	+0.160	+1.02%
	20 Days	+0.600	+6.00%
Medium Term Return	3 Months	-0.955	-3.96%
	6 Months	+0.759	+5.01%
	1 Year	+2.695	+14.04%
Long Term Return	2 Years	1.150	+26.97%
	3 Years	2.000	+43.25%
	5 Years	4.750	+90.29%
Annualised Return	Annualised	-	+12.51%

## JAYCORP BERHAD (7152)

C<sup>2</sup> Chart



Period	Dividend Received	Capital Appreciation	Total Shareholder Return
Short Term Return	5 Days	-0.095	+0.72%
	10 Days	-0.095	+0.72%
	20 Days	+0.010	+1.45%
Medium Term Return	3 Months	-	-
	6 Months	-0.015	-2.10%
	1 Year	+0.040	+5.06%
Long Term Return	2 Years	0.055	+8.40%
	3 Years	0.170	+19.38%
	5 Years	0.355	+34.44%
Annualised Return	Annualised	-	+18.58%

## FORMOSA PROSONIC INDUSTRIES (9172)

C<sup>2</sup> Chart



Period	Dividend Received	Capital Appreciation	Total Shareholder Return
Short Term Return	5 Days	-0.220	+0.28%
	10 Days	+0.170	+7.02%
	20 Days	+0.180	+7.47%
Medium Term Return	3 Months	-0.190	-5.47%
	6 Months	-0.720	-21.99%
	1 Year	-0.130	-4.73%
Long Term Return	2 Years	0.200	+4.49%
	3 Years	0.340	+10.07%
	5 Years	0.550	+19.58%
Annualised Return	Annualised	-	+17.04%

**Disclaimer:** The information on this page is provided as a service to readers. It does not constitute financial advice and/or any investment recommendations. Past performance is not indicative of future results. We assume no liability for damages resulting from or arising out of the use of such information. It would be best if you did your own research to make your personal investment decisions wisely or consult a licenced investment advisor.



Happy Jack sofa designed by Ludovica + Roberto Palomba

# Made of Stories

by people who design, craft and live.  
Handmade with love in Italy to last generations, since 1912.

[poltronafrau.com](http://poltronafrau.com)

Scan to activate the augmented reality experience.



# XTRA

X-TRA furniture sdn bhd  
The Gardens Mall, Mid Valley City, KL  
2nd floor, Lot S236 & 237  
[xtrafurniture.com](http://xtrafurniture.com)



Week: 14 July 2023 – 20 July 2023

More Brokers' Call 

AMINVESTMENT BANK <small>... See More</small>	Call	Target Price	Release Date
Ancom Nylex Berhad (4758)	BUY	RM1.43	18 Jul 2023
Ancom Nylex Berhad (4758)	BUY	RM1.43	17 Jul 2023

BIMB SECURITIES SDN BHD <small>... See More</small>	Call	Target Price	Release Date
Malakoff Berhad (2496)	BUY	RM0.79	16 Jul 2023
Maxis Berhad (6012)	HOLD	RM3.95	17 Jul 2023
MISC Berhad (3816)	BUY	RM10.00	17 Jul 2023
OM Holdings Limited (5298)	BUY	RM2.71	16 Jul 2023

CGS CIMB <small>... See More</small>	Call	Target Price	Release Date
Dayang Enterprise Holdings Berhad (5141)	ADD	RM1.70	14 Jul 2023

KENANGA <small>... See More</small>	Call	Target Price	Release Date
Aeon Credit Service (M) Berhad (5139)	OUTPERFORM	RM16.15	17 Jul 2023
Ancom Nylex Berhad (4758)	OUTPERFORM	RM1.80	18 Jul 2023
Bursa Malaysia Berhad (1818)	MARKET PERFORM	RM6.25	18 Jul 2023
Oppstar Berhad (0275)	MARKET PERFORM	RM1.82	14 Jul 2023

MIDF <small>... See More</small>	Call	Target Price	Release Date
IOI Properties Group Berhad (5249)	BUY	RM1.38	14 Jul 2023
UOA Development Berhad (5200)	TRADING BUY	RM1.91	20 Jul 2023

JOB KAYHIAN <small>... See More</small>	Call	Target Price	Release Date
Agmo Holdings Berhad (0258)	BUY	RM0.77	18 Jul 2023
Elsoft Research Berhad (0090)	BUY	RM0.73	17 Jul 2023
Formosa Prosonic Industries Berhad (9172)	BUY	RM2.93	18 Jul 2023
OM Holdings Limited (5298)	BUY	RM2.650	17 Jul 2023
Tenaga Nasional Berhad (5347)	BUY	RM10.40	14 Jul 2023

**Disclaimer:** InveSt does not accept any liability whatsoever for any direct, indirect or consequential losses (including loss of profit) or damages that may arise from the use of information or opinions in this publication. The information and opinions in InveSt are not to be considered as an offer to sell or buy any of the securities discussed. Opinions expressed are subject to change without notice. The Brokers may, from time to time, have interests or positions in the securities mentioned. For the full report on each item listed on this page, please visit [https://www.shareinvestor.com/my/brokers\\_call](https://www.shareinvestor.com/my/brokers_call).

**DEFINITION:** Top 10 stocks with Technical Analysis plus Pattern Matching by 60 pre-defined indicators by the system showing a higher probability of bullish sentiment on the share price.



ShareInvestor WebPro > Screener > Predefined TA Screens > select market BURSA > Most Long Signals > click Scan Results or mouse over each company

**TOYO VENTURES HOLDINGS BERHAD (7173.MY)**

**TOYOVEN**

Price updated at 20 Jul 2023 16:57

Last: <b>1.370</b>	Change: <b>+0.030</b>	Volume: <b>4,412</b>
	Change (%): <b>+2.24</b>	Range: <b>1.300 - 1.370</b>

TA Scanner Results based on historical data up to 20 Jul 2023

Condition	Signal	Explanation
Bollinger Band: Bullish Lower Bollinger Band Support	Long	1. Low 1 day ago below lower bollinger band(20,2). 2. Close above close 1 day ago. 3. Average volume(5) is above 100,000.
Bollinger Band: High Above Upper Bollinger Band	Neutral	1. High above upper bollinger band(14,2). 2. Average volume(5) is above 100,000.
CCI: Bearish CCI Overbought And Reversing	Short	1. CCI(26) above 100 and CCI(26) 1 day ago increasing for the last 3 days. 2. CCI(26) below CCI(26) 1 day ago
DM: Bullish Directional Movement	Long	-DI(14) crossed below +DI(14)
Donchian Channels: High Above Upper Donchian Channels	Long	High crossed above the upper Donchian Channel(14,4)
Parabolic SAR: Bearish Parabolic SAR Reversal	Neutral	1. Parabolic SAR 1 day ago above close price 1 day ago for the last 5 days. 2. Parabolic SAR below close price
RSI: Short Term RSI 50 Bullish Crossover	Long	1. RSI(20) crossed above 50 within the last 1 day and RSI(20) 1 day ago below 50 for the last 5 days. 2. Volume above average volume(125). 3. Average volume(5) is above 100,000.
Volume: Volume Spike	Long	1. Volume is more than 500% above average volume(10). 2. Volume above 200000. 3. Close price above 0.10
Williams %R: Bearish Williams %R	Short	1. Williams %R(26) between 0 and -20. 2. Average volume(5) is above 100,000.

**POWERWELL HOLDINGS BERHAD (0217.MY)**

**PWRWELL**

Price updated at 20 Jul 2023 16:56

Last: <b>0.225</b>	Change: <b>+0.005</b>	Volume: <b>25,699</b>
	Change (%): <b>+2.27</b>	Range: <b>0.210 - 0.225</b>

TA Scanner Results based on historical data up to 20 Jul 2023

Condition	Signal	Explanation
Bollinger Band: Bullish Long Term Volatility Breakout and Trending	Long	1. Close price above upper bollinger band(33,1). 2. Volume above average volume(50). 3. Average volume(50) is above 300,000.
Bollinger Band: Bullish Short Term Volatility Breakout and Trending	Long	1. Close price above upper bollinger band(33,1). 2. Volume above average volume(10). 3. Average volume(10) is above 300,000.
Bollinger Band: High Above Upper Bollinger Band	Neutral	1. High above upper bollinger band(14,2). 2. Average volume(5) is above 100,000.
Donchian Channels: High Above Upper Donchian Channels	Long	High crossed above the upper Donchian Channel(14,4)
Parabolic SAR: Bearish Parabolic SAR Reversal	Neutral	1. Parabolic SAR 1 day ago above close price 1 day ago for the last 5 days. 2. Parabolic SAR below close price
Volume: Volume Spike	Long	1. Volume is more than 500% above average volume(10). 2. Volume above 200000. 3. Close price above 0.10

**Disclaimer:** The information on this page is provided as a service to readers. It does not constitute financial advice and/or any investment recommendations. Past performance is not indicative of future results. We assume no liability for damages resulting from or arising out of the use of such information. It would be best if you did your own research to make your personal investment decisions wisely or consult a licenced investment advisor.

**SIME DARBY PROPERTY BERHAD (5288.MY)**

**SIMEPROP**

Price updated at 20 Jul 2023 16:59

Last: <b>0.585</b>	Change: <b>+0.010</b>	Volume: <b>327,396</b>
	Change (%): <b>+1.74</b>	Range: <b>0.565 - 0.600</b>

TA Scanner Results based on historical data up to 20 Jul 2023

Condition	Signal	Explanation
Bollinger Band: High Above Upper Bollinger Band	Neutral	1. High above upper bollinger band(14,2). 2. Average volume(5) is above 100,000.
MACD: Overbought	Short	1. MACD Histogram(12,26,9) reached a new 6 month high. 2. MACD Histogram(12,26,9) has been above 0 for the last 3 weeks.
Price: New 52 Week High	Long	1. Stock reach a new 52 week high. 2. Average volume(30) is above 50000.
Volume: 10 Days large value Buy Up trade	Long	1. 150K value Buy Up greater than Sell Down by 20% for 10 days. 2. 50K-100K value Buy Up greater than Sell Down by 20% for 10 days. 3. Average volume(10) is above 1000000
Volume: 5 Days large value Buy Up trade	Long	1. 150K value Buy Up greater than Sell Down by 20% for 5 days. 2. 50K-100K value Buy Up greater than Sell Down by 20% for 5 days. 3. Average volume(10) is above 1000000
Volume: Consecutive Days Of Increasing Average Volume	Long	1. Average Volume(20) has been increasing over the last 2 weeks. 2. Average volume(20) is above 100000
Williams %R: Bearish Williams %R	Short	1. Williams %R(26) between 0 and -20. 2. Average volume(5) is above 100,000.

**FARM FRESH BERHAD (5306.MY)**

**FFB**

Price updated at 20 Jul 2023 16:59

Last: <b>1.080</b>	Change: <b>-0.020</b>	Volume: <b>100,549</b>
	Change (%): <b>-1.82</b>	Range: <b>1.070 - 1.110</b>

TA Scanner Results based on historical data up to 20 Jul 2023

Condition	Signal	Explanation
Candlestick: Indecision Doji	Neutral	Indecision: Doji
MACD: Bullish MACD Crossover	Long	1. MACD(12,26) diff line crossed above the MACD(12,26) signal line. 2. MACD Histogram(12,26) is above 0.
Volume: 10 Days large value Buy Up trade	Long	1. 150K value Buy Up greater than Sell Down by 20% for 10 days. 2. 50K-100K value Buy Up greater than Sell Down by 20% for 10 days. 3. Average volume(10) is above 1000000
Volume: 5 Days large value Buy Up trade	Long	1. 150K value Buy Up greater than Sell Down by 20% for 5 days. 2. 50K-100K value Buy Up greater than Sell Down by 20% for 5 days. 3. Average volume(10) is above 1000000
Volume: Consecutive Days Of Increasing Average Volume	Long	1. Average Volume(20) has been increasing over the last 2 weeks. 2. Average volume(20) is above 100000

**COUNTRY VIEW BERHAD (5049.MY)**

**CVIEW**

Price updated at 20 Jul 2023 15:20

Last: <b>0.980</b>	Change: -	Volume: -
	Change (%): -	Range: <b>0.980 - 0.980</b>

TA Scanner Results based on historical data up to 20 Jul 2023

Condition	Signal	Explanation
DM: Bullish Directional Movement	Long	-DI(14) crossed below +DI(14)
MA: Bullish Price Crossover	Long	1. Close price crossed above MA(40) within the last 1 day. 2. Previous day close price is below the MA(10) for the last 5 days
MA: Short Term Bullish Moving Average Crossover	Long	MA(10) crossed above MA(15) within the last 1 day.
MACD: Bullish MACD Crossover	Long	1. MACD(12,26) diff line crossed above the MACD(12,26) signal line. 2. MACD Histogram(12,26) is above 0.

 **PESONA METRO HOLDINGS BERHAD (8311.MY)**

**PESONA**

Price updated at 20 Jul 2023 16:20

Last: <b>0.180</b>	Change: -	Volume: <b>27,842</b>
	Change (%): -	Range: <b>0.170 - 0.190</b>

TA Scanner Results based on historical data up to 20 Jul 2023

Condition	Signal	Explanation
Bollinger Band: Bullish Long Term Volatility Breakout and Trending	Long	1. Close price above upper bollinger band(33,1). 2. Volume above average volume(50). 3. Average volume(50) is above 300,000.
Bollinger Band: Bullish Short Term Volatility Breakout and Trending	Long	1. Close price above upper bollinger band(33,1). 2. Volume above average volume(10). 3. Average volume(10) is above 300,000.
Bollinger Band: High Above Upper Bollinger Band	Neutral	1. High above upper bollinger band(14,2). 2. Average volume(5) is above 100,000.
Donchian Channels: High Above Upper Donchian Channels	Long	High crossed above the upper Donchian Channel(14,4)
Parabolic SAR: Bearish Parabolic SAR Reversal	Neutral	1. Parabolic SAR 1 day ago above close price 1 day ago for the last 5 days. 2. Parabolic SAR below close price
Volume: Volume Spike	Long	1. Volume is more than 500% above average volume(10). 2. Volume above 200000. 3. Close price above 0.10

 **ECOFIRST CONSOLIDATED BHD (3557.MY)**

**ECOFIRS**

Price updated at 20 Jul 2023 16:35

Last: <b>0.345</b>	Change: -	Volume: <b>4,494</b>
	Change (%): -	Range: <b>0.345 - 0.355</b>

TA Scanner Results based on historical data up to 20 Jul 2023

Condition	Signal	Explanation
Bollinger Band: Bullish Short Term Volatility Breakout and Trending	Long	1. Close price above upper bollinger band(33,1). 2. Volume above average volume(10). 3. Average volume(10) is above 300,000.
Bollinger Band: High Above Upper Bollinger Band	Neutral	1. High above upper bollinger band(14,2). 2. Average volume(5) is above 100,000.
DM: Bullish Directional Movement	Long	-DI(14) crossed below +DI(14)
Donchian Channels: High Above Upper Donchian Channels	Long	High crossed above the upper Donchian Channel(14,4)
MA: Short Term Bearish Moving Average Crossover	Short	MA(10) crossed below MA(15) within the last 1 day.
MACD: Bullish MACD Crossover	Long	1. MACD(12,26) diff line crossed above the MACD(12,26) signal line. 2. MACD Histogram(12,26) is above 0.

 **CENTRAL GLOBAL BERHAD (8052.MY)**

**CGB**

Price updated at 20 Jul 2023 16:50

Last: <b>1.780</b>	Change: <b>+0.010</b>	Volume: <b>20,860</b>
	Change (%): <b>+0.56</b>	Range: <b>1.730 - 1.790</b>

TA Scanner Results based on historical data up to 20 Jul 2023

Condition	Signal	Explanation
Bollinger Band: High Above Upper Bollinger Band	Neutral	1. High above upper bollinger band(14,2). 2. Average volume(5) is above 100,000.
MACD: Bullish MACD Crossover	Long	1. MACD(12,26) diff line crossed above the MACD(12,26) signal line. 2. MACD Histogram(12,26) is above 0.
Price: New 52 Week High	Long	1. Stock reach a new 52 week high. 2. Average volume(30) is above 50000.
Volume: 5 Days large value Buy Up trade	Long	1. 150K value Buy Up greater than Sell Down by 20% for 5 days. 2. 50K-100K value Buy Up greater than Sell Down by 20% for 5 days. 3. Average volume(10) is above 1000000

 **MAH SING GROUP BERHAD (8583.MY)**

**MAHSING**

Price updated at 20 Jul 2023 16:57

Last: <b>0.670</b>	Change: -	Volume: <b>45,368</b>
	Change (%): -	Range: <b>0.665 - 0.680</b>

TA Scanner Results based on historical data up to 20 Jul 2023

Condition	Signal	Explanation
Bollinger Band: High Above Upper Bollinger Band	Neutral	1. High above upper bollinger band(14,2). 2. Average volume(5) is above 100,000.
Price: New 52 Week High	Long	1. Stock reach a new 52 week high. 2. Average volume(30) is above 50000.
Volume: 10 Days large value Buy Up trade	Long	1. 150K value Buy Up greater than Sell Down by 20% for 10 days. 2. 50K-100K value Buy Up greater than Sell Down by 20% for 10 days. 3. Average volume(10) is above 1000000
Volume: 5 Days large value Buy Up trade	Long	1. 150K value Buy Up greater than Sell Down by 20% for 5 days. 2. 50K-100K value Buy Up greater than Sell Down by 20% for 5 days. 3. Average volume(10) is above 1000000
Volume: Consecutive Days Of Increasing Average Volume	Long	1. Average Volume(20) has been increasing over the last 2 weeks. 2. Average volume(20) is above 100000
Williams %R: Bearish Williams %R	Short	1. Williams %R(26) between 0 and -20. 2. Average volume(5) is above 100,000.

 **PGF CAPITAL BERHAD (8117.MY)**

**PGF**

Price updated at 20 Jul 2023 16:41

Last: <b>1.360</b>	Change: <b>+0.010</b>	Volume: <b>2,004</b>
	Change (%): <b>+0.74</b>	Range: <b>1.340 - 1.370</b>

TA Scanner Results based on historical data up to 20 Jul 2023

Condition	Signal	Explanation
Bollinger Band: High Above Upper Bollinger Band	Neutral	1. High above upper bollinger band(14,2). 2. Average volume(5) is above 100,000.
DM: Bullish Directional Movement	Long	-DI(14) crossed below +DI(14)
Donchian Channels: High Above Upper Donchian Channels	Long	High crossed above the upper Donchian Channel(14,4)
Parabolic SAR: Bearish Parabolic SAR Reversal	Neutral	1. Parabolic SAR 1 day ago above close price 1 day ago for the last 5 days. 2. Parabolic SAR below close price
RSI: Short Term RSI 50 Bullish Crossover	Long	1. RSI(20) crossed above 50 within the last 1 day and RSI(20) 1 day ago below 50 for the last 5 days. 2. Volume above average volume(125). 3. Average volume(5) is above 100,000.
Volume: Volume Spike	Long	1. Volume is more than 500% above average volume(10). 2. Volume above 200000. 3. Close price above 0.10
Williams %R: Bearish Williams %R	Short	1. Williams %R(26) between 0 and -20. 2. Average volume(5) is above 100,000.

**Disclaimer:** The information on this page is provided as a service to readers. It does not constitute financial advice and/or any investment recommendations. Past performance is not indicative of future results. We assume no liability for damages resulting from or arising out of the use of such information. It would be best if you did your own research to make your personal investment decisions wisely or consult a licenced investment advisor.

Condition	Signal	Explanation
Volume: Consecutive Days Of Increasing Average Volume	Long	1. Average Volume(20) has been increasing over the last 2 weeks. 2. Average volume(20) is above 100000
Williams %R: Bearish Williams %R	Short	1. Williams %R(26) between 0 and -20. 2. Average volume(5) is above 100,000.

**Brand Finance**<sup>®</sup>



# Malaysia

# 100

# 2023

**The annual report on the most valuable and strongest Malaysian brands**  
May 2023

# Brand Value Ranking (USDm).

## Top 100 most valuable Malaysian brands 1-50

2023 Rank	2022 Rank		Brand	Sector	2023 Brand Value	Brand Value Change	2022 Brand Value	2023 Brand Rating	2022 Brand Rating
1	1	←	PETRONAS	Oil & Gas	12,712	-7%	13,596	AAA	AAA
2	3	↑	Maybank	Banking	3,946	+1%	3,903	AAA	AAA
3	2	↓	Genting	Leisure & Tourism	3,623	-19%	4,493	AAA-	AAA
4	4	←	CIMB	Banking	2,492	+7%	2,333	AA+	AAA-
5	6	↑	Sime Darby	Conglomerates	2,103	-3%	2,177	AA	AA
6	5	↓	Tenaga Nasional	Utilities	1,853	-17%	2,238	AAA-	AAA-
7	7	←	Public Bank	Banking	1,812	-5%	1,905	AAA	AAA
8	9	↑	airasia	Airlines	1,343	-7%	1,444	AAA-	AAA-
9	8	↓	Maxis	Telecoms	1,223	-17%	1,474	AA+	AAA-
10	10	←	TM	Telecoms	1,019	-6%	1,083	AAA-	AAA-
11	11	←	RHB Bank	Banking	🔒	🔒	🔒	🔒	🔒
12	12	←	YTL	Engineering & Construction	🔒	🔒	🔒	🔒	🔒
13	14	↑	Hong Leong Financial	Banking	🔒	🔒	🔒	🔒	🔒
14	13	↓	DiGi	Telecoms	🔒	🔒	🔒	🔒	🔒
15	16	↑	IOI	Conglomerates	🔒	🔒	🔒	🔒	🔒
16	17	↑	Axiata	Telecoms	🔒	🔒	🔒	🔒	🔒
17	15	↓	Celcom	Telecoms	🔒	🔒	🔒	🔒	🔒
18	19	↑	Sunway	Conglomerates	🔒	🔒	🔒	🔒	🔒
19	21	↑	Berjaya	Leisure & Tourism	🔒	🔒	🔒	🔒	🔒
20	27	↑	AmBank	Banking	🔒	🔒	🔒	🔒	🔒
21	24	↑	Gamuda	Engineering & Construction	🔒	🔒	🔒	🔒	🔒
22	31	↑	Batu Kawan	Chemicals	🔒	🔒	🔒	🔒	🔒
23	18	↓	Astro Malaysia	Media	🔒	🔒	🔒	🔒	🔒
24	23	↓	Berjaya Land	Hotels	🔒	🔒	🔒	🔒	🔒
25	35	↑	Bank Rakyat	Banking	🔒	🔒	🔒	🔒	🔒
26	22	↓	MISC	Logistics	🔒	🔒	🔒	🔒	🔒
27	26	↓	KLK	Food	🔒	🔒	🔒	🔒	🔒
28	25	↓	Felda Global Ventures	Food	🔒	🔒	🔒	🔒	🔒
29	28	↓	U Mobile	Telecoms	🔒	🔒	🔒	🔒	🔒
30	30	←	Hap Seng	Conglomerates	🔒	🔒	🔒	🔒	🔒
31	20	↓	Top Glove	Chemicals	🔒	🔒	🔒	🔒	🔒
32	29	↓	IJM	Engineering & Construction	🔒	🔒	🔒	🔒	🔒
33	32	↓	Bank Islam	Banking	🔒	🔒	🔒	🔒	🔒
34	34	←	Dutch Lady Milk	Food	🔒	🔒	🔒	🔒	🔒
35	33	↓	Setia	Real Estate	🔒	🔒	🔒	🔒	🔒
36	51	↑	Alliance Bank	Banking	🔒	🔒	🔒	🔒	🔒
37	39	↑	Scientex	Chemicals	🔒	🔒	🔒	🔒	🔒
38	38	←	100 Plus	Soft Drinks	🔒	🔒	🔒	🔒	🔒
39	44	↑	Malaysia Airlines	Airlines	🔒	🔒	🔒	🔒	🔒
40	40	←	Affin Bank	Banking	🔒	🔒	🔒	🔒	🔒
41	42	↑	TIME dotCom	Telecoms	🔒	🔒	🔒	🔒	🔒
42	47	↑	Eco World	Real Estate	🔒	🔒	🔒	🔒	🔒
43	37	↓	Proton	Automobiles	🔒	🔒	🔒	🔒	🔒
44	41	↓	Padini	Retail	🔒	🔒	🔒	🔒	🔒
45	50	↑	Etiqa	Insurance	🔒	🔒	🔒	🔒	🔒
46	45	↓	Boustead	Conglomerates	🔒	🔒	🔒	🔒	🔒
47	43	↓	Takaful Malaysia	Insurance	🔒	🔒	🔒	🔒	🔒
48	36	↓	Sapura Energy	Oil & Gas	🔒	🔒	🔒	🔒	🔒
49	58	↑	QL Resources	Food	🔒	🔒	🔒	🔒	🔒
50	48	↓	Magnum	Leisure & Tourism	🔒	🔒	🔒	🔒	🔒



# Brand Value Ranking.

## Top 100 most valuable Malaysian brands 51-100

2023 Rank	2022 Rank		Brand	Sector	2023 Brand Value	Brand Value Change	2022 Brand Value	2023 Brand Rating	2022 Brand Rating
51	46	↓	Kossan	Chemicals	🔒	🔒	🔒	🔒	🔒
52	53	↑	KPJ Healthcare	Healthcare Facilities	🔒	🔒	🔒	🔒	🔒
53	61	↑	UEM	Conglomerates	🔒	🔒	🔒	🔒	🔒
54	52	↓	Parkson	Retail	🔒	🔒	🔒	🔒	🔒
55	54	↓	Malakoff	Utilities	🔒	🔒	🔒	🔒	🔒
56	49	↓	Hartalega	Chemicals	🔒	🔒	🔒	🔒	🔒
57	57	←	Press Metal	Mining, Metals & Minerals	🔒	🔒	🔒	🔒	🔒
58	56	↓	Mah Sing	Real Estate	🔒	🔒	🔒	🔒	🔒
59	62	↑	UMW	Conglomerates	🔒	🔒	🔒	🔒	🔒
60	74	↑	LPI Capital	Insurance	🔒	🔒	🔒	🔒	🔒
61	60	↓	Gas Malaysia	Utilities	🔒	🔒	🔒	🔒	🔒
62	65	↑	Matrix Concepts	Real Estate	🔒	🔒	🔒	🔒	🔒
63	63	←	MBSB	Banking	🔒	🔒	🔒	🔒	🔒
64	55	↓	Pos Malaysia	Logistics	🔒	🔒	🔒	🔒	🔒
65	59	↓	V.S. Industry	Tech	🔒	🔒	🔒	🔒	🔒
66	77	↑	Bank Muamalat	Banking	🔒	🔒	🔒	🔒	🔒
67	76	↑	FFM Group	Food	🔒	🔒	🔒	🔒	🔒
68	64	↓	Tropicana	Real Estate	🔒	🔒	🔒	🔒	🔒
69	72	↑	Yes	Telecoms	🔒	🔒	🔒	🔒	🔒
70	69	↓	DRB-Hicom	Automobiles	🔒	🔒	🔒	🔒	🔒
71	66	↓	Westports	Commercial Services	🔒	🔒	🔒	🔒	🔒
72	67	↓	IHH	Healthcare Facilities	🔒	🔒	🔒	🔒	🔒
73	71	↓	Malayan Flour Mills	Food	🔒	🔒	🔒	🔒	🔒
74	73	↓	OSK	Conglomerates	🔒	🔒	🔒	🔒	🔒
75	-	New	Dumex	Food	🔒	🔒	🔒	🔒	🔒
76	68	↓	Malaysia Airports	Airports	🔒	🔒	🔒	🔒	🔒
77	75	↓	Pantai	Healthcare Facilities	🔒	🔒	🔒	🔒	🔒
78	78	←	Bursa Malaysia	Exchanges	🔒	🔒	🔒	🔒	🔒
79	81	↑	UOA Development	Real Estate	🔒	🔒	🔒	🔒	🔒
80	79	↓	Dialog	Oil & Gas	🔒	🔒	🔒	🔒	🔒
81	84	↑	Malaysian Reinsurance	Insurance	🔒	🔒	🔒	🔒	🔒
82	82	←	Cahaya Mata Sarawak	Engineering & Construction	🔒	🔒	🔒	🔒	🔒
83	83	←	Unifi	Telecoms	🔒	🔒	🔒	🔒	🔒
84	70	↓	Media Prima	Media	🔒	🔒	🔒	🔒	🔒
85	86	↑	Guan Chong	Food	🔒	🔒	🔒	🔒	🔒
86	85	↓	Bumi Armada	Oil & Gas	🔒	🔒	🔒	🔒	🔒
87	80	↓	Takaful IKHLAS	Insurance	🔒	🔒	🔒	🔒	🔒
88	88	←	MCIS Life	Insurance	🔒	🔒	🔒	🔒	🔒
89	90	↑	Kulim Malaysia	Food	🔒	🔒	🔒	🔒	🔒
90	95	↑	United Plantations	Food	🔒	🔒	🔒	🔒	🔒
91	87	↓	Bonia	Retail	🔒	🔒	🔒	🔒	🔒
92	91	↓	Eastern & Oriental	Real Estate	🔒	🔒	🔒	🔒	🔒
93	92	↓	Wah Seong	Engineering & Construction	🔒	🔒	🔒	🔒	🔒
94	93	↓	MSM	Food	🔒	🔒	🔒	🔒	🔒
95	-	New	Ancom	Chemicals	🔒	🔒	🔒	🔒	🔒
96	98	↑	MMC	Conglomerates	🔒	🔒	🔒	🔒	🔒
97	94	↓	Star Publications (Malaysia)	Media	🔒	🔒	🔒	🔒	🔒
98	100	↑	Tan Chong Motor	Automobiles	🔒	🔒	🔒	🔒	🔒
99	-	New	Masteel	Mining, Metals & Minerals	🔒	🔒	🔒	🔒	🔒
100	97	↓	Cagamas	Commercial Services	🔒	🔒	🔒	🔒	🔒

Brand Finance® 

## Bringing you the best, and then some more

With one of the world's leading reports on Malaysia's most valuable brands at your fingertips, expand your insights with coverage on ASEAN's top brands in our first-ever ASEAN 250 2023 report releasing globally in October 2023.

Alongside this report, Brand Finance proudly presents...

### Brand Value Trends: The Importance of Corporate Conduct and Leadership for ASEAN brands

SAVE THE DATE

17 October 2023 | 2.00PM (SGT) | 6.00AM (GMT)

- 1 Recognise** the role senior leaders play in building brand value and brand strength as well as who the top "Brand Guardians" in the region are
- 2 Discover** why analysing the gap between brand perceptions and brand performance is important and which brands do best
- 3 Understand** how corporate conduct and sustainability help build brand value
- 4 Learn** about the factors that drive brand value performance in ASEAN and how you can leverage these
- 5 Find** out the top brands by brand value, brand strength and brand popularity in each sector across ASEAN

✉ Register your interest today at [bfs@brandfinance.com](mailto:bfs@brandfinance.com)

Register now!

# Sustainability.



# Sustainability.

## Sustainability Perception Values (SPV)

© Brand Finance Plc 2023



## Top Sustainability Perceptions Score and Value for 2023

As part of its analysis, Brand Finance assesses the role that specific brand attributes play in driving overall brand value. One such attribute growing rapidly in significance is sustainability. Brand Finance assesses how sustainable specific brands are perceived to be, represented by a Sustainability Perceptions Score (SPS). The value that is linked to this score, the Sustainability Perceptions Value (SPV), is then calculated for each brand.

### Eco World has the highest Sustainability Perceptions Score

**Eco World** (brand value up 5% to \$200 million) has the highest SPS in our rankings at 5.30 out of 10. The property development brand has committed to advancing a sustainability agenda throughout all aspects of its business and become an ESG leader in the industry.

This starts with the sustainable design of Eco World’s developments, which looks to create eco-living

environments that benefit residents, the environment and broader communities. One initiative, for example, includes researching and planting a broad range of plants and trees throughout Eco World’s developments. These trees and shrubs are specifically selected for their carbon sequestration capabilities, in order to aid Eco World’s net-zero ambitions.

Eco World has also looked to leverage partnerships with other ESG-focused organisations and NGOs. This includes a partnership with **Public Bank** to provide sustainable development financing for those wishing to purchase properties in Eco World’s green certified developments. The brand has also worked with a number of solar photovoltaic solution providers to offer solar packages to homebuyers in many of its developments.

By promoting and communicating its sustainability initiatives and commitments to all stakeholder groups, Eco World has successfully built high perceptions of sustainability among its stakeholders.

## Sustainability.

### PETRONAS has the highest Sustainability Perceptions Value

As well as being Malaysia's most valuable and strongest brand, **PETRONAS** also has the highest SPV among brands listed in our rankings at \$1.1 billion. Although the brand has committed to an industry-wide energy transition, its pole position in terms of SPV is not an assessment of its overall sustainability performance. Rather, this indicates how much brand value PETRONAS has tied up in sustainability perceptions.

PETRONAS also posted an SPS of 4.59 out of 10 – the 10<sup>th</sup> highest in Malaysia. The brand has increasingly looked towards diversifying its range of energy options and significantly improving its company-wide sustainability outcomes. This includes committing to

allocating 20% of its overall capital expenditure for decarbonisation projects and cleaner energy solutions from 2023 to 2026.

In 2022, PETRONAS launched **Gentari**, a wholly owned clean energy solutions provider, which will look to boost renewable energy in Asia Pacific. While being supported by PETRONAS in its growth phase, Gentari will eventually operate as an independently managed entity. It will focus primarily on renewable energy, hydrogen and green mobility solutions. The brand is particularly looking to grow its sustainable operations in Australia and India in the near term. The positive coverage surrounding the launch of Gentari has likely helped contribute to PETRONAS' SPS. However, there is further room for growth as the brand ramps up its sustainability initiatives in the years to come.



# MALAYSIA RANKED FIRST PLACE IN SEA IN WEF'S ENERGY TRANSITION INDEX

**A** ccording to Economy Minister Rafizi Ramli, Malaysia has been recognised as the best country in Southeast Asia in the Energy Transition Index by the World Economic Forum (WEF). The index takes into account the system performance and the country's readiness to switch to more environmentally friendly energy sources. This achievement shows that Malaysia is on the right track to manage a fast, safe and affordable energy transition.

Malaysia also has various strategic advantages, such as a strategic location, diverse renewable energy sources (RES) and a high level of skills to become a regional leader in the field of energy transition. The country is expected to be able to seize the opportunity to attract global investments in the clean technology sector, which has reached RM5 trillion in 2022 and this value is expected to continue to increase in the coming years.

Meanwhile, the Economy Ministry will launch the National Energy Transition Roadmap (NETR) Phase 1 during the Invest Malaysia KL 2023 Special Series programme, organised by Bursa Malaysia, in collaboration with CLSA and Maybank in Kuala Lumpur on July 27. The launch of NETR Phase 1 is the starting point in efforts to mainstream the energy transition of the national development narrative.

NETR will announce the implementation of 10 flagship pilot projects that are expected to generate investments amounting to RM25 billion, the creation of 23,000 high-quality job opportunities and the reduction of carbon dioxide equivalent emissions by more than 10,000 gigagrammes per year, cumulatively.

The NETR is a comprehensive follow-up to the current policy reforms related to renewable energy sources by the Economy Ministry and the Natural Resources, Environment and Climate Change Ministry, particularly the new target increase of renewable energy installed capacity from 40% in 2035 to 70% by 2050.

The Economy Ministry hopes that the NETR would drive a strategic agenda to create new high-paying job opportunities, boost domestic and foreign investment participation, ensure the continuity of the country's energy supply and make Malaysia a regional leader in the clean energy industry in the long term.

## **SC'S WAQF-FEATURED FUNDS RAISED RM46.7M AS OF DEC 2022**

According to Securities Commission Chairman Datuk Seri Awang Adek Hussin, Waqf-featured funds (WQ-FF) have raised aggregate funds totalling RM46.7 million as of December 2022. He said that although the amount might be a little small, it was undoubtedly a clear sign that the WQ-FF is moving in the right direction adding that six WQ-FFs have been issued following the launch of the WQ-FF framework in 2020.

In his welcoming remarks at the Waqf and Islamic Capital Market Conference on July 20, he explained that the WQ-FF allows investors to give a portion of their dividends from unit trusts or wholesale funds to

charity or charitable projects in the form of cash. The framework was expanded last year to include Islamic Real Estate Investment Trusts (REITs) and Islamic exchange-traded funds to further deepen and broaden the choice of products. The WQ-FF framework has been able to promote greater collaboration between Islamic fund management companies and state Islamic religious councils.

He was pleased with the development to-date in that there has been an increase in efforts by all parties in exploring and identifying the potential of waqf asset development. Islamic social finance, especially waqf, has plenty of room for growth, benefitting from a wide range of Islamic capital market instruments available to support sustainability financing while addressing socio-economic imbalances and developments.

To optimise Islamic finance instruments, the SC and all stakeholders need to work towards a common goal with a common purpose, namely, putting Islamic social finance high on the national agenda, in line with the growing focus on environmental, social and corporate governance financing globally.

## **ENERGY EXCHANGE IN THE WORKS, TO SUPPORT COUNTRY'S EXPORT OF RENEWABLE ENERGY - NIK NAZMI**

According to Natural Resources, Environment and Climate Change Minister Nik Nazmi Nik Ahmad, Malaysia will launch an Energy Exchange to support the export of renewable energy (RE) to neighbouring countries. The Energy Commission (TEC) is currently drafting details to facilitate the exchange which will be announced this year and is preparing a working paper for approval at the government level.

The TEC will look at some of the available models and among the goals is to first secure enough RE to supply in the country and then ensure we get the best value for sales abroad and allow that value to be reinvested to boost the RE sector in Malaysia. He was speaking at the Malaysian Industrial Development Finance Bhd (MIDF) roundtable.

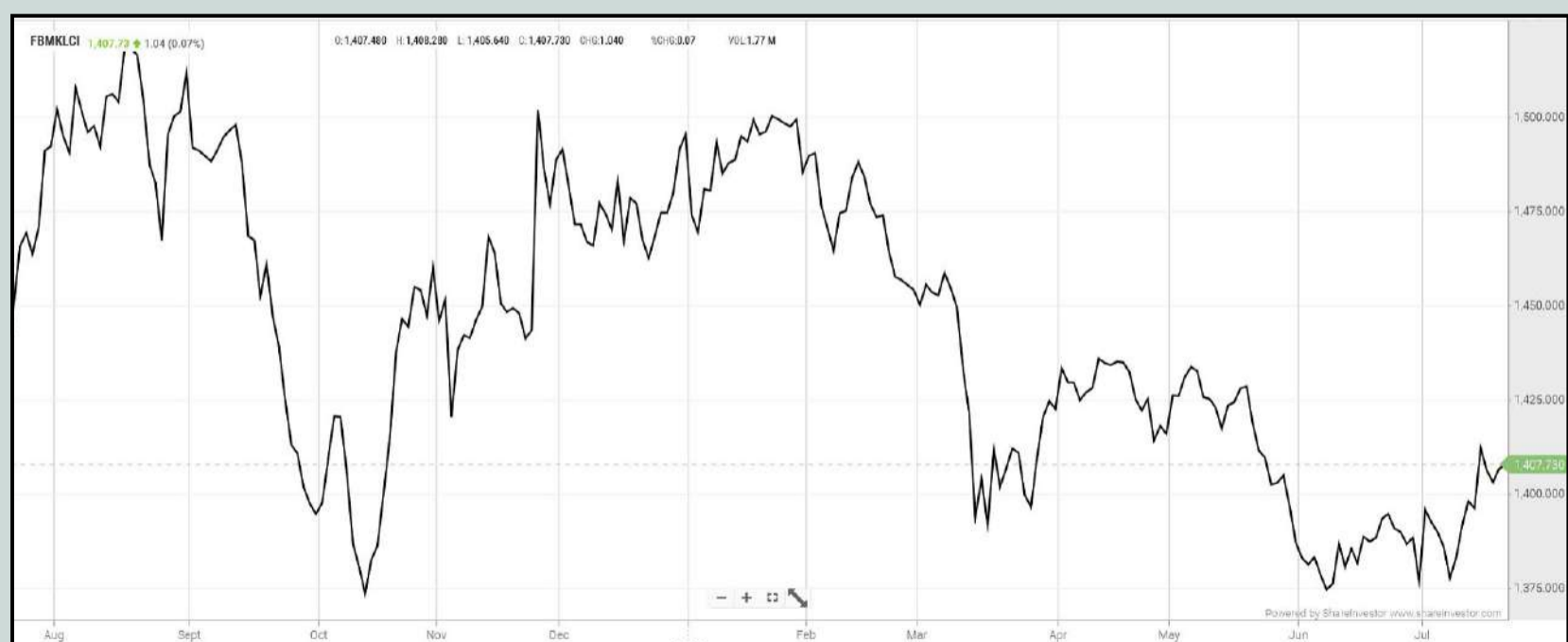


To support the country's energy transition, Malaysia should look at other sources of energy generation such as mini-scale hydropower and not look at large-scale hydropower which is quite problematic because of the many trade-offs. Malaysia also needs to look at battery storage systems which will play an increasingly pivotal role to support cheaper RE prices.

On Malaysia imposing a carbon tax, he said that the country would need tax reforms to support the industry and the Ministry of Finance is taking the lead on that. When talking about achieving a net-zero carbon emission target by 2050, the tax has to play a role because there will be a price to pay for carbon.

## EYE ON THE MARKETS

On Thursday (20 July), the Ringgit closed at 4.5500 against the USD and 3.4390 to the Sing Dollar. On Monday (17 July), the FBM KLCI opened at 1411.77. As at Thursday (20 July) 5:00pm, the FBM KLCI was down 5.08 points for the week at 1406.69. Over in US, the overnight Dow Jones Industrial Average closed up 163.97 points (+0.47%) to 35,225.18 whilst the NASDAQ shed 294.71 points (-2.05%) to 14,063.31.



KLCI 1 Year Chart

## Over 5 trading days



ShareInvestor WebPro ([www.shareinvestor.com/my](http://www.shareinvestor.com/my))

1. Price > Stock Prices
2. Select Market: NASDAQ / NYSE / IDX / SET / HKEX / SGX (One bourse at a time)
3. select Stocks Tab
4. select Ranking Top Gainers or Top Losers (Over 5 Trading Days)
5. Mouse over Column Layout > select Edit Customs > select Name > select Last Done Price > select 5 Days Change > select 52 Weeks High > select 52 Weeks Low > Mouse Over Column Layout > select Custom

### NASDAQ (USD)

#### Top Gainers

Name	Last Done	Change Over 5 Days	52 Weeks High	52 Weeks Low
ARGENX SE SPON ADR EACH REP 1 ORD SHS	534.950	+163.530	524.055	333.070
FIRST CITIZENS BANCSHARES INC NRTH	1,372.390	+60.960	1,386.070	505.840
MERCADOLIBRE INC	1,198.340	+51.620	1,365.640	694.640
BOOKING HOLDINGS INC	2,917.500	+50.580	2,998.000	1,616.850
SAIA INC	410.050	+46.930	397.940	176.700

#### Top Losers

Name	Last Done	Change Over 5 Days	52 Weeks High	52 Weeks Low
ASML HOLDING NV EURO.09 NY REGISTRY SHS 2012	676.130	-77.890	771.980	363.150
APELLIS PHARMACEUTICALS INC	34.240	-51.740	94.750	38.180
MONOLITHIC POWER SYSTEM INC	529.050	-47.570	595.980	301.690
ALIGN TECHNOLOGY INC	330.990	-35.890	371.990	172.050
MASIMO CORPORATION	112.030	-35.260	198.000	105.500

### NYSE (USD)

#### Top Gainers

Name	Last Done	Change Over 5 Days	52 Weeks High	52 Weeks Low
BERKSHIRE HATHAWAY INC	526,240.010	+8,832.490	528,553.990	393,012.250
CABLE ONE INC	740.940	+98.440	1,464.200	602.700
WHITE MOUNTAINS INSURANCE GROUP	1,568.660	+93.610	1,560.210	1,172.000
UNITEDHEALTH GROUP INC	504.240	+56.490	558.100	436.510
MARKEL GROUP INC	1,428.430	+43.830	1,458.560	1,064.090

#### Top Losers

Name	Last Done	Change Over 5 Days	52 Weeks High	52 Weeks Low
NVR INC	6,226.080	-99.700	6,470.870	3,816.555
AUTOZONE INC	2,460.000	-96.590	2,750.000	2,050.210
BIGLARI HOLDINGS INC	985.468	-26.342	1,058.500	585.000
SNAP-ON INC	272.740	-17.850	297.255	200.750
EQUIFAX INC	216.370	-16.780	240.350	145.980

### IDX (Rupiah)

#### Top Gainers

Name	Last Done	Change Over 5 Days	52 Weeks High	52 Weeks Low
DIAN SWASTATIKA SENTOSA TBK	44,000.000	+1,500.000	44,000.000	31,700.000
GUDANG GARAM TBK	28,425.000	+825.000	30,050.000	16,500.000
BAYAN RESOURCES TBK	18,700.000	+700.000	24,800.000	6,300.000
SIANTAR TOP	8,800.000	+700.000	9,650.000	6,800.000
INDO TAMBANGRAYA MEGA TBK	25,500.000	+600.000	45,650.000	22,125.000

#### Top Losers

Name	Last Done	Change Over 5 Days	52 Weeks High	52 Weeks Low
AKASHA WIRA INTERNATIONAL TBK	9,900.000	-375.000	10,450.000	6,050.000
ASTRA INTERNATIONAL	6,525.000	-275.000	7,300.000	5,200.000
INDOINTERNET TBK	18,700.000	-250.000	25,625.000	17,575.000
INDAH KIAT PULP & PAPER	8,925.000	-225.000	10,400.000	6,775.000
INDOFOOD CBP SUKSES MAKMUR TBK PT	11,475.000	-225.000	11,925.000	8,125.000

### SET (Thai Baht)

#### Top Gainers

Name	Last Done	Change Over 5 Days	52 Weeks High	52 Weeks Low
SFP	438.000	+111.000	438.000	110.000
SAPPE	91.750	+7.750	95.250	35.250
BBL	164.000	+7.500	166.500	127.000
STANLY	199.500	+5.500	226.000	164.500
EGCO	137.000	+5.000	190.000	126.500

#### Top Losers

Name	Last Done	Change Over 5 Days	52 Weeks High	52 Weeks Low
KDH	89.000	-6.250	101.000	81.000
KWC	245.000	-6.000	320.000	224.000
OHTL	478.000	-4.000	610.000	316.000
SCC	319.000	-4.000	375.000	300.000
BTG	22.200	-3.800	39.750	22.000

### HKEX (HKD)

#### Top Gainers

Name	Last Done	Change Over 5 Days	52 Weeks High	52 Weeks Low
ORIENT OVERSEAS INT	119.600	+7.600	279.400	92.150
YSB INC	38.550	+6.350	41.750	19.000
STAR CM HOLDINGS LIMITED	112.000	+6.300	132.000	32.550
BEIJING SINOHYTEC CO LTD	42.850	+4.750	48.500	33.214
MANULIFE FINANCIAL CORP	149.700	+3.900	157.200	120.000

#### Top Losers

Name	Last Done	Change Over 5 Days	52 Weeks High	52 Weeks Low
3D MEDICINES INC	60.250	-63.750	131.500	27.700
TENCENT HOLDINGS LIMITED	332.800	-17.000	416.600	188.213
TENCENT HOLDINGS LIMITED	306.000	-14.000	342.000	297.000
SUNNY OPTICAL TECHNOLOGY GROUP	67.350	-12.250	125.500	65.000
BILIBILI INC	122.100	-10.900	228.000	66.100

### SGX (SGD)

#### Top Gainers

Name	Last Done	Change Over 5 Days	52 Weeks High	52 Weeks Low
GLD US\$	184.050	+1.950	190.700	150.450
DBS	32.550	+0.680	35.855	29.974
UOB	28.420	+0.620	31.400	25.910
GREAT EASTERN	18.110	+0.320	19.630	16.850
OCBC BANK	12.640	+0.290	13.230	11.360

#### Top Losers

Name	Last Done	Change Over 5 Days	52 Weeks High	52 Weeks Low
JARDINE C&C	33.400	-0.810	36.850	27.000
NIO Inc. USD OV	10.490	-0.520	22.150	7.420
AZEUS	8.000	-0.500	8.650	6.250
VENTURE	14.620	-0.250	18.750	14.440
SHANGRI-LA HKD	6.010	-0.180	8.400	4.300

# THE MANY BENEFITS OF WOMEN DIRECTORS ON BOARDS



Devanesan  
Evanson

**Chief Executive  
Officer, Minority  
Shareholders Watch  
Group**

**A**ccording to the Securities Commission's (SC) Corporate Governance (CG) Monitor 2022 report, the participation of women on boards across all Malaysian public listed companies ("PLCs") increased by 8.5% from 2016 to 2022. Approximately 34% of individuals appointed to boards of PLCs in 2022 were women, of which 80% of the women directors appointed were for the position of independent directors. This indicates that more women were appointed as independent directors of PLCs in 2022.

Of late, women independent directors have become much sought-after to fill board positions. It is high time that the boards of PLCs, which are majority dominated by males, acknowledge that women have an important role to play on PLC's boards, as appointing women directors comes with various benefits.

## **COMPLYING WITH THE LISTING REQUIREMENTS**

1 June 2023 came and went by, and Bursa Malaysia's Listing Requirements requiring all PLCs to have at least one woman director on its board became enforceable. The requirement was introduced in January 2022 and came into effect on 1 September 2022 for PLCs with a market capitalisation of RM2 billion and above as of 31 December 2021, and for the remaining PLCs on 1 June 2023. As such, appointing women as directors will automatically enable PLCs to comply with the Listing Requirement.

## **GENDER DIVERSITY**

Women independent directors' representation on the boards of PLCs promotes diversity. With the right board composition, diverse boards make better decisions as the mixed representation of male and female directors will bring different perspectives, thought-processes and approaches to stewardship and risk-reward orientation to the table. This averts male-dominated 'groupthink' in the decision-making process. Board decisions can be made more objectively in the best interests of the PLC, taking into account the different perspectives and insights that gender diversity offers. Also, the corporation will be effectively applying Practice 5.5 of the Malaysian Code on Corporate Governance 2021 (MCCG 2021).

Furthermore, Bursa Malaysia has always been promoting diversity across all PLCs, and this is reflected in Bursa Malaysia's enhanced Sustainability Reporting Framework. Starting from the financial year ending 31 December 2023, Main Market-listed PLCs are required to

effectively manage diversity within their respective organisations – by implementing relevant policies, processes and initiatives to promote diversity – and making corresponding disclosures within their Sustainability Statement or Report.

Meanwhile, ACE Market-listed PLCs will be subject to these requirements from the financial year ending 31 December 2025. To enhance transparency and accountability, Bursa Malaysia is mandating all PLCs to report on the percentage of directors by gender and age group, percentage of employees by gender and age group for each employee category.

## **30% WOMEN ON BOARD**

Adding one more woman independent director to the board could narrow the gap of applying Practice 5.9 of the MCCG 2021, which states that a PLC's board comprise at least 30% women directors. This brings PLCs closer to achieving the 30% women on boards. SC CG Monitor 2022 pointed out that, as of 1 October 2022, 224 (Dec 2021: 177 PLCs) out of the total 959 PLCs listed on Bursa Malaysia have at least 30% women on board. Looks like there is much to be done on the journey towards achieving the aspirational target of 30% women on boards.

## **A SOLUTION TO THE REPLACEMENT OF LONG-SERVING IDs**

Finally, the amendment of Bursa Malaysia's Listing Requirements which impose a 12-year tenure limit for independent directors took effect on 1 June 2023. The MCCG 2021 recommends that boards set a tenure limit of nine years for independent directors. If those long-serving directors are male, replacing them with women directors would resolve the two issues - the long-serving director issue and the gender diversity issue, simultaneously.

# CONCLUSION

In short, appointing a woman director, preferably an independent director, ticks many conformance boxes for a PLC. A diversified boardroom by gender and skillsets also demonstrates the efforts toward better governance.

However, the ever-changing regulatory environment and the increasingly stringent regulations with scrutiny on independent directors may deter qualified women from taking up the role, more so if fees do not commensurate with the responsibilities and duties imposed.

Women independent directors should be fairly remunerated based on their contribution to the board and at a level on par with their male counterparts. Quality individuals and services come at a price; you will get what you paid for!

**Elaine Choo**  
**Manager, Corporate Monitoring**

*This article appeared in the The Observer, a weekly newsletter published by The Minority Shareholders Watch Group (MSWG) and reproduced here with their permission. Do follow MSWG's Twitter account at @MSWGMalaysia and share your thought on their tweets from time to time.*

Learn how to identify Hot Stocks using Technical Analysis (TA) and Fundamental Analysis (FA)

Scan me

**SIGN UP FOR Invest NOW IT'S FREE!!!**

[Click here](#)

Get market moving news and analyses. Regular columns include **Behind The Action** and **From The Observer**

**Leaderboard • Shariah Hot Stocks • Shariah Momentum Up Stocks • Non Shariah Hot Stocks • Up Trending Stocks • Growth Stocks • Dividend Stocks • Long Companies • Insider Activity • Investor Relations • Regional Markets**

**DEFINITION:** Insider Activity shows the trades made by substantial shareholders or directors of the company. Purchases by the directors and company share buyback may indicate the share price is undervalued and brings confidence to the price trend of the share price.



ShareInvestor WebPro > Fundamental > Insider Trades > click Search tab > Select Bursa > click Stock name > scroll up and leave at <Select Counter> Type Date Range for Announcement Date > click Search

Notice Period is 09th July - 15th July 2023

Effective Change Date	Stock Name	Buyer/ Seller Name [Classification]	Bought / (Sold) ['000]		No. of Shares After Trade ['000]	
			Total	Total	% Held	
12 JUL 2023 - 13 JUL 2023	3A	MR TEO KWEE HOCK [SSH]	-1,265	47,591	9.732	
12 JUL 2023 - 13 JUL 2023	3A	WILMAR INTERNATIONAL LIMITED [SSH]	5,722	82,722	16.916	
07 JUL 2023 - 10 JUL 2023	3A	MR TEO KWEE HOCK [SSH]	851	48,856	9.991	
06 JUL 2023 - 06 JUL 2023	ABMB	EMPLOYEES PROVIDENT FUND BOARD [SSH]	137	160,443	10.364	
05 JUL 2023 - 05 JUL 2023	ABMB	EMPLOYEES PROVIDENT FUND BOARD [SSH]	203	160,306	10.355	
07 JUL 2023 - 07 JUL 2023	ADVPKG	MR PETER LING EE KONG [DIR/CEO]	9	8,470	10.489	
07 JUL 2023 - 07 JUL 2023	ADVPKG	MR PETER LING EE KONG [SSH]	9	8,470	10.489	
11 JUL 2023 - 11 JUL 2023	AEON	EMPLOYEES PROVIDENT FUND BOARD [SSH]	-525	158,287	11.274	
06 JUL 2023 - 06 JUL 2023	AEON	EMPLOYEES PROVIDENT FUND BOARD [SSH]	-37	158,812	11.311	
05 JUL 2023 - 05 JUL 2023	AEON	EMPLOYEES PROVIDENT FUND BOARD [SSH]	-40	158,848	11.314	
11 JUL 2023 - 12 JUL 2023	AHEALTH	APEX HOLDINGS (PTE) LTD [SSH]	114	296,302	41.266	
11 JUL 2023 - 12 JUL 2023	AHEALTH	DR KEE KIRK CHIN [DIR/CEO]	114	304,606	42.423	
11 JUL 2023 - 12 JUL 2023	AHEALTH	DR KEE KIRK CHIN [SSH]	114	304,606	42.423	
11 JUL 2023 - 12 JUL 2023	AHEALTH	DR KEE LOO [SSH]	114	296,302	41.266	
11 JUL 2023 - 12 JUL 2023	AHEALTH	MADAM YANG LIEW FANG [SSH]	114	296,302	41.266	
11 JUL 2023 - 12 JUL 2023	AHEALTH	MR KEE KIRK CHUEN [DIR/CEO]	114	297,708	41.462	
11 JUL 2023 - 12 JUL 2023	AHEALTH	MR KEE KIRK CHUEN [SSH]	114	297,708	41.462	
11 JUL 2023 - 12 JUL 2023	AHEALTH	MR KEE TAH PENG @ HEE TECK PENG [SSH]	114	296,302	41.266	
11 JUL 2023 - 12 JUL 2023	AHEALTH	XEPA HOLDINGS PTE LTD [SSH]	114	296,302	41.266	
13 JUL 2023 - 13 JUL 2023	AIRPORT	KUMPULAN WANG PERSARAAN (DIPERBADANKAN) [SSH]	13	112,779	6.759	
11 JUL 2023 - 11 JUL 2023	AIRPORT	EMPLOYEES PROVIDENT FUND BOARD [SSH]	-3,780	208,936	12.522	
12 JUL 2023 - 12 JUL 2023	AIRPORT	KUMPULAN WANG PERSARAAN (DIPERBADANKAN) [SSH]	-38	112,767	6.758	
10 JUL 2023 - 10 JUL 2023	AIRPORT	EMPLOYEES PROVIDENT FUND BOARD [SSH]	-205	212,716	12.749	
11 JUL 2023 - 11 JUL 2023	AIRPORT	KUMPULAN WANG PERSARAAN (DIPERBADANKAN) [SSH]	-146	112,805	6.761	
07 JUL 2023 - 07 JUL 2023	AIRPORT	EMPLOYEES PROVIDENT FUND BOARD [SSH]	-124	212,921	12.761	
10 JUL 2023 - 10 JUL 2023	AIRPORT	KUMPULAN WANG PERSARAAN (DIPERBADANKAN) [SSH]	-35	112,950	6.769	
06 JUL 2023 - 06 JUL 2023	AIRPORT	EMPLOYEES PROVIDENT FUND BOARD [SSH]	-69	213,045	12.768	
05 JUL 2023 - 05 JUL 2023	AIRPORT	EMPLOYEES PROVIDENT FUND BOARD [SSH]	-560	213,114	12.772	
11 JUL 2023 - 11 JUL 2023	ALLIANZ	EMPLOYEES PROVIDENT FUND BOARD [SSH]	-49	12,752	7.165	
10 JUL 2023 - 10 JUL 2023	ALLIANZ	EMPLOYEES PROVIDENT FUND BOARD [SSH]	-6	12,801	7.193	
07 JUL 2023 - 07 JUL 2023	ALLIANZ	EMPLOYEES PROVIDENT FUND BOARD [SSH]	-12	12,807	7.196	
06 JUL 2023 - 06 JUL 2023	ALLIANZ	EMPLOYEES PROVIDENT FUND BOARD [SSH]	-9	12,818	7.202	
05 JUL 2023 - 05 JUL 2023	ALLIANZ	EMPLOYEES PROVIDENT FUND BOARD [SSH]	-18	12,827	7.207	
13 JUL 2023 - 13 JUL 2023	ANCOMNY	MR CHAN THYE SENG [DIR/CEO]	-300	9,749	1.04	
11 JUL 2023 - 13 JUL 2023	ANCOMNY	DATO' SIEW KA WEI [DIR/CEO]	-2,947	187,141	19.96	
11 JUL 2023 - 11 JUL 2023	ANCOMNY	DATO' SIEW KA WEI [DIR/CEO]	6	21,892	19.721	
11 JUL 2023 - 13 JUL 2023	ANCOMNY	DATO' SIEW KA WEI [SSH]	-2,947	187,141	19.96	
10 JUL 2023 - 10 JUL 2023	ANCOMNY	MR CHAN THYE SENG [DIR/CEO]	-220	10,049	1.075	
05 JUL 2023 - 07 JUL 2023	ANCOMNY	DATO' SIEW KA WEI [DIR/CEO]	14	190,089	20.355	
05 JUL 2023 - 07 JUL 2023	ANCOMNY	DATO' SIEW KA WEI [SSH]	14	190,089	20.355	
11 JUL 2023 - 13 JUL 2023	APM	DATO' TAN HENG CHEW [DIR/CEO]	17	104,506	53.457	
11 JUL 2023 - 13 JUL 2023	APM	DATO' TAN HENG CHEW [SSH]	17	96,452	49.337	
10 JUL 2023 - 12 JUL 2023	AURO	MR WU WAI KONG [SSH]	-16,074	39,766	6.867	
07 JUL 2023 - 10 JUL 2023	AURO	MR TAN WYE CHUAN [DIR/CEO]	36,585	106,190	18.339	
07 JUL 2023 - 10 JUL 2023	AURO	MR TAN WYE CHUAN [SSH]	36,585	106,190	18.339	
06 JUL 2023 - 06 JUL 2023	AXIATA	EMPLOYEES PROVIDENT FUND BOARD [SSH]	2,867	1,599,596	17.427	
10 JUL 2023 - 10 JUL 2023	AXTERIA	MR WOO WAI ONN @ FOO WAI ONN [DIR/CEO]	4,900	186,269	25.987	
10 JUL 2023 - 10 JUL 2023	AXTERIA	MR WOO WAI ONN @ FOO WAI ONN [SSH]	4,900	186,269	25.987	
10 JUL 2023 - 10 JUL 2023	AXTERIA	MR YEE WEI MENG [DIR/CEO]	-3,000	15,867	2.214	
11 JUL 2023 - 13 JUL 2023	BAHVEST	INNOSABAH CAPITAL HOLDINGS SDN BHD [SSH]	9,987	101,670	8.2	
12 JUL 2023 - 12 JUL 2023	BAUTO	PRUDENTIAL PLC [SSH]	-95	71,639	6.135	
10 JUL 2023 - 10 JUL 2023	BAUTO	EMPLOYEES PROVIDENT FUND BOARD [SSH]	-1,123	115,752	9.913	
07 JUL 2023 - 07 JUL 2023	BAUTO	EMPLOYEES PROVIDENT FUND BOARD [SSH]	-500	116,875	10.01	
07 JUL 2023 - 07 JUL 2023	BAUTO	PRUDENTIAL PLC [SSH]	-584	71,734	6.144	
06 JUL 2023 - 06 JUL 2023	BAUTO	PRUDENTIAL PLC [SSH]	-80	72,318	6.194	
05 JUL 2023 - 05 JUL 2023	BAUTO	EMPLOYEES PROVIDENT FUND BOARD [SSH]	729	117,375	10.053	
14 JUL 2023 - 14 JUL 2023	BORNOIL	DATUK JOSEPH LEE YOK MIN @ AMBROSE [DIR/CEO]	1,800	1,836,134	15.446	
11 JUL 2023 - 11 JUL 2023	BORNOIL	DATUK JOSEPH LEE YOK MIN @ AMBROSE [DIR/CEO]	1,400	1,834,334	15.43	
07 JUL 2023 - 07 JUL 2023	BTM	EXEMPT AN FOR KENANGA INVESTORS BERHAD [SSH]	250,000	250,000	19.896	
05 JUL 2023 - 05 JUL 2023	BTM	DATUK WOO THIN CHOY [DIR/CEO]	-6,293	65,556	5.22	
06 JUL 2023 - 06 JUL 2023	BTM	DATUK WOO THIN CHOY [DIR/CEO]	-29,556	36,000	2.87	
05 JUL 2023 - 05 JUL 2023	BTM	DATUK WOO THIN CHOY [DIR/CEO]	-6,293	65,556	5.22	
05 JUL 2023 - 05 JUL 2023	BTM	DATUK WOO THIN CHOY [SSH]	-6,293	65,556	5.22	

Notice Period is 09th July - 15th July 2023

Effective Change Date	Stock Name	Buyer/ Seller Name [Classification]	Bought / (Sold) ['000]		No. of Shares After Trade ['000]	
			Total	Total	% Held	
10 JUL 2023 - 12 JUL 2023	CBIP	DATUK LIM CHAI BENG [DIR/CEO]	512	195,199	40.84	
10 JUL 2023 - 12 JUL 2023	CBIP	DATUK LIM CHAI BENG [SSH]	512	195,199	40.84	
10 JUL 2023 - 12 JUL 2023	CBIP	ZEE CAPITAL SDN BHD [SSH]	512	31,480	6.586	
06 JUL 2023 - 06 JUL 2023	CDB	EMPLOYEES PROVIDENT FUND BOARD [SSH]	17	1,124,457	9.585	
06 JUL 2023 - 07 JUL 2023	CEPAT	DATIN SERI OOI AH THIN [SSH]	20	119,896	38.81	
06 JUL 2023 - 07 JUL 2023	CEPAT	DATO' MAH POOI SOO REALTY SDN. BHD. [SSH]	20	119,896	38.81	
06 JUL 2023 - 07 JUL 2023	CEPAT	DATO' SERI MAH KING SENG [DIR/CEO]	20	119,896	38.81	
06 JUL 2023 - 07 JUL 2023	CEPAT	DATO' SERI MAH KING SENG [SSH]	20	119,896	38.81	
06 JUL 2023 - 07 JUL 2023	CEPAT	MHC PLANTATIONS BHD. [SSH]	20	119,896	38.81	
06 JUL 2023 - 07 JUL 2023	CEPAT	TAN SRI DR MAH KING THIAN @ MAH KING THIAM [DIR/CEO]	20	119,896	38.81	
06 JUL 2023 - 07 JUL 2023	CEPAT	TAN SRI DR MAH KING THIAN @ MAH KING THIAM [SSH]	20	119,896	38.81	
12 JUL 2023 - 12 JUL 2023	CGB	MR CHEW HIAN TAT [DIR/CEO]	1,000	46,680	30.159	
12 JUL 2023 - 12 JUL 2023	CGB	MR CHEW HIAN TAT [SSH]	1,000	46,680	30.159	
10 JUL 2023 - 10 JUL 2023	CGB	MR CHEW HIAN TAT [DIR/CEO]	2,000	45,680	29.513	
10 JUL 2023 - 10 JUL 2023	CGB	MR CHEW HIAN TAT [SSH]	2,000	45,680	29.513	
05 JUL 2023 - 06 JUL 2023	CGB	MR LEE SWEE MENG [DIR/CEO]	-54	139	0.09	
05 JUL 2023 - 06 JUL 2023	CGB	MR LEE SWEE MENG [DIR/CEO]	-54	139	0.09	
12 JUL 2023 - 12 JUL 2023	CHGP	DATIN LEE TEOH KEE [SSH]	-53	38,352	6.969	
12 JUL 2023 - 12 JUL 2023	CHGP	CHIN HIN GROUP BERHAD [SSH]	1,341	319,797	58.11	
12 JUL 2023 - 12 JUL 2023	CHGP	DATUK SERI CHIAU BENG TEIK [DIR/CEO]	1,341	319,797	58.11	
12 JUL 2023 - 12 JUL 2023	CHGP	DATUK SERI CHIAU BENG TEIK [SSH]	1,341	319,797	58.11	
12 JUL 2023 - 12 JUL 2023	CHGP	DIVINE INVENTIONS SDN BHD [SSH]	1,341	319,797	58.11	
12 JUL 2023 - 12 JUL 2023	CHGP	MR CHIAU HAW CHOON [DIR/CEO]	1,341	319,797	58.11	
12 JUL 2023 - 12 JUL 2023	CHGP	MR CHIAU HAW CHOON [SSH]	1,341	319,797	58.11	
12 JUL 2023 - 12 JUL 2023	CHGP	PP CHIN HIN REALTY SDN BHD [SSH]	1,341	319,797	58.11	
10 JUL 2023 - 11 JUL 2023	CHGP	CHIN HIN GROUP BERHAD [SSH]	3,835	318,456	57.866	
10 JUL 2023 - 11 JUL 2023	CHGP	DATUK SERI CHIAU BENG TEIK [DIR/CEO]	3,835	318,456	57.866	
10 JUL 2023 - 11 JUL 2023	CHGP	DATUK SERI CHIAU BENG TEIK [SSH]	3,835	318,456	57.866	
10 JUL 2023 - 11 JUL 2023	CHGP	DIVINE INVENTIONS SDN BHD [SSH]	3,835	318,456	57.866	
10 JUL 2023 - 11 JUL 2023	CHGP	MR CHIAU HAW CHOON [DIR/CEO]	3,835	318,456	57.866	
10 JUL 2023 - 11 JUL 2023	CHGP	MR CHIAU HAW CHOON [SSH]	3,835	318,456	57.866	
10 JUL 2023 - 11 JUL 2023	CHGP	PP CHIN HIN REALTY SDN BHD [SSH]	3,835	318,456	57.866	
07 JUL 2023 - 07 JUL 2023	CHGP	DATIN LEE TEOH KEE [SSH]	-114	38,404	6.979	
06 JUL 2023 - 07 JUL 2023	CHGP	CHIN HIN GROUP BERHAD [SSH]	2,020	314,621	57.172	
06 JUL 2023 - 07 JUL 2023	CHGP	DATUK SERI CHIAU BENG TEIK [DIR/CEO]	2,020	314,621	57.172	
06 JUL 2023 - 07 JUL 2023	CHGP	DATUK SERI CHIAU BENG TEIK [SSH]	2,020	314,621	57.172	
06 JUL 2023 - 07 JUL 2023	CHGP	DIVINE INVENTIONS SDN BHD [SSH]	2,020	314,621	57.172	
06 JUL 2023 - 07 JUL 2023	CHGP	MR CHIAU HAW CHOON [DIR/CEO]	2,020	314,621	57.172	
06 JUL 2023 - 07 JUL 2023	CHGP	MR CHIAU HAW CHOON [SSH]	2,020	314,621	57.172	
06 JUL 2023 - 07 JUL 2023	CHGP	PP CHIN HIN REALTY SDN BHD [SSH]	2,020	314,621	57.172	
06 JUL 2023 - 06 JUL 2023	CIMB	KUMPULAN WANG PERSARAAN (DIPERBADANKAN) [SSH]	94	718,878	6.74	
05 JUL 2023 - 05 JUL 2023	CIMB	EMPLOYEES PROVIDENT FUND BOARD [SSH]	50,000	1,565,747	14.68	
12 JUL 2023 - 12 JUL 2023	CITAGLB	DATO' MOHAN A/L C SINNATHAMBY [DIR/CEO]	18	1,600	0.383	
11 JUL 2023 - 11 JUL 2023	CITAGLB	DATO' MOHAN A/L C SINNATHAMBY [DIR/CEO]	17	1,582	0.379	
11 JUL 2023 - 11 JUL 2023	CITAGLB	RHB TRUSTEE BERHAD [SSH]	23,000	23,000	5.508	
11 JUL 2023 - 11 JUL 2023	CITAGLB	TAN SRI DATO' SRI (DR.) MOHAMAD NORZA BIN ZAKARIA [DIR/CEO]	60	141,724	33.941	
11 JUL 2023 - 11 JUL 2023	CITAGLB	TAN SRI DATO' SRI (DR.) MOHAMAD NORZA BIN ZAKARIA [SSH]	60	141,724	33.941	
10 JUL 2023 - 10 JUL 2023	CITAGLB	DATO' MOHAN A/L C SINNATHAMBY [DIR/CEO]	66	1,566	0.375	
10 JUL 2023 - 10 JUL 2023	CITAGLB	TAN SRI DATO' SRI (DR.) MOHAMAD NORZA BIN ZAKARIA [DIR/CEO]	110	141,664	33.927	
10 JUL 2023 - 10 JUL 2023	CITAGLB	TAN SRI DATO' SRI (DR.) MOHAMAD NORZA BIN ZAKARIA [SSH]	110	141,664	33.927	
06 JUL 2023 - 06 JUL 2023	CITAGLB	ENCIK IKHLAS BIN KAMARUDIN [DIR/CEO]	-23,000	12,058	2.888	
06 JUL 2023 - 06 JUL 2023	CITAGLB	TAN SRI DATO' SRI (DR.) MOHAMAD NORZA BIN ZAKARIA [DIR/CEO]	-23,000	141,554	33.902	
06 JUL 2023 - 06 JUL 2023	CITAGLB	TAN SRI DATO' SRI (DR.) MOHAMAD NORZA BIN ZAKARIA [SSH]	-23,000	141,554	33.902	
06 JUL 2023 - 06 JUL 2023	CITAGLB	TAN SRI DATO' SRI (DR.) MOHAMAD NORZA BIN ZAKARIA [SSH]	-23,000	141,554	33.902	
06 JUL 2023 - 06 JUL 2023	CITAGLB	TAN SRI DATO' SRI (DR.) MOHAMAD NORZA BIN ZAKARIA [SSH]	-23,000	141,554	33.902	
06 JUL 2023 - 06 JUL 2023	CITAGLB	TAN SRI DATO' SRI (DR.) MOHAMAD NORZA BIN ZAKARIA [SSH]	-23,000	141,554	33.902	
06 JUL 2023 - 06 JUL 2023	CITAGLB	TAN SRI DATO' SRI (DR.) MOHAMAD NORZA BIN ZAKARIA [SSH]	-23,000	141,554	33.902	
06 JUL 2023 - 06 JUL 2023	CITAGLB	TAN SRI DATO' SRI (DR.) MOHAMAD NORZA BIN ZAKARIA [SSH]	-23,000	141,554	33.902	
14 JUL 2023 - 14 JUL 2023	CLASSITA	HONG SENG CONSOLIDATED BERHAD [SSH]	402,058	402,058	32.61	
13 JUL 2023 - 13 JUL 2023	CLOUDPT	ERA JASAKITA SDN BHD [SSH]	500	277,904	52.277	
13 JUL 2023 - 13 JUL 2023	CLOUDPT	MR CHOONG WAI HOONG [DIR/CEO]	500	320,976	60.379	
13 JUL 2023 - 13 JUL 2023	CLOUDPT	MR CHOONG WAI HOONG [SSH]	500	320,976	60.379	
13 JUL 2023 - 13 JUL 2023	CLOUDPT	MR YEW CHOONG CHEONG [DIR/CEO]	500	320,976	60.379	
13 JUL 2023 - 13 JUL 2023	CLOUDPT	MR YEW CHOONG CHEONG [SSH]	500	320,976	60.379	

**Disclaimer:** The Information in Insider Activity is extracted from [www.shareinvestor.com/fundamental/insider\\_trades](http://www.shareinvestor.com/fundamental/insider_trades). The information on this page is provided as a service to readers. It does not constitute financial advice and/or any investment recommendations. We assume no liability for damages resulting from or arising out of the use of such information. Whilst every effort is made to ensure accuracy, the information presented is not the official record of shareholder filings. Readers are advised to read the original filings on the Bursa Malaysia website at [www.bursamalaysia.com](http://www.bursamalaysia.com)



**STROM**  
SWISS TIMEPIECES & JEWELLERY



StromWatch Asia  
Tele : +65.9817

Notice Period is 09th July - 15th July 2023

Effective Change Date	Stock Name	Buyer/ Seller Name [Classification]	Bought / (Sold) ['000]		No. of Shares After Trade ['000]	
			Total	Total	% Held	% Held
07 JUL 2023 - 10 JUL 2023	CLOUDPT	ERA JASAKITA SDN BHD [SSH]	1,000	277,404	52.183	
07 JUL 2023 - 10 JUL 2023	CLOUDPT	MR CHOONG WAI HOONG [DIR/CEO]	1,000	320,476	60.285	
07 JUL 2023 - 10 JUL 2023	CLOUDPT	MR CHOONG WAI HOONG [SSH]	1,000	320,476	60.285	
07 JUL 2023 - 10 JUL 2023	CLOUDPT	MR YEW CHOONG CHEONG [DIR/CEO]	1,000	320,476	60.285	
07 JUL 2023 - 10 JUL 2023	CLOUDPT	MR YEW CHOONG CHEONG [SSH]	1,000	320,476	60.285	
04 JUL 2023 - 10 JUL 2023	CNOUHUA	MR CHIN KUAN HAOK @ CHEN KOH FOOK [SSH]	617	105,000	15.719	
12 JUL 2023 - 12 JUL 2023	CUSCAPI	MR WONG THEAN SOON [SSH]	1,150	234,833	24.853	
07 JUL 2023 - 07 JUL 2023	DESTINI	DATO' ABD AZIZ BIN HAJI SHEIKH FADZIR [DIR/CEO]	94,000	123,300	7.412	
07 JUL 2023 - 07 JUL 2023	DIALOG	EMPLOYEES PROVIDENT FUND BOARD [SSH]	404	835,997	14.82	
06 JUL 2023 - 06 JUL 2023	DIALOG	EMPLOYEES PROVIDENT FUND BOARD [SSH]	380	835,593	14.81	
07 JUL 2023 - 07 JUL 2023	DIALOG	KUMPULAN WANG PERSARAAN (DIPERBADANKAN) [SSH]	205	553,590	9.81	
06 JUL 2023 - 06 JUL 2023	DRBHC	EMPLOYEES PROVIDENT FUND BOARD [SSH]	-500	193,438	10.006	
05 JUL 2023 - 05 JUL 2023	DRBHC	EMPLOYEES PROVIDENT FUND BOARD [SSH]	-233	193,938	10.032	
13 JUL 2023 - 13 JUL 2023	ECOFIRS	DATO' TEOH SENG KIAN [DIR/CEO]	-48,000	84,005	6.959	
13 JUL 2023 - 13 JUL 2023	ECOFIRS	DATO' TEOH SENG KIAN [SSH]	-48,000	84,005	6.959	
11 JUL 2023 - 11 JUL 2023	ECOFIRS	DATO' TIONG KWING HEE [DIR/CEO]	-180	81,514	6.752	
11 JUL 2023 - 11 JUL 2023	ECOFIRS	DATO' TIONG KWING HEE [SSH]	-180	81,514	6.752	
11 JUL 2023 - 11 JUL 2023	ECOFIRS	MR TEOH SENG AUN [SSH]	-14,040	71,710	5.94	
11 JUL 2023 - 11 JUL 2023	EG	DATO' KANG PANG KIANG [DIR/CEO]	500	66,958	16.162	
11 JUL 2023 - 11 JUL 2023	EG	DATO' KANG PANG KIANG [SSH]	500	66,958	16.162	
06 JUL 2023 - 07 JUL 2023	EG	MR ONG LYE SOON [DIR/CEO]	-517	1,250	0.302	
12 JUL 2023 - 13 JUL 2023	ENGTEX-WB	MR NG CHOOI GUAN [DIR/CEO]	2,000	9,272	8.5	
12 JUL 2023 - 12 JUL 2023	ENGTEX-WB	MR NG CHOOI GUAN [SSH]	1,000	9,272	8.5	
12 JUL 2023 - 13 JUL 2023	ENGTEX-WB	NG YIK SOON [DIR/CEO]	100	4,189	3.84	
07 JUL 2023 - 07 JUL 2023	F&N	EMPLOYEES PROVIDENT FUND BOARD [SSH]	8	42,358	11.549	
10 JUL 2023 - 10 JUL 2023	FAJAR	TAN SRI DATUK TA KIN YAN [SSH]	45	88,661	11.955	
07 JUL 2023 - 07 JUL 2023	FBBHD	MR NG KIAN BOON [DIR/CEO]	-1,500	193,821	89.732	
07 JUL 2023 - 07 JUL 2023	FBBHD	MR NG KIAN BOON [SSH]	-1,500	193,821	89.732	
11 JUL 2023 - 12 JUL 2023	FFB	MR LOI TUAN EE [DIR/CEO]	1,000	810,491	43.297	
11 JUL 2023 - 12 JUL 2023	FFB	MR LOI TUAN EE [SSH]	1,000	810,491	43.297	
07 JUL 2023 - 07 JUL 2023	FFB	EMPLOYEES PROVIDENT FUND BOARD [SSH]	2,779	139,725	7.464	
05 JUL 2023 - 05 JUL 2023	FFB	EMPLOYEES PROVIDENT FUND BOARD [SSH]	2,131	136,946	7.316	
27 JUN 2023 - 27 JUN 2023	FITTERS	MR HO JIEN SHIUNG [SSH]	125,708	242,211	10.345	
28 APR 2023 - 15 MAY 2023	FITTERS	CITA REALITI SDN BHD [SSH]	37,500	240,850	10.287	
12 JUL 2023 - 12 JUL 2023	FPGROUP	DATO' ONG CHOON HENG [DIR/CEO]	625	189,375	34.765	
12 JUL 2023 - 12 JUL 2023	FPGROUP	DATO' ONG CHOON HENG [SSH]	625	189,375	34.765	
12 JUL 2023 - 12 JUL 2023	FPGROUP	MR LEE CHUN WAH [DIR/CEO]	400	217,580	39.942	
12 JUL 2023 - 12 JUL 2023	FPGROUP	MR LEE CHUN WAH [SSH]	400	217,580	39.942	
11 JUL 2023 - 11 JUL 2023	GAMUDA	EMPLOYEES PROVIDENT FUND BOARD (EPF BOARD) [SSH]	-83	366,243	13.76	
06 JUL 2023 - 06 JUL 2023	GAMUDA	EMPLOYEES PROVIDENT FUND BOARD (EPF BOARD) [SSH]	100	366,325	13.76	
05 JUL 2023 - 05 JUL 2023	GAMUDA	EMPLOYEES PROVIDENT FUND BOARD (EPF BOARD) [SSH]	-796	366,225	13.76	
10 JUL 2023 - 10 JUL 2023	GASMSIA	EMPLOYEES PROVIDENT FUND BOARD [SSH]	933	84,614	6.589	
07 JUL 2023 - 07 JUL 2023	GASMSIA	EMPLOYEES PROVIDENT FUND BOARD [SSH]	2,854	83,681	6.517	
13 JUL 2023 - 13 JUL 2023	GPHAROS	DATO' HAJI A. RAHMAN BIN YAHYA [DIR/CEO]	100	100	0.071	
13 JUL 2023 - 13 JUL 2023	GPHAROS	DATO' HAJI TENGU HASSAN BIN TENGU OMAR [DIR/CEO]	125	125	0.089	
13 JUL 2023 - 13 JUL 2023	GPHAROS	ENCIK SAIFUDDIN BIN OTHMAN [DIR/CEO]	75	75	0.053	
11 JUL 2023 - 11 JUL 2023	GREATEC	DATO' TAN ENG KEE [DIR/CEO]	4	772,733	61.643	
11 JUL 2023 - 11 JUL 2023	GREATEC	DATO' TAN ENG KEE [SSH]	4	772,733	61.643	
11 JUL 2023 - 11 JUL 2023	GUH	DATUK SERI KENNETH H'NG BAK TEE [DIR/CEO]	80	6,324	2.248	
07 JUL 2023 - 10 JUL 2023	HEKTAR	HEKTAR BLACK SDN BHD [SSH]	-960	132,981	26.661	
05 JUL 2023 - 06 JUL 2023	HEKTAR	HEKTAR BLACK SDN BHD [SSH]	-890	133,941	26.854	
11 JUL 2023 - 11 JUL 2023	HLBANK	EMPLOYEES PROVIDENT FUND BOARD [SSH]	1,863	219,089	10.5	
10 JUL 2023 - 10 JUL 2023	HLBANK	EMPLOYEES PROVIDENT FUND BOARD [SSH]	-8,517	217,227	10.41	
07 JUL 2023 - 07 JUL 2023	HLBANK	EMPLOYEES PROVIDENT FUND BOARD [SSH]	999	225,744	10.819	
06 JUL 2023 - 06 JUL 2023	HLBANK	EMPLOYEES PROVIDENT FUND BOARD [SSH]	584	224,745	10.771	
05 JUL 2023 - 05 JUL 2023	HLBANK	EMPLOYEES PROVIDENT FUND BOARD [SSH]	78	224,160	10.743	
11 JUL 2023 - 11 JUL 2023	IGBB	HSBC ASIA HOLDINGS LIMITED (HAHO) [SSH]	67	109,715	8.131	
11 JUL 2023 - 11 JUL 2023	IGBB	HSBC HOLDINGS PLC (HGQ) [SSH]	67	109,715	8.131	
11 JUL 2023 - 11 JUL 2023	IGBB	HSBC INTERNATIONAL TRUSTEE (HOLDINGS) PTE. LTD. (HTHL) [SSH]	67	109,715	8.131	
11 JUL 2023 - 11 JUL 2023	IGBB	HSBC INTERNATIONAL TRUSTEE LIMITED (HKIT) [SSH]	67	109,715	8.131	
11 JUL 2023 - 11 JUL 2023	IGBB	THE HONGKONG AND SHANGHAI BANKING CORPORATION LIMITED (HBAP) [SSH]	67	109,715	8.131	
10 JUL 2023 - 10 JUL 2023	IGBB	HSBC ASIA HOLDINGS LIMITED (HAHO) [SSH]	116	109,648	8.126	
10 JUL 2023 - 10 JUL 2023	IGBB	HSBC HOLDINGS PLC (HGQ) [SSH]	116	109,648	8.126	
10 JUL 2023 - 10 JUL 2023	IGBB	HSBC INTERNATIONAL TRUSTEE (HOLDINGS) PTE. LTD. (HTHL) [SSH]	116	109,648	8.126	
10 JUL 2023 - 10 JUL 2023	IGBB	HSBC INTERNATIONAL TRUSTEE LIMITED (HKIT) [SSH]	116	109,648	8.126	
10 JUL 2023 - 10 JUL 2023	IGBB	THE HONGKONG AND SHANGHAI BANKING CORPORATION LIMITED (HBAP) [SSH]	116	109,648	8.126	
07 JUL 2023 - 07 JUL 2023	IGBREIT	KUMPULAN WANG PERSARAAN (DIPERBADANKAN) [SSH]	50	264,206	7.35	
11 JUL 2023 - 11 JUL 2023	IHH	EMPLOYEES PROVIDENT FUND BOARD [SSH]	267	900,379	10.223	
10 JUL 2023 - 10 JUL 2023	IHH	EMPLOYEES PROVIDENT FUND BOARD [SSH]	117	900,112	10.22	
07 JUL 2023 - 07 JUL 2023	IHH	EMPLOYEES PROVIDENT FUND BOARD [SSH]	1,335	899,995	10.219	
06 JUL 2023 - 06 JUL 2023	IHH	EMPLOYEES PROVIDENT FUND BOARD [SSH]	1,393	898,660	10.204	
05 JUN 2023 - 05 JUN 2023	IJM	URUSHARTA JAMA'AH SDN BHD [SSH]	-100	208,609	5.947	
13 JUL 2023 - 13 JUL 2023	INARI	KUMPULAN WANG PERSARAAN (DIPERBADANKAN) [SSH]	300	356,091	9.54	
10 JUL 2023 - 10 JUL 2023	INARI	EMPLOYEES PROVIDENT FUND BOARD [SSH]	211	415,664	11.135	
11 JUL 2023 - 11 JUL 2023	INARI	KUMPULAN WANG PERSARAAN (DIPERBADANKAN) [SSH]	1,531	355,791	9.532	
10 JUL 2023 - 10 JUL 2023	INARI	KUMPULAN WANG PERSARAAN (DIPERBADANKAN) [SSH]	45	354,259	9.49	
05 JUL 2023 - 05 JUL 2023	INARI	EMPLOYEES PROVIDENT FUND BOARD [SSH]	692	415,452	11.129	
13 JUL 2023 - 13 JUL 2023	INGENIEU	MMAG HOLDINGS BERHAD [SSH]	-22,000	154,418	11.16	
07 OCT 2023 - 07 OCT 2023	JAKS	DATO' RAZALI MERICAN BIN NAINA MERICAN [DIR/CEO]	4,700	11,730	0.512	
07 OCT 2023 - 07 OCT 2023	JAKS	MR ANG LAM POAH [DIR/CEO]	42,300	334,365	14.602	

Notice Period is 09th July - 15th July 2023

Effective Change Date	Stock Name	Buyer/ Seller Name [Classification]	Bought / (Sold) ['000]		No. of Shares After Trade ['000]	
			Total	Total	% Held	% Held
10 JUL 2023 - 10 JUL 2023	JAKS	MR ANG LAM POAH [SSH]	42,300	334,365	14.602	
11 JUL 2023 - 11 JUL 2023	KAB	DATO' LAI KENG ONN [DIR/CEO]	13,172	631,852	34.94	
11 JUL 2023 - 11 JUL 2023	KAB	DATO' LAI KENG ONN [SSH]	13,172	631,852	34.94	
11 JUL 2023 - 12 JUL 2023	KAWAN	MR NARESHCHANDRA GORDHANDAS NAGRECHA [SSH]	-50	76,952	21.275	
07 JUL 2023 - 07 JUL 2023	KGB	DATUK HAJI JAMIL BIN HAJI OSMAN [DIR/CEO]	5	5	0.001	
07 JUL 2023 - 07 JUL 2023	KGB	MISS NG LEE KUAN [DIR/CEO]	5	5	0.001	
07 JUL 2023 - 07 JUL 2023	KGB	MR CHAM TECK KUANG [DIR/CEO]	110	135,517	21.017	
07 JUL 2023 - 07 JUL 2023	KGB	MR CHAM TECK KUANG [SSH]	110	135,517	21.017	
07 JUL 2023 - 07 JUL 2023	KGB	MR GAN HUNG KENG [DIR/CEO]	110	140,213	21.745	
07 JUL 2023 - 07 JUL 2023	KGB	MR GAN HUNG KENG [SSH]	110	140,213	21.745	
07 JUL 2023 - 07 JUL 2023	KGB	MR HU KEQIN [DIR/CEO]	110	135,517	21.017	
07 JUL 2023 - 07 JUL 2023	KGB	MR HU KEQIN [SSH]	110	135,517	21.017	
07 JUL 2023 - 07 JUL 2023	KGB	MR ONG WENG LEONG [DIR/CEO]	110	139,909	21.698	
07 JUL 2023 - 07 JUL 2023	KGB	MR ONG WENG LEONG [SSH]	110	139,909	21.698	
07 JUL 2023 - 07 JUL 2023	KGB	MR SOH TONG HWA [DIR/CEO]	110	139,463	21.63	
07 JUL 2023 - 07 JUL 2023	KGB	MR SOH TONG HWA [SSH]	110	139,463	21.63	
07 JUL 2023 - 07 JUL 2023	KGB	MR SOO YUIT WENG [DIR/CEO]	5	1,499	0.232	
10 JUL 2023 - 10 JUL 2023	KLK	EMPLOYEES PROVIDENT FUND BOARD [SSH]	-532	119,283	11.061	
07 JUL 2023 - 07 JUL 2023	KLK	EMPLOYEES PROVIDENT FUND BOARD [SSH]	-387	119,816	11.11	
12 JUL 2023 - 12 JUL 2023	KOBAY	MR KOAY CHENG LYE [DIR/CEO]	300	123,546	37.877	
10 JUL 2023 - 11 JUL 2023	KOBAY	MR KOAY CHENG LYE [DIR/CEO]	817	123,246	37.785	
07 JUL 2023 - 07 JUL 2023	KOBAY	MR KOAY CHENG LYE [DIR/CEO]	180	122,429	37.534	
14 JUL 2023 - 14 JUL 2023	KOSSAN	KOSSAN HOLDINGS (M) SDN BHD [SSH]	500	1,254,718	49.173	
14 JUL 2023 - 14 JUL 2023	KOSSAN	MR LIM KUANG WANG [SSH]	500	1,256,418	49.24	
14 JUL 2023 - 14 JUL 2023	KOSSAN	MR LIM KUANG YONG [SSH]	500	1,258,296	49.314	
14 JUL 2023 - 14 JUL 2023	KOSSAN	MR LIM LENG BUNG [SSH]	500	1,257,036	49.264	
14 JUL 2023 - 14 JUL 2023	KOSSAN	TAN SRI DATO' LIM KUANG SIA [DIR/CEO]	500	1,264,915	49.573	
14 JUL 2023 - 14 JUL 2023	KOSSAN	TAN SRI DATO' LIM KUANG SIA [SSH]	500	1,264,915	49.573	
13 JUL 2023 - 13 JUL 2023	KOSSAN	KOSSAN HOLDINGS (M) SDN BHD [SSH]	1,800	1,254,218	49.154	
13 JUL 2023 - 13 JUL 2023	KOSSAN	MR LIM KUANG WANG [SSH]	1,800	1,255,918	49.221	
13 JUL 2023 - 13 JUL 2023	KOSSAN	MR LIM KUANG YONG [SSH]	1,800	1,257,796	49.294	
13 JUL 2023 - 13 JUL 2023	KOSSAN	MR LIM LENG BUNG [SSH]	1,800	1,256,536	49.245	
13 JUL 2023 - 13 JUL 2023	KOSSAN	TAN SRI DATO' LIM KUANG SIA [DIR/CEO]	1,800	1,264,415	49.553	
13 JUL 2023 - 13 JUL 2023	KOSSAN	TAN SRI DATO' LIM KUANG SIA [SSH]	1,800	1,264,415	49.553	
12 JUL 2023 - 12 JUL 2023	KOSSAN	KOSSAN HOLDINGS (M) SDN BHD [SSH]	1,696	1,252,418	49.083	
12 JUL 2023 - 12 JUL 2023	KOSSAN	MR LIM KUANG WANG [SSH]	1,696	1,254,118	49.15	
12 JUL 2023 - 12 JUL 2023	KOSSAN	MR LIM KUANG YONG [SSH]	1,696	1,255,996	49.223	
12 JUL 2023 - 12 JUL 2023	KOSSAN	MR LIM LENG BUNG [SSH]	1,696	1,254,736	48.174	
12 JUL 2023 - 12 JUL 2023	KOSSAN	TAN SRI DATO' LIM KUANG SIA [DIR/CEO]	1,696	1,262,615	49.483	
12 JUL 2023 - 12 JUL 2023	KOSSAN	TAN SRI DATO' LIM KUANG SIA [SSH]	1,696	1,262,615	49.483	
10 JUL 2023 - 10 JUL 2023	KSENG	DATO' HO CHENG CHONG @ HO KIAN HOCK [DIR/CEO]	24	128,988	35.9	
10 JUL 2023 - 10 JUL 2023	KSENG	DATO' HO CHENG CHONG @ HO KIAN HOCK [SSH]	24	128,988	35.9	
10 JUL 2023 - 10 JUL 2023	KSENG	HO YEOW KOON & SONS PTE LTD [SSH]	24	81,277	22.621	
10 JUL 2023 - 10 JUL 2023	KSENG	MR HO KIM SWEE @ HO KIAN GUAN [DIR/CEO]	24	128,484	35.76	
10 JUL 2023 - 10 JUL 2023	KSENG	MR HO KIM SWEE @ HO KIAN GUAN [SSH]	24	128,484	35.76	
06 JUL 2023 - 06 JUL 2023	L&PBHD	DATO' SERI LEE KAH CHOON [DIR/CEO]	500	500	0.089	
06 JUL 2023 - 06 JUL 2023	L&PBHD	MISS OOI HOOI KIANG [DIR/CEO]	-1,900	25,320	4.521	
06 JUL 2023 - 06 JUL 2023	L&PBHD	MR ONG KAH HONG [DIR/CEO]	-1,900	25,920	4.629	
10 JUL 2023 - 10 JUL 2023	LAYHONG	DATO' YAP HOONG CHAI [DIR/CEO]	-50	284,158	38.383	
05 JUL 2023 - 07 JUL 2023	LAYHONG	DATO' YAP HOONG CHAI [DIR/CEO]	-200	284,208	38.389	
13 JUL 2023 - 13 JUL 2023	LBS	TAN SRI DATO' SRI IR. LIM HOCK SAN JP [DIR/CEO]	200	607,172	39.411	
13 JUL 2023 - 13 JUL 2023	LBS	TAN SRI DATO' SRI IR. LIM HOCK SAN JP [SSH]	200	602,419	39.103	
11 JUL 2023 - 11 JUL 2023	LBS	TAN SRI DATO' SRI IR. LIM HOCK SAN JP [DIR/CEO]	250	606,972	39.398	
11 JUL 2023 - 11 JUL 2023	LBS	TAN SRI DATO' SRI IR. LIM HOCK SAN JP [SSH]	250	602,219	39.09	
07 JUL 2023 - 07 JUL 2023	LBS	TAN SRI DATO' SRI IR. LIM HOCK SAN JP [DIR/CEO]	100	606,722	39.382	
07 JUL 2023 - 07 JUL 2023	LBS	TAN SRI DATO' SRI IR. LIM H				



Notice Period is 09th July – 15th July 2023

Effective Change Date	Stock Name	Buyer/ Seller Name [Classification]	Bought / (Sold) ('000)		No. of Shares After Trade ('000)	
			Total	% Held	Total	% Held
07 JUL 2023 - 07 JUL 2023	MAYBANK	EMPLOYEES PROVIDENT FUND BOARD [SSH]	-8		1,605,875	13.322
07 JUL 2023 - 07 JUL 2023	MAYBANK	AMANAHRAYA TRUSTEES BERHAD - AMANAH SAHAM BUMIPUTERA [SSH]	-60		3,807,773	31.589
06 JUL 2023 - 06 JUL 2023	MAYBANK	AMANAHRAYA TRUSTEES BERHAD - AMANAH SAHAM BUMIPUTERA [SSH]	-2,000		3,807,833	31.589
05 JUL 2023 - 05 JUL 2023	MAYU	LIMBONGAN BATU MAUNG SDN. BHD. [SSH]	30,612		30,612	6.899
05 JUL 2023 - 05 JUL 2023	MAYU	MR LIM YEOW TEOH [SSH]	75,510		75,510	17.018
05 JUL 2023 - 05 JUL 2023	MAYU	MR LIO CHEE YEONG [SSH]	75,510		77,612	17.492
05 JUL 2023 - 05 JUL 2023	MAYU	UTOPIA SPAN SDN. BHD. [SSH]	75,510		75,510	17.018
11 JUL 2023 - 11 JUL 2023	MBMR	EMPLOYEES PROVIDENT FUND BOARD [SSH]	-20		31,409	8.035
10 JUL 2023 - 10 JUL 2023	MBMR	EMPLOYEES PROVIDENT FUND BOARD [SSH]	-94		31,429	8.04
07 JUL 2023 - 07 JUL 2023	MBMR	EMPLOYEES PROVIDENT FUND BOARD [SSH]	-9		31,523	8.064
05 JUL 2023 - 05 JUL 2023	MBMR	EMPLOYEES PROVIDENT FUND BOARD [SSH]	-284		31,532	8.067
05 JUL 2023 - 05 JUL 2023	MBMR	EMPLOYEES PROVIDENT FUND BOARD [SSH]	-39		31,816	8.139
04 JUL 2023 - 13 JUL 2023	MBRIGHT	DATO' LEE WAI MUN DIMP. JP. [DIR/CEO]	5,174		1,260,839	53.843
04 JUL 2023 - 13 JUL 2023	MBRIGHT	DATO' LEE WAI MUN DIMP. JP. [SSH]	5,174		1,260,839	53.843
04 JUL 2023 - 13 JUL 2023	MBRIGHT	LEADING VENTURES SDN. BHD. [SSH]	5,174		1,260,839	53.843
12 JUL 2023 - 12 JUL 2023	MCEMENT	AMANAHRAYA TRUSTEES BERHAD-AMANAH SAHAM BUMIPUTERA [SSH]	-31		69,969	5.34
14 JUL 2023 - 14 JUL 2023	MGRG	RINANI GROUP BERHAD [SSH]	4,593		7,618	5.85
12 JUL 2023 - 12 JUL 2023	MICROLN	RHB TRUSTEES BERHAD [SSH]	30,000		152,258	14.198
06 JUL 2023 - 06 JUL 2023	MICROLN	MR MONTEIRO GERARD CLAIR [DIR/CEO]	-7,720		29,516	2.752
06 JUL 2023 - 06 JUL 2023	MICROLN	OMESTI BERHAD [SSH]	-14,137		376,458	35.104
06 JUL 2023 - 06 JUL 2023	MICROLN	OMESTI HOLDINGS BERHAD [SSH]	-14,137		376,458	35.104
06 JUL 2023 - 06 JUL 2023	MICROLN	RHB TRUSTEES BERHAD [SSH]	22,200		122,258	11.4
05 JUL 2023 - 05 JUL 2023	MISC	EMPLOYEES PROVIDENT FUND BOARD [SSH]	1,376		567,464	12.713
11 JUL 2023 - 11 JUL 2023	MJPERAK	G CAPITAL BERHAD [SSH]	1,429		23,237	8.17
11 JUL 2023 - 11 JUL 2023	MJPERAK	GUNUNG RESOURCES SDN BHD [SSH]	1,429		23,237	8.17
12 JUL 2023 - 12 JUL 2023	MNHLDG	DATO' TOH ENG KEAT [DIR/CEO]	310		90,497	22.14
12 JUL 2023 - 12 JUL 2023	MNHLDG	DATO' TOH ENG KEAT [SSH]	310		90,497	22.14
14 JUL 2023 - 14 JUL 2023	MPHCAP	DATO SERI LIM TIONG CHIN [DIR/CEO]	50		11,015	1.569
11 JUL 2023 - 11 JUL 2023	MPHCAP	DATO SERI LIM TIONG CHIN [DIR/CEO]	25		10,965	1.561
07 JUL 2023 - 10 JUL 2023	MPHCAP	DATO SERI LIM TIONG CHIN [DIR/CEO]	119		10,940	1.558
13 JUL 2023 - 13 JUL 2023	MYEG	KUMPULAN WANG PERSARAAN (DIPERBADANKAN) [SSH]	1,400		552,436	7.46
07 JUL 2023 - 07 JUL 2023	MYEG	KUMPULAN WANG PERSARAAN (DIPERBADANKAN) [SSH]	-1,378		551,036	7.441
14 JUL 2023 - 14 JUL 2023	MYNEWS	JAG CAPITAL HOLDINGS SDN BHD [SSH]	7,000		75,200	0.933
12 JUL 2023 - 12 JUL 2023	MYNEWS	JAG CAPITAL HOLDINGS SDN BHD [SSH]	68,200		68,200	9.089
12 JUL 2023 - 14 JUL 2023	NATGATE	DATO' SERI WONG SIEW HAI [DIR/CEO]	-100		6,084	0.293
11 JUL 2023 - 11 JUL 2023	NESTLE	EMPLOYEES PROVIDENT FUND BOARD [SSH]	4		21,476	9.158
10 JUL 2023 - 10 JUL 2023	NESTLE	EMPLOYEES PROVIDENT FUND BOARD [SSH]	4		21,472	9.156
07 JUL 2023 - 07 JUL 2023	NESTLE	EMPLOYEES PROVIDENT FUND BOARD [SSH]	9		21,468	9.155
06 JUL 2023 - 06 JUL 2023	NESTLE	EMPLOYEES PROVIDENT FUND BOARD [SSH]	11		21,459	9.151
05 JUL 2023 - 05 JUL 2023	NESTLE	EMPLOYEES PROVIDENT FUND BOARD [SSH]	-25		21,448	9.146
12 JUL 2023 - 12 JUL 2023	NGGB	DATO' GAN KONG HIOK [SSH]	-500		143,803	16.805
12 JUL 2023 - 12 JUL 2023	NGGB	DATO' LIM THIAM HUAT [DIR/CEO]	1,800		122,362	14.299
12 JUL 2023 - 12 JUL 2023	NGGB	DATO' LIM THIAM HUAT [SSH]	1,800		122,362	14.299
12 JUL 2023 - 12 JUL 2023	NGGB	MISS LIM KAH YEE [DIR/CEO]	1,800		95,330	11.14
12 JUL 2023 - 12 JUL 2023	NGGB	MISS LIM KAH YEE [SSH]	1,800		95,330	11.14
12 JUL 2023 - 12 JUL 2023	NGGB	MISS LIM KAH YEN [DIR/CEO]	1,800		111,027	12.974
12 JUL 2023 - 12 JUL 2023	NGGB	MISS LIM KAH YEN [SSH]	1,800		111,027	12.974
13 JUL 2023 - 14 JUL 2023	NIHSIN	MR LER LEONG KEH [DIR/CEO]	1,000		1,500	0.286
13 JUL 2023 - 14 JUL 2023	NIHSIN-PA	MR LER LEONG KEH [DIR/CEO]	1,500		6,563	1.065
11 JUL 2023 - 11 JUL 2023	NYLEX	DATO' SIEW KA WEI [DIR/CEO]	-200		77,176	42.926
11 JUL 2023 - 11 JUL 2023	NYLEX	DATO' SIEW KA WEI [SSH]	-200		77,176	42.926
12 JUL 2023 - 13 JUL 2023	OVH	MR KENNY RONALD NGALIN [DIR/CEO]	-3,319		47,462	11.302
12 JUL 2023 - 13 JUL 2023	OVH	MR KENNY RONALD NGALIN [SSH]	-3,319		47,462	11.302
11 JUL 2023 - 11 JUL 2023	PADINI	EMPLOYEES PROVIDENT FUND BOARD [SSH]	2		33,362	5.071
10 JUL 2023 - 10 JUL 2023	PADINI	EMPLOYEES PROVIDENT FUND BOARD [SSH]	554		33,360	5.071
06 JUL 2023 - 06 JUL 2023	PCHEM	EMPLOYEES PROVIDENT FUND BOARD ("EPF BOARD") [SSH]	1,813		891,984	11.15
05 JUL 2023 - 05 JUL 2023	PCHEM	EMPLOYEES PROVIDENT FUND BOARD ("EPF BOARD") [SSH]	200		890,171	11.127
10 JUL 2023 - 12 JUL 2023	PEKAT	DATIN TEOH SIEW YOKE @ TEOH SIEW CHIN [SSH]	-80,750		49,250	7.636
10 JUL 2023 - 12 JUL 2023	PEKAT	DATO' ONG CHOO MENG [SSH]	-80,750		49,250	7.636
10 JUL 2023 - 12 JUL 2023	PEKAT	DATO' ONG SOON HO [SSH]	-80,750		49,250	7.636
10 JUL 2023 - 12 JUL 2023	PEKAT	HEXTAR HOLDINGS SDN BHD [SSH]	-80,750		49,250	7.636
13 JUL 2023 - 13 JUL 2023	PENTA	KUMPULAN WANG PERSARAAN (DIPERBADANKAN) [SSH]	129		36,541	5.137
11 JUL 2023 - 11 JUL 2023	PENTA	EMPLOYEES PROVIDENT FUND BOARD [SSH]	-108		47,424	6.667
10 JUL 2023 - 10 JUL 2023	PENTA	EMPLOYEES PROVIDENT FUND BOARD [SSH]	-12		47,532	6.682
11 JUL 2023 - 11 JUL 2023	PENTA	KUMPULAN WANG PERSARAAN (DIPERBADANKAN) [SSH]	141		36,412	5.119
07 JUL 2023 - 07 JUL 2023	PENTA	EMPLOYEES PROVIDENT FUND BOARD [SSH]	-316		47,544	6.684
05 JUL 2023 - 05 JUL 2023	PENTA	EMPLOYEES PROVIDENT FUND BOARD [SSH]	-436		47,860	6.728
07 JUL 2023 - 07 JUL 2023	PETDAG	EMPLOYEES PROVIDENT FUND BOARD ("EPF BOARD") [SSH]	88		123,121	12.393
06 JUL 2023 - 06 JUL 2023	PETDAG	EMPLOYEES PROVIDENT FUND BOARD ("EPF BOARD") [SSH]	49		123,033	12.384
13 JUL 2023 - 13 JUL 2023	PETGAS	KUMPULAN WANG PERSARAAN (DIPERBADANKAN) ("KWAP") [SSH]	30		198,751	10.045
11 JUL 2023 - 11 JUL 2023	PETGAS	EMPLOYEES PROVIDENT FUND BOARD [SSH]	-2,441		281,163	14.209
10 JUL 2023 - 10 JUL 2023	PETGAS	EMPLOYEES PROVIDENT FUND BOARD [SSH]	449		283,604	14.333
07 JUL 2023 - 07 JUL 2023	PETGAS	EMPLOYEES PROVIDENT FUND BOARD [SSH]	1,000		283,155	14.31
06 JUL 2023 - 06 JUL 2023	PETGAS	EMPLOYEES PROVIDENT FUND BOARD [SSH]	99		282,155	14.259
05 JUL 2023 - 05 JUL 2023	PETGAS	EMPLOYEES PROVIDENT FUND BOARD [SSH]	107		282,056	14.254
12 JUL 2023 - 12 JUL 2023	PJBUMI	PUAN HAFIDAH BINTI PAWANCIK [SSH]	-147		5,188	6.327
10 JUL 2023 - 10 JUL 2023	PJBUMI	PUAN HAFIDAH BINTI PAWANCIK [SSH]	812		5,335	6.506
12 JUL 2023 - 12 JUL 2023	PMBTECH	ALPHA MILESTONE SDN BHD [SSH]	108,969		377,418	23.592
12 JUL 2023 - 12 JUL 2023	PMBTECH	DATO' KOON POH TAT [DIR/CEO]	810		85,260	5.329
12 JUL 2023 - 12 JUL 2023	PMBTECH	DATO' KOON POH TAT [SSH]	810		85,260	5.329
12 JUL 2023 - 12 JUL 2023	PMBTECH	KPK HOLDINGS (L) LTD [SSH]	108,969		377,418	23.592

Notice Period is 09th July – 15th July 2023

Effective Change Date	Stock Name	Buyer/ Seller Name [Classification]	Bought / (Sold) ('000)		No. of Shares After Trade ('000)	
			Total	% Held	Total	% Held
12 JUL 2023 - 12 JUL 2023	PMBTECH	MADAM CHAN POH CHOO [SSH]	37,829		170,641	10.667
12 JUL 2023 - 12 JUL 2023	PMBTECH	MADAM ONG SOO FAN [SSH]	84,690		337,575	21.102
12 JUL 2023 - 12 JUL 2023	PMBTECH	MR KOON POH MING [DIR/CEO]	84,690		337,575	21.102
12 JUL 2023 - 12 JUL 2023	PMBTECH	MR KOON POH MING [SSH]	84,690		337,575	21.102
12 JUL 2023 - 12 JUL 2023	PMBTECH	MR KOON POH WENG [DIR/CEO]	37,829		170,641	10.667
12 JUL 2023 - 12 JUL 2023	PMBTECH	MR KOON POH WENG [SSH]	37,829		170,641	10.667
12 JUL 2023 - 12 JUL 2023	PMBTECH	PAUL KOON FOUNDATION [SSH]	108,969		377,418	23.592
12 JUL 2023 - 12 JUL 2023	PMBTECH	PAUL KOON PTE. LTD. [SSH]	108,969		377,418	23.592
12 JUL 2023 - 12 JUL 2023	PMBTECH	PRESS METAL ALUMINIUM HOLDINGS BERHAD [SSH]	108,969		377,418	23.592
12 JUL 2023 - 12 JUL 2023	PMBTECH	TAN SRI DATO' KOON POH KEONG [DIR/CEO]	114,505		416,794	26.053
12 JUL 2023 - 12 JUL 2023	PMBTECH	TAN SRI DATO' KOON POH KEONG [SSH]	114,505		416,794	26.053
06 JUL 2023 - 06 JUL 2023	PMBTECH	DATO' KOON POH TAT [DIR/CEO]	113		84,450	6.685
06 JUL 2023 - 06 JUL 2023	PMBTECH	DATO' KOON POH TAT [SSH]	113		84,450	6.685
10 JUL 2023 - 10 JUL 2023	POHUAT	MR TAY KIM HUAT [DIR/CEO]	29		70,149	26.474
10 JUL 2023 - 10 JUL 2023	POHUAT	MR TAY KIM HUAT [SSH]	29		70,149	26.474
11 JUL 2023 - 11 JUL 2023	PPB	EMPLOYEES PROVIDENT FUND BOARD [SSH]	58		145,727	10.244
10 JUL 2023 - 10 JUL 2023	PPB	EMPLOYEES PROVIDENT FUND BOARD [SSH]	61		145,670	10.24
07 JUL 2023 - 07 JUL 2023	PPB	EMPLOYEES PROVIDENT FUND BOARD [SSH]	439		145,609	10.235
06 JUL 2023 - 06 JUL 2023	PPB	EMPLOYEES PROVIDENT FUND BOARD [SSH]	402		145,170	10.205
05 JUL 2023 - 05 JUL 2023	PPB	EMPLOYEES PROVIDENT FUND BOARD [SSH]	249		144,768	10.176
14 JUL 2023 - 14 JUL 2023	PPHB	MADAM OOI SIEW HONG [SSH]	80		118,533	44.52
14 JUL 2023 - 14 JUL 2023	PPHB	MR KOAY CHIEW KANG [DIR/CEO]	8		12,412	4.66
14 JUL 2023 - 14 JUL 2023	PPHB	MR KOAY CHIEW POH [DIR/CEO]	140		129,254	48.543
14 JUL 2023 - 14 JUL 2023	PPHB	MR KOAY TENG KHEONG [DIR/CEO]	36		19,465	7.305
14 JUL 2023 - 14 JUL 2023	PPHB	MR KOAY TENG KHEONG [SSH]	25		19,465	7.305
14 JUL 2023 - 14 JUL 2023	PPHB	MR KOAY TENG LIANG [DIR/CEO]	36		19,577	7.347
14 JUL 2023 - 14 JUL 2023	PPHB	MR KOAY TENG LIANG [SSH]	25		19,577	7.347
10 JUL 2023 - 10 JUL 2023	PPJACK	MADAM LEE KOOI LAN [SSH]	200		369,299	48.073
10 JUL 2023 - 10 JUL 2023	PPJACK	MR LIM BOON HUA [DIR/CEO]	200		369,299	48.073
10 JUL 2023 - 10 JUL 2023	PPJACK	MR LIM BOON HUA [SSH]	200		369,299	48.073
07 JUL 2023 - 07 JUL 2023	PPJACK	MADAM LEE KOOI LAN [SSH]	529		369,099	48.047
07 JUL 2023 - 07 JUL 2023	PPJACK	MR LIM BOON HUA [DIR/CEO]	529		369,099	48.047
07 JUL 2023 - 07 JUL 2023	PPJACK	MR LIM BOON HUA [SSH]	529		369,099	48.047
12 JUL 2023 - 12 JUL 2023	PTRB	MR HENG CHANG HOOI [DIR/CEO]	-2,400		37,3919	69.889
12 JUL 2023 - 12 JUL 2023	PTRB	MR HENG CHANG HOOI [SSH]	-2,400		37,3919	69.889
13 JUL 2023 - 13 JUL 2023	PWORTH	DATO' ABD AZIZ BIN HAJI SHEIKH FADZIR [DIR/CEO]	3,400		5,402	0.361
10 JUL 2023 - 10 JUL 2023	REVENUE	MR LEONG SENG WUI [DIR/CEO]	410		27,651	5.002
10 JUL 2023 - 10 JUL 2023	REVENUE	MR LEONG SENG WUI [SSH]	410		27,651	5.002
10 JUL 2023 - 10 JUL 2023	REVENUE	MR TEH CHEE HOE [DIR/CEO]	340		27,651	5.002
10 JUL 2023 - 10 JUL 2023	REVENUE	MR TEH CHEE HOE [SSH]	340		27,651	5.002
12 JUL 2023 - 12 JUL 2023	RGB	DATO' SERI CHUAH KIM SEAH [DIR/CEO]	300		46,363	30.137
12 JUL 2023 - 12 JUL 2023	RGB	DATO' SERI CHUAH KIM SEAH [SSH]	300		46,362	30.111

Notice Period is 09th July - 15th July 2023

Effective Change Date	Stock Name	Buyer/ Seller Name [Classification]	Bought / (Sold) ['000]		No. of Shares After Trade ['000]	
			Total	% Held	Total	% Held
10 JUL 2023 - 10 JUL 2023	SKPRES	KUMPULAN WANG PERSARAAN (DIPERBADANKAN) [SSH]	-500		127606	8.167
07 JUL 2023 - 07 JUL 2023	SKPRES	KUMPULAN WANG PERSARAAN (DIPERBADANKAN) [SSH]	-6,000		128106	8.199
05 JUL 2023 - 05 JUL 2023	SKPRES	EMPLOYEES PROVIDENT FUND BOARD [SSH]	-2,150		118359	7.576
10 JUL 2023 - 10 JUL 2023	SKYWLD	DATUK SERI NG THIEN PHING [DIR/CEO]	6,000		420778	42.078
10 JUL 2023 - 10 JUL 2023	SKYWLD	DATUK SERI NG THIEN PHING [SSH]	6,000		420778	42.078
10 JUL 2023 - 10 JUL 2023	SKYWLD	DATUK LAM SOO KEONG @ LOW SOO KEONG [DIR/CEO]	2,000		102758	10.276
10 JUL 2023 - 10 JUL 2023	SKYWLD	DATUK LAM SOO KEONG @ LOW SOO KEONG [SSH]	2,000		102758	10.276
10 JUL 2023 - 10 JUL 2023	SKYWLD	MR LEE CHEE SENG [DIR/CEO]	2,500		49692	4.969
07 JUL 2023 - 07 JUL 2023	SKYWLD	DATUK SERI NG THIEN PHING [DIR/CEO]	-134,400		414778	41.478
07 JUL 2023 - 07 JUL 2023	SKYWLD	DATUK SERI NG THIEN PHING [SSH]	-134,400		414778	41.478
07 JUL 2023 - 07 JUL 2023	SKYWLD	DATUK LAM SOO KEONG @ LOW SOO KEONG [DIR/CEO]	-57,600		100758	10.076
07 JUL 2023 - 07 JUL 2023	SKYWLD	DATUK LAM SOO KEONG @ LOW SOO KEONG [SSH]	-134,400		100758	10.076
07 JUL 2023 - 07 JUL 2023	SKYWLD	MISS ONG SOO CHAN [DIR/CEO]	100		100	0.01
07 JUL 2023 - 07 JUL 2023	SKYWLD	MISS PHANG SZE FUI [DIR/CEO]	100		100	0.01
10 JUL 2023 - 12 JUL 2023	SLVEST	DATIN SERI WONG MEE LENG [SSH]	-12,572		79828	11.958
10 JUL 2023 - 12 JUL 2023	SLVEST	DATUK SERI CHIAU BENG TEIK [SSH]	-12,572		89215	13.364
10 JUL 2023 - 12 JUL 2023	SLVEST	DIVINE INVENTIONS SDN. BHD. [SSH]	-12,572		79828	11.958
10 JUL 2023 - 12 JUL 2023	SLVEST	MR CHIAU HAW CHOON [SSH]	-12,572		80388	12.042
10 JUL 2023 - 12 JUL 2023	SLVEST	PP CHIN HIN REALTY SDN. BHD. [SSH]	-12,572		79828	11.958
05 JUL 2023 - 07 JUL 2023	SLVEST	DATIN SERI WONG MEE LENG [SSH]	-25,900		92400	13.842
05 JUL 2023 - 07 JUL 2023	SLVEST	DATUK SERI CHIAU BENG TEIK [SSH]	-25,900		101787	15.248
05 JUL 2023 - 07 JUL 2023	SLVEST	DIVINE INVENTIONS SDN. BHD. [SSH]	-25,900		92400	13.842
05 JUL 2023 - 07 JUL 2023	SLVEST	MR CHIAU HAW CHOON [SSH]	-25,900		92960	13.926
05 JUL 2023 - 07 JUL 2023	SLVEST	PP CHIN HIN REALTY SDN. BHD. [SSH]	-25,900		92400	13.842
06 JUL 2023 - 06 JUL 2023	SPRITZER	DATIN CHUA SHOK TIM @ CHUA SIOK HOON [SSH]	140		161671	50.637
06 JUL 2023 - 06 JUL 2023	SPRITZER	DATO' LIM A HENG @ LIM KOK CHEONG DPMP JSM JP [SSH]	140		161671	50.637
06 JUL 2023 - 06 JUL 2023	SPRITZER	DATO' LIM A HENG @ LIM KOK CHEONG [DIR/CEO]	140		161671	50.637
06 JUL 2023 - 06 JUL 2023	SPRITZER	LANGIT MAKMUR SDN. BHD. [SSH]	140		100756	31.558
06 JUL 2023 - 06 JUL 2023	SPRITZER	UNIKAMPAR CREDIT AND LEASING SDN. BHD. [SSH]	140		134974	42.275
06 JUL 2023 - 06 JUL 2023	SPRITZER	UNIVELEE SDN. BHD. [SSH]	140		134974	42.275
06 JUL 2023 - 06 JUL 2023	SPRITZER	YEE LEE CORPORATION BHD. [SSH]	140		100756	31.558
06 JUL 2023 - 06 JUL 2023	SPRITZER	YEE LEE ORGANIZATION BHD. [SSH]	140		134974	42.275
06 JUL 2023 - 06 JUL 2023	SPRITZER	YELETA HOLDINGS SDN. BHD. [SSH]	140		134974	42.275
06 JUL 2023 - 06 JUL 2023	SPRITZER	YOUNG WEI HOLDINGS SDN. BHD. [SSH]	140		134974	42.275
11 JUL 2023 - 11 JUL 2023	SPSETIA	EMPLOYEES PROVIDENT FUND BOARD [SSH]	-2,000		225973	5.538
10 JUL 2023 - 10 JUL 2023	SPSETIA	EMPLOYEES PROVIDENT FUND BOARD [SSH]	-3,000		227973	5.587
07 JUL 2023 - 07 JUL 2023	SPSETIA	EMPLOYEES PROVIDENT FUND BOARD [SSH]	-2,430		230973	5.661
06 JUL 2023 - 06 JUL 2023	SPSETIA	EMPLOYEES PROVIDENT FUND BOARD [SSH]	-1,735		233403	5.72
12 JUL 2023 - 12 JUL 2023	SRIDGE	MR TAN WIN SEN [DIR/CEO]	49		49	0.024
11 JUL 2023 - 11 JUL 2023	SRIDGE	DATO' KHOO YIK CHOU [DIR/CEO]	44		11334	5.457
11 JUL 2023 - 11 JUL 2023	SRIDGE	DATO' KHOO YIK CHOU [SSH]	44		11334	5.457
07 JUL 2023 - 07 JUL 2023	SSBB	TAN SRI DATUK SERI GAN YU CHAI [DIR/CEO]	10,161		1222434	53.79
07 JUL 2023 - 07 JUL 2023	SSBB	TAN SRI DATUK SERI GAN YU CHAI [SSH]	10,161		1222434	53.79
10 JUL 2023 - 10 JUL 2023	SUNMOW	MR KONG CHIONG MIEW [DIR/CEO]	-1,000		103815	44.377
10 JUL 2023 - 10 JUL 2023	SUNMOW	MR KONG CHIONG MIEW [SSH]	-1,000		103815	44.377
10 JUL 2023 - 10 JUL 2023	SUNMOW	MR LEE YEW CHEN [DIR/CEO]	1,000		25194	10.769
10 JUL 2023 - 10 JUL 2023	SUNMOW	MR LEE YEW CHEN [SSH]	1,000		25194	10.769
05 JUL 2023 - 05 JUL 2023	SUNREIT	EMPLOYEES PROVIDENT FUND BOARD [SSH]	500		524109	15.303
11 JUL 2023 - 11 JUL 2023	SUNWAY	MADAM SARENA CHEAH YEAN TIH [DIR/CEO]	250		3226999	65.13
11 JUL 2023 - 11 JUL 2023	SUNWAY	MADAM SARENA CHEAH YEAN TIH [SSH]	250		3226999	65.13
11 JUL 2023 - 11 JUL 2023	SUNWAY	MR ADRIAN CHEAH YEAN SUN [SSH]	250		3221672	65.02
11 JUL 2023 - 11 JUL 2023	SUNWAY	MR EVAN CHEAH YEAN SHIN [SSH]	250		3225927	65.11
11 JUL 2023 - 11 JUL 2023	SUNWAY	PUAN SRI DATIN SERI (DR) SUSAN CHEAH SEOK CHENG [SSH]	250		3231252	65.22
11 JUL 2023 - 11 JUL 2023	SUNWAY	TAN SRI DATO' SERI DR JEFFREY CHEAH FOOK LING AO [DIR/CEO]	250		3231252	65.22
11 JUL 2023 - 11 JUL 2023	SUNWAY	TAN SRI DATO' SERI DR JEFFREY CHEAH FOOK LING AO [SSH]	250		3231252	65.22
07 JUL 2023 - 10 JUL 2023	SUNWAY	MADAM SARENA CHEAH YEAN TIH [DIR/CEO]	1,354		3226749	65.13
07 JUL 2023 - 10 JUL 2023	SUNWAY	MADAM SARENA CHEAH YEAN TIH [SSH]	1,354		3226749	65.13
07 JUL 2023 - 10 JUL 2023	SUNWAY	MR ADRIAN CHEAH YEAN SUN [SSH]	1,354		3221422	65.02
07 JUL 2023 - 10 JUL 2023	SUNWAY	MR EVAN CHEAH YEAN SHIN [SSH]	1,354		3225677	65.11
07 JUL 2023 - 10 JUL 2023	SUNWAY	PUAN SRI DATIN SERI (DR) SUSAN CHEAH SEOK CHENG [SSH]	1,354		3231002	65.21
07 JUL 2023 - 10 JUL 2023	SUNWAY	TAN SRI DATO' SERI DR JEFFREY CHEAH FOOK LING AO [DIR/CEO]	1,354		3231002	65.22
07 JUL 2023 - 10 JUL 2023	SUNWAY	TAN SRI DATO' SERI DR JEFFREY CHEAH FOOK LING AO [SSH]	1,354		3231002	65.22
03 JUL 2023 - 03 JUL 2023	SWSCAP	DR LOH YEE FEEI [DIR/CEO]	-1,600		211	0.076
13 JUL 2023 - 13 JUL 2023	T7GLOBAL	MISS TAN SAM ENG [DIR/CEO]	-300		600	0.081
12 JUL 2023 - 13 JUL 2023	T7GLOBAL-WC	MISS TAN SAM ENG [DIR/CEO]	650		4131	2.792
11 JUL 2023 - 11 JUL 2023	TAFI	ARMANI SYNERGY SDN. BHD. [SSH]	65		203711	53.689
11 JUL 2023 - 11 JUL 2023	TAFI	DATO' SRI ANDREW LIM ENG GUAN [DIR/CEO]	65		212759	56.074
11 JUL 2023 - 11 JUL 2023	TAFI	DATO' SRI ANDREW LIM ENG GUAN [SSH]	65		212759	56.074
11 JUL 2023 - 11 JUL 2023	TAFI	DATO' SRI AZLAN BIN AZMI [DIR/CEO]	65		203876	53.732
11 JUL 2023 - 11 JUL 2023	TAFI	DATO' SRI AZLAN BIN AZMI [SSH]	65		203876	53.732
11 JUL 2023 - 11 JUL 2023	TAFI	DATO' SRI ONG CHEE KEAN [DIR/CEO]	50		1000	0.264
11 JUL 2023 - 11 JUL 2023	TAFI	DATO' SRI WONG SZE CHIEN [DIR/CEO]	65		212129	55.908
11 JUL 2023 - 11 JUL 2023	TAFI	DATO' SRI WONG SZE CHIEN [SSH]	65		212129	55.908
07 JUL 2023 - 07 JUL 2023	TAFI	ARMANI SYNERGY SDN. BHD. [SSH]	70		203646	53.672
07 JUL 2023 - 07 JUL 2023	TAFI	DATO' SRI ANDREW LIM ENG GUAN [DIR/CEO]	70		212694	56.057
07 JUL 2023 - 07 JUL 2023	TAFI	DATO' SRI ANDREW LIM ENG GUAN [SSH]	70		212694	56.057
07 JUL 2023 - 07 JUL 2023	TAFI	DATO' SRI AZLAN BIN AZMI [DIR/CEO]	70		203811	53.715

Notice Period is 09th July - 15th July 2023

Effective Change Date	Stock Name	Buyer/ Seller Name [Classification]	Bought / (Sold) ['000]		No. of Shares After Trade ['000]	
			Total	% Held	Total	% Held
07 JUL 2023 - 07 JUL 2023	TAFI	DATO' SRI AZLAN BIN AZMI [SSH]	70		203811	53.715
07 JUL 2023 - 07 JUL 2023	TAFI	DATO' SRI WONG SZE CHIEN [DIR/CEO]	70		212064	55.891
07 JUL 2023 - 07 JUL 2023	TAFI	DATO' SRI WONG SZE CHIEN [SSH]	70		212064	55.891
06 JUL 2023 - 06 JUL 2023	TAFI	ARMANI SYNERGY SDN. BHD. [SSH]	83		203576	53.653
06 JUL 2023 - 06 JUL 2023	TAFI	DATO' SRI ANDREW LIM ENG GUAN [DIR/CEO]	83		212624	56.038
06 JUL 2023 - 06 JUL 2023	TAFI	DATO' SRI ANDREW LIM ENG GUAN [SSH]	83		212624	56.038
06 JUL 2023 - 06 JUL 2023	TAFI	DATO' SRI AZLAN BIN AZMI [DIR/CEO]	83		203741	53.696
06 JUL 2023 - 06 JUL 2023	TAFI	DATO' SRI AZLAN BIN AZMI [SSH]	83		203741	53.696
06 JUL 2023 - 06 JUL 2023	TAFI	DATO' SRI WONG SZE CHIEN [DIR/CEO]	83		211994	55.872
06 JUL 2023 - 06 JUL 2023	TAFI	DATO' SRI WONG SZE CHIEN [SSH]	83		211994	55.872
07 JUL 2023 - 07 JUL 2023	TAKAFUL	EMPLOYEES PROVIDENT FUND BOARD [SSH]	49		106698	12.743
06 JUL 2023 - 06 JUL 2023	TAKAFUL	EMPLOYEES PROVIDENT FUND BOARD [SSH]	17		106649	12.737
05 JUL 2023 - 05 JUL 2023	TAKAFUL	EMPLOYEES PROVIDENT FUND BOARD [SSH]	34		106632	12.735
13 JUL 2023 - 13 JUL 2023	TENAGA	KUMPULAN WANG PERSARAAN (DIPERBADANKAN) [SSH]	25		430979	7.44
11 JUL 2023 - 11 JUL 2023	TENAGA	EMPLOYEES PROVIDENT FUND BOARD [SSH]	-3,000		907567	15.68
12 JUL 2023 - 12 JUL 2023	TENAGA	KUMPULAN WANG PERSARAAN (DIPERBADANKAN) [SSH]	25		430954	7.44
10 JUL 2023 - 10 JUL 2023	TENAGA	EMPLOYEES PROVIDENT FUND BOARD [SSH]	-1,441		910567	15.73
11 JUL 2023 - 11 JUL 2023	TENAGA	KUMPULAN WANG PERSARAAN (DIPERBADANKAN) [SSH]	280		430929	7.44
07 JUL 2023 - 07 JUL 2023	TENAGA	EMPLOYEES PROVIDENT FUND BOARD [SSH]	-1,419		912008	15.76
06 JUL 2023 - 06 JUL 2023	TENAGA	EMPLOYEES PROVIDENT FUND BOARD [SSH]	923		913427	15.78
05 JUL 2023 - 05 JUL 2023	TENAGA	EMPLOYEES PROVIDENT FUND BOARD [SSH]	-666		912504	15.77
13 JUL 2023 - 13 JUL 2023	TIMECOM	KUMPULAN WANG PERSARAAN (DIPERBADANKAN) ("KWAP") [SSH]	2,240		109895	5.977
11 JUL 2023 - 11 JUL 2023	TIMECOM	EMPLOYEES PROVIDENT FUND BOARD [SSH]	608		133639	7.269
06 JUL 2023 - 06 JUL 2023	TIMECOM	EMPLOYEES PROVIDENT FUND BOARD [SSH]	603		133031	7.236
07 JUL 2023 - 07 JUL 2023	TROP	MR JARED ANG TZER SHEN [DIR/CEO]	-130		106	0.004
07 JUL 2023 - 07 JUL 2023	TROP	TAN SRI DATO' TAN CHEE SING [DIR/CEO]	-130		1262999	55.728
11 JUL 2023 - 11 JUL 2023	UEMS	URUSHARTA JAMAAH SDN BHD [SSH]	9		318042	6.287
10 JUL 2023 - 10 JUL 2023	UEMS	URUSHARTA JAMAAH SDN BHD [SSH]	353		318033	6.287
06 JUL 2023 - 06 JUL 2023	UEMS	URUSHARTA JAMAAH SDN BHD [SSH]	-50		317679	6.28
07 JUL 2023 - 07 JUL 2023	ULICORP	EASTSPRING INVESTMENTS BERHAD [SSH]	-518		11002	5.052
07 JUL 2023 - 07 JUL 2023	ULICORP	PRUDENTIAL PLC [SSH]	-518		11002	5.052
07 JUL 2023 - 07 JUL 2023	ULICORP	TAN SRI DATO' WIRA LEE YOON WAH [SSH]	200		87693	40.263
07 JUL 2023 - 07 JUL 2023	ULICORP	MR JOSEPH LEE JOON KIT [DIR/CEO]	30		30	0.014
07 JUL 2023 - 07 JUL 2023	ULICORP	TAN SRI DATO' WIRA LEE YOON WAH [DIR/CEO]	200		87693	40.263
06 JUL 2023 - 06 JUL 2023	ULICORP	EASTSPRING INVESTMENTS BERHAD [SSH]	-231		11520	5.289
06 JUL 2023 - 06 JUL 2023	ULICORP	LIM MEE HWA [SSH]	100		13650	6.267
06 JUL 2023 - 06 JUL 2023	ULICORP	PRUDENTIAL PLC [SSH]	-231		11520	5.289
06 JUL 2023 - 06 JUL 2023	ULICORP	YEO SENG CHONG [SSH]	100		13650	6.267
06 JUL 2023 - 06 JUL 2023	ULICORP	YEOMAN 3-RIGHTS VALUE ASIA FUND VCC [SSH]	100		11250	5.165
06 JUL 2023 - 06 JUL 2023	ULICORP	YEOMAN CAPITAL MANAGEMENT PTE LTD [SSH]	100		11625	5.337
11 JUL 2023 - 11 JUL 2023	UMW	EMPLOYEES PROVIDENT FUND BOARD [SSH]	-86		109898	9.407
10 JUL 2023 - 10 JUL 2023	UMW	EMPLOYEES PROVIDENT FUND BOARD [SSH]	-26		109984	9.414
07 JUL 2023 - 07 JUL 2023	UMW	EMPLOYEES PROVIDENT FUND BOARD [SSH]	-456		110010	9.416
06 JUL 2023 - 06 JUL 2023	UMW	EMPLOYEES PROVIDENT FUND BOARD [SSH]	57		110466	9.455
05 JUL 2023 - 05 JUL 2023	UMW	EMPLOYEES PROVIDENT FUND BOARD [SSH]	6		110409	9.45
18 MAY 2023 - 18 MAY 2023	UTAMA	MR LIEW THIAM LEONG [DIR/CEO]	-1,			



The Board of Directors of **Gamuda Berhad (GAMUDA)** wishes to announce that its property arm, Gamuda Land via the following three wholly owned foreign sub-



subsidiaries in Vietnam have entered into a Share Transfer Agreement with Mr Nguyen Hong Giang, Mr Nguyen Van Viet and Ms Dang Thi Dung on 20 July 2023 to acquire 100% equity interest in Tam Luc Real Estate Corporation, the project company which solely owns the Project Land. The Project Land is a shovel-ready mixed-use high-rise project site with all requisite planning approvals obtained that is ready for immediate development. It is strategically situated in Thu Duc City which has been gazetted as the Innovation Hub of Ho Chi Minh City. This project will enable Gamuda Land to continue its strong trajectory of profitable growth in Vietnam.



Malaysian Genomics Resource Centre Berhad (MGRC), announced today that Rinani Group Berhad has become a substantial shareholder by acquiring a 5.85% stake equivalent to 7.62 million shares in the Group. Their investment comes at a pivotal time as they are transitioning towards biopharmaceuticals and pursuing various growth initiatives in the group's restructuring and next phase of growth. Their involvement brings a wealth of opportunities in life sciences and its applications, which aligns with MGRC's growth strategy. Rinani's arrival as a substantial shareholder strengthens their financial standing and their capacity to capitalise on burgeoning opportunities in the healthcare sector. Together, they are better positioned to deliver sustainable value to their stakeholders.



The Board of Directors of **Titijaya Land Berhad (TITIJYA)** wishes to announce that Titijaya PMC Sdn Bhd and Titijaya South Asia Sdn Bhd, being the wholly-owned subsidiaries of Titijaya, had entered into a Sale and Purchase Agreement with Menara ABS Berhad for the acquisition of a twenty-two (22) storey purpose-built office building together with an annexed six (6) storey Telekom Exchange and 5 level of basement car park erected on a piece of leasehold land held under Hakmilik Sementara Daftar 64439, PT 24, Section 87A, Town and District of Kuala Lumpur, State of Wilayah Persekutuan Kuala Lumpur measuring approximately 30,115 square metres in net lettable area and bearing postal address of Menara TM Semarak, No. 82, Jalan Raja Muda Abdul Aziz, 50300 Kuala Lumpur for a purchase price of RM72.0 million, subject to the terms and conditions as stipulated in the SPA (Proposed Acquisition).

**Upcoming IPO**

NAME OF COMPANY	OFFER PERIOD		ISSUE PRICE (Per Ordinary Share)	LISTING SOUGHT	DATE OF LISTING
	OPENING	CLOSING			
KGW GROUP BERHAD	30 Jun 2023	18 Jul 2023	RM0.21	ACE MARKET	1 Aug 2023
DAYTHREE DIGITAL BERHAD	21 Jun 2023	11 Jul 2023	RM0.30	ACE MARKET	26 Jul 2023
MYMBN BERHAD	30 Jun 2023	10 Jul 2023	RM0.21	ACE MARKET	25 Jul 2023

**Disclaimer:** The information in the Investor Relations page is extracted from individual companies' announcements in [www.bursamalaysia.com](http://www.bursamalaysia.com). The information on this page is provided as a service to readers. We assume no liability for damages resulting from or arising out of the use of such information. Whilst every effort is made to ensure accuracy, the information presented has been simplified for your reading pleasure. Readers are advised to read the original and complete filings on the Bursa Malaysia website at [https://www.bursamalaysia.com/market\\_information/announcements/company\\_announcement](https://www.bursamalaysia.com/market_information/announcements/company_announcement)

ShareInvestor is a technology based company with a focus on Internet media and we have operations in Malaysia, Singapore and Thailand.

We are the market leader in providing a combination of market data, analysis and news on various platforms to traders and investors.

Our websites include [www.shareinvestor.com](http://www.shareinvestor.com) and [www.bursastation.com](http://www.bursastation.com).

More information about our products and services can be found at [www.shareinvestorholdings.com](http://www.shareinvestorholdings.com)

**We're looking for Drupal Developers who will be in charge of front-end development and back-end/module development. This role requires expertise in PHP, HTML, CSS, JS, and an eye for design aesthetics. The candidates should be familiar and have a passion working with content management systems.**

Interested candidates are encouraged to apply with full resume, present and expected salary and a recent photograph. Please send these to [hr.my@shareinvestor.com](mailto:hr.my@shareinvestor.com) for processing. ShareInvestor regrets that only shortlisted candidates shall be notified.

## Drupal Developers (2 vacancies)

### Job Responsibilities:

- Active participation in all UI / UX decisions
- Contribute actively to the continuous development and maintenance of development projects
- Enhance Drupal development quality
- Provide solutions to issues and suggestions for improvements.
- Designing and implementing new features to the system
- Ensuring optimal performance

### Required Skills:

- At least 3 years of Drupal Theming and Front-End Development experience
- Proficient in PHP, HTML5/XHTML, CSS, Javascript, jQuery, AJAX, XML, Json
- Good Diploma/Degree in Computer Science/Computer Engineering.
- Experience working with Drupal's main modules, such as CTools, Views, Rules, Webform, and so on
- Ability to create custom Drupal modules
- Strong troubleshooting skills to fix bugs

### Benefits:

- Career & growth opportunities
- Interesting projects
- Medical Insurance
- Incentives

## Ruby on Rails Developer (1 vacancy)

### Job Responsibilities:

- Develop quality web-based software modules on schedule with a focus on Ruby and Ruby on Rails applications.
- Explore and utilize the latest web-based technologies.
- Document design specifications, logic concepts and module description.
- Maintain and enhance existing web-based applications.

### Required Skills:

- Experience in web-based programming/scripting is essential. Candidate must be able to explain clearly technical aspects of his/her past experiences and projects.
- Passion for programming and desire to learn new languages like Go.
- Good Diploma/Degree in Computer Science/Computer Engineering.
- Able to work well in a team and be able to follow documentation and coding standards.
- Knowledge in any of the following would be an added advantage
  - Ruby and Ruby on Rails Framework
  - Javascript and jQuery library
  - Go
  - Perl

## Application Developer (C++/STL) (1 vacancy)

**Job Responsibilities**

- Deliver quality software modules on schedule.
- Document design specifications, conceptions, module description.
- Maintain and enhance existing applications.

**Required Skills:**

- Passion for programming and desire to learn.
- Good Diploma/Degree in Computer Science/Computer Engineering.
- Skills in C++ is essential.
- Experience with Visual Studio, networking stack and Golang would be an advantage.
- Proactive, resourceful and self-motivated with strong analytical skills.
- Good interpersonal, written and communication skills.
- Able to work with little supervision.

## Junior Market Data Support Specialist

As a Junior Market Data Support Specialist, you will be involved in reviewing, analysing and collecting accurate and timely financial information on listed companies for our market data information services.

**Job Responsibilities**

- Collect, compute and analyse relevant financial data of listed companies, organise and present them on the company portal, in timely manner, for the consumption by our subscribers and our corporate clients
- Capture corporate events / actions and translate them to adjustments of impacted financial data
- Research, evaluate, propose new solutions or recommendations for adhoc project requirements that are related to the financial data or the financial fundamentals of listed companies
- Provide support to users' queries related to financial information displayed on our platforms
- Perform any other duties assigned from time to time, including rare occasions of working during weekends

**Required Skills**

- Minimum academic qualification: Diploma in any finance-related discipline
- Knowledge of basic accounting and financial terms is required
- Flair for data precision / accuracy / quality / thoroughness plus strict adherence to structured data process and timeline is a must
- Proficient in Microsoft Excel
- Team player with pleasant personality
- Proficient in English, oral and written.

*Fresh graduates are welcome to apply.*

Interested candidates are encouraged to apply with full resume, present and expected salary and a recent photograph. Please send these to [hr.my@shareinvestor.com](mailto:hr.my@shareinvestor.com) for processing. ShareInvestor regrets that only shortlisted candidates shall be notified.