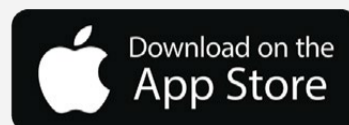


# Invest

ISSUE  
**96**  
FRIDAY  
25 FEBRUARY 2022



A **free** weekly e-Publication by SHARE**INVESTOR**.com



## ShareInvestor App is now available on iOS

Gain access to free data while on the move.

Keep abreast with all company's movement and price trend, and more!

Prices of  
companies  
across  
**7 markets**

Company's **key  
statistics** and  
financial health

Latest company  
news and  
**market  
movements**

**Recorded  
time and sales**  
of every counter  
daily

**Events**  
Compilation of  
corporate  
actions

**ShareInvestor Station and ShareInvestor WebPro members rejoice!**  
**Log in and access even more features:**

### FINANCIAL RATIOS

Snapshot of stock price and statistics that helps to make timely decision.

### CHARTING TOOL

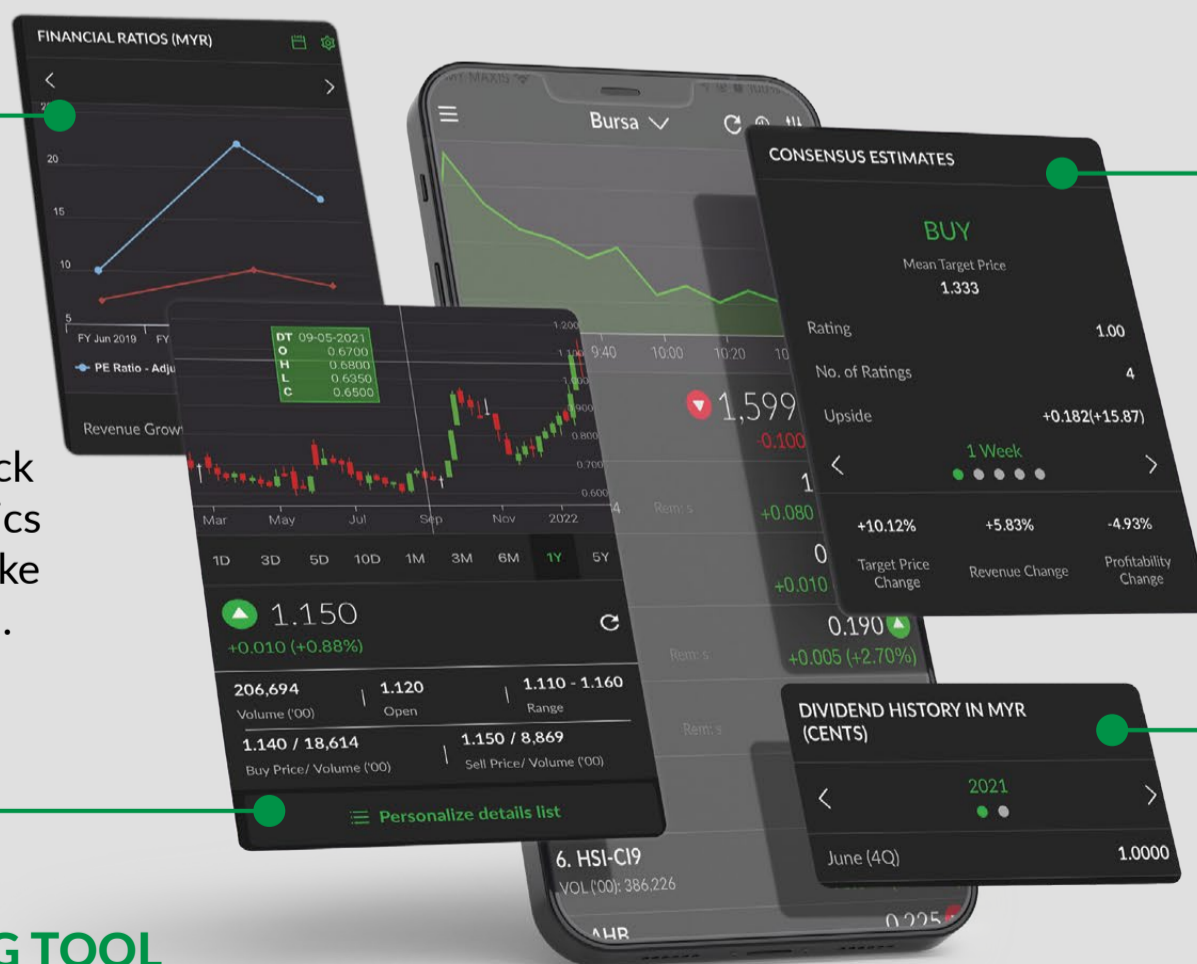
Comprehensive and customizable to your preference

### CONSENSUS ESTIMATES

Analysts' forecast of a company's forward earnings

### DIVIDENDS

History of each company and new insights to its pay-out trends



**Click here to  
download NOW!**



# Invest

A free weekly e-Publication by SHAREINVESTOR.com

ISSUE

# 96

FRIDAY  
25 FEBRUARY 2022



02	BURSA MALAYSIA DERIVATIVES COMPLETES FIRST PHYSICAL DELIVERY OF EAST MALAYSIA CRUDE PALM OIL FUTURES IN SABAH	12	COMPANY SPOTLIGHT	20	GROWTH STOCKS
05	LEADERBOARD	14	SHARIAH MOMENTUM UP STOCKS	21	DIVIDEND STOCKS
07	BEHIND THE ACTION	16	NON SHARIAH HOT STOCKS	22	LONG COMPANIES
09	FROM THE OBSERVER	18	UP TRENDING STOCKS	23	INSIDER ACTIVITY
11	SHARIAH HOT STOCKS	19	CAREERS AT SHAREINVESTOR	26	INVESTOR RELATIONS
				27	REGIONAL MARKETS

CHECK OUT  
**SHAREINVESTOR  
BROKERS' CALL**

Weekly Buy/Sell/Hold calls from leading Malaysian Brokerages.

[Go To Brokers' Call](#)




**SHAREINVESTOR®**

Invest with Knowledge

**Corporate**

 Managing Director (Malaysia) & Publisher | **Edward Stanislaus**  
edward@shareinvestor.com

**Sales & Marketing**

 Director | **Elizabeth Tan**  
elizabeth.tan@shareinvestor.com

 Online IR  
Manager

 | **Leticia Wong**  
leticia.wong@shareinvestor.com

**Advertising & Sponsorship Sales**

 Manager | **Sharon Lee**  
sharon.lee@shareinvestor.com

**Market Data Analytics:** (marketdata.my@shareinvestor.com)

 Account Manager | **Foo Yong Jui**  
yongjui.foo@shareinvestor.com

 Account Manager | **Heidee Ahmad**  
heidee.ahmad@shareinvestor.com

 Coordinator | **Watie Nordin**
**Market Data Analytics & Editorial**

 Market Data & Media Coordinator | **Silas Emmanuel Joseph**  
silas.joseph@shareinvestor.com

 Market Data Analyst | **Nickson Aw**  
nickson.aw@shareinvestor.com

**Marketing Communications**

 Marcomm Manager | **Danny Ng**
**Creative & Design**

 Manager | **Andric See**  
Asst. Manager | **Ivy Yap**  
Web Developer | **Nurul Atiqah**  
| **Aiman Jasmin**  
| **Izwan Rusli**  
| **Hamed Bohloul**
**IT Apps**

 Project Manager | **Amir Yusoff**  
Sr. Software Engineer | **Mohd. Qasem**  
Software Engineer | **Lian Kok Keong**
**Finance, Admin & HR**

 Manager | **Shireen Goh**  
Sn. Accounts Executive | **Jessie Ho**  
Accounts Assistant | **Ng Jin Yng**
**Shareinvestor Holdings**

 Chairman | **Patrick Daniel**  
Group CEO | **Christopher Lee**  
Group COO | **Lim Dau Hee**  
Group CFO | **Teo Siew May**

**ShareInvestor Malaysia Sdn. Bhd.** (200001023956) (526564-M)  
(Formerly known as SI Portal.com Sdn. Bhd.)  
Unit No. DF2-07-03A, Level 7,  
Persoft Tower, 6B Persiaran Tropicana,  
47410 Petaling Jaya, Selangor Darul Ehsan.

 Hotline : 603 7803 1791  
Mobile : 011 6343 8939  
Fax : 603 7803 1792

 Website : [www.ShareInvestor.com.my](http://www.ShareInvestor.com.my)  
[www.ShareInvestorHoldings.com](http://www.ShareInvestorHoldings.com)  
[www.Facebook.com/ShareInvestorMalaysia](https://www.facebook.com/ShareInvestorMalaysia)

ADVERTISEMENT ENQUIRY

# Bursa Malaysia Derivatives completes first physical delivery of East Malaysia Crude Palm Oil Futures in Sabah

According to Bursa Malaysia Derivatives chief executive officer Samuel Ho Hock Guan, Bursa Malaysia Derivatives Bhd has completed the first physical delivery of its East Malaysia Crude Palm Oil Futures Contract (Fepo) in Sabah on February 17, 2022. The delivery saw a total of eight contracts, representing 200 tonnes of crude palm oil (CPO) transacted between the seller, Green Edible Oil Sdn Bhd, and the buyer, Kunak Refinery Sdn Bhd at one of the approved Port Tank Installations in East Malaysia, namely in Sandakan, Sabah. The Port Tank Installation is operated by Sawit Bulkurs Sdn Bhd, a wholly-owned subsidiary of Sawit Kinabalu Group, which is the premier investment arm of the Sabah state government in the oil palm industry. The successful and orderly completion of the first physical delivery for Fepo contracts demonstrates the demand from Sabah producers to sell their CPO through an alternative platform with greater price transparency. The Fepo contract benefits Sabah refiners and buyers by allowing them to source CPO at competitive pricing. It also enables them to manage price risk and hedge against unfavourable price movement in the physical market, especially during the low-supply season. Meanwhile, Sawit Kinabalu group managing director Datuk Bacho Jansie said the availability of Bursa Malaysia Derivatives' Fepo contract provides East Malaysia market participants with an additional trading opportunity as well as an improved price discovery mechanism and more physical delivery options in Sabah and Sarawak. He added that as one of the designated delivery ports in Sabah, he hopes to attract more market participants to lease out their available tanks and further increase the visibility of the East Malaysia palm oil market. The Fepo contract, which went live on October 4, 2021, provides East Malaysia CPO market participants with a new avenue to engage in physical deliveries and hedge their positions in the physical CPO market. It also strengthens Bursa Malaysia Derivatives' Palm Complex offerings and

provides price transparency in the East Malaysia CPO market, further cementing Malaysia's position as the global centre for palm oil price discovery. From its launch date to February 8, 2022, Bursa Malaysia Derivatives recorded a total trading volume of 3,250 contracts which is equivalent to 81,250 tonnes of CPO. Its highest daily trading volume was recorded on January 5, 2022, at 122 contracts representing 3,050 tonnes of CPO.

## Growth momentum expected to be hampered - Moody's

According to Moody's Investors Service in the latest update to its Global Macro Outlook for 2022-23 report, declining fiscal support, tighter monetary policy and waning pent-up demand will weigh on growth momentum in most countries. Although it expects the rapid rise in inflation in recent months to subside, the steep and broad-based increase in prices is eroding household purchasing power and could weaken the recovery. The global economy is transitioning from a tentative recovery toward more stable growth, bolstered by improvement in the Covid-19 health situation. The current economic cycle is remarkable in the swiftness with which activity has been restored in most major economies. The Group of 20 (G20) economies is expected to collectively expand 4.3 per cent in 2022, down from 5.9 per cent in 2021 yet still above long-term trend growth. Global growth will further slow to 3.2 per cent in 2023 as pandemic-fuelled output losses have been largely recouped and labour markets in advanced economies approach a full recovery. The agency also predicted a challenging first half of 2022, with elevated commodity prices, demand-supply imbalances, inflation pressures, volatile financial markets and geopolitical tensions. However, demand-supply distortions is expected to resolve over 2022, with supply bottlenecks easing in the second half of the year.

## AmInvest launches Asia ex Japan Equity Fund

According to AmBank group CEO Datuk Sulaiman Mohd Tahir, AmInvest has

launched its Asia ex Japan Equity Fund, which offers investors potential long-term capital growth by investing in a diversified portfolio of stocks in the Asia region (excluding Japan). The fund will feed into the Baillie Gifford Worldwide Asia ex Japan Fund, which aims to provide above average returns over the long term by investing in the fastest growing stocks in the Asia region excluding Japan. The target fund invests in companies that are financially sustainable in the long run, and takes into consideration factors such as high quality growth businesses that enjoy competitive advantages in their marketplace, environmental, social and governance matters. According to AmInvest chief executive Goh Wee Peng, the fund is a beneficiary of structural drivers that will continue to support strong growth prospects in China and the broader Asia Pacific region. This is the second fund partnership with Baillie Gifford, the target fund's investment manager, who also manages the target fund for the Sustainable Series - Positive Change Fund. Baillie Gifford have over 30 years of experience managing Asian region equities. Since its inception in February 2020 until to date, the target fund has returned 36.2% and beaten its benchmark by 23.4%. There should be material growth for the fund, as there are more than 3 billion consumers across Asia with a notably large consumer market within the rising Asian middle class. Pre-pandemic data from International Monetary Fund predicts that the per capital spending power of Chinese consumers will nearly double in US dollar terms over a five-year period from 2019 to 2024. Digital penetration and technological change continue to be the key themes for long-term growth opportunities in Asia. Rapid development of technology is creating a fundamental change in market behaviours, with digitalisation

driving changes in economic and political systems, businesses, consumer habits and behaviours. The target fund actively seeks companies that may have underappreciated growth and those constantly reinvesting for the long-term, either in research or development of capital projects. The fund's base currency is US dollar. It is being offered for subscription to sophisticated investors in US dollar, ringgit and in ringgit-hedged classes at the initial offer prices of US\$1 and RM1 per unit respectively during the initial offer period until March 23, 2022. AmInvest is the brand name for the fund management business of AmFunds Management Bhd and AmIslamic Funds Management Sdn Bhd.

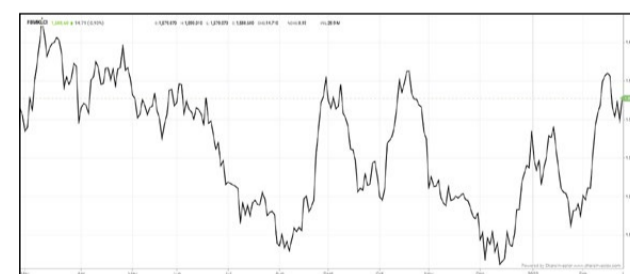
**Local institutions placed emphasis on importance of ESG-compliant investments — Bursa**

According to Bursa Malaysia, local institutions placed emphasis on the importance of environmental, social and corporate governance (ESG)-compliant investments. Malaysia's key institutional investment managers and asset owners — such as the Employers Provident Fund (EPF), Khazanah Nasional Bhd and Retirement Fund (Incorporated) (KWAP) — had participated in and signed the United Nations Principles for Responsible Investment in 2019. These institutions have incorporated the ESG mandate into their funds. The EPF is also expected to announce a sector sustainability policy framework as guidance for its future investments that will comply with ESG practices. Citing IHS Markit's filings up to Feb 7, 2022, the regulator said the local ESG-mandated funds had a total holding value of US\$118 billion (about RM494.01 billion) in stocks with good ESG ratings. The filings also showed that the fund houses ranked the highest in terms of the total holding value of stocks with good ESG ratings and accounted for 92% of

the total holding value of the stocks. With the change in investment fundamentals within the industry, large-scale investment banks are also pivoting their strategies in tandem with the rise of sustainability consciousness. For instance, in December last year, Maybank Investment Banking Group announced that it would prioritise ESG and help its clients to identify green opportunities. ESG investing is one of the fastest-growing trends in the investment community over the past few years. ESG is slowly becoming a key consideration for investors. Asset owners such as pension funds are increasingly demanding sustainable investing strategies from their asset managers. Bursa, in quoting IHS Markit's filings up to Feb 7, said there were 235 ESG-mandated funds globally that had invested in Bursa as an exchange with a total holding value of US\$143.5 billion (about RM600.76 billion). 44% of the funds (excluding Malaysia) were from North America, followed by Europe at 27%, Asia at 26% and the Middle East at 3%.

**Eye On The Markets**

This week, on Friday (25Feb), the Ringgit opened at 4.1985 against the USD from 4.1880 on Monday (21Feb). Meanwhile, the Ringgit was 3.1004 to the Sing Dollar on Friday (25Feb). On Monday (21Feb), the FBM KLCI opened at 1601.66 As at Friday (25Feb) 10:00am, the FBM KLCI is down 11.62 points for the week at 1590.04. Over in US, the overnight Dow Jones Industrial Average closed up 92.07 points (+0.28%) to 33,223.83 whilst the NASDAQ added 436.10 points (+3.34%) to 13,473.58.



KLCI 1 Year Chart



Learn how to identify Hot Stocks using Technical Analysis (TA) and Fundamental Analysis (FA)

**SIGN UP FOR Invest IT'S FREE!!!**

[Click here](#)

Scan me



Via email, every Friday.





# STROM

SWISS TIMEPIECES & JEWELLERY



StromWatch Asia  
Tele : +65.9817.3378 Email : ll.stromasia@gmail.com

[WWW.STROMWATCH.SWISS](http://WWW.STROMWATCH.SWISS)







Leaderboard

[www.shareinvestor.com](http://www.shareinvestor.com) - market data at your fingertips



ShareInvestor WebPro ([www.shareinvestor.com/my](http://www.shareinvestor.com/my))

Prices > Stock Prices > Bursa > click Stocks tab  
 1. mouse over Ranking > select Top Active > all Shariah stocks are denoted with an [S] > mouse over Column Layout > select Edit Customs > select Name > select Volume > select Last Done Price > Mouse Over Column Layout > select Custom

2. mouse over Ranking > select Top Turnover > all Shariah stocks are denoted with an [S] > mouse over Column Layout > select Edit Customs > select Name > select Last Done Price > select Value > Mouse Over Column Layout > select Custom  
 3. mouse over Ranking > select Top Gainers (Over 5 Trading Days) > mouse over Column Layout > select Edit Customs > select Name

> select Last Done Price > select 5 Days Change > select 5 Days % Change > Mouse Over Column Layout > select Custom  
 4. mouse over Ranking > select Top Losers (Over 5 Trading Days)  
 5. mouse over Ranking > select Top % Gainers (Over 5 Trading Days)  
 6. mouse over Ranking > select Top % Losers (Over 5 Trading Days)

**Shariah Top Actives**  
(as at Yesterday)

Name	Price (RM)	Volume
HIBISCS [S]	1.260	2,147,427
DNEX [S]	1.140	1,980,196
AT [S]	0.020	1,901,350
TAWIN [S]	0.145	1,383,384
SMTRACK [S]	0.215	1,262,680
NICE [S]	0.205	1,099,313
AHB [S]	0.240	905,975
JTIASA [S]	0.965	776,012
VELESTO [S]	0.125	630,809
KNM [S]	0.165	499,811

**Top Gainers**  
(over 5 Trading days as at Yesterday)

Name	Price (RM)	Change (RM)
PMBTECH	20.040	+2.100
MSC	4.880	+0.850
PPB	17.900	+0.660
SOP	5.370	+0.530
PETRONM	5.080	+0.460
ANCOM	4.000	+0.450
HENGYUAN	4.560	+0.440
GENP	8.930	+0.430
CHHB	2.260	+0.350
HSPLANT	2.660	+0.340

**Top Losers**  
(over 5 Trading days as at Yesterday)

Name	Price (RM)	Change (RM)
MPI	35.100	-3.020
BKAWAN	24.940	-2.160
SAM	21.060	-1.940
CARLSBG	20.740	-1.560
KESM	9.950	-1.230
KLK	25.400	-1.200
KOBAY	3.660	-1.050
GREATEC	4.130	-0.970
BAT	11.700	-0.940
LPI	14.040	-0.860

**Shariah Top Turnover**  
(as at Yesterday)

Name	Price (RM)	Value (RM)
HIBISCS [S]	1.260	270,861,896
DNEX [S]	1.140	229,215,421
KLK [S]	25.400	118,113,740
PCHEM [S]	9.200	102,713,767
TENAGA [S]	9.000	85,556,571
JTIASA [S]	0.965	73,023,909
INARI [S]	3.110	62,756,710
IHH [S]	6.400	60,058,800
PMETAL [S]	6.750	55,376,667
TOPGLOV [S]	1.970	50,569,213

**Top % Gainers**  
(over 5 Trading days as at Yesterday)

Name	Price (RM)	Change (%)
MCOM	0.100	+100.00
VSOLAR	0.015	+50.00
NICE	0.205	+32.26
CLOUD	0.100	+25.00
BPLANT	1.140	+23.24
JTIASA	0.965	+22.15
KPOWER	0.500	+21.95
MSC	4.880	+21.09
KAMDAR	0.225	+18.42
CHHB	2.260	+18.32

**Top % Losers**  
(over 5 Trading days as at Yesterday)

Name	Price (RM)	Change (%)
NEXGRAM	0.010	-37.50
AT	0.020	-33.33
XOX	0.020	-33.33
MSM	0.835	-32.11
SKBSHUT	0.335	-29.47
BCMALL	0.025	-28.57
BSLCORP	0.280	-26.32
MLAB	0.030	-25.00
KOBAY	3.660	-22.29
MQTECH	0.055	-21.43

**Disclaimer:** The information on this page is provided as a service to readers. It does not constitute financial advice and/or any investment recommendations. Past performance is not indicative of future results. We assume no liability for damages resulting from or arising out of the use of such information. It would be best if you did your own research to make your personal investment decisions wisely or consult a licenced investment advisor.

NEW

# C<sup>2</sup> CHART

C<sup>2</sup> Chart is WebPro's new feature-packed technical analysis tool for the modern stock investor

**Over 100 Indicators**  
Select your preferred indicators to best suit your technical strategies

**Historical Data**  
Extract price data from over 30 years

**Drawing Tools**  
Multiple drawing tools to easily identify chart patterns

**Over 10 Chart Styles**  
Various charts to suit your preferred style

**Events Indicators**  
Key events can be pinned onto your charts for a better overview

**No App Needed**  
Access your charts from any computer or mobile

**Compare Tool**  
Conveniently compare multiple stock prices at the same time

**Easy Zoom**  
Intuitive zooming function on charts



## TRADE FUTURES AND WIN

# WONDERFUL REWARDS!

Get cash rewards AND Foodpanda vouchers\*

Promotion: 1 March - 31 May 2022



**FKLI** - FTSE Bursa Malaysia KLCI Futures  
**FM70** - Mini FTSE Bursa Malaysia Mid 70 Index Futures



**FCPO** - Crude Palm Oil Futures  
**FEPO** - East Malaysia Crude Palm Oil Futures

**Start Trading Now**

\*T&C Apply

Supported by:







Pankaj C Kumar

## “Putin In, Investors Out”

### Markets

The geopolitical risk went up a few notches this week as Russian President, Vladimir Putin, signed decrees recognizing self-proclaimed Donetsk and Luhansk republics in eastern Ukraine, which is seen to be against the interest of the West, in particular, the US and the EU. The Russian President's order to have military forces into the two separatist regions too raised eyebrows as the world grapples with Russian real intention on Ukraine, a country that is rich in natural resources, in particular, oil, coal, natural gas, and iron ore as well as agricultural commodities like corn and wheat, sending prices higher across the board. The benchmark 3rd-month Crude Palm Oil Futures contract closed at a new record high of RM6,458 per tonne while the near month March'22 contract surpassed the RM7,000 per tonne mark to close at RM7,093 per tonne yesterday. Brent Crude Oil was last seen at US\$104.75 per barrel.

The US and the EU responded to Russia's aggression by imposing some soft sanctions against Kremlin. As the US State Secretary opined that Russia is ready to invade Ukraine, markets turned nervous with selling pressure intensified globally on rising geopolitical risk. At the time of writing, Putin had ordered broad military operations towards Ukraine targeting military facilities, including airfields and anti-aircraft systems. The US and the Western allies are likely to retaliate with stricter sanctions towards Moscow or an outright military intervention.

While markets were keeping tabs on the development in Ukraine, another spanner for the market was China's move of targeting technology companies with further regulatory controls, which caused further selling pressure among Chinese-based tech companies.

### Economy

US housing market showed a mixed picture in January as Building Permits improved by 0.7% m-o-m to an annualized rate of 1.899mil units and better than market expectations of 1.76mil but Housing Starts fell by 4.1% m-o-m to an annualized rate of just 1.638mil units against 1.708mil in the preceding month and the 1.7mil forecasted. However, the Existing Home Sales improved 6.7% m-o-m to an annualized rate of 6.5mil units against the consensus expectations of a 6.1mil print. In other news, the Conference Board Consumer Confidence Index for February fell to 110.5 from the preceding month's reading of 111.1.

Out of Europe, the IHS Markit Flash Eurozone Composite Index rose to 55.8 in February from the preceding month's print of 52.3. Meanwhile, the People's Bank of China left the benchmark 1-year Loan Prime Rate unchanged at 3.7%, while the Bank of Korea too left its 7-day repurchase rate unchanged at 1.25%. However, the Reserve Bank of New Zealand stepped-up its move to contain inflationary pressure with another 25bps hike to 1.00%, the third hike in as many meetings.

Down south, Singapore's 2022 Budget revealed a few surprises. Although the much-anticipated hike in GST to 9% was announced, Singapore has decided to stagger the increase over two years, with an 8% GST rate effective Jan 1, 2023, and a 9% GST rate effective Jan 1, 2024. Singapore also raised taxes for property and luxury cars, a higher tax rate for top income earners, and a substantial increase in carbon tax. In other news, Singapore's January headline and core inflation prints increased by 4% and 2.4% respectively. Although the pace of

increase was unchanged for the headline data on a m-o-m basis, the core inflation was higher than the preceding month's reading of a 2.1% y-o-y increase.

Up north, Thailand's 4Q GDP came in marginally ahead of expectations with a y-o-y expansion of 1.9%. This brought the kingdom's 2021 GDP growth rate to 1.6% against the preceding year's contraction of 6.2%.

Locally, Malaysia's exports for January surged 23.5% y-o-y to RM110.7bil while imports rose by 26.4% to RM92.3bil, giving the country a trade surplus of RM18.4bil, an increase of 10.9% y-o-y. In other news, the January Total Industry Volume for the automotive sector rose 21.5% y-o-y to 40,581 units but the monthly sales figure was lower by 37.7% m-o-m, mainly due to supply chain issues and the bumper December month due to promotional activities carried out by distributors. Meanwhile, Malaysia's international reserves as at February 15, 2022, stood at US\$115.8bil or RM482.23bil against US\$116.1bil or RM483.68bil as at end of January 2022.

Lastly, January inflation data released yesterday showed inflationary pressure has eased with an increase of just 2.3% y-o-y against the 3.2% print in Dec'2021. Despite the good news, core inflation remains on an upward trajectory, rising to a 1.6% y-o-y pace against the preceding month's increase of 1.1% y-o-y.

### Corporate

AirAsia X, which has recently undergone a share consolidation exercise has now called a smaller proposed rights issue on the basis of 1-for-1 at an indicative issue price of 28 sen per share, enabling the company to raise some RM116mil in fresh capital. In addition, a share subscription by a Special Purpose Vehicle (SPV) to raise another RM50mil will also be carried out. Meanwhile, E&O has proposed a rights issue of Irredeemable Convertible Unsecured Loan Stocks (ICULS) on the basis of 1 ICULS for 2 shares held to raise up to RM362.8mil. The ICULS carries a coupon rate of 3.8% per annum and will be convertible anytime over 5 years on the basis of 1-for-1 at a conversion price of RM0.50 per share.

Three huge contracts were won by listed companies this week. First was Wah Seong, which won a US\$254.1mil (RM1.06bil) midstream contract for the provision of line pipe thermal insulation services by East African Crude Oil Pipeline (EACOP) Ltd in Tanzania. The second job award was to Gamuda. The company, via an unincorporated joint-venture company with Wai Fong Construction Pte. Ltd, in which Gamuda will have a 60% stake, won a S\$467mil (RM1.45bil) contract for the design and construction of the proposed Defu station and tunnels. Last but not least was Kerjaya Prospek as the company bagged a RM710.1mil contract for the construction of the main building and external works for a proposed residential development project in Ampang. To be completed in 53 months from its commencement date in June 2022, the project comprises 5,255 small office home office units, apartments, and retail spaces.

Meanwhile, CTOS Digital completed a primary placement of 110mil new shares at an issue price of RM1.58, which enabled the company to raise some RM173.8mil. At the same time, its major shareholder, Inodes Ltd, placed out 185mil existing CTOS shares at the same placement price of RM1.58 per share, raising RM292.3mil. Inodes, which is owned by private equity firm, Creador, will see its direct interest in CTOS drop to 30.1% from 40% previously.

In quarterly results, two Malaysian largest corporates by market capitalization announced a sterling set of results with both Petronas Chemical and Maybank reporting net profits of RM2.06bil each for the 4Q period.

### Equity

Global markets experienced a major sell-off as more indices fell into the 10% correction territory on rising geopolitical risk. Index losses of between 0.3% on Jakarta's Composite Index to as much as 7.7% on the Nasdaq 100 Index were recorded this week. The benchmark MOEX Russian Index was off by 23.6% at the time of writing after falling as much as 45.4% at one stage. On the local bourse, despite strong gains among commodity-based companies on the back of record-high CPO prices, the KLCI still closed 31.13 pts or 1.9% lower at 1,573.89 pts.

For the week ended February 23, foreigners net buying momentum eased but remained sizable with an inflow of RM641.5mil. Retail market participants too were net buyers with an inflow of RM305.5mil, leaving the local institutions as sole net sellers in the market with an outflow of RM947mil. With just three market day's statistics to go for the monthly data, foreign net buying interest has already surpassed the RM2bil mark and is on course to register the highest monthly inflow in four years.

### Eye on Week Ahead

Other than economic data points over the next one week, investors' attention will likely be focused on the escalating tension in Ukraine as it is likely not only the US and its allies will impose stricter sanctions on Moscow but the likelihood of these allied forces coming together to defend Ukraine cannot be ruled out as well.

Later today, the US will release the much-awaited January headline and core Personal Consumption Expenditure (PCE) data which the market expects to hit 5.5% and 5.1% respectively. In addition, the January Durable Goods Order is due as well while the Final University of Michigan Consumer Sentiment Index is expected to show a final reading of 61.7.

On Tuesday, March 1, a host of February IHS Markit PMI indicators are due and this includes the JP Morgan Global, Eurozone, ASEAN, and the Malaysian Manufacturing PMI prints. On top of it, China's official manufacturing and non-manufacturing PMI for February and the Institute of Supply Management (ISM) US Manufacturing PMI too are expected to be released, with the latter expected to show a reading of 58.0 against 57.6 in January. Meanwhile, the Reserve Bank Of Australia meets on the same day too as investors will be keen to see if the RBA is ready to hike rates just yet.

The Fed's Beige Book is expected to be released on Wednesday, March 2. The next day, Final February Eurozone Composite PMI and the JP Morgan Global Composite PMI are expected to be released.

Locally, Bank Negara will be releasing the monthly statistical bulletin as well as the key banking statistics for January on Monday, February 28. On the same day, the Department of Statistics will be releasing the January Producer Price Index-Local Production. But the key event is the Monetary Policy Committee meeting to be held on March 2-3, followed by the Monetary Policy Statement thereafter. Bank Negara is widely expected to keep the Overnight Policy Rate (OPR) unchanged for now.





# Italian Masterpieces

Coupé De Luxe bed designed by GamFratesi  
Grant ottoman designed by Tristan Auer

poltronafrau.com

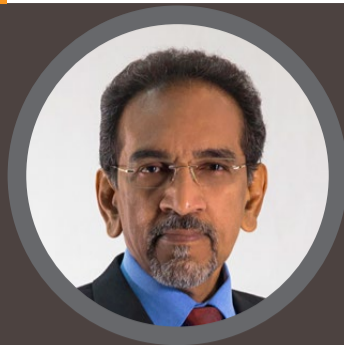


# XTRA

The Gardens Mall, Mid Valley City, Lot S-236 & 237  
2nd flr Linkaran Syed Putra, Kuala Lumpur  
T. +603 2282 9088 | living@xfurniture.com | xfurniture.com  
f XTRAFurniture | @xfurnituremsia







Devanesan Evanson  
Chief Executive Officer, Minority Shareholders Watch Group

## BCM Alliance's ESOS draws attention

In a nutshell, an employee share option scheme (ESOS) is an incentive scheme whereby employees are offered an option to purchase shares of their companies at a certain price either over a specified period of time or upon specified milestones. ESOS is a means of compensating employees – a platform to motivate, retain and remunerate talents – by allowing them to participate in the growth of the company's equity. The ESOS mooted by BCM Alliance Berhad has raised public interest. While ESOS is typically offered to all employees, only two employees ended up taking the offered ESOS. It is puzzling why the other staff did not take up the ESOS, if they were offered, as the ESOS was at a significant discount to the market price. The exercise price of options offered was 2.91 sen while the closing market price of the Company's shares on the date of offer was 3.5 sen. Subsequently, the two employees emerged as the major shareholders of the company. Overnight, new major shareholders had emerged.

### What happened?

According to BCM Alliance's filings with Bursa Malaysia dated 20 January 2022, two employees namely Kiu Cu Seng and Cheng Li Ping, exercised a total of 469.41 million shares (the total ESOS shares that was offered under the scheme) at 2.91 sen apiece. Kiu exercised some 305.12 million shares or equivalent to a 15% stake, making him the largest shareholder of BCM Alliance, followed by Cheng who exercised 164.29 million shares for an 8.08% stake. This has effectively made the duo the largest shareholders of BCM Alliance with a combined 23% stake after exercising their ESOS. A check on the website

Boardroom Alpha shows that Kiu, 33, has since March 2021 served as group accountant for BCM Alliance, Sanichi Technology Bhd and Trive Property Group Bhd. His responsibility is said to centre on group consolidation matters. Additionally, his name also appeared as the chief financial officer of Nasdaq-listed shell company Energem Corp. Energem which was listed on 16 November 2021 with an initial public offering price of US\$10 per unit for 10 million units. There is hardly any information available with regards to Cheng.

For its third quarter ended 30 September 2021, BCM Alliance returned to the black with a net profit of RM1.51 million against a net loss of RM5.33 million in the preceding quarter. Year-on-year, its net profit jumped 21.77% from RM1.24 million in the previous year's corresponding quarter. Quarterly revenue, however, fell 17% to RM16.97 million from RM20.39 million a year earlier. For the cumulative nine months ended 30 September 2021, BCM Alliance had incurred a net loss of RM3.79 million compared to a net profit of RM2.32 million in the previous corresponding period while revenue fell 5% to RM49.71 million from RM52.5 million. Over the last 14 months, BCM Alliance had issued 1.08 billion new shares via rights issues and private placement to raise funds. Presently, it has a total share base of about two billion shares, up three-fold from 625.88 million shares as of 31 March 2021. At the same time, the share price of BCM Alliance has been on a downward spiral from a 52-week high of 32.5 sen to the current price of 3.5 sen as of 17 February.

### Further probing

To re-cap, in February 2021, BCM Alliance proposed to terminate a five-year ESOS scheme which was established on 25 August 2020. The previous ESOS constituted the issuance of up to 15% of the Company's issued share capital to eligible directors and employees. Shortly after, BCM Alliance came out with a new five-year ESOS proposal involving up to 30% of the total number of its issued shares for eligible directors and employees of the company and its subsidiaries. BCM Alliance said the ESOS exercise is also intended to retain the eligible individuals by giving them a sense of ownership, loyalty and belonging to the group by enabling them to participate via equity ownership in the company.

It further noted that any proceeds from its ESOS will be utilised for the company's working capital purposes. The exercise price of ESOS offered to employees was 2.91 sen per share, representing approximate a 17% discount to BCM Alliance's closing price of 3.5 sen on 12 January when the offer was made. Given the ESOS was offered at a discount to share price, it is strange to find that none of the other employees took up the offered shares.

Indeed Kiu and Cheng must be wealthy for they were able to fork out RM13.66 million (a massive amount for the man on the street) to exercise the 469.41 million ESOS shares. Shareholders should seek explanation on the puzzling offer of ESOS at BCM Alliance's forthcoming general meeting.

*This article appeared in the The Observer, a weekly newsletter published by The Minority Shareholders Watch Group (MSWG) and reproduced here with their permission. Do follow MSWG's Twitter account at @MSWGMalaysia and share your thought on their tweets from time to time.*

**SHAREINVESTOR MARKET DATA PLATFORMS**

**SHAREINVESTOR STATION**  
Advanced Charting Software  
(8 Markets)

**SHAREINVESTOR WEBPRO**  
Browser-Based Market Data  
Analytics Platform

**BURSASTATION**  
Advanced Charting Software  
(Bursa Malaysia Only)



# Heineken posts stronger earnings in FY2021 as Q4 profits recover



Heineken Malaysia Bhd could be ascending the path of recovery as net profit for the financial year ended 31 December 2021 (FY21) was up 59% to register RM246 million, buoyed by an active fourth quarter (4QFY21) net profit of RM95.85 million, a 77% increase for the same period of the previous year.

Revenue in the 4QFY2021 rose 33% to RM692 million, compared to RM519 million of the corresponding quarter of the previous year. The brewer attributed the improved sales to the reopening of economic sectors and early Chinese New Year celebratory sentiments. This quarter also saw a price adjustment for certain products to compensate for rising input costs. Heineken recorded a revenue of RM1.98 billion in FY21, 12% higher than the RM1.76 billion recorded the previous year. Nevertheless, revenue still fell below pre-pandemic level of RM2.32 billion recorded in 2019.

The company's profit before tax grew 85% due to improved sales performance across all brand portfolio, effective cost management and the absence of a one-off provision of RM14



million in December 2020 for costs associated with the organisational restructuring exercise implemented in 2021.

Despite having to stop operations for 11 weeks in 2021, the brewer said in a statement that its team pulled together various strategic initiatives to unlock efficiencies that aided in overcoming the many challenges and rake in the commendable set of results achieved in FY21.

As international borders remain closed due to the recent rise in Covid-19 cases, coupled with an escalation of input costs and logistics issues, Heineken affirms a challenging external environment. However, the Government's decision not to increase excise duties on beers and stouts in the Budget 2022 provides a degree of reprieve, and will prevent the proliferation of illicit alcohol demand.

Heineken's portfolio includes 12 international brands, among them Guinness, Anchor, Tiger, Edelweiss, Kilkenny and Anglia. On Thursday, Heineken's share price closed at RM21.88, giving the group a market capitalisation of RM6.61 billion.



## MINORITY SHAREHOLDERS WATCH GROUP

BADAN PENGAWAS PEMEGANG SAHAM MINORITI BERHAD

(Incorporated in Malaysia . Registration No. 200001022382 (524989-M))



**Ooi Beng Hooi**  
Manager  
Corporate Monitoring



**Rita Foo**  
Head  
Corporate Monitoring



**Ranjit Singh**  
Manager  
Corporate Monitoring

## Retail Investors Training

**Topic 1: Improving the chances of winning in the stock market**

**Topic 2: The MCG Updates 2021**



Date: 28 March 2022



Time: 8-9pm



FREE WEBINAR

[Click here to register](#)



SHARIAH HOT STOCKS

Price & Volume Distribution Charts (as at Yesterday)

Technical Analysis

Definition

Shariah compliant stocks with Technical Analysis showing the closing price Yesterday is higher than previous closing price and 5-days Moving Average Price with Volume Spike

Chart Guide

Volume Distribution Chart is a statistical interpretation of the current sentiment on each stock in graphical format. The highest bar categorized as >150k is likely to be traded by institutions or super dealers, while the lowest bar categorized as <15k usually represents retail investors. "Buy Up" refers to more buyers snatching up the lots queued at selling price. "Sell Down" refers to sellers selling their shares to the buying queue



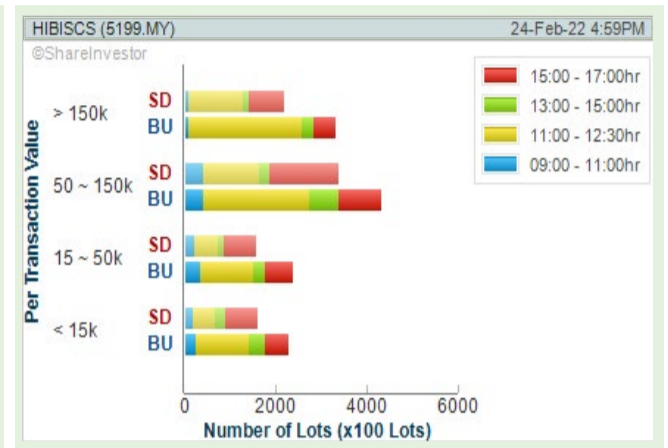
ShareInvestor WebPro > Screener > Market Screener (FA & TA) > select BURSA > add criteria  
**A. Criteria**  
 • Fundamental Analysis Conditions tab > select (i) Revenue  
 • Technical Analysis Conditions tab select (ii) Moving Average Below Close (iii) select ADX Trend (iv) select Bullish ADX +DI/-DI (v) select Volume Spike (vi) select RSI Overbought  
 • Prices & Other Conditions tab > select (vii) Is Shariah Compliant

> click Add Criteria  
**B. Conditions (Criteria Filters)**  
 • Revenue - select (more than) type (1) for the past select (1) financial year(s)  
 • Moving Average Below Close - select (MA) type (5) below close price for type (1) days  
 • ADX Trend - ADX type (5) type (1) above type (20) for type (1) days  
 • Bullish ADX +DI/-DI - ADX type (5) type (1); +DI above -DI  
 • Volume Spike - Volume type (1) times greater than type (5) days average  
 • RSI Overbought - RSI type (1) above (99) for (1) days  
 • Is Shariah Compliant - select Yes

> click Save Template > Create New Template type (Shariah Hot Stocks) > click Create  
 > click Save Template as > select Shariah Hot Stocks > click Save  
 > click Screen Now (may take a few minutes)  
 > Sort By: Select (Vol) Select (Desc)  
 > Mouse over stock name > Charts > click C? Chart or Volume Distribution

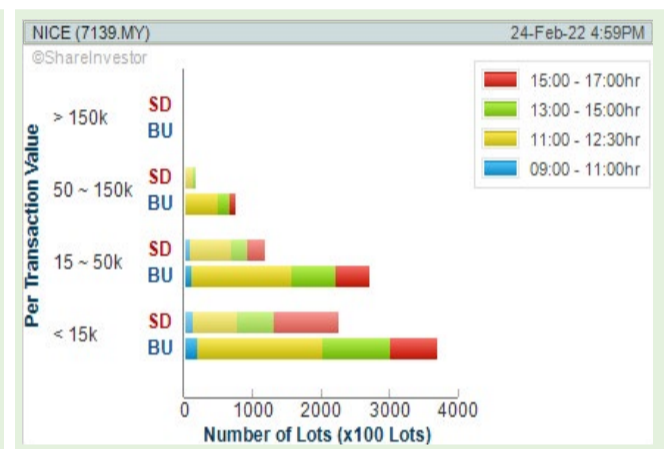
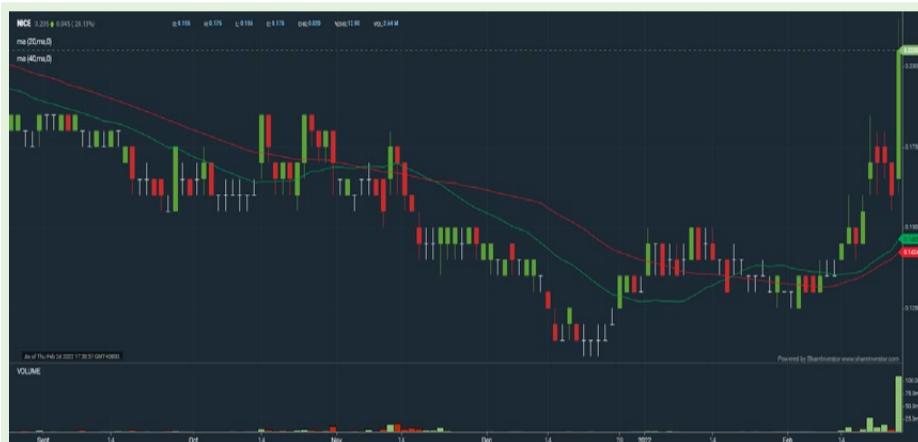
**HIBISCUS PETROLEUM BERHAD (5199)**

Analysis



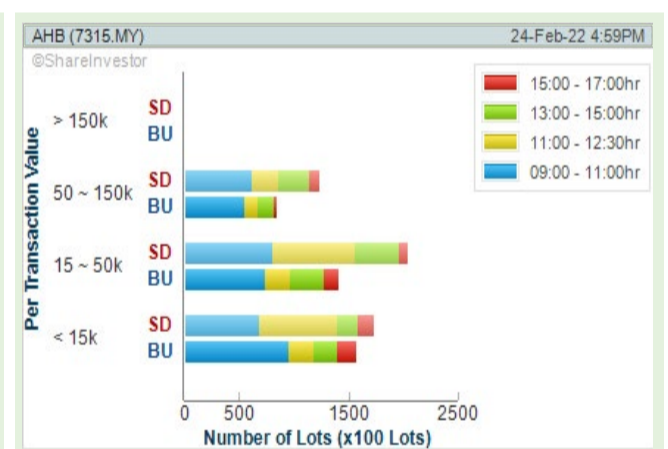
**NICHE CAPITAL EMAS HLDG BERHAD (7139)**

Analysis



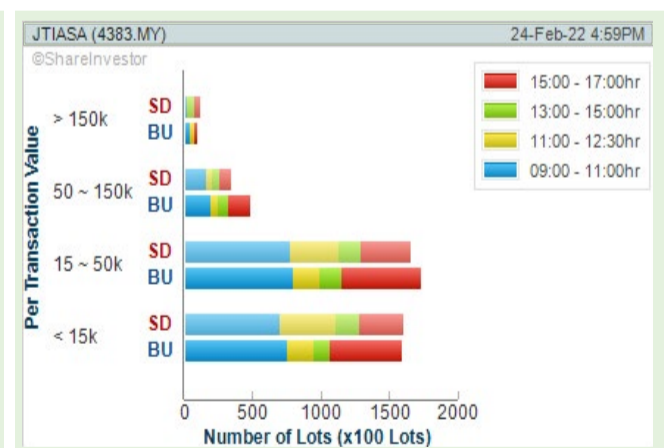
**AHB HOLDINGS BERHAD (7315)**

Analysis



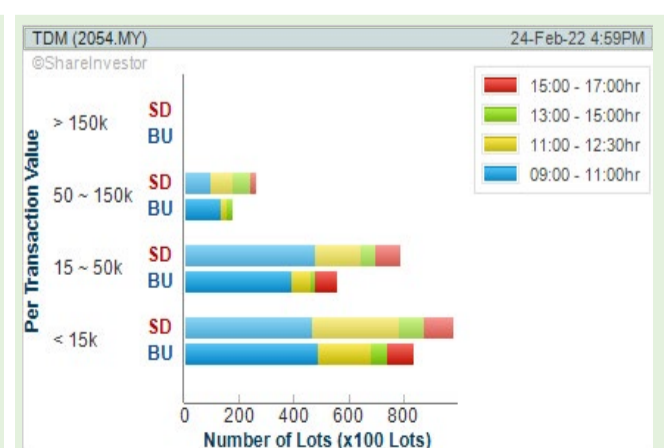
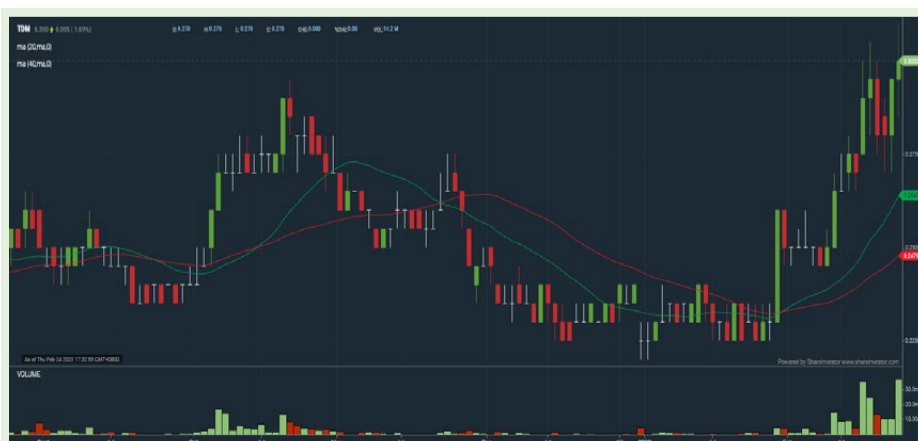
**JAYA TIASA HOLDINGS BERHAD (4383)**

Analysis



**TDM BERHAD (2054)**

Analysis





COMPANY SPOTLIGHT

Company Background

**T7 Global Berhad** is listed in the Main Board of Bursa Malaysia. It is an investment holding company, whilst its subsidiaries and associated companies are principally involved in the provision of integrated services to the oil and gas and related industries. The group provides comprehensive services to the oil and gas industry having secured exclusive agencies for a wide range of engineering equipment and parts such as compressors, turbines, pumps and control valves in Malaysia. The Group continues to expand its business expertise globally and has diversified into different portfolio of services such as aerospace and construction through strategic acquisitions and smart partnerships



Select Counter: Bursa T7GLOBAL (7228.MY) View

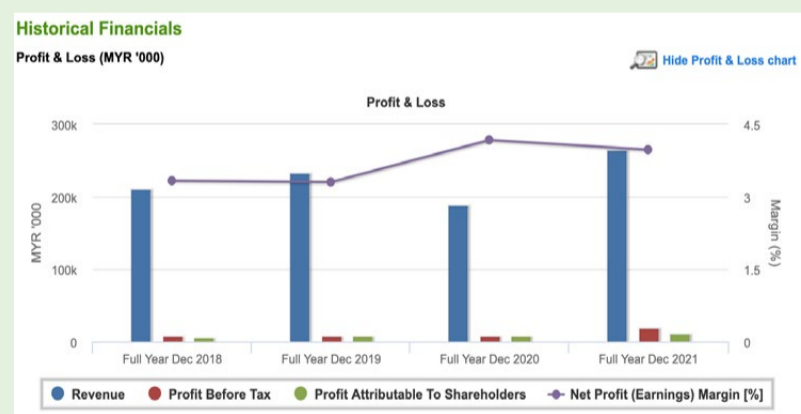
**T7GLOBAL T7 GLOBAL BERHAD** Updated at 24 Feb 2022 16:59

Last (MYR): <b>0.385</b> ↑	Change: +0.015	High: 0.385	Remarks: -
	Change (%): +4.05	Low: 0.365	
Open	0.370	Yesterday's Close	0.370
Buy Price	0.380	Sell Price	0.385
Buy Volume ('00)	1,271	Sell Volume ('00)	37,921
Cumulative Volume ('00)	163,361	Cumulative Value	6,139,522

**Financial Analysis**

<b>Revenue Growth</b> Revenue up and down in past years	Neutral	<b>Profit Growth</b> Increasing profit in last 3 consecutive years (with at least 4 profitable years)	Excellent
<b>Piotroski F Score</b> The company has weak financial strength (Piotroski F-Score of 0-2)	Be Alert	<b>Dividend Payout</b> No dividend paid in most recent year but dividends paid in prior years	Be Alert
<b>Debt to Cashflow</b> The company has negative cash flow from operations in most recent year	Be Alert	<b>Free Cash Flow</b> Negative free cash flow for two years or more	Be Alert
<b>Net Earnings Margin</b> Low net profit margin for 3 years	Be Alert		

Excellent Good Neutral Be Alert Watch Out



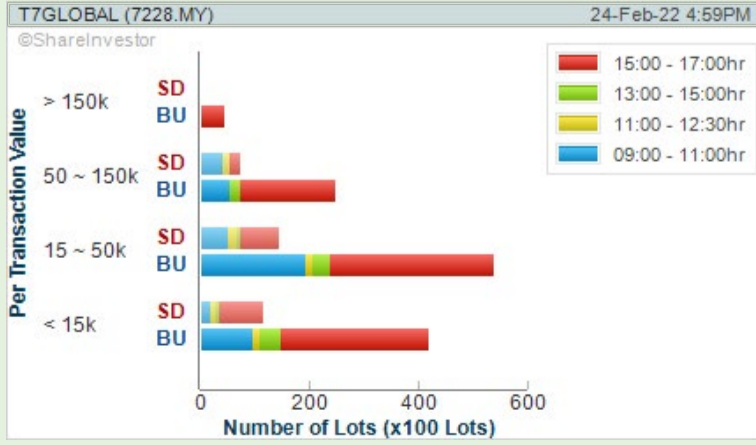
**WebPro 9-Days Free Trial Registration (worth RM9) Sign Up Now**

Key Statistics with Total Shareholder Returns

**Total Shareholder Return**

Period	Dividend Received	Capital Appreciation	Total Shareholder Return
Short Term Return	5 Days	-	+0.010
	10 Days	-	+0.025
	20 Days	-	+0.030
Medium Term Return	3 Months	-	-0.005
	6 Months	0.005	+0.030
	1 Year	0.005	-0.030
Long Term Return	2 Years	0.005	-0.065
	3 Years	0.010	-0.055
	5 Years	0.010	-0.035
Annualised Return	-	-	-

Volume Distribution Chart





SHAREINVESTOR WEBPRO

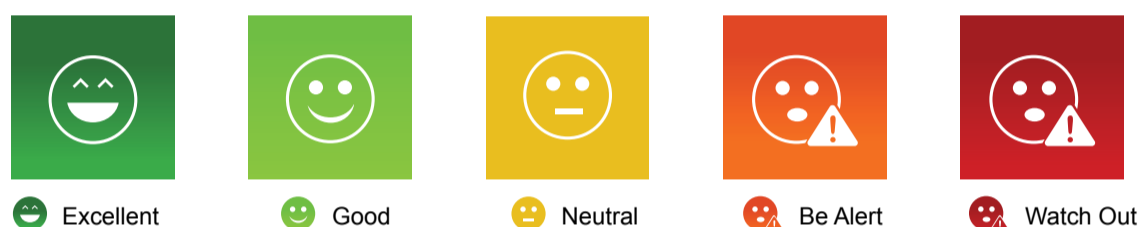
# Smiley Grid

**Are you struggling to analyse financial information?  
Do you find financial data overwhelming?**

**Worry not, introducing our NEW feature, Smiley Grid**

Smiley Grid makes the Factsheet fast and easy to understand.

It is a shortcut where key financial data have now been interpreted for you, and presented in easy-to-understand, colour coded icons.



With just a glance, you can easily identify strong or weak areas of a particular counter.

**We do the analysis so you can make faster decisions.**



**Sign up for our 9 Days Free Trial and give it a try**

**9-Days FREE TRIAL WORTH (RM 10)**



SHARIAH MOMENTUM UP STOCKS

Price & Volume Distribution Charts (as at Yesterday)

Technical Analysis

Definition

Shariah compliant stocks with Technical Analysis showing Bullish Momentum and Price Uptrend. The share price closed at the highest price yesterday. Both the highest and lowest price were higher than the previous day's highest and lowest price.

Chart Guide

Volume Distribution Chart is a statistical interpretation of the current sentiment on each stock in graphical format. The highest bar categorized as >150k is likely to be traded by institutions or super dealers, while the lowest bar categorized as <15k usually represents retail investors. "Buy Up" refers to more buyers snatching up the lots queued at selling price. "Sell Down" refers to sellers selling their shares to the buying queue.



ShareInvestor WebPro > Screener > Market Screener (FA & TA) > select BURSA > add criteria

**A. Criteria**

- Fundamental Analysis Conditions tab: select (i) Revenue
- Technical Analysis Conditions tab: select (ii) Stochastic Overbought (iii) select Bullish ADX+DI/-DI (iv) select Average Volume (v) select RSI Overbought
- Prices & Other Conditions tab: select (vi) Last Done Price (vii) select Is Shariah Compliant

**B. Conditions**

- Revenue - select (more than) type (1) for the past select (1) financial year(s)
- Stochastic Overbought - FatSO type (1), type (1) above type (99) for type (1) days
- Bullish ADX+DI/-DI - ADX Type (1), type (1): +DI above -DI
- Average Volume - type (1) days average volume greater than type (1000) lots
- RSI Overbought - RSI type (1) above (99) for (1) days
- Last Done Price - select (more than) type (0.3)
- Is Shariah Compliant - select Yes

> click Save Template > Create New Template type (Shariah Momentum Up Stocks) > click Create

> click Save Template as > select Shariah Momentum Up Stocks > click Save

> click Screen Now (may take a few minutes)

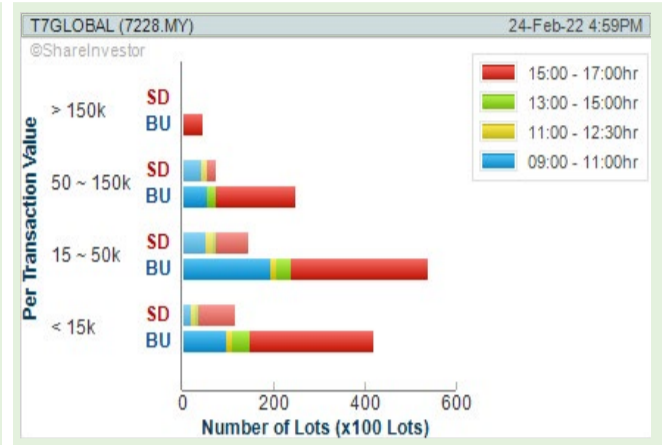
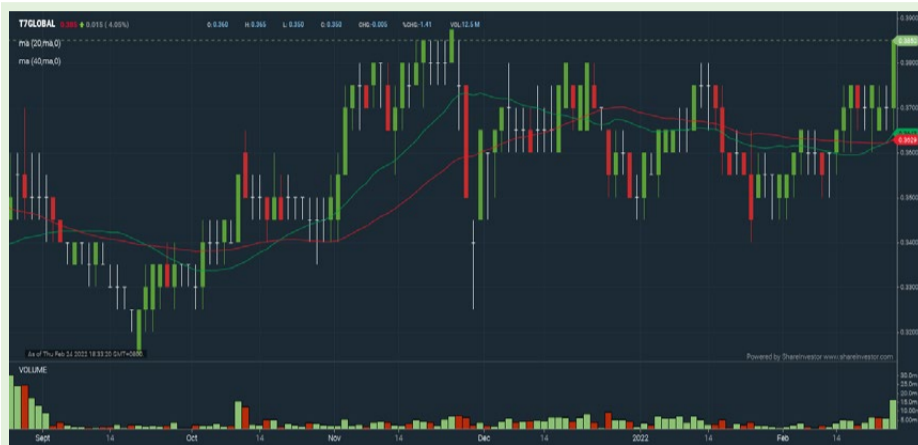
Sort By: Select (Vol) Select (Desc)

Mouse over stock name > Charts > click C<sup>2</sup> Chart or Volume Distribution



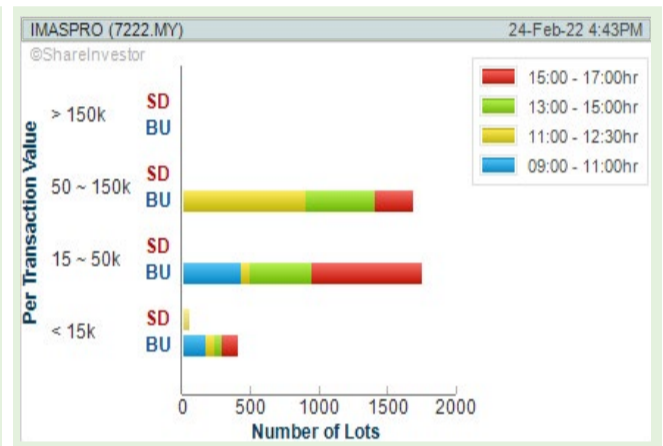
**T7 GLOBAL BERHAD (7228)**

Analysis



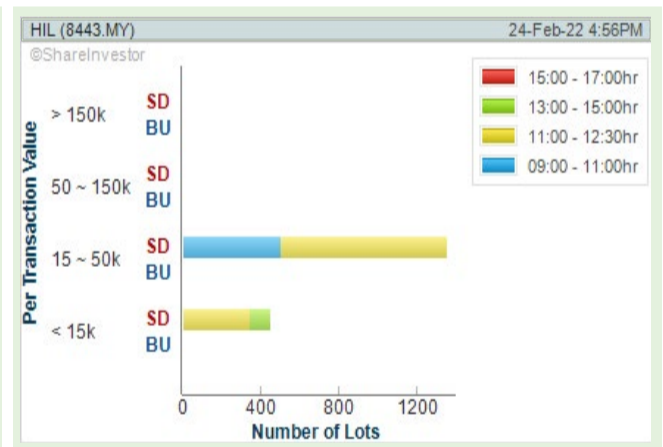
**IMASPRO CORPORATION BERHAD (7222)**

Analysis



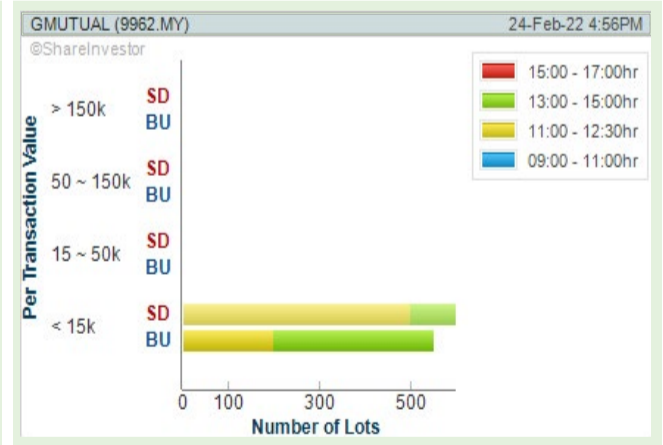
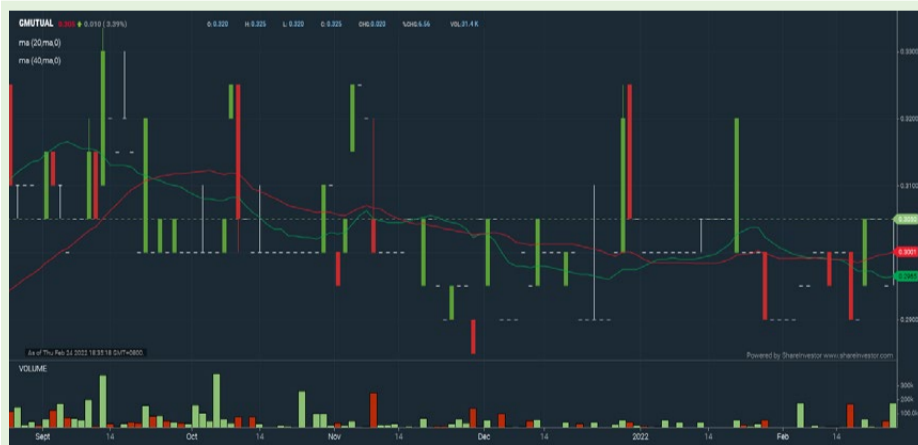
**HIL INDUSTRIES BERHAD (8443)**

Analysis



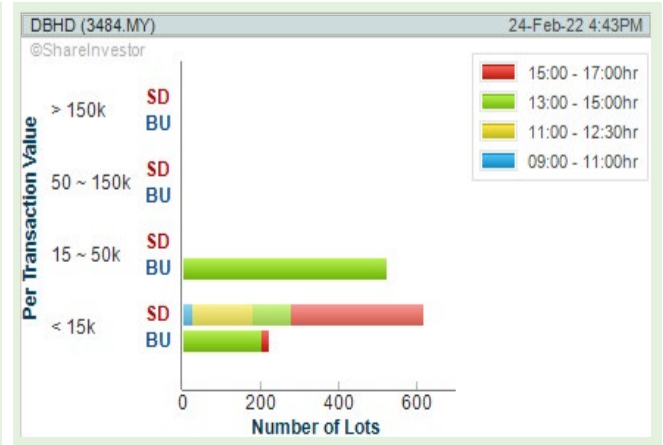
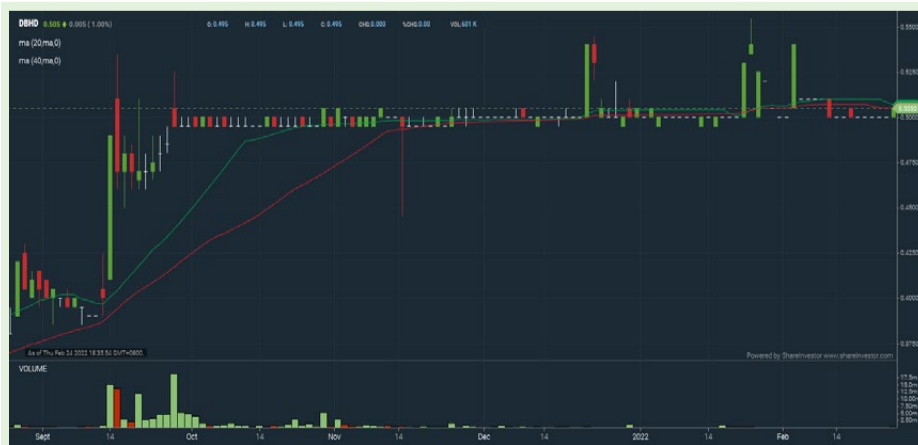
**GROMUTUAL BERHAD (9962)**

Analysis



**DAMANSARA HOLDINGS BERHAD (3484)**

Analysis



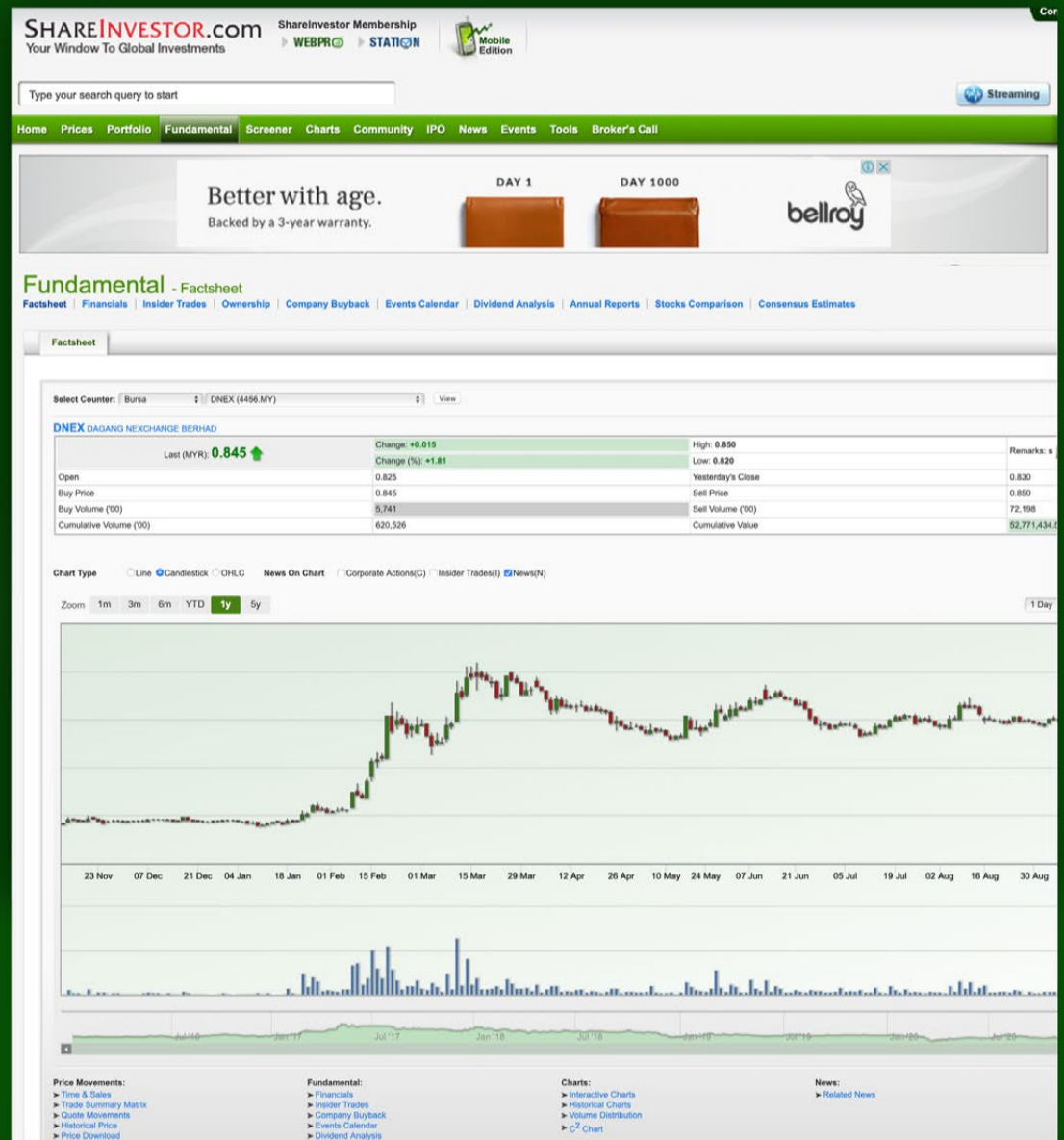
Disclaimer: The information on this page is provided as a service to readers. It does not constitute financial advice and/or any investment recommendations. Past performance is not indicative of future results. We assume no liability for damages resulting from or arising out of the use of such information. It would be best if you did your own research to make your personal investment decisions wisely or consult a licenced investment advisor.



# COMPANY ANALYSIS AT YOUR FINGERTIPS

Click the Analysis buttons to access the Factsheets of any company featured on the Hot Stocks, Momentum-Up, Up-Trending, Growth and Dividend Stocks pages.

Invest with knowledge



Company Background

Candlestick Chart

Current Price

Key Statistics

Peer Comparison

Total Shareholder Returns

Price Movements

IPO performance

Financial Reports

Historical Price Data

Latest News

More

Analysis



NON SHARIAH HOT STOCK

Price & Volume Distribution Charts  
(Over 5 trading days as at Yesterday)

Technical Analysis

Definition

Non-Shariah compliant stocks with Technical Analysis showing the closing price Yesterday is higher than previous closing price and 5-days Moving Average Price with Volume Spike

Chart Guide

Volume Distribution Chart is a statistical interpretation of the current sentiment on each stock in graphical format. The highest bar categorized as >150k is likely to be traded by institutions or super dealers, while the lowest bar categorized as <15k usually represents retail investors. "Buy Up" refers to more buyers snatching up the lots queued at selling price. "Sell Down" refers to sellers selling their shares to the buying queue.



**ShareInvestor WebPro > Screener > Market Screener (FA & TA) > select BURSAs > add criteria**

**A. Criteria**

- Fundamental Analysis Conditions tab > select (i) Revenue
- Technical Analysis Conditions tab select (ii) Moving Average Below Close (iii) select Volume Spike (iv) select RSI Overbought
- Price & Other Conditions tab > select (v) Is Shariah Compliant

**> click Add Criteria**

**B. Conditions**

- Revenue - select (more than) type (1) for the past select (1) financial year(s)
- Moving Average Below Close - select (MA) type (5) below close price for type (1) days
- Volume Spike - Volume type (1) times greater than type (5) days average
- RSI Overbought - RSI type (1) above (99) for (1) days
- Is Shariah Compliant - select No

**> click Save Template > Create New Template type (Non-Shariah Hot Stocks) > click Create**

**> click Save Template as > select Non-Shariah Hot Stocks > click Save**

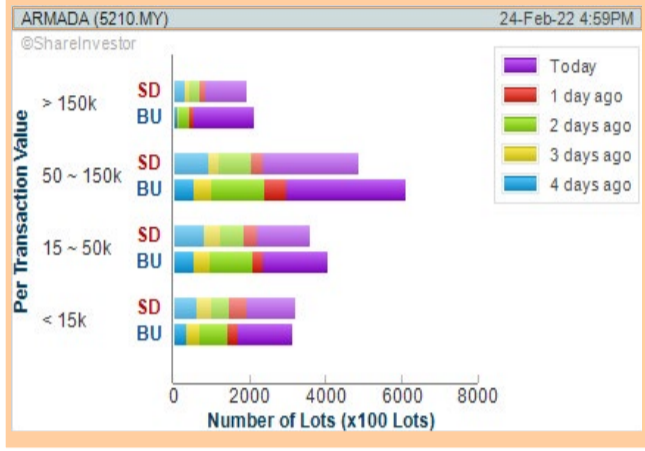
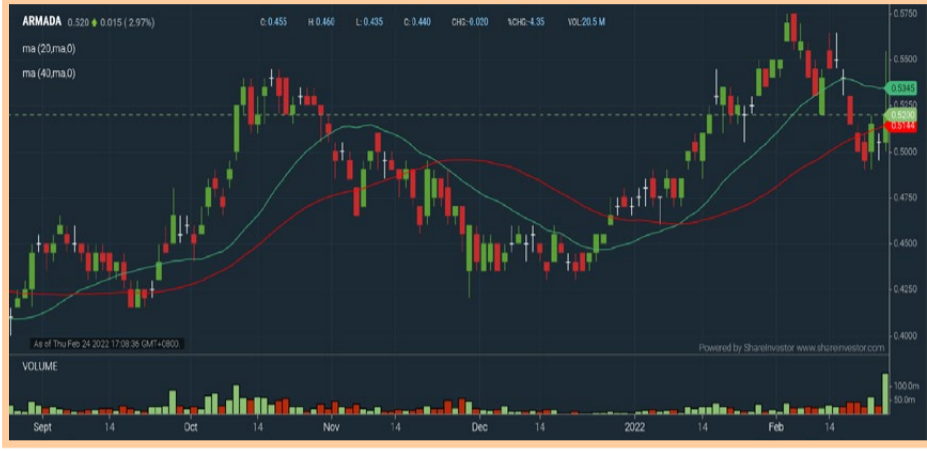
**> click Screen Now (may take a few minutes)**

**> Sort By: Select (Vol) Select (Desc)**

**> Mouse over stock name > Charts > click C<sup>2</sup> Chart tab or Volume Distribution**

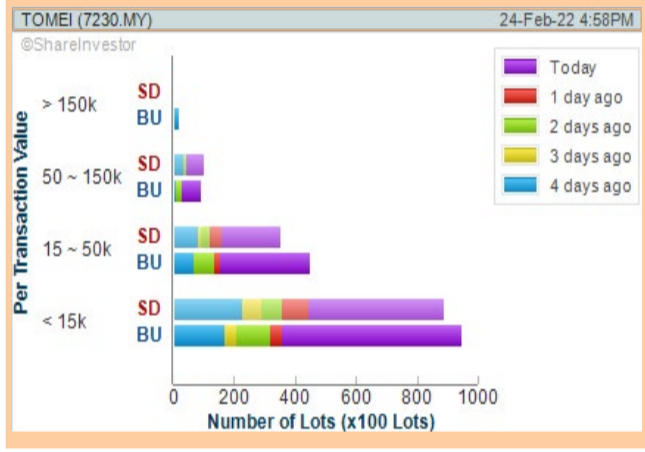
**BUMI ARMADA BERHAD (5210)**

**Analysis**



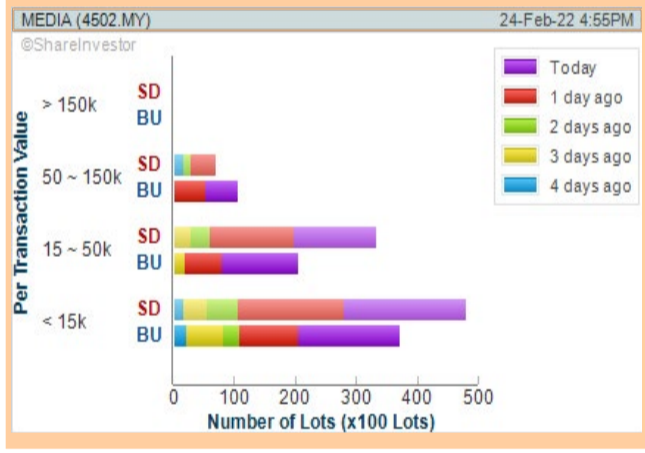
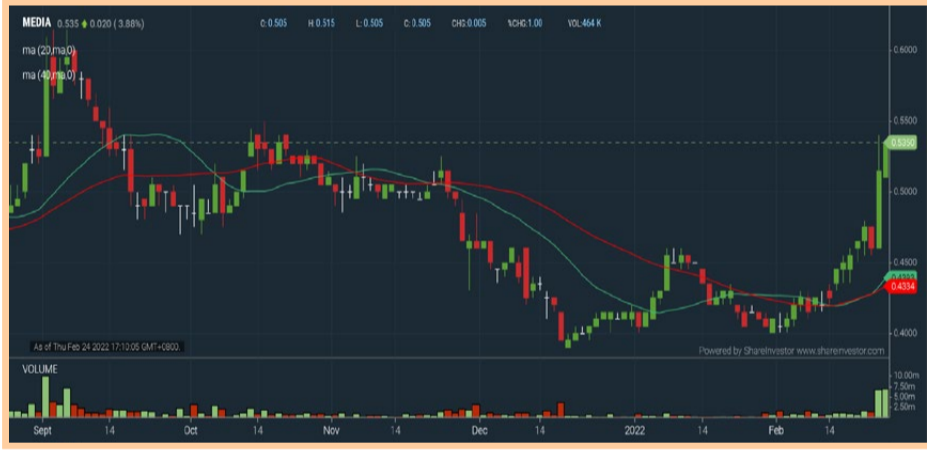
**TOMEI CONSOLIDATED BERHAD (7230)**

**Analysis**



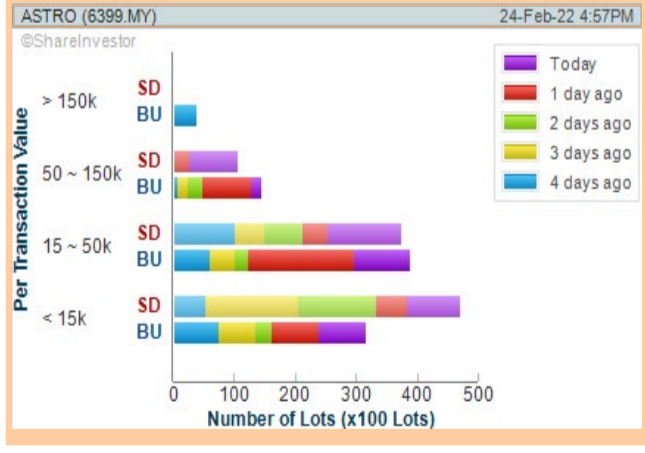
**MEDIA PRIMA BERHAD (4502)**

**Analysis**



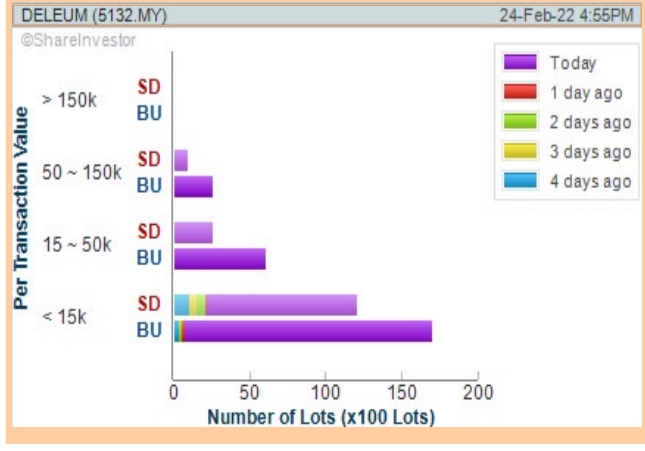
**ASTRO MALAYSIA HOLDINGS BERHAD (6399)**

**Analysis**



**DELEUM BERHAD (5132)**

**Analysis**



**Disclaimer:** The information on this page is provided as a service to readers. It does not constitute financial advice and/or any investment recommendations. Past performance is not indicative of future results. We assume no liability for damages resulting from or arising out of the use of such information. It would be best if you did your own research to make your personal investment decisions wisely or consult a licenced investment advisor.



# BURSASTATION



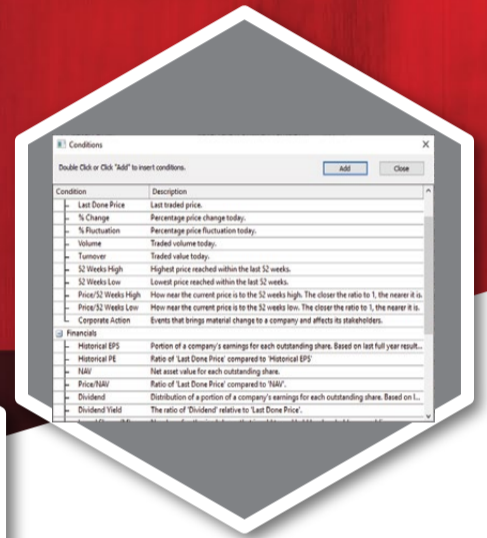
Financials



Candlestick Patterns Recognition



Dynamic TA Chart



FA Market Scanner

**BursaStation Professional** is a state-of-the-art Stock Market Tracker / Share Market Tracker cum Charting Software (Charting Tool) that places in your hands the power to make better investment decisions.

BursaStation is designed with you, the user, in mind, as a user-friendly yet full of powerful features that will appeal to investors/traders who need instant access to fundamental, technical, and trading data, via the Internet, anywhere, anytime.

**CLICK HERE for 14-Days FREE TRIAL**

## Other Key Features



Intraday Market Ticker



Intraday Charts



Portfolio Management



World Indices



Bursa news



Financial Results



Stock Alerts



Dynamic Data Exchange



UP TRENDING STOCKS

Price & Volume Distribution Charts (Over 5 trading days as at Yesterday)

Technical Analysis

Definition

Stocks with Technical Analysis showing Bullish Momentum and Price Uptrend.

Chart Guide

Volume Distribution Chart is a statistical interpretation of the current sentiment on each stock in graphical format. The highest bar categorized as >150k is likely to be traded by institutions or super dealers, while the lowest bar categorized as <15k usually represents retail investors. "Buy Up" refers to more buyers snatching up the lots queued at selling price. "Sell Down" refers to sellers selling their shares to the buying queue.



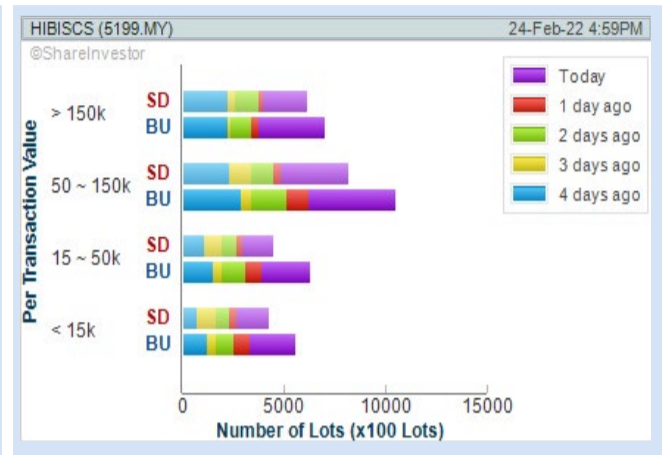
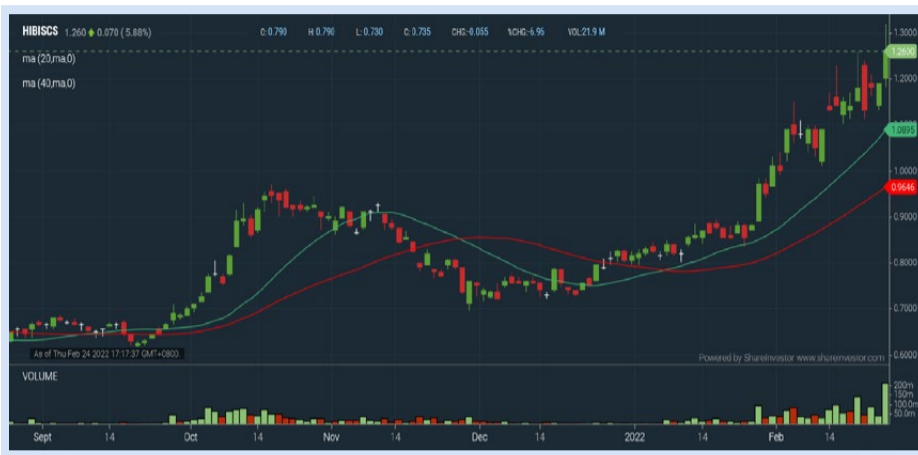
ShareInvestor WebPro > Screener > Market Screener (FA & TA) > select BURSA > add criteria  
**A. Criteria**  
 • Fundamental Analysis Conditions tab >select (i) Revenue  
 • Technical Analysis Conditions tab (ii) select Moving Average Below Close (iii) select Average Volume (iv) select Bullish ADX +DI/-DI (v) select ADX Trend  
 • Prices & Other Conditions tab: select (vi) Last Done Price  
 > click Add Criteria  
 • Technical Analysis Conditions tab (vii) select Moving Average Below Close  
 > click Add Criteria

**B. Conditions**  
 • Revenue - select (more than) type (1) for the past select (1) financial year(s)  
 • Moving Average Below Close - select (MA) type (20) below close price for type (1) days  
 • Average Volume - type (5) days average volume type (1000) lots  
 • Last Done Price - select (more than) type (0.3)  
 • Moving Average Below Close - select (MA) type (40) below close price for type (1) days  
 • Bullish ADX - ADX type (20) type (1): +DI above -DI  
 • ADX Trend - ADX type (20), type (1) above type (20) for type (1) days

> click Save Template > Create New Template type (Non-Shariah Up-Trending Stocks) > click Create  
 Click Save Template As > select Non-Shariah Up Trending Stocks > click Save  
 > click Screen Now (may take a few minutes)  
 Sort By: Select (Vol) Select (Desc)  
 Mouse over stock name > Charts > click C? Chart tab or Volume Distribution

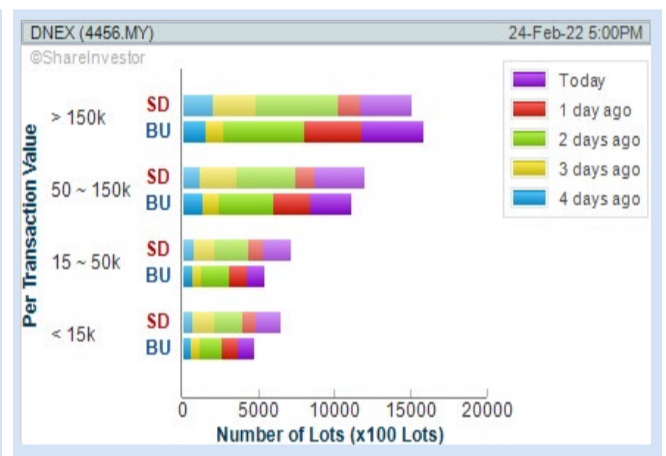
**HIBISCUS PETROLEUM BERHAD (5199)**

Analysis



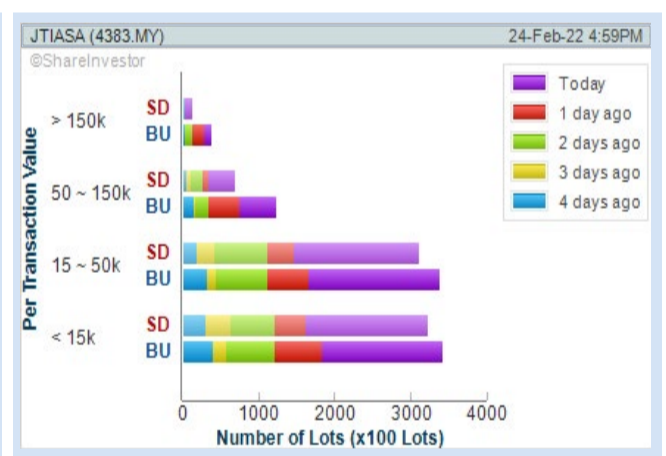
**DAGANG NEXCHANGE BERHAD (4456)**

Analysis



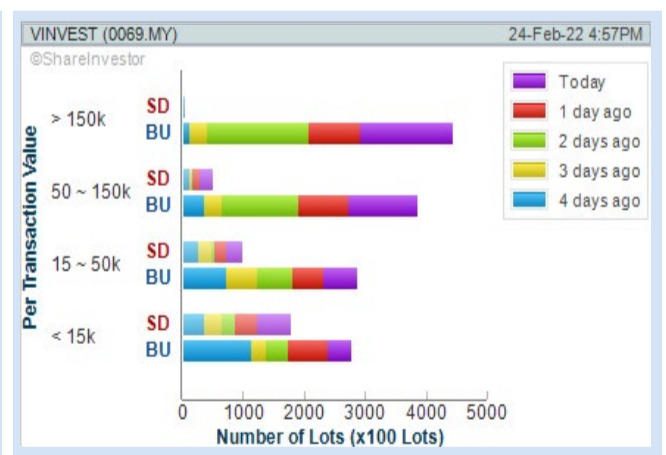
**JAYA TIASA HOLDINGS BERHAD (4383)**

Analysis



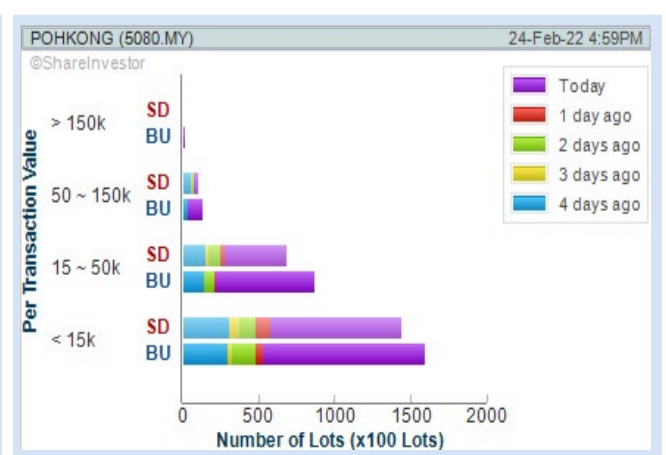
**VINVEST CAPITAL HOLDINGS BERHAD (0069)**

Analysis



**POH KONG HOLDINGS BERHAD (5080)**

Analysis





ShareInvestor is a technology based company with a focus on Internet media and we have operations in Malaysia, Singapore and Thailand. We are the market leader in providing a combination of market data, analysis and news on various platforms to traders and investors.

Our websites include [www.shareinvestor.com](http://www.shareinvestor.com) and [www.bursastation.com](http://www.bursastation.com). More information about our products and services can be found at [www.shareinvestorholdings.com](http://www.shareinvestorholdings.com)

**We are looking for Developers to join our team, in a challenging, yet fun and fulfilling environment. The successful applicants will leverage on the latest Internet technologies to help create financial applications and platforms for investors, listed companies and financial institutions. Fresh graduates are welcome to apply.**

Interested candidates are encouraged to apply with full resume, present and expected salary and a recent photograph. Please send these to [hr.my@shareinvestor.com](mailto:hr.my@shareinvestor.com) for processing. ShareInvestor regrets that only shortlisted candidates shall be notified.

## Ruby on Rails Developer

### Responsibilities:

- Develop quality web-based software modules on schedule with a focus on Ruby and Ruby on Rails applications.
- Explore and utilize the latest web-based technologies.
- Document design specifications, logic concepts and module description.
- Maintain and enhance existing web-based applications.

### Requirements:

- Experience in web-based programming/scripting is essential. Candidate must be able to explain clearly technical aspects of his/her past experiences and projects.
- Passion for programming and desire to learn new languages like Go.
- Good Diploma/Degree in Computer Science/Computer Engineering.
- Able to work well in a team and be able to follow documentation and coding standards.
- Knowledge in any of the following would be an added advantage
  - Ruby and Ruby on Rails Framework
  - Javascript and jQuery library
  - Go
  - Perl

## Application Developer (C++/STL)

### Responsibilities:

- Deliver quality software modules on schedule.
- Document design specifications, conceptions, module description.
- Maintain and enhance existing applications.

### Requirements:

- Passion for programming and desire to learn.
- Good Diploma/Degree in Computer Science/Computer Engineering.
- Skills in C++ is essential.
- Experience with Visual Studio, networking stack and Golang would be an advantage.
- Proactive, resourceful and self-motivated with strong analytical skills.
- Good interpersonal, written and communication skills.
- Able to work with little supervision.

## PHP Developer

### Responsibilities:

- Develop web applications in PHP
- Work with Front-End Developers for integration with visuals.
- Perform R&D work based on new ideas and concepts for future requirements and enhancement.
- Use JSON and REST API's for integration
- Advise and consult on technical queries on web development.
- Present ideas and concepts internally and be creative to propose and deliver solutions
- Provide support and maintenance for all related projects.
- Be actively involved in internal discussions, brainstorm-sessions, and other meetings.

### Requirements:

- Bachelor's Degree/Diploma in Computer Science; Information Technology or equivalent.
- Minimum 3-5 years of experience working with at least one of the following PHP based frameworks: Symfony, WordPress
- Experience with AWS & Containerisation (Docker, GitLab, Podman) strongly preferred.
- Proven experience developing custom modules or framework extensions
- Very comfortable integrating with 3rd party APIs
- Strong skills in PHP, MySQL, Bootstrap, HTML, CSS, Javascript/Jquery.
- Excellent communication skills to support healthy relationships with teammates and clients
- Good problem solving capabilities
- Able to showcase PHP projects which the candidate has implemented before.
- Familiar with secure coding practices

**Vacancy Filled**



GROWTH STOCKS

Price & Total Shareholder Return (as at Yesterday)

Fundamental Analysis

Definition

A growth company is any company whose business generates significant positive cash flows or earnings which increase at significantly faster rates than the overall economy. A growth company tends to have very profitable reinvestment opportunities for its own retained earnings.

Chart Guide

Total Shareholder Return (TSR) combines share price appreciation and dividends paid to show the total return to the shareholder expressed as a percentage.



ShareInvestor WebPro > Screener > Market Screener (FA & TA) > select BURSA > add criteria  
**A.Criteria**  
 • Fundamental Analysis Conditions tab > select (i) Free Cash Flow, (ii) Revenue Growth, (iii) Gross Profit (Earnings) Margin, (iv) Quality of Earnings, (v) Total Shareholder Returns,  
 > click Add Criteria  
 • Fundamental Analysis Conditions tab >select (vi) Total Shareholder Returns  
 > click Add Criteria

**B.Conditions (Criteria Filters)**  
 • Free Cash Flow - select (more than) type (1) for the past select (1) financial year(s)  
 • Revenue Growth - select (more than) type (1) for the past select (1) financial year(s)  
 • Gross Profit (Earnings) Margin - select (more than) type (30) % for the past select (1) financial year(s)  
 • Quality of Earnings - select (more than) type (1) for the past select (1) financial year(s)  
 • Total Shareholder Return - select (more than) type (5) % for the past select (3) financial year(s)  
 • Total Shareholder Return - select (more than) type (5) % for the past select (5) financial year(s)

> click Save Template > Create New Template type (Growth Companies) > click Create  
 > click Save Template as > select Growth Companies > click Save  
 > click Screen Now (may take a few minutes)  
 > Sort By: Select (Revenue Growth) Select (Desc)  
 > Mouse over stock name > Factsheet > looking for Total Shareholder Return

**ES CERAMICS TECHNOLOGY BERHAD (0100)**

Analysis



Period	Dividend Received	Capital Appreciation	Total Shareholder Return
Short Term Return	5 Days	-0.045	-11.69 %
	10 Days	-0.060	-15.00 %
	20 Days	-0.045	-11.69 %
Medium Term Return	3 Months	0.075	18.07 %
	6 Months	-0.160	-38.61 %
	1 Year	0.040	-51.90 %
Long Term Return	2 Years	0.050	+204.69 %
	3 Years	0.026	+377.11 %
	5 Years	0.068	+73.62 %
Annualised Return	Annualised	-	+11.67 %

**KOSSAN RUBBER INDUSTRIES BERHAD (7153)**

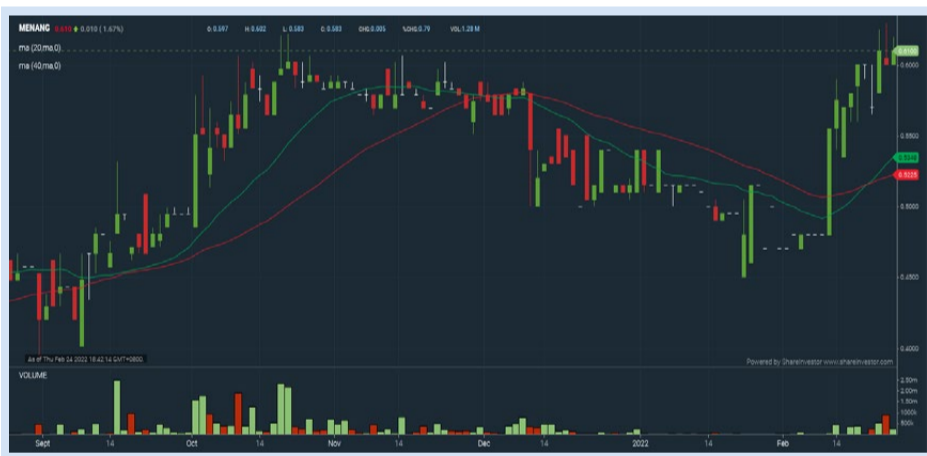
Analysis



Period	Dividend Received	Capital Appreciation	Total Shareholder Return
Short Term Return	5 Days	-0.040	-2.34 %
	10 Days	-0.060	-3.47 %
	20 Days	-0.190	-10.22 %
Medium Term Return	3 Months	-0.350	-17.33 %
	6 Months	0.120	-42.63 %
	1 Year	0.470	-42.61 %
Long Term Return	2 Years	0.530	-8.26 %
	3 Years	0.590	+16.31 %
	5 Years	0.790	+61.63 %
Annualised Return	Annualised	-	+10.08 %

**MENANG CORPORATION (M) BERHAD (1694)**

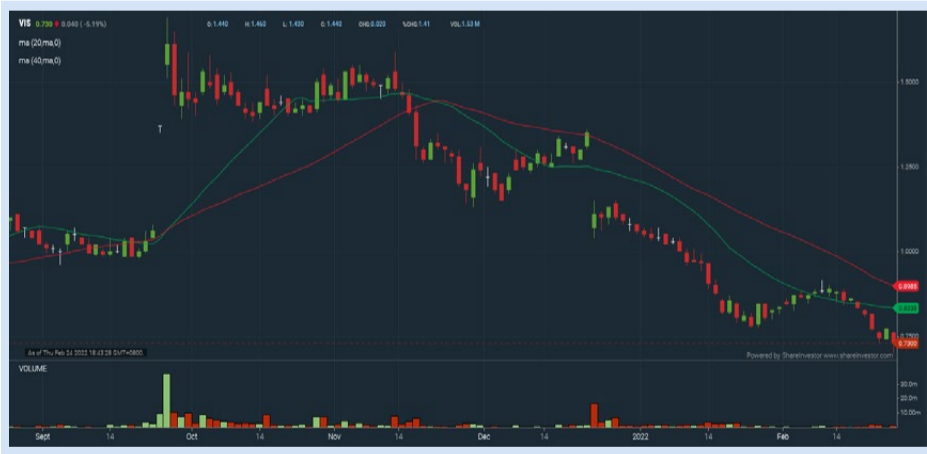
Analysis



Period	Dividend Received	Capital Appreciation	Total Shareholder Return
Short Term Return	5 Days	+0.030	+5.17 %
	10 Days	+0.130	+27.08 %
	20 Days	+0.095	+16.45 %
Medium Term Return	3 Months	+0.077	+4.63 %
	6 Months	+0.167	+34.66 %
	1 Year	+0.148	+32.03 %
Long Term Return	2 Years	+0.339	+125.09 %
	3 Years	-0.251	+69.92 %
	5 Years	+0.190	+46.99 %
Annualised Return	Annualised	-	+8.01 %

**VISDYNAMICS HOLDINGS BERHAD (0120)**

Analysis



Period	Dividend Received	Capital Appreciation	Total Shareholder Return
Short Term Return	5 Days	-0.130	-15.12 %
	10 Days	-0.150	-17.05 %
	20 Days	-0.115	-13.51 %
Medium Term Return	3 Months	-0.550	-42.97 %
	6 Months	0.330	31.43 %
	1 Year	0.010	-47.52 %
Long Term Return	2 Years	0.020	+16.11 %
	3 Years	0.030	+50.50 %
	5 Years	0.030	+83.46 %
Annualised Return	Annualised	-	+12.90 %

**HARTALEGA HOLDINGS BERHAD (5168)**

Analysis



Period	Dividend Received	Capital Appreciation	Total Shareholder Return
Short Term Return	5 Days	-0.340	-3.82 %
	10 Days	-0.470	-6.24 %
	20 Days	-0.800	-11.88 %
Medium Term Return	3 Months	-0.480	-6.06 %
	6 Months	0.698	-24.54 %
	1 Year	0.875	-46.49 %
Long Term Return	2 Years	1.069	-4.97 %
	3 Years	1.147	+14.00 %
	5 Years	1.351	+146.57 %
Annualised Return	Annualised	-	+19.78 %



DIVIDEND STOCKS

Price & Total Shareholder Return (as at Yesterday)

Fundamental Analysis

Definition

A dividend company is any company that pays out regular dividends. It is usually a well-established company with a track record of distributing earnings back to shareholders.

Chart Guide

Total Shareholder Return (TSR) combines share price appreciation and dividends paid to show the total return to the shareholder expressed as a percentage.



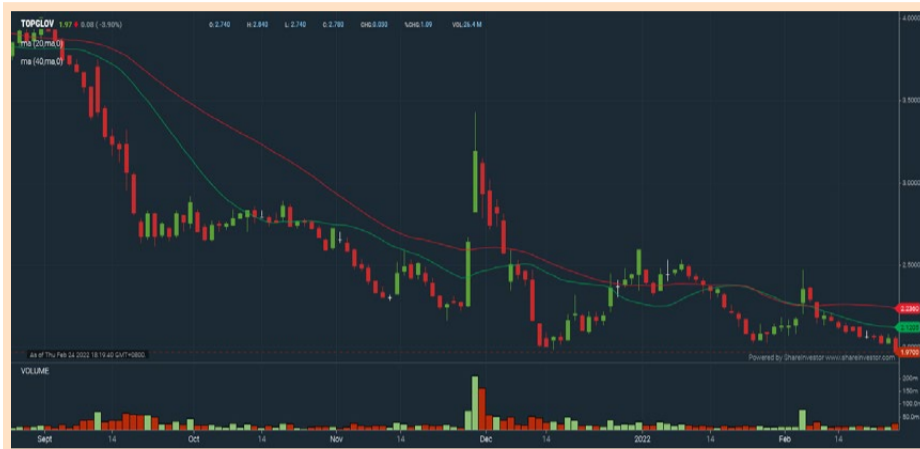
ShareInvestor WebPro > Screener > Market Screener (FA & TA) > select BURSA > add criteria  
**A. Criteria**  
 • Fundamental Analysis Conditions tab > select (i) Dividend Yield, (ii) Dividend Payout, (iii) Total Debt To Equity, (iv) Total Shareholder Returns > click Add Criteria  
 • Fundamental Analysis Conditions tab > select (v) Total Shareholder Returns > click Add Criteria

**B. Conditions (Criteria Filters)**  
 • Dividend Yield - select (more than) type (5) % for the past select (1) financial year(s)  
 • Dividend Payout (Historical) - select (more than) type (0.5) times for the past select (1) financial year(s)  
 • Total Debt To Equity - select (less than) type (1) for the past select (1) financial year(s)  
 • Total Shareholder Return - select (more than) type (5) % for the past select (3) financial year(s)  
 • Total Shareholder Return - select (more than) type (5) % for the past select (5) financial year(s)

> click Save Template > Create New Template type (Dividend Companies) > click Create  
 > click Save Template as > select Dividend Companies > click Save  
 > click Screen Now (may take a few minutes)  
 > Sort By: Select (Dividend Yield) Select (Desc)  
 > Mouse over stock name > Factsheet > looking for Total Shareholder Return

**TOP GLOVE CORPORATION BERHAD (7113)**

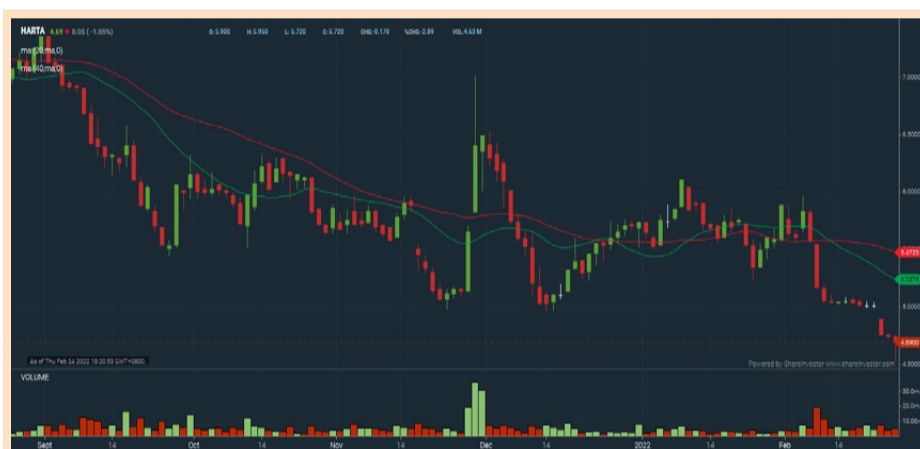
Analysis



Period	Dividend Received	Capital Appreciation	Total Shareholder Return
Short Term Return	5 Days	-0.130	-6.19 %
	10 Days	-0.210	-8.63 %
	20 Days	-0.110	-5.29 %
Medium Term Return	3 Months	0.012	-12.69 %
	6 Months	0.066	-46.06 %
	1 Year	0.498	-52.26 %
Long Term Return	2 Years	0.848	+50.53 %
	3 Years	0.923	+87.61 %
	5 Years	1.188	+275.95 %
Annualised Return	Annualised	-	+30.32 %

**HARTALEGA HOLDINGS BERHAD (5168)**

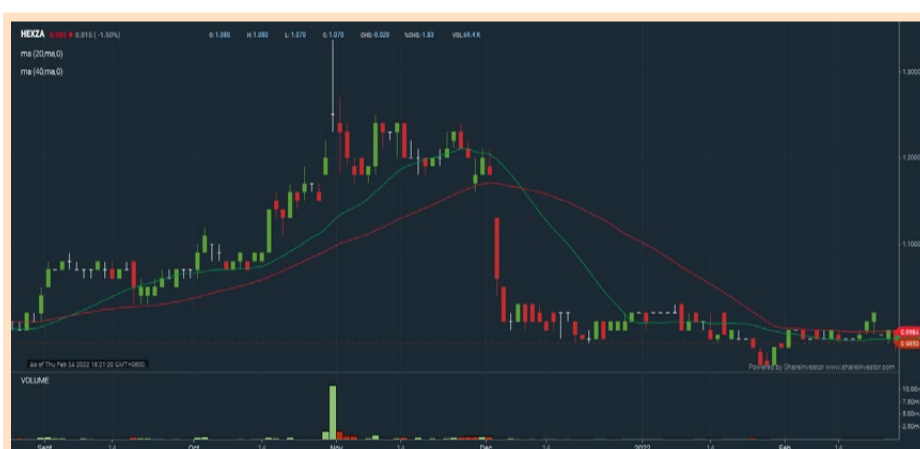
Analysis



Period	Dividend Received	Capital Appreciation	Total Shareholder Return
Short Term Return	5 Days	0.148	-3.82 %
	10 Days	0.148	-6.24 %
	20 Days	0.148	-11.88 %
Medium Term Return	3 Months	0.148	-6.06 %
	6 Months	0.698	-24.54 %
	1 Year	0.875	-46.49 %
Long Term Return	2 Years	1.069	-4.97 %
	3 Years	1.147	+14.00 %
	5 Years	1.351	+146.57 %
Annualised Return	Annualised	-	+19.78 %

**HEXZA CORPORATION BERHAD (3298)**

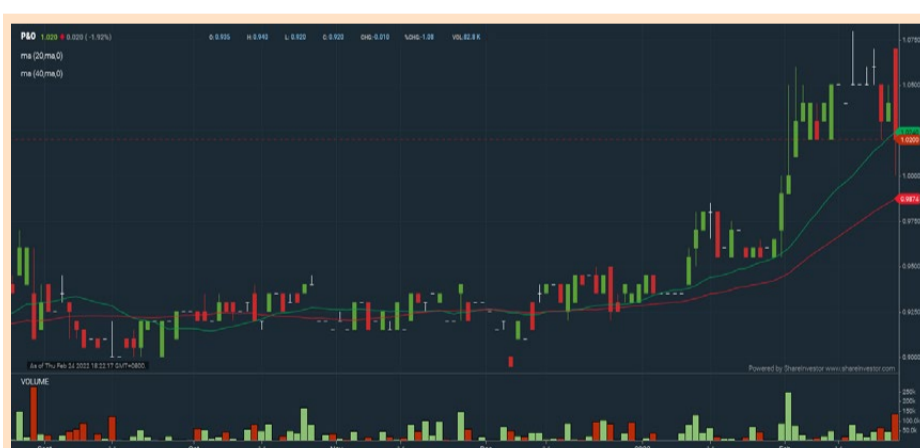
Analysis



Period	Dividend Received	Capital Appreciation	Total Shareholder Return
Short Term Return	5 Days	-0.005	-0.51 %
	10 Days	-0.005	-0.51 %
	20 Days	+0.025	+2.60 %
Medium Term Return	3 Months	0.150	-7.72 %
	6 Months	0.150	+13.50 %
	1 Year	0.150	+2.25 %
Long Term Return	2 Years	0.225	+50.31 %
	3 Years	0.275	+82.08 %
	5 Years	0.325	+27.06 %
Annualised Return	Annualised	-	+4.91 %

**PACIFIC & ORIENT BERHAD (6009)**

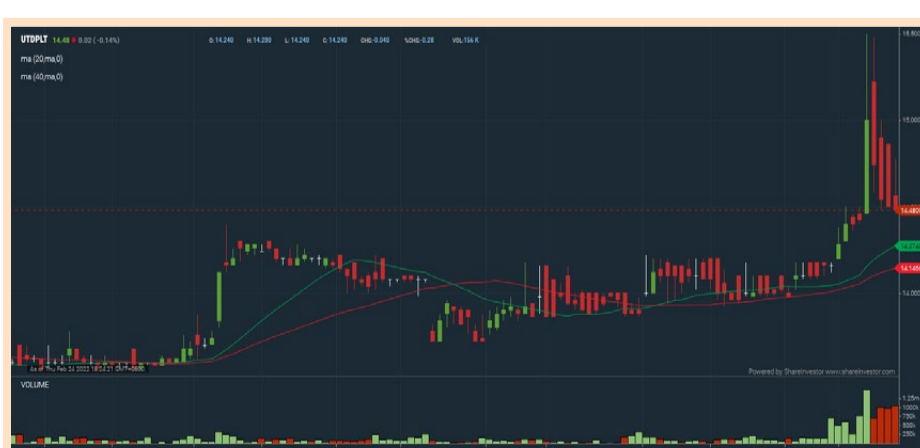
Analysis



Period	Dividend Received	Capital Appreciation	Total Shareholder Return
Short Term Return	5 Days	-0.030	-2.86 %
	10 Days	-	-
	20 Days	+0.065	+6.81 %
Medium Term Return	3 Months	+0.100	+10.87 %
	6 Months	+0.060	+6.25 %
	1 Year	0.036	+15.41 %
Long Term Return	2 Years	0.099	+18.41 %
	3 Years	0.167	+18.70 %
	5 Years	0.304	+19.71 %
Annualised Return	Annualised	-	+3.66 %

**UNITED PLANTATIONS BERHAD (2089)**

Analysis



Period	Dividend Received	Capital Appreciation	Total Shareholder Return
Short Term Return	5 Days	+0.000	+0.56 %
	10 Days	+0.300	+2.70 %
	20 Days	+0.480	+3.43 %
Medium Term Return	3 Months	+0.580	+4.17 %
	6 Months	0.300	+8.84 %
	1 Year	0.950	+12.17 %
Long Term Return	2 Years	2.290	+35.73 %
	3 Years	3.600	+46.86 %
	5 Years	6.250	+81.95 %
Annualised Return	Annualised	-	+12.72 %





Long Companies

SHAREINVESTOR WEBPRO GUIDE  
 ShareInvestor WebPro > Screener > Predefined TA Screens > select market BURSA > Most Long Signals > click Scan Results or mouse over each company

Definition

Top 10 stocks with Technical Analysis plus Pattern Matching by 60 pre-defined indicators by the system showing a higher probability of bullish sentiment on the share price.

**MESB BHD (7234.MY)**

MESB

Price updated at 24 Feb 2022 16:56

Last: <b>0.545</b>	Change: <b>-0.015</b>	Volume: <b>11,183</b>
	Change (%): <b>-2.68</b>	Range: <b>0.510 - 0.560</b>

TA Scanner Results based on historical data up to 24 Feb 2022

Condition	Signal	Explanation
Bollinger Band: Bullish Long Term Volatility Breakout and Trending	Long	1. Close price above upper bollinger band(33,1). 2. Volume above average volume(50). 3. Average volume(50) is above 300,000.
Bollinger Band: Bullish Lower Bollinger Band Support	Long	1. Low 1 day ago below lower bollinger band(20,2). 2. Close above close 1 day ago. 3. Average volume(5) is above 100,000.
Bollinger Band: Bullish Short Term Volatility Breakout and Trending	Long	1. Close price above upper bollinger band(33,1). 2. Volume above average volume(10). 3. Average volume(10) is above 300,000.
Bollinger Band: High Above Upper Bollinger Band	Neutral	1. High above upper bollinger band(20,2). 2. Average volume(5) is above 100,000.
Chaikin Volatility: Increasing Chaikin Volatility	Neutral	Chaikin Volatility(10,10) has been increasing for 5 days
DM: Bullish Directional Movement	Long	-DI(14) crossed below +DI(14)
Donchian Channels: High Above Upper Donchian Channels	Long	High crossed above the upper Donchian Channel(14,4)
MACD: Bullish MACD Crossover	Long	1. MACD(12,26) diff line crossed above the MACD(12,26) signal line. 2. MACD Histogram(12,26) is above 0.
Volume: Volume Spike	Long	1. Volume is more than 500% above average volume(10). 2. Volume above 200000. 3. Close price above 0.10

**CLOUDARON GROUP BERHAD (03001.MY)**

CLOUD

Price updated at 24 Feb 2022 08:30

Last: <b>0.100</b>	Change: -	Volume: -
	Change (%): -	Range: <b>0.100 - 0.100</b>

TA Scanner Results based on historical data up to 24 Feb 2022

Condition	Signal	Explanation
DM: Bullish Directional Movement	Long	-DI(14) crossed below +DI(14)
Donchian Channels: High Above Upper Donchian Channels	Long	High crossed above the upper Donchian Channel(14,4)
MA: Long Term Bullish Moving Average Crossover	Long	MA(50) crossed above MA(200) within the last 1 day.
MA: Medium Term Bullish Moving Average Crossover	Long	MA(25) crossed above MA(50) within the last 1 day.
MA: Short Term Bullish Moving Average Crossover	Long	MA(10) crossed above MA(15) within the last 1 day.
MACD: Bullish MACD Crossover	Long	1. MACD(12,26) diff line crossed above the MACD(12,26) signal line. 2. MACD Histogram(12,26) is above 0.
Parabolic SAR: Bearish Parabolic SAR Reversal	Neutral	1. Parabolic SAR 1 day ago above close price 1 day ago for the last 5 days. 2. Parabolic SAR below close price

**JAYA TIASA HOLDINGS BHD (4383.MY)**

JTIASA

Price updated at 24 Feb 2022 16:59

Last: <b>0.965</b>	Change: <b>+0.075</b>	Volume: <b>776,012</b>
	Change (%): <b>+8.43</b>	Range: <b>0.880 - 0.980</b>

TA Scanner Results based on historical data up to 24 Feb 2022

Condition	Signal	Explanation
Bollinger Band: High Above Upper Bollinger Band	Neutral	1. High above upper bollinger band(20,2). 2. Average volume(5) is above 100,000.
Candlestick: Bullish Engulfing	Long	Bullish: Engulfing
Chaikin Volatility: Increasing Chaikin Volatility	Neutral	Chaikin Volatility(10,10) has been increasing for 5 days
MA: Long Term Bullish Moving Average Crossover	Long	MA(50) crossed above MA(200) within the last 1 day.
MACD: Overbought	Short	1. MACD Histogram(12,26,9) reached a new 6 month high. 2. MACD Histogram(12,26,9) has been above 0 for the last 3 weeks.
Price: New 52 Week High	Long	1. Stock reach a new 52 week high. 2. Average volume(30) is above 50000.
Volume: 10 Days large value Buy Up trade	Long	1. 150K value Buy Up greater than Sell Down by 20% for 10 days. 2. 50K-100K value Buy Up greater than Sell Down by 20% for 10 days. 3. Average volume(10) is above 1000000
Volume: 5 Days large value Buy Up trade	Long	1. 150K value Buy Up greater than Sell Down by 20% for 5 days. 2. 50K-100K value Buy Up greater than Sell Down by 20% for 5 days. 3. Average volume(10) is above 1000000
Volume: Consecutive Days Of Increasing Average Volume	Long	1. Average Volume(20) has been increasing over the last 2 weeks. 2. Average volume(20) is above 100000
Williams %R: Bearish Williams %R	Short	1. Williams %R(26) between 0 and -20. 2. Average volume(5) is above 100,000.

**CHIN HIN GROUP BERHAD (5273.MY)**

CHINHIN

Price updated at 24 Feb 2022 16:53

Last: <b>2.400</b>	Change: <b>-0.110</b>	Volume: <b>24,174</b>
	Change (%): <b>-4.38</b>	Range: <b>2.370 - 2.560</b>

TA Scanner Results based on historical data up to 24 Feb 2022

Condition	Signal	Explanation
Bollinger Band: Bullish Long Term Volatility Breakout and Trending	Long	1. Close price above upper bollinger band(33,1). 2. Volume above average volume(50). 3. Average volume(50) is above 300,000.
Bollinger Band: Bullish Short Term Volatility Breakout and Trending	Long	1. Close price above upper bollinger band(33,1). 2. Volume above average volume(10). 3. Average volume(10) is above 300,000.
Candlestick: Bullish Engulfing	Long	Bullish: Engulfing
MA: Short Term Bullish Moving Average Crossover	Long	MA(10) crossed above MA(15) within the last 1 day.
Volume: 10 Days large value Buy Up trade	Long	1. 150K value Buy Up greater than Sell Down by 20% for 10 days. 2. 50K-100K value Buy Up greater than Sell Down by 20% for 10 days. 3. Average volume(10) is above 1000000
Volume: 5 Days large value Buy Up trade	Long	1. 150K value Buy Up greater than Sell Down by 20% for 5 days. 2. 50K-100K value Buy Up greater than Sell Down by 20% for 5 days. 3. Average volume(10) is above 1000000

**SAMCHEM HOLDINGS BERHAD (5147.MY)**

SAMCHEM

Price updated at 24 Feb 2022 16:59

Last: <b>0.955</b>	Change: <b>-0.065</b>	Volume: <b>88,766</b>
	Change (%): <b>-6.37</b>	Range: <b>0.950 - 1.040</b>

TA Scanner Results based on historical data up to 24 Feb 2022

Condition	Signal	Explanation
Bollinger Band: High Above Upper Bollinger Band	Neutral	1. High above upper bollinger band(20,2). 2. Average volume(5) is above 100,000.
Candlestick: Bullish Engulfing	Long	Bullish: Engulfing
Donchian Channels: High Above Upper Donchian Channels	Long	High crossed above the upper Donchian Channel(14,4)
MACD: Bullish MACD Crossover	Long	1. MACD(12,26) diff line crossed above the MACD(12,26) signal line. 2. MACD Histogram(12,26) is above 0.
Volume: 10 Days large value Buy Up trade	Long	1. 150K value Buy Up greater than Sell Down by 20% for 10 days. 2. 50K-100K value Buy Up greater than Sell Down by 20% for 10 days. 3. Average volume(10) is above 1000000
Volume: 5 Days large value Buy Up trade	Long	1. 150K value Buy Up greater than Sell Down by 20% for 5 days. 2. 50K-100K value Buy Up greater than Sell Down by 20% for 5 days. 3. Average volume(10) is above 1000000
Williams %R: Bearish Williams %R	Short	1. Williams %R(26) between 0 and -20. 2. Average volume(5) is above 100,000.

**RADIANT GLOBALTECH BERHAD (0202.MY)**

RGTECH

Price updated at 24 Feb 2022 16:59

Last: <b>0.440</b>	Change: <b>-0.050</b>	Volume: <b>198,269</b>
	Change (%): <b>-10.20</b>	Range: <b>0.425 - 0.490</b>

TA Scanner Results based on historical data up to 24 Feb 2022

Condition	Signal	Explanation
Bollinger Band: Bullish Long Term Volatility Breakout and Trending	Long	1. Close price above upper bollinger band(33,1). 2. Volume above average volume(50). 3. Average volume(50) is above 300,000.
Bollinger Band: Bullish Short Term Volatility Breakout and Trending	Long	1. Close price above upper bollinger band(33,1). 2. Volume above average volume(10). 3. Average volume(10) is above 300,000.
Bollinger Band: High Above Upper Bollinger Band	Neutral	1. High above upper bollinger band(20,2). 2. Average volume(5) is above 100,000.
Donchian Channels: High Above Upper Donchian Channels	Long	High crossed above the upper Donchian Channel(14,4)
Volume: 10 Days large value Buy Up trade	Long	1. 150K value Buy Up greater than Sell Down by 20% for 10 days. 2. 50K-100K value Buy Up greater than Sell Down by 20% for 10 days. 3. Average volume(10) is above 1000000
Volume: 5 Days large value Buy Up trade	Long	1. 150K value Buy Up greater than Sell Down by 20% for 5 days. 2. 50K-100K value Buy Up greater than Sell Down by 20% for 5 days. 3. Average volume(10) is above 1000000

**Disclaimer:** The information on this page is provided as a service to readers. It does not constitute financial advice and/or any investment recommendations. Past performance is not indicative of future results. We assume no liability for damages resulting from or arising out of the use of such information. It would be best if you did your own research to make your personal investment decisions wisely or consult a licenced investment advisor.

**NYLEX (M) BHD (4944.MY)**

NYLEX

Price updated at 24 Feb 2022 16:59

Last: <b>1.820</b>	Change: <b>+0.030</b>	Volume: <b>36,272</b>
	Change (%): <b>+1.68</b>	Range: <b>1.620 - 1.850</b>

TA Scanner Results based on historical data up to 24 Feb 2022

Condition	Signal	Explanation
Bollinger Band: High Above Upper Bollinger Band	Neutral	1. High above upper bollinger band(20,2). 2. Average volume(5) is above 100,000.
Donchian Channels: High Above Upper Donchian Channels	Long	High crossed above the upper Donchian Channel(14,4)
MACD: Bullish MACD Crossover	Long	1. MACD(12,26) diff line crossed above the MACD(12,26) signal line. 2. MACD Histogram(12,26) is above 0.
Price: New 52 Week High	Long	1. Stock reach a new 52 week high. 2. Average volume(30) is above 50000.
Volume: 10 Days large value Buy Up trade	Long	1. 150K value Buy Up greater than Sell Down by 20% for 10 days. 2. 50K-100K value Buy Up greater than Sell Down by 20% for 10 days. 3. Average volume(10) is above 1000000
Volume: 5 Days large value Buy Up trade	Long	1. 150K value Buy Up greater than Sell Down by 20% for 5 days. 2. 50K-100K value Buy Up greater than Sell Down by 20% for 5 days. 3. Average volume(10) is above 1000000

**BOUSTEAD PLANTATIONS BHD (5254.MY)**

BPLANT

Price updated at 24 Feb 2022 16:59

Last: <b>1.140</b>	Change: <b>+0.070</b>	Volume: <b>253,839</b>
	Change (%): <b>+6.54</b>	Range: <b>1.050 - 1.150</b>

TA Scanner Results based on historical data up to 24 Feb 2022

Condition	Signal	Explanation
Bollinger Band: High Above Upper Bollinger Band	Neutral	1. High above upper bollinger band(20,2). 2. Average volume(5) is above 100,000.
MACD: Overbought	Short	1. MACD Histogram(12,26,9) reached a new 6 month high. 2. MACD Histogram(12,26,9) has been above 0 for the last 3 weeks.
Price: New 52 Week High	Long	1. Stock reach a new 52 week high. 2. Average volume(30) is above 50000.
Volume: 10 Days large value Buy Up trade	Long	1. 150K value Buy Up greater than Sell Down by 20% for 10 days. 2. 50K-100K value Buy Up greater than Sell Down by 20% for 10 days. 3. Average volume(10) is above 1000000
Volume: 5 Days large value Buy Up trade	Long	1. 150K value Buy Up greater than Sell Down by 20% for 5 days. 2. 50K-100K value Buy Up greater than Sell Down by 20% for 5 days. 3. Average volume(10) is above 1000000
Volume: Consecutive Days Of Increasing Average Volume	Long	1. Average Volume(20) has been increasing over the last 2 weeks. 2. Average volume(20) is above 100000
Williams %R: Bearish Williams %R	Short	1. Williams %R(26) between 0 and -20. 2. Average volume(5) is above 100,000.

**WIDAD GROUP BERHAD (0162.MY)**

WIDAD

Price updated at 24 Feb 2022 16:59

Last: <b>0.310</b>	Change: <b>-0.010</b>	Volume: <b>337,575</b>
	Change (%): <b>-3.13</b>	Range: <b>0.305 - 0.320</b>

TA Scanner Results based on historical data up to 24 Feb 2022

Condition	Signal	Explanation
Bollinger Band: Bullish Lower Bollinger Band Support	Long	1. Low 1 day ago below lower bollinger band(20,2). 2. Close above close 1 day ago. 3. Average volume(5) is above 100,000.
Candlestick: Bullish Harami	Long	Bullish: Harami
Volume: 10 Days large value Buy Up trade	Long	1. 150K value Buy Up greater than Sell Down by 20% for 10 days. 2. 50K-100K value Buy Up greater than Sell Down by 20% for 10 days. 3. Average volume(10) is above 1000000
Volume: 5 Days large value Buy Up trade	Long	1. 150K value Buy Up greater than Sell Down by 20% for 5 days. 2. 50K-100K value Buy Up greater than Sell Down by 20% for 5 days. 3. Average volume(10) is above 1000000

**SARAWAK OIL PALMS BHD (5126.MY)**

SOP

Price updated at 24 Feb 2022 16:59

Last: <b>5.370</b>	Change: <b>+0.110</b>	Volume: <b>24,359</b>
	Change (%): <b>+2.09</b>	Range: <b>5.160 - 5.420</b>

TA Scanner Results based on historical data up to 24 Feb 2022

Condition	Signal	Explanation
Price: New 52 Week High	Long	1. Stock reach a new 52 week high. 2. Average volume(30) is above 50000.
Volume: 10 Days large value Buy Up trade	Long	1. 150K value Buy Up greater than Sell Down by 20% for 10 days. 2. 50K-100K value Buy Up greater than Sell Down by 20% for 10 days. 3. Average volume(10) is above 1000000
Volume: 5 Days large value Buy Up trade	Long	1. 150K value Buy Up greater than Sell Down by 20% for 5 days. 2. 50K-100K value Buy Up greater than Sell Down by 20% for 5 days. 3. Average volume(10) is above 1000000
Volume: Consecutive Days Of Increasing Average Volume	Long	1. Average Volume(20) has been increasing over the last 2 weeks. 2. Average volume(20) is above 100000
Williams %R: Bearish Williams %R	Short	1. Williams %R(26) between 0 and -20. 2. Average volume(5) is above 100,000





# Insider Activity

## Definition

Insider Activity shows the trades made by substantial shareholders or directors of the company. Purchases by the directors and company share buyback may indicate the share price is undervalued and brings confidence to the price trend of the share price.



ShareInvestor WebPro > Fundamental > Insider Trades > click Search tab > Select Bursa > click Stock name > scroll up and leave at <Select Counter> Type Date Range for Announcement Date > click Search

Notice Period is 13 February 2022 - 19 February 2022					
Effective Change Date	Stock Name	Buyer/ Seller Name (Classification)	Bought / (Sold) ('000)	No. of Shares After Trade ('000)	
			Total	Total	% Held
15 Feb 2022 - 16 Feb 2022	3A	MR TEO KWEE HOCK [SSH]	-1,344	43,436	8.86
10 Feb 2022 - 11 Feb 2022	3A	MR TEO KWEE HOCK [SSH]	-1,370	44,779	9.134
14 Feb 2022 - 14 Feb 2022	ABMB	EMPLOYEES PROVIDENT FUND BOARD [SSH]	-842	209,025	13.502
11 Feb 2022 - 11 Feb 2022	ABMB	EMPLOYEES PROVIDENT FUND BOARD [SSH]	-158	209,867	13.556
10 Feb 2022 - 10 Feb 2022	ABMB	EMPLOYEES PROVIDENT FUND BOARD [SSH]	-1,000	210,025	13.567
09 Feb 2022 - 09 Feb 2022	ABMB	EMPLOYEES PROVIDENT FUND BOARD [SSH]	-277	211,025	13.631
15 Feb 2022 - 15 Feb 2022	AEON	EMPLOYEES PROVIDENT FUND BOARD [SSH]	-337	158,070	11.259
14 Feb 2022 - 14 Feb 2022	AEON	EMPLOYEES PROVIDENT FUND BOARD [SSH]	-664	158,407	11.283
11 Feb 2022 - 11 Feb 2022	AEON	EMPLOYEES PROVIDENT FUND BOARD [SSH]	-451	159,072	11.33
17 Feb 2022 - 17 Feb 2022	AIRPORT	KUMPULAN WANG PERSARAAN (DIPERBADANKAN) [SSH]	96	92,261	5.561
15 Feb 2022 - 15 Feb 2022	AIRPORT	EMPLOYEES PROVIDENT FUND BOARD [SSH]	240	251,644	15.167
16 Feb 2022 - 16 Feb 2022	AIRPORT	KUMPULAN WANG PERSARAAN (DIPERBADANKAN) [SSH]	96	92,164	5.555
15 Feb 2022 - 15 Feb 2022	AIRPORT	KUMPULAN WANG PERSARAAN (DIPERBADANKAN) [SSH]	48	92,069	5.549
10 Feb 2022 - 10 Feb 2022	AIRPORT	EMPLOYEES PROVIDENT FUND BOARD [SSH]	-100	251,404	15.152
11 Feb 2022 - 11 Feb 2022	AIRPORT	KUMPULAN WANG PERSARAAN (DIPERBADANKAN) [SSH]	100	92,021	5.546
09 Dec 2021 - 09 Feb 2022	AIRPORT	EMPLOYEES PROVIDENT FUND BOARD [SSH]	91	251,504	15.158
15 Feb 2022 - 15 Feb 2022	ALLIANZ	EMPLOYEES PROVIDENT FUND BOARD [SSH]	18	11,630	6.54
14 Feb 2022 - 14 Feb 2022	ALLIANZ	EMPLOYEES PROVIDENT FUND BOARD [SSH]	3	11,612	6.536
10 Feb 2022 - 10 Feb 2022	ALLIANZ	EMPLOYEES PROVIDENT FUND BOARD [SSH]	9	11,609	6.534
09 Feb 2022 - 09 Feb 2022	ALLIANZ	EMPLOYEES PROVIDENT FUND BOARD [SSH]	14	11,600	6.529
15 Feb 2022 - 15 Feb 2022	AMBANK	EMPLOYEES PROVIDENT FUND BOARD [SSH]	831	309,226	9.337
14 Feb 2022 - 14 Feb 2022	AMBANK	EMPLOYEES PROVIDENT FUND BOARD [SSH]	169	308,395	9.312
11 Feb 2022 - 11 Feb 2022	AMBANK	EMPLOYEES PROVIDENT FUND BOARD [SSH]	355	308,226	9.307
16 Feb 2022 - 16 Feb 2022	ANCOM	DATO SIEW KA WEI [DIR/CEO]	5	15,237	25.639
15 Feb 2022 - 15 Feb 2022	ANCOM	MR LEE CHEUN WEI [SSH]	20	15,647	6.207
07 Feb 2022 - 17 Feb 2022	ANCOM	DATO SIEW KA WEI [SSH]	-1,041	55,521	22.024
07 Feb 2022 - 17 Feb 2022	ANCOM	DATO SIEW KA WEI [DIR/CEO]	5	55,521	22.024
07 Feb 2022 - 07 Feb 2022	ANCOM	MR SIEW KA KHEONG [DIR/CEO]	300	15,377	6.099
07 Feb 2022 - 07 Feb 2022	ANCOM	MR SIEW KA KHEONG [SSH]	300	15,377	6.099
10 Feb 2022 - 14 Feb 2022	ANCOM	DATO SIEW KA WEI [DIR/CEO]	-235	55,180	21.889
10 Feb 2022 - 14 Feb 2022	ANCOM	DATO SIEW KA WEI [SSH]	-235	55,180	21.889
10 Feb 2022 - 10 Feb 2022	ANCOM	MR LEE CHEUN WEI [SSH]	65	15,627	6.595
17 Feb 2022 - 17 Feb 2022	ANNJO	DATO LIM KIAM LAM [DIR/CEO]	10,500	280,182	50.642
17 Feb 2022 - 17 Feb 2022	ANNJO	DATO LIM KIAM LAM [SSH]	10,500	279,804	50.574
17 Feb 2022 - 17 Feb 2022	ANNJO	LIM SENG QWEE [SSH]	10,500	265,610	48.008
17 Feb 2022 - 17 Feb 2022	ANNJO	LSQ & SONS SDN BHD [SSH]	10,500	259,280	46.864
17 Feb 2022 - 17 Feb 2022	ANNJO	LIM SIN SEONG [DIR/CEO]	10,500	217,972	39.397
17 Feb 2022 - 17 Feb 2022	ANNJO	LIM SIN SEONG SDN BHD [SSH]	10,500	217,829	39.372
17 Feb 2022 - 17 Feb 2022	ANNJO	LIM SIN SEONG [SSH]	10,500	217,829	39.372
17 Feb 2022 - 17 Feb 2022	ANNJO	DATO LIM KIAM LAM [DIR/CEO]	10,500	52,417	70.582
17 Feb 2022 - 17 Feb 2022	ANNJO	LIM SIN SEONG [DIR/CEO]	10,500	33,378	44.945
15 Feb 2022 - 15 Feb 2022	APM	EMPLOYEES PROVIDENT FUND BOARD [SSH]	0.5	11,026	5.64
09 Feb 2022 - 09 Feb 2022	APM	EMPLOYEES PROVIDENT FUND BOARD [SSH]	0.3	11,025	5.64
14 Feb 2022 - 14 Feb 2022	ARBB	DATO SRI LIEW KOK LEONG [SSH]	88,570	260,244	21.394
14 Feb 2022 - 14 Feb 2022	ARBB	DATO SRI LIEW KOK LEONG [DIR/CEO]	88,570	260,244	21.394
14 Feb 2022 - 14 Feb 2022	ARBB	UKAY ONE SDN BHD [SSH]	88,570	107,139	8.808
15 Feb 2022 - 15 Feb 2022	ASTRO	EMPLOYEES PROVIDENT FUND BOARD ("EPF") [SSH]	653	335,526	6.434
14 Feb 2022 - 14 Feb 2022	AXIATA	EMPLOYEES PROVIDENT FUND BOARD [SSH]	-468	1,567,434	17.084
11 Feb 2022 - 11 Feb 2022	AXIATA	EMPLOYEES PROVIDENT FUND BOARD [SSH]	-500	1,567,902	17.089
10 Feb 2022 - 10 Feb 2022	AXIATA	EMPLOYEES PROVIDENT FUND BOARD [SSH]	-583	1,568,407	17.094
09 Feb 2022 - 09 Feb 2022	AXIATA	EMPLOYEES PROVIDENT FUND BOARD [SSH]	-248	1,568,985	17.101
08 Feb 2022 - 08 Feb 2022	AXIATA	EMPLOYEES PROVIDENT FUND BOARD [SSH]	-138	1,569,233	17.103
07 Feb 2022 - 07 Feb 2022	AXIATA	EMPLOYEES PROVIDENT FUND BOARD [SSH]	-500	1,569,371	17.105
15 Feb 2022 - 15 Feb 2022	AXREIT	EMPLOYEES PROVIDENT FUND BOARD [SSH]	-106	279,212	17.082
14 Feb 2022 - 14 Feb 2022	AXREIT	EMPLOYEES PROVIDENT FUND BOARD [SSH]	-155	279,318	17.089
11 Feb 2022 - 11 Feb 2022	AXREIT	EMPLOYEES PROVIDENT FUND BOARD [SSH]	371	279,473	17.098
10 Feb 2022 - 10 Feb 2022	AXREIT	EMPLOYEES PROVIDENT FUND BOARD [SSH]	-75	279,102	17.075
17 Feb 2022 - 17 Feb 2022	BAUTO	KUMPULAN WANG PERSARAAN (DIPERBADANKAN) [SSH]	-290	60,288	5.187
16 Feb 2022 - 16 Feb 2022	BAUTO	KUMPULAN WANG PERSARAAN (DIPERBADANKAN) [SSH]	-71	60,578	5.212
14 Feb 2022 - 14 Feb 2022	BAUTO	KUMPULAN WANG PERSARAAN (DIPERBADANKAN) [SSH]	245	60,649	5.218
11 Feb 2022 - 11 Feb 2022	BAUTO	KUMPULAN WANG PERSARAAN (DIPERBADANKAN) [SSH]	87	60,404	5.197
08 Feb 2022 - 08 Feb 2022	BDB	JINGSHI HOLDINGS (M) SDN BHD [SSH]	-734	20,942	6.892
15 Feb 2022 - 15 Feb 2022	BESHOM	MADAM TAN KENG SONG [SSH]	89	78,246	26.074
15 Feb 2022 - 15 Feb 2022	BESHOM	MR TAN KENG KANG [SSH]	89	77,483	25.819
15 Feb 2022 - 15 Feb 2022	BESHOM	MR TAN KAI HEE [DIR/CEO]	89	77,483	25.819
15 Feb 2022 - 15 Feb 2022	BESHOM	MR TAN KENG KANG [DIR/CEO]	89	77,483	25.819
15 Feb 2022 - 15 Feb 2022	BESHOM	MADAM PHAN VAN DENH [SSH]	89	77,483	25.819
15 Feb 2022 - 15 Feb 2022	BESHOM	MR TAN KAI HEE [SSH]	89	77,483	25.819
15 Feb 2022 - 15 Feb 2022	BIMB	EMPLOYEES PROVIDENT FUND BOARD [SSH]	283	282,251	13.096
15 Feb 2022 - 15 Feb 2022	BIMB	AMANAHRAYA TRUSTEES BERHAD - AMANAH SAHAM BUMIPUTERA [SSH]	-87	149,125	6.919
14 Feb 2022 - 14 Feb 2022	BIMB	EMPLOYEES PROVIDENT FUND BOARD [SSH]	1,000	281,968	13.083
11 Feb 2022 - 11 Feb 2022	BIMB	EMPLOYEES PROVIDENT FUND BOARD [SSH]	525	280,968	13.036
10 Feb 2022 - 10 Feb 2022	BIMB	EMPLOYEES PROVIDENT FUND BOARD [SSH]	1,000	280,443	13.012
09 Feb 2022 - 09 Feb 2022	BIMB	EMPLOYEES PROVIDENT FUND BOARD [SSH]	759	279,443	12.966
11 Feb 2022 - 11 Feb 2022	BJCORP-LD	TAN SRI DATO SRI VINCENT TAN CHEE YIUON [DIR/CEO]	-346	165,695	38.06
16 Jan 2022 - 17 Feb 2022	BJFOOD	TAN SRI DATO SRI VINCENT TAN CHEE YIUON [SSH]	-5,079	216,088	59.872
15 Feb 2022 - 15 Feb 2022	BJFOOD	DATUK ZAINUN AISHAH BINTI AHMAD [DIR/CEO]	-250	320	0.089
15 Feb 2022 - 15 Feb 2022	BOILERM	DR CHIA SONG KUN [DIR/CEO]	466	264,248	51.21
15 Feb 2022 - 15 Feb 2022	BOILERM	DR CHIA SONG KUN [SSH]	466	264,248	51.21

Disclaimer: The information in Insider Activity is extracted from [www.shareinvestor.com/fundamental/insider\\_trades](http://www.shareinvestor.com/fundamental/insider_trades). The information on this page is provided as a service to readers. It does not constitute financial advice and/or any investment recommendations. We assume no liability for damages resulting from or arising out of the use of such information. Whilst every effort is made to ensure accuracy, the information presented is not the official record of shareholder filings. Readers are advised to read the original filings on the Bursa Malaysia website at [www.bursamalaysia.com](http://www.bursamalaysia.com)

Notice Period is 13 February 2022 - 19 February 2022					
Effective Change Date	Stock Name	Buyer/ Seller Name (Classification)	Bought / (Sold) ('000)	No. of Shares After Trade ('000)	
			Total	Total	% Held
15 Feb 2022 - 15 Feb 2022	BOILERM	QL RESOURCES BERHAD [SSH]	466	263,848	51.13
15 Feb 2022 - 15 Feb 2022	BOILERM	QL GREEN RESOURCES SDN. BHD. [SSH]	466	263,848	51.13
15 Feb 2022 - 15 Feb 2022	BOILERM	CBG (L) PTE LTD [SSH]	466	263,848	51.13
15 Feb 2022 - 15 Feb 2022	BOILERM	CBG (L) FOUNDATION [SSH]	466	263,848	51.13
17 Feb 2022 - 17 Feb 2022	BONIA	MR CHIANG SANG SEM [DIR/CEO]	-500	146,306	72.79
18 Feb 2022 - 18 Feb 2022	CAELY	DATO WIRA NG CHUN HAU [DIR/CEO]	-360	23,265	18.074
18 Feb 2022 - 18 Feb 2022	CAELY	DATO WIRA NG CHUN HAU [DIR/CEO]	-3,780	19,485	15.138
17 Feb 2022 - 17 Feb 2022	CAELY	DATO WIRA NG CHUN HAU [DIR/CEO]	-662	23,625	18.354
17 Feb 2022 - 17 Feb 2022	CAELY	DATO WIRA NG CHUN HAU [DIR/CEO]	-662	23,625	18.354
16 Feb 2022 - 16 Feb 2022	CAELY	DATO WIRA NG CHUN HAU [DIR/CEO]	-3,578	24,287	18.868
16 Feb 2022 - 16 Feb 2022	CARIMIN	MR WONG KONG FOO [SSH]	-15,000	43,337	18.53
16 Feb 2022 - 16 Feb 2022	CARIMIN	CIPTA PANTAS SDN. BHD. [SSH]	-3,000	38,787	16.584
16 Feb 2022 - 16 Feb 2022	CIMB	KUMPULAN WANG PERSARAAN (DIPERBADANKAN) [SSH]	-500	677,427	6.63
15 Feb 2022 - 15 Feb 2022	CIMB	EMPLOYEES PROVIDENT FUND BOARD [SSH]	334	1,563,274	15.29
14 Feb 2022 - 14 Feb 2022	CIMB	EMPLOYEES PROVIDENT FUND BOARD [SSH]	2,046	1,556,940	15.23
15 Feb 2022 - 15 Feb 2022	CIMB	KUMPULAN WANG PERSARAAN (DIPERBADANKAN) [SSH]	-150	677,927	6.64
11 Feb 2022 - 11 Feb 2022	CIMB	EMPLOYEES PROVIDENT FUND BOARD [SSH]	2,829	1,554,894	15.21
10 Feb 2022 - 10 Feb 2022	CIMB	EMPLOYEES PROVIDENT FUND BOARD [SSH]	-785	1,552,065	15.18
11 Feb 2022 - 11 Feb 2022	CIMB	KUMPULAN WANG PERSARAAN (DIPERBADANKAN) [SSH]	-500	678,077	6.64
09 Feb 2022 - 09 Feb 2022	CIMB	EMPLOYEES PROVIDENT FUND BOARD [SSH]	-6,236	1,552,850	15.19
10 Feb 2022 - 14 Feb 2022	COMPLET	DATO ONG CHOO MENG [SSH]	-2,500	91,951	71.474
17 Feb 2022 - 17 Feb 2022	CRG	DATO SRI CHIANG FONG YEE [DIR/CEO]	48	253,445	31.458
17 Feb 2022 - 17 Feb 2022	CRG	DATO SRI CHIANG FONG YEE [SSH]	48	179,806	22.318
16 Feb 2022 - 16 Feb 2022	CRG	DATO SRI CHIANG FONG YEE [DIR/CEO]	2	253,397	31.452
16 Feb 2022 - 16 Feb 2022	CRG	DATO SRI CHIANG FONG YEE [SSH]	2	179,758	22.312
15 Feb 2022 - 15 Feb 2022	CRG	DATO SRI CHIANG FONG YEE [DIR/CEO]	10	253,395	31.452
15 Feb 2022 - 15 Feb 2022	CRG	DATO SRI CHIANG FONG YEE [SSH]	10	179,755	22.312
14 Feb 2022 - 14 Feb 2022	CRG	DATO SRI CHIANG FONG YEE [DIR/CEO]	39	253,385	31.451
14 Feb 2022 - 14 Feb 2022	CRG	DATO SRI CHIANG FONG YEE [SSH]	39	179,745	22.311
14 Feb 2022 - 14 Feb 2022	DAYANG	URUSHARTA JAMAHAH SDN BHD [SSH]	-179	93,219	8.052
11 Feb 2022 - 11 Feb 2022	DAYANG	URUSHARTA JAMAHAH SDN BHD [SSH]	1,094	93,398	8.067
17 Feb 2022 - 17 Feb 2022	DBHD	JOHOR CORPORATION [SSH]	14	264,617	83.114
17 Feb 2022 - 17 Feb 2022	DBHD	JLAND GROUP SDN. BHD. (FORMERLY KNOWN AS ABSOLUTE AMBIENT SDN. BHD.) [SSH]	14	220,652	69.305
16 Feb 2022 - 16 Feb 2022	DBHD	JOHOR CORPORATION [SSH]	2	264,602	83.109
16 Feb 2022 - 16 Feb 2022	DBHD	JLAND GROUP SDN. BHD. (FORMERLY KNOWN AS ABSOLUTE AMBIENT SDN. BHD.) [SSH]	2	220,638	69.3
15 Feb 2022 - 15 Feb 2022	DBHD	JOHOR CORPORATION [SSH]	6	264,600	83.109
15 Feb 2022 - 15 Feb 2022	DBHD	JLAND GROUP SDN. BHD. (FORMERLY KNOWN AS ABSOLUTE AMBIENT SDN. BHD.) [SSH]	6	220,636	69.3
14 Feb 2022 - 14 Feb 2022	DBHD	JOHOR CORPORATION [SSH]	10	264,594	83.107
14 Feb 2022 - 14 Feb 2022	DBHD	JLAND GROUP SDN. BHD. (FORMERLY KNOWN AS ABSOLUTE AMBIENT SDN. BHD.) [SSH]	10	220,630	69.298
11 Feb 2022 - 11 Feb 2022	DBHD	JOHOR CORPORATION [SSH]	6	264,584	83.104
11 Feb 2022 - 11 Feb 2022	DBHD	JLAND GROUP SDN. BHD. (FORMERLY KNOWN AS ABSOLUTE AMBIENT SDN. BHD.) [SSH]	6	220,620	69.295
15 Feb 2022 - 15 Feb 2022	DESTINI	DATO ROZABIL @ ROZAMUJIB BIN ABDUL RAHMAN [SSH]	-8,000	300,611	18.07
15 Feb 2022 - 15 Feb 2022	DESTINI	DATO ROZABIL @ ROZAMUJIB BIN ABDUL RAHMAN [DIR/CEO]	-8,000	300,611	18.07
17 Feb 2022 - 17 Feb 2022	DIALOG	KUMPULAN WANG PERSARAAN (DIPERBADANKAN) [SSH]	-410	525,209	9.31
15 Feb 2022 - 15 Feb 2022	DIALOG	EMPLOYEES PROVIDENT FUND BOARD [SSH]	-4,183	746,672	13.23
16 Feb 2022 - 16 Feb 2022	DIALOG	KUMPULAN WANG PERSARAAN (DIPERBADANKAN) [SSH]	-269	525,249	9.31
14 Feb 2022 - 14 Feb 2022	DIALOG	EMPLOYEES PROVIDENT FUND BOARD [SSH]	-927	750,855	13.31
15 Feb 2022 - 15 Feb 2022	DIALOG	KUMPULAN WANG PERSARAAN (DIPERBADANKAN) [SSH]	-655	525,518	9.32
14 Feb 2022 - 14 Feb 2022	DIALOG	KUMPULAN WANG PERSARAAN (DIPERBADANKAN) [SSH]	187	526,173	9.33
10 Feb 2022 - 10 Feb 2022	DIALOG	EMPLOYEES PROVIDENT FUND BOARD [SSH]	-587	751,782	13.32
11 Feb 2022 - 11 Feb 2022	DIALOG	KUMPULAN WANG PERSARAAN (DIPERBADANKAN) [SSH]	-657	525,985	9.32
15 Feb 2022 - 15 Feb 2022	DIGI	EMPLOYEE PROVIDENT FUND BOARD [SSH]	-638	1,179,158	15.166
14 Feb 2022 - 14 Feb 2022	DIGI	EMPLOYEE PROVIDENT FUND BOARD [SSH]	-500	1,179,796	15.174
11 Feb 2022 - 11 Feb 2022	DIGI	EMPLOYEE PROVIDENT FUND BOARD [SSH]	-500	1,180,296	15.181
10 Feb 2022 - 10 Feb 2022	DIGI	EMPLOYEE PROVIDENT FUND BOARD [SSH]	-811	1,180,555	15.184
09 Feb 2022 - 09 Feb 2022	DIGI	EMPLOYEE PROVIDENT FUND BOARD [SSH]	-800	1,181,366	15.194
14 Feb 2022 - 14 Feb 2022	DIGISTA	LEE MEY LING [DIR/CEO]	250	250	0.024
15 Feb 2022 - 15 Feb 2022	DNONCE	AT SYSTEMATIZATION BERHAD [SSH]	13,863	111,300	29.621
17 Feb 2022 - 1					



Notice Period is 13 February 2022 - 19 February 2022

Effective Change Date	Stock Name	Buyer/ Seller Name [Classification]	Bought / (Sold) ('000)			No. of Shares After Trade ('000)		
			Total	Total	% Held	Total	Total	% Held
11 Feb 2022 - 11 Feb 2022	ECOFIRS	DATO' TIONG KWING HEE [DIR/CEO]	-1,320	102,873	8.839			
10 Feb 2022 - 10 Feb 2022	ECONBHD	EMPLOYEES PROVIDENT FUND BOARD [SSH]	-1,000	128,384	9.057			
10 Feb 2022 - 10 Feb 2022	ECOWLD	DATO' LEONG KOK WAH [DIR/CEO]	-400	1,193,594	40.538			
10 Feb 2022 - 10 Feb 2022	ECOWLD	DATO' LEONG KOK WAH [SSH]	-400	1,193,594	40.538			
10 Feb 2022 - 10 Feb 2022	ECOWLD	ECO WORLD DEVELOPMENT HOLDINGS SDN. BHD. [SSH]	-400	223,675	7.597			
10 Feb 2022 - 10 Feb 2022	ECOWLD	TAN SRI ABDUL RASHID BIN ABDUL MANAF [SSH]	-400	223,675	7.597			
10 Feb 2022 - 10 Feb 2022	ECOWLD	TAN SRI ABDUL RASHID BIN ABDUL MANAF [DIR/CEO]	-400	223,675	7.597			
14 Feb 2022 - 15 Feb 2022	EG	DATO' KANG PANG KIANG [SSH]	3,276	46,997	12.958			
14 Feb 2022 - 15 Feb 2022	EG	DATO' KANG PANG KIANG [DIR/CEO]	3,276	46,997	12.958			
11 Feb 2022 - 11 Feb 2022	EG	DATO' KANG PANG KIANG [DIR/CEO]	800	43,721	12.055			
11 Feb 2022 - 11 Feb 2022	EG	DATO' KANG PANG KIANG [SSH]	800	43,721	12.055			
11 Feb 2022 - 11 Feb 2022	EG	DATO' KANG PANG KIANG [SSH]	800	43,721	12.055			
11 Feb 2022 - 11 Feb 2022	EG	DATO' KANG PANG KIANG [DIR/CEO]	800	43,721	12.055			
17 Feb 2022 - 17 Feb 2022	ENGTEX	DATO' NG HOOK [SSH]	209	118,745	27.284			
17 Feb 2022 - 17 Feb 2022	ENGTEX	DATIN YAP SENG KUAN [DIR/CEO]	209	118,745	27.284			
17 Feb 2022 - 17 Feb 2022	ENGTEX	DATO' NG HOOK [DIR/CEO]	209	118,745	27.284			
17 Feb 2022 - 17 Feb 2022	ENGTEX	DATIN YAP SENG KUAN [SSH]	209	118,745	27.284			
17 Feb 2022 - 17 Feb 2022	ENGTEX	NGK RESOURCES SDN. BHD. [SSH]	209	22,833	5.246			
16 Feb 2022 - 16 Feb 2022	ENGTEX	DATIN YAP SENG KUAN [SSH]	424	118,536	27.236			
16 Feb 2022 - 16 Feb 2022	ENGTEX	DATO' NG HOOK [DIR/CEO]	424	118,536	27.236			
16 Feb 2022 - 16 Feb 2022	ENGTEX	DATIN YAP SENG KUAN [DIR/CEO]	424	118,536	27.236			
16 Feb 2022 - 16 Feb 2022	ENGTEX	DATO' NG HOOK [SSH]	424	118,536	27.236			
16 Feb 2022 - 16 Feb 2022	ENGTEX	NGK RESOURCES SDN. BHD. [SSH]	424	22,624	5.198			
15 Feb 2022 - 15 Feb 2022	ENRA	MR CHUA MING HUAT [SSH]	50	13,353	9.897			
09 Feb 2022 - 10 Feb 2022	ENRA	MR CHUA MING HUAT [SSH]	150	13,303	9.86			
10 Feb 2022 - 10 Feb 2022	F&N	EMPLOYEES PROVIDENT FUND BOARD [SSH]	72	46,789	12.757			
15 Feb 2022 - 15 Feb 2022	FAVCO	MR MAC NGAN BOON @ MAC YIN BOON [SSH]	330	149,395	67.114			
15 Feb 2022 - 15 Feb 2022	FAVCO	MR MAC NGAN BOON @ MAC YIN BOON [DIR/CEO]	330	149,395	67.114			
15 Feb 2022 - 15 Feb 2022	FAVCO	MUHIHBAH ENGINEERING (M) BHD [SSH]	330	135,532	60.886			
14 Feb 2022 - 14 Feb 2022	FAVCO	MR MAC NGAN BOON @ MAC YIN BOON [SSH]	312	149,065	66.965			
14 Feb 2022 - 14 Feb 2022	FAVCO	MR MAC NGAN BOON @ MAC YIN BOON [DIR/CEO]	312	149,065	66.965			
14 Feb 2022 - 14 Feb 2022	FAVCO	MUHIHBAH ENGINEERING (M) BHD [SSH]	312	135,201	60.737			
10 Feb 2022 - 10 Feb 2022	FAVCO	MR MAC NGAN BOON @ MAC YIN BOON [SSH]	99	148,753	66.825			
10 Feb 2022 - 10 Feb 2022	FAVCO	MR MAC NGAN BOON @ MAC YIN BOON [DIR/CEO]	99	148,753	66.825			
10 Feb 2022 - 10 Feb 2022	FAVCO	MUHIHBAH ENGINEERING (M) BHD [SSH]	99	134,889	60.597			
09 Feb 2022 - 09 Feb 2022	FGV	FEDERAL LAND DEVELOPMENT AUTHORITY (FELDA) [SSH]	59	2,916,096	79.933			
10 Feb 2022 - 10 Feb 2022	FITTERS	DATO' IR HO SHU KEONG [SSH]	-900	24,599	5.26			
15 Feb 2022 - 15 Feb 2022	FSBM	DATO TAN HOCK SAN @ TAN HOCK MING [DIR/CEO]	-11,726	27,218	19.41			
15 Feb 2022 - 15 Feb 2022	FSBM	DATO TAN HOCK SAN @ TAN HOCK MING [SSH]	-11,726	27,218	19.41			
11 Feb 2022 - 11 Feb 2022	GBGAQRS	EMPLOYEES PROVIDENT FUND BOARD [SSH]	-50	42,711	7.869			
17 Feb 2022 - 17 Feb 2022	GENP	KUMPULAN WANG PERSARAAN (DIPERBADANKAN) [SSH]	-70	64,744	7.216			
15 Feb 2022 - 15 Feb 2022	GENP	EMPLOYEES PROVIDENT FUND BOARD [SSH]	198	125,067	13.94			
16 Feb 2022 - 16 Feb 2022	GENP	KUMPULAN WANG PERSARAAN (DIPERBADANKAN) [SSH]	-460	64,814	7.224			
15 Feb 2022 - 15 Feb 2022	GENP	KUMPULAN WANG PERSARAAN (DIPERBADANKAN) [SSH]	-480	65,274	7.275			
11 Feb 2022 - 11 Feb 2022	GENP	KUMPULAN WANG PERSARAAN (DIPERBADANKAN) [SSH]	170	65,754	7.329			
15 Feb 2022 - 15 Feb 2022	HARTA	EMPLOYEES PROVIDENT FUND BOARD [SSH]	422	271,637	9.925			
14 Feb 2022 - 14 Feb 2022	HARTA	EMPLOYEES PROVIDENT FUND BOARD [SSH]	79	271,214	7.913			
10 Feb 2022 - 10 Feb 2022	HARTA	EMPLOYEES PROVIDENT FUND BOARD [SSH]	391	271,135	7.91			
09 Feb 2022 - 09 Feb 2022	HARTA	EMPLOYEES PROVIDENT FUND BOARD [SSH]	640	270,744	7.899			
11 Feb 2022 - 11 Feb 2022	HEIM	KAYNE ANDERSON RUDNICK INVESTMENT MANAGEMENT LLC. [SSH]	9,400	16,455	5.45			
15 Feb 2022 - 15 Feb 2022	HEXIND	MR WONG KIN SENG [DIR/CEO]	60	15,837	1.38			
15 Feb 2022 - 15 Feb 2022	HLBANK	EMPLOYEES PROVIDENT FUND BOARD [SSH]	260	197,250	9.453			
14 Feb 2022 - 14 Feb 2022	HLBANK	EMPLOYEES PROVIDENT FUND BOARD [SSH]	535	196,990	9.441			
11 Feb 2022 - 11 Feb 2022	HLBANK	EMPLOYEES PROVIDENT FUND BOARD [SSH]	414	196,455	9.415			
10 Feb 2022 - 10 Feb 2022	HLBANK	EMPLOYEES PROVIDENT FUND BOARD [SSH]	466	196,042	9.395			
09 Feb 2022 - 09 Feb 2022	HLBANK	EMPLOYEES PROVIDENT FUND BOARD [SSH]	-159	195,576	9.373			
15 Feb 2022 - 15 Feb 2022	HSPANT	EMPLOYEES PROVIDENT FUND BOARD ["EPF"] [SSH]	-305	70,178	8.776			
14 Feb 2022 - 14 Feb 2022	HSPANT	EMPLOYEES PROVIDENT FUND BOARD ["EPF"] [SSH]	-255	70,484	8.814			
11 Feb 2022 - 11 Feb 2022	IBHD	TAN SRI LIM KIM HONG [DIR/CEO]	22	781,166	68.712			
11 Feb 2022 - 11 Feb 2022	IBHD	TAN SRI LIM KIM HONG [SSH]	22	781,166	68.712			
11 Feb 2022 - 11 Feb 2022	IBHD	SUMUR VENTURES SDN BHD [SSH]	22	744,809	65.515			
11 Feb 2022 - 11 Feb 2022	IBHD	SUMURWANG SDN BHD [SSH]	22	659,219	57.986			
16 Feb 2022 - 16 Feb 2022	IBHD-PA	TAN SRI LIM KIM HONG [DIR/CEO]	4	600,928	83.412			
16 Feb 2022 - 16 Feb 2022	IBHD-PA	TAN SRI LIM KIM HONG [SSH]	4	600,928	83.412			
16 Feb 2022 - 16 Feb 2022	IBHD-PA	SUMUR VENTURES SDN BHD [SSH]	4	578,366	80.28			
16 Feb 2022 - 16 Feb 2022	IBHD-PA	SUMURWANG SDN BHD [SSH]	4	510,038	70.795			
11 Feb 2022 - 11 Feb 2022	IBHD-PA	TAN SRI LIM KIM HONG [SSH]	7	600,924	83.411			
11 Feb 2022 - 11 Feb 2022	IBHD-PA	TAN SRI LIM KIM HONG [DIR/CEO]	7	600,924	83.411			
11 Feb 2022 - 11 Feb 2022	IBHD-PA	SUMUR VENTURES SDN BHD [SSH]	7	578,361	80.279			
11 Feb 2022 - 11 Feb 2022	IBHD-PA	SUMURWANG SDN BHD [SSH]	7	510,034	70.795			
15 Feb 2022 - 15 Feb 2022	IGBREIT	EMPLOYEES PROVIDENT FUND BOARD ("EPF BOARD") [SSH]	500	391,821	10.959			
11 Feb 2022 - 11 Feb 2022	IGBREIT	EMPLOYEES PROVIDENT FUND BOARD ("EPF BOARD") [SSH]	500	389,933	10.906			
10 Feb 2022 - 10 Feb 2022	IGBREIT	EMPLOYEES PROVIDENT FUND BOARD ("EPF BOARD") [SSH]	500	389,433	10.892			
09 Feb 2022 - 09 Feb 2022	IGBREIT	EMPLOYEES PROVIDENT FUND BOARD ("EPF BOARD") [SSH]	50	388,933	10.878			
15 Feb 2022 - 15 Feb 2022	IHH	EMPLOYEES PROVIDENT FUND BOARD [SSH]	-746	842,081	9.571			
14 Feb 2022 - 14 Feb 2022	IHH	EMPLOYEES PROVIDENT FUND BOARD [SSH]	1,269	842,828	9.579			
11 Feb 2022 - 11 Feb 2022	IHH	EMPLOYEES PROVIDENT FUND BOARD [SSH]	751	841,559	9.565			
10 Feb 2022 - 10 Feb 2022	IHH	EMPLOYEES PROVIDENT FUND BOARD [SSH]	-629	840,808	9.556			
09 Feb 2022 - 09 Feb 2022	IHH	EMPLOYEES PROVIDENT FUND BOARD [SSH]	-490	841,437	9.563			
17 Feb 2022 - 17 Feb 2022	IJM	TAN SRI DATO' TAN BOON SENG @ KRISHNAN [DIR/CEO]	100	9,615	0.271			
15 Feb 2022 - 15 Feb 2022	INARI	EMPLOYEES PROVIDENT FUND BOARD [SSH]	-1,801	222,253	5.999			
16 Feb 2022 - 16 Feb 2022	INARI	KUMPULAN WANG PERSARAAN (DIPERBADANKAN) [SSH]	-284	328,047	8.855			
14 Feb 2022 - 14 Feb 2022	INARI	EMPLOYEES PROVIDENT FUND BOARD [SSH]	100	224,055	6.048			
15 Feb 2022 - 15 Feb 2022	INARI	KUMPULAN WANG PERSARAAN (DIPERBADANKAN) [SSH]	-262	328,331	8.863			
11 Feb 2022 - 11 Feb 2022	INARI	EMPLOYEES PROVIDENT FUND BOARD [SSH]	210	223,955	6.045			
14 Feb 2022 - 14 Feb 2022	INARI	DATO' SRI THONG KOK KHEE [SSH]	5	542,714	14.65			
14 Feb 2022 - 14 Feb 2022	INARI	DATO' SRI THONG KOK KHEE [DIR/CEO]	5	542,714	14.65			
14 Feb 2022 - 14 Feb 2022	INARI	INSAS BERHAD [SSH]	5	535,999	14.468			
14 Feb 2022 - 14 Feb 2022	INARI	KUMPULAN WANG PERSARAAN (DIPERBADANKAN) [SSH]	-300	328,593	8.87			
10 Feb 2022 - 10 Feb 2022	INARI	EMPLOYEES PROVIDENT FUND BOARD [SSH]	653	223,745	6.04			
09 Feb 2022 - 09 Feb 2022	INARI	EMPLOYEES PROVIDENT FUND BOARD [SSH]	-2,180	223,091	6.022			
15 Feb 2022 - 15 Feb 2022	IOICORP	EMPLOYEES PROVIDENT FUND BOARD [SSH]	-7,322	794,788	12.792			
14 Feb 2022 - 14 Feb 2022	IOICORP	EMPLOYEES PROVIDENT FUND BOARD [SSH]	-3,374	802,110	12.91			
11 Feb 2022 - 11 Feb 2022	IOICORP	EMPLOYEES PROVIDENT FUND BOARD [SSH]	-4,171	805,484	12.965			
10 Feb 2022 - 10 Feb 2022	IOICORP	EMPLOYEES PROVIDENT FUND BOARD [SSH]	-1,207	809,656	13.032			
09 Feb 2022 - 09 Feb 2022	IOICORP	EMPLOYEES PROVIDENT FUND BOARD [SSH]	-1,798	810,862	13.051			
14 Feb 2022 - 14 Feb 2022	JADI	XOX BHD [SSH]	3,000	298,266	27.71			
14 Feb 2022 - 14 Feb 2022	JADI	XOX (HONG KONG) LIMITED [SSH]	3,000	298,266	27.71			
15 Feb 2022 - 15 Feb 2022	JSB	ENCIK JEFFRI BIN MUHAMMAD YUSUF [DIR/CEO]	251	4,855	4.786			
14 Feb 2022 - 14 Feb 2022	KERJAYA	EMPLOYEES PROVIDENT FUND BOARD [SSH]	312	87,228	7.053			
11 Feb 2022 - 11 Feb 2022	KERJAYA	EMPLOYEES PROVIDENT FUND BOARD [SSH]	60	86,917	7.028			
10 Feb 2022 - 10 Feb 2022	KERJAYA	EMPLOYEES PROVIDENT FUND BOARD [SSH]	122	86,856	7.023			
09 Feb 2022 - 09 Feb 2022	KERJAYA	EMPLOYEES PROVIDENT FUND BOARD [SSH]	109	86,734	7.013			
29 Dec 2021 - 30 Dec 2021	KGB	VICE ADMIRAL (RETIRED) DATUK HAJI JAMIL BIN HAJI OSMAN [DIR/CEO]	-32	48	0.007			
15 Feb 2022 - 15 Feb 2022	KLCC	EMPLOYEES PROVIDENT FUND BOARD [SSH]	8	180,547	10.001			
15 Feb 2022 - 15 Feb 2022	KLCC	EMPLOYEES PROVIDENT FUND BOARD [SSH]	8	180,547	10.001			
14 Feb 2022 - 14 Feb 2022	KLCC	EMPLOYEES PROVIDENT FUND BOARD [SSH]	10	180,539	10			

Notice Period is 13 February 2022 - 19 February 2022

Effective Change Date	Stock Name	Buyer/ Seller Name [Classification]	Bought / (Sold) ('000)			No. of Shares After Trade ('000)		
			Total	Total	% Held	Total	Total	% Held
14 Feb 2022 - 14 Feb 2022	KLCC	EMPLOYEES PROVIDENT FUND BOARD [SSH]	10	180,539	10			
11 Feb 2022 - 11 Feb 2022	KLCC	EMPLOYEES PROVIDENT FUND BOARD [SSH]	2	180,529	10			
11 Feb 2022 - 11 Feb 2022	KLCC	EMPLOYEES PROVIDENT FUND BOARD [SSH]	2	180,529	10			
10 Feb 2022 - 10 Feb 2022	KLCC	EMPLOYEES PROVIDENT FUND BOARD [SSH]	44	180,527	10			
10 Feb 2022 - 10 Feb 2022	KLCC	EMPLOYEES PROVIDENT FUND BOARD [SSH]	44	180,527	10			



Notice Period is 13 February 2022 - 19 February 2022

Effective Change Date	Stock Name	Buyer/ Seller Name [Classification]	Bought / (Sold) ['000]		
			Total	Total	% Held
09 Feb 2022 - 09 Feb 2022	PAVREIT	EMPLOYEES PROVIDENT FUND BOARD [SSH]	2	301,659	9.89
15 Feb 2022 - 15 Feb 2022	PBBANK	EMPLOYEES PROVIDENT FUND BOARD [SSH]	-750	2,954,031	15.22
14 Feb 2022 - 14 Feb 2022	PBBANK	EMPLOYEES PROVIDENT FUND BOARD [SSH]	-1,687	2,954,781	15.22
11 Feb 2022 - 11 Feb 2022	PBBANK	EMPLOYEES PROVIDENT FUND BOARD [SSH]	1,814	2,956,468	15.23
09 Feb 2022 - 09 Feb 2022	PBBANK	EMPLOYEES PROVIDENT FUND BOARD [SSH]	-8,149	2,954,654	15.22
15 Feb 2022 - 15 Feb 2022	PCHEM	EMPLOYEES PROVIDENT FUND BOARD ("EPF BOARD") [SSH]	678	545,502	6.819
14 Feb 2022 - 14 Feb 2022	PCHEM	EMPLOYEES PROVIDENT FUND BOARD ("EPF BOARD") [SSH]	-26	544,825	6.81
11 Feb 2022 - 11 Feb 2022	PCHEM	EMPLOYEES PROVIDENT FUND BOARD ("EPF BOARD") [SSH]	925	544,850	6.811
10 Feb 2022 - 10 Feb 2022	PCHEM	EMPLOYEES PROVIDENT FUND BOARD ("EPF BOARD") [SSH]	99	543,925	6.799
09 Feb 2022 - 09 Feb 2022	PCHEM	EMPLOYEES PROVIDENT FUND BOARD ("EPF BOARD") [SSH]	-2,000	543,826	6.798
15 Feb 2022 - 16 Feb 2022	PECCA	DATO' LIM CHENG LING [SSH]	170	11,194	5.956
14 Feb 2022 - 14 Feb 2022	PECCA	DATO' LIM CHENG LING [SSH]	210	11,024	5.865
11 Feb 2022 - 11 Feb 2022	PECCA	DATO' LIM CHENG LING [SSH]	170	10,814	5.754
14 Feb 2022 - 14 Feb 2022	PENERGY	URUSHARTA JAMAAH SDN. BHD. [SSH]	-200	30,397	9.47
11 Feb 2022 - 11 Feb 2022	PENERGY	URUSHARTA JAMAAH SDN. BHD. [SSH]	-500	30,597	9.53
08 Feb 2022 - 10 Feb 2022	PENERGY	URUSHARTA JAMAAH SDN. BHD. [SSH]	-610	31,097	9.69
15 Feb 2022 - 15 Feb 2022	PENTA	EMPLOYEES PROVIDENT FUND BOARD [SSH]	227	45,648	6.408
14 Feb 2022 - 14 Feb 2022	PENTA	EMPLOYEES PROVIDENT FUND BOARD [SSH]	332	45,420	6.376
11 Feb 2022 - 11 Feb 2022	PENTA	EMPLOYEES PROVIDENT FUND BOARD [SSH]	630	45,089	6.33
15 Feb 2022 - 15 Feb 2022	PERSTIM	MITSUI & CO. LTD. [SSH]	-5	9,365	7.255
11 Feb 2022 - 11 Feb 2022	PERTAMA	PERFECT HEXAGON COMMODITY & INVESTMENT BANK LIMITED [SSH]	4,553	73,033	16.853
11 Feb 2022 - 11 Feb 2022	PERTAMA	PERFECT HEXAGON LIMITED [SSH]	4,553	73,033	16.853
11 Feb 2022 - 11 Feb 2022	PERTAMA	SIM TZE SHIONG [SSH]	4,553	73,033	16.853
15 Feb 2022 - 15 Feb 2022	PETDAG	EMPLOYEES PROVIDENT FUND BOARD ("EPF BOARD") [SSH]	100	115,477	11.624
14 Feb 2022 - 14 Feb 2022	PETDAG	EMPLOYEES PROVIDENT FUND BOARD ("EPF BOARD") [SSH]	300	115,377	11.614
11 Feb 2022 - 11 Feb 2022	PETDAG	EMPLOYEES PROVIDENT FUND BOARD ("EPF BOARD") [SSH]	219	115,072	11.583
10 Feb 2022 - 10 Feb 2022	PETDAG	EMPLOYEES PROVIDENT FUND BOARD ("EPF BOARD") [SSH]	144	114,853	11.561
09 Feb 2022 - 09 Feb 2022	PETDAG	EMPLOYEES PROVIDENT FUND BOARD ("EPF BOARD") [SSH]	43	114,709	11.546
15 Feb 2022 - 15 Feb 2022	PETGAS	EMPLOYEES PROVIDENT FUND BOARD [SSH]	-152	275,335	13.915
16 Feb 2022 - 16 Feb 2022	PETGAS	KUMPULAN WANG PERSARAAN (DIPERBADANKAN) [SSH]	-25	207,124	10.467
14 Feb 2022 - 14 Feb 2022	PETGAS	EMPLOYEES PROVIDENT FUND BOARD [SSH]	-268	275,487	13.922
15 Feb 2022 - 15 Feb 2022	PETGAS	KUMPULAN WANG PERSARAAN (DIPERBADANKAN) [SSH]	-77	207,149	10.469
11 Feb 2022 - 11 Feb 2022	PETGAS	EMPLOYEES PROVIDENT FUND BOARD [SSH]	-350	275,755	13.936
14 Feb 2022 - 14 Feb 2022	PETGAS	KUMPULAN WANG PERSARAAN (DIPERBADANKAN) [SSH]	-38	207,225	10.472
10 Feb 2022 - 10 Feb 2022	PETGAS	EMPLOYEES PROVIDENT FUND BOARD [SSH]	-718	276,105	13.954
09 Feb 2022 - 09 Feb 2022	PETGAS	EMPLOYEES PROVIDENT FUND BOARD [SSH]	-601	276,823	13.99
16 Feb 2022 - 16 Feb 2022	PIE	MR LOO HOOI BENG [DIR/CEO]	5	24	0.006
11 Feb 2022 - 11 Feb 2022	POHKONG	MADAM LIM MEE HWA [SSH]	89	25,385	7.222
11 Feb 2022 - 11 Feb 2022	POHKONG	MR YEO SENG CHONG [SSH]	89	25,385	6.186
11 Feb 2022 - 11 Feb 2022	POHKONG	YEOMAN CAPITALMANAGEMENT PTE LTD [SSH]	89	21,135	5.15
15 Feb 2022 - 15 Feb 2022	PPB	EMPLOYEES PROVIDENT FUND BOARD [SSH]	-1,368	174,969	12.299
14 Feb 2022 - 14 Feb 2022	PPB	EMPLOYEES PROVIDENT FUND BOARD [SSH]	-276	176,338	12.395
11 Feb 2022 - 11 Feb 2022	PPB	EMPLOYEES PROVIDENT FUND BOARD [SSH]	-785	176,613	12.415
10 Feb 2022 - 10 Feb 2022	PPB	EMPLOYEES PROVIDENT FUND BOARD [SSH]	-172	177,398	12.47
09 Feb 2022 - 09 Feb 2022	PPB	EMPLOYEES PROVIDENT FUND BOARD [SSH]	-280	177,570	12.482
16 Feb 2022 - 17 Feb 2022	PUC	MADAM CHEOW SOOK MEI [SSH]	-1,673	82,014	5.555
15 Feb 2022 - 15 Feb 2022	QL	EMPLOYEES PROVIDENT FUND BOARD [SSH]	906	171,705	7.055
14 Feb 2022 - 14 Feb 2022	REACH	MTD CAPITAL BHD [SSH]	-7,091	115,270	10.513
17 Feb 2022 - 17 Feb 2022	REDTONE	TAN SRI DATO' SERI VINCENT TAN CHEE YIOUN [SSH]	-50	389,865	50.438
17 Feb 2022 - 17 Feb 2022	RHBBANK	KUMPULAN WANG PERSARAAN (DIPERBADANKAN) [SSH]	-20	243,114	5.868
15 Feb 2022 - 15 Feb 2022	RHBBANK	EMPLOYEES PROVIDENT FUND BOARD [SSH]	490	1,748,916	42.215
16 Feb 2022 - 16 Feb 2022	RHBBANK	KUMPULAN WANG PERSARAAN (DIPERBADANKAN) [SSH]	196	243,134	5.869
14 Feb 2022 - 14 Feb 2022	RHBBANK	EMPLOYEES PROVIDENT FUND BOARD [SSH]	2,500	1,748,426	42.203
11 Feb 2022 - 11 Feb 2022	RHBBANK	EMPLOYEES PROVIDENT FUND BOARD [SSH]	1,332	1,745,926	42.142
14 Feb 2022 - 14 Feb 2022	RHBBANK	KUMPULAN WANG PERSARAAN (DIPERBADANKAN) [SSH]	50	242,938	5.864
10 Feb 2022 - 10 Feb 2022	RHBBANK	EMPLOYEES PROVIDENT FUND BOARD [SSH]	-637	1,744,594	42.11
11 Feb 2022 - 11 Feb 2022	RHBBANK	KUMPULAN WANG PERSARAAN (DIPERBADANKAN) [SSH]	-305	242,888	5.863
09 Feb 2022 - 09 Feb 2022	RHBBANK	EMPLOYEES PROVIDENT FUND BOARD [SSH]	-1,348	1,745,231	42.126
16 Feb 2022 - 16 Feb 2022	RL-WA	MR THIEN CHIET CHAI [DIR/CEO]	1,071	10,818	15.183
16 Feb 2022 - 16 Feb 2022	RL-WA	DATO' WAN HASSAN BIN MOHD JAMIL [DIR/CEO]	1,071	9,810	13.768
15 Feb 2022 - 15 Feb 2022	SCGM	DATO' SRI LEE HOCK GUAN [SSH]	-200	42,881	22.269
14 Feb 2022 - 14 Feb 2022	SCIPACK	SAMARANG UCITS - SAMARANG ASIAN PROSPERITY [SSH]	10	17,251	5.27
11 Feb 2022 - 11 Feb 2022	SCIPACK	SAMARANG UCITS - SAMARANG ASIAN PROSPERITY [SSH]	3	17,241	5.266
10 Feb 2022 - 10 Feb 2022	SDS	MR TAN YONG THYE [SSH]	-50	20,390	5.024
16 Feb 2022 - 16 Feb 2022	SEM	TAN SRI DATO' SERI VINCENT TAN CHEE YIOUN [SSH]	-20	503,464	44.7
16 Feb 2022 - 16 Feb 2022	SHANG	ABRDN PLC (FORMERLY KNOWN AS STANDARD LIFE ABERDEEN PLC) [SSH]	9	34,482	7.837
16 Feb 2022 - 16 Feb 2022	SHANG	ABERDEEN ASSET MANAGEMENT PLC [SSH]	-9	34,482	7.837
17 Feb 2022 - 17 Feb 2022	SIME	KUMPULAN WANG PERSARAAN (DIPERBADANKAN) [SSH]	863	492,937	7.238
15 Feb 2022 - 16 Feb 2022	SIME	PERMODALAN NASIONAL BERHAD [SSH]	3,000	417,910	6.137
15 Feb 2022 - 16 Feb 2022	SIME	YAYASAN PELABURAN BUMIPUTRA [SSH]	3,000	417,910	6.137
14 Feb 2022 - 15 Feb 2022	SIME	EMPLOYEES PROVIDENT FUND BOARD [SSH]	-5,000	604,900	8.882
11 Feb 2022 - 11 Feb 2022	SIME	EMPLOYEES PROVIDENT FUND BOARD [SSH]	-1,987	609,900	8.956
10 Feb 2022 - 10 Feb 2022	SIME	EMPLOYEES PROVIDENT FUND BOARD [SSH]	-3,000	611,887	8.985
09 Feb 2022 - 09 Feb 2022	SIME	EMPLOYEES PROVIDENT FUND BOARD [SSH]	-2,175	614,887	9.029
15 Feb 2022 - 15 Feb 2022	SIMEPLT	EMPLOYEES PROVIDENT FUND BOARD [SSH]	-6,049	1,083,793	15.671
15 Feb 2022 - 16 Feb 2022	SIMEPLT	KUMPULAN WANG PERSARAAN (DIPERBADANKAN) [SSH]	-2,233	446,957	6.463
11 Feb 2022 - 14 Feb 2022	SIMEPLT	EMPLOYEES PROVIDENT FUND BOARD [SSH]	-9,000	1,089,842	15.759
14 Feb 2022 - 14 Feb 2022	SIMEPLT	KUMPULAN WANG PERSARAAN (DIPERBADANKAN) [SSH]	-1,319	449,190	6.495
10 Feb 2022 - 10 Feb 2022	SIMEPLT	EMPLOYEES PROVIDENT FUND BOARD [SSH]	-3,063	1,098,842	15.889
11 Feb 2022 - 11 Feb 2022	SIMEPLT	KUMPULAN WANG PERSARAAN (DIPERBADANKAN) [SSH]	-1,505	450,510	6.514
09 Feb 2022 - 09 Feb 2022	SIMEPLT	EMPLOYEES PROVIDENT FUND BOARD [SSH]	-1,516	1,101,905	15.933
11 Feb 2022 - 11 Feb 2022	SKBSHUT	SIN KHENG LEE [DIR/CEO]	34,286	37,751	57.199
11 Feb 2022 - 11 Feb 2022	SKBSHUT	CHOU LEE SIN [DIR/CEO]	37,736	37,751	57.199
11 Feb 2022 - 11 Feb 2022	SKBSHUT	SIN CHING SAN [DIR/CEO]	34,271	34,286	51.949
17 Feb 2022 - 17 Feb 2022	SKPRES	KUMPULAN WANG PERSARAAN (DIPERBADANKAN) [SSH]	-170	142,808	9.141
11 Feb 2022 - 11 Feb 2022	SKPRES	KUMPULAN WANG PERSARAAN (DIPERBADANKAN) [SSH]	41	142,978	9.152
17 Feb 2022 - 17 Feb 2022	SPSETIA	KUMPULAN WANG PERSARAAN (DIPERBADANKAN) [SSH]	1,000	405,125	9.959
15 Feb 2022 - 15 Feb 2022	SPSETIA	EMPLOYEES PROVIDENT FUND BOARD [SSH]	236	242,110	5.952
16 Feb 2022 - 16 Feb 2022	SPSETIA	KUMPULAN WANG PERSARAAN (DIPERBADANKAN) [SSH]	-988	406,125	9.984
14 Feb 2022 - 14 Feb 2022	SPSETIA	EMPLOYEES PROVIDENT FUND BOARD [SSH]	231	241,873	5.946
11 Feb 2022 - 11 Feb 2022	SPSETIA	EMPLOYEES PROVIDENT FUND BOARD [SSH]	479	241,643	5.94
09 Feb 2022 - 09 Feb 2022	SPSETIA	EMPLOYEES PROVIDENT FUND BOARD [SSH]	383	241,164	5.928
18 Feb 2022 - 18 Feb 2022	STRAITS	ANG TUN YOUNG [SSH]	1,006	55,744	6.391
15 Feb 2022 - 15 Feb 2022	SUNREIT	EMPLOYEES PROVIDENT FUND BOARD [SSH]	79	535,457	15.63
14 Feb 2022 - 14 Feb 2022	SUNREIT	EMPLOYEES PROVIDENT FUND BOARD [SSH]	321	535,379	15.63
14 Feb 2022 - 14 Feb 2022	SUNREIT	KUMPULAN WANG PERSARAAN (DIPERBADANKAN) ("KWAP") [SSH]	-473	200,295	5.85
11 Feb 2022 - 11 Feb 2022	SUNREIT	KUMPULAN WANG PERSARAAN (DIPERBADANKAN) ("KWAP") [SSH]	-553	200,768	5.86
15 Feb 2022 - 15 Feb 2022	SUNWAY	EMPLOYEES PROVIDENT FUND BOARD [SSH]	220	423,596	8.66
14 Feb 2022 - 14 Feb 2022	SUNWAY	EMPLOYEES PROVIDENT FUND BOARD [SSH]	1,000	423,376	8.66
11 Feb 2022 - 11 Feb 2022	SUNWAY	EMPLOYEES PROVIDENT FUND BOARD [SSH]	1,713	422,376	8.64
10 Feb 2022 - 10 Feb 2022	SUNWAY	EMPLOYEES PROVIDENT FUND BOARD [SSH]	100	420,664	8.6
14 Feb 2022 - 14 Feb 2022	SWIFT	MR LOO HOOI KEAT [DIR/CEO]	100	339,299	38.132
14 Feb 2022 - 14 Feb 2022	SWIFT	MR LOO HOOI KEAT [DIR/CEO]	100	339,299	38.132
11 Feb 2022 - 11 Feb 2022	SWIFT	MR LOO HOOI KEAT [DIR/CEO]	130	339,199	38.121
11 Feb 2022 - 11 Feb 2022	SWIFT	MR LOO HOOI KEAT [SSH]	130	339,199	38.121

Notice Period is 13 February 2022 - 19 February 2022

Effective Change Date	Stock Name	Buyer/ Seller Name [Classification]	Bought / (Sold) ['000]		
			Total	Total	% Held
15 Feb 2022 - 15 Feb 2022	SWKPLNT	URUSHARTA JAMAAH SDN. BHD. [SSH]	-200	17,278	6.19
14 Feb 2022 - 14 Feb 2022	SWKPLNT	URUSHARTA JAMAAH SDN. BHD. [SSH]	-390	17,478	6.26
15 Feb 2022 - 15 Feb 2022	TAKAFUL	EMPLOYEES PROVIDENT FUND BOARD [SSH]	-68	91,447	10.944
14 Feb 2022 - 14 Feb 2022	TAKAFUL	EMPLOYEES PROVIDENT FUND BOARD [SSH]	140	91,516	10.952
11 Feb 2022 - 11 Feb 2022	TAKAFUL	EMPLOYEES PROVIDENT FUND BOARD [SSH]	155	91,376	10.935
10 Feb 2022 - 10 Feb 2022	TAKAFUL	EMPLOYEES PROVIDENT FUND BOARD [SSH]	-282	91,221	10.917
09 Feb 2022 - 09 Feb 2022	TAKAFUL	EMPLOYEES PROVIDENT FUND BOARD [SSH]	273	91,503	10.95
16 Feb 2022 - 16 Feb 2022	TAWIN	DATO' YEO BOON LEONG JP [SSH]	6,000	480,641	14.078
16 Feb 2022 - 16 Feb 2022	TAWIN	DATO' YEO BOON LEONG JP [DIR/CEO]	6,000	480,641	14.078
16 Feb 2022 - 16 Feb 2022	TAWIN	ASIA POLY HOLDINGS BERHAD [SSH]	6,000	191,000	5.595
15 Feb 2022 - 15 Feb 2022	TAWIN	DATO' YEO BOON LEONG JP [SSH]	5,000	474,641	13.903
15 Feb 2022 - 15 Feb 2022	TAWIN	DATO' YEO BOON LEONG JP [DIR/CEO]	5,000	474,641	13.903
15 Feb 2022 - 15 Feb 2022	TAWIN	ASIA POLY HOLDINGS BERHAD [SSH]	5,000	185,000	5.419
15 Feb 2022 - 15 Feb 2022	TENAGA	EMPLOYEES PROVIDENT FUND BOARD [SSH]	-1,000	912,769	15.94
14 Feb 2022 - 14 Feb 2022	TENAGA	EMPLOYEES PROVIDENT FUND BOARD [SSH]	-1,156	913,769	15.96
15 Feb 2022 - 15 Feb 2022	TENAGA	KUMPULAN WANG PERSARAAN (DIPERBADANKAN) [SSH]	-134	420,064	7.33
11 Feb 2022 - 11 Feb 2022	TENAGA	EMPLOYEES PROVIDENT FUND BOARD [SSH]	-539	914,925	15.98
14 Feb 2022 - 14 Feb 2022	TENAGA	KUMPULAN WANG PERSARAAN (DIPERBADANKAN) [SSH]	-210	420,198	7.33
10 Feb 2022 - 10 Feb 2022	TENAGA	EMPLOYEES PROVIDENT FUND BOARD [SSH]	-806	915,464	15.99
09 Feb 2022 - 09 Feb 2022	TENAGA	EMPLOYEES PROVIDENT FUND BOARD [SSH]	-1,500	916,269	16
17 Feb 2022 - 17 Feb 2022	TM	KUMPULAN WANG PERSARAAN (DIPERBADANKAN) [SSH]	2,582	390,780	10.355
16 Feb 2022 - 16 Feb 2022	TM	KUMPULAN WANG PERSARAAN (DIPERBADANKAN) [SSH]	336	388,202	10.287
15 Feb 2022 - 15 Feb 2022	TM	KUMPULAN WANG PERSARAAN (DIPERBADANKAN) [SSH]	-158	387,867	10.278
11 Feb 2022 - 11 Feb 2022	TM	KUMPULAN WANG PERSARAAN (DIPERBADANKAN) [SSH]	1,000	388,025	10.283





## Axiata Group Berhad

The Board of Directors of Axiata Group Berhad (**Axiata**) had on 21 February 2022 declared a tax exempt Dividend of 5.5 sen under single tier system per ordinary share of the Company in respect of the financial year ended 31 December 2021. The details of entitlement and payment date of the above said dividend will be determined and announced in due course.



## Capital A Berhad

The Board of Directors of Capital A Berhad (**CAPITALA**) wishes to announce that AirAsia Super App Sdn. Bhd., a subsidiary of Capital A, had on 24 February 2022 implemented a long-term incentive plan for its eligible employees and directors which consists of an employee share option scheme and a share grant scheme. As at the date of this announcement, Capital A holds 96.19% interest in AirAsia Super App Sdn. Bhd.



## Malayan Banking Berhad

On behalf of the Board of Directors of Malayan Banking Berhad (**MAYBANK**), Maybank Investment Bank Berhad wishes to announce that Bank Negara Malaysia has granted its approval for Maybank to increase its share capital through the issuance of up to 157.0 million new ordinary shares in Maybank pursuant to the 22nd Dividend Reinvestment Plan.



## Dayang Enterprise Holdings Berhad

The Board of Directors of Dayang Enterprise Holdings Berhad (**DAYANG**) wishes to announce that the Company intends to seek its shareholders' approval on the Proposed Renewal of Shareholders' Mandate for Recurrent Related Party Transactions of a Revenue or Trading Nature at its 16th Annual General Meeting to be convened at a date to be notified later.



## Pentamaster Corporation Berhad

The Board of Directors of Pentamaster Corporation Berhad (**PENTA**) is pleased to announce that it has recommended a final single tier dividend of RM0.02 per ordinary share amounting to approximately RM14.2 million in respect of the financial year ended 31 December 2021 for shareholders' approval at the forthcoming Annual General Meeting. The entitlement date and date of payment of the dividend will be announced on a later date subject to approval of the dividend by shareholders.



## Gamuda Berhad

Gamuda Berhad (**GAMUDA**) wishes to announce that its Gamuda Berhad Singapore Branch together with Wai Fong Construction Pte Ltd has been awarded the design and construction of Defu station and tunnels by the Land Transport Authority of Singapore on 22 February 2022.



## Steel Hawk Berhad

The Board of Directors of Steel Hawk Berhad (**SKHAWK**) is pleased to announce that its wholly-owned subsidiary, Steel Hawk Engineering Sdn Bhd, had on 14 February 2022 accepted the letter of award by E&P O&M Services Sdn Bhd in relation to the provision of scaffolding services for E&P O&M Services Sdn Bhd Operations in Peninsular Malaysia. The provision of scaffolding services by Steel Hawk Engineering Sdn Bhd to E&P O&M Services Sdn Bhd will be based on a call-out basis whereby the value of the Services shall be based on the agreed rates and work order issued within the period of 2 years plus 1 year extension option.

**Disclaimer:** The information in the Investor Relations page is extracted from individual companies' announcements in [www.bursamalaysia.com](http://www.bursamalaysia.com). The information on this page is provided as a service to readers. We assume no liability for damages resulting from or arising out of the use of such information. Whilst every effort is made to ensure accuracy, the information presented has been simplified for your reading pleasure. Readers are advised to read the original and complete filings on the Bursa Malaysia website at [https://www.bursamalaysia.com/market\\_information/announcements/company\\_announcement](https://www.bursamalaysia.com/market_information/announcements/company_announcement)



## Upcoming IPO

28th Feb 2022

**SIAB HOLDINGS BERHAD**  
(ACE MARKET)





Over 5 trading days



- ShareInvestor WebPro (www.shareinvestor.com/my)
1. Price > Stock Prices
  2. Select Market: NASDAQ / NYSE / IDX / SET / HKEX / SGX (One bourse at a time)
  3. select Stocks Tab
  4. select Ranking Top Gainers or Top Losers (Over 5 Trading Days)
  5. Mouse over Column Layout > select Edit Customs > select Name > select Last Done Price > select 5 Days Change > select 52 Weeks High > select 52 Weeks Low > Mouse Over Column Layout > select Custom

NASDAQ (USD)

Top Gainers

Name	Last Done	Change Over 5 Days	52 Weeks High	52 Weeks Low
ALPHABET INC (GOOGL.NQ)	2,653.820	+45.760	3,030.932	1,994.000
ALPHABET INC (GOOG.NQ)	2,653.470	+44.120	3,042.000	2,010.000
PALO ALTO NETWORKS INC	539.940	+40.800	572.670	455.760
ATRION CORP	692.100	+38.780	805.620	579.960
SHOCKWAVE MEDICAL INC	170.630	+27.770	249.730	91.465

Top Losers

Name	Last Done	Change Over 5 Days	52 Weeks High	52 Weeks Low
BOOKING HOLDINGS INC	2,295.000	-328.950	2,715.660	2,053.575
COCA-COLA CONSOLIDATED INC	445.940	-120.190	638.000	252.140
TESLA INC	800.770	-75.580	1,243.490	539.490
MONDAY COM LTD	146.510	-58.140	450.000	155.010
INSPIRATO INCORPORATED	36.490	-56.160	108.000	9.140

NYSE (USD)

Top Gainers

Name	Last Done	Change Over 5 Days	52 Weeks High	52 Weeks Low
TEXAS PACIFIC LAND CORPORATION	1,098.300	+93.520	1,773.950	946.290
TELEFLEX INC	338.060	+20.070	449.375	289.000
MATSON INC	106.860	+19.490	105.920	59.646
HUBSPOT INC	525.000	+17.420	866.000	403.000
SOUTH JERSEY INDUSTRIES INC	66.940	+15.390	59.860	47.220

Top Losers

Name	Last Done	Change Over 5 Days	52 Weeks High	52 Weeks Low
BERKSHIRE HATHAWAY INC	462,110.000	-10,147.000	488,399.850	363,680.000
NVR INC	4,775.440	-225.890	5,982.445	4,330.000
AUTOZONE INC	1,794.770	-125.240	2,110.000	1,145.155
EPAM SYS INC	382.280	-58.710	725.400	338.690
CABLE ONE INC	1,421.600	-53.270	2,136.135	1,375.625

IDX (Rupiah)

Top Gainers

Name	Last Done	Change Over 5 Days	52 Weeks High	52 Weeks Low
SOLUSI TUNAS PRATAMA TBK.	70,975.000	+29875.000	70,975.000	4,250.000
INDO TAMBANGRAYA MEGAH TBK.	26,975.000	+4000.000	27,750.000	11,425.000
PRATAMA ABADI NUSA INDUSTRI TBK.	4,990.000	+3180.000	5,500.000	98.000
DCI INDONESIA TBK.	44,975.000	+2100.000	60,300.000	9,875.000
FAJAR SURYA WISESA TBK.	8,500.000	+1900.000	8,700.000	6,600.000

Top Losers

Name	Last Done	Change Over 5 Days	52 Weeks High	52 Weeks Low
TRANSCOAL PACIFIC TBK	9,300.000	-1,300.000	10,850.000	6,425.000
UNGGUL INDAH CAHAYA TBK.	12,100.000	-1,000.000	14,600.000	4,760.000
SIANTAR TOP TBK.	7,625.000	-850.000	10,500.000	6,500.000
INDOINTERNET TBK.	21,475.000	-825.000	47,000.000	10,400.000
BERKAH BETON SADAYA TBK.	4,590.000	-710.000	7,450.000	135.000

SET (Thai Baht)

Top Gainers

Name	Last Done	Change Over 5 Days	52 Weeks High	52 Weeks Low
THG	49.750	+7.750	50.500	24.200
COM7	79.250	+4.250	84.500	49.000
JMT	67.000	+4.250	70.750	38.345
SINGER	46.250	+3.750	55.000	28.985
NKI	46.750	+3.000	56.000	42.750

Top Losers

Name	Last Done	Change Over 5 Days	52 Weeks High	52 Weeks Low
JTS	211.000	-63.000	322.000	2.660
DELTA	402.000	-14.000	790.000	286.000
ADVANC	227.000	-13.000	242.000	164.000
SCCC	161.000	-12.500	188.500	152.000
SCC	387.000	-12.000	474.000	364.000

HKEX (HKD)

Top Gainers

Name	Last Done	Change Over 5 Days	52 Weeks High	52 Weeks Low
ASYMCHAM LABORATORIES (TIANJIN) CO	262.000	+8.000	388.000	230.000
ASM PACIFIC TECHNOLOGY	85.650	+4.250	125.000	76.050
SHANGHAI JUNSHI BIOSCIENCES CO LTD	54.400	+3.050	87.600	36.500
NEW HORIZON HEALTH LTD	28.000	+2.900	89.650	18.860
CANSINO BIOLOGICS INC	136.000	+2.700	437.000	121.200

Top Losers

Name	Last Done	Change Over 5 Days	52 Weeks High	52 Weeks Low
MICROSOFT CORP	1,600.000	-185.000	1,785.000	1,600.000
BILIBILI INC	227.200	-63.000	1,052.000	222.800
ZAI LAB LIMITED	385.000	-56.000	1,420.000	321.200
MEITUAN	170.200	-50.600	388.000	166.400
HONG KONG EXCHANGES & CLEARING	394.600	-42.800	544.000	392.400

SGX (SGD)

Top Gainers

Name	Last Done	Change Over 5 Days	52 Weeks High	52 Weeks Low
MSC	1.460	+0.230	1.500	0.575
RIVERSTONE	0.820	+0.105	1.520	0.590
COLEX	0.260	+0.050	0.270	0.180
REX INTL	0.435	+0.050	0.440	0.165
CAPTII	0.440	+0.040	0.480	0.335

Top Losers

Name	Last Done	Change Over 5 Days	52 Weeks High	52 Weeks Low
UOB	30.750	-2.110	33.330	24.050
JMH USD	58.460	-1.880	68.880	49.980
DBS	34.750	-1.780	37.490	26.360
OCBC BANK	12.000	-1.410	13.540	10.900
VENTURE	17.210	-0.990	20.790	17.130