

# Invest

A Weekly e-Publication by SHAREINVESTOR

ISSUE

299

FRIDAY  
30 APRIL 2026

Scan/Click QR to Register



Via email, every Friday

## MARKET SENTIMENTS

# Khazanah Leads Malaysia's First Tokenised Sukuk Pilot in Collaboration with the SC

page 28

Securities Commission launches youth-led innovation challenge on river resilience

page 30

From MSWG's The Observer 2+1 Corporate Tales

See more on pages 34-39

ALSO

COMPANY SPOTLIGHT  
UEM Sunrise Berhad

See more on page 06

**BEHIND THE TICKER: DECODING COMPANY FUNDAMENTALS** Issue No. 02/2025 Invest 120

**SKB Shutters: A Modest Upside Story**

**SUMMARY**

- SKB Shutters Corporation Berhad (Bursa:7115) has evolved from a roller shutter manufacturer into a broader industrial solutions provider, with growth and margin improvements driven by regulatory tailwinds and product diversification.
- Profitability, margins, and returns have strengthened post-2021, but while operating efficiency improved, capital efficiency remains uneven due to historically high reinvestment.
- Despite recent gains, decade-average ROIC and ROE remain below the cost of capital, suggesting limited shareholder value creation over the full cycle.

Disclaimer: This article is written for informational purposes only. It does not constitute a solicitation, offer, advice, recommendation or endorsement to buy or sell any stock or to hold shares in any company. It is not intended to be used as a basis for investment decisions. Shareholders, investors, analysts and the issuer should consult with their broker. The views expressed here are solely the author's own.

See more on pages 19-26

04 LEADERBOARD

05 SHARIAH HOT STOCKS

08 SHARIAH MOMENTUM UP STOCKS

09 NON SHARIAH HOT STOCKS

10 UP TRENDING STOCKS

11 VALUE STOCKS

12 GROWTH STOCKS

14 DIVIDEND STOCKS

16 BROKERS' CALL

17 LONG COMPANIES

33 REGIONAL MARKETS

40 INSIDER ACTIVITY

45 INVESTOR RELATIONS ANNOUNCEMENTS

# SHAREINVESTOR®

An AlphaInvest Company

Invest with Knowledge

### INVESTOR PLATFORMS

**Director**  
Darren Chong  
darren.chong@shareinvestor.com

### ADMIN & OPERATIONS

**Senior Executive**  
Watie Nordin  
watie.nordin@shareinvestor.com

**Executive**  
Silas Emmanuel Joseph  
silas.joseph@shareinvestor.com

### PROCESS AUTOMATION & DATA ANALYTICS

**Data Analyst**  
Lee Khai Bing

### INVESTOR RELATIONS

**Group Managing Director & Publisher**  
Edward Stanislaus  
edward@shareinvestor.com

**Senior Manager**  
Letticia Wong  
letticia.wong@shareinvestor.com

**Manager**  
Aida Norzeti Talib  
aida.norzeti@shareinvestor.com

### ALPHA INVEST HOLDINGS BOARD OF DIRECTORS

<b>Chairman</b>		Patrick Daniel
<b>Group CEO</b>		Christopher Lee
<b>Group COO</b>		Lim Dau Hee
<b>Group MD</b>		Shanison Lin



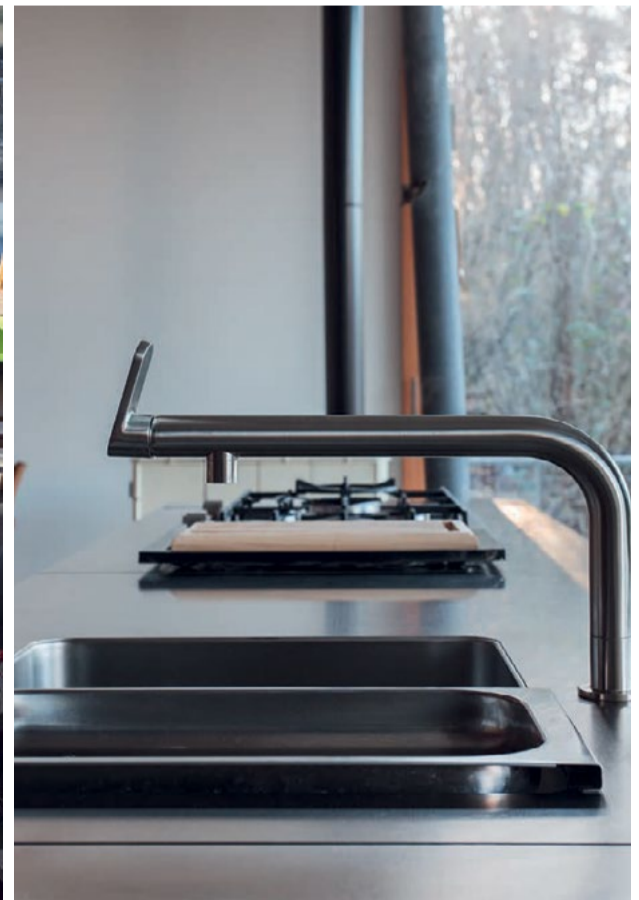
“ GIVE A MAN A FISH AND YOU FEED HIM FOR A DAY; TEACH A MAN TO FISH AND YOU FEED HIM FOR A LIFETIME ”

**ShareInvestor Malaysia Sdn. Bhd.**  
(200001023956) (526564-M)  
L15-03 & 03A, PJX HM Shah Tower,  
No 16A, Jalan Persiaran Barat, PJS 52,  
46200 Petaling Jaya, Selangor

Hotline : 603 8681 0580  
Mobile : 011 6343 8939  
Website : [www.ShareInvestor.com.my](http://www.ShareInvestor.com.my)  
[www.alphainvestholdings.com](http://www.alphainvestholdings.com)  
[www.Facebook.com/ShareInvestorMalaysia](http://www.Facebook.com/ShareInvestorMalaysia)

ADVERTISEMENT ENQUIRY

bulthaup takes care of the details so that you can enjoy a harmonious environment.



**XTRA**

XTRA FURNITURE SDN BHD  
The Gardens Mall, Mid Valley City  
[xtrafurniture.com/bulthaup](http://xtrafurniture.com/bulthaup)  
[fb.com/bulthaupmalaysia](https://fb.com/bulthaupmalaysia)



**ROWAN** director chair  
Designed by ITO Design, Germany

Inspired by the sophistication of first and business class, **ROWAN** delivers a fully enveloping comfort through Italian full-grain leather and precision-engineered aluminum form.

Where design excellence meets executive presence.



**XTRA**  
www.xtrafurniture.com



GERMAN DESIGN AWARD WINNER 2025



Awarded for Design. Certified for Excellence. Trusted Worldwide.

[www.shareinvestor.com](http://www.shareinvestor.com) - market data at your fingertips



ShareInvestor WebPro ([www.shareinvestor.com/my](http://www.shareinvestor.com/my))  
Prices > Stock Prices > Bursa > click Stocks tab

1. mouse over Ranking > select Top Active > all Shariah stocks are denoted with an [S] > mouse over Column Layout > select Edit Customs > select Name > select Volume > select Last Done Price > Mouse Over Column Layout > select Custom
2. mouse over Ranking > select Top Turnover > all Shariah stocks are denoted with an [S] > mouse over Column Layout > select Edit Customs > select Name > select Last Done Price > select Value > Mouse Over Column Layout > select Custom
3. mouse over Ranking > select Top Gainers (Over 5 Trading Days) > mouse over Column Layout > select Edit Customs > select Name > select Last Done Price > select 5 Days Change > select 5 Days % Change > Mouse Over Column Layout > select Custom
4. mouse over Ranking > select Top Losers (Over 5 Trading Days)
5. mouse over Ranking > select Top % Gainers (Over 5 Trading Days)
6. mouse over Ranking > select Top % Losers (Over 5 Trading Days)

### Shariah Top Actives (As at Yesterday)

Name	Price (RM)	Volume
BORNOIL [S]	0.005	2,618,764.000
UEMS [S]	0.685	1,037,756.000
MRCB [S]	0.365	978,106.000
ZETRIX [S]	0.855	916,257.000
VELESTO [S]	0.345	699,598.000
WCT [S]	0.495	613,998.000
VS [S]	0.210	514,297.000
INARI [S]	2.050	441,389.000
TANCO [S]	1.590	417,264.000
LUSTER [S]	0.035	365,577.000

### Shariah Top Turnover (As at Yesterday)

Name	Price (RM)	Value (RM)
IHH [S]	8.810	140,523,009
SDG [S]	6.050	124,421,390
PCHEM [S]	5.660	95,208,082
INARI [S]	2.050	90,709,342
TENAGA [S]	14.600	86,946,744
PMETAL [S]	8.640	85,839,966
ZETRIX [S]	0.855	77,881,512
UEMS [S]	0.685	71,198,211
TANCO [S]	1.590	66,723,581
GAMUDA [S]	4.420	65,778,281

### Top Gainers (over 5 Trading days as at Yesterday)

Name	Price (RM)	Change (RM)
NESTLE	102.900	+4.160
MPI	38.000	+2.360
UMSINT	6.900	+0.870
KESM	4.150	+0.780
PMETAL	8.640	+0.780
F&N	31.520	+0.600
TM	7.590	+0.590
KOBAY	2.160	+0.520
VITROX	5.500	+0.520
KGB	6.150	+0.460

### Top % Gainers (over 5 Trading days as at Yesterday)

Name	Price (RM)	Change (%)
MTRONIC	0.010	+100.00
SMILE	0.100	+66.67
HOHUP	0.065	+62.50
G3	0.015	+50.00
UEMS	0.685	+37.00
GIIB	0.100	+33.33
PUC	0.020	+33.33
KOBAY	2.160	+31.71
LKL	0.045	+28.57
MBN	0.115	+27.78

### Top Losers (over 5 Trading days as at Yesterday)

Name	Price (RM)	Change (RM)
UTDPLT	32.000	-1.417
CHINTEK	10.820	-0.380
PETGAS	17.820	-0.360
BURSA	8.490	-0.300
PETDAG	20.300	-0.300
SOP	4.610	-0.210
ALLIANZ	20.800	-0.200
HLFG	18.960	-0.180
MAYBANK	11.040	-0.180
MISC	8.130	-0.170

### Top % Losers (over 5 Trading days as at Yesterday)

Name	Price (RM)	Change (%)
PHB	0.005	-50.00
PERMAJU	0.005	-50.00
SMTRACK	0.005	-50.00
CME	0.010	-33.33
TAWIN	0.010	-33.33
ASDION	0.015	-25.00
BSLCORP	0.015	-25.00
LYC	0.015	-25.00
SALUTE	0.105	-22.22
AIM	0.040	-20.00

## Price & Volume Distribution Charts (as at Yesterday)

Technical Analysis

**DEFINITION:** Shariah compliant stocks with Technical Analysis showing 5-days & 10-days Moving Average Price below Yesterday's Close over past 3 days and with Volume Spike.

**CHART GUIDE:** Volume Distribution Chart is a statistical interpretation of the current sentiment on each stock in graphical format. The highest bar categorized as >150k is likely to be traded by institutions or super dealers, while the lowest bar categorized as <15k usually represents retail investors. "Buy Up" refers to more buyers snatching up the lots queued at selling price. "Sell Down" refers to sellers selling their shares to the buying queue



ShareInvestor WebPro > Screener > Market Screener (FA & TA) > select BURSA > add criteria

**A. Criteria**

- > click Add Criteria
- Technical Analysis Conditions tab select (i) Moving Average Below Close (ii) Volume Spike
- Fundamental Analysis Conditions tab > select (iii) Revenue
- Prices & Other Conditions tab > select (iv) Is Shariah Compliant
- Technical Analysis Conditions tab select (v) Moving Average Below Close
- Prices & Other Conditions tab > select (vi) Last Done Price
- Technical Analysis Conditions tab select (vii) Moving Average Below Close

**B. Conditions (Criteria Filters)**

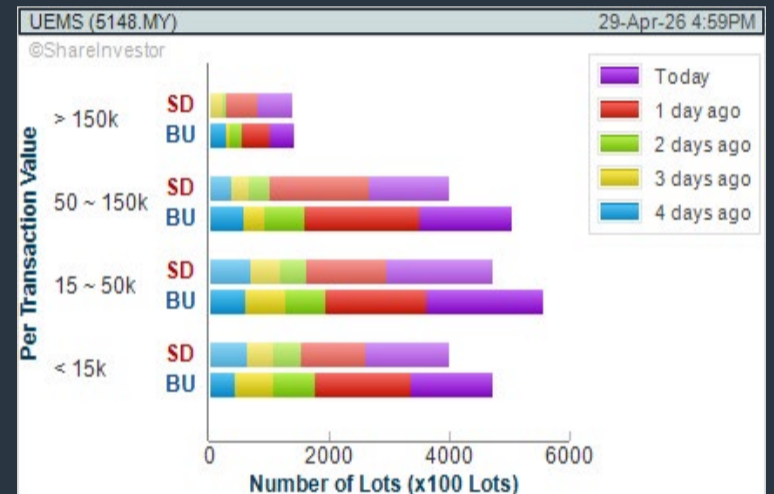
1. Moving Average Below Close - select (MA) type (5) below close price for type (3) days
2. Volume Spike - Volume type (1) greater than type (5) days average
3. Revenue ("000) - select (more than) type (1) for the past select (1) financial year(s)
4. Is Shariah Compliant - select **Yes**
5. Moving Average Below Close - select (MA) type (10) below close price for type (3) days
6. Last Done Price - select (more than) type (0.3)
7. Moving Average Below Close - select (EMA) type (5) below close price for type (3) days

- > click Save Template > Create New Template type (Shariah Hot Stocks) > click Create
- > click Save Template as > select Shariah Hot Stocks > click Save
- > click Screen Now (may take a few minutes)
- > Sort By: Select (Vol) Select (Desc)
- > Mouse over stock name > Charts > click C<sup>2</sup> Charts or Volume Distribution

### UEM SUNRISE BERHAD (5148)

C<sup>2</sup> Chart

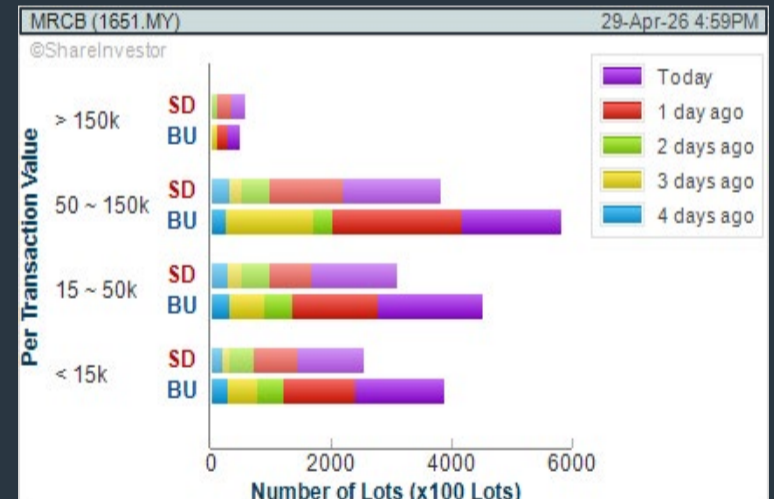
Analysis



### MALYSIAN RESOURCES CORPORATION BERHAD (1651)

C<sup>2</sup> Chart

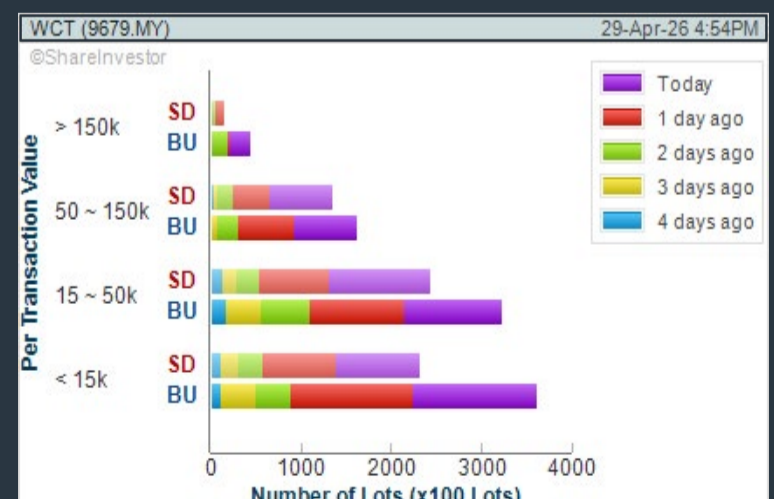
Analysis



### WCT HOLDINGS BERHAD (9679)

C<sup>2</sup> Chart

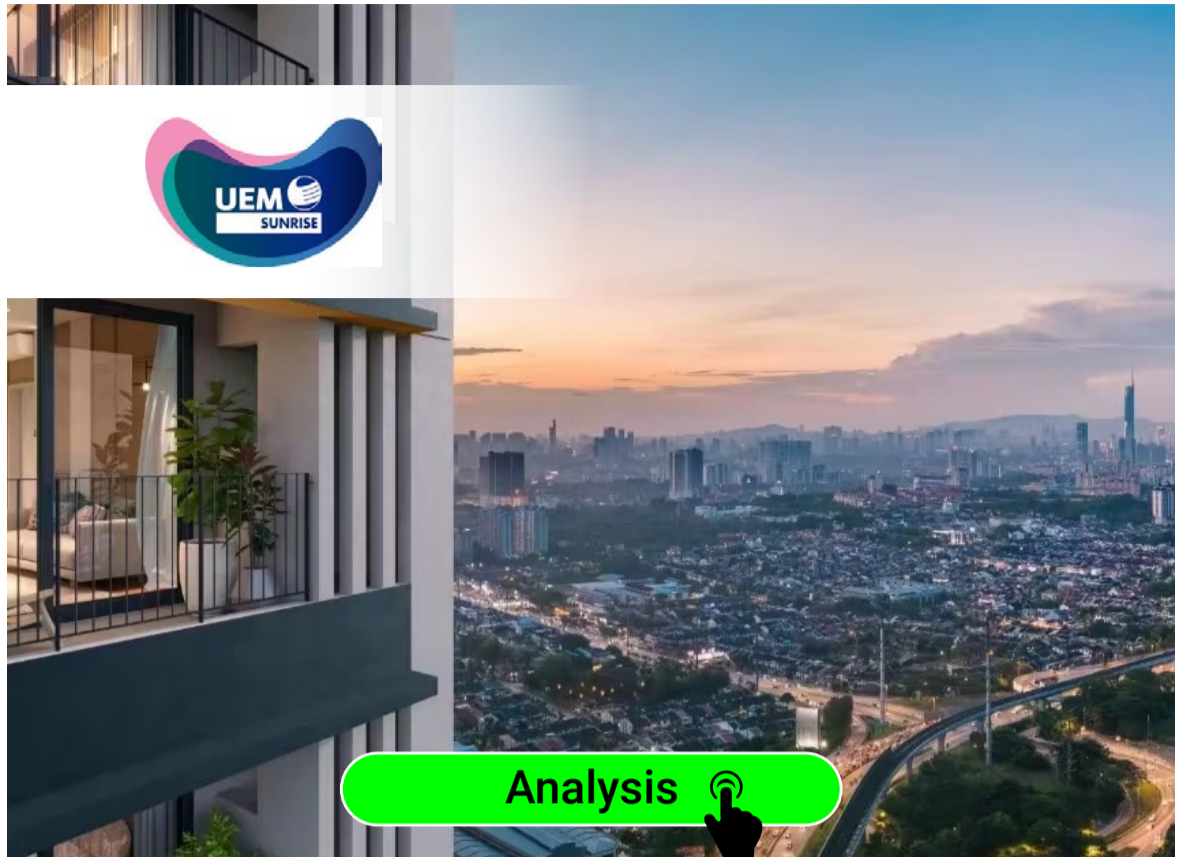
Analysis



**Disclaimer:** The information on this page is provided as a service to readers. It does not constitute financial advice and/or any investment recommendations. Past performance is not indicative of future results. We assume no liability for damages resulting from or arising out of the use of such information. It would be best if you did your own research to make your personal investment decisions wisely or consult a licenced investment advisor.

## COMPANY BACKGROUND

**UEM Sunrise Berhad** is one of Malaysia's top property developers. The core competencies include Macro Township Development, High-Rise Residential, Commercial, Retail and Integrated developments, Property Management as well as Project and Construction Services.

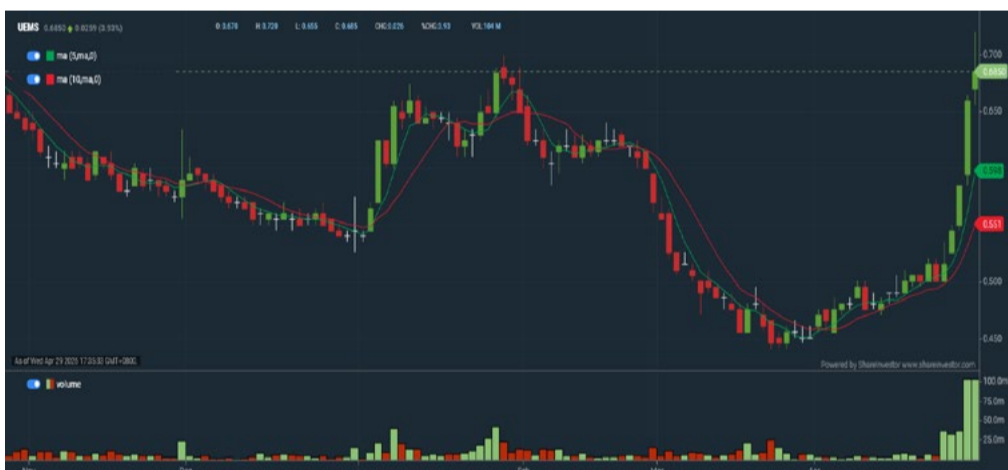


UEMS UEM SUNRISE BERHAD		Updated at 29 Apr 2026 16:59	
Last (MYR): <b>0.685</b> ↑	Change: +0.020	High: 0.720	Remarks: -
	Change (%): +3.01	Low: 0.665	
Open: 0.670		Yesterday's Close: 0.665	
Buy Price: 0.680		Sell Price: 0.685	
Buy Volume ('00): 2,585		Sell Volume ('00): 1,051	
Cumulative Volume ('00): 1,037,756		Cumulative Value: 71,196,210.5	

### Financial Analysis

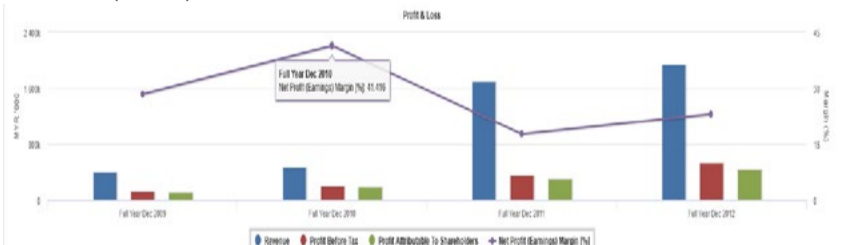
<b>Revenue Growth</b> Increasing revenue in last 2 consecutive years	😊	<b>Profit Growth</b> Profit up and down in last 3 years (with last 3 profitable years)	😐
<b>Piotroski F Score</b> The company has above average financial strength (Piotroski F-Score of 6-7)	😊	<b>Dividend Payout</b> Dividend is increasing over the past 60 months.	😊
<b>Debt to Cashflow</b> High debt to cash flow for most recent year	😐	<b>Gross Profit Margin</b> Consistently good gross profit margin of 20%-40% for 3 years	😊
<b>Net Earnings Margin</b> Low net profit margin for 3 years	😐	<b>Net Earnings Margin</b> Net profit margin is improving by 5% a year over the past 60 months.	😊

😊 Excellent    😊 Good    😐 Neutral    😡 De Alert    🚨 Watch Out



### Historical Financials

#### Profit & Loss (MYR '000)

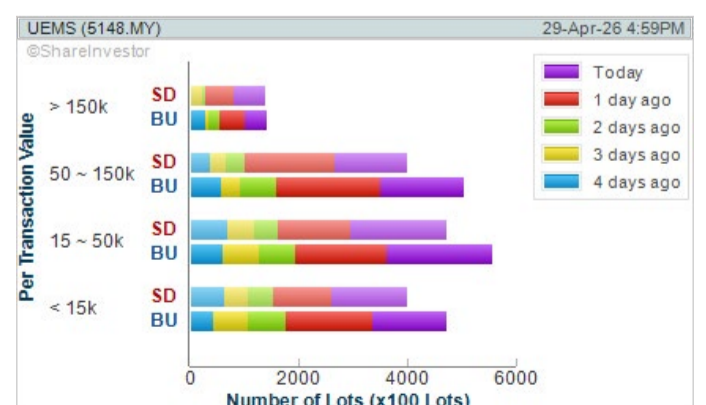


**WebPro 9-Days Free Trial Registration (worth RM10) Sign Up Now**



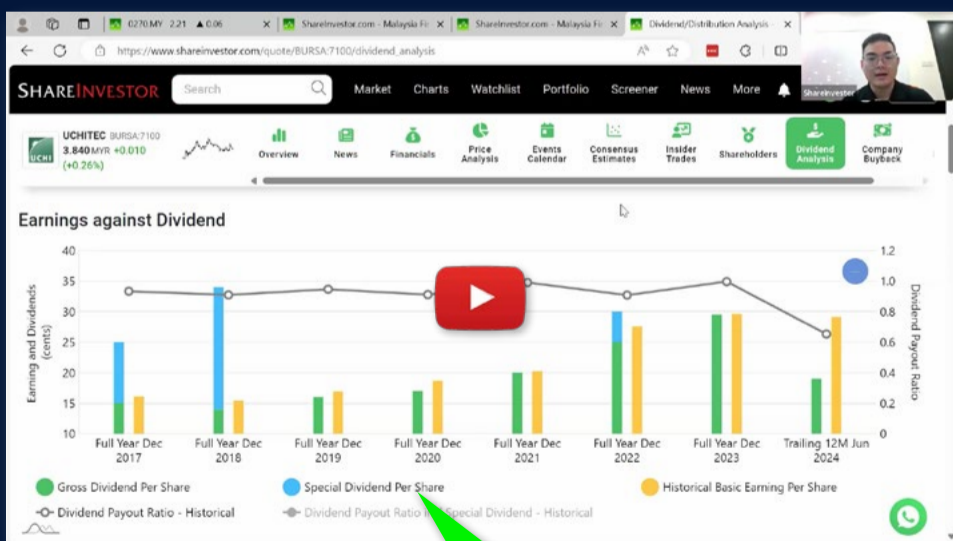
### Key Statistics with Total Shareholder Returns

Period	Dividend Received	Capital Appreciation	Total Shareholder Return
<b>Short Term Return</b>	5 Days	0.014	+35.73 %
	10 Days	0.014	+42.36 %
	20 Days	0.014	+54.99 %
<b>Medium Term Return</b>	3 Months	0.014	+2.19 %
	6 Months	0.014	+5.27 %
	1 Year	0.014	-2.10 %
<b>Long Term Return</b>	2 Years	0.027	-32.89 %
	3 Years	0.034	+178.68 %
	5 Years	0.039	+74.04 %
<b>Annualised Return</b>	Annualised	-	+11.72 %



**Disclaimer:** The information on this page is provided as a service to readers. It does not constitute financial advice and/or any investment recommendations. Past performance is not indicative of future results. We assume no liability for damages resulting from or arising out of the use of such information. It would be best if you did your own research to make your personal investment decisions wisely or consult a licenced investment advisor.

# Ultimate Guide to use **ShareInvestor**



## YOU WILL LEARN HOW TO USE:

- Company Financials
- Market Screener
- Company Insider Trades
- Dividend Analysis
- Consensus Estimation  
*and more...*

**Watch  
now!**

## Price & Volume Distribution Charts (as at Yesterday)

Technical Analysis

**DEFINITION:** Shariah compliant stocks with Technical Analysis showing Bullish Momentum and Price Uptrend. The share price closed at the highest price yesterday. The typical price was higher than the previous day's typical price.

**CHART GUIDE:** Volume Distribution Chart is a statistical interpretation of the current sentiment on each stock in graphical format. The highest bar categorized as >150k is likely to be traded by institutions or super dealers, while the lowest bar categorized as <15k usually represents retail investors. "Buy Up" refers to more buyers snatching up the lots queued at selling price. "Sell Down" refers to sellers selling their shares to the buying queue.



ShareInvestor WebPro > Screener > Market Screener (FA & TA)>select BURSA>add criteria

**A. Criteria**

- > click Add Criteria
- Fundamental Analysis Conditions tab >select (i) Revenue
- Technical Analysis Conditions tab select (ii) Average Volume
- Prices & Other Conditions tab > select (iii) Last Done Price
- Prices & Other Conditions tab > select (iv) Is Shariah Compliant
- Technical Analysis Conditions tab select (v) RSI Overbought
- Technical Analysis Conditions tab select (vi) Moving Average Below Close
- Technical Analysis Conditions tab select (vii) CCI Overbought

**B. Conditions (Criteria Filters)**

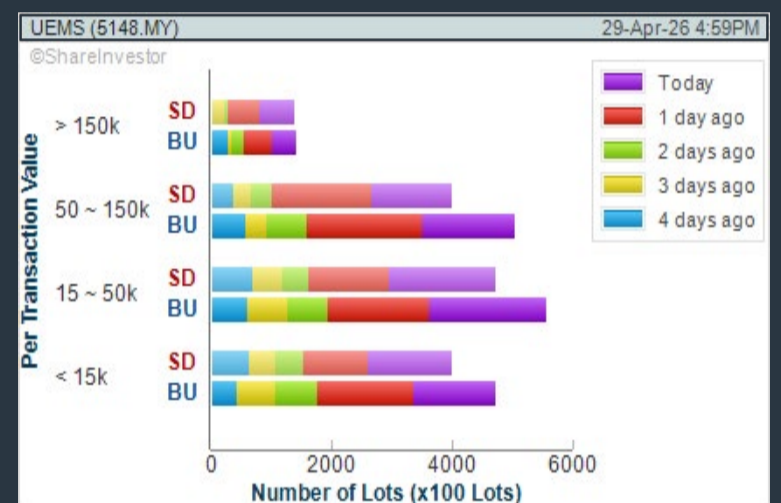
1. Revenue ("000) - select (more than) type (1) for the past select (1) financial year(s)
2. Average Volume - type (1) days average volume greater than type (10000) lots
3. Last Done Price - select (more than) type (0.3)
4. Is Shariah Compliant - select Yes
5. RSI Overbought - select RSI 1 above 99 for 1 days
6. Moving Average Below Close - select (MA) type (10) below close price for type (1) days
7. CCI Overbought - select CCI (2) above (0) for (1) days

- > click Save Template > Create New Template type (Shariah Momentum Up Stocks) > click Create
- > click Save Template as > select Shariah Momentum Up Stocks > click Save
- > click Screen Now (may take a few minutes)
- Sort By: Select (Vol) Select (Desc)
- Mouse over stock name > Charts > click C<sup>2</sup> Charts tab or Volume Distribution

### UEM SUNRISE BERHAD (5148)

C<sup>2</sup> Chart

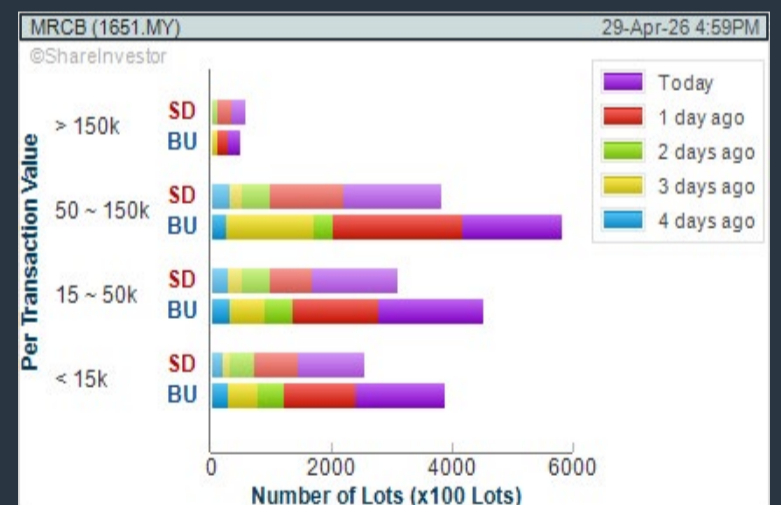
Analysis



### MALAYSIAN RESOURCES CORPORATION BERHAD (1651)

C<sup>2</sup> Chart

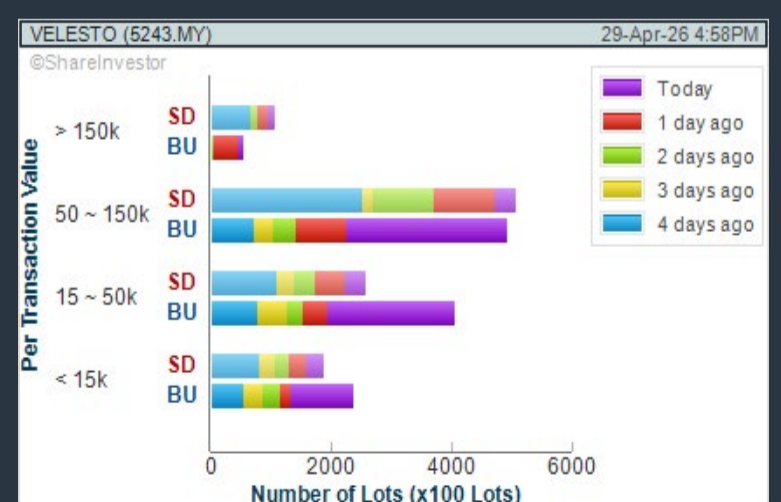
Analysis



### VELESTO ENERGY BERHAD (5243)

C<sup>2</sup> Chart

Analysis



**Disclaimer:** The information on this page is provided as a service to readers. It does not constitute financial advice and/or any investment recommendations. Past performance is not indicative of future results. We assume no liability for damages resulting from or arising out of the use of such information. It would be best if you did your own research to make your personal investment decisions wisely or consult a licenced investment advisor.

## Price & Volume Distribution Charts (as at Yesterday)

Technical Analysis

**DEFINITION:** Stocks with Technical Analysis showing 5-days & 10-days Moving Average Price below Close over past 1 days and with Volume Spike

**CHART GUIDE:** Volume Distribution Chart is a statistical interpretation of the current sentiment on each stock in graphical format. The highest bar categorized as >150k is likely to be traded by institutions or super dealers, while the lowest bar categorized as <15k usually represents retail investors. "Buy Up" refers to more buyers snatching up the lots queued at selling price. "Sell Down" refers to sellers selling their shares to the buying queue.



ShareInvestor WebPro > Screener > Market Screener (FA & TA) > select BURSA > add criteria

**A. Criteria**

- > click Add Criteria
- Technical Analysis Conditions tab select (i) Moving Average Below Close (ii) Volume Spike
- Fundamental Analysis Conditions tab >select (iii) Revenue
- Prices & Other Conditions tab > select (iv) Is Shariah Compliant
- Technical Analysis Conditions tab select (v) Moving Average Below Close
- Prices & Other Conditions tab > select (vi) Last Done Price
- Technical Analysis Conditions tab select (vii) Moving Average Below Close

**B. Conditions (Criteria Filters)**

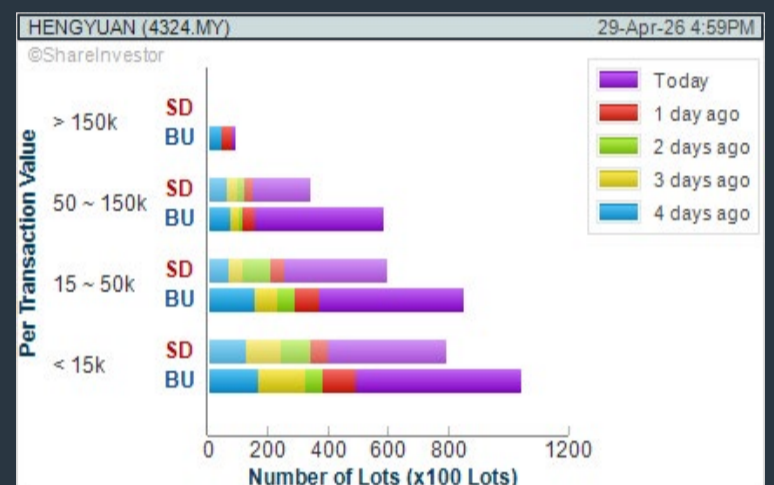
1. Moving Average Below Close - select (MA) type (5) below close price for type (3) days
2. Volume Spike - Volume type (1) greater than type (5) days average
3. Revenue ('000) - select (more than) type (1) for the past select (1) financial year(s)
4. Is Shariah Compliant - select NO
5. Moving Average Below Close - select (MA) type (10) below close price for type (1) days
6. Last Done Price - select (more than) type (0.3)
7. Moving Average Below Close - select (EMA) type (5) below close price for type (1) days

- > click Save Template > Create New Template type (Non-Shariah Hot Stocks) > click Create
- > click Save Template as > select Non-Shariah Hot Stocks > click Save
- > click Screen Now (may take a few minutes)
- Sort By: Select (Vol) Select (Desc)
- Mouse over stock name > Charts > click C<sup>2</sup> Charts tab or Volume Distribution

### HENGYUAN REFINING COMPANY BERHAD (4324)

C<sup>2</sup> Chart

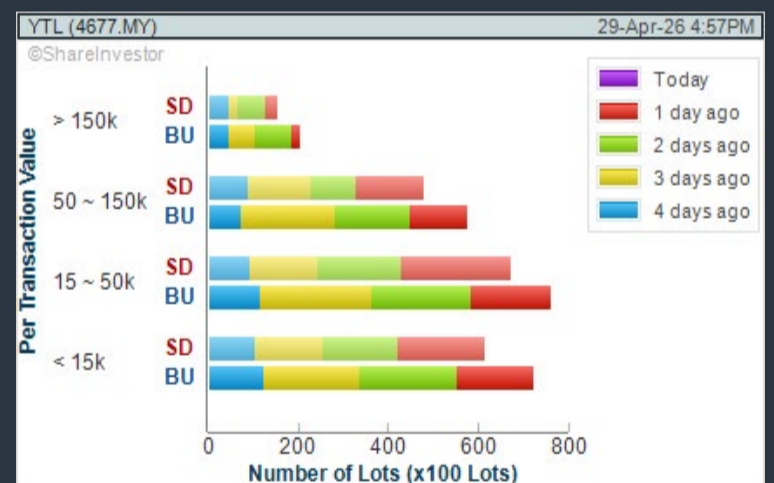
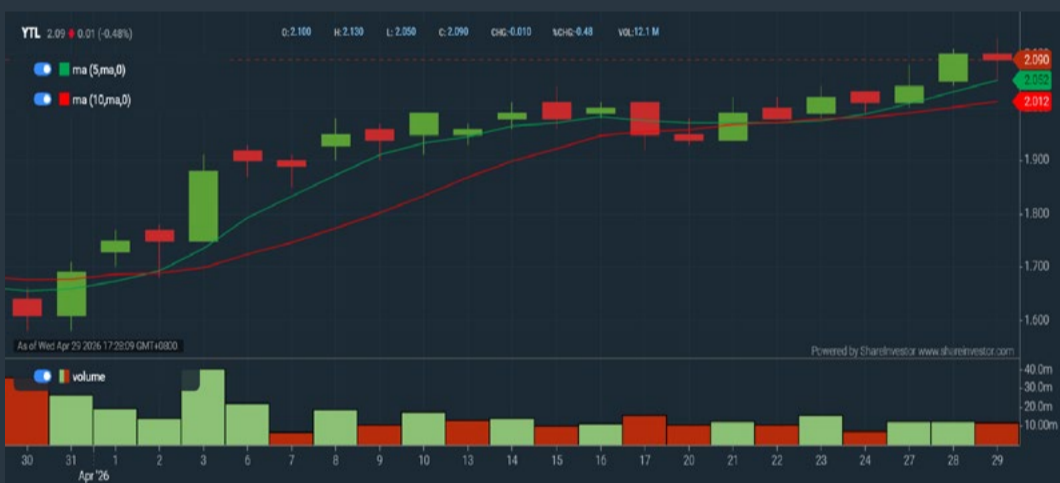
Analysis



### YTL CORPORATION BHD (4677)

C<sup>2</sup> Chart

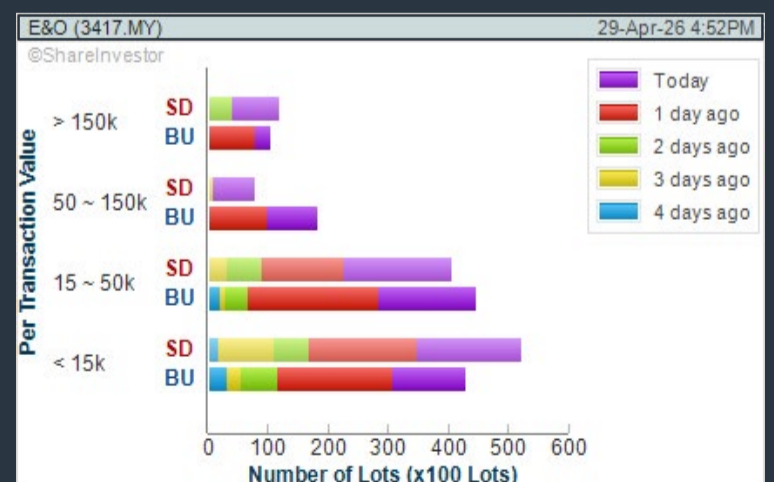
Analysis



### EASTERN & ORIENTAL BHD (3417)

C<sup>2</sup> Chart

Analysis



**Disclaimer:** The information on this page is provided as a service to readers. It does not constitute financial advice and/or any investment recommendations. Past performance is not indicative of future results. We assume no liability for damages resulting from or arising out of the use of such information. It would be best if you did your own research to make your personal investment decisions wisely or consult a licenced investment advisor.

## Price & Volume Distribution Charts (Over 3 trading days as at Yesterday)

Technical Analysis

**DEFINITION:** Stocks with Technical Analysis showing Bullish Momentum and Price Uptrend

**CHART GUIDE:** Volume Distribution Chart is a statistical interpretation of the current sentiment on each stock in graphical format. The highest bar categorized as >150k is likely to be traded by institutions or super dealers, while the lowest bar categorized as <15k usually represents retail investors. "Buy Up" refers to more buyers snatching up the lots queued at selling price. "Sell Down" refers to sellers selling their shares to the buying queue.



ShareInvestor WebPro > Screener > Market Screener (FA & TA) > select BURSA > add criteria

**A. Criteria**

- > click Add Criteria
- Fundamental Analysis Conditions tab > select (i) Revenue
- Technical Analysis Conditions tab select (ii) Moving Average Below Close
- Technical Analysis Conditions tab select (iii) Average Volume
- Prices & Other Conditions tab > select (iv) Last Done Price
- Technical Analysis Conditions tab select (v) Moving Average Below Close
- Technical Analysis Conditions tab select (v) Moving Average Bullish Crossover

**B. Conditions**

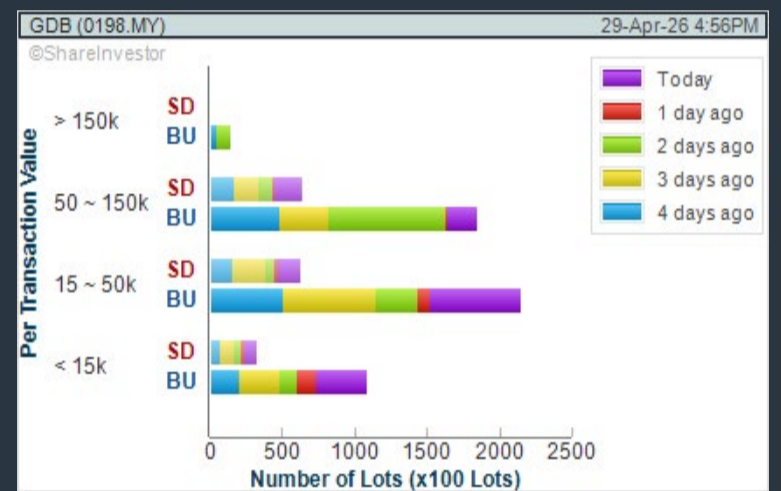
1. Revenue - select (more than) type (1) for the past select (1) financial year(s)
2. Moving Average Below Close - select (MA) type (20) below close price for type (1) days
3. Average Volume - type (5) days average volume type (10000) lots
4. Last Done Price - select (more than) type (0.3)
5. Moving Average Below Close - select (MA) type (10) below close price for type (1) days
6. Moving Average Bullish Crossover - select (MA) type (5) crossed above select (MA) type (10)

> click Save Template > Create New Template type (Non-Shariah Up-Trending Stocks) > click Create Click Save Template As > select Non-Shariah Up Trending Stocks > click Save > click Screen Now (may take a few minutes) Sort By: Select (Vol) Select (Desc) Mouse over stock name > Charts > click C<sup>2</sup> Charts tab or Volume Distribution

### GDB HOLDINGS BERHAD (0198)

C<sup>2</sup> Chart

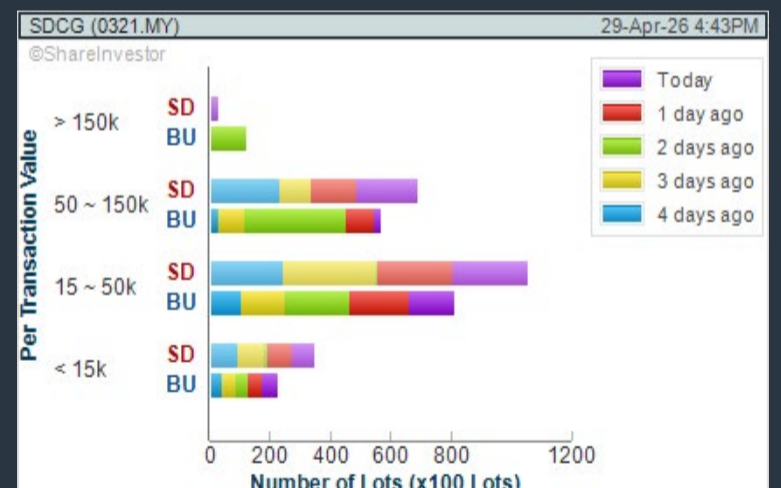
Analysis



### SOLAR DISTRICT COOLING GROUP BERHAD (0321)

C<sup>2</sup> Chart

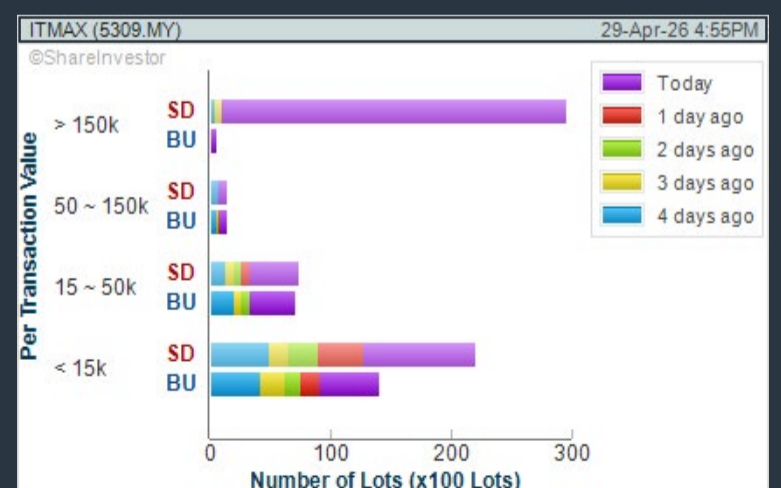
Analysis



### ITMAX SYSTEM BERHAD (5309)

C<sup>2</sup> Chart

Analysis



**Disclaimer:** The information on this page is provided as a service to readers. It does not constitute financial advice and/or any investment recommendations. Past performance is not indicative of future results. We assume no liability for damages resulting from or arising out of the use of such information. It would be best if you did your own research to make your personal investment decisions wisely or consult a licenced investment advisor.

## Price & Total Shareholder Return (as at Yesterday)

Fundamental Analysis

**DEFINITION:** Share price of a company trading at a lower price as compared to its fundamentals (FA) such as financial performance and dividend, allowing it to be attractive to value investors.

**CHART GUIDE:** Total Shareholder Return (TSR) combines share price appreciation and dividend distributions paid to show the total return to the shareholder expressed as a percentage.



ShareInvestor WebPro > Screener > Market Screener (FA & TA) > select BURSA > add criteria

**A. Criteria**

- > click Add Criteria
- Fundamental Analysis Conditions tab (i) Price Earnings Ratio
- Fundamental Analysis Conditions tab >select (ii) CAGR of Net Earnings
- Fundamental Analysis Conditions tab >select (iii) Net Debt To Equity
- Fundamental Analysis Conditions tab >select (iv) Return On Equity (ROE)

**B. Conditions**

1. Price Earnings Ratio - select (less than) type (15) times now
2. CAGR of Net Earnings - select (more than) type (10) % for the past type (3) financial year(s)
3. Net Debt To Equity – select (less than) type (1) for the past select (1) financial year(s)
4. Return On Equity (ROE) – select (more than) type (10) % for the past select (1) financial year(s)

- > click Save Template > Create New Template type (Value Stock) > click Create
- > click Save Template as > select Value Companies > click Save
- > click Screen Now (may take a few minutes)
- Sort by: Select (PE Ratio) Select (Ascending)
- > Mouse over stock name > Factsheet > looking for Total Shareholder Return
- > Mouse over stock name > Charts > click C2 Charts tab

## MULPHA INTERNATIONAL BERHAD (3905)

C<sup>2</sup> Chart

Analysis

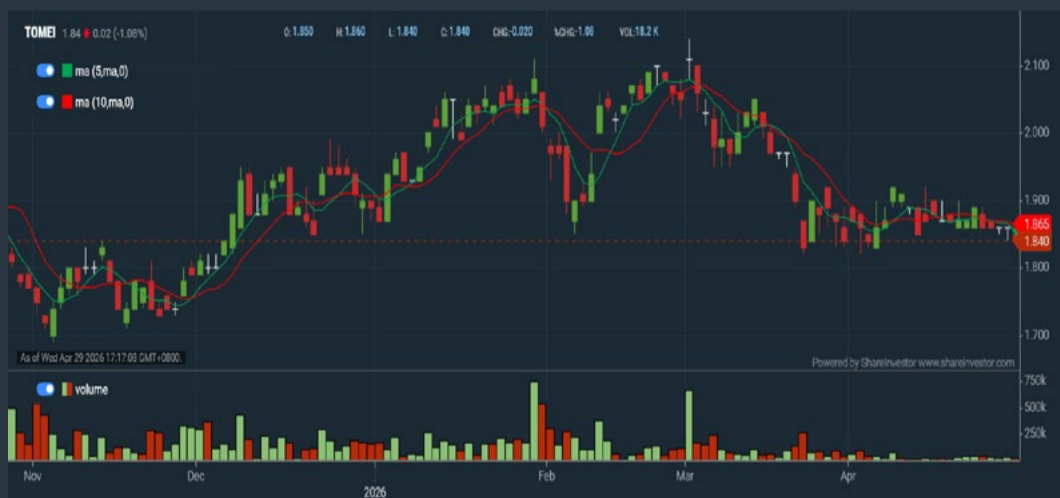


Period	Dividend Received	Capital Appreciation	Total Shareholder Return
Short Term Return	5Days	-0.01	-0.34%
	10Days	-0.01	-0.34%
	20Days	-0.01	-0.34%
Medium Term Return	3Months	-0.01	-0.35%
	6Months	0.00	-0.67%
	1Year	-0.01	-0.88%
Long Term Return	2Years	-0.01	-0.85%
	3Years	-0.01	-0.82%
	5Years	-0.01	-0.75%
Annualized Return	Annualized	-	-0.81%

## TOMEI CONSOLIDATED BHD (7230)

C<sup>2</sup> Chart

Analysis

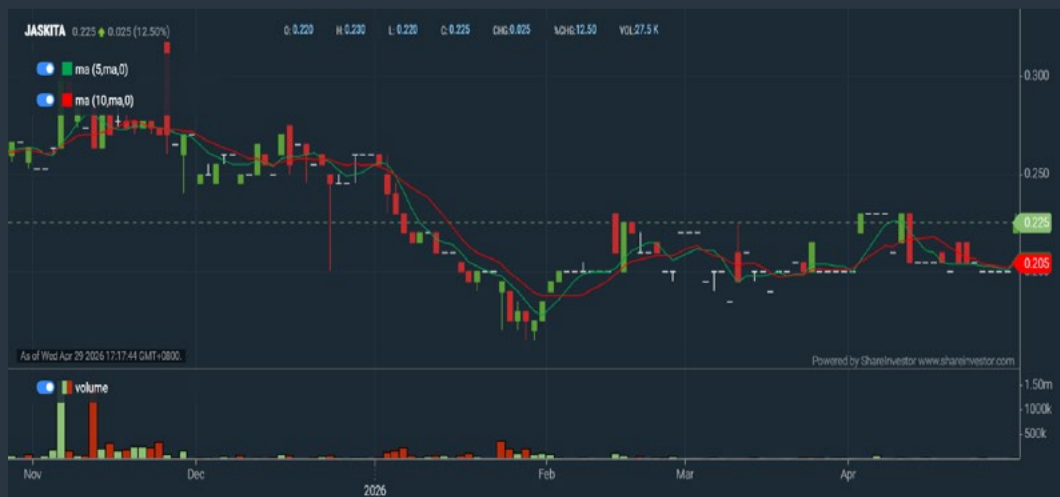


Period	Dividend Received	Capital Appreciation	Total Shareholder Return
Short Term Return	5Days	-0.01	-0.6%
	10Days	-0.01	-0.6%
	20Days	-	-
Medium Term Return	3Months	0.01	0.6%
	6Months	-0.01	-0.6%
	1Year	0.01	-0.6%
Long Term Return	2Years	0.01	-0.6%
	3Years	0.01	-0.6%
	5Years	0.01	-0.6%
Annualized Return	Annualized	-	-0.6%

## JASA KITA BHD (8648)

C<sup>2</sup> Chart

Analysis



Period	Dividend Received	Capital Appreciation	Total Shareholder Return
Short Term Return	5Days	-	-0.3%
	10Days	-	-0.3%
	20Days	-	-0.8%
Medium Term Return	3Months	-	-0.8%
	6Months	0.01	-0.2%
	1Year	0.01	-0.1%
Long Term Return	2Years	0.01	-0.1%
	3Years	0.01	-0.1%
	5Years	0.01	-0.1%
Annualized Return	Annualized	-	-0.4%

**Disclaimer:** The information on this page is provided as a service to readers. It does not constitute financial advice and/or any investment recommendations. Past performance is not indicative of future results. We assume no liability for damages resulting from or arising out of the use of such information. It would be best if you did your own research to make your personal investment decisions wisely or consult a licenced investment advisor.

## Price & Total Shareholder Return (as at Yesterday)

Fundamental Analysis

**DEFINITION:** Company revenue is growing and making good quality of earnings with positive Free Cash Flow.

**CHART GUIDE:** Total Shareholder Return (TSR) combines share price appreciation and distributions paid to show the total return to the shareholder expressed as a percentage.



ShareInvestor WebPro > Screener > Market Screener (FA & TA) > select BURSA > add criteria

**A. Criteria**

1. Fundamental Analysis Conditions tab >select (i) Free Cash Flow, (ii) Revenue Growth, (iii) Gross Profit (Earnings) Margin, (iv) Quality of Earnings, (v) Total Shareholder Returns, > click Add Criteria
2. Fundamental Analysis Conditions tab >select (vi) Total Shareholder Returns > click Add Criteria

**B. Conditions (Criteria Filters)**

1. Free Cash Flow - select (more than) type (1) for the past select (1) financial year(s)
2. Revenue Growth - select (more than) type (1) for the past select (1) financial year(s)
3. Gross Profit (Earnings) Margin - select (more than) type (30) % for the past select (1) financial year(s)
4. Quality of Earnings - select (more than) type (1) for the past select (1) financial year(s)
5. Total Shareholder Return - select (more than) type (5) % for the past select (3) financial year(s)
6. Total Shareholder Return - select (more than) type (5) % for the past select (5) financial year(s)

- > click Save Template > Create New Template type (Growth Companies) > click Create
- > click Save Template as > select Growth Companies > click Save
- > click Screen Now (may take a few minutes)
- > Sort By: Select (Revenue Growth) Select (Desc)
- > Mouse over stock name > Factsheet > looking for Total Shareholder Return

## CATCHA DIGITAL BERHAD (0173)

C<sup>2</sup> Chart

Analysis

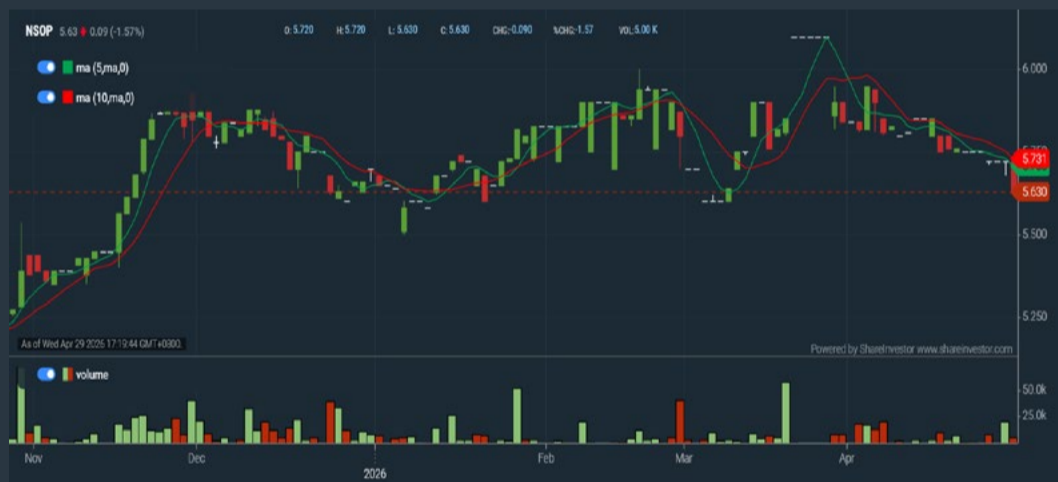


Period	Dividend Received	Capital Appreciation	Total Shareholder Return
Short Term Return	1 Day	-0.015	-0.015%
	10 Days	-0.010	-0.010%
	20 Days	-0.010	-0.010%
Medium Term Return	3 Months	-0.040	-0.07%
	6 Months	-0.015	-0.015%
	1 Year	-0.010	-0.010%
Long Term Return	2 Years	-0.007	-0.01%
	3 Years	-0.017	-0.015%
	5 Years	-0.010	-0.010%
Annualized Return	Annualized	-	-0.01%

## NEGRI SEMBILAN OIL PALMS BHD (2038)

C<sup>2</sup> Chart

Analysis



Period	Dividend Received	Capital Appreciation	Total Shareholder Return
Short Term Return	1 Day	-0.008	-0.01%
	10 Days	-0.008	-0.01%
	20 Days	-0.008	-0.01%
Medium Term Return	3 Months	-0.008	-0.01%
	6 Months	0.000	-0.01%
	1 Year	0.000	-0.01%
Long Term Return	2 Years	0.000	-0.01%
	3 Years	0.000	-0.01%
	5 Years	0.000	-0.01%
Annualized Return	Annualized	-	-0.01%

## COUNTRY VIEW BHD (5049)

C<sup>2</sup> Chart

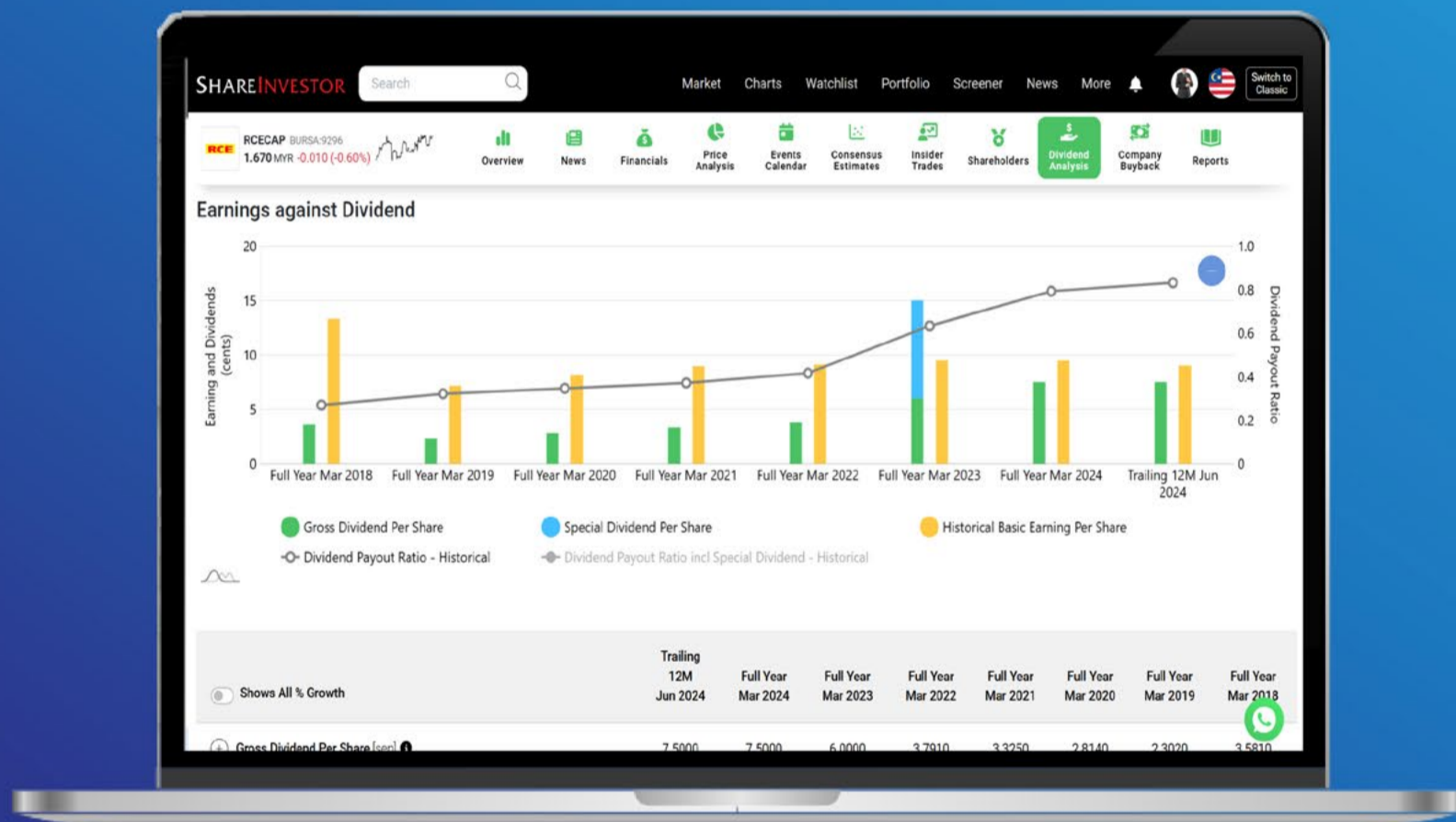
Analysis



Period	Dividend Received	Capital Appreciation	Total Shareholder Return
Short Term Return	1 Day	-0.010	-0.01%
	10 Days	-0.010	-0.01%
	20 Days	-0.010	-0.01%
Medium Term Return	3 Months	0.000	-0.01%
	6 Months	0.000	-0.01%
	1 Year	0.000	-0.01%
Long Term Return	2 Years	0.000	-0.01%
	3 Years	0.000	-0.01%
	5 Years	0.000	-0.01%
Annualized Return	Annualized	-	-0.01%

**Disclaimer:** The information on this page is provided as a service to readers. It does not constitute financial advice and/or any investment recommendations. Past performance is not indicative of future results. We assume no liability for damages resulting from or arising out of the use of such information. It would be best if you did your own research to make your personal investment decisions wisely or consult a licenced investment advisor.

# Tired of low returns? Let's talk high-paying Dividends!



- ✓ **Top Dividend Picks Right Now**
- ✓ **Insider Tips** – Advanced strategies for experienced investors
- ✓ **Easy-to-Follow Tutorial**

Get the most out of dividends, use our Dividend Analysis function –  
Click to Watch Our Tutorial Below!

**Upgrade Your Dividend Strategy Here**



## Price & Total Shareholder Return (as at Yesterday)

Fundamental Analysis

**DEFINITION:** Company is paying out dividend with low or moderate leverage.

**CHART GUIDE:** Total Shareholder Return (TSR) combines share price appreciation and distributions paid to show the total return to the shareholder expressed as a percentage.



ShareInvestor WebPro > Screener > Market Screener (FA & TA) > select BURSA > add criteria

**A. Criteria**

- > click Add Criteria
- Fundamental Analysis Conditions tab >select (i) Dividend Yield (Historical)
- Fundamental Analysis Conditions tab >select (ii) Dividend Payout (Historical)
- Fundamental Analysis Conditions tab >select (iii) Total Debt To Equity
- Fundamental Analysis Conditions tab >select (iv) Total Shareholder Returns
- Fundamental Analysis Conditions tab >select (v) Total Shareholder Returns
- Fundamental Analysis Conditions tab / >select (vi) CAGR of Dividend Per Share

• Fundamental Analysis Conditions tab >select (vii) CAGR of Dividend Per Share

**B. Conditions (Criteria Filters)**

1. Dividend Yield - select (more than) type (1) % for the past select (1) financial year(s)
2. Dividend Payout (Historical) - select (between) type (0.5) to type (1) times for the past select (1) financial year(s)
3. Total Debt to Equity - select (less than) type (1) for the past select (1) financial year(s)
4. Total Shareholder Return - - select (more than) type (5) % for the past select (3) financial year(s)
5. Total Shareholder Return - - select (more than) type (5) % for the past select (5) financial year(s)

6. CAGR of Dividend Per Share - - select (less than) type (30) % for the past select (5) financial year(s)
7. CAGR of Dividend Per Share - - select (more than) type (1) % for the past select (5) financial year(s)

- > click Save Template > Create New Template type (Dividend Companies) > click Create
- > click Save Template as > select Dividend Companies > click Save
- > click Screen Now (may take a few minutes)
- > Sort By: Select (Dividend Yield) Select (Desc)
- > Mouse over stock name > Factsheet > looking for Total Shareholder Return

## TA ANN HOLDINGS BHD (5012)

C<sup>2</sup> Chart



Period	Dividend Received	Capital Appreciation	Total Shareholder Return
Short Term Return	5 Days	-0.130	+2.46%
	10 Days	-0.029	-0.37%
	20 Days	-0.029	-0.37%
Medium Term Return	3 Months	0.100	+3.82%
	6 Months	0.200	+3.84%
	1 Year	0.400	+4.96%
Long Term Return	2 Years	0.750	+5.63%
	3 Years	1.000	+10.12%
	5 Years	1.700	+17.00%
Annualised Return	Annualised	-	+18.84%

## INNORISE PLANTATIONS BERHAD (6262)

C<sup>2</sup> Chart



Period	Dividend Received	Capital Appreciation	Total Shareholder Return
Short Term Return	5 Days	-0.090	+4.82%
	10 Days	-0.100	+6.15%
	20 Days	-0.070	+3.55%
Medium Term Return	3 Months	0.025	+6.90%
	6 Months	0.080	+12.99%
	1 Year	0.150	+28.07%
Long Term Return	2 Years	0.300	+31.79%
	3 Years	0.400	+39.61%
	5 Years	0.811	+17.19%
Annualised Return	Annualised	-	+18.86%

## UCHI TECHNOLOGIES BHD (7100)

C<sup>2</sup> Chart



Period	Dividend Received	Capital Appreciation	Total Shareholder Return
Short Term Return	5 Days	-0.070	+2.55%
	10 Days	-0.220	+8.46%
	20 Days	-0.230	+11.02%
Medium Term Return	3 Months	0.045	-11.02%
	6 Months	0.090	-8.43%
	1 Year	0.195	-9.82%
Long Term Return	2 Years	0.505	-16.87%
	3 Years	0.695	+10.11%
	5 Years	1.320	+36.58%
Annualised Return	Annualised	-	+6.42%

**Disclaimer:** The information on this page is provided as a service to readers. It does not constitute financial advice and/or any investment recommendations. Past performance is not indicative of future results. We assume no liability for damages resulting from or arising out of the use of such information. It would be best if you did your own research to make your personal investment decisions wisely or consult a licenced investment advisor.

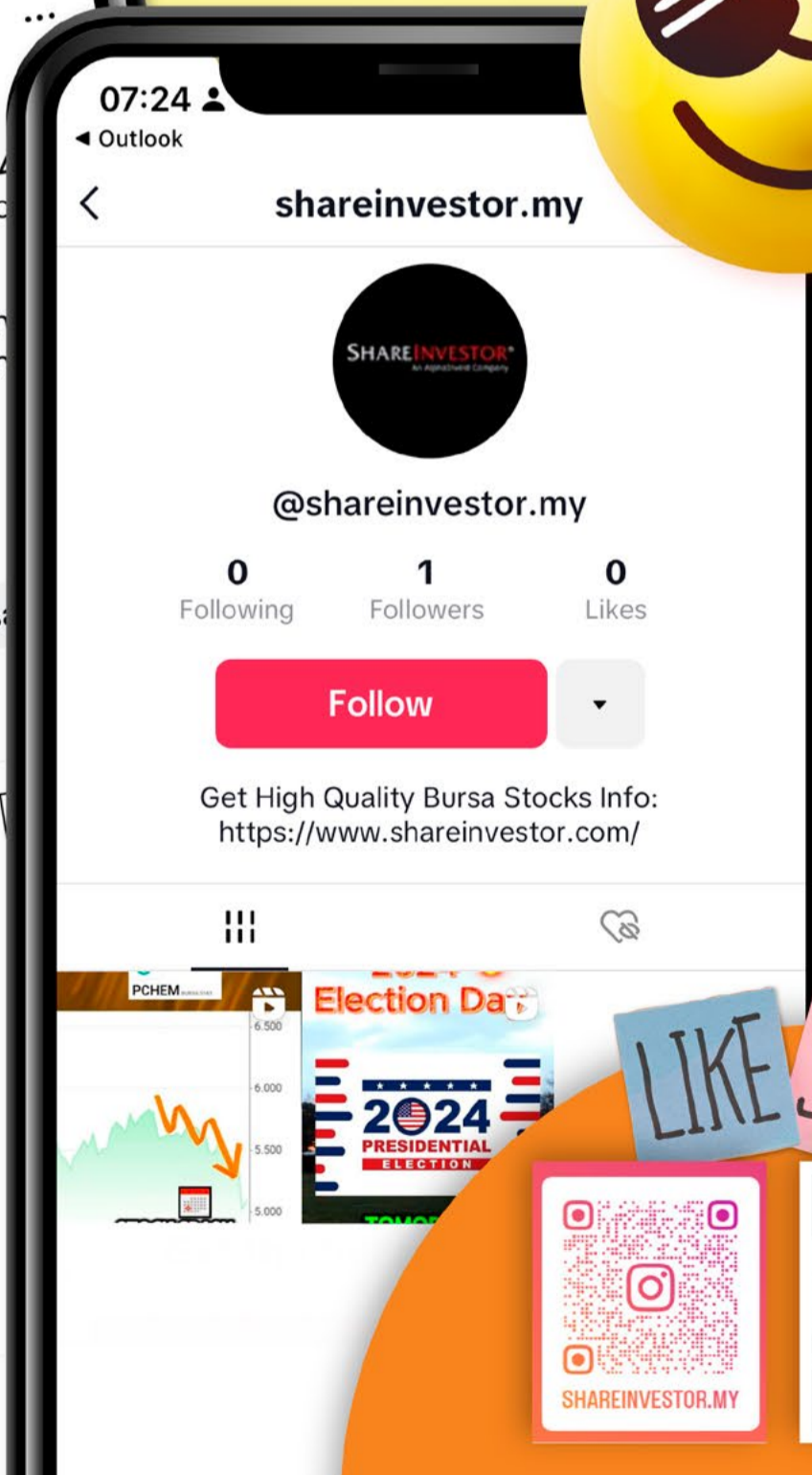
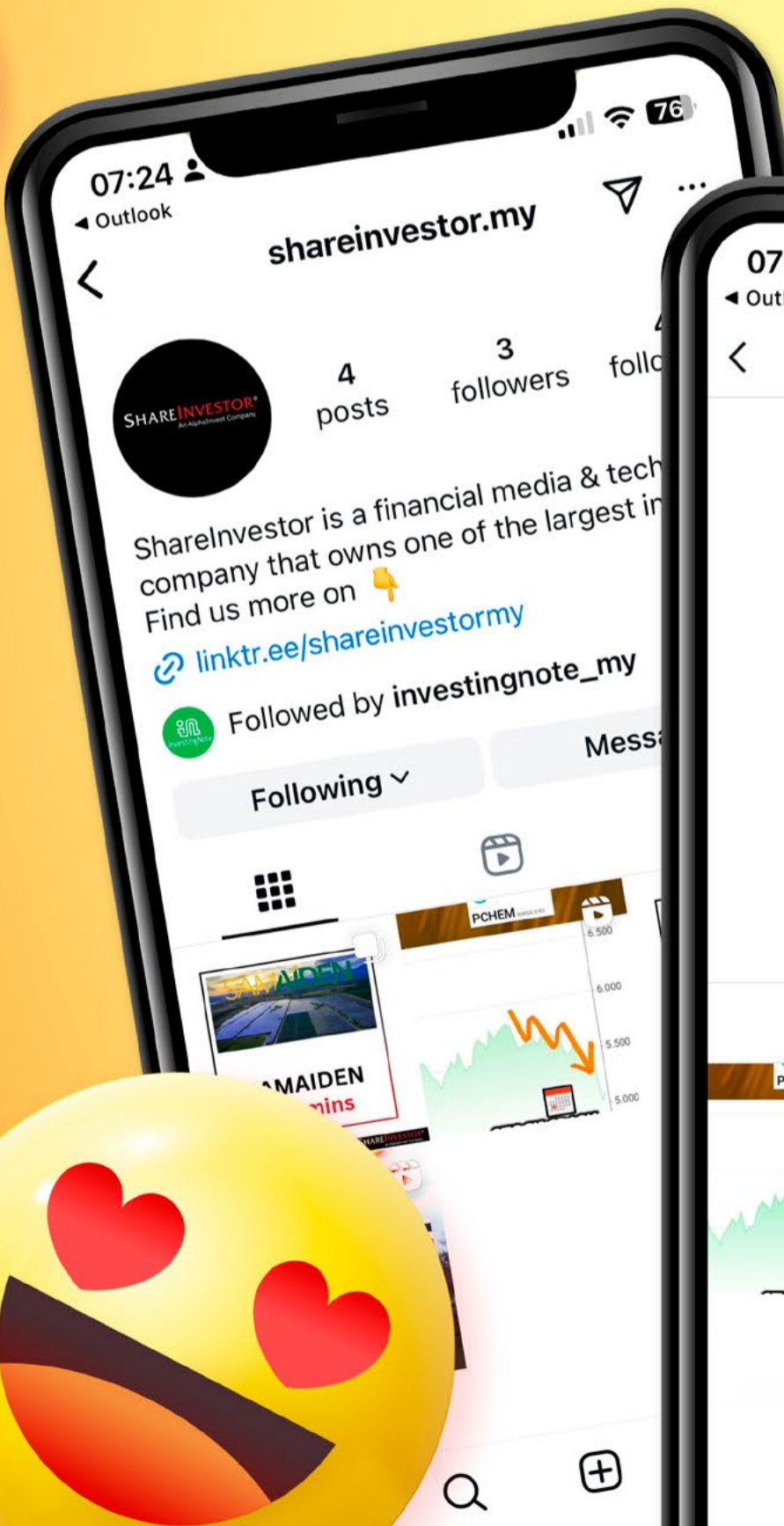
**SHAREINVESTOR**<sup>®</sup>  
An AlphaInvest Company



# We're Officially on TikTok & Instagram!



Follow us now for more information!



LIKE SHARE



Week: 23 Apr - 29 Apr 2026

More Brokers' Call 

<b>AmInvestment Bank</b> <small>... See More</small>	<b>Call</b>	<b>Target Price</b>	<b>Release Date</b>
Mega First Corporation Berhad (3069)	<b>BUY</b>	RM3.11	28 Apr 26
MISC Berhad (3816)	<b>BUY</b>	RM8.08	28 Apr 26

<b>Apex Securities</b> <small>... See More</small>	<b>Call</b>	<b>Target Price</b>	<b>Release Date</b>
Vitrox Corporation Berhad (0097)	<b>BUY</b>	RM7.04	27 Apr 26
KIP Real Estate Investment Trust (5280)	<b>BUY</b>	RM0.92	28 Apr 26
HI Mobility Berhad (5335)	<b>BUY</b>	RM2.73	29 Apr 26

<b>Hong Leong Investment Bank</b> <small>... See More</small>	<b>Call</b>	<b>Target Price</b>	<b>Release Date</b>
Unisem (M) Berhad (5005)	<b>BUY</b>	RM3.76	27 Apr 26
CTOS Digital Berhad (5301)	<b>BUY</b>	RM0.89	28 Apr 26

<b>Kenanga</b> <small>... See More</small>	<b>Call</b>	<b>Target Price</b>	<b>Release Date</b>
Uzma Berhad (7250)	<b>OUTPERFORM</b>	RM0.70	28 Apr 26
LPI Capital Berhad (8621)	<b>OUTPERFORM</b>	RM16.00	29 Apr 26
Nestlé (Malaysia) Berhad (4707)	<b>MARKET PERFORM</b>	RM106.00	29 Apr 26

<b>MIDF</b> <small>... See More</small>	<b>Call</b>	<b>Target Price</b>	<b>Release Date</b>
LPI Capital Berhad (8621)	<b>BUY</b>	RM15.42	29 Apr 26
Nestlé (Malaysia) Berhad (4707)	<b>NEUTRAL</b>	RM95.70	29 Apr 26
SD Guthrie Berhad (5285)	<b>BUY</b>	RM6.46	29 Apr 26

<b>Public Investment Bank</b> <small>... See More</small>	<b>Call</b>	<b>Target Price</b>	<b>Release Date</b>
Malaysia Smelting Corporation Berhad (5916)	<b>OUTPERFORM</b>	RM2.60	24 Apr 26
UUE Holdings Berhad (0310)	<b>OUTPERFORM</b>	RM0.55	24 Apr 26
Avaland Berhad (5182)	<b>OUTPERFORM</b>	RM0.30	29 Apr 26

<b>UOB Kay Hian</b> <small>... See More</small>	<b>Call</b>	<b>Target Price</b>	<b>Release Date</b>
Westports Holdings Berhad (5246)	<b>HOLD</b>	RM5.75	27 Apr 26
Sunway Construction Group Berhad (5263)	<b>BUY</b>	RM7.65	28 Apr 26

**DEFINITION:** Top 08 stocks with Technical Analysis plus Pattern Matching by 60 pre-defined indicators by the system showing a higher probability of bullish sentiment on the share price.



ShareInvestor WebPro > Screener > Predefined TA Screens > select market BURSA > Most Long Signals > click Scan Results or mouse over each company

## MICROLINK SOLUTIONS BHD (0126.MY)

### MICROLN

Price updated at 29 Apr 2026 17:31

Last: <b>0.080</b>	Change: <b>-0.005</b>	Volume: <b>14,367</b>
	Change (%): <b>-5.88</b>	Range: <b>0.080 - 0.085</b>

TA Scanner Results based on historical data up to 29 Apr 2026

Condition	Signal	Explanation
Bollinger Band: Bullish Long Term Volatility Breakout and Trending	Long	"1. Close price above upper bollinger band(33,1). 2. Volume above average volume(50). 3. Average volume(50) is above 300,000."
Bollinger Band: Bullish Short Term Volatility Breakout and Trending	Long	"1. Close price above upper bollinger band(33,1). 2. Volume above average volume(10). 3. Average volume(10) is above 300,000."
Bollinger Band: High Above Upper Bollinger Band	Neutral	"1. High above upper bollinger band(14,2). 2. Average volume(5) is above 100,000."
Donchian Channels: High Above Upper Donchian Channels	Long	High crossed above the upper Donchian Channel(14,4)
MA: Short Term Bullish Moving Average Crossover	Long	MA(10) crossed above MA(15) within the last 1 day.
RSI: Short Term RSI 50 Bullish Crossover	Long	"1. RSI(20) crossed above 50 within the last 1 day and RSI(20) 1 day ago below 50 for the last 5 days. 2. Volume above average volume(125). 3. Average volume(5) is above 100,000."

## WCT HOLDINGS BERHAD (9679.MY)

### WCT

Price updated at 29 Apr 2026 17:31

Last: <b>0.495</b>	Change: <b>+0.025</b>	Volume: <b>613,998</b>
	Change (%): <b>+5.32</b>	Range: <b>0.475 - 0.515</b>

TA Scanner Results based on historical data up to 29 Apr 2026

Condition	Signal	Explanation
Bollinger Band: Bullish Long Term Volatility Breakout and Trending	Long	"1. Close price above upper bollinger band(33,1). 2. Volume above average volume(50). 3. Average volume(50) is above 300,000."
Bollinger Band: Bullish Short Term Volatility Breakout and Trending	Long	"1. Close price above upper bollinger band(33,1). 2. Volume above average volume(10). 3. Average volume(10) is above 300,000."
Bollinger Band: High Above Upper Bollinger Band	Neutral	"1. High above upper bollinger band(14,2). 2. Average volume(5) is above 100,000."
CCI: Bearish CCI Overbought And Reversing	Short	"1. CCI(26) above 100 and CCI(26) 1 day ago increasing for the last 3 days. 2. CCI(26) below CCI(26) 1 day ago"
Candlestick: Bullish Engulfing	Long	Bullish: Engulfing
Chaikin Volatility: Increasing Chaikin Volatility	Neutral	Chaikin Volatility(10,10) has been increasing for 5 days
MACD: Overbought	Short	"1. MACD Histogram(12,26,9) reached a new 6 month high. 2. MACD Histogram(12,26,9) has been above 0 for the last 3 weeks."
Volume: 10 Days large value Buy Up trade	Long	"1. 150K value Buy Up greater than Sell Down by 20% for 10 days. 2. 50K-100K value Buy Up greater than Sell Down by 20% for 10 days. 3. Average volume(10) is above 1000000"
Volume: 5 Days large value Buy Up trade	Long	"1. 150K value Buy Up greater than Sell Down by 20% for 5 days. 2. 50K-100K value Buy Up greater than Sell Down by 20% for 5 days. 3. Average volume(10) is above 1000000"
Williams %R: Bearish Williams %R	Short	"1. Williams %R(26) between 0 and -20. 2. Average volume(5) is above 100,000."

**Disclaimer:** The information on this page is provided as a service to readers. It does not constitute financial advice and/or any investment recommendations. Past performance is not indicative of future results. We assume no liability for damages resulting from or arising out of the use of such information. It would be best if you did your own research to make your personal investment decisions wisely or consult a licenced investment advisor.

## PMCK BERHAD (0363.MY)

### PMCK

Price updated at 29 Apr 2026 17:30

Last: <b>0.205</b>	Change: <b>-</b>	Volume: <b>3,141</b>
	Change (%): <b>-</b>	Range: <b>0.200 - 0.205</b>

TA Scanner Results based on historical data up to 29 Apr 2026

Condition	Signal	Explanation
Bollinger Band: Bullish Lower Bollinger Band Support	Long	"1. Low 1 day ago below lower bollinger band(20,2). 2. Close above close 1 day ago. 3. Average volume(5) is above 100,000."
Bollinger Band: High Above Upper Bollinger Band	Neutral	"1. High above upper bollinger band(14,2). 2. Average volume(5) is above 100,000."
Bollinger Band: Low Below Lower Bollinger Band	Neutral	"1. Low below lower bollinger band(14,2). 2. Average volume(5) is above 100,000."
MA: Bullish Price Crossover	Long	"1. Close price crossed above MA(40) within the last 1 day. 2. Previous day close price is below the MA(10) for the last 5 days"
MACD: Bullish MACD Crossover	Long	"1. MACD(12,26) diff line crossed above the MACD(12,26) signal line. 2. MACD Histogram(12,26) is above 0."
RSI: Short Term RSI 50 Bullish Crossover	Long	"1. RSI(20) crossed above 50 within the last 1 day and RSI(20) 1 day ago below 50 for the last 5 days. 2. Volume above average volume(125). 3. Average volume(5) is above 100,000."
Stochastic: Fast Stochastic Buy Signal	Long	"1. Fast Stochastic(15,5) %K crossed above 20. 2. Fast Stochastic(15,5) %K 1 day ago was below 20 for the last 5 days. 3. Average volume(30) is above 50000"

## MK LAND HOLDINGS BERHAD (8893.MY)

### MKLAND

Price updated at 29 Apr 2026 17:31

Last: <b>0.140</b>	Change: <b>-</b>	Volume: <b>1,460</b>
	Change (%): <b>-</b>	Range: <b>0.135 - 0.140</b>

TA Scanner Results based on historical data up to 29 Apr 2026

Condition	Signal	Explanation
Bollinger Band: Bullish Long Term Volatility Breakout and Trending	Long	"1. Close price above upper bollinger band(33,1). 2. Volume above average volume(50). 3. Average volume(50) is above 300,000."
Bollinger Band: Bullish Short Term Volatility Breakout and Trending	Long	"1. Close price above upper bollinger band(33,1). 2. Volume above average volume(10). 3. Average volume(10) is above 300,000."
Bollinger Band: High Above Upper Bollinger Band	Neutral	"1. High above upper bollinger band(14,2). 2. Average volume(5) is above 100,000."
CCI: Bearish CCI Overbought And Reversing	Short	"1. CCI(26) above 100 and CCI(26) 1 day ago increasing for the last 3 days. 2. CCI(26) below CCI(26) 1 day ago"
DM: Bullish Directional Movement	Long	-DI(14) crossed below +DI(14)
Donchian Channels: High Above Upper Donchian Channels	Long	High crossed above the upper Donchian Channel(14,4)
Parabolic SAR: Bearish Parabolic SAR Reversal	Neutral	"1. Parabolic SAR 1 day ago above close price 1 day ago for the last 5 days. 2. Parabolic SAR below close price"
Volume: Volume Spike	Long	"1. Volume is more than 500% above average volume(10). 2. Volume above 200000. 3. Close price above 0.10"



## LION INDUSTRIES CORPORATION (4235.MY)

### LIONIND

Price updated at 29 Apr 2026 17:31

Last: <b>0.150</b>	Change: <b>-0.005</b>	Volume: <b>10,490</b>
	Change (%): <b>-3.23</b>	Range: <b>0.150 - 0.160</b>

TA Scanner Results based on historical data up to 29 Apr 2026

Condition	Signal	Explanation
Bollinger Band: Bullish Long Term Volatility Breakout and Trending	Long	"1. Close price above upper bollinger band(33,1). 2. Volume above average volume(50). 3. Average volume(50) is above 300,000."
Bollinger Band: Bullish Short Term Volatility Breakout and Trending	Long	"1. Close price above upper bollinger band(33,1). 2. Volume above average volume(10). 3. Average volume(10) is above 300,000."
Bollinger Band: High Above Upper Bollinger Band	Neutral	"1. High above upper bollinger band(14,2). 2. Average volume(5) is above 100,000."
CCI: Bearish CCI Overbought And Reversing	Short	"1. CCI(26) above 100 and CCI(26) 1 day ago increasing for the last 3 days. 2. CCI(26) below CCI(26) 1 day ago"
Chaikin Volatility: Increasing Chaikin Volatility	Neutral	Chaikin Volatility(10,10) has been increasing for 5 days
Donchian Channels: High Above Upper Donchian Channels	Long	High crossed above the upper Donchian Channel(14,4)
MACD: Bullish MACD Crossover	Long	"1. MACD(12,26) diff line crossed above the MACD(12,26) signal line. 2. MACD Histogram(12,26) is above 0."
Parabolic SAR: Bearish Parabolic SAR Reversal	Neutral	"1. Parabolic SAR 1 day ago above close price 1 day ago for the last 5 days. 2. Parabolic SAR below close price"
Volume: Volume Spike	Long	"1. Volume is more than 500% above average volume(10). 2. Volume above 200000. 3. Close price above 0.10"



## RALCO CORPORATION BERHAD (7498.MY)

### RALCO

Price updated at 29 Apr 2026 17:31

Last: <b>1.090</b>	Change: <b>-0.030</b>	Volume: <b>1,021</b>
	Change (%): <b>-2.68</b>	Range: <b>1.090 - 1.120</b>

TA Scanner Results based on historical data up to 29 Apr 2026

Condition	Signal	Explanation
Bollinger Band: Bullish Long Term Volatility Breakout and Trending	Long	"1. Close price above upper bollinger band(33,1). 2. Volume above average volume(50). 3. Average volume(50) is above 300,000."
Bollinger Band: Bullish Short Term Volatility Breakout and Trending	Long	"1. Close price above upper bollinger band(33,1). 2. Volume above average volume(10). 3. Average volume(10) is above 300,000."
Bollinger Band: High Above Upper Bollinger Band	Neutral	"1. High above upper bollinger band(14,2). 2. Average volume(5) is above 100,000."
Donchian Channels: High Above Upper Donchian Channels	Long	High crossed above the upper Donchian Channel(14,4)
MACD: Bullish MACD Crossover	Long	"1. MACD(12,26) diff line crossed above the MACD(12,26) signal line. 2. MACD Histogram(12,26) is above 0."
Volume: 10 Days large value Buy Up trade	Long	"1. 150K value Buy Up greater than Sell Down by 20% for 10 days. 2. 50K-100K value Buy Up greater than Sell Down by 20% for 10 days. 3. Average volume(10) is above 1000000"
Volume: 5 Days large value Buy Up trade	Long	"1. 150K value Buy Up greater than Sell Down by 20% for 5 days. 2. 50K-100K value Buy Up greater than Sell Down by 20% for 5 days. 3. Average volume(10) is above 1000000"
Williams %R: Bearish Williams %R	Short	"1. Williams %R(26) between 0 and -20. 2. Average volume(5) is above 100,000."



## ISF GROUP BERHAD (0390.MY)

### ISF

Price updated at 29 Apr 2026 17:30

Last: <b>0.515</b>	Change: <b>+0.010</b>	Volume: <b>127,819</b>
	Change (%): <b>+1.98</b>	Range: <b>0.505 - 0.525</b>

TA Scanner Results based on historical data up to 29 Apr 2026

Condition	Signal	Explanation
Bollinger Band: Bullish Long Term Volatility Breakout and Trending	Long	"1. Close price above upper bollinger band(33,1). 2. Volume above average volume(50). 3. Average volume(50) is above 300,000."
Bollinger Band: Bullish Short Term Volatility Breakout and Trending	Long	"1. Close price above upper bollinger band(33,1). 2. Volume above average volume(10). 3. Average volume(10) is above 300,000."
Candlestick: Bullish Engulfing	Long	Bullish: Engulfing
MA: Medium Term Bullish Moving Average Crossover	Long	MA(25) crossed above MA(50) within the last 1 day.
Volume: 10 Days large value Buy Up trade	Long	"1. 150K value Buy Up greater than Sell Down by 20% for 10 days. 2. 50K-100K value Buy Up greater than Sell Down by 20% for 10 days. 3. Average volume(10) is above 1000000"
Williams %R: Bearish Williams %R	Short	"1. Williams %R(26) between 0 and -20. 2. Average volume(5) is above 100,000."



## CAHYA MATA SARAWAK BHD (2852.MY)

### CMSB

Price updated at 29 Apr 2026 17:31

Last: <b>1.270</b>	Change: <b>-0.010</b>	Volume: <b>60,835</b>
	Change (%): <b>-0.78</b>	Range: <b>1.240 - 1.310</b>

TA Scanner Results based on historical data up to 29 Apr 2026

Condition	Signal	Explanation
Bollinger Band: Bullish Long Term Volatility Breakout and Trending	Long	"1. Close price above upper bollinger band(33,1). 2. Volume above average volume(50). 3. Average volume(50) is above 300,000."
Bollinger Band: Bullish Short Term Volatility Breakout and Trending	Long	"1. Close price above upper bollinger band(33,1). 2. Volume above average volume(10). 3. Average volume(10) is above 300,000."
Bollinger Band: High Above Upper Bollinger Band	Neutral	"1. High above upper bollinger band(14,2). 2. Average volume(5) is above 100,000."
Candlestick: Bullish Engulfing	Long	Bullish: Engulfing
DM: Bullish Directional Movement	Long	-DI(14) crossed below +DI(14)
Donchian Channels: High Above Upper Donchian Channels	Long	High crossed above the upper Donchian Channel(14,4)
RSI: Short Term RSI 50 Bullish Crossover	Long	"1. RSI(20) crossed above 50 within the last 1 day and RSI(20) 1 day ago below 50 for the last 5 days. 2. Volume above average volume(125). 3. Average volume(5) is above 100,000."
Volume: 10 Days large value Buy Up trade	Long	"1. 150K value Buy Up greater than Sell Down by 20% for 10 days. 2. 50K-100K value Buy Up greater than Sell Down by 20% for 10 days. 3. Average volume(10) is above 1000000"
Volume: 5 Days large value Buy Up trade	Long	"1. 150K value Buy Up greater than Sell Down by 20% for 5 days. 2. 50K-100K value Buy Up greater than Sell Down by 20% for 5 days. 3. Average volume(10) is above 1000000"
Williams %R: Bearish Williams %R	Short	"1. Williams %R(26) between 0 and -20. 2. Average volume(5) is above 100,000."



**Dato' Eu Hong Chew**  
Former Group CEO i-Berhad  
Non-Executive Director

He has been associated with the Sumurwang Group for many years charting the path for its manufacturing arm, firstly under Dreamland Holdings Berhad and the subsequent acquisition of I-Berhad.

Before that, he was with PA Management Consulting for a decade where he was the Director of Studies for the Cranfield PA MBA Programme in Malaysia.

Educated at the Royal Military College, Dato' Eu has an engineering degree from the University of Glasgow, and a MBA from the University of Bradford, UK.

# SKB Shutters: A Modest Upside Story

## SUMMARY

- SKB Shutters Corporation Berhad (**Bursa:7115**) has evolved from a roller shutter manufacturer into a broader industrial solutions provider, with growth and margin improvements driven by regulatory tailwinds and product diversification.
- Profitability, margins, and returns have strengthened post-2021, but while operating efficiency improved, capital efficiency remains uneven due to historically high reinvestment.
- Despite recent gains, decade-average ROIC and ROE remain below the cost of capital, suggesting limited shareholder value creation over the full cycle

*Disclaimer: This article is written for informational purposes only. It does not constitute a solicitation, offer, advice, counseling or recommendation to buy or sell. As such it is not intended to promote the purchase of shares in any way. As a reminder, any type of asset has a risk factor and needs to be evaluated from multiple perspectives. Therefore, any investment decision and the associated risk remains with the investor. The views expressed here are entirely the writer's own.*

## BACKGROUND

SKB was established in 1957 as a manufacturer of roller shutters. Over the decades, the Group expanded its capabilities and product offerings, culminating in its listing on Bursa Malaysia on 28 March 2001.

While its origins were in roller shutters, SKB has since diversified into a broader range of products, including:

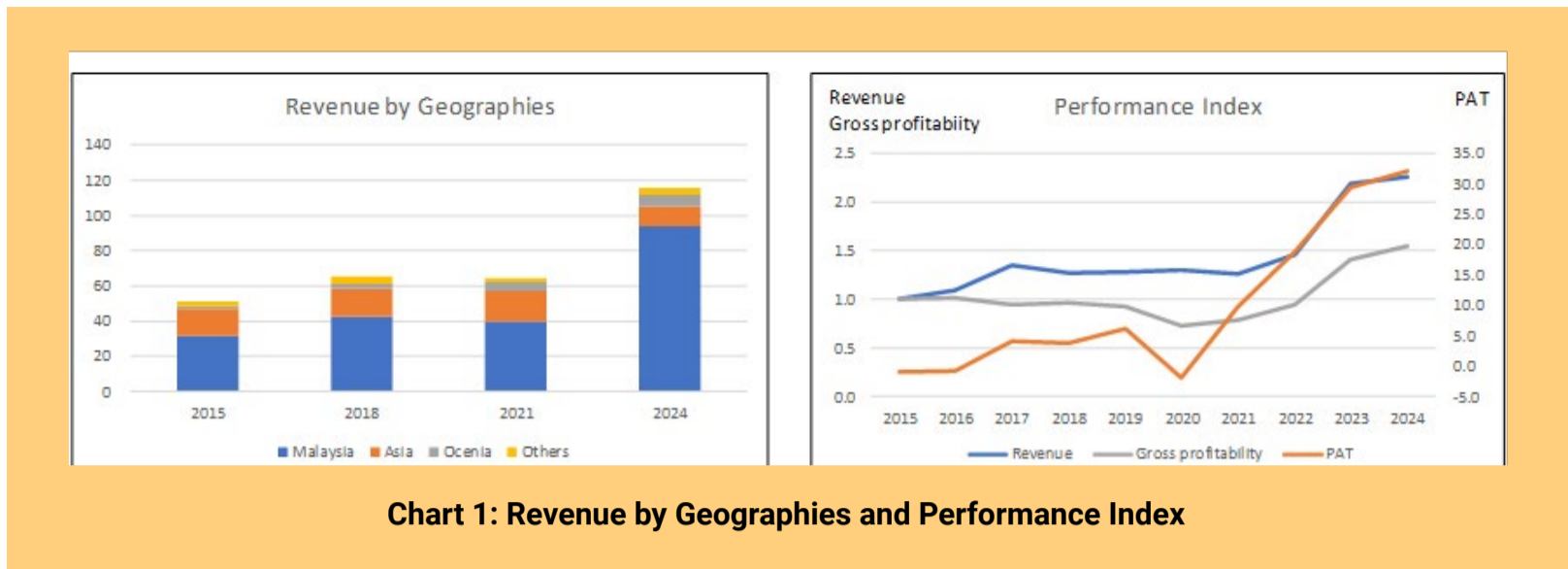
- Fire-rated and high-security steel doors.
- Storage and handling systems for the logistics and industrial sectors.
- Niche solutions such as powerless flood shutters and extreme weather-resistant shutters

Today, the Group is a leading player in the manufacturing of roller shutters, steel doors, and storage systems, with the ambition of becoming the largest player in Southeast Asia.

In tandem with its product expansion, SKB has also evolved its business model. It is moving beyond a traditional manufacturer-supplier role towards providing integrated solutions. This includes incorporating ESG-compliant initiatives, automation, and designing products tailored to specific market needs, such as earthquake-prone regions and high-security environments.

The Group does not disclose revenue by product segment, instead reporting performance by geography. As shown in the **left part of Chart 1**, Malaysia remains the dominant market, accounting for both the bulk of revenue and growth. Its contribution increased from about 62% in 2015 to 81% in 2024.

Note that SKB's financial year ends in June. Unless otherwise stated, all years in this article refer to the financial year.



## OPERATING PERFORMANCE

SKB operates in a niche segment serving construction, logistics, and industrial infrastructure. The industry is moderately competitive, with differentiation driven by innovation, compliance with safety standards, and cost efficiency.

Overall, this is a mature market with modest growth prospects. Industry data suggests a low single-digit growth trajectory.

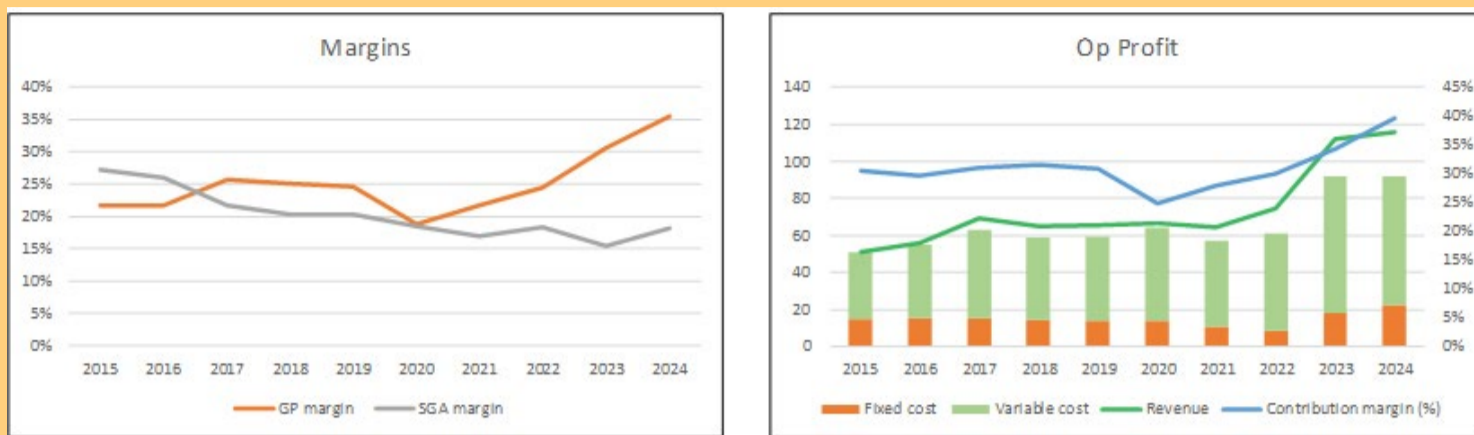
Against this market backdrop, SKB’s revenue grew at a compounded annual rate of about 9.5% from 2015 to 2024. However, **as illustrated in Chart 1**, much of this growth was concentrated in the period after 2021.

The strong performance in 2021 was driven by regulatory changes. According to the company, the double-digit growth that year was “primarily attributed to the enforcement of new building requirements by the Malaysian government.”

In particular, the mandatory adoption of Insulated Fire Shutters (IFS) for compartment walls created a surge in demand. Having invested six years in developing IFS and ensuring compliance with local standards, SKB was well-positioned to capitalise on this opportunity.

The momentum carried into 2023, supported by the fulfilment of backlog orders and a rebound in the construction sector. Growth, however, moderated to single digits in 2024. This slowdown was

attributed to a softer economic environment as well as a greater focus on higher-value, higher-margin products that serve a more limited market.



**Chart 2: Margins and Operating Profit**

**Notes to Chart 2:** I broke down the operating profits into fixed costs and variable costs.

- Fixed cost = SGA, Depreciation & Amortization and Others.
- Variable cost = Cost of Sales that excluded Depreciation & Amortization.
- Contribution = Revenue – Variable Cost.
- Contribution margin = Contribution/Revenue.

While revenue accelerated from 2021 onwards, profitability began improving slightly earlier. As shown in the **right part of Chart 1**, profit growth was underpinned by expanding margins and lower cost structures. These trends are evident in the **left part of Chart 2**, while the rising contribution margin (**right part of Chart 2**) further reflects improved operating leverage.

As a result, returns strengthened over the period. From 2015 to 2024:

- ROIC improved from close to zero to about 10% in 2024, with a decade average of around 5%.
- ROE increased from about negative 1% to 12% in 2024, with a similar decade average of about 5%

Despite these improvements, the average returns over the period remained below the likely cost of capital, suggesting that the Group did not meaningfully create shareholder value over the past decade.

A comparison of Charts 1 and 2 indicates a clear shift in performance post-2021 relative to earlier years. The introduction of

new products, some degree of market diversification, and improved margins appear to have repositioned the business for stronger performance. A key driver has been better efficiency, as reflected in the improvement in gross profitability (**right part of Chart 1**).

Other efficiency metrics also showed similar trends.

- **Operating efficiency:** Post-2021, most metrics improved, except the operating expense ratio.
- **Capital efficiency:** The results were more mixed. Improvements in asset turnover and free cash flow were offset by weaker reinvestment margins and cash conversion ratios.

Overall, while SKB has demonstrated improvements in operating efficiency, there remains room for further enhancement in capital efficiency.

## PEER COMPARISON

There are no other Bursa companies with the specialized nature of SKB's product offerings. As such, I focused on Bursa companies that serve similar customer markets to SKB. These are companies

catering to the construction and infrastructure industries.

You can see from **Table 1** that SKB is the smallest player in terms of 2023 revenue. But it had the best revenue growth rate.

I looked at the trends of 4 metrics – ROC,

Company	Revenue (a)	
	2023 RM m	2015 to 2023 CAGR %
SKB	112	10.3%
CHINHIN	2057	7.0%
AJIYA	305	-4.1%
ASTINO	619	3.1%

**Table 1: Peer revenue**

**Notes to Table 1:**

- *Ajiya specializes in the manufacturing and supply of building materials, including safety glass and metal roofing systems.*
- *Astino engages in the production of metal roofing sheets, structural products, and other building-related materials.*
- *Chin Hin Group is involved in the distribution of building materials and the provision of construction-related services.*

EBIT margin, Free Cash Flow margin, and EPS - to get a sense of how well Iris performed compared to its peers.

Post-2021, SKB delivered the best return on capital, EBIT margin, and levered free cash flow margin. It also had the best EPS growth trend.

## FINANCIAL POSITION

I would rate SKB's financial position as sound. While it has some negative points, they are not impactful enough to offset the strong points. The strong points included:

- As of Sep 2025, it had RM 73 million in cash. This is equal to 23% of its total assets.
- As of Sep 2025, it had a 53% debt-equity ratio. This has come down from its 2017 high of 83%.

From 2015 to 2024, there was only one year when it failed to generate positive cash flow from operations annually. During this period, it generated RM 88 million in cash flow from operations compared to the total PAT of RM51 million. This is a good cash conversion ratio.

Item	Sources RM m	Uses RM m
Cash flow from Ops	88	
New shares	5	
Net Debt	14	
Acquisition		0
CAPEX		57
Dividends		0
Buybacks		0
Misc		51
<b>Total</b>	<b>108</b>	<b>108</b>

Table 2: Sources and Uses of Funds 2015 to 2024

It had a reasonable capital allocation plan. **Refer to Table 2.** The cash flow from operations was more than sufficient to cover its CAPEX.

The main negative point is the high

Reinvestment rate (Reinvestment/NOPAT). From 2015 to 2024, this averaged 50%.

Reinvestment = CAPEX & Acquisitions – Depreciation & Amortization + increase in Net Working Capital.

I suspect that this high rate was because of the new factory. The Group had acquired 9.8 acres of land in 2023 for RM36 million to build a new manufacturing facility in 2023.

In the longer run, following the completion of this new plant, I expect the Reinvestment rate to come down. So, it is not as dire as the first impression.

## **VALUATION**

I based my valuation of SKB on a set of assumptions that reflect its positioning in a mature industry.

I assumed revenue would grow in line with long-term GDP growth of about 4%, using the September 2024 LTM revenue as the base.

On profitability, I used the average contribution margin for the 2022–2024 period as the starting point, with a gradual improvement of 10% by Year 6.

For reinvestment, the base rate was anchored to the 2022–2024 average. This was then progressively reduced to converge with the level implied by the fundamental growth equation by Year 6.

Fixed costs were based on the average levels observed in 2023–2024.

Based on these assumptions, I derived an intrinsic value of RM1.06 per share, compared to a market price of RM0.93 per share (end Sep 2025). This translates into a margin of safety of about 14%. Refer to the original article for details of the valuation.

## **CONCLUSION**

SKB has evolved from a traditional roller shutter manufacturer into a more diversified industrial solutions provider. The post-2021 period marks a clear inflection point, driven by regulatory tailwinds, new product introductions, and improved operating efficiency. This has

translated into stronger margins, higher returns, and a more competitive positioning relative to peers.

However, it is important to distinguish between cyclical uplift and structural improvement. Part of the recent performance was driven by one-off factors such as regulatory changes and backlog fulfilment. While there are signs of sustainable improvements, the business still operates in a mature, low-growth industry.

From a return perspective, the Group has yet to demonstrate consistent value creation. Although returns have improved in recent years, the decade-average returns remain below the cost of capital. In addition, the historically high reinvestment rate - partly due to capacity expansion - suggests that growth has required significant capital commitment.

The balance sheet is sound and provides downside protection, but the investment case ultimately hinges on whether SKB can:

- Sustain its higher-margin product mix
- Improve capital efficiency post-expansion
- Translate operating gains into returns consistently above its cost of capital

At the current valuation, the stock offers only a modest margin of safety. This suggests that much of the recent improvement is already reflected in the price.

*I am a long-term value investor who has held onto stocks for more than 5 years. My analysis and valuation are from such a perspective. I consider quarterly results "noisy" and focus on long-term trends.*

*This article was derived from a detailed analysis, emphasizing the intersection of business performance and valuation metrics, which was first published on i4value as ["Is SKB Shuttters an investment opportunity?"](#) Refer to the article for further insights on its investment risk vs business performance.*

# UNLOCK THE SECRET OF WEALTH

DO YOU REALLY WANT TO MASTER VALUE INVESTING



SEE HOW TO GET HIGHER RETURNS WITH LOWER RISK



# Khazanah Leads Malaysia's First Tokenised Sukuk Pilot in Collaboration with the SC

**K**hazanah Nasional Berhad (Khazanah), in collaboration with the Securities Commission Malaysia (SC), has successfully priced Malaysia's first tokenised sukuk with a nominal value of RM100 million, marking an important step in the application of digital technologies to support the future development of Malaysia's domestic capital market.

A tokenised bond (or sukuk) refers to a digital representation of the capital market product. This involves the adoption of Distributed Ledger Technology (DLT) to create the product in digital form, typically as a token. Tokenisation enables the creation of a digital record or "digital twin" of the capital market product that is cryptographically secure and immutable.

According to Dato' Amirul Feisal Wan Zahir, Managing Director of Khazanah Nasional Berhad, Khazanah's role as Malaysia's sovereign wealth fund is not only to generate returns, but also to support the development of the domestic capital market. This tokenised sukuk, in collaboration with the SC, reflects that role by taking a practical step towards exploring how digital technology can improve how we issue and manage capital market instruments.

He added that Khazanah's position in the market and the SC's regulatory leadership is able to test this in a controlled and credible

manner. He noted that this is not about introducing a new product for its own sake, but about building the foundations for a more efficient and transparent market over time.

He added that Khazanah remains committed to advancing Malaysia's capital markets in a purposeful, measured and responsible manner. This pilot represents an important step in building the capabilities, confidence and ecosystem required for a more digitally enabled future and ensuring that innovation is anchored in strong governance, aligned with existing frameworks, and ultimately delivers long-term value to the nation.

Meanwhile, Dato' Mohammad Faiz Azmi, SC Chairman, said, "We are collectively redefining the boundaries of the capital market. This unified commitment signals Malaysia's readiness to shape the future of digital finance, ensuring we continue to set the global benchmark for Islamic finance innovation. This pilot reflects the direction set under the Capital Market Masterplan 2026-2030 to further strengthen Malaysia's bond and sukuk market through innovation, enhanced market connectivity and improved execution efficiency."

He added that tokenisation offers potential to improve transparency, broaden participation and support a more vibrant market, and initiatives such as this allow the testing of those possibilities in a controlled and credible manner. By working closely with market participants, the regulatory and market foundation is being built for the next phase of development in Malaysia's capital market.

Please [click this link](#) for the full press release.



Learn how to identify Hot Stocks using Technical Analysis (TA) and Fundamental Analysis (FA)

# SIGN UP FOR **Invest** IT'S FREE!

[Click Here](#)

Scan/Click me



Via email,  
every Friday

# Securities Commission launches youth-led innovation challenge on river resilience

**T**he Securities Commission Malaysia (SC) launched the River Flooding Adaptation & Resilience (RIFAR) Challenge to empower youth to contribute ideas and actions that strengthen the resilience of Malaysia's rivers.

This RIFAR initiative, a collaboration with strategic partners in university engagement, real-world implementation of flood mitigation measures and technical expertise in river resilience and sustainability, includes ICAEW Malaysia, Lembaga Urus Air Selangor (LUAS), Landasan Lumayan Sdn Bhd (LLSB) - master developer of Selangor Maritime Gateway (SMG) project and the Jeffrey Sachs Center on Sustainable Development (JSC)

The nationwide competition invites university students to help address the escalating threat of river flooding through two distinct categories:

- **The Sprint:** An awareness track focused on creative communication, to drive public consciousness and community action about Malaysia's river health;
- **The Marathon:** An interdisciplinary innovation track where teams develop a flood mitigation intervention for Taman Sri Muda. Solutions combine engineering concepts with capital market financing plans and measurable climate co-benefits, such as renewable energy.

RIFAR forms part of the SC's Transition, Resilience & Adaptation in Capital Markets (TRAC) initiative. It is in line with SC's broader objectives to strengthen the role of capital markets in mobilising finance for climate transition, adaptation, and resilience, as outlined in the Capital Market Masterplan 2026-2030.

RIFAR is the SC's second climate adaptation and resilience challenge, building on the significant success of the inaugural Coastal Flooding Adaptation & Resilience (COFAR) Challenge held in 2025. That initiative involved 220 students from 29 universities to develop adaptation solutions for Carey Island, Selangor.

Speaking at the RIFAR Challenge Launch webinar, SC Chairman Dato' Mohammad Faiz Azmi said that rivers are at the heart of Malaysia's climate adaptation challenge. He noted that rivers are the circulatory system of this nation, supplying 80% of the country's raw water supply and run through the most economically vital corridors.

He said that the capital market values ideas that are both technically sound and financially viable. Following the success of COFAR, he is confident that Malaysia's university students can contribute to the integrated solutions needed for our river basins.

The RIFAR Challenge offers total cash prizes of RM50,000 for the Marathon and RM7,000 for the Sprint. The Challenge is open to students from all public and private universities in Malaysia, as well as Malaysians studying in universities abroad.

**For more information and to register, please visit: [www.sc.com.my/trac/rifar-challenge](http://www.sc.com.my/trac/rifar-challenge). Registrations close on 12 May 2026.**



**CHECK OUT  
SHAREINVESTOR  
BROKERS' CALL**

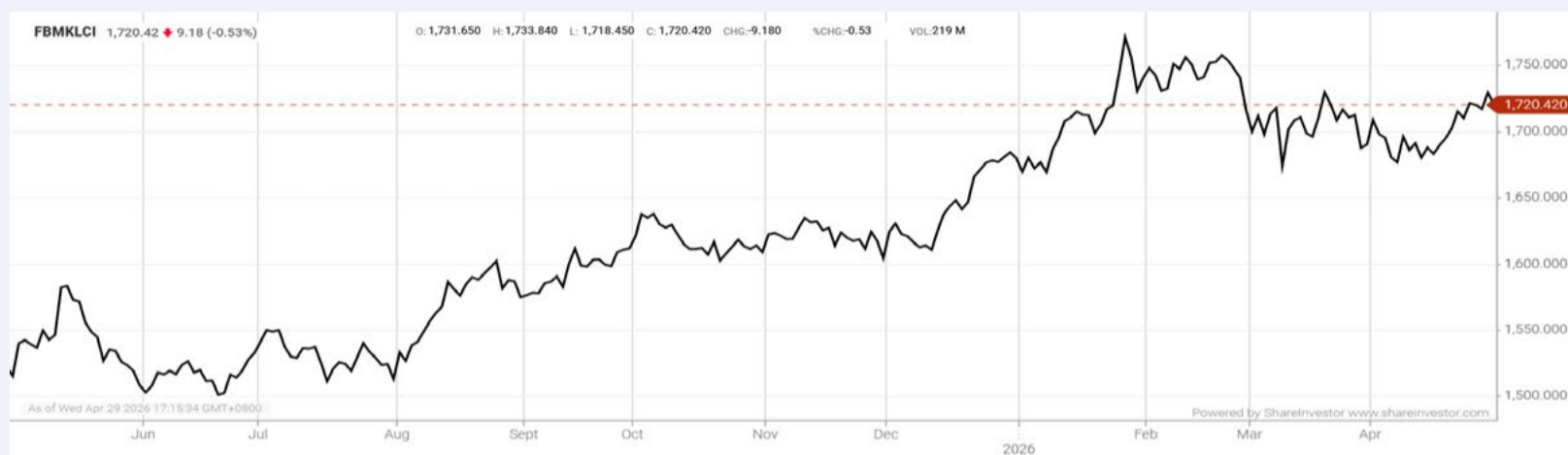
Weekly Buy/Sell/Hold calls from leading Malaysian Brokerages.

**Go To Brokers' Call**

The advertisement features a hand moving a wooden block labeled 'BUY' (in green) from a row of three blocks. The other two blocks are labeled 'HOLD' (in orange) and 'SELL' (in red). The background is a dark blue stock market chart with green and red bars and lines.

## EYE ON THE MARKETS

On Wednesday (29Apr), the Ringgit closed at 3.9515 against the USD and 3.0924 to the Sing Dollar. On Monday (27Apr), the FBM KLCI opened at 1724.47. As at Wednesday (29Apr) 5:00pm, the FBM KLCI closed down 4.05 points at 1720.42. Over in US, the overnight Dow Jones Industrial Average closed down 280.12 points (-0.57%) to 48,861.81 whilst the NASDAQ added 9.44 points (+0.04%) to 24,673.24.



KLCI 1 Year Chart

Learn how to identify Hot Stocks using Technical Analysis (TA) and Fundamental Analysis (FA)

# SIGN UP FOR Invest

*now*

**Click Here**

**IT'S FREE!**

Scan/Click me

Via email, every Friday

Get market moving news and analyses. Regular columns include **Behind The Ticker** and **From MSWG's The Observer**

Leaderboard • Shariah Hot Stocks • Shariah Momentum Up Stocks • Non Shariah Hot Stocks • Up Trending Stocks • Growth Stocks • Dividend Stocks • Long Companies • Insider Activity • Investor Relations • Regional Markets

## Over 5 Trading Days (as at Yesterday)



ShareInvestor WebPro ([www.shareinvestor.com/my](http://www.shareinvestor.com/my))

1. Price > Stock Prices
2. Select Market: NASDAQ / NYSE / IDX / SET / HKEX / SGX (One bourse at a time)
3. select Stocks Tab
4. select Ranking Top Gainers or Top Losers (Over 5 Trading Days)
5. Mouse over Column Layout > select Edit Customs > select Name > select Last Done Price > select 5 Days Change > select 52 Weeks High > select 52 Weeks Low > Mouse Over Column Layout > select Custom

### NASDAQ (USD)

#### Top Gainers

Name	Last Done	Change Over 5 Days	52 Weeks High	52 Weeks Low
Sandisk	1,002.350	+98.860	1,070.660	31.010
Micron Technology	504.290	+54.910	531.360	73.500
Inhibrx Biosciences	130.665	+46.585	155.290	10.840
Sanmina	215.460	+41.400	197.630	74.900
IES Holdings	601.000	+36.810	611.210	184.730

#### Top Losers

Name	Last Done	Change Over 5 Days	52 Weeks High	52 Weeks Low
Avis Budget Group	182.005	-261.935	847.700	85.960
Medpace Holdings	409.650	-105.250	628.915	284.100
Charter Communications A	173.110	-69.380	437.060	170.770
First Citizens BancShares A	1,983.390	-62.460	2,232.210	1,623.760
Mercadolibre	1,791.990	-62.190	2,645.220	1,593.210

### NYSE (USD)

#### Top Gainers

Name	Last Done	Change Over 5 Days	52 Weeks High	52 Weeks Low
Berkshire Hathaway A	717,550.000	+14,570.000	812,855.000	685,150.000
United Rentals Inc	962.720	+156.500	1,021.470	611.930
Chemed	421.100	+47.950	583.960	365.205
Fair Isaac	1,010.500	+40.330	2,217.600	870.010
NewMarket	682.330	+40.260	875.970	580.030

#### Top Losers

Name	Last Done	Change Over 5 Days	52 Weeks High	52 Weeks Low
NVR	6,442.360	-491.140	8,618.280	6,301.025
Spotify Technology	434.200	-88.240	785.000	405.000
Harbor PanAgora Dynamic Large Cap Core	25.729	-81.381	135.820	88.810
Ubiquiti	964.260	-63.180	1,099.990	310.650
Mettler-Toledo	1,262.480	-61.790	1,525.170	1,029.230

### IDX (Rupiah)

#### Top Gainers

Name	Last Done	Change Over 5 Days	52 Weeks High	52 Weeks Low
GUDANG GARAM TBK	16,175.000	+1,975.000	17,825.000	8,300.000
PANCA ANUGRAH WISESA TBK	8,350.000	+1,350.000	8,350.000	107.000
AKASHA WIRA INTERNATIONAL TBK	17,975.000	+1,325.000	18,475.000	10,050.000
SINAR MAS AGRO RESOURCES AND TECHNOLOGY TBK	6,800.000	+975.000	7,250.000	3,300.000
GOLDEN EAGLE ENERGY TBK	2,720.000	+945.000	3,230.000	825.000

#### Top Losers

Name	Last Done	Change Over 5 Days	52 Weeks High	52 Weeks Low
MULTIPOLAR TECHNOLOGY TBK	22,800.000	-4,200.000	25,875.000	12,375.000
SINGARAJA PUTRA TBK	14,500.000	-3,500.000	30,850.000	2,490.000
GOLDEN FLOWER TBK	15,175.000	-2,600.000	41,900.000	5,600.000
UNITED TRACTORS TBK	30,175.000	-1,800.000	32,825.000	20,900.000
PRADIKSI GUNATAMA TBK	8,175.000	-1,575.000	29,525.000	498.000

### SET (Thai Baht)

#### Top Gainers

Name	Last Done	Change Over 5 Days	52 Weeks High	52 Weeks Low
KBANK	194.000	+10.500	208.000	147.000
PTTEP	151.000	+8.000	164.000	94.250
STANLY	203.000	+5.500	219.000	176.000
DELTA	310.000	+5.000	320.000	84.000
TOPP	139.500	+4.500	155.000	135.000

#### Top Losers

Name	Last Done	Change Over 5 Days	52 Weeks High	52 Weeks Low
F&D	53.000	-14.750	67.750	40.000
Food and Drinks Public NVDR	53.000	-11.000	67.750	40.000
JTS	44.000	-8.750	93.500	23.000
SHANG	44.750	-5.250	61.500	38.000
BBL	162.500	-5.000	181.000	135.000

### HKEX (HKD)

#### Top Gainers

Name	Last Done	Change Over 5 Days	52 Weeks High	52 Weeks Low
MONTAGE TECH (6809)	264.800	+57.600	275.000	152.700
HAIXI PHARMA (2637)	221.800	+28.800	302.400	97.500
PATEO (2889)	148.000	+28.100	288.800	96.000
AUNTEA JENNY (2589)	143.000	+27.100	197.600	73.500
DELTON (1989)	174.300	+24.900	181.500	79.950

#### Top Losers

Name	Last Done	Change Over 5 Days	52 Weeks High	52 Weeks Low
MINIMAX-WP (100)	723.500	-175.000	1,330.000	220.000
KNOWLEDGE ATLAS (2513)	800.000	-150.000	1,078.000	116.100
CATL (3750)	629.000	-107.000	745.000	291.000
XUNCE (3317)	260.000	-69.400	382.800	38.020
LAOPIU GOLD (6181)	573.000	-58.500	1,108.000	540.000

### SGX (SGD)

#### Top Gainers

Name	Last Done	Change Over 5 Days	52 Weeks High	52 Weeks Low
AEM SGD	7.150	+2.110	7.150	1.150
Nanofilm	1.360	+0.415	1.680	0.515
Micro-Mechanics	3.400	+0.310	3.450	1.540
Frencken	2.720	+0.230	2.790	1.000
Multi-Chem	3.850	+0.210	3.850	2.550

#### Top Losers

Name	Last Done	Change Over 5 Days	52 Weeks High	52 Weeks Low
JMH USD	69.980	-2.290	82.500	43.040
UOB	35.960	-1.310	39.500	33.250
Keppel	10.890	-0.977	13.114	6.384
OCBC Bank	21.680	-0.770	22.936	15.688
DBS	56.750	-0.730	59.843	41.466



## APRIL'S DEAL FRENZY: ONE CHECKOUT, TWO ABANDONED CARTS

One successful, two rejected; such an outcome could well wrap up the fate of three corporate deals that made headlines in April 2026.

### FUTILE SUNWAY'S RM11 BILLION TAKEOVER BID FOR IJM

On 6 April 2026, Sunway Berhad's RM11.04 billion conditional voluntary takeover of IJM Corporation Berhad lapsed after having secured only 33.43% acceptance, thus missing the 50% + 1 share requirement by the end of the offer period. The deal consisted of an offer to buy each IJM share at RM3.15, consisting of 10% cash

portion (which was later raised to 32.5 sen) and 90% in exchange for new Sunway shares.

At the outset, the merger was positioned as a strategic consolidation aimed at creating a construction giant.

Sunway pitched the offer as providing IJM shareholders

with a 14.55% premium to its prevailing market price at the time, framing the transaction as an opportunity to participate in a larger, more diversified group with enhanced scale and execution capabilities.

Notwithstanding these strategic ambitions, the offer faced strong opposition from key stakeholders, including political figures.

Independent adviser (IA) M&A Securities Sdn Bhd concluded that the offer was "not fair and not reasonable", ascribing IJM a valuation range of between RM5.84 and RM6.48 per share. The board of IJM subsequently concurred with this assessment and unanimously recommended that shareholders reject the proposal.

This stance was reinforced by three major institutional shareholders—Employees Provident Fund, Permodalan Nasional Berhad, and Kumpulan Wang Persaraan, which collectively held 44.44% of IJM's shares. These institutions reportedly declined the offer, citing concerns that it did not adequately reflect IJM's intrinsic value and long-term growth prospects.

Yet, the final acceptance level of 33.43%, out of the remaining 55.56% minority shareholding, suggests that a substantial proportion of non-institutional investors were, in fact, supportive of Sunway's proposal.

In effect, this implies that well over half of the minority shareholder base elected to tender their shares, despite the negative

Out of the 55.56% minority stake

**33.43%**  
accepted the offer

recommendation from both the IA and IJM's board. This outcome highlights a meaningful divergence between institutional and minority shareholder perspectives, with the latter appearing more receptive to the immediate liquidity and strategic narrative offered by Sunway.

The motivations underpinning this support are not definitively known, but several plausible factors emerge. Some shareholders may have been persuaded by the vision articulated by Sunway's founder, Tan Sri Jeffrey Cheah, particularly the prospect of unlocking IJM's value through integration within Sunway's broader ecosystem. Others may have been influenced by more pragmatic considerations, including the certainty of partial cash realisation, the opportunity to gain exposure to Sunway shares, or a perception that the offer price, while below independent valuations, was nevertheless attractive relative to prevailing market conditions.

**“HAPPY” ENDING TO UEM EDGENTA SCR**

Turning to asset management and infrastructure solutions outfit UEM Edgenta Berhad, the privatisation of the entity was initiated by its parent company, UEM Group Bhd in late 2025, primarily prompted by a challenging operating environment with prolonged subdued financial performance post-pandemic amid rising operational costs.

<b>IA's Recommendation: Unfair but Reasonable</b>	
<b>For</b>	<b>Against</b>
97.1%	2.9%
<b>Total shares cast against</b>	
1.3%	

UEM Group cited the need for greater strategic flexibility, a desire to streamline operations amid challenging market conditions, and the need to improve financial performance following a series of poor financial results by UEM Edgenta.

In FY2025, UEM Edgenta amassed unprecedented net losses totalling RM401.19 million compared to a RM45.31 million profit

the year before. Post-COVID-19 pandemic, its return on equity has been on a declining trend, ranging between 1% and 3%, while profit margin was at a razor-thin level of 1% to 2%.

Offering disinterested shareholders an offer price of RM1.10 per share, UEM Group sought to take the firm private to enable it to restructure, adopt long-term strategies and improve efficiency without the pressure of quarterly reporting and public market scrutiny.

While the extraordinary general meeting held on 2 April saw heated exchanges between the board and shareholders, the proposed selective capital reduction and repayment exercise (SCR) was nonetheless approved by disinterested shareholders with 97.09% disinterested shares voting in favour. Votes against the resolution stood at 1.33% (of the total number of disinterested shares), below the 10% threshold required to block the proposal under Bursa's listing requirements.

UEM Edgenta is poised to be delisted from the Main Market of Bursa Malaysia by early July 2026 with UEM Group eventually owning a 100% stake in UEM Edgenta.

**RESOLUTE REJECTION OF DKSH MALAYSIA'S SCR**

The attempted privatisation of DKSH Holdings (Malaysia) Berhad stands out as a clear case of assertive minority shareholder activism shaping corporate outcomes.

<b>IA's Recommendation: Unfair but Reasonable</b>	
<b>For</b>	<b>Against</b>
12.5%	87.5%
<b>Total shares cast against</b>	
38.8%	

Announced in December 2025, the SCR exercise was initiated by its controlling shareholder, DKSH Holding Ltd, which already held a 74.31% stake. The offer of RM6.15 per share was framed as an opportunity for minority shareholders to realise their investments

amid low trading liquidity (averaging just 0.12% of free float daily for the past three years) and trading volumes.

What looked like a straightforward privatisation turned out to be a coordinated and vocal pushback from minority shareholders. Swiftly after the proposal was made public, dissenting shareholders began articulating their opposition, challenging both the valuation and the rationale for delisting.

Among the most prominent voices was Pangolin Investment Management which held a 2.71% stake, or equivalent to slightly more than 10% of the total disinterested shares eligible to vote in the SCR. Pangolin openly opposed the deal, arguing the offer price materially undervalued the company, given the Company's strong financial performance and robust dividend track record.

Pangolin's resistance was underpinned by DKSH Malaysia's solid fundamentals. The trading house is widely regarded as Malaysia's top fast-moving consumer goods (FMCG) distributor, which currently manages popular brands like Buttercup and SCS Butter.

DKSH Malaysia has demonstrated resilient financial performance in recent years. For the financial year ended 31 December 2025, net profit rose 26.3% year-on-year to RM155.5 million (FY2024: RM123.12 million), while revenue increased 8.6% to RM8.62 billion (FY2024: RM7.94 billion). To many minority shareholders, these metrics reinforced the view that the RM6.15 offer failed to capture the company's intrinsic value and future growth potential.

Having concluded the offer as "not fair but reasonable", the IA - Asia Equity Research Sdn Bhd, recommended acceptance due to the premium over historical trading prices, low liquidity and lack of competing offers.

However, this nuanced assessment appeared to have galvanised minority shareholders rejection. The unfairness became a focal point for dissent, with shareholders challenging recommendations that they perceived as misalignment with long-term value at the EGM.

For the privatisation exercise to have succeeded, DKSH Malaysia would have needed the approval of at least a majority number of disinterested shareholders and 75% in value to the votes attached to the shares, with no more than 10% of the votes attached to the shares held by disinterested shareholders voting against the proposal.

The culmination of minority shareholders' activism was epitomised on 2 April 2026. 100 out of the 151 shareholders representing 87.47% of shares voted against the proposal. Only 51 shareholders, or 12.53% in value, voted in favour of it. It was a resounding rejection from minority shareholders.

Unlike fragmented shareholder bases often seen in privatisation exercises, Pangolin, as a significant minority shareholder in DKSH Malaysia, adopted a clear and vocal stance in articulating its objections to the broader investing public. More critically, it was able to translate that influence into action by virtue of its significant block of shares in the company.

To a greater degree, its action sent ripples through the investing community, culminating in a coordinated vote against the proposal. This reflects a broader shift in Malaysia's capital markets, where minority investors, particularly institutional and sophisticated funds, are increasingly prepared to exercise their rights and influence outcomes.

*Reproduced with permission from The Observer, a weekly newsletter published by the Minority Shareholders Watch Group (MSWG). Subscribe to The Observer for free at [www.mswg.org.my](http://www.mswg.org.my) and follow @MSWGMalaysia on social media for the latest updates.*



**CHECK OUT**  
**SHAREINVESTOR**  
**BROKERS' CALL**

Weekly Buy/Sell/Hold calls from leading Malaysian Brokerages.

[Go To Brokers' Call](#)

**DEFINITION:** Insider Activity shows the trades made by substantial shareholders or directors of the company. Purchases by the directors and company share buyback may indicate the share price is undervalued and brings confidence to the price trend of the share price.



ShareInvestor WebPro > Fundamental > Insider Trades > click Search tab > Select Bursa > click Stock name > scroll up and leave at <Select Counter> Type Date Range for Announcement Date > click Search

Notice Period is 19th April 2026 to 25th April 2026

Effective Change Date	Stock Name	Buyer/ Seller Name [Classification]	Bought / (Sold) ['000]		No. of Shares After Trade ['000]	
			Total	Total	Total	% Held
21 APR 2026 - 21 APR 2026	99SMART	EMPLOYEES PROVIDENT FUND BOARD [SSH]	184		594,885	7.082
20 APR 2026 - 20 APR 2026	99SMART	EMPLOYEES PROVIDENT FUND BOARD [SSH]	358		594,701	7.08
17 APR 2026 - 17 APR 2026	99SMART	EMPLOYEES PROVIDENT FUND BOARD [SSH]	1,797		594,343	7.076
16 APR 2026 - 16 APR 2026	99SMART	EMPLOYEES PROVIDENT FUND BOARD [SSH]	1,483		592,546	7.054
15 APR 2026 - 15 APR 2026	99SMART	EMPLOYEES PROVIDENT FUND BOARD [SSH]	1,569		591,063	7.036
20 APR 2026 - 20 APR 2026	ABMB	EMPLOYEES PROVIDENT FUND BOARD [SSH]	533		147,878	8.547
17 APR 2026 - 17 APR 2026	AEON	EMPLOYEES PROVIDENT FUND BOARD [SSH]	-115		107,450	7.653
17 APR 2026 - 17 APR 2026	ALLIANZ	EMPLOYEES PROVIDENT FUND BOARD [SSH]	-10		14,156	7.683
16 APR 2026 - 16 APR 2026	ALLIANZ	EMPLOYEES PROVIDENT FUND BOARD [SSH]	-77		14,166	7.688
15 APR 2026 - 15 APR 2026	ALLIANZ	EMPLOYEES PROVIDENT FUND BOARD [SSH]	-25		14,243	7.73
21 APR 2026 - 21 APR 2026	AMBANK	EMPLOYEES PROVIDENT FUND BOARD [SSH]	450		551,615	16.682
20 APR 2026 - 20 APR 2026	AMBANK	EMPLOYEES PROVIDENT FUND BOARD [SSH]	-1,986		551,165	16.668
17 APR 2026 - 17 APR 2026	AMBANK	EMPLOYEES PROVIDENT FUND BOARD [SSH]	-8,500		553,152	16.728
16 APR 2026 - 16 APR 2026	AMBANK	EMPLOYEES PROVIDENT FUND BOARD [SSH]	-5,150		561,652	16.985
15 APR 2026 - 15 APR 2026	AMBANK	EMPLOYEES PROVIDENT FUND BOARD [SSH]	-3,700		566,802	17.141
17 APR 2026 - 17 APR 2026	AMBEST	MISS GOH LIUH YIH [DIR/CEO]	-63		62	0.01
17 APR 2026 - 17 APR 2026	AMBEST	MISS LOK MAN SHUNG [DIR/CEO]	-122		128	0.025
06 FEB 2026 - 06 FEB 2026	AMBEST	MISS GOH LIUH YIH [DIR/CEO]	125		125	0.02
21 APR 2026 - 21 APR 2026	AMS	AMS METAL GROUP SDN. BHD. [SSH]	-47,000		452,008	73.856
21 APR 2026 - 21 APR 2026	AMS	ENCIK FAZRIN AZWAR BIN MD. NOR [DIR/CEO]	130		130	0.021
21 APR 2026 - 21 APR 2026	AMS	MISS GEETHA KANDIAH [DIR/CEO]	130		130	0.021
21 APR 2026 - 21 APR 2026	AMS	MISS TEO YELING [DIR/CEO]	130		130	0.021
21 APR 2026 - 21 APR 2026	AMS	MR CHIA GEK LIANG [DIR/CEO]	130		130	0.021
21 APR 2026 - 21 APR 2026	AMS	MR KEH TENG YANG [DIR/CEO]	-47,000		452,008	73.857
21 APR 2026 - 21 APR 2026	AMS	MR KEH TENG YANG [SSH]	-47,000		452,008	73.857
21 APR 2026 - 21 APR 2026	AMS	MR TAN CHEE YUEN [SSH]	-47,000		452,008	73.86
20 APR 2026 - 22 APR 2026	AQUAWALK	DATO' FOONG CHOONG HENG [DIR/CEO]	3,000		949,509	51.52
20 APR 2026 - 22 APR 2026	AQUAWALK	DATO' FOONG CHOONG HENG [SSH]	3,000		949,509	51.52
17 APR 2026 - 17 APR 2026	AQUAWALK	DATO' FOONG CHOONG HENG [DIR/CEO]	585		946,509	51.357
17 APR 2026 - 17 APR 2026	AQUAWALK	DATO' FOONG CHOONG HENG [SSH]	585		946,509	51.357
17 APR 2026 - 17 APR 2026	ARMADA	MR UTHAYA KUMAR A/L K VIVEKANANDA [DIR/CEO]	200		429	0.007
17 APR 2026 - 17 APR 2026	ATECH	EMPLOYEES PROVIDENT FUND BOARD [SSH]	377		158,933	12.22
16 APR 2026 - 16 APR 2026	ATECH	EMPLOYEES PROVIDENT FUND BOARD [SSH]	254		158,557	12.191
15 APR 2026 - 15 APR 2026	ATECH	EMPLOYEES PROVIDENT FUND BOARD [SSH]	332		158,303	12.171
16 APR 2026 - 17 APR 2026	AWANTEC	LEMBAGA TABUNG AMANAH WARISAN NEGERI TERENGGANU [SSH]	26		46,159	5.855
15 APR 2026 - 15 APR 2026	AXIATA	EMPLOYEES PROVIDENT FUND BOARD [SSH]	1,013		1,784,538	19.422
20 APR 2026 - 20 APR 2026	AXREIT	EMPLOYEES PROVIDENT FUND BOARD [SSH]	-6,120		421,014	20.792
17 APR 2026 - 17 APR 2026	AXREIT	EMPLOYEES PROVIDENT FUND BOARD [SSH]	53		427,134	21.094
21 APR 2026 - 21 APR 2026	BAUTO	EMPLOYEES PROVIDENT FUND BOARD [SSH]	40		68,640	6.047
20 APR 2026 - 20 APR 2026	BAUTO	EMPLOYEES PROVIDENT FUND BOARD [SSH]	1,294		68,599	6.043
15 APR 2026 - 15 APR 2026	BAUTO	EMPLOYEES PROVIDENT FUND BOARD [SSH]	293		67,305	5.929
20 APR 2026 - 22 APR 2026	BESHOM	MADAM PHAN VAN DENH [SSH]	12		81,955	27.386
20 APR 2026 - 22 APR 2026	BESHOM	MR TAN KENG KANG [DIR/CEO]	12		81,955	27.386
20 APR 2026 - 22 APR 2026	BESHOM	MR TAN KENG KANG [SSH]	12		81,955	27.386
20 APR 2026 - 22 APR 2026	BESHOM	TAN KAI HEE FAMILY HOLDINGS SDN BHD [SSH]	12		67,932	22.701
16 APR 2026 - 16 APR 2026	BIMB	EMPLOYEES PROVIDENT FUND BOARD [SSH]	95		367,434	16.212
15 APR 2026 - 15 APR 2026	BIMB	EMPLOYEES PROVIDENT FUND BOARD [SSH]	548		367,339	16.208
22 APR 2026 - 23 APR 2026	BJCORP	TAN SRI DATO' SERI VINCENT TAN CHEE YIUON [SSH]	526		1,369,525	23.034
20 APR 2026 - 21 APR 2026	BJCORP	TAN SRI DATO' SERI VINCENT TAN CHEE YIUON [SSH]	870		1,368,999	23.025
17 APR 2026 - 17 APR 2026	BJCORP	TAN SRI DATO' SERI VINCENT TAN CHEE YIUON [SSH]	131		1,368,129	23.01
22 APR 2026 - 22 APR 2026	BONIA	MR CHIANG SANG SEM [DIR/CEO]	1		144,535	71.909
22 APR 2026 - 22 APR 2026	BONIA	MR CHIANG SANG SEM [SSH]	1		131,775	65.561
17 APR 2026 - 17 APR 2026	BURSA	EMPLOYEES PROVIDENT FUND BOARD [SSH]	49		121,403	15.001
15 APR 2026 - 20 APR 2026	CATCHA	MR PATRICK YKIN GROVE [DIR/CEO]	2,195		237,278	52.163
15 APR 2026 - 20 APR 2026	CATCHA	MR PATRICK YKIN GROVE [SSH]	2,195		237,278	52.163
23 APR 2026 - 23 APR 2026	CGB	HJT INTERNATIONAL GROUP (M) SDN. BHD. [SSH]	4,945		53,931	6.06
23 APR 2026 - 23 APR 2026	CGB	MR CHEW HIAN TAT [DIR/CEO]	4,945		262,987	29.553
23 APR 2026 - 23 APR 2026	CGB	MR CHEW HIAN TAT [SSH]	4,945		262,987	29.553
20 APR 2026 - 20 APR 2026	CGB	MR CHEW HIAN TAT [DIR/CEO]	2,000		258,041	29.208
20 APR 2026 - 20 APR 2026	CGB	MR CHEW HIAN TAT [SSH]	2,000		258,041	29.208
20 APR 2026 - 22 APR 2026	CGB	MR LEE CHEE VUI [DIR/CEO]	-1,193		98,962	11.202
20 APR 2026 - 22 APR 2026	CGB	MR LEE CHEE VUI [SSH]	-1,193		98,962	11.202
20 APR 2026 - 22 APR 2026	CGB	MR SOO YU CHAI [SSH]	-1,193		87,326	9.885
20 APR 2026 - 22 APR 2026	CGB	RYRT HOLDINGS SDN. BHD. [SSH]	-1,193		86,544	9.796
23 APR 2026 - 23 APR 2026	CGB-WB	MR CHEW HIAN TAT [DIR/CEO]	4,945		70,592	40.047
22 APR 2026 - 22 APR 2026	CGB-WB	MR LEE CHEE VUI [DIR/CEO]	807		16,809	9.198
20 APR 2026 - 21 APR 2026	CGB-WB	MR CHEW HIAN TAT [DIR/CEO]	4,681		75,537	41.337
21 APR 2026 - 21 APR 2026	CIMB	EMPLOYEES PROVIDENT FUND BOARD [SSH]	-8,661		1,937,550	17.94
20 APR 2026 - 20 APR 2026	CIMB	EMPLOYEES PROVIDENT FUND BOARD [SSH]	-1,323		1,946,211	18.02
21 APR 2026 - 21 APR 2026	CIMB	KUMPULAN WANG PERSARAAN (DIPERBADANKAN) [SSH]	27		689,922	6.39
17 APR 2026 - 17 APR 2026	CIMB	EMPLOYEES PROVIDENT FUND BOARD [SSH]	-2,798		1,947,535	18.03
16 APR 2026 - 16 APR 2026	CIMB	EMPLOYEES PROVIDENT FUND BOARD [SSH]	2,613		1,950,333	18.05
15 APR 2026 - 15 APR 2026	CIMB	EMPLOYEES PROVIDENT FUND BOARD [SSH]	-272		1,947,719	18.03
17 APR 2026 - 17 APR 2026	CLMT	EMPLOYEES PROVIDENT FUND BOARD [SSH]	2,069		580,421	17.248
23 APR 2026 - 23 APR 2026	CLOUDPT	MR YEW CHOONG CHEONG [DIR/CEO]	90		215,570	40.55
23 APR 2026 - 23 APR 2026	CLOUDPT	MR YEW CHOONG CHEONG [SSH]	90		215,570	40.55
20 APR 2026 - 20 APR 2026	CMSB	LEMBAGA TABUNG HAJI [SSH]	-500		67,280	6.255
17 APR 2026 - 17 APR 2026	CMSB	LEMBAGA TABUNG HAJI [SSH]	-500		67,780	6.302
23 APR 2026 - 23 APR 2026	COASTAL	SAMARANG UCITS - SAMARANG ASIAN PROSPERITY [SSH]	-1,547		33,762	6.229
21 APR 2026 - 21 APR 2026	COASTAL	SAMARANG UCITS - SAMARANG ASIAN PROSPERITY [SSH]	-1,774		35,816	6.611

Notice Period is 19th April 2026 to 25th April 2026

Effective Change Date	Stock Name	Buyer/ Seller Name [Classification]	Bought / (Sold) ['000]		No. of Shares After Trade ['000]	
			Total	Total	Total	% Held
23 APR 2026 - 23 APR 2026	COMPUGT	MADAM SEE THOO CHAN [DIR/CEO]	7		1,140,666	18.853
23 APR 2026 - 23 APR 2026	COMPUGT	MADAM SEE THOO CHAN [SSH]	7		1,140,666	18.853
23 APR 2026 - 23 APR 2026	COMPUGT	MR GOH KHENG PEOW [SSH]	7		1,140,666	18.853
22 APR 2026 - 22 APR 2026	COMPUGT	MADAM SEE THOO CHAN [DIR/CEO]	30		1,140,659	18.853
22 APR 2026 - 22 APR 2026	COMPUGT	MADAM SEE THOO CHAN [SSH]	30		1,140,659	18.853
22 APR 2026 - 22 APR 2026	COMPUGT	MR GOH KHENG PEOW [SSH]	30		1,140,659	18.853
21 APR 2026 - 21 APR 2026	COMPUGT	MADAM SEE THOO CHAN [DIR/CEO]	621		1,140,629	18.852
21 APR 2026 - 21 APR 2026	COMPUGT	MADAM SEE THOO CHAN [SSH]	621		1,140,629	18.852
21 APR 2026 - 21 APR 2026	COMPUGT	MR GOH KHENG PEOW [SSH]	621		1,140,629	18.852
20 APR 2026 - 20 APR 2026	COMPUGT	MADAM SEE THOO CHAN [DIR/CEO]	931		1,140,008	18.842
20 APR 2026 - 20 APR 2026	COMPUGT	MADAM SEE THOO CHAN [SSH]	931		1,140,008	18.842
20 APR 2026 - 20 APR 2026	COMPUGT	MR GOH KHENG PEOW [SSH]	931		1,140,008	18.842
17 APR 2026 - 17 APR 2026	COMPUGT	MADAM SEE THOO CHAN [DIR/CEO]	300		1,139,078	18.827
17 APR 2026 - 17 APR 2026	COMPUGT	MADAM SEE THOO CHAN [SSH]	300		1,139,078	18.827
17 APR 2026 - 17 APR 2026	COMPUGT	MR GOH KHENG PEOW [SSH]	300		1,139,078	18.827
21 APR 2026 - 21 APR 2026	COSMOS	DATO' CHONG TOH WEE [DIR/CEO]	5,130		109,958	42.867
21 APR 2026 - 21 APR 2026	COSMOS	DATO' CHONG TOH WEE [SSH]	5,130		109,958	42.867
20 APR 2026 - 20 APR 2026	CRPMATE	PUAN TENGKU FARADIZA TENGKU BAHARUDDIN [DIR/CEO]	-100		300	0.041
21 APR 2026 - 21 APR 2026	CTOS	KUMPULAN WANG PERSARAAN (DIPERBADANKAN) [SSH]	-1,655		206,905	9.094
17 APR 2026 - 17 APR 2026	CTOS	EMPLOYEES PROVIDENT FUND BOARD [SSH]	4,500		522,272	22.956
20 APR 2026 - 20 APR 2026	CTOS	KUMPULAN WANG PERSARAAN (DIPERBADANKAN) [SSH]	-1,500		208,559	9.167
17 APR 2026 - 17 APR 2026	CTOS	KUMPULAN WANG PERSARAAN (DIPERBADANKAN) [SSH]	-5,738		210,059	9.233
15 APR 2026 - 15 APR 2026	CTOS	EMPLOYEES PROVIDENT FUND BOARD [SSH]	715		517,772	22.758
17 APR 2026 - 17 APR 2026	CYBERE	SPECIAL FLAGSHIP HOLDINGS SDN BHD [SSH]	10		106,696	61.975
17 APR 2026 - 17 APR 2026	CYBERE	TAN SRI DATO' DR PALANIAPPAN A/L RAMANATHAN CHETTIAR [DIR/CEO]	10		106,696	61.975
17 APR 2026 - 17 APR 2026	CYBERE	TAN SRI DATO' DR PALANIAPPAN A/L RAMANATHAN CHETTIAR [SSH]	10		106,696	61.975
21 APR 2026 - 21 APR 2026	D&O	EMPLOYEES PROVIDENT FUND BOARD [SSH]	-2,500		76,932	6.207
22 APR 2026 - 22 APR 2026	D&O	KUMPULAN WANG PERSARAAN (DIPERBADANKAN) [SSH]	-313		77,324	6.239
21 APR 2026 - 21 APR 2026	D&O	KUMPULAN WANG PERSARAAN (DIPERBADANKAN) [SSH]	-502		77,637	6.264
17 APR 2026 - 17 APR 2026	D&O	EMPLOYEES PROVIDENT FUND BOARD [SSH]	-689		79,432	6.408
20 APR 2026 - 20 APR 2026	D&O	KUMPULAN WANG PERSARAAN (DIPERBADANKAN) [SSH]	-500		78,139	6.304
16 APR 2026 - 16 APR 2026	D&O	EMPLOYEES PROVIDENT FUND BOARD [SSH]	-1,388		80,121	6.464
17 APR 2026 - 17 APR 2026	D&O	KUMPULAN WANG PERSARAAN (DIPERBADANKAN) [SSH]	-1,076		78,639	6.345
15 APR 2026 - 15 APR 2026	D&O	EMPLOYEES PROVIDENT FUND BOARD [SSH]	-309		81,509	6.576
21 APR 2026 - 21 APR 2026	DAYANG	EMPLOYEES PROVIDENT FUND BOARD [SSH]	197		151,090	13.05
21 APR 2026 - 21 APR 2026	DAYANG	ABERDEEN GROUP PLC (FORMERLY KNOWN AS ABRDN PLC) [SSH]	197		77,836	6.723
21 APR 2026 - 21 APR 2026	DAYANG	ABRDN HOLDINGS LIMITED [SSH]	197		77,836	6.723
21 APR 2026 - 21 APR 2026	DAYANG	ABRDN MALAYSIA SDN BHD [SSH]	197		77,836	6.723
20 APR 2026 - 20 APR 2026	DAYANG	EMPLOYEES PROVIDENT FUND BOARD [SSH]	2,320		150,894	13.033
20 APR 2026 - 20 APR 2026	DAYANG	ABERDEEN GROUP PLC [SSH]	2,320		77,639	6.706
20 APR 2026 - 20 APR 2026	DAYANG	ABRDN HOLDINGS LIMITED [SSH]	2,320		77,639	6.706
20 APR 2026 - 20 APR 2026	DAYANG	ABRDN MALAYSIA SDN BHD [SSH]	2,320		77,639	6.706
17 APR 2026 - 17 APR 2026	DAYANG	EMPLOYEES PROVIDENT FUND BOARD [SSH]	567		148,574	12.833
20 APR 2026 - 20 APR 2026	DAYANG	DATUK LING SUK KIONG [DIR/CEO]	-2,900		118,547	10.239
20 APR 2026 - 20 APR 2026	DAYANG	DATUK LING SUK KIONG [SSH]	-2,900		118,547	10.239
20 APR 2026 - 20 APR 2026	DAYANG	MR JOE LING SIEW LOUNG @ LIN SHOU LONG [DIR/CEO]	-2,900		118,547	10.239
20 APR 2026 - 20 APR 2026	DAYANG	MR JOE LING SIEW LOUNG @ LIN SHOU LONG [SSH]	-2,900		118,547	10.239
17 APR 2026 - 17 APR 2026	DAYANG	ABERDEEN GROUP PLC [SSH]	567		75,319	6.506
17 APR 2026 - 17 APR 2026	DAYANG	ABRDN HOLDINGS LIMITED [SSH]	567		75,319	6.506
17 APR 2026 - 17 APR 2026	DAYANG	ABRDN MALAYSIA SDN BHD [SSH]	567		75,319	6.506
16 APR 2026 - 16 APR 2026	DAYANG	EMPLOYEES PROVIDENT FUND BOARD [SSH]	206		148,007	12.784
16 APR 2026 - 16 APR 2026	DAYANG	ABERDEEN GROUP PLC [SSH]	206		74,753	6.457
16 APR 2026 - 16 APR 2026	DAYANG	ABRDN HOLDINGS LIMITED [SSH]	206		74,753	6.457

Notice Period is 19th April 2026 to 25th April 2026

Effective Change Date	Stock Name	Buyer/ Seller Name [Classification]	Bought / (Sold) ['000]	No. of Shares After Trade ['000]	
			Total	Total	% Held
16 APR 2026 - 17 APR 2026	ELKDESA	MR TEOH HOCK CHAI@TEW HOCK CHAI [DIR/CEO]	185	199,710	45.731
21 APR 2026 - 21 APR 2026	ELRIDGE	URUSHARTA JAMAHAH SDN. BHD. [SSH]	367	133,217	6.661
20 APR 2026 - 20 APR 2026	ELRIDGE	URUSHARTA JAMAHAH SDN. BHD. [SSH]	186	132,850	6.643
17 APR 2026 - 17 APR 2026	ELRIDGE	URUSHARTA JAMAHAH SDN. BHD. [SSH]	413	132,665	6.633
17 APR 2026 - 17 APR 2026	EMPIRE	MISS ELAINE LAW SOH YING [DIR/CEO]	-35	165	0.015
17 APR 2026 - 17 APR 2026	EMPIRE	MISS ROHAIZA BINTI MOHAMED BASIR [DIR/CEO]	-25	175	0.016
17 APR 2026 - 20 APR 2026	ENGTEX	MR NG YIK SOON [DIR/CEO]	135	17,259	2.053
21 APR 2026 - 23 APR 2026	ENGTEX-WB	NG YIK SOON [DIR/CEO]	382	5,460	4.447
21 APR 2026 - 21 APR 2026	ENGTEX-WB	NH HOLDINGS SDN. BHD. [SSH]	-5,000	31,647	25.773
21 APR 2026 - 21 APR 2026	ENGTEX-WB	PUAN SRI DATIN YAP SENG KUAN [DIR/CEO]	-5,000	33,497	27.28
21 APR 2026 - 21 APR 2026	ENGTEX-WB	PUAN SRI DATIN YAP SENG KUAN [SSH]	-5,000	33,497	27.28
21 APR 2026 - 21 APR 2026	ENGTEX-WB	TAN SRI DATO' NG HOOK [DIR/CEO]	-5,000	33,497	27.28
21 APR 2026 - 21 APR 2026	ENGTEX-WB	TAN SRI DATO' NG HOOK [SSH]	-5,000	33,497	27.28
17 APR 2026 - 17 APR 2026	ENGTEX-WB	MR NG YIK SOON [DIR/CEO]	200	5,078	4.136
20 APR 2026 - 20 APR 2026	F&N	EMPLOYEES PROVIDENT FUND BOARD [SSH]	15	60,086	16.382
16 APR 2026 - 16 APR 2026	F&N	EMPLOYEES PROVIDENT FUND BOARD [SSH]	14	60,056	16.374
21 APR 2026 - 21 APR 2026	FAREAST	DATO' SRI KAMARUDDIN BIN MOHAMMED [DIR/CEO]	1,000	22,500	3.789
20 APR 2026 - 20 APR 2026	FAREAST	DATO' ASMIN BINTI YAHYA [DIR/CEO]	2	391	0.066
23 APR 2026 - 23 APR 2026	FFB	KUMPULAN WANG PERSARAAN (DIPERBADANKAN) [SSH]	-987	146,611	7.781
20 APR 2026 - 20 APR 2026	FFB	EMPLOYEES PROVIDENT FUND BOARD [SSH]	-9	312,898	16.605
21 APR 2026 - 21 APR 2026	FFB	KUMPULAN WANG PERSARAAN (DIPERBADANKAN) [SSH]	-839	147,598	7.833
17 APR 2026 - 17 APR 2026	FFB	KUMPULAN WANG PERSARAAN (DIPERBADANKAN) [SSH]	-347	148,438	7.878
15 APR 2026 - 15 APR 2026	FFB	EMPLOYEES PROVIDENT FUND BOARD [SSH]	130	312,701	16.594
21 APR 2026 - 21 APR 2026	FRONTKN	DAPE LTD [SSH]	-2,300	177,137	10.709
21 APR 2026 - 21 APR 2026	FRONTKN	DAZZLE CLEAN LTD [SSH]	-2,300	177,137	10.709
21 APR 2026 - 21 APR 2026	FRONTKN	DIAMOND GP HOLDINGS II LTD [SSH]	-2,300	177,137	10.709
21 APR 2026 - 21 APR 2026	FRONTKN	DIAMOND GP HOLDINGS II LTD [SSH]	-2,300	177,137	10.709
21 APR 2026 - 21 APR 2026	FRONTKN	DYMON ASIA PRIVATE EQUITY (S.E. ASIA) II LTD [SSH]	-2,300	177,137	10.709
21 APR 2026 - 21 APR 2026	FRONTKN	EMPLOYEES PROVIDENT FUND BOARD [SSH]	3,000	271,039	16.385
21 APR 2026 - 21 APR 2026	FRONTKN	MR NG WAI PIN [DIR/CEO]	-2,300	189,147	11.435
21 APR 2026 - 21 APR 2026	FRONTKN	MR NG WAI PIN [SSH]	-2,300	189,147	11.435
21 APR 2026 - 21 APR 2026	FRONTKN	MR TAN KENG SOON [SSH]	-2,300	177,137	10.709
21 APR 2026 - 21 APR 2026	FRONTKN	MR YONG MING CHONG (DANNY) [SSH]	-2,300	177,137	10.709
21 APR 2026 - 21 APR 2026	FRONTKN	PRISTINE PRISM LTD [SSH]	-2,300	177,137	10.709
20 APR 2026 - 20 APR 2026	FRONTKN	DAPE LTD [SSH]	-900	179,437	10.848
20 APR 2026 - 20 APR 2026	FRONTKN	DAZZLE CLEAN LTD [SSH]	-900	179,437	10.848
20 APR 2026 - 20 APR 2026	FRONTKN	DIAMOND GP HOLDINGS II LTD [SSH]	-900	179,437	10.848
20 APR 2026 - 20 APR 2026	FRONTKN	DYMON ASIA PRIVATE EQUITY (S.E. ASIA) II LTD [SSH]	-900	179,437	10.848
20 APR 2026 - 20 APR 2026	FRONTKN	EMPLOYEES PROVIDENT FUND BOARD [SSH]	2,493	268,039	16.204
20 APR 2026 - 20 APR 2026	FRONTKN	MR NG WAI PIN [DIR/CEO]	-900	191,447	11.574
20 APR 2026 - 20 APR 2026	FRONTKN	MR NG WAI PIN [SSH]	-900	191,447	11.574
20 APR 2026 - 20 APR 2026	FRONTKN	MR YONG MING CHONG (DANNY) [SSH]	-900	179,437	10.848
20 APR 2026 - 20 APR 2026	FRONTKN	PRISTINE PRISM LTD [SSH]	-900	179,437	10.848
17 APR 2026 - 17 APR 2026	FRONTKN	EMPLOYEES PROVIDENT FUND BOARD [SSH]	4,273	267,840	16.192
16 APR 2026 - 16 APR 2026	FRONTKN	EMPLOYEES PROVIDENT FUND BOARD [SSH]	906	264,581	15.999
15 APR 2026 - 15 APR 2026	FRONTKN	EMPLOYEES PROVIDENT FUND BOARD [SSH]	580	263,675	15.944
17 APR 2026 - 17 APR 2026	GADANG	SUMBER RASWIRA SDN BHD [SSH]	630	83,965	10.484
17 APR 2026 - 17 APR 2026	GADANG	TAN SRI DATO' KOK ONN [DIR/CEO]	630	197,432	24.647
17 APR 2026 - 17 APR 2026	GADANG	TAN SRI DATO' KOK ONN [SSH]	630	197,432	24.648
21 APR 2026 - 21 APR 2026	GAMUDA	EMPLOYEES PROVIDENT FUND BOARD (EPF BOARD) [SSH]	1,763	1,210,430	20.32
20 APR 2026 - 20 APR 2026	GAMUDA	EMPLOYEES PROVIDENT FUND BOARD (EPF BOARD) [SSH]	1,910	1,208,667	20.29
17 APR 2026 - 17 APR 2026	GAMUDA	EMPLOYEES PROVIDENT FUND BOARD (EPF BOARD) [SSH]	5,873	1,206,758	20.26
16 APR 2026 - 16 APR 2026	GAMUDA	EMPLOYEES PROVIDENT FUND BOARD (EPF BOARD) [SSH]	1,700	1,200,672	20.16
15 APR 2026 - 15 APR 2026	GAMUDA	EMPLOYEES PROVIDENT FUND BOARD (EPF BOARD) [SSH]	244	1,198,972	20.13
21 APR 2026 - 21 APR 2026	GASMSIA	LEMBAGA TABUNG HAJI [SSH]	99	69,383	5.403
20 APR 2026 - 20 APR 2026	GASMSIA	LEMBAGA TABUNG HAJI [SSH]	-1,924	69,284	5.395
21 APR 2026 - 21 APR 2026	GCB	MR TAY HOE LIAN [DIR/CEO]	120	135,705	4.951
20 APR 2026 - 20 APR 2026	GDB	MR ANDY LAI WEE YOUNG [DIR/CEO]	2,500	144,297	13.992
20 APR 2026 - 20 APR 2026	GDB	MR ANDY LAI WEE YOUNG [SSH]	2,500	144,297	13.992
20 APR 2026 - 20 APR 2026	GDB	MR CLEMENT WONG TECK HOO [DIR/CEO]	-2,500	4,359	0.423
21 APR 2026 - 21 APR 2026	GENP	EMPLOYEES PROVIDENT FUND BOARD [SSH]	-9	139,048	15.499
20 APR 2026 - 20 APR 2026	GENP	EMPLOYEES PROVIDENT FUND BOARD [SSH]	-8	139,057	15.5
17 APR 2026 - 17 APR 2026	GENP	EMPLOYEES PROVIDENT FUND BOARD [SSH]	28	139,065	15.5
16 APR 2026 - 16 APR 2026	GENP	EMPLOYEES PROVIDENT FUND BOARD [SSH]	-211	139,037	15.497
15 APR 2026 - 15 APR 2026	GENP	EMPLOYEES PROVIDENT FUND BOARD [SSH]	-2	139,248	15.521
17 APR 2026 - 17 APR 2026	GHS	MR YEO TIEN EE [DIR/CEO]	54	102,459	21.638
17 APR 2026 - 17 APR 2026	GHS	MR YEO TIEN EE [SSH]	54	102,459	21.638
21 APR 2026 - 23 APR 2026	GLOMAC	SHAPADU CAPITAL SDN. BHD. [SSH]	265	105,895	13.797
21 APR 2026 - 22 APR 2026	GLOMAC	DATUK SERI FATEH ISKANDAR BIN TAN SRI DATO' MOHAMED MANSOR [DIR/CEO]	10	265,187	34.552
21 APR 2026 - 22 APR 2026	GLOMAC	DATUK SERI FATEH ISKANDAR BIN TAN SRI DATO' MOHAMED MANSOR [SSH]	10	265,187	34.552
21 APR 2026 - 22 APR 2026	GLOMAC	TAN SRI DATO' MOHAMED MANSOR BIN FATEH DIN [DIR/CEO]	10	272,513	35.507
21 APR 2026 - 22 APR 2026	GLOMAC	TAN SRI DATO' MOHAMED MANSOR BIN FATEH DIN [SSH]	10	265,187	34.552
17 APR 2026 - 20 APR 2026	GLOMAC	DATUK SERI FATEH ISKANDAR BIN TAN SRI DATO' MOHAMED MANSOR [DIR/CEO]	11	265,177	34.551
17 APR 2026 - 20 APR 2026	GLOMAC	DATUK SERI FATEH ISKANDAR BIN TAN SRI DATO' MOHAMED MANSOR [SSH]	11	265,177	34.551
17 APR 2026 - 20 APR 2026	GLOMAC	TAN SRI DATO' MOHAMED MANSOR BIN FATEH DIN [DIR/CEO]	11	272,503	35.506
17 APR 2026 - 20 APR 2026	GLOMAC	TAN SRI DATO' MOHAMED MANSOR BIN FATEH DIN [SSH]	11	265,177	34.551
21 APR 2026 - 21 APR 2026	GREATEC	DATO' OOI HOOI KIANG [DIR/CEO]	-10	1,265	0.05

Notice Period is 19th April 2026 to 25th April 2026

Effective Change Date	Stock Name	Buyer/ Seller Name [Classification]	Bought / (Sold) ['000]	No. of Shares After Trade ['000]	
			Total	Total	% Held
16 APR 2026 - 16 APR 2026	GREATEC	DATO' OOI HOOI KIANG [DIR/CEO]	-10	1,275	0.051
16 APR 2026 - 16 APR 2026	GREATEC	MR KHOR LEAN HENG [DIR/CEO]	-100	148,008	5.886
16 APR 2026 - 16 APR 2026	GREATEC	MR KHOR LEAN HENG [SSH]	-100	148,008	5.886
17 APR 2026 - 17 APR 2026	HEGROUP	MISS CHRISTINE TOH HUNG MEI [DIR/CEO]	200	350	0.08
23 APR 2026 - 23 APR 2026	HEKTAR	UPAYAPADU (M) SDN. BHD. [SSH]	277	68,942	9.72
22 APR 2026 - 22 APR 2026	HEKTAR	UPAYAPADU (M) SDN. BHD. [SSH]	170	68,665	9.681
21 APR 2026 - 21 APR 2026	HEKTAR	UPAYAPADU (M) SDN. BHD. [SSH]	750	68,495	9.657
17 APR 2026 - 20 APR 2026	HEKTAR	UPAYAPADU (M) SDN BHD [SSH]	1,350	67,745	9.551
22 APR 2026 - 23 APR 2026	HIBISCS	DATUK MICHAEL TANG VEE MUN [SSH]	-3,637	83,145	11.275
22 APR 2026 - 23 APR 2026	HIBISCS	POLO INVESTMENTS LIMITED [SSH]	-3,637	48,323	6.553
17 APR 2026 - 17 APR 2026	HKB	MISS ONG AI-LYN [DIR/CEO]	10	314	0.051
21 APR 2026 - 21 APR 2026	HLBANK	EMPLOYEES PROVIDENT FUND BOARD [SSH]	-220	205,611	9.854
20 APR 2026 - 20 APR 2026	HLBANK	EMPLOYEES PROVIDENT FUND BOARD [SSH]	-339	205,831	9.864
17 APR 2026 - 17 APR 2026	HLBANK	EMPLOYEES PROVIDENT FUND BOARD [SSH]	-1,301	206,170	9.881
16 APR 2026 - 16 APR 2026	HLBANK	EMPLOYEES PROVIDENT FUND BOARD [SSH]	-684	207,471	9.943
15 APR 2026 - 15 APR 2026	HLBANK	EMPLOYEES PROVIDENT FUND BOARD [SSH]	-959	208,155	9.976
15 APR 2026 - 15 APR 2026	HLFG	EMPLOYEES PROVIDENT FUND BOARD [SSH]	-23	75,864	6.611
17 APR 2026 - 17 APR 2026	HOHUP	MR LEE FOOK YUEN [SSH]	0.1	51,845	10.004
15 APR 2026 - 16 APR 2026	HOHUP	MR LEE FOOK YUEN [SSH]	133	51,845	10.004
17 APR 2026 - 17 APR 2026	IGBREIT	EMPLOYEES PROVIDENT FUND BOARD [SSH]	88	410,151	9.482
16 APR 2026 - 16 APR 2026	IGBREIT	EMPLOYEES PROVIDENT FUND BOARD [SSH]	-144	410,064	9.48
15 APR 2026 - 15 APR 2026	IGBREIT	EMPLOYEES PROVIDENT FUND BOARD [SSH]	489	410,408	9.488
21 APR 2026 - 21 APR 2026	IHH	EMPLOYEES PROVIDENT FUND BOARD [SSH]	-175	1,178,849	13.341
20 APR 2026 - 20 APR 2026	IHH	EMPLOYEES PROVIDENT FUND BOARD [SSH]	838	1,179,024	13.343
17 APR 2026 - 17 APR 2026	IHH	EMPLOYEES PROVIDENT FUND BOARD [SSH]	2,238	1,178,187	13.334
16 APR 2026 - 16 APR 2026	IHH	EMPLOYEES PROVIDENT FUND BOARD [SSH]	3,328	1,175,948	13.308
15 APR 2026 - 15 APR 2026	IHH	EMPLOYEES PROVIDENT FUND BOARD [SSH]	2,668	1,172,621	13.271
20 APR 2026 - 20 APR 2026	IJM	EMPLOYEES PROVIDENT FUND BOARD [SSH]	238	714,894	20.395
17 APR 2026 - 17 APR 2026	IJM	EMPLOYEES PROVIDENT FUND BOARD [SSH]	814	714,656	20.389
17 APR 2026 - 17 APR 2026	IJM	KUMPULAN WANG PERSARAAN (DIPERBADANKAN) [SSH]	6,916	372,180	10.618
23 APR 2026 - 23 APR 2026	INARI	KUMPULAN WANG PERSARAAN (DIPERBADANKAN) [SSH]	-100	379,073	9.962
21 APR 2026 - 21 APR 2026	INARI	EMPLOYEES PROVIDENT FUND BOARD [SSH]	7,179	570,396	14.99
22 APR 2026 - 22 APR 2026	INARI	KUMPULAN WANG PERSARAAN (DIPERBADANKAN) [SSH]	1,497	379,173	9.964
20 APR 2026 - 20 APR 2026	INARI	EMPLOYEES PROVIDENT FUND BOARD [SSH]	-100	563,217	14.802
21 APR 2026 - 21 APR 2026	INARI	KUMPULAN WANG PERSARAAN (DIPERBADANKAN) [SSH]	-137	377,676	9.925
20 APR 2026 - 20 APR 2026	INARI	KUMPULAN WANG PERSARAAN (DIPERBADANKAN) [SSH]	1,810	377,812	9.929
16 APR 2026 - 16 APR 2026	INARI	EMPLOYEES PROVIDENT FUND BOARD [SSH]	6,090	562,417	14.781
15 APR 2026 - 15 APR 2026	INARI	EMPLOYEES PROVIDENT FUND BOARD [SSH]	392	556,327	14.62
23 APR 2026 - 24 APR 2026	INFOTEC	MR CHOO WEI CHUEN [DIR/CEO]	9	154,586	42.568
23 APR 2026 - 24 APR 2026	INFOTEC	MR CHOO WEI CHUEN [SSH]	9	154,586	42.568
20 APR 2026 - 22 APR 2026	INFOTEC	MR CHOO WEI CHUEN [DIR/CEO]	13	154,577	42.566
20 APR 2026 - 22 APR 2026	INFOTEC	MR CHOO WEI CHUEN [SSH]	13	154,577	42.566
17 APR 2026 - 17 APR 2026	INFOTEC	MR CHOO WEI CHUEN [DIR/CEO]	2	154,564	42.562
17 APR 2026 - 17 APR 2026	INFOTEC	MR CHOO WEI CHUEN [SSH]	2	154,564	42.562
20 APR 2026 - 20 APR 2026	IOICORP	EMPLOYEES PROVIDENT FUND BOARD [SSH]	-416	1,081,360	17.205
17 APR 2026 - 17 APR 2026	IOICORP	EMPLOYEES PROVIDENT FUND BOARD [SSH]	-2,920	1,081,775	17.211
16 APR 2026 - 16 APR 2026	IOICORP	EMPLOYEES PROVIDENT FUND BOARD [SSH]	-391	1,084,583	17.256
15 APR 2026 - 15 APR 2026	IOICORP	EMPLOYEES PROVIDENT FUND BOARD [SSH]	-143	1,084,974	17.262
17 APR 2026 - 17 APR 2026	IOIPG	EMPLOYEES PROVIDENT FUND BOARD [SSH]	-1,249	371,748	6.752
17 APR 2026 - 20 APR 2026	IOIPG	DATO' LEE YEOW SENG [DIR/CEO]	3,750	3,767,255	68.419
17 APR 2026 - 20 APR 2026	IOIPG	DATO' LEE YEOW SENG [SSH]	3,750	3,767,080	68.416
15 APR 2026 - 16 APR 2026	IOIPG	EMPLOYEES PROVIDENT FUND BOARD [SSH]	-293	372,997	6.774
15 APR 2026 - 15 APR 2026	IRIS	DATO' POH YANG HONG [DIR/CEO]	40	105,123	12.887
15 APR 2026 - 15 APR 2026	IRIS	DATO' POH YANG HONG [SSH]	40	105,123	12.887
15 APR 2026 - 15 APR 2026	IRIS	DR POH SOON SIM [DIR/CEO]	40	21,975	2.694
23 APR 2026 - 23 APR 2026	JPG	KUMPULAN WANG PERSARAAN (DIPERBADANKAN) [SSH]	850	145,304	5.812
21 APR 2026 - 21 APR 2026	JPG	EMPLOYEES PROVIDENT FUND BOARD [SSH]	-1,249	234,438	9.378
21 APR 2026 - 21 APR 2026	JPG	KUMPULAN WANG PERSARAAN (DIPERBADANKAN) [SSH]	1,106	144,454	5.778
20 APR 2026 - 20 APR 2026	JPG	EMPLOYEES PROVIDENT FUND BOARD [SSH]	1,169	235,687	9.427
17 APR 2026 - 17 APR 2026	JPG	EMPLOYEES PROVIDENT FUND BOARD [SSH]	-150	234,518	9.381
16 APR 2026 - 16 APR 2026	JPG	EMPLOYEES PROVIDENT FUND BOARD [SSH]	200	234,668	9.387
17 APR 2026 - 17 APR 2026	JPG	KUMPULAN WANG PERSARAAN (DIPERBADANKAN) [SSH]	-1,000	143,399	5.736
15 APR 2026 - 15 APR 2026	JPG	EMPLOYEES PROVIDENT FUND BOARD [SSH]	1,610	234,468	9.379
21 APR 2026 - 21 APR 2026	KGB	EMPLOYEES PROVIDENT FUND BOARD [SSH]	794	46,995	

Notice Period is 19th April 2026 to 25th April 2026

Effective Change Date	Stock Name	Buyer/ Seller Name [Classification]	Bought / (Sold) ['000]	No. of Shares After Trade ['000]	
			Total	Total	% Held
17 APR 2026 - 17 APR 2026	KUCINGKO	MR SEE CHIN JOO [DIR/CEO]	100	174,595	34.921
17 APR 2026 - 17 APR 2026	KUCINGKO	MR SEE CHIN JOO [SSH]	100	174,595	34.921
20 APR 2026 - 20 APR 2026	LBS	TAN SRI DATO' SRI IR. (DR.) LIM HOCK SAN JP [DIR/CEO]	100	630,968	41.198
20 APR 2026 - 20 APR 2026	LBS	TAN SRI DATO' SRI IR. (DR.) LIM HOCK SAN JP [SSH]	100	627,699	40.984
20 APR 2026 - 20 APR 2026	LBS	KUMPULAN WANG PERSARAAN (DIPERBADANKAN) [SSH]	-200	113,947	7.44
23 APR 2026 - 23 APR 2026	MAGNI	KP HOLDINGS SDN. BHD. [SSH]	100	60,478	13.95
23 APR 2026 - 23 APR 2026	MAGNI	TAN SRI DATO' SERI TAN KOK PING [DIR/CEO]	100	111,806	25.79
23 APR 2026 - 23 APR 2026	MAGNI	TAN SRI DATO' SERI TAN KOK PING [SSH]	100	83,236	19.2
23 APR 2026 - 23 APR 2026	MALAKOF	KUMPULAN WANG PERSARAAN (DIPERBADANKAN) ('KWAP') [SSH]	-100	337,102	6.898
22 APR 2026 - 22 APR 2026	MALAKOF	KUMPULAN WANG PERSARAAN (DIPERBADANKAN) ('KWAP') [SSH]	-100	337,202	6.9
21 APR 2026 - 21 APR 2026	MALAKOF	KUMPULAN WANG PERSARAAN (DIPERBADANKAN) ('KWAP') [SSH]	-100	337,302	6.902
20 APR 2026 - 20 APR 2026	MALAKOF	KUMPULAN WANG PERSARAAN (DIPERBADANKAN) ('KWAP') [SSH]	-100	337,402	6.904
17 APR 2026 - 17 APR 2026	MALAKOF	KUMPULAN WANG PERSARAAN (DIPERBADANKAN) ('KWAP') [SSH]	-100	337,502	6.906
23 APR 2026 - 23 APR 2026	MATRIX	LEMBAGA TABUNG HAJI [SSH]	500	126,254	6.726
21 APR 2026 - 21 APR 2026	MATRIX	LEMBAGA TABUNG HAJI [SSH]	500	125,754	6.7
20 APR 2026 - 20 APR 2026	MATRIX	LEMBAGA TABUNG HAJI [SSH]	500	125,254	6.673
17 APR 2026 - 17 APR 2026	MATRIX	LEMBAGA TABUNG HAJI [SSH]	500	124,754	6.646
17 APR 2026 - 17 APR 2026	MAXIS	EMPLOYEES PROVIDENT FUND BOARD ('EPF BOARD') [SSH]	369	1,063,221	13.57
16 APR 2026 - 16 APR 2026	MAXIS	EMPLOYEES PROVIDENT FUND BOARD ('EPF BOARD') [SSH]	517	1,062,852	13.565
15 APR 2026 - 15 APR 2026	MAXIS	EMPLOYEES PROVIDENT FUND BOARD ('EPF BOARD') [SSH]	887	1,062,336	13.558
22 APR 2026 - 22 APR 2026	MAYBANK	AMANAHRAYA TRUSTEES BERHAD - AMANAH SAHAM BUMIPUTERA [SSH]	-252	3,385,128	27.987
21 APR 2026 - 21 APR 2026	MAYBANK	EMPLOYEES PROVIDENT FUND BOARD [SSH]	-300	1,517,124	12.543
21 APR 2026 - 21 APR 2026	MAYBANK	AMANAHRAYA TRUSTEES BERHAD - AMANAH SAHAM BUMIPUTERA [SSH]	-3,120	3,385,380	27.989
20 APR 2026 - 20 APR 2026	MAYBANK	EMPLOYEES PROVIDENT FUND BOARD [SSH]	1,090	1,517,423	12.546
17 APR 2026 - 17 APR 2026	MAYBANK	EMPLOYEES PROVIDENT FUND BOARD [SSH]	-763	1,516,333	12.537
20 APR 2026 - 20 APR 2026	MAYBANK	KUMPULAN WANG PERSARAAN (DIPERBADANKAN) ('KWAP') [SSH]	215	633,997	5.242
17 APR 2026 - 17 APR 2026	MAYBANK	AMANAHRAYA TRUSTEES BERHAD - AMANAH SAHAM BUMIPUTERA [SSH]	-2,500	3,388,500	28.015
16 APR 2026 - 16 APR 2026	MAYBANK	EMPLOYEES PROVIDENT FUND BOARD [SSH]	-960	1,517,096	12.543
16 APR 2026 - 16 APR 2026	MAYBANK	AMANAHRAYA TRUSTEES BERHAD - AMANAH SAHAM BUMIPUTERA [SSH]	-3,100	3,391,000	28.036
15 APR 2026 - 15 APR 2026	MAYBANK	EMPLOYEES PROVIDENT FUND BOARD [SSH]	-1,571	1,518,057	12.551
22 APR 2026 - 22 APR 2026	METRO	ENCIK SHEIKH MOHD NASARUDIN [SSH]	-4	50,522	5.161
20 APR 2026 - 21 APR 2026	METRO	ENCIK SHEIKH MOHD NASARUDIN [SSH]	-505	50,525	5.161
17 APR 2026 - 17 APR 2026	METRO	ENCIK SHEIKH MOHD NASARUDIN [SSH]	-251	51,030	5.212
21 APR 2026 - 21 APR 2026	MISC	EMPLOYEES PROVIDENT FUND BOARD [SSH]	-150	674,416	15.109
20 APR 2026 - 20 APR 2026	MISC	EMPLOYEES PROVIDENT FUND BOARD [SSH]	452	674,566	15.112
17 APR 2026 - 17 APR 2026	MISC	EMPLOYEES PROVIDENT FUND BOARD [SSH]	281	674,114	15.102
16 APR 2026 - 16 APR 2026	MISC	EMPLOYEES PROVIDENT FUND BOARD [SSH]	245	673,833	15.096
15 APR 2026 - 15 APR 2026	MISC	EMPLOYEES PROVIDENT FUND BOARD [SSH]	97	673,588	15.09
21 APR 2026 - 21 APR 2026	MN-HLDG-WA	MR PANKAJKUMAR A/L BIPINCHANDRA [DIR/CEO]	-20	660	0.957
21 APR 2026 - 21 APR 2026	MRDIY	EMPLOYEES PROVIDENT FUND BOARD [SSH]	500	1,044,332	11.019
17 APR 2026 - 17 APR 2026	MTTSL	MR CHAN HUAN HIN [DIR/CEO]	20	120,405	4.815
17 APR 2026 - 17 APR 2026	MTTSL	DATO' SERI ONG KEAN LEE [DIR/CEO]	252	929,847	22.535
17 APR 2026 - 17 APR 2026	MTTSL	DATO' SERI ONG KEAN LEE [SSH]	252	929,847	22.535
17 APR 2026 - 17 APR 2026	MTTSL	MR LEE HOCK SAING [SSH]	934	277,296	11.092
17 APR 2026 - 17 APR 2026	MTTSL	MR OOI LEAN HIN [DIR/CEO]	48	320,327	12.809
17 APR 2026 - 17 APR 2026	MTTSL	MR OOI LEAN HIN [SSH]	48	320,327	12.809
22 APR 2026 - 23 APR 2026	NZN	QUAH CHOON WAH [SSH]	293	52368	9.381
21 APR 2026 - 21 APR 2026	NADIBHD	DATO' SRI SUBAHAN BIN KAMAL [SSH]	-181	50402	6.694
20 APR 2026 - 20 APR 2026	NADIBHD	DATO' SRI SUBAHAN BIN KAMAL [SSH]	-500	50583	6.718
22 APR 2026 - 22 APR 2026	NAIM	DATUK AMAR ABDUL HAMED BIN HAJI SEPAWI [DIR/CEO]	-789	97,363	19.528
22 APR 2026 - 22 APR 2026	NAIM	DATUK AMAR ABDUL HAMED BIN HAJI SEPAWI [SSH]	-789	97,363	19.528
20 APR 2026 - 21 APR 2026	NAIM	DATUK AMAR ABDUL HAMED BIN HAJI SEPAWI [DIR/CEO]	-1,086	98,152	19.686
20 APR 2026 - 21 APR 2026	NAIM	DATUK AMAR ABDUL HAMED BIN HAJI SEPAWI [SSH]	-1,086	98,152	19.686
21 APR 2026 - 21 APR 2026	NESTLE	EMPLOYEES PROVIDENT FUND BOARD [SSH]	5	31,665	13.503
20 APR 2026 - 20 APR 2026	NESTLE	EMPLOYEES PROVIDENT FUND BOARD [SSH]	163	31,697	13.517
17 APR 2026 - 17 APR 2026	NESTLE	EMPLOYEES PROVIDENT FUND BOARD [SSH]	55	31,538	13.449
16 APR 2026 - 16 APR 2026	NESTLE	EMPLOYEES PROVIDENT FUND BOARD [SSH]	79	31,483	13.426
15 APR 2026 - 15 APR 2026	NESTLE	EMPLOYEES PROVIDENT FUND BOARD [SSH]	11	31,454	13.413
23 APR 2026 - 24 APR 2026	NGGB	DATO' LIM THIAM HUAT [DIR/CEO]	120	143,705	13.14
23 APR 2026 - 24 APR 2026	NGGB	DATO' LIM THIAM HUAT [SSH]	120	143,705	13.14
23 APR 2026 - 24 APR 2026	NGGB	DR LIM KAH YEN [DIR/CEO]	120	135,370	12.38
23 APR 2026 - 24 APR 2026	NGGB	DR LIM KAH YEN [SSH]	120	135,370	12.38
23 APR 2026 - 24 APR 2026	NGGB	MISS LIM KAH YEE [DIR/CEO]	120	121,491	11.11
23 APR 2026 - 24 APR 2026	NGGB	MISS LIM KAH YEE [SSH]	120	121,491	11.11
22 APR 2026 - 22 APR 2026	NIHSIN	MISS KHOO WUAN RU [DIR/CEO]	60	119,631	20.771
22 APR 2026 - 22 APR 2026	NIHSIN	MR KHOO CHEE KONG [SSH]	60	119,631	20.771
21 APR 2026 - 21 APR 2026	OFB	SIERRA MODE SDN BHD [SSH]	-1,388	12496	5.946
20 APR 2026 - 20 APR 2026	OHM	DATUK TEOH YEE SEANG [DIR/CEO]	310	306057	61.211
20 APR 2026 - 20 APR 2026	OHM	DATUK TEOH YEE SEANG [SSH]	310	306057	61.211
20 APR 2026 - 20 APR 2026	OHM	OASIS MANAGEMENT TEAM SDN. BHD. [SSH]	310	128740	25.748
16 APR 2026 - 17 APR 2026	OHM	DATUK TEOH YEE SEANG [DIR/CEO]	1,000	305748	61.149
16 APR 2026 - 17 APR 2026	OHM	DATUK TEOH YEE SEANG [SSH]	1,000	305748	61.149
16 APR 2026 - 17 APR 2026	OHM	OASIS MANAGEMENT TEAM SDN. BHD. [SSH]	1,000	128430	25.686
20 APR 2026 - 20 APR 2026	OMESTI	MR MONTEIRO GERARD CLAIR [DIR/CEO]	1,624	196190	8.448
20 APR 2026 - 20 APR 2026	OMESTI	MR MONTEIRO GERARD CLAIR [SSH]	1,624	196190	8.448
18 DEC 2025 - 02 MAR 2026	OVH	MR CHAI MING YUNG [SSH]	-13,231	24738	5.754

Notice Period is 19th April 2026 to 25th April 2026

Effective Change Date	Stock Name	Buyer/ Seller Name [Classification]	Bought / (Sold) ['000]	No. of Shares After Trade ['000]	
			Total	Total	% Held
20 APR 2026 - 20 APR 2026	PADINI	EMPLOYEES PROVIDENT FUND BOARD [SSH]	-375	108428	10.987
17 APR 2026 - 17 APR 2026	PADINI	EMPLOYEES PROVIDENT FUND BOARD [SSH]	-292	108803	11.025
15 APR 2026 - 15 APR 2026	PADINI	EMPLOYEES PROVIDENT FUND BOARD [SSH]	-68	109095	11.055
20 APR 2026 - 20 APR 2026	PANAMY	EMPLOYEES PROVIDENT FUND BOARD [SSH]	-5	4244	6.987
17 APR 2026 - 17 APR 2026	PANAMY	EMPLOYEES PROVIDENT FUND BOARD [SSH]	-11	4250	6.996
16 APR 2026 - 16 APR 2026	PANAMY	EMPLOYEES PROVIDENT FUND BOARD [SSH]	-13	4261	7.014
19 NOV 2025 - 29 JAN 2026	PARADIGM	DOMINION NEXUS SDN BHD [SSH]	1,807	1041807	65.039
19 NOV 2025 - 29 JAN 2026	PARADIGM	LEGACY PACIFIC LIMITED [SSH]	1,807	1041807	65.039
19 NOV 2025 - 29 JAN 2026	PARADIGM	TAN SRI LIM SIEW CHOON [SSH]	1,807	1041807	65.039
19 NOV 2025 - 29 JAN 2026	PARADIGM	WCT HOLDINGS BERHAD [SSH]	1,807	1041807	65.04
20 APR 2026 - 20 APR 2026	PARADIGM	EMPLOYEES PROVIDENT FUND BOARD [SSH]	95	132760	8.288
16 APR 2026 - 16 APR 2026	PARADIGM	EMPLOYEES PROVIDENT FUND BOARD [SSH]	121	132666	8.282
20 APR 2026 - 20 APR 2026	PAVREIT	EMPLOYEES PROVIDENT FUND BOARD [SSH]	415	502835	12.801
17 APR 2026 - 17 APR 2026	PAVREIT	EMPLOYEES PROVIDENT FUND BOARD [SSH]	810	502420	12.791
16 APR 2026 - 16 APR 2026	PAVREIT	EMPLOYEES PROVIDENT FUND BOARD [SSH]	578	501609	12.77
21 APR 2026 - 21 APR 2026	PBBANK	EMPLOYEES PROVIDENT FUND BOARD [SSH]	999	3405661	17.55
21 APR 2026 - 21 APR 2026	PBBANK	KUMPULAN WANG PERSARAAN (DIPERBADANKAN) [SSH]	1,711	1027799	5.29
17 APR 2026 - 17 APR 2026	PBBANK	EMPLOYEES PROVIDENT FUND BOARD [SSH]	-6,288	3406869	17.55
20 APR 2026 - 20 APR 2026	PBBANK	KUMPULAN WANG PERSARAAN (DIPERBADANKAN) [SSH]	6,018	1026088	5.28
16 APR 2026 - 16 APR 2026	PBBANK	EMPLOYEES PROVIDENT FUND BOARD [SSH]	-3,972	3413157	17.58
17 APR 2026 - 17 APR 2026	PBBANK	KUMPULAN WANG PERSARAAN (DIPERBADANKAN) [SSH]	6,740	1020070	5.26
15 APR 2026 - 15 APR 2026	PBBANK	EMPLOYEES PROVIDENT FUND BOARD [SSH]	-7,200	3417129	17.6
21 APR 2026 - 21 APR 2026	PCHEM	EMPLOYEES PROVIDENT FUND BOARD ('EPF BOARD') [SSH]	-362	1015603	12.695
20 APR 2026 - 20 APR 2026	PCHEM	EMPLOYEES PROVIDENT FUND BOARD ('EPF BOARD') [SSH]	-580	1015965	12.7
17 APR 2026 - 17 APR 2026	PCHEM	EMPLOYEES PROVIDENT FUND BOARD ('EPF BOARD') [SSH]	-500	1016544	12.707
16 APR 2026 - 16 APR 2026	PCHEM	EMPLOYEES PROVIDENT FUND BOARD ('EPF BOARD') [SSH]	-250	1017044	12.713
15 APR 2026 - 15 APR 2026	PCHEM	EMPLOYEES PROVIDENT FUND BOARD ('EPF BOARD') [SSH]	-375	1017294	12.716
17 APR 2026 - 17 APR 2026	PENSONI	DATO' SERI CHEW WENG KHAK @ CHEW WENG KIAK [SSH]	-2,000	11296	7.606
23 APR 2026 - 23 APR 2026	PENTA	KUMPULAN WANG PERSARAAN (DIPERBADANKAN) [SSH]	-200	59124	8.312
21 APR 2026 - 21 APR 2026	PENTA	EMPLOYEES PROVIDENT FUND BOARD [SSH]	217	103298	14.522
20 APR 2026 - 20 APR 2026	PENTA	EMPLOYEES PROVIDENT FUND BOARD [SSH]	31	103081	14.492
21 APR 2026 - 21 APR 2026	PENTA	KUMPULAN WANG PERSARAAN (DIPERBADANKAN) [SSH]	125	59324	8.34
17 APR 2026 - 17 APR 2026	PENTA	EMPLOYEES PROVIDENT FUND BOARD [SSH]	231	103050	14.487
16 APR 2026 - 16 APR 2026	PENTA	EMPLOYEES PROVIDENT FUND BOARD [SSH]	1,138	102669	14.434
17 APR 2026 - 17 APR 2026	PENTA	KUMPULAN WANG PERSARAAN (DIPERBADANKAN) [SSH]	100	59199	8.322
15 APR 2026 - 15 APR 2026	PENTA	EMPLOYEES PROVIDENT FUND BOARD [SSH]	20	101531	14.274
23 APR 2026 - 23 APR 2026	PESONA	KOMBINASI EMAS SDN BHD [SSH]	150	309740	44.568
23 APR 2026 - 23 APR 2026	PESONA	MR WIE HOCK KIONG [DIR/CEO]	150	309740	44.568
23 APR 2026 - 23 APR 2026	PESONA	MR WIE HOCK KIONG [SSH]	150	309740	44.568
22 APR 2026 - 22 APR 2026	PESONA	KOMBINASI EMAS SDN BHD [SSH]	360	309590	44.546
22 APR 2026 - 22 APR 2026	PESONA	MR WIE HOCK KIONG [DIR/CEO]	360	309590	44.546
22 APR 2026 - 22 APR 2026	PESONA	MR WIE HOCK KIONG [SSH]	360	309590	44.546
20 APR 2026 - 20 APR 2026	PESONA	KOMBINASI EMAS SDN BHD [SSH]	230	309230	44.494
20 APR 2026 - 20 APR 2026	PESONA	MR WIE HOCK KIONG [DIR/CEO]	230	309230	44.494
20 APR 2026 - 20 APR 2026	PESONA	MR WIE HOCK KIONG [SSH]	230	309230	44.494
16 APR 2026 - 17 APR 2026	PESONA	KOMBINASI EMAS SDN BHD [SSH]	392	309000	44.461
16 APR 2026 - 17 APR 2026	PESONA	MR WIE HOCK KIONG [DIR/CEO]	392	309000	44.461
16 APR 2026 - 17 APR 2026	PESONA	MR WIE HOCK KIONG [SSH]	392	309000	44.461
17 APR 2026 - 17 APR 2026	PESTEC	DATUK SERI (DR.) SUBRAMANIAM PILLAI A/L SAN-KARAN PILLAI [DIR/CEO]	1,600	1581597	62.031
17 APR 2026 - 17 APR 2026	PESTEC	DATUK SERI (DR.) SUBRAMANIAM PILLAI A/L SAN-KARAN PILLAI [SSH]	1,600	1581597	62.031
15 APR 2026 - 15 APR 2026	PESTEC	DATUK MOHAMED RAZEK BIN MD HUSSAIN MARI-CAR [DIR/CEO]	2,000	1567124	61.463
15 APR 2026 - 15 APR 2026	PESTEC	MR DATUK MOHAMED RAZEK BIN MD HUSSAIN MARICAR [SSH]	2,000	1567124	61.463
24 APR 2026 - 24 APR 2026	PINEAPP	DATO LIM KHOON HENG [DIR/CEO]	-30,971	1758	3.624
24 APR 2026 - 24 APR 2026	PINEAPP	DATO LIM LOONG HENG [DIR/CEO]	-30,971	930	1.918
24 APR 2026 - 24 APR 2026	PINEAPP	LIM LOONG HENG [DIR/CEO]	-30,971	930	1.918
21 APR 2026 - 21 APR 2026	PLABS	MR BU YAW SENG [SSH]	-1,000	17303	6.287
21 APR 2026 - 21 APR 2026	PMETAL	EMPLOYEES PROVIDENT FUND BOARD [SSH]	189	740072	8.982
20 APR 2026 - 20 APR 2026	PMETAL	EMPLOYEES PROVIDENT FUND BOARD [SSH]	2,983	739883	8.98
17 APR 2026 - 17 APR 2026	PMETAL	EMPLOYEES PROVIDENT FUND BOARD [SSH]	2,190	736900	8.943
16 APR 2026 - 16 APR 2026	PMETAL	EMPLOYEES PROVIDENT FUND BOARD [SSH]	3,436	734710	8.917
15 APR 2026 - 15 APR 2026	PMETAL	EMPLOYEES PROVIDENT FUND BOARD [SSH]	2,856	731275	8.875
22 APR 2026 - 22 APR 2026	PMW	MADAM LEE SIEW YOKE [SSH]	100	561209	62.912
22 APR 2026 - 22 APR 2026	PMW	MR LEE HON HWA [DIR/CEO]	100	561209	62.912
22 APR 2026 - 22 APR 2026	PMW	MR LEE HON HWA [SSH]	100	561209	62.912
22 APR 2026 - 22 APR 2026	PMW	MR LEE KHIM HWA [DIR/CEO]	100	561209	62.912

Notice Period is 19th April 2026 to 25th April 2026

Effective Change Date	Stock Name	Buyer/ Seller Name [Classification]	Bought / (Sold) ['000]	No. of Shares After Trade ['000]	
			Total	Total	% Held
15 APR 2026 - 15 APR 2026	RADIUM	CENGAL 2020 SDN. BHD. [SSH]	-13,500	935484	26.975
15 APR 2026 - 15 APR 2026	RADIUM	DATUK GAN KAH SIONG [DIR/CEO]	-13,500	1443098	41.612
15 APR 2026 - 15 APR 2026	RADIUM	DATUK GAN KAH SIONG [SSH]	-13,500	1443098	41.612
23 APR 2026 - 23 APR 2026	RHBBANK	KUMPULAN WANG PERSARAAN (DIPERBADANKAN) [SSH]	151	225551	5.171
21 APR 2026 - 21 APR 2026	RHBBANK	EMPLOYEES PROVIDENT FUND BOARD [SSH]	-3,769	1591388	36.484
17 APR 2026 - 17 APR 2026	RHBBANK	EMPLOYEES PROVIDENT FUND BOARD [SSH]	-3,500	1595157	36.57
16 APR 2026 - 16 APR 2026	RHBBANK	EMPLOYEES PROVIDENT FUND BOARD [SSH]	-2,557	1598657	36.65
15 APR 2026 - 15 APR 2026	RHBBANK	EMPLOYEES PROVIDENT FUND BOARD [SSH]	-3,204	1601214	36.709
22 APR 2026 - 22 APR 2026	RL	MR THIEN CHIET CHAI [DIR/CEO]	400	67332	17.667
22 APR 2026 - 22 APR 2026	RL	MR THIEN CHIET CHAI [SSH]	400	67332	17.667
17 APR 2026 - 20 APR 2026	RSAWIT	DATUK TIONG CHIONG IE [DIR/CEO]	4,612	26601	1.303
21 APR 2026 - 23 APR 2026	SALIRAN	MR LIAW CHOON WEI [DIR/CEO]	575	275464	71.941
21 APR 2026 - 23 APR 2026	SALIRAN	MR LIAW CHOON WEI [SSH]	575	275464	71.941
21 APR 2026 - 21 APR 2026	SAM	EMPLOYEES PROVIDENT FUND BOARD [SSH]	183	40382	5.965
20 APR 2026 - 20 APR 2026	SAM	EMPLOYEES PROVIDENT FUND BOARD [SSH]	32	40200	5.938
17 APR 2026 - 17 APR 2026	SAM	EMPLOYEES PROVIDENT FUND BOARD [SSH]	78	40168	5.933
16 APR 2026 - 16 APR 2026	SAM	EMPLOYEES PROVIDENT FUND BOARD [SSH]	236	40090	5.922
15 APR 2026 - 15 APR 2026	SAM	EMPLOYEES PROVIDENT FUND BOARD [SSH]	30	39854	5.887
20 APR 2026 - 20 APR 2026	SBH	MISS TEOH LI HOON [DIR/CEO]	172	422	0.048
20 APR 2026 - 20 APR 2026	SBH	MR TAN BOO NAM [DIR/CEO]	-10,000	367765	41.415
20 APR 2026 - 20 APR 2026	SBH	MR TAN BOO NAM [SSH]	-10,000	278687	31.384
20 APR 2026 - 20 APR 2026	SBH	MR TAN YOK JIN [DIR/CEO]	5,000	63068	7.102
20 APR 2026 - 20 APR 2026	SBH	MR TAN YOK JIN [SSH]	5,000	63068	7.102
20 APR 2026 - 20 APR 2026	SBH	MR TAN YUAK MING [DIR/CEO]	5,000	75900	8.548
20 APR 2026 - 20 APR 2026	SBH	MR TAN YUAK MING [SSH]	5,000	75900	8.548
17 APR 2026 - 17 APR 2026	SCBUILD	MR LOH BOON GINN [DIR/CEO]	200,000	457014	8.591
21 APR 2026 - 21 APR 2026	SCGBHD	EMPLOYEES PROVIDENT FUND BOARD [SSH]	-1,455	99417	8.754
20 APR 2026 - 20 APR 2026	SCGBHD	EMPLOYEES PROVIDENT FUND BOARD [SSH]	-1,250	100872	8.882
17 APR 2026 - 17 APR 2026	SCGBHD	EMPLOYEES PROVIDENT FUND BOARD [SSH]	-995	102122	8.996
16 APR 2026 - 16 APR 2026	SCGBHD	EMPLOYEES PROVIDENT FUND BOARD [SSH]	-2,000	103117	9.084
15 APR 2026 - 15 APR 2026	SCGBHD	EMPLOYEES PROVIDENT FUND BOARD [SSH]	-1,250	105117	9.26
20 APR 2026 - 20 APR 2026	SCGM	MR SAW CHAI SOON [SSH]	-293	10074	5.232
20 APR 2026 - 20 APR 2026	SCOPE	MR LEE MIN HUAT [SSH]	300	195867	16.957
23 APR 2026 - 23 APR 2026	SDG	KUMPULAN WANG PERSARAAN (DIPERBADANKAN) [SSH]	4,000	568624	8.222
22 APR 2026 - 22 APR 2026	SDG	AMANAHRAYA TRUSTEES BERHAD - AMANAH SAHAM BUMIPUTERA [SSH]	-6,605	2710521	39.194
21 APR 2026 - 21 APR 2026	SDG	EMPLOYEES PROVIDENT FUND BOARD [SSH]	8,052	1084539	15.682
21 APR 2026 - 22 APR 2026	SDG	KUMPULAN WANG PERSARAAN (DIPERBADANKAN) [SSH]	-462	564624	8.164
17 APR 2026 - 20 APR 2026	SDG	EMPLOYEES PROVIDENT FUND BOARD [SSH]	6,551	1076487	15.566
20 APR 2026 - 20 APR 2026	SDG	KUMPULAN WANG PERSARAAN (DIPERBADANKAN) [SSH]	-193	565086	8.171
15 APR 2026 - 16 APR 2026	SDG	EMPLOYEES PROVIDENT FUND BOARD [SSH]	27,906	1069936	15.471
17 APR 2026 - 17 APR 2026	SDG	KUMPULAN WANG PERSARAAN (DIPERBADANKAN) [SSH]	-1,000	565280	8.174
16 APR 2026 - 17 APR 2026	SDG	AMANAHRAYA TRUSTEES BERHAD - AMANAH SAHAM BUMIPUTERA [SSH]	-6,000	2717126	39.289
16 APR 2026 - 16 APR 2026	SDG	KUMPULAN WANG PERSARAAN (DIPERBADANKAN) [SSH]	-646	566280	8.188
15 APR 2026 - 15 APR 2026	SDG	AMANAHRAYA TRUSTEES BERHAD - AMANAH SAHAM BUMIPUTERA [SSH]	-5,000	2723126	39.376
14 APR 2026 - 14 APR 2026	SDG	EMPLOYEES PROVIDENT FUND BOARD [SSH]	7,721	1041936	15.066
17 APR 2026 - 17 APR 2026	SEM	TAN SRI DATO' SERI VINCENT TAN CHEE YIOUN [SSH]	4,700	461822	41.641
22 APR 2026 - 22 APR 2026	SFPTECH	MR KEOH BENG HUAT [DIR/CEO]	-66,700	1397532	58.231
22 APR 2026 - 22 APR 2026	SFPTECH	MR KEOH BENG HUAT [SSH]	-66,700	1397532	58.231
21 APR 2026 - 22 APR 2026	SIME	AMANAHRAYA TRUSTEES BERHAD - AMANAH SAHAM BUMIPUTERA [SSH]	-20,058	2220784	32.584
17 APR 2026 - 17 APR 2026	SIME	AMANAHRAYA TRUSTEES BERHAD - AMANAH SAHAM BUMIPUTERA [SSH]	-8,190	2240842	32.878
16 APR 2026 - 16 APR 2026	SIME	EMPLOYEES PROVIDENT FUND BOARD [SSH]	1,885	1149772	16.869
16 APR 2026 - 16 APR 2026	SIME	AMANAHRAYA TRUSTEES BERHAD - AMANAH SAHAM BUMIPUTERA [SSH]	-4,650	2249032	32.998
15 APR 2026 - 15 APR 2026	SIME	EMPLOYEES PROVIDENT FUND BOARD [SSH]	3,000	1147887	16.842
23 APR 2026 - 23 APR 2026	SIMEPROP	KUMPULAN WANG PERSARAAN (DIPERBADANKAN) [SSH]	-57	528313	7.768
21 APR 2026 - 21 APR 2026	SIMEPROP	EMPLOYEES PROVIDENT FUND BOARD [SSH]	-2,907	1113342	16.37
22 APR 2026 - 22 APR 2026	SIMEPROP	KUMPULAN WANG PERSARAAN (DIPERBADANKAN) [SSH]	3,137	528369	7.77
20 APR 2026 - 20 APR 2026	SIMEPROP	EMPLOYEES PROVIDENT FUND BOARD [SSH]	-2,761	1116248	16.413
21 APR 2026 - 21 APR 2026	SIMEPROP	KUMPULAN WANG PERSARAAN (DIPERBADANKAN) [SSH]	1,515	525232	7.723
17 APR 2026 - 17 APR 2026	SIMEPROP	EMPLOYEES PROVIDENT FUND BOARD [SSH]	-307	1119009	16.454
16 APR 2026 - 16 APR 2026	SIMEPROP	EMPLOYEES PROVIDENT FUND BOARD [SSH]	10,895	1119316	16.459
17 APR 2026 - 17 APR 2026	SIMEPROP	KUMPULAN WANG PERSARAAN (DIPERBADANKAN) [SSH]	-52	523717	7.7
15 APR 2026 - 15 APR 2026	SIMEPROP	EMPLOYEES PROVIDENT FUND BOARD [SSH]	4,189	1108421	16.298
21 APR 2026 - 21 APR 2026	SKPRES	EMPLOYEES PROVIDENT FUND BOARD [SSH]	1,000	198763	12.722
22 APR 2026 - 22 APR 2026	SKPRES	KUMPULAN WANG PERSARAAN (DIPERBADANKAN) [SSH]	-100	144121	9.225
21 APR 2026 - 21 APR 2026	SKPRES	KUMPULAN WANG PERSARAAN (DIPERBADANKAN) [SSH]	-76	144221	9.231
15 APR 2026 - 15 APR 2026	SKPRES	EMPLOYEES PROVIDENT FUND BOARD [SSH]	-895	197763	12.658
21 APR 2026 - 21 APR 2026	SLVEST	URUSHARTA JAMAHAH SDN. BHD. [SSH]	301	60706	6.373
20 APR 2026 - 20 APR 2026	SLVEST	URUSHARTA JAMAHAH SDN. BHD. [SSH]	199	60405	6.341
23 APR 2026 - 23 APR 2026	SMILE	DATIN WONG CHIEN YUE [DIR/CEO]	70	132487	52.523
23 APR 2026 - 23 APR 2026	SMILE	DATIN WONG CHIEN YUE [SSH]	70	132487	52.523
23 APR 2026 - 23 APR 2026	SMILE	DATO' DR WONG RUEN YUAN [DIR/CEO]	70	132832	52.66
23 APR 2026 - 23 APR 2026	SMILE	DATO' DR WONG RUEN YUAN [SSH]	70	132832	52.66
21 APR 2026 - 22 APR 2026	SMILE	DATIN WONG CHIEN YUE [DIR/CEO]	170	132417	52.495
21 APR 2026 - 22 APR 2026	SMILE	DATIN WONG CHIEN YUE [SSH]	170	132417	52.495
21 APR 2026 - 22 APR 2026	SMILE	DATO' DR WONG RUEN YUAN [DIR/CEO]	170	132762	52.632

Notice Period is 19th April 2026 to 25th April 2026

Effective Change Date	Stock Name	Buyer/ Seller Name [Classification]	Bought / (Sold) ['000]	No. of Shares After Trade ['000]	
			Total	Total	% Held
16 APR 2026 - 16 APR 2026	SMILE	DATIN WONG CHIEN YUE [DIR/CEO]	220	132247	52.428
16 APR 2026 - 16 APR 2026	SMILE	DATIN WONG CHIEN YUE [SSH]	220	132247	52.428
16 APR 2026 - 16 APR 2026	SMILE	DATO' DR WONG RUEN YUAN [DIR/CEO]	220	132592	52.565
16 APR 2026 - 16 APR 2026	SMILE	DATO' DR WONG RUEN YUAN [SSH]	220	132592	52.565
16 APR 2026 - 16 APR 2026	SMILE	SMILE LINK RESOURCES (M) SDN. BHD. [SSH]	220	116952	46.365
17 APR 2026 - 17 APR 2026	SOLID	MR KER BOON KEE [SSH]	123	50158	9.66
17 APR 2026 - 17 APR 2026	SOLID	MR KER MIN CHOO [DIR/CEO]	123	110525	21.281
17 APR 2026 - 17 APR 2026	SOLID	MR KER MIN CHOO [SSH]	123	110525	21.281
20 APR 2026 - 20 APR 2026	SPRITZER	DATIN SERI CHUA SHOK TIM @ CHUA SIOK HOON [SSH]	-2,000	338780	52.873
20 APR 2026 - 20 APR 2026	SPRITZER	DATIN LAI YIN LENG [SSH]	-2,000	54066	8.438
20 APR 2026 - 20 APR 2026	SPRITZER	DATO SERI LIM A HENG @ LIM KOK CHEONG [SSH]	-2,000	338780	52.873
20 APR 2026 - 20 APR 2026	SPRITZER	DATO' SERI LIM A HENG @ LIM KOK CHEONG [DIR/CEO]	-2,000	338780	52.873
20 APR 2026 - 20 APR 2026	SPRITZER	DATO' LIM KOK BOON [DIR/CEO]	-2,000	54066	8.438
20 APR 2026 - 20 APR 2026	SPRITZER	DATO' LIM KOK BOON [SSH]	-2,000	54066	8.438
20 APR 2026 - 20 APR 2026	SPRITZER	MR LIM HOCK LAI [DIR/CEO]	-2,000	10840	1.692
20 APR 2026 - 20 APR 2026	SPRITZER	MR LIM SENG LEE [DIR/CEO]	-2,000	16353	2.552
23 APR 2026 - 23 APR 2026	SPSETIA	KUMPULAN WANG PERSARAAN (DIPERBADANKAN) [SSH]	-3,000	465874	9.312
21 APR 2026 - 21 APR 2026	SPSETIA	EMPLOYEES PROVIDENT FUND BOARD [SSH]	1,684	615492	12.302
20 APR 2026 - 20 APR 2026	SPSETIA	EMPLOYEES PROVIDENT FUND BOARD [SSH]	1,500	613809	12.268
17 APR 2026 - 17 APR 2026	SPSETIA	EMPLOYEES PROVIDENT FUND BOARD [SSH]	3,574	612309	12.238
16 APR 2026 - 16 APR 2026	SPSETIA	EMPLOYEES PROVIDENT FUND BOARD [SSH]	1,214	607635	12.145
15 APR 2026 - 15 APR 2026	SPSETIA	EMPLOYEES PROVIDENT FUND BOARD [SSH]	3,000	606421	12.12
23 APR 2026 - 23 APR 2026	SPTOTO	TAN SRI DATO' SERI VINCENT TAN CHEE YIOUN [SSH]	4,590	732512	55.593
21 APR 2026 - 21 APR 2026	SPTOTO	TAN SRI DATO' SERI VINCENT TAN CHEE YIOUN [SSH]	4,590	727922	55.244
20 APR 2026 - 22 APR 2026	STRAITS	MR YONG CHEAN PENG [SSH]	1,017	75867	7.629
15 APR 2026 - 15 APR 2026	SUNCON	DATUK KWAN FOH KWAI [DIR/CEO]	-4	320	0.025
16 APR 2026 - 17 APR 2026	SUNCON	DATIN PADUKA SARENA CHEAH YEAN TIH [SSH]	-14,100	807373	60.943
16 APR 2026 - 17 APR 2026	SUNCON	MR ADRIAN CHEAH YEAN SUN [SSH]	-14,100	807315	60.939
16 APR 2026 - 17 APR 2026	SUNCON	MR EVAN CHEAH YEAN SHIN [DIR/CEO]	-14,100	807329	60.94
16 APR 2026 - 17 APR 2026	SUNCON	MR EVAN CHEAH YEAN SHIN [SSH]	-14,100	807329	60.94
16 APR 2026 - 17 APR 2026	SUNCON	PUAN SRI DATIN SERI DR. SUSAN CHEAH SEOK CHENG [SSH]	-14,100	807386	60.944
16 APR 2026 - 17 APR 2026	SUNCON	TAN SRI DATO' SERI DR. JEFFREY CHEAH FOOK LING KBE AO [SSH]	-14,100	807386	60.944
15 APR 2026 - 15 APR 2026	SUNMED	EMPLOYEES PROVIDENT FUND BOARD [SSH]	-2,000	575968	5.008
20 APR 2026 - 20 APR 2026	SUNREIT	EMPLOYEES PROVIDENT FUND BOARD [SSH]	827	538413	15.721
17 APR 2026 - 17 APR 2026	SUNREIT	EMPLOYEES PROVIDENT FUND BOARD [SSH]	1,080	537587	15.697
16 APR 2026 - 16 APR 2026	SUNREIT	EMPLOYEES PROVIDENT FUND BOARD [SSH]	1,420	536507	15.665
15 APR 2026 - 15 APR 2026	SUNREIT	EMPLOYEES PROVIDENT FUND BOARD [SSH]	990	535087	15.624
21 APR 2026 - 21 APR 2026	SUNWAY	EMPLOYEES PROVIDENT FUND BOARD [SSH]	228	707582	10.47
20 APR 2026 - 20 APR 2026	SUNWAY	EMPLOYEES PROVIDENT FUND BOARD [SSH]	613	706354	10.45
17 APR 2026 - 17 APR 2026	SUNWAY	EMPLOYEES PROVIDENT FUND BOARD [SSH]	895	705742	10.44
16 APR 2026 - 16 APR 2026	SUNWAY	EMPLOYEES PROVIDENT FUND BOARD [SSH]	2,168	704858	10.43
15 APR 2026 - 15 APR 2026	SUNWAY	EMPLOYEES PROVIDENT FUND BOARD [SSH]	4,500	701702	10.38
17 APR 2026 - 17 APR 2026	SWIFT	MR LOO HOOI KEAT [DIR/CEO]	-500	255563	29.895
17 APR 2026 - 17 APR 2026	SWIFT	MR LOO HOOI KEAT [SSH]	-500	255563	29.895
23 APR 2026 - 23 APR 2026	SYSTECH	DR LOW MIN YEW [DIR/CEO]	700	50993	7.214
23 APR 2026 - 23 APR 2026	SYSTECH	DR LOW MIN YEW [SSH]	700	50993	7.214
21 APR 2026 - 23 APR 2026	SYSTECH	MR GAN THIAM SENG [SSH]	4,350	49530	7.007
17 APR 2026 - 20 APR 2026	SYSTECH	MR GAN THIAM SENG [SSH]	1,660	45180	6.392
24 APR 2026 - 24 APR 2026	TANCO	DATO' SRI ANDREW TAN JUN SUAN [DIR/CEO]	15,660	3207522	53.233
24 APR 2026 - 24 APR 2026	TANCO	DATO' SRI ANDREW TAN JUN SUAN [DIR/CEO]	-10,903	3191862	52.973
24 APR 2026 - 24 APR 2026	TANCO	DATO' SRI ANDREW TAN JUN SUAN [SSH]	15,660	3207522	53.233
23 APR 2026 - 23 APR 2026	TANCO	DATO' SRI ANDREW TAN JUN SUAN [DIR/CEO]	15,350	3202765	53.154
23 APR 2026 - 23 APR 2026	TANCO	DATO' SRI ANDREW TAN JUN SUAN [DIR/CEO]	-13,300	3187416	52.899
23 APR 2026 - 23 APR 2026	TANCO	DATO' SRI ANDREW TAN JUN SUAN [SSH]	-13,300	3187416	52.899
22 APR 2026 - 22 APR 2026	TANCO	DATO' SRI ANDREW TAN JUN SUAN [DIR/CEO]	-9,300	3186843	52.889
22 APR 2026 - 22 APR 2026	TANCO	DATO' SRI ANDREW TAN JUN SUAN [DIR/CEO]	13,873	3200716	53.12
22 APR 2026 - 22 APR 2026	TANCO	DATO' SRI ANDREW TAN JUN SUAN [SSH]	13,873	3200716	53.12
22 APR 2026 - 22 APR 2026	TANCO	DATO' SRI ANDREW TAN JUN SUAN [SSH]	-9,300	3186843	52.889
21 APR 2026 - 21 APR 2026	TANCO	DATO' SRI ANDREW TAN JUN SUAN [DIR/CEO]	11,660	3196143	53.044
21 APR 2026 - 21 APR 2026	TANCO	DATO' SRI ANDREW TAN JUN SUAN [DIR/CEO]	-9,860	3184482	52.85
21 APR 2026 - 21 APR 2026	TANCO	DATO' SRI ANDREW TAN JUN SUAN [SSH]	-9,860	3184482	52.85
21 APR 2026 - 21 APR 2026	TANCO	DATO' SRI ANDREW TAN JUN SUAN [SSH]	11,660	3196143	53.044
21 APR 2026 - 21 APR 2026	TAS	DATUK LAU NAI HOH [DIR/CEO]	-10,789	68668	38.415
21 APR 2026 - 21 APR 2026	TAS	DATUK LAU NAI HOH [DIR/CEO]	3,596	72264	40.427
21 APR 2026 - 21 APR 2026	TAS	DATUK LAU NAI HOH [SSH]	-10,789	68668	38.415
21 APR 2026 - 21 APR 2026	TAS	DATUK LAU NAI HOH [SSH]	3,596	72264	

Notice Period is 19th April 2026 to 25th April 2026

Effective Change Date	Stock Name	Buyer/ Seller Name [Classification]	Bought / (Sold) ['000]	No. of Shares After Trade ['000]	
			Total	Total	% Held
17 APR 2026 - 17 APR 2026	TIMECOM	KUMPULAN WANG PERSARAAN (DIPERBADANKAN) [SSH]	-244	189059	10.226
15 APR 2026 - 15 APR 2026	TIMECOM	EMPLOYEES PROVIDENT FUND BOARD [SSH]	1,455	319325	17.272
20 APR 2026 - 20 APR 2026	TJSETIA	MR WEE ENG KONG [DIR/CEO]	33	141185	40.511
20 APR 2026 - 20 APR 2026	TJSETIA	MR WEE ENG KONG [SSH]	33	141185	40.511
23 APR 2026 - 23 APR 2026	TM	KUMPULAN WANG PERSARAAN (DIPERBADANKAN) [KWAP] [SSH]	-163	406930	10.603
22 APR 2026 - 22 APR 2026	TM	KUMPULAN WANG PERSARAAN (DIPERBADANKAN) [KWAP] [SSH]	-10	407092	10.607
21 APR 2026 - 21 APR 2026	TM	KUMPULAN WANG PERSARAAN (DIPERBADANKAN) [KWAP] [SSH]	-717	407103	10.607
16 APR 2026 - 16 APR 2026	TM	EMPLOYEES PROVIDENT FUND BOARD (EPF BOARD) [SSH]	630	888216	23.144
15 APR 2026 - 15 APR 2026	TM	EMPLOYEES PROVIDENT FUND BOARD (EPF BOARD) [SSH]	2,095	887586	23.128
17 APR 2026 - 20 APR 2026	TURBO	MR GAN KOK TEN [DIR/CEO]	88	60643	56.151
17 APR 2026 - 20 APR 2026	TURBO	MR GAN KOK TEN [SSH]	88	60643	56.151
16 APR 2026 - 16 APR 2026	TURBO	MR GAN KOK TEN [DIR/CEO]	27	60555	56.07
16 APR 2026 - 16 APR 2026	TURBO	MR GAN KOK TEN [SSH]	27	60555	56.07
21 APR 2026 - 21 APR 2026	TWL	DATIN SEK CHIAN NEE [SSH]	-31,942	1699917	25.809
21 APR 2026 - 21 APR 2026	TWL	DATO' TAN WEI LIAN [DIR/CEO]	-31,942	1699917	25.809
21 APR 2026 - 21 APR 2026	TWL	DATO' TAN WEI LIAN [SSH]	-31,942	1699917	25.809
21 APR 2026 - 21 APR 2026	TWL	TWL CAPITAL BERHAD [SSH]	-31,942	1699917	25.809
17 APR 2026 - 17 APR 2026	TWL	DATIN LEONG KIM FONG [SSH]	-5,000	335000	5.087
21 APR 2026 - 21 APR 2026	UTDPLT	EMPLOYEES PROVIDENT FUND BOARD [SSH]	23	43686	7.021
20 APR 2026 - 20 APR 2026	UTDPLT	EMPLOYEES PROVIDENT FUND BOARD [SSH]	82	43663	7.018
17 APR 2026 - 17 APR 2026	UTDPLT	EMPLOYEES PROVIDENT FUND BOARD [SSH]	920	43581	7.005
16 APR 2026 - 16 APR 2026	UTDPLT	EMPLOYEES PROVIDENT FUND BOARD [SSH]	4	42661	6.857
15 APR 2026 - 15 APR 2026	UTDPLT	EMPLOYEES PROVIDENT FUND BOARD [SSH]	62	42657	6.856
22 APR 2026 - 22 APR 2026	UWC	DATO' F'NG MEOW CHENG [DIR/CEO]	-70	424	0.038
21 APR 2026 - 21 APR 2026	UWC	EMPLOYEES PROVIDENT FUND BOARD [SSH]	-747	78934	7.155
20 APR 2026 - 20 APR 2026	UWC	EMPLOYEES PROVIDENT FUND BOARD [SSH]	-2,459	79682	7.223
17 APR 2026 - 17 APR 2026	UWC	EMPLOYEES PROVIDENT FUND BOARD [SSH]	-24	82141	7.446
16 APR 2026 - 16 APR 2026	UWC	EMPLOYEES PROVIDENT FUND BOARD [SSH]	-583	82164	7.448
15 APR 2026 - 15 APR 2026	UWC	EMPLOYEES PROVIDENT FUND BOARD [SSH]	-204	82747	7.501
22 APR 2026 - 22 APR 2026	UZMA	DATIN ROZITA BINTI MAT SHAH @ HASSAN [DIR/CEO]	4,320	143396	23.755
22 APR 2026 - 22 APR 2026	UZMA	DATIN ROZITA BINTI MAT SHAH @ HASSAN [SSH]	4,320	143396	23.755
22 APR 2026 - 22 APR 2026	UZMA	DATO' KAMARUL REDZUAN BIN MUHAMED [DIR/CEO]	4,320	143396	23.755
22 APR 2026 - 22 APR 2026	UZMA	DATO' KAMARUL REDZUAN BIN MUHAMED [SSH]	4,320	143396	23.755
17 APR 2026 - 17 APR 2026	VANZO	FRAGRANCE CENTURY SDN. BHD. [SSH]	413	205136	43.95
17 APR 2026 - 17 APR 2026	VANZO	MR WONG LIANG TZER [DIR/CEO]	413	205136	43.95
17 APR 2026 - 17 APR 2026	VANZO	MR WONG LIANG TZER [SSH]	413	205136	43.95
21 APR 2026 - 21 APR 2026	VELESTO	AMANAHRAYA TRUSTEES BERHAD-AMANA SAHAM BUMIPUTERA [SSH]	-20,000	2726175	33.103
17 APR 2026 - 17 APR 2026	VELESTO	AMANAHRAYA TRUSTEES BERHAD-AMANA SAHAM BUMIPUTERA [SSH]	-12,297	2746175	33.346
16 APR 2026 - 16 APR 2026	VELESTO	AMANAHRAYA TRUSTEES BERHAD-AMANA SAHAM BUMIPUTERA [SSH]	-18,446	2758472	33.495
20 APR 2026 - 21 APR 2026	VERSATL	MR LIM AH CHAI [SSH]	440	131387	46.907
20 APR 2026 - 21 APR 2026	VERSATL	MR LIM AH CHUAN [SSH]	440	131387	46.907
20 APR 2026 - 21 APR 2026	VERSATL	MR LIM CHOU BU [SSH]	440	131387	46.907
20 APR 2026 - 21 APR 2026	VERSATL	NSK TRADING SDN BHD [SSH]	440	131387	46.907
23 APR 2026 - 23 APR 2026	VOLCANO	DATUK CH'NG HUAT SENG [DIR/CEO]	2	30013	16.524
23 APR 2026 - 23 APR 2026	VOLCANO	DATUK CH'NG HUAT SENG [SSH]	2	30013	16.524

Notice Period is 19th April 2026 to 25th April 2026

Effective Change Date	Stock Name	Buyer/ Seller Name [Classification]	Bought / (Sold) ['000]	No. of Shares After Trade ['000]	
			Total	Total	% Held
21 APR 2026 - 21 APR 2026	VOLCANO	DATUK CH'NG HUAT SENG [DIR/CEO]	1	30007	16.521
21 APR 2026 - 21 APR 2026	VOLCANO	DATUK CH'NG HUAT SENG [SSH]	1	30007	16.521
20 APR 2026 - 20 APR 2026	VOLCANO	DATUK CH'NG HUAT SENG [DIR/CEO]	58	30006	16.521
20 APR 2026 - 20 APR 2026	VOLCANO	DATUK CH'NG HUAT SENG [SSH]	58	30006	16.521
24 APR 2026 - 24 APR 2026	VS	MR WONG CHEER FENG [DIR/CEO]	600	5510	0.143
21 APR 2026 - 21 APR 2026	VS	EMPLOYEES PROVIDENT FUND BOARD [SSH]	-10,000	213474	5.538
17 APR 2026 - 17 APR 2026	VS	EMPLOYEES PROVIDENT FUND BOARD [SSH]	6,852	223474	5.798
15 APR 2026 - 15 APR 2026	VS	EMPLOYEES PROVIDENT FUND BOARD [SSH]	5,439	216623	5.62
22 APR 2026 - 22 APR 2026	WASCO	ABERDEEN GROUP PLC [SSH]	985	46670	6.027
22 APR 2026 - 22 APR 2026	WASCO	ABRDN HOLDINGS LIMITED [SSH]	985	46670	6.027
22 APR 2026 - 22 APR 2026	WASCO	ABRDN MALAYSIA SDN BHD [SSH]	985	46670	6.027
21 APR 2026 - 21 APR 2026	WASCO	EMPLOYEES PROVIDENT FUND BOARD [SSH]	926	58996	7.619
21 APR 2026 - 21 APR 2026	WASCO	ABERDEEN GROUP PLC [SSH]	926	45685	5.9
21 APR 2026 - 21 APR 2026	WASCO	ABRDN HOLDINGS LIMITED [SSH]	926	45685	5.9
21 APR 2026 - 21 APR 2026	WASCO	ABRDN MALAYSIA SDN BHD [SSH]	926	45685	5.9
20 APR 2026 - 20 APR 2026	WASCO	EMPLOYEES PROVIDENT FUND BOARD [SSH]	18	58071	7.499
20 APR 2026 - 20 APR 2026	WASCO	ABERDEEN GROUP PLC [SSH]	18	44760	5.78
20 APR 2026 - 20 APR 2026	WASCO	ABRDN HOLDINGS LIMITED [SSH]	18	44760	5.78
20 APR 2026 - 20 APR 2026	WASCO	ABRDN MALAYSIA SDN BHD [SSH]	18	44760	5.78
20 APR 2026 - 21 APR 2026	WCEHB	TAN SRI PANG TEE CHEW [SSH]	350	328260	9.947
16 APR 2026 - 20 APR 2026	WEGMANS	MR KEK WEE BENG [SSH]	279	51640	9.474
03 MAR 2026 - 03 MAR 2026	WELLS	RHB TRUSTEES BERHAD [SSH]	16,097	80393	11.289
17 APR 2026 - 17 APR 2026	WESTRVR	MR CHEONG WEE KIM [DIR/CEO]	5,350	17850	4.99
17 APR 2026 - 17 APR 2026	WESTRVR	MR LIM YONG LAI [DIR/CEO]	-5,350	220740	61.711
17 APR 2026 - 17 APR 2026	WESTRVR	MR LIM YONG LAI [SSH]	-5,350	220740	61.711
17 APR 2026 - 17 APR 2026	WESTRVR	NEUTRON CAPITAL SDN BHD [SSH]	-5,350	148334	41.469
23 APR 2026 - 23 APR 2026	WPRTS	KUMPULAN WANG PERSARAAN (DIPERBADANKAN) [SSH]	2,306	200408	5.832
21 APR 2026 - 21 APR 2026	WPRTS	EMPLOYEES PROVIDENT FUND BOARD [SSH]	6,634	205584	5.982
20 APR 2026 - 20 APR 2026	WPRTS	EMPLOYEES PROVIDENT FUND BOARD [SSH]	1,853	198949	5.789
21 APR 2026 - 21 APR 2026	WPRTS	KUMPULAN WANG PERSARAAN (DIPERBADANKAN) [SSH]	-232	198102	5.765
17 APR 2026 - 17 APR 2026	WPRTS	EMPLOYEES PROVIDENT FUND BOARD [SSH]	1,336	197096	5.735
16 APR 2026 - 16 APR 2026	WPRTS	EMPLOYEES PROVIDENT FUND BOARD [SSH]	715	195761	5.697
17 APR 2026 - 17 APR 2026	WPRTS	KUMPULAN WANG PERSARAAN (DIPERBADANKAN) [SSH]	-181	198334	5.771
15 APR 2026 - 15 APR 2026	WPRTS	EMPLOYEES PROVIDENT FUND BOARD [SSH]	518	195046	5.676
21 APR 2026 - 21 APR 2026	YOCB	CHEW HON FOONG [DIR/CEO]	555	84805	53.453
21 APR 2026 - 21 APR 2026	YOCB	MR CHEW HON FOONG [SSH]	555	84805	53.453
16 APR 2026 - 16 APR 2026	YSPSAH	DATO' DR LEE FANG HSIN [DIR/CEO]	50	69414	48.937
16 APR 2026 - 16 APR 2026	YSPSAH	DATO' DR LEE FANG HSIN [SSH]	50	69414	48.937
17 APR 2026 - 17 APR 2026	YTL	EMPLOYEES PROVIDENT FUND BOARD [SSH]	4,344	1250812	10.768
16 APR 2026 - 16 APR 2026	YTL	EMPLOYEES PROVIDENT FUND BOARD [SSH]	5,000	1246468	10.73
17 APR 2026 - 17 APR 2026	YTLPOWR	EMPLOYEES PROVIDENT FUND BOARD [SSH]	4,572	984425	11.391
16 APR 2026 - 16 APR 2026	YTLPOWR	EMPLOYEES PROVIDENT FUND BOARD [SSH]	3,750	979854	11.339
24 APR 2026 - 24 APR 2026	ZETRIX	ASIA INTERNET HOLDINGS SDN. BHD. [SSH]	510	1157021	14.595
24 APR 2026 - 24 APR 2026	ZETRIX	MR WONG THEAN SOON [DIR/CEO]	510	2351291	29.66
24 APR 2026 - 24 APR 2026	ZETRIX	MR WONG THEAN SOON [SSH]	510	2351291	29.66
20 APR 2026 - 20 APR 2026	ZETRIX	ASIA INTERNET HOLDINGS SDN. BHD. [SSH]	-1,050	1156511	14.589
20 APR 2026 - 20 APR 2026	ZETRIX	MR WONG THEAN SOON [DIR/CEO]	5,977	2350781	29.654
20 APR 2026 - 20 APR 2026	ZETRIX	MR WONG THEAN SOON [SSH]	5,977	2350781	29.654

**Disclaimer:** The Information in Insider Activity is extracted from [www.shareinvestor.com/fundamental/insider\\_trades](http://www.shareinvestor.com/fundamental/insider_trades). The information on this page is provided as a service to readers. It does not constitute financial advice and/or any investment recommendations. We assume no liability for damages resulting from or arising out of the use of such information. Whilst every effort is made to ensure accuracy, the information presented is not the official record of shareholder filings. Readers are advised to read the original filings on the Bursa Malaysia website at [www.bursamalaysia.com](http://www.bursamalaysia.com)



Learn how to identify Hot Stocks using Technical Analysis (TA) and Fundamental Analysis (FA)

**SIGN UP FOR Invest**  
**IT'S FREE!**

**Click Here**

Scan/Click me



Via email, every Friday



The Board of Directors of **AirAsia X Berhad (AAX)** wishes to announce that the Company is proposing to change its name from AIRASIA X BERHAD to AIRASIA GROUP BERHAD (Proposed Change of Name).

The reservation of the proposed name "AIRASIA GROUP BERHAD" was approved by the Companies Commission of Malaysia on 24 February 2026.

The Proposed Change of Name is subject to the approval of the shareholders of the Company at the forthcoming Nineteenth Annual General Meeting of the Company to be convened. A circular to the shareholders containing the details of the Proposed Change of Name will be issued to the shareholders of the Company, in due course.

The Board of Directors of **Telekom Malaysia Berhad (TM)** wishes to announce that the Company has revised its dividend policy to a minimum of 75% of the Group's reported Profit After Tax and Non-controlling Interests to be declared and paid on a quarterly basis.

The revised policy reflects TM's strengthened financial position and stable cash flow generation, while dividend payments remain subject to the Group's financial requirements and at the Board's discretion.





The Board of Directors of **Ayer Holdings Berhad (AYER)** is pleased to propose a final dividend of 20.0 sen per ordinary share for the financial year ended 31 December 2025 for the approval of the shareholders at the Company's forthcoming 115th Annual General Meeting.

**Ekovest Berhad (EKOVEST)** wishes to announce that, despite ongoing efforts between the parties, the Proposed Transit-Oriented Development Lands Acquisition will not proceed. The binding term sheets entered with the Vendors to discuss and negotiate on the terms of the Definitive Agreements between the parties will lapse upon the expiry of its final extension up to 27 April 2026 as announced on 27 January 2026, as mutually agreed by both parties.



The Board of Directors of **Gamuda Berhad (GAMUDA)** is pleased to update that Upper Padas Power Sdn Bhd has on 29 April 2026 received the Letter of Acceptance from the Sabah State Water Department for the appointment of UPPSB for the construction of Phase 1 of Skim Bekalan Air Ulu Padas with a contract value of RM5.98 billion.



[READ MORE](#)

**Maxis Berhad (MAXIS)** wishes to announce that Maxis Broadband Sdn Bhd, a wholly-owned subsidiary of Maxis, had provided an additional shareholder advance of RM202,000,000 to Digital Nasional Berhad on 29 April 2026.

**Sarawak Consolidated Industries Berhad (SCIB)** today announced that its wholly-owned subsidiary, SCIB Industrialised Building System Sdn Bhd (SIBS) has secured a Letter of Award for an engineering, procurement, construction and commissioning contract with an estimated value of RM32.78 million.



[READ MORE](#)





**READ MORE** 

The Board of Directors of **Steel Hawk Berhad (HAWK)** is pleased to announce that Steel Hawk Engineering Sdn Bhd, a wholly owned subsidiary of Steel Hawk, had on 10 April 2026 secured a contract for term contract for logistic management services for PETRONAS Gas Berhad.

**Disclaimer:** The information in the Investor Relations page is extracted from individual companies' announcements in [www.bursamalaysia.com](http://www.bursamalaysia.com). The information on this page is provided as a service to readers. We assume no liability for damages resulting from or arising out of the use of such information. Whilst every effort is made to ensure accuracy, the information presented has been simplified for your reading pleasure. Readers are advised to read the original and complete filings on the Bursa Malaysia website at [https://www.bursamalaysia.com/market\\_information/announcements/company\\_announcement](https://www.bursamalaysia.com/market_information/announcements/company_announcement)

NAME OF COMPANY	OFFER PERIOD		ISSUE PRICE (Per Ordinary Share)	LISTING SOUGHT	DATE OF LISTING
	OPENING	CLOSING			
<a href="#">MANFORCE GROUP BERHAD</a>	15 Apr 2026	21 Apr 2026	RM0.38	ACE MARKET	6 May 2026
<a href="#">INSPACE CREATION BERHAD</a>	13 Apr 2026	22 Apr 2026	RM0.25	ACE MARKET	8 May 2026
<a href="#">GOLD LI HOLDINGS BERHAD</a>	27 Apr 2026	5 May 2026	RM0.13	ACE MARKET	18 May 2026
<a href="#">SKYECHIP BERHAD</a>	29 Apr 2026	6 May 2026	RM0.88	MAIN MARKET	20 May 2026
<a href="#">EI POWER BERHAD</a>	21 Apr 2026	6 May 2026	RM0.48	ACE MARKET	21 May 2026

CHECK OUT SHAREINVESTOR

# BROKER'S CALL

Weekly Buy/Sell/Hold calls from leading Malaysian Brokerages.

Go To Broker's Call