

Invest

A Weekly e-Publication by SHAREINVESTOR

ISSUE

298

FRIDAY
24 APRIL 2026

Scan/Click QR to Register



Via email, every Friday

MARKET SENTIMENTS

Malaysia unlikely to get upgrade in 1-2 years due to weak external metrics despite strong growth - S&P Global

page 30

Khazanah warns of investment scams using its name, logo, branding

page 31

From MSWG's
The Observer
Opaque and at
Stake

See more on pages 34-39

ALSO

COMPANY
SPOTLIGHT
NEXG Berhad

See more on page 06

BEHIND THE TICKER:
DECODING COMPANY FUNDAMENTALS

Jabil:
A Well-Run Company at the Wrong Price

SUMMARY

- Jabil Inc. (NYSE:JBL) operates in a low-growth EMS industry, delivering about 4.4% revenue CAGR, with performance driven more by scale and efficiency than growth.
- Despite average margins, Jabil achieved strong ROIC and ROE through improved asset turnover, outperforming peers in long-term earnings growth.
- Financial structure is the key risk: While operations generate strong cash flow, rising leverage and share buybacks funded partly through financing raise concerns about balance sheet risk and capital allocation discipline.

Disclaimer: This article is written for informational purposes only. It does not constitute a solicitation, offer, advice, recommendation or investment in any security and should not be relied upon for investment decisions. Share prices may vary. All securities and their prices are subject to change and should be evaluated based on multiple perspectives. Therefore, any investment decision and the associated risk remain with the investor. The views expressed here are solely the author's own.

See more on pages 20-28

04 LEADERBOARD

05 SHARIAH HOT STOCKS

08 SHARIAH MOMENTUM UP STOCKS

09 NON SHARIAH HOT STOCKS

10 UP TRENDING STOCKS

12 VALUE STOCKS

13 GROWTH STOCKS

15 DIVIDEND STOCKS

17 BROKERS' CALL

18 LONG COMPANIES

33 REGIONAL MARKETS

40 INSIDER ACTIVITY

45 INVESTOR RELATIONS
ANNOUNCEMENTS

SHAREINVESTOR®

An AlphaInvest Company

Invest with Knowledge

INVESTOR PLATFORMS

Director
Darren Chong
darren.chong@shareinvestor.com

ADMIN & OPERATIONS

Senior Executive
Watie Nordin
watie.nordin@shareinvestor.com

Executive
Silas Emmanuel Joseph
silas.joseph@shareinvestor.com

PROCESS AUTOMATION & DATA ANALYTICS

Data Analyst
Lee Khai Bing

INVESTOR RELATIONS

Group Managing Director & Publisher
Edward Stanislaus
edward@shareinvestor.com

Senior Manager
Letticia Wong
letticia.wong@shareinvestor.com

Manager
Aida Norzeti Talib
aida.norzeti@shareinvestor.com

ALPHA INVEST HOLDINGS BOARD OF DIRECTORS

Chairman		Patrick Daniel
Group CEO		Christopher Lee
Group COO		Lim Dau Hee
Group MD		Shanison Lin



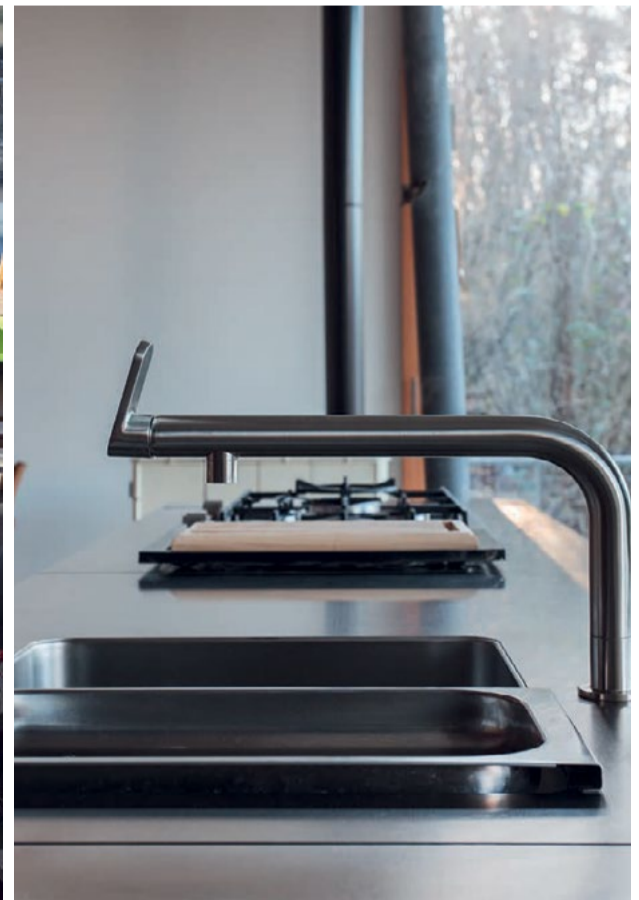
“ GIVE A MAN A FISH AND YOU FEED HIM FOR A DAY; TEACH A MAN TO FISH AND YOU FEED HIM FOR A LIFETIME ”

ShareInvestor Malaysia Sdn. Bhd.
(200001023956) (526564-M)
L15-03 & 03A, PJX HM Shah Tower,
No 16A, Jalan Persiaran Barat, PJS 52,
46200 Petaling Jaya, Selangor

Hotline : 603 8681 0580
Mobile : 011 6343 8939
Website : www.ShareInvestor.com.my
www.alphainvestholdings.com
www.Facebook.com/ShareInvestorMalaysia

ADVERTISEMENT ENQUIRY

bulthaup takes care of the details so that you can enjoy a harmonious environment.



XTRA

XTRA FURNITURE SDN BHD
The Gardens Mall, Mid Valley City
xtrafurniture.com/bulthaup
fb.com/bulthaupmalaysia



& WORLD WISH DAY

In Partnership with



TEE OFF FOR HOPE

This year, we tee off for hope while celebrating **World Wish Day** on **29 April**, a day that honors the very first wish granted in 1980, and reminds us how wishes bring strength, joy and healing to wish children and their families.

When you join this golf tournament, you're becoming a **WishMaker**. Every swing helps create hope, strength and unforgettable memories for children facing critical illnesses. These children are counting on **WishMakers** like you to make their dreams come true. **Sign up now!**



wishmakers wanted

For booking or donation please contact:

Make-A-Wish Malaysia

(03) 2738 9939

info@makeawish.org.my

BOOK NOW

Date: Wednesday, 29 April 2026

Time: 1.30pm Tee Off

Venue: Tropicana Golf & Country Club

Flights: (for 4 golfers)

Other: Championship packages available

Format of play: Texas Scramble Stableford System 36



www.shareinvestor.com - market data at your fingertips



ShareInvestor WebPro (www.shareinvestor.com/my)
Prices > Stock Prices > Bursa > click Stocks tab

1. mouse over Ranking > select Top Active > all Shariah stocks are denoted with an [S] > mouse over Column Layout > select Edit Customs > select Name > select Volume > select Last Done Price > Mouse Over Column Layout > select Custom
2. mouse over Ranking > select Top Turnover > all Shariah stocks are denoted with an [S] > mouse over Column Layout > select Edit Customs > select Name > select Last Done Price > select Value > Mouse Over Column Layout > select Custom
3. mouse over Ranking > select Top Gainers (Over 5 Trading Days) > mouse over Column Layout > select Edit Customs > select Name > select Last Done Price > select 5 Days Change > select 5 Days % Change > Mouse Over Column Layout > select Custom
4. mouse over Ranking > select Top Losers (Over 5 Trading Days)
5. mouse over Ranking > select Top % Gainers (Over 5 Trading Days)
6. mouse over Ranking > select Top % Losers (Over 5 Trading Days)

Shariah Top Actives (As at Yesterday)

Name	Price (RM)	Volume
ZETRIX [S]	0.865	1,317,352.000
VELESTO [S]	0.320	811,905.000
AAX [S]	1.230	740,318.000
ARMADA [S]	0.415	495,677.000
NEXG [S]	0.320	465,622.000
TANCO [S]	1.620	404,495.000
UEMS [S]	0.520	367,782.000
TOPGLOV [S]	0.750	338,964.000
SUNMED [S]	1.890	310,918.000
INARI [S]	1.820	273,819.000

Shariah Top Turnover (As at Yesterday)

Name	Price (RM)	Value (RM)
SDG [S]	5.970	135,184,465
PMETAL [S]	8.070	127,913,462
ZETRIX [S]	0.865	113,571,909
PCHEM [S]	5.550	96,106,974
AAX [S]	1.230	92,707,640
TANCO [S]	1.620	66,945,193
SUNMED [S]	1.890	59,087,325
TENAGA [S]	14.600	54,828,840
GAMUDA [S]	4.460	51,149,092
KGB [S]	5.980	50,910,068

Top Gainers (over 5 Trading days as at Yesterday)

Name	Price (RM)	Change (RM)
MPI	36.340	+2.360
DLADY	32.860	+0.660
HLBANK	22.860	+0.660
HLFG	19.300	+0.600
ALLIANZ	21.280	+0.580
UWC	5.000	+0.480
TENAGA	14.600	+0.380
BAT	6.100	+0.350
KGB	5.980	+0.350
CIMB	7.780	+0.330

Top % Gainers (over 5 Trading days as at Yesterday)

Name	Price (RM)	Change (%)
BCMALL	0.010	+100.00
FOCUS	0.010	+100.00
SMTRACK	0.010	+100.00
HOHUP	0.055	+57.14
PUC	0.015	+50.00
TURBO	0.620	+40.91
NEXGBINA	0.035	+40.00
CPETECH	0.775	+37.17
BSLCORP	0.020	+33.33
TRIVE	0.020	+33.33

Top Losers (over 5 Trading days as at Yesterday)

Name	Price (RM)	Change (RM)
NESTLE	98.000	-1.020
KLK	20.760	-0.320
PETDAG	20.580	-0.260
BKAWAN	21.000	-0.200
PPB	11.340	-0.200
MSC	1.860	-0.150
DKSH	5.690	-0.130
MAXIS	3.500	-0.120
SCGBHD	1.980	-0.120
FRONTKN	4.290	-0.110

Top % Losers (over 5 Trading days as at Yesterday)

Name	Price (RM)	Change (%)
PHB	0.005	-50.00
PERMAJU	0.005	-50.00
TAWIN	0.010	-33.33
YLI	0.170	-29.17
SMART	0.140	-20.00
SMI	0.180	-20.00
VINVEST	0.020	-20.00
Y&G	0.300	-18.92
SMILE	0.090	-18.18
HANDAL	0.025	-16.67

Price & Volume Distribution Charts (as at Yesterday)

Technical Analysis

DEFINITION: Shariah compliant stocks with Technical Analysis showing 5-days & 10-days Moving Average Price below Yesterday's Close over past 3 days and with Volume Spike.

CHART GUIDE: Volume Distribution Chart is a statistical interpretation of the current sentiment on each stock in graphical format. The highest bar categorized as >150k is likely to be traded by institutions or super dealers, while the lowest bar categorized as <15k usually represents retail investors. "Buy Up" refers to more buyers snatching up the lots queued at selling price. "Sell Down" refers to sellers selling their shares to the buying queue



ShareInvestor WebPro > Screener > Market Screener (FA & TA) > select BURSA > add criteria

A. Criteria

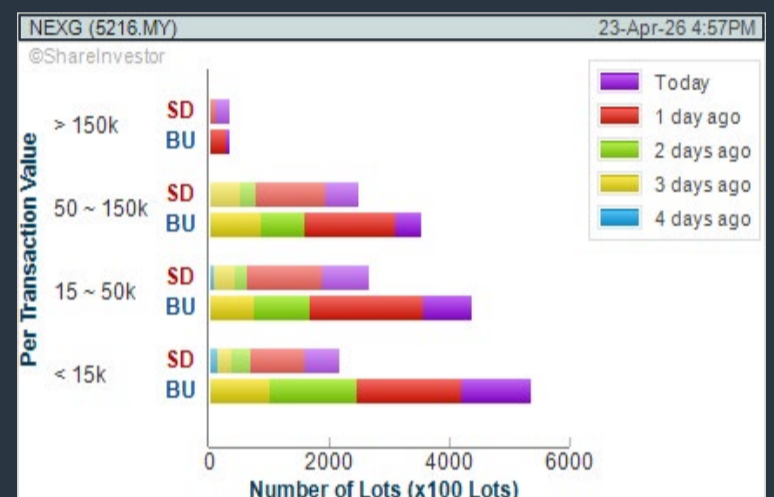
- > click Add Criteria
- Technical Analysis Conditions tab select (i) Moving Average Below Close (ii) Volume Spike
- Fundamental Analysis Conditions tab > select (iii) Revenue
- Prices & Other Conditions tab > select (iv) Is Shariah Compliant
- Technical Analysis Conditions tab select (v) Moving Average Below Close
- Prices & Other Conditions tab > select (vi) Last Done Price
- Technical Analysis Conditions tab select (vii) Moving Average Below Close

B. Conditions (Criteria Filters)

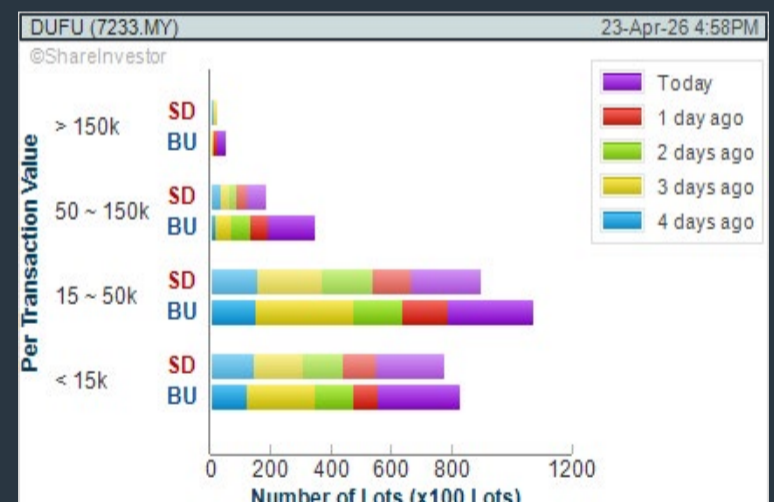
1. Moving Average Below Close - select (MA) type (5) below close price for type (3) days
2. Volume Spike - Volume type (1) greater than type (5) days average
3. Revenue ("000) - select (more than) type (1) for the past select (1) financial year(s)
4. Is Shariah Compliant - select **Yes**
5. Moving Average Below Close - select (MA) type (10) below close price for type (3) days
6. Last Done Price - select (more than) type (0.3)
7. Moving Average Below Close - select (EMA) type (5) below close price for type (3) days

- > click Save Template > Create New Template type (Shariah Hot Stocks) > click Create
- > click Save Template as > select Shariah Hot Stocks > click Save
- > click Screen Now (may take a few minutes)
- > Sort By: Select (Vol) Select (Desc)
- > Mouse over stock name > Charts > click C² Charts or Volume Distribution

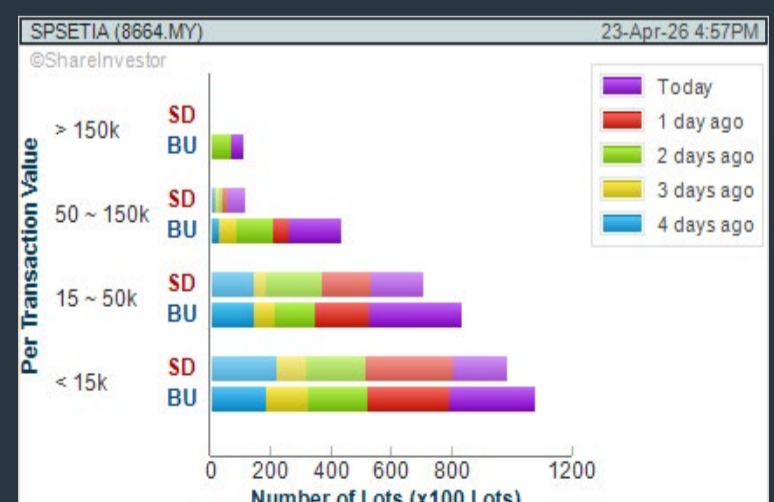
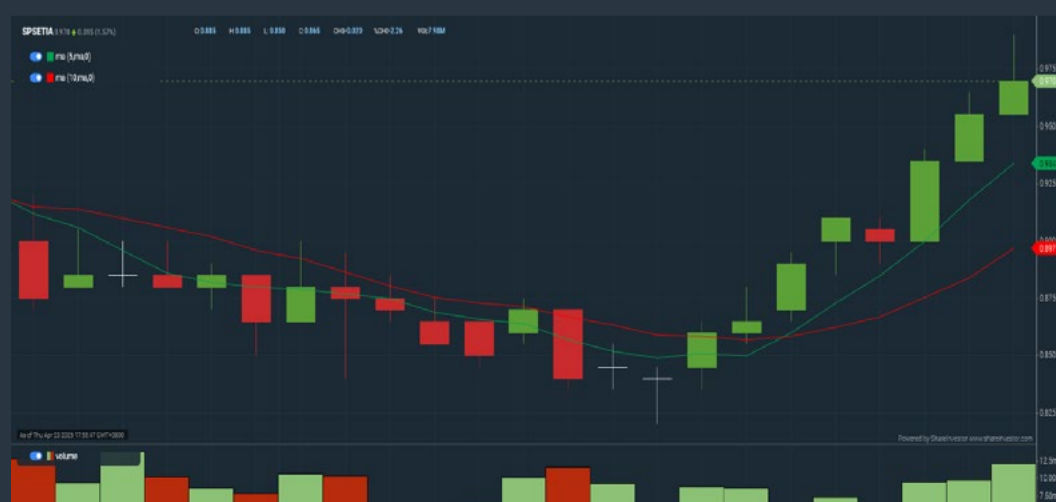
NEXG BERHAD (5216) C² Chart



DUFU TECHNOLOGY CORP. BHD (7233) C² Chart



SP SETIA BHD (8664) C² Chart



Disclaimer: The information on this page is provided as a service to readers. It does not constitute financial advice and/or any investment recommendations. Past performance is not indicative of future results. We assume no liability for damages resulting from or arising out of the use of such information. It would be best if you did your own research to make your personal investment decisions wisely or consult a licenced investment advisor.

COMPANY BACKGROUND

NEXG Berhad is an investment holding company, which engages in the provision of management services. It operates through the following segments: Customised Smart Card Solutions (CSCS), Manufacturing, and Investment Holding. The CSCS segment focuses on large scale customized software and hardware systems for secure ID, total smart card solutions, and ICT project management. The Manufacturing segment manufactures cards and booklets. The Investment Holding segment consists of investment holding and provision of management services to the group of companies.



NEXG NEXG BERHAD		Updated at 23 Apr 2026 16:59	
Last (MYR): 0.320 ↑	Change: +0.005	High: 0.335	Remarks: s
	Change (%): +1.59	Low: 0.315	
Open: 0.320		Yesterday's Close: 0.315	
Buy Price: 0.315		Sell Price: 0.320	
Buy Volume ('00): 1,325		Sell Volume ('00): 5,518	
Cumulative Volume ('00): 465,622		Cumulative Value: 14,998,344.5	

Financial Analysis

Revenue Growth Increasing revenue in last 3 consecutive years	😊	Profit Growth Increasing profit in last 3 consecutive years and min growth is 10% (with at least 4 profitable years)	😊
Piotroski F Score The company has strong financial strength (Piotroski F-Score of 8-9)	😊	Dividend Payout Dividend is increasing over the past 60 months.	😊
Current Ratio The company is well-positioned to cover its short-term obligations with its current assets (ratio between 1.5 to 10) for 3 consecutive years	😊	Gross Profit Margin Consistently high gross profit margin of at least 40% for 3 years	😊
Gross Profit Margin Gross profit margin is improving by 5% a year over the past 60 months.	😊	Net Earnings Margin Consistently high net profit margin of at least 20% for 3 years but trailing 12 months margin is below 20%	😊
Net Earnings Margin Net profit margin is improving by 5% a year over the past 60 months.	😊	Return on Equity (ROE) ROE above 20% for 3 consecutive years	😊

😊 Excellent 😊 Good 😐 Neutral 😟 Be Alert 🚨 Watch Out



Historical Financials

Profit & Loss (MYR '000)

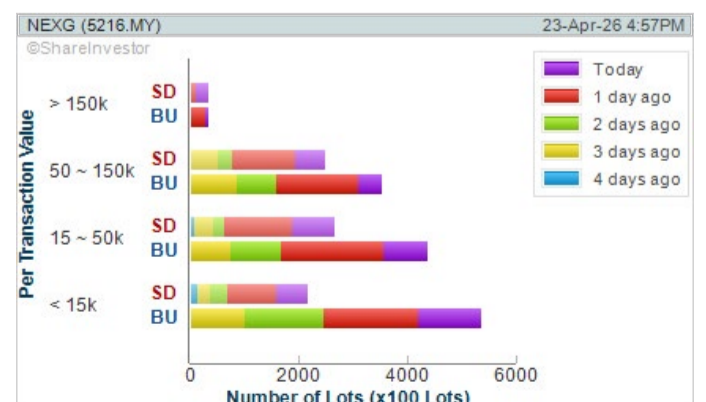


WebPro 9-Days Free Trial Registration
(worth RM10)
Sign Up Now



Key Statistics with Total Shareholder Returns

Period	Dividend Received	Capital Appreciation	Total Shareholder Return
Short Term Return	5 Days	+0.085	+36.17%
	10 Days	+0.070	+28.00%
	20 Days	+0.065	+25.49%
Medium Term Return	3 Months	-	-
	6 Months	-0.090	-21.95%
	1 Year	-0.040	-11.11%
Long Term Return	2 Years	0.021	-8.82%
	3 Years	0.045	+0.83%
	5 Years	0.064	-23.20%
Annualised Return	Annualised	-	-5.14%



Disclaimer: The information on this page is provided as a service to readers. It does not constitute financial advice and/or any investment recommendations. Past performance is not indicative of future results. We assume no liability for damages resulting from or arising out of the use of such information. It would be best if you did your own research to make your personal investment decisions wisely or consult a licenced investment advisor.



ROWAN director chair
 Designed by ITO Design, Germany

Inspired by the sophistication of first and business class, **ROWAN** delivers a fully enveloping comfort through Italian full-grain leather and precision-engineered aluminum form.

Where design excellence meets executive presence.



XTRA
www.xtrafurniture.com



GERMAN
 DESIGN
 AWARD
 WINNER
 2025



Awarded for Design. Certified for Excellence. Trusted Worldwide.

Price & Volume Distribution Charts (as at Yesterday)

Technical Analysis

DEFINITION: Shariah compliant stocks with Technical Analysis showing Bullish Momentum and Price Uptrend. The share price closed at the highest price yesterday. The typical price was higher than the previous day's typical price.

CHART GUIDE: Volume Distribution Chart is a statistical interpretation of the current sentiment on each stock in graphical format. The highest bar categorized as >150k is likely to be traded by institutions or super dealers, while the lowest bar categorized as <15k usually represents retail investors. "Buy Up" refers to more buyers snatching up the lots queued at selling price. "Sell Down" refers to sellers selling their shares to the buying queue.



ShareInvestor WebPro > Screener > Market Screener (FA & TA)>select BURSA>add criteria

A. Criteria

- > click Add Criteria
- Fundamental Analysis Conditions tab >select (i) Revenue
- Technical Analysis Conditions tab select (ii) Average Volume
- Prices & Other Conditions tab > select (iii) Last Done Price
- Prices & Other Conditions tab > select (iv) Is Shariah Compliant
- Technical Analysis Conditions tab select (v) RSI Overbought
- Technical Analysis Conditions tab select (vi) Moving Average Below Close
- Technical Analysis Conditions tab select (vii) CCI Overbought

B. Conditions (Criteria Filters)

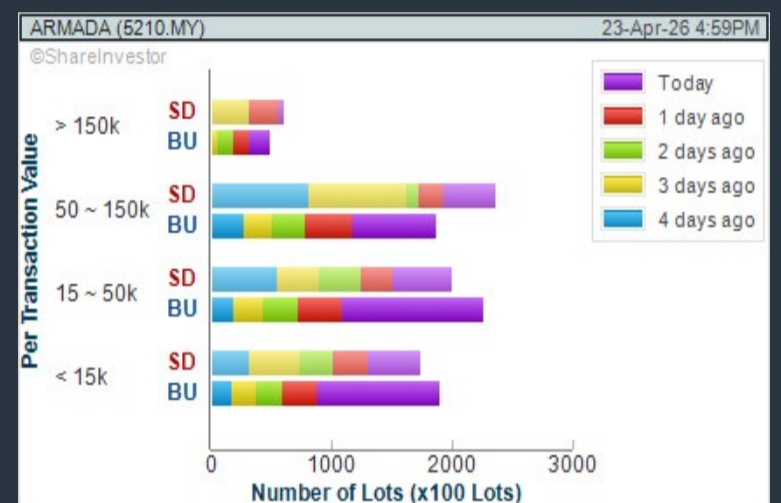
1. Revenue ("000) - select (more than) type (1) for the past select (1) financial year(s)
2. Average Volume - type (1) days average volume greater than type (10000) lots
3. Last Done Price - select (more than) type (0.3)
4. Is Shariah Compliant - select Yes
5. RSI Overbought - select RSI 1 above 99 for 1 days
6. Moving Average Below Close - select (MA) type (10) below close price for type (1) days
7. CCI Overbought - select CCI (2) above (0) for (1) days

- > click Save Template > Create New Template type (Shariah Momentum Up Stocks) > click Create
- > click Save Template as > select Shariah Momentum Up Stocks > click Save
- > click Screen Now (may take a few minutes)
- Sort By: Select (Vol) Select (Desc)
- Mouse over stock name > Charts > click C² Charts tab or Volume Distribution

BUMI ARMADA BERHAD (5210)

C² Chart

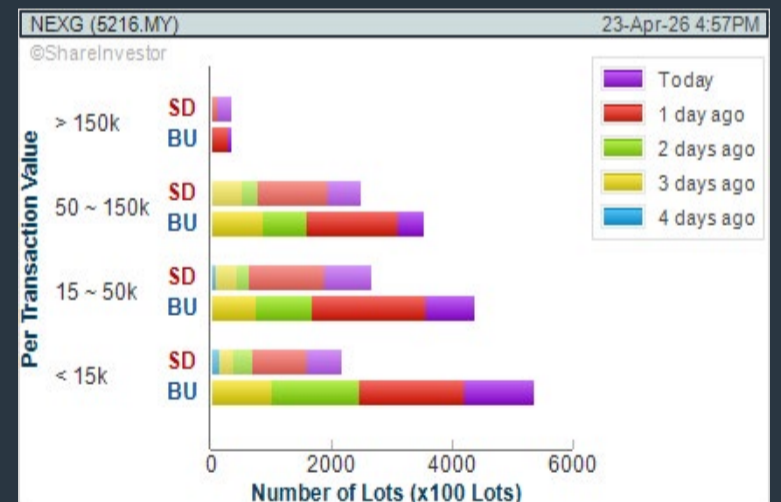
Analysis



NEXG BERHAD (5216)

C² Chart

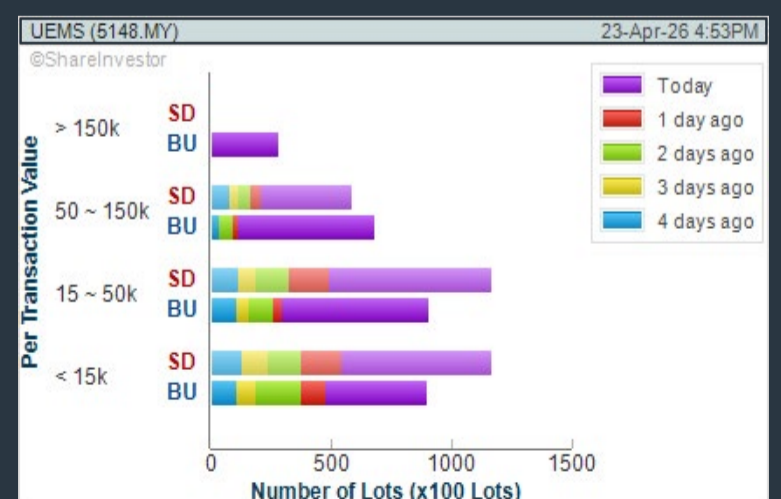
Analysis



UEM SUNRISE BERHAD (5148)

C² Chart

Analysis



Disclaimer: The information on this page is provided as a service to readers. It does not constitute financial advice and/or any investment recommendations. Past performance is not indicative of future results. We assume no liability for damages resulting from or arising out of the use of such information. It would be best if you did your own research to make your personal investment decisions wisely or consult a licenced investment advisor.

Price & Volume Distribution Charts (as at Yesterday)

Technical Analysis

DEFINITION: Stocks with Technical Analysis showing 5-days & 10-days Moving Average Price below Close over past 1 days and with Volume Spike

CHART GUIDE: Volume Distribution Chart is a statistical interpretation of the current sentiment on each stock in graphical format. The highest bar categorized as >150k is likely to be traded by institutions or super dealers, while the lowest bar categorized as <15k usually represents retail investors. "Buy Up" refers to more buyers snatching up the lots queued at selling price. "Sell Down" refers to sellers selling their shares to the buying queue.



ShareInvestor WebPro > Screener > Market Screener (FA & TA) > select BURSA > add criteria

A. Criteria

- > click Add Criteria
- Technical Analysis Conditions tab select (i) Moving Average Below Close (ii) Volume Spike
- Fundamental Analysis Conditions tab >select (iii) Revenue
- Prices & Other Conditions tab > select (iv) Is Shariah Compliant
- Technical Analysis Conditions tab select (v) Moving Average Below Close
- Prices & Other Conditions tab > select (vi) Last Done Price
- Technical Analysis Conditions tab select (vii) Moving Average Below Close

B. Conditions (Criteria Filters)

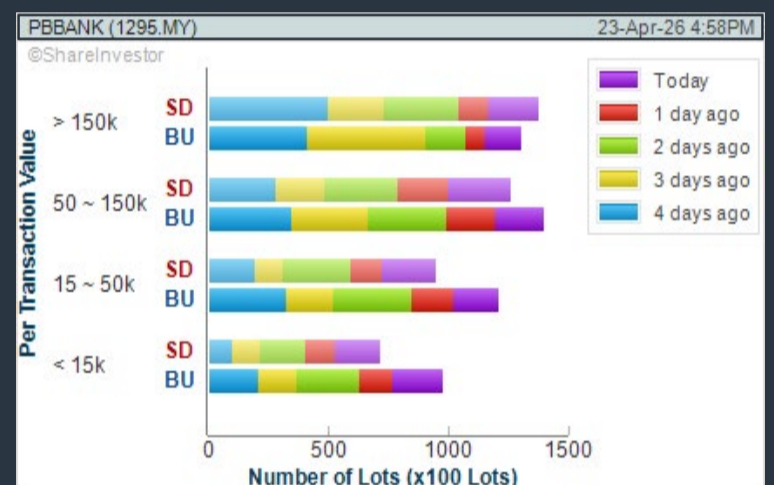
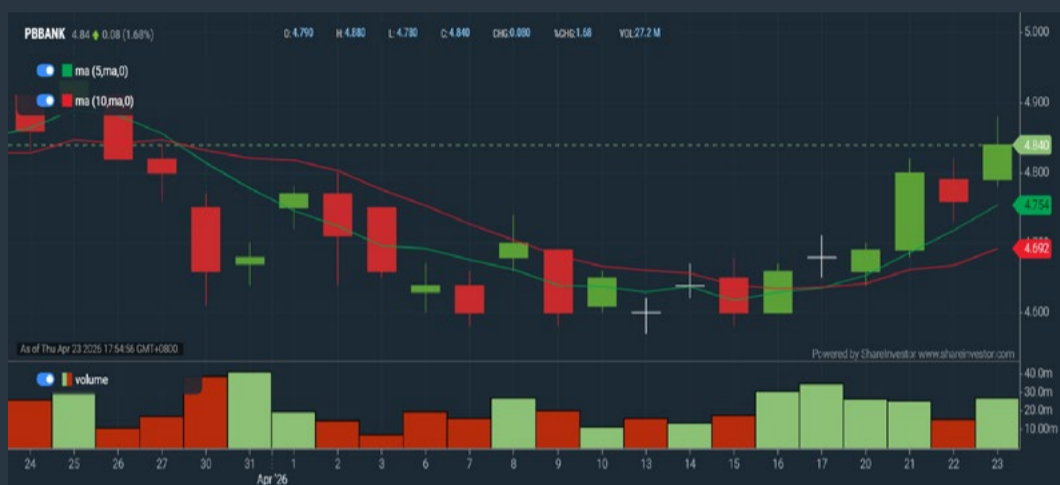
1. Moving Average Below Close - select (MA) type (5) below close price for type (3) days
2. Volume Spike - Volume type (1) greater than type (5) days average
3. Revenue ('000) - select (more than) type (1) for the past select (1) financial year(s)
4. Is Shariah Compliant - select NO
5. Moving Average Below Close - select (MA) type (10) below close price for type (1) days
6. Last Done Price - select (more than) type (0.3)
7. Moving Average Below Close - select (EMA) type (5) below close price for type (1) days

- > click Save Template > Create New Template type (Non-Shariah Hot Stocks) > click Create
- > click Save Template as > select Non-Shariah Hot Stocks > click Save
- > click Screen Now (may take a few minutes)
- Sort By: Select (Vol) Select (Desc)
- Mouse over stock name > Charts > click C² Charts tab or Volume Distribution

PUBLIC BANK BHD (1295)

C² Chart

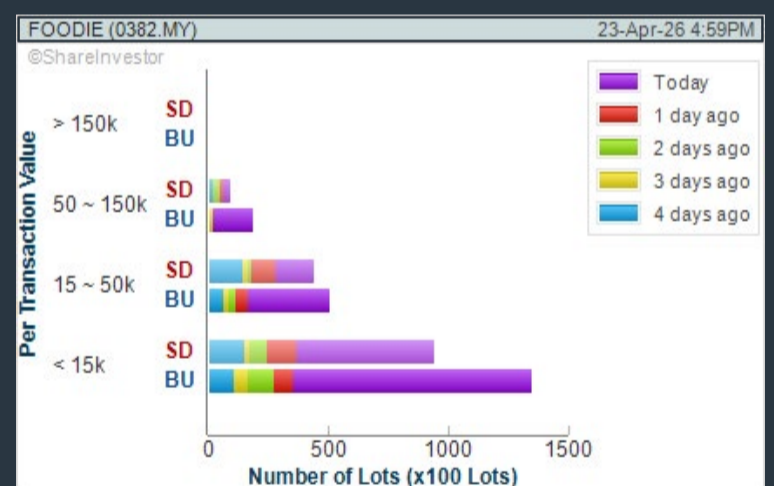
Analysis



FOODIE MEDIA BERHAD (0382)

C² Chart

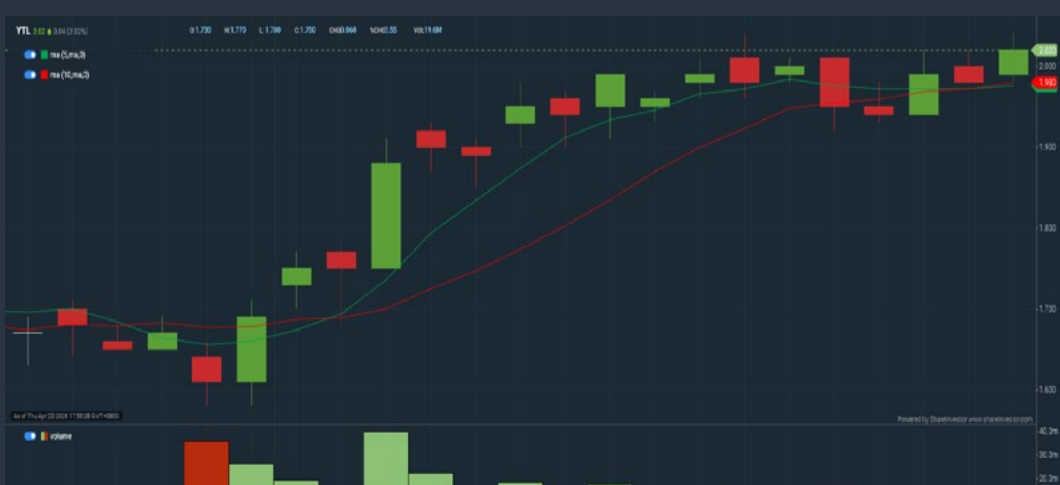
Analysis



YTL CORPORATION BHD (4677)

C² Chart

Analysis



Disclaimer: The information on this page is provided as a service to readers. It does not constitute financial advice and/or any investment recommendations. Past performance is not indicative of future results. We assume no liability for damages resulting from or arising out of the use of such information. It would be best if you did your own research to make your personal investment decisions wisely or consult a licenced investment advisor.

Price & Volume Distribution Charts (Over 3 trading days as at Yesterday)

Technical Analysis

DEFINITION: Stocks with Technical Analysis showing Bullish Momentum and Price Uptrend

CHART GUIDE: Volume Distribution Chart is a statistical interpretation of the current sentiment on each stock in graphical format. The highest bar categorized as >150k is likely to be traded by institutions or super dealers, while the lowest bar categorized as <15k usually represents retail investors. "Buy Up" refers to more buyers snatching up the lots queued at selling price. "Sell Down" refers to sellers selling their shares to the buying queue.



ShareInvestor WebPro > Screener > Market Screener (FA & TA) > select BURSA > add criteria

A. Criteria

- > click Add Criteria
- Fundamental Analysis Conditions tab > select (i) Revenue
- Technical Analysis Conditions tab select (ii) Moving Average Below Close
- Technical Analysis Conditions tab select (iii) Average Volume
- Prices & Other Conditions tab > select (iv) Last Done Price
- Technical Analysis Conditions tab select (v) Moving Average Below Close
- Technical Analysis Conditions tab select (v) Moving Average Bullish Crossover

B. Conditions

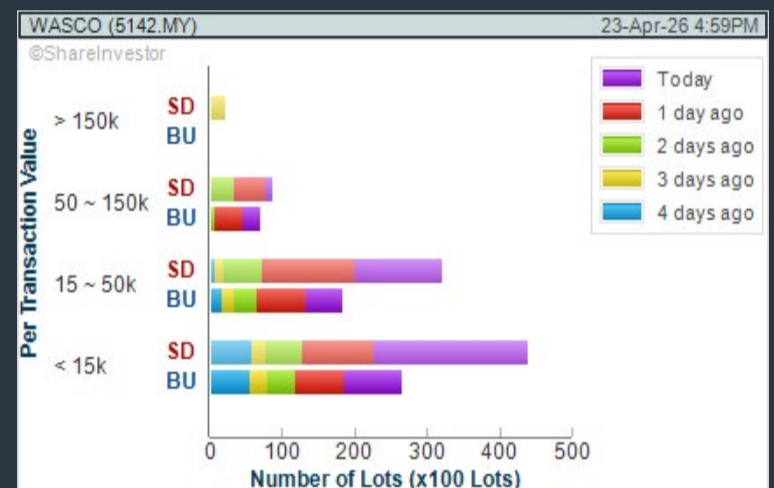
1. Revenue - select (more than) type (1) for the past select (1) financial year(s)
2. Moving Average Below Close - select (MA) type (20) below close price for type (1) days
3. Average Volume - type (5) days average volume type (10000) lots
4. Last Done Price - select (more than) type (0.3)
5. Moving Average Below Close - select (MA) type (10) below close price for type (1) days
6. Moving Average Bullish Crossover - select (MA) type (5) crossed above select (MA) type (10)

> click Save Template > Create New Template type (Non-Shariah Up-Trending Stocks) > click Create Click Save Template As > select Non-Shariah Up Trending Stocks > click Save
> click Screen Now (may take a few minutes)
Sort By: Select (Vol) Select (Desc)
Mouse over stock name > Charts > click C² Charts tab or Volume Distribution

WASCO BERHAD (5142)

C² Chart

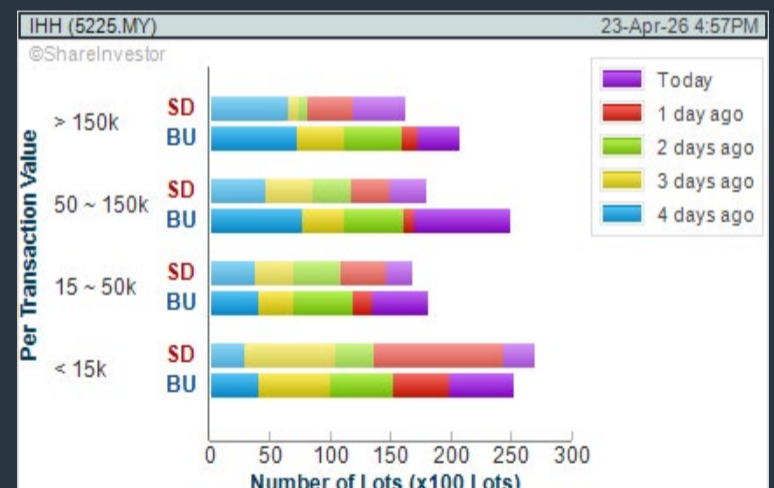
Analysis



IHH HEALTHCARE BERHAD (5225)

C² Chart

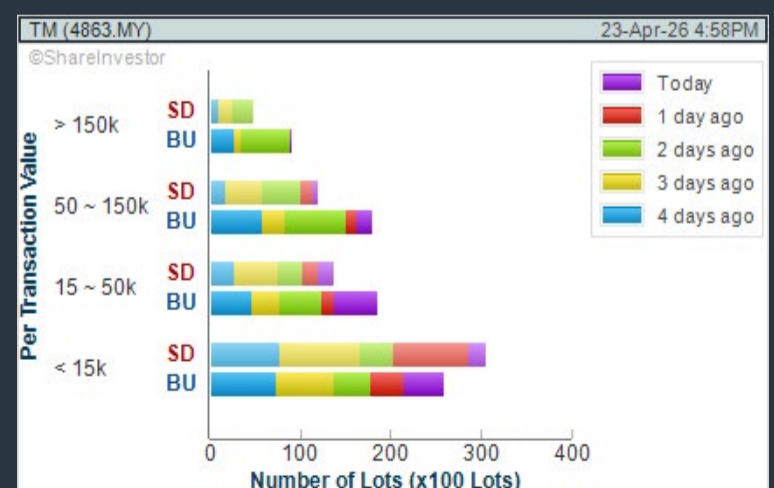
Analysis



TELEKOM MALAYSIA BHD (4863)

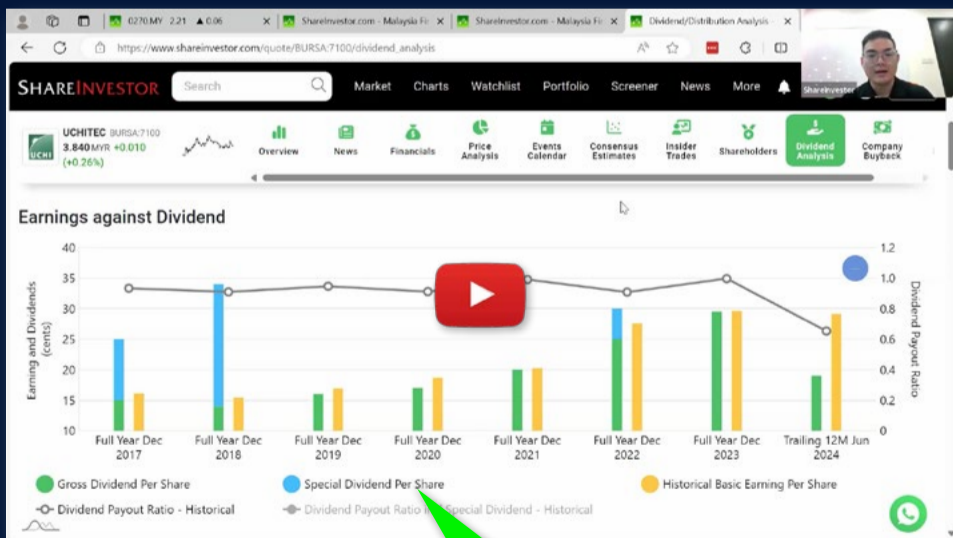
C² Chart

Analysis



Disclaimer: The information on this page is provided as a service to readers. It does not constitute financial advice and/or any investment recommendations. Past performance is not indicative of future results. We assume no liability for damages resulting from or arising out of the use of such information. It would be best if you did your own research to make your personal investment decisions wisely or consult a licenced investment advisor.

Ultimate Guide to use **ShareInvestor**



YOU WILL LEARN HOW TO USE:

- Company Financials
- Market Screener
- Company Insider Trades
- Dividend Analysis
- Consensus Estimation
and more...

**Watch
now!**

Price & Total Shareholder Return (as at Yesterday)

Fundamental Analysis

DEFINITION: Share price of a company trading at a lower price as compared to its fundamentals (FA) such as financial performance and dividend, allowing it to be attractive to value investors.

CHART GUIDE: Total Shareholder Return (TSR) combines share price appreciation and dividend distributions paid to show the total return to the shareholder expressed as a percentage.



ShareInvestor WebPro > Screener > Market Screener (FA & TA) > select BURSA > add criteria

A. Criteria

- > click Add Criteria
- Fundamental Analysis Conditions tab (i) Price Earnings Ratio
- Fundamental Analysis Conditions tab >select (ii) CAGR of Net Earnings
- Fundamental Analysis Conditions tab >select (iii) Net Debt To Equity
- Fundamental Analysis Conditions tab >select (iv) Return On Equity (ROE)

B. Conditions

1. Price Earnings Ratio - select (less than) type (15) times now
2. CAGR of Net Earnings - select (more than) type (10) % for the past type (3) financial year(s)
3. Net Debt To Equity – select (less than) type (1) for the past select (1) financial year(s)
4. Return On Equity (ROE) – select (more than) type (10) % for the past select (1) financial year(s)

- > click Save Template > Create New Template type (Value Stock) > click Create
- > click Save Template as > select Value Companies > click Save
- > click Screen Now (may take a few minutes)
- Sort by: Select (PE Ratio) Select (Ascending)
- > Mouse over stock name > Factsheet > looking for Total Shareholder Return
- > Mouse over stock name > Charts > click C2 Charts tab

MULPHA INTERNATIONAL BERHAD (3905)

C² Chart

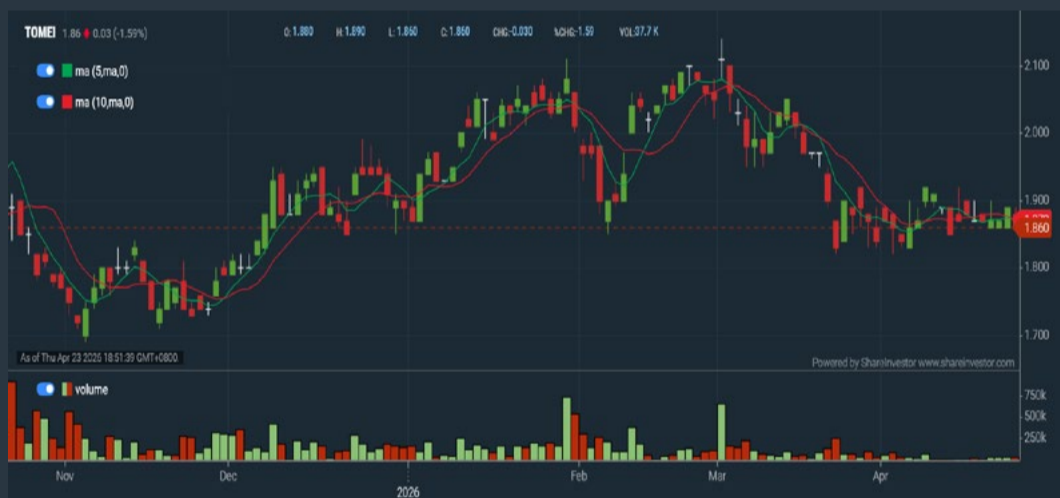


Analysis

Period	Dividend Received	Capital Appreciation	Total Shareholder Return
Short Term Return	5 Days	-0.010	-0.34 %
	10 Days	-0.010	-0.34 %
	20 Days	+0.070	+2.41 %
Medium Term Return	3 Months	+0.050	+1.71 %
	6 Months	-0.030	-1.00 %
	1 Year	-0.120	-3.88 %
Long Term Return	2 Years	+0.620	+26.38 %
	3 Years	+0.530	+21.72 %
	5 Years	+1.200	+67.80 %
Annualised Return	Annualised	-	+10.91 %

TOMEI CONSOLIDATED BHD (7230)

C² Chart



Analysis

Period	Dividend Received	Capital Appreciation	Total Shareholder Return
Short Term Return	5 Days	-0.020	-1.06 %
	10 Days	-0.060	-3.12 %
	20 Days	-0.040	2.11 %
Medium Term Return	3 Months	-0.190	-9.27 %
	6 Months	-0.040	-2.11 %
	1 Year	0.025	+8.96 %
Long Term Return	2 Years	0.080	+19.75 %
	3 Years	0.120	+47.76 %
	5 Years	0.170	+129.38 %
Annualised Return	Annualised	-	+18.06 %

JASA KITA BHD (8648)

C² Chart



Analysis

Period	Dividend Received	Capital Appreciation	Total Shareholder Return
Short Term Return	5 Days	-0.005	-2.44 %
	10 Days	-0.010	-4.76 %
	20 Days	-0.015	-6.88 %
Medium Term Return	3 Months	-	-
	6 Months	0.120	+23.08 %
	1 Year	0.120	+64.95 %
Long Term Return	2 Years	0.165	+288.30 %
	3 Years	0.165	+301.10 %
	5 Years	0.165	+393.24 %
Annualised Return	Annualised	-	+37.60 %

Disclaimer: The information on this page is provided as a service to readers. It does not constitute financial advice and/or any investment recommendations. Past performance is not indicative of future results. We assume no liability for damages resulting from or arising out of the use of such information. It would be best if you did your own research to make your personal investment decisions wisely or consult a licenced investment advisor.

Price & Total Shareholder Return (as at Yesterday)

Fundamental Analysis

DEFINITION: Company revenue is growing and making good quality of earnings with positive Free Cash Flow.

CHART GUIDE: Total Shareholder Return (TSR) combines share price appreciation and distributions paid to show the total return to the shareholder expressed as a percentage.



ShareInvestor WebPro > Screener > Market Screener (FA & TA) > select BURSA > add criteria

A. Criteria

1. Fundamental Analysis Conditions tab > select (i) Free Cash Flow, (ii) Revenue Growth, (iii) Gross Profit (Earnings) Margin, (iv) Quality of Earnings, (v) Total Shareholder Returns, > click Add Criteria
2. Fundamental Analysis Conditions tab > select (vi) Total Shareholder Returns > click Add Criteria

B. Conditions (Criteria Filters)

1. Free Cash Flow - select (more than) type (1) for the past select (1) financial year(s)
2. Revenue Growth - select (more than) type (1) for the past select (1) financial year(s)
3. Gross Profit (Earnings) Margin - select (more than) type (30) % for the past select (1) financial year(s)
4. Quality of Earnings - select (more than) type (1) for the past select (1) financial year(s)
5. Total Shareholder Return - select (more than) type (5) % for the past select (3) financial year(s)
6. Total Shareholder Return - select (more than) type (5) % for the past select (5) financial year(s)

- > click Save Template > Create New Template type (Growth Companies) > click Create
- > click Save Template as > select Growth Companies > click Save
- > click Screen Now (may take a few minutes)
- > Sort By: Select (Revenue Growth) Select (Desc)
- > Mouse over stock name > Factsheet > looking for Total Shareholder Return

COUNTRY VIEW BHD (5049)

C² Chart



Analysis

Period	Dividend Received	Capital Appreciation	Total Shareholder Return	
Short Term Return	5 Days	-	+0.130	+4.19 %
	10 Days	-	+0.200	+9.49 %
	20 Days	-	+0.160	+5.21 %
Medium Term Return	3 Months	0.130	+0.310	+15.07 %
	6 Months	0.220	+0.350	+19.79 %
	1 Year	0.530	+1.400	+105.46 %
Long Term Return	2 Years	0.660	+2.030	+225.83 %
	3 Years	0.750	+2.160	+271.96 %
	5 Years	0.890	+2.030	+243.33 %
Annualised Return	Annualised	-	-	+27.90 %

CATCHA DIGITAL BERHAD (0173)

C² Chart



Analysis

Period	Dividend Received	Capital Appreciation	Total Shareholder Return	
Short Term Return	5 Days	-	+0.025	+9.62 %
	10 Days	-	+0.050	+21.29 %
	20 Days	-	+0.030	+11.78 %
Medium Term Return	3 Months	-	-0.035	-10.94 %
	6 Months	-	+0.015	+5.56 %
	1 Year	-	+0.008	+2.89 %
Long Term Return	2 Years	-	+0.013	+4.78 %
	3 Years	-	+0.032	+12.66 %
	5 Years	-	+0.052	+22.32 %
Annualised Return	Annualised	-	-	+4.11 %

NEGRI SEMBILAN OIL PALMS BHD (2038)

C² Chart

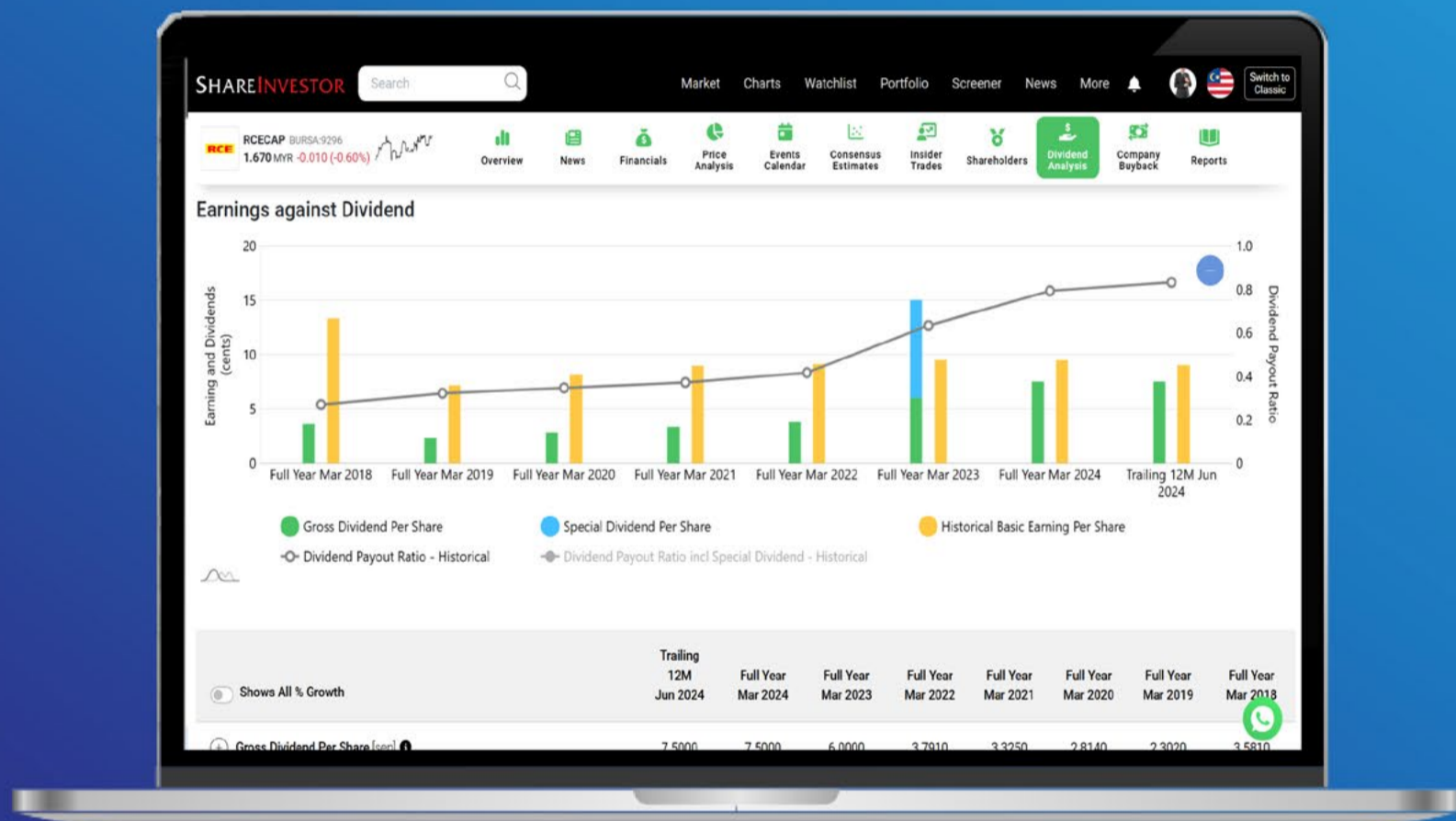


Analysis

Period	Dividend Received	Capital Appreciation	Total Shareholder Return	
Short Term Return	5 Days	-	-0.100	-1.71 %
	10 Days	-	-0.080	-1.37 %
	20 Days	-	-0.350	-5.74 %
Medium Term Return	3 Months	-	+0.150	+2.68 %
	6 Months	0.180	+0.557	+14.19 %
	1 Year	0.260	+1.671	+47.34 %
Long Term Return	2 Years	0.460	+2.169	+73.42 %
	3 Years	0.580	+2.558	+98.31 %
	5 Years	0.890	+2.990	+137.14 %
Annualised Return	Annualised	-	-	+18.85 %

Disclaimer: The information on this page is provided as a service to readers. It does not constitute financial advice and/or any investment recommendations. Past performance is not indicative of future results. We assume no liability for damages resulting from or arising out of the use of such information. It would be best if you did your own research to make your personal investment decisions wisely or consult a licenced investment advisor.

Tired of low returns? Let's talk high-paying Dividends!



- ✓ **Top Dividend Picks Right Now**
- ✓ **Insider Tips** – Advanced strategies for experienced investors
- ✓ **Easy-to-Follow Tutorial**

Get the most out of dividends, use our Dividend Analysis function –
Click to Watch Our Tutorial Below!

Upgrade Your Dividend Strategy Here



Price & Total Shareholder Return (as at Yesterday)

Fundamental Analysis

DEFINITION: Company is paying out dividend with low or moderate leverage.

CHART GUIDE: Total Shareholder Return (TSR) combines share price appreciation and distributions paid to show the total return to the shareholder expressed as a percentage.



ShareInvestor WebPro > Screener > Market Screener (FA & TA) > select BURSA > add criteria

A. Criteria

- > click Add Criteria
- Fundamental Analysis Conditions tab >select (i) Dividend Yield (Historical)
- Fundamental Analysis Conditions tab >select (ii) Dividend Payout (Historical)
- Fundamental Analysis Conditions tab >select (iii) Total Debt To Equity
- Fundamental Analysis Conditions tab >select (iv) Total Shareholder Returns
- Fundamental Analysis Conditions tab >select (v) Total Shareholder Returns
- Fundamental Analysis Conditions tab / >select (vi) CAGR of Dividend Per Share

• Fundamental Analysis Conditions tab >select (vii) CAGR of Dividend Per Share

B. Conditions (Criteria Filters)

1. Dividend Yield - select (more than) type (1) % for the past select (1) financial year(s)
2. Dividend Payout (Historical) - select (between) type (0.5) to type (1) times for the past select (1) financial year(s)
3. Total Debt to Equity - select (less than) type (1) for the past select (1) financial year(s)
4. Total Shareholder Return - - select (more than) type (5) % for the past select (3) financial year(s)
5. Total Shareholder Return - - select (more than) type (5) % for the past select (5) financial year(s)

6. CAGR of Dividend Per Share - - select (less than) type (30) % for the past select (5) financial year(s)
7. CAGR of Dividend Per Share - - select (more than) type (1) % for the past select (5) financial year(s)

- > click Save Template > Create New Template type (Dividend Companies) > click Create
- > click Save Template as > select Dividend Companies > click Save
- > click Screen Now (may take a few minutes)
- > Sort By: Select (Dividend Yield) Select (Desc)
- > Mouse over stock name > Factsheet > looking for Total Shareholder Return

UCHI TECHNOLOGIES BHD (7100)

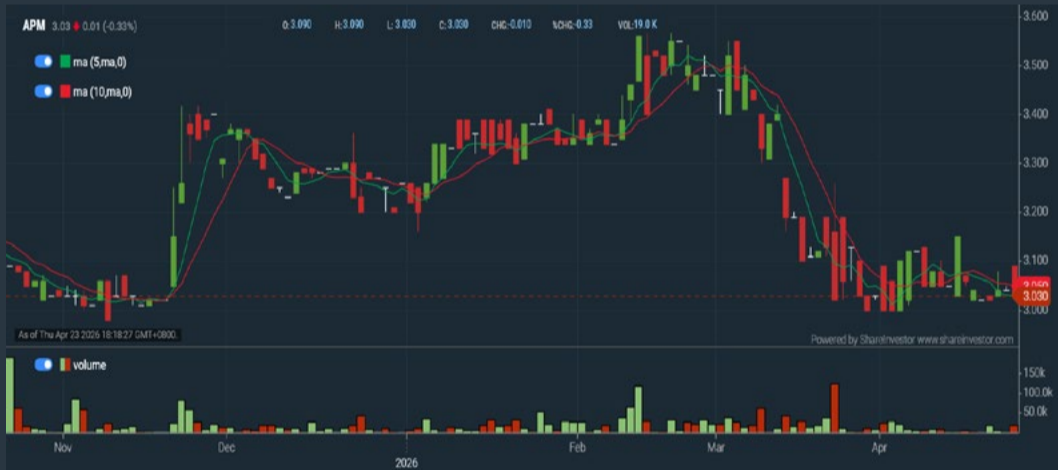
C² Chart



Period		Dividend Received	Capital Appreciation	Total Shareholder Return
Short Term Return	5 Days	-	+0.190	+7.28 %
	10 Days	-	-0.220	+8.53 %
	20 Days	-	+0.080	+2.94 %
Medium Term Return	3 Months	0.045	-0.330	-9.11 %
	6 Months	0.050	-0.270	-5.86 %
	1 Year	0.195	-0.190	+0.17 %
Long Term Return	2 Years	0.505	-1.067	-14.53 %
	3 Years	0.905	-0.534	+11.13 %
	5 Years	1.320	-0.291	+33.29 %
Annualised Return	Annualised	-	-	+5.92 %

APM AUTOMOTIVE HOLDINGS BHD (5015)

C² Chart



Period		Dividend Received	Capital Appreciation	Total Shareholder Return
Short Term Return	5 Days	-	-0.030	-0.98 %
	10 Days	-	-0.020	-0.66 %
	20 Days	-	-0.030	-0.98 %
Medium Term Return	3 Months	0.130	-0.270	-4.24 %
	6 Months	0.130	-0.090	+2.27 %
	1 Year	0.200	-0.010	+6.25 %
Long Term Return	2 Years	0.400	+0.390	+32.95 %
	3 Years	0.660	+1.020	+63.58 %
	5 Years	0.940	+0.740	+73.36 %
Annualised Return	Annualised	-	-	+11.63 %

WELLCAL HOLDINGS BERHAD (7231)

C² Chart



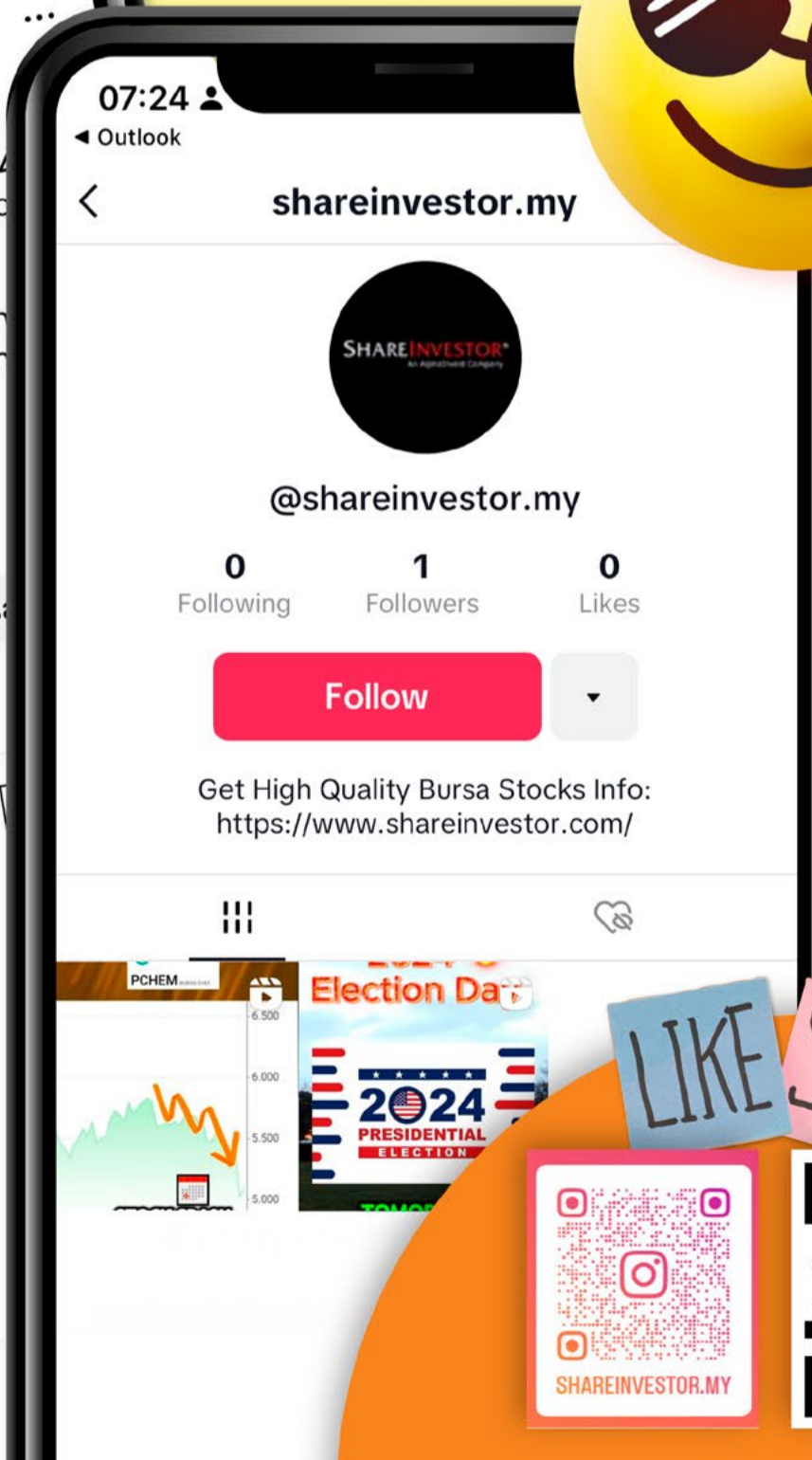
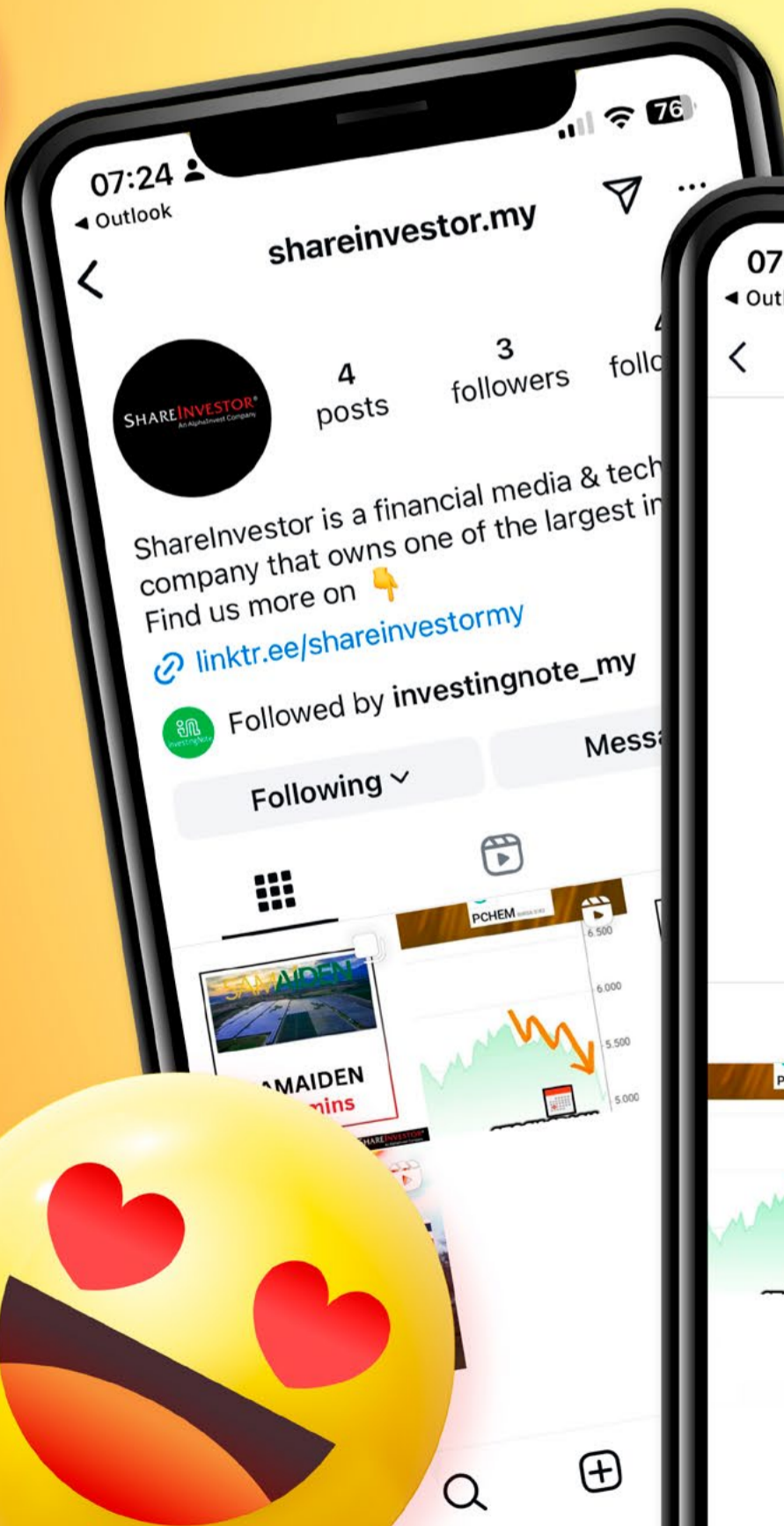
Period		Dividend Received	Capital Appreciation	Total Shareholder Return
Short Term Return	5 Days	-	-0.010	-0.80 %
	10 Days	-	0.010	0.80 %
	20 Days	-	+0.020	+1.64 %
Medium Term Return	3 Months	0.016	-0.120	-7.65 %
	6 Months	0.040	-0.024	+1.27 %
	1 Year	0.076	-0.214	-8.49 %
Long Term Return	2 Years	0.158	-0.274	-7.66 %
	3 Years	0.246	+0.109	+31.39 %
	5 Years	0.386	+0.166	+54.27 %
Annualised Return	Annualised	-	-	+9.06 %

Disclaimer: The information on this page is provided as a service to readers. It does not constitute financial advice and/or any investment recommendations. Past performance is not indicative of future results. We assume no liability for damages resulting from or arising out of the use of such information. It would be best if you did your own research to make your personal investment decisions wisely or consult a licenced investment advisor.

SHAREINVESTOR[®]
An AlphaInvest Company

We're Officially on TikTok & Instagram!

Follow us now for more information!



LIKE SHARE



Week: 17 Apr - 23 Apr 2026

More Brokers' Call 

Apex Securities <small>... See More</small>	Call	Target Price	Release Date
Mitrajaya Holdings Berhad (9571)	BUY	RM1.28	23 Apr 26

Hong Leong Investment Bank <small>... See More</small>	Call	Target Price	Release Date
CIMB Group Holdings Berhad (1023)	BUY	RM9.80	21 Apr 26
CTOS Digital Berhad (5301)	BUY	RM0.89	22 Apr 26
Top Glove Corporation Bhd (7113)	HOLD	RM0.75	23 Apr 26

Kenanga <small>... See More</small>	Call	Target Price	Release Date
Sunway Construction Group Berhad (5263)	OUTPERFORM	RM7.76	20 Apr 26
Public Bank Berhad (1295)	OUTPERFORM	RM5.75	22 Apr 26
AME Real Estate Investment Trust (5307)	MARKET PERFORM	RM1.58	23 Apr 26

Malacca Securities <small>... See More</small>	Call	Target Price	Release Date
Inspace Creation Berhad (0451)	NOT RATED	RM0.36	17 Apr 26
Manforce Group Berhad (0450)	NOT RATED	RM0.40	21 Apr 26
Betamek Berhad (0263)	NOT RATED	RM0.87	22 Apr 26

MIDF <small>... See More</small>	Call	Target Price	Release Date
Sunway Construction Group Berhad (5263)	TRADING BUY	RM7.68	20 Apr 26
CIMB Group Holdings Berhad (1023)	BUY	RM9.29	21 Apr 26
D&O Green Technologies Berhad (7204)	SELL	RM0.39	23 Apr 26

Public Investment Bank <small>... See More</small>	Call	Target Price	Release Date
Ta Ann Holdings Berhad (5012)	OUTPERFORM	RM6.66	17 Apr 26
Kawan Renergy Berhad (0307)	NEUTRAL	RM0.54	20 Apr 26
Inspace Creation Berhad (0451)	FAIR VALUE	RM0.33	21 Apr 26

UOB Kay Hian <small>... See More</small>	Call	Target Price	Release Date
CIMB Group Holdings Berhad (1023)	BUY	RM9.30	21 Apr 26
Yinson Holdings Berhad (7293)	BUY	RM2.75	22 Apr 26

DEFINITION: Top 08 stocks with Technical Analysis plus Pattern Matching by 60 pre-defined indicators by the system showing a higher probability of bullish sentiment on the share price.



ShareInvestor WebPro > Screener > Predefined TA Screens > select market BURSA > Most Long Signals > click Scan Results or mouse over each company

HHRG BERHAD (0175.MY)

HHRG

Price updated at 23 Apr 2026 16:58

Last: 0.065	Change: -0.005	Volume: 65,681
	Change (%): -7.14	Range: 0.065 - 0.070

TA Scanner Results based on historical data up to 23 Apr 2026

Condition	Signal	Explanation
Bollinger Band: Bullish Long Term Volatility Breakout and Trending	Long	"1. Close price above upper bollinger band(33,1). 2. Volume above average volume(50). 3. Average volume(50) is above 300,000."
Bollinger Band: Bullish Lower Bollinger Band Support	Long	"1. Low 1 day ago below lower bollinger band(20,2). 2. Close above close 1 day ago. 3. Average volume(5) is above 100,000."
Bollinger Band: Bullish Short Term Volatility Breakout and Trending	Long	"1. Close price above upper bollinger band(33,1). 2. Volume above average volume(10). 3. Average volume(10) is above 300,000."
Bollinger Band: High Above Upper Bollinger Band	Neutral	"1. High above upper bollinger band(14,2). 2. Average volume(5) is above 100,000."
DM: Bullish Directional Movement	Long	-DI(14) crossed below +DI(14)
Donchian Channels: High Above Upper Donchian Channels	Long	High crossed above the upper Donchian Channel(14,4)
MA: Short Term Bullish Moving Average Crossover	Long	MA(10) crossed above MA(15) within the last 1 day.
MACD: Bullish MACD Crossover	Long	"1. MACD(12,26) diff line crossed above the MACD(12,26) signal line. 2. MACD Histogram(12,26) is above 0."

SKP RESOURCES BHD (7155.MY)

SKPRES

Price updated at 23 Apr 2026 16:50

Last: 0.415	Change: +0.010	Volume: 25,249
	Change (%): +2.47	Range: 0.405 - 0.415

TA Scanner Results based on historical data up to 23 Apr 2026

Condition	Signal	Explanation
Bollinger Band: High Above Upper Bollinger Band	Neutral	"1. High above upper bollinger band(14,2). 2. Average volume(5) is above 100,000."
Candlestick: Bearish Harami	Short	Bearish: Harami
Donchian Channels: High Above Upper Donchian Channels	Long	High crossed above the upper Donchian Channel(14,4)
Volume: 10 Days large value Buy Up trade	Long	"1. 150K value Buy Up greater than Sell Down by 20% for 10 days. 2. 50K-100K value Buy Up greater than Sell Down by 20% for 10 days. 3. Average volume(10) is above 1000000"
Volume: 5 Days large value Buy Up trade	Long	"1. 150K value Buy Up greater than Sell Down by 20% for 5 days. 2. 50K-100K value Buy Up greater than Sell Down by 20% for 5 days. 3. Average volume(10) is above 1000000"
Volume: Consecutive Days Of Increasing Average Volume	Long	"1. Average Volume(20) has been increasing over the last 2 weeks. 2. Average volume(20) is above 100000"

CROPMATE BERHAD (0331.MY)

CRPMATE

Price updated at 23 Apr 2026 16:57

Last: 0.215	Change: +0.005	Volume: 54,524
	Change (%): +2.38	Range: 0.205 - 0.220

TA Scanner Results based on historical data up to 23 Apr 2026

Condition	Signal	Explanation
Bollinger Band: High Above Upper Bollinger Band	Neutral	"1. High above upper bollinger band(14,2). 2. Average volume(5) is above 100,000."
Candlestick: Bearish Shooting Star	Short	Bearish: Shooting Star
Chaikin Volatility: Increasing Chaikin Volatility	Neutral	Chaikin Volatility(10,10) has been increasing for 5 days
DM: Bullish Directional Movement	Long	-DI(14) crossed below +DI(14)
Donchian Channels: High Above Upper Donchian Channels	Long	High crossed above the upper Donchian Channel(14,4)
Price: New 52 Week High	Long	"1. Stock reach a new 52 week high. 2. Average volume(30) is above 50000."
Volume: Volume Spike	Long	"1. Volume is more than 500% above average volume(10). 2. Volume above 200000. 3. Close price above 0.10"

TECHNODEX BHD (0132.MY)

TDEX

Price updated at 23 Apr 2026 16:50

Last: 0.030	Change: -0.005	Volume: 1,304
	Change (%): -14.29	Range: 0.030 - 0.030

TA Scanner Results based on historical data up to 23 Apr 2026

Condition	Signal	Explanation
Bollinger Band: Bullish Lower Bollinger Band Support	Long	"1. Low 1 day ago below lower bollinger band(20,2). 2. Close above close 1 day ago. 3. Average volume(5) is above 100,000."
Bollinger Band: Bullish Short Term Volatility Breakout and Trending	Long	"1. Close price above upper bollinger band(33,1). 2. Volume above average volume(10). 3. Average volume(10) is above 300,000."
Bollinger Band: High Above Upper Bollinger Band	Neutral	"1. High above upper bollinger band(14,2). 2. Average volume(5) is above 100,000."
DM: Bullish Directional Movement	Long	-DI(14) crossed below +DI(14)
Donchian Channels: High Above Upper Donchian Channels	Long	High crossed above the upper Donchian Channel(14,4)
Historical Volatility: Increasing Historical Volatility	Neutral	Historical Volatility(100,365) increasing for the last 10 days
MACD: Bullish MACD Crossover	Long	"1. MACD(12,26) diff line crossed above the MACD(12,26) signal line. 2. MACD Histogram(12,26) is above 0."
RSI: Short Term RSI 50 Bullish Crossover	Long	"1. RSI(20) crossed above 50 within the last 1 day and RSI(20) 1 day ago below 50 for the last 5 days. 2. Volume above average volume(125). 3. Average volume(5) is above 100,000."

Disclaimer: The information on this page is provided as a service to readers. It does not constitute financial advice and/or any investment recommendations. Past performance is not indicative of future results. We assume no liability for damages resulting from or arising out of the use of such information. It would be best if you did your own research to make your personal investment decisions wisely or consult a licenced investment advisor.



BINA DARULAMAN BHD (6173.MY)

BDB

Price updated at 23 Apr 2026 16:58

Last: 0.210	Change: -0.010	Volume: 300
	Change (%): -4.55	Range: 0.210 - 0.220

TA Scanner Results based on historical data up to 23 Apr 2026

Condition	Signal	Explanation
DM: Bullish Directional Movement	Long	-DI(14) crossed below +DI(14)
Donchian Channels: High Above Upper Donchian Channels	Long	High crossed above the upper Donchian Channel(14,4)
MA: Bullish Price Crossover	Long	"1. Close price crossed above MA(40) within the last 1 day. 2. Previous day close price is below the MA(10) for the last 5 days"
MACD: Bullish MACD Crossover	Long	"1. MACD(12,26) diff line crossed above the MACD(12,26) signal line. 2. MACD Histogram(12,26) is above 0."
Parabolic SAR: Bearish Parabolic SAR Reversal	Neutral	"1. Parabolic SAR 1 day ago above close price 1 day ago for the last 5 days. 2. Parabolic SAR below close price"



TDM BHD (2054.MY)

TDM

Price updated at 23 Apr 2026 16:57

Last: 0.235	Change: -0.015	Volume: 28,020
	Change (%): -6.00	Range: 0.235 - 0.250

TA Scanner Results based on historical data up to 23 Apr 2026

Condition	Signal	Explanation
Bollinger Band: Bullish Long Term Volatility Breakout and Trending	Long	"1. Close price above upper bollinger band(33,1). 2. Volume above average volume(50). 3. Average volume(50) is above 300,000."
Bollinger Band: Bullish Short Term Volatility Breakout and Trending	Long	"1. Close price above upper bollinger band(33,1). 2. Volume above average volume(10). 3. Average volume(10) is above 300,000."
Bollinger Band: High Above Upper Bollinger Band	Neutral	"1. High above upper bollinger band(14,2). 2. Average volume(5) is above 100,000."
Donchian Channels: High Above Upper Donchian Channels	Long	High crossed above the upper Donchian Channel(14,4)
MACD: Bullish MACD Crossover	Long	"1. MACD(12,26) diff line crossed above the MACD(12,26) signal line. 2. MACD Histogram(12,26) is above 0."
Parabolic SAR: Bearish Parabolic SAR Reversal	Neutral	"1. Parabolic SAR 1 day ago above close price 1 day ago for the last 5 days. 2. Parabolic SAR below close price"
Price: New 52 Week High	Long	"1. Stock reach a new 52 week high. 2. Average volume(30) is above 50000."
Volume: Volume Spike	Long	"1. Volume is more than 500% above average volume(10). 2. Volume above 200000. 3. Close price above 0.10"

Disclaimer: The information on this page is provided as a service to readers. It does not constitute financial advice and/or any investment recommendations. Past performance is not indicative of future results. We assume no liability for damages resulting from or arising out of the use of such information. It would be best if you did your own research to make your personal investment decisions wisely or consult a licenced investment advisor.



APPASIA BERHAD (0119.MY)

APPASIA

Price updated at 23 Apr 2026 16:57

Last: 0.120	Change: -	Volume: 100
	Change (%): -	Range: 0.120 - 0.120

TA Scanner Results based on historical data up to 23 Apr 2026

Condition	Signal	Explanation
DM: Bullish Directional Movement	Long	-DI(14) crossed below +DI(14)
MA: Bullish Price Crossover	Long	"1. Close price crossed above MA(40) within the last 1 day. 2. Previous day close price is below the MA(10) for the last 5 days"
MACD: Bullish MACD Crossover	Long	"1. MACD(12,26) diff line crossed above the MACD(12,26) signal line. 2. MACD Histogram(12,26) is above 0."
Stochastic: Fast Stochastic Buy Signal	Long	"1. Fast Stochastic(15,5) %K crossed above 20. 2. Fast Stochastic(15,5) %K 1 day ago was below 20 for the last 5 days. 3. Average volume(30) is above 50000"



PERDANA PETROLEUM BERHAD (7108.MY)

PERDANA

Price updated at 23 Apr 2026 16:59

Last: 0.180	Change: -0.005	Volume: 110,929
	Change (%): -2.70	Range: 0.180 - 0.190

TA Scanner Results based on historical data up to 23 Apr 2026

Condition	Signal	Explanation
Bollinger Band: Bullish Long Term Volatility Breakout and Trending	Long	"1. Close price above upper bollinger band(33,1). 2. Volume above average volume(50). 3. Average volume(50) is above 300,000."
Bollinger Band: Bullish Short Term Volatility Breakout and Trending	Long	"1. Close price above upper bollinger band(33,1). 2. Volume above average volume(10). 3. Average volume(10) is above 300,000."
Bollinger Band: High Above Upper Bollinger Band	Neutral	"1. High above upper bollinger band(14,2). 2. Average volume(5) is above 100,000."
CCI: Bearish CCI Overbought And Reversing	Short	"1. CCI(26) above 100 and CCI(26) 1 day ago increasing for the last 3 days. 2. CCI(26) below CCI(26) 1 day ago"
Chaikin Volatility: Increasing Chaikin Volatility	Neutral	Chaikin Volatility(10,10) has been increasing for 5 days
DM: Bullish Directional Movement	Long	-DI(14) crossed below +DI(14)
Donchian Channels: High Above Upper Donchian Channels	Long	High crossed above the upper Donchian Channel(14,4)
Volume: Volume Spike	Long	"1. Volume is more than 500% above average volume(10). 2. Volume above 200000. 3. Close price above 0.10"
Williams %R: Bearish Williams %R	Short	"1. Williams %R(26) between 0 and -20. 2. Average volume(5) is above 100,000."
DM: Bullish Directional Movement	Long	-DI(14) crossed below +DI(14)



Dato' Eu Hong Chew
Former Group CEO i-Berhad
Non-Executive Director

He has been associated with the Sumurwang Group for many years charting the path for its manufacturing arm, firstly under Dreamland Holdings Berhad and the subsequent acquisition of I-Berhad.

Before that, he was with PA Management Consulting for a decade where he was the Director of Studies for the Cranfield PA MBA Programme in Malaysia.

Educated at the Royal Military College, Dato' Eu has an engineering degree from the University of Glasgow, and a MBA from the University of Bradford, UK.

Jabil:

A Well-Run Company at the Wrong Price

SUMMARY

- Jabil Inc. (**NYSE:JBL**) operates in a low-growth EMS industry, delivering about 4.4% revenue CAGR, with performance driven more by scale and efficiency than growth.
- Despite average margins, Jabil achieved strong ROIC and ROE through improved asset turnover, outperforming peers in long-term earnings growth.
- Financial structure is the key risk: While operations generate strong cash flow, rising leverage and share buybacks funded partly through financing raise concerns about balance sheet risk and capital allocation discipline.

Disclaimer: This article is written for informational purposes only. It does not constitute a solicitation, offer, advice, counseling or recommendation to buy or sell. As such it is not intended to promote the purchase of shares in any way. As a reminder, any type of asset has a risk factor and needs to be evaluated from multiple perspectives. Therefore, any investment decision and the associated risk remains with the investor. The views expressed here are entirely the writer's own.

BACKGROUND

Jabil is a global provider of manufacturing services and supply chain solutions, with its core business centred on electronics contract manufacturing. Before September 2024, the Group reported its operations under two main segments:

- **Electronics Manufacturing Services (EMS)** – focused on high-volume, low-mix products, leveraging scale, automation, and cost efficiency.
- **Diversified Manufacturing Services (DMS)** – focused on low-volume, high-complexity products that require closer customer collaboration and specialised capabilities.

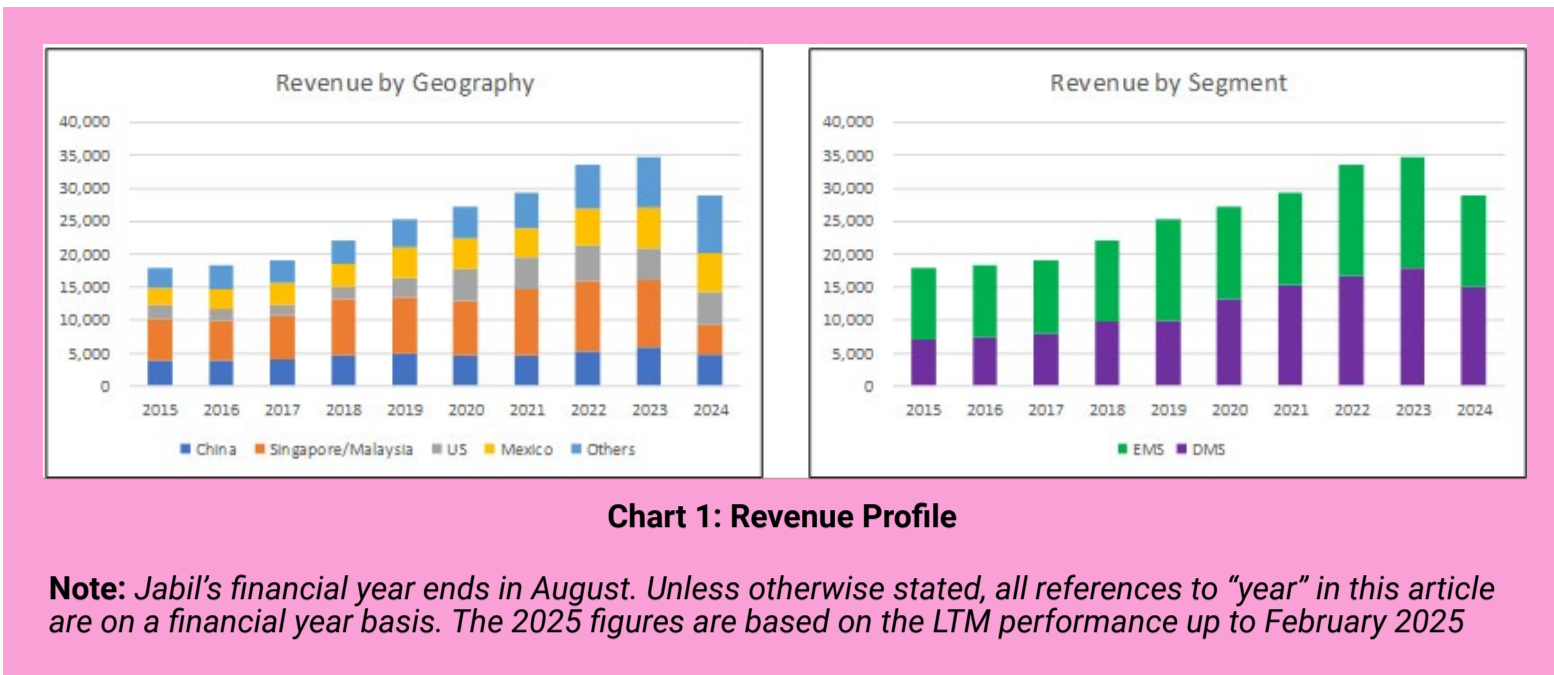
From a revenue mix perspective, the business has evolved. In 2015, DMS was the dominant segment, contributing about 60% of total revenue. However, EMS grew at a faster pace, resulting in DMS's share declining to about 48% by 2024. **Refer to Chart 1, right.** This suggests a gradual shift toward higher-volume manufacturing activities.

Geographically, Jabil has also rebalanced its footprint. While it remains a global operator, there has been a noticeable diversification away from Asia.

In 2015, China, Singapore, and Malaysia collectively contributed about 57% of revenue.

By 2024, this had declined to about 32%. **Refer to Chart 1, left.**

This shift likely reflects efforts to align production with evolving customer requirements and to mitigate geopolitical and supply chain risks.



OPERATING PERFORMANCE

Jabil operates within the electronics manufacturing services (EMS) industry, a relatively mature sector characterised by steady, single-digit growth. Industry expansion is driven by ongoing outsourcing trends, increasing product complexity, and demand across a wide range of end markets such as automotive, healthcare, and consumer electronics.

Against this industry backdrop, Jabil's performance is broadly in line with expectations. From 2015 to 2025, revenue grew at a modest 4.4% CAGR, consistent with the underlying single-digit growth characteristics of the EMS sector.

As shown in Chart 1, revenue in 2024 declined by about USD5.8 billion compared to 2023. This contraction can be decomposed into two components:

- About USD2.4 billion due to the strategic exit from the mobility and legacy networking businesses.
- The remaining USD 3.4 billion is attributable to softer demand across several end-markets.

This indicates that the decline was not purely strategic but also cyclical in nature. The lack of growth momentum is further reflected in the relatively flat quarterly revenue over the past five quarters.

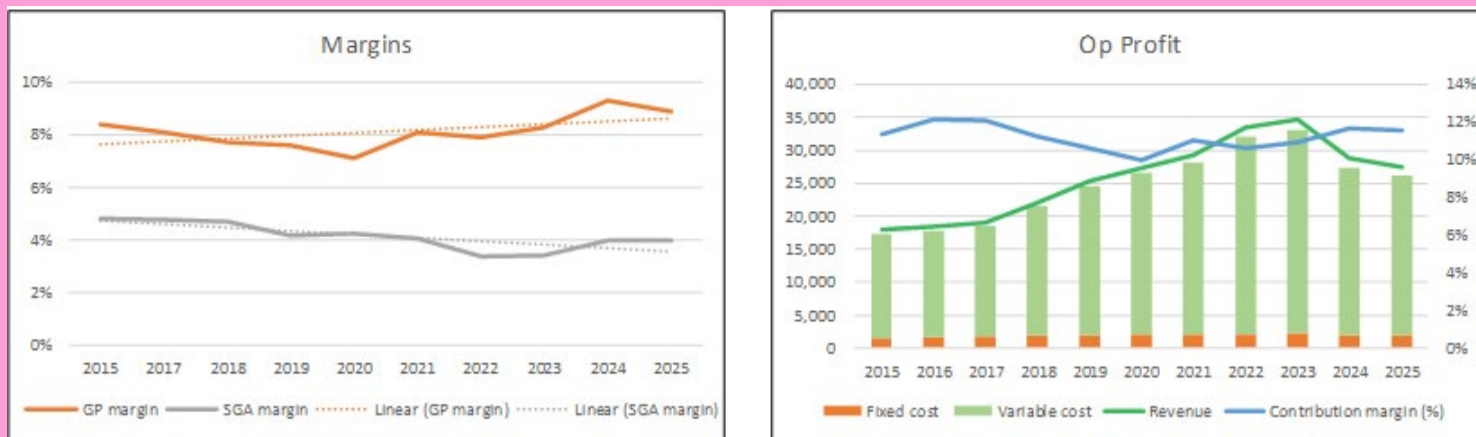


Chart 2: Margins and Operating Profit

Notes to Chart 2:

- a. SGA margin = Selling, Administration, and General expenses/Revenue
- b. I broke down the operating profits into fixed costs and variable costs.
- Fixed cost = SGA, Depreciation & Amortisation, R&D, and Others.
- Variable cost = Cost of Sales – Depreciation & Amortization.
- Contribution = Revenue – Variable Cost.
- Contribution margin = Contribution/Revenue.

Despite the top-line pressure, there are signs of operational improvement. Gross profit margins and Selling, General and Administration (SGA) margins have shown some expansion (**Chart 2, left**), with a corresponding improvement in contribution margins (**Chart 2, right**).

Part of this resilience stems from Jabil’s cost structure. Fixed costs account for only about 8% of total costs, providing a buffer against revenue volatility and helping to preserve profitability during weaker demand periods.

Over the longer term, returns have been volatile but trending upward. Over the past 11 years, Jabil delivered average returns of about 16.8% ROIC and 24.4% ROE - both above their respective costs of capital, indicating value creation.

Importantly, the improvement in returns appears to be driven more by better capital turnover than by margin expansion alone. This suggests that operational efficiency and asset utilisation have been key levers.

One area of volatility has been the effective tax rate, which ranged from 20.2% in 2024 to as high as 76.6% in 2018, with a long-term average of about 40.8%. This variability reflects:

*Please refer to the disclaimer on first page and last page.

- One-off impacts from US tax reform.
- A geographically diverse earnings base with a shifting profit mix.
- Changes in assumptions around deferred tax assets and intercompany charges.

In recent years, however, the effective tax rate has stabilised in the 20% - 30% range, suggesting a more predictable tax profile going forward.

Overall, the picture that emerges is consistent with a company operating in a mature, low-growth industry but sustaining returns through operational discipline. While there has been some margin improvement, the more significant driver of performance has been enhanced asset efficiency rather than structural margin expansion.

PEER COMPARISON

To put Jabil's performance into perspective, I compared it with a sample of global EMS providers and diversified manufacturers, **as shown in Table 1.**

Company	Revenue	
	2024 USD m	2015 to 2024 CAGR %
Jabil (JBL)	28,883	5.5%
AptarGroup, Inc (ATR)	3,583	5.0%
Berry Global Group (BRY)	12,258	10.8%
Celestica Inc (CLS)	9,646	6.1%
Flex Ltd (FLEX)	26,415	0.1%
Sanmina Corporation (SNM)	7,568	1.9%

Table 1: Peer revenue

Based on 2024 revenue, Jabil ranks among the larger players in the peer group and is No. 3 in terms of revenue growth. Consistent with the mature nature of the industry, most

peers - except for Berry Global Group - delivered only single-digit top-line growth.

On the surface, Jabil does not consistently lead on margins or cash flow. However, it stands out as one of the more important drivers of long-term value creation - capital efficiency and earnings growth. A

closer look at the metrics highlights several key points:

- **Return on capital:** Jabil recorded the highest returns over the past decade among its peers.
- **Operating margins:** EBIT margins were broadly in line with the peer average, indicating no structural margin advantage.
- **Free cash flow:** Levered free cash flow margins were volatile and, for much of the period, lagged peers. However, there was a notable improvement, with Jabil ranking No. 2 in 2024.
- **Earnings growth:** EPS performance was among the weakest from 2015 to 2020 but improved significantly to become the strongest post-2021.

In a mature and competitive industry, this combination is telling. While Jabil does not rely on superior margins, it has been able to generate value through efficient capital deployment and improved earnings delivery. Its ability to navigate cyclical volatility while strengthening key shareholder metrics suggests a resilient business model supported by disciplined operational execution.

FINANCIAL POSITION

At first glance, Jabil's financial position raises several concerns.

First, as of the end of November 2025, the Group reported a Debt-to-Equity ratio of 226% - among the highest levels over the past 11 years - indicating a significantly more leveraged capital structure.

Second, Jabil's reinvestment profile appears elevated. Over the 2015 to 2025 period, the Reinvestment rate (defined as Reinvestment/ NOPAT) averaged about 45%.

Reinvestment is defined as: CAPEX & Acquisitions – Depreciation & Amortisation + Increase in Net Working Capital.

This level appears high when benchmarked against the fundamental growth relationship:

$$\text{Growth} = \text{ROIC} \times \text{Reinvestment rate}$$

Based on Jabil's 4.4% revenue CAGR and an average ROIC of 16.8%, the implied reinvestment rate is about 26%. The higher actual reinvestment suggests either inefficiencies, timing differences, or investments that have yet to fully translate into growth.

Third, there are questions around capital allocation (**Table 2**). While operating cash flow has generally been sufficient to fund CAPEX, it has not consistently covered share buybacks.

Item	Sources USD m	Uses USD m
Cash flow from Ops	10,267	
New shares	396	
Net Debt	665	
Net Divestiture	747	
CAPEX		8,034
Dividends		569
Buybacks		7,778
Misc	4,307	
Total	16,382	16,382

Table 2: Sources and Uses of Funds 2015 to 2025

That said, the financial picture is not entirely negative.

As of November 2025, Jabil held about USD1.6 billion in cash, equivalent to roughly 8% of total assets, indicating reasonable liquidity.

Over the past decade, only two years recorded negative operating cash flow. Cash conversion has been strong, with cumulative operating cash flow of USD10.3 billion compared to total PAT of USD5.5 billion.

Taken together, these suggest that Jabil's core operations are fundamentally sound. It generates cash reliably, maintains adequate liquidity, and has the capacity to reinvest.

The key issue lies more with capital structure and capital allocation. Leverage has increased, and part of the shareholder return - particularly share buybacks - appears to have been supported by balance sheet financing and short-term liquidity measures rather than purely by internally generated free cash flow.

This raises questions about balance sheet risk and the sustainability of capital return policies, especially under weaker economic conditions or tighter credit markets. The aggressive buyback programme, while enhancing capital efficiency, is a central factor in this assessment.

Overall, I would characterise Jabil as moderately sound financially - with strong operating fundamentals, but a more aggressive capital structure that warrants monitoring.

VALUATION

I valued Jabil based on normalised operating assumptions: using 2025 revenue as the base with 4% perpetual growth, average historical margins and reinvestment rates (with modest improvements over time), and a normalised tax rate. I also assumed no further share buybacks to isolate operational performance. ***(Refer to the original article for details of the valuation).***

Under these assumptions, the intrinsic value is estimated at USD115 per share, compared to a market price of USD211 (as of end Nov 2025), indicating no margin of safety.

CONCLUSION

Jabil is a well-run company operating in a mature, low-growth industry. Its performance over the past decade reflects this reality - modest revenue growth, average margins, but consistently strong returns driven by efficient capital utilisation.

While it does not possess a structural margin advantage, Jabil has demonstrated an ability to create shareholder value through operational discipline, scale, and improved asset turnover. The recent improvement in earnings and free cash flow further reinforces the strength of its execution.

However, this is not without trade-offs. The increasingly leveraged balance sheet and the reliance on financial engineering - particularly share buybacks not fully supported by internally generated free cash

flow - introduce a layer of financial risk. This is a key consideration, especially in a cyclical downturn or a tighter credit environment.

From a valuation perspective, the market appears to have fully priced in these strengths. With an intrinsic value below the current market price, there is no margin of safety.

I am a long-term value investor who has held onto stocks for more than 5 years. My analysis and valuation are from such a perspective. I consider quarterly results "noisy" and focus on long-term trends.

This article was re-purposed from my article "Low Growth, High Returns: The Jabil Paradox", which was first published in Seeking Alpha. Refer to this [link](#) for more of my insights on other US companies.

Disclaimer: This article is written for informational purposes only. It does not constitute a solicitation, offer, advice, counseling or recommendation to buy or sell. As such it is not intended to promote the purchase of shares in any way. As a reminder, any type of asset has a risk factor and needs to be evaluated from multiple perspectives. Therefore, any investment decision and the associated risk remains with the investor. The views expressed here are entirely the writer's own.

**CHECK OUT SHAREINVESTOR
BROKER'S
CALL**

Weekly Buy/Sell/Hold calls
from leading Malaysian Brokerages.

[Go To Broker's Call](#)

BUY **HOLD** **SELL**

UNLOCK THE SECRET OF WEALTH

DO YOU REALLY WANT TO MASTER VALUE INVESTING



SEE HOW TO GET HIGHER RETURNS WITH LOWER RISK



Malaysia unlikely to get upgrade in 1-2 years due to weak external metrics despite strong growth - S&P Global

According to S&P Global Ratings, Malaysia is unlikely to get a credit rating upgrade in the next 1 to 2 years unless it strengthens its external financial indicators, which have been affected by heavy foreign inflows into its bond market, while it also maintains strong economic growth and fiscal discipline. For now, the rating agency has an A- rating with a stable outlook for Malaysia.

S&P Global Ratings managing director and sovereign ratings sector lead Tan Kim Eng said Malaysia's bond market is attractive to foreign investors, but heavy foreign inflows can weaken some external financial indicators. While this shows strong investor interest, these weaker metrics still affect Malaysia's overall credit profile.

He added that if these metrics were to improve, it could potentially, in a material and sustainable way, help to improve Malaysia's overall metrics. He thinks that it is unlikely for an upgrade in the next one to two years. He was speaking at a forum titled "Pricing Risks, Seizing Opportunities", jointly organised by S&P Global Ratings and RAM Ratings. He noted that a rating upgrade is likely if the economy remains resilient and the fiscal deficit falls below 3% of GDP.

Khazanah warns of investment scams using its name, logo, branding

Khazanah Nasional Bhd has issued a public alert regarding fraudulent investment schemes where scammers are impersonating the sovereign wealth fund's name, logo, and branding to deceive the public.

This comes as the group was notified of attempts on social media and instant messaging platforms, specifically Telegram, where scammers misuse images of senior leadership to promote false opportunities.

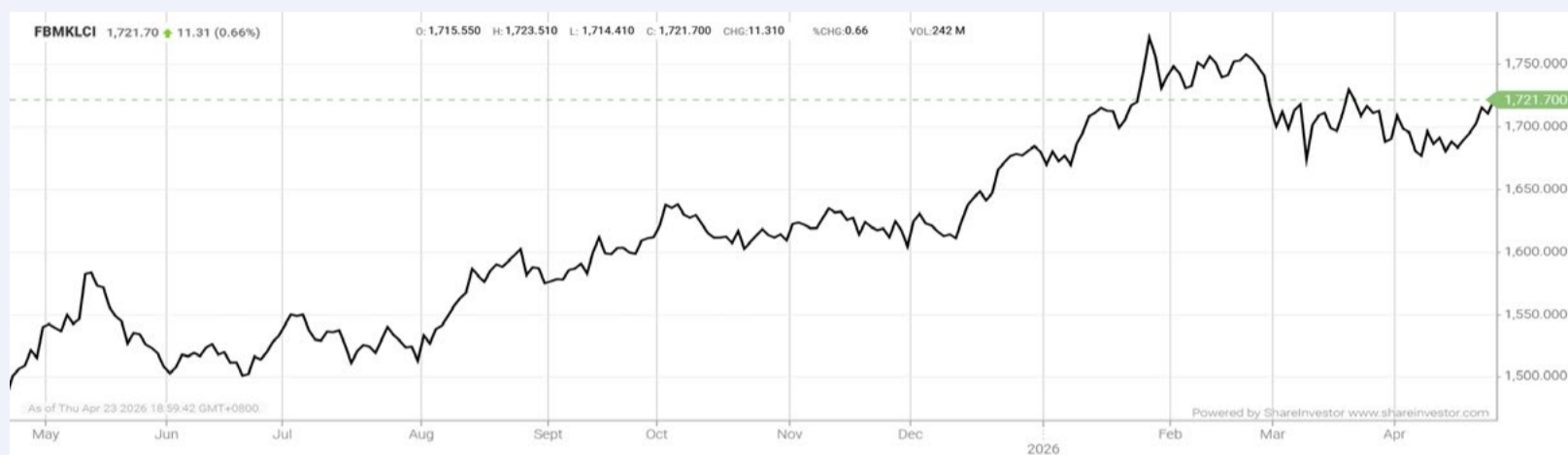
In a statement on Thursday, Khazanah clarified that as an institutional investor, it does not offer public investment schemes, solicit individual funds, or provide retail services such as unit trusts or mutual funds. Its investments are instead anchored in delivering sustainable, long-term value for the nation.

According to Head of Governance, Risk and Compliance Datuk Suhana Dewi Selamat, any parties claiming to represent Khazanah while offering unrealistic and quick returns should be treated as fraudulent. She added that Khazanah will not hesitate to take appropriate legal action and work with the authorities to act against those who misuse its name and identity. Should the public encounter any content or communication that appears suspicious or inconsistent with Khazanah's official channels, they are encouraged to contact Khazanah at info@khazanah.com.my for verification.

For accurate and verified information, the public should refer only to Khazanah's official website at www.khazanah.com.my and its official social media accounts on Facebook, Instagram and LinkedIn.

EYE ON THE MARKETS

On Thursday (23Apr), the Ringgit closed at 3.9645 against the USD and 3.1066 to the Sing Dollar. On Monday (20Apr), the FBM KLCI opened at 1693.50. As at Thursday (23Apr) 5:00pm, the FBM KLCI closed up 28.20 points at 1721.70. Over in US, the overnight Dow Jones Industrial Average closed down 179.71 points (-0.36%) to 49,310.32 whilst the NASDAQ shed 219.06 points (-0.89%) to 24,438.50.



KLCI 1 Year Chart

Learn how to identify Hot Stocks using Technical Analysis (TA) and Fundamental Analysis (FA)

SIGN UP FOR

Invest

now

Click Here

Scan/Click me

IT'S FREE!

Via email, every Friday

Get market moving news and analyses. Regular columns include **Behind The Ticker** and **From MSWG's The Observer**

Leaderboard • Shariah Hot Stocks • Shariah Momentum Up Stocks • Non Shariah Hot Stocks • Up Trending Stocks • Growth Stocks • Dividend Stocks • Long Companies • Insider Activity • Investor Relations • Regional Markets

Over 5 Trading Days (as at Yesterday)



ShareInvestor WebPro (www.shareinvestor.com/my)

1. Price > Stock Prices
2. Select Market: NASDAQ / NYSE / IDX / SET / HKEX / SGX (One bourse at a time)
3. select Stocks Tab
4. select Ranking Top Gainers or Top Losers (Over 5 Trading Days)
5. Mouse over Column Layout > select Edit Customs > select Name > select Last Done Price > select 5 Days Change > select 52 Weeks High > select 52 Weeks Low > Mouse Over Column Layout > select Custom

NASDAQ (USD)

Top Gainers

Name	Last Done	Change Over 5 Days	52 Weeks High	52 Weeks Low
Monolithic Power Systems	1,522.040	+169.040	1,548.170	506.305
Sandisk	979.070	+87.350	965.000	29.315
Mega Fortune Company	140.000	+71.630	170.000	1.500
Vicor	265.000	+70.800	256.370	38.925
SiTime	524.510	+70.360	539.990	127.300

Top Losers

Name	Last Done	Change Over 5 Days	52 Weeks High	52 Weeks Low
Atrium Therapeutics	13.660	-59.160	73.060	13.510
argenx ADR	793.220	-47.650	934.620	510.055
VSE	182.850	-41.790	232.610	103.915
VivoPower	2.990	-30.960	3.500	2.700
Woodward	366.480	-26.630	407.000	165.750

NYSE (USD)

Top Gainers

Name	Last Done	Change Over 5 Days	52 Weeks High	52 Weeks Low
GE Vernova	1,127.560	+141.640	1,016.000	317.600
Comfort Systems USA	1,724.490	+118.520	1,730.260	353.580
AutoZone	3,589.990	+100.700	4,388.110	3,210.720
EMCOR Group	860.000	+67.750	842.500	365.870
TopBuild	452.820	+64.920	559.468	273.870

Top Losers

Name	Last Done	Change Over 5 Days	52 Weeks High	52 Weeks Low
Berkshire Hathaway A	702,980.000	-9,720.000	812,855.000	685,150.000
NVR	6,610.770	-156.440	8,618.280	6,301.025
Fair Isaac	970.170	-99.760	2,217.600	870.010
Northrop Grumman	589.620	-88.970	774.000	450.130
TransDigm Group	1,187.750	-86.940	1,623.830	1,123.610

IDX (Rupiah)

Top Gainers

Name	Last Done	Change Over 5 Days	52 Weeks High	52 Weeks Low
ARKORA HYDRO TBK	11,700.000	+3,900.000	13,000.000	740.000
SINGARAJA PUTRA TBK	18,025.000	+2,925.000	30,850.000	2,450.000
SEJAHTERARAYA ANUGRAHJAYA TBK	15,200.000	+2,100.000	19,200.000	2,900.000
INTI BANGUN SEJAHTERA TBK	8,475.000	+2,075.000	8,475.000	4,210.000
UNGGUL INDAH CAHAYA TBK	12,850.000	+1,975.000	14,000.000	7,000.000

Top Losers

Name	Last Done	Change Over 5 Days	52 Weeks High	52 Weeks Low
TRANSCOAL PACIFIC TBK	11,625.000	-1,725.000	13,725.000	4,920.000
BARITO RENEWABLES ENERGY TBK	5,400.000	-1,050.000	10,725.000	4,140.000
RODA VIVATEX TBK	15,600.000	-1,025.000	18,900.000	11,500.000
DIAN SWASTATIKA SENTOSA TBK	2,510.000	-840.000	4,720.000	1,688.000
INDO TAMBANGRAYA MEGAH TBK	26,800.000	-625.000	30,700.000	20,900.000

SET (Thai Baht)

Top Gainers

Name	Last Done	Change Over 5 Days	52 Weeks High	52 Weeks Low
Food and Drinks Public NVDR	67.750	+23.750	67.750	40.000
SCC	233.000	+19.000	235.000	147.500
F&D	53.000	+9.000	67.750	40.000
OHTL	273.000	+8.000	360.000	248.000
TOPP	139.500	+4.500	155.000	135.000

Top Losers

Name	Last Done	Change Over 5 Days	52 Weeks High	52 Weeks Low
DELTA	301.000	-16.000	319.000	70.500
ADVANC	349.000	-14.000	410.000	267.000
SCB	134.500	-11.000	149.500	112.500
PTTEP	144.000	-7.500	164.000	94.250
BBL	163.000	-3.000	181.000	135.000

HKEX (HKD)

Top Gainers

Name	Last Done	Change Over 5 Days	52 Weeks High	52 Weeks Low
KNOWLEDGE ATLAS (2513)	986.000	+119.000	1,030.000	116.100
MINIMAX-WP (100)	928.000	+80.500	1,330.000	220.000
CIG (6166)	152.200	+65.850	157.800	63.250
AUNTEA JENNY (2589)	132.000	+53.550	197.600	73.500
ILUVATAR COREX (9903)	419.200	+48.200	442.000	148.900

Top Losers

Name	Last Done	Change Over 5 Days	52 Weeks High	52 Weeks Low
QINGSONG HEALTH (2661)	50.250	-100.950	162.700	48.380
LAOPU GOLD (6181)	601.500	-71.500	1,108.000	540.000
GUOXIA TECH (2655)	30.820	-35.030	76.800	30.580
SKB BIO-B (6990)	493.200	-25.800	581.000	280.000
NUOBIKAN-NEW (2635)	45.700	-15.250	83.200	31.000

SGX (SGD)

Top Gainers

Name	Last Done	Change Over 5 Days	52 Weeks High	52 Weeks Low
Azeus	12.070	+1.070	17.280	10.560
AvePoint	12.920	+0.920	20.400	11.340
UOL	10.840	+0.610	11.480	5.610
Prudential USD	15.100	+0.600	15.100	8.830
SGX	21.700	+0.580	21.720	13.580

Top Losers

Name	Last Done	Change Over 5 Days	52 Weeks High	52 Weeks Low
UOB	37.020	-0.570	39.500	33.250
DBS	57.200	-0.500	59.843	41.249
UOB Kay Hian	3.810	-0.240	4.100	1.650
Comba	0.170	-0.220	0.390	0.093
Sembcorp Ind	6.890	-0.210	7.930	5.600



FAIR VALUE: WHEN LOSSES ARE SEEN BUT NOT EXAMINED

Fair value accounting has made investment losses highly visible. Numbers are marked to market, movements are recorded, and financial statements reflect current valuations rather than historical cost.

Losses are quantified, disclosed and audited, but the decision-making behind the investments is often not clearly explained, independently assessed, or consistently challenged.

A fundamental question remains: do these numbers reveal anything about the quality of decisions behind them?

A HANDFUL OF OBSERVATIONS

The patterns differ across listed companies, but the underlying issue is consistent. Many reported significant fair value losses on their investments in quoted securities.

In the 15-month financial period ended 30 September 2025, Vsolar Group Berhad recognised a fair value loss of RM15.7 million - more than two-thirds of its pre-tax losses.

While the Company highlighted the existence of formal investment policies, due diligence and board oversight, it did not disclose the identities of specific investees or the detailed rationale for its investments. This limits shareholders' ability to assess concentration risk and individual investment performance.

	Note	Group		Company	
		From 01.07.2024 to 30.09.2025 RM	From 01.07.2023 to 30.06.2024 RM	From 01.07.2024 to 30.09.2025 RM	From 01.07.2023 to 30.06.2024 RM
CASH FLOWS FROM OPERATING ACTIVITIES					
Loss before taxation		(23,308,905)	(3,174,260)	(32,396,727)	(3,219,659)
Fair value loss on other investments	9	15,698,873	1,295,129	-	-

(Source: Page 83 of Vsolar Group Berhad Annual Report 2025)

The Group first disclosed its quoted investment in 2021, but without details on the underlying holdings or their acquisition cost. More granular disclosure – such as sector level information - only emerged after queries were raised by MSWG. Even then, the lack of investee-level transparency, i.e., investee identities, detailed investment rationale, continued to constrain meaningful assessment.

At Fintec Global Berhad, earnings have been shaped by recurring fair value gains and losses, including a substantial RM67.37 million mark-to-market loss in FY2025. These fluctuations are broadly consistent with its positioning as a “technology incubator” and “strategic investment firm”, where exposure to high-growth or early-stage assets naturally entails valuation swings.

The Group provides relatively detailed disclosure (refer to [here](#)), including identification of investee companies and commentary on portfolio performance. However, its earnings profile remains significantly influenced by fair value movements based on market prices of investee companies (refer to the chart below), with reported results consistently driven by valuation changes.



Source: Fintec Global Annual Reports

This highlights a different dimension of the issue – even where disclosure is present, fair value can dominate reported

outcomes, creating a convenient explanatory framework – one that may normalise volatility without necessarily prompting deeper scrutiny of the underlying investment decisions or earnings quality.

In the case of APB Resources Berhad, a RM140 million long-term investment in Globetronics Berhad declined significantly over time. The bulk of the loss became visible only upon reclassification following the loss of significant influence in Globetronics, resulting in a fair value of RM35.35 million and a recognised loss of approximately RM68.7 million in FY2025.

While the accounting treatment appropriately reflected the change, the timing and presentation may frame the loss as temporary rather than prompting a reassessment of the earlier investment decision.

Management continues to characterise the decline as temporary, but its narrative offers limited assurance regarding the quality of the underlying judgment - whether decisions are rigorously challenged, independently assessed, or subjected to post-investment review.

Similarly, at NexG Berhad, RM145.6 million in fair value losses on quoted investments (MMAG Holdings Berhad and Classita Holdings

APB Resources Berhad's acquisition of Globetronics

(a) Acquisition of shares in Globetronics Technology Bhd.

In previous financial period (18-month FPE 31 March 2024), the Company entered into a share sale agreement ("SSA") to acquire 70,000,000 ordinary shares, representing 10.41% of the equity interest in Globetronics Technology Bhd. ("Globetronics") for a total cash consideration of RM140,000,000.

(b) Reclassification of investment and loss of significant influence

On 1 November 2024, the Company's representative on the Board of Globetronics resigned, resulting in the cessation of the Group's significant influence over Globetronics. Consequently, the investment was reclassified from an investment in associate to a financial asset measured at fair value through profit or loss ("FVPL") in accordance with MFRS 9 *Financial Instruments*. The fair value of the quoted investment on 1 November 2024 was RM35,350,000. The Group and the Company recognised a loss on derecognition of the quoted investment amounting to RM68,702,811 and RM68,250,000 respectively, being the difference between the carrying amount of the investment in associate and its fair value of the investment at the date of loss of significant influence. This loss on derecognition is recognised in profit or loss in the financial year ended 31 March 2025.

(Source: Page 124 of APB Resources Berhad Annual Report 2025)

	Group		Company	
	01.04.2024 to 31.03.2025 (12 months) RM	01.10.2022 to 31.03.2024 (18 months) RM (Restated)	01.04.2024 to 31.03.2025 (12 months) RM	01.10.2022 to 31.03.2024 (18 months) RM
CASH FLOWS FROM OPERATING ACTIVITIES				
Loss before tax	(80,956,924)	(29,861,356)	(86,503,880)	(35,054,281)
Loss on derecognition of investment in an associate	9 68,702,811	-	68,250,000	-

(Source: Page 107 of APB Resources Berhad Annual Report 2025)

Berhad) resulted in a net loss of RM130.9 million for the third quarter ended 31 December 2025 and triggered an internal review.

NexG board clarified that NexG's investments had been made in compliance with applicable laws and listing requirements, and that the substantial fair-value

losses should not be interpreted as "a reflection of any impropriety or lack of strategic rationale behind investment decisions made by the company".

Across these cases, the numbers are clear. What remains opaque is whether the decisions that led to those outcomes were ever meaningfully examined. Without such visibility, shareholders cannot determine whether losses reflect market conditions or weaknesses in capital allocation – nor whether similar decisions may recur.

THE COMFORT OF FAIR VALUE

Fair value is often perceived as objective, market-based and external. It reflects observable prices and is grounded in established accounting standards.

This objectivity, however, can shift focus away from decision-making. Losses are easily framed as market-driven or temporary, making it more convenient to attribute outcomes to external conditions rather than scrutinise internal judgment.

Fair value measures assets and liabilities based on current market evaluations but also comfort in explanation. It explains what has changed, but not whether the underlying decisions were sound. In doing so, it subtly shifts attention from how capital was allocated to how markets have moved.

Building on this, some company executives also tend to sidestep investors' concerns by emphasising that fair value losses are non-cash in nature, implying that such concerns are misplaced or overstated.

This creates an important risk – losses may be accepted as external outcomes, even when they may reflect decisions that were never meaningfully examined.

THE MISSING LAYER: GOVERNANCE JUDGMENT

Disclosures exist and numbers are accurate, but the focus remains largely on what happened, rather than why it happened or whether it should have happened at all.

Boards and audit or risk committees are expected not only to oversee financial reporting, but also to exercise judgment over significant capital allocation decisions, including evaluating investment rationale, assessing risk exposure, and challenging management decisions. However, the most consistent gap is the lack of visibility into whether and how such a challenge takes place, particularly when investment outcomes fall short.

For shareholders, this creates a fundamental blind spot. Without insight into who approved the investment, what limits were applied, whether independent challenge occurred, and how outcomes were evaluated, it becomes difficult to distinguish between unavoidable losses and those arising from flawed capital allocation.

In the absence of this layer of judgment, fair value losses risk being accepted as outcomes of the market, rather than examined as consequences of decisions.

A POSSIBLE WAY FORWARD: KEY GOVERNANCE MATTERS

If financial reporting highlights areas of significant audit judgment through Key Audit Matters, a similar approach could be considered for governance.

Our suggestion to the Securities Commission Malaysia is the introduction of “Key Governance Matters”, where independent directors shall disclose insights into significant decisions, particularly major investments. This could include the investment rationale, key risks considered, the nature of board challenge, and how the investment is monitored over time, including exit considerations.

This would provide shareholders with clearer insight not only into the decisions made but also into how they were challenged and evaluated. Without this, the gap between outcomes and accountability will persist.

ACCOUNTABILITY OBSCURED BEHIND FAIR VALUE

The real gap is not in the numbers, but in the narrative. Financial statements have become increasingly precise in capturing outcomes, yet remain noticeably thin in explaining the thinking that produced them.

What is missing is not disclosure, but conviction. A clear articulation of why capital was deployed, what risks were consciously taken, and whether those decisions still stand up to scrutiny today. Without that, reporting risks becomes an exercise in recording movement rather than demonstrating judgment.

In the end, fair value is like a weather report. It tells you the storm has arrived, how strong it is, and how much damage it caused. But it says nothing about who chose to sail into it.

DEFINITION: Insider Activity shows the trades made by substantial shareholders or directors of the company. Purchases by the directors and company share buyback may indicate the share price is undervalued and brings confidence to the price trend of the share price.



ShareInvestor WebPro > Fundamental > Insider Trades > click Search tab > Select Bursa > click Stock name > scroll up and leave at <Select Counter> Type Date Range for Announcement Date > click Search

Notice Period is 12th April 2026 to 18th April 2026

Effective Change Date	Stock Name	Buyer/ Seller Name [Classification]	Bought / (Sold) ['000]	No. of Shares After Trade ['000]	
			Total	Total	% Held
14 APR 2026 - 14 APR 2026	5ER	GREENEDGE SDN. BHD. [SSH]	-281,447	281,447	18.276
14 APR 2026 - 14 APR 2026	5ER	MADAM LOO SOK CHING [DIR/CEO]	-98,360	792,436	51.457
14 APR 2026 - 14 APR 2026	5ER	MADAM LOO SOK CHING [SSH]	-98,360	792,436	51.457
14 APR 2026 - 14 APR 2026	5ER	MISS TAN SUAN SEE [DIR/CEO]	1,000	1,000	0.065
14 APR 2026 - 14 APR 2026	5ER	MISS WANG SZE MIN [DIR/CEO]	1,000	1,000	0.065
14 APR 2026 - 14 APR 2026	5ER	MR BAN KIM WAH [SSH]	-23,885	124,128	8.06
14 APR 2026 - 14 APR 2026	5ER	MR LIM TE HUA [DIR/CEO]	-22,453	116,664	7.576
14 APR 2026 - 14 APR 2026	5ER	MR LIM TE HUA [SSH]	-22,453	116,664	7.576
14 APR 2026 - 14 APR 2026	5ER	MR SHANKAR A/L NARASINGAM [DIR/CEO]	-9,302	48,273	3.135
14 APR 2026 - 14 APR 2026	5ER	MR SIOW CHIN HOW [DIR/CEO]	1,000	1,000	0.065
14 APR 2026 - 14 APR 2026	5ER	MR WANG HAN LIN [DIR/CEO]	1,000	1,000	0.065
14 APR 2026 - 14 APR 2026	99SMART	EMPLOYEES PROVIDENT FUND BOARD [SSH]	328	589,494	7.018
13 APR 2026 - 13 APR 2026	99SMART	EMPLOYEES PROVIDENT FUND BOARD [SSH]	480	589,166	7.014
09 APR 2026 - 09 APR 2026	99SMART	EMPLOYEES PROVIDENT FUND BOARD [SSH]	661	588,686	7.008
08 APR 2026 - 08 APR 2026	99SMART	EMPLOYEES PROVIDENT FUND BOARD [SSH]	280	588,025	7
09 APR 2026 - 09 APR 2026	ABMB	EMPLOYEES PROVIDENT FUND BOARD [SSH]	300	147,345	8.516
14 APR 2026 - 14 APR 2026	ALLIANZ	EMPLOYEES PROVIDENT FUND BOARD [SSH]	-39	14,267	7.743
13 APR 2026 - 13 APR 2026	ALLIANZ	EMPLOYEES PROVIDENT FUND BOARD [SSH]	-42	14,306	7.764
09 APR 2026 - 09 APR 2026	ALLIANZ	EMPLOYEES PROVIDENT FUND BOARD [SSH]	-52	14,348	7.787
08 APR 2026 - 08 APR 2026	ALLIANZ	EMPLOYEES PROVIDENT FUND BOARD [SSH]	-87	14,400	7.815
14 APR 2026 - 14 APR 2026	AMBANK	EMPLOYEES PROVIDENT FUND BOARD [SSH]	-3,164	570,502	17.253
13 APR 2026 - 13 APR 2026	AMBANK	EMPLOYEES PROVIDENT FUND BOARD [SSH]	-565	573,666	17.348
10 APR 2026 - 10 APR 2026	AMBANK	EMPLOYEES PROVIDENT FUND BOARD [SSH]	-1,764	574,231	17.365
09 APR 2026 - 09 APR 2026	AMBANK	EMPLOYEES PROVIDENT FUND BOARD [SSH]	-106	575,994	17.419
08 APR 2026 - 08 APR 2026	AMBANK	EMPLOYEES PROVIDENT FUND BOARD [SSH]	-4,555	576,100	17.422
14 APR 2026 - 14 APR 2026	ANCOMNY	DATO' SIEW KA WEI [DIR/CEO]	-1,000	163,983	15.736
14 APR 2026 - 14 APR 2026	ANCOMNY	DATO' SIEW KA WEI [SSH]	-1,000	163,983	15.736
14 APR 2026 - 14 APR 2026	ANCOMNY	DATUK LEE CHEUN WEI [DIR/CEO]	1,000	136,610	13.109
14 APR 2026 - 14 APR 2026	ANCOMNY	DATUK LEE CHEUN WEI [SSH]	1,000	136,610	13.109
13 APR 2026 - 15 APR 2026	AQUAWALK	DATO' FOONG CHOONG HENG [DIR/CEO]	3,900	945,924	51.326
13 APR 2026 - 15 APR 2026	AQUAWALK	DATO' FOONG CHOONG HENG [SSH]	3,900	945,924	51.326
10 APR 2026 - 10 APR 2026	AQUAWALK	DATO' FOONG CHOONG HENG [DIR/CEO]	1,017	942,024	51.114
10 APR 2026 - 10 APR 2026	AQUAWALK	DATO' FOONG CHOONG HENG [SSH]	1,017	942,024	51.114
15 APR 2026 - 15 APR 2026	ASTINO	MR NG BACK TENG [DIR/CEO]	500	38,198	8.131
15 APR 2026 - 15 APR 2026	ASTINO	MR NG BACK TENG [SSH]	500	38,198	8.131
09 APR 2026 - 09 APR 2026	AVANGAAD	DATO' LAI KENG ONN [DIR/CEO]	13,786	703,674	53.057
09 APR 2026 - 09 APR 2026	AVANGAAD	DATO' LAI KENG ONN [SSH]	13,786	703,674	53.057
13 APR 2026 - 15 APR 2026	AWANTEC	LEMBAGA TABUNG AMANAH WARISAN NEGERI TERENGGANU [SSH]	46	46,133	5.852
09 APR 2026 - 10 APR 2026	AWANTEC	LEMBAGA TABUNG AMANAH WARISAN NEGERI TERENGGANU [SSH]	24	46,087	5.846
09 APR 2026 - 09 APR 2026	AXIATA	EMPLOYEES PROVIDENT FUND BOARD [SSH]	1,739	1,783,525	19.411
14 APR 2026 - 14 APR 2026	AXREIT	EMPLOYEES PROVIDENT FUND BOARD [SSH]	146	427,081	21.091
13 APR 2026 - 13 APR 2026	AXREIT	EMPLOYEES PROVIDENT FUND BOARD [SSH]	240	426,934	21.084
10 APR 2026 - 10 APR 2026	AXREIT	EMPLOYEES PROVIDENT FUND BOARD [SSH]	35	426,694	21.072
09 APR 2026 - 09 APR 2026	AXREIT	EMPLOYEES PROVIDENT FUND BOARD [SSH]	485	426,659	21.071
08 APR 2026 - 08 APR 2026	AXREIT	EMPLOYEES PROVIDENT FUND BOARD [SSH]	202	426,174	21.047
17 APR 2026 - 17 APR 2026	BIG	MR PRIME CHNG SERNH LEE [DIR/CEO]	18,986	18,986	29.907
17 APR 2026 - 17 APR 2026	BIG	MR PRIME CHNG SERNH LEE [SSH]	1,989	18,986	29.907
13 APR 2026 - 13 APR 2026	BIMB	EMPLOYEES PROVIDENT FUND BOARD [SSH]	875	366,791	16.183
10 APR 2026 - 10 APR 2026	BIMB	EMPLOYEES PROVIDENT FUND BOARD [SSH]	804	365,916	16.145
09 APR 2026 - 09 APR 2026	BIMB	EMPLOYEES PROVIDENT FUND BOARD [SSH]	183	365,112	16.109
15 APR 2026 - 16 APR 2026	BJCORP	TAN SRI DATO' SERI VINCENT TAN CHEE YIUON [SSH]	241	1,367,998	23.008
13 APR 2026 - 14 APR 2026	BJCORP	TAN SRI DATO' SERI VINCENT TAN CHEE YIUON [SSH]	871	1,367,757	23.004
10 APR 2026 - 10 APR 2026	BJCORP	TAN SRI DATO' SERI VINCENT TAN CHEE YIUON [SSH]	859	1,366,886	22.989
13 APR 2026 - 13 APR 2026	BJFOOD	BERJAYA CORPORATION BERHAD [SSH]	12,290	1,237,122	65.106
13 APR 2026 - 13 APR 2026	BJFOOD	BERJAYA GROUP BERHAD [SSH]	12,290	1,136,136	59.792
13 APR 2026 - 13 APR 2026	BJFOOD	TAN SRI DATO' SERI VINCENT TAN CHEE YIUON [SSH]	12,290	1,356,830	71.406
14 APR 2026 - 14 APR 2026	BLDPLNT	DATO' SRI LAW KIU KIONG [SSH]	1	6,315	6.753
14 APR 2026 - 14 APR 2026	BLDPLNT	LAW KIONG HOLDINGS SDN. BHD. [SSH]	1	6,315	6.753
15 APR 2026 - 15 APR 2026	BNASTRA	DATUK TAN KAK SENG [DIR/CEO]	134	571,413	52.35
15 APR 2026 - 15 APR 2026	BNASTRA	DATUK TAN KAK SENG [SSH]	134	571,413	52.35
13 APR 2026 - 13 APR 2026	BNASTRA	MR LEE SENG YONG [DIR/CEO]	261	129,062	11.824
13 APR 2026 - 13 APR 2026	BNASTRA	MR LEE SENG YONG [SSH]	261	129,062	11.824
13 APR 2026 - 15 APR 2026	BONIA	MR CHIANG SANG SEM [DIR/CEO]	26	144,533	71.908
13 APR 2026 - 15 APR 2026	BONIA	MR CHIANG SANG SEM [SSH]	26	131,774	65.56
16 APR 2026 - 16 APR 2026	BORNOIL	MR LO LING [SSH]	17,000	1,631,000	9.832
13 APR 2026 - 13 APR 2026	BURSA	EMPLOYEES PROVIDENT FUND BOARD [SSH]	314	121,354	14.995
09 APR 2026 - 09 APR 2026	BURSA	EMPLOYEES PROVIDENT FUND BOARD [SSH]	972	121,040	14.956
08 APR 2026 - 08 APR 2026	BURSA	EMPLOYEES PROVIDENT FUND BOARD [SSH]	71	120,068	14.836
10 APR 2026 - 15 APR 2026	CATCHA	MR PATRICK YKIN GROVE [DIR/CEO]	2,272	235,083	51.681
10 APR 2026 - 15 APR 2026	CATCHA	MR PATRICK YKIN GROVE [SSH]	2,272	235,083	51.681
16 APR 2026 - 16 APR 2026	CBHB	MR CHEAH BOON HUAT [DIR/CEO]	-30	2,520	0.134
16 APR 2026 - 16 APR 2026	CCK	KUEH CHUNG PENG [DIR/CEO]	150	17,624	2.862
13 APR 2026 - 13 APR 2026	CGB	HJT INTERNATIONAL GROUP (M) SDN. BHD. [SSH]	400	48,986	5.558
13 APR 2026 - 13 APR 2026	CGB	MR CHEW HIAN TAT [DIR/CEO]	-717	256,041	29.052
13 APR 2026 - 13 APR 2026	CGB	MR CHEW HIAN TAT [SSH]	-717	256,041	29.052
13 APR 2026 - 14 APR 2026	CGB	MR LEE CHEE VUI [DIR/CEO]	6,340	100,156	11.364
13 APR 2026 - 14 APR 2026	CGB	MR LEE CHEE VUI [SSH]	6,340	100,156	11.364
13 APR 2026 - 14 APR 2026	CGB	MR SOO YU CHAI [SSH]	6,340	88,520	10.044
13 APR 2026 - 14 APR 2026	CGB	RYRT HOLDINGS SDN. BHD. [SSH]	6,340	87,737	9.955
16 APR 2026 - 16 APR 2026	CGB-WB	MR LEE CHEE VUI [DIR/CEO]	13,008	17,616	9.582
13 APR 2026 - 13 APR 2026	CGB-WB	MR CHEW HIAN TAT [DIR/CEO]	400	70,856	38.335
13 APR 2026 - 13 APR 2026	CGB-WB	MR LEE CHEE VUI [DIR/CEO]	2,340	4,607	2.493

Notice Period is 12th April 2026 to 18th April 2026

Effective Change Date	Stock Name	Buyer/ Seller Name [Classification]	Bought / (Sold) ['000]	No. of Shares After Trade ['000]	
			Total	Total	% Held
14 APR 2026 - 14 APR 2026	CIMB	EMPLOYEES PROVIDENT FUND BOARD [SSH]	-5,915	1,947,991	18.03
13 APR 2026 - 13 APR 2026	CIMB	EMPLOYEES PROVIDENT FUND BOARD [SSH]	-2,509	1,953,906	18.09
14 APR 2026 - 14 APR 2026	CIMB	KUMPULAN WANG PERSARAAN (DIPERBADANKAN) [SSH]	-382	689,894	6.39
10 APR 2026 - 10 APR 2026	CIMB	EMPLOYEES PROVIDENT FUND BOARD [SSH]	-887	1,956,415	18.11
09 APR 2026 - 09 APR 2026	CIMB	EMPLOYEES PROVIDENT FUND BOARD [SSH]	-2,475	1,957,302	18.12
08 APR 2026 - 08 APR 2026	CIMB	EMPLOYEES PROVIDENT FUND BOARD [SSH]	-7,459	1,959,777	18.14
14 APR 2026 - 14 APR 2026	CLMT	MISS YONG SU-LIN [DIR/CEO]	175	175	0.005
13 APR 2026 - 13 APR 2026	CLMT	EMPLOYEES PROVIDENT FUND BOARD [SSH]	865	578,352	17.187
13 APR 2026 - 13 APR 2026	CMSB	LEMBAGA TABUNG HAJI [SSH]	-500	68,280	6.348
10 APR 2026 - 10 APR 2026	CMSB	LEMBAGA TABUNG HAJI [SSH]	-200	68,780	6.395
13 APR 2026 - 14 APR 2026	CNERGEN	MR LYE THIM LOONG [DIR/CEO]	130	13,370	2.684
16 APR 2026 - 16 APR 2026	COASTAL	SAMARANG UCITS - SAMARANG ASIAN PROSPERITY [SSH]	-782	38,906	7.179
15 APR 2026 - 15 APR 2026	COASTAL	SAMARANG UCITS - SAMARANG ASIAN PROSPERITY [SSH]	-81	39,687	7.323
14 APR 2026 - 14 APR 2026	COASTAL	SAMARANG UCITS - SAMARANG ASIAN PROSPERITY [SSH]	-176	39,768	7.338
13 APR 2026 - 13 APR 2026	COASTAL	SAMARANG UCITS - SAMARANG ASIAN PROSPERITY [SSH]	-258	39,945	7.371
10 APR 2026 - 10 APR 2026	COASTAL	SAMARANG UCITS - SAMARANG ASIAN PROSPERITY [SSH]	-469	40,203	7.419
16 APR 2026 - 16 APR 2026	COMPUGT	MADAM SEE THOO CHAN [DIR/CEO]	321	1,138,778	18.822
16 APR 2026 - 16 APR 2026	COMPUGT	MADAM SEE THOO CHAN [SSH]	321	1,138,778	18.822
16 APR 2026 - 16 APR 2026	COMPUGT	MR GOH KHENG PEOW [SSH]	321	1,138,778	18.822
14 APR 2026 - 14 APR 2026	COMPUGT	MADAM SEE THOO CHAN [DIR/CEO]	225	1,138,456	18.816
14 APR 2026 - 14 APR 2026	COMPUGT	MADAM SEE THOO CHAN [SSH]	225	1,138,456	18.816
14 APR 2026 - 14 APR 2026	COMPUGT	MR GOH KHENG PEOW [SSH]	225	1,138,456	18.816
10 APR 2026 - 10 APR 2026	COMPUGT	MADAM SEE THOO CHAN [DIR/CEO]	300	1,138,231	18.813
10 APR 2026 - 10 APR 2026	COMPUGT	MADAM SEE THOO CHAN [SSH]	300	1,138,231	18.813
10 APR 2026 - 10 APR 2026	COMPUGT	MR GOH KHENG PEOW [SSH]	300	1,138,231	18.813
10 APR 2026 - 13 APR 2026	CPETECH	MR LEE CHEN YEONG [DIR/CEO]	1,000	193,241	28.785
10 APR 2026 - 13 APR 2026	CPETECH	MR LEE CHEN YEONG [SSH]	1,000	193,241	28.785
16 APR 2026 - 16 APR 2026	CTOS	KUMPULAN WANG PERSARAAN (DIPERBADANKAN) [SSH]	-1,529	215,797	9.485
15 APR 2026 - 15 APR 2026	CTOS	KUMPULAN WANG PERSARAAN (DIPERBADANKAN) [SSH]	-888	217,326	9.552
14 APR 2026 - 14 APR 2026	CTOS	KUMPULAN WANG PERSARAAN (DIPERBADANKAN) [SSH]	-168	218,214	9.591
08 APR 2026 - 08 APR 2026	CTOS	EMPLOYEES PROVIDENT FUND BOARD [SSH]	355	517,057	22.727
15 APR 2026 - 16 APR 2026	CYBERE	SPECIAL FLAGSHIP HOLDINGS SDN BHD [SSH]	88	106,686	61.969
15 APR 2026 - 16 APR 2026	CYBERE	TAN SRI DATO' DR PALANIAPPAN A/L RAMANATHAN CHETTIAR [DIR/CEO]	88	106,686	61.969
15 APR 2026 - 16 APR 2026	CYBERE	TAN SRI DATO' DR PALANIAPPAN A/L RAMANATHAN CHETTIAR [SSH]	88	106,686	61.969
13 APR 2026 - 14 APR 2026	CYBERE	SPECIAL FLAGSHIP HOLDINGS SDN BHD [SSH]	75	106,597	61.918
13 APR 2026 - 14 APR 2026	CYBERE	TAN SRI DATO' DR PALANIAPPAN A/L RAMANATHAN CHETTIAR [DIR/CEO]	75	106,597	61.918
13 APR 2026 - 14 APR 2026	CYBERE	TAN SRI DATO' DR PALANIAPPAN A/L RAMANATHAN CHETTIAR [SSH]	75	106,597	61.918
10 APR 2026 - 10 APR 2026	CYBERE	SPECIAL FLAGSHIP HOLDINGS SDN BHD [SSH]	22	106,522	61.874
10 APR 2026 - 10 APR 2026	CYBERE	TAN SRI DATO' DR PALANIAPPAN A/L RAMANATHAN CHETTIAR [DIR/CEO]	22	106,522	61.874
10 APR 2026 - 10 APR 2026	CYBERE	TAN SRI DATO' DR PALANIAPPAN A/L RAMANATHAN CHETTIAR [SSH]	22	106,522	61.874
16 APR 2026 - 16 APR 2026	D&O	KUMPULAN WANG PERSARAAN (DIPERBADANKAN) [SSH]	-968	79,715	6.431
14 APR 2026 - 14 APR 2026	D&O	EMPLOYEES PROVIDENT FUND BOARD [SSH]	-354	81,818	6.601
14 APR 2026 - 14 APR 2026	D&O	KUMPULAN WANG PERSARAAN (DIPERBADANKAN) [SSH]	-500	80,683	6.509
13 APR 2026 - 13 APR 2026	D&O	KUMPULAN WANG PERSARAAN (DIPERBADANKAN) [SSH]	200	81,183	6.55
15 APR 2026 - 16 APR 2026	DANCO	DATUK ZAINAL ABIDIN BIN UJUD [DIR/CEO]	-50	150	0.034
08 APR 2026 - 14 APR 2026	DATAPRP	DATUK WIRA SHAMSHURI BIN ABDUL MAJID [SSH]	7,765	136,140	16.281
15 APR 2026 - 15 APR 2026	DAYANG	ABERDEEN GROUP PLC [SSH]	633	74,546	6.439
15 APR 2026 - 15 APR 2026	DAYANG	ABRDN HOLDINGS LIMITED [SSH]	633	74,546	6.439
15 APR 2026 - 15 APR 2026	DAYANG	ABRDN MALAYSIA SDN BHD [SSH]	633	74,546	6.439
10 APR 2026 - 10 APR 2026	DAYANG	EMPLOYEES PROVIDENT FUND BOARD [SSH]	423	147,168	12.711
10 APR 2026 - 10 APR 2026	DAYANG	ABERDEEN GROUP PLC [SSH]	423	73,914	6.384
10 APR 2026 - 10 APR 2026	DAYANG	ABRDN HOLDINGS LIMITED [SSH]	423	73,914	6.384
10 APR 2026 - 10 APR 2026	DAYANG	ABRDN MALAYSIA SDN BHD [SSH]	423	73,914	6.384
09 APR 2026 - 09 APR 2026	DAYANG	EMPLOYEES PROVIDENT FUND BOARD [SSH]	1,527	146,745	12.675
09 APR 2026 - 09 APR 2026	DAYANG	ABERDEEN GROUP PLC [SSH]	140	73,491	6.348
09 APR 2026 - 09 APR 2026	DAYANG	ABRDN HOLDINGS LIMITED [SSH]	140	73,491	6.348
09 APR 2026 - 09 APR 2026	DAYANG	ABRDN MALAYSIA SDN BHD [SSH]	140	73,49	

Notice Period is 12th April 2026 to 18th April 2026

Effective Change Date	Stock Name	Buyer/ Seller Name [Classification]	Bought / (Sold) ['000]	No. of Shares After Trade ['000]	
			Total	Total	% Held
14 APR 2026 - 14 APR 2026	ECONBHD	EMPLOYEES PROVIDENT FUND BOARD [SSH]	-1,541	96,396	6.8
13 APR 2026 - 13 APR 2026	ECONBHD	EMPLOYEES PROVIDENT FUND BOARD [SSH]	-2,000	97,936	6.909
10 APR 2026 - 10 APR 2026	ECONBHD	EMPLOYEES PROVIDENT FUND BOARD [SSH]	-1,224	99,936	7.05
09 APR 2026 - 09 APR 2026	ECONBHD	EMPLOYEES PROVIDENT FUND BOARD [SSH]	-2,000	101,160	7.137
08 APR 2026 - 08 APR 2026	ECONBHD	EMPLOYEES PROVIDENT FUND BOARD [SSH]	-2,000	103,160	7.278
13 APR 2026 - 13 APR 2026	ECOSHOP	DATO' SRI LEE KAR WHATT [DIR/CEO]	500	4,428,493	76.939
13 APR 2026 - 13 APR 2026	ECOSHOP	DATO' SRI LEE KAR WHATT [SSH]	500	4,428,493	76.939
10 APR 2026 - 10 APR 2026	ECOSHOP	DATO' SRI LEE KAR WHATT [DIR/CEO]	323	4,427,993	76.93
10 APR 2026 - 10 APR 2026	ECOSHOP	DATO' SRI LEE KAR WHATT [SSH]	323	4,427,993	76.93
14 APR 2026 - 14 APR 2026	EFRAME	DATO NG WEI YEE [SSH]	-105	30,492	8.087
16 APR 2026 - 16 APR 2026	EITA	MR LEE PENG SIAN [DIR/CEO]	-116	13,024	4.315
14 APR 2026 - 15 APR 2026	ELKDESA	MR TEOH HOCK CHAI @ TEW HOCK CHAI [SSH]	165	199,525	45.689
14 APR 2026 - 15 APR 2026	ELKDESA	MR TEOH HOCK CHAI@TEW HOCK CHAI [DIR/CEO]	165	199,525	45.689
10 APR 2026 - 13 APR 2026	ELKDESA	MR TEOH HOCK CHAI @ TEW HOCK CHAI [SSH]	175	199,360	45.651
10 APR 2026 - 13 APR 2026	ELKDESA	MR TEOH HOCK CHAI@TEW HOCK CHAI [DIR/CEO]	175	199,360	45.651
14 APR 2026 - 14 APR 2026	ELRIDGE	URUSHARTA JAMAHAH SDN. BHD. [SSH]	633	132,252	6.613
13 APR 2026 - 13 APR 2026	ELRIDGE	URUSHARTA JAMAHAH SDN. BHD. [SSH]	41	131,619	6.581
10 APR 2026 - 10 APR 2026	ELRIDGE	URUSHARTA JAMAHAH SDN. BHD. [SSH]	166	131,578	6.579
09 APR 2026 - 09 APR 2026	ELRIDGE	URUSHARTA JAMAHAH SDN. BHD. [SSH]	387	131,412	6.571
08 APR 2026 - 08 APR 2026	ELRIDGE	URUSHARTA JAMAHAH SDN. BHD. [SSH]	576	131,025	6.551
16 APR 2026 - 16 APR 2026	EMPIRE	EMPIRE 11 GROUP SDN. BHD. [SSH]	-145,000	737,000	67
16 APR 2026 - 16 APR 2026	EMPIRE	MISS ELAINE LAW SOH YING [DIR/CEO]	200	200	0.018
16 APR 2026 - 16 APR 2026	EMPIRE	MISS LIM XUI JHI [DIR/CEO]	-145,000	737,000	67
16 APR 2026 - 16 APR 2026	EMPIRE	MISS LIM XUI JHI [SSH]	-145,000	737,000	67
16 APR 2026 - 16 APR 2026	EMPIRE	MISS ROHAIZA BINTI MOHAMED BASIR [DIR/CEO]	200	200	0.018
16 APR 2026 - 16 APR 2026	EMPIRE	MR SYED RAZIF AL-IDID B. SYED SIDI AL-IDID [DIR/CEO]	200	200	0.018
16 APR 2026 - 16 APR 2026	EMPIRE	MR TAN SIN GUAN [DIR/CEO]	-145,000	737,000	67
16 APR 2026 - 16 APR 2026	EMPIRE	MR TAN SIN GUAN [SSH]	-145,000	737,000	67
13 APR 2026 - 13 APR 2026	F&N	EMPLOYEES PROVIDENT FUND BOARD [SSH]	5	60,061	16.375
09 APR 2026 - 09 APR 2026	F&N	EMPLOYEES PROVIDENT FUND BOARD [SSH]	3	60,056	16.374
08 APR 2026 - 08 APR 2026	F&N	EMPLOYEES PROVIDENT FUND BOARD [SSH]	3	60,053	16.373
14 APR 2026 - 14 APR 2026	FFB	EMPLOYEES PROVIDENT FUND BOARD [SSH]	212	312,571	16.587
14 APR 2026 - 14 APR 2026	FFB	MR LOI TUAN EE [DIR/CEO]	187	704,023	37.36
14 APR 2026 - 14 APR 2026	FFB	MR LOI TUAN EE [SSH]	187	704,023	37.36
13 APR 2026 - 13 APR 2026	FFB	EMPLOYEES PROVIDENT FUND BOARD [SSH]	5,598	312,359	16.576
09 APR 2026 - 09 APR 2026	FFB	EMPLOYEES PROVIDENT FUND BOARD [SSH]	835	306,761	16.279
09 APR 2026 - 09 APR 2026	FFB	MR LOI TUAN EE [DIR/CEO]	200	703,836	37.35
09 APR 2026 - 09 APR 2026	FFB	MR LOI TUAN EE [SSH]	200	703,836	37.35
10 APR 2026 - 10 APR 2026	FFB	KUMPULAN WANG PERSARAAN (DIPERBADANKAN) [SSH]	-1,138	148,785	7.896
08 APR 2026 - 08 APR 2026	FFB	EMPLOYEES PROVIDENT FUND BOARD [SSH]	4,717	305,926	16.235
14 APR 2026 - 14 APR 2026	FRONTKN	EMPLOYEES PROVIDENT FUND BOARD [SSH]	250	265,164	16.034
13 APR 2026 - 13 APR 2026	FRONTKN	EMPLOYEES PROVIDENT FUND BOARD [SSH]	126	264,914	16.019
10 APR 2026 - 10 APR 2026	FRONTKN	EMPLOYEES PROVIDENT FUND BOARD [SSH]	278	264,787	16.011
13 APR 2026 - 13 APR 2026	GAMUDA	EMPLOYEES PROVIDENT FUND BOARD (EPF BOARD) [SSH]	-1,959	1,198,729	20.12
16 APR 2026 - 16 APR 2026	GASMSIA	LEMBAGA TABUNG HAJI [SSH]	72	71,208	5.545
16 APR 2026 - 16 APR 2026	GCB	MR TAY HOE LIAN [DIR/CEO]	350	135,585	4.946
14 APR 2026 - 14 APR 2026	GDB	MR DASMAND WONG WEI MING [DIR/CEO]	4,750	9,750	0.945
13 APR 2026 - 13 APR 2026	GDB	MR ANDY LAI WEE YOUNG [DIR/CEO]	490	141,797	13.75
13 APR 2026 - 13 APR 2026	GDB	MR ANDY LAI WEE YOUNG [SSH]	490	141,797	13.75
09 APR 2026 - 09 APR 2026	GDB	MR DASMAND WONG WEI MING [DIR/CEO]	5,000	5,000	0.485
15 APR 2026 - 15 APR 2026	GDGROUP	MISS CHAN MUN SHEE [DIR/CEO]	500	500	0.05
15 APR 2026 - 15 APR 2026	GDGROUP	MISS YEAT SOO CHING [DIR/CEO]	500	500	0.05
15 APR 2026 - 15 APR 2026	GDGROUP	MR CHEONG KEE YOONG [DIR/CEO]	1,000	1,000	0.1
15 APR 2026 - 15 APR 2026	GDGROUP	MR KHOO CHOON KEAT [DIR/CEO]	500	500	0.05
15 APR 2026 - 15 APR 2026	GDGROUP	MR LIM SWEE CHUAN [DIR/CEO]	1,500	1,500	0.15
14 APR 2026 - 15 APR 2026	GDGROUP	MR LIM SWEE KOK [DIR/CEO]	-98,500	701,500	70.15
14 APR 2026 - 15 APR 2026	GDGROUP	MR LIM SWEE KOK [SSH]	-98,500	701,500	70.15
14 APR 2026 - 14 APR 2026	GENP	EMPLOYEES PROVIDENT FUND BOARD [SSH]	-70	139,250	15.521
13 APR 2026 - 13 APR 2026	GENP	EMPLOYEES PROVIDENT FUND BOARD [SSH]	-6	139,320	15.529
10 APR 2026 - 10 APR 2026	GENP	EMPLOYEES PROVIDENT FUND BOARD [SSH]	-180	139,326	15.53
09 APR 2026 - 09 APR 2026	GENP	EMPLOYEES PROVIDENT FUND BOARD [SSH]	2	139,506	15.55
09 APR 2026 - 10 APR 2026	GEOHAN	MADAM LIM TSUI NING [SSH]	130	295,846	67.238
09 APR 2026 - 10 APR 2026	GEOHAN	MR LEE KIM SENG [DIR/CEO]	130	295,846	67.238
09 APR 2026 - 10 APR 2026	GEOHAN	MR LEE KIM SENG [SSH]	130	295,846	67.238
13 APR 2026 - 14 APR 2026	GHS	MR YEO TIAN SENG [DIR/CEO]	294	76,378	16.13
13 APR 2026 - 14 APR 2026	GHS	MR YEO TIAN SENG [SSH]	294	76,378	16.13
10 APR 2026 - 10 APR 2026	GHS	MR YEO TIAN SENG [DIR/CEO]	40	76,085	16.068
10 APR 2026 - 10 APR 2026	GHS	MR YEO TIAN SENG [SSH]	40	76,085	16.068
16 APR 2026 - 16 APR 2026	GLOMAC	SHAPADU CAPITAL SDN. BHD. [SSH]	77	105,630	13.763
15 APR 2026 - 16 APR 2026	GLOMAC	DATUK SERI FATEH ISKANDAR BIN TAN SRI DATO' MOHAMED MANSOR [DIR/CEO]	10	265,166	34.55
15 APR 2026 - 16 APR 2026	GLOMAC	DATUK SERI FATEH ISKANDAR BIN TAN SRI DATO' MOHAMED MANSOR [SSH]	10	265,166	34.55
15 APR 2026 - 16 APR 2026	GLOMAC	TAN SRI DATO' MOHAMED MANSOR BIN FATEH DIN [DIR/CEO]	10	272,492	35.504
15 APR 2026 - 16 APR 2026	GLOMAC	TAN SRI DATO' MOHAMED MANSOR BIN FATEH DIN [SSH]	10	265,166	34.55
14 APR 2026 - 15 APR 2026	GLOMAC	SHAPADU CAPITAL SDN. BHD. [SSH]	189	105,553	13.753
10 APR 2026 - 13 APR 2026	GLOMAC	DATUK SERI FATEH ISKANDAR BIN TAN SRI DATO' MOHAMED MANSOR [DIR/CEO]	12	265,156	34.548
10 APR 2026 - 13 APR 2026	GLOMAC	DATUK SERI FATEH ISKANDAR BIN TAN SRI DATO' MOHAMED MANSOR [SSH]	12	265,156	34.548
10 APR 2026 - 13 APR 2026	GLOMAC	TAN SRI DATO' MOHAMED MANSOR BIN FATEH DIN [DIR/CEO]	12	272,482	35.503
10 APR 2026 - 13 APR 2026	GLOMAC	TAN SRI DATO' MOHAMED MANSOR BIN FATEH DIN [SSH]	12	265,156	34.548
07 APR 2026 - 09 APR 2026	GLOMAC	DATUK SERI FATEH ISKANDAR BIN TAN SRI DATO' MOHAMED MANSOR [DIR/CEO]	20	265,144	34.547
07 APR 2026 - 09 APR 2026	GLOMAC	DATUK SERI FATEH ISKANDAR BIN TAN SRI DATO' MOHAMED MANSOR [SSH]	20	265,144	34.547

Notice Period is 12th April 2026 to 18th April 2026

Effective Change Date	Stock Name	Buyer/ Seller Name [Classification]	Bought / (Sold) ['000]	No. of Shares After Trade ['000]	
			Total	Total	% Held
13 APR 2026 - 13 APR 2026	GREENYB	MR THAM FOO CHOON [DIR/CEO]	-3,960	76,248	13.758
13 APR 2026 - 13 APR 2026	GREENYB	MR THAM FOO CHOON [SSH]	-3,960	76,248	13.758
08 APR 2026 - 08 APR 2026	HARNLEN	LNH ENTERPRISE SDN. BHD. [SSH]	2,136	120,015	19.714
08 APR 2026 - 08 APR 2026	HARNLEN	MR LOW KOK YAOW [DIR/CEO]	2,136	274,857	45.147
08 APR 2026 - 08 APR 2026	HARNLEN	MR LOW KOK YAOW [SSH]	2,136	274,857	45.147
08 APR 2026 - 08 APR 2026	HARNLEN	MR LOW KOK YONG [SSH]	2,136	275,852	45.31
08 APR 2026 - 08 APR 2026	HARNLEN	MR LOW KUECK SHIN [DIR/CEO]	2,136	263,170	43.227
08 APR 2026 - 08 APR 2026	HARNLEN	MR LOW KUECK SHIN [SSH]	2,136	263,040	43.206
08 APR 2026 - 08 APR 2026	HARNLEN	MR LOW KUEK KONG [DIR/CEO]	2,136	262,790	43.165
08 APR 2026 - 08 APR 2026	HARNLEN	MR LOW KUEK KONG [SSH]	2,136	262,790	43.165
08 APR 2026 - 08 APR 2026	HARNLEN	MR LOW KWEK LEE [DIR/CEO]	2,136	263,000	43.199
08 APR 2026 - 08 APR 2026	HARNLEN	MR LOW KWEK LEE [SSH]	2,136	263,000	43.199
08 APR 2026 - 08 APR 2026	HARNLEN	MR LOW QUEK KIONG [DIR/CEO]	2,136	303,327	49.823
08 APR 2026 - 08 APR 2026	HARNLEN	MR LOW QUEK KIONG [SSH]	2,136	295,647	48.562
08 APR 2026 - 08 APR 2026	HARNLEN	PUAN SRI DATIN CHAN PUI LEORN [DIR/CEO]	2,136	275,884	45.315
08 APR 2026 - 08 APR 2026	HARNLEN	PUAN SRI DATIN CHAN PUI LEORN [SSH]	2,136	275,884	45.315
08 APR 2026 - 08 APR 2026	HARNLEN	TAN SRI LOW NAM HUI [SSH]	2,136	262,000	43.034
10 APR 2026 - 10 APR 2026	HARTA	KUMPULAN WANG PERSARAAN (DIPERBADANKAN) [SSH]	900	212,718	6.232
15 APR 2026 - 16 APR 2026	HEGROUP	MR HAW CHEE SENG [DIR/CEO]	207	105,203	23.91
15 APR 2026 - 16 APR 2026	HEGROUP	MR HAW CHEE SENG [SSH]	207	105,203	23.91
16 APR 2026 - 16 APR 2026	HEXTAR	DATO' ONG CHOO MENG [SSH]	-4,000	2,096,219	54.43
16 APR 2026 - 16 APR 2026	HEXTAR	DATO' ONG SOON HO [DIR/CEO]	-4,000	2,107,719	54.729
16 APR 2026 - 16 APR 2026	HEXTAR	DATO' ONG SOON HO [SSH]	-4,000	2,107,719	54.729
16 APR 2026 - 16 APR 2026	HEXTAR	HEXTAR HOLDINGS SDN. BHD. [SSH]	-4,000	2,001,165	51.962
10 APR 2026 - 10 APR 2026	HEXTAR	DATO' ONG CHOO MENG [SSH]	-4,500	2,100,219	54.534
10 APR 2026 - 10 APR 2026	HEXTAR	DATO' ONG SOON HO [DIR/CEO]	-4,500	2,111,719	54.832
10 APR 2026 - 10 APR 2026	HEXTAR	DATO' ONG SOON HO [SSH]	-4,500	2,111,719	54.832
10 APR 2026 - 10 APR 2026	HEXTAR	HEXTAR HOLDINGS SDN. BHD. [SSH]	-4,500	2,005,165	52.066
13 APR 2026 - 13 APR 2026	HIBISCS	DATUK MICHAEL TANG VEE MUN [SSH]	-900	86,782	11.769
13 APR 2026 - 13 APR 2026	HIBISCS	POLO INVESTMENTS LIMITED [SSH]	-900	51,961	7.046
09 APR 2026 - 09 APR 2026	HIBISCS	DATUK MICHAEL TANG VEE MUN [SSH]	-1,500	87,682	11.891
09 APR 2026 - 09 APR 2026	HIBISCS	POLO INVESTMENTS LIMITED [SSH]	-1,500	52,861	7.169
09 APR 2026 - 10 APR 2026	HKB	MISS ONG AI-LYN [DIR/CEO]	4	304	0.049
14 APR 2026 - 14 APR 2026	HLBANK	EMPLOYEES PROVIDENT FUND BOARD [SSH]	-657	209,114	10.022
13 APR 2026 - 13 APR 2026	HLBANK	EMPLOYEES PROVIDENT FUND BOARD [SSH]	-401	209,771	10.053
10 APR 2026 - 10 APR 2026	HLBANK	EMPLOYEES PROVIDENT FUND BOARD [SSH]	-692	210,172	10.072
09 APR 2026 - 09 APR 2026	HLBANK	EMPLOYEES PROVIDENT FUND BOARD [SSH]	-929	210,713	10.098
08 APR 2026 - 08 APR 2026	HLBANK	EMPLOYEES PROVIDENT FUND BOARD [SSH]	-1,836	211,642	10.143
14 APR 2026 - 14 APR 2026	HLFG	EMPLOYEES PROVIDENT FUND BOARD [SSH]	-30	75,887	6.613
13 APR 2026 - 13 APR 2026	HLFG	EMPLOYEES PROVIDENT FUND BOARD [SSH]	-14	75,917	6.616
10 APR 2026 - 10 APR 2026	HLFG	EMPLOYEES PROVIDENT FUND BOARD [SSH]	-26	75,901	6.614
09 APR 2026 - 09 APR 2026	HLFG	EMPLOYEES PROVIDENT FUND BOARD [SSH]	-64	75,926	6.617
08 APR 2026 - 08 APR 2026	HLFG	EMPLOYEES PROVIDENT FUND BOARD [SSH]	-33	75,991	6.622
08 APR 2026 - 09 APR 2026	HOHUP	MR LEE FOOK YUEN [SSH]	33	51,711	9.978
13 APR 2026 - 13 APR 2026	HSSEB	TAN SRI IR. KUNASINGAM A/L V.SITTAMPALAM [DIR/CEO]	20	108,987	21.434
13 APR 2026 - 13 APR 2026	HSSEB	TAN SRI IR. KUNASINGAM A/L V.SITTAMPALAM [SSH]	20	108,987	21.434
15 APR 2026 - 16 APR 2026	HWATAI	DATUK SOO CHUNG YEE [DIR/CEO]	21	33,041	44.143
15 APR 2026 - 16 APR 2026	HWATAI	DATUK SOO CHUNG YEE [SSH]	21	33,041	44.153
15 APR 2026 - 15 APR 2026	IAB	PROF DR LOO CHU KIONG [DIR/CEO]	-295	100	0.018
15 APR 2026 - 15 APR 2026	ICTZONE	DATUK SERI NG THIEN PHING [DIR/CEO]	1,000	422,181	53.075
15 APR 2026 - 15 APR 2026	ICTZONE	DATUK SERI NG THIEN PHING [SSH]	1,000	422,181	53.075
14 APR 2026 - 14 APR 2026	IGBREIT	EMPLOYEES PROVIDENT FUND BOARD [SSH]	968	409,754	9.473
13 APR 2026 - 13 APR 2026	IGBREIT	EMPLOYEES PROVIDENT FUND BOARD [SSH]	770	408,987	9.455
10 APR 2026 - 10 APR 2026	IGBREIT	EMPLOYEES PROVIDENT FUND BOARD [SSH]	740	408,216	9.437
09 APR 2026 - 09 APR 2026	IGBREIT	EMPLOYEES PROVIDENT FUND BOARD [SSH]	545	407,476	9.42
08 APR 2026 - 08 APR 2026	IGBREIT	EMPLOYEES PROVIDENT FUND BOARD [SSH]	433	406,931	9.408
14 APR 2026 - 14 APR 2026	IHH	EMPLOYEES PROVIDENT FUND BOARD [SSH]	2,898	1,169,953	13.241
13 APR 2026 - 13 APR 2026	IHH	EMPLOYEES PROVIDENT FUND BOARD [SSH]	2,773	1,167,055	13.208
10 APR 2026 - 10 APR 2026	IHH	EMPLOYEES PROVIDENT FUND BOARD [SSH]	3,689	1,164,282	13.176
09 APR 2026 - 09 APR 2026	IHH	EMPLOYEES PROVIDENT FUND BOARD [SSH]	2,111	1,160,593	13.135
08 APR 2026 - 08 APR 2026	IHH	EMPLOYEES PROVIDENT FUND BOARD [SSH]	2,152	1,158,482	13.111
16 APR 2026 - 16 APR 2026	IJM	KUMPULAN WANG PERSARAAN (DIPERBADANKAN) [SSH			

Notice Period is 12th April 2026 to 18th April 2026

Effective Change Date	Stock Name	Buyer/ Seller Name [Classification]	Bought / (Sold) ['000]	No. of Shares After Trade ['000]	
			Total	Total	% Held
14 APR 2026 - 14 APR 2026	IOIPG	DATO' LEE YEOW SENG [DIR/CEO]	2,032	3,762,405	68.331
14 APR 2026 - 14 APR 2026	IOIPG	DATO' LEE YEOW SENG [SSH]	2,032	3,762,230	68.328
10 APR 2026 - 10 APR 2026	IOIPG	DATO' LEE YEOW CHOR [DIR/CEO]	-20	3,619,060	65.728
10 APR 2026 - 10 APR 2026	IOIPG	EMPLOYEES PROVIDENT FUND BOARD [SSH]	1,366	374,163	6.795
10 APR 2026 - 10 APR 2026	IOIPG	DATO' LEE YEOW SENG [DIR/CEO]	1,595	3,760,373	68.294
10 APR 2026 - 10 APR 2026	IOIPG	DATO' LEE YEOW SENG [SSH]	1,595	3,760,198	68.291
09 APR 2026 - 09 APR 2026	IOIPG	EMPLOYEES PROVIDENT FUND BOARD [SSH]	236	372,797	6.771
08 APR 2026 - 08 APR 2026	IOIPG	EMPLOYEES PROVIDENT FUND BOARD [SSH]	3,983	372,561	6.766
16 APR 2026 - 16 APR 2026	JPG	KUMPULAN WANG PERSARAAN (DIPERBADANKAN) [SSH]	-1,000	144,399	5.776
15 APR 2026 - 15 APR 2026	JPG	KUMPULAN WANG PERSARAAN (DIPERBADANKAN) [SSH]	848	145,399	5.817
13 APR 2026 - 13 APR 2026	JPG	EMPLOYEES PROVIDENT FUND BOARD [SSH]	-2,020	232,858	9.314
10 APR 2026 - 10 APR 2026	JPG	EMPLOYEES PROVIDENT FUND BOARD [SSH]	872	234,878	9.395
13 APR 2026 - 13 APR 2026	JPG	KUMPULAN WANG PERSARAAN (DIPERBADANKAN) [SSH]	2,372	144,551	5.782
09 APR 2026 - 09 APR 2026	JPG	EMPLOYEES PROVIDENT FUND BOARD [SSH]	-1,147	234,007	9.36
10 APR 2026 - 10 APR 2026	JPG	KUMPULAN WANG PERSARAAN (DIPERBADANKAN) [SSH]	-917	142,179	5.687
08 APR 2026 - 08 APR 2026	JPG	EMPLOYEES PROVIDENT FUND BOARD [SSH]	-3,893	235,153	9.406
09 APR 2026 - 09 APR 2026	KENERGY	LIM THOU LAI [SSH]	120	364,177	66.21
09 APR 2026 - 09 APR 2026	KENERGY	MR LIM THOU LAI [DIR/CEO]	120	364,177	66.21
17 APR 2026 - 17 APR 2026	KGB	MR SOH TONG HWA [DIR/CEO]	500	201,868	23.758
17 APR 2026 - 17 APR 2026	KGB	MR SOH TONG HWA [SSH]	500	201,868	23.758
14 APR 2026 - 14 APR 2026	KGB	EMPLOYEES PROVIDENT FUND BOARD [SSH]	120	43,982	5.176
16 APR 2026 - 16 APR 2026	KGB	MR SOH TONG HWA [DIR/CEO]	0.888	201,368	23.699
16 APR 2026 - 16 APR 2026	KGB	MR SOH TONG HWA [DIR/CEO]	-0.888	8	0.035
16 APR 2026 - 16 APR 2026	KGB	MR SOH TONG HWA [SSH]	0.888	201,368	23.699
13 APR 2026 - 13 APR 2026	KGB	EMPLOYEES PROVIDENT FUND BOARD [SSH]	-5	43,862	5.162
10 APR 2026 - 10 APR 2026	KGB	EMPLOYEES PROVIDENT FUND BOARD [SSH]	90	43,867	5.163
09 APR 2026 - 09 APR 2026	KGB	EMPLOYEES PROVIDENT FUND BOARD [SSH]	195	43,777	5.152
08 APR 2026 - 08 APR 2026	KGB	EMPLOYEES PROVIDENT FUND BOARD [SSH]	-14	43,582	5.129
14 APR 2026 - 14 APR 2026	KGW	DATO' ROGER WONG KEN HONG [DIR/CEO]	11,938	298,066	61.738
14 APR 2026 - 14 APR 2026	KGW	DATO' ROGER WONG KEN HONG [SSH]	11,938	298,066	61.738
14 APR 2026 - 14 APR 2026	KGW	MR CHOW ENN JIE [DIR/CEO]	-7,242	11,850	2.454
13 APR 2026 - 13 APR 2026	KGW	DATO' ROGER WONG KEN HONG [DIR/CEO]	600	286,128	59.265
13 APR 2026 - 13 APR 2026	KGW	DATO' ROGER WONG KEN HONG [SSH]	600	286,128	59.265
14 APR 2026 - 16 APR 2026	KKB	DATIN SRI LIEW MOI FAH [SSH]	65	112,794	39.066
14 APR 2026 - 16 APR 2026	KKB	DATO SRI KHO KAK BENG [DIR/CEO]	65	118,321	40.98
14 APR 2026 - 16 APR 2026	KKB	DATO SRI KHO KAK BENG [SSH]	65	117,833	40.811
14 APR 2026 - 16 APR 2026	KKB	KHO KAK BENG HOLDING COMPANY SDN. BHD. [SSH]	65	112,498	38.963
14 APR 2026 - 16 APR 2026	KKB	MADAM KHO POH JOO [SSH]	65	112,690	39.03
14 APR 2026 - 16 APR 2026	KKB	MADAM KHO POH LIN [DIR/CEO]	65	113,727	39.389
14 APR 2026 - 16 APR 2026	KKB	MADAM KHO POH LIN [SSH]	65	113,127	39.181
14 APR 2026 - 16 APR 2026	KKB	MR KHO POK TONG [DIR/CEO]	65	113,394	39.273
14 APR 2026 - 16 APR 2026	KKB	MR KHO POK TONG [SSH]	65	113,394	39.273
10 APR 2026 - 13 APR 2026	KKB	DATIN SRI LIEW MOI FAH [SSH]	40	112,729	39.044
10 APR 2026 - 13 APR 2026	KKB	KHO KAK BENG HOLDING COMPANY SDN. BHD. [SSH]	40	112,433	38.941
10 APR 2026 - 13 APR 2026	KKB	MADAM KHO POH JOO [SSH]	40	112,625	39.008
10 APR 2026 - 13 APR 2026	KKB	MADAM KHO POH LIN [DIR/CEO]	40	113,662	39.367
10 APR 2026 - 13 APR 2026	KKB	MADAM KHO POH LIN [SSH]	40	113,062	39.159
10 APR 2026 - 13 APR 2026	KKB	MR KHO POK TONG [DIR/CEO]	40	113,329	39.251
10 APR 2026 - 13 APR 2026	KKB	MR KHO POK TONG [SSH]	40	113,329	39.251
09 APR 2026 - 13 APR 2026	KKB	DATO SRI KHO KAK BENG [DIR/CEO]	60	118,256	40.958
09 APR 2026 - 13 APR 2026	KKB	DATO SRI KHO KAK BENG [SSH]	60	117,768	40.789
14 APR 2026 - 14 APR 2026	KLCC	EMPLOYEES PROVIDENT FUND BOARD [SSH]	-252	195,678	10.839
14 APR 2026 - 14 APR 2026	KLCC	EMPLOYEES PROVIDENT FUND BOARD [SSH]	-252	195,678	10.839
13 APR 2026 - 13 APR 2026	KLCC	EMPLOYEES PROVIDENT FUND BOARD [SSH]	-68	195,931	10.853
13 APR 2026 - 13 APR 2026	KLCC	EMPLOYEES PROVIDENT FUND BOARD [SSH]	-68	195,931	10.853
10 APR 2026 - 10 APR 2026	KLCC	EMPLOYEES PROVIDENT FUND BOARD [SSH]	332	195,998	10.857
10 APR 2026 - 10 APR 2026	KLCC	EMPLOYEES PROVIDENT FUND BOARD [SSH]	332	195,998	10.857
14 APR 2026 - 14 APR 2026	KLK	EMPLOYEES PROVIDENT FUND BOARD [SSH]	-112	215,580	19.358
13 APR 2026 - 13 APR 2026	KLK	EMPLOYEES PROVIDENT FUND BOARD [SSH]	-159	215,692	19.368
10 APR 2026 - 10 APR 2026	KLK	EMPLOYEES PROVIDENT FUND BOARD [SSH]	-807	215,852	19.382
09 APR 2026 - 09 APR 2026	KLK	EMPLOYEES PROVIDENT FUND BOARD [SSH]	-963	216,659	19.455
08 APR 2026 - 08 APR 2026	KLK	EMPLOYEES PROVIDENT FUND BOARD [SSH]	-166	217,622	19.541
15 APR 2026 - 15 APR 2026	KOBAY	DATO' SERI KOAY HEAN ENG [DIR/CEO]	65	119,796	37.415
15 APR 2026 - 15 APR 2026	KOBAY	MR KOAY ZEE EE [DIR/CEO]	65	119,796	37.414
10 APR 2026 - 10 APR 2026	KOSSAN	MR LIM KUANG WANG [SSH]	-200	960,138	38.069
23 OCT 2025 - 23 OCT 2025	KSENG	HAWKS FORD TRUST SERVICES PTE. LTD. [SSH]	24,662	42,662	11.874
23 OCT 2025 - 23 OCT 2025	KSENG	KC DIANA HOLDINGS PTE. LTD. [SSH]	24,662	42,662	11.874
23 OCT 2025 - 13 APR 2026	KSENG	MRS DIANA TAN NGOK MUI @ TAN GEOK NGOH [SSH]	24,678	42,678	11.878
23 OCT 2025 - 13 APR 2026	KSENG	MR HO ENG CHONG @ HO KIAN CHEONG [DIR/CEO]	24,678	42,678	11.878
23 OCT 2025 - 13 APR 2026	KSENG	MR HO ENG CHONG @ HO KIAN CHEONG [SSH]	24,678	42,678	11.878
15 APR 2026 - 15 APR 2026	KUCINGKO	MR OOI KOK HONG [DIR/CEO]	100	176,089	35.22
15 APR 2026 - 15 APR 2026	KUCINGKO	MR OOI KOK HONG [SSH]	100	176,089	35.22
07 APR 2026 - 10 APR 2026	KYM	MR LIM TZE THEAN [DIR/CEO]	200	25,550	16.743
07 APR 2026 - 10 APR 2026	KYM	MR LIM TZE THEAN [SSH]	200	5,050	16.743
16 APR 2026 - 16 APR 2026	LBS	KUMPULAN WANG PERSARAAN (DIPERBADANKAN) [SSH]	-100	11,4147	7.453
16 APR 2026 - 16 APR 2026	LBS	TAN SRI DATO' SRI IR. (DR.) LIM HOCK SAN JP [DIR/CEO]	100	63,0868	41.192
16 APR 2026 - 16 APR 2026	LBS	TAN SRI DATO' SRI IR. (DR.) LIM HOCK SAN JP [SSH]	100	62,7599	40.978
14 APR 2026 - 14 APR 2026	LBS	TAN SRI DATO' SRI IR. (DR.) LIM HOCK SAN JP [DIR/CEO]	100	63,0768	41.185
14 APR 2026 - 14 APR 2026	LBS	TAN SRI DATO' SRI IR. (DR.) LIM HOCK SAN JP [SSH]	100	62,7499	40.971
13 APR 2026 - 13 APR 2026	LBS	KUMPULAN WANG PERSARAAN (DIPERBADANKAN) [SSH]	-200	11,4247	7.46
16 APR 2026 - 16 APR 2026	LIHEN	MR CHUA YONG HAUP [DIR/CEO]	235	3,155	0.584
16 APR 2026 - 16 APR 2026	LOTUSCIR	DATUK WONG SAK KUAN [DIR/CEO]	-6,000	166,457	55.321

Notice Period is 12th April 2026 to 18th April 2026

Effective Change Date	Stock Name	Buyer/ Seller Name [Classification]	Bought / (Sold) ['000]	No. of Shares After Trade ['000]	
			Total	Total	% Held
13 APR 2026 - 13 APR 2026	M&A	PUAN SITI NUR AISHAH BINTI ISHAK [SSH]	-550	1,481,388	7.415
10 APR 2026 - 10 APR 2026	M&A	PUAN SITI NUR AISHAH BINTI ISHAK [SSH]	-400	1,486,888	7.443
13 APR 2026 - 13 APR 2026	M&G	TAN SRI MOHAMMED AZLAN BIN HASHIM [DIR/CEO]	10,000	1,855,777	22.886
13 APR 2026 - 13 APR 2026	M&G	TAN SRI MOHAMMED AZLAN BIN HASHIM [SSH]	10,000	1,855,777	22.886
16 APR 2026 - 16 APR 2026	MALAKOF	KUMPULAN WANG PERSARAAN (DIPERBADANKAN) ("KWAP") [SSH]	-100	337,602	6.908
15 APR 2026 - 15 APR 2026	MALAKOF	KUMPULAN WANG PERSARAAN (DIPERBADANKAN) ("KWAP") [SSH]	-100	337,702	6.91
13 APR 2026 - 13 APR 2026	MALAKOF	EMPLOYEES PROVIDENT FUND BOARD [SSH]	364	912,398	18.67
14 APR 2026 - 14 APR 2026	MALAKOF	KUMPULAN WANG PERSARAAN (DIPERBADANKAN) ("KWAP") [SSH]	-100	337,802	6.912
13 APR 2026 - 13 APR 2026	MALAKOF	KUMPULAN WANG PERSARAAN (DIPERBADANKAN) ("KWAP") [SSH]	-100	337,902	6.914
10 APR 2026 - 10 APR 2026	MALAKOF	KUMPULAN WANG PERSARAAN (DIPERBADANKAN) ("KWAP") [SSH]	-100	338,002	6.916
08 APR 2026 - 08 APR 2026	MALAKOF	EMPLOYEES PROVIDENT FUND BOARD [SSH]	769	910,773	18.636
16 APR 2026 - 16 APR 2026	MATRIX	LEMBAGA TABUNG HAJI [SSH]	500	124,254	6.62
15 APR 2026 - 15 APR 2026	MATRIX	LEMBAGA TABUNG HAJI [SSH]	500	123,754	6.593
14 APR 2026 - 14 APR 2026	MATRIX	LEMBAGA TABUNG HAJI [SSH]	500	123,254	6.566
13 APR 2026 - 13 APR 2026	MATRIX	LEMBAGA TABUNG HAJI [SSH]	500	122,754	6.54
15 APR 2026 - 15 APR 2026	MAYBANK	AMANAHRAYA TRUSTEES BERHAD - AMANAH SAHAM BUMIPUTERA [SSH]	-2,200	33,941,000	28.061
14 APR 2026 - 14 APR 2026	MAYBANK	EMPLOYEES PROVIDENT FUND BOARD [SSH]	-3,214	15,196,288	12.564
14 APR 2026 - 14 APR 2026	MAYBANK	AMANAHRAYA TRUSTEES BERHAD - AMANAH SAHAM BUMIPUTERA [SSH]	-4,499	33,963,000	28.079
13 APR 2026 - 13 APR 2026	MAYBANK	EMPLOYEES PROVIDENT FUND BOARD [SSH]	-187	15,228,424	12.59
13 APR 2026 - 13 APR 2026	MAYBANK	AMANAHRAYA TRUSTEES BERHAD - AMANAH SAHAM BUMIPUTERA [SSH]	-2,961	34,007,999	28.117
10 APR 2026 - 10 APR 2026	MAYBANK	EMPLOYEES PROVIDENT FUND BOARD [SSH]	1,647	15,230,299	12.592
10 APR 2026 - 10 APR 2026	MAYBANK	AMANAHRAYA TRUSTEES BERHAD - AMANAH SAHAM BUMIPUTERA [SSH]	-3,028	34,033,760	28.141
09 APR 2026 - 09 APR 2026	MAYBANK	EMPLOYEES PROVIDENT FUND BOARD [SSH]	-1,852	15,213,824	12.578
10 APR 2026 - 10 APR 2026	MAYBANK	KUMPULAN WANG PERSARAAN (DIPERBADANKAN) ("KWAP") [SSH]	250	633,782	5.24
09 APR 2026 - 09 APR 2026	MAYBANK	AMANAHRAYA TRUSTEES BERHAD - AMANAH SAHAM BUMIPUTERA [SSH]	-1,912	34,067,888	28.166
08 APR 2026 - 08 APR 2026	MAYBANK	EMPLOYEES PROVIDENT FUND BOARD [SSH]	1,791	15,233,234	12.594
17 APR 2026 - 17 APR 2026	MCEMENT	YEOH TIONG LAY & SONS HOLDINGS SDN BHD [SSH]	3,000	8,441,119	60.512
16 APR 2026 - 16 APR 2026	MCEMENT	PUAN SRI DATIN TAN KAI YONG @ TAN KAY NEONG [SSH]	3,000	8,441,119	60.512
16 APR 2026 - 16 APR 2026	MCEMENT	TAN SRI (SIR) YEOH SOCK PING [DIR/CEO]	-3,000	500	0.036
16 APR 2026 - 16 APR 2026	MCEMENT	YEOH TIONG LAY & SONS FAMILY HOLDINGS LIMITED [SSH]	3,000	8,441,119	60.512
16 APR 2026 - 16 APR 2026	MCEMENT	YEOH TIONG LAY & SONS TRUST COMPANY LIMITED [SSH]	3,000	8,441,119	60.512
14 APR 2026 - 14 APR 2026	MCEMENT	PRUDENTIAL PLC [SSH]	-155	112,448	8.061
10 APR 2026 - 10 APR 2026	MCEMENT	EASTSPRING INVESTMENTS BERHAD [SSH]	-70	93,057	6.671
10 APR 2026 - 10 APR 2026	MCEMENT	PRUDENTIAL PLC [SSH]	-163	112,603	8.072
16 APR 2026 - 16 APR 2026	METRO	MR LIM WAI KHONG [DIR/CEO]	98	7,916	0.809
10 APR 2026 - 10 APR 2026	METRO	ENCIK SHEIKH MOHD NASARUDIN [SSH]	-1,000	51,281	5.238
14 APR 2026 - 15 APR 2026	MFCB	CAM PROPERTY (MALAYSIA) SDN BHD [SSH]	28	212,554	22.559
14 APR 2026 - 15 APR 2026	MFCB	CAMASIA LIMITED [SSH]	28	214,111	22.724
14 APR 2026 - 15 APR 2026	MFCB	GOH NAN KIOH [DIR/CEO]	28	341,243	36.218
14 APR 2026 - 15 APR 2026	MFCB	KEEN CAPITAL INVESTMENTS LIMITED [SSH]	28	290,378	30.819
14 APR 2026 - 15 APR 2026	MFCB	LAJU RIANG SDN BHD [SSH]	28	212,554	22.559
14 APR 2026 - 15 APR 2026	MFCB	MR GOH NAN KIOH [SSH]	28	341,243	36.218
14 APR 2026 - 15 APR 2026	MFCB	RUBBER THREAD INDUSTRIES (M) SDN BERHAD [SSH]	28	212,554	22.559
13 APR 2026 - 13 APR 2026	MFCB	EMPLOYEES PROVIDENT FUND BOARD [SSH]	248	107,263	11.384
10 APR 2026 - 10 APR 2026	MFCB	EMPLOYEES PROVIDENT FUND BOARD [SSH]	221	107,015	11.358
09 APR 2026 - 09 APR 2026	MFCB	EMPLOYEES PROVIDENT FUND BOARD [SSH]	100	106,794	11.335
10 APR 2026 - 10 APR 2026	MFCB	DATO' SETIA PROF DR TAN HUI MENG [DIR/CEO]	13	3,473	0.369
14 APR 2026 - 14 APR 2026	MISC	EMPLOYEES PROVIDENT FUND BOARD [SSH]	283	673,491	15.088
13 APR 2026 - 13 APR 2026	MISC	EMPLOYEES PROVIDENT FUND BOARD [SSH]	1,030	673,208	15.082
10 APR 2026 - 10 APR 2026	MISC	EMPLOYEES PROVIDENT FUND BOARD [SSH]	235	672,178	15.059
09 APR 2026 - 09 APR 2026	MISC	EMPLOYEES PROVIDENT FUND BOARD [SSH]	1,062	671,944	15.053
08 APR 2026 - 08 APR 2026	MISC	EMPLOYEES PROVIDENT FUND BOARD [SSH]	-280	670,882	15.03
10 APR 2026 - 13 APR 2026	N2N	QUAH CHOON WAH [SSH]	410	52,075	9.329
14 APR 2026 - 14 APR 2026	NESTLE	EMPLOYEES PROVIDENT FUND BOARD [SSH]	27	31,443	13.408
13 APR 2026 - 13 APR 2026	NESTLE	EMPLOYEES PROVIDENT FUND BOARD [SSH]	101	31,428	13.402
10 APR 2026 - 10 APR 2026	NESTLE	EMPLOYEES PROVIDENT FUND BOARD [SSH]	50	31,327	13.359
08 APR 2026 - 08 APR 2026	NESTLE	EMPLOYEES PROVIDENT FUND BOARD [SSH]	0.9	31,277	13.337
07 APR 2026 - 07 APR 2026	NESTLE	EMPLOYEES PROVIDENT FUND BOARD [SSH]	5	31,276	13.337
02 APR 2026 - 14 APR 2026	NEXG	DATO' HAJI ISHAK BIN ISMAIL [DIR/CEO]	530	82,7495	23.717

Notice Period is 12th April 2026 to 18th April 2026

Effective Change Date	Stock Name	Buyer/ Seller Name [Classification]	Bought / (Sold) ['000]	No. of Shares After Trade ['000]	
			Total	Total	% Held
09 APR 2026 - 09 APR 2026	PAVREIT	EMPLOYEES PROVIDENT FUND BOARD [SSH]	1,269	499103	12.706
08 APR 2026 - 08 APR 2026	PAVREIT	EMPLOYEES PROVIDENT FUND BOARD [SSH]	1,687	497834	12.674
16 APR 2026 - 16 APR 2026	PBBANK	KUMPULAN WANG PERSARAAN (DIPERBADANKAN) [SSH]	3,967	1013330	5.22
14 APR 2026 - 14 APR 2026	PBBANK	EMPLOYEES PROVIDENT FUND BOARD [SSH]	-4,085	3424329	17.64
15 APR 2026 - 15 APR 2026	PBBANK	KUMPULAN WANG PERSARAAN (DIPERBADANKAN) [SSH]	2,000	1009364	5.2
13 APR 2026 - 13 APR 2026	PBBANK	EMPLOYEES PROVIDENT FUND BOARD [SSH]	-8,400	3428414	17.66
10 APR 2026 - 10 APR 2026	PBBANK	EMPLOYEES PROVIDENT FUND BOARD [SSH]	-2,040	3436814	17.71
09 APR 2026 - 09 APR 2026	PBBANK	EMPLOYEES PROVIDENT FUND BOARD [SSH]	-8,890	3438853	17.72
10 APR 2026 - 10 APR 2026	PBBANK	KUMPULAN WANG PERSARAAN (DIPERBADANKAN) [SSH]	500	1007364	5.19
08 APR 2026 - 08 APR 2026	PBBANK	EMPLOYEES PROVIDENT FUND BOARD [SSH]	-1,893	3447743	17.76
14 APR 2026 - 14 APR 2026	PCHEM	EMPLOYEES PROVIDENT FUND BOARD ("EPF BOARD") [SSH]	-795	1017669	12.721
13 APR 2026 - 13 APR 2026	PCHEM	EMPLOYEES PROVIDENT FUND BOARD ("EPF BOARD") [SSH]	1,374	1018465	12.731
10 APR 2026 - 10 APR 2026	PCHEM	EMPLOYEES PROVIDENT FUND BOARD ("EPF BOARD") [SSH]	-2,658	1017091	12.714
08 APR 2026 - 08 APR 2026	PCHEM	EMPLOYEES PROVIDENT FUND BOARD ("EPF BOARD") [SSH]	5,057	1019749	12.747
16 APR 2026 - 16 APR 2026	PENTA	KUMPULAN WANG PERSARAAN (DIPERBADANKAN) [SSH]	-121	59099	8.308
16 APR 2026 - 16 APR 2026	PENTA	MR CHUAH CHONG EWE [SSH]	-111	53469	7.517
14 APR 2026 - 14 APR 2026	PENTA	EMPLOYEES PROVIDENT FUND BOARD [SSH]	45	101510	14.271
15 APR 2026 - 15 APR 2026	PENTA	KUMPULAN WANG PERSARAAN (DIPERBADANKAN) [SSH]	135	59220	8.325
14 APR 2026 - 14 APR 2026	PENTA	KUMPULAN WANG PERSARAAN (DIPERBADANKAN) [SSH]	413	59085	8.306
10 APR 2026 - 10 APR 2026	PENTA	KUMPULAN WANG PERSARAAN (DIPERBADANKAN) [SSH]	500	58672	8.248
13 APR 2026 - 15 APR 2026	PESONA	KOMBINASI EMAS SDN BHD [SSH]	777	308608	44.405
13 APR 2026 - 15 APR 2026	PESONA	MR WIE HOCK KIONG [DIR/CEO]	777	308608	44.405
13 APR 2026 - 15 APR 2026	PESONA	MR WIE HOCK KIONG [SSH]	777	308608	44.405
09 APR 2026 - 10 APR 2026	PESONA	KOMBINASI EMAS SDN BHD [SSH]	360	307831	44.293
09 APR 2026 - 10 APR 2026	PESONA	MR WIE HOCK KIONG [DIR/CEO]	360	307831	44.293
09 APR 2026 - 10 APR 2026	PESONA	MR WIE HOCK KIONG [SSH]	360	307831	44.293
10 APR 2026 - 10 APR 2026	PESTEC	DATUK SERI (DR.) SUBRAMANIAM PILLAI A/L SAN-KARAN PILLAI [DIR/CEO]	2,000	1579997	61.968
10 APR 2026 - 10 APR 2026	PESTEC	DATUK SERI (DR.) SUBRAMANIAM PILLAI A/L SAN-KARAN PILLAI [SSH]	2,000	1579997	61.968
15 APR 2026 - 16 APR 2026	PLABS	MR BU YAW SENG [SSH]	-2,002	18303	6.65
14 APR 2026 - 14 APR 2026	PMETAL	EMPLOYEES PROVIDENT FUND BOARD [SSH]	3,225	728418	8.84
13 APR 2026 - 13 APR 2026	PMETAL	EMPLOYEES PROVIDENT FUND BOARD [SSH]	-1,740	725193	8.801
10 APR 2026 - 10 APR 2026	PMETAL	EMPLOYEES PROVIDENT FUND BOARD [SSH]	2,807	726933	8.822
09 APR 2026 - 09 APR 2026	PMETAL	EMPLOYEES PROVIDENT FUND BOARD [SSH]	2,486	724126	8.788
08 APR 2026 - 08 APR 2026	PMETAL	EMPLOYEES PROVIDENT FUND BOARD [SSH]	-966	721641	8.758
17 APR 2026 - 17 APR 2026	PTRANS	DATO' SRI CHEONG KONG FITT [DIR/CEO]	629	3997	5.714
14 APR 2026 - 16 APR 2026	QL	CHIA SEONG FATT [DIR/CEO]	210	438806	12.021
14 APR 2026 - 16 APR 2026	QL	CHIA SEONG FATT [SSH]	210	438806	12.021
14 APR 2026 - 16 APR 2026	QL	CHIA SEONG POW [SSH]	210	448272	12.28
14 APR 2026 - 16 APR 2026	QL	CHIA SONG KUN [DIR/CEO]	210	1509581	41.355
14 APR 2026 - 16 APR 2026	QL	CHIA SONG KUN [SSH]	210	1509581	41.355
14 APR 2026 - 16 APR 2026	QL	MR CHIA SEONG POW [DIR/CEO]	210	448272	12.28
09 APR 2026 - 13 APR 2026	QL	CHIA SEONG FATT [DIR/CEO]	381	438596	12.015
09 APR 2026 - 13 APR 2026	QL	CHIA SEONG FATT [SSH]	381	438596	12.015
09 APR 2026 - 13 APR 2026	QL	CHIA SEONG POW [SSH]	381	448062	12.274
09 APR 2026 - 13 APR 2026	QL	CHIA SONG KUN [DIR/CEO]	381	1509371	41.35
09 APR 2026 - 13 APR 2026	QL	CHIA SONG KUN [SSH]	381	1509371	41.35
09 APR 2026 - 13 APR 2026	QL	MR CHIA SEONG POW [DIR/CEO]	381	448062	12.274
02 APR 2026 - 02 APR 2026	RGB	DATO' SURINDER SINGH A/L INDER SINGH [DIR/CEO]	450	450	0.029
14 APR 2026 - 14 APR 2026	RHBBANK	EMPLOYEES PROVIDENT FUND BOARD [SSH]	-5,189	1604418	36.782
13 APR 2026 - 13 APR 2026	RHBBANK	EMPLOYEES PROVIDENT FUND BOARD [SSH]	-1,350	1609607	36.901
10 APR 2026 - 10 APR 2026	RHBBANK	EMPLOYEES PROVIDENT FUND BOARD [SSH]	-3,500	1610957	36.932
09 APR 2026 - 09 APR 2026	RHBBANK	EMPLOYEES PROVIDENT FUND BOARD [SSH]	-1,019	1614457	37.013
08 APR 2026 - 08 APR 2026	RHBBANK	EMPLOYEES PROVIDENT FUND BOARD [SSH]	-4,609	1615475	37.036
15 APR 2026 - 15 APR 2026	RL	DATO' WAN HASSAN BIN MOHD JAMIL [DIR/CEO]	875	37201	9.761
15 APR 2026 - 15 APR 2026	RL	DATO' WAN HASSAN BIN MOHD JAMIL [SSH]	875	37201	9.761
15 APR 2026 - 15 APR 2026	RL	ENCIK MAD HAIMI BIN ABU HASSAN [SSH]	875	37373	9.806
15 APR 2026 - 15 APR 2026	RL	MR THIEN CHIET CHAI [DIR/CEO]	1,750	66932	17.562
15 APR 2026 - 15 APR 2026	RL	MR THIEN CHIET CHAI [SSH]	1,750	66932	17.562
15 APR 2026 - 15 APR 2026	RL	RESERVOIR LINK HOLDINGS SDN. BHD. [SSH]	875	34747	9.117
14 APR 2026 - 16 APR 2026	SALIRAN	MR LIAW CHOON WEI [DIR/CEO]	40	274889	71.791
14 APR 2026 - 16 APR 2026	SALIRAN	MR LIAW CHOON WEI [SSH]	40	274889	71.791
10 APR 2026 - 13 APR 2026	SALIRAN	MR LIAW CHOON WEI [DIR/CEO]	231	274849	71.78
10 APR 2026 - 13 APR 2026	SALIRAN	MR LIAW CHOON WEI [SSH]	231	274849	71.78
13 APR 2026 - 13 APR 2026	SAM	EMPLOYEES PROVIDENT FUND BOARD [SSH]	14	39824	5.883
10 APR 2026 - 10 APR 2026	SAM	EMPLOYEES PROVIDENT FUND BOARD [SSH]	7	39811	5.881
09 APR 2026 - 09 APR 2026	SAM	EMPLOYEES PROVIDENT FUND BOARD [SSH]	20	39804	5.88
08 APR 2026 - 08 APR 2026	SAM	EMPLOYEES PROVIDENT FUND BOARD [SSH]	16	39784	5.877
10 APR 2026 - 10 APR 2026	SBH	MR TAN BOO NAM [DIR/CEO]	230	377765	42.541
10 APR 2026 - 10 APR 2026	SBH	MR TAN BOO NAM [SSH]	230	288687	32.51
14 APR 2026 - 14 APR 2026	SCGBHD	EMPLOYEES PROVIDENT FUND BOARD [SSH]	-1,650	106367	9.37
13 APR 2026 - 13 APR 2026	SCGBHD	EMPLOYEES PROVIDENT FUND BOARD [SSH]	378	108017	9.515
10 APR 2026 - 10 APR 2026	SCGBHD	EMPLOYEES PROVIDENT FUND BOARD [SSH]	700	107640	9.503
09 APR 2026 - 09 APR 2026	SCGBHD	EMPLOYEES PROVIDENT FUND BOARD [SSH]	139	106940	9.441
15 APR 2026 - 15 APR 2026	SCIENTX	MR LIM PENG CHEONG [DIR/CEO]	8,266	886319	56.951
15 APR 2026 - 15 APR 2026	SCIENTX	MR LIM PENG CHEONG [SSH]	8,266	880241	56.561
15 APR 2026 - 15 APR 2026	SCIENTX	MR LIM PENG JIN [DIR/CEO]	8,266	931960	59.884
15 APR 2026 - 15 APR 2026	SCIENTX	MR LIM PENG JIN [SSH]	8,266	931868	59.878
15 APR 2026 - 15 APR 2026	SCIENTX	SCIENTEX INFINITY SDN BHD [SSH]	8,266	747644	48.04

Notice Period is 12th April 2026 to 18th April 2026

Effective Change Date	Stock Name	Buyer/ Seller Name [Classification]	Bought / (Sold) ['000]	No. of Shares After Trade ['000]	
			Total	Total	% Held
13 APR 2026 - 13 APR 2026	SCOMNET	EMPLOYEES PROVIDENT FUND BOARD [SSH]	-20	70882	8.338
09 APR 2026 - 09 APR 2026	SCOMNET	EMPLOYEES PROVIDENT FUND BOARD [SSH]	-31	70902	8.34
14 APR 2026 - 14 APR 2026	SDG	AMANAHRAYA TRUSTEES BERHAD - AMANAH SAHAM BUMIPUTERA [SSH]	-7,107	2728126	39.448
13 APR 2026 - 13 APR 2026	SDG	EMPLOYEES PROVIDENT FUND BOARD [SSH]	-1,722	1034215	14.955
15 APR 2026 - 15 APR 2026	SDG	KUMPULAN WANG PERSARAAN (DIPERBADANKAN) [SSH]	-104	566925	8.198
13 APR 2026 - 13 APR 2026	SDG	AMANAHRAYA TRUSTEES BERHAD - AMANAH SAHAM BUMIPUTERA [SSH]	-3,792	2735233	39.551
13 APR 2026 - 13 APR 2026	SDG	KUMPULAN WANG PERSARAAN (DIPERBADANKAN) [SSH]	531	567030	8.199
10 APR 2026 - 10 APR 2026	SDG	AMANAHRAYA TRUSTEES BERHAD - AMANAH SAHAM BUMIPUTERA [SSH]	-6,824	2739025	39.606
10 APR 2026 - 10 APR 2026	SDG	EMPLOYEES PROVIDENT FUND BOARD [SSH]	6,625	1035937	14.979
09 APR 2026 - 09 APR 2026	SDG	EMPLOYEES PROVIDENT FUND BOARD [SSH]	-3,929	1029312	14.884
10 APR 2026 - 10 APR 2026	SDG	KUMPULAN WANG PERSARAAN (DIPERBADANKAN) [SSH]	150	566499	8.192
09 APR 2026 - 09 APR 2026	SDG	AMANAHRAYA TRUSTEES BERHAD - AMANAH SAHAM BUMIPUTERA [SSH]	-4,505	2745849	39.704
08 APR 2026 - 08 APR 2026	SDG	EMPLOYEES PROVIDENT FUND BOARD [SSH]	-8,380	1033241	14.94
09 APR 2026 - 09 APR 2026	SDG	KUMPULAN WANG PERSARAAN (DIPERBADANKAN) [SSH]	388	566349	8.189
07 APR 2026 - 07 APR 2026	SDG	EMPLOYEES PROVIDENT FUND BOARD [SSH]	-368	1041621	15.062
15 APR 2026 - 15 APR 2026	SIME	AMANAHRAYA TRUSTEES BERHAD - AMANAH SAHAM BUMIPUTERA [SSH]	-4,404	2253682	33.067
14 APR 2026 - 14 APR 2026	SIME	AMANAHRAYA TRUSTEES BERHAD - AMANAH SAHAM BUMIPUTERA [SSH]	-1,697	2258086	33.131
13 APR 2026 - 13 APR 2026	SIME	EMPLOYEES PROVIDENT FUND BOARD [SSH]	45	1144887	16.798
10 APR 2026 - 10 APR 2026	SIME	EMPLOYEES PROVIDENT FUND BOARD [SSH]	2,000	1144842	16.798
09 APR 2026 - 09 APR 2026	SIME	EMPLOYEES PROVIDENT FUND BOARD [SSH]	661	1142842	16.768
16 APR 2026 - 16 APR 2026	SIMEPROP	KUMPULAN WANG PERSARAAN (DIPERBADANKAN) [SSH]	-2,266	523769	7.702
14 APR 2026 - 14 APR 2026	SIMEPROP	EMPLOYEES PROVIDENT FUND BOARD [SSH]	2,724	1104232	16.237
15 APR 2026 - 15 APR 2026	SIMEPROP	KUMPULAN WANG PERSARAAN (DIPERBADANKAN) [SSH]	-167	526035	7.735
13 APR 2026 - 13 APR 2026	SIMEPROP	EMPLOYEES PROVIDENT FUND BOARD [SSH]	3,416	1101508	16.196
14 APR 2026 - 14 APR 2026	SIMEPROP	KUMPULAN WANG PERSARAAN (DIPERBADANKAN) [SSH]	-610	526202	7.738
10 APR 2026 - 10 APR 2026	SIMEPROP	EMPLOYEES PROVIDENT FUND BOARD [SSH]	200	1098092	16.147
09 APR 2026 - 09 APR 2026	SIMEPROP	EMPLOYEES PROVIDENT FUND BOARD [SSH]	1,103	1097892	16.144
08 APR 2026 - 08 APR 2026	SIMEPROP	EMPLOYEES PROVIDENT FUND BOARD [SSH]	4,305	1096789	16.127
14 APR 2026 - 14 APR 2026	SKPRES	EMPLOYEES PROVIDENT FUND BOARD [SSH]	-1,407	198659	12.715
13 APR 2026 - 13 APR 2026	SKPRES	EMPLOYEES PROVIDENT FUND BOARD [SSH]	-495	200066	12.805
10 APR 2026 - 10 APR 2026	SKPRES	EMPLOYEES PROVIDENT FUND BOARD [SSH]	-409	200561	12.837
09 APR 2026 - 09 APR 2026	SKPRES	EMPLOYEES PROVIDENT FUND BOARD [SSH]	-678	200971	12.863
08 APR 2026 - 08 APR 2026	SKPRES	EMPLOYEES PROVIDENT FUND BOARD [SSH]	-2,441	201649	12.907
15 APR 2026 - 15 APR 2026	SLVEST	MR LIM CHIN SIU [DIR/CEO]	-1,860	227668	23.901
15 APR 2026 - 15 APR 2026	SLVEST	MR LIM CHIN SIU [SSH]	-1,860	227668	23.901
15 APR 2026 - 15 APR 2026	SLVEST	MR TAN CHYI BOON [DIR/CEO]	-2,340	221143	23.216
15 APR 2026 - 15 APR 2026	SLVEST	MR TAN CHYI BOON [SSH]	-2,340	221143	23.216
13 APR 2026 - 15 APR 2026	SLVEST	MR LIEW CHEE ING [DIR/CEO]	-600	1000	0.105
10 APR 2026 - 10 APR 2026	SLVEST	URUSHARTA JAMAAH SDN. BHD. [SSH]	500	61110	6.415
09 APR 2026 - 09 APR 2026	SNS	DATO' FNG MEOW CHENG [DIR/CEO]	80	440	0.026
09 APR 2026 - 09 APR 2026	SNS	MISS ENG SU FERN [SSH]	4,838	441417	25.904
09 APR 2026 - 09 APR 2026	SNS	MR KO YUN HUNG [DIR/CEO]	9,677	520857	30.566
09 APR 2026 - 09 APR 2026	SNS	MR KO YUN HUNG [SSH]	9,677	520857	30.566
09 APR 2026 - 09 APR 2026	SNS	MR PAH WAI ONN [DIR/CEO]	9,677	521712	30.616
09 APR 2026 - 09 APR 2026	SNS	MR PAH WAI ONN [SSH]	9,677	521712	30.616
14 APR 2026 - 14 APR 2026	SPRITZER	DATIN SERI CHUA SHOK TIM @ CHUA SIOK HOON [SSH]	125	340780	53.185
14 APR 2026 - 14 APR 2026	SPRITZER	DATO SERI LIM A HENG @ LIM KOK CHEONG [SSH]	125	340780	53.185
14 APR 2026 - 14 APR 2026	SPRITZER	DATO' SERI LIM A HENG @ LIM KOK CHEONG [DIR/CEO]	125	340780	53.185
14 APR 2026 - 14 APR 2026	SPSETIA	EMPLOYEES PROVIDENT FUND BOARD [SSH]	3,500	603421	12.06
13 APR 2026 - 13 APR 2026	SPSETIA	EMPLOYEES PROVIDENT FUND BOARD [SSH]	2,800	599921	11.99
10 APR 2026 - 10 APR 2026	SPSETIA	EMPLOYEES PROVIDENT FUND BOARD [SSH]	2,800	595036	11.893
09 APR 2026 - 09 APR 2026	SPSETIA	EMPLOYEES PROVIDENT FUND BOARD [SSH]	2,700	592236	11.837
08 APR 2026 - 08 APR 2026	SPSETIA	EMPLOYEES PROVIDENT FUND BOARD [SSH]	2,700	589536	11.783
15 APR 2026 - 15 APR 2026	SRIDGE	DATO' KHOO YIK CHOU [DIR/CEO]	389	65994	16.375
15 APR 2026 - 15 APR 2026	SRIDGE	DATO' KHOO YIK CHOU [SSH]	389	65994	16.375
14 APR 2026 - 14 APR 2026	SRIDGE	MR VINCENT GAN KEAN CHEANG [DIR/CEO]	500	14872	3.69
08 APR 2026 - 08 APR 2026	SRIDGE	ENCIK SYAUQAT BIN DATO' MOHD SUHAIMI [DIR/CEO]	-280	33011	8.192
08 APR 2026 - 08 APR 2026	SRIDGE	ENCIK SYAUQAT BIN DATO' MOHD SUHAIMI [SSH]	-280	33011	8.192
07 APR 2026 - 10 APR 2026	SRIDGE	DATO' KHOO YIK CHOU [DIR/CEO]	187	65605	16.28
07 APR 2026 - 10 APR 2026	SRIDGE	DATO' KHOO YIK CHOU [SSH]	187	65605	16.28
13 APR 2026 - 14 APR 2026	STRAITS	MR YONG CHEAN PENG [SSH]	355	74849	7.527
08 APR 2026 - 10 APR 2026	STRAITS	MR YONG CHEAN PENG [SSH]	1,292	74494	7.491
14 APR 2026 - 14 APR 2026	SUNMED	EMPLOYEES PROVIDENT FUND BOARD [SSH]	-2,000	577968	5.026
13 APR 2026 - 13 APR 2026	SUNREIT	EMPLOYEES PROVIDENT FUND BOARD [SSH]	1,323	534097	15.595
10 APR 2026 - 10 APR 2026	SUNREIT	EMPLOY			

Notice Period is 12th April 2026 to 18th April 2026

Effective Change Date	Stock Name	Buyer/ Seller Name [Classification]	Bought / (Sold) ['000]	No. of Shares After Trade ['000]	
			Total	Total	% Held
09 APR 2026 - 10 APR 2026	SYSTECH	DR LOW MIN YEW [SSH]	-33,278	50293	7.115
10 APR 2026 - 10 APR 2026	TAFI	DATO' SRI ANDREW LIM ENG GUAN [DIR/CEO]	-2,100	181551	47.849
10 APR 2026 - 10 APR 2026	TAFI	DATO' SRI ANDREW LIM ENG GUAN [SSH]	-2,100	181551	47.849
10 APR 2026 - 10 APR 2026	TAFI	DATO' SRI WONG SZE CHIEN [DIR/CEO]	-2,100	181408	47.811
10 APR 2026 - 10 APR 2026	TAFI	DATO' SRI WONG SZE CHIEN [SSH]	-2,100	181408	47.811
14 APR 2026 - 14 APR 2026	TAGHILL	MBUILD VENTURE SDN. BHD. [SSH]	5,000	422337	27.14
14 APR 2026 - 14 APR 2026	TAGHILL	MR CHU YEE HONG [DIR/CEO]	5,000	439928	28.27
14 APR 2026 - 14 APR 2026	TAGHILL	MR CHU YEE HONG [SSH]	5,000	439928	28.27
14 APR 2026 - 14 APR 2026	TAGHILL	MR WONG YIH MING [DIR/CEO]	5,000	439928	28.27
14 APR 2026 - 14 APR 2026	TAGHILL	MR WONG YIH MING [SSH]	5,000	439928	28.27
14 APR 2026 - 14 APR 2026	TAGHILL	MR YAP KEK SIUNG [DIR/CEO]	5,000	439928	28.27
14 APR 2026 - 14 APR 2026	TAGHILL	MR YAP KEK SIUNG [SSH]	5,000	439928	28.27
17 APR 2026 - 17 APR 2026	TANCO	DATO' SRI ANDREW TAN JUN SUAN [DIR/CEO]	-8,557	3185752	52.871
17 APR 2026 - 17 APR 2026	TANCO	DATO' SRI ANDREW TAN JUN SUAN [SSH]	8,590	3194342	53.014
17 APR 2026 - 17 APR 2026	TANCO	DATO' SRI ANDREW TAN JUN SUAN [SSH]	-8,557	3185752	52.871
17 APR 2026 - 17 APR 2026	TANCO	DATO' SRI ANDREW TAN JUN SUAN [SSH]	8,590	3194342	53.014
16 APR 2026 - 16 APR 2026	TANCO	DATO' SRI ANDREW TAN JUN SUAN [DIR/CEO]	9,993	3194309	53.013
16 APR 2026 - 16 APR 2026	TANCO	DATO' SRI ANDREW TAN JUN SUAN [DIR/CEO]	-8,803	3184317	52.848
16 APR 2026 - 16 APR 2026	TANCO	DATO' SRI ANDREW TAN JUN SUAN [SSH]	9,993	3194309	53.013
16 APR 2026 - 16 APR 2026	TANCO	DATO' SRI ANDREW TAN JUN SUAN [SSH]	-8,803	3184317	52.848
15 APR 2026 - 15 APR 2026	TANCO	DATO' SRI ANDREW TAN JUN SUAN [DIR/CEO]	-10,779	3181547	52.802
15 APR 2026 - 15 APR 2026	TANCO	DATO' SRI ANDREW TAN JUN SUAN [DIR/CEO]	11,573	3193120	52.994
15 APR 2026 - 15 APR 2026	TANCO	DATO' SRI ANDREW TAN JUN SUAN [SSH]	11,573	3193120	52.994
15 APR 2026 - 15 APR 2026	TANCO	DATO' SRI ANDREW TAN JUN SUAN [SSH]	-10,779	3181547	52.802
14 APR 2026 - 14 APR 2026	TANCO	DATO' SRI ANDREW TAN JUN SUAN [DIR/CEO]	13,070	3192325	52.98
14 APR 2026 - 14 APR 2026	TANCO	DATO' SRI ANDREW TAN JUN SUAN [DIR/CEO]	-5,995	3179255	52.764
14 APR 2026 - 14 APR 2026	TANCO	DATO' SRI ANDREW TAN JUN SUAN [SSH]	-5,995	3179255	52.764
14 APR 2026 - 14 APR 2026	TANCO	DATO' SRI ANDREW TAN JUN SUAN [SSH]	13,070	3192325	52.98
13 APR 2026 - 13 APR 2026	TANCO	DATO' SRI ANDREW TAN JUN SUAN [DIR/CEO]	14,730	3185250	52.863
13 APR 2026 - 13 APR 2026	TANCO	DATO' SRI ANDREW TAN JUN SUAN [DIR/CEO]	-15,032	3170520	52.619
13 APR 2026 - 13 APR 2026	TANCO	DATO' SRI ANDREW TAN JUN SUAN [SSH]	-15,032	3170520	52.619
13 APR 2026 - 13 APR 2026	TANCO	DATO' SRI ANDREW TAN JUN SUAN [SSH]	14,730	3185250	52.863
14 APR 2026 - 14 APR 2026	TENAGA	EMPLOYEES PROVIDENT FUND BOARD [SSH]	3,818	1388127	23.81
14 APR 2026 - 14 APR 2026	TENAGA	KUMPULAN WANG PERSARAAN (DIPERBADANKAN) [SSH]	-1,696	438015	7.52
10 APR 2026 - 10 APR 2026	TENAGA	EMPLOYEES PROVIDENT FUND BOARD [SSH]	2,000	1384309	23.75
09 APR 2026 - 09 APR 2026	TENAGA	EMPLOYEES PROVIDENT FUND BOARD [SSH]	2,030	1382309	23.71
08 APR 2026 - 08 APR 2026	TENAGA	EMPLOYEES PROVIDENT FUND BOARD [SSH]	1,818	1380278	23.68
13 FEB 2026 - 13 FEB 2026	TGUAN	DATUK ANG POON SEONG [DIR/CEO]	87	6219	1.573
16 APR 2026 - 16 APR 2026	TIMECOM	KUMPULAN WANG PERSARAAN (DIPERBADANKAN) [SSH]	-120	189303	10.239
14 APR 2026 - 14 APR 2026	TIMECOM	EMPLOYEES PROVIDENT FUND BOARD [SSH]	57	317870	17.193
15 APR 2026 - 15 APR 2026	TIMECOM	KUMPULAN WANG PERSARAAN (DIPERBADANKAN) [SSH]	-957	189423	10.245
13 APR 2026 - 13 APR 2026	TIMECOM	EMPLOYEES PROVIDENT FUND BOARD [SSH]	-288	317813	17.19
10 APR 2026 - 10 APR 2026	TIMECOM	EMPLOYEES PROVIDENT FUND BOARD [SSH]	340	318100	17.206
09 APR 2026 - 09 APR 2026	TIMECOM	EMPLOYEES PROVIDENT FUND BOARD [SSH]	4,000	317760	17.187
10 APR 2026 - 10 APR 2026	TIMECOM	KUMPULAN WANG PERSARAAN (DIPERBADANKAN) [SSH]	-264	190380	10.297
08 APR 2026 - 08 APR 2026	TIMECOM	EMPLOYEES PROVIDENT FUND BOARD [SSH]	15,114	313760	16.971
16 APR 2026 - 16 APR 2026	TM	KUMPULAN WANG PERSARAAN (DIPERBADANKAN) [KWAP] [SSH]	86	407820	10.626
14 APR 2026 - 14 APR 2026	TM	EMPLOYEES PROVIDENT FUND BOARD (EPF BOARD) [SSH]	-133	885491	23.073
15 APR 2026 - 15 APR 2026	TM	KUMPULAN WANG PERSARAAN (DIPERBADANKAN) [KWAP] [SSH]	223	407735	10.624
13 APR 2026 - 13 APR 2026	TM	EMPLOYEES PROVIDENT FUND BOARD (EPF BOARD) [SSH]	-236	885624	23.077
10 APR 2026 - 10 APR 2026	TM	EMPLOYEES PROVIDENT FUND BOARD (EPF BOARD) [SSH]	120	885860	23.083
09 APR 2026 - 09 APR 2026	TM	EMPLOYEES PROVIDENT FUND BOARD (EPF BOARD) [SSH]	452	885740	23.08
10 APR 2026 - 10 APR 2026	TM	KUMPULAN WANG PERSARAAN (DIPERBADANKAN) [KWAP] [SSH]	-1,179	407511	10.618
08 APR 2026 - 08 APR 2026	TM	EMPLOYEES PROVIDENT FUND BOARD (EPF BOARD) [SSH]	57	885288	23.068
10 APR 2026 - 10 APR 2026	TRIMODE	DATO' MARKIMAN BIN KOBIRAN [DIR/CEO]	38	218	0.131
09 APR 2026 - 09 APR 2026	TRIVE	MITSUBISHI UFJ FINANCIAL GROUP INC [SSH]	-19,192	79763	5.574
09 APR 2026 - 09 APR 2026	TRIVE	MORGAN STANLEY [SSH]	-19,192	79763	5.574
10 APR 2026 - 10 APR 2026	TWL	DATIN LEONG KIM FONG [SSH]	-10,000	340000	5.163
15 APR 2026 - 15 APR 2026	ULICORP	MR LEE JOON WAI EDWIN [DIR/CEO]	25	35	0.016
09 APR 2026 - 09 APR 2026	ULICORP	MR LEE JOON WAI EDWIN [DIR/CEO]	10	10	0.005

Notice Period is 12th April 2026 to 18th April 2026

Effective Change Date	Stock Name	Buyer/ Seller Name [Classification]	Bought / (Sold) ['000]	No. of Shares After Trade ['000]	
			Total	Total	% Held
09 APR 2026 - 09 APR 2026	UTDPLT	EMPLOYEES PROVIDENT FUND BOARD [SSH]	16	43614	7.01
08 APR 2026 - 08 APR 2026	UTDPLT	EMPLOYEES PROVIDENT FUND BOARD [SSH]	-32	43598	7.007
14 APR 2026 - 14 APR 2026	UWC	EMPLOYEES PROVIDENT FUND BOARD [SSH]	-466	82951	7.52
13 APR 2026 - 13 APR 2026	UWC	EMPLOYEES PROVIDENT FUND BOARD [SSH]	-580	83417	7.562
10 APR 2026 - 10 APR 2026	UWC	EMPLOYEES PROVIDENT FUND BOARD [SSH]	-897	83997	7.614
09 APR 2026 - 09 APR 2026	UWC	EMPLOYEES PROVIDENT FUND BOARD [SSH]	-51	84894	7.696
08 APR 2026 - 08 APR 2026	UWC	EMPLOYEES PROVIDENT FUND BOARD [SSH]	190	84944	7.7
14 APR 2026 - 14 APR 2026	VANZO	FRAGRANCE CENTURY SDN. BHD. [SSH]	50	204722	43.861
14 APR 2026 - 14 APR 2026	VANZO	MR WONG LIANG TZER [DIR/CEO]	50	204722	43.861
14 APR 2026 - 14 APR 2026	VANZO	MR WONG LIANG TZER [SSH]	50	204722	43.861
13 APR 2026 - 13 APR 2026	VANZO	FRAGRANCE CENTURY SDN. BHD [SSH]	-8,200	204672	43.85
13 APR 2026 - 13 APR 2026	VANZO	MISS MICHELLE TAN YEE FEUNG [SSH]	8,200	63870	13.684
13 APR 2026 - 13 APR 2026	VANZO	MR NG YEE HENG [DIR/CEO]	8,200	63870	13.684
13 APR 2026 - 13 APR 2026	VANZO	MR NG YEE HENG [SSH]	8,200	63870	13.684
13 APR 2026 - 13 APR 2026	VANZO	MR WONG LIANG TZER [DIR/CEO]	-8,200	204672	43.85
13 APR 2026 - 13 APR 2026	VANZO	MR WONG LIANG TZER [SSH]	-8,200	204672	43.85
15 APR 2026 - 15 APR 2026	VELESTO	AMANAHRAYA TRUSTEES BERHAD-AMANAH SAHAM BUMIPUTERA [SSH]	-11,000	2776918	33.719
14 APR 2026 - 14 APR 2026	VELESTO	AMANAHRAYA TRUSTEES BERHAD- AMANAH SAHAM BUMIPUTERA [SSH]	-12,000	2787918	33.852
13 APR 2026 - 13 APR 2026	VELESTO	AMANAHRAYA TRUSTEES BERHAD- AMANAH SAHAM BUMIPUTERA [SSH]	-7,000	2799918	33.998
08 APR 2026 - 08 APR 2026	VELESTO	AMANAHRAYA TRUSTEES BERHAD-AMANAH SAHAM BUMIPUTERA [SSH]	-25,000	2819918	34.241
08 APR 2026 - 08 APR 2026	VELESTO	PERMODALAN NASIONAL BERHAD [SSH]	-1,000	570175	6.923
07 APR 2026 - 07 APR 2026	VELESTO	PERMODALAN NASIONAL BERHAD [SSH]	-2,000	571175	6.936
09 APR 2026 - 09 APR 2026	VELESTO	AMANAHRAYA TRUSTEES BERHAD- AMANAH SAHAM BUMIPUTERA [SSH]	-13,000	2806918	34.083
09 APR 2026 - 09 APR 2026	VELESTO	PERMODALAN NASIONAL BERHAD [SSH]	-7,000	563175	6.838
09 APR 2026 - 09 APR 2026	VERDANT	MR LIM TZER HAUR [DIR/CEO]	280	435909	53.315
09 APR 2026 - 09 APR 2026	VERDANT	MR LIM TZER HAUR [SSH]	280	435909	53.315
17 APR 2026 - 17 APR 2026	VITROX	MADAM CHUAH POAY NGEI [DIR/CEO]	-5	1555	0.082
16 APR 2026 - 16 APR 2026	VOLCANO	DATUK CH'NG HUAT SENG [DIR/CEO]	12	29948	16.489
16 APR 2026 - 16 APR 2026	VOLCANO	DATUK CH'NG HUAT SENG [SSH]	12	29948	16.489
14 APR 2026 - 14 APR 2026	VOLCANO	DATUK CH'NG HUAT SENG [DIR/CEO]	6	29937	16.482
14 APR 2026 - 14 APR 2026	VOLCANO	DATUK CH'NG HUAT SENG [SSH]	6	29937	16.482
10 APR 2026 - 13 APR 2026	VOLCANO	DATUK CH'NG HUAT SENG [DIR/CEO]	135	29931	16.479
10 APR 2026 - 13 APR 2026	VOLCANO	DATUK CH'NG HUAT SENG [SSH]	135	29931	16.479
08 APR 2026 - 08 APR 2026	VS	EMPLOYEES PROVIDENT FUND BOARD [SSH]	-18,200	211184	5.479
13 APR 2026 - 13 APR 2026	WASCO	EMPLOYEES PROVIDENT FUND BOARD [SSH]	963	58053	7.497
13 APR 2026 - 13 APR 2026	WASCO	ABERDEEN GROUP PLC [SSH]	963	44742	5.778
13 APR 2026 - 13 APR 2026	WASCO	ABRDN HOLDINGS LIMITED [SSH]	963	44742	5.778
13 APR 2026 - 13 APR 2026	WASCO	ABRDN MALAYSIA SDN BHD [SSH]	963	44742	5.778
10 APR 2026 - 10 APR 2026	WASCO	EMPLOYEES PROVIDENT FUND BOARD [SSH]	954	57090	7.373
10 APR 2026 - 10 APR 2026	WASCO	ABERDEEN GROUP PLC [SSH]	954	43779	5.653
10 APR 2026 - 10 APR 2026	WASCO	ABRDN HOLDINGS LIMITED [SSH]	954	43779	5.653
10 APR 2026 - 10 APR 2026	WASCO	ABRDN MALAYSIA SDN BHD [SSH]	954	43779	5.653
09 APR 2026 - 09 APR 2026	WASCO	EMPLOYEES PROVIDENT FUND BOARD [SSH]	191	56136	7.249
09 APR 2026 - 09 APR 2026	WASCO	ABERDEEN GROUP PLC [SSH]	191	42825	5.53
09 APR 2026 - 09 APR 2026	WASCO	ABRDN HOLDINGS LIMITED [SSH]	191	42825	5.53
09 APR 2026 - 09 APR 2026	WASCO	ABRDN MALAYSIA SDN BHD [SSH]	191	42825	5.53
08 APR 2026 - 08 APR 2026	WASCO	EMPLOYEES PROVIDENT FUND BOARD [SSH]	105	55946	7.225
14 APR 2026 - 14 APR 2026	WPRTS	EMPLOYEES PROVIDENT FUND BOARD [SSH]	349	194528	5.661
13 APR 2026 - 13 APR 2026	WPRTS	EMPLOYEES PROVIDENT FUND BOARD [SSH]	1,052	194179	5.651
10 APR 2026 - 10 APR 2026	WPRTS	EMPLOYEES PROVIDENT FUND BOARD [SSH]	712	193127	5.62
09 APR 2026 - 09 APR 2026	WPRTS	EMPLOYEES PROVIDENT FUND BOARD [SSH]	327	192415	5.599
13 APR 2026 - 13 APR 2026	WTK	MR LIM HONG HIN [DIR/CEO]	50	750	0.16
14 APR 2026 - 14 APR 2026	YTL	EMPLOYEES PROVIDENT FUND BOARD [SSH]	4,063	1242468	10.696
13 APR 2026 - 13 APR 2026	YTL	EMPLOYEES PROVIDENT FUND BOARD [SSH]	1,081	1240405	10.678
10 APR 2026 - 10 APR 2026	YTL	EMPLOYEES PROVIDENT FUND BOARD [SSH]	2,368	1239325	10.669
09 APR 2026 - 09 APR 2026	YTL	EMPLOYEES PROVIDENT FUND BOARD [SSH]	1,193	1243257	10.703
08 APR 2026 - 08 APR 2026	YTL	EMPLOYEES PROVIDENT FUND BOARD [SSH]	2,952	1242064	10.693
08 APR 2026 - 08 APR 2026	YTL	EMPLOYEES PROVIDENT FUND BOARD [SSH]	2,952	1242064	10.693
14 APR 2026 - 14 APR 2026	YTLPOWR	EMPLOYEES PROVIDENT FUND BOARD [SSH]	3,200	976104	11.295
13 APR 2026 - 13 APR 2026	YTLPOWR	EMPLOYEES PROVIDENT FUND BOARD [SSH]	1,487	972904	11.258
10 APR 2026 - 10 APR 2026	YTLPOWR	EMPLOYEES PROVIDENT FUND BOARD [SSH]	1,342	971416	11.241
09 APR 2026 - 09 APR 2026	YTLPOWR	EMPLOYEES PROVIDENT FUND BOARD [SSH]	341	970074	11.226
08 APR 2026 - 08 APR 2026	YTLPOWR	EMPLOYEES PROVIDENT FUND BOARD [SSH]	-777	969733	11.222

Disclaimer: The Information in Insider Activity is extracted from www.shareinvestor.com/fundamental/insider_trades. The information on this page is provided as a service to readers. It does not constitute financial advice and/or any investment recommendations. We assume no liability for damages resulting from or arising out of the use of such information. Whilst every effort is made to ensure accuracy, the information presented is not the official record of shareholder filings. Readers are advised to read the original filings on the Bursa Malaysia website at www.bursamalaysia.com

CHECK OUT
SHAREINVESTOR
BROKERS' CALL

Weekly Buy/Sell/Hold calls from leading Malaysian Brokerages.

[Go To Brokers' Call](#)



Pursuant to paragraph 9.19(40) of the Main Market Listing Requirements of Bursa Malaysia Securities Berhad, we wish to inform that Captii, a subsidiary of **Advance Synergy Berhad (ASB)** which is listed on the SGX, had on 22 April 2026 made announcement to the SGX in relation to the results of its Annual General Meeting held on 22 April 2026.

Further to the announcement made on 12 February 2026, **KKB Engineering Berhad (KKB)** wishes to announce that the dates of entitlement and payment for the First and Final Single Tier Dividend in respect of the financial year ended 31 December 2025 are 3 June 2026 and 16 June 2026 respectively.



The Board of Directors of **Leform Berhad (LEFORM)** wishes to announce that Leform has on 22 April 2026 entered into a Memorandum of Understanding with Nippon Steel Trading Corporation and NST Trading Malaysia Sdn. Bhd. The MOU sets forth the terms and understanding among the Company, NSTC and NSTM for the establishment of a collaborative framework in order to maximize synergies among the Company, NSTC and NSTM.



The Board of Directors of **Gamuda Berhad (GAMUDA)** wishes to announce that its wholly-owned subsidiary, Gamuda Engineering Sdn Bhd has been awarded the construction of a hyperscale data centre in Port Dickson, Negeri

Sembilan Darul Khusus by a multinational technology company headquartered in the United States on 17 April 2026.

CapitaLand Malaysia Trust (CLMT) achieved strong distributable income growth of 22.7% to RM45.7 million for the period 1 January 2026 to 31 March 2026 compared to 1Q 2025. Correspondingly, its Distribution Per Unit grew 6.3% year-on-year to 1.36 sen. Net Property Income rose 14.7% y-o-y to RM80.4 million. The strong momentum was mainly driven by the industrial and logistics acquisitions completed in 2025, and better performance of the retail properties particularly East Coast Mall, alongside prudent management of interest costs.



Malayan Banking Berhad (MAYBANK) wishes to inform that it will officially move its head office from Menara Maybank in Jalan Tun Perak to Menara Merdeka 118 Kuala Lumpur, effective 6 May 2026.

The new registered address of Maybank will be as follows:

Level 70, Menara Merdeka 118, Presint Merdeka 118, 50118 Kuala Lumpur



The Board of Directors of **MI Technovation Berhad (MI)** wishes to announce that the Company intends to seek the shareholders' approval at the forthcoming 9th Annual General Meeting, to be convened at a later date, for the renewal of authority for the Company to purchase its own shares of up to ten per centum (10%) of the issued and paid-up share capital of the Company.

Disclaimer: The information in the Investor Relations page is extracted from individual companies' announcements in www.bursamalaysia.com. The information on this page is provided as a service to readers. We assume no liability for damages resulting from or arising out of the use of such information. Whilst every effort is made to ensure accuracy, the information presented has been simplified for your reading pleasure. Readers are advised to read the original and complete filings on the Bursa Malaysia website at https://www.bursamalaysia.com/market_information/announcements/company_announcement

Upcoming IPO					
NAME OF COMPANY	OFFER PERIOD		ISSUE PRICE (Per Ordinary Share)	LISTING SOUGHT	DATE OF LISTING
	OPENING	CLOSING			
MANFORCE GROUP BERHAD	15 Apr 2026	21 Apr 2026	RM0.38	ACE MARKET	6 May 2026
INSPACE CREATION BERHAD	13 Apr 2026	22 Apr 2026	RM0.25	ACE MARKET	8 May 2026
EI POWER BERHAD	21 Apr 2026	6 May 2026	RM0.48	ACE MARKET	21 May 2026



Learn how to identify Hot Stocks using Technical Analysis (TA) and Fundamental Analysis (FA)

SIGN UP FOR **Invest** IT'S FREE!

[Click Here](#)

Scan/Click me



Via email,
every Friday