

# Invest

A Weekly e-Publication by SHARE INVESTOR

ISSUE

295

FRIDAY  
03 APRIL 2026

Scan/Click QR to Register



Via email, every Friday

## MARKET SENTIMENTS

# BNM publishes Annual Report 2025, Economic & Monetary Review 2025, and Financial Stability Review for 2H 2025

page 31

Bursa Malaysia and HKEX launch HKEX Bursa Malaysia Large Cap Index

page 36

## ALSO

### COMPANY SPOTLIGHT

Top Glove Corporation Berhad

See more on page 06



BEHIND THE TICKER: DECODING COMPANY FUNDAMENTALS



Paul Ee-Hong Choo, Founder, Director, and Chief Executive Officer

### Dutch Lady: A Quiet Turnaround in the Making?

#### SUMMARY

- Dutch Lady Milk Industries Berhad (Dutch Lady) (Bursa: 3026) is the leading dairy player in Malaysia with high household penetration, but operates in a low single-digit growth industry with limited revenue upside.
- Revenue grew at about 4% CAGR (2017 - 2024), but profits and returns declined due to margin pressure, transition costs, and heavy capital investment ahead of revenue.
- Turnaround hinges on its new Bandar Enstek plant. The new facility is expected to improve efficiency, reduce costs, and stabilise margins, with early signs of recovery as transition costs taper off.

Disclaimer: This article is written for informational purposes only. It does not constitute a solicitation, offer, advice, or recommendation to buy or sell. All such is not intended to provide the purchase of shares in any way. As a weekly publication, it is not intended to be used as a basis for investment decisions. Please read the disclaimer and the associated risk factors with the investor. The views expressed here are solely the author's own.

See more on pages 21-29

04 LEADERBOARD

05 SHARIAH HOT STOCKS

08 SHARIAH MOMENTUM UP STOCKS

09 NON SHARIAH HOT STOCKS

10 UP TRENDING STOCKS

12 VALUE STOCKS

14 GROWTH STOCKS

16 DIVIDEND STOCKS

18 BROKERS' CALL

19 LONG COMPANIES

39 REGIONAL MARKETS

40 INSIDER ACTIVITY

44 INVESTOR RELATIONS ANNOUNCEMENTS

# SHAREINVESTOR®

An AlphaInvest Company

Invest with Knowledge

### INVESTOR PLATFORMS

**Director**  
Darren Chong  
darren.chong@shareinvestor.com

### ADMIN & OPERATIONS

**Senior Executive**  
Watie Nordin  
watie.nordin@shareinvestor.com

**Executive**  
Silas Emmanuel Joseph  
silas.joseph@shareinvestor.com

### PROCESS AUTOMATION & DATA ANALYTICS

**Data Analyst**  
Lee Khai Bing

### INVESTOR RELATIONS

**Group Managing Director & Publisher**  
Edward Stanislaus  
edward@shareinvestor.com

**Senior Manager**  
Letticia Wong  
letticia.wong@shareinvestor.com

**Manager**  
Aida Norzeti Talib  
aida.norzeti@shareinvestor.com

### ALPHAINVEST HOLDINGS BOARD OF DIRECTORS

<b>Chairman</b>		Patrick Daniel
<b>Group CEO</b>		Christopher Lee
<b>Group COO</b>		Lim Dau Hee
<b>Group MD</b>		Shanison Lin



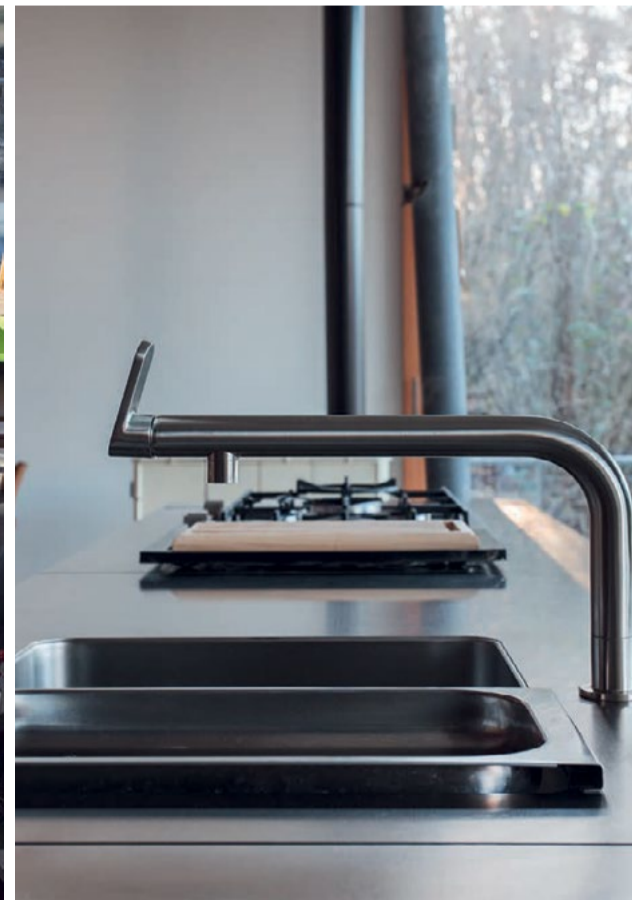
“ GIVE A MAN A FISH AND YOU FEED HIM FOR A DAY; TEACH A MAN TO FISH AND YOU FEED HIM FOR A LIFETIME ”

**ShareInvestor Malaysia Sdn. Bhd.**  
(200001023956) (526564-M)  
L15-03 & 03A, PJX HM Shah Tower,  
No 16A, Jalan Persiaran Barat, PJS 52,  
46200 Petaling Jaya, Selangor

Hotline : 603 8681 0580  
Mobile : 011 6343 8939  
Website : [www.ShareInvestor.com.my](http://www.ShareInvestor.com.my)  
[www.alphainvestholdings.com](http://www.alphainvestholdings.com)  
[www.Facebook.com/ShareInvestorMalaysia](http://www.Facebook.com/ShareInvestorMalaysia)

**ADVERTISEMENT ENQUIRY**

bulthaup takes care of the details so that you can enjoy a harmonious environment.



**XTRA**

XTRA FURNITURE SDN BHD  
The Gardens Mall, Mid Valley City  
[xtrafurniture.com/bulthaup](http://xtrafurniture.com/bulthaup)  
[fb.com/bulthaupmalaysia](https://fb.com/bulthaupmalaysia)

bulthaup

# 2026

# InvestSG TRADING TOURNAMENT

COMPETE • TRADE



WIN UP TO

# RM18,000

Tournament Period:  
6 - 24 April 2026

Join Now! >

INVESTSG

Organized by

**INVESTSG**

Sponsored by

**PhillipCapital**  
Your Partner In Finance

[www.shareinvestor.com](http://www.shareinvestor.com) - market data at your fingertips



ShareInvestor WebPro ([www.shareinvestor.com/my](http://www.shareinvestor.com/my))  
Prices > Stock Prices > Bursa > click Stocks tab

1. mouse over Ranking > select Top Active > all Shariah stocks are denoted with an [S] > mouse over Column Layout > select Edit Customs > select Name > select Volume > select Last Done Price > Mouse Over Column Layout > select Custom
2. mouse over Ranking > select Top Turnover > all Shariah stocks are denoted with an [S] > mouse over Column Layout > select Edit Customs > select Name > select Last Done Price > select Value > Mouse Over Column Layout > select Custom
3. mouse over Ranking > select Top Gainers (Over 5 Trading Days) > mouse over Column Layout > select Edit Customs > select Name > select Last Done Price > select 5 Days Change > select 5 Days % Change > Mouse Over Column Layout > select Custom
4. mouse over Ranking > select Top Losers (Over 5 Trading Days)
5. mouse over Ranking > select Top % Gainers (Over 5 Trading Days)
6. mouse over Ranking > select Top % Losers (Over 5 Trading Days)

### Shariah Top Actives (As at Yesterday)

Name	Price (RM)	Volume
VS [S]	0.185	2,214,721.000
TOPGLOV [S]	0.760	1,432,594.000
SUNMED [S]	2.000	861,181.000
ZETRIX [S]	0.750	792,483.000
AAX [S]	1.140	645,694.000
ARMADA [S]	0.355	597,782.000
TANCO [S]	1.530	545,569.000
DIALOG [S]	2.250	448,999.000
BORNOIL [S]	0.005	434,628.000
PCHEM [S]	5.970	399,005.000

### Shariah Top Turnover (As at Yesterday)

Name	Price (RM)	Value (RM)
PCHEM [S]	5.970	233,638,264
SUNMED [S]	2.000	174,411,038
SDG [S]	6.150	147,484,967
TOPGLOV [S]	0.760	103,080,307
DIALOG [S]	2.250	99,781,011
WPRTS [S]	5.440	95,677,148
PMETAL [S]	7.810	83,033,843
TANCO [S]	1.530	82,820,227
TENAGA [S]	14.000	78,321,184
AAX [S]	1.140	75,909,829

### Top Gainers (over 5 Trading days as at Yesterday)

Name	Price (RM)	Change (RM)
KLK	21.880	+1.740
BKAWAN	21.560	+1.680
NESTLE	98.860	+0.860
PPB	12.160	+0.740
CEPCO	2.430	+0.550
SOP	4.770	+0.500
TAANN	5.560	+0.460
PETGAS	18.040	+0.420
UTDPLT	34.000	+0.400
MCEMENT	6.610	+0.320

### Top % Gainers (over 5 Trading days as at Yesterday)

Name	Price (RM)	Change (%)
PHB	0.010	+100.00
JADI	0.045	+80.00
KOMARK	0.065	+44.44
TOPGLOV	0.760	+39.45
SMI	0.230	+39.39
COMFORT	0.165	+32.00
CEPCO	2.430	+29.26
OASIS	0.200	+29.03
AIM	0.045	+28.57
HARTA	1.180	+24.87

### Top Losers (over 5 Trading days as at Yesterday)

Name	Price (RM)	Change (RM)
PETDAG	21.100	-0.820
HLBANK	22.000	-0.500
WPRTS	5.440	-0.460
F&N	29.300	-0.400
TENAGA	14.000	-0.380
SUNCON	6.410	-0.370
HLFG	19.060	-0.340
SUNMED	2.000	-0.290
NSOP	5.820	-0.280
ABMB	4.750	-0.250

### Top % Losers (over 5 Trading days as at Yesterday)

Name	Price (RM)	Change (%)
SMILE	0.070	-41.67
VS	0.185	-35.09
SG	0.010	-33.33
HANDAL	0.030	-25.00
LYC	0.015	-25.00
ECONBHD	0.115	-20.69
MERIDIAN	0.020	-20.00
PGB	0.060	-20.00
TFP	0.020	-20.00
VINVEST	0.020	-20.00

## Price & Volume Distribution Charts (as at Yesterday)

Technical Analysis

**DEFINITION:** Shariah compliant stocks with Technical Analysis showing 5-days & 10-days Moving Average Price below Yesterday's Close over past 3 days and with Volume Spike.

**CHART GUIDE:** Volume Distribution Chart is a statistical interpretation of the current sentiment on each stock in graphical format. The highest bar categorized as >150k is likely to be traded by institutions or super dealers, while the lowest bar categorized as <15k usually represents retail investors. "Buy Up" refers to more buyers snatching up the lots queued at selling price. "Sell Down" refers to sellers selling their shares to the buying queue



ShareInvestor WebPro > Screener > Market Screener (FA & TA) > select BURSA > add criteria

**A. Criteria**

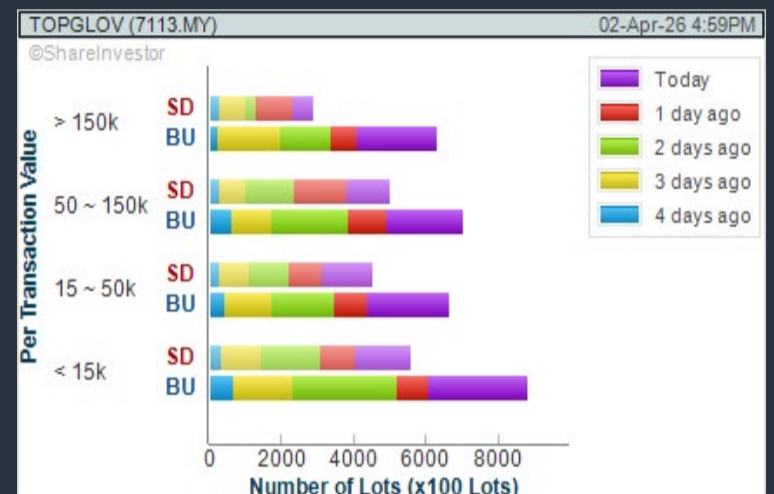
- > click Add Criteria
- Technical Analysis Conditions tab select (i) Moving Average Below Close (ii) Volume Spike
- Fundamental Analysis Conditions tab > select (iii) Revenue
- Prices & Other Conditions tab > select (iv) Is Shariah Compliant
- Technical Analysis Conditions tab select (v) Moving Average Below Close
- Prices & Other Conditions tab > select (vi) Last Done Price
- Technical Analysis Conditions tab select (vii) Moving Average Below Close

**B. Conditions (Criteria Filters)**

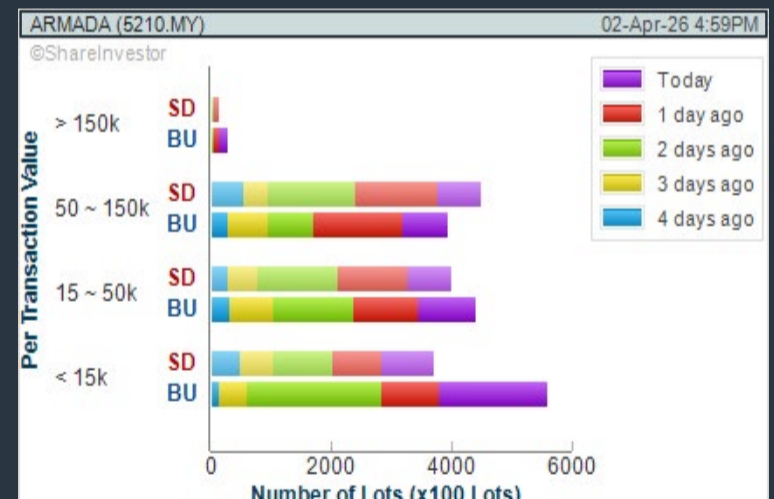
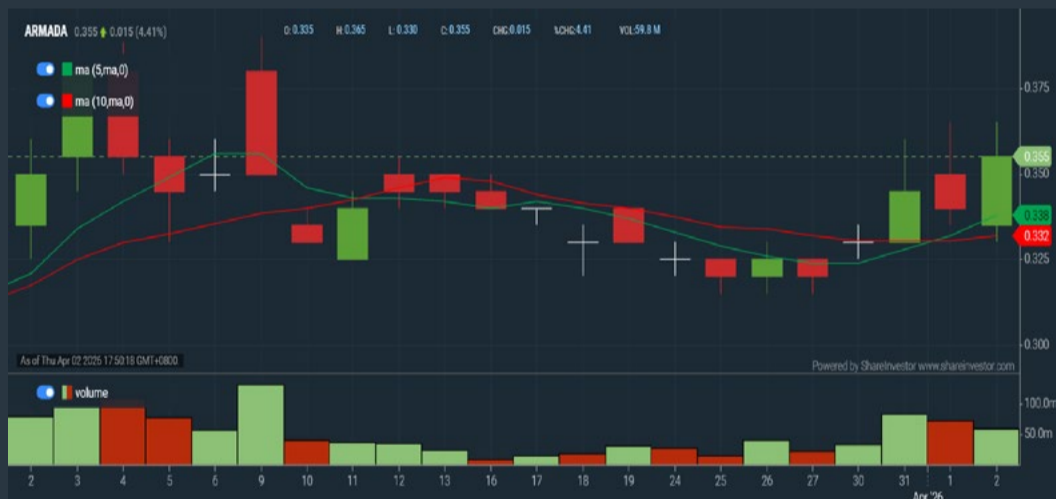
1. Moving Average Below Close - select (MA) type (5) below close price for type (3) days
2. Volume Spike - Volume type (1) greater than type (5) days average
3. Revenue ("000) - select (more than) type (1) for the past select (1) financial year(s)
4. Is Shariah Compliant - select **Yes**
5. Moving Average Below Close - select (MA) type (10) below close price for type (3) days
6. Last Done Price - select (more than) type (0.3)
7. Moving Average Below Close - select (EMA) type (5) below close price for type (3) days

- > click Save Template > Create New Template type (Shariah Hot Stocks) > click Create
- > click Save Template as > select Shariah Hot Stocks > click Save
- > click Screen Now (may take a few minutes)
- > Sort By: Select (Vol) Select (Desc)
- > Mouse over stock name > Charts > click C<sup>2</sup> Charts or Volume Distribution

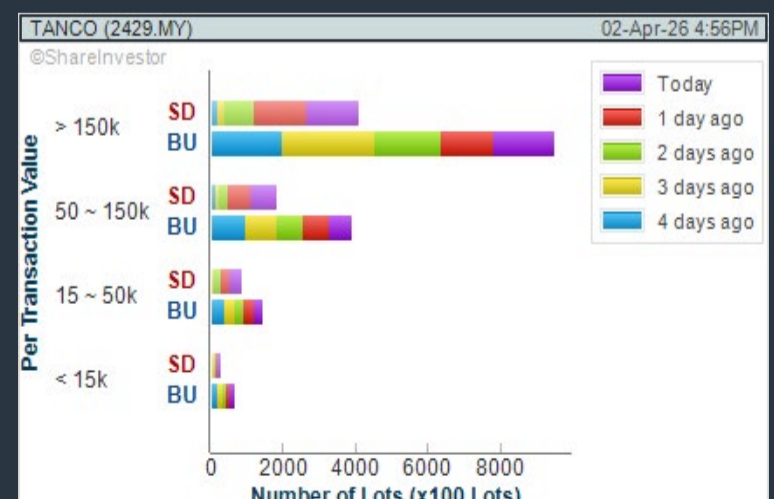
### TOP GLOVE CORPORATION BHD (7113) C<sup>2</sup> Chart



### BUMI ARMADA BERHAD (5210) C<sup>2</sup> Chart



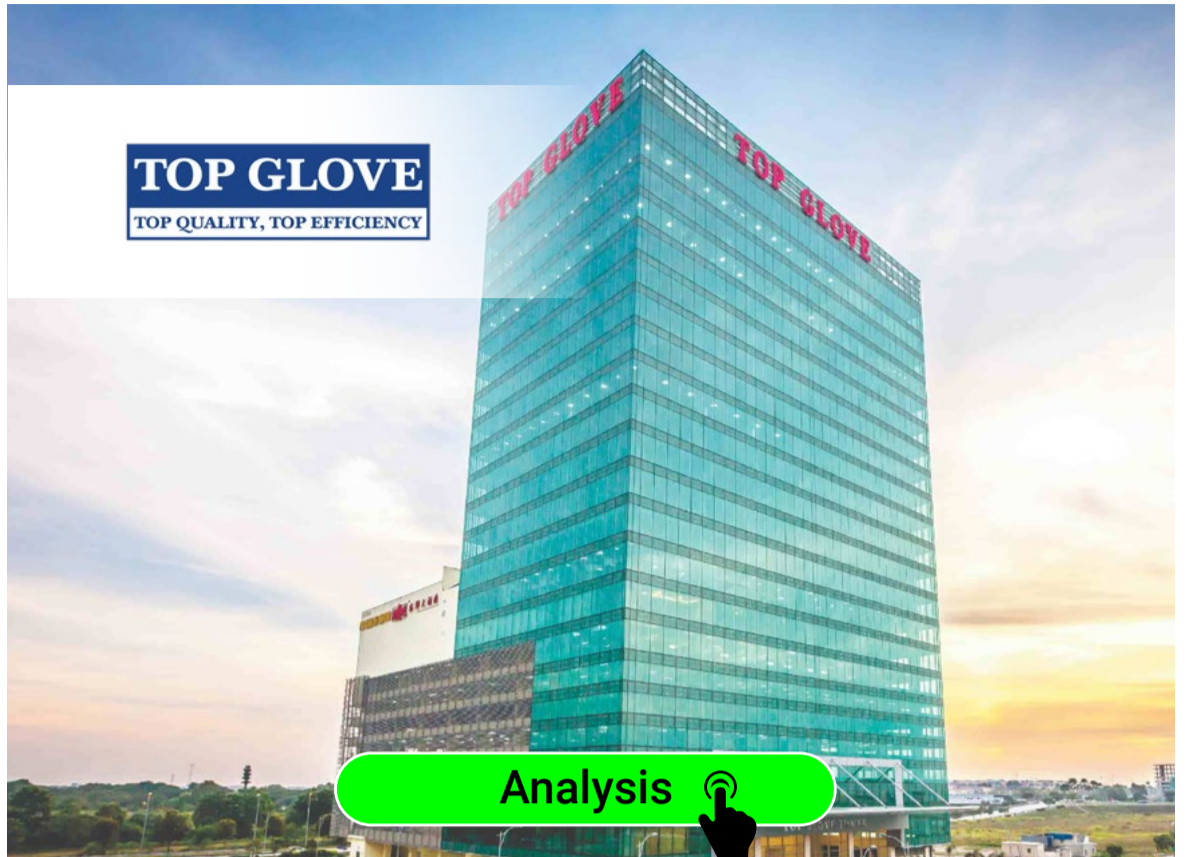
### TANCO HOLDINGS BHD (2429) C<sup>2</sup> Chart



**Disclaimer:** The information on this page is provided as a service to readers. It does not constitute financial advice and/or any investment recommendations. Past performance is not indicative of future results. We assume no liability for damages resulting from or arising out of the use of such information. It would be best if you did your own research to make your personal investment decisions wisely or consult a licenced investment advisor.

## COMPANY BACKGROUND

**Top Glove Corporation Berhad** is an investment holding company, which engages in the provision of management services. It offers latex, nitrile, vinyl, surgical, house-hold, cleanroom, cast polyethylene, industrial high risk, and thermoplastic elastomer gloves.



TOPGLOV TOP GLOVE CORPORATION BHD		Updated at 02 Apr 2026 16:59	
Last (MYR): <b>0.760</b> ↑	Change: <b>+0.100</b>	High: 0.765	Remarks: <b>5</b>
	Change (%): <b>+15.15</b>	Low: 0.655	
Open: 0.655		Yesterday's Close: 0.660	
Buy Price: 0.750		Sell Price: 0.760	
Buy Volume ('00): 141		Sell Volume ('00): 6	
Cumulative Volume ('00): 1,432,594		Cumulative Value: 103,080,307	

### Financial Analysis

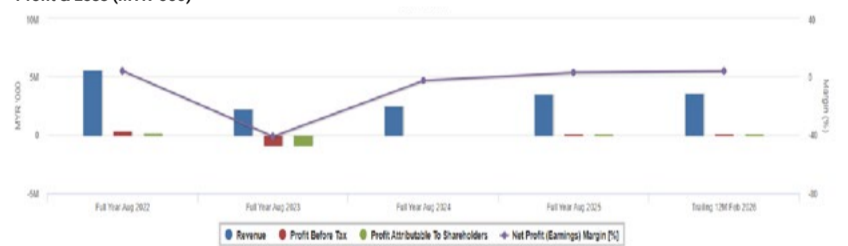
<b>Revenue Growth</b> Increasing revenue in last 2 consecutive years	😊	<b>Profit Growth</b> Profit turnaround in most recent year	😊
<b>Piotroski F Score</b> The company has strong financial strength (Piotroski F-Score of 8-9)	😊	<b>Dividend Payout</b> Dividend is decreasing over the past 60 months.	😞
<b>Current Ratio</b> The company is well-positioned to cover its short-term obligations with its current assets (ratio between 1.5 to 10) for 3 consecutive years	😊	<b>Debt to Cashflow</b> High debt to cash flow for most recent year	😞
<b>Gross Profit Margin</b> Low gross profit margin for 3 years	😞	<b>Gross Profit Margin</b> Gross profit margin is decreasing by more than 10% a year over the past 60 months.	😞
<b>Net Earnings Margin</b> Low net profit margin for most recent year	😞	<b>Net Earnings Margin</b> Net profit margin is decreasing by 5% a year over the past 60 months.	😞
<b>Return on Equity (ROE)</b> ROE is improving by 5% a year over the past 36 months.	😊		

😊 Excellent    😊 Good    😐 Neutral    😞 Be Alert    🚨 Watch Out



### Historical Financials

#### Profit & Loss (MYR '000)

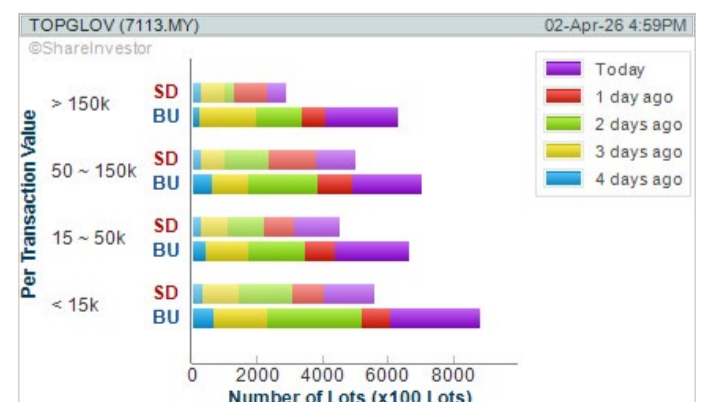


**WebPro 9-Days Free Trial Registration (worth RM10) Sign Up Now**



## Key Statistics with Total Shareholder Returns

Period	Dividend Received	Capital Appreciation	Total Shareholder Return
<b>Short Term Return</b>	5 Days	-	+0.205
	10 Days	-	+0.185
	20 Days	-	+0.210
<b>Medium Term Return</b>	3 Months	-	+0.115
	6 Months	0.005	+0.175
<b>Long Term Return</b>	1 Year	0.005	-0.045
	2 Years	0.005	-0.060
	3 Years	0.005	-0.250
<b>Annualised Return</b>	Annualised	-	-



**Disclaimer:** The information on this page is provided as a service to readers. It does not constitute financial advice and/or any investment recommendations. Past performance is not indicative of future results. We assume no liability for damages resulting from or arising out of the use of such information. It would be best if you did your own research to make your personal investment decisions wisely or consult a licenced investment advisor.



# & WORLD WISH DAY

In Partnership with



## TEE OFF FOR HOPE

This year, we tee off for hope while celebrating **World Wish Day** on **29 April**, a day that honors the very first wish granted in 1980, and reminds us how wishes bring strength, joy and healing to wish children and their families.

When you join this golf tournament, you're becoming a **WishMaker**. Every swing helps create hope, strength and unforgettable memories for children facing critical illnesses. These children are counting on **WishMakers** like you to make their dreams come true. **Sign up now!**



### wishmakers wanted

For booking or donation please contact:

**Make-A-Wish Malaysia**

(03) 2738 9939

info@makeawish.org.my

### BOOK NOW

Date: Wednesday, 29 April 2026

Time: 1.30pm Tee Off

Venue: Tropicana Golf & Country Club

Flights: (for 4 golfers)

Other: Championship packages available

Format of play: Texas Scramble Stableford System 36



## Price & Volume Distribution Charts (as at Yesterday)

Technical Analysis

**DEFINITION:** Shariah compliant stocks with Technical Analysis showing Bullish Momentum and Price Uptrend. The share price closed at the highest price yesterday. The typical price was higher than the previous day's typical price.

**CHART GUIDE:** Volume Distribution Chart is a statistical interpretation of the current sentiment on each stock in graphical format. The highest bar categorized as >150k is likely to be traded by institutions or super dealers, while the lowest bar categorized as <15k usually represents retail investors. "Buy Up" refers to more buyers snatching up the lots queued at selling price. "Sell Down" refers to sellers selling their shares to the buying queue.



ShareInvestor WebPro > Screener > Market Screener (FA & TA)>select BURSA>add criteria

**A. Criteria**

- > click Add Criteria
- Fundamental Analysis Conditions tab >select (i) Revenue
- Technical Analysis Conditions tab select (ii) Average Volume
- Prices & Other Conditions tab > select (iii) Last Done Price
- Prices & Other Conditions tab > select (iv) Is Shariah Compliant
- Technical Analysis Conditions tab select (v) RSI Overbought
- Technical Analysis Conditions tab select (vi) Moving Average Below Close
- Technical Analysis Conditions tab select (vii) CCI Overbought

**B. Conditions (Criteria Filters)**

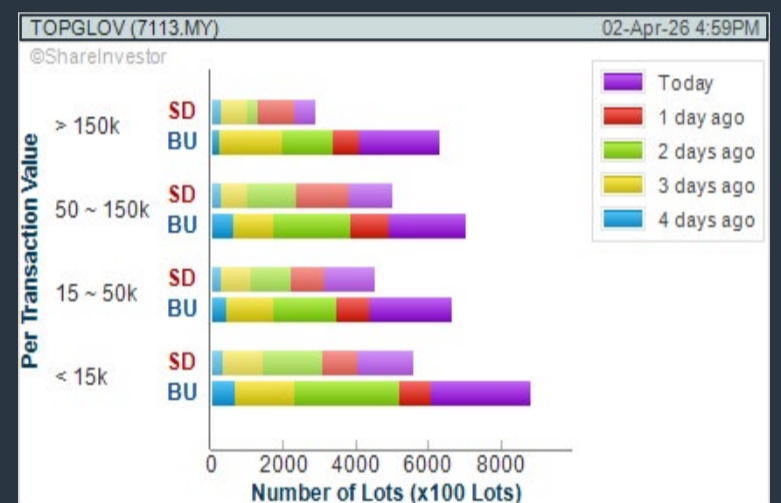
1. Revenue ('000) - select (more than) type (1) for the past select (1) financial year(s)
2. Average Volume - type (1) days average volume greater than type (10000) lots
3. Last Done Price - select (more than) type (0.3)
4. Is Shariah Compliant - select Yes
5. RSI Overbought - select RSI 1 above 99 for 1 days
6. Moving Average Below Close - select (MA) type (10) below close price for type (1) days
7. CCI Overbought - select CCI (2) above (0) for (1) days

- > click Save Template > Create New Template type (Shariah Momentum Up Stocks) > click Create
- > click Save Template as > select Shariah Momentum Up Stocks > click Save
- > click Screen Now (may take a few minutes)
- Sort By: Select (Vol) Select (Desc)
- Mouse over stock name > Charts > click C<sup>2</sup> Charts tab or Volume Distribution

### TOP GLOVE CORPORATION BHD (7113)

C<sup>2</sup> Chart

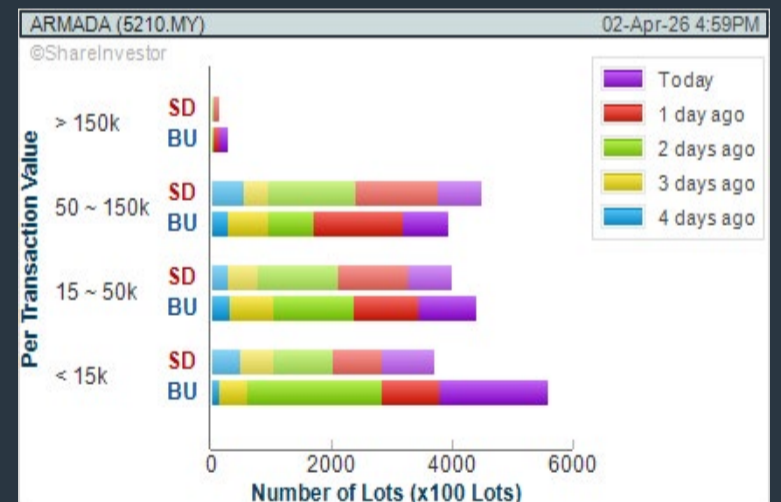
Analysis



### BUMI ARMADA BERHAD (5210)

C<sup>2</sup> Chart

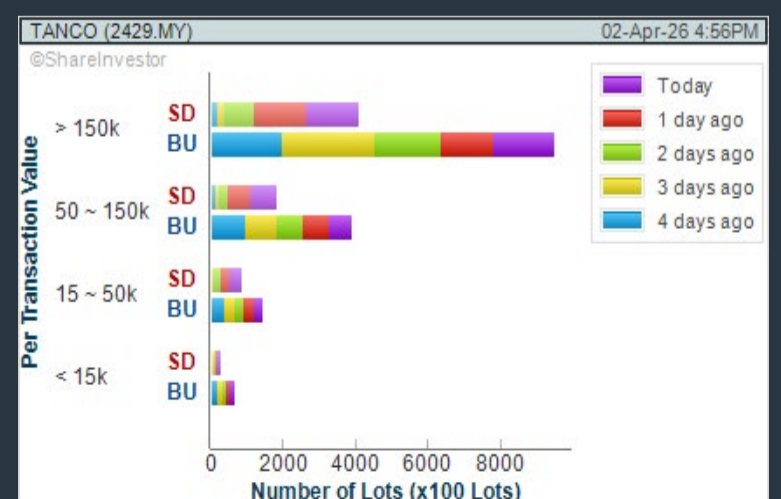
Analysis



### TANCO HOLDINGS BHD (2429)

C<sup>2</sup> Chart

Analysis



**Disclaimer:** The information on this page is provided as a service to readers. It does not constitute financial advice and/or any investment recommendations. Past performance is not indicative of future results. We assume no liability for damages resulting from or arising out of the use of such information. It would be best if you did your own research to make your personal investment decisions wisely or consult a licenced investment advisor.

## Price & Volume Distribution Charts (as at Yesterday)

Technical Analysis

**DEFINITION:** Stocks with Technical Analysis showing 5-days & 10-days Moving Average Price below Close over past 1 days and with Volume Spike

**CHART GUIDE:** Volume Distribution Chart is a statistical interpretation of the current sentiment on each stock in graphical format. The highest bar categorized as >150k is likely to be traded by institutions or super dealers, while the lowest bar categorized as <15k usually represents retail investors. "Buy Up" refers to more buyers snatching up the lots queued at selling price. "Sell Down" refers to sellers selling their shares to the buying queue.



ShareInvestor WebPro > Screener > Market Screener (FA & TA) > select BURSA > add criteria

**A. Criteria**

- > click Add Criteria
- Technical Analysis Conditions tab select (i) Moving Average Below Close (ii) Volume Spike
- Fundamental Analysis Conditions tab >select (iii) Revenue
- Prices & Other Conditions tab > select (iv) Is Shariah Compliant
- Technical Analysis Conditions tab select (v) Moving Average Below Close
- Prices & Other Conditions tab > select (vi) Last Done Price
- Technical Analysis Conditions tab select (vii) Moving Average Below Close

**B. Conditions (Criteria Filters)**

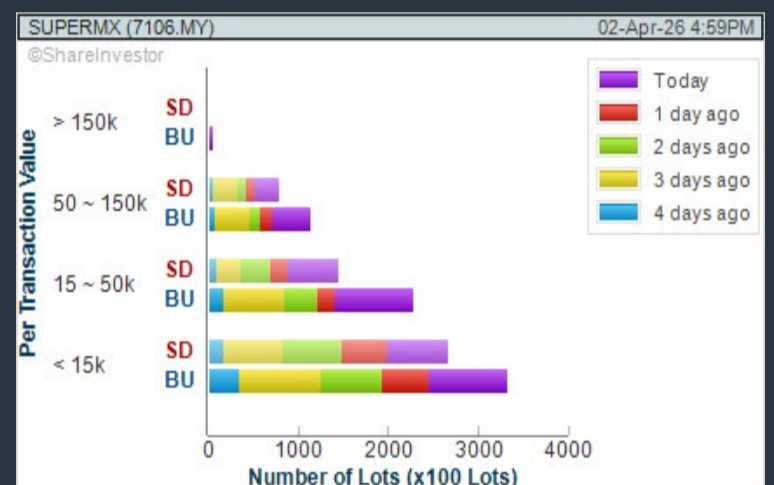
1. Moving Average Below Close - select (MA) type (5) below close price for type (3) days
2. Volume Spike - Volume type (1) greater than type (5) days average
3. Revenue ('000) - select (more than) type (1) for the past select (1) financial year(s)
4. Is Shariah Compliant - select NO
5. Moving Average Below Close - select (MA) type (10) below close price for type (1) days
6. Last Done Price - select (more than) type (0.3)
7. Moving Average Below Close - select (EMA) type (5) below close price for type (1) days

- > click Save Template > Create New Template type (Non-Shariah Hot Stocks) > click Create
- > click Save Template as > select Non-Shariah Hot Stocks > click Save
- > click Screen Now (may take a few minutes)
- Sort By: Select (Vol) Select (Desc)
- Mouse over stock name > Charts > click C<sup>2</sup> Charts tab or Volume Distribution

### SUPERMAX CORPORATION BERHAD (7106)

C<sup>2</sup> Chart

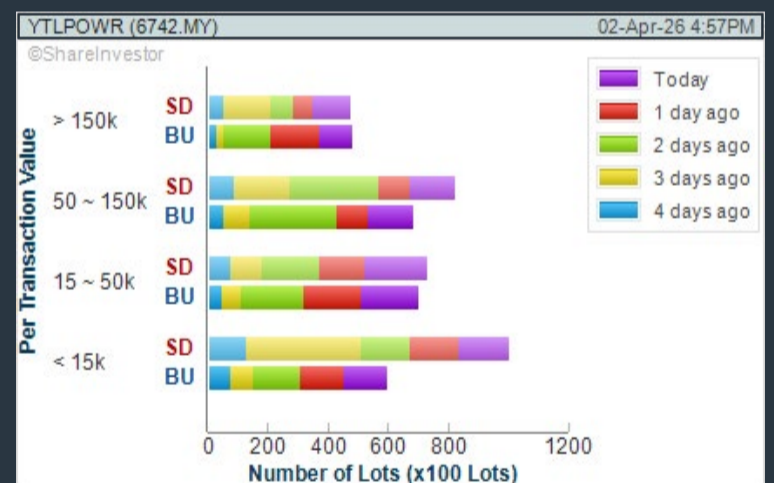
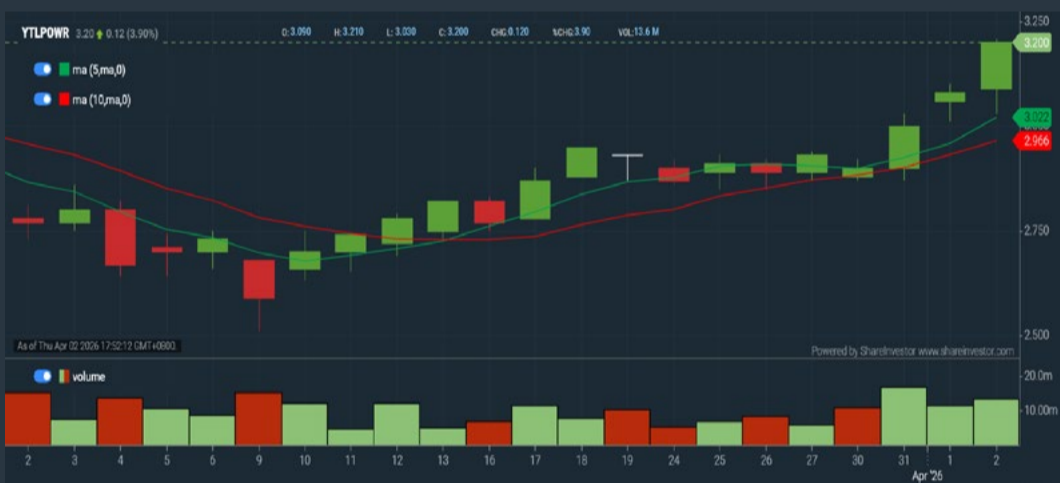
Analysis



### YTL POWER INTERNATIONAL BHD (6742)

C<sup>2</sup> Chart

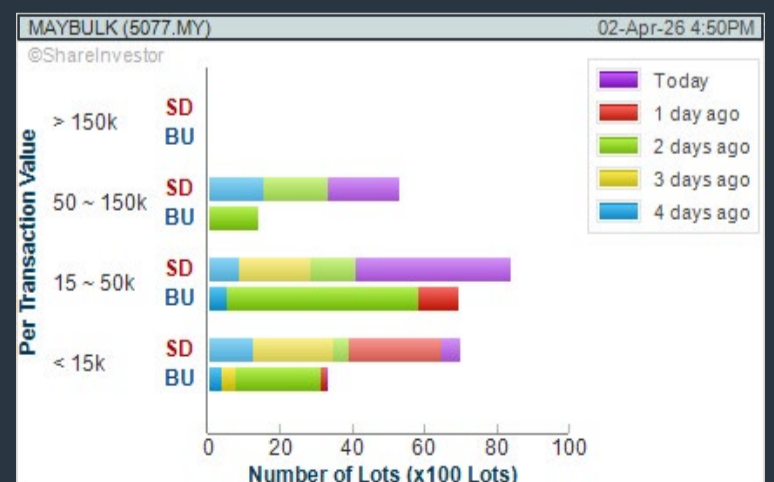
Analysis



### MAYBULK BERHAD (5077)

C<sup>2</sup> Chart

Analysis



**Disclaimer:** The information on this page is provided as a service to readers. It does not constitute financial advice and/or any investment recommendations. Past performance is not indicative of future results. We assume no liability for damages resulting from or arising out of the use of such information. It would be best if you did your own research to make your personal investment decisions wisely or consult a licenced investment advisor.

## Price & Volume Distribution Charts (Over 3 trading days as at Yesterday)

Technical Analysis

**DEFINITION:** Stocks with Technical Analysis showing Bullish Momentum and Price Uptrend

**CHART GUIDE:** Volume Distribution Chart is a statistical interpretation of the current sentiment on each stock in graphical format. The highest bar categorized as >150k is likely to be traded by institutions or super dealers, while the lowest bar categorized as <15k usually represents retail investors. "Buy Up" refers to more buyers snatching up the lots queued at selling price. "Sell Down" refers to sellers selling their shares to the buying queue.



ShareInvestor WebPro > Screener > Market Screener (FA & TA) > select BURSA > add criteria

**A. Criteria**

- > click Add Criteria
- Fundamental Analysis Conditions tab > select (i) Revenue
- Technical Analysis Conditions tab select (ii) Moving Average Below Close
- Technical Analysis Conditions tab select (iii) Average Volume
- Prices & Other Conditions tab > select (iv) Last Done Price
- Technical Analysis Conditions tab select (v) Moving Average Below Close
- Technical Analysis Conditions tab select (v) Moving Average Bullish Crossover

**B. Conditions**

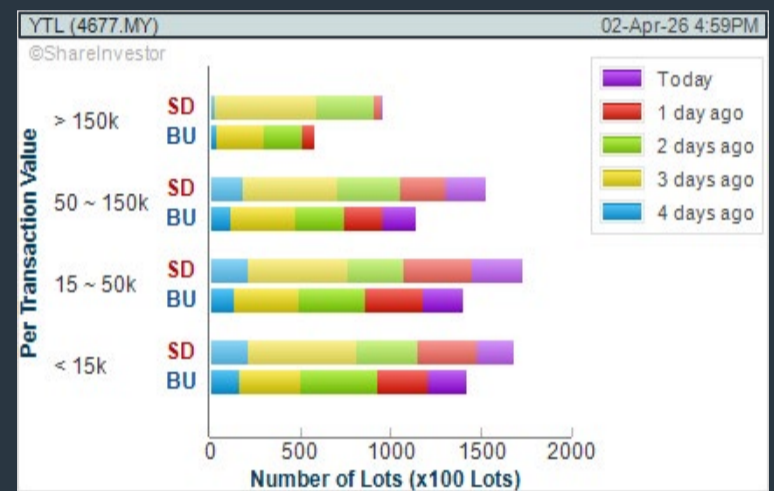
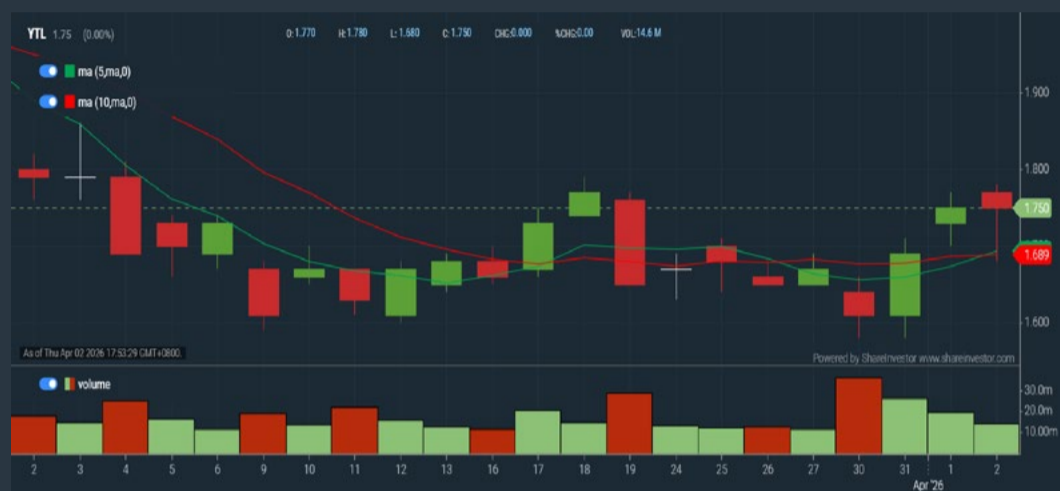
1. Revenue - select (more than) type (1) for the past select (1) financial year(s)
2. Moving Average Below Close - select (MA) type (20) below close price for type (1) days
3. Average Volume - type (5) days average volume type (10000) lots
4. Last Done Price - select (more than) type (0.3)
5. Moving Average Below Close - select (MA) type (10) below close price for type (1) days
6. Moving Average Bullish Crossover - select (MA) type (5) crossed above select (MA) type (10)

> click Save Template > Create New Template type (Non-Shariah Up-Trending Stocks) > click Create Click Save Template As > select Non-Shariah Up Trending Stocks > click Save  
> click Screen Now (may take a few minutes)  
Sort By: Select (Vol) Select (Desc)  
Mouse over stock name > Charts > click C<sup>2</sup> Charts tab or Volume Distribution

### YTL CORPORATION BHD (4677)

C<sup>2</sup> Chart

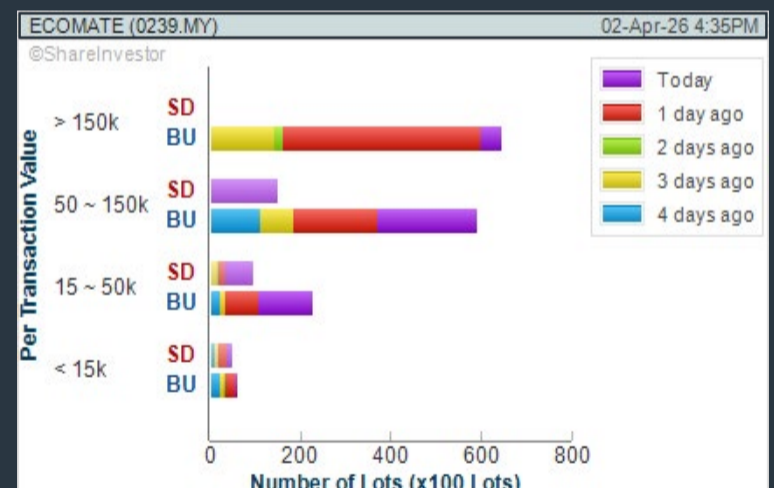
Analysis



### ECOMATE HOLDINGS BERHAD (0239)

C<sup>2</sup> Chart

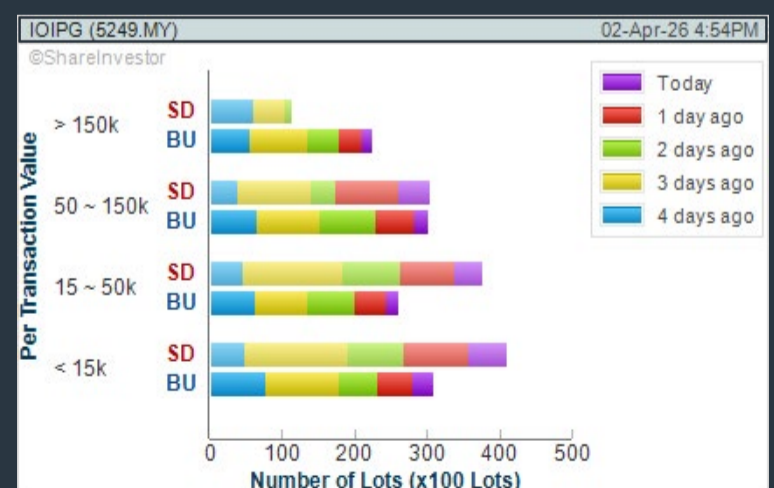
Analysis



### IOI PROPERTIES GROUP BERHAD (5249)

C<sup>2</sup> Chart

Analysis



**Disclaimer:** The information on this page is provided as a service to readers. It does not constitute financial advice and/or any investment recommendations. Past performance is not indicative of future results. We assume no liability for damages resulting from or arising out of the use of such information. It would be best if you did your own research to make your personal investment decisions wisely or consult a licenced investment advisor.



**ROWAN** director chair  
 Designed by ITO Design, Germany

Inspired by the sophistication of first and business class, **ROWAN** delivers a fully enveloping comfort through Italian full-grain leather and precision-engineered aluminum form.

Where design excellence meets executive presence.



**XTRA**  
[www.xtrafurniture.com](http://www.xtrafurniture.com)



GERMAN  
 DESIGN  
 AWARD  
 WINNER  
 2025



Awarded for Design. Certified for Excellence. Trusted Worldwide.

## Price & Total Shareholder Return (as at Yesterday)

Fundamental Analysis

**DEFINITION:** Share price of a company trading at a lower price as compared to its fundamentals (FA) such as financial performance and dividend, allowing it to be attractive to value investors.

**CHART GUIDE:** Total Shareholder Return (TSR) combines share price appreciation and dividend distributions paid to show the total return to the shareholder expressed as a percentage.



ShareInvestor WebPro > Screener > Market Screener (FA & TA) > select BURSA > add criteria

**A. Criteria**

- > click Add Criteria
- Fundamental Analysis Conditions tab (i) Price Earnings Ratio
- Fundamental Analysis Conditions tab >select (ii) CAGR of Net Earnings
- Fundamental Analysis Conditions tab >select (iii) Net Debt To Equity
- Fundamental Analysis Conditions tab >select (iv) Return On Equity (ROE)

**B. Conditions**

1. Price Earnings Ratio - select (less than) type (15) times now
2. CAGR of Net Earnings - select (more than) type (10) % for the past type (3) financial year(s)
3. Net Debt To Equity – select (less than) type (1) for the past select (1) financial year(s)
4. Return On Equity (ROE) – select (more than) type (10) % for the past select (1) financial year(s)

- > click Save Template > Create New Template type (Value Stock) > click Create
- > click Save Template as > select Value Companies > click Save
- > click Screen Now (may take a few minutes)
- Sort by: Select (PE Ratio) Select (Ascending)
- > Mouse over stock name > Factsheet > looking for Total Shareholder Return
- > Mouse over stock name > Charts > click C2 Charts tab

## MULPHA INTERNATIONAL BERHAD (3905)

C<sup>2</sup> Chart

Analysis



Period	Dividend Received	Capital Appreciation	Total Shareholder Return
Short Term Return	5 Days	-	+2.41%
	10 Days	-	+4.58%
	20 Days	-	+2.41%
Medium Term Return	3 Months	+0.043	+1.37%
	6 Months	-	-
	1 Year	-0.050	-1.66%
Long Term Return	2 Years	+0.610	+26.85%
	3 Years	+0.480	+19.28%
	5 Years	+1.410	+44.12%
Annualised Return	Annualised	-	+14.19%

## TOMEI CONSOLIDATED BHD (7230)

C<sup>2</sup> Chart

Analysis



Period	Dividend Received	Capital Appreciation	Total Shareholder Return
Short Term Return	5 Days	-0.040	-2.11%
	10 Days	-0.110	-5.58%
	20 Days	-0.170	-8.37%
Medium Term Return	3 Months	-0.000	-1.59%
	6 Months	+0.050	+2.76%
	1 Year	0.025	+1.50%
Long Term Return	2 Years	0.080	+3.08%
	3 Years	0.120	+5.31%
	5 Years	0.170	+8.82%
Annualised Return	Annualised	-	+19.02%

## SMRT HOLDINGS BERHAD (0117)

C<sup>2</sup> Chart

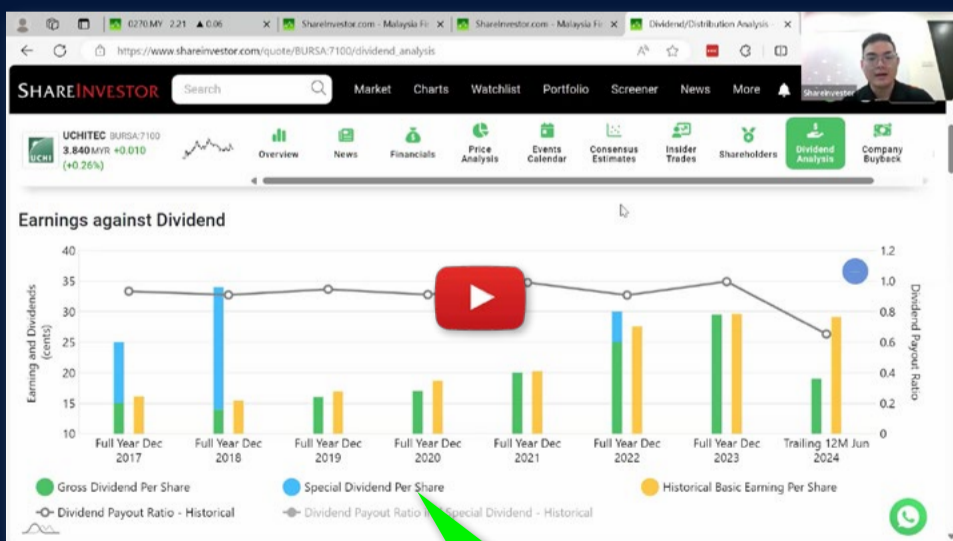
Analysis



Period	Dividend Received	Capital Appreciation	Total Shareholder Return
Short Term Return	5 Days	-0.005	-3.33%
	10 Days	-	-
	20 Days	+0.030	+20.00%
Medium Term Return	3 Months	-0.390	-72.90%
	6 Months	-0.645	-81.65%
	1 Year	-0.910	-84.82%
Long Term Return	2 Years	-0.700	-82.84%
	3 Years	-0.295	-67.65%
	5 Years	-0.015	-9.38%
Annualised Return	Annualised	-	-1.85%

**Disclaimer:** The information on this page is provided as a service to readers. It does not constitute financial advice and/or any investment recommendations. Past performance is not indicative of future results. We assume no liability for damages resulting from or arising out of the use of such information. It would be best if you did your own research to make your personal investment decisions wisely or consult a licenced investment advisor.

# Ultimate Guide to use **ShareInvestor**



## YOU WILL LEARN HOW TO USE:

- Company Financials
- Market Screener
- Company Insider Trades
- Dividend Analysis
- Consensus Estimation  
*and more...*

**Watch  
now!**

## Price & Total Shareholder Return (as at Yesterday)

Fundamental Analysis

**DEFINITION:** Company revenue is growing and making good quality of earnings with positive Free Cash Flow.

**CHART GUIDE:** Total Shareholder Return (TSR) combines share price appreciation and distributions paid to show the total return to the shareholder expressed as a percentage.



ShareInvestor WebPro > Screener > Market Screener (FA & TA) > select BURSA > add criteria

**A. Criteria**

1. Fundamental Analysis Conditions tab > select (i) Free Cash Flow, (ii) Revenue Growth, (iii) Gross Profit (Earnings) Margin, (iv) Quality of Earnings, (v) Total Shareholder Returns, > click Add Criteria
2. Fundamental Analysis Conditions tab > select (vi) Total Shareholder Returns > click Add Criteria

**B. Conditions (Criteria Filters)**

1. Free Cash Flow - select (more than) type (1) for the past select (1) financial year(s)
2. Revenue Growth - select (more than) type (1) for the past select (1) financial year(s)
3. Gross Profit (Earnings) Margin - select (more than) type (30) % for the past select (1) financial year(s)
4. Quality of Earnings - select (more than) type (1) for the past select (1) financial year(s)
5. Total Shareholder Return - select (more than) type (5) % for the past select (3) financial year(s)
6. Total Shareholder Return - select (more than) type (5) % for the past select (5) financial year(s)

- > click Save Template > Create New Template type (Growth Companies) > click Create
- > click Save Template as > select Growth Companies > click Save
- > click Screen Now (may take a few minutes)
- > Sort By: Select (Revenue Growth) Select (Desc)
- > Mouse over stock name > Factsheet > looking for Total Shareholder Return

## COUNTRY VIEW BHD (5049)

C<sup>2</sup> Chart

Analysis

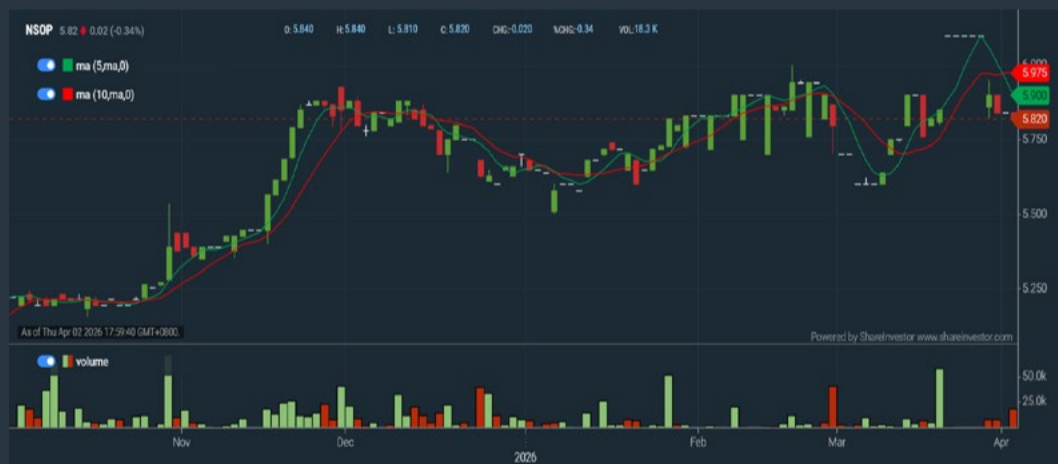


Period	Dividend Received	Capital Appreciation	Total Shareholder Return
Short Term Return	5 Days	-0.000	-2.93 %
	10 Days	-0.040	-1.32 %
	20 Days	-0.070	-2.30 %
Medium Term Return	3 Months	0.130	+6.42 %
	6 Months	0.220	+12.68 %
	1 Year	0.530	+72.06 %
Long Term Return	2 Years	0.600	+186.94 %
	3 Years	0.750	+248.60 %
	5 Years	0.800	+217.21 %
Annualised Return	Annualised	-	+26.97 %

## NEGRI SEMBILAN OIL PALMS BHD (2038)

C<sup>2</sup> Chart

Analysis



Period	Dividend Received	Capital Appreciation	Total Shareholder Return
Short Term Return	5 Days	-0.280	-4.59 %
	10 Days	-0.000	-0.61 %
	20 Days	+0.220	+3.83 %
Medium Term Return	3 Months	+0.120	+2.11 %
	6 Months	0.180	+4.46 %
	1 Year	0.200	+49.75 %
Long Term Return	2 Years	0.460	+87.02 %
	3 Years	0.580	+97.55 %
	5 Years	0.690	+135.94 %
Annualised Return	Annualised	-	+18.73 %

## WESTPORTS HOLDINGS BERHAD (5246)

C<sup>2</sup> Chart

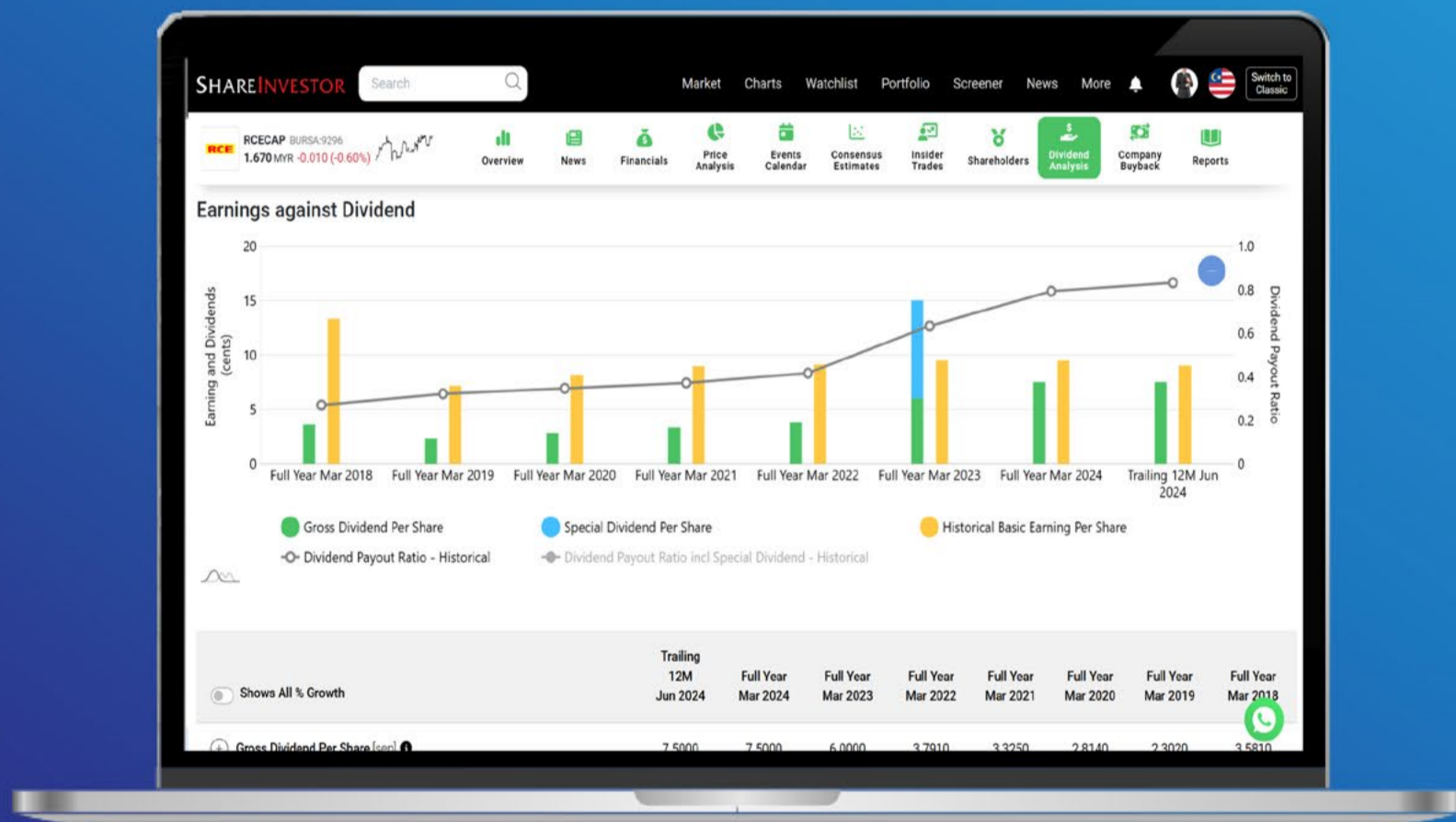
Analysis



Period	Dividend Received	Capital Appreciation	Total Shareholder Return
Short Term Return	5 Days	-0.500	-8.18 %
	10 Days	-0.500	-8.33 %
	20 Days	-0.610	-10.09 %
Medium Term Return	3 Months	0.119	-1.99 %
	6 Months	0.119	+4.49 %
	1 Year	0.219	+17.16 %
Long Term Return	2 Years	0.416	+53.30 %
	3 Years	0.585	+66.90 %
	5 Years	0.907	+45.91 %
Annualised Return	Annualised	-	+7.86 %

**Disclaimer:** The information on this page is provided as a service to readers. It does not constitute financial advice and/or any investment recommendations. Past performance is not indicative of future results. We assume no liability for damages resulting from or arising out of the use of such information. It would be best if you did your own research to make your personal investment decisions wisely or consult a licenced investment advisor.

# Tired of low returns? Let's talk high-paying Dividends!



- ✓ **Top Dividend Picks Right Now**
- ✓ **Insider Tips** – Advanced strategies for experienced investors
- ✓ **Easy-to-Follow Tutorial**

Get the most out of dividends, use our Dividend Analysis function –  
Click to Watch Our Tutorial Below!

**Upgrade Your Dividend Strategy Here**



## Price & Total Shareholder Return (as at Yesterday)

Fundamental Analysis

**DEFINITION:** Company is paying out dividend with low or moderate leverage.

**CHART GUIDE:** Total Shareholder Return (TSR) combines share price appreciation and distributions paid to show the total return to the shareholder expressed as a percentage.



ShareInvestor WebPro > Screener > Market Screener (FA & TA) > select BURSA > add criteria

**A. Criteria**

- > click Add Criteria
- Fundamental Analysis Conditions tab >select (i) Dividend Yield (Historical)
- Fundamental Analysis Conditions tab >select (ii) Dividend Payout (Historical)
- Fundamental Analysis Conditions tab >select (iii) Total Debt To Equity
- Fundamental Analysis Conditions tab >select (iv) Total Shareholder Returns
- Fundamental Analysis Conditions tab >select (v) Total Shareholder Returns
- Fundamental Analysis Conditions tab / >select (vi) CAGR of Dividend Per Share

• Fundamental Analysis Conditions tab >select (vii) CAGR of Dividend Per Share

**B. Conditions (Criteria Filters)**

1. Dividend Yield - select (more than) type (1) % for the past select (1) financial year(s)
2. Dividend Payout (Historical) - select (between) type (0.5) to type (1) times for the past select (1) financial year(s)
3. Total Debt to Equity - select (less than) type (1) for the past select (1) financial year(s)
4. Total Shareholder Return - select (more than) type (5) % for the past select (3) financial year(s)
5. Total Shareholder Return - select (more than) type (5) % for the past select (5) financial year(s)

6. CAGR of Dividend Per Share - select (less than) type (30) % for the past select (5) financial year(s)
7. CAGR of Dividend Per Share - select (more than) type (1) % for the past select (5) financial year(s)

- > click Save Template > Create New Template type (Dividend Companies) > click Create
- > click Save Template as > select Dividend Companies > click Save
- > click Screen Now (may take a few minutes)
- > Sort By: Select (Dividend Yield) Select (Desc)
- > Mouse over stock name > Factsheet > looking for Total Shareholder Return

## APM AUTOMOTIVE HOLDINGS BHD (5015)

C<sup>2</sup> Chart

Analysis



Period	Dividend Received	Capital Appreciation	Total Shareholder Return
Short Term Return	5 Days	-0.000	-1.99 %
	10 Days	-0.120	-3.85 %
	20 Days	0.130	-8.28 %
Medium Term Return	3 Months	0.130	-3.99 %
	6 Months	0.130	+0.32 %
	1 Year	0.200	+5.26 %
Long Term Return	2 Years	0.400	+29.37 %
	3 Years	0.730	+80.19 %
	5 Years	0.940	+69.83 %
Annualised Return	Annualised	-	+11.17 %

## WELLCAL HOLDINGS BERHAD (7231)

C<sup>2</sup> Chart

Analysis



Period	Dividend Received	Capital Appreciation	Total Shareholder Return
Short Term Return	5 Days	+0.030	+2.46 %
	10 Days	-	-
	20 Days	0.016	+1.28 %
Medium Term Return	3 Months	0.016	-6.91 %
	6 Months	0.040	+0.47 %
	1 Year	0.075	-0.90 %
Long Term Return	2 Years	0.158	-12.71 %
	3 Years	0.245	+34.53 %
	5 Years	0.385	+56.22 %
Annualised Return	Annualised	-	+6.19 %

## LPI CAPITAL BHD (8621)

C<sup>2</sup> Chart

Analysis



Period	Dividend Received	Capital Appreciation	Total Shareholder Return
Short Term Return	5 Days	-0.120	-0.83 %
	10 Days	-0.220	-1.62 %
	20 Days	0.500	-1.20 %
Medium Term Return	3 Months	0.500	-0.94 %
	6 Months	0.500	+4.23 %
	1 Year	0.600	+6.19 %
Long Term Return	2 Years	1.600	+30.97 %
	3 Years	2.260	+36.41 %
	5 Years	3.600	+29.71 %
Annualised Return	Annualised	-	+5.34 %

**Disclaimer:** The information on this page is provided as a service to readers. It does not constitute financial advice and/or any investment recommendations. Past performance is not indicative of future results. We assume no liability for damages resulting from or arising out of the use of such information. It would be best if you did your own research to make your personal investment decisions wisely or consult a licenced investment advisor.

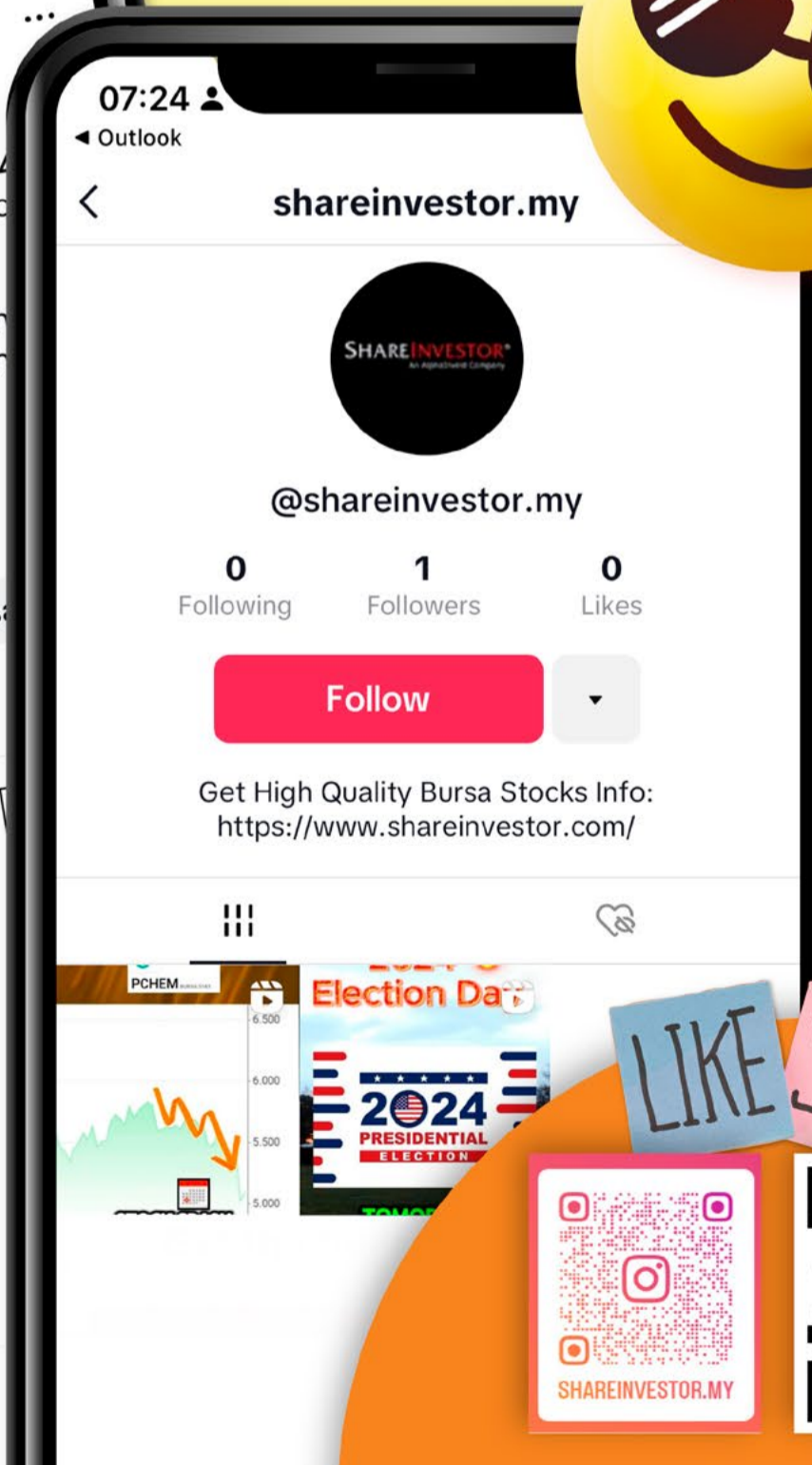
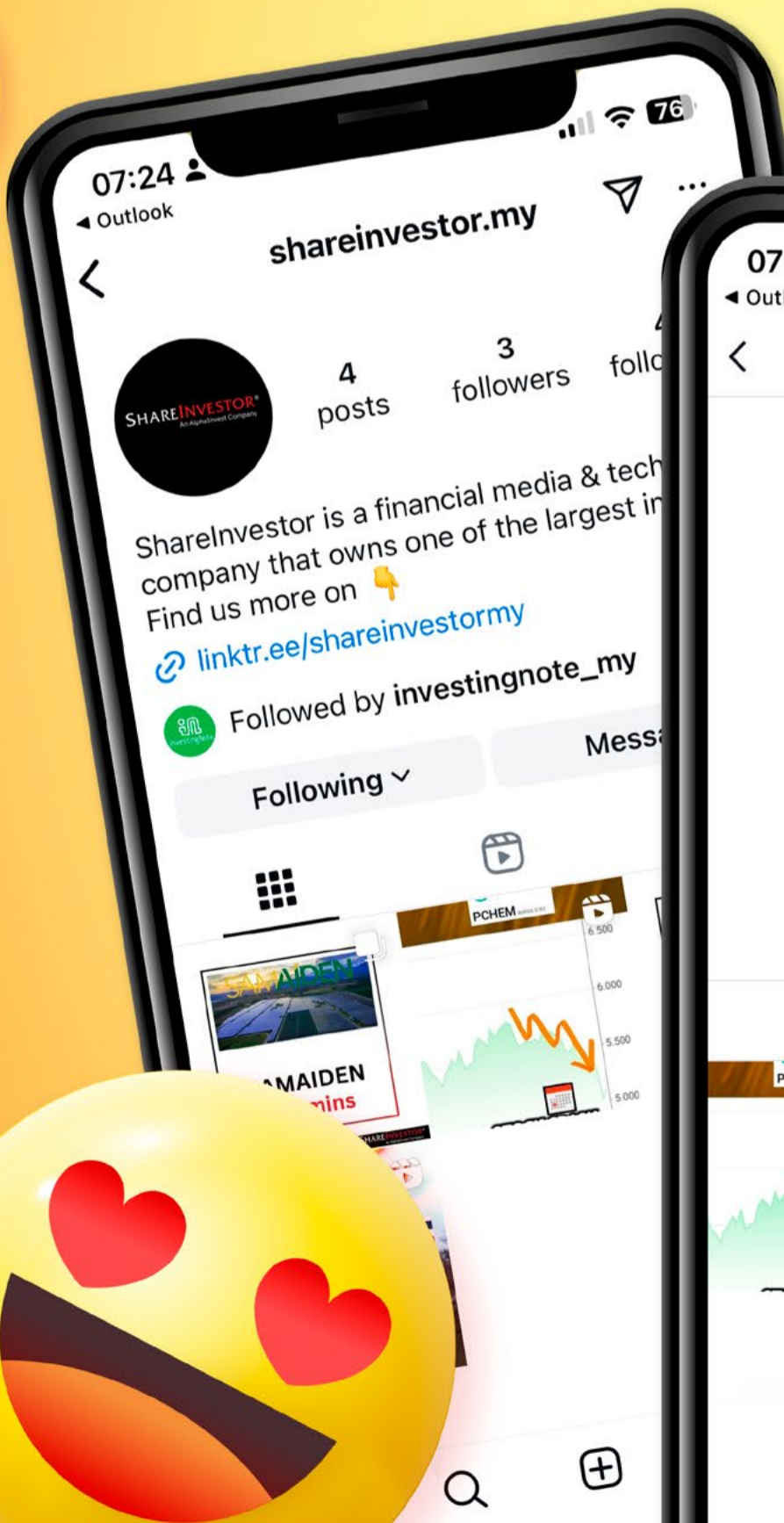
**SHAREINVESTOR**<sup>®</sup>  
An AlphaInvest Company



# We're Officially on TikTok & Instagram!



Follow us now for more information!



LIKE SHARE



Week: 27 Mar - 2 Apr 2026

More Brokers' Call 

<b>AmlInvestment Bank</b> <small>... See More</small>	<b>Call</b>	<b>Target Price</b>	<b>Release Date</b>
Binastra Corporation Berhad (7195)	<b>BUY</b>	RM2.70	30 Mar 26
Pentamaster Corporation Berhad (7160)	<b>BUY</b>	RM3.90	30 Mar 26
Keyfield International Berhad (5321)	<b>BUY</b>	RM1.39	1 Apr 26

<b>Apex Securities</b> <small>... See More</small>	<b>Call</b>	<b>Target Price</b>	<b>Release Date</b>
Southern Score Builders Berhad (0045)	<b>BUY</b>	RM0.81	30 Mar 26
Southern Score Builders Berhad (0045)	<b>BUY</b>	RM0.81	1 Apr 26

<b>Hong Leong Investment Bank</b> <small>... See More</small>	<b>Call</b>	<b>Target Price</b>	<b>Release Date</b>
Capital A Berhad (5099)	<b>BUY</b>	RM0.93	31 Mar 26
IJM Corporation Berhad (3336)	<b>ACCEPT</b>	RM3.15	2 Apr 26
V.S. Industry berhad (6963)	<b>SELL</b>	RM0.13	2 Apr 26

<b>Kenanga</b> <small>... See More</small>	<b>Call</b>	<b>Target Price</b>	<b>Release Date</b>
United Malacca Berhad (2593)	<b>OUTPERFORM</b>	RM6.70	1 Apr 26
IJM Corporation Berhad (3336)	<b>OUTPERFORM</b>	RM3.40	2 Apr 26

<b>Malacca Securities</b> <small>... See More</small>	<b>Call</b>	<b>Target Price</b>	<b>Release Date</b>
Empire Premium Food Berhad (5351)	<b>NOT RATED</b>	RM0.93	30 Mar 26
MTT Shipping and Logistics Berhad (5352)	<b>NOT RATED</b>	RM1.45	1 Apr 26

<b>MIDF</b> <small>... See More</small>	<b>Call</b>	<b>Target Price</b>	<b>Release Date</b>
CelcomDigi Berhad (6947)	<b>BUY</b>	RM3.54	30 Mar 26
IJM Corporation Berhad (3336)	<b>ACCEPT</b>	RM3.15	2 Apr 26
Paramount Corporation Berhad (1724)	<b>FAIR VALUE</b>	RM1.30	2 Apr 26
Petronas Dagangan Berhad (5861)	<b>NEUTRAL</b>	RM22.20	2 Apr 26

<b>Public Investment Bank</b> <small>... See More</small>	<b>Call</b>	<b>Target Price</b>	<b>Release Date</b>
IJM Corporation Berhad (3336)	<b>OUTPERFORM</b>	RM3.15	2 Apr 26
MGB Berhad (7595)	<b>OUTPERFORM</b>	RM0.78	2 Apr 26

**Disclaimer:** InveSt does not accept any liability whatsoever for any direct, indirect or consequential losses (including loss of profit) or damages that may arise from the use of information or opinions in this publication. The information and opinions in InveSt are not to be considered as an offer to sell or buy any of the securities discussed. Opinions expressed are subject to change without notice. The Brokers may, from time to time, have interests or positions in the securities mentioned. For the full report on each item listed on this page, please visit [https://www.shareinvestor.com/my/brokers\\_call](https://www.shareinvestor.com/my/brokers_call).

**DEFINITION:** Top 08 stocks with Technical Analysis plus Pattern Matching by 60 pre-defined indicators by the system showing a higher probability of bullish sentiment on the share price.



ShareInvestor WebPro > Screener > Predefined TA Screens > select market BURSA > Most Long Signals > click Scan Results or mouse over each company

## KOMARKCORP BHD (7017.MY)

### KOMARK

Price updated at 02 Apr 2026 17:31

Last: <b>0.065</b>	Change: <b>+0.005</b>	Volume: <b>29,651</b>
	Change (%): <b>+8.33</b>	Range: <b>0.060 - 0.065</b>

TA Scanner Results based on historical data up to 02 Apr 2026

Condition	Signal	Explanation
Bollinger Band: Bullish Lower Bollinger Band Support	Long	"1. Low 1 day ago below lower bollinger band(20,2). 2. Close above close 1 day ago. 3. Average volume(5) is above 100,000."
Bollinger Band: Bullish Short Term Volatility Breakout and Trending	Long	"1. Close price above upper bollinger band(33,1). 2. Volume above average volume(10). 3. Average volume(10) is above 300,000."
Bollinger Band: High Above Upper Bollinger Band	Neutral	"1. High above upper bollinger band(14,2). 2. Average volume(5) is above 100,000."
DM: Bullish Directional Movement	Long	-DI(14) crossed below +DI(14)
Donchian Channels: High Above Upper Donchian Channels	Long	High crossed above the upper Donchian Channel(14,4)
MACD: Bullish MACD Crossover	Long	"1. MACD(12,26) diff line crossed above the MACD(12,26) signal line. 2. MACD Histogram(12,26) is above 0."
Parabolic SAR: Bearish Parabolic SAR Reversal	Neutral	"1. Parabolic SAR 1 day ago above close price 1 day ago for the last 5 days. 2. Parabolic SAR below close price"

## NORTHEAST GROUP BERHAD (0325.MY)

### NE

Price updated at 02 Apr 2026 17:30

Last: <b>0.695</b>	Change: -	Volume: <b>14,953</b>
	Change (%): -	Range: <b>0.660 - 0.700</b>

TA Scanner Results based on historical data up to 02 Apr 2026

Condition	Signal	Explanation
Bollinger Band: Bullish Long Term Volatility Breakout and Trending	Long	"1. Close price above upper bollinger band(33,1). 2. Volume above average volume(50). 3. Average volume(50) is above 300,000."
Bollinger Band: Bullish Short Term Volatility Breakout and Trending	Long	"1. Close price above upper bollinger band(33,1). 2. Volume above average volume(10). 3. Average volume(10) is above 300,000."
Bollinger Band: High Above Upper Bollinger Band	Neutral	"1. High above upper bollinger band(14,2). 2. Average volume(5) is above 100,000."
DM: Bullish Directional Movement	Long	-DI(14) crossed below +DI(14)
Donchian Channels: High Above Upper Donchian Channels	Long	High crossed above the upper Donchian Channel(14,4)
Volume: 10 Days large value Buy Up trade	Long	"1. 150K value Buy Up greater than Sell Down by 20% for 10 days. 2. 50K-100K value Buy Up greater than Sell Down by 20% for 10 days. 3. Average volume(10) is above 1000000"

## AGMO HOLDINGS BERHAD (0258.MY)

### AGMO

Price updated at 02 Apr 2026 17:30

Last: <b>0.300</b>	Change: <b>-0.015</b>	Volume: <b>1,583</b>
	Change (%): <b>-4.76</b>	Range: <b>0.295 - 0.315</b>

TA Scanner Results based on historical data up to 02 Apr 2026

Condition	Signal	Explanation
Bollinger Band: Bullish Lower Bollinger Band Support	Long	"1. Low 1 day ago below lower bollinger band(20,2). 2. Close above close 1 day ago. 3. Average volume(5) is above 100,000."
DM: Bullish Directional Movement	Long	-DI(14) crossed below +DI(14)
MA: Bullish Price Crossover	Long	"1. Close price crossed above MA(40) within the last 1 day. 2. Previous day close price is below the MA(10) for the last 5 days"
MACD: Bullish MACD Crossover	Long	"1. MACD(12,26) diff line crossed above the MACD(12,26) signal line. 2. MACD Histogram(12,26) is above 0."
RSI: Short Term RSI 50 Bullish Crossover	Long	"1. RSI(20) crossed above 50 within the last 1 day and RSI(20) 1 day ago below 50 for the last 5 days. 2. Volume above average volume(125). 3. Average volume(5) is above 100,000."

## GENTING BERHAD (3182.MY)

### GENTING

Price updated at 02 Apr 2026 17:31

Last: <b>2.280</b>	Change: <b>-0.010</b>	Volume: <b>25,358</b>
	Change (%): <b>-0.44</b>	Range: <b>2.250 - 2.310</b>

TA Scanner Results based on historical data up to 02 Apr 2026

Condition	Signal	Explanation
Bollinger Band: Bullish Lower Bollinger Band Support	Long	"1. Low 1 day ago below lower bollinger band(20,2). 2. Close above close 1 day ago. 3. Average volume(5) is above 100,000."
Stochastic: Fast Stochastic Buy Signal	Long	"1. Fast Stochastic(15,5) %K crossed above 20. 2. Fast Stochastic(15,5) %K 1 day ago was below 20 for the last 5 days. 3. Average volume(30) is above 50000"
Volume: Consecutive Days Of Increasing Average Volume	Long	"1. Average Volume(20) has been increasing over the last 2 weeks. 2. Average volume(20) is above 100000"
Williams %R: Bullish Williams %R	Long	"1. Williams %R(26) between -80 and -100. 2. Average volume(5) is above 100,000."

**Disclaimer:** The information on this page is provided as a service to readers. It does not constitute financial advice and/or any investment recommendations. Past performance is not indicative of future results. We assume no liability for damages resulting from or arising out of the use of such information. It would be best if you did your own research to make your personal investment decisions wisely or consult a licenced investment advisor.



## JENTAYU SUSTAINABLES BERHAD (5673.MY)

### JSB

Price updated at 02 Apr 2026 17:31

Last: <b>0.280</b>	Change: <b>-0.010</b>	Volume: <b>76,553</b>
	Change (%): <b>-3.45</b>	Range: <b>0.260 - 0.290</b>

TA Scanner Results based on historical data up to 02 Apr 2026

Condition	Signal	Explanation
Bollinger Band: Bullish Lower Bollinger Band Support	Long	"1. Low 1 day ago below lower bollinger band(20,2). 2. Close above close 1 day ago. 3. Average volume(5) is above 100,000."
Candlestick: Bullish Harami	Long	Bullish: Harami
MA: Medium Term Bearish Moving Average Crossover	Short	MA(25) crossed below MA(50) within the last 1 day.
Volume: 10 Days large value Buy Up trade	Long	"1. 150K value Buy Up greater than Sell Down by 20% for 10 days. 2. 50K-100K value Buy Up greater than Sell Down by 20% for 10 days. 3. Average volume(10) is above 1000000"
Williams %R: Bullish Williams %R	Long	"1. Williams %R(26) between -80 and -100. 2. Average volume(5) is above 100,000."



## ECOMATE HOLDINGS BERHAD (0239.MY)

### ECOMATE

Price updated at 02 Apr 2026 17:31

Last: <b>0.855</b>	Change: <b>+0.005</b>	Volume: <b>62,571</b>
	Change (%): <b>+0.59</b>	Range: <b>0.855 - 0.855</b>

TA Scanner Results based on historical data up to 02 Apr 2026

Condition	Signal	Explanation
Bollinger Band: High Above Upper Bollinger Band	Neutral	"1. High above upper bollinger band(14,2). 2. Average volume(5) is above 100,000."
Candlestick: Indecision Doji	Neutral	Indecision: Doji
MACD: Bullish MACD Crossover	Long	"1. MACD(12,26) diff line crossed above the MACD(12,26) signal line. 2. MACD Histogram(12,26) is above 0."
RSI: Short Term RSI 50 Bullish Crossover	Long	"1. RSI(20) crossed above 50 within the last 1 day and RSI(20) 1 day ago below 50 for the last 5 days. 2. Volume above average volume(125). 3. Average volume(5) is above 100,000."
Stochastic: Fast Stochastic Buy Signal	Long	"1. Fast Stochastic(15,5) %K crossed above 20. 2. Fast Stochastic(15,5) %K 1 day ago was below 20 for the last 5 days. 3. Average volume(30) is above 50000"
Volume: 10 Days large value Buy Up trade	Long	"1. 150K value Buy Up greater than Sell Down by 20% for 10 days. 2. 50K-100K value Buy Up greater than Sell Down by 20% for 10 days. 3. Average volume(10) is above 1000000"
Volume: 5 Days large value Buy Up trade	Long	"1. 150K value Buy Up greater than Sell Down by 20% for 5 days. 2. 50K-100K value Buy Up greater than Sell Down by 20% for 5 days. 3. Average volume(10) is above 1000000"
Williams %R: Bearish Williams %R	Short	"1. Williams %R(26) between 0 and -20. 2. Average volume(5) is above 100,000."



## INCH KENNETH KAJANG RUBBER PUBLIC LTD CO (2607.MY)

### INCKEN

Price updated at 02 Apr 2026 17:31

Last: <b>0.395</b>	Change: <b>-0.025</b>	Volume: <b>5,723</b>
	Change (%): <b>-5.95</b>	Range: <b>0.385 - 0.485</b>

TA Scanner Results based on historical data up to 02 Apr 2026

Condition	Signal	Explanation
Candlestick: Indecision Doji	Neutral	Indecision: Doji
DM: Bullish Directional Movement	Long	-DI(14) crossed below +DI(14)
Donchian Channels: High Above Upper Donchian Channels	Long	High crossed above the upper Donchian Channel(14,4)
MACD: Bullish MACD Crossover	Long	"1. MACD(12,26) diff line crossed above the MACD(12,26) signal line. 2. MACD Histogram(12,26) is above 0."
Parabolic SAR: Bearish Parabolic SAR Reversal	Neutral	"1. Parabolic SAR 1 day ago above close price 1 day ago for the last 5 days. 2. Parabolic SAR below close price"
Volume: Volume Spike	Long	"1. Volume is more than 500% above average volume(10). 2. Volume above 200000. 3. Close price above 0.10"



## HI MOBILITY BERHAD (5335.MY)

### HI

Price updated at 02 Apr 2026 17:31

Last: <b>2.000</b>	Change: <b>+0.100</b>	Volume: <b>15,398</b>
	Change (%): <b>+5.26</b>	Range: <b>1.880 - 2.050</b>

TA Scanner Results based on historical data up to 02 Apr 2026

Condition	Signal	Explanation
Bollinger Band: Bullish Lower Bollinger Band Support	Long	"1. Low 1 day ago below lower bollinger band(20,2). 2. Close above close 1 day ago. 3. Average volume(5) is above 100,000."
Candlestick: Indecision Doji	Neutral	Indecision: Doji
Volume: 10 Days large value Buy Up trade	Long	"1. 150K value Buy Up greater than Sell Down by 20% for 10 days. 2. 50K-100K value Buy Up greater than Sell Down by 20% for 10 days. 3. Average volume(10) is above 1000000"
Volume: 5 Days large value Buy Up trade	Long	"1. 150K value Buy Up greater than Sell Down by 20% for 5 days. 2. 50K-100K value Buy Up greater than Sell Down by 20% for 5 days. 3. Average volume(10) is above 1000000"
Williams %R: Bullish Williams %R	Long	"1. Williams %R(26) between -80 and -100. 2. Average volume(5) is above 100,000."

**Disclaimer:** The information on this page is provided as a service to readers. It does not constitute financial advice and/or any investment recommendations. Past performance is not indicative of future results. We assume no liability for damages resulting from or arising out of the use of such information. It would be best if you did your own research to make your personal investment decisions wisely or consult a licenced investment advisor.



**Dato' Eu Hong Chew**  
Former Group CEO i-Berhad  
Non-Executive Director

He has been associated with the Sumurwang Group for many years charting the path for its manufacturing arm, firstly under Dreamland Holdings Berhad and the subsequent acquisition of I-Berhad.

Before that, he was with PA Management Consulting for a decade where he was the Director of Studies for the Cranfield PA MBA Programme in Malaysia.

Educated at the Royal Military College, Dato' Eu has an engineering degree from the University of Glasgow, and a MBA from the University of Bradford, UK.

# Dutch Lady:

## A Quiet Turnaround in the Making?

### SUMMARY

- Dutch Lady Milk Industries Berhad (Dutch Lady) (**BURSA:3026**) is the leading dairy player in Malaysia with high household penetration, but operates in a low single-digit growth industry with limited revenue upside.
- Revenue grew at about 4% CAGR (2017 - 2024), but profits and returns declined due to margin pressure, transition costs, and heavy capital investment ahead of revenue.
- Turnaround hinges on its new Bandar Enstek plant. The new facility is expected to improve efficiency, reduce costs, and stabilise margins, with early signs of recovery as transition costs taper off.

## BACKGROUND

Dutch Lady was established in 1963 as Pacific Milk Industries (Malaya) Sdn Bhd and was the first milk company listed on Bursa Malaysia. Today, it is a subsidiary of Royal FrieslandCampina N.V., one of the world's largest dairy cooperatives.

Over the years, the Group has evolved from producing sweetened condensed milk into a diversified dairy player offering liquid milk, powdered milk, and yogurt.

For decades, operations were centred at its facility in Petaling Jaya, Selangor. However, in 2019, the Group announced plans to develop a new manufacturing plant in Bandar Baru Enstek, Negeri Sembilan. This move forms part of its long-term strategy to support growth and strengthen its manufacturing footprint in Malaysia.

The new plant sits on a 30-acre site, compared to approximately 10 acres for the Petaling Jaya facility. As of September 2024, the new facility was nearing completion, with operations expected to commence within the year. In preparation, the Group has already begun transitioning its workforce, processes, and supply chain.

The Bandar Enstek plant is expected to be transformative for Dutch Lady's operations, improving efficiency, sustainability, and profitability. This is a critical development for the Group.

The facility will incorporate advanced technologies such as IoT, big data analytics, and automation to enhance productivity, improve production accuracy, and reduce material losses. At the same time, it is designed to minimise the use of chemicals, waste, and energy.

Sustainability is also a key focus. The plant will feature energy-efficient utilities, zero-loss processing, and rainwater reuse systems. These initiatives are expected to lower production costs while maintaining high product quality.

## MARKET DEMAND AND GROWTH OUTLOOK

Reading between the lines, the investment in the new plant reflects the Group’s confidence in its long-term prospects in Malaysia. Dutch Lady is the leading dairy company in the country. According to its 2023 Annual Report, it holds a 42.7% market share in liquid milk and 24.7% in formula and toddler nutrition. The Group has steadily increased its market share over time. For instance, its liquid milk share rose from 40.2% in 2022, while earlier data shows consistent incremental gains.

Its products also enjoy high household penetration. As of 2022, Dutch Lady reached 3.7 million Malaysian households annually - about 57.7% of total households. The Group expects the Malaysian dairy market to grow by about 5.1% in 2024, driven by demand for drinking and liquid milk.

There is also significant room for growth. Milk consumption in Malaysia is roughly one litre per capita, compared to about 40 litres in developed regions such as Europe. This gap highlights the long-term potential of the domestic market. In addition, Malaysia’s halal dairy market - valued at around RM4billion - offers further opportunities for expansion. Overall, the Group’s outlook is consistent with a relatively mature industry growing at a single-digit rate.



**Chart 1: Performance Index and Returns**

## OPERATING PERFORMANCE

From 2017 to 2024, revenue grew at a 4.4% CAGR, but profit after tax (PAT) declined (**refer to the left part of Chart 1**).

This was despite a temporary profit spike in 2021, mainly due to the disposal of the Petaling Jaya land, which boosted profit before tax to RM284.5 million. This gain was partly offset by the start of accelerated depreciation for assets at the Petaling Jaya plant.

The declining profits translated into lower returns, **as shown in the right part of Chart 2**. Over the past eight years, ROIC averaged 94% while ROE averaged 58%. Although these returns remained well above the cost of funds - indicating continued value creation - the downward trend is evident.

The decline in returns can be attributed to several factors:

- **Rising raw material costs:** Higher dairy input prices compressed gross profit margins.
- **Transition costs:** The shift to the new manufacturing facility resulted in significant one-off expenses, including accelerated depreciation of non-transferable assets.
- **Capital expansion ahead of revenue:** Capital increased substantially with the new plant, but this was not matched by a corresponding rise in sales.

This imbalance is reflected in the Group's financials. By 2024, total equity was about four times its 2017 level, while PAT was only about three-quarters of the 2017 figure. The decline in returns is therefore not surprising.

However, there are signs that this trend could reverse.

**First, the accelerated depreciation** - averaging about RM 15 million annually over the past two years - is expected to taper off. This suggests a potential improvement in earnings from 2025 onwards.

**Second, margins appear to have bottomed in 2022.** Both gross profit and contribution margins (refer to Chart 2) show signs of stabilisation and early recovery.

**Finally, with the completion of the new plant,** I do not expect a similar pace of capital expansion going forward. This should help improve capital efficiency and support a recovery in returns.



**Chart 2: Margins and Operating Profit**

- Notes to Chart 2:** I broke down the operating profits into fixed costs and variable costs.
- Fixed cost = SGA, Depreciation & Amortization and Others.
  - Variable cost = Cost of Sales that excluded Depreciation & Amortization.
  - Contribution = Revenue - Variable Cost.
  - Contribution margin = Contribution/Revenue.

## PEER COMPARISON

I compared Dutch Lady’s performance with several Bursa Malaysia F&B companies. Based on 2023 revenue, Dutch Lady is a mid-sized player, with revenue growth over the past eight years broadly in line with the sector average. **Refer to Table 1.**

Company	Revenue	
	2023 RM m	2017 to 2023 CAGR %
Dutch Lady (DLADY)	1,443	5.2%
Farm Fresh (FFB)	630	
Fraser & Neave (F&N)	5,001	3.4%
Nestle Malaysia (NESTLE)	7,051	5.0%
Spritzer (SPRITZER)	491	7.8%

**Chart 2: Margins and Operating Profit**

**Notes to Chart 2:** Data from Farm Fresh was only available from 2019.

To assess relative performance, I examined trends across four key metrics. Overall, Dutch Lady appears to have underperformed its peers.

**Strengths:** Recent improvements in free cash flow margin and a recovery in EBIT margin suggest that the Group may be stabilising following its transition phase.

**Weaknesses:** Dutch Lady lags its peers in return on capital, EBIT margin, and EPS. This points to challenges in both cost management and capital utilisation.

**Opportunities:** The new Bandar Enstek plant is expected to enhance productivity and margins over the long term, potentially narrowing the gap with stronger peers such as Nestlé Malaysia and Fraser & Neave.

A closer look at the metrics reinforces this assessment:

- Return on capital has declined sharply, particularly after 2021, in contrast to the more stable performance of Nestlé and F&N;
- EBIT margins are lower and more volatile, while peers demonstrate greater operational consistency;
- Free cash flow margins have been negative for much of the period, reflecting the impact of heavy capital investment;
- EPS performance is weaker than Nestlé's, both in terms of growth and stability.

Overall, Dutch Lady's performance is below average relative to its peers, especially when benchmarked against industry leaders.

## **FINANCIAL POSITION**

I would rate Dutch Lady's financial position as sound based on the following:

- As of Sep 2025, it had RM39 million in cash. This is equal to 4% of its total assets.
- As of Sep 2025, it had a debt-capital ratio of 15%.

- Over the past 8 years, the Group has had a 45% Reinvestment rate. This is a good sign as this includes the investment in the new plant. Without the new plant, the rate would be lower.
- From 2017 to 2024, there was only one year when it failed to generate positive cash flow from operations. During this period, it generated RM832 million cash flow from operations compared to the total PAT of RM879 million. This is a good cash flow conversion ratio.
- It had a reasonable capital allocation plan. **Refer to Table 2.** The cash flow from operations was sufficient to fund its CAPEX, with excess used for dividends.

Item	Sources RM m	Uses RM m
Cash flow from Ops	832	
New shares	0	
Net Debt	36	
Acquisition		0
CAPEX		524
Dividends		550
Buybacks		0
Misc	207	
<b>Total</b>	<b>1,075</b>	<b>1,075</b>

**Table 2: Sources and Uses of Funds 2017 to 2024**

I must mention that historically, the Group paid out a larger part of its earnings as dividends. From 2002 to 2018, it had a dividend payout ratio of about 100%. During these 17 years,

it paid out a total dividend of RM1.37 billion. Its total PAT was RM1.35 billion, and total cash flow from operations was RM1.61 billion.

This dividend payout ratio dropped over the past few years as the funds were channelled for the new plant. I expect that with the opening of the new plant, the Group will revert to its earlier high payout ratio. This is in line with my postulate that there will not be further significant growth in capital.

## VALUATION

I postulate that while the new plant is unlikely to drive additional revenue growth, it should lead to margin improvements. In valuing

Dutch Lady, I adopted the following assumptions:

- The Group operates in a mature sector, with revenue growing at the long-term GDP rate of about 4%. The base revenue is anchored to the 2024 level.
- Contribution margins are assumed to improve progressively at 3% per annum from the 2024 level, reaching the historical peak of 43% (achieved in 2015/16) by the terminal year.
- The reinvestment rate is assumed to decline from the elevated 2024 level to the rate implied by the fundamental growth equation in the terminal year.
- Fixed costs in Year 1 are based on 2024 levels, adjusted downward by RM15 million to reflect the cessation of accelerated depreciation related to the old plant.

Based on these assumptions, I derived an intrinsic value of RM42 per share, compared to a market price of RM27 per share (end Sep 2025). This implies a margin of safety of about 55%.

***(Refer to the original article for details of the valuation.)***

It is worth noting that these projections are relatively optimistic, as reflected in the implied performance metrics:

- ROIC averages 27%, compared to 19% over the past two years.
- EBIT margin averages 16%, versus 7% over the past two years.
- Reinvestment rate averages 28%, compared to 45% over the past eight years.

## **CONCLUSION**

Dutch Lady presents a case of a fundamentally sound business undergoing a transition phase.

On one hand, it operates in a mature but resilient sector, with strong market leadership, high household penetration, and long-term

structural growth potential. Its financial position is also reasonably sound, with good cash flow conversion and a history of disciplined capital allocation.

On the other hand, its recent performance has been underwhelming. Despite steady revenue growth, profits and returns have declined due to margin pressures, transition costs, and capital expansion ahead of revenue. Relative to peers, Dutch Lady's returns, margins, and earnings performance have been below average.

The key investment question is whether the new Bandar Enstek plant can reverse this trend.

There are early signs that this is plausible. Transition-related costs are tapering off, margins appear to have bottomed, and future capital requirements are likely to moderate. If the new plant delivers the expected improvements in efficiency and cost structure, Dutch Lady could see a recovery in profitability and returns.

My valuation reflects this turnaround thesis. While I have assumed no structural uplift in revenue growth, the margin recovery and normalisation of reinvestment underpin the estimated intrinsic value. This leads to a margin of safety of about 55%, albeit based on relatively optimistic assumptions regarding returns and margins.

Overall, Dutch Lady can be viewed as a turnaround within a mature business.

*I am a long-term value investor who has held onto stocks for more than 5 years. My analysis and valuation are from such a perspective. I consider quarterly results "noisy" and focus on long-term trends.*

*This article was derived from a detailed analysis, emphasizing the intersection of business performance and valuation metrics, which was first published on i4value as "[Is Dutch Lady an investment opportunity?](#)" Refer to the article for further insights on its investment risk vs business performance.*

# UNLOCK THE SECRET OF WEALTH

DO YOU REALLY WANT TO MASTER VALUE INVESTING



SEE HOW TO GET HIGHER RETURNS WITH LOWER RISK



# BNM publishes Annual Report 2025, Economic & Monetary Review 2025, and Financial Stability Review for 2H 2025

**B**ank Negara Malaysia (BNM) has released its Annual Report 2025 (AR 2025), Economic and Monetary Review 2025 (EMR 2025), and Financial Stability Review for Second Half 2025 (FSR 2H 2025).

Highlights of the reports:

- In 2025, the Malaysian economy grew by 5.2%, anchored by resilient domestic demand.
  - Household spending remained firm, supported by positive labour market conditions and more targeted policy measures.
  - Investment activity increased strongly, driven by continued progress in multi year projects and strong investment approvals, particularly in high-technology services and advanced manufacturing.
  - Inflation averaged 1.4%, the lowest in five years. That said, cost of living remains a concern. The AR 2025 feature article ***'Beyond the Headline: Inflation Through the Eyes of Households'*** explains how people's day-to-day experience of prices can be different from official inflation data, which remains useful as an indicator for guiding policy decisions.

- Amid the challenging and uncertain global landscape, the Malaysian economy is projected to grow between 4% to 5% in 2026. Malaysia is entering this challenging period from a position of strength, supported by robust domestic demand, moderate inflation, a sound financial sector, and a resilient external position. BNM will remain vigilant to the rapidly evolving Middle East conflict.
  - With its diversified growth drivers, resilient domestic demand, and a secure foothold in the technology cycle, Malaysia is well positioned to navigate the challenges and risks ahead.
  - Household consumption remains an important anchor of growth. Positive income prospects, a stable labour market and targeted policy support will sustain resilient household spending. The EMR 2025 feature article ***'Sustaining the Engine: The Evolving Drivers behind Malaysia's Private Consumption Growth'*** dissects this issue.
  - Investment activity will continue to expand, albeit at a more moderate pace.
  - The external sector is expected to remain resilient against headwinds from the Middle East conflict and uncertainties surrounding tariffs. The E&E sector is expected to benefit from strong semiconductor demand supporting AI developments and the ongoing realisation of data centre investments. The EMR 2025 feature article ***'Disentangling Malaysia Value Chains in The Age of Trade Turbulence'*** explores this topic. Inbound tourism, in conjunction with Visit Malaysia Year 2026, would also support the external sector.
  - Headline inflation is expected to average between 1.5% to 2.5%, well anchored and close to its long-term average.
  - Domestic monetary and financial conditions will remain supportive of financial needs amid continued economic expansion.

- Monetary policy will continue to focus on maintaining price stability while fostering conditions that support sustainable growth.
- The financial system is resilient to support the economy through the uncertain global environment. Efforts also continue to further strengthen and develop the financial sector.
  - Financial stability continues to be preserved. Financial institutions are well capitalised and operationally resilient, supported by ample liquidity buffers and sound asset quality. Malaysia's payment and settlement systems remain reliable and secure.
  - Macro solvency stress tests, which incorporate major downside risks, affirm the resilience of financial institutions against severe macroeconomic and financial shocks.
  - The financial sector continues to support the financing needs of the economy. Outstanding financing to small and medium enterprises (SMEs) grew 5.9% in 2025. Financing approvals and disbursements remained stable and broad-based across sectors, indicating continued access to financing.
  - Reforms were advanced to strengthen consumer protection and resilience in the financial sector, such as the enactment of the Consumer Credit Act, revisions to the Hire-Purchase Act, the launch of the National Financial Literacy Strategy 2026-2030, and the introduction of RESET initiatives in coordination with the Ministry of Health and the Ministry of Finance.
  - Platforms and initiatives such as the Digital Asset Innovation Hub, Climate Finance Innovation Lab and i-CITA programme were set up to support financial solutions that respond directly to the needs of our economy and society. Further progress has also been made to build climate resilience of financial institutions and their customers.

- Banks are stepping up efforts to close service gaps for the unserved and underserved. Read more about this in the AR 2025 feature article ***'Bridging the Gap: The Path to Affordable and Accessible Basic Banking Services'***.
- In the area of Islamic finance, the industry continues to advance value-based finance that delivers positive impact and socio-economic outcomes. The AR 2025 feature article ***'The Rise of Islamic Finance in ASEAN: Unlocking its Growth Potential'*** highlights the growing opportunities and the potential for Islamic finance to drive inclusive and sustainable economic outcomes within the region.
- As the Financial Sector Blueprint 2022–2026 enters its final phase, work is underway to chart out the next chapter of Malaysia's financial sector.
- Efforts to combat financial fraud continue to be intensified. Efforts to reinforce defences are yielding results, with some banks reporting zero malware cases in 2025. A whole-of-nation approach remains key to protecting vulnerable communities from evolving scams. Read more about these efforts in the AR 2025 feature article ***'Fraud Resolution: Building Trust through Shared Accountability'***.
- ASEAN's unified commitment and collective resolve anchored confidence, supported economic activity, and provided a more stable regional environment. The AR 2025 feature article ***'Malaysia's 2025 ASEAN/ASEAN+3 Chairmanship: Advancing Inclusive and Sustainable Economic Growth for ASEAN and Malaysia'*** highlights how deeper integration and shared opportunities can benefit all ASEAN member states.
- Malaysia was placed under the highest category 'Regular Monitoring' by the Financial Action Task Force (FATF). It is an important affirmation of the country's robust and improving anti-money laundering and counter terrorism financing (AML/CFT) regime.

- The AR 2025 also includes BNM’s Audited Financial Statements for the financial year ended 31 December 2025. As audited and certified by the Auditor General, BNM’s total assets stood at RM602.22 billion. A net profit after tax of RM12.45 billion was recorded, of which RM7.45 billion has been transferred to the BNM Risk Reserves. BNM declared a dividend of RM5 billion to the Government for the 2025 financial year.

According to Bank Negara Malaysia Governor Dato’ Sri Abdul Rasheed Ghaffour, the Malaysian economy is resilient, recording growth of 5.2% in 2025 despite extremely challenging external environment. Stable domestic economic, monetary and financial conditions have helped cushion the impact of external shocks and paved the way for important reforms to take place. He noted that the country must continue to strengthen its economic fundamentals and policy buffers to be better positioned to navigate prevailing and future headwinds. While the environment continues to evolve, BNM’s commitment is firmly anchored to faithfully discharge our mandate to build a brighter future for all Malaysians.

To read the full publications, please visit [‘bnm.gov.my/AR2025’](https://bnm.gov.my/AR2025).



Learn how to identify Hot Stocks using Technical Analysis (TA) and Fundamental Analysis (FA)

# SIGN UP FOR Invest

now

Click Here

Scan/Click me



Via email, every Friday

Get market moving news and analyses. Regular columns include **Behind The Ticker** and **From MSWG’s The Observer**

**Leaderboard • Shariah Hot Stocks • Shariah Momentum Up Stocks • Non Shariah Hot Stocks • Up Trending Stocks • Growth Stocks • Dividend Stocks • Long Companies • Insider Activity • Investor Relations • Regional Markets**

IT’S FREE!

# Bursa Malaysia and HKEX launch HKEX Bursa Malaysia Large Cap Index

**B**ursa Malaysia Berhad and Hong Kong Exchanges and Clearing Limited (HKEX) have signed a MoU to deepen collaboration, expand regional market connectivity and unlock cross border investment opportunities. As the first initiative under the collaboration, Bursa Malaysia and HKEX unveiled the HKEX Bursa Malaysia Large Cap Index, a co branded benchmark designed to strengthen Malaysia-Hong Kong capital market integration, and support future cross-market investment opportunities, including products such as Exchange Traded Funds (ETFs).

Meanwhile, the MoU enables both exchanges to cooperate across five strategic areas for the development of more connected and investable markets. These include:

1. the joint exploration of streamlined pathways for dual listings between Hong Kong and Malaysia;
2. co development of market driven indexes;
3. cooperation to enhance access to and promotion of ETFs;
4. facilitation of the development of Shariah compliant securities in both markets; and
5. collaboration in areas relating to carbon markets.

The HKEX Bursa Malaysia Large Cap Index brings together 30 Malaysian blue chip constituents and 30 Hong Kong Southbound eligible large cap companies. Malaysian constituents in the index span key sectors that form the backbone of the country's economy, including consumer products and services (23%), financial services (20%), utilities (13%), as well as telecommunications and media (13%).

The MoU was signed on behalf of Bursa Malaysia by Dato' Fad'l Mohamed, CEO of Bursa Malaysia, and on behalf of HKEX by Bonnie Y Chan, CEO of HKEX.

According to Dato' Fad'l Mohamed, as global markets become more volatile and capital flows rotate dynamically across geographies, internationalisation is a vital growth enabler for exchanges. This collaboration with HKEX aligns with Bursa Malaysia's efforts to boost market vibrancy, expand opportunities for PLCs and investors, and enhance Malaysia's connectivity and visibility within the global investment landscape.

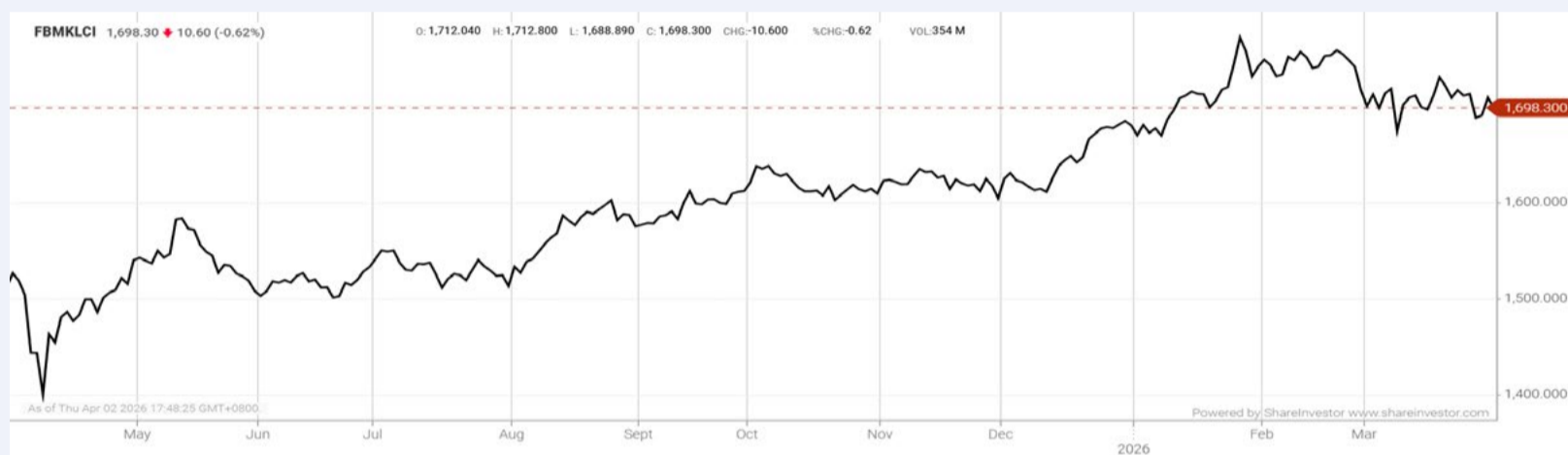
He added that Malaysia's market is underpinned by a strong base of domestic institutional investors alongside its leadership in Islamic capital market. These strengths position Bursa Malaysia as a platform that connects corporates and Shariah compliant investments with regional and global capital, while serving as a gateway for companies seeking access to ASEAN's growth markets. The launch of the HKEX Bursa Malaysia Large Cap Index marks an important early milestone under this MoU, elevating the market presence of Malaysian PLCs among investors in the region and highlighting the diversity of our sectors.

According to Bonnie Y Chan, HKEX is delighted to be partnering with Bursa Malaysia to drive enhanced connectivity between the two capital markets. Malaysia sits at the heart of Southeast Asia, one of the world's fastest growing regions, known for exciting opportunities in sectors such as innovation, consumer and resources, while HKEX is home to Asia's most vibrant international marketplace, offering exclusive connectivity to opportunities on the Chinese Mainland.

She noted that expanding HKEX's engagement with the region is a key strategic priority to build a multi-asset product ecosystem, drawing global liquidity to Asia at a time of heightened macro uncertainties. She added that the launch of the HKEX Bursa Malaysia Large Cap Index, together with the signing of this MOU, marks the latest step in their journey to advance regional connectivity through tangible outcomes that benefit the markets.

## EYE ON THE MARKETS

On Thursday (2Apr), the Ringgit closed at 4.0375 against the USD and 3.1370 to the Sing Dollar. On Monday (30Mar), the FBM KLCI opened at 1702.08. As at Thursday (2Apr) 5:00pm, the FBM KLCI closed down 3.78 points at 1698.30. Over in US, the overnight Dow Jones Industrial Average closed down 61.07 points (-0.13%) to 46,504.67 whilst the NASDAQ added 38.23 points (+0.18%) to 21,879.18.



KLCI 1 Year Chart

**CHECK OUT SHAREINVESTOR**

# BROKER'S CALL

Weekly Buy/Sell/Hold calls from leading Malaysian Brokerages.

[Go To Broker's Call](#)

## Over 5 Trading Days (as at Yesterday)



ShareInvestor WebPro ([www.shareinvestor.com/my](http://www.shareinvestor.com/my))

1. Price > Stock Prices
2. Select Market: NASDAQ / NYSE / IDX / SET / HKEX / SGX (One bourse at a time)
3. select Stocks Tab
4. select Ranking Top Gainers or Top Losers (Over 5 Trading Days)
5. Mouse over Column Layout > select Edit Customs > select Name > select Last Done Price > select 5 Days Change > select 52 Weeks High > select 52 Weeks Low > Mouse Over Column Layout > select Custom

### NASDAQ (USD)

#### Top Gainers

Name	Last Done	Change Over 5 Days	52 Weeks High	52 Weeks Low
Sandisk	692.730	+89.560	777.600	27.885
Mercadolibre	1,718.970	+87.980	2,645.220	1,593.210
Lumentum Holdings	764.650	+75.850	808.800	45.650
KLA	1,519.840	+68.710	1,693.350	551.330
Monolithic Power Systems	1,119.510	+61.230	1,256.220	438.860

#### Top Losers

Name	Last Done	Change Over 5 Days	52 Weeks High	52 Weeks Low
Atrium Therapeutics	13.470	-59.350	73.060	21.510
Nexstar Media Group	179.300	-38.800	254.300	141.660
VivoPower	2.080	-31.870	34.375	20.350
Sterling Infrastructure	421.290	-31.630	477.028	96.340
Powell Industries	554.050	-30.510	612.500	152.890

### NYSE (USD)

#### Top Gainers

Name	Last Done	Change Over 5 Days	52 Weeks High	52 Weeks Low
Berkshire Hathaway A	716,258.000	+3,758.000	812,855.000	685,150.000
Argan	571.380	+160.530	588.000	111.160
NVR	6,664.190	+111.990	8,618.280	6,301.025
Biglari Holdings A	1,759.930	+79.110	2,513.000	999.010
Comfort Systems USA	1,428.520	+69.860	1,500.000	276.440

#### Top Losers

Name	Last Done	Change Over 5 Days	52 Weeks High	52 Weeks Low
TX Pac Land	439.200	-91.160	547.200	269.233
Harbor PanAgora Dynamic Large Cap Core	23.708	-83.402	135.820	88.810
MSA Safety	166.350	-30.710	203.265	127.860
MDA Space	25.910	-30.230	56.960	54.300
Destiny Tech Rg	29.220	-27.320	105.000	7.750

### IDX (Rupiah)

#### Top Gainers

Name	Last Done	Change Over 5 Days	52 Weeks High	52 Weeks Low
DIAN SWASTATIKA SENTOSA TBK	68,525.000	+5,175.000	118,000.000	36,400.000
DCI INDONESIA TBK	209,700.000	+4,700.000	398,000.000	141,200.000
SINAR MAS MULTIARTHA TBK	15,200.000	+3,521.000	27,225.000	11,500.000
AKASHA WIRA INTERNATIONAL TBK	16,450.000	+1,325.000	17,500.000	9,000.000
ESTEE GOLD FEET TBK	2,690.000	+680.000	2,690.000	130.000

#### Top Losers

Name	Last Done	Change Over 5 Days	52 Weeks High	52 Weeks Low
INDO TAMBANGRAYA MEGAH TBK	27,775.000	-2,275.000	30,700.000	20,900.000
BAYAN RESOURCES TBK	11,425.000	-1,275.000	20,250.000	11,350.000
REMALA ABADI TBK	2,560.000	-1,260.000	6,775.000	955.000
IFISHDECO TBK	1,750.000	-1,180.000	3,250.000	660.000
MULTIPOLAR TECHNOLOGY TBK	14,725.000	-825.000	257,875.000	12,375.000

### SET (Thai Baht)

#### Top Gainers

Name	Last Done	Change Over 5 Days	52 Weeks High	52 Weeks Low
SCC	208.000	+14.500	231.000	128.000
F&D	61.000	+11.000	61.500	39.000
Food and Drinks Public NVDR	61.000	+11.000	61.000	39.000
BKIH	325.000	+8.000	325.000	271.000
SHANG	51.750	+7.500	61.500	38.000

#### Top Losers

Name	Last Done	Change Over 5 Days	52 Weeks High	52 Weeks Low
DELTA	273.000	-17.000	292.000	51.250
KWC	270.000	-9.000	340.000	260.000
ADVANC	365.000	-6.000	410.000	264.000
UP	22.800	-4.200	27.250	16.000
ASML01	36.250	-2.500	39.500	17.400

### HKEX (HKD)

#### Top Gainers

Name	Last Done	Change Over 5 Days	52 Weeks High	52 Weeks Low
KNOWLEDGE ATLAS (2513)	915.000	+155.000	938.000	116.100
SKB BIO-B (6990)	497.000	+71.200	581.000	228.200
DUALITYBIO-B (9606)	321.200	+58.000	563.500	165.500
XUNCE (3317)	203.200	+47.200	222.200	38.020
HAIXI PHARMA (2637)	180.100	+32.600	184.000	97.500

#### Top Losers

Name	Last Done	Change Over 5 Days	52 Weeks High	52 Weeks Low
ILUVATAR COREX (9903)	231.600	-42.800	342.000	148.900
GIGADEVICE (3986)	366.000	-41.600	463.600	220.000
BUSYMING (1768)	362.600	-34.200	461.200	345.600
BUTONG GROUP (6090)	38.840	-32.660	143.000	38.800
MIXUE GROUP (2097)	289.600	-32.400	618.500	275.200

### SGX (SGD)

#### Top Gainers

Name	Last Done	Change Over 5 Days	52 Weeks High	52 Weeks Low
OCBC Bank	22.550	+1.160	22.660	14.211
SGX	19.960	+0.550	20.100	11.500
Oiltek	1.450	+0.495	1.450	0.280
UOB	37.030	+0.440	39.500	28.599
Micro-Mechanics	2.490	+0.430	2.510	1.400

#### Top Losers

Name	Last Done	Change Over 5 Days	52 Weeks High	52 Weeks Low
JMH USD	74.550	-1.350	82.500	36.010
Jardine C&C	34.420	-0.780	36.300	23.100
Shangri-La HKD	4.490	-0.510	5.290	4.020
Keppel	12.000	-0.450	13.250	5.610
AvePoint	12.260	-0.200	20.400	12.100

**DEFINITION:** Insider Activity shows the trades made by substantial shareholders or directors of the company. Purchases by the directors and company share buyback may indicate the share price is undervalued and brings confidence to the price trend of the share price.



ShareInvestor WebPro > Fundamental > Insider Trades > click Search tab > Select Bursa > click Stock name > scroll up and leave at <Select Counter> Type Date Range for Announcement Date > click Search

Notice Period is 22nd March 2026 to 28th March 2026

Effective Change Date	Stock Name	Buyer/ Seller Name [Classification]	Bought / (Sold) ['000]		No. of Shares After Trade ['000]	
			Total	% Held	Total	% Held
19 MAR 2026 - 24 MAR 2026	99SMART	EMPLOYEES PROVIDENT FUND BOARD [SSH]	1,290		571,725	6.806
19 MAR 2026 - 19 MAR 2026	99SMART	EMPLOYEES PROVIDENT FUND BOARD [SSH]	4,329		570,435	6.791
18 MAR 2026 - 18 MAR 2026	99SMART	EMPLOYEES PROVIDENT FUND BOARD [SSH]	8,886		566,106	6.739
17 MAR 2026 - 17 MAR 2026	99SMART	EMPLOYEES PROVIDENT FUND BOARD [SSH]	797		557,221	6.634
19 MAR 2026 - 24 MAR 2026	ABMB	EMPLOYEES PROVIDENT FUND BOARD [SSH]	4,192		124,395	7.19
19 MAR 2026 - 19 MAR 2026	ABMB	EMPLOYEES PROVIDENT FUND BOARD [SSH]	517		120,204	6.947
18 MAR 2026 - 18 MAR 2026	ABMB	EMPLOYEES PROVIDENT FUND BOARD [SSH]	500		119,687	6.917
17 MAR 2026 - 17 MAR 2026	ABMB	EMPLOYEES PROVIDENT FUND BOARD [SSH]	585		119,187	6.889
19 MAR 2026 - 19 MAR 2026	AEMULUS	MR NG SANG BENG [DIR/CEO]	300		129,544	19.261
19 MAR 2026 - 19 MAR 2026	AEMULUS	MR NG SANG BENG [SSH]	300		129,544	19.261
25 MAR 2026 - 25 MAR 2026	AHB	MR CHOW HUNG KEAY [DIR/CEO]	12,500		41,500	4.631
19 MAR 2026 - 19 MAR 2026	ALAM	DATO ALOYSIUS ALBERT MICHAEL [SSH]	25,620		5,541	12.436
17 MAR 2026 - 24 MAR 2026	ALAM	SAUJANA HOLDINGS SDN BHD [SSH]	19,464		66,917	15.019
24 MAR 2026 - 24 MAR 2026	ALLIANZ	EMPLOYEES PROVIDENT FUND BOARD [SSH]	-31		14,952	8.114
19 MAR 2026 - 19 MAR 2026	ALLIANZ	EMPLOYEES PROVIDENT FUND BOARD [SSH]	44		14,983	8.131
17 MAR 2026 - 17 MAR 2026	ALLIANZ	EMPLOYEES PROVIDENT FUND BOARD [SSH]	20		14,939	8.108
24 MAR 2026 - 24 MAR 2026	ALSREIT	ENCIK ABDULLAH BIN ABU SAMAH [DIR/CEO]	10		10	0.058
24 MAR 2026 - 24 MAR 2026	AMBANK	EMPLOYEES PROVIDENT FUND BOARD [SSH]	-2,055		562,464	17.01
19 MAR 2026 - 19 MAR 2026	AMBANK	EMPLOYEES PROVIDENT FUND BOARD [SSH]	893		564,519	17.072
18 MAR 2026 - 18 MAR 2026	AMBANK	EMPLOYEES PROVIDENT FUND BOARD [SSH]	527		563,626	17.045
17 MAR 2026 - 17 MAR 2026	AMBANK	EMPLOYEES PROVIDENT FUND BOARD [SSH]	1,984		563,099	17.029
19 MAR 2026 - 24 MAR 2026	AMLEX	MR LIM SAY SOON [DIR/CEO]	40		79,247	29.558
19 MAR 2026 - 24 MAR 2026	AMLEX	MR LIM SAY SOON [SSH]	40		79,247	29.558
19 MAR 2026 - 19 MAR 2026	ANEKA	IR CHONG NGIT SOOI [DIR/CEO]	60		92,861	13.371
19 MAR 2026 - 19 MAR 2026	ANEKA	IR CHONG NGIT SOOI [SSH]	60		92,861	13.371
25 MAR 2026 - 25 MAR 2026	ASTINO	MR NG BACK TENG [DIR/CEO]	20		37,698	8.017
25 MAR 2026 - 25 MAR 2026	ASTINO	MR NG BACK TENG [SSH]	20		37,698	8.023
19 MAR 2026 - 19 MAR 2026	ASTINO	MADAM LIM MEE HWA [SSH]	59		26,537	5.647
19 MAR 2026 - 19 MAR 2026	ASTINO	MR YEO SENG CHONG [SSH]	59		26,537	5.647
24 MAR 2026 - 25 MAR 2026	AWANTEC	LEMBAGA TABUNG AMANAH WARISAN NEGERI TERENGGANU [SSH]	100		45,876	5.82
18 MAR 2026 - 19 MAR 2026	AWANTEC	LEMBAGA TABUNG AMANAH WARISAN NEGERI TERENGGANU [SSH]	13		45,775	5.807
18 MAR 2026 - 18 MAR 2026	AXIATA	EMPLOYEES PROVIDENT FUND BOARD [SSH]	2,000		1,771,532	19.281
17 MAR 2026 - 17 MAR 2026	AXIATA	EMPLOYEES PROVIDENT FUND BOARD [SSH]	1,760		1,769,532	19.259
24 MAR 2026 - 24 MAR 2026	AXREIT	EMPLOYEES PROVIDENT FUND BOARD [SSH]	5,128		406,741	20.087
18 MAR 2026 - 18 MAR 2026	AXREIT	EMPLOYEES PROVIDENT FUND BOARD [SSH]	228		401,613	19.834
17 MAR 2026 - 17 MAR 2026	AXREIT	EMPLOYEES PROVIDENT FUND BOARD [SSH]	674		401,385	19.823
19 MAR 2026 - 19 MAR 2026	BAUTO	KUMPULAN WANG PERSARAAN (DIPERBADANKAN) [SSH]	-1,311		58,246	5.13
24 MAR 2026 - 24 MAR 2026	BIMB	EMPLOYEES PROVIDENT FUND BOARD [SSH]	460		360,735	15.916
19 MAR 2026 - 19 MAR 2026	BIMB	EMPLOYEES PROVIDENT FUND BOARD [SSH]	331		360,275	15.9
18 MAR 2026 - 18 MAR 2026	BIMB	EMPLOYEES PROVIDENT FUND BOARD [SSH]	48		359,943	15.881
17 MAR 2026 - 17 MAR 2026	BIMB	EMPLOYEES PROVIDENT FUND BOARD [SSH]	285		359,895	15.879
24 MAR 2026 - 24 MAR 2026	BJCORP	HQZ CREDIT SDN BHD [SSH]	540		333,720	5.624
24 MAR 2026 - 26 MAR 2026	BJCORP	TAN SRI DATO' SERI VINCENT TAN CHEE YIOUN [SSH]	58,486		1,324,763	22.327
19 MAR 2026 - 19 MAR 2026	BJCORP	HQZ CREDIT SDN BHD [SSH]	-19,908		333,179	5.667
19 MAR 2026 - 19 MAR 2026	BJCORP	INTAN UTILITIES SDN BHD [SSH]	-14,240		326,813	5.559
19 MAR 2026 - 19 MAR 2026	BJCORP	PREMIER MERCHANDISE SDN BHD [SSH]	-14,240		325,564	5.537
19 MAR 2026 - 19 MAR 2026	BJCORP	VISTA MERANTI SDN BHD [SSH]	-14,240		326,813	5.559
18 MAR 2026 - 19 MAR 2026	BJCORP	TAN SRI DATO' SERI VINCENT TAN CHEE YIOUN [SSH]	-18,175		1,266,277	21.539
25 MAR 2026 - 25 MAR 2026	BLDPLNT	DATO' SRI LAW KIU KIONG [SSH]	0.5		6,313	6.752
25 MAR 2026 - 25 MAR 2026	BLDPLNT	LAW KIONG HOLDINGS SDN. BHD. [SSH]	0.5		6,313	6.752
27 MAR 2026 - 27 MAR 2026	BORNOIL	DATUK JOSEPH LEE YOK MIN @ AMBROSE [DIR/CEO]	-10,000		1,884,466	12.383
27 MAR 2026 - 27 MAR 2026	BORNOIL	DATUK JOSEPH LEE YOK MIN @ AMBROSE [SSH]	-10,000		575,251	12.383
27 MAR 2026 - 27 MAR 2026	BORNOIL	MR RIORN LEE KAH VUI [DIR/CEO]	-10,000		626,268	4.115
27 MAR 2026 - 27 MAR 2026	BORNOIL	MR RIORN LEE KAH VUI [SSH]	-10,000		51,018	4.115
24 MAR 2026 - 24 MAR 2026	BURSA	EMPLOYEES PROVIDENT FUND BOARD [SSH]	1,351		114,648	14.166
19 MAR 2026 - 19 MAR 2026	BURSA	EMPLOYEES PROVIDENT FUND BOARD [SSH]	2,000		113,296	13.999
18 MAR 2026 - 18 MAR 2026	BURSA	EMPLOYEES PROVIDENT FUND BOARD [SSH]	29		111,296	13.752
19 MAR 2026 - 19 MAR 2026	CGB	MR CHEW HIAN TAT [DIR/CEO]	133		254,958	29.387
19 MAR 2026 - 19 MAR 2026	CGB	MR CHEW HIAN TAT [SSH]	133		254,958	29.387
19 MAR 2026 - 19 MAR 2026	CGB	MR LEE CHEE VUI [DIR/CEO]	2,866		87,718	10.11
19 MAR 2026 - 19 MAR 2026	CGB	MR LEE CHEE VUI [SSH]	2,866		87,718	10.11
19 MAR 2026 - 19 MAR 2026	CGB	MR SOO YU CHAI [SSH]	2,866		76,082	8.769
19 MAR 2026 - 19 MAR 2026	CGB	RYRT HOLDINGS SDN. BHD. [SSH]	2,866		75,299	8.679
19 MAR 2026 - 19 MAR 2026	CGB-WB	MR CHEW HIAN TAT [DIR/CEO]	133		73,022	36.773
19 MAR 2026 - 19 MAR 2026	CGB-WB	MR LEE CHEE VUI [DIR/CEO]	2,866		13,145	6.619
19 MAR 2026 - 19 MAR 2026	CHEETAH	mitsubishi UFJ FINANCIAL GROUP INC [SSH]	-564		31,778	6.536
19 MAR 2026 - 19 MAR 2026	CHEETAH	MORGAN STANLEY [SSH]	-564		31,778	6.536
17 MAR 2026 - 17 MAR 2026	CHEETAH	XOX (HONG KONG) LIMITED [SSH]	2,100		123,346	25.368
17 MAR 2026 - 17 MAR 2026	CHEETAH	XOX BHD [SSH]	2,100		123,346	25.368
24 MAR 2026 - 24 MAR 2026	CIMB	EMPLOYEES PROVIDENT FUND BOARD [SSH]	-6,007		1,966,218	18.2
19 MAR 2026 - 19 MAR 2026	CIMB	EMPLOYEES PROVIDENT FUND BOARD [SSH]	3,700		1,972,224	18.26
24 MAR 2026 - 24 MAR 2026	CIMB	KUMPULAN WANG PERSARAAN (DIPERBADANKAN) [SSH]	-1,060		691,340	6.4
18 MAR 2026 - 18 MAR 2026	CIMB	EMPLOYEES PROVIDENT FUND BOARD [SSH]	3,205		1,968,524	18.22
17 MAR 2026 - 17 MAR 2026	CIMB	EMPLOYEES PROVIDENT FUND BOARD [SSH]	3,476		1,965,319	18.19
18 MAR 2026 - 19 MAR 2026	CITAGLB	TAN SRI DATO' SRI DR MOHAMAD NORZA BIN ZAKARIA [DIR/CEO]	330		162,247	32.883
18 MAR 2026 - 19 MAR 2026	CITAGLB	TAN SRI DATO' SRI DR MOHAMAD NORZA BIN ZAKARIA [SSH]	330		162,247	32.883
26 MAR 2026 - 26 MAR 2026	CLMT	KUMPULAN WANG PERSARAAN (DIPERBADANKAN) [SSH]	1,471		304,252	9.042
25 MAR 2026 - 25 MAR 2026	CLMT	MR FOO WEI HOONG [DIR/CEO]	2		134	0.004
24 MAR 2026 - 24 MAR 2026	CLMT	EMPLOYEES PROVIDENT FUND BOARD [SSH]	7,029		555,910	16.688

Notice Period is 22nd March 2026 to 28th March 2026

Effective Change Date	Stock Name	Buyer/ Seller Name [Classification]	Bought / (Sold) ['000]		No. of Shares After Trade ['000]	
			Total	% Held	Total	% Held
26 MAR 2026 - 26 MAR 2026	CMSB	LEMBAGA TABUNG HAJI [SSH]	-500		71,180	6.618
26 MAR 2026 - 26 MAR 2026	COASTAL	SAMARANG UCITS - SAMARANG ASIAN PROSPERITY [SSH]	-39		44,563	8.202
25 MAR 2026 - 25 MAR 2026	COASTAL	SAMARANG UCITS - SAMARANG ASIAN PROSPERITY [SSH]	-38		44,602	8.208
24 MAR 2026 - 24 MAR 2026	COASTAL	SAMARANG UCITS - SAMARANG ASIAN PROSPERITY [SSH]	-50		44,640	8.215
19 MAR 2026 - 19 MAR 2026	COASTAL	SAMARANG UCITS - SAMARANG ASIAN PROSPERITY [SSH]	-612		44,689	8.224
25 MAR 2026 - 25 MAR 2026	COMPUGT	MADAM SEE THOO CHAN [DIR/CEO]	136		1,122,985	18.561
25 MAR 2026 - 25 MAR 2026	COMPUGT	MADAM SEE THOO CHAN [SSH]	136		1,122,985	18.561
25 MAR 2026 - 25 MAR 2026	COMPUGT	MR GOH KHENG PEOW [SSH]	136		1,122,985	18.561
24 MAR 2026 - 24 MAR 2026	COMPUGT	MADAM SEE THOO CHAN [DIR/CEO]	500		1,122,849	18.558
24 MAR 2026 - 24 MAR 2026	COMPUGT	MADAM SEE THOO CHAN [SSH]	500		1,122,849	18.558
19 MAR 2026 - 19 MAR 2026	COMPUGT	CURATE HOLDINGS SDN. BHD. [SSH]	-10,000		856,488	14.156
19 MAR 2026 - 19 MAR 2026	COMPUGT	MADAM SEE THOO CHAN [DIR/CEO]	16,823		1,122,349	18.55
19 MAR 2026 - 19 MAR 2026	COMPUGT	MADAM SEE THOO CHAN [SSH]	16,823		1,122,349	18.55
19 MAR 2026 - 19 MAR 2026	COMPUGT	MISS SOO YI XIN [SSH]	-10,000		856,688	14.159
19 MAR 2026 - 19 MAR 2026	COMPUGT	MR GOH KHENG PEOW [SSH]	16,823		1,122,349	18.55
26 MAR 2026 - 26 MAR 2026	CTOS	KUMPULAN WANG PERSARAAN (DIPERBADANKAN) [SSH]	-546		218,767	9.616
24 MAR 2026 - 24 MAR 2026	CTOS	EMPLOYEES PROVIDENT FUND BOARD [SSH]	1,474		513,630	22.576
25 MAR 2026 - 25 MAR 2026	CTOS	KUMPULAN WANG PERSARAAN (DIPERBADANKAN) [SSH]	-367		219,313	9.64
24 MAR 2026 - 24 MAR 2026	CTOS	KUMPULAN WANG PERSARAAN (DIPERBADANKAN) [SSH]	-1,121		219,680	9.656
19 MAR 2026 - 19 MAR 2026	CTOS	CREADOR V L.P. [SSH]	250		460,521	20.242
19 MAR 2026 - 19 MAR 2026	CTOS	JADE VINE SDN. BHD. [SSH]	250		460,521	20.242
19 MAR 2026 - 19 MAR 2026	CTOS	KUMPULAN WANG PERSARAAN (DIPERBADANKAN) [SSH]	-443		220,801	9.706
24 MAR 2026 - 25 MAR 2026	CYBERE	SPECIAL FLAGSHIP HOLDINGS SDN BHD [SSH]	324		105,710	61.402
24 MAR 2026 - 25 MAR 2026	CYBERE	TAN SRI DATO' DR PALANIAPPAN A/L RAMANATHAN CHETTIAR [DIR/CEO]	324		105,710	61.402
24 MAR 2026 - 25 MAR 2026	CYBERE	TAN SRI DATO' DR PALANIAPPAN A/L RAMANATHAN CHETTIAR [SSH]	324		105,710	61.402
19 MAR 2026 - 19 MAR 2026	CYBERE	SPECIAL FLAGSHIP HOLDINGS SDN BHD [SSH]	963		105,385	61.214
19 MAR 2026 - 19 MAR 2026	CYBERE	TAN SRI DATO' DR PALANIAPPAN A/L RAMANATHAN CHETTIAR [DIR/CEO]	963		105,385	61.214
19 MAR 2026 - 19 MAR 2026	CYBERE	TAN SRI DATO' DR PALANIAPPAN A/L RAMANATHAN CHETTIAR [SSH]	963		105,385	61.214
26 MAR 2026 - 26 MAR 2026	D&O	LEMBAGA TABUNG HAJI [SSH]	-400		61,992	5.001
25 MAR 2026 - 25 MAR 2026	D&O	KUMPULAN WANG PERSARAAN (DIPERBADANKAN) [SSH]	-500		80,886	6.526
24 MAR 2026 - 24 MAR 2026	D&O	KUMPULAN WANG PERSARAAN (DIPERBADANKAN) [SSH]	-244		81,386	6.566
19 MAR 2026 - 19 MAR 2026	D&O	ABERDEEN GROUP PLC [SSH]	-1,639		64,742	5.223
19 MAR 2026 - 19 MAR 2026	D&O	ABRDN HOLDINGS LIMITED [SSH]	-1,639		64,742	5.223
19 MAR 2026 - 19 MAR 2026	D&O	ABRDN MALAYSIA SDN BHD [SSH]	-1,639		64,742	5.223
19 MAR 2026 - 19 MAR 2026	D&O	KUMPULAN WANG PERSARAAN (DIPERBADANKAN) [SSH]	-1,854		81,630	6.586
12 MAR 2026 - 19 MAR 2026	DATAPRP	DATUK WIRA SHAMSHURI BIN ABDUL MAJID [SSH]	8,578		128,375	15.353
26 MAR 2026 - 26 MAR 2026	DAYANG	DATUK LING SUK KIONG [DIR/CEO]	-2,000		140,665	12.149
26 MAR 2026 - 26 MAR 2026	DAYANG	DATUK LING SUK KIONG [SSH]	-2,000		140,665	12.149
26 MAR 2026 - 26 MAR 2026	DAYANG	MR JOE LING SIEW LOUNG @ LIN SHOU LONG [DIR/CEO]	-2,000		140,665	12.149
26 MAR 2026 - 26 MAR 2026	DAYANG	MR JOE LING SIEW LOUNG @ LIN SHOU LONG [SSH]	-2,000		140,665	12.149
19 MAR 2026 - 19 MAR 2026	DAYANG	EMPLOYEES PROVIDENT FUND BOARD [SSH]	310		134,087	11.582
25 MAR 2026 - 27 MAR 2026	DIALOG	PUAN ZAINAB BINTI MOHD SALLEH [DIR/CEO]	-100		7,264	0.132
19 MAR 2026 - 19 MAR 2026	DIALOG	EMPLOYEES PROVIDENT FUND BOARD [SSH]	1,593		1,271,878	22.54
24 MAR 2026 - 24 MAR 2026	DIALOG	KUMPULAN WANG PERSARAAN (DIPERBADANKAN) [SSH]	1,098		537,707	9.53
18 MAR 2026 - 18 MAR 2026	DIALOG	EMPLOYEES PROVIDENT FUND BOARD [SSH]	2,637		1,270,285	22.51
19 MAR 2026 - 19 MAR 2026	DIALOG	KUMPULAN WANG PERSARAAN (DIPERBADANKAN) [SSH]	75		536,609	9.51
17 MAR 2026 - 17 MAR 2026	DIALOG	EMPLOYEES PROVIDENT FUND BOARD [SSH]	432		1,267,648	22.47
17 MAR 2026 - 17 MAR 2026	DPHARMA	EMPLOYEES PROVIDENT FUND BOARD [SSH]	-102		86,158	8.957
19 MAR 2026 - 19 MAR 2026	DPS	EDMUND SOW YONG MING [SSH]	1,092		168,266	63.321
19 MAR 2026 - 19 MAR 2026	DPS	EMILY SOW MEI CHET [DIR/CEO]	1,092		168,266	63.321
19 MAR 2026 - 19 MAR 2026	DPS	EUGENE SOW CHUAN SHENG [DIR/CEO]	1,092		168,266	63.321
19 MAR 2026 - 19 MAR 2026	DPS	EUGENE SOW CHUAN SHENG [SSH]	1,092		168,266	63.321
19 MAR 2						

Notice Period is 22nd March 2026 to 28th March 2026

Effective Change Date	Stock Name	Buyer/ Seller Name [Classification]	Bought / (Sold) ['000]	No. of Shares After Trade ['000]	
			Total	Total	% Held
24 MAR 2026 - 24 MAR 2026	F&N	EMPLOYEES PROVIDENT FUND BOARD [SSH]	269	59,447	16.208
19 MAR 2026 - 19 MAR 2026	F&N	EMPLOYEES PROVIDENT FUND BOARD [SSH]	-14	59,178	16.135
17 MAR 2026 - 17 MAR 2026	F&N	EMPLOYEES PROVIDENT FUND BOARD [SSH]	-5	59,192	16.138
24 MAR 2026 - 24 MAR 2026	FFB	EMPLOYEES PROVIDENT FUND BOARD [SSH]	4,458	248,789	13.203
19 MAR 2026 - 19 MAR 2026	FFB	EMPLOYEES PROVIDENT FUND BOARD [SSH]	655	246,634	13.088
18 MAR 2026 - 18 MAR 2026	FFB	EMPLOYEES PROVIDENT FUND BOARD [SSH]	400	245,979	13.054
17 MAR 2026 - 17 MAR 2026	FFB	EMPLOYEES PROVIDENT FUND BOARD [SSH]	374	245,579	13.032
24 MAR 2026 - 24 MAR 2026	FPGROUP	DATO' ONG CHOO HENG [DIR/CEO]	0.7	189,758	34.84
24 MAR 2026 - 24 MAR 2026	FPGROUP	DATO' ONG CHOO HENG [SSH]	0.7	189,758	34.84
18 MAR 2026 - 19 MAR 2026	FPHB	MRS LIEW TSUEY ER [DIR/CEO]	250	283,588	62.846
18 MAR 2026 - 19 MAR 2026	FPHB	MRS LIEW TSUEY ER [SSH]	250	283,588	62.846
24 MAR 2026 - 24 MAR 2026	GAMUDA	EMPLOYEES PROVIDENT FUND BOARD (EPF BOARD) [SSH]	5,000	1,165,892	19.58
19 MAR 2026 - 19 MAR 2026	GAMUDA	EMPLOYEES PROVIDENT FUND BOARD (EPF BOARD) [SSH]	5,000	1,160,887	19.5
18 MAR 2026 - 18 MAR 2026	GAMUDA	EMPLOYEES PROVIDENT FUND BOARD (EPF BOARD) [SSH]	121	1,155,887	19.41
17 MAR 2026 - 17 MAR 2026	GAMUDA	EMPLOYEES PROVIDENT FUND BOARD (EPF BOARD) [SSH]	957	1,155,767	19.41
18 MAR 2026 - 24 MAR 2026	GBAY	MR PETER LING EE KONG [DIR/CEO]	155	14,181	17.937
18 MAR 2026 - 24 MAR 2026	GBAY	MR PETER LING EE KONG [SSH]	155	14,181	17.937
25 MAR 2026 - 26 MAR 2026	GENM	DATO INDERA LIM KEONG HUI [DIR/CEO]	617	4,186,786	73.87
25 MAR 2026 - 26 MAR 2026	GENM	DATO INDERA LIM KEONG HUI [SSH]	617	4,186,786	73.87
25 MAR 2026 - 26 MAR 2026	GENM	GENTING BERHAD [SSH]	617	4,185,583	73.849
25 MAR 2026 - 26 MAR 2026	GENM	KIEN HUAT INTERNATIONAL LIMITED [SSH]	617	4,186,782	73.87
25 MAR 2026 - 26 MAR 2026	GENM	KIEN HUAT REALTY SDN BERHAD [SSH]	617	4,186,782	73.87
25 MAR 2026 - 26 MAR 2026	GENM	PARKVIEW MANAGEMENT SDN BHD [SSH]	617	4,186,782	73.87
25 MAR 2026 - 26 MAR 2026	GENM	TAN SRI LIM KOK THAY [DIR/CEO]	617	4,186,786	73.87
25 MAR 2026 - 26 MAR 2026	GENM	TAN SRI LIM KOK THAY [SSH]	617	4,186,786	73.87
26 MAR 2026 - 26 MAR 2026	GHS	MR YEO TIEN EE [SSH]	43	102,122	21.567
26 MAR 2026 - 26 MAR 2026	GHS	YEO TIEN EE [DIR/CEO]	43	102,122	21.567
24 MAR 2026 - 26 MAR 2026	GLOMAC	DATUK SERI FATEH ISKANDAR BIN TAN SRI DATO' MOHAMED MANSOR [DIR/CEO]	15	265,099	34.541
24 MAR 2026 - 26 MAR 2026	GLOMAC	DATUK SERI FATEH ISKANDAR BIN TAN SRI DATO' MOHAMED MANSOR [SSH]	15	265,099	34.541
24 MAR 2026 - 26 MAR 2026	GLOMAC	TAN SRI DATO' MOHAMED MANSOR BIN FATEH DIN [DIR/CEO]	15	272,425	35.496
24 MAR 2026 - 26 MAR 2026	GLOMAC	TAN SRI DATO' MOHAMED MANSOR BIN FATEH DIN [SSH]	15	265,099	34.541
24 MAR 2026 - 24 MAR 2026	GUH	DATUK SERI KENNETH H'NG BAK TEE [DIR/CEO]	110	17,421	6.151
24 MAR 2026 - 24 MAR 2026	GUH	DATUK SERI KENNETH H'NG BAK TEE [SSH]	110	17,421	6.151
26 MAR 2026 - 26 MAR 2026	HI	MADAM BAH KIM LIAN [DIR/CEO]	1,000	6,369	1.274
26 MAR 2026 - 26 MAR 2026	HI	MR LIM HAN WENG [SSH]	1,000	307,519	61.504
19 MAR 2026 - 19 MAR 2026	HI	MADAM BAH KIM LIAN [DIR/CEO]	500	5,369	1.074
19 MAR 2026 - 19 MAR 2026	HI	MR LIM HAN WENG [SSH]	500	306,519	61.304
24 MAR 2026 - 24 MAR 2026	HIBISCS	DATUK MICHAEL TANG YEE MUN [SSH]	-3,610	100,551	13.636
25 MAR 2026 - 25 MAR 2026	HIGHTEC	MR TAN LYE HUAT [DIR/CEO]	55	63,709	55.882
25 MAR 2026 - 25 MAR 2026	HIGHTEC	MR TAN LYE HUAT [SSH]	55	63,709	55.882
24 MAR 2026 - 24 MAR 2026	HLBANK	EMPLOYEES PROVIDENT FUND BOARD [SSH]	-184	222,620	10.669
18 MAR 2026 - 18 MAR 2026	HLBANK	EMPLOYEES PROVIDENT FUND BOARD [SSH]	-50	222,804	10.678
19 MAR 2026 - 19 MAR 2026	HLFG	EMPLOYEES PROVIDENT FUND BOARD [SSH]	-58	75,314	6.563
18 MAR 2026 - 18 MAR 2026	HLFG	EMPLOYEES PROVIDENT FUND BOARD [SSH]	-37	75,371	6.568
19 MAR 2026 - 19 MAR 2026	HWATAI	DATUK SOO CHUNG YEE [DIR/CEO]	14	33,018	44.122
19 MAR 2026 - 19 MAR 2026	HWATAI	DATUK SOO CHUNG YEE [SSH]	14	33,018	44.122
24 MAR 2026 - 24 MAR 2026	ICAP	CITY OF LONDON INVESTMENT MANAGEMENT COMPANY LIMITED [SSH]	-197	21,066	14.936
24 MAR 2026 - 24 MAR 2026	IGBREIT	EMPLOYEES PROVIDENT FUND BOARD [SSH]	175	390,052	9.017
19 MAR 2026 - 19 MAR 2026	IGBREIT	EMPLOYEES PROVIDENT FUND BOARD [SSH]	-268	390,067	9.018
18 MAR 2026 - 18 MAR 2026	IGBREIT	EMPLOYEES PROVIDENT FUND BOARD [SSH]	8,413	390,335	9.024
18 MAR 2026 - 18 MAR 2026	IGBREIT	KUMPULAN WANG PERSARAAN (DIPERBADANKAN) [SSH]	1,000	228,287	5.277
17 MAR 2026 - 17 MAR 2026	IGBREIT	EMPLOYEES PROVIDENT FUND BOARD [SSH]	-1,144	386,752	8.941
24 MAR 2026 - 24 MAR 2026	IHH	EMPLOYEES PROVIDENT FUND BOARD [SSH]	-676	1,129,680	12.785
19 MAR 2026 - 19 MAR 2026	IHH	EMPLOYEES PROVIDENT FUND BOARD [SSH]	-666	1,130,356	12.792
18 MAR 2026 - 18 MAR 2026	IHH	EMPLOYEES PROVIDENT FUND BOARD [SSH]	-4,483	1,131,022	12.8
17 MAR 2026 - 17 MAR 2026	IHH	EMPLOYEES PROVIDENT FUND BOARD [SSH]	2,003	1,135,505	12.851
26 MAR 2026 - 26 MAR 2026	INARI	KUMPULAN WANG PERSARAAN (DIPERBADANKAN) [SSH]	-628	374,496	9.842
25 MAR 2026 - 25 MAR 2026	INARI	KUMPULAN WANG PERSARAAN (DIPERBADANKAN) [SSH]	-416	375,124	9.858
19 MAR 2026 - 19 MAR 2026	INARI	KUMPULAN WANG PERSARAAN (DIPERBADANKAN) [SSH]	-1,162	375,539	9.869
25 MAR 2026 - 27 MAR 2026	INFOTEC	MR CHOO WEI CHUEN [DIR/CEO]	38	154,538	42.555
25 MAR 2026 - 27 MAR 2026	INFOTEC	MR CHOO WEI CHUEN [SSH]	38	154,538	42.555
24 MAR 2026 - 24 MAR 2026	INFOTEC	MR CHOO WEI CHUEN [DIR/CEO]	5	154,500	42.545
24 MAR 2026 - 24 MAR 2026	INFOTEC	MR CHOO WEI CHUEN [SSH]	5	154,500	42.545
17 MAR 2026 - 18 MAR 2026	INFOTEC	MR CHOO WEI CHUEN [DIR/CEO]	13	154,495	42.543
17 MAR 2026 - 18 MAR 2026	INFOTEC	MR CHOO WEI CHUEN [SSH]	13	154,495	42.543
19 MAR 2026 - 24 MAR 2026	IOICORP	EMPLOYEES PROVIDENT FUND BOARD [SSH]	659	1,162,755	18.5
19 MAR 2026 - 19 MAR 2026	IOICORP	EMPLOYEES PROVIDENT FUND BOARD [SSH]	903	1,162,097	18.489
18 MAR 2026 - 18 MAR 2026	IOICORP	EMPLOYEES PROVIDENT FUND BOARD [SSH]	82	1,161,194	18.475
17 MAR 2026 - 17 MAR 2026	IOICORP	EMPLOYEES PROVIDENT FUND BOARD [SSH]	59	1,161,112	18.474
19 MAR 2026 - 24 MAR 2026	IOIPG	EMPLOYEES PROVIDENT FUND BOARD [SSH]	3,403	358,978	6.52
24 MAR 2026 - 25 MAR 2026	IOIPG	DATO' LEE YEOW SENG [DIR/CEO]	3,401	3,753,492	68.169
24 MAR 2026 - 25 MAR 2026	IOIPG	DATO' LEE YEOW SENG [SSH]	3,401	3,753,317	68.166
19 MAR 2026 - 19 MAR 2026	IOIPG	EMPLOYEES PROVIDENT FUND BOARD [SSH]	4,859	355,574	6.458
18 MAR 2026 - 18 MAR 2026	IOIPG	EMPLOYEES PROVIDENT FUND BOARD [SSH]	1,658	350,715	6.37
19 MAR 2026 - 19 MAR 2026	IOIPG	DATO' LEE YEOW CHOR [DIR/CEO]	-500	3,619,080	65.728
19 MAR 2026 - 19 MAR 2026	IOIPG	DATO' LEE YEOW CHOR [SSH]	-500	3,618,638	65.72
17 MAR 2026 - 17 MAR 2026	IOIPG	EMPLOYEES PROVIDENT FUND BOARD [SSH]	3,230	349,057	6.339
19 MAR 2026 - 24 MAR 2026	ISF	ASF ETERNITY SDN. BHD. [SSH]	800	600,800	60.08
19 MAR 2026 - 24 MAR 2026	ISF	MISS LIM AY YUM [DIR/CEO]	800	725,855	72.585
19 MAR 2026 - 24 MAR 2026	ISF	MISS LIM AY YUM [SSH]	800	725,855	72.585

Notice Period is 22nd March 2026 to 28th March 2026

Effective Change Date	Stock Name	Buyer/ Seller Name [Classification]	Bought / (Sold) ['000]	No. of Shares After Trade ['000]	
			Total	Total	% Held
19 MAR 2026 - 24 MAR 2026	ISF	MR AI SEW FUAT [DIR/CEO]	800	725,855	72.585
19 MAR 2026 - 24 MAR 2026	ISF	MR AI SEW FUAT [SSH]	800	725,855	72.585
26 MAR 2026 - 26 MAR 2026	JPG	ENCIK SHAMSUL ANUAR BIN ABDUL MAJID [DIR/CEO]	-100	2,900	0.116
26 MAR 2026 - 26 MAR 2026	JPG	KUMPULAN WANG PERSARAAN (DIPERBADANKAN) [SSH]	-1,000	135,075	5.403
24 MAR 2026 - 24 MAR 2026	JPG	EMPLOYEES PROVIDENT FUND BOARD [SSH]	-1,100	232,463	9.299
19 MAR 2026 - 19 MAR 2026	JPG	EMPLOYEES PROVIDENT FUND BOARD [SSH]	512	233,563	9.343
17 MAR 2026 - 17 MAR 2026	JPG	EMPLOYEES PROVIDENT FUND BOARD [SSH]	31,044	233,051	9.322
24 MAR 2026 - 24 MAR 2026	KGB	EMPLOYEES PROVIDENT FUND BOARD [SSH]	-200	44,436	5.648
24 MAR 2026 - 25 MAR 2026	KGB	MR SOH TONG HWA [DIR/CEO]	190	145,585	18.504
24 MAR 2026 - 25 MAR 2026	KGB	MR SOH TONG HWA [SSH]	190	145,585	18.504
19 MAR 2026 - 19 MAR 2026	KGB	EMPLOYEES PROVIDENT FUND BOARD [SSH]	-100	44,636	5.673
18 MAR 2026 - 18 MAR 2026	KGB	EMPLOYEES PROVIDENT FUND BOARD [SSH]	12	44,736	5.686
17 MAR 2026 - 17 MAR 2026	KGB	EMPLOYEES PROVIDENT FUND BOARD [SSH]	-54	44,724	5.684
18 MAR 2026 - 24 MAR 2026	KHEE-SAN-WA	DATO' SRI NGU TIENG UNG JP [DIR/CEO]	-1,200	138,136	31.344
18 MAR 2026 - 24 MAR 2026	KHEE-SAN-WA	MISS NGU CHIENN YING [DIR/CEO]	-1,200	138,136	31.344
24 MAR 2026 - 24 MAR 2026	KLCC	EMPLOYEES PROVIDENT FUND BOARD [SSH]	802	194,307	10.763
24 MAR 2026 - 24 MAR 2026	KLCC	EMPLOYEES PROVIDENT FUND BOARD [SSH]	802	194,307	10.763
19 MAR 2026 - 19 MAR 2026	KLCC	EMPLOYEES PROVIDENT FUND BOARD [SSH]	81	193,505	10.719
19 MAR 2026 - 19 MAR 2026	KLCC	EMPLOYEES PROVIDENT FUND BOARD [SSH]	81	193,505	10.719
18 MAR 2026 - 18 MAR 2026	KLCC	EMPLOYEES PROVIDENT FUND BOARD [SSH]	-142	193,424	10.714
18 MAR 2026 - 18 MAR 2026	KLCC	EMPLOYEES PROVIDENT FUND BOARD [SSH]	-142	193,424	10.714
17 MAR 2026 - 17 MAR 2026	KLCC	EMPLOYEES PROVIDENT FUND BOARD [SSH]	-9	193,566	10.722
17 MAR 2026 - 17 MAR 2026	KLCC	EMPLOYEES PROVIDENT FUND BOARD [SSH]	-9	193,566	10.722
17 MAR 2026 - 17 MAR 2026	KLK	EMPLOYEES PROVIDENT FUND BOARD [SSH]	124	214,159	19.23
24 MAR 2026 - 24 MAR 2026	KOSSAN	TAN SRI DATO' LIM KUANG SIA [DIR/CEO]	500	977,391	38.723
24 MAR 2026 - 24 MAR 2026	KOSSAN	TAN SRI DATO' LIM KUANG SIA [SSH]	500	977,391	38.723
19 MAR 2026 - 19 MAR 2026	KOSSAN	TAN SRI DATO' LIM KUANG SIA [DIR/CEO]	500	976,891	38.703
19 MAR 2026 - 19 MAR 2026	KOSSAN	TAN SRI DATO' LIM KUANG SIA [SSH]	500	976,891	38.703
24 MAR 2026 - 24 MAR 2026	KTC	DATUK LAU KOH SING @ LAU KOK SING [DIR/CEO]	190	477,215	69.987
24 MAR 2026 - 24 MAR 2026	KTC	DATUK LAU KOH SING @ LAU KOK SING [SSH]	190	477,215	69.987
19 MAR 2026 - 19 MAR 2026	LBS	TAN SRI DATO' SRI IR. (DR.) LIM HOCK SAN JP [DIR/CEO]	400	629,618	41.11
19 MAR 2026 - 19 MAR 2026	LBS	TAN SRI DATO' SRI IR. (DR.) LIM HOCK SAN JP [SSH]	400	626,349	40.896
27 MAR 2026 - 27 MAR 2026	LIHEN	MR CHUA YONG HAUP [DIR/CEO]	90	2,570	0.475
26 MAR 2026 - 26 MAR 2026	LIHEN	MR CHUA YONG HAUP [DIR/CEO]	60	2,480	0.459
25 MAR 2026 - 25 MAR 2026	LIHEN	MR CHUA YONG HAUP [DIR/CEO]	100	2,420	0.448
26 MAR 2026 - 26 MAR 2026	LSH	DATO' WANG SZE YAO @ WANG MING WAY [DIR/CEO]	5	825	0.098
26 MAR 2026 - 26 MAR 2026	LSH	MR LIM DING SHYONG [DIR/CEO]	21	1,386	0.165
25 MAR 2026 - 25 MAR 2026	LSH	MR LIM DING SHYONG [DIR/CEO]	23	1,365	0.163
24 MAR 2026 - 24 MAR 2026	LSH	MR LIM DING SHYONG [DIR/CEO]	60	1,342	0.16
24 MAR 2026 - 24 MAR 2026	LWSABAH	MR TAN HWONG KUEN [DIR/CEO]	50	85,524	18.074
24 MAR 2026 - 24 MAR 2026	LWSABAH	MR TAN HWONG KUEN [SSH]	50	85,524	18.074
26 MAR 2026 - 26 MAR 2026	M&A	CIK SITI NUR AISHAH BINTI ISHAK [SSH]	100	147,888	7.393
25 MAR 2026 - 26 MAR 2026	MAG	MR MELVIN LIM CHUN WOEI [DIR/CEO]	-12,933	25,067	1.318
24 MAR 2026 - 25 MAR 2026	MAGNI	KP HOLDINGS SDN. BHD. [SSH]	200	60,310	13.91
24 MAR 2026 - 25 MAR 2026	MAGNI	TAN SRI DATO' SERI TAN KOK PING [DIR/CEO]	200	111,638	25.76
24 MAR 2026 - 25 MAR 2026	MAGNI	TAN SRI DATO' SERI TAN KOK PING [SSH]	200	83,068	19.16
19 MAR 2026 - 19 MAR 2026	MAGNI	TAN SRI DATO' SERI TAN KOK PING [DIR/CEO]	300	111,438	25.71
26 MAR 2026 - 26 MAR 2026	MALAKOF	KUMPULAN WANG PERSARAAN (DIPERBADANKAN) ("KWAP") [SSH]	-100	339,203	6.941
25 MAR 2026 - 25 MAR 2026	MALAKOF	KUMPULAN WANG PERSARAAN (DIPERBADANKAN) ("KWAP") [SSH]	-100	339,303	6.943
24 MAR 2026 - 24 MAR 2026	MALAKOF	KUMPULAN WANG PERSARAAN (DIPERBADANKAN) ("KWAP") [SSH]	-100	339,403	6.945
19 MAR 2026 - 19 MAR 2026	MALAKOF	KUMPULAN WANG PERSARAAN (DIPERBADANKAN) ("KWAP") [SSH]	-100	339,503	6.947
24 MAR 2026 - 24 MAR 2026	MAXIS	EMPLOYEES PROVIDENT FUND BOARD (EPF BOARD) [SSH]	-309	1,061,449	13.547
25 MAR 2026 - 25 MAR 2026	MAYBANK	AMANAHRAYA TRUSTEES BERHAD - AMANAH SAHAM BUMIPUTERA [SSH]	-4,000	3,417,022	28.284
24 MAR 2026 - 24 MAR 2026	MAYBANK	EMPLOYEES PROVIDENT FUND BOARD [SSH]	2,913	1,491,706	12.347
24 MAR 2026 - 24 MAR 2026	MAYBANK	AMANAHRAYA TRUSTEES BERHAD - AMANAH SAHAM BUMIPUTERA [SSH]	-1,200	3,421,022	28.317
19 MAR 2026 - 19 MAR 2026	MAYBANK	EMPLOYEES PROVIDENT FUND BOARD [SSH]	7,300	1,488,793	12.323
24 MAR 2026 - 24 MAR 2026	MAYBANK	KUMPULAN WANG PERSARAAN (DIPERBADANKAN) ("KWAP") [SSH]	-200	632,826	5.239
18 MAR 2026 - 18 MAR 2026	MAYBANK	EMPLOYEES PROVIDENT FUND BOARD [SSH]	6,060	1,481,493	12.263
17 MAR 2026 - 17 MAR 2026	MAYBANK	EMPLOYEES PROVIDENT FUND BOARD [SSH]	7,150	1,475,432	12.213
24 MAR 2026 - 25 MAR 2026	MCEMENT	EASTSPRING INVESTMENTS BERHAD [SSH]	-262	92,988	6.667
24 MAR 2026 - 25 MAR 2026	MCEMENT	PRUDENTIAL PLC [SSH]	-344	113,478	8.136
19 MAR 20					

Notice Period is 22nd March 2026 to 28th March 2026

Effective Change Date	Stock Name	Buyer/ Seller Name [Classification]	Bought / (Sold) ['000]	No. of Shares After Trade ['000]	
			Total	Total	% Held
24 MAR 2026 - 25 MAR 2026	MFCB	RUBBER THREAD INDUSTRIES (M) SDN BERHAD [SSH]	25	212,439	22.547
18 MAR 2026 - 18 MAR 2026	MFCB	EMPLOYEES PROVIDENT FUND BOARD [SSH]	38	106,380	11.29
17 MAR 2026 - 17 MAR 2026	MFCB	EMPLOYEES PROVIDENT FUND BOARD [SSH]	40	106,342	11.286
19 MAR 2026 - 24 MAR 2026	MGB	DATUK LIM LIT CHEK [DIR/CEO]	173	81,501	13.775
19 MAR 2026 - 24 MAR 2026	MGB	DATUK LIM LIT CHEK [SSH]	173	81,501	13.775
24 MAR 2026 - 24 MAR 2026	MISC	EMPLOYEES PROVIDENT FUND BOARD [SSH]	-1,348	679,525	15.223
19 MAR 2026 - 19 MAR 2026	MISC	EMPLOYEES PROVIDENT FUND BOARD [SSH]	-1,960	680,873	15.253
18 MAR 2026 - 18 MAR 2026	MISC	EMPLOYEES PROVIDENT FUND BOARD [SSH]	-874	682,833	15.297
17 MAR 2026 - 17 MAR 2026	MISC	EMPLOYEES PROVIDENT FUND BOARD [SSH]	-1,607	683,707	15.317
24 MAR 2026 - 24 MAR 2026	MRDIY	EMPLOYEES PROVIDENT FUND BOARD [SSH]	4,252	1,022,254	10.786
19 MAR 2026 - 19 MAR 2026	MRDIY	EMPLOYEES PROVIDENT FUND BOARD [SSH]	3,840	1,017,958	10.741
17 MAR 2026 - 17 MAR 2026	MRDIY	EMPLOYEES PROVIDENT FUND BOARD [SSH]	1,441	1,013,608	10.695
19 MAR 2026 - 19 MAR 2026	N2N	QUAH CHOON WAH [SSH]	12	51,664	9.255
26 MAR 2026 - 26 MAR 2026	NAIM	DATUK AMAR ABDUL HAMED BIN HAJI SEPAWI [DIR/CEO]	-241	100,547	20.109
26 MAR 2026 - 26 MAR 2026	NAIM	DATUK AMAR ABDUL HAMED BIN HAJI SEPAWI [SSH]	-241	100,547	20.109
26 MAR 2026 - 26 MAR 2026	NAIM	TAPAK BERINGIN SDN. BHD. [SSH]	-241	65,941	13.188
24 MAR 2026 - 25 MAR 2026	NAIM	DATUK AMAR ABDUL HAMED BIN HAJI SEPAWI [DIR/CEO]	-1,170	100,788	20.161
24 MAR 2026 - 25 MAR 2026	NAIM	DATUK AMAR ABDUL HAMED BIN HAJI SEPAWI [SSH]	-1,170	100,788	20.161
24 MAR 2026 - 25 MAR 2026	NAIM	TAPAK BERINGIN SDN. BHD. [SSH]	-1,170	66,182	13.236
18 MAR 2026 - 19 MAR 2026	NAIM	DATUK AMAR ABDUL HAMED BIN HAJI SEPAWI [DIR/CEO]	-2,000	101,958	20.4
18 MAR 2026 - 19 MAR 2026	NAIM	DATUK AMAR ABDUL HAMED BIN HAJI SEPAWI [SSH]	-2,000	101,958	20.4
18 MAR 2026 - 19 MAR 2026	NAIM	TAPAK BERINGIN SDN BHD [SSH]	-2,000	67,352	13.47
24 MAR 2026 - 24 MAR 2026	NESTLE	EMPLOYEES PROVIDENT FUND BOARD [SSH]	10	31,228	13.317
25 MAR 2026 - 25 MAR 2026	NIHSIN	MISS KHOO WUAN RU [DIR/CEO]	65	118,462	20.568
25 MAR 2026 - 25 MAR 2026	NIHSIN	MR KHOO CHEE KONG [SSH]	65	118,462	20.568
25 MAR 2026 - 25 MAR 2026	OBHB	MISS LEE BAO YU [DIR/CEO]	30	1,434	0.366
25 MAR 2026 - 25 MAR 2026	OHM	DATIN TANG JING WEN [DIR/CEO]	-4,688	16,647	3.329
24 MAR 2026 - 26 MAR 2026	OHM	DATUK TEOH YEE SEANG [DIR/CEO]	330	302,361	60.472
24 MAR 2026 - 26 MAR 2026	OHM	DATUK TEOH YEE SEANG [SSH]	330	302,361	60.472
24 MAR 2026 - 26 MAR 2026	OHM	OASIS MANAGEMENT TEAM SDN. BHD. [SSH]	330	125,044	25.009
24 MAR 2026 - 24 MAR 2026	ORKIM	EASTSPRING INVESTMENTS BERHAD [SSH]	-79	59,770	5.977
24 MAR 2026 - 24 MAR 2026	ORKIM	PRUDENTIAL PLC [SSH]	-79	70,196	7.02
18 MAR 2026 - 18 MAR 2026	ORKIM	EMPLOYEES PROVIDENT FUND BOARD [SSH]	1,362	63,008	6.301
17 MAR 2026 - 17 MAR 2026	ORKIM	EASTSPRING INVESTMENTS BERHAD [SSH]	727	59,849	5.985
17 MAR 2026 - 17 MAR 2026	ORKIM	PRUDENTIAL PLC [SSH]	727	70,275	7.028
25 MAR 2026 - 26 MAR 2026	AXB	MR OH YEN SAN [DIR/CEO]	400	67,366	9.488
25 MAR 2026 - 26 MAR 2026	AXB	MR OH YEN SAN [SSH]	400	67,366	9.488
19 MAR 2026 - 19 MAR 2026	PADINI	CHONG CHIN LIN [SSH]	25	455,713	46.178
19 MAR 2026 - 19 MAR 2026	PADINI	MR CHRISTOPHER YONG TZE-YAO [DIR/CEO]	25	52	0.005
19 MAR 2026 - 19 MAR 2026	PADINI	YONG PANG CHAUN [DIR/CEO]	25	455,713	46.178
19 MAR 2026 - 19 MAR 2026	PADINI	YONG PANG CHAUN [SSH]	25	455,713	46.178
19 MAR 2026 - 24 MAR 2026	PARADIGM	EMPLOYEES PROVIDENT FUND BOARD [SSH]	5,742	121,615	7.592
19 MAR 2026 - 19 MAR 2026	PARADIGM	EMPLOYEES PROVIDENT FUND BOARD [SSH]	2,819	115,873	7.234
17 MAR 2026 - 17 MAR 2026	PARADIGM	EMPLOYEES PROVIDENT FUND BOARD [SSH]	2,986	113,054	7.058
24 MAR 2026 - 24 MAR 2026	PAVREIT	EMPLOYEES PROVIDENT FUND BOARD [SSH]	4,035	482,085	12.273
19 MAR 2026 - 19 MAR 2026	PAVREIT	EMPLOYEES PROVIDENT FUND BOARD [SSH]	-2,655	478,050	12.17
24 MAR 2026 - 24 MAR 2026	PAVREIT	KUMPULAN WANG PERSARAAN (DIPERBADANKAN) [SSH]	-71	230,295	5.863
19 MAR 2026 - 19 MAR 2026	PAVREIT	KUMPULAN WANG PERSARAAN (DIPERBADANKAN) [SSH]	492	230,366	5.865
17 MAR 2026 - 17 MAR 2026	PAVREIT	EMPLOYEES PROVIDENT FUND BOARD [SSH]	-1,612	480,706	12.238
24 MAR 2026 - 24 MAR 2026	PBBANK	EMPLOYEES PROVIDENT FUND BOARD [SSH]	-6,633	346,6205	17.86
19 MAR 2026 - 19 MAR 2026	PBBANK	EMPLOYEES PROVIDENT FUND BOARD [SSH]	6,500	347,2839	17.89
18 MAR 2026 - 18 MAR 2026	PBBANK	EMPLOYEES PROVIDENT FUND BOARD [SSH]	12,692	346,6339	17.86
19 MAR 2026 - 19 MAR 2026	PBBANK	KUMPULAN WANG PERSARAAN (DIPERBADANKAN) [SSH]	-2,000	998,990	5.15
17 MAR 2026 - 17 MAR 2026	PBBANK	EMPLOYEES PROVIDENT FUND BOARD [SSH]	5,932	3,453,647	17.79
24 MAR 2026 - 24 MAR 2026	PCHEM	EMPLOYEES PROVIDENT FUND BOARD ("EPF BOARD") [SSH]	1,495	1,024,877	12.811
19 MAR 2026 - 19 MAR 2026	PCHEM	EMPLOYEES PROVIDENT FUND BOARD ("EPF BOARD") [SSH]	11,363	1,023,382	12.792
18 MAR 2026 - 18 MAR 2026	PCHEM	EMPLOYEES PROVIDENT FUND BOARD ("EPF BOARD") [SSH]	4,600	1,012,020	12.65
17 MAR 2026 - 17 MAR 2026	PCHEM	EMPLOYEES PROVIDENT FUND BOARD ("EPF BOARD") [SSH]	2,799	1,007,420	12.593
24 MAR 2026 - 26 MAR 2026	PESONA	KOMBINASI EMAS SDN BHD [SSH]	1,300	305,230	43.919
24 MAR 2026 - 26 MAR 2026	PESONA	MR WIE HOCK KIONG [DIR/CEO]	1,300	305,230	43.919
24 MAR 2026 - 26 MAR 2026	PESONA	MR WIE HOCK KIONG [SSH]	1,300	305,230	43.919
17 MAR 2026 - 17 MAR 2026	PETGAS	EMPLOYEES PROVIDENT FUND BOARD [SSH]	149	270,916	13.691
27 MAR 2026 - 27 MAR 2026	PHARMA	DATO' SERI DR HJ AWALJUDIN BIN SAID [DIR/CEO]	300	300	0.005
25 MAR 2026 - 25 MAR 2026	PINEAPP	MITSUBISHI UFJ FINANCIAL GROUP INC ("MUFG") [SSH]	-72	2,455	5.061
25 MAR 2026 - 25 MAR 2026	PINEAPP	MORGAN STANLEY [SSH]	-72	2,455	5.061
24 MAR 2026 - 24 MAR 2026	PINEAPP	MITSUBISHI UFJ FINANCIAL GROUP INC ("MUFG") [SSH]	-110	2,527	5.21
24 MAR 2026 - 24 MAR 2026	PINEAPP	MORGAN STANLEY [SSH]	-110	2,527	5.21
19 MAR 2026 - 19 MAR 2026	PINEAPP	MITSUBISHI UFJ FINANCIAL GROUP INC ("MUFG") [SSH]	-57	2,637	5.438
19 MAR 2026 - 19 MAR 2026	PINEAPP	MORGAN STANLEY [SSH]	-57	2,637	5.438
19 MAR 2026 - 19 MAR 2026	PMCK	DATO' DR LEE GAIK CHENG [DIR/CEO]	-4,729	740,712	67.917
19 MAR 2026 - 19 MAR 2026	PMCK	DATO' DR LEE GAIK CHENG [SSH]	-4,729	739,582	67.814
17 MAR 2026 - 18 MAR 2026	PMCK	DATO' DR LEE GAIK CHENG [DIR/CEO]	-17,271	745,441	68.351
17 MAR 2026 - 18 MAR 2026	PMCK	DATO' DR LEE GAIK CHENG [SSH]	-17,271	744,311	68.248
24 MAR 2026 - 24 MAR 2026	PMETAL	EMPLOYEES PROVIDENT FUND BOARD [SSH]	3,053	707,824	8.59
19 MAR 2026 - 19 MAR 2026	PMETAL	EMPLOYEES PROVIDENT FUND BOARD [SSH]	2,178	704,771	8.553
18 MAR 2026 - 18 MAR 2026	PMETAL	EMPLOYEES PROVIDENT FUND BOARD [SSH]	365	702,593	8.527
17 MAR 2026 - 17 MAR 2026	PMETAL	EMPLOYEES PROVIDENT FUND BOARD [SSH]	1,687	702,228	8.523
24 MAR 2026 - 25 MAR 2026	PMW	MADAM LEE SIEW YOKE [SSH]	200	560,909	62.878
24 MAR 2026 - 25 MAR 2026	PMW	MR LEE HON HWA [DIR/CEO]	200	560,909	62.879
24 MAR 2026 - 25 MAR 2026	PMW	MR LEE HON HWA [SSH]	200	560,909	62.879

Notice Period is 22nd March 2026 to 28th March 2026

Effective Change Date	Stock Name	Buyer/ Seller Name [Classification]	Bought / (Sold) ['000]	No. of Shares After Trade ['000]	
			Total	Total	% Held
19 MAR 2026 - 19 MAR 2026	PMW	MADAM LEE SIEW YOKE [SSH]	100	560,709	62.856
19 MAR 2026 - 19 MAR 2026	PMW	MR LEE HON HWA [DIR/CEO]	100	560,709	62.857
19 MAR 2026 - 19 MAR 2026	PMW	MR LEE HON HWA [SSH]	100	560,709	62.857
19 MAR 2026 - 19 MAR 2026	PMW	MR LEE KHIM HWA [DIR/CEO]	100	560,709	62.857
19 MAR 2026 - 19 MAR 2026	PMW	MR LEE KHIM HWA [SSH]	100	560,709	62.857
19 MAR 2026 - 19 MAR 2026	POLYMER	PAUL JAMES NUGENT [SSH]	780	13,7573	24.567
19 MAR 2026 - 19 MAR 2026	PPB	EMPLOYEES PROVIDENT FUND BOARD [SSH]	13	268,555	18.878
17 MAR 2026 - 17 MAR 2026	PPB	EMPLOYEES PROVIDENT FUND BOARD [SSH]	232	268,542	18.877
27 MAR 2026 - 27 MAR 2026	PTRANS	DATIN SRI LIM SOW KENG [SSH]	8,728	147,462	12.127
27 MAR 2026 - 27 MAR 2026	PTRANS	DATO' SRI CHEONG KONG FITT [DIR/CEO]	8,728	147,462	12.127
27 MAR 2026 - 27 MAR 2026	PTRANS	DATO' SRI CHEONG KONG FITT [SSH]	8,728	147,462	12.127
26 MAR 2026 - 26 MAR 2026	PTRANS	DATIN SRI LIM SOW KENG [SSH]	19,000	138,733	11.409
26 MAR 2026 - 26 MAR 2026	PTRANS	DATO' SRI CHEONG KONG FITT [DIR/CEO]	19,000	138,733	11.409
26 MAR 2026 - 26 MAR 2026	PTRANS	DATO' SRI CHEONG KONG FITT [SSH]	19,000	138,733	11.409
24 MAR 2026 - 24 MAR 2026	PTRANS	DATO' SRI CHEONG KONG FITT [DIR/CEO]	-12,910	15,617	18.382
19 MAR 2026 - 24 MAR 2026	PTRANS	DATO' SRI CHEONG KONG FITT [DIR/CEO]	13,525	15,617	18.382
24 MAR 2026 - 26 MAR 2026	QL	CHIA SEONG FATT [DIR/CEO]	180	436,799	11.966
24 MAR 2026 - 26 MAR 2026	QL	CHIA SEONG FATT [SSH]	180	436,799	11.966
24 MAR 2026 - 26 MAR 2026	QL	CHIA SEONG POW [SSH]	180	446,265	12.225
24 MAR 2026 - 26 MAR 2026	QL	CHIA SONG KUN [DIR/CEO]	180	150,7574	41.3
24 MAR 2026 - 26 MAR 2026	QL	CHIA SONG KUN [SSH]	180	150,7574	41.3
24 MAR 2026 - 26 MAR 2026	QL	MR CHIA SEONG POW [DIR/CEO]	180	446,265	12.225
19 MAR 2026 - 19 MAR 2026	QL	MR CHIA MAK HOOI [DIR/CEO]	20	7,716	0.211
17 MAR 2026 - 19 MAR 2026	QL	CHIA SEONG FATT [DIR/CEO]	240	436,619	11.961
17 MAR 2026 - 19 MAR 2026	QL	CHIA SEONG FATT [SSH]	240	436,619	11.961
17 MAR 2026 - 19 MAR 2026	QL	CHIA SEONG POW [SSH]	240	446,085	12.22
17 MAR 2026 - 19 MAR 2026	QL	CHIA SONG KUN [DIR/CEO]	240	150,7394	41.296
17 MAR 2026 - 19 MAR 2026	QL	CHIA SONG KUN [SSH]	240	150,7394	41.296
17 MAR 2026 - 19 MAR 2026	QL	MR CHIA SEONG POW [DIR/CEO]	240	446,085	12.22
24 MAR 2026 - 24 MAR 2026	RADIUM	CENGAL 2020 SDN. BHD. [SSH]	-3,400	954,984	27.537
24 MAR 2026 - 24 MAR 2026	RADIUM	DATUK GAN KAH SIONG [DIR/CEO]	-3,400	146,2598	42.174
24 MAR 2026 - 24 MAR 2026	RADIUM	DATUK GAN KAH SIONG [SSH]	-3,400	146,2598	42.174
17 MAR 2026 - 17 MAR 2026	RADIUM	CENGAL 2020 SDN. BHD. [SSH]	-2,000	958,384	27.635
17 MAR 2026 - 17 MAR 2026	RADIUM	DATUK GAN KAH SIONG [DIR/CEO]	-2,000	146,5998	42.272
17 MAR 2026 - 17 MAR 2026	RADIUM	DATUK GAN KAH SIONG [SSH]	-2,000	146,5998	42.272
19 MAR 2026 - 19 MAR 2026	RESINTC	MISS WEI HWEI HONG [DIR/CEO]	972	19,597	10.08
19 MAR 2026 - 19 MAR 2026	RESINTC	MISS WEI HWEI HONG [SSH]	972	19,597	10.08
19 MAR 2026 - 19 MAR 2026	RESINTC	MR TEH LENG KANG [DIR/CEO]	972	19,597	10.08
19 MAR 2026 - 19 MAR 2026	RESINTC	MR TEH LENG KANG [SSH]	972	19,597	10.08
24 MAR 2026 - 24 MAR 2026	RHBBANK	EMPLOYEES PROVIDENT FUND BOARD [SSH]	4,617	160,9014	36.888
19 MAR 2026 - 19 MAR 2026	RHBBANK	EMPLOYEES PROVIDENT FUND BOARD [SSH]	23	160,4397	36.782
18 MAR 2026 - 18 MAR 2026	RHBBANK	EMPLOYEES PROVIDENT FUND BOARD [SSH]	47	160,4374	36.781
17 MAR 2026 - 17 MAR 2026	RHBBANK	EMPLOYEES PROVIDENT FUND BOARD [SSH]	280	160,4327	36.78
24 MAR 2026 - 24 MAR 2026	RL	ENCIK REWI HAMID BUGO [DIR/CEO]	100	2,000	0.525
24 MAR 2026 - 24 MAR 2026	RSSB	DATUK FONG KIAH YEOW [DIR/CEO]	-18,000	3,423	0.655
18 MAR 2026 - 19 MAR 2026	SBH	MR TAN BOO NAM [DIR/CEO]	71	375,944	42.336
18 MAR 2026 - 19 MAR 2026	SBH	MR TAN BOO NAM [SSH]	71	286,866	32.305
24 MAR 2026 - 24 MAR 2026	SCGBHD	EMPLOYEES PROVIDENT FUND BOARD [SSH]	89	107,001	9.464
19 MAR 2026 - 19 MAR 2026	SCGBHD	EMPLOYEES PROVIDENT FUND BOARD [SSH]	480	106,913	9.456
18 MAR 2026 - 18 MAR 2026	SCGBHD	EMPLOYEES PROVIDENT FUND BOARD [SSH]	586	106,433	9.413
17 MAR 2026 - 17 MAR 2026	SCGBHD	EMPLOYEES PROVIDENT FUND BOARD [SSH]	-102	105,847	9.362
19 MAR 2026 - 24 MAR 2026	SCGM	MR SAW CHAI SOON [SSH]	-301	10,862	5.641
18 MAR 2026 - 18 MAR 2026	SCIENTX	MR LIM PENG CHEONG [DIR/CEO]	20	87,7668	56.395
24 MAR 2026 - 24 MAR 2026	SCOMNET	EMPLOYEES PROVIDENT FUND BOARD [SSH]	-5	7,1000	8.339
19 MAR 2026 - 19 MAR 2026	SCOMNET	EMPLOYEES PROVIDENT FUND BOARD [SSH]	-113	7,1005	8.337
18 MAR 2026 - 18 MAR 2026	SCOMNET	EMPLOYEES PROVIDENT FUND BOARD [SSH]	-90	7,1119	8.349
25 MAR 2026 - 26 MAR 2026	SCOPE	MR LEE MIN HUAT [DIR/CEO]	600	194,660	16.853
25 MAR 2026 - 26 MAR 2026	SCOPE	MR LEE MIN HUAT [SSH]	600	194,660	16.853
19 MAR 2026 - 19 MAR 2026	SCOPE	MR LEE MIN HUAT [DIR/CEO]	300	194,060	16.801
19 MAR 2026 - 19 MAR 2026	SCOPE	MR LEE MIN HUAT [SSH]	300	194,060	16.801
25 MAR 2026 - 25 MAR 2026	SDG	KUMPULAN WANG PERSARAAN (DIPERBADANKAN) [SSH]	2,670	55,7930	8.068
24 MAR 2026 - 24 MAR 2026	SDG	AMANAHRAYA TRUSTEES BERHAD - AMANAH SAHAM BUMIPUTERA [SSH]	-4,540	278,0587	40.207
19 MAR 2026 - 19 MAR 2026	SDG	EMPLOYEES PROVIDENT FUND BOARD [SSH]	1,500	108,5652	15.698</

Notice Period is 22nd March 2026 to 28th March 2026

Effective Change Date	Stock Name	Buyer/ Seller Name [Classification]	Bought / (Sold) ['000]	No. of Shares After Trade ['000]	
			Total	Total	% Held
24 MAR 2026 - 24 MAR 2026	SPSETIA	KUMPULAN WANG PERSARAAN (DIPERBADANKAN) [SSH]	2,759	460596	9.206
18 MAR 2026 - 18 MAR 2026	SPSETIA	EMPLOYEES PROVIDENT FUND BOARD [SSH]	2,146	551075	11.014
17 MAR 2026 - 17 MAR 2026	SPSETIA	EMPLOYEES PROVIDENT FUND BOARD [SSH]	2,855	548930	10.971
19 MAR 2026 - 19 MAR 2026	SPTOTO	TAN SRI DATO' SERI VINCENT TAN CHEE YOUN [SSH]	-10,906	723292	54.893
24 MAR 2026 - 24 MAR 2026	SRIDGE	DATO' KHOO YIK CHOU [DIR/CEO]	-700	65888	16.401
24 MAR 2026 - 24 MAR 2026	SRIDGE	DATO' KHOO YIK CHOU [SSH]	-700	65888	16.401
24 MAR 2026 - 26 MAR 2026	STRAITS	MR YONG CHEAN PENG [SSH]	910	72459	7.286
24 MAR 2026 - 24 MAR 2026	SUCCESS	MISS TAN CHUNG CHIAH [DIR/CEO]	67	11641	4.933
19 MAR 2026 - 19 MAR 2026	SUCCESS	MADAM LIM MEE HWA [SSH]	37	12737	5.397
19 MAR 2026 - 19 MAR 2026	SUCCESS	MR YEO SENG CHONG [SSH]	37	12737	5.397
25 MAR 2026 - 25 MAR 2026	SUNLOGY	MR CHU KERD YEE [DIR/CEO]	14,000	161000	23
25 MAR 2026 - 25 MAR 2026	SUNLOGY	MR CHU KERD YEE [SSH]	14,000	161000	23
25 MAR 2026 - 26 MAR 2026	SUNLOGY	MR KHOR CHUAN MENG [DIR/CEO]	-32,900	114100	16.3
25 MAR 2026 - 26 MAR 2026	SUNLOGY	MR KHOR CHUAN MENG [SSH]	-32,900	114100	16.3
19 MAR 2026 - 24 MAR 2026	SUNMED	EMPLOYEES PROVIDENT FUND BOARD [SSH]	-5,827	587817	5.11
26 MAR 2026 - 26 MAR 2026	SUNMED	(DR.) KHOO CHOW HUAT DBA [DIR/CEO]	-100	200	0.002
19 MAR 2026 - 19 MAR 2026	SUNMED	EMPLOYEES PROVIDENT FUND BOARD [SSH]	3,829	593643	5.16
17 MAR 2026 - 17 MAR 2026	SUNMED	ACTIVE EQUITY SDN BHD [SSH]	526,947	8324815	72.389
17 MAR 2026 - 17 MAR 2026	SUNMED	DATIN PADUKA SARENA CHEAH YEAN TIH [SSH]	600,872	8398741	73.031
17 MAR 2026 - 17 MAR 2026	SUNMED	MR ADRIAN CHEAH YEAN SUN [SSH]	597,393	8395262	73.001
17 MAR 2026 - 17 MAR 2026	SUNMED	MR EVAN CHEAH YEAN SHIN [SSH]	598,175	8396044	73.008
17 MAR 2026 - 17 MAR 2026	SUNMED	PUAN SRI DATIN SERI DR. SUSAN CHEAH SEOK CHENG [SSH]	601,653	8399522	73.038
17 MAR 2026 - 17 MAR 2026	SUNMED	SUNGEI WAY CORPORATION SDN BHD [SSH]	506,027	8303896	72.207
17 MAR 2026 - 17 MAR 2026	SUNMED	SUNWAY BERHAD [SSH]	186,907	7984775	69.432
17 MAR 2026 - 17 MAR 2026	SUNMED	SUNWAY CITY SDN BHD [SSH]	186,907	7984775	69.432
17 MAR 2026 - 17 MAR 2026	SUNMED	TAN SRI DATO' SERI DR JEFFREY CHEAH FOOK LING KBE AO [SSH]	601,653	8399522	73.038
24 MAR 2026 - 24 MAR 2026	SUNREIT	EMPLOYEES PROVIDENT FUND BOARD [SSH]	905	521415	15.225
19 MAR 2026 - 19 MAR 2026	SUNREIT	EMPLOYEES PROVIDENT FUND BOARD [SSH]	75	520510	15.198
18 MAR 2026 - 18 MAR 2026	SUNREIT	EMPLOYEES PROVIDENT FUND BOARD [SSH]	-280	520435	15.196
17 MAR 2026 - 17 MAR 2026	SUNREIT	EMPLOYEES PROVIDENT FUND BOARD [SSH]	-153	520715	15.204
19 MAR 2026 - 24 MAR 2026	SUNWAY	EMPLOYEES PROVIDENT FUND BOARD [SSH]	1,888	659454	9.75
19 MAR 2026 - 19 MAR 2026	SUNWAY	EMPLOYEES PROVIDENT FUND BOARD [SSH]	6,233	657566	9.73
18 MAR 2026 - 18 MAR 2026	SUNWAY	EMPLOYEES PROVIDENT FUND BOARD [SSH]	5,260	650833	9.63
17 MAR 2026 - 17 MAR 2026	SUNWAY	EMPLOYEES PROVIDENT FUND BOARD [SSH]	1,307	645473	9.55
25 MAR 2026 - 26 MAR 2026	T7GLOBAL-WC	MISS TAN SAM ENG [DIR/CEO]	-1,175	80	0.12
25 MAR 2026 - 26 MAR 2026	TAMBUN	MR TEH KIAK SENG [DIR/CEO]	100	224127	51.02
25 MAR 2026 - 26 MAR 2026	TAMBUN	MR TEH KIAK SENG [SSH]	100	224127	51.02
27 MAR 2026 - 27 MAR 2026	TANCO	DATO' SRI ANDREW TAN JUN SUAN [DIR/CEO]	13,550	3202918	53.156
27 MAR 2026 - 27 MAR 2026	TANCO	DATO' SRI ANDREW TAN JUN SUAN [DIR/CEO]	-8,654	3189368	52.931
27 MAR 2026 - 27 MAR 2026	TANCO	DATO' SRI ANDREW TAN JUN SUAN [SSH]	13,550	3202918	53.156
27 MAR 2026 - 27 MAR 2026	TANCO	DATO' SRI ANDREW TAN JUN SUAN [SSH]	-8,654	3189368	52.931
26 MAR 2026 - 26 MAR 2026	TANCO	DATO' SRI ANDREW TAN JUN SUAN [DIR/CEO]	-12,432	3189202	52.929
26 MAR 2026 - 26 MAR 2026	TANCO	DATO' SRI ANDREW TAN JUN SUAN [DIR/CEO]	8,820	3198022	53.075
26 MAR 2026 - 26 MAR 2026	TANCO	DATO' SRI ANDREW TAN JUN SUAN [SSH]	8,820	3198022	53.075
26 MAR 2026 - 26 MAR 2026	TANCO	DATO' SRI ANDREW TAN JUN SUAN [SSH]	-12,432	3189202	52.929
25 MAR 2026 - 25 MAR 2026	TANCO	DATO' SRI ANDREW TAN JUN SUAN [DIR/CEO]	-6,785	3194452	53.016
25 MAR 2026 - 25 MAR 2026	TANCO	DATO' SRI ANDREW TAN JUN SUAN [DIR/CEO]	7,182	3201634	53.135
25 MAR 2026 - 25 MAR 2026	TANCO	DATO' SRI ANDREW TAN JUN SUAN [SSH]	7,182	3201634	53.135
25 MAR 2026 - 25 MAR 2026	TANCO	DATO' SRI ANDREW TAN JUN SUAN [SSH]	-6,785	3194452	53.016
24 MAR 2026 - 24 MAR 2026	TANCO	DATO' SRI ANDREW TAN JUN SUAN [DIR/CEO]	13,415	3201237	53.128
24 MAR 2026 - 24 MAR 2026	TANCO	DATO' SRI ANDREW TAN JUN SUAN [DIR/CEO]	-13,464	3187822	52.906
24 MAR 2026 - 24 MAR 2026	TANCO	DATO' SRI ANDREW TAN JUN SUAN [SSH]	13,415	3201237	53.128
24 MAR 2026 - 24 MAR 2026	TANCO	DATO' SRI ANDREW TAN JUN SUAN [SSH]	-13,464	3187822	52.906
24 MAR 2026 - 24 MAR 2026	TASHIN	MR TOH YEW SENG [DIR/CEO]	31	1630	0.467
25 MAR 2026 - 26 MAR 2026	TEAMSTR	MR TAN LEE KUENG [DIR/CEO]	10,000	433204	54.151
25 MAR 2026 - 26 MAR 2026	TEAMSTR	MR TAN LEE KUENG [SSH]	10,000	433204	54.151
24 MAR 2026 - 24 MAR 2026	TECHBND	MR LEE YUEN SHIUAN [DIR/CEO]	350	1633	0.215
26 MAR 2026 - 26 MAR 2026	TECHSTORE	MR TAN HOCK LIM [DIR/CEO]	134	280019	56.004
26 MAR 2026 - 26 MAR 2026	TECHSTORE	MR TAN HOCK LIM [SSH]	134	280019	56.004
25 MAR 2026 - 25 MAR 2026	TECHSTORE	MR TAN HOCK LIM [DIR/CEO]	165	279885	55.977
25 MAR 2026 - 25 MAR 2026	TECHSTORE	MR TAN HOCK LIM [SSH]	165	279885	55.977
24 MAR 2026 - 24 MAR 2026	TECHSTORE	MR TAN HOCK LIM [DIR/CEO]	146	279720	55.944
24 MAR 2026 - 24 MAR 2026	TECHSTORE	MR TAN HOCK LIM [SSH]	146	279720	55.944
19 MAR 2026 - 19 MAR 2026	TECHSTORE	MR TAN HOCK LIM [DIR/CEO]	1,382	279574	55.915
19 MAR 2026 - 19 MAR 2026	TECHSTORE	MR TAN HOCK LIM [SSH]	1,382	279574	55.915
26 MAR 2026 - 26 MAR 2026	TENAGA	KUMPULAN WANG PERSARAAN (DIPERBADANKAN) [SSH]	264	441057	7.57
19 MAR 2026 - 24 MAR 2026	TENAGA	EMPLOYEES PROVIDENT FUND BOARD [SSH]	2,523	1363805	23.4
25 MAR 2026 - 25 MAR 2026	TENAGA	KUMPULAN WANG PERSARAAN (DIPERBADANKAN) [SSH]	-418	440793	7.57
19 MAR 2026 - 19 MAR 2026	TENAGA	EMPLOYEES PROVIDENT FUND BOARD [SSH]	-178	1361283	23.35
24 MAR 2026 - 24 MAR 2026	TENAGA	KUMPULAN WANG PERSARAAN (DIPERBADANKAN) [SSH]	-532	441212	7.57
19 MAR 2026 - 19 MAR 2026	TENAGA	KUMPULAN WANG PERSARAAN (DIPERBADANKAN) [SSH]	-452	441744	7.58
18 MAR 2026 - 18 MAR 2026	TENAGA	EMPLOYEES PROVIDENT FUND BOARD [SSH]	779	1361461	23.36
17 MAR 2026 - 17 MAR 2026	TENAGA	EMPLOYEES PROVIDENT FUND BOARD [SSH]	-1,181	1360682	23.34
24 MAR 2026 - 24 MAR 2026	TIMECOM	EMPLOYEES PROVIDENT FUND BOARD [SSH]	-645	299139	16.18
25 MAR 2026 - 25 MAR 2026	TIMECOM	KUMPULAN WANG PERSARAAN (DIPERBADANKAN) [SSH]	100	173509	9.385
19 MAR 2026 - 19 MAR 2026	TIMECOM	EMPLOYEES PROVIDENT FUND BOARD [SSH]	-1,151	299783	16.215
18 MAR 2026 - 18 MAR 2026	TIMECOM	EMPLOYEES PROVIDENT FUND BOARD [SSH]	-784	300934	16.277
17 MAR 2026 - 17 MAR 2026	TIMECOM	EMPLOYEES PROVIDENT FUND BOARD [SSH]	-318	301718	16.319
26 MAR 2026 - 26 MAR 2026	TIMWELL	MR WONG WAI FOO [SSH]	2	63491	71.297
26 MAR 2026 - 26 MAR 2026	TIMWELL	QUATTRINI HOLDINGS SDN. BHD. [SSH]	2	27470	30.848

Notice Period is 22nd March 2026 to 28th March 2026

Effective Change Date	Stock Name	Buyer/ Seller Name [Classification]	Bought / (Sold) ['000]	No. of Shares After Trade ['000]	
			Total	Total	% Held
19 MAR 2026 - 19 MAR 2026	TIMWELL	MR WONG WAI FOO [SSH]	625	61644	69.223
19 MAR 2026 - 19 MAR 2026	TIMWELL	QUATTRINI HOLDINGS SDN. BHD. [SSH]	625	25623	28.774
26 MAR 2026 - 26 MAR 2026	TM	KUMPULAN WANG PERSARAAN (DIPERBADANKAN) [KWAP] [SSH]	403	409458	10.669
24 MAR 2026 - 24 MAR 2026	TM	EMPLOYEES PROVIDENT FUND BOARD (EPF BOARD) [SSH]	557	885168	23.065
18 MAR 2026 - 18 MAR 2026	TM	EMPLOYEES PROVIDENT FUND BOARD (EPF BOARD) [SSH]	379	884612	23.05
17 MAR 2026 - 17 MAR 2026	TM	EMPLOYEES PROVIDENT FUND BOARD (EPF BOARD) [SSH]	729	884233	23.04
26 MAR 2026 - 26 MAR 2026	TOPGLOV	MR LIM JIN FENG [SSH]	2,000	2927933	36.517
25 MAR 2026 - 26 MAR 2026	TOPGLOV	MR LIM HOOI SIN [DIR/CEO]	3,000	3060006	38.165
25 MAR 2026 - 26 MAR 2026	TOPGLOV	MR LIM HOOI SIN [SSH]	3,000	3060006	38.165
25 MAR 2026 - 26 MAR 2026	TOPGLOV	PUAN SRI TONG SIEW BEE [SSH]	3,000	3060206	38.167
25 MAR 2026 - 26 MAR 2026	TOPGLOV	TAN SRI DR LIM WEE CHAI [DIR/CEO]	3,000	3060206	38.167
25 MAR 2026 - 26 MAR 2026	TOPGLOV	TAN SRI DR LIM WEE CHAI [SSH]	3,000	3060206	38.167
24 MAR 2026 - 25 MAR 2026	TOPGLOV	MR LIM JIN FENG [SSH]	4,000	2925933	36.492
19 MAR 2026 - 25 MAR 2026	TOPGLOV	MR LIM HOOI SIN [DIR/CEO]	6,000	3057006	38.127
19 MAR 2026 - 25 MAR 2026	TOPGLOV	MR LIM HOOI SIN [SSH]	6,000	3057006	38.127
19 MAR 2026 - 25 MAR 2026	TOPGLOV	PUAN SRI TONG SIEW BEE [SSH]	6,000	3057206	38.129
19 MAR 2026 - 25 MAR 2026	TOPGLOV	TAN SRI DR LIM WEE CHAI [DIR/CEO]	6,000	3057206	38.129
19 MAR 2026 - 25 MAR 2026	TOPGLOV	TAN SRI DR LIM WEE CHAI [SSH]	6,000	3057206	38.129
19 MAR 2026 - 19 MAR 2026	TOPGLOV	KUMPULAN WANG PERSARAAN (DIPERBADANKAN) [SSH]	-2,704	510011	6.36
19 MAR 2026 - 19 MAR 2026	TWL	DATIN SEK CHIAN NEE [SSH]	6,472	1712492	26.002
19 MAR 2026 - 19 MAR 2026	TWL	DATO' TAN WEI LIAN [DIR/CEO]	6,472	1712492	26.003
19 MAR 2026 - 19 MAR 2026	TWL	DATO' TAN WEI LIAN [SSH]	6,472	1712492	26.003
19 MAR 2026 - 19 MAR 2026	TWL	TWL CAPITAL BERHAD [SSH]	6,472	1712492	26.002
24 MAR 2026 - 24 MAR 2026	ULICORP	LIM MEE HWA [SSH]	65	13065	5.999
24 MAR 2026 - 24 MAR 2026	ULICORP	MR YEO SENG CHONG [SSH]	65	13065	5.999
24 MAR 2026 - 24 MAR 2026	ULICORP	YEOMAN CAPITAL MANAGEMENT PTE LTD [SSH]	65	11040	5.069
24 MAR 2026 - 24 MAR 2026	UOAEV	EMPLOYEES PROVIDENT FUND BOARD ("EPF BOARD") [SSH]	312	381479	14.368
24 MAR 2026 - 24 MAR 2026	UTDPLT	EMPLOYEES PROVIDENT FUND BOARD [SSH]	58	45371	7.292
26 MAR 2026 - 26 MAR 2026	UUE	DATUK DR TING KOK HWA [DIR/CEO]	400	410835	45.026
26 MAR 2026 - 26 MAR 2026	UUE	DATUK DR TING KOK HWA [SSH]	400	410835	45.026
19 MAR 2026 - 19 MAR 2026	UUE	DATUK DR TING KOK HWA [DIR/CEO]	100	410435	44.982
19 MAR 2026 - 19 MAR 2026	UUE	DATUK DR TING KOK HWA [SSH]	100	410435	44.982
19 MAR 2026 - 19 MAR 2026	UWC	EMPLOYEES PROVIDENT FUND BOARD [SSH]	-68	81466	7.385
18 MAR 2026 - 18 MAR 2026	UWC	EMPLOYEES PROVIDENT FUND BOARD [SSH]	177	81534	7.391
17 MAR 2026 - 17 MAR 2026	UWC	EMPLOYEES PROVIDENT FUND BOARD [SSH]	120	81357	7.375
24 MAR 2026 - 24 MAR 2026	VELESTO	ABERDEEN GROUP PLC [SSH]	2,507	680576	8.264
24 MAR 2026 - 24 MAR 2026	VELESTO	ABRDN HOLDINGS LIMITED [SSH]	2,507	680576	8.264
24 MAR 2026 - 24 MAR 2026	VELESTO	ABRDN MALAYSIA SDN BHD [SSH]	2,507	680576	8.264
19 MAR 2026 - 19 MAR 2026	VELESTO	ABERDEEN GROUP PLC (FORMERLY KNOWN AS ABRDN PLC) [SSH]	1,159	678069	8.233
19 MAR 2026 - 19 MAR 2026	VELESTO	ABRDN HOLDINGS LIMITED [SSH]	1,159	678069	8.233
19 MAR 2026 - 19 MAR 2026	VELESTO	ABRDN MALAYSIA SDN BHD [SSH]	1,159	678069	8.233
19 MAR 2026 - 19 MAR 2026	VITROX	DATO' CHU JENN WENG [DIR/CEO]	-2,000	487130	25.73
19 MAR 2026 - 19 MAR 2026	VITROX	DATO' CHU JENN WENG [SSH]	-2,000	487130	25.73
18 MAR 2026 - 18 MAR 2026	VITROX	YEOH SHIH HOONG [DIR/CEO]	-5,631	178671	9.438
18 MAR 2026 - 18 MAR 2026	VITROX	YEOH SHIH HOONG [SSH]	-5,631	178671	9.438
27 MAR 2026 - 27 MAR 2026	VS	DATIN LING SOK MOOI [SSH]	5,000	212596	5.515
27 MAR 2026 - 27 MAR 2026	VS	DATUK GAN SEM YAM [DIR/CEO]	5,000	212596	5.516
27 MAR 2026 - 27 MAR 2026	VS	DATUK GAN SEM YAM [SSH]	5,000	212596	5.516
24 MAR 2026 - 24 MAR 2026	WOODLAN	DATO' SERI DR MUN WENG SUM [DIR/CEO]	3	7402	18.504
24 MAR 2026 - 24 MAR 2026	WOODLAN	DATO' SERI DR MUN WENG SUM [SSH]	3	7402	18.504



**Bursa Malaysia Berhad (BURSA)** wishes to announce that the Company had on 27 March 2026, entered into a Memorandum of Understanding ("MOU") with Hong Kong Exchanges and Clearing Limited with a view to foster the development

of channels of communication and a co-operative relationship between Bursa Malaysia and HKEX for the purpose of supporting and advancing the development of both capital markets.

**Capital A Berhad (CAPITALA)** has appointed Effendy Shahul Hamid as Deputy Chief Executive Officer effective 6 April 2026, strengthening and reinforcing the company's leadership bench as it enters its next phase of growth. Post the disposal of its aviation businesses to AirAsia X Berhad in January 2026, Capital A now sharpens its focus to growing and scaling its other core businesses, namely Asia Digital Engineering, Teleport, AirAsia MOVE, AirAsia Next and Santan.



**Salcon Berhad (SALCON)** is pleased to announce that Salcon Engineering Berhad, a wholly-owned subsidiary of the Company, had on 1 April 2026 accepted the Letter of Acceptance (Design and Build) dated 18 March 2026 issued by Perbadanan Bekalan Air Pulau Pinang Sdn. Bhd.



The Board of Directors of **Southern Score Builders Berhad (SSB8)** is pleased to announce that SJEE, a 51%-owned subsidiary of the Company had on 30 March 2026, accepted the following Awards from a local construction

company to undertake the following projects:-

a) a subcontract project more particularly described as "Supply, Delivery, Installation, Testing, Commissioning and Maintenance of Electrical System" for a data centre project at a total subcontract sum of RM150,000,000.00, inclusive of all present and future taxes, duties, levies and other similar charges imposed by the relevant authorities; and

b) additional works in relation to an existing subcontract project described as the "Supply, Delivery, Installation, Testing, Commissioning and Maintenance of Electrical System" for a data centre project originally awarded to SJEE on 15 October 2024 (prior to the Company's acquisition of 51% equity interest in SJEE), for an additional subcontract sum of RM39,000,000.00, bringing the total subcontract sum for this project to RM115,035,917.14, inclusive of all present and future taxes, duties, levies and other similar charges imposed by the relevant authorities.

**Disclaimer:** The information in the Investor Relations page is extracted from individual companies' announcements in www.bursamalaysia.com. The information on this page is provided as a service to readers. We assume no liability for damages resulting from or arising out of the use of such information. Whilst every effort is made to ensure accuracy, the information presented has been simplified for your reading pleasure. Readers are advised to read the original and complete filings on the Bursa Malaysia website at [https://www.bursamalaysia.com/market\\_information/announcements/company\\_announcement](https://www.bursamalaysia.com/market_information/announcements/company_announcement)

Upcoming IPO					
NAME OF COMPANY	OFFER PERIOD		ISSUE PRICE (Per Ordinary Share)	LISTING SOUGHT	DATE OF LISTING
	OPENING	CLOSING			
<a href="#">5E RESOURCES HOLDINGS BERHAD</a>	30 Mar 2026	3 Apr 2026	RM0.26	ACE MARKET	15 Apr 2026
<a href="#">GOLDEN DESTINATIONS GROUP BERHAD</a>	26 Mar 2026	4 Apr 2026	RM0.45	ACE MARKET	16 Apr 2026
<a href="#">EMPIRE PREMIUM FOOD BERHAD</a>	25 Mar 2026	31 Mar 2026	RM0.36	MAIN MARKET	17 Apr 2026
<a href="#">MTT SHIPPING AND LOGISTICS BERHAD</a>	26 Mar 2026	3 Apr 2026	RM1.03	MAIN MARKET	21 Apr 2026
<a href="#">AMS ADVANCED MATERIAL BERHAD</a>	27 Mar 2026	10 Apr 2026	RM0.29	ACE MARKET	23 Apr 2026