

Invest

A Weekly e-Publication by SHAREINVESTOR

ISSUE

294

FRIDAY
27 MARCH 2026

Scan/Click QR to Register



Via email, every Friday



MARKET SENTIMENTS

Strong upside for local gold ETF despite recent weakness - BIMB Securities page 30

SC launches FIKRALab to drive development of Islamic capital market products page 31

ALSO

COMPANY SPOTLIGHT

Dialog Group Berhad

See more on page 06



BEHIND THE TICKER: DECODING COMPANY FUNDAMENTALS Invest | 21

Zebra Technologies: Strong Profitability, Modest Growth

SUMMARY

- Zebra Technologies Corp (Zebra) (NASDAQ:ZBRA) has evolved from a barcode printer manufacturer into a broader enterprise mobility and asset intelligence company, operating across enterprise mobility, automation, IoT, and asset tracking markets.
- Although Zebra operates in sectors expected to grow at double-digit rates, its revenue expanded at only about 3.5% CAGR over the past decade. This reflected its reliance on mature product lines, slow scaling of newer technologies, macro headwinds, and competitive pressures.
- Despite modest top-line growth, operating income and net profit rose significantly, supported by stronger gross margins, better cost discipline, and a gradual shift toward higher-value solutions such as automation and asset intelligence.

Disclaimer: This article is written for informational purposes only. It does not constitute any financial advice, recommendation, or offer of securities. The author is not a financial advisor. The author is not responsible for any losses or gains resulting from the use of this article. The author is not a financial advisor. The author is not responsible for any losses or gains resulting from the use of this article.

See more on pages 21-28

04 LEADERBOARD

05 SHARIAH HOT STOCKS

08 SHARIAH MOMENTUM UP STOCKS

09 NON SHARIAH HOT STOCKS

10 UP TRENDING STOCKS

12 VALUE STOCKS

14 GROWTH STOCKS

16 DIVIDEND STOCKS

18 BROKERS' CALL

19 LONG COMPANIES

34 REGIONAL MARKETS

35 INSIDER ACTIVITY

38 INVESTOR RELATIONS ANNOUNCEMENTS

SHAREINVESTOR®

An AlphaInvest Company

Invest with Knowledge

INVESTOR PLATFORMS

Director
Darren Chong
darren.chong@shareinvestor.com

ADMIN & OPERATIONS

Senior Executive
Watie Nordin
watie.nordin@shareinvestor.com

Executive
Silas Emmanuel Joseph
silas.joseph@shareinvestor.com

PROCESS AUTOMATION & DATA ANALYTICS

Data Analyst
Lee Khai Bing

INVESTOR RELATIONS

Group Managing Director & Publisher
Edward Stanislaus
edward@shareinvestor.com

Senior Manager
Letticia Wong
letticia.wong@shareinvestor.com

Manager
Aida Norzeti Talib
aida.norzeti@shareinvestor.com

ALPHAINVEST HOLDINGS BOARD OF DIRECTORS

Chairman	Patrick Daniel
Group CEO	Christopher Lee
Group COO	Lim Dau Hee
Group MD	Shanison Lin



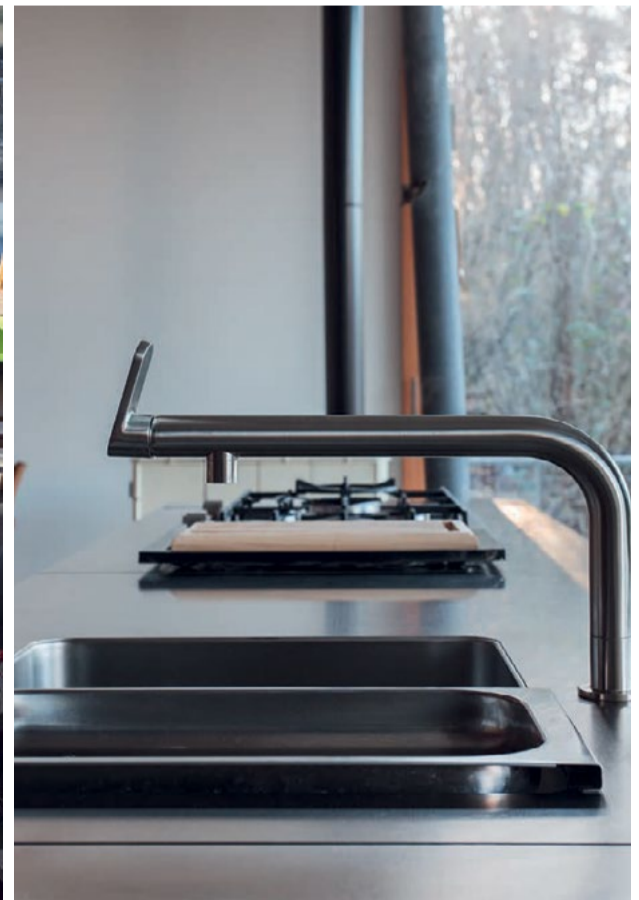
“ GIVE A MAN A FISH AND YOU FEED HIM FOR A DAY; TEACH A MAN TO FISH AND YOU FEED HIM FOR A LIFETIME ”

ShareInvestor Malaysia Sdn. Bhd.
(200001023956) (526564-M)
L15-03 & 03A, PJX HM Shah Tower,
No 16A, Jalan Persiaran Barat, PJS 52,
46200 Petaling Jaya, Selangor

Hotline : 603 8681 0580
Mobile : 011 6343 8939
Website : www.ShareInvestor.com.my
www.alphainvestholdings.com
www.Facebook.com/ShareInvestorMalaysia

ADVERTISEMENT ENQUIRY

bulthaup takes care of the details so that you can enjoy a harmonious environment.



XTRA

XTRA FURNITURE SDN BHD
The Gardens Mall, Mid Valley City
xfurniture.com/bulthaup
fb.com/bulthaupmalaysia

bulthaup

2026

InvestSG TRADING TOURNAMENT

COMPETE • TRADE



WIN UP TO

RM18,000

Tournament Period:
6 - 24 April 2026

Join Now! >

INVESTSG

Organized by

INVESTSG

Sponsored by

PhillipCapital
Your Partner In Finance

www.shareinvestor.com - market data at your fingertips



ShareInvestor WebPro (www.shareinvestor.com/my)

Prices > Stock Prices > Bursa > click Stocks tab

1. mouse over Ranking > select Top Active > all Shariah stocks are denoted with an [S] > mouse over Column Layout > select Edit Customs > select Name > select Volume > select Last Done Price > Mouse Over Column Layout > select Custom
2. mouse over Ranking > select Top Turnover > all Shariah stocks are denoted with an [S] > mouse over Column Layout > select Edit Customs > select Name > select Last Done Price > select Value > Mouse Over Column Layout > select Custom
3. mouse over Ranking > select Top Gainers (Over 5 Trading Days) > mouse over Column Layout > select Edit Customs > select Name > select Last Done Price > select 5 Days Change > select 5 Days % Change > Mouse Over Column Layout > select Custom
4. mouse over Ranking > select Top Losers (Over 5 Trading Days)
5. mouse over Ranking > select Top % Gainers (Over 5 Trading Days)
6. mouse over Ranking > select Top % Losers (Over 5 Trading Days)

Shariah Top Actives (As at Yesterday)

Name	Price (RM)	Volume
SUNMED [S]	2.290	1,428,213.000
ZETRIX [S]	0.740	1,270,239.000
DIALOG [S]	2.320	698,001.000
AAX [S]	1.160	415,025.000
ARMADA [S]	0.325	409,601.000
TANCO [S]	1.440	398,034.000
OCR [S]	0.045	396,159.000
VELESTO [S]	0.345	384,455.000
TOPGLOV [S]	0.545	383,789.000
GAMUDA [S]	3.980	326,581.000

Shariah Top Turnover (As at Yesterday)

Name	Price (RM)	Value (RM)
SUNMED [S]	2.290	323,411,513
DIALOG [S]	2.320	156,869,861
GAMUDA [S]	3.980	132,106,116
SDG [S]	5.850	115,705,112
PCHEM [S]	5.800	110,339,989
ZETRIX [S]	0.740	93,118,227
TANCO [S]	1.440	58,035,759
PMETAL [S]	7.680	57,145,647
TENAGA [S]	14.380	56,357,452
AAX [S]	1.160	48,923,193

Top Gainers (over 5 Trading days as at Yesterday)

Name	Price (RM)	Change (RM)
PETGAS	17.620	+0.820
F&N	29.700	+0.400
SUNMED	2.290	+0.390
DIALOG	2.320	+0.320
HEIM	22.740	+0.320
PCHEM	5.800	+0.320
DLADY	32.000	+0.300
GASMSIA	5.670	+0.270
KLK	20.140	+0.220
CEPCO	1.880	+0.210

Top % Gainers (over 5 Trading days as at Yesterday)

Name	Price (RM)	Change (%)
BCMALL	0.010	+100.00
CME	0.015	+50.00
SG	0.015	+50.00
TAWIN	0.015	+50.00
AMLEX	0.170	+47.83
AASIA	0.110	+37.50
BIOHLDG	0.020	+33.33
TFP	0.025	+25.00
TWL	0.025	+25.00
VIZIONE	0.100	+25.00

Top Losers (over 5 Trading days as at Yesterday)

Name	Price (RM)	Change (RM)
NESTLE	98.000	-2.400
UTDPLT	33.600	-1.220
HLFG	19.400	-0.600
MPI	29.020	-0.580
ALLIANZ	20.780	-0.540
HLBANK	22.500	-0.380
HLIND	16.760	-0.340
BLDPLNT	15.000	-0.300
WPRTS	5.900	-0.290
GENTING	2.310	-0.220

Top % Losers (over 5 Trading days as at Yesterday)

Name	Price (RM)	Change (%)
BORNOIL	0.005	-50.00
FOCUS	0.005	-50.00
SNTORIA	0.010	-33.33
JADI	0.025	-28.57
PUC	0.015	-25.00
SENDAI	0.275	-24.66
MEGAFB	1.000	-17.36
FITTERS	0.025	-16.67
FLBHD	0.200	-16.67
NEXGRAM	0.025	-16.67

Price & Volume Distribution Charts (as at Yesterday)

Technical Analysis

DEFINITION: Shariah compliant stocks with Technical Analysis showing 5-days & 10-days Moving Average Price below Yesterday's Close over past 3 days and with Volume Spike.

CHART GUIDE: Volume Distribution Chart is a statistical interpretation of the current sentiment on each stock in graphical format. The highest bar categorized as >150k is likely to be traded by institutions or super dealers, while the lowest bar categorized as <15k usually represents retail investors. "Buy Up" refers to more buyers snatching up the lots queued at selling price. "Sell Down" refers to sellers selling their shares to the buying queue



ShareInvestor WebPro > Screener > Market Screener (FA & TA) > select BURSA > add criteria

A. Criteria

- > click Add Criteria
- Technical Analysis Conditions tab select (i) Moving Average Below Close (ii) Volume Spike
- Fundamental Analysis Conditions tab > select (iii) Revenue
- Prices & Other Conditions tab > select (iv) Is Shariah Compliant
- Technical Analysis Conditions tab select (v) Moving Average Below Close
- Prices & Other Conditions tab > select (vi) Last Done Price
- Technical Analysis Conditions tab select (vii) Moving Average Below Close

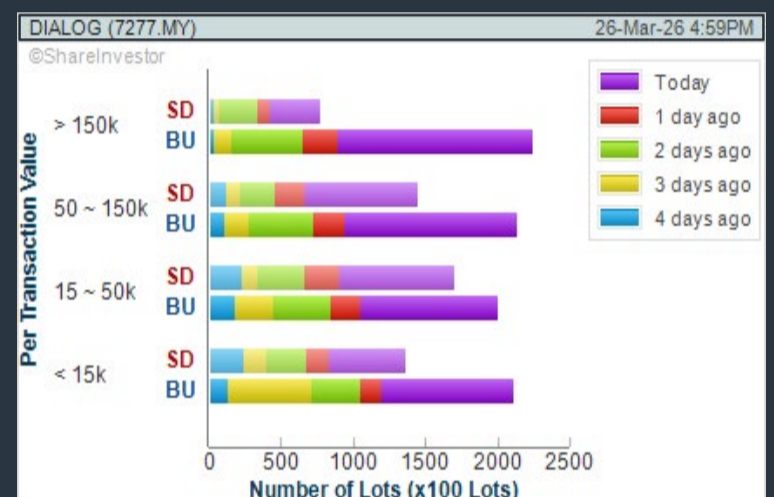
B. Conditions (Criteria Filters)

1. Moving Average Below Close - select (MA) type (5) below close price for type (3) days
2. Volume Spike - Volume type (1) greater than type (5) days average
3. Revenue ("000) - select (more than) type (1) for the past select (1) financial year(s)
4. Is Shariah Compliant - select **Yes**
5. Moving Average Below Close - select (MA) type (10) below close price for type (3) days
6. Last Done Price - select (more than) type (0.3)
7. Moving Average Below Close - select (EMA) type (5) below close price for type (3) days

- > click Save Template > Create New Template type (Shariah Hot Stocks) > click Create
- > click Save Template as > select Shariah Hot Stocks > click Save
- > click Screen Now (may take a few minutes)
- > Sort By: Select (Vol) Select (Desc)
- > Mouse over stock name > Charts > click C² Charts or Volume Distribution

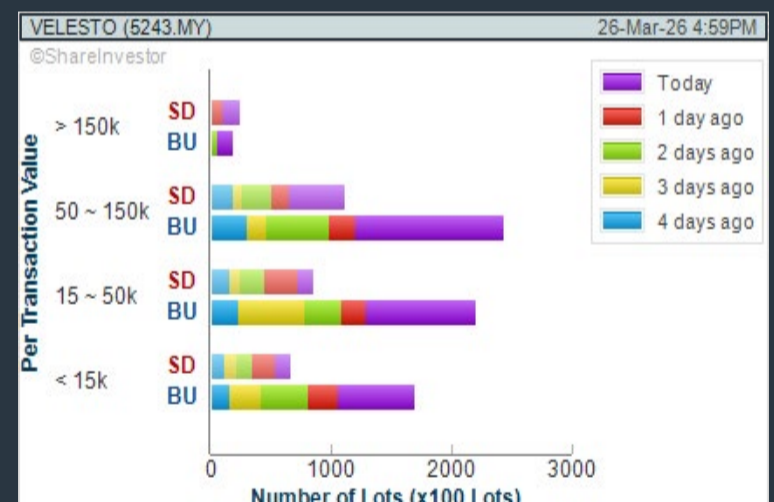
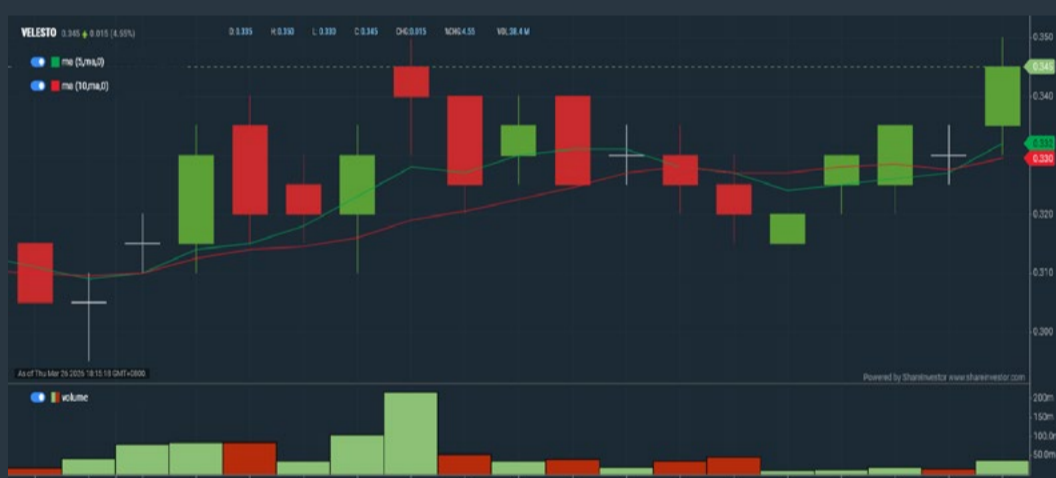
DIALOG GROUP BHD (7277)

C² Chart



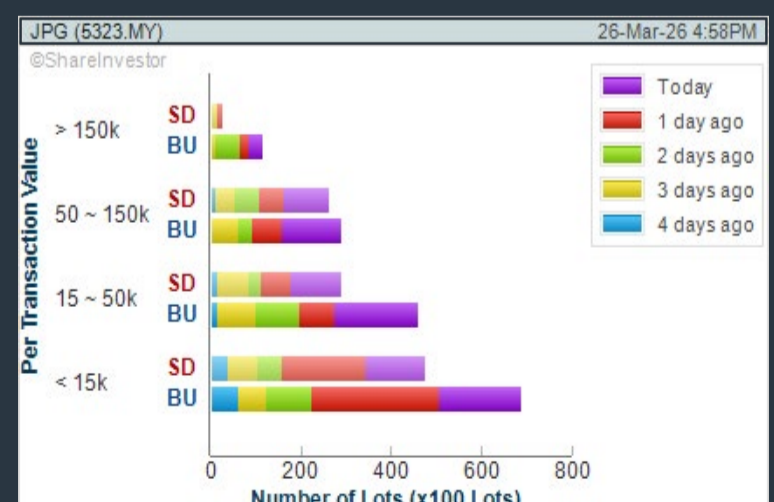
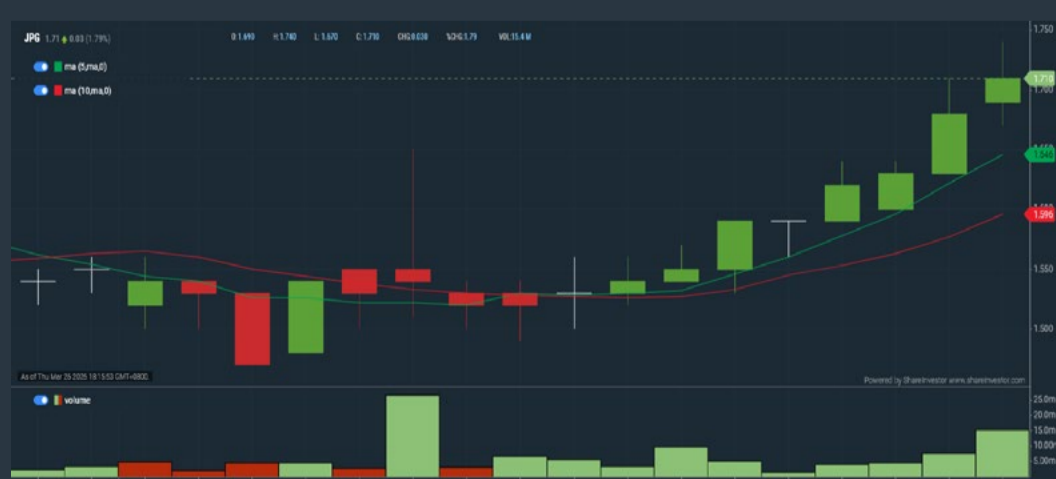
VELESTO ENERGY BERHAD (5243)

C² Chart



JOHOR PLANTATIONS GROUP BERHAD (5323)

C² Chart



Disclaimer: The information on this page is provided as a service to readers. It does not constitute financial advice and/or any investment recommendations. Past performance is not indicative of future results. We assume no liability for damages resulting from or arising out of the use of such information. It would be best if you did your own research to make your personal investment decisions wisely or consult a licenced investment advisor.

COMPANY BACKGROUND

Dialog Group Berhad is an integrated technical service provider to the energy sector in Malaysia and international markets. The Group is expanding into Sustainable and Renewables business, including clean and green energy as well as circular economy.



Select Counter: Bursa | DIALOG (7277.MY) | View | Free Trial | Broker's Call

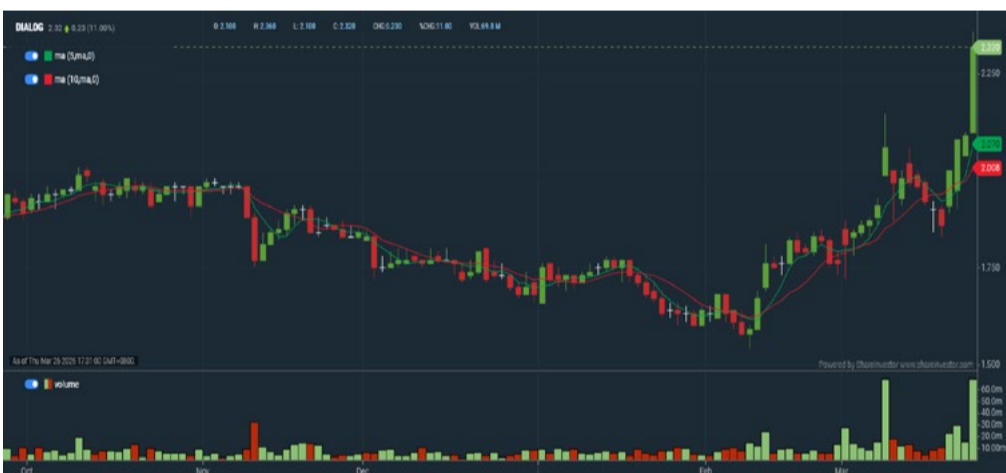
DIALOG DIALOG GROUP BHD | Updated at 26 Mar 2026 16:59

Last (MYR): 2.320 ↑	Change: +0.230	High: 2.360	Remarks: s ?
	Change (%): +11.01	Low: 2.100	
Open: 2.100		Yesterday's Close: 2.090	
Buy Price: 2.320		Sell Price: 2.330	
Buy Volume ('00): 1,932		Sell Volume ('00): 2,118	
Cumulative Volume ('00): 698,001		Cumulative Value: 156,869,861	

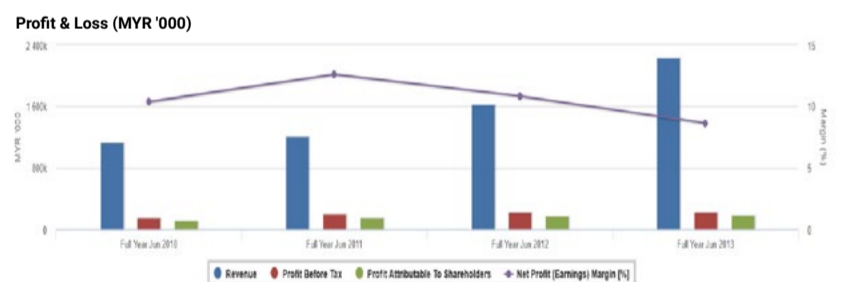
Financial Analysis

Profit Growth Profit down sharply in latest year (< 35%) (with last 3 profitable years)	Dividend Payout Dividend is increasing over the past 60 months.
Cash Ratio Good cash ratio of at least 0.8 for 3 consecutive years	Debt to Cashflow High debt to cash flow for most recent year
Gross Profit Margin Low gross profit margin for 3 years	

Excellent |
 Good |
 Neutral |
 Be Alert |
 Watch Out



Historical Financials



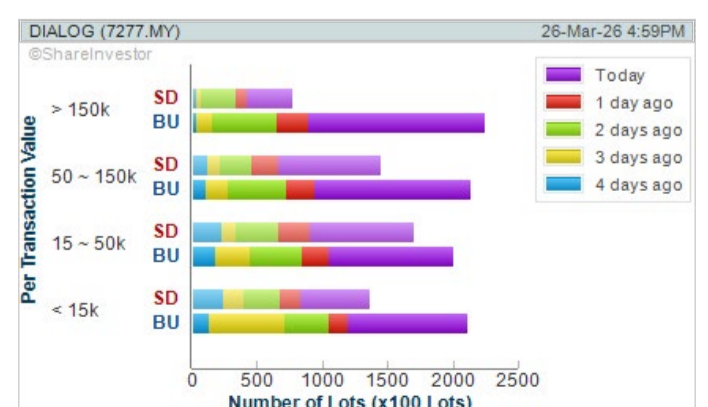
WebPro 9-Days Free Trial Registration (worth RM10) Sign Up Now



Key Statistics with Total Shareholder Returns

Total Shareholder Return

Period	Dividend Received	Capital Appreciation	Total Shareholder Return
Short Term Return	5 Days	-	+0.460
	10 Days	-	+0.340
	20 Days	-	+0.500
Medium Term Return	3 Months	-	+0.590
	6 Months	0.018	+0.440
	1 Year	0.031	+0.810
Long Term Return	2 Years	0.074	+0.070
	3 Years	0.111	-0.020
	5 Years	0.176	-0.790
Annualised Return	Annualised	-	-



Disclaimer: The information on this page is provided as a service to readers. It does not constitute financial advice and/or any investment recommendations. Past performance is not indicative of future results. We assume no liability for damages resulting from or arising out of the use of such information. It would be best if you did your own research to make your personal investment decisions wisely or consult a licenced investment advisor.



& **WORLD WISH DAY**

In Partnership with



TEE OFF FOR HOPE

This year, we tee off for hope while celebrating **World Wish Day on 29 April**, a day that honors the very first wish granted in 1980, and reminds us how wishes bring strength, joy and healing to wish children and their families.

When you join this golf tournament, you're becoming a **WishMaker**. Every swing helps create hope, strength and unforgettable memories for children facing critical illnesses. These children are counting on **WishMakers** like you to make their dreams come true. **Sign up now!**



**wishmakers
wanted**

For booking or donation please contact:

Make-A-Wish Malaysia



(03) 2738 9939

info@makeawish.org.my

BOOK NOW

Date: Wednesday, 29 April 2026

Time: 1.30pm Tee Off

Venue: Tropicana Golf & Country Club

Flights: (for 4 golfers)

Other: Championship packages available

Format of play: Texas Scramble Stableford System 36



Price & Volume Distribution Charts (as at Yesterday)

Technical Analysis

DEFINITION: Shariah compliant stocks with Technical Analysis showing Bullish Momentum and Price Uptrend. The share price closed at the highest price yesterday. The typical price was higher than the previous day's typical price.

CHART GUIDE: Volume Distribution Chart is a statistical interpretation of the current sentiment on each stock in graphical format. The highest bar categorized as >150k is likely to be traded by institutions or super dealers, while the lowest bar categorized as <15k usually represents retail investors. "Buy Up" refers to more buyers snatching up the lots queued at selling price. "Sell Down" refers to sellers selling their shares to the buying queue.



ShareInvestor WebPro > Screener > Market Screener (FA & TA) > select BURSA > add criteria

A. Criteria

- > click Add Criteria
- Fundamental Analysis Conditions tab > select (i) Revenue
- Technical Analysis Conditions tab select (ii) Average Volume
- Prices & Other Conditions tab > select (iii) Last Done Price
- Prices & Other Conditions tab > select (iv) Is Shariah Compliant
- Technical Analysis Conditions tab select (v) RSI Overbought
- Technical Analysis Conditions tab select (vi) Moving Average Below Close
- Technical Analysis Conditions tab select (vii) CCI Overbought

B. Conditions (Criteria Filters)

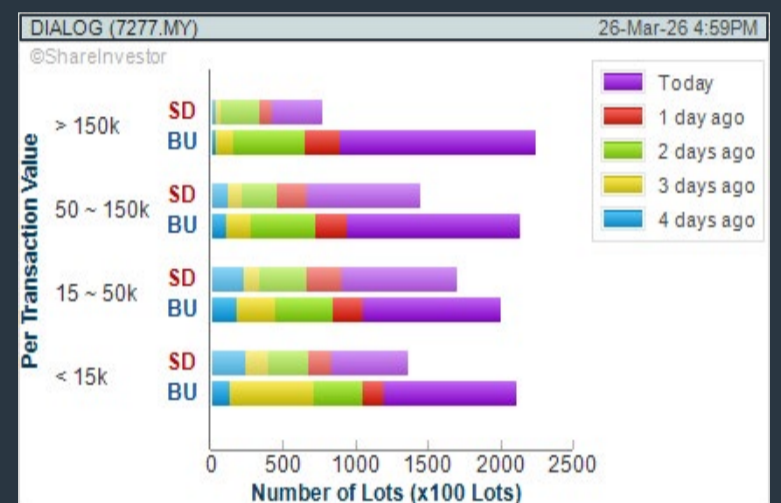
1. Revenue ("000) - select (more than) type (1) for the past select (1) financial year(s)
2. Average Volume - type (1) days average volume greater than type (10000) lots
3. Last Done Price - select (more than) type (0.3)
4. Is Shariah Compliant - select Yes
5. RSI Overbought - select RSI 1 above 99 for 1 days
6. Moving Average Below Close - select (MA) type (10) below close price for type (1) days
7. CCI Overbought - select CCI (2) above (0) for (1) days

- > click Save Template > Create New Template type (Shariah Momentum Up Stocks) > click Create
- > click Save Template as > select Shariah Momentum Up Stocks > click Save
- > click Screen Now (may take a few minutes)
- Sort By: Select (Vol) Select (Desc)
- Mouse over stock name > Charts > click C² Charts tab or Volume Distribution

DIALOG GROUP BHD (7277)

C² Chart

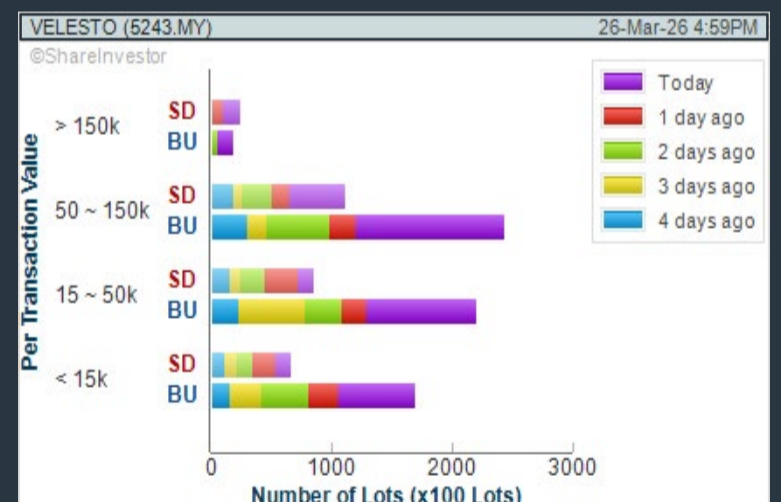
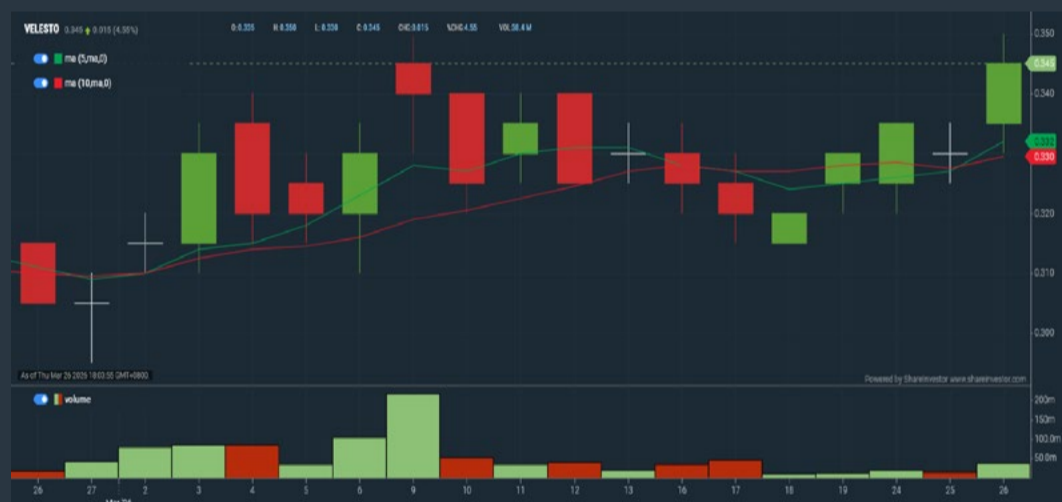
Analysis



VELESTO ENERGY BERHAD (5243)

C² Chart

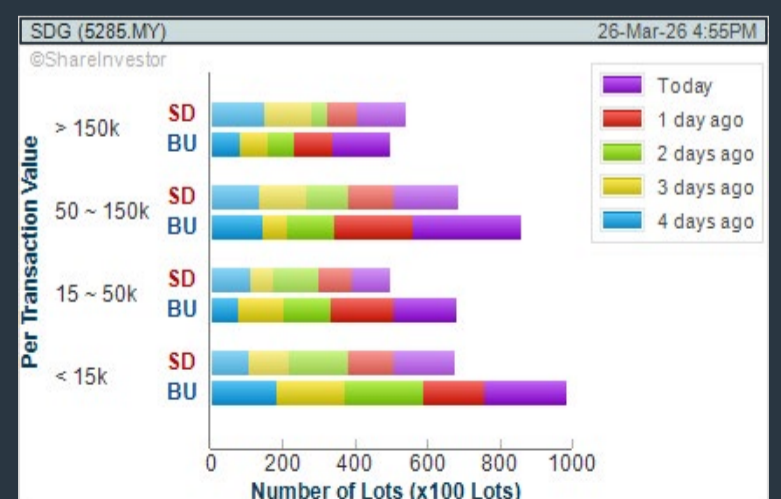
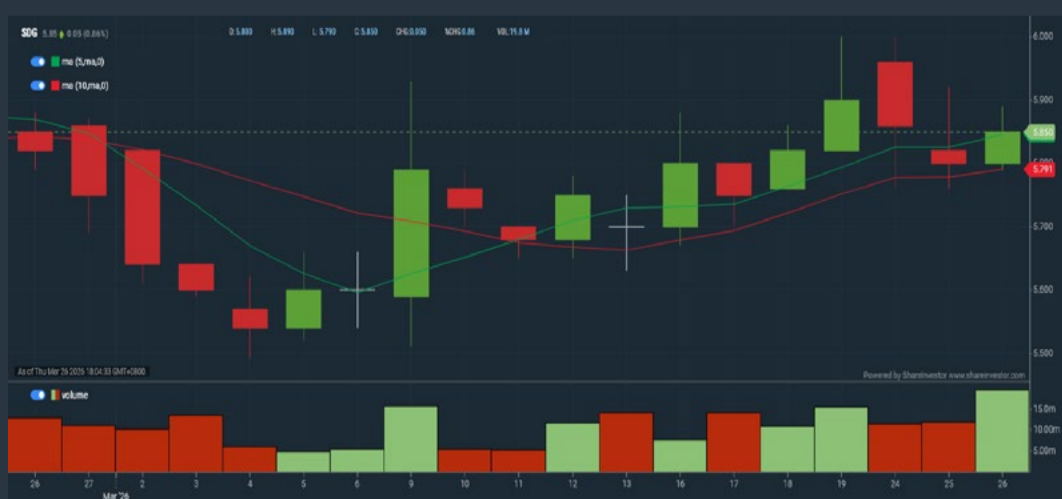
Analysis



SD GUTHRIE BERHAD (5285)

C² Chart

Analysis



Disclaimer: The information on this page is provided as a service to readers. It does not constitute financial advice and/or any investment recommendations. Past performance is not indicative of future results. We assume no liability for damages resulting from or arising out of the use of such information. It would be best if you did your own research to make your personal investment decisions wisely or consult a licenced investment advisor.

Price & Volume Distribution Charts (as at Yesterday)

Technical Analysis

DEFINITION: Stocks with Technical Analysis showing 5-days & 10-days Moving Average Price below Close over past 1 days and with Volume Spike

CHART GUIDE: Volume Distribution Chart is a statistical interpretation of the current sentiment on each stock in graphical format. The highest bar categorized as >150k is likely to be traded by institutions or super dealers, while the lowest bar categorized as <15k usually represents retail investors. "Buy Up" refers to more buyers snatching up the lots queued at selling price. "Sell Down" refers to sellers selling their shares to the buying queue.



ShareInvestor WebPro > Screener > Market Screener (FA & TA) > select BURSA > add criteria

A. Criteria

- > click Add Criteria
- Technical Analysis Conditions tab select (i) Moving Average Below Close (ii) Volume Spike
- Fundamental Analysis Conditions tab >select (iii) Revenue
- Prices & Other Conditions tab > select (iv) Is Shariah Compliant
- Technical Analysis Conditions tab select (v) Moving Average Below Close
- Prices & Other Conditions tab > select (vi) Last Done Price
- Technical Analysis Conditions tab select (vii) Moving Average Below Close

B. Conditions (Criteria Filters)

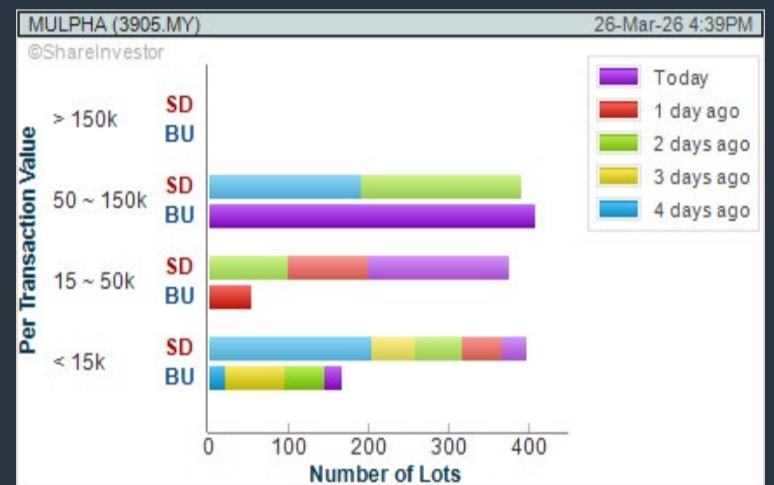
- Moving Average Below Close - select (MA) type (5) below close price for type (3) days
- Volume Spike - Volume type (1) greater than type (5) days average
- Revenue ('000) - select (more than) type (1) for the past select (1) financial year(s)
- Is Shariah Compliant - select NO
- Moving Average Below Close - select (MA) type (10) below close price for type (1) days
- Last Done Price - select (more than) type (0.3)
- Moving Average Below Close - select (EMA) type (5) below close price for type (1) days

- > click Save Template > Create New Template type (Non-Shariah Hot Stocks) > click Create
- > click Save Template as > select Non-Shariah Hot Stocks > click Save
- > click Screen Now (may take a few minutes)
- Sort By: Select (Vol) Select (Desc)
- Mouse over stock name > Charts > click C² Charts tab or Volume Distribution

MULPHA INTERNATIONAL BERHAD (3905)

Analysis

C² Chart



Disclaimer: The information on this page is provided as a service to readers. It does not constitute financial advice and/or any investment recommendations. Past performance is not indicative of future results. We assume no liability for damages resulting from or arising out of the use of such information. It would be best if you did your own research to make your personal investment decisions wisely or consult a licenced investment advisor.

CHECK OUT SHAREINVESTOR

BROKER'S CALL

Weekly Buy/Sell/Hold calls from leading Malaysian Brokerages.

[Go To Broker's Call](#)

Price & Volume Distribution Charts (Over 3 trading days as at Yesterday)

Technical Analysis

DEFINITION: Stocks with Technical Analysis showing Bullish Momentum and Price Uptrend

CHART GUIDE: Volume Distribution Chart is a statistical interpretation of the current sentiment on each stock in graphical format. The highest bar categorized as >150k is likely to be traded by institutions or super dealers, while the lowest bar categorized as <15k usually represents retail investors. "Buy Up" refers to more buyers snatching up the lots queued at selling price. "Sell Down" refers to sellers selling their shares to the buying queue.



ShareInvestor WebPro > Screener > Market Screener (FA & TA) > select BURSA > add criteria

A. Criteria

- > click Add Criteria
- Fundamental Analysis Conditions tab > select (i) Revenue
- Technical Analysis Conditions tab select (ii) Moving Average Below Close
- Technical Analysis Conditions tab select (iii) Average Volume
- Prices & Other Conditions tab > select (iv) Last Done Price
- Technical Analysis Conditions tab select (v) Moving Average Below Close
- Technical Analysis Conditions tab select (v) Moving Average Bullish Crossover

B. Conditions

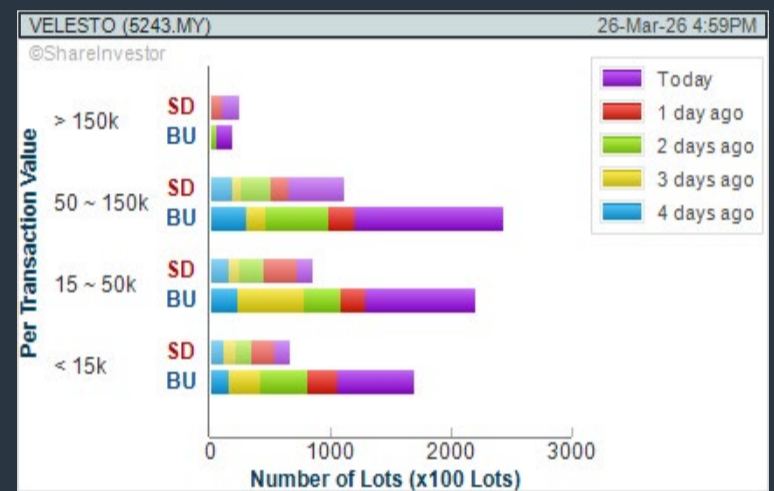
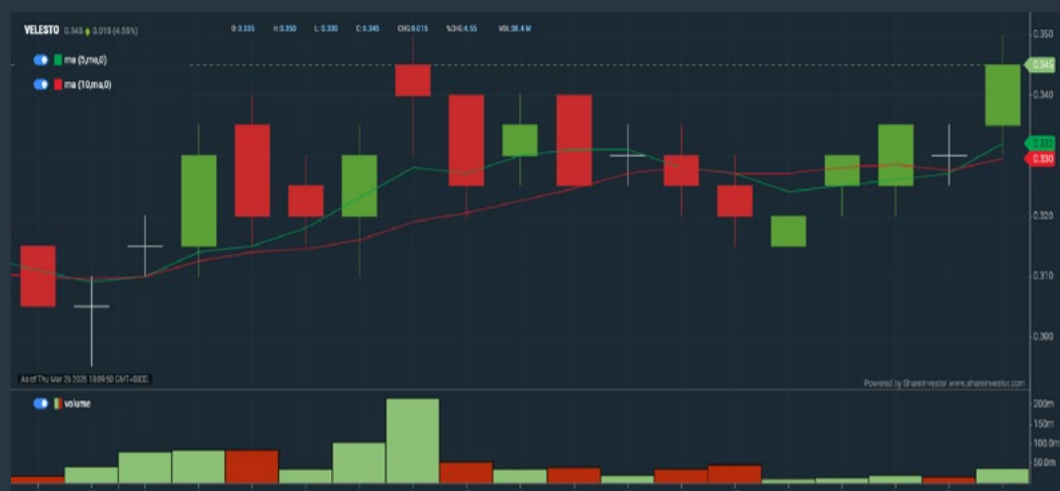
1. Revenue - select (more than) type (1) for the past select (1) financial year(s)
2. Moving Average Below Close - select (MA) type (20) below close price for type (1) days
3. Average Volume - type (5) days average volume type (10000) lots
4. Last Done Price - select (more than) type (0.3)
5. Moving Average Below Close - select (MA) type (10) below close price for type (1) days
6. Moving Average Bullish Crossover - select (MA) type (5) crossed above select (MA) type (10)

> click Save Template > Create New Template type (Non-Shariah Up-Trending Stocks) > click Create Click Save Template As > select Non-Shariah Up Trending Stocks > click Save
> click Screen Now (may take a few minutes)
Sort By: Select (Vol) Select (Desc)
Mouse over stock name > Charts > click C² Charts tab or Volume Distribution

VELESTO ENERGY BERHAD (5243)

C² Chart

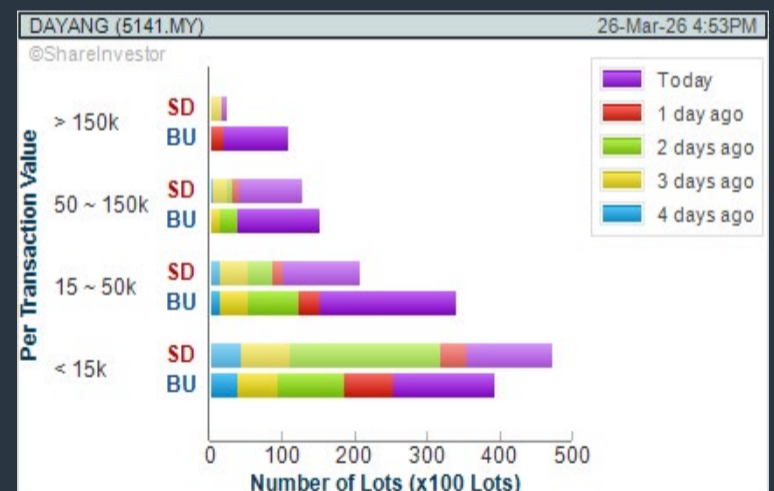
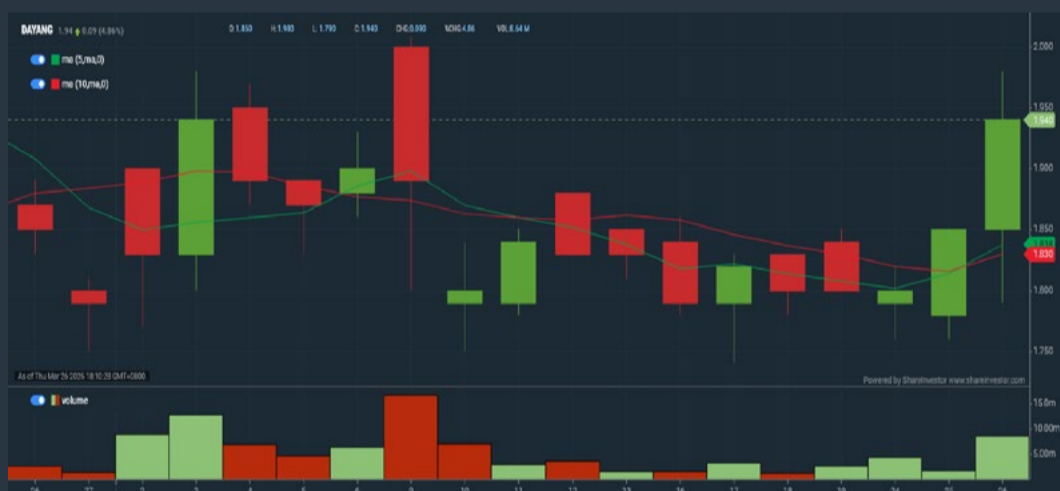
Analysis



DAYANG ENTERPRISE HOLDINGS BHD (5141)

C² Chart

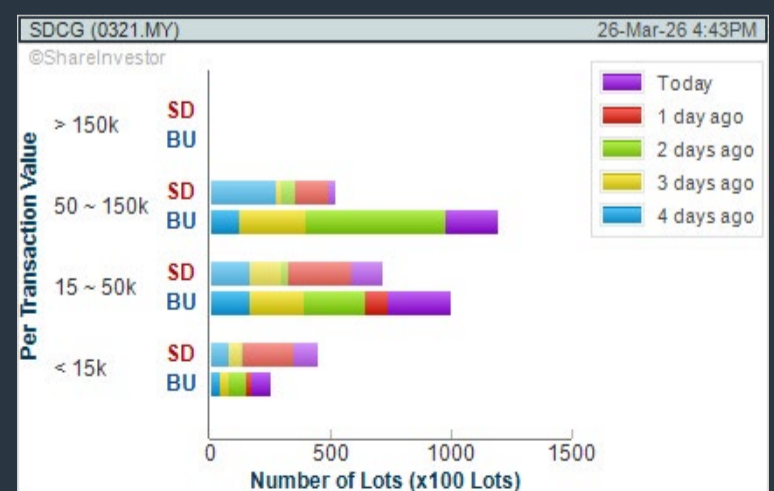
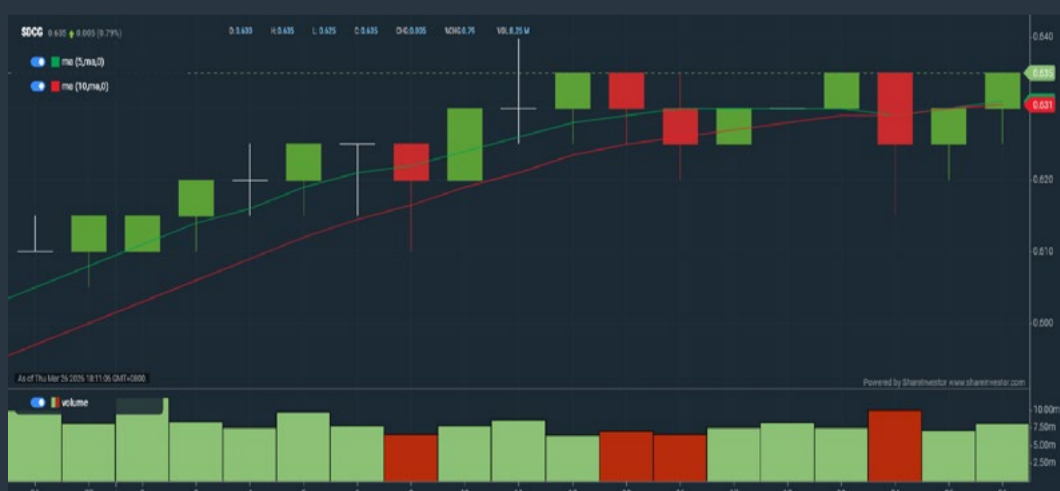
Analysis



SOLAR DISTRICT COOLING GROUP BERHAD (0321)

C² Chart

Analysis



Disclaimer: The information on this page is provided as a service to readers. It does not constitute financial advice and/or any investment recommendations. Past performance is not indicative of future results. We assume no liability for damages resulting from or arising out of the use of such information. It would be best if you did your own research to make your personal investment decisions wisely or consult a licenced investment advisor.



ROWAN director chair
 Designed by ITO Design, Germany

Inspired by the sophistication of first and business class, **ROWAN** delivers a fully enveloping comfort through Italian full-grain leather and precision-engineered aluminum form.

Where design excellence meets executive presence.



XTRA
www.xtrafurniture.com



Awarded for Design. Certified for Excellence. Trusted Worldwide.

Price & Total Shareholder Return (as at Yesterday)

Fundamental Analysis

DEFINITION: Share price of a company trading at a lower price as compared to its fundamentals (FA) such as financial performance and dividend, allowing it to be attractive to value investors.

CHART GUIDE: Total Shareholder Return (TSR) combines share price appreciation and dividend distributions paid to show the total return to the shareholder expressed as a percentage.



ShareInvestor WebPro > Screener > Market Screener (FA & TA) > select BURSA > add criteria

A. Criteria

- > click Add Criteria
- Fundamental Analysis Conditions tab (i) Price Earnings Ratio
- Fundamental Analysis Conditions tab >select (ii) CAGR of Net Earnings
- Fundamental Analysis Conditions tab >select (iii) Net Debt To Equity
- Fundamental Analysis Conditions tab >select (iv) Return On Equity (ROE)

B. Conditions

1. Price Earnings Ratio - select (less than) type (15) times now
2. CAGR of Net Earnings - select (more than) type (10) % for the past type (3) financial year(s)
3. Net Debt To Equity – select (less than) type (1) for the past select (1) financial year(s)
4. Return On Equity (ROE) – select (more than) type (10) % for the past select (1) financial year(s)

- > click Save Template > Create New Template type (Value Stock) > click Create
- > click Save Template as > select Value Companies > click Save
- > click Screen Now (may take a few minutes)
- Sort by: Select (PE Ratio) Select (Ascending)
- > Mouse over stock name > Factsheet > looking for Total Shareholder Return
- > Mouse over stock name > Charts > click C2 Charts tab

MULPHA INTERNATIONAL BERHAD (3905)

C² Chart

Analysis

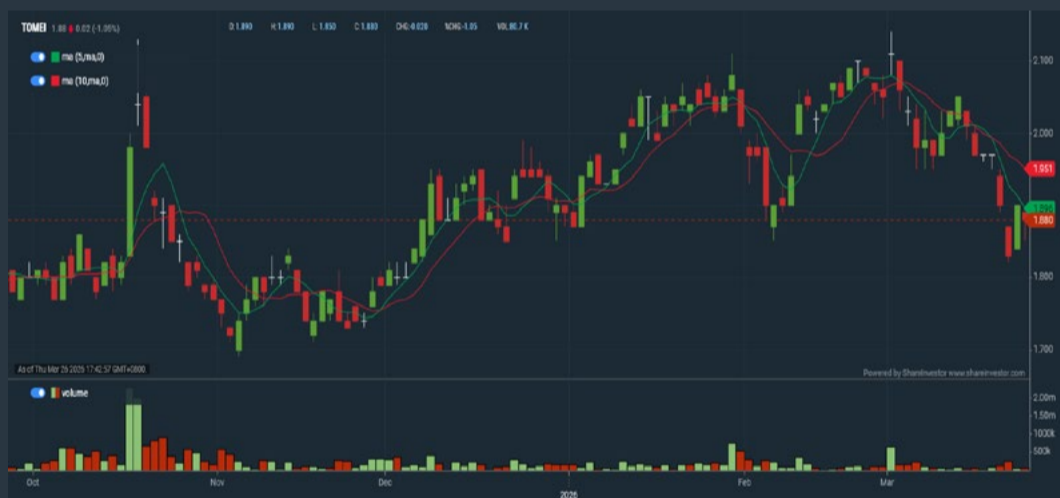


Period	Dividend Received	Capital Appreciation	Total Shareholder Return
Short Term Return	5 Days	+	+3.87 %
	10 Days	+	+3.15 %
	20 Days	+	+1.72 %
Medium Term Return	3 Months	+	+0.34 %
	6 Months	-	-1.34 %
	1 Year	-	-1.67 %
Long Term Return	2 Years	+	+25.00 %
	3 Years	+	+23.43 %
	5 Years	+	+91.56 %
Annualised Return	Annualised	-	+13.88 %

TOMEI CONSOLIDATED BHD (7230)

C² Chart

Analysis



Period	Dividend Received	Capital Appreciation	Total Shareholder Return	
Short Term Return	5 Days	-	-4.57 %	
	10 Days	-	-7.39 %	
	20 Days	-	-9.62 %	
Medium Term Return	3 Months	-	-3.09 %	
	6 Months	+	+3.87 %	
	1 Year	0.025	+6.250	+16.87 %
Long Term Return	2 Years	0.080	+6.460	+38.03 %
	3 Years	0.120	+6.720	+72.41 %
	5 Years	0.170	+1.055	+148.48 %
Annualised Return	Annualised	-	+19.97 %	

SMRT HOLDINGS BERHAD (0117)

C² Chart

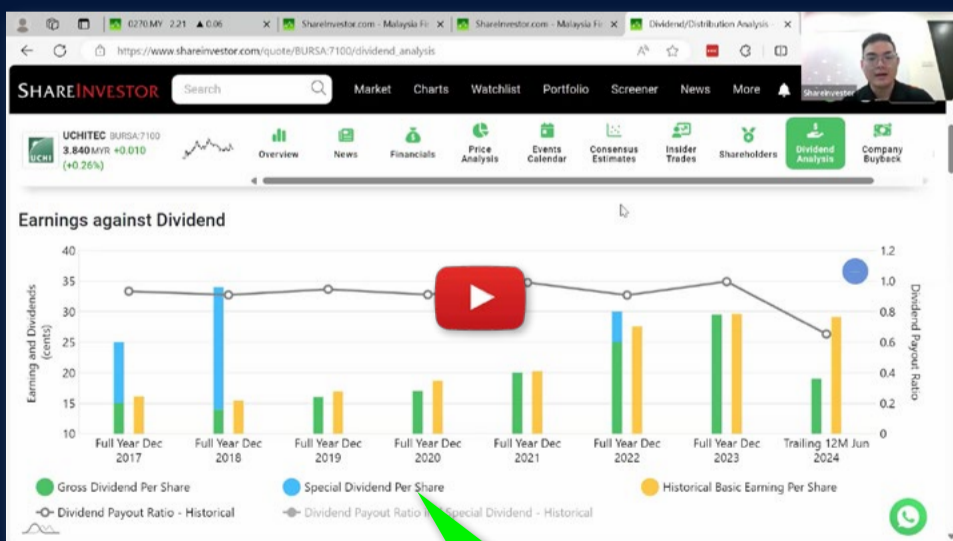
Analysis



Period	Dividend Received	Capital Appreciation	Total Shareholder Return
Short Term Return	5 Days	-	-
	10 Days	+	+20.83 %
	20 Days	-	-6.45 %
Medium Term Return	3 Months	-	-73.64 %
	6 Months	-	-81.65 %
	1 Year	-	-84.57 %
Long Term Return	2 Years	-	-82.94 %
	3 Years	-	-72.12 %
	5 Years	-	-19.44 %
Annualised Return	Annualised	-	-4.23 %

Disclaimer: The information on this page is provided as a service to readers. It does not constitute financial advice and/or any investment recommendations. Past performance is not indicative of future results. We assume no liability for damages resulting from or arising out of the use of such information. It would be best if you did your own research to make your personal investment decisions wisely or consult a licenced investment advisor.

Ultimate Guide to use **ShareInvestor**



YOU WILL LEARN HOW TO USE:

- Company Financials
- Market Screener
- Company Insider Trades
- Dividend Analysis
- Consensus Estimation
and more...

**Watch
now!**

Price & Total Shareholder Return (as at Yesterday)

Fundamental Analysis

DEFINITION: Company revenue is growing and making good quality of earnings with positive Free Cash Flow.

CHART GUIDE: Total Shareholder Return (TSR) combines share price appreciation and distributions paid to show the total return to the shareholder expressed as a percentage.



ShareInvestor WebPro > Screener > Market Screener (FA & TA) > select BURSA > add criteria

A. Criteria

1. Fundamental Analysis Conditions tab >select (i) Free Cash Flow, (ii) Revenue Growth, (iii) Gross Profit (Earnings) Margin, (iv) Quality of Earnings, (v) Total Shareholder Returns, > click Add Criteria
2. Fundamental Analysis Conditions tab >select (vi) Total Shareholder Returns > click Add Criteria

B. Conditions (Criteria Filters)

1. Free Cash Flow - select (more than) type (1) for the past select (1) financial year(s)
2. Revenue Growth - select (more than) type (1) for the past select (1) financial year(s)
3. Gross Profit (Earnings) Margin - select (more than) type (30) % for the past select (1) financial year(s)
4. Quality of Earnings - select (more than) type (1) for the past select (1) financial year(s)
5. Total Shareholder Return - select (more than) type (5) % for the past select (3) financial year(s)
6. Total Shareholder Return - select (more than) type (5) % for the past select (5) financial year(s)

- > click Save Template > Create New Template type (Growth Companies) > click Create
- > click Save Template as > select Growth Companies > click Save
- > click Screen Now (may take a few minutes)
- > Sort By: Select (Revenue Growth) Select (Desc)
- > Mouse over stock name > Factsheet > looking for Total Shareholder Return

COUNTRY VIEW BHD (5049)

C² Chart

Analysis



CVIEW (5049.MY)					
Total Shareholder Return					
Period	Dividend Received	Capital Appreciation	Total Shareholder Return		
Short Term Return	5 Days	-	+0.040		+1.32 %
	10 Days	-	-		-
	20 Days	0.130	-0.360		-6.73 %
Medium Term Return	3 Months	0.130	+0.160		+10.00 %
	6 Months	0.220	+0.610		+33.88 %
	1 Year	0.530	+1.020		+75.98 %
Long Term Return	2 Years	0.680	+1.760		+187.69 %
	3 Years	0.750	+2.090		+292.78 %
	5 Years	0.890	+1.820		+218.55 %
Annualised Return	Annualised	-	-		+26.08 %

NEGRI SEMBILAN OIL PALMS BHD (2038)

C² Chart

Analysis



NSOP (2038.MY)					
Total Shareholder Return					
Period	Dividend Received	Capital Appreciation	Total Shareholder Return		
Short Term Return	5 Days	-	+0.250		+4.27 %
	10 Days	-	+0.350		+6.09 %
	20 Days	-	+0.160		+2.69 %
Medium Term Return	3 Months	-	+0.470		+8.35 %
	6 Months	0.100	+0.887		+20.47 %
	1 Year	0.260	+2.099		+58.96 %
Long Term Return	2 Years	0.460	+2.424		+78.45 %
	3 Years	0.580	+2.862		+106.30 %
	5 Years	0.890	+3.184		+139.71 %
Annualised Return	Annualised	-	-		+19.11 %

WESTPORTS HOLDINGS BERHAD (5246)

C² Chart

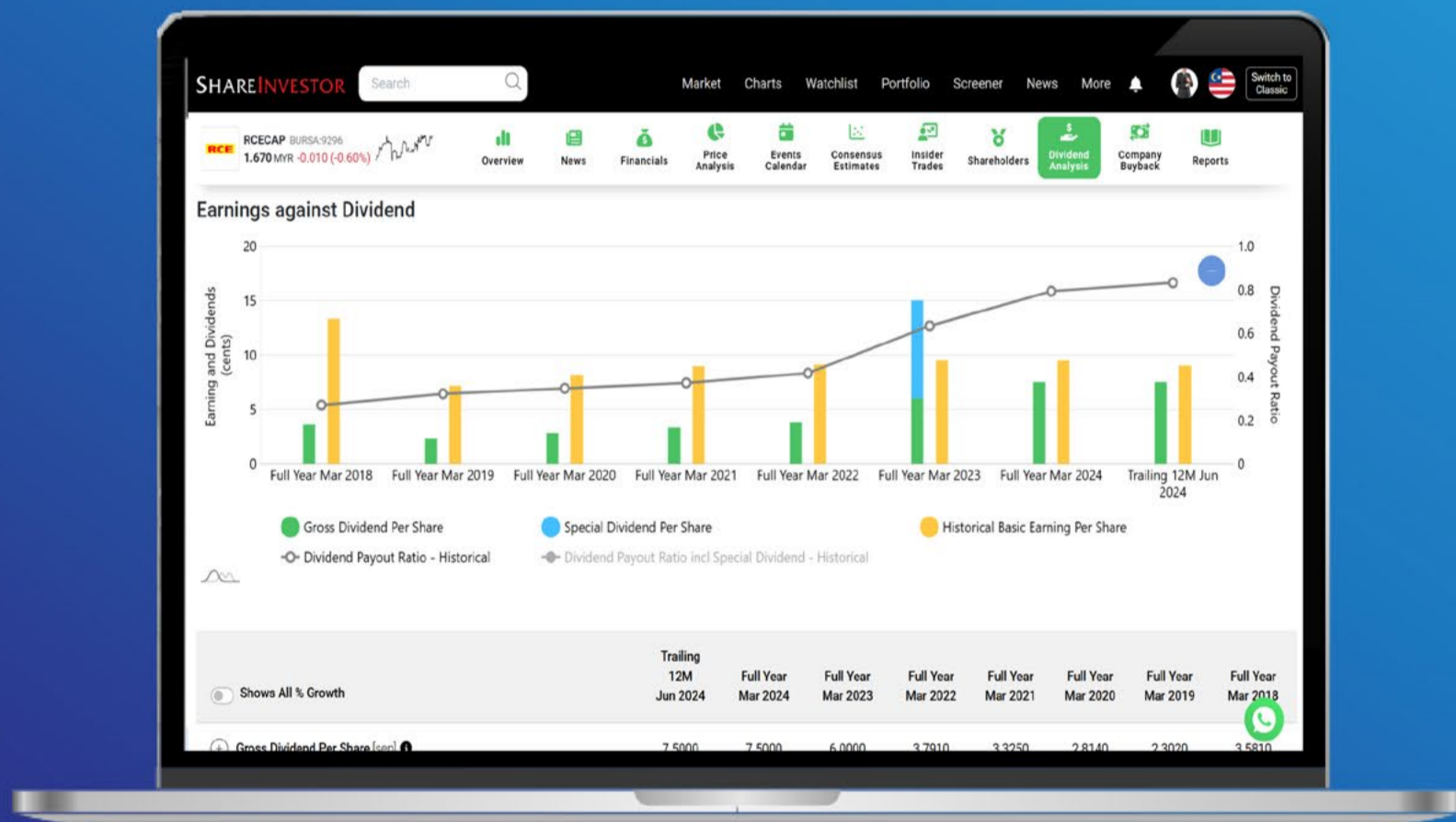
Analysis



WPRTS (5246.MY)					
Total Shareholder Return					
Period	Dividend Received	Capital Appreciation	Total Shareholder Return		
Short Term Return	5 Days	-	-0.100		-1.67 %
	10 Days	-	-0.120		-1.99 %
	20 Days	-	-0.360		-5.75 %
Medium Term Return	3 Months	0.119	+0.130		+4.32 %
	6 Months	0.119	+0.500		+11.46 %
	1 Year	0.219	+1.190		+29.92 %
Long Term Return	2 Years	0.416	+2.050		+64.05 %
	3 Years	0.585	+2.320		+81.15 %
	5 Years	0.907	+1.700		+62.07 %
Annualised Return	Annualised	-	-		+10.14 %

Disclaimer: The information on this page is provided as a service to readers. It does not constitute financial advice and/or any investment recommendations. Past performance is not indicative of future results. We assume no liability for damages resulting from or arising out of the use of such information. It would be best if you did your own research to make your personal investment decisions wisely or consult a licenced investment advisor.

Tired of low returns? Let's talk high-paying Dividends!



- ✓ **Top Dividend Picks Right Now**
- ✓ **Insider Tips – Advanced strategies for experienced investors**
- ✓ **Easy-to-Follow Tutorial**

Get the most out of dividends, use our Dividend Analysis function –
Click to Watch Our Tutorial Below!

Upgrade Your Dividend Strategy Here



Price & Total Shareholder Return (as at Yesterday)

Fundamental Analysis

DEFINITION: Company is paying out dividend with low or moderate leverage.

CHART GUIDE: Total Shareholder Return (TSR) combines share price appreciation and distributions paid to show the total return to the shareholder expressed as a percentage.



ShareInvestor WebPro > Screener > Market Screener (FA & TA) > select BURSA > add criteria

A. Criteria

- > click Add Criteria
- Fundamental Analysis Conditions tab >select (i) Dividend Yield (Historical)
- Fundamental Analysis Conditions tab >select (ii) Dividend Payout (Historical)
- Fundamental Analysis Conditions tab >select (iii) Total Debt To Equity
- Fundamental Analysis Conditions tab >select (iv) Total Shareholder Returns
- Fundamental Analysis Conditions tab >select (v) Total Shareholder Returns
- Fundamental Analysis Conditions tab / >select (vi) CAGR of Dividend Per Share

• Fundamental Analysis Conditions tab >select (vii) CAGR of Dividend Per Share

B. Conditions (Criteria Filters)

1. Dividend Yield - select (more than) type (1) % for the past select (1) financial year(s)
2. Dividend Payout (Historical) - select (between) type (0.5) to type (1) times for the past select (1) financial year(s)
3. Total Debt to Equity - select (less than) type (1) for the past select (1) financial year(s)
4. Total Shareholder Return - - select (more than) type (5) % for the past select (3) financial year(s)
5. Total Shareholder Return - - select (more than) type (5) % for the past select (5) financial year(s)

6. CAGR of Dividend Per Share - - select (less than) type (30) % for the past select (5) financial year(s)
7. CAGR of Dividend Per Share - - select (more than) type (1) % for the past select (5) financial year(s)

- > click Save Template > Create New Template type (Dividend Companies) > click Create
- > click Save Template as > select Dividend Companies > click Save
- > click Screen Now (may take a few minutes)
- > Sort By: Select (Dividend Yield) Select (Desc)
- > Mouse over stock name > Factsheet > looking for Total Shareholder Return

APM AUTOMOTIVE HOLDINGS BHD (5015)

C² Chart

Analysis



APM (5015.MY)					
Total Shareholder Return					
Period	Dividend Received	Capital Appreciation	Total Shareholder Return		
Short Term Return	5 Days	-	+0.010		+0.32 %
	10 Days	0.130	-0.270		-4.12 %
	20 Days	0.130	-0.350		-6.32 %
Medium Term Return	3 Months	0.130	-0.140		-0.31 %
	6 Months	0.130	+0.010		+4.49 %
	1 Year	0.200	+0.130		+11.00 %
Long Term Return	2 Years	0.480	+0.340		+29.39 %
	3 Years	0.730	+1.120		+92.04 %
	5 Years	0.940	+0.850		+78.51 %
Annualised Return	Annualised	-	-		+12.29 %

WELLCAL HOLDINGS BERHAD (7231)

C² Chart

Analysis



WELLCAL (7231.MY)					
Total Shareholder Return					
Period	Dividend Received	Capital Appreciation	Total Shareholder Return		
Short Term Return	5 Days	-	-0.030		-2.40 %
	10 Days	0.016	-0.030		-1.12 %
	20 Days	0.016	-0.140		-9.12 %
Medium Term Return	3 Months	0.016	-0.120		-7.76 %
	6 Months	0.040	-0.054		-1.10 %
	1 Year	0.076	-0.204		-8.99 %
Long Term Return	2 Years	0.158	-0.433		-16.64 %
	3 Years	0.246	+0.128		+34.25 %
	5 Years	0.386	+0.176		+53.83 %
Annualised Return	Annualised	-	-		+9.00 %

LPI CAPITAL BHD (8621)

C² Chart

Analysis



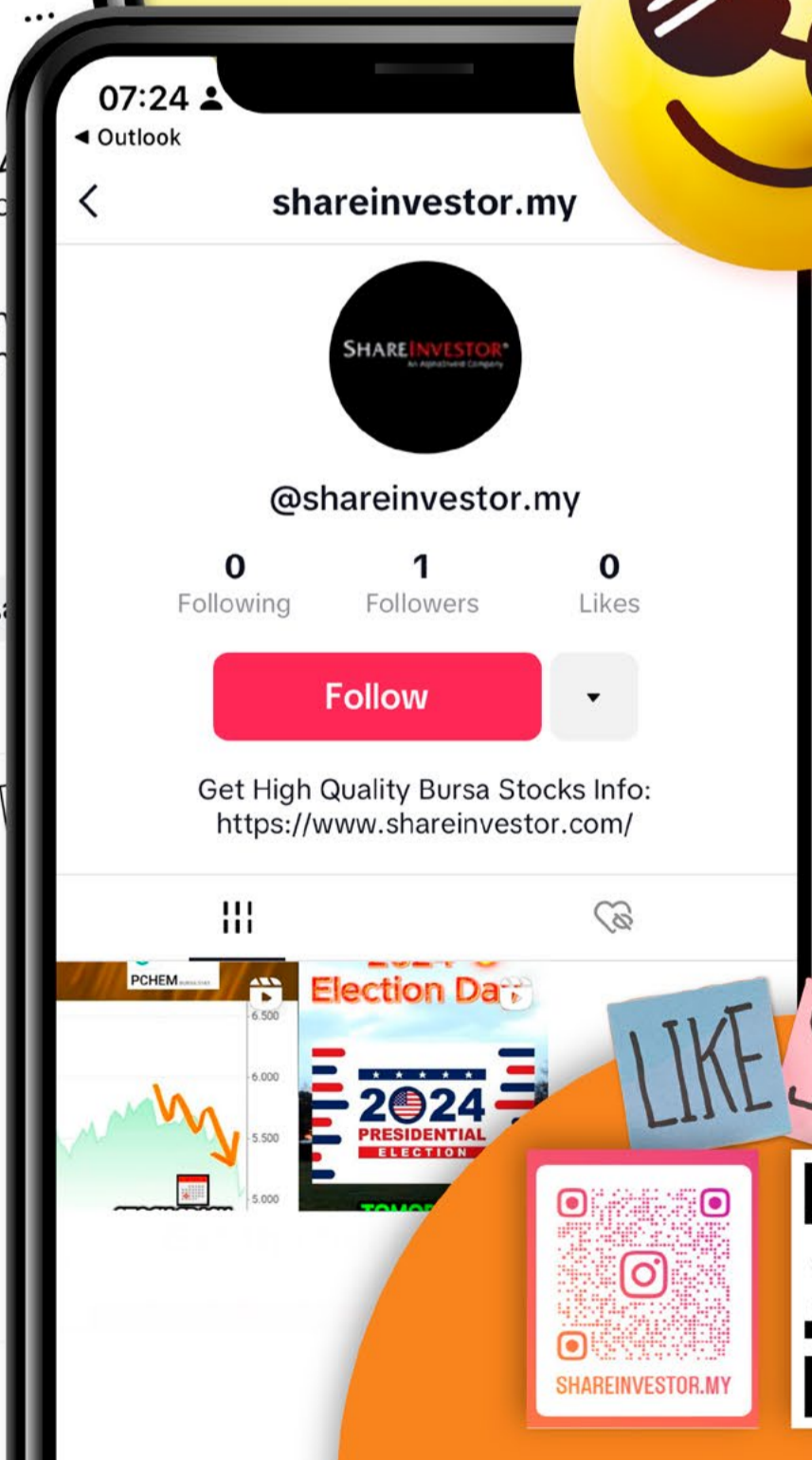
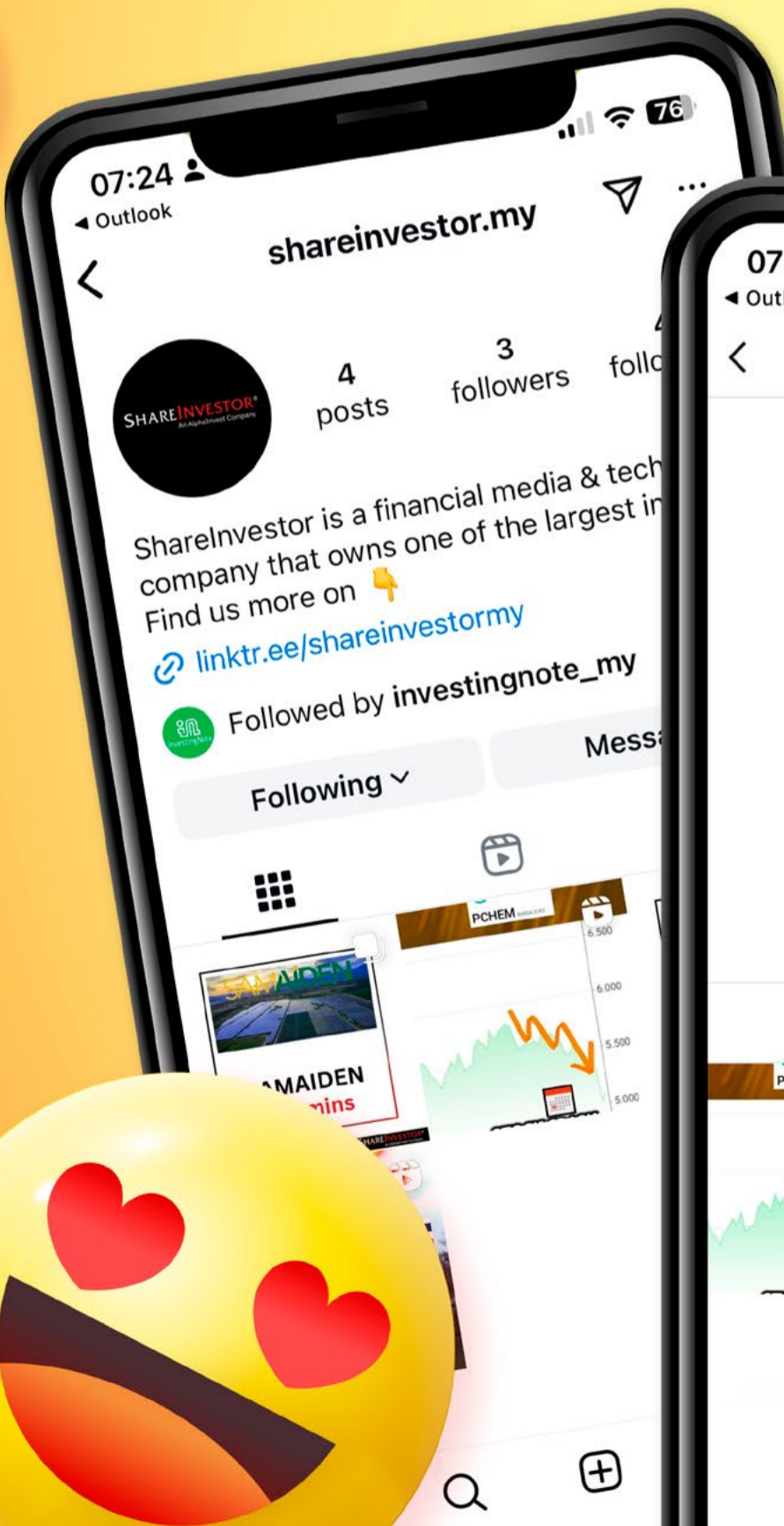
LPI (8621.MY)					
Total Shareholder Return					
Period	Dividend Received	Capital Appreciation	Total Shareholder Return		
Short Term Return	5 Days	-	-0.160		-1.10 %
	10 Days	-	+0.200		+1.41 %
	20 Days	0.500	-1.100		-3.88 %
Medium Term Return	3 Months	0.500	-0.540		-0.27 %
	6 Months	0.500	+0.120		+4.35 %
	1 Year	0.800	-0.040		-5.28 %
Long Term Return	2 Years	1.600	+2.060		+29.76 %
	3 Years	2.260	+2.280		+37.58 %
	5 Years	3.600	+0.720		+31.67 %
Annualised Return	Annualised	-	-		+5.66 %

Disclaimer: The information on this page is provided as a service to readers. It does not constitute financial advice and/or any investment recommendations. Past performance is not indicative of future results. We assume no liability for damages resulting from or arising out of the use of such information. It would be best if you did your own research to make your personal investment decisions wisely or consult a licenced investment advisor.

SHAREINVESTOR[®]
An AlphaInvest Company

We're Officially on TikTok & Instagram!

Follow us now for more information!



LIKE SHARE



Week: 20 Mar 2026 - 26 Mar 2026

More Brokers' Call 

AmlInvestment Bank <small>... See More</small>	Call	Target Price	Release Date
VSTECs Berhad (5162)	BUY	RM4.95	24 Mar 26

Hong Leong Investment Bank <small>... See More</small>	Call	Target Price	Release Date
AMMB Holdings Berhad (1015)	BUY	RM7.70	24 Mar 26
Heineken Malaysia Berhad (3255)	BUY	RM28.07	25 Mar 26
Press Metal Aluminium Holdings Berhad (8869)	BUY	RM8.63	25 Mar 26
Hiap Teck Venture Berhad (5072)	BUY	RM0.35	26 Mar 26
MN Holdings Berhad (0245)	BUY	RM2.70	26 Mar 26
UWC Berhad (5292)	BUY	RM4.85	26 Mar 26

Kenanga <small>... See More</small>	Call	Target Price	Release Date
Yinson Holdings Berhad (7293)	OUTPERFORM	RM2.76	24 Mar 26
Kelington Group Berhad (0151)	OUTPERFORM	RM6.15	25 Mar 26
Astro Malaysia Holdings Berhad (6399)	MARKET PERFORM	RM0.08	26 Mar 26
KJTS Group Berhad (0293)	OUTPERFORM	RM1.37	26 Mar 26
UWC Berhad (5292)	OUTPERFORM	RM4.70	26 Mar 26

Malacca Securities <small>... See More</small>	Call	Target Price	Release Date
IGB Commercial Real Estate Investment Trust (5299)	BUY	RM0.67	24 Mar 26

Public Investment Bank <small>... See More</small>	Call	Target Price	Release Date
Sarawak Plantation Berhad (5135)	OUTPERFORM	RM4.08	24 Mar 26
Ta Ann Holdings Berhad (5012)	OUTPERFORM	RM6.42	25 Mar 26
Inari Amertron Berhad (0166)	NEUTRAL	RM1.48	26 Mar 26

Disclaimer: InveSt does not accept any liability whatsoever for any direct, indirect or consequential losses (including loss of profit) or damages that may arise from the use of information or opinions in this publication. The information and opinions in InveSt are not to be considered as an offer to sell or buy any of the securities discussed. Opinions expressed are subject to change without notice. The Brokers may, from time to time, have interests or positions in the securities mentioned. For the full report on each item listed on this page, please visit https://www.shareinvestor.com/my/brokers_call.

DEFINITION: Top 08 stocks with Technical Analysis plus Pattern Matching by 60 pre-defined indicators by the system showing a higher probability of bullish sentiment on the share price.



ShareInvestor WebPro > Screener > Predefined TA Screens > select market BURSA > Most Long Signals > click Scan Results or mouse over each company

TENAGA NASIONAL BHD (5347.MY)

TENAGA

Price updated at 26 Mar 2026 17:31

Last: 14.380	Change: -0.040	Volume: 39,209
	Change (%): -0.28	Range: 14.300 - 14.480

TA Scanner Results based on historical data up to 26 Mar 2026

Condition	Signal	Explanation
Bollinger Band: Bullish Long Term Volatility Breakout and Trending	Long	"1. Close price above upper bollinger band(33,1). 2. Volume above average volume(50). 3. Average volume(50) is above 300,000."
Bollinger Band: High Above Upper Bollinger Band	Neutral	"1. High above upper bollinger band(14,2). 2. Average volume(5) is above 100,000."
Candlestick: Bullish Engulfing	Long	Bullish: Engulfing
DM: Bullish Directional Movement	Long	-DI(14) crossed below +DI(14)
MA: Short Term Bullish Moving Average Crossover	Long	MA(10) crossed above MA(15) within the last 1 day.
MACD: Bullish MACD Crossover	Long	"1. MACD(12,26) diff line crossed above the MACD(12,26) signal line. 2. MACD Histogram(12,26) is above 0."
Williams %R: Bearish Williams %R	Short	"1. Williams %R(26) between 0 and -20. 2. Average volume(5) is above 100,000."

CHIN HIN GROUP BERHAD (5273.MY)

CHINHIN

Price updated at 26 Mar 2026 17:31

Last: 2.190	Change: +0.030	Volume: 13,237
	Change (%): +1.39	Range: 2.130 - 2.190

TA Scanner Results based on historical data up to 26 Mar 2026

Condition	Signal	Explanation
Bollinger Band: High Above Upper Bollinger Band	Neutral	"1. High above upper bollinger band(14,2). 2. Average volume(5) is above 100,000."
Candlestick: Indecision Doji	Neutral	Indecision: Doji
DM: Bullish Directional Movement	Long	-DI(14) crossed below +DI(14)
MA: Short Term Bullish Moving Average Crossover	Long	MA(10) crossed above MA(15) within the last 1 day.
Volume: 10 Days large value Buy Up trade	Long	"1. 150K value Buy Up greater than Sell Down by 20% for 10 days. 2. 50K-100K value Buy Up greater than Sell Down by 20% for 10 days. 3. Average volume(10) is above 1000000"
Volume: 5 Days large value Buy Up trade	Long	"1. 150K value Buy Up greater than Sell Down by 20% for 5 days. 2. 50K-100K value Buy Up greater than Sell Down by 20% for 5 days. 3. Average volume(10) is above 1000000"

GDB HOLDINGS BERHAD (0198.MY)

GDB

Price updated at 26 Mar 2026 17:31

Last: 0.375	Change: -	Volume: 288,733
	Change (%): -	Range: 0.370 - 0.380

TA Scanner Results based on historical data up to 26 Mar 2026

Condition	Signal	Explanation
Candlestick: Indecision Doji	Neutral	Indecision: Doji
MA: Short Term Bullish Moving Average Crossover	Long	MA(10) crossed above MA(15) within the last 1 day.
Volume: 10 Days large value Buy Up trade	Long	"1. 150K value Buy Up greater than Sell Down by 20% for 10 days. 2. 50K-100K value Buy Up greater than Sell Down by 20% for 10 days. 3. Average volume(10) is above 1000000"
Volume: 5 Days large value Buy Up trade	Long	"1. 150K value Buy Up greater than Sell Down by 20% for 5 days. 2. 50K-100K value Buy Up greater than Sell Down by 20% for 5 days. 3. Average volume(10) is above 1000000"
Volume: Consecutive Days Of Increasing Average Volume	Long	"1. Average Volume(20) has been increasing over the last 2 weeks. 2. Average volume(20) is above 100000"

TIME DOTCOM BHD (5031.MY)

TIMECOM

Price updated at 26 Mar 2026 17:31

Last: 5.960	Change: -0.070	Volume: 12,916
	Change (%): -1.16	Range: 5.920 - 6.000

TA Scanner Results based on historical data up to 26 Mar 2026

Condition	Signal	Explanation
Bollinger Band: Bullish Lower Bollinger Band Support	Long	"1. Low 1 day ago below lower bollinger band(20,2). 2. Close above close 1 day ago. 3. Average volume(5) is above 100,000."
Candlestick: Bullish Harami	Long	Bullish: Harami
Volume: 10 Days large value Buy Up trade	Long	"1. 150K value Buy Up greater than Sell Down by 20% for 10 days. 2. 50K-100K value Buy Up greater than Sell Down by 20% for 10 days. 3. Average volume(10) is above 1000000"
Volume: 5 Days large value Buy Up trade	Long	"1. 150K value Buy Up greater than Sell Down by 20% for 5 days. 2. 50K-100K value Buy Up greater than Sell Down by 20% for 5 days. 3. Average volume(10) is above 1000000"

Disclaimer: The information on this page is provided as a service to readers. It does not constitute financial advice and/or any investment recommendations. Past performance is not indicative of future results. We assume no liability for damages resulting from or arising out of the use of such information. It would be best if you did your own research to make your personal investment decisions wisely or consult a licenced investment advisor.



SOUTHERN CABLE GROUP BERHAD (0225.MY)

SCGBHD

Price updated at 26 Mar 2026 17:31

Last: 1.900	Change: -0.030	Volume: 41,552
	Change (%): -1.55	Range: 1.880 - 1.940

TA Scanner Results based on historical data up to 26 Mar 2026

Condition	Signal	Explanation
Candlestick: Bullish Engulfing	Long	Bullish: Engulfing
DM: Bullish Directional Movement	Long	-DI(14) crossed below +DI(14)
MA: Short Term Bullish Moving Average Crossover	Long	MA(10) crossed above MA(15) within the last 1 day.
Volume: Consecutive Days Of Increasing Average Volume	Long	"1. Average Volume(20) has been increasing over the last 2 weeks. 2. Average volume(20) is above 100000"



PARAGON UNION BHD (9407.MY)

PARAGON

Price updated at 26 Mar 2026 17:31

Last: 4.380	Change: +0.020	Volume: 14,481
	Change (%): +0.46	Range: 4.340 - 4.400

TA Scanner Results based on historical data up to 26 Mar 2026

Condition	Signal	Explanation
Accumulation Distribution: Bullish Accumulation Distribution	Long	Accumulation distribution increasing for the last 7 days
Bollinger Band: High Above Upper Bollinger Band	Neutral	"1. High above upper bollinger band(14,2). 2. Average volume(5) is above 100,000."
Price: Consecutive Days Gains	Long	"1. Close price has been increasing over the last 5 days. 2. Average volume(5) above 100,000."
Price: New 52 Week High	Long	"1. Stock reach a new 52 week high. 2. Average volume(30) is above 50000."
RSI: RSI Overbought	Short	"1. RSI(20) is above 80. 2. RSI(20) is increasing for the last 3 days. 3. Stock has more than 75 days of historical data."
Volume: 10 Days large value Buy Up trade	Long	"1. 150K value Buy Up greater than Sell Down by 20% for 10 days. 2. 50K-100K value Buy Up greater than Sell Down by 20% for 10 days. 3. Average volume(10) is above 1000000"
Volume: Consecutive Days Of Increasing Average Volume	Long	"1. Average Volume(20) has been increasing over the last 2 weeks. 2. Average volume(20) is above 100000"
Williams %R: Bearish Williams %R	Short	"1. Williams %R(26) between 0 and -20. 2. Average volume(5) is above 100,000."



YTL HOSPITALITY REIT (5109.MY)

YTLREIT

Price updated at 26 Mar 2026 17:31

Last: 0.995	Change: -0.005	Volume: 31,992
	Change (%): -0.50	Range: 0.990 - 1.000

TA Scanner Results based on historical data up to 26 Mar 2026

Condition	Signal	Explanation
Bollinger Band: Bullish Lower Bollinger Band Support	Long	"1. Low 1 day ago below lower bollinger band(20,2). 2. Close above close 1 day ago. 3. Average volume(5) is above 100,000."
Bollinger Band: Low Below Lower Bollinger Band	Neutral	"1. Low below lower bollinger band(14,2). 2. Average volume(5) is above 100,000."
Candlestick: Bullish Harami	Long	Bullish: Harami
MACD: Oversold	Long	"1. MACD Histogram(12,26,9) reached a new 6 month low. 2. MACD Histogram(12,26,9) has been below 0 for the last 3 weeks."
Williams %R: Bullish Williams %R	Long	"1. Williams %R(26) between -80 and -100. 2. Average volume(5) is above 100,000."



MYCRON STEEL BERHAD (5087.MY)

MYCRON

Price updated at 26 Mar 2026 17:31

Last: 0.270	Change: -0.035	Volume: 1
	Change (%): -11.48	Range: 0.270 - 0.270

TA Scanner Results based on historical data up to 26 Mar 2026

Condition	Signal	Explanation
DM: Bullish Directional Movement	Long	-DI(14) crossed below +DI(14)
Donchian Channels: High Above Upper Donchian Channels	Long	High crossed above the upper Donchian Channel(14,4)
MA: Bullish Price Crossover	Long	"1. Close price crossed above MA(40) within the last 1 day. 2. Previous day close price is below the MA(10) for the last 5 days"
MACD: Bullish MACD Crossover	Long	"1. MACD(12,26) diff line crossed above the MACD(12,26) signal line. 2. MACD Histogram(12,26) is above 0."
Parabolic SAR: Bearish Parabolic SAR Reversal	Neutral	"1. Parabolic SAR 1 day ago above close price 1 day ago for the last 5 days. 2. Parabolic SAR below close price"

Disclaimer: The information on this page is provided as a service to readers. It does not constitute financial advice and/or any investment recommendations. Past performance is not indicative of future results. We assume no liability for damages resulting from or arising out of the use of such information. It would be best if you did your own research to make your personal investment decisions wisely or consult a licenced investment advisor.



Learn how to identify Hot Stocks using Technical Analysis (TA) and Fundamental Analysis (FA)

SIGN UP FOR Invest
IT'S FREE!

[Click Here](#)

Scan/Click me



Via email, every Friday



Dato' Eu Hong Chew
Former Group CEO i-Berhad
Non-Executive Director

He has been associated with the Sumurwang Group for many years charting the path for its manufacturing arm, firstly under Dreamland Holdings Berhad and the subsequent acquisition of I-Berhad.

Before that, he was with PA Management Consulting for a decade where he was the Director of Studies for the Cranfield PA MBA Programme in Malaysia.

Educated at the Royal Military College, Dato' Eu has an engineering degree from the University of Glasgow, and a MBA from the University of Bradford, UK.

Zebra Technologies:

Strong Profitability, Modest Growth

SUMMARY

- Zebra Technologies Corp (Zebra) (**NASDAQ:ZBRA**) has evolved from a barcode printer manufacturer into a broader enterprise mobility and asset intelligence company, operating across enterprise mobility, automation, IoT, and asset tracking markets.
- Although Zebra operates in sectors expected to grow at double-digit rates, its revenue expanded at only about 3.5% CAGR over the past decade. This reflected its reliance on mature product lines, slow scaling of newer technologies, macro headwinds, and competitive pressures.
- Despite modest top-line growth, operating income and net profit rose significantly, supported by stronger gross margins, better cost discipline, and a gradual shift toward higher-value solutions such as automation and asset intelligence.

Disclaimer: This article is written for informational purposes only. It does not constitute a solicitation, offer, advice, counseling or recommendation to buy or sell. As such it is not intended to promote the purchase of shares in any way. As a reminder, any type of asset has a risk factor and needs to be evaluated from multiple perspectives. Therefore, any investment decision and the associated risk remains with the investor. The views expressed here are entirely the writer's own.

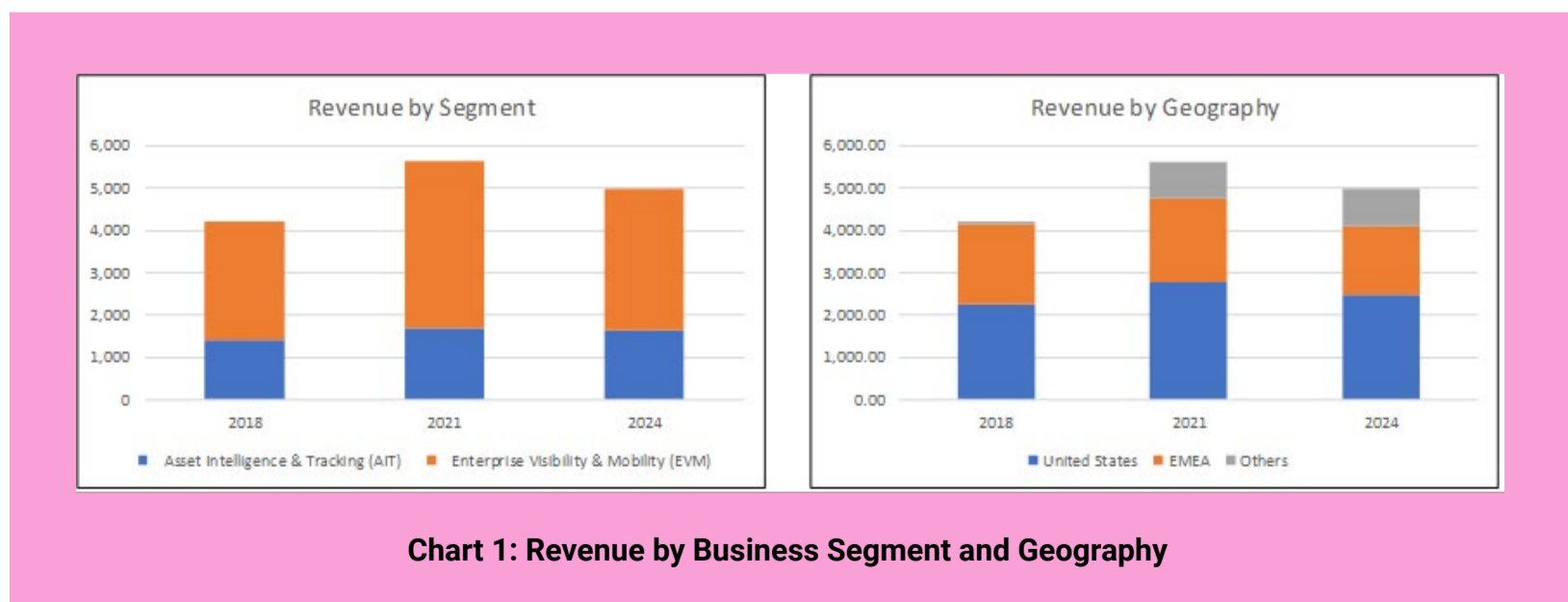
BACKGROUND

Following the 2014 acquisition of Motorola’s Enterprise business, Zebra began transforming from a barcode printer manufacturer into a broader enterprise mobility and asset intelligence company. Its strategy gradually shifted toward enterprise asset intelligence - enabling customers to sense, analyze, and act on operational data in real time.

By 2021, Zebra had achieved sufficient scale, differentiation, and strategic clarity across its product portfolio to formally organize the business into two operating segments:

- EVM (Enterprise Visibility & Mobility) - Zebra’s traditional core business, encompassing barcode printing, mobile computing, and data capture solutions. This segment accounted for about 67% of revenue in 2024 (**see the left side of Chart 1**).
- AIT (Asset Intelligence & Tracking) - a newer growth platform focused on technologies such as machine vision, automation, and AI-driven insights designed to enhance asset tracking and operational intelligence.

Zebra’s revenue base is also geographically diversified. Historically, about half of its revenue has been generated outside the United States, as illustrated in the **right side of Chart 1**.



To understand Zebra's market positioning, the company can be viewed as operating at the intersection of enterprise mobility, automation, IoT, and asset tracking. Its solutions integrate hardware, software, and analytics to digitize workflows and enable real-time, data-driven decision-making at the operational edge.

The company primarily participates in two technology markets: Automatic Identification and Data Capture (**AIDC**) and Enterprise Mobility Management (**EMM**). Based on market research reports, both markets are expected to grow at double-digit rates.

OPERATING PERFORMANCE

Although Zebra operates in sectors experiencing double-digit growth, its revenue has expanded at only about 3.5% CAGR over the past decade. This relatively modest growth appears to reflect several structural and strategic factors:

- **Dependence on mature product lines:** Zebra has continued to rely heavily on its legacy offerings, particularly barcode printers, mobile computers, and data capture devices
- **Gradual scaling of newer technologies:** Zebra has invested in newer areas such as machine vision, robotics, and automation, but these initiatives have taken time to scale.
- **External macroeconomic headwinds:** Zebra highlighted several external challenges, including currency volatility, geopolitical disruptions, and supply chain constraints during the COVID period.
- **Competitive pressures:** The company faces competition from both established incumbents and newer technology players.

Taken together, these factors help explain why Zebra's growth has trailed the broader expansion of the markets it serves.

To be fair, Zebra did experience periods of stronger growth, including 11.1% revenue growth in 2018 and 23.2% in 2021. However, these

stronger years were not sustained, resulting in an overall low single-digit growth rate over the decade.

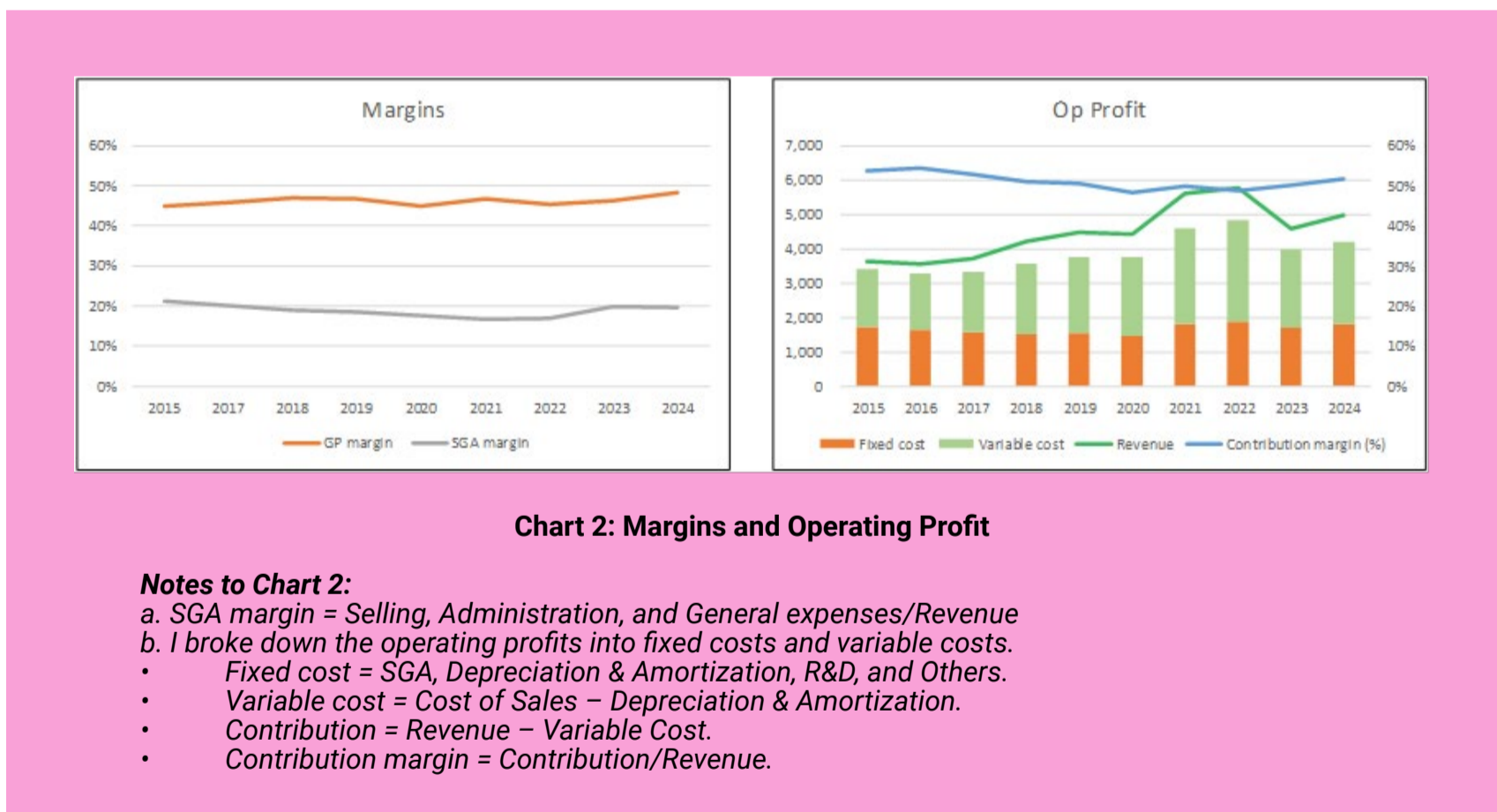
IMPROVING PROFITABILITY

Despite the modest revenue growth, Zebra delivered significant improvement in profitability over the same period:

- Operating income increased from USD222 million in 2015 to USD765 million in 2024.
- Net income improved from a loss in 2015 - largely driven by high interest expenses, restructuring charges, and merger-related costs - to USD528 million in profit after tax in 2024.

Several factors contributed to these improvements - higher gross margins, improved cost discipline, and a more flexible cost structure.

Refer to Chart 2.



The company's profit track record over the past decade suggests that its profitability is sustainable rather than cyclical or temporary. Several underlying factors support this view:

- Consistent gross margin performance;

- Strategic shift toward higher-margin solutions;
- Continued focus on cost discipline; and
- Favourable industry tailwinds.

Overall, Zebra's improving profitability does not appear to be a temporary outcome. Rather, it reflects a combination of strategic product mix shifts, disciplined cost management, and alignment with growing technology markets.

While macroeconomic risks and execution challenges remain, the company appears to have a solid foundation to sustain - and potentially expand - its margins going forward.

PEER COMPARISON

I compared Zebra's performance with the following:

- **Cognex Corporation (CGNX)** is a US-based leader in machine vision systems, software, and sensors, serving automation and quality control needs in high-precision manufacturing.
- **Datalogic S.p.A. (DLGCF)** is an Italian-based company specializing in automatic data capture and industrial automation.
- **Honeywell International Inc. (HON)** is a diversified global technology and manufacturing company with workflow automation technologies that directly compete with Zebra.
- **Impinj, Inc (PI)** is a US company focused on RAIN RFID solutions and offering RFID readers, chips, and software that compete with Zebra's RTLS and RFID platforms.

While these companies are not direct competitors to Zebra, they provide relevant benchmarks for evaluating Zebra's financial quality and capital efficiency. Compared to these peers, Zebra is ranked No. 2 in terms of 2024 revenue and No. 3 in terms of growth rates. Only 2 of the peers delivered double-digit growth rates.

Zebra has demonstrated strong capital efficiency and earnings improvement over the past decade, though its overall profitability profile remains mixed.

- Zebra improved its return on capital initially to be the best from 2018 to 2022. But it has since declined to be No 2.
- I would rate its EBIT margin and Levered Free Cash Flow margin as average during the past decade.
- While initially having the worst EPS, Zebra has improved to have the best EPS from 2019 to 2022 and 2024. It managed to rank No. 2 in 2023.

The above suggests that Zebra's strategic pivot toward higher-margin and value-added solutions has translated into stronger earnings quality and capital allocation, even if some core operating margins remain relatively unexceptional.

FINANCIAL POSITION

I would rate Zebra financially sound based on the following:

- It had USD1.1 billion cash, equivalent to 11.3% of total assets as of the end of Sep 2025.
- It had reduced its Debt Equity ratio from a 340% high in 2015 to 62% by the end of Sep 2025.
- From 2015 to 2024, there was only one year that it failed to deliver a positive cash flow from operations. Over this period, it had a good cash flow conversion rate with USD6.0 billion cash flow from operations compared to USD3.3 billion PAT.
- It has a low average Reinvestment rate of 6% over the past decade. I defined this metric as $\text{Reinvestment} / \text{NOPAT}$, where $\text{Reinvestment} = \text{CAPEX} \& \text{Acquisitions} - \text{Depreciation} \& \text{Amortization} + \text{increase in Net Working Capital}$. This low

rate meant that a big part of the NOPAT could be returned to shareholders or used to repay debt.

- It had a good capital allocation plan, looking at the sources and uses of funds from 2015 to 2024. The cash flow from operations was more than sufficient to fund its acquisition and CAPEX, with the excess used to reduce debt and returned to shareholders.

VALUATION

Based on my analysis, I assumed the following in my valuation of Zebra:

1. Zebra would achieve single-digit revenue growth, broadly in line with the long-term GDP growth rate of about 4%.
2. At the same time, I assumed a modest improvement in profitability. Specifically, the terminal-year contribution margin was assumed to reach 1.1 times the base-year level.
3. The base-year margin was set at the average contribution margin over the past decade, approximately 51%.
4. I also assumed that capital efficiency and reinvestment rates would remain consistent with their historical decade averages.

Under these assumptions, the estimated intrinsic value is about USD215 per share, compared with a market price of USD293 per share (end Sep 2025). In other words, there is no margin of safety. (Refer to the original article for details of the valuation).

CONCLUSION

Zebra has evolved significantly over the past decade. Following the acquisition of Motorola's Enterprise business, the company successfully transformed itself from a barcode printer manufacturer into a broader enterprise mobility and asset intelligence provider.

Today, it operates at the intersection of enterprise mobility,

automation, IoT, and asset tracking - sectors supported by long-term structural growth trends

However, Zebra's revenue growth has lagged the expansion of the markets it serves. Over the past decade, revenue grew at only about 3.5% CAGR. This modest performance appears to reflect the company's continued reliance on mature product lines, the gradual scaling of newer technologies, macroeconomic headwinds, and competitive pressures.

Despite this relatively slow top-line growth, Zebra has demonstrated meaningful improvement in profitability. Gross margins have remained resilient, operating discipline has improved, and the company has gradually shifted toward higher-value solutions such as intelligent automation and asset intelligence. These factors suggest that the improvement in profitability is structural rather than temporary.

From a long-term perspective, Zebra appears to be strategically aligned with favourable industry trends. That said, valuation ultimately determines investment attractiveness.

Based on conservative assumptions - including revenue growth in line with long-term GDP and modest margin improvement - the estimated intrinsic value did not provide any margin of safety.

I am a long-term value investor who has held onto stocks for more than 5 years. My analysis and valuation are from such a perspective. I consider quarterly results "noisy" and focus on long-term trends.

This article was re-purposed from my article "Zebra Technologies: Great Business, Mediocre Growth" which was first published in Seeking Alpha. Refer to this [link](#) for more of my insights on other US companies.

UNLOCK THE SECRET OF WEALTH

DO YOU REALLY WANT TO MASTER VALUE INVESTING



SEE HOW TO GET HIGHER RETURNS WITH LOWER RISK



Strong upside for local gold ETF despite recent weakness - BIMB Securities

According to BIMB Securities, the TradePlus Shariah Gold Tracker has plenty of upside, and that the current sell-off is temporary. It maintained its 'buy' call on the TradePlus Shariah Gold Tracker with an unchanged target price of RM6.94, implying an upside of about 30% from the current market price of RM5.33.

The recent weakness in gold prices was due to war-driven inflation fears, rising real yields, US dollar strength, and liquidity-driven outflows. It is of the belief that the current weakness is cyclical and not structural.

In a note, the research house said that the medium-term case for gold remains intact, underpinned by (i) policy credibility erosion (repeated unilateral military actions risk undermining confidence in US institutions and assets); (ii) deteriorating fiscal dynamics (war expenditure and structural deficits continue to weaken US balance sheet credibility); and (iii) central bank accumulation (reserves diversification, particularly from emerging markets) all providing a structural floor for gold.

Gold has fallen below its 50-day moving average of USD4,969 per oz and is now testing the 100-day level at USD4,609 per oz, with a downside risk towards USD4,096 per oz if momentum persists.

Gold is expected to reprice sharply higher once real yields stabilise, reiterating the research house's end-2026 call of USD5,400 per oz with USD/MYR exchange rate at 4.00.

SC launches FIKRALab to drive development of Islamic capital market products

The Securities Commission Malaysia (SC) has launched the ICM Innovation Lab (FIKRALab), a structured co-creation and applied research and development platform to develop new Islamic capital market (ICM) products and instruments.

The FIKRALab, an initiative under the Capital Market Masterplan 2026–2030, is aimed at advancing Malaysia's ICM, anchored on Maqasid al-Shariah and guided by Halal-Toyyib. Through the FIKRALab, the SC seeks to catalyse the development of Maqasid al-Shariah-driven ICM products and services that deliver ethical objectives, real economic value and broader social impact.

In a statement, SC said that these innovations are intended to uphold the essentials of human well-being, namely faith, life, intellect, lineage and wealth, while aligning capital with productive economic activity and advancing shared, sustainable prosperity.

The SC noted that FIKRALab builds on its long-standing efforts to nurture ICM innovation. The efforts began with FIKRA, Malaysia's Islamic fintech accelerator programme launched in 2021, followed by the enhanced FIKRA ACE, a targeted facilitation, industry engagement and ecosystem connectivity focusing on financial technology.

The FIKRALab expands the ecosystem development beyond fintech-centric ICM innovation, enabling deeper collaboration and co-creation between the SC and the industry in ideation, research, product

design and pilot testing. It focuses particularly on developing new instruments and solutions that align with Maqasid al-Shariah.

The SC noted that FIKRALab is expected to deliver new ICM use cases, products and infrastructure with clear value-based outcomes, alongside stronger industry-regulator engagement and enhanced market confidence in innovation, anchored on Maqasid al-Shariah.

A key feature of FIKRALab is the Maqasid al-Shariah Clinics, a structured approach that includes curated engagement led by the SC and a knowledge symposium with experts in identified domains to assess and enhance existing ICM products. Through these clinics, the SC will work with industry players, shariah advisers and other identified subject matter experts to strengthen the value propositions of current ICM instruments, reinforce real-economy linkages and deliver greater social and economic impact.

It said FIKRALab will be implemented in phases, starting with a pilot project with a financial institution to develop an instrument aimed at unlocking Shariah-derived income within mixed-activity groups.

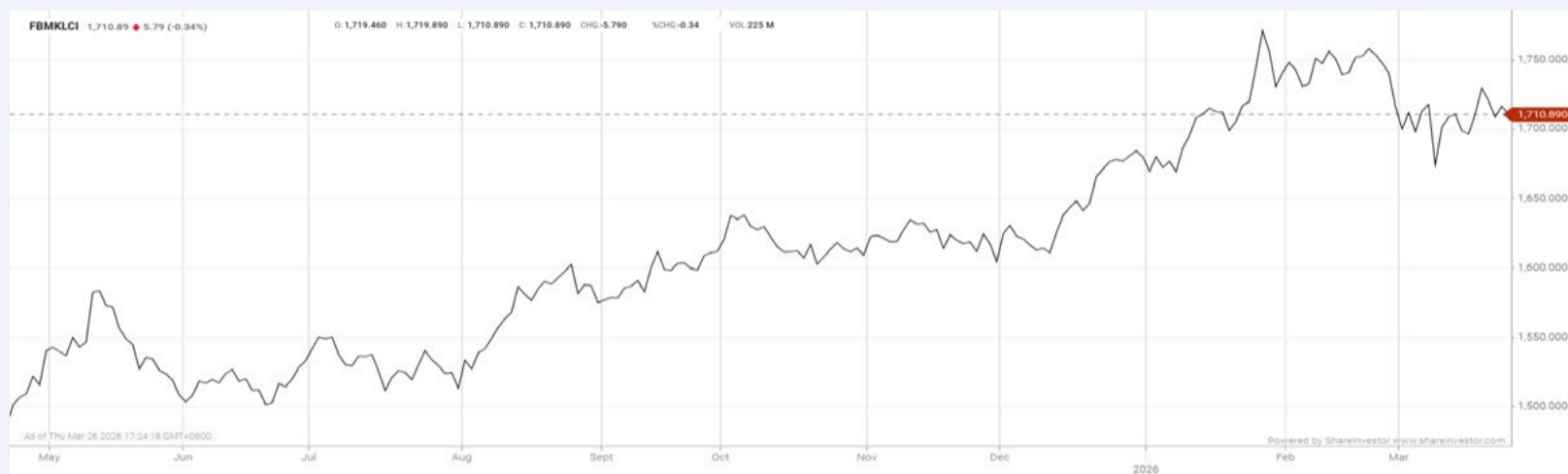
The subsequent phase is anticipated to commence in the fourth quarter of 2026, when applications for the first FIKRALab cohort will be opened. Cohort applications are expected to be conducted annually, with different focus areas for each cycle.

The focus areas for the first cohort will include new generation ICM products and services that offer entirely new value propositions, Islamic social finance and social capital, as well as sustainability and transition finance.

The SC invited innovators and industry stakeholders with proposals for ICM product innovation to register their interest and engage with the commission via FIKRALab@seccom.com.my by Sept 30, 2026. Further details will be announced in due course.

EYE ON THE MARKETS

On Thursday (26Mar), the Ringgit closed at 3.9940 against the USD and 3.1124 to the Sing Dollar. On Tuesday (24Mar), the FBM KLCI opened at 1732.09. As at Thursday (26Mar) 5:00pm, the FBM KLCI closed down 21.20 points at 1710.89. Over in US, the overnight Dow Jones Industrial Average closed down 469.38 points (-1.01%) to 45,960.11 whilst the NASDAQ shed 521.74 points (-2.38%) to 21,408.08.



KLCI 1 Year Chart

CHECK OUT SHAREINVESTOR

BROKER'S CALL

Weekly Buy/Sell/Hold calls from leading Malaysian Brokerages.

[Go To Broker's Call](#)

Over 5 Trading Days (as at Yesterday)



ShareInvestor WebPro (www.shareinvestor.com/my)

1. Price > Stock Prices
2. Select Market: NASDAQ / NYSE / IDX / SET / HKEX / SGX (One bourse at a time)
3. select Stocks Tab
4. select Ranking Top Gainers or Top Losers (Over 5 Trading Days)
5. Mouse over Column Layout > select Edit Customs > select Name > select Last Done Price > select 5 Days Change > select 52 Weeks High > select 52 Weeks Low > Mouse Over Column Layout > select Custom

NASDAQ (USD)

Top Gainers

Name	Last Done	Change Over 5 Days	52 Weeks High	52 Weeks Low
First Citizens BancShares A	1,874.890	+98.100	2,232.210	1,473.620
Powell Industries	584.560	+82.330	612.500	152.890
Lumentum Holdings	777.170	+76.360	803.580	45.650
KLA	1,543.820	+61.460	1,693.350	551.330
IES Holdings	501.270	+59.710	537.700	146.515

Top Losers

Name	Last Done	Change Over 5 Days	52 Weeks High	52 Weeks Low
Micron Technology	382.090	-79.640	471.340	61.540
Sandisk	677.860	-75.830	777.600	27.885
Atrium Therapeutics	13.090	-59.730	73.060	21.510
Booking Holdings	4,237.750	-143.640	5,839.410	3,765.450
Mercadolibre	1,639.470	-50.790	2,645.220	1,606.210

NYSE (USD)

Top Gainers

Name	Last Done	Change Over 5 Days	52 Weeks High	52 Weeks Low
Mettler-Toledo	1,265.750	+74.210	1,525.170	946.690
Fabrinet	612.030	+71.280	632.990	148.550
NVR	6,552.200	+69.380	8,618.280	6,301.025
Ubiquiti	839.050	+54.170	842.000	255.000
GE Vernova	923.690	+65.220	920.630	252.250

Top Losers

Name	Last Done	Change Over 5 Days	52 Weeks High	52 Weeks Low
Berkshire Hathaway A	714,976.800	-7,800.970	812,855.000	685,150.000
Harbor PanAgora Dynamic Large Cap Core	23.690	-83.420	135.820	88.810
Fair Isaac	1,043.100	-70.060	2,217.600	969.320
Spotify Technology	473.210	-43.510	785.000	405.000
TransDigm Group	1,156.490	-43.450	1,623.830	1,137.060

IDX (Rupiah)

Top Gainers

Name	Last Done	Change Over 5 Days	52 Weeks High	52 Weeks Low
GOLDEN FLOWER TBK	15,675.000	+2,350.000	41,900.000	5,600.000
INDO TAMBANGRAYA MEGAH TBK	30,050.000	+2,050.000	30,150.000	20,900.000
DIAN SWASTATIKA SENTOSA TBK	63,350.000	+1,900.000	118,000.000	36,400.000
UNITED TRACTORS TBK	30,775.000	+775.000	32,000.000	20,025.000
ARKORA HYDRO TBK	7,100.000	+700.000	13,000.000	740.000

Top Losers

Name	Last Done	Change Over 5 Days	52 Weeks High	52 Weeks Low
METROPOLITAN KENTJANA TBK	22,600.000	-4,800.000	27,125.000	21,300.000
SINAR MAS MULTIARTHA TBK	11,679.000	-4,671.000	27,225.000	11,500.000
DCI INDONESIA TBK	205,000.000	-3,975.000	398,000.000	141,200.000
MERDEKA GOLD RESOURCES TBK	8,500.000	-1,000.000	10,175.000	3,100.000
ROCKFIELDS PROPERTI INDONESIA TBK	3,000.000	-520.000	4,300.000	228.000

SET (Thai Baht)

Top Gainers

Name	Last Done	Change Over 5 Days	52 Weeks High	52 Weeks Low
DELTA	290.000	+14.000	292.000	51.250
SCC	193.500	+8.500	231.000	128.000
BKIH	317.000	+8.000	317.000	271.000
KWC	279.000	+8.000	340.000	260.000
PTTEP	151.500	+4.500	157.500	93.000

Top Losers

Name	Last Done	Change Over 5 Days	52 Weeks High	52 Weeks Low
OHTL	265.000	-11.000	360.000	248.000
OHTL NVDR	270.000	-10.000	350.000	254.000
ADVANC-F	371.000	-9.000	404.000	265.000
Bumrungrad Hospital NVDR	159.000	-8.500	213.000	131.500
ADVANC	371.000	-8.000	410.000	264.000

HKEX (HKD)

Top Gainers

Name	Last Done	Change Over 5 Days	52 Weeks High	52 Weeks Low
DELTON (1989)	98.000	+97.100	147.900	79.950
FS.COM (3355)	45.720	+44.230	57.000	41.700
QINGSONG HEALTH (2661)	156.400	+31.700	156.600	49.000
YUNJI (2670)	218.600	+30.800	225.200	100.800
YOFC (6869)	185.000	+28.700	206.800	12.220

Top Losers

Name	Last Done	Change Over 5 Days	52 Weeks High	52 Weeks Low
MINIMAX-WP (100)	1,079.000	-159.000	1,330.000	220.000
TENCENT-R (80700)	444.000	-55.000	625.500	393.600
POP MART (9992)	168.300	-53.500	339.800	118.800
ILUVATAR COREX (9903)	274.400	-48.600	342.000	148.900
TENCENT (700)	505.500	-45.000	683.000	419.000

SGX (SGD)

Top Gainers

Name	Last Done	Change Over 5 Days	52 Weeks High	52 Weeks Low
Jardine C&C	35.200	+1.400	36.300	23.100
Haw Par	16.820	+1.040	17.330	10.837
AEM SGD	4.300	+0.580	4.300	1.000
B&M Hldg	1.480	+0.290	1.480	0.350
Sembcorp Ind	6.390	+0.290	7.930	5.600

Top Losers

Name	Last Done	Change Over 5 Days	52 Weeks High	52 Weeks Low
JMH USD	75.900	-1.440	82.500	36.010
AvePoint	12.460	-0.910	20.400	12.380
UOB	36.590	-0.620	39.500	28.599
DBS	57.180	-0.580	60.000	35.975
HongkongLand USD	8.090	-0.550	9.120	3.810

DEFINITION: Insider Activity shows the trades made by substantial shareholders or directors of the company. Purchases by the directors and company share buyback may indicate the share price is undervalued and brings confidence to the price trend of the share price.



ShareInvestor WebPro > Fundamental > Insider Trades > click Search tab > Select Bursa > click Stock name > scroll up and leave at <Select Counter> Type Date Range for Announcement Date > click Search

Notice Period is 14th March 2026 to 21st March 2026

Effective Change Date	Stock Name	Buyer/ Seller Name [Classification]	Bought / (Sold) ['000]	No. of Shares After Trade ['000]	
			Total	Total	% Held
13 MAR 2026 - 13 MAR 2026	3REN	MR KOH DIM KUAN [DIR/CEO]	30	288,323	44.269
13 MAR 2026 - 13 MAR 2026	3REN	MR KOH DIM KUAN [SSH]	30	288,323	44.269
13 MAR 2026 - 13 MAR 2026	99SMART	EMPLOYEES PROVIDENT FUND BOARD [SSH]	7,638	551,796	6.569
12 MAR 2026 - 12 MAR 2026	99SMART	EMPLOYEES PROVIDENT FUND BOARD [SSH]	3,150	544,158	6.478
11 MAR 2026 - 11 MAR 2026	99SMART	EMPLOYEES PROVIDENT FUND BOARD [SSH]	9,214	541,008	6.441
17 MAR 2026 - 17 MAR 2026	AASIA	TAN SRI DATO' LIM KANG YEW [DIR/CEO]	2,860	92,413	13.347
17 MAR 2026 - 17 MAR 2026	AASIA	TAN SRI DATO' LIM KANG YEW [SSH]	2,860	92,413	13.347
13 MAR 2026 - 13 MAR 2026	AASIA	LIM GUAN SHIUN [DIR/CEO]	3,490	3,490	0.504
13 MAR 2026 - 13 MAR 2026	ABMB	EMPLOYEES PROVIDENT FUND BOARD [SSH]	4,493	118,302	6.837
12 MAR 2026 - 12 MAR 2026	ABMB	EMPLOYEES PROVIDENT FUND BOARD [SSH]	1,333	113,809	6.578
11 MAR 2026 - 11 MAR 2026	ABMB	EMPLOYEES PROVIDENT FUND BOARD [SSH]	112	112,476	6.501
16 MAR 2026 - 16 MAR 2026	ADNEX	DR SOON FONG PIEW [DIR/CEO]	250	250	0.05
16 MAR 2026 - 16 MAR 2026	ADNEX	MISS CHEONG WOON CHEE [DIR/CEO]	250	250	0.05
16 MAR 2026 - 16 MAR 2026	ADNEX	MISS YEO JIE YIN [DIR/CEO]	250	250	0.05
16 MAR 2026 - 16 MAR 2026	ADNEX	MR KAN WAI CHUN [DIR/CEO]	-29,625	352,500	70.5
16 MAR 2026 - 16 MAR 2026	ADNEX	MR KAN WAI CHUN [SSH]	-29,625	352,500	70.5
16 MAR 2026 - 16 MAR 2026	ADNEX	MR KAN WAI PENG [DIR/CEO]	-9,875	317,500	63.5
16 MAR 2026 - 16 MAR 2026	ADNEX	MR KAN WAI PENG [SSH]	-9,875	17,500	63.5
12 MAR 2026 - 12 MAR 2026	AEON	EMPLOYEES PROVIDENT FUND BOARD [SSH]	600	107,565	7.661
13 MAR 2026 - 13 MAR 2026	ALLIANZ	EMPLOYEES PROVIDENT FUND BOARD [SSH]	62	14,919	8.097
12 MAR 2026 - 12 MAR 2026	ALLIANZ	EMPLOYEES PROVIDENT FUND BOARD [SSH]	6	14,857	8.063
11 MAR 2026 - 11 MAR 2026	ALLIANZ	EMPLOYEES PROVIDENT FUND BOARD [SSH]	50	14,851	8.06
13 MAR 2026 - 13 MAR 2026	ALPHA	DR NG PENG WAH [DIR/CEO]	500	452,172	9.321
13 MAR 2026 - 13 MAR 2026	ALPHA	DR NG PENG WAH [SSH]	500	452,172	9.321
13 MAR 2026 - 13 MAR 2026	AMBANK	EMPLOYEES PROVIDENT FUND BOARD [SSH]	7,765	555,287	16.793
12 MAR 2026 - 12 MAR 2026	AMBANK	EMPLOYEES PROVIDENT FUND BOARD [SSH]	3,059	547,522	16.558
11 MAR 2026 - 11 MAR 2026	AMBANK	EMPLOYEES PROVIDENT FUND BOARD [SSH]	819	544,462	16.465
16 MAR 2026 - 16 MAR 2026	ANEKA	MR LOKE KIEN TUCK [DIR/CEO]	50	103,354	14.882
16 MAR 2026 - 16 MAR 2026	ANEKA	MR LOKE KIEN TUCK [SSH]	50	103,354	14.882
16 MAR 2026 - 17 MAR 2026	AWANTEC	LEMBAGA TABUNG AMANAH WARISAN NEGERI TERENGGANU [SSH]	20	45,763	5.805
12 MAR 2026 - 13 MAR 2026	AWANTEC	LEMBAGA TABUNG AMANAH WARISAN NEGERI TERENGGANU [SSH]	32	45,743	5.803
13 MAR 2026 - 13 MAR 2026	AXIATA	EMPLOYEES PROVIDENT FUND BOARD [SSH]	2,000	1,765,773	19.218
12 MAR 2026 - 12 MAR 2026	AXIATA	EMPLOYEES PROVIDENT FUND BOARD [SSH]	796	1,763,773	19.196
11 MAR 2026 - 11 MAR 2026	AXIATA	EMPLOYEES PROVIDENT FUND BOARD [SSH]	238	1,762,977	19.188
13 MAR 2026 - 13 MAR 2026	AXREIT	EMPLOYEES PROVIDENT FUND BOARD [SSH]	1,067	400,711	19.789
12 MAR 2026 - 12 MAR 2026	AXREIT	EMPLOYEES PROVIDENT FUND BOARD [SSH]	1,081	399,644	19.737
11 MAR 2026 - 11 MAR 2026	AXREIT	EMPLOYEES PROVIDENT FUND BOARD [SSH]	1,400	398,563	19.683
13 MAR 2026 - 13 MAR 2026	AYS	OH POOI FOON [DIR/CEO]	22	144	0.034
16 MAR 2026 - 16 MAR 2026	BAUTO	KUMPULAN WANG PERSARAAN (DIPERBADANKAN) [SSH]	-100	59,557	5.245
13 MAR 2026 - 13 MAR 2026	BIMB	EMPLOYEES PROVIDENT FUND BOARD [SSH]	363	359,483	15.861
12 MAR 2026 - 12 MAR 2026	BIMB	EMPLOYEES PROVIDENT FUND BOARD [SSH]	543	359,120	15.845
16 MAR 2026 - 16 MAR 2026	BINTAI	DATUK TAY CHOR HAN [DIR/CEO]	3,000	110,339	7.397
16 MAR 2026 - 16 MAR 2026	BINTAI	DATUK TAY CHOR HAN [SSH]	3,000	110,339	7.397
16 MAR 2026 - 17 MAR 2026	BJCORP	TAN SRI DATO' SERI VINCENT TAN CHEE YIOUN [SSH]	48,130	1,284,452	21.847
25 FEB 2026 - 26 FEB 2026	BJCORP	TAN SRI DATO' SERI VINCENT TAN CHEE YIOUN [SSH]	290	1,535,321	26.325
13 MAR 2026 - 16 MAR 2026	BONIA	MR CHIANG SANG SEM [DIR/CEO]	6	144,329	71.807
13 MAR 2026 - 16 MAR 2026	BONIA	MR CHIANG SANG SEM [SSH]	6	131,595	65.471
13 MAR 2026 - 16 MAR 2026	BPURI	MR OOI HEE KAH [DIR/CEO]	-1,220	1,449	0.162
17 MAR 2026 - 17 MAR 2026	BSLCORP	MR BU YAW SENG [SSH]	817	109,405	5.668
13 MAR 2026 - 13 MAR 2026	BURSA	EMPLOYEES PROVIDENT FUND BOARD [SSH]	2,383	111,268	13.749
12 MAR 2026 - 12 MAR 2026	BURSA	EMPLOYEES PROVIDENT FUND BOARD [SSH]	850	108,885	13.454
11 MAR 2026 - 11 MAR 2026	BURSA	EMPLOYEES PROVIDENT FUND BOARD [SSH]	538	108,035	13.349
13 MAR 2026 - 13 MAR 2026	CEB	MR CHUNG CHEE YANG [SSH]	100	84,270	8.495
13 MAR 2026 - 13 MAR 2026	CIMB	EMPLOYEES PROVIDENT FUND BOARD [SSH]	9,348	1,956,503	18.11
12 MAR 2026 - 12 MAR 2026	CIMB	EMPLOYEES PROVIDENT FUND BOARD [SSH]	6,219	1,947,155	18.03
11 MAR 2026 - 11 MAR 2026	CIMB	EMPLOYEES PROVIDENT FUND BOARD [SSH]	3,093	1,940,937	17.97
13 MAR 2026 - 13 MAR 2026	CITAGLB	TAN SRI DATO' SRI DR MOHAMAD NORZA BIN ZAKARIA [DIR/CEO]	11,500	161,917	32.816
13 MAR 2026 - 13 MAR 2026	CITAGLB	TAN SRI DATO' SRI DR MOHAMAD NORZA BIN ZAKARIA [SSH]	11,500	161,917	32.816
13 MAR 2026 - 13 MAR 2026	CITAGLB	TIZA GLOBAL SDN. BHD. [SSH]	11,500	156,613	31.741
13 MAR 2026 - 13 MAR 2026	CLMT	EMPLOYEES PROVIDENT FUND BOARD [SSH]	568	543,946	16.328
13 MAR 2026 - 13 MAR 2026	CLMT	MISS YONG SU-LIN [DIR/CEO]	524	524	0.016
12 MAR 2026 - 12 MAR 2026	CLMT	EMPLOYEES PROVIDENT FUND BOARD [SSH]	540	543,377	16.311
11 MAR 2026 - 11 MAR 2026	CLMT	EMPLOYEES PROVIDENT FUND BOARD [SSH]	1,422	542,838	16.295
17 MAR 2026 - 17 MAR 2026	COASTAL	SAMARANG UCITS - SAMARANG ASIAN PROSPERITY [SSH]	-39	45,337	8.349
16 MAR 2026 - 16 MAR 2026	COASTAL	SAMARANG UCITS - SAMARANG ASIAN PROSPERITY [SSH]	-258	45,377	8.356
13 MAR 2026 - 13 MAR 2026	COASTAL	SAMARANG UCITS - SAMARANG ASIAN PROSPERITY [SSH]	-158	45,634	8.399
17 MAR 2026 - 17 MAR 2026	COMPUGT	MADAM SEE THOO CHAN [DIR/CEO]	1,140	1,103,669	18.241
17 MAR 2026 - 17 MAR 2026	COMPUGT	MADAM SEE THOO CHAN [SSH]	1,140	1,103,669	18.241
17 MAR 2026 - 17 MAR 2026	COMPUGT	MR GOH KHENG PEOW [SSH]	1,140	1,103,669	18.241
17 MAR 2026 - 17 MAR 2026	CTOS	KUMPULAN WANG PERSARAAN (DIPERBADANKAN) [SSH]	-245	222,146	9.765
16 MAR 2026 - 16 MAR 2026	CTOS	KUMPULAN WANG PERSARAAN (DIPERBADANKAN) [SSH]	-220	222,391	9.776
13 MAR 2026 - 13 MAR 2026	CTOS	KUMPULAN WANG PERSARAAN (DIPERBADANKAN) [SSH]	-276	222,611	9.785
13 MAR 2026 - 16 MAR 2026	CYBERE	SPECIAL FLAGSHIP HOLDINGS SDN BHD [SSH]	120	104,043	60.434
13 MAR 2026 - 16 MAR 2026	CYBERE	TAN SRI DATO' DR PALANIAPPAN A/L RAMANATHAN CHETTIAR [DIR/CEO]	120	104,043	60.434
13 MAR 2026 - 16 MAR 2026	CYBERE	TAN SRI DATO' DR PALANIAPPAN A/L RAMANATHAN CHETTIAR [SSH]	120	104,043	60.434
11 MAR 2026 - 12 MAR 2026	CYBERE	SPECIAL FLAGSHIP HOLDINGS SDN BHD [SSH]	245	103,924	60.365

Notice Period is 14th March 2026 to 21st March 2026

Effective Change Date	Stock Name	Buyer/ Seller Name [Classification]	Bought / (Sold) ['000]	No. of Shares After Trade ['000]	
			Total	Total	% Held
12 MAR 2026 - 12 MAR 2026	DAYANG	EMPLOYEES PROVIDENT FUND BOARD [SSH]	215	133,777	11.555
13 MAR 2026 - 13 MAR 2026	DIALOG	EMPLOYEES PROVIDENT FUND BOARD [SSH]	-10	1,267,216	22.46
16 MAR 2026 - 16 MAR 2026	E&O	KUMPULAN WANG PERSARAAN (DIPERBADANKAN) [SSH]	-250	163,486	6.558
13 MAR 2026 - 13 MAR 2026	E&O	KUMPULAN WANG PERSARAAN (DIPERBADANKAN) [SSH]	-312	163,736	6.568
16 MAR 2026 - 16 MAR 2026	EDARAN	VALIANT CHAPTER SDN BHD [SSH]	25	14,720	25.421
13 MAR 2026 - 13 MAR 2026	EDARAN	VALIANT CHAPTER SDN BHD [SSH]	20	14,695	25.377
16 MAR 2026 - 16 MAR 2026	EFRAME	DATO HOOI JIA HAO [SSH]	-1,850	27,667	7.334
11 MAR 2026 - 11 MAR 2026	EFRAME	DATO HOOI JIA HAO [SSH]	1,850	29,517	7.823
11 MAR 2026 - 11 MAR 2026	EFRAME	DATO HOOI JIA HAO [SSH]	1,850	29,517	7.823
13 MAR 2026 - 13 MAR 2026	EKSONS	MR TAY HUA SIN [DIR/CEO]	5	78,666	48.716
13 MAR 2026 - 13 MAR 2026	EKSONS	MR TAY HUA SIN [SSH]	5	78,666	48.716
13 MAR 2026 - 16 MAR 2026	ELRIDGE	TAN SRI DR AZMIL KHALILI BIN DATO KHALID [DIR/CEO]	252	5,829	0.291
12 MAR 2026 - 12 MAR 2026	ELRIDGE	MR YEO HOCK CHEONG [DIR/CEO]	10,000	476,904	23.845
12 MAR 2026 - 12 MAR 2026	ELRIDGE	MR YEO HOCK CHEONG [SSH]	10,000	476,904	23.845
13 MAR 2026 - 13 MAR 2026	F&N	EMPLOYEES PROVIDENT FUND BOARD [SSH]	23	59,213	16.144
12 MAR 2026 - 12 MAR 2026	F&N	EMPLOYEES PROVIDENT FUND BOARD [SSH]	25	59,190	16.138
11 MAR 2026 - 11 MAR 2026	F&N	EMPLOYEES PROVIDENT FUND BOARD [SSH]	-3	59,165	16.131
17 MAR 2026 - 17 MAR 2026	FAREAST	DATO' ASMIN BINTI YAHYA [DIR/CEO]	2	389	0.066
12 MAR 2026 - 12 MAR 2026	FFB	EMPLOYEES PROVIDENT FUND BOARD [SSH]	300	244,263	12.963
11 MAR 2026 - 11 MAR 2026	FFB	EMPLOYEES PROVIDENT FUND BOARD [SSH]	800	244,303	12.965
16 MAR 2026 - 16 MAR 2026	FOODIE	MISS LOO CHEE LENG [DIR/CEO]	700	56,220	6.332
16 MAR 2026 - 16 MAR 2026	FOODIE	MISS LOO CHEE LENG [SSH]	700	56,220	6.332
12 MAR 2026 - 12 MAR 2026	FPGROUP	DATO' ONG CHOON HENG [DIR/CEO]	157	189,757	34.84
12 MAR 2026 - 12 MAR 2026	FPGROUP	DATO' ONG CHOON HENG [SSH]	157	189,757	34.84
13 MAR 2026 - 13 MAR 2026	FPHB	MRS LIEW TSUEY ER [DIR/CEO]	44	283,338	62.791
13 MAR 2026 - 13 MAR 2026	FPHB	MRS LIEW TSUEY ER [SSH]	44	283,338	62.791
13 MAR 2026 - 13 MAR 2026	FRONTKN	EMPLOYEES PROVIDENT FUND BOARD [SSH]	4,245	259,661	15.701
12 MAR 2026 - 12 MAR 2026	FRONTKN	EMPLOYEES PROVIDENT FUND BOARD [SSH]	2,761	255,417	15.445
11 MAR 2026 - 11 MAR 2026	FRONTKN	EMPLOYEES PROVIDENT FUND BOARD [SSH]	2,429	252,655	15.278
13 MAR 2026 - 17 MAR 2026	GAMUDA	YTM RAJA DATO' SERI ELEENA BINTI ALMARHUM SULTAN AZLAN MUHIBBUDDIN SHAH AL-MAGHFUR-LAH [DIR/CEO]	-500	232,979	3.914
12 MAR 2026 - 12 MAR 2026	GAMUDA	EMPLOYEES PROVIDENT FUND BOARD (EPF BOARD) [SSH]	1,000	1,153,572	19.37
11 MAR 2026 - 11 MAR 2026	GAMUDA	EMPLOYEES PROVIDENT FUND BOARD (EPF BOARD) [SSH]	832	1,152,572	19.36
17 MAR 2026 - 18 MAR 2026	GCAP	DATUK YAP YEE PING [DIR/CEO]	1,040	13,192	4.023
17 MAR 2026 - 18 MAR 2026	GCAP	GEN (R) TAN SRI DATO' SERI AFFENDI BIN BUANG [DIR/CEO]	44	654	0.2
12 MAR 2026 - 12 MAR 2026	GENP	EMPLOYEES PROVIDENT FUND BOARD [SSH]	225	139,409	15.539
11 MAR 2026 - 11 MAR 2026	GENP	EMPLOYEES PROVIDENT FUND BOARD [SSH]	46	139,184	15.514
17 MAR 2026 - 17 MAR 2026	GESHEN	MR CHIAU HAW LOON [SSH]	10,000	40,356	9.702
16 MAR 2026 - 16 MAR 2026	GESHEN	ENRICH SIGNATURE SDN. BHD. [SSH]	-9,865	28,356	6.817
16 MAR 2026 - 16 MAR 2026	GESHEN	MR CHIAU HAW LOON [SSH]	-9,865	30,356	7.298
16 MAR 2026 - 16 MAR 2026	GESHEN	MR CHIAU HAW YEW [SSH]	-13,153	31,068	7.469
13 MAR 2026 - 13 MAR 2026	GFM	ENCIK RUSLAN BIN NORDIN [DIR/CEO]	2,000	137,870	18.151
13 MAR 2026 - 13 MAR 2026	GFM	ENCIK RUSLAN BIN NORDIN [SSH]	2,000	63,069	18.151
11 MAR 2026 - 13 MAR 2026	GLOMAC	DATUK SERI FATEH ISKANDAR BIN TAN SRI DATO' MOHAMED MANSOR [DIR/CEO]	15	265,079	34.538
11 MAR 2026 - 13 MAR 2026	GLOMAC	DATUK SERI FATEH ISKANDAR BIN TAN SRI DATO' MOHAMED MANSOR [SSH]	15	265,079	34.538
11 MAR 2026 - 13 MAR 2026	GLOMAC	TAN SRI DATO' MOHAMED MANSOR BIN FATEH DIN [DIR/CEO]	15	272,405	35.493
11 MAR 2026 - 13 MAR 2026	GLOMAC	TAN SRI DATO' MOHAMED MANSOR BIN FATEH DIN [SSH]	15	265,079	34.538
13 MAR 2026 - 13 MAR 2026	HARTA	KUMPULAN WANG PERSARAAN (DIPERBADANKAN) [SSH]	-500	212,851	6.236
13 MAR 2026 - 13 MAR 2026	HEGROUP	DATUK CHRISTOPHER WAN SOO KEE [DIR/CEO]	50	150	0.034
17 MAR 2026 - 17 MAR 2026	HEKTAR	UPAYAPADU (M) SDN BHD [SSH]	509	66,395	9.361
16 MAR 2026 - 16 MAR 2026	HEKTAR	UPAYAPADU (M) SDN BHD [SSH]	524	65,886	9.289
13 MAR 2026 - 13 MAR 2026	HEKTAR	UPAYAPADU (M) SDN BHD [SSH]	60	65,363	9.215
17 MAR 2026 - 17 MAR 2026	HI	MADAM BAH KIM LIAN [DIR/CEO]	600	4,869	0.974
17 MAR 2026 - 17 MAR 2026	HI	MR LIM HAN WENG [SSH]	600	306,019	61.204
16 MAR 2026 - 17 MAR 2026	HIBISCS	DATUK MICHAEL TANG VEE MUN [SSH]	-1,001	104,161	14.126
12 MAR 2026 - 13 MAR 2026	HIBISCS	DATUK MICHAEL TANG VEE MUN [SSH]	-4,218	105,162	14.261
13 MAR 2026 - 13 MAR 2026	HLBANK	EMPLOYEES PROVIDENT FUND BOARD [SSH]	-150	222,754	10.675
11 MAR 2026 - 11 MAR 2026	HLBANK	EMPLOYEES PROVIDENT FUND BOARD [SSH]	-238	222,904	10.683
12 MAR 2026 - 12 MAR 2026	HLFG	EMPLOYEES PROVIDENT FUND BOARD [SSH]	47	75,408	6.571
11 MAR 2026 - 11 MAR 2026	HLFG	EMPLOYEES PROVIDENT FUND BOARD [SSH]	97	75,274	6.56
13 MAR 2026 - 13 MAR 2026	HOHUP	LEE FOOK YUEN [SSH]	135	50,376	9.72
16 MAR 2026 - 16 MAR 2026	IGBB	MISS TAN LEI CHENG [DIR/CEO]	12,888	38,663	1.942
16 MAR 2026 - 16 MAR 2026	IGBB	TAN CHIN NAM SDN BHD [SSH]	350,190	1,050,570	52.773
16 MAR 2026 - 16 MAR 2026	IGBB	WAH SEONG (MALAYA) TRADING CO. SDN BHD [SSH			

Notice Period is 14th March 2026 to 21st March 2026

Effective Change Date	Stock Name	Buyer/ Seller Name [Classification]	Bought / (Sold) ['000]	No. of Shares After Trade ['000]	
			Total	Total	% Held
13 MAR 2026 - 13 MAR 2026	INFOTEC	MR CHOO WEI CHUEN [DIR/CEO]	10	154,482	42.54
13 MAR 2026 - 13 MAR 2026	INFOTEC	MR CHOO WEI CHUEN [SSH]	10	154,482	42.54
13 MAR 2026 - 13 MAR 2026	IOICORP	EMPLOYEES PROVIDENT FUND BOARD [SSH]	565	1,160,527	18.464
11 MAR 2026 - 11 MAR 2026	IOICORP	EMPLOYEES PROVIDENT FUND BOARD [SSH]	89	1,159,962	18.455
13 MAR 2026 - 13 MAR 2026	IOIPG	EMPLOYEES PROVIDENT FUND BOARD [SSH]	2,241	343,247	6.234
12 MAR 2026 - 12 MAR 2026	IOIPG	EMPLOYEES PROVIDENT FUND BOARD [SSH]	-1,257	341,006	6.193
13 MAR 2026 - 13 MAR 2026	IOIPG	DATO' LEE YEOW SENG [SSH]	149	3,749,796	68.102
11 MAR 2026 - 11 MAR 2026	IOIPG	EMPLOYEES PROVIDENT FUND BOARD [SSH]	69	342,562	6.221
09 MAR 2026 - 13 MAR 2026	IOIPG	DATO' LEE YEOW SENG [DIR/CEO]	179	3,749,971	68.105
12 MAR 2026 - 12 MAR 2026	IRIS	DATO' POH YANG HONG [DIR/CEO]	50	105,023	12.874
12 MAR 2026 - 12 MAR 2026	IRIS	DATO' POH YANG HONG [SSH]	50	105,023	12.874
12 MAR 2026 - 12 MAR 2026	IRIS	DR POH SOON SIM [DIR/CEO]	50	21,875	2.682
17 MAR 2026 - 17 MAR 2026	JPG	JOHOR CORPORATION [SSH]	-125,000	1,486,429	59.457
17 MAR 2026 - 17 MAR 2026	JPG	KULIM (MALAYSIA) BERHAD [SSH]	-125,000	1,486,000	59.44
17 MAR 2026 - 17 MAR 2026	JPG	KUMPULAN WANG PERSARAAN (DIPERBADANKAN) [SSH]	10,931	136,041	5.442
13 MAR 2026 - 13 MAR 2026	JPG	EMPLOYEES PROVIDENT FUND BOARD [SSH]	-1,238	207,333	8.293
12 MAR 2026 - 12 MAR 2026	JPG	EMPLOYEES PROVIDENT FUND BOARD [SSH]	-1,486	208,571	8.343
11 MAR 2026 - 11 MAR 2026	JPG	EMPLOYEES PROVIDENT FUND BOARD [SSH]	-2,375	210,057	8.402
13 MAR 2026 - 13 MAR 2026	KAREX	ABERDEEN GROUP PLC [SSH]	-170	63,374	6.016
13 MAR 2026 - 13 MAR 2026	KAREX	ABRDN HOLDINGS LIMITED [SSH]	-170	63,374	6.016
12 MAR 2026 - 12 MAR 2026	KAREX	ABERDEEN GROUP PLC [SSH]	-329	63,544	6.032
12 MAR 2026 - 12 MAR 2026	KAREX	ABRDN HOLDINGS LIMITED [SSH]	-329	63,544	6.032
18 MAR 2026 - 18 MAR 2026	KGB	MR SOH TONG HWA [DIR/CEO]	1,000	145,395	18.481
18 MAR 2026 - 18 MAR 2026	KGB	MR SOH TONG HWA [SSH]	1,000	145,395	18.481
13 MAR 2026 - 13 MAR 2026	KGB	EMPLOYEES PROVIDENT FUND BOARD [SSH]	77	44,452	5.65
12 MAR 2026 - 12 MAR 2026	KGB	EMPLOYEES PROVIDENT FUND BOARD [SSH]	103	44,375	5.641
13 MAR 2026 - 13 MAR 2026	KHEE-SAN-WA	DATO' SRI NGU TIENG UNG JP [DIR/CEO]	-10,000	139,336	31.616
13 MAR 2026 - 13 MAR 2026	KHEE-SAN-WA	MISS NGU CHIENN YING [DIR/CEO]	-10,000	139,336	31.616
13 MAR 2026 - 13 MAR 2026	KLCC	EMPLOYEES PROVIDENT FUND BOARD [SSH]	-57	193,734	10.731
13 MAR 2026 - 13 MAR 2026	KLCC	EMPLOYEES PROVIDENT FUND BOARD [SSH]	-57	193,734	10.731
12 MAR 2026 - 12 MAR 2026	KLCC	EMPLOYEES PROVIDENT FUND BOARD [SSH]	-32	193,790	10.734
12 MAR 2026 - 12 MAR 2026	KLCC	EMPLOYEES PROVIDENT FUND BOARD [SSH]	-32	193,790	10.734
11 MAR 2026 - 11 MAR 2026	KLCC	EMPLOYEES PROVIDENT FUND BOARD [SSH]	-1,763	193,822	10.736
11 MAR 2026 - 11 MAR 2026	KLCC	EMPLOYEES PROVIDENT FUND BOARD [SSH]	-1,763	193,822	10.736
13 MAR 2026 - 13 MAR 2026	KLK	EMPLOYEES PROVIDENT FUND BOARD [SSH]	41	213,952	19.212
12 MAR 2026 - 12 MAR 2026	KLK	EMPLOYEES PROVIDENT FUND BOARD [SSH]	0.5	213,911	19.208
11 MAR 2026 - 11 MAR 2026	KLK	EMPLOYEES PROVIDENT FUND BOARD [SSH]	152	213,911	19.208
16 MAR 2026 - 17 MAR 2026	LBS	TAN SRI DATO' SRI IR. (DR.) LIM HOCK SAN JP [DIR/CEO]	250	629,021	41.071
16 MAR 2026 - 17 MAR 2026	LBS	TAN SRI DATO' SRI IR. (DR.) LIM HOCK SAN JP [SSH]	250	625,751	40.857
16 MAR 2026 - 16 MAR 2026	LBS	KUMPULAN WANG PERSARAAN (DIPERBADANKAN) [SSH]	-239	115,447	7.538
13 MAR 2026 - 13 MAR 2026	LBS	KUMPULAN WANG PERSARAAN (DIPERBADANKAN) [SSH]	-261	115,686	7.554
13 MAR 2026 - 13 MAR 2026	LBS	TAN SRI DATO' SRI IR. (DR.) LIM HOCK SAN JP [DIR/CEO]	100	628,771	41.055
13 MAR 2026 - 13 MAR 2026	LBS	TAN SRI DATO' SRI IR. (DR.) LIM HOCK SAN JP [SSH]	100	625,501	40.841
12 MAR 2026 - 12 MAR 2026	LEFORM	DATUK SERI AKHIL BIN BULAT [DIR/CEO]	-350	350	0.021
12 MAR 2026 - 12 MAR 2026	LEFORM	MISS CHUA LENG LEEK [DIR/CEO]	-450	450	0.028
12 MAR 2026 - 12 MAR 2026	LEFORM	MISS LEE WEE LENG [DIR/CEO]	-100	100	0.006
12 MAR 2026 - 12 MAR 2026	LEFORM	MR LAW KAR HOU [DIR/CEO]	-2,100	2,100	0.129
12 MAR 2026 - 12 MAR 2026	LEFORM	MR LAW KOK THYE [DIR/CEO]	-301,622	1,063,422	65.276
12 MAR 2026 - 12 MAR 2026	LEFORM	MR LAW KOK THYE [SSH]	-301,622	1,063,422	65.276
12 MAR 2026 - 12 MAR 2026	LEFORM	MR TAN JIN YIK [DIR/CEO]	-33	33	0.002
12 MAR 2026 - 12 MAR 2026	LEFORM	PUAN ESMARIZA BINTI ISMAIL [DIR/CEO]	-210	210	0.013
12 MAR 2026 - 12 MAR 2026	LEFORM	TIANWEN HOLDINGS SDN BHD [SSH]	-755,400	755,400	46.369
12 MAR 2026 - 12 MAR 2026	LFG	DATO' SYED NAQIZ SHAHABUDDIN BIN SYED ABDUL JABBAR [DIR/CEO]	3,500	18,000	1.541
18 MAR 2026 - 18 MAR 2026	LIHEN	MR CHUA YONG HAUP [DIR/CEO]	88	2,320	0.429
17 MAR 2026 - 17 MAR 2026	M&A	CIK SITI NUR AISHAH BINTI ISHAK [SSH]	1,182	147,798	7.389
17 MAR 2026 - 17 MAR 2026	MALAKOF	KUMPULAN WANG PERSARAAN (DIPERBADANKAN) ('KWAP') [SSH]	-100	339,703	6.951
13 MAR 2026 - 13 MAR 2026	MALAKOF	EMPLOYEES PROVIDENT FUND BOARD [SSH]	112	906,539	18.55
16 MAR 2026 - 16 MAR 2026	MALAKOF	KUMPULAN WANG PERSARAAN (DIPERBADANKAN) ('KWAP') [SSH]	-100	339,803	6.953
13 MAR 2026 - 13 MAR 2026	MALAKOF	KUMPULAN WANG PERSARAAN (DIPERBADANKAN) ('KWAP') [SSH]	-100	339,903	6.955
11 MAR 2026 - 11 MAR 2026	MALAKOF	EMPLOYEES PROVIDENT FUND BOARD [SSH]	28	906,428	18.547
17 MAR 2026 - 17 MAR 2026	MATRIX	LEMBAGA TABUNG HAJI [SSH]	500	122,254	6.513
16 MAR 2026 - 16 MAR 2026	MATRIX	LEMBAGA TABUNG HAJI [SSH]	300	121,754	6.487
16 MAR 2026 - 16 MAR 2026	MAYBANK	AMANAHRAYA TRUSTEES BERHAD - AMANAH SAHAM BUMIPUTERA [SSH]	15,000	3,422,222	28.327
16 MAR 2026 - 16 MAR 2026	MAYBANK	PERMODALAN NASIONAL BERHAD [SSH]	5,000	766,113	6.341
16 MAR 2026 - 16 MAR 2026	MAYBANK	YAYASAN PELABURAN BUMIPUTERA [SSH]	5,000	766,113	6.341
13 MAR 2026 - 13 MAR 2026	MAYBANK	EMPLOYEES PROVIDENT FUND BOARD [SSH]	16,400	1,460,553	12.09
16 MAR 2026 - 16 MAR 2026	MAYBANK	KUMPULAN WANG PERSARAAN (DIPERBADANKAN) ('KWAP') [SSH]	250	633,026	5.24
12 MAR 2026 - 12 MAR 2026	MAYBANK	EMPLOYEES PROVIDENT FUND BOARD [SSH]	13,423	1,444,154	11.954
13 MAR 2026 - 13 MAR 2026	MAYBANK	KUMPULAN WANG PERSARAAN (DIPERBADANKAN) ('KWAP') [SSH]	-494	632,776	5.238
11 MAR 2026 - 11 MAR 2026	MAYBANK	EMPLOYEES PROVIDENT FUND BOARD [SSH]	364	1,430,730	11.843
16 MAR 2026 - 16 MAR 2026	MBRIGHT	DATO' LEE WAI MUN DIMP. JMK. JP. [DIR/CEO]	15	1,313,634	48.404
16 MAR 2026 - 16 MAR 2026	MBRIGHT	DATO' LEE WAI MUN DIMP. JMK. JP. [SSH]	15	1,313,634	48.404
16 MAR 2026 - 16 MAR 2026	MBRIGHT	LEADING VENTURES SDN. BHD. [SSH]	15	1,313,634	48.404
13 MAR 2026 - 13 MAR 2026	MBRIGHT	DATO' LEE WAI MUN DIMP. JMK. JP. [DIR/CEO]	150	1,313,619	48.403
13 MAR 2026 - 13 MAR 2026	MBRIGHT	DATO' LEE WAI MUN DIMP. JMK. JP. [SSH]	150	1,313,619	48.403
13 MAR 2026 - 13 MAR 2026	MBRIGHT	LEADING VENTURES SDN. BHD. [SSH]	150	1,313,619	48.403
13 MAR 2026 - 13 MAR 2026	MCEMENT	EASTSPRING INVESTMENT BERHAD [SSH]	1,306	93,924	6.734
13 MAR 2026 - 13 MAR 2026	MCEMENT	PRUDENTIAL ASSURANCE MALAYSIA BERHAD [SSH]	1,532	92,570	6.637
13 MAR 2026 - 13 MAR 2026	MCEMENT	PRUDENTIAL PLC [SSH]	1,165	114,895	8.239
12 MAR 2026 - 12 MAR 2026	MCEMENT	PRUDENTIAL PLC [SSH]	-522	113,730	8.154

Notice Period is 14th March 2026 to 21st March 2026

Effective Change Date	Stock Name	Buyer/ Seller Name [Classification]	Bought / (Sold) ['000]	No. of Shares After Trade ['000]	
			Total	Total	% Held
12 MAR 2026 - 12 MAR 2026	MCLEAN	DATUK DR TERENCE TEA YEOK KIAN [DIR/CEO]	840	68,644	27.88
12 MAR 2026 - 12 MAR 2026	MCLEAN	DATUK DR TERENCE TEA YEOK KIAN [SSH]	840	68,644	27.88
16 MAR 2026 - 18 MAR 2026	MFCB	CAM PROPERTY (MALAYSIA) SDN BHD [SSH]	61	212,414	22.544
16 MAR 2026 - 18 MAR 2026	MFCB	CAMASIA LIMITED [SSH]	61	213,971	22.709
16 MAR 2026 - 18 MAR 2026	MFCB	GOH NAM KIOH [DIR/CEO]	61	341,104	36.203
16 MAR 2026 - 18 MAR 2026	MFCB	KEEN CAPITAL INVESTMENTS LIMITED [SSH]	61	290,238	30.804
16 MAR 2026 - 18 MAR 2026	MFCB	LAJU RIANG SDN BHD [SSH]	61	212,414	22.544
16 MAR 2026 - 18 MAR 2026	MFCB	RUBBER THREAD INDUSTRIES (M) SDN BERHAD [SSH]	61	212,414	22.544
13 MAR 2026 - 13 MAR 2026	MFCB	MR KHOO TENG KEAT [DIR/CEO]	3	4,690	0.498
13 MAR 2026 - 13 MAR 2026	MISC	EMPLOYEES PROVIDENT FUND BOARD [SSH]	-2,022	685,322	15.353
12 MAR 2026 - 12 MAR 2026	MISC	EMPLOYEES PROVIDENT FUND BOARD [SSH]	-1,003	687,345	15.398
11 MAR 2026 - 11 MAR 2026	MISC	EMPLOYEES PROVIDENT FUND BOARD [SSH]	-965	688,348	15.421
12 MAR 2026 - 13 MAR 2026	MRDIY	EMPLOYEES PROVIDENT FUND BOARD [SSH]	5,630	1,015,075	10.71
12 MAR 2026 - 12 MAR 2026	MRDIY	EMPLOYEES PROVIDENT FUND BOARD [SSH]	3,916	1,009,430	10.651
11 MAR 2026 - 11 MAR 2026	MRDIY	EMPLOYEES PROVIDENT FUND BOARD [SSH]	945	1,005,515	10.61
16 MAR 2026 - 16 MAR 2026	MSNIAGA	SHAPADU CAPITAL SDN. BHD. [SSH]	9	17,142	28.38
13 MAR 2026 - 17 MAR 2026	MUDA	DATIN CHEONG KOON HOOI [SSH]	20	119,297	39.108
13 MAR 2026 - 17 MAR 2026	MUDA	MISS LIM YEN WEE [DIR/CEO]	20	119,843	39.287
13 MAR 2026 - 17 MAR 2026	MUDA	MISS LIM YEN WEE [SSH]	20	119,843	39.287
16 MAR 2026 - 16 MAR 2026	N2N	QUAH CHOON WAH [SSH]	90	51,652	9.253
13 MAR 2026 - 13 MAR 2026	NADIBHD	DATO' SR HJ WAN AZMAN BIN WAN KAMAL [DIR/CEO]	-56,000	431,117	57.253
13 MAR 2026 - 13 MAR 2026	NADIBHD	DATO' SR HJ WAN AZMAN BIN WAN KAMAL [SSH]	-56,000	431,117	57.253
12 MAR 2026 - 12 MAR 2026	NATGATE	DATO' SERI WONG SIEW HAI [DIR/CEO]	5	5,599	0.248
17 MAR 2026 - 17 MAR 2026	NE	MR NG CHAY CHIN [DIR/CEO]	57	440,170	59.482
17 MAR 2026 - 17 MAR 2026	NE	MR NG CHAY CHIN [SSH]	57	440,170	59.482
13 MAR 2026 - 13 MAR 2026	NE	MR NG CHAY CHIN [DIR/CEO]	53	440,113	59.475
13 MAR 2026 - 13 MAR 2026	NE	MR NG CHAY CHIN [SSH]	53	440,113	59.475
12 MAR 2026 - 12 MAR 2026	NESTLE	EMPLOYEES PROVIDENT FUND BOARD [SSH]	13	31,226	13.316
11 MAR 2026 - 11 MAR 2026	NESTLE	EMPLOYEES PROVIDENT FUND BOARD [SSH]	158	31,213	13.311
10 MAR 2026 - 10 MAR 2026	NESTLE	EMPLOYEES PROVIDENT FUND BOARD [SSH]	15	31,053	13.242
18 MAR 2026 - 18 MAR 2026	OBHB	MISS LEE BAO YU [DIR/CEO]	160	1,404	0.359
13 MAR 2026 - 13 MAR 2026	OHM	DATUK TEOH YEE SEANG [DIR/CEO]	211	301,548	60.309
13 MAR 2026 - 13 MAR 2026	OHM	DATUK TEOH YEE SEANG [SSH]	211	301,548	60.309
13 MAR 2026 - 13 MAR 2026	OHM	OASIS MANAGEMENT TEAM SDN. BHD. [SSH]	211	124,231	24.846
17 MAR 2026 - 17 MAR 2026	OMESTI	MR MONTEIRO GERARD CLAIR [DIR/CEO]	4,102	191,566	8.249
17 MAR 2026 - 17 MAR 2026	OMESTI	MR MONTEIRO GERARD CLAIR [SSH]	4,102	191,566	8.249
13 MAR 2026 - 13 MAR 2026	OMESTI	CIMB COMMERCE TRUSTEE BERHAD [SSH]	-201,922	8,000	0.344
17 MAR 2026 - 17 MAR 2026	PADINI	CHONG CHIN LIN [SSH]	20	455,688	46.175
17 MAR 2026 - 17 MAR 2026	PADINI	MR CHRISTOPHER YONG TZE-YAO [DIR/CEO]	20	27	0.003
17 MAR 2026 - 17 MAR 2026	PADINI	YONG PANG CHAUN [DIR/CEO]	20	455,688	46.175
17 MAR 2026 - 17 MAR 2026	PADINI	YONG PANG CHAUN [SSH]	20	455,688	46.175
13 MAR 2026 - 13 MAR 2026	PADINI	EMPLOYEES PROVIDENT FUND BOARD [SSH]	1,149	108,160	10.96
13 MAR 2026 - 13 MAR 2026	PADINI	CHONG CHIN LIN [SSH]	7	455,668	46.173
13 MAR 2026 - 13 MAR 2026	PADINI	MISS SUNG FONG FUI [DIR/CEO]	11	90	0.009
13 MAR 2026 - 13 MAR 2026	PADINI	MR ANDREW YONG TZE HOW [DIR/CEO]	17	200	0.02
13 MAR 2026 - 13 MAR 2026	PADINI	YONG PANG CHAUN [DIR/CEO]	17	455,668	46.173
13 MAR 2026 - 13 MAR 2026	PADINI	YONG PANG CHAUN [SSH]	17	455,668	46.173
11 MAR 2026 - 11 MAR 2026	PADINI	EMPLOYEES PROVIDENT FUND BOARD [SSH]	-75	107,011	10.844
13 MAR 2026 - 13 MAR 2026	PANAMY	EMPLOYEES PROVIDENT FUND BOARD [SSH]	-10	4,313	7.101
13 MAR 2026 - 13 MAR 2026	PARADIGM	EMPLOYEES PROVIDENT FUND BOARD [SSH]	156	110,068	6.871
11 MAR 2026 - 11 MAR 2026	PARADIGM	EMPLOYEES PROVIDENT FUND BOARD [SSH]	603	109,912	6.862
17 MAR 2026 - 17 MAR 2026	PAVREIT	KUMPULAN WANG PERSARAAN (DIPERBADANKAN) [SSH]	195	229,874	5.852
13 MAR 2026 - 13 MAR 2026	PAVREIT	EMPLOYEES PROVIDENT FUND BOARD [SSH]	1,063	481,109	12.248
16 MAR 2026 - 16 MAR 2026	PAVREIT	KUMPULAN WANG PERSARAAN (DIPERBADANKAN) [SSH]	316	229,678	5.847
12 MAR 2026 - 12 MAR 2026	PAVREIT	EMPLOYEES PROVIDENT FUND BOARD [SSH]	-266	480,047	12.221
13 MAR 2026 - 13 MAR 2026	PAVREIT	KUMPULAN WANG PERSARAAN (DIPERBADANKAN) [SSH]	127	229,362	5.839
11 MAR 2026 - 11 MAR 2026	PAVREIT	EMPLOYEES PROVIDENT FUND BOARD [SSH]	-2,092	480,313	12.228
13 MAR 2026 - 13 MAR 2026	PBBANK	EMPLOYEES PROVIDENT FUND BOARD [SSH]	11,943	3,445,573	17.75
16 MAR 2026 - 16 MAR 2026	PBBANK	KUMPULAN WANG PERSARAAN (DIPERBADANKAN) [SSH]	1,000	1,000,990	5.16
12 MAR 2026 - 12 MAR 2026	PBBANK	EMPLOYEES PROVIDENT FUND BOARD [SSH]	1,064	3,433,630	17.69
13 MAR 2026 - 13 MAR 2026	PCHEM	EMPLOYEES PROVIDENT FUND BOARD ("EPF BOARD") [SSH]	4,195	998,021	12.475
12 MAR 2026 - 12 MAR 2026	PCHEM	EMPLOYEES PROVIDENT FUND BOARD ("EPF BOARD") [SSH]	5,541	99	

Notice Period is 14th March 2026 to 21st March 2026

Effective Change Date	Stock Name	Buyer/ Seller Name [Classification]	Bought / (Sold) ['000]	No. of Shares After Trade ['000]	
			Total	Total	% Held
18 MAR 2026 - 18 MAR 2026	PTRANS	DATO' SRI CHEONG KONG FITT [SSH]	1,521	113,735	9.399
17 MAR 2026 - 17 MAR 2026	PTRANS	DATO' SRI CHEONG KONG FITT [DIR/CEO]	1,000	22,400	24.221
13 MAR 2026 - 13 MAR 2026	QL	MR CHIA MAK HOOI [DIR/CEO]	30	7,696	0.21
12 MAR 2026 - 16 MAR 2026	QL	CHIA SEONG FATT [DIR/CEO]	410	436,379	11.955
12 MAR 2026 - 16 MAR 2026	QL	CHIA SEONG FATT [SSH]	410	436,379	11.955
12 MAR 2026 - 16 MAR 2026	QL	CHIA SEONG POW [SSH]	410	445,845	12.214
12 MAR 2026 - 16 MAR 2026	QL	CHIA SONG KUN [DIR/CEO]	410	1,507,154	41.289
12 MAR 2026 - 16 MAR 2026	QL	CHIA SONG KUN [SSH]	410	1,507,154	41.289
12 MAR 2026 - 16 MAR 2026	QL	MR CHIA SEONG POW [DIR/CEO]	410	445,845	12.214
13 MAR 2026 - 13 MAR 2026	RHBBANK	EMPLOYEES PROVIDENT FUND BOARD [SSH]	7,366	1,600,975	36.703
12 MAR 2026 - 12 MAR 2026	RHBBANK	EMPLOYEES PROVIDENT FUND BOARD [SSH]	-9,010	1,593,609	36.535
11 MAR 2026 - 11 MAR 2026	RHBBANK	EMPLOYEES PROVIDENT FUND BOARD [SSH]	-3,933	1,602,619	36.741
17 MAR 2026 - 17 MAR 2026	SALIRAN	MR LIAW CHOON WEI [DIR/CEO]	348	272,831	71.253
17 MAR 2026 - 17 MAR 2026	SALIRAN	MR LIAW CHOON WEI [SSH]	348	272,831	71.253
16 MAR 2026 - 16 MAR 2026	SALIRAN	MR LIAW CHOON WEI [DIR/CEO]	220	272,483	71.163
16 MAR 2026 - 16 MAR 2026	SALIRAN	MR LIAW CHOON WEI [SSH]	220	272,483	71.163
13 MAR 2026 - 13 MAR 2026	SALIRAN	MR LIAW CHOON WEI [DIR/CEO]	106	272,263	71.105
13 MAR 2026 - 13 MAR 2026	SALIRAN	MR LIAW CHOON WEI [SSH]	106	272,263	71.105
13 MAR 2026 - 13 MAR 2026	SAM	EMPLOYEES PROVIDENT FUND BOARD [SSH]	-2	39,518	5.837
12 MAR 2026 - 12 MAR 2026	SAM	EMPLOYEES PROVIDENT FUND BOARD [SSH]	-25	39,520	5.838
17 MAR 2026 - 17 MAR 2026	SANCY	MR PRABUDDHA KUMAR PRONOB CHAKRAVERTTY [DIR/CEO]	3	449,451	66.176
17 MAR 2026 - 17 MAR 2026	SANCY	MR PRABUDDHA KUMAR PRONOB CHAKRAVERTTY [SSH]	3	449,451	66.176
12 MAR 2026 - 12 MAR 2026	SCGBHD	EMPLOYEES PROVIDENT FUND BOARD [SSH]	-519	105,950	9.372
11 MAR 2026 - 11 MAR 2026	SCGBHD	EMPLOYEES PROVIDENT FUND BOARD [SSH]	4,000	106,469	9.418
12 MAR 2026 - 12 MAR 2026	SCOMNET	EMPLOYEES PROVIDENT FUND BOARD [SSH]	-200	70,749	8.298
11 MAR 2026 - 11 MAR 2026	SCOMNET	EMPLOYEES PROVIDENT FUND BOARD [SSH]	-13	70,949	8.319
12 MAR 2026 - 13 MAR 2026	SCOPE	MR LEE MIN HUAT [DIR/CEO]	600	192,860	16.697
12 MAR 2026 - 13 MAR 2026	SCOPE	MR LEE MIN HUAT [SSH]	600	192,860	16.697
17 MAR 2026 - 17 MAR 2026	SDG	KUMPULAN WANG PERSARAAN (DIPERBADANKAN) [SSH]	1,600	553,853	8.009
16 MAR 2026 - 16 MAR 2026	SDG	AMANAHRAYA TRUSTEES BERHAD - AMANAH SAHAM BUMIPUTERA [SSH]	-767	2,806,360	40.579
13 MAR 2026 - 13 MAR 2026	SDG	EMPLOYEES PROVIDENT FUND BOARD [SSH]	2,832	1,087,820	15.729
13 MAR 2026 - 16 MAR 2026	SDG	KUMPULAN WANG PERSARAAN (DIPERBADANKAN) [SSH]	150	552,253	7.985
12 MAR 2026 - 13 MAR 2026	SDG	AMANAHRAYA TRUSTEES BERHAD - AMANAH SAHAM BUMIPUTERA [SSH]	-12,405	2,807,126	40.591
11 MAR 2026 - 12 MAR 2026	SDG	EMPLOYEES PROVIDENT FUND BOARD [SSH]	-3,095	1,085,193	15.691
16 MAR 2026 - 16 MAR 2026	SDS	DR LIM PANG KIAM [DIR/CEO]	152	260	0.048
16 MAR 2026 - 16 MAR 2026	SEAL	DATUK WIRA SYED AMIR SYAKIB ARSALAN BIN SYED IBRAHIM [DIR/CEO]	6	1,491	0.332
18 MAR 2026 - 18 MAR 2026	SENDAI	TAN SRI DATO' NATHAN A/L ELUMALAY [DIR/CEO]	400	549,213	70.273
18 MAR 2026 - 18 MAR 2026	SENDAI	TAN SRI DATO' NATHAN A/L ELUMALAY [SSH]	400	549,213	70.273
18 MAR 2026 - 18 MAR 2026	SENDAI	VAHANA HOLDINGS SDN. BHD. [SSH]	400	549,213	70.273
17 MAR 2026 - 17 MAR 2026	SENDAI	TAN SRI DATO' NATHAN A/L ELUMALAY [DIR/CEO]	400	548,813	70.221
17 MAR 2026 - 17 MAR 2026	SENDAI	TAN SRI DATO' NATHAN A/L ELUMALAY [SSH]	400	548,813	70.221
17 MAR 2026 - 17 MAR 2026	SENDAI	VAHANA HOLDINGS SDN. BHD. [SSH]	400	548,813	70.221
17 MAR 2026 - 17 MAR 2026	SIME	KUMPULAN WANG PERSARAAN (DIPERBADANKAN) [SSH]	3,000	475,102	6.971
12 MAR 2026 - 12 MAR 2026	SIME	EMPLOYEES PROVIDENT FUND BOARD [SSH]	-500	1,169,657	17.162
13 MAR 2026 - 13 MAR 2026	SIME	AMANAHRAYA TRUSTEES BERHAD - AMANAH SAHAM BUMIPUTERA [SSH]	-83	2,259,784	33.156
12 MAR 2026 - 12 MAR 2026	SIME	AMANAHRAYA TRUSTEES BERHAD - AMANAH SAHAM BUMIPUTERA [SSH]	-4,917	2,259,866	33.157
10 MAR 2026 - 10 MAR 2026	SIME	EMPLOYEES PROVIDENT FUND BOARD [SSH]	-319	1,170,157	17.169
13 MAR 2026 - 13 MAR 2026	SIMEPROP	EMPLOYEES PROVIDENT FUND BOARD [SSH]	4,380	104,528	15.37
12 MAR 2026 - 12 MAR 2026	SIMEPROP	EMPLOYEES PROVIDENT FUND BOARD [SSH]	1,463	104,094	15.306
11 MAR 2026 - 11 MAR 2026	SIMEPROP	EMPLOYEES PROVIDENT FUND BOARD [SSH]	14,025	103,941	15.284
16 MAR 2026 - 16 MAR 2026	SOP	MR CHUA CHEN SAN [DIR/CEO]	80	80	0.009
11 MAR 2026 - 12 MAR 2026	SOP	MR FONG YOO KAW @ FONG YEE KOW (VICTOR) [DIR/CEO]	-50	55	0.006
13 MAR 2026 - 13 MAR 2026	SPSETIA	EMPLOYEES PROVIDENT FUND BOARD [SSH]	5,825	541,975	10.832
12 MAR 2026 - 12 MAR 2026	SPSETIA	EMPLOYEES PROVIDENT FUND BOARD [SSH]	10,075	536,150	10.716
11 MAR 2026 - 11 MAR 2026	SPSETIA	EMPLOYEES PROVIDENT FUND BOARD [SSH]	3,000	526,075	10.514
16 MAR 2026 - 16 MAR 2026	SRIDGE	DATO' KHOO YIK CHOU [DIR/CEO]	389	65,903	16.409
16 MAR 2026 - 16 MAR 2026	SRIDGE	DATO' KHOO YIK CHOU [SSH]	389	65,903	16.409
13 MAR 2026 - 13 MAR 2026	STAR	HUAREN HOLDINGS SDN BHD [SSH]	26	36,957	5.1
13 MAR 2026 - 13 MAR 2026	STAR	MALAYSIAN CHINESE ASSOCIATION [SSH]	26	350,273	48.329
13 MAR 2026 - 13 MAR 2026	SUMI	ENCIK NORAZLAM BIN NORBI [DIR/CEO]	262	965,905	66.91
13 MAR 2026 - 13 MAR 2026	SUMI	ENCIK NORAZLAM BIN NORBI [SSH]	262	965,905	66.91
12 MAR 2026 - 12 MAR 2026	SUMI	ENCIK NORAZLAM BIN NORBI [DIR/CEO]	212	965,643	66.892
12 MAR 2026 - 12 MAR 2026	SUMI	ENCIK NORAZLAM BIN NORBI [SSH]	212	965,643	66.892
13 MAR 2026 - 13 MAR 2026	SUNREIT	EMPLOYEES PROVIDENT FUND BOARD [SSH]	-868	520,552	15.199
12 MAR 2026 - 12 MAR 2026	SUNREIT	EMPLOYEES PROVIDENT FUND BOARD [SSH]	-200	521,420	15.225
11 MAR 2026 - 11 MAR 2026	SUNREIT	EMPLOYEES PROVIDENT FUND BOARD [SSH]	-1,072	521,620	15.231
12 MAR 2026 - 12 MAR 2026	SUNVIEW	MR CHOW KIAN HUNG [DIR/CEO]	-6,780	166,016	29.242
12 MAR 2026 - 12 MAR 2026	SUNVIEW	MR CHOW KIAN HUNG [SSH]	-6,780	166,016	29.242
12 MAR 2026 - 12 MAR 2026	SUNVIEW	MR ONG HANG PING [DIR/CEO]	-6,780	172,988	30.47
12 MAR 2026 - 12 MAR 2026	SUNVIEW	MR ONG HANG PING [SSH]	-6,780	172,988	30.47
12 MAR 2026 - 12 MAR 2026	SUNVIEW	NEW ENERGY CAPITAL SDN. BHD. [SSH]	-6,780	134,480	23.687
12 MAR 2026 - 12 MAR 2026	SUNWAY	EMPLOYEES PROVIDENT FUND BOARD [SSH]	3,476	639,883	9.47
11 MAR 2026 - 11 MAR 2026	SUNWAY	EMPLOYEES PROVIDENT FUND BOARD [SSH]	5,498	636,908	9.42
13 MAR 2026 - 13 MAR 2026	TAFI	ARMANI SYNERGY SDN. BHD. [SSH]	262	184,088	48.517
13 MAR 2026 - 13 MAR 2026	TAFI	DATO' SRI ANDREW LIM ENG GUAN [DIR/CEO]	262	194,891	51.364
13 MAR 2026 - 13 MAR 2026	TAFI	DATO' SRI ANDREW LIM ENG GUAN [SSH]	262	194,891	51.364
13 MAR 2026 - 13 MAR 2026	TAFI	DATO' SRI AZLAN BIN AZMI [DIR/CEO]	262	184,396	48.598
13 MAR 2026 - 13 MAR 2026	TAFI	DATO' SRI AZLAN BIN AZMI [SSH]	262	184,396	48.598

Notice Period is 14th March 2026 to 21st March 2026

Effective Change Date	Stock Name	Buyer/ Seller Name [Classification]	Bought / (Sold) ['000]	No. of Shares After Trade ['000]	
			Total	Total	% Held
18 MAR 2026 - 18 MAR 2026	TANCO	DATO' SRI ANDREW TAN JUN SUAN [DIR/CEO]	-8,579	318,899	52.925
18 MAR 2026 - 18 MAR 2026	TANCO	DATO' SRI ANDREW TAN JUN SUAN [DIR/CEO]	11,542	320,053	53.117
18 MAR 2026 - 18 MAR 2026	TANCO	DATO' SRI ANDREW TAN JUN SUAN [DIR/CEO]	-40,000	319,752	53.068
18 MAR 2026 - 18 MAR 2026	TANCO	DATO' SRI ANDREW TAN JUN SUAN [SSH]	11,542	320,053	53.117
18 MAR 2026 - 18 MAR 2026	TANCO	DATO' SRI ANDREW TAN JUN SUAN [SSH]	-40,000	319,752	53.068
18 MAR 2026 - 18 MAR 2026	TANCO	DATO' SRI ANDREW TAN JUN SUAN [SSH]	-8,579	318,899	52.925
17 MAR 2026 - 17 MAR 2026	TANCO	DATO' SRI ANDREW TAN JUN SUAN [DIR/CEO]	-3,348	323,170	53.634
17 MAR 2026 - 17 MAR 2026	TANCO	DATO' SRI ANDREW TAN JUN SUAN [DIR/CEO]	5,868	323,752	53.731
17 MAR 2026 - 17 MAR 2026	TANCO	DATO' SRI ANDREW TAN JUN SUAN [SSH]	-3,348	323,170	53.634
17 MAR 2026 - 17 MAR 2026	TANCO	DATO' SRI ANDREW TAN JUN SUAN [SSH]	5,868	323,752	53.731
16 MAR 2026 - 16 MAR 2026	TANCO	DATO' SRI ANDREW TAN JUN SUAN [DIR/CEO]	12,450	323,502	53.69
16 MAR 2026 - 16 MAR 2026	TANCO	DATO' SRI ANDREW TAN JUN SUAN [DIR/CEO]	-1,443	322,260	53.483
16 MAR 2026 - 16 MAR 2026	TANCO	DATO' SRI ANDREW TAN JUN SUAN [SSH]	12,450	323,502	53.69
16 MAR 2026 - 16 MAR 2026	TANCO	DATO' SRI ANDREW TAN JUN SUAN [SSH]	-1,443	322,260	53.483
17 MAR 2026 - 17 MAR 2026	TECHSTORE	MR TAN HOCK LIM [DIR/CEO]	250	278,192	55.638
17 MAR 2026 - 17 MAR 2026	TECHSTORE	MR TAN HOCK LIM [SSH]	250	278,192	55.638
16 MAR 2026 - 16 MAR 2026	TECHSTORE	MR TAN HOCK LIM [DIR/CEO]	525	277,942	55.588
16 MAR 2026 - 16 MAR 2026	TECHSTORE	MR TAN HOCK LIM [SSH]	525	277,942	55.588
12 MAR 2026 - 13 MAR 2026	TECHSTORE	MR TAN HOCK LIM [DIR/CEO]	931	277,417	55.483
12 MAR 2026 - 13 MAR 2026	TECHSTORE	MR TAN HOCK LIM [SSH]	931	277,417	55.483
17 MAR 2026 - 17 MAR 2026	TENAGA	KUMPULAN WANG PERSARAAN (DIPERBADANKAN) [SSH]	-372	44,268	7.6
13 MAR 2026 - 13 MAR 2026	TENAGA	EMPLOYEES PROVIDENT FUND BOARD [SSH]	4,897	1,357,692	23.29
16 MAR 2026 - 16 MAR 2026	TENAGA	KUMPULAN WANG PERSARAAN (DIPERBADANKAN) [SSH]	-979	44,305	7.6
12 MAR 2026 - 12 MAR 2026	TENAGA	EMPLOYEES PROVIDENT FUND BOARD [SSH]	388	1,352,796	23.21
13 MAR 2026 - 13 MAR 2026	TENAGA	KUMPULAN WANG PERSARAAN (DIPERBADANKAN) [SSH]	-872	44,403	7.62
11 MAR 2026 - 11 MAR 2026	TENAGA	EMPLOYEES PROVIDENT FUND BOARD [SSH]	-522	1,352,407	23.2
17 MAR 2026 - 17 MAR 2026	TIMECOM	KUMPULAN WANG PERSARAAN (DIPERBADANKAN) [SSH]	37	17,340	9.379
13 MAR 2026 - 13 MAR 2026	TIMECOM	EMPLOYEES PROVIDENT FUND BOARD [SSH]	-533	30,238	16.355
16 MAR 2026 - 16 MAR 2026	TIMECOM	KUMPULAN WANG PERSARAAN (DIPERBADANKAN) [SSH]	-74	17,337	9.377
12 MAR 2026 - 12 MAR 2026	TIMECOM	EMPLOYEES PROVIDENT FUND BOARD [SSH]	-2,253	30,294	16.384
13 MAR 2026 - 13 MAR 2026	TIMECOM	KUMPULAN WANG PERSARAAN (DIPERBADANKAN) [SSH]	28	17,345	9.381
11 MAR 2026 - 11 MAR 2026	TIMECOM	EMPLOYEES PROVIDENT FUND BOARD [SSH]	-710	30,516	16.506
17 MAR 2026 - 17 MAR 2026	TIMWELL	MR WONG WAI FOO [SSH]	3,903	58,633	65.843
17 MAR 2026 - 17 MAR 2026	TIMWELL	QUATRINI HOLDINGS SDN. BHD. [SSH]	2,991	22,613	25.394
16 MAR 2026 - 16 MAR 2026	TIMWELL	MR WONG WAI FOO [SSH]	675	54,731	61.46
16 MAR 2026 - 16 MAR 2026	TIMWELL	QUATRINI HOLDINGS SDN. BHD. [SSH]	82	19,622	22.035
13 MAR 2026 - 13 MAR 2026	TIMWELL	MR WONG WAI FOO [SSH]	204	54,056	60.702
13 MAR 2026 - 13 MAR 2026	TIMWELL	QUATRINI HOLDINGS SDN. BHD. [SSH]	204	19,541	21.943
17 MAR 2026 - 17 MAR 2026	TM	KUMPULAN WANG PERSARAAN (DIPERBADANKAN) [KWAP] [SSH]	-39	40,959	10.673
13 MAR 2026 - 13 MAR 2026	TM	EMPLOYEES PROVIDENT FUND BOARD (EPF BOARD) [SSH]	185	88,267	22.999
16 MAR 2026 - 16 MAR 2026	TM	KUMPULAN WANG PERSARAAN (DIPERBADANKAN) [KWAP] [SSH]	604	40,963	10.674
12 MAR 2026 - 12 MAR 2026	TM	EMPLOYEES PROVIDENT FUND BOARD (EPF BOARD) [SSH]	663	88,247	22.995
11 MAR 2026 - 11 MAR 2026	TM	EMPLOYEES PROVIDENT FUND BOARD (EPF BOARD) [SSH]	885	88,109	22.977
12 MAR 2026 - 13 MAR 2026	TRC	DATO RICHARD KHOO TENG SAN [DIR/CEO]	59	13,332	2.829
09 MAR 2026 - 09 MAR 2026	TRC	DATO' SR. ABDULL MANAF BIN HJ HASHIM [DIR/CEO]	20	70	0.015
16 MAR 2026 - 16 MAR 2026	TWL	DATIN SEK CHIAN NEE [SSH]	-4,500	170,620	25.925
16 MAR 2026 - 16 MAR 2026	TWL	DATO' TAN WEI LIAN [DIR/CEO]	-4,500	170,620	25.925
16 MAR 2026 - 16 MAR 2026	TWL	DATO' TAN WEI LIAN [SSH]	-4,500	170,620	25.925
16 MAR 2026 - 16 MAR 2026	TWL	TWL CAPITAL BERHAD [SSH]	-4,500	170,620	25.924
13 MAR 2026 - 13 MAR 2026	TWL	DATIN LEONG KIM FONG [SSH]	-20,000	36,000	5.47
13 MAR 2026 - 13 MAR 2026	UWC	EMPLOYEES PROVIDENT FUND BOARD [SSH]	413	80,877	7.332
12 MAR 2026 - 12 MAR 2026	UWC	EMPLOYEES PROVIDENT FUND BOARD [SSH]	127	80,464	7.294
11 MAR 2026 - 11 MAR 2026	UWC	EMPLOYEES PROVIDENT FUND BOARD [SSH]	228	80,337	7.283
17 MAR 2026 - 17 MAR 2026	VELESTO	MR MEGAT ZARIMAN BIN ABDUL RAHIM [DIR/CEO]	7,524	752	0.091
12 MAR 2026 - 13 MAR 2026	VERDANT	MR LIM TZER HAUR [DIR/CEO]	660	43,543	53.256
12 MAR 2026 - 13 MAR 2026	VERDANT	MR LIM TZER HAUR [SSH]	660	43,543	53.256
13 MAR 2026 - 13 MAR 2026	VITROX	SIAW KOK TONG [DIR/CEO]	-3,000	34,680	18.317
13 MAR 2026 - 13 MAR 2026	VITROX	SIAW KOK TONG [SSH]	-3,000	34,680	18.317
16 MAR 2026 - 16 MAR 2026	VS	ABERDEEN GROUP PLC [SSH]	4,197	25,864	6.71
16 MAR 2026 - 16 MAR 2026	VS	ABRDN HOLDINGS LIMITED [SSH]	4,197	25,864	6.71
16 MAR 2026 - 16 MAR 2026	VS	ABRDN MALAYSIA SDN BHD [SSH]	4,197	25,864	6.71
13 MAR 2026 - 13 MAR 2026	VS	EMPLOYEES PROVIDENT FUND BOARD [SSH]	8,000	25,587	6.639
13 MAR 2026 - 13 MAR 2026	VS	ABERDEEN GROUP PLC (FORMERLY KNOWN AS ABRDN PLC) [SSH]	8,000	25,452	6.601
13 MAR 2026 - 13 MAR 2026					



The Board of Directors of the **Aemulus Holdings Berhad (AEMULUS)** is pleased to announce that Aemulus Corporation Sdn Bhd, a wholly-owned subsidiary of the Company has secured a confirmed order worth USD2.7 million, (approximately equivalent to RM10.5million). The

Secured Order is from a prominent semiconductor manufacturing and electronic assembly provider based in India, with specialized focus on the CMOS Image Sensor market. This order represents a significant milestone, marking Group's debut in the India market.

Further to the announcement by **Malayan Banking Berhad (MAYBANK)** dated 2 September 2025 in relation to the issuance of shares in AMRB to Maybank and Maybank Islamic Berhad, a wholly-owned subsidiary of Maybank, pursuant to a Scheme of Arrangement under Section 366 of the Companies Act, 2016, whereby Maybank's direct and indirect shareholdings in AMRB were 19.16%, the Board of Directors of Maybank wishes to announce that Maybank and MIB have disposed of all the Settlement Shares on 19 March 2026.



On behalf of the Board of **Sarawak Consolidated Industries Berhad (SCIB)**, Berjaya Securities Sdn Bhd (formerly known as Inter-Pacific Securities Sdn Bhd) wishes to announce that Bursa Securities had, vide its letter dated 25 March 2026, resolved to grant the Company an extension of time up to 26 September 2026 for the Company to complete the implementation of the Proposed Rights Issue with Warrants.



On behalf of the Board of Directors of **Technodex Berhad (TDEX)**, Mercury Securities Sdn Bhd wishes to announce that the Company proposes to undertake the Proposed Private Placement.

Disclaimer: The information in the Investor Relations page is extracted from individual companies' announcements in www.bursamalaysia.com. The information on this page is provided as a service to readers. We assume no liability for damages resulting from or arising out of the use of such information. Whilst every effort is made to ensure accuracy, the information presented has been simplified for your reading pleasure. Readers are advised to read the original and complete filings on the Bursa Malaysia website at https://www.bursamalaysia.com/market_information/announcements/company_announcement

Upcoming IPO					
NAME OF COMPANY	OFFER PERIOD		ISSUE PRICE (Per Ordinary Share)	LISTING SOUGHT	DATE OF LISTING
	OPENING	CLOSING			
BIMOFFICE GROUP BERHAD	-	-	RM0.15	LEAP MARKET	30 Mar 2026
GOLDEN DESTINATIONS GROUP BERHAD	26 Mar 2026	4 Apr 2026	RM0.45	ACE MARKET	16 Apr 2026
EMPIRE PREMIUM FOOD BERHAD	25 Mar 2026	31 Mar 2026	RM0.36	MAIN MARKET	17 Apr 2026
MTT SHIPPING AND LOGISTICS BERHAD	26 Mar 2026	3 Apr 2026	RM1.03	MAIN MARKET	21 Apr 2026



Learn how to identify Hot Stocks using Technical Analysis (TA) and Fundamental Analysis (FA)

SIGN UP FOR **Invest** IT'S FREE!

Click Here

Scan/Click me



Via email,
every Friday