



MARKET SENTIMENTS

Overnight Policy Rate (OPR) maintained at 2.75% - MPC page 28

International Reserves of BNM as at 15 January 2026 page 30

Malaysia's inflation increased 1.6% in December 2025 - DOSM page 30

From MSWG's
The Observer
Staged Not
Engaged

See more on pages 34-40

ALSO

COMPANY
SPOTLIGHT
Velesto Energy
Berhad

See more on page 06

BEHIND THE TICKER: DECODING COMPANY FUNDAMENTALS Invest 120

Ouster:
Strong Growth, Weak Economics (For Now)

SUMMARY

- Nasdaq's Ouster Inc (OUST) operates in a high-growth LIDAR market and has improved its operating performance since the Velodyne merger, but it remains firmly in the growth stage and structurally unprofitable.
- Despite strong headline revenue growth, much of it acquisition-driven, Ouster operates well below breakeven. It would need to nearly triple revenue - alongside margin expansion and cost discipline - to reach profitability.
- With a strong cash position, low debt, and improving cash burn, Ouster appears able to fund several more years of losses without near-term dilution or balance sheet stress.

Disclaimer: This article is written for informational purposes only. It does not constitute a solicitation, offer, advice, investment or recommendation to buy or sell any security. It is not intended to provide the purchase of shares in any way and a reader's any type of asset has a risk factor and needs to be evaluated from multiple perspectives. Therefore, any investment decision and the associated risk remains with the investor. This space represents the views of the author only.

See more on pages 20-26

04 LEADERBOARD

05 SHARIAH HOT STOCKS

08 SHARIAH MOMENTUM UP STOCKS

09 NON SHARIAH HOT STOCKS

10 UP TRENDING STOCKS

11 VALUE STOCKS

12 GROWTH STOCKS

14 DIVIDEND STOCKS

16 BROKERS' CALL

17 LONG COMPANIES

33 REGIONAL MARKETS

41 INSIDER ACTIVITY

46 INVESTOR RELATIONS
ANNOUNCEMENTS

SHAREINVESTOR®

An AlphaInvest Company

Invest with Knowledge

INVESTOR PLATFORMS

Director
Darren Chong
darren.chong@shareinvestor.com

Business Development Manager
Jay Cheong
jay.cheong.@shareinvestor.com

ADMIN & OPERATIONS

Senior Executive
Watie Nordin
watie.nordin@shareinvestor.com

Executive
Silas Emmanuel Joseph
silas.joseph@shareinvestor.com

PROCESS AUTOMATION & DATA ANALYTICS

Data Analyst
Lee Khai Bing

INVESTOR RELATIONS

Group Managing Director & Publisher
Edward Stanislaus
edward@shareinvestor.com

Senior Manager
Letticia Wong
letticia.wong@shareinvestor.com

Manager
Aida Norzeti Talib
aida.norzeti@shareinvestor.com

ALPHAINVEST HOLDINGS BOARD OF DIRECTORS

Chairman	Patrick Daniel
Group CEO	Christopher Lee
Group COO	Lim Dau Hee
Group MD	Shanison Lin



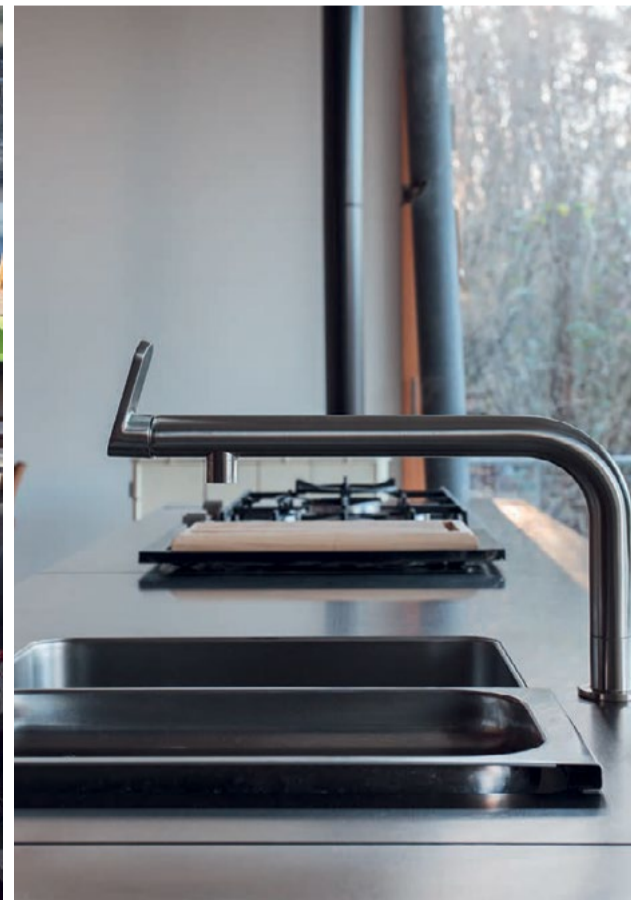
“ GIVE A MAN A FISH AND YOU FEED HIM FOR A DAY; TEACH A MAN TO FISH AND YOU FEED HIM FOR A LIFETIME ”

ShareInvestor Malaysia Sdn. Bhd.
(200001023956) (526564-M)
L15-03 & 03A, PJX HM Shah Tower,
No 16A, Jalan Persiaran Barat, PJS 52,
46200 Petaling Jaya, Selangor

Hotline : 603 8681 0580
Mobile : 011 6343 8939
Website : www.ShareInvestor.com.my
www.alphainvestholdings.com
www.Facebook.com/ShareInvestorMalaysia

ADVERTISEMENT ENQUIRY

bulthaup takes care of the details so that you can enjoy a harmonious environment.



XTRA

XTRA FURNITURE SDN BHD
The Gardens Mall, Mid Valley City
xfurniture.com/bulthaup
fb.com/bulthaupmalaysia

bulthaup



ROWAN director chair
 Designed by ITO Design, Germany

Inspired by the sophistication of first and business class, **ROWAN** delivers a fully enveloping comfort through Italian full-grain leather and precision-engineered aluminum form.

Where design excellence meets executive presence.



XTRA
www.xtrafurniture.com



GERMAN
 DESIGN
 AWARD
 WINNER
 2025



Awarded for Design. Certified for Excellence. Trusted Worldwide.

www.shareinvestor.com - market data at your fingertips



ShareInvestor WebPro (www.shareinvestor.com/my)
Prices > Stock Prices > Bursa > click Stocks tab

1. mouse over Ranking > select Top Active > all Shariah stocks are denoted with an [S] > mouse over Column Layout > select Edit Customs > select Name > select Volume > select Last Done Price > Mouse Over Column Layout > select Custom
2. mouse over Ranking > select Top Turnover > all Shariah stocks are denoted with an [S] > mouse over Column Layout > select Edit Customs > select Name > select Last Done Price > select Value > Mouse Over Column Layout > select Custom
3. mouse over Ranking > select Top Gainers (Over 5 Trading Days) > mouse over Column Layout > select Edit Customs > select Name > select Last Done Price > select 5 Days Change > select 5 Days % Change > Mouse Over Column Layout > select Custom
4. mouse over Ranking > select Top Losers (Over 5 Trading Days)
5. mouse over Ranking > select Top % Gainers (Over 5 Trading Days)
6. mouse over Ranking > select Top % Losers (Over 5 Trading Days)

Shariah Top Actives (As at Yesterday)

Name	Price (RM)	Volume
VELESTO [S]	0.315	1,312,642.000
SMRT [S]	0.200	967,089.000
NATGATE [S]	1.190	772,343.000
PMETAL [S]	7.500	742,419.000
ZETRIX [S]	0.810	649,357.000
TANCO [S]	1.310	519,536.000
IJM [S]	2.640	469,416.000
MRDIY [S]	1.800	270,509.000
CAPITALA [S]	0.520	233,712.000
SBS [S]	0.230	227,550.000

Shariah Top Turnover (As at Yesterday)

Name	Price (RM)	Value (RM)
PMETAL [S]	7.500	549,659,821
IJM [S]	2.640	123,601,954
GAMUDA [S]	4.580	97,126,381
NATGATE [S]	1.190	86,635,210
TANCO [S]	1.310	67,646,343
TM [S]	7.780	54,668,502
ZETRIX [S]	0.810	53,014,929
SDG [S]	5.650	51,321,299
IHH [S]	8.490	49,246,520
MRDIY [S]	1.800	48,348,111

Top Gainers (over 5 Trading days as at Yesterday)

Name	Price (RM)	Change (RM)
ALLIANZ	22.660	+2.300
NESTLE	117.000	+1.000
DLADY	31.940	+0.740
CARLSBG	17.800	+0.520
PETDAG	21.200	+0.500
LPI	15.400	+0.440
SCIENTX	3.900	+0.320
MPI	34.000	+0.300
PMETAL	7.500	+0.280
KSSC	0.930	+0.230

Top % Gainers (over 5 Trading days as at Yesterday)

Name	Price (RM)	Change (%)
NEXGBINA	0.040	+33.33
SNTORIA	0.020	+33.33
KSSC	0.930	+32.86
GPACKET	0.045	+28.57
GREENTEC	0.235	+27.03
ASDION	0.025	+25.00
ARTRONIQ	0.145	+20.83
SORENTO	0.735	+20.49
OBHB	0.200	+17.65
GCE	0.410	+17.14

Top Losers (over 5 Trading days as at Yesterday)

Name	Price (RM)	Change (RM)
UTDPLT	30.720	-2.260
KLK	20.100	-0.440
AYER	7.020	-0.370
SLVEST	2.810	-0.320
BLDPLNT	15.300	-0.300
KSL	2.990	-0.280
ABMB	5.200	-0.260
SMRT	0.200	-0.230
KESM	3.070	-0.200
SUNCON	5.760	-0.200

Top % Losers (over 5 Trading days as at Yesterday)

Name	Price (RM)	Change (%)
SMRT	0.200	-53.49
BORNOIL	0.005	-50.00
ZENTECH	0.005	-50.00
TECHNAX	0.025	-37.50
SEALINK	0.265	-28.38
LYC	0.020	-20.00
EVD	0.045	-18.18
JOHAN	0.025	-16.67
NETX	0.050	-16.67
FITTERS	0.030	-14.29

Price & Volume Distribution Charts (as at Yesterday)

Technical Analysis

DEFINITION: Shariah compliant stocks with Technical Analysis showing 5-days & 10-days Moving Average Price below Yesterday's Close over past 3 days and with Volume Spike.

CHART GUIDE: Volume Distribution Chart is a statistical interpretation of the current sentiment on each stock in graphical format. The highest bar categorized as >150k is likely to be traded by institutions or super dealers, while the lowest bar categorized as <15k usually represents retail investors. "Buy Up" refers to more buyers snatching up the lots queued at selling price. "Sell Down" refers to sellers selling their shares to the buying queue



ShareInvestor WebPro > Screener > Market Screener (FA & TA) > select BURSA > add criteria

A. Criteria

- > click Add Criteria
- Technical Analysis Conditions tab select (i) Moving Average Below Close (ii) Volume Spike
- Fundamental Analysis Conditions tab > select (iii) Revenue
- Prices & Other Conditions tab > select (iv) Is Shariah Compliant
- Technical Analysis Conditions tab select (v) Moving Average Below Close
- Prices & Other Conditions tab > select (vi) Last Done Price
- Technical Analysis Conditions tab select (vii) Moving Average Below Close

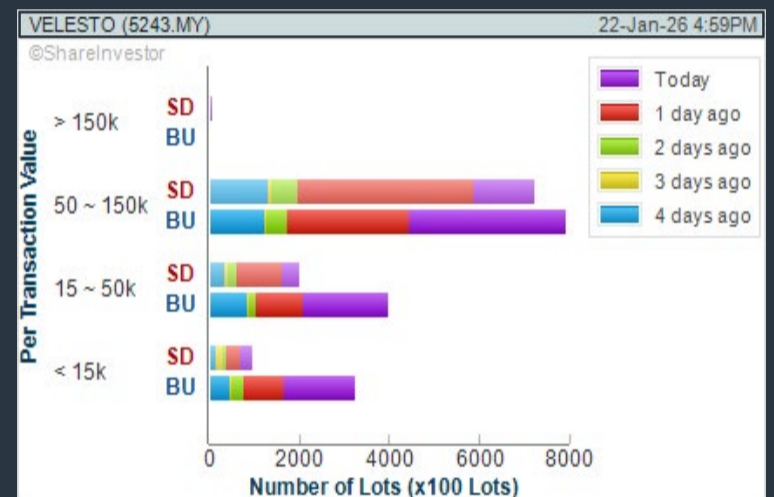
B. Conditions (Criteria Filters)

1. Moving Average Below Close - select (MA) type (5) below close price for type (3) days
2. Volume Spike - Volume type (1) greater than type (5) days average
3. Revenue ('000) - select (more than) type (1) for the past select (1) financial year(s)
4. Is Shariah Compliant - select **Yes**
5. Moving Average Below Close - select (MA) type (10) below close price for type (3) days
6. Last Done Price - select (more than) type (0.3)
7. Moving Average Below Close - select (EMA) type (5) below close price for type (3) days

- > click Save Template > Create New Template type (Shariah Hot Stocks) > click Create
- > click Save Template as > select Shariah Hot Stocks > click Save
- > click Screen Now (may take a few minutes)
- > Sort By: Select (Vol) Select (Desc)
- > Mouse over stock name > click C² Charts or Volume Distribution

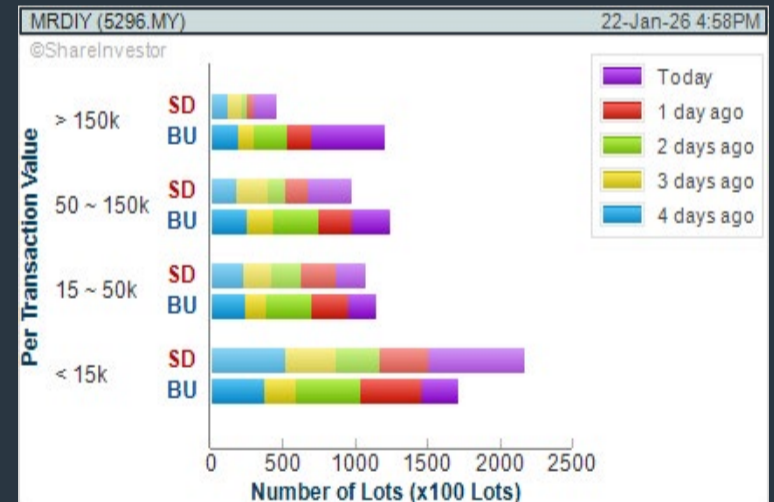
VELESTO ENERGY BERHAD (5243) C² Chart

Analysis



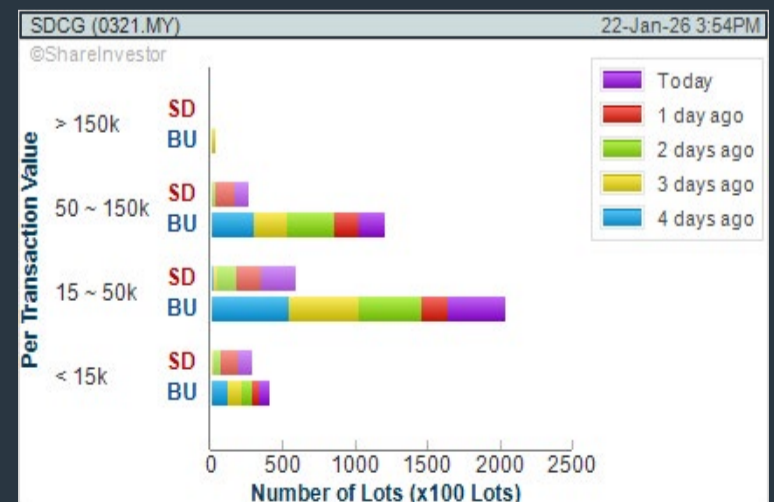
MR D.I.Y. GROUP (M) BERHAD (5296) C² Chart

Analysis



SOLAR DISTRICT COOLING GROUP BERHAD (0321) C² Chart

Analysis



Disclaimer: The information on this page is provided as a service to readers. It does not constitute financial advice and/or any investment recommendations. Past performance is not indicative of future results. We assume no liability for damages resulting from or arising out of the use of such information. It would be best if you did your own research to make your personal investment decisions wisely or consult a licenced investment advisor.

COMPANY BACKGROUND

Velesto Energy Berhad is an investment holding company, which provides drilling and oilfield services for the oil and gas industry. It operates through the following segments: Drilling Services, Integrated Project Management, Oilfield Services, and Others.



VELESTO VELESTO ENERGY BERHAD		Updated at 22 Jan 2026 16:59	
Last (MYR): 0.315 ↑	Change: +0.025	High: 0.320	Remarks: [c] • [?]
Open: 0.290	Change (%): +8.62	Low: 0.285	
Buy Price: 0.315	0.290	Yesterday's Close: 0.290	
Buy Volume ('00): 30,717	0.315	Sell Price: 0.320	
Cumulative Volume ('00): 1,312,642	30,717	Sell Volume ('00): 48,519	
	1,312,642	Cumulative Value: 40,051,215	

Financial Analysis

Revenue Growth Increasing revenue in last 3 consecutive years	😊	Profit Growth Increasing profit in latest year (with last 2 profitable years)	😊
Piotroski F Score The company has strong financial strength (Piotroski F-Score of 8-9)	😊	Dividend Payout Dividend is increasing over the past 60 months.	😊
Free Cash Flow Positive and increasing free cash flow for at least two years	😊	Gross Profit Margin Consistently good gross profit margin of 20%-40% for 3 years	😊
Gross Profit Margin Gross profit margin is improving by 5% a year over the past 60 months.	😊	Net Earnings Margin Good net profit margin of at least 15% for most recent year	😊
Net Earnings Margin Net profit margin is improving by more than 10% a year over the past 60 months.	😊		

😊 Excellent 😊 Good 😐 Neutral 😡 Be Alert 🚨 Watch Out



Historical Financials

Profit & Loss (MYR '000)

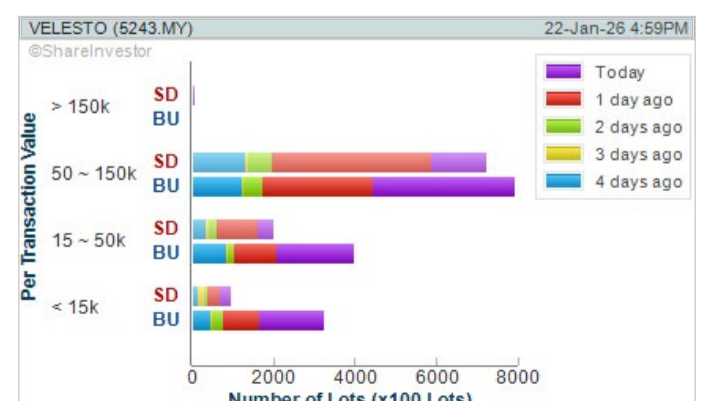


WebPro 9-Days Free Trial Registration
(worth RM10)
Sign Up Now



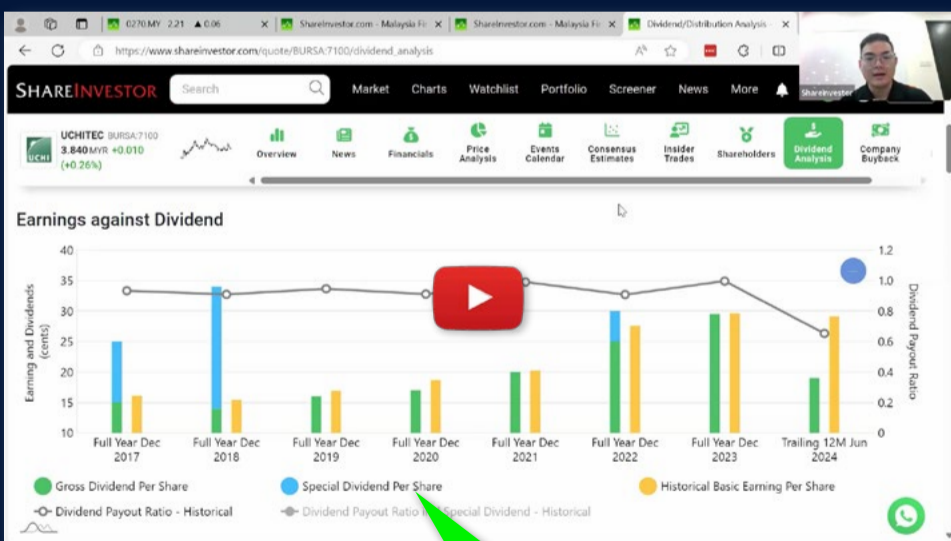
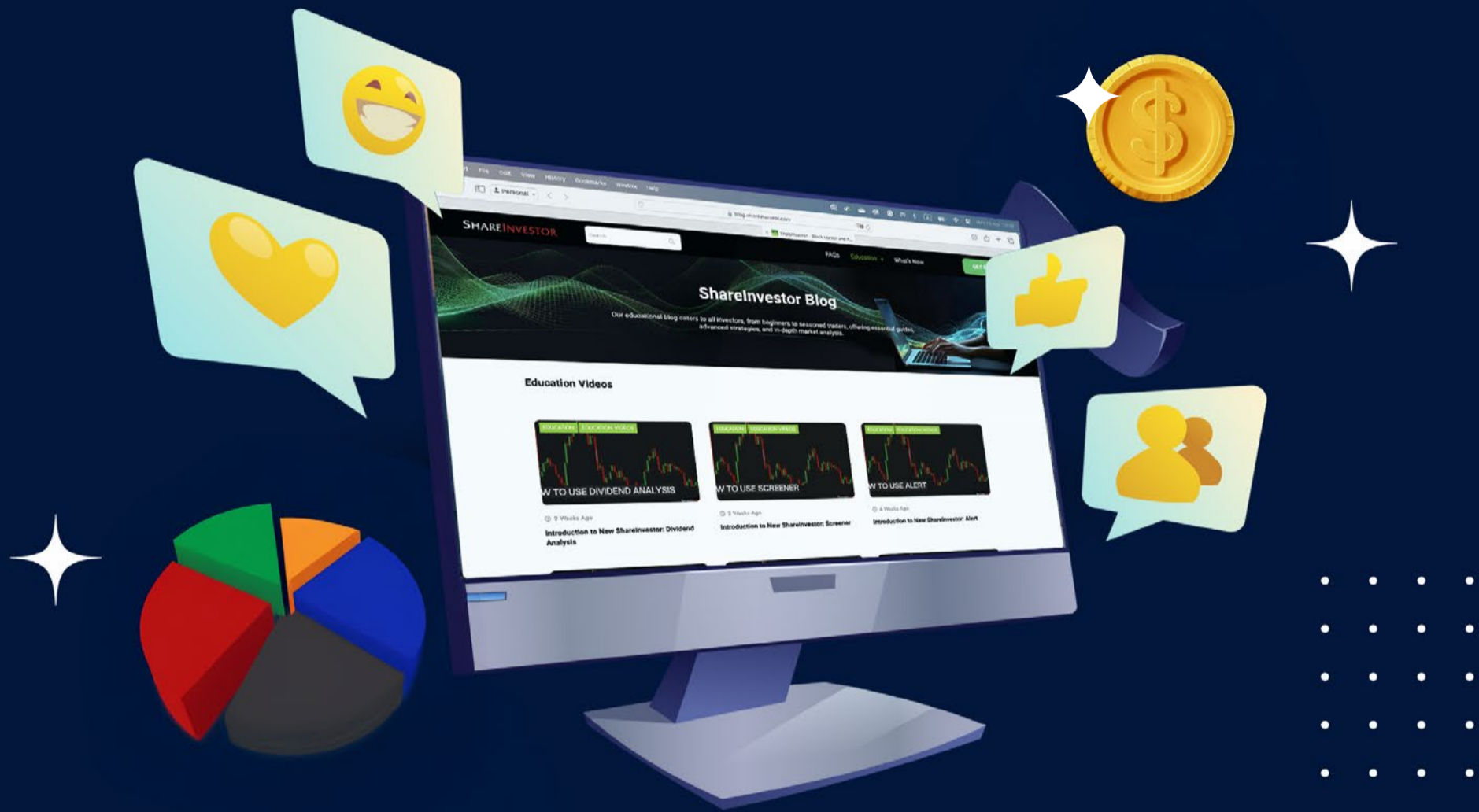
Key Statistics with Total Shareholder Returns

Period	Dividend Received	Capital Appreciation	Total Shareholder Return
Short Term Return	5 Days	-	+12.50%
	10 Days	-	+12.60%
	20 Days	-	+14.55%
Medium Term Return	3 Months	-	+23.53%
	6 Months	0.008	+74.59%
	1 Year	0.018	+70.77%
Long Term Return	2 Years	0.023	+30.00%
	3 Years	0.023	+53.64%
	5 Years	0.023	+181.67%
Annualised Return	Annualised	-	+23.01%



Disclaimer: The information on this page is provided as a service to readers. It does not constitute financial advice and/or any investment recommendations. Past performance is not indicative of future results. We assume no liability for damages resulting from or arising out of the use of such information. It would be best if you did your own research to make your personal investment decisions wisely or consult a licenced investment advisor.

Ultimate Guide to use **ShareInvestor**



YOU WILL LEARN HOW TO USE:

- Company Financials
- Market Screener
- Company Insider Trades
- Dividend Analysis
- Consensus Estimation
and more...

**Watch
now!**

Price & Volume Distribution Charts (as at Yesterday)

Technical Analysis

DEFINITION: Shariah compliant stocks with Technical Analysis showing Bullish Momentum and Price Uptrend. The share price closed at the highest price yesterday. The typical price was higher than the previous day's typical price.

CHART GUIDE: Volume Distribution Chart is a statistical interpretation of the current sentiment on each stock in graphical format. The highest bar categorized as >150k is likely to be traded by institutions or super dealers, while the lowest bar categorized as <15k usually represents retail investors. "Buy Up" refers to more buyers snatching up the lots queued at selling price. "Sell Down" refers to sellers selling their shares to the buying queue.



ShareInvestor WebPro > Screener > Market Screener (FA & TA)>select BURSA>add criteria

A. Criteria

- > click Add Criteria
- Fundamental Analysis Conditions tab >select (i) Revenue
- Technical Analysis Conditions tab select (ii) Average Volume
- Prices & Other Conditions tab > select (iii) Last Done Price
- Prices & Other Conditions tab > select (iv) Is Shariah Compliant
- Technical Analysis Conditions tab select (v) RSI Overbought
- Technical Analysis Conditions tab select (vi) Moving Average Below Close
- Technical Analysis Conditions tab select (vii) CCI Overbought

B. Conditions (Criteria Filters)

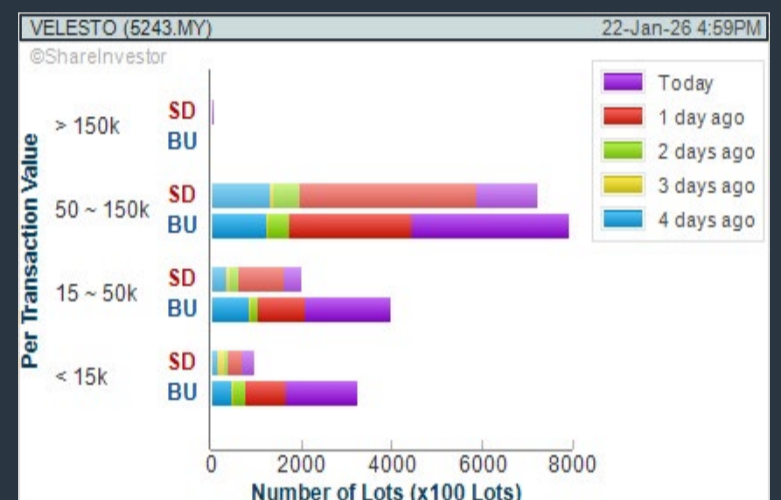
1. Revenue ('000) - select (more than) type (1) for the past select (1) financial year(s)
2. Average Volume - type (1) days average volume greater than type (10000) lots
3. Last Done Price - select (more than) type (0.3)
4. Is Shariah Compliant - select Yes
5. RSI Overbought - select RSI 1 above 99 for 1 days
6. Moving Average Below Close - select (MA) type (10) below close price for type (1) days
7. CCI Overbought - select CCI (2) above (0) for (1) days

- > click Save Template > Create New Template type (Shariah Momentum Up Stocks) > click Create
- > click Save Template as > select Shariah Momentum Up Stocks > click Save
- > click Screen Now (may take a few minutes)
- Sort By: Select (Vol) Select (Desc)
- Mouse over stock name > Charts > click C² Charts tab or Volume Distribution

VELESTO ENERGY BERHAD (5243)

C² Chart

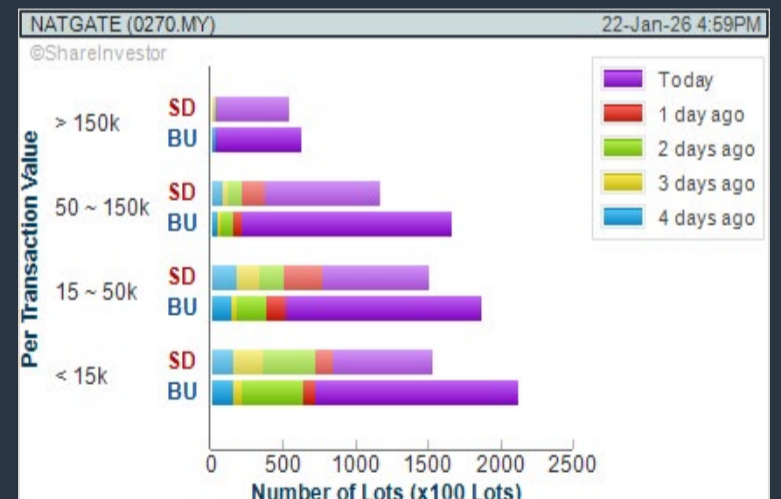
Analysis



NATIONGATE HOLDINGS BERHAD (0270)

C² Chart

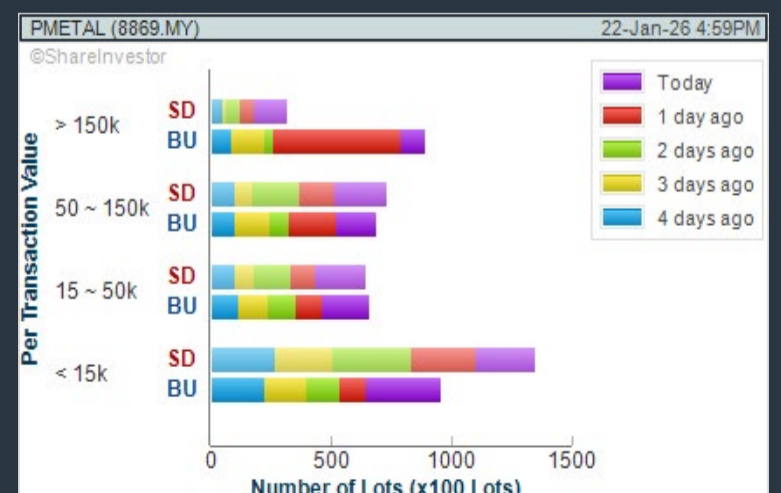
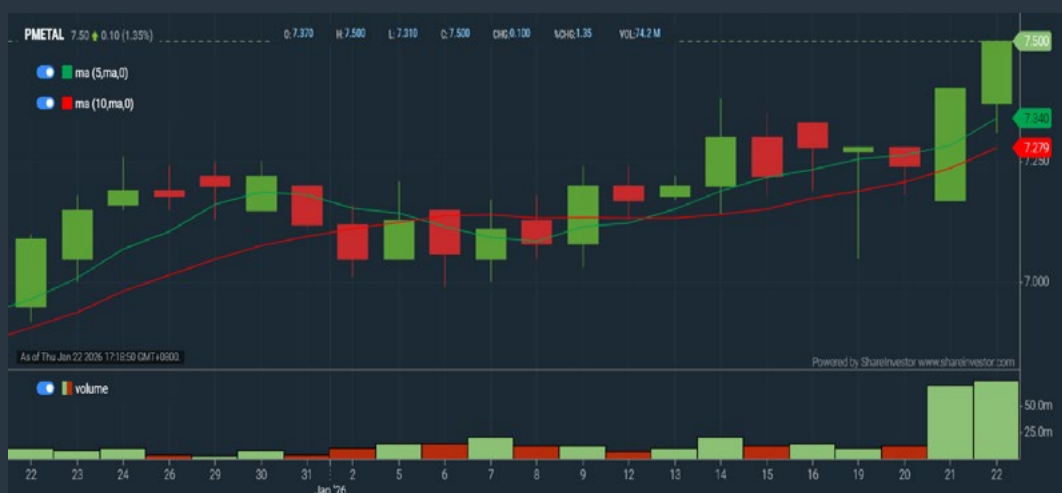
Analysis



PRESS METAL ALUMINIUM HOLDINGS BERHAD (8869)

C² Chart

Analysis



Disclaimer: The information on this page is provided as a service to readers. It does not constitute financial advice and/or any investment recommendations. Past performance is not indicative of future results. We assume no liability for damages resulting from or arising out of the use of such information. It would be best if you did your own research to make your personal investment decisions wisely or consult a licenced investment advisor.

Price & Volume Distribution Charts (as at Yesterday)

Technical Analysis

DEFINITION: Stocks with Technical Analysis showing 5-days & 10-days Moving Average Price below Close over past 1 days and with Volume Spike

CHART GUIDE: Volume Distribution Chart is a statistical interpretation of the current sentiment on each stock in graphical format. The highest bar categorized as >150k is likely to be traded by institutions or super dealers, while the lowest bar categorized as <15k usually represents retail investors. "Buy Up" refers to more buyers snatching up the lots queued at selling price. "Sell Down" refers to sellers selling their shares to the buying queue.



ShareInvestor WebPro > Screener > Market Screener (FA & TA) > select BURSA > add criteria

A. Criteria

- > click Add Criteria
- Technical Analysis Conditions tab select (i) Moving Average Below Close (ii) Volume Spike
- Fundamental Analysis Conditions tab >select (iii) Revenue
- Prices & Other Conditions tab > select (iv) Is Shariah Compliant
- Technical Analysis Conditions tab select (v) Moving Average Below Close
- Prices & Other Conditions tab > select (vi) Last Done Price
- Technical Analysis Conditions tab select (vii) Moving Average Below Close

B. Conditions (Criteria Filters)

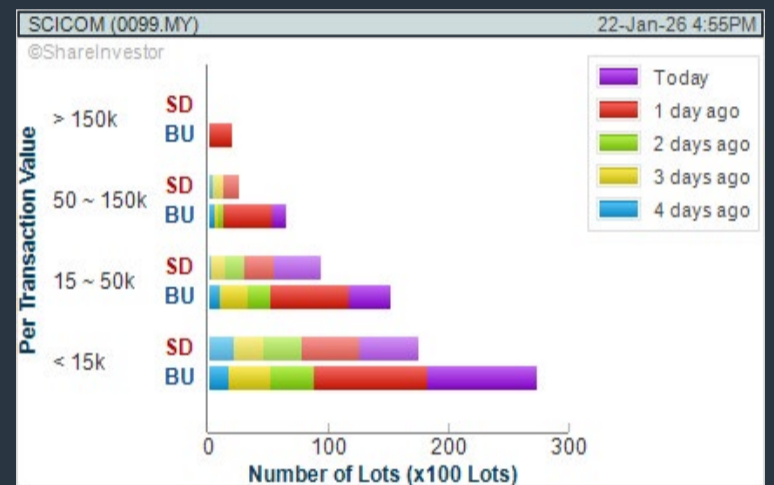
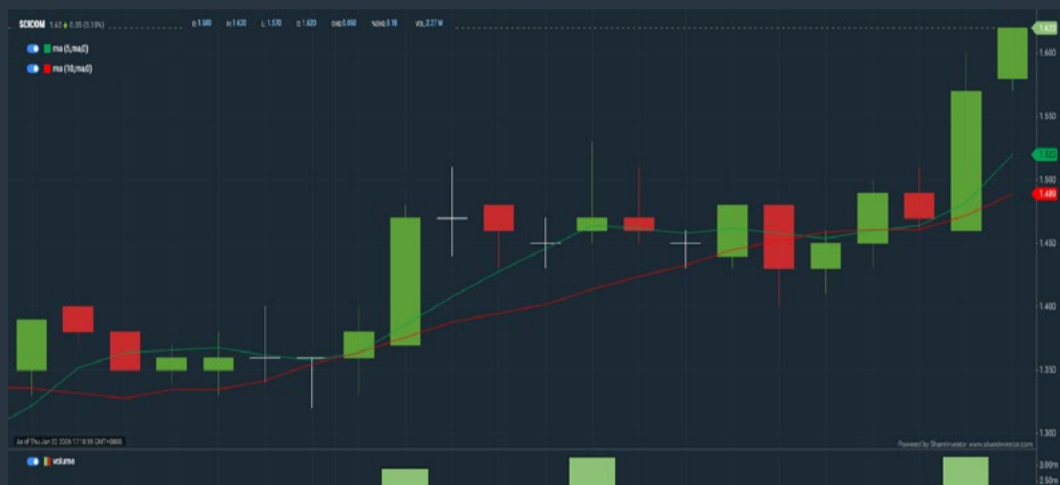
1. Moving Average Below Close - select (MA) type (5) below close price for type (3) days
2. Volume Spike - Volume type (1) greater than type (5) days average
3. Revenue ('000) - select (more than) type (1) for the past select (1) financial year(s)
4. Is Shariah Compliant - select NO
5. Moving Average Below Close - select (MA) type (10) below close price for type (1) days
6. Last Done Price - select (more than) type (0.3)
7. Moving Average Below Close - select (EMA) type (5) below close price for type (1) days

- > click Save Template > Create New Template type (Non-Shariah Hot Stocks) > click Create
- > click Save Template as > select Non-Shariah Hot Stocks > click Save
- > click Screen Now (may take a few minutes)
- Sort By: Select (Vol) Select (Desc)
- Mouse over stock name > Charts > click C² Charts tab or Volume Distribution

SCICOM (MSC) BERHAD (0099)

C² Chart

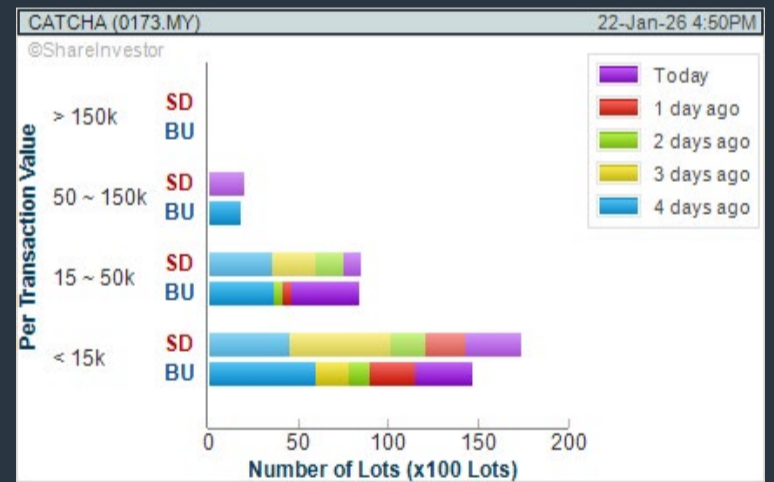
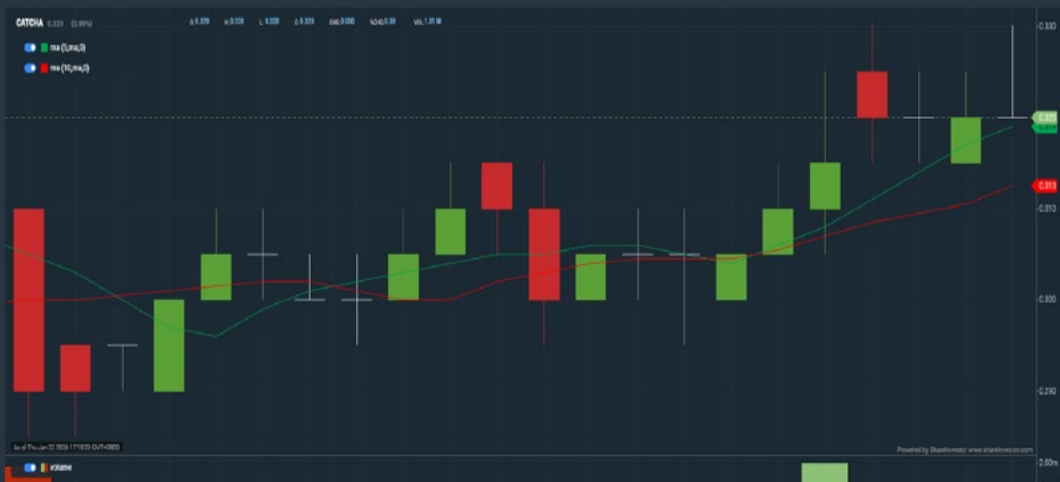
Analysis



CATCHA DIGITAL BERHAD (0173)

C² Chart

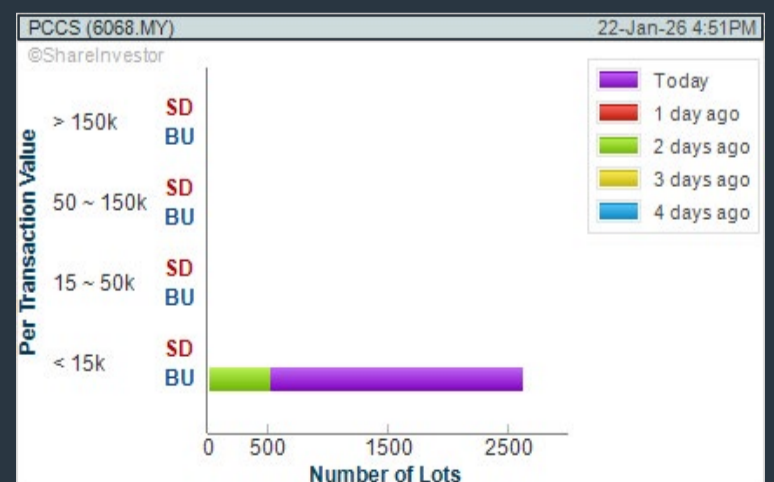
Analysis



PCCS GROUP BHD (6068)

C² Chart

Analysis



Disclaimer: The information on this page is provided as a service to readers. It does not constitute financial advice and/or any investment recommendations. Past performance is not indicative of future results. We assume no liability for damages resulting from or arising out of the use of such information. It would be best if you did your own research to make your personal investment decisions wisely or consult a licenced investment advisor.

Price & Volume Distribution Charts (Over 3 trading days as at Yesterday)

Technical Analysis

DEFINITION: Stocks with Technical Analysis showing Bullish Momentum and Price Uptrend

CHART GUIDE: Volume Distribution Chart is a statistical interpretation of the current sentiment on each stock in graphical format. The highest bar categorized as >150k is likely to be traded by institutions or super dealers, while the lowest bar categorized as <15k usually represents retail investors. "Buy Up" refers to more buyers snatching up the lots queued at selling price. "Sell Down" refers to sellers selling their shares to the buying queue.



ShareInvestor WebPro > Screener > Market Screener (FA & TA) > select BURSA > add criteria

A. Criteria

- > click Add Criteria
- Fundamental Analysis Conditions tab > select (i) Revenue
- Technical Analysis Conditions tab select (ii) Moving Average Below Close
- Technical Analysis Conditions tab select (iii) Average Volume
- Prices & Other Conditions tab > select (iv) Last Done Price
- Technical Analysis Conditions tab select (v) Moving Average Below Close
- Technical Analysis Conditions tab select (v) Moving Average Bullish Crossover

B. Conditions

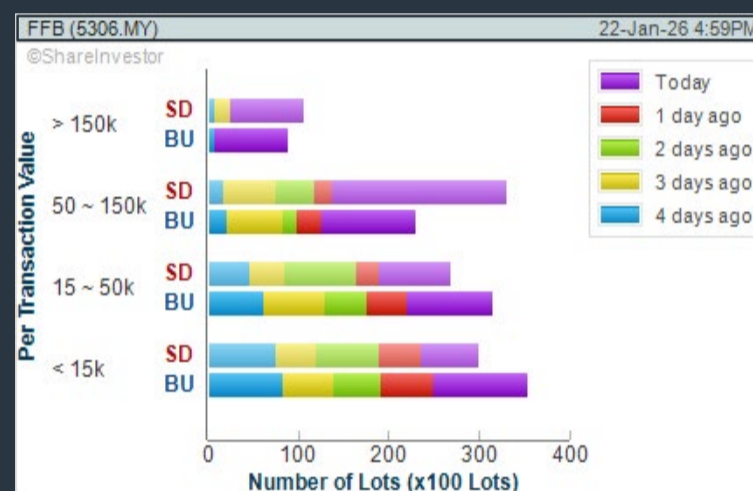
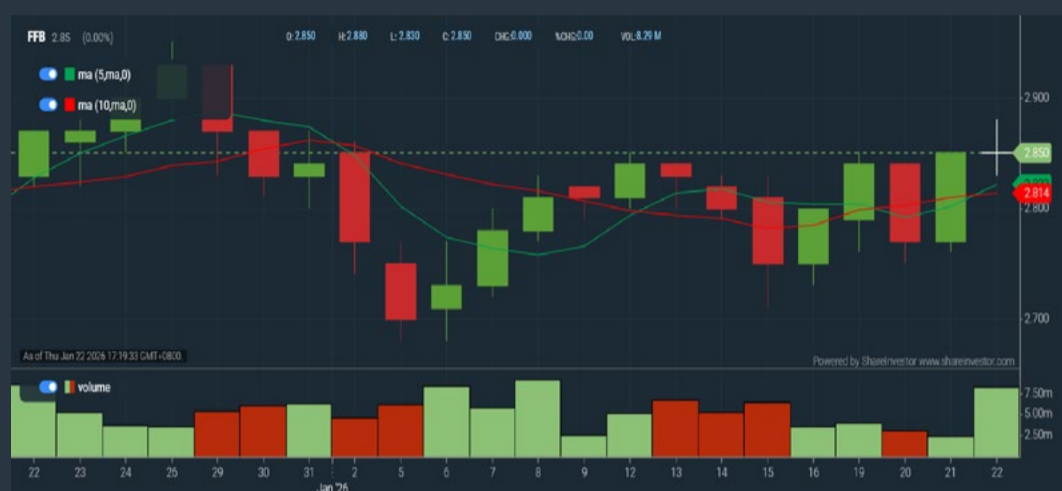
1. Revenue - select (more than) type (1) for the past select (1) financial year(s)
2. Moving Average Below Close - select (MA) type (20) below close price for type (1) days
3. Average Volume - type (5) days average volume type (10000) lots
4. Last Done Price - select (more than) type (0.3)
5. Moving Average Below Close - select (MA) type (10) below close price for type (1) days
6. Moving Average Bullish Crossover - select (MA) type (5) crossed above select (MA) type (10)

> click Save Template > Create New Template type (Non-Shariah Up-Trending Stocks) > click Create Click Save Template As > select Non-Shariah Up Trending Stocks > click Save
> click Screen Now (may take a few minutes)
Sort By: Select (Vol) Select (Desc)
Mouse over stock name > Charts > click C² Charts tab or Volume Distribution

FARM FRESH BERHAD (5306)

C² Chart

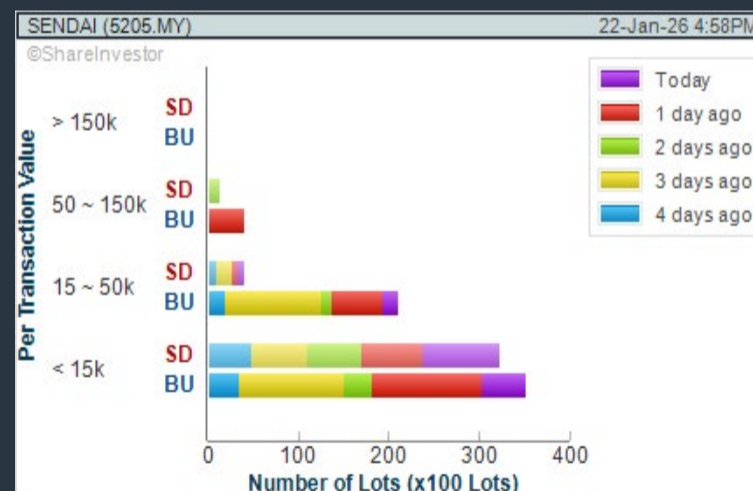
Analysis



EVERSENDI CORPORATION BERHAD (5205)

C² Chart

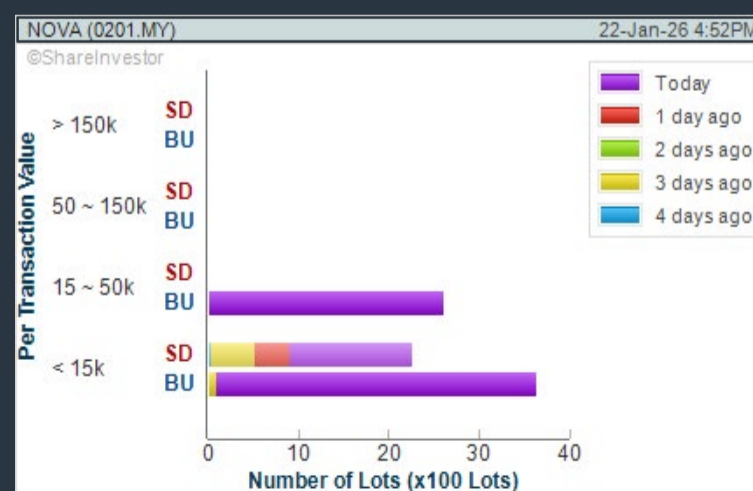
Analysis



NOVA WELLNESS GROUP BERHAD (0201)

C² Chart

Analysis



Disclaimer: The information on this page is provided as a service to readers. It does not constitute financial advice and/or any investment recommendations. Past performance is not indicative of future results. We assume no liability for damages resulting from or arising out of the use of such information. It would be best if you did your own research to make your personal investment decisions wisely or consult a licenced investment advisor.

Price & Total Shareholder Return (as at Yesterday)

Fundamental Analysis

DEFINITION: Share price of a company trading at a lower price as compared to its fundamentals (FA) such as financial performance and dividend, allowing it to be attractive to value investors.

CHART GUIDE: Total Shareholder Return (TSR) combines share price appreciation and dividend distributions paid to show the total return to the shareholder expressed as a percentage.



ShareInvestor WebPro > Screener > Market Screener (FA & TA) > select BURSA > add criteria

A. Criteria

- > click Add Criteria
- Fundamental Analysis Conditions tab (i) Price Earnings Ratio
- Fundamental Analysis Conditions tab >select (ii) CAGR of Net Earnings
- Fundamental Analysis Conditions tab >select (iii) Net Debt To Equity
- Fundamental Analysis Conditions tab >select (iv) Return On Equity (ROE)

B. Conditions

1. Price Earnings Ratio - select (less than) type (15) times now
2. CAGR of Net Earnings - select (more than) type (10) % for the past type (3) financial year(s)
3. Net Debt To Equity – select (less than) type (1) for the past select (1) financial year(s)
4. Return On Equity (ROE) – select (more than) type (10) % for the past select (1) financial year(s)

- > click Save Template > Create New Template type (Value Stock) > click Create
- > click Save Template as > select Value Companies > click Save
- > click Screen Now (may take a few minutes)
- Sort by: Select (PE Ratio) Select (Ascending)
- > Mouse over stock name > Factsheet > looking for Total Shareholder Return
- > Mouse over stock name > Charts > click C2 Charts tab

MUDAJAYA GROUP BHD (5085)

C² Chart



Analysis

Period	Dividend Received	Capital Appreciation	Total Shareholder Return
Short Term Return	5Days	-0.01	-1.9%
	10Days	-	-
	20Days	-0.01	-4.5%
Medium Term Return	3Months	-0.01	-3.2%
	6Months	-0.01	-3.8%
	1Year	-0.01	-3.2%
Long Term Return	2Years	-0.01	-4.8%
	3Years	0.00	-3.4%
	5Years	0.00	-2.2%
Annualized Return	Annualized	-	0.2%

SMRT HOLDINGS BERHAD (0117)

C² Chart



Analysis

Period	Dividend Received	Capital Appreciation	Total Shareholder Return
Short Term Return	5Days	-0.01	-5.0%
	10Days	-0.01	-5.0%
	20Days	-0.01	-5.0%
Medium Term Return	3Months	-0.01	-5.0%
	6Months	-0.01	-5.0%
	1Year	-0.01	-5.0%
Long Term Return	2Years	-0.01	-5.0%
	3Years	-0.01	-5.0%
	5Years	-0.01	-5.0%
Annualized Return	Annualized	-	-5.0%

TOMEI CONSOLIDATED BHD (7230)

C² Chart



Analysis

Period	Dividend Received	Capital Appreciation	Total Shareholder Return
Short Term Return	5Days	-0.01	-0.5%
	10Days	-	-
	20Days	-0.01	-0.5%
Medium Term Return	3Months	-0.01	-0.5%
	6Months	-	-
	1Year	0.01	-0.5%
Long Term Return	2Years	0.01	-0.5%
	3Years	0.01	-0.5%
	5Years	0.01	-0.5%
Annualized Return	Annualized	-	-0.5%

Disclaimer: The information on this page is provided as a service to readers. It does not constitute financial advice and/or any investment recommendations. Past performance is not indicative of future results. We assume no liability for damages resulting from or arising out of the use of such information. It would be best if you did your own research to make your personal investment decisions wisely or consult a licenced investment advisor.

Price & Total Shareholder Return (as at Yesterday)

Fundamental Analysis

DEFINITION: Company revenue is growing and making good quality of earnings with positive Free Cash Flow.

CHART GUIDE: Total Shareholder Return (TSR) combines share price appreciation and distributions paid to show the total return to the shareholder expressed as a percentage.



ShareInvestor WebPro > Screener > Market Screener (FA & TA) > select BURSA > add criteria

A. Criteria

1. Fundamental Analysis Conditions tab >select (i) Free Cash Flow, (ii) Revenue Growth, (iii) Gross Profit (Earnings) Margin, (iv) Quality of Earnings, (v) Total Shareholder Returns, > click Add Criteria
2. Fundamental Analysis Conditions tab >select (vi) Total Shareholder Returns > click Add Criteria

B. Conditions (Criteria Filters)

1. Free Cash Flow - select (more than) type (1) for the past select (1) financial year(s)
2. Revenue Growth - select (more than) type (1) for the past select (1) financial year(s)
3. Gross Profit (Earnings) Margin - select (more than) type (30) % for the past select (1) financial year(s)
4. Quality of Earnings - select (more than) type (1) for the past select (1) financial year(s)
5. Total Shareholder Return - select (more than) type (5) % for the past select (3) financial year(s)
6. Total Shareholder Return - select (more than) type (5) % for the past select (5) financial year(s)

- > click Save Template > Create New Template type (Growth Companies) > click Create
- > click Save Template as > select Growth Companies > click Save
- > click Screen Now (may take a few minutes)
- > Sort By: Select (Revenue Growth) Select (Desc)
- > Mouse over stock name > Factsheet > looking for Total Shareholder Return

COUNTRY VIEW BHD (5049)

C² Chart

Analysis



Period	Dividend Received	Capital Appreciation	Total Shareholder Return
Short Term Return	1 Day	-0.00	-0.0%
	10 Days	-0.00	-0.0%
	20 Days	-	-
Medium Term Return	3 Months	0.00	+0.0%
	6 Months	0.00	+0.0%
	1 Year	0.00	+0.0%
Long Term Return	2 Years	0.00	+0.0%
	3 Years	0.00	+0.0%
	5 Years	0.00	+0.0%
Annualized Return	Annualized	-	+0.0%

IDB TECHNOLOGIES BERHAD (03030)

C² Chart

Analysis



Period	Dividend Received	Capital Appreciation	Total Shareholder Return
Short Term Return	1 Day	-	-
	10 Days	-	-
	20 Days	-	-
Medium Term Return	3 Months	0.00	+0.0%
	6 Months	0.00	+0.0%
	1 Year	0.00	+0.0%
Long Term Return	2 Years	0.00	+0.0%
	3 Years	0.00	+0.0%
	5 Years	0.00	+0.0%
Annualized Return	Annualized	-	+0.0%

ORIENTAL INTEREST BHD (5827)

C² Chart

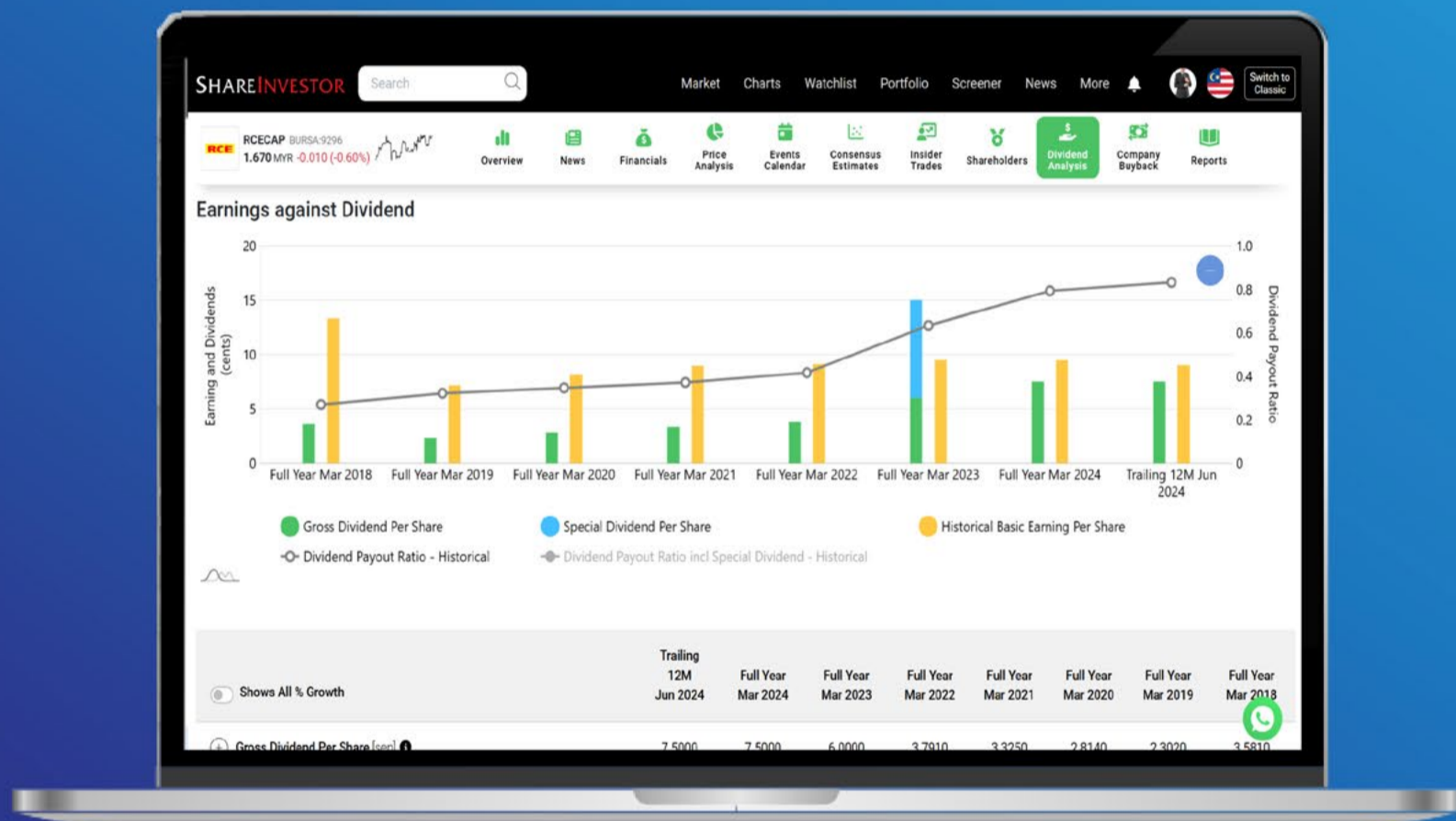
Analysis



Period	Dividend Received	Capital Appreciation	Total Shareholder Return
Short Term Return	1 Day	-0.00	-0.0%
	10 Days	-0.00	-0.0%
	20 Days	-0.00	-0.0%
Medium Term Return	3 Months	-0.00	-0.0%
	6 Months	-0.00	-0.0%
	1 Year	0.00	+0.0%
Long Term Return	2 Years	0.00	+0.0%
	3 Years	0.00	+0.0%
	5 Years	0.00	+0.0%
Annualized Return	Annualized	-	+0.0%

Disclaimer: The information on this page is provided as a service to readers. It does not constitute financial advice and/or any investment recommendations. Past performance is not indicative of future results. We assume no liability for damages resulting from or arising out of the use of such information. It would be best if you did your own research to make your personal investment decisions wisely or consult a licenced investment advisor.

Tired of low returns? Let's talk high-paying Dividends!



- ✓ **Top Dividend Picks Right Now**
- ✓ **Insider Tips** – Advanced strategies for experienced investors
- ✓ **Easy-to-Follow Tutorial**

Get the most out of dividends, use our Dividend Analysis function –
Click to Watch Our Tutorial Below!

Upgrade Your Dividend Strategy Here



Price & Total Shareholder Return (as at Yesterday)

Fundamental Analysis

DEFINITION: Company is paying out dividend with low or moderate leverage.

CHART GUIDE: Total Shareholder Return (TSR) combines share price appreciation and distributions paid to show the total return to the shareholder expressed as a percentage.



ShareInvestor WebPro > Screener > Market Screener (FA & TA) > select BURSA > add criteria

A. Criteria

- > click Add Criteria
- Fundamental Analysis Conditions tab >select (i) Dividend Yield (Historical)
- Fundamental Analysis Conditions tab >select (ii) Dividend Payout (Historical)
- Fundamental Analysis Conditions tab >select (iii) Total Debt To Equity
- Fundamental Analysis Conditions tab >select (iv) Total Shareholder Returns
- Fundamental Analysis Conditions tab >select (v) Total Shareholder Returns
- Fundamental Analysis Conditions tab / >select (vi) CAGR of Dividend Per Share

• Fundamental Analysis Conditions tab >select (vii) CAGR of Dividend Per Share

B. Conditions (Criteria Filters)

1. Dividend Yield - select (more than) type (1) % for the past select (1) financial year(s)
2. Dividend Payout (Historical) - select (between) type (0.5) to type (1) times for the past select (1) financial year(s)
3. Total Debt to Equity - select (less than) type (1) for the past select (1) financial year(s)
4. Total Shareholder Return - select (more than) type (5) % for the past select (3) financial year(s)
5. Total Shareholder Return - select (more than) type (5) % for the past select (5) financial year(s)

6. CAGR of Dividend Per Share - select (less than) type (30) % for the past select (5) financial year(s)
7. CAGR of Dividend Per Share - select (more than) type (1) % for the past select (5) financial year(s)

- > click Save Template > Create New Template type (Dividend Companies) > click Create
- > click Save Template as > select Dividend Companies > click Save
- > click Screen Now (may take a few minutes)
- > Sort By: Select (Dividend Yield) Select (Desc)
- > Mouse over stock name > Factsheet > looking for Total Shareholder Return

FORMOSA PROSONIC INDUSTRIES BERHAD (9172)

C² Chart



Analysis

Period	Dividend Received	Capital Appreciation	Total Shareholder Return
Short Term Return	5 Days	-0.00	-0.01%
	10 Days	-0.00	+0.03%
	20 Days	-0.00	+0.07%
Medium Term Return	3 Months	0.00	+0.00%
	6 Months	0.00	+0.00%
	1 Year	0.00	+0.00%
Long Term Return	2 Years	0.00	+0.00%
	3 Years	0.00	+0.00%
	5 Years	0.00	+0.00%
Annualized Return	Annualized	-	+0.00%

APM AUTOMOTIVE HOLDINGS BHD (5015)

C² Chart



Analysis

Period	Dividend Received	Capital Appreciation	Total Shareholder Return
Short Term Return	5 Days	-0.00	-0.01%
	10 Days	-0.00	+0.01%
	20 Days	-0.00	+0.02%
Medium Term Return	3 Months	-0.00	+0.01%
	6 Months	0.00	+0.01%
	1 Year	0.00	+0.01%
Long Term Return	2 Years	0.00	+0.01%
	3 Years	0.00	+0.01%
	5 Years	0.00	+0.01%
Annualized Return	Annualized	-	+0.01%

DELEUM BHD (5132)

C² Chart



Analysis

Period	Dividend Received	Capital Appreciation	Total Shareholder Return
Short Term Return	5 Days	-0.00	-0.01%
	10 Days	-0.00	-0.02%
	20 Days	-0.00	-0.03%
Medium Term Return	3 Months	-0.00	-0.04%
	6 Months	0.00	+0.00%
	1 Year	0.00	+0.00%
Long Term Return	2 Years	0.00	+0.00%
	3 Years	0.00	+0.00%
	5 Years	0.00	+0.00%
Annualized Return	Annualized	-	+0.00%

Disclaimer: The information on this page is provided as a service to readers. It does not constitute financial advice and/or any investment recommendations. Past performance is not indicative of future results. We assume no liability for damages resulting from or arising out of the use of such information. It would be best if you did your own research to make your personal investment decisions wisely or consult a licenced investment advisor.

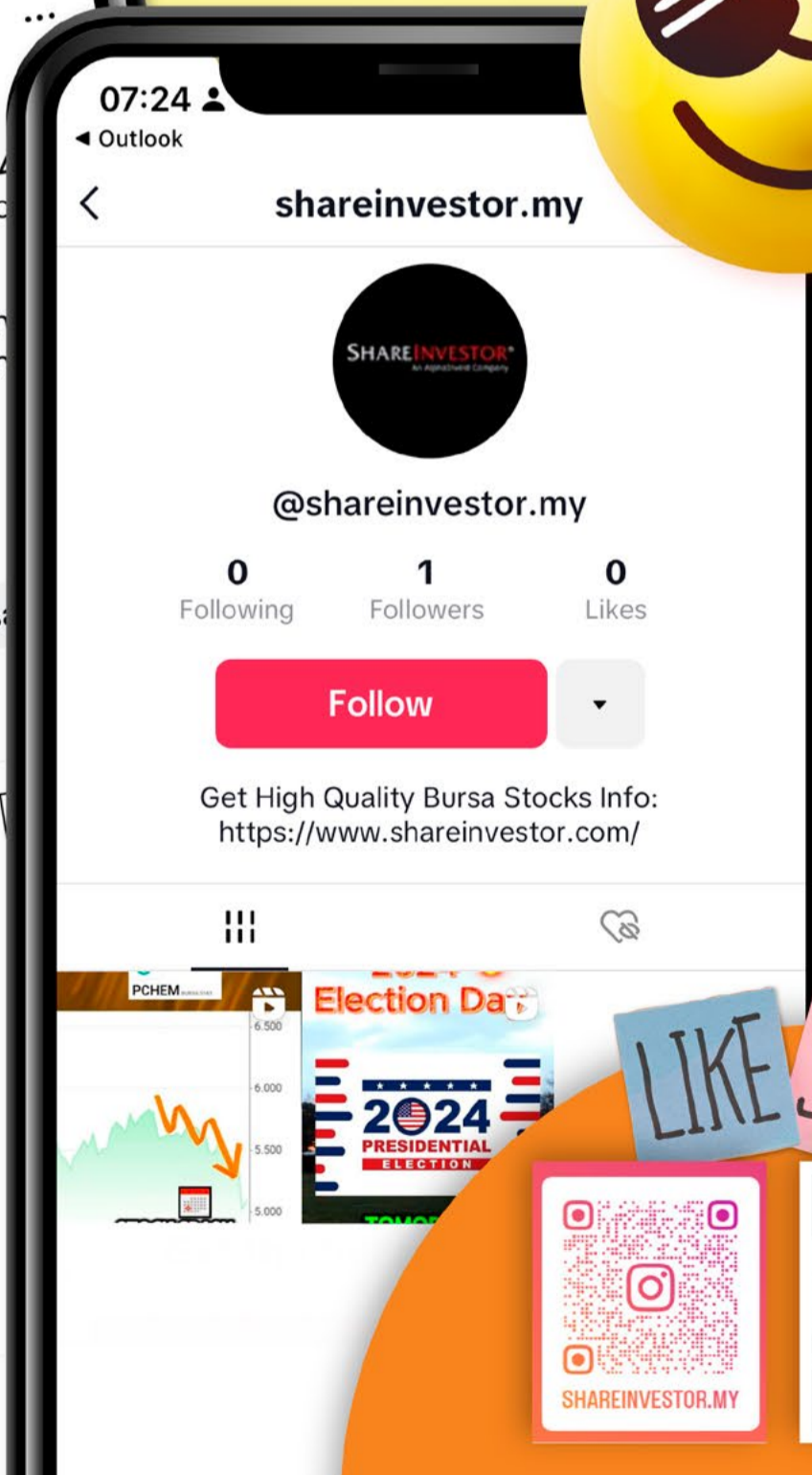
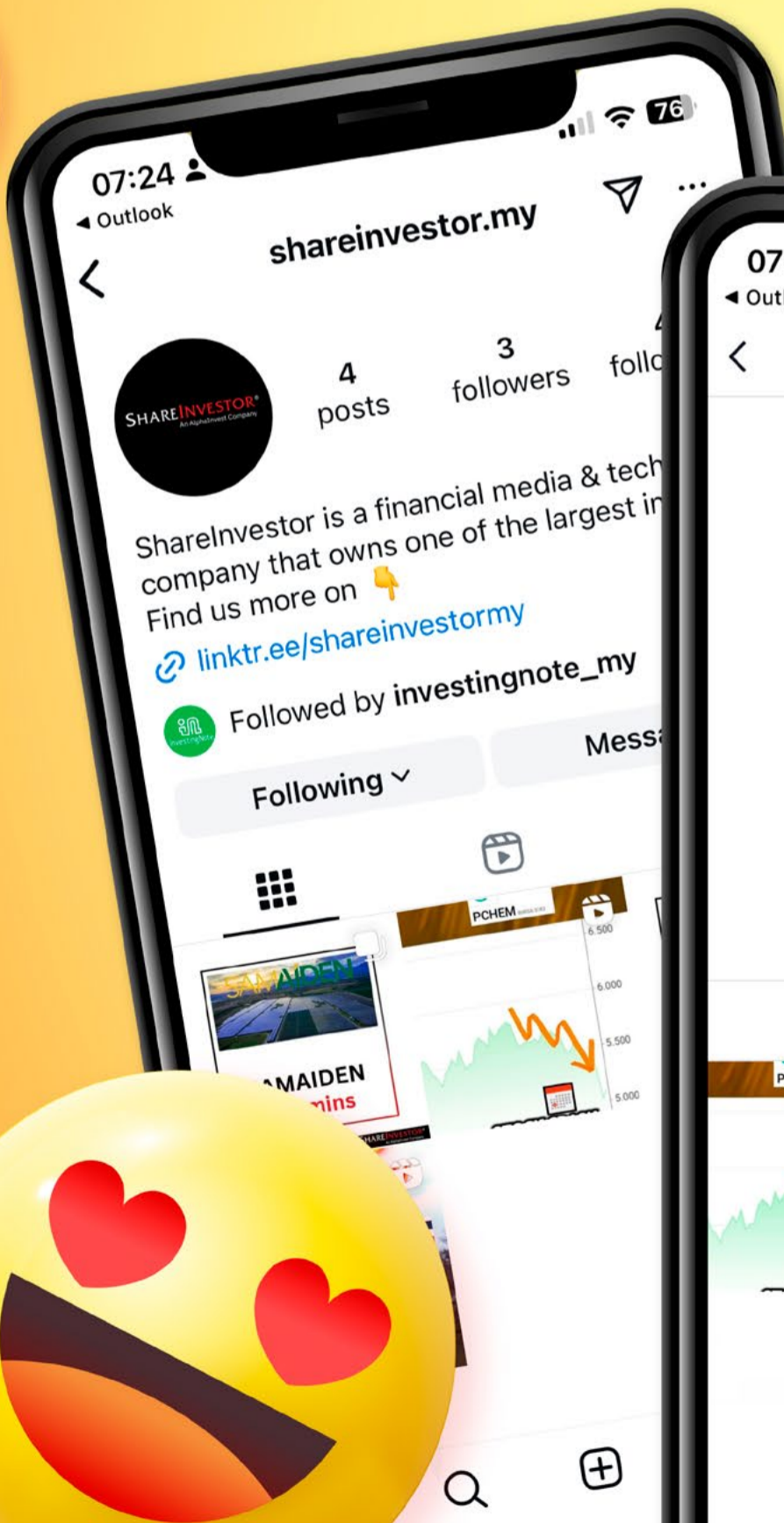
SHAREINVESTOR[®]
An AlphaInvest Company



We're Officially on TikTok & Instagram!



Follow us now for more information!



LIKE SHARE



SHAREINVESTOR.MY

Week: 16 Jan - 22 Jan 2026

More Brokers' Call 

AmInvestment Bank <small>... See More</small>	Call	Target Price	Release Date
Infomina Berhad (0265)	BUY	RM1.38	19 Jan 26
Kuala Lumpur Kepong Berhad (2445)	HOLD	RM20.80	20 Jan 26
Malayan Banking Berhad (1155)	HOLD	RM10.80	21 Jan 26

APEX Securities <small>... See More</small>	Call	Target Price	Release Date
Elridge Energy Holdings Berhad (0318)	HOLD	RM0.97	22 Jan 26
KIP Real Estate Investment Trust (5280)	HOLD	RM0.95	22 Jan 26

Hong Leong Investment Bank <small>... See More</small>	Call	Target Price	Release Date
Ancom Nylex Berhad (4758)	BUY	RM1.13	21 Jan 26
Malayan Banking Berhad (1155)	BUY	RM12.70	21 Jan 26
SD Guthrie Berhad (5285)	BUY	RM6.49	22 Jan 26

Kenanga <small>... See More</small>	Call	Target Price	Release Date
Dayang Enterprise Holdings Berhad (5141)	MARKET PERFORM	RM1.60	21 Jan 26
Malayan Banking Berhad (1155)	OUTPERFORM	RM11.30	21 Jan 26
Ancom Nylex Berhad (4758)	OUTPERFORM	RM1.40	22 Jan 26

MIDF <small>... See More</small>	Call	Target Price	Release Date
IJM Corporation Berhad (3336)	ACCEPT	RM3.15	20 Jan 26
Malayan Banking Berhad (1155)	BUY	RM11.99	21 Jan 26

Public Investment Bank <small>... See More</small>	Call	Target Price	Release Date
Kossan Rubber Industries Berhad (7153)	OUTPERFORM	RM1.50	20 Jan 26
Malayan Banking Berhad (1155)	OUTPERFORM	RM11.70	21 Jan 26

UOB Kay Hian <small>... See More</small>	Call	Target Price	Release Date
Binastra Corporation Berhad (7195)	BUY	RM2.46	21 Jan 26
Ranhill Utilities Berhad (5272)	BUY	RM2.04	21 Jan 26
Yinson Holdings Berhad (7293)	BUY	RM3.10	21 Jan 26

DEFINITION: Top 10 stocks with Technical Analysis plus Pattern Matching by 60 pre-defined indicators by the system showing a higher probability of bullish sentiment on the share price.



ShareInvestor WebPro > Screener > Predefined TA Screens > select market BURSA > Most Long Signals > click Scan Results or mouse over each company

CLLOUDPOINT TECHNOLOGY BERHAD (0277.MY)

CLLOUDPT

Price updated at 22 Jan 2026 17:31

Last: 0.660	Change: +0.005	Volume: 5,308
	Change (%): +0.76	Range: 0.650 - 0.660

TA Scanner Results based on historical data up to 22 Jan 2026

Condition	Signal	Explanation
Bollinger Band: Bullish Lower Bollinger Band Support	Long	"1. Low 1 day ago below lower bollinger band(20,2). 2. Close above close 1 day ago. 3. Average volume(5) is above 100,000."
Candlestick: Bullish Engulfing	Long	Bullish: Engulfing
Volume: 10 Days large value Buy Up trade	Long	"1. 150K value Buy Up greater than Sell Down by 20% for 10 days. 2. 50K-100K value Buy Up greater than Sell Down by 20% for 10 days. 3. Average volume(10) is above 1000000"
Volume: 5 Days large value Buy Up trade	Long	"1. 150K value Buy Up greater than Sell Down by 20% for 5 days. 2. 50K-100K value Buy Up greater than Sell Down by 20% for 5 days. 3. Average volume(10) is above 1000000"
Volume: Consecutive Days Of Increasing Average Volume	Long	"1. Average Volume(20) has been increasing over the last 2 weeks. 2. Average volume(20) is above 100000"

MI TECHNOVATION BERHAD (5286.MY)

MI

Price updated at 22 Jan 2026 17:31

Last: 3.490	Change: -0.020	Volume: 14,821
	Change (%): -0.57	Range: 3.470 - 3.560

TA Scanner Results based on historical data up to 22 Jan 2026

Condition	Signal	Explanation
Candlestick: Bullish Engulfing	Long	Bullish: Engulfing
MA: Medium Term Bullish Moving Average Crossover	Long	MA(25) crossed above MA(50) within the last 1 day.
Price: New 52 Week High	Long	"1. Stock reach a new 52 week high. 2. Average volume(30) is above 50000."
Volume: 10 Days large value Buy Up trade	Long	"1. 150K value Buy Up greater than Sell Down by 20% for 10 days. 2. 50K-100K value Buy Up greater than Sell Down by 20% for 10 days. 3. Average volume(10) is above 1000000"
Volume: 5 Days large value Buy Up trade	Long	"1. 150K value Buy Up greater than Sell Down by 20% for 5 days. 2. 50K-100K value Buy Up greater than Sell Down by 20% for 5 days. 3. Average volume(10) is above 1000000"
Williams %R: Bearish Williams %R	Short	"1. Williams %R(26) between 0 and -20. 2. Average volume(5) is above 100,000."

AMFIRST REITS (5120.MY)

AMFIRST

Price updated at 22 Jan 2026 17:31

Last: 0.325	Change: -	Volume: 1,191
	Change (%): -	Range: 0.325 - 0.335

TA Scanner Results based on historical data up to 22 Jan 2026

Condition	Signal	Explanation
Bollinger Band: Bullish Long Term Volatility Breakout and Trending	Long	"1. Close price above upper bollinger band(33,1). 2. Volume above average volume(50). 3. Average volume(50) is above 300,000."
Bollinger Band: Bullish Short Term Volatility Breakout and Trending	Long	"1. Close price above upper bollinger band(33,1). 2. Volume above average volume(10). 3. Average volume(10) is above 300,000."
Bollinger Band: High Above Upper Bollinger Band	Neutral	"1. High above upper bollinger band(14,2). 2. Average volume(5) is above 100,000."
DM: Bullish Directional Movement	Long	-DI(14) crossed below +DI(14)
MACD: Bullish MACD Crossover	Long	"1. MACD(12,26) diff line crossed above the MACD(12,26) signal line. 2. MACD Histogram(12,26) is above 0."
Price: New 52 Week High	Long	"1. Stock reach a new 52 week high. 2. Average volume(30) is above 50000."
Williams %R: Bearish Williams %R	Short	"1. Williams %R(26) between 0 and -20. 2. Average volume(5) is above 100,000."

THREE-A RESOURCES BHD (0012.MY)

3A

Price updated at 22 Jan 2026 17:31

Last: 0.710	Change: -	Volume: 21
	Change (%): -	Range: 0.710 - 0.710

TA Scanner Results based on historical data up to 22 Jan 2026

Condition	Signal	Explanation
Candlestick: Bullish Engulfing	Long	Bullish: Engulfing
DM: Bullish Directional Movement	Long	-DI(14) crossed below +DI(14)
MA: Bullish Price Crossover	Long	"1. Close price crossed above MA(40) within the last 1 day. 2. Previous day close price is below the MA(10) for the last 5 days"
MA: Short Term Bearish Moving Average Crossover	Short	MA(10) crossed below MA(15) within the last 1 day.
MACD: Bullish MACD Crossover	Long	"1. MACD(12,26) diff line crossed above the MACD(12,26) signal line. 2. MACD Histogram(12,26) is above 0."

Disclaimer: The information on this page is provided as a service to readers. It does not constitute financial advice and/or any investment recommendations. Past performance is not indicative of future results. We assume no liability for damages resulting from or arising out of the use of such information. It would be best if you did your own research to make your personal investment decisions wisely or consult a licenced investment advisor.



SILVER RIDGE HOLDINGS BHD (0129.MY)

SRIDGE

Price updated at 22 Jan 2026 17:30

Last: 0.305	Change: -	Volume: 82,285
	Change (%): -	Range: 0.300 - 0.310

TA Scanner Results based on historical data up to 22 Jan 2026

Condition	Signal	Explanation
Bollinger Band: Bullish Long Term Volatility Breakout and Trending	Long	"1. Close price above upper bollinger band(33,1). 2. Volume above average volume(50). 3. Average volume(50) is above 300,000."
Bollinger Band: Bullish Short Term Volatility Breakout and Trending	Long	"1. Close price above upper bollinger band(33,1). 2. Volume above average volume(10). 3. Average volume(10) is above 300,000."
Chaikin Volatility: Increasing Chaikin Volatility	Neutral	Chaikin Volatility(10,10) has been increasing for 5 days
DM: Bullish Directional Movement	Long	-DI(14) crossed below +DI(14)
Volume: Consecutive Days Of Increasing Average Volume	Long	"1. Average Volume(20) has been increasing over the last 2 weeks. 2. Average volume(20) is above 100000"
Williams %R: Bearish Williams %R	Short	"1. Williams %R(26) between 0 and -20. 2. Average volume(5) is above 100,000."



MALAYAN BANKING BHD (1155.MY)

MAYBANK

Price updated at 22 Jan 2026 17:31

Last: 11.220	Change: +0.120	Volume: 242,350
	Change (%): +1.08	Range: 11.120 - 11.240

TA Scanner Results based on historical data up to 22 Jan 2026

Condition	Signal	Explanation
Candlestick: Bullish Harami	Long	Bullish: Harami
Volume: 10 Days large value Buy Up trade	Long	"1. 150K value Buy Up greater than Sell Down by 20% for 10 days. 2. 50K-100K value Buy Up greater than Sell Down by 20% for 10 days. 3. Average volume(10) is above 1000000"
Volume: 5 Days large value Buy Up trade	Long	"1. 150K value Buy Up greater than Sell Down by 20% for 5 days. 2. 50K-100K value Buy Up greater than Sell Down by 20% for 5 days. 3. Average volume(10) is above 1000000"
Volume: Consecutive Days Of Increasing Average Volume	Long	"1. Average Volume(20) has been increasing over the last 2 weeks. 2. Average volume(20) is above 100000"
Williams %R: Bearish Williams %R	Short	"1. Williams %R(26) between 0 and -20. 2. Average volume(5) is above 100,000."



NEXTGREEN GLOBAL BERHAD (7241.MY)

NGGB

Price updated at 22 Jan 2026 17:31

Last: 0.795	Change: -	Volume: 15,430
	Change (%): -	Range: 0.790 - 0.795

TA Scanner Results based on historical data up to 22 Jan 2026

Condition	Signal	Explanation
Bollinger Band: Bullish Lower Bollinger Band Support	Long	"1. Low 1 day ago below lower bollinger band(20,2). 2. Close above close 1 day ago. 3. Average volume(5) is above 100,000."
Volume: 10 Days large value Buy Up trade	Long	"1. 150K value Buy Up greater than Sell Down by 20% for 10 days. 2. 50K-100K value Buy Up greater than Sell Down by 20% for 10 days. 3. Average volume(10) is above 1000000"
Volume: 5 Days large value Buy Up trade	Long	"1. 150K value Buy Up greater than Sell Down by 20% for 5 days. 2. 50K-100K value Buy Up greater than Sell Down by 20% for 5 days. 3. Average volume(10) is above 1000000"
Volume: Consecutive Days Of Increasing Average Volume	Long	"1. Average Volume(20) has been increasing over the last 2 weeks. 2. Average volume(20) is above 100000"



SORENTO CAPITAL BERHAD (0326.MY)

SORENTO

Price updated at 22 Jan 2026 17:30

Last: 0.735	Change: +0.035	Volume: 35,134
	Change (%): +5.00	Range: 0.690 - 0.735

TA Scanner Results based on historical data up to 22 Jan 2026

Condition	Signal	Explanation
Candlestick: Bullish 3 White Soldiers	Long	Bullish: 3 White Soldiers
Price: New 52 Week High	Long	"1. Stock reach a new 52 week high. 2. Average volume(30) is above 50000."
RSI: RSI Overbought	Short	"1. RSI(20) is above 80. 2. RSI(20) is increasing for the last 3 days. 3. Stock has more than 75 days of historical data."
Volume: 10 Days large value Buy Up trade	Long	"1. 150K value Buy Up greater than Sell Down by 20% for 10 days. 2. 50K-100K value Buy Up greater than Sell Down by 20% for 10 days. 3. Average volume(10) is above 1000000"
Volume: Consecutive Days Of Increasing Average Volume	Long	"1. Average Volume(20) has been increasing over the last 2 weeks. 2. Average volume(20) is above 100000"

Disclaimer: The information on this page is provided as a service to readers. It does not constitute financial advice and/or any investment recommendations. Past performance is not indicative of future results. We assume no liability for damages resulting from or arising out of the use of such information. It would be best if you did your own research to make your personal investment decisions wisely or consult a licenced investment advisor.

CHECK OUT
SHAREINVESTOR
BROKERS' CALL

Weekly Buy/Sell/Hold calls from leading Malaysian Brokerages.

[Go To Brokers' Call](#)

SCICOM (MSC) BERHAD (0099.MY)

SCICOM

Price updated at 22 Jan 2026 17:31

Last: 1.620	Change: +0.050	Volume: 22,724
	Change (%): +3.19	Range: 1.570 - 1.620

TA Scanner Results based on historical data up to 22 Jan 2026

Condition	Signal	Explanation
Bollinger Band: High Above Upper Bollinger Band	Neutral	"1. High above upper bollinger band(14,2). 2. Average volume(5) is above 100,000."
Candlestick: Bullish Engulfing	Long	Bullish: Engulfing
Donchian Channels: High Above Upper Donchian Channels	Long	High crossed above the upper Donchian Channel(14,4)
Price: New 52 Week High	Long	"1. Stock reach a new 52 week high. 2. Average volume(30) is above 50000."
Volume: 10 Days large value Buy Up trade	Long	"1. 150K value Buy Up greater than Sell Down by 20% for 10 days. 2. 50K-100K value Buy Up greater than Sell Down by 20% for 10 days. 3. Average volume(10) is above 1000000"
Volume: 5 Days large value Buy Up trade	Long	"1. 150K value Buy Up greater than Sell Down by 20% for 5 days. 2. 50K-100K value Buy Up greater than Sell Down by 20% for 5 days. 3. Average volume(10) is above 1000000"
Williams %R: Bearish Williams %R	Short	"1. Williams %R(26) between 0 and -20. 2. Average volume(5) is above 100,000."

Disclaimer: The information on this page is provided as a service to readers. It does not constitute financial advice and/or any investment recommendations. Past performance is not indicative of future results. We assume no liability for damages resulting from or arising out of the use of such information. It would be best if you did your own research to make your personal investment decisions wisely or consult a licenced investment advisor.

TFP SOLUTIONS BERHAD (0145.MY)

TFP

Price updated at 22 Jan 2026 17:30

Last: 0.025	Change: -0.005	Volume: 4,934
	Change (%): -16.67	Range: 0.025 - 0.025

TA Scanner Results based on historical data up to 22 Jan 2026

Condition	Signal	Explanation
Bollinger Band: Bullish Long Term Volatility Breakout and Trending	Long	"1. Close price above upper bollinger band(33,1). 2. Volume above average volume(50). 3. Average volume(50) is above 300,000."
Bollinger Band: Bullish Lower Bollinger Band Support	Long	"1. Low 1 day ago below lower bollinger band(20,2). 2. Close above close 1 day ago. 3. Average volume(5) is above 100,000."
Bollinger Band: Bullish Short Term Volatility Breakout and Trending	Long	"1. Close price above upper bollinger band(33,1). 2. Volume above average volume(10). 3. Average volume(10) is above 300,000."
Bollinger Band: High Above Upper Bollinger Band	Neutral	"1. High above upper bollinger band(14,2). 2. Average volume(5) is above 100,000."
DM: Bullish Directional Movement	Long	-DI(14) crossed below +DI(14)
MA: Bullish Price Crossover	Long	"1. Close price crossed above MA(40) within the last 1 day. 2. Previous day close price is below the MA(10) for the last 5 days"
MACD: Bullish MACD Crossover	Long	"1. MACD(12,26) diff line crossed above the MACD(12,26) signal line. 2. MACD Histogram(12,26) is above 0."
RSI: Short Term RSI 50 Bullish Crossover	Long	"1. RSI(20) crossed above 50 within the last 1 day and RSI(20) 1 day ago below 50 for the last 5 days. 2. Volume above average volume(125). 3. Average volume(5) is above 100,000."



Learn how to identify Hot Stocks using Technical Analysis (TA) and Fundamental Analysis (FA)

SIGN UP FOR Invest

now

Click Here

Scan/Click me



Get market moving news and analyses. Regular columns include **Behind The Ticker** and **From MSWG's The Observer**

Leaderboard • Shariah Hot Stocks • Shariah Momentum Up Stocks • Non Shariah Hot Stocks • Up Trending Stocks • Growth Stocks • Dividend Stocks • Long Companies

- Insider Activity
- Investor Relations
- Regional Markets

IT'S FREE!

Via email, every Friday



Dato' Eu Hong Chew
Former Group CEO i-Berhad
Non-Executive Director

He has been associated with the Sumurwang Group for many years charting the path for its manufacturing arm, firstly under Dreamland Holdings Berhad and the subsequent acquisition of I-Berhad.

Before that, he was with PA Management Consulting for a decade where he was the Director of Studies for the Cranfield PA MBA Programme in Malaysia.

Educated at the Royal Military College, Dato' Eu has an engineering degree from the University of Glasgow, and a MBA from the University of Bradford, UK.

Ouster:

Strong Growth, Weak Economics (For Now)

SUMMARY

- Nasdaq's Ouster Inc (**OUST**) operates in a high-growth LiDAR market and has improved its operating performance since the Velodyne merger, but it remains firmly in the growth stage and structurally unprofitable.
- Despite strong headline revenue growth, much of it acquisition-driven, Ouster operates well below breakeven. It would need to nearly triple revenue - alongside margin expansion and cost discipline - to reach profitability.
- With a strong cash position, low debt, and improving cash burn, Ouster appears able to fund several more years of losses without near-term dilution or balance sheet stress.

BACKGROUND

Ouster is a leading global provider of LiDAR (Light Detection and Ranging) sensors and software solutions. LiDAR is a remote sensing technology that uses laser pulses to measure distances and generate highly accurate 3D representations of physical environments.

Although the underlying technology has existed for decades, its commercial adoption is still in an early stage. Recent advances have accelerated LiDAR adoption across a range of applications. These include autonomous vehicles, robotics, smart infrastructure, and industrial automation, which are now the primary drivers of market growth.

According to Ouster's November 2024 investor presentation, the company estimates a total addressable market (TAM) of approximately USD70 billion. However, independent market research suggests a substantially smaller near-term market size for LiDAR. The discrepancy largely reflects differing definitions of market scope. Despite these differences, there is a broad consensus that LiDAR is a high-growth sector, with market size expected to approximately double over the next four to five years.

Ouster's current corporate structure stems from its merger with Velodyne Lidar, completed in February 2023. As a result, Ouster's revenue doubled in 2023 compared to 2022, with Velodyne contributing slightly more than two-thirds of the increase, despite the merger being finalized early in the year.

In this context, Ouster appears to be entering the growth stage of its corporate life cycle. This is reflected in its financial profile: since going public via a SPAC merger in March 2021, the company has yet to achieve profitability.

OPERATING PERFORMANCE

From 2021 to 2024, Ouster's revenue grew at a CAGR of 49%, significantly outpacing its peers, whose revenue growth ranged from 18% to 33% CAGR over the same period.

However, it is important to note that this strong headline growth was largely acquisition-driven, with both Ouster and its peers relying on mergers or acquisitions to accelerate revenue expansion.

To ground my assumptions and avoid inside-view bias, I adopt an “outside view” approach in the spirit of Daniel Kahneman, using the following peer companies as reference points:

- Hesai Group (Nasdaq: HSAI) – A China-based LiDAR manufacturer focused on autonomous driving and robotics.
- indie Semiconductor (Nasdaq: INDI) – A US-based provider of automotive semiconductors and software, including LiDAR-related technologies.
- Luminar Technologies (Nasdaq: LAZR) – A US-based company specializing in LiDAR and machine perception systems for autonomous vehicles.

Despite its rapid revenue growth, Ouster has remained unprofitable because it continues to operate below its breakeven level. This is illustrated in the right-hand side of Chart 1, where the gap between revenue and total costs (fixed plus variable) represents operating profit.

Over the past four years, annual revenue has consistently fallen short of total costs, resulting in ongoing operating losses.

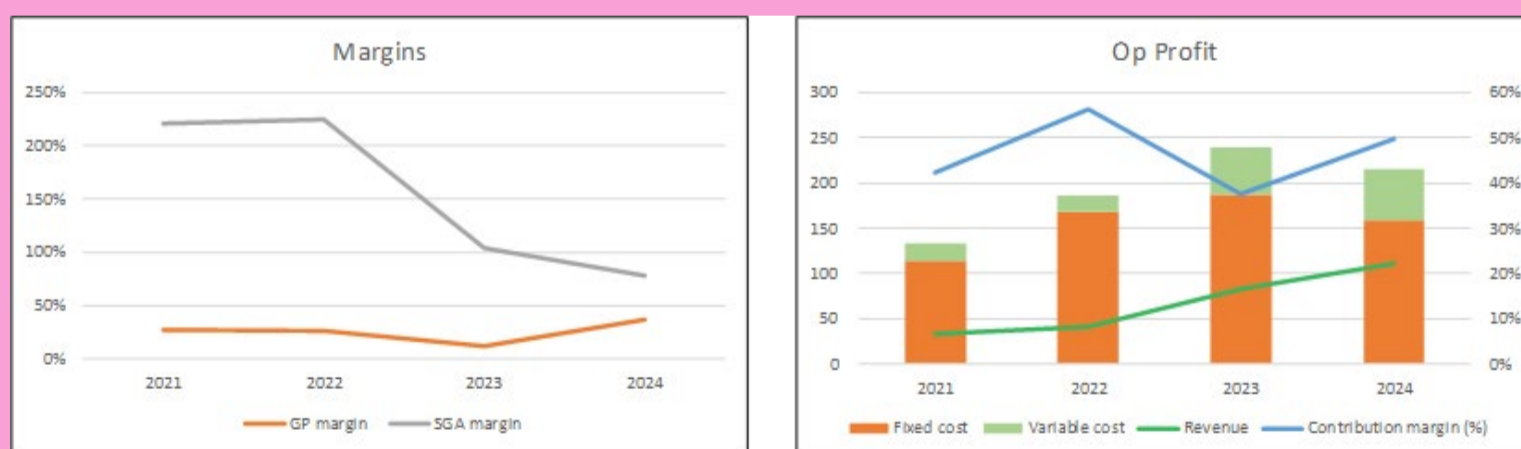


Chart 1: Margins and Operating Profit Profile

Notes to Op Profit Profile: I broke down the operating profits into fixed costs and variable costs.

- Fixed cost = SGA, R&D, Depreciation & Amortization and Others.
- Variable cost = Cost of Sales – Depreciation & Amortization.
- Contribution = Revenue – Variable Cost.
- Contribution margin = Contribution/Revenue.

A key characteristic of Ouster's operating model is its high fixed-cost base. Fixed costs account for a substantial portion of total costs, implying significant operating leverage. In such a structure, incremental revenue growth can have a disproportionate impact on profitability once breakeven is reached. Encouragingly, although the company remained loss-making, operating performance in 2024 improved meaningfully compared to 2023.

Several factors contributed to this improvement. Revenue growth was supported by a broader product portfolio following the Velodyne merger, which enabled Ouster to expand its customer base. Additional tailwinds came from improved pricing and an upgraded product mix. Contribution margins also improved as the merger generated cost synergies, leading to higher gross margins.

On the cost side, fixed costs declined following workforce reductions, which lowered selling, general, and administrative (SG&A) expenses. The consolidation of R&D activities after the merger further reduced the fixed-cost base. **Refer to Chart 1, left.**

Taken together, Ouster has multiple potential pathways to profitability: increasing revenue, expanding contribution margins, reducing fixed costs, or some combination of the three.

Using the 2024 operating parameters shown on the **right-hand side of Chart 1**, the breakeven revenue is estimated at approximately USD321 million, assuming no change in fixed costs or contribution margins. This is roughly 2.9 times Ouster's 2024 revenue. Even assuming a robust industry growth rate of 20% CAGR, it would take approximately six years for Ouster to triple its revenue through organic growth alone.

The conclusion is that Ouster's headline revenue growth has been strong but largely acquisition-driven. The company remains structurally unprofitable due to operating well below breakeven. While operating leverage and merger synergies provide a credible path to profitability, reaching breakeven would likely require several more years of sustained, high growth with limited room for execution error.

REINVESTMENT

Growth ultimately requires reinvestment. One way to assess this is through reinvestment, defined as:

Reinvestment = CAPEX and acquisitions – depreciation and amortization + increase in net working capital

From 2021 to 2024, Ouster reported a negative average reinvestment. Over this period, spending on capital expenditure and acquisitions was more than offset by depreciation and amortization, as well as changes in net working capital.

While this may reflect short-term dynamics following the Velodyne merger and cost rationalization, it is unlikely to be sustainable over the long run. For a company still in the growth phase, reinvestment should eventually be positive.

To put Ouster's reinvestment behaviour into context, I examined the reinvestment patterns of its peers. To account for differences in company size, reinvestment was scaled to revenue, resulting in the following average reinvestment margins over the 2021–2024 period:

- Hesai Group (HSAI): 37% (based on 2021–2023 data)
- indie Semiconductor (INDI): 35%
- Luminar Technologies (LAZR): 37%

These reinvestment margins are unusually high, likely reflecting the peers' relatively low revenue bases and their heavy investment in capacity, R&D, and market expansion. As revenues scale, these reinvestment margins would be expected to decline.

Against this backdrop, Ouster appears to have pursued a more capital-efficient reinvestment strategy to date. However, negative reinvestment is not a realistic long-term assumption for a company seeking sustained growth.

Rather than extrapolating peer reinvestment rates, a more grounded approach is to anchor reinvestment to fundamentals using the standard growth identity:

- Growth = Return × Reinvestment Rate
- Reinvestment Rate = Reinvestment / NOPAT

Under this framework, Ouster's long-term reinvestment rate should be determined by its ability to earn returns on invested capital and the growth it seeks to sustain, rather than by short-term peer behaviour or merger-related distortions.

FINANCIAL POSITION

Based on my analysis, I expect Ouster to continue operating at a loss for the next few years. The key question, then, is whether it has sufficient financial resources to weather this period.

As of June 2025, the company held USD227 million in cash, representing 71% of total assets.

Based on its 2024 performance, Ouster reported a negative USD34 million in operating cash flow. Assuming no material cash flows from investing activities (based on its historical negative reinvestment), this cash reserve could sustain approximately 5 years of negative operating cash flow. In practice, this runway could be longer, as the 2024 operating cash burn was lower than that in 2022 (before the Velodyne merger), i.e., there is a declining picture.

Ouster also appears to be managing its debt prudently. As of June 2025, it had USD18 million in total debt, equal to a debt-to-equity ratio of 8%, down significantly from 39% at year-end 2023.

In terms of liquidity, the company reported a current ratio of 3.2 at the end of Jun 2025, which indicates no immediate liquidity concerns.

Taken together, these indicators suggest that Ouster is unlikely to require additional equity funding and may not need to raise further debt in the near term.

VALUATION

My analysis indicates that Ouster's path to profitability requires sustained double-digit revenue growth, margin expansion, and tight control over fixed costs. Based on this, I assumed aggressive near-

term growth supported by continued acquisitions, gradually slowing to a mature growth rate, alongside modest margin improvement, rising reinvestment over time, and fixed costs growing well below revenue.

Along this line, I estimated its intrinsic value at USD8.63 per share, below the market price of USD24.25 (end June 2025), indicating no margin of safety. Refer to the original article for details of the valuation and assumptions.

CONCLUSION

Ouster operates in a structurally attractive, high-growth LiDAR market. It has made tangible progress since the Velodyne merger, particularly in improving margins, reducing fixed costs, and strengthening its balance sheet. The company has a credible path to profitability, driven by operating leverage as revenue scales.

However, that path is long and highly execution-dependent. Profitability requires several more years of sustained double-digit growth, continued margin expansion, and strict control of fixed costs, with limited tolerance for missteps. When these requirements are reflected in a fundamental valuation, the resulting intrinsic value falls below the current market price, offering no margin of safety.

I am a long-term value investor who has held onto stocks for more than 5 years. My analysis and valuation are from such a perspective. I consider quarterly results "noisy" and focus on long-term trends.

This article was re-purposed from my article "Ouster's Path To Profitability: Can Growth Outrun The Burn?" which was first published in Seeking Alpha. Refer to this [link](#) for more of my insights on other US companies.

Disclaimer: This article is written for informational purposes only. It does not constitute a solicitation, offer, advice, counseling or recommendation to buy or sell. As such it is not intended to promote the purchase of shares in any way. As a reminder, any type of asset has a risk factor and needs to be evaluated from multiple perspectives. Therefore, any investment decision and the associated risk remains with the investor. The views expressed here are entirely the writer's own.



CHECK OUT
SHAREINVESTOR
BROKERS' CALL

Weekly Buy/Sell/Hold calls from leading Malaysian Brokerages.

[Go To Brokers' Call](#)

UNLOCK THE SECRET OF WEALTH

DO YOU REALLY WANT TO MASTER VALUE INVESTING



SEE HOW TO GET HIGHER RETURNS WITH LOWER RISK



Overnight Policy Rate (OPR) maintained at 2.75% - MPC

The Monetary Policy Committee (MPC) of Bank Negara Malaysia decided to maintain the Overnight Policy Rate (OPR) at 2.75%.

The Malaysian economy's growth momentum for 2025 is expected to continue into 2026, supported by resilient domestic demand. Employment, wage growth and income-related policy measures will remain supportive of household spending. Investment activity will be driven by the progress of multi-year projects in both the private and public sectors, implementation of new smaller-scale public projects, continued high realisation of approved investments, as well as the ongoing implementation of national master plans.

External sector will benefit from continued strength in electrical and electronics (E&E) exports and higher tourist spending. This growth outlook remains subject to uncertainties, in particular surrounding global developments. Downside risks remain from slower global trade and lower-than-expected commodity production. Meanwhile, upside potential to growth could arise from a better global growth outlook, stronger demand for E&E goods, and more robust tourism activity.

Headline and core inflation averaged 1.4% and 2.0%, respectively, in 2025. For 2026, headline inflation is expected to remain moderate amid the continued easing in global cost conditions. Global commodity prices are expected to remain modest, contributing to contained domestic cost conditions. Meanwhile, core inflation in 2026 is expected to remain stable and close to its long-term average, reflecting continued expansion in economic activity and the absence of excessive demand pressures.

For the global economy, growth for 2025 turned out higher than expected, mainly reflecting lower-than-anticipated tariffs, higher artificial intelligence (AI)-led tech spending and stronger fiscal support. For 2026, while the impact of tariffs could weigh on global growth, the outlook remains resilient, supported by sustained domestic demand, moderating inflation, robust tech investments, and supportive fiscal and monetary policies. Downside risks remain, arising from potentially higher tariffs, further escalation in geopolitical tensions and heightened volatility in global financial markets. Additionally, there are continued concerns over the elevated valuations in financial markets. Upside potential includes stronger tech spending, a milder tariff impact on economic activity and pro-growth policies in major economies.

At the current OPR level for Malaysia, the MPC considers the monetary policy stance to be appropriate and supportive of the economy amid price stability. The MPC will continue to monitor ongoing developments and assess the balance of risks surrounding the outlook for domestic growth and inflation.



Learn how to identify Hot Stocks using Technical Analysis (TA) and Fundamental Analysis (FA)

SIGN UP FOR Invest

now

Click Here

Scan/Click me



Via email, every Friday

Get market moving news and analyses. Regular columns include **Behind The Ticker** and **From MSWG's The Observer**

Leaderboard • Shariah Hot Stocks • Shariah Momentum Up Stocks • Non Shariah Hot Stocks • Up Trending Stocks • Growth Stocks • Dividend Stocks • Long Companies

- Insider Activity • Investor Relations
- Regional Markets

IT'S FREE!

International Reserves of BNM as at 15 January 2026

The international reserves of Bank Negara Malaysia amounted to USD125.6 billion as at 15 January 2026. The reserves position is sufficient to finance 4.7 months of imports of goods and services, and is 0.9 times the total short-term external debt.

Malaysia's inflation increased 1.6% in December 2025 - DOSM

According to the Dept of Statistics Malaysia (DOSM), Malaysia's inflation increased 1.6% in December 2025 with the index points at 135.5 as against 133.4 in the same month of the previous year. The increase was driven by higher inflation for the groups of Personal Care, Social Protection & Miscellaneous Goods & Services (5.7%); Education (2.8%); Alcoholic Beverages & Tobacco (2.5%); Housing, Water, Electricity, Gas & Other Fuels (0.9%); Information & Communication (0.9%); Furnishings, Household Equipment & Routine Household Maintenance (0.3%) and Clothing & Footwear (0.1%).

However, the Transport group (0.1%); Recreation, Sport & Culture (0.8%) and Restaurant & Accommodation Services (3.1%) recorded a slower increase in December 2025 as compared to the previous month. And Insurance & Financial Services (5.6%); Food & Beverages (1.5%) and Health (1.5%) remained at the same rate as recorded in November 2025.

Five states recorded increases above the national inflation level (1.6%) namely Johor (2.3%), Negeri Sembilan (2.2%), Pahang (1.8%); Wilayah Persekutuan Labuan (1.8%) and Selangor (1.7%). However, the remainder 11 states increased below and equal to the national inflation rate with Kelantan recorded the lowest inflation (0.5%) in December 2025. All states registered an increase in inflation of Food & Beverages except Kelantan (-0.3%).

The monthly headline inflation in December 2025 registered an increase of 0.3% as compared to November 2025 (0.0%). This was driven by the Information & Communication (0.6%) and Food & Beverages group (0.4%) which recorded higher increases as compared to the previous month. Besides, the groups of Housing, Water, Electricity, Gas & Other Fuels; Health and Transport increased to 0.2% respectively also recorded the same trend in December 2025.

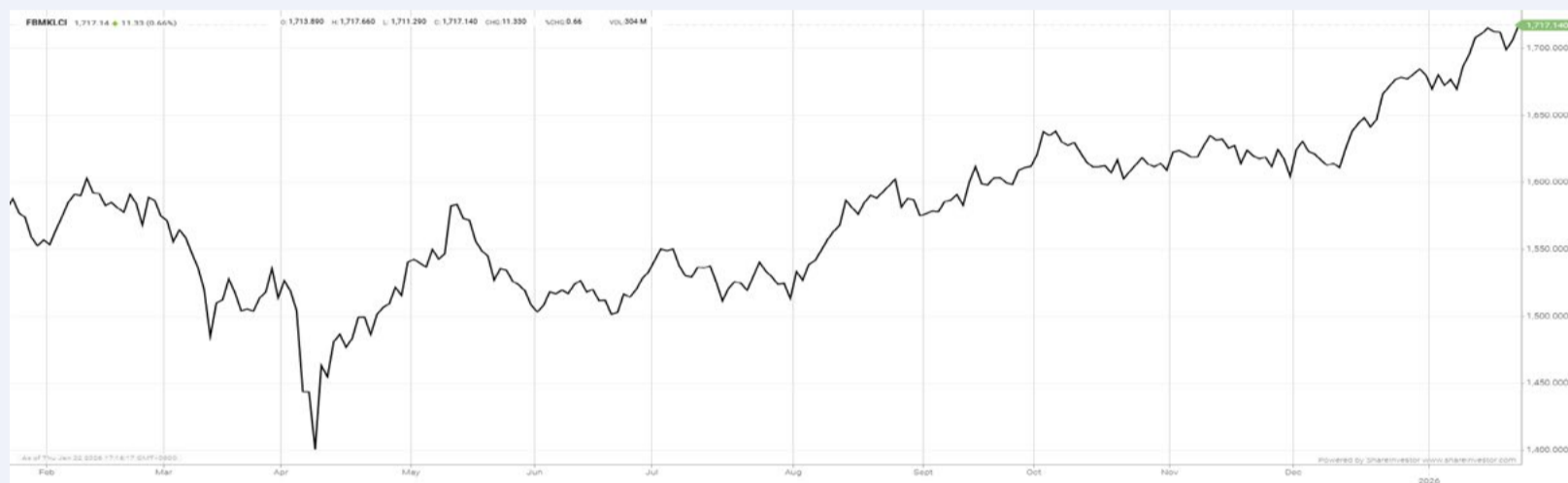
The annual inflation rate for 2025 recorded at 1.4%, a slower rate as compared to 1.8% in 2024. This was contributed by Housing, Water, Electricity, Gas & Other Fuels, 1.6% (2024: 3.0%); Health, 1.2% (2024: 1.8%); Recreation, Sport & Culture, 1.1% (2024: 1.8%); Transport, 0.4% (2024: 1.0%) and Furnishings, Household Equipment & Routine Household Maintenance, 0.2% (2024: 0.7%). The Information & Communication and Clothing & Footwear registered decreases at negative 4.3% and negative 0.2% in 2025. However, there are groups which increased higher in 2025 such as Personal Care, Social Protection & Miscellaneous Goods & Services (4.4%); Insurance & Financial Services (3.4%); Restaurant & Accommodation Services (3.2%); Education (2.3%) and Food & Beverages (2.1%).

In comparison to inflation in other selected countries, inflation in Malaysia in December 2025 (1.6%) was lower than inflation in Vietnam (3.5%), Indonesia (2.9%) and Republic of Korea (2.3%). However, the rate was higher than China (0.8%) and Thailand (-0.3%).

For the infographic, please [click this link](#).

EYE ON THE MARKETS

On Thursday (22Jan), the Ringgit closed at 4.0385 against the USD and 3.1454 to the Sing Dollar. On Monday (19Jan), the FBM KLCI opened at 1710.57. As at Thursday (22Jan) 5:00pm, the FBM KLCI closed up 6.57 points at 1717.14. Over in US, the overnight Dow Jones Industrial Average closed up 306.78 points (+0.63%) to 49,384.01 whilst the NASDAQ added 211.20 points (+0.91%) to 23,436.02.



KLCI 1 Year Chart

Learn how to identify Hot Stocks using Technical Analysis (TA) and Fundamental Analysis (FA)

SIGN UP FOR Invest

now

Click Here

Scan/Click me

Get market moving news and analyses. Regular columns include **Behind The Ticker** and **From MSWG's The Observer**

Leaderboard • Shariah Hot Stocks • Shariah Momentum Up Stocks • Non Shariah Hot Stocks • Up Trending Stocks • Growth Stocks • Dividend Stocks • Long Companies • Insider Activity • Investor Relations • Regional Markets

IT'S FREE!

Via email, every Friday

Over 5 Trading Days (as at Yesterday)



ShareInvestor WebPro (www.shareinvestor.com/my)

1. Price > Stock Prices
2. Select Market: NASDAQ / NYSE / IDX / SET / HKEX / SGX (One bourse at a time)
3. select Stocks Tab
4. select Ranking Top Gainers or Top Losers (Over 5 Trading Days)
5. Mouse over Column Layout > select Edit Customs > select Name > select Last Done Price > select 5 Days Change > select 52 Weeks High > select 52 Weeks Low > Mouse Over Column Layout > select Custom

NASDAQ (USD)

Top Gainers

Name	Last Done	Change Over 5 Days	52 Weeks High	52 Weeks Low
Sandisk	501.290	+113.480	457.370	27.885
Strategy Pfd	99.550	+97.580	3.250	0.398
Monolithic Power Systems	1,074.930	+91.330	1,123.380	438.860
KLA	1,520.000	+85.500	1,581.340	551.330
Micron Technology	389.110	+55.760	381.560	61.540

Top Losers

Name	Last Done	Change Over 5 Days	52 Weeks High	52 Weeks Low
REX IncmMx Optn Strgy ETF	16.860	-314.500	365.860	219.970
AppLovin A	532.560	-85.200	745.610	200.500
Rich Sparkle Holdings	69.050	-74.190	180.639	2.797
AeroVironment	319.630	-58.940	417.860	102.250
Constellation Energy	294.370	-36.010	412.700	161.350

NYSE (USD)

Top Gainers

Name	Last Done	Change Over 5 Days	52 Weeks High	52 Weeks Low
NVR	7,796.750	+215.990	8,618.280	6,562.850
AutoZone	3,671.680	+206.230	4,388.110	3,210.720
Biglari Holdings A	2,462.990	+119.760	2,468.000	999.010
Argan	397.420	+67.760	399.300	101.020
Teledyne Technologies	621.790	+59.250	595.990	419.000

Top Losers

Name	Last Done	Change Over 5 Days	52 Weeks High	52 Weeks Low
Berkshire Hathaway A	724,079.490	-19,358.510	812,855.000	682,280.000
Harbor PanAgora Dynamic Large Cap Core	24.464	-82.646	135.820	88.810
NewMarket	644.620	-64.690	875.970	480.570
Fair Isaac	1,535.540	-45.650	2,217.600	1,300.000
HubSpot	302.320	-42.980	881.130	302.000

IDX (Rupiah)

Top Gainers

Name	Last Done	Change Over 5 Days	52 Weeks High	52 Weeks Low
SINGARAJA PUTRA TBK	30,850.000	+14,950.000	30,850.000	1,955.000
DCI INDONESIA TBK	220,000.000	+9,800.000	398,000.000	41,200.000
SINAR MAS MULTIARTHA TBK	12,875.000	+4,812.000	27,225.000	12,000.000
PRADIKSI GUNATAMA TBK	11,450.000	+1,825.000	29,525.000	424.000
GOLDEN FLOWER TBK	24,250.000	+1,650.000	41,900.000	1,630.000

Top Losers

Name	Last Done	Change Over 5 Days	52 Weeks High	52 Weeks Low
UNITED TRACTORS TBK	27,200.000	-4,300.000	32,000.000	20,025.000
JAYA SUKSES MAKMUR SENTOSA TBK	6,800.000	-3,300.000	15,100.000	965.000
DIAN SWASTATIKA SENTOSA TBK	105,050.000	-2,925.000	118,000.000	30,300.000
MULTIPOLAR TECHNOLOGY TBK	61,525.000	-850.000	257,875.000	17,225.000
REMALA ABADI TBK	4,920.000	-630.000	6,775.000	815.000

SET (Thai Baht)

Top Gainers

Name	Last Done	Change Over 5 Days	52 Weeks High	52 Weeks Low
DELTA	186.500	+26.500	232.000	51.250
BH	165.000	+25.000	198.500	130.000
OHTL	319.000	+22.000	360.000	248.000
FE	185.000	+15.000	223.000	169.000
ADVANC	349.000	+11.000	354.000	259.000

Top Losers

Name	Last Done	Change Over 5 Days	52 Weeks High	52 Weeks Low
BBL	160.500	-10.500	174.500	131.000
CHARAN	16.000	-3.000	25.500	10.300
KBANK	189.000	-3.000	198.000	145.000
SCB	137.500	-3.000	143.000	111.000
LVMH01	13.100	-1.700	16.900	10.600

HKEX (HKD)

Top Gainers

Name	Last Done	Change Over 5 Days	52 Weeks High	52 Weeks Low
GIGADEVICE (3986)	324.800	+99.800	350.600	220.000
ZHIDA TECH (2650)	295.800	+41.800	318.600	170.100
MINIMAX-WP (100)	404.800	+38.400	479.000	220.000
LAOPU GOLD (6181)	712.000	+26.500	1,108.000	339.600
ZIJIN GOLD INTL (2259)	187.500	+23.400	188.800	111.000

Top Losers

Name	Last Done	Change Over 5 Days	52 Weeks High	52 Weeks Low
NUOBIKAN (2635)	366.000	-106.600	488.000	310.000
TRIP.COM-S (9961)	482.600	-86.900	613.000	402.600
SKB BIO-B (6990)	429.400	-37.000	581.000	156.000
UNISOUND (9678)	252.000	-34.000	879.000	198.000
TENCENT (700)	602.500	-30.500	683.000	379.600

SGX (SGD)

Top Gainers

Name	Last Done	Change Over 5 Days	52 Weeks High	52 Weeks Low
UOL	10.230	+0.510	10.400	5.010
Venture	16.560	+0.500	16.730	10.133
JMH USD	74.000	+0.350	75.800	36.010
IFAST	10.050	+0.330	10.300	6.020
OCBC Bank	20.440	+0.310	20.540	14.211

Top Losers

Name	Last Done	Change Over 5 Days	52 Weeks High	52 Weeks Low
AvePoint	16.040	-1.360	20.400	15.840
Jardine C&C	34.500	-0.800	36.000	23.100
SGX	17.310	-0.470	17.890	11.500
Cortina	3.460	-0.340	3.810	2.456
DBS	58.020	-0.300	59.250	35.975



ARE SHAREHOLDERS BEING HEARD AT AGM?

Now that the 2025 AGM season is behind us, a clear pattern has emerged: no two meetings felt the same, even though they all followed the same script.

Over the course of the year, the Minority Shareholders Watch Group (MSWG) attended nearly 500 general meetings, moving steadily across large and small market-cap companies, spanning 12 states and cutting across a wide range of industries. At each meeting, the agenda followed a familiar order: notices read, resolutions tabled, votes cast. Yet in practice, the experience varied dramatically from one company to the next.

At one end of the spectrum were AGMs that felt almost festive. Shareholders were welcomed by the gentle strains of live orchestral music as they entered tastefully arranged ballrooms. Professionally

produced videos played on large screens, narrating the company's journey and achievements. Some venues even featured wellness corners offering shoulder massages, refreshments and neatly packaged corporate souvenirs, creating an atmosphere more reminiscent of a corporate showcase than a statutory meeting.

At the other end were meetings that felt markedly different. Security presence was heavy, sometimes visibly armed. Shareholders entered under watchful eyes, the room already tense before the chairman took his seat. In these meetings, questions were measured carefully, words chosen cautiously, and the sense of unease was difficult to miss.

The 2025 AGM season was, in many ways, a season of colour and competence. Meetings were professionally run, technologically sound and, for the most part, orderly. Yet beneath that surface polish lay deeper questions about how companies today view the AGM. Is it merely a legal requirement to be completed once a year? Or is it still regarded as what it was always meant to be: a forum where boards are held to account, where shareholders can engage meaningfully, and where trust is built not through compliance, but through conversation?

Those questions lingered long after the final resolutions were carried and the meeting halls emptied.

THE CASE FOR BRINGING SHAREHOLDERS BACK INTO THE ROOM

From 1 March 2025, all listed companies were required to hold their AGMs in full physical form. The policy shift sparked debate. Some observers worried that attendance would decline and suggested the requirement be reconsidered. The argument was a familiar one: fewer people in the room must mean weaker engagement, and convenience should therefore take precedence over format.

MSWG took a different view.

We welcomed the move by the Securities Commission Malaysia and Bursa Malaysia, not because physical meetings are perfect, but because they restore something fundamental that virtual platforms struggle to replicate, i.e. human presence. A physical AGM allows shareholders to observe the board directly, read body language, sense discomfort or confidence, and ask questions without a moderator filtering tone or content.

Technology can enhance accessibility, but it can also distance. Engagement, especially on governance matters, is rarely improved when reduced to typed questions and timed responses. Physical meetings remind boards that shareholders are not just usernames or voting statistics, but individuals who have entrusted them with capital.

THE COST OF A CROWDED AGM CALENDAR

As in previous years, AGM activity in 2025 was heavily concentrated between April and July, with May and June emerging as the peak months. This seasonal clustering is well understood, yet its behavioural consequences are often underestimated.

For boards and management, the AGM season can feel relentless. Preparation overlaps, advisers juggle multiple meetings, and directors may find themselves attending several AGMs within the same week. Under such conditions, efficiency becomes a survival mechanism.

But efficiency comes at a cost. Meetings become more formulaic. Presentations follow familiar templates. Chairmen become increasingly focused on keeping proceedings on schedule. Questions are managed carefully. Follow-ups are sometimes discouraged, not out of ill intent, but because time feels scarce.

When AGMs are treated primarily as a seasonal obligation to be completed, rather than a core accountability exercise, dialogue risks becoming transactional. And when dialogue becomes transactional, engagement quietly erodes.

HOW AGM LOCATIONS INFLUENCE ENGAGEMENT

Most AGMs in 2025 were held outside companies' registered offices, at hotels, golf clubs, convention centres and commercial buildings. Venue selection was highly decentralised, with no single dominant location emerging across the year.

On the surface, venue choice appears to be a practical decision, namely driven by availability, capacity and cost. Yet venue choice sends subtle signals about who the meeting is really designed for.

Some venues were centrally located, accessible by public transport, and easy for shareholders to attend. Others were less so. Tucked away in industrial areas, remote business sites, plantations or factories. While hosting an AGM at a business location can be meaningful, accessibility must be considered carefully.

If a meeting is held far from public transport or urban centres, companies should consider measures such as shuttle services, clearer logistical support, or even hybrid arrangements. Accessibility is not merely about convenience; it reflects how seriously a company takes shareholder participation.

An AGM that is technically open but practically difficult to attend risks becoming exclusive by default.

RETHINKING SHAREHOLDER TURNOUT

Shareholder attendance figures in 2025 varied dramatically. In some meetings, MSWG representatives were the only minority shareholders present, apart from company or controlling shareholder representatives. In others, turnout exceeded 2,000 shareholders, filling ballrooms and overflow rooms alike. Most AGMs, however, typically had 50 to 200 attendees.

Yet attendance figures alone tell us very little about engagement.

A lower turnout does not automatically signal disinterest. Shareholders may choose not to attend for a range of practical reasons, including time constraints, reliance on proxy voting, or

expectations about the opportunity for meaningful exchange during the meeting. Conversely, a high turnout does not guarantee robust dialogue. Large crowds can sometimes limit interaction, with questions filtered, time compressed, and follow-ups curtailed.

The more relevant question, therefore, is not how many shareholders show up, but whether those who do are given the space, time and respect to be heard.

TIME, DURATION AND THE PACE OF AGMS

The duration of AGMs in 2025 ranged widely. The shortest meeting observed concluded in under 30 minutes. The longest extended close to four hours. Most meetings clustered around one to one-and-a-half hours.

Time discipline is important. Shareholders appreciate well-managed, respectful meetings that respect their schedules. Yet extreme brevity often coincided with tightly scripted proceedings and minimal Q&A. Longer meetings, by contrast, tended to reflect genuine shareholder interest, governance tensions, or complex issues requiring explanation.

A well-run AGM is not necessarily a short one. It is one where time is allocated fairly, questions are not rushed, and dialogue is allowed to unfold naturally.

THE CHAIRMAN'S INFLUENCE ON SHAREHOLDER TRUST

In over 95% of AGMs, the meeting was chaired by the company chairman. In more than 90% of cases, chairmen managed proceedings in an orderly and professional manner. This is a positive development and should be acknowledged.

Yet orderliness is not the same as openness.

In a small but significant number of meetings, shareholders were explicitly restricted from asking questions. In other cases, Q&A sessions were permitted in form but constrained in practice, with

limitations justified by time constraints, pre-filtered questions, or limited opportunities for follow-ups. While these instances remain a minority, they tend to leave a lasting impression and disproportionately shape shareholders' perceptions of the meeting. The chairman sets the tone of the AGM. He or she decides which questions are addressed, how much time is allocated, and whether follow-ups are welcomed. Increasingly, MSWG observed chairmen exercising this discretion cautiously, sometimes defensively.

The chairman's role is not merely to keep the meeting on schedule. It is to foster trust. A chairman who facilitates dialogue strengthens confidence. One who curtails it, even politely, risks eroding it.

WHEN PRESENCE DOES NOT MEAN PARTICIPATION

Board attendance at AGMs remains reasonably strong, with approximately 75–80% of meetings recording full attendance. Yet it is not uncommon to see directors absent from the AGM while seeking shareholder approval for their reappointment.

Equally telling is what happens before the meeting begins. Fewer than 10% of AGMs saw directors mingling with shareholders beforehand. These informal interactions, brief conversations, and simple greetings can humanise the board and lower barriers to engagement. They remain an underutilised opportunity.

Introductions during the meeting were more consistent. Board members were introduced in most AGMs. Senior management and external auditors were introduced less consistently. Independent directors, in particular, were often silent during governance-related questions. Visibility matters. But engagement matters more.

QUESTIONS, ANSWERS AND THE LIMITS OF "COMPLIANCE RESPONSES"

Most AGMs in 2025 allowed shareholders the opportunity to ask questions. In approximately 80% of cases, boards provided responses deemed adequate. In the remainder, answers were partial, evasive or unsatisfactory.

A recurring pattern was the reliance on compliance-based responses: “We comply with Bursa requirements.” “The board has deliberated.” “This is within regulatory limits.”

Such answers may satisfy regulatory checklists, but they rarely satisfy shareholders. Shareholders are not merely seeking confirmation of compliance. They want to understand why decisions were made, what alternatives were considered, and what trade-offs were involved.

Technology has improved significantly. Multimedia presentations were used in about 70% of AGMs. Audio issues were rare. Poll voting and electronic systems are now standard.

RECLAIMING THE PURPOSE OF THE AGM

Taken together, the picture that emerges from 2025 is nuanced.

AGMs are more efficient, more orderly and more professionally executed than ever before. Yet they are also increasingly scripted, procedural and, at times, defensive. There is a risk that the AGM becomes a compliance ritual rather than a forum for accountability.

Efficiency is not the enemy. But when efficiency replaces conversation, something essential is lost.

For many minority shareholders, the AGM remains the only moment each year when they can look the board in the eye and ask a question directly. Boards that embrace this moment build trust and credibility. Those who avoid it, however unintentionally, invite scepticism.

In a market that values confidence and credibility, how companies conduct their AGMs ultimately speaks louder than any annual report.

DEFINITION: Insider Activity shows the trades made by substantial shareholders or directors of the company. Purchases by the directors and company share buyback may indicate the share price is undervalued and brings confidence to the price trend of the share price.



ShareInvestor WebPro > Fundamental > Insider Trades > click Search tab > Select Bursa > click Stock name > scroll up and leave at <Select Counter> Type Date Range for Announcement Date > click Search

Notice Period is 11th January 2026 to 17th January 2026

Effective Change Date	Stock Name	Buyer/ Seller Name [Classification]	Bought / (Sold) ['000]		No. of Shares After Trade ['000]	
			Total	% Held	Total	% Held
14 JAN 2026 - 14 JAN 2026	AAX	CAPITAL A BERHAD [SSH]	-17,000		40,073	8.963
14 JAN 2026 - 14 JAN 2026	AAX	DATUK KAMARUDIN BIN MERANUN [DIR/CEO]	-250		83,614	37.405
14 JAN 2026 - 14 JAN 2026	AAX	DATUK KAMARUDIN BIN MERANUN [DIR/CEO]	-17,000		78,958	17.661
14 JAN 2026 - 14 JAN 2026	AAX	DATUK KAMARUDIN BIN MERANUN [SSH]	-17,000		78,958	17.661
14 JAN 2026 - 14 JAN 2026	AAX	DATUK KAMARUDIN BIN MERANUN [SSH]	-250		83,614	37.405
14 JAN 2026 - 14 JAN 2026	AAX	TAN SRI ANTHONY FRANCIS FERNANDES [SSH]	-17,000		51,232	11.459
15 JAN 2026 - 15 JAN 2026	AHB	MR FLAVIO PORRO [DIR/CEO]	18,500		18,500	2.21
13 JAN 2026 - 13 JAN 2026	ALLIANZ	EMPLOYEES PROVIDENT FUND BOARD [SSH]	33		13,116	7.118
12 JAN 2026 - 12 JAN 2026	ALLIANZ	EMPLOYEES PROVIDENT FUND BOARD [SSH]	70		13,083	7.101
08 JAN 2026 - 08 JAN 2026	ALLIANZ	EMPLOYEES PROVIDENT FUND BOARD [SSH]	3		13013	7.063
13 JAN 2026 - 13 JAN 2026	AMBANK	EMPLOYEES PROVIDENT FUND BOARD [SSH]	-623		581551	17.584
12 JAN 2026 - 12 JAN 2026	AMBANK	EMPLOYEES PROVIDENT FUND BOARD [SSH]	-4,250		582175	17.603
09 JAN 2026 - 09 JAN 2026	AMBANK	EMPLOYEES PROVIDENT FUND BOARD [SSH]	674		586,425	17.731
08 JAN 2026 - 08 JAN 2026	AMBANK	EMPLOYEES PROVIDENT FUND BOARD [SSH]	1,210		585,751	17.711
13 JAN 2026 - 13 JAN 2026	AMWAY	AMANAHRAYA TRUSTEES BERHAD - AMANAH SAHAM BUMIPUTERA [SSH]	-3		20,376	12.395
15 JAN 2026 - 15 JAN 2026	ASTINO	MR NG BACK TENG [DIR/CEO]	-1,685		37,632	7.988
15 JAN 2026 - 15 JAN 2026	ASTINO	MR NG BACK TENG [SSH]	-1,685		37,632	7.988
09 JAN 2026 - 09 JAN 2026	ATECH	EMPLOYEES PROVIDENT FUND BOARD [SSH]	31		152,878	11.754
12 JAN 2026 - 14 JAN 2026	AWANTEC	LEMBAGA TABUNG AMANAH WARISAN NEGERI TERENGGANU [SSH]	58		44,584	5.656
08 JAN 2026 - 09 JAN 2026	AWANTEC	LEMBAGA TABUNG AMANAH WARISAN NEGERI TERENGGANU [SSH]	31		44,526	5.648
09 JAN 2026 - 09 JAN 2026	AWC	DATO' AHMAD KABEER BIN MOHAMED NAGOOR [DIR/CEO]	28,578		28,578	33.685
09 JAN 2026 - 09 JAN 2026	AWC	DATO' NIK MOD AMIN BIN NIK ABD MAJID [DIR/CEO]	125		125	0.147
09 JAN 2026 - 09 JAN 2026	AWC	MR SURESON A/L KRISNASAMY [DIR/CEO]	16		16	0.019
09 JAN 2026 - 09 JAN 2026	AWC	YM TUNKU PUAN SRI DATO' HAJAH NOOR HAYATI BINTI TUNKU ABDUL RAHMAN PUTRA [DIR/CEO]	75		75	0.088
15 JAN 2026 - 15 JAN 2026	AXREIT	LEMBAGA TABUNG HAJI [SSH]	-637		130,260	6.433
14 JAN 2026 - 14 JAN 2026	AXREIT	LEMBAGA TABUNG HAJI [SSH]	28		130,898	6.464
08 JAN 2026 - 08 JAN 2026	AXREIT	EMPLOYEES PROVIDENT FUND BOARD [SSH]	512		397,919	19.651
07 JAN 2026 - 07 JAN 2026	AXREIT	EMPLOYEES PROVIDENT FUND BOARD [SSH]	566		397,407	19.626
13 JAN 2026 - 13 JAN 2026	BAUTO	EMPLOYEES PROVIDENT FUND BOARD [SSH]	640		67,908	5.969
12 JAN 2026 - 12 JAN 2026	BAUTO	EMPLOYEES PROVIDENT FUND BOARD [SSH]	1,133		67,268	5.913
09 JAN 2026 - 09 JAN 2026	BAUTO	DATO' SRI AMER HAMZAH BIN AHMAD [SSH]	200		190,051	16.704
09 JAN 2026 - 09 JAN 2026	BAUTO	DATO' SRI LEE KOK CHUAN [DIR/CEO]	200		190,497	16.743
09 JAN 2026 - 09 JAN 2026	BAUTO	DATO' SRI LEE KOK CHUAN [SSH]	200		190,497	16.743
09 JAN 2026 - 09 JAN 2026	BAUTO	DYNAMIC MILESTONE SDN BHD [SSH]	200		185,607	16.313
09 JAN 2026 - 09 JAN 2026	BAUTO	TAN SRI DATO' SRI YEOH CHOO SAN [DIR/CEO]	200		189,849	16.686
09 JAN 2026 - 09 JAN 2026	BAUTO	TAN SRI DATO' SRI YEOH CHOO SAN [SSH]	200		189,849	16.686
13 JAN 2026 - 13 JAN 2026	BIMB	EMPLOYEES PROVIDENT FUND BOARD [SSH]	500		376,992	16.633
12 JAN 2026 - 12 JAN 2026	BIMB	EMPLOYEES PROVIDENT FUND BOARD [SSH]	400		376,492	16.611
09 JAN 2026 - 09 JAN 2026	BIMB	EMPLOYEES PROVIDENT FUND BOARD [SSH]	200		376,092	16.594
14 JAN 2026 - 14 JAN 2026	BJASSET	TAN SRI DATO' SERI VINCENT TAN CHEE YIUON [SSH]	12		1,570,716	61.398
09 JAN 2026 - 09 JAN 2026	BJASSET	TAN SRI DATO' SERI VINCENT TAN CHEE YIUON [SSH]	0.2		1,570,704	61.397
07 JAN 2026 - 07 JAN 2026	BJCORP-WD	MISS CHRYSSEIS TAN SHEIK LING [DIR/CEO]	170		170	0.009
07 JAN 2026 - 07 JAN 2026	BJCORP-WD	MISS NERINE TAN SHEIK PING [DIR/CEO]	46		46	0.002
12 JAN 2026 - 12 JAN 2026	BJFOOD	DATO' SYDNEY LAWRENCE QUAYS [DIR/CEO]	-18		3,581	0.202
07 JAN 2026 - 09 JAN 2026	BJFOOD	DATO' SYDNEY LAWRENCE QUAYS [DIR/CEO]	-32		3,599	0.203
15 JAN 2026 - 15 JAN 2026	BLDPLNT	DATO' SRI LAW KIU KIONG [SSH]	1		6,299	6.736
15 JAN 2026 - 15 JAN 2026	BLDPLNT	LAW KIONG HOLDINGS SDN. BHD. [SSH]	1		6,299	6.736
12 JAN 2026 - 12 JAN 2026	BLDPLNT	DATO' SRI LAW KIU KIONG [SSH]	0.1		6,297	6.735
12 JAN 2026 - 12 JAN 2026	BLDPLNT	LAW KIONG HOLDINGS SDN. BHD. [SSH]	0.1		6,297	6.735
13 JAN 2026 - 14 JAN 2026	BONIA	MR CHIANG SANG SEM [DIR/CEO]	-5,100		141,696	70.497
13 JAN 2026 - 14 JAN 2026	BONIA	MR CHIANG SANG SEM [SSH]	-5,100		129,052	64.206
16 JAN 2026 - 16 JAN 2026	BORNOIL	DATUK JOSEPH LEE YOK MIN @ AMBROSE [DIR/CEO]	-7,700		2,229,566	14.679
16 JAN 2026 - 16 JAN 2026	BORNOIL	DATUK JOSEPH LEE YOK MIN @ AMBROSE [SSH]	-7,700		900,551	14.679
16 JAN 2026 - 16 JAN 2026	BORNOIL	MR RIORN LEE KAH VUI [DIR/CEO]	-7,700		971,368	6.395
16 JAN 2026 - 16 JAN 2026	BORNOIL	MR RIORN LEE KAH VUI [SSH]	-7,700		70,818	6.395
12 JAN 2026 - 14 JAN 2026	BPURI	MR OOI HEE KAH [DIR/CEO]	-300		17,629	1.974
13 JAN 2026 - 13 JAN 2026	BURSA	EMPLOYEES PROVIDENT FUND BOARD [SSH]	500		93,601	11.566
13 JAN 2026 - 13 JAN 2026	BURSA	EMPLOYEES PROVIDENT FUND BOARD [SSH]	-301		93,101	11.504
12 JAN 2026 - 12 JAN 2026	CAMAROE	MISS LOW SAW CHENG [DIR/CEO]	560		319,051	64.455
12 JAN 2026 - 12 JAN 2026	CAMAROE	MISS LOW SAW CHENG [SSH]	560		319,051	64.455
12 JAN 2026 - 12 JAN 2026	CAMAROE	MR TEOH HAN BOON [DIR/CEO]	560		319,051	64.455

Notice Period is 11th January 2026 to 17th January 2026

Effective Change Date	Stock Name	Buyer/ Seller Name [Classification]	Bought / (Sold) ['000]		No. of Shares After Trade ['000]	
			Total	% Held	Total	% Held
08 JAN 2026 - 08 JAN 2026	CATCHA-WA	MR PATRICK YKIN GROVE [DIR/CEO]	599		94,434	52.393
13 JAN 2026 - 13 JAN 2026	CBHB	MR CHEAH BOON HWA [DIR/CEO]	50		1,373,811	73.04
13 JAN 2026 - 13 JAN 2026	CBHB	MR CHEAH BOON HWA [SSH]	50		1,373,811	73.04
13 JAN 2026 - 13 JAN 2026	CBHB	MR CHEAH MIN HENG [DIR/CEO]	50		620	0.033
14 JAN 2026 - 14 JAN 2026	CHGP	CHIN HIN GROUP BERHAD [SSH]	-1,680		818,039	59.06
14 JAN 2026 - 14 JAN 2026	CHGP	DATUK SERI CHIAU BENG TEIK [DIR/CEO]	-1,680		818,039	59.06
14 JAN 2026 - 14 JAN 2026	CHGP	DATUK SERI CHIAU BENG TEIK [SSH]	-1,680		818,039	59.06
14 JAN 2026 - 14 JAN 2026	CHGP	DATUK WIRA CHIAU HAW CHOON [DIR/CEO]	-1,680		818,039	59.06
14 JAN 2026 - 14 JAN 2026	CHGP	DATUK WIRA CHIAU HAW CHOON [SSH]	-1,680		818,039	59.06
14 JAN 2026 - 14 JAN 2026	CHGP	DIVINE INVENTIONS SDN BHD [SSH]	-1,680		818,039	59.06
14 JAN 2026 - 14 JAN 2026	CHGP	PP CHIN HIN REALTY SDN BHD [SSH]	-1,680		818,039	59.06
13 JAN 2026 - 13 JAN 2026	CIMB	EMPLOYEES PROVIDENT FUND BOARD [SSH]	976		1,988,743	18.43
12 JAN 2026 - 12 JAN 2026	CIMB	EMPLOYEES PROVIDENT FUND BOARD [SSH]	4,154		1,987,767	18.42
09 JAN 2026 - 09 JAN 2026	CIMB	EMPLOYEES PROVIDENT FUND BOARD [SSH]	11,531		1,983,613	18.38
12 JAN 2026 - 12 JAN 2026	CIMB	KUMPULAN WANG PERSARAAN (DIPERBADANKAN) [SSH]	-286		701,086	6.5
08 JAN 2026 - 08 JAN 2026	CIMB	EMPLOYEES PROVIDENT FUND BOARD [SSH]	1,545		1,972,082	18.28
09 JAN 2026 - 09 JAN 2026	CIMB	KUMPULAN WANG PERSARAAN (DIPERBADANKAN) [SSH]	1,240		701,372	6.5
07 JAN 2026 - 07 JAN 2026	CIMB	EMPLOYEES PROVIDENT FUND BOARD [SSH]	-2,315		1,970,538	18.26
12 JAN 2026 - 12 JAN 2026	CLMT	EMPLOYEES PROVIDENT FUND BOARD [SSH]	630		508,447	15.263
09 JAN 2026 - 09 JAN 2026	CLMT	EMPLOYEES PROVIDENT FUND BOARD [SSH]	688		507,818	15.244
14 JAN 2026 - 14 JAN 2026	COASTAL	SAMARANG UCITS - SAMARANG ASIAN PROSPERITY [SSH]	-410		50,297	9.293
13 JAN 2026 - 13 JAN 2026	CTOS	EMPLOYEES PROVIDENT FUND BOARD [SSH]	353		459,907	20.215
12 JAN 2026 - 12 JAN 2026	CTOS	EMPLOYEES PROVIDENT FUND BOARD [SSH]	3,640		459,554	20.199
08 JAN 2026 - 08 JAN 2026	CTOS	EMPLOYEES PROVIDENT FUND BOARD [SSH]	890		455,915	20.04
07 JAN 2026 - 07 JAN 2026	CTOS	EMPLOYEES PROVIDENT FUND BOARD [SSH]	3,500		455,024	20
07 JAN 2026 - 07 JAN 2026	CYBERE	MR MAHA RAMANATHAN PALAN [DIR/CEO]	5		6,719	3.903
13 JAN 2026 - 13 JAN 2026	D&O	EMPLOYEES PROVIDENT FUND BOARD [SSH]	-500		91,419	7.376
12 JAN 2026 - 12 JAN 2026	D&O	EMPLOYEES PROVIDENT FUND BOARD [SSH]	-500		91,919	7.416
31 DEC 2025 - 13 JAN 2026	DATAPRP	DATUK WIRA SHAMSHURI BIN ABDUL MAJID [SSH]	-3,166		122,767	14.682
13 JAN 2026 - 13 JAN 2026	DIALOG	EMPLOYEES PROVIDENT FUND BOARD [SSH]	4,350		1,202,048	21.3
12 JAN 2026 - 12 JAN 2026	DIALOG	EMPLOYEES PROVIDENT FUND BOARD [SSH]	3,213		1,197,698	21.23
09 JAN 2026 - 09 JAN 2026	DIALOG	EMPLOYEES PROVIDENT FUND BOARD [SSH]	2,127		1,194,485	21.17
08 JAN 2026 - 08 JAN 2026	DIALOG	EMPLOYEES PROVIDENT FUND BOARD [SSH]	6,027		1,192,358	21.13
07 JAN 2026 - 07 JAN 2026	DIALOG	EMPLOYEES PROVIDENT FUND BOARD [SSH]	4,269		1,186,331	21.02
09 JAN 2026 - 09 JAN 2026	DPS	EDMUND SOW YONG MING [SSH]	1,054		167,174	62.91
09 JAN 2026 - 09 JAN 2026	DPS	EMILY SOW MEI CHET [DIR/CEO]	1,054		167,174	62.91
09 JAN 2026 - 09 JAN 2026	DPS	EUGENE SOW CHUAN SHENG [DIR/CEO]	1,054		167,174	62.91
09 JAN 2026 - 09 JAN 2026	DPS	EUGENE SOW CHUAN SHENG [SSH]	1,054		167,174	62.91
09 JAN 2026 - 09 JAN 2026	DPS	MISS EMILY SOW MEI CHET [SSH]	1,054		167,174	62.91
09 JAN 2026 - 09 JAN 2026	DPS	MR EDWARD SOW YUEN SENG [SSH]	1,054		167,174	62.91
09 JAN 2026 - 09 JAN 2026	DPS	MR ERIC SOW YONG SHING [SSH]	1,054		167,216	62.926
09 JAN 2026 - 09 JAN 2026	DPS	PUAN SRI CHU KIM GUEK [DIR/CEO]	1,054		167,216	62.926
09 JAN 2026 - 09 JAN 2026	DPS	PUAN SRI CHU KIM GUEK [SSH]	1,054		171,022	64.358
09 JAN 2026 - 09 JAN 2026	DPS	TAN SRI (DR) SOW CHIN CHUAN [DIR/CEO]	1,054		167,216	62.926
09 JAN 2026 - 09 JAN 2026	DPS	TAN SRI (DR) SOW CHIN CHUAN [SSH]	1,054		167,216	62.926
12 JAN 2026 - 12 JAN 2026	DRBHCORP	EMPLOYEES PROVIDENT FUND BOARD [SSH]	160		164,023	8.484
09 JAN 2026 - 09 JAN 2026	DRBHCORP	EMPLOYEES PROVIDENT FUND BOARD [SSH]	47		163,863	8.476
14 JAN 2026 - 14 JAN 2026	DXN	DATUK LIM SIOW JIN [DIR/CEO]	45,568		3,181,579	63.986
14 JAN 2026 - 14 JAN 2026	DXN	DATUK LIM SIOW JIN [SSH]	45,568		1,966,579	39.551
15 JAN 2026 - 15 JAN 2026	E&O	KUMPULAN WANG PERSARAAN (DIPERBADANKAN) [SSH]	-50		162,362	6.514
14 JAN 2026 - 14 JAN 2026	E&O	KUMPULAN WANG PERSARAAN (DIPERBADANKAN) [SSH]	-50		162,412	6.516
13 JAN 2026 - 13 JAN 2026	E&O	KUMPULAN WANG PERSARAAN (DIPERBADANKAN) [SSH]	-50		162,462	6.518
12 JAN 2026 - 12 JAN 2026	E&O	KUMPULAN WANG PERSARAAN (DIPERBADANKAN) [SSH]	-50		162,512	6.52
09 JAN 2026 - 09 JAN 2026	E&O	KUMPULAN WANG PERSARAAN (DIPERBADANKAN) [SSH]	-250		162,562	6.522
14 JAN 2026 - 14 JAN 2026	EFRAME	DATO NG WEI YEE [SSH]	856		30,717	8.032
12 JAN 2026 - 12 JAN 2026	EITA	MADAM GOH KIN BEE [SSH]	25		44,185	14.64
12 JAN 2026 - 12 JAN 2026	EITA	MR LIM JOO SWEE [DIR/CEO]	25		44,292	14.675
12 JAN 2026 - 12 JAN 2026	EITA	MR LIM JOO SWEE [SSH]	25		44,292	14.675

Disclaimer: The Information in Insider Activity is extracted from www.shareinvestor.com/fundamental/insider_trades. The information on this page is provided as a service to readers. It does not constitute financial advice and/or any investment recommendations. We assume no liability for damages resulting from or arising out of the use of such information. Whilst every effort is made to ensure accuracy, the information presented is not the official record of shareholder filings. Readers are advised to read the original filings on the Bursa Malaysia website at www.bursamalaysia.com



STROM
SWISS TIMEPIECES & JEWELLERY



StromWatch Asia
Tele : +65.9817.3378
Email : ll.stromasia@gmail.com
WWW.STROMWATCH.SWISS

Notice Period is 11th January 2026 to 17th January 2026

Effective Change Date	Stock Name	Buyer/ Seller Name [Classification]	Bought / (Sold) ['000]	No. of Shares After Trade ['000]	
			Total	Total	% Held
08 JAN 2026 - 08 JAN 2026	EITA	MR LIM JOO SWEE [SSH]	10	44,267	14.667
14 JAN 2026 - 14 JAN 2026	F&N	AMANAHRAYA TRUSTEES BERHAD - AMANAH SAHAM BUMIPUTERA [SSH]	-924	20,800	5.671
13 JAN 2026 - 13 JAN 2026	F&N	EMPLOYEES PROVIDENT FUND BOARD [SSH]	149	56,822	15.492
13 JAN 2026 - 13 JAN 2026	F&N	AMANAHRAYA TRUSTEES BERHAD - AMANAH SAHAM BUMIPUTERA [SSH]	-230	21,724	5.923
12 JAN 2026 - 12 JAN 2026	F&N	EMPLOYEES PROVIDENT FUND BOARD [SSH]	7	56,670	15.451
12 JAN 2026 - 12 JAN 2026	F&N	AMANAHRAYA TRUSTEES BERHAD - AMANAH SAHAM BUMIPUTERA [SSH]	-46	21,954	5.986
09 JAN 2026 - 09 JAN 2026	F&N	EMPLOYEES PROVIDENT FUND BOARD [SSH]	49	56,663	15.449
07 JAN 2026 - 07 JAN 2026	F&N	EMPLOYEES PROVIDENT FUND BOARD [SSH]	1,051	56,626	15.439
12 JAN 2026 - 12 JAN 2026	FACBIND	MAGNI VANTAGE LIMITED [SSH]	20	49,527	59.043
12 JAN 2026 - 12 JAN 2026	FACBIND	MR CHEN YIY FON [DIR/CEO]	20	49,527	59.043
12 JAN 2026 - 12 JAN 2026	FACBIND	MR CHEN YIY FON [SSH]	20	49,527	59.043
09 JAN 2026 - 09 JAN 2026	FACBIND	MAGNI VANTAGE LIMITED [SSH]	118	49,507	59.019
09 JAN 2026 - 09 JAN 2026	FACBIND	MR CHEN YIY FON [DIR/CEO]	118	49,507	59.019
09 JAN 2026 - 09 JAN 2026	FACBIND	MR CHEN YIY FON [SSH]	118	49,507	59.019
14 JAN 2026 - 14 JAN 2026	FAREAST	PUAN ADZLINA JUNITA BINTI ABD.JALIL [DIR/CEO]	10	20	0.003
13 JAN 2026 - 13 JAN 2026	FAREAST	DATO' ASMIN BINTI YAHYA [DIR/CEO]	3	384	0.065
12 JAN 2026 - 12 JAN 2026	FAREAST	PUAN ADZLINA JUNITA BINTI ABD.JALIL [DIR/CEO]	10	10	0.002
15 JAN 2026 - 15 JAN 2026	FFB	KUMPULAN WANG PERSARAAN (DIPERBADANKAN) [SSH]	-100	172,536	9.158
13 JAN 2026 - 13 JAN 2026	FFB	EMPLOYEES PROVIDENT FUND BOARD [SSH]	550	198,881	10.556
14 JAN 2026 - 14 JAN 2026	FFB	KUMPULAN WANG PERSARAAN (DIPERBADANKAN) [SSH]	-588	172,636	9.163
13 JAN 2026 - 13 JAN 2026	FFB	KUMPULAN WANG PERSARAAN (DIPERBADANKAN) [SSH]	-2,197	173,224	9.195
12 JAN 2026 - 12 JAN 2026	FFB	KUMPULAN WANG PERSARAAN (DIPERBADANKAN) [SSH]	-2,272	175,422	9.311
09 JAN 2026 - 09 JAN 2026	FFB	KUMPULAN WANG PERSARAAN (DIPERBADANKAN) [SSH]	-890	177,694	9.432
07 JAN 2026 - 07 JAN 2026	FFB	EMPLOYEES PROVIDENT FUND BOARD [SSH]	1,150	198,331	10.527
14 JAN 2026 - 14 JAN 2026	FOCUSP	DATIN SIM SWEE YOKE [DIR/CEO]	30	30	0.005
09 JAN 2026 - 09 JAN 2026	GAMUDA	EMPLOYEES PROVIDENT FUND BOARD (EPF BOARD) [SSH]	479	1,103,610	18.67
08 JAN 2026 - 08 JAN 2026	GAMUDA	EMPLOYEES PROVIDENT FUND BOARD (EPF BOARD) [SSH]	3,354	1,103,130	18.69
07 JAN 2026 - 07 JAN 2026	GAMUDA	EMPLOYEES PROVIDENT FUND BOARD (EPF BOARD) [SSH]	9,021	1,100,085	18.64
12 JAN 2026 - 13 JAN 2026	GENETEC	MR CHIN KEM WENG [DIR/CEO]	400	60,363	7.808
12 JAN 2026 - 13 JAN 2026	GENETEC	MR CHIN KEM WENG [SSH]	400	60,363	7.808
13 JAN 2026 - 13 JAN 2026	GENP	EMPLOYEES PROVIDENT FUND BOARD [SSH]	12	130,232	14.516
12 JAN 2026 - 12 JAN 2026	GENP	EMPLOYEES PROVIDENT FUND BOARD [SSH]	116	130,220	14.515
09 JAN 2026 - 09 JAN 2026	GENP	EMPLOYEES PROVIDENT FUND BOARD [SSH]	138	130,104	14.502
08 JAN 2026 - 08 JAN 2026	GENP	EMPLOYEES PROVIDENT FUND BOARD [SSH]	150	129,966	14.486
07 JAN 2026 - 07 JAN 2026	GENP	EMPLOYEES PROVIDENT FUND BOARD [SSH]	158	129,816	14.47
13 JAN 2026 - 14 JAN 2026	GLOMAC	DATUK SERI FATEH ISKANDAR BIN TAN SRI DATO' MOHAMED MANSOR [DIR/CEO]	10	335,839	43.758
13 JAN 2026 - 14 JAN 2026	GLOMAC	DATUK SERI FATEH ISKANDAR BIN TAN SRI DATO' MOHAMED MANSOR [SSH]	10	334,977	43.646
13 JAN 2026 - 14 JAN 2026	GLOMAC	TAN SRI DATO' MOHAMED MANSOR BIN FATEH DIN [DIR/CEO]	10	342,303	44.6
13 JAN 2026 - 14 JAN 2026	GLOMAC	TAN SRI DATO' MOHAMED MANSOR BIN FATEH DIN [SSH]	10	334,977	43.646
12 JAN 2026 - 13 JAN 2026	GLOMAC	DATUK SERI FATEH ISKANDAR BIN TAN SRI DATO' MOHAMED MANSOR [DIR/CEO]	20	335,829	43.756
12 JAN 2026 - 12 JAN 2026	GLOMAC	DATUK SERI FATEH ISKANDAR BIN TAN SRI DATO' MOHAMED MANSOR [SSH]	10	334,967	43.644
12 JAN 2026 - 13 JAN 2026	GLOMAC	SHAPADU CAPITAL SDN. BHD. [SSH]	80	101,833	13.268
12 JAN 2026 - 12 JAN 2026	GLOMAC	TAN SRI DATO' MOHAMED MANSOR BIN FATEH DIN [DIR/CEO]	10	342,293	44.599
12 JAN 2026 - 12 JAN 2026	GLOMAC	TAN SRI DATO' MOHAMED MANSOR BIN FATEH DIN [SSH]	10	334,967	43.644
12 JAN 2026 - 12 JAN 2026	GUH	DATUK SERI KENNETH H'NG BAK TEE [DIR/CEO]	120	17,311	6.112
12 JAN 2026 - 12 JAN 2026	GUH	DATUK SERI KENNETH H'NG BAK TEE [SSH]	120	17,311	6.112
15 JAN 2026 - 15 JAN 2026	HEKTAR	UPAYAPADU (M) SDN BHD [SSH]	459	52,481	7.399
12 JAN 2026 - 14 JAN 2026	HEXIND	DATO' ONG CHOO MENG [SSH]	2,132	1,422,902	53.271
08 JAN 2026 - 09 JAN 2026	HEXTAR	DATO' ONG CHOO MENG [SSH]	2,000	2,099,083	54.265
08 JAN 2026 - 09 JAN 2026	HEXTAR	DATO' ONG SOON HO [DIR/CEO]	2,000	2,099,083	54.265
08 JAN 2026 - 09 JAN 2026	HEXTAR	DATO' ONG SOON HO [SSH]	2,000	2,099,083	54.265
12 JAN 2026 - 12 JAN 2026	HEXZA	DATUK DR FOONG WENG SUM [DIR/CEO]	2,380	66,071	32.135
12 JAN 2026 - 12 JAN 2026	HEXZA	DATUK DR FOONG WENG SUM [SSH]	2,380	66,071	32.135
12 JAN 2026 - 12 JAN 2026	HEXZA	DR FOONG WENG CHEONG [SSH]	2,380	66,174	32.185
12 JAN 2026 - 12 JAN 2026	HEXZA	MR OOI YING HONG [DIR/CEO]	5	85	0.041
12 JAN 2026 - 12 JAN 2026	HEXZA	SUMMIT HOLDINGS SDN BHD [SSH]	2,380	62,962	30.623
13 JAN 2026 - 15 JAN 2026	HHRG	BATU KAWI CAPITAL SDN BHD [SSH]	1,200	56,820	5.351
13 JAN 2026 - 15 JAN 2026	HHRG	MR TAI CHIN HWANG [SSH]	1,200	57,200	5.387
14 JAN 2026 - 14 JAN 2026	HIBISCS	DATUK MICHAEL TANG VEE MUN [SSH]	200	117,902	15.989
12 JAN 2026 - 13 JAN 2026	HIBISCS	DATUK MICHAEL TANG VEE MUN [SSH]	1,648	117,702	15.962
13 JAN 2026 - 14 JAN 2026	HIGHTEC	MR TAN LYE HUAT [DIR/CEO]	116	63,523	55.663
13 JAN 2026 - 14 JAN 2026	HIGHTEC	MR TAN LYE HUAT [SSH]	116	63,523	55.663
13 JAN 2026 - 15 JAN 2026	HIL	DATO' AMBROSE LEONARD NG KWEE HENG [SSH]	665	215,694	64.98
13 JAN 2026 - 13 JAN 2026	HIL	DATO' MILTON NORMAN NG KWEE LEONG [DIR/CEO]	140	224,703	67.694
13 JAN 2026 - 15 JAN 2026	HIL	DATO' MILTON NORMAN NG KWEE LEONG [DIR/CEO]	665	225,367	67.894
13 JAN 2026 - 15 JAN 2026	HIL	DATO' MILTON NORMAN NG KWEE LEONG [SSH]	665	225,367	67.894
13 JAN 2026 - 13 JAN 2026	HIL	DATO' MILTON NORMAN NG KWEE LEONG [SSH]	140	224,703	67.694
13 JAN 2026 - 15 JAN 2026	HIL	MR MALCOLM JEREMY NG KWEE SENG [DIR/CEO]	665	217,946	65.658
13 JAN 2026 - 15 JAN 2026	HIL	MR MALCOLM JEREMY NG KWEE SENG [SSH]	665	217,946	65.658
13 JAN 2026 - 15 JAN 2026	HIL	MR STEVEN JUNIOR NG KWEE LENG [DIR/CEO]	665	218,680	65.879
13 JAN 2026 - 15 JAN 2026	HIL	MR STEVEN JUNIOR NG KWEE LENG [SSH]	665	218,680	65.879
13 JAN 2026 - 13 JAN 2026	HIL	PUAN SRI DATIN CATHERINE YEOH ENG NEO [SSH]	140	242,732	73.125
13 JAN 2026 - 15 JAN 2026	HIL	PUAN SRI DATIN CATHERINE YEOH ENG NEO [SSH]	665	243,396	73.325
13 JAN 2026 - 13 JAN 2026	HIL	TAN SRI DATO' IR NG BOON THONG @ NG THIAN HOCK [DIR/CEO]	140	242,732	73.125
13 JAN 2026 - 15 JAN 2026	HIL	TAN SRI DATO' IR NG BOON THONG @ NG THIAN HOCK [DIR/CEO]	665	243,396	73.325

Notice Period is 11th January 2026 to 17th January 2026

Effective Change Date	Stock Name	Buyer/ Seller Name [Classification]	Bought / (Sold) ['000]	No. of Shares After Trade ['000]	
			Total	Total	% Held
13 JAN 2026 - 13 JAN 2026	HLBANK	EMPLOYEES PROVIDENT FUND BOARD [SSH]	2,119	217,528	10.425
12 JAN 2026 - 12 JAN 2026	HLBANK	EMPLOYEES PROVIDENT FUND BOARD [SSH]	622	215,409	10.323
09 JAN 2026 - 09 JAN 2026	HLBANK	EMPLOYEES PROVIDENT FUND BOARD [SSH]	630	214,787	10.294
08 JAN 2026 - 08 JAN 2026	HLBANK	EMPLOYEES PROVIDENT FUND BOARD [SSH]	1,500	214,158	10.263
07 JAN 2026 - 07 JAN 2026	HLBANK	EMPLOYEES PROVIDENT FUND BOARD [SSH]	2,254	212,716	10.194
13 JAN 2026 - 13 JAN 2026	HLFG	EMPLOYEES PROVIDENT FUND BOARD [SSH]	414	70,276	6.124
12 JAN 2026 - 12 JAN 2026	HLFG	EMPLOYEES PROVIDENT FUND BOARD [SSH]	129	69,862	6.088
09 JAN 2026 - 09 JAN 2026	HLFG	EMPLOYEES PROVIDENT FUND BOARD [SSH]	74	69,795	6.082
08 JAN 2026 - 08 JAN 2026	HLFG	EMPLOYEES PROVIDENT FUND BOARD [SSH]	91	69,756	6.079
12 JAN 2026 - 13 JAN 2026	HOHUP	LEE FOOK YUEN [SSH]	508	47,933	9.249
12 JAN 2026 - 12 JAN 2026	ICAP	CITY OF LONDON INVESTMENT MANAGEMENT COMPANY LIMITED [SSH]	-104	22,594	16.02
10 SEP 2025 - 10 SEP 2025	IFCAMSC	MR YONG KEANG CHEUN [DIR/CEO]	1,340	225,267	37.556
10 SEP 2025 - 10 SEP 2025	IFCAMSC	MR YONG KEANG CHEUN [SSH]	1,340	225,267	37.556
10 SEP 2025 - 10 SEP 2025	IFCAMSC	MR YONG KIAN KEONG [DIR/CEO]	1,340	225,267	37.556
10 SEP 2025 - 10 SEP 2025	IFCAMSC	MR YONG KIAN KEONG [SSH]	1,340	225,267	37.556
13 JAN 2026 - 13 JAN 2026	IFCAMSC	MR ENG KIM HAW [DIR/CEO]	30	65	0.011
12 JAN 2026 - 12 JAN 2026	IFCAMSC	MR ENG KIM HAW [DIR/CEO]	17	35	0.006
12 JAN 2026 - 12 JAN 2026	IGBREIT	EMPLOYEES PROVIDENT FUND BOARD [SSH]	1,102	397,756	9.201
09 JAN 2026 - 09 JAN 2026	IGBREIT	EMPLOYEES PROVIDENT FUND BOARD [SSH]	1,057	396,654	9.175
08 JAN 2026 - 08 JAN 2026	IGBREIT	EMPLOYEES PROVIDENT FUND BOARD [SSH]	543	395,597	9.151
07 JAN 2026 - 07 JAN 2026	IGBREIT	EMPLOYEES PROVIDENT FUND BOARD [SSH]	106	395,054	9.138
13 JAN 2026 - 13 JAN 2026	IHH	EMPLOYEES PROVIDENT FUND BOARD [SSH]	-1,191	1,111,691	12.581
12 JAN 2026 - 12 JAN 2026	IHH	EMPLOYEES PROVIDENT FUND BOARD [SSH]	-1,980	1,112,882	12.595
09 JAN 2026 - 09 JAN 2026	IHH	EMPLOYEES PROVIDENT FUND BOARD [SSH]	-138	1,114,862	12.617
07 JAN 2026 - 07 JAN 2026	IHH	EMPLOYEES PROVIDENT FUND BOARD [SSH]	433	1,115,000	12.619
13 JAN 2026 - 13 JAN 2026	IJM	EMPLOYEES PROVIDENT FUND BOARD [SSH]	9,526	655,541	18.702
09 JAN 2026 - 09 JAN 2026	IJM	EMPLOYEES PROVIDENT FUND BOARD [SSH]	1,000	646,014	18.43
09 JAN 2026 - 09 JAN 2026	IJM	PRUDENTIAL PLC [SSH]	-104	176,504	5.036
09 JAN 2026 - 09 JAN 2026	IJM	KUMPULAN WANG PERSARAAN (DIPERBADANKAN) [SSH]	380	337,904	9.64
08 JAN 2026 - 08 JAN 2026	IJM	PRUDENTIAL PLC [SSH]	-1,380	176,607	5.038
07 JAN 2026 - 07 JAN 2026	IJM	EMPLOYEES PROVIDENT FUND BOARD [SSH]	4,133	645,014	18.402
13 JAN 2026 - 13 JAN 2026	INARI	EMPLOYEES PROVIDENT FUND BOARD [SSH]	3,559	534,702	14.052
12 JAN 2026 - 12 JAN 2026	INARI	EMPLOYEES PROVIDENT FUND BOARD [SSH]	6,152	531,143	13.959
09 JAN 2026 - 09 JAN 2026	INARI	EMPLOYEES PROVIDENT FUND BOARD [SSH]	960	524,991	13.797
08 JAN 2026 - 08 JAN 2026	INARI	EMPLOYEES PROVIDENT FUND BOARD [SSH]	2,050	524,031	13.772
07 JAN 2026 - 07 JAN 2026	INARI	EMPLOYEES PROVIDENT FUND BOARD [SSH]	3,383	521,981	13.718
08 JAN 2026 - 08 JAN 2026	INFOTEC	MR CHOO WEI CHUEN [DIR/CEO]	22	154,315	42.484
08 JAN 2026 - 08 JAN 2026	INFOTEC	MR CHOO WEI CHUEN [SSH]	22	154,315	42.484
13 JAN 2026 - 13 JAN 2026	IOICORP	EMPLOYEES PROVIDENT FUND BOARD [SSH]	1,976	1,129,401	17.969
12 JAN 2026 - 12 JAN 2026	IOICORP	EMPLOYEES PROVIDENT FUND BOARD [SSH]	1,222	1,127,425	17.938
08 JAN 2026 - 08 JAN 2026	IOICORP	EMPLOYEES PROVIDENT FUND BOARD [SSH]	1,895	1,126,203	17.918
07 JAN 2026 - 07 JAN 2026	IOICORP	EMPLOYEES PROVIDENT FUND BOARD [SSH]	98	1,124,307	17.888
14 JAN 2026 - 15 JAN 2026	IOIPG	DATO' LEE YEOW SENG [DIR/CEO]	5,387	3,678,119	66.8
14 JAN 2026 - 15 JAN 2026	IOIPG	DATO' LEE YEOW SENG [SSH]	5,387	3,677,974	66.797
13 JAN 2026 - 13 JAN 2026	IOIPG	EMPLOYEES PROVIDENT FUND BOARD [SSH]	6,220	344,339	6.254
13 JAN 2026 - 13 JAN 2026	IOIPG	DATO' LEE YEOW SENG [DIR/CEO]	1,250	3,672,732	66.703
13 JAN 2026 - 13 JAN 2026	IOIPG	DATO' LEE YEOW SENG [SSH]	1,250	3,672,587	66.7
12 JAN 2026 - 12 JAN 2026	IOIPG	EMPLOYEES PROVIDENT FUND BOARD [SSH]	3,339	338,119	6.141
13 JAN 2026 - 13 JAN 2026	IOIPG	DATUK DR TAN KIM HEUNG [DIR/CEO]	-8,050	31,950	0.58
09 JAN 2026 - 12 JAN 2026	IOIPG	DATO' LEE YEOW SENG [DIR/CEO]	4,437	3,671,482	66.68
09 JAN 2026 - 12 JAN 2026	IOIPG	DATO' LEE YEOW SENG [SSH]	4,437	3,671,337	66.677
09 JAN 2026 - 09 JAN 2026	IOIPG	EMPLOYEES PROVIDENT FUND BOARD [SSH]	3,238	334,781	6.08
08 JAN 2026 - 08 JAN 2026	IRIS	DATO' POH YANG HONG [DIR/CEO]	150	400	0.049
08 JAN 2026 - 08 JAN 2026	IRIS	DR POH SOON SIM [DIR/CEO]	150	107,098	13.129
08 JAN 2026 - 08 JAN 2026	IRIS	DR POH SOON SIM [SSH]	150	107,098	13.129
13 JAN 2026 - 13 JAN 2026	JPG	EMPLOYEES PROVIDENT FUND BOARD [SSH]	-2,659	217,232	8.689
12 JAN 2026 - 12 JAN 2026	JPG	EMPLOYEES PROVIDENT FUND BOARD [SSH]	-354	219,890	8.796
09 JAN 2026 - 09 JAN 2026	JPG	EMPLOYEES PROVIDENT FUND BOARD [SSH]	317	220,245	8.81
08 JAN 2026 - 08 JAN 2026	JPG	EMPLOYEES PROVIDENT FUND BOARD [SSH]	2,390	219,928	8.797
13 JAN 2026 - 13 JAN 2026	KGB	EMPLOYEES PROVIDENT FUND BOARD [SSH]	281	44,480	5.695
08 JAN 2026 - 08 JAN 2026	KGB	EMPLOYEES PROVIDENT FUND BOARD [SSH]	-82	44,199	5.659
07 JAN 2026 - 07 JAN 2026	KGB	EMPLOYEES PROVIDENT FUND BOARD [SSH]	-726	44,281	5.67
15 JAN 2026 - 15 JAN 2026	KHEESAN	MR EDWARD TAN JUAN PENG [DIR/CEO]	-5,000	18,200	1.626
15 JAN 2026 - 15 JAN 2026	KITACON	MR TAN AH KEE [DIR/CEO]	400	227,982	45.566
15 JAN 2026 - 15 JAN 2026	KITACON	MR TAN AH KEE [SSH]	400	227,982	45.566
08 JAN 2026 - 09 JAN 2026	KKB	DATO' SRI KHO KAK BENG [DIR/CEO]	34	118,063	40.891
08 JAN 2026 - 09 JAN					

Notice Period is 11th January 2026 to 17th January 2026

Effective Change Date	Stock Name	Buyer/ Seller Name [Classification]	Bought / (Sold) ['000]	No. of Shares After Trade ['000]	
			Total	Total	% Held
15 JAN 2026 - 15 JAN 2026	LSH	MR LIM DING SHYONG [DIR/CEO]	60	715	0.085
15 JAN 2026 - 15 JAN 2026	MALAKOF	KUMPULAN WANG PERSARAAN (DIPERBADANKAN) ('KWAP') [SSH]	-100	346,103	7.082
14 JAN 2026 - 14 JAN 2026	MALAKOF	KUMPULAN WANG PERSARAAN (DIPERBADANKAN) ('KWAP') [SSH]	-100	346,203	7.084
13 JAN 2026 - 13 JAN 2026	MALAKOF	KUMPULAN WANG PERSARAAN (DIPERBADANKAN) ('KWAP') [SSH]	-100	346,303	7.086
12 JAN 2026 - 12 JAN 2026	MALAKOF	KUMPULAN WANG PERSARAAN (DIPERBADANKAN) ('KWAP') [SSH]	-100	346,403	7.088
08 JAN 2026 - 08 JAN 2026	MALAKOF	EMPLOYEES PROVIDENT FUND BOARD [SSH]	1,190	897,957	18.374
07 JAN 2026 - 07 JAN 2026	MALAKOF	EMPLOYEES PROVIDENT FUND BOARD [SSH]	3,000	896,768	18.35
09 JAN 2026 - 09 JAN 2026	MALAKOF	KUMPULAN WANG PERSARAAN (DIPERBADANKAN) ('KWAP') [SSH]	-199	346,503	7.09
15 JAN 2026 - 15 JAN 2026	MATRIX	LEMBAGA TABUNG HAJI [SSH]	-500	124,304	6.622
14 JAN 2026 - 14 JAN 2026	MATRIX	LEMBAGA TABUNG HAJI [SSH]	-92	124,804	6.649
13 JAN 2026 - 13 JAN 2026	MATRIX	LEMBAGA TABUNG HAJI [SSH]	-500	124,896	6.654
12 JAN 2026 - 12 JAN 2026	MATRIX	LEMBAGA TABUNG HAJI [SSH]	-1,000	125,396	6.681
09 JAN 2026 - 09 JAN 2026	MATRIX	LEMBAGA TABUNG HAJI [SSH]	-500	126,396	6.734
13 JAN 2026 - 13 JAN 2026	MAXIS	EMPLOYEES PROVIDENT FUND BOARD ('EPF BOARD') [SSH]	110	1,044,316	13.328
12 JAN 2026 - 12 JAN 2026	MAXIS	EMPLOYEES PROVIDENT FUND BOARD ('EPF BOARD') [SSH]	5	1,044,206	13.327
09 JAN 2026 - 09 JAN 2026	MAXIS	EMPLOYEES PROVIDENT FUND BOARD ('EPF BOARD') [SSH]	-124	1,044,201	13.327
07 JAN 2026 - 07 JAN 2026	MAXIS	EMPLOYEES PROVIDENT FUND BOARD ('EPF BOARD') [SSH]	100	1,044,325	13.329
15 JAN 2026 - 15 JAN 2026	MAYBANK	KUMPULAN WANG PERSARAAN (DIPERBADANKAN) ('KWAP') [SSH]	-500	639,951	5.297
14 JAN 2026 - 14 JAN 2026	MAYBANK	AMANAHRAYA TRUSTEES BERHAD - AMANAH SAHAM BUMIPUTERA [SSH]	-740	3,341,375	27.658
13 JAN 2026 - 13 JAN 2026	MAYBANK	EMPLOYEES PROVIDENT FUND BOARD [SSH]	6,392	1,424,880	11.794
14 JAN 2026 - 14 JAN 2026	MAYBANK	KUMPULAN WANG PERSARAAN (DIPERBADANKAN) ('KWAP') [SSH]	-675	640,451	5.301
13 JAN 2026 - 13 JAN 2026	MAYBANK	AMANAHRAYA TRUSTEES BERHAD - AMANAH SAHAM BUMIPUTERA [SSH]	-4,578	3,342,115	27.664
12 JAN 2026 - 12 JAN 2026	MAYBANK	EMPLOYEES PROVIDENT FUND BOARD [SSH]	7,406	1,418,488	11.741
13 JAN 2026 - 13 JAN 2026	MAYBANK	KUMPULAN WANG PERSARAAN (DIPERBADANKAN) ('KWAP') [SSH]	-500	641,126	5.307
12 JAN 2026 - 12 JAN 2026	MAYBANK	AMANAHRAYA TRUSTEES BERHAD - AMANAH SAHAM BUMIPUTERA [SSH]	-3,042	3,346,693	27.702
09 JAN 2026 - 09 JAN 2026	MAYBANK	EMPLOYEES PROVIDENT FUND BOARD [SSH]	2,649	1,411,081	11.68
12 JAN 2026 - 12 JAN 2026	MAYBANK	KUMPULAN WANG PERSARAAN (DIPERBADANKAN) ('KWAP') [SSH]	-1,518	641,626	5.311
09 JAN 2026 - 09 JAN 2026	MAYBANK	AMANAHRAYA TRUSTEES BERHAD - AMANAH SAHAM BUMIPUTERA [SSH]	-1,800	3,349,735	27.727
08 JAN 2026 - 08 JAN 2026	MAYBANK	EMPLOYEES PROVIDENT FUND BOARD [SSH]	12,950	1,408,432	11.658
08 JAN 2026 - 08 JAN 2026	MAYBANK	AMANAHRAYA TRUSTEES BERHAD - AMANAH SAHAM BUMIPUTERA [SSH]	-10,776	3,351,535	27.742
07 JAN 2026 - 07 JAN 2026	MAYBANK	EMPLOYEES PROVIDENT FUND BOARD [SSH]	6,000	1,395,482	11.551
12 JAN 2026 - 12 JAN 2026	MFCB	EMPLOYEES PROVIDENT FUND BOARD [SSH]	286	104,178	11.057
12 JAN 2026 - 15 JAN 2026	MFCB	GOH NAN KIOH [DIR/CEO]	131	340,135	36.1
12 JAN 2026 - 15 JAN 2026	MFCB	KEEN CAPITAL INVESTMENTS LIMITED [SSH]	131	289,269	30.702
12 JAN 2026 - 15 JAN 2026	MFCB	MR GOH NAN KIOH [SSH]	131	340,135	36.1
08 JAN 2026 - 08 JAN 2026	MFCB	EMPLOYEES PROVIDENT FUND BOARD [SSH]	76	103,891	11.026
07 JAN 2026 - 07 JAN 2026	MFCB	EMPLOYEES PROVIDENT FUND BOARD [SSH]	11	103,816	11.018
09 JAN 2026 - 09 JAN 2026	MGB	DATUK WIRA LIM HOCK GUAN JP [DIR/CEO]	21	343,972	58.138
09 JAN 2026 - 09 JAN 2026	MGB	DATUK WIRA LIM HOCK GUAN JP [SSH]	21	343,972	58.138
09 JAN 2026 - 09 JAN 2026	MGB	GATERICH SDN. BHD. [SSH]	21	342,452	57.881
09 JAN 2026 - 09 JAN 2026	MGB	LBS BINA GROUP BERHAD [SSH]	21	342,452	57.881
09 JAN 2026 - 09 JAN 2026	MGB	TAN SRI DATO' SRI IR. (DR.) LIM HOCK SAN JP [DIR/CEO]	21	344,722	58.265
09 JAN 2026 - 09 JAN 2026	MGB	TAN SRI DATO' SRI IR. (DR.) LIM HOCK SAN JP [SSH]	21	344,722	58.265
14 JAN 2026 - 14 JAN 2026	MI	MR OH KUANG ENG [DIR/CEO]	500	400,500	45.086
14 JAN 2026 - 14 JAN 2026	MI	MR OH KUANG ENG [SSH]	500	400,500	45.086
09 JAN 2026 - 09 JAN 2026	MIECO	MR GAN BOON TIAN [SSH]	500	69,791	6.979
13 JAN 2026 - 13 JAN 2026	MISC	EMPLOYEES PROVIDENT FUND BOARD [SSH]	-175	728,760	16.326
14 JAN 2026 - 14 JAN 2026	MISC	KUMPULAN WANG PERSARAAN (DIPERBADANKAN) (KWAP) [SSH]	-50	223,852	5.015
13 JAN 2026 - 13 JAN 2026	MISC	KUMPULAN WANG PERSARAAN (DIPERBADANKAN) (KWAP) [SSH]	-50	223,902	5.016
09 JAN 2026 - 09 JAN 2026	MISC	EMPLOYEES PROVIDENT FUND BOARD [SSH]	322	728,935	16.33
09 JAN 2026 - 09 JAN 2026	MISC	KUMPULAN WANG PERSARAAN (DIPERBADANKAN) (KWAP) [SSH]	-540	223,952	5.018
09 JAN 2026 - 09 JAN 2026	MMAG	DATO' FAM CHEE WAY [SSH]	-32,600	117,400	5.058
09 JAN 2026 - 09 JAN 2026	MMAG	DB ATLANTIC CAPITAL (M) SDN. BHD. [SSH]	-32,600	117,400	5.058
09 JAN 2026 - 09 JAN 2026	MMAG	VELOCITY CAPITAL PARTNER BERHAD [SSH]	-32,600	117,400	5.058
04 DEC 2025 - 15 DEC 2025	MMSV	MR GOH KIM HOCK [DIR/CEO]	85	43,746	22.283
04 DEC 2025 - 15 DEC 2025	MMSV	MR GOH KIM HOCK [SSH]	85	43,746	22.283
12 JAN 2026 - 12 JAN 2026	MRDIY	EMPLOYEES PROVIDENT FUND BOARD [SSH]	429	986,829	10.412
12 JAN 2026 - 12 JAN 2026	MSC	DATO DR IR YONG MIAN THONG [DIR/CEO]	-200	853	0.102
12 JAN 2026 - 12 JAN 2026	MUDA	DATIN CHEONG KOON HOI [SSH]	27	119,262	39.096
12 JAN 2026 - 12 JAN 2026	MUDA	MISS LIM YEN WEE [DIR/CEO]	27	119,808	39.275
12 JAN 2026 - 12 JAN 2026	MUDA	MISS LIM YEN WEE [SSH]	27	119,808	39.275
08 JAN 2026 - 09 JAN 2026	MUDA	DATIN CHEONG KOON HOI [SSH]	66	119,235	39.087
08 JAN 2026 - 09 JAN 2026	MUDA	MISS LIM YEN WEE [DIR/CEO]	66	119,781	39.266
08 JAN 2026 - 09 JAN 2026	MUDA	MISS LIM YEN WEE [SSH]	66	119,781	39.266
16 DEC 2025 - 16 DEC 2025	MYTECH	GAIN MILLEN SDN BHD [SSH]	43,745	103,642	42.106
16 DEC 2025 - 16 DEC 2025	MYTECH	TAN SRI DATO' CHENG JOO TEIK [DIR/CEO]	43,745	116,980	47.525
16 DEC 2025 - 16 DEC 2025	MYTECH	TAN SRI DATO' CHENG JOO TEIK [SSH]	43,745	116,980	47.525
13 JAN 2026 - 13 JAN 2026	NESTLE	EMPLOYEES PROVIDENT FUND BOARD [SSH]	4	31,346	13.367
12 JAN 2026 - 12 JAN 2026	NESTLE	EMPLOYEES PROVIDENT FUND BOARD [SSH]	-1	31,340	13.364
09 JAN 2026 - 09 JAN 2026	NESTLE	EMPLOYEES PROVIDENT FUND BOARD [SSH]	10	31,342	13.365
08 JAN 2026 - 08 JAN 2026	NESTLE	EMPLOYEES PROVIDENT FUND BOARD [SSH]	31	31,331	13.361
07 JAN 2026 - 07 JAN 2026	NESTLE	EMPLOYEES PROVIDENT FUND BOARD [SSH]	35	31,300	13.348
08 JAN 2026 - 08 JAN 2026	NGGB	DATO' GAN KONG HIOK [SSH]	69	173,344	15.853
09 JAN 2026 - 09 JAN 2026	NICE	MR JULIAN FOO KUAN LIN [DIR/CEO]	1,010	191,590	12.911

Notice Period is 11th January 2026 to 17th January 2026

Effective Change Date	Stock Name	Buyer/ Seller Name [Classification]	Bought / (Sold) ['000]	No. of Shares After Trade ['000]	
			Total	Total	% Held
12 JAN 2026 - 13 JAN 2026	NIHSIN	MR KHOO CHEE KONG [SSH]	26	100,142	19.079
09 JAN 2026 - 09 JAN 2026	NIHSIN	MISS KHOO WUAN RU [DIR/CEO]	3	100,116	19.074
09 JAN 2026 - 09 JAN 2026	NIHSIN	MR KHOO CHEE KONG [SSH]	3	100,116	19.074
08 JAN 2026 - 09 JAN 2026	NOVAMSC	MR OOI KENG THYE [SSH]	3,400	195,148	9.063
13 JAN 2026 - 14 JAN 2026	OCK	DATUK WIRA OOI CHIN KHOON [DIR/CEO]	19	341,154	32.324
13 JAN 2026 - 14 JAN 2026	OCK	DATUK WIRA OOI CHIN KHOON [SSH]	19	341,154	32.324
08 JAN 2026 - 09 JAN 2026	OHM	DATUK TEOH YEE SEANG [DIR/CEO]	144	303,221	60.644
08 JAN 2026 - 09 JAN 2026	OHM	DATUK TEOH YEE SEANG [SSH]	144	303,221	60.644
12 JAN 2026 - 12 JAN 2026	ORKIM	KUMPULAN WANG PERSARAAN (DIPERBADANKAN) [SSH]	2,156	94,323	9.432
09 JAN 2026 - 09 JAN 2026	ORKIM	KUMPULAN WANG PERSARAAN (DIPERBADANKAN) [SSH]	2,428	92,167	9.217
14 JAN 2026 - 15 JAN 2026	PA	TAN SRI LAU KUAN KAM [DIR/CEO]	1,102	106,270	7.062
14 JAN 2026 - 15 JAN 2026	PA	TAN SRI LAU KUAN KAM [SSH]	1,102	106,270	7.062
13 JAN 2026 - 13 JAN 2026	PADINI	EMPLOYEES PROVIDENT FUND BOARD [SSH]	436	105,012	10.641
12 JAN 2026 - 12 JAN 2026	PADINI	EMPLOYEES PROVIDENT FUND BOARD [SSH]	345	104,576	10.597
09 JAN 2026 - 09 JAN 2026	PADINI	CHONG CHIN LIN [SSH]	-15	455,904	46.197
09 JAN 2026 - 09 JAN 2026	PADINI	MR CHRISTOPHER YONG TZE-YAO [DIR/CEO]	-15	288	0.029
09 JAN 2026 - 09 JAN 2026	PADINI	YONG PANG CHAUN [DIR/CEO]	-15	455,904	46.197
09 JAN 2026 - 09 JAN 2026	PADINI	YONG PANG CHAUN [SSH]	-15	455,904	46.197
13 JAN 2026 - 13 JAN 2026	PANAMY	EMPLOYEES PROVIDENT FUND BOARD [SSH]	-4	5,369	8.839
12 JAN 2026 - 12 JAN 2026	PANAMY	EMPLOYEES PROVIDENT FUND BOARD [SSH]	-0.9	5,373	8.845
09 JAN 2026 - 09 JAN 2026	PANAMY	EMPLOYEES PROVIDENT FUND BOARD [SSH]	-38	5,374	8.846
08 JAN 2026 - 08 JAN 2026	PANAMY	EMPLOYEES PROVIDENT FUND BOARD [SSH]	-12	5,412	8.909
07 JAN 2026 - 07 JAN 2026	PANAMY	EMPLOYEES PROVIDENT FUND BOARD [SSH]	-0.1	5,424	8.929
13 JAN 2026 - 13 JAN 2026	PARADIGM	EMPLOYEES PROVIDENT FUND BOARD [SSH]	500	88,105	5.503
13 JAN 2026 - 13 JAN 2026	PARADIGM	EMPLOYEES PROVIDENT FUND BOARD [SSH]	500	88,105	5.503
12 JAN 2026 - 12 JAN 2026	PARADIGM	EMPLOYEES PROVIDENT FUND BOARD [SSH]	-222	87,605	5.472
12 JAN 2026 - 12 JAN 2026	PARAGON	MR WONG EE-COLN [DIR/CEO]	-50	250	0.247
15 JAN 2026 - 15 JAN 2026	PAVREIT	KUMPULAN WANG PERSARAAN (DIPERBADANKAN) [SSH]	69	225,518	5.745
13 JAN 2026 - 13 JAN 2026	PAVREIT	EMPLOYEES PROVIDENT FUND BOARD [SSH]	731	480,169	12.234
14 JAN 2026 - 14 JAN 2026	PAVREIT	KUMPULAN WANG PERSARAAN (DIPERBADANKAN) [SSH]	69	225,449	5.744
12 JAN 2026 - 12 JAN 2026	PAVREIT	EMPLOYEES PROVIDENT FUND BOARD [SSH]	1,088	479,438	12.215
13 JAN 2026 - 13 JAN 2026	PAVREIT	KUMPULAN WANG PERSARAAN (DIPERBADANKAN) [SSH]	69	225,380	5.742
09 JAN 2026 - 09 JAN 2026	PAVREIT	EMPLOYEES PROVIDENT FUND BOARD [SSH]	731	478,350	12.188
12 JAN 2026 - 12 JAN 2026	PAVREIT	KUMPULAN WANG PERSARAAN (DIPERBADANKAN) [SSH]	-104	225,310	5.74
08 JAN 2026 - 08 JAN 2026	PAVREIT	EMPLOYEES PROVIDENT FUND BOARD [SSH]	863	477,619	12.169
09 JAN 2026 - 09 JAN 2026	PAVREIT	KUMPULAN WANG PERSARAAN (DIPERBADANKAN) [SSH]	-457	225,415	5.743
07 JAN 2026 - 07 JAN 2026	PAVREIT	EMPLOYEES PROVIDENT FUND BOARD [SSH]	-42	476,756	12.147
13 JAN 2026 - 13 JAN 2026	PBBANK	EMPLOYEES PROVIDENT FUND BOARD [SSH]	7,739	355,424	18.31
12 JAN 2026 - 12 JAN 2026	PBBANK	EMPLOYEES PROVIDENT FUND BOARD [SSH]	3,267	354,650	18.27
09 JAN 2026 - 09 JAN 2026	PBBANK	EMPLOYEES PROVIDENT FUND BOARD [SSH]	9,374	354,323	18.25
08 JAN 2026 - 08 JAN 2026	PBBANK	EMPLOYEES PROVIDENT FUND BOARD [SSH]	6,450	353,864	18.21
07 JAN 2026 - 07 JAN 2026	PBBANK	EMPLOYEES PROVIDENT FUND BOARD [SSH]	6,129	352,741	18.17
13 JAN 2026 - 13 JAN 2026	PCHEM	EMPLOYEES PROVIDENT FUND BOARD ('EPF BOARD') [SSH]	-338	99,051	12.376
12 JAN 2026 - 12 JAN 2026	PCHEM	EMPLOYEES PROVIDENT FUND BOARD ('EPF BOARD') [SSH]	-1,072	99,038	12.38
09 JAN 2026 - 09 JAN 2026	PCHEM	EMPLOYEES PROVIDENT FUND BOARD ('EPF BOARD') [SSH]	-502	99,146	12.393
08 JAN 2026 - 08 JAN 2026	PCHEM	EMPLOYEES PROVIDENT FUND BOARD ('EPF BOARD') [SSH]	-137	99,196	12.4
07 JAN 2026 - 07 JAN 2026	PCHEM	EMPLOYEES PROVIDENT FUND BOARD ('EPF BOARD') [SSH]	-824	99,209	12.401
15 JAN 2026 - 15 JAN 2026	PENTA	KUMPULAN WANG PERSARAAN (DIPERBADANKAN) [SSH]	38	57,185	8.039
13 JAN 2026 - 13 JAN 2026	PENTA	EMPLOYEES PROVIDENT FUND BOARD [SSH]	3,350	91,536	12.868
14 JAN 2026 - 14 JAN 2026	PENTA	KUMPULAN WANG PERSARAAN (DIPERBADANKAN) [SSH]	105	57,147	8.033
12 JAN 2026 - 12 JAN 2026	PENTA	EMPLOYEES PROVIDENT FUND BOARD [SSH]	3,564	88,186	12.398
13 JAN 2026 - 13 JAN 2026	PENTA	KUMPULAN WANG PERSARAAN (DIPERBADANKAN) [SSH]	32	57,042	8.019
09 JAN 2026 - 09 JAN 2026	PENTA	EMPLOYEES PROVIDENT FUND BOARD [SSH]	547	84,622	11.896
12 JAN 2026 - 12 JAN 2026	PENTA	KUMPULAN WANG PERSARAAN (DIPERBADANKAN) [SSH]	136	57,010	8.014
08 JAN 2026 - 08 JAN 2026	PENTA	EMPLOYEES PROVIDENT FUND BOARD [SSH]	1,460	84,075	11.82
09 JAN 2026 - 09 JAN 2026	PENTA	KUMPULAN WANG PERSARAAN (DIPERBADANKAN) [SSH]	93	56,874	7.995
07 JAN 2026 - 07 JAN 2026	PENTA	EMPLOYEES PROVIDENT FUND BOARD [SSH]	724	82,615	11.614
14 JAN 2026 - 15 JAN 2026	PESONA	KOMBINASI EMAS SDN BHD [SSH]	700	295,350	42.497
14 JAN 2026 - 15 JAN 2026	PESONA	MR WIE HOCK KIONG [DIR/CEO]	700	295,350	42.497
14 JAN 2026 - 15 JAN 2026	PESONA	MR WIE HOCK KIONG [SSH]	700	295,350	42.497
13 JAN 2026 - 13 JAN 2026	PETDAG	EMPLOYEES PROVIDENT FUND BOARD ('EPF BOARD') [SSH]	-50	131,042	13.191
09 JAN 2026 - 09 JAN 2026	PETDAG	EMPLOYEES PROVIDENT FUND BOARD ('EPF BOARD') [SSH]	5	132,358	13.323
07 JAN 2026 - 07 JAN 2026	PETDAG	EMPLOYEES PROVIDENT FUND BOARD ('EPF BOARD') [SSH]	484	132,600	13.347
09 JAN 2026 - 09 JAN 2026	PETGAS	EMPLOYEES PROVIDENT FUND BOARD [SSH]	128	268,900	13.59
08 JAN 2026 - 08 JAN 2026	PETGAS	EMPLOYEES PROVIDENT FUND BOARD [SSH]	393	268,772	13.583
07 JAN 2026 - 07 JAN 2026	PETGAS	EMPLOYEES PROVIDENT FUND BOARD [SSH]	15	268,380	13.563
13 JAN 2026 - 13 JAN 2026					

Notice Period is 11th January 2026 to 17th January 2026

Effective Change Date	Stock Name	Buyer/ Seller Name [Classification]	Bought / (Sold) ['000]	No. of Shares After Trade ['000]	
			Total	Total	% Held
15 JAN 2026 - 15 JAN 2026	RESINTC	MR TEH LENG KANG [DIR/CEO]	11	18425	9.478
15 JAN 2026 - 15 JAN 2026	RESINTC	MR TEH LENG KANG [SSH]	11	18425	9.478
14 JAN 2026 - 14 JAN 2026	RESINTC	MISS WEI HWEI HONG [DIR/CEO]	29	18414	9.472
14 JAN 2026 - 14 JAN 2026	RESINTC	MISS WEI HWEI HONG [SSH]	29	18414	9.472
14 JAN 2026 - 14 JAN 2026	RESINTC	MR TEH LENG KANG [DIR/CEO]	29	18414	9.472
14 JAN 2026 - 14 JAN 2026	RESINTC	MR TEH LENG KANG [SSH]	29	18414	9.472
12 JAN 2026 - 12 JAN 2026	RESINTC	MISS WEI HWEI HONG [DIR/CEO]	51	18385	9.457
12 JAN 2026 - 12 JAN 2026	RESINTC	MISS WEI HWEI HONG [SSH]	51	18385	9.457
12 JAN 2026 - 12 JAN 2026	RESINTC	MR TEH LENG KANG [DIR/CEO]	51	18385	9.457
12 JAN 2026 - 12 JAN 2026	RESINTC	MR TEH LENG KANG [SSH]	51	18385	9.457
13 JAN 2026 - 13 JAN 2026	RGS	DATO' TAN BOON TECK [DIR/CEO]	1	154003	60.393
13 JAN 2026 - 13 JAN 2026	RGS	DATO' TAN BOON TECK [SSH]	1	154003	60.393
13 JAN 2026 - 13 JAN 2026	RHBBANK	EMPLOYEES PROVIDENT FUND BOARD [SSH]	-3,500	1676721	38.44
12 JAN 2026 - 12 JAN 2026	RHBBANK	EMPLOYEES PROVIDENT FUND BOARD [SSH]	-6,126	1680221	38.52
13 JAN 2026 - 13 JAN 2026	RHBBANK	KUMPULAN WANG PERSARAAN (DIPERBADANKAN) [SSH]	150	236002	5.411
09 JAN 2026 - 09 JAN 2026	RHBBANK	EMPLOYEES PROVIDENT FUND BOARD [SSH]	637	1686347	38.661
12 JAN 2026 - 12 JAN 2026	RHBBANK	KUMPULAN WANG PERSARAAN (DIPERBADANKAN) [SSH]	500	235852	5.407
08 JAN 2026 - 08 JAN 2026	RHBBANK	EMPLOYEES PROVIDENT FUND BOARD [SSH]	2,735	1685710	38.646
09 JAN 2026 - 09 JAN 2026	RHBBANK	KUMPULAN WANG PERSARAAN (DIPERBADANKAN) [SSH]	250	235352	5.396
07 JAN 2026 - 07 JAN 2026	RHBBANK	EMPLOYEES PROVIDENT FUND BOARD [SSH]	4,962	1682974	38.583
15 JAN 2026 - 15 JAN 2026	RKI	MR LIN CHIN-HUNG [DIR/CEO]	2,000	36034	18.419
15 JAN 2026 - 15 JAN 2026	RKI	MR LIN CHIN-HUNG [SSH]	2,000	36034	18.419
12 JAN 2026 - 12 JAN 2026	SALIRAN	MR LIAW CHOON WEI [DIR/CEO]	150	269404	70.358
12 JAN 2026 - 12 JAN 2026	SALIRAN	MR LIAW CHOON WEI [SSH]	150	269404	70.358
12 JAN 2026 - 12 JAN 2026	SAM	EMPLOYEES PROVIDENT FUND BOARD [SSH]	46	39620	5.852
09 JAN 2026 - 09 JAN 2026	SAM	EMPLOYEES PROVIDENT FUND BOARD [SSH]	-14	39574	5.846
08 JAN 2026 - 08 JAN 2026	SAM	EMPLOYEES PROVIDENT FUND BOARD [SSH]	21	39589	5.848
13 JAN 2026 - 13 JAN 2026	SBH	MR TAN BOO NAM [DIR/CEO]	100	373741	42.088
13 JAN 2026 - 13 JAN 2026	SBH	MR TAN BOO NAM [SSH]	100	284663	32.057
24 DEC 2025 - 24 DEC 2025	SCBUILD	MISS CHUAN AI MAY [SSH]	200	651200	12.241
12 JAN 2026 - 12 JAN 2026	SCGBHD	EMPLOYEES PROVIDENT FUND BOARD [SSH]	807	71573	6.337
09 JAN 2026 - 09 JAN 2026	SCGBHD	EMPLOYEES PROVIDENT FUND BOARD [SSH]	1,479	70767	6.265
08 JAN 2026 - 08 JAN 2026	SCGBHD	EMPLOYEES PROVIDENT FUND BOARD [SSH]	633	69287	6.134
08 JAN 2026 - 08 JAN 2026	SCGM	MR SAW CHAI SOON [SSH]	-110	11162	5.797
13 JAN 2026 - 13 JAN 2026	SCOPE	MR LEE MIN HUAT [DIR/CEO]	500	186203	16.12
13 JAN 2026 - 13 JAN 2026	SCOPE	MR LEE MIN HUAT [SSH]	500	186203	16.12
13 JAN 2026 - 13 JAN 2026	SDG	KUMPULAN WANG PERSARAAN (DIPERBADANKAN) [SSH]	175	535193	7.739
12 JAN 2026 - 12 JAN 2026	SDG	AMANAHRAYA TRUSTEES BERHAD - AMANAH SAHAM BUMIPUTERA [SSH]	-355	2916772	42.176
09 JAN 2026 - 09 JAN 2026	SDG	EMPLOYEES PROVIDENT FUND BOARD [SSH]	-3,307	1027821	14.862
09 JAN 2026 - 12 JAN 2026	SDG	KUMPULAN WANG PERSARAAN (DIPERBADANKAN) [SSH]	636	535018	7.736
08 JAN 2026 - 09 JAN 2026	SDG	AMANAHRAYA TRUSTEES BERHAD - AMANAH SAHAM BUMIPUTERA [SSH]	-4,000	2917126	42.181
07 JAN 2026 - 08 JAN 2026	SDG	EMPLOYEES PROVIDENT FUND BOARD [SSH]	6,207	1031128	14.91
15 JAN 2026 - 15 JAN 2026	SDRED	MR TEH LIP BIN [SSH]	-3,086	150071	35.22
15 JAN 2026 - 15 JAN 2026	SDRED	TEH WAN SANG & SONS SDN BHD [SSH]	-3,086	82441	19.35
12 JAN 2026 - 12 JAN 2026	SDRED	MR TEH LIP BIN [SSH]	-6,511	153157	35.94
12 JAN 2026 - 12 JAN 2026	SDRED	TEH WAN SANG & SONS SDN BHD [SSH]	-6,511	85527	20.07
09 JAN 2026 - 09 JAN 2026	SEALINK	MR LO LING [DIR/CEO]	1,158	101460	20.292
09 JAN 2026 - 09 JAN 2026	SEALINK	MR LO LING [SSH]	1,158	101460	20.292
12 JAN 2026 - 12 JAN 2026	SEMICO	DATO' SRI RAMLI BIN MOHAMED YOOSUF [DIR/CEO]	500	500	0.139
12 JAN 2026 - 12 JAN 2026	SEMICO	MARC EXPERIENCE VENTURES SDN. BHD. [SSH]	-18,000	236230	65.619
12 JAN 2026 - 13 JAN 2026	SEMICO	MISS ANDREA HUONG JIA MEI [DIR/CEO]	200	200	0.056
12 JAN 2026 - 13 JAN 2026	SEMICO	MISS YAP CHOO CHENG [DIR/CEO]	200	200	0.056
12 JAN 2026 - 13 JAN 2026	SEMICO	MR OOI GUAN HOE [DIR/CEO]	50	50	0.014
12 JAN 2026 - 12 JAN 2026	SEMICO	MR TAI LEE CHUEN [DIR/CEO]	-18,000	236230	65.619
12 JAN 2026 - 12 JAN 2026	SEMICO	MR TAI LEE CHUEN [SSH]	-18,000	236230	65.619
12 JAN 2026 - 12 JAN 2026	SFPTECH	DATO' HAMZAH BIN MOHD SALLEH [DIR/CEO]	400	400	1.533
12 JAN 2026 - 12 JAN 2026	SFPTECH	DR CHANG CHEE JIA [DIR/CEO]	1,200	1200	4.598
12 JAN 2026 - 12 JAN 2026	SFPTECH	MISS CHAN FOONG PING [DIR/CEO]	400	400	1.533
12 JAN 2026 - 12 JAN 2026	SFPTECH	MISS TAN GEK IM [DIR/CEO]	400	400	1.533
12 JAN 2026 - 12 JAN 2026	SFPTECH	MR KEOH BENG HUAT [DIR/CEO]	2,600	2600	9.962
12 JAN 2026 - 12 JAN 2026	SFPTECH	YM TENGKU MOHD FARID BIN TENGKU HASSIM [DIR/CEO]	400	400	1.533
14 JAN 2026 - 14 JAN 2026	SIGN	CHIN HIN GROUP BERHAD [SSH]	-1,620	409488	63.438
14 JAN 2026 - 14 JAN 2026	SIGN	DATUK SERI CHIAU BENG TEIK JP [DIR/CEO]	-1,620	409488	63.438
14 JAN 2026 - 14 JAN 2026	SIGN	DATUK SERI CHIAU BENG TEIK JP [SSH]	-1,620	409488	63.438
14 JAN 2026 - 14 JAN 2026	SIGN	DATUK WIRA CHIAU HAW CHOON [DIR/CEO]	-1,620	409488	63.438
14 JAN 2026 - 14 JAN 2026	SIGN	DATUK WIRA CHIAU HAW CHOON [SSH]	-1,620	409488	63.438
14 JAN 2026 - 14 JAN 2026	SIGN	DIVINE INVENTIONS SDN BHD [SSH]	-1,620	409488	63.438
14 JAN 2026 - 14 JAN 2026	SIGN	PP CHIN HIN REALTY SDN BHD [SSH]	-1,620	409488	63.438
14 JAN 2026 - 14 JAN 2026	SIME	KUMPULAN WANG PERSARAAN (DIPERBADANKAN) [SSH]	600	457218	6.708
13 JAN 2026 - 13 JAN 2026	SIME	AMANAHRAYA TRUSTEES BERHAD - AMANAH SAHAM BUMIPUTERA [SSH]	-2,896	2393272	35.115
12 JAN 2026 - 12 JAN 2026	SIME	AMANAHRAYA TRUSTEES BERHAD - AMANAH SAHAM BUMIPUTERA [SSH]	-660	2396168	35.157
09 JAN 2026 - 09 JAN 2026	SIME	EMPLOYEES PROVIDENT FUND BOARD [SSH]	-2,363	1170610	17.175
12 JAN 2026 - 12 JAN 2026	SIME	KUMPULAN WANG PERSARAAN (DIPERBADANKAN) [SSH]	1,000	456618	6.699
08 JAN 2026 - 08 JAN 2026	SIME	EMPLOYEES PROVIDENT FUND BOARD [SSH]	-1,387	1172973	17.21
09 JAN 2026 - 09 JAN 2026	SIME	KUMPULAN WANG PERSARAAN (DIPERBADANKAN) [SSH]	1,000	455618	6.685
15 JAN 2026 - 15 JAN 2026	SIMEPROP	KUMPULAN WANG PERSARAAN (DIPERBADANKAN) [SSH]	3,000	453946	6.675
14 JAN 2026 - 14 JAN 2026	SIMEPROP	AMANAHRAYA TRUSTEES BERHAD - AMANAH SAHAM BUMIPUTERA [SSH]	-966	2272494	33.415
13 JAN 2026 - 13 JAN 2026	SIMEPROP	AMANAHRAYA TRUSTEES BERHAD - AMANAH SAHAM BUMIPUTERA [SSH]	-2,440	2273460	33.429

Notice Period is 11th January 2026 to 17th January 2026

Effective Change Date	Stock Name	Buyer/ Seller Name [Classification]	Bought / (Sold) ['000]	No. of Shares After Trade ['000]	
			Total	Total	% Held
08 JAN 2026 - 08 JAN 2026	SIMEPROP	AMANAHRAYA TRUSTEES BERHAD - AMANAH SAHAM BUMIPUTERA [SSH]	-1,045	2279852	33.523
07 JAN 2026 - 07 JAN 2026	SIMEPROP	AMANAHRAYA TRUSTEES BERHAD - AMANAH SAHAM BUMIPUTERA [SSH]	-2,295	2280897	33.538
07 JAN 2026 - 07 JAN 2026	SIMEPROP	EMPLOYEES PROVIDENT FUND BOARD [SSH]	1,594	999527	14.698
12 JAN 2026 - 12 JAN 2026	SLVEST	URUSHARTA JAMAAH SDN. BHD. [SSH]	604	62347	6.601
08 JAN 2026 - 08 JAN 2026	SLVEST	URUSHARTA JAMAAH SDN. BHD. [SSH]	-30	61743	6.539
12 JAN 2026 - 12 JAN 2026	SNS	PRUDENTIAL PLC [SSH]	-301	96028	5.73
08 JAN 2026 - 08 JAN 2026	SPRITZER	DATIN LAI YIN LENG [SSH]	120	56066	8.744
08 JAN 2026 - 08 JAN 2026	SPRITZER	DATO' LIM KOK BOON [DIR/CEO]	120	56066	8.744
08 JAN 2026 - 08 JAN 2026	SPRITZER	DATO' LIM KOK BOON [SSH]	120	56066	8.744
14 JAN 2026 - 14 JAN 2026	SPSETIA	AMANAHRAYA TRUSTEES BERHAD - AMANAH SAHAM BUMIPUTERA [SSH]	-3,447	985602	19.699
13 JAN 2026 - 13 JAN 2026	SPSETIA	AMANAHRAYA TRUSTEES BERHAD - AMANAH SAHAM BUMIPUTERA [SSH]	-553	989050	19.768
12 JAN 2026 - 12 JAN 2026	SPSETIA	EMPLOYEES PROVIDENT FUND BOARD [SSH]	2,750	449178	8.978
09 JAN 2026 - 09 JAN 2026	SPSETIA	EMPLOYEES PROVIDENT FUND BOARD [SSH]	896	446428	8.923
15 JAN 2026 - 15 JAN 2026	SRIDGE	DATO' KHOO YIK CHOU [DIR/CEO]	389	57098	14.75
15 JAN 2026 - 15 JAN 2026	SRIDGE	DATO' KHOO YIK CHOU [SSH]	389	57098	14.75
12 JAN 2026 - 12 JAN 2026	SRIDGE	ENCIK SYAKUR BIN DATO' MOHD SUHAIMI [DIR/CEO]	-23	28516	7.379
12 JAN 2026 - 12 JAN 2026	SRIDGE	ENCIK SYAKUR BIN DATO' MOHD SUHAIMI [SSH]	-23	28546	7.379
13 JAN 2026 - 15 JAN 2026	STRAITS	MR YONG CHEAN PENG [SSH]	541	63834	6.42
08 JAN 2026 - 12 JAN 2026	STRAITS	MR YONG CHEAN PENG [SSH]	1,663	63293	6.365
20 JAN 2025 - 20 JAN 2025	SUNCON	MR LIEW KOK WING [DIR/CEO]	2,400	2400	0.186
20 JAN 2025 - 20 JAN 2025	SUNCON	MR WONG KWAN SONG [DIR/CEO]	1,400	1400	0.109
13 JAN 2026 - 13 JAN 2026	SUNREIT	EMPLOYEES PROVIDENT FUND BOARD [SSH]	2,821	505619	14.763
12 JAN 2026 - 12 JAN 2026	SUNREIT	EMPLOYEES PROVIDENT FUND BOARD [SSH]	-345	502799	14.681
09 JAN 2026 - 09 JAN 2026	SUNREIT	EMPLOYEES PROVIDENT FUND BOARD [SSH]	312	502910	14.684
08 JAN 2026 - 08 JAN 2026	SUNREIT	EMPLOYEES PROVIDENT FUND BOARD [SSH]	4,000	502599	14.675
09 JAN 2026 - 09 JAN 2026	SUNREIT	KUMPULAN WANG PERSARAAN (DIPERBADANKAN) ("KWAP") [SSH]	-536	204899	5.983
07 JAN 2026 - 07 JAN 2026	SUNREIT	EMPLOYEES PROVIDENT FUND BOARD [SSH]	2,267	498814	14.565
13 JAN 2026 - 13 JAN 2026	SUNWAY	EMPLOYEES PROVIDENT FUND BOARD [SSH]	10,213	610677	9.03
09 JAN 2026 - 09 JAN 2026	SUNWAY	EMPLOYEES PROVIDENT FUND BOARD [SSH]	1,761	600464	8.88
08 JAN 2026 - 08 JAN 2026	SUNWAY	EMPLOYEES PROVIDENT FUND BOARD [SSH]	7,503	598704	8.86
07 JAN 2026 - 07 JAN 2026	SUNWAY	EMPLOYEES PROVIDENT FUND BOARD [SSH]	8,079	591200	8.75
16 JAN 2026 - 16 JAN 2026	SUPREME	DATO SRI RICHARD WEE LIANG HUAT @ RICHARD WEE LIANG CHIAT [DIR/CEO]	20	150096	34.906
16 JAN 2026 - 16 JAN 2026	SUPREME	DATO SRI RICHARD WEE LIANG HUAT @ RICHARD WEE LIANG CHIAT [SSH]	20	150096	34.906
13 JAN 2026 - 15 JAN 2026	SYSTECH	DATUK CHAN SOON TAT [SSH]	1,804	48264	6.828
16 JAN 2026 - 16 JAN 2026	TANCO	DATO' SRI ANDREW TAN JUN SUAN [DIR/CEO]	-11,500	3209356	53.263
16 JAN 2026 - 16 JAN 2026	TANCO	DATO' SRI ANDREW TAN JUN SUAN [DIR/CEO]	11,150	3220506	53.448
16 JAN 2026 - 16 JAN 2026	TANCO	DATO' SRI ANDREW TAN JUN SUAN [SSH]	11,150	3220506	53.448
16 JAN 2026 - 16 JAN 2026	TANCO	DATO' SRI ANDREW TAN JUN SUAN [SSH]	-11,500	3209356	53.263
15 JAN 2026 - 15 JAN 2026	TANCO	DATO' SRI ANDREW TAN JUN SUAN [DIR/CEO]	15,716	3220856	53.454
15 JAN 2026 - 15 JAN 2026	TANCO	DATO' SRI ANDREW TAN JUN SUAN [DIR/CEO]	-15,312	3205140	53.193
15 JAN 2026 - 15 JAN 2026	TANCO	DATO' SRI ANDREW TAN JUN SUAN [SSH]	15,716	3220856	53.454
15 JAN 2026 - 15 JAN 2026	TANCO	DATO' SRI ANDREW TAN JUN SUAN [SSH]	-15,312	3205140	53.193
14 JAN 2026 - 14 JAN 2026	TANCO	DATO' SRI ANDREW TAN JUN SUAN [DIR/CEO]	-13,264	3205385	53.197
14 JAN 2026 - 14 JAN 2026	TANCO	DATO' SRI ANDREW TAN JUN SUAN [DIR/CEO]	15,068	3220453	53.447
14 JAN 2026 - 14 JAN 2026	TANCO	DATO' SRI ANDREW TAN JUN SUAN [SSH]	15,068	3220453	53.447
14 JAN 2026 - 14 JAN 2026	TANCO	DATO' SRI ANDREW TAN JUN SUAN [SSH]	-13,264	3205385	53.197
13 JAN 2026 - 13 JAN 2026	TANCO	DATO' SRI ANDREW TAN JUN SUAN [DIR/CEO]	14,950	3218649	53.417
13 JAN 2026 - 13 JAN 2026	TANCO	DATO' SRI ANDREW TAN JUN SUAN [DIR/CEO]	-13,104	3203699	53.169
13 JAN 2026 - 13 JAN 2026	TANCO	DATO' SRI ANDREW TAN JUN SUAN [SSH]	14,950	3218649	53.417
13 JAN 2026 - 13 JAN 2026	TANCO	DATO' SRI ANDREW TAN JUN SUAN [SSH]	-13,104	3203699	53.169
12 JAN 2026 - 12 JAN 2026	TANCO	DATO' SRI ANDREW TAN JUN SUAN [DIR/CEO]	-8,989	3203707	53.169
12 JAN 2026 - 12 JAN 2026	TANCO	DATO' SRI ANDREW TAN JUN SUAN [DIR/CEO]	13,096	3216803	53.387
12 JAN 2026 - 12 JAN 2026	TANCO	DATO' SRI ANDREW TAN JUN SUAN [SSH]	13,096	3216803	53.387
12 JAN 2026 - 12 JAN 2026	TANCO	DATO' SRI ANDREW TAN JUN SUAN [SSH]	-8,989	3203707	53.169
15 JAN 2026 - 15 JAN 2026	TENAGA	KUMPULAN WANG PERSARAAN (DIPERBADANKAN) [SSH]	-586	445965	7.65
13 JAN 2026 - 13 JAN 2026	TENAGA	EMPLOYEES PROVIDENT FUND BOARD [SSH]	369	1344810	23.07
12 JAN 2026 - 12 JAN 2026	TENAGA	EMPLOYEES PROVIDENT FUND BOARD [SSH]	792	1344441	23.06
09 JAN 2026 - 09 JAN 2026	TENAGA	EMPLOYEES PROVIDENT FUND BOARD [SSH]	2,000	1343649	23.05
08 JAN 2026 - 08 JAN 2026	TENAGA	EMPLOYEES PROVIDENT FUND BOARD [SSH]	7,088	1341649	23.02
07 JAN 2026 - 07 JAN 2026	TENAGA	EMPLOYEES PROVIDENT FUND BOARD [SSH]	722	1334561	22.89
13 JAN 2026 - 14 JAN 2026	TEXCHEM	TAN SRI DATO' SERI (DR.) FUMIHIKO KONISHI [DIR/CEO]	65	59834	51.101
13 JAN 2026 - 14 JAN 2026	TEXCHEM	TAN SRI DATO' SERI (DR.) FUMIHIKO KONISHI [SSH]	65	59834	51.101
09 JAN 2026 - 12 JAN 2026	TEXCHEM	TAN SRI DATO' SERI (DR.) FUMIHIKO KONISHI [DIR/CEO]	37	59770	51.045
09 JAN 2026 - 12 JAN 2026</					

Notice Period is 11th January 2026 to 17th January 2026

Effective Change Date	Stock Name	Buyer/ Seller Name [Classification]	Bought / (Sold) ['000]	No. of Shares After Trade ['000]	
			Total	Total	% Held
16 JAN 2026 - 16 JAN 2026	TOMYPAK	DATUK CHRISTOPHER WAN SOO KEE [DIR/CEO]	14	3443	0.799
14 JAN 2026 - 14 JAN 2026	TOMYPAK	MR YONG KWET ON [DIR/CEO]	158	109891	25.49
14 JAN 2026 - 14 JAN 2026	TOMYPAK	MR YONG KWET ON [SSH]	158	109891	25.49
09 JAN 2026 - 09 JAN 2026	TOMYPAK	MR YONG KWET ON [DIR/CEO]	146	109733	25.453
09 JAN 2026 - 09 JAN 2026	TOMYPAK	MR YONG KWET ON [SSH]	146	109733	25.453
14 JAN 2026 - 15 JAN 2026	TOPVISN	DATUK LIEW HOCK NEAN [DIR/CEO]	330	132976	42.921
14 JAN 2026 - 15 JAN 2026	TOPVISN	DATUK LIEW HOCK NEAN [SSH]	330	132976	42.921
14 JAN 2026 - 15 JAN 2026	TOPVISN	MADAM ANGELA LOO VOON PEI [SSH]	330	132976	42.921
12 JAN 2026 - 13 JAN 2026	TOPVISN	DATUK LIEW HOCK NEAN [DIR/CEO]	420	132646	42.815
12 JAN 2026 - 13 JAN 2026	TOPVISN	DATUK LIEW HOCK NEAN [SSH]	420	132646	42.815
12 JAN 2026 - 13 JAN 2026	TOPVISN	MADAM ANGELA LOO VOON PEI [SSH]	420	132646	42.815
14 JAN 2026 - 15 JAN 2026	TRC	TAN SRI DR AHMAD KAMARULZAMAN BIN HJ AHMAD BADARUDDIN [DIR/CEO]	-144	398	0.008
16 JAN 2026 - 16 JAN 2026	TSH	LIM FOOK HIN [DIR/CEO]	100	3862	0.305
15 JAN 2026 - 15 JAN 2026	TSH	LIM FOOK HIN [DIR/CEO]	100	3762	0.297
12 JAN 2026 - 12 JAN 2026	TSH	LIM FOOK HIN [DIR/CEO]	100	3662	0.289
08 JAN 2026 - 09 JAN 2026	TWL	DATIN SEK CHIAN NEE [SSH]	9,144	1801663	27.499
08 JAN 2026 - 09 JAN 2026	TWL	DATO' TAN WEI LIAN [DIR/CEO]	9,144	1801663	27.498
08 JAN 2026 - 09 JAN 2026	TWL	DATO' TAN WEI LIAN [SSH]	9,144	1801663	27.498
08 JAN 2026 - 09 JAN 2026	TWL	TWL CAPITAL BERHAD [SSH]	9,144	1801663	27.499
12 JAN 2026 - 12 JAN 2026	UOAEV	EMPLOYEES PROVIDENT FUND BOARD ("EPF BOARD") [SSH]	326	379607	14.298
09 JAN 2026 - 09 JAN 2026	UOAEV	EMPLOYEES PROVIDENT FUND BOARD ("EPF BOARD") [SSH]	106	379281	14.286
08 JAN 2026 - 08 JAN 2026	UOAEV	EMPLOYEES PROVIDENT FUND BOARD ("EPF BOARD") [SSH]	84	379174	14.281
07 JAN 2026 - 07 JAN 2026	UOAEV	EMPLOYEES PROVIDENT FUND BOARD ("EPF BOARD") [SSH]	25	379090	14.278
13 JAN 2026 - 13 JAN 2026	UTDPLT	EMPLOYEES PROVIDENT FUND BOARD [SSH]	-291	45840	7.368
12 JAN 2026 - 12 JAN 2026	UTDPLT	EMPLOYEES PROVIDENT FUND BOARD [SSH]	-457	46132	7.415
08 JAN 2026 - 08 JAN 2026	UTDPLT	EMPLOYEES PROVIDENT FUND BOARD [SSH]	29	46588	7.488
07 JAN 2026 - 07 JAN 2026	UTDPLT	EMPLOYEES PROVIDENT FUND BOARD [SSH]	27	46560	7.483
12 JAN 2026 - 12 JAN 2026	UWC	EMPLOYEES PROVIDENT FUND BOARD [SSH]	368	68916	6.249
09 JAN 2026 - 09 JAN 2026	UWC	EMPLOYEES PROVIDENT FUND BOARD [SSH]	100	68548	6.215
08 JAN 2026 - 08 JAN 2026	UWC	EMPLOYEES PROVIDENT FUND BOARD [SSH]	-65	68448	6.206
12 JAN 2026 - 12 JAN 2026	VANZO	FRAGRANCE CENTURY SDN. BHD. [SSH]	307	218398	46.791
12 JAN 2026 - 12 JAN 2026	VANZO	MR WONG LIANG TZER [DIR/CEO]	307	218398	46.791
12 JAN 2026 - 12 JAN 2026	VANZO	MR WONG LIANG TZER [SSH]	307	218398	46.791
09 JAN 2026 - 09 JAN 2026	VITROX	MADAM CHUAH POAY NGEI [DIR/CEO]	-9	1560	0.082
16 JAN 2026 - 16 JAN 2026	VOLCANO	DATUK CH'NG HUAT SENG [DIR/CEO]	30	29193	16.073
16 JAN 2026 - 16 JAN 2026	VOLCANO	DATUK CH'NG HUAT SENG [SSH]	30	29193	16.073
15 JAN 2026 - 15 JAN 2026	VOLCANO	DATUK CH'NG HUAT SENG [DIR/CEO]	99	29163	16.056
15 JAN 2026 - 15 JAN 2026	VOLCANO	DATUK CH'NG HUAT SENG [SSH]	99	29163	16.056
14 JAN 2026 - 14 JAN 2026	VOLCANO	MR ANDREW SU MENG KIT [DIR/CEO]	100	18700	10.296
14 JAN 2026 - 14 JAN 2026	VOLCANO	MR ANDREW SU MENG KIT [SSH]	100	18700	10.296
13 JAN 2026 - 13 JAN 2026	VOLCANO	DATUK CH'NG HUAT SENG [DIR/CEO]	62	29065	16.002
13 JAN 2026 - 13 JAN 2026	VOLCANO	DATUK CH'NG HUAT SENG [SSH]	62	29065	16.002
12 JAN 2026 - 12 JAN 2026	VOLCANO	MR ANDREW SU MENG KIT [DIR/CEO]	100	18600	10.241
12 JAN 2026 - 12 JAN 2026	VOLCANO	MR ANDREW SU MENG KIT [SSH]	100	18600	10.241

Notice Period is 11th January 2026 to 17th January 2026

Effective Change Date	Stock Name	Buyer/ Seller Name [Classification]	Bought / (Sold) ['000]	No. of Shares After Trade ['000]	
			Total	Total	% Held
09 JAN 2026 - 09 JAN 2026	WASCO	URUSHARTA JAMAAH SDN BHD [SSH]	-200	47075	6.079
08 JAN 2026 - 08 JAN 2026	WASCO	URUSHARTA JAMAAH SDN BHD [SSH]	-150	47275	6.105
07 JAN 2026 - 07 JAN 2026	WASCO	URUSHARTA JAMAAH SDN BHD [SSH]	-150	47425	6.124
12 JAN 2026 - 12 JAN 2026	WCEHB	TAN SRI PANG TEE CHEW [SSH]	181	327910	9.936
15 JAN 2026 - 15 JAN 2026	WOODLAN	DATO' SERI DR MUN WENG SUM [DIR/CEO]	2	7393	18.481
15 JAN 2026 - 15 JAN 2026	WOODLAN	DATO' SERI DR MUN WENG SUM [SSH]	2	7393	18.481
15 JAN 2026 - 15 JAN 2026	WPRTS	KUMPULAN WANG PERSARAAN (DIPERBADANKAN) [SSH]	-503	217813	6.365
14 JAN 2026 - 14 JAN 2026	WPRTS	KUMPULAN WANG PERSARAAN (DIPERBADANKAN) [SSH]	-793	218315	6.379
08 JAN 2026 - 08 JAN 2026	WTEC	MR TIOW SEE YEN [DIR/CEO]	1,000	117991	24.581
08 JAN 2026 - 08 JAN 2026	WTEC	MR TIOW SEE YEN [SSH]	1,000	117991	24.581
15 JAN 2026 - 15 JAN 2026	WTK	DATO SRI WONG KIE YIK [SSH]	-845	144766	30.946
15 JAN 2026 - 15 JAN 2026	WTK	DATO' SRI PATRICK WONG HAW YEONG [DIR/CEO]	300	35495	7.587
15 JAN 2026 - 15 JAN 2026	WTK	DATO' SRI PATRICK WONG HAW YEONG [SSH]	300	35495	7.587
15 JAN 2026 - 15 JAN 2026	WTK	MR WONG KIE CHIE [SSH]	-845	136362	29.149
15 JAN 2026 - 15 JAN 2026	WTK	THE LATE DATUK WONG KIE NAI (ESTATE) [SSH]	-845	138934	29.699
14 JAN 2026 - 14 JAN 2026	WTK	DATO SRI WONG KIE YIK [SSH]	-1,600	145611	31.127
14 JAN 2026 - 14 JAN 2026	WTK	MR WONG KIE CHIE [SSH]	-1,600	137207	29.33
14 JAN 2026 - 14 JAN 2026	WTK	THE LATE DATUK WONG KIE NAI (ESTATE) [SSH]	-1,600	139779	29.88
13 JAN 2026 - 14 JAN 2026	WTK	DATO' SRI PATRICK WONG HAW YEONG [DIR/CEO]	1,216	35195	7.523
13 JAN 2026 - 14 JAN 2026	WTK	DATO' SRI PATRICK WONG HAW YEONG [SSH]	1,216	35195	7.523
13 JAN 2026 - 13 JAN 2026	WTK	DATO SRI WONG KIE YIK [SSH]	-1,000	147211	31.469
13 JAN 2026 - 13 JAN 2026	WTK	MR WONG KIE CHIE [SSH]	-1,000	138807	29.672
13 JAN 2026 - 13 JAN 2026	WTK	THE LATE DATUK WONG KIE NAI (ESTATE) [SSH]	-1,000	141379	30.222
12 JAN 2026 - 12 JAN 2026	WTK	DATO SRI WONG KIE YIK [SSH]	-1,240	148211	31.682
12 JAN 2026 - 12 JAN 2026	WTK	MR WONG KIE CHIE [SSH]	-1,240	139807	29.885
12 JAN 2026 - 12 JAN 2026	WTK	THE LATE DATUK WONG KIE NAI (ESTATE) [SSH]	-1,240	142379	30.435
09 JAN 2026 - 09 JAN 2026	WTK	DATO SRI WONG KIE YIK [SSH]	-210	149451	31.947
09 JAN 2026 - 09 JAN 2026	WTK	MR WONG KIE CHIE [SSH]	-210	141047	30.15
09 JAN 2026 - 09 JAN 2026	WTK	THE LATE DATUK WONG KIE NAI (ESTATE) [SSH]	-210	143619	30.7
12 JAN 2026 - 12 JAN 2026	YEWLEE	MR KHOO CHEE SIANG [SSH]	2,350	41007	7.134
09 JAN 2026 - 09 JAN 2026	YINSON	MADAM BAH KIM LIAN [DIR/CEO]	-620,360	86480	2.959
13 JAN 2026 - 13 JAN 2026	YTL	EMPLOYEES PROVIDENT FUND BOARD [SSH]	3,500	1187616	10.233
09 JAN 2026 - 09 JAN 2026	YTL	EMPLOYEES PROVIDENT FUND BOARD [SSH]	-100	1184691	10.207
08 JAN 2026 - 08 JAN 2026	YTL	EMPLOYEES PROVIDENT FUND BOARD [SSH]	-250	1184243	10.204
13 JAN 2026 - 13 JAN 2026	YTLPOWR	EMPLOYEES PROVIDENT FUND BOARD [SSH]	2,000	925459	10.724
12 JAN 2026 - 12 JAN 2026	YTLPOWR	EMPLOYEES PROVIDENT FUND BOARD [SSH]	1,500	923459	10.701
08 JAN 2026 - 08 JAN 2026	YTLPOWR	EMPLOYEES PROVIDENT FUND BOARD [SSH]	1,000	922034	10.684
07 JAN 2026 - 07 JAN 2026	YTLPOWR	EMPLOYEES PROVIDENT FUND BOARD [SSH]	1,000	921034	10.673
15 JAN 2026 - 15 JAN 2026	ZETRIX	MR WONG THEAN SOON [DIR/CEO]	229	2199476	28.195
15 JAN 2026 - 15 JAN 2026	ZETRIX	MR WONG THEAN SOON [SSH]	229	2199476	28.195
13 JAN 2026 - 13 JAN 2026	ZETRIX	ASIA INTERNET HOLDINGS SDN. BHD. [SSH]	3,000	1090581	13.98
13 JAN 2026 - 13 JAN 2026	ZETRIX	MR WONG THEAN SOON [DIR/CEO]	6,394	2199247	28.192
13 JAN 2026 - 13 JAN 2026	ZETRIX	MR WONG THEAN SOON [SSH]	6,394	2199247	28.192
12 JAN 2026 - 12 JAN 2026	ZETRIX	ASIA INTERNET HOLDINGS SDN. BHD. [SSH]	1,000	1087581	13.942
12 JAN 2026 - 12 JAN 2026	ZETRIX	MR WONG THEAN SOON [DIR/CEO]	1,000	2192853	28.11
12 JAN 2026 - 12 JAN 2026	ZETRIX	MR WONG THEAN SOON [SSH]	1,000	2192853	28.11

Disclaimer: The Information in Insider Activity is extracted from www.shareinvestor.com/fundamental/insider_trades. The information on this page is provided as a service to readers. It does not constitute financial advice and/or any investment recommendations. We assume no liability for damages resulting from or arising out of the use of such information. Whilst every effort is made to ensure accuracy, the information presented is not the official record of shareholder filings. Readers are advised to read the original filings on the Bursa Malaysia website at www.bursamalaysia.com

CHECK OUT SHAREINVESTOR

BROKER'S CALL

Weekly Buy/Sell/Hold calls from leading Malaysian Brokerages.

Go To Broker's Call

BUY **HOLD** **SELL**



The Board of Directors of **Able Global Berhad (ABLEGLOB)** wishes to announce the Recurrent Related Party Transaction entered into by the Company's wholly-owned subsidiary companies from 18 December 2025 to 16 January 2026.

AirAsia X Berhad (AAX) wishes to announce that Garynma had accepted all 3 Subscription Options to subscribe for such number of new Shares representing, in aggregate, 12% of the total issued shares in the Company, i.e. in aggregate 403,299,166 Subscription Shares at the issue price of RM1.65 per Share based on the closing market price of the Shares as at 19 January 2026, being the last trading day prior to the acceptance of the Subscription Options by Garynma.



The Board of Directors of **Capital A Berhad (CAPITALA)** wishes to announce that Teleport Everywhere Pte. Ltd., a 93.48%-owned subsidiary of the Company, has on 22 January 2026 entered into a Subscription Agreement with funds managed by HPS Investment Partners. HPS has agreed to subscribe for, and Teleport has agreed to issue and allot to HPS, redeemable convertible perpetual securities for a total consideration of USD50 million (equivalent to RM205million), on and subject to the terms and conditions of the Agreement.



[READ MORE](#)

The Board of Directors of **Dayang Enterprise Holdings Bhd (DAYANG)** wishes to announce that the Company, via its wholly-owned subsidiary, DESB Marine Services Sdn Bhd, had on 20 January 2026 entered into a Sale and Purchase Agreement with Shin Yang Shipyard Sdn. Bhd. for the construction and purchase of a 91-metre

Maintenance / Work Vessel for a total consideration of RM117.7 million, subject to the terms and conditions contained in the Agreement.

On behalf of the Board of **Gamuda Berhad (GAMUDA)**, AmInvestment Bank wishes to announce that the issue price of the new Gamuda Shares to be issued pursuant to the DRP Application has been fixed today at RM4.15 per new Gamuda Share.



[READ MORE](#)



[READ MORE](#)

HSS Engineers Berhad (HSSEB) is pleased to announce that on 22 January 2026, HSS Integrated Sdn Bhd, an associate company of HEB, accepted a letter of appointment from Silver Streams Technofarm Sdn Bhd appointing HSSI as the Project Management Consultant for the

Engineering, Procurement, Construction and Commissioning of the proposed 10.06MW Load Data Centre and associated works in Bagan Datuk, Perak Darul Ridzuan.



[READ MORE](#)

The Board of Directors of **KKB Engineering Berhad (KKB)** is pleased to announce that KKB has received Orders from QC Construction & Engineering Sdn Bhd, Bumia Sdn Bhd and EPR Sdn Bhd for the Supply of MSCSL Pipes and Specials; and Global Rail Sdn Bhd for the Supply, Fabricate and Hot-Dip Galvanising of AP Poles and VMISS Rectangular Post.

The Board of **LGMS Berhad (LGMS)** wishes to announce that the Company had, on 22 January 2026, paid part of the Purchase Consideration of RM16.065 million to the Vendor. This marks the completion of the Proposed Acquisition on even date.



[READ MORE](#)



[READ MORE](#)

Rimbunan Sawit Berhad (RSAWIT) wishes to inform that certain inadvertent errors were identified in the earlier announcements. The corresponding corrections and the corrected announcement in relation to the Proposed Disposal are outlined in the files as attached.

On behalf of the Board of **Sarawak Consolidated Industries Berhad (SCIB)**, Berjaya Securities wishes to announce additional information in relation to the Proposals as set out in the attachment (I) Proposed Disposal; and (II) Proposed Options.



[READ MORE](#)



[READ MORE](#) 

The Board of Directors of **Steel Hawk Berhad (HAWK)** is pleased to announce that Steel Hawk Engineering Sdn Bhd, a wholly-owned subsidiary of Steel Hawk, had on 20 January 2026 secured a subcontract for the Procurement, Construction & Commissioning of Fire Rated Doors for Sabah Region from Eternity Mode Sdn Bhd.

The Board of Directors of the **Swift Energy Technology Berhad (SET)** is pleased to announce that its wholly owned subsidiary, Swift Energy Sdn Bhd, has received multiple purchase orders with a combined contract value of approximately RM17.995 million.



[READ MORE](#) 





On behalf of the Board of **Sunsuria Berhad (SUNSURIA)**, RHB Investment Bank wishes to announce that Sunsuria has, on 16 January 2026, entered into (i) an amended and restated shares sale and purchase agreement with the Vendors to amend and restate the provisions of the SSPA in their entirety; and (ii) an amended and restated shareholders' agreement with Transworld and Suez Capital to amend and restate the provisions of the SHA 2025 in their entirety.

Disclaimer: The information in the Investor Relations page is extracted from individual companies' announcements in www.bursamalaysia.com. The information on this page is provided as a service to readers. We assume no liability for damages resulting from or arising out of the use of such information. Whilst every effort is made to ensure accuracy, the information presented has been simplified for your reading pleasure. Readers are advised to read the original and complete filings on the Bursa Malaysia website at https://www.bursamalaysia.com/market_information/announcements/company_announcement

NAME OF COMPANY	OFFER PERIOD		ISSUE PRICE (Per Ordinary Share)	LISTING SOUGHT	DATE OF LISTING
	OPENING	CLOSING			
GUAN HUAT SENG HOLDINGS BERHAD	5 Jan 2026	9 Jan 2026	RM0.25	ACE MARKET	22 Jan 2026
ONE GAS MASTER HOLDINGS BERHAD	12 Jan 2026	16 Jan 2026	RM0.25	ACE MARKET	27 Jan 2026
ISF GROUP BERHAD	8 Jan 2026	14 Jan 2026	RM0.33	ACE MARKET	28 Jan 2026
AMBEST GROUP BERHAD	21 Jan 2026	27 Jan 2026	RM0.25	ACE MARKET	6 Feb 2026
KEE MING GROUP BERHAD	21 Jan 2026	27 Jan 2026	RM0.38	ACE MARKET	12 Feb 2026



Learn how to identify Hot Stocks using Technical Analysis (TA) and Fundamental Analysis (FA)

SIGN UP FOR Invest
IT'S FREE!

Click Here

Scan/Click me



Via email, every Friday