

Invest

A Weekly e-Publication by SHAREINVESTOR

ISSUE

285

FRIDAY
16 JAN 2026

Scan/Click QR to Register



Via email, every Friday

MARKET SENTIMENTS

Bursa launches two quality factor indexes to showcase companies with strong financial characteristics page 29

Attracting high growth new economy Chinese enterprises for cross-border listing in Malaysia page 31

Beyond Insights Symposium 2026 Reframes How Malaysians Turn Megatrends into Investable Decisions page 34

ALSO

COMPANY SPOTLIGHT

Capital A Berhad

See more on page 06

BEHIND THE TICKER: DECODING COMPANY FUNDAMENTALS Invest 120

Perstima: Value Opportunity or Capital Trap?

SUMMARY

- Perusahaan Sadur Timah Malaysia (Perstima) Berhad (BURSA:5436) operates in a mature, cyclical tinplating industry. While the Philippines expansion adds capacity and may provide a one-off revenue lift, it does not change the industry's structural growth profile.
- Operating performance has been volatile, and capital efficiency has weakened over time. Despite modest profit growth over the cycle, ROIC and ROE have trended downward.
- Financially, Perstima is moderately sound but capital-intensive. A through-the-cycle valuation suggests the stock is undervalued.

Disclaimer: This article is written for informational purposes only. It does not constitute a solicitation, offer, advice, recommendation or recommendation to buy or sell any security. It is not intended to induce the purchase of shares in any way. All investments are subject to market risk and should be evaluated from multiple perspectives. Therefore, any investment decision and the associated risk remains with the investor. This space represents the views of the author only.

See more on pages 20-27

04 LEADERBOARD

05 SHARIAH HOT STOCKS

08 SHARIAH MOMENTUM UP STOCKS

09 NON SHARIAH HOT STOCKS

10 UP TRENDING STOCKS

11 VALUE STOCKS

12 GROWTH STOCKS

14 DIVIDEND STOCKS

16 BROKERS' CALL

17 LONG COMPANIES

36 REGIONAL MARKETS

37 INSIDER ACTIVITY

42 INVESTOR RELATIONS ANNOUNCEMENTS

SHAREINVESTOR®

An AlphaInvest Company

Invest with Knowledge

INVESTOR PLATFORMS

Director
Darren Chong
darren.chong@shareinvestor.com

Business Development Manager
Jay Cheong
jay.cheong.@shareinvestor.com

ADMIN & OPERATIONS

Senior Executive
Watie Nordin
watie.nordin@shareinvestor.com

Executive
Silas Emmanuel Joseph
silas.joseph@shareinvestor.com

PROCESS AUTOMATION & DATA ANALYTICS

Data Analyst
Lee Khai Bing

INVESTOR RELATIONS

Group Managing Director & Publisher
Edward Stanislaus
edward@shareinvestor.com

Senior Manager
Letticia Wong
letticia.wong@shareinvestor.com

Manager
Aida Norzeti Talib
aida.norzeti@shareinvestor.com

ALPHA INVEST HOLDINGS BOARD OF DIRECTORS

Chairman	Patrick Daniel
Group CEO	Christopher Lee
Group COO	Lim Dau Hee
Group MD	Shanison Lin



“ GIVE A MAN A FISH AND YOU FEED HIM FOR A DAY; TEACH A MAN TO FISH AND YOU FEED HIM FOR A LIFETIME ”

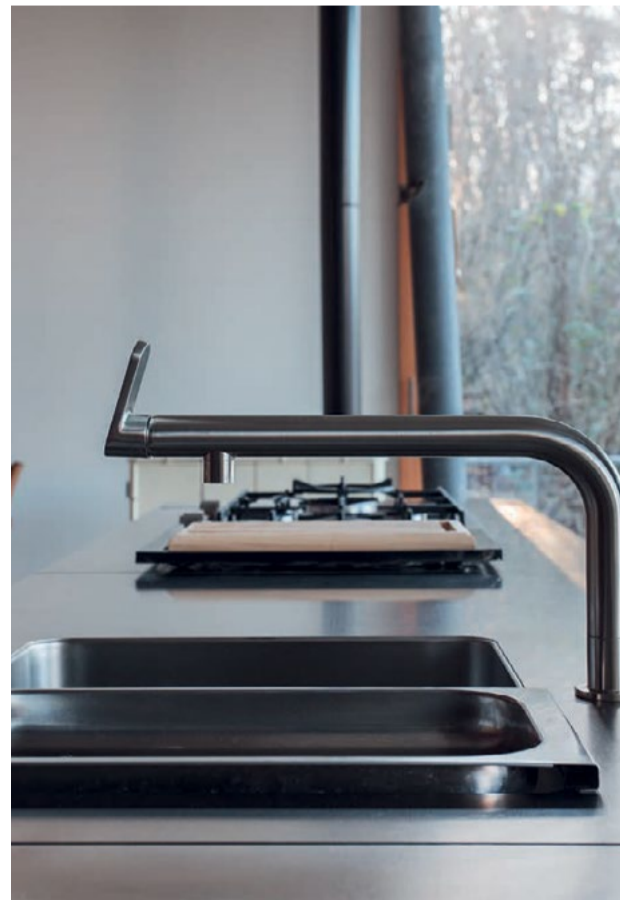
ShareInvestor Malaysia Sdn. Bhd.

(200001023956) (526564-M)
L15-03 & 03A, PJX HM Shah Tower,
No 16A, Jalan Persiaran Barat, PJS 52,
46200 Petaling Jaya, Selangor

Hotline : 603 8681 0580
Mobile : 011 6343 8939
Website : www.ShareInvestor.com.my
www.alphainvestholdings.com
www.Facebook.com/ShareInvestorMalaysia

ADVERTISEMENT ENQUIRY

bulthaup takes care of the details so that you can enjoy a harmonious environment.



XTRA

XTRA FURNITURE SDN BHD
The Gardens Mall, Mid Valley City
xtrafurniture.com/bulthaup
fb.com/bulthaupmalaysia

bulthaup



ROWAN director chair
 Designed by ITO Design, Germany

Inspired by the sophistication of first and business class, **ROWAN** delivers a fully enveloping comfort through Italian full-grain leather and precision-engineered aluminum form.

Where design excellence meets executive presence.



XTRA
www.xtrafurniture.com



GERMAN
 DESIGN
 AWARD
 WINNER
 2025



Awarded for Design. Certified for Excellence. Trusted Worldwide.

www.shareinvestor.com - market data at your fingertips



ShareInvestor WebPro (www.shareinvestor.com/my)

Prices > Stock Prices > Bursa > click Stocks tab

1. mouse over Ranking > select Top Active > all Shariah stocks are denoted with an [S] > mouse over Column Layout > select Edit Customs > select Name > select Volume > select Last Done Price > Mouse Over Column Layout > select Custom
2. mouse over Ranking > select Top Turnover > all Shariah stocks are denoted with an [S] > mouse over Column Layout > select Edit Customs > select Name > select Last Done Price > select Value > Mouse Over Column Layout > select Custom
3. mouse over Ranking > select Top Gainers (Over 5 Trading Days) > mouse over Column Layout > select Edit Customs > select Name > select Last Done Price > select 5 Days Change > select 5 Days % Change > Mouse Over Column Layout > select Custom
4. mouse over Ranking > select Top Losers (Over 5 Trading Days)
5. mouse over Ranking > select Top % Gainers (Over 5 Trading Days)
6. mouse over Ranking > select Top % Losers (Over 5 Trading Days)

Shariah Top Actives (As at Yesterday)

Name	Price (RM)	Volume
VS [S]	0.480	795,547.000
CAPITALA [S]	0.530	790,917.000
TANCO [S]	1.240	631,879.000
ZETRIX [S]	0.825	558,953.000
NE [S]	0.595	557,116.000
PHARMA [S]	0.295	527,086.000
GENETEC [S]	0.320	400,284.000
IJM [S]	2.820	367,267.000
TWL [S]	0.025	356,143.000
GREATEC [S]	1.640	340,837.000

Shariah Top Turnover (As at Yesterday)

Name	Price (RM)	Value (RM)
GAMUDA [S]	4.660	141,962,521
IJM [S]	2.820	103,961,693
TENAGA [S]	13.920	96,050,076
PMETAL [S]	7.220	94,613,468
TANCO [S]	1.240	78,268,029
GREATEC [S]	1.640	57,913,625
ZETRIX [S]	0.825	46,425,628
WPRTS [S]	6.120	44,159,328
CAPITALA [S]	0.530	43,019,612
MI [S]	3.390	39,654,768

Top Gainers (over 5 Trading days as at Yesterday)

Name	Price (RM)	Change (RM)
HLFG	20.820	+1.460
HLBANK	24.000	+1.360
MPI	33.700	+1.300
KLK	20.540	+0.700
PETDAG	20.700	+0.660
PPB	11.160	+0.560
UMSINT	4.090	+0.530
KGB	5.550	+0.465
MAYBANK	11.100	+0.460
WPRTS	6.120	+0.460

Top % Gainers (over 5 Trading days as at Yesterday)

Name	Price (RM)	Change (%)
BCMALL	0.010	+100.00
INGENIEU	0.035	+40.00
REVENUE	0.075	+36.36
FIBRO	0.855	+33.59
COMPUGT	0.020	+33.33
NEXGRAM	0.020	+33.33
PARLO	0.045	+28.57
CAPITALA	0.530	+27.71
LYC	0.025	+25.00
AXTERIA	0.105	+23.53

Top Losers (over 5 Trading days as at Yesterday)

Name	Price (RM)	Change (RM)
NESTLE	116.000	-5.000
HEIM	22.880	-0.360
NE	0.595	-0.310
FAREAST	4.100	-0.300
SUNCON	5.960	-0.280
MCEMENT	7.830	-0.270
PANAMY	7.230	-0.230
BLDPLNT	15.600	-0.200
GAMUDA	4.660	-0.200
TM	7.750	-0.170

Top % Losers (over 5 Trading days as at Yesterday)

Name	Price (RM)	Change (%)
NE	0.595	-34.25
TAWIN	0.010	-33.33
MMAG	0.050	-28.57
SNTORIA	0.015	-25.00
BIOHLDG	0.020	-20.00
ALRICH	0.065	-18.75
SMRT	0.430	-18.10
GENERGY	0.640	-17.42
HAWK	0.245	-16.95
EIB	0.175	-16.67

Price & Volume Distribution Charts (as at Yesterday)

Technical Analysis

DEFINITION: Shariah compliant stocks with Technical Analysis showing 5-days & 10-days Moving Average Price below Yesterday's Close over past 3 days and with Volume Spike.

CHART GUIDE: Volume Distribution Chart is a statistical interpretation of the current sentiment on each stock in graphical format. The highest bar categorized as >150k is likely to be traded by institutions or super dealers, while the lowest bar categorized as <15k usually represents retail investors. "Buy Up" refers to more buyers snatching up the lots queued at selling price. "Sell Down" refers to sellers selling their shares to the buying queue



ShareInvestor WebPro > Screener > Market Screener (FA & TA)>select BURSA>add criteria

A. Criteria

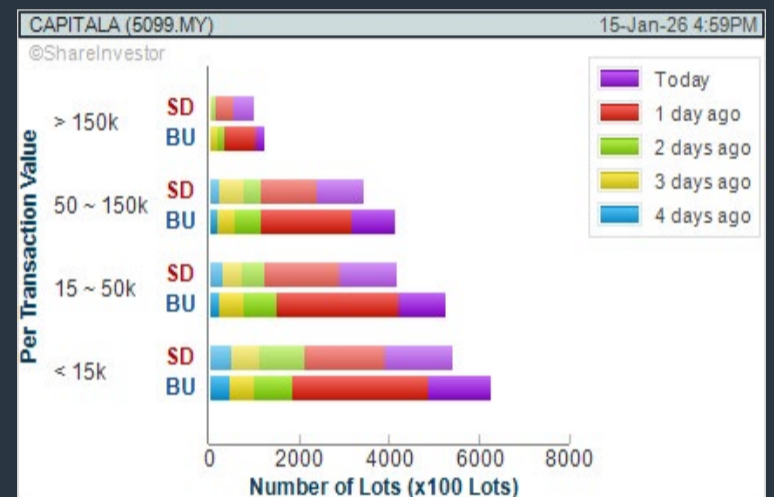
- > click Add Criteria
- Technical Analysis Conditions tab select (i) Moving Average Below Close (ii) Volume Spike
- Fundamental Analysis Conditions tab >select (iii) Revenue
- Prices & Other Conditions tab > select (iv) Is Shariah Compliant
- Technical Analysis Conditions tab select (v) Moving Average Below Close
- Prices & Other Conditions tab > select (vi) Last Done Price
- Technical Analysis Conditions tab select (vii) Moving Average Below Close

B. Conditions (Criteria Filters)

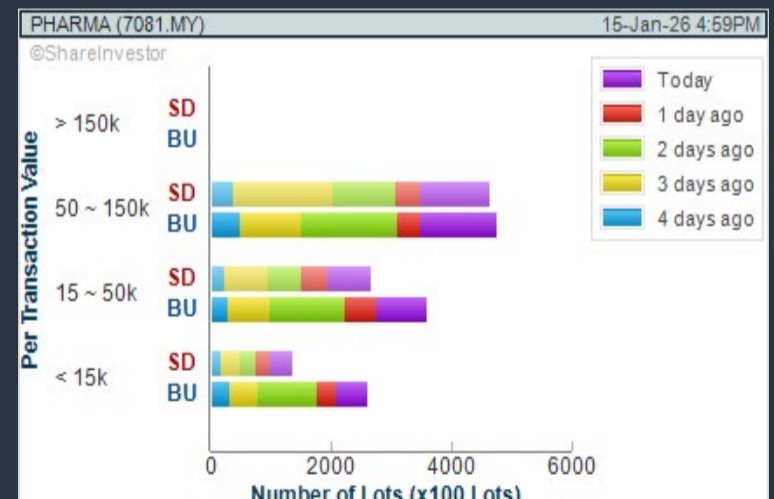
1. Moving Average Below Close - select (MA) type (5) below close price for type (3) days
2. Volume Spike - Volume type (1) greater than type (5) days average
3. Revenue ("000) - select (more than) type (1) for the past select (1) financial year(s)
4. Is Shariah Compliant - select **Yes**
5. Moving Average Below Close - select (MA) type (10) below close price for type (3) days
6. Last Done Price - select (more than) type (0.3)
7. Moving Average Below Close - select (EMA) type (5) below close price for type (3) days

- > click Save Template > Create New Template type (Shariah Hot Stocks) > click Create
- > click Save Template as > select Shariah Hot Stocks > click Save
- > click Screen Now (may take a few minutes)
- > Sort By: Select (Vol) Select (Desc)
- > Mouse over stock name > Charts > click C² Charts or Volume Distribution

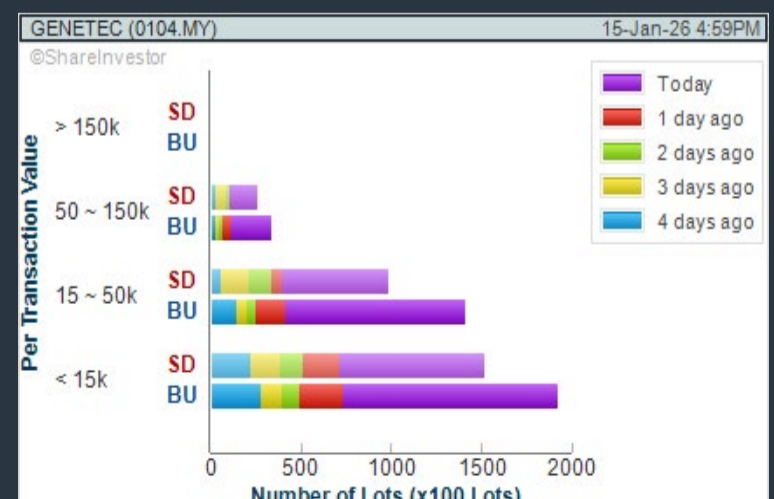
CAPITAL A BERHAD (5099) C² Chart



PHARMANIAGA BHD (7081) C² Chart



GENETEC TECHNOLOGY BERHAD (0104) C² Chart



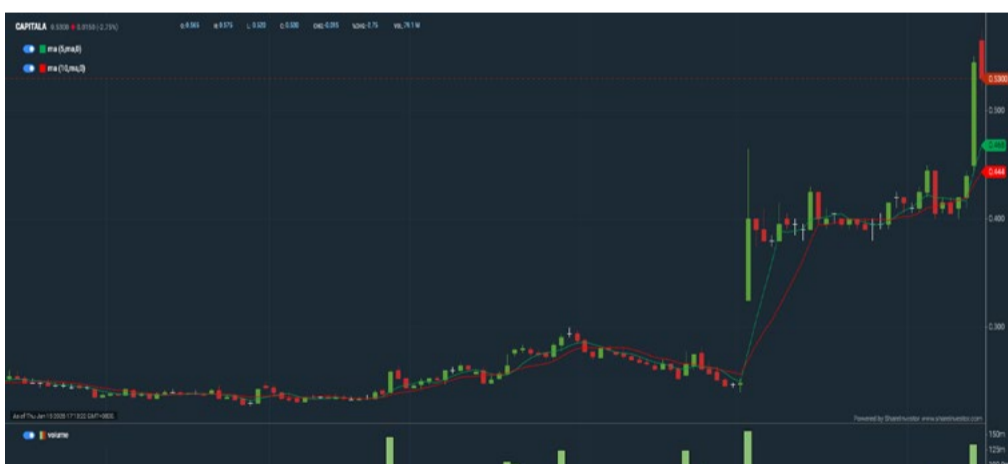
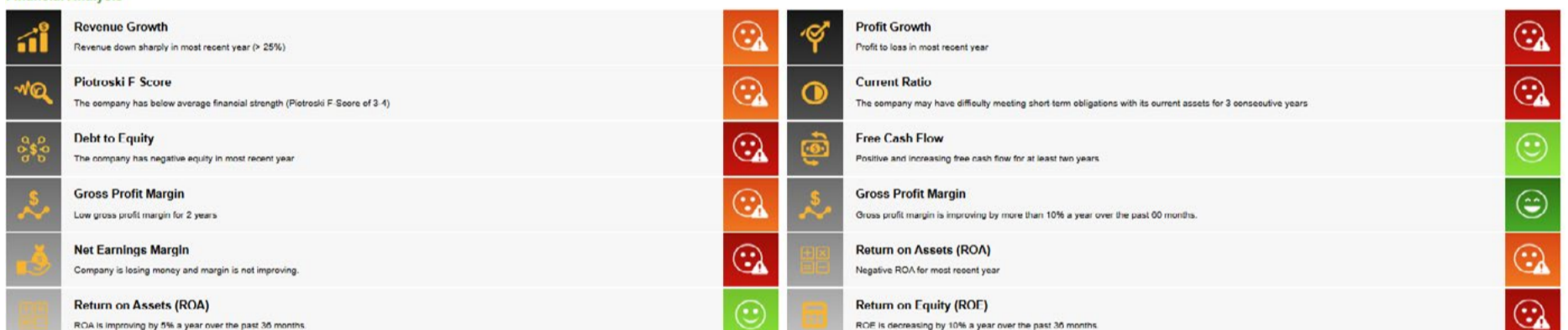
Disclaimer: The information on this page is provided as a service to readers. It does not constitute financial advice and/or any investment recommendations. Past performance is not indicative of future results. We assume no liability for damages resulting from or arising out of the use of such information. It would be best if you did your own research to make your personal investment decisions wisely or consult a licenced investment advisor.

COMPANY BACKGROUND

Capital A Berhad is an investment holding company with a synergistic ecosystem of travel-focused and digitally driven businesses with six core verticals alongside AirAsia, the airline, leveraging data and technology to unlock growth opportunities. The Company's core businesses include Aviation, Maintenance, Repair and Overhaul (MRO), Logistics, Brand and Intellectual Property (IP), Online Travel Agency (OTA), Aviation Services and Fintech.

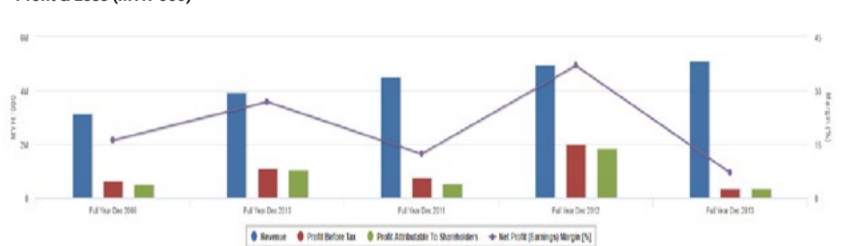


Financial Analysis



Historical Financials

Profit & Loss (MYR '000)

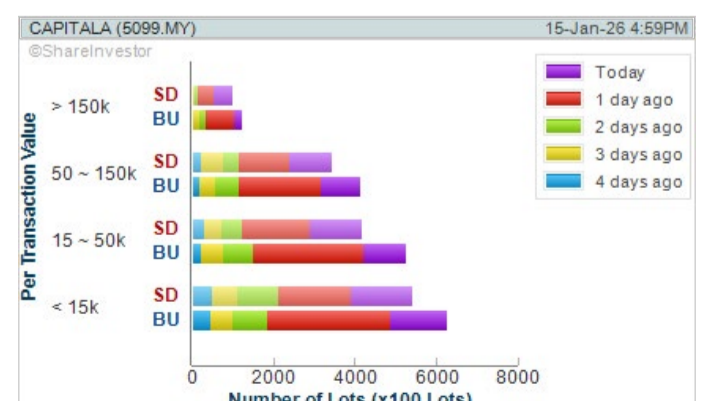


WebPro 9-Days Free Trial Registration (worth RM10) Sign Up Now



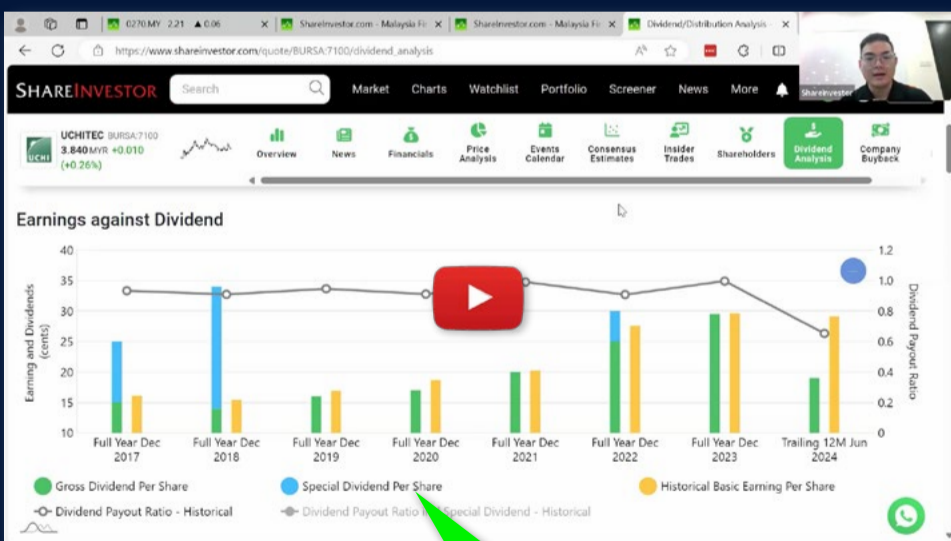
Key Statistics with Total Shareholder Returns

Period	Dividend Received	Capital Appreciation	Total Shareholder Return
Short Term Return	5 Days	+0.125	+30.86%
	10 Days	+0.115	+27.71%
	20 Days	+0.125	+30.86%
Medium Term Return	3 Months	+0.278	+110.32%
	6 Months	+0.277	+109.49%
	1 Year	+0.262	+97.76%
	2 Years	+0.329	+163.86%
Long Term Return	3 Years	+0.328	+162.38%
	5 Years	+0.319	+161.18%
	Annualised	-	+20.23%



Disclaimer: The information on this page is provided as a service to readers. It does not constitute financial advice and/or any investment recommendations. Past performance is not indicative of future results. We assume no liability for damages resulting from or arising out of the use of such information. It would be best if you did your own research to make your personal investment decisions wisely or consult a licenced investment advisor.

Ultimate Guide to use **ShareInvestor**



YOU WILL LEARN HOW TO USE:

- Company Financials
- Market Screener
- Company Insider Trades
- Dividend Analysis
- Consensus Estimation
and more...

**Watch
now!**

Price & Volume Distribution Charts (as at Yesterday)

Technical Analysis

DEFINITION: Shariah compliant stocks with Technical Analysis showing Bullish Momentum and Price Uptrend. The share price closed at the highest price yesterday. The typical price was higher than the previous day's typical price.

CHART GUIDE: Volume Distribution Chart is a statistical interpretation of the current sentiment on each stock in graphical format. The highest bar categorized as >150k is likely to be traded by institutions or super dealers, while the lowest bar categorized as <15k usually represents retail investors. "Buy Up" refers to more buyers snatching up the lots queued at selling price. "Sell Down" refers to sellers selling their shares to the buying queue.



ShareInvestor WebPro > Screener > Market Screener (FA & TA)>select BURSA>add criteria

A. Criteria

- > click Add Criteria
- Fundamental Analysis Conditions tab >select (i) Revenue
- Technical Analysis Conditions tab select (ii) Average Volume
- Prices & Other Conditions tab > select (iii) Last Done Price
- Prices & Other Conditions tab > select (iv) Is Shariah Compliant
- Technical Analysis Conditions tab select (v) RSI Overbought
- Technical Analysis Conditions tab select (vi) Moving Average Below Close
- Technical Analysis Conditions tab select (vii) CCI Overbought

B. Conditions (Criteria Filters)

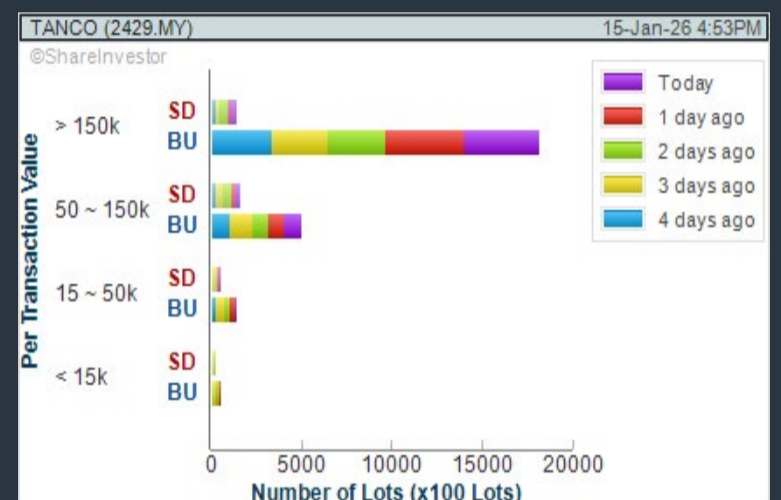
1. Revenue ("000) - select (more than) type (1) for the past select (1) financial year(s)
2. Average Volume - type (1) days average volume greater than type (10000) lots
3. Last Done Price - select (more than) type (0.3)
4. Is Shariah Compliant - select Yes
5. RSI Overbought - select RSI 1 above 99 for 1 days
6. Moving Average Below Close - select (MA) type (10) below close price for type (1) days
7. CCI Overbought - select CCI (2) above (0) for (1) days

- > click Save Template > Create New Template type (Shariah Momentum Up Stocks) > click Create
- > click Save Template as > select Shariah Momentum Up Stocks > click Save
- > click Screen Now (may take a few minutes)
- Sort By: Select (Vol) Select (Desc)
- Mouse over stock name > Charts > click C² Charts tab or Volume Distribution

TANCO HOLDINGS BHD (2429)

C² Chart

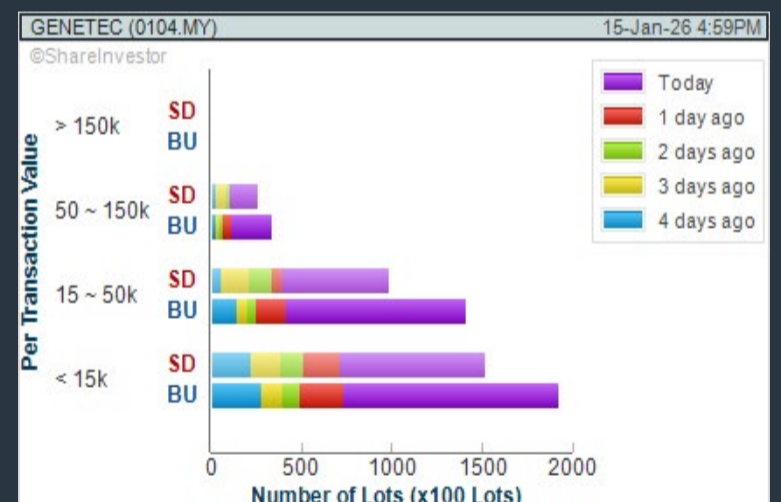
Analysis



GENETEC TECHNOLOGY BERHAD (0104)

C² Chart

Analysis



IJM CORPORATION BHD (3336)

C² Chart

Analysis



Disclaimer: The information on this page is provided as a service to readers. It does not constitute financial advice and/or any investment recommendations. Past performance is not indicative of future results. We assume no liability for damages resulting from or arising out of the use of such information. It would be best if you did your own research to make your personal investment decisions wisely or consult a licenced investment advisor.

Price & Volume Distribution Charts (as at Yesterday)

Technical Analysis

DEFINITION: Stocks with Technical Analysis showing 5-days & 10-days Moving Average Price below Close over past 1 days and with Volume Spike

CHART GUIDE: Volume Distribution Chart is a statistical interpretation of the current sentiment on each stock in graphical format. The highest bar categorized as >150k is likely to be traded by institutions or super dealers, while the lowest bar categorized as <15k usually represents retail investors. "Buy Up" refers to more buyers snatching up the lots queued at selling price. "Sell Down" refers to sellers selling their shares to the buying queue.



ShareInvestor WebPro > Screener > Market Screener (FA & TA) > select BURSA > add criteria

A. Criteria

- > click Add Criteria
- Technical Analysis Conditions tab select (i) Moving Average Below Close (ii) Volume Spike
- Fundamental Analysis Conditions tab >select (iii) Revenue
- Prices & Other Conditions tab > select (iv) Is Shariah Compliant
- Technical Analysis Conditions tab select (v) Moving Average Below Close
- Prices & Other Conditions tab > select (vi) Last Done Price
- Technical Analysis Conditions tab select (vii) Moving Average Below Close

B. Conditions (Criteria Filters)

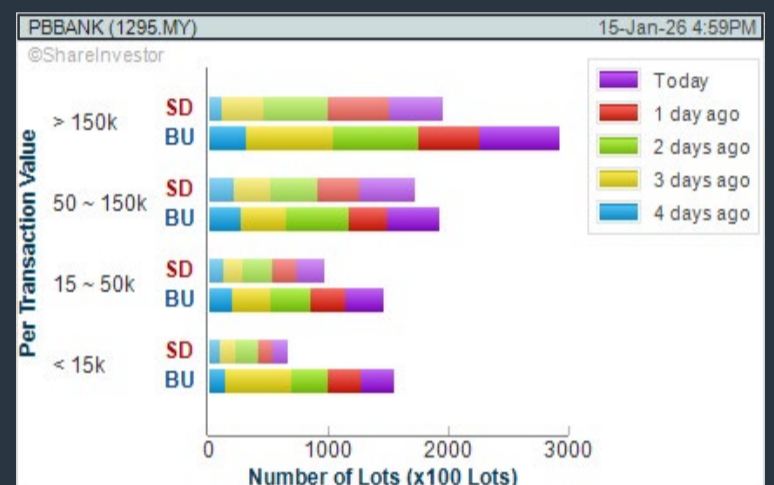
1. Moving Average Below Close - select (MA) type (5) below close price for type (3) days
2. Volume Spike - Volume type (1) greater than type (5) days average
3. Revenue ("000) - select (more than) type (1) for the past select (1) financial year(s)
4. Is Shariah Compliant - select NO
5. Moving Average Below Close - select (MA) type (10) below close price for type (1) days
6. Last Done Price - select (more than) type (0.3)
7. Moving Average Below Close - select (EMA) type (5) below close price for type (1) days

- > click Save Template > Create New Template type (Non-Shariah Hot Stocks) > click Create
- > click Save Template as > select Non-Shariah Hot Stocks > click Save
- > click Screen Now (may take a few minutes)
- Sort By: Select (Vol) Select (Desc)
- Mouse over stock name > Charts > click C² Charts tab or Volume Distribution

PUBLIC BANK BHD (1295)

C² Chart

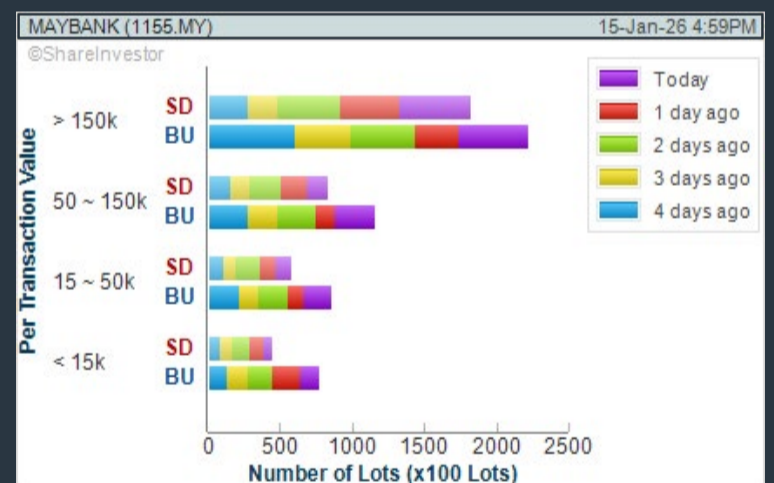
Analysis



MALAYAN BANKING BHD (1155)

C² Chart

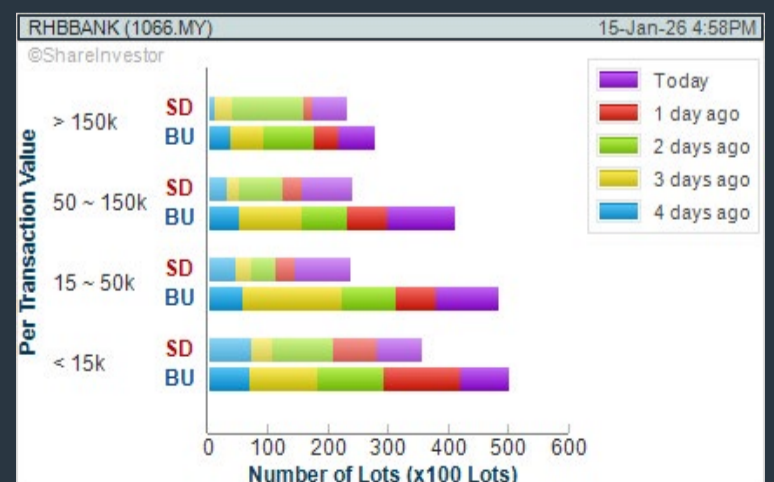
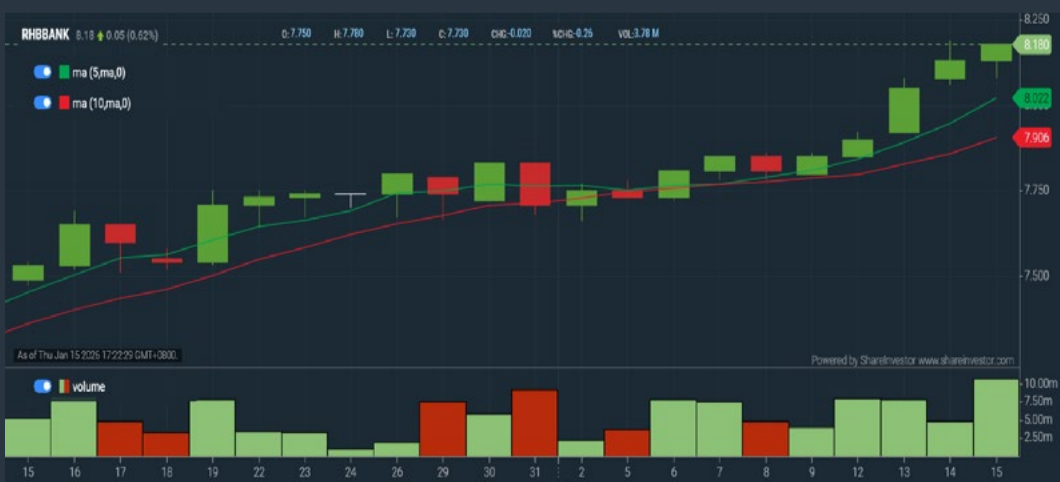
Analysis



RHB BANK BERHAD (1066)

C² Chart

Analysis



Disclaimer: The information on this page is provided as a service to readers. It does not constitute financial advice and/or any investment recommendations. Past performance is not indicative of future results. We assume no liability for damages resulting from or arising out of the use of such information. It would be best if you did your own research to make your personal investment decisions wisely or consult a licenced investment advisor.

Price & Volume Distribution Charts (Over 3 trading days as at Yesterday)

Technical Analysis

DEFINITION: Stocks with Technical Analysis showing Bullish Momentum and Price Uptrend

CHART GUIDE: Volume Distribution Chart is a statistical interpretation of the current sentiment on each stock in graphical format. The highest bar categorized as >150k is likely to be traded by institutions or super dealers, while the lowest bar categorized as <15k usually represents retail investors. "Buy Up" refers to more buyers snatching up the lots queued at selling price. "Sell Down" refers to sellers selling their shares to the buying queue.



ShareInvestor WebPro > Screener > Market Screener (FA & TA) > select BURSA > add criteria

A. Criteria

- > click Add Criteria
- Fundamental Analysis Conditions tab > select (i) Revenue
- Technical Analysis Conditions tab select (ii) Moving Average Below Close
- Technical Analysis Conditions tab select (iii) Average Volume
- Prices & Other Conditions tab > select (iv) Last Done Price
- Technical Analysis Conditions tab select (v) Moving Average Below Close
- Technical Analysis Conditions tab select (v) Moving Average Bullish Crossover

B. Conditions

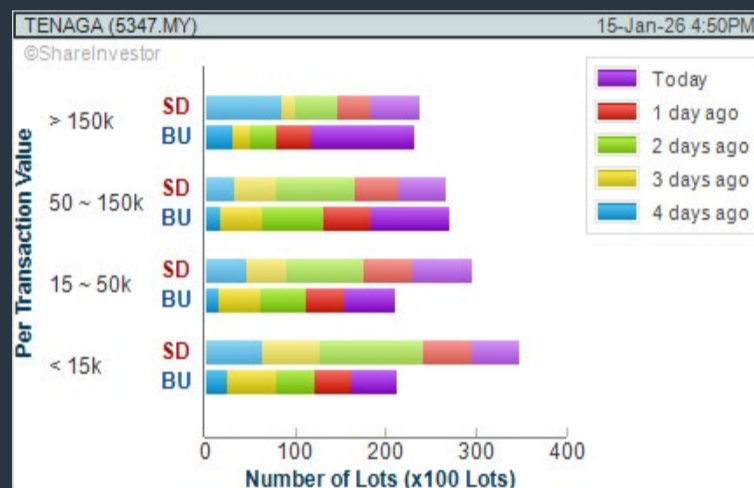
1. Revenue - select (more than) type (1) for the past select (1) financial year(s)
2. Moving Average Below Close - select (MA) type (20) below close price for type (1) days
3. Average Volume - type (5) days average volume type (10000) lots
4. Last Done Price - select (more than) type (0.3)
5. Moving Average Below Close - select (MA) type (10) below close price for type (1) days
6. Moving Average Bullish Crossover - select (MA) type (5) crossed above select (MA) type (10)

> click Save Template > Create New Template type (Non-Shariah Up-Trending Stocks) > click Create Click Save Template As > select Non-Shariah Up Trending Stocks > click Save
> click Screen Now (may take a few minutes)
Sort By: Select (Vol) Select (Desc)
Mouse over stock name > Charts > click C² Charts tab or Volume Distribution

TENAGA NASIONAL BHD (5347)

C² Chart

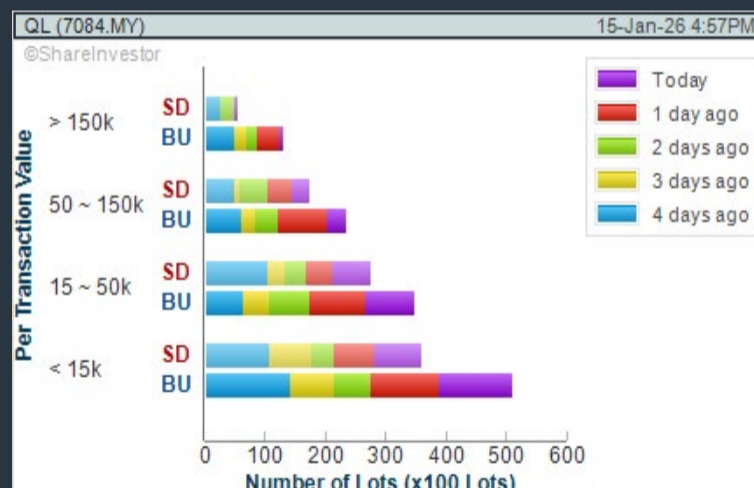
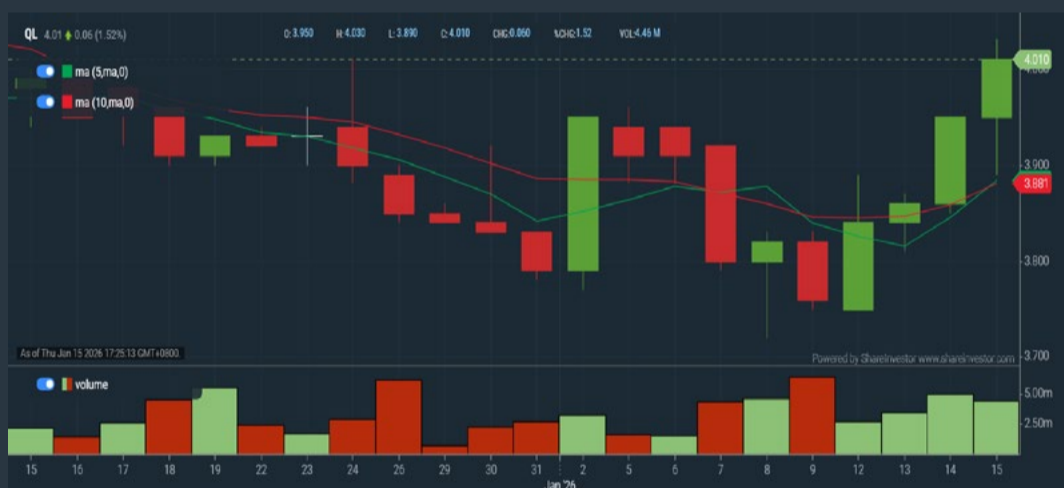
Analysis



QL RESOURCES BHD (7084)

C² Chart

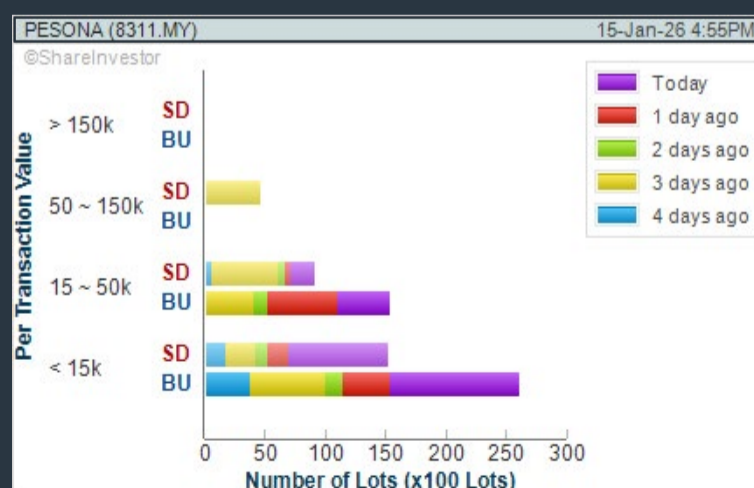
Analysis



PESONA METRO HOLDINGS BERHAD (8311)

C² Chart

Analysis



Disclaimer: The information on this page is provided as a service to readers. It does not constitute financial advice and/or any investment recommendations. Past performance is not indicative of future results. We assume no liability for damages resulting from or arising out of the use of such information. It would be best if you did your own research to make your personal investment decisions wisely or consult a licenced investment advisor.

Price & Total Shareholder Return (as at Yesterday)

Fundamental Analysis

DEFINITION: Share price of a company trading at a lower price as compared to its fundamentals (FA) such as financial performance and dividend, allowing it to be attractive to value investors.

CHART GUIDE: Total Shareholder Return (TSR) combines share price appreciation and dividend distributions paid to show the total return to the shareholder expressed as a percentage.



ShareInvestor WebPro > Screener > Market Screener (FA & TA) > select BURSA > add criteria

A. Criteria

- > click Add Criteria
- Fundamental Analysis Conditions tab (i) Price Earnings Ratio
- Fundamental Analysis Conditions tab >select (ii) CAGR of Net Earnings
- Fundamental Analysis Conditions tab >select (iii) Net Debt To Equity
- Fundamental Analysis Conditions tab >select (iv) Return On Equity (ROE)

B. Conditions

1. Price Earnings Ratio - select (less than) type (15) times now
2. CAGR of Net Earnings - select (more than) type (10) % for the past type (3) financial year(s)
3. Net Debt To Equity – select (less than) type (1) for the past select (1) financial year(s)
4. Return On Equity (ROE) – select (more than) type (10) % for the past select (1) financial year(s)

- > click Save Template > Create New Template type (Value Stock) > click Create
- > click Save Template as > select Value Companies > click Save
- > click Screen Now (may take a few minutes)
- Sort by: Select (PE Ratio) Select (Ascending)
- > Mouse over stock name > Factsheet > looking for Total Shareholder Return
- > Mouse over stock name > Charts > click C2 Charts tab

INGENIEUR GUDANG BERHAD (5178)

C² Chart

Analysis



Period	Dividend Received	Capital Appreciation	Total Shareholder Return
Short Term Return	5 Days	+0.010	+40.00%
	10 Days	+0.010	+40.00%
	20 Days	+0.010	+40.00%
Medium Term Return	3 Months	+0.005	+16.67%
	6 Months	+0.005	+16.67%
Long Term Return	1 Year	-0.010	-22.22%
	2 Years	-0.095	-73.08%
	3 Years	0.000	0.00%
5 Years	-0.000	-0.00%	
Annualised Return	Annualised	-	21.17%

MUDAJAYA GROUP BHD (5085)

C² Chart

Analysis



Period	Dividend Received	Capital Appreciation	Total Shareholder Return
Short Term Return	5 Days	+0.005	+1.09%
	10 Days	+0.015	+3.33%
	20 Days	+0.010	+2.20%
Medium Term Return	3 Months	-0.035	-7.00%
	6 Months	-0.040	-8.41%
Long Term Return	1 Year	-0.060	-11.43%
	2 Years	-0.360	-43.84%
	3 Years	0.040	8.35%
5 Years	0.040	8.35%	
Annualised Return	Annualised	-	-17.23%

TOMEI CONSOLIDATED BHD (7230)

C² Chart

Analysis



Period	Dividend Received	Capital Appreciation	Total Shareholder Return
Short Term Return	5 Days	+0.120	+6.22%
	10 Days	+0.160	+8.47%
	20 Days	+0.160	+8.47%
Medium Term Return	3 Months	+0.220	+12.64%
	6 Months	+0.470	+23.75%
Long Term Return	1 Year	0.025	+1.25%
	2 Years	0.000	0.00%
	3 Years	0.120	+6.00%
5 Years	0.170	+8.50%	
Annualised Return	Annualised	-	+20.47%

Disclaimer: The information on this page is provided as a service to readers. It does not constitute financial advice and/or any investment recommendations. Past performance is not indicative of future results. We assume no liability for damages resulting from or arising out of the use of such information. It would be best if you did your own research to make your personal investment decisions wisely or consult a licenced investment advisor.

Price & Total Shareholder Return (as at Yesterday)

Fundamental Analysis

DEFINITION: Company revenue is growing and making good quality of earnings with positive Free Cash Flow.

CHART GUIDE: Total Shareholder Return (TSR) combines share price appreciation and distributions paid to show the total return to the shareholder expressed as a percentage.



ShareInvestor WebPro > Screener > Market Screener (FA & TA) > select BURSA > add criteria

A. Criteria

1. Fundamental Analysis Conditions tab > select (i) Free Cash Flow, (ii) Revenue Growth, (iii) Gross Profit (Earnings) Margin, (iv) Quality of Earnings, (v) Total Shareholder Returns, > click Add Criteria
2. Fundamental Analysis Conditions tab > select (vi) Total Shareholder Returns > click Add Criteria

B. Conditions (Criteria Filters)

1. Free Cash Flow - select (more than) type (1) for the past select (1) financial year(s)
2. Revenue Growth - select (more than) type (1) for the past select (1) financial year(s)
3. Gross Profit (Earnings) Margin - select (more than) type (30) % for the past select (1) financial year(s)
4. Quality of Earnings - select (more than) type (1) for the past select (1) financial year(s)
5. Total Shareholder Return - select (more than) type (5) % for the past select (3) financial year(s)
6. Total Shareholder Return - select (more than) type (5) % for the past select (5) financial year(s)

- > click Save Template > Create New Template type (Growth Companies) > click Create
- > click Save Template as > select Growth Companies > click Save
- > click Screen Now (may take a few minutes)
- > Sort By: Select (Revenue Growth) Select (Desc)
- > Mouse over stock name > Factsheet > looking for Total Shareholder Return

COUNTRY VIEW BHD (5049)

C² Chart

Analysis



Period	Dividend Received	Capital Appreciation	Total Shareholder Return
Short Term Return	5 Days	+0.050	+1.89%
	10 Days	+0.050	+1.69%
	20 Days	+0.140	+4.90%
Medium Term Return	3 Months	+0.090	+3.80%
	6 Months	+0.200	+8.15%
	1 Year	+0.400	+19.70%
Long Term Return	2 Years	+0.575	+26.56%
	3 Years	+0.600	+21.25%
	5 Years	+0.760	+21.40%
Annualised Return	Annualised	-	+28.50%

IDB TECHNOLOGIES BERHAD (03030)

C² Chart

Analysis



Period	Dividend Received	Capital Appreciation	Total Shareholder Return
Short Term Return	5 Days	-	-
	10 Days	-	-
	20 Days	-	-
Medium Term Return	3 Months	-	-
	6 Months	0.004	+3.08%
	1 Year	0.007	+5.38%
Long Term Return	2 Years	0.009	+6.90%
	3 Years	0.010	+7.69%
	5 Years	0.011	+8.46%
Annualised Return	Annualised	-	+7.11%

ORIENTAL INTEREST BHD (5827)

C² Chart

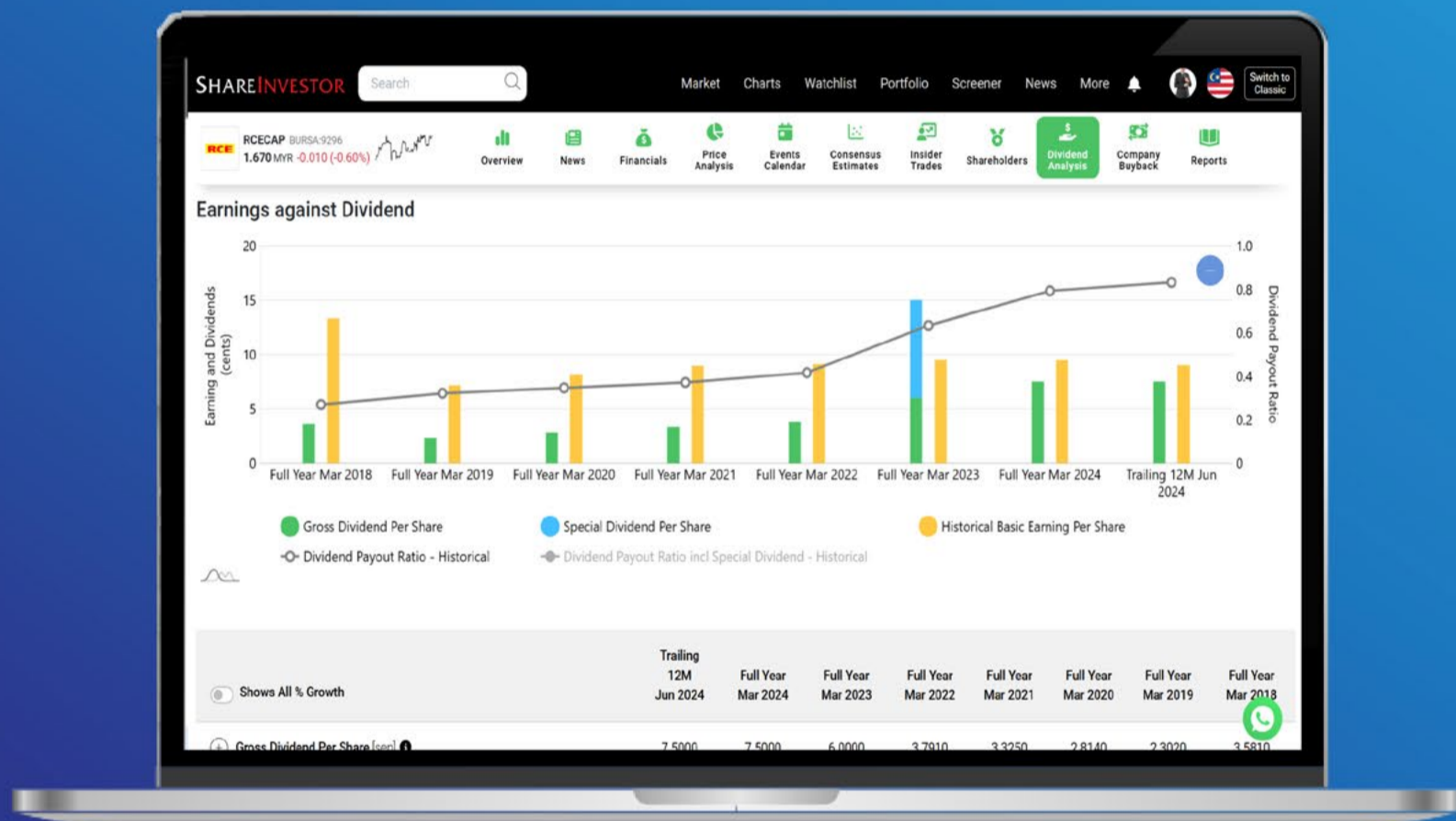
Analysis



Period	Dividend Received	Capital Appreciation	Total Shareholder Return
Short Term Return	5 Days	+0.010	+0.78%
	10 Days	-	-
	20 Days	+0.010	+0.78%
Medium Term Return	3 Months	+0.010	+0.78%
	6 Months	+0.120	+10.26%
	1 Year	0.200	+16.40%
Long Term Return	2 Years	0.255	+21.00%
	3 Years	0.305	+26.40%
	5 Years	0.390	+33.20%
Annualised Return	Annualised	-	+17.85%

Disclaimer: The information on this page is provided as a service to readers. It does not constitute financial advice and/or any investment recommendations. Past performance is not indicative of future results. We assume no liability for damages resulting from or arising out of the use of such information. It would be best if you did your own research to make your personal investment decisions wisely or consult a licenced investment advisor.

Tired of low returns? Let's talk high-paying Dividends!



- ✓ **Top Dividend Picks Right Now**
- ✓ **Insider Tips** – Advanced strategies for experienced investors
- ✓ **Easy-to-Follow Tutorial**

Get the most out of dividends, use our Dividend Analysis function –
Click to Watch Our Tutorial Below!

Upgrade Your Dividend Strategy Here



Price & Total Shareholder Return (as at Yesterday)

Fundamental Analysis

DEFINITION: Company is paying out dividend with low or moderate leverage.

CHART GUIDE: Total Shareholder Return (TSR) combines share price appreciation and distributions paid to show the total return to the shareholder expressed as a percentage.



ShareInvestor WebPro > Screener > Market Screener (FA & TA) > select BURSA > add criteria

A. Criteria

- > click Add Criteria
- Fundamental Analysis Conditions tab >select (i) Dividend Yield (Historical)
- Fundamental Analysis Conditions tab >select (ii) Dividend Payout (Historical)
- Fundamental Analysis Conditions tab >select (iii) Total Debt To Equity
- Fundamental Analysis Conditions tab >select (iv) Total Shareholder Returns
- Fundamental Analysis Conditions tab >select (v) Total Shareholder Returns
- Fundamental Analysis Conditions tab / >select (vi) CAGR of Dividend Per Share

• Fundamental Analysis Conditions tab >select (vii) CAGR of Dividend Per Share

B. Conditions (Criteria Filters)

1. Dividend Yield - select (more than) type (1) % for the past select (1) financial year(s)
2. Dividend Payout (Historical) - select (between) type (0.5) to type (1) times for the past select (1) financial year(s)
3. Total Debt to Equity - select (less than) type (1) for the past select (1) financial year(s)
4. Total Shareholder Return - select (more than) type (5) % for the past select (3) financial year(s)
5. Total Shareholder Return - select (more than) type (5) % for the past select (5) financial year(s)

6. CAGR of Dividend Per Share - select (less than) type (30) % for the past select (5) financial year(s)
7. CAGR of Dividend Per Share - select (more than) type (1) % for the past select (5) financial year(s)

- > click Save Template > Create New Template type (Dividend Companies) > click Create
- > click Save Template as > select Dividend Companies > click Save
- > click Screen Now (may take a few minutes)
- > Sort By: Select (Dividend Yield) Select (Desc)
- > Mouse over stock name > Factsheet > looking for Total Shareholder Return

FORMOSA PROSONIC INDUSTRIES BERHAD (9172)

C² Chart



Analysis

Period	Dividend Received	Capital Appreciation	Total Shareholder Return
Short Term Return	5 Days	+0.030	+2.86%
	10 Days	-0.060	-6.28%
	20 Days	0.000	-0.94%
Medium Term Return	3 Months	0.000	+0.14%
	6 Months	0.000	+17.59%
	1 Year	0.000	+24.77%
Long Term Return	2 Years	1.210	+36.23%
	3 Years	1.420	+25.94%
	5 Years	1.790	+78.40%
Annualised Return	Annualised	-	+12.29%

APM AUTOMOTIVE HOLDINGS BHD (5015)

C² Chart



Analysis

Period	Dividend Received	Capital Appreciation	Total Shareholder Return
Short Term Return	5 Days	-0.010	-0.30%
	10 Days	-	+2.15%
	20 Days	-	+1.22%
Medium Term Return	3 Months	-	+6.05%
	6 Months	0.070	+0.29%
	1 Year	0.250	+30.66%
Long Term Return	2 Years	0.460	+32.98%
	3 Years	0.600	+10.16%
	5 Years	0.810	+80.00%
Annualised Return	Annualised	-	+12.47%

DELEUM BHD (5132)

C² Chart



Analysis

Period	Dividend Received	Capital Appreciation	Total Shareholder Return
Short Term Return	5 Days	-0.000	+4.84%
	10 Days	-	+7.44%
	20 Days	-	+6.56%
Medium Term Return	3 Months	-	-3.28%
	6 Months	0.040	-10.67%
	1 Year	0.093	+2.43%
Long Term Return	2 Years	0.170	+12.72%
	3 Years	0.223	+53.76%
	5 Years	0.275	+166.95%
Annualised Return	Annualised	-	+21.70%

Disclaimer: The information on this page is provided as a service to readers. It does not constitute financial advice and/or any investment recommendations. Past performance is not indicative of future results. We assume no liability for damages resulting from or arising out of the use of such information. It would be best if you did your own research to make your personal investment decisions wisely or consult a licenced investment advisor.

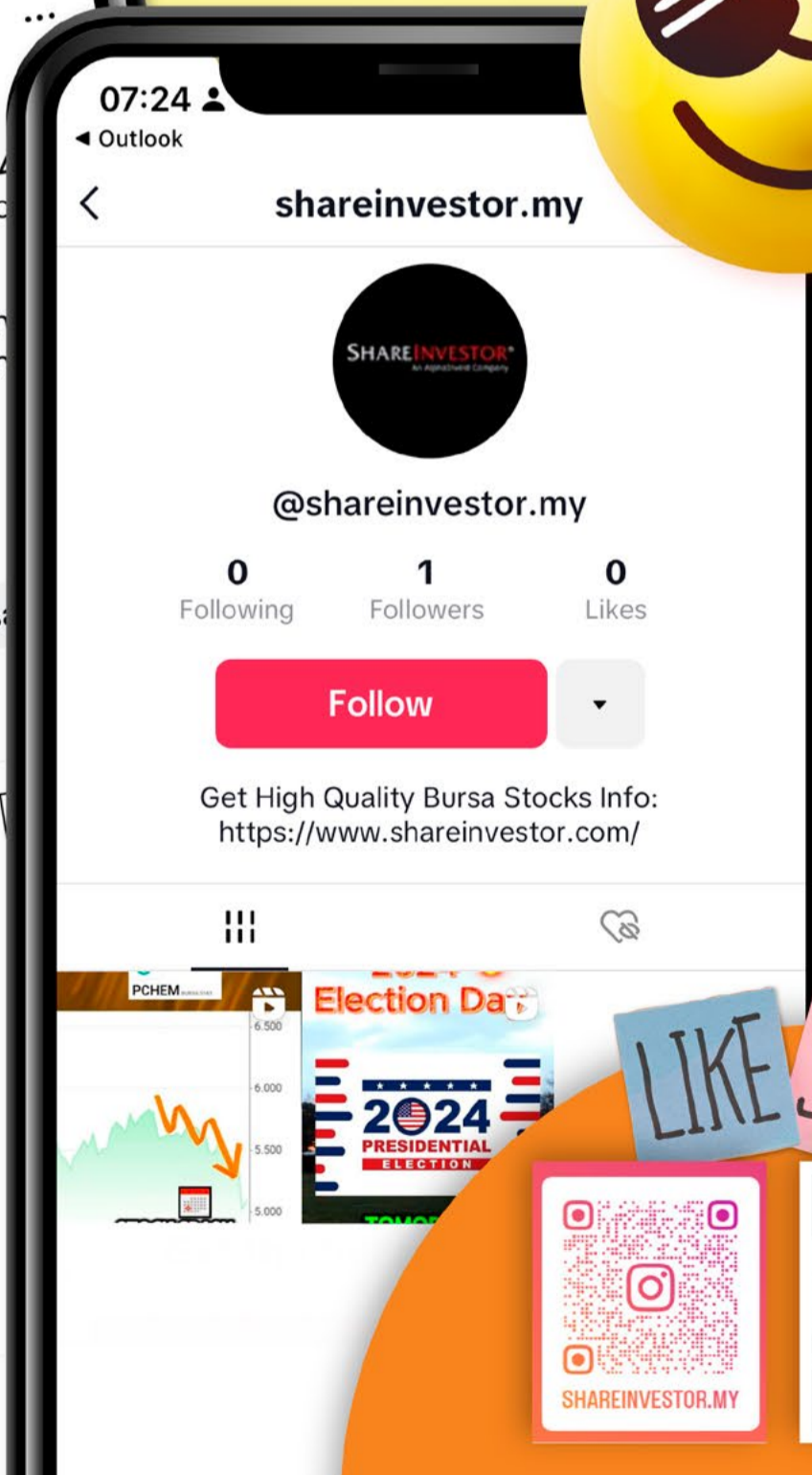
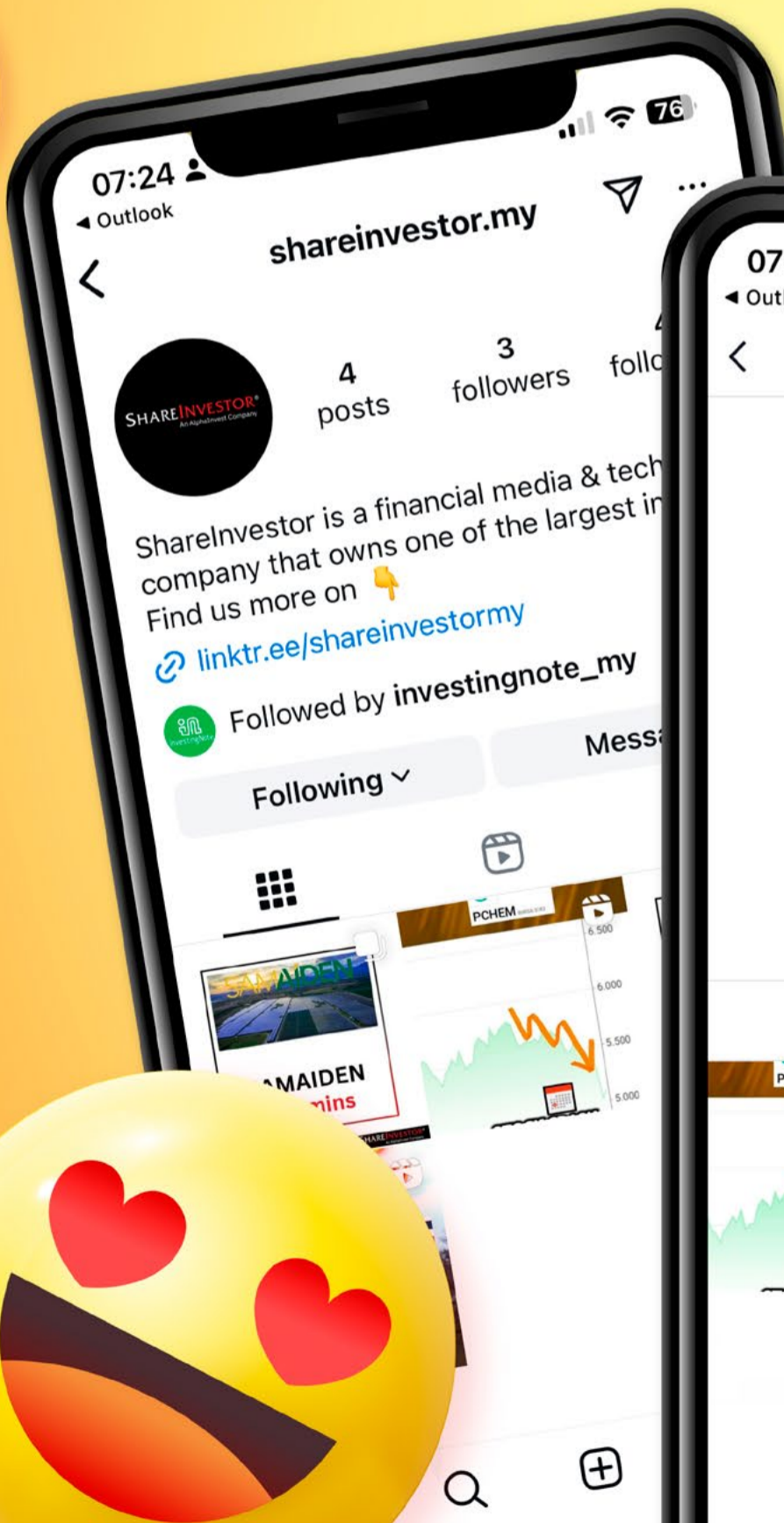
SHAREINVESTOR[®]
An AlphaInvest Company



We're Officially on TikTok & Instagram!



Follow us now for more information!



LIKE SHARE



Week: 9 Jan – 15 Jan 2026

More Brokers' Call 

AmlInvestment Bank <small>... See More</small>	Call	Target Price	Release Date
Sunview Group Berhad (0262)	HOLD	RM0.39	13 Jan 26
APEX Securities Berhad <small>... See More</small>	Call	Target Price	Release Date
Malaysia Smelting Corporation Berhad (5916)	BUY	RM2.14	12 Jan 26
ISF Group Berhad (0390)	BUY	RM0.55	13 Jan 26
Hong Leong Investment <small>... See More</small>	Call	Target Price	Release Date
Sunway Berhad (5211)	BUY	RM6.05	13 Jan 26
Kenanga <small>... See More</small>	Call	Target Price	Release Date
IOI Properties Group Berhad (5249)	MARKET PERFORM	RM2.81	12 Jan 26
IJM Corporation Berhad (3336)	OUTPERFORM	RM3.40	13 Jan 26
Sunway Berhad (5211)	UNDERPERFORM	RM4.73	13 Jan 26
Bursa Malaysia Berhad (1818)	MARKET PERFORM	RM8.00	14 Jan 26
Malacca Securities <small>... See More</small>	Call	Target Price	Release Date
Guan Huat Seng Holdings Berhad (0387)	NOT RATED	RM0.29	9 Jan 26
ISF Group Berhad (0390)	NOT RATED	RM0.46	13 Jan 26
MIDF <small>... See More</small>	Call	Target Price	Release Date
Sunway Berhad (5211)	NEUTRAL	RM5.34	13 Jan 26
Public Investment Bank <small>... See More</small>	Call	Target Price	Release Date
IJM Corporation Berhad (3336)	OUTPERFORM	RM3.50	13 Jan 26
Airasia X Berhad (5238)	OUTPERFORM	RM1.82	14 Jan 26
Teo Seng Capital Berhad (7252)	NEUTRAL	RM0.98	15 Jan 26
UOB Kay Hian <small>... See More</small>	Call	Target Price	Release Date
IJM Corporation Berhad (3336)	BUY	RM3.15	13 Jan 26
Sunway Berhad (5211)	BUY	RM6.10	13 Jan 26
Cnergz Berhad (0246)	BUY	RM0.60	14 Jan 26
V.S. Industry Berhad (6963)	BUY	RM0.70	14 Jan 26

Disclaimer: InveSt does not accept any liability whatsoever for any direct, indirect or consequential losses (including loss of profit) or damages that may arise from the use of information or opinions in this publication. The information and opinions in InveSt are not to be considered as an offer to sell or buy any of the securities discussed. Opinions expressed are subject to change without notice. The Brokers may, from time to time, have interests or positions in the securities mentioned. For the full report on each item listed on this page, please visit https://www.shareinvestor.com/my/brokers_call.

DEFINITION: Top 10 stocks with Technical Analysis plus Pattern Matching by 60 pre-defined indicators by the system showing a higher probability of bullish sentiment on the share price.



ShareInvestor WebPro > Screener > Predefined TA Screens > select market BURSA > Most Long Signals > click Scan Results or mouse over each company

SERSOL BERHAD (0055.MY)

SERSOL

Price updated at 15 Jan 2026 16:56

Last: 0.030	Change: -	Volume: 43,500
	Change (%): -	Range: 0.030 - 0.035

TA Scanner Results based on historical data up to 15 Jan 2026

Condition	Signal	Explanation
Bollinger Band: Bullish Long Term Volatility Breakout and Trending	Long	"1. Close price above upper bollinger band(33,1). 2. Volume above average volume(50). 3. Average volume(50) is above 300,000."
Bollinger Band: Bullish Short Term Volatility Breakout and Trending	Long	"1. Close price above upper bollinger band(33,1). 2. Volume above average volume(10). 3. Average volume(10) is above 300,000."
DM: Bullish Directional Movement	Long	-DI(14) crossed below +DI(14)
MACD: Bullish MACD Crossover	Long	"1. MACD(12,26) diff line crossed above the MACD(12,26) signal line. 2. MACD Histogram(12,26) is above 0."
Volume: Consecutive Days Of Increasing Average Volume	Long	"1. Average Volume(20) has been increasing over the last 2 weeks. 2. Average volume(20) is above 100000"

MLABS SYSTEMS BERHAD (0085.MY)

MLAB

Price updated at 15 Jan 2026 16:50

Last: 0.065	Change: +0.005	Volume: 25,821
	Change (%): +8.33	Range: 0.060 - 0.070

TA Scanner Results based on historical data up to 15 Jan 2026

Condition	Signal	Explanation
Bollinger Band: Bullish Long Term Volatility Breakout and Trending	Long	"1. Close price above upper bollinger band(33,1). 2. Volume above average volume(50). 3. Average volume(50) is above 300,000."
Bollinger Band: Bullish Lower Bollinger Band Support	Long	"1. Low 1 day ago below lower bollinger band(20,2). 2. Close above close 1 day ago. 3. Average volume(5) is above 100,000."
Bollinger Band: Bullish Short Term Volatility Breakout and Trending	Long	"1. Close price above upper bollinger band(33,1). 2. Volume above average volume(10). 3. Average volume(10) is above 300,000."
Bollinger Band: High Above Upper Bollinger Band	Neutral	"1. High above upper bollinger band(14,2). 2. Average volume(5) is above 100,000."
Donchian Channels: High Above Upper Donchian Channels	Long	High crossed above the upper Donchian Channel(14,4)
MA: Bullish Price Crossover	Long	"1. Close price crossed above MA(40) within the last 1 day. 2. Previous day close price is below the MA(10) for the last 5 days"
Parabolic SAR: Bearish Parabolic SAR Reversal	Neutral	"1. Parabolic SAR 1 day ago above close price 1 day ago for the last 5 days. 2. Parabolic SAR below close price"
RSI: Short Term RSI 50 Bullish Crossover	Long	"1. RSI(20) crossed above 50 within the last 1 day and RSI(20) 1 day ago below 50 for the last 5 days. 2. Volume above average volume(125). 3. Average volume(5) is above 100,000."

CAPITAL A BERHAD (5099.MY)

CAPITALA

Price updated at 15 Jan 2026 16:59

Last: 0.530	Change: -0.015	Volume: 790,917
	Change (%): -2.75	Range: 0.520 - 0.575

TA Scanner Results based on historical data up to 15 Jan 2026

Condition	Signal	Explanation
Bollinger Band: High Above Upper Bollinger Band	Neutral	"1. High above upper bollinger band(14,2). 2. Average volume(5) is above 100,000."
Donchian Channels: High Above Upper Donchian Channels	Long	High crossed above the upper Donchian Channel(14,4)
MACD: Bullish MACD Crossover	Long	"1. MACD(12,26) diff line crossed above the MACD(12,26) signal line. 2. MACD Histogram(12,26) is above 0."
Price: New 52 Week High	Long	"1. Stock reach a new 52 week high. 2. Average volume(30) is above 50000."
Volume: 10 Days large value Buy Up trade	Long	"1. 150K value Buy Up greater than Sell Down by 20% for 10 days. 2. 50K-100K value Buy Up greater than Sell Down by 20% for 10 days. 3. Average volume(10) is above 1000000"
Volume: 5 Days large value Buy Up trade	Long	"1. 150K value Buy Up greater than Sell Down by 20% for 5 days. 2. 50K-100K value Buy Up greater than Sell Down by 20% for 5 days. 3. Average volume(10) is above 1000000"
Williams %R: Bearish Williams %R	Short	"1. Williams %R(26) between 0 and -20. 2. Average volume(5) is above 100,000."

AEMULUS HOLDINGS BERHAD (0181.MY)

AEMULUS

Price updated at 15 Jan 2026 16:59

Last: 0.200	Change: -	Volume: 27,690
	Change (%): -	Range: 0.200 - 0.205

TA Scanner Results based on historical data up to 15 Jan 2026

Condition	Signal	Explanation
Bollinger Band: Bullish Long Term Volatility Breakout and Trending	Long	"1. Close price above upper bollinger band(33,1). 2. Volume above average volume(50). 3. Average volume(50) is above 300,000."
Bollinger Band: Bullish Short Term Volatility Breakout and Trending	Long	"1. Close price above upper bollinger band(33,1). 2. Volume above average volume(10). 3. Average volume(10) is above 300,000."
Bollinger Band: High Above Upper Bollinger Band	Neutral	"1. High above upper bollinger band(14,2). 2. Average volume(5) is above 100,000."
Candlestick: Bullish Engulfing	Long	Bullish: Engulfing
Donchian Channels: High Above Upper Donchian Channels	Long	High crossed above the upper Donchian Channel(14,4)
Price: New 52 Week Low	Short	"1. Stock reach a new 52 week low. 2. Average volume(30) is above 50000."
RSI: Short Term RSI 50 Bullish Crossover	Long	"1. RSI(20) crossed above 50 within the last 1 day and RSI(20) 1 day ago below 50 for the last 5 days. 2. Volume above average volume(125). 3. Average volume(5) is above 100,000."

Disclaimer: The information on this page is provided as a service to readers. It does not constitute financial advice and/or any investment recommendations. Past performance is not indicative of future results. We assume no liability for damages resulting from or arising out of the use of such information. It would be best if you did your own research to make your personal investment decisions wisely or consult a licenced investment advisor.



SCIENTEX PACKAGING (AYER KEROH) BERHAD (8125.MY)

SCIPACK

Price updated at 15 Jan 2026 15:04

Last: 1.490	Change: -	Volume: -
	Change (%): -	Range: 1.490 - 1.490

TA Scanner Results based on historical data up to 15 Jan 2026

Condition	Signal	Explanation
Bollinger Band: Bullish Long Term Volatility Breakout and Trending	Long	"1. Close price above upper bollinger band(33,1). 2. Volume above average volume(50). 3. Average volume(50) is above 300,000."
Bollinger Band: Bullish Short Term Volatility Breakout and Trending	Long	"1. Close price above upper bollinger band(33,1). 2. Volume above average volume(10). 3. Average volume(10) is above 300,000."
Bollinger Band: High Above Upper Bollinger Band	Neutral	"1. High above upper bollinger band(14,2). 2. Average volume(5) is above 100,000."
MA: Short Term Bullish Moving Average Crossover	Long	MA(10) crossed above MA(15) within the last 1 day.
Stochastic: Fast Stochastic Buy Signal	Long	"1. Fast Stochastic(15,5) %K crossed above 20. 2. Fast Stochastic(15,5) %K 1 day ago was below 20 for the last 5 days. 3. Average volume(30) is above 50000"
Volume: 10 Days large value Sell Down trade	Short	"1. 150K value Sell Down greater than Buy Up by 20% for 10 days. 2. 50K-100K value Sell Down greater than Buy Up by 20% for 10 days. 3. Average volume(10) is above 1000000"
Volume: 5 Days large value Sell Down trade	Short	"1. 150K value Sell Down greater than Buy Up by 20% for 5 days. 2. 50K-100K value Sell Down greater than Buy Up by 20% for 5 days. 3. Average volume(10) is above 1000000"
Volume: Volume Spike	Long	"1. Volume is more than 500% above average volume(10). 2. Volume above 200000. 3. Close price above 0.10"



BERMAZ AUTO BERHAD (5248.MY)

BAUTO

Price updated at 15 Jan 2026 16:59

Last: 0.805	Change: +0.025	Volume: 136,174
	Change (%): +3.21	Range: 0.785 - 0.835

TA Scanner Results based on historical data up to 15 Jan 2026

Condition	Signal	Explanation
Bollinger Band: Bullish Long Term Volatility Breakout and Trending	Long	"1. Close price above upper bollinger band(33,1). 2. Volume above average volume(50). 3. Average volume(50) is above 300,000."
Bollinger Band: Bullish Short Term Volatility Breakout and Trending	Long	"1. Close price above upper bollinger band(33,1). 2. Volume above average volume(10). 3. Average volume(10) is above 300,000."
Bollinger Band: High Above Upper Bollinger Band	Neutral	"1. High above upper bollinger band(14,2). 2. Average volume(5) is above 100,000."
Donchian Channels: High Above Upper Donchian Channels	Long	High crossed above the upper Donchian Channel(14,4)
MA: Short Term Bullish Moving Average Crossover	Long	MA(10) crossed above MA(15) within the last 1 day.
MACD: Bullish MACD Crossover	Long	"1. MACD(12,26) diff line crossed above the MACD(12,26) signal line. 2. MACD Histogram(12,26) is above 0."
Parabolic SAR: Bearish Parabolic SAR Reversal	Neutral	"1. Parabolic SAR 1 day ago above close price 1 day ago for the last 5 days. 2. Parabolic SAR below close price"



UWC BERHAD (5292.MY)

UWC

Price updated at 15 Jan 2026 16:59

Last: 4.550	Change: -	Volume: 24,438
	Change (%): -	Range: 4.450 - 4.600

TA Scanner Results based on historical data up to 15 Jan 2026

Condition	Signal	Explanation
Bollinger Band: High Above Upper Bollinger Band	Neutral	"1. High above upper bollinger band(14,2). 2. Average volume(5) is above 100,000."
Candlestick: Bullish Engulfing	Long	Bullish: Engulfing
MA: Short Term Bullish Moving Average Crossover	Long	MA(10) crossed above MA(15) within the last 1 day.
Price: New 52 Week High	Long	"1. Stock reach a new 52 week high. 2. Average volume(30) is above 50000."
Volume: 10 Days large value Buy Up trade	Long	"1. 150K value Buy Up greater than Sell Down by 20% for 10 days. 2. 50K-100K value Buy Up greater than Sell Down by 20% for 10 days. 3. Average volume(10) is above 1000000"
Volume: 5 Days large value Buy Up trade	Long	"1. 150K value Buy Up greater than Sell Down by 20% for 5 days. 2. 50K-100K value Buy Up greater than Sell Down by 20% for 5 days. 3. Average volume(10) is above 1000000"



PESTEC INTERNATIONAL BERHAD (5219.MY)

PESTEC

Price updated at 15 Jan 2026 16:54

Last: 0.105	Change: -0.005	Volume: 34,473
	Change (%): -4.55	Range: 0.105 - 0.110

TA Scanner Results based on historical data up to 15 Jan 2026

Condition	Signal	Explanation
Bollinger Band: Bullish Long Term Volatility Breakout and Trending	Long	"1. Close price above upper bollinger band(33,1). 2. Volume above average volume(50). 3. Average volume(50) is above 300,000."
Bollinger Band: Bullish Lower Bollinger Band Support	Long	"1. Low 1 day ago below lower bollinger band(20,2). 2. Close above close 1 day ago. 3. Average volume(5) is above 100,000."
Bollinger Band: Bullish Short Term Volatility Breakout and Trending	Long	"1. Close price above upper bollinger band(33,1). 2. Volume above average volume(10). 3. Average volume(10) is above 300,000."
Bollinger Band: High Above Upper Bollinger Band	Neutral	"1. High above upper bollinger band(14,2). 2. Average volume(5) is above 100,000."
DM: Bullish Directional Movement	Long	-DI(14) crossed below +DI(14)
Donchian Channels: High Above Upper Donchian Channels	Long	High crossed above the upper Donchian Channel(14,4)
MA: Short Term Bearish Moving Average Crossover	Short	MA(10) crossed below MA(15) within the last 1 day.
Parabolic SAR: Bearish Parabolic SAR Reversal	Neutral	"1. Parabolic SAR 1 day ago above close price 1 day ago for the last 5 days. 2. Parabolic SAR below close price"

Disclaimer: The information on this page is provided as a service to readers. It does not constitute financial advice and/or any investment recommendations. Past performance is not indicative of future results. We assume no liability for damages resulting from or arising out of the use of such information. It would be best if you did your own research to make your personal investment decisions wisely or consult a licenced investment advisor.



RAMSSOL GROUP BERHAD (0236.MY)

RAMSSOL

Price updated at 15 Jan 2026 16:58

Last: 1.050	Change: +0.010	Volume: 33,098
	Change (%): +0.96	Range: 1.040 - 1.060

TA Scanner Results based on historical data up to 15 Jan 2026

Condition	Signal	Explanation
Bollinger Band: Bullish Long Term Volatility Breakout and Trending	Long	"1. Close price above upper bollinger band(33,1). 2. Volume above average volume(50). 3. Average volume(50) is above 300,000."
Bollinger Band: Bullish Short Term Volatility Breakout and Trending	Long	"1. Close price above upper bollinger band(33,1). 2. Volume above average volume(10). 3. Average volume(10) is above 300,000."
Bollinger Band: High Above Upper Bollinger Band	Neutral	"1. High above upper bollinger band(14,2). 2. Average volume(5) is above 100,000."
DM: Bullish Directional Movement	Long	-DI(14) crossed below +DI(14)
Donchian Channels: High Above Upper Donchian Channels	Long	High crossed above the upper Donchian Channel(14,4)
MACD: Bullish MACD Crossover	Long	"1. MACD(12,26) diff line crossed above the MACD(12,26) signal line. 2. MACD Histogram(12,26) is above 0."
Parabolic SAR: Bearish Parabolic SAR Reversal	Neutral	"1. Parabolic SAR 1 day ago above close price 1 day ago for the last 5 days. 2. Parabolic SAR below close price"
Volume: 10 Days large value Buy Up trade	Long	"1. 150K value Buy Up greater than Sell Down by 20% for 10 days. 2. 50K-100K value Buy Up greater than Sell Down by 20% for 10 days. 3. Average volume(10) is above 1000000"
Volume: 5 Days large value Buy Up trade	Long	"1. 150K value Buy Up greater than Sell Down by 20% for 5 days. 2. 50K-100K value Buy Up greater than Sell Down by 20% for 5 days. 3. Average volume(10) is above 1000000"

Disclaimer: The information on this page is provided as a service to readers. It does not constitute financial advice and/or any investment recommendations. Past performance is not indicative of future results. We assume no liability for damages resulting from or arising out of the use of such information. It would be best if you did your own research to make your personal investment decisions wisely or consult a licenced investment advisor.



YTL CORPORATION BHD (4677.MY)

YTL

Price updated at 15 Jan 2026 16:59

Last: 2.240	Change: +0.050	Volume: 129,042
	Change (%): +2.28	Range: 2.160 - 2.240

TA Scanner Results based on historical data up to 15 Jan 2026

Condition	Signal	Explanation
Bollinger Band: Bullish Long Term Volatility Breakout and Trending	Long	"1. Close price above upper bollinger band(33,1). 2. Volume above average volume(50). 3. Average volume(50) is above 300,000."
Bollinger Band: Bullish Short Term Volatility Breakout and Trending	Long	"1. Close price above upper bollinger band(33,1). 2. Volume above average volume(10). 3. Average volume(10) is above 300,000."
Bollinger Band: High Above Upper Bollinger Band	Neutral	"1. High above upper bollinger band(14,2). 2. Average volume(5) is above 100,000."
Chaikin Volatility: Increasing Chaikin Volatility	Neutral	Chaikin Volatility(10,10) has been increasing for 5 days
Donchian Channels: High Above Upper Donchian Channels	Long	High crossed above the upper Donchian Channel(14,4)
MACD: Overbought	Short	"1. MACD Histogram(12,26,9) reached a new 6 month high. 2. MACD Histogram(12,26,9) has been above 0 for the last 3 weeks."
Price: Consecutive Days Gains	Long	"1. Close price has been increasing over the last 5 days. 2. Average volume(5) above 100,000."
RSI: Short Term RSI 50 Bullish Crossover	Long	"1. RSI(20) crossed above 50 within the last 1 day and RSI(20) 1 day ago below 50 for the last 5 days. 2. Volume above average volume(125). 3. Average volume(5) is above 100,000."
Volume: 10 Days large value Buy Up trade	Long	"1. 150K value Buy Up greater than Sell Down by 20% for 10 days. 2. 50K-100K value Buy Up greater than Sell Down by 20% for 10 days. 3. Average volume(10) is above 1000000"
Volume: 5 Days large value Buy Up trade	Long	"1. 150K value Buy Up greater than Sell Down by 20% for 5 days. 2. 50K-100K value Buy Up greater than Sell Down by 20% for 5 days. 3. Average volume(10) is above 1000000"
Williams %R: Bearish Williams %R	Short	"1. Williams %R(26) between 0 and -20. 2. Average volume(5) is above 100,000."



Learn how to identify Hot Stocks using Technical Analysis (TA) and Fundamental Analysis (FA)

SIGN UP FOR Invest
IT'S FREE!

[Click Here](#)

Scan/Click me



Via email, every Friday



Dato' Eu Hong Chew
Former Group CEO i-Berhad
Non-Executive Director

He has been associated with the Sumurwang Group for many years charting the path for its manufacturing arm, firstly under Dreamland Holdings Berhad and the subsequent acquisition of I-Berhad.

Before that, he was with PA Management Consulting for a decade where he was the Director of Studies for the Cranfield PA MBA Programme in Malaysia.

Educated at the Royal Military College, Dato' Eu has an engineering degree from the University of Glasgow, and a MBA from the University of Bradford, UK.

Perstima: Value Opportunity or Capital Trap?

SUMMARY

- Perusahaan Sadur Timah Malaysia (Perstima) Berhad (**BURSA.5436**) operates in a mature, cyclical tinplating industry. While the Philippines expansion adds capacity and may provide a one-off revenue lift, it does not change the industry's structural growth profile.
- Operating performance has been volatile, and capital efficiency has weakened over time. Despite modest profit growth over the cycle, ROIC and ROE have trended downward.
- Financially, Perstima is moderately sound but capital-intensive. A through-the-cycle valuation suggests the stock is undervalued.

Disclaimer: This article is written for informational purposes only. It does not constitute a solicitation, offer, advice, counseling or recommendation to buy or sell. As such it is not intended to promote the purchase of shares in any way. As a reminder, any type of asset has a risk factor and needs to be evaluated from multiple perspectives. Therefore, any investment decision and the associated risk remains with the investor. The views expressed here are entirely the writer's own.

BACKGROUND

Perstima is a producer and supplier of high-quality, prime-grade tinplate serving both domestic and export markets. Tinplate steel refers to cold-rolled thin steel sheets coated with a thin layer of tin. The prices of tinplate are largely driven by the costs of steel and tin, which are the key raw materials in the production process.

Today, Perstima operates manufacturing facilities in Malaysia, Vietnam, and the Philippines.

- In Malaysia, the Group's manufacturing plant in Johore has an annual production capacity of 200,000 metric tonnes (MT).
- In Vietnam, operations were established in 2002, making Perstima the country's first tinplate manufacturer. The plant has an annual production capacity of 120,000 MT.
- In the Philippines, the manufacturing facility has an annual production capacity of 200,000 MT.

The Group reports segment performance by country. As shown in **Chart 1**, the Malaysian operations remain the largest contributor to both revenue and profits. In contrast, the Philippine operations were still loss-making in 2024.

The Philippine plant commenced commercial operations in August 2022. According to the Group, it "is currently in its initial stages, with sales projected to grow steadily."

However, tinplating is a mature industry, with projected growth rates in the low single digits. Against this backdrop, despite Perstima's expansion into the Philippines, the Group's revenue grew at only a 3.1% CAGR from 2013 to 2024.

Note: Perstima's financial year-end is in March. Unless stated otherwise, all years referred to in this article correspond to the financial year.

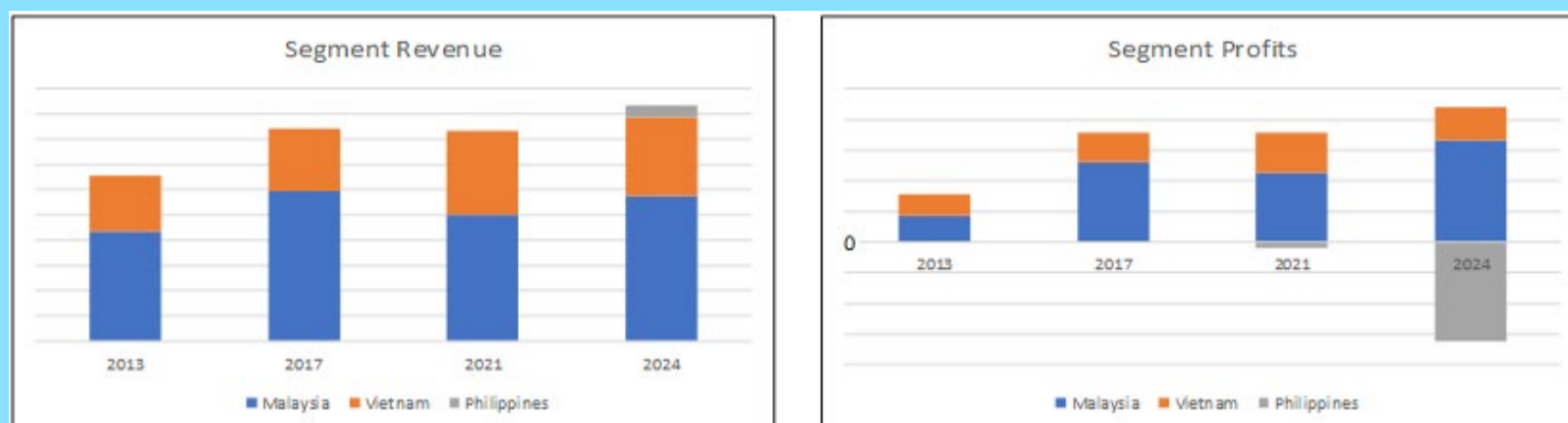


Chart 1: Segment Performance

OPERATING PERFORMANCE

As shown in the **left panel of Chart 1**, revenue growth over the past 12 years was driven mainly by the Malaysian and Vietnamese operations. Both are mature businesses operating in low-growth markets, with revenue expanding at single-digit rates. Over the period, revenue from Malaysia grew at a 2.5% CAGR, while it was 3.3% CAGR for Vietnam.

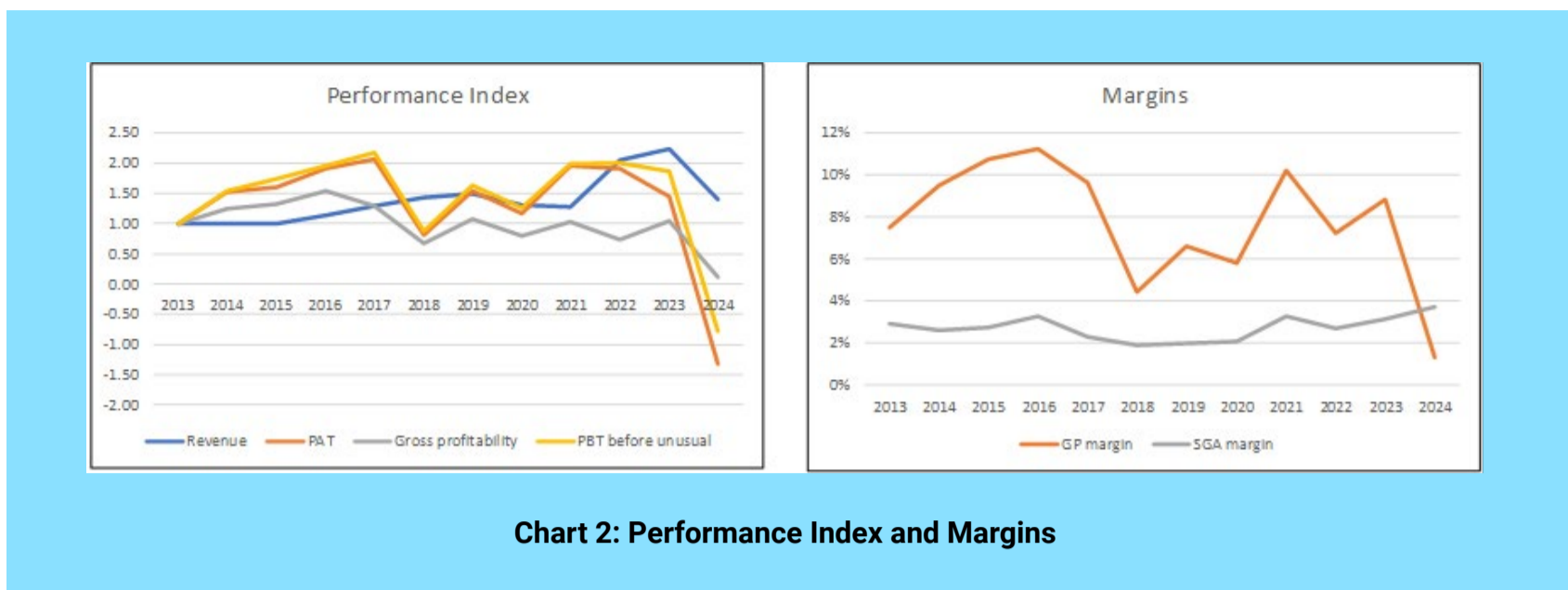
While the ramp-up of the Philippines operations may initially deliver a step-up in Group revenue once operations stabilise, growth is likely to taper thereafter and revert to a single-digit rate, consistent with the underlying industry characteristics.

Profit growth broadly tracked revenue growth over the period, with the notable exception of 2024. As illustrated in the **left panel of Chart 2**, the Group recorded a substantial loss in 2024, driven by several factors.

First, revenue declined due to weaker sales demand.

Second, gross profit margins deteriorated due to lower volumes and the weakening of the Ringgit against the US Dollar, as shown in the **right panel of Chart 2**. The company also attributed the loss to higher financing costs and the fact that the Philippines operations were still in their early stages and had yet to contribute meaningfully to earnings.

It is also likely that the sharp spike in tin and steel prices in 2021-2022 resulted in unusually high profits during those years. When market conditions softened in 2024, the downside impact on profitability was correspondingly larger.



Excluding 2024, profit after tax (PAT) grew at a 3.7% CAGR from 2013 to 2023. Despite this growth, return metrics tell a less favourable story.

Both ROIC and ROE exhibit a long-term downward trend, even when the 2024 performance is excluded. The primary reason for this decline is that capital has grown faster than profits. Excluding 2024:

- Total capital employed increased at a 12.2% CAGR, compared with a 5.6% CAGR in NOPAT.
- Equity expanded at a 5.4% CAGR, compared with a 3.7% CAGR in PAT.

The higher growth in invested capital can largely be traced to the funding required for the start-up of the Philippines operations. A dive into the drivers of ROIC showed that, excluding 2024, the deterioration in ROIC was driven mainly by declining capital turnover. Operating profit margins and tax yield (1 – tax rate) were relatively stable over the period.

In a low-growth environment, efficiency improvements become critical. One indicator of this is gross profitability. As shown in the left panel of Chart 2, even when 2024 is excluded, gross profitability exhibits a declining trend.

Other operating and capital efficiency metrics, such as asset turnover and operating expense ratio, also showed no clear improving trends when 2024 is excluded.

FINANCIAL POSITION

I would rate Perstima as moderately sound financially. While there were some positive points, I have some concerns. The positive points included the following:

- As of Jun 2025, it had RM113 million in cash. This is equal to 12% of its total assets.
- From 2013 to 2024, it generated positive cash flow from operations for 11 out of the 12 years. During this period, it generated RM546 million cash flow from operations compared to the total PAT of RM415 million. This is a good cash flow conversion ratio.
- It had a good capital allocation plan. Refer to Table 1. The cash flow from operations was sufficient to fund its CAPEX, including the Philippines expansion.

Item	Sources RM m	Uses RM m
Cash flow from Ops	546	
New shares	58	
Net Debt	228	
Acquisition		0
CAPEX		462
Dividends		300
Buybacks		0
Misc		70
Total	832	832

Table 1: Sources and Uses of Funds 2013 to 2024

My concerns include the following:

First, it had a Debt Capital ratio of 0.48 as of Jun 2025. This is the highest over the past decade. But looking at **Table 1**, I expect the CAPEX to come down once the Philippines operations run smoothly. The cash flow could then be used to reduce the Debt.

Another troubling picture was the increasing Reinvestment rate post-2021. This metric measures the Reinvestment.

Reinvestment rate = Reinvestment / NOPAT.

Reinvestment = CAPEX & Acquisition – Depreciation & Amortization
+ net increase in Working Capital.

Over the past decade, Perstima had an average Reinvestment rate of 88%. The high Reinvestment rate meant that there was not much NOPAT left to distribute to shareholders. I suspect that the high rate was because of the investments in the Philippines.

If you look at the situation before 2018 (before the Philippines expansion), the average Reinvestment rate was around 25%.

VALUATION

I adopted the following framework in valuing Perstima. (***Refer to the original article for the details***).

Perstima is a cyclical business with a new start-up segment in the Philippines. Accordingly, the valuation is based on through-the-cycle performance rather than on recent or peak earnings. While the tinplating industry is mature and characterised by low single-digit growth, the ramp-up of the Philippines operations could provide a one-off uplift to Group revenue before growth normalises.

Revenue projections were anchored to the 2024 revenue trendline. I assumed revenue growth of 9% in Year 1 to reflect the initial contribution from the Philippines operations. This growth rate was then reduced proportionately over time, converging to 3% in the terminal year. The terminal growth rate is consistent with historical revenue growth, while the initial growth rate is approximately three times the long-term average.

Given the cyclical nature of tin and steel prices, I assumed the average contribution margin over the 2013-2024 period to represent the long-term, mid-cycle margin at the terminal stage.

To capture the losses associated with the early-stage Philippines operations, the base-year contribution margin was set at the 2024 level. This margin was then assumed to improve proportionately over time, eventually reaching the long-term average contribution margin.

Fixed cost was assumed to be equal to the average fixed cost over the 2022-2024 period. This was then assumed to grow at 3% per annum over the projection period.

Beyond earnings, the reinvestment rate is a key driver of free cash flow. Over the past decade, the average reinvestment rate was 88%, reflecting significant capital deployment for capacity expansion. I assumed that, in the long run, the reinvestment rate would normalise to a more sustainable level of 44%, or roughly half the historical average. The transition from the current reinvestment rate to the long-term rate was assumed to occur gradually over five years.

Based on these assumptions, I derived an intrinsic value of RM3.21 per share, compared with the market price of RM1.97 per share (at end Jun 2025). This implies a margin of safety of more than 30%.

I consider this valuation to be conservative rather than aggressive. Under the valuation model:

- Terminal ROIC is assumed to be 6%, well below the past 12-year average of 11%.
- Average EPS over the projection period is RM0.19 per share, compared with the past 12-year average of RM0.34 per share.

CONCLUSION

Perstima is a cyclical, mature industrial business operating in a low-growth industry. While the expansion into the Philippines has materially increased the Group's asset base and capacity, it has yet to translate into commensurate earnings.

Operationally, revenue growth over the past decade has been modest and in line with industry growth, while profitability has been volatile. Although profits recovered during the 2021-2022 commodity upcycle, the downturn in 2024 exposed the downside risks of high operating leverage and elevated reinvestment levels.

More importantly, even excluding the 2024 loss, return metrics such as ROIC and ROE have been on a declining trend, driven primarily by falling capital turnover rather than margin compression. From

a financial perspective, Perstima remains moderately sound. A successful stabilisation of the Philippines' operations, coupled with a reduction in reinvestment intensity, will be critical for improving free cash flow and restoring balance sheet flexibility.

Overall, Perstima appears more like a value-with-conditions opportunity rather than a clear compounder. The investment case hinges less on growth and more on mean reversion in margins, improved capital discipline, and the eventual earnings contribution from the Philippines plant.

I am a long-term value investor who has held onto stocks for more than 5 years. My analysis and valuation are from such a perspective. I consider quarterly results "noisy" and focus on long-term trends.

This article was derived from a detailed analysis, emphasizing the intersection of business performance and valuation metrics, which was first published on i4value as "[Is Perstima an investment opportunity?](#)" Refer to the article for further insights on its investment risk vs business performance.

Disclaimer: This article is written for informational purposes only. It does not constitute a solicitation, offer, advice, counseling or recommendation to buy or sell. As such it is not intended to promote the purchase of shares in any way. As a reminder, any type of asset has a risk factor and needs to be evaluated from multiple perspectives. Therefore, any investment decision and the associated risk remains with the investor. The views expressed here are entirely the writer's own.

Learn how to identify Hot Stocks using Technical Analysis (TA) and Fundamental Analysis (FA)

SIGN UP FOR Invest *now*

Click Here

Get market moving news and analyses. Regular columns include **Behind The Ticker** and **From MSWG's The Observer**

- Leaderboard
- Shariah Hot Stocks
- Shariah Momentum Up Stocks
- Non Shariah Hot Stocks
- Up Trending Stocks
- Growth Stocks
- Dividend Stocks
- Long Companies
- Insider Activity
- Investor Relations
- Regional Markets

IT'S FREE! Via email, every Friday

Scan/Click me



UNLOCK THE SECRET OF WEALTH

DO YOU REALLY WANT TO MASTER VALUE INVESTING



SEE HOW TO GET HIGHER RETURNS WITH LOWER RISK



Bursa launches two quality factor indexes to showcase companies with strong financial characteristics

Bursa Malaysia has launched the Bursa Malaysia Quality 50 Index (BMQ) and the Bursa Malaysia Quality 50 Shariah Index (BMQ-S), the Exchange's first in-house indexes that are based on financial performance. Unlike headline benchmarks that mainly track companies based on market capitalisation, the BMQ and BMQ-S indexes profile listed companies that demonstrate comparatively stronger financial characteristics across profitability, capital structure and earnings quality. These factors are measured through Return on Equity, Debt-to-Equity, and Operating Cash Flow relative to Profit After Tax and Minority Interests. Each index comprises 50 companies from the MAIN Market and ACE Market that are not part of the FTSE Bursa Malaysia KLCI (FBMKLCI), the market's primary headline benchmark where a large share of market capitalisation and investor focus is concentrated.

According to Dato' Fad'l Mohamed, Chief Executive Officer of Bursa Malaysia, the launch of these indexes marks a significant milestone in the Exchange's index innovation journey. He sees financially

resilient companies emerging across sectors, including technology companies which make up almost 18% of both BMQ and BMQ-S. He added that these indexes provide reference points that reflect the broader growth landscape, ensuring that Malaysian companies with strong fundamentals are visible and accessible to investors, whilst also supporting broader participation in Malaysia's equity market.

Both BMQ and BMQ-S use the same index construction framework, with BMQ-S comprising only Shariah-compliant companies.

To ensure the indexes reflect companies that are suitable for benchmarking and investment reference, selected companies must meet minimum requirements in terms of size and trading activity.

The indexes will be reviewed twice a year to ensure they continue to reflect current market conditions and company performance.

Index values and constituent information will be available on Bursa Malaysia's website. For more information on the BMQ and BMQ-S indexes and their methodology, please visit:

https://www.bursamalaysia.com/trade/our_products_services/indices/bursa-malaysia-quality-50-index.



CHECK OUT SHAREINVESTOR

BROKER'S CALL

Weekly Buy/Sell/Hold calls
from leading Malaysian Brokerages.

Go To Broker's Call

BUY **HOLD** **SELL**

Attracting high growth new economy Chinese enterprises for cross-border listing in Malaysia



(From L to R): Bob Ma, Investment Banking, China Galaxy Securities; Shu Qi Yun, Partner, DeHeng Law Offices; Alan Inn Wei Loon, Country Head of CGS MY; Dato' Fad'l Mohamed, CEO of Bursa Malaysia; Xu Jianjun, De Heng Law Offices; Julian M Hashim, Chief Regulatory Officer, Bursa Malaysia and Leong See Meng, Director Securities Market, Bursa Malaysia

CGS International Securities Malaysia (CGS MY) hosted a market engagement session with DeHeng Law Offices (DeHeng), a Beijing-based cross-border law firm, and Bursa Malaysia, aimed at bridging high-growth Chinese enterprises in the new economy looking for regional growth as well as opportunities to attract greater ASEAN investor participation in their businesses.

The session focused on early-stage dialogue on Malaysia's capital market framework, issuer readiness and expectations, as well as greater clarity on listing processes, with the aim of supporting well-governed, future-ready companies as they consider Malaysia's capital market as part of their regional growth plans.

In his welcome remarks, Julian Mahmud Hashim, Chief Regulatory Officer of Bursa Malaysia, said, "Malaysia is well positioned for companies seeking a stable base in Southeast Asia. For Chinese-funded enterprises, Malaysia can be a platform not only to build operations, but also to access regional opportunities. Bursa Malaysia offers different listing routes for foreign companies looking to tap into our equity capital market."

Alan Inn Wei Loon, Country Head of CGS MY said, "As a leading gateway between China and ASEAN, CGS International is uniquely positioned to bridge capital and opportunity. Through our shareholders China Galaxy Securities and one of the world's largest sovereign wealth funds, the China Investment Corporation (CIC), we have the platform and deep institutional networks across ASEAN and in China to enable companies and businesses to tap into unparalleled market insights and capital. Malaysia's deep pockets of liquidity, asset diversity, highly developed capital market infrastructure and robust investor protection are key attraction factors."

Xu Jianjun, Deputy Director of DeHeng Law Offices, said, "Our multifaceted role is more than just bridging the complex regulatory and operating environment for our China issuers. Ensuring they are market-ready today goes beyond the rigour of complying with domestic financial, operational and governance standards to meeting sustainability requirements and expectation of value. By providing

specialised legal advisory, we aim to facilitate mutually beneficial listings for both the issuers and Malaysia’s investment community.”

The cooperation between CGS MY and DeHeng is designed to bridge "future-ready" companies from high-potential sectors, including technology, advanced manufacturing, renewable energy, and consumer goods with the robust capital raising ecosystem in Malaysia.

Learn how to identify Hot Stocks using Technical Analysis (TA) and Fundamental Analysis (FA)

SIGN UP FOR Invest *now*

Click Here

Get market moving news and analyses. Regular columns include **Behind The Ticker** and **From MSWG's The Observer**

- **Leaderboard**
- **Shariah Hot Stocks**
- **Shariah Momentum Up Stocks**
- **Non Shariah Hot Stocks**
- **Up Trending Stocks**
- **Growth Stocks**
- **Dividend Stocks**
- **Long Companies**
- **Insider Activity**
- **Investor Relations**
- **Regional Markets**

IT'S FREE! Via email, every Friday



Beyond Insights Symposium 2026 Reframes How Malaysians Turn Megatrends into Investable Decisions



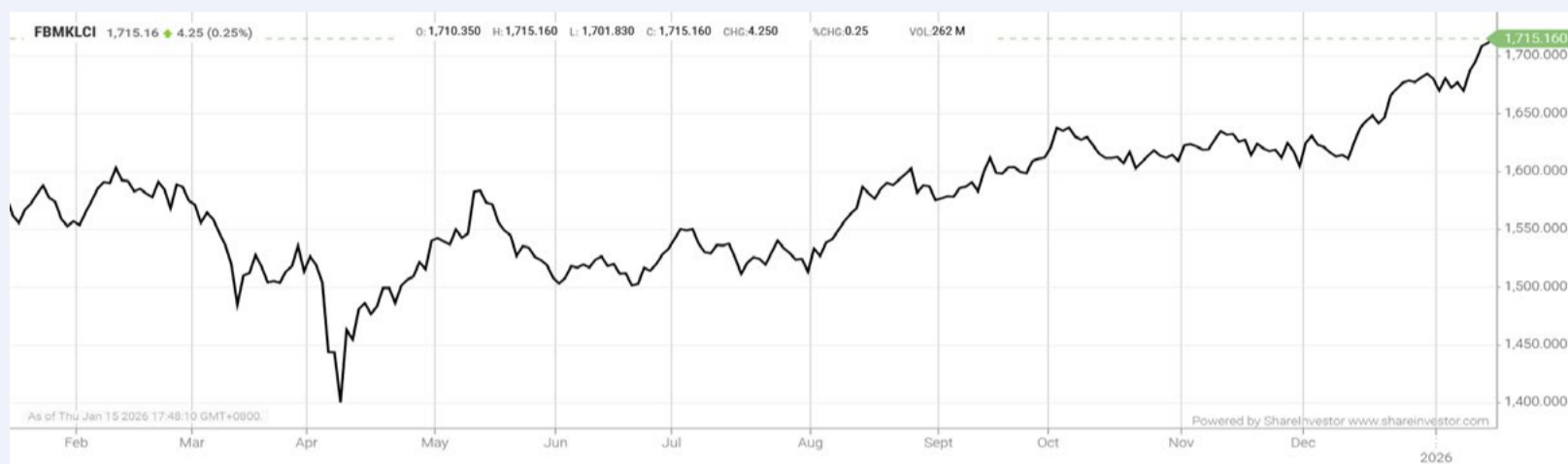
Kathlyn Toh - Founder & Chief Trainer, Terence Teoh - CEO of Beyond Insights, with participants at the Beyond Insights Symposium 2026

The Beyond Insights Symposium 2026, held recently at Securities Commission Malaysia, brought together global technology leaders, fintech pioneers and market strategists to examine how fast-evolving megatrends are reshaping markets, and why investors must move beyond headline-driven narratives to achieve sustainable results.

This year's programme examined eight global megatrends, with a particular focus on three that are already exerting immediate and structural impact on markets today: **Artificial Intelligence (AI), Big Data**, and the **Cashless Society & Fintech**. The Symposium also highlighted adjacent themes such as **autonomous vehicles, next-generation broadband, and early-stage developments in robotics, biotechnology, virtualisation, and the space and defence sectors.**

EYE ON THE MARKETS

On Thursday (15Jan), the Ringgit closed at 4.0545 against the USD and 3.1475 to the Sing Dollar. On Monday (12Jan), the FBM KLCI opened at 1687.07. As at Thursday (15Jan) 5:00pm, the FBM KLCI closed up 28.09 points at 1715.16. Over in US, the overnight Dow Jones Industrial Average closed up 292.81 points (+0.60%) to 49,442.44 whilst the NASDAQ added 58.27 points (+0.25%) to 23,530.02.



KLCI 1 Year Chart

Learn how to identify Hot Stocks using Technical Analysis (TA) and Fundamental Analysis (FA)

SIGN UP FOR Invest

now

Click Here

Scan/Click me

Via email, every Friday

Get market moving news and analyses. Regular columns include **Behind The Ticker** and **From MSWG's The Observer**

Leaderboard • Shariah Hot Stocks • Shariah Momentum Up Stocks • Non Shariah Hot Stocks • Up Trending Stocks • Growth Stocks • Dividend Stocks • Long Companies • Insider Activity • Investor Relations • Regional Markets

IT'S FREE!

Over 5 Trading Days (as at Yesterday)



ShareInvestor WebPro (www.shareinvestor.com/my)

1. Price > Stock Prices
2. Select Market: NASDAQ / NYSE / IDX / SET / HKEX / SGX (One bourse at a time)
3. select Stocks Tab
4. select Ranking Top Gainers or Top Losers (Over 5 Trading Days)
5. Mouse over Column Layout > select Edit Customs > select Name > select Last Done Price > select 5 Days Change > select 52 Weeks High > select 52 Weeks Low > Mouse Over Column Layout > select Custom

NASDAQ (USD)

Top Gainers

Name	Last Done	Change Over 5 Days	52 Weeks High	52 Weeks Low
Rich Sparkle Holdings	143.240	+118.990	108.680	2.797
Strategy Pfd	100.050	+98.080	3.250	0.398
KLA	1,434.500	+74.810	1,469.860	551.330
ASML Hold NY Reg	1,263.720	+69.400	1,291.480	578.510
Daily Journal	649.000	+66.800	654.170	348.630

Top Losers

Name	Last Done	Change Over 5 Days	52 Weeks High	52 Weeks Low
REX IncmMx Optn Strgy ETF	17.120	-314.240	365.860	219.970
Booking Holdings	5,187.020	-257.980	5,839.410	4,096.230
Intuit	566.600	-84.550	813.700	532.645
Lumentum Holdings	331.620	-61.260	402.795	45.650
Mercadolibre	2,101.950	-60.660	2,645.220	1,723.900

NYSE (USD)

Top Gainers

Name	Last Done	Change Over 5 Days	52 Weeks High	52 Weeks Low
NVR	7,580.760	+434.310	8,618.280	6,562.850
AutoZone	3,472.660	+158.670	4,388.110	3,162.000
Biglari Holdings A	2,278.790	+158.090	2,299.000	999.010
Comfort Systems USA	1,053.100	+81.610	1,079.268	276.440
Northrop Grumman	653.140	+76.130	640.901	426.240

Top Losers

Name	Last Done	Change Over 5 Days	52 Weeks High	52 Weeks Low
Berkshire Hathaway A	743,437.690	-6,862.310	812,855.000	680,500.000
Harbor PanAgora Dynamic Large Cap Core	24.667	-82.443	135.820	88.810
Markel Group	2,097.810	-47.580	2,207.590	1,621.890
Dillard's A	648.720	-41.760	741.975	282.240
Spotify Technology	528.920	-40.700	785.000	460.330

IDX (Rupiah)

Top Gainers

Name	Last Done	Change Over 5 Days	52 Weeks High	52 Weeks Low
DIAN SWASTATIKA SENTOSA TBK	107,975.000	+7,400.000	118,000.000	30,300.000
SINGARAJA PUTRA TBK	15,900.000	+3,700.000	15,900.000	1,955.000
RODA VIVATEX TBK	16,550.000	+3,350.000	16,550.000	11,050.000
SATRIA MEGA KENCANA TBK	5,025.000	+3,140.000	5,025.000	234.000
SOHO GLOBAL HEALTH TBK	3,210.000	+1,910.000	3,210.000	500.000

Top Losers

Name	Last Done	Change Over 5 Days	52 Weeks High	52 Weeks Low
DCI INDONESIA TBK	210,200.000	-11,800.000	398,000.000	41,200.000
GOLDEN FLOWER TBK	22,600.000	-6,300.000	41,900.000	1,600.000
SINAR MAS MULTIARTHA TBK	8,063.000	-6,137.000	27,225.000	12,000.000
MULTIPOLAR TECHNOLOGY TBK	62,375.000	-4,225.000	257,875.000	17,225.000
ABADI NUSANTARA HIJAU INVESTAMA TBK	326.000	-2,394.000	4,970.000	272.000

SET (Thai Baht)

Top Gainers

Name	Last Done	Change Over 5 Days	52 Weeks High	52 Weeks Low
ADVANC	338.000	+18.000	342.000	259.000
PTTEP	114.000	+5.500	130.500	93.000
SHANG	50.500	+5.500	61.500	38.000
BCT	57.000	+5.000	70.000	43.500
KYE	292.000	+4.000	324.000	272.000

Top Losers

Name	Last Done	Change Over 5 Days	52 Weeks High	52 Weeks Low
DELTA	160.000	-26.000	232.000	51.250
OHTL	297.000	-20.000	360.000	248.000
BH	140.000	-15.000	198.500	130.000
EGCO	111.500	-6.500	143.000	85.000
JTS	52.750	-6.250	67.500	22.100

HKEX (HKD)

Top Gainers

Name	Last Done	Change Over 5 Days	52 Weeks High	52 Weeks Low
MINIMAX-WP (100)	366.400	+359.280	479.000	220.000
NUOBIKAN (2635)	472.600	+89.600	475.000	310.000
LAOPU GOLD (6181)	685.500	+61.500	1,108.000	280.600
MININGLAMP-W (2718)	250.600	+54.100	309.800	168.600
BILIBILI-W (9626)	258.000	+47.000	261.000	113.600

Top Losers

Name	Last Done	Change Over 5 Days	52 Weeks High	52 Weeks Low
UNISOUND (9678)	286.000	-75.400	879.000	198.000
TRIP.COM-S (9961)	569.500	-30.500	613.000	402.600
CATL (3750)	484.000	-22.000	614.000	291.000
MIXUE GROUP (2097)	419.600	-13.800	618.500	256.000
TRANSTHERA-B (2617)	100.100	-12.700	679.500	20.200

SGX (SGD)

Top Gainers

Name	Last Done	Change Over 5 Days	52 Weeks High	52 Weeks Low
JMH USD	73.650	+1.990	75.080	36.010
HongkongLand USD	8.180	+0.940	8.240	3.810
Man Oriental USD	3.340	+0.600	3.340	1.313
UOL	9.720	+0.570	9.720	5.010
Venture	16.060	+0.530	16.100	10.133

Top Losers

Name	Last Done	Change Over 5 Days	52 Weeks High	52 Weeks Low
Pharmesis Intl	0.215	-0.165	0.605	0.200
Sin Heng Mach	0.550	-0.165	0.785	0.492
NIO Inc. USD OV	4.750	-0.140	7.840	3.090
IHH	2.600	-0.120	2.950	1.890
DBS	58.320	-0.080	58.800	35.975

DEFINITION: Insider Activity shows the trades made by substantial shareholders or directors of the company. Purchases by the directors and company share buyback may indicate the share price is undervalued and brings confidence to the price trend of the share price.



ShareInvestor WebPro > Fundamental > Insider Trades > click Search tab > Select Bursa > click Stock name > scroll up and leave at <Select Counter> Type Date Range for Announcement Date > click Search

Notice Period is 04th January 2026 to 10th January 2026

Effective Change Date	Stock Name	Buyer/ Seller Name [Classification]	Bought / (Sold) ['000]		No. of Shares After Trade ['000]	
			Total	% Held	Total	% Held
06 JAN 2026 - 08 JAN 2026	AAX	DATUK KAMARUDIN BIN MERANUN [DIR/CEO]	-1,100		83,864	37.517
06 JAN 2026 - 06 JAN 2026	AAX	DATUK KAMARUDIN BIN MERANUN [DIR/CEO]	-10		95,958	21.464
06 JAN 2026 - 06 JAN 2026	AAX	DATUK KAMARUDIN BIN MERANUN [SSH]	-10		95,958	21.464
06 JAN 2026 - 08 JAN 2026	AAX	DATUK KAMARUDIN BIN MERANUN [SSH]	-1,100		83,864	37.517
06 JAN 2026 - 06 JAN 2026	AAX	DATUK KAMARUDIN BIN MERANUN [DIR/CEO]	-7,130		95,968	21.466
06 JAN 2026 - 06 JAN 2026	AAX	DATUK KAMARUDIN BIN MERANUN [SSH]	-7,130		95,968	21.466
06 JAN 2026 - 06 JAN 2026	AAX	TAN SRI ANTHONY FRANCIS FERNANDES [SSH]	-7,130		68,232	15.262
06 JAN 2026 - 06 JAN 2026	AAX	DATUK KAMARUDIN BIN MERANUN [DIR/CEO]	-66,830		103,098	23.061
06 JAN 2026 - 06 JAN 2026	AAX	DATUK KAMARUDIN BIN MERANUN [SSH]	-66,830		103,098	23.061
06 JAN 2026 - 06 JAN 2026	AAX	TAN SRI ANTHONY FRANCIS FERNANDES [SSH]	-66,830		75,362	16.857
06 JAN 2026 - 06 JAN 2026	AHEALTH	65 EQUITY PARTNERS GROUP PTE. LTD. [SSH]	13,739		689,441	95.427
06 JAN 2026 - 06 JAN 2026	AHEALTH	65 EQUITY PARTNERS PTE. LTD. [SSH]	13,739		689,441	95.427
06 JAN 2026 - 06 JAN 2026	AHEALTH	65EP INVESTMENT IV PTE. LTD. [SSH]	13,739		689,441	95.427
06 JAN 2026 - 06 JAN 2026	AHEALTH	65EP INVESTMENTS PTE. LTD. [SSH]	13,739		689,441	95.427
06 JAN 2026 - 06 JAN 2026	AHEALTH	ALEVIA INVESTMENT HOLDINGS PTE. LTD. [SSH]	13,739		689,441	95.427
06 JAN 2026 - 06 JAN 2026	AHEALTH	EMPLOYEES PROVIDENT FUND BOARD [SSH]	13,739		689,441	95.427
06 JAN 2026 - 06 JAN 2026	AHEALTH	LEF 1C PTE. LTD. [SSH]	13,739		689,441	95.427
06 JAN 2026 - 06 JAN 2026	AHEALTH	LEF GP I PTE. LTD. [SSH]	13,739		689,441	95.427
06 JAN 2026 - 06 JAN 2026	AHEALTH	PANACEA INVESTMENT HOLDINGS PTE. LTD. [SSH]	13,739		689,441	95.427
06 JAN 2026 - 06 JAN 2026	AHEALTH	PHARMORA INVESTMENT HOLDINGS PTE. LTD. ("PHARMORA") [SSH]	13,739		689,441	95.427
06 JAN 2026 - 06 JAN 2026	AHEALTH	QUADRIA CAPITAL FUND III HOLDINGS PTE. LTD. [SSH]	13,739		689,441	95.427
06 JAN 2026 - 06 JAN 2026	AHEALTH	QUADRIA CAPITAL FUND III LP [SSH]	13,739		689,441	95.427
06 JAN 2026 - 06 JAN 2026	AHEALTH	QUADRIA CAPITAL FUND III SEA LP [SSH]	13,739		689,441	95.427
06 JAN 2026 - 06 JAN 2026	AHEALTH	QUADRIA CAPITAL FUND III PAR LP [SSH]	13,739		689,441	95.427
06 JAN 2026 - 06 JAN 2026	AHEALTH	TEMASEK HOLDINGS (PRIVATE) LIMITED [SSH]	13,739		689,441	95.427
06 JAN 2026 - 06 JAN 2026	AHEALTH	TEMBUSU CAPITAL PTE. LTD. [SSH]	13,739		689,441	95.427
06 JAN 2026 - 06 JAN 2026	AHEALTH	THOMSON CAPITAL PTE. LTD. [SSH]	13,739		689,441	95.427
02 JAN 2026 - 02 JAN 2026	AHEALTH	65 EQUITY PARTNERS GROUP PTE. LTD. [SSH]	737		675,702	93.526
02 JAN 2026 - 02 JAN 2026	AHEALTH	65 EQUITY PARTNERS PTE. LTD. [SSH]	737		675,702	93.526
02 JAN 2026 - 02 JAN 2026	AHEALTH	65EP INVESTMENT IV PTE. LTD. [SSH]	737		675,702	93.526
02 JAN 2026 - 02 JAN 2026	AHEALTH	65EP INVESTMENTS PTE. LTD. [SSH]	737		675,702	93.526
02 JAN 2026 - 02 JAN 2026	AHEALTH	ALEVIA INVESTMENT HOLDINGS PTE. LTD. [SSH]	737		675,702	93.526
02 JAN 2026 - 02 JAN 2026	AHEALTH	EMPLOYEES PROVIDENT FUND BOARD [SSH]	737		675,702	93.526
02 JAN 2026 - 02 JAN 2026	AHEALTH	LEF 1C PTE. LTD. [SSH]	737		675,702	93.526
02 JAN 2026 - 02 JAN 2026	AHEALTH	LEF GP I PTE. LTD. [SSH]	737		675,702	93.526
02 JAN 2026 - 02 JAN 2026	AHEALTH	PANACEA INVESTMENT HOLDINGS PTE. LTD. [SSH]	737		675,702	93.526
02 JAN 2026 - 02 JAN 2026	AHEALTH	PHARMORA INVESTMENT HOLDINGS PTE. LTD. ("PHARMORA") [SSH]	737		675,702	93.526
02 JAN 2026 - 02 JAN 2026	AHEALTH	QUADRIA CAPITAL FUND III HOLDINGS PTE. LTD. [SSH]	737		675,702	93.526
02 JAN 2026 - 02 JAN 2026	AHEALTH	QUADRIA CAPITAL FUND III LP [SSH]	737		675,702	93.526
02 JAN 2026 - 02 JAN 2026	AHEALTH	QUADRIA CAPITAL FUND III SEA LP [SSH]	737		675,702	93.526
02 JAN 2026 - 02 JAN 2026	AHEALTH	QUADRIA CAPITAL FUND III PAR LP [SSH]	737		675,702	93.526
02 JAN 2026 - 02 JAN 2026	AHEALTH	TEMASEK HOLDINGS (PRIVATE) LIMITED [SSH]	737		675,702	93.526
02 JAN 2026 - 02 JAN 2026	AHEALTH	TEMBUSU CAPITAL PTE. LTD. [SSH]	737		675,702	93.526
02 JAN 2026 - 02 JAN 2026	AHEALTH	THOMSON CAPITAL PTE. LTD. [SSH]	737		675,702	93.526
05 JAN 2026 - 05 JAN 2026	ALLIANZ	EMPLOYEES PROVIDENT FUND BOARD [SSH]	0.1		13,010	7.061
02 JAN 2026 - 02 JAN 2026	ALLIANZ	EMPLOYEES PROVIDENT FUND BOARD [SSH]	57		13,010	7.061
30 DEC 2025 - 30 DEC 2025	ALLIANZ	EMPLOYEES PROVIDENT FUND BOARD [SSH]	22		12,953	7.03
06 JAN 2026 - 06 JAN 2026	AMBANK	EMPLOYEES PROVIDENT FUND BOARD [SSH]	-250		584,541	17.674
05 JAN 2026 - 05 JAN 2026	AMBANK	EMPLOYEES PROVIDENT FUND BOARD [SSH]	1,894		584,791	17.682
02 JAN 2026 - 02 JAN 2026	AMBANK	EMPLOYEES PROVIDENT FUND BOARD [SSH]	1,961		582,898	17.624
31 DEC 2025 - 31 DEC 2025	AMBANK	EMPLOYEES PROVIDENT FUND BOARD [SSH]	792		580,936	17.565
30 DEC 2025 - 30 DEC 2025	AMBANK	EMPLOYEES PROVIDENT FUND BOARD [SSH]	1,202		580,145	17.541
31 DEC 2025 - 31 DEC 2025	ANCOMNY	DATUK LEE CHEUN WEI [DIR/CEO]	40		135,610	12.65
31 DEC 2025 - 31 DEC 2025	ANCOMNY	DATUK LEE CHEUN WEI [SSH]	40		135,610	12.65
05 JAN 2026 - 05 JAN 2026	APPASIA	MADAM YONG MAI FANG [DIR/CEO]	179		156,000	11.294
05 JAN 2026 - 05 JAN 2026	APPASIA	MADAM YONG MAI FANG [SSH]	179		156,000	11.294
05 JAN 2026 - 07 JAN 2026	AWANTEC	LEMBAGA TABUNG AMANAH WARISAN NEGERI TERENGGANU [SSH]	46		44,495	5.644
02 JAN 2026 - 02 JAN 2026	AWANTEC	LEMBAGA TABUNG AMANAH WARISAN NEGERI TERENGGANU [SSH]	19		44,449	5.639
31 DEC 2025 - 31 DEC 2025	AXIATA	EMPLOYEES PROVIDENT FUND BOARD [SSH]	-4,352		1,735,726	18.895
30 DEC 2025 - 30 DEC 2025	AXIATA	EMPLOYEES PROVIDENT FUND BOARD [SSH]	-428		1,740,077	18.942
06 JAN 2026 - 06 JAN 2026	AXREIT	EMPLOYEES PROVIDENT FUND BOARD [SSH]	2,045		396,841	19.598
05 JAN 2026 - 05 JAN 2026	AXREIT	EMPLOYEES PROVIDENT FUND BOARD [SSH]	372		394,796	19.497

Notice Period is 04th January 2026 to 10th January 2026

Effective Change Date	Stock Name	Buyer/ Seller Name [Classification]	Bought / (Sold) ['000]		No. of Shares After Trade ['000]	
			Total	% Held	Total	% Held
02 JAN 2026 - 02 JAN 2026	AXREIT	EMPLOYEES PROVIDENT FUND BOARD [SSH]	2,000		394,424	19.479
05 JAN 2026 - 05 JAN 2026	AXREIT	KUMPULAN WANG PERSARAAN (DIPERBADANKAN) [SSH]	53		164,129	8.106
05 JAN 2026 - 05 JAN 2026	AXREIT	LEMBAGA TABUNG HAJI [SSH]	500		130,370	6.438
02 JAN 2026 - 02 JAN 2026	AXREIT	LEMBAGA TABUNG HAJI [SSH]	-2,573		129,870	6.414
07 JAN 2026 - 08 JAN 2026	BAUTO	DATO' SRI AMER HAMZAH BIN AHMAD [SSH]	400		189,851	16.684
07 JAN 2026 - 08 JAN 2026	BAUTO	DATO' SRI LEE KOK CHUAN [DIR/CEO]	400		190,297	16.723
07 JAN 2026 - 08 JAN 2026	BAUTO	DATO' SRI LEE KOK CHUAN [SSH]	400		190,297	16.723
07 JAN 2026 - 08 JAN 2026	BAUTO	DYNAMIC MILESTONE SDN BHD [SSH]	400		185,407	16.293
07 JAN 2026 - 08 JAN 2026	BAUTO	TAN SRI DATO' SRI YEOH CHOON SAN [DIR/CEO]	400		189,649	16.666
07 JAN 2026 - 08 JAN 2026	BAUTO	TAN SRI DATO' SRI YEOH CHOON SAN [SSH]	400		189,649	16.666
05 JAN 2026 - 05 JAN 2026	BAUTO	EMPLOYEES PROVIDENT FUND BOARD [SSH]	-489		66,136	5.81
02 JAN 2026 - 02 JAN 2026	BAUTO	EMPLOYEES PROVIDENT FUND BOARD [SSH]	-451		66,025	5.853
31 DEC 2025 - 31 DEC 2025	BAUTO	EMPLOYEES PROVIDENT FUND BOARD [SSH]	805		67,076	5.892
30 DEC 2025 - 30 DEC 2025	BAUTO	EMPLOYEES PROVIDENT FUND BOARD [SSH]	1,902		66,271	5.821
05 JAN 2026 - 06 JAN 2026	BESHOM	MADAM PHAN VAN DENH [SSH]	74		81,695	27.298
05 JAN 2026 - 06 JAN 2026	BESHOM	MR TAN KENG KANG [DIR/CEO]	74		81,695	27.299
05 JAN 2026 - 06 JAN 2026	BESHOM	MR TAN KENG KANG [SSH]	74		81,695	27.299
05 JAN 2026 - 06 JAN 2026	BESHOM	TAN KAI HEE FAMILY HOLDINGS SDN BHD [SSH]	74		67,672	22.612
31 DEC 2025 - 31 DEC 2025	BIMB	EMPLOYEES PROVIDENT FUND BOARD [SSH]	-2,000		375,892	16.585
30 DEC 2025 - 30 DEC 2025	BIMB	EMPLOYEES PROVIDENT FUND BOARD [SSH]	-1,357		377,892	16.673
06 JAN 2026 - 07 JAN 2026	BJASSET	TAN SRI DATO' SERI VINCENT TAN CHEE YIOUN [SSH]	5		1,570,704	61.397
02 JAN 2026 - 02 JAN 2026	BJASSET	TAN SRI DATO' SERI VINCENT TAN CHEE YIOUN [SSH]	10		1,570,699	61.397
07 JAN 2026 - 07 JAN 2026	BJCORP	TAN SRI DATO' SERI VINCENT TAN CHEE YIOUN [SSH]	-1,800		1,216,806	20.864
05 JAN 2026 - 05 JAN 2026	BJCORP	TAN SRI DATO' SERI VINCENT TAN CHEE YIOUN [SSH]	-10,000		1,218,606	20.895
07 JAN 2026 - 07 JAN 2026	BLDPLNT	DATO' SRI LAW KIU KIONG [SSH]	0.2		6,297	6.735
07 JAN 2026 - 07 JAN 2026	BLDPLNT	LAW KIONG HOLDINGS SDN. BHD. [SSH]	0.2		6,297	6.735
08 JAN 2026 - 08 JAN 2026	BMS	MADAM YU BEE CHEW [SSH]	1,000		498,663	32.381
08 JAN 2026 - 08 JAN 2026	BMS	MR ANG KWEE PENG [DIR/CEO]	1,000		498,663	32.381
08 JAN 2026 - 08 JAN 2026	BMS	MR ANG KWEE PENG [SSH]	1,000		498,663	32.381
06 JAN 2026 - 06 JAN 2026	BNASTRA	EASTSPRING INVESTMENTS BERHAD [SSH]	-10		59,751	5.475
06 JAN 2026 - 06 JAN 2026	BNASTRA	PRUDENTIAL ASSURANCE MALAYSIA BERHAD [SSH]	-10		59,991	5.497
06 JAN 2026 - 06 JAN 2026	BNASTRA	PRUDENTIAL PLC [SSH]	-10		82,683	7.576
05 JAN 2026 - 05 JAN 2026	BNASTRA	EASTSPRING INVESTMENTS BERHAD [SSH]	-347		59,761	5.476
05 JAN 2026 - 05 JAN 2026	BNASTRA	PRUDENTIAL ASSURANCE MALAYSIA BERHAD [SSH]	-347		60,001	5.498
05 JAN 2026 - 05 JAN 2026	BNASTRA	PRUDENTIAL PLC [SSH]	-347		82,693	7.577
07 JAN 2026 - 07 JAN 2026	BORNOIL	VICTORIA CAPITAL SDN BHD [SSH]	-1,673		897,099	5.906
07 JAN 2026 - 09 JAN 2026	BPURI	MR OOI HEE KAH [DIR/CEO]	-300		17,929	2.008
02 JAN 2026 - 06 JAN 2026	BPURI	MR OOI HEE KAH [DIR/CEO]	-300		18,229	2.042
06 JAN 2026 - 06 JAN 2026	BSLCORP	MR BU YAW SENG [SSH]	2,000		106,342	5.51
31 DEC 2025 - 31 DEC 2025	BURSA	EMPLOYEES PROVIDENT FUND BOARD [SSH]	206		93,402	11.541
02 JAN 2026 - 02 JAN 2026	CATCHA-WA	MR LUCAS ROBERT ELLIOTT [DIR/CEO]	2,346		93,582	51.921
02 JAN 2026 - 02 JAN 2026	CATCHA-WA	MR PATRICK YKIN GROVE [DIR/CEO]	2,346		93,835	52.061
06 JAN 2026 - 07 JAN 2026	CBIP	DATUK LIM CHAI BENG [DIR/CEO]	175		187,540	40.599
06 JAN 2026 - 07 JAN 2026	CBIP	DATUK LIM CHAI BENG [SSH]	175		187,540	40.599
31 DEC 2025 - 31 DEC 2025	CDB	EMPLOYEES PROVIDENT FUND BOARD [SSH]	-5,000		1,260,401	10.744
30 DEC 2025 - 30 DEC 2025	CDB	EMPLOYEES PROVIDENT FUND BOARD [SSH]	-11,170		1,265,401	10.786
31 DEC 2025 - 31 DEC 2025	CHEETAH	MITSUBISHI UFJ FINANCIAL GROUP INC [SSH]	-1,459		32,342	6.651
07 JAN 2026 - 07 JAN 2026	CHGP	CHIN HIN GROUP BERHAD [SSH]	-3,300		819,719	59.181
07 JAN 2026 - 07 JAN 2026	CHGP	DATUK SERI CHIAU BENG TEIK [DIR/CEO]	-3,300		819,719	59.181
07 JAN 2026 - 07 JAN 2026	CHGP	DATUK SERI CHIAU BENG TEIK [SSH]	-3,300		819,719	59.181
07 JAN 2026 - 07 JAN 2026	CHGP	DATUK WIRA CHIAU HAW CHOON [DIR/CEO]	-3,300		819,719	59.181
07 JAN 2026 - 07 JAN 2026	CHGP	DATUK WIRA CHIAU HAW CHOON [SSH]	-3,300		819,719	59.181
07 JAN 2026 - 07 JAN 2026	CHGP	DIVINE INVENTIONS SDN BHD [SSH]	-3,300		819,719	59.181
07 JAN 2026 - 07 JAN 2026	CHGP	PP CHIN HIN REALTY SDN BHD [SSH]	-3,300		819,719	59.181
08 JAN 2026 - 08 JAN 2026	CIMB	KUMPULAN WANG PERSARAAN (DIPERBADANKAN) [SSH]	789		700,132	6.49
06 JAN 2026 - 06 JAN 2026	CIMB	EMPLOYEES PROVIDENT FUND BOARD [SSH]	-5,224		1,972,852	18.28
07 JAN 2026 - 07 JAN 2026	CIMB	KUMPULAN WANG PERSARAAN (DIPERBADANKAN) [SSH]	211		699,343	6.48
05 JAN 2026 - 05 JAN 2026	CIMB	EMPLOYEES PROVIDENT FUND BOARD [SSH]	-2,327		1,978,076	18.33
06 JAN 2026 - 06 JAN 2026	CIMB	KUMPULAN WANG PERSARAAN (DIPERBADANKAN) [SSH]	23		699,132	6.48
02 JAN 2026 - 02 JAN 2026	CIMB	EMPLOYEES PROVIDENT FUND BOARD [SSH]	6,406		1,980,303	18.35

Disclaimer: The Information in Insider Activity is extracted from www.shareinvestor.com/fundamental/insider_trades. The information on this page is provided as a service to readers. It does not constitute financial advice and/or any investment recommendations. We assume no liability for damages resulting from or arising out of the use of such information. Whilst every effort is made to ensure accuracy, the information presented is not the official record of shareholder filings. Readers are advised to read the original filings on the Bursa Malaysia website at www.bursamalaysia.com



STROM
SWISS TIMEPIECES & JEWELLERY



StromWatch Asia
Tele : +65.9817.3378
Email : ll.stromasia@gmail.com
WWW.STROMWATCH.SWISS

Notice Period is 04th January 2026 to 10th January 2026

Effective Change Date	Stock Name	Buyer/ Seller Name [Classification]	Bought / (Sold) ['000]	No. of Shares After Trade ['000]	
			Total	Total	% Held
02 JAN 2026 - 02 JAN 2026	CIMB	KUMPULAN WANG PERSARAAN (DIPERBADANKAN) [SSH]	-6,763	699,934	6.49
30 DEC 2025 - 30 DEC 2025	CIMB	EMPLOYEES PROVIDENT FUND BOARD [SSH]	1,284	1,977,038	18.32
31 DEC 2025 - 31 DEC 2025	CITAGLB	AL-SULTAN ABDULLAH IBNI SULTAN HAJI AHMAD SHAH [SSH]	5,004	64,373	13.764
06 JAN 2026 - 06 JAN 2026	CLMT	EMPLOYEES PROVIDENT FUND BOARD [SSH]	867	507,130	15.223
05 JAN 2026 - 05 JAN 2026	CLMT	EMPLOYEES PROVIDENT FUND BOARD [SSH]	1,259	506,263	15.197
02 JAN 2026 - 02 JAN 2026	CLMT	EMPLOYEES PROVIDENT FUND BOARD [SSH]	400	505,004	15.159
31 DEC 2025 - 31 DEC 2025	CLMT	EMPLOYEES PROVIDENT FUND BOARD [SSH]	-2,192	504,604	15.147
30 DEC 2025 - 30 DEC 2025	CLMT	EMPLOYEES PROVIDENT FUND BOARD [SSH]	1,000	506,796	15.213
06 JAN 2026 - 07 JAN 2026	CNERGEN	MR LYE THIM LOONG [DIR/CEO]	65	13,015	2.613
06 JAN 2026 - 06 JAN 2026	COMPUGT	MADAM SEE THOO CHAN [DIR/CEO]	145	1,057,526	17.479
06 JAN 2026 - 06 JAN 2026	COMPUGT	MADAM SEE THOO CHAN [SSH]	145	1,057,526	17.479
06 JAN 2026 - 06 JAN 2026	COMPUGT	MR GOH KHENG PEOW [SSH]	145	1,057,526	17.479
05 JAN 2026 - 05 JAN 2026	COMPUGT	MADAM SEE THOO CHAN [DIR/CEO]	100	1,057,382	17.476
05 JAN 2026 - 05 JAN 2026	COMPUGT	MADAM SEE THOO CHAN [SSH]	100	1,057,382	17.476
05 JAN 2026 - 05 JAN 2026	COMPUGT	MR GOH KHENG PEOW [SSH]	100	1,057,382	17.476
31 DEC 2025 - 31 DEC 2025	CRESNDO	DATO' ONG ENG BIN [DIR/CEO]	15	15	0.002
06 JAN 2026 - 06 JAN 2026	CTOS	EMPLOYEES PROVIDENT FUND BOARD [SSH]	2,785	451,524	19.847
05 JAN 2026 - 05 JAN 2026	CTOS	EMPLOYEES PROVIDENT FUND BOARD [SSH]	693	448,740	19.724
02 JAN 2026 - 02 JAN 2026	CTOS	EMPLOYEES PROVIDENT FUND BOARD [SSH]	445	448,047	19.694
31 DEC 2025 - 31 DEC 2025	CTOS	EMPLOYEES PROVIDENT FUND BOARD [SSH]	371	447,601	19.674
30 DEC 2025 - 30 DEC 2025	CTOS	EMPLOYEES PROVIDENT FUND BOARD [SSH]	1,757	447,230	19.658
31 DEC 2025 - 31 DEC 2025	D&O	EMPLOYEES PROVIDENT FUND BOARD [SSH]	8,700	92,419	7.456
30 DEC 2025 - 30 DEC 2025	D&O	EMPLOYEES PROVIDENT FUND BOARD [SSH]	-1,190	83,719	6.754
05 JAN 2026 - 05 JAN 2026	DAYANG	EMPLOYEES PROVIDENT FUND BOARD [SSH]	-490	131,181	11.33
02 JAN 2026 - 02 JAN 2026	DAYANG	EMPLOYEES PROVIDENT FUND BOARD [SSH]	-438	131,671	11.373
07 JAN 2026 - 07 JAN 2026	DESTINI	DATO' ABD AZIZ BIN HAJI SHEIKH FADZIR [DIR/CEO]	1,000	60,416	11.005
07 JAN 2026 - 07 JAN 2026	DESTINI	DATO' ABD AZIZ BIN HAJI SHEIKH FADZIR [SSH]	1,000	60,416	11.005
08 JAN 2026 - 08 JAN 2026	DIALOG	KUMPULAN WANG PERSARAAN (DIPERBADANKAN) [SSH]	-630	546,327	9.68
06 JAN 2026 - 06 JAN 2026	DIALOG	EMPLOYEES PROVIDENT FUND BOARD [SSH]	3,000	1,182,062	20.95
05 JAN 2026 - 05 JAN 2026	DIALOG	EMPLOYEES PROVIDENT FUND BOARD [SSH]	1,866	1,179,062	20.9
02 JAN 2026 - 02 JAN 2026	DIALOG	EMPLOYEES PROVIDENT FUND BOARD [SSH]	8,286	1,177,196	20.86
31 DEC 2025 - 31 DEC 2025	DIALOG	EMPLOYEES PROVIDENT FUND BOARD [SSH]	-3,339	1,168,910	20.72
02 JAN 2026 - 02 JAN 2026	DIALOG	KUMPULAN WANG PERSARAAN (DIPERBADANKAN) [SSH]	-2,252	546,957	9.69
30 DEC 2025 - 30 DEC 2025	DIALOG	EMPLOYEES PROVIDENT FUND BOARD [SSH]	5,471	1,172,249	20.77
06 JAN 2026 - 06 JAN 2026	DRBHCOM	EMPLOYEES PROVIDENT FUND BOARD [SSH]	7	163,868	8.476
02 JAN 2026 - 02 JAN 2026	DRBHCOM	EMPLOYEES PROVIDENT FUND BOARD [SSH]	208	162,611	8.411
31 DEC 2025 - 31 DEC 2025	DRBHCOM	EMPLOYEES PROVIDENT FUND BOARD [SSH]	-1	162,403	8.401
30 DEC 2025 - 30 DEC 2025	DRBHCOM	EMPLOYEES PROVIDENT FUND BOARD [SSH]	-522	162,404	8.401
31 DEC 2025 - 31 DEC 2025	E&O	EMPLOYEES PROVIDENT FUND BOARD [SSH]	-1,000	182,174	7.31
02 JAN 2026 - 02 JAN 2026	E&O	AMAZING PARADE SDN BHD [SSH]	333	708,082	28.411
02 JAN 2026 - 02 JAN 2026	E&O	DATIN SERI TOH SIEW CHUON [SSH]	333	858,564	34.45
02 JAN 2026 - 02 JAN 2026	E&O	DATO' TEE ENG SENG [DIR/CEO]	333	1,542,644	61.898
02 JAN 2026 - 02 JAN 2026	E&O	DATO' TEE ENG SENG [SSH]	333	1,542,644	61.898
02 JAN 2026 - 02 JAN 2026	E&O	DATO' SERI TEE ENG HO [DIR/CEO]	333	1,548,162	62.119
02 JAN 2026 - 02 JAN 2026	E&O	DATO' SERI TEE ENG HO [SSH]	333	1,542,644	61.898
30 DEC 2025 - 30 DEC 2025	E&O	EMPLOYEES PROVIDENT FUND BOARD [SSH]	-1,000	183,174	7.35
07 JAN 2026 - 07 JAN 2026	EDARAN	VALIANT CHAPTER SDN BHD [SSH]	20	14,655	25.31
06 JAN 2026 - 06 JAN 2026	EDARAN	VALIANT CHAPTER SDN BHD [SSH]	30	14,635	25.274
31 DEC 2025 - 02 JAN 2026	EITA	MADAM GOH KIN BEE [SSH]	30	44,150	14.629
31 DEC 2025 - 02 JAN 2026	EITA	MR LIM JOO SWEE [DIR/CEO]	30	44,257	14.663
31 DEC 2025 - 02 JAN 2026	EITA	MR LIM JOO SWEE [SSH]	30	44,257	14.663
07 JAN 2026 - 07 JAN 2026	F&N	AMANAHRAYA TRUSTEES BERHAD - AMANAH SAHAM BUMIPUTERA [SSH]	-1,000	22,000	5.998
06 JAN 2026 - 06 JAN 2026	F&N	EMPLOYEES PROVIDENT FUND BOARD [SSH]	355	55,611	15.162
05 JAN 2026 - 05 JAN 2026	F&N	EMPLOYEES PROVIDENT FUND BOARD [SSH]	33	55,256	15.065
02 JAN 2026 - 02 JAN 2026	F&N	EMPLOYEES PROVIDENT FUND BOARD [SSH]	68	55,223	15.056
31 DEC 2025 - 31 DEC 2025	F&N	EMPLOYEES PROVIDENT FUND BOARD [SSH]	4	55,155	15.038
30 DEC 2025 - 30 DEC 2025	F&N	EMPLOYEES PROVIDENT FUND BOARD [SSH]	572	55,117	15.027
08 JAN 2026 - 08 JAN 2026	FACBIND	MAGNI VANTAGE LIMITED [SSH]	20	49,390	58.879
08 JAN 2026 - 08 JAN 2026	FACBIND	MR CHEN YIY FON [DIR/CEO]	20	49,390	58.879
08 JAN 2026 - 08 JAN 2026	FACBIND	MR CHEN YIY FON [SSH]	20	49,390	58.879
07 JAN 2026 - 07 JAN 2026	FACBIND	MAGNI VANTAGE LIMITED [SSH]	41	49,370	58.856
07 JAN 2026 - 07 JAN 2026	FACBIND	MR CHEN YIY FON [DIR/CEO]	41	49,370	58.856
07 JAN 2026 - 07 JAN 2026	FACBIND	MR CHEN YIY FON [SSH]	41	49,370	58.856
05 JAN 2026 - 05 JAN 2026	FAREAST	TEE KIM TEE @ TEE CHING TEE [DIR/CEO]	-4	12,141	2.044
02 JAN 2026 - 02 JAN 2026	FAREAST	TEE KIM TEE @ TEE CHING TEE [DIR/CEO]	-15	12,145	2.045
08 JAN 2026 - 08 JAN 2026	FFB	KUMPULAN WANG PERSARAAN (DIPERBADANKAN) [SSH]	-1,127	178,583	9.479
06 JAN 2026 - 06 JAN 2026	FFB	EMPLOYEES PROVIDENT FUND BOARD [SSH]	915	197,181	10.466
05 JAN 2026 - 05 JAN 2026	FFB	EMPLOYEES PROVIDENT FUND BOARD [SSH]	573	196,265	10.417
02 JAN 2026 - 02 JAN 2026	FFB	EMPLOYEES PROVIDENT FUND BOARD [SSH]	516	195,692	10.392
05 JAN 2026 - 05 JAN 2026	FFB	KUMPULAN WANG PERSARAAN (DIPERBADANKAN) [SSH]	156	179,710	9.543
31 DEC 2025 - 31 DEC 2025	FFB	EMPLOYEES PROVIDENT FUND BOARD [SSH]	2,000	195,176	10.364
02 JAN 2026 - 02 JAN 2026	FFB	KUMPULAN WANG PERSARAAN (DIPERBADANKAN) [SSH]	-115	179,554	9.535
30 DEC 2025 - 30 DEC 2025	FFB	EMPLOYEES PROVIDENT FUND BOARD [SSH]	1,355	193,176	10.258
31 DEC 2025 - 02 JAN 2026	FIBRO	MR NG KIAN BOON [DIR/CEO]	51	153,234	61.719
31 DEC 2025 - 02 JAN 2026	FIBRO	MR NG KIAN BOON [SSH]	51	153,234	61.719
05 JAN 2026 - 05 JAN 2026	FPI	MISS GOH SAW TIN [DIR/CEO]	-100	200	0.074
05 JAN 2026 - 05 JAN 2026	FRONTKN	EMPLOYEES PROVIDENT FUND BOARD [SSH]	634	244,231	14.767
06 JAN 2026 - 06 JAN 2026	GAMUDA	EMPLOYEES PROVIDENT FUND BOARD (EPF BOARD) [SSH]	330	1,091,240	18.49
02 JAN 2026 - 02 JAN 2026	GAMUDA	EMPLOYEES PROVIDENT FUND BOARD (EPF BOARD) [SSH]	6,321	1,091,005	18.49
31 DEC 2025 - 31 DEC 2025	GAMUDA	EMPLOYEES PROVIDENT FUND BOARD (EPF BOARD) [SSH]	1,176	1,085,147	18.39

Notice Period is 04th January 2026 to 10th January 2026

Effective Change Date	Stock Name	Buyer/ Seller Name [Classification]	Bought / (Sold) ['000]	No. of Shares After Trade ['000]	
			Total	Total	% Held
05 JAN 2026 - 05 JAN 2026	GENP	EMPLOYEES PROVIDENT FUND BOARD [SSH]	-0.3	127,075	14.164
06 JAN 2026 - 06 JAN 2026	GENP	KUMPULAN WANG PERSARAAN (DIPERBADANKAN) [SSH]	-691	67,950	7.574
02 JAN 2026 - 02 JAN 2026	GENP	EMPLOYEES PROVIDENT FUND BOARD [SSH]	-59	127,075	14.164
31 DEC 2025 - 31 DEC 2025	GENP	EMPLOYEES PROVIDENT FUND BOARD [SSH]	110	127,134	14.171
30 DEC 2025 - 30 DEC 2025	GENP	EMPLOYEES PROVIDENT FUND BOARD [SSH]	156	127,025	14.158
06 JAN 2026 - 06 JAN 2026	GESHEN	DATIN CHEONG KAI MENG [SSH]	-1,000	69,741	17.257
06 JAN 2026 - 06 JAN 2026	GESHEN	DATUK KEH CHUAN SENG [SSH]	-1,000	69,741	17.257
06 JAN 2026 - 06 JAN 2026	GESHEN	FRAZEL GROUP SDN BHD [SSH]	-1,000	69,741	17.257
08 JAN 2026 - 08 JAN 2026	GLOMAC	DATUK SERI FATEH ISKANDAR BIN TAN SRI DATO' MOHAMED MANSOR [DIR/CEO]	5	335,809	43.754
08 JAN 2026 - 08 JAN 2026	GLOMAC	DATUK SERI FATEH ISKANDAR BIN TAN SRI DATO' MOHAMED MANSOR [SSH]	5	334,957	43.643
08 JAN 2026 - 08 JAN 2026	GLOMAC	SHAPADU CAPITAL SDN. BHD. [SSH]	11	101,753	13.258
08 JAN 2026 - 08 JAN 2026	GLOMAC	TAN SRI DATO' MOHAMED MANSOR BIN FATEH DIN [DIR/CEO]	5	342,283	44.598
08 JAN 2026 - 08 JAN 2026	GLOMAC	TAN SRI DATO' MOHAMED MANSOR BIN FATEH DIN [SSH]	5	334,957	43.643
07 JAN 2026 - 07 JAN 2026	GLOMAC	DATUK SERI FATEH ISKANDAR BIN TAN SRI DATO' MOHAMED MANSOR [DIR/CEO]	5	335,804	43.753
07 JAN 2026 - 07 JAN 2026	GLOMAC	DATUK SERI FATEH ISKANDAR BIN TAN SRI DATO' MOHAMED MANSOR [SSH]	5	334,952	43.642
07 JAN 2026 - 07 JAN 2026	GLOMAC	TAN SRI DATO' MOHAMED MANSOR BIN FATEH DIN [DIR/CEO]	5	342,278	44.597
07 JAN 2026 - 07 JAN 2026	GLOMAC	TAN SRI DATO' MOHAMED MANSOR BIN FATEH DIN [SSH]	5	334,952	43.012
05 JAN 2026 - 05 JAN 2026	GLOMAC	DATUK SERI FATEH ISKANDAR BIN TAN SRI DATO' MOHAMED MANSOR [DIR/CEO]	5	335,799	43.753
05 JAN 2026 - 05 JAN 2026	GLOMAC	DATUK SERI FATEH ISKANDAR BIN TAN SRI DATO' MOHAMED MANSOR [SSH]	5	334,947	43.012
05 JAN 2026 - 05 JAN 2026	GLOMAC	TAN SRI DATO' MOHAMED MANSOR BIN FATEH DIN [DIR/CEO]	5	342,273	44.596
05 JAN 2026 - 05 JAN 2026	GLOMAC	TAN SRI DATO' MOHAMED MANSOR BIN FATEH DIN [SSH]	5	334,947	43.012
02 JAN 2026 - 02 JAN 2026	GLOMAC	DATUK SERI FATEH ISKANDAR BIN TAN SRI DATO' MOHAMED MANSOR [DIR/CEO]	10	335,794	43.752
02 JAN 2026 - 02 JAN 2026	GLOMAC	DATUK SERI FATEH ISKANDAR BIN TAN SRI DATO' MOHAMED MANSOR [SSH]	10	334,942	43.011
02 JAN 2026 - 02 JAN 2026	GLOMAC	TAN SRI DATO' MOHAMED MANSOR BIN FATEH DIN [DIR/CEO]	10	342,268	44.596
02 JAN 2026 - 02 JAN 2026	GLOMAC	TAN SRI DATO' MOHAMED MANSOR BIN FATEH DIN [SSH]	10	334,942	43.641
08 JAN 2026 - 08 JAN 2026	GUH	DATUK SERI KENNETH H'NG BAK TEE [DIR/CEO]	230	17,191	6.07
08 JAN 2026 - 08 JAN 2026	GUH	DATUK SERI KENNETH H'NG BAK TEE [SSH]	230	17,191	6.07
07 JAN 2026 - 07 JAN 2026	GUH	DATUK SERI KENNETH H'NG BAK TEE [DIR/CEO]	133	16,961	5.988
07 JAN 2026 - 07 JAN 2026	GUH	DATUK SERI KENNETH H'NG BAK TEE [SSH]	133	16,961	5.988
06 JAN 2026 - 06 JAN 2026	GUH	DATUK SERI KENNETH H'NG BAK TEE [DIR/CEO]	271	16,828	5.941
06 JAN 2026 - 06 JAN 2026	GUH	DATUK SERI KENNETH H'NG BAK TEE [SSH]	271	16,828	5.941
05 JAN 2026 - 05 JAN 2026	GUH	DATUK SERI KENNETH H'NG BAK TEE [DIR/CEO]	192	16,557	5.846
05 JAN 2026 - 05 JAN 2026	GUH	DATUK SERI KENNETH H'NG BAK TEE [SSH]	192	16,557	5.846
07 JAN 2026 - 07 JAN 2026	HCK	DATO' DIONG TAK CHONG @ TIONG TAK CHONG [DIR/CEO]	1,000	34,377	5.49
07 JAN 2026 - 07 JAN 2026	HCK	DATO' DIONG TAK CHONG @ TIONG TAK CHONG [SSH]	1,000	34,377	5.49
07 JAN 2026 - 07 JAN 2026	HCK-WA	DATO' DIONG TAK CHONG @ TIONG TAK CHONG [DIR/CEO]	1,000	25,855	47.611
02 JAN 2026 - 02 JAN 2026	HEGROUP	MR HAW CHEE SENG [DIR/CEO]	10,000	104,239	23.691
02 JAN 2026 - 02 JAN 2026	HEGROUP	MR HAW CHEE SENG [SSH]	10,000	104,239	23.691
31 DEC 2025 - 02 JAN 2026	HEGROUP	DATUK WIRA YONG CHONG CHEANG [SSH]	-19,057	32,794	7.453
31 DEC 2025 - 02 JAN 2026	HEGROUP	HEXATECH ENERGY CONSOLIDATED SDN. BHD. [SSH]	-19,057	32,794	7.453
07 JAN 2026 - 07 JAN 2026	HEKTAR	UPAYAPADU (M) SDN BHD [SSH]	499	52,022	7.334
05 JAN 2026 - 05 JAN 2026	HEKTAR	UPAYAPADU (M) SDN BHD [SSH]	89	51,522	7.264
31 DEC 2025 - 02 JAN 2026	HEKTAR	UPAYAPADU (M) SDN BHD [SSH]	263	51,434	7.251
07 JAN 2026 - 08 JAN 2026	HEXIND	DATO' ONG CHOO MENG [SSH]	2,337	1,420,770	53.191
07 JAN 2026 - 08 JAN 2026	HIBISCS	DATUK MICHAEL TANG VEE MUN [SSH]	752	116,055	15.739
07 JAN 2026 - 07 JAN 2026	HIBISCS	METTIZ CAPITAL SDN BHD [SSH]	180	38,190	5.179
31 DEC 2025 - 02 JAN 2026	HIBISCS	DATUK MICHAEL TANG VEE MUN [SSH]	1,009	115,303	15.636
06 JAN 2026 - 06 JAN 2026	HLBANK	EMPLOYEES PROVIDENT FUND BOARD [SSH]</			

Notice Period is 04th January 2026 to 10th January 2026

Effective Change Date	Stock Name	Buyer/ Seller Name [Classification]	Bought / (Sold) ['000]	No. of Shares After Trade ['000]	
			Total	Total	% Held
30 DEC 2025 - 30 DEC 2025	IJM	EMPLOYEES PROVIDENT FUND BOARD [SSH]	500	637,391	18.184
06 JAN 2026 - 06 JAN 2026	INARI	EMPLOYEES PROVIDENT FUND BOARD [SSH]	-723	518,598	13.629
05 JAN 2026 - 05 JAN 2026	INARI	EMPLOYEES PROVIDENT FUND BOARD [SSH]	1,333	519,321	13.648
02 JAN 2026 - 02 JAN 2026	INARI	EMPLOYEES PROVIDENT FUND BOARD [SSH]	11,883	517,988	13.613
31 DEC 2025 - 31 DEC 2025	INARI	EMPLOYEES PROVIDENT FUND BOARD [SSH]	-13,561	506,106	13.301
30 DEC 2025 - 30 DEC 2025	INARI	EMPLOYEES PROVIDENT FUND BOARD [SSH]	-11,565	519,667	13.657
07 JAN 2026 - 07 JAN 2026	INFOTEC	MR CHOO WEI CHUEN [DIR/CEO]	32	154,293	42.478
07 JAN 2026 - 07 JAN 2026	INFOTEC	MR CHOO WEI CHUEN [SSH]	32	154,293	42.478
06 JAN 2026 - 06 JAN 2026	IOICORP	EMPLOYEES PROVIDENT FUND BOARD [SSH]	-100	1,124,209	17.887
05 JAN 2026 - 05 JAN 2026	IOICORP	EMPLOYEES PROVIDENT FUND BOARD [SSH]	1,449	1,124,309	17.888
02 JAN 2026 - 02 JAN 2026	IOICORP	EMPLOYEES PROVIDENT FUND BOARD [SSH]	419	1,125,631	17.909
31 DEC 2025 - 31 DEC 2025	IOICORP	EMPLOYEES PROVIDENT FUND BOARD [SSH]	1,227	1,125,212	17.903
30 DEC 2025 - 30 DEC 2025	IOICORP	EMPLOYEES PROVIDENT FUND BOARD [SSH]	91	1,123,984	17.883
06 JAN 2026 - 07 JAN 2026	IOIPG	DATO' LEE YEOW SENG [DIR/CEO]	1,431	3,667,045	66.599
06 JAN 2026 - 07 JAN 2026	IOIPG	DATO' LEE YEOW SENG [SSH]	1,431	3,666,900	66.596
05 JAN 2026 - 05 JAN 2026	IOIPG	EMPLOYEES PROVIDENT FUND BOARD [SSH]	182	331,542	6.021
02 JAN 2026 - 02 JAN 2026	IOIPG	EMPLOYEES PROVIDENT FUND BOARD [SSH]	471	331,360	6.018
31 DEC 2025 - 31 DEC 2025	IOIPG	EMPLOYEES PROVIDENT FUND BOARD [SSH]	433	330,889	6.009
30 DEC 2025 - 30 DEC 2025	IOIPG	EMPLOYEES PROVIDENT FUND BOARD [SSH]	633	330,457	6.002
07 JAN 2026 - 07 JAN 2026	ITMAX	MR TAN WEI LUN [DIR/CEO]	-29,200	518,400	50.134
07 JAN 2026 - 07 JAN 2026	ITMAX	MR TAN WEI LUN [SSH]	-29,200	518,400	50.134
07 JAN 2026 - 07 JAN 2026	ITMAX	SENA HOLDINGS SDN. BHD. [SSH]	-29,200	518,400	50.134
07 JAN 2026 - 07 JAN 2026	ITMAX	TAN SRI DATO' DR TAN BOON HOCK [DIR/CEO]	-29,200	518,400	50.134
07 JAN 2026 - 07 JAN 2026	ITMAX	TAN SRI DATO' DR TAN BOON HOCK [SSH]	-29,200	518,400	50.134
06 JAN 2026 - 06 JAN 2026	JPG	EMPLOYEES PROVIDENT FUND BOARD [SSH]	3,973	217,539	8.702
31 DEC 2025 - 31 DEC 2025	JPG	EMPLOYEES PROVIDENT FUND BOARD [SSH]	111	213,566	8.543
06 JAN 2026 - 06 JAN 2026	KGB	EMPLOYEES PROVIDENT FUND BOARD [SSH]	-217	45,006	5.762
02 JAN 2026 - 02 JAN 2026	KGB	EMPLOYEES PROVIDENT FUND BOARD [SSH]	50	45,223	5.795
31 DEC 2025 - 31 DEC 2025	KGB	EMPLOYEES PROVIDENT FUND BOARD [SSH]	167	45,173	5.805
30 DEC 2025 - 30 DEC 2025	KGB	EMPLOYEES PROVIDENT FUND BOARD [SSH]	310	45,007	5.784
05 JAN 2026 - 05 JAN 2026	KHEESAN	MR EDWARD TAN JUAN PENG [DIR/CEO]	-20,000	23,200	2.073
05 JAN 2026 - 05 JAN 2026	KHEESAN	MR EDWARD TAN JUAN PENG [DIR/CEO]	-20,000	5,000	0.447
08 JAN 2026 - 08 JAN 2026	KINERGY	DATO' LAI KENG ONN [DIR/CEO]	-35,000	576,026	26.363
08 JAN 2026 - 08 JAN 2026	KINERGY	DATO' LAI KENG ONN [SSH]	-35,000	576,026	26.363
05 JAN 2026 - 07 JAN 2026	KKB	DATO SRI KHO KAK BENG [DIR/CEO]	22	118,029	40.879
05 JAN 2026 - 07 JAN 2026	KKB	DATO SRI KHO KAK BENG [SSH]	22	117,541	40.71
06 JAN 2026 - 06 JAN 2026	KLCC	EMPLOYEES PROVIDENT FUND BOARD [SSH]	198	191,545	10.61
06 JAN 2026 - 06 JAN 2026	KLCC	EMPLOYEES PROVIDENT FUND BOARD [SSH]	198	191,545	10.61
05 JAN 2026 - 05 JAN 2026	KLCC	EMPLOYEES PROVIDENT FUND BOARD [SSH]	48	191,347	10.599
05 JAN 2026 - 05 JAN 2026	KLCC	EMPLOYEES PROVIDENT FUND BOARD [SSH]	48	191,347	10.599
02 JAN 2026 - 02 JAN 2026	KLCC	EMPLOYEES PROVIDENT FUND BOARD [SSH]	49	191,300	10.596
02 JAN 2026 - 02 JAN 2026	KLCC	EMPLOYEES PROVIDENT FUND BOARD [SSH]	49	191,300	10.596
31 DEC 2025 - 31 DEC 2025	KLCC	EMPLOYEES PROVIDENT FUND BOARD [SSH]	-49	191,251	10.594
31 DEC 2025 - 31 DEC 2025	KLCC	EMPLOYEES PROVIDENT FUND BOARD [SSH]	-49	191,251	10.594
30 DEC 2025 - 30 DEC 2025	KLCC	EMPLOYEES PROVIDENT FUND BOARD [SSH]	-35	191,300	10.596
30 DEC 2025 - 30 DEC 2025	KLCC	EMPLOYEES PROVIDENT FUND BOARD [SSH]	-35	191,300	10.596
06 JAN 2026 - 06 JAN 2026	KLK	EMPLOYEES PROVIDENT FUND BOARD [SSH]	-50	207,789	18.658
31 DEC 2025 - 31 DEC 2025	KLK	EMPLOYEES PROVIDENT FUND BOARD [SSH]	337	207,839	18.663
30 DEC 2025 - 30 DEC 2025	KLK	EMPLOYEES PROVIDENT FUND BOARD [SSH]	433	207,502	18.632
02 JAN 2026 - 02 JAN 2026	KOSSAN	EMPLOYEES PROVIDENT FUND BOARD [SSH]	-1,040	145,193	5.743
31 DEC 2025 - 31 DEC 2025	KOSSAN	EMPLOYEES PROVIDENT FUND BOARD [SSH]	205	146,232	5.784
30 DEC 2025 - 30 DEC 2025	KOSSAN	EMPLOYEES PROVIDENT FUND BOARD [SSH]	936	146,027	5.776
07 JAN 2026 - 07 JAN 2026	LBS	TAN SRI DATO' SRI IR. (DR.) LIM HOCK SAN JP [DIR/CEO]	50	625,731	40.773
07 JAN 2026 - 07 JAN 2026	LBS	TAN SRI DATO' SRI IR. (DR.) LIM HOCK SAN JP [SSH]	50	622,461	40.56
08 JAN 2026 - 08 JAN 2026	LSH	MR LIM DING SHYONG [DIR/CEO]	71	655	0.078
31 DEC 2025 - 31 DEC 2025	LUXCHEM	DATUK KWAN FOH KWAI [DIR/CEO]	22	4,639	0.434
08 JAN 2026 - 08 JAN 2026	M&A	CIK SITI NUR AISHAH BINTI ISHAK [SSH]	5	143,108	7.154
05 JAN 2026 - 05 JAN 2026	M&A	CIK SITI NUR AISHAH BINTI ISHAK [SSH]	100	143,103	7.154
31 DEC 2025 - 31 DEC 2025	MALAKOF	EMPLOYEES PROVIDENT FUND BOARD [SSH]	5,000	893,768	18.288
30 DEC 2025 - 30 DEC 2025	MALAKOF	EMPLOYEES PROVIDENT FUND BOARD [SSH]	9,337	888,768	18.186
31 DEC 2025 - 31 DEC 2025	MATANG	MR ANG KIAN YOU [SSH]	1,177	212,445	8.892
08 JAN 2026 - 08 JAN 2026	MATRIX	LEMBAGA TABUNG HAJI [SSH]	-500	126,896	6.76
05 JAN 2026 - 05 JAN 2026	MAXIS	EMPLOYEES PROVIDENT FUND BOARD ('EPF BOARD') [SSH]	1,502	1,044,225	13.328
02 JAN 2026 - 02 JAN 2026	MAXIS	EMPLOYEES PROVIDENT FUND BOARD ('EPF BOARD') [SSH]	415	1,042,723	13.309
30 DEC 2025 - 30 DEC 2025	MAXIS	EMPLOYEES PROVIDENT FUND BOARD ('EPF BOARD') [SSH]	197	1,042,308	13.303
07 JAN 2026 - 07 JAN 2026	MAYBANK	AMANAHRAYA TRUSTEES BERHAD - AMANAH SAHAM BUMIPUTERA [SSH]	-3,367	3,362,310	27.831
06 JAN 2026 - 06 JAN 2026	MAYBANK	EMPLOYEES PROVIDENT FUND BOARD [SSH]	183	1,389,482	11.501
07 JAN 2026 - 07 JAN 2026	MAYBANK	KUMPULAN WANG PERSARAAN (DIPERBADANKAN) ('KWAP') [SSH]	-1,000	643,144	5.323
05 JAN 2026 - 05 JAN 2026	MAYBANK	EMPLOYEES PROVIDENT FUND BOARD [SSH]	5,885	1,389,299	11.5
02 JAN 2026 - 02 JAN 2026	MAYBANK	EMPLOYEES PROVIDENT FUND BOARD [SSH]	1,175	1,383,414	11.451
05 JAN 2026 - 05 JAN 2026	MAYBANK	KUMPULAN WANG PERSARAAN (DIPERBADANKAN) ('KWAP') [SSH]	-8,002	644,144	5.332
31 DEC 2025 - 31 DEC 2025	MAYBANK	EMPLOYEES PROVIDENT FUND BOARD [SSH]	861	1,382,239	11.441
02 JAN 2026 - 02 JAN 2026	MAYBANK	KUMPULAN WANG PERSARAAN (DIPERBADANKAN) ('KWAP') [SSH]	-2,062	652,145	5.398
30 DEC 2025 - 30 DEC 2025	MAYBANK	EMPLOYEES PROVIDENT FUND BOARD [SSH]	-770	1,381,378	11.434
31 DEC 2025 - 31 DEC 2025	MCEMENT	EASTSPRING INVESTMENT BERHAD [SSH]	209	94,201	6.824
31 DEC 2025 - 31 DEC 2025	MCEMENT	PRUDENTIAL ASSURANCE MALAYSIA BERHAD [SSH]	209	90,788	6.577
31 DEC 2025 - 31 DEC 2025	MCEMENT	PRUDENTIAL PLC [SSH]	209	116,506	8.44
05 JAN 2026 - 08 JAN 2026	MFCB	GOH NAN KIOH [DIR/CEO]	162	340,004	36.086
02 JAN 2026 - 02 JAN 2026	MFCB	EMPLOYEES PROVIDENT FUND BOARD [SSH]	28	103,650	11.001
31 DEC 2025 - 31 DEC 2025	MFCB	EMPLOYEES PROVIDENT FUND BOARD [SSH]	204	103,622	10.998
30 DEC 2025 - 30 DEC 2025	MFCB	EMPLOYEES PROVIDENT FUND BOARD [SSH]	57	103,418	10.976
08 DEC 2025 - 08 DEC 2025	MFLOUR	MR LIM PANG BOON [DIR/CEO]	100	721	0.058

Notice Period is 04th January 2026 to 10th January 2026

Effective Change Date	Stock Name	Buyer/ Seller Name [Classification]	Bought / (Sold) ['000]	No. of Shares After Trade ['000]	
			Total	Total	% Held
05 JAN 2026 - 05 JAN 2026	MISC	EMPLOYEES PROVIDENT FUND BOARD [SSH]	316	728,613	16.323
02 JAN 2026 - 02 JAN 2026	MISC	EMPLOYEES PROVIDENT FUND BOARD [SSH]	-5	728,297	16.316
30 DEC 2025 - 30 DEC 2025	MISC	EMPLOYEES PROVIDENT FUND BOARD [SSH]	209	728,302	16.316
19 DEC 2025 - 05 JAN 2026	MPAY	DATO' CHEW CHEE SENG [DIR/CEO]	-4,359	317,249	30.739
19 DEC 2025 - 05 JAN 2026	MPAY	DATO' CHEW CHEE SENG [SSH]	-4,359	317,249	30.739
02 JAN 2026 - 02 JAN 2026	MRDIY	EMPLOYEES PROVIDENT FUND BOARD [SSH]	784	1,005,926	10.614
31 DEC 2025 - 31 DEC 2025	MRDIY	EMPLOYEES PROVIDENT FUND BOARD [SSH]	-21,000	1,005,303	10.607
30 DEC 2025 - 30 DEC 2025	MRDIY	EMPLOYEES PROVIDENT FUND BOARD [SSH]	-2,618	1,026,388	10.83
06 JAN 2026 - 07 JAN 2026	N2N	QUAH CHOON WAH [SSH]	33	51,027	9.141
02 JAN 2026 - 02 JAN 2026	NCT	DATO' SRI YAP NGAN CHOY [DIR/CEO]	143,775	1,118,026	52.819
02 JAN 2026 - 02 JAN 2026	NCT	DATO' YAP FOOK CHOY [DIR/CEO]	35,944	987,009	46.629
02 JAN 2025 - 02 JAN 2025	NCT	DATO' SRI YAP NGAN CHOY [SSH]	143,775	1,118,026	52.819
02 JAN 2025 - 02 JAN 2025	NCT	DATO' YAP FOOK CHOY [SSH]	35,944	987,009	46.629
06 JAN 2026 - 06 JAN 2026	NESTLE	EMPLOYEES PROVIDENT FUND BOARD [SSH]	20	31,265	13.333
02 JAN 2026 - 02 JAN 2026	NESTLE	EMPLOYEES PROVIDENT FUND BOARD [SSH]	7	31,245	13.324
31 DEC 2025 - 31 DEC 2025	NESTLE	EMPLOYEES PROVIDENT FUND BOARD [SSH]	32	31,238	13.321
30 DEC 2025 - 30 DEC 2025	NESTLE	EMPLOYEES PROVIDENT FUND BOARD [SSH]	182	31,203	13.306
29 DEC 2025 - 29 DEC 2025	NESTLE	EMPLOYEES PROVIDENT FUND BOARD [SSH]	-4	31,021	13.228
06 JAN 2026 - 06 JAN 2026	NGGB	DATO' GAN KONG HIOK [SSH]	31	173,275	15.847
31 DEC 2025 - 31 DEC 2025	NICE	MR JULIAN FOO KUAN LIN [DIR/CEO]	250	190,580	12.843
31 DEC 2025 - 31 DEC 2025	NICE	MR JULIAN FOO KUAN LIN [SSH]	250	190,580	12.843
07 JAN 2026 - 07 JAN 2026	NIHSIN	MISS KHOO WUAN RU [DIR/CEO]	15	100,113	19.074
07 JAN 2026 - 07 JAN 2026	NIHSIN	MR KHOO CHEE KONG [SSH]	15	100,113	19.074
02 JAN 2026 - 02 JAN 2026	NIHSIN	MISS KHOO WUAN RU [DIR/CEO]	5	100,098	19.071
02 JAN 2026 - 02 JAN 2026	NIHSIN	MR KHOO CHEE KONG [SSH]	5	100,098	19.071
31 DEC 2025 - 31 DEC 2025	OHM	DATUK TEOH YEE SEANG [DIR/CEO]	192	303,077	60.615
31 DEC 2025 - 31 DEC 2025	OHM	DATUK TEOH YEE SEANG [SSH]	192	303,077	60.615
05 JAN 2026 - 06 JAN 2026	OMESTI	MR MONTEIRO GERARD CLAIR [DIR/CEO]	7,098	187,464	8.072
05 JAN 2026 - 06 JAN 2026	OMESTI	MR MONTEIRO GERARD CLAIR [SSH]	7,098	187,464	8.072
08 JAN 2026 - 08 JAN 2026	ORKIM	KUMPULAN WANG PERSARAAN (DIPERBADANKAN) [SSH]	1,416	89,739	8.974
06 JAN 2026 - 06 JAN 2026	ORKIM	EMPLOYEES PROVIDENT FUND BOARD [SSH]	-800	65,200	6.52
05 JAN 2026 - 05 JAN 2026	ORKIM	EMPLOYEES PROVIDENT FUND BOARD [SSH]	-1,500	66,000	6.6
02 JAN 2026 - 02 JAN 2026	ORKIM	PRUDENTIAL PLC [SSH]	1,188	58,805	5.881
02 JAN 2026 - 02 JAN 2026	ORKIM	PRUDENTIAL PLC [SSH]	1,188	58,805	5.881
29 DEC 2025 - 29 DEC 2025	ORKIM	EMPLOYEES PROVIDENT FUND BOARD [SSH]	-1,500	67,500	6.75
02 JAN 2026 - 02 JAN 2026	ORKIM	KUMPULAN WANG PERSARAAN (DIPERBADANKAN) [SSH]	1,038	88,323	8.832
07 JAN 2026 - 08 JAN 2026	PA	TAN SRI LAU KUAN KAM [DIR/CEO]	3,580	105,169	6.989
07 JAN 2026 - 08 JAN 2026	PA	TAN SRI LAU KUAN KAM [SSH]	3,580	105,169	6.989
05 JAN 2026 - 05 JAN 2026	PA	TAN SRI LAU KUAN KAM [DIR/CEO]	1,128	101,588	6.752
05 JAN 2026 - 05 JAN 2026	PA	TAN SRI LAU KUAN KAM [SSH]	1,128	101,588	6.752
07 JAN 2026 - 07 JAN 2026	PADINI	KUMPULAN WANG PERSARAAN (DIPERBADANKAN) [SSH]	163	104,598	10.599
05 JAN 2026 - 05 JAN 2026	PADINI	EMPLOYEES PROVIDENT FUND BOARD [SSH]	55	103,855	10.524
31 DEC 2025 - 31 DEC 2025	PADINI	EMPLOYEES PROVIDENT FUND BOARD [SSH]	-228	103,799	10.518
30 DEC 2025 - 30 DEC 2025	PADINI	EMPLOYEES PROVIDENT FUND BOARD [SSH]	-1,225	104,027	10.541
06 JAN 2026 - 06 JAN 2026	PANAMY	EMPLOYEES PROVIDENT FUND BOARD [SSH]	-73	54,24	8.929
05 JAN 2026 - 05 JAN 2026	PANTECH	MR TAN ANG ANG [DIR/CEO]	70	15,186	1.826
06 JAN 2026 - 06 JAN 2026	PARADIGM	EMPLOYEES PROVIDENT FUND BOARD [SSH]	5,000	8,782	5.486
02 JAN 2026 - 02 JAN 2026	PARADIGM	EMPLOYEES PROVIDENT FUND BOARD [SSH]	637	8,282	5.173
31 DEC 2025 - 31 DEC 2025	PARADIGM	EMPLOYEES PROVIDENT FUND BOARD [SSH]	266	8,219	5.134
08 JAN 2026 - 08 JAN 2026	PAVREIT	KUMPULAN WANG PERSARAAN (DIPERBADANKAN) [SSH]	-465	22,587	5.754
06 JAN 2026 - 06 JAN 2026	PAVREIT	EMPLOYEES PROVIDENT FUND BOARD [SSH]	-792	47,679	12.148
07 JAN 2026 - 07 JAN 2026	PAVREIT	KUMPULAN WANG PERSARAAN (DIPERBADANKAN) [SSH]	-628	22,637	5.766
05 JAN 2026 - 05 JAN 2026	PAVREIT	EMPLOYEES PROVIDENT FUND BOARD [SSH]	583	47,758	12.168
06 JAN 2026 - 06 JAN 2026	PAVREIT	KUMPULAN WANG PERSARAAN (DIPERBADANKAN) [SSH]	-1,388	22,695	5.782
02 JAN 2026 - 02 JAN 2026	PAVREIT	EMPLOYEES PROVIDENT FUND BOARD [SSH]	1,305	47,706	12.154
05 JAN 2026 - 05 JAN 2026	PAVREIT	KUMPULAN WANG PERSARAAN (DIPERBADANKAN) [SSH]	-1,532	22,835	5.818
31 DEC 2025 - 31 DEC 2025	PAVREIT	EMPLOYEES PROVIDENT FUND BOARD [SSH]	-1,200	47,501	12.12
02 JAN 2026 - 02 JAN 2026	PAVREIT	KUMPULAN WANG PERSARAAN (DIPERBADANKAN) [SSH]	-667	22,984	5.857
30 DEC 2025 - 30 DEC 2025	PAVREIT	EMPLOYEES PROVIDENT FUND BOARD [SSH]	470	47,691	12.151
06 JAN 2026 - 06 JAN 2026	PBBANK	EMPLOYEES PROVIDENT FUND BOARD [SSH]	3,409		

Notice Period is 04th January 2026 to 10th January 2026

Effective Change Date	Stock Name	Buyer/ Seller Name [Classification]	Bought / (Sold) ['000]	No. of Shares After Trade ['000]	
			Total	Total	% Held
05 JAN 2026 - 05 JAN 2026	PETGAS	EMPLOYEES PROVIDENT FUND BOARD [SSH]	300	268335	13.561
02 JAN 2026 - 02 JAN 2026	PETGAS	EMPLOYEES PROVIDENT FUND BOARD [SSH]	449	268035	13.546
31 DEC 2025 - 31 DEC 2025	PETGAS	EMPLOYEES PROVIDENT FUND BOARD [SSH]	300	267586	13.523
05 JAN 2026 - 05 JAN 2026	PGB	DATO' TAN YEE BOON [DIR/CEO]	1,662	11452	1.481
05 JAN 2026 - 05 JAN 2026	PGB	ENCIK MOHAMAD REZA BIN ABDUL MUTALIB [DIR/CEO]	1,250	2500	0.323
05 JAN 2026 - 05 JAN 2026	PGB	ENCIK SHAMSUL BIN SAAD [DIR/CEO]	554	1662	0.215
05 JAN 2026 - 05 JAN 2026	PGB	MISS LEE SZE YEEN [DIR/CEO]	8,310	34514	4.463
05 JAN 2026 - 05 JAN 2026	PGB	PUAN ELAIN BINTI LOCKMAN [DIR/CEO]	554	1662	0.215
02 JAN 2026 - 02 JAN 2026	PHARMA	JAKEL MEDICAL SDN BHD [SSH]	10,000	937145	14.292
31 DEC 2025 - 31 DEC 2025	PHARMA	JAKEL MEDICAL SDN BHD [SSH]	51,000	927145	14.14
31 DEC 2025 - 31 DEC 2025	PINEAPP	mitsubishi UFJ FINANCIAL GROUP INC ("MUFG") [SSH]	-21	2695	5.556
30 DEC 2025 - 30 DEC 2025	PLINTAS	URUSHARTA JAMAAH SDN. BHD. [SSH]	-100	62755	5.705
06 JAN 2026 - 06 JAN 2026	PMETAL	EMPLOYEES PROVIDENT FUND BOARD [SSH]	-6,574	486539	5.905
05 JAN 2026 - 05 JAN 2026	PMETAL	EMPLOYEES PROVIDENT FUND BOARD [SSH]	-2,050	493113	5.985
02 JAN 2026 - 02 JAN 2026	PMETAL	EMPLOYEES PROVIDENT FUND BOARD [SSH]	551	495162	6.01
31 DEC 2025 - 31 DEC 2025	PMETAL	EMPLOYEES PROVIDENT FUND BOARD [SSH]	-954	494611	6.003
30 DEC 2025 - 30 DEC 2025	PMETAL	EMPLOYEES PROVIDENT FUND BOARD [SSH]	512	495565	6.014
31 DEC 2025 - 31 DEC 2025	POLYMER	KOH SONG HENG [DIR/CEO]	-1,522	139048	24.83
31 DEC 2025 - 31 DEC 2025	POLYMER	KOH SONG HENG [SSH]	-1,522	139048	24.83
06 JAN 2026 - 06 JAN 2026	PPB	EMPLOYEES PROVIDENT FUND BOARD [SSH]	192	259664	18.253
02 JAN 2026 - 02 JAN 2026	PPB	EMPLOYEES PROVIDENT FUND BOARD [SSH]	290	259515	18.242
31 DEC 2025 - 31 DEC 2025	PPB	EMPLOYEES PROVIDENT FUND BOARD [SSH]	338	259225	18.222
30 DEC 2025 - 30 DEC 2025	PPB	EMPLOYEES PROVIDENT FUND BOARD [SSH]	388	258887	18.198
30 DEC 2025 - 31 DEC 2025	RADIUM	CENGAL 2020 SDN. BHD. [SSH]	-12,400	965734	27.847
30 DEC 2025 - 31 DEC 2025	RADIUM	DATUK GAN KAH SIONG [DIR/CEO]	-12,400	1473348	42.484
30 DEC 2025 - 31 DEC 2025	RADIUM	DATUK GAN KAH SIONG [SSH]	-12,400	1473348	42.484
07 JAN 2026 - 07 JAN 2026	REACHTEN	CHIN YU LAY [DIR/CEO]	50	176682	17.668
07 JAN 2026 - 07 JAN 2026	REACHTEN	MR CHIN YU LAY [SSH]	50	176682	17.668
08 JAN 2026 - 08 JAN 2026	RESINTC	MISS WEI HWEI HONG [DIR/CEO]	33	18334	9.431
08 JAN 2026 - 08 JAN 2026	RESINTC	MISS WEI HWEI HONG [SSH]	33	18334	9.431
08 JAN 2026 - 08 JAN 2026	RESINTC	MR TEH LENG KANG [DIR/CEO]	33	18334	9.431
08 JAN 2026 - 08 JAN 2026	RESINTC	MR TEH LENG KANG [SSH]	33	18334	9.431
07 JAN 2026 - 07 JAN 2026	RESINTC	MISS WEI HWEI HONG [DIR/CEO]	30	18301	9.414
07 JAN 2026 - 07 JAN 2026	RESINTC	MISS WEI HWEI HONG [SSH]	30	18301	9.414
07 JAN 2026 - 07 JAN 2026	RESINTC	MR TEH LENG KANG [DIR/CEO]	30	18301	9.414
07 JAN 2026 - 07 JAN 2026	RESINTC	MR TEH LENG KANG [SSH]	30	18301	9.414
06 JAN 2026 - 06 JAN 2026	RHBBANK	EMPLOYEES PROVIDENT FUND BOARD [SSH]	5,389	1678012	38.47
05 JAN 2026 - 05 JAN 2026	RHBBANK	EMPLOYEES PROVIDENT FUND BOARD [SSH]	1,668	1672624	38.346
02 JAN 2026 - 02 JAN 2026	RHBBANK	EMPLOYEES PROVIDENT FUND BOARD [SSH]	413	1670955	38.308
31 DEC 2025 - 31 DEC 2025	RHBBANK	EMPLOYEES PROVIDENT FUND BOARD [SSH]	3,676	1670542	38.298
30 DEC 2025 - 30 DEC 2025	RHBBANK	EMPLOYEES PROVIDENT FUND BOARD [SSH]	2,072	1666866	38.214
05 JAN 2026 - 06 JAN 2026	RHONEMA	TEO KWEE HOCK [SSH]	662	16370	7.437
05 JAN 2026 - 05 JAN 2026	RKI	MADAM LIN CHEN JUI-FEN [DIR/CEO]	1,300	70279	35.924
05 JAN 2026 - 05 JAN 2026	RKI	MADAM LIN CHEN JUI-FEN [SSH]	1,300	70279	35.924
05 JAN 2026 - 05 JAN 2026	RKI	MADAM LIN SHIN-NI [DIR/CEO]	1,300	25411	12.989
05 JAN 2026 - 05 JAN 2026	RKI	MADAM LIN SHIN-NI [SSH]	1,300	25411	12.989
05 JAN 2026 - 05 JAN 2026	RKI	MR LIN CHIN-HUNG [DIR/CEO]	1,300	34034	17.397
05 JAN 2026 - 05 JAN 2026	RKI	MR LIN CHIN-HUNG [SSH]	1,300	34034	17.397
05 JAN 2026 - 05 JAN 2026	RKI	SHUN CHU YI (M) SDN BHD [SSH]	1,300	20361	10.408
23 DEC 2025 - 23 DEC 2025	RKI	MADAM LIN CHEN JUI-FEN [DIR/CEO]	3,866	68979	35.253
23 DEC 2025 - 23 DEC 2025	RKI	MADAM LIN CHEN JUI-FEN [SSH]	3,866	68979	35.253
23 DEC 2025 - 23 DEC 2025	RKI	MADAM LIN SHIN-NI [DIR/CEO]	3,866	24111	12.323
23 DEC 2025 - 23 DEC 2025	RKI	MADAM LIN SHIN-NI [SSH]	3,866	24111	12.323
23 DEC 2025 - 23 DEC 2025	RKI	MR LIN CHIN-HUNG [DIR/CEO]	3,866	32734	16.729
23 DEC 2025 - 23 DEC 2025	RKI	MR LIN CHIN-HUNG [SSH]	3,866	32734	16.729
23 DEC 2025 - 23 DEC 2025	RKI	SHUN CHU YI (M) SDN BHD [SSH]	3,866	19061	9.742
02 JAN 2026 - 02 JAN 2026	SANICHI	DATO' SRI DR PANG CHOW HUAT [DIR/CEO]	7,976	33717	20.52
02 JAN 2026 - 02 JAN 2026	SANICHI	DATO' SRI DR PANG CHOW HUAT [SSH]	7,976	33717	20.52
05 JAN 2026 - 06 JAN 2026	SBH	MR TAN BOO NAM [DIR/CEO]	280	373641	42.076
05 JAN 2026 - 06 JAN 2026	SBH	MR TAN BOO NAM [SSH]	280	284563	32.045
30 DEC 2025 - 30 DEC 2025	SCGBHD	EMPLOYEES PROVIDENT FUND BOARD [SSH]	403	68655	6.086
31 DEC 2025 - 31 DEC 2025	SCOMNET	EMPLOYEES PROVIDENT FUND BOARD [SSH]	-71	72236	8.436
30 DEC 2025 - 30 DEC 2025	SCOMNET	EMPLOYEES PROVIDENT FUND BOARD [SSH]	61	72306	8.444
06 JAN 2026 - 06 JAN 2026	SCOPE	MR LEE MIN HUAT [DIR/CEO]	200	185703	16.077
06 JAN 2026 - 06 JAN 2026	SCOPE	MR LEE MIN HUAT [SSH]	200	185703	16.077
31 DEC 2025 - 31 DEC 2025	SCOPE	MR LEE MIN HUAT [DIR/CEO]	200	185503	16.06
31 DEC 2025 - 31 DEC 2025	SCOPE	MR LEE MIN HUAT [SSH]	200	185503	16.06
07 JAN 2026 - 07 JAN 2026	SDG	AMANAHRAYA TRUSTEES BERHAD - AMANAH SAHAM BUMIPUTERA [SSH]	-4,648	2921126	42.239
07 JAN 2026 - 08 JAN 2026	SDG	KUMPULAN WANG PERSARAAN (DIPERBADANKAN) [SSH]	1,248	534382	7.727
05 JAN 2026 - 06 JAN 2026	SDG	EMPLOYEES PROVIDENT FUND BOARD [SSH]	4,451	1024921	14.821
05 JAN 2026 - 06 JAN 2026	SDG	KUMPULAN WANG PERSARAAN (DIPERBADANKAN) [SSH]	-2,940	533134	7.709
30 DEC 2025 - 30 DEC 2025	SDG	EMPLOYEES PROVIDENT FUND BOARD [SSH]	-1,910	1020618	14.758
30 DEC 2025 - 30 DEC 2025	SDS	EMPLOYEES PROVIDENT FUND BOARD [SSH]	-500	27435	5.038
05 JAN 2026 - 06 JAN 2026	SEALINK	MR LO LING [DIR/CEO]	817	100303	20.061
05 JAN 2026 - 06 JAN 2026	SEALINK	MR LO LING [SSH]	817	100303	20.061
02 JAN 2026 - 02 JAN 2026	SEALINK	MR LO LING [DIR/CEO]	1,140	99486	19.897
02 JAN 2026 - 02 JAN 2026	SEALINK	MR LO LING [SSH]	1,140	99486	19.897
09 JAN 2026 - 09 JAN 2026	SENFONG	MR ER HOCK LAI [DIR/CEO]	797	445388	61.718
09 JAN 2026 - 09 JAN 2026	SENFONG	MR ER HOCK LAI [SSH]	797	445388	61.718
09 JAN 2026 - 09 JAN 2026	SENFONG	SUMBER PANJU SDN. BHD. [SSH]	797	444588	61.607
30 DEC 2025 - 31 DEC 2025	SIMEPROP	EMPLOYEES PROVIDENT FUND BOARD [SSH]	-12,781	1174360	17.23
06 JAN 2026 - 06 JAN 2026	SIMEPROP	EMPLOYEES PROVIDENT FUND BOARD [SSH]	820	997933	14.674
07 JAN 2026 - 07 JAN 2026	SIMEPROP	KUMPULAN WANG PERSARAAN (DIPERBADANKAN) [SSH]	180	448495	6.595
05 JAN 2026 - 05 JAN 2026	SIMEPROP	EMPLOYEES PROVIDENT FUND BOARD [SSH]	586	997113	14.662

Notice Period is 04th January 2026 to 10th January 2026

Effective Change Date	Stock Name	Buyer/ Seller Name [Classification]	Bought / (Sold) ['000]	No. of Shares After Trade ['000]	
			Total	Total	% Held
31 DEC 2025 - 31 DEC 2025	SIMEPROP	EMPLOYEES PROVIDENT FUND BOARD [SSH]	133	996527	14.653
05 JAN 2026 - 05 JAN 2026	SKPRES	EMPLOYEES PROVIDENT FUND BOARD [SSH]	-261	212041	13.572
06 JAN 2026 - 06 JAN 2026	SKPRES	KUMPULAN WANG PERSARAAN (DIPERBADANKAN) [SSH]	-600	144964	9.278
02 JAN 2026 - 02 JAN 2026	SKPRES	EMPLOYEES PROVIDENT FUND BOARD [SSH]	-2,291	212302	13.589
05 JAN 2026 - 05 JAN 2026	SKPRES	KUMPULAN WANG PERSARAAN (DIPERBADANKAN) [SSH]	-2,072	145564	9.317
31 DEC 2025 - 31 DEC 2025	SKPRES	EMPLOYEES PROVIDENT FUND BOARD [SSH]	1,581	214592	13.735
02 JAN 2026 - 02 JAN 2026	SKPRES	KUMPULAN WANG PERSARAAN (DIPERBADANKAN) [SSH]	-646	147636	9.449
31 DEC 2025 - 31 DEC 2025	SKPRES	ABERDEEN GROUP PLC (FORMERLY KNOWN AS ABRDN PLC) [SSH]	2,527	163744	10.481
31 DEC 2025 - 31 DEC 2025	SKPRES	ABRDN HOLDINGS LIMITED [SSH]	2,527	163744	10.481
31 DEC 2025 - 31 DEC 2025	SKPRES	ABRDN MALAYSIA SDN BHD [SSH]	2,527	163744	10.481
30 DEC 2025 - 30 DEC 2025	SKPRES	EMPLOYEES PROVIDENT FUND BOARD [SSH]	-8,894	213011	13.634
02 JAN 2026 - 02 JAN 2026	SLVEST	URUSHARTA JAMAAH SDN. BHD. [SSH]	73	61773	6.549
06 JAN 2026 - 06 JAN 2026	SNS	EASTSPRING INVESTMENTS BERHAD [SSH]	-4,500	86999	5.192
06 JAN 2026 - 07 JAN 2026	SNS	PRUDENTIAL PLC [SSH]	-5,450	96329	5.748
05 JAN 2026 - 05 JAN 2026	SNS	EASTSPRING INVESTMENTS BERHAD [SSH]	-2,800	91499	5.46
05 JAN 2026 - 05 JAN 2026	SNS	PRUDENTIAL PLC [SSH]	-2,670	101779	6.074
02 JAN 2026 - 02 JAN 2026	SNS	EASTSPRING INVESTMENTS BERHAD [SSH]	274	94299	5.627
02 JAN 2026 - 02 JAN 2026	SNS	PRUDENTIAL PLC [SSH]	274	104449	6.233
31 DEC 2025 - 31 DEC 2025	SNS	EASTSPRING INVESTMENTS BERHAD [SSH]	639	94025	5.611
31 DEC 2025 - 31 DEC 2025	SNS	PRUDENTIAL PLC [SSH]	827	104175	6.217
28 NOV 2025 - 28 NOV 2025	SOP	DATU SR. ZAIDI BIN HAJI MAHDI [DIR/CEO]	50	50	0.006
05 JAN 2026 - 05 JAN 2026	SPRITZER	DATIN LAI YIN LENG [SSH]	1,583	55946	8.725
05 JAN 2026 - 05 JAN 2026	SPRITZER	DATO' LIM KOK BOON [DIR/CEO]	528	54891	8.561
05 JAN 2026 - 05 JAN 2026	SPRITZER	DATO' LIM KOK BOON [SSH]	1,055	55946	8.726
05 JAN 2026 - 05 JAN 2026	SPRITZER	DATO' LIM KOK BOON [SSH]	528	54891	8.561
05 JAN 2026 - 05 JAN 2026	SPRITZER	MR LAM SANG [DIR/CEO]	422	9278	1.447
05 JAN 2026 - 05 JAN 2026	SPRITZER	MR LIM HOCK LAI [DIR/CEO]	528	12840	2.003
05 JAN 2026 - 05 JAN 2026	SPRITZER	MR LIM SENG LEE [DIR/CEO]	528	18221	2.842
05 JAN 2026 - 05 JAN 2026	SPRITZER	MR LIM SENG LEE [DIR/CEO]	132	18353	2.862
05 JAN 2026 - 05 JAN 2026	SPSETIA	EMPLOYEES PROVIDENT FUND BOARD [SSH]	303	443574	8.866
06 JAN 2026 - 06 JAN 2026	SPSETIA	KUMPULAN WANG PERSARAAN (DIPERBADANKAN) [SSH]	-800	412613	8.247
02 JAN 2026 - 02 JAN 2026	SPSETIA	EMPLOYEES PROVIDENT FUND BOARD [SSH]	1,931	443271	8.86
05 JAN 2026 - 05 JAN 2026	SPSETIA	KUMPULAN WANG PERSARAAN (DIPERBADANKAN) [SSH]	-1,473	413413	8.263
31 DEC 2025 - 31 DEC 2025	SPSETIA	EMPLOYEES PROVIDENT FUND BOARD [SSH]	-13,742	441341	8.821
02 JAN 2026 - 02 JAN 2026	SPSETIA	KUMPULAN WANG PERSARAAN (DIPERBADANKAN) [SSH]	-1,200	414886	8.292
30 DEC 2025 - 30 DEC 2025	SPSETIA	EMPLOYEES PROVIDENT FUND BOARD [SSH]	-1,537	455083	9.096
07 JAN 2026 - 07 JAN 2026	SRIDGE	MR VINCENT GAN KEAN CHEANG [DIR/CEO]	-500	16322	4.222
02 JAN 2026 - 05 JAN 2026	STAR	MALAYSIAN CHINESE ASSOCIATION [SSH]	172	349506	48.223
08 JAN 2026 - 08 JAN 2026	SUNREIT	KUMPULAN WANG PERSARAAN (DIPERBADANKAN) ("KWAP") [SSH]	-2,800	205435	5.999
06 JAN 2026 - 06 JAN 2026	SUNREIT	EMPLOYEES PROVIDENT FUND BOARD [SSH]	388	496353	14.493
07 JAN 2026 - 07 JAN 2026	SUNREIT	KUMPULAN WANG PERSARAAN (DIPERBADANKAN) ("KWAP") [SSH]	-1,607	208235	6.081
05 JAN 2026 - 05 JAN 2026	SUNREIT	EMPLOYEES PROVIDENT FUND BOARD [SSH]	2,561	495857	14.478
06 JAN 2026 - 06 JAN 2026	SUNREIT	KUMPULAN WANG PERSARAAN (DIPERBADANKAN) ("KWAP") [SSH]	-453	209842	6.128
02 JAN 2026 - 02 JAN 2026	SUNREIT	EMPLOYEES PROVIDENT FUND BOARD [SSH]	1,178	493295	14.404
05 JAN 2026 - 05 JAN 2026	SUNREIT	KUMPULAN WANG PERSARAAN (DIPERBADANKAN) ("KWAP") [SSH]	-603	210296	6.141
31 DEC 2025 - 31 DEC 2025	SUNREIT	EMPLOYEES PROVIDENT FUND BOARD [SSH]	1,356	492339	14.376
30 DEC 2025 - 30 DEC 2025	SUNREIT	EMPLOYEES PROVIDENT FUND BOARD [SSH]	1,067	490983	14.336
06 JAN 2026 - 06 JAN 2026	SUNWAY	EMPLOYEES PROVIDENT FUND BOARD [SSH]	3,057	583122	8.63
05 JAN 2026 - 05 JAN 2026	SUNWAY	EMPLOYEES PROVIDENT FUND BOARD [SSH]	-473	580065	8.58
02 JAN 2026 - 02 JAN 2026	SUNWAY	EMPLOYEES PROVIDENT FUND BOARD [SSH]	579	580538	8.59
31 DEC 2025 - 31 DEC 2025	SUNWAY	EMPLOYEES PROVIDENT FUND BOARD [SSH]	53	579959	8.58
30 DEC 2025 - 30 DEC 2025	SUNWAY	EMPLOYEES PROVIDENT FUND BOARD [SSH]	212	579906	8.58
03 DEC 2025 - 26 DEC 2025	SWKPLNT	DATO WONG KUO HEA [DIR/CEO]	300	89384	32.033
03 DEC 2025 - 26 DEC 2025	SWKPLNT	DATO WONG KUO HEA [SSH]	300	89384	32.033
05 JAN 2026 - 05 JAN 2026	TAMBUN	MR TEH KIAK SENG [DIR/CEO]	15	223256	50.82
05 JAN 2026 - 05 JAN 2026	TAMBUN	MR TEH KIAK SENG [SSH]	15	223256	50.82
02 JAN 2026 - 02 JAN 2026	TAMBUN	MR TEH KIAK SENG [DIR/CEO]	4	223241	50.82
02 JAN 2026 - 02 JAN 2026	TAMBUN	MR TEH KIAK SENG [SSH]	4	223241	50.82
09 JAN 2026 - 09 JAN 2026	TANCO	DATO' SRI ANDREW TAN JUN SUAN [DIR/CEO]	-13,826	3203456	53.165
09 JAN 2026 - 09 JAN 2026	TANCO	DATO' SRI ANDREW TAN JUN SUAN [DIR/CEO]	9,240	3212696	53.319
08 JAN 2026 - 08 JAN 2026	TANCO	D			

Notice Period is 04th January 2026 to 10th January 2026

Effective Change Date	Stock Name	Buyer/ Seller Name [Classification]	Bought / (Sold) ['000]	No. of Shares After Trade ['000]	
			Total	Total	% Held
02 JAN 2026 - 02 JAN 2026	TENAGA	EMPLOYEES PROVIDENT FUND BOARD [SSH]	2,209	1328664	22.79
05 JAN 2026 - 05 JAN 2026	TENAGA	KUMPULAN WANG PERSARAAN (DIPERBADANKAN) [SSH]	-150	446527	7.66
31 DEC 2025 - 31 DEC 2025	TENAGA	EMPLOYEES PROVIDENT FUND BOARD [SSH]	1,720	1326455	22.76
02 JAN 2026 - 02 JAN 2026	TENAGA	KUMPULAN WANG PERSARAAN (DIPERBADANKAN) [SSH]	-1,000	446677	7.66
30 DEC 2025 - 30 DEC 2025	TENAGA	EMPLOYEES PROVIDENT FUND BOARD [SSH]	5,398	1324735	22.73
07 JAN 2026 - 08 JAN 2026	TEXCHEM	TAN SRI DATO' SERI (DR.) FUMIHIKO KONISHI [DIR/CEO]	100	59732	51.014
07 JAN 2026 - 08 JAN 2026	TEXCHEM	TAN SRI DATO' SERI (DR.) FUMIHIKO KONISHI [SSH]	100	59732	51.014
05 JAN 2026 - 06 JAN 2026	TEXCHEM	TAN SRI DATO' SERI (DR.) FUMIHIKO KONISHI [DIR/CEO]	67	59632	50.928
05 JAN 2026 - 06 JAN 2026	TEXCHEM	TAN SRI DATO' SERI (DR.) FUMIHIKO KONISHI [SSH]	67	59632	50.928
07 JAN 2026 - 07 JAN 2026	TGL	MADAM TOH KIAN BENG [DIR/CEO]	75	75	8.918
07 JAN 2026 - 07 JAN 2026	TGL	MADAM TOH KIAN BENG [DIR/CEO]	75	75	10.316
07 JAN 2026 - 07 JAN 2026	TGL	MR TOH CHOON GUAN [DIR/CEO]	75	75	8.918
07 JAN 2026 - 07 JAN 2026	TGL	MR TOH CHOON GUAN [DIR/CEO]	75	75	10.316
07 JAN 2026 - 07 JAN 2026	TGL	MR TOH CHOON KEAT [DIR/CEO]	75	75	8.918
07 JAN 2026 - 07 JAN 2026	TGL	MR TOH CHOON KEAT [DIR/CEO]	75	75	10.316
08 JAN 2026 - 08 JAN 2026	TIMECOM	KUMPULAN WANG PERSARAAN (DIPERBADANKAN) [SSH]	-797	177111	9.58
06 JAN 2026 - 06 JAN 2026	TIMECOM	EMPLOYEES PROVIDENT FUND BOARD [SSH]	-1,414	308136	16.667
06 JAN 2026 - 06 JAN 2026	TIMECOM	KUMPULAN WANG PERSARAAN (DIPERBADANKAN) [SSH]	1,424	177908	9.623
05 JAN 2026 - 05 JAN 2026	TIMECOM	KUMPULAN WANG PERSARAAN (DIPERBADANKAN) [SSH]	-909	176484	9.546
31 DEC 2025 - 31 DEC 2025	TIMECOM	EMPLOYEES PROVIDENT FUND BOARD [SSH]	-1,731	309415	16.736
02 JAN 2026 - 02 JAN 2026	TIMECOM	KUMPULAN WANG PERSARAAN (DIPERBADANKAN) [SSH]	-86	177393	9.595
30 DEC 2025 - 30 DEC 2025	TIMECOM	EMPLOYEES PROVIDENT FUND BOARD [SSH]	-340	311146	16.829
06 JAN 2026 - 06 JAN 2026	TIMWELL	MADAM AGNES SOEI-TIN LAMEY [DIR/CEO]	80	80	0.09
31 DEC 2025 - 31 DEC 2025	TJSETIA	MR WEE ENG KONG [DIR/CEO]	167	141152	40.501
31 DEC 2025 - 31 DEC 2025	TJSETIA	MR WEE ENG KONG [SSH]	167	141152	40.501
08 JAN 2026 - 08 JAN 2026	TM	KUMPULAN WANG PERSARAAN (DIPERBADANKAN) [KWAP] [SSH]	-38	396083	10.321
06 JAN 2026 - 06 JAN 2026	TM	EMPLOYEES PROVIDENT FUND BOARD (EPF BOARD) [SSH]	3,465	870067	22.671
07 JAN 2026 - 07 JAN 2026	TM	KUMPULAN WANG PERSARAAN (DIPERBADANKAN) [KWAP] [SSH]	917	396121	10.323
05 JAN 2026 - 05 JAN 2026	TM	EMPLOYEES PROVIDENT FUND BOARD (EPF BOARD) [SSH]	281	866602	22.581
06 JAN 2026 - 06 JAN 2026	TM	KUMPULAN WANG PERSARAAN (DIPERBADANKAN) [KWAP] [SSH]	-533	395204	10.298
02 JAN 2026 - 02 JAN 2026	TM	EMPLOYEES PROVIDENT FUND BOARD (EPF BOARD) [SSH]	615	866321	22.574
31 DEC 2025 - 31 DEC 2025	TM	EMPLOYEES PROVIDENT FUND BOARD (EPF BOARD) [SSH]	519	865706	22.558
02 JAN 2026 - 02 JAN 2026	TM	KUMPULAN WANG PERSARAAN (DIPERBADANKAN) [KWAP] [SSH]	1,411	395737	10.312
30 DEC 2025 - 30 DEC 2025	TM	EMPLOYEES PROVIDENT FUND BOARD (EPF BOARD) [SSH]	39	865188	22.544
08 JAN 2026 - 08 JAN 2026	TOMYPAK	DATUK CHRISTOPHER WAN SOO KEE [DIR/CEO]	25	3429	0.795
07 JAN 2026 - 07 JAN 2026	TOMYPAK	DATUK CHRISTOPHER WAN SOO KEE [DIR/CEO]	18	3404	0.789
06 JAN 2026 - 06 JAN 2026	TOMYPAK	DATUK CHRISTOPHER WAN SOO KEE [DIR/CEO]	20	3386	0.785
02 JAN 2026 - 02 JAN 2026	TOMYPAK	MR YONG KWET ON [DIR/CEO]	280	109587	25.419
02 JAN 2026 - 02 JAN 2026	TOMYPAK	MR YONG KWET ON [SSH]	280	109587	25.419
06 JAN 2026 - 07 JAN 2026	TRC	TAN SRI DR AHMAD KAMARULZAMAN BIN HJ AHMAD BADARUDDIN [DIR/CEO]	-39	542	0.115
07 JAN 2026 - 07 JAN 2026	TROP	TAN SRI DATO' TAN CHEE SING [DIR/CEO]	2,700	1402967	55.801
07 JAN 2026 - 07 JAN 2026	TROP	TAN SRI DATO' TAN CHEE SING [SSH]	2,700	962307	55.801
09 JAN 2026 - 09 JAN 2026	TSH	LIM FOOK HIN [DIR/CEO]	100	3562	0.281
08 JAN 2026 - 08 JAN 2026	TSH	LIM FOOK HIN [DIR/CEO]	100	3462	0.273
07 JAN 2026 - 07 JAN 2026	TSH	LIM FOOK HIN [DIR/CEO]	100	3362	0.265
06 JAN 2026 - 06 JAN 2026	TSH	LIM FOOK HIN [DIR/CEO]	200	3262	0.257
06 JAN 2026 - 06 JAN 2026	UOAEV	EMPLOYEES PROVIDENT FUND BOARD ("EPF BOARD") [SSH]	145	379065	14.277
31 DEC 2025 - 31 DEC 2025	UOAEV	EMPLOYEES PROVIDENT FUND BOARD ("EPF BOARD") [SSH]	254	378920	14.272
30 DEC 2025 - 30 DEC 2025	UOAEV	EMPLOYEES PROVIDENT FUND BOARD ("EPF BOARD") [SSH]	145	378666	14.262

Notice Period is 04th January 2026 to 10th January 2026

Effective Change Date	Stock Name	Buyer/ Seller Name [Classification]	Bought / (Sold) ['000]	No. of Shares After Trade ['000]	
			Total	Total	% Held
02 JAN 2026 - 02 JAN 2026	UTDPLT	EMPLOYEES PROVIDENT FUND BOARD [SSH]	-81	46272	7.437
30 DEC 2025 - 30 DEC 2025	UTDPLT	EMPLOYEES PROVIDENT FUND BOARD [SSH]	115	46353	7.45
05 JAN 2026 - 05 JAN 2026	UWC	EMPLOYEES PROVIDENT FUND BOARD [SSH]	0.7	68513	6.212
02 JAN 2026 - 02 JAN 2026	UWC	EMPLOYEES PROVIDENT FUND BOARD [SSH]	750	68513	6.212
02 JAN 2026 - 02 JAN 2026	UWC	ABERDEEN GROUP PLC (FORMERLY KNOWN AS ABRDN PLC) [SSH]	-578	55304	5.014
02 JAN 2026 - 02 JAN 2026	UWC	ABRDN HOLDINGS LIMITED [SSH]	-578	55304	5.014
31 DEC 2025 - 31 DEC 2025	UWC	EMPLOYEES PROVIDENT FUND BOARD [SSH]	112	67763	6.144
31 DEC 2025 - 31 DEC 2025	UWC	ABERDEEN GROUP PLC (FORMERLY KNOWN AS ABRDN PLC) [SSH]	-23	55882	5.067
31 DEC 2025 - 31 DEC 2025	UWC	ABRDN HOLDINGS LIMITED [SSH]	-23	55882	5.067
31 DEC 2025 - 31 DEC 2025	UWC	ABRDN MALAYSIA SDN BHD [SSH]	-23	55603	5.042
30 DEC 2025 - 30 DEC 2025	UWC	EMPLOYEES PROVIDENT FUND BOARD [SSH]	64	67650	6.134
05 JAN 2026 - 06 JAN 2026	VANZO	FRAGRANCE CENTURY SDN. BHD. [SSH]	1,409	218091	46.725
05 JAN 2026 - 06 JAN 2026	VANZO	MR WONG LIANG TZER [DIR/CEO]	1,409	218091	46.725
05 JAN 2026 - 06 JAN 2026	VANZO	MR WONG LIANG TZER [SSH]	1,409	218091	46.725
02 JAN 2026 - 02 JAN 2026	VANZO	FRAGRANCE CENTURY SDN. BHD. [SSH]	578	216682	46.423
02 JAN 2026 - 02 JAN 2026	VANZO	MR WONG LIANG TZER [DIR/CEO]	578	216682	46.423
02 JAN 2026 - 02 JAN 2026	VANZO	MR WONG LIANG TZER [SSH]	578	216682	46.423
01 JAN 2026 - 01 JAN 2026	VANZO	MISS MICHELLE TAN YEE FEUNG [SSH]	49,170	49170	10.534
01 JAN 2026 - 01 JAN 2026	VANZO	MR NG YEE HENG [DIR/CEO]	700	49170	10.534
01 JAN 2026 - 01 JAN 2026	VANZO	MR NG YEE HENG [SSH]	700	49170	10.534
28 OCT 2025 - 28 OCT 2025	VITROX	DATO' SERI DR KIEW KWONG SEN [DIR/CEO]	-20	25768	1.361
05 JAN 2026 - 05 JAN 2026	VOLCANO	DATUK CH'NG HUAT SENG [DIR/CEO]	20	29003	15.968
05 JAN 2026 - 05 JAN 2026	VOLCANO	DATUK CH'NG HUAT SENG [SSH]	20	29003	15.968
05 JAN 2026 - 05 JAN 2026	VS	EMPLOYEES PROVIDENT FUND BOARD [SSH]	-738	231686	6.011
02 JAN 2026 - 02 JAN 2026	VS	EMPLOYEES PROVIDENT FUND BOARD [SSH]	-1,159	232424	6.03
31 DEC 2025 - 31 DEC 2025	VS	EMPLOYEES PROVIDENT FUND BOARD [SSH]	1,567	233583	6.06
31 DEC 2025 - 31 DEC 2025	VS	ABERDEEN GROUP PLC (FORMERLY KNOWN AS ABRDN PLC) [SSH]	4,400	221670	5.751
31 DEC 2025 - 31 DEC 2025	VS	ABRDN HOLDINGS LIMITED [SSH]	4,400	221670	5.751
31 DEC 2025 - 31 DEC 2025	VS	ABRDN MALAYSIA SDN BHD [SSH]	4,400	221670	5.751
30 DEC 2025 - 30 DEC 2025	VS	EMPLOYEES PROVIDENT FUND BOARD [SSH]	780	232016	6.019
06 JAN 2026 - 06 JAN 2026	WASCO	URUSHARTA JAMAAH SDN BHD [SSH]	-100	47555	6.141
05 JAN 2026 - 05 JAN 2026	WASCO	URUSHARTA JAMAAH SDN BHD [SSH]	-100	47655	6.154
31 DEC 2025 - 02 JAN 2026	WASCO	MR GIAN CARLO MACCAGNO [DIR/CEO]	200	5948	0.768
05 JAN 2026 - 06 JAN 2026	WOODLAN	DATO' SERI DR MUN WENG SUM [DIR/CEO]	0.3	7391	18.476
05 JAN 2026 - 06 JAN 2026	WOODLAN	DATO' SERI DR MUN WENG SUM [SSH]	0.3	7391	18.476
07 JAN 2026 - 07 JAN 2026	WPRTS	KUMPULAN WANG PERSARAAN (DIPERBADANKAN) [SSH]	-751	219108	6.402
06 JAN 2026 - 06 JAN 2026	WPRTS	KUMPULAN WANG PERSARAAN (DIPERBADANKAN) [SSH]	304	219859	6.424
02 JAN 2026 - 02 JAN 2026	WPRTS	KUMPULAN WANG PERSARAAN (DIPERBADANKAN) [SSH]	-951	219555	6.415
08 JAN 2026 - 08 JAN 2026	WTK	DATO SRI WONG KIE YIK [SSH]	-309	149661	31.992
08 JAN 2026 - 08 JAN 2026	WTK	MR WONG KIE CHIE [SSH]	-309	141257	30.195
08 JAN 2026 - 08 JAN 2026	WTK	THE LATE DATUK WONG KIE NAI (ESTATE) [SSH]	-309	143829	30.745
07 JAN 2026 - 07 JAN 2026	WTK	DR LOH LEONG HUA [DIR/CEO]	80	500	0.107
06 JAN 2026 - 06 JAN 2026	YTL	EMPLOYEES PROVIDENT FUND BOARD [SSH]	-250	1193107	10.28
31 DEC 2025 - 31 DEC 2025	YTL	EMPLOYEES PROVIDENT FUND BOARD [SSH]	3,000	1193269	10.282
30 DEC 2025 - 30 DEC 2025	YTL	EMPLOYEES PROVIDENT FUND BOARD [SSH]	1,258	1189589	10.251
06 JAN 2026 - 06 JAN 2026	YTLPOWR	EMPLOYEES PROVIDENT FUND BOARD [SSH]	-250	920034	10.662
02 JAN 2026 - 02 JAN 2026	YTLPOWR	EMPLOYEES PROVIDENT FUND BOARD [SSH]	1,000	920284	10.665
30 DEC 2025 - 30 DEC 2025	YTLPOWR	EMPLOYEES PROVIDENT FUND BOARD [SSH]	3,000	919284	10.653
09 JAN 2026 - 09 JAN 2026	ZETRIX	ASIA INTERNET HOLDINGS SDN. BHD. [SSH]	280	1086581	13.929
09 JAN 2026 - 09 JAN 2026	ZETRIX	MR WONG THEAN SOON [DIR/CEO]	663	2191853	28.097
09 JAN 2026 - 09 JAN 2026	ZETRIX	MR WONG THEAN SOON [SSH]	663	2191853	28.097
08 JAN 2026 - 08 JAN 2026	ZETRIX	MR WONG THEAN SOON [DIR/CEO]	3,000	2191190	28.088
08 JAN 2026 - 08 JAN 2026	ZETRIX	MR WONG THEAN SOON [SSH]	3,000	2191190	28.088
05 JAN 2026 - 05 JAN 2026	ZETRIX	ASIA INTERNET HOLDINGS SDN. BHD. [SSH]	500	1086301	13.925
05 JAN 2026 - 05 JAN 2026	ZETRIX	MR WONG THEAN SOON [DIR/CEO]	2,186	2188190	28.05
05 JAN 2026 - 05 JAN 2026	ZETRIX	MR WONG THEAN SOON [SSH]	2,186	2188190	28.05

Disclaimer: The Information in Insider Activity is extracted from www.shareinvestor.com/fundamental/insider_trades. The information on this page is provided as a service to readers. It does not constitute financial advice and/or any investment recommendations. We assume no liability for damages resulting from or arising out of the use of such information. Whilst every effort is made to ensure accuracy, the information presented is not the official record of shareholder filings. Readers are advised to read the original filings on the Bursa Malaysia website at www.bursamalaysia.com

CHECK OUT
SHAREINVESTOR
BROKERS' CALL

Weekly Buy/Sell/Hold calls from leading Malaysian Brokerages.

[Go To Brokers' Call](#)



We refer to the news article entitled “AirAsia X to be renamed AirAsia on Jan 19, says Fernandes” featured in The Edge Malaysia on 13 January 2026. The **AirAsia X Berhad (AAX)** wishes to clarify that it is currently exploring a possible change of company name to reflect the consolidation of AirAsia Group’s aviation

business upon completion of the ongoing acquisition of 100% equity interest in AirAsia Berhad and AirAsia Aviation Group Limited by AirAsia X.

AwanBiru Technology Berhad

(AWANTEC) cloud framework agreement between the Government for Malaysia with Google Cloud Malaysia Sdn Bhd and Awantec Systems Sdn Bhd.



The Board of Directors of **Capital A Berhad (CAPITALA)** wishes to announce that our Company had on 14 January 2026 disposed of 17,000,000 ordinary shares in AirAsia X Berhad via direct business transactions for a

consideration of RM28,050,000 which was satisfied in cash. Following the Transaction, our Company’s shareholding in AAX has decreased from 57,072,850 AAX Shares, representing 12.77% of the total issued shares in AAX, to 40,072,850 AAX Shares, representing 8.96% of the total issued shares in AAX.



On behalf of the Board of **Gamuda Berhad (GAMUDA)**, AmlInvestment Bank Berhad wishes to announce that Bursa Securities had vide its letter dated 12 January 2026, approved the listing and quotation of up to 75,000,000 new Gamuda Shares to be issued pursuant to the DRP Application on the Main Market of Bursa Securities.

The Board of Directors of **KKB Engineering Berhad (KKB)** is pleased to announce that its subsidiary, OceanMight Sdn. Bhd., has received a Letter of Award from PETRONAS Carigali Sdn. Bhd. for Provision of Minor Engineering, Procurement and Construction of Fixed Offshore Structure and Host Tie-In at Erb West for Belud South Greenfield Development Project. A formal agreement for the said Contract will be executed in due course. The Contract Sum is approximately RM212 million.



On behalf of the Board of **LGMS Berhad (LGMS)**, UOBKH wishes to announce that the application in relation to the Proposed Transfer of the listing of and quotation for the entire issued share capital of LGMS from the ACE Market to the Main Market of Bursa Securities Berhad has been submitted to Bursa Securities on 9 January 2026.



[READ MORE](#)

On behalf of **Pertama Digital Berhad (PERTAMA)**, M & A Securities wishes to announce that Bursa Securities had vide its letter dated 14 January 2026, informed that after due consideration of all facts and circumstances of the

matter, including M & A Securities' written representations, Bursa Securities had decided to allow the Appeal and grant Pertama an extension of time until 8 April 2026 to submit its regularisation plan to the relevant authorities for approval.

The Board of Directors of **Rimbunan Sawit Berhad (RSAWIT)** wishes to announce that Sastat Holdings Sdn. Bhd., a wholly owned subsidiary of RSB, had on 13 January 2026 entered into a conditional sale and purchase agreement with Trinity Capital Resources Sdn. Bhd., to dispose of a parcel of land situated at Batang Baram, Baram in the Miri division of Sarawak measuring approximately 1,504 hectares and described as Lot 205 Teraja Land District for a cash consideration of RM28.0 million.



[READ MORE](#)





READ MORE

Unconditional mandatory take-over by **Southern Score Builders Berhad (SSB8)** through Kenanga Investment Bank Berhad to acquire all the remaining ordinary shares in Nova Pharma Solutions Berhad not already held by the offeror and persons acting in concert with it for a cash consideration of RM0.37 per offer share.

Disclaimer: The information in the Investor Relations page is extracted from individual companies' announcements in www.bursamalaysia.com. The information on this page is provided as a service to readers. We assume no liability for damages resulting from or arising out of the use of such information. Whilst every effort is made to ensure accuracy, the information presented has been simplified for your reading pleasure. Readers are advised to read the original and complete filings on the Bursa Malaysia website at https://www.bursamalaysia.com/market_information/announcements/company_announcement

Upcoming **IPO**

NAME OF COMPANY	OFFER PERIOD		ISSUE PRICE (Per Ordinary Share)	LISTING SOUGHT	DATE OF LISTING
	OPENING	CLOSING			
<u>SBS NEXUS BERHAD</u>	23 Dec 2025	7 Jan 2026	RM0.25	ACE MARKET	20 Jan 2026
<u>ONE GAS MASTER HOLDINGS BERHAD</u>	12 Jan 2026	16 Jan 2026	RM0.25	ACE MARKET	27 Jan 2026
<u>ISF GROUP BERHAD</u>	8 Jan 2026	14 Jan 2026	RM0.33	ACE MARKET	28 Jan 2026



Learn how to identify Hot Stocks using Technical Analysis (TA) and Fundamental Analysis (FA)

SIGN UP FOR Invest
IT'S FREE!

Click Here

Scan/Click me



Via email, every Friday