

Invest

A Weekly e-Publication by SHAREINVESTOR

ISSUE

279

FRIDAY
21 NOV 2025


Scan/Click QR to Register



Via email, every Friday

BREGUET



 Experience the Story

New chronometric momentum

In 1802, Abraham-Louis Breguet undertook construction of a series of five timepieces featuring several devices designed to improve precision, in particular a tourbillon associated to natural escapement. These creations represented the pinnacle of what the master watchmaker could offer his clients in terms of timekeeping.

Today, as part of its 250th anniversary celebrations, Manufacture Breguet is continuing this tradition by announcing the Classique 7225, equipped with a magnetic-pivot balance and a high-frequency escapement (10 Hz).



MARKET SENTIMENTS

Global GDP growth slowing to 2.5% in 2026, 2.6% in 2027 - Moody's Analytics page 32

CPO prices to rebound towards RM4,500 per tonne amid festive demand, output slowdown - MPOC page 34



From MSWG's
The Observer
Nobody Saw
Anything

See more on pages **38-41**

ALSO

COMPANY SPOTLIGHT

Johor
Plantations
Group Berhad

See more on page **06**

BEHIND THE TICKER: DECODING COMPANY FUNDAMENTALS ISSUE NOVEMBER 2025 | Invest | 21

David Bellamy Clark
Formerly Group CEO, Sumitomo
Risk Management Director

Khind:
When Growth Fades but Value Remains

SUMMARY

- Established in 1961, KHIND (Bursa:7062) has grown into a global Malaysian brand operating mainly in the Trading and Manufacturing segments. The Trading segment dominates, contributing 96% of 2023 revenue, with Malaysia accounting for 61%.
- Revenue grew at a 5.1% CAGR over the past 12 years, driven mainly by pandemic-era e-commerce gains in 2020-2021. Post-pandemic, revenue and margins weakened, and 2023 profits fell below 2012 levels, though long-term ROIC and ROE averaged around 8%, above the cost of funds.
- Margins have been under pressure, but KHIND has improved capital efficiency and cash generation compared to its peers. Among peers, it ranks high in Return on Capital, Free Cash Flow Margin, and EPS, though its EBIT margin has declined.

Disclaimer: This article is written for informational purposes only. It does not constitute a solicitation, offer, advice, recommendation or endorsement to buy or sell. As each IPO is subject to its own risks, investors should conduct their own research and consult with their financial advisor and the associated risks with the issuer. The views expressed herein are solely the author's own.

See more on pages **22-28**

04 LEADERBOARD

05 SHARIAH HOT STOCKS

08 SHARIAH MOMENTUM UP STOCKS

09 NON SHARIAH HOT STOCKS

10 UP TRENDING STOCKS

12 VALUE STOCKS

14 GROWTH STOCKS

16 DIVIDEND STOCKS

18 BROKERS' CALL

19 LONG COMPANIES

30 MARKETPLACE

37 REGIONAL MARKETS

42 INSIDER ACTIVITY

47 INVESTOR RELATIONS

SHAREINVESTOR®

An AlphaInvest Company

Invest with Knowledge

INVESTOR PLATFORMS

Director
Darren Chong
darren.chong@shareinvestor.com

Business Development Manager
Jay Cheong
jay.cheong.@shareinvestor.com

ADMIN & OPERATIONS

Senior Executive
Watie Nordin
watie.nordin@shareinvestor.com

Executive
Silas Emmanuel Joseph
silas.joseph@shareinvestor.com

PROCESS AUTOMATION & DATA ANALYTICS

Data Analyst
Lee Khai Bing

INVESTOR RELATIONS

Group Managing Director & Publisher
Edward Stanislaus
edward@shareinvestor.com

Senior Manager
Letticia Wong
letticia.wong@shareinvestor.com

Manager
Aida Norzeti Talib
aida.norzeti@shareinvestor.com

ALPHA INVEST HOLDINGS BOARD OF DIRECTORS

Chairman	Patrick Daniel
Group CEO	Christopher Lee
Group COO	Lim Dau Hee
Group MD	Shanison Lin



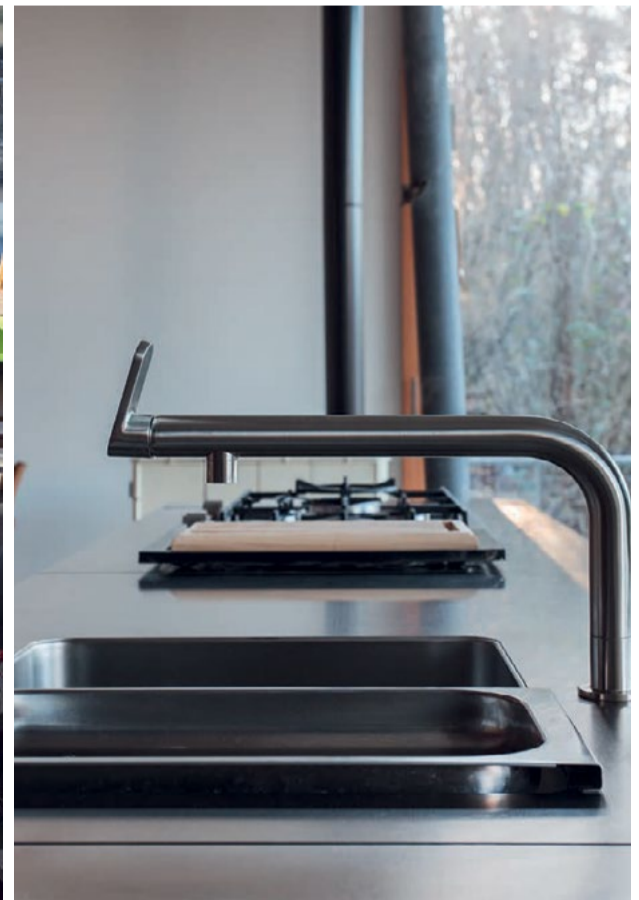
“ GIVE A MAN A FISH AND YOU FEED HIM FOR A DAY; TEACH A MAN TO FISH AND YOU FEED HIM FOR A LIFETIME ”

ShareInvestor Malaysia Sdn. Bhd.
(200001023956) (526564-M)
L15-03 & 03A, PJX HM Shah Tower,
No 16A, Jalan Persiaran Barat, PJS 52,
46200 Petaling Jaya, Selangor

Hotline : 603 8681 0580
Mobile : 011 6343 8939
Website : www.ShareInvestor.com.my
www.alphainvestholdings.com
www.Facebook.com/ShareInvestorMalaysia

ADVERTISEMENT ENQUIRY

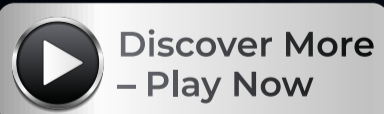
bulthaup takes care of the details so that you can enjoy a harmonious environment.



XTRA

XTRA FURNITURE SDN BHD
The Gardens Mall, Mid Valley City
xfurniture.com/bulthaup
fb.com/bulthaupmalaysia

bulthaup



A tribute to the founding principles of the Breguet style

How did the fundamentals of the Breguet style originate? They are so deeply rooted in the Manufacture's 250-year history that pinpointing a single origin is a daring endeavour. One watch, however, perfectly embodies them: the No. 5, delivered in 1794 – to which today's Classique 7235 pays fitting tribute.

www.shareinvestor.com - market data at your fingertips



ShareInvestor WebPro (www.shareinvestor.com/my)

Prices > Stock Prices > Bursa > click Stocks tab

1. mouse over Ranking > select Top Active > all Shariah stocks are denoted with an [S] > mouse over Column Layout > select Edit Customs > select Name > select Volume > select Last Done Price > Mouse Over Column Layout > select Custom
2. mouse over Ranking > select Top Turnover > all Shariah stocks are denoted with an [S] > mouse over Column Layout > select Edit Customs > select Name > select Last Done Price > select Value > Mouse Over Column Layout > select Custom
3. mouse over Ranking > select Top Gainers (Over 5 Trading Days) > mouse over Column Layout > select Edit Customs > select Name > select Last Done Price > select 5 Days Change > select 5 Days % Change > Mouse Over Column Layout > select Custom
4. mouse over Ranking > select Top Losers (Over 5 Trading Days)
5. mouse over Ranking > select Top % Gainers (Over 5 Trading Days)
6. mouse over Ranking > select Top % Losers (Over 5 Trading Days)

Shariah Top Actives (As at Yesterday)

Name	Price (RM)	Volume
VS [S]	0.440	747,469.000
ZETRIX [S]	0.855	619,908.000
TANCO [S]	1.030	598,251.000
PTRANS [S]	0.280	570,868.000
NEXG [S]	0.375	441,133.000
MMAG [S]	0.080	432,669.000
CAPITALA [S]	0.915	365,010.000
NEXGBINA [S]	0.045	296,453.000
JPG [S]	1.680	248,787.000
GAMUDA [S]	5.400	244,373.000

Shariah Top Turnover (As at Yesterday)

Name	Price (RM)	Value (RM)
GAMUDA [S]	5.400	132,656,168
TENAGA [S]	13.140	92,594,866
IHH [S]	8.130	67,797,693
TANCO [S]	1.030	61,116,615
ZETRIX [S]	0.855	53,132,367
PMETAL [S]	6.470	50,985,959
WPRTS [S]	5.350	42,330,166
JPG [S]	1.680	40,968,647
SDG [S]	5.360	40,398,797
FFB [S]	2.430	40,091,237

Top Gainers (over 5 Trading days as at Yesterday)

Name	Price (RM)	Change (RM)
BLDPLNT	13.300	+2.500
UTDPLT	28.300	+2.300
HEIM	22.800	+0.760
CARLSBG	17.180	+0.480
HLIND	15.260	+0.400
NSOP	5.910	+0.350
SOP	4.030	+0.310
MBMR	5.480	+0.300
NESTLE	113.300	+0.300
GAMUDA	5.400	+0.240

Top % Gainers (over 5 Trading days as at Yesterday)

Name	Price (RM)	Change (%)
BCMALL	0.010	+100.00
PHB	0.010	+100.00
MCOM	0.050	+66.67
PARLO	0.040	+60.00
PERMAJU	0.015	+50.00
SMCAP	0.390	+34.48
MERIDIAN	0.040	+33.33
NEXGRAM	0.020	+33.33
TRIVE	0.020	+33.33
EXSIMHB	0.345	+32.69

Top Losers (over 5 Trading days as at Yesterday)

Name	Price (RM)	Change (RM)
PETDAG	21.480	-0.960
KLK	20.600	-0.800
PPB	11.140	-0.660
SAM	3.950	-0.630
TENAGA	13.140	-0.360
MASTER	2.060	-0.330
PANAMY	7.500	-0.300
HUMEIND	3.300	-0.290
PETGAS	18.320	-0.280
VSTECs	4.150	-0.240

Top % Losers (over 5 Trading days as at Yesterday)

Name	Price (RM)	Change (%)
SCBUILD	0.005	-50.00
SNTORIA	0.005	-50.00
MMSV	0.425	-27.97
BIOHLDG	0.015	-25.00
BSLCORP	0.015	-25.00
TAWIN	0.015	-25.00
XOXNET	0.015	-25.00
GENETEC	0.325	-23.53
REX	0.155	-22.50
XOXTECH	0.055	-21.43

Price & Volume Distribution Charts (as at Yesterday)

Technical Analysis

DEFINITION: Shariah compliant stocks with Technical Analysis showing 5-days & 10-days Moving Average Price below Yesterday's Close over past 3 days and with Volume Spike.

CHART GUIDE: Volume Distribution Chart is a statistical interpretation of the current sentiment on each stock in graphical format. The highest bar categorized as >150k is likely to be traded by institutions or super dealers, while the lowest bar categorized as <15k usually represents retail investors. "Buy Up" refers to more buyers snatching up the lots queued at selling price. "Sell Down" refers to sellers selling their shares to the buying queue



ShareInvestor WebPro > Screener > Market Screener (FA & TA) > select BURSA > add criteria

A. Criteria

- > click Add Criteria
- Technical Analysis Conditions tab select (i) Moving Average Below Close (ii) Volume Spike
- Fundamental Analysis Conditions tab > select (iii) Revenue
- Prices & Other Conditions tab > select (iv) Is Shariah Compliant
- Technical Analysis Conditions tab select (v) Moving Average Below Close
- Prices & Other Conditions tab > select (vi) Last Done Price
- Technical Analysis Conditions tab select (vii) Moving Average Below Close

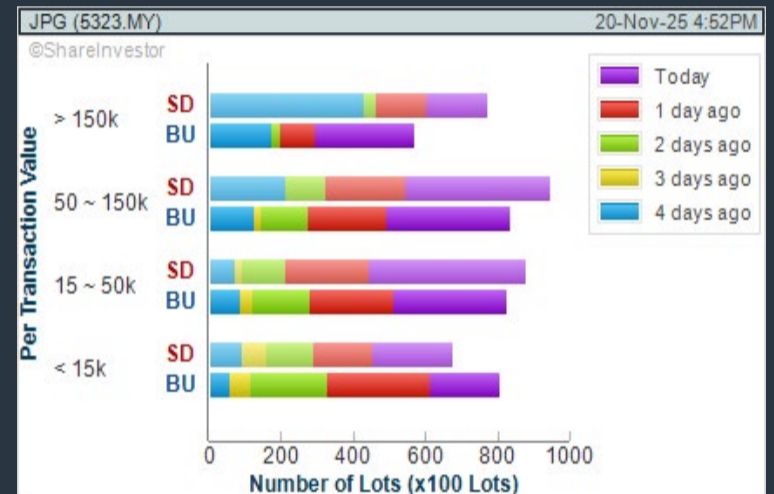
B. Conditions (Criteria Filters)

1. Moving Average Below Close - select (MA) type (5) below close price for type (3) days
2. Volume Spike - Volume type (1) greater than type (5) days average
3. Revenue ("000) - select (more than) type (1) for the past select (1) financial year(s)
4. Is Shariah Compliant - select **Yes**
5. Moving Average Below Close - select (MA) type (10) below close price for type (3) days
6. Last Done Price - select (more than) type (0.3)
7. Moving Average Below Close - select (EMA) type (5) below close price for type (3) days

- > click Save Template > Create New Template type (Shariah Hot Stocks) > click Create
- > click Save Template as > select Shariah Hot Stocks > click Save
- > click Screen Now (may take a few minutes)
- > Sort By: Select (Vol) Select (Desc)
- > Mouse over stock name > Charts > click C² Charts or Volume Distribution

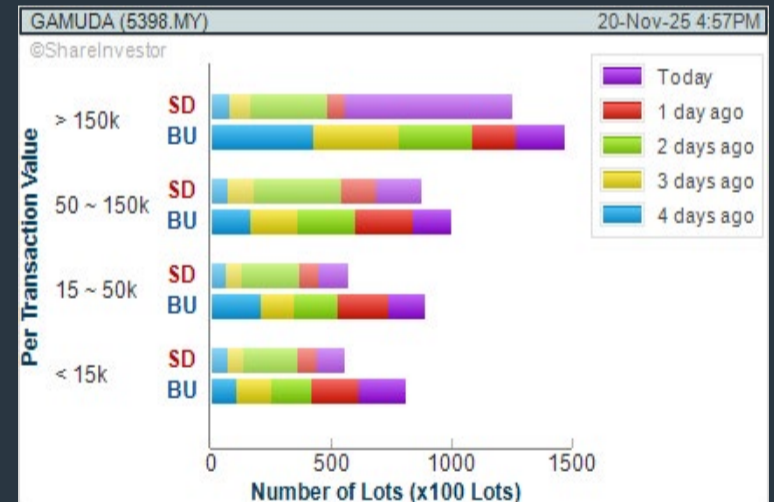
JOHOR PLANTATIONS GROUP BERHAD (5323) C² Chart

Analysis



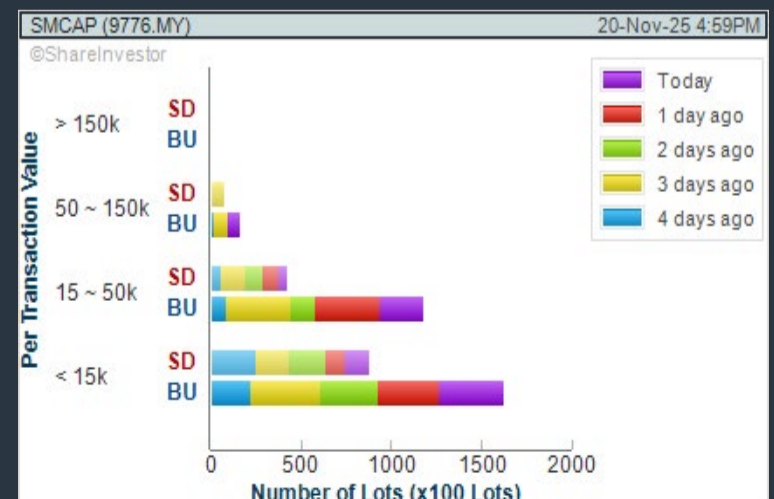
GAMUDA BHD (5398) C² Chart

Analysis



SINMAH CAPITAL BERHAD (9776) C² Chart

Analysis



Disclaimer: The information on this page is provided as a service to readers. It does not constitute financial advice and/or any investment recommendations. Past performance is not indicative of future results. We assume no liability for damages resulting from or arising out of the use of such information. It would be best if you did your own research to make your personal investment decisions wisely or consult a licenced investment advisor.

COMPANY BACKGROUND

Johor Plantations Group Berhad, (JPG), is an integrated plantation company with focus on sustainability and technology. It is an upstream oil palm plantation company with plans to enter into the downstream plantation business. The Company owns, manages, and cultivates oil palms and harvests FFB produced on the plantation estates that it owns or rents. It sells Crude Palm Oil to downstream refineries and Palm Kernel to crushing plants.

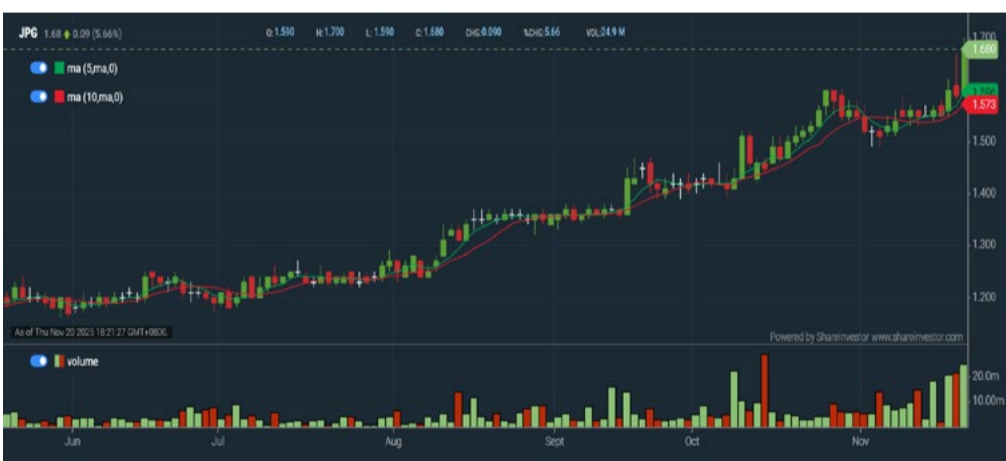


JPG JOHOR PLANTATIONS GROUP BERHAD		Updated at 20 Nov 2025 17:31	
Last (MYR): 1.680 ↑	Change: +0.090	High: 1.700	Remarks: -
	Change (%): +5.66	Low: 1.590	
Open	1.590	Yesterday's Close	1.590
Buy Price	1.670	Sell Price	1.690
Buy Volume ('00)	601	Sell Volume ('00)	550
Cumulative Volume ('00)	248,787	Cumulative Value	40,968,647

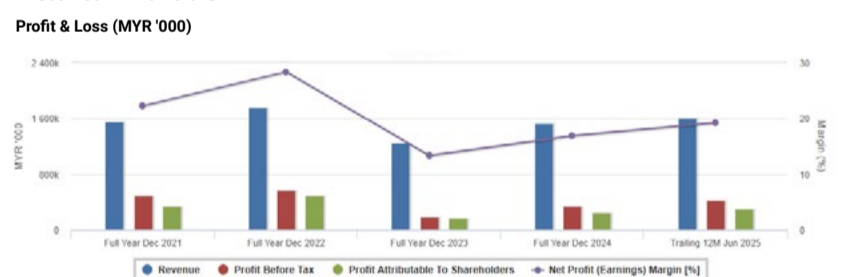
Financial Analysis

	Revenue Growth Revenue up and down in past years			Profit Growth Profit up and down in last 3 years (with last 3 profitable years)	
	Piotroski F Score The company has strong financial strength (Piotroski F-Score of 8-9)			Dividend Payout Dividend is increasing over the past 48 months.	
	Debt to Cashflow High debt to cash flow for most recent year			Gross Profit Margin Consistently good gross profit margin of 20%-40% for 3 years	
	Net Earnings Margin Good net profit margin of at least 15% for most recent year				

Excellent
 Good
 Neutral
 Be Alert
 Watch Out



Historical Financials

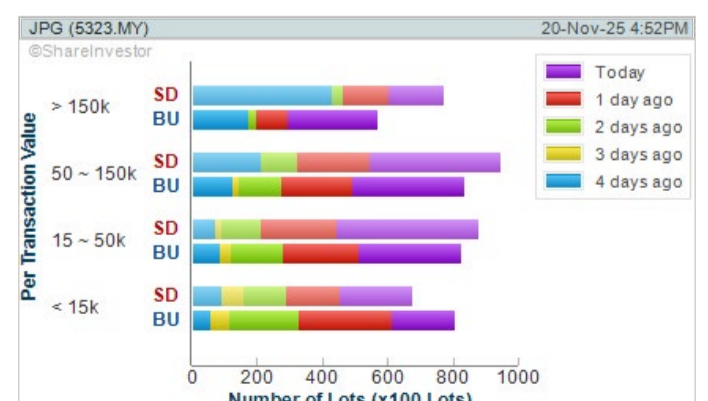


WebPro 9-Days Free Trial Registration (worth RM10) Sign Up Now



Key Statistics with Total Shareholder Returns

Period	Dividend Received	Capital Appreciation	Total Shareholder Return
Short Term Return	5 Days	-	+8.39 %
	10 Days	-	+11.26 %
	20 Days	-	+10.53 %
Medium Term Return	3 Months	0.013	+25.41 %
	6 Months	0.023	+39.59 %
	1 Year	0.063	+23.62 %
Annualised Return	Annualised	-	+23.62 %



Disclaimer: The information on this page is provided as a service to readers. It does not constitute financial advice and/or any investment recommendations. Past performance is not indicative of future results. We assume no liability for damages resulting from or arising out of the use of such information. It would be best if you did your own research to make your personal investment decisions wisely or consult a licenced investment advisor.

Sponsored by  Webull

Organised by  InvestingNote
by AlphaInvest



突破马年

2026 赢战攻略



 29 Nov 2025
10am - 2pm

 Auditorium, Connexion
Conference & Event Centre

 收费: RM22
(包含午餐)

[立即注册](#) 



Tommy Lim Kok Kwang
CEO / Managing Director,
ICT Zone Asia Berhad

Koh Chung Jie
Non-Independent
Executive Director / COO,
A1 A.K. Koh Group Berhad

Ng Tzyy Loon
Portfolio Manager,
Tradeview Capital

Max Tan
Co-Founder,
12Invest
(Moderator)

Jayden Pang
Senior Analyst,
Eco Asia Capital
Advisory Sdn Bhd

George Poh, CFP®
Co-Founder,
Finance Lang
(Moderator)

Price & Volume Distribution Charts (as at Yesterday)

Technical Analysis

DEFINITION: Shariah compliant stocks with Technical Analysis showing Bullish Momentum and Price Uptrend. The share price closed at the highest price yesterday. The typical price was higher than the previous day's typical price.

CHART GUIDE: Volume Distribution Chart is a statistical interpretation of the current sentiment on each stock in graphical format. The highest bar categorized as >150k is likely to be traded by institutions or super dealers, while the lowest bar categorized as <15k usually represents retail investors. "Buy Up" refers to more buyers snatching up the lots queued at selling price. "Sell Down" refers to sellers selling their shares to the buying queue.



ShareInvestor WebPro > Screener > Market Screener (FA & TA)>select BURSA>add criteria

A. Criteria

- > click Add Criteria
- Fundamental Analysis Conditions tab >select (i) Revenue
- Technical Analysis Conditions tab select (ii) Average Volume
- Prices & Other Conditions tab > select (iii) Last Done Price
- Prices & Other Conditions tab > select (iv) Is Shariah Compliant
- Technical Analysis Conditions tab select (v) RSI Overbought
- Technical Analysis Conditions tab select (vi) Moving Average Below Close
- Technical Analysis Conditions tab select (vii) CCI Overbought

B. Conditions (Criteria Filters)

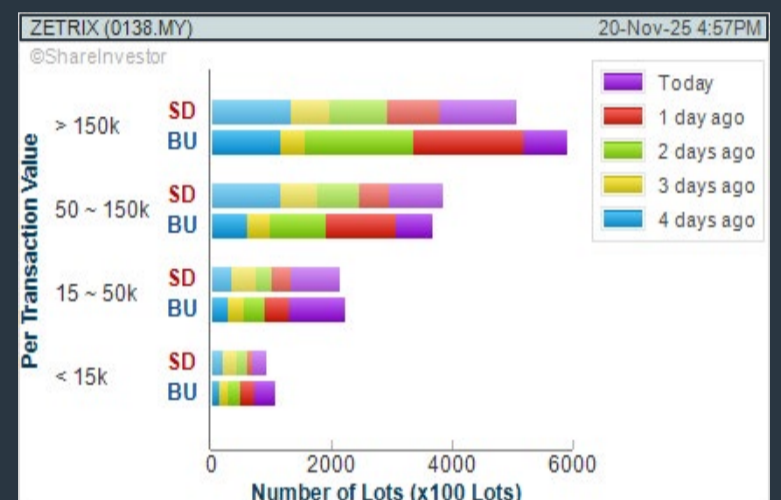
1. Revenue ("000) - select (more than) type (1) for the past select (1) financial year(s)
2. Average Volume - type (1) days average volume greater than type (10000) lots
3. Last Done Price - select (more than) type (0.3)
4. Is Shariah Compliant - select Yes
5. RSI Overbought - select RSI 1 above 99 for 1 days
6. Moving Average Below Close - select (MA) type (10) below close price for type (1) days
7. CCI Overbought - select CCI (2) above (0) for (1) days

- > click Save Template > Create New Template type (Shariah Momentum Up Stocks) > click Create
- > click Save Template as > select Shariah Momentum Up Stocks > click Save
- > click Screen Now (may take a few minutes)
- Sort By: Select (Vol) Select (Desc)
- Mouse over stock name > Charts > click C² Charts tab or Volume Distribution

ZETRIX AI BERHAD (0138)

C² Chart

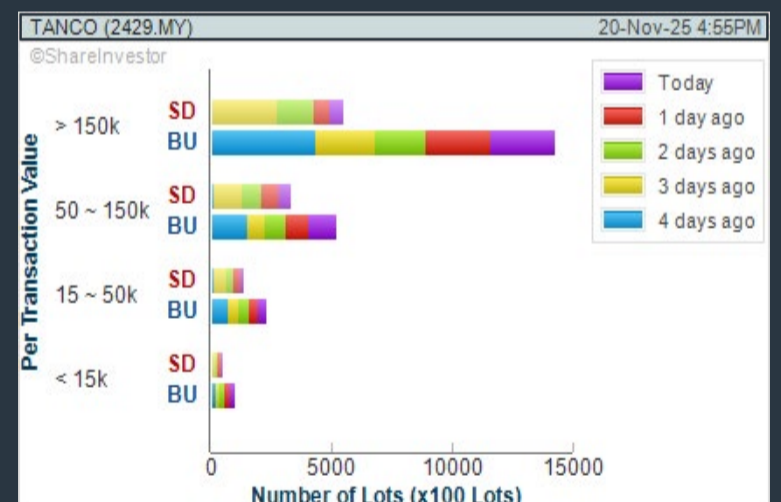
Analysis



TANCO HOLDINGS BHD (2429)

C² Chart

Analysis



NEXG BERHAD (5216)

C² Chart

Analysis



Disclaimer: The information on this page is provided as a service to readers. It does not constitute financial advice and/or any investment recommendations. Past performance is not indicative of future results. We assume no liability for damages resulting from or arising out of the use of such information. It would be best if you did your own research to make your personal investment decisions wisely or consult a licenced investment advisor.

Price & Volume Distribution Charts (as at Yesterday)

Technical Analysis

DEFINITION: Stocks with Technical Analysis showing 5-days & 10-days Moving Average Price below Close over past 1 days and with Volume Spike

CHART GUIDE: Volume Distribution Chart is a statistical interpretation of the current sentiment on each stock in graphical format. The highest bar categorized as >150k is likely to be traded by institutions or super dealers, while the lowest bar categorized as <15k usually represents retail investors. "Buy Up" refers to more buyers snatching up the lots queued at selling price. "Sell Down" refers to sellers selling their shares to the buying queue.



ShareInvestor WebPro > Screener > Market Screener (FA & TA) > select BURSA > add criteria

A. Criteria

- > click Add Criteria
- Technical Analysis Conditions tab select (i) Moving Average Below Close (ii) Volume Spike
- Fundamental Analysis Conditions tab >select (iii) Revenue
- Prices & Other Conditions tab > select (iv) Is Shariah Compliant
- Technical Analysis Conditions tab select (v) Moving Average Below Close
- Prices & Other Conditions tab > select (vi) Last Done Price
- Technical Analysis Conditions tab select (vii) Moving Average Below Close

B. Conditions (Criteria Filters)

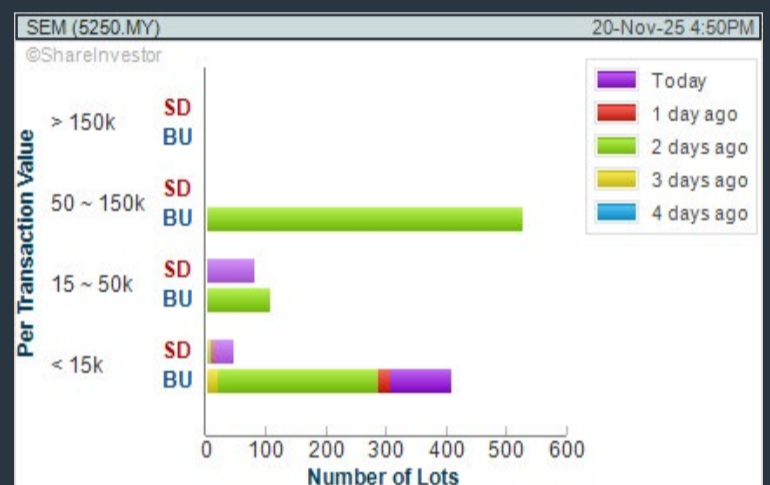
1. Moving Average Below Close - select (MA) type (5) below close price for type (3) days
2. Volume Spike - Volume type (1) greater than type (5) days average
3. Revenue ("000) - select (more than) type (1) for the past select (1) financial year(s)
4. Is Shariah Compliant - select NO
5. Moving Average Below Close - select (MA) type (10) below close price for type (1) days
6. Last Done Price - select (more than) type (0.3)
7. Moving Average Below Close - select (EMA) type (5) below close price for type (1) days

- > click Save Template > Create New Template type (Non-Shariah Hot Stocks) > click Create
- > click Save Template as > select Non-Shariah Hot Stocks > click Save
- > click Screen Now (may take a few minutes)
- Sort By: Select (Vol) Select (Desc)
- Mouse over stock name > Charts > click C² Charts tab or Volume Distribution

7-ELEVEN MALAYSIA HOLDINGS BERHAD (5250)

C² Chart

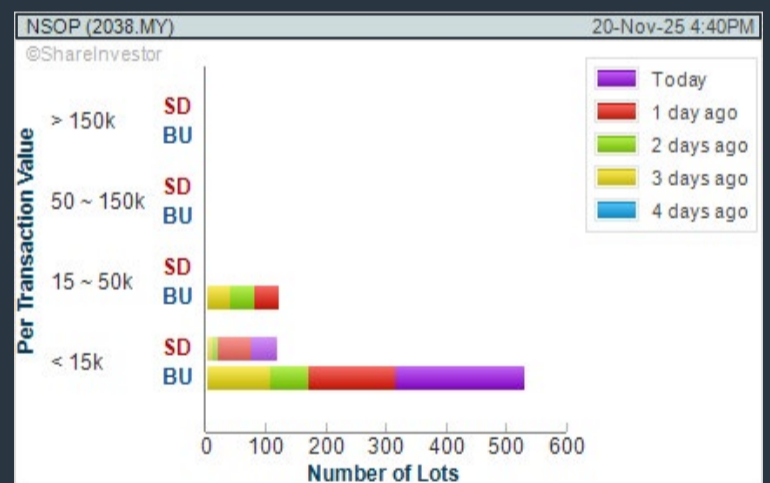
Analysis



NEGRI SEMBILAN OIL PALMS BHD (2038)

C² Chart

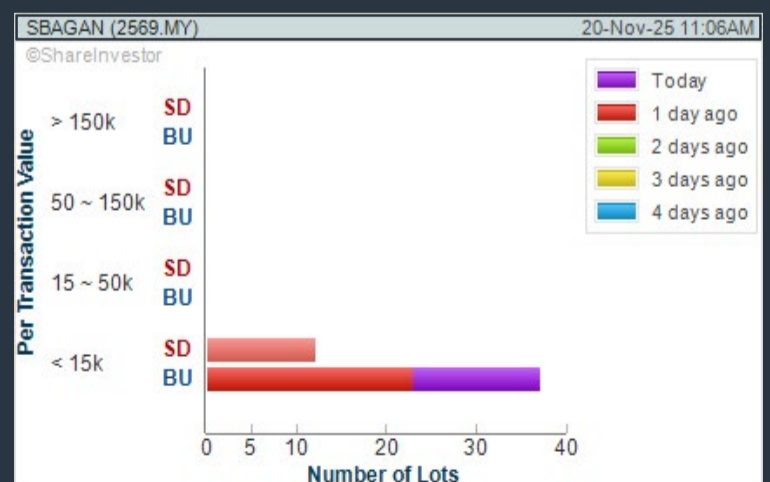
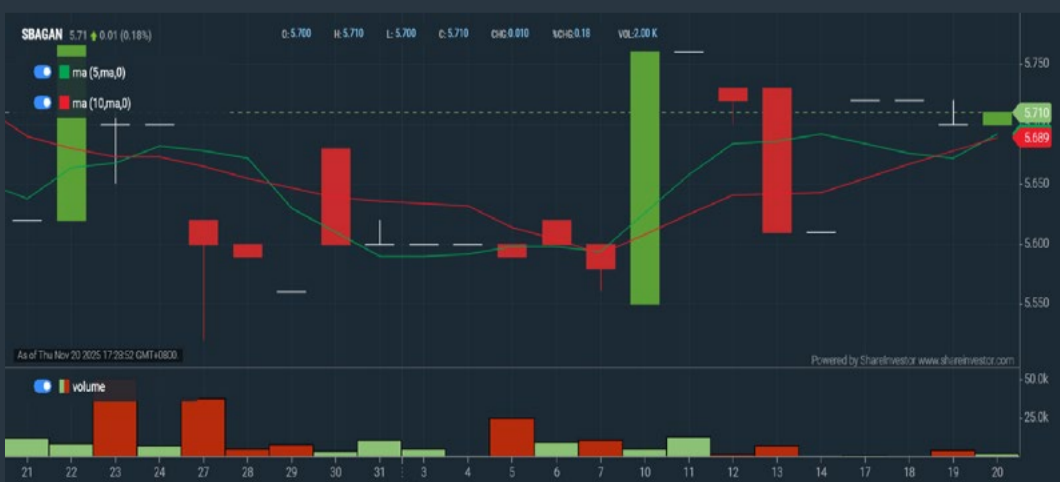
Analysis



SUNGEI BAGAN RUBBER CO (M) BHD (2569)

C² Chart

Analysis



Disclaimer: The information on this page is provided as a service to readers. It does not constitute financial advice and/or any investment recommendations. Past performance is not indicative of future results. We assume no liability for damages resulting from or arising out of the use of such information. It would be best if you did your own research to make your personal investment decisions wisely or consult a licenced investment advisor.

Price & Volume Distribution Charts (Over 3 trading days as at Yesterday)

Technical Analysis

DEFINITION: Stocks with Technical Analysis showing Bullish Momentum and Price Uptrend

CHART GUIDE: Volume Distribution Chart is a statistical interpretation of the current sentiment on each stock in graphical format. The highest bar categorized as >150k is likely to be traded by institutions or super dealers, while the lowest bar categorized as <15k usually represents retail investors. "Buy Up" refers to more buyers snatching up the lots queued at selling price. "Sell Down" refers to sellers selling their shares to the buying queue.



ShareInvestor WebPro > Screener > Market Screener (FA & TA) > select BURSA > add criteria

A. Criteria

- > click Add Criteria
- Fundamental Analysis Conditions tab > select (i) Revenue
- Technical Analysis Conditions tab select (ii) Moving Average Below Close
- Technical Analysis Conditions tab select (iii) Average Volume
- Prices & Other Conditions tab > select (iv) Last Done Price
- Technical Analysis Conditions tab select (v) Moving Average Below Close
- Technical Analysis Conditions tab select (v) Moving Average Bullish Crossover

B. Conditions

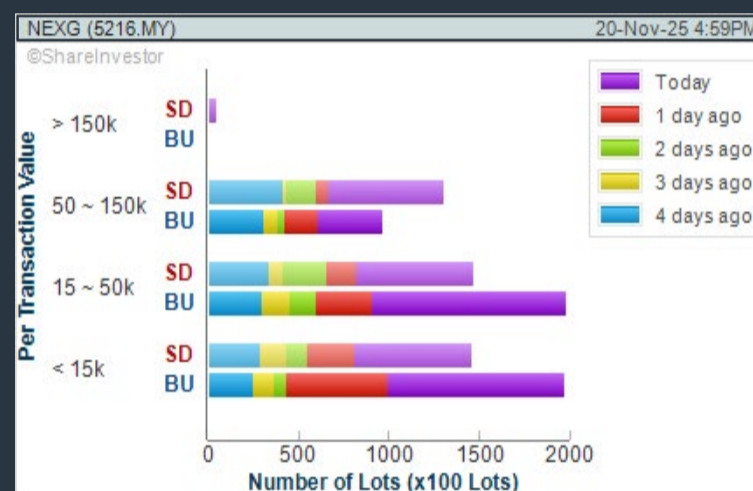
1. Revenue - select (more than) type (1) for the past select (1) financial year(s)
2. Moving Average Below Close - select (MA) type (20) below close price for type (1) days
3. Average Volume - type (5) days average volume type (10000) lots
4. Last Done Price - select (more than) type (0.3)
5. Moving Average Below Close - select (MA) type (10) below close price for type (1) days
6. Moving Average Bullish Crossover - select (MA) type (5) crossed above select (MA) type (10)

> click Save Template > Create New Template type (Non-Shariah Up-Trending Stocks) > click Create Click Save Template As > select Non-Shariah Up Trending Stocks > click Save
> click Screen Now (may take a few minutes)
Sort By: Select (Vol) Select (Desc)
Mouse over stock name > Charts > click C² Charts tab or Volume Distribution

NEXG BERHAD (5216)

C² Chart

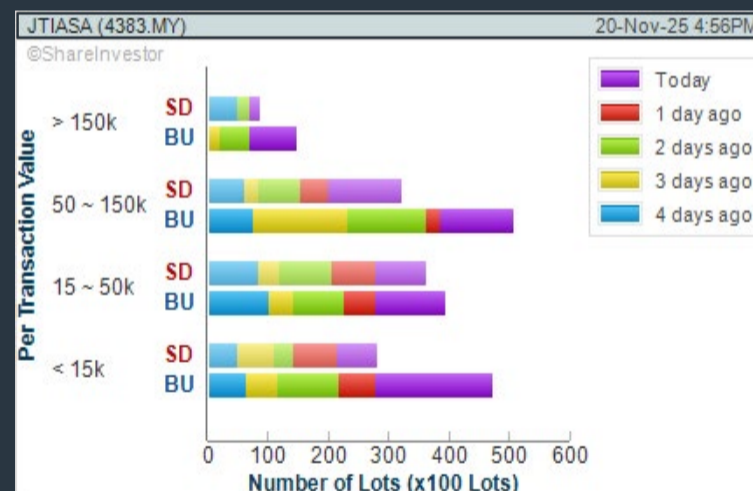
Analysis



JAYA TIASA HOLDINGS BHD (4383)

C² Chart

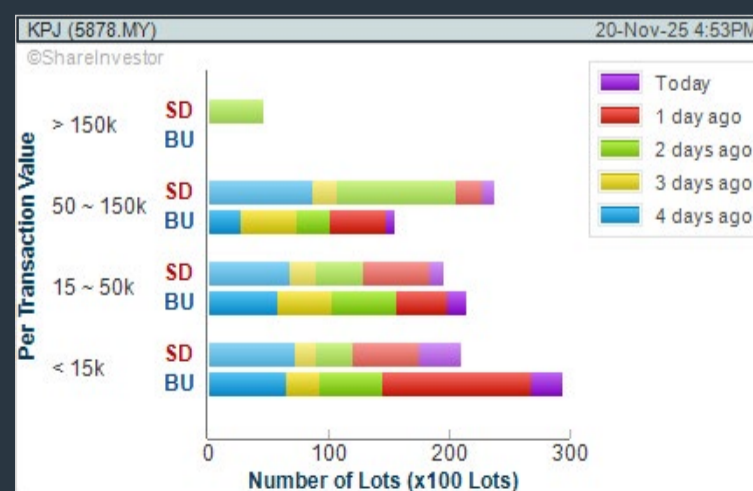
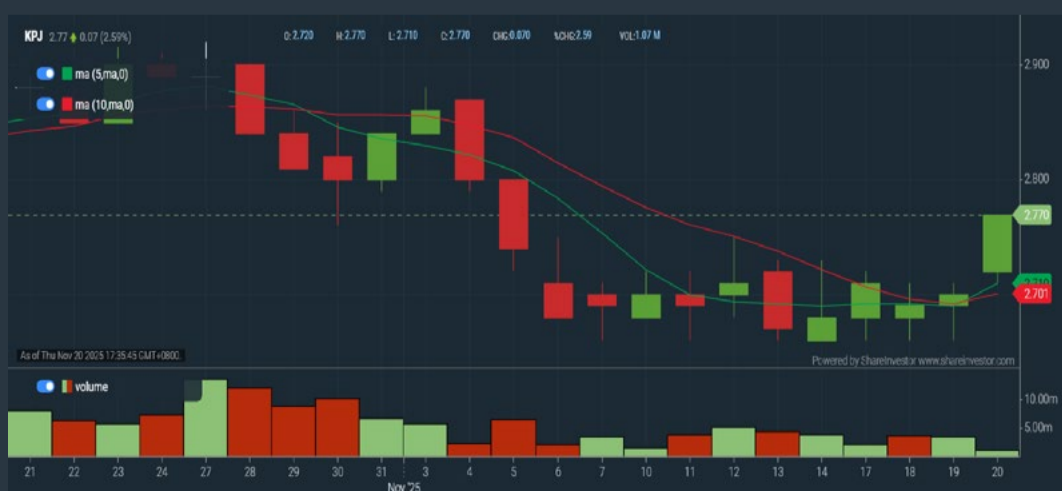
Analysis



KPJ HEALTHCARE BHD (5878)

C² Chart

Analysis



Disclaimer: The information on this page is provided as a service to readers. It does not constitute financial advice and/or any investment recommendations. Past performance is not indicative of future results. We assume no liability for damages resulting from or arising out of the use of such information. It would be best if you did your own research to make your personal investment decisions wisely or consult a licenced investment advisor.

Sponsored by



Managed by



CRYPTO WITHOUT THE CHAOS: CASH-SETTLED FUTURES FOR EVERYDAY TRADERS

Jose BlascoFounder & Quantitative Strategist,
Traddictiv

📅 6 Dec 2025 ⌚ 10am - 2pm

📍 Colony, KL Eco City

📄 Fees: RM22 (Lunch included)

[REGISTER NOW →](#)

Price & Total Shareholder Return (as at Yesterday)

Fundamental Analysis

DEFINITION: Share price of a company trading at a lower price as compared to its fundamentals (FA) such as financial performance and dividend, allowing it to be attractive to value investors.

CHART GUIDE: Total Shareholder Return (TSR) combines share price appreciation and dividend distributions paid to show the total return to the shareholder expressed as a percentage.



ShareInvestor WebPro > Screener > Market Screener (FA & TA) > select BURSA > add criteria

A. Criteria

- > click Add Criteria
- Fundamental Analysis Conditions tab (i) Price Earnings Ratio
- Fundamental Analysis Conditions tab >select (ii) CAGR of Net Earnings
- Fundamental Analysis Conditions tab >select (iii) Net Debt To Equity
- Fundamental Analysis Conditions tab >select (iv) Return On Equity (ROE)

B. Conditions

1. Price Earnings Ratio - select (less than) type (15) times now
2. CAGR of Net Earnings - select (more than) type (10) % for the past type (3) financial year(s)
3. Net Debt To Equity – select (less than) type (1) for the past select (1) financial year(s)
4. Return On Equity (ROE) – select (more than) type (10) % for the past select (1) financial year(s)

- > click Save Template > Create New Template type (Value Stock) > click Create
- > click Save Template as > select Value Companies > click Save
- > click Screen Now (may take a few minutes)
- Sort by: Select (PE Ratio) Select (Ascending)
- > Mouse over stock name > Factsheet > looking for Total Shareholder Return
- > Mouse over stock name > Charts > click C2 Charts tab

INGENIEUR GUDANG BERHAD (5178)

C² Chart



Period	Dividend Received	Capital Appreciation	Total Shareholder Return
Short Term Return	5 Days	+0.005	+20.00%
	10 Days	-	-
	20 Days	+0.005	+20.00%
Medium Term Return	3 Months	+0.005	+20.00%
	6 Months	-0.005	-14.29%
	1 Year	-0.010	-28.00%
Long Term Return	2 Years	-0.100	-78.92%
	3 Years	-0.075	-71.43%
	5 Years	-0.070	-70.00%
Annualised Return	Annualised	-	21.40%

MUDAJAYA GROUP BHD (5085)

C² Chart



Period	Dividend Received	Capital Appreciation	Total Shareholder Return
Short Term Return	5 Days	-	-
	10 Days	-	-
	20 Days	-	-
Medium Term Return	3 Months	-0.010	+12.50%
	6 Months	-0.010	-10.00%
	1 Year	-0.005	-5.28%
Long Term Return	2 Years	-0.085	-48.67%
	3 Years	0.040	-28.73%
	5 Years	0.040	-51.85%
Annualised Return	Annualised	-	-10.60%

RAPID SYNERGY BERHAD (7765)

C² Chart



Period	Dividend Received	Capital Appreciation	Total Shareholder Return
Short Term Return	5 Days	+0.040	+6.84%
	10 Days	+0.035	+5.93%
	20 Days	-	-
Medium Term Return	3 Months	-0.055	-8.09%
	6 Months	-0.065	-8.42%
	1 Year	+0.005	+0.81%
Long Term Return	2 Years	-27.275	-97.78%
	3 Years	-15.195	-95.05%
	5 Years	-5.775	-98.23%
Annualised Return	Annualised	-	-37.20%

Disclaimer: The information on this page is provided as a service to readers. It does not constitute financial advice and/or any investment recommendations. Past performance is not indicative of future results. We assume no liability for damages resulting from or arising out of the use of such information. It would be best if you did your own research to make your personal investment decisions wisely or consult a licenced investment advisor.

* **FOODIE** **IPO PREDICTION** **CHALLENGE**


VOTE
& Comment
to stand a chance to win



 Vote
1 Chance

 Comment
+ 3 Chances

Challenge Period:
17 Nov - 27 Nov 2025

T & C Apply

Click to Vote! 

Price & Total Shareholder Return (as at Yesterday)

Fundamental Analysis

DEFINITION: Company revenue is growing and making good quality of earnings with positive Free Cash Flow.

CHART GUIDE: Total Shareholder Return (TSR) combines share price appreciation and distributions paid to show the total return to the shareholder expressed as a percentage.



ShareInvestor WebPro > Screener > Market Screener (FA & TA) > select BURSA > add criteria

A. Criteria

1. Fundamental Analysis Conditions tab >select (i) Free Cash Flow, (ii) Revenue Growth, (iii) Gross Profit (Earnings) Margin, (iv) Quality of Earnings, (v) Total Shareholder Returns, > click Add Criteria
2. Fundamental Analysis Conditions tab >select (vi) Total Shareholder Returns > click Add Criteria

B. Conditions (Criteria Filters)

1. Free Cash Flow - select (more than) type (1) for the past select (1) financial year(s)
2. Revenue Growth - select (more than) type (1) for the past select (1) financial year(s)
3. Gross Profit (Earnings) Margin - select (more than) type (30) % for the past select (1) financial year(s)
4. Quality of Earnings - select (more than) type (1) for the past select (1) financial year(s)
5. Total Shareholder Return - select (more than) type (5) % for the past select (3) financial year(s)
6. Total Shareholder Return - select (more than) type (5) % for the past select (5) financial year(s)

- > click Save Template > Create New Template type (Growth Companies) > click Create
- > click Save Template as > select Growth Companies > click Save
- > click Screen Now (may take a few minutes)
- > Sort By: Select (Revenue Growth) Select (Desc)
- > Mouse over stock name > Factsheet > looking for Total Shareholder Return

COUNTRY VIEW BHD (5049)

C² Chart

Analysis



Period	Dividend Received	Capital Appreciation	Total Shareholder Return
Short Term Return	5 Days	-0.020	-0.88 %
	10 Days	-0.020	-0.88 %
	20 Days	-0.090	-2.08 %
Medium Term Return	3 Months	+0.670	+29.52 %
	6 Months	0.110	+33.77 %
	1 Year	0.405	+91.14 %
Long Term Return	2 Years	0.485	+220.09 %
	3 Years	0.570	+333.33 %
	5 Years	0.670	+443.81 %
Annualised Return	Annualised	-	+28.02 %

IDB TECHNOLOGIES BERHAD (03030)

C² Chart

Analysis



Period	Dividend Received	Capital Appreciation	Total Shareholder Return
Short Term Return	5 Days	-	-
	10 Days	-	-
	20 Days	-	-
Medium Term Return	3 Months	0.004	+3.08 %
	6 Months	0.004	+3.08 %
	1 Year	0.007	+5.38 %
Long Term Return	2 Years	0.009	+6.92 %
	3 Years	0.010	+7.69 %
	5 Years	0.011	+8.46 %
Annualised Return	Annualised	-	+7.11 %

ORIENTAL INTEREST BHD (5827)

C² Chart

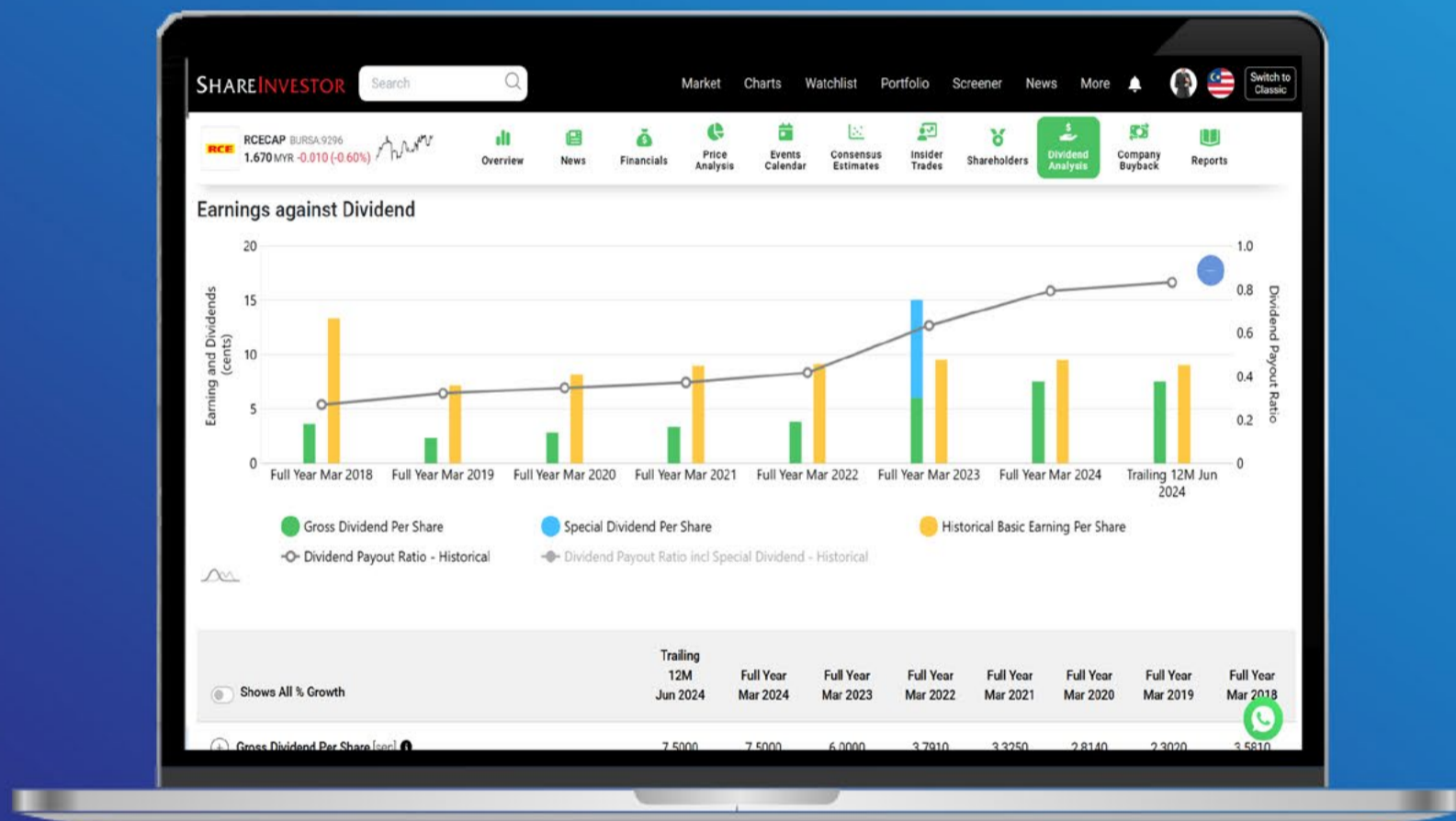
Analysis



Period	Dividend Received	Capital Appreciation	Total Shareholder Return
Short Term Return	5 Days	-0.040	-3.10 %
	10 Days	-	-
	20 Days	-0.030	-2.34 %
Medium Term Return	3 Months	+0.020	+1.63 %
	6 Months	0.200	+21.14 %
	1 Year	0.255	+29.41 %
Long Term Return	2 Years	0.305	+33.32 %
	3 Years	0.355	+36.41 %
	5 Years	0.470	+42.95 %
Annualised Return	Annualised	-	+28.93 %

Disclaimer: The information on this page is provided as a service to readers. It does not constitute financial advice and/or any investment recommendations. Past performance is not indicative of future results. We assume no liability for damages resulting from or arising out of the use of such information. It would be best if you did your own research to make your personal investment decisions wisely or consult a licenced investment advisor.

Tired of low returns? Let's talk high-paying Dividends!



✓ **Top Dividend Picks Right Now**

✓ **Insider Tips** – Advanced strategies for experienced investors

✓ **Easy-to-Follow Tutorial**

Get the most out of dividends, use our Dividend Analysis function –
Click to Watch Our Tutorial Below!

Upgrade Your Dividend Strategy Here



Price & Total Shareholder Return (as at Yesterday)

Fundamental Analysis

DEFINITION: Company is paying out dividend with low or moderate leverage.

CHART GUIDE: Total Shareholder Return (TSR) combines share price appreciation and distributions paid to show the total return to the shareholder expressed as a percentage.



ShareInvestor WebPro > Screener > Market Screener (FA & TA) > select BURSA > add criteria

A. Criteria

- > click Add Criteria
- Fundamental Analysis Conditions tab >select (i) Dividend Yield (Historical)
- Fundamental Analysis Conditions tab >select (ii) Dividend Payout (Historical)
- Fundamental Analysis Conditions tab >select (iii) Total Debt To Equity
- Fundamental Analysis Conditions tab >select (iv) Total Shareholder Returns
- Fundamental Analysis Conditions tab >select (v) Total Shareholder Returns
- Fundamental Analysis Conditions tab / >select (vi) CAGR of Dividend Per Share

• Fundamental Analysis Conditions tab >select (vii) CAGR of Dividend Per Share

B. Conditions (Criteria Filters)

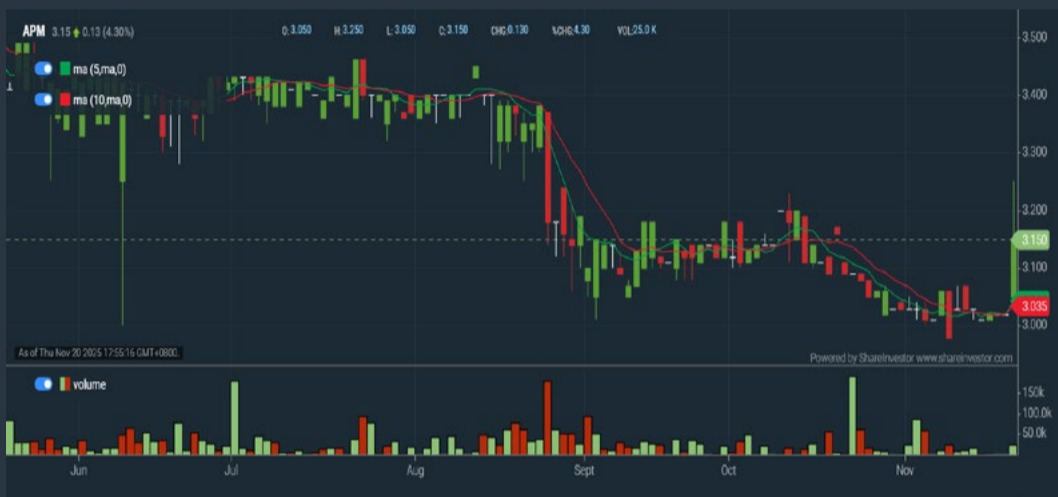
1. Dividend Yield - select (more than) type (1) % for the past select (1) financial year(s)
2. Dividend Payout (Historical) - select (between) type (0.5) to type (1) times for the past select (1) financial year(s)
3. Total Debt to Equity - select (less than) type (1) for the past select (1) financial year(s)
4. Total Shareholder Return - select (more than) type (5) % for the past select (3) financial year(s)
5. Total Shareholder Return - select (more than) type (5) % for the past select (5) financial year(s)

6. CAGR of Dividend Per Share - select (less than) type (30) % for the past select (5) financial year(s)
7. CAGR of Dividend Per Share - select (more than) type (1) % for the past select (5) financial year(s)

- > click Save Template > Create New Template type (Dividend Companies) > click Create
- > click Save Template as > select Dividend Companies > click Save
- > click Screen Now (may take a few minutes)
- > Sort By: Select (Dividend Yield) Select (Desc)
- > Mouse over stock name > Factsheet > looking for Total Shareholder Return

APM AUTOMOTIVE HOLDINGS BHD (5015)

C² Chart



Period	Dividend Received	Capital Appreciation	Total Shareholder Return
Short Term Return	5 Days	+0.120	+3.86%
	10 Days	-0.140	+4.65%
	20 Days	-0.090	+1.84%
Medium Term Return	3 Months	0.070	-3.08%
	6 Months	0.070	-7.74%
	1 Year	0.250	+21.00%
Long Term Return	2 Years	0.450	+56.06%
	3 Years	0.670	+100.00%
	5 Years	0.810	+92.23%
Annualised Return	Annualised	-	+13.96%

DELEUM BHD (5132)

C² Chart



Period	Dividend Received	Capital Appreciation	Total Shareholder Return
Short Term Return	5 Days	-0.050	-4.00%
	10 Days	-0.020	-1.64%
	20 Days	-0.050	-4.00%
Medium Term Return	3 Months	0.040	+18.42%
	6 Months	0.040	+8.00%
	1 Year	0.093	+9.99%
Long Term Return	2 Years	0.170	+34.31%
	3 Years	0.223	+52.50%
	5 Years	0.275	+52.28%
Annualised Return	Annualised	-	+18.56%

GAS MALAYSIA BERHAD (5209)

C² Chart



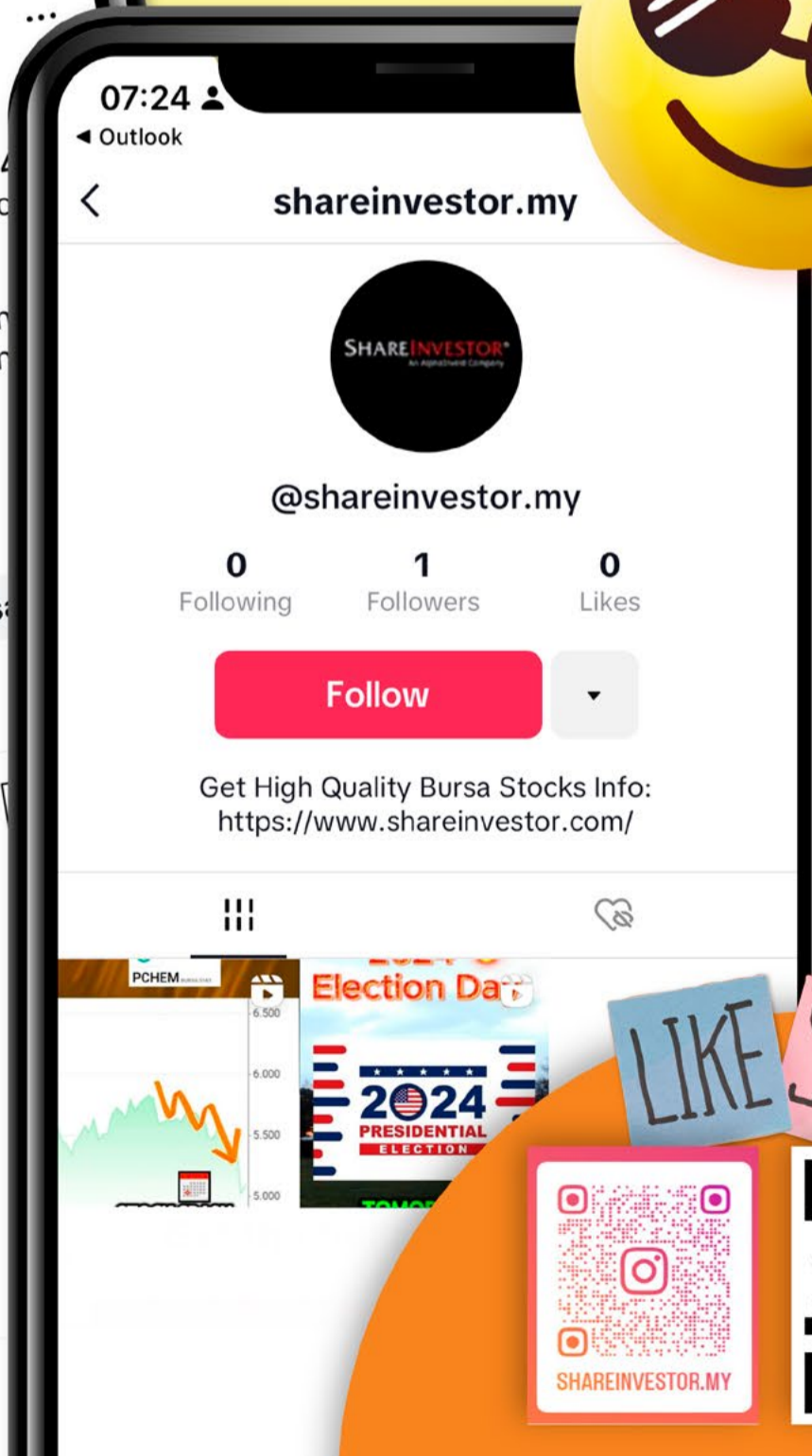
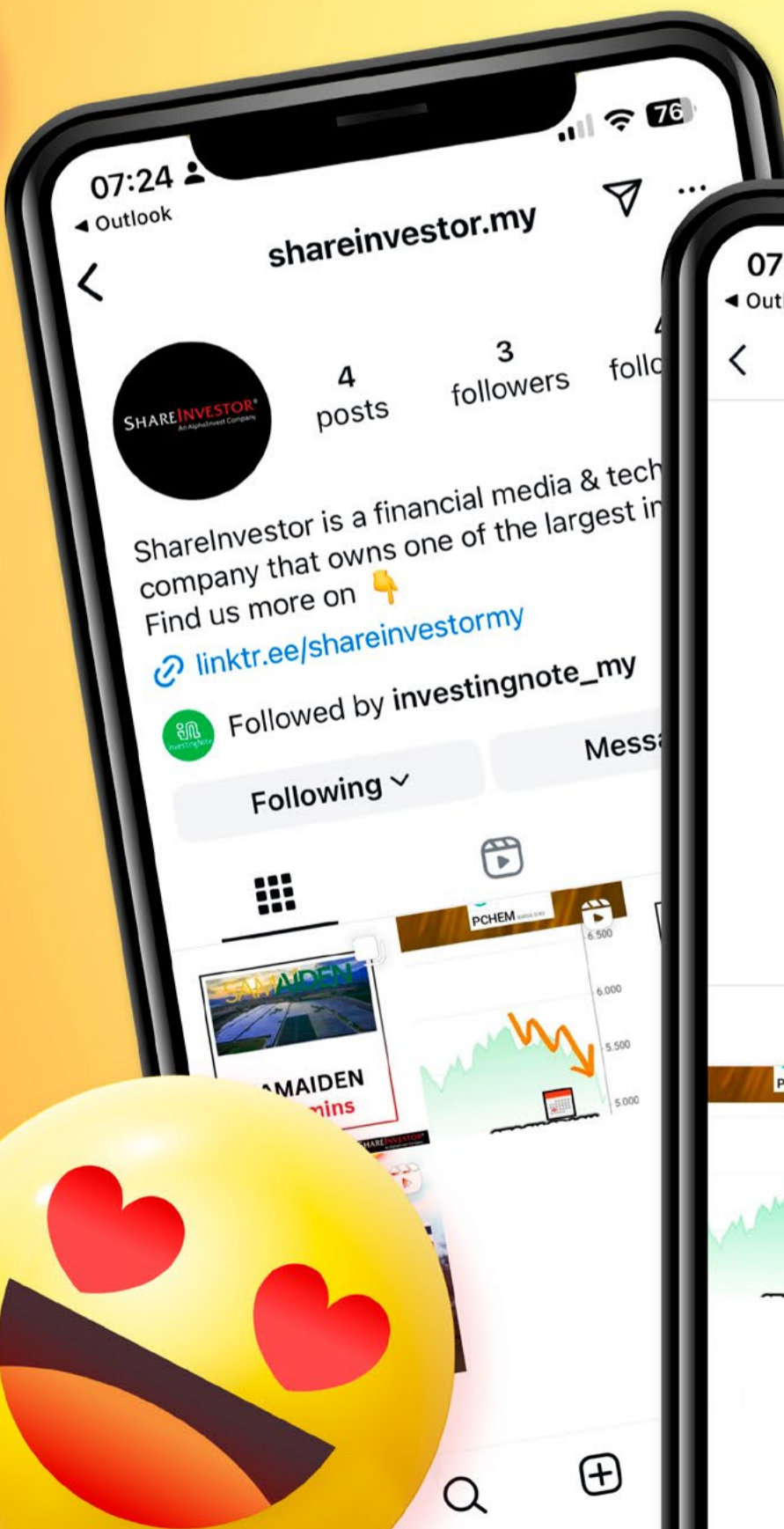
Period	Dividend Received	Capital Appreciation	Total Shareholder Return
Short Term Return	5 Days	-0.020	-0.46%
	10 Days	-0.100	-2.20%
	20 Days	-0.000	-1.99%
Medium Term Return	3 Months	0.000	+4.65%
	6 Months	0.163	+8.82%
	1 Year	0.259	+20.80%
Long Term Return	2 Years	0.492	+54.12%
	3 Years	0.710	+89.94%
	5 Years	1.062	+102.23%
Annualised Return	Annualised	-	+15.13%

Disclaimer: The information on this page is provided as a service to readers. It does not constitute financial advice and/or any investment recommendations. Past performance is not indicative of future results. We assume no liability for damages resulting from or arising out of the use of such information. It would be best if you did your own research to make your personal investment decisions wisely or consult a licenced investment advisor.

SHAREINVESTOR[®]
An AlphaInvest Company

We're Officially on TikTok & Instagram!

Follow us now for more information!



LIKE SHARE



Week: 14 Nov - 20 Nov 2025

More Brokers' Call 

AmInvestment Bank <small>... See More</small>	Call	Target Price	Release Date
Lianson Fleet Group Berhad (5255)	BUY	RM3.00	19 Nov 25
Southern Score Builders Berhad (0045)	BUY	RM0.80	19 Nov 25
Apex Securities <small>... See More</small>	Call	Target Price	Release Date
CBH Engineering Holding Berhad (0339)	HOLD	RM0.47	20 Nov 25
Samaiden Group Berhad (0223)	HOLD	RM1.42	20 Nov 25
Solarvest Holdings Berhad (0215)	BUY	RM3.55	20 Nov 25
Hong Leong Investment Bank <small>... See More</small>	Call	Target Price	Release Date
Aeon Co. (M) Berhad (6599)	BUY	RM1.72	20 Nov 25
Solarvest Holdings Berhad (0215)	BUY	RM3.66	20 Nov 25
Kenanga <small>... See More</small>	Call	Target Price	Release Date
Solarvest Holdings Berhad (0215)	OUTPERFORM	RM3.45	20 Nov 25
TSH Resources Berhad (9059)	OUTPERFORM	RM1.55	20 Nov 25
Malacca Securities <small>... See More</small>	Call	Target Price	Release Date
BMS Holdings Berhad (0385)	NOT RATED	RM0.25	19 Nov 25
LGMS Berhad (0249)	BUY	RM0.93	19 Nov 25
MIDF <small>... See More</small>	Call	Target Price	Release Date
Aeon Co. (M) Berhad (6599)	BUY	RM1.66	20 Nov 25
Eco World Development Group Berhad (8206)	NEUTRAL	RM2.22	20 Nov 25
Public Investment Bank <small>... See More</small>	Call	Target Price	Release Date
Geohan Corporation Berhad (5345)	BUY	RM0.65	20 Nov 25
MGB Berhad (7595)	OUTPERFORM	RM0.78	20 Nov 25
SD Guthrie Berhad (5285)	NEUTRAL	RM5.88	20 Nov 25
UOB Kay Hian <small>... See More</small>	Call	Target Price	Release Date
Ge-Shen Corporation Berhad (7197)	BUY	RM1.79	19 Nov 25
Hup Seng Industries Berhad (5024)	BUY	RM1.28	19 Nov 25

DEFINITION: Top 10 stocks with Technical Analysis plus Pattern Matching by 60 pre-defined indicators by the system showing a higher probability of bullish sentiment on the share price.



ShareInvestor WebPro > Screener > Predefined TA Screens > select market BURSA > Most Long Signals > click Scan Results or mouse over each company

PARAGON UNION BHD (9407.MY)

PARAGON

Price updated at 20 Nov 2025 17:31

Last: 3.180	Change: -	Volume: 14,753
	Change (%): -	Range: 3.150 - 3.190

TA Scanner Results based on historical data up to 20 Nov 2025

Condition	Signal	Explanation
Bollinger Band: High Above Upper Bollinger Band	Neutral	"1. High above upper bollinger band(14,2). 2. Average volume(5) is above 100,000."
Price: New 52 Week High	Long	"1. Stock reach a new 52 week high. 2. Average volume(30) is above 50000."
Stochastic: Fast Stochastic Sell Signal	Short	"1. Fast Stochastic(15,5) %K crossed below 80. 2. Fast Stochastic(15,5) %K 1 day ago was above 80 for the last 5 days. 3. Average volume(30) is above 50000"
Volume: 10 Days large value Buy Up trade	Long	"1. 150K value Buy Up greater than Sell Down by 20% for 10 days. 2. 50K-100K value Buy Up greater than Sell Down by 20% for 10 days. 3. Average volume(10) is above 1000000"
Volume: 5 Days large value Buy Up trade	Long	"1. 150K value Buy Up greater than Sell Down by 20% for 5 days. 2. 50K-100K value Buy Up greater than Sell Down by 20% for 5 days. 3. Average volume(10) is above 1000000"
Volume: Consecutive Days Of Increasing Average Volume	Long	"1. Average Volume(20) has been increasing over the last 2 weeks. 2. Average volume(20) is above 100000"

TANCO HOLDINGS BHD (2429.MY)

TANCO

Price updated at 20 Nov 2025 17:31

Last: 1.030	Change: +0.020	Volume: 598,251
	Change (%): +1.98	Range: 1.010 - 1.040

TA Scanner Results based on historical data up to 20 Nov 2025

Condition	Signal	Explanation
Accumulation Distribution: Bullish Accumulation Distribution	Long	Accumulation distribution increasing for the last 7 days
Bollinger Band: High Above Upper Bollinger Band	Neutral	"1. High above upper bollinger band(14,2). 2. Average volume(5) is above 100,000."
CCI: Bearish CCI Overbought And Reversing	Short	"1. CCI(26) above 100 and CCI(26) 1 day ago increasing for the last 3 days. 2. CCI(26) below CCI(26) 1 day ago"
Price: Consecutive Days Gains	Long	"1. Close price has been increasing over the last 5 days. 2. Average volume(5) above 100,000."
Volume: 10 Days large value Buy Up trade	Long	"1. 150K value Buy Up greater than Sell Down by 20% for 10 days. 2. 50K-100K value Buy Up greater than Sell Down by 20% for 10 days. 3. Average volume(10) is above 1000000"
Volume: 5 Days large value Buy Up trade	Long	"1. 150K value Buy Up greater than Sell Down by 20% for 5 days. 2. 50K-100K value Buy Up greater than Sell Down by 20% for 5 days. 3. Average volume(10) is above 1000000"
Williams %R: Bearish Williams %R	Short	"1. Williams %R(26) between 0 and -20. 2. Average volume(5) is above 100,000."

SSF HOME GROUP BERHAD (0287.MY)

SSF

Price updated at 20 Nov 2025 17:30

Last: 0.405	Change: -	Volume: 56,551
	Change (%): -	Range: 0.400 - 0.410

TA Scanner Results based on historical data up to 20 Nov 2025

Condition	Signal	Explanation
Bollinger Band: Bullish Long Term Volatility Breakout and Trending	Long	"1. Close price above upper bollinger band(33,1). 2. Volume above average volume(50). 3. Average volume(50) is above 300,000."
Candlestick: Bullish Engulfing	Long	Bullish: Engulfing
Volume: 10 Days large value Buy Up trade	Long	"1. 150K value Buy Up greater than Sell Down by 20% for 10 days. 2. 50K-100K value Buy Up greater than Sell Down by 20% for 10 days. 3. Average volume(10) is above 1000000"
Volume: 5 Days large value Buy Up trade	Long	"1. 150K value Buy Up greater than Sell Down by 20% for 5 days. 2. 50K-100K value Buy Up greater than Sell Down by 20% for 5 days. 3. Average volume(10) is above 1000000"
Williams %R: Bearish Williams %R	Short	"1. Williams %R(26) between 0 and -20. 2. Average volume(5) is above 100,000."

OASIS HOME HOLDING BERHAD (0357.MY)

OHM

Price updated at 20 Nov 2025 17:30

Last: 0.330	Change: +0.005	Volume: 13,821
	Change (%): +1.54	Range: 0.330 - 0.340

TA Scanner Results based on historical data up to 20 Nov 2025

Condition	Signal	Explanation
Bollinger Band: Bullish Long Term Volatility Breakout and Trending	Long	"1. Close price above upper bollinger band(33,1). 2. Volume above average volume(50). 3. Average volume(50) is above 300,000."
Bollinger Band: Bullish Short Term Volatility Breakout and Trending	Long	"1. Close price above upper bollinger band(33,1). 2. Volume above average volume(10). 3. Average volume(10) is above 300,000."
Bollinger Band: High Above Upper Bollinger Band	Neutral	"1. High above upper bollinger band(14,2). 2. Average volume(5) is above 100,000."
Chaikin Volatility: Increasing Chaikin Volatility	Neutral	Chaikin Volatility(10,10) has been increasing for 5 days
DM: Bullish Directional Movement	Long	-DI(14) crossed below +DI(14)
Donchian Channels: High Above Upper Donchian Channels	Long	High crossed above the upper Donchian Channel(14,4)
Volume: Volume Spike	Long	"1. Volume is more than 500% above average volume(10). 2. Volume above 200000. 3. Close price above 0.10"
Williams %R: Bearish Williams %R	Short	"1. Williams %R(26) between 0 and -20. 2. Average volume(5) is above 100,000."

Disclaimer: The information on this page is provided as a service to readers. It does not constitute financial advice and/or any investment recommendations. Past performance is not indicative of future results. We assume no liability for damages resulting from or arising out of the use of such information. It would be best if you did your own research to make your personal investment decisions wisely or consult a licenced investment advisor.



WILLOWGLEN MSC BHD
(0008.MY)

WILLOW

Price updated at 20 Nov 2025 17:31

Last: 0.280	Change: -0.030	Volume: 32,359
	Change (%): -9.68	Range: 0.280 - 0.300

TA Scanner Results based on historical data up to 20 Nov 2025

Condition	Signal	Explanation
Bollinger Band: Bullish Long Term Volatility Breakout and Trending	Long	"1. Close price above upper bollinger band(33,1). 2. Volume above average volume(50). 3. Average volume(50) is above 300,000."
Bollinger Band: Bullish Short Term Volatility Breakout and Trending	Long	"1. Close price above upper bollinger band(33,1). 2. Volume above average volume(10). 3. Average volume(10) is above 300,000."
Bollinger Band: High Above Upper Bollinger Band	Neutral	"1. High above upper bollinger band(14,2). 2. Average volume(5) is above 100,000."
Donchian Channels: High Above Upper Donchian Channels	Long	High crossed above the upper Donchian Channel(14,4)
Volume: Volume Spike	Long	"1. Volume is more than 500% above average volume(10). 2. Volume above 200000. 3. Close price above 0.10"



ARTRONIQ BERHAD (0038.MY)

ARTRONIQ

Price updated at 20 Nov 2025 17:30

Last: 0.120	Change: +0.015	Volume: 185,679
	Change (%): +14.29	Range: 0.105 - 0.125

TA Scanner Results based on historical data up to 20 Nov 2025

Condition	Signal	Explanation
Bollinger Band: Bullish Long Term Volatility Breakout and Trending	Long	"1. Close price above upper bollinger band(33,1). 2. Volume above average volume(50). 3. Average volume(50) is above 300,000."
Bollinger Band: Bullish Short Term Volatility Breakout and Trending	Long	"1. Close price above upper bollinger band(33,1). 2. Volume above average volume(10). 3. Average volume(10) is above 300,000."
Bollinger Band: High Above Upper Bollinger Band	Neutral	"1. High above upper bollinger band(14,2). 2. Average volume(5) is above 100,000."
MA: Short Term Bullish Moving Average Crossover	Long	MA(10) crossed above MA(15) within the last 1 day.
MACD: Bullish MACD Crossover	Long	"1. MACD(12,26) diff line crossed above the MACD(12,26) signal line. 2. MACD Histogram(12,26) is above 0."
Parabolic SAR: Bearish Parabolic SAR Reversal	Neutral	"1. Parabolic SAR 1 day ago above close price 1 day ago for the last 5 days. 2. Parabolic SAR below close price"
Price: New 52 Week High	Long	"1. Stock reach a new 52 week high. 2. Average volume(30) is above 50000."



SENI JAYA CORPORATION BHD
(9431.MY)

SJC

Price updated at 20 Nov 2025 17:31

Last: 0.430	Change: -	Volume: 71,383
	Change (%): -	Range: 0.425 - 0.445

TA Scanner Results based on historical data up to 20 Nov 2025

Condition	Signal	Explanation
RSI: Short Term RSI 50 Bullish Crossover	Long	"1. RSI(20) crossed above 50 within the last 1 day and RSI(20) 1 day ago below 50 for the last 5 days. 2. Volume above average volume(125). 3. Average volume(5) is above 100,000."
Volume: 10 Days large value Buy Up trade	Long	"1. 150K value Buy Up greater than Sell Down by 20% for 10 days. 2. 50K-100K value Buy Up greater than Sell Down by 20% for 10 days. 3. Average volume(10) is above 1000000"
Volume: 5 Days large value Buy Up trade	Long	"1. 150K value Buy Up greater than Sell Down by 20% for 5 days. 2. 50K-100K value Buy Up greater than Sell Down by 20% for 5 days. 3. Average volume(10) is above 1000000"
Volume: Consecutive Days Of Increasing Average Volume	Long	"1. Average Volume(20) has been increasing over the last 2 weeks. 2. Average volume(20) is above 100000"



UNISEM (M) BHD (5005.MY)

UNISEM

Price updated at 20 Nov 2025 17:31

Last: 3.340	Change: +0.160	Volume: 9,763
	Change (%): +5.03	Range: 3.200 - 3.350

TA Scanner Results based on historical data up to 20 Nov 2025

Condition	Signal	Explanation
Bollinger Band: Low Below Lower Bollinger Band	Neutral	"1. Low below lower bollinger band(14,2). 2. Average volume(5) is above 100,000."
CCI: Bullish CCI Oversold And Reversing	Long	"1. CCI(26) below -100 and CCI(26) 1 day ago decreasing for the last 3 days. 2. CCI(26) above CCI(26) 1 day ago"
MACD: Oversold	Long	"1. MACD Histogram(12,26,9) reached a new 6 month low. 2. MACD Histogram(12,26,9) has been below 0 for the last 3 weeks."
Price: Consecutive Days Loss	Short	"1. Close price has been decreasing over the last 5 days. 2. Average volume(5) is above 100,000."
Volume: 10 Days large value Buy Up trade	Long	"1. 150K value Buy Up greater than Sell Down by 20% for 10 days. 2. 50K-100K value Buy Up greater than Sell Down by 20% for 10 days. 3. Average volume(10) is above 1000000"
Williams %R: Bullish Williams %R	Long	"1. Williams %R(26) between -80 and -100. 2. Average volume(5) is above 100,000."

Disclaimer: The information on this page is provided as a service to readers. It does not constitute financial advice and/or any investment recommendations. Past performance is not indicative of future results. We assume no liability for damages resulting from or arising out of the use of such information. It would be best if you did your own research to make your personal investment decisions wisely or consult a licenced investment advisor.

CHECK OUT
SHAREINVESTOR
BROKERS' CALL

Weekly Buy/Sell/Hold calls from leading Malaysian Brokerages.

[Go To Brokers' Call](#)

TOYO VENTURES HOLDINGS BERHAD (7173.MY)

AHB HOLDINGS BHD (7315.MY)

TOYOVEN

Price updated at 20 Nov 2025 17:31

Last: 0.295	Change: -0.020	Volume: 5,664
	Change (%): -6.35	Range: 0.295 - 0.315

TA Scanner Results based on historical data up to 20 Nov 2025

Condition	Signal	Explanation
Bollinger Band: High Above Upper Bollinger Band	Neutral	"1. High above upper bollinger band(14,2). 2. Average volume(5) is above 100,000."
Candlestick: Bullish Engulfing	Long	Bullish: Engulfing
DM: Bullish Directional Movement	Long	-DI(14) crossed below +DI(14)
Donchian Channels: High Above Upper Donchian Channels	Long	High crossed above the upper Donchian Channel(14,4)
MA: Bullish Price Crossover	Long	"1. Close price crossed above MA(40) within the last 1 day. 2. Previous day close price is below the MA(10) for the last 5 days"
MACD: Bullish MACD Crossover	Long	"1. MACD(12,26) diff line crossed above the MACD(12,26) signal line. 2. MACD Histogram(12,26) is above 0."
RSI: Short Term RSI 50 Bullish Crossover	Long	"1. RSI(20) crossed above 50 within the last 1 day and RSI(20) 1 day ago below 50 for the last 5 days. 2. Volume above average volume(125). 3. Average volume(5) is above 100,000."
Volume: Volume Spike	Long	"1. Volume is more than 500% above average volume(10). 2. Volume above 200000. 3. Close price above 0.10"

AHB

Price updated at 20 Nov 2025 17:31

Last: 0.030	Change: -0.005	Volume: 173,365
	Change (%): -14.29	Range: 0.030 - 0.035

TA Scanner Results based on historical data up to 20 Nov 2025

Condition	Signal	Explanation
Bollinger Band: Bullish Lower Bollinger Band Support	Long	"1. Low 1 day ago below lower bollinger band(20,2). 2. Close above close 1 day ago. 3. Average volume(5) is above 100,000."
Bollinger Band: High Above Upper Bollinger Band	Neutral	"1. High above upper bollinger band(14,2). 2. Average volume(5) is above 100,000."
Bollinger Band: Low Below Lower Bollinger Band	Neutral	"1. Low below lower bollinger band(14,2). 2. Average volume(5) is above 100,000."
Historical Volatility: Decreasing Historical Volatility	Neutral	Historical Volatility(100,365) decreasing for the last 10 days
MA: Short Term Bullish Moving Average Crossover	Long	MA(10) crossed above MA(15) within the last 1 day.
MACD: Bullish MACD Crossover	Long	"1. MACD(12,26) diff line crossed above the MACD(12,26) signal line. 2. MACD Histogram(12,26) is above 0."
Parabolic SAR: Bearish Parabolic SAR Reversal	Neutral	"1. Parabolic SAR 1 day ago above close price 1 day ago for the last 5 days. 2. Parabolic SAR below close price"
RSI: Short Term RSI 50 Bullish Crossover	Long	"1. RSI(20) crossed above 50 within the last 1 day and RSI(20) 1 day ago below 50 for the last 5 days. 2. Volume above average volume(125). 3. Average volume(5) is above 100,000."

Disclaimer: The information on this page is provided as a service to readers. It does not constitute financial advice and/or any investment recommendations. Past performance is not indicative of future results. We assume no liability for damages resulting from or arising out of the use of such information. It would be best if you did your own research to make your personal investment decisions wisely or consult a licenced investment advisor.



Learn how to identify Hot Stocks using Technical Analysis (TA) and Fundamental Analysis (FA)

SIGN UP FOR Invest NOW IT'S FREE!!!

[Click here](#)

Scan me



Via email, every Friday.

Get market moving news and analyses. Regular columns include **Behind The Action** and **From The Observer**

- Leaderboard • Shariah Hot Stocks • Shariah Momentum Up Stocks • Non Shariah Hot Stocks • Up Trending Stocks • Growth Stocks • Dividend Stocks • Long Companies • Insider Activity • Investor Relations • Regional Markets





Dato' Eu Hong Chew
Former Group CEO i-Berhad
Non-Executive Director

He has been associated with the Sumurwang Group for many years charting the path for its manufacturing arm, firstly under Dreamland Holdings Berhad and the subsequent acquisition of I-Berhad.

Before that, he was with PA Management Consulting for a decade where he was the Director of Studies for the Cranfield PA MBA Programme in Malaysia.

Educated at the Royal Military College, Dato' Eu has an engineering degree from the University of Glasgow, and a MBA from the University of Bradford, UK.

Khind: When Growth Fades but Value Remains

SUMMARY

- Established in 1961, KHIND (**Bursa:7062**) has grown into a global Malaysian brand operating mainly in the Trading and Manufacturing segments. The Trading segment dominates, contributing 96% of 2023 revenue, with Malaysia accounting for 61%.
- Revenue grew at a 5.1% CAGR over the past 12 years, driven mainly by pandemic-era e-commerce gains in 2020–2021. Post-pandemic, revenue and margins weakened, and 2023 profits fell below 2012 levels, though long-term ROIC and ROE averaged around 8%, above the cost of funds.
- Margins have been under pressure, but KHIND has improved capital efficiency and cash generation compared to its peers. Among peers, it ranks high in Return on Capital, Free Cash Flow Margin, and EPS, though its EBIT margin has declined.

Disclaimer: This article is written for informational purposes only. It does not constitute a solicitation, offer, advice, counseling or recommendation to buy or sell. As such it is not intended to promote the purchase of shares in any way. As a reminder, any type of asset has a risk factor and needs to be evaluated from multiple perspectives. Therefore, any investment decision and the associated risk remains with the investor. The views expressed here are entirely the writer's own.

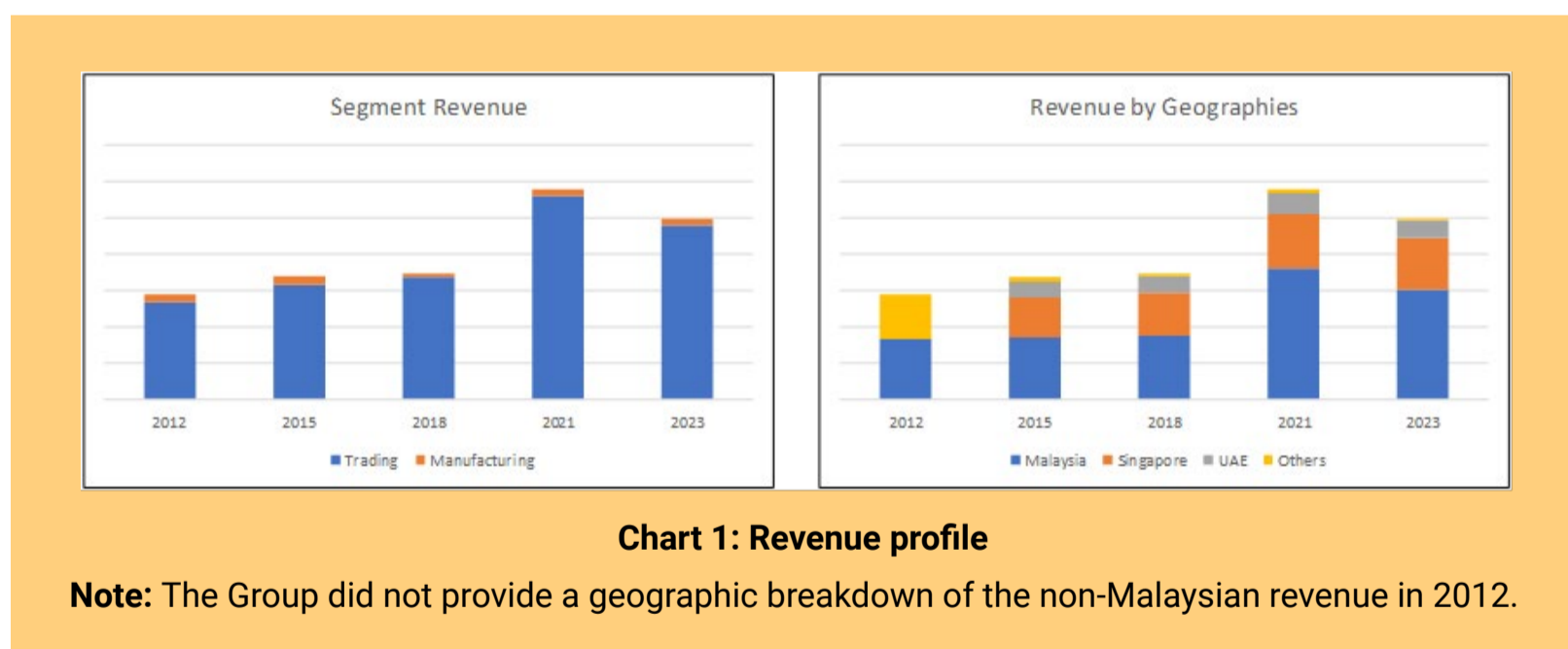
BACKGROUND

Established in 1961, KHIND began as a small electrical appliance repair shop and has since evolved into a successful Malaysian brand with a presence in more than 58 countries worldwide.

KHIND's operations are organized into two main business segments:

- **Trading** - This segment covers the trading of electrical home consumer appliances. Products are distributed primarily through outright sales to dealers, departmental and chain stores, supermarkets, and e-commerce platforms. The Group also operates its own Rent-to-Own (R2O) channel.
- **Manufacturing** - KHIND manufactures its flagship products - such as fans, rechargeable emergency lamps, and small appliances - at its facility in Sekinchan, Selangor.

The Trading segment is the Group's largest revenue contributor, accounting for 96% of total revenue in 2023. The business remains predominantly domestic, with Malaysia contributing approximately 61% of Group revenue in 2023. **(Refer to Chart 1)**



OPERATING PERFORMANCE

Over the past 12 years, KHIND's revenue grew at a CAGR of 5.1%. However, most of this growth was concentrated in 2020 and 2021, when the company achieved double-digit annual increases.

According to management, this surge was largely driven by the Group's successful e-commerce strategy, which benefited from the

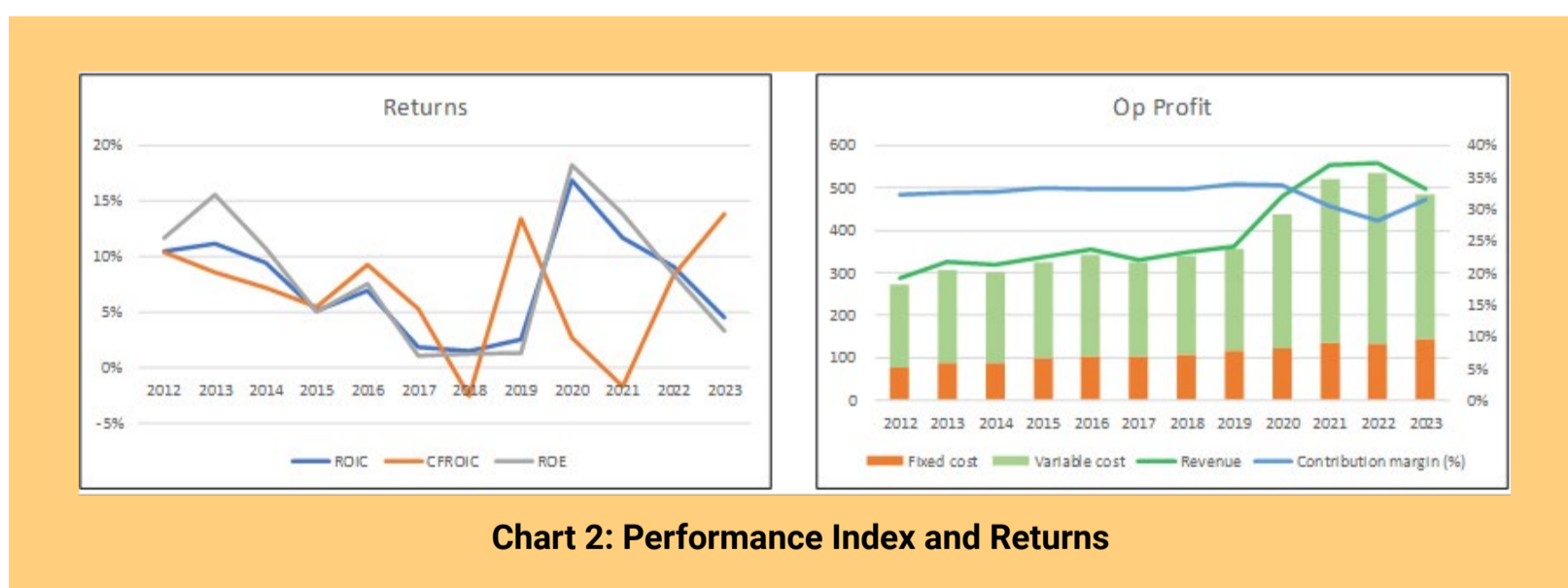
COVID-19 lockdowns. As economic activities resumed and mobility restrictions eased, revenue growth weakened. In fact, 2023 revenue declined compared to 2022.

While revenue expanded from 2020 to 2022, gross profit margins trended downward. Fortunately, this was partially offset by a decline in Selling, General and Administrative expenses as a percentage of revenue.

In summary, KHIND’s strong revenue growth during 2020-2021 was largely the result of a temporary tailwind - the combination of its e-commerce push and the “stay-at-home” effect of the pandemic. With the return to normalcy, this momentum has dissipated, and sustained double-digit growth is unlikely moving forward.

Although revenue increased over the long term, profit performance tells a different story. Profits declined from 2013 to 2019, rebounded briefly during the pandemic years, and then fell again, leaving 2023 profits below 2012 levels.

Reflecting this trend, returns have been volatile (**see Chart 2, left**). Over the past 12 years, ROIC and ROE averaged around 8%, which nonetheless exceeded the Group’s cost of funds. This indicates that, despite fluctuations, KHIND has managed to generate positive shareholder value over the long run.



Beyond revenue growth, another area of concern is the persistent decline in margins over the past several years. Gross profit margins have trended downward, which in turn led to a deterioration in the contribution margin (**see right side of Chart 2**).

**Please refer to the disclaimer on first page and last page.*

There appeared to be a modest margin recovery in 2023, but its sustainability remains uncertain. To assess this, I examined several operating and capital efficiency metrics.

- **Operating efficiencies:** Although inventory turnover improved from 2020 to 2023, there were no clear upward trends in the other three operating efficiency indicators.
- **Capital efficiencies:** Capital and asset turnover ratios showed little change during the same period, while the cash conversion cycle worsened. On a positive note, there was an improvement in the reinvestment margin.

Taken together, these metrics suggest no convincing evidence of a sustained turnaround in margin performance.

To its credit, the Group has recognized these challenges and has initiated several efficiency and cost optimization measures. While these initiatives indicate management’s commitment to enhancing productivity, it remains to be seen whether they will translate into lasting improvements in profitability and margins.

PEER COMPARISON

I compared Khind's performance with 3 other Bursa appliance companies, as shown in **Table 1**. You can see that Khind is one of the larger companies in terms of 2023 revenue. It also had one of the better revenue growth rates over the past 12 years. The low growth rates experienced by the peers suggest that this is a mature sector.

Company	Revenue	
	2023 RM m	2012 to 2023 CAGR %
Khind	499	5.1%
Fiamma	486	5.9%
Pensonic (PENSONI)	273	-2.2%
Panasonic Malaysia (PANAMY)	992	1.7%

Table 1: Peer Revenue

To assess KHIND's performance relative to its peers, I examined trends across four key metrics.

- Return on Capital - excellent improvement. KHIND initially recorded only average returns on capital. However, since 2020, it has shown strong improvement, achieving one of the best, if not the best, returns among its peers.
- EBIT Margin - average, with recent decline. Although margins improved from 2020 onwards, they have weakened in recent years, falling below the 2012 level by 2023. This reversal warrants attention.
- Levered Free Cash Flow Margin - best in class. Over the past few years, KHIND's levered free cash flow margin has strengthened significantly, making it the top performer among its peers in 2023.
- Earnings per Share (EPS) - strong performance. KHIND has emerged as a top performer among local companies in terms of EPS growth and consistency.

In summary, KHIND has made notable progress in capital efficiency and cash generation, underscoring management's focus on long-term value creation. However, the recent decline in EBIT margin remains a concern, suggesting some pressure on operating profitability. Even so, the Group's solid EPS performance continues to highlight its competitive standing in the local market.

FINANCIAL POSITION

I would rate Khind as financially sound:

- As of Jun 2025, it had RM56 million in cash. This is equal to 15% of its total assets.
- It had a Debt Equity ratio of 0.51 as of Jun 2024. This has come down from its 2012 high of 0.74.
- Over the past 12 years, it generated positive cash flow from operations for 10 out of the 12 years. During this period, it generated RM135 million cash flow from operations compared

to the total PAT of RM137 million. This is a reasonable cash flow conversion ratio.

- From 2013 to 2024, it had a 23% Reinvestment rate. I defined Reinvestment rate = Reinvestment/NOPAT and Reinvestment = CAPEX + Acquisition – Depreciation & Amortization + increase in Net Working Capital. This meant that the company had sufficient funds to return to shareholders.
- It has a good capital allocation track record. **Refer to Table 2.** A big part of the cash flow from operations was used to reduce debt, pay dividends, and build up its cash position.

Item	Sources RM m	Uses RM m
Cash flow from Ops	135	
New shares	5	
Net Debt		40
Acquisitions		4
Net CAPEX		2
Dividends		27
Buybacks		0
Misc		67
Total	141	141

Table 2: Sources and Uses of Funds 2012 to 2023

VALUATION

In valuing Khind, I adopted the following picture:

I assumed that this is a mature company in a mature sector. Revenue growth would follow the long-term GDP growth rate of 4%.

The base revenue was derived from the 2023 revenue based on the best-fit logarithmic line for the past 12 years' revenue. This will smooth the "random" component of the annual revenue.

There would not be any improvement in the operating and capital efficiency. Given the bigger role of e-commerce from 2020, I assumed the 2020 to 2023 operating and capital efficiencies as the long-term ones.

On such a basis, I obtained an intrinsic value of RM3.67 per share compared to its market price of RM1.94 per share (as of end March

2025). You can see that there is more than 30% margin of safety. Refer to the original article for details of the valuation.

CONCLUSION

KHIND has evolved from a small repair shop into a resilient Malaysian brand with global reach. Its strong revenue growth during 2020 to 2021 was largely driven by temporary pandemic-related tailwinds, and performance has since normalized.

The Group's returns on capital and cash flow generation have improved, supported by prudent financial management and a healthy balance sheet. However, declining EBIT margins and uneven profitability remain key challenges. Management's ongoing efficiency initiatives reflect awareness, but their impact will take time to show.

Assuming modest growth consistent with Malaysia's GDP and stable efficiency levels, KHIND's intrinsic value of RM3.67 per share implies over 30% margin of safety.

Overall, KHIND is a financially sound, value-oriented company offering potential upside for long-term investors, provided it can sustain operational improvements and restore profitability momentum.

I am a long-term value investor who has held onto stocks for more than 5 years. My analysis and valuation are from such a perspective. I consider quarterly results "noisy" and focus on long-term trends.

This article was derived from a detailed analysis, emphasizing the intersection of business performance and valuation metrics, which was first published on i4value as "[Is Khind an investment opportunity?](#)" Refer to the article for further insights on its investment risk vs business performance.

Disclaimer: This article is written for informational purposes only. It does not constitute a solicitation, offer, advice, counseling or recommendation to buy or sell. As such it is not intended to promote the purchase of shares in any way. As a reminder, any type of asset has a risk factor and needs to be evaluated from multiple perspectives. Therefore, any investment decision and the associated risk remains with the investor. The views expressed here are entirely the writer's own.

UNLOCK THE SECRET OF WEALTH

DO YOU REALLY WANT TO MASTER VALUE INVESTING



SEE HOW TO GET HIGHER RETURNS WITH LOWER RISK



Breguet wins the “Aiguille d’Or” Grand Prix

At the Grand Prix d’Horlogerie de Genève (GPHG), Breguet was awarded the “Aiguille d’Or” Grand Prix for its Classique Souscription 2025 timepiece. This prize rewards the best overall timepiece among all categories (Best in Show), also deemed the most representative of the watch industry as a whole. It is the most prestigious award.




GPHG
GRAND PRIX D’HORLOGERIE DE GENÈVE
— 2025 —
“AIGUILLE D’OR”
GRAND PRIX

The Classique Souscription 2025, the first piece unveiled to celebrate Breguet's 250th anniversary, pays tribute to the visionary spirit of Abraham-Louis Breguet. Inspired by the Souscription watch designed in the late 18th century, it embodies a renewal infused with apparent simplicity. This single-hand model faithfully translates a historic pocket watch into a wristwatch format. Its movement architecture draws inspiration from Souscription calibres and the tact watch, while its aesthetics remain true to the original codes — a satin-brushed case middle, chev  glass, grand feu enamel dial, secret signature and blued hand done by hand. The caseback is adorned with the exclusive Quai de l'Horloge guilloch  pattern and an engraving featuring the founder's own words on the conception of the movement.

Gregory Kissling, CEO of Breguet said, "Receiving the "Aiguille d'Or" Grand Prix at the GPHG is an incredible honour for Breguet, which this year celebrates 250 years of uninterrupted watchmaking excellence. This award not only celebrates our Classique Souscription 2025, but above all the work, passion, and dedication of all our colleagues who bring the Maison to life every day. Their commitment, expertise, and high standards lie at the heart of Breguet. To each and every one of them, I express my deepest gratitude. This distinction belongs to them as much as it does to the brand."

To discover the Classique Souscription 2025 and the history of Breguet, [click this link.](#)



Global GDP growth slowing to 2.5% in 2026, 2.6% in 2027 - Moody's Analytics

According to Moody's Analytics Inc, the global GDP growth will slow to 2.5% in 2026 and 2.6% in 2027, from an estimated 2.7% in 2025 and growth of 2.8% in 2024, attributing it to slowing trade and investment.

In a statement, Stefan Angrick, head of Japan and frontier markets economics in Moody's Analytics, noted that annual US growth will average less than 2% from 2025 to 2027, far off the near 3% pace of 2024.

Europe and Asia will stumble as exports weaken. Fiscal policy will help put a floor under growth in Europe. Policymakers in Asia will be more reluctant to offer support. China's GDP growth will slow to just under 4.5% in 2026, from an estimated 4.9% in 2025. Furthermore, recent trade deals deliver short-term relief but will leave key disputes unresolved.

Moody's Analytics' baseline assumes no escalation in trade frictions. However, periodic flare-ups followed by temporary resolutions are likely to fuel a persistent undercurrent of uncertainty. Advanced economies in America's orbit, already squeezed by Chinese competition (and higher energy costs in Europe's case), are the most exposed. Although the latest updates to US tariff settings will bring some relief, duties will still hurt.

He also noted that export-led growth is the backbone of many Asian economies, a pattern the pandemic only reinforced. But currency movements are cushioning the blow from US tariffs. Asia-Pacific currencies have sunk well below their pre-pandemic averages. The yen has fallen more than 30% since 2019.

He observed that most EU economies face duties similar to those imposed on developed Asian economies, but the euro has strengthened rather than weakened, adding to the drag from tariffs.



Learn how to identify Hot Stocks using Technical Analysis (TA) and Fundamental Analysis (FA)

SIGN UP FOR Invest NOW IT'S FREE!!!

[Click here](#)

Scan me



Via email, every Friday.

Get market moving news and analyses. Regular columns include **Behind The Action** and **From The Observer**

- Leaderboard • Shariah Hot Stocks • Shariah Momentum Up Stocks • Non Shariah Hot Stocks • Up Trending Stocks • Growth Stocks • Dividend Stocks • Long Companies • Insider Activity • Investor Relations • Regional Markets



CPO prices to rebound towards RM4,500 per tonne amid festive demand, output slowdown - MPOC

According to Malaysian Palm Oil Council (MPOC), crude palm oil (CPO) prices are expected to find strong support at RM4,100 to RM4,200 per tonne in December 2025, and could trend higher towards RM4,500 per tonne.

The projection is driven by stable import demand ahead of the Chinese New Year and Ramadan, while Indonesia's policy uncertainty continues to lend support to palm oil prices.

In a statement, the MPOC stated market reports suggest that the Indonesian government may adjust export duties to secure sufficient domestic feedstock. The timing of Indonesia's shift to a higher biodiesel mandate - whether B45 or B50 - remains a key swing factor influencing exportable supplies in 2026.

Malaysia's palm oil production surged by 11% to 203,000 tonnes in October, marking the highest monthly output in a decade. Sabah led the growth with a month-on-month increase of 19.5%

to 72,000 tonnes, followed by Sarawak, up 14.6% at 61,000 tonnes, and Peninsular Malaysia at 68,000 tonnes, up by 6.5%. The strong production in October was supported by the late arrival of the monsoon, improved fertilisation, and favourable rainfall patterns throughout 2024.

Exports in October were also robust, rising by 18.6% or 265,000 tonnes to 1.69 million tonnes. Sub-Saharan Africa accounted for most of the improvement, with exports hitting a record 577,000 tonnes, or 34% of Malaysia's total exports, while exports to China climbed to a five-month high of 110,000 tonnes.

The MPOC noted that Malaysian palm oil stocks rose to 2.46 million tonnes in October, the highest since April 2019, despite export growth outpacing production. The rise in stocks was not driven by production or export dynamics, but by softer domestic consumption.

The council also said Malaysia imported 708,000 tonnes of palm oil from Indonesia between January and October 2025, a 266% increase from 193,000 tonnes in the same period last year.

On the global front, palm oil prices eased 4% in November, as stocks continued to accumulate, while sunflower, soybean and rapeseed oil prices were largely unchanged, widening palm oil's discount to soft oils.

The MPOC noted that as of mid-November, palm oil traded at a US\$120 (RM499) discount to sunflower oil, US\$48 and US\$34 below soybean oil and rapeseed oil.



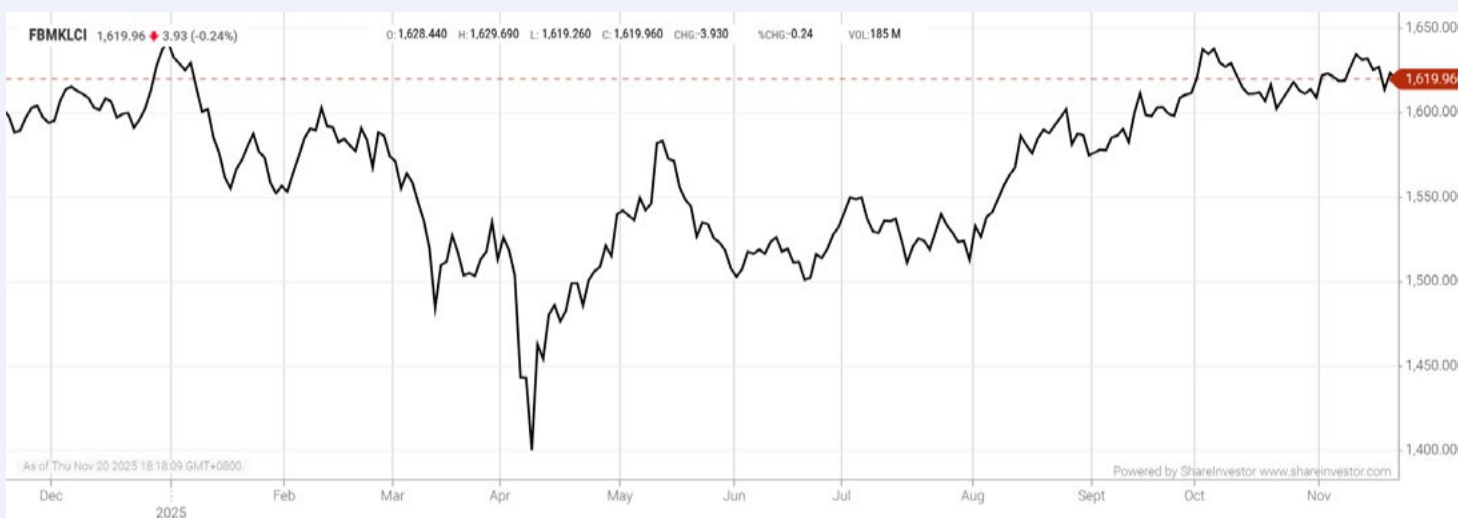
CHECK OUT
SHAREINVESTOR
BROKERS' CALL
Weekly Buy/Sell/Hold calls from leading Malaysian Brokerages.

BUY HOLD SELL

[Go To Brokers' Call](#)

EYE ON THE MARKETS

On Thursday (20Nov), the Ringgit closed at 4.1565 against the USD and 3.1797 to the Sing Dollar. On Monday (17Nov), the FBM KLCI opened at 1627.47. As at Thursday (20Nov) 5:00pm, the FBM KLCI closed down 7.51 points at 1619.96. Over in US, the overnight Dow Jones Industrial Average closed down 386.51 points (-0.84%) to 45,752.26 whilst the NASDAQ shed 486.18 points (-2.15%) to 22,078.05.



KLCI 1 Year Chart

Invest 246
 A Weekly e-Publication by SHAREINVESTOR
 FRIDAY 14 MARCH 2025

What's Next for Steel Hawk?
 After a stellar IPO and major contract wins in hand...
 See more on pages 20-37

Dato' Sharman K Michael
 Deputy Chairman and Executive Director
 Steel Hawk Berhad

MARKET SENTIMENTS
 IRB, MyDigital ID strengthen cooperation to accelerate digital identity adoption + Gig Workers Bill aims to make SOCSO contribution mandatory - Steven Sim

Is there an investment opportunity in AMCOR?

Learn how to identify Hot Stocks using Technical Analysis (TA) and Fundamental Analysis (FA)

SIGN UP FOR Invest NOW IT'S FREE!!!

[Click here](#)

Scan me



Via email, every Friday.

Get market moving news and analyses. Regular columns include **Behind The Action** and **From The Observer**

- Leaderboard • Shariah Hot Stocks • Shariah Momentum Up Stocks • Non Shariah Hot Stocks • Up Trending Stocks • Growth Stocks • Dividend Stocks • Long Companies • Insider Activity • Investor Relations • Regional Markets

SENTIMENTS
 LAYSIA'S DIVERSIFIED ECONOMIC STRUCTURE...
 SHARIAH HOT STOCKS
 Price & Volume Distribution Charts (as of Yesterday)
 CAPITAL A BERHAD (5099)
 LONG COMPANIES
 MALAYSIA AIRPORTS HOLDINGS BERHAD (9446)
 DATASONE GROUP BERHAD (6247)
 INSIDER ACTIVITY
 NON SHARIAH HOT STOCK
 Price & Volume Distribution Charts (as of Yesterday)
 INVESTOR RELATIONS
 KPJ Healthcare Berhad

Over 5 Trading Days (as at Yesterday)



ShareInvestor WebPro (www.shareinvestor.com/my)

1. Price > Stock Prices
2. Select Market: NASDAQ / NYSE / IDX / SET / HKEX / SGX (One bourse at a time)
3. select Stocks Tab
4. select Ranking Top Gainers or Top Losers (Over 5 Trading Days)
5. Mouse over Column Layout > select Edit Customs > select Name > select Last Done Price > select 5 Days Change > select 52 Weeks High > select 52 Weeks Low > Mouse Over Column Layout > select Custom

NASDAQ (USD)

Top Gainers

Name	Last Done	Change Over 5 Days	52 Weeks High	52 Weeks Low
Cidara Therapeutics	219.020	+111.900	218.850	14.930
Jazz Pharmaceuticals	176.080	+39.370	182.990	95.490
Madrigal Pharmaceuticals	555.600	+26.660	577.900	265.000
argenx ADR	914.590	+24.700	934.130	510.055
Talen Energy	390.510	+22.970	451.280	158.080

Top Losers

Name	Last Done	Change Over 5 Days	52 Weeks High	52 Weeks Low
Booking Holdings	4,690.770	-484.810	5,839.410	4,096.230
Monolithic Power Systems	884.650	-73.700	1,123.380	438.860
Powell Industries	285.290	-70.940	413.000	146.023
Sterling Infrastructure	334.170	-46.530	419.140	96.340
OSI Systems	237.820	-45.660	292.340	150.235

NYSE (USD)

Top Gainers

Name	Last Done	Change Over 5 Days	52 Weeks High	52 Weeks Low
Dycom Industries	325.290	+29.720	301.875	131.370
GE Vernova	595.370	+19.970	677.290	252.250
TransDigm Group	1,341.190	+33.220	1,623.830	1,183.600
Comfort Systems USA	930.500	+32.980	1,020.260	276.440
Eli Lilly	1,049.600	+31.820	1,040.725	623.780

Top Losers

Name	Last Done	Change Over 5 Days	52 Weeks High	52 Weeks Low
Berkshire Hathaway A	752,464.420	-17,720.580	812,855.000	660,640.000
NVR	7,119.900	-167.480	9,376.750	6,562.850
TX Pac Land	905.760	-100.640	1,769.140	845.560
United Rentals	792.270	-68.440	1,021.470	525.914
Biglari Holdings A	1,489.990	-60.010	1,850.000	999.010

IDX (Rupiah)

Top Gainers

Name	Last Done	Change Over 5 Days	52 Weeks High	52 Weeks Low
DIAN SWASTATIKA SENTOSA TBK	98,625.000	+12,125.000	118,000.000	30,300.000
JAYA SUKSES MAKMUR SENTOSA TBK	12,125.000	+2,750.000	15,100.000	965.000
SEJAHTERARAYA ANUGRAHJAYA TBK	14,125.000	+2,375.000	18,400.000	2,250.000
MORA TELEMATIKA INDONESIA TBK	6,075.000	+2,015.000	6,075.000	350.000
MSIG LIFE INSURANCE INDONESIA TBK	9,975.000	+1,650.000	17,100.000	4,990.000

Top Losers

Name	Last Done	Change Over 5 Days	52 Weeks High	52 Weeks Low
AGRO BAHARI NUSANTARA TBK	3,350.000	-1,150.000	4,690.000	37.000
MULTIPOLAR TECHNOLOGY TBK	77,450.000	-1,125.000	257,875.000	16,800.000
UNITED TRACTORS TBK	27,300.000	-1,000.000	28,500.000	20,025.000
INDO TAMBANGRAYA MEGAH TBK	22,150.000	-950.000	28,650.000	21,400.000
ADARO ANDALAN INDONESIA TBK	7,850.000	-850.000	11,375.000	5,550.000

SET (Thai Baht)

Top Gainers

Name	Last Done	Change Over 5 Days	52 Weeks High	52 Weeks Low
JTS	28.250	+3.950	70.000	22.100
KBANK	185.000	+3.500	188.500	145.000
TCAP	53.250	+2.250	53.250	44.250
KWC	282.000	+2.000	348.000	260.000
METCO	234.000	+2.000	237.000	154.500

Top Losers

Name	Last Done	Change Over 5 Days	52 Weeks High	52 Weeks Low
EGCO	114.500	-11.500	143.000	85.000
BH	172.000	-9.000	215.000	130.000
SCC	182.500	-8.000	231.000	124.500
M	22.700	-6.800	35.250	13.800
AEONTS	95.000	-4.000	128.500	90.500

HKEX (HKD)

Top Gainers

Name	Last Done	Change Over 5 Days	52 Weeks High	52 Weeks Low
REFIRE (2570)	155.000	+52.500	316.200	99.650
DUALITYBIO-B (9606)	322.000	+15.000	563.500	165.500
VIGONVITA-B (2630)	67.550	+14.700	97.000	51.000
PEGBIO CO-B (2565)	64.600	+11.300	72.750	8.680
YUM CHINA (9987)	372.400	+11.200	421.400	324.000

Top Losers

Name	Last Done	Change Over 5 Days	52 Weeks High	52 Weeks Low
CATL (3750)	512.000	-38.000	614.000	291.000
TENCENT-R (80700)	567.000	-35.500	625.500	345.600
TENCENT (700)	622.500	-34.500	683.000	364.800
HESAI-W (2525)	139.900	-30.100	244.000	137.200
MININGLAMP-W (2718)	181.100	-29.900	309.800	168.600

SGX (SGD)

Top Gainers

Name	Last Done	Change Over 5 Days	52 Weeks High	52 Weeks Low
ST Engineering	8.660	+0.370	9.070	4.440
Food Empire	2.590	+0.240	2.740	0.947
Ascent Bridge	0.650	+0.200	0.720	0.111
JB Foods	0.710	+0.172	0.800	0.440
Singtel 10	4.840	+0.160	4.910	3.000

Top Losers

Name	Last Done	Change Over 5 Days	52 Weeks High	52 Weeks Low
JMH USD	63.640	-2.390	71.200	36.010
Azeus	12.200	-1.800	17.280	10.030
DBS	53.700	-1.200	55.438	35.975
NIO Inc. USD OV	5.980	-0.600	7.840	3.090
OCBC Bank	18.160	-0.550	18.800	14.211



GRANTED AND EXERCISED FIRST, APPROVAL LATER

Shareholders of TWL Holdings Berhad (formerly Tiger Synergy Berhad) have found themselves in a conundrum that strikes at the core of shareholder rights and regulatory compliance. The Company is seeking post-facto ratification for the grant of 192 million Employee Share Option Scheme (ESOS) shares to its Executive Chairman, Datuk Tan Wei Lian, a move that was made without shareholders' prior consent.

This came about as the ESOS shares granted to Tan on 1 July 2025 were without shareholders' approval, resulting in non-compliance with Paragraph 6.06 (1) of the Main Market Listing Requirement (MMLR) and Paragraph 7.4 of the Company's ESOS by-Laws.

The MMLR explicitly requires that any grant of shares or convertible securities to directors, major shareholders, chief executives, or persons connected to them must first be approved by shareholders in a general meeting. Yet, TWL proceeded with the allocation of ESOS options to Tan.

On the day of the ESOS grant (1 July 2025), Tan immediately exercised 110 million of those options at 2.7 sen per share, generating total proceeds amounting to RM2.97 million. The balance of 82 million ESOS option shares granted to Tan had since been cancelled on 11 July 2025 as he *“had decided not to exercise the outstanding options”*.

On 4 November 2025, TWL realised that approval has not been sought for the grant and subsequently made the relevant announcement. What stroke them to such realisation after four months is anyone's guess.

CHECKS AND BALANCES GONE MISSING

TWL's ESOS, established in December 2021 for a five-year period (extendable for another five years), vests broad discretionary powers in its ESOS Committee.

The ESOS Committee is responsible for administering the scheme in such manner as it shall deem fit and with such powers and duties are conferred upon it by the Board. Its power and authorities include:

- To determine any other eligibility criteria or waive the conditions of eligibility from time to time
- To select and identify suitable Eligible Persons to participate in the ESOS
- To award ESOS options to Eligible Persons after taking into consideration the designation, length of service, work performance, and/or other criteria as the Committee deems relevant.
- To set out the basis of allotment, identify the category or grade of the Eligible Person(s) and the Maximum Allowable Allotment for the Eligible Person(s) in the differing categories or grades.

Even if the Committee is at discretion to determine the quantum of ESOS option for eligible directors or employees, that does not

negate the fact that there are clear-cut rules for shareholders' approval before the grant of ESOS options.

The ESOS Committee comprises two independent non-executive directors – namely S. Nagaraju Sinniah and Rithauddin Hussein Jamalattiff Jamaluddin – and managing director Tan Lee Chin who is Tan's sibling.

As it is, that such a large ESOS grant, which made up 74% of the total 258 million ESOS shares, went below the radar of the ESOS committee and the five-member board, including the two Tans, is beyond comprehension.

EXCEPTION NOT NORM

Pending an EGM to be convened on 10 December, soon after its 29th AGM, the TWL Board has recommended shareholders to vote in favour of the resolution pertaining to the proposed ratification as *“such action is in the best interest of TWL Holdings Group”*.

TWL claims this step is necessary to *“maintain regulatory compliance, uphold transparency, and safeguard stakeholder confidence.”*

Yet, this justification rings hollow. Ratification, while not unheard of, is typically a corrective measure – not a substitute for governance discipline. It is deeply troubling when companies treat shareholder ratification as a procedural formality rather than a fundamental safeguard of accountability.

While TWL attempts to cast this as an *“administrative oversight”*, the implications go deeper. After all, Tan had exercised and received the 110 million shares. The damage was irreversible. Shareholders are now effectively being asked to retroactively legitimise a breach that benefited the director at their expense.

This is not an isolated lapse. Other public-listed companies have similarly sought postfacto ratifications to regularise earlier non-compliance – such as Malaysian Genomics Resource Centre Berhad (MGRC), which only recently moved to ratify acquisitions

and disposals of quoted securities from 2022–2023. Astonishingly, MGRC has not obtained the ratification even after two years, despite the Company was aware of the lapses as earlier as 2023.

If such behaviour becomes tolerated, it sets a dangerous precedent: that directors may act first, seek forgiveness later, and rely on shareholders' limited options to legitimise their missteps.

Given that the ESOS options have already been exercised, shareholders have little options but to vote in favour of the ratification to restore compliance. Yet, they should not do so silently.

Shareholders must demand a full and transparent explanation from the Board and ESOS Committee regarding:

- How the breach occurred under their watch;
- What internal control failures enabled it; and
- What remedial governance actions will be taken to prevent recurrence.

Such scrutiny is not just warranted, but essential. The episode must serve as a wake-up call for all listed issuers: Shareholder approval is not a rubber stamp, nor should ratification become a convenient justification to absolve governance failures.

Reproduced with permission from The Observer, a weekly newsletter published by the Minority Shareholders Watch Group (MSWG). Subscribe to The Observer for free at www.mswg.org.my and follow @MSWGMalaysia on social media for the latest updates.



Learn how to identify Hot Stocks using Technical Analysis (TA) and Fundamental Analysis (FA)

SIGN UP FOR Invest

IT'S FREE!!!

[Click here](#)

Scan me



Via email, every Friday.

DEFINITION: Insider Activity shows the trades made by substantial shareholders or directors of the company. Purchases by the directors and company share buyback may indicate the share price is undervalued and brings confidence to the price trend of the share price.



ShareInvestor WebPro > Fundamental > Insider Trades > click Search tab > Select Bursa > click Stock name > scroll up and leave at <Select Counter> Type Date Range for Announcement Date > click Search

Notice Period is 09th November 2025 to 15th November 2025

Effective Change Date	Stock Name	Buyer/ Seller Name [Classification]	Bought / (Sold) ['000]		No. of Shares After Trade ['000]	
			Total	% Held	Total	% Held
11 NOV 2025 - 12 NOV 2025	AGRICOR	DATIN CHEONG KAI MENG [SSH]	-8,780		46,802	23.079
11 NOV 2025 - 12 NOV 2025	AGRICOR	DATUK KEH CHUAN SENG [SSH]	-8,780		46,716	23.036
11 NOV 2025 - 12 NOV 2025	AGRICOR	FRAZEL GROUP SDN. BHD. [SSH]	-8,780		46,716	23.036
07 NOV 2025 - 10 NOV 2025	AGRICOR	DATIN CHEONG KAI MENG [SSH]	-2,500		55,582	27.408
07 NOV 2025 - 10 NOV 2025	AGRICOR	DATUK KEH CHUAN SENG [SSH]	-2,500		55,496	27.365
07 NOV 2025 - 10 NOV 2025	AGRICOR	FRAZEL GROUP SDN. BHD. [SSH]	-2,500		55,496	27.365
11 NOV 2025 - 11 NOV 2025	AMBANK	EMPLOYEES PROVIDENT FUND BOARD [SSH]	-4,694		506,859	15.323
10 NOV 2025 - 10 NOV 2025	AMBANK	EMPLOYEES PROVIDENT FUND BOARD [SSH]	350		511,553	15.465
07 NOV 2025 - 07 NOV 2025	AMBANK	EMPLOYEES PROVIDENT FUND BOARD [SSH]	1,719		511,203	15.454
06 NOV 2025 - 06 NOV 2025	AMBANK	EMPLOYEES PROVIDENT FUND BOARD [SSH]	-2,525		509,484	15.402
05 NOV 2025 - 05 NOV 2025	AMBANK	EMPLOYEES PROVIDENT FUND BOARD [SSH]	-1,704		512,009	15.478
10 NOV 2025 - 10 NOV 2025	AMEREIT	AME ELITE CONSORTIUM BERHAD [SSH]	844		265,470	50.06
10 NOV 2025 - 10 NOV 2025	AMEREIT	MR KANG AH CHEE [SSH]	844		289,982	54.69
10 NOV 2025 - 10 NOV 2025	AMEREIT	MR LEE CHAI [SSH]	844		291,710	55.02
10 NOV 2025 - 10 NOV 2025	AMEREIT	MR LEE SAI BOON [SSH]	844		274,644	51.79
10 NOV 2025 - 10 NOV 2025	AMEREIT	MR LIM YOOK KIM [SSH]	844		290,337	54.75
12 NOV 2025 - 12 NOV 2025	AMWAY	KUMPULAN WANG PERSARAAN (DIPERBADANKAN) [SSH]	-103		14,187	8.63
11 NOV 2025 - 11 NOV 2025	AMWAY	KUMPULAN WANG PERSARAAN (DIPERBADANKAN) [SSH]	-112		14,290	8.693
10 NOV 2025 - 10 NOV 2025	AMWAY	KUMPULAN WANG PERSARAAN (DIPERBADANKAN) [SSH]	-129		14,402	8.761
07 NOV 2025 - 07 NOV 2025	AMWAY	KUMPULAN WANG PERSARAAN (DIPERBADANKAN) [SSH]	-42		14,531	8.839
11 NOV 2025 - 12 NOV 2025	ANEKA	MR PANG TSE FUJ [DIR/CEO]	619		93,224	13.423
11 NOV 2025 - 12 NOV 2025	ANEKA	MR PANG TSE FUJ [SSH]	619		93,224	13.423
10 NOV 2025 - 10 NOV 2025	ASIAPLY	DATO' YEO BOON LEONG [DIR/CEO]	1,161		324,803	30.806
10 NOV 2025 - 10 NOV 2025	ASIAPLY	DATO' YEO BOON LEONG [SSH]	1,161		324,803	30.806
11 NOV 2025 - 11 NOV 2025	ATLAN	BERJAYA GROUP BERHAD [SSH]	4,000		27,137	10.698
10 NOV 2025 - 12 NOV 2025	AWANTEC	LEMBAGA TABUNG AMANAH WARISAN NEGERI TERENGGANU [SSH]	6		43,738	5.548
06 NOV 2025 - 07 NOV 2025	AWANTEC	LEMBAGA TABUNG AMANAH WARISAN NEGERI TERENGGANU [SSH]	11		43,732	5.548
14 NOV 2025 - 14 NOV 2025	AWC	DATO' AHMAD KABEER BIN MOHAMED NAGOOR [DIR/CEO]	50		114,257	33.668
13 NOV 2025 - 13 NOV 2025	AWC	DATO' AHMAD KABEER BIN MOHAMED NAGOOR [SSH]	50		114,257	33.668
11 NOV 2025 - 11 NOV 2025	AXIATA	EMPLOYEES PROVIDENT FUND BOARD [SSH]	6,807		1,724,439	18.772
10 NOV 2025 - 10 NOV 2025	AXIATA	EMPLOYEES PROVIDENT FUND BOARD [SSH]	8,556		1,717,632	18.698
07 NOV 2025 - 07 NOV 2025	AXIATA	EMPLOYEES PROVIDENT FUND BOARD [SSH]	2,416		1,709,076	18.605
06 NOV 2025 - 06 NOV 2025	AXIATA	EMPLOYEES PROVIDENT FUND BOARD [SSH]	1,271		1,706,661	18.578
05 NOV 2025 - 05 NOV 2025	AXIATA	EMPLOYEES PROVIDENT FUND BOARD [SSH]	2,069		1,705,389	18.565
13 NOV 2025 - 13 NOV 2025	AXREIT	LEMBAGA TABUNG HAJI [SSH]	500		137,641	6.811
11 NOV 2025 - 11 NOV 2025	AXREIT	EMPLOYEES PROVIDENT FUND BOARD [SSH]	9,326		398,105	19.701
12 NOV 2025 - 12 NOV 2025	AXREIT	LEMBAGA TABUNG HAJI [SSH]	500		137,141	6.787
10 NOV 2025 - 10 NOV 2025	AXREIT	EMPLOYEES PROVIDENT FUND BOARD [SSH]	-1,041		388,778	19.239
11 NOV 2025 - 11 NOV 2025	AXREIT	LEMBAGA TABUNG HAJI [SSH]	500		136,641	6.762
07 NOV 2025 - 07 NOV 2025	AXREIT	EMPLOYEES PROVIDENT FUND BOARD [SSH]	3,150		389,820	19.291
10 NOV 2025 - 10 NOV 2025	AXREIT	LEMBAGA TABUNG HAJI [SSH]	500		136,141	6.737
06 NOV 2025 - 06 NOV 2025	AXREIT	EMPLOYEES PROVIDENT FUND BOARD [SSH]	-585		386,669	19.135
07 NOV 2025 - 07 NOV 2025	AXREIT	KUMPULAN WANG PERSARAAN (DIPERBADANKAN) [SSH]	-1,730		163,578	8.095
07 NOV 2025 - 07 NOV 2025	AXREIT	LEMBAGA TABUNG HAJI [SSH]	500		135,641	6.712
05 NOV 2025 - 05 NOV 2025	AXREIT	EMPLOYEES PROVIDENT FUND BOARD [SSH]	1,637		387,255	19.164
11 NOV 2025 - 13 NOV 2025	BAUTO	DATO' SRI AMER HAMZAH BIN AHMAD [SSH]	600		186,959	16.353
11 NOV 2025 - 13 NOV 2025	BAUTO	DATO' SRI LEE KOK CHUAN [DIR/CEO]	600		187,105	16.365
11 NOV 2025 - 13 NOV 2025	BAUTO	DATO' SRI LEE KOK CHUAN [SSH]	600		187,105	16.365
11 NOV 2025 - 13 NOV 2025	BAUTO	DYNAMIC MILESTONE SDN BHD [SSH]	600		182,515	15.964
11 NOV 2025 - 11 NOV 2025	BAUTO	EMPLOYEES PROVIDENT FUND BOARD [SSH]	1,167		116,221	10.152
11 NOV 2025 - 13 NOV 2025	BAUTO	TAN SRI DATO' SRI YEOH CHOON SAN [DIR/CEO]	600		186,732	16.333
11 NOV 2025 - 13 NOV 2025	BAUTO	TAN SRI DATO' SRI YEOH CHOON SAN [SSH]	600		186,732	16.333
10 NOV 2025 - 10 NOV 2025	BAUTO	EMPLOYEES PROVIDENT FUND BOARD [SSH]	-4,500		115,055	10.048
07 NOV 2025 - 07 NOV 2025	BAUTO	EMPLOYEES PROVIDENT FUND BOARD [SSH]	1,059		119,555	10.441
06 NOV 2025 - 06 NOV 2025	BAUTO	EMPLOYEES PROVIDENT FUND BOARD [SSH]	-650		118,496	10.347
06 NOV 2025 - 07 NOV 2025	BAUTO	DATO' SRI AMER HAMZAH BIN AHMAD [SSH]	100		186,359	16.274
06 NOV 2025 - 07 NOV 2025	BAUTO	DATO' SRI LEE KOK CHUAN [DIR/CEO]	100		186,505	16.287
06 NOV 2025 - 07 NOV 2025	BAUTO	DATO' SRI LEE KOK CHUAN [SSH]	100		186,505	16.287

Notice Period is 09th November 2025 to 15th November 2025

Effective Change Date	Stock Name	Buyer/ Seller Name [Classification]	Bought / (Sold) ['000]		No. of Shares After Trade ['000]	
			Total	% Held	Total	% Held
06 NOV 2025 - 07 NOV 2025	BAUTO	TAN SRI DATO' SRI YEOH CHOON SAN [SSH]	100		186,132	16.254
05 NOV 2025 - 05 NOV 2025	BAUTO	EMPLOYEES PROVIDENT FUND BOARD [SSH]	992		119,146	10.403
11 NOV 2025 - 11 NOV 2025	BETA	ENCIK MUHAMMAD FAUZI BIN ABD GHANI [DIR/CEO]	400		6,579	1.459
10 NOV 2025 - 11 NOV 2025	BJASSET	TAN SRI DATO' SERI VINCENT TAN CHEE YIOUN [SSH]	215		1,569,808	61.362
06 NOV 2025 - 07 NOV 2025	BJASSET	TAN SRI DATO' SERI VINCENT TAN CHEE YIOUN [SSH]	75		1,569,593	61.354
04 NOV 2025 - 04 NOV 2025	BNASTRA	PRUDENTIAL PLC [SSH]	-200		83,204	7.624
11 NOV 2025 - 11 NOV 2025	BURSA	EMPLOYEES PROVIDENT FUND BOARD [SSH]	-2,964		88,002	10.874
10 NOV 2025 - 10 NOV 2025	BURSA	EMPLOYEES PROVIDENT FUND BOARD [SSH]	-483		90,966	11.24
07 NOV 2025 - 07 NOV 2025	BURSA	EMPLOYEES PROVIDENT FUND BOARD [SSH]	350		91,449	11.3
06 NOV 2025 - 06 NOV 2025	BURSA	EMPLOYEES PROVIDENT FUND BOARD [SSH]	-107		91,099	11.257
05 NOV 2025 - 05 NOV 2025	BURSA	EMPLOYEES PROVIDENT FUND BOARD [SSH]	-58		91,206	11.27
07 NOV 2025 - 07 NOV 2025	CATCHA	CATCHA GROUP PTE LTD [SSH]	2,593		142,236	31.566
07 NOV 2025 - 07 NOV 2025	CATCHA	CATCHA INVESTMENTS LTD [SSH]	42,726		90,246	20.028
07 NOV 2025 - 07 NOV 2025	CATCHA	DATO JUSTIN LEONG MING LOONG [DIR/CEO]	-2,314		2,314	0.513
07 NOV 2025 - 07 NOV 2025	CATCHA	MR LUCAS ROBERT ELLIOTT [DIR/CEO]	45,318		232,482	51.594
07 NOV 2025 - 07 NOV 2025	CATCHA	MR LUCAS ROBERT ELLIOTT [SSH]	45,318		232,482	51.594
07 NOV 2025 - 07 NOV 2025	CATCHA	MR PATRICK YKIN GROVE [DIR/CEO]	45,116		232,685	51.639
07 NOV 2025 - 07 NOV 2025	CATCHA	MR PATRICK YKIN GROVE [SSH]	45,116		232,685	51.639
07 NOV 2025 - 07 NOV 2025	CATCHA-WA	MR LUCAS ROBERT ELLIOTT [DIR/CEO]	90,636		90,636	50.286
07 NOV 2025 - 07 NOV 2025	CATCHA-WA	MR PATRICK YKIN GROVE [DIR/CEO]	90,636		90,636	50.286
10 NOV 2025 - 10 NOV 2025	CDB	EMPLOYEES PROVIDENT FUND BOARD [SSH]	7,000		1,279,867	10.91
07 NOV 2025 - 07 NOV 2025	CDB	EMPLOYEES PROVIDENT FUND BOARD [SSH]	927		1,272,867	10.85
06 NOV 2025 - 06 NOV 2025	CDB	EMPLOYEES PROVIDENT FUND BOARD [SSH]	2,709		1,271,940	10.842
05 NOV 2025 - 05 NOV 2025	CDB	EMPLOYEES PROVIDENT FUND BOARD [SSH]	388		1,269,231	10.819
06 NOV 2025 - 07 NOV 2025	CEB	MR CHUNG CHEE YANG [SSH]	915		82,009	8.267
12 NOV 2025 - 12 NOV 2025	CHINHIN	DATUK SERI CHIAU BENG TEIK JP [DIR/CEO]	934		2,115,991	59.793
12 NOV 2025 - 12 NOV 2025	CHINHIN	DATUK SERI CHIAU BENG TEIK JP [SSH]	934		2,115,991	59.793
11 NOV 2025 - 11 NOV 2025	CHINHIN	DATUK WIRA CHIAU HAW CHOON [DIR/CEO]	-2,400		1,515,454	42.823
11 NOV 2025 - 11 NOV 2025	CHINHIN	DATUK WIRA CHIAU HAW CHOON [SSH]	-2,400		1,515,454	42.823
11 NOV 2025 - 11 NOV 2025	CIMB	EMPLOYEES PROVIDENT FUND BOARD [SSH]	3,994		1,980,719	18.39
12 NOV 2025 - 12 NOV 2025	CIMB	KUMPULAN WANG PERSARAAN (DIPERBADANKAN) [SSH]	50		686,274	6.37
10 NOV 2025 - 10 NOV 2025	CIMB	EMPLOYEES PROVIDENT FUND BOARD [SSH]	2,134		1,976,725	18.35
11 NOV 2025 - 11 NOV 2025	CIMB	KUMPULAN WANG PERSARAAN (DIPERBADANKAN) [SSH]	-1,000		686,224	6.37
07 NOV 2025 - 07 NOV 2025	CIMB	EMPLOYEES PROVIDENT FUND BOARD [SSH]	6,682		1,974,591	18.33
06 NOV 2025 - 06 NOV 2025	CIMB	EMPLOYEES PROVIDENT FUND BOARD [SSH]	6,580		1,967,909	18.27
05 NOV 2025 - 05 NOV 2025	CIMB	EMPLOYEES PROVIDENT FUND BOARD [SSH]	5,904		1,961,329	18.21
13 NOV 2025 - 13 NOV 2025	COMPUGT	MADAM SEE THOO CHAN [DIR/CEO]	300		997,435	16.486
13 NOV 2025 - 13 NOV 2025	COMPUGT	MADAM SEE THOO CHAN [SSH]	300		997,435	16.486
13 NOV 2025 - 13 NOV 2025	COMPUGT	MR GOH KHENG PEOW [SSH]	300		997,435	16.486
12 NOV 2025 - 12 NOV 2025	COMPUGT	MADAM SEE THOO CHAN [DIR/CEO]	101		997,135	16.481
12 NOV 2025 - 12 NOV 2025	COMPUGT	MADAM SEE THOO CHAN [SSH]	101		997,135	16.481
12 NOV 2025 - 12 NOV 2025	COMPUGT	MR GOH KHENG PEOW [SSH]	101		997,135	16.481
11 NOV 2025 - 11 NOV 2025	COMPUGT	MADAM SEE THOO CHAN [DIR/CEO]	507		997,034	16.479
11 NOV 2025 - 11 NOV 2025	COMPUGT	MADAM SEE THOO CHAN [SSH]	507		997,034	16.479
11 NOV 2025 - 11 NOV 2025	COMPUGT	MR GOH KHENG PEOW [SSH]	507		997,034	16.479
10 NOV 2025 - 10 NOV 2025	COMPUGT	CURATE HOLDINGS SDN. BHD. [SSH]	-10,000		886,488	14.652
10 NOV 2025 - 10 NOV 2025	COMPUGT	MADAM SEE THOO CHAN [DIR/CEO]	10,000		996,526	16.471
10 NOV 2025 - 10 NOV 2025	COMPUGT	MADAM SEE THOO CHAN [SSH]	10,000		996,526	16.471
10 NOV 2025 - 10 NOV 2025	COMPUGT	MISS SOO YI XIN [SSH]	-10,000		886,688	14.655
10 NOV 2025 - 10 NOV 2025	COMPUGT	MR GOH KHENG PEOW [SSH]	10,000		996,526	16.471
06 NOV 2025 - 06 NOV 2025	COSMOS	DATO' FOONG WEI KUONG [SSH]	5,130		51,171	19.95
06 NOV 2025 - 06 NOV 2025	CTOS	ABERDEEN GROUP PLC (FORMERLY KNOWN AS ABRDN PLC) [SSH]	755		378,216	16.5
06 NOV 2025 - 06 NOV 2025	CTOS	ABRDN HOLDINGS LIMITED [SSH]	755		378,216	16.5
06 NOV 2025 - 06 NOV 2025	CTOS	ABRDN MALAYSIA SDN BHD [SSH]	755		374,618	16.344
10 NOV 2025 - 10 NOV 2025	CYBERE	MR MAHA RAMANATHAN PALAN [DIR/CEO]	147		5,985	3.476
07 NOV 2025 - 07 NOV 2025	CYBERE	MR MAHA RAMANATHAN PALAN [DIR/CEO]	70		5,838	3.391
12 NOV 2025 - 12 NOV 2025	D&O	KUMPULAN WANG PERSARAAN (DIPERBADANKAN) [SSH]	-1,173		83,484	6.736
05 NOV 2025 - 05 NOV 2025	D&O	EMPLOYEES PROVIDENT FUND BOARD [SSH]	-1,424		88,641	7.151

Disclaimer: The Information in Insider Activity is extracted from www.shareinvestor.com/fundamental/insider_trades. The information on this page is provided as a service to readers. It does not constitute financial advice and/or any investment recommendations. We assume no liability for damages resulting from or arising out of the use of such information. Whilst every effort is made to ensure accuracy, the information presented is not the official record of shareholder filings. Readers are advised to read the original filings on the Bursa Malaysia website at www.bursamalaysia.com



STROM
SWISS TIMEPIECES & JEWELLERY



StromWatch Asia
Tele : +65.9817.3378
Email : ll.stromasia@gmail.com
WWW.STROMWATCH.SWISS

Notice Period is 09th November 2025 to 15th November 2025

Effective Change Date	Stock Name	Buyer/ Seller Name [Classification]	Bought / (Sold) ['000]	No. of Shares After Trade ['000]	
			Total	Total	% Held
05 NOV 2025 - 05 NOV 2025	DAYANG	EMPLOYEES PROVIDENT FUND BOARD [SSH]	3	125,510	10.841
11 NOV 2025 - 11 NOV 2025	DIALOG	EMPLOYEES PROVIDENT FUND BOARD [SSH]	9,104	1,056,637	18.73
12 NOV 2025 - 12 NOV 2025	DIALOG	KUMPULAN WANG PERSARAAN (DIPERBADANKAN) [SSH]	-282	558,167	9.89
10 NOV 2025 - 10 NOV 2025	DIALOG	EMPLOYEES PROVIDENT FUND BOARD [SSH]	2,789	1,047,533	18.56
11 NOV 2025 - 11 NOV 2025	DIALOG	KUMPULAN WANG PERSARAAN (DIPERBADANKAN) [SSH]	-1,070	558,449	9.89
07 NOV 2025 - 07 NOV 2025	DIALOG	EMPLOYEES PROVIDENT FUND BOARD [SSH]	4,034	1,044,744	18.52
10 NOV 2025 - 10 NOV 2025	DIALOG	KUMPULAN WANG PERSARAAN (DIPERBADANKAN) [SSH]	-432	559,519	9.91
06 NOV 2025 - 06 NOV 2025	DIALOG	EMPLOYEES PROVIDENT FUND BOARD [SSH]	3,000	1,040,710	18.44
05 NOV 2025 - 05 NOV 2025	DIALOG	EMPLOYEES PROVIDENT FUND BOARD [SSH]	496	1,037,710	18.39
10 NOV 2025 - 11 NOV 2025	DIGISTA	GAN BOON TIAN [SSH]	9,000	80,300	12.797
05 NOV 2025 - 05 NOV 2025	DRBHCOR	EMPLOYEES PROVIDENT FUND BOARD [SSH]	205	160,620	8.308
10 NOV 2025 - 11 NOV 2025	DUFU	LEE SU HUI-FEN ALSO KNOWN AS FLORA SU [SSH]	-2,000	45,321	8.502
10 NOV 2025 - 11 NOV 2025	DUFU	LEE WEN-JUNG [SSH]	-2,000	45,385	8.514
10 NOV 2025 - 11 NOV 2025	DUFU	PERFECT COMMERCE SDN. BHD. [SSH]	-2,000	45,299	8.498
06 NOV 2025 - 07 NOV 2025	DUFU	LEE SU HUI-FEN ALSO KNOWN AS FLORA SU [SSH]	-1,000	47,321	8.877
06 NOV 2025 - 07 NOV 2025	DUFU	LEE WEN-JUNG [SSH]	-1,000	47,385	8.889
06 NOV 2025 - 07 NOV 2025	DUFU	PERFECT COMMERCE SDN. BHD. [SSH]	-1,000	47,299	8.873
07 NOV 2025 - 07 NOV 2025	DXN	DATUK LIM SIOW JIN [DIR/CEO]	17,000	3,170,894	63.771
07 NOV 2025 - 07 NOV 2025	DXN	DATUK LIM SIOW JIN [SSH]	17,000	1,955,894	39.336
12 NOV 2025 - 12 NOV 2025	E&O	AMAZING PARADE SDN BHD [SSH]	995	671,748	26.954
12 NOV 2025 - 12 NOV 2025	E&O	DATIN SERI TOH SIEW CHUON [SSH]	995	822,230	32.992
12 NOV 2025 - 12 NOV 2025	E&O	DATO' TEE ENG SENG [DIR/CEO]	995	1,506,310	60.441
12 NOV 2025 - 12 NOV 2025	E&O	DATO' TEE ENG SENG [SSH]	995	1,506,310	60.441
12 NOV 2025 - 12 NOV 2025	E&O	DATO' SERI TEE ENG HO [DIR/CEO]	995	1,511,828	60.663
12 NOV 2025 - 12 NOV 2025	E&O	DATO' SERI TEE ENG HO [SSH]	995	1,506,310	60.441
10 NOV 2025 - 10 NOV 2025	ECONBHD	EMPLOYEES PROVIDENT FUND BOARD [SSH]	107	117,616	8.297
07 NOV 2025 - 07 NOV 2025	ECONBHD	EMPLOYEES PROVIDENT FUND BOARD [SSH]	1,000	117,509	8.29
06 NOV 2025 - 06 NOV 2025	ECONBHD	EMPLOYEES PROVIDENT FUND BOARD [SSH]	870	116,509	8.219
13 NOV 2025 - 13 NOV 2025	ECOSHOP	DATO' SRI LEE KAR WHATT [DIR/CEO]	1,904	4,407,843	76.631
13 NOV 2025 - 13 NOV 2025	ECOSHOP	DATO' SRI LEE KAR WHATT [SSH]	1,904	4,407,843	76.631
10 NOV 2025 - 12 NOV 2025	ECOSHOP	DATO' SRI LEE KAR WHATT [DIR/CEO]	2,500	4,405,939	76.598
10 NOV 2025 - 12 NOV 2025	ECOSHOP	DATO' SRI LEE KAR WHATT [SSH]	2,500	4,405,939	76.598
12 NOV 2025 - 12 NOV 2025	EITA	MADAM GOH KIN BEE [SSH]	10	44,063	14.6
12 NOV 2025 - 12 NOV 2025	EITA	MR LIM JOO SWEE [DIR/CEO]	10	44,170	14.635
12 NOV 2025 - 12 NOV 2025	EITA	MR LIM JOO SWEE [SSH]	10	44,170	14.635
11 NOV 2025 - 11 NOV 2025	EITA	LIM JOO SWEE [DIR/CEO]	8	44,160	14.631
11 NOV 2025 - 11 NOV 2025	EITA	MADAM GOH KIN BEE [SSH]	8	44,053	14.597
11 NOV 2025 - 11 NOV 2025	EITA	MR LIM JOO SWEE [SSH]	8	44,160	14.631
11 NOV 2025 - 11 NOV 2025	F&N	EMPLOYEES PROVIDENT FUND BOARD [SSH]	80	48,141	13.125
10 NOV 2025 - 10 NOV 2025	F&N	EMPLOYEES PROVIDENT FUND BOARD [SSH]	275	48,061	13.104
06 NOV 2025 - 06 NOV 2025	F&N	EMPLOYEES PROVIDENT FUND BOARD [SSH]	0.6	47,486	12.947
13 NOV 2025 - 13 NOV 2025	FACBIND	MAGNI VANTAGE LIMITED [SSH]	45	48,757	58.125
13 NOV 2025 - 13 NOV 2025	FACBIND	MR CHEN YIY FON [DIR/CEO]	45	48,757	58.125
13 NOV 2025 - 13 NOV 2025	FACBIND	MR CHEN YIY FON [SSH]	45	48,757	58.125
12 NOV 2025 - 12 NOV 2025	FACBIND	MAGNI VANTAGE LIMITED [SSH]	9	48,713	58.072
12 NOV 2025 - 12 NOV 2025	FACBIND	MR CHEN YIY FON [DIR/CEO]	9	48,713	58.072
12 NOV 2025 - 12 NOV 2025	FACBIND	MR CHEN YIY FON [SSH]	9	48,713	58.072
11 NOV 2025 - 11 NOV 2025	FACBIND	MAGNI VANTAGE LIMITED [SSH]	9	48,704	58.062
11 NOV 2025 - 11 NOV 2025	FACBIND	MR CHEN YIY FON [DIR/CEO]	9	48,704	58.062
11 NOV 2025 - 11 NOV 2025	FACBIND	MR CHEN YIY FON [SSH]	9	48,704	58.062
10 NOV 2025 - 10 NOV 2025	FACBIND	MAGNI VANTAGE LIMITED [SSH]	33	48,695	58.051
10 NOV 2025 - 10 NOV 2025	FACBIND	MR CHEN YIY FON [DIR/CEO]	33	48,695	58.051
10 NOV 2025 - 10 NOV 2025	FACBIND	MR CHEN YIY FON [SSH]	33	48,695	58.051
07 NOV 2025 - 07 NOV 2025	FACBIND	MAGNI VANTAGE LIMITED [SSH]	0.5	48,662	58.012
07 NOV 2025 - 07 NOV 2025	FACBIND	MR CHEN YIY FON [DIR/CEO]	0.5	48,662	58.012
07 NOV 2025 - 07 NOV 2025	FACBIND	MR CHEN YIY FON [SSH]	0.5	48,662	58.012
12 NOV 2025 - 12 NOV 2025	FEYTECH	ABERDEEN GROUP PLC (FORMERLY KNOWN AS ABRDN PLC) [SSH]	-300	46,430	5.506
12 NOV 2025 - 12 NOV 2025	FEYTECH	ABRDN HOLDINGS LIMITED [SSH]	-300	46,430	5.506
12 NOV 2025 - 12 NOV 2025	FEYTECH	ABRDN MALAYSIA SDN BHD [SSH]	-300	46,430	5.506
11 NOV 2025 - 11 NOV 2025	FEYTECH	ABERDEEN GROUP PLC (FORMERLY KNOWN AS ABRDN PLC) [SSH]	-300	46,730	5.542
11 NOV 2025 - 11 NOV 2025	FEYTECH	ABRDN HOLDINGS LIMITED [SSH]	-300	46,730	5.542
11 NOV 2025 - 11 NOV 2025	FEYTECH	ABRDN MALAYSIA SDN BHD [SSH]	-300	46,730	5.542
10 NOV 2025 - 10 NOV 2025	FEYTECH	ABERDEEN GROUP PLC (FORMERLY KNOWN AS ABRDN PLC) [SSH]	-250	47,030	5.578
10 NOV 2025 - 10 NOV 2025	FEYTECH	ABRDN HOLDINGS LIMITED [SSH]	-250	47,030	5.578
10 NOV 2025 - 10 NOV 2025	FEYTECH	ABRDN MALAYSIA SDN BHD [SSH]	-250	47,030	5.578
07 NOV 2025 - 07 NOV 2025	FEYTECH	ABERDEEN GROUP PLC (FORMERLY KNOWN AS ABRDN PLC) [SSH]	-250	47,280	5.607
07 NOV 2025 - 07 NOV 2025	FEYTECH	ABRDN HOLDINGS LIMITED [SSH]	-250	47,280	5.607
07 NOV 2025 - 07 NOV 2025	FEYTECH	ABRDN MALAYSIA SDN BHD [SSH]	-250	47,280	5.607
06 NOV 2025 - 06 NOV 2025	FEYTECH	ABERDEEN GROUP PLC (FORMERLY KNOWN AS ABRDN PLC) [SSH]	-200	47,530	5.637
06 NOV 2025 - 06 NOV 2025	FEYTECH	ABRDN HOLDINGS LIMITED [SSH]	-200	47,530	5.637
06 NOV 2025 - 06 NOV 2025	FEYTECH	ABRDN MALAYSIA SDN BHD [SSH]	-200	47,530	5.637
13 NOV 2025 - 13 NOV 2025	FFB	KUMPULAN WANG PERSARAAN (DIPERBADANKAN) [SSH]	-685	186,913	9.949
11 NOV 2025 - 11 NOV 2025	FFB	EMPLOYEES PROVIDENT FUND BOARD [SSH]	-175	117,410	6.25
12 NOV 2025 - 12 NOV 2025	FFB	KUMPULAN WANG PERSARAAN (DIPERBADANKAN) [SSH]	-140	187,598	9.986
10 NOV 2025 - 10 NOV 2025	FFB	EMPLOYEES PROVIDENT FUND BOARD [SSH]	-2,283	117,585	6.259
11 NOV 2025 - 11 NOV 2025	FFB	KUMPULAN WANG PERSARAAN (DIPERBADANKAN) [SSH]	-75	187,738	9.993
10 NOV 2025 - 10 NOV 2025	FFB	ABERDEEN GROUP PLC (FORMERLY KNOWN AS ABRDN PLC) [SSH]	-945	127,350	6.779
10 NOV 2025 - 10 NOV 2025	FFB	ABRDN HOLDINGS LIMITED [SSH]	-945	127,350	6.779
10 NOV 2025 - 10 NOV 2025	FFB	ABRDN MALAYSIA SDN BHD [SSH]	-945	125,335	6.672
07 NOV 2025 - 07 NOV 2025	FFB	EMPLOYEES PROVIDENT FUND BOARD [SSH]	-1,316	119,869	6.381
06 NOV 2025 - 06 NOV 2025	FFB	EMPLOYEES PROVIDENT FUND BOARD [SSH]	-1,381	121,184	6.451

Notice Period is 09th November 2025 to 15th November 2025

Effective Change Date	Stock Name	Buyer/ Seller Name [Classification]	Bought / (Sold) ['000]	No. of Shares After Trade ['000]	
			Total	Total	% Held
06 NOV 2025 - 06 NOV 2025	FFB	ABRDN MALAYSIA SDN BHD [SSH]	-152	126,280	6.722
05 NOV 2025 - 05 NOV 2025	FFB	EMPLOYEES PROVIDENT FUND BOARD [SSH]	-1,226	122,566	6.524
11 NOV 2025 - 11 NOV 2025	FRONTKN	EMPLOYEES PROVIDENT FUND BOARD [SSH]	196	154,777	9.462
10 NOV 2025 - 10 NOV 2025	FRONTKN	EMPLOYEES PROVIDENT FUND BOARD [SSH]	204	153,881	9.407
07 NOV 2025 - 07 NOV 2025	FRONTKN	EMPLOYEES PROVIDENT FUND BOARD [SSH]	683	153,094	9.359
06 NOV 2025 - 06 NOV 2025	FRONTKN	EMPLOYEES PROVIDENT FUND BOARD [SSH]	787	149,412	9.134
05 NOV 2025 - 05 NOV 2025	FRONTKN	EMPLOYEES PROVIDENT FUND BOARD [SSH]	-884	148,881	9.101
11 NOV 2025 - 11 NOV 2025	GAMUDA	EMPLOYEES PROVIDENT FUND BOARD (EPF BOARD) [SSH]	-2,286	1,051,182	17.94
10 NOV 2025 - 10 NOV 2025	GAMUDA	EMPLOYEES PROVIDENT FUND BOARD (EPF BOARD) [SSH]	-3,324	1,053,468	17.98
07 NOV 2025 - 07 NOV 2025	GAMUDA	EMPLOYEES PROVIDENT FUND BOARD (EPF BOARD) [SSH]	6,582	1,056,793	18.04
06 NOV 2025 - 06 NOV 2025	GAMUDA	EMPLOYEES PROVIDENT FUND BOARD (EPF BOARD) [SSH]	-2,521	1,050,211	17.93
05 NOV 2025 - 05 NOV 2025	GAMUDA	EMPLOYEES PROVIDENT FUND BOARD (EPF BOARD) [SSH]	280	1,052,732	17.97
13 NOV 2025 - 13 NOV 2025	GENM	DATO Indera LIM KEONG HUI [DIR/CEO]	87,131	3,236,556	57.105
13 NOV 2025 - 13 NOV 2025	GENM	DATO Indera LIM KEONG HUI [SSH]	87,131	3,236,556	57.105
13 NOV 2025 - 13 NOV 2025	GENM	GENTING BERHAD [SSH]	87,131	3,231,072	57.008
13 NOV 2025 - 13 NOV 2025	GENM	KIEN HUAT INTERNATIONAL LIMITED [SSH]	87,131	3,232,271	57.029
13 NOV 2025 - 13 NOV 2025	GENM	KIEN HUAT REALTY SDN BERHAD [SSH]	87,131	3,232,271	57.029
13 NOV 2025 - 13 NOV 2025	GENM	PARKVIEW MANAGEMENT SDN BHD [SSH]	87,131	3,232,271	57.029
13 NOV 2025 - 13 NOV 2025	GENM	TAN SRI LIM KOK THAY [DIR/CEO]	87,131	3,232,275	57.029
13 NOV 2025 - 13 NOV 2025	GENM	TAN SRI LIM KOK THAY [SSH]	87,131	3,232,275	57.029
12 NOV 2025 - 12 NOV 2025	GENM	DATO Indera LIM KEONG HUI [DIR/CEO]	55,711	3,149,425	55.568
12 NOV 2025 - 12 NOV 2025	GENM	DATO Indera LIM KEONG HUI [SSH]	55,711	3,149,425	55.568
12 NOV 2025 - 12 NOV 2025	GENM	GENTING BERHAD [SSH]	55,711	3,143,941	55.471
12 NOV 2025 - 12 NOV 2025	GENM	KIEN HUAT INTERNATIONAL LIMITED [SSH]	55,711	3,145,140	55.492
12 NOV 2025 - 12 NOV 2025	GENM	KIEN HUAT REALTY SDN BERHAD [SSH]	55,711	3,145,140	55.492
12 NOV 2025 - 12 NOV 2025	GENM	PARKVIEW MANAGEMENT SDN BHD [SSH]	55,711	3,145,140	55.492
12 NOV 2025 - 12 NOV 2025	GENM	TAN SRI LIM KOK THAY [DIR/CEO]	55,711	3,145,144	55.492
12 NOV 2025 - 12 NOV 2025	GENM	TAN SRI LIM KOK THAY [SSH]	55,711	3,145,144	55.492
10 NOV 2025 - 10 NOV 2025	GENM	DATO Indera LIM KEONG HUI [DIR/CEO]	68,693	3,057,187	53.94
10 NOV 2025 - 10 NOV 2025	GENM	DATO Indera LIM KEONG HUI [SSH]	68,693	3,057,187	53.94
10 NOV 2025 - 10 NOV 2025	GENM	GENTING BERHAD [SSH]	68,693	3,051,703	53.843
10 NOV 2025 - 10 NOV 2025	GENM	KIEN HUAT INTERNATIONAL LIMITED [SSH]	68,693	3,052,902	53.864
10 NOV 2025 - 10 NOV 2025	GENM	KIEN HUAT REALTY SDN BERHAD [SSH]	68,693	3,052,902	53.864
10 NOV 2025 - 10 NOV 2025	GENM	PARKVIEW MANAGEMENT SDN BHD [SSH]	68,693	3,052,902	53.864
10 NOV 2025 - 10 NOV 2025	GENM	TAN SRI LIM KOK THAY [DIR/CEO]	68,693	3,052,906	53.864
10 NOV 2025 - 10 NOV 2025	GENM	TAN SRI LIM KOK THAY [SSH]	68,693	3,052,906	53.864
07 NOV 2025 - 07 NOV 2025	GENM	DATO Indera LIM KEONG HUI [DIR/CEO]	34,995	2,988,493	52.728
07 NOV 2025 - 07 NOV 2025	GENM	DATO Indera LIM KEONG HUI [SSH]	34,995	2,988,493	52.728
07 NOV 2025 - 07 NOV 2025	GENM	GENTING BERHAD [SSH]	34,995	2,983,010	52.631
07 NOV 2025 - 07 NOV 2025	GENM	KIEN HUAT INTERNATIONAL LIMITED [SSH]	34,995	2,984,209	52.652
07 NOV 2025 - 07 NOV 2025	GENM	KIEN HUAT REALTY SDN BERHAD [SSH]	34,995	2,984,209	52.652
07 NOV 2025 - 07 NOV 2025	GENM	PARKVIEW MANAGEMENT SDN BHD [SSH]	34,995	2,984,209	52.652
07 NOV 2025 - 07 NOV 2025	GENM	TAN SRI LIM KOK THAY [DIR/CEO]	34,995	2,984,213	52.652
07 NOV 2025 - 07 NOV 2025	GENM	TAN SRI LIM KOK THAY [SSH]	34,995	2,984,213	52.652
10 NOV 2025 - 10 NOV 2025	GENP	EMPLOYEES PROVIDENT FUND BOARD [SSH]	5	123,817	13.801
07 NOV 2025 - 07 NOV 2025	GENP	EMPLOYEES PROVIDENT FUND BOARD [SSH]	150	123,812	13.8
06 NOV 2025 - 06 NOV 2025	GENP	EMPLOYEES PROVIDENT FUND BOARD [SSH]	10	123,662	13.784
05 NOV 2025 - 05 NOV 2025	GENP	EMPLOYEES PROVIDENT FUND BOARD [SSH]	200	123,652	13.783
10 NOV 2025 - 10 NOV 2025	GLOMAC	SHAPADU CAPITAL SDN. BHD. [SSH]	20	92,389	12.038
07 NOV 2025 - 07 NOV 2025	GLOMAC	SHAPADU CAPITAL SDN. BHD. [SSH]	30	92,369	12.035
05 NOV 2025 - 05 NOV 2025	HARNLEN	LNH ENTERPRISE SDN. BHD. [SSH]	10,000	117,879	19.227
05 NOV 2025 - 05 NOV 2025	HARNLEN	MR LOW KOK YAOW [DIR/CEO]	10,000	272,721	44.484
05 NOV 2025 - 05 NOV 2025	HARNLEN	MR LOW KOK YAOW [SSH]	10,000	272,721	44.484
05 NOV 2025 - 05 NOV 2025	HARNLEN	MR LOW KOK YONG [SSH]	10,000	273,716	44.646
05 NOV 2025 - 05 NOV 2025	HARNLEN	MR LOW KUECK SHIN [DIR/CEO]	10,000	261,034	42.578
05 NOV 2025 - 05 NOV 2025	HARNLEN	MR LOW KUECK SHIN [SSH]	10,000	260,904	42.557
05 NOV 2025 - 05 NOV 2025	HARNLEN	MR LOW KUEK KONG [DIR/CEO]	10,000	260,654	42.516
05 NOV 2025 - 05 NOV 2025	HARNLEN	MR LOW KUEK KONG [SSH]	10,000	260,654	42.516
05 NOV 2025 - 05 NOV 2025	HARNLEN	MR LOW KWEK LEE [DIR/CEO]	10,000	260,864	42.55
05 NOV 2025 - 05 NOV 2025	HARNLEN	MR LOW KWEK LEE [SSH]	10,000	260,864	42.55
05 NOV 2025 - 05 NOV 2025	HARNLEN	MR LOW QUEK KIONG [DIR/CEO]			

Notice Period is 09th November 2025 to 15th November 2025

Effective Change Date	Stock Name	Buyer/ Seller Name [Classification]	Bought / (Sold) ['000]	No. of Shares After Trade ['000]	
			Total	Total	% Held
11 NOV 2025 - 11 NOV 2025	HTPADU	ZETRIX AI BERHAD (FORMERLY KNOWN AS MY E.G. SERVICES BERHAD) [SSH]	-7,900	27,546	16.901
11 NOV 2025 - 11 NOV 2025	IGBREIT	EMPLOYEES PROVIDENT FUND BOARD [SSH]	1,732	372,213	10.271
10 NOV 2025 - 10 NOV 2025	IGBREIT	EMPLOYEES PROVIDENT FUND BOARD [SSH]	483	370,481	10.223
07 NOV 2025 - 07 NOV 2025	IGBREIT	EMPLOYEES PROVIDENT FUND BOARD [SSH]	221	369,998	10.21
10 NOV 2025 - 10 NOV 2025	IGBREIT	KUMPULAN WANG PERSARAAN (DIPERBADANKAN) [SSH]	92	241,343	6.659
06 NOV 2025 - 06 NOV 2025	IGBREIT	EMPLOYEES PROVIDENT FUND BOARD [SSH]	688	369,777	10.204
07 NOV 2025 - 07 NOV 2025	IGBREIT	KUMPULAN WANG PERSARAAN (DIPERBADANKAN) [SSH]	158	241,251	6.657
05 NOV 2025 - 05 NOV 2025	IGBREIT	EMPLOYEES PROVIDENT FUND BOARD [SSH]	125	369,089	10.185
11 NOV 2025 - 11 NOV 2025	IHH	EMPLOYEES PROVIDENT FUND BOARD [SSH]	5,000	1,096,067	12.404
10 NOV 2025 - 10 NOV 2025	IHH	EMPLOYEES PROVIDENT FUND BOARD [SSH]	-636	1,091,067	12.348
07 NOV 2025 - 07 NOV 2025	IHH	EMPLOYEES PROVIDENT FUND BOARD [SSH]	4,623	1,091,518	12.353
06 NOV 2025 - 06 NOV 2025	IHH	EMPLOYEES PROVIDENT FUND BOARD [SSH]	-7,861	1,086,895	12.301
05 NOV 2025 - 05 NOV 2025	IHH	EMPLOYEES PROVIDENT FUND BOARD [SSH]	-6,925	1,094,756	12.39
12 NOV 2025 - 12 NOV 2025	IJM	KUMPULAN WANG PERSARAAN (DIPERBADANKAN) [SSH]	532	336,687	9.605
12 NOV 2025 - 13 NOV 2025	INARI	DATO' SRI THONG KOK KHEE [DIR/CEO]	-2,000	483,981	12.74
12 NOV 2025 - 13 NOV 2025	INARI	DATO' SRI THONG KOK KHEE [SSH]	-2,000	483,981	12.74
12 NOV 2025 - 13 NOV 2025	INARI	INSAS BERHAD [SSH]	-2,000	483,981	12.74
10 NOV 2025 - 11 NOV 2025	INARI	DATO' SRI THONG KOK KHEE [DIR/CEO]	-2,001	485,981	12.81
10 NOV 2025 - 11 NOV 2025	INARI	DATO' SRI THONG KOK KHEE [SSH]	-2,001	485,981	12.81
10 NOV 2025 - 11 NOV 2025	INARI	INSAS BERHAD [SSH]	-2,000	485,981	12.81
10 NOV 2025 - 10 NOV 2025	INARI	MR MAI MANG LEE [DIR/CEO]	-300	12,581	0.332
06 NOV 2025 - 06 NOV 2025	INARI	EMPLOYEES PROVIDENT FUND BOARD [SSH]	621	541,143	14.264
11 NOV 2025 - 11 NOV 2025	IOICORP	EMPLOYEES PROVIDENT FUND BOARD [SSH]	58,500	995,222	15.894
10 NOV 2025 - 10 NOV 2025	IOICORP	EMPLOYEES PROVIDENT FUND BOARD [SSH]	1,204	936,722	15.099
07 NOV 2025 - 07 NOV 2025	IOICORP	EMPLOYEES PROVIDENT FUND BOARD [SSH]	1,118	935,518	15.08
06 NOV 2025 - 06 NOV 2025	IOICORP	EMPLOYEES PROVIDENT FUND BOARD [SSH]	2,140	934,399	15.062
05 NOV 2025 - 05 NOV 2025	IOICORP	EMPLOYEES PROVIDENT FUND BOARD [SSH]	1,562	932,259	15.027
11 NOV 2025 - 11 NOV 2025	IOIPG	EMPLOYEES PROVIDENT FUND BOARD [SSH]	407	302,459	5.493
07 NOV 2025 - 07 NOV 2025	IOIPG	EMPLOYEES PROVIDENT FUND BOARD [SSH]	487	302,053	5.486
06 NOV 2025 - 06 NOV 2025	IOIPG	EMPLOYEES PROVIDENT FUND BOARD [SSH]	609	301,566	5.477
05 NOV 2025 - 05 NOV 2025	IOIPG	EMPLOYEES PROVIDENT FUND BOARD [SSH]	845	300,956	5.466
11 NOV 2025 - 11 NOV 2025	JPG	EMPLOYEES PROVIDENT FUND BOARD [SSH]	-5,991	305,478	12.219
10 NOV 2025 - 10 NOV 2025	JPG	EMPLOYEES PROVIDENT FUND BOARD [SSH]	-2,930	311,468	12.459
07 NOV 2025 - 07 NOV 2025	JPG	EMPLOYEES PROVIDENT FUND BOARD [SSH]	-3,846	314,398	12.576
06 NOV 2025 - 06 NOV 2025	JPG	EMPLOYEES PROVIDENT FUND BOARD [SSH]	-4,382	318,244	12.73
05 NOV 2025 - 05 NOV 2025	JPG	EMPLOYEES PROVIDENT FUND BOARD [SSH]	-1,325	322,626	12.905
07 NOV 2025 - 07 NOV 2025	JSB	DATIN NURHAIDA BINTI ABU SAHID [SSH]	7,576	71,105	15.671
07 NOV 2025 - 07 NOV 2025	JSB	DATUK BEROZ NIKMAL BIN MIRDIN [DIR/CEO]	7,576	91,849	20.243
07 NOV 2025 - 07 NOV 2025	JSB	DATUK BEROZ NIKMAL BIN MIRDIN [SSH]	7,576	91,849	20.243
07 NOV 2025 - 07 NOV 2025	JSB-WB	DATUK BEROZ NIKMAL BIN MIRDIN [DIR/CEO]	-7,576	32,670	22.789
11 NOV 2025 - 11 NOV 2025	KLCC	EMPLOYEES PROVIDENT FUND BOARD [SSH]	1,600	191,413	10.603
11 NOV 2025 - 11 NOV 2025	KLCC	EMPLOYEES PROVIDENT FUND BOARD [SSH]	1,600	191,413	10.603
10 NOV 2025 - 10 NOV 2025	KLCC	EMPLOYEES PROVIDENT FUND BOARD [SSH]	2	189,813	10.514
10 NOV 2025 - 10 NOV 2025	KLCC	EMPLOYEES PROVIDENT FUND BOARD [SSH]	2	189,813	10.514
07 NOV 2025 - 07 NOV 2025	KLCC	EMPLOYEES PROVIDENT FUND BOARD [SSH]	700	189,812	10.514
07 NOV 2025 - 07 NOV 2025	KLCC	EMPLOYEES PROVIDENT FUND BOARD [SSH]	700	189,812	10.514
06 NOV 2025 - 06 NOV 2025	KLCC	EMPLOYEES PROVIDENT FUND BOARD [SSH]	1,013	189,112	10.475
06 NOV 2025 - 06 NOV 2025	KLCC	EMPLOYEES PROVIDENT FUND BOARD [SSH]	1,013	189,112	10.475
05 NOV 2025 - 05 NOV 2025	KLCC	EMPLOYEES PROVIDENT FUND BOARD [SSH]	291	188,099	10.419
05 NOV 2025 - 05 NOV 2025	KLCC	EMPLOYEES PROVIDENT FUND BOARD [SSH]	291	188,099	10.419
11 NOV 2025 - 11 NOV 2025	KLK	EMPLOYEES PROVIDENT FUND BOARD [SSH]	443	188,355	16.913
10 NOV 2025 - 10 NOV 2025	KLK	EMPLOYEES PROVIDENT FUND BOARD [SSH]	-4	187,912	16.873
06 NOV 2025 - 06 NOV 2025	KLK	EMPLOYEES PROVIDENT FUND BOARD [SSH]	26	187,913	16.873
05 NOV 2025 - 05 NOV 2025	KLK	EMPLOYEES PROVIDENT FUND BOARD [SSH]	13	187,887	16.871
11 NOV 2025 - 11 NOV 2025	KOPI	DATUK CHRISTOPHER WAN SOO KEE [DIR/CEO]	139	139	0.007
13 NOV 2025 - 13 NOV 2025	LBS	KUMPULAN WANG PERSARAAN (DIPERBADANKAN) [SSH]	-572	126,699	8.218
12 NOV 2025 - 12 NOV 2025	LBS	KUMPULAN WANG PERSARAAN (DIPERBADANKAN) [SSH]	-7,213	127,270	8.255
11 NOV 2025 - 11 NOV 2025	LBS	KUMPULAN WANG PERSARAAN (DIPERBADANKAN) [SSH]	-2,490	134,483	8.723
10 NOV 2025 - 10 NOV 2025	M&A	CIK SITI NUR AISHAH BINTI ISHAK [SSH]	-155	142,498	7.129
13 NOV 2025 - 13 NOV 2025	MALAKOF	KUMPULAN WANG PERSARAAN (DIPERBADANKAN) ("KWAP") [SSH]	-328	368,362	7.537
12 NOV 2025 - 12 NOV 2025	MALAKOF	KUMPULAN WANG PERSARAAN (DIPERBADANKAN) ("KWAP") [SSH]	-474	368,690	7.544
11 NOV 2025 - 11 NOV 2025	MALAKOF	KUMPULAN WANG PERSARAAN (DIPERBADANKAN) ("KWAP") [SSH]	-500	369,163	7.554
06 NOV 2025 - 06 NOV 2025	MALAKOF	EMPLOYEES PROVIDENT FUND BOARD [SSH]	59	865,985	17.72
11 NOV 2025 - 11 NOV 2025	MAXIS	EMPLOYEES PROVIDENT FUND BOARD (EPF BOARD) [SSH]	2,130	1,020,311	13.022
10 NOV 2025 - 10 NOV 2025	MAXIS	EMPLOYEES PROVIDENT FUND BOARD (EPF BOARD) [SSH]	1,925	1,018,181	12.995
07 NOV 2025 - 07 NOV 2025	MAXIS	EMPLOYEES PROVIDENT FUND BOARD (EPF BOARD) [SSH]	8,221	1,016,256	12.97
06 NOV 2025 - 06 NOV 2025	MAXIS	EMPLOYEES PROVIDENT FUND BOARD (EPF BOARD) [SSH]	8,768	1,008,035	12.865
05 NOV 2025 - 05 NOV 2025	MAXIS	EMPLOYEES PROVIDENT FUND BOARD (EPF BOARD) [SSH]	7,657	999,266	12.753
13 NOV 2025 - 13 NOV 2025	MAYBANK	AMANAHRAYA TRUSTEES BERHAD - AMANAH SAHAM BUMIPUTERA [SSH]	-2,264	3,399,981	28.143
12 NOV 2025 - 12 NOV 2025	MAYBANK	AMANAHRAYA TRUSTEES BERHAD - AMANAH SAHAM BUMIPUTERA [SSH]	-8,090	3,402,245	28.162
11 NOV 2025 - 11 NOV 2025	MAYBANK	EMPLOYEES PROVIDENT FUND BOARD [SSH]	-1,900	1,374,772	11.38
11 NOV 2025 - 11 NOV 2025	MAYBANK	AMANAHRAYA TRUSTEES BERHAD - AMANAH SAHAM BUMIPUTERA [SSH]	-2,939	341,034	28.229
07 NOV 2025 - 07 NOV 2025	MAYBANK	EMPLOYEES PROVIDENT FUND BOARD [SSH]	6,739	1,376,672	11.395
06 NOV 2025 - 06 NOV 2025	MAYBANK	EMPLOYEES PROVIDENT FUND BOARD [SSH]	-2,464	1,369,932	11.339

Notice Period is 09th November 2025 to 15th November 2025

Effective Change Date	Stock Name	Buyer/ Seller Name [Classification]	Bought / (Sold) ['000]	No. of Shares After Trade ['000]	
			Total	Total	% Held
10 NOV 2025 - 10 NOV 2025	MCEMENT	PRUDENTIAL PLC [SSH]	-196	115,427	8.372
13 NOV 2025 - 14 NOV 2025	MFCB	CAM PROPERTY (MALAYSIA) SDN BHD [SSH]	61	208,670	22.144
13 NOV 2025 - 14 NOV 2025	MFCB	CAMASIA LIMITED [SSH]	61	210,155	22.302
13 NOV 2025 - 14 NOV 2025	MFCB	GOH NAN KIOH [DIR/CEO]	61	336,235	35.681
13 NOV 2025 - 14 NOV 2025	MFCB	KEEN CAPITAL INVESTMENTS LIMITED [SSH]	61	285,440	30.291
13 NOV 2025 - 14 NOV 2025	MFCB	LAJU RIANG SDN BHD [SSH]	61	208,670	22.144
13 NOV 2025 - 14 NOV 2025	MFCB	MR GOH NAN KIOH [SSH]	61	336,235	35.681
13 NOV 2025 - 14 NOV 2025	MFCB	RUBBER THREAD INDUSTRIES (M) SDN BERHAD [SSH]	61	208,670	22.144
11 NOV 2025 - 12 NOV 2025	MFCB	CAM PROPERTY (MALAYSIA) SDN BHD [SSH]	43	208,609	22.138
11 NOV 2025 - 12 NOV 2025	MFCB	CAMASIA LIMITED [SSH]	43	210,095	22.296
11 NOV 2025 - 12 NOV 2025	MFCB	GOH NAN KIOH [DIR/CEO]	43	336,174	35.675
11 NOV 2025 - 12 NOV 2025	MFCB	KEEN CAPITAL INVESTMENTS LIMITED [SSH]	43	285,380	30.285
11 NOV 2025 - 12 NOV 2025	MFCB	LAJU RIANG SDN BHD [SSH]	43	208,609	22.138
11 NOV 2025 - 12 NOV 2025	MFCB	MR GOH NAN KIOH [SSH]	43	336,174	35.675
11 NOV 2025 - 12 NOV 2025	MFCB	RUBBER THREAD INDUSTRIES (M) SDN BERHAD [SSH]	43	208,609	22.138
05 NOV 2025 - 05 NOV 2025	MFCB	EMPLOYEES PROVIDENT FUND BOARD [SSH]	94	102,338	10.86
07 NOV 2025 - 10 NOV 2025	MFCB	CAM PROPERTY (MALAYSIA) SDN BHD [SSH]	35	208,566	22.133
07 NOV 2025 - 10 NOV 2025	MFCB	CAMASIA LIMITED [SSH]	35	210,052	22.291
07 NOV 2025 - 10 NOV 2025	MFCB	GOH NAN KIOH [DIR/CEO]	35	336,131	35.67
07 NOV 2025 - 10 NOV 2025	MFCB	KEEN CAPITAL INVESTMENTS LIMITED [SSH]	35	285,337	30.28
07 NOV 2025 - 10 NOV 2025	MFCB	LAJU RIANG SDN BHD [SSH]	35	208,566	22.133
07 NOV 2025 - 10 NOV 2025	MFCB	MR GOH NAN KIOH [SSH]	35	336,131	35.67
07 NOV 2025 - 10 NOV 2025	MFCB	RUBBER THREAD INDUSTRIES (M) SDN BERHAD [SSH]	35	208,566	22.133
05 NOV 2025 - 05 NOV 2025	MFCB	EMPLOYEES PROVIDENT FUND BOARD [SSH]	94	102,338	10.86
10 NOV 2025 - 10 NOV 2025	MIECO	DATO' SRI NG AH CHAI [DIR/CEO]	-1,500	572,352	57.235
10 NOV 2025 - 10 NOV 2025	MIECO	DATO' SRI NG AH CHAI [SSH]	-1,500	572,352	57.235
11 NOV 2025 - 11 NOV 2025	MISC	EMPLOYEES PROVIDENT FUND BOARD [SSH]	-626	695,982	15.592
10 NOV 2025 - 10 NOV 2025	MISC	EMPLOYEES PROVIDENT FUND BOARD [SSH]	-164	696,608	15.606
07 NOV 2025 - 07 NOV 2025	MISC	EMPLOYEES PROVIDENT FUND BOARD [SSH]	-131	696,772	15.61
06 NOV 2025 - 06 NOV 2025	MISC	EMPLOYEES PROVIDENT FUND BOARD [SSH]	-50	696,903	15.613
05 NOV 2025 - 05 NOV 2025	MISC	EMPLOYEES PROVIDENT FUND BOARD [SSH]	85	696,953	15.614
10 NOV 2025 - 10 NOV 2025	MRDIY	EMPLOYEES PROVIDENT FUND BOARD [SSH]	3,009	100,410	10.594
07 NOV 2025 - 07 NOV 2025	MRDIY	EMPLOYEES PROVIDENT FUND BOARD [SSH]	7,265	100,110	10.563
10 NOV 2025 - 10 NOV 2025	MSB	MADAM LEE LI LIAN [SSH]	-2,670	40,376	6.619
13 NOV 2025 - 13 NOV 2025	MUH	MR KHOR SEANG CHIAT [DIR/CEO]	-193	1,405	2.491
12 NOV 2025 - 12 NOV 2025	MUH	MR KHOR SEANG CHIAT [DIR/CEO]	-98	1,598	2.833
07 NOV 2025 - 07 NOV 2025	MUH	MR KHOR SEANG CHIAT [DIR/CEO]	-495	1,696	3.007
11 NOV 2025 - 11 NOV 2025	NESTLE	EMPLOYEES PROVIDENT FUND BOARD [SSH]	-118	30,566	13.034
10 NOV 2025 - 10 NOV 2025	NESTLE	EMPLOYEES PROVIDENT FUND BOARD [SSH]	-27	30,693	13.089
10 NOV 2025 - 12 NOV 2025	NGGB	DATO' GAN KUNG HIOK [SSH]	290	172,357	15.763
13 NOV 2025 - 13 NOV 2025	NIHSIN	MISS KHOO WUAN RU [DIR/CEO]	60	9,938	19.08
13 NOV 2025 - 13 NOV 2025	NIHSIN	MR KHOO CHEE KONG [SSH]	60	9,938	19.08
13 NOV 2025 - 13 NOV 2025	OMESTI	MR MONTEIRO GERARD CLAIR [DIR/CEO]	4,358	177,066	8.768
13 NOV 2025 - 13 NOV 2025	OMESTI	MR MONTEIRO GERARD CLAIR [SSH]	4,358	177,066	8.768
11 NOV 2025 - 11 NOV 2025	OMESTI	CIMB COMMERCE TRUSTEE BERHAD [SSH]	8,000	209,922	10.395
12 NOV 2025 - 12 NOV 2025	OMESTI	MR MONTEIRO GERARD CLAIR [DIR/CEO]	947	172,708	8.552
12 NOV 2025 - 12 NOV 2025	OMESTI	MR MONTEIRO GERARD CLAIR [SSH]	947	172,708	8.552
06 NOV 2025 - 06 NOV 2025	OMESTI	DATO' SRI THONG KOK KHEE [DIR/CEO]	53,867	305,081	15.107
06 NOV 2025 - 06 NOV 2025	OMESTI	DATO' SRI THONG KOK KHEE [SSH]	53,867	305,081	15.107
06 NOV 2025 - 07 NOV 2025	OMESTI	DATO' MAH SIEW KWOK [SSH]	68,739	370,749	18.359
06 NOV 2025 - 06 NOV 2025	OMESTI	GRYPHON ASSET MANAGEMENT SDN BHD [SSH]	53,160	120,638	5.974
06 NOV 2025 - 06 NOV 2025	OMESTI	INSAS BERHAD [SSH]	53,860	305,067	15.106
06 NOV 2025 - 06 NOV 2025	OMESTI	MISS MAH XIAN-ZHEN [DIR/CEO]	3,502	34,488	1.708
06 NOV 2025 - 10 NOV 2025	OMESTI	MR MONTEIRO GERARD CLAIR [DIR/CEO]	78,570	171,761	8.506
06 NOV 2025 - 10 NOV 2025	OMESTI	MR MONTEIRO GERARD CLAIR [SSH]	78,570	171,76	

Notice Period is 09th November 2025 to 15th November 2025

Effective Change Date	Stock Name	Buyer/ Seller Name [Classification]	Bought / (Sold) ['000]	No. of Shares After Trade ['000]	
			Total	Total	% Held
11 NOV 2025 - 11 NOV 2025	PENTA	KUMPULAN WANG PERSARAAN (DIPERBADANKAN) [SSH]	-112	56860	7.993
07 NOV 2025 - 07 NOV 2025	PENTA	EMPLOYEES PROVIDENT FUND BOARD [SSH]	259	63567	8.937
10 NOV 2025 - 10 NOV 2025	PENTA	KUMPULAN WANG PERSARAAN (DIPERBADANKAN) [SSH]	-207	56972	8.009
07 NOV 2025 - 07 NOV 2025	PENTA	KUMPULAN WANG PERSARAAN (DIPERBADANKAN) [SSH]	-75	57179	8.038
11 NOV 2025 - 11 NOV 2025	PETDAG	EMPLOYEES PROVIDENT FUND BOARD ("EPF BOARD") [SSH]	26	129903	13.076
06 NOV 2025 - 06 NOV 2025	PETDAG	EMPLOYEES PROVIDENT FUND BOARD ("EPF BOARD") [SSH]	243	129865	13.072
05 NOV 2025 - 05 NOV 2025	PETDAG	EMPLOYEES PROVIDENT FUND BOARD ("EPF BOARD") [SSH]	3	129616	13.047
11 NOV 2025 - 11 NOV 2025	PETGAS	EMPLOYEES PROVIDENT FUND BOARD [SSH]	-64	249873	12.628
10 NOV 2025 - 10 NOV 2025	PETGAS	EMPLOYEES PROVIDENT FUND BOARD [SSH]	-239	249972	12.633
06 NOV 2025 - 06 NOV 2025	PETGAS	EMPLOYEES PROVIDENT FUND BOARD [SSH]	-110	250165	12.643
05 NOV 2025 - 05 NOV 2025	PETGAS	EMPLOYEES PROVIDENT FUND BOARD [SSH]	90	250276	12.648
10 NOV 2025 - 10 NOV 2025	PHARMA	JAKEL MEDICAL SDN BHD [SSH]	20,000	686245	10.466
07 NOV 2025 - 07 NOV 2025	PHARMA	JAKEL MEDICAL SDN BHD [SSH]	10,500	666245	10.16
07 NOV 2025 - 07 NOV 2025	PJBUMI	MR PERUMAL A/L MANIMARAN [SSH]	55	4240	5.171
10 NOV 2025 - 10 NOV 2025	PLINTAS	EMPLOYEES PROVIDENT FUND BOARD [SSH]	-431	87378	7.943
06 NOV 2025 - 06 NOV 2025	PLINTAS	EMPLOYEES PROVIDENT FUND BOARD [SSH]	-300	87808	7.983
11 NOV 2025 - 11 NOV 2025	PMETAL	EMPLOYEES PROVIDENT FUND BOARD [SSH]	-8,657	520401	6.316
10 NOV 2025 - 10 NOV 2025	PMETAL	EMPLOYEES PROVIDENT FUND BOARD [SSH]	-16,419	529058	6.421
07 NOV 2025 - 07 NOV 2025	PMETAL	EMPLOYEES PROVIDENT FUND BOARD [SSH]	-2,664	545407	6.619
06 NOV 2025 - 06 NOV 2025	PMETAL	EMPLOYEES PROVIDENT FUND BOARD [SSH]	-3,727	548071	6.652
05 NOV 2025 - 05 NOV 2025	PMETAL	EMPLOYEES PROVIDENT FUND BOARD [SSH]	692	551868	6.698
11 NOV 2025 - 11 NOV 2025	PPB	EMPLOYEES PROVIDENT FUND BOARD [SSH]	167	240205	16.885
10 NOV 2025 - 10 NOV 2025	PPB	EMPLOYEES PROVIDENT FUND BOARD [SSH]	166	240037	16.873
06 NOV 2025 - 06 NOV 2025	PPB	EMPLOYEES PROVIDENT FUND BOARD [SSH]	197	239594	16.842
05 NOV 2025 - 05 NOV 2025	PPB	EMPLOYEES PROVIDENT FUND BOARD [SSH]	113	239397	16.828
22 OCT 2025 - 24 NOV 2025	PTRANS	DATIN SRI LIM SOW KENG [SSH]	-36,465	134526	11.173
22 OCT 2025 - 23 OCT 2025	PTRANS	DATO' SRI CHEONG KONG FITT [DIR/CEO]	-22,915	148076	12.298
22 OCT 2025 - 23 OCT 2025	PTRANS	DATO' SRI CHEONG KONG FITT [SSH]	-22,915	148076	12.298
07 NOV 2025 - 07 NOV 2025	PTRANS	DATIN SRI LIM SOW KENG [SSH]	-3,600	107856	8.956
07 NOV 2025 - 07 NOV 2025	PTRANS	DATO' SRI CHEONG KONG FITT [DIR/CEO]	-2,510	107856	8.956
07 NOV 2025 - 07 NOV 2025	PTRANS	DATO' SRI CHEONG KONG FITT [DIR/CEO]	-1,090	110366	9.164
07 NOV 2025 - 07 NOV 2025	PTRANS	DATO' SRI CHEONG KONG FITT [SSH]	-1,090	110366	9.164
07 NOV 2025 - 07 NOV 2025	PTRANS	DATO' SRI CHEONG KONG FITT [SSH]	-2,510	107856	8.956
11 NOV 2025 - 11 NOV 2025	REDTONE	JUARA SEJATI SDN. BHD. [SSH]	-18,000	255678	33.078
06 NOV 2025 - 06 NOV 2025	RGS	DATO' TAN BOON TECK [DIR/CEO]	1	154001	60.393
06 NOV 2025 - 06 NOV 2025	RGS	DATO' TAN BOON TECK [SSH]	1	154001	60.393
11 NOV 2025 - 12 NOV 2025	RGTBHD	DATUK LIM SEAT HOE [DIR/CEO]	60	101054	29.516
11 NOV 2025 - 12 NOV 2025	RGTBHD	DATUK LIM SEAT HOE [SSH]	60	101054	29.516
11 NOV 2025 - 12 NOV 2025	RGTBHD	MADAM HOR LIM CHEE [SSH]	60	123746	36.145
11 NOV 2025 - 12 NOV 2025	RGTBHD	MR NG CHOON KEAT [DIR/CEO]	60	110061	32.147
11 NOV 2025 - 12 NOV 2025	RGTBHD	MR NG CHOON KEAT [SSH]	60	110061	32.147
11 NOV 2025 - 12 NOV 2025	RGTBHD	MR TAN SONG CHAI [SSH]	60	110046	32.143
11 NOV 2025 - 12 NOV 2025	RGTBHD	RGT EQUITY HOLDINGS SDN. BHD. [SSH]	60	92453	27.004
06 NOV 2025 - 07 NOV 2025	RGTBHD	DATUK LIM SEAT HOE [DIR/CEO]	363	100994	29.499
06 NOV 2025 - 07 NOV 2025	RGTBHD	DATUK LIM SEAT HOE [SSH]	363	100994	29.499
06 NOV 2025 - 07 NOV 2025	RGTBHD	MADAM HOR LIM CHEE [SSH]	363	123686	36.128
06 NOV 2025 - 07 NOV 2025	RGTBHD	MR NG CHOON KEAT [DIR/CEO]	363	110001	32.13
06 NOV 2025 - 07 NOV 2025	RGTBHD	MR NG CHOON KEAT [SSH]	363	110001	32.13
06 NOV 2025 - 07 NOV 2025	RGTBHD	MR TAN SONG CHAI [SSH]	363	109986	32.125
06 NOV 2025 - 07 NOV 2025	RGTBHD	RGT EQUITY HOLDINGS SDN. BHD. [SSH]	363	92393	26.987
11 NOV 2025 - 11 NOV 2025	RHBBANK	EMPLOYEES PROVIDENT FUND BOARD [SSH]	-1,013	1658053	38.012
10 NOV 2025 - 10 NOV 2025	RHBBANK	EMPLOYEES PROVIDENT FUND BOARD [SSH]	-1,223	1659066	38.035
07 NOV 2025 - 07 NOV 2025	RHBBANK	EMPLOYEES PROVIDENT FUND BOARD [SSH]	2,205	1660289	38.063
06 NOV 2025 - 06 NOV 2025	RHBBANK	EMPLOYEES PROVIDENT FUND BOARD [SSH]	-1,181	1658084	38.013
05 NOV 2025 - 05 NOV 2025	RHBBANK	EMPLOYEES PROVIDENT FUND BOARD [SSH]	-683	1659265	38.04
06 NOV 2025 - 06 NOV 2025	RKI	MADAM LIN CHEN JUI-FEN [SSH]	14,196	64114	32.734
06 NOV 2025 - 06 NOV 2025	RKI	MR LIN CHIN-HUNG [SSH]	14,196	27868	14.229
11 NOV 2025 - 12 NOV 2025	SALCON	BERJAYA CAPITAL BERHAD [SSH]	2,315	127851	11.262
11 NOV 2025 - 12 NOV 2025	SALCON	BERJAYA CORPORATION BERHAD [SSH]	2,315	186641	16.44
11 NOV 2025 - 12 NOV 2025	SALCON	BERJAYA GROUP BERHAD [SSH]	2,315	186641	16.44
11 NOV 2025 - 12 NOV 2025	SALCON	BERJAYA IPS EQUITY SDN BHD (FKA INTER-PACIFIC CAPITAL SDN BHD) [SSH]	2,315	127851	11.262
11 NOV 2025 - 12 NOV 2025	SALCON	BIZURAI BIJAK (M) SDN BHD [SSH]	2,315	127851	11.262
11 NOV 2025 - 12 NOV 2025	SALCON	JUARA SEJATI SDN BHD [SSH]	-7,685	176641	15.56
11 NOV 2025 - 12 NOV 2025	SALCON	TAN SRI DATO' SERI VINCENT TAN CHEE YIOUN [SSH]	2,315	186641	16.44
10 NOV 2025 - 10 NOV 2025	SAM	EMPLOYEES PROVIDENT FUND BOARD [SSH]	-11	38687	5.715
07 NOV 2025 - 07 NOV 2025	SAM	EMPLOYEES PROVIDENT FUND BOARD [SSH]	56	38698	5.716
06 NOV 2025 - 06 NOV 2025	SAM	EMPLOYEES PROVIDENT FUND BOARD [SSH]	-15	38642	5.708
05 NOV 2025 - 05 NOV 2025	SAM	EMPLOYEES PROVIDENT FUND BOARD [SSH]	-110	38657	5.71
10 NOV 2025 - 10 NOV 2025	SCIENTX	MR LIM PENG CHEONG [DIR/CEO]	6,000	877648	56.394
10 NOV 2025 - 10 NOV 2025	SCIENTX	MR LIM PENG CHEONG [SSH]	6,000	871590	56.005
10 NOV 2025 - 10 NOV 2025	SCIENTX	MR LIM PENG JIN [DIR/CEO]	6,000	923309	59.329
10 NOV 2025 - 10 NOV 2025	SCIENTX	MR LIM PENG JIN [SSH]	6,000	923217	59.323
10 NOV 2025 - 10 NOV 2025	SCIENTX	SCIENTEX INFINITY SDN BHD [SSH]	6,000	738993	47.485
11 NOV 2025 - 11 NOV 2025	SCOMNET	MADAM WU HUEI-CHUNG [DIR/CEO]	100	461544	53.82
11 NOV 2025 - 11 NOV 2025	SCOMNET	MADAM WU HUEI-CHUNG [SSH]	100	461544	53.82
11 NOV 2025 - 11 NOV 2025	SCOMNET	MR HSUEH CHIH-YU [DIR/CEO]	100	461544	53.819
11 NOV 2025 - 11 NOV 2025	SCOMNET	MR HSUEH CHIH-YU [SSH]	100	461544	53.819
11 NOV 2025 - 11 NOV 2025	SCOMNET	MR SHIUE JONG-ZONE A.K.A. JAMES SHIUE [DIR/CEO]	100	461544	53.819
11 NOV 2025 - 11 NOV 2025	SCOMNET	MR SHIUE JONG-ZONE A.K.A. JAMES SHIUE [SSH]	100	461544	53.819
11 NOV 2025 - 11 NOV 2025	SCOMNET	MR SHIUE JYH-JEH @ JERRY [SSH]	100	463711	54.072

Notice Period is 09th November 2025 to 15th November 2025

Effective Change Date	Stock Name	Buyer/ Seller Name [Classification]	Bought / (Sold) ['000]	No. of Shares After Trade ['000]	
			Total	Total	% Held
07 NOV 2025 - 07 NOV 2025	SCOMNET	MADAM WU HUEI-CHUNG [DIR/CEO]	32	461444	53.798
07 NOV 2025 - 07 NOV 2025	SCOMNET	MADAM WU HUEI-CHUNG [SSH]	32	461444	53.798
07 NOV 2025 - 07 NOV 2025	SCOMNET	MR HSUEH CHIH-YU [DIR/CEO]	32	461444	53.798
07 NOV 2025 - 07 NOV 2025	SCOMNET	MR HSUEH CHIH-YU [SSH]	32	461444	53.798
07 NOV 2025 - 07 NOV 2025	SCOMNET	MR SHIUE JONG-ZONE A.K.A. JAMES SHIUE [DIR/CEO]	32	461444	53.798
07 NOV 2025 - 07 NOV 2025	SCOMNET	MR SHIUE JONG-ZONE A.K.A. JAMES SHIUE [SSH]	32	461444	53.798
07 NOV 2025 - 07 NOV 2025	SCOMNET	MR SHIUE JYH-JEH @ JERRY [SSH]	32	463611	54.051
07 NOV 2025 - 07 NOV 2025	SCOMNET	MR WU CHUNG-JUNG [DIR/CEO]	32	461444	53.798
07 NOV 2025 - 07 NOV 2025	SCOMNET	MR WU CHUNG-JUNG [SSH]	32	461444	53.798
10 NOV 2025 - 10 NOV 2025	SDG	EMPLOYEES PROVIDENT FUND BOARD [SSH]	-4,800	1054851	15.253
10 NOV 2025 - 11 NOV 2025	SDG	EMPLOYEES PROVIDENT FUND BOARD [SSH]	-2,345	1052506	15.219
12 NOV 2025 - 12 NOV 2025	SDG	KUMPULAN WANG PERSARAAN (DIPERBADANKAN) [SSH]	215	518566	7.498
11 NOV 2025 - 11 NOV 2025	SDG	AMANAHRAYA TRUSTEES BERHAD - AMANAH SAHAM BUMIPUTERA [SSH]	-2,207	2968919	42.93
11 NOV 2025 - 11 NOV 2025	SDG	KUMPULAN WANG PERSARAAN (DIPERBADANKAN) [SSH]	352	518351	7.495
10 NOV 2025 - 10 NOV 2025	SDG	KUMPULAN WANG PERSARAAN (DIPERBADANKAN) [SSH]	100	518703	7.5
07 NOV 2025 - 07 NOV 2025	SDG	AMANAHRAYA TRUSTEES BERHAD - AMANAH SAHAM BUMIPUTERA [SSH]	-1,750	2971126	42.962
07 NOV 2025 - 07 NOV 2025	SDG	EMPLOYEES PROVIDENT FUND BOARD [SSH]	-12,700	1059651	15.323
05 NOV 2025 - 06 NOV 2025	SDG	EMPLOYEES PROVIDENT FUND BOARD [SSH]	-12,946	1072351	15.506
14 NOV 2025 - 14 NOV 2025	SEALINK	MR YONG FOH CHOI [SSH]	-109,081	45717	9.143
10 NOV 2025 - 10 NOV 2025	SEALINK	MR YONG FOH CHOI [SSH]	-154,798	154798	30.963
12 NOV 2025 - 13 NOV 2025	SIME	KUMPULAN WANG PERSARAAN (DIPERBADANKAN) [SSH]	-821	454975	6.676
11 NOV 2025 - 11 NOV 2025	SIME	EMPLOYEES PROVIDENT FUND BOARD [SSH]	-413	1202856	17.648
11 NOV 2025 - 11 NOV 2025	SIME	KUMPULAN WANG PERSARAAN (DIPERBADANKAN) [SSH]	936	455796	6.688
07 NOV 2025 - 07 NOV 2025	SIME	EMPLOYEES PROVIDENT FUND BOARD [SSH]	-426	1203269	17.654
06 NOV 2025 - 06 NOV 2025	SIME	EMPLOYEES PROVIDENT FUND BOARD [SSH]	-808	1203695	17.66
07 NOV 2025 - 07 NOV 2025	SIME	KUMPULAN WANG PERSARAAN (DIPERBADANKAN) [SSH]	-66	454859	6.674
06 NOV 2025 - 06 NOV 2025	SIME	KUMPULAN WANG PERSARAAN (DIPERBADANKAN) [SSH]	-126	454925	6.675
04 NOV 2025 - 04 NOV 2025	SIME	EMPLOYEES PROVIDENT FUND BOARD [SSH]	-2,181	1204503	17.672
12 NOV 2025 - 12 NOV 2025	SIMEPROP	KUMPULAN WANG PERSARAAN (DIPERBADANKAN) [SSH]	-1,789	453876	6.673
10 NOV 2025 - 10 NOV 2025	SIMEPROP	EMPLOYEES PROVIDENT FUND BOARD [SSH]	2,107	976026	14.352
11 NOV 2025 - 11 NOV 2025	SIMEPROP	KUMPULAN WANG PERSARAAN (DIPERBADANKAN) [SSH]	418	455664	6.7
07 NOV 2025 - 07 NOV 2025	SIMEPROP	EMPLOYEES PROVIDENT FUND BOARD [SSH]	1,099	973918	14.321
10 NOV 2025 - 10 NOV 2025	SIMEPROP	KUMPULAN WANG PERSARAAN (DIPERBADANKAN) [SSH]	327	455247	6.693
06 NOV 2025 - 06 NOV 2025	SIMEPROP	EMPLOYEES PROVIDENT FUND BOARD [SSH]	3,256	972820	14.305
07 NOV 2025 - 07 NOV 2025	SIMEPROP	KUMPULAN WANG PERSARAAN (DIPERBADANKAN) [SSH]	665	454920	6.689
05 NOV 2025 - 05 NOV 2025	SIMEPROP	EMPLOYEES PROVIDENT FUND BOARD [SSH]	3,085	969563	14.257
12 NOV 2025 - 12 NOV 2025	SKPRES	ABERDEEN GROUP PLC (FORMERLY KNOWN AS ABRDN PLC) [SSH]	212	137326	8.79
12 NOV 2025 - 12 NOV 2025	SKPRES	ABRDN HOLDINGS LIMITED [SSH]	212	137326	8.79
12 NOV 2025 - 12 NOV 2025	SKPRES	ABRDN MALAYSIA SDN BHD [SSH]	212	137326	8.79
12 NOV 2025 - 12 NOV 2025	SKPRES	KUMPULAN WANG PERSARAAN (DIPERBADANKAN) [SSH]	212	178264	11.41
11 NOV 2025 - 11 NOV 2025	SKPRES	ABERDEEN GROUP PLC (FORMERLY KNOWN AS ABRDN PLC) [SSH]	1,339	137114	8.776
11 NOV 2025 - 11 NOV 2025	SKPRES	ABRDN HOLDINGS LIMITED [SSH]	1,339	137114	8.776
11 NOV 2025 - 11 NOV 2025	SKPRES	ABRDN MALAYSIA SDN BHD [SSH]	1,339	137114	8.776
11 NOV 2025 - 11 NOV 2025	SKPRES	KUMPULAN WANG PERSARAAN (DIPERBADANKAN) [SSH]	1,339	178053	11.397
05 NOV 2025 - 05 NOV 2025	SKPRES	EMPLOYEES PROVIDENT FUND BOARD [SSH]	208	233239	14.929
11 NOV 2025 - 11 NOV 2025	SLVEST	URUSHARTA JAMAAH SDN. BHD. [SSH]	-69	60430	6.441
06 NOV 2025 - 06 NOV 2025	SLVEST	URUSHARTA JAMAAH SDN. BHD. [SSH]	-87	48994	5.232
05 NOV 2025 - 05 NOV 2025	SLVEST	URUSHARTA JAMAAH SDN. BHD. [SSH]	-182	49080	5.762
04 NOV 2025 - 04 NOV 2025	SLVEST	URUSHARTA JAMAAH SDN. BHD. [SSH]	-94	49262	5.785
11 NOV 2025 - 11 NOV 2025	SMRT	EMPLOYEES PROVIDENT FUND BOARD [SSH]	-100	36723	8.065
06 NOV 2025 - 06 NOV 2025	SMRT	EMPLOYEES PROVIDENT FUND BOARD [SSH]	-50	36823	8.087
05 NOV 2025 - 05 NOV 2025	SMRT	EMPLOYEES PROVIDENT FUND BOARD [SSH]	-300	36873	8.098
12 NOV 2026 - 12 NOV 2026	SRIDGE	ENCIK SYAKUR BIN DATO' MOHD SUHAIMI [DIR/CEO]	-45	28589	7.525
12 NOV 2025 - 12 NOV 2025	SRIDGE	ENCIK SYAKUR BIN DATO' MOHD SUHAIMI [SSH]	45	286189	7.525
10 OCT 2025 - 10 OCT 2025	SRIDGE	MR VINCENT GAN KEAN CHEANG [DIR/CEO]	-450	16920	4.452
10 NOV 2025 - 11 NOV 2025	STRAITS	MR YONG CHEAN PENG [SSH]	331	54498	5.48
05 NOV 2025 - 07 NOV 2025	STRAITS	MR YONG CHEAN PENG [SSH]	228	54167	5.447
05 NOV 2025 - 06 NOV 2025	SUNLOGY	DATUK KEH CHUAN SENG [SSH]	-35,000	126000	18
11 NOV 2025 - 11 NOV 2025	SUNREIT	EMPLOYEES PROVIDENT FUND BOARD [SSH]	3,576	474556	13.856
10 NOV 2025 - 10 NOV 2025	SUNREIT	EMPLOYEES PROVIDENT FUND BOARD [SSH]	5,000	470980	13.752
07 NOV 2025 - 07 NOV 2025	SUNREIT	EMPLOYEES PROVIDENT FUND BOARD [SSH]	1,653	465980	13.606
06 NOV 2025 - 06 NOV 2025	SUNREIT	EMPLOYEES PROVIDENT FUND BOARD [SSH]	1,167	464327	13.558
05 NOV 2025 - 05 NOV 2025	SUNREIT	EMPLOY			

Notice Period is 09th November 2025 to 15th November 2025

Effective Change Date	Stock Name	Buyer/ Seller Name [Classification]	Bought / (Sold) ['000]	No. of Shares After Trade ['000]	
			Total	Total	% Held
07 NOV 2025 - 07 NOV 2025	SUNWAY	TAN SRI SIR DR. JEFFREY CHEAH FOOK LING KBE AO [DIR/CEO]	30,262	3729911	59.47
07 NOV 2025 - 07 NOV 2025	SUNWAY	TAN SRI SIR DR. JEFFREY CHEAH FOOK LING KBE AO [SSH]	30,262	3729911	59.47
06 NOV 2025 - 06 NOV 2025	SUNWAY	EMPLOYEES PROVIDENT FUND BOARD [SSH]	650	498030	7.94
05 NOV 2025 - 05 NOV 2025	SUNWAY	EMPLOYEES PROVIDENT FUND BOARD [SSH]	769	497380	7.93
10 NOV 2025 - 10 NOV 2025	TAFI	ARMANI SYNERGY SDN. BHD. [SSH]	303	200992	52.972
10 NOV 2025 - 10 NOV 2025	TAFI	DATO' SRI ANDREW LIM ENG GUAN [DIR/CEO]	303	211794	55.819
10 NOV 2025 - 10 NOV 2025	TAFI	DATO' SRI ANDREW LIM ENG GUAN [SSH]	303	211794	55.819
10 NOV 2025 - 10 NOV 2025	TAFI	DATO' SRI AZLAN BIN AZMI [DIR/CEO]	303	201550	53.119
10 NOV 2025 - 10 NOV 2025	TAFI	DATO' SRI AZLAN BIN AZMI [SSH]	303	201550	53.119
10 NOV 2025 - 10 NOV 2025	TAFI	DATO' SRI WONG SZE CHIEN [DIR/CEO]	303	211651	55.781
10 NOV 2025 - 10 NOV 2025	TAFI	DATO' SRI WONG SZE CHIEN [SSH]	303	211651	55.781
14 NOV 2025 - 14 NOV 2025	TANCO	DATO' SRI ANDREW TAN JUN SUAN [DIR/CEO]	-7,745	3166754	52.556
14 NOV 2025 - 14 NOV 2025	TANCO	DATO' SRI ANDREW TAN JUN SUAN [SSH]	12,766	3179520	52.768
14 NOV 2025 - 14 NOV 2025	TANCO	DATO' SRI ANDREW TAN JUN SUAN [SSH]	12,766	3179520	52.768
14 NOV 2025 - 14 NOV 2025	TANCO	DATO' SRI ANDREW TAN JUN SUAN [SSH]	-7,745	3166754	52.556
13 NOV 2025 - 13 NOV 2025	TANCO	DATO' SRI ANDREW TAN JUN SUAN [DIR/CEO]	12,795	3174499	52.685
13 NOV 2025 - 13 NOV 2025	TANCO	DATO' SRI ANDREW TAN JUN SUAN [DIR/CEO]	-6,500	3161704	52.472
13 NOV 2025 - 13 NOV 2025	TANCO	DATO' SRI ANDREW TAN JUN SUAN [SSH]	-6,500	3161704	52.472
13 NOV 2025 - 13 NOV 2025	TANCO	DATO' SRI ANDREW TAN JUN SUAN [SSH]	12,795	3174499	52.685
12 NOV 2025 - 12 NOV 2025	TANCO	DATO' SRI ANDREW TAN JUN SUAN [DIR/CEO]	9,603	3168204	52.58
12 NOV 2025 - 12 NOV 2025	TANCO	DATO' SRI ANDREW TAN JUN SUAN [DIR/CEO]	-10,550	3158601	52.421
12 NOV 2025 - 12 NOV 2025	TANCO	DATO' SRI ANDREW TAN JUN SUAN [SSH]	9,603	3168204	52.58
12 NOV 2025 - 12 NOV 2025	TANCO	DATO' SRI ANDREW TAN JUN SUAN [SSH]	-10,550	3158601	52.421
11 NOV 2025 - 11 NOV 2025	TANCO	DATO' SRI ANDREW TAN JUN SUAN [DIR/CEO]	-6,440	3163177	52.497
11 NOV 2025 - 11 NOV 2025	TANCO	DATO' SRI ANDREW TAN JUN SUAN [DIR/CEO]	5,975	3169151	52.596
11 NOV 2025 - 11 NOV 2025	TANCO	DATO' SRI ANDREW TAN JUN SUAN [SSH]	-6,440	3163177	52.497
11 NOV 2025 - 11 NOV 2025	TANCO	DATO' SRI ANDREW TAN JUN SUAN [SSH]	5,975	3169151	52.596
10 NOV 2025 - 10 NOV 2025	TANCO	DATO' SRI ANDREW TAN JUN SUAN [DIR/CEO]	7,875	3169617	52.604
10 NOV 2025 - 10 NOV 2025	TANCO	DATO' SRI ANDREW TAN JUN SUAN [DIR/CEO]	-3,503	3161742	52.473
10 NOV 2025 - 10 NOV 2025	TANCO	DATO' SRI ANDREW TAN JUN SUAN [SSH]	-3,503	3161742	52.473
10 NOV 2025 - 10 NOV 2025	TANCO	DATO' SRI ANDREW TAN JUN SUAN [SSH]	7,875	3169617	52.604
10 NOV 2025 - 10 NOV 2025	TENAGA	EMPLOYEES PROVIDENT FUND BOARD [SSH]	10	1124750	19.3
06 NOV 2025 - 06 NOV 2025	TENAGA	EMPLOYEES PROVIDENT FUND BOARD [SSH]	1,740	1123836	19.28
05 NOV 2025 - 05 NOV 2025	TENAGA	EMPLOYEES PROVIDENT FUND BOARD [SSH]	292	1122096	19.25
13 NOV 2025 - 13 NOV 2025	TM	KUMPULAN WANG PERSARAAN (DIPERBADANKAN) [KWAP] [SSH]	57	383372	9.99
11 NOV 2025 - 11 NOV 2025	TM	EMPLOYEES PROVIDENT FUND BOARD (EPF BOARD) [SSH]	-4,647	856578	22.32
12 NOV 2025 - 12 NOV 2025	TM	KUMPULAN WANG PERSARAAN (DIPERBADANKAN) [KWAP] [SSH]	-100	383315	9.988
10 NOV 2025 - 10 NOV 2025	TM	EMPLOYEES PROVIDENT FUND BOARD (EPF BOARD) [SSH]	-315	861225	22.441
07 NOV 2025 - 07 NOV 2025	TM	EMPLOYEES PROVIDENT FUND BOARD (EPF BOARD) [SSH]	-70	861481	22.448
06 NOV 2025 - 06 NOV 2025	TM	EMPLOYEES PROVIDENT FUND BOARD (EPF BOARD) [SSH]	-653	861550	22.449
05 NOV 2025 - 05 NOV 2025	TM	EMPLOYEES PROVIDENT FUND BOARD (EPF BOARD) [SSH]	341	862203	22.466
14 NOV 2025 - 14 NOV 2025	TOPGLOV	MR LIM HOOI SIN [DIR/CEO]	2,000	2981211	37.182
14 NOV 2025 - 14 NOV 2025	TOPGLOV	MR LIM HOOI SIN [SSH]	2,000	2981211	37.182
14 NOV 2025 - 14 NOV 2025	TOPGLOV	MR LIM JIN FENG [SSH]	2,000	2866933	35.756
14 NOV 2025 - 14 NOV 2025	TOPGLOV	PUAN SRI TONG SIEW BEE [SSH]	2,000	2981411	37.185
14 NOV 2025 - 14 NOV 2025	TOPGLOV	TAN SRI DR LIM WEE CHAI [DIR/CEO]	2,000	2981411	37.185
14 NOV 2025 - 14 NOV 2025	TOPGLOV	TAN SRI DR LIM WEE CHAI [SSH]	2,000	2981411	37.185
13 NOV 2025 - 13 NOV 2025	TOPGLOV	MR LIM HOOI SIN [DIR/CEO]	2,000	2979211	37.157
13 NOV 2025 - 13 NOV 2025	TOPGLOV	MR LIM HOOI SIN [SSH]	2,000	2979211	37.157
13 NOV 2025 - 13 NOV 2025	TOPGLOV	MR LIM JIN FENG [SSH]	2,000	2864933	35.731
13 NOV 2025 - 13 NOV 2025	TOPGLOV	PUAN SRI TONG SIEW BEE [SSH]	2,000	2979411	37.16
13 NOV 2025 - 13 NOV 2025	TOPGLOV	TAN SRI DR LIM WEE CHAI [DIR/CEO]	2,000	2979411	37.16
13 NOV 2025 - 13 NOV 2025	TOPGLOV	TAN SRI DR LIM WEE CHAI [SSH]	2,000	2979411	37.16
12 NOV 2025 - 12 NOV 2025	TOPGLOV	MR LIM HOOI SIN [DIR/CEO]	2,000	2977211	37.133
12 NOV 2025 - 12 NOV 2025	TOPGLOV	MR LIM HOOI SIN [SSH]	2,000	2977211	37.133
12 NOV 2025 - 12 NOV 2025	TOPGLOV	MR LIM JIN FENG [SSH]	2,000	2862933	35.707
12 NOV 2025 - 12 NOV 2025	TOPGLOV	PUAN SRI TONG SIEW BEE [SSH]	2,000	2977411	37.135
12 NOV 2025 - 12 NOV 2025	TOPGLOV	TAN SRI DR LIM WEE CHAI [DIR/CEO]	2,000	2977411	37.135
12 NOV 2025 - 12 NOV 2025	TOPGLOV	TAN SRI DR LIM WEE CHAI [SSH]	2,000	2977411	37.135
13 NOV 2025 - 13 NOV 2025	UCHITEC	KUMPULAN WANG PERSARAAN (DIPERBADANKAN) [SSH]	100	26722	5.774

Notice Period is 09th November 2025 to 15th November 2025

Effective Change Date	Stock Name	Buyer/ Seller Name [Classification]	Bought / (Sold) ['000]	No. of Shares After Trade ['000]	
			Total	Total	% Held
11 NOV 2025 - 11 NOV 2025	UOAEV	EMPLOYEES PROVIDENT FUND BOARD ("EPF BOARD") [SSH]	57	376636	14.186
10 NOV 2025 - 10 NOV 2025	UOAEV	EMPLOYEES PROVIDENT FUND BOARD ("EPF BOARD") [SSH]	63	376580	14.184
07 NOV 2025 - 07 NOV 2025	UOAEV	EMPLOYEES PROVIDENT FUND BOARD ("EPF BOARD") [SSH]	65	376516	14.181
06 NOV 2025 - 06 NOV 2025	UOAEV	EMPLOYEES PROVIDENT FUND BOARD ("EPF BOARD") [SSH]	69	376451	14.179
05 NOV 2025 - 05 NOV 2025	UOAEV	EMPLOYEES PROVIDENT FUND BOARD ("EPF BOARD") [SSH]	2	376383	14.176
11 NOV 2025 - 11 NOV 2025	UTDPLT	EMPLOYEES PROVIDENT FUND BOARD [SSH]	460	37822	6.079
10 NOV 2025 - 10 NOV 2025	UTDPLT	EMPLOYEES PROVIDENT FUND BOARD [SSH]	50	37362	6.005
06 NOV 2025 - 06 NOV 2025	UTDPLT	EMPLOYEES PROVIDENT FUND BOARD [SSH]	36	37267	5.99
04 NOV 2025 - 05 DEC 2025	UTDPLT	EMPLOYEES PROVIDENT FUND BOARD [SSH]	-25	37231	5.984
11 NOV 2025 - 11 NOV 2025	UWC	EMPLOYEES PROVIDENT FUND BOARD [SSH]	-75	70908	6.429
11 NOV 2025 - 11 NOV 2025	UWC	ABERDEEN GROUP PLC (FORMERLY KNOWN AS ABRDN PLC) [SSH]	-110	56893	5.159
11 NOV 2025 - 11 NOV 2025	UWC	ABRDN HOLDINGS LIMITED [SSH]	-110	56893	5.159
11 NOV 2025 - 11 NOV 2025	UWC	ABRDN MALAYSIA SDN BHD [SSH]	-110	56614	5.133
10 NOV 2025 - 10 NOV 2025	UWC	ABERDEEN GROUP PLC (FORMERLY KNOWN AS ABRDN PLC) [SSH]	-25	57003	5.168
10 NOV 2025 - 10 NOV 2025	UWC	ABRDN HOLDINGS LIMITED [SSH]	-25	57003	5.168
10 NOV 2025 - 10 NOV 2025	UWC	ABRDN MALAYSIA SDN BHD [SSH]	-25	56724	5.143
07 NOV 2025 - 07 NOV 2025	UWC	ABERDEEN GROUP PLC (FORMERLY KNOWN AS ABRDN PLC) [SSH]	-24	57028	5.171
07 NOV 2025 - 07 NOV 2025	UWC	ABRDN HOLDINGS LIMITED [SSH]	-24	57028	5.171
07 NOV 2025 - 07 NOV 2025	UWC	ABRDN MALAYSIA SDN BHD [SSH]	-24	56749	5.145
06 NOV 2025 - 06 NOV 2025	UWC	EMPLOYEES PROVIDENT FUND BOARD [SSH]	-458	70983	6.436
06 NOV 2025 - 06 NOV 2025	UWC	ABERDEEN GROUP PLC (FORMERLY KNOWN AS ABRDN PLC) [SSH]	-110	57051	5.173
06 NOV 2025 - 06 NOV 2025	UWC	ABRDN HOLDINGS LIMITED [SSH]	-110	57051	5.173
06 NOV 2025 - 06 NOV 2025	UWC	ABRDN MALAYSIA SDN BHD [SSH]	-110	56773	5.148
05 NOV 2025 - 05 NOV 2025	UWC	EMPLOYEES PROVIDENT FUND BOARD [SSH]	-85	71441	6.478
06 NOV 2025 - 06 NOV 2025	VANTNRG	KHAZANAH NASIONAL BERHAD [SSH]	-67,733	208930	9.139
06 NOV 2025 - 06 NOV 2025	VANTNRG	CIMB BANK BERHAD [SSH]	-67,733	208930	9.151
06 NOV 2025 - 06 NOV 2025	VANTNRG	CIMB GROUP HOLDINGS BERHAD [SSH]	-67,733	208930	9.151
06 NOV 2025 - 06 NOV 2025	VANTNRG	CIMB GROUP SDN BHD [SSH]	-67,733	208930	9.151
12 NOV 2025 - 12 NOV 2025	VELESTO	ABERDEEN GROUP PLC (FORMERLY KNOWN AS ABRDN PLC) [SSH]	4,977	652453	7.942
12 NOV 2025 - 12 NOV 2025	VELESTO	ABRDN HOLDINGS LIMITED [SSH]	4,977	652453	7.942
12 NOV 2025 - 12 NOV 2025	VELESTO	ABRDN MALAYSIA SDN BHD [SSH]	4,977	652453	7.942
06 NOV 2025 - 06 NOV 2025	VLB	DATO SOO SZE CHING [SSH]	69	313576	33.207
06 NOV 2025 - 06 NOV 2025	VLB	NOBLE PINNACLE (HOLDING) SDN BHD [SSH]	69	312163	33.057
11 NOV 2025 - 11 NOV 2025	WASCO	URUSHARTA JAMAAH SDN BHD [SSH]	65	43899	5.669
07 NOV 2025 - 07 NOV 2025	WASCO	URUSHARTA JAMAAH SDN BHD [SSH]	24	43834	5.66
06 NOV 2025 - 06 NOV 2025	WASCO	URUSHARTA JAMAAH SDN BHD [SSH]	105	43810	5.657
05 NOV 2025 - 05 NOV 2025	WASCO	URUSHARTA JAMAAH SDN BHD [SSH]	240	43705	5.644
14 NOV 2025 - 14 NOV 2025	WOODLAN	DATO' SERI DR MUN WENG SUM [DIR/CEO]	3	7371	18.427
14 NOV 2025 - 14 NOV 2025	WOODLAN	DATO' SERI DR MUN WENG SUM [SSH]	3	7371	18.427
13 NOV 2025 - 13 NOV 2025	WPRTS	KUMPULAN WANG PERSARAAN (DIPERBADANKAN) [SSH]	261	223882	6.542
12 NOV 2025 - 12 NOV 2025	WPRTS	KUMPULAN WANG PERSARAAN (DIPERBADANKAN) [SSH]	-154	223621	6.534
11 NOV 2025 - 11 NOV 2025	WPRTS	KUMPULAN WANG PERSARAAN (DIPERBADANKAN) [SSH]	-0.5	223775	6.539
10 NOV 2025 - 10 NOV 2025	WPRTS	KUMPULAN WANG PERSARAAN (DIPERBADANKAN) [SSH]	-12	223776	6.539
07 NOV 2025 - 07 NOV 2025	WPRTS	KUMPULAN WANG PERSARAAN (DIPERBADANKAN) [SSH]	-112	223788	6.539
11 NOV 2025 - 11 NOV 2025	YTL	EMPLOYEES PROVIDENT FUND BOARD [SSH]	5,000	1147186	9.888
07 NOV 2025 - 07 NOV 2025	YTL	EMPLOYEES PROVIDENT FUND BOARD [SSH]	1,740	1141933	9.843
05 NOV 2025 - 05 NOV 2025	YTL	EMPLOYEES PROVIDENT FUND BOARD [SSH]	132	1140193	9.834
11 NOV 2025 - 11 NOV 2025	ZETRIX	ASIA INTERNET HOLDINGS SDN. BHD. [SSH]	-3,000	1059601	13.564
13 NOV 2025 - 13 NOV 2025	ZHULIAN	MR TEOH BENG SENG [SSH]	63	270675	58.839
13 NOV 2025 - 13 NOV 2025	ZHULIAN	THE BEST SOURCE HOLDINGS PTE. LTD. [SSH]	63	67728	14.723
12 NOV 2025 - 12 NOV 2025	ZHULIAN	MR TEOH BENG SENG [SSH]	14	270612	58.826
12 NOV 2025 - 12 NOV 2025	ZHULIAN	THE BEST SOURCE HOLDINGS PTE. LTD. [SSH]	14	67665	14.71
11 NOV 2025 - 11 NOV 2025	ZHULIAN	MR TEOH BENG SENG [SSH]	10	270598	58.823
11 NOV 2025 - 11 NOV 2025	ZHULIAN	THE BEST SOURCE HOLDINGS PTE. LTD. [SSH]	10	67651	14.707
10 NOV 2025 - 10 NOV 2025	ZHULIAN	MR TEOH BENG SENG [SSH]	510	270588	58.82
10 NOV 2025 - 10 NOV 2025	ZHULIAN	THE BEST SOURCE HOLDINGS PTE. LTD. [SSH]	510	67641	14.705
07 NOV 2025 - 07 NOV 2025	ZHULIAN	MR TEOH BENG SENG [SSH]	220	270078	58.709
07 NOV 2025 - 07 NOV 2025	ZHULIAN	THE BEST SOURCE HOLDINGS PTE. LTD. [SSH]	220	67131	14.594

Disclaimer: The Information in Insider Activity is extracted from www.shareinvestor.com/fundamental/insider_trades. The information on this page is provided as a service to readers. It does not constitute financial advice and/or any investment recommendations. We assume no liability for damages resulting from or arising out of the use of such information. Whilst every effort is made to ensure accuracy, the information presented is not the official record of shareholder filings. Readers are advised to read the original filings on the Bursa Malaysia website at www.bursamalaysia.com

CHECK OUT
SHAREINVESTOR
BROKERS' CALL

Weekly Buy/Sell/Hold calls from leading Malaysian Brokerages.

[Go To Brokers' Call](#)



The Board of Directors of **Aemulus Holdings Berhad (AEMULUS)** is pleased to announce that TMSS Precision Instrument (Suzhou) Co., Ltd, a wholly-owned subsidiary of the Company has secured a confirmed order worth RMB25 million, (approximately equivalent

to RM14.8 million) with partial payment received on 19 November 2025. The Secured Order is from a customer based in China specialised in the CMOS Image Sensor design and manufacturing industry.

On behalf of the Board of Directors of **Affin Bank Berhad (AFFIN)**, Affin Hwang Investment Bank Berhad wishes to announce that ABB had on 20 November 2025 entered into a conditional share purchase agreement with the Selling Shareholders for the proposed acquisition of 5,000,000 ordinary shares in Pheim AM, representing the entire equity interest in Pheim AM, for a total purchase consideration of RM50.0 million to be satisfied entirely in cash.



The Board of Directors of **Tan Chong Motor Holdings Berhad (TCHONG)** is pleased to announce pursuant to Paragraphs 9.03(2) and 9.04 of the Main Market Listing Requirements of Bursa Malaysia Securities Berhad that Tan Chong Motor Assemblies

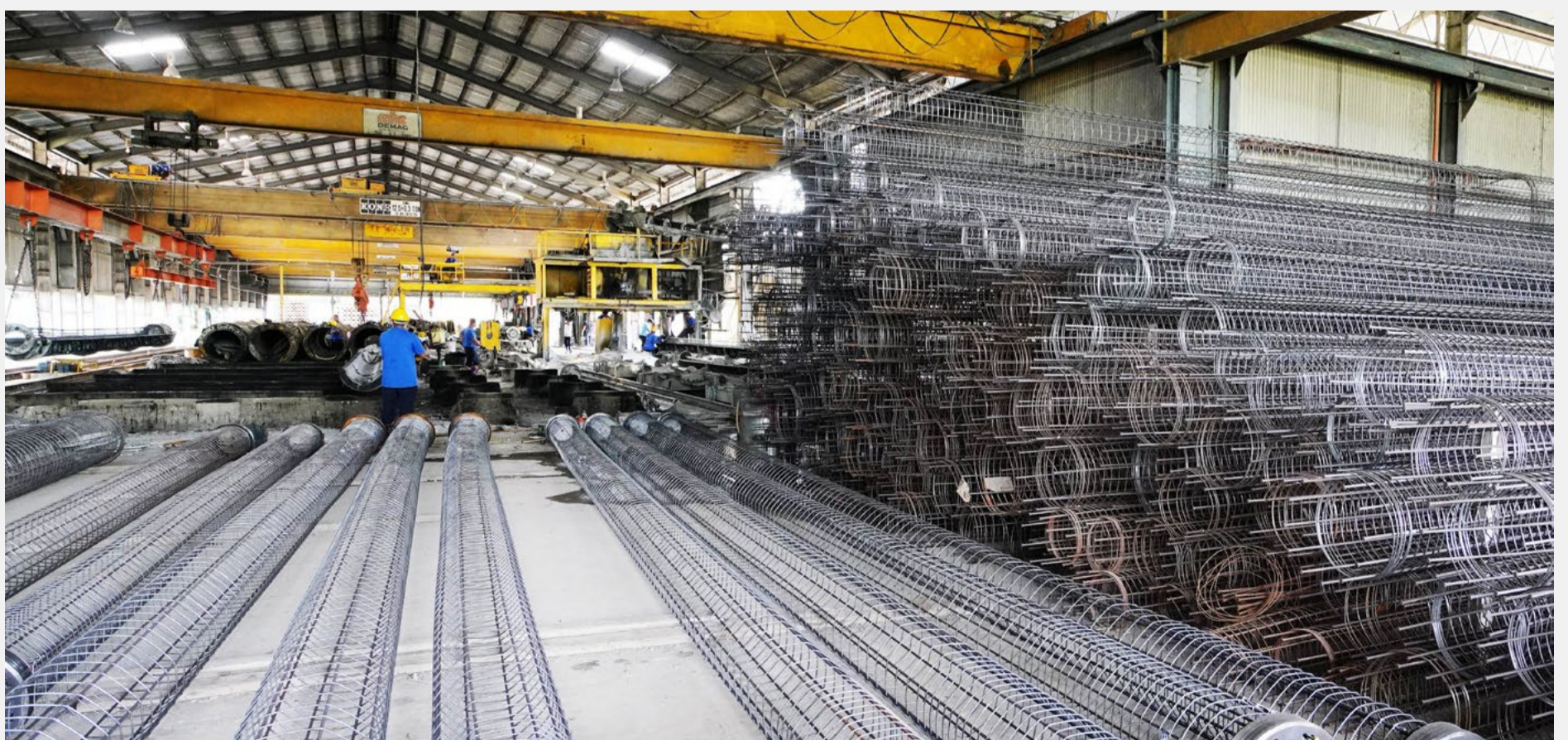
Sdn. Bhd., a 70% owned subsidiary of Tan Chong & Sons Motor Company Sdn. Bhd., a wholly-owned subsidiary of the Company, had on 13 November 2025, entered into a Letter of Intent dated 11 November 2025 with Perodua Sales Sdn. Bhd. as more particularly detailed below.

On behalf of **MBSB Berhad (MBSB)**, MBSB IB wishes to announce that an application for the listing of and quotation for the new Shares to be issued pursuant to the Proposed ESOS on the Main Market of Bursa Securities has been submitted to Bursa Securities today.



On behalf of the Board of **Sarawak Consolidated Industries Berhad (SCIB)**, Berjaya Securities Sdn Bhd wishes to announce that the Company and SCIB Holdings Sdn Bhd, a wholly-owned subsidiary of the Company, had on 18 November 2025 entered into a conditional share sale and purchase agreement with YTL Cement Sarawak for the proposed disposal of the entire

equity interest in SCM for an indicative total cash consideration of RM113.00 million subject to adjustments in accordance with Sections 3.2 and 3.3 of Appendix I of the announcement and other terms and conditions as set out in the SSPA.





Teladan Group Berhad (TELADAN) has made a press statement entitled "TELADAN SUSTAINS GROWTH MOMENTUM IN Q3FY25, SUPPORTED BY MARGIN GAINS AND STRATEGIC PROJECT EXPANSION".

Disclaimer: The information in the Investor Relations page is extracted from individual companies' announcements in www.bursamalaysia.com. The information on this page is provided as a service to readers. We assume no liability for damages resulting from or arising out of the use of such information. Whilst every effort is made to ensure accuracy, the information presented has been simplified for your reading pleasure. Readers are advised to read the original and complete filings on the Bursa Malaysia website at https://www.bursamalaysia.com/market_information/announcements/company_announcement

Upcoming IPO

NAME OF COMPANY	OFFER PERIOD		ISSUE PRICE (Per Ordinary Share)	LISTING SOUGHT	DATE OF LISTING
	OPENING	CLOSING			
POLYMER LINK HOLDINGS	4 Nov 2025	11 Nov 2025	RM0.25	ACE MARKET	25 November 2025
FOODIE MEDIA BERHAD	13 Nov 2025	19 Nov 2025	RM0.30	ACE MARKET	29 November 2025
PSP ENERGY BERHAD	11 Nov 2025	21 Nov 2025	RM0.16	ACE MARKET	4 December 2025
BMS HOLDINGS BERHAD	13 Nov 2025	19 Nov 2025	RM0.22	ACE MARKET	8 December 2025
ORKIM BERHAD	19 Nov 2025	26 Nov 2025	RM0.92	MAIN MARKET	9 December 2025
LAC MED BERHAD	14 Nov 2025	25 Nov 2025	RM0.25	MAIN MARKET	10 December 2025

CHECK OUT SHAREINVESTOR

BROKER'S CALL

Weekly Buy/Sell/Hold calls from leading Malaysian Brokerages.

[Go To Broker's Call](#)

BUY **HOLD** **SELL**