



MARKET SENTIMENTS

Bursa Malaysia And Stockbroking Industry Announce Cyber Resilience Enhancements page 29

Local institutions extend buying streak with RM280.7m net purchases for last week - MBSB IB page 31

From MSWG's
The Observer
Reset Through
Release

See more on pages 34-40

ALSO

COMPANY
SPOTLIGHT

Gamuda Berhad

See more on page 06

BEHIND THE TICKER: DECODING COMPANY FUNDAMENTALS



David Yu Hong Choo
Former Senior Analyst
Now Executive Director

Is there an investment opportunity in Red Violet?

SUMMARY

- Since its 2018 spin-off, Red Violet, Inc. (Nasdaq: RDVT) has grown revenue at a 29% CAGR, significantly expanding margins and improving returns as scale drove operating leverage.
- There were improving financial and operating metrics. Gross profit margin rose, while the SGA margin declined, and the ROIC and ROE turned positive by 2024, signalling improved efficiency and profitability.
- The company is nearly debt-free, generates positive cash flow, and manages capital well, though its high Reinvestment rate - mainly due to low early profits - bears watching.

Disclaimer: This article is written for informational purposes only. It does not constitute a solicitation, offer, advice, recommendation or endorsement to buy or sell. As such it is not intended to provide the purchase of shares in any way. As a general rule, you should not invest in any stock or security based on this article. Investors should conduct their own research and the associated risks with the investment. The views expressed here are solely the author's own.

See more on pages 22-27

04 LEADERBOARD

05 SHARIAH HOT STOCKS

08 SHARIAH MOMENTUM UP STOCKS

09 NON SHARIAH HOT STOCKS

10 UP TRENDING STOCKS

12 VALUE STOCKS

13 GROWTH STOCKS

15 DIVIDEND STOCKS

18 BROKERS' CALL

19 LONG COMPANIES

33 REGIONAL MARKETS

41 INSIDER ACTIVITY

46 INVESTOR RELATIONS

SHAREINVESTOR®

An AlphaInvest Company

Invest with Knowledge

INVESTOR PLATFORMS

Director
Darren Chong
darren.chong@shareinvestor.com

Business Development Manager
Jay Cheong
jay.cheong.@shareinvestor.com

ADMIN & OPERATIONS

Senior Executive
Watie Nordin
watie.nordin@shareinvestor.com

Executive
Silas Emmanuel Joseph
silas.joseph@shareinvestor.com

PROCESS AUTOMATION & DATA ANALYTICS

Data Analyst
Lee Khai Bing

INVESTOR RELATIONS

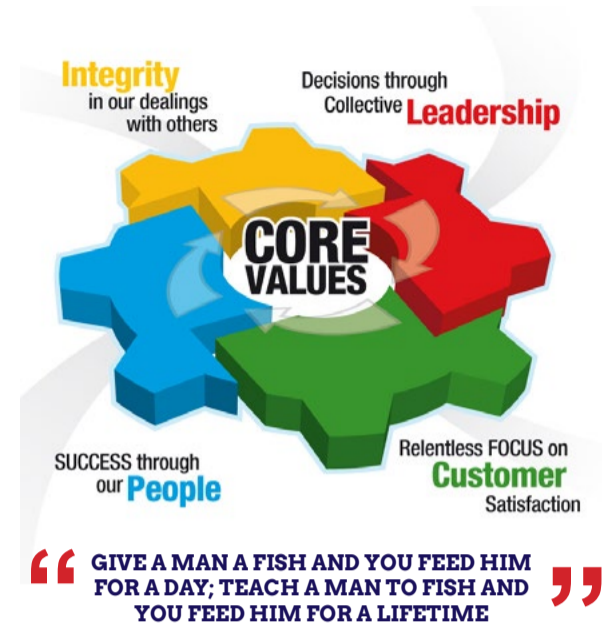
Group Managing Director & Publisher
Edward Stanislaus
edward@shareinvestor.com

Senior Manager
Letticia Wong
letticia.wong@shareinvestor.com

Manager
Aida Norzeti Talib
aida.norzeti@shareinvestor.com

ALPHA INVEST HOLDINGS BOARD OF DIRECTORS

Chairman	Patrick Daniel
Group CEO	Christopher Lee
Group COO	Lim Dau Hee
Group MD	Shanison Lin

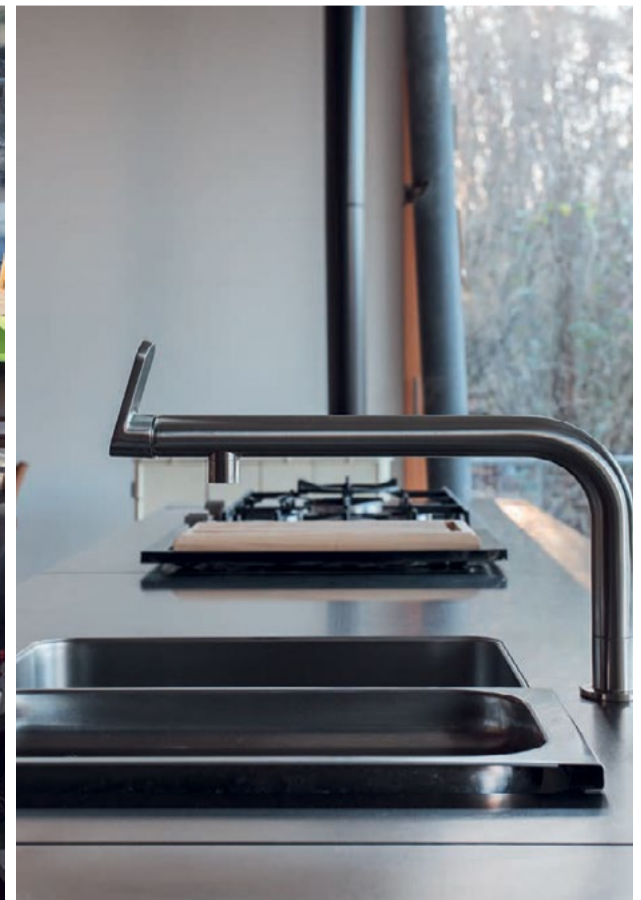


ShareInvestor Malaysia Sdn. Bhd.
(200001023956) (526564-M)
L15-03 & 03A, PJX HM Shah Tower,
No 16A, Jalan Persiaran Barat, PJS 52,
46200 Petaling Jaya, Selangor

Hotline : 603 8681 0580
Mobile : 011 6343 8939
Website : www.ShareInvestor.com.my
www.alphainvestholdings.com
www.Facebook.com/ShareInvestorMalaysia

ADVERTISEMENT ENQUIRY

bulthaup takes care of the details so that you can enjoy a harmonious environment.

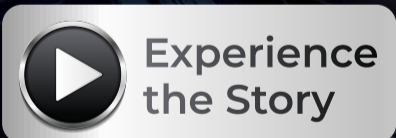


XTRA

XTRA FURNITURE SDN BHD
The Gardens Mall, Mid Valley City
xtrafurniture.com/bulthaup
fb.com/bulthaupmalaysia

bulthaup

BREGUET



Inspired by the sky
guided by time and the spirit of adventure

As part of its 250th anniversary celebrations, following Paris with the Classique Souscription 2025 and Shanghai with the Tradition 7035 edition, Breguet is making a stopover in New York. Here it presents the Type XX Chronographe reference 2075 in two versions, inspired by an emblematic model dating back to 1955.

www.shareinvestor.com - market data at your fingertips



ShareInvestor WebPro (www.shareinvestor.com/my)

Prices > Stock Prices > Bursa > click Stocks tab

1. mouse over Ranking > select Top Active > all Shariah stocks are denoted with an [S] > mouse over Column Layout > select Edit Customs > select Name > select Volume > select Last Done Price > Mouse Over Column Layout > select Custom
2. mouse over Ranking > select Top Turnover > all Shariah stocks are denoted with an [S] > mouse over Column Layout > select Edit Customs > select Name > select Last Done Price > select Value > Mouse Over Column Layout > select Custom
3. mouse over Ranking > select Top Gainers (Over 5 Trading Days) > mouse over Column Layout > select Edit Customs > select Name > select Last Done Price > select 5 Days Change > select 5 Days % Change > Mouse Over Column Layout > select Custom
4. mouse over Ranking > select Top Losers (Over 5 Trading Days)
5. mouse over Ranking > select Top % Gainers (Over 5 Trading Days)
6. mouse over Ranking > select Top % Losers (Over 5 Trading Days)

Shariah Top Actives (As at Yesterday)

Name	Price (RM)	Volume
VS [S]	0.505	758,941.000
TWL [S]	0.025	688,171.000
TANCO [S]	0.945	512,668.000
ZETRIX [S]	0.850	494,432.000
DNEX [S]	0.285	385,473.000
PTRANS [S]	0.265	357,211.000
GAMUDA [S]	5.160	325,354.000
WAVEFRNT [S]	0.210	309,628.000
MMAG [S]	0.080	296,815.000
PERTAMA [S]	0.095	241,602.000

Shariah Top Turnover (As at Yesterday)

Name	Price (RM)	Value (RM)
GAMUDA [S]	5.160	167,837,116
PMETAL [S]	6.500	107,179,061
KLK [S]	21.400	86,593,726
TENAGA [S]	13.500	67,668,954
IHH [S]	8.250	49,750,369
TANCO [S]	0.945	48,192,377
SDG [S]	5.400	47,616,437
ZETRIX [S]	0.850	41,991,278
VS [S]	0.505	37,710,597
FRONTKN [S]	4.510	37,014,264

Top Gainers (over 5 Trading days as at Yesterday)

Name	Price (RM)	Change (RM)
F&N	32.400	+4.720
DLADY	28.600	+1.820
KLK	21.400	+0.620
UTDPLT	26.000	+0.420
HEIM	22.040	+0.400
MPI	30.600	+0.400
PJBUMI	1.720	+0.390
FCW	2.100	+0.350
VSTECs	4.390	+0.350
TENAGA	13.500	+0.300

Top % Gainers (over 5 Trading days as at Yesterday)

Name	Price (RM)	Change (%)
MPSOL	0.045	+125.00
MERIDIAN	0.030	+50.00
IAB	1.010	+34.67
ALRICH	0.020	+33.33
BIOHLDG	0.020	+33.33
PJBUMI	1.720	+29.32
MIKROMB	0.270	+28.57
HOHUP	0.050	+25.00
MESTRON	0.200	+25.00
PUC	0.025	+25.00

Top Losers (over 5 Trading days as at Yesterday)

Name	Price (RM)	Change (RM)
PANAMY	7.800	-0.360
UMSINT	4.630	-0.340
SAM	4.580	-0.270
PIE	2.680	-0.240
UWC	3.950	-0.210
CHINHIN	2.090	-0.180
KESM	3.400	-0.160
MFCB	3.610	-0.160
PRKCORP	0.740	-0.125
CMSB	1.420	-0.120

Top % Losers (over 5 Trading days as at Yesterday)

Name	Price (RM)	Change (%)
BCMALL	0.005	-50.00
HONGSENG	0.005	-50.00
PHB	0.005	-50.00
PERMAJU	0.010	-33.33
SG	0.010	-33.33
AIM	0.030	-25.00
AMLEX	0.150	-16.67
MMAG	0.080	-15.79
BDB	0.275	-15.38
FSBM	0.170	-15.00

Price & Volume Distribution Charts (as at Yesterday)

Technical Analysis

DEFINITION: Shariah compliant stocks with Technical Analysis showing 5-days & 10-days Moving Average Price below Yesterday's Close over past 3 days and with Volume Spike.

CHART GUIDE: Volume Distribution Chart is a statistical interpretation of the current sentiment on each stock in graphical format. The highest bar categorized as >150k is likely to be traded by institutions or super dealers, while the lowest bar categorized as <15k usually represents retail investors. "Buy Up" refers to more buyers snatching up the lots queued at selling price. "Sell Down" refers to sellers selling their shares to the buying queue



ShareInvestor WebPro > Screener > Market Screener (FA & TA) > select BURSA > add criteria

A. Criteria

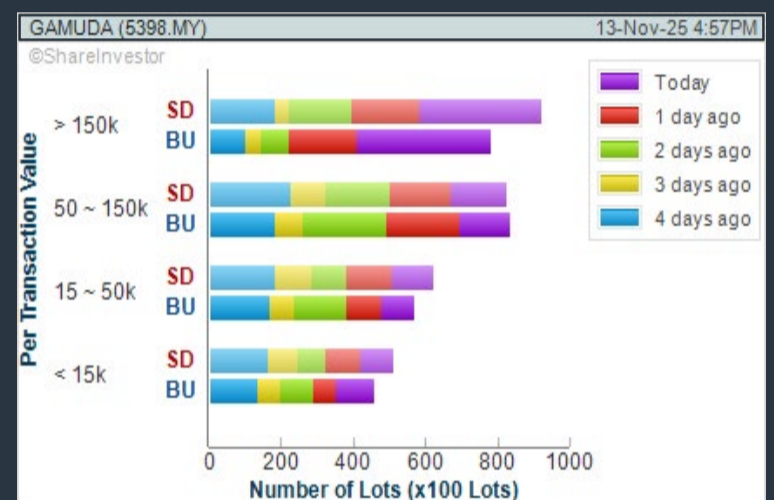
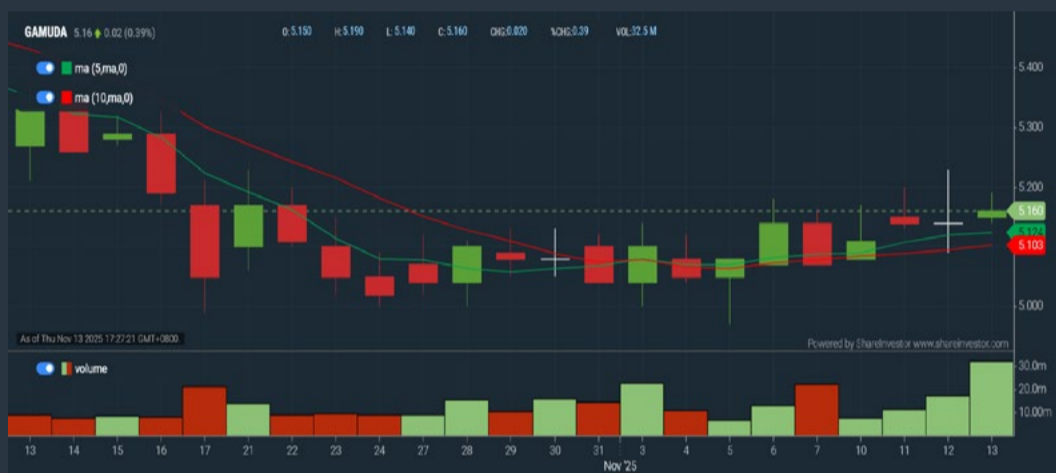
- > click Add Criteria
- Technical Analysis Conditions tab select (i) Moving Average Below Close (ii) Volume Spike
- Fundamental Analysis Conditions tab > select (iii) Revenue
- Prices & Other Conditions tab > select (iv) Is Shariah Compliant
- Technical Analysis Conditions tab select (v) Moving Average Below Close
- Prices & Other Conditions tab > select (vi) Last Done Price
- Technical Analysis Conditions tab select (vii) Moving Average Below Close

B. Conditions (Criteria Filters)

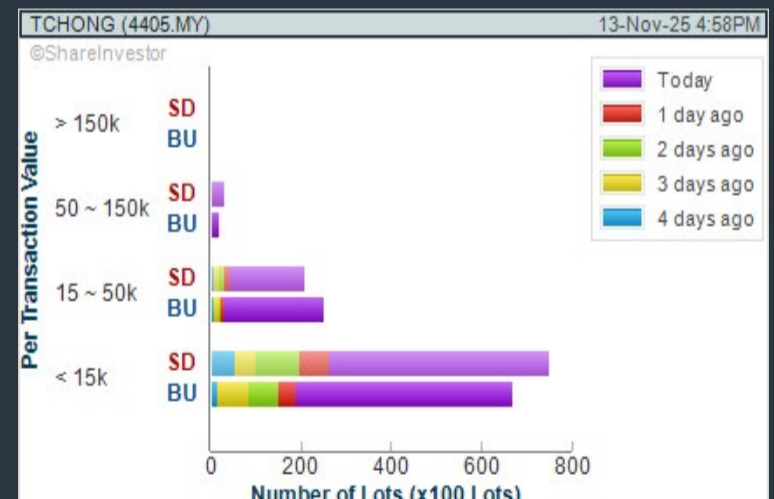
1. Moving Average Below Close - select (MA) type (5) below close price for type (3) days
2. Volume Spike - Volume type (1) greater than type (5) days average
3. Revenue ("000) - select (more than) type (1) for the past select (1) financial year(s)
4. Is Shariah Compliant - select **Yes**
5. Moving Average Below Close - select (MA) type (10) below close price for type (3) days
6. Last Done Price - select (more than) type (0.3)
7. Moving Average Below Close - select (EMA) type (5) below close price for type (3) days

- > click Save Template > Create New Template type (Shariah Hot Stocks) > click Create
- > click Save Template as > select Shariah Hot Stocks > click Save
- > click Screen Now (may take a few minutes)
- > Sort By: Select (Vol) Select (Desc)
- > Mouse over stock name > Charts > click C² Charts or Volume Distribution

GAMUDA BHD (5398) C² Chart



TAN CHONG MOTOR HOLDINGS BHD (4405) C² Chart



GUAN CHONG BHD (5102) C² Chart



Disclaimer: The information on this page is provided as a service to readers. It does not constitute financial advice and/or any investment recommendations. Past performance is not indicative of future results. We assume no liability for damages resulting from or arising out of the use of such information. It would be best if you did your own research to make your personal investment decisions wisely or consult a licenced investment advisor.

COMPANY BACKGROUND

Gamuda Berhad is a globally recognised conglomerate renowned for innovative solutions and a steadfast commitment to sustainable development, through integrated expertise in engineering and construction, property development, renewable energy and technology.

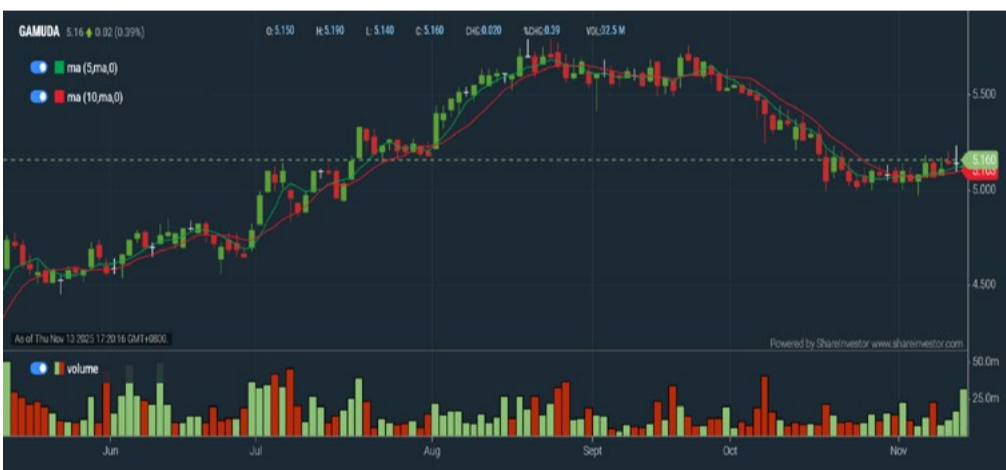


GAMUDA GAMUDA BHD		Updated at 13 Nov 2025 16:57	
Last (MYR): 5.160 ↑	Change: +0.020	High: 5.190	Remarks: s ?
	Change (%): +0.39	Low: 5.140	
Open	5.150	Yesterday's Close	5.140
Buy Price	5.160	Sell Price	5.170
Buy Volume ('00)	63	Sell Volume ('00)	100
Cumulative Volume ('00)	325,354	Cumulative Value	167,837,116

Financial Analysis

Revenue Growth Increasing revenue in last 4 consecutive years and min growth is 15% in last 4 years	Excellent	Profit Growth Increasing profit in last 3 consecutive years (with at least 4 profitable years)	Excellent
Piotroski F Score The company has below average financial strength (Piotroski F-Score of 3-4)	Be Alert	Dividend Payout Dividend is increasing over the past 60 months.	Excellent
Current Ratio The company is well-positioned to cover its short-term obligations with its current assets (ratio between 1.5 to 10) for 3 consecutive years	Good	Debt to Cashflow The company has negative cash flow from operations in most recent year	Watch Out
Free Cash Flow Negative free cash flow for two years or more	Watch Out	Gross Profit Margin Low gross profit margin for 3 years	Be Alert

Excellent Good Neutral Be Alert Watch Out



Historical Financials

Profit & Loss (MYR '000)

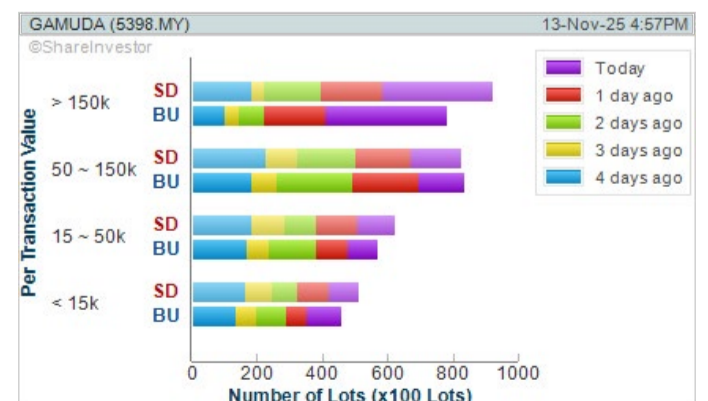


WebPro 9-Days Free Trial Registration (worth RM10) Sign Up Now



Key Statistics with Total Shareholder Returns

Period	Dividend Received	Capital Appreciation	Total Shareholder Return
Short Term Return	5 Days	+0.080	+1.57%
	10 Days	+0.080	+1.57%
	20 Days	-0.130	-2.46%
Medium Term Return	3 Months	-0.450	-8.02%
	6 Months	0.050	+10.62%
	1 Year	0.100	+19.55%
Long Term Return	2 Years	0.260	+134.63%
	3 Years	0.760	+230.73%
	5 Years	0.760	+220.00%
Annualised Return	-	-	+26.19%



Disclaimer: The information on this page is provided as a service to readers. It does not constitute financial advice and/or any investment recommendations. Past performance is not indicative of future results. We assume no liability for damages resulting from or arising out of the use of such information. It would be best if you did your own research to make your personal investment decisions wisely or consult a licenced investment advisor.



Type XX, *the legend of the skies*

In the early 1950s, the French Air Force invited tenders for a chronograph wristwatch for its pilots, which it codenamed Type 20. One of the winning companies was Breguet, which would supply the aviation world with several timepieces meeting these specifications.

The year 1952 saw the birth of the Breguet instrument-watch: there were two military versions, the Type 20 for the Air Force and the Type XX for the Naval Aviation, as well as numerous Type XX variants created for the civilian market.

Inspired by this part of its history, Breguet introduced its own Type XX line into its current collections, with the 4th generation seeing the light of day in 2023. To continue this fascinating story, and to celebrate the company's 250th anniversary, Breguet presents the Type XX reference 2075, available in two versions.

A civilian model in gold, presented in 1955, provides the inspiration. According to the archives, this timepiece originally sported a satin-finish silver dial, which was later replaced by a black dial.

Today, Breguet is offering two reinterpretations: one with a black dial in aluminium, and the other, limited to 250 pieces, with a solid silver dial. A natural continuity between past and present.



With a diameter of 38.3 mm, identical to the historic 1955 timepiece, and a thickness of 13.2 mm, the case is crafted entirely in Breguet gold. A combination of gold enriched with silver, copper and palladium, this signature gold alloy was unveiled at the launch of the Classique Souscription 2025 watch.

The slim, bi-directional rotating bezel has numerals picked out in black for the black-dialled version and in blue for the silver-dialled version. The crown proudly bears the B of Breguet.

Both new models feature an interchangeable leather strap, gradient black for the black dial version and gradient blue for the silver dial version.

A Breguet *gold case*



A high-performance *engine*



The calibres housed in these two models are variations of the high-performance, 5 Hz calibre 728 introduced by Breguet in 2023. They incorporate the flyback function that allows the watch to be reset to zero and a new count instantly started by a single press of the pusher located at 4 o'clock.

These two new models feature, for the first time, manually wound versions of the Breguet calibre 728, which are gilded in Breguet gold. The calibre 7279, for the black-dialled version, has a 15-minute counter at 3 o'clock, while the calibre 7278, for the silver-dialled version, has a 30-minute counter also at 3 o'clock.

Both models have a small seconds display at 9 o'clock. The transparent case back reveals an engraving entirely hand-crafted in the company's workshops.

It depicts the Breguet 19 aircraft in full flight accompanied by the precise route taken in 1930, the European and North American landmasses' frosted finishing contrasts against the smooth Atlantic Ocean.

Price & Volume Distribution Charts (as at Yesterday)

Technical Analysis

DEFINITION: Shariah compliant stocks with Technical Analysis showing Bullish Momentum and Price Uptrend. The share price closed at the highest price yesterday. The typical price was higher than the previous day's typical price.

CHART GUIDE: Volume Distribution Chart is a statistical interpretation of the current sentiment on each stock in graphical format. The highest bar categorized as >150k is likely to be traded by institutions or super dealers, while the lowest bar categorized as <15k usually represents retail investors. "Buy Up" refers to more buyers snatching up the lots queued at selling price. "Sell Down" refers to sellers selling their shares to the buying queue.



ShareInvestor WebPro > Screener > Market Screener (FA & TA)>select BURSA>add criteria

A. Criteria

- > click Add Criteria
- Fundamental Analysis Conditions tab >select (i) Revenue
- Technical Analysis Conditions tab select (ii) Average Volume
- Prices & Other Conditions tab > select (iii) Last Done Price
- Prices & Other Conditions tab > select (iv) Is Shariah Compliant
- Technical Analysis Conditions tab select (v) RSI Overbought
- Technical Analysis Conditions tab select (vi) Moving Average Below Close
- Technical Analysis Conditions tab select (vii) CCI Overbought

B. Conditions (Criteria Filters)

1. Revenue ("000) - select (more than) type (1) for the past select (1) financial year(s)
2. Average Volume - type (1) days average volume greater than type (10000) lots
3. Last Done Price - select (more than) type (0.3)
4. Is Shariah Compliant - select Yes
5. RSI Overbought - select RSI 1 above 99 for 1 days
6. Moving Average Below Close - select (MA) type (10) below close price for type (1) days
7. CCI Overbought - select CCI (2) above (0) for (1) days

- > click Save Template > Create New Template type (Shariah Momentum Up Stocks) > click Create
- > click Save Template as > select Shariah Momentum Up Stocks > click Save
- > click Screen Now (may take a few minutes)
- Sort By: Select (Vol) Select (Desc)
- Mouse over stock name > Charts > click C² Charts tab or Volume Distribution

V.S INDUSTRY BHD (6963)

C² Chart

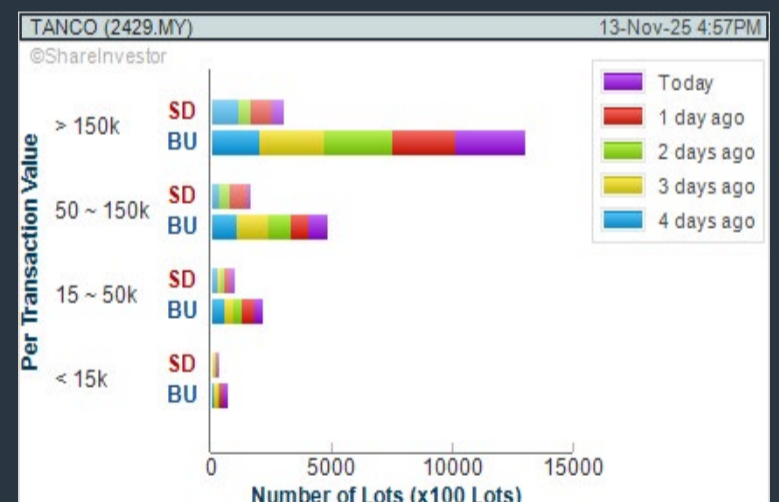
Analysis



TANCO HOLDINGS BHD (2429)

C² Chart

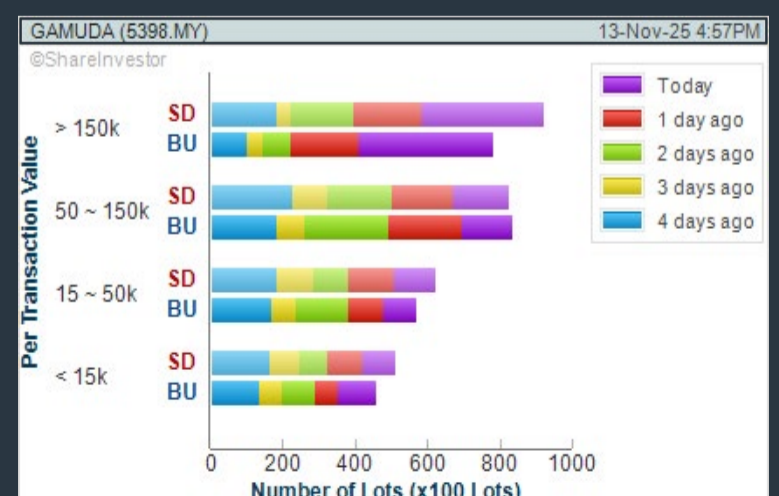
Analysis



GAMUDA BHD (5398)

C² Chart

Analysis



Disclaimer: The information on this page is provided as a service to readers. It does not constitute financial advice and/or any investment recommendations. Past performance is not indicative of future results. We assume no liability for damages resulting from or arising out of the use of such information. It would be best if you did your own research to make your personal investment decisions wisely or consult a licenced investment advisor.

Price & Volume Distribution Charts (as at Yesterday)

Technical Analysis

DEFINITION: Stocks with Technical Analysis showing 5-days & 10-days Moving Average Price below Close over past 1 days and with Volume Spike

CHART GUIDE: Volume Distribution Chart is a statistical interpretation of the current sentiment on each stock in graphical format. The highest bar categorized as >150k is likely to be traded by institutions or super dealers, while the lowest bar categorized as <15k usually represents retail investors. "Buy Up" refers to more buyers snatching up the lots queued at selling price. "Sell Down" refers to sellers selling their shares to the buying queue.



ShareInvestor WebPro > Screener > Market Screener (FA & TA) > select BURSA > add criteria

A. Criteria

- > click Add Criteria
- Technical Analysis Conditions tab select (i) Moving Average Below Close (ii) Volume Spike
- Fundamental Analysis Conditions tab >select (iii) Revenue
- Prices & Other Conditions tab > select (iv) Is Shariah Compliant
- Technical Analysis Conditions tab select (v) Moving Average Below Close
- Prices & Other Conditions tab > select (vi) Last Done Price
- Technical Analysis Conditions tab select (vii) Moving Average Below Close

B. Conditions (Criteria Filters)

1. Moving Average Below Close - select (MA) type (5) below close price for type (3) days
2. Volume Spike - Volume type (1) greater than type (5) days average
3. Revenue ("000) - select (more than) type (1) for the past select (1) financial year(s)
4. Is Shariah Compliant - select NO
5. Moving Average Below Close - select (MA) type (10) below close price for type (1) days
6. Last Done Price - select (more than) type (0.3)
7. Moving Average Below Close - select (EMA) type (5) below close price for type (1) days

- > click Save Template > Create New Template type (Non-Shariah Hot Stocks) > click Create
- > click Save Template as > select Non-Shariah Hot Stocks > click Save
- > click Screen Now (may take a few minutes)
- Sort By: Select (Vol) Select (Desc)
- Mouse over stock name > Charts > click C² Charts tab or Volume Distribution

99 SPEED MART RETAIL HOLDINGS BERHAD (5326)

C² Chart

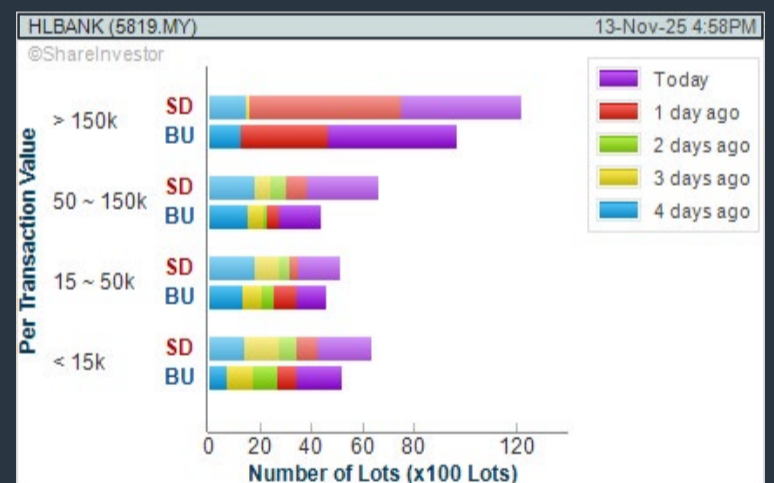
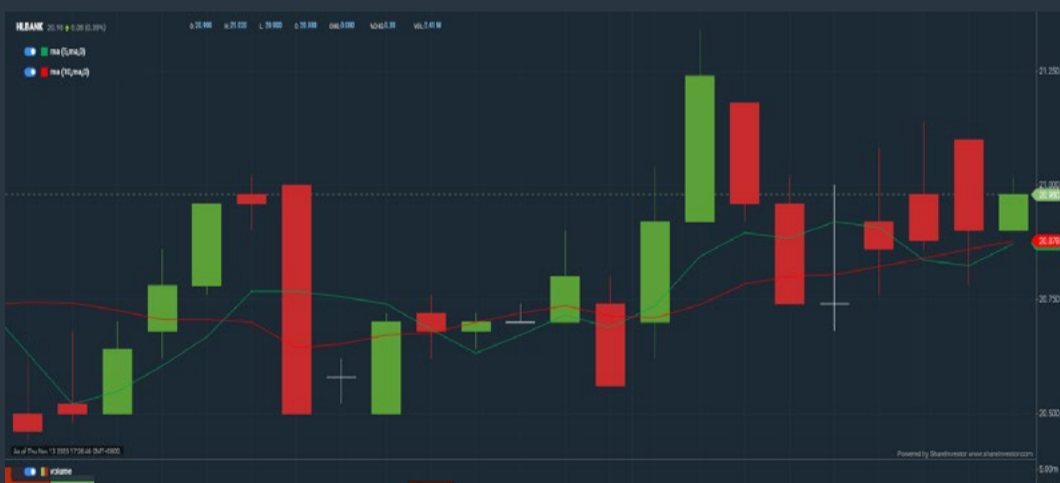
Analysis



HONG LEONG BANK BHD (5819)

C² Chart

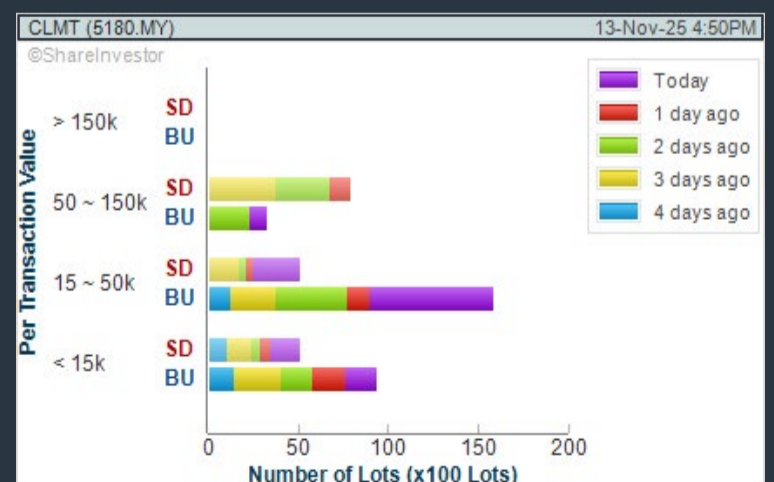
Analysis



CAPITALAND MALAYSIA TRUST (5180)

C² Chart

Analysis



Disclaimer: The information on this page is provided as a service to readers. It does not constitute financial advice and/or any investment recommendations. Past performance is not indicative of future results. We assume no liability for damages resulting from or arising out of the use of such information. It would be best if you did your own research to make your personal investment decisions wisely or consult a licenced investment advisor.

Price & Volume Distribution Charts (Over 3 trading days as at Yesterday)

Technical Analysis

DEFINITION: Stocks with Technical Analysis showing Bullish Momentum and Price Uptrend

CHART GUIDE: Volume Distribution Chart is a statistical interpretation of the current sentiment on each stock in graphical format. The highest bar categorized as >150k is likely to be traded by institutions or super dealers, while the lowest bar categorized as <15k usually represents retail investors. "Buy Up" refers to more buyers snatching up the lots queued at selling price. "Sell Down" refers to sellers selling their shares to the buying queue.



ShareInvestor WebPro > Screener > Market Screener (FA & TA) > select BURSA > add criteria

A. Criteria

- > click Add Criteria
- Fundamental Analysis Conditions tab > select (i) Revenue
- Technical Analysis Conditions tab select (ii) Moving Average Below Close
- Technical Analysis Conditions tab select (iii) Average Volume
- Prices & Other Conditions tab > select (iv) Last Done Price
- Technical Analysis Conditions tab select (v) Moving Average Below Close
- Technical Analysis Conditions tab select (v) Moving Average Bullish Crossover

B. Conditions

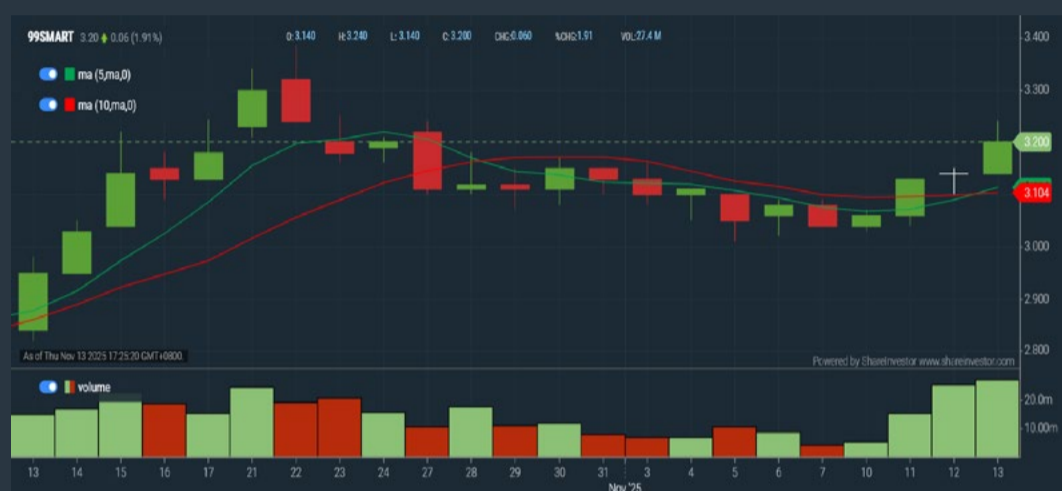
1. Revenue - select (more than) type (1) for the past select (1) financial year(s)
2. Moving Average Below Close - select (MA) type (20) below close price for type (1) days
3. Average Volume - type (5) days average volume type (10000) lots
4. Last Done Price - select (more than) type (0.3)
5. Moving Average Below Close - select (MA) type (10) below close price for type (1) days
6. Moving Average Bullish Crossover - select (MA) type (5) crossed above select (MA) type (10)

> click Save Template > Create New Template type (Non-Shariah Up-Trending Stocks) > click Create Click Save Template As > select Non-Shariah Up Trending Stocks > click Save > click Screen Now (may take a few minutes) Sort By: Select (Vol) Select (Desc) Mouse over stock name > Charts > click C² Charts tab or Volume Distribution

99 SPEED MART RETAIL HOLDINGS BERHAD (5326)

C² Chart

Analysis



AMMB HOLDINGS BHD (1015)

C² Chart

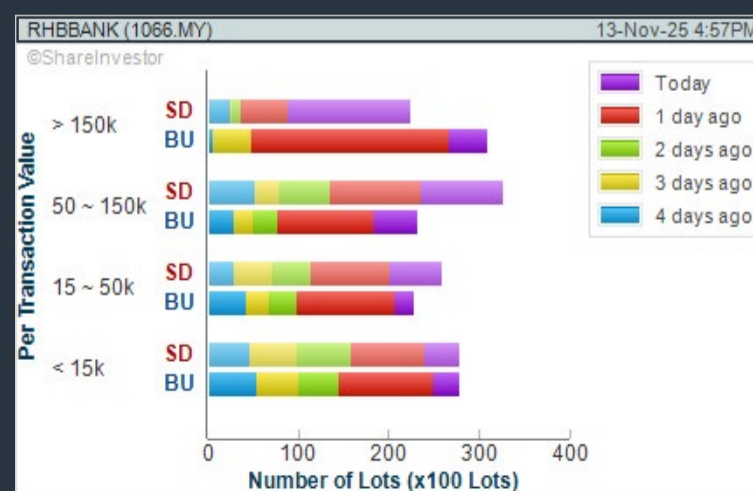
Analysis



RHB BANK BERHAD (1066)

C² Chart

Analysis



Disclaimer: The information on this page is provided as a service to readers. It does not constitute financial advice and/or any investment recommendations. Past performance is not indicative of future results. We assume no liability for damages resulting from or arising out of the use of such information. It would be best if you did your own research to make your personal investment decisions wisely or consult a licenced investment advisor.



ROWAN director chair
 Designed by ITO Design, Germany

Inspired by the sophistication of first and business class, **ROWAN** delivers a fully enveloping comfort through Italian full-grain leather and precision-engineered aluminum form.

Where design excellence meets executive presence.



XTRA
www.xtrafurniture.com



GERMAN
 DESIGN
 AWARD
 WINNER
 2025



Awarded for Design. Certified for Excellence. Trusted Worldwide.

Price & Total Shareholder Return (as at Yesterday)

Fundamental Analysis

DEFINITION: Share price of a company trading at a lower price as compared to its fundamentals (FA) such as financial performance and dividend, allowing it to be attractive to value investors.

CHART GUIDE: Total Shareholder Return (TSR) combines share price appreciation and dividend distributions paid to show the total return to the shareholder expressed as a percentage.



ShareInvestor WebPro > Screener > Market Screener (FA & TA) > select BURSA > add criteria

A. Criteria

- > click Add Criteria
- Fundamental Analysis Conditions tab (i) Price Earnings Ratio
- Fundamental Analysis Conditions tab >select (ii) CAGR of Net Earnings
- Fundamental Analysis Conditions tab >select (iii) Net Debt To Equity
- Fundamental Analysis Conditions tab >select (iv) Return On Equity (ROE)

B. Conditions

1. Price Earnings Ratio - select (less than) type (15) times now
2. CAGR of Net Earnings - select (more than) type (10) % for the past type (3) financial year(s)
3. Net Debt To Equity – select (less than) type (1) for the past select (1) financial year(s)
4. Return On Equity (ROE) – select (more than) type (10) % for the past select (1) financial year(s)

- > click Save Template > Create New Template type (Value Stock) > click Create
- > click Save Template as > select Value Companies > click Save
- > click Screen Now (may take a few minutes)
- Sort by: Select (PE Ratio) Select (Ascending)
- > Mouse over stock name > Factsheet > looking for Total Shareholder Return
- > Mouse over stock name > Charts > click C2 Charts tab

INGENIEUR GUDANG BERHAD (5178)

C² Chart

Analysis



Period	Dividend Received	Capital Appreciation	Total Shareholder Return
Short Term Return	1 Day	-	-
Medium Term Return	10 Days	-	-
	30 Days	-	-
	90 Days	-	-
Long Term Return	1 Year	-0.01	-0.01%
	3 Years	-0.01	-0.01%
Annualized Return	Annualized	-	-0.01%

RAPID SYNERGY BERHAD (7765)

C² Chart

Analysis



Period	Dividend Received	Capital Appreciation	Total Shareholder Return
Short Term Return	1 Day	-	-0.01%
Medium Term Return	10 Days	-0.01	-0.01%
	30 Days	-0.01	-0.01%
	90 Days	-0.01	-0.01%
Long Term Return	1 Year	-0.01	-0.01%
	3 Years	-0.01	-0.01%
Annualized Return	Annualized	-	-0.01%

MUDAJAYA GROUP BHD (5085)

C² Chart

Analysis



Period	Dividend Received	Capital Appreciation	Total Shareholder Return
Short Term Return	1 Day	-	-
Medium Term Return	10 Days	-	-
	30 Days	-0.01	-0.01%
	90 Days	-0.01	-0.01%
Long Term Return	1 Year	-0.01	-0.01%
	3 Years	0.01	0.01%
Annualized Return	Annualized	-	-0.01%

Disclaimer: The information on this page is provided as a service to readers. It does not constitute financial advice and/or any investment recommendations. Past performance is not indicative of future results. We assume no liability for damages resulting from or arising out of the use of such information. It would be best if you did your own research to make your personal investment decisions wisely or consult a licenced investment advisor.

Price & Total Shareholder Return (as at Yesterday)

Fundamental Analysis

DEFINITION: Company revenue is growing and making good quality of earnings with positive Free Cash Flow.

CHART GUIDE: Total Shareholder Return (TSR) combines share price appreciation and distributions paid to show the total return to the shareholder expressed as a percentage.



ShareInvestor WebPro > Screener > Market Screener (FA & TA) > select BURSA > add criteria

A. Criteria

1. Fundamental Analysis Conditions tab >select (i) Free Cash Flow, (ii) Revenue Growth, (iii) Gross Profit (Earnings) Margin, (iv) Quality of Earnings, (v) Total Shareholder Returns, > click Add Criteria
2. Fundamental Analysis Conditions tab >select (vi) Total Shareholder Returns > click Add Criteria

B. Conditions (Criteria Filters)

1. Free Cash Flow - select (more than) type (1) for the past select (1) financial year(s)
2. Revenue Growth - select (more than) type (1) for the past select (1) financial year(s)
3. Gross Profit (Earnings) Margin - select (more than) type (30) % for the past select (1) financial year(s)
4. Quality of Earnings - select (more than) type (1) for the past select (1) financial year(s)
5. Total Shareholder Return - select (more than) type (5) % for the past select (3) financial year(s)
6. Total Shareholder Return - select (more than) type (5) % for the past select (5) financial year(s)

- > click Save Template > Create New Template type (Growth Companies) > click Create
- > click Save Template as > select Growth Companies > click Save
- > click Screen Now (may take a few minutes)
- > Sort By: Select (Revenue Growth) Select (Desc)
- > Mouse over stock name > Factsheet > looking for Total Shareholder Return

COUNTRY VIEW BHD (5049)

C² Chart

Analysis

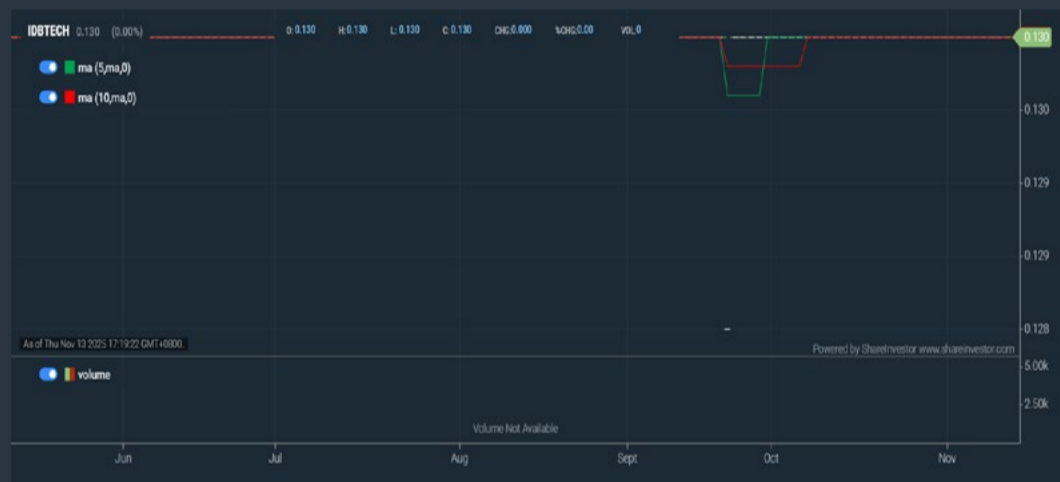


Period	Dividend Received	Capital Appreciation	Total Shareholder Return
Short Term Return	5 Days	0.00	+0.0%
	10 Days	0.00	0.0%
	20 Days	0.00	+0.0%
	30 Days	0.00	+0.0%
Medium Term Return	60 Days	0.00	+0.0%
	1 Year	0.40	+0.0%
	2 Years	0.40	+0.0%
Long Term Return	3 Years	0.00	+0.0%
	5 Years	0.00	+0.0%
Annualized Return	Annualized	-	+0.0%

IDB TECHNOLOGIES BERHAD (03030)

C² Chart

Analysis



Period	Dividend Received	Capital Appreciation	Total Shareholder Return
Short Term Return	5 Days	-	-
	10 Days	-	-
	20 Days	-	-
	30 Days	0.00	+0.0%
Medium Term Return	60 Days	0.00	+0.0%
	1 Year	0.00	+0.0%
	2 Years	0.00	+0.0%
Long Term Return	3 Years	0.00	+0.0%
	5 Years	0.00	+0.0%
Annualized Return	Annualized	-	+0.0%

ORIENTAL INTEREST BHD (5827)

C² Chart

Analysis



Period	Dividend Received	Capital Appreciation	Total Shareholder Return
Short Term Return	5 Days	0.00	+0.0%
	10 Days	0.00	+0.0%
	20 Days	0.00	+0.0%
	30 Days	0.00	+0.0%
Medium Term Return	60 Days	0.00	+0.0%
	1 Year	0.00	+0.0%
	2 Years	0.00	+0.0%
Long Term Return	3 Years	0.00	+0.0%
	5 Years	0.00	+0.0%
Annualized Return	Annualized	-	+0.0%

Disclaimer: The information on this page is provided as a service to readers. It does not constitute financial advice and/or any investment recommendations. Past performance is not indicative of future results. We assume no liability for damages resulting from or arising out of the use of such information. It would be best if you did your own research to make your personal investment decisions wisely or consult a licenced investment advisor.

Tired of low returns? Let's talk high-paying Dividends!



✓ **Top Dividend Picks Right Now**

✓ **Insider Tips** – Advanced strategies for experienced investors

✓ **Easy-to-Follow Tutorial**

Get the most out of dividends, use our Dividend Analysis function –
Click to Watch Our Tutorial Below!

Upgrade Your Dividend Strategy Here



Price & Total Shareholder Return (as at Yesterday)

Fundamental Analysis

DEFINITION: Company is paying out dividend with low or moderate leverage.

CHART GUIDE: Total Shareholder Return (TSR) combines share price appreciation and distributions paid to show the total return to the shareholder expressed as a percentage.



ShareInvestor WebPro > Screener > Market Screener (FA & TA) > select BURSA > add criteria

A. Criteria

- > click Add Criteria
- Fundamental Analysis Conditions tab >select (i) Dividend Yield (Historical)
- Fundamental Analysis Conditions tab >select (ii) Dividend Payout (Historical)
- Fundamental Analysis Conditions tab >select (iii) Total Debt To Equity
- Fundamental Analysis Conditions tab >select (iv) Total Shareholder Returns
- Fundamental Analysis Conditions tab >select (v) Total Shareholder Returns
- Fundamental Analysis Conditions tab / >select (vi) CAGR of Dividend Per Share

• Fundamental Analysis Conditions tab >select (vii) CAGR of Dividend Per Share

B. Conditions (Criteria Filters)

1. Dividend Yield - select (more than) type (1) % for the past select (1) financial year(s)
2. Dividend Payout (Historical) - select (between) type (0.5) to type (1) times for the past select (1) financial year(s)
3. Total Debt to Equity - select (less than) type (1) for the past select (1) financial year(s)
4. Total Shareholder Return - select (more than) type (5) % for the past select (3) financial year(s)
5. Total Shareholder Return - select (more than) type (5) % for the past select (5) financial year(s)

6. CAGR of Dividend Per Share - select (less than) type (30) % for the past select (5) financial year(s)
7. CAGR of Dividend Per Share - select (more than) type (1) % for the past select (5) financial year(s)

- > click Save Template > Create New Template type (Dividend Companies) > click Create
- > click Save Template as > select Dividend Companies > click Save
- > click Screen Now (may take a few minutes)
- > Sort By: Select (Dividend Yield) Select (Desc)
- > Mouse over stock name > Factsheet > looking for Total Shareholder Return

APM AUTOMOTIVE HOLDINGS BHD (5015)

C² Chart

Analysis



Period	Dividend Received	Capital Appreciation	Total Shareholder Return
Short Term Return	10Days	-	-0.00%
Medium Term Return	10Days	0.00	0.00%
	10Days	0.00	0.00%
	10Days	0.00	0.00%
Long Term Return	1Year	0.00	0.00%
	2Years	0.00	0.00%
	3Years	0.00	0.00%
Annualized Return	Annualized	-	0.00%

DELEUM BHD (5132)

C² Chart

Analysis



Period	Dividend Received	Capital Appreciation	Total Shareholder Return
Short Term Return	10Days	-	-0.00%
Medium Term Return	10Days	0.00	0.00%
	10Days	0.00	0.00%
	10Days	0.00	0.00%
Long Term Return	1Year	0.00	0.00%
	2Years	0.00	0.00%
	3Years	0.00	0.00%
Annualized Return	Annualized	-	0.00%

CSC STEEL HOLDINGS BERHAD (5094)

C² Chart

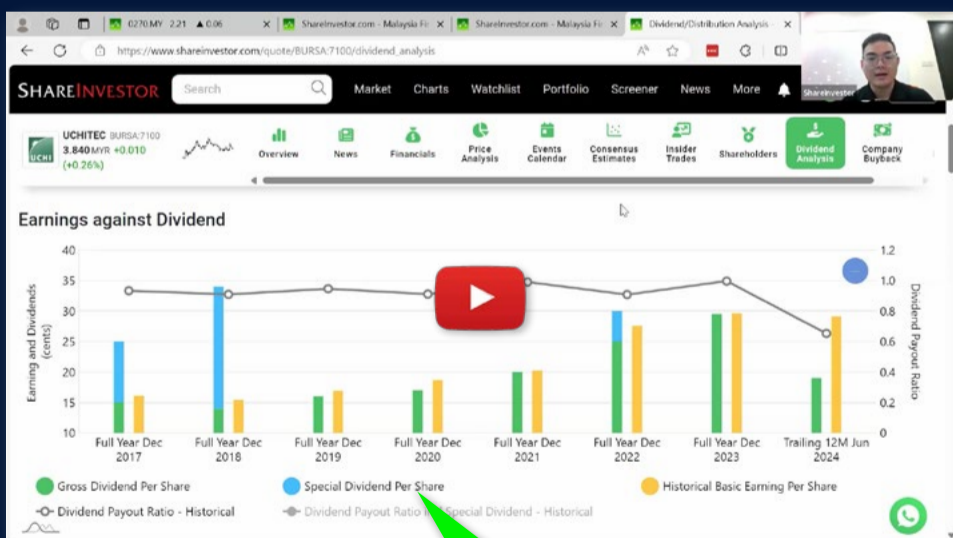
Analysis



Period	Dividend Received	Capital Appreciation	Total Shareholder Return
Short Term Return	10Days	-	-0.00%
Medium Term Return	10Days	0.00	0.00%
	10Days	0.00	0.00%
	10Days	0.00	0.00%
Long Term Return	1Year	0.00	0.00%
	2Years	0.00	0.00%
	3Years	0.00	0.00%
Annualized Return	Annualized	-	0.00%

Disclaimer: The information on this page is provided as a service to readers. It does not constitute financial advice and/or any investment recommendations. Past performance is not indicative of future results. We assume no liability for damages resulting from or arising out of the use of such information. It would be best if you did your own research to make your personal investment decisions wisely or consult a licenced investment advisor.

Ultimate Guide to use **ShareInvestor**



YOU WILL LEARN HOW TO USE:

- Company Financials
 - Market Screener
 - Company Insider Trades
 - Dividend Analysis
 - Consensus Estimation
- and more...*

**Watch
now!**

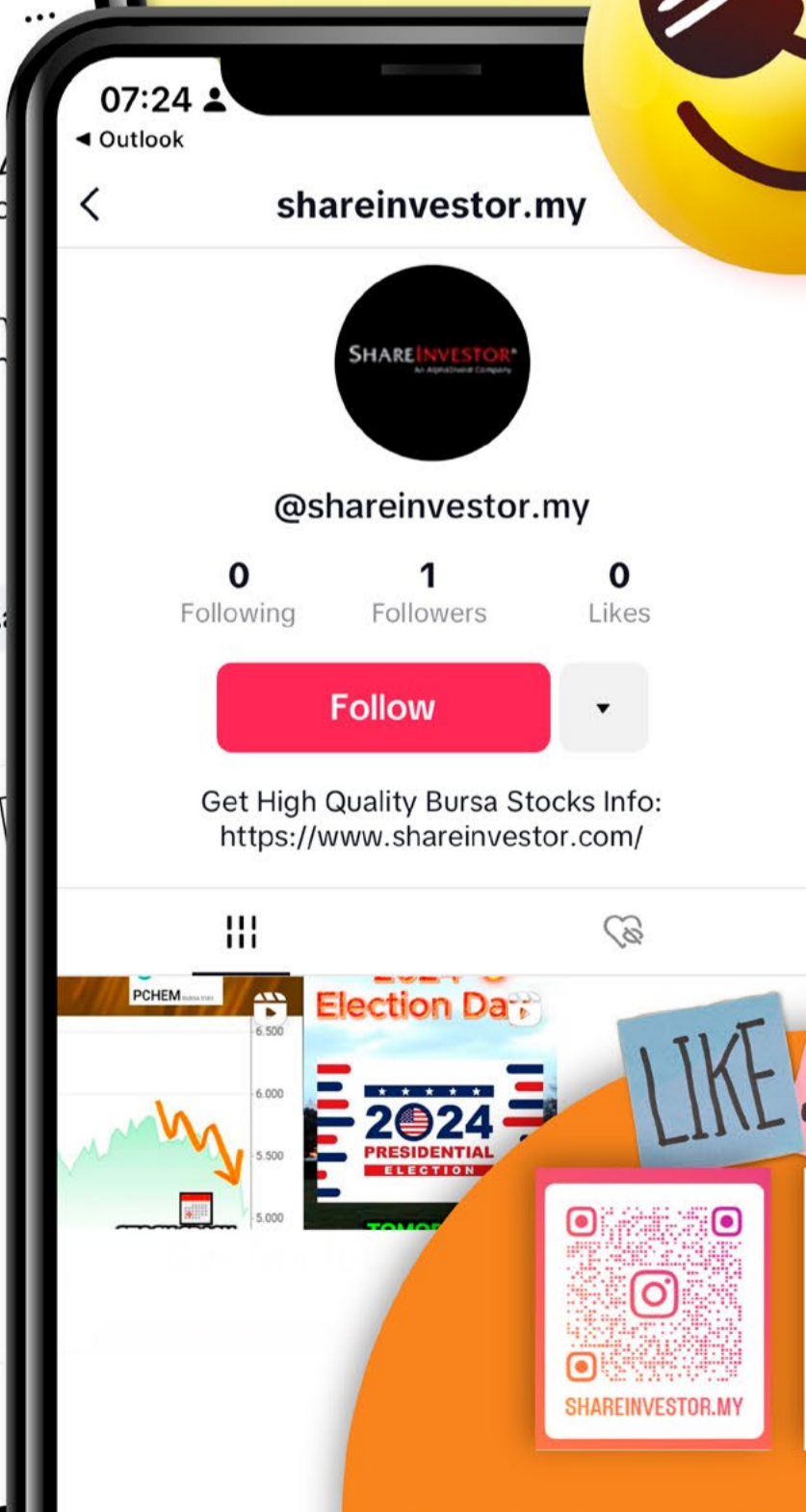
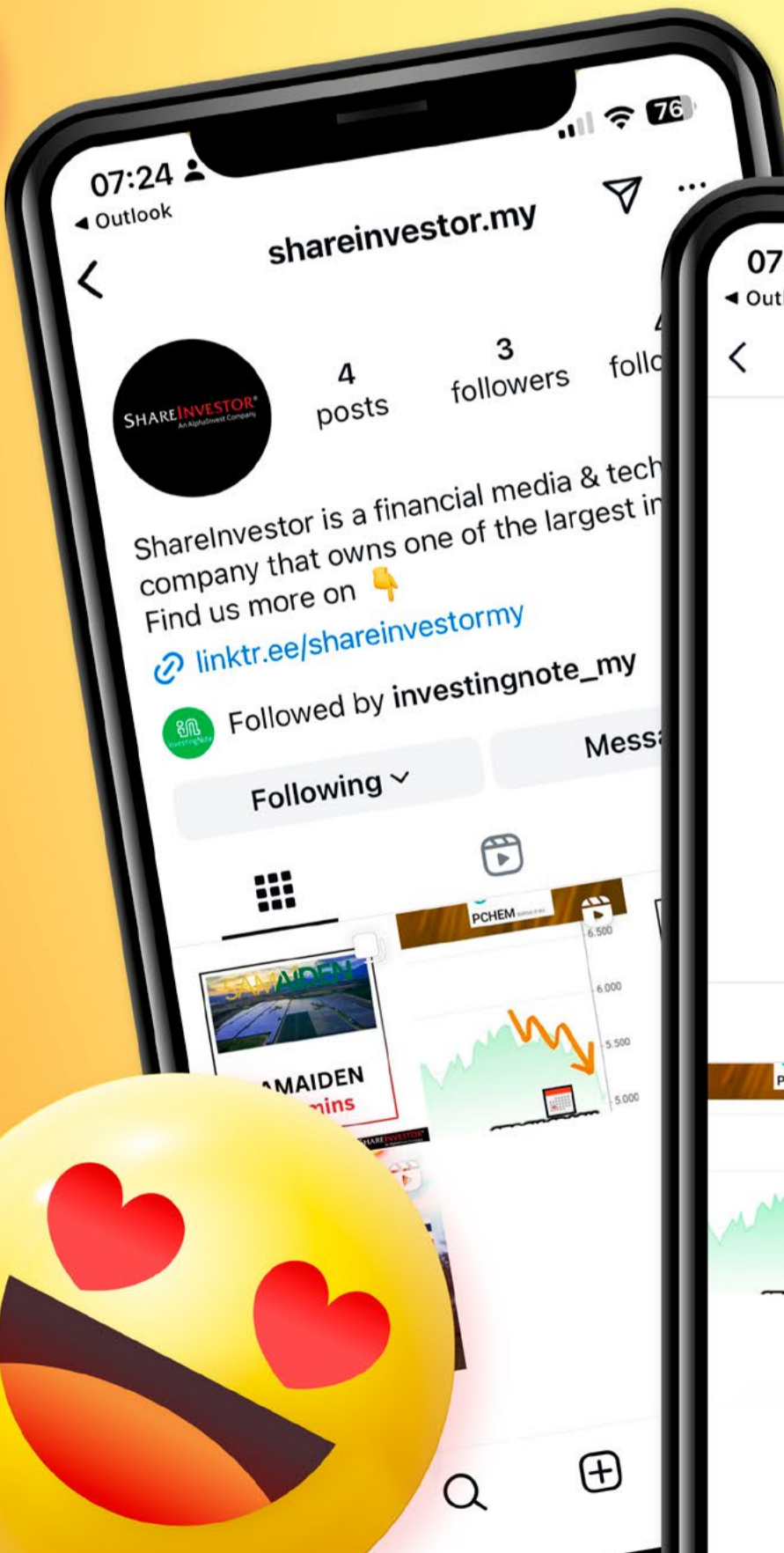
SHAREINVESTOR[®]
An AlphaInvest Company



We're Officially on TikTok & Instagram!



Follow us now for more information!



LIKE SHARE



Week: 7 Nov - 13 Nov 2025

More Brokers' Call 

AmInvestment Bank <small>... See More</small>	Call	Target Price	Release Date
Maxis Berhad (6012)	BUY	RM4.45	10 Nov 25
Sunway REIT (5176)	HOLD	RM2.32	11 Nov 25

APEX SECURITIES <small>... See More</small>	Call	Target Price	Release Date
Hartalega Holdings Berhad (5168)	HOLD	RM1.17	12 Nov 25
Kerjaya Prospek Group Berhad (7161)	HOLD	RM2.34	13 Nov 25
Swift Haulage Berhad (5303)	HOLD	RM0.39	13 Nov 25

Hong Leong Investment Bank <small>... See More</small>	Call	Target Price	Release Date
Mr D.I.Y. Group (M) Berhad (5296)	BUY	RM2.14	12 Nov 25
KLCCP Stapled Group (5235)	HOLD	RM8.70	13 Nov 25

Kenanga <small>... See More</small>	Call	Target Price	Release Date
Hartalega Holdings Berhad (5168)	OUTPERFORM	RM2.30	12 Nov 25
Swift Haulage Berhad (5303)	MARKET PERFORM	RM0.35	13 Nov 25

Malacca Securities <small>... See More</small>	Call	Target Price	Release Date
Polymer Link Holdings Berhad (0381)	NOT RATED	RM0.32	11 Nov 25
Powerwell Holdings Berhad (0217)	BUY	RM0.64	12 Nov 25

MIDF <small>... See More</small>	Call	Target Price	Release Date
Hartalega Holdings Berhad (5168)	NEUTRAL	RM1.19	12 Nov 25
Swift Haulage Berhad (5303)	NEUTRAL	RM0.35	13 Nov 25

Public Investment Bank <small>... See More</small>	Call	Target Price	Release Date
Kerjaya Prospek Group Berhad (7161)	NEUTRAL	RM2.85	12 Nov 25
LBS Bina Group Berhad (5789)	OUTPERFORM	RM0.67	12 Nov 25

UOB KAYHIAN <small>... See More</small>	Call	Target Price	Release Date
Guan Chong Berhad (5102)	BUY	RM1.21	12 Nov 25
Hartalega Holdings Berhad (5168)	HOLD	RM1.26	12 Nov 25
ICents Group Holdings Berhad (0366)	BUY	RM0.55	12 Nov 25

DEFINITION: Top 10 stocks with Technical Analysis plus Pattern Matching by 60 pre-defined indicators by the system showing a higher probability of bullish sentiment on the share price.



ShareInvestor WebPro > Screener > Predefined TA Screens > select market BURSA > Most Long Signals > click Scan Results or mouse over each company

FOUNDPAC GROUP BERHAD (5277.MY)

FPGROUP

Price updated at 13 Nov 2025 17:31

Last: 0.380	Change: -	Volume: 9,326
	Change (%): -	Range: 0.370 - 0.385

TA Scanner Results based on historical data up to 13 Nov 2025

Condition	Signal	Explanation
Bollinger Band: Bullish Long Term Volatility Breakout and Trending	Long	"1. Close price above upper bollinger band(33,1). 2. Volume above average volume(50). 3. Average volume(50) is above 300,000."
Bollinger Band: Bullish Short Term Volatility Breakout and Trending	Long	"1. Close price above upper bollinger band(33,1). 2. Volume above average volume(10). 3. Average volume(10) is above 300,000."
Bollinger Band: High Above Upper Bollinger Band	Neutral	"1. High above upper bollinger band(14,2). 2. Average volume(5) is above 100,000."
Candlestick: Bullish Engulfing	Long	Bullish: Engulfing
Donchian Channels: High Above Upper Donchian Channels	Long	High crossed above the upper Donchian Channel(14,4)
MACD: Bullish MACD Crossover	Long	"1. MACD(12,26) diff line crossed above the MACD(12,26) signal line. 2. MACD Histogram(12,26) is above 0."

AZAM JAYA BERHAD (5329.MY)

AZAMJAYA

Price updated at 13 Nov 2025 17:31

Last: 1.120	Change: -	Volume: 7,215
	Change (%): -	Range: 1.100 - 1.120

TA Scanner Results based on historical data up to 13 Nov 2025

Condition	Signal	Explanation
Bollinger Band: Bullish Long Term Volatility Breakout and Trending	Long	"1. Close price above upper bollinger band(33,1). 2. Volume above average volume(50). 3. Average volume(50) is above 300,000."
Candlestick: Bullish Harami	Long	Bullish: Harami
Volume: 10 Days large value Buy Up trade	Long	"1. 150K value Buy Up greater than Sell Down by 20% for 10 days. 2. 50K-100K value Buy Up greater than Sell Down by 20% for 10 days. 3. Average volume(10) is above 1000000"
Volume: 5 Days large value Buy Up trade	Long	"1. 150K value Buy Up greater than Sell Down by 20% for 5 days. 2. 50K-100K value Buy Up greater than Sell Down by 20% for 5 days. 3. Average volume(10) is above 1000000"
Volume: Consecutive Days Of Increasing Average Volume	Long	"1. Average Volume(20) has been increasing over the last 2 weeks. 2. Average volume(20) is above 100000"

NOVA WELLNESS GROUP BERHAD (0201.MY)

NOVA

Price updated at 13 Nov 2025 17:31

Last: 0.365	Change: -0.005	Volume: 12
	Change (%): -1.35	Range: 0.365 - 0.365

TA Scanner Results based on historical data up to 13 Nov 2025

Condition	Signal	Explanation
Candlestick: Bullish Engulfing	Long	Bullish: Engulfing
DM: Bullish Directional Movement	Long	-DI(14) crossed below +DI(14)
MA: Bullish Price Crossover	Long	"1. Close price crossed above MA(40) within the last 1 day. 2. Previous day close price is below the MA(10) for the last 5 days"
Stochastic: Fast Stochastic Buy Signal	Long	"1. Fast Stochastic(15,5) %K crossed above 20. 2. Fast Stochastic(15,5) %K 1 day ago was below 20 for the last 5 days. 3. Average volume(30) is above 50000"
Volume: Volume Spike	Long	"1. Volume is more than 500% above average volume(10). 2. Volume above 200000. 3. Close price above 0.10"

WAVEFRONT BERHAD (8176.MY)

WAVEFRNT

Price updated at 13 Nov 2025 17:31

Last: 0.210	Change: -0.020	Volume: 309,628
	Change (%): -8.70	Range: 0.205 - 0.250

TA Scanner Results based on historical data up to 13 Nov 2025

Condition	Signal	Explanation
Bollinger Band: Bullish Lower Bollinger Band Support	Long	"1. Low 1 day ago below lower bollinger band(20,2). 2. Close above close 1 day ago. 3. Average volume(5) is above 100,000."
DM: Bullish Directional Movement	Long	-DI(14) crossed below +DI(14)
Donchian Channels: High Above Upper Donchian Channels	Long	High crossed above the upper Donchian Channel(14,4)
MACD: Bullish MACD Crossover	Long	"1. MACD(12,26) diff line crossed above the MACD(12,26) signal line. 2. MACD Histogram(12,26) is above 0."
RSI: Short Term RSI 50 Bullish Crossover	Long	"1. RSI(20) crossed above 50 within the last 1 day and RSI(20) 1 day ago below 50 for the last 5 days. 2. Volume above average volume(125). 3. Average volume(5) is above 100,000."

Disclaimer: The information on this page is provided as a service to readers. It does not constitute financial advice and/or any investment recommendations. Past performance is not indicative of future results. We assume no liability for damages resulting from or arising out of the use of such information. It would be best if you did your own research to make your personal investment decisions wisely or consult a licenced investment advisor.



MCLEAN TECHNOLOGIES BERHAD (0167.MY)

MCLEAN

Price updated at 13 Nov 2025 17:30

Last: 0.570	Change: -	Volume: 46,403
	Change (%): -	Range: 0.560 - 0.580

TA Scanner Results based on historical data up to 13 Nov 2025

Condition	Signal	Explanation
DM: Bullish Directional Movement	Long	-DI(14) crossed below +DI(14)
Stochastic: Fast Stochastic Buy Signal	Long	"1. Fast Stochastic(15,5) %K crossed above 20. 2. Fast Stochastic(15,5) %K 1 day ago was below 20 for the last 5 days. 3. Average volume(30) is above 50000"
Volume: 10 Days large value Buy Up trade	Long	"1. 150K value Buy Up greater than Sell Down by 20% for 10 days. 2. 50K-100K value Buy Up greater than Sell Down by 20% for 10 days. 3. Average volume(10) is above 1000000"
Williams %R: Bullish Williams %R	Long	"1. Williams %R(26) between -80 and -100. 2. Average volume(5) is above 100,000."



ECO WORLD DEVELOPMENT GROUP BERHAD (8206.MY)

ECOWLD

Price updated at 13 Nov 2025 17:31

Last: 2.080	Change: -	Volume: 29,208
	Change (%): -	Range: 2.060 - 2.110

TA Scanner Results based on historical data up to 13 Nov 2025

Condition	Signal	Explanation
Bollinger Band: Bullish Lower Bollinger Band Support	Long	"1. Low 1 day ago below lower bollinger band(20,2). 2. Close above close 1 day ago. 3. Average volume(5) is above 100,000."
MACD: Bullish MACD Crossover	Long	"1. MACD(12,26) diff line crossed above the MACD(12,26) signal line. 2. MACD Histogram(12,26) is above 0."
Volume: 10 Days large value Buy Up trade	Long	"1. 150K value Buy Up greater than Sell Down by 20% for 10 days. 2. 50K-100K value Buy Up greater than Sell Down by 20% for 10 days. 3. Average volume(10) is above 1000000"
Volume: 5 Days large value Buy Up trade	Long	"1. 150K value Buy Up greater than Sell Down by 20% for 5 days. 2. 50K-100K value Buy Up greater than Sell Down by 20% for 5 days. 3. Average volume(10) is above 1000000"

Disclaimer: The information on this page is provided as a service to readers. It does not constitute financial advice and/or any investment recommendations. Past performance is not indicative of future results. We assume no liability for damages resulting from or arising out of the use of such information. It would be best if you did your own research to make your personal investment decisions wisely or consult a licenced investment advisor.



LYSAGHT GALVANIZED STEEL BERHAD (9199.MY)

LYSAGHT

Price updated at 13 Nov 2025 17:31

Last: 2.450	Change: -	Volume: -
	Change (%): -	Range: 2.450 - 2.450

TA Scanner Results based on historical data up to 13 Nov 2025

Condition	Signal	Explanation
CCI: Bearish CCI Overbought And Reversing	Short	"1. CCI(26) above 100 and CCI(26) 1 day ago increasing for the last 3 days. 2. CCI(26) below CCI(26) 1 day ago"
Candlestick: Bullish Kicking	Long	Bullish: Kicking
DM: Bullish Directional Movement	Long	-DI(14) crossed below +DI(14)
MA: Bullish Price Crossover	Long	"1. Close price crossed above MA(40) within the last 1 day. 2. Previous day close price is below the MA(10) for the last 5 days"
MACD: Bullish MACD Crossover	Long	"1. MACD(12,26) diff line crossed above the MACD(12,26) signal line. 2. MACD Histogram(12,26) is above 0."
Parabolic SAR: Bearish Parabolic SAR Reversal	Neutral	"1. Parabolic SAR 1 day ago above close price 1 day ago for the last 5 days. 2. Parabolic SAR below close price"



TOPMIX BERHAD (0302.MY)

TOPMIX

Price updated at 13 Nov 2025 17:30

Last: 0.480	Change: -0.005	Volume: 8,354
	Change (%): -1.03	Range: 0.480 - 0.490

TA Scanner Results based on historical data up to 13 Nov 2025

Condition	Signal	Explanation
Bollinger Band: Bullish Long Term Volatility Breakout and Trending	Long	"1. Close price above upper bollinger band(33,1). 2. Volume above average volume(50). 3. Average volume(50) is above 300,000."
Bollinger Band: Bullish Short Term Volatility Breakout and Trending	Long	"1. Close price above upper bollinger band(33,1). 2. Volume above average volume(10). 3. Average volume(10) is above 300,000."
Bollinger Band: High Above Upper Bollinger Band	Neutral	"1. High above upper bollinger band(14,2). 2. Average volume(5) is above 100,000."
Donchian Channels: High Above Upper Donchian Channels	Long	High crossed above the upper Donchian Channel(14,4)
Volume: Volume Spike	Long	"1. Volume is more than 500% above average volume(10). 2. Volume above 200000. 3. Close price above 0.10"

**CHECK OUT
SHAREINVESTOR
BROKERS' CALL**

Weekly Buy/Sell/Hold calls from leading Malaysian Brokerages.

[Go To Brokers' Call](#)

GUAN CHONG BHD (5102.MY)

MAGMA GROUP BERHAD (7243.MY)

GCB

Price updated at 13 Nov 2025 17:31

Last: 1.020	Change: -	Volume: 114,866
	Change (%): -	Range: 1.000 - 1.040

TA Scanner Results based on historical data up to 13 Nov 2025

Condition	Signal	Explanation
Bollinger Band: High Above Upper Bollinger Band	Neutral	"1. High above upper bollinger band(14,2). 2. Average volume(5) is above 100,000."
CCI: Bearish CCI Overbought And Reversing	Short	"1. CCI(26) above 100 and CCI(26) 1 day ago increasing for the last 3 days. 2. CCI(26) below CCI(26) 1 day ago"
Donchian Channels: High Above Upper Donchian Channels	Long	High crossed above the upper Donchian Channel(14,4)
MA: Short Term Bullish Moving Average Crossover	Long	MA(10) crossed above MA(15) within the last 1 day.
Volume: 10 Days large value Buy Up trade	Long	"1. 150K value Buy Up greater than Sell Down by 20% for 10 days. 2. 50K-100K value Buy Up greater than Sell Down by 20% for 10 days. 3. Average volume(10) is above 1000000"
Volume: 5 Days large value Buy Up trade	Long	"1. 150K value Buy Up greater than Sell Down by 20% for 5 days. 2. 50K-100K value Buy Up greater than Sell Down by 20% for 5 days. 3. Average volume(10) is above 1000000"
Williams %R: Bearish Williams %R	Short	"1. Williams %R(26) between 0 and -20. 2. Average volume(5) is above 100,000."

MAGMA

Price updated at 13 Nov 2025 17:31

Last: 0.340	Change: -	Volume: 26,522
	Change (%): -	Range: 0.335 - 0.350

TA Scanner Results based on historical data up to 13 Nov 2025

Condition	Signal	Explanation
Bollinger Band: High Above Upper Bollinger Band	Neutral	"1. High above upper bollinger band(14,2). 2. Average volume(5) is above 100,000."
Donchian Channels: High Above Upper Donchian Channels	Long	High crossed above the upper Donchian Channel(14,4)
MA: Short Term Bullish Moving Average Crossover	Long	MA(10) crossed above MA(15) within the last 1 day.
Parabolic SAR: Bearish Parabolic SAR Reversal	Neutral	"1. Parabolic SAR 1 day ago above close price 1 day ago for the last 5 days. 2. Parabolic SAR below close price"
Volume: 10 Days large value Buy Up trade	Long	"1. 150K value Buy Up greater than Sell Down by 20% for 10 days. 2. 50K-100K value Buy Up greater than Sell Down by 20% for 10 days. 3. Average volume(10) is above 1000000"
Volume: 5 Days large value Buy Up trade	Long	"1. 150K value Buy Up greater than Sell Down by 20% for 5 days. 2. 50K-100K value Buy Up greater than Sell Down by 20% for 5 days. 3. Average volume(10) is above 1000000"
Williams %R: Bearish Williams %R	Short	"1. Williams %R(26) between 0 and -20. 2. Average volume(5) is above 100,000."

Disclaimer: The information on this page is provided as a service to readers. It does not constitute financial advice and/or any investment recommendations. Past performance is not indicative of future results. We assume no liability for damages resulting from or arising out of the use of such information. It would be best if you did your own research to make your personal investment decisions wisely or consult a licenced investment advisor.

Learn how to identify Hot Stocks using Technical Analysis (TA) and Fundamental Analysis (FA)

SIGN UP FOR Invest NOW IT'S FREE!!!

[Click here](#)

Scan me



Via email, every Friday.

Get market moving news and analyses. Regular columns include **Behind The Action** and **From The Observer**

- Leaderboard • Shariah Hot Stocks • Shariah Momentum Up Stocks • Non Shariah Hot Stocks • Up Trending Stocks • Growth Stocks • Dividend Stocks • Long Companies • Insider Activity • Investor Relations • Regional Markets



Dato' Eu Hong Chew
Former Group CEO i-Berhad
Non-Executive Director

He has been associated with the Sumurwang Group for many years charting the path for its manufacturing arm, firstly under Dreamland Holdings Berhad and the subsequent acquisition of I-Berhad.

Before that, he was with PA Management Consulting for a decade where he was the Director of Studies for the Cranfield PA MBA Programme in Malaysia.

Educated at the Royal Military College, Dato' Eu has an engineering degree from the University of Glasgow, and a MBA from the University of Bradford, UK.

Is there an investment opportunity in **Red Violet?**

SUMMARY

- Since its 2018 spin-off, Red Violet, Inc. (**Nasdaq: RDVT**) has grown revenue at a 29% CAGR, significantly expanding margins and improving returns as scale drove operating leverage.
- There were improving financial and operating metrics. Gross profit margin rose, while the SGA margin declined, and the ROIC and ROE turned positive by 2024, signalling improved efficiency and profitability.
- The company is nearly debt-free, generates positive cash flow, and manages capital well, though its high Reinvestment rate - mainly due to low early profits - bears watching.

Disclaimer: This article is written for informational purposes only. It does not constitute a solicitation, offer, advice, counseling or recommendation to buy or sell. As such it is not intended to promote the purchase of shares in any way. As a reminder, any type of asset has a risk factor and needs to be evaluated from multiple perspectives. Therefore, any investment decision and the associated risk remains with the investor. The views expressed here are entirely the writer's own.

BACKGROUND

Red Violet became an independent public company in 2018 after spinning off from Fluent Inc. Since then, it has expanded its identity intelligence platform, broadened its customer base, and shifted toward a recurring revenue model.

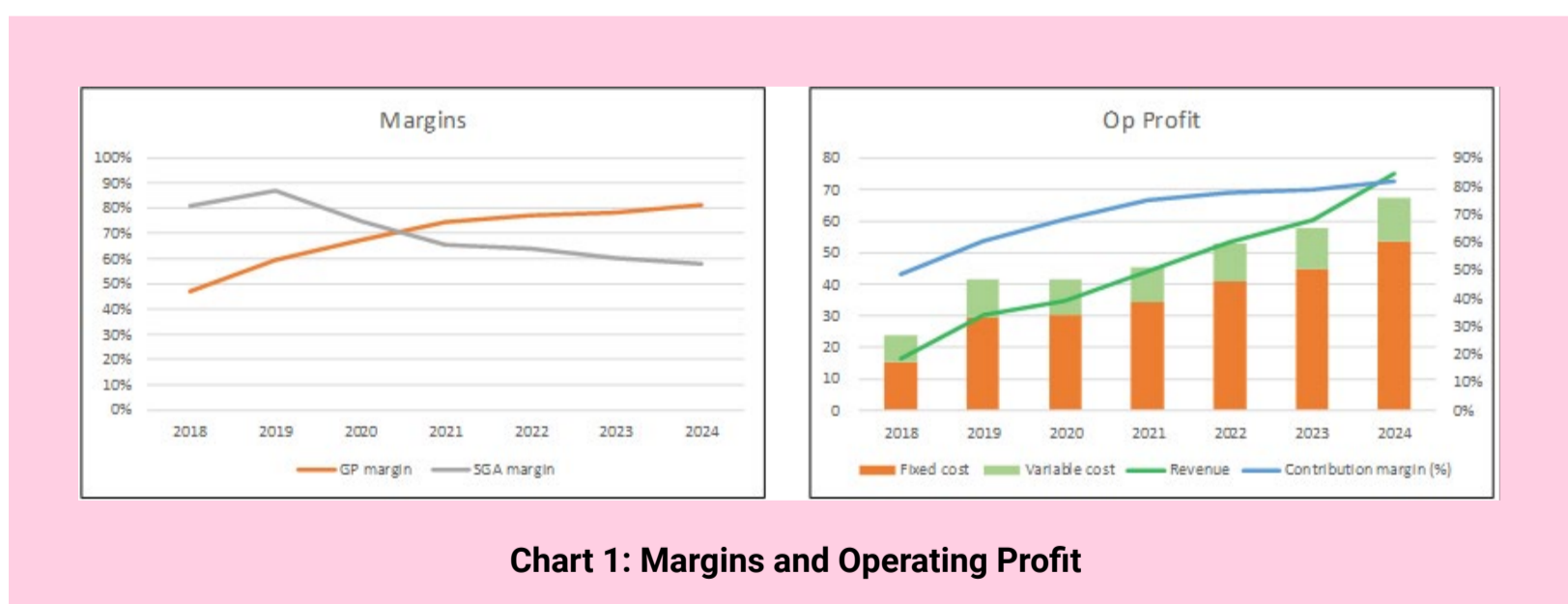
Today, Red Violet develops technology that delivers real-time identity and location data to US businesses and government agencies. Its work falls within the identity intelligence sector.

This is a growing field at the intersection of data analytics, cybersecurity, and risk management. This is a rapidly expanding market in the US and worldwide. Industry estimates consistently indicate double-digit annual growth over the coming decade, driven by rising digital transactions, regulatory requirements, and demand for fraud prevention and secure identity solutions.

OPERATING PERFORMANCE

From 2018 to 2024, Red Violet’s revenue grew at a 29% CAGR, driving significant improvements in profitability and efficiency.

As shown in **Chart 1**, gross profit margin expanded from 47% to 81%, reflecting strong operating leverage. Revenue growth outpaced the rise in cost of sales, indicating scale-driven margin gains.



Over the same period, the Selling, General and Administrative (SGA) margin fell from 81% to 58%. Although operating expenses rose in absolute terms, they declined sharply as a percentage of revenue. This demonstrated greater cost discipline and efficiency as the company scaled.

The widening gross margin also translated into stronger contribution margins. Refer to **Chart 1, right**. With a high fixed-cost structure, incremental revenue now delivers disproportionately higher profits. These trends enabled Red Violet to surpass its break-even point and record its first operating profit in 2022. In **Chart 1, right**, profit is represented by revenue being above the total cost (variable + fixed).

Even if margin expansion moderates, continued revenue growth should sustain profit momentum. Key operating and capital efficiency metrics also improved steadily, supporting further potential for margin gains and cost optimization. Correspondingly, returns strengthened.

- ROIC improved from -28% in 2018 to +12% in 2024.
- ROE rose from -19% in 2018 to +8% in 2024.

PEERS

I compared Red Violet's performance with some companies offering similar solutions, as shown in **Table 1**. Red Violet is a small company in terms of its 2024 revenue, but it had the best revenue growth rate.

When compared with its peers, Red Violet's performance shows clear improvement.

- Although its return on capital and EBIT margin trailed peers for several years, both metrics reached comparable levels by 2024.
- Its levered free cash flow margin, initially well below peers, improved significantly by 2020, though it remains slightly below average.
- Earnings per share were the weakest from 2018 to 2022 but rebounded strongly in 2023 before easing slightly in 2024.

Overall, the peer analysis suggests that sustaining a return on capital above 20% or an EBIT margin beyond 30% will be challenging for companies in this space.

Company	Revenue	
	2024 USD m	2018 to 2023 CAGR %
Red Violet (RDVT)	75	29.0%
Experian (EXPN)	7,097	7.6%
Mitek Systems (MITK)	172	18.0%
TransUnion (TRU)	4,184	10.4%

Table 1: Peer Revenue

Notes to Table 1:

- Experian – A global information services company specializing in data analytics and consumer credit reporting.
- Mitek Systems – Specializes in digital identity verification and mobile capture solutions, serving financial institutions and businesses requiring secure customer onboarding.
- TransUnion - A global information and insights company that collects and aggregates information on over one billion individual consumers in over thirty countries.

FINANCIAL POSITION

I consider Red Violet as moderately sound financially.

- Its cash of USD39 million as of the end of Jun 2025 was equivalent to about 37% of its total assets.
- It is almost debt-free with a 3% Debt Equity ratio at the end of Jun 2025.
- Apart from 2018, it generated positive cash flow from operations every year (2019 to 2024). It had a good cash flow conversion ratio. From 2018 to 2024, it generated USD61 billion cash flow from operations compared to its cumulative loss.
- It had a good capital allocation plan as shown in Table 2. The

cash flow from operations was sufficient to cover its CAPEX. Note that a big portion of the share buyback was post-2022, after it became profitable.

My main concern is the Reinvestment rate, defined as Reinvestment / NOPAT,

Item	Sources RM m	Uses RM m
Cash flow from Ops	799	
New shares	0	
Net Debt		37
Acquisition		0
CAPEX		563
Dividends		40
Buybacks		0
Misc		160
Total	799	799

Table 2: Sources and Uses of Funds 2015 to 2024

where Reinvestment equals CAPEX & Acquisitions – Depreciation & Amortization + change in net Working Capital.

Over the past three years, the company reinvested about USD34 million, roughly 3.8 times its total NOPAT. The elevated Reinvestment rate mainly reflects low profitability rather than excessive spending.

Given the improving returns, I am not overly concerned. Over time, the Reinvestment rate should normalize in line with the fundamental growth relationship: $\text{Growth} = \text{Return} \times \text{Reinvestment rate}$.

VALUATION

My analysis indicates that Red Violet is in the growth stage of its business life cycle, showing improving efficiency as it scales. The key uncertainties are how long this growth phase will last and the extent of further efficiency gains.

For valuation, I assumed the following:

Revenue grows at the historical 29% CAGR in Year 1, tapering linearly to a 4% mature growth rate by Year 6, using 2024 as the base year.

Margins and Reinvestment rate start from the 2022–2024 averages, reflecting the period of positive operating profits. Both metrics improve proportionately to reach steady-state levels in Year 6:

- Margins follow the log-normal trendlines derived from 2018–2024 data.
- The Reinvestment rate aligns with the fundamental growth equation ($\text{Growth} = \text{Return} \times \text{Reinvestment rate}$).

Based on these assumptions, the estimated intrinsic value is USD31 per share, versus a market price of USD49 at the end of Jun 2025 - indicating no margin of safety. Refer to the original article for details of the valuation.

CONCLUSION

Red Violet has demonstrated strong growth and improved efficiency since becoming an independent company. Its expanding margins, rising returns, and disciplined cost structure indicate a scalable business model in a fast-growing industry. The company's balance sheet is solid, with minimal debt and consistent cash generation, though the high Reinvestment rate warrants monitoring as profitability matures.

While Red Violet is moderately sound financially, with its performance catching up to its peers, its valuation is a concern. Based on an optimistic set of assumptions, there is currently no margin of safety.

I am a long-term value investor who has held onto stocks for more than 5 years. My analysis and valuation are from such a perspective. I consider quarterly results "noisy" and focus on long-term trends.

This article was re-purposed from my article "Red Violet's Explosive Growth - Is It Too Late To Buy?" which was first published in Seeking Alpha. Refer to this [link](#) for more of my insights on other US companies.

Disclaimer: This article is written for informational purposes only. It does not constitute a solicitation, offer, advice, counseling or recommendation to buy or sell. As such it is not intended to promote the purchase of shares in any way. As a reminder, any type of asset has a risk factor and needs to be evaluated from multiple perspectives. Therefore, any investment decision and the associated risk remains with the investor. The views expressed here are entirely the writer's own.



CHECK OUT SHAREINVESTOR

BROKER'S CALL

Weekly Buy/Sell/Hold calls from leading Malaysian Brokerages.

Go To Broker's Call

BUY **HOLD** **SELL**

UNLOCK THE SECRET OF WEALTH

DO YOU REALLY WANT TO MASTER VALUE INVESTING



SEE HOW TO GET HIGHER RETURNS WITH LOWER RISK



Bursa Malaysia And Stockbroking Industry Announce Cyber Resilience Enhancements

Bursa Malaysia Berhad in collaboration with Malaysia's stockbroking industry, announced a series of cyber resilience enhancements to strengthen the integrity of the stockbroking ecosystem. These enhancements are outlined in a recommendation paper developed as part of the industry's collective response to the unauthorised trades incident in late April 2025. The Recommendation Paper is the collective output of an industry working group formed in June 2025, comprising representatives from both bank-backed and non-bank Participating Organisations, as well as cybersecurity experts.

Chaired by Julian M Hashim, Chief Regulatory Officer of Bursa Malaysia, the industry working group was tasked with assessing current industry cybersecurity practices to identify vulnerabilities, developing industry-wide standards for Information Technology risk management and incident response, as well as recommending regulatory and operational improvements.

According to Dato' Fad'l Mohamed, Chief Executive Officer of Bursa Malaysia, the priority is to protect investors and uphold the trust they place in our securities market. These enhancements represent the industry's commitment to every investor that cybersecurity safeguards are taken seriously, and are of prime importance. He added that by strengthening the cyber resilience of

the stockbroking ecosystem, the industry is actively taking steps to fortify the marketplace where investors can trade with confidence, knowing their investments are protected against cyber threats.

Meanwhile, Julian M Hashim said that the Recommendation Paper reflects the industry's promise to act collaboratively. The enhancements outlined are designed to be both actionable and scalable, ensuring that all brokers, regardless of size or complexity, can adopt them meaningfully.

The finalised Recommendation Paper, issued to brokers following an industry briefing session, has been reviewed by independent cybersecurity experts to ensure its robustness and alignment with best practices. Bursa Malaysia will adopt a two-pronged oversight approach to guide the implementation of the enhancements, focusing on:

- (i) enhancing Bursa Malaysia's IT Security Standards for brokers by incorporating the recommended cybersecurity and regulatory standards outlined in the Recommendation Paper; and
- (ii) strengthening the Exchange's oversight of Independent Software Vendors (ISV) which are Order Management Systems (OMS) providers.

The recommendations are broadly aligned with the Securities Commission Malaysia's Guidelines on Technology Risk Management and Bank Negara Malaysia's Risk Management in Technology framework.

The Recommendation Paper aims to raise industry-wide cybersecurity standards and resilience by setting clear expectations for brokers, including the responsibility to exercise effective oversight over their third-party technology service providers – such as ISVs that provide OMS - to ensure compliance with Bursa Malaysia's requirements.

For the full details, please [click this link](#).

Local institutions extend buying streak with RM280.7m net purchases for last week - MBSB IB

According to MBSB Investment Bank Bhd (MBSB IB), local institutions extended their streak of net purchases for the 5th consecutive week, recording inflows of RM280.7 million. In its fund flow report for the week ended Nov 7, MBSB IB stated that local retailers, however, reversed a single week of net inflows, reverting to net selling at RM195.2 million. Foreign investors, meanwhile, lengthened their selling streak to five weeks, posting a net outflow of RM85.4 million.

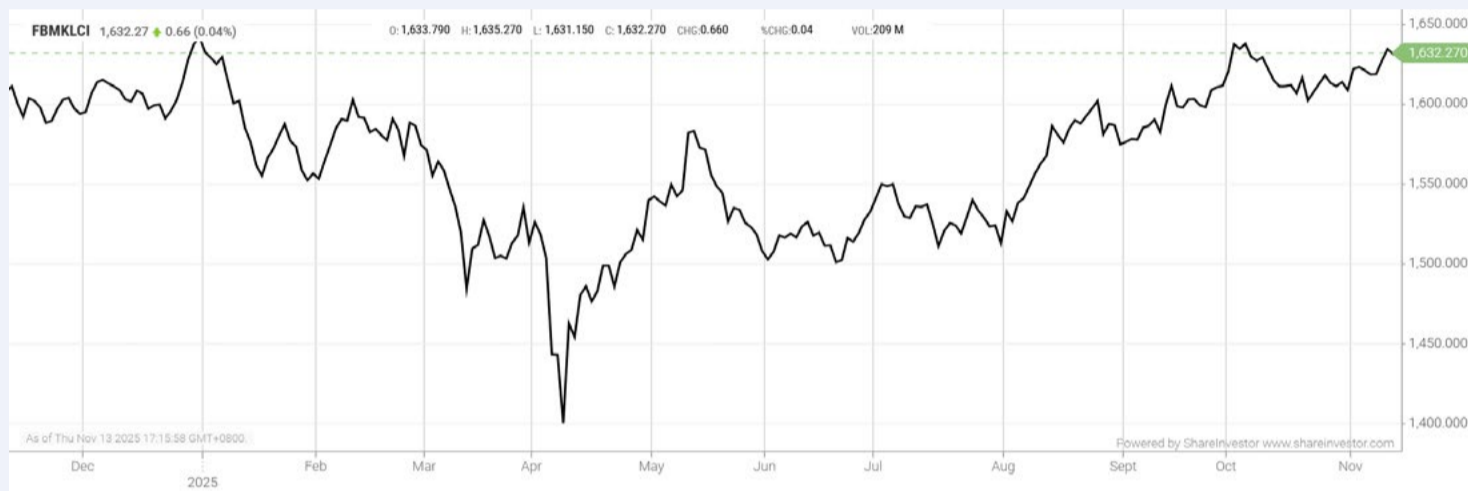
MBSB IB noted that foreign investors were net sellers on three out of five trading days last week, with last Monday seeing the highest net selling activity at RM158.8 million, followed by last Thursday (RM129.4 million) and Friday (RM45.4 million). However, inflows were recorded last Wednesday (RM138.4 million) and Tuesday (RM109.8 million).

The top three sectors that recorded net foreign inflows last week were plantation (RM138.4 million), consumer products and services (RM137.1 million), and healthcare (RM80.2 million). The top three sectors that recorded net foreign outflows were utilities (RM134.3 million), telecommunications and media (RM91.4 million), and technology (RM83.4 million).

Average daily trading volume experienced a broad-based decrease last week with local retailers and local institutions recording decreases of 6.4% and 15.2%, respectively, while foreign investors saw an increase of 3.2%.

EYE ON THE MARKETS

On Thursday (13Nov), the Ringgit closed at 4.1270 against the USD and 3.1750 to the Sing Dollar. On Monday (10Nov), the FBM KLCI opened at 1621.53. As at Thursday (13Nov) 5:00pm, the FBM KLCI closed up 10.74 points at 1632.27. Over in US, the overnight Dow Jones Industrial Average closed down 797.84 points (-1.65%) to 47,456.98 whilst the NASDAQ shed 536.10 points (-2.29%) to 22,870.36.



KLCI 1 Year Chart

Invest 246
 A Weekly e-Publication by SHAREINVESTOR
 FRIDAY 14 MARCH 2025

What's Next for Steel Hawk?
 After a stellar IPO and major contract wins in hand...
 See more on pages 26-37

Dato' Sharman K Michael
 Deputy Chairman and Executive Director Steel Hawk Berhad

MARKET SENTIMENTS
 IRB, MyDigital ID strengthen cooperation to accelerate digital identity adoption
 Gig Workers Bill aims to make SOCSO contribution mandatory - Steven Sim

Is there an investment opportunity in AMCOR?
 See more on pages 20-26

Learn how to identify Hot Stocks using Technical Analysis (TA) and Fundamental Analysis (FA)

SIGN UP FOR Invest NOW IT'S FREE!!!

[Click here](#)



Via email, every Friday.

Get market moving news and analyses. Regular columns include **Behind The Action** and **From The Observer**

- Leaderboard • Shariah Hot Stocks • Shariah Momentum Up Stocks • Non Shariah Hot Stocks • Up Trending Stocks • Growth Stocks • Dividend Stocks • Long Companies • Insider Activity • Investor Relations • Regional Markets

MARKET SENTIMENTS
 MALAYSIA'S DIVERSIFIED ECONOMIC STRUCTURE
 DIGITAL DISRUPTION BY ASIA-UKRAINE
 Bank Negara Malaysia (BNM) governs...
 Capital A Berhad (5099)
 SHARIAH HOT STOCKS
 Price & Volume Distribution Charts (as at Friday)

LONG COMPANIES
 MALAYSIA AIRPORTS HOLDINGS BERHAD (9444.MY)
 AIRPORT
 DARSANIC GROUP BERHAD (8141.MY)
 DARSANIC
 MY E.G. SERVICES BERHAD (1091.MY)
 EVERGON

INSIDER ACTIVITY

NON SHARIAH HOT STOCK
 Price & Volume Distribution Charts (as at Yesterday)

INVESTOR RELATIONS
 KPJ Healthcare Berhad
 The Board of Directors of KPJ Healthcare Berhad (KPB) is pleased to announce that it has today, via Pure Zone (M) Sdn Bhd, a wholly-owned subsidiary of KPJ Healthcare Berhad, issued RM650 million pursuant to the Sukuk Wakalah Programme. The Sukuk Wakalah Programme has been assigned a final rating of AA-(D)(C) (stable) by Malaysian Rating Corporation Berhad. Proceeds from the issuance shall be utilized by KPJ to fund amongst others Shariah-compliant financing activities comprising the expansion, working capital requirements and general corporate purposes of the healthcare and healthcare

Over 5 Trading Days (as at Yesterday)



ShareInvestor WebPro (www.shareinvestor.com/my)

1. Price > Stock Prices
2. Select Market: NASDAQ / NYSE / IDX / SET / HKEX / SGX (One bourse at a time)
3. select Stocks Tab
4. select Ranking Top Gainers or Top Losers (Over 5 Trading Days)
5. Mouse over Column Layout > select Edit Customs > select Name > select Last Done Price > select 5 Days Change > select 52 Weeks High > select 52 Weeks Low > Mouse Over Column Layout > select Custom

NASDAQ (USD)

Top Gainers

Name	Last Done	Change Over 5 Days	52 Weeks High	52 Weeks Low
Booking Holdings	5,175.580	+264.430	5,839.410	4,096.230
Sandisk	283.100	+66.600	275.870	27.885
Expedia Group	273.650	+59.840	270.220	130.010
Netflix	1,157.500	+59.040	1,341.150	803.750
argenx ADR	889.890	+57.540	893.518	510.055

Top Losers

Name	Last Done	Change Over 5 Days	52 Weeks High	52 Weeks Low
Mercadolibre	2,103.910	-197.970	2,645.220	1,646.000
Monolithic Power Systems	958.350	-41.800	1,123.380	438.860
Powell Industries	356.230	-39.540	413.000	146.023
AppLovin A	584.860	-36.500	745.610	200.500
Talen Energy	367.540	-35.950	451.280	158.080

NYSE (USD)

Top Gainers

Name	Last Done	Change Over 5 Days	52 Weeks High	52 Weeks Low
Berkshire Hathaway A	756,363.000	+16,463.000	812,855.000	660,640.000
AutoZone	3,788.700	+115.040	4,388.110	3,036.400
Fair Isaac	1,777.910	+103.110	2,402.515	1,300.000
NVR	7,287.380	+92.330	9,376.750	6,562.850
Markel Group	2,091.910	+82.650	2,096.140	1,621.890

Top Losers

Name	Last Done	Change Over 5 Days	52 Weeks High	52 Weeks Low
Biglari Holdings A	1,536.630	-230.590	1,850.000	876.750
Ubiquiti	584.810	-174.600	803.595	255.000
HubSpot	394.740	-77.250	881.130	375.010
Biglari Holdings B	318.800	-43.230	381.830	171.940
Humana	240.480	-41.390	315.348	206.870

IDX (Rupiah)

Top Gainers

Name	Last Done	Change Over 5 Days	52 Weeks High	52 Weeks Low
PAKUAN TBK	4,220.000	+2,265.000	8,000.000	197.000
MORA TELEMATIKA INDONESIA TBK	4,060.000	+2,095.000	4,060.000	290.000
DCI INDONESIA TBK	262,550.000	+2,000.000	398,000.000	40,100.000
MAHA PROPERTI INDONESIA TBK	9,000.000	+1,975.000	9,000.000	1,950.000
BERKAH PRIMA PERKASA TBK	3,580.000	+1,420.000	4,050.000	282.000

Top Losers

Name	Last Done	Change Over 5 Days	52 Weeks High	52 Weeks Low
GOLDEN FLOWER TBK	22,875.000	-2,200.000	41,900.000	910.000
DIAN SWASTATIKA SENTOSA TBK	86,500.000	-1,700.000	118,000.000	30,300.000
MULTIPOLAR TECHNOLOGY TBK	78,575.000	-1,200.000	257,875.000	16,800.000
GUDANG GARAM TBK	16,075.000	-1,025.000	17,825.000	8,300.000
PERDANA BANGUN PUSAKA TBK	3,050.000	-730.000	3,910.000	1,110.000

SET (Thai Baht)

Top Gainers

Name	Last Done	Change Over 5 Days	52 Weeks High	52 Weeks Low
GYT	192.500	+10.000	198.000	163.000
METCO	232.000	+8.000	235.000	154.500
EGCO	126.000	+4.000	143.000	85.000
BH	181.000	+3.500	224.000	130.000
BKIH	307.000	+3.000	310.000	271.000

Top Losers

Name	Last Done	Change Over 5 Days	52 Weeks High	52 Weeks Low
STANLY	184.000	-12.000	225.000	176.000
Food and Drinks Public NVDR	42.000	-7.500	60.500	30.250
BCT	49.000	-5.000	70.000	43.500
AEONTS	99.000	-4.500	129.000	90.500
DELTA	215.000	-4.000	232.000	51.250

HKEX (HKD)

Top Gainers

Name	Last Done	Change Over 5 Days	52 Weeks High	52 Weeks Low
UNISOUND (9678)	540.000	+35.000	879.000	198.000
AUNTEA JENNY (2589)	116.900	+32.400	197.600	80.200
TRIP.COM-S (9961)	573.000	+32.000	613.000	402.600
LAOPU GOLD (6181)	659.000	+31.000	1,108.000	180.700
HAIXI PHARMA (2637)	144.200	+30.200	147.000	97.500

Top Losers

Name	Last Done	Change Over 5 Days	52 Weeks High	52 Weeks Low
NETEASE MUSIC (9899)	205.000	-33.800	303.400	106.000
DEEPEXI TECH (1384)	78.650	-22.350	128.200	52.100
TRANSTHERA-B (2617)	210.200	-18.400	679.500	20.200
REFIRE (2570)	102.500	-16.800	316.200	100.500
SERES (9927)	115.500	-16.000	131.500	108.000

SGX (SGD)

Top Gainers

Name	Last Done	Change Over 5 Days	52 Weeks High	52 Weeks Low
JMH USD	66.030	+3.600	71.200	36.010
DBS	55.050	+1.696	55.590	36.074
OCBC Bank	18.710	+1.650	18.770	14.211
UOL	8.630	+0.660	8.670	5.010
Prudential USD	13.000	+0.500	13.000	8.090

Top Losers

Name	Last Done	Change Over 5 Days	52 Weeks High	52 Weeks Low
AvePoint	17.000	-1.020	20.400	15.840
Azeus	14.000	-1.020	17.280	10.030
UOB	34.130	-0.740	38.658	28.599
NIO Inc. USD OV	6.580	-0.680	7.840	3.090
IFAST	9.190	-0.260	9.990	6.020



WHEN KNM FINALLY HIT RESET

It was a bright Thursday morning at Mines Resort City, the kind of morning where sunlight rippled across the lake, turning the water into silver glass. Inside the meeting room, about fifty KNM Group Berhad (KNM) shareholders took their seats for an extraordinary general meeting (EGM) unlike any other.

By then, KNM had already been delisted from Bursa Malaysia. Its ticker had vanished from the screen a day earlier, but the Company was not yet ready to close the book. The EGM that morning would determine the fate of KNM's most valuable asset, Deutsche KNM GmbH (DKNM), the holding company of Borsig GmbH. This name had long been synonymous with the Group's glory years.

The question before shareholders was simple: should KNM proceed with the €270 million sale of DKNM to Japan's NGK Insulators Ltd? Yet, beneath that question lay two decades of ambition, turbulence, and survival - threads of a story that had come full circle.

FROM AMBITIOUS BEGINNINGS TO HEAVY BURDENS

To appreciate the weight of that morning, one has to rewind to 2008. KNM was then a fast-rising engineering conglomerate riding a wave of optimism. It made headlines by acquiring Borsig GmbH of Germany for €350 million, a bold move that signalled Malaysia's arrival on the global industrial stage. The acquisition instantly expanded KNM's reach into Europe, bringing with it German manufacturing precision and century-old prestige. At its peak, Borsig contributed more than four-fifths of KNM's revenue.

But growth built on leverage can be fragile. Volatile oil prices, slower project pipelines, and rising financing costs marked the years that followed. KNM's once-manageable borrowings swelled under market pressure. By 2021, the Group had defaulted on its Thai baht-denominated bonds, worth roughly RM347 million then. That default triggered a domino effect: tightening liquidity, audit qualifications, and finally the Practice Note 17 (PN17) classification, Bursa Malaysia's designation for financially distressed issuers.

What followed was a two-year effort to regain footing, marked by restraining orders, revised business plans, management reshuffles, and a revolving door of financial advisers. Each attempt to restructure faced the same obstacle: a towering debt load and a shrinking cash flow.

THE SEARCH FOR A LIFELINE

KNM's management had long regarded Borsig as both its greatest asset and its best chance at survival. The Group first tried to sell the German subsidiary in 2022 to a local investment vehicle for €220 million. The deal fell through before completion. Later, the Board explored listing Borsig on the Singapore Exchange, but market conditions and regulatory timing worked against it.

Then, in early 2025, a lifeline appeared. Japan's NGK Insulators Ltd, a century-old global player in ceramics and energy technology

systems, offered €270 million or about RM1.26 billion for the acquisition of DKNM and its Borsig subsidiaries. Negotiations stretched over months, but the outline was clear: this was the centrepiece of KNM's long-awaited regularisation plan.

Under the sale and purchase agreement, NGK would pay 88% in cash upon completion, with the remaining 12%, around €32 million, held in escrow for up to five years to cover warranty and indemnity obligations. The deal was framed as a willing-buyer, willing-seller transaction, one designed not for profit but for survival. The Board viewed it as the most practical route to address RM1.33 billion in borrowings through a court approved Scheme of Arrangement (SOA).

DKNM's FY2024 results underlined the bittersweet nature of the sale. Revenue hit €254 million, EBITDA €39 million, reflecting a strong turnaround. The EV/ EBITDA multiple of DKNM of six times implied by the disposal consideration was below that of European peers, but in KNM's

KNM GROUP – CHRONOLOGY OF MAJOR EVENTS

3 Dec 2021

KNM defaulted on a THB2.78 billion Thai-denominated bond (equivalent to RM347 million then) due on 18 Nov 2021.

May 2022

Proposed sale of Borsig (via Deutsche KNM GmbH) to GPR Siebzigste Verwaltungsgesellschaft mbH (GSV) for €220.8 million.

31 Oct 2022

Classified as a PN17 Affected Listed Issuer due to going concern uncertainties.

Dec 2022

Borsig's sale to GSV collapsed; the proposal to list Borsig on SGX also failed.

27 Feb 2025

Signed a conditional SPA with NGK Insulators Ltd for the sale of Deutsche KNM GmbH (DKNM, Borsig holding company) for €270 million.

9 Jun 2025

Announced Court Convened Creditors Meeting (CCCM) for 11 Aug 2025 to vote on Scheme of Arrangement (SOA).

11 Aug 2025

SOA was approved by over 75% of creditors of both KNM and KNMPS.

19 Aug 2025

Announced Proposed Regularisation Plan:

- Disposal of DKNM for €270 million
- Share capital reduction under Section 116, Companies Act 2016
- 4-to-1 share consolidation

27 Aug 2025

Submitted Proposed Regularisation Plan to Bursa Malaysia.

3 Oct 2025

Bursa Malaysia rejected the plan, warning of delisting by 5 Nov 2025 if no appeal is filed by 2 Nov 2025.

circumstances, time mattered more than multiples. Cash today outweighs theoretical value tomorrow.

REGULATORY HURDLES AND THE ROAD TO DELISTING

Even as the deal gained momentum, KNM's path to recovery encountered regulatory hurdles. Bursa Malaysia questioned whether the Group could sustain meaningful operations after selling its largest profit-making unit.

At the same time, major shareholder MAA Group Berhad (MAAG) requisitioned an EGM to allow shareholders to vote directly on the disposal. Bursa Malaysia subsequently reminded the company that the transaction was a major disposal, ordinarily requiring a principal adviser, an independent adviser, and an independent valuation report.

Tensions heightened when Bursa Malaysia initiated a legal action in the High Court seeking clarification on KNM's move to proceed with the Borsig sale before obtaining full regulatory approval. The Exchange maintained that the disposal fell under Bursa Malaysia's oversight as it was part of a PN17 regularisation plan. KNM, meanwhile, argued that the transaction was necessary to satisfy its creditors and prevent further deterioration of its financial position.

7 Oct 2025

MAA Group Berhad (MAAG, a 16.45% shareholder) requisitioned an EGM to approve the disposal of DKNM.

8 Oct 2025

KNM appealed Bursa Malaysia's decision; delisting deferred. Issued EGM notice pursuant to MAAG's requisition.

9 Oct 2025

The Board announced it could not convene the EGM; MAAG decided to convene it independently.

23 Oct 2025

Bursa Malaysia issued a Regulatory Advisory noting the plan's rejection, a pending appeal under Paragraph 8.04(3A) MMLR, and that the disposal qualifies as a major transaction requiring advisers, valuation, and circular approval.

27 Oct 2025

KNM withdrew the appeal; Bursa Malaysia confirmed delisting effective 5 Nov 2025.

28 Oct 2025

KAF Investment Bank resigned as Principal Adviser. Bursa Malaysia filed an Originating Summons against MAAG, CIMSEC, KNM & KNMPS, seeking to block the EGM pending compliance.

29 Oct 2025

The High Court allowed the EGM to proceed; no injunction was granted.

30 Oct 2025

EGM convened; motion to adjourn passed by shareholders.

6 Nov 2025

Adjourned EGM.

Despite the legal proceedings, KNM continued to press forward. The Company maintained that the sale was integral to its debt resolution efforts and that any delay could jeopardise creditor agreements. Court proceedings to approve the SOA were already underway, and timing was critical.

In late October, KNM withdrew its appeal to Bursa Malaysia and moved ahead with preparations for the EGM. Then, on 5 November 2025, Bursa Malaysia delisted KNM from the Main Market. The Company would proceed with the EGM as a private entity; a rare sequence of events that underscored the unusual nature of its situation.

THE EGM AT MINES RESORT CITY

At the EGM, shareholders arrived early, exchanging polite nods and brief conversations before taking their seats. Representatives from the MSWG were also present to observe proceedings. There was no tension in the air, only the recognition that this meeting marked a significant milestone in KNM's long restructuring journey.

The Company explained that the proposed disposal was essential to complete the restructuring and settle the Group's RM1.33 billion borrowings. Approximately threequarters of the sale proceeds would be applied toward debt repayment under the SOA. At the same time, the remaining balance would be allocated to transaction expenses and working capital.

Questions from shareholders were probing but civil. Focused on valuation, the timing of the deal, and what would happen to KNM's remaining businesses. The Board assured the floor that its Malaysian subsidiaries, Borsig Boiler Systems Sdn Bhd and KNM Borsig Services Sdn Bhd, would remain operational and form the foundation of a streamlined group structure.

When the resolution was finally put to a vote, 71 shareholders cast their ballots. The outcome was clear: 93.7% voted in favour. The motion carried, and with it, KNM's plan to move forward.

WHAT THE SALE MEANS

The approved disposal now moves into its execution phase. The Company expects to record an accounting loss of about RM104 million, mainly due to currency translation and transaction costs, but the sale will substantially reduce debt and interest obligations. Once the proceeds are applied, KNM's balance sheet is expected to lighten significantly.

In practical terms, the Company will shift its focus to domestic operations and partnerships. Its remaining units, KNM Process Systems, Borsig Boiler Systems, and KNM Borsig Services, will anchor a leaner business model focused on fabrication, energy systems, and regional industrial services. The Group has also indicated plans to collaborate with FBM Hudson Italiana S.p.A., leveraging technical expertise and project experience to pursue new contracts in Asia.

Much remains to be done, including obtaining regulatory clearance for the foreign transfer and fulfilling the escrow conditions. Yet, for the first time in years, KNM faces these tasks without the weight of public-market deadlines. Freed from listing obligations, it can realign quietly, perhaps even rediscover the discipline that once powered its rise.

A CHAPTER CLOSES, ANOTHER OPENS

For long-time investors, the Borsig sale represents both an ending and a beginning. It closes KNM's chapter as an international listed group, but it opens a new one as a privately managed engineering company with lower debt and a narrower scope. Whether this transformation leads to recovery or retrenchment remains to be seen, but it gives the Company something it has lacked for years: breathing space.

The outcome of the EGM suggests that most shareholders understood this trade-off. Faced with few alternatives, they chose certainty over speculation, a practical decision consistent with

KNM's financial reality. The day ended without drama, only quiet conversation as shareholders lingered outside by the lake, watching the reflection of the afternoon sun.

KNM's journey offers lessons that extend beyond one company. It underscores the importance of balancing expansion with risk management, the value of transparency in sustaining confidence even in challenging times, and how corporate resilience often depends on the willingness to adapt rather than resist change.

The delisting may have removed KNM from the trading screens, but it has not erased its relevance. Its operations continue, its obligations remain, and its stakeholders, including creditors, employees, and shareholders, will still watch closely as the company transitions to its next stage.

The sale of Borsig was not a surrender; it was a reset. The Company that once reached for global markets now turns inward, stripped of ambition's excess but not of purpose.

Corporate stories rarely end neatly; they stumble, regroup, and find new rhythm. KNM's tale is no different. Its next act will unfold away from the noise of trading screens, quieter perhaps, but no less instructive. In corporate Malaysia, endings like this are never just about loss; they are about learning who you become when the spotlight fades.

Reproduced with permission from The Observer, a weekly newsletter published by the Minority Shareholders Watch Group (MSWG). Subscribe to The Observer for free at www.mswg.org.my and follow @MSWGMalaysia on social media for the latest updates.



Learn how to identify Hot Stocks using Technical Analysis (TA) and Fundamental Analysis (FA)

SIGN UP FOR Invest
IT'S FREE!!!

[Click here](#)

Scan me



Via email, every Friday.

DEFINITION: Insider Activity shows the trades made by substantial shareholders or directors of the company. Purchases by the directors and company share buyback may indicate the share price is undervalued and brings confidence to the price trend of the share price.



ShareInvestor WebPro > Fundamental > Insider Trades > click Search tab > Select Bursa > click Stock name > scroll up and leave at <Select Counter> Type Date Range for Announcement Date > click Search

Notice Period is 2nd November 2025 to 8th November 2025

Effective Change Date	Stock Name	Buyer/ Seller Name [Classification]	Bought / (Sold) ['000]		No. of Shares After Trade ['000]	
			Total	Total	Total	% Held
15 JUL 2025 - 15 JUL 2025	ABMB	DUXTON INVESTMENTS PTE LTD [SSH]	52,924		502,782	29.059
15 JUL 2025 - 15 JUL 2025	ABMB	FULLERTON FINANCIAL HOLDINGS PTE LTD [SSH]	52,924		502,782	29.059
15 JUL 2025 - 15 JUL 2025	ABMB	FULLERTON MANAGEMENT PTE LTD [SSH]	52,924		502,782	29.059
15 JUL 2025 - 15 JUL 2025	ABMB	VERTICAL THEME SDN BHD [SSH]	52,924		502,782	29.059
03 NOV 2025 - 03 NOV 2025	ALLIANZ	EMPLOYEES PROVIDENT FUND BOARD [SSH]	0.2		11,297	6.131
04 NOV 2025 - 04 NOV 2025	AMBANK	EMPLOYEES PROVIDENT FUND BOARD [SSH]	666		513,714	15.53
03 NOV 2025 - 03 NOV 2025	AMBANK	EMPLOYEES PROVIDENT FUND BOARD [SSH]	11,143		513,048	15.51
31 OCT 2025 - 31 OCT 2025	AMBANK	EMPLOYEES PROVIDENT FUND BOARD [SSH]	3,940		501,905	15.173
30 OCT 2025 - 30 OCT 2025	AMBANK	EMPLOYEES PROVIDENT FUND BOARD [SSH]	6,414		497,965	15.054
29 OCT 2025 - 29 OCT 2025	AMBANK	EMPLOYEES PROVIDENT FUND BOARD [SSH]	2,039		491,551	14.86
30 OCT 2025 - 30 OCT 2025	ASIAFLE	DATO LIM SOON HUAT [DIR/CEO]	19,551		117,900	62.263
06 NOV 2025 - 06 NOV 2025	ASIAPLY	DATO' YEO BOON LEONG [DIR/CEO]	300		323,642	30.696
06 NOV 2025 - 06 NOV 2025	ASIAPLY	DATO' YEO BOON LEONG [SSH]	300		323,642	30.696
06 NOV 2025 - 06 NOV 2025	ASIAPLY	HUANG YONGKANG [SSH]	500		96,650	9.167
06 NOV 2025 - 06 NOV 2025	ASIAPLY	MR HUANG YONGKANG [DIR/CEO]	500		96,650	9.167
04 NOV 2025 - 04 NOV 2025	ASIAPLY	DATO' YEO BOON LEONG [DIR/CEO]	5,303		323,342	30.667
04 NOV 2025 - 04 NOV 2025	ASIAPLY	DATO' YEO BOON LEONG [SSH]	5,303		323,342	30.667
03 NOV 2025 - 03 NOV 2025	ASIAPLY	DATO' YEO BOON LEONG [DIR/CEO]	771		318,038	30.164
03 NOV 2025 - 03 NOV 2025	ASIAPLY	DATO' YEO BOON LEONG [SSH]	771		318,038	30.164
04 NOV 2025 - 04 NOV 2025	ATECH	EMPLOYEES PROVIDENT FUND BOARD [SSH]	1,500		153,002	11.765
30 OCT 2025 - 30 OCT 2025	ATECH	EMPLOYEES PROVIDENT FUND BOARD [SSH]	-50		151,502	11.649
04 NOV 2025 - 04 NOV 2025	ATLAN	CHESTERFIELD TRUST COMPANY LIMITED AS TRUSTEES OF THE LIM FAMILY TRUST [SSH]	-5,000		127,819	50.392
04 NOV 2025 - 04 NOV 2025	ATLAN	DATO' SRI ADAM SANI BIN ABDULLAH [DIR/CEO]	-5,000		127,819	50.392
04 NOV 2025 - 04 NOV 2025	ATLAN	DATO' SRI ADAM SANI BIN ABDULLAH [SSH]	-5,000		127,819	50.392
04 NOV 2025 - 04 NOV 2025	ATLAN	DISTINCT CONTINENT SDN BHD [SSH]	-5,000		75,220	29.655
04 NOV 2025 - 04 NOV 2025	ATLAN	LIM FAMILY HOLDINGS LIMITED [SSH]	-5,000		127,819	50.392
03 NOV 2025 - 05 NOV 2025	AWANTEC	LEMBAGA TABUNG AMANAH WARISAN NEGERI TERENGGANU [SSH]	15		43,721	5.546
30 OCT 2025 - 31 OCT 2025	AWANTEC	LEMBAGA TABUNG AMANAH WARISAN NEGERI TERENGGANU [SSH]	4		43,706	5.544
04 NOV 2025 - 04 NOV 2025	AXIATA	EMPLOYEES PROVIDENT FUND BOARD [SSH]	2,587		1,703,321	18.542
03 NOV 2025 - 03 NOV 2025	AXIATA	EMPLOYEES PROVIDENT FUND BOARD [SSH]	1,474		1,700,734	18.514
06 NOV 2025 - 06 NOV 2025	AXREIT	LEMBAGA TABUNG HAJI [SSH]	350		135,141	6.688
04 NOV 2025 - 04 NOV 2025	AXREIT	EMPLOYEES PROVIDENT FUND BOARD [SSH]	1,050		385,618	19.083
05 NOV 2025 - 05 NOV 2025	AXREIT	LEMBAGA TABUNG HAJI [SSH]	250		134,791	6.67
03 NOV 2025 - 03 NOV 2025	AXREIT	EMPLOYEES PROVIDENT FUND BOARD [SSH]	1,652		384,568	19.031
04 NOV 2025 - 04 NOV 2025	AXREIT	LEMBAGA TABUNG HAJI [SSH]	250		134,541	6.658
31 OCT 2025 - 31 OCT 2025	AXREIT	EMPLOYEES PROVIDENT FUND BOARD [SSH]	-1,777		382,916	18.949
03 NOV 2025 - 03 NOV 2025	AXREIT	LEMBAGA TABUNG HAJI [SSH]	500		134,291	6.646
30 OCT 2025 - 30 OCT 2025	AXREIT	EMPLOYEES PROVIDENT FUND BOARD [SSH]	7,386		384,692	19.037
31 OCT 2025 - 31 OCT 2025	AXREIT	LEMBAGA TABUNG HAJI [SSH]	1,000		133,791	6.621
29 OCT 2025 - 29 OCT 2025	AXREIT	EMPLOYEES PROVIDENT FUND BOARD [SSH]	3,512		377,306	18.671
04 NOV 2025 - 04 NOV 2025	BAUTO	EMPLOYEES PROVIDENT FUND BOARD [SSH]	128		118,154	10.315
03 NOV 2025 - 05 NOV 2025	BAUTO	DATO' SRI AMER HAMZAH BIN AHMAD [SSH]	248		186,259	16.262
03 NOV 2025 - 05 NOV 2025	BAUTO	DATO' SRI LEE KOK CHUAN [DIR/CEO]	248		186,405	16.275
03 NOV 2025 - 05 NOV 2025	BAUTO	DATO' SRI LEE KOK CHUAN [SSH]	248		186,405	16.275
03 NOV 2025 - 05 NOV 2025	BAUTO	DYNAMIC MILESTONE SDN BHD [SSH]	248		181,815	15.874
03 NOV 2025 - 03 NOV 2025	BAUTO	EMPLOYEES PROVIDENT FUND BOARD [SSH]	-826		118,026	10.3
03 NOV 2025 - 05 NOV 2025	BAUTO	TAN SRI DATO' SRI YEOH CHOO SAN [DIR/CEO]	248		186,032	16.242
03 NOV 2025 - 05 NOV 2025	BAUTO	TAN SRI DATO' SRI YEOH CHOO SAN [SSH]	248		186,032	16.242
31 OCT 2025 - 31 OCT 2025	BAUTO	EMPLOYEES PROVIDENT FUND BOARD [SSH]	1,389		118,852	10.372
30 OCT 2025 - 30 OCT 2025	BAUTO	EMPLOYEES PROVIDENT FUND BOARD [SSH]	-1,080		117,463	10.25
29 OCT 2025 - 29 OCT 2025	BAUTO	EMPLOYEES PROVIDENT FUND BOARD [SSH]	1,127		118,543	10.345
05 NOV 2025 - 05 NOV 2025	BINACOM	DATO' ONG CHOO MENG [SSH]	24,714		180,184	29.818
05 NOV 2025 - 05 NOV 2025	BINACOM	HEXTAR CAPITAL BERHAD [SSH]	24,714		180,184	29.818
05 NOV 2025 - 05 NOV 2025	BINACOM	OPCOM VC SDN. BHD. [SSH]	24,714		180,184	29.818
31 OCT 2025 - 31 OCT 2025	BJASSET	TAN SRI DATO' SERI VINCENT TAN CHEE YIOUN [SSH]	5		1,569,518	61.351
04 NOV 2025 - 04 NOV 2025	BNASTRA	EASTSPRING INVESTMENTS BERHAD [SSH]	-200		60,508	5.544
04 NOV 2025 - 04 NOV 2025	BNASTRA	PRUDENTIAL PLC [SSH]	200		83,204	7.624
05 NOV 2025 - 05 NOV 2025	BPPLAS	MR LIM CHUN YOW [SSH]	531		148,365	52.709
05 NOV 2025 - 05 NOV 2025	BPPLAS	MR LIM CHUN YOW [DIR/CEO]	531		148,613	52.797

Notice Period is 2nd November 2025 to 8th November 2025

Effective Change Date	Stock Name	Buyer/ Seller Name [Classification]	Bought / (Sold) ['000]		No. of Shares After Trade ['000]	
			Total	Total	Total	% Held
04 NOV 2025 - 04 NOV 2025	BURSA	KUMPULAN WANG PERSARAAN (DIPERBADANKAN) [SSH]	500		92,126	11.383
31 OCT 2025 - 31 OCT 2025	BURSA	EMPLOYEES PROVIDENT FUND BOARD [SSH]	550		91,282	11.279
30 OCT 2025 - 30 OCT 2025	BURSA	EMPLOYEES PROVIDENT FUND BOARD [SSH]	-14		90,732	11.211
29 OCT 2025 - 29 OCT 2025	BURSA	EMPLOYEES PROVIDENT FUND BOARD [SSH]	-400		90,746	11.213
05 NOV 2025 - 05 NOV 2025	CAREPLS	MADAM NG SHU SI [SSH]	500		114,749	14.913
05 NOV 2025 - 05 NOV 2025	CAREPLS	MR LIM KWEE SHYAN [DIR/CEO]	500		117,266	15.24
05 NOV 2025 - 05 NOV 2025	CAREPLS	MR LIM KWEE SHYAN [SSH]	500		117,266	15.24
03 NOV 2025 - 03 NOV 2025	CAREPLS	MADAM NG SHU SI [SSH]	500		114,249	14.848
03 NOV 2025 - 03 NOV 2025	CAREPLS	MR LIM KWEE SHYAN [DIR/CEO]	500		116,766	15.175
03 NOV 2025 - 03 NOV 2025	CAREPLS	MR LIM KWEE SHYAN [SSH]	500		116,766	15.175
04 NOV 2025 - 04 NOV 2025	CDB	EMPLOYEES PROVIDENT FUND BOARD [SSH]	2,892		1,268,843	10.816
03 NOV 2025 - 03 NOV 2025	CDB	EMPLOYEES PROVIDENT FUND BOARD [SSH]	468		1,265,951	10.791
31 OCT 2025 - 31 OCT 2025	CDB	EMPLOYEES PROVIDENT FUND BOARD [SSH]	1,057		1,265,483	10.787
30 OCT 2025 - 30 OCT 2025	CDB	EMPLOYEES PROVIDENT FUND BOARD [SSH]	2,000		1,264,425	10.778
29 OCT 2025 - 29 OCT 2025	CDB	EMPLOYEES PROVIDENT FUND BOARD [SSH]	200		1,262,425	10.761
04 NOV 2025 - 04 NOV 2025	CGB	MR LEE CHEE VUI [DIR/CEO]	-2,413		100,899	12.05
04 NOV 2025 - 04 NOV 2025	CGB	MR LEE CHEE VUI [SSH]	-2,413		100,899	12.05
04 NOV 2025 - 04 NOV 2025	CGB	MR SOO YU CHAI [SSH]	-2,413		89,263	10.66
04 NOV 2025 - 04 NOV 2025	CGB	RYRT HOLDINGS SDN. BHD. [SSH]	-2,413		88,480	10.567
05 NOV 2025 - 05 NOV 2025	CHINHIN	DATUK WIRA CHIAU HAW CHOOH [DIR/CEO]	-4,800		1,517,854	42.891
05 NOV 2025 - 05 NOV 2025	CHINHIN	DATUK WIRA CHIAU HAW CHOOH [SSH]	-4,800		1,517,854	42.891
05 NOV 2025 - 05 NOV 2025	CIMB	KUMPULAN WANG PERSARAAN (DIPERBADANKAN) [SSH]	-1,000		687,224	6.38
04 NOV 2025 - 04 NOV 2025	CIMB	EMPLOYEES PROVIDENT FUND BOARD [SSH]	600		1,955,425	18.15
03 NOV 2025 - 03 NOV 2025	CIMB	EMPLOYEES PROVIDENT FUND BOARD [SSH]	-3,194		1,954,825	18.15
04 NOV 2025 - 04 NOV 2025	CIMB	KUMPULAN WANG PERSARAAN (DIPERBADANKAN) [SSH]	-1,000		688,224	6.39
31 OCT 2025 - 31 OCT 2025	CIMB	EMPLOYEES PROVIDENT FUND BOARD [SSH]	1,696		1,958,019	18.18
30 OCT 2025 - 30 OCT 2025	CIMB	EMPLOYEES PROVIDENT FUND BOARD [SSH]	6,944		1,956,322	18.16
29 OCT 2025 - 29 OCT 2025	CIMB	EMPLOYEES PROVIDENT FUND BOARD [SSH]	3,209		1,949,379	18.1
04 NOV 2025 - 04 NOV 2025	COMPUGT	MADAM SEE THOO CHAN [DIR/CEO]	19		986,526	16.305
04 NOV 2025 - 04 NOV 2025	COMPUGT	MADAM SEE THOO CHAN [SSH]	19		986,526	16.305
04 NOV 2025 - 04 NOV 2025	COMPUGT	MR GOH KHENG PEOW [SSH]	19		986,526	16.305
03 NOV 2025 - 03 NOV 2025	COMPUGT	CURATE HOLDINGS SDN. BHD. [SSH]	-10,000		896,488	14.817
03 NOV 2025 - 03 NOV 2025	COMPUGT	MADAM SEE THOO CHAN [DIR/CEO]	11,027		986,507	16.305
03 NOV 2025 - 03 NOV 2025	COMPUGT	MADAM SEE THOO CHAN [SSH]	11,027		986,507	16.305
03 NOV 2025 - 03 NOV 2025	COMPUGT	MISS SOO YI XIN [SSH]	-10,000		896,688	14.82
03 NOV 2025 - 03 NOV 2025	COMPUGT	MR GOH KHENG PEOW [SSH]	11,027		986,507	16.305
31 OCT 2025 - 31 OCT 2025	COMPUGT	MADAM SEE THOO CHAN [DIR/CEO]	360		975,480	16.123
31 OCT 2025 - 31 OCT 2025	COMPUGT	MADAM SEE THOO CHAN [SSH]	360		975,480	16.123
31 OCT 2025 - 31 OCT 2025	COMPUGT	MR GOH KHENG PEOW [SSH]	360		975,480	16.123
06 NOV 2025 - 06 NOV 2025	CTOS	KUMPULAN WANG PERSARAAN (DIPERBADANKAN) [SSH]	158		221,721	9.673
05 NOV 2025 - 05 NOV 2025	CTOS	ABERDEEN GROUP PLC (FORMERLY KNOWN AS ABRDN PLC) [SSH]	1,930		377,461	16.465
05 NOV 2025 - 05 NOV 2025	CTOS	ABRDN HOLDINGS LIMITED [SSH]	1,930		377,461	16.465
05 NOV 2025 - 05 NOV 2025	CTOS	ABRDN MALAYSIA SDN BHD [SSH]	1,930		373,863	16.308
05 NOV 2025 - 05 NOV 2025	CTOS	KUMPULAN WANG PERSARAAN (DIPERBADANKAN) [SSH]	405		221,562	9.665
03 NOV 2025 - 03 NOV 2025	CTOS	EMPLOYEES PROVIDENT FUND BOARD [SSH]	-100		481,904	21.016
31 OCT 2025 - 31 OCT 2025	CTOS	ABERDEEN GROUP PLC (FORMERLY KNOWN AS ABRDN PLC) [SSH]	20		375,531	16.374
31 OCT 2025 - 31 OCT 2025	CTOS	ABRDN HOLDINGS LIMITED [SSH]	20		375,531	16.374
31 OCT 2025 - 31 OCT 2025	CTOS	ABRDN MALAYSIA SDN BHD [SSH]	20		371,933	16.217
30 OCT 2025 - 30 OCT 2025	CTOS	EMPLOYEES PROVIDENT FUND BOARD [SSH]	-80		482,004	21.017
31 OCT 2025 - 31 OCT 2025	CTOS	KUMPULAN WANG PERSARAAN (DIPERBADANKAN) [SSH]	4		221,158	9.643
30 OCT 2025 - 30 OCT 2025	CTOS	ABERDEEN GROUP PLC (FORMERLY KNOWN AS ABRDN PLC) [SSH]	1,843		375,511	16.373
30 OCT 2025 - 30 OCT 2025	CTOS	ABRDN HOLDINGS LIMITED [SSH]	1,843		375,511	16.373
30 OCT 2025 - 30 OCT 2025	CTOS	ABRDN MALAYSIA SDN BHD [SSH]	1,843		371,913	16.217
29 OCT 2025 - 29 OCT 2025	CTOS	EMPLOYEES PROVIDENT FUND BOARD [SSH]	-1,000		482,084	21.02
06 NOV 2025 - 06 NOV 2025	CYBERE	MR MAHA RAMANATHAN PALAN [DIR/CEO]	45		5,768	3.35
05 NOV 2025 - 05 NOV 2025	CYBERE	MR MAHA RAMANATHAN PALAN [DIR/CEO]	12		5,723	3.324

Disclaimer: The Information in Insider Activity is extracted from www.shareinvestor.com/fundamental/insider_trades. The information on this page is provided as a service to readers. It does not constitute financial advice and/or any investment recommendations. We assume no liability for damages resulting from or arising out of the use of such information. Whilst every effort is made to ensure accuracy, the information presented is not the official record of shareholder filings. Readers are advised to read the original filings on the Bursa Malaysia website at www.bursamalaysia.com



STROM
SWISS TIMEPIECES & JEWELLERY



StromWatch Asia
Tele : +65.9817.3378
Email : ll.stromasia@gmail.com
WWW.STROMWATCH.SWISS

Notice Period is 2nd November 2025 to 8th November 2025

Effective Change Date	Stock Name	Buyer/ Seller Name [Classification]	Bought / (Sold) ['000]	No. of Shares After Trade ['000]	
			Total	Total	% Held
30 OCT 2025 - 31 OCT 2025	CYBERE	MR MAHA RAMANATHAN PALAN [DIR/CEO]	126	5,538	3.217
31 OCT 2025 - 31 OCT 2025	CYPARK	MR CHUNG CHEE YANG [SSH]	15,000	57,565	6.996
31 OCT 2025 - 31 OCT 2025	CYPARK	MR CHUNG DAO [SSH]	-15,000	44,535	5.412
04 NOV 2025 - 04 NOV 2025	D&O	EMPLOYEES PROVIDENT FUND BOARD [SSH]	-72	90,065	7.266
03 NOV 2025 - 03 NOV 2025	D&O	EMPLOYEES PROVIDENT FUND BOARD [SSH]	-132	90,137	7.272
31 OCT 2025 - 31 OCT 2025	D&O	EMPLOYEES PROVIDENT FUND BOARD [SSH]	190	90,269	7.283
30 OCT 2025 - 30 OCT 2025	D&O	EMPLOYEES PROVIDENT FUND BOARD [SSH]	1,097	90,079	7.267
29 OCT 2025 - 29 OCT 2025	D&O	EMPLOYEES PROVIDENT FUND BOARD [SSH]	111	88,982	7.179
27 OCT 2025 - 03 NOV 2025	DATAPRP	DATUK WIRA SHAMSHURI BIN ABDUL MAJID [SSH]	2,351	122,872	14.695
03 NOV 2025 - 03 NOV 2025	DAY3	BLM HOLDINGS SDN. BHD. [SSH]	-400	78,300	13.05
03 NOV 2025 - 03 NOV 2025	DAY3	MISS BERNADINE LEE SIEW LING [SSH]	-400	78,300	13.05
04 NOV 2025 - 04 NOV 2025	DAYANG	EMPLOYEES PROVIDENT FUND BOARD [SSH]	-171	125,507	10.84
03 NOV 2025 - 03 NOV 2025	DAYANG	EMPLOYEES PROVIDENT FUND BOARD [SSH]	14	125,678	10.855
31 OCT 2025 - 31 OCT 2025	DAYANG	EMPLOYEES PROVIDENT FUND BOARD [SSH]	391	125,664	10.854
29 OCT 2025 - 29 OCT 2025	DAYANG	EMPLOYEES PROVIDENT FUND BOARD [SSH]	-250	125,273	10.82
28 OCT 2025 - 28 OCT 2025	DAYANG	EMPLOYEES PROVIDENT FUND BOARD [SSH]	1,025	125,523	10.842
06 NOV 2025 - 06 NOV 2025	DIALOG	KUMPULAN WANG PERSARAAN (DIPERBADANKAN) [SSH]	-394	559,952	9.92
04 NOV 2025 - 04 NOV 2025	DIALOG	EMPLOYEES PROVIDENT FUND BOARD [SSH]	4,435	1,037,213	18.38
05 NOV 2025 - 05 NOV 2025	DIALOG	KUMPULAN WANG PERSARAAN (DIPERBADANKAN) [SSH]	-380	560,346	9.93
03 NOV 2025 - 03 NOV 2025	DIALOG	EMPLOYEES PROVIDENT FUND BOARD [SSH]	611	1,032,778	18.3
31 OCT 2025 - 31 OCT 2025	DIALOG	EMPLOYEES PROVIDENT FUND BOARD [SSH]	5,878	1,032,167	18.29
03 NOV 2025 - 03 NOV 2025	DIALOG	KUMPULAN WANG PERSARAAN (DIPERBADANKAN) [SSH]	216	560,726	9.93
30 OCT 2025 - 30 OCT 2025	DIALOG	EMPLOYEES PROVIDENT FUND BOARD [SSH]	805	1,026,289	18.19
31 OCT 2025 - 31 OCT 2025	DIALOG	KUMPULAN WANG PERSARAAN (DIPERBADANKAN) [SSH]	209	560,510	9.93
29 OCT 2025 - 29 OCT 2025	DIALOG	EMPLOYEES PROVIDENT FUND BOARD [SSH]	3,198	1,025,484	18.17
04 NOV 2025 - 04 NOV 2025	DRBHC0M	EMPLOYEES PROVIDENT FUND BOARD [SSH]	1,001	160,415	8.298
05 NOV 2025 - 05 NOV 2025	E&O	KUMPULAN WANG PERSARAAN (DIPERBADANKAN) [SSH]	-100	163,533	6.562
04 NOV 2025 - 04 NOV 2025	E&O	KUMPULAN WANG PERSARAAN (DIPERBADANKAN) [SSH]	1,072	163,633	6.566
03 NOV 2025 - 03 NOV 2025	E&O	KUMPULAN WANG PERSARAAN (DIPERBADANKAN) [SSH]	1,928	162,561	6.523
31 OCT 2025 - 31 OCT 2025	E&O	AMAZING PARADE SDN. BHD. [SSH]	2,086	670,753	26.915
31 OCT 2025 - 31 OCT 2025	E&O	DATIN SERI TOH SIEW CHUON [SSH]	2,086	821,236	32.954
31 OCT 2025 - 31 OCT 2025	E&O	DATO' SERI TEE ENG HO [DIR/CEO]	2,086	1,510,833	60.625
31 OCT 2025 - 31 OCT 2025	E&O	DATO' SERI TEE ENG HO [SSH]	2,086	1,505,316	60.404
31 OCT 2025 - 31 OCT 2025	E&O	DATO' TEE ENG SENG [DIR/CEO]	2,086	1,505,316	60.404
31 OCT 2025 - 31 OCT 2025	E&O	DATO' TEE ENG SENG [SSH]	2,086	1,505,316	60.404
31 OCT 2025 - 31 OCT 2025	E&O	KUMPULAN WANG PERSARAAN (DIPERBADANKAN) [SSH]	832	160,633	6.446
05 NOV 2025 - 05 NOV 2025	ECOFIRS	MADAM YEOH SIOK CHOO [SSH]	-1,300	199,636	17.162
05 NOV 2025 - 05 NOV 2025	ECOFIRS	MR TAN YOU TIONG [SSH]	-1,300	282,636	24.297
03 NOV 2025 - 03 NOV 2025	ECONBHD	EMPLOYEES PROVIDENT FUND BOARD [SSH]	767	115,639	8.158
31 OCT 2025 - 31 OCT 2025	ECOSHOP	DATO' SRI LEE KAR WHATT [DIR/CEO]	6,600	4,403,439	76.576
31 OCT 2025 - 31 OCT 2025	ECOSHOP	DATO' SRI LEE KAR WHATT [SSH]	6,600	4,403,439	76.576
06 NOV 2025 - 06 NOV 2025	EDUSPEC	DATO' SRI GAN CHOW TEE [DIR/CEO]	150	111,340	7.853
06 NOV 2025 - 06 NOV 2025	EDUSPEC	DATO' SRI GAN CHOW TEE [SSH]	150	111,340	7.853
04 NOV 2025 - 04 NOV 2025	F&N	EMPLOYEES PROVIDENT FUND BOARD [SSH]	70	47,485	12.947
30 OCT 2025 - 30 OCT 2025	F&N	EMPLOYEES PROVIDENT FUND BOARD [SSH]	12	47,415	12.927
29 OCT 2025 - 29 OCT 2025	F&N	EMPLOYEES PROVIDENT FUND BOARD [SSH]	16	47,403	12.924
06 NOV 2025 - 06 NOV 2025	FACBIND	MAGNI VANTAGE LIMITED [SSH]	0.5	48,662	58.012
06 NOV 2025 - 06 NOV 2025	FACBIND	MR CHEN YIY FON [DIR/CEO]	0.5	48,662	58.012
06 NOV 2025 - 06 NOV 2025	FACBIND	MR CHEN YIY FON [SSH]	0.5	48,662	58.012
05 NOV 2025 - 05 NOV 2025	FACBIND	MAGNI VANTAGE LIMITED [SSH]	7	48,661	58.011
05 NOV 2025 - 05 NOV 2025	FACBIND	MR CHEN YIY FON [DIR/CEO]	7	48,661	58.011
05 NOV 2025 - 05 NOV 2025	FACBIND	MR CHEN YIY FON [SSH]	7	48,661	58.011
04 NOV 2025 - 04 NOV 2025	FACBIND	MAGNI VANTAGE LIMITED [SSH]	38	48,655	58.003
04 NOV 2025 - 04 NOV 2025	FACBIND	MR CHEN YIY FON [DIR/CEO]	38	48,655	58.003
04 NOV 2025 - 04 NOV 2025	FACBIND	MR CHEN YIY FON [SSH]	38	48,655	58.003
03 NOV 2025 - 03 NOV 2025	FACBIND	MAGNI VANTAGE LIMITED [SSH]	50	48,617	57.958
03 NOV 2025 - 03 NOV 2025	FACBIND	MR CHEN YIY FON [SSH]	50	48,617	57.958
03 OCT 2025 - 03 OCT 2025	FACBIND	MR CHEN YIY FON [DIR/CEO]	50	48,617	57.958
31 OCT 2025 - 31 OCT 2025	FACBIND	MAGNI VANTAGE LIMITED [SSH]	2	48,567	57.898
31 OCT 2025 - 31 OCT 2025	FACBIND	MR CHEN YIY FON [DIR/CEO]	2	48,567	57.898
31 OCT 2025 - 31 OCT 2025	FACBIND	MR CHEN YIY FON [SSH]	2	48,567	57.898
06 NOV 2025 - 06 NOV 2025	FBG	INFINITE HORIZONS CAPITAL SDN BHD [SSH]	19,577	78,000	10.518
06 NOV 2025 - 06 NOV 2025	FBG	TAN SRI DATO' SRI CHAN KONG CHOY [DIR/CEO]	19,577	83,746	11.292
06 NOV 2025 - 06 NOV 2025	FBG	TAN SRI DATO' SRI CHAN KONG CHOY [SSH]	19,577	83,746	11.292
31 OCT 2025 - 31 OCT 2025	FBG	DATUK YOO WEI HOW [DIR/CEO]	200	200	0.027
05 NOV 2025 - 05 NOV 2025	FEYTECH	ABERDEEN GROUP PLC (FORMERLY KNOWN AS ABRDN PLC) [SSH]	-150	47,730	5.661
05 NOV 2025 - 05 NOV 2025	FEYTECH	ABRDN HOLDINGS LIMITED [SSH]	-150	47,730	5.661
05 NOV 2025 - 05 NOV 2025	FEYTECH	ABRDN MALAYSIA SDN BHD [SSH]	-150	47,730	5.661
04 NOV 2025 - 04 NOV 2025	FEYTECH	ABERDEEN GROUP PLC (FORMERLY KNOWN AS ABRDN PLC) [SSH]	-150	47,880	5.678
04 NOV 2025 - 04 NOV 2025	FEYTECH	ABRDN HOLDINGS LIMITED [SSH]	-150	47,880	5.678
04 NOV 2025 - 04 NOV 2025	FEYTECH	ABRDN MALAYSIA SDN BHD [SSH]	-150	47,880	5.678
06 NOV 2025 - 06 NOV 2025	FFB	KUMPULAN WANG PERSARAAN (DIPERBADANKAN) [SSH]	500	187,813	9.998
05 NOV 2025 - 05 NOV 2025	FFB	ABERDEEN GROUP PLC (FORMERLY KNOWN AS ABRDN PLC) [SSH]	-469	128,447	6.838
05 NOV 2025 - 05 NOV 2025	FFB	ABRDN HOLDINGS LIMITED [SSH]	-469	128,447	6.838
05 NOV 2025 - 05 NOV 2025	FFB	ABRDN MALAYSIA SDN BHD [SSH]	-469	126,432	6.731
04 NOV 2025 - 04 NOV 2025	FFB	EMPLOYEES PROVIDENT FUND BOARD [SSH]	-1,563	123,792	6.59
04 NOV 2025 - 04 NOV 2025	FFB	ABERDEEN GROUP PLC (FORMERLY KNOWN AS ABRDN PLC) [SSH]	-1,563	128,916	6.863
04 NOV 2025 - 04 NOV 2025	FFB	ABRDN HOLDINGS LIMITED [SSH]	-1,563	128,916	6.863
04 NOV 2025 - 04 NOV 2025	FFB	ABRDN MALAYSIA SDN BHD [SSH]	-1,563	126,900	6.756

Notice Period is 2nd November 2025 to 8th November 2025

Effective Change Date	Stock Name	Buyer/ Seller Name [Classification]	Bought / (Sold) ['000]	No. of Shares After Trade ['000]	
			Total	Total	% Held
03 NOV 2025 - 03 NOV 2025	FFB	ABRDN HOLDINGS LIMITED [SSH]	-3,670	130,479	6.946
03 NOV 2025 - 03 NOV 2025	FFB	ABRDN MALAYSIA SDN BHD [SSH]	-3,670	128,463	6.839
31 OCT 2025 - 31 OCT 2025	FFB	EMPLOYEES PROVIDENT FUND BOARD [SSH]	-2,251	127,373	6.781
31 OCT 2025 - 31 OCT 2025	FFB	ABERDEEN GROUP PLC (FORMERLY KNOWN AS ABRDN PLC) [SSH]	-3,874	134,148	7.142
31 OCT 2025 - 31 OCT 2025	FFB	ABRDN HOLDINGS LIMITED [SSH]	-3,874	134,148	7.142
31 OCT 2025 - 31 OCT 2025	FFB	ABRDN MALAYSIA SDN BHD [SSH]	-3,874	132,133	7.034
30 OCT 2025 - 30 OCT 2025	FFB	EMPLOYEES PROVIDENT FUND BOARD [SSH]	2,306	129,623	6.901
30 OCT 2025 - 30 OCT 2025	FFB	ABERDEEN GROUP PLC (FORMERLY KNOWN AS ABRDN PLC) [SSH]	-370	138,022	7.348
30 OCT 2025 - 30 OCT 2025	FFB	ABRDN HOLDINGS LIMITED [SSH]	-370	138,022	7.348
30 OCT 2025 - 30 OCT 2025	FFB	ABRDN MALAYSIA SDN BHD [SSH]	-370	136,006	7.241
29 OCT 2025 - 29 OCT 2025	FFB	EMPLOYEES PROVIDENT FUND BOARD [SSH]	300	127,317	6.778
04 NOV 2025 - 04 NOV 2025	FRONTKN	EMPLOYEES PROVIDENT FUND BOARD [SSH]	4,551	148,315	9.067
03 NOV 2025 - 03 NOV 2025	FRONTKN	EMPLOYEES PROVIDENT FUND BOARD [SSH]	1,416	143,535	8.775
30 OCT 2025 - 30 OCT 2025	FRONTKN	EMPLOYEES PROVIDENT FUND BOARD [SSH]	-3,417	143,998	8.809
29 OCT 2025 - 29 OCT 2025	FRONTKN	EMPLOYEES PROVIDENT FUND BOARD [SSH]	-7,324	147,415	9.041
31 OCT 2025 - 31 OCT 2025	FSBM	MR CHEONG CHEN KHAN [DIR/CEO]	1,750	9,060	1.757
04 NOV 2025 - 04 NOV 2025	GAMUDA	EMPLOYEES PROVIDENT FUND BOARD (EPF BOARD) [SSH]	-30	1,052,452	17.97
03 NOV 2025 - 03 NOV 2025	GAMUDA	EMPLOYEES PROVIDENT FUND BOARD (EPF BOARD) [SSH]	-7,277	1,052,482	17.97
31 OCT 2025 - 31 OCT 2025	GAMUDA	EMPLOYEES PROVIDENT FUND BOARD (EPF BOARD) [SSH]	-4,254	1,059,758	18.09
30 OCT 2025 - 30 OCT 2025	GAMUDA	EMPLOYEES PROVIDENT FUND BOARD (EPF BOARD) [SSH]	-5,962	1,064,012	18.17
29 OCT 2025 - 29 OCT 2025	GAMUDA	EMPLOYEES PROVIDENT FUND BOARD (EPF BOARD) [SSH]	-1,439	1,069,974	18.27
31 OCT 2025 - 31 OCT 2025	GENETEC	EMPLOYEES PROVIDENT FUND BOARD [SSH]	-192	39,335	5.081
30 OCT 2025 - 30 OCT 2025	GENETEC	EMPLOYEES PROVIDENT FUND BOARD [SSH]	-84	39,527	5.106
29 OCT 2025 - 29 OCT 2025	GENETEC	EMPLOYEES PROVIDENT FUND BOARD [SSH]	-1,000	39,611	5.117
06 NOV 2025 - 06 NOV 2025	GENM	DATO Indera Lim Keong Hui [DIR/CEO]	31,538	2,953,498	52.111
06 NOV 2025 - 06 NOV 2025	GENM	DATO Indera Lim Keong Hui [SSH]	31,538	2,953,498	52.111
06 NOV 2025 - 06 NOV 2025	GENM	GENTING BERHAD [SSH]	31,538	2,948,015	52.014
06 NOV 2025 - 06 NOV 2025	GENM	KIEN HUAT INTERNATIONAL LIMITED [SSH]	31,538	2,949,214	52.035
06 NOV 2025 - 06 NOV 2025	GENM	KIEN HUAT REALTY SDN BERHAD [SSH]	31,538	2,949,214	52.035
06 NOV 2025 - 06 NOV 2025	GENM	PARKVIEW MANAGEMENT SDN BHD [SSH]	31,538	2,949,214	52.035
06 NOV 2025 - 06 NOV 2025	GENM	TAN SRI LIM KOK THAY [DIR/CEO]	31,538	2,949,218	52.035
06 NOV 2025 - 06 NOV 2025	GENM	TAN SRI LIM KOK THAY [SSH]	31,538	2,949,218	52.035
05 NOV 2025 - 05 NOV 2025	GENM	DATO Indera Lim Keong Hui [DIR/CEO]	26,967	2,921,960	51.554
05 NOV 2025 - 05 NOV 2025	GENM	DATO Indera Lim Keong Hui [SSH]	26,967	2,921,960	51.554
05 NOV 2025 - 05 NOV 2025	GENM	GENTING BERHAD [SSH]	26,967	2,916,476	51.457
05 NOV 2025 - 05 NOV 2025	GENM	KIEN HUAT INTERNATIONAL LIMITED [SSH]	26,967	2,917,675	51.478
05 NOV 2025 - 05 NOV 2025	GENM	KIEN HUAT REALTY SDN BERHAD [SSH]	26,967	2,917,675	51.478
05 NOV 2025 - 05 NOV 2025	GENM	PARKVIEW MANAGEMENT SDN BHD [SSH]	26,967	2,917,675	51.478
05 NOV 2025 - 05 NOV 2025	GENM	TAN SRI LIM KOK THAY [DIR/CEO]	26,967	2,917,679	51.478
05 NOV 2025 - 05 NOV 2025	GENM	TAN SRI LIM KOK THAY [SSH]	26,967	2,917,679	51.478
04 NOV 2025 - 04 NOV 2025	GENM	DATO Indera Lim Keong Hui [DIR/CEO]	49,707	2,894,993	51.079
04 NOV 2025 - 04 NOV 2025	GENM	DATO Indera Lim Keong Hui [SSH]	49,707	2,894,993	51.079
04 NOV 2025 - 04 NOV 2025	GENM	GENTING BERHAD [SSH]	49,707	2,889,509	50.982
04 NOV 2025 - 04 NOV 2025	GENM	KIEN HUAT INTERNATIONAL LIMITED [SSH]	49,707	2,890,708	51.003
04 NOV 2025 - 04 NOV 2025	GENM	KIEN HUAT REALTY SDN BERHAD [SSH]	49,707	2,890,708	51.003
04 NOV 2025 - 04 NOV 2025	GENM	PARKVIEW MANAGEMENT SDN BHD [SSH]	49,707	2,890,708	51.003
04 NOV 2025 - 04 NOV 2025	GENM	TAN SRI LIM KOK THAY [DIR/CEO]	49,707	2,890,712	51.003
04 NOV 2025 - 04 NOV 2025	GENM	TAN SRI LIM KOK THAY [SSH]	49,707	2,890,712	51.003
03 NOV 2025 - 03 NOV 2025	GENM	DATO Indera Lim Keong Hui [DIR/CEO]	6,000	2,845,285	50.202
03 NOV 2025 - 03 NOV 2025	GENM	DATO Indera Lim Keong Hui [SSH]	6,000	2,845,285	50.202
03 NOV 2025 - 03 NOV 2025	GENM	GENTING BERHAD [SSH]	6,000	2,839,802	50.105
03 NOV 2025 - 03 NOV 2025	GENM	KIEN HUAT INTERNATIONAL LIMITED [SSH]	6,000	2,841,001	50.126
03 NOV 2025 - 03 NOV 2025	GENM	KIEN HUAT REALTY SDN BERHAD [SSH]	6,000	2,841,001	50.126
03 NOV 2025 - 03 NOV 2025	GENM	PARKVIEW MANAGEMENT SDN BHD [SSH]	6,000	2,841,001	50.126
03 NOV 2025 - 03 NOV 2025	GENM	TAN SRI LIM KOK THAY [DIR/CEO]	6,000	2,841,005	50.126
03 NOV 2025 - 03 NOV 2025	GENM	TAN SRI LIM KOK THAY [SSH]	6,000	2,841,005	50.126
04 NOV 2025 - 04 NOV 2025	GENP	EMPLOYEES PROVIDENT FUND BOARD [SSH]	100	123,452	13.76
03 NOV 2025 - 03 NOV 2025	GENP	EMPLOYEES PROVIDENT FUND BOARD [SSH]	327	123,352	13.749
31 OCT 2025 - 31 OCT 2025	GENP	EMPLOYEES PROVIDENT FUND BOARD [SSH]	43	123,026	13.713
30 OCT 2025 - 30 OCT 2025	GENP	EMPLOYEES PROVIDENT FUND BOARD [SSH]	41	122,983	13.708
04 NOV 2025 - 04 NOV 2025	GLOMAC	SHAPADU CAPITAL SDN. BHD. [SSH]	50	92,339	12.031
31 OCT 2025 - 31 OCT 2025	HARTA	KUMPULAN WANG PERSARAAN (DIPERBADANKAN) [SSH]	-100	210,610	

Notice Period is 2nd November 2025 to 8th November 2025

Effective Change Date	Stock Name	Buyer/ Seller Name [Classification]	Bought / (Sold) ['000]	No. of Shares After Trade ['000]	
			Total	Total	% Held
03 NOV 2025 - 03 NOV 2025	IGBREIT	EMPLOYEES PROVIDENT FUND BOARD [SSH]	60	368,964	10.181
31 OCT 2025 - 31 OCT 2025	IGBREIT	EMPLOYEES PROVIDENT FUND BOARD [SSH]	219	368,904	10.18
30 OCT 2025 - 30 OCT 2025	IGBREIT	EMPLOYEES PROVIDENT FUND BOARD [SSH]	200	368,685	10.174
29 OCT 2025 - 29 OCT 2025	IGBREIT	EMPLOYEES PROVIDENT FUND BOARD [SSH]	1,556	368,485	10.168
04 NOV 2025 - 04 NOV 2025	IHH	EMPLOYEES PROVIDENT FUND BOARD [SSH]	-7,416	1,101,681	12.468
03 NOV 2025 - 03 NOV 2025	IHH	EMPLOYEES PROVIDENT FUND BOARD [SSH]	4,840	1,109,097	12.552
31 OCT 2025 - 31 OCT 2025	IHH	EMPLOYEES PROVIDENT FUND BOARD [SSH]	7,923	1,104,257	12.497
30 OCT 2025 - 30 OCT 2025	IHH	EMPLOYEES PROVIDENT FUND BOARD [SSH]	3,586	1,096,334	12.407
29 OCT 2025 - 29 OCT 2025	IHH	EMPLOYEES PROVIDENT FUND BOARD [SSH]	4,273	1,092,748	12.367
06 NOV 2025 - 06 NOV 2025	IJM	KUMPULAN WANG PERSARAAN (DIPERBADANKAN) [SSH]	-1,210	336,155	9.59
06 NOV 2025 - 06 NOV 2025	IJM	TAN SRI DATO' TAN BOON SENG @ KRISHNAN [DIR/CEO]	100	11,369	0.324
04 NOV 2025 - 04 NOV 2025	IJM	KUMPULAN WANG PERSARAAN (DIPERBADANKAN) [SSH]	-1,005	337,365	9.625
04 NOV 2025 - 04 NOV 2025	IJM	TAN SRI DATO' TAN BOON SENG @ KRISHNAN [DIR/CEO]	100	11,269	0.322
31 OCT 2025 - 31 OCT 2025	IJM	EMPLOYEES PROVIDENT FUND BOARD [SSH]	-1,000	634,825	18.111
03 NOV 2025 - 03 NOV 2025	IJM	KUMPULAN WANG PERSARAAN (DIPERBADANKAN) [SSH]	-1,051	338,369	9.653
31 OCT 2025 - 31 OCT 2025	IJM	KUMPULAN WANG PERSARAAN (DIPERBADANKAN) [SSH]	-1,000	339,420	9.683
29 OCT 2025 - 29 OCT 2025	IJM	EMPLOYEES PROVIDENT FUND BOARD [SSH]	1,087	635,436	18.129
06 NOV 2025 - 07 NOV 2025	INARI	DATO' SRI THONG KOK KHEE [DIR/CEO]	-2,000	487,982	12.863
06 NOV 2025 - 07 NOV 2025	INARI	DATO' SRI THONG KOK KHEE [SSH]	-2,000	487,982	12.863
06 NOV 2025 - 07 NOV 2025	INARI	INSAS BERHAD [SSH]	-2,000	487,981	12.863
06 NOV 2025 - 06 NOV 2025	INARI	KUMPULAN WANG PERSARAAN (DIPERBADANKAN) [SSH]	-195	383,670	10.113
05 NOV 2025 - 05 NOV 2025	INARI	KUMPULAN WANG PERSARAAN (DIPERBADANKAN) [SSH]	-5,000	383,865	10.118
03 NOV 2025 - 03 NOV 2025	INARI	EMPLOYEES PROVIDENT FUND BOARD [SSH]	464	540,521	14.248
04 NOV 2025 - 05 NOV 2025	INARI	DATO' SRI THONG KOK KHEE [DIR/CEO]	-2,399	489,982	12.915
04 NOV 2025 - 05 NOV 2025	INARI	DATO' SRI THONG KOK KHEE [SSH]	-2,399	489,982	12.915
04 NOV 2025 - 05 NOV 2025	INARI	INSAS BERHAD [SSH]	-2,000	489,981	12.915
31 OCT 2025 - 31 OCT 2025	INARI	EMPLOYEES PROVIDENT FUND BOARD [SSH]	2,000	540,057	14.235
03 NOV 2025 - 03 NOV 2025	INARI	DATO' SRI THONG KOK KHEE [DIR/CEO]	-1,436	492,381	12.979
03 NOV 2025 - 03 NOV 2025	INARI	DATO' SRI THONG KOK KHEE [SSH]	-1,436	492,381	12.979
03 NOV 2025 - 03 NOV 2025	INARI	INSAS BERHAD [SSH]	-1,000	491,981	12.968
03 NOV 2025 - 03 NOV 2025	INARI	KUMPULAN WANG PERSARAAN (DIPERBADANKAN) [SSH]	-406	388,865	10.25
30 OCT 2025 - 30 OCT 2025	INARI	EMPLOYEES PROVIDENT FUND BOARD [SSH]	2,348	538,057	14.183
31 OCT 2025 - 31 OCT 2025	INARI	KUMPULAN WANG PERSARAAN (DIPERBADANKAN) [SSH]	-200	389,271	10.261
29 OCT 2025 - 29 OCT 2025	INARI	EMPLOYEES PROVIDENT FUND BOARD [SSH]	3,000	535,710	14.121
04 NOV 2025 - 04 NOV 2025	IOICORP	EMPLOYEES PROVIDENT FUND BOARD [SSH]	91	930,697	15.002
03 NOV 2025 - 03 NOV 2025	IOICORP	EMPLOYEES PROVIDENT FUND BOARD [SSH]	582	930,606	15.001
31 OCT 2025 - 31 OCT 2025	IOICORP	EMPLOYEES PROVIDENT FUND BOARD [SSH]	683	930,324	14.996
30 OCT 2025 - 30 OCT 2025	IOICORP	EMPLOYEES PROVIDENT FUND BOARD [SSH]	959	929,641	14.985
29 OCT 2025 - 29 OCT 2025	IOICORP	EMPLOYEES PROVIDENT FUND BOARD [SSH]	2,564	928,683	14.97
03 NOV 2025 - 03 NOV 2025	IOIPG	EMPLOYEES PROVIDENT FUND BOARD [SSH]	1,975	300,111	5.45
31 OCT 2025 - 31 OCT 2025	IOIPG	EMPLOYEES PROVIDENT FUND BOARD [SSH]	529	298,136	5.415
30 OCT 2025 - 30 OCT 2025	IOIPG	EMPLOYEES PROVIDENT FUND BOARD [SSH]	992	297,607	5.405
29 OCT 2025 - 29 OCT 2025	IOIPG	EMPLOYEES PROVIDENT FUND BOARD [SSH]	5,185	296,615	5.387
03 NOV 2025 - 03 NOV 2025	JAG	DATO' NG AIK KEE [SSH]	25,000	215,600	30.626
04 NOV 2025 - 04 NOV 2025	JPG	EMPLOYEES PROVIDENT FUND BOARD [SSH]	511	323,951	12.958
03 NOV 2025 - 03 NOV 2025	JPG	EMPLOYEES PROVIDENT FUND BOARD [SSH]	-2,038	323,440	12.938
31 OCT 2025 - 31 OCT 2025	JPG	EMPLOYEES PROVIDENT FUND BOARD [SSH]	-1,835	325,478	13.019
30 OCT 2025 - 30 OCT 2025	JPG	EMPLOYEES PROVIDENT FUND BOARD [SSH]	-2,748	327,314	13.093
29 OCT 2025 - 29 OCT 2025	JPG	EMPLOYEES PROVIDENT FUND BOARD [SSH]	-178	330,062	13.202
05 NOV 2025 - 05 NOV 2025	JTGROUP	DATO' SERI LIM YEONG SEONG [SSH]	600	251,008	57.573
05 NOV 2025 - 05 NOV 2025	JTGROUP	DATO' SERI LIM YEONG SEONG [DIR/CEO]	600	251,008	57.573
05 NOV 2025 - 05 NOV 2025	JTGROUP	MR CHIN JIUNN SHYONG [DIR/CEO]	600	234,200	53.717
05 NOV 2025 - 05 NOV 2025	JTGROUP	MR CHIN JIUNN SHYONG [SSH]	600	234,200	53.717
06 NOV 2025 - 06 NOV 2025	KAB	DATO' GAN KONG HIOK [SSH]	3,987	234,804	10.746
03 NOV 2025 - 03 NOV 2025	KLCC	EMPLOYEES PROVIDENT FUND BOARD [SSH]	125	187,784	10.402
03 NOV 2025 - 03 NOV 2025	KLCC	EMPLOYEES PROVIDENT FUND BOARD [SSH]	125	187,784	10.402
31 OCT 2025 - 31 OCT 2025	KLCC	EMPLOYEES PROVIDENT FUND BOARD [SSH]	1,000	187,659	10.395
31 OCT 2025 - 31 OCT 2025	KLCC	EMPLOYEES PROVIDENT FUND BOARD [SSH]	1,000	187,659	10.395
30 OCT 2025 - 30 OCT 2025	KLCC	EMPLOYEES PROVIDENT FUND BOARD [SSH]	692	186,659	10.339
30 OCT 2025 - 30 OCT 2025	KLCC	EMPLOYEES PROVIDENT FUND BOARD [SSH]	692	186,659	10.339
29 OCT 2025 - 29 OCT 2025	KLCC	EMPLOYEES PROVIDENT FUND BOARD [SSH]	1,049	185,966	10.301
29 OCT 2025 - 29 OCT 2025	KLCC	EMPLOYEES PROVIDENT FUND BOARD [SSH]	1,049	185,966	10.301
04 NOV 2025 - 04 NOV 2025	KLK	EMPLOYEES PROVIDENT FUND BOARD [SSH]	83	187,873	16.87
03 NOV 2025 - 03 NOV 2025	KLK	EMPLOYEES PROVIDENT FUND BOARD [SSH]	704	187,791	16.863
30 OCT 2025 - 30 OCT 2025	KLK	EMPLOYEES PROVIDENT FUND BOARD [SSH]	2	187,087	16.799
29 OCT 2025 - 29 OCT 2025	KLK	EMPLOYEES PROVIDENT FUND BOARD [SSH]	169	187,085	16.799
03 NOV 2025 - 03 NOV 2025	KOSSAN	MR LIM KUANG WANG [SSH]	200	959,738	37.958
31 OCT 2025 - 31 OCT 2025	KOSSAN	MR LIM KUANG WANG [SSH]	100	959,538	37.95
05 NOV 2025 - 06 NOV 2025	LTKM	DATUK SERI CHIAU BENG TEIK [SSH]	-2,650	7,122	4.977
06 NOV 2025 - 06 NOV 2025	M&A	CIK SITI NUR AISHAH BINTI ISHAK [SSH]	95	142,653	7.137
05 NOV 2025 - 05 NOV 2025	M&A	CIK SITI NUR AISHAH BINTI ISHAK [SSH]	50	142,558	7.132
04 NOV 2025 - 04 NOV 2025	M&A	CIK SITI NUR AISHAH BINTI ISHAK [SSH]	10	142,508	7.13
28 OCT 2025 - 31 OCT 2025	M&A	CIK SITI NUR AISHAH BINTI ISHAK [SSH]	1	142,498	7.129
06 NOV 2025 - 06 NOV 2025	MAGNA	DATO' SRI WONG SZE CHIEN [SSH]	505	219,377	54.961
06 NOV 2025 - 06 NOV 2025	MAGNA	HALLSON HOLDINGS SDN. BHD. (FORMERLY KNOWN AS EDXUS SOLUTIONS SDN. BHD.) [SSH]	505	219,377	54.961
06 NOV 2025 - 06 NOV 2025	MAGNA	MR SEAH LEY HONG [DIR/CEO]	505	219,387	54.963
06 NOV 2025 - 06 NOV 2025	MAGNA	MR SEAH LEY HONG [SSH]	505	219,387	54.963
05 NOV 2025 - 05 NOV 2025	MAGNA	DATO' SRI WONG SZE CHIEN [SSH]	2,716	218,872	54.834

Notice Period is 2nd November 2025 to 8th November 2025

Effective Change Date	Stock Name	Buyer/ Seller Name [Classification]	Bought / (Sold) ['000]	No. of Shares After Trade ['000]	
			Total	Total	% Held
05 NOV 2025 - 05 NOV 2025	MAGNA	MR SEAH LEY HONG [SSH]	2,716	218,882	54.837
04 NOV 2025 - 04 NOV 2025	MAGNA	DATO' SRI WONG SZE CHIEN [SSH]	199	216,157	54.154
04 NOV 2025 - 04 NOV 2025	MAGNA	HALLSON HOLDINGS SDN. BHD. (FORMERLY KNOWN AS EDXUS SOLUTIONS SDN. BHD.) [SSH]	199	216,157	54.154
04 NOV 2025 - 04 NOV 2025	MAGNA	MR SEAH LEY HONG [DIR/CEO]	199	216,167	54.156
04 NOV 2025 - 04 NOV 2025	MAGNA	MR SEAH LEY HONG [SSH]	199	216,167	54.156
03 NOV 2025 - 03 NOV 2025	MAGNA	DATO' SRI WONG SZE CHIEN [SSH]	387	215,958	54.104
03 NOV 2025 - 03 NOV 2025	MAGNA	HALLSON HOLDINGS SDN. BHD. (FORMERLY KNOWN AS EDXUS SOLUTIONS SDN. BHD.) [SSH]	387	215,958	54.104
03 NOV 2025 - 03 NOV 2025	MAGNA	MR SEAH LEY HONG [DIR/CEO]	387	215,968	54.107
03 NOV 2025 - 03 NOV 2025	MAGNA	MR SEAH LEY HONG [SSH]	387	215,968	54.107
31 OCT 2025 - 31 OCT 2025	MAGNA	DATO' SRI WONG SZE CHIEN [SSH]	96	215,570	54.007
31 OCT 2025 - 31 OCT 2025	MAGNA	HALLSON HOLDINGS SDN. BHD. (FORMERLY KNOWN AS EDXUS SOLUTIONS SDN. BHD.) [SSH]	96	215,570	54.007
31 OCT 2025 - 31 OCT 2025	MAGNA	MR SEAH LEY HONG [DIR/CEO]	96	215,580	54.01
31 OCT 2025 - 31 OCT 2025	MAGNA	MR SEAH LEY HONG [SSH]	96	215,580	54.01
06 NOV 2025 - 06 NOV 2025	MALAKOF	KUMPULAN WANG PERSARAAN (DIPERBADANKAN) ("KWAP") [SSH]	-1,000	369,663	7.564
05 NOV 2025 - 05 NOV 2025	MALAKOF	KUMPULAN WANG PERSARAAN (DIPERBADANKAN) ("KWAP") [SSH]	-500	370,663	7.584
31 OCT 2025 - 31 OCT 2025	MALAKOF	KUMPULAN WANG PERSARAAN (DIPERBADANKAN) ("KWAP") [SSH]	-250	371,163	7.595
29 OCT 2025 - 29 OCT 2025	MALAKOF	EMPLOYEES PROVIDENT FUND BOARD [SSH]	2,638	863,925	17.678
04 NOV 2025 - 04 NOV 2025	MAXIS	EMPLOYEES PROVIDENT FUND BOARD ('EPF BOARD') [SSH]	6,722	991,609	12.656
03 NOV 2025 - 03 NOV 2025	MAXIS	EMPLOYEES PROVIDENT FUND BOARD ('EPF BOARD') [SSH]	5,973	984,888	12.571
31 OCT 2025 - 31 OCT 2025	MAXIS	EMPLOYEES PROVIDENT FUND BOARD ('EPF BOARD') [SSH]	3,173	978,914	12.494
30 OCT 2025 - 30 OCT 2025	MAXIS	EMPLOYEES PROVIDENT FUND BOARD ('EPF BOARD') [SSH]	1,967	975,742	12.453
29 OCT 2025 - 29 OCT 2025	MAXIS	EMPLOYEES PROVIDENT FUND BOARD ('EPF BOARD') [SSH]	238	973,775	12.428
06 NOV 2025 - 06 NOV 2025	MAYBANK	AMANAHRAYA TRUSTEES BERHAD - AMANAH SAHAM BUMIPUTERA [SSH]	-3,161	3,420,120	28.31
04 NOV 2025 - 04 NOV 2025	MAYBANK	EMPLOYEES PROVIDENT FUND BOARD [SSH]	-364	1,374,160	11.374
05 NOV 2025 - 05 NOV 2025	MAYBANK	AMANAHRAYA TRUSTEES BERHAD - AMANAH SAHAM BUMIPUTERA [SSH]	-1,454	3,423,281	28.336
31 OCT 2025 - 31 OCT 2025	MAYBANK	EMPLOYEES PROVIDENT FUND BOARD [SSH]	3,000	1,371,580	11.353
30 OCT 2025 - 30 OCT 2025	MAYBANK	EMPLOYEES PROVIDENT FUND BOARD [SSH]	5,466	1,368,580	11.328
31 OCT 2025 - 31 OCT 2025	MAYBANK	AMANAHRAYA TRUSTEES BERHAD - AMANAH SAHAM BUMIPUTERA [SSH]	-1,000	3,424,735	28.348
03 NOV 2025 - 03 NOV 2025	MFCB	EMPLOYEES PROVIDENT FUND BOARD [SSH]	83	102,104	10.835
31 OCT 2025 - 31 OCT 2025	MFCB	EMPLOYEES PROVIDENT FUND BOARD [SSH]	-48	102,021	10.827
31 OCT 2025 - 31 OCT 2025	MFCB	CAM PROPERTY (MALAYSIA) SDN BHD [SSH]	14	208,531	22.129
31 OCT 2025 - 31 OCT 2025	MFCB	CAMASIA LIMITED [SSH]	14	210,017	22.287
31 OCT 2025 - 31 OCT 2025	MFCB	GOH NAN KIOH [DIR/CEO]	14	336,096	35.666
31 OCT 2025 - 31 OCT 2025	MFCB	KEEN CAPITAL INVESTMENTS LIMITED [SSH]	14	285,302	30.276
31 OCT 2025 - 31 OCT 2025	MFCB	LAJU RIANG SDN BHD [SSH]	14	208,531	22.129
31 OCT 2025 - 31 OCT 2025	MFCB	MR GOH NAN KIOH [SSH]	14	336,096	35.666
31 OCT 2025 - 31 OCT 2025	MFCB	RUBBER THREAD INDUSTRIES (M) SDN BERHAD [SSH]	14	208,531	22.129
29 OCT 2025 - 29 OCT 2025	MFCB	EMPLOYEES PROVIDENT FUND BOARD [SSH]	16	102,069	10.832
29 OCT 2025 - 29 OCT 2025	MIECO	DATO' SRI NG AH CHAI [DIR/CEO]	-2,000	57,3852	57.385
29 OCT 2025 - 29 OCT 2025	MIECO	DATO' SRI NG AH CHAI [SSH]	-2,000	57,3852	57.385
04 NOV 2025 - 04 NOV 2025	MISC	EMPLOYEES PROVIDENT FUND BOARD [SSH]	422	696,868	15.612
03 NOV 2025 - 03 NOV 2025	MISC	EMPLOYEES PROVIDENT FUND BOARD [SSH]	841	696,446	15.602
31 OCT 2025 - 31 OCT 2025	MISC	EMPLOYEES PROVIDENT FUND BOARD [SSH]	599	695,605	15.583
30 OCT 2025 - 30 OCT 2025	MISC	EMPLOYEES PROVIDENT FUND BOARD [SSH]	1,383	695,007	15.57
29 OCT 2025 - 29 OCT 2025	MISC	EMPLOYEES PROVIDENT FUND BOARD [SSH]	570	693,623	15.539
05 NOV 2025 - 05 NOV 2025	MPSOL	MR CHIN WING WAH [SSH]	66,855	208,476	71.961
04 NOV 2025 - 04 NOV 2025	MRDIY	EMPLOYEES PROVIDENT FUND BOARD [SSH]	1,276	99,837	10.486
03 NOV 2025 - 03 NOV 2025	MRDIY	EMPLOYEES PROVIDENT FUND BOARD [SSH]	1,012	99,2561	10.473
31 OCT 2025 - 31 OCT 2025	MRDIY	EMPLOYEES PROVIDENT FUND BOARD [SSH]	5,000	991,549	10.462
30 OCT 2025 - 30 OCT 2025	MRDIY	EMPLOYEES PROVIDENT FUND BOARD [SSH]	5,000	986,549	10.409
29 OCT 2025 - 29 OCT 2025	MRDIY	EMPLOYEES PROVIDENT FUND BOARD [SSH]	3,000	981,549	10.357
06 NOV 2025 - 06 NOV 2025	MSNIAGA	SHAPADU CAPITAL SDN. BHD. [SSH]	5	16,983	28.116
04 NOV 2025 - 04 NOV 2025	MSNIAGA	SHAPADU CAPITAL SDN. BHD. [SSH]	5	16,978	28.108
31 OCT 2025 - 31 OCT 2025	MUH	MR KHOR SEANG CHIAT [DIR/CEO]	-254	2191	3.884
06 NOV 2025 - 06 NOV 2025	N2N	QUAH CHOON WAH [SSH]	99	48,491	8.687
05 NOV 2025 - 05 NOV 2025	N2N	QUAH CHOON WAH [SSH]	2	48,392	8.669
04 NOV 2025 - 04 NOV 2025	NESTLE	EMPLOYEES PROVIDENT FUND BOARD [SSH]	-93	30,769	13.121
03 NOV 2025 - 03 NOV 2025	NESTLE	EMPLOYEES PROVIDENT FUND BOARD [SSH]	-8	30,862	13.161
31 OCT 2025 - 31 OCT 2025	NESTLE	EMPLOYEES PROVIDENT FUND BOARD [SSH]	-16	30,870	13.164
30 OCT 2025 - 30 OCT 2025	NESTLE	EMPLOYEES PROVIDENT FUND BOARD [SSH]	-22	30,901	13.177
29 OCT 2025 - 29 OCT 2025	NESTLE	EMPLOYEES PROVIDENT FUND BOARD [SSH]	-72	30,923	13.187
28 OCT 2025 - 28 OCT 2025	NESTLE	EMPLOYEES PROVIDENT FUND BOARD [SSH]	13	30,995	13.217

Notice Period is 2nd November 2025 to 8th November 2025

Effective Change Date	Stock Name	Buyer/ Seller Name [Classification]	Bought / (Sold) ['000]	No. of Shares After Trade ['000]	
			Total	Total	% Held
03 NOV 2025 - 03 NOV 2025	PADINI	YONG PANG CHAUN [SSH]	50	455899	46.197
31 OCT 2025 - 31 OCT 2025	PADINI	CHONG CHIN LIN [SSH]	9	455850	46.191
31 OCT 2025 - 31 OCT 2025	PADINI	MR CHRISTOPHER YONG TZE-YAO [DIR/CEO]	9	234	0.024
31 OCT 2025 - 31 OCT 2025	PADINI	YONG PANG CHAUN [DIR/CEO]	9	455850	46.192
31 OCT 2025 - 31 OCT 2025	PADINI	YONG PANG CHAUN [SSH]	9	455850	46.192
04 NOV 2025 - 04 NOV 2025	PANAMY	EMPLOYEES PROVIDENT FUND BOARD [SSH]	-65	6141	10.109
03 NOV 2025 - 03 NOV 2025	PANAMY	EMPLOYEES PROVIDENT FUND BOARD [SSH]	-10	6206	10.216
31 OCT 2025 - 31 OCT 2025	PANAMY	EMPLOYEES PROVIDENT FUND BOARD [SSH]	-18	6216	10.233
30 OCT 2025 - 30 OCT 2025	PANAMY	EMPLOYEES PROVIDENT FUND BOARD [SSH]	-17	6234	10.263
29 OCT 2025 - 29 OCT 2025	PANAMY	EMPLOYEES PROVIDENT FUND BOARD [SSH]	-43	6251	10.291
07 NOV 2025 - 07 NOV 2025	PANTECH	DATIN SHUM KAH LIN [SSH]	300	165982	19.897
07 NOV 2025 - 07 NOV 2025	PANTECH	DATO' CHEW TING LENG [DIR/CEO]	300	165982	19.896
07 NOV 2025 - 07 NOV 2025	PANTECH	DATO' CHEW TING LENG [SSH]	300	165982	19.896
04 NOV 2025 - 04 NOV 2025	PAVREIT	EMPLOYEES PROVIDENT FUND BOARD [SSH]	600	508535	12.957
03 NOV 2025 - 03 NOV 2025	PAVREIT	EMPLOYEES PROVIDENT FUND BOARD [SSH]	1,758	507935	12.942
31 OCT 2025 - 31 OCT 2025	PAVREIT	EMPLOYEES PROVIDENT FUND BOARD [SSH]	4,642	506177	12.897
30 OCT 2025 - 30 OCT 2025	PAVREIT	EMPLOYEES PROVIDENT FUND BOARD [SSH]	35	501536	12.779
31 OCT 2025 - 31 OCT 2025	PAVREIT	KUMPULAN WANG PERSARAAN (DIPERBADANKAN) [SSH]	-500	231122	5.889
29 OCT 2025 - 29 OCT 2025	PAVREIT	EMPLOYEES PROVIDENT FUND BOARD [SSH]	2,138	501501	12.778
04 NOV 2025 - 04 NOV 2025	PBBANK	EMPLOYEES PROVIDENT FUND BOARD [SSH]	462	3472445	17.89
03 NOV 2025 - 03 NOV 2025	PBBANK	EMPLOYEES PROVIDENT FUND BOARD [SSH]	245	3471982	17.89
31 OCT 2025 - 31 OCT 2025	PBBANK	EMPLOYEES PROVIDENT FUND BOARD [SSH]	2,036	3471738	17.89
30 OCT 2025 - 30 OCT 2025	PBBANK	EMPLOYEES PROVIDENT FUND BOARD [SSH]	1,386	3469702	17.88
06 NOV 2025 - 06 NOV 2025	PENTA	KUMPULAN WANG PERSARAAN (DIPERBADANKAN) [SSH]	-40	57254	8.049
04 NOV 2025 - 04 NOV 2025	PENTA	KUMPULAN WANG PERSARAAN (DIPERBADANKAN) [SSH]	-500	57294	8.054
31 OCT 2025 - 31 OCT 2025	PENTA	KUMPULAN WANG PERSARAAN (DIPERBADANKAN) [SSH]	-88	57794	8.125
31 OCT 2025 - 31 OCT 2025	PENTA	LEMBAGA TABUNG HAJI [SSH]	-112	38751	5.448
29 OCT 2025 - 29 OCT 2025	PENTA	EMPLOYEES PROVIDENT FUND BOARD [SSH]	106	63308	8.9
30 OCT 2025 - 30 OCT 2025	PETDAG	EMPLOYEES PROVIDENT FUND BOARD ("EPF BOARD") [SSH]	304	128063	12.891
29 OCT 2025 - 29 OCT 2025	PETDAG	EMPLOYEES PROVIDENT FUND BOARD ("EPF BOARD") [SSH]	300	127959	12.88
04 NOV 2025 - 04 NOV 2025	PETGAS	EMPLOYEES PROVIDENT FUND BOARD [SSH]	0.4	250186	12.644
03 NOV 2025 - 03 NOV 2025	PETGAS	EMPLOYEES PROVIDENT FUND BOARD [SSH]	81	250185	12.644
31 OCT 2025 - 31 OCT 2025	PETGAS	EMPLOYEES PROVIDENT FUND BOARD [SSH]	135	250104	12.64
30 OCT 2025 - 30 OCT 2025	PETGAS	EMPLOYEES PROVIDENT FUND BOARD [SSH]	21	249969	12.633
29 OCT 2025 - 29 OCT 2025	PETGAS	EMPLOYEES PROVIDENT FUND BOARD [SSH]	849	249948	12.632
04 NOV 2025 - 04 NOV 2025	PMETAL	EMPLOYEES PROVIDENT FUND BOARD [SSH]	-1,795	551176	6.689
03 NOV 2025 - 03 NOV 2025	PMETAL	EMPLOYEES PROVIDENT FUND BOARD [SSH]	-2,789	552971	6.711
31 OCT 2025 - 31 OCT 2025	PMETAL	EMPLOYEES PROVIDENT FUND BOARD [SSH]	-5,253	555761	6.745
30 OCT 2025 - 30 OCT 2025	PMETAL	EMPLOYEES PROVIDENT FUND BOARD [SSH]	-5,865	561013	6.809
29 OCT 2025 - 29 OCT 2025	PMETAL	EMPLOYEES PROVIDENT FUND BOARD [SSH]	-2,674	566878	6.88
04 NOV 2025 - 04 NOV 2025	PPB	EMPLOYEES PROVIDENT FUND BOARD [SSH]	263	239284	16.82
03 NOV 2025 - 03 NOV 2025	PPB	EMPLOYEES PROVIDENT FUND BOARD [SSH]	247	239020	16.802
30 OCT 2025 - 30 OCT 2025	PPB	EMPLOYEES PROVIDENT FUND BOARD [SSH]	135	238773	16.784
29 OCT 2025 - 29 OCT 2025	PPB	EMPLOYEES PROVIDENT FUND BOARD [SSH]	804	238697	16.779
06 NOV 2025 - 06 NOV 2025	PTRANS	DATIN SRI LIM SOW KENG [SSH]	-10,449	111456	9.255
06 NOV 2025 - 06 NOV 2025	PTRANS	DATO' SRI CHEONG KONG FITT [DIR/CEO]	-10,449	111456	9.255
06 NOV 2025 - 06 NOV 2025	PTRANS	DATO' SRI CHEONG KONG FITT [DIR/CEO]	-4,398	13131	13.581
06 NOV 2025 - 06 NOV 2025	PTRANS	DATO' SRI CHEONG KONG FITT [SSH]	-10,449	111456	9.255
06 NOV 2025 - 06 NOV 2025	PTRANS	DATO' CHEONG PEAK SOOI [DIR/CEO]	-1,187	8788	0.73
06 NOV 2025 - 06 NOV 2025	PTRANS	TAN SRI DATO' TAN CHEE SING [SSH]	-1,132	66747	5.543
31 OCT 2025 - 31 OCT 2025	QL	CHIA SEONG FATT [DIR/CEO]	100	436679	11.963
31 OCT 2025 - 31 OCT 2025	QL	CHIA SEONG FATT [SSH]	100	436679	11.963
31 OCT 2025 - 31 OCT 2025	QL	CHIA SEONG POW [SSH]	100	446155	12.222
31 OCT 2025 - 31 OCT 2025	QL	CHIA SONG KUN [DIR/CEO]	100	1507406	41.296
31 OCT 2025 - 31 OCT 2025	QL	CHIA SONG KUN [SSH]	100	1507407	41.296
31 OCT 2025 - 31 OCT 2025	QL	MR CHIA SEONG POW [DIR/CEO]	100	446155	12.222
30 OCT 2025 - 03 NOV 2025	RAMSSOL	MR SIM SENG LOONG @ TAI SENG [DIR/CEO]	-60	170	0.044
04 NOV 2025 - 05 NOV 2025	RGTBHD	DATUK LIM SEAT HOE [DIR/CEO]	280	100631	29.393
04 NOV 2025 - 05 NOV 2025	RGTBHD	DATUK LIM SEAT HOE [SSH]	280	100631	29.393
04 NOV 2025 - 05 NOV 2025	RGTBHD	MADAM HOR LIM CHEE [SSH]	280	123323	36.022
04 NOV 2025 - 05 NOV 2025	RGTBHD	MR NG CHOON KEAT [DIR/CEO]	280	109638	32.024
04 NOV 2025 - 05 NOV 2025	RGTBHD	MR NG CHOON KEAT [SSH]	280	109638	32.024
04 NOV 2025 - 05 NOV 2025	RGTBHD	MR TAN SONG CHAI [SSH]	280	109623	32.019
04 NOV 2025 - 05 NOV 2025	RGTBHD	RGT EQUITY HOLDINGS SDN. BHD. [SSH]	280	92030	26.881
31 OCT 2025 - 31 OCT 2025	RGTBHD	DATUK LIM SEAT HOE [DIR/CEO]	110	100351	29.311
31 OCT 2025 - 31 OCT 2025	RGTBHD	DATUK LIM SEAT HOE [SSH]	110	100351	29.311
31 OCT 2025 - 31 OCT 2025	RGTBHD	MADAM HOR LIM CHEE [SSH]	110	123043	35.94
31 OCT 2025 - 31 OCT 2025	RGTBHD	MR NG CHOON KEAT [DIR/CEO]	110	109358	31.942
31 OCT 2025 - 31 OCT 2025	RGTBHD	MR NG CHOON KEAT [SSH]	110	109358	31.942
31 OCT 2025 - 31 OCT 2025	RGTBHD	MR TAN SONG CHAI [SSH]	110	109343	31.938
31 OCT 2025 - 31 OCT 2025	RGTBHD	RGT EQUITY HOLDINGS SDN. BHD. [SSH]	110	91750	26.799
04 NOV 2025 - 04 NOV 2025	RHBBANK	EMPLOYEES PROVIDENT FUND BOARD [SSH]	635	1659948	38.055
03 NOV 2025 - 03 NOV 2025	RHBBANK	EMPLOYEES PROVIDENT FUND BOARD [SSH]	4,958	1659313	38.041
04 NOV 2025 - 04 NOV 2025	RHBBANK	KUMPULAN WANG PERSARAAN (DIPERBADANKAN) [SSH]	750	227740	5.221
31 OCT 2025 - 31 OCT 2025	RHBBANK	EMPLOYEES PROVIDENT FUND BOARD [SSH]	2,000	1654354	37.927
30 OCT 2025 - 30 OCT 2025	RHBBANK	EMPLOYEES PROVIDENT FUND BOARD [SSH]	8,092	1652354	37.881
29 OCT 2025 - 29 OCT 2025	RHBBANK	EMPLOYEES PROVIDENT FUND BOARD [SSH]	3,000	1644262	37.696
06 NOV 2025 - 06 NOV 2025	RKI	MADAM LIN CHEN JUI-FEN [DIR/CEO]	14,196	64114	32.734
06 NOV 2025 - 06 NOV 2025	RKI	MADAM LIN SHIN-NI [DIR/CEO]	14,196	14246	7.274
06 NOV 2025 - 06 NOV 2025	RKI	MR LIN CHIN-HUNG [DIR/CEO]	14,196	27868	14.229

Notice Period is 2nd November 2025 to 8th November 2025

Effective Change Date	Stock Name	Buyer/ Seller Name [Classification]	Bought / (Sold) ['000]	No. of Shares After Trade ['000]	
			Total	Total	% Held
31 OCT 2025 - 31 OCT 2025	SAM	EMPLOYEES PROVIDENT FUND BOARD [SSH]	112	38722	5.72
30 OCT 2025 - 30 OCT 2025	SAM	EMPLOYEES PROVIDENT FUND BOARD [SSH]	-8	38610	5.703
29 OCT 2025 - 29 OCT 2025	SAM	EMPLOYEES PROVIDENT FUND BOARD [SSH]	-95	38617	5.704
31 OCT 2025 - 31 OCT 2025	SAMAIDEN	MR FONG YENG FOON [DIR/CEO]	6,319	93090	19.68
31 OCT 2025 - 31 OCT 2025	SAMAIDEN	MR FONG YENG FOON [SSH]	6,319	93090	19.68
31 OCT 2025 - 31 OCT 2025	SAMAID-EN-WA	MR FONG YENG FOON [DIR/CEO]	6,319	21600	24.133
03 NOV 2025 - 03 NOV 2025	SCBUILD	MR LOH BOON GINN [DIR/CEO]	25,000	257014	4.831
06 NOV 2025 - 06 NOV 2025	SDG	AMANAHRAYA TRUSTEES BERHAD - AMANAH SAHAM BUMIPUTERA [SSH]	-1,750	2972876	42.987
04 NOV 2025 - 04 NOV 2025	SDG	EMPLOYEES PROVIDENT FUND BOARD [SSH]	-2,188	1085296	15.693
05 NOV 2025 - 05 NOV 2025	SDG	AMANAHRAYA TRUSTEES BERHAD - AMANAH SAHAM BUMIPUTERA [SSH]	-1,500	2974626	43.013
03 NOV 2025 - 03 NOV 2025	SDG	EMPLOYEES PROVIDENT FUND BOARD [SSH]	-3,850	1087484	15.724
31 OCT 2025 - 31 OCT 2025	SDG	EMPLOYEES PROVIDENT FUND BOARD [SSH]	-1,939	1091334	15.78
30 OCT 2025 - 30 OCT 2025	SDG	EMPLOYEES PROVIDENT FUND BOARD [SSH]	-10,108	1093273	15.809
29 OCT 2025 - 29 OCT 2025	SDG	EMPLOYEES PROVIDENT FUND BOARD [SSH]	-19,239	1103381	15.955
28 OCT 2025 - 28 OCT 2025	SDG	EMPLOYEES PROVIDENT FUND BOARD [SSH]	-5,099	1122620	16.233
06 NOV 2025 - 06 NOV 2025	SEDANIA	DATUK NOOR AZRIN BIN MOHD NOOR [DIR/CEO]	300	125617	30.792
06 NOV 2025 - 06 NOV 2025	SEDANIA	DATUK NOOR AZRIN BIN MOHD NOOR [SSH]	300	125617	30.792
06 NOV 2025 - 06 NOV 2025	SEDANIA	SEDANIA CORPORATION SDN. BHD. [SSH]	300	109740	26.9
05 NOV 2025 - 05 NOV 2025	SIME	KUMPULAN WANG PERSARAAN (DIPERBADANKAN) [SSH]	-393	455051	6.676
03 NOV 2025 - 03 NOV 2025	SIME	EMPLOYEES PROVIDENT FUND BOARD [SSH]	-1,722	1205684	17.69
04 NOV 2025 - 04 NOV 2025	SIME	KUMPULAN WANG PERSARAAN (DIPERBADANKAN) [SSH]	1,661	455444	6.682
31 OCT 2025 - 31 OCT 2025	SIME	EMPLOYEES PROVIDENT FUND BOARD [SSH]	-773	1207406	17.715
03 NOV 2025 - 03 NOV 2025	SIME	KUMPULAN WANG PERSARAAN (DIPERBADANKAN) [SSH]	1,254	453783	6.658
30 OCT 2025 - 30 OCT 2025	SIME	EMPLOYEES PROVIDENT FUND BOARD [SSH]	-654	1208178	17.726
06 NOV 2025 - 06 NOV 2025	SIMEPROP	KUMPULAN WANG PERSARAAN (DIPERBADANKAN) [SSH]	505	454255	6.679
04 NOV 2025 - 04 NOV 2025	SIMEPROP	EMPLOYEES PROVIDENT FUND BOARD [SSH]	2,708	966479	14.212
05 NOV 2025 - 05 NOV 2025	SIMEPROP	KUMPULAN WANG PERSARAAN (DIPERBADANKAN) [SSH]	2,839	453750	6.671
04 NOV 2025 - 04 NOV 2025	SIMEPROP	KUMPULAN WANG PERSARAAN (DIPERBADANKAN) [SSH]	20	450911	6.63
03 NOV 2025 - 03 NOV 2025	SIMEPROP	KUMPULAN WANG PERSARAAN (DIPERBADANKAN) [SSH]	629	450891	6.629
31 OCT 2025 - 31 OCT 2025	SIMEPROP	KUMPULAN WANG PERSARAAN (DIPERBADANKAN) [SSH]	50	450262	6.62
29 OCT 2025 - 29 OCT 2025	SIMEPROP	EMPLOYEES PROVIDENT FUND BOARD [SSH]	1,568	963770	14.172
31 OCT 2025 - 31 OCT 2025	SKPRES	EMPLOYEES PROVIDENT FUND BOARD [SSH]	169	233031	14.915
31 OCT 2025 - 31 OCT 2025	SKPRES	ABERDEEN GROUP PLC (FORMERLY KNOWN AS ABRDN PLC) [SSH]	169	135775	8.69
31 OCT 2025 - 31 OCT 2025	SKPRES	ABRDN HOLDINGS LIMITED [SSH]	169	135775	8.69
31 OCT 2025 - 31 OCT 2025	SKPRES	ABRDN MALAYSIA SDN BHD [SSH]	169	135775	8.69
30 OCT 2025 - 30 OCT 2025	SKPRES	EMPLOYEES PROVIDENT FUND BOARD [SSH]	3,095	232862	14.904
30 OCT 2025 - 30 OCT 2025	SKPRES	ABERDEEN GROUP PLC (FORMERLY KNOWN AS ABRDN PLC) [SSH]	3,095	135606	8.68
30 OCT 2025 - 30 OCT 2025	SKPRES	ABRDN HOLDINGS LIMITED [SSH]	3,095	135606	8.68
30 OCT 2025 - 30 OCT 2025	SKPRES	ABRDN MALAYSIA SDN BHD [SSH]	3,095	135606	8.68
04 NOV 2025 - 04 NOV 2025	SLVEST	URUSHARTA JAMAAH SDN. BHD. [SSH]	-94	61130	7.178
03 NOV 2025 - 03 NOV 2025	SMRT	EMPLOYEES PROVIDENT FUND BOARD [SSH]	-50	37173	8.163
31 OCT 2025 - 31 OCT 2025	SMRT	EMPLOYEES PROVIDENT FUND BOARD [SSH]	-400	37223	8.174
30 OCT 2025 - 30 OCT 2025	SMRT	EMPLOYEES PROVIDENT FUND BOARD [SSH]	-300	37623	8.262
29 OCT 2025 - 29 OCT 2025	SMRT	EMPLOYEES PROVIDENT FUND BOARD [SSH]	-100	37923	8.328
04 NOV 2025 - 05 NOV 2025	SNS	EASTSPRING INVESTMENTS BERHAD [SSH]	422	89188	5.322
04 NOV 2025 - 05 NOV 2025	SNS	PRUDENTIAL PLC [SSH]	422	98555	5.881
31 OCT 2025 - 31 OCT 2025	SNS	EASTSPRING INVESTMENTS BERHAD [SSH]	-1,410	88766	5.297
31 OCT 2025 - 31 OCT 2025	SNS	PRUDENTIAL PLC [SSH]	-1,410	98133	5.856
03 NOV 2025 - 03 NOV 2025	SPSETIA	EMPLOYEES PROVIDENT FUND BOARD [SSH]	1,000	470411	9.402
31 OCT 2025 - 31 OCT 2025	SPSETIA	KUMPULAN WANG PERSARAAN (DIPERBADANKAN) [SSH]	-600	419921	8.393
03 NOV 2025 - 03 NOV 2025	SRIDGE	DATO' KHOO YIK CHOU [DIR/CEO]	120	53717	14.142
03 NOV 2025 - 03 NOV 2025	SRIDGE	DATO' KHOO YIK CHOU [SSH]	120	53717	14.142
31 OCT 2025 - 04 NOV 2025	STRAITS	MR YONG CHEAN PENG [SSH]	1,195	53940	5.424
05 NOV 2025 - 05 NOV 2025	SUCCESS	MADAM LIM MEE HWA [SSH]	85	12700	5.381
05 NOV 2025 - 05 NOV 2025	SUCCESS	MR YEO SENG CHONG [SSH]	85	12700	5.382
31 OCT 2025 - 31 OCT 2025	SUCCESS	MADAM LIM MEE HWA [SSH]	172	12615	5.345
31 OCT 2025 - 31 OCT 2025	SUCCESS	MR YEO SENG CHONG [SSH]	172	12615	5.346
30 OCT 2025 - 30 OCT 2025	SUCCESS	MADAM LIM MEE HWA [SSH]	66	12443	5.273
30 OCT 2025 - 30 OCT 2025	SUCCESS	MR YEO SENG CHONG [SSH]	66	12443	5.273
04 NOV 2025 - 04 NOV 2025	SUNREIT	EMPLOYEES PROVIDENT FUND BOARD [SSH]	-814	462860	13.515
03 NOV 2025 - 03 NOV 2025	SUNREIT	EMPLOYEES PROVIDENT FUND BOARD [SSH]	2,946	463674	13.539
31 OCT 2025 - 31 OCT 2025	SUNREIT	EMPLOYEES PROVIDENT FUND BOARD [SSH]	5,000	460728	13.453
03 NOV 2025 - 03 NOV 2025	SUNREIT	KUMPULAN WANG PERSARAAN (DIPERBADANKAN) ("KWAP") [SSH]	-500	205487	6
29 OCT 2025 - 29 OCT 2025	SUNREIT	EMPLOYEES PROVIDENT FUND BOARD [SSH]	4,467	455728	13.307
04 NOV 2025 - 04 NOV 2025	SUNWAY	EMPLOYEES PROVIDENT FUND BOARD [SSH]	2,		

Notice Period is 2nd November 2025 to 8th November 2025

Effective Change Date	Stock Name	Buyer/ Seller Name [Classification]	Bought / (Sold) ['000]	No. of Shares After Trade ['000]	
			Total	Total	% Held
06 NOV 2025 - 06 NOV 2025	TANCO	DATO' SRI ANDREW TAN JUN SUAN [SSH]	-23,529	3155620	52.371
05 NOV 2025 - 05 NOV 2025	TANCO	DATO' SRI ANDREW TAN JUN SUAN [DIR/CEO]	9,428	3179149	52.762
05 NOV 2025 - 05 NOV 2025	TANCO	DATO' SRI ANDREW TAN JUN SUAN [DIR/CEO]	-10,400	3169721	52.606
05 NOV 2025 - 05 NOV 2025	TANCO	DATO' SRI ANDREW TAN JUN SUAN [SSH]	-10,400	3169721	52.606
05 NOV 2025 - 05 NOV 2025	TANCO	DATO' SRI ANDREW TAN JUN SUAN [SSH]	9,428	3179149	52.762
04 NOV 2025 - 04 NOV 2025	TANCO	DATO' SRI ANDREW TAN JUN SUAN [DIR/CEO]	-5,042	3170001	52.61
04 NOV 2025 - 04 NOV 2025	TANCO	DATO' SRI ANDREW TAN JUN SUAN [DIR/CEO]	10,120	3180121	52.778
04 NOV 2025 - 04 NOV 2025	TANCO	DATO' SRI ANDREW TAN JUN SUAN [SSH]	-5,042	3170001	52.61
04 NOV 2025 - 04 NOV 2025	TANCO	DATO' SRI ANDREW TAN JUN SUAN [SSH]	10,120	3180121	52.778
03 NOV 2025 - 03 NOV 2025	TANCO	DATO' SRI ANDREW TAN JUN SUAN [DIR/CEO]	6,500	3175043	52.694
03 NOV 2025 - 03 NOV 2025	TANCO	DATO' SRI ANDREW TAN JUN SUAN [DIR/CEO]	-4,590	3168543	52.586
03 NOV 2025 - 03 NOV 2025	TANCO	DATO' SRI ANDREW TAN JUN SUAN [SSH]	6,500	3175043	52.694
03 NOV 2025 - 03 NOV 2025	TANCO	DATO' SRI ANDREW TAN JUN SUAN [SSH]	-4,590	3168543	52.586
04 NOV 2025 - 04 NOV 2025	TENAGA	EMPLOYEES PROVIDENT FUND BOARD [SSH]	1,796	1121804	19.24
03 NOV 2025 - 03 NOV 2025	TENAGA	EMPLOYEES PROVIDENT FUND BOARD [SSH]	304	1120008	19.21
04 NOV 2025 - 04 NOV 2025	TENAGA	KUMPULAN WANG PERSARAAN (DIPERBADANKAN) [SSH]	155	441295	7.58
31 OCT 2025 - 31 OCT 2025	TENAGA	KUMPULAN WANG PERSARAAN (DIPERBADANKAN) [SSH]	50	441140	7.57
29 OCT 2025 - 29 OCT 2025	TENAGA	EMPLOYEES PROVIDENT FUND BOARD [SSH]	803	1117309	19.17
03 NOV 2025 - 03 NOV 2025	TIMECOM	EMPLOYEES PROVIDENT FUND BOARD [SSH]	100	245939	13.303
31 OCT 2025 - 31 OCT 2025	TIMECOM	EMPLOYEES PROVIDENT FUND BOARD [SSH]	200	245839	13.297
30 OCT 2025 - 30 OCT 2025	TIMECOM	EMPLOYEES PROVIDENT FUND BOARD [SSH]	100	245639	13.286
29 OCT 2025 - 29 OCT 2025	TIMECOM	EMPLOYEES PROVIDENT FUND BOARD [SSH]	201	245539	13.281
06 NOV 2025 - 06 NOV 2025	TM	KUMPULAN WANG PERSARAAN (DIPERBADANKAN) [KWAP] [SSH]	83	383415	9.991
04 NOV 2025 - 04 NOV 2025	TM	EMPLOYEES PROVIDENT FUND BOARD (EPF BOARD) [SSH]	-628	861862	22.458
05 NOV 2025 - 05 NOV 2025	TM	KUMPULAN WANG PERSARAAN (DIPERBADANKAN) [KWAP] [SSH]	302	383331	9.988
03 NOV 2025 - 03 NOV 2025	TM	EMPLOYEES PROVIDENT FUND BOARD (EPF BOARD) [SSH]	-1,918	862490	22.474
31 OCT 2025 - 31 OCT 2025	TM	EMPLOYEES PROVIDENT FUND BOARD (EPF BOARD) [SSH]	-1,939	864408	22.524
30 OCT 2025 - 30 OCT 2025	TM	EMPLOYEES PROVIDENT FUND BOARD (EPF BOARD) [SSH]	-1,421	866347	22.574
31 OCT 2025 - 31 OCT 2025	TM	KUMPULAN WANG PERSARAAN (DIPERBADANKAN) [KWAP] [SSH]	318	383029	9.981
29 OCT 2025 - 29 OCT 2025	TM	EMPLOYEES PROVIDENT FUND BOARD (EPF BOARD) [SSH]	-811	867769	22.611
07 NOV 2025 - 07 NOV 2025	TOPGLOV	MR LIM HOOI SIN [DIR/CEO]	1,618	2975211	37.108
07 NOV 2025 - 07 NOV 2025	TOPGLOV	MR LIM HOOI SIN [SSH]	1,618	2975211	37.108
07 NOV 2025 - 07 NOV 2025	TOPGLOV	MR LIM JIN FENG [SSH]	1,618	2860933	35.682
07 NOV 2025 - 07 NOV 2025	TOPGLOV	PUAN SRI TONG SIEW BEE [SSH]	1,618	2975411	37.11
07 NOV 2025 - 07 NOV 2025	TOPGLOV	TAN SRI DR LIM WEE CHAI [DIR/CEO]	1,618	2975411	37.11
07 NOV 2025 - 07 NOV 2025	TOPGLOV	TAN SRI DR LIM WEE CHAI [SSH]	1,618	2975411	37.11
04 NOV 2025 - 04 NOV 2025	TSH	ABERDEEN GROUP PLC (FORMERLY KNOWN AS ABRDN PLC) [SSH]	860	64852	5.088
04 NOV 2025 - 04 NOV 2025	TSH	ABRDN HOLDINGS LIMITED [SSH]	860	64852	5.088

Notice Period is 2nd November 2025 to 8th November 2025

Effective Change Date	Stock Name	Buyer/ Seller Name [Classification]	Bought / (Sold) ['000]	No. of Shares After Trade ['000]	
			Total	Total	% Held
31 OCT 2025 - 31 OCT 2025	UOAEV	EMPLOYEES PROVIDENT FUND BOARD ("EPF BOARD") [SSH]	2,724	376292	14.173
30 OCT 2025 - 30 OCT 2025	UOAEV	EMPLOYEES PROVIDENT FUND BOARD ("EPF BOARD") [SSH]	243	373568	14.07
29 OCT 2025 - 29 OCT 2025	UOAEV	EMPLOYEES PROVIDENT FUND BOARD ("EPF BOARD") [SSH]	362	373325	14.061
03 NOV 2025 - 03 NOV 2025	UTDPLT	EMPLOYEES PROVIDENT FUND BOARD [SSH]	46	37256	5.988
31 OCT 2025 - 31 OCT 2025	UTDPLT	EMPLOYEES PROVIDENT FUND BOARD [SSH]	28	37210	5.981
30 OCT 2025 - 30 OCT 2025	UTDPLT	EMPLOYEES PROVIDENT FUND BOARD [SSH]	-42	37183	5.976
29 OCT 2025 - 29 OCT 2025	UTDPLT	EMPLOYEES PROVIDENT FUND BOARD [SSH]	-1,147	37225	5.983
04 NOV 2025 - 04 NOV 2025	UWC	EMPLOYEES PROVIDENT FUND BOARD [SSH]	-388	71526	6.485
03 NOV 2025 - 03 NOV 2025	UWC	EMPLOYEES PROVIDENT FUND BOARD [SSH]	-212	71914	6.52
03 NOV 2025 - 03 NOV 2025	UWC	ABERDEEN GROUP PLC (FORMERLY KNOWN AS ABRDN PLC) [SSH]	-3	57161	5.183
03 NOV 2025 - 03 NOV 2025	UWC	ABRDN HOLDINGS LIMITED [SSH]	-3	57161	5.183
03 NOV 2025 - 03 NOV 2025	UWC	ABRDN MALAYSIA SDN BHD [SSH]	-3	56883	5.158
31 OCT 2025 - 31 OCT 2025	UWC	EMPLOYEES PROVIDENT FUND BOARD [SSH]	-891	72126	6.54
30 OCT 2025 - 30 OCT 2025	UWC	EMPLOYEES PROVIDENT FUND BOARD [SSH]	-5,298	73017	6.621
29 OCT 2025 - 29 OCT 2025	UWC	EMPLOYEES PROVIDENT FUND BOARD [SSH]	-2,850	78315	7.101
03 NOV 2025 - 03 NOV 2025	VANZO	FRAGRANCE CENTURY SDN. BHD. [SSH]	-11,400	215915	46.259
03 NOV 2025 - 03 NOV 2025	VANZO	MR WONG LIANG TZER [DIR/CEO]	-11,400	215915	46.259
03 NOV 2025 - 03 NOV 2025	VANZO	MR WONG LIANG TZER [SSH]	-11,400	215915	46.259
04 NOV 2025 - 04 NOV 2025	VS	EMPLOYEES PROVIDENT FUND BOARD [SSH]	-5,000	390315	10.126
31 OCT 2025 - 31 OCT 2025	VS	EMPLOYEES PROVIDENT FUND BOARD [SSH]	-2,500	395315	10.256
04 NOV 2025 - 04 NOV 2025	WASCO	URUSHARTA JAMAAH SDN BHD [SSH]	332	43465	5.613
31 OCT 2025 - 31 OCT 2025	WASCO	URUSHARTA JAMAAH SDN BHD [SSH]	198	43133	5.57
06 NOV 2025 - 06 NOV 2025	WPRTS	KUMPULAN WANG PERSARAAN (DIPERBADANKAN) [SSH]	200	223900	6.542
05 NOV 2025 - 05 NOV 2025	WPRTS	KUMPULAN WANG PERSARAAN (DIPERBADANKAN) [SSH]	167	223700	6.537
04 NOV 2025 - 04 NOV 2025	WPRTS	KUMPULAN WANG PERSARAAN (DIPERBADANKAN) [SSH]	15	223534	6.532
03 NOV 2025 - 03 NOV 2025	WPRTS	KUMPULAN WANG PERSARAAN (DIPERBADANKAN) [SSH]	200	223519	6.531
05 NOV 2025 - 05 NOV 2025	YEWLEE	MR KHOO CHEE SIANG [SSH]	2,000	38657	6.887
30 OCT 2025 - 30 OCT 2025	YEWLEE	MR KHOO CHEE SIANG [SSH]	3,700	36657	6.536
03 NOV 2025 - 03 NOV 2025	YTL	EMPLOYEES PROVIDENT FUND BOARD [SSH]	2,000	1140060	9.833
03 NOV 2025 - 03 NOV 2025	YTLPOWR	EMPLOYEES PROVIDENT FUND BOARD [SSH]	1,210	913866	10.595
03 NOV 2025 - 03 NOV 2025	ZETRIX	ASIA INTERNET HOLDINGS SDN. BHD. [SSH]	-3,000	1062601	13.602
06 NOV 2025 - 06 NOV 2025	ZHULIAN	MR TEOH BENG SENG [SSH]	92	269858	58.662
06 NOV 2025 - 06 NOV 2025	ZHULIAN	THE BEST SOURCE HOLDINGS PTE. LTD. [SSH]	92	66911	14.546
05 NOV 2025 - 05 NOV 2025	ZHULIAN	MR TEOH BENG SENG [SSH]	49	269766	58.642
05 NOV 2025 - 05 NOV 2025	ZHULIAN	THE BEST SOURCE HOLDINGS PTE. LTD. [SSH]	49	66819	14.526
04 NOV 2025 - 04 NOV 2025	ZHULIAN	MR TEOH BENG SENG [SSH]	44	269716	58.631
04 NOV 2025 - 04 NOV 2025	ZHULIAN	THE BEST SOURCE HOLDINGS PTE. LTD. [SSH]	44	66769	14.515
31 OCT 2025 - 31 OCT 2025	ZHULIAN	MR TEOH BENG SENG [SSH]	10	269672	58.621
31 OCT 2025 - 31 OCT 2025	ZHULIAN	THE BEST SOURCE HOLDINGS PTE. LTD. [SSH]	10	66725	14.506

Disclaimer: The Information in Insider Activity is extracted from www.shareinvestor.com/fundamental/insider_trades. The information on this page is provided as a service to readers. It does not constitute financial advice and/or any investment recommendations. We assume no liability for damages resulting from or arising out of the use of such information. Whilst every effort is made to ensure accuracy, the information presented is not the official record of shareholder filings. Readers are advised to read the original filings on the Bursa Malaysia website at www.bursamalaysia.com

CHECK OUT SHAREINVESTOR

BROKER'S CALL

Weekly Buy/Sell/Hold calls
from leading Malaysian Brokerages.

Go To Broker's Call

BUY

HOLD

SELL



The Boards of Directors of **Daythree Digital Berhad (DAY3)** wishes to inform that Daythree intends to seek its shareholders' approval in respect of the proposed new shareholders' mandate for recurrent related party transactions of a revenue and/or trading nature at the forthcoming Extraordinary General Meeting of the Company.

The Board of Directors of **Feytech Holdings Berhad (FEYTECH)** wishes to announce that it has deliberated and resolved to extend the timeframe for the use of proceeds raised from the initial public offering exercise in conjunction with the listing of and the quotation of its entire share capital on the Main Market of Bursa Malaysia Securities Berhad on 21 May 2024. The Company has raised gross proceeds of RM114.66 million from its IPO.



On behalf of the Board of **FSBM Holdings Berhad (FSBM)**, Malacca Securities wishes to announce that Bursa Securities had vide its letter dated 7 November 2025, resolved to approve the listing and quotation of up to 51,562,037 new FSBM Shares to be issued pursuant to the Proposed Private Placement.

The Board of Directors of **HSS Engineers Berhad (HSSEB)** wishes to announce that the Company has on 13th November 2025 entered into a Memorandum of Understanding with CTI Engineering Co. Ltd. The MOU provides a framework for HEB and CTI to explore potential synergies in engineering consultancy, technology transfer, and business development, both locally and internationally.



The Board of Directors of **Nextgreen Global Berhad (NGGB)** wishes to announce that Nextgreen Fertilizer Sdn. Bhd., a wholly-owned subsidiary of the Company, had on 13 November 2025 entered into a Commercial Distribution Agreement with DOA Integrated Farming Sdn. Bhd. Pursuant to the

Agreement, DOA is appointed as the non-exclusive distributor of NGF's organic fertilizer products, namely NexBooster™ and NexCompost®, for sale and distribution within Raub, State of Pahang.





UEM Sunrise Berhad (UEMS) definitive agreements in relation to the proposed sales of seventy-two freehold industrial plots measuring approximately 169.8 acres in phase 3, southern industrial & logistics clusters in Iskandar Puteri, Johor for a total consideration of RM434.3 million.

The Board of Directors of **Steel Hawk Berhad (HAWK)** is pleased to announce that Steel Hawk Engineering Sdn Bhd, a wholly-owned subsidiary of SteelHawk, had on 12 November 2025 been awarded a contract from Binalite Electrical Engineering Sdn. Bhd., to establish 275kV bulk supply connection to a data centre in the southern region of Peninsular Malaysia.





The Board of Directors of **YNH Property Berhad (YNHPROP)** wishes to announce that Kar Sin Bhd had executed a Supplemental Agreement dated 11 November 2025 in respect of the Sale and Purchase Agreement dated 12 May with the following parties to vary certain terms and conditions of the SPA in relation to the Proposed Disposal.

Disclaimer: The information in the Investor Relations page is extracted from individual companies' announcements in www.bursamalaysia.com. The information on this page is provided as a service to readers. We assume no liability for damages resulting from or arising out of the use of such information. Whilst every effort is made to ensure accuracy, the information presented has been simplified for your reading pleasure. Readers are advised to read the original and complete filings on the Bursa Malaysia website at https://www.bursamalaysia.com/market_information/announcements/company_announcement

Upcoming IPO					
NAME OF COMPANY	OFFER PERIOD		ISSUE PRICE (Per Ordinary Share)	LISTING SOUGHT	DATE OF LISTING
	OPENING	CLOSING			
PMW INTERNATIONAL BERHAD	28 Oct 2025	6 Oct 2025	RM0.34	ACE MARKET	18 November 2025
AQUAWALK GROUP BERHAD	30 Oct 2025	7 Nov 2025	RM0.31	ACE MARKET	19 November 2025
POLYMER LINK HOLDINGS	4 Nov 2025	11 Nov 2025	RM0.25	ACE MARKET	25 November 2025
FOODIE MEDIA BERHAD	13 Nov 2025	19 Nov 2025	RM0.30	ACE MARKET	29 November 2025
PSP ENERGY BERHAD	11 Nov 2025	21 Nov 2025	RM0.16	ACE MARKET	4 December 2025
BMS HOLDINGS BERHAD	13 Nov 2025	19 Nov 2025	RM0.22	ACE MARKET	8 December 2025

**CHECK OUT
SHAREINVESTOR
BROKERS' CALL**

Weekly Buy/Sell/Hold calls from leading Malaysian Brokerages.

[Go To Brokers' Call](#)