

Invest

A Weekly e-Publication by SHAREINVESTOR

ISSUE

271

FRIDAY
26 SEP 2025

Scan/Click QR to Register



Via email, every Friday

MARKET SENTIMENTS

Treat stronger board governance as competitive advantage - Bursa CEO page 30

Foreign investors extended net buying on Bursa with RM492.1m inflow last week — MBSB IB page 32

ALSO

COMPANY SPOTLIGHT

Tanco Holdings Berhad

See more on page 06

From MSWG's The Observer

Stop Right There

See more on pages 36-40

BEHIND THE TICKER: DECODING COMPANY FUNDAMENTALS Invest | 21

Dr. Ho Hong Chae
Former Group CEO
Non-Executive Director

He has been associated with the Sumitomo Group for many years, sharing the wealth in manufacturing, energy and financial services. He is the independent non-executive director of Berhad.

Before that, he was with the Management Consulting for a decade when he was the Director of Studies for the Cranfield MBA Program in Malaysia.

He holds a PhD from the University of Cambridge, a MSc from the University of Glasgow, and a BSc from the University of Bedford, UK.

18 Globetronics

an investment opportunity or a value trap?

SUMMARY

- Despite operating in a growing global semiconductor industry, Globetronics Technology Berhad's revenue declined at a 6.9% CAGR over the past 12 years, highlighting its failure to develop competitive new products consistently.

Disclaimer: This article is written for informational purposes only. It does not constitute a solicitation, offer, advice, recommendation or endorsement to buy or sell. As such, it is not intended to provide the purchase of shares in any way. As a result, any form of advice for risk factor and needs to be applied based on individual circumstances. Therefore, any investment decision and the associated risk remains with the investor. The views expressed herein are solely the author's own.

See more on pages 21-28

04 LEADERBOARD

05 SHARIAH HOT STOCKS

08 SHARIAH MOMENTUM UP STOCKS

09 NON SHARIAH HOT STOCKS

10 UP TRENDING STOCKS

12 VALUE STOCKS

13 GROWTH STOCKS

15 DIVIDEND STOCKS

17 BROKERS' CALL

18 LONG COMPANIES

35 REGIONAL MARKETS

41 INSIDER ACTIVITY

45 INVESTOR RELATIONS

SHAREINVESTOR®

An AlphaInvest Company

Invest with Knowledge

INVESTOR PLATFORMS

Director
Darren Chong
darren.chong@shareinvestor.com

Business Development Manager
Jay Cheong
jay.cheong.@shareinvestor.com

ADMIN & OPERATIONS

Senior Executive
Watie Nordin
watie.nordin@shareinvestor.com

Executive
Silas Emmanuel Joseph
silas.joseph@shareinvestor.com

PROCESS AUTOMATION & DATA ANALYTICS

Data Analyst
Lee Khai Bing

INVESTOR RELATIONS

Group Managing Director & Publisher
Edward Stanislaus
edward@shareinvestor.com

Senior Manager
Letticia Wong
letticia.wong@shareinvestor.com

Manager
Aida Norzeti Talib
aida.norzeti@shareinvestor.com

ALPHA INVEST HOLDINGS BOARD OF DIRECTORS

Chairman	Patrick Daniel
Group CEO	Christopher Lee
Group COO	Lim Dau Hee
Group MD	Shanison Lin



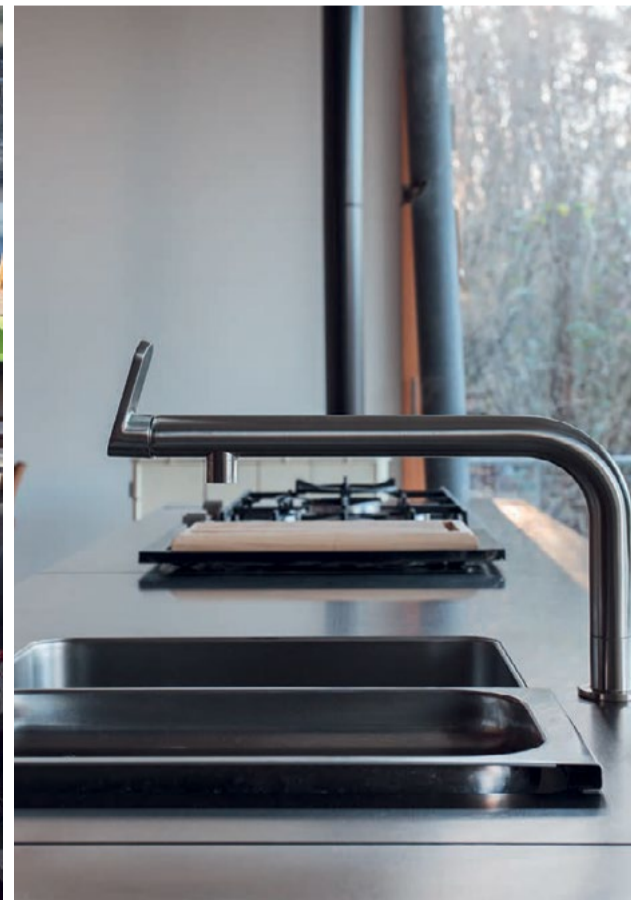
“ GIVE A MAN A FISH AND YOU FEED HIM FOR A DAY; TEACH A MAN TO FISH AND YOU FEED HIM FOR A LIFETIME ”

ShareInvestor Malaysia Sdn. Bhd.
(200001023956) (526564-M)
L15-03 & 03A, PJX HM Shah Tower,
No 16A, Jalan Persiaran Barat, PJS 52,
46200 Petaling Jaya, Selangor

Hotline : 603 8681 0580
Mobile : 011 6343 8939
Website : www.ShareInvestor.com.my
www.alphainvestholdings.com
www.Facebook.com/ShareInvestorMalaysia

ADVERTISEMENT ENQUIRY

bulthaup takes care of the details so that you can enjoy a harmonious environment.



XTRA

XTRA FURNITURE SDN BHD
The Gardens Mall, Mid Valley City
xtrafurniture.com/bulthaup
fb.com/bulthaupmalaysia

bulthaup

Sponsored by



Organised by



冲刺Q4, 布局2026

27 SEPT 2025

9:30am - 2:00 pm

 Auditorium, Connexion
Conference & Event Centre

收费: RM20 (包含午餐)

2025股市策略交流会

立即注册

**Loui Low**Head of Research
M+ Global**邱天雄**道资DAOVEST
创办人兼首席执行官**天哥**

第一天投资理财日记

J LimFounder & Trainer
Trade The Pattern

www.shareinvestor.com - market data at your fingertips



ShareInvestor WebPro (www.shareinvestor.com/my)

Prices > Stock Prices > Bursa > click Stocks tab

1. mouse over Ranking > select Top Active > all Shariah stocks are denoted with an [S] > mouse over Column Layout > select Edit Customs > select Name > select Volume > select Last Done Price > Mouse Over Column Layout > select Custom
2. mouse over Ranking > select Top Turnover > all Shariah stocks are denoted with an [S] > mouse over Column Layout > select Edit Customs > select Name > select Last Done Price > select Value > Mouse Over Column Layout > select Custom
3. mouse over Ranking > select Top Gainers (Over 5 Trading Days) > mouse over Column Layout > select Edit Customs > select Name > select Last Done Price > select 5 Days Change > select 5 Days % Change > Mouse Over Column Layout > select Custom
4. mouse over Ranking > select Top Losers (Over 5 Trading Days)
5. mouse over Ranking > select Top % Gainers (Over 5 Trading Days)
6. mouse over Ranking > select Top % Losers (Over 5 Trading Days)

Shariah Top Actives (As at Yesterday)

Name	Price (RM)	Volume
NEXGBINA [S]	0.100	1,076,960.000
VS [S]	0.590	535,593.000
TANCO [S]	0.890	533,990.000
ARMADA [S]	0.360	478,215.000
VELESTO [S]	0.250	408,171.000
ZETRIX [S]	0.855	399,798.000
SFPTECH [S]	0.190	369,332.000
PHARMA [S]	0.280	353,619.000
CBHB [S]	0.420	353,240.000
SIME [S]	2.240	304,465.000

Shariah Top Turnover (As at Yesterday)

Name	Price (RM)	Value (RM)
MISC [S]	7.260	111,520,804
TENAGA [S]	13.200	85,610,016
IHH [S]	7.370	68,376,874
SIME [S]	2.240	67,267,884
TANCO [S]	0.890	47,658,731
FFB [S]	2.410	46,871,361
GAMUDA [S]	5.670	41,313,763
KSL [S]	3.300	39,720,236
PMETAL [S]	5.840	36,902,822
FRONTKN [S]	4.300	35,731,542

Top Gainers (over 5 Trading days as at Yesterday)

Name	Price (RM)	Change (RM)
NESTLE	96.600	+1.600
MPI	29.600	+1.060
KESM	3.570	+0.870
PJBUMI	2.690	+0.710
MCEMENT	6.730	+0.660
HEIM	21.500	+0.620
KSL	3.300	+0.570
F&N	27.260	+0.460
CARLSBG	16.860	+0.360
LFG	2.020	+0.350

Top % Gainers (over 5 Trading days as at Yesterday)

Name	Price (RM)	Change (%)
XOXTECH	0.075	+150.00
MERIDIAN	0.050	+100.00
SCBUILD	0.010	+100.00
SINARAN	0.030	+100.00
XOXNET	0.020	+100.00
SMCAP	0.095	+58.33
CME	0.015	+50.00
MTRONIC	0.015	+50.00
SMTRACK	0.015	+50.00
TAWIN	0.015	+50.00

Top Losers (over 5 Trading days as at Yesterday)

Name	Price (RM)	Change (RM)
PETDAG	22.120	-0.820
ALLIANZ	18.500	-0.380
LPI	14.100	-0.260
MISC	7.260	-0.220
SUNCON	6.130	-0.220
HENGYUAN	1.070	-0.180
KUCHAI	0.450	-0.170
APOLLO	6.240	-0.160
HLFG	17.000	-0.160
DLADY	27.060	-0.140

Top % Losers (over 5 Trading days as at Yesterday)

Name	Price (RM)	Change (%)
BCMALL	0.005	-50.00
FOCUS	0.005	-50.00
HONGSENG	0.005	-50.00
XDL	0.010	-33.33
KUCHAI	0.450	-27.42
G3	0.015	-25.00
RENEUCO	0.015	-25.00
REKATECH	0.035	-22.22
EVD	0.060	-20.00
PUC	0.020	-20.00

Price & Volume Distribution Charts (as at Yesterday)

Technical Analysis

DEFINITION: Shariah compliant stocks with Technical Analysis showing 5-days & 10-days Moving Average Price below Yesterday's Close over past 3 days and with Volume Spike.

CHART GUIDE: Volume Distribution Chart is a statistical interpretation of the current sentiment on each stock in graphical format. The highest bar categorized as >150k is likely to be traded by institutions or super dealers, while the lowest bar categorized as <15k usually represents retail investors. "Buy Up" refers to more buyers snatching up the lots queued at selling price. "Sell Down" refers to sellers selling their shares to the buying queue



ShareInvestor WebPro > Screener > Market Screener (FA & TA) > select BURSA > add criteria

A. Criteria

- > click Add Criteria
- Technical Analysis Conditions tab select (i) Moving Average Below Close (ii) Volume Spike
- Fundamental Analysis Conditions tab > select (iii) Revenue
- Prices & Other Conditions tab > select (iv) Is Shariah Compliant
- Technical Analysis Conditions tab select (v) Moving Average Below Close
- Prices & Other Conditions tab > select (vi) Last Done Price
- Technical Analysis Conditions tab select (vii) Moving Average Below Close

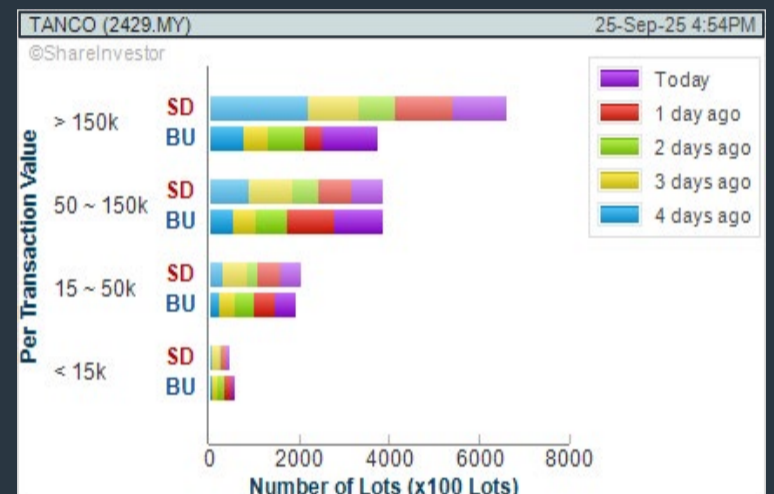
B. Conditions (Criteria Filters)

1. Moving Average Below Close - select (MA) type (5) below close price for type (3) days
2. Volume Spike - Volume type (1) greater than type (5) days average
3. Revenue ("000) - select (more than) type (1) for the past select (1) financial year(s)
4. Is Shariah Compliant - select **Yes**
5. Moving Average Below Close - select (MA) type (10) below close price for type (3) days
6. Last Done Price - select (more than) type (0.3)
7. Moving Average Below Close - select (EMA) type (5) below close price for type (3) days

- > click Save Template > Create New Template type (Shariah Hot Stocks) > click Create
- > click Save Template as > select Shariah Hot Stocks > click Save
- > click Screen Now (may take a few minutes)
- > Sort By: Select (Vol) Select (Desc)
- > Mouse over stock name > Charts > click C² Charts or Volume Distribution

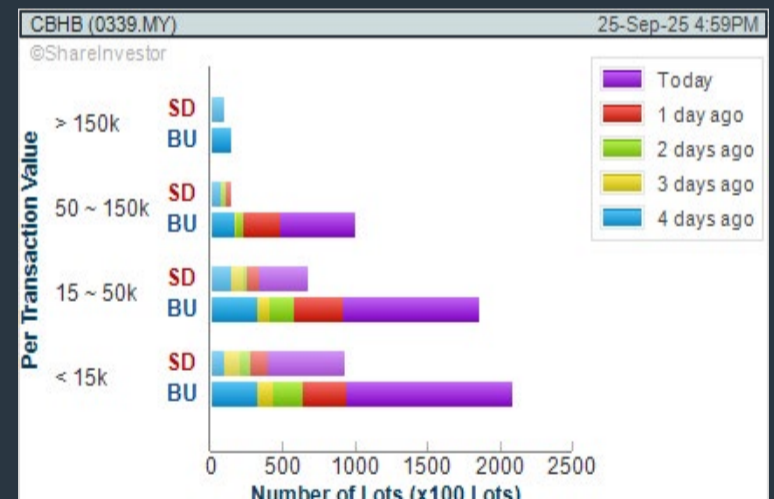
TANCO HOLDINGS BHD (2429)

C² Chart



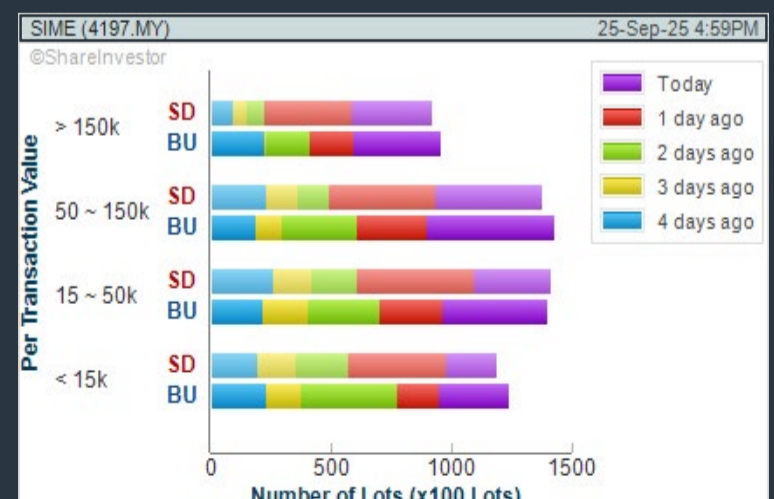
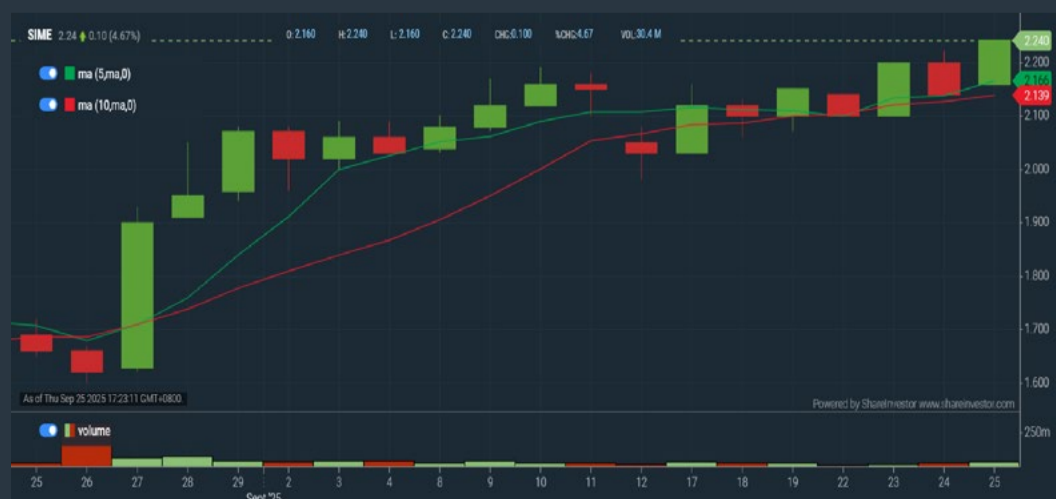
CBH ENGINEERING HOLDING BERHAD (0339)

C² Chart



SIME DARBY BHD (4197)

C² Chart



Disclaimer: The information on this page is provided as a service to readers. It does not constitute financial advice and/or any investment recommendations. Past performance is not indicative of future results. We assume no liability for damages resulting from or arising out of the use of such information. It would be best if you did your own research to make your personal investment decisions wisely or consult a licenced investment advisor.

COMPANY BACKGROUND

Tanco Holdings Berhad is an investment holding company with a diversified portfolio that includes property development, real estate sales, property financing, construction, the supply and trading of building materials, port development, industrial park development and pharmaceutical products.

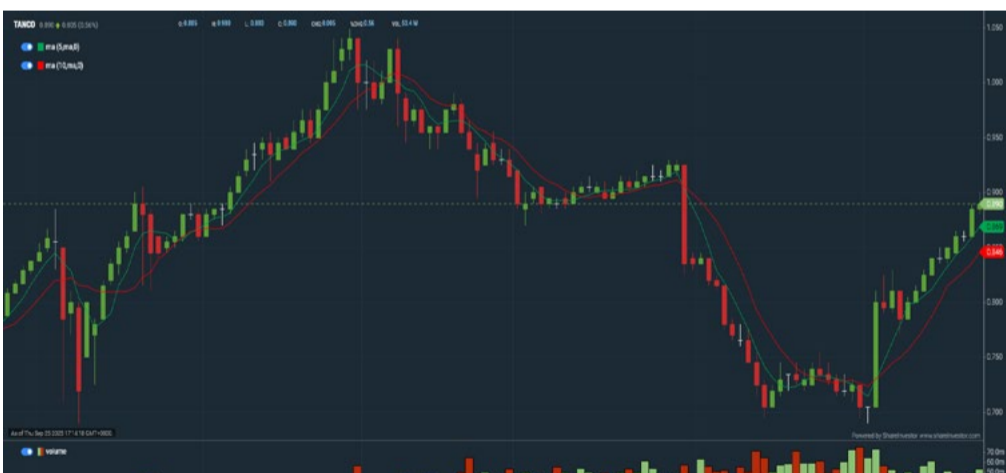


TANCO (2429.MY)		High: 0.900		Remarks:	
Last (MYR): 0.890 ↑	Change: +0.005	Low: 0.880	Open: 0.885	Yesterday's Close: 0.885	Updated at: 25 Sep 2025 16:54
	Change (%): +0.56%	Buy Price: 0.890	Buy Volume (UU): 10,234	Sell Price: 0.895	
		Sell Volume (UU): 3,941	Cumulative Volume (UU): 533,000	Cumulative Value: 47,650,730.5	

Financial Analysis

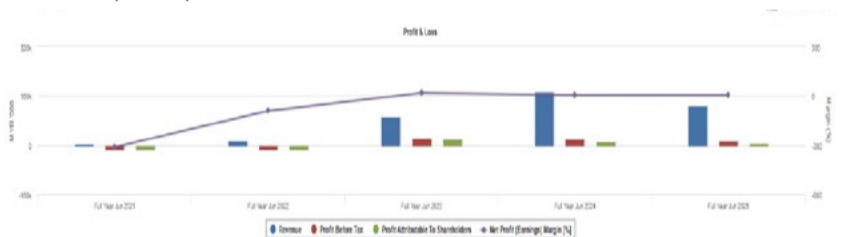
Revenue Growth Revenue down sharply in most recent year (> 25%)	Profit Growth Decreasing profit for last 2 consecutive years (with last 3 profitable years)
Piotroski F Score The company has below average financial strength (Piotroski F-Score of 3-4)	Debt to Cashflow The company has negative cash flow from operations in most recent year
Free Cash Flow Negative free cash flow for two years or more	Gross Profit Margin Gross profit margin is improving by more than 10% a year over the past 60 months.
Net Earnings Margin Net profit margin is improving by more than 10% a year over the past 60 months.	

😊 Excellent
 🙂 Good
 😐 Neutral
 😬 Be Alert
 😱 Watch Out



Historical Financials

Profit & Loss (MYR '000)

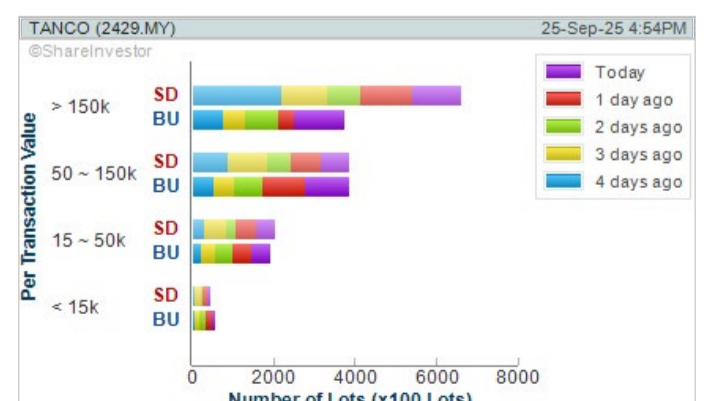


WebPro 9-Days Free Trial Registration (worth RM10) Sign Up Now



Key Statistics with Total Shareholder Returns

Period	Dividend Received	Capital Appreciation	Total Shareholder Return
Short Term Return	5 Days	+0.090	+9.99%
	10 Days	+0.090	+11.25%
	20 Days	+0.170	+23.61%
Medium Term Return	3 Months	-0.040	-4.30%
	6 Months	+0.070	+8.54%
	1 Year	+0.326	+36.85%
Long Term Return	2 Years	+0.659	+73.20%
	3 Years	+0.787	+87.58%
	5 Years	+0.871	+96.82%
Annualised Return	Annualised	-	+19.84%



Disclaimer: The information on this page is provided as a service to readers. It does not constitute financial advice and/or any investment recommendations. Past performance is not indicative of future results. We assume no liability for damages resulting from or arising out of the use of such information. It would be best if you did your own research to make your personal investment decisions wisely or consult a licenced investment advisor.

MARTEX

OFFICE SWEET HOME

100% made in Italy



KYO

KYO a Japanese word meaning 'strength' is a collection of presidential, executive and meeting tables, where the simple shapes of the lines are enhanced by the use of materials and the thickness of the tops.

design Mario Mazzer

Exclusively by:

XTRA

XTRA FURNITURE SDN BHD

The Gardens Mall, Mid Valley City, Lot S-236 & 237

Lingkar Syed Putra, 59200 Kuala Lumpur

T. +603 2282 9088 | living@xtrafurniture.com | xtrafurniture.com

 XTRAFurniture |  xtrafurnituremsia



Price & Volume Distribution Charts (as at Yesterday)

Technical Analysis

DEFINITION: Shariah compliant stocks with Technical Analysis showing Bullish Momentum and Price Uptrend. The share price closed at the highest price yesterday. The typical price was higher than the previous day's typical price.

CHART GUIDE: Volume Distribution Chart is a statistical interpretation of the current sentiment on each stock in graphical format. The highest bar categorized as >150k is likely to be traded by institutions or super dealers, while the lowest bar categorized as <15k usually represents retail investors. "Buy Up" refers to more buyers snatching up the lots queued at selling price. "Sell Down" refers to sellers selling their shares to the buying queue.



ShareInvestor WebPro > Screener > Market Screener (FA & TA)>select BURSA>add criteria

A. Criteria

- > click Add Criteria
- Fundamental Analysis Conditions tab >select (i) Revenue
- Technical Analysis Conditions tab select (ii) Average Volume
- Prices & Other Conditions tab > select (iii) Last Done Price
- Prices & Other Conditions tab > select (iv) Is Shariah Compliant
- Technical Analysis Conditions tab select (v) RSI Overbought
- Technical Analysis Conditions tab select (vi) Moving Average Below Close
- Technical Analysis Conditions tab select (vii) CCI Overbought

B. Conditions (Criteria Filters)

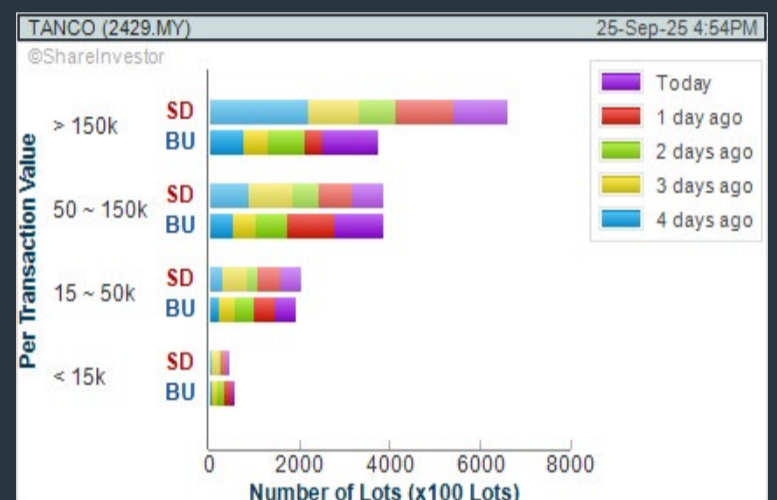
- Revenue ("000) - select (more than) type (1) for the past select (1) financial year(s)
- Average Volume - type (1) days average volume greater than type (10000) lots
- Last Done Price - select (more than) type (0.3)
- Is Shariah Compliant - select Yes
- RSI Overbought - select RSI 1 above 99 for 1 days
- Moving Average Below Close - select (MA) type (10) below close price for type (1) days
- CCI Overbought - select CCI (2) above (0) for (1) days

- > click Save Template > Create New Template type (Shariah Momentum Up Stocks) > click Create
- > click Save Template as > select Shariah Momentum Up Stocks > click Save
- > click Screen Now (may take a few minutes)
- Sort By: Select (Vol) Select (Desc)
- Mouse over stock name > Charts > click C² Charts tab or Volume Distribution

TANCO HOLDINGS BHD (2429)

C² Chart

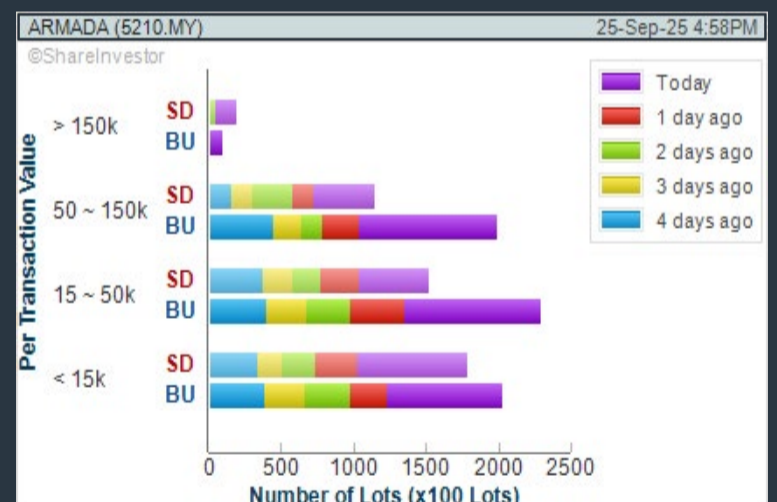
Analysis



BUMI ARMADA BERHAD (5210)

C² Chart

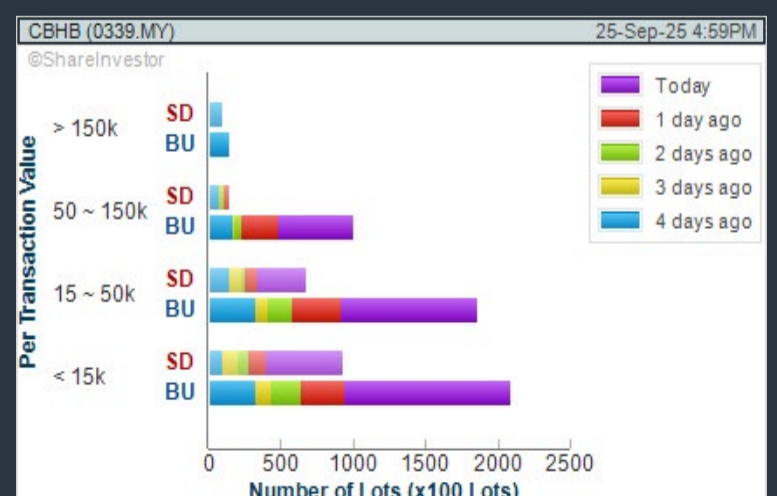
Analysis



CBH ENGINEERING HOLDING BERHAD (0339)

C² Chart

Analysis



Disclaimer: The information on this page is provided as a service to readers. It does not constitute financial advice and/or any investment recommendations. Past performance is not indicative of future results. We assume no liability for damages resulting from or arising out of the use of such information. It would be best if you did your own research to make your personal investment decisions wisely or consult a licenced investment advisor.

Price & Volume Distribution Charts (as at Yesterday)

Technical Analysis

DEFINITION: Stocks with Technical Analysis showing 5-days & 10-days Moving Average Price below Close over past 1 days and with Volume Spike

CHART GUIDE: Volume Distribution Chart is a statistical interpretation of the current sentiment on each stock in graphical format. The highest bar categorized as >150k is likely to be traded by institutions or super dealers, while the lowest bar categorized as <15k usually represents retail investors. "Buy Up" refers to more buyers snatching up the lots queued at selling price. "Sell Down" refers to sellers selling their shares to the buying queue.



ShareInvestor WebPro > Screener > Market Screener (FA & TA) > select BURSA > add criteria

A. Criteria

- > click Add Criteria
- Technical Analysis Conditions tab select (i) Moving Average Below Close (ii) Volume Spike
- Fundamental Analysis Conditions tab >select (iii) Revenue
- Prices & Other Conditions tab > select (iv) Is Shariah Compliant
- Technical Analysis Conditions tab select (v) Moving Average Below Close
- Prices & Other Conditions tab > select (vi) Last Done Price
- Technical Analysis Conditions tab select (vii) Moving Average Below Close

B. Conditions (Criteria Filters)

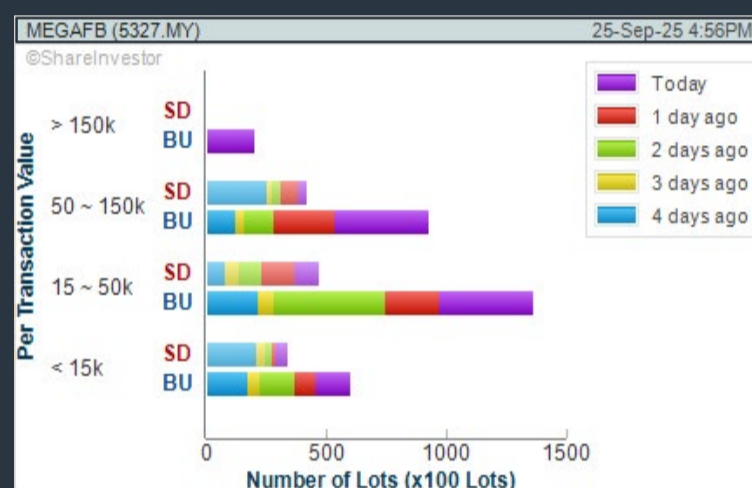
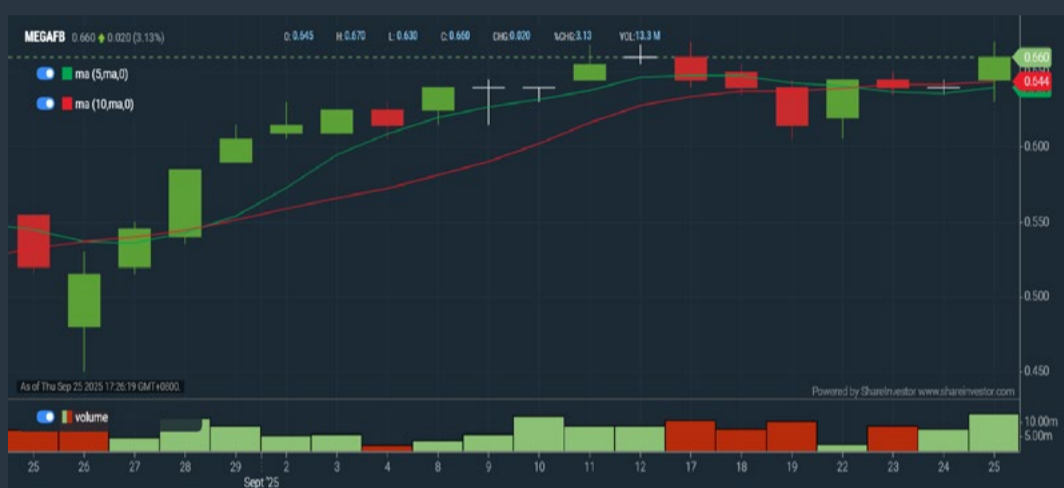
1. Moving Average Below Close - select (MA) type (5) below close price for type (3) days
2. Volume Spike - Volume type (1) greater than type (5) days average
3. Revenue ("000) - select (more than) type (1) for the past select (1) financial year(s)
4. Is Shariah Compliant - select NO
5. Moving Average Below Close - select (MA) type (10) below close price for type (1) days
6. Last Done Price - select (more than) type (0.3)
7. Moving Average Below Close - select (EMA) type (5) below close price for type (1) days

- > click Save Template > Create New Template type (Non-Shariah Hot Stocks) > click Create
- > click Save Template as > select Non-Shariah Hot Stocks > click Save
- > click Screen Now (may take a few minutes)
- Sort By: Select (Vol) Select (Desc)
- Mouse over stock name > Charts > click C² Charts tab or Volume Distribution

MEGA FORTRIS BERHAD (5327)

C² Chart

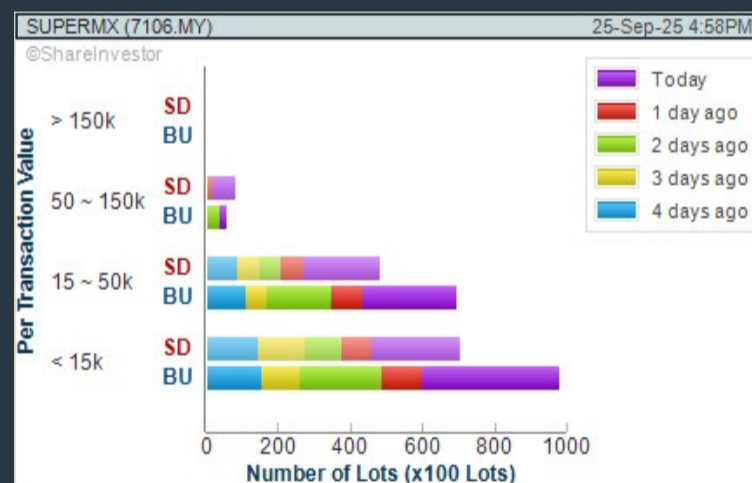
Analysis



SUPERMAX CORPORATION BERHAD (7106)

C² Chart

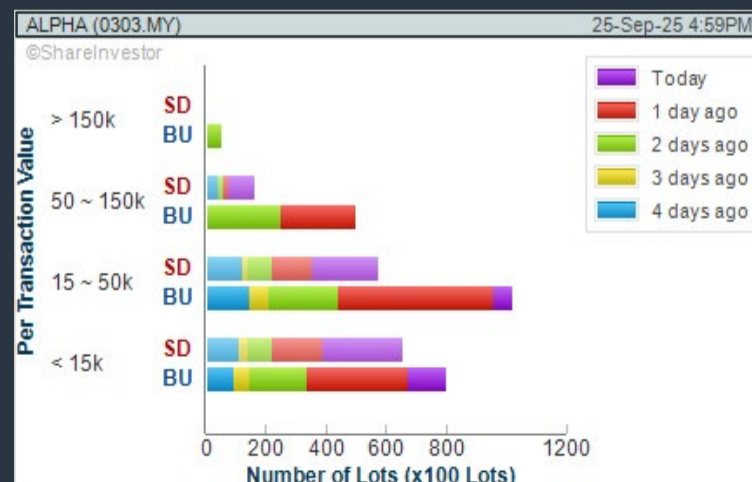
Analysis



ALPHA IVF GROUP BERHAD (0303)

C² Chart

Analysis



Disclaimer: The information on this page is provided as a service to readers. It does not constitute financial advice and/or any investment recommendations. Past performance is not indicative of future results. We assume no liability for damages resulting from or arising out of the use of such information. It would be best if you did your own research to make your personal investment decisions wisely or consult a licenced investment advisor.

Price & Volume Distribution Charts (Over 3 trading days as at Yesterday)

Technical Analysis

DEFINITION: Stocks with Technical Analysis showing Bullish Momentum and Price Uptrend

CHART GUIDE: Volume Distribution Chart is a statistical interpretation of the current sentiment on each stock in graphical format. The highest bar categorized as >150k is likely to be traded by institutions or super dealers, while the lowest bar categorized as <15k usually represents retail investors. "Buy Up" refers to more buyers snatching up the lots queued at selling price. "Sell Down" refers to sellers selling their shares to the buying queue.



ShareInvestor WebPro > Screener > Market Screener (FA & TA) > select BURSA > add criteria

A. Criteria

- > click Add Criteria
- Fundamental Analysis Conditions tab > select (i) Revenue
- Technical Analysis Conditions tab select (ii) Moving Average Below Close
- Technical Analysis Conditions tab select (iii) Average Volume
- Prices & Other Conditions tab > select (iv) Last Done Price
- Technical Analysis Conditions tab select (v) Moving Average Below Close
- Technical Analysis Conditions tab select (v) Moving Average Bullish Crossover

B. Conditions

1. Revenue - select (more than) type (1) for the past select (1) financial year(s)
2. Moving Average Below Close - select (MA) type (20) below close price for type (1) days
3. Average Volume - type (5) days average volume type (10000) lots
4. Last Done Price - select (more than) type (0.3)
5. Moving Average Below Close - select (MA) type (10) below close price for type (1) days
6. Moving Average Bullish Crossover - select (MA) type (5) crossed above select (MA) type (10)

> click Save Template > Create New Template type (Non-Shariah Up-Trending Stocks) > click Create Click Save Template As > select Non-Shariah Up Trending Stocks > click Save
> click Screen Now (may take a few minutes)
Sort By: Select (Vol) Select (Desc)
Mouse over stock name > Charts > click C² Charts tab or Volume Distribution

KERJAYA PROSPEK GROUP BERHAD (7161)

C² Chart

Analysis



CAPITAL A BERHAD (5099)

C² Chart

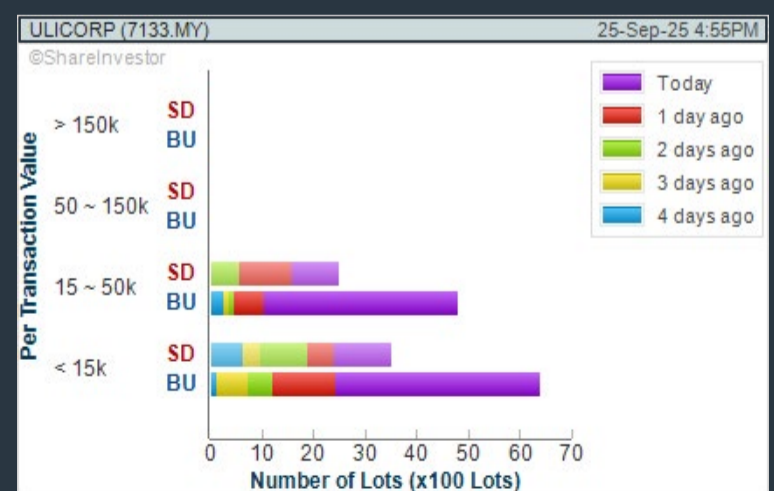
Analysis



UNITED U-LI CORPORATION BERHAD (7133)

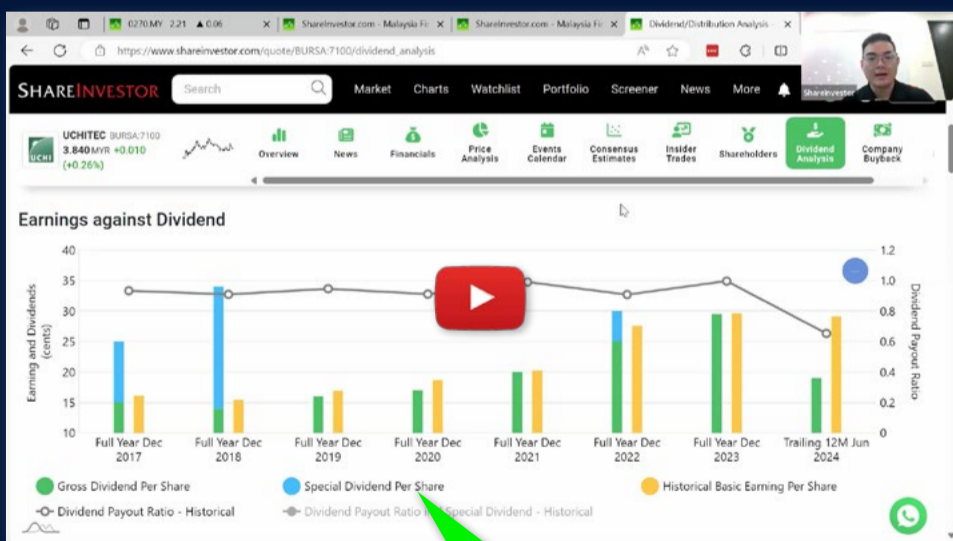
C² Chart

Analysis



Disclaimer: The information on this page is provided as a service to readers. It does not constitute financial advice and/or any investment recommendations. Past performance is not indicative of future results. We assume no liability for damages resulting from or arising out of the use of such information. It would be best if you did your own research to make your personal investment decisions wisely or consult a licenced investment advisor.

Ultimate Guide to use **ShareInvestor**



YOU WILL LEARN HOW TO USE:

- Company Financials
 - Market Screener
 - Company Insider Trades
 - Dividend Analysis
 - Consensus Estimation
- and more...*

**Watch
now!**

Price & Total Shareholder Return (as at Yesterday)

Fundamental Analysis

DEFINITION: Share price of a company trading at a lower price as compared to its fundamentals (FA) such as financial performance and dividend, allowing it to be attractive to value investors.

CHART GUIDE: Total Shareholder Return (TSR) combines share price appreciation and dividend distributions paid to show the total return to the shareholder expressed as a percentage.



ShareInvestor WebPro > Screener > Market Screener (FA & TA) > select BURSA > add criteria

A. Criteria

- > click Add Criteria
- Fundamental Analysis Conditions tab (i) Price Earnings Ratio
- Fundamental Analysis Conditions tab >select (ii) CAGR of Net Earnings
- Fundamental Analysis Conditions tab >select (iii) Net Debt To Equity
- Fundamental Analysis Conditions tab >select (iv) Return On Equity (ROE)

B. Conditions

1. Price Earnings Ratio - select (less than) type (15) times now
2. CAGR of Net Earnings - select (more than) type (10) % for the past type (3) financial year(s)
3. Net Debt To Equity – select (less than) type (1) for the past select (1) financial year(s)
4. Return On Equity (ROE) – select (more than) type (10) % for the past select (1) financial year(s)

- > click Save Template > Create New Template type (Value Stock) > click Create
- > click Save Template as > select Value Companies > click Save
- > click Screen Now (may take a few minutes)
- Sort by: Select (PE Ratio) Select (Ascending)
- > Mouse over stock name > Factsheet > looking for Total Shareholder Return
- > Mouse over stock name > Charts > click C2 Charts tab

MATRIX PARKING SOLUTION HOLDINGS BERHAD (03019)

Analysis

C² Chart



Period	Dividend Received	Capital Appreciation	Total Shareholder Return
Short Term Return	5 Days	-	-
	10 Days	-	-
	20 Days	-	-
Medium Term Return	3 Months	-0.010	-33.33%
	6 Months	-0.050	-71.43%
	1 Year	-0.080	-80.00%
Long Term Return	2 Years	-0.080	-80.00%
	3 Years	0.160	88.89%
	5 Years	-0.150	-81.25%
Annualised Return	Annualised	-	-34.82%

INGENIEUR GUDANG BERHAD (5178)

Analysis

C² Chart



Period	Dividend Received	Capital Appreciation	Total Shareholder Return
Short Term Return	5 Days	-	-
	10 Days	+0.005	+20.00%
	20 Days	-	-
Medium Term Return	3 Months	+0.005	+20.00%
	6 Months	-	-
	1 Year	-0.020	-40.00%
Long Term Return	2 Years	-0.085	-73.81%
	3 Years	-0.070	-70.00%
	5 Years	-0.080	-73.73%
Annualised Return	Annualised	-	-22.88%

MUDAJAYA GROUP BHD (5085)

Analysis

C² Chart



Period	Dividend Received	Capital Appreciation	Total Shareholder Return
Short Term Return	5 Days	+0.010	+12.50%
	10 Days	+0.010	+12.50%
	20 Days	+0.005	+5.88%
Medium Term Return	3 Months	-	-
	6 Months	-0.010	-10.00%
	1 Year	-0.005	-5.26%
Long Term Return	2 Years	-0.090	-60.00%
	3 Years	0.040	-21.21%
	5 Years	0.040	-43.48%
Annualised Return	Annualised	-	-10.78%

Disclaimer: The information on this page is provided as a service to readers. It does not constitute financial advice and/or any investment recommendations. Past performance is not indicative of future results. We assume no liability for damages resulting from or arising out of the use of such information. It would be best if you did your own research to make your personal investment decisions wisely or consult a licenced investment advisor.

Price & Total Shareholder Return (as at Yesterday)

Fundamental Analysis

DEFINITION: Company revenue is growing and making good quality of earnings with positive Free Cash Flow.

CHART GUIDE: Total Shareholder Return (TSR) combines share price appreciation and distributions paid to show the total return to the shareholder expressed as a percentage.



ShareInvestor WebPro > Screener > Market Screener (FA & TA) > select BURSA > add criteria

A. Criteria

1. Fundamental Analysis Conditions tab >select (i) Free Cash Flow, (ii) Revenue Growth, (iii) Gross Profit (Earnings) Margin, (iv) Quality of Earnings, (v) Total Shareholder Returns, > click Add Criteria
2. Fundamental Analysis Conditions tab >select (vi) Total Shareholder Returns > click Add Criteria

B. Conditions (Criteria Filters)

1. Free Cash Flow - select (more than) type (1) for the past select (1) financial year(s)
2. Revenue Growth - select (more than) type (1) for the past select (1) financial year(s)
3. Gross Profit (Earnings) Margin - select (more than) type (30) % for the past select (1) financial year(s)
4. Quality of Earnings - select (more than) type (1) for the past select (1) financial year(s)
5. Total Shareholder Return - select (more than) type (5) % for the past select (3) financial year(s)
6. Total Shareholder Return - select (more than) type (5) % for the past select (5) financial year(s)

- > click Save Template > Create New Template type (Growth Companies) > click Create
- > click Save Template as > select Growth Companies > click Save
- > click Screen Now (may take a few minutes)
- > Sort By: Select (Revenue Growth) Select (Desc)
- > Mouse over stock name > Factsheet > looking for Total Shareholder Return

COUNTRY VIEW BHD (5049)

C² Chart

Analysis

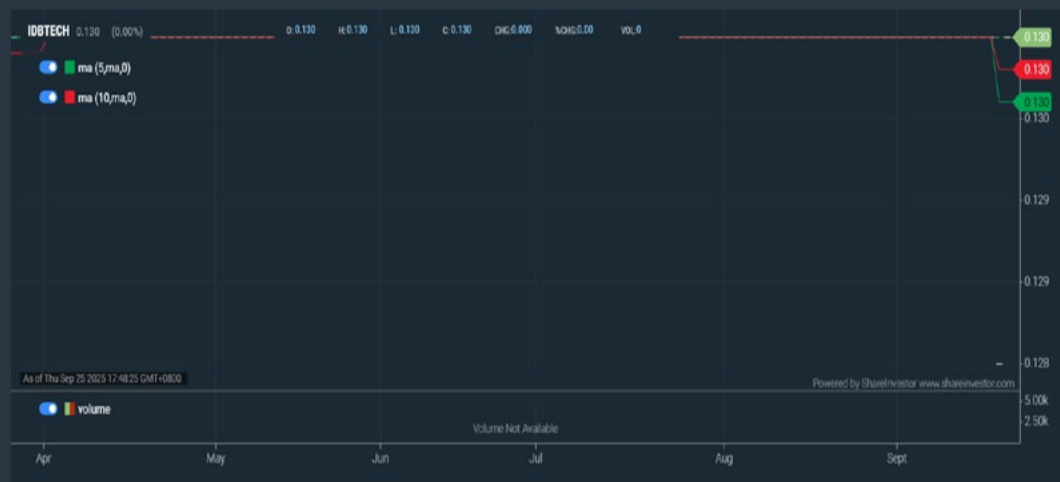


Period	Dividend Received	Capital Appreciation	Total Shareholder Return
Short Term Return	5 Days	-	+0.250
	10 Days	-	+0.400
	20 Days	-	+0.300
Medium Term Return	3 Months	0.110	+0.550
	6 Months	0.310	+0.510
	1 Year	0.405	+0.900
Long Term Return	2 Years	0.500	+1.450
	3 Years	0.570	+1.600
	5 Years	0.700	+1.550
Annualised Return	Annualised	-	+26.50%

IDB TECHNOLOGIES BERHAD (03030)

C² Chart

Analysis



Period	Dividend Received	Capital Appreciation	Total Shareholder Return
Short Term Return	5 Days	0.004	-
	10 Days	0.004	-
	20 Days	0.004	-
Medium Term Return	3 Months	0.004	-
	6 Months	0.004	-
	1 Year	0.007	-
Long Term Return	2 Years	0.009	-0.070
	3 Years	0.010	+0.040
	5 Years	0.011	+0.030
Annualised Return	Annualised	-	+7.11%

CHIN TECK PLANTATIONS BHD (1929)

C² Chart

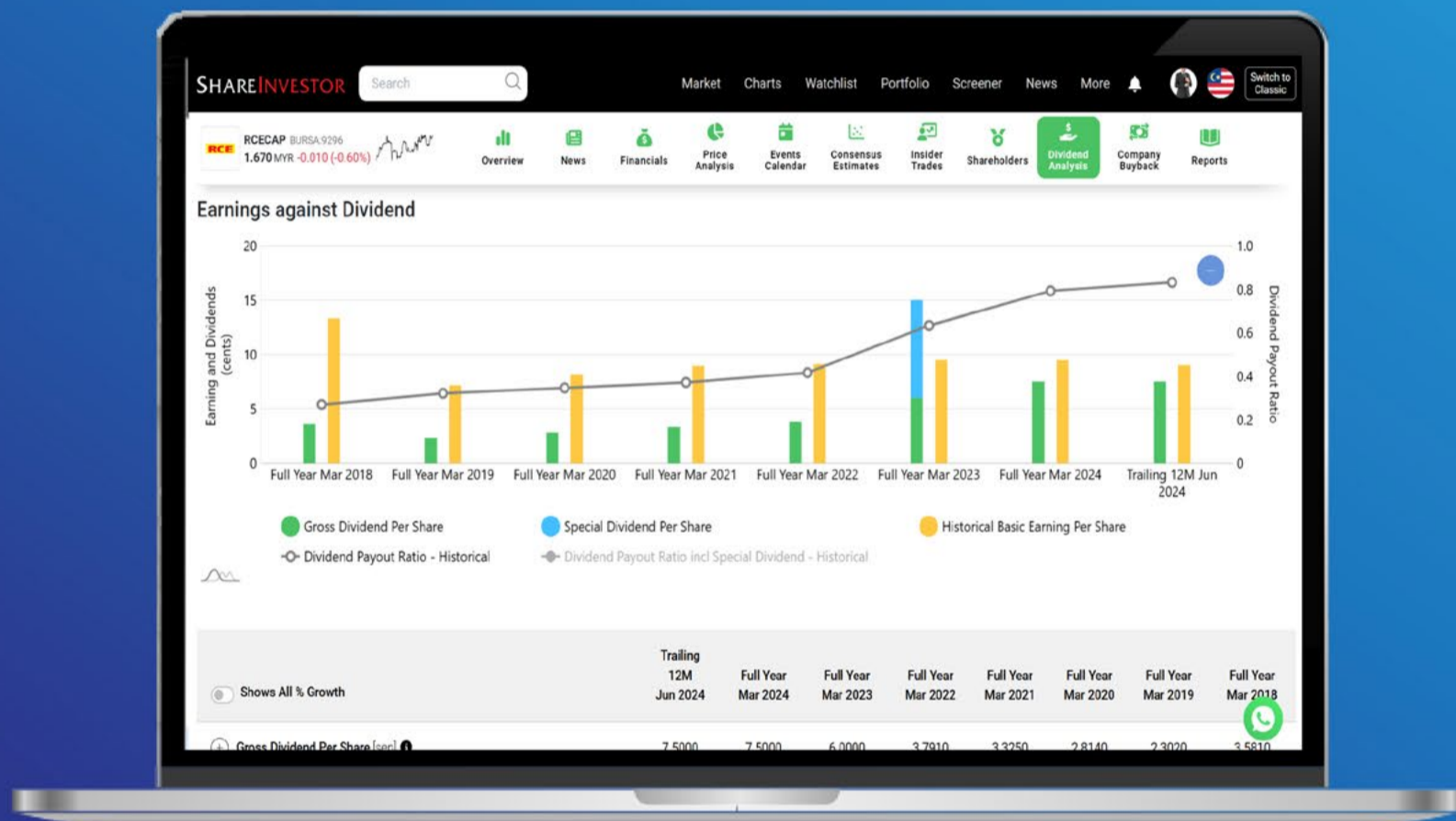
Analysis



Period	Dividend Received	Capital Appreciation	Total Shareholder Return
Short Term Return	5 Days	-	+0.000
	10 Days	-	+0.240
	20 Days	-	+0.440
Medium Term Return	3 Months	0.380	+1.270
	6 Months	0.360	+2.182
	1 Year	0.510	+2.075
Long Term Return	2 Years	0.910	+2.871
	3 Years	1.110	+2.607
	5 Years	1.830	+5.001
Annualised Return	Annualised	-	+18.42%

Disclaimer: The information on this page is provided as a service to readers. It does not constitute financial advice and/or any investment recommendations. Past performance is not indicative of future results. We assume no liability for damages resulting from or arising out of the use of such information. It would be best if you did your own research to make your personal investment decisions wisely or consult a licenced investment advisor.

Tired of low returns? Let's talk high-paying Dividends!



✓ **Top Dividend Picks Right Now**

✓ **Insider Tips** – Advanced strategies for experienced investors

✓ **Easy-to-Follow Tutorial**

Get the most out of dividends, use our Dividend Analysis function –
Click to Watch Our Tutorial Below!

Upgrade Your Dividend Strategy Here



Price & Total Shareholder Return (as at Yesterday)

Fundamental Analysis

DEFINITION: Company is paying out dividend with low or moderate leverage.

CHART GUIDE: Total Shareholder Return (TSR) combines share price appreciation and distributions paid to show the total return to the shareholder expressed as a percentage.



ShareInvestor WebPro > Screener > Market Screener (FA & TA) > select BURSA > add criteria

A. Criteria

- > click Add Criteria
- Fundamental Analysis Conditions tab >select (i) Dividend Yield (Historical)
- Fundamental Analysis Conditions tab >select (ii) Dividend Payout (Historical)
- Fundamental Analysis Conditions tab >select (iii) Total Debt To Equity
- Fundamental Analysis Conditions tab >select (iv) Total Shareholder Returns
- Fundamental Analysis Conditions tab >select (v) Total Shareholder Returns
- Fundamental Analysis Conditions tab / >select (vi) CAGR of Dividend Per Share

• Fundamental Analysis Conditions tab >select (vii) CAGR of Dividend Per Share

B. Conditions (Criteria Filters)

1. Dividend Yield - select (more than) type (1) % for the past select (1) financial year(s)
2. Dividend Payout (Historical) - select (between) type (0.5) to type (1) times for the past select (1) financial year(s)
3. Total Debt to Equity - select (less than) type (1) for the past select (1) financial year(s)
4. Total Shareholder Return - select (more than) type (5) % for the past select (3) financial year(s)
5. Total Shareholder Return - select (more than) type (5) % for the past select (5) financial year(s)

6. CAGR of Dividend Per Share - select (less than) type (30) % for the past select (5) financial year(s)
7. CAGR of Dividend Per Share - select (more than) type (1) % for the past select (5) financial year(s)

- > click Save Template > Create New Template type (Dividend Companies) > click Create
- > click Save Template as > select Dividend Companies > click Save
- > click Screen Now (may take a few minutes)
- > Sort By: Select (Dividend Yield) Select (Desc)
- > Mouse over stock name > Factsheet > looking for Total Shareholder Return

APM AUTOMOTIVE HOLDINGS BHD (5015)

C² Chart

Analysis



Period	Dividend Received	Capital Appreciation	Total Shareholder Return
Short Term Return	5 Days	-0.040	-1.26%
	10 Days	-0.070	-2.28%
	20 Days	0.070	+1.88%
Medium Term Return	3 Months	0.070	+4.41%
	6 Months	0.070	+7.00%
	1 Year	0.250	+14.92%
Long Term Return	2 Years	0.460	+75.61%
	3 Years	0.670	+114.04%
	5 Years	0.810	+132.38%
Annualised Return	Annualised	-	+10.37%

DELEUM BHD (5132)

C² Chart

Analysis



Period	Dividend Received	Capital Appreciation	Total Shareholder Return
Short Term Return	5 Days	-0.020	-1.44%
	10 Days	-0.090	-6.16%
	20 Days	0.040	+2.84%
Medium Term Return	3 Months	0.040	+8.82%
	6 Months	0.040	+8.44%
	1 Year	0.093	+9.21%
Long Term Return	2 Years	0.170	+40.00%
	3 Years	0.223	+124.37%
	5 Years	0.275	+204.63%
Annualised Return	Annualised	-	+24.96%

GAS MALAYSIA BERHAD (5209)

C² Chart

Analysis



Period	Dividend Received	Capital Appreciation	Total Shareholder Return
Short Term Return	5 Days	-	-
	10 Days	-	-0.47%
	20 Days	-	-1.59%
Medium Term Return	3 Months	-	+1.66%
	6 Months	0.199	+8.89%
	1 Year	0.252	+22.19%
Long Term Return	2 Years	0.490	+59.27%
	3 Years	0.717	+53.57%
	5 Years	1.002	+94.95%
Annualised Return	Annualised	-	+14.25%

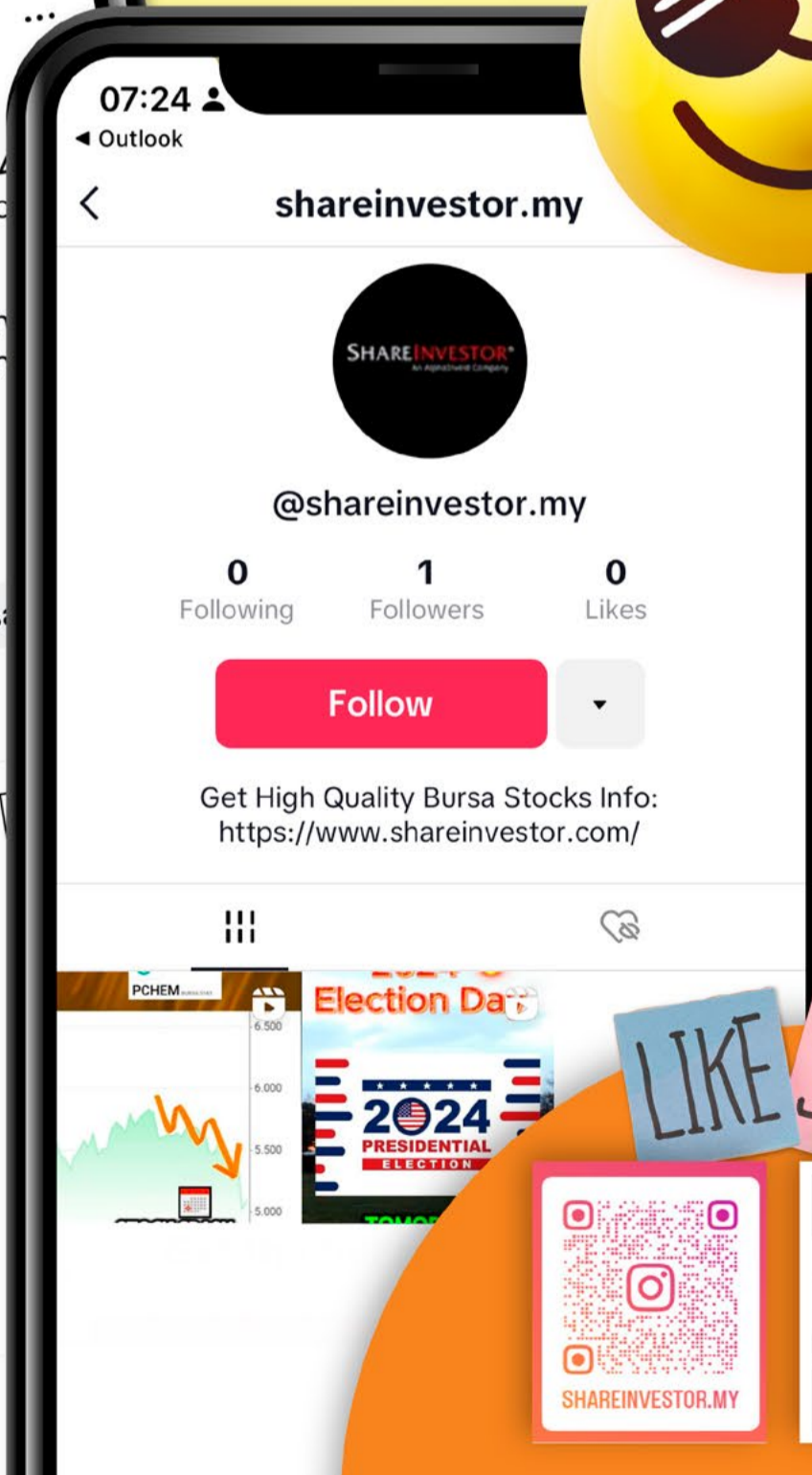
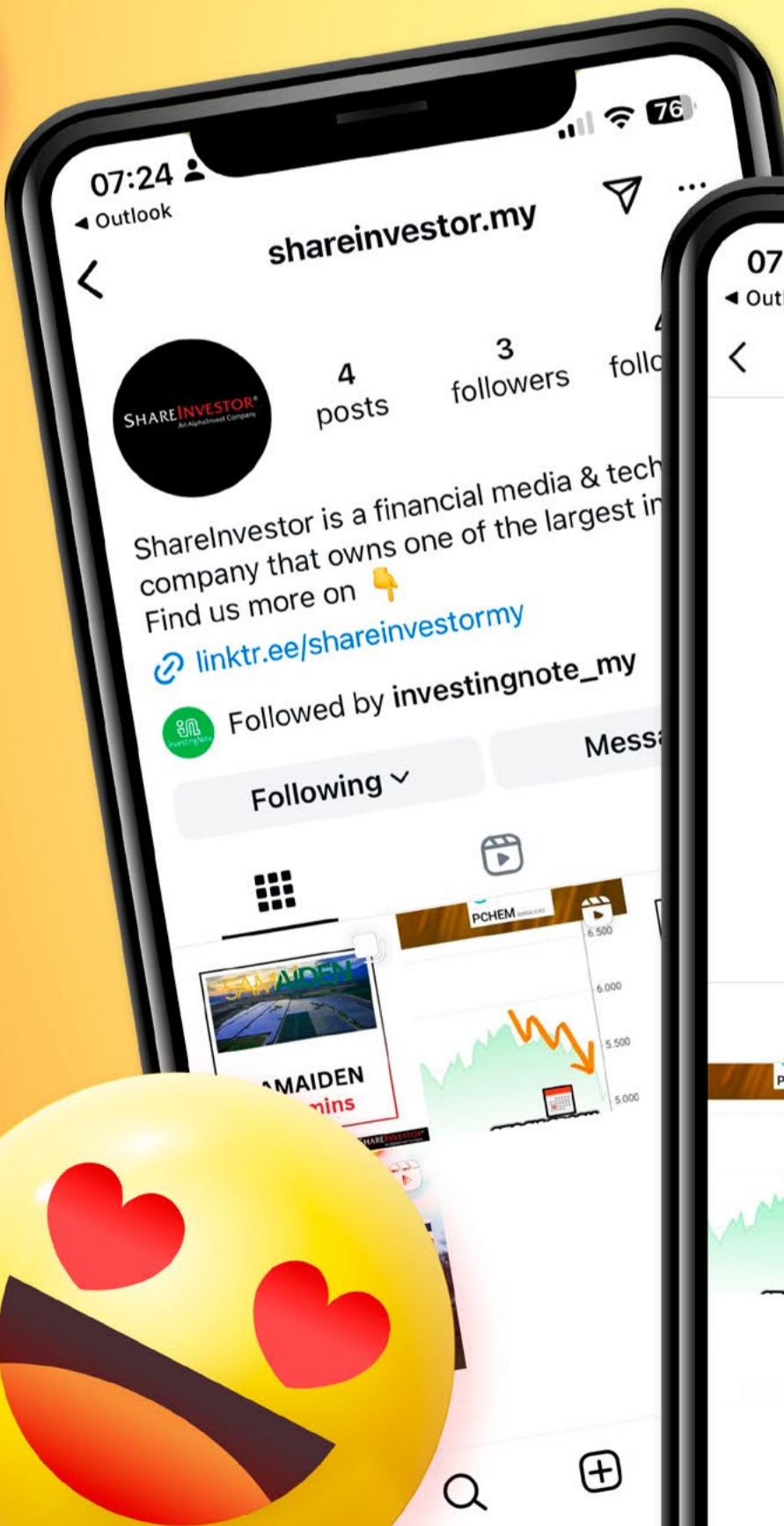
Disclaimer: The information on this page is provided as a service to readers. It does not constitute financial advice and/or any investment recommendations. Past performance is not indicative of future results. We assume no liability for damages resulting from or arising out of the use of such information. It would be best if you did your own research to make your personal investment decisions wisely or consult a licenced investment advisor.

SHAREINVESTOR[®]
An AlphaInvest Company

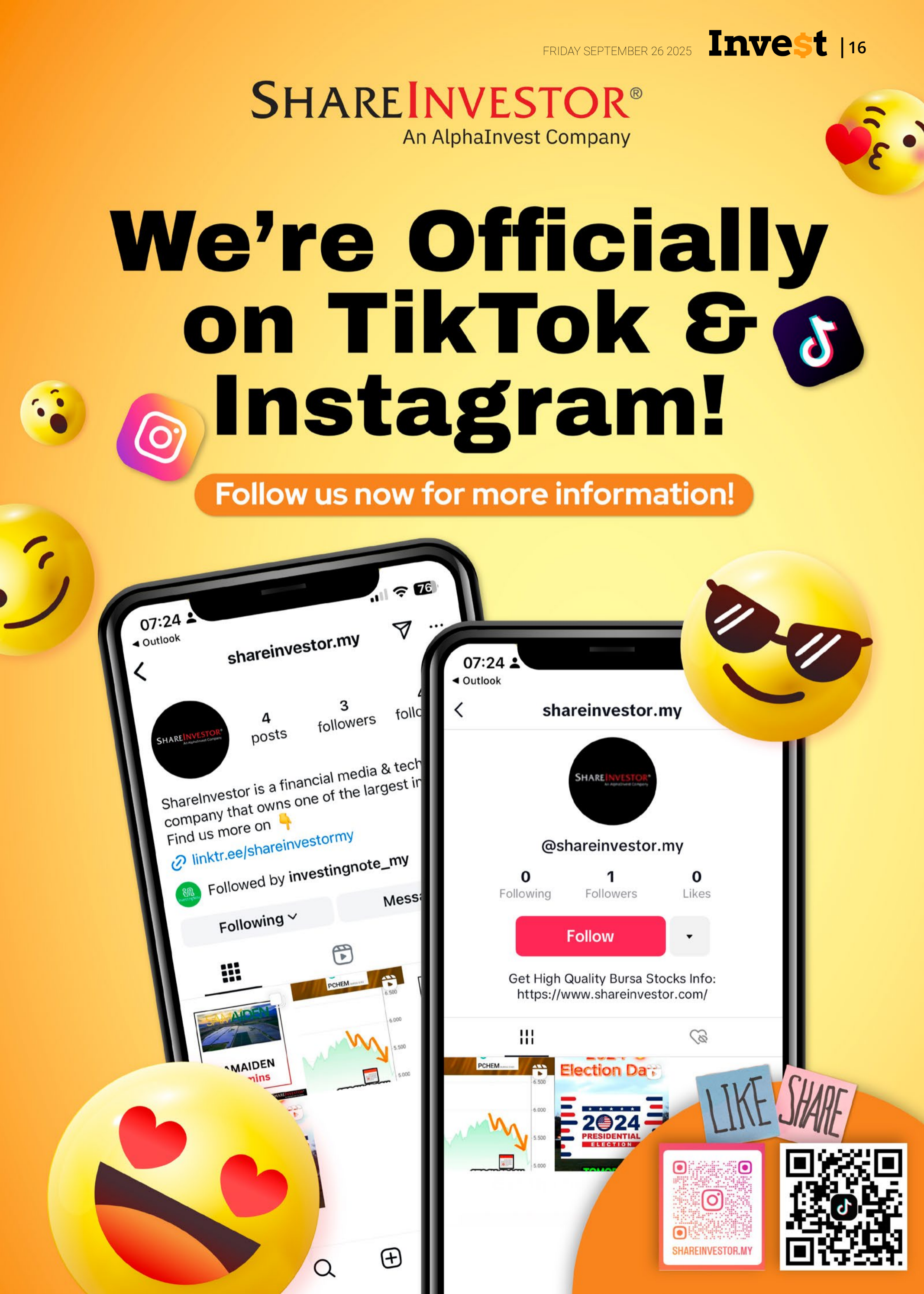
We're Officially on TikTok & Instagram!



Follow us now for more information!



LIKE SHARE



Week: 19 Sep 2025 – 25 Sep 2025

More Brokers' Call 

AMINVESTMENT BANK <small>... See More</small>	Call	Target Price	Release Date
Binastra Corporation Berhad (7195)	BUY	RM2.70	19 Sep 25
Solarvest Holdings Berhad (0215)	HOLD	RM2.40	23 Sep 25

APEX SECURITIES <small>... See More</small>	Call	Target Price	Release Date
AWC Berhad (7579)	BUY	RM0.78	23 Sep 25
CBH Engineering Holding Berhad (0339)	BUY	RM0.50	23 Sep 25

Hong Leong Investment Bank <small>... See More</small>	Call	Target Price	Release Date
Press Metal Aluminium Holdings Berhad (8869)	BUY	RM6.60	24 Sep 25
Southern Cable Group Berhad (0225)	BUY	RM2.65	24 Sep 25
UMedic Group Berhad (0256)	HOLD	RM0.40	25 Sep 25

KENANGA <small>... See More</small>	Call	Target Price	Release Date
Solarvest Holdings Berhad (0215)	OUTPERFORM	RM3.25	23 Sep 25
Farm Fresh Berhad (5306)	OUTPERFORM	RM2.36	24 Sep 25
Wasco Berhad (5142)	OUTPERFORM	RM1.17	25 Sep 25

MALACCA SECURITIES <small>... See More</small>	Call	Target Price	Release Date
Cheeding Holdings Berhad (0372)	NOT RATED	RM0.72	23 Sep 25
AWC Berhad (7579)	BUY	RM0.81	23 Sep 25

MIDF <small>... See More</small>	Call	Target Price	Release Date
Pharmaniaga Berhad (7081)	BUY	RM0.32	23 Sep 25
MISC Berhad (3816)	BUY	RM8.13	25 Sep 25

PUBLIC INVESTMENT BANK <small>... See More</small>	Call	Target Price	Release Date
Inari Amertron Berhad (0166)	OUTPERFORM	RM2.37	22 Sep 25
Cheeding Holdings Berhad (0372)	BUY	RM0.80	23 Sep 25

UOB KAY HIAN <small>... See More</small>	Call	Target Price	Release Date
Binastra Corporation Berhad (7195)	BUY	RM2.61	23 Sep 25
ITMAX System Berhad (5309)	BUY	RM5.15	24 Sep 25

DEFINITION: Top 9 stocks with Technical Analysis plus Pattern Matching by 60 pre-defined indicators by the system showing a higher probability of bullish sentiment on the share price.



ShareInvestor WebPro > Screener > Predefined TA Screens > select market BURSA > Most Long Signals > click Scan Results or mouse over each company

MALTON BHD (6181.MY)

MALTON

Price updated at 25 Sep 2025 16:50

Last: 0.320	Change: -0.010	Volume: 1,309
	Change (%): -3.03	Range: 0.310 - 0.330

TA Scanner Results based on historical data up to 25 Sep 2025

Condition	Signal	Explanation
Bollinger Band: Bullish Short Term Volatility Breakout and Trending	Long	"1. Close price above upper bollinger band(33,1). 2. Volume above average volume(10). 3. Average volume(10) is above 300,000."
Bollinger Band: High Above Upper Bollinger Band	Neutral	"1. High above upper bollinger band(14,2). 2. Average volume(5) is above 100,000."
DM: Bullish Directional Movement	Long	-DI(14) crossed below +DI(14)
Donchian Channels: High Above Upper Donchian Channels	Long	High crossed above the upper Donchian Channel(14,4)
MA: Short Term Bullish Moving Average Crossover	Long	MA(10) crossed above MA(15) within the last 1 day.
RSI: Short Term RSI 50 Bullish Crossover	Long	"1. RSI(20) crossed above 50 within the last 1 day and RSI(20) 1 day ago below 50 for the last 5 days. 2. Volume above average volume(125). 3. Average volume(5) is above 100,000."

WTK HOLDINGS BHD (4243.MY)

WTK

Price updated at 25 Sep 2025 16:56

Last: 0.595	Change: +0.010	Volume: 44,545
	Change (%): +1.71	Range: 0.585 - 0.605

TA Scanner Results based on historical data up to 25 Sep 2025

Condition	Signal	Explanation
Candlestick: Bullish Engulfing	Long	Bullish: Engulfing
MA: Long Term Bullish Moving Average Crossover	Long	MA(50) crossed above MA(200) within the last 1 day.
MACD: Overbought	Short	"1. MACD Histogram(12,26,9) reached a new 6 month high. 2. MACD Histogram(12,26,9) has been above 0 for the last 3 weeks."
Price: New 52 Week High	Long	"1. Stock reach a new 52 week high. 2. Average volume(30) is above 50000."
Volume: 10 Days large value Buy Up trade	Long	"1. 150K value Buy Up greater than Sell Down by 20% for 10 days. 2. 50K-100K value Buy Up greater than Sell Down by 20% for 10 days. 3. Average volume(10) is above 100000"
Volume: Consecutive Days Of Increasing Average Volume	Long	"1. Average Volume(20) has been increasing over the last 2 weeks. 2. Average volume(20) is above 100000"
Williams %R: Bearish Williams %R	Short	"1. Williams %R(26) between 0 and -20. 2. Average volume(5) is above 100,000."

AXTERIA GROUP BERHAD (7120.MY)

AXTERIA

Price updated at 25 Sep 2025 16:57

Last: 0.105	Change: +0.005	Volume: 5,593
	Change (%): +5.00	Range: 0.095 - 0.105

TA Scanner Results based on historical data up to 25 Sep 2025

Condition	Signal	Explanation
Bollinger Band: Bullish Long Term Volatility Breakout and Trending	Long	"1. Close price above upper bollinger band(33,1). 2. Volume above average volume(50). 3. Average volume(50) is above 300,000."
Bollinger Band: Bullish Short Term Volatility Breakout and Trending	Long	"1. Close price above upper bollinger band(33,1). 2. Volume above average volume(10). 3. Average volume(10) is above 300,000."
Bollinger Band: High Above Upper Bollinger Band	Neutral	"1. High above upper bollinger band(14,2). 2. Average volume(5) is above 100,000."
Donchian Channels: High Above Upper Donchian Channels	Long	High crossed above the upper Donchian Channel(14,4)
MA: Bullish Price Crossover	Long	"1. Close price crossed above MA(40) within the last 1 day. 2. Previous day close price is below the MA(10) for the last 5 days"
MA: Short Term Bullish Moving Average Crossover	Long	MA(10) crossed above MA(15) within the last 1 day.
MACD: Bullish MACD Crossover	Long	"1. MACD(12,26) diff line crossed above the MACD(12,26) signal line. 2. MACD Histogram(12,26) is above 0."
Parabolic SAR: Bearish Parabolic SAR Reversal	Neutral	"1. Parabolic SAR 1 day ago above close price 1 day ago for the last 5 days. 2. Parabolic SAR below close price"
RSI: Short Term RSI 50 Bullish Crossover	Long	"1. RSI(20) crossed above 50 within the last 1 day and RSI(20) 1 day ago below 50 for the last 5 days. 2. Volume above average volume(125). 3. Average volume(5) is above 100,000."
Stochastic: Fast Stochastic Buy Signal	Long	"1. Fast Stochastic(15,5) %K crossed above 20. 2. Fast Stochastic(15,5) %K 1 day ago was below 20 for the last 5 days. 3. Average volume(30) is above 50000"

Disclaimer: The information on this page is provided as a service to readers. It does not constitute financial advice and/or any investment recommendations. Past performance is not indicative of future results. We assume no liability for damages resulting from or arising out of the use of such information. It would be best if you did your own research to make your personal investment decisions wisely or consult a licenced investment advisor.



RADIUM DEVELOPMENT BERHAD (5313.MY)

RADIUM

Price updated at 25 Sep 2025 16:54

Last: 0.495	Change: -0.005	Volume: 8,089
	Change (%): -1.00	Range: 0.495 - 0.500

TA Scanner Results based on historical data up to 25 Sep 2025

Condition	Signal	Explanation
Bollinger Band: Bullish Long Term Volatility Breakout and Trending	Long	"1. Close price above upper bollinger band(33,1). 2. Volume above average volume(50). 3. Average volume(50) is above 300,000."
Bollinger Band: Bullish Short Term Volatility Breakout and Trending	Long	"1. Close price above upper bollinger band(33,1). 2. Volume above average volume(10). 3. Average volume(10) is above 300,000."
Bollinger Band: High Above Upper Bollinger Band	Neutral	"1. High above upper bollinger band(14,2). 2. Average volume(5) is above 100,000."
DM: Bullish Directional Movement	Long	-DI(14) crossed below +DI(14)
Donchian Channels: High Above Upper Donchian Channels	Long	High crossed above the upper Donchian Channel(14,4)
Price: New 52 Week High	Long	"1. Stock reach a new 52 week high. 2. Average volume(30) is above 50000."
RSI: Short Term RSI 50 Bullish Crossover	Long	"1. RSI(20) crossed above 50 within the last 1 day and RSI(20) 1 day ago below 50 for the last 5 days. 2. Volume above average volume(125). 3. Average volume(5) is above 100,000."



ONLY WORLD GROUP HOLDINGS BERHAD (5260.MY)

OWG

Price updated at 25 Sep 2025 16:55

Last: 0.270	Change: +0.040	Volume: 31,387
	Change (%): +17.39	Range: 0.235 - 0.275

TA Scanner Results based on historical data up to 25 Sep 2025

Condition	Signal	Explanation
Bollinger Band: Bullish Short Term Volatility Breakout and Trending	Long	"1. Close price above upper bollinger band(33,1). 2. Volume above average volume(10). 3. Average volume(10) is above 300,000."
Bollinger Band: High Above Upper Bollinger Band	Neutral	"1. High above upper bollinger band(14,2). 2. Average volume(5) is above 100,000."
DM: Bullish Directional Movement	Long	-DI(14) crossed below +DI(14)
Donchian Channels: High Above Upper Donchian Channels	Long	High crossed above the upper Donchian Channel(14,4)
MACD: Bullish MACD Crossover	Long	"1. MACD(12,26) diff line crossed above the MACD(12,26) signal line. 2. MACD Histogram(12,26) is above 0."
Volume: Volume Spike	Long	"1. Volume is more than 500% above average volume(10). 2. Volume above 200000. 3. Close price above 0.10"



SENHENG NEW RETAIL BERHAD (5305.MY)

SENHENG

Price updated at 25 Sep 2025 16:51

Last: 0.175	Change: -	Volume: 21,498
	Change (%): -	Range: 0.170 - 0.180

TA Scanner Results based on historical data up to 25 Sep 2025

Condition	Signal	Explanation
Bollinger Band: High Above Upper Bollinger Band	Neutral	"1. High above upper bollinger band(14,2). 2. Average volume(5) is above 100,000."
DM: Bullish Directional Movement	Long	-DI(14) crossed below +DI(14)
Donchian Channels: High Above Upper Donchian Channels	Long	High crossed above the upper Donchian Channel(14,4)
MA: Bullish Price Crossover	Long	"1. Close price crossed above MA(40) within the last 1 day. 2. Previous day close price is below the MA(10) for the last 5 days"
MACD: Bullish MACD Crossover	Long	"1. MACD(12,26) diff line crossed above the MACD(12,26) signal line. 2. MACD Histogram(12,26) is above 0."
Parabolic SAR: Bearish Parabolic SAR Reversal	Neutral	"1. Parabolic SAR 1 day ago above close price 1 day ago for the last 5 days. 2. Parabolic SAR below close price"
Price: New 52 Week Low	Short	"1. Stock reach a new 52 week low. 2. Average volume(30) is above 50000."
RSI: Short Term RSI 50 Bullish Crossover	Long	"1. RSI(20) crossed above 50 within the last 1 day and RSI(20) 1 day ago below 50 for the last 5 days. 2. Volume above average volume(125). 3. Average volume(5) is above 100,000."
Volume: Volume Spike	Long	"1. Volume is more than 500% above average volume(10). 2. Volume above 200000. 3. Close price above 0.10"



NORTHERN SOLAR HOLDINGS BERHAD (0340.MY)

NORTHERN

Price updated at 25 Sep 2025 16:58

Last: 0.775	Change: +0.025	Volume: 25,388
	Change (%): +3.33	Range: 0.740 - 0.795

TA Scanner Results based on historical data up to 25 Sep 2025

Condition	Signal	Explanation
Bollinger Band: Bullish Long Term Volatility Breakout and Trending	Long	"1. Close price above upper bollinger band(33,1). 2. Volume above average volume(50). 3. Average volume(50) is above 300,000."
Bollinger Band: Bullish Short Term Volatility Breakout and Trending	Long	"1. Close price above upper bollinger band(33,1). 2. Volume above average volume(10). 3. Average volume(10) is above 300,000."
Candlestick: Bullish Engulfing	Long	Bullish: Engulfing
DM: Bullish Directional Movement	Long	-DI(14) crossed below +DI(14)
MACD: Bullish MACD Crossover	Long	"1. MACD(12,26) diff line crossed above the MACD(12,26) signal line. 2. MACD Histogram(12,26) is above 0."
Williams %R: Bearish Williams %R	Short	"1. Williams %R(26) between 0 and -20. 2. Average volume(5) is above 100,000."

Disclaimer: The information on this page is provided as a service to readers. It does not constitute financial advice and/or any investment recommendations. Past performance is not indicative of future results. We assume no liability for damages resulting from or arising out of the use of such information. It would be best if you did your own research to make your personal investment decisions wisely or consult a licenced investment advisor.



REVENUE GROUP BERHAD (0200.MY)

REVENUE

Price updated at 25 Sep 2025 16:50

Last: 0.075	Change: -	Volume: 9,338
	Change (%): -	Range: 0.070 - 0.075

TA Scanner Results based on historical data up to 25 Sep 2025

Condition	Signal	Explanation
Bollinger Band: Bullish Long Term Volatility Breakout and Trending	Long	"1. Close price above upper bollinger band(33,1). 2. Volume above average volume(50). 3. Average volume(50) is above 300,000."
Bollinger Band: Bullish Short Term Volatility Breakout and Trending	Long	"1. Close price above upper bollinger band(33,1). 2. Volume above average volume(10). 3. Average volume(10) is above 300,000."
Bollinger Band: High Above Upper Bollinger Band	Neutral	"1. High above upper bollinger band(14,2). 2. Average volume(5) is above 100,000."
Donchian Channels: High Above Upper Donchian Channels	Long	High crossed above the upper Donchian Channel(14,4)
MA: Medium Term Bearish Moving Average Crossover	Short	MA(25) crossed below MA(50) within the last 1 day.
MA: Short Term Bullish Moving Average Crossover	Long	MA(10) crossed above MA(15) within the last 1 day.
Parabolic SAR: Bearish Parabolic SAR Reversal	Neutral	"1. Parabolic SAR 1 day ago above close price 1 day ago for the last 5 days. 2. Parabolic SAR below close price"

Disclaimer: The information on this page is provided as a service to readers. It does not constitute financial advice and/or any investment recommendations. Past performance is not indicative of future results. We assume no liability for damages resulting from or arising out of the use of such information. It would be best if you did your own research to make your personal investment decisions wisely or consult a licenced investment advisor.



IGB REAL ESTATE INV TRUST (5227.MY)

IGBREIT

Price updated at 25 Sep 2025 16:59

Last: 2.820	Change: +0.020	Volume: 25,834
	Change (%): +0.71	Range: 25,834

TA Scanner Results based on historical data up to 25 Sep 2025

Condition	Signal	Explanation
Bollinger Band: Bullish Long Term Volatility Breakout and Trending	Long	"1. Close price above upper bollinger band(33,1). 2. Volume above average volume(50). 3. Average volume(50) is above 300,000."
Bollinger Band: Bullish Short Term Volatility Breakout and Trending	Long	"1. Close price above upper bollinger band(33,1). 2. Volume above average volume(10). 3. Average volume(10) is above 300,000."
Bollinger Band: High Above Upper Bollinger Band	Neutral	"1. High above upper bollinger band(14,2). 2. Average volume(5) is above 100,000."
Donchian Channels: High Above Upper Donchian Channels	Long	High crossed above the upper Donchian Channel(14,4)
MACD: Bullish MACD Crossover	Long	"1. MACD(12,26) diff line crossed above the MACD(12,26) signal line. 2. MACD Histogram(12,26) is above 0."
Parabolic SAR: Bearish Parabolic SAR Reversal	Neutral	"1. Parabolic SAR 1 day ago above close price 1 day ago for the last 5 days. 2. Parabolic SAR below close price"
Volume: 5 Days large value Buy Up trade	Long	"1. 150K value Buy Up greater than Sell Down by 20% for 5 days. 2. 50K-100K value Buy Up greater than Sell Down by 20% for 5 days. 3. Average volume(10) is above 1000000"
Williams %R: Bearish Williams %R	Short	"1. Williams %R(26) between 0 and -20. 2. Average volume(5) is above 100,000."

CHECK OUT SHAREINVESTOR

BROKER'S CALL

Weekly Buy/Sell/Hold calls from leading Malaysian Brokerages.

[Go To Broker's Call](#)

BUY **HOLD** **SELL**



Dato' Eu Hong Chew
Former Group CEO i-Berhad
Non-Executive Director

He has been associated with the Sumurwang Group for many years charting the path for its manufacturing arm, firstly under Dreamland Holdings Berhad and the subsequent acquisition of I-Berhad.

Before that, he was with PA Management Consulting for a decade where he was the Director of Studies for the Cranfield PA MBA Programme in Malaysia.

Educated at the Royal Military College, Dato' Eu has an engineering degree from the University of Glasgow, and a MBA from the University of Bradford, UK.

Globetronics

an investment opportunity or a value trap?

SUMMARY

- Despite operating in a growing global semiconductor industry, Globetronics Technology Berhad's revenue declined at a 6.9% CAGR over the past 12 years, highlighting its failure to develop competitive new products consistently.

Disclaimer: This article is written for informational purposes only. It does not constitute a solicitation, offer, advice, counseling or recommendation to buy or sell. As such it is not intended to promote the purchase of shares in any way. As a reminder, any type of asset has a risk factor and needs to be evaluated from multiple perspectives. Therefore, any investment decision and the associated risk remains with the investor. The views expressed here are entirely the writer's own.

- Contribution margins improved post-2019 through automation and efficiency gains, but declining capital efficiency and weakening returns on capital offset these operational improvements.
- Once a stronger performer compared to its peers on profitability and EPS, Globetronics is now the smallest among its peers by revenue. It is also one of the weakest recent EPS performers, despite sustaining EBIT margin and FCF strength.

BACKGROUND

Globetronics (**GTRONIC 7022:MY**) was founded in 1991 to provide integrated circuit burn-in services and was listed on Bursa Malaysia in 1997. Since then, it has expanded into the design, manufacturing, and distribution of semiconductor products across four main categories:

- **Semiconductor Devices** – LEDs and sensor devices.
- **Optoelectronics** – high-performance LEDs for automotive and general lighting.
- **MEMS** – devices for consumer and automotive applications.
- **Integrated Circuits (ICs)** – core components for multiple electronic applications.

These products serve the consumer electronics, automotive, industrial automation, and medical industries.

The semiconductor sector is characterized by rapid technological change, necessitating ongoing product development. Globetronics has consistently recognized this need:

- 2010: Focused on energy-saving LEDs and ICT crystal devices.
- 2013: Targeted smartphones, medical electronics, automotive, tablets, wearables.

- 2016: Transitioned mature platforms to next-generation platforms.
- 2019: Developed third-generation light sensors, bio/environment sensors, 5G modules.
- 2022: Launched new light and gesture sensors for AR/VR, wearables, and LED applications.

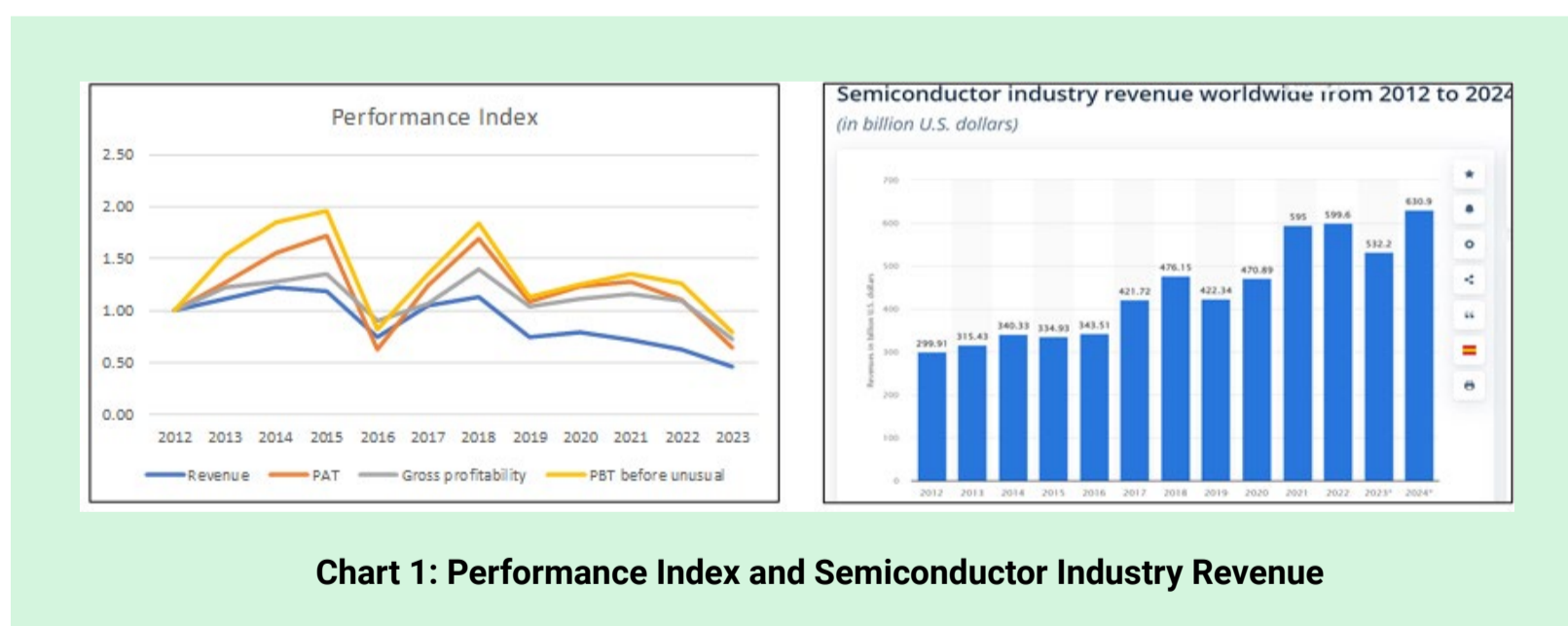
However, despite these initiatives, Globetronics’ revenue decline over the past decade reflects its limited success in developing new products that matched the evolving technology landscape.

OPERATING PERFORMANCE

Globetronics’ performance over the past 12 years has been weak (Chart 1, left).

- Revenue declined at a 6.9% CAGR, with PAT falling at a 4.0% CAGR.
- Gross profitability (gross profit / total assets) fell from an average of 24% in 2012/13 to 19% in 2022/23.

In contrast, the global semiconductor industry revenue expanded (Chart 1, right), implying a loss of market share for Globetronics.



The Group faced three revenue dips – 2016, 2019, and 2023 – broadly aligned with global semiconductor downcycles. Global industry revenue rebounded after each dip and continued growing. Globetronics also recovered in the following year but remained on

*Please refer to the disclaimer on first page and last page.

a downward trend, reflecting its inability to launch new products aligned with customer needs.

The key challenge in valuing Globetronics, then, is figuring out whether it has found a way to address the decade-long poor product development trend. To get a picture of this, we looked at 3 performance metrics – return, contribution, and efficiency.

RETURN

Despite declining profits, the return picture did not look too bad (Chart 2, left). Except for the 2016/17 dip, 2023 ROIC and CFROIC exceeded 2012 levels.

However, the 2023 ROE was lower than in 2012, mainly due to taxation. The Group’s sensor subsidiary lost its pioneer tax status in 2023, raising the effective tax rate to 22.1% vs. 5.3% (2019–2022 average).

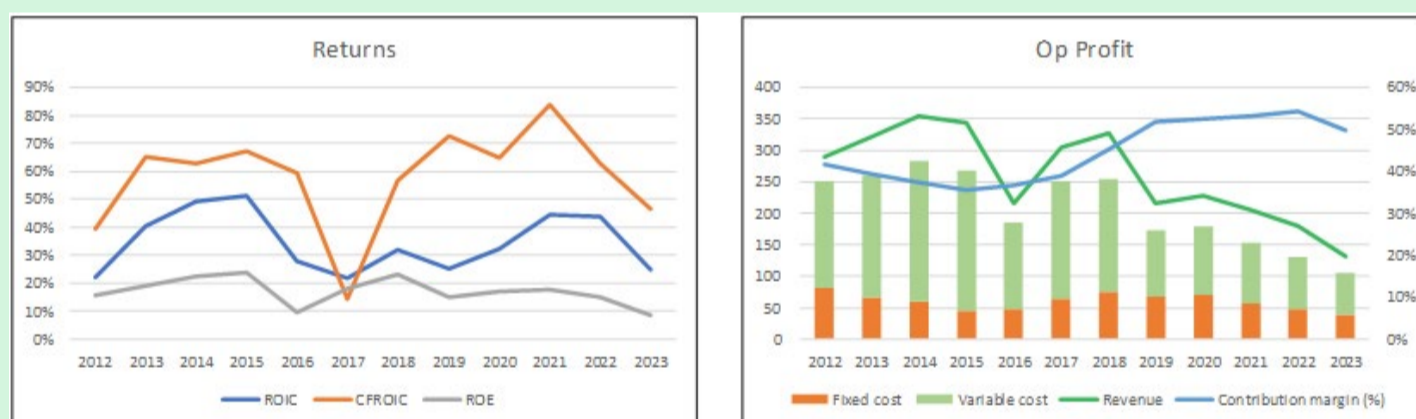


Chart 2: Returns and Operating Profit

Note to Op Profit Profile: I broke down the operating profits into fixed costs and variable costs.

- Fixed cost = SGA, Depreciation & Amortization and Others.
- Variable cost = Cost of Sales – Depreciation & Amortization.
- Contribution = Revenue – Variable Cost.
- Contribution margin = Contribution/Revenue.

CONTRIBUTION

Contribution margin trends provide another positive signal (Chart 2, right). Post-2019 margins were higher than pre-2019, supported by:

- **Industry 4.0 plan (2019)** – automation, live data integration, and process efficiency.

- **Operational review (2019)** – revised equipment usage, reducing depreciation (2022–2024).
- **Automation investments (2020)** – targeted “lights off” factories for key product lines.

These initiatives helped lift gross profit margin from 26% (2012/13 avg.) to 40% (2022/23 avg.), driving stronger contribution margins.

EFFICIENCY

Operational efficiency has improved, but capital efficiency has deteriorated. This divergence is concerning: stronger operations are being offset by weaker capital deployment. Unless addressed, this imbalance could undermine Globetronics’ financial stability and long-term competitiveness.

PEER COMPARISON

As of September 2024, there were 18 Bursa-listed companies in the semiconductor sector. For peer benchmarking, I selected main board companies with 2012 revenue levels comparable to Globetronics (Table 1).

Company	Revenue		
	2023 RM m	2012 to 2023 CAGR %	2012 RM m
D&O	1,017	16%	192
Frontkn	500	10%	181
Gtronic	132	-7%	290
Inari	1,354	20%	181
KESM	235	0%	247
Unisem	1,442	3%	1,092

Table 1: Peers

In 2012, only Unisem had a larger revenue than Globetronics. By 2023, Globetronics had become the smallest among this peer set. Over the past 12 years, Globetronics was the only company with declining revenue.

To assess relative performance, I reviewed four key metrics: return on capital, EBIT margin, Free Cash Flow (FCF) margin, and EPS. The overall picture was that Globetronics started the period with above-average profitability and capital efficiency, but has since lost ground.

- **Strengths:** Sustained EBIT margin and FCF generation point to underlying operational discipline.
- **Weaknesses:** Declining return on capital and weak recent EPS performance underscore the impact of its shrinking revenue base.

The peer comparison reinforces the conclusion that product and revenue growth challenges remain the core issue for Globetronics.

FINANCIAL POSITION

I would rate Globetronics as financially sound.

- As of Dec 2024, it had RM149 million in cash. This is equal to 45% of its total assets. It did not have any borrowings.
- From 2012 to 2023, it generated positive cash flow from operations every year. During this period, it generated RM918 million cash flow from operations compared to the total PAT of RM597 million. This is a very good cash flow conversion ratio.
- From 2012 to 2023, it had a negative Reinvestment. I defined Reinvestment = CAPEX + Acquisition – Depreciation & Amortization + increase in Net Working Capital. The negative value implies that the amount spent on CAPEX and/or the increase in Net Working Capital was smaller than the Depreciation & Amortization. This is a good position as it means that the company did not have to allocate funds to support its growth.
- It had a good capital allocation plan. Refer to Table 2. The cash flow from operations was sufficient to fund its CAPEX, and the excess was returned to shareholders as dividends.

Item	Sources RM m	Uses RM m
Cash flow from Ops	918	
New shares	41	
Net Debt		4
Acuisition		0
CAPEX		312
Dividends		592
Buybacks		0
Misc		51
Total	959	959

Table 2: Sources and Uses of Funds 2012 to 2023

VALUATION

Globetronics must revive its product development pipeline to drive revenue growth. To capture the valuation impact, I considered two scenarios:

Scenario 1 – Conservative Case

- Revenue held at 2023 levels, growing at 4% CAGR.
- Contribution margin and capital efficiency set at 2019–2023 averages.
- Reflects a “status quo” outcome with limited product success.

Scenario 2 – Turnaround Case

- Revenue reset to 2019 to 2023 average, then growing at 4% CAGR.
- Contribution margin and capital efficiency assumed to revert to 2012 to 2023 averages, reflecting scale trade-offs.
- Represents a successful product development turnaround.

Assumptions for both Scenarios:

- Tax rate at 24% nominal, following expiry of pioneer status.
- Cash of RM0.22 per share included in intrinsic value.

Table 3 summarizes the intrinsic values versus the market price of RM0.61 per share (Sep 2024). Refer to the original article for the valuation details.

- **Scenario 1:** No margin of safety; valuation close to current price.
- **Scenario 2:** Intrinsic value exceeds market, offering a margin of safety.

Only the turnaround scenario provides upside. The conservative case highlights how limited product innovation leaves little value cushion.

Scenarios	Value RM/share	Margin of safety %	Revenue RM m	Contribution margin %	Revenue/TCE %	Notes
Base	0.58	NIL	132	52%	165%	a
Turnaround	0.88	43%	192	45%	192%	b
Market price 20 Sep 2024	0.61					

Notes

- a) 2023 revenue. Others are average from 2019 to 2023.
 b) 2019 to 2023 average revenue. Others are average from 2012 to 2023.

CONCLUSION

Globetronics remains a financially sound company with a strong balance sheet, consistent cash generation, and disciplined capital allocation. These strengths, however, cannot mask its central challenge. There was a persistent inability to develop new products that keep pace with customer and industry demands. Over the past decade, this weakness has translated into revenue contraction, eroding its early lead in returns and earnings relative to peers.

The valuation framework underscores the issue. In a conservative case where performance remains stagnant, the current share price already discounts intrinsic value, leaving little margin of safety. Only under a turnaround scenario – one that assumes successful product innovation and renewed revenue growth – does the stock offer upside potential.

For investors, the decision rests on conviction about Globetronics' ability to restart its product cycle. Without such a turnaround, the company risks remaining a structurally declining player in a growing industry. With it, however, the balance sheet strength and operational discipline provide a foundation for recovery.

I am a long-term value investor who has held onto stocks for more than 5 years. My analysis and valuation are from such a perspective. I consider quarterly results "noisy" and focus on long-term trends.

This article was derived from a detailed analysis, emphasizing the intersection of business performance and valuation metrics, which was first published on i4value as ["Is Globetronics a value trap?"](#) Refer to the article for further insights on its investment risk vs business performance.

Disclaimer: This article is written for informational purposes only. It does not constitute a solicitation, offer, advice, counseling or recommendation to buy or sell. As such it is not intended to promote the purchase of shares in any way. As a reminder, any type of asset has a risk factor and needs to be evaluated from multiple perspectives. Therefore, any investment decision and the associated risk remains with the investor. The views expressed here are entirely the writer's own.

UNLOCK THE SECRET OF WEALTH

DO YOU REALLY WANT TO MASTER VALUE INVESTING



SEE HOW TO GET HIGHER RETURNS WITH LOWER RISK



Treat stronger board governance as competitive advantage - Bursa CEO

According to Bursa Malaysia CEO Datuk Fad'l Mohamed, stronger board governance is crucial as Malaysia pushes to raise board diversity, enhance sustainability oversight and positions itself among the world's top 25 nations in Transparency International's Corruption Perceptions Index (CPI) by 2033.

He said that an effective board brings independence of mind, diversity of perspectives and strategic oversight that elevates a company's ability to compete. Boards need to strengthen the narratives that link risk, strategy and capital allocation. Speaking at the launch of the Malaysian Institute of Chartered Secretaries and Administrators' (Maicsa) annual conference, he said investors reward coherence they can model.

He called on the ecosystem partners to continue collaborating with Bursa Malaysia to ensure governance frameworks are practical and scalable across companies of all sizes. He welcomed Maicsa's continuous input to ensure guidance documents and toolkits stay

practical and suited for boardrooms of every size. Meanwhile Bursa Malaysia will continue working with Maicsa and other stakeholders to build a culture of trust, transparency and accountability in the market.

He noted that governance professionals will play a critical role in helping organisations meet global standards as Malaysia aspires to rank among the top 25 nations in Transparency International's CPI by 2033. He also highlighted the progress in the Securities Commission Malaysia's Corporate Governance Monitor 2024, which showed that over 96% of PLCs have adopted sustainability oversight at board and management levels.

He said that women now hold 27% of PLC board positions, up from 12% in 2016, with representation among the top 100 PLCs climbing to 32.2%. Moreover, independent directors account for just over half of all board seats, while 63% of companies ensure their chairmen are not members of audit, nomination or remuneration committees. And adoption levels were also high, with 30 of the 48 best practices under the Malaysian Code on Corporate Governance recording compliance rates above 90%.

He said that to support these improvements, Bursa Malaysia has invested to provide FTSE ESG ratings for all Main and ACE Market PLCs, giving investors a credible benchmark. Moreover, it has also aligned listing requirements with the National Sustainability Reporting Framework and enhanced its Centralised Sustainability Intelligence platform with IFRS Scope 1 and Scope 2 reporting modules, available at no cost to PLCs.

He added that Bursa has partnered with industry players to scale decarbonisation measurement and introduced capacity-building initiatives such as the Chairperson's Circle and the Mandatory Accreditation Programme to equip directors with governance and sustainability skills.

He hoped that through regulatory guidance, professional excellence and industry collaboration, Malaysia can build institutions that are ethical, resilient and globally competitive.

Foreign investors extended net buying on Bursa with RM492.1m inflow last week — MBSB IB

According to MBSB Investment Bank Bhd (MBSB IB), foreign investors continued to be net buyers on Bursa Malaysia last week, marking the second consecutive week of net buying with a net inflow of RM492.1 million. MBSB IB also noted that last week was a short trading week, as the market was closed on Monday and Tuesday in conjunction with Malaysia Day.

Foreign investors were net buyers on two out of the three trading days, with last Wednesday (Sept 17) seeing the highest net buying activity at RM348.69 million, followed by last Friday (RM205.30

million), while the only outflow occurred last Thursday (RM61.9 million).

In its weekly fund flow report for the week ended Sept 19, 2025, it noted that the top three sectors that recorded net foreign inflows last week were transportation and logistics (RM131.8 million), industrial products and services (RM126.9 million) and technology (RM117.1 million). The only two sectors that recorded net foreign outflows were financial services (RM154.7 million), and healthcare (RM38.1 million).

MBSB IB added that local institutions and local retailers remained as net sellers, with outflows totalling RM337.6 million and RM159.5 million, respectively. The average daily trading volume (ADTV) increased across all investor groups for the three days' trading week. Foreign investors posted a sharp increase of 88.3%, while retail investors and local institutions recorded expansions of 21.2% and 19.0%, respectively.



CHECK OUT SHAREINVESTOR

BROKER'S CALL

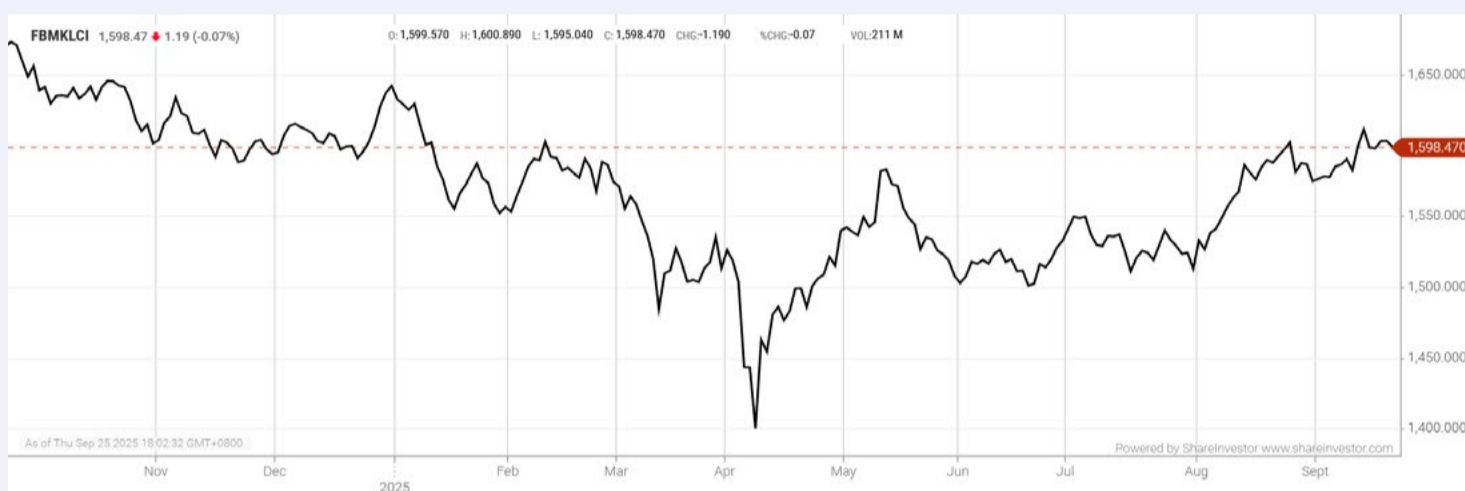
Weekly Buy/Sell/Hold calls
from leading Malaysian Brokerages.

[Go To Broker's Call](#)

BUY **HOLD** **SELL**

EYE ON THE MARKETS

On Thursday (Sept 25), the Ringgit closed at 4.2135 against the USD and 3.2720 to the Sing Dollar. On Monday (22Sept), the FBM KLCI opened at 1599.78. As at Thursday (25Sept) 5:00pm, the FBM KLCI closed down 1.31 points at 1598.47. Over in US, the overnight Dow Jones Industrial Average closed down 173.96 points (-0.38%) to 45,947.32 whilst the NASDAQ shed 113.16 points (-0.50%) to 22,384.70.



KLCI 1 Year Chart

Invest 216
 A Weekly e-Publication by SHAREINVESTOR
 FRIDAY 19 JULY 2024
 Ooi Lay Pheng
 Executive Director / CEO, L&P Global Berhad
 How L&P Global Stays Ahead
 Advanced Drainage Systems
 MARKET SENTIMENTS
 FBM KLCI has upside potential in 2H2024 - StarChart
 Malaysia's trade performance maintains positive trend in June 2024 - DOSM

Learn how to identify Hot Stocks using Technical Analysis (TA) and Fundamental Analysis (FA)

SIGN UP FOR Invest NOW IT'S FREE!!!

[Click here](#)

Scan me



Via email, every Friday.

Get market moving news and analyses. Regular columns include **Behind The Action** and **From The Observer**

- Leaderboard
- Shariah Hot Stocks
- Shariah Momentum Up Stocks
- Non Shariah Hot Stocks
- Up Trending Stocks
- Growth Stocks
- Dividend Stocks
- Long Companies
- Insider Activity
- Investor Relations
- Regional Markets

MALAYSIA'S DIVERSIFIED ECONOMIC STRUCTURE
 SHARIAH HOT STOCKS
 LONG COMPANIES
 INSIDER ACTIVITY
 INVESTOR RELATIONS
 KPJ Healthcare Berhad

Over 5 Trading Days (as at Yesterday)



ShareInvestor WebPro (www.shareinvestor.com/my)

1. Price > Stock Prices
2. Select Market: NASDAQ / NYSE / IDX / SET / HKEX / SGX (One bourse at a time)
3. select Stocks Tab
4. select Ranking Top Gainers or Top Losers (Over 5 Trading Days)
5. Mouse over Column Layout > select Edit Customs > select Name > select Last Done Price > select 5 Days Change > select 52 Weeks High > select 52 Weeks Low > Mouse Over Column Layout > select Custom

NASDAQ (USD)

Top Gainers

Name	Last Done	Change Over 5 Days	52 Weeks High	52 Weeks Low
Booking Holdings	5,525.600	+28.100	5,839.410	4,060.980
KLA	1,068.670	+78.800	1,076.790	551.330
Mercadolibre	2,510.970	+64.650	2,645.220	1,646.000
Synopsys	468.090	+42.690	651.730	365.740
United Therapeutics	438.750	+35.070	438.260	266.980

Top Losers

Name	Last Done	Change Over 5 Days	52 Weeks High	52 Weeks Low
Axon Enterprise	698.020	-68.450	885.915	388.370
First Citizens BancShares A	1,835.090	-47.740	2,412.930	1,473.620
Astera Labs	205.270	-46.610	262.900	47.125
CrowdStrike Holdings A	476.330	30.830	517.980	272.670
Netflix	1,203.950	-24.550	1,341.150	677.880

NYSE (USD)

Top Gainers

Name	Last Done	Change Over 5 Days	52 Weeks High	52 Weeks Low
Berkshire Hathaway A	744,600.000	+8,150.000	812,855.000	657,497.500
McKesson	760.580	+68.340	748.745	464.415
AutoZone	4,176.890	+44.060	4,388.110	2,980.100
Oklo A	131.170	+35.880	143.750	7.900
White Mountains Insurance Group	1,756.990	+34.010	2,023.000	1,678.870

Top Losers

Name	Last Done	Change Over 5 Days	52 Weeks High	52 Weeks Low
NVR	8,036.630	-100.680	9,964.770	6,562.850
S&P Global	490.740	-53.360	579.050	427.140
WW Grainger	952.930	-45.000	1,227.659	893.990
Mettler-Toledo	1,242.280	-31.680	1,521.010	946.690
Reddit A	235.690	-30.780	282.950	63.600

IDX (Rupiah)

Top Gainers

Name	Last Done	Change Over 5 Days	52 Weeks High	52 Weeks Low
MULTIPOLAR TECHNOLOGY TBK	157,225.000	+26,200.000	157,225.000	4,500.000
PRADIKSI GUNATAMA TBK	10,675.000	+5,075.000	10,675.000	378.000
DIAN SWASTATIKA SENTOSA TBK	115,000.000	+5,000.000	115,500.000	30,300.000
JHONLIN AGRO RAYA TBK	4,250.000	+2,460.000	4,250.000	256.000
GUDANG GARAM TBK	13,700.000	+2,400.000	16,675.000	8,300.000

Top Losers

Name	Last Done	Change Over 5 Days	52 Weeks High	52 Weeks Low
DCI INDONESIA TBK	299,800.000	-4,950.000	398,000.000	40,000.000
MSIG LIFE INSURANCE INDONESIA TBK	11,800.000	-2,925.000	17,100.000	4,990.000
GOLDEN FLOWER TBK	14,350.000	-1,575.000	17,500.000	540.000
AMMAN MINERAL INTERNASIONAL TBK	7,050.000	-1,000.000	10,225.000	4,500.000
AGRO BAHARI NUSANTARA TBK	2,070.000	-690.000	3,390.000	37.000

SET (Thai Baht)

Top Gainers

Name	Last Done	Change Over 5 Days	52 Weeks High	52 Weeks Low
OHTL	350.000	+26.000	397.000	248.000
RAM	21.500	+3.700	25.750	16.600
PTL	13.500	+3.550	14.500	9.200
TFMAMA	198.500	+3.500	211.000	180.000
SHANG	53.750	+3.250	61.500	39.750

Top Losers

Name	Last Done	Change Over 5 Days	52 Weeks High	52 Weeks Low
BH	173.000	-8.500	280.000	130.000
SCC	223.000	-7.000	255.000	124.500
ALUCON	182.500	-5.500	188.000	168.000
INSURE	71.500	-5.500	103.500	66.250
ADVANC	292.000	-5.000	309.000	258.000

HKEX (HKD)

Top Gainers

Name	Last Done	Change Over 5 Days	52 Weeks High	52 Weeks Low
BUTONG GROUP (6090)	99.000	+96.800	108.100	88.100
ASMPY (522)	83.900	+12.650	105.600	42.850
BABA-W (9988)	174.000	+12.400	174.900	77.350
BABA-WR (89988)	160.100	+12.100	160.100	73.150
GUOFUHEE (2582)	65.750	+10.250	156.700	49.480

Top Losers

Name	Last Done	Change Over 5 Days	52 Weeks High	52 Weeks Low
DUALITYBIO-B (9606)	335.000	-117.600	563.500	165.500
TRANSTHERA-B (2617)	162.500	-46.700	679.500	20.200
UNISOUND (9678)	507.500	-21.000	879.000	198.000
HKEX (388)	438.200	-19.800	466.000	260.800
LAOPU GOLD (6181)	715.000	-18.000	1,108.000	122.100

SGX (SGD)

Top Gainers

Name	Last Done	Change Over 5 Days	52 Weeks High	52 Weeks Low
JMH USD	62.480	+2.790	63.890	36.010
Prudential USD	11.990	+1.790	12.000	8.090
Venture	14.180	+0.390	14.290	10.133
AEM SGD	1.870	+0.320	1.960	1.000
ST Engineering	8.540	+0.240	8.970	4.440

Top Losers

Name	Last Done	Change Over 5 Days	52 Weeks High	52 Weeks Low
DBS	50.340	-1.130	53.240	36.074
UOB	34.410	-0.410	38.658	28.599
OCBC Bank	16.360	-0.300	17.757	14.211
UOI	7.550	-0.270	8.090	6.927
HongkongLand USD	6.520	-0.240	7.450	3.590



CAN YOU BE DENIED ENTRY TO YOUR OWN AGM?

Imagine this. You are a minority shareholder who has held onto your shares for years, faithfully attending annual general meetings (AGMs) whenever you can. This is your one chance a year to look the board in the eye, to hear directly from management, to raise questions about issues that concern you.

On the morning of the AGM, you battle traffic, circle the building for parking, and finally make it up to the registration counter, only to find the counters closed. The AGM has just started. The registrar politely says, "Sorry, you cannot register anymore."

You look at the meeting hall. The directors are seated at the front. Shareholders are scattered in their seats. The meeting is in progress, but voting has not even begun. You protest, "But this is my right. I am a shareholder. How can you stop me from entering?"

This scenario is not hypothetical. It actually unfolded at the AGM of Kossan Rubber Industries Berhad (Kossan Rubber) earlier this

year. And it poses a serious governance question: can a company really stop a shareholder from registering once the AGM has started?

WHAT HAPPENED AT KOSSAN RUBBER

On 29 May 2025, Kossan Rubber held its 45th Annual General Meeting. As usual, shareholders were required to register before entering the meeting hall. The registration counters, managed by the share registrar, were open before the meeting began. A shareholder arrived late, after the Chairman had already called the meeting to order. At that point, the share registrar refused to register him as the official registration period had concluded.

But this shareholder would not take no for an answer. He walked into the hall, stood up, and addressed the Chairman directly. His argument was compelling and straightforward. The AGM is a fundamental right of every shareholder. Since the voting had not yet commenced, why should he be denied participation?

Faced with this challenge, the Chairman made a decision. He instructed the registration counter to be reopened, allowing the shareholder to register and exercise his rights.

On the surface, this may seem like a minor incident, quickly resolved. But scratch deeper, and it raises important issues about shareholder rights, procedural rigidity, and the very spirit of corporate governance.

WHAT THE LAW SAYS AND DOESN'T SAY

The Companies Act 2016 provides shareholders with the right to attend, participate, and vote at general meetings. But here is the catch: no provision in the Companies Act expressly requires registration to close the moment a meeting begins, or that late-arriving shareholders must be refused entry. These cut-off practices are administrative measures devised by share

registrars and companies to maintain order and efficiency. When a shareholder is turned away solely because the counter has closed, it is not the law that bars them; it is the procedure.

And this is where governance meets a grey area. Good governance is not just about strict adherence to procedure. It is about ensuring that processes do not undermine the substance of rights.

Let us not forget: the shareholder in question had a legal entitlement to attend. Denying registration before the poll had even started arguably curtailed his rights under the law.

At the same time, companies do have a legitimate concern. AGMs must be orderly. Registration cannot go on indefinitely. Counters must close at some point, and the poll administrator needs time to reconcile the attendance before voting.

But governance is about balance.

Closing registration after the poll ends makes sense, as no one should be allowed to vote after results are counted. But to close registration the moment the Chairman calls the meeting to order, even before any substantive business is transacted, is unnecessarily rigid.

We have seen in other cases, not just at Kossan but at companies like Sunsuria Berhad and CB Industrial Products Holdings Berhad, that this rigidity can create tension. Shareholders who arrive minutes late are turned away, sometimes in a manner that feels discourteous. In one instance, registration staff shut down their laptops to indicate that no more shareholders would be accommodated.

Does this build confidence, or does it erode trust?

WHAT SHOULD HAVE BEEN DONE

In Kossan's case, the Chairman's decision to reopen registration was the right one. It reflected flexibility, inclusivity, and a practical

appreciation of shareholder rights. But governance should not have to rely on the discretion of one individual. Companies ought to establish clear internal guidelines that balance order with fairness.

Shareholders should be allowed to register up until the point voting begins, and this flexibility should be clearly communicated in the AGM notice to avoid confusion. Registration staff must also be trained not to apply rules mechanically but to exercise judgment or escalate matters promptly to the Chairman. Ultimately, flexibility should be institutionalised so that fair treatment is applied consistently across all AGMs, rather than left to ad hoc decisions.

This matters most for minority shareholders. For large shareholders and insiders, AGMs may feel like routine, but for minorities, they are often the only meaningful platform to voice concerns. Denying entry, even to one shareholder, sends the wrong signal that procedure matters more than participation. Such rigidity risks making a mockery of shareholder rights, especially when minorities already struggle with limited influence.

At MSWG, we do not view this as an isolated case but as part of a broader pattern. Too often, companies cling to rigid interpretations of process and lose sight of the purpose of governance. We commend the Chairman of Kossan Rubber for reopening registration and upholding shareholder rights. But we also urge all companies to ensure their AGM procedures reflect the spirit of the law, inclusivity, fairness, and accountability. Governance is not measured by how tightly rules are enforced, but by how well companies respect their shareholders.

PROCEDURE MAY CLOSE A DOOR, PRINCIPLE MUST KEEP IT OPEN

An AGM is not just a compliance exercise; it is the one forum where shareholders are meant to be seen and heard. The law may be silent on registration cut-off times, but its spirit is clear:

shareholders have the right to attend, and refusing registration before voting starts undermines that right.

The solution is straightforward: allow registration until voting commences, state this clearly in the AGM notice, and train staff to exercise judgment instead of rigidity. Governance should not depend on a Chairman's discretion to "save the day"; it must be built into the system and applied consistently. Companies that embrace inclusivity will strengthen trust, while those that cling to rigid cut-offs risk sending the wrong message.

After all, an AGM is not a private dinner party where latecomers miss the soup course; it is a meeting of owners. To lock the door on shareholders before voting begins is to forget who actually owns the house.

Reproduced with permission from The Observer, a weekly newsletter published by the Minority Shareholders Watch Group (MSWG). Subscribe to The Observer for free at www.mswg.org.my and follow @MSWGMalaysia on social media for the latest updates.



CHECK OUT SHAREINVESTOR

BROKER'S CALL

Weekly Buy/Sell/Hold calls from leading Malaysian Brokerages.

Go To Broker's Call

BUY **HOLD** **SELL**

DEFINITION: Insider Activity shows the trades made by substantial shareholders or directors of the company. Purchases by the directors and company share buyback may indicate the share price is undervalued and brings confidence to the price trend of the share price.



ShareInvestor WebPro > Fundamental > Insider Trades > click Search tab > Select Bursa > click Stock name > scroll up and leave at <Select Counter> Type Date Range for Announcement Date > click Search

Notice Period is 14th September 2025 to 20th September 2025

Effective Change Date	Stock Name	Buyer/ Seller Name [Classification]	Bought / (Sold) ['000]	No. of Shares After Trade ['000]	
			Total	Total	% Held
12 SEP 2025 - 12 SEP 2025	99SMART	EMPLOYEES PROVIDENT FUND BOARD [SSH]	-886	459,237	5.467
11 SEP 2025 - 11 SEP 2025	99SMART	EMPLOYEES PROVIDENT FUND BOARD [SSH]	-335	460,124	5.478
10 SEP 2025 - 10 SEP 2025	99SMART	EMPLOYEES PROVIDENT FUND BOARD [SSH]	300	460,459	5.482
18 SEP 2025 - 18 SEP 2025	AAX	DATUK KAMARUDIN BIN MERANUN [DIR/CEO]	74	169,778	37.975
18 SEP 2025 - 18 SEP 2025	AAX	DATUK KAMARUDIN BIN MERANUN [SSH]	74	169,778	37.975
12 SEP 2025 - 12 SEP 2025	AEON	EMPLOYEES PROVIDENT FUND BOARD [SSH]	528	94,426	6.726
11 SEP 2025 - 11 SEP 2025	AEON	EMPLOYEES PROVIDENT FUND BOARD [SSH]	792	93,899	6.688
10 SEP 2025 - 10 SEP 2025	AEON	EMPLOYEES PROVIDENT FUND BOARD [SSH]	265	93,107	6.632
17 SEP 2025 - 17 SEP 2025	AGX	MR NEO LIP PHENG PETER [DIR/CEO]	200	80,623	18.625
17 SEP 2025 - 17 SEP 2025	AGX	MR NEO LIP PHENG PETER [SSH]	200	80,623	18.625
12 SEP 2025 - 12 SEP 2025	AGX	MR NEO LIP PHENG PETER [DIR/CEO]	200	80,423	18.579
12 SEP 2025 - 12 SEP 2025	AGX	MR NEO LIP PHENG PETER [SSH]	200	80,423	18.579
12 SEP 2025 - 12 SEP 2025	ALLIANZ	EMPLOYEES PROVIDENT FUND BOARD [SSH]	-43	11,684	6.421
11 SEP 2025 - 11 SEP 2025	ALLIANZ	EMPLOYEES PROVIDENT FUND BOARD [SSH]	-60	11,727	6.444
10 SEP 2025 - 10 SEP 2025	ALLIANZ	EMPLOYEES PROVIDENT FUND BOARD [SSH]	-87	11,787	6.478
12 SEP 2025 - 12 SEP 2025	AMBANK	EMPLOYEES PROVIDENT FUND BOARD [SSH]	-31	489,576	14.8
11 SEP 2025 - 11 SEP 2025	AMBANK	EMPLOYEES PROVIDENT FUND BOARD [SSH]	-143	489,607	14.801
10 SEP 2025 - 10 SEP 2025	AMBANK	EMPLOYEES PROVIDENT FUND BOARD [SSH]	250	489,750	14.806
11 SEP 2025 - 11 SEP 2025	AME	EMPLOYEES PROVIDENT FUND BOARD [SSH]	2	38,442	6.02
10 SEP 2025 - 10 SEP 2025	AME	EMPLOYEES PROVIDENT FUND BOARD [SSH]	77	38,440	6.02
19 SEP 2025 - 19 SEP 2025	ASIAPLY	MR LIM TECK SENG [DIR/CEO]	200	963	0.091
17 SEP 2025 - 17 SEP 2025	ASIAPLY	DATO' YEO BOON LEONG [DIR/CEO]	4,877	267,222	25.345
17 SEP 2025 - 17 SEP 2025	ASIAPLY	DATO' YEO BOON LEONG [SSH]	4,877	267,222	25.345
12 SEP 2025 - 12 SEP 2025	ASIAPLY	DATO' YEO BOON LEONG [DIR/CEO]	305	262,345	24.882
17 SEP 2025 - 17 SEP 2025	ASTINO	MADAM LIM MEE HWA [SSH]	91	26,478	5.615
17 SEP 2025 - 17 SEP 2025	ASTINO	MR YEO SENG CHONG [SSH]	91	26,478	5.615
11 SEP 2025 - 17 SEP 2025	AUMAS	DR CHONG MEE FAH @ FREDERICK CHONG [DIR/CEO]	1,455	32,602	1.79
17 SEP 2025 - 17 SEP 2025	AWANTEC	LEMBAGA TABUNG AMANAH WARISAN NEGERI TERENGGANU [SSH]	8	43,452	5.512
11 SEP 2025 - 12 SEP 2025	AWANTEC	LEMBAGA TABUNG AMANAH WARISAN NEGERI TERENGGANU [SSH]	20	43,445	5.511
17 SEP 2025 - 17 SEP 2025	AWC	DATO' AHMAD KABEER BIN MOHAMED NAGOOR [DIR/CEO]	731	113,007	33.545
17 SEP 2025 - 17 SEP 2025	AWC	DATO' AHMAD KABEER BIN MOHAMED NAGOOR [SSH]	731	113,007	33.545
12 SEP 2025 - 12 SEP 2025	AXIATA	EMPLOYEES PROVIDENT FUND BOARD [SSH]	887	1,695,241	18.456
10 SEP 2025 - 10 SEP 2025	AXIATA	EMPLOYEES PROVIDENT FUND BOARD [SSH]	396	1,694,353	18.446
18 SEP 2025 - 18 SEP 2025	AXREIT	LEMBAGA TABUNG HAJI [SSH]	335	117,746	5.827
12 SEP 2025 - 12 SEP 2025	AXREIT	EMPLOYEES PROVIDENT FUND BOARD [SSH]	328	426,207	21.091
17 SEP 2025 - 17 SEP 2025	AXREIT	LEMBAGA TABUNG HAJI [SSH]	19	117,411	5.81
11 SEP 2025 - 11 SEP 2025	AXREIT	EMPLOYEES PROVIDENT FUND BOARD [SSH]	-83	425,879	21.075
12 SEP 2025 - 12 SEP 2025	AXREIT	LEMBAGA TABUNG HAJI [SSH]	100	117,392	5.809
10 SEP 2025 - 10 SEP 2025	AXREIT	EMPLOYEES PROVIDENT FUND BOARD [SSH]	294	425,962	21.079
17 SEP 2025 - 17 SEP 2025	BAUTO	DATO' SRI AMER HAMZAH BIN AHMAD [SSH]	150	184,061	15.989
17 SEP 2025 - 17 SEP 2025	BAUTO	DATO' LEE KOK CHUAN [DIR/CEO]	150	184,207	16.002
17 SEP 2025 - 17 SEP 2025	BAUTO	DATO' LEE KOK CHUAN [SSH]	150	184,207	16.002
17 SEP 2025 - 17 SEP 2025	BAUTO	DYNAMIC MILESTONE SDN BHD [SSH]	150	179,617	15.603
17 SEP 2025 - 17 SEP 2025	BAUTO	TAN SRI DATO' SRI YEOH CHOON SAN [DIR/CEO]	150	183,834	15.969
17 SEP 2025 - 17 SEP 2025	BAUTO	TAN SRI DATO' SRI YEOH CHOON SAN [SSH]	150	183,834	15.969
12 SEP 2025 - 12 SEP 2025	BAUTO	EMPLOYEES PROVIDENT FUND BOARD [SSH]	-80	119,511	10.376
12 SEP 2025 - 12 SEP 2025	BAUTO	DATO' SRI AMER HAMZAH BIN AHMAD [SSH]	750	183,911	15.967
12 SEP 2025 - 12 SEP 2025	BAUTO	DATO' LEE KOK CHUAN [DIR/CEO]	800	184,057	15.979
12 SEP 2025 - 12 SEP 2025	BAUTO	DATO' LEE KOK CHUAN [SSH]	800	184,057	15.979
12 SEP 2025 - 12 SEP 2025	BAUTO	DYNAMIC MILESTONE SDN BHD [SSH]	750	179,467	15.581
12 SEP 2025 - 12 SEP 2025	BAUTO	TAN SRI DATO' SRI YEOH CHOON SAN [DIR/CEO]	750	183,684	15.947
12 SEP 2025 - 12 SEP 2025	BAUTO	TAN SRI DATO' SRI YEOH CHOON SAN [SSH]	750	183,684	15.947
10 SEP 2025 - 10 SEP 2025	BAUTO	EMPLOYEES PROVIDENT FUND BOARD [SSH]	-975	119,591	10.361
11 SEP 2025 - 17 SEP 2025	BMGREEN	DR CHIA SONG KUN [DIR/CEO]	700	368,541	53.58
11 SEP 2025 - 17 SEP 2025	BMGREEN	DR CHIA SONG KUN [SSH]	700	368,541	53.58
18 SEP 2025 - 18 SEP 2025	BORNOIL	DATUK JOSEPH LEE YOK MIN @ AMBROSE [DIR/CEO]	87,000	2,110,762	13.946
18 SEP 2025 - 18 SEP 2025	BORNOIL	DATUK JOSEPH LEE YOK MIN @ AMBROSE [SSH]	87,000	783,747	13.946
18 SEP 2025 - 18 SEP 2025	BORNOIL	MR RIORN LEE KAH VUI [DIR/CEO]	87,000	852,565	5.633
18 SEP 2025 - 18 SEP 2025	BORNOIL	MR RIORN LEE KAH VUI [SSH]	87,000	68,818	5.633
11 SEP 2025 - 11 SEP 2025	BPPLAS	MR LIM CHUN YOW [SSH]	150	147,835	52.521
12 SEP 2025 - 12 SEP 2025	BURSA	EMPLOYEES PROVIDENT FUND BOARD [SSH]	-910	99,134	12.249

Notice Period is 14th September 2025 to 20th September 2025

Effective Change Date	Stock Name	Buyer/ Seller Name [Classification]	Bought / (Sold) ['000]	No. of Shares After Trade ['000]	
			Total	Total	% Held
12 SEP 2025 - 12 SEP 2025	CATCHA	MR PATRICK YKIN GROVE [SSH]	38	187,355	51.973
12 SEP 2025 - 12 SEP 2025	CBIP	DATUK LIM CHAI BENG [DIR/CEO]	-50	187,365	40.255
12 SEP 2025 - 12 SEP 2025	CBIP	DATUK LIM CHAI BENG [SSH]	-50	187,365	40.255
17 SEP 2025 - 17 SEP 2025	CHINWEL	MISS TSAI CHIA LING [DIR/CEO]	75	166,823	58.24
17 SEP 2025 - 17 SEP 2025	CHINWEL	MR TSAI CHENG HSUN [DIR/CEO]	75	165,985	57.95
17 SEP 2025 - 17 SEP 2025	CHINWEL	MR TSAI YUNG CHUAN [DIR/CEO]	75	165,985	57.95
18 SEP 2025 - 18 SEP 2025	CLMT	KUMPULAN WANG PERSARAAN (DIPERBADANKAN) [SSH]	-178	317,725	9.537
12 SEP 2025 - 12 SEP 2025	CLMT	EMPLOYEES PROVIDENT FUND BOARD [SSH]	-950	524,323	15.739
17 SEP 2025 - 17 SEP 2025	CLMT	KUMPULAN WANG PERSARAAN (DIPERBADANKAN) [SSH]	-107	317,903	9.543
11 SEP 2025 - 11 SEP 2025	CLMT	EMPLOYEES PROVIDENT FUND BOARD [SSH]	4,622	525,272	15.768
12 SEP 2025 - 12 SEP 2025	CLMT	KUMPULAN WANG PERSARAAN (DIPERBADANKAN) [SSH]	-78	318,010	9.546
10 SEP 2025 - 10 SEP 2025	CLMT	EMPLOYEES PROVIDENT FUND BOARD [SSH]	-1,000	520,651	15.629
11 SEP 2025 - 12 SEP 2025	CLOUDPT	DATUK WIRA CHOONG WAI HOONG [DIR/CEO]	-8,000	214,253	40.303
11 SEP 2025 - 12 SEP 2025	CLOUDPT	DATUK WIRA CHOONG WAI HOONG [SSH]	-8,000	214,253	40.303
18 SEP 2025 - 18 SEP 2025	COMPUGT	MADAM SEE THOO CHAN [DIR/CEO]	350	957,874	15.832
18 SEP 2025 - 18 SEP 2025	COMPUGT	MADAM SEE THOO CHAN [SSH]	350	957,874	15.832
18 SEP 2025 - 18 SEP 2025	COMPUGT	MR GOH KHENG PEOW [SSH]	350	957,874	15.832
17 SEP 2025 - 17 SEP 2025	COMPUGT	MADAM SEE THOO CHAN [DIR/CEO]	147	957,524	15.826
17 SEP 2025 - 17 SEP 2025	COMPUGT	MADAM SEE THOO CHAN [SSH]	147	957,524	15.826
17 SEP 2025 - 17 SEP 2025	COMPUGT	MR GOH KHENG PEOW [SSH]	147	957,524	15.826
12 SEP 2025 - 12 SEP 2025	COMPUGT	MADAM SEE THOO CHAN [DIR/CEO]	162	957,377	15.824
12 SEP 2025 - 12 SEP 2025	COMPUGT	MADAM SEE THOO CHAN [SSH]	162	957,377	15.824
12 SEP 2025 - 12 SEP 2025	COMPUGT	MR GOH KHENG PEOW [SSH]	162	957,377	15.824
17 SEP 2025 - 17 SEP 2025	CTOS	ABERDEEN GROUP PLC (FORMERLY KNOWN AS ABRDN PLC) [SSH]	108	364,745	15.896
17 SEP 2025 - 17 SEP 2025	CTOS	ABRDN HOLDINGS LIMITED [SSH]	108	364,745	15.896
17 SEP 2025 - 17 SEP 2025	CTOS	ABRDN MALAYSIA SDN BHD [SSH]	108	361,147	15.74
10 SEP 2025 - 10 SEP 2025	D&O	EMPLOYEES PROVIDENT FUND BOARD [SSH]	-733	100,266	8.089
12 SEP 2025 - 12 SEP 2025	DAYANG	EMPLOYEES PROVIDENT FUND BOARD [SSH]	-131	97,780	8.446
18 SEP 2025 - 18 SEP 2025	DIALOG	KUMPULAN WANG PERSARAAN (DIPERBADANKAN) [SSH]	-3,939	583,198	10.33
17 SEP 2025 - 17 SEP 2025	DIALOG	KUMPULAN WANG PERSARAAN (DIPERBADANKAN) [SSH]	-3,538	587,137	10.4
11 SEP 2025 - 11 SEP 2025	DIALOG	EMPLOYEES PROVIDENT FUND BOARD [SSH]	3,000	975,101	17.28
12 SEP 2025 - 12 SEP 2025	DIALOG	KUMPULAN WANG PERSARAAN (DIPERBADANKAN) [SSH]	-1,758	590,675	10.47
10 SEP 2025 - 10 SEP 2025	DIALOG	EMPLOYEES PROVIDENT FUND BOARD [SSH]	2,000	972,101	17.23
18 SEP 2025 - 18 SEP 2025	ECOFIRS	MR CHEW HIAN TAT [DIR/CEO]	2,469	139,125	11.96
18 SEP 2025 - 18 SEP 2025	ECOFIRS	MR CHEW HIAN TAT [SSH]	2,469	139,125	11.96
10 SEP 2025 - 10 SEP 2025	ECONBHD	EMPLOYEES PROVIDENT FUND BOARD [SSH]	312	114,961	8.11
17 SEP 2025 - 17 SEP 2025	EDUSPEC	DATO' SRI GAN CHOW TEE [DIR/CEO]	350	111,109	7.844
17 SEP 2025 - 17 SEP 2025	EDUSPEC	DATO' SRI GAN CHOW TEE [SSH]	350	111,109	7.844
12 SEP 2025 - 12 SEP 2025	EDUSPEC	DATO' SRI GAN CHOW TEE [DIR/CEO]	46	110,759	7.819
12 SEP 2025 - 12 SEP 2025	EDUSPEC	DATO' SRI GAN CHOW TEE [SSH]	46	110,759	7.819
12 SEP 2025 - 12 SEP 2025	EFAME	DATO' HOOI JIA HAO [SSH]	-18,261	28,380	7.42
17 SEP 2025 - 18 SEP 2025	EITA	MADAM GOH KIN BEE [SSH]	17	44,035	14.591
17 SEP 2025 - 18 SEP 2025	EITA	MR LIM JOO SWEE [DIR/CEO]	17	44,142	14.625
17 SEP 2025 - 18 SEP 2025	EITA	MR LIM JOO SWEE [SSH]	17	44,142	14.625
11 SEP 2025 - 11 SEP 2025	EKSONS	MR TAY HUA SIN [DIR/CEO]	20	78,619	48.687
11 SEP 2025 - 11 SEP 2025	EKSONS	MR TAY HUA SIN [SSH]	20	78,619	48.687
11 SEP 2025 - 11 SEP 2025	EPB	MR STEPHEN CHUA CHEE KEONG [DIR/CEO]	5	409	0.11
16 SEP 2025 - 16 SEP 2025	EPMB	HKFAEX GROUP LIMITED [SSH]	-152	14,654	5.117
18 SEP 2025 - 18 SEP 2025	FACBIND	MAGNI VANTAGE LIMITED [SSH]	13	47,647	56.801
18 SEP 2025 - 18 SEP 2025	FACBIND	MR CHEN YIY FON [DIR/CEO]	13	47,647	56.801
18 SEP 2025 - 18 SEP 2025	FACBIND	MR CHEN YIY FON [SSH]	13	47,647	56.801
17 SEP 2025 - 17 SEP 2025	FACBIND	MAGNI VANTAGE LIMITED [SSH]	53	47,634	56.786
17 SEP 2025 - 17 SEP 2025	FACBIND	MR CHEN YIY FON [DIR/CEO]	53	47,634	56.786
17 SEP 2025 - 17 SEP 2025	FACBIND	MR CHEN YIY FON [SSH]	53	47,634	56.786
12 SEP 2025 - 12 SEP 2025	FACBIND	MAGNI VANTAGE LIMITED [SSH]	75	47,580	56.722
12 SEP 2025 - 12 SEP 2025	FACBIND	MR CHEN YIY FON [DIR/CEO]	75	47,580	56.722
12 SEP 2025 - 12 SEP 2025	FACBIND	MR CHEN YIY FON [SSH]	75	47,580	56.722
17 SEP 2025 - 17 SEP 2025	FBG	DATO' SRI KUAN KHIAN LENG [DIR/CEO]	-58,423	52,322	7.055
17 SEP 2025 - 17 SEP 2025	FBG	TAN SRI DATO' SRI CHAN KONG CHOY [DIR/CEO]	58,423	64,169	8.653

Disclaimer: The Information in Insider Activity is extracted from www.shareinvestor.com/fundamental/insider_trades. The information on this page is provided as a service to readers. It does not constitute financial advice and/or any investment recommendations. We assume no liability for damages resulting from or arising out of the use of such information. Whilst every effort is made to ensure accuracy, the information presented is not the official record of shareholder filings. Readers are advised to read the original filings on the Bursa Malaysia website at www.bursamalaysia.com



STROM
SWISS TIMEPIECES & JEWELLERY



StromWatch Asia
Tele : +65.9817.3378
Email : ll.stromasia@gmail.com
WWW.STROMWATCH.SWISS

Notice Period is 14th September 2025 to 20th September 2025

Effective Change Date	Stock Name	Buyer/ Seller Name [Classification]	Bought / (Sold) ['000]	No. of Shares After Trade ['000]	
			Total	Total	% Held
18 SEP 2025 - 18 SEP 2025	FFB	KUMPULAN WANG PERSARAAN (DIPERBADANKAN) [SSH]	23	188,774	10.055
12 SEP 2025 - 12 SEP 2025	FFB	EMPLOYEES PROVIDENT FUND BOARD [SSH]	-2,280	156,087	8.313
29 AUG 2025 - 02 SEP 2025	FFB	DATO' DR QUAZA NIZAMUDDIN BIN A. HASSAN NIZAM [DIR/CEO]	-100	400	0.021
17 SEP 2025 - 17 SEP 2025	FFB	KUMPULAN WANG PERSARAAN (DIPERBADANKAN) [SSH]	346	188,750	10.053
12 SEP 2025 - 12 SEP 2025	FFB	ABERDEEN GROUP PLC (FORMERLY KNOWN AS ABRDN PLC) [SSH]	-4,227	188,258	10.029
12 SEP 2025 - 12 SEP 2025	FFB	ABRDN HOLDINGS LIMITED [SSH]	-4,227	188,258	10.029
12 SEP 2025 - 12 SEP 2025	FFB	ABRDN MALAYSIA SDN BHD [SSH]	-4,227	186,242	9.922
12 SEP 2025 - 12 SEP 2025	FFB	KUMPULAN WANG PERSARAAN (DIPERBADANKAN) [SSH]	730	188,405	10.037
11 SEP 2025 - 11 SEP 2025	FFB	ABERDEEN GROUP PLC (FORMERLY KNOWN AS ABRDN PLC) [SSH]	-7,224	192,485	10.254
11 SEP 2025 - 11 SEP 2025	FFB	ABRDN HOLDINGS LIMITED [SSH]	-7,224	192,485	10.254
11 SEP 2025 - 11 SEP 2025	FFB	ABRDN MALAYSIA SDN BHD [SSH]	-7,224	190,469	10.147
10 SEP 2025 - 10 SEP 2025	FFB	EMPLOYEES PROVIDENT FUND BOARD [SSH]	-3,112	160,954	8.575
12 SEP 2025 - 12 SEP 2025	FPI	MR SHIH CHAO YUAN [DIR/CEO]	62,860	75,468	29.447
12 SEP 2025 - 12 SEP 2025	FRONT-KN-WB	DR TAY KIANG MENG [DIR/CEO]	-500	3,702	0.738
12 SEP 2025 - 12 SEP 2025	GAMUDA	EMPLOYEES PROVIDENT FUND BOARD (EPF BOARD) [SSH]	1,182	1,056,473	18.05
11 SEP 2025 - 11 SEP 2025	GAMUDA	EMPLOYEES PROVIDENT FUND BOARD (EPF BOARD) [SSH]	11,180	1,055,291	18.03
10 SEP 2025 - 10 SEP 2025	GAMUDA	EMPLOYEES PROVIDENT FUND BOARD (EPF BOARD) [SSH]	1,300	1,044,112	17.84
18 SEP 2025 - 18 SEP 2025	GASMSIA	LEMBAGA TABUNG HAJI [SSH]	-1,000	72,576	5.652
17 SEP 2025 - 17 SEP 2025	GASMSIA	LEMBAGA TABUNG HAJI [SSH]	-1,000	73,576	5.73
12 SEP 2025 - 12 SEP 2025	GASMSIA	LEMBAGA TABUNG HAJI [SSH]	-1,000	74,576	5.808
19 SEP 2025 - 19 SEP 2025	GCB	MR TAY HOW SIK @ TAY HOW SICK [DIR/CEO]	300	64,847	2.366
17 SEP 2025 - 17 SEP 2025	GCB	MR TAY HOE LIAN [DIR/CEO]	280	134,415	4.904
12 SEP 2025 - 12 SEP 2025	GENETEC	EMPLOYEES PROVIDENT FUND BOARD [SSH]	-205	40,099	5.18
11 SEP 2025 - 11 SEP 2025	GESHEN	ENRICH SIGNATURE SDN. BHD. [SSH]	-11,000	42,005	10.394
11 SEP 2025 - 11 SEP 2025	GESHEN	MR CHIAU HAW LOON [SSH]	-11,000	44,005	10.889
11 SEP 2025 - 11 SEP 2025	GESHEN	MR CHIAU HAW YEW [SSH]	-11,000	48,005	11.879
17 SEP 2025 - 17 SEP 2025	GLXT	PUAN ANIZA BINTI MD DIN [DIR/CEO]	56	2,911	0.698
18 SEP 2025 - 18 SEP 2025	GUH	DATUK SERI KENNETH H'NG BAK TEE [DIR/CEO]	150	13,955	4.927
17 SEP 2025 - 17 SEP 2025	GUH	DATUK SERI KENNETH H'NG BAK TEE [DIR/CEO]	130	13,805	4.874
17 SEP 2025 - 17 SEP 2025	HARTA	KUMPULAN WANG PERSARAAN (DIPERBADANKAN) [SSH]	-200	212,210	6.227
17 SEP 2025 - 17 SEP 2025	HEGROUP	DATUK WIRA YONG CHONG CHEANG [SSH]	-140	52,451	11.921
17 SEP 2025 - 17 SEP 2025	HEGROUP	HEXATECH ENERGY CONSOLIDATED SDN. BHD. [SSH]	-140	52,451	11.921
12 SEP 2025 - 12 SEP 2025	HEGROUP	DATUK CHRISTOPHER WAN SOO KEE [DIR/CEO]	50	50	0.011
11 SEP 2025 - 12 SEP 2025	HEGROUP	DATUK WIRA YONG CHONG CHEANG [SSH]	-3,490	52,591	11.952
11 SEP 2025 - 12 SEP 2025	HEGROUP	HEXATECH ENERGY CONSOLIDATED SDN. BHD. [SSH]	-3,490	52,591	11.952
17 SEP 2025 - 19 SEP 2025	HEKTAR	DATO' ONG CHOO MENG [SSH]	-7,359	79,915	11.267
17 SEP 2025 - 17 SEP 2025	HEKTAR	UPAYAPADU (M) SDN BHD [SSH]	1,586	43,535	6.138
12 SEP 2025 - 12 SEP 2025	HEKTAR	UPAYAPADU (M) SDN BHD [SSH]	445	41,950	5.914
17 SEP 2025 - 18 SEP 2025	HEXTAR	DATO' ONG CHOO MENG [SSH]	2,312	2,110,748	54.456
17 SEP 2025 - 18 SEP 2025	HEXTAR	DATO' ONG SOON HO [DIR/CEO]	2,312	2,110,748	54.456
17 SEP 2025 - 18 SEP 2025	HEXTAR	DATO' ONG SOON HO [SSH]	2,312	2,110,748	54.456
19 SEP 2025 - 19 SEP 2025	HHRG	BATU KAWI CAPITAL SDN BHD [SSH]	880	83,127	8.309
19 SEP 2025 - 19 SEP 2025	HHRG	MR TAI CHIN HWANG [SSH]	880	100,480	10.044
12 SEP 2025 - 12 SEP 2025	HLBANK	EMPLOYEES PROVIDENT FUND BOARD [SSH]	-367	200,643	9.616
11 SEP 2025 - 11 SEP 2025	HLBANK	EMPLOYEES PROVIDENT FUND BOARD [SSH]	-38	201,010	9.633
10 SEP 2025 - 10 SEP 2025	HLBANK	EMPLOYEES PROVIDENT FUND BOARD [SSH]	-88	201,047	9.635
12 SEP 2025 - 12 SEP 2025	HLFG	EMPLOYEES PROVIDENT FUND BOARD [SSH]	-0.6	64,254	5.599
11 SEP 2025 - 11 SEP 2025	HLFG	EMPLOYEES PROVIDENT FUND BOARD [SSH]	-9	64,254	5.599
17 SEP 2025 - 18 SEP 2025	HOHUP	DATO' SRI THONG KOK KHEE [SSH]	-1,383	69,833	13.475
17 SEP 2025 - 18 SEP 2025	HOHUP	INSAS BERHAD [SSH]	-1,383	69,783	13.465
12 SEP 2025 - 12 SEP 2025	HOHUP	DATO' SRI THONG KOK KHEE [SSH]	-1,539	71,216	13.741
12 SEP 2025 - 12 SEP 2025	HOHUP	INSAS BERHAD [SSH]	-1,539	71,166	13.732
17 SEP 2025 - 17 SEP 2025	IBHD	SUMUR VENTURES SDN BHD [SSH]	33	1,348,449	72.603
17 SEP 2025 - 17 SEP 2025	IBHD	SUMURWANG CAPITAL SDN BHD [SSH]	33	94,098	5.066
17 SEP 2025 - 17 SEP 2025	IBHD	SUMURWANG SDN BHD [SSH]	33	1,194,532	64.316
17 SEP 2025 - 19 SEP 2025	IBHD	TAN SRI LIM KIM HONG [DIR/CEO]	513	1,424,369	76.691
17 SEP 2025 - 19 SEP 2025	IBHD	TAN SRI LIM KIM HONG [SSH]	513	1,424,369	76.691
12 SEP 2025 - 12 SEP 2025	IBHD	SUMUR VENTURES SDN BHD [SSH]	153	1,348,416	72.601
12 SEP 2025 - 12 SEP 2025	IBHD	SUMURWANG CAPITAL SDN BHD [SSH]	153	94,065	5.065
12 SEP 2025 - 12 SEP 2025	IBHD	SUMURWANG SDN BHD [SSH]	153	1,194,499	64.314
12 SEP 2025 - 12 SEP 2025	IBHD	TAN SRI LIM KIM HONG [DIR/CEO]	153	1,423,856	76.663
12 SEP 2025 - 12 SEP 2025	IBHD	TAN SRI LIM KIM HONG [SSH]	153	1,423,856	76.663
18 SEP 2025 - 18 SEP 2025	ICAP	CITY OF LONDON INVESTMENT MANAGEMENT COMPANY LIMITED [SSH]	-263	25,500	18.08
17 SEP 2025 - 17 SEP 2025	ICAP	CITY OF LONDON INVESTMENT MANAGEMENT COMPANY LIMITED [SSH]	-386	25,763	18.267
12 SEP 2025 - 12 SEP 2025	ICAP	CITY OF LONDON INVESTMENT MANAGEMENT COMPANY LIMITED [SSH]	-519	26,149	18.54
12 SEP 2025 - 12 SEP 2025	IGBREIT	EMPLOYEES PROVIDENT FUND BOARD [SSH]	-550	369,423	10.194
11 SEP 2025 - 11 SEP 2025	IGBREIT	EMPLOYEES PROVIDENT FUND BOARD [SSH]	-19	369,973	10.209
10 SEP 2025 - 10 SEP 2025	IGBREIT	EMPLOYEES PROVIDENT FUND BOARD [SSH]	-370	369,991	10.21
12 SEP 2025 - 12 SEP 2025	IHH	EMPLOYEES PROVIDENT FUND BOARD [SSH]	3,305	1,022,084	11.567
11 SEP 2025 - 11 SEP 2025	IHH	EMPLOYEES PROVIDENT FUND BOARD [SSH]	1,277	1,018,779	11.53
10 SEP 2025 - 10 SEP 2025	IHH	EMPLOYEES PROVIDENT FUND BOARD [SSH]	4,171	1,017,502	11.515
18 SEP 2025 - 18 SEP 2025	IJM	KUMPULAN WANG PERSARAAN (DIPERBADANKAN) [SSH]	-650	340,110	9.703
18 SEP 2025 - 18 SEP 2025	INARI	KUMPULAN WANG PERSARAAN (DIPERBADANKAN) [SSH]	-1,000	384,101	10.137
17 SEP 2025 - 17 SEP 2025	INTA	MR CHAU YIK MUN [DIR/CEO]	370	13,063	2.125
12 SEP 2025 - 12 SEP 2025	IOICORP	EMPLOYEES PROVIDENT FUND BOARD [SSH]	1,630	901,583	14.533
11 SEP 2025 - 11 SEP 2025	IOICORP	EMPLOYEES PROVIDENT FUND BOARD [SSH]	3,409	899,953	14.507
10 SEP 2025 - 10 SEP 2025	IOICORP	EMPLOYEES PROVIDENT FUND BOARD [SSH]	1,735	896,544	14.452

Notice Period is 14th September 2025 to 20th September 2025

Effective Change Date	Stock Name	Buyer/ Seller Name [Classification]	Bought / (Sold) ['000]	No. of Shares After Trade ['000]	
			Total	Total	% Held
10 SEP 2025 - 10 SEP 2025	IOIPG	EMPLOYEES PROVIDENT FUND BOARD [SSH]	-1,802	369,899	6.718
12 SEP 2025 - 12 SEP 2025	JASKITA	DATO' SRI ISKANDAR MIZAL BIN MAHMOOD [DIR/CEO]	22,478	22,478	5
12 SEP 2025 - 12 SEP 2025	JASKITA	DATUK (DR.) YASMIN BINTI MAHMOOD [DIR/CEO]	203,174	203,174	45.19
12 SEP 2025 - 12 SEP 2025	JPG	EMPLOYEES PROVIDENT FUND BOARD [SSH]	4,856	325,414	13.017
11 SEP 2025 - 11 SEP 2025	JPG	EMPLOYEES PROVIDENT FUND BOARD [SSH]	1,500	320,558	12.822
10 SEP 2025 - 10 SEP 2025	JPG	EMPLOYEES PROVIDENT FUND BOARD [SSH]	1,530	319,058	12.762
17 SEP 2025 - 17 SEP 2025	KGB	ABERDEEN GROUP PLC (FORMERLY KNOWN AS ABRDN PLC) [SSH]	-175	42,907	5.568
17 SEP 2025 - 17 SEP 2025	KGB	ABRDN HOLDINGS LIMITED [SSH]	-175	42,907	5.568
17 SEP 2025 - 17 SEP 2025	KGB	ABRDN MALAYSIA SDN BHD [SSH]	-175	42,031	5.454
12 SEP 2025 - 12 SEP 2025	KGB	EMPLOYEES PROVIDENT FUND BOARD [SSH]	417	40,381	5.24
17 SEP 2025 - 17 SEP 2025	KGB	KUMPULAN WANG PERSARAAN (DIPERBADANKAN) [SSH]	431	41,444	5.378
11 SEP 2025 - 11 SEP 2025	KGB	EMPLOYEES PROVIDENT FUND BOARD [SSH]	677	39,964	5.186
11 SEP 2025 - 11 SEP 2025	KGB	ABERDEEN GROUP PLC (FORMERLY KNOWN AS ABRDN PLC) [SSH]	-182	43,082	5.609
11 SEP 2025 - 11 SEP 2025	KGB	ABRDN HOLDINGS LIMITED [SSH]	-182	43,082	5.609
11 SEP 2025 - 11 SEP 2025	KGB	ABRDN MALAYSIA SDN BHD [SSH]	-182	42,206	5.495
11 SEP 2025 - 11 SEP 2025	KGB	FORTUNE DRAGON HOLDING INC. [SSH]	6,725	46,361	6.036
11 SEP 2025 - 11 SEP 2025	KGB	LIEN HWA INDUSTRIAL HOLDING CORP. [SSH]	6,725	46,361	6.036
11 SEP 2025 - 11 SEP 2025	KGB	SUN LEAD INTERNATIONAL LIMITED [SSH]	6,725	46,361	6.036
10 SEP 2025 - 10 SEP 2025	KGB	EMPLOYEES PROVIDENT FUND BOARD [SSH]	-149	39,287	5.115
17 SEP 2025 - 17 SEP 2025	KHIND	MADAM KOH GUAT KUAN [SSH]	880	4,438	10.557
17 SEP 2025 - 17 SEP 2025	KHIND	MR CHENG PING KEAT [DIR/CEO]	880	27,457	65.312
12 SEP 2025 - 12 SEP 2025	KLCC	EMPLOYEES PROVIDENT FUND BOARD [SSH]	-165	185,291	10.264
12 SEP 2025 - 12 SEP 2025	KLCC	EMPLOYEES PROVIDENT FUND BOARD [SSH]	-165	185,291	10.264
11 SEP 2025 - 11 SEP 2025	KLCC	EMPLOYEES PROVIDENT FUND BOARD [SSH]	-1,476	185,456	10.273
11 SEP 2025 - 11 SEP 2025	KLCC	EMPLOYEES PROVIDENT FUND BOARD [SSH]	-1,476	185,456	10.273
10 SEP 2025 - 10 SEP 2025	KLCC	EMPLOYEES PROVIDENT FUND BOARD [SSH]	-84	186,932	10.354
10 SEP 2025 - 10 SEP 2025	KLCC	EMPLOYEES PROVIDENT FUND BOARD [SSH]	-84	186,932	10.354
10 SEP 2025 - 10 SEP 2025	KLK	EMPLOYEES PROVIDENT FUND BOARD [SSH]	24	181,868	16.331
18 SEP 2025 - 18 SEP 2025	KOMARK	MR ROY HO YEW KEE [DIR/CEO]	22	663	0.287
17 SEP 2025 - 17 SEP 2025	LWSABAH	MADAM CHIN LEE LING [DIR/CEO]	-2,366	171,358	36.214
17 SEP 2025 - 17 SEP 2025	LWSABAH	MADAM CHIN LEE LING [SSH]	-2,366	171,358	36.214
17 SEP 2025 - 17 SEP 2025	LWSABAH	MR LIAW HEN KONG [DIR/CEO]	-2,366	171,248	36.191
17 SEP 2025 - 17 SEP 2025	LWSABAH	MR LIAW HEN KONG [SSH]	-2,366	171,248	36.191
17 SEP 2025 - 17 SEP 2025	LWSABAH	MR LIM YOUNG PIAU [DIR/CEO]	-1,183	85,624	18.095
17 SEP 2025 - 17 SEP 2025	LWSABAH	MR LIM YOUNG PIAU [SSH]	-1,183	85,624	18.095
17 SEP 2025 - 17 SEP 2025	LWSABAH	MR TAN HWONG KUEN [DIR/CEO]	-1,183	85,624	18.095
17 SEP 2025 - 17 SEP 2025	LWSABAH	MR TAN HWONG KUEN [SSH]	-1,183	85,624	18.095
17 SEP 2025 - 17 SEP 2025	LWSABAH	SCARECROW HOLDING SDN. BHD. [SSH]	-2,366	171,247	36.191
18 SEP 2025 - 18 SEP 2025	M&A	CIK SITI NUR AISHAH BINTI ISHAK [SSH]	450	142,826	7.146
18 SEP 2025 - 18 SEP 2025	M&A	DATO' SRI THONG KOK KHEE [SSH]	1,080	1,161,799	58.127
18 SEP 2025 - 18 SEP 2025	M&A	INSAS BERHAD [SSH]	1,080	1,161,799	58.127
17 SEP 2025 - 17 SEP 2025	M&A	CIK SITI NUR AISHAH BINTI ISHAK [SSH]	258	142,376	7.123
12 SEP 2025 - 12 SEP 2025	M&A	CIK SITI NUR AISHAH BINTI ISHAK [SSH]	11	142,118	7.11
18 SEP 2025 - 18 SEP 2025	MAGNA	DATO' SRI WONG SZE CHIEN [SSH]	22,600	142,600	35.726
18 SEP 2025 - 18 SEP 2025	MAGNA	HALLSON HOLDINGS SDN. BHD. (FORMERLY KNOWN AS EDXUS SOLUTIONS SDN. BHD.) [SSH]	22,600	142,600	35.726
18 SEP 2025 - 18 SEP 2025	MAGNA	HENG HOLDINGS SDN BHD [SSH]	-22,600	80,290	20.115
18 SEP 2025 - 18 SEP 2025	MAGNA	HUA YANG BERHAD [SSH]	-22,600	80,290	20.115
18 SEP 2025 - 18 SEP 2025	MAGNA	MADAM CHEW PO SIM [SSH]	-22,600	80,290	20.115
18 SEP 2025 - 18 SEP 2025	MAGNA	MADAM HO MIN YI [SSH]	-22,600	80,290	20.115
18 SEP 2025 - 18 SEP 2025	MAGNA	MR HO WEN FAN [SSH]	-22,600	80,290	20.115
18 SEP 2025 - 18 SEP 2025	MAGNA	MR HO WEN HAN [SSH]	-22,600	80,290	20.115
18 SEP 2025 - 18 SEP 2025	MAGNA	MR HO WEN YAN [DIR/CEO]	-22,600	80,290	20.115

Notice Period is 14th September 2025 to 20th September 2025

Effective Change Date	Stock Name	Buyer/ Seller Name [Classification]	Bought / (Sold) ['000]	No. of Shares After Trade ['000]	
			Total	Total	% Held
17 SEP 2025 - 19 SEP 2025	MFCB	KEEN CAPITAL INVESTMENTS LIMITED [SSH]	291	284,334	30.174
17 SEP 2025 - 19 SEP 2025	MFCB	LAJU RIANG SDN BHD [SSH]	291	207,564	22.027
17 SEP 2025 - 19 SEP 2025	MFCB	MR GOH NAN KIOH [SSH]	291	335,129	35.564
17 SEP 2025 - 19 SEP 2025	MFCB	RUBBER THREAD INDUSTRIES (M) SDN BERHAD [SSH]	291	207,564	22.027
11 SEP 2025 - 11 SEP 2025	MFCB	EMPLOYEES PROVIDENT FUND BOARD [SSH]	73	96,006	10.188
10 SEP 2025 - 10 SEP 2025	MFCB	EMPLOYEES PROVIDENT FUND BOARD [SSH]	241	95,932	10.18
12 SEP 2025 - 12 SEP 2025	MISC	EMPLOYEES PROVIDENT FUND BOARD [SSH]	24	642,425	14.392
11 SEP 2025 - 11 SEP 2025	MISC	EMPLOYEES PROVIDENT FUND BOARD [SSH]	1,115	642,401	14.392
10 SEP 2025 - 10 SEP 2025	MISC	EMPLOYEES PROVIDENT FUND BOARD [SSH]	183	641,286	14.367
12 SEP 2025 - 12 SEP 2025	MRDIY	EMPLOYEES PROVIDENT FUND BOARD [SSH]	2,003	896,335	9.461
11 AUG 2025 - 11 AUG 2025	MTOUCHE	MORGAN STANLEY [SSH]	-6,951	46,741	5.044
04 AUG 2025 - 04 AUG 2025	MTOUCHE	MORGAN STANLEY [SSH]	-3,612	53,693	5.794
31 JUL 2025 - 31 JUL 2025	MTOUCHE	MORGAN STANLEY [SSH]	-1,896	57,305	6.184
11 SEP 2025 - 11 SEP 2025	NESTLE	EMPLOYEES PROVIDENT FUND BOARD [SSH]	2	30,933	13.191
17 SEP 2025 - 17 SEP 2025	NEXG	DATUK HAJI ABU HANIFAH BIN NOORDIN [DIR/CEO]	47,401	434,561	11.731
17 SEP 2025 - 17 SEP 2025	NEXG	DATUK HAJI ABU HANIFAH BIN NOORDIN [SSH]	47,401	434,561	11.731
17 SEP 2025 - 17 SEP 2025	NEXG-WB	DATUK HAJI ABU HANIFAH BIN NOORDIN [DIR/CEO]	47,401	3,005	0.368
17 SEP 2025 - 17 SEP 2025	NGGB	DATO' GAN KONG HIOK [SSH]	50	165,120	15.101
12 SEP 2025 - 12 SEP 2025	OMESTI	MR MONTEIRO GERARD CLAIR [DIR/CEO]	97	77,470	14.329
12 SEP 2025 - 12 SEP 2025	OMESTI	MR MONTEIRO GERARD CLAIR [SSH]	97	77,470	14.329
17 SEP 2025 - 17 SEP 2025	ONEGLOVE	ADA CAPITAL INVESTMENTS LIMITED [SSH]	19,000	246,002	42.217
17 SEP 2025 - 17 SEP 2025	ONEGLOVE	MR LOW BOK TEK [DIR/CEO]	19,000	261,210	44.827
17 SEP 2025 - 17 SEP 2025	ONEGLOVE	MR LOW BOK TEK [SSH]	19,000	261,210	44.827
12 SEP 2025 - 12 SEP 2025	PADINI	EMPLOYEES PROVIDENT FUND BOARD [SSH]	351	102,048	10.341
11 SEP 2025 - 11 SEP 2025	PADINI	EMPLOYEES PROVIDENT FUND BOARD [SSH]	140	101,698	10.305
12 SEP 2025 - 12 SEP 2025	PADINI	KUMPULAN WANG PERSARAAN (DIPERBADANKAN) [SSH]	-50	102,935	10.43
10 SEP 2025 - 10 SEP 2025	PADINI	EMPLOYEES PROVIDENT FUND BOARD [SSH]	500	101,558	10.291
18 SEP 2025 - 18 SEP 2025	PANAMY	KUMPULAN WANG PERSARAAN (DIPERBADANKAN) [SSH]	-39	3,149	5.184
17 SEP 2025 - 17 SEP 2025	PANAMY	KUMPULAN WANG PERSARAAN (DIPERBADANKAN) [SSH]	-52	3,187	5.247
10 SEP 2025 - 10 SEP 2025	PANAMY	EMPLOYEES PROVIDENT FUND BOARD [SSH]	-4	6,494	10.691
10 SEP 2025 - 10 SEP 2025	PAVREIT	EMPLOYEES PROVIDENT FUND BOARD [SSH]	224	482,367	12.29
12 SEP 2025 - 12 SEP 2025	PBBANK	EMPLOYEES PROVIDENT FUND BOARD [SSH]	3,368	3,424,656	17.64
11 SEP 2025 - 11 SEP 2025	PBBANK	EMPLOYEES PROVIDENT FUND BOARD [SSH]	2,278	3,421,288	17.63
10 SEP 2025 - 10 SEP 2025	PBBANK	EMPLOYEES PROVIDENT FUND BOARD [SSH]	6,721	3,419,010	17.61
18 SEP 2025 - 18 SEP 2025	PENTA	KUMPULAN WANG PERSARAAN (DIPERBADANKAN) [SSH]	77	58,010	8.155
12 SEP 2025 - 12 SEP 2025	PENTA	EMPLOYEES PROVIDENT FUND BOARD [SSH]	-1,173	71,152	10.003
17 SEP 2025 - 17 SEP 2025	PENTA	KUMPULAN WANG PERSARAAN (DIPERBADANKAN) [SSH]	-78	57,932	8.144
11 SEP 2025 - 11 SEP 2025	PENTA	EMPLOYEES PROVIDENT FUND BOARD [SSH]	-115	72,324	10.168
12 SEP 2025 - 12 SEP 2025	PENTA	KUMPULAN WANG PERSARAAN (DIPERBADANKAN) [SSH]	-95	58,011	8.156
10 SEP 2025 - 10 SEP 2025	PETDAG	EMPLOYEES PROVIDENT FUND BOARD ("EPF BOARD") [SSH]	36	126,937	12.777
12 SEP 2025 - 12 SEP 2025	PETGAS	EMPLOYEES PROVIDENT FUND BOARD [SSH]	-111	247,389	12.502
11 SEP 2025 - 11 SEP 2025	PETGAS	EMPLOYEES PROVIDENT FUND BOARD [SSH]	-145	247,499	12.508
10 SEP 2025 - 10 SEP 2025	PETGAS	EMPLOYEES PROVIDENT FUND BOARD [SSH]	-5,750	247,644	12.515
12 SEP 2025 - 12 SEP 2025	PLINTAS	EMPLOYEES PROVIDENT FUND BOARD [SSH]	5	86,096	7.827
11 SEP 2025 - 11 SEP 2025	PLINTAS	EMPLOYEES PROVIDENT FUND BOARD [SSH]	-76	86,090	7.826
10 SEP 2025 - 10 SEP 2025	PLINTAS	EMPLOYEES PROVIDENT FUND BOARD [SSH]	27	86,166	7.833
12 SEP 2025 - 12 SEP 2025	PMCK	DATO' DR LIM KIM HUAT DRHT. DSDK.BKM. PJK. JP [DIR/CEO]	50	607,364	55.691
12 SEP 2025 - 12 SEP 2025	PMETAL	EMPLOYEES PROVIDENT FUND BOARD [SSH]	-2,322	573,142	6.956
11 SEP 2025 - 11 SEP 2025	PMETAL	EMPLOYEES PROVIDENT FUND BOARD [SSH]	-117	575,643	6.984
10 SEP 2025 - 10 SEP 2025	PMETAL	EMPLOYEES PROVIDENT FUND BOARD [SSH]	-2,000	575,581	6.986
17 SEP 2025 - 17 SEP 2025	PMIBHD	DATUK TAN LEH KIAH [DIR/CEO]	100	697	0.08
12 SEP 2025 - 12 SEP 2025	PPB	EMPLOYEES PROVIDENT FUND BOARD [SSH]	765	211,010	14.833
11 SEP 2025 - 11 SEP 2025	PPB	EMPLOYEES PROVIDENT FUND BOARD [SSH]	1,404	210,246	14.779
10 SEP 2025 - 10 SEP 2025	PPB	EMPLOYEES PROVIDENT FUND BOARD [SSH]	2,535	208,842	14.68
11 SEP 2025 - 12 SEP 2025	PTARAS	DR CHIU HONG KEONG [DIR/CEO]	13	109,106	65.78
11 SEP 2025 - 12 SEP 2025	PTARAS	DR CHIU HONG KEONG [SSH]	13	109,106	65.78
11 SEP 2025 - 12 SEP 2025	PTARAS	MADAM KHOO YOK KEE [DIR/CEO]	13	109,106	65.78
11 SEP 2025 - 12 SEP 2025	PTARAS	MADAM KHOO YOK KEE [SSH]	13	109,106	65.78
11 SEP 2025 - 12 SEP 2025	PTARAS	PINTARAS BINA SDN BHD [SSH]	13	60,988	36.77
17 SEP 2025 - 19 SEP 2025	PTRANS	DATIN SRI LIM SOW KENG [SSH]	6,515	225,333	18.772
17 SEP 2025 - 19 SEP 2025	PTRANS	DATO' SRI CHEONG KONG FITT [DIR/CEO]	-4,000	25,338	25.209
17 SEP 2025 - 19 SEP 2025	PTRANS	DATO' SRI CHEONG KONG FITT [DIR/CEO]	6,515	225,333	18.771
17 SEP 2025 - 19 SEP 2025	PTRANS	DATO' SRI CHEONG KONG FITT [SSH]	6,515	225,333	18.771
10 SEP 2025 - 10 SEP 2025	PTRANS	DATO' SRI CHEONG KONG FITT [DIR/CEO]	-9,840	29,338	26.952
04 SEP 2025 - 04 SEP 2025	PTRANS	DATO' SRI CHEONG KONG FITT [DIR/CEO]	-9,482	39,178	32.682
17 SEP 2025 - 17 SEP 2025	RCECAP	AMCORP GROUP BERHAD [SSH]	85	869,020	59.196
17 SEP 2025 - 17 SEP 2025	RCECAP	CEMPAKA EMPAYAR SDN BHD [SSH]	85	869,020	59.196
17 SEP 2025 - 17 SEP 2025	RCECAP	CLEAR GOAL SDN BHD [SSH]	85	869,020	59.196
17 SEP 2025 - 17 SEP 2025	RCECAP	TAN SRI AZMAN BIN HASHIM [SSH]	85	869,020	59.196
11 SEP 2025 - 11 SEP 2025	RCECAP	AMCORP GROUP BERHAD [SSH]	38	868,935	59.19
11 SEP 2025 - 11 SEP 2025	RCECAP	CEMPAKA EMPAYAR SDN BHD [SSH]	38	868,935	59.19
11 SEP 2025 - 11 SEP 2025	RCECAP	CLEAR GOAL SDN BHD [SSH]	38	868,935	59.19
11 SEP 2025 - 11 SEP 2025	RCECAP	TAN SRI AZMAN BIN HASHIM [SSH]	38	868,935	59.19
04 SEP 2025 - 11 SEP 2025	RHBBANK	EMPLOYEES PROVIDENT FUND BOARD [SSH]	-8,866	165,987	38.011
17 SEP 2025 - 17 SEP 2025	SALIRAN	MAJU ALLIANCE SDN. BHD. [SSH]	450	264,857	69.171
17 SEP 2025 - 17 SEP 2025	SALIRAN	MR CHAN KOON WAI [DIR/CEO]	450	264,857	69.171
17 SEP 2025 - 17 SEP 2025	SALIRAN	MR CHAN KOON WAI [SSH]	450	264,857	69.171
17 SEP 2025 - 17 SEP 2025	SALIRAN	MR LIAW CHOON WEI [DIR/CEO]	450	264,857	69.171
17 SEP 2025 - 17 SEP 2025	SALIRAN	MR LIAW CHOON WEI [SSH]	450	264,857	69.171
12 SEP 2025 - 12 SEP 2025	SALIRAN	MAJU ALLIANCE SDN. BHD. [SSH]	197	264,407	69.054
12 SEP 2025 - 12 SEP 2025	SALIRAN	MR CHAN KOON WAI [DIR/CEO]	197	264,407	69.054
12 SEP 2025 - 12 SEP 2025	SALIRAN	MR CHAN KOON WAI [SSH]	197	264,407	69.054

Notice Period is 14th September 2025 to 20th September 2025

Effective Change Date	Stock Name	Buyer/ Seller Name [Classification]	Bought / (Sold) ['000]	No. of Shares After Trade ['000]	
			Total	Total	% Held
12 SEP 2025 - 12 SEP 2025	SAMAIDEN	DATUK IR CHOW PUI HEE [DIR/CEO]	13,400	147,653	31.802
12 SEP 2025 - 12 SEP 2025	SAMAIDEN	DATUK IR CHOW PUI HEE [SSH]	13,400	147,653	31.802
12 SEP 2025 - 12 SEP 2025	SAMAID-EN-WA	DATUK IR CHOW PUI HEE [DIR/CEO]	13,400	44,176	45.499
17 SEP 2025 - 17 SEP 2025	SAPIND	MR KOH KOK HOOI [SSH]	2	8,291	11.393
12 SEP 2025 - 12 SEP 2025	SAPIND	MR KOH KOK HOOI [SSH]	3	8,289	11.39
12 SEP 2025 - 12 SEP 2025	SBH	MR TAN BOO NAM [DIR/CEO]	907	377,334	42.492
12 SEP 2025 - 12 SEP 2025	SBH	MR TAN BOO NAM [SSH]	907	288,256	32.461
12 SEP 2025 - 12 SEP 2025	SBH	TAN BOO NAM HOLDINGS SDN. BHD. [SSH]	907	160,763	18.104
17 SEP 2025 - 17 SEP 2025	SCGBHD	MADAM OOI GAIK BEE [SSH]	9,000	304,624	30.302
17 SEP 2025 - 17 SEP 2025	SCGBHD	MR TUNG ENG HAI [DIR/CEO]	9,000	126,812	65.133
17 SEP 2025 - 17 SEP 2025	SCGBHD	MR TUNG ENG HAI [SSH]	9,000	304,624	30.302
17 SEP 2025 - 17 SEP 2025	SCGBHD	SINO SHIELD SDN. BHD. [SSH]	9,000	302,524	30.093
17 SEP 2025 - 17 SEP 2025	SCICOM	DATO' SRI LEO SURESH ARIYANAYAKAM [DIR/CEO]	100	93,139	26.203
17 SEP 2025 - 17 SEP 2025	SCICOM	DATO' SRI LEO SURESH ARIYANAYAKAM [SSH]	100	93,139	26.203
12 SEP 2025 - 12 SEP 2025	SCIPACK	MR LIM PENG CHEONG [SSH]	10,000	262,072	74.745
12 SEP 2025 - 12 SEP 2025	SCIPACK	MR LIM PENG JIN [SSH]	10,000	262,072	74.745
12 SEP 2025 - 12 SEP 2025	SCIPACK	SCIENTEX BERHAD [SSH]	10,000	262,072	74.745
12 SEP 2025 - 12 SEP 2025	SCIPACK	SCIENTEX HOLDINGS SDN BERHAD [SSH]	10,000	262,072	74.745
12 SEP 2025 - 12 SEP 2025	SCOPE	TNTC FOR APOLLO ASIA FUND LIMITED [SSH]	-7,000	29,127	8.307
11 SEP 2025 - 12 SEP 2025	SCOPE	MR LEE MIN HUAT [DIR/CEO]	4,209	111,419	9.646
11 SEP 2025 - 12 SEP 2025	SCOPE	MR LEE MIN HUAT [SSH]	4,209	111,419	9.646
18 SEP 2025 - 18 SEP 2025	SDG	AMANAHRAYA TRUSTEES BERHAD - AMANAH SAHAM BUMIPUTERA [SSH]	-3,684	308,742	44.644
12 SEP 2025 - 12 SEP 2025	SDG	EMPLOYEES PROVIDENT FUND BOARD [SSH]	351	117,4039	16.976
17 SEP 2025 - 17 SEP 2025	SDG	AMANAHRAYA TRUSTEES BERHAD - AMANAH SAHAM BUMIPUTERA [SSH]	-1,364	309,1126	44.697
12 SEP 2025 - 12 SEP 2025	SDG	AMANAHRAYA TRUSTEES BERHAD - AMANAH SAHAM BUMIPUTERA [SSH]	-1,836	309,2491	44.717
11 SEP 2025 - 11 SEP 2025	SDG	EMPLOYEES PROVIDENT FUND BOARD [SSH]	4,634	117,3687	16.971
10 SEP 2025 - 10 SEP 2025	SDG	EMPLOYEES PROVIDENT FUND BOARD [SSH]	1,992	116,9053	16.904
17 SEP 2025 - 17 SEP 2025	SENTRAL	KUMPULAN WANG PERSARAAN (DIPERBADANKAN) [SSH]	-142	5,9884	5.009
18 SEP 2025 - 18 SEP 2025	SIME	AMANAHRAYA TRUSTEES BERHAD - AMANAH SAHAM BUMIPUTERA [SSH]	-7,000	247,6784	36.34
12 SEP 2025 - 12 SEP 2025	SIME	EMPLOYEES PROVIDENT FUND BOARD [SSH]	979	121,8810	17.88
17 SEP 2025 - 17 SEP 2025	SIME	AMANAHRAYA TRUSTEES BERHAD - AMANAH SAHAM BUMIPUTERA [SSH]	-5,675	248,3784	36.443
17 SEP 2025 - 17 SEP 2025	SIME	KUMPULAN WANG PERSARAAN (DIPERBADANKAN) [SSH]	-507	461,036	6.765
10 SEP 2025 - 10 SEP 2025	SIME	EMPLOYEES PROVIDENT FUND BOARD [SSH]	3,518	121,7832	17.866
18 SEP 2025 - 18 SEP 2025	SIMEPROP	AMANAHRAYA TRUSTEES BERHAD - AMANAH SAHAM BUMIPUTERA [SSH]	-8,400	231,5900	34.053
12 SEP 2025 - 12 SEP 2025	SIMEPROP	EMPLOYEES PROVIDENT FUND BOARD [SSH]	3,051	93,6498	13.77
17 SEP 2025 - 17 SEP 2025	SIMEPROP	AMANAHRAYA TRUSTEES BERHAD - AMANAH SAHAM BUMIPUTERA [SSH]	-3,606	232,4300	34.177
12 SEP 2025 - 12 SEP 2025	SIMEPROP	AMANAHRAYA TRUSTEES BERHAD - AMANAH SAHAM BUMIPUTERA [SSH]	-10,106	232,7906	34.23
11 SEP 2025 - 11 SEP 2025	SIMEPROP	EMPLOYEES PROVIDENT FUND BOARD [SSH]	-2,075	93,3447	13.726
12 SEP 2025 - 12 SEP 2025	SIMEPROP	KUMPULAN WANG PERSARAAN (DIPERBADANKAN) [SSH]	861	43,3510	6.375
10 SEP 2025 - 10 SEP 2025	SIMEPROP	EMPLOYEES PROVIDENT FUND BOARD [SSH]	5,297	93,5522	13.756
18 SEP 2025 - 18 SEP 2025	SJC-WA	DATIN LEE NAI YEE [DIR/CEO]	-51	111,72	11.51
17 SEP 2025 - 17 SEP 2025	SJC-WA	DATIN LEE NAI YEE [DIR/CEO]	-413	11,223	11.562
12 SEP 2025 - 12 SEP 2025	SJC-WA	DATIN LEE NAI YEE [DIR/CEO]	-500	11,636	11.988
17 SEP 2025 - 17 SEP 2025	SKPRES	ABERDEEN GROUP PLC (FORMERLY KNOWN AS ABRDN PLC) [SSH]	28	11,8642	7.594
17 SEP 2025 - 17 SEP 2025	SKPRES	ABRDN HOLDINGS LIMITED [SSH]	28	11,8642	7.594
17 SEP 2025 - 17 SEP 2025	SKPRES	ABRDN MALAYSIA SDN BHD [SSH]	28	11,8642	7.594
17 SEP 2025 - 17 SEP 2025	SKPRES	KUMPULAN WANG PERSARAAN (DIPERBADANKAN) [SSH]	176	16,4136	10.506
11 SEP 2025 - 11 SEP 2025	SKPRES	EMPLOYEES PROVIDENT FUND BOARD [SSH]	1,170	22,0872	14.137
12 SEP 2025 - 12 SEP 2025	SKPRES	ABERDEEN GROUP PLC (FORMERLY KNOWN AS ABRDN PLC) [SSH]	134	11,8614	7.592
12 SEP 2025 - 12 SEP 2025	SKPRES	ABRDN HOLDINGS LIMITED [SSH]	134	11,8614	7.592
12 SEP 2025 - 12 SEP 2025	SKPRES	ABRDN MALAYSIA SDN BHD [SSH]	134	11,8614	7.592
12 SEP 2025 - 12 SEP 2025	SKPRES	KUMPULAN WANG PERSARAAN (DIPERBADANKAN) [SSH]	207	16,3961	10.495
11 SEP 2025 - 11 SEP 2025	SKPRES	ABERDEEN GROUP PLC (FORMERLY KNOWN AS ABRDN PLC) [SSH]	40	11,8480	7.583
11 SEP 2025 - 11 SEP 2025	SKPRES	ABRDN HOLDINGS LIMITED [SSH]	40	11,8480	7.583
11 SEP 2025 - 11 SEP 2025	SKPRES	ABRDN MALAYSIA SDN BHD [SSH]	40	11,8480	7.583
10 SEP 2025 - 10 SEP 2025	SKPRES	EMPLOYEES PROVIDENT FUND BOARD [SSH]	1,899	21,9702	14.062
19 SEP 2025 - 19 SEP 2025	SNS	MR KO YUN HUNG [DIR/CEO]	100	51,0956	30.491
19 SEP 2025 - 19 SEP 2025	SNS	MR KO YUN HUNG [SSH]	100	51,0956	30.491
17 SEP 2025 - 17 SEP 2025	SNS	MR PAH WAI ONN [DIR/CEO]	430	51,1386	30.517

Notice Period is 14th September 2025 to 20th September 2025

Effective Change Date	Stock Name	Buyer/ Seller Name [Classification]	Bought / (Sold) ['000]		No. of Shares After Trade ['000]	
			Total	% Held	Total	% Held
17 SEP 2025 - 18 SEP 2025	SUNZEN	MR TEO YEK MING [DIR/CEO]	400	15.565	119807	15.565
17 SEP 2025 - 18 SEP 2025	SUNZEN	MR TEO YEK MING [SSH]	400	15.565	119807	15.565
12 SEP 2025 - 12 SEP 2025	SYSTECH	DR LOW MIN YEW [DIR/CEO]	410	2.461	16183	2.461
12 SEP 2025 - 17 SEP 2025	SYSTECH	MR TEOH KENG CHANG [DIR/CEO]	947	2.419	15905	2.419
11 SEP 2025 - 11 SEP 2025	TAKAFUL	EMPLOYEES PROVIDENT FUND BOARD [SSH]	440	18.802	163987	18.802
10 SEP 2025 - 10 SEP 2025	TAKAFUL	EMPLOYEES PROVIDENT FUND BOARD [SSH]	155	18.751	163547	18.751
19 SEP 2025 - 19 SEP 2025	TANCO	DATO' SRI ANDREW TAN JUN SUAN [DIR/CEO]	1,500	52.541	3165842	52.541
19 SEP 2025 - 19 SEP 2025	TANCO	DATO' SRI ANDREW TAN JUN SUAN [SSH]	1,500	52.541	3165842	52.541
17 SEP 2025 - 17 SEP 2025	TANCO	DATO' SRI ANDREW TAN JUN SUAN [DIR/CEO]	3,614	52.516	3164342	52.516
17 SEP 2025 - 17 SEP 2025	TANCO	DATO' SRI ANDREW TAN JUN SUAN [SSH]	3,614	52.516	3164342	52.516
12 SEP 2025 - 12 SEP 2025	TASHIN	IR TAN TIONG BEN [DIR/CEO]	29	0.008	29	0.008
12 SEP 2025 - 12 SEP 2025	TENAGA	EMPLOYEES PROVIDENT FUND BOARD [SSH]	691	19.02	1108602	19.02
17 SEP 2025 - 17 SEP 2025	TENAGA	KUMPULAN WANG PERSARAAN (DIPERBADANKAN) [SSH]	390	7.41	432294	7.41
12 SEP 2025 - 12 SEP 2025	TENAGA	KUMPULAN WANG PERSARAAN (DIPERBADANKAN) [SSH]	357	7.41	431904	7.41
12 SEP 2025 - 12 SEP 2025	TIMECOM	KUMPULAN WANG PERSARAAN (DIPERBADANKAN) [SSH]	-100	8.184	151306	8.184
12 SEP 2025 - 12 SEP 2025	TM	EMPLOYEES PROVIDENT FUND BOARD (EPF BOARD) [SSH]	-100	22.575	866356	22.575
17 SEP 2025 - 17 SEP 2025	TM	KUMPULAN WANG PERSARAAN (DIPERBADANKAN) [KWAP] [SSH]	-910	9.945	381664	9.945
11 SEP 2025 - 11 SEP 2025	TM	EMPLOYEES PROVIDENT FUND BOARD (EPF BOARD) [SSH]	3,818	22.577	866456	22.577
10 SEP 2025 - 10 SEP 2025	TM	EMPLOYEES PROVIDENT FUND BOARD (EPF BOARD) [SSH]	100	22.478	862638	22.478
19 SEP 2025 - 19 SEP 2025	TOPGLOV	MR LIM HOOI SIN [DIR/CEO]	2,000	37.025	2968593	37.025
19 SEP 2025 - 19 SEP 2025	TOPGLOV	MR LIM HOOI SIN [SSH]	2,000	37.025	2968593	37.025
19 SEP 2025 - 19 SEP 2025	TOPGLOV	MR LIM JIN FENG [SSH]	2,000	35.599	2854314	35.599
19 SEP 2025 - 19 SEP 2025	TOPGLOV	PUAN SRI TONG SIEW BEE [SSH]	2,000	37.027	2968793	37.027
19 SEP 2025 - 19 SEP 2025	TOPGLOV	TAN SRI DR LIM WEE CHAI [DIR/CEO]	2,000	37.027	2968793	37.027
19 SEP 2025 - 19 SEP 2025	TOPGLOV	TAN SRI DR LIM WEE CHAI [SSH]	2,000	37.027	2968793	37.027
18 SEP 2025 - 18 SEP 2025	TOPGLOV	KUMPULAN WANG PERSARAAN (DIPERBADANKAN) [SSH]	-5,000	6.961	558113	6.961
17 SEP 2025 - 17 SEP 2025	TOPGLOV	KUMPULAN WANG PERSARAAN (DIPERBADANKAN) [SSH]	-11,852	7.023	563113	7.023
12 SEP 2025 - 12 SEP 2025	TOPGLOV	KUMPULAN WANG PERSARAAN (DIPERBADANKAN) [SSH]	-3,871	7.171	574966	7.171
10 SEP 2025 - 10 SEP 2025	UOAEV	EMPLOYEES PROVIDENT FUND BOARD ("EPF BOARD") [SSH]	36	13.885	368637	13.885
17 SEP 2025 - 17 SEP 2025	UPA	MR CHUA NGEUN LOK [DIR/CEO]	1,940	8.835	20466	8.835
17 SEP 2025 - 17 SEP 2025	UPA	MR CHUA NGEUN LOK [SSH]	1,940	8.835	20466	8.835
12 SEP 2025 - 12 SEP 2025	UTDPLT	EMPLOYEES PROVIDENT FUND BOARD [SSH]	4	6.298	39187	6.298
11 SEP 2025 - 11 SEP 2025	UTDPLT	EMPLOYEES PROVIDENT FUND BOARD [SSH]	58	6.298	39183	6.298
10 SEP 2025 - 10 SEP 2025	UTDPLT	EMPLOYEES PROVIDENT FUND BOARD [SSH]	39	6.288	39125	6.288
11 SEP 2025 - 11 SEP 2025	UWC	EMPLOYEES PROVIDENT FUND BOARD [SSH]	-111	8.948	98682	8.948
18 SEP 2025 - 18 SEP 2025	VANZO	FRAGRANCE CENTURY SDN. BHD. [SSH]	-6,061	48.702	227315	48.702
18 SEP 2025 - 18 SEP 2025	VANZO	MR WONG LIANG TZER [DIR/CEO]	-6,061	48.702	227315	48.702

Notice Period is 14th September 2025 to 20th September 2025

Effective Change Date	Stock Name	Buyer/ Seller Name [Classification]	Bought / (Sold) ['000]		No. of Shares After Trade ['000]	
			Total	% Held	Total	% Held
11 SEP 2025 - 11 SEP 2025	VITROX	EMPLOYEES PROVIDENT FUND BOARD [SSH]	549	5.774	109319	5.774
10 SEP 2025 - 10 SEP 2025	VITROX	EMPLOYEES PROVIDENT FUND BOARD [SSH]	-1,258	5.745	108769	5.745
10 SEP 2025 - 10 SEP 2025	VOLCANO	DATUK CH'NG HUAT SENG [DIR/CEO]	36	15.821	28736	15.821
10 SEP 2025 - 10 SEP 2025	VOLCANO	DATUK CH'NG HUAT SENG [SSH]	36	15.821	28736	15.821
19 SEP 2025 - 19 SEP 2025	VS	DATUK BEH KIM LING [DIR/CEO]	-24,000	10.319	397753	10.319
19 SEP 2025 - 19 SEP 2025	VS	DATUK BEH KIM LING [SSH]	-24,000	10.319	397753	10.319
19 SEP 2025 - 19 SEP 2025	VS	MR BEH CHERN WEI [DIR/CEO]	-2,612	2.575	99248	2.575
12 SEP 2025 - 12 SEP 2025	VS	EMPLOYEES PROVIDENT FUND BOARD [SSH]	250	9.812	378189	9.812
18 SEP 2025 - 18 SEP 2025	VS	DATUK BEH KIM LING [DIR/CEO]	-18,713	10.942	421753	10.942
18 SEP 2025 - 18 SEP 2025	VS	DATUK BEH KIM LING [SSH]	-18,713	10.942	421753	10.942
18 SEP 2025 - 18 SEP 2025	VS	MR BEH CHERN WEI [DIR/CEO]	-1,447	2.643	101860	2.643
11 SEP 2025 - 11 SEP 2025	VS	EMPLOYEES PROVIDENT FUND BOARD [SSH]	577	9.805	377939	9.805
17 SEP 2025 - 17 SEP 2025	VS	DATUK BEH KIM LING [DIR/CEO]	-17,000	11.427	440466	11.427
17 SEP 2025 - 17 SEP 2025	VS	DATUK BEH KIM LING [SSH]	-17,000	11.427	440466	11.427
17 SEP 2025 - 17 SEP 2025	VS	MR BEH CHERN WEI [DIR/CEO]	-7,800	2.68	103307	2.68
10 SEP 2025 - 10 SEP 2025	VS	EMPLOYEES PROVIDENT FUND BOARD [SSH]	-250	9.79	377362	9.79
19 SEP 2025 - 19 SEP 2025	WPRTS	DATUK RUBEN EMIR GNANALINGAM BIN ABDULLAH [DIR/CEO]	420	3.099	106059	3.099
19 SEP 2025 - 19 SEP 2025	WPRTS	GRYSS (L) FOUNDATION [SSH]	5,757	42.433	1452218	42.433
19 SEP 2025 - 19 SEP 2025	WPRTS	GRYSS LIMITED [SSH]	5,757	42.433	1452218	42.433
19 SEP 2025 - 19 SEP 2025	WPRTS	PEMBINAAN REDZAI SDN BHD [SSH]	5,757	42.433	1452218	42.433
19 SEP 2025 - 19 SEP 2025	WPRTS	THE ESTATE OF LATE TAN SRI DATUK GNANALINGAM A/L GUNANATH LINGAM [SSH]	6,177	45.532	1558277	45.532
18 SEP 2025 - 18 SEP 2025	WPRTS	KUMPULAN WANG PERSARAAN (DIPERBADANKAN) [SSH]	254	6.498	221582	6.498
12 SEP 2025 - 12 SEP 2025	WPRTS	EMPLOYEES PROVIDENT FUND BOARD [SSH]	-3,501	5.7	194382	5.7
11 SEP 2025 - 11 SEP 2025	WPRTS	EMPLOYEES PROVIDENT FUND BOARD [SSH]	-778	5.803	197883	5.803
12 SEP 2025 - 12 SEP 2025	WPRTS	KUMPULAN WANG PERSARAAN (DIPERBADANKAN) [SSH]	177	6.491	221328	6.491
10 SEP 2025 - 10 SEP 2025	WPRTS	EMPLOYEES PROVIDENT FUND BOARD [SSH]	-20	5.825	198648	5.825
18 SEP 2025 - 18 SEP 2025	YINSON	KUMPULAN WANG PERSARAAN (DIPERBADANKAN) [SSH]	12,402	7.02	204911	7.02
12 SEP 2025 - 12 SEP 2025	YINSON	EMPLOYEES PROVIDENT FUND BOARD [SSH]	-1,000	17.128	499958	17.128
11 SEP 2025 - 11 SEP 2025	YINSON	EMPLOYEES PROVIDENT FUND BOARD [SSH]	-2,000	17.162	500958	17.162
12 SEP 2025 - 12 SEP 2025	YINSON	KUMPULAN WANG PERSARAAN (DIPERBADANKAN) [SSH]	-1,102	6.595	192509	6.595
10 SEP 2025 - 10 SEP 2025	YINSON	EMPLOYEES PROVIDENT FUND BOARD [SSH]	-1,500	17.233	502958	17.233
11 SEP 2025 - 11 SEP 2025	YTL	EMPLOYEES PROVIDENT FUND BOARD [SSH]	747	8.556	979886	8.556
12 SEP 2025 - 12 SEP 2025	YTLPOWR	EMPLOYEES PROVIDENT FUND BOARD [SSH]	617	7.487	857914	7.487
11 SEP 2025 - 11 SEP 2025	YTLPOWR	EMPLOYEES PROVIDENT FUND BOARD [SSH]	2,343	10.002	857297	10.002
10 SEP 2025 - 10 SEP 2025	YTLPOWR	EMPLOYEES PROVIDENT FUND BOARD [SSH]	562	9.975	854954	9.975
18 SEP 2025 - 18 SEP 2025	ZHULIAN	MR TEOH BENG SENG [SSH]	116	58.508	269151	58.508
18 SEP 2025 - 18 SEP 2025	ZHULIAN	THE BEST SOURCE HOLDINGS PTE. LTD. [SSH]	116	14.392	66204	14.392
17 SEP 2025 - 17 SEP 2025	ZHULIAN	MR TEOH BENG SENG [SSH]	20	58.483	269035	58.483
17 SEP 2025 - 17 SEP 2025	ZHULIAN	THE BEST SOURCE HOLDINGS PTE. LTD. [SSH]	20	14.367	66088	14.367

Disclaimer: The Information in Insider Activity is extracted from www.shareinvestor.com/fundamental/insider_trades. The information on this page is provided as a service to readers. It does not constitute financial advice and/or any investment recommendations. We assume no liability for damages resulting from or arising out of the use of such information. Whilst every effort is made to ensure accuracy, the information presented is not the official record of shareholder filings. Readers are advised to read the original filings on the Bursa Malaysia website at www.bursamalaysia.com



What's Next for Steel Hawk?
After a stellar IPO and major contract wins in hand...

Dato' Sharman K Michael
Deputy Chairman and Executive Director
Steel Hawk Berhad

MARKET SENTIMENTS
IRB, MyDigital ID strengthen cooperation to accelerate digital identity adoption + Gig Workers Bill aims to make SOCSO contribution mandatory - Steven Sim

Learn how to identify Hot Stocks using Technical Analysis (TA) and Fundamental Analysis (FA)

SIGN UP FOR Invest NOW IT'S FREE!!!

Click here

Get market moving news and analyses. Regular columns include **Behind The Action** and **From The Observer**

Leaderboard • Shariah Hot Stocks • Shariah Momentum Up Stocks • Non Shariah Hot Stocks • Up Trending Stocks • Growth Stocks • Dividend Stocks • Long Companies • Insider Activity • Investor Relations • Regional Markets

Scan me



Via email, every Friday.







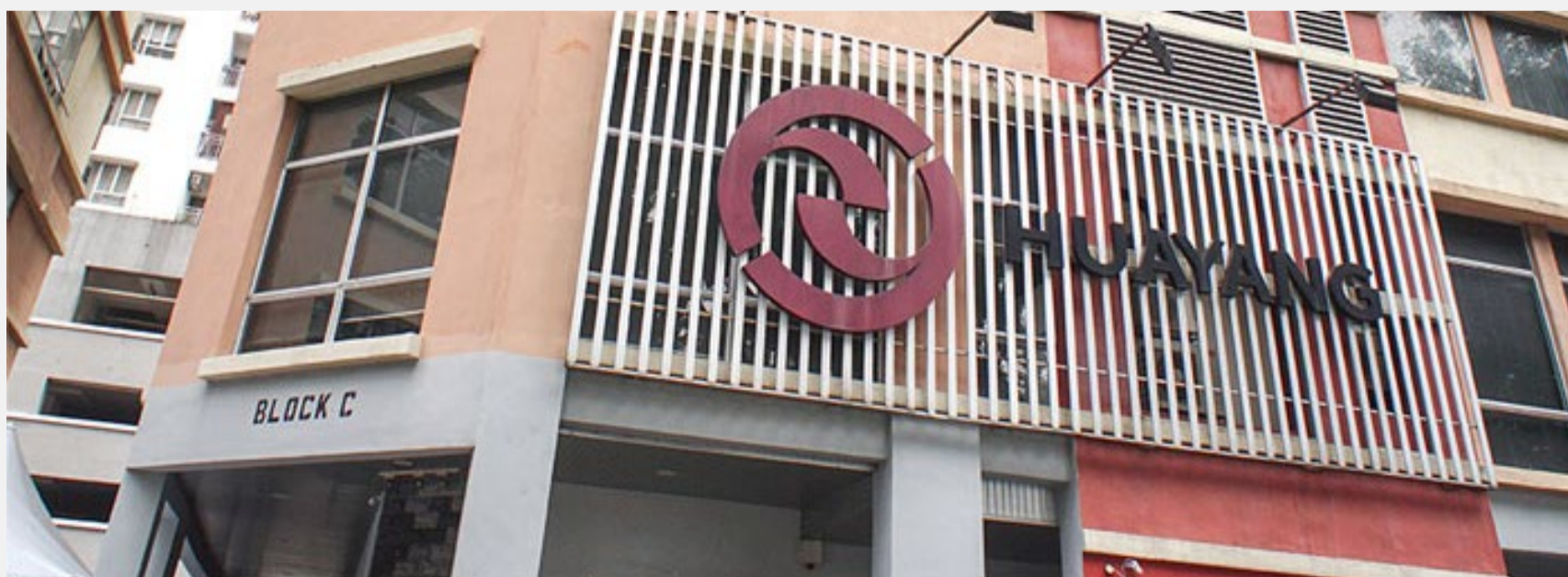






On behalf of the Board of **Leform Berhad (LEFORM)**, UOBKH wishes to announce that Bursa Securities had, vide its letter dated 22 September 2025, resolved to grant the Company an extension of time of 6 months until 24 March 2026 for the implementation of the Private Placement. This is pursuant to the application submitted by UOBKH to Bursa Securities on 10 September 2025, to seek its approval for an extension of time for the Company to implement and complete the Private Placement.

The Board of Directors of **Hua Yang Berhad (HUAYANG)** wishes to inform that the Company's wholly-owned subsidiary, Prisma Pelangi Sdn Bhd has on 18 September 2025 disposed of 22,600,000 ordinary shares in Magna Prima Berhad, representing approximately 5.66% equity interest in Magna Prima Berhad for a cash consideration of RM16,498,000 via a direct business transaction. Consequential to the Disposal, PPSB still holds 80,289,940 ordinary shares in MPB, representing approximately 20.11% equity interest in MPB.





[READ MORE](#)

The Board of Directors of **Gamuda Berhad (GAMUDA)** wishes to announce that the Company intends to seek its shareholders' approval on the Proposed Renewal of Share Buy-back Authority at its forthcoming 49th Annual General Meeting to be convened

on a date to be announced later. The Statement to Shareholders containing details of the above proposal will be published on the Company's website at www.gamuda.com.my or Bursa Malaysia's website at www.bursamalaysia.com in due course.



On behalf of the Board of **NextGreen Global Berhad (NGGB)**, TA Securities wishes to announce that a total of 97,672,000 Nextgreen Shares were issued under the Private Placement and the Company has decided not to place out the remaining 1,901,300 Placement Shares available for placement. As such, the Private Placement is deemed completed today.



[READ MORE](#)

The Board of Directors of **Radium Development Berhad (RADIUM)** wishes to announce that pursuant to Clause 2.4 and Clause 2.5 of the Joint Venture Agreement dated 20 September 2022, both Kadar Jutajaya Sdn. Bhd. and Rasa Wangi Development Sdn. Bhd. are agreeable to further extend the period for fulfilment of Condition Precedent for a further three months commencing from 20 September 2025 to 19 December 2025 subject to interest of ten percent per annum on daily basis based on unpaid Landowner's Entitlement. For avoidance of doubt, the interest shall cease to accrue upon the Condition Precedent being fulfilled with relevant documents proving the same. The Board is of the view that the interest expense will not have material impact on the financial result of Radium for the financial year ending 31 December 2025.



Disclaimer: The information in the Investor Relations page is extracted from individual companies' announcements in www.bursamalaysia.com. The information on this page is provided as a service to readers. We assume no liability for damages resulting from or arising out of the use of such information. Whilst every effort is made to ensure accuracy, the information presented has been simplified for your reading pleasure. Readers are advised to read the original and complete filings on the Bursa Malaysia website at https://www.bursamalaysia.com/market_information/announcements/company_announcement

NAME OF COMPANY	OFFER PERIOD		ISSUE PRICE (Per Ordinary Share)	LISTING SOUGHT	DATE OF LISTING
	OPENING	CLOSING			
CHEEDING HOLDINGS BERHAD	12 Sept 2025	23 Sept 2025	RM0.36	ACE MARKET	7 October 2025
CAMAROE BERHAD	29 Aug 2025	12 Sept 2025	RM0.14	ACE MARKET	2 October 2025



Learn how to identify Hot Stocks using Technical Analysis (TA) and Fundamental Analysis (FA)

SIGN UP FOR Invest
IT'S FREE!!!

[Click here](#)

