

# Invest

ISSUE  
**270**

FRIDAY  
12 SEPT 2025

Scan/Click QR to Register



Via email, every Friday

A Weekly e-Publication by **SHAREINVESTOR**



*Selamat*

# Hari Malaysia

16 SEPTEMBER 2025



From all of us at

**SHAREINVESTOR**<sup>®</sup>

An AlphaInvest Company



# SHAREINVESTOR®

An AlphaInvest Company

Invest with Knowledge

## INVESTOR PLATFORMS

**Director**  
Darren Chong  
darren.chong@shareinvestor.com

**Business Development Manager**  
Jay Cheong  
jay.cheong.@shareinvestor.com

## ADMIN & OPERATIONS

**Senior Executive**  
Watie Nordin  
watie.nordin@shareinvestor.com

**Executive**  
Silas Emmanuel Joseph  
silas.joseph@shareinvestor.com

## PROCESS AUTOMATION & DATA ANALYTICS

**Data Analyst**  
Lee Khai Bing

## INVESTOR RELATIONS

**Group Managing Director & Publisher**  
Edward Stanislaus  
edward@shareinvestor.com

**Senior Manager**  
Letticia Wong  
letticia.wong@shareinvestor.com

**Manager**  
Aida Norzeti Talib  
aida.norzeti@shareinvestor.com

## ALPHA INVEST HOLDINGS BOARD OF DIRECTORS

<b>Chairman</b>	Patrick Daniel
<b>Group CEO</b>	Christopher Lee
<b>Group COO</b>	Lim Dau Hee
<b>Group MD</b>	Shanison Lin



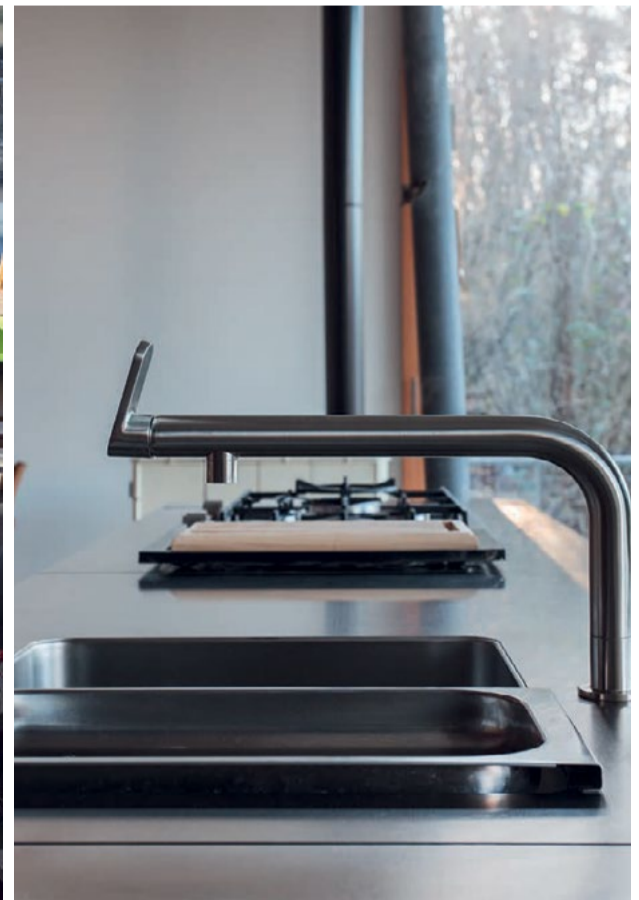
“ GIVE A MAN A FISH AND YOU FEED HIM FOR A DAY; TEACH A MAN TO FISH AND YOU FEED HIM FOR A LIFETIME ”

**ShareInvestor Malaysia Sdn. Bhd.**  
(200001023956) (526564-M)  
L15-03 & 03A, PJX HM Shah Tower,  
No 16A, Jalan Persiaran Barat, PJS 52,  
46200 Petaling Jaya, Selangor

Hotline : 603 8681 0580  
Mobile : 011 6343 8939  
Website : [www.ShareInvestor.com.my](http://www.ShareInvestor.com.my)  
[www.alphainvestholdings.com](http://www.alphainvestholdings.com)  
[www.Facebook.com/ShareInvestorMalaysia](http://www.Facebook.com/ShareInvestorMalaysia)

**ADVERTISEMENT ENQUIRY**

bulthaup takes care of the details so that you can enjoy a harmonious environment.



**XTRA**

XTRA FURNITURE SDN BHD  
The Gardens Mall, Mid Valley City  
[xtrafurniture.com/bulthaup](http://xtrafurniture.com/bulthaup)  
[fb.com/bulthaupmalaysia](http://fb.com/bulthaupmalaysia)

bulthaup



# making places collaborative



usm.com

## **XTRA**

XTRA FURNITURE SDN BHD  
The Gardens Mall, Mid Valley City, Lot S-236 & 237  
Lingkar Syed Putra, 59200 Kuala Lumpur  
T. +603 2282 9088 | living@xtrafurniture.com | xtrafurniture.com  
● XTRAFurniture | ● xtrafurnituremsia

[www.shareinvestor.com](http://www.shareinvestor.com) - market data at your fingertips



ShareInvestor WebPro ([www.shareinvestor.com/my](http://www.shareinvestor.com/my))  
Prices > Stock Prices > Bursa > click Stocks tab

1. mouse over Ranking > select Top Active > all Shariah stocks are denoted with an [S] > mouse over Column Layout > select Edit Customs > select Name > select Volume > select Last Done Price > Mouse Over Column Layout > select Custom
2. mouse over Ranking > select Top Turnover > all Shariah stocks are denoted with an [S] > mouse over Column Layout > select Edit Customs > select Name > select Last Done Price > select Value > Mouse Over Column Layout > select Custom
3. mouse over Ranking > select Top Gainers (Over 5 Trading Days) > mouse over Column Layout > select Edit Customs > select Name > select Last Done Price > select 5 Days Change > select 5 Days % Change > Mouse Over Column Layout > select Custom
4. mouse over Ranking > select Top Losers (Over 5 Trading Days)
5. mouse over Ranking > select Top % Gainers (Over 5 Trading Days)
6. mouse over Ranking > select Top % Losers (Over 5 Trading Days)

### Shariah Top Actives (As at Yesterday)

Name	Price (RM)	Volume
VS [S]	0.550	1,357,313.000
PHARMA [S]	0.245	970,702.000
TANCO [S]	0.810	359,007.000
SIME [S]	2.150	284,286.000
NEXG [S]	0.495	277,981.000
ZETRIX [S]	0.850	253,188.000
SDG [S]	5.150	251,431.000
ARMADA [S]	0.340	209,532.000
FFB [S]	2.100	204,571.000
CLITE [S]	0.270	168,152.000

### Shariah Top Turnover (As at Yesterday)

Name	Price (RM)	Value (RM)
SDG [S]	5.150	129,255,528
VS [S]	0.550	74,969,760
SIME [S]	2.150	60,553,934
TENAGA [S]	13.220	54,776,018
FFB [S]	2.100	42,756,768
TM [S]	7.020	41,356,890
IHH [S]	7.150	38,569,045
KPJ [S]	2.490	38,305,994
GAMUDA [S]	5.550	30,974,657
IJM [S]	2.870	29,566,236

### Top Gainers (over 5 Trading days as at Yesterday)

Name	Price (RM)	Change (RM)
NESTLE	95.500	+2.260
PPB	10.100	+0.500
UWC	3.270	+0.390
MCEMENT	6.090	+0.320
HLIND	13.780	+0.280
KSL	1.970	+0.250
IHH	7.150	+0.240
RANHILL	1.820	+0.230
PARAGON	2.920	+0.210
PJBUMI	1.780	+0.210

### Top % Gainers (over 5 Trading days as at Yesterday)

Name	Price (RM)	Change (%)
PHB	0.010	+100.00
CHEETAH	0.115	+53.33
SG	0.015	+50.00
XOXNET	0.015	+50.00
MERIDIAN	0.035	+40.00
PHARMA	0.245	+36.11
JADI	0.020	+33.33
JOE	0.060	+33.33
LYC	0.025	+25.00
MCLEAN	0.380	+22.58

### Top Losers (over 5 Trading days as at Yesterday)

Name	Price (RM)	Change (RM)
PANAMY	8.450	-0.800
HEIM	20.340	-0.720
F&N	27.000	-0.620
CARLSBG	16.340	-0.540
PETDAG	21.380	-0.420
ALLIANZ	18.080	-0.280
PETGAS	18.460	-0.240
MAYBANK	9.770	-0.220
DAYANG	1.520	-0.200
EUROSP	2.680	-0.180

### Top % Losers (over 5 Trading days as at Yesterday)

Name	Price (RM)	Change (%)
BCMALL	0.005	-50.00
HONGSENG	0.005	-50.00
XDL	0.010	-33.33
G3	0.015	-25.00
KEYASIC	0.030	-25.00
SINARAN	0.015	-25.00
WIDAD	0.015	-25.00
ASDION	0.020	-20.00
CNH	0.040	-20.00
VS	0.550	-19.12

## Price & Volume Distribution Charts (as at Yesterday)

Technical Analysis

**DEFINITION:** Shariah compliant stocks with Technical Analysis showing 5-days & 10-days Moving Average Price below Yesterday's Close over past 3 days and with Volume Spike.

**CHART GUIDE:** Volume Distribution Chart is a statistical interpretation of the current sentiment on each stock in graphical format. The highest bar categorized as >150k is likely to be traded by institutions or super dealers, while the lowest bar categorized as <15k usually represents retail investors. "Buy Up" refers to more buyers snatching up the lots queued at selling price. "Sell Down" refers to sellers selling their shares to the buying queue



ShareInvestor WebPro > Screener > Market Screener (FA & TA) > select BURSA > add criteria

**A. Criteria**

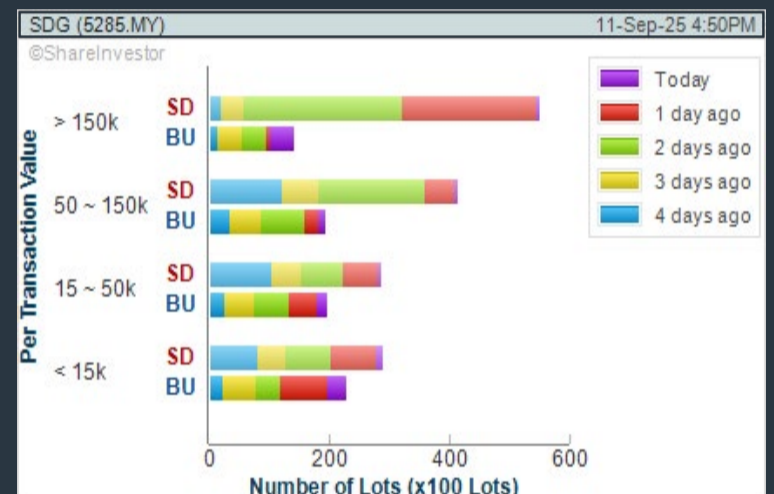
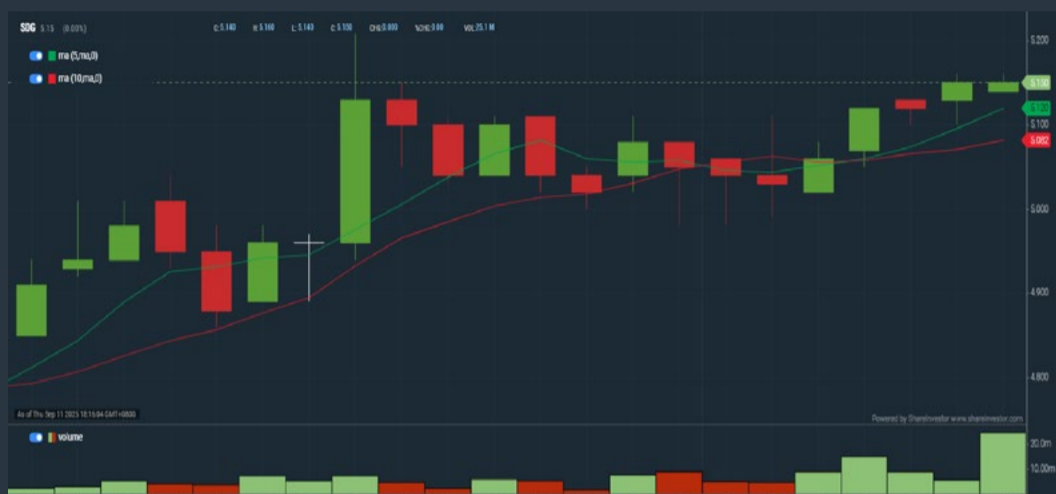
- > click Add Criteria
- Technical Analysis Conditions tab select (i) Moving Average Below Close (ii) Volume Spike
- Fundamental Analysis Conditions tab > select (iii) Revenue
- Prices & Other Conditions tab > select (iv) Is Shariah Compliant
- Technical Analysis Conditions tab select (v) Moving Average Below Close
- Prices & Other Conditions tab > select (vi) Last Done Price
- Technical Analysis Conditions tab select (vii) Moving Average Below Close

**B. Conditions (Criteria Filters)**

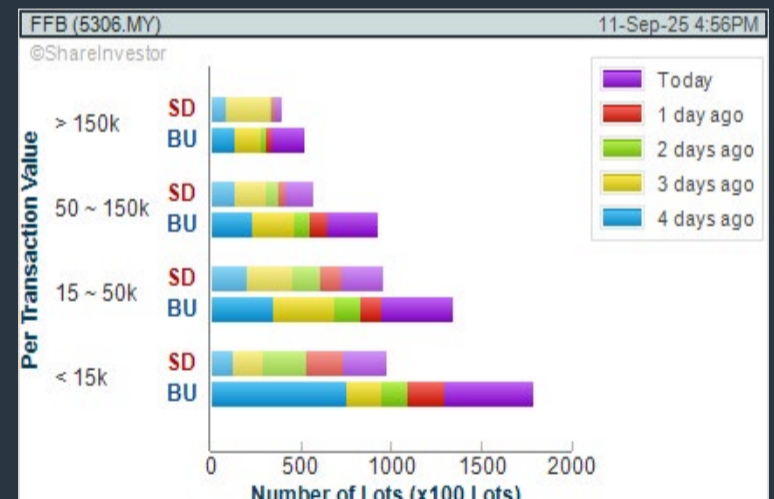
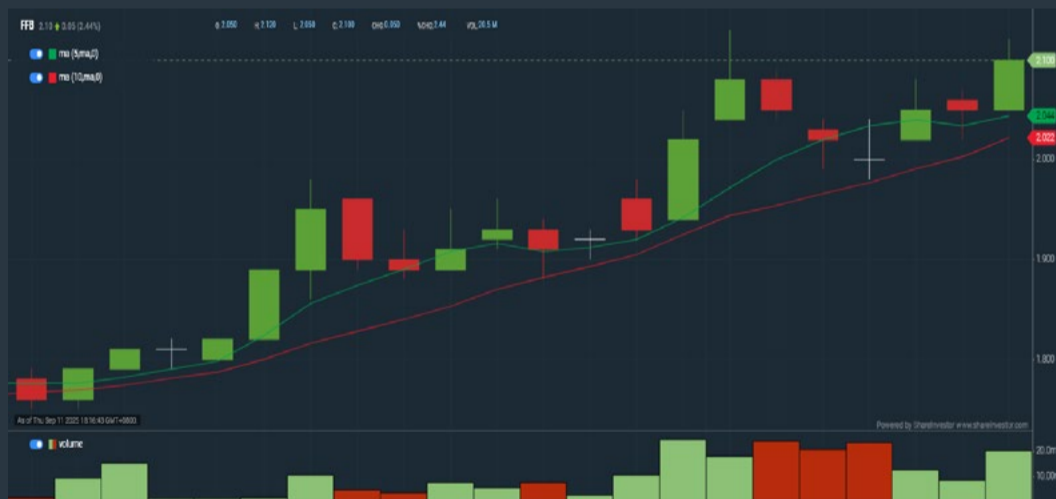
1. Moving Average Below Close - select (MA) type (5) below close price for type (3) days
2. Volume Spike - Volume type (1) greater than type (5) days average
3. Revenue ("000) - select (more than) type (1) for the past select (1) financial year(s)
4. Is Shariah Compliant - select **Yes**
5. Moving Average Below Close - select (MA) type (10) below close price for type (3) days
6. Last Done Price - select (more than) type (0.3)
7. Moving Average Below Close - select (EMA) type (5) below close price for type (3) days

- > click Save Template > Create New Template type (Shariah Hot Stocks) > click Create
- > click Save Template as > select Shariah Hot Stocks > click Save
- > click Screen Now (may take a few minutes)
- > Sort By: Select (Vol) Select (Desc)
- > Mouse over stock name > Charts > click C<sup>2</sup> Charts or Volume Distribution

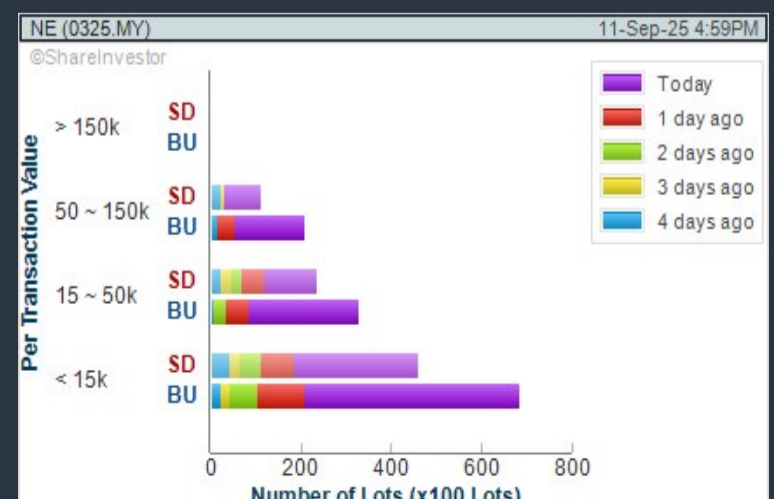
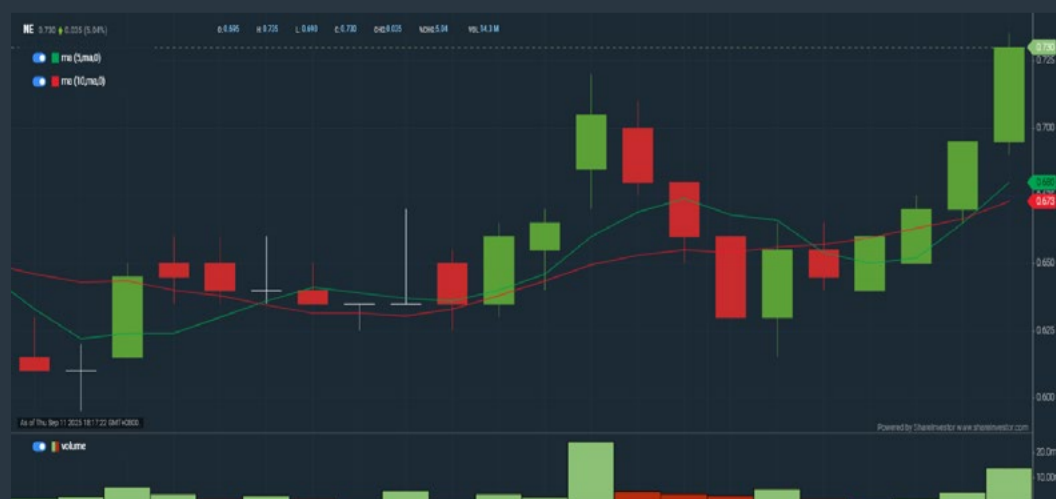
### SD GUTHRIE BERHAD (5285) C<sup>2</sup> Chart



### FARM FRESH BERHAD (5306) C<sup>2</sup> Chart



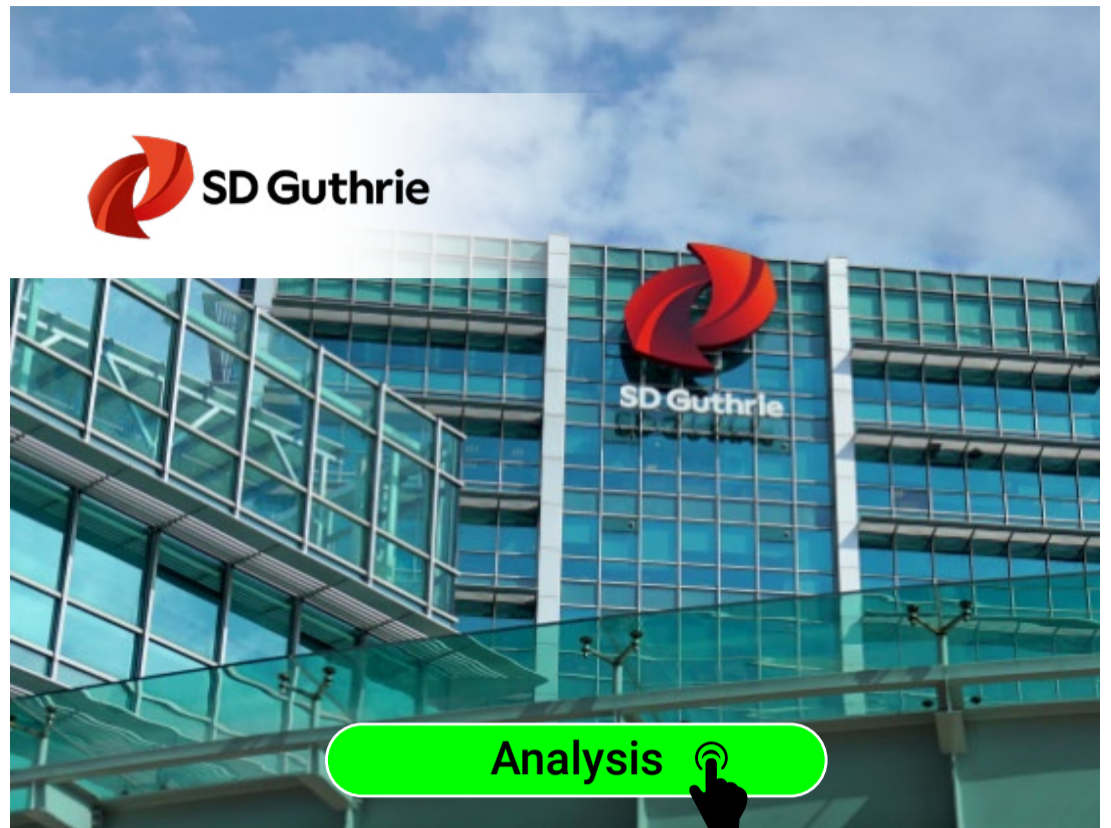
### NORTHEAST GROUP BERHAD (0325) C<sup>2</sup> Chart



**Disclaimer:** The information on this page is provided as a service to readers. It does not constitute financial advice and/or any investment recommendations. Past performance is not indicative of future results. We assume no liability for damages resulting from or arising out of the use of such information. It would be best if you did your own research to make your personal investment decisions wisely or consult a licenced investment advisor.

## COMPANY BACKGROUND

**SD Guthrie Berhad** is an integrated global palm oil producer of Certified Sustainable Palm Oil (CSPO). The Company offers high-quality palm oil sourced from its sustainability-focused plantations. The operations, both upstream and downstream, are fully integrated, and it maintains a deforestation-free supply chain that is traceable. The Renewable Energy segment focuses on developing green technology and renewable energy which includes solar, biogas and biomass projects.

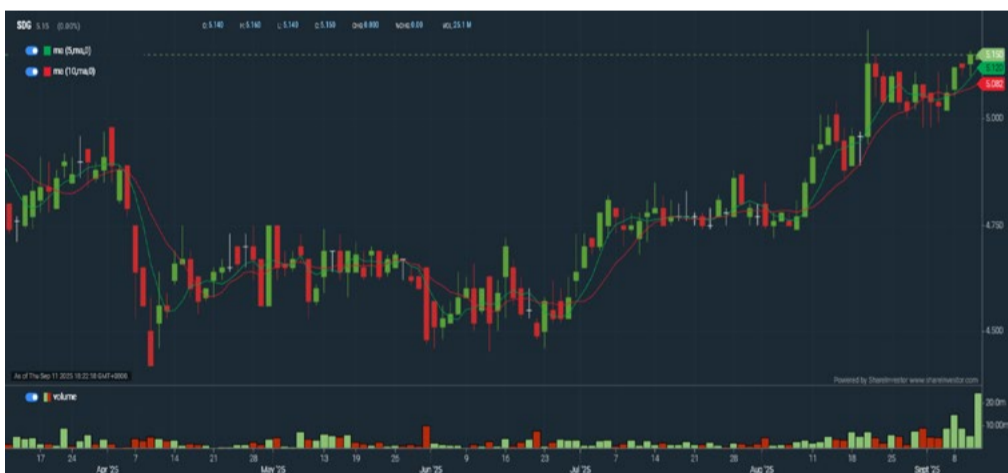


SDG SD GUTHRIE BERHAD		Updated at 11 Sep 2025 17:31	
Last (MYR): <b>5.150</b>	Change: -	High: <b>5.160</b>	Remarks: [e] s [?]
Open	Change (%): -	Low: <b>5.140</b>	
Buy Price	5.140	Yesterday's Close	5.150
Buy Volume ('00)	5.080	Sell Price	5.160
Cumulative Volume ('00)	50	Sell Volume ('00)	1
	251,431	Cumulative Value	129,255,528

### Financial Analysis

	<b>Revenue Growth</b> Revenue up and down in past years			<b>Profit Growth</b> Profit up and down in last 3 years (with last 3 profitable years)	
	<b>Piotroski F Score</b> The company has strong financial strength (Piotroski F-Score of 8-9)			<b>Dividend Payout</b> Dividend is increasing over the past 60 months.	
	<b>Debt to Cashflow</b> High debt to cash flow for most recent year			<b>Gross Profit Margin</b> Low gross profit margin for 3 years	
	<b>Return on Equity (ROE)</b> ROE above 10% for 3 consecutive years				

Excellent   
 Good   
 Neutral   
 Be Alert   
 Watch Out



### Historical Financials

Profit & Loss (MYR '000)



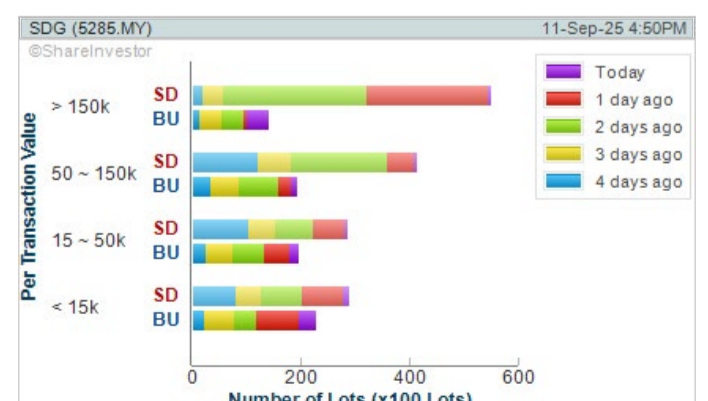
**WebPro 9-Days Free Trial Registration (worth RM10) Sign Up Now**



## Key Statistics with Total Shareholder Returns

### Total Shareholder Return

Period	Dividend Received	Capital Appreciation	Total Shareholder Return
<b>Short Term Return</b>	5 Days	-	+2.39 %
	10 Days	-	+2.59 %
	20 Days	-	+3.41 %
<b>Medium Term Return</b>	3 Months	-	+11.96 %
	6 Months	0.117	+10.65 %
	1 Year	0.164	+18.35 %
<b>Long Term Return</b>	2 Years	0.314	+26.92 %
	3 Years	0.474	+31.56 %
	5 Years	0.792	+18.08 %
<b>Annualised Return</b>	Annualised	-	+3.38 %



**Disclaimer:** The information on this page is provided as a service to readers. It does not constitute financial advice and/or any investment recommendations. Past performance is not indicative of future results. We assume no liability for damages resulting from or arising out of the use of such information. It would be best if you did your own research to make your personal investment decisions wisely or consult a licenced investment advisor.

Sponsored by



Organised by



# 冲刺Q4, 布局2026

📅 27 SEPT 2025

🕒 9:30am - 2:00 pm

📍 Auditorium, Connexion  
Conference & Event Centre

🎫 收费: RM20 (包含午餐)

2025股市策略交流会

立即注册 →



**Loui Low**

Head of Research  
M+ Global

**邱天雄**

道资DAOVEST  
创办人兼首席执行官

**天哥**

第一天投资理财日记

**J Lim**

Founder & Trainer  
Trade The Pattern

## Price & Volume Distribution Charts (as at Yesterday)

Technical Analysis

**DEFINITION:** Shariah compliant stocks with Technical Analysis showing Bullish Momentum and Price Uptrend. The share price closed at the highest price yesterday. The typical price was higher than the previous day's typical price.

**CHART GUIDE:** Volume Distribution Chart is a statistical interpretation of the current sentiment on each stock in graphical format. The highest bar categorized as >150k is likely to be traded by institutions or super dealers, while the lowest bar categorized as <15k usually represents retail investors. "Buy Up" refers to more buyers snatching up the lots queued at selling price. "Sell Down" refers to sellers selling their shares to the buying queue.



ShareInvestor WebPro > Screener > Market Screener (FA & TA)>select BURSA>add criteria

**A. Criteria**

- > click Add Criteria
- Fundamental Analysis Conditions tab >select (i) Revenue
- Technical Analysis Conditions tab select (ii) Average Volume
- Prices & Other Conditions tab > select (iii) Last Done Price
- Prices & Other Conditions tab > select (iv) Is Shariah Compliant
- Technical Analysis Conditions tab select (v) RSI Overbought
- Technical Analysis Conditions tab select (vi) Moving Average Below Close
- Technical Analysis Conditions tab select (vii) CCI Overbought

**B. Conditions (Criteria Filters)**

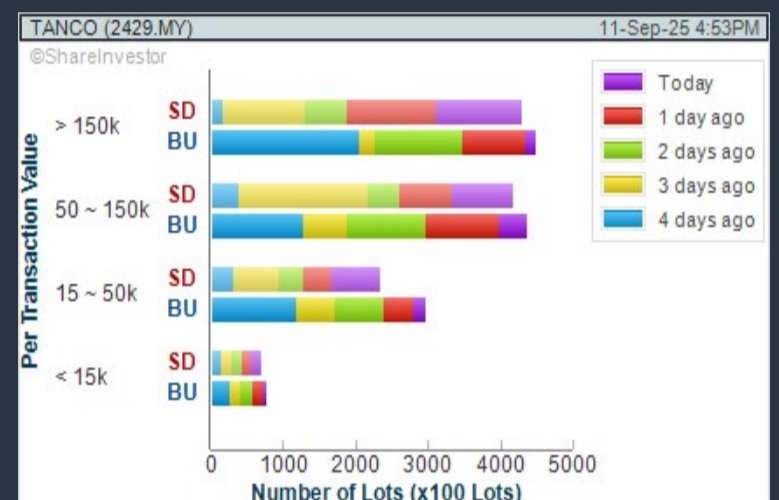
1. Revenue ("000) - select (more than) type (1) for the past select (1) financial year(s)
2. Average Volume - type (1) days average volume greater than type (10000) lots
3. Last Done Price - select (more than) type (0.3)
4. Is Shariah Compliant - select Yes
5. RSI Overbought - select RSI 1 above 99 for 1 days
6. Moving Average Below Close - select (MA) type (10) below close price for type (1) days
7. CCI Overbought - select CCI (2) above (0) for (1) days

- > click Save Template > Create New Template type (Shariah Momentum Up Stocks) > click Create
- > click Save Template as > select Shariah Momentum Up Stocks > click Save
- > click Screen Now (may take a few minutes)
- Sort By: Select (Vol) Select (Desc)
- Mouse over stock name > Charts > click C<sup>2</sup> Charts tab or Volume Distribution

### TANCO HOLDINGS BHD (2429)

C<sup>2</sup> Chart

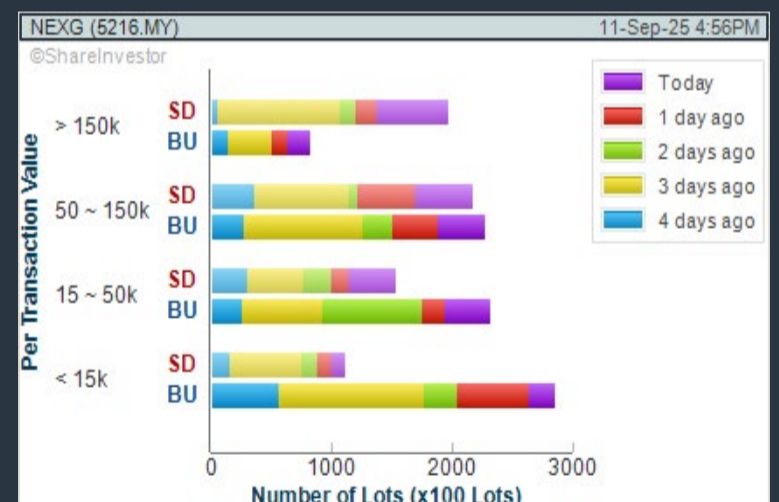
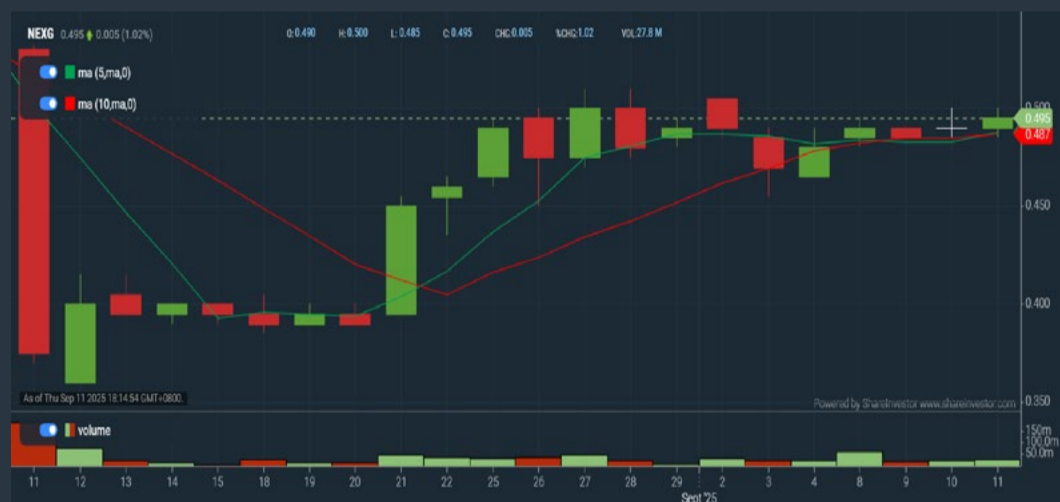
Analysis



### NEXG BERHAD (5216)

C<sup>2</sup> Chart

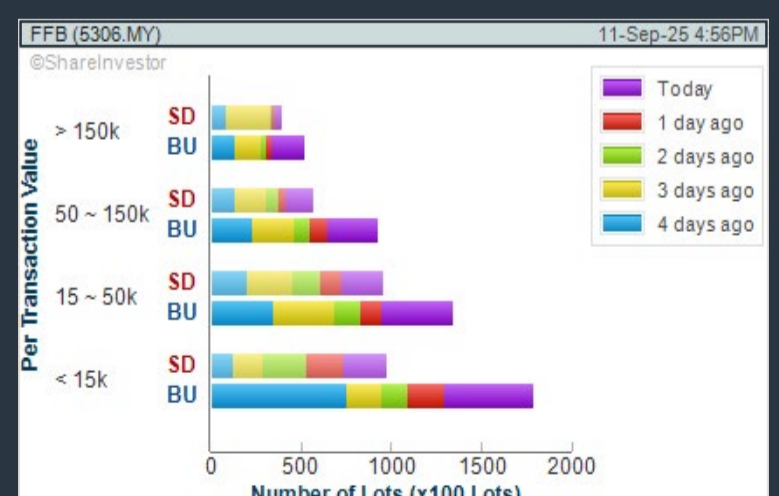
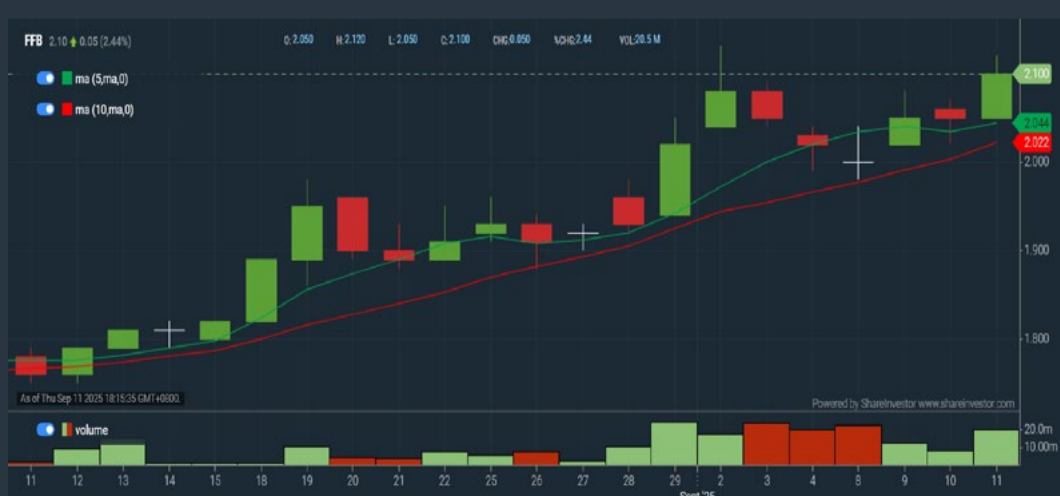
Analysis



### FARM FRESH BERHAD (5306)

C<sup>2</sup> Chart

Analysis



**Disclaimer:** The information on this page is provided as a service to readers. It does not constitute financial advice and/or any investment recommendations. Past performance is not indicative of future results. We assume no liability for damages resulting from or arising out of the use of such information. It would be best if you did your own research to make your personal investment decisions wisely or consult a licenced investment advisor.

## Price & Volume Distribution Charts (as at Yesterday)

Technical Analysis

**DEFINITION:** Stocks with Technical Analysis showing 5-days & 10-days Moving Average Price below Close over past 1 days and with Volume Spike

**CHART GUIDE:** Volume Distribution Chart is a statistical interpretation of the current sentiment on each stock in graphical format. The highest bar categorized as >150k is likely to be traded by institutions or super dealers, while the lowest bar categorized as <15k usually represents retail investors. "Buy Up" refers to more buyers snatching up the lots queued at selling price. "Sell Down" refers to sellers selling their shares to the buying queue.



ShareInvestor WebPro > Screener > Market Screener (FA & TA) > select BURSA > add criteria

**A. Criteria**

- > click Add Criteria
- Technical Analysis Conditions tab select (i) Moving Average Below Close (ii) Volume Spike
- Fundamental Analysis Conditions tab >select (iii) Revenue
- Prices & Other Conditions tab > select (iv) Is Shariah Compliant
- Technical Analysis Conditions tab select (v) Moving Average Below Close
- Prices & Other Conditions tab > select (vi) Last Done Price
- Technical Analysis Conditions tab select (vii) Moving Average Below Close

**B. Conditions (Criteria Filters)**

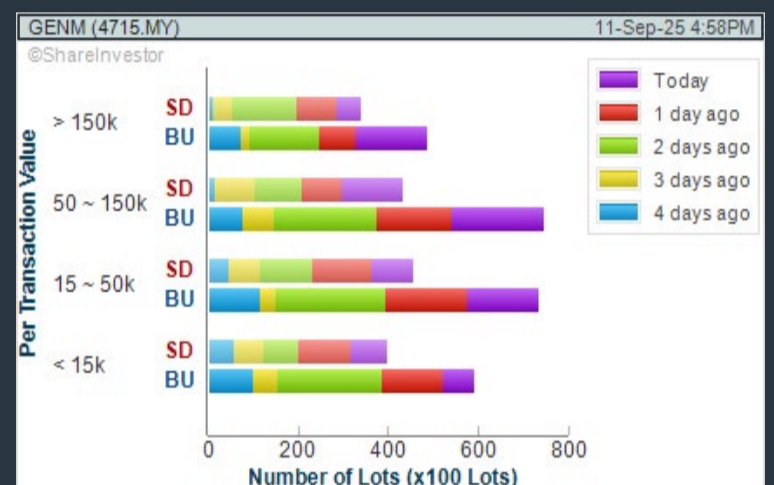
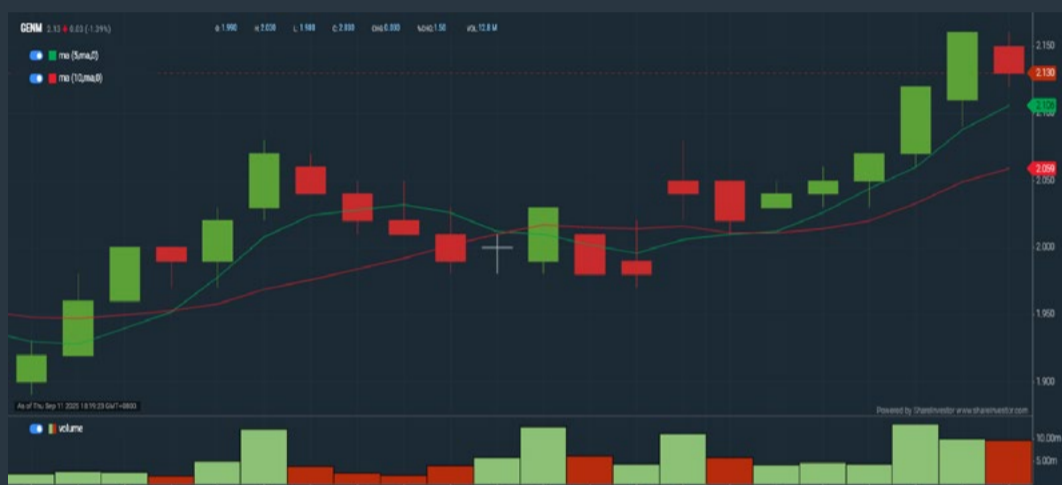
1. Moving Average Below Close - select (MA) type (5) below close price for type (3) days
2. Volume Spike - Volume type (1) greater than type (5) days average
3. Revenue ("000) - select (more than) type (1) for the past select (1) financial year(s)
4. Is Shariah Compliant - select NO
5. Moving Average Below Close - select (MA) type (10) below close price for type (1) days
6. Last Done Price - select (more than) type (0.3)
7. Moving Average Below Close - select (EMA) type (5) below close price for type (1) days

- > click Save Template > Create New Template type (Non-Shariah Hot Stocks) > click Create
- > click Save Template as > select Non-Shariah Hot Stocks > click Save
- > click Screen Now (may take a few minutes)
- Sort By: Select (Vol) Select (Desc)
- Mouse over stock name > Charts > click C² Charts tab or Volume Distribution

### GENTING MALAYSIA BERHAD (4715)

C² Chart

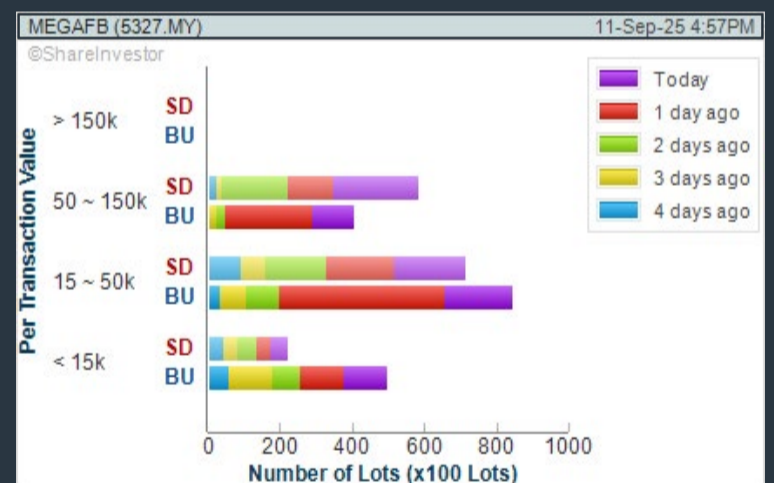
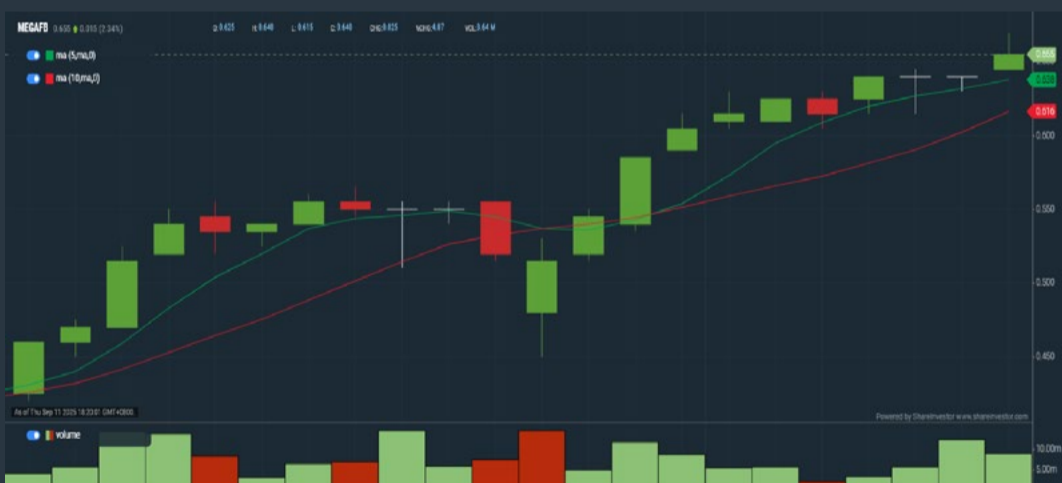
Analysis



### MEGA FORTRIS BERHAD (5327)

C² Chart

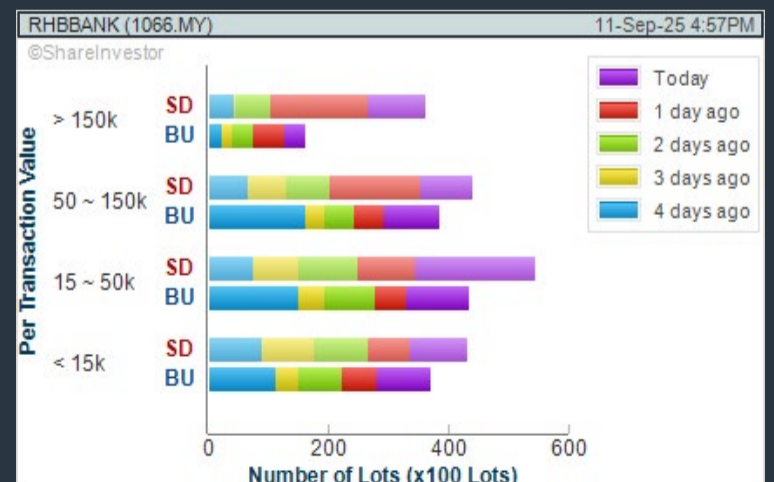
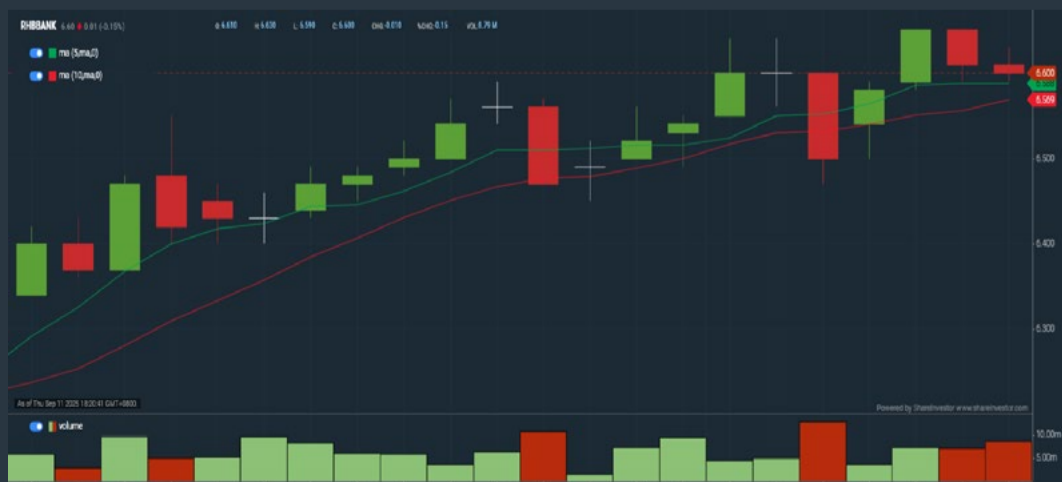
Analysis



### RHB BANK BERHAD (1066)

C² Chart

Analysis



**Disclaimer:** The information on this page is provided as a service to readers. It does not constitute financial advice and/or any investment recommendations. Past performance is not indicative of future results. We assume no liability for damages resulting from or arising out of the use of such information. It would be best if you did your own research to make your personal investment decisions wisely or consult a licenced investment advisor.

## Price & Volume Distribution Charts (Over 3 trading days as at Yesterday)

Technical Analysis

**DEFINITION:** Stocks with Technical Analysis showing Bullish Momentum and Price Uptrend

**CHART GUIDE:** Volume Distribution Chart is a statistical interpretation of the current sentiment on each stock in graphical format. The highest bar categorized as >150k is likely to be traded by institutions or super dealers, while the lowest bar categorized as <15k usually represents retail investors. "Buy Up" refers to more buyers snatching up the lots queued at selling price. "Sell Down" refers to sellers selling their shares to the buying queue.



ShareInvestor WebPro > Screener > Market Screener (FA & TA) > select BURSA > add criteria

**A. Criteria**

- > click Add Criteria
- Fundamental Analysis Conditions tab > select (i) Revenue
- Technical Analysis Conditions tab select (ii) Moving Average Below Close
- Technical Analysis Conditions tab select (iii) Average Volume
- Prices & Other Conditions tab > select (iv) Last Done Price
- Technical Analysis Conditions tab select (v) Moving Average Below Close
- Technical Analysis Conditions tab select (v) Moving Average Bullish Crossover

**B. Conditions**

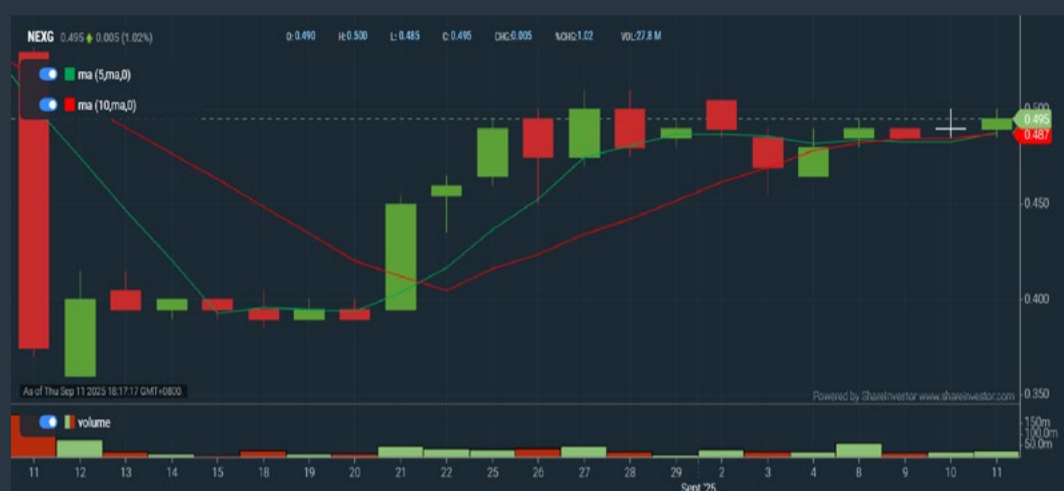
1. Revenue - select (more than) type (1) for the past select (1) financial year(s)
2. Moving Average Below Close - select (MA) type (20) below close price for type (1) days
3. Average Volume - type (5) days average volume type (10000) lots
4. Last Done Price - select (more than) type (0.3)
5. Moving Average Below Close - select (MA) type (10) below close price for type (1) days
6. Moving Average Bullish Crossover - select (MA) type (5) crossed above select (MA) type (10)

> click Save Template > Create New Template type (Non-Shariah Up-Trending Stocks) > click Create Click Save Template As > select Non-Shariah Up Trending Stocks > click Save  
> click Screen Now (may take a few minutes)  
Sort By: Select (Vol) Select (Desc)  
Mouse over stock name > Charts > click C<sup>2</sup> Charts tab or Volume Distribution

### NEXG BERHAD (5216)

C<sup>2</sup> Chart

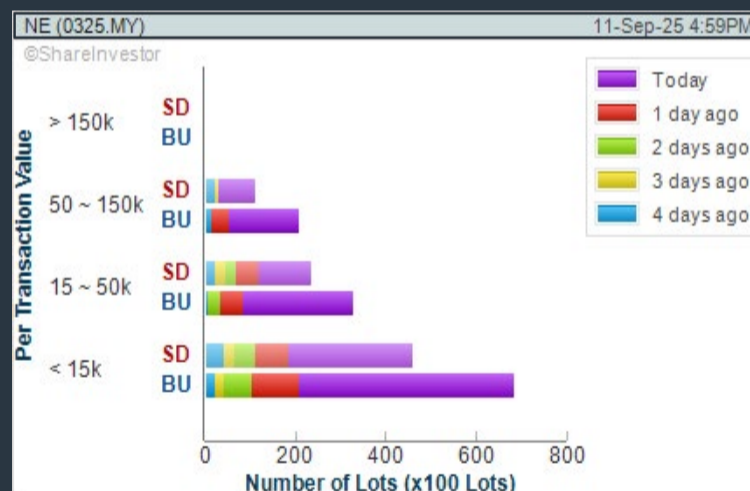
Analysis



### NORTHEAST GROUP BERHAD (0325)

C<sup>2</sup> Chart

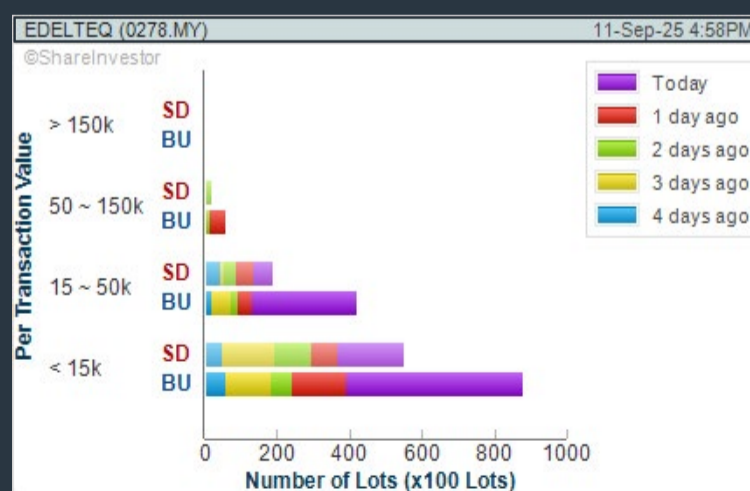
Analysis



### EDELTEQ HOLDINGS BERHAD (0278)

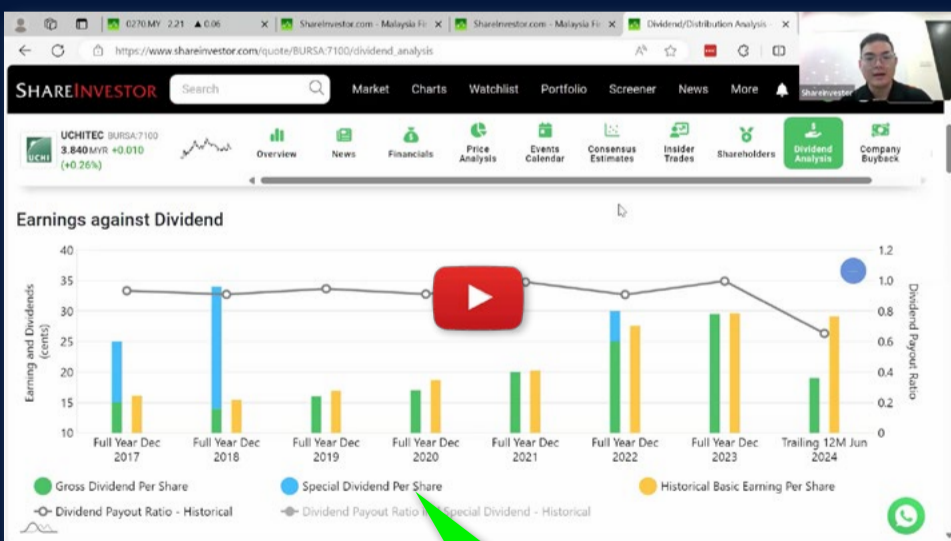
C<sup>2</sup> Chart

Analysis



**Disclaimer:** The information on this page is provided as a service to readers. It does not constitute financial advice and/or any investment recommendations. Past performance is not indicative of future results. We assume no liability for damages resulting from or arising out of the use of such information. It would be best if you did your own research to make your personal investment decisions wisely or consult a licenced investment advisor.

# Ultimate Guide to use **ShareInvestor**



## YOU WILL LEARN HOW TO USE:

- Company Financials
- Market Screener
- Company Insider Trades
- Dividend Analysis
- Consensus Estimation
- *and more...*

**Watch  
now!**

## Price & Total Shareholder Return (as at Yesterday)

Fundamental Analysis

**DEFINITION:** Share price of a company trading at a lower price as compared to its fundamentals (FA) such as financial performance and dividend, allowing it to be attractive to value investors.

**CHART GUIDE:** Total Shareholder Return (TSR) combines share price appreciation and dividend distributions paid to show the total return to the shareholder expressed as a percentage.



ShareInvestor WebPro > Screener > Market Screener (FA & TA) > select BURSA > add criteria

**A. Criteria**

- > click Add Criteria
- Fundamental Analysis Conditions tab (i) Price Earnings Ratio
- Fundamental Analysis Conditions tab >select (ii) CAGR of Net Earnings
- Fundamental Analysis Conditions tab >select (iii) Net Debt To Equity
- Fundamental Analysis Conditions tab >select (iv) Return On Equity (ROE)

**B. Conditions**

1. Price Earnings Ratio - select (less than) type (15) times now
2. CAGR of Net Earnings - select (more than) type (10) % for the past type (3) financial year(s)
3. Net Debt To Equity – select (less than) type (1) for the past select (1) financial year(s)
4. Return On Equity (ROE) – select (more than) type (10) % for the past select (1) financial year(s)

- > click Save Template > Create New Template type (Value Stock) > click Create
- > click Save Template as > select Value Companies > click Save
- > click Screen Now (may take a few minutes)
- Sort by: Select (PE Ratio) Select (Ascending)
- > Mouse over stock name > Factsheet > looking for Total Shareholder Return
- > Mouse over stock name > Charts > click C2 Charts tab

## INGENIEUR GUDANG BERHAD (5178)

C<sup>2</sup> Chart

Analysis



Period	Dividend Received	Capital Appreciation	Total Shareholder Return
Short Term Return	5 Days	-	+20.00 %
	10 Days	-	-
	20 Days	-	-
Medium Term Return	3 Months	-	+20.00 %
	6 Months	-	+20.00 %
	1 Year	-	-40.00 %
Long Term Return	2 Years	-	-70.00 %
	3 Years	-	-70.00 %
	5 Years	-	-70.00 %
Annualised Return	Annualised	-	-20.00 %

## MATRIX PARKING SOLUTION HOLDINGS BERHAD (03019)

C<sup>2</sup> Chart

Analysis



Period	Dividend Received	Capital Appreciation	Total Shareholder Return
Short Term Return	5 Days	-	-
	10 Days	-	-
	20 Days	-	-
Medium Term Return	3 Months	-	-33.33 %
	6 Months	-	-21.43 %
	1 Year	-	-30.00 %
Long Term Return	2 Years	-	-30.00 %
	3 Years	-	-30.00 %
	5 Years	-	-30.00 %
Annualised Return	Annualised	-	-30.00 %

## MUDAJAYA GROUP BHD (5085)

C<sup>2</sup> Chart

Analysis



Period	Dividend Received	Capital Appreciation	Total Shareholder Return
Short Term Return	5 Days	-	-
	10 Days	-	-5.00 %
	20 Days	-	-
Medium Term Return	3 Months	-	-15.75 %
	6 Months	-	-15.75 %
	1 Year	-	-20.00 %
Long Term Return	2 Years	-	-55.56 %
	3 Years	0.00	-27.27 %
	5 Years	0.00	-50.00 %
Annualised Return	Annualised	-	-16.67 %

**Disclaimer:** The information on this page is provided as a service to readers. It does not constitute financial advice and/or any investment recommendations. Past performance is not indicative of future results. We assume no liability for damages resulting from or arising out of the use of such information. It would be best if you did your own research to make your personal investment decisions wisely or consult a licenced investment advisor.

## Price & Total Shareholder Return (as at Yesterday)

Fundamental Analysis

**DEFINITION:** Company revenue is growing and making good quality of earnings with positive Free Cash Flow.

**CHART GUIDE:** Total Shareholder Return (TSR) combines share price appreciation and distributions paid to show the total return to the shareholder expressed as a percentage.



ShareInvestor WebPro > Screener > Market Screener (FA & TA) > select BURSA > add criteria

**A. Criteria**

1. Fundamental Analysis Conditions tab > select (i) Free Cash Flow, (ii) Revenue Growth, (iii) Gross Profit (Earnings) Margin, (iv) Quality of Earnings, (v) Total Shareholder Returns, > click Add Criteria
2. Fundamental Analysis Conditions tab > select (vi) Total Shareholder Returns > click Add Criteria

**B. Conditions (Criteria Filters)**

1. Free Cash Flow - select (more than) type (1) for the past select (1) financial year(s)
2. Revenue Growth - select (more than) type (1) for the past select (1) financial year(s)
3. Gross Profit (Earnings) Margin - select (more than) type (30) % for the past select (1) financial year(s)
4. Quality of Earnings - select (more than) type (1) for the past select (1) financial year(s)
5. Total Shareholder Return - select (more than) type (5) % for the past select (3) financial year(s)
6. Total Shareholder Return - select (more than) type (5) % for the past select (5) financial year(s)

- > click Save Template > Create New Template type (Growth Companies) > click Create
- > click Save Template as > select Growth Companies > click Save
- > click Screen Now (may take a few minutes)
- > Sort By: Select (Revenue Growth) Select (Desc)
- > Mouse over stock name > Factsheet > looking for Total Shareholder Return

## COUNTRY VIEW BHD (5049)

C<sup>2</sup> Chart

Analysis

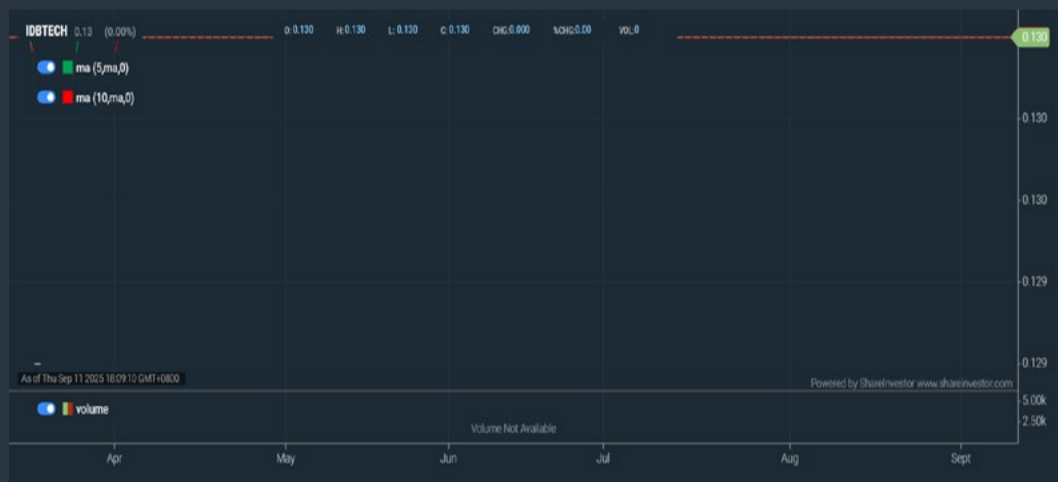


Period	Dividend Received	Capital Appreciation	Total Shareholder Return
Short Term Return	5 Days	-0.036	-1.35%
	10 Days	-0.036	-1.35%
	20 Days	-0.100	-4.65%
Medium Term Return	3 Months	0.150	+6.95%
	6 Months	0.310	+14.42%
	1 Year	0.455	+21.54%
Long Term Return	2 Years	0.500	+23.59%
	3 Years	0.570	+26.58%
	5 Years	0.720	+34.00%
Annualised Return	Annualised	-	+23.22%

## IDB TECHNOLOGIES BERHAD (03030)

C<sup>2</sup> Chart

Analysis



Period	Dividend Received	Capital Appreciation	Total Shareholder Return
Short Term Return	5 Days	-	-
	10 Days	-	-
	20 Days	-	-
Medium Term Return	3 Months	-	-
	6 Months	0.003	+2.31%
	1 Year	0.003	+2.31%
Long Term Return	2 Years	0.005	+3.85%
	3 Years	0.006	+4.62%
	5 Years	0.007	+5.38%
Annualised Return	Annualised	-	+4.51%

## CHIN TECK PLANTATIONS BHD (1929)

C<sup>2</sup> Chart

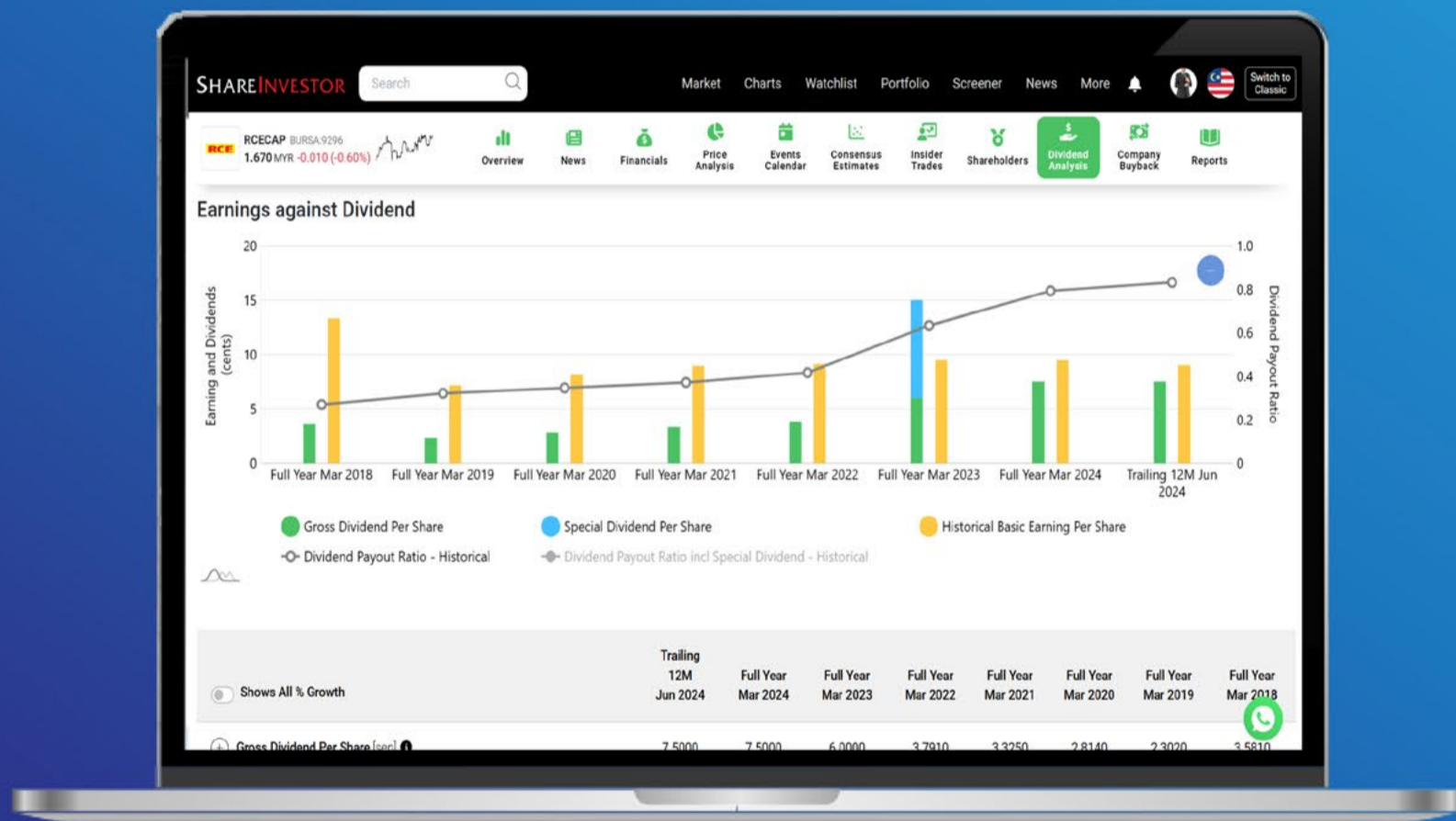
Analysis



Period	Dividend Received	Capital Appreciation	Total Shareholder Return
Short Term Return	5 Days	+0.110	+1.12%
	10 Days	+0.230	+2.37%
	20 Days	+0.440	+4.64%
Medium Term Return	3 Months	0.360	+3.60%
	6 Months	0.500	+5.00%
	1 Year	0.510	+5.10%
Long Term Return	2 Years	0.510	+5.10%
	3 Years	0.910	+9.10%
	5 Years	1.030	+10.30%
Annualised Return	Annualised	-	+17.65%

**Disclaimer:** The information on this page is provided as a service to readers. It does not constitute financial advice and/or any investment recommendations. Past performance is not indicative of future results. We assume no liability for damages resulting from or arising out of the use of such information. It would be best if you did your own research to make your personal investment decisions wisely or consult a licenced investment advisor.

# Tired of low returns? Let's talk high-paying Dividends!



✓ **Top Dividend Picks Right Now**

✓ **Insider Tips** – Advanced strategies for experienced investors

✓ **Easy-to-Follow Tutorial**

Get the most out of dividends, use our Dividend Analysis function –  
Click to Watch Our Tutorial Below!

**Upgrade Your Dividend Strategy Here**



## Price & Total Shareholder Return (as at Yesterday)

Fundamental Analysis

**DEFINITION:** Company is paying out dividend with low or moderate leverage.

**CHART GUIDE:** Total Shareholder Return (TSR) combines share price appreciation and distributions paid to show the total return to the shareholder expressed as a percentage.



ShareInvestor WebPro > Screener > Market Screener (FA & TA) > select BURSA > add criteria  
**A. Criteria**  
 > click Add Criteria  
 • Fundamental Analysis Conditions tab >select (i) Dividend Yield  
 • Fundamental Analysis Conditions tab >select (ii) Dividend Payout (Historical)  
 • Fundamental Analysis Conditions tab >select (iii) Total Debt To Equity  
 • Fundamental Analysis Conditions tab >select (iv) Total Shareholder Returns  
 • Fundamental Analysis Conditions tab >select (v) Total Shareholder Returns  
 • Fundamental Analysis Conditions tab / >select (vi) CAGR of Dividend Per Share

• Fundamental Analysis Conditions tab >select (vii) CAGR of Dividend Per Share  
**B. Conditions (Criteria Filters)**  
 1. Dividend Yield - select (more than) type (1) % for the past select (1) financial year(s)  
 2. Dividend Payout (Historical) - select (between) type (0.5) to type (1) times for the past select (1) financial year(s)  
 3. Total Debt to Equity - select (less than) type (1) for the past select (1) financial year(s)  
 4. Total Shareholder Return - - select (more than) type (5) % for the past select (3) financial year(s)  
 5. Total Shareholder Return - - select (more than) type (5) % for the past select (5) financial year(s)

6. CAGR of Dividend Per Share - - select (less than) type (30) % for the past select (5) financial year(s)  
 7. CAGR of Dividend Per Share - - select (more than) type (1) % for the past select (5) financial year(s)  
 > click Save Template > Create New Template type (Dividend Companies) > click Create  
 > click Save Template as > select Dividend Companies > click Save  
 > click Screen Now (may take a few minutes)  
 > Sort By: Select (Dividend Yield) Select (Desc)  
 > Mouse over stock name > Factsheet > looking for Total Shareholder Return

## APM AUTOMOTIVE HOLDINGS BHD (5015)

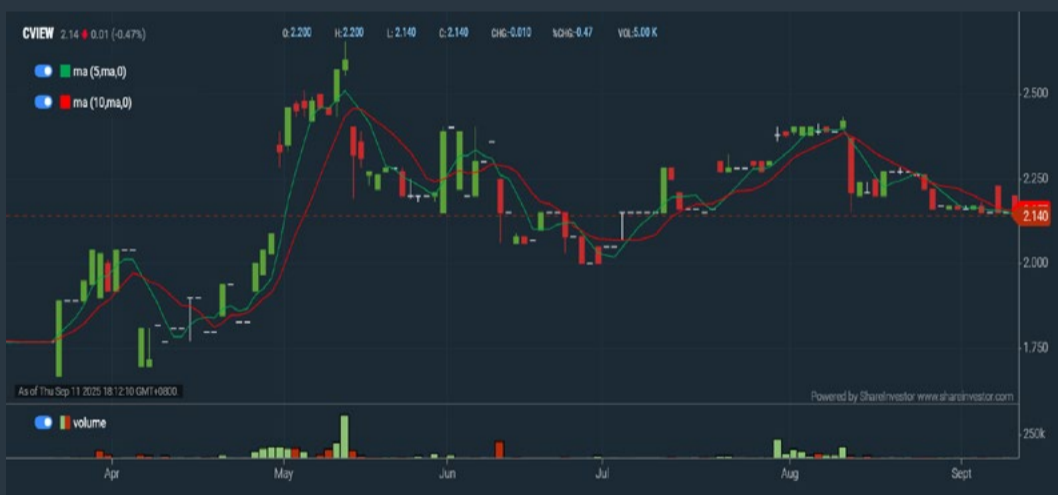
C<sup>2</sup> Chart



Period	Dividend Received	Capital Appreciation	Total Shareholder Return	
Short Term Return	5 Days	0.070	-0.221	+1.59%
	10 Days	0.070	-0.221	+1.27%
	20 Days	0.070	-0.219	-0.88%
Medium Term Return	3 Months	0.070	-0.200	-4.16%
	6 Months	0.250	+0.100	+15.55%
	1 Year	0.250	+0.200	+19.01%
Long Term Return	2 Years	0.450	+1.100	+26.85%
	3 Years	0.670	+1.320	+19.94%
	5 Years	0.810	+1.410	+19.67%
Annualised Return	Annualised	-	-	+18.03%

## COUNTRY VIEW BHD (5049)

C<sup>2</sup> Chart



Period	Dividend Received	Capital Appreciation	Total Shareholder Return	
Short Term Return	5 Days	-	-0.030	-1.38%
	10 Days	-	-0.030	-1.38%
	20 Days	-	-0.100	-4.65%
Medium Term Return	3 Months	0.110	-0.100	+1.65%
	6 Months	0.310	+0.370	+30.42%
	1 Year	0.405	+0.500	+61.14%
Long Term Return	2 Years	0.500	+0.900	+107.59%
	3 Years	0.570	+1.070	+119.28%
	5 Years	0.770	+1.140	+114.09%
Annualised Return	Annualised	-	-	+23.22%

## DELEUM BHD (5132)

C<sup>2</sup> Chart



Period	Dividend Received	Capital Appreciation	Total Shareholder Return	
Short Term Return	5 Days	0.040	-0.140	-4.58%
	10 Days	0.040	-0.140	-4.58%
	20 Days	0.040	-0.190	-4.79%
Medium Term Return	3 Months	0.040	-0.200	-3.40%
	6 Months	0.090	+0.020	+1.11%
	1 Year	0.130	-0.100	-1.05%
Long Term Return	2 Years	0.170	+0.205	+19.36%
	3 Years	0.225	+0.610	+100.00%
	5 Years	0.275	+0.815	+152.52%
Annualised Return	Annualised	-	-	+23.93%

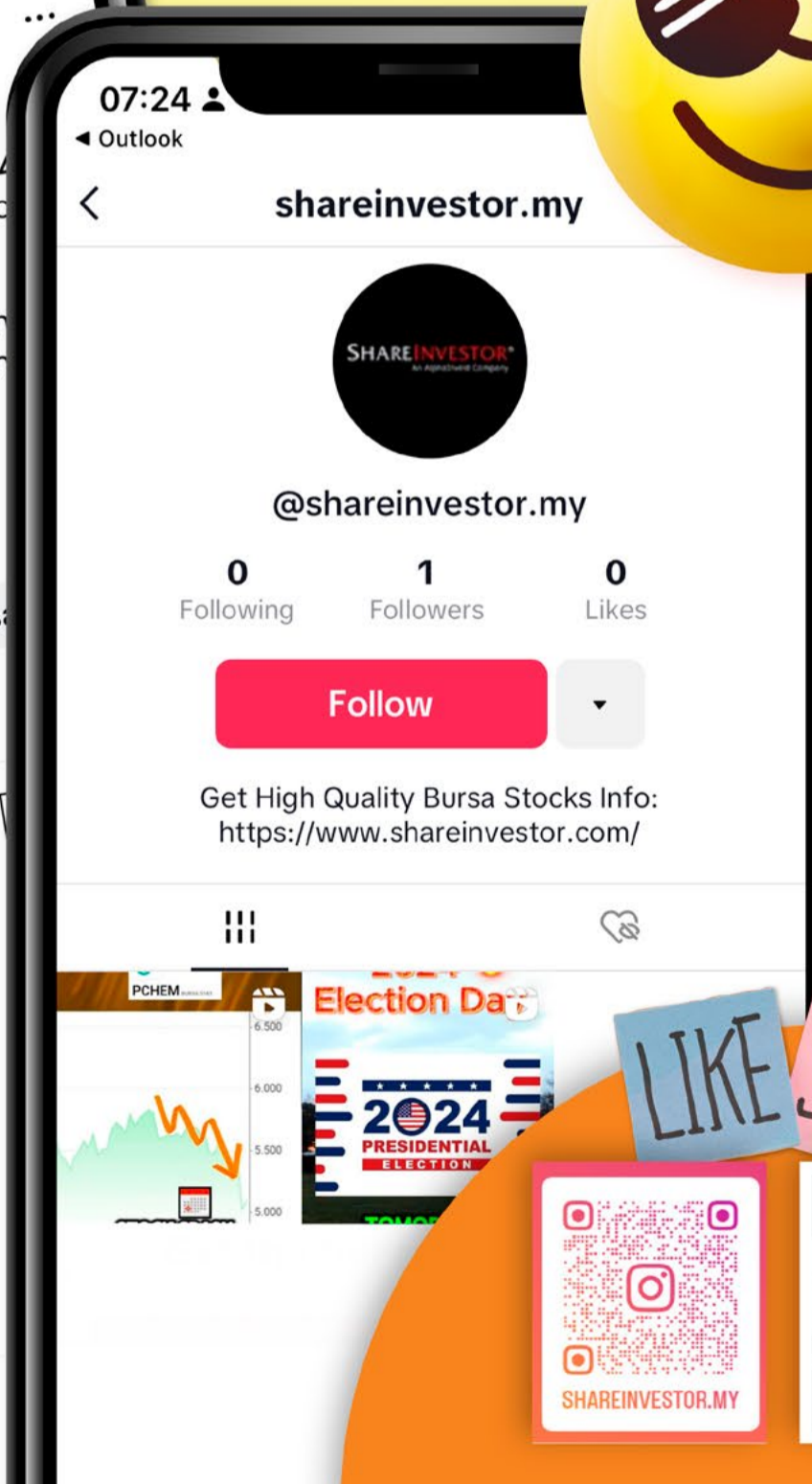
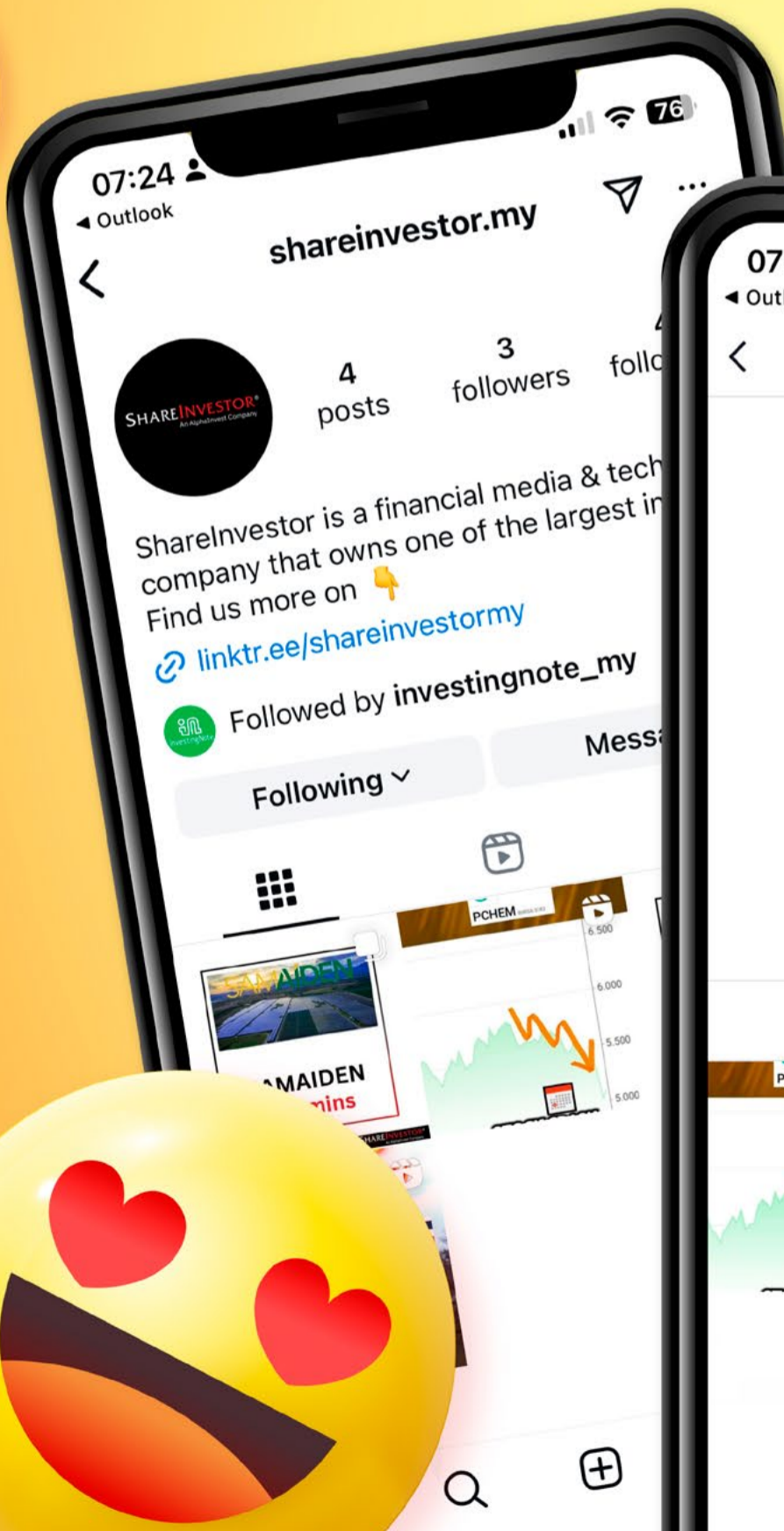
**Disclaimer:** The information on this page is provided as a service to readers. It does not constitute financial advice and/or any investment recommendations. Past performance is not indicative of future results. We assume no liability for damages resulting from or arising out of the use of such information. It would be best if you did your own research to make your personal investment decisions wisely or consult a licenced investment advisor.

**SHAREINVESTOR**<sup>®</sup>  
An AlphaInvest Company

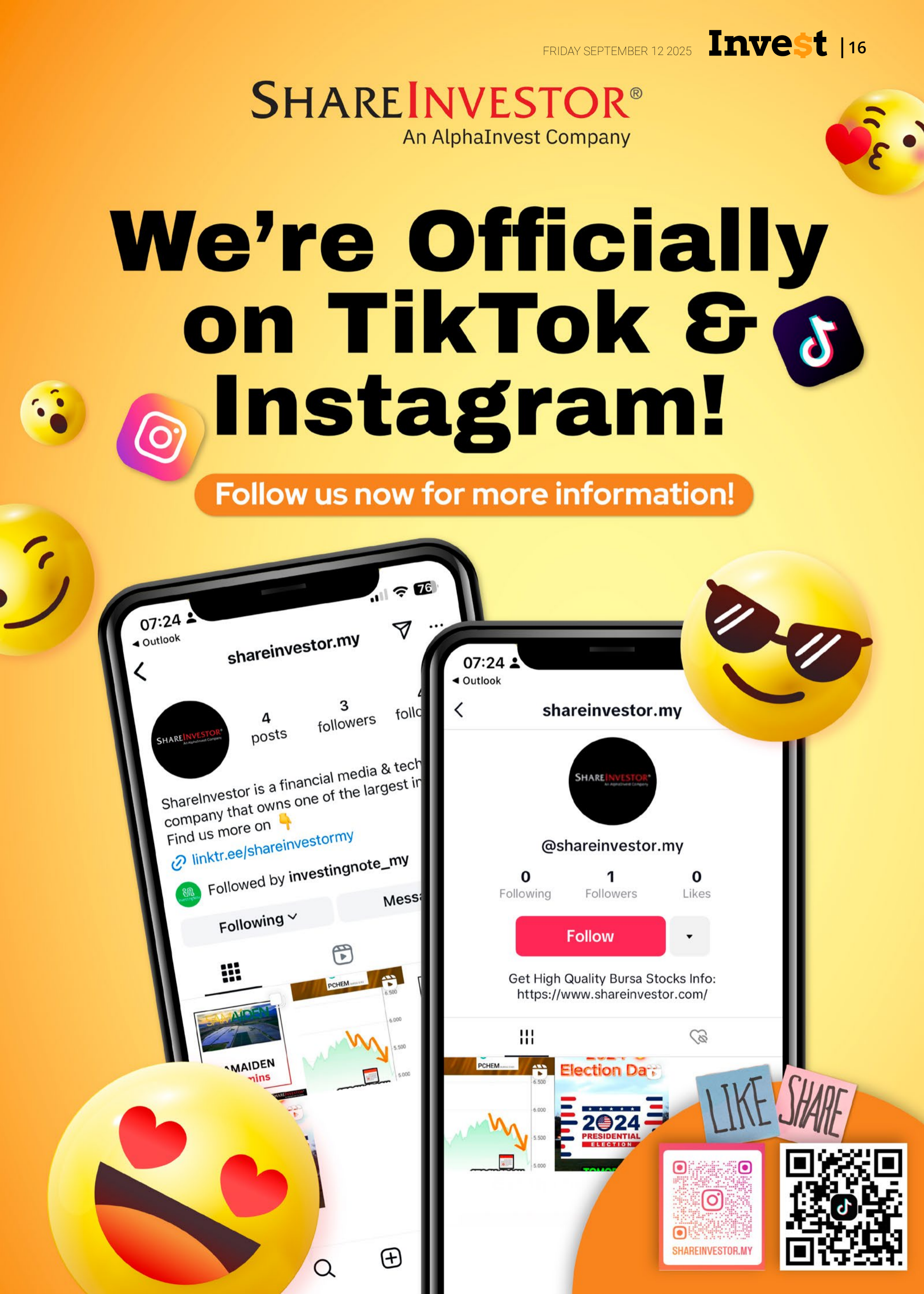
# We're Officially on TikTok & Instagram!



Follow us now for more information!



LIKE SHARE



Week: 5 Sep 2025 - 11 Sep 2025

More Brokers' Call 

<b>APEX SECURITIES</b> <small>... See More</small>	Call	Target Price	Release Date
Samaiden Group Berhad (0223)	<b>BUY</b>	RM1.45	8 Sep 25
Malaysia Smelting Corporation Berhad (5916)	<b>BUY</b>	RM1.51	9 Sep 25

<b>Hong Leong Investment Bank</b> <small>... See More</small>	Call	Target Price	Release Date
ITMAX System Berhad (5309)	<b>BUY</b>	RM5.71	10 Sep 25
SMRT Holdings Berhad (0117)	<b>BUY</b>	RM1.72	11 Sep 25
UWC Berhad (5292)	<b>BUY</b>	RM3.30	11 Sep 25

<b>KENANGA</b> <small>... See More</small>	Call	Target Price	Release Date
Gamuda Berhad (5398)	<b>OUTPERFORM</b>	RM6.10	9 Aug 25
OCK Group Berhad (0172)	<b>MARKET PERFORM</b>	RM0.39	9 Aug 25
MBSB Berhad (1171)	<b>MARKET PERFORM</b>	RM0.72	11 Aug 25

<b>Malacca Securities</b> <small>... See More</small>	Call	Target Price	Release Date
Inta Bina Group Berhad (0192)	<b>BUY</b>	RM0.76	9 Sep 25

<b>MIDF</b> <small>... See More</small>	Call	Target Price	Release Date
Sunway Berhad (5211)	<b>NEUTRAL</b>	RM5.06	9 Sep 25
Cahaya Mata Sarawak Berhad (2852)	<b>BUY</b>	RM1.49	10 Sep 25
Sunway Berhad (5211)	<b>NEUTRAL</b>	RM5.06	11 Sep 25

<b>PUBLIC INVESTMENT BANK</b> <small>... See More</small>	Call	Target Price	Release Date
D&O Green Technologies Berhad (7204)	<b>NEUTRAL</b>	RM1.27	8 Sep 25
Hibiscus Petroleum Berhad (5199)	<b>OUTPERFORM</b>	RM2.30	11 Sep 25

<b>UOB KAY HIAN</b> <small>... See More</small>	Call	Target Price	Release Date
Cahaya Mata Sarawak Berhad (2852)	<b>BUY</b>	RM1.46	10 Sep 25
FBG Holdings Berhad (7047)	<b>BUY</b>	RM0.26	10 Sep 25
Gamuda Berhad (5398)	<b>HOLD</b>	RM5.75	10 Sep 25
IOI Corporation Berhad (1961)	<b>HOLD</b>	RM3.70	10 Sep 25

**Disclaimer:** InveSt does not accept any liability whatsoever for any direct, indirect or consequential losses (including loss of profit) or damages that may arise from the use of information or opinions in this publication. The information and opinions in InveSt are not to be considered as an offer to sell or buy any of the securities discussed. Opinions expressed are subject to change without notice. The Brokers may, from time to time, have interests or positions in the securities mentioned. For the full report on each item listed on this page, please visit [https://www.shareinvestor.com/my/brokers\\_call](https://www.shareinvestor.com/my/brokers_call).

DEFINITION: Top 10 stocks with Technical Analysis plus Pattern Matching by 60 pre-defined indicators by the system showing a higher probability of bullish sentiment on the share price.



ShareInvestor WebPro > Screener > Predefined TA Screens > select market BURSA > Most Long Signals > click Scan Results or mouse over each company

**SOLARVEST HOLDINGS BERHAD**  
(0215.MY)

**SLVEST**

Price updated at 11 Sep 2025 17:31

Last: <b>2.630</b>	Change: <b>+0.020</b>	Volume: <b>17,710</b>
	Change (%): <b>+0.77</b>	Range: <b>2.610 - 2.650</b>

TA Scanner Results based on historical data up to 11 Sep 2025

Condition	Signal	Explanation
Bollinger Band: High Above Upper Bollinger Band	Neutral	"1. High above upper bollinger band(14,2). 2. Average volume(5) is above 100,000."
MA: Short Term Bullish Moving Average Crossover	Long	MA(10) crossed above MA(15) within the last 1 day.
Price: New 52 Week High	Long	"1. Stock reach a new 52 week high. 2. Average volume(30) is above 50000."
Volume: 10 Days large value Buy Up trade	Long	"1. 150K value Buy Up greater than Sell Down by 20% for 10 days. 2. 50K-100K value Buy Up greater than Sell Down by 20% for 10 days. 3. Average volume(10) is above 1000000"
Volume: 5 Days large value Buy Up trade	Long	"1. 150K value Buy Up greater than Sell Down by 20% for 5 days. 2. 50K-100K value Buy Up greater than Sell Down by 20% for 5 days. 3. Average volume(10) is above 1000000"
Williams %R: Bearish Williams %R	Short	"1. Williams %R(26) between 0 and -20. 2. Average volume(5) is above 100,000."

**KINERGY ADVANCEMENT BERHAD**  
(0193.MY)

**KAB**

Price updated at 11 Sep 2025 17:31

Last: <b>0.360</b>	Change: <b>-</b>	Volume: <b>105,679</b>
	Change (%): <b>-</b>	Range: <b>0.355 - 0.365</b>

TA Scanner Results based on historical data up to 11 Sep 2025

Condition	Signal	Explanation
Bollinger Band: High Above Upper Bollinger Band	Neutral	"1. High above upper bollinger band(14,2). 2. Average volume(5) is above 100,000."
Candlestick: Indecision Doji	Neutral	Indecision: Doji
Chaikin Volatility: Decreasing Chaikin Volatility	Neutral	Chaikin Volatility(10,10) has been decreasing for 5 days
Donchian Channels: High Above Upper Donchian Channels	Long	High crossed above the upper Donchian Channel(14,4)
Price: New 52 Week High	Long	"1. Stock reach a new 52 week high. 2. Average volume(30) is above 50000."
Volume: 10 Days large value Buy Up trade	Long	"1. 150K value Buy Up greater than Sell Down by 20% for 10 days. 2. 50K-100K value Buy Up greater than Sell Down by 20% for 10 days. 3. Average volume(10) is above 1000000"
Volume: 5 Days large value Buy Up trade	Long	"1. 150K value Buy Up greater than Sell Down by 20% for 5 days. 2. 50K-100K value Buy Up greater than Sell Down by 20% for 5 days. 3. Average volume(10) is above 1000000"
Williams %R: Bearish Williams %R	Short	"1. Williams %R(26) between 0 and -20. 2. Average volume(5) is above 100,000."

**MCE HOLDINGS BERHAD**  
(7004.MY)

**MCEHLDG**

Price updated at 11 Sep 2025 17:31

Last: <b>1.630</b>	Change: <b>+0.020</b>	Volume: <b>2,878</b>
	Change (%): <b>+1.24</b>	Range: <b>1.590 - 1.640</b>

TA Scanner Results based on historical data up to 11 Sep 2025

Condition	Signal	Explanation
Accumulation Distribution: Bullish Accumulation Distribution	Long	Accumulation distribution increasing for the last 7 days
Bollinger Band: Bullish Lower Bollinger Band Support	Long	"1. Low 1 day ago below lower bollinger band(20,2). 2. Close above close 1 day ago. 3. Average volume(5) is above 100,000."
Bollinger Band: High Above Upper Bollinger Band	Neutral	"1. High above upper bollinger band(14,2). 2. Average volume(5) is above 100,000."
DM: Bullish Directional Movement	Long	-DI(14) crossed below +DI(14)
Donchian Channels: High Above Upper Donchian Channels	Long	High crossed above the upper Donchian Channel(14,4)
MA: Short Term Bullish Moving Average Crossover	Long	MA(10) crossed above MA(15) within the last 1 day.
MACD: Bullish MACD Crossover	Long	"1. MACD(12,26) diff line crossed above the MACD(12,26) signal line. 2. MACD Histogram(12,26) is above 0."
Parabolic SAR: Bearish Parabolic SAR Reversal	Neutral	"1. Parabolic SAR 1 day ago above close price 1 day ago for the last 5 days. 2. Parabolic SAR below close price"

**WELL CHIP GROUP BERHAD**  
(5325.MY)

**WELLCHIP**

Price updated at 11 Sep 2025 17:31

Last: <b>1.730</b>	Change: <b>-0.010</b>	Volume: <b>10,311</b>
	Change (%): <b>-0.58</b>	Range: <b>1.710 - 1.770</b>

TA Scanner Results based on historical data up to 11 Sep 2025

Condition	Signal	Explanation
Candlestick: Bullish Engulfing	Long	Bullish: Engulfing
Price: New 52 Week High	Long	"1. Stock reach a new 52 week high. 2. Average volume(30) is above 50000."
Volume: 10 Days large value Buy Up trade	Long	"1. 150K value Buy Up greater than Sell Down by 20% for 10 days. 2. 50K-100K value Buy Up greater than Sell Down by 20% for 10 days. 3. Average volume(10) is above 1000000"
Volume: 5 Days large value Buy Up trade	Long	"1. 150K value Buy Up greater than Sell Down by 20% for 5 days. 2. 50K-100K value Buy Up greater than Sell Down by 20% for 5 days. 3. Average volume(10) is above 1000000"

**Disclaimer:** The information on this page is provided as a service to readers. It does not constitute financial advice and/or any investment recommendations. Past performance is not indicative of future results. We assume no liability for damages resulting from or arising out of the use of such information. It would be best if you did your own research to make your personal investment decisions wisely or consult a licenced investment advisor.

 **PESONA METRO HOLDINGS BERHAD (8311.MY)**

 **HI MOBILITY BERHAD (5335.MY)**

**PESONA**

**HI**

Price updated at 11 Sep 2025 17:31

Price updated at 11 Sep 2025 17:31

Last: <b>0.345</b>	Change: -	Volume: <b>23,887</b>
	Change (%): -	Range: <b>0.335 - 0.350</b>

Last: <b>2.370</b>	Change: <b>+0.020</b>	Volume: <b>21,117</b>
	Change (%): <b>+0.85</b>	Range: <b>2.340 - 2.420</b>

TA Scanner Results based on historical data up to 11 Sep 2025

TA Scanner Results based on historical data up to 11 Sep 2025

Condition	Signal	Explanation
Bollinger Band: Bullish Long Term Volatility Breakout and Trending	Long	"1. Close price above upper bollinger band(33,1). 2. Volume above average volume(50). 3. Average volume(50) is above 300,000."
Bollinger Band: Bullish Short Term Volatility Breakout and Trending	Long	"1. Close price above upper bollinger band(33,1). 2. Volume above average volume(10). 3. Average volume(10) is above 300,000."
Bollinger Band: High Above Upper Bollinger Band	Neutral	"1. High above upper bollinger band(14,2). 2. Average volume(5) is above 100,000."
MACD: Bullish MACD Crossover	Long	"1. MACD(12,26) diff line crossed above the MACD(12,26) signal line. 2. MACD Histogram(12,26) is above 0."
Parabolic SAR: Bearish Parabolic SAR Reversal	Neutral	"1. Parabolic SAR 1 day ago above close price 1 day ago for the last 5 days. 2. Parabolic SAR below close price"
Price: New 52 Week High	Long	"1. Stock reach a new 52 week high. 2. Average volume(30) is above 50000."
Williams %R: Bearish Williams %R	Short	"1. Williams %R(26) between 0 and -20. 2. Average volume(5) is above 100,000."

Condition	Signal	Explanation
Bollinger Band: Bullish Long Term Volatility Breakout and Trending	Long	"1. Close price above upper bollinger band(33,1). 2. Volume above average volume(50). 3. Average volume(50) is above 300,000."
Bollinger Band: Bullish Short Term Volatility Breakout and Trending	Long	"1. Close price above upper bollinger band(33,1). 2. Volume above average volume(10). 3. Average volume(10) is above 300,000."
Bollinger Band: High Above Upper Bollinger Band	Neutral	"1. High above upper bollinger band(14,2). 2. Average volume(5) is above 100,000."
Bollinger Band: Low Below Lower Bollinger Band	Neutral	"1. Low below lower bollinger band(14,2). 2. Average volume(5) is above 100,000."
Parabolic SAR: Bearish Parabolic SAR Reversal	Neutral	"1. Parabolic SAR 1 day ago above close price 1 day ago for the last 5 days. 2. Parabolic SAR below close price"
Volume: 10 Days large value Buy Up trade	Long	"1. 150K value Buy Up greater than Sell Down by 20% for 10 days. 2. 50K-100K value Buy Up greater than Sell Down by 20% for 10 days. 3. Average volume(10) is above 1000000"
Volume: 5 Days large value Buy Up trade	Long	"1. 150K value Buy Up greater than Sell Down by 20% for 5 days. 2. 50K-100K value Buy Up greater than Sell Down by 20% for 5 days. 3. Average volume(10) is above 1000000"
Williams %R: Bearish Williams %R	Short	"1. Williams %R(26) between 0 and -20. 2. Average volume(5) is above 100,000."

 **AXIATA GROUP BERHAD (6888.MY)**

 **GUAN CHONG BHD (5102.MY)**

**AXIATA**

**GCB**

Price updated at 11 Sep 2025 17:31

Price updated at 11 Sep 2025 17:31

Last: <b>2.630</b>	Change: <b>+0.010</b>	Volume: <b>27,841</b>
	Change (%): <b>+0.38</b>	Range: <b>2.610 - 2.650</b>

Last: <b>0.940</b>	Change: <b>-0.015</b>	Volume: <b>25,331</b>
	Change (%): <b>-1.57</b>	Range: <b>0.935 - 0.960</b>

TA Scanner Results based on historical data up to 11 Sep 2025

TA Scanner Results based on historical data up to 11 Sep 2025

Condition	Signal	Explanation
DM: Bullish Directional Movement	Long	-DI(14) crossed below +DI(14)
MA: Bullish Price Crossover	Long	"1. Close price crossed above MA(40) within the last 1 day. 2. Previous day close price is below the MA(10) for the last 5 days"
Parabolic SAR: Bearish Parabolic SAR Reversal	Neutral	"1. Parabolic SAR 1 day ago above close price 1 day ago for the last 5 days. 2. Parabolic SAR below close price"
RSI: Short Term RSI 50 Bullish Crossover	Long	"1. RSI(20) crossed above 50 within the last 1 day and RSI(20) 1 day ago below 50 for the last 5 days. 2. Volume above average volume(125). 3. Average volume(5) is above 100,000."
Volume: 5 Days large value Buy Up trade	Long	"1. 150K value Buy Up greater than Sell Down by 20% for 5 days. 2. 50K-100K value Buy Up greater than Sell Down by 20% for 5 days. 3. Average volume(10) is above 1000000"

Condition	Signal	Explanation
Stochastic: Fast Stochastic Buy Signal	Long	"1. Fast Stochastic(15,5) %K crossed above 20. 2. Fast Stochastic(15,5) %K 1 day ago was below 20 for the last 5 days. 3. Average volume(30) is above 50000"
Volume: 10 Days large value Buy Up trade	Long	"1. 150K value Buy Up greater than Sell Down by 20% for 10 days. 2. 50K-100K value Buy Up greater than Sell Down by 20% for 10 days. 3. Average volume(10) is above 1000000"
Volume: 5 Days large value Buy Up trade	Long	"1. 150K value Buy Up greater than Sell Down by 20% for 5 days. 2. 50K-100K value Buy Up greater than Sell Down by 20% for 5 days. 3. Average volume(10) is above 1000000"
Volume: Consecutive Days Of Increasing Average Volume	Long	"1. Average Volume(20) has been increasing over the last 2 weeks. 2. Average volume(20) is above 100000"

**Disclaimer:** The information on this page is provided as a service to readers. It does not constitute financial advice and/or any investment recommendations. Past performance is not indicative of future results. We assume no liability for damages resulting from or arising out of the use of such information. It would be best if you did your own research to make your personal investment decisions wisely or consult a licenced investment advisor.

 **UNITED MALACCA BHD**  
(2593.MY)

**UMCCA**

Price updated at 11 Sep 2025 17:31

Last: <b>5.390</b>	Change: <b>-0.010</b>	Volume: <b>20</b>
	Change (%): <b>-0.19</b>	Range: <b>5.390 - 5.390</b>

TA Scanner Results based on historical data up to 11 Sep 2025

Condition	Signal	Explanation
DM: Bullish Directional Movement	Long	-DI(14) crossed below +DI(14)
Donchian Channels: High Above Upper Donchian Channels	Long	High crossed above the upper Donchian Channel(14,4)
MA: Short Term Bullish Moving Average Crossover	Long	MA(10) crossed above MA(15) within the last 1 day.
MACD: Bullish MACD Crossover	Long	"1. MACD(12,26) diff line crossed above the MACD(12,26) signal line. 2. MACD Histogram(12,26) is above 0."
Parabolic SAR: Bearish Parabolic SAR Reversal	Neutral	"1. Parabolic SAR 1 day ago above close price 1 day ago for the last 5 days. 2. Parabolic SAR below close price"

**Disclaimer:** The information on this page is provided as a service to readers. It does not constitute financial advice and/or any investment recommendations. Past performance is not indicative of future results. We assume no liability for damages resulting from or arising out of the use of such information. It would be best if you did your own research to make your personal investment decisions wisely or consult a licenced investment advisor.

 **QL RESOURCES BHD (7084.MY)**

**QL**

Price updated at 11 Sep 2025 17:31

Last: <b>4.330</b>	Change: <b>+0.050</b>	Volume: <b>38,860</b>
	Change (%): <b>+1.17</b>	Range: <b>4.270 - 4.340</b>

TA Scanner Results based on historical data up to 11 Sep 2025

Condition	Signal	Explanation
Bollinger Band: Bullish Long Term Volatility Breakout and Trending	Long	"1. Close price above upper bollinger band(33,1). 2. Volume above average volume(50). 3. Average volume(50) is above 300,000."
Bollinger Band: Bullish Short Term Volatility Breakout and Trending	Long	"1. Close price above upper bollinger band(33,1). 2. Volume above average volume(10). 3. Average volume(10) is above 300,000."
Bollinger Band: High Above Upper Bollinger Band	Neutral	"1. High above upper bollinger band(14,2). 2. Average volume(5) is above 100,000."
CCI: Bearish CCI Overbought And Reversing	Short	"1. CCI(26) above 100 and CCI(26) 1 day ago increasing for the last 3 days. 2. CCI(26) below CCI(26) 1 day ago"
Donchian Channels: High Above Upper Donchian Channels	Long	High crossed above the upper Donchian Channel(14,4)
RSI: Short Term RSI 50 Bullish Crossover	Long	"1. RSI(20) crossed above 50 within the last 1 day and RSI(20) 1 day ago below 50 for the last 5 days. 2. Volume above average volume(125). 3. Average volume(5) is above 100,000."
Williams %R: Bearish Williams %R	Short	"1. Williams %R(26) between 0 and -20. 2. Average volume(5) is above 100,000."



**CHECK OUT SHAREINVESTOR**

**BROKER'S CALL**

Weekly Buy/Sell/Hold calls from leading Malaysian Brokerages.

[Go To Broker's Call](#)

**BUY** **HOLD** **SELL**



**Dato' Eu Hong Chew**  
Former Group CEO i-Berhad  
Non-Executive Director

He has been associated with the Sumurwang Group for many years charting the path for its manufacturing arm, firstly under Dreamland Holdings Berhad and the subsequent acquisition of I-Berhad.

Before that, he was with PA Management Consulting for a decade where he was the Director of Studies for the Cranfield PA MBA Programme in Malaysia.

Educated at the Royal Military College, Dato' Eu has an engineering degree from the University of Glasgow, and a MBA from the University of Bradford, UK.

# there an investment opportunity in **Targa Resources?**

## SUMMARY

- Over the past decade, Targa Resources Corp (**NYSE: TRGP**) transformed from a commodity-exposed operator into a fee-based midstream company, now resembling a “toll-road” model.

*Disclaimer: This article is written for informational purposes only. It does not constitute a solicitation, offer, advice, counseling or recommendation to buy or sell. As such it is not intended to promote the purchase of shares in any way. As a reminder, any type of asset has a risk factor and needs to be evaluated from multiple perspectives. Therefore, any investment decision and the associated risk remains with the investor. The views expressed here are entirely the writer's own.*

- Revenue grew at an 18% CAGR (2020–2024), supported by Permian Basin expansion, new processing and fractionation capacity, the Daytona pipeline, and potential acquisitions
- The company has a strong cash conversion and consistent operating cash flow, but I have concerns that included high leverage, low cash reserves, and an unsustainably high reinvestment rate.
- I estimated its intrinsic value at USD198 per share. This is roughly equal to the market price of USD200 per share (Feb 2025), leaving no margin of safety despite stronger returns on capital and growth momentum

## **BACKGROUND**

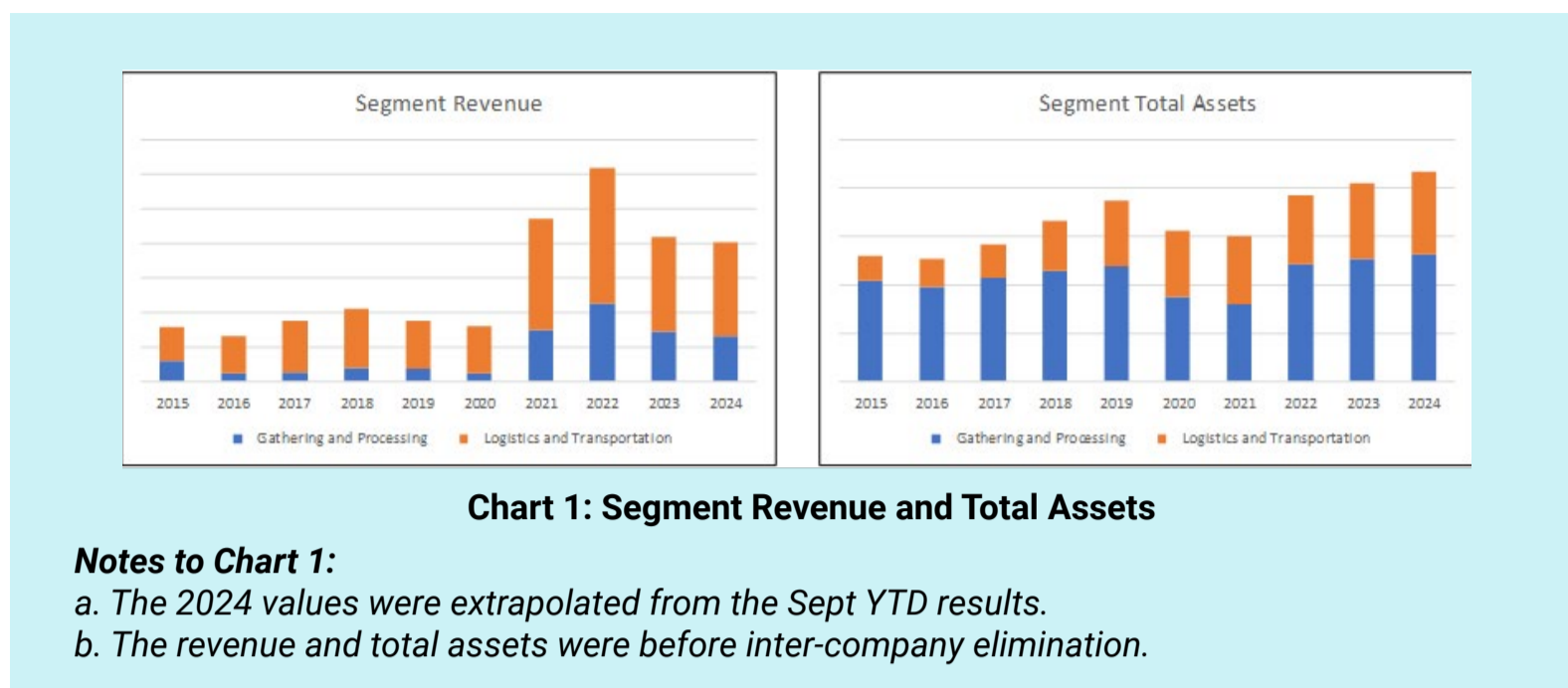
Targa describes itself as “a leading provider of midstream services and one of the largest independent midstream infrastructure companies in North America.” The company is deeply entrenched in the US oil and gas value chain, with a powerful presence in the Permian Basin.

Its operations are organized into two segments:

- **Gathering & Processing:** Assets here are used to gather, purchase, and sell natural gas from wells. The network includes natural gas pipelines and processing plants.
- **Logistics & Transportation:** This segment fractionates, stores, transports, and markets natural gas liquids, moving them from the wellhead to domestic and global markets. Assets include fractionation facilities, pipelines, and storage terminals.

Although the Logistics & Transportation segment contributes the majority of revenue, it accounts for a smaller share of total assets (see Chart 1).

*Note: Unless otherwise noted, the 2024 performance references are based on LTM September 2024 results.*



Over the past decade, Targa has shifted from a commodity-exposed operator to a fee-based midstream company. Between 2015 and 2020, it simplified its structure, expanded in the Permian Basin, and developed fractionation, pipelines, and LPG export capacity, anchored by the 2019 integration of its processing plants with Mont Belvieu.

Since 2020, growth has focused on the Permian Basin and on moving revenues to long-term, fee-based contracts. By 2024, even the once commodity-sensitive Gathering & Processing segment derived 90% of its revenues from fees.

Targa today functions much like a toll road in the energy sector - earning on throughput volumes rather than commodity prices. While some residual exposure remains in Gathering & Processing, it is steadily declining, leaving the company with a more resilient, price-insulated cash flow profile than a decade ago.

## **OPERATING PERFORMANCE**

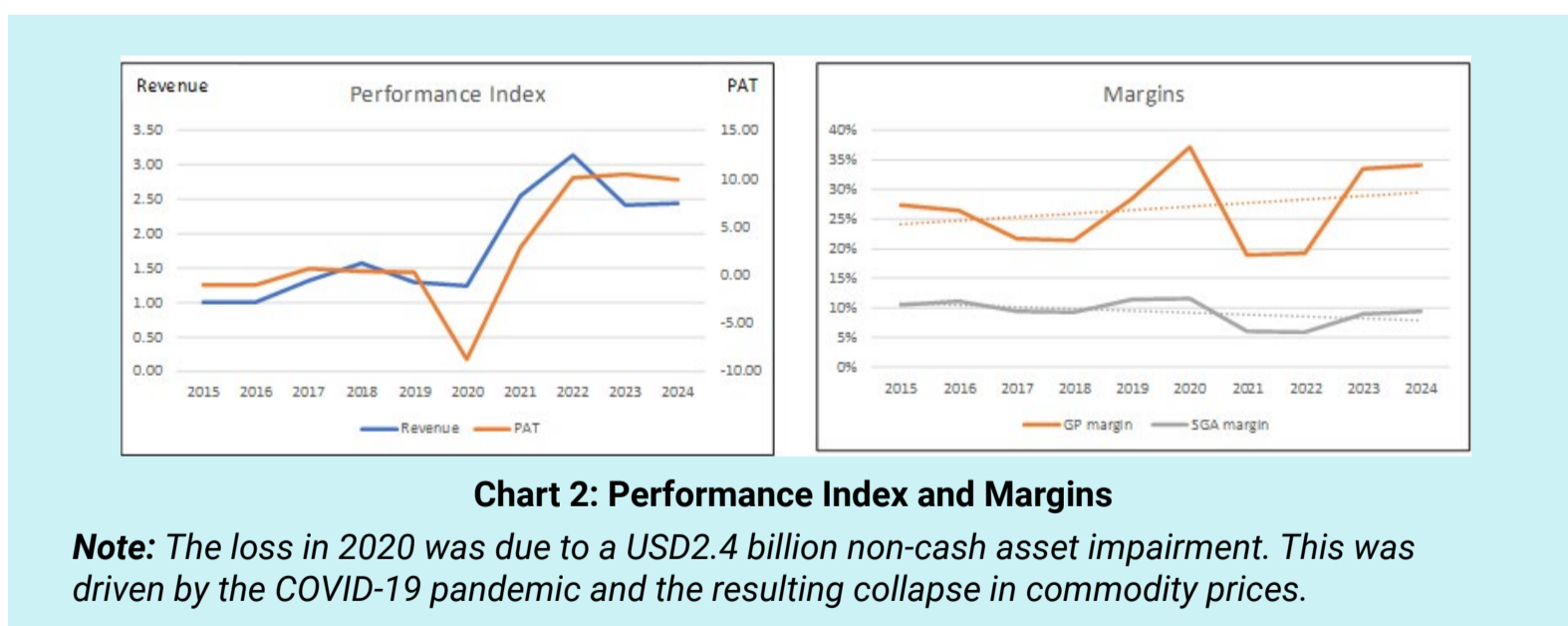
From 2020 to 2024, Targa grew revenue at an impressive 18% CAGR, powered by rising throughput across its integrated NGL infrastructure. Growth continues to hinge on the Permian Basin, where abundant reserves provide a long runway for expansion.

The company is adding 1.6 bcf/d of gas processing and 525 million bbl/d of fractionation capacity by 2026, while also building the Daytona natural gas liquids pipeline. Given its track record, further acquisitions remain a possibility.

Such expansion requires heavy reinvestment, and over the past decade, Targa’s reinvestment rate averaged 130% of NOPAT. This is well above sustainable levels. More recently, management has shifted focus toward free cash flow and shareholder returns, suggesting a move to balance growth with capital discipline.

Earnings have rebounded strongly since the pandemic-related impairment in 2020, though profits have plateaued more recently. Margins remain volatile due to processing costs and hedge results, but 2023 showed signs of recovery. The company has improved efficiency by lowering SGA, though operating margins and turnover ratios have seen little change. Refer to Chart 2.

Overall, Targa has evolved into a fee-based, toll-road style operator - less exposed to commodity swings, positioned to capture Permian growth, yet still challenged to convert its expansion into durable returns.



## PEERS

I benchmarked Targa against a panel of publicly listed midstream infrastructure peers. As shown in Table 1, Targa is

\*Please refer to the disclaimer on first page and last page.

one of the smaller players by 2024 revenue, yet it posted the strongest revenue growth.

To compare performance, I focused on four metrics – return, EBIT margin, free cash flow margin, and EPS. On margins and EPS, Targa ranks below average. However, its return on capital tells a different story - improving from the weakest in 2015 to the strongest among peers today.

It is also worth noting that all companies experienced a sharp drop in EBIT margins between 2020 and 2022. In this context, Targa’s profit decline, partly driven by hedging losses, may not be as severe as it first appears.

Company	Revenue	
	2024 USD m	2015 to 2024 CAGR %
Targa (TRGP)	16,216	10.4%
Enterprise Products Partners (EPD)	56,640	8.6%
Energy Transfer (ET)	83,662	9.8%
Kinder Morgan (KMI)	15,100	0.5%
Williams Company (WMB)	10,336	3.8%

**Table 1: Peer revenue**

## **FINANCIAL POSITION**

I would rate Targa as moderately sound financially. While it is a cash cow with a good capital allocation plan, I have some concerns. The positive points were:

- Over the past decade, it has had positive cash flow from operations every year. During this period, it generated USD18.3 billion in cash flow from operations, compared to the USD3.6 billion cumulative profit. This is a good cash conversion ratio.
- It had a good capital allocation plan. Refer to Table 2. The cash flow from operations and new capital was more than sufficient to cover its CAPEX.

Item	Sources USD m	Uses USD m
Cash flow from Ops	18,265	
New shares	4,701	
Net Debt	9,249	
Net Acquisition		5,575
Net CAPEX		16,561
Dividends		5,392
Buybacks		2,751
Misc		1,935
<b>Total</b>	<b>32,215</b>	<b>32,215</b>

**Table 2: Sources and Uses of Funds 2015 to 2024**

The key concerns were:

- As of March 2025, it had USD151 million in cash. This is less than 1% of its total assets.

- As of March 2024, it had an 82% debt-capital ratio. This is the past decade's high.
- The unsustainable reinvestment rate that averaged 130% over the past decade.

## VALUATION

In valuing Targa, I assumed the following:

- Revenue growth would taper from 18% in Year 1 to 4% in the terminal year.
- Efficiency gains would lift contribution margins by 10% over the 2020–2024 base.
- Reinvestment was modelled to align with the fundamental growth equation, using the past decade's average as the base.
- A normalized tax rate of 16% was applied.

On this basis, the intrinsic value came to USD198 per share, essentially in line with the market price of USD200 (Feb 4, 2025) - leaving no margin of safety. Refer to the original article for details of the valuation.

I valued Targa using an operating model that separates fixed and variable costs. The projections show a more favourable picture than history, with steeper free cash flow to the firm growth, higher

revenues, steadier margins, and a declining reinvestment burden. Even so, the valuation produced no margin of safety.

## CONCLUSION

Targa has successfully repositioned itself from a commodity-sensitive operator to a fee-based midstream company. The “toll-road” model provides greater resilience to price volatility, while the Permian Basin offers ample growth runway through expanded processing, fractionation, and pipeline capacity. However, growth has come with heavy reinvestment, leaving the balance sheet more leveraged than peers and raising questions about long-term capital discipline.

Relative to competitors, Targa combines strong revenue momentum with improving returns on capital, though margins and EPS remain below average. Financially, it generates robust operating cash flows but carries a high debt load and limited cash reserves.

On valuation, my intrinsic value estimate of USD198 per share is essentially in line with the market price of USD200 (Feb 4, 2025), offering no margin of safety. For long-term investors, Targa represents a solid, fee-driven midstream play with clear strategic advantages, but at current prices, the stock appears fairly valued with limited upside.

*I am a long-term value investor who has held onto stocks for more than 5 years. My analysis and valuation are from such a perspective. I consider quarterly results “noisy” and focus on long-term trends.*

*This article was re-purposed from my article “Targa Resources: From Commodity Exposure To Fee-Based Stability” which was first published in Seeking Alpha. Refer to this [link](#) for more of my insights on other US companies.*

# UNLOCK THE SECRET OF WEALTH

DO YOU REALLY WANT TO MASTER VALUE INVESTING



SEE HOW TO GET HIGHER RETURNS WITH LOWER RISK



# 10-year Malaysian Government Securities yield expected at 3.4% at end-2025 – MBSB IB

**M**BSB Investment Bank Bhd (MBSB IB) has revised its projection for the 10-year Malaysian Government Securities (MGS) yield to end the year at around 3.40%, following the recent overnight policy rate (OPR) cut. The investment bank said the MGS yields mostly moved higher last month, with the biggest move at the 10-year tenor, rising by 21 basis points to 3.37% in August.

MBSB IB noted that the 10-year MGS has oscillated within a tight range between 3.36% and 3.39%, being stable after the decline seen in July, especially after the OPR cut. It expects the current compressed spread between the MGS and OPR, hovering around 50 basis points to 60 basis points, to persist, and this is a lower-than-average spread, suggesting the market is anticipating another OPR cut this year.

Following the latest Bank Negara Malaysia rate cut in July, the differential between the OPR and the US federal funds rate (FFR) had

expanded. This gap is projected to persist in the near term. The forecast does not include any additional OPR cuts for the remainder of the year, but it anticipates the US Federal Reserve to continue its policy adjustment of lowering the FFR.

MBSB IB said the divergence in policy setting will cause the interest rate differential, a critical component of its market outlook, to gradually decrease, and as a result, it expects the OPR-MGS spread to normalise as market participants react to the diminished probability of another OPR rate cut.

It noted that several key developments are poised to strengthen the MGS market and boost investor confidence, including the government's recent decision to expand the sales and service tax in July, which demonstrates a commitment to fiscal improvement. This is further reinforced by the 13th Malaysia Plan, which outlines a clear goal of reducing the fiscal deficit to below 3.0% of gross domestic product by 2030.

These measures, combined with the domestic consumption support from a recent mini-stimulus package and the latest OPR cut, create a positive environment for increased MGS inflows. Additionally, investors will have their eyes on the upcoming Budget 2026 announcement.

MBSB IB noted that despite concerns over the impact of higher tariffs and potentially weaker external demand, Malaysia's growth fundamentals remain robust, supported by stable and manageable inflation and still resilient domestic demand. A potential delay in Fed rate cuts, a persistently strong US dollar, and renewed inflationary pressures could sustain current MGS yield levels in the short term.

MBSB IB added that futures market trends currently suggest three more Fed rate cuts in the remainder of the year, beginning this month. Potential downward pressure on US Treasury yields could lead to lower MGS yields, but the impact may be limited due to the recent weaker sensitivity of the two markets. Therefore, close monitoring of these factors is crucial for the Malaysian debt market outlook.

# Telecom industry's average revenue per user eases 0.8% in 2Q2025 — CIMB Securities

**A**ccording to CIMB Securities, the telecommunications industry's average revenue per user (ARPU) eased 0.8% q-o-q in the 2Q2025, with the possibility to decline further in the 2H2025. The decline is attributed to bundled discounts and promotional rebates offered by service providers to acquire and retain customers.

In a statement, the company stated that ARPU may be more stable thereafter because most subscribers would have re-contracted on the new offers introduced since 2H2023, following the

implementation of the mandatory standard on access pricing on March 1, 2023.

It noted that most telcos reported earnings broadly in line with expectations, with Maxis Bhd beating forecasts, while CelcomDigi Bhd underperformed. Maxis' mobile revenue market share (RMS) rose 0.3 percentage points to 42.7%, while CelcomDigi's fell by the same margin to 57.3%. Fixed services revenue fared worse than mobile in 2025, down 2.5% y-o-y, solely due to Telekom Malaysia Bhd. Meanwhile, fibre broadband competition stayed tight.

On earnings, Maxis posted a 7% q-o-q rise in core earnings per share (EPS), helped by higher device-related income and lower effective tax rates. CelcomDigi's core EPS slipped 2% q-o-q, while Telekom's fell 4.5% due to a lower one-off income and higher depreciation.

The research house maintained its "overweight" rating on the telecommunications sector.



**CHECK OUT SHAREINVESTOR**

# **BROKER'S CALL**

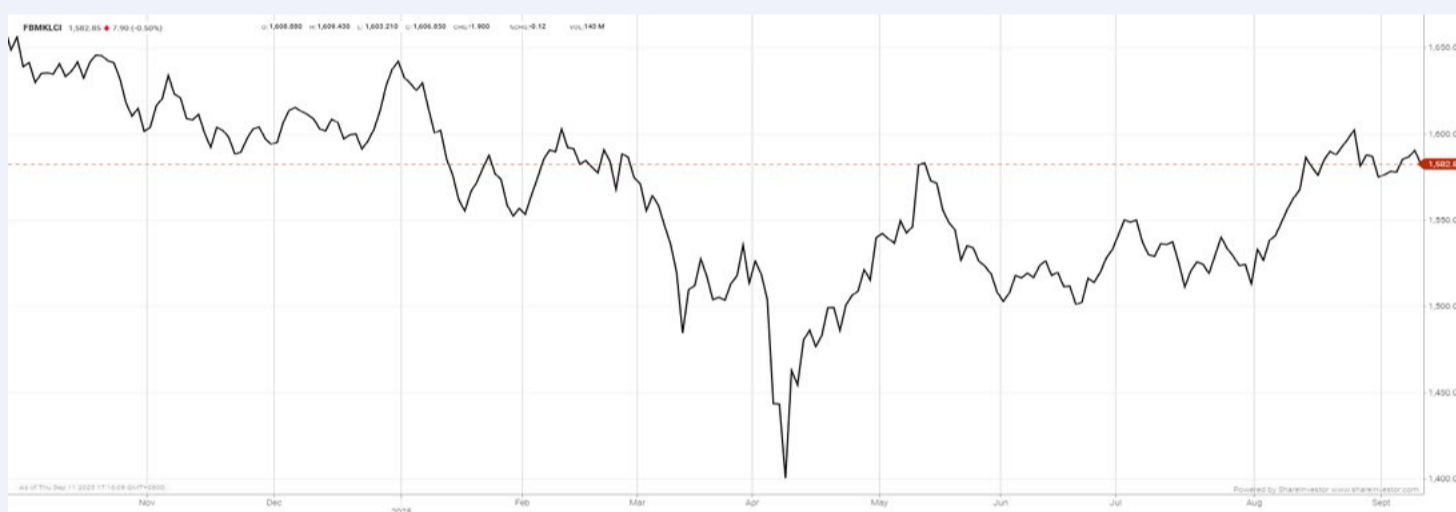
Weekly Buy/Sell/Hold calls  
from leading Malaysian Brokerages.

[Go To Broker's Call](#)

**BUY** **HOLD** **SELL**

# EYE ON THE MARKETS

On Thursday (Sept 11), the Ringgit closed at 4.2180 against the USD and 3.2842 to the Sing Dollar. On Monday (08Sept), the FBM KLCI opened at 1581.22. As at Thursday (11Sept) 5:00pm, the FBM KLCI closed up 1.63 points at 1582.85. Over in US, the overnight Dow Jones Industrial Average closed up 616.87 points (+1.36%) to 46,107.79 whilst the NASDAQ added 157.01 points (+0.72%) to 22,043.08.



KLCI 1 Year Chart



Learn how to identify Hot Stocks using Technical Analysis (TA) and Fundamental Analysis (FA)

**SIGN UP FOR Invest NOW IT'S FREE!!!**

[Click here](#)

Scan me



Via email, every Friday.

Get market moving news and analyses. Regular columns include **Behind The Action** and **From The Observer**

- Leaderboard • Shariah Hot Stocks • Shariah Momentum Up Stocks • Non Shariah Hot Stocks • Up Trending Stocks • Growth Stocks • Dividend Stocks • Long Companies • Insider Activity • Investor Relations • Regional Markets



## Over 5 Trading Days (as at Yesterday)



ShareInvestor WebPro ([www.shareinvestor.com/my](http://www.shareinvestor.com/my))

1. Price > Stock Prices
2. Select Market: NASDAQ / NYSE / IDX / SET / HKEX / SGX (One bourse at a time)
3. select Stocks Tab
4. select Ranking Top Gainers or Top Losers (Over 5 Trading Days)
5. Mouse over Column Layout > select Edit Customs > select Name > select Last Done Price > select 5 Days Change > select 52 Weeks High > select 52 Weeks Low > Mouse Over Column Layout > select Custom

### NASDAQ (USD)

#### Top Gainers

Name	Last Done	Change Over 5 Days	52 Weeks High	52 Weeks Low
QMMM Holdings A	109.500	+102.520	303.000	0.540
KLA	932.630	+88.730	959.260	551.330
AppLovin A	567.120	+79.770	559.240	85.230
Broadcom	369.570	+67.180	356.340	138.100
Astera Labs	230.370	+53.760	220.690	36.850

#### Top Losers

Name	Last Done	Change Over 5 Days	52 Weeks High	52 Weeks Low
Synopsys	387.780	-204.340	651.730	365.740
Booking Holdings	5,474.810	-108.140	5,839.410	3,719.340
Wingstop	280.650	-42.180	433.860	204.000
First Citizens BancShares A	1,946.650	-39.470	2,412.930	1,473.620
lululemon athletica	163.900	-34.630	423.320	162.800

### NYSE (USD)

#### Top Gainers

Name	Last Done	Change Over 5 Days	52 Weeks High	52 Weeks Low
NVR	8,335.890	+145.660	9,964.770	6,562.850
Oracle	328.330	+104.880	260.870	118.860
GE Vernova	643.560	+66.520	677.290	199.140
Ubiquiti	605.660	+60.690	599.610	190.430
Goldman Sachs Group	769.580	+39.020	765.620	439.380

#### Top Losers

Name	Last Done	Change Over 5 Days	52 Weeks High	52 Weeks Low
Berkshire Hathaway A	737,994.050	-13,813.950	812,855.000	657,497.500
Bio-Rad Laboratories B	247.050	-41.345	369.820	242.060
Humana	273.580	-38.400	348.240	206.870
Markel Group	1,920.740	-29.740	2,075.920	1,494.000
Biglari Holdings A	1,517.960	-26.400	1,648.800	805.040

### IDX (Rupiah)

#### Top Gainers

Name	Last Done	Change Over 5 Days	52 Weeks High	52 Weeks Low
GOLDEN FLOWER TBK	14,875.000	+7,675.000	14,875.000	540.000
MD ENTERTAINMENT TBK	4,120.000	+810.000	4,280.000	1,380.000
UNITED TRACTORS TBK	26,350.000	+750.000	28,500.000	20,025.000
PAKUAN TBK	1,325.000	+620.000	1,325.000	197.000
MANDOM INDONESIA TBK	3,010.000	+540.000	3,010.000	1,520.000

#### Top Losers

Name	Last Done	Change Over 5 Days	52 Weeks High	52 Weeks Low
DCI INDONESIA TBK	307,000.000	-20,700.000	398,000.000	40,000.000
DIAN SWASTATIKA SENTOSA TBK	103,000.000	-6,800.000	114,150.000	30,300.000
MULTIPOLAR TECHNOLOGY TBK	72,250.000	-5,600.000	81,150.000	2,980.000
MSIG LIFE INSURANCE INDONESIA TBK	13,875.000	-3,225.000	17,100.000	4,990.000
PANTAI INDAH KAPUK DUA TBK	14,150.000	-1,400.000	19,650.000	7,300.000

### SET (Thai Baht)

#### Top Gainers

Name	Last Done	Change Over 5 Days	52 Weeks High	52 Weeks Low
OHTL	296.000	+16.000	402.000	248.000
SCC	227.000	+10.000	255.000	124.500
CSR	82.000	+8.750	95.000	69.000
CBG	58.250	+6.000	82.000	46.500
BKIH	294.000	+5.000	316.000	271.000

#### Top Losers

Name	Last Done	Change Over 5 Days	52 Weeks High	52 Weeks Low
ADVANC	290.000	-8.000	309.000	253.000
BBL	150.000	-5.000	161.500	131.000
EGCO	114.000	-4.500	128.500	85.000
PTTEP	111.500	-4.000	141.000	93.000
BH	184.000	-3.500	284.000	130.000

### HKEX (HKD)

#### Top Gainers

Name	Last Done	Change Over 5 Days	52 Weeks High	52 Weeks Low
DUALITYBIO-B (9606)	433.000	+63.400	459.800	165.500
TENCENT (700)	633.500	+35.000	639.000	364.800
TENCENT-R (80700)	581.000	+34.500	583.500	333.600
TRANSTHERA-B (2617)	90.000	+29.950	104.000	20.200
NETEASE MUSIC (9899)	290.800	+28.200	303.400	88.150

#### Top Losers

Name	Last Done	Change Over 5 Days	52 Weeks High	52 Weeks Low
UNISOUND (9678)	467.000	-241.500	879.000	198.000
POP MART (9992)	275.200	-39.200	339.800	46.650
CAO CAO INC (2643)	54.850	-26.800	92.500	32.850
AKESO (9926)	133.500	-20.100	179.000	54.000
AUNTEA JENNY (2589)	119.200	-13.200	197.600	117.000

### SGX (SGD)

#### Top Gainers

Name	Last Done	Change Over 5 Days	52 Weeks High	52 Weeks Low
DBS	52.730	+2.330	52.870	36.074
Great Eastern	14.030	+0.440	14.300	12.800
BRC Asia	4.410	+0.360	4.550	2.208
Venture	13.640	+0.350	14.128	10.133
Soilbuild Constr	2.740	+0.320	2.840	0.711

#### Top Losers

Name	Last Done	Change Over 5 Days	52 Weeks High	52 Weeks Low
JMH USD	58.870	-1.630	61.350	36.010
NIO Inc. USD OV	6.030	-0.520	7.750	3.090
IFAST	8.670	-0.170	9.830	6.020
Ascent Bridge^	0.445	-0.155	0.720	0.111
Jardine C&C	27.250	-0.150	29.500	23.100



The IPO game is stacked in favor of early movers — that’s not cynicism, it’s fact. Minority investors can only avoid being the easy target by learning the rules of the game.

## THE CAPITAL GAME: BETTING ON THE NEXT BIG THING

Let’s get one thing straight. The stock market is not a temple of fair play where everyone walks away with a smile and a pocket full of dividends. It is a casino with rules written by the house — and the house is always the early investors, the insiders, the venture capitalist (VC) who bought in when the business was still an idea scribbled on a napkin.

The rest of us? Retail investors. The so-called “public.” We usually show up late to the party, when the music is fading and the bottles are empty, paying top dollar for scraps while the big boys head for the exit with their pockets stuffed.

Take a look at how the capital game really works.

## THE BILLION-DOLLAR ILLUSION

Every time you hear about a hot Initial Public Offering (IPO) — some shiny “tech disruptor” that promises to change the world — remember this: the game is not about profits. It is about valuation.

You do not need earnings when you've got a story. You just need a growth narrative captivating enough to sell to the market. That's what inflates valuations into the billions, even when the company is bleeding red ink quarter after quarter.

Founders and early investors are in on the game. They took the risk early, so they are the ones who cash out big when the IPO bell rings. They don't need dividends. They do not even care if the company makes a dime in net profit. They have already won once the market buys the story.

## AND THE BAG HOLDERS ARE...

Who gets left holding the bag? You guessed it — the public shareholders who buy after IPO day. They are sold the dream of endless growth, but reality usually shows up fast. Loss-making companies stay loss-making. Competition intensifies. Regulators step in. Suddenly, that “can't miss rocket ship” is grounded, and the stock price slides south.

We have seen this movie too many times. Ride-hailing giants listing at sky-high valuations, only to see their share prices wilt once the early excitement fades. Grab Holdings Limited, for instance, came to market with a US\$40 billion headline valuation, regional scale, and brand recognition. Yet from its opening trade above US\$13, the stock today sits closer to US\$4–5. Growth is not the problem. Profitability is.

Or take Green Packet Berhad, once Malaysia's bold technology play. Its shares soared past RM10.00 during mid-2007 on the back of broadband and tech ambitions, before spiralling down over the years as multiple pivots and fundraising cycles failed to restore

confidence. Crucially, unlike some IPO stories, this was not a case of founders cashing out at the start – the major shareholder remained. But endurance did not equate to returns. For minority investors, the outcome was the same: a steady erosion of value. From a peak above RM10.00 during the tech boom, the stock now trades at RM0.04 – a 99% destruction of shareholder value over two decades.

These are not isolated cases. They are proof that the capital game is alive and well here, too.

## WHAT'S THE LESSON FOR MINORITY INVESTORS?

So, what do minority shareholders actually stand to gain after an IPO? Let's cut through the fluff.

- (a) Liquidity for insiders. IPOs give founders and VCs their golden exit.
- (b) A story for the public. Investors are sold growth narratives – sometimes genuine, sometimes fantasy.
- (c) A seat at the table... at a premium. By the time retail investors get in, valuations are often stretched, and dividends are a distant dream.

That does not mean every IPO is a pitfall. Some companies do grow into their valuations. Some become sustainable giants. But the odds are stacked, and the history books are littered with examples of IPOs that fizzled after the fireworks. The bottom line? IPOs aren't designed to make minority shareholders rich. They're designed to make the insiders liquid. That's the brutal truth.

## PLAYING THE GAME SMARTER

If you are a minority investor, vigilance is not optional – it is survival. Ask the hard questions before you put your money on the line:

- (a) Is the business profitable, or is it just a cash bonfire?
- (b) What is the path to sustainable earnings – not just revenue growth?
- (c) Are insiders selling out while telling you to buy in?
- (d) How does today's price compare to intrinsic value, not just hype?

Once you strip away the jargon and the glossy prospectuses, the stock market is just a transfer of wealth. From the impatient to the patient. From the uninformed to the informed.

## THE HARSH TRUTH

The IPO game can be rigged in favour of those who got in early. That is not cynicism, it is reality. The only way for minority investors to avoid being the easy prey at the table is to understand the playbook.

So next time you see headlines screaming about “the next big thing,” do not just swallow the hype. As markets evolve, the key reminder for minority shareholders is to remain cautious, analytical, and vigilant. The capital market has no shortage of ambitious stories – but history shows that only a fraction of them create lasting value.

*Reproduced with permission from The Observer, a weekly newsletter published by the Minority Shareholders Watch Group (MSWG). Subscribe to The Observer for free at [www.mswg.org.my](http://www.mswg.org.my) and follow @MSWGMalaysia on social media for the latest updates.*



CHECK OUT  
SHAREINVESTOR  
**BROKERS' CALL**  
Weekly Buy/Sell/Hold calls from leading Malaysian Brokerages.

Go To Brokers' Call

**DEFINITION:** Insider Activity shows the trades made by substantial shareholders or directors of the company. Purchases by the directors and company share buyback may indicate the share price is undervalued and brings confidence to the price trend of the share price.



ShareInvestor WebPro > Fundamental > Insider Trades > click Search tab > Select Bursa > click Stock name > scroll up and leave at <Select Counter> Type Date Range for Announcement Date > click Search

Notice Period is 31st August 2025 to 6th September 2025

Effective Change Date	Stock Name	Buyer/ Seller Name [Classification]	Bought / (Sold) ['000]		No. of Shares After Trade ['000]	
			Total	Total	Total	% Held
29 AUG 2025 - 29 AUG 2025	99SMART	EMPLOYEES PROVIDENT FUND BOARD [SSH]	-730	453,955	5.404	
28 AUG 2025 - 28 AUG 2025	99SMART	EMPLOYEES PROVIDENT FUND BOARD [SSH]	155	454,685	5.413	
27 AUG 2025 - 27 AUG 2025	99SMART	EMPLOYEES PROVIDENT FUND BOARD [SSH]	-138	454,529	5.411	
29 AUG 2025 - 29 AUG 2025	AEON	EMPLOYEES PROVIDENT FUND BOARD [SSH]	967	87,876	6.259	
28 AUG 2025 - 28 AUG 2025	AEON	EMPLOYEES PROVIDENT FUND BOARD [SSH]	523	86,910	6.19	
03 SEP 2025 - 03 SEP 2025	AHEALTH	DR KEE KIRK CHIN [DIR/CEO]	150	305,629	42.376	
03 SEP 2025 - 03 SEP 2025	AHEALTH	DR KEE KIRK CHIN [SSH]	150	305,629	42.376	
29 AUG 2025 - 29 AUG 2025	ALAM	DATUK AZMI BIN AHMAD [SSH]	42,033	42,033	9.432	
29 AUG 2025 - 29 AUG 2025	ALAM	SAR VENTURE HOLDINGS (M) SDN BHD [SSH]	33,042	33,042	7.415	
29 AUG 2025 - 29 AUG 2025	AMBANK	EMPLOYEES PROVIDENT FUND BOARD [SSH]	3,750	483,122	14.603	
28 AUG 2025 - 28 AUG 2025	AMBANK	EMPLOYEES PROVIDENT FUND BOARD [SSH]	500	479,372	14.489	
27 AUG 2025 - 27 AUG 2025	AMBANK	EMPLOYEES PROVIDENT FUND BOARD [SSH]	5,993	478,872	14.474	
27 AUG 2025 - 27 AUG 2025	ANEKA	MR PANG TSE FUJ [DIR/CEO]	50	92,489	13.317	
27 AUG 2025 - 27 AUG 2025	ANEKA	MR PANG TSE FUJ [SSH]	50	92,489	13.317	
02 SEP 2025 - 02 SEP 2025	ASIAPLY	DATO' YEO BOON LEONG [DIR/CEO]	1,951	255,710	24.253	
02 SEP 2025 - 02 SEP 2025	ASIAPLY	DATO' YEO BOON LEONG [SSH]	1,951	255,710	24.253	
28 AUG 2025 - 29 AUG 2025	ASIAPLY	DATO' YEO BOON LEONG [DIR/CEO]	4,095	253,760	24.068	
28 AUG 2025 - 29 AUG 2025	ASIAPLY	DATO' YEO BOON LEONG [SSH]	4,095	253,760	24.068	
02 SEP 2025 - 03 SEP 2025	AWANTEC	LEMBAGA TABUNG AMANAH WARISAN NEGERI TERENGGANU [SSH]	34	43,392	5.505	
28 AUG 2025 - 29 AUG 2025	AWANTEC	LEMBAGA TABUNG AMANAH WARISAN NEGERI TERENGGANU [SSH]	30	43,358	5.5	
28 AUG 2025 - 28 AUG 2025	AXIATA	EMPLOYEES PROVIDENT FUND BOARD [SSH]	622	1,693,958	18.442	
27 AUG 2025 - 27 AUG 2025	AXIATA	EMPLOYEES PROVIDENT FUND BOARD [SSH]	3,039	1,693,336	18.435	
29 AUG 2025 - 29 AUG 2025	AXREIT	EMPLOYEES PROVIDENT FUND BOARD [SSH]	-21	426,204	21.091	
02 SEP 2025 - 02 SEP 2025	AXREIT	KUMPULAN WANG PERSARAAN (DIPERBADANKAN) [SSH]	2,094	165,179	8.174	
28 AUG 2025 - 28 AUG 2025	AXREIT	EMPLOYEES PROVIDENT FUND BOARD [SSH]	-772	426,225	21.092	
29 AUG 2025 - 29 AUG 2025	AXREIT	LEMBAGA TABUNG HAJI [SSH]	240	117,192	5.799	
27 AUG 2025 - 27 AUG 2025	AXREIT	EMPLOYEES PROVIDENT FUND BOARD [SSH]	-693	426,997	21.13	
29 AUG 2025 - 29 AUG 2025	BAUTO	EMPLOYEES PROVIDENT FUND BOARD [SSH]	1,670	127,885	11.08	
28 AUG 2025 - 28 AUG 2025	BAUTO	EMPLOYEES PROVIDENT FUND BOARD [SSH]	785	126,215	10.935	
27 AUG 2025 - 27 AUG 2025	BAUTO	EMPLOYEES PROVIDENT FUND BOARD [SSH]	-1,000	125,430	10.867	
29 AUG 2025 - 29 AUG 2025	BIMB	EMPLOYEES PROVIDENT FUND BOARD [SSH]	203	383,822	16.935	
28 AUG 2025 - 28 AUG 2025	BIMB	EMPLOYEES PROVIDENT FUND BOARD [SSH]	753	383,620	16.926	
27 AUG 2025 - 27 AUG 2025	BIMB	EMPLOYEES PROVIDENT FUND BOARD [SSH]	-874	382,867	16.893	
29 AUG 2025 - 29 AUG 2025	BJCORP	TAN SRI DATO' SERI VINCENT TAN CHEE YIOUN [SSH]	-13,800	1,193,338	20.462	
29 AUG 2025 - 29 AUG 2025	BKAWAN	DATO' LEE HAU HIAN [DIR/CEO]	-373	215,615	55.444	
29 AUG 2025 - 29 AUG 2025	BKAWAN	DATO' LEE HAU HIAN [SSH]	-373	215,615	55.444	
29 AUG 2025 - 29 AUG 2025	BKAWAN	TAN SRI DATO' SERI LEE OI HIAN [DIR/CEO]	-240	218,418	56.165	
29 AUG 2025 - 29 AUG 2025	BKAWAN	TAN SRI DATO' SERI LEE OI HIAN [SSH]	-240	218,418	56.165	
29 AUG 2025 - 02 SEP 2025	BMGREEN	CBG (L) FOUNDATION [SSH]	602	365,792	53.18	
29 AUG 2025 - 02 SEP 2025	BMGREEN	CBG (L) PTE LTD [SSH]	602	365,792	53.18	
29 AUG 2025 - 02 SEP 2025	BMGREEN	DR CHIA SONG KUN [DIR/CEO]	602	367,146	53.38	
29 AUG 2025 - 02 SEP 2025	BMGREEN	DR CHIA SONG KUN [SSH]	602	367,146	53.38	
29 AUG 2025 - 02 SEP 2025	BMGREEN	MR GAN CHIH SOON [DIR/CEO]	150	20,824	3.03	
29 AUG 2025 - 02 SEP 2025	BMGREEN	QL GREEN RESOURCES SDN. BHD. [SSH]	602	365,792	53.18	
29 AUG 2025 - 02 SEP 2025	BMGREEN	QL RESOURCES BERHAD [SSH]	602	365,792	53.18	
29 AUG 2025 - 29 AUG 2025	BURSA	EMPLOYEES PROVIDENT FUND BOARD [SSH]	-417	104,885	12.96	
02 SEP 2025 - 02 SEP 2025	BURSA	KUMPULAN WANG PERSARAAN (DIPERBADANKAN) [SSH]	550	91,353	11.288	
28 AUG 2025 - 28 AUG 2025	BURSA	EMPLOYEES PROVIDENT FUND BOARD [SSH]	-349	105,302	13.011	
27 AUG 2025 - 27 AUG 2025	BURSA	EMPLOYEES PROVIDENT FUND BOARD [SSH]	-534	105,650	13.055	
29 AUG 2025 - 29 AUG 2025	CARLORINO	DATO' SRI CHIANG FONG YEE [DIR/CEO]	800	293,541	30.03	
29 AUG 2025 - 29 AUG 2025	CARLORINO	DATO' SRI CHIANG FONG YEE [SSH]	800	269,372	27.557	
29 AUG 2025 - 29 AUG 2025	CBIP	DATUK LIM CHAI BENG [DIR/CEO]	-300	187,415	40.266	
29 AUG 2025 - 29 AUG 2025	CBIP	DATUK LIM CHAI BENG [SSH]	-300	187,415	40.266	
27 AUG 2025 - 27 AUG 2025	CDB	EMPLOYEES PROVIDENT FUND BOARD [SSH]	-541	1,255,712	10.704	
20 AUG 2025 - 20 AUG 2025	CEB	MISS TEE KIM CHIN [DIR/CEO]	3,000	119,085	12.005	
02 SEP 2025 - 02 SEP 2025	CGB	MR LEE SWEE MENG [DIR/CEO]	-30	854	0.102	
29 AUG 2025 - 29 AUG 2025	CHINHIN	DATUK SERI CHIAU BENG TEIK JP [DIR/CEO]	-10,544	2,116,196	59.799	
29 AUG 2025 - 29 AUG 2025	CHINHIN	DATUK SERI CHIAU BENG TEIK JP [SSH]	-10,544	2,116,196	59.799	
29 AUG 2025 - 02 SEP 2025	CHINHIN	DATUK WIRA CHIAU HAW CHOON [DIR/CEO]	-7,544	1,530,654	43.253	
29 AUG 2025 - 02 SEP 2025	CHINHIN	DATUK WIRA CHIAU HAW CHOON [SSH]	-7,544	1,530,654	43.253	
29 AUG 2025 - 29 AUG 2025	CHINHIN	DIVINE INVENTIONS SDN BHD [SSH]	-4,544	1,325,436	37.454	

Notice Period is 31st August 2025 to 6th September 2025

Effective Change Date	Stock Name	Buyer/ Seller Name [Classification]	Bought / (Sold) ['000]		No. of Shares After Trade ['000]	
			Total	Total	Total	% Held
03 SEP 2025 - 03 SEP 2025	CIMB	KUMPULAN WANG PERSARAAN (DIPERBADANKAN) [SSH]	95	695,674	6.47	
29 AUG 2025 - 29 AUG 2025	CIMB	EMPLOYEES PROVIDENT FUND BOARD [SSH]	10,372	1,802,376	16.76	
02 SEP 2025 - 02 SEP 2025	CIMB	KUMPULAN WANG PERSARAAN (DIPERBADANKAN) [SSH]	-1,244	695,579	6.47	
28 AUG 2025 - 28 AUG 2025	CIMB	EMPLOYEES PROVIDENT FUND BOARD [SSH]	2,456	1,792,004	16.66	
26 AUG 2025 - 26 AUG 2025	CIMB	KUMPULAN WANG PERSARAAN (DIPERBADANKAN) [SSH]	94	696,823	6.48	
27 AUG 2025 - 27 AUG 2025	CIMB	EMPLOYEES PROVIDENT FUND BOARD [SSH]	1,280	1,789,549	16.64	
26 AUG 2025 - 26 AUG 2025	CIMB	EMPLOYEES PROVIDENT FUND BOARD [SSH]	14,430	1,788,269	16.62	
03 SEP 2025 - 03 SEP 2025	CITAGLB	DATO' SRI RAJA MUFIK AFFANDI BIN RAJA KHALID [SSH]	1,176	23,606	5.546	
03 SEP 2025 - 03 SEP 2025	CLMT	KUMPULAN WANG PERSARAAN (DIPERBADANKAN) [SSH]	3,265	323,079	9.698	
02 SEP 2025 - 02 SEP 2025	CLMT	KUMPULAN WANG PERSARAAN (DIPERBADANKAN) [SSH]	1,500	319,815	9.6	
03 SEP 2025 - 03 SEP 2025	COMPUGT	MADAM SEE THOO CHAN [DIR/CEO]	337	947,778	15.665	
03 SEP 2025 - 03 SEP 2025	COMPUGT	MADAM SEE THOO CHAN [SSH]	337	947,778	15.665	
03 SEP 2025 - 03 SEP 2025	COMPUGT	MR GOH KHENG PEOW [SSH]	337	947,778	15.665	
02 SEP 2025 - 02 SEP 2025	COMPUGT	MADAM SEE THOO CHAN [DIR/CEO]	1,915	947,441	15.659	
02 SEP 2025 - 02 SEP 2025	COMPUGT	MADAM SEE THOO CHAN [SSH]	1,915	947,441	15.659	
02 SEP 2025 - 02 SEP 2025	COMPUGT	MR GOH KHENG PEOW [SSH]	1,915	947,441	15.659	
29 AUG 2025 - 29 AUG 2025	COMPUGT	MADAM SEE THOO CHAN [DIR/CEO]	20,000	945,526	15.628	
29 AUG 2025 - 29 AUG 2025	COMPUGT	MADAM SEE THOO CHAN [SSH]	20,000	945,526	15.628	
29 AUG 2025 - 29 AUG 2025	COMPUGT	MR GOH KHENG PEOW [SSH]	20,000	945,526	15.628	
28 AUG 2025 - 28 AUG 2025	CTOS	ABERDEEN GROUP PLC (FORMERLY KNOWN AS ABRDN PLC) [SSH]	1,388	364,637	15.869	
28 AUG 2025 - 28 AUG 2025	CTOS	ABRDN HOLDINGS LIMITED [SSH]	1,388	364,637	15.869	
28 AUG 2025 - 28 AUG 2025	CTOS	ABRDN MALAYSIA SDN BHD [SSH]	1,388	361,039	15.713	
29 AUG 2025 - 29 AUG 2025	DIALOG	KUMPULAN WANG PERSARAAN (DIPERBADANKAN) [SSH]	49	600,622	10.65	
27 AUG 2025 - 27 AUG 2025	DIALOG	EMPLOYEES PROVIDENT FUND BOARD [SSH]	2,150	962,820	17.06	
03 SEP 2025 - 03 SEP 2025	DKLS	DATO' DING POI BOR [DIR/CEO]	118	30,232	32.613	
03 SEP 2025 - 03 SEP 2025	DKLS	DATO' DING POI BOR [SSH]	118	30,232	32.613	
29 AUG 2025 - 29 AUG 2025	DPHARMA	EMPLOYEES PROVIDENT FUND BOARD [SSH]	86	90,135	9.371	
28 AUG 2025 - 28 AUG 2025	DPHARMA	EMPLOYEES PROVIDENT FUND BOARD [SSH]	4,365	90,049	9.361	
28 AUG 2025 - 28 AUG 2025	DRBHCORP	EMPLOYEES PROVIDENT FUND BOARD [SSH]	572	146,066	7.556	
29 AUG 2025 - 29 AUG 2025	E&O	EMPLOYEES PROVIDENT FUND BOARD [SSH]	455	161,972	6.501	
02 SEP 2025 - 02 SEP 2025	E&O	ABERDEEN GROUP PLC (FORMERLY KNOWN AS ABRDN PLC) [SSH]	413	156,113	6.265	
02 SEP 2025 - 02 SEP 2025	E&O	ABRDN HOLDINGS LIMITED [SSH]	413	156,113	6.265	
02 SEP 2025 - 02 SEP 2025	E&O	ABRDN MALAYSIA SDN BHD [SSH]	413	154,767	6.211	
29 AUG 2025 - 29 AUG 2025	E&O	ABERDEEN GROUP PLC (FORMERLY KNOWN AS ABRDN PLC) [SSH]	455	155,700	6.249	
29 AUG 2025 - 29 AUG 2025	E&O	ABRDN HOLDINGS LIMITED [SSH]	455	155,700	6.249	
29 AUG 2025 - 29 AUG 2025	E&O	ABRDN MALAYSIA SDN BHD [SSH]	455	154,354	6.195	
27 AUG 2025 - 27 AUG 2025	E&O	EMPLOYEES PROVIDENT FUND BOARD [SSH]	328	161,518	6.482	
02 SEP 2025 - 02 SEP 2025	EFORCE	MR WONG THEAN SOON [SSH]	-4,800	189,635	31.094	
29 AUG 2025 - 29 AUG 2025	EKSONS	MR TAY HUA SIN [DIR/CEO]	15	78,599	48.67	
29 AUG 2025 - 29 AUG 2025	EKSONS	MR TAY HUA SIN [SSH]	15	78,599	48.67	
28 AUG 2025 - 28 AUG 2025	F&N	EMPLOYEES PROVIDENT FUND BOARD [SSH]	3	46,550	12.692	
27 AUG 2025 - 27 AUG 2025	F&N	EMPLOYEES PROVIDENT FUND BOARD [SSH]	26	46,547	12.691	
03 SEP 2025 - 03 SEP 2025	FACBIND	MAGNI VANTAGE LIMITED [SSH]	99	46,547	55.49	
03 SEP 2025 - 03 SEP 2025	FACBIND	MR CHEN YIY FON [DIR/CEO]	99	46,547	55.49	
03 SEP 2025 - 03 SEP 2025	FACBIND	MR CHEN YIY FON [SSH]	99	46,547	55.49	
02 SEP 2025 - 02 SEP 2025	FACBIND	MAGNI VANTAGE LIMITED [SSH]	288	46,448	55.373	
02 SEP 2025 - 02 SEP 2025	FACBIND	MR CHEN YIY FON [DIR/CEO]	288	46,448	55.373	
02 SEP 2025 - 02 SEP 2025	FACBIND	MR CHEN YIY FON [SSH]	288	46,448	55.373	
29 AUG 2025 - 29 AUG 2025	FACBIND	MAGNI VANTAGE LIMITED [SSH]	95	46,160	55.029	
29 AUG 2025 - 29 AUG 2025	FACBIND	MR CHEN YIY FON [DIR/CEO]	95	46,160	55.029	
29 AUG 2025 - 29 AUG 2025	FACBIND	MR CHEN YIY FON [SSH]	95	46,160	55.029	
03 SEP 2025 - 03 SEP 2025	FFB	KUMPULAN WANG PERSARAAN (DIPERBADANKAN) [SSH]	1,685	181,714	9.683	
29 AUG 2025 - 29 AUG 2025	FFB	EMPLOYEES PROVIDENT FUND BOARD [SSH]	-4,924	167,366	8.918	
02 SEP 2025 - 02 SEP 2025	FFB	KUMPULAN WANG PERSARAAN (DIPERBADANKAN) [SSH]	387	180,028	9.593	
28 AUG 2025 - 28 AUG 2025	FFB	EMPLOYEES PROVIDENT FUND BOARD [SSH]	-1,232	172,290	9.18	
29 AUG 2025 - 29 AUG 2025	FFB	KUMPULAN WANG PERSARAAN (DIPERBADANKAN) [SSH]	-974	179,641	9.572	

**Disclaimer:** The Information in Insider Activity is extracted from [www.shareinvestor.com/fundamental/insider\\_trades](http://www.shareinvestor.com/fundamental/insider_trades). The information on this page is provided as a service to readers. It does not constitute financial advice and/or any investment recommendations. We assume no liability for damages resulting from or arising out of the use of such information. Whilst every effort is made to ensure accuracy, the information presented is not the official record of shareholder filings. Readers are advised to read the original filings on the Bursa Malaysia website at [www.bursamalaysia.com](http://www.bursamalaysia.com)



**STROM**  
SWISS TIMEPIECES & JEWELLERY



StromWatch Asia  
Tele : +65.9817.3378  
Email : [ll.stromasia@gmail.com](mailto:ll.stromasia@gmail.com)  
[WWW.STROMWATCH.SWISS](http://WWW.STROMWATCH.SWISS)

Notice Period is 31st August 2025 to 6th September 2025

Effective Change Date	Stock Name	Buyer/ Seller Name [Classification]	Bought / (Sold) ['000]	No. of Shares After Trade ['000]	
			Total	Total	% Held
29 AUG 2025 - 29 AUG 2025	FIBRO	MR NG KIAN BOON [SSH]	905	163,396	65.812
28 AUG 2025 - 28 AUG 2025	FRONTKN	EMPLOYEES PROVIDENT FUND BOARD [SSH]	800	169,371	10.651
27 AUG 2025 - 27 AUG 2025	FRONTKN	EMPLOYEES PROVIDENT FUND BOARD [SSH]	690	168,571	10.6
29 AUG 2025 - 29 AUG 2025	GAMUDA	EMPLOYEES PROVIDENT FUND BOARD (EPF BOARD) [SSH]	362	1,028,747	17.73
28 AUG 2025 - 28 AUG 2025	GAMUDA	EMPLOYEES PROVIDENT FUND BOARD (EPF BOARD) [SSH]	-989	1,028,385	17.72
27 AUG 2025 - 27 AUG 2025	GAMUDA	EMPLOYEES PROVIDENT FUND BOARD (EPF BOARD) [SSH]	-195	1,029,777	17.75
03 SEP 2025 - 03 SEP 2025	GASMSIA	LEMBAGA TABUNG HAJI [SSH]	-254	76,026	5.92
02 SEP 2025 - 02 SEP 2025	GASMSIA	LEMBAGA TABUNG HAJI [SSH]	-129	76,280	5.94
29 AUG 2025 - 29 AUG 2025	GASMSIA	LEMBAGA TABUNG HAJI [SSH]	-1,300	76,409	5.95
29 AUG 2025 - 29 AUG 2025	GCB	GUAN CHONG RESOURCES SDN. BHD. [SSH]	2,120	1,368,819	49.947
29 AUG 2025 - 29 AUG 2025	GENETEC	EMPLOYEES PROVIDENT FUND BOARD [SSH]	-1,171	40,509	5.225
28 AUG 2025 - 28 AUG 2025	GENETEC	EMPLOYEES PROVIDENT FUND BOARD [SSH]	-1,355	41,679	5.351
29 AUG 2025 - 29 AUG 2025	GENETEC	MR ALLEN LIK-HOOK TING [DIR/CEO]	2,000	4,027	0.519
02 SEP 2025 - 03 SEP 2025	GESHEN	DATIN CHEONG KAI MENG [SSH]	-3,000	80,076	19.815
02 SEP 2025 - 03 SEP 2025	GESHEN	DATUK KEH CHUAN SENG [SSH]	-3,000	80,076	19.815
02 SEP 2025 - 03 SEP 2025	GESHEN	FRAZEL GROUP SDN BHD [SSH]	-3,000	80,076	19.815
29 AUG 2025 - 02 SEP 2025	GESHEN	ENRICH SIGNATURE SDN. BHD. [SSH]	-10,993	73,005	18.065
29 AUG 2025 - 02 SEP 2025	GESHEN	MR CHIAU HAW LOON [SSH]	-10,993	73,005	18.065
29 AUG 2025 - 02 SEP 2025	GESHEN	MR CHIAU HAW YEW [SSH]	-6,993	77,005	19.055
28 AUG 2025 - 28 AUG 2025	GESHEN	DATIN CHEONG KAI MENG [SSH]	-2,940	83,076	20.557
28 AUG 2025 - 28 AUG 2025	GESHEN	DATUK KEH CHUAN SENG [SSH]	-2,940	83,076	20.557
28 AUG 2025 - 28 AUG 2025	GESHEN	FRAZEL GROUP SDN BHD [SSH]	-2,940	83,076	20.557
29 AUG 2025 - 29 AUG 2025	HARNLEN	MR LOW QUEK KIONG [DIR/CEO]	5,000	280,981	45.521
29 AUG 2025 - 29 AUG 2025	HARNLEN	MR LOW QUEK KIONG [SSH]	5,000	273,301	44.276
03 SEP 2025 - 03 SEP 2025	HARTA	KUMPULAN WANG PERSARAAN (DIPERBADANKAN) [SSH]	-200	212,410	6.223
03 SEP 2025 - 03 SEP 2025	HEGROUP	MR HAW CHEE SENG [DIR/CEO]	35	92,744	21.078
03 SEP 2025 - 03 SEP 2025	HEGROUP	MR HAW CHEE SENG [SSH]	35	92,744	21.078
02 SEP 2025 - 02 SEP 2025	HEKTAR	UPAYAPADU (M) SDN BHD [SSH]	53	41,054	5.788
29 AUG 2025 - 29 AUG 2025	HEKTAR	UPAYAPADU (M) SDN BHD [SSH]	54	41,001	5.781
20 AUG 2025 - 25 AUG 2025	HEKTAR	HEKTAR BLACK SDN BHD [SSH]	-400	116,964	16.49
28 AUG 2025 - 28 AUG 2025	HEVEA	MISS YOONG LI YEN [DIR/CEO]	600	190,149	33.604
28 AUG 2025 - 28 AUG 2025	HEVEA	MISS YOONG LI YEN [SSH]	600	190,149	33.604
28 AUG 2025 - 28 AUG 2025	HEVEA	MR YOONG HAU CHUN [DIR/CEO]	600	191,476	33.838
28 AUG 2025 - 28 AUG 2025	HEVEA	MR YOONG HAU CHUN [SSH]	600	191,476	33.838
28 AUG 2025 - 28 AUG 2025	HEVEA	MR YOONG TEIN SENG @ YONG KIAN SENG [DIR/CEO]	600	200,928	35.508
28 AUG 2025 - 28 AUG 2025	HEVEA	MR YOONG TEIN SENG @ YONG KIAN SENG [SSH]	600	200,928	35.508
02 SEP 2025 - 02 SEP 2025	HEXTAR	DATO' ONG CHOO MENG [SSH]	2,250	2,114,441	54.551
02 SEP 2025 - 02 SEP 2025	HEXTAR	DATO' ONG SOON HO [DIR/CEO]	2,250	2,114,441	54.551
02 SEP 2025 - 02 SEP 2025	HEXTAR	DATO' ONG SOON HO [SSH]	2,250	2,114,441	54.551
29 AUG 2025 - 29 AUG 2025	HEXTAR	DATO' ONG CHOO MENG [SSH]	1,650	2,112,191	54.493
29 AUG 2025 - 29 AUG 2025	HEXTAR	DATO' ONG SOON HO [DIR/CEO]	1,650	2,112,191	54.493
29 AUG 2025 - 29 AUG 2025	HEXTAR	DATO' ONG SOON HO [SSH]	1,650	2,112,191	54.493
28 JAN 2025 - 28 JAN 2025	HEXZA	DR FOONG WENG CHEONG [SSH]	-1,100	63,794	31.837
29 AUG 2025 - 29 AUG 2025	HLBANK	EMPLOYEES PROVIDENT FUND BOARD [SSH]	305	200,986	9.632
28 AUG 2025 - 28 AUG 2025	HLBANK	EMPLOYEES PROVIDENT FUND BOARD [SSH]	358	200,681	9.618
27 AUG 2025 - 27 AUG 2025	HLBANK	EMPLOYEES PROVIDENT FUND BOARD [SSH]	101	200,573	9.612
02 SEP 2025 - 04 SEP 2025	IBHD	SUMUR VENTURES SDN BHD [SSH]	686	1,347,940	72.575
02 SEP 2025 - 04 SEP 2025	IBHD	SUMURWANG CAPITAL SDN BHD [SSH]	686	93,588	5.039
02 SEP 2025 - 04 SEP 2025	IBHD	SUMURWANG SDN BHD [SSH]	686	1,194,022	64.289
02 SEP 2025 - 04 SEP 2025	IBHD	TAN SRI LIM KIM HONG [DIR/CEO]	686	1,423,379	76.637
02 SEP 2025 - 04 SEP 2025	IBHD	TAN SRI LIM KIM HONG [SSH]	686	1,423,379	76.637
29 AUG 2025 - 29 AUG 2025	IBHD	SUMUR VENTURES SDN BHD [SSH]	279	1,347,254	72.538
29 AUG 2025 - 29 AUG 2025	IBHD	SUMURWANG SDN BHD [SSH]	279	1,193,336	64.252
29 AUG 2025 - 29 AUG 2025	IBHD	TAN SRI LIM KIM HONG [DIR/CEO]	279	1,422,694	76.6
29 AUG 2025 - 29 AUG 2025	IBHD	TAN SRI LIM KIM HONG [SSH]	279	1,422,694	76.6
03 SEP 2025 - 03 SEP 2025	ICAP	CITY OF LONDON INVESTMENT MANAGEMENT COMPANY LIMITED [SSH]	-124	26,872	19.053
29 AUG 2025 - 29 AUG 2025	IGBREIT	EMPLOYEES PROVIDENT FUND BOARD [SSH]	121	369,774	10.204
28 AUG 2025 - 28 AUG 2025	IGBREIT	EMPLOYEES PROVIDENT FUND BOARD [SSH]	2,654	369,652	10.2
29 AUG 2025 - 29 AUG 2025	IGBREIT	KUMPULAN WANG PERSARAAN (DIPERBADANKAN) [SSH]	250	233,845	6.453
27 AUG 2025 - 27 AUG 2025	IGBREIT	EMPLOYEES PROVIDENT FUND BOARD [SSH]	3,650	366,998	10.127
29 AUG 2025 - 29 AUG 2025	IHH	EMPLOYEES PROVIDENT FUND BOARD [SSH]	4,916	1,015,252	11.49
28 AUG 2025 - 28 AUG 2025	IHH	EMPLOYEES PROVIDENT FUND BOARD [SSH]	5,239	1,010,336	11.434
27 AUG 2025 - 27 AUG 2025	IHH	EMPLOYEES PROVIDENT FUND BOARD [SSH]	4,398	1,005,096	11.375
02 SEP 2025 - 02 SEP 2025	IJM	KUMPULAN WANG PERSARAAN (DIPERBADANKAN) [SSH]	1,752	340,509	9.715
29 AUG 2025 - 29 AUG 2025	IJM	KUMPULAN WANG PERSARAAN (DIPERBADANKAN) [SSH]	1,116	338,758	9.665
27 AUG 2025 - 27 AUG 2025	IJM	EMPLOYEES PROVIDENT FUND BOARD [SSH]	-100	644,263	18.38
04 SEP 2025 - 04 SEP 2025	INTA	MR TEO HOCK CHOON [DIR/CEO]	1,580	48,883	7.958
04 SEP 2025 - 04 SEP 2025	INTA	MR TEO HOCK CHOON [SSH]	1,580	48,883	7.958
02 SEP 2025 - 02 SEP 2025	INTA	MR YAP YOON KONG [DIR/CEO]	201	17,795	2.905
29 AUG 2025 - 29 AUG 2025	IOICORP	EMPLOYEES PROVIDENT FUND BOARD [SSH]	692	892,626	14.389
28 AUG 2025 - 28 AUG 2025	IOICORP	EMPLOYEES PROVIDENT FUND BOARD [SSH]	2,680	891,935	14.377
27 AUG 2025 - 27 AUG 2025	IOICORP	EMPLOYEES PROVIDENT FUND BOARD [SSH]	451	889,255	14.334
29 AUG 2025 - 29 AUG 2025	IOIPG	EMPLOYEES PROVIDENT FUND BOARD [SSH]	1,912	380,328	6.907
11 APR 2025 - 11 APR 2025	IOIPG	DATO LEE YEOW CHOR [DIR/CEO]	50	3,623,343	65.805
28 AUG 2025 - 28 AUG 2025	IOIPG	EMPLOYEES PROVIDENT FUND BOARD [SSH]	-783	378,416	6.873
27 AUG 2025 - 27 AUG 2025	IOIPG	EMPLOYEES PROVIDENT FUND BOARD [SSH]	2,377	379,199	6.887
29 AUG 2025 - 29 AUG 2025	JPG	EMPLOYEES PROVIDENT FUND BOARD [SSH]	1,152	311,331	12.453
29 AUG 2025 - 29 AUG 2025	KGB	EMPLOYEES PROVIDENT FUND BOARD [SSH]	1,119	40,018	5.287
28 AUG 2025 - 28 AUG 2025	KGB	EMPLOYEES PROVIDENT FUND BOARD [SSH]	910	38,899	5.139

Notice Period is 31st August 2025 to 6th September 2025

Effective Change Date	Stock Name	Buyer/ Seller Name [Classification]	Bought / (Sold) ['000]	No. of Shares After Trade ['000]	
			Total	Total	% Held
29 AUG 2025 - 29 AUG 2025	KGB	ABRDN MALAYSIA SDN BHD [SSH]	-335	43,279	5.718
27 AUG 2025 - 27 AUG 2025	KGB	EMPLOYEES PROVIDENT FUND BOARD [SSH]	124	37,989	5.019
28 AUG 2025 - 28 AUG 2025	KLCC	EMPLOYEES PROVIDENT FUND BOARD [SSH]	-145	186,938	10.355
28 AUG 2025 - 28 AUG 2025	KLCC	EMPLOYEES PROVIDENT FUND BOARD [SSH]	-145	186,938	10.355
27 AUG 2025 - 27 AUG 2025	KLCC	EMPLOYEES PROVIDENT FUND BOARD [SSH]	-1,285	187,083	10.363
27 AUG 2025 - 27 AUG 2025	KLCC	EMPLOYEES PROVIDENT FUND BOARD [SSH]	-1,285	187,083	10.363
29 AUG 2025 - 29 AUG 2025	KLK	EMPLOYEES PROVIDENT FUND BOARD [SSH]	100	181,844	16.329
02 SEP 2025 - 03 SEP 2025	KOMARK	MR ROY HO YEW KEE [DIR/CEO]	113	613	0.265
04 SEP 2025 - 04 SEP 2025	KPJ	MR CHIN KEAT CHYUAN [DIR/CEO]	50	750	0.017
03 SEP 2025 - 03 SEP 2025	M&A	CIK SITI NUR AISHAH BINTI ISHAK [SSH]	43	142,439	7.127
02 SEP 2025 - 02 SEP 2025	M&A	CIK SITI NUR AISHAH BINTI ISHAK [SSH]	-396	142,396	7.124
28 AUG 2025 - 29 AUG 2025	M&A	CIK SITI NUR AISHAH BINTI ISHAK [SSH]	1,050	142,793	7.144
03 SEP 2025 - 03 SEP 2025	MAGNI	TAN SRI DATO' SERI TAN KOK PING [DIR/CEO]	88	110,728	25.54
03 SEP 2025 - 03 SEP 2025	MAGNI	TAN SRI DATO' SERI TAN KOK PING [SSH]	88	82,558	19.04
29 AUG 2025 - 29 AUG 2025	MALAKOF	EMPLOYEES PROVIDENT FUND BOARD [SSH]	-332	697,645	14.275
29 AUG 2025 - 29 AUG 2025	MALAKOF	URUSHARTA JAMAAH SDN. BHD. [SSH]	1,232	451,847	9.246
28 AUG 2025 - 28 AUG 2025	MALAKOF	EMPLOYEES PROVIDENT FUND BOARD [SSH]	290	697,977	14.282
27 AUG 2025 - 27 AUG 2025	MALAKOF	EMPLOYEES PROVIDENT FUND BOARD [SSH]	-238	697,687	14.276
29 AUG 2025 - 02 SEP 2025	MATANG	HUAREN HOLDINGS SDN BHD [SSH]	679	603,403	25.255
29 AUG 2025 - 02 SEP 2025	MATANG	MALAYSIAN CHINESE ASSOCIATION [SSH]	679	626,133	26.207
03 SEP 2025 - 03 SEP 2025	MATRIX	LEMBAGA TABUNG HAJI [SSH]	500	118,446	6.31
02 SEP 2025 - 02 SEP 2025	MATRIX	LEMBAGA TABUNG HAJI [SSH]	500	117,946	6.284
29 AUG 2025 - 29 AUG 2025	MATRIX	LEMBAGA TABUNG HAJI [SSH]	500	117,446	6.257
29 AUG 2025 - 29 AUG 2025	MAXIS	EMPLOYEES PROVIDENT FUND BOARD (EPF BOARD) [SSH]	750	953,036	12.163
28 AUG 2025 - 28 AUG 2025	MAXIS	EMPLOYEES PROVIDENT FUND BOARD (EPF BOARD) [SSH]	77	952,286	12.154
27 AUG 2025 - 27 AUG 2025	MAXIS	EMPLOYEES PROVIDENT FUND BOARD (EPF BOARD) [SSH]	29	952,209	12.153
03 SEP 2025 - 03 SEP 2025	MAYBANK	AMANAHRAYA TRUSTEES BERHAD - AMANAH SAHAM BUMIPUTERA [SSH]	-1,744	3,456,957	28.615
03 SEP 2025 - 03 SEP 2025	MAYBANK	KUMPULAN WANG PERSARAAN (DIPERBADANKAN) ("KWAP") [SSH]	291	649,009	5.372
29 AUG 2025 - 29 AUG 2025	MAYBANK	EMPLOYEES PROVIDENT FUND BOARD [SSH]	4,047	1,370,753	11.346
02 SEP 2025 - 02 SEP 2025	MAYBANK	AMANAHRAYA TRUSTEES BERHAD - AMANAH SAHAM BUMIPUTERA [SSH]	-3,348	3,458,702	28.629
02 SEP 2025 - 02 SEP 2025	MAYBANK	KUMPULAN WANG PERSARAAN (DIPERBADANKAN) ("KWAP") [SSH]	-334	648,718	5.37
28 AUG 2025 - 28 AUG 2025	MAYBANK	EMPLOYEES PROVIDENT FUND BOARD [SSH]	1,427	1,366,706	11.313
29 AUG 2025 - 29 AUG 2025	MAYBANK	AMANAHRAYA TRUSTEES BERHAD - AMANAH SAHAM BUMIPUTERA [SSH]	-5,000	3,462,050	28.657
29 AUG 2025 - 29 AUG 2025	MAYBANK	KUMPULAN WANG PERSARAAN (DIPERBADANKAN) ("KWAP") [SSH]	749	649,053	5.373
03 SEP 2025 - 03 SEP 2025	MCEMENT	DATO' YEOH SEOK KIAN [DIR/CEO]	3,000	3,000	0.221
03 SEP 2025 - 03 SEP 2025	MCEMENT	DATO' YEOH SOO KENG [DIR/CEO]	12,000	13,000	0.948
02 SEP 2025 - 02 SEP 2025	MCEMENT	EASTSPRING INVESTMENT BERHAD [SSH]	796	86,449	6.303
02 SEP 2025 - 02 SEP 2025	MCEMENT	PRUDENTIAL ASSURANCE MALAYSIA BERHAD [SSH]	796	82,522	6.017
02 SEP 2025 - 02 SEP 2025	MCEMENT	PRUDENTIAL PLC [SSH]	796	106,352	7.754
29 AUG 2025 - 29 AUG 2025	MCEMENT	EASTSPRING INVESTMENT BERHAD [SSH]	1,221	85,653	6.245
29 AUG 2025 - 29 AUG 2025	MCEMENT	PRUDENTIAL ASSURANCE MALAYSIA BERHAD [SSH]	1,221	81,726	5.959
29 AUG 2025 - 29 AUG 2025	MCEMENT	PRUDENTIAL PLC [SSH]	1,221	105,556	7.696
28 AUG 2025 - 28 AUG 2025	MCEMENT	EASTSPRING INVESTMENT BERHAD [SSH]	965	84,432	6.227
28 AUG 2025 - 28 AUG 2025	MCEMENT	PRUDENTIAL ASSURANCE MALAYSIA BERHAD [SSH]	965	80,505	5.938
28 AUG 2025 - 28 AUG 2025	MCEMENT	PRUDENTIAL PLC [SSH]	1,291	104,335	7.695
02 SEP 2025 - 04 SEP 2025	MFCB	CAM PROPERTY (MALAYSIA) SDN BHD [SSH]	313	206,825	21.948
02 SEP 2025 - 04 SEP 2025	MFCB	CAMASIA LIMITED [SSH]	313	208,311	22.106
02 SEP 2025 - 04 SEP 2025	MFCB	GOH NAN KIOH [DIR/CEO]	313	334,390	35.485
02 SEP 2025 - 04 SEP 2025	MFCB	KEEN CAPITAL INVESTMENTS LIMITED [SSH]	313	283,596	30.095
02 SEP 2025 - 04 SEP 2025	MFCB	LAJU RIANG SDN BHD [SSH]	313	206,825	21.948
02 SEP 2025 - 04 SEP 2025	MFCB	MR GOH NAN KIOH [SSH]	313	334,390	35.485
02 SEP 2025 - 04 SEP 2025	MFCB	RUBBER THREAD INDUSTRIES (M) SDN BERHAD [SSH]	313	206,825	21.948
29 AUG 2025 - 29 AUG 2025	MFCB	EMPLOYEES PROVIDENT FUND BOARD [SSH]	120	95,077	10.09
03 SEP 2025 - 03 SEP 2025	MFCB	MR YEOW SEE YUEN [DIR/CEO]	15	9,890	1.05
28 AUG 2025 - 28 AUG 2025	MFCB	EMPLOYEES PROVIDENT FUND BOARD [SSH]	600	94,957	10.077
27 AUG 2025 - 27 AUG 2025	MFCB	EMPLOYEES PROVIDENT FUND BOARD [SSH]	200	94,357	10.013
29 AUG 2025 - 29 AUG 2025	MISC	EMPLOYEES PROVIDENT FUND BOARD [SSH]	1,050	641,077	14.362
28 AUG 2025 - 28 AUG 2025	MISC	EMPLOYEES PROVIDENT FUND BOARD [SSH]	501	640,027	14.338
29 AUG 2025 - 29 AUG 2025	MRDIY	EMPLOYEES PROVIDENT FUND BOARD [SSH]	2,461	895,219	9.45
28 AUG 2025 - 28 AUG 2025	MRDIY	EMPLOYEES PROVIDENT FUND BOARD [SSH]	5,000	892,758	9.424
27 AUG 2025 - 27 AUG 2025	MRDIY	EMPLOYEES PROVIDENT FUND BOARD [SSH]	10,687	888,733	9.382
29 AUG 2025 - 02 SEP 2025	N2N	QUAH CHOON WAH [SSH]	518	47,466	8.503
27 AUG 2025 - 27 AUG 2025	NESTLE	EMPLOYEES PROVIDENT FUND BOARD [SSH]	71	30,644	

Notice Period is 31st August 2025 to 6th September 2025

Effective Change Date	Stock Name	Buyer/ Seller Name [Classification]	Bought / (Sold) ['000]	No. of Shares After Trade ['000]	
			Total	Total	% Held
29 AUG 2025 - 29 AUG 2025	ORGABIO	MR EAN YONG HAN KHIAN [SSH]	139	151,976	61.31
29 AUG 2025 - 29 AUG 2025	ORGABIO	MR EAN YONG HEN LOEN [DIR/CEO]	139	151,976	61.31
29 AUG 2025 - 29 AUG 2025	ORGABIO	MR EAN YONG HEN LOEN [SSH]	139	151,976	61.31
29 AUG 2025 - 29 AUG 2025	ORGABIO	MR EAN YONG HAN WAH [DIR/CEO]	139	151,976	61.31
29 AUG 2025 - 29 AUG 2025	ORGABIO	MR EAN YONG HAN WAH [SSH]	139	151,976	61.31
29 AUG 2025 - 29 AUG 2025	ORGABIO	MR EAN YONG HIEN CHAL [SSH]	139	151,976	61.31
29 AUG 2025 - 29 AUG 2025	ORGABIO	MR EAN YONG HIEN VOON [DIR/CEO]	139	151,976	61.32
29 AUG 2025 - 29 AUG 2025	ORGABIO	MR EAN YONG HIEN VOON [SSH]	139	151,976	61.32
03 SEP 2025 - 03 SEP 2025	PADINI	KUMPULAN WANG PERSARAAN (DIPERBADANKAN) [SSH]	-95	101,659	10.301
29 AUG 2025 - 29 AUG 2025	PADINI	EMPLOYEES PROVIDENT FUND BOARD [SSH]	2,043	99,756	10.108
02 SEP 2025 - 02 SEP 2025	PADINI	CHONG CHIN LIN [SSH]	70	455,826	46.189
02 SEP 2025 - 02 SEP 2025	PADINI	KUMPULAN WANG PERSARAAN (DIPERBADANKAN) [SSH]	350	101,754	10.311
02 SEP 2025 - 02 SEP 2025	PADINI	MR BENJAMIN YONG TZE JET [DIR/CEO]	70	640	0.065
02 SEP 2025 - 02 SEP 2025	PADINI	YONG PANG CHAUN [DIR/CEO]	70	455,826	46.189
02 SEP 2025 - 02 SEP 2025	PADINI	YONG PANG CHAUN [SSH]	70	455,826	46.189
28 AUG 2025 - 28 AUG 2025	PADINI	EMPLOYEES PROVIDENT FUND BOARD [SSH]	3,000	97,714	9.901
29 AUG 2025 - 29 AUG 2025	PADINI	CHONG CHIN LIN [SSH]	35	455,756	46.182
29 AUG 2025 - 29 AUG 2025	PADINI	MR BENJAMIN YONG TZE JET [DIR/CEO]	350	570	0.058
29 AUG 2025 - 29 AUG 2025	PADINI	YONG PANG CHAUN [DIR/CEO]	35	455,756	46.182
29 AUG 2025 - 29 AUG 2025	PADINI	YONG PANG CHAUN [SSH]	35	455,756	46.182
27 AUG 2025 - 27 AUG 2025	PADINI	EMPLOYEES PROVIDENT FUND BOARD [SSH]	100	94,714	9.597
03 SEP 2025 - 03 SEP 2025	PANAMY	KUMPULAN WANG PERSARAAN (DIPERBADANKAN) [SSH]	-7	3,245	5.341
02 SEP 2025 - 02 SEP 2025	PANAMY	KUMPULAN WANG PERSARAAN (DIPERBADANKAN) [SSH]	-12	3,252	5.353
29 AUG 2025 - 29 AUG 2025	PANAMY	KUMPULAN WANG PERSARAAN (DIPERBADANKAN) [SSH]	-18	3,264	5.374
03 SEP 2025 - 03 SEP 2025	PAVREIT	KUMPULAN WANG PERSARAAN (DIPERBADANKAN) [SSH]	-942	228,913	5.832
29 AUG 2025 - 29 AUG 2025	PAVREIT	EMPLOYEES PROVIDENT FUND BOARD [SSH]	-565	468,428	11.935
02 SEP 2025 - 02 SEP 2025	PAVREIT	KUMPULAN WANG PERSARAAN (DIPERBADANKAN) [SSH]	-1,280	229,855	5.856
28 AUG 2025 - 28 AUG 2025	PAVREIT	EMPLOYEES PROVIDENT FUND BOARD [SSH]	877	468,992	11.949
27 AUG 2025 - 27 AUG 2025	PAVREIT	EMPLOYEES PROVIDENT FUND BOARD [SSH]	2,639	467,716	11.917
29 AUG 2025 - 29 AUG 2025	PBBANK	EMPLOYEES PROVIDENT FUND BOARD [SSH]	14,500	3,356,356	17.29
27 AUG 2025 - 27 AUG 2025	PBBANK	EMPLOYEES PROVIDENT FUND BOARD [SSH]	15,000	3,341,856	17.22
28 AUG 2025 - 28 AUG 2025	PENTA	EMPLOYEES PROVIDENT FUND BOARD [SSH]	23	72,649	10.213
27 AUG 2025 - 27 AUG 2025	PENTA	EMPLOYEES PROVIDENT FUND BOARD [SSH]	-696	72,626	10.21
02 SEP 2025 - 03 SEP 2025	PESONA	KOMBINASI EMAS SDN BHD [SSH]	1,200	294,200	42.332
02 SEP 2025 - 03 SEP 2025	PESONA	MR WIE HOCK KIONG [DIR/CEO]	1,200	294,200	42.332
02 SEP 2025 - 03 SEP 2025	PESONA	MR WIE HOCK KIONG [SSH]	1,200	294,200	42.332
27 AUG 2025 - 27 AUG 2025	PESTEC	DATUK SERI (DR.) SUBRAMANIAM PILLAI A/L SAN-KARAN PILLAI [DIR/CEO]	273	1,570,447	61.594
27 AUG 2025 - 27 AUG 2025	PESTEC	DATUK SERI (DR.) SUBRAMANIAM PILLAI A/L SAN-KARAN PILLAI [SSH]	273	1,570,447	61.594
29 AUG 2025 - 29 AUG 2025	PETDAG	EMPLOYEES PROVIDENT FUND BOARD ("EPF BOARD") [SSH]	33	125,935	12.676
27 AUG 2025 - 27 AUG 2025	PETDAG	EMPLOYEES PROVIDENT FUND BOARD ("EPF BOARD") [SSH]	97	125,902	12.673
03 SEP 2025 - 03 SEP 2025	PETGAS	KUMPULAN WANG PERSARAAN (DIPERBADANKAN) ("KWAP") [SSH]	26	196,500	9.931
29 AUG 2025 - 29 AUG 2025	PETGAS	EMPLOYEES PROVIDENT FUND BOARD [SSH]	152	254,450	12.859
02 SEP 2025 - 02 SEP 2025	PETGAS	KUMPULAN WANG PERSARAAN (DIPERBADANKAN) ("KWAP") [SSH]	215	196,474	9.929
28 AUG 2025 - 28 AUG 2025	PETGAS	EMPLOYEES PROVIDENT FUND BOARD [SSH]	111	254,298	12.852
29 AUG 2025 - 29 AUG 2025	PETGAS	KUMPULAN WANG PERSARAAN (DIPERBADANKAN) ("KWAP") [SSH]	15	196,259	9.919
27 AUG 2025 - 27 AUG 2025	PETGAS	EMPLOYEES PROVIDENT FUND BOARD [SSH]	13	254,139	12.844
02 SEP 2025 - 02 SEP 2025	PGF	EQUAPLUS SDN BHD [SSH]	3	83,699	43.155
02 SEP 2025 - 02 SEP 2025	PGF	FONG WAH KAI [DIR/CEO]	3	90,482	46.655
02 SEP 2025 - 02 SEP 2025	PGF	MR FONG WAH KAI [SSH]	3	90,482	46.655
29 AUG 2025 - 29 AUG 2025	PMETAL	EMPLOYEES PROVIDENT FUND BOARD [SSH]	1,901	576,591	6.998
28 AUG 2025 - 28 AUG 2025	PMETAL	EMPLOYEES PROVIDENT FUND BOARD [SSH]	1,354	574,690	6.975
27 AUG 2025 - 27 AUG 2025	PMETAL	EMPLOYEES PROVIDENT FUND BOARD [SSH]	404	573,336	6.958
29 AUG 2025 - 29 AUG 2025	PPB	EMPLOYEES PROVIDENT FUND BOARD [SSH]	1,379	193,918	13.631
28 AUG 2025 - 28 AUG 2025	PPB	EMPLOYEES PROVIDENT FUND BOARD [SSH]	4,103	191,097	13.433
27 AUG 2025 - 27 AUG 2025	PPB	EMPLOYEES PROVIDENT FUND BOARD [SSH]	157	183,928	12.929
28 AUG 2025 - 02 SEP 2025	PTRANS	DATIN SRI LIM SOW KENG [SSH]	5,263	202,666	17.171
28 AUG 2025 - 28 AUG 2025	PTRANS	DATO' SRI CHEONG KONG FITT [DIR/CEO]	-4,000	44,660	37.025
28 AUG 2025 - 02 SEP 2025	PTRANS	DATO' SRI CHEONG KONG FITT [DIR/CEO]	5,263	202,666	17.17
28 AUG 2025 - 02 SEP 2025	PTRANS	DATO' SRI CHEONG KONG FITT [SSH]	-2,737	202,666	17.17
29 AUG 2025 - 03 SEP 2025	QL	CHIA SEONG FATT [DIR/CEO]	598	435,355	11.931
29 AUG 2025 - 03 SEP 2025	QL	CHIA SEONG FATT [SSH]	598	435,355	11.931
29 AUG 2025 - 03 SEP 2025	QL	CHIA SEONG POW [SSH]	598	444,833	12.191
29 AUG 2025 - 03 SEP 2025	QL	CHIA SONG KUN [DIR/CEO]	598	1,506,089	41.274
29 AUG 2025 - 03 SEP 2025	QL	CHIA SONG KUN [SSH]	598	1,506,089	41.274
29 AUG 2025 - 03 SEP 2025	QL	MR CHIA SEONG POW [DIR/CEO]	598	444,833	12.191
02 SEP 2025 - 02 SEP 2025	RCECAP	CLEAR GOAL SDN BHD [SSH]	255	868,520	59.162
02 SEP 2025 - 02 SEP 2025	RCECAP	TAN SRI AZMAN BIN HASHIM [SSH]	255	868,520	59.162
28 AUG 2025 - 28 AUG 2025	RCECAP	AMCORP GROUP BERHAD [SSH]	54	868,265	59.145
28 AUG 2025 - 28 AUG 2025	RCECAP	CENPAKA EMPAYAR SDN BHD [SSH]	54	868,265	59.145
28 AUG 2025 - 28 AUG 2025	RCECAP	CLEAR GOAL SDN BHD [SSH]	54	868,265	59.145
28 AUG 2025 - 28 AUG 2025	RCECAP	TAN SRI AZMAN BIN HASHIM [SSH]	54	868,265	59.145
02 SEP 2025 - 02 SEP 2025	RGTBHD	DATUK LIM SEAT HOE [DIR/CEO]	400	99,302	29.032
02 SEP 2025 - 02 SEP 2025	RGTBHD	DATUK LIM SEAT HOE [SSH]	400	99,302	29.032
02 SEP 2025 - 02 SEP 2025	RGTBHD	MADAM HOR LIM CHEE [SSH]	100	122,135	35.708
02 SEP 2025 - 02 SEP 2025	RGTBHD	MR NG CHOON KEAT [DIR/CEO]	100	108,450	31.706

Notice Period is 31st August 2025 to 6th September 2025

Effective Change Date	Stock Name	Buyer/ Seller Name [Classification]	Bought / (Sold) ['000]	No. of Shares After Trade ['000]	
			Total	Total	% Held
02 SEP 2025 - 02 SEP 2025	RGTBHD	RGT EQUITY HOLDINGS SDN. BHD. [SSH]	100	90,842	26.559
29 AUG 2025 - 29 AUG 2025	RGTBHD	DATUK LIM SEAT HOE [DIR/CEO]	190	98,902	28.916
29 AUG 2025 - 29 AUG 2025	RGTBHD	DATUK LIM SEAT HOE [SSH]	190	98,902	28.916
29 AUG 2025 - 29 AUG 2025	RGTBHD	MADAM HOR LIM CHEE [SSH]	120	122,035	35.679
29 AUG 2025 - 29 AUG 2025	RGTBHD	MR NG CHOON KEAT [DIR/CEO]	120	108,350	31.677
29 AUG 2025 - 29 AUG 2025	RGTBHD	MR NG CHOON KEAT [SSH]	120	108,350	31.677
29 AUG 2025 - 29 AUG 2025	RGTBHD	MR TAN SONG CHAI [SSH]	120	108,335	31.674
29 AUG 2025 - 29 AUG 2025	RGTBHD	RGT EQUITY HOLDINGS SDN. BHD. [SSH]	120	90,742	26.53
29 AUG 2025 - 29 AUG 2025	RHBBANK	EMPLOYEES PROVIDENT FUND BOARD [SSH]	3,836	1,666,538	38.207
28 AUG 2025 - 28 AUG 2025	RHBBANK	EMPLOYEES PROVIDENT FUND BOARD [SSH]	2,085	1,662,701	38.119
27 AUG 2025 - 27 AUG 2025	RHBBANK	EMPLOYEES PROVIDENT FUND BOARD [SSH]	133	1,660,617	38.071
02 SEP 2025 - 02 SEP 2025	SAPIND	MR KOH KOK HOOI [SSH]	13	8,282	11.381
29 AUG 2025 - 29 AUG 2025	SAPIND	MR KOH KOK HOOI [SSH]	1	8,269	11.363
28 AUG 2025 - 28 AUG 2025	SAPIND	MR KOH KOK HOOI [SSH]	3	8,268	11.361
29 AUG 2025 - 29 AUG 2025	SCICOM	KRISHNAN A/L C K MENON [DIR/CEO]	30	24,775	6.97
29 AUG 2025 - 29 AUG 2025	SCICOM	KRISHNAN A/L C K MENON [SSH]	30	24,775	6.97
03 SEP 2025 - 03 SEP 2025	SDG	AMANAHRAYA TRUSTEES BERHAD - AMANAH SAHAM BUMIPUTERA [SSH]	-2,000	3,130,626	45.268
29 AUG 2025 - 29 AUG 2025	SDG	EMPLOYEES PROVIDENT FUND BOARD [SSH]	-1,106	1,161,137	16.789
02 SEP 2025 - 02 SEP 2025	SDG	AMANAHRAYA TRUSTEES BERHAD - AMANAH SAHAM BUMIPUTERA [SSH]	-1,500	3,132,626	45.297
02 SEP 2025 - 02 SEP 2025	SDG	KUMPULAN WANG PERSARAAN (DIPERBADANKAN) [SSH]	857	511,099	7.39
28 AUG 2025 - 28 AUG 2025	SDG	EMPLOYEES PROVIDENT FUND BOARD [SSH]	668	1,162,243	16.806
29 AUG 2025 - 29 AUG 2025	SDG	AMANAHRAYA TRUSTEES BERHAD - AMANAH SAHAM BUMIPUTERA [SSH]	-3,000	3,134,126	45.319
29 AUG 2025 - 29 AUG 2025	SIME	EMPLOYEES PROVIDENT FUND BOARD [SSH]	1,539	1,218,743	17.879
28 AUG 2025 - 02 SEP 2025	SIME	KUMPULAN WANG PERSARAAN (DIPERBADANKAN) [SSH]	1,718	464,742	6.819
27 AUG 2025 - 28 AUG 2025	SIME	EMPLOYEES PROVIDENT FUND BOARD [SSH]	8,381	1217204	17.857
03 SEP 2025 - 03 SEP 2025	SIMEPROP	AMANAHRAYA TRUSTEES BERHAD - AMANAH SAHAM BUMIPUTERA [SSH]	-550	2362499	34.738
02 SEP 2025 - 02 SEP 2025	SIMEPROP	AMANAHRAYA TRUSTEES BERHAD - AMANAH SAHAM BUMIPUTERA [SSH]	-21,704	2363050	34.746
02 SEP 2025 - 02 SEP 2025	SIMEPROP	KUMPULAN WANG PERSARAAN (DIPERBADANKAN) [SSH]	3,041	430721	6.333
29 AUG 2025 - 29 AUG 2025	SIMEPROP	KUMPULAN WANG PERSARAAN (DIPERBADANKAN) [SSH]	-128	427680	6.289
03 SEP 2025 - 03 SEP 2025	SKPRES	KUMPULAN WANG PERSARAAN (DIPERBADANKAN) [SSH]	1,481	162433	10.397
29 AUG 2025 - 29 AUG 2025	SKPRES	EMPLOYEES PROVIDENT FUND BOARD [SSH]	5,172	214853	13.752
02 SEP 2025 - 02 SEP 2025	SKPRES	KUMPULAN WANG PERSARAAN (DIPERBADANKAN) [SSH]	3,091	160952	10.302
28 AUG 2025 - 28 AUG 2025	SKPRES	EMPLOYEES PROVIDENT FUND BOARD [SSH]	800	209681	13.421
29 AUG 2025 - 29 AUG 2025	SKPRES	KUMPULAN WANG PERSARAAN (DIPERBADANKAN) [SSH]	1,470	157861	10.104
28 AUG 2025 - 28 AUG 2025	SKPRES	ABERDEEN GROUP PLC (FORMERLY KNOWN AS ABRDN PLC) [SSH]	16	118361	7.576
28 AUG 2025 - 28 AUG 2025	SKPRES	ABRDN HOLDINGS LIMITED [SSH]	16	118361	7.576
28 AUG 2025 - 28 AUG 2025	SKPRES	ABRDN MALAYSIA SDN BHD [SSH]	16	118361	7.576
02 SEP 2025 - 03 SEP 2025	SKYWLD	DATUK SERI NG THIEN PHING [DIR/CEO]	1,589	452127	45.213
02 SEP 2025 - 03 SEP 2025	SKYWLD	DATUK SERI NG THIEN PHING [SSH]	1,589	452127	45.213
28 AUG 2025 - 29 AUG 2025	SKYWLD	DATUK SERI NG THIEN PHING [DIR/CEO]	366	450538	45.054
28 AUG 2025 - 29 AUG 2025	SKYWLD	DATUK SERI NG THIEN PHING [SSH]	366	450538	45.054
03 SEP 2025 - 03 SEP 2025	SLVEST	ATLANTIC BLUE HOLDING SDN. BHD. [SSH]	5,000	166652	20.331
03 SEP 2025 - 03 SEP 2025	SLVEST	MR LIM CHIN SIU [DIR/CEO]	5,000	225292	27.52
03 SEP 2025 - 03 SEP 2025	SLVEST	MR LIM CHIN SIU [SSH]	5,000	225292	27.52
03 SEP 2025 - 03 SEP 2025	SLVEST	MR TAN CHYI BOON [DIR/CEO]	5,000	219477	26.775
03 SEP 2025 - 03 SEP 2025	SLVEST	MR TAN CHYI BOON [SSH]	5,000	219477	26.775
29 AUG 2025 - 29 AUG 2025	SLVEST	URUSHARTA JAMAAH SDN. BHD. [SSH]	263	46975	5.766
28 AUG 2025 - 28 AUG 2025	SLVEST	URUSHARTA JAMAAH SDN. BHD. [SSH]	63	46712	5.734
27 AUG 2025 - 27 AUG 2025	SLVEST	URUSHARTA JAMAAH SDN. BHD. [SSH]	572	46649	5.726
03 SEP 2025 - 03 SEP 2025	SLVEST-WA	ATLANTIC BLUE HOLDING SDN. BHD. [SSH]	5,000	4236	9.034
03 SEP 2025 - 03 SEP 2025	SLVEST-WA	MR LIM CHIN SIU [DIR/CEO]	5,000	4236	9.034
03 SEP 2025 - 03 SEP 2025	SLVEST-WA	MR LIM CHIN SIU [SSH]	5,000	4236	9.034
03 SEP 2025 - 03 SEP 2025	SLVEST-WA	MR TAN CHYI BOON [DIR/CEO]	5,000	6736	14.365
03 SEP 2025 - 03 SEP 2025	SLVEST-WA	MR TAN CHYI BOON [SSH]	5,000	6736	14.365
02 SEP 2025 - 02 SEP 2025	SMETRIC	MR YONG KIM FUI [DIR/CEO]	100	11486	1.99
29 AUG 2025 - 29 AUG 2025	SMRT	EMPLOYEES PROVIDENT FUND BOARD [SSH]	3,764	33448	7.345
28 AUG 2025 - 28 AUG 2025	SMRT	EMPLOYEES PROVIDENT FUND BOARD [SSH]	345	29684	6.519
29 AUG 2025 - 29 AUG 2025	SNS	EASTSPRING INVESTMENTS BERHAD [SSH]	-4,374	84003	5.013
29 AUG 2025 - 29 AUG 2025	SNS	PRUDENTIAL PLC [SSH]	-4,374	92968	5.548
28 AUG 2025 - 28 AUG 2025	SNS	EASTSPRING INVESTMENTS BERHAD [SSH]	-2,069	88377	5.274
28 AUG 2025 - 28 AUG 2025	SNS	PRUDENTIAL PLC [SSH]	-2,069	97342	5.809
03 SEP 2025 - 03 SEP 2025	SRIDGE	ENCIK SYAUQAT BIN DATO' MOHD SUHAIMI [DIR/CEO]	210	28926	7.99
02 SEP 2025 - 02 SEP 2025	SUN-MOW-PA	LEE YEW CHEN [SSH]	10	7097	49.231
03 SEP 2025 - 03 SEP 2025	SUNREIT	KUMPULAN WANG PERSARAAN (DIPERBADANKAN) ("KWAP") [SSH]	500	204314	5.965
29 AUG 2025 - 29 AUG 2025	SUNREIT	EMPLOYEES PROVIDENT FUND BOARD [SSH]	-494	543257	15.862
02 SEP 2025 - 02 SEP 2025	SUNREIT	KUMPULAN WANG PERSARAAN (DIPERBADANKAN) ("KWAP") [SSH]	-1,196	203814	5.951
28 AUG 2025 - 28 AUG 2025	SUNREIT	EMPLOYEES			

Notice Period is 31st August 2025 to 6th September 2025

Effective Change Date	Stock Name	Buyer/ Seller Name [Classification]	Bought / (Sold) ['000]		No. of Shares After Trade ['000]	
			Total	% Held	Total	% Held
02 SEP 2025 - 02 SEP 2025	TAKAFUL	KUMPULAN WANG PERSARAAN (DIPERBADANKAN) [SSH]	29	6.55	57124	6.55
03 SEP 2025 - 03 SEP 2025	TANCO	DATO' SRI ANDREW TAN JUN SUAN [DIR/CEO]	5,300	52.719	3146150	52.719
03 SEP 2025 - 03 SEP 2025	TANCO	DATO' SRI ANDREW TAN JUN SUAN [SSH]	5,300	52.719	3146150	52.719
02 SEP 2025 - 02 SEP 2025	TANCO	DATO' SRI ANDREW TAN JUN SUAN [DIR/CEO]	20,000	52.631	3140850	52.631
02 SEP 2025 - 02 SEP 2025	TANCO	DATO' SRI ANDREW TAN JUN SUAN [SSH]	20,000	52.631	3140850	52.631
03 SEP 2025 - 03 SEP 2025	TENAGA	KUMPULAN WANG PERSARAAN (DIPERBADANKAN) [SSH]	50	7.38	430009	7.38
29 AUG 2025 - 29 AUG 2025	TENAGA	EMPLOYEES PROVIDENT FUND BOARD [SSH]	961	18.95	1104850	18.95
02 SEP 2025 - 02 SEP 2025	TENAGA	KUMPULAN WANG PERSARAAN (DIPERBADANKAN) [SSH]	385	7.38	429959	7.38
28 AUG 2025 - 28 AUG 2025	TENAGA	EMPLOYEES PROVIDENT FUND BOARD [SSH]	1,082	18.94	1103890	18.94
02 SEP 2025 - 02 SEP 2025	TEOSEN	MR NA HAP CHENG [SSH]	10	53.086	313633	53.086
03 SEP 2025 - 03 SEP 2025	TIMECOM	KUMPULAN WANG PERSARAAN (DIPERBADANKAN) [SSH]	130	8.171	151079	8.171
29 AUG 2025 - 29 AUG 2025	TIMECOM	EMPLOYEES PROVIDENT FUND BOARD [SSH]	-5	13.504	249672	13.504
02 SEP 2025 - 02 SEP 2025	TIMECOM	KUMPULAN WANG PERSARAAN (DIPERBADANKAN) [SSH]	316	8.165	150949	8.165
28 AUG 2025 - 28 AUG 2025	TIMECOM	EMPLOYEES PROVIDENT FUND BOARD [SSH]	-74	13.505	249677	13.505
29 AUG 2025 - 29 AUG 2025	TIMECOM	KUMPULAN WANG PERSARAAN (DIPERBADANKAN) [SSH]	491	8.148	150634	8.148
03 SEP 2025 - 03 SEP 2025	TM	KUMPULAN WANG PERSARAAN (DIPERBADANKAN) [KWAP] [SSH]	-1,550	10.07	386461	10.07
29 AUG 2025 - 29 AUG 2025	TM	EMPLOYEES PROVIDENT FUND BOARD (EPF BOARD) [SSH]	1,590	21.83	837784	21.83
02 SEP 2025 - 02 SEP 2025	TM	KUMPULAN WANG PERSARAAN (DIPERBADANKAN) [KWAP] [SSH]	53	10.111	388011	10.111
28 AUG 2025 - 28 AUG 2025	TM	EMPLOYEES PROVIDENT FUND BOARD (EPF BOARD) [SSH]	4,695	21.789	836194	21.789
29 AUG 2025 - 29 AUG 2025	TM	KUMPULAN WANG PERSARAAN (DIPERBADANKAN) [KWAP] [SSH]	30	10.109	387958	10.109
27 AUG 2025 - 27 AUG 2025	TM	EMPLOYEES PROVIDENT FUND BOARD (EPF BOARD) [SSH]	6,209	21.666	831499	21.666
03 SEP 2025 - 03 SEP 2025	TOPGLOV	KUMPULAN WANG PERSARAAN (DIPERBADANKAN) [SSH]	-5,000	7.336	588184	7.336
03 SEP 2025 - 03 SEP 2025	UCHITEC	KUMPULAN WANG PERSARAAN (DIPERBADANKAN) [SSH]	258	5.569	25766	5.569
02 SEP 2025 - 02 SEP 2025	UCHITEC	KUMPULAN WANG PERSARAAN (DIPERBADANKAN) [SSH]	153	5.513	25508	5.513
29 AUG 2025 - 29 AUG 2025	UCHITEC	KUMPULAN WANG PERSARAAN (DIPERBADANKAN) [SSH]	100	5.48	25355	5.48
29 AUG 2025 - 29 AUG 2025	UTDPLT	EMPLOYEES PROVIDENT FUND BOARD [SSH]	21	6.294	39158	6.294
29 AUG 2025 - 29 AUG 2025	VITROX	EMPLOYEES PROVIDENT FUND BOARD [SSH]	-96	5.927	112209	5.927
28 AUG 2025 - 28 AUG 2025	VITROX	EMPLOYEES PROVIDENT FUND BOARD [SSH]	-88	5.932	112305	5.932
27 AUG 2025 - 27 AUG 2025	VITROX	EMPLOYEES PROVIDENT FUND BOARD [SSH]	-116	5.937	112393	5.937
03 SEP 2025 - 03 SEP 2025	VOLCANO	DATUK CH'NG HUAT SENG [DIR/CEO]	200	15.749	28605	15.749
03 SEP 2025 - 03 SEP 2025	VOLCANO	DATUK CH'NG HUAT SENG [SSH]	200	15.749	28605	15.749

Notice Period is 31st August 2025 to 6th September 2025

Effective Change Date	Stock Name	Buyer/ Seller Name [Classification]	Bought / (Sold) ['000]		No. of Shares After Trade ['000]	
			Total	% Held	Total	% Held
02 SEP 2025 - 02 SEP 2025	VOLCANO	DATUK CH'NG HUAT SENG [DIR/CEO]	105	15.639	28405	15.639
02 SEP 2025 - 02 SEP 2025	VOLCANO	DATUK CH'NG HUAT SENG [SSH]	105	15.639	28405	15.639
02 SEP 2025 - 02 SEP 2025	VOLCANO	MR ANDREW SU MENG KIT [DIR/CEO]	100	9.745	17700	9.745
02 SEP 2025 - 02 SEP 2025	VOLCANO	MR ANDREW SU MENG KIT [SSH]	100	9.745	17700	9.745
29 AUG 2025 - 29 AUG 2025	VOLCANO	MR ANDREW SU MENG KIT [DIR/CEO]	30	9.69	17600	9.69
29 AUG 2025 - 29 AUG 2025	VOLCANO	MR ANDREW SU MENG KIT [SSH]	30	9.69	17600	9.69
04 SEP 2025 - 04 SEP 2025	VS	MR BEH CHERN WEI [DIR/CEO]	-1,925	3.211	123752	3.211
03 SEP 2025 - 03 SEP 2025	VS	DATUK BEH KIM LING [DIR/CEO]	-2,950	14.043	541266	14.043
03 SEP 2025 - 03 SEP 2025	VS	DATUK BEH KIM LING [SSH]	-2,950	14.043	541266	14.043
02 SEP 2025 - 02 SEP 2025	VS	DATUK BEH KIM LING [DIR/CEO]	-2,900	14.119	544216	14.119
02 SEP 2025 - 02 SEP 2025	VS	DATUK BEH KIM LING [SSH]	-2,900	14.119	544216	14.119
29 AUG 2025 - 29 AUG 2025	WASCO	EMPLOYEES PROVIDENT FUND BOARD [SSH]	-125	6.712	51979	6.712
28 AUG 2025 - 28 AUG 2025	WASCO	EMPLOYEES PROVIDENT FUND BOARD [SSH]	-125	6.729	52104	6.729
27 AUG 2025 - 27 AUG 2025	WASCO	EMPLOYEES PROVIDENT FUND BOARD [SSH]	-150	6.745	52229	6.745
03 SEP 2025 - 03 SEP 2025	WELLCHIP	MISS TANG SOO YEN [DIR/CEO]	-350	1.651	9908	1.651
03 SEP 2025 - 03 SEP 2025	WELLCHIP	YEAH HIANG NAM [DIR/CEO]	-100	65.49	392947	65.49
03 SEP 2025 - 03 SEP 2025	WPRTS	KUMPULAN WANG PERSARAAN (DIPERBADANKAN) [SSH]	32	6.453	220074	6.453
29 AUG 2025 - 29 AUG 2025	WPRTS	EMPLOYEES PROVIDENT FUND BOARD [SSH]	-19	5.993	204370	5.993
02 SEP 2025 - 02 SEP 2025	WPRTS	KUMPULAN WANG PERSARAAN (DIPERBADANKAN) [SSH]	265	6.452	220041	6.452
27 AUG 2025 - 27 AUG 2025	WPRTS	EMPLOYEES PROVIDENT FUND BOARD [SSH]	-244	5.977	203826	5.977
29 AUG 2025 - 29 AUG 2025	YGL	MADAM TAN HOAY LENG [SSH]	4,000	18.559	50799	18.559
29 AUG 2025 - 29 AUG 2025	YGL	MR YEAP KONG CHEAN [DIR/CEO]	4,000	18.559	50799	18.559
29 AUG 2025 - 29 AUG 2025	YGL	MR YEAP KONG CHEAN [SSH]	4,000	18.559	50799	18.559
29 AUG 2025 - 29 AUG 2025	YGL	TAN HOAY LENG [DIR/CEO]	4,000	18.559	50799	18.559
29 AUG 2025 - 29 AUG 2025	YINSON	KUMPULAN WANG PERSARAAN (DIPERBADANKAN) [SSH]	-1,000	6.634	193601	6.634
29 AUG 2025 - 29 AUG 2025	YTL	EMPLOYEES PROVIDENT FUND BOARD [SSH]	1,785	8.335	954268	8.335
28 AUG 2025 - 28 AUG 2025	YTL	EMPLOYEES PROVIDENT FUND BOARD [SSH]	5,000	8.329	953133	8.329
27 AUG 2025 - 27 AUG 2025	YTL	EMPLOYEES PROVIDENT FUND BOARD [SSH]	418	8.302	950081	8.302
27 AUG 2025 - 27 AUG 2025	YTLPOWR	EMPLOYEES PROVIDENT FUND BOARD [SSH]	310	9.722	832705	9.722
02 SEP 2025 - 04 SEP 2025	ZETRIX	ASIA INTERNET HOLDINGS SDN. BHD. [SSH]	-5,300	13.398	1030555	13.398
02 SEP 2025 - 04 SEP 2025	ZETRIX	MR WONG THEAN SOON [DIR/CEO]	-2,698	27.036	2079569	27.036
02 SEP 2025 - 04 SEP 2025	ZETRIX	MR WONG THEAN SOON [SSH]	-2,698	27.036	2079569	27.036
02 SEP 2025 - 02 SEP 2025	ZETRIX	KUMPULAN WANG PERSARAAN (DIPERBADANKAN) [SSH]	4,962	5.067	389729	5.067
03 SEP 2025 - 03 SEP 2025	ZHULIAN	MR TEOH BENG SENG [SSH]	100	58.421	268750	58.421
03 SEP 2025 - 03 SEP 2025	ZHULIAN	THE BEST SOURCE HOLDINGS PTE. LTD. [SSH]	100	14.305	65803	14.305
02 SEP 2025 - 02 SEP 2025	ZHULIAN	MR TEOH BENG SENG [SSH]	22	58.399	268649	58.399
02 SEP 2025 - 02 SEP 2025	ZHULIAN	THE BEST SOURCE HOLDINGS PTE. LTD. [SSH]	22	14.283	65702	14.283
29 AUG 2025 - 29 AUG 2025	ZHULIAN	MR TEOH BENG SENG [SSH]	37	58.394	268628	58.394
29 AUG 2025 - 29 AUG 2025	ZHULIAN	THE BEST SOURCE HOLDINGS PTE. LTD. [SSH]	37	14.278	65681	14.278

**Disclaimer:** The Information in Insider Activity is extracted from [www.shareinvestor.com/fundamental/insider\\_trades](http://www.shareinvestor.com/fundamental/insider_trades). The information on this page is provided as a service to readers. It does not constitute financial advice and/or any investment recommendations. We assume no liability for damages resulting from or arising out of the use of such information. Whilst every effort is made to ensure accuracy, the information presented is not the official record of shareholder filings. Readers are advised to read the original filings on the Bursa Malaysia website at [www.bursamalaysia.com](http://www.bursamalaysia.com)

**What's Next for Steel Hawk?**  
After a stellar IPO and major contract wins in hand...  
**Dato' Sharman K Michael**  
Deputy Chairman and Executive Director  
Steel Hawk Berhad

**MARKET SENTIMENTS**  
IRB, MyDigital ID strengthen cooperation to accelerate digital identity adoption  
Gig Workers Bill aims to make SOCSO contribution mandatory - Steven Sim

## Learn how to identify Hot Stocks using Technical Analysis (TA) and Fundamental Analysis (FA)

# SIGN UP FOR Invest NOW IT'S FREE!!!

Click here

Scan me

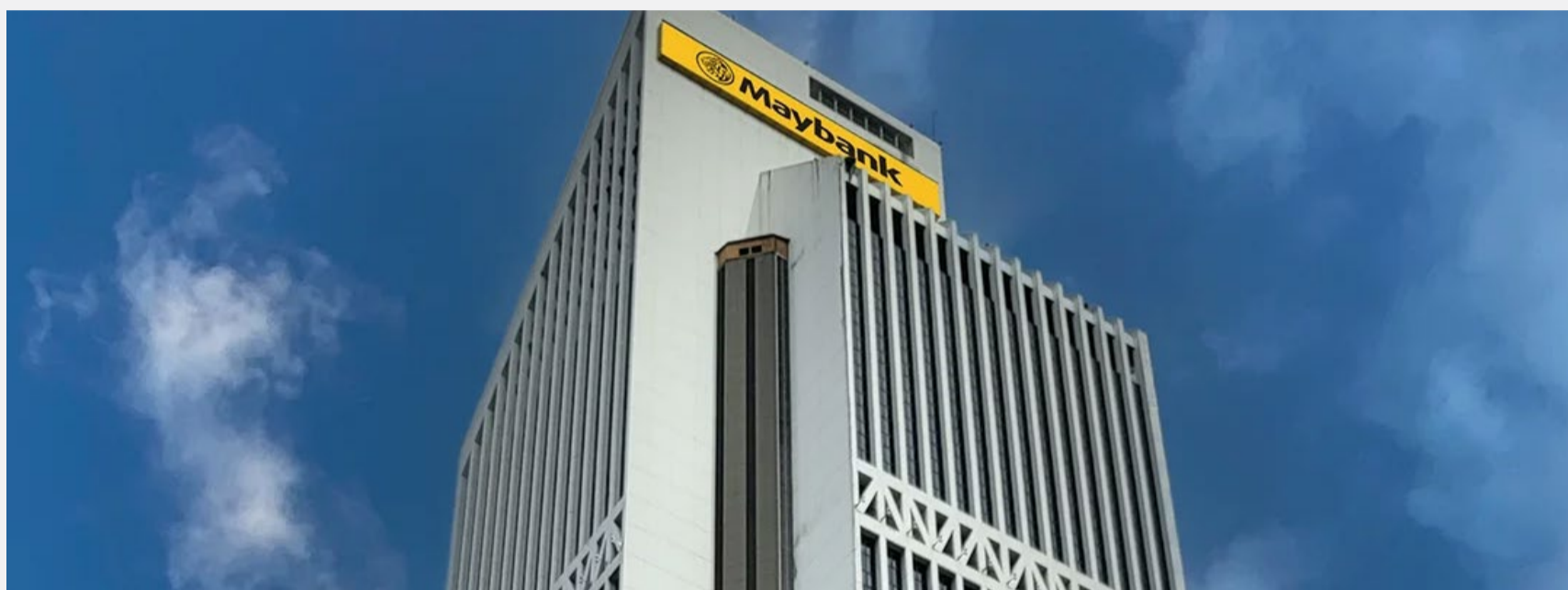
Via email, every Friday.

Get market moving news and analyses. Regular columns include **Behind The Action** and **From The Observer**

**Leaderboard • Shariah Hot Stocks • Shariah Momentum Up Stocks • Non Shariah Hot Stocks • Up Trending Stocks • Growth Stocks • Dividend Stocks • Long Companies • Insider Activity • Investor Relations • Regional Markets**



The Board of Directors of **Able Global Berhad (ABLEGLOB)** wishes to announce the Recurrent Related Party Transaction entered into by the Company's wholly-owned subsidiary companies from 26 July 2025 to 09 September 2025.



On behalf of the Board of Directors of **Malayan Banking Berhad (MAYBANK)**, Maybank Investment Bank Berhad is pleased to announce that Maybank has, on 8 September 2025, completed the issuance of the RM3.0 billion Subordinated Sukuk Murabahah under the Sukuk Programme.



On behalf of the Board of **NextGreen Global Berhad (NGGB)**, TA Securities wishes to announce that the Board had on even date fixed the issue price for the Private Placement at RM0.80 per Placement Share. The Issue Price represents a discount of 3.74% to the 5-day VWAP of Nextgreen Shares up to and including 10 September 2025 of RM0.8311, being the last market day immediately preceding the Price-fixing Date.



[READ MORE](#)

The Board of Directors of **Gamuda Berhad (GAMUDA)** wishes to announce that the Tender submitted by Gamuda (Singapore) Pte Ltd, a wholly owned subsidiary of Gamuda in Singapore jointly with Evia MCS Pte Ltd, and H108 Pte. Ltd. at a tender price of SGD1,012.59 million (equivalent to RM3,327.27 million) has emerged as the highest bidder. The Provisional Tender Results was announced by the Housing and Development Board of Singapore after the Tender closing date on 11 September 2025.



**Telekom Malaysia Berhad (TM)** and SCICOM form a strategic partnership to deliver world-class AI-Powered customer experience.



[READ MORE](#)

## The Board of Directors of **SkyWorld Development Berhad (SKYWLD)**

wishes to announce that SkyWorld Development (Vietnam) Company Limit, a wholly-owned subsidiary of SkyWorld Development had on 9 September 2025,

entered into a Memorandum of Understanding with (i) Mr. Le Van Phong and (ii) MTV Vina An Thuan Phat Company to secure an exclusive negotiation period with the Parties prior to the signing of the definitive transaction agreements for SkyWorld Vietnam to develop the “Sai Gon – Thuan An central commercial apartment complex (Sai Gon – Thuan An Central)” project on a land lot of 9,443.5m<sup>2</sup> located at Lai Thieu Ward, Ho Chi Minh City, Vietnam via the acquisition of ATP.



**Disclaimer:** The information in the Investor Relations page is extracted from individual companies' announcements in [www.bursamalaysia.com](http://www.bursamalaysia.com). The information on this page is provided as a service to readers. We assume no liability for damages resulting from or arising out of the use of such information. Whilst every effort is made to ensure accuracy, the information presented has been simplified for your reading pleasure. Readers are advised to read the original and complete filings on the Bursa Malaysia website at [https://www.bursamalaysia.com/market\\_information/announcements/company\\_announcement](https://www.bursamalaysia.com/market_information/announcements/company_announcement)

NAME OF COMPANY	OFFER PERIOD		ISSUE PRICE (Per Ordinary Share)	LISTING SOUGHT	DATE OF LISTING
	OPENING	CLOSING			
<a href="#">CAMAROE BERHAD</a>	29 Aug 2025	12 Sept 2025	RM0.14	ACE MARKET	2 October 2025
<a href="#">EXPRESS POWERR SOLUTIONS (M) BERHAD</a>	20 Aug 2025	8 Sept 2025	RM0.20	ACE MARKET	24 September 2025
<a href="#">JS SOLAR HOLDING BERHAD</a>	28 Aug 2025	9 Sept 2025	RM0.31	ACE MARKET	23 September 2025



Learn how to identify Hot Stocks using Technical Analysis (TA) and Fundamental Analysis (FA)

**SIGN UP FOR Invest**  
**IT'S FREE!!!**

[Click here](#)

