

Invest

A Weekly e-Publication by SHAREINVESTOR

ISSUE

269

FRIDAY
29 AUG 2025

Scan/Click QR to Register



Via email, every Friday

SELAMAT

31^{HB} HARI

OGOS 2025

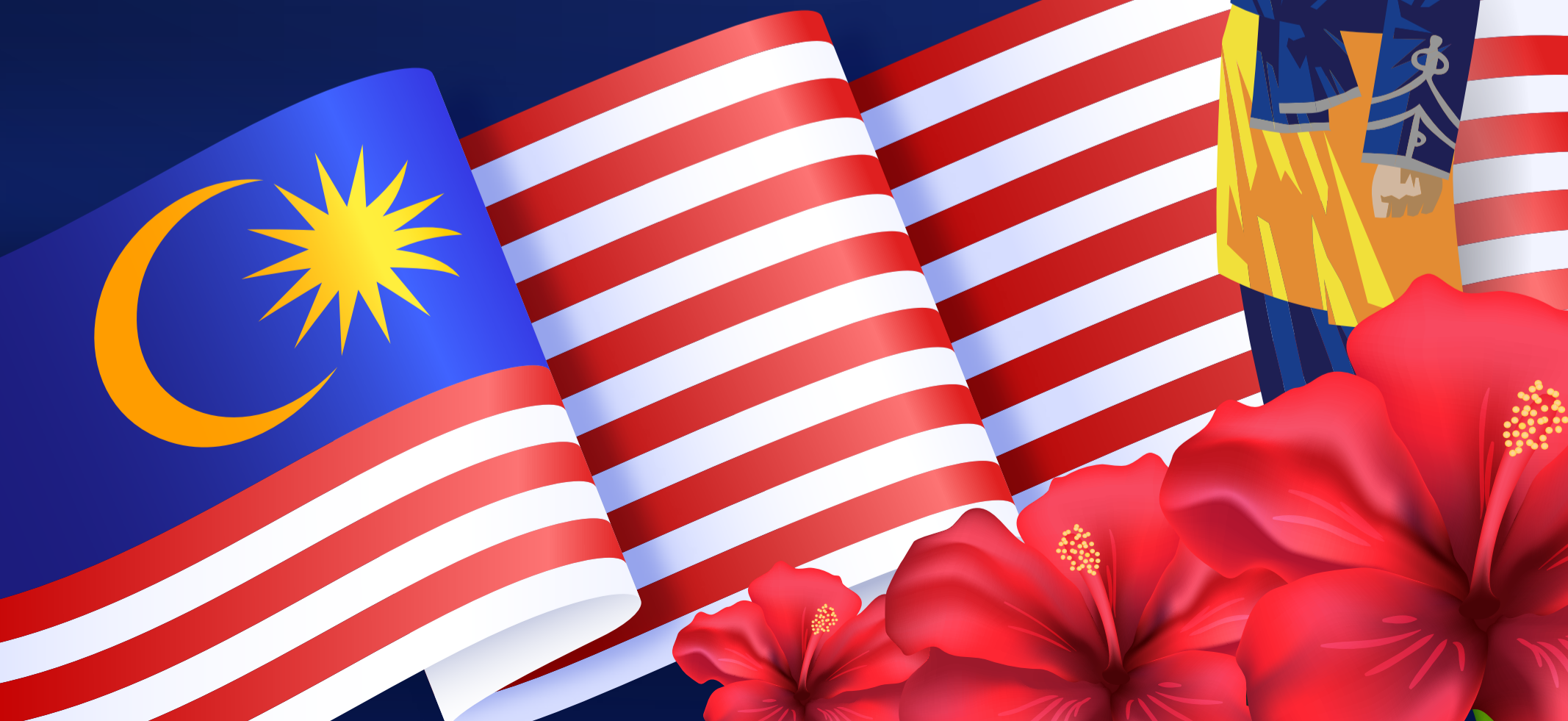
Merdeka

KE-68

From all of us at

SHAREINVESTOR[®]

An AlphaInvest Company



Inve\$t

A Weekly e-Publication by SHAREINVESTOR

ISSUE

269

FRIDAY
29 AUG 2025

Scan/Click QR to Register



Via email, every Friday

MARKET SENTIMENTS

E-commerce revenue at RM625b in 1H 2025 — KPDNKK page 31

Malaysia's PPI records slower decrease of 3.8% in July - DOSM page 32

ALSO

COMPANY SPOTLIGHT

CBH Engineering Holding Berhad

See more on page 06



From MSWG's The Observer Vague Ventures

See more on pages 36-40



BEHIND THE TICKER: DECODING COMPANY FUNDAMENTALS ISSUE AUGUST 2025 **Inve\$t** | 22

Dr. Gu Hong Chue
Former Group CEO, Berhad
Non-Executive Director

He has been associated with the Sunmang Group for many years, starting the work for the manufacturing group, being under Government Holdings Berhad and the subsequent acquisition of Berhad. He has also been with the Management Consulting for decades when he was the Director of Studies for the Chartered FA MBA Programme in Malaysia.

Education at the Royal Military College, Sandhurst and an engineering degree from the University of Glasgow, and a MSc from the University of Bradford, UK.

Is FACBI an investment opportunity or a value trap?

SUMMARY

- FACBI Industries Inc Bhd (FACBI or the Group) (FACBID:2984.MY) is a small mattress manufacturer under the "Dreamland" brand, with additional investments in China's bedding and power sectors. It has exited its former steel pipe and fittings business and now operates mainly in bedding, China power generation, and holding financial assets.

Disclaimer: This article is written for informational purposes only. It does not constitute a solicitation, offer, advice, recommendation or recommendation to buy or sell. As such, it is not intended to provide the purchase of shares in any way. As a result, any type of share that the reader will wish to be excluded from such purposes. Therefore, any investment decision and the associated risk remains with the reader. The views expressed here are solely the author's own.

See more on pages 22-29

Note From The Publisher: Inve\$t will take a break next week due to the holidays. The next issue will be on September 12, 2025.

04 LEADERBOARD

05 SHARIAH HOT STOCKS

08 SHARIAH MOMENTUM UP STOCKS

09 NON SHARIAH HOT STOCKS

10 UP TRENDING STOCKS

12 VALUE STOCKS

14 GROWTH STOCKS

16 DIVIDEND STOCKS

18 BROKERS' CALL

19 LONG COMPANIES

35 REGIONAL MARKETS

41 INSIDER ACTIVITY

46 INVESTOR RELATIONS

SHAREINVESTOR®

An AlphaInvest Company

Invest with Knowledge

INVESTOR PLATFORMS

Director
Darren Chong
darren.chong@shareinvestor.com

Business Development Manager
Jay Cheong
jay.cheong.@shareinvestor.com

ADMIN & OPERATIONS

Senior Executive
Watie Nordin
watie.nordin@shareinvestor.com

Executive
Silas Emmanuel Joseph
silas.joseph@shareinvestor.com

PROCESS AUTOMATION & DATA ANALYTICS

Data Analyst
Lee Khai Bing

INVESTOR RELATIONS

Group Managing Director & Publisher
Edward Stanislaus
edward@shareinvestor.com

Senior Manager
Letticia Wong
letticia.wong@shareinvestor.com

Manager
Aida Norzeti Talib
aida.norzeti@shareinvestor.com

ALPHA INVEST HOLDINGS BOARD OF DIRECTORS

Chairman	Patrick Daniel
Group CEO	Christopher Lee
Group COO	Lim Dau Hee
Group MD	Shanison Lin



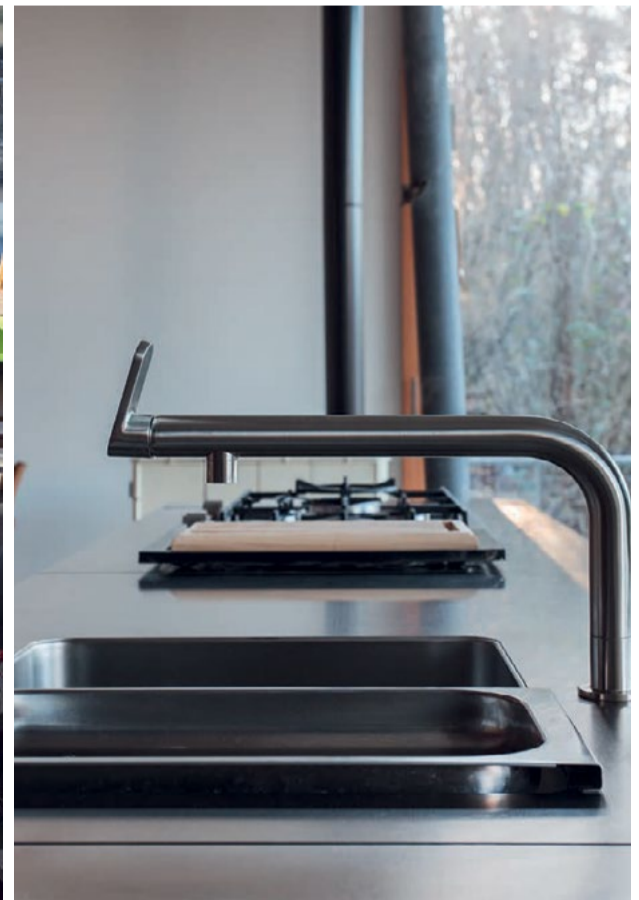
“ GIVE A MAN A FISH AND YOU FEED HIM FOR A DAY; TEACH A MAN TO FISH AND YOU FEED HIM FOR A LIFETIME ”

ShareInvestor Malaysia Sdn. Bhd.
(200001023956) (526564-M)
L15-03 & 03A, PJX HM Shah Tower,
No 16A, Jalan Persiaran Barat, PJS 52,
46200 Petaling Jaya, Selangor

Hotline : 603 8681 0580
Mobile : 011 6343 8939
Website : www.ShareInvestor.com.my
www.alphainvestholdings.com
www.Facebook.com/ShareInvestorMalaysia

ADVERTISEMENT ENQUIRY

bulthaup takes care of the details so that you can enjoy a harmonious environment.



XTRA

XTRA FURNITURE SDN BHD
The Gardens Mall, Mid Valley City
xfurniture.com/bulthaup
fb.com/bulthaupmalaysia

bulthaup

SkyWorld®



3-TIME WORLD WINNER

As a leading Malaysian city developer, SkyWorld is committed to more than just building homes. We're passionate about *Make Living Better*.



**2023 WORLD
GOLD WINNER**
FIABCI World Prix d'Excellence Awards



**2024 WORLD
GOLD WINNER**
FIABCI World Prix d'Excellence Awards



**2025 WORLD
SILVER WINNER**
FIABCI World Prix d'Excellence Awards



SkyAwani 2 Residences
Sentul, KL



SkyAwani 3 Residences
Setapak, KL



SkyLuxe On The Park Residences
Bukit Jalil, KL



www.shareinvestor.com - market data at your fingertips



ShareInvestor WebPro (www.shareinvestor.com/my)
 Prices > Stock Prices > Bursa > click Stocks tab

1. mouse over Ranking > select Top Active > all Shariah stocks are denoted with an [S] > mouse over Column Layout > select Edit Customs > select Name > select Volume > select Last Done Price > Mouse Over Column Layout > select Custom
2. mouse over Ranking > select Top Turnover > all Shariah stocks are denoted with an [S] > mouse over Column Layout > select Edit Customs > select Name > select Last Done Price > select Value > Mouse Over Column Layout > select Custom
3. mouse over Ranking > select Top Gainers (Over 5 Trading Days) > mouse over Column Layout > select Edit Customs > select Name > select Last Done Price > select 5 Days Change > select 5 Days % Change > Mouse Over Column Layout > select Custom
4. mouse over Ranking > select Top Losers (Over 5 Trading Days)
5. mouse over Ranking > select Top % Gainers (Over 5 Trading Days)
6. mouse over Ranking > select Top % Losers (Over 5 Trading Days)

Shariah Top Actives (As at Yesterday)

Name	Price (RM)	Volume
SIME [S]	1.950	787,488.000
BORNOIL [S]	0.005	759,031.000
TANCO [S]	0.725	735,627.000
ZETRIX [S]	0.870	657,155.000
EKOVEST [S]	0.375	469,879.000
NATGATE [S]	1.300	447,590.000
PHARMA [S]	0.175	297,731.000
TWL [S]	0.025	288,435.000
ARMADA [S]	0.365	248,247.000
DRBHCOM [S]	0.920	237,574.000

Shariah Top Turnover (As at Yesterday)

Name	Price (RM)	Value (RM)
SIME [S]	1.950	155,613,806
PPB [S]	9.390	104,715,924
TM [S]	7.050	101,251,393
SUNWAY [S]	4.940	76,878,770
IHH [S]	6.790	71,507,797
GAMUDA [S]	5.670	68,255,673
TENAGA [S]	13.440	67,038,628
NATGATE [S]	1.300	60,344,802
ZETRIX [S]	0.870	57,482,454
TANCO [S]	0.725	53,253,426

Top Gainers (over 5 Trading days as at Yesterday)

Name	Price (RM)	Change (RM)
MPI	26.440	+4.300
NESTLE	96.000	+4.000
HLIND	13.360	+0.840
PPB	9.390	+0.690
HLFG	17.420	+0.680
UTDPLT	22.620	+0.620
SUNCON	6.410	+0.560
MCCEMENT	5.700	+0.380
KGB	5.000	+0.370
D&O	1.340	+0.345

Top % Gainers (over 5 Trading days as at Yesterday)

Name	Price (RM)	Change (%)
HONGSENG	0.010	+100.00
MTOUCHE	0.045	+80.00
IHB	0.175	+66.67
MTRONIC	0.015	+50.00
TRIVE	0.015	+50.00
D&O	1.340	+34.67
PARLO	0.020	+33.33
CJCEN	0.180	+28.57
VTC	0.295	+28.26
BSLCORP	0.025	+25.00

Top Losers (over 5 Trading days as at Yesterday)

Name	Price (RM)	Change (RM)
HEIM	20.580	-0.960
PETDAG	21.800	-0.960
F&N	26.980	-0.420
PCHEM	4.420	-0.340
SAM	3.820	-0.330
PETGAS	18.600	-0.300
PANAMY	9.630	-0.290
AEONCR	4.900	-0.250
RVIEW	2.810	-0.240
MISC	7.470	-0.220

Top % Losers (over 5 Trading days as at Yesterday)

Name	Price (RM)	Change (%)
1TECH	0.030	-85.00
IVORY	0.005	-75.00
ECOHLDS	0.020	-33.33
TFP	0.020	-33.33
XDL	0.010	-33.33
JADI	0.015	-25.00
SCC	0.220	-24.14
SYNERGY	0.375	-22.68
FAST	0.035	-22.22
PENERGY	0.835	-18.93

Disclaimer: The information on this page is provided as a service to readers. It does not constitute financial advice and/or any investment recommendations. Past performance is not indicative of future results. We assume no liability for damages resulting from or arising out of the use of such information. It would be best if you did your own research to make your personal investment decisions wisely or consult a licenced investment advisor.

Price & Volume Distribution Charts (as at Yesterday)

Technical Analysis

DEFINITION: Shariah compliant stocks with Technical Analysis showing 5-days & 10-days Moving Average Price below Yesterday's Close over past 3 days and with Volume Spike.

CHART GUIDE: Volume Distribution Chart is a statistical interpretation of the current sentiment on each stock in graphical format. The highest bar categorized as >150k is likely to be traded by institutions or super dealers, while the lowest bar categorized as <15k usually represents retail investors. "Buy Up" refers to more buyers snatching up the lots queued at selling price. "Sell Down" refers to sellers selling their shares to the buying queue



ShareInvestor WebPro > Screener > Market Screener (FA & TA) > select BURSA > add criteria

A. Criteria

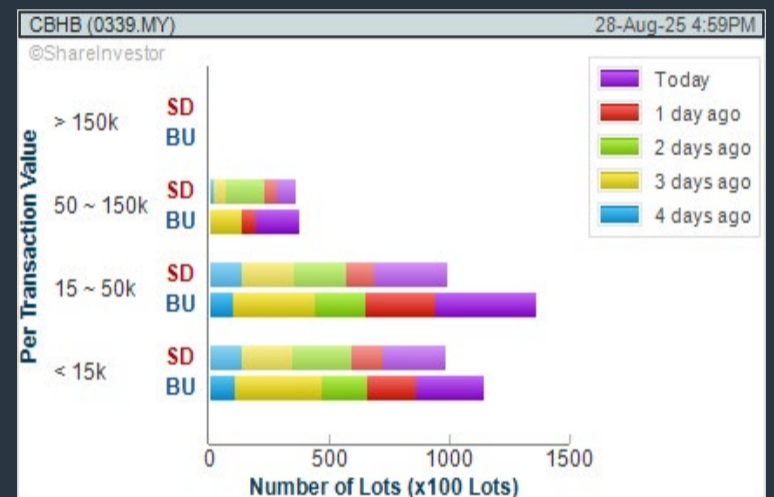
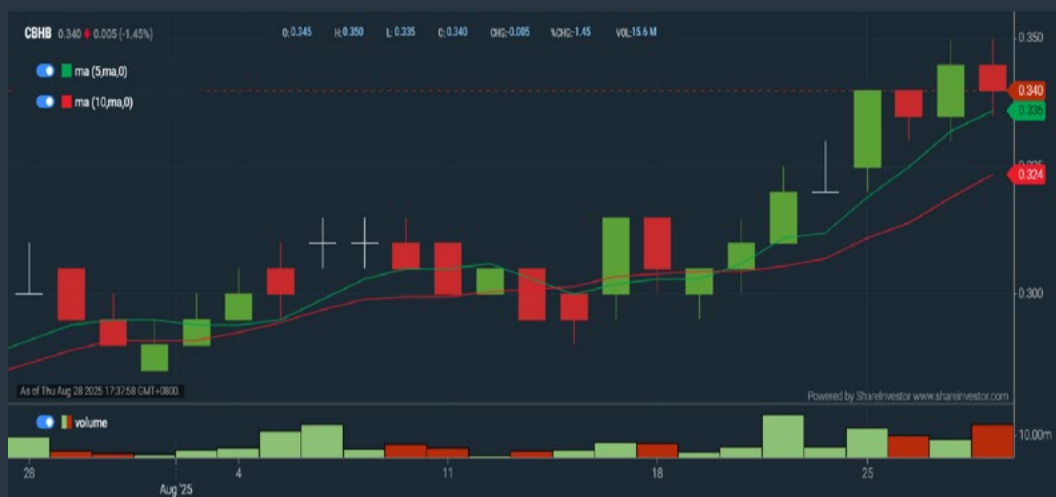
- > click Add Criteria
- Technical Analysis Conditions tab select (i) Moving Average Below Close (ii) Volume Spike
- Fundamental Analysis Conditions tab > select (iii) Revenue
- Prices & Other Conditions tab > select (iv) Is Shariah Compliant
- Technical Analysis Conditions tab select (v) Moving Average Below Close
- Prices & Other Conditions tab > select (vi) Last Done Price
- Technical Analysis Conditions tab select (vii) Moving Average Below Close

B. Conditions (Criteria Filters)

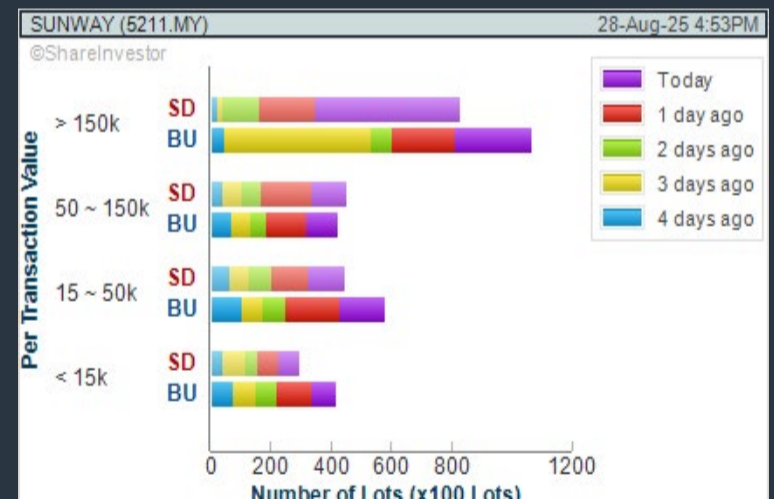
1. Moving Average Below Close - select (MA) type (5) below close price for type (3) days
2. Volume Spike - Volume type (1) greater than type (5) days average
3. Revenue ("000) - select (more than) type (1) for the past select (1) financial year(s)
4. Is Shariah Compliant - select **Yes**
5. Moving Average Below Close - select (MA) type (10) below close price for type (3) days
6. Last Done Price - select (more than) type (0.3)
7. Moving Average Below Close - select (EMA) type (5) below close price for type (3) days

- > click Save Template > Create New Template type (Shariah Hot Stocks) > click Create
- > click Save Template as > select Shariah Hot Stocks > click Save
- > click Screen Now (may take a few minutes)
- > Sort By: Select (Vol) Select (Desc)
- > Mouse over stock name > Charts > click C² Charts or Volume Distribution

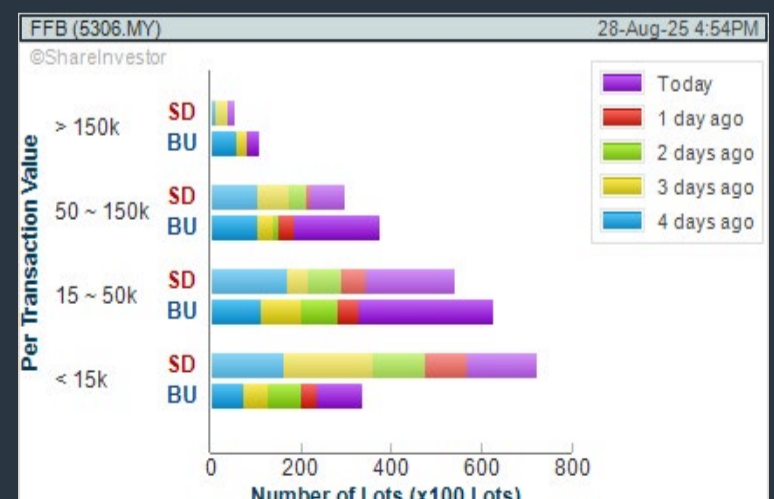
CBH ENGINEERING HOLDING BERHAD (0339) C² Chart



SUNWAY BERHAD (5211) C² Chart



FARM FRESH BERHAD (5306) C² Chart



Disclaimer: The information on this page is provided as a service to readers. It does not constitute financial advice and/or any investment recommendations. Past performance is not indicative of future results. We assume no liability for damages resulting from or arising out of the use of such information. It would be best if you did your own research to make your personal investment decisions wisely or consult a licenced investment advisor.

COMPANY BACKGROUND

CBH Engineering Holding Berhad is principally an electrical engineering service provider. The Company specialises in electricity supply distribution systems, where it undertakes the design, supply, installation, testing, commissioning and maintenance of High voltage (HV), Medium voltage (MV), Low voltage (LV) and Extra low voltage (ELV) electrical systems. It also undertakes mechanical engineering works for the design, supply, installation, testing, commissioning and maintenance of building systems such as Air conditioning and mechanical ventilation (ACMV) systems, fire protection systems, plumbing and sanitary systems as well as renewable energy systems.



Select Counter: Bursa		CBHB (0339.MY)		View		Free Trial		Broker's Call	
CBHB CBH ENGINEERING HOLDING BERHAD									
Last (MYR): 0.340 ↓		Change: -0.005		High: 0.350		Remarks: -			
		Change (%): 1.45		Low: 0.335		Updated at 28 Aug 2025 17:30			
Open	0.345	Yesterday's Close	0.345						
Buy Price	0.335	Sell Price	0.345						
Buy Volume ('00)	780	Sell Volume ('00)	500						
Cumulative Volume ('00)	156,420	Cumulative Value	5,393,091						

Financial Analysis

Profit Growth Increasing profit in latest year (with last 2 profitable years)		Piotroski F Score The company has above average financial strength (Piotroski F Score of 6.7)	
Gross Profit Margin Good gross profit margin of 20%~40% for 2 years		Net Earnings Margin Consistently good net profit margin of at least 15% for 2 years	
Return on Equity (ROE) ROE is decreasing by 10% a year over the past 10 months			

Excellent
 Good
 Neutral
 Be Alert
 Watch Out



Historical Financials

Profit & Loss (MYR '000)

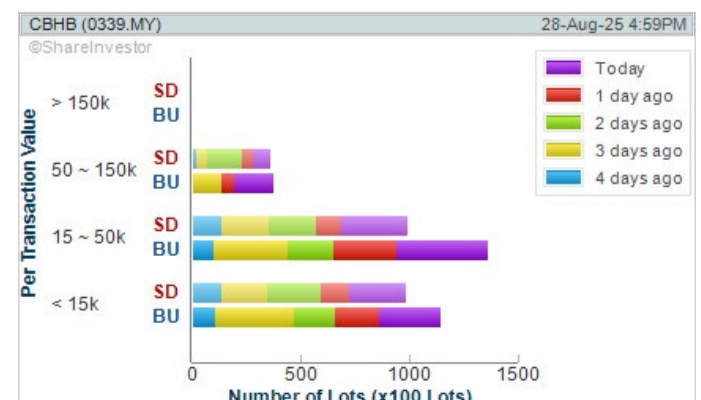


WebPro 9-Days Free Trial Registration (worth RM10) Sign Up Now



Key Statistics with Total Shareholder Returns

Period	Dividend Received	Capital Appreciation	Total Shareholder Return
Short Term Return	5 Days	-	+9.68 %
	10 Days	-	+15.25 %
	20 Days	-	+17.24 %
Medium Term Return	3 Months	-	+65.85 %
	6 Months	-	+13.33 %



Disclaimer: The information on this page is provided as a service to readers. It does not constitute financial advice and/or any investment recommendations. Past performance is not indicative of future results. We assume no liability for damages resulting from or arising out of the use of such information. It would be best if you did your own research to make your personal investment decisions wisely or consult a licenced investment advisor.

BREGUET

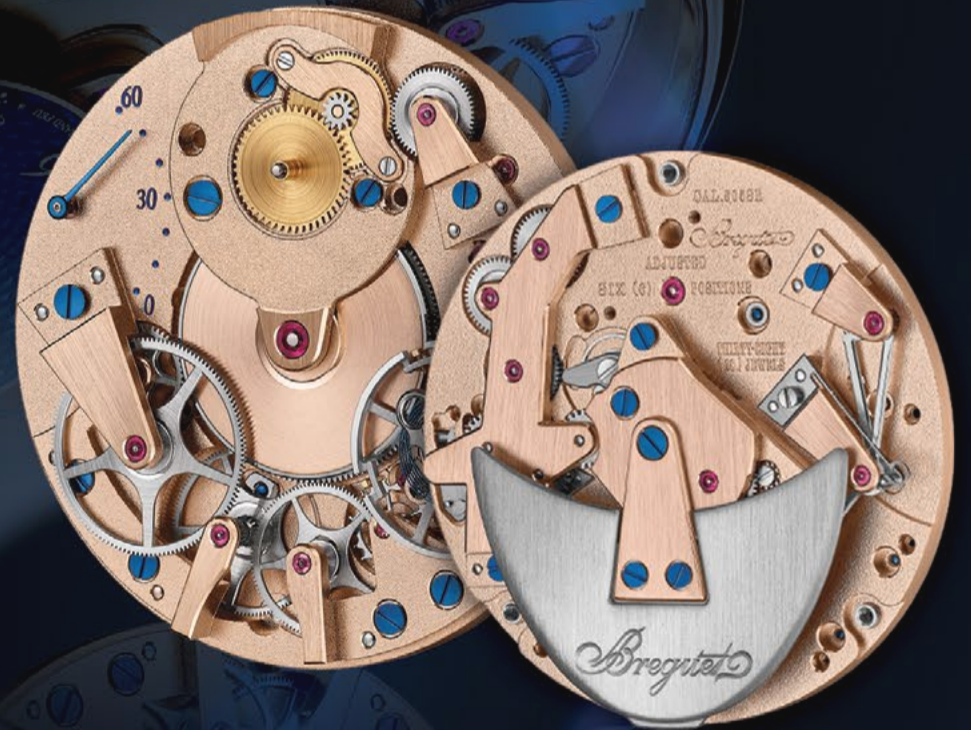


100%
Breguet style

With a unique architecture that brings its precision mechanism to the fore, crowned by a hand-made, enamel dial, the Tradition 7035 epitomises Breguet's 250 years of technical and aesthetic innovation.



Abraham-Louis Breguet
or the birth of an
international network



In addition to his technical innovations, A.-L. Breguet worked constantly to widen access to timekeeping innovations, enabling an increasingly broad and cosmopolitan clientele to know the time at any moment. His intuition, combined with a desire to produce in small series, led him, in 1796, to propose Souscription watches. These were simple and robust, single hand timepieces, sold in a distinctive way. Clients were introduced to Souscription watches by means of an advertising leaflet, a first for its time and the precursor of the first commercial catalogue, which Breguet would go on to create. Another particularity was the use of a deposit: Having selected the timepiece from the leaflet, the client would pay a quarter of the price when the order was placed.

In 1799, he introduced Tact watches, which further enhanced his status amongst his peers and clients.

Featuring an external hand and markings placed around the case they allowed the time to be "read" by touch, in perfect discretion.

The synthesis of these two timepieces is the Tradition collection, born in 2005. This line features a unique architectural structure, exposing the bridges, gears and mechanisms of this marvel of precision microengineering. Inspired by the work of A.-L. Breguet, this easily recognisable configuration offers the same uninterrupted view of the inner workings of the watch that a watchmaker sees when working on a watch.

Price & Volume Distribution Charts (as at Yesterday)

Technical Analysis

DEFINITION: Shariah compliant stocks with Technical Analysis showing Bullish Momentum and Price Uptrend. The share price closed at the highest price yesterday. The typical price was higher than the previous day's typical price.

CHART GUIDE: Volume Distribution Chart is a statistical interpretation of the current sentiment on each stock in graphical format. The highest bar categorized as >150k is likely to be traded by institutions or super dealers, while the lowest bar categorized as <15k usually represents retail investors. "Buy Up" refers to more buyers snatching up the lots queued at selling price. "Sell Down" refers to sellers selling their shares to the buying queue.



ShareInvestor WebPro > Screener > Market Screener (FA & TA)>select BURSA>add criteria

A. Criteria

- > click Add Criteria
- Fundamental Analysis Conditions tab >select (i) Revenue
- Technical Analysis Conditions tab select (ii) Average Volume
- Prices & Other Conditions tab > select (iii) Last Done Price
- Prices & Other Conditions tab > select (iv) Is Shariah Compliant
- Technical Analysis Conditions tab select (v) RSI Overbought
- Technical Analysis Conditions tab select (vi) Moving Average Below Close
- Technical Analysis Conditions tab select (vii) CCI Overbought

B. Conditions (Criteria Filters)

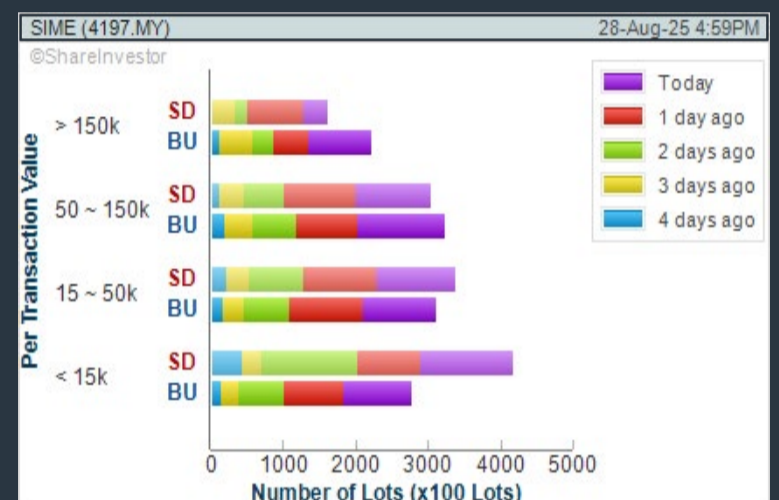
1. Revenue ("000) - select (more than) type (1) for the past select (1) financial year(s)
2. Average Volume - type (1) days average volume greater than type (10000) lots
3. Last Done Price - select (more than) type (0.3)
4. Is Shariah Compliant - select Yes
5. RSI Overbought - select RSI 1 above 99 for 1 days
6. Moving Average Below Close - select (MA) type (10) below close price for type (1) days
7. CCI Overbought - select CCI (2) above (0) for (1) days

- > click Save Template > Create New Template type (Shariah Momentum Up Stocks) > click Create
- > click Save Template as > select Shariah Momentum Up Stocks > click Save
- > click Screen Now (may take a few minutes)
- Sort By: Select (Vol) Select (Desc)
- Mouse over stock name > Charts > click C² Charts tab or Volume Distribution

SIME DARBY BHD (4197)

C² Chart

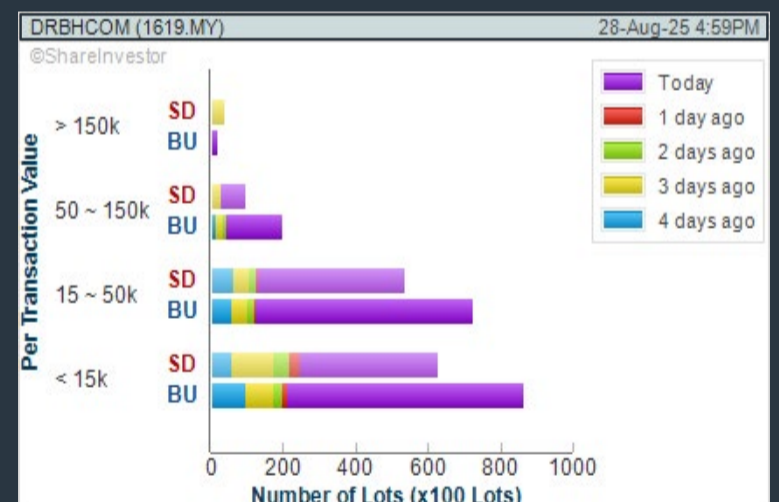
Analysis



DRB-HICOM BHD (1619)

C² Chart

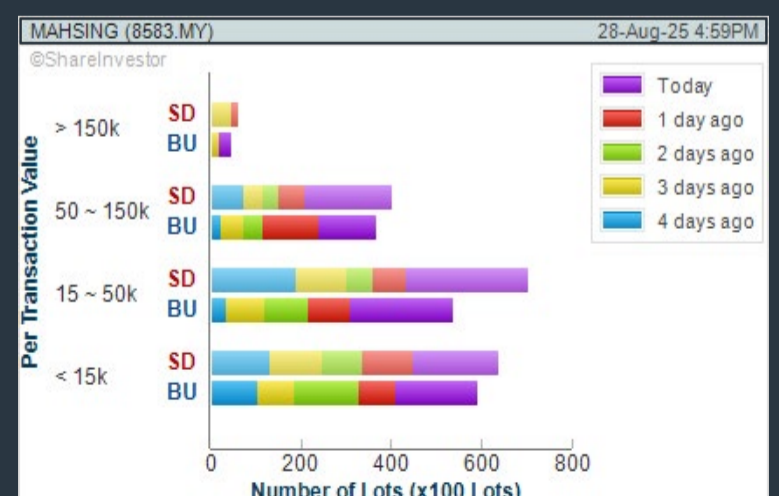
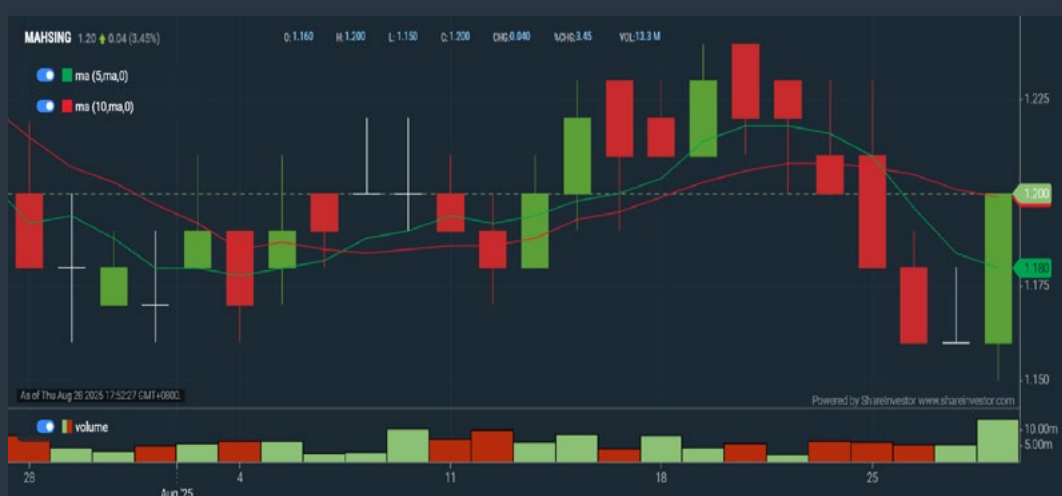
Analysis



MAH SING GROUP BHD (8583)

C² Chart

Analysis



Disclaimer: The information on this page is provided as a service to readers. It does not constitute financial advice and/or any investment recommendations. Past performance is not indicative of future results. We assume no liability for damages resulting from or arising out of the use of such information. It would be best if you did your own research to make your personal investment decisions wisely or consult a licenced investment advisor.

Price & Volume Distribution Charts (as at Yesterday)

Technical Analysis

DEFINITION: Stocks with Technical Analysis showing 5-days & 10-days Moving Average Price below Close over past 1 days and with Volume Spike

CHART GUIDE: Volume Distribution Chart is a statistical interpretation of the current sentiment on each stock in graphical format. The highest bar categorized as >150k is likely to be traded by institutions or super dealers, while the lowest bar categorized as <15k usually represents retail investors. "Buy Up" refers to more buyers snatching up the lots queued at selling price. "Sell Down" refers to sellers selling their shares to the buying queue.



ShareInvestor WebPro > Screener > Market Screener (FA & TA) > select BURSA > add criteria

A. Criteria

- > click Add Criteria
- Technical Analysis Conditions tab select (i) Moving Average Below Close (ii) Volume Spike
- Fundamental Analysis Conditions tab >select (iii) Revenue
- Prices & Other Conditions tab > select (iv) Is Shariah Compliant
- Technical Analysis Conditions tab select (v) Moving Average Below Close
- Prices & Other Conditions tab > select (vi) Last Done Price
- Technical Analysis Conditions tab select (vii) Moving Average Below Close

B. Conditions (Criteria Filters)

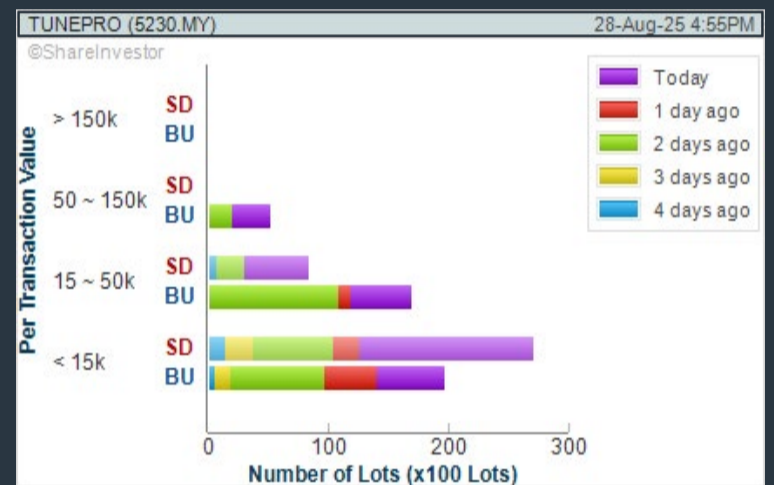
1. Moving Average Below Close - select (MA) type (5) below close price for type (3) days
2. Volume Spike - Volume type (1) greater than type (5) days average
3. Revenue ("000) - select (more than) type (1) for the past select (1) financial year(s)
4. Is Shariah Compliant - select NO
5. Moving Average Below Close - select (MA) type (10) below close price for type (1) days
6. Last Done Price - select (more than) type (0.3)
7. Moving Average Below Close - select (EMA) type (5) below close price for type (1) days

- > click Save Template > Create New Template type (Non-Shariah Hot Stocks) > click Create
- > click Save Template as > select Non-Shariah Hot Stocks > click Save
- > click Screen Now (may take a few minutes)
- Sort By: Select (Vol) Select (Desc)
- Mouse over stock name > Charts > click C² Charts tab or Volume Distribution

TUNE PROTECT GROUP BERHAD (5230)

C² Chart

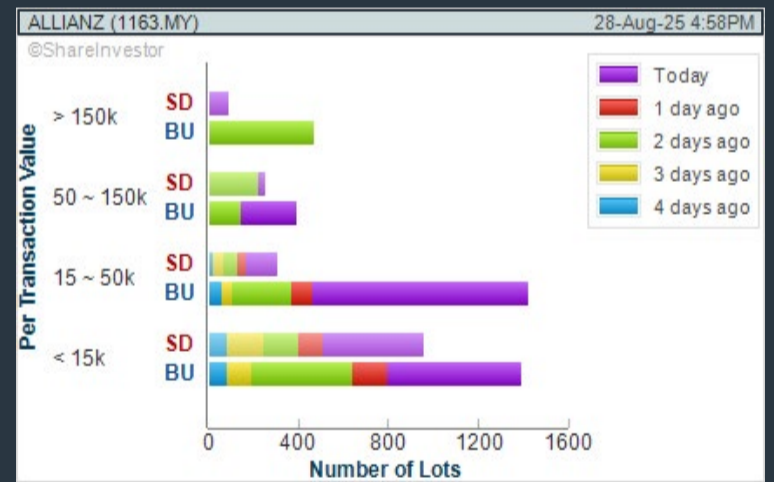
Analysis



ALLIANZ MALAYSIA BHD (1163)

C² Chart

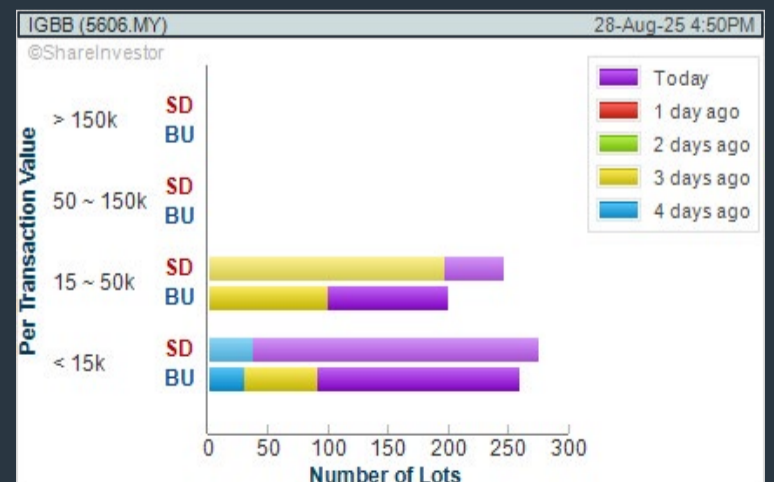
Analysis



IGB BERHAD (5606)

C² Chart

Analysis



Disclaimer: The information on this page is provided as a service to readers. It does not constitute financial advice and/or any investment recommendations. Past performance is not indicative of future results. We assume no liability for damages resulting from or arising out of the use of such information. It would be best if you did your own research to make your personal investment decisions wisely or consult a licenced investment advisor.

Price & Volume Distribution Charts (Over 3 trading days as at Yesterday)

Technical Analysis

DEFINITION: Stocks with Technical Analysis showing Bullish Momentum and Price Uptrend

CHART GUIDE: Volume Distribution Chart is a statistical interpretation of the current sentiment on each stock in graphical format. The highest bar categorized as >150k is likely to be traded by institutions or super dealers, while the lowest bar categorized as <15k usually represents retail investors. "Buy Up" refers to more buyers snatching up the lots queued at selling price. "Sell Down" refers to sellers selling their shares to the buying queue.



ShareInvestor WebPro > Screener > Market Screener (FA & TA) > select BURSA > add criteria

A. Criteria

- > click Add Criteria
- Fundamental Analysis Conditions tab > select (i) Revenue
- Technical Analysis Conditions tab select (ii) Moving Average Below Close
- Technical Analysis Conditions tab select (iii) Average Volume
- Prices & Other Conditions tab > select (iv) Last Done Price
- Technical Analysis Conditions tab select (v) Moving Average Below Close
- Technical Analysis Conditions tab select (v) Moving Average Bullish Crossover

B. Conditions

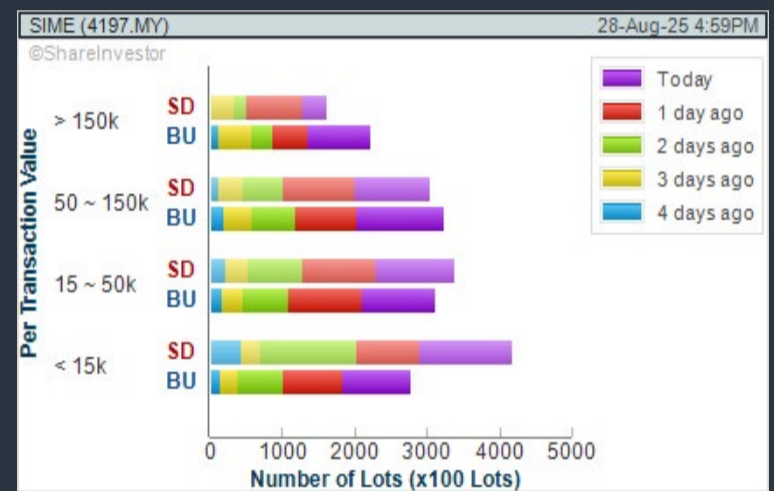
1. Revenue - select (more than) type (1) for the past select (1) financial year(s)
2. Moving Average Below Close - select (MA) type (20) below close price for type (1) days
3. Average Volume - type (5) days average volume type (10000) lots
4. Last Done Price - select (more than) type (0.3)
5. Moving Average Below Close - select (MA) type (10) below close price for type (1) days
6. Moving Average Bullish Crossover - select (MA) type (5) crossed above select (MA) type (10)

> click Save Template > Create New Template type (Non-Shariah Up-Trending Stocks) > click Create Click Save Template As > select Non-Shariah Up Trending Stocks > click Save > click Screen Now (may take a few minutes) Sort By: Select (Vol) Select (Desc) Mouse over stock name > Charts > click C² Charts tab or Volume Distribution

SIME DARBY BHD (4197)

C² Chart

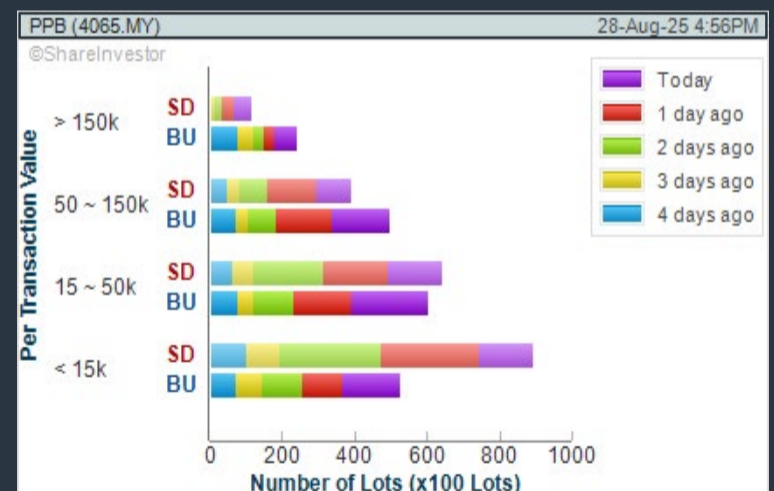
Analysis



PPB GROUP BHD (4065)

C² Chart

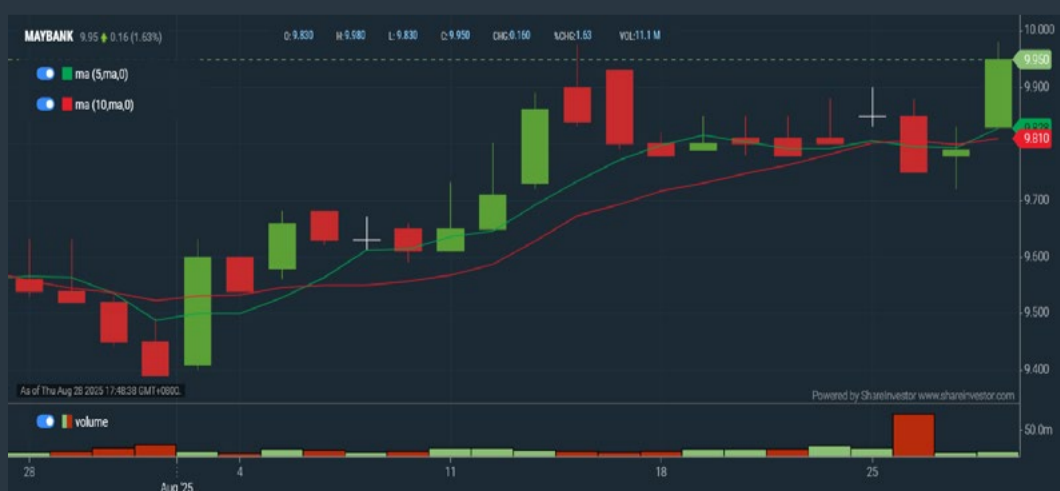
Analysis



MALAYAN BANKING BHD (1155)

C² Chart

Analysis



Disclaimer: The information on this page is provided as a service to readers. It does not constitute financial advice and/or any investment recommendations. Past performance is not indicative of future results. We assume no liability for damages resulting from or arising out of the use of such information. It would be best if you did your own research to make your personal investment decisions wisely or consult a licenced investment advisor.

SHARE**INVESTOR**[®]

An AlphaInvest Company

25%
OFF



**SUBSCRIBE
NOW!**

PROMOTION PERIOD

11 - 31 Aug 2025

Coupon Code

MERDEKA25

* T & Cs Apply

Price & Total Shareholder Return (as at Yesterday)

Fundamental Analysis

DEFINITION: Share price of a company trading at a lower price as compared to its fundamentals (FA) such as financial performance and dividend, allowing it to be attractive to value investors.

CHART GUIDE: Total Shareholder Return (TSR) combines share price appreciation and dividend distributions paid to show the total return to the shareholder expressed as a percentage.



ShareInvestor WebPro > Screener > Market Screener (FA & TA) > select BURSA > add criteria

A. Criteria

- > click Add Criteria
- Fundamental Analysis Conditions tab (i) Price Earnings Ratio
- Fundamental Analysis Conditions tab >select (ii) CAGR of Net Earnings
- Fundamental Analysis Conditions tab >select (iii) Net Debt To Equity
- Fundamental Analysis Conditions tab >select (iv) Return On Equity (ROE)

B. Conditions

1. Price Earnings Ratio - select (less than) type (15) times now
2. CAGR of Net Earnings - select (more than) type (10) % for the past type (3) financial year(s)
3. Net Debt To Equity – select (less than) type (1) for the past select (1) financial year(s)
4. Return On Equity (ROE) – select (more than) type (10) % for the past select (1) financial year(s)

- > click Save Template > Create New Template type (Value Stock) > click Create
- > click Save Template as > select Value Companies > click Save
- > click Screen Now (may take a few minutes)
- Sort by: Select (PE Ratio) Select (Ascending)
- > Mouse over stock name > Factsheet > looking for Total Shareholder Return
- > Mouse over stock name > Charts > click C2 Charts tab

INGENIEUR GUDANG BERHAD (5178)

C² Chart

Analysis



Period	Dividend Received	Capital Appreciation	Total Shareholder Return
Short Term Return	5 Days	+0.005	+20.00%
	10 Days	-	-
	20 Days	+0.005	+20.00%
Medium Term Return	3 Months	-	-
	6 Months	-0.010	-25.00%
	1 Year	-0.020	-40.00%
Long Term Return	2 Years	-0.085	-73.91%
	3 Years	-0.095	-76.00%
	5 Years	-0.115	-75.31%
Annualised Return	Annualised	-	27.03%

MUDAJAYA GROUP BHD (5085)

C² Chart

Analysis



Period	Dividend Received	Capital Appreciation	Total Shareholder Return
Short Term Return	5 Days	-	-
	10 Days	-	-
	20 Days	-	-
Medium Term Return	3 Months	-0.020	-20.00%
	6 Months	-0.020	-20.00%
	1 Year	-0.030	-27.27%
Long Term Return	2 Years	-0.105	-56.76%
	3 Years	0.040	31.43%
	5 Years	0.040	36.36%
Annualised Return	Annualised	-	15.28%

MUAR BAN LEE GROUP BERHAD (5152)

C² Chart

Analysis



Period	Dividend Received	Capital Appreciation	Total Shareholder Return
Short Term Return	5 Days	-0.020	-5.41%
	10 Days	-0.025	-6.67%
	20 Days	-0.015	-4.11%
Medium Term Return	3 Months	-0.045	-11.39%
	6 Months	-0.035	-8.09%
	1 Year	-0.095	-21.35%
Long Term Return	2 Years	-0.125	-28.32%
	3 Years	-0.020	-5.41%
	5 Years	-0.425	-64.04%
Annualised Return	Annualised	-	-14.70%

Disclaimer: The information on this page is provided as a service to readers. It does not constitute financial advice and/or any investment recommendations. Past performance is not indicative of future results. We assume no liability for damages resulting from or arising out of the use of such information. It would be best if you did your own research to make your personal investment decisions wisely or consult a licenced investment advisor.



making
places
timeless



usm.com

XTRA

XTRA FURNITURE SDN BHD
The Gardens Mall, Mid Valley City, Lot S-236 & 237
Lingkar Syed Putra, 59200 Kuala Lumpur
T. +603 2282 9088 | living@xtrafurniture.com | xtrafurniture.com
● XTRAfurniture | ● xtrafurnituremsia

Price & Total Shareholder Return (as at Yesterday)

Fundamental Analysis

DEFINITION: Company revenue is growing and making good quality of earnings with positive Free Cash Flow.

CHART GUIDE: Total Shareholder Return (TSR) combines share price appreciation and distributions paid to show the total return to the shareholder expressed as a percentage.



ShareInvestor WebPro > Screener > Market Screener (FA & TA) > select BURSA > add criteria

A. Criteria

1. Fundamental Analysis Conditions tab > select (i) Free Cash Flow, (ii) Revenue Growth, (iii) Gross Profit (Earnings) Margin, (iv) Quality of Earnings, (v) Total Shareholder Returns, > click Add Criteria
2. Fundamental Analysis Conditions tab > select (vi) Total Shareholder Returns > click Add Criteria

B. Conditions (Criteria Filters)

1. Free Cash Flow - select (more than) type (1) for the past select (1) financial year(s)
2. Revenue Growth - select (more than) type (1) for the past select (1) financial year(s)
3. Gross Profit (Earnings) Margin - select (more than) type (30) % for the past select (1) financial year(s)
4. Quality of Earnings - select (more than) type (1) for the past select (1) financial year(s)
5. Total Shareholder Return - select (more than) type (5) % for the past select (3) financial year(s)
6. Total Shareholder Return - select (more than) type (5) % for the past select (5) financial year(s)

- > click Save Template > Create New Template type (Growth Companies) > click Create
- > click Save Template as > select Growth Companies > click Save
- > click Screen Now (may take a few minutes)
- > Sort By: Select (Revenue Growth) Select (Desc)
- > Mouse over stock name > Factsheet > looking for Total Shareholder Return

COUNTRY VIEW BHD (5049)

C² Chart

Analysis



Period	Dividend Received	Capital Appreciation	Total Shareholder Return
Short Term Return	5 Days	-0.100	-4.41 %
	10 Days	-0.070	-3.12 %
	20 Days	0.110	-4.20 %
Medium Term Return	3 Months	0.110	+3.84 %
	6 Months	0.310	+38.33 %
	1 Year	0.405	+62.97 %
Long Term Return	2 Years	0.500	+147.22 %
	3 Years	0.570	+182.47 %
	5 Years	0.700	+178.64 %
Annualised Return	Annualised	-	+22.75 %

CHIN TECK PLANTATIONS BHD (1929)

C² Chart

Analysis



Period	Dividend Received	Capital Appreciation	Total Shareholder Return
Short Term Return	5 Days	-0.050	-0.63 %
	10 Days	-0.040	-0.42 %
	20 Days	0.360	+3.44 %
Medium Term Return	3 Months	0.360	+18.77 %
	6 Months	0.360	+23.41 %
	1 Year	0.510	+21.35 %
Long Term Return	2 Years	0.910	+44.51 %
	3 Years	1.110	+34.52 %
	5 Years	1.630	+113.27 %
Annualised Return	Annualised	-	+16.36 %

PLENITUDE BERHAD (5075)

C² Chart

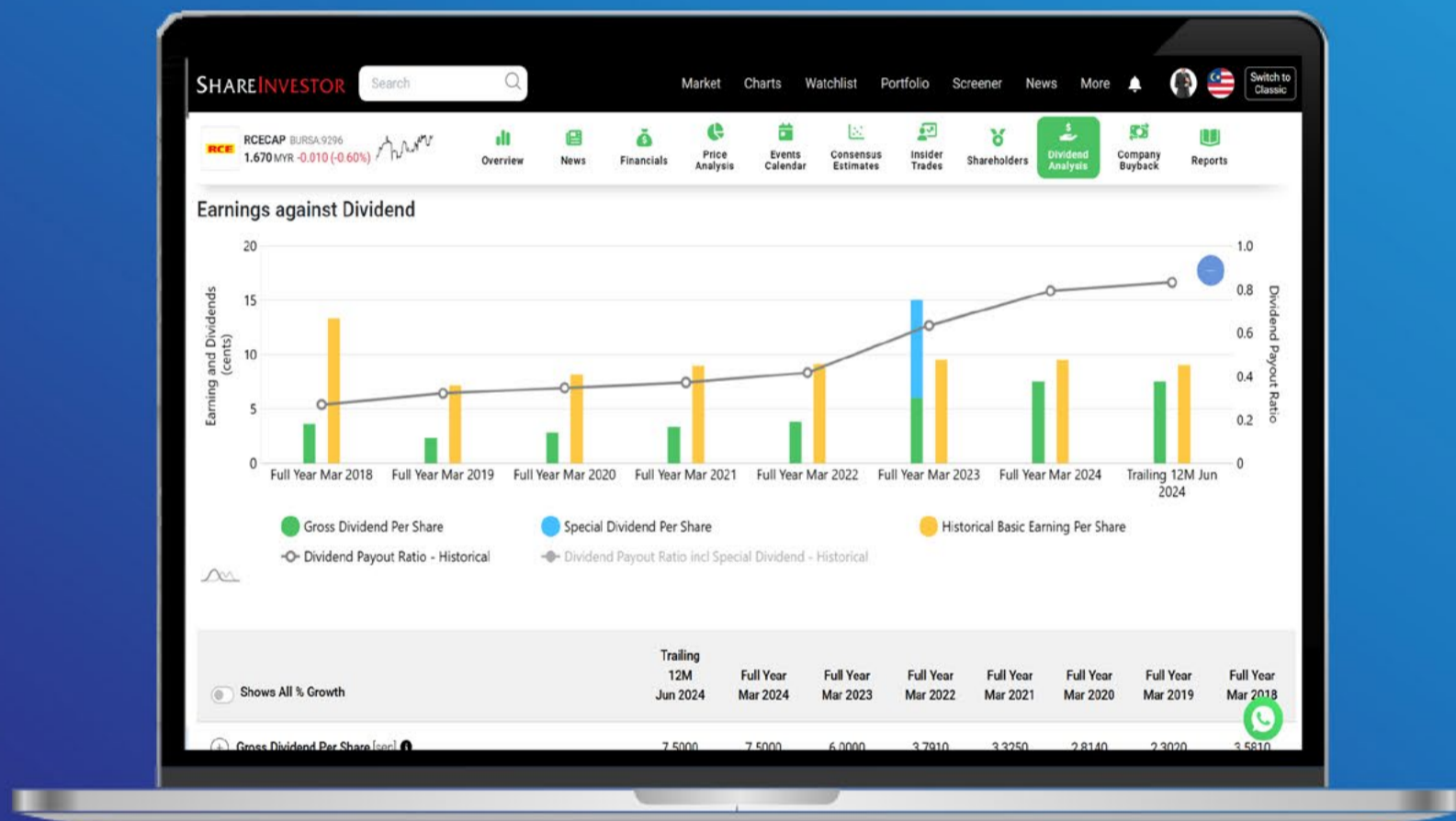
Analysis



Period	Dividend Received	Capital Appreciation	Total Shareholder Return
Short Term Return	5 Days	-0.050	-3.28 %
	10 Days	-0.070	-4.79 %
	20 Days	-0.030	-2.00 %
Medium Term Return	3 Months	+0.120	+8.61 %
	6 Months	+0.060	+4.08 %
	1 Year	0.065	+8.39 %
Long Term Return	2 Years	0.115	+17.81 %
	3 Years	0.140	+18.69 %
	5 Years	0.100	+10.00 %
Annualised Return	Annualised	-	+12.47 %

Disclaimer: The information on this page is provided as a service to readers. It does not constitute financial advice and/or any investment recommendations. Past performance is not indicative of future results. We assume no liability for damages resulting from or arising out of the use of such information. It would be best if you did your own research to make your personal investment decisions wisely or consult a licenced investment advisor.

Tired of low returns? Let's talk high-paying Dividends!



✓ **Top Dividend Picks Right Now**

✓ **Insider Tips** – Advanced strategies for experienced investors

✓ **Easy-to-Follow Tutorial**

Get the most out of dividends, use our Dividend Analysis function –
Click to Watch Our Tutorial Below!

Upgrade Your Dividend Strategy Here



Price & Total Shareholder Return (as at Yesterday)

Fundamental Analysis

DEFINITION: Company is paying out dividend with low or moderate leverage.

CHART GUIDE: Total Shareholder Return (TSR) combines share price appreciation and distributions paid to show the total return to the shareholder expressed as a percentage.



ShareInvestor WebPro > Screener > Market Screener (FA & TA) > select BURSA > add criteria

A. Criteria

- > click Add Criteria
- Fundamental Analysis Conditions tab >select (i) Dividend Yield (Historical)
- Fundamental Analysis Conditions tab >select (ii) Dividend Payout (Historical)
- Fundamental Analysis Conditions tab >select (iii) Total Debt To Equity
- Fundamental Analysis Conditions tab >select (iv) Total Shareholder Returns
- Fundamental Analysis Conditions tab >select (v) Total Shareholder Returns
- Fundamental Analysis Conditions tab / >select (vi) CAGR of Dividend Per Share

• Fundamental Analysis Conditions tab >select (vii) CAGR of Dividend Per Share

B. Conditions (Criteria Filters)

1. Dividend Yield - select (more than) type (1) % for the past select (1) financial year(s)
2. Dividend Payout (Historical) - select (between) type (0.5) to type (1) times for the past select (1) financial year(s)
3. Total Debt to Equity - select (less than) type (1) for the past select (1) financial year(s)
4. Total Shareholder Return - - select (more than) type (5) % for the past select (3) financial year(s)
5. Total Shareholder Return - - select (more than) type (5) % for the past select (5) financial year(s)

6. CAGR of Dividend Per Share - - select (less than) type (30) % for the past select (5) financial year(s)
7. CAGR of Dividend Per Share - - select (more than) type (1) % for the past select (5) financial year(s)

- > click Save Template > Create New Template type (Dividend Companies) > click Create
- > click Save Template as > select Dividend Companies > click Save
- > click Screen Now (may take a few minutes)
- > Sort By: Select (Dividend Yield) Select (Desc)
- > Mouse over stock name > Factsheet > looking for Total Shareholder Return

KENANGA INVESTMENT BANK BERHAD (6483)

C² Chart

Analysis



Period	Dividend Received	Capital Appreciation	Total Shareholder Return
Short Term Return	5 Days	-	-
	10 Days	-0.010	-1.11 %
	20 Days	-0.010	-1.11 %
Medium Term Return	3 Months	-0.040	-4.30 %
	6 Months	0.000	-2.02 %
	1 Year	-0.250	-17.60 %
Long Term Return	2 Years	0.150	+16.20 %
	3 Years	0.210	+22.81 %
	5 Years	0.403	+53.93 %
Annualised Return	Annualised	-	+9.01 %

APM AUTOMOTIVE HOLDINGS BHD (5015)

C² Chart

Analysis



Period	Dividend Received	Capital Appreciation	Total Shareholder Return
Short Term Return	5 Days	-0.210	-6.27 %
	10 Days	-0.260	-7.66 %
	20 Days	-0.220	-6.66 %
Medium Term Return	3 Months	-0.270	-7.92 %
	6 Months	0.100	+7.79 %
	1 Year	0.200	+14.00 %
Long Term Return	2 Years	0.460	+72.25 %
	3 Years	0.600	+90.84 %
	5 Years	0.740	+135.14 %
Annualised Return	Annualised	-	+18.65 %

COUNTRY VIEW BHD (5049)

C² Chart

Analysis



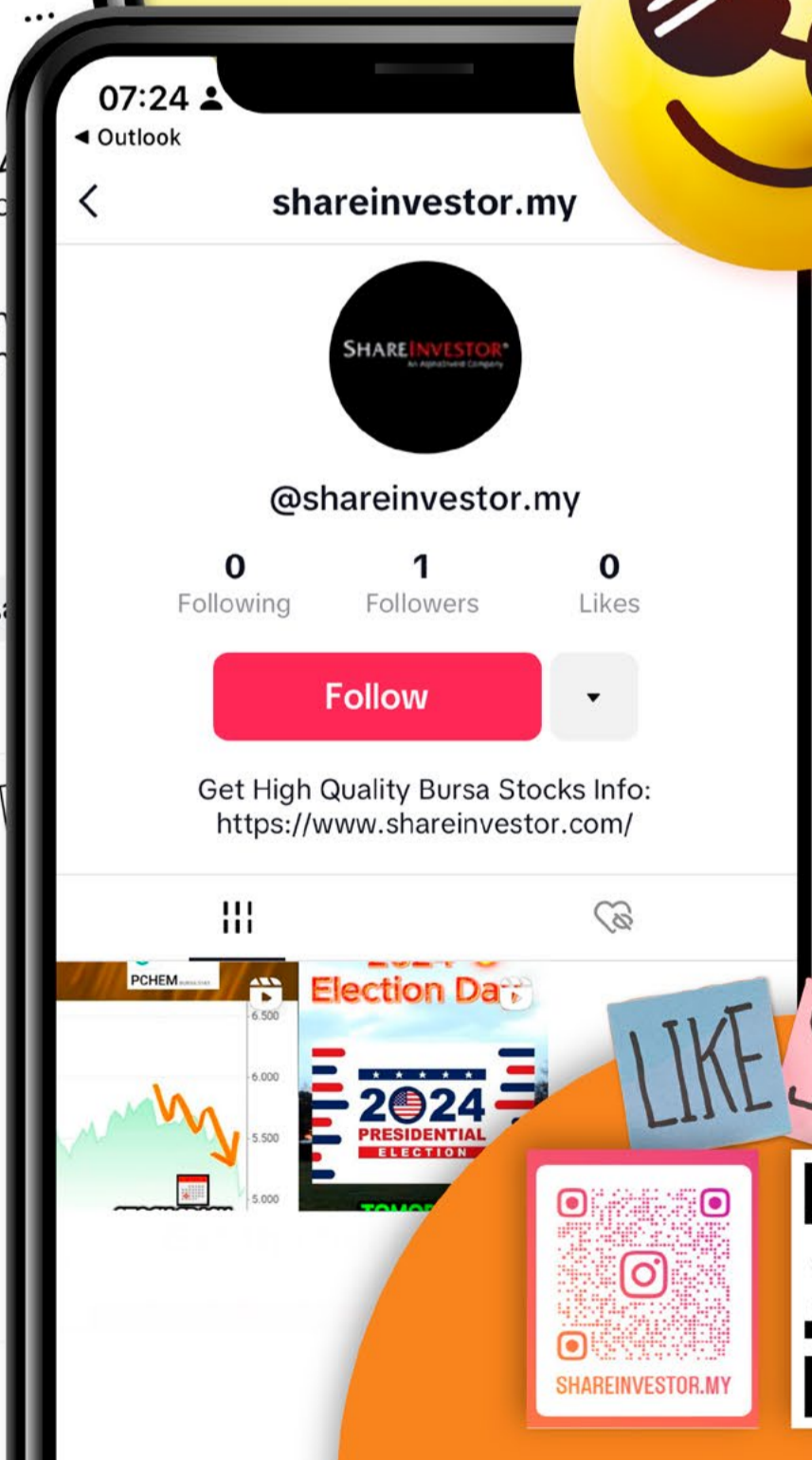
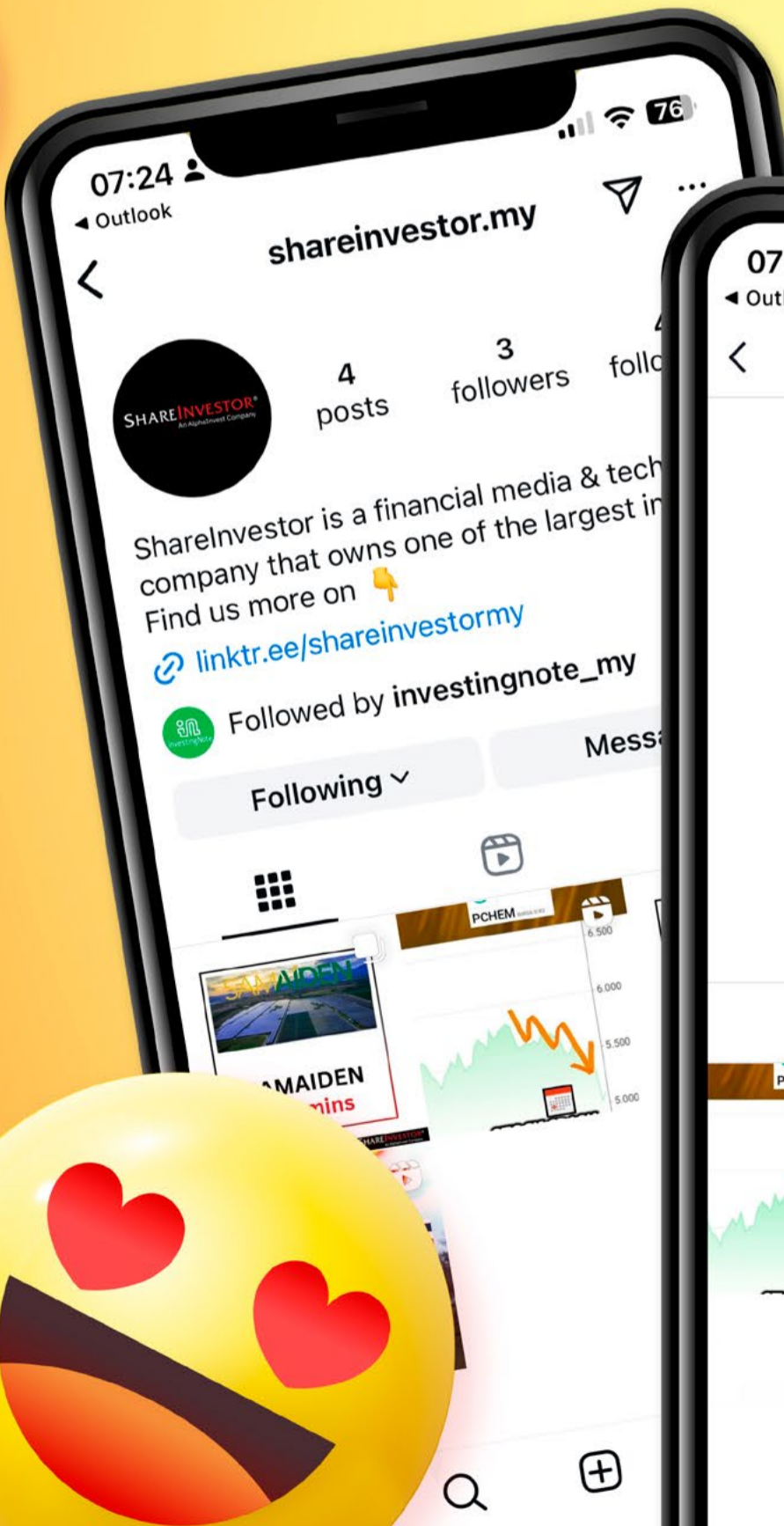
Period	Dividend Received	Capital Appreciation	Total Shareholder Return
Short Term Return	5 Days	-0.100	-4.41 %
	10 Days	-0.070	-3.12 %
	20 Days	0.110	+4.20 %
Medium Term Return	3 Months	0.110	+3.64 %
	6 Months	0.310	+39.33 %
	1 Year	0.405	+62.97 %
Long Term Return	2 Years	0.500	+147.22 %
	3 Years	0.570	+182.47 %
	5 Years	0.700	+176.64 %
Annualised Return	Annualised	-	+22.75 %

Disclaimer: The information on this page is provided as a service to readers. It does not constitute financial advice and/or any investment recommendations. Past performance is not indicative of future results. We assume no liability for damages resulting from or arising out of the use of such information. It would be best if you did your own research to make your personal investment decisions wisely or consult a licenced investment advisor.

SHAREINVESTOR[®]
An AlphaInvest Company

We're Officially on TikTok & Instagram!

Follow us now for more information!



LIKE SHARE



Week: 22 Aug 2025 - 28 Aug 2025

More Brokers' Call 

AMINVESTMENT BANK <small>... See More</small>	Call	Target Price	Release Date
Allianz Malaysia Berhad (1163)	BUY	RM21.80	26 Aug 25
Malayan Banking Berhad (1155)	HOLD	RM9.30	26 Aug 25
Public Bank Berhad (1295)	BUY	RM5.20	26 Aug 25
APEX SECURITIES <small>... See More</small>	Call	Target Price	Release Date
AWC Berhad (7579)	BUY	RM0.78	28 Aug 25
Mega First Corporation Berhad (3069)	HOLD	RM3.68	28 Aug 25
Hong Leong Investment Bank <small>... See More</small>	Call	Target Price	Release Date
Kuala Lumpur Kepong Berhad (2445)	BUY	RM24.65	28 Aug 25
QL Resources Berhad (7084)	BUY	RM5.70	28 Aug 25
Sunway Berhad (5211)	BUY	RM6.00	28 Aug 25
KENANGA <small>... See More</small>	Call	Target Price	Release Date
Farm Fresh Berhad (5306)	OUTPERFORM	RM2.10	28 Aug 25
KJTS Group Berhad (0293)	OUTPERFORM	RM2.12	28 Aug 25
Malacca Securities <small>... See More</small>	Call	Target Price	Release Date
AWC Berhad (7579)	BUY	RM0.81	28 Aug 25
KJTS Group Berhad (0293)	BUY	RM2.00	28 Aug 25
MIDF <small>... See More</small>	Call	Target Price	Release Date
Alliance Bank Malaysia Berhad (2488)	BUY	RM4.69	28 Aug 25
Genting Plantations Berhad (2291)	BUY	RM5.81	28 Aug 25
PUBLIC INVESTMENT BANK <small>... See More</small>	Call	Target Price	Release Date
Sime Darby Property Berhad (5288)	NEUTRAL	RM2.05	28 Aug 25
Spritzer Berhad (7103)	OUTPERFORM	RM1.93	28 Aug 25
UOB KAY HIAN <small>... See More</small>	Call	Target Price	Release Date
IOI Properties Group Berhad (5249)	BUY	RM2.72	27 Aug 25
Malayan Banking Berhad (1155)	HOLD	RM10.52	27 Aug 25

Disclaimer: InveSt does not accept any liability whatsoever for any direct, indirect or consequential losses (including loss of profit) or damages that may arise from the use of information or opinions in this publication. The information and opinions in InveSt are not to be considered as an offer to sell or buy any of the securities discussed. Opinions expressed are subject to change without notice. The Brokers may, from time to time, have interests or positions in the securities mentioned. For the full report on each item listed on this page, please visit https://www.shareinvestor.com/my/brokers_call.

DEFINITION: Top 10 stocks with Technical Analysis plus Pattern Matching by 60 pre-defined indicators by the system showing a higher probability of bullish sentiment on the share price.



ShareInvestor WebPro > Screener > Predefined TA Screens > select market BURSA > Most Long Signals > click Scan Results or mouse over each company

MGB BERHAD (7595.MY)

MGB

Price updated at 28 Aug 2025 16:50

Last: 0.490	Change: -	Volume: 1,069
	Change (%): -	Range: 0.490 - 0.495

TA Scanner Results based on historical data up to 28 Aug 2025

Condition	Signal	Explanation
Candlestick: Bullish Engulfing	Long	Bullish: Engulfing
MACD: Bullish MACD Crossover	Long	"1. MACD(12,26) diff line crossed above the MACD(12,26) signal line. 2. MACD Histogram(12,26) is above 0."
Price: New 52 Week Low	Short	"1. Stock reach a new 52 week low. 2. Average volume(30) is above 50000."
RSI: Short Term RSI 30 Bullish Crossover	Long	"1. RSI(20) crossed above 30 within the last 1 day and RSI(20) 1 day ago below 30 for the last 5 days. 2. Volume above average volume(125). 3. Average volume(5) is above 100,000."
Stochastic: Fast Stochastic Buy Signal	Long	"1. Fast Stochastic(15,5) %K crossed above 20. 2. Fast Stochastic(15,5) %K 1 day ago was below 20 for the last 5 days. 3. Average volume(30) is above 50000"
Volume: Consecutive Days Of Increasing Average Volume	Long	"1. Average Volume(20) has been increasing over the last 2 weeks. 2. Average volume(20) is above 100000"

GENTING BERHAD (3182.MY)

GENTING

Price updated at 28 Aug 2025 16:59

Last: 2.840	Change: -	Volume: 163,132
	Change (%): -	Range: 2.830 - 2.900

TA Scanner Results based on historical data up to 28 Aug 2025

Condition	Signal	Explanation
Accumulation Distribution: Bearish Accumulation Distribution	Short	Accumulation distribution decreasing for the last 7 days
Bollinger Band: Bullish Lower Bollinger Band Support	Long	"1. Low 1 day ago below lower bollinger band(20,2). 2. Close above close 1 day ago. 3. Average volume(5) is above 100,000."
Candlestick: Bullish Harami	Long	Bullish: Harami
MA: Short Term Bearish Moving Average Crossover	Short	MA(10) crossed below MA(15) within the last 1 day.
Volume: 10 Days large value Sell Down trade	Short	"1. 150K value Sell Down greater than Buy Up by 20% for 10 days. 2. 50K-100K value Sell Down greater than Buy Up by 20% for 10 days. 3. Average volume(10) is above 1000000"
Volume: 5 Days large value Sell Down trade	Short	"1. 150K value Sell Down greater than Buy Up by 20% for 5 days. 2. 50K-100K value Sell Down greater than Buy Up by 20% for 5 days. 3. Average volume(10) is above 1000000"
Volume: Consecutive Days Of Increasing Average Volume	Long	"1. Average Volume(20) has been increasing over the last 2 weeks. 2. Average volume(20) is above 100000"
Williams %R: Bullish Williams %R	Long	"1. Williams %R(26) between -80 and -100. 2. Average volume(5) is above 100,000."

NORTHEAST GROUP BERHAD (0325.MY)

NE

Price updated at 28 Aug 2025 16:59

Last: 0.590	Change: -0.025	Volume: 49,205
	Change (%): -3.55	Range: 0.675 - 0.710

TA Scanner Results based on historical data up to 28 Aug 2025

Condition	Signal	Explanation
Bollinger Band: High Above Upper Bollinger Band	Neutral	"1. High above upper bollinger band(14,2). 2. Average volume(5) is above 100,000."
Chaikin Volatility: Increasing Chaikin Volatility	Neutral	Chaikin Volatility(10,10) has been increasing for 5 days
Donchian Channels: High Above Upper Donchian Channels	Long	High crossed above the upper Donchian Channel(14,4)
MACD: Bullish MACD Crossover	Long	"1. MACD(12,26) diff line crossed above the MACD(12,26) signal line. 2. MACD Histogram(12,26) is above 0."
Volume: 10 Days large value Buy Up trade	Long	"1. 150K value Buy Up greater than Sell Down by 20% for 10 days. 2. 50K-100K value Buy Up greater than Sell Down by 20% for 10 days. 3. Average volume(10) is above 1000000"
Volume: 5 Days large value Buy Up trade	Long	"1. 150K value Buy Up greater than Sell Down by 20% for 5 days. 2. 50K-100K value Buy Up greater than Sell Down by 20% for 5 days. 3. Average volume(10) is above 1000000"
Volume: Volume Spike	Long	"1. Volume is more than 500% above average volume(10). 2. Volume above 200000. 3. Close price above 0.10"
Williams %R: Bearish Williams %R	Short	"1. Williams %R(26) between 0 and -20. 2. Average volume(5) is above 100,000."

HONG LEONG BANK BHD (5819.MY)

HLBANK

Price updated at 28 Aug 2025 16:54

Last: 20.100	Change: +0.360	Volume: 21,281
	Change (%): +1.82	Range: 19.820 - 20.400

TA Scanner Results based on historical data up to 28 Aug 2025

Condition	Signal	Explanation
Bollinger Band: Bullish Long Term Volatility Breakout and Trending	Long	"1. Close price above upper bollinger band(33,1). 2. Volume above average volume(50). 3. Average volume(50) is above 300,000."
Bollinger Band: Bullish Short Term Volatility Breakout and Trending	Long	"1. Close price above upper bollinger band(33,1). 2. Volume above average volume(10). 3. Average volume(10) is above 300,000."
Candlestick: Bullish Harami	Long	Bullish: Harami
MA: Medium Term Bullish Moving Average Crossover	Long	MA(25) crossed above MA(50) within the last 1 day.

Disclaimer: The information on this page is provided as a service to readers. It does not constitute financial advice and/or any investment recommendations. Past performance is not indicative of future results. We assume no liability for damages resulting from or arising out of the use of such information. It would be best if you did your own research to make your personal investment decisions wisely or consult a licenced investment advisor.



MUDAJAYA GROUP BHD
(5085.MY)

MUDAJYA

Price updated at 28 Aug 2025 16:50

Last: 0.080	Change: -0.005	Volume: 112
	Change (%): -5.88	Range: 0.080 - 0.080

TA Scanner Results based on historical data up to 28 Aug 2025

Condition	Signal	Explanation
Bollinger Band: Bullish Long Term Volatility Breakout and Trending	Long	"1. Close price above upper bollinger band(33,1). 2. Volume above average volume(50). 3. Average volume(50) is above 300,000."
Bollinger Band: Bullish Lower Bollinger Band Support	Long	"1. Low 1 day ago below lower bollinger band(20,2). 2. Close above close 1 day ago. 3. Average volume(5) is above 100,000."
Bollinger Band: Bullish Short Term Volatility Breakout and Trending	Long	"1. Close price above upper bollinger band(33,1). 2. Volume above average volume(10). 3. Average volume(10) is above 300,000."
Bollinger Band: High Above Upper Bollinger Band	Neutral	"1. High above upper bollinger band(14,2). 2. Average volume(5) is above 100,000."
DM: Bullish Directional Movement	Long	-DI(14) crossed below +DI(14)
Parabolic SAR: Bearish Parabolic SAR Reversal	Neutral	"1. Parabolic SAR 1 day ago above close price 1 day ago for the last 5 days. 2. Parabolic SAR below close price"
Price: New 52 Week Low	Short	"1. Stock reach a new 52 week low. 2. Average volume(30) is above 50000."
RSI: Short Term RSI 50 Bullish Crossover	Long	"1. RSI(20) crossed above 50 within the last 1 day and RSI(20) 1 day ago below 50 for the last 5 days. 2. Volume above average volume(125). 3. Average volume(5) is above 100,000."



MBSB BERHAD (1171.MY)

MBSB

Price updated at 28 Aug 2025 16:59

Last: 0.705	Change: -	Volume: 31,607
	Change (%): -	Range: 0.705 - 0.715

TA Scanner Results based on historical data up to 28 Aug 2025

Condition	Signal	Explanation
Bollinger Band: Bullish Long Term Volatility Breakout and Trending	Long	"1. Close price above upper bollinger band(33,1). 2. Volume above average volume(50). 3. Average volume(50) is above 300,000."
Bollinger Band: Bullish Short Term Volatility Breakout and Trending	Long	"1. Close price above upper bollinger band(33,1). 2. Volume above average volume(10). 3. Average volume(10) is above 300,000."
Bollinger Band: High Above Upper Bollinger Band	Neutral	"1. High above upper bollinger band(14,2). 2. Average volume(5) is above 100,000."
DM: Bullish Directional Movement	Long	-DI(14) crossed below +DI(14)
Donchian Channels: High Above Upper Donchian Channels	Long	High crossed above the upper Donchian Channel(14,4)
MA: Bullish Price Crossover	Long	"1. Close price crossed above MA(40) within the last 1 day. 2. Previous day close price is below the MA(10) for the last 5 days"
MACD: Bullish MACD Crossover	Long	"1. MACD(12,26) diff line crossed above the MACD(12,26) signal line. 2. MACD Histogram(12,26) is above 0."
RSI: Short Term RSI 50 Bullish Crossover	Long	"1. RSI(20) crossed above 50 within the last 1 day and RSI(20) 1 day ago below 50 for the last 5 days. 2. Volume above average volume(125). 3. Average volume(5) is above 100,000."
Williams %R: Bearish Williams %R	Short	"1. Williams %R(26) between 0 and -20. 2. Average volume(5) is above 100,000."



MN HOLDINGS BERHAD
(0245.MY)

MNHLDG

Price updated at 28 Aug 2025 16:59

Last: 1.580	Change: -0.030	Volume: 37,167
	Change (%): -1.86	Range: 1.580 - 1.640

TA Scanner Results based on historical data up to 28 Aug 2025

Condition	Signal	Explanation
Bollinger Band: Bullish Long Term Volatility Breakout and Trending	Long	"1. Close price above upper bollinger band(33,1). 2. Volume above average volume(50). 3. Average volume(50) is above 300,000."
Bollinger Band: Bullish Short Term Volatility Breakout and Trending	Long	"1. Close price above upper bollinger band(33,1). 2. Volume above average volume(10). 3. Average volume(10) is above 300,000."
Bollinger Band: High Above Upper Bollinger Band	Neutral	"1. High above upper bollinger band(14,2). 2. Average volume(5) is above 100,000."
CCI: Bearish CCI Overbought And Reversing	Short	"1. CCI(26) above 100 and CCI(26) 1 day ago increasing for the last 3 days. 2. CCI(26) below CCI(26) 1 day ago"
Chaikin Volatility: Increasing Chaikin Volatility	Neutral	Chaikin Volatility(10,10) has been increasing for 5 days
DM: Bullish Directional Movement	Long	-DI(14) crossed below +DI(14)
MACD: Bullish MACD Crossover	Long	"1. MACD(12,26) diff line crossed above the MACD(12,26) signal line. 2. MACD Histogram(12,26) is above 0."
Volume: 10 Days large value Buy Up trade	Long	"1. 150K value Buy Up greater than Sell Down by 20% for 10 days. 2. 50K-100K value Buy Up greater than Sell Down by 20% for 10 days. 3. Average volume(10) is above 1000000"
Williams %R: Bearish Williams %R	Short	"1. Williams %R(26) between 0 and -20. 2. Average volume(5) is above 100,000."



PECCA GROUP BERHAD (5271.MY)

PECCA

Price updated at 28 Aug 2025 16:59

Last: 1.430	Change: -	Volume: 9,662
	Change (%): -	Range: 1.420 - 1.440

TA Scanner Results based on historical data up to 28 Aug 2025

Condition	Signal	Explanation
Bollinger Band: Bullish Lower Bollinger Band Support	Long	"1. Low 1 day ago below lower bollinger band(20,2). 2. Close above close 1 day ago. 3. Average volume(5) is above 100,000."
Bollinger Band: Low Below Lower Bollinger Band	Neutral	"1. Low below lower bollinger band(14,2). 2. Average volume(5) is above 100,000."
Candlestick: Bullish Harami	Long	Bullish: Harami
Volume: 10 Days large value Buy Up trade	Long	"1. 150K value Buy Up greater than Sell Down by 20% for 10 days. 2. 50K-100K value Buy Up greater than Sell Down by 20% for 10 days. 3. Average volume(10) is above 1000000"
Williams %R: Bullish Williams %R	Long	"1. Williams %R(26) between -80 and -100. 2. Average volume(5) is above 100,000."

Disclaimer: The information on this page is provided as a service to readers. It does not constitute financial advice and/or any investment recommendations. Past performance is not indicative of future results. We assume no liability for damages resulting from or arising out of the use of such information. It would be best if you did your own research to make your personal investment decisions wisely or consult a licenced investment advisor.

YINSON HOLDINGS BHD
(7293.MY)

YINSON

Price updated at 28 Aug 2025 16:59

Last: 2.480	Change: +0.100	Volume: 52,359
	Change (%): +4.20	Range: 2.390 - 2.490

TA Scanner Results based on historical data up to 28 Aug 2025

Condition	Signal	Explanation
Bollinger Band: Bullish Long Term Volatility Breakout and Trending	Long	"1. Close price above upper bollinger band(33,1). 2. Volume above average volume(50). 3. Average volume(50) is above 300,000."
Bollinger Band: Bullish Lower Bollinger Band Support	Long	"1. Low 1 day ago below lower bollinger band(20,2). 2. Close above close 1 day ago. 3. Average volume(5) is above 100,000."
Bollinger Band: Bullish Short Term Volatility Breakout and Trending	Long	"1. Close price above upper bollinger band(33,1). 2. Volume above average volume(10). 3. Average volume(10) is above 300,000."
Bollinger Band: High Above Upper Bollinger Band	Neutral	"1. High above upper bollinger band(14,2). 2. Average volume(5) is above 100,000."
Candlestick: Bullish Engulfing	Long	Bullish: Engulfing
DM: Bullish Directional Movement	Long	-DI(14) crossed below +DI(14)
Donchian Channels: High Above Upper Donchian Channels	Long	High crossed above the upper Donchian Channel(14,4)
MACD: Bullish MACD Crossover	Long	"1. MACD(12,26) diff line crossed above the MACD(12,26) signal line. 2. MACD Histogram(12,26) is above 0."
Volume: 10 Days large value Buy Up trade	Long	"1. 150K value Buy Up greater than Sell Down by 20% for 10 days. 2. 50K-100K value Buy Up greater than Sell Down by 20% for 10 days. 3. Average volume(10) is above 1000000"

Disclaimer: The information on this page is provided as a service to readers. It does not constitute financial advice and/or any investment recommendations. Past performance is not indicative of future results. We assume no liability for damages resulting from or arising out of the use of such information. It would be best if you did your own research to make your personal investment decisions wisely or consult a licenced investment advisor.

IOI PROPERTIES GROUP BERHAD
(5249.MY)

IOIPG

Price updated at 28 Aug 2025 16:59

Last: 2.250	Change: +0.010	Volume: 88,990
	Change (%): +0.45	Range: 2.240 - 2.280

TA Scanner Results based on historical data up to 28 Aug 2025

Condition	Signal	Explanation
Bollinger Band: Bullish Long Term Volatility Breakout and Trending	Long	"1. Close price above upper bollinger band(33,1). 2. Volume above average volume(50). 3. Average volume(50) is above 300,000."
Bollinger Band: Bullish Lower Bollinger Band Support	Long	"1. Low 1 day ago below lower bollinger band(20,2). 2. Close above close 1 day ago. 3. Average volume(5) is above 100,000."
Bollinger Band: Bullish Short Term Volatility Breakout and Trending	Long	"1. Close price above upper bollinger band(33,1). 2. Volume above average volume(10). 3. Average volume(10) is above 300,000."
Bollinger Band: High Above Upper Bollinger Band	Neutral	"1. High above upper bollinger band(14,2). 2. Average volume(5) is above 100,000."
DM: Bullish Directional Movement	Long	-DI(14) crossed below +DI(14)
Donchian Channels: High Above Upper Donchian Channels	Long	High crossed above the upper Donchian Channel(14,4)
MA: Bullish Price Crossover	Long	"1. Close price crossed above MA(40) within the last 1 day. 2. Previous day close price is below the MA(10) for the last 5 days"
Parabolic SAR: Bearish Parabolic SAR Reversal	Neutral	"1. Parabolic SAR 1 day ago above close price 1 day ago for the last 5 days. 2. Parabolic SAR below close price"
Volume: 10 Days large value Sell Down trade	Short	"1. 150K value Sell Down greater than Buy Up by 20% for 10 days. 2. 50K-100K value Sell Down greater than Buy Up by 20% for 10 days. 3. Average volume(10) is above 1000000"
Volume: 5 Days large value Sell Down trade	Short	"1. 150K value Sell Down greater than Buy Up by 20% for 5 days. 2. 50K-100K value Sell Down greater than Buy Up by 20% for 5 days. 3. Average volume(10) is above 1000000"

CHECK OUT
SHAREINVESTOR
BROKERS' CALL

Weekly Buy/Sell/Hold calls from leading Malaysian Brokerages.

[Go To Brokers' Call](#)



Dato' Eu Hong Chew
Former Group CEO i-Berhad
Non-Executive Director

He has been associated with the Sumurwang Group for many years charting the path for its manufacturing arm, firstly under Dreamland Holdings Berhad and the subsequent acquisition of I-Berhad.

Before that, he was with PA Management Consulting for a decade where he was the Director of Studies for the Cranfield PA MBA Programme in Malaysia.

Educated at the Royal Military College, Dato' Eu has an engineering degree from the University of Glasgow, and a MBA from the University of Bradford, UK.

Is **FACBI** an investment opportunity or a value trap?

SUMMARY

- **FACB Industries Inc Bhd (FACBI or the Group) (FACBIND:2984.MY)** is a small mattress manufacturer under the “Dreamland” brand, with additional investments in China’s bedding and power sectors. It has exited its former steel pipe and fittings business and now operates mainly in bedding, China power generation, and holding financial assets.

Disclaimer: This article is written for informational purposes only. It does not constitute a solicitation, offer, advice, counseling or recommendation to buy or sell. As such it is not intended to promote the purchase of shares in any way. As a reminder, any type of asset has a risk factor and needs to be evaluated from multiple perspectives. Therefore, any investment decision and the associated risk remains with the investor. The views expressed here are entirely the writer’s own.

- Post-2018, revenue grew modestly while PAT rose from a low base. However, adjusted ROIC and EBIT margins were weak, ranking last among peers. Free Cash Flow margins improved recently, and EPS has been relatively stable, partly due to large cash holdings.
- Over 60% of total assets are in cash and securities, with minimal debt and no reinvestment needs to sustain bedding operations. Cash conversion from operations was poor, and capital allocation was unremarkable.
- I estimated its intrinsic value as RM2.48 per share, with more than 30% margin of safety. But this margin of safety is mostly from non-operating assets. The main risk is strategic inertia - without productive use of cash, FACBI risks remaining a value trap despite its strong balance sheet.

BACKGROUND

FACBI was first listed on Bursa Malaysia in the 1980s as Dreamland Holdings Berhad, a mattress manufacturer. In the early 1990s, the Group diversified into the stainless-steel pipes and fittings industry and was renamed Kanzen Berhad. A change in controlling shareholder in the mid-1990s led to another name change – FACB Industries Incorporated Berhad.

The Group's origins lie in mattress manufacturing, a business that remains its core activity today. A pioneer in spring mattress technology in Malaysia, its bedding division operates under the "Dreamland" brand.

FACBI also holds the distinction of being the first Bursa-listed company to invest in China, establishing a spring mattress joint venture in Tianjin in 1987. Today, its China investments cover mattress manufacturing and sales, as well as power generation.

While the steel pipes and fittings segment dominated revenue and earnings in the 1990s, the Group has since exited this business. As

of today, I classify the Group’s operations into three categories – Bedding, China, and Others.

Note: FACBI’s financial year-end is June. Unless otherwise stated, all years in this article refer to the financial year.

OPERATING PERFORMANCE

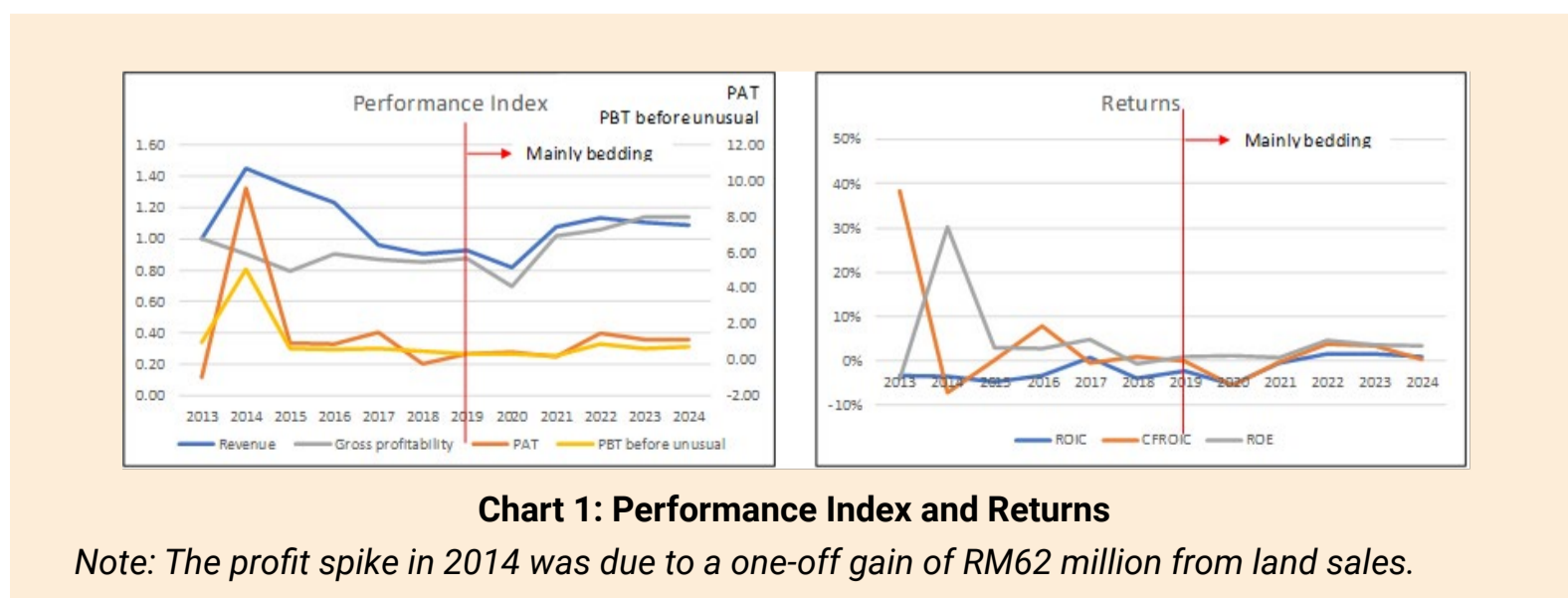
In reviewing FACBI’s profit and loss statements, I noted that interest income is classified under “Other income”. This accounting treatment places interest income within operating income.

In my usual operating performance analysis, I exclude both interest income and interest expense, as I treat cash as a non-operating asset in my valuation. Accordingly, I re-cast FACBI’s operating income - and hence NOPAT - to remove interest income.

For performance assessment, I typically analyse a 12-year history to understand long-term trends. However, given FACBI’s change in business direction after 2018, it is more meaningful to focus on the post-2018 period.

2019–2024 Performance (*Chart 1, left panel*):

- Revenue grew at a CAGR of 3.3%.
- PAT grew at a CAGR of 29.1%.
- Gross profitability (gross profit ÷ total assets) showed an upward trend.



The strong PAT growth was driven by:

- A low starting point – RM2.3 million in 2019, rising to RM8.1 million in 2024.
- Higher gross margins – from an average of 36% (2019–2020) to 41% (2023–2024).
- Increased associate contributions – from RM0.1 million in 2019 to RM2.5 million in 2024.

However, after adjusting for interest income and expenses, positive NOPAT was only recorded in the last three years of the 2019–2024 period. This resulted in the average returns below the WACC and cost of equity, indicating no shareholder value creation. (Chart 1, right)

The underlying reason is clear: a large proportion of assets remain in cash, generating low returns. Unless more capital is deployed into operating assets, higher returns are unlikely.

To gauge the relative contribution of each segment, I conducted a return analysis (Table 1). The findings show that the Group’s overall return is low because only the bedding operations deliver strong returns.

A large portion of net assets is locked in cash, which historically generates low yields. This positions FACBI effectively as a cash-holding company.

Operations	Ave Revenue RM m (a)	Ave Profit RM m (b)	Net Assets RM m (c)	Return % e = b / c
Bedding	46.5	4.4	28.5	16%
China	0.0	-0.3	22.1	-1%
Others (d)	0.0	4.1	180.2	2%
Total	46.5	8.2	230.7	4%

Table 1: Sector Performance

Notes

a) 2021 to 2023 average.

b) 2021 to 2023 average. The Bedding and China profits were based on EBIT, where all the interest expenses and interest income were transferred to be part of Others.

c) Based on 2023.

d) The profit was derived by deducting the Bedding and China profit from the total PBT.

PEER COMPARISON

There are 4 Bursa Malaysia companies in the bedding business - FACBI, HHRG, Lee Swee Kiat (LEESK), and Yoong Onn (YOOCB). However, only FACBI and LEESK are mattress manufacturers. FACBI is the smallest by 2023 revenue, with average revenue growth. *Refer to Table 2*

Peers	Revenue	
	2023 RM m	CAGR %
FACBI (FACBIND)	46.6	5%
HHRG	155.3	15%
Lee Swee Kiat (LEESK)	127.7	6%
Yoong Onn (YOOCB)	262.5	1%

Table 2: Peer Revenue

A peer comparison across return on capital, EPS, EBIT margin, and Free Cash Flow margin showed the following:

- **Weakness:** FACBI's return on capital and EBIT margin have lagged peers, becoming the worst over the past two years.
- **Strength:** Free Cash Flow margin has improved relative to peers in the last two years.
- **Stability:** EPS is steadier than peers, though this may be due to earnings reliance on its large cash reserves - raising concerns over long-term growth and sustainability.

Overall, I would rate FACBI below average relative to its peers.

FINANCIAL POSITION

I have already mentioned that FACBI is a cash-holding company. As of the end of March 2025, it had RM149 million cash and marketable securities, equal to 62% of its total assets. As such, I would consider it financially sound. Its other positive points included the following:

- From 2019 to 2024, it had a negative Reinvestment. I defined Reinvestment = CAPEX + Acquisition – Depreciation & Amortization + increase in Net Working Capital. The negative value implies that the amount spent on CAPEX and/or the increase in Net Working Capital was smaller than the Depreciation & Amortization. This is a good position as it means that the company did not have to allocate funds to support its bedding growth.
- Its Debt Equity ratio was less than 1% as of the end of March 2025.
- While it has some negative points as follows, since the operations are small, the strong cash position more than offsets the negative points.
- From 2019 to 2024, there was only positive cash flow from operations annual for half of the time. During this period, the Group generated RM0.9 million cash flow from operations compared to the cumulative PAT of RM33.6 million. This is a very poor average cash flow conversion rate.
- Its capital allocation plan was also nothing to shout about. Refer to Table 3.

Item	Sources RM m	Uses RM m
Cash flow from Ops	1	
New shares	0	
Net Debt		5
Acquisitions		0
CAPEX		3
Dividends		4
Buybacks		4
Misc		-15
Total	1	1

Table 3: Sources and Uses of Funds 2019 to 2024

VALUATION

I normally use the Free Cash Flow to the Firm approach to determine the intrinsic value of a firm. In the case of FACBI, the operation is only a

small part of the business, and I estimated this to be RM3 million. *(Refer to the original article for the details).* The bigger contributors to the value of the firm are cash, securities, and investments in associates. *(Refer to Table 4.)*

We then have the intrinsic value of FACBI of RM2.48 per share. But a big part of this came from the non-operating assets. The cash value is equal to RM1.77 per share. FACBI's market price as of the end of March 2025 was RM1.07 per share. While there is more than a 30% margin of safety, the safety came from cash and other non-operating assets.

Items	Units	Value
Value of Bedding ops	RM m	3
Cash	RM m	149
Securities & associates	RM m	73
Value of firm	RM m	225
Debt	RM m	2
Minority interest	RM m	15
Value of equity	RM m	208
Value per share	RM per share	2.48

Table 4: Components of intrinsic value (March 2025)

FACBI is primarily a cash-holding company, with its margin of safety stemming from non-operating assets. While the cash position has been stable for about a decade and well-managed under good corporate governance, the key issue

is the lack of plans to deploy it productively. The company has been under the control of Tan Sri Datuk Chen Lip Keong since the mid-1990s, with little operational change. Following his passing in December 2023, leadership has passed to his son, and it remains uncertain whether this will bring a strategic shift.

CONCLUSION

FACBI's investment case is defined less by its operating business and more by its substantial cash and non-operating asset holdings. While the bedding segment delivers reasonable returns, it is too small to drive meaningful value creation and operational metrics. This is particularly true with the ROIC and EBIT margins lagging well behind peers.

The company's financial strength, with over 60% of assets in cash and securities, provides a sizeable margin of safety, but this safety comes from idle capital rather than a strong operating engine.

The long-standing challenge is strategic: without a clear plan to deploy its cash into productive assets, returns will remain sub-par and shareholder value creation will be limited. The recent change in leadership following Tan Sri Datuk Chen Lip Keong's passing could present an opportunity for a fresh strategic direction. But it is too early to tell whether such a shift will occur.

For now, FACBI trades at a discount to its intrinsic value, yet investors must weigh the risk that it could remain a "value trap" unless operational growth and capital deployment improve.

I am a long-term value investor who has held onto stocks for more than 5 years. My analysis and valuation are from such a perspective. I consider quarterly results "noisy" and focus on long-term trends.

This article was derived from a detailed analysis, emphasizing the intersection of business performance and valuation metrics, which was first published on i4value as ["Is FACBIND a value trap?"](#) Refer to the article for further insights on its investment risk vs business performance.

Disclaimer: This article is written for informational purposes only. It does not constitute a solicitation, offer, advice, counseling or recommendation to buy or sell. As such it is not intended to promote the purchase of shares in any way. As a reminder, any type of asset has a risk factor and needs to be evaluated from multiple perspectives. Therefore, any investment decision and the associated risk remains with the investor. The views expressed here are entirely the writer's own.



**CHECK OUT
SHAREINVESTOR
BROKERS' CALL**

Weekly Buy/Sell/Hold calls from leading Malaysian Brokerages.

[Go To Brokers' Call](#)

UNLOCK THE SECRET OF WEALTH

DO YOU REALLY WANT TO MASTER VALUE INVESTING



SEE HOW TO GET HIGHER RETURNS WITH LOWER RISK



E-commerce revenue at RM625b in 1H 2025 — KPDNKK

According to Ministry of Domestic Trade and Cost of Living (KPDNKK) secretary general Datuk Seri Mohd Sayuthi Bakar, Malaysia's e-commerce sector recorded RM625 billion in revenue in 1H2025, marking a RM13.5 billion increase compared to the same period last year. He cited data from the Department of Statistics Malaysia (DOSM) showing projected total e-commerce revenue for 2024 reaching RM1.23 trillion. The ministry remains committed to creating a balanced ecosystem that ensures both consumer protection and sustainable business growth.

Speaking at the Shopee Brands Summit 2025, he said that e-commerce platforms have made significant contributions to the national economy and raised living standards, providing Malaysians from all backgrounds with opportunities to generate income and participate in the economy.

He also highlighted strategic partnerships between the ministry and e-commerce platforms, citing a RM2 million allocation to Shopee's 'Buy Malaysian Goods' campaign in 2019, which helped local sellers generate RM70 million in sales. He added that this government initiative supports local traders by expanding their market reach. He also urged consumers to support local brands amid current tariff challenges.

Malaysia's PPI records slower decrease of 3.8% in July - DOSM

According to chief statistician Datuk Seri Dr Mohd Uzir Mahidin, Malaysia's producer price index (PPI) recorded a slower decrease of 3.8% in July 2025, from a 4.2% decline in the previous month. He said the decline in July 2025 was mainly attributed to the mining and manufacturing sectors, which have experienced a downward trend since the beginning of the year.

He noted the mining sector decreased by 8.7% (June 2025: -8.0%), dragged down by the extraction of crude petroleum (-9.8%) and the extraction of natural gas (-4.7%) indices. He added the manufacturing sector declined by 4.0% (June 2025: -4.3%) due to declines in the manufacture of coke and refined petroleum products (-15.7%) and the manufacture of computer, electronic and optical products (-7.6%) indices.

The agriculture, forestry and fishing sector recorded an increase of 1.1% (June 2025: -0.3%), supported by the growing of perennial crops (3.1%) index. The electricity and gas supply sector went up by 4.0% (June 2025: -0.2%) while the water supply sector posted a marginal decline of 0.1% in July 2025.

On a month-on-month basis, the PPI local production increased by 0.3% in July 2025 after a 0.7% decrease in the previous month. The agriculture, forestry and fishing sector increased by 2.5% (June 2025: -1.0%), contributed by the growing of perennial crops (4.6%) index. The utility sectors, electricity and gas supply and water supply indices also went up by 3.4% and 0.9%, respectively.

However, the mining sector remained unchanged in July 2025, after posting a 4.6% increase in the previous month. He noted the manufacturing sector recorded a marginal decrease of 0.1% (June 2025: -1.2%), weighed down by manufacture of computer, electronic and optical products (-0.5%) and manufacture of food products (-0.4%).



CHECK OUT SHAREINVESTOR

BROKER'S CALL

Weekly Buy/Sell/Hold calls
from leading Malaysian Brokerages.

[Go To Broker's Call](#)

BUY **HOLD** **SELL**

EYE ON THE MARKETS

On Thursday (28Aug), the Ringgit closed at 4.2180 against the USD and 3.2835 to the Sing Dollar. On Monday (25Aug), the FBM KLCI opened at 1602.82. As at Thursday (28Aug) 5:00pm, the FBM KLCI closed down 15.75 points at 1587.07. Over in US, the overnight Dow Jones Industrial Average closed up 71.67 points (+0.16%) to 45,636.90 whilst the NASDAQ added 115.02 points (+0.53%) to 21,705.16.



KLCI 1 Year Chart

Invest 216
 A Weekly e-Publication by SHAREINVESTOR
 FRIDAY 19 JULY 2024
How L&P Global Stays Ahead
 See more on pages 30-40
Ooi Lay Pheng
 Executive Director / CEO, L&P Global Berhad
Advanced Drainage Systems
 See more on pages 41-45
MARKET SENTIMENTS
 FBM KLCI has upside potential in 2H2024 - StarChart
 Malaysia's trade performance maintains positive trend in June 2024 - DOSM

Learn how to identify Hot Stocks using Technical Analysis (TA) and Fundamental Analysis (FA)

SIGN UP FOR Invest NOW IT'S FREE!!!

[Click here](#)

Scan me



Via email, every Friday.

Get market moving news and analyses. Regular columns include **Behind The Action** and **From The Observer**

- Leaderboard • Shariah Hot Stocks • Shariah Momentum Up Stocks • Non Shariah Hot Stocks • Up Trending Stocks • Growth Stocks • Dividend Stocks • Long Companies • Insider Activity • Investor Relations • Regional Markets

Malaysia's Diversified Economic Structure
SHARIAH HOT STOCKS
LONG COMPANIES
INSIDER ACTIVITY
INVESTOR RELATIONS
KPJ Healthcare Berhad

Over 5 Trading Days (as at Yesterday)



ShareInvestor WebPro (www.shareinvestor.com/my)

1. Price > Stock Prices
2. Select Market: NASDAQ / NYSE / IDX / SET / HKEX / SGX (One bourse at a time)
3. select Stocks Tab
4. select Ranking Top Gainers or Top Losers (Over 5 Trading Days)
5. Mouse over Column Layout > select Edit Customs > select Name > select Last Done Price > select 5 Days Change > select 52 Weeks High > select 52 Weeks Low > Mouse Over Column Layout > select Custom

NASDAQ (USD)

Top Gainers

Name	Last Done	Change Over 5 Days	52 Weeks High	52 Weeks Low
First Citizens BancShares A	2,032.560	+101.220	2,412.930	1,473.620
MongoDB A	295.700	+83.000	370.000	140.780
Mercadolibre	2,413.430	+77.450	2,645.220	1,646.000
argenx ADR	707.960	+46.990	709.110	510.055
AppLovin A	462.940	+50.560	525.150	82.510

Top Losers

Name	Last Done	Change Over 5 Days	52 Weeks High	52 Weeks Low
Booking Holdings	5,615.680	-24.100	5,839.410	3,700.970
Newegg Commerce	60.890	-49.750	137.839	3.320
Intuit	663.170	-35.980	813.700	532.645
Duolingo A	317.930	-20.950	544.930	202.380
Costco Wholesale	949.520	-45.050	1,078.230	867.160

NYSE (USD)

Top Gainers

Name	Last Done	Change Over 5 Days	52 Weeks High	52 Weeks Low
Berkshire Hathaway A	744,346.530	+11,266.530	812,855.000	657,497.500
Ubiquiti	524.310	+129.730	537.055	184.000
Biglari Holdings A	1,584.580	+86.380	1,643.200	805.040
AutoZone	4,205.410	+77.720	4,216.020	2,898.570
Fair Isaac	1,419.370	+75.260	2,402.515	1,300.000

Top Losers

Name	Last Done	Change Over 5 Days	52 Weeks High	52 Weeks Low
Bio-Rad Laboratories B	247.050	-37.915	369.820	242.060
Mettler-Toledo	1,285.240	-31.640	1,521.010	946.690
Lennox	567.000	-22.080	689.440	500.100
McKesson	683.510	-19.430	737.890	464.415
Murphy USA	378.340	-15.890	561.080	345.230

IDX (Rupiah)

Top Gainers

Name	Last Done	Change Over 5 Days	52 Weeks High	52 Weeks Low
MULTIPOLAR TECHNOLOGY TBK	79,500.000	+9,000.000	81,150.000	1,500.000
MSIG LIFE INSURANCE INDONESIA TBK	17,100.000	+2,850.000	17,100.000	4,990.000
DIAN SWASTATIKA SENTOSA TBK	95,000.000	+2,650.000	97,000.000	30,300.000
REMALA ABADI TBK	4,560.000	+2,200.000	4,730.000	464.000
BARITO RENEWABLES ENERGY TBK	9,800.000	+1,200.000	12,100.000	4,170.000

Top Losers

Name	Last Done	Change Over 5 Days	52 Weeks High	52 Weeks Low
DCI INDONESIA TBK	321,750.000	-26,800.000	398,000.000	39,200.000
ABADI NUSANTARA HIJAU INVESTAMA TBK	2,600.000	-1,040.000	4,970.000	34.000
PANTAI INDAH KAPUK DUA TBK	15,100.000	-850.000	19,650.000	6,650.000
MD ENTERTAINMENT TBK	2,960.000	-840.000	4,673.913	1,380.000
GOLDEN FLOWER TBK	6,700.000	-700.000	8,875.000	540.000

SET (Thai Baht)

Top Gainers

Name	Last Done	Change Over 5 Days	52 Weeks High	52 Weeks Low
DELTA	154.000	+9.000	173.500	51.250
GYT	195.500	+7.500	195.500	141.500
ADVANC	299.000	+7.000	309.000	244.000
CPALL	52.250	+6.750	68.000	41.500
AEONTS	111.000	+5.000	148.000	90.500

Top Losers

Name	Last Done	Change Over 5 Days	52 Weeks High	52 Weeks Low
NEW	96.250	-17.250	142.000	62.000
Wattana Karnpaet NVDR	96.250	-17.250	141.500	86.250
KWC	272.000	-13.000	366.000	260.000
BLK-TRD	0.270	-12.830	58.000	0.010
SCCC	149.000	-7.500	177.500	138.500

HKEX (HKD)

Top Gainers

Name	Last Done	Change Over 5 Days	52 Weeks High	52 Weeks Low
UNISOUND (9678)	840.000	+98.500	872.500	198.000
SKB BIO-B (6990)	463.400	+32.400	498.200	152.000
CHINAGOLDINTL (2099)	101.100	+17.000	103.100	28.000
CAO CAO INC (2643)	83.500	+14.100	92.500	32.850
NIO-SW (9866)	51.650	+12.530	60.700	23.700

Top Losers

Name	Last Done	Change Over 5 Days	52 Weeks High	52 Weeks Low
LAOPU GOLD (6181)	724.500	-57.500	1,108.000	84.050
BILIBILI-W (9626)	175.900	-23.200	238.800	105.500
CIRRUS (2507)	52.700	-17.850	76.500	17.760
MIXUE GROUP (2097)	460.400	-13.600	618.500	256.000
NETEASE MUSIC (9899)	279.000	-12.200	303.400	87.850

SGX (SGD)

Top Gainers

Name	Last Done	Change Over 5 Days	52 Weeks High	52 Weeks Low
JMH USD	59.840	+1.690	60.600	35.100
NIO Inc. USD OV	6.540	+1.540	7.750	3.090
Great Eastern	13.640	+0.740	14.300	12.800
BRC Asia	4.100	+0.460	4.200	2.208
Soilbuild Constr	2.370	+0.410	2.450	0.711

Top Losers

Name	Last Done	Change Over 5 Days	52 Weeks High	52 Weeks Low
N522100N 270901	99.601	-0.555	-	-
IS INDIA CLIMATE S\$D	17.780	-0.530	-	-
IS INDIA CLIMATE US\$	13.760	-0.340	-	-
SingIndexFund	3.450	-0.270	3.720	2.600
Cortina	3.510	-0.260	3.790	2.456



Main Market-listed NexG Berhad (formerly Datasonic Group Berhad) may have rattled the market with its pricey purchase of loss-making lingerie maker Classita Holdings Berhad, but it is Hong Seng Consolidated Berhad that walks away grinning and banking the profits.

WHEN ONE MAN'S GAIN IS ANOTHER MAN'S LOSS

While Main Market-listed NexG Berhad (previously Datasonic Group Berhad) has set tongues wagging over its acquisition of a hefty stake in the struggling lingerie manufacturer Classita Holdings Berhad at a glaring premium, it is Hong Seng Consolidated Berhad that laughs its way to the bank.

This came about after NexG announced on 8 August that it had acquired a 32.61% stake or 402.06 million shares in Classita from Hong Seng for RM60.31 million cash or 15 sen apiece. The price

NexG paid represented an eye-watering premium over Classita's closing price of 8 sen on the same day.

Additionally, NexG also acquired 414.31 million Classita warrants from various parties for RM16.47 million – mostly off-market at four sen each with some from the open market at 3.5 sen. Following the acquisition, NexG has become the major shareholder of Classita. Accordingly, Classita has also become an associate company of NexG.

For those uninitiated, Hong Seng acquired the block of shares, or 32.61% stake in July 2023 at 15 sen apiece, being a 30.23% discount to Classita's market price of 21.5 sen then. Classita share prices tumbled after the change of hands. As the carrying amount of Hong Seng's investment in Classita exceeds its recoverable amount, an impairment loss of RM34.52 million was provided earlier. All in all, Hong Seng will conveniently book a paper gain of RM34.52 million upon completion of the transaction with NexG. Talk about flipping the script.

This is hardly Hong Seng's first act in the quick-flip playbook. After all, Hong Seng is known for its "Midas touch" in buying, holding briefly, then unloading stakes for tidy gains.

A case in point is its acquisition of a 51% stake in Innov8tif Holdings Sdn Bhd, a service provider of identity assurance solutions, for RM30.9 million back in January 2023. By May, barely ten days after the deal became unconditional, Hong Seng proposed to flip the same stake to Revenue Group Berhad for RM36 million – pocketing a RM5.15 million profit within a fortnight.

Despite all its deft manoeuvres in the market, Hong Seng's core businesses – spanning gloves manufacturing, nitrile butadiene latex production, medical supplies, and moneylending – tell a far less glamorous story. The Group chalked up a net loss of RM92.94 million on revenue of only RM22.42 million for the 18-month period

ended 31 March 2024. With its year-end recently shifted to 30 September 2025, investors are still waiting for the latest set of full-year numbers.

Beyond any doubt, the NexG deal looked like a golden ticket for Classita. The market seemed upbeat about the emergence of NexG, a much stronger backer, as its new major shareholder. Shares of Classita rose to a 52-week high of 10.5 sen on 12 August amid heavy trading volume of 193.55 million shares.

Without further delay, Classita had, on 11 August, unveiled its plan to change its name to NexG Bina Berhad, a name intended to reflect its serious plan to go full force in the property development and construction industries.

Formerly Caely Holdings Berhad, Classita has been in the property business for years but never quite delivered. Years of delays and underwhelming execution have resulted in multi-year losses at the Group level. For instance, in late 2022, the Company acquired 97.24% of Kepayang Heights Sdn Bhd (KHSB) for RM18.5 million to carry out mixed commercial and residential development on the 19.69-acre Bentong land owned by KHSB. The development fetched an estimated gross development value of RM233.8 million. The groundbreaking was supposed to kick off in early 2023, but as of December 2024, Classita admitted the project would only begin in the first half of 2025¹.

Similarly, the progress of Classita's project in Kinta is also falling behind. The acquisition was completed in early 2023, yet the construction of a lightweight industrial warehouse on-site was not started till the first half of 2025.

Beyond housing initiatives, Classita sets its sights on large-scale infrastructure projects, most notably the Mass Rapid Transit Line 3 (MRT3) project.

¹ Classita's reply to MSWG questions dated 9 December 2024

Through a partnership with Lion Pacific Sdn Bhd, it has positioned itself for the SY303 work package involving the supply, testing, and commissioning of electric trains and related systems.

The undergarments manufacturing remains the mainstay for Classita, contributing 90% of its total revenue in the financial year ended 30 June 2024. The Group managed to narrow its pre-tax losses to RM1.86 million compared to a loss before taxation of RM9.49 million in the previous year.

A FLOP FOR NEXG?

That aside, NexG appeared to bear the brunt of investors' fury as share prices were battered down to a multi-year low after the announcement. Shares of NexG fell as much as 16.5 sen or 31% to 37 sen on 11 August – its biggest decline in a single day since October 2018 – with its market cap having dwindled to RM1.19 billion at the closing bell. This even prompted NexG's intraday short selling to be suspended for the rest of the day following a sharp plunge in its share price.

The message from the market was clear: investors balked at the 87.5% premium NexG paid for a loss-making PLC. To fund the acquisition, NexG is relying on RM40 million in short-term borrowings plus RM36.78 million in internal funds - a strategy that raised eyebrows.

Despite NexG having viewed the acquisition as a strategic opportunity to expand into the property and construction sector, it has the following to answer minority shareholders:

- What has prompted NexG to acquire Classita's shares and warrants at a premium, considering the very fact that Classita is a loss-making entity? Notwithstanding a lower net loss of RM3.39 million in its FY2024.
- What value does NexG see in Classita, a loss-making company with a string of unsuccessful property development ventures?

Analysts weren't convinced either. BIMB Securities swiftly downgraded NexG to 'sell' while questioning whether NexG's move is a "strategic diversification or distraction" from its core technology and identity business. More so, the earnings contribution from Classita is trivial as the stake would contribute only about RM980,000 or less than 1% of NexG's FY2025 RM115 million annual profit.

BIMB also flagged a larger risk: property development is a sector with an entirely different DNA – cyclical, capital-hungry, and execution-sensitive. NexG must prove it can integrate Classita seamlessly and allocate capital wisely. Without greater proactivity and transparency, the market may continue to view the deal less as a bold diversification and more as an expensive distraction at the expense of minority shareholders.

Reproduced with permission from The Observer, a weekly newsletter published by the Minority Shareholders Watch Group (MSWG). Subscribe to The Observer for free at www.mswg.org.my and follow @MSWGMalaysia on social media for the latest updates.



CHECK OUT SHAREINVESTOR

BROKER'S CALL

Weekly Buy/Sell/Hold calls from leading Malaysian Brokerages.

[Go To Broker's Call](#)

BUY **HOLD** **SELL**

DEFINITION: Insider Activity shows the trades made by substantial shareholders or directors of the company. Purchases by the directors and company share buyback may indicate the share price is undervalued and brings confidence to the price trend of the share price.



ShareInvestor WebPro > Fundamental > Insider Trades > click Search tab > Select Bursa > click Stock name > scroll up and leave at <Select Counter> Type Date Range for Announcement Date > click Search

Notice Period is 17th August 2025 to 23th August 2025

Effective Change Date	Stock Name	Buyer/ Seller Name [Classification]	Bought / (Sold) ['000]	No. of Shares After Trade ['000]	
			Total	Total	% Held
19 AUG 2025 - 19 AUG 2025	99SMART	EMPLOYEES PROVIDENT FUND BOARD [SSH]	-1,044	460,142	5.478
18 AUG 2025 - 18 AUG 2025	99SMART	EMPLOYEES PROVIDENT FUND BOARD [SSH]	3,734	461,186	5.49
14 AUG 2025 - 14 AUG 2025	99SMART	EMPLOYEES PROVIDENT FUND BOARD [SSH]	-300	456,452	5.434
13 AUG 2025 - 13 AUG 2025	99SMART	EMPLOYEES PROVIDENT FUND BOARD [SSH]	-321	456,752	5.438
21 AUG 2025 - 21 AUG 2025	AAX	DATUK KAMARUDIN BIN MERANUN [DIR/CEO]	40	169,594	37.934
21 AUG 2025 - 21 AUG 2025	AAX	DATUK KAMARUDIN BIN MERANUN [SSH]	40	169,594	37.934
19 AUG 2025 - 19 AUG 2025	ABMB	EMPLOYEES PROVIDENT FUND BOARD [SSH]	-5,500	120,080	6.94
18 AUG 2025 - 18 AUG 2025	ABMB	EMPLOYEES PROVIDENT FUND BOARD [SSH]	-1,449	125,580	7.258
15 AUG 2025 - 15 AUG 2025	ABMB	EMPLOYEES PROVIDENT FUND BOARD [SSH]	-213	127,029	7.342
14 AUG 2025 - 14 AUG 2025	ABMB	EMPLOYEES PROVIDENT FUND BOARD [SSH]	-1,906	127,242	7.354
13 AUG 2025 - 13 AUG 2025	ABMB	EMPLOYEES PROVIDENT FUND BOARD [SSH]	-4,000	129,148	7.464
14 AUG 2025 - 14 AUG 2025	AGRICOR	DATIN CHEONG KAI MENG [SSH]	-3,000	58082	28.641
14 AUG 2025 - 14 AUG 2025	AGRICOR	DATUK KEH CHUAN SENG [SSH]	-3,000	57,996	28.598
14 AUG 2025 - 14 AUG 2025	AGRICOR	FRAZEL GROUP SDN. BHD. [SSH]	-3,000	57,996	28.598
15 AUG 2025 - 15 AUG 2025	AGRICOR	MR OON BOON KHONG [DIR/CEO]	-10	66,368	32.726
15 AUG 2025 - 15 AUG 2025	AGRICOR	MR OON BOON KHONG [SSH]	-10	66,368	32.726
19 AUG 2025 - 19 AUG 2025	AMBANK	EMPLOYEES PROVIDENT FUND BOARD [SSH]	2,970	446,060	13.483
18 AUG 2025 - 18 AUG 2025	AMBANK	EMPLOYEES PROVIDENT FUND BOARD [SSH]	2,004	443,089	13.393
15 AUG 2025 - 15 AUG 2025	AMBANK	EMPLOYEES PROVIDENT FUND BOARD [SSH]	4,284	441,086	13.332
14 AUG 2025 - 14 AUG 2025	AMBANK	EMPLOYEES PROVIDENT FUND BOARD [SSH]	2,102	436,802	13.203
13 AUG 2025 - 13 AUG 2025	AMBANK	EMPLOYEES PROVIDENT FUND BOARD [SSH]	5,250	434,500	13.133
20 AUG 2025 - 20 AUG 2025	AMLEX	MR LIM SAY SOON [DIR/CEO]	-500	78,207	29.17
20 AUG 2025 - 20 AUG 2025	AMLEX	MR LIM SAY SOON [SSH]	-500	78,207	29.17
19 AUG 2025 - 19 AUG 2025	ANEKA	MR LOKE KIEN TUCK [DIR/CEO]	200	101,433	14.605
19 AUG 2025 - 19 AUG 2025	ANEKA	MR LOKE KIEN TUCK [SSH]	200	101,433	14.605
18 AUG 2025 - 19 AUG 2025	ANEKA	MR PANG TSE FUJ [DIR/CEO]	800	92,406	13.305
18 AUG 2025 - 19 AUG 2025	ANEKA	MR PANG TSE FUJ [SSH]	800	92,406	13.305
13 AUG 2025 - 15 AUG 2025	APB	MR YAP KOW @ YAP KIM FAH [DIR/CEO]	-475	4,386	3.533
19 AUG 2025 - 19 AUG 2025	ASIAFLE	AMANAHRAYA TRUSTEES BERHAD-AMANAH SAHAM BUMIPUTERA [SSH]	-65	22,106	11.674
18 AUG 2025 - 18 AUG 2025	ASIAFLE	AMANAHRAYA TRUSTEES BERHAD-AMANAH SAHAM BUMIPUTERA [SSH]	-629	22,171	11.708
15 AUG 2025 - 15 AUG 2025	ASIAFLE	AMANAHRAYA TRUSTEES BERHAD-AMANAH SAHAM BUMIPUTERA [SSH]	-100	22,800	12.041
21 AUG 2025 - 21 AUG 2025	ASIAPLY	DATO' YEO BOON LEONG [DIR/CEO]	2,918	241,038	22.861
21 AUG 2025 - 21 AUG 2025	ASIAPLY	DATO' YEO BOON LEONG [SSH]	2,918	241,038	22.861
19 AUG 2025 - 19 AUG 2025	ASIAPLY	DATO' YEO BOON LEONG [DIR/CEO]	2,939	238,120	22.584
19 AUG 2025 - 19 AUG 2025	ASIAPLY	DATO' YEO BOON LEONG [SSH]	2,939	238,120	22.584
18 AUG 2025 - 20 AUG 2025	AWANTEC	LEMBAGA TABUNG AMANAH WARISAN NEGERI TERENGGANU [SSH]	20	43,272	5.489
15 AUG 2025 - 15 AUG 2025	AWANTEC	LEMBAGA TABUNG AMANAH WARISAN NEGERI TERENGGANU [SSH]	8	43,253	5.487
19 AUG 2025 - 19 AUG 2025	AXIATA	EMPLOYEES PROVIDENT FUND BOARD [SSH]	462	1,688,297	18.38
18 AUG 2025 - 18 AUG 2025	AXIATA	EMPLOYEES PROVIDENT FUND BOARD [SSH]	1,636	1,687,835	18.375
15 AUG 2025 - 15 AUG 2025	AXIATA	EMPLOYEES PROVIDENT FUND BOARD [SSH]	902	1,686,199	18.357
13 AUG 2025 - 13 AUG 2025	AXIATA	EMPLOYEES PROVIDENT FUND BOARD [SSH]	251	1,685,297	18.347
19 AUG 2025 - 19 AUG 2025	AXREIT	EMPLOYEES PROVIDENT FUND BOARD [SSH]	-500	429,857	21.272
20 AUG 2025 - 20 AUG 2025	AXREIT	KUMPULAN WANG PERSARAAN (DIPERBADANKAN) [SSH]	-1,829	163,085	8.07
18 AUG 2025 - 18 AUG 2025	AXREIT	EMPLOYEES PROVIDENT FUND BOARD [SSH]	298	430,357	21.297
19 AUG 2025 - 19 AUG 2025	AXREIT	KUMPULAN WANG PERSARAAN (DIPERBADANKAN) [SSH]	-2,000	164,914	8.161
19 AUG 2025 - 19 AUG 2025	AXREIT	LEMBAGA TABUNG HAJI [SSH]	89	116,451	5.763
15 AUG 2025 - 15 AUG 2025	AXREIT	EMPLOYEES PROVIDENT FUND BOARD [SSH]	6,870	430,059	21.282
14 AUG 2025 - 14 AUG 2025	AXREIT	EMPLOYEES PROVIDENT FUND BOARD [SSH]	7,585	423,189	20.942
15 AUG 2025 - 15 AUG 2025	AXREIT	KUMPULAN WANG PERSARAAN (DIPERBADANKAN) [SSH]	-1,000	166,914	8.259
13 AUG 2025 - 13 AUG 2025	AXREIT	EMPLOYEES PROVIDENT FUND BOARD [SSH]	4,417	415,604	20.567
18 AUG 2025 - 18 AUG 2025	BAUTO	EMPLOYEES PROVIDENT FUND BOARD [SSH]	-100	133,054	11.52
14 AUG 2025 - 14 AUG 2025	BAUTO	DATO' SRI AMER HAMZAH BIN AHMAD [SSH]	50	183,061	15.848
14 AUG 2025 - 14 AUG 2025	BAUTO	DATO' LEE KOK CHUAN [DIR/CEO]	50	183,157	15.856
14 AUG 2025 - 14 AUG 2025	BAUTO	DATO' LEE KOK CHUAN [SSH]	50	183,157	15.856
14 AUG 2025 - 14 AUG 2025	BAUTO	DYNAMIC MILESTONE SDN BHD [SSH]	50	178,617	15.463
14 AUG 2025 - 14 AUG 2025	BAUTO	TAN SRI DATO' SRI YEOH CHOON SAN [DIR/CEO]	50	182,834	15.828
14 AUG 2025 - 14 AUG 2025	BAUTO	TAN SRI DATO' SRI YEOH CHOON SAN [SSH]	50	182,834	15.828
13 AUG 2025 - 13 AUG 2025	BAUTO	EMPLOYEES PROVIDENT FUND BOARD [SSH]	-1,300	133,154	11.525
18 AUG 2025 - 20 AUG 2025	BESHOM	MADAM PHAN VAN DENH [SSH]	57	81,552	27.25

Notice Period is 17th August 2025 to 23th August 2025

Effective Change Date	Stock Name	Buyer/ Seller Name [Classification]	Bought / (Sold) ['000]	No. of Shares After Trade ['000]	
			Total	Total	% Held
18 AUG 2025 - 20 AUG 2025	BESHOM	TAN KAI HEE FAMILY HOLDINGS SDN BHD [SSH]	57	67,529	22.564
14 AUG 2025 - 15 AUG 2025	BESHOM	MADAM PHAN VAN DENH [SSH]	49	81,495	27.231
14 AUG 2025 - 15 AUG 2025	BESHOM	MR TAN KENG KANG [DIR/CEO]	49	81,495	27.232
14 AUG 2025 - 15 AUG 2025	BESHOM	MR TAN KENG KANG [SSH]	49	81,495	27.232
14 AUG 2025 - 15 AUG 2025	BESHOM	TAN KAI HEE FAMILY HOLDINGS SDN BHD [SSH]	49	67,471	22.545
19 AUG 2025 - 19 AUG 2025	BIMB	EMPLOYEES PROVIDENT FUND BOARD [SSH]	-229	384,223	16.952
18 AUG 2025 - 18 AUG 2025	BIMB	EMPLOYEES PROVIDENT FUND BOARD [SSH]	64	384,453	16.963
15 AUG 2025 - 15 AUG 2025	BIMB	EMPLOYEES PROVIDENT FUND BOARD [SSH]	3	384,388	16.96
14 AUG 2025 - 14 AUG 2025	BIMB	EMPLOYEES PROVIDENT FUND BOARD [SSH]	577	384,386	16.96
13 AUG 2025 - 13 AUG 2025	BIMB	EMPLOYEES PROVIDENT FUND BOARD [SSH]	-199	383,809	16.934
20 AUG 2025 - 20 AUG 2025	BPURI	DATUK MATTHEW TEE KAI WOON [DIR/CEO]	55	70,583	8.642
20 AUG 2025 - 20 AUG 2025	BPURI	DATUK MATTHEW TEE KAI WOON [SSH]	55	70,583	8.642
20 AUG 2025 - 20 AUG 2025	BPURI	TAN SRI DATUK TEE HOCK SENG JP [SSH]	55	70,583	8.642
20 AUG 2025 - 20 AUG 2025	BPURI-WB	DATUK MATTHEW TEE KAI WOON [DIR/CEO]	55	155	0.378
18 AUG 2025 - 18 AUG 2025	CBIP	DATUK LIM CHAI BENG [DIR/CEO]	-3,000	187,761	40.34
18 AUG 2025 - 18 AUG 2025	CBIP	DATUK LIM CHAI BENG [SSH]	-3,000	187,761	40.34
13 AUG 2025 - 13 AUG 2025	CDB	EMPLOYEES PROVIDENT FUND BOARD [SSH]	747	1,256,253	10.708
21 AUG 2025 - 21 AUG 2025	CEB	MISS TEE KIM CHIN [SSH]	600	119,685	12.065
21 AUG 2025 - 21 AUG 2025	CEB	MISS TEE KIM CHIN [DIR/CEO]	600	119,685	12.065
20 AUG 2025 - 20 AUG 2025	CEB	MISS TEE KIM CHIN [SSH]	3,000	119,085	12.005
20 AUG 2025 - 21 AUG 2025	CEB	MR CHUNG DAO [SSH]	1,700	91,100	9.183
20 AUG 2025 - 20 AUG 2025	CEB	MISS TEE KIM CHIN [DIR/CEO]	3,000	3,000	12.005
19 AUG 2025 - 19 AUG 2025	CEB	MISS TEE KIM CHIN [SSH]	2,355	116,085	11.702
19 AUG 2025 - 19 AUG 2025	CEB	MISS TEE KIM CHIN [DIR/CEO]	2,355	116,085	11.702
21 AUG 2025 - 21 AUG 2025	CGB	MR CHEW HIAN TAT [DIR/CEO]	1,156	262,503	31.494
21 AUG 2025 - 21 AUG 2025	CGB	MR CHEW HIAN TAT [SSH]	1,156	262,503	31.494
15 AUG 2025 - 15 AUG 2025	CHEETAH	MITSUBISHI UFJ FINANCIAL GROUP INC [SSH]	-41	28,504	5.862
15 AUG 2025 - 15 AUG 2025	CHEETAH	MORGAN STANLEY [SSH]	-41	28,504	5.862
14 AUG 2025 - 14 AUG 2025	CHEETAH	MITSUBISHI UFJ FINANCIAL GROUP INC [SSH]	-107	28,545	5.871
14 AUG 2025 - 14 AUG 2025	CHEETAH	MORGAN STANLEY [SSH]	-107	28,545	5.871
13 AUG 2025 - 13 AUG 2025	CHEETAH	MITSUBISHI UFJ FINANCIAL GROUP INC [SSH]	-0.7	28,652	5.893
13 AUG 2025 - 13 AUG 2025	CHEETAH	MORGAN STANLEY [SSH]	-0.7	28,652	5.893
21 AUG 2025 - 21 AUG 2025	CIMB	KUMPULAN WANG PERSARAAN (DIPERBADANKAN) [SSH]	-3,531	696,831	6.48
19 AUG 2025 - 19 AUG 2025	CIMB	EMPLOYEES PROVIDENT FUND BOARD [SSH]	274	1,741,991	16.19
18 AUG 2025 - 18 AUG 2025	CIMB	EMPLOYEES PROVIDENT FUND BOARD [SSH]	4,051	1,741,717	16.19
19 AUG 2025 - 19 AUG 2025	CIMB	KUMPULAN WANG PERSARAAN (DIPERBADANKAN) [SSH]	1,500	700,361	6.52
15 AUG 2025 - 15 AUG 2025	CIMB	EMPLOYEES PROVIDENT FUND BOARD [SSH]	3,996	1,737,666	16.15
18 AUG 2025 - 18 AUG 2025	CIMB	KUMPULAN WANG PERSARAAN (DIPERBADANKAN) [SSH]	500	698,861	6.5
14 AUG 2025 - 14 AUG 2025	CIMB	EMPLOYEES PROVIDENT FUND BOARD [SSH]	-4,200	1,733,670	16.12
15 AUG 2025 - 15 AUG 2025	CIMB	KUMPULAN WANG PERSARAAN (DIPERBADANKAN) [SSH]	-825	698,361	6.5
13 AUG 2025 - 13 AUG 2025	CIMB	EMPLOYEES PROVIDENT FUND BOARD [SSH]	2,304	1,737,870	16.16
19 AUG 2025 - 19 AUG 2025	CLMT	EMPLOYEES PROVIDENT FUND BOARD [SSH]	553	523,202	15.706
18 AUG 2025 - 18 AUG 2025	CLMT	EMPLOYEES PROVIDENT FUND BOARD [SSH]	92	522,649	15.689
18 AUG 2025 - 18 AUG 2025	CTOS	ABERDEEN GROUP PLC (FORMERLY KNOWN AS ABRDN PLC) [SSH]	129	361,111	15.685
18 AUG 2025 - 18 AUG 2025	CTOS	ABRDN HOLDINGS LIMITED [SSH]	129	361,111	15.685
18 AUG 2025 - 18 AUG 2025	CTOS	ABRDN MALAYSIA SDN BHD [SSH]	129	357,513	15.528
18 AUG 2025 - 18 AUG 2025	CTOS	KUMPULAN WANG PERSARAAN (DIPERBADANKAN) [SSH]	129	209,164	9.055
19 AUG 2025 - 19 AUG 2025	D&O	EMPLOYEES PROVIDENT FUND BOARD [SSH]	-324	106,006	8.552
18 AUG 2025 - 18 AUG 2025	D&O	EMPLOYEES PROVIDENT FUND BOARD [SSH]	-21	106,330	8.579
15 AUG 2025 - 15 AUG 2025	D&O	EMPLOYEES PROVIDENT FUND BOARD [SSH]	-2,223	106,351	8.58
01 AUG 2025 - 20 AUG 2025	DATAPRP	ENCIK SHAMSHURI BIN ABDUL MAJID [SSH]	-13,532	77,252	9.408
15 AUG 2025 - 15 AUG 2025	DAYANG	EMPLOYEES PROVIDENT FUND BOARD [SSH]	172	97,667	8.436
14 AUG 2025 - 14 AUG 2025	DAYANG	EMPLOYEES PROVIDENT FUND BOARD [SSH]	1,100	97,495	8.421
13 AUG 2025 - 13 AUG 2025	DAYANG	EMPLOYEES PROVIDENT FUND BOARD [SSH]	1,484	96,395	8.326
19 AUG 2025 - 19 AUG 2025	DIALOG	EMPLOYEES PROVIDENT FUND BOARD [SSH]	6,446	948,937	16.82
18 AUG 2025 - 18 AUG 2025	DIALOG	EMPLOYEES PROVIDENT FUND BOARD [SSH]	1,069	942,491	16.7
19 AUG 2025 - 19 AUG 2025	DPHARMA	EMPLOYEES PROVIDENT FUND BOARD [SSH]	110	85,264	8.864
19 AUG 2025 - 19 AUG 2025	EAH	ENCIK MOHAMMAD SOBRI BIN SAAD [DIR/CEO]	20,000	381,424	5.912
19 AUG 2025 - 19 AUG 2025	EAH	ENCIK MOHAMMAD SOBRI BIN SAAD [SSH]	381,424	381,424	5.912
15 AUG 2025 - 15 AUG 2025	ECOSHOP	DATO' SRI LEE KAR WHATT [DIR/CEO]	2,289	4,396,839	76.507

Disclaimer: The Information in Insider Activity is extracted from www.shareinvestor.com/fundamental/insider_trades. The information on this page is provided as a service to readers. It does not constitute financial advice and/or any investment recommendations. We assume no liability for damages resulting from or arising out of the use of such information. Whilst every effort is made to ensure accuracy, the information presented is not the official record of shareholder filings. Readers are advised to read the original filings on the Bursa Malaysia website at www.bursamalaysia.com



STROM
SWISS TIMEPIECES & JEWELLERY



StromWatch Asia
Tele : +65.9817.3378
Email : ll.stromasia@gmail.com
WWW.STROMWATCH.SWISS

Notice Period is 17th August 2025 to 23th August 2025

Effective Change Date	Stock Name	Buyer/ Seller Name [Classification]	Bought / (Sold) ['000]	No. of Shares After Trade ['000]	
			Total	Total	% Held
19 AUG 2025 - 19 AUG 2025	EDUSPEC	DATO' SRI GAN CHOW TEE [DIR/CEO]	130	106,930	7.554
19 AUG 2025 - 19 AUG 2025	EDUSPEC	DATO' SRI GAN CHOW TEE [SSH]	130	106,930	7.554
19 AUG 2025 - 19 AUG 2025	EFRAME	DATO HOOI JIA HAO [SSH]	-3,077	45,893	11.999
18 AUG 2025 - 18 AUG 2025	ELRIDGE	URUSHARTA JAMAAH SDN. BHD. [SSH]	11,780	116,967	5.848
19 AUG 2025 - 19 AUG 2025	EPMB	HKFAEX GROUP LIMITED [SSH]	-200	14,806	5.17
19 AUG 2025 - 19 AUG 2025	F&N	EMPLOYEES PROVIDENT FUND BOARD [SSH]	200	46,407	12.652
18 AUG 2025 - 18 AUG 2025	F&N	EMPLOYEES PROVIDENT FUND BOARD [SSH]	76	46,207	12.598
15 AUG 2025 - 15 AUG 2025	F&N	EMPLOYEES PROVIDENT FUND BOARD [SSH]	300	46,131	12.577
13 AUG 2025 - 13 AUG 2025	F&N	EMPLOYEES PROVIDENT FUND BOARD [SSH]	289	45,831	12.496
21 AUG 2025 - 21 AUG 2025	FACBIND	MAGNI VANTAGE LIMITED [SSH]	212	9,486	11.309
21 AUG 2025 - 21 AUG 2025	FACBIND	MR CHEN YIY FON [DIR/CEO]	212	9,486	11.309
21 AUG 2025 - 21 AUG 2025	FACBIND	MR CHEN YIY FON [SSH]	212	9,486	11.309
20 AUG 2025 - 20 AUG 2025	FACBIND	MAGNI VANTAGE LIMITED [SSH]	60	9,275	11.057
20 AUG 2025 - 20 AUG 2025	FACBIND	MR CHEN YIY FON [DIR/CEO]	60	9,275	11.057
20 AUG 2025 - 20 AUG 2025	FACBIND	MR CHEN YIY FON [SSH]	60	9,275	11.057
19 AUG 2025 - 19 AUG 2025	FACBIND	MAGNI VANTAGE LIMITED [SSH]	320	9,215	10.985
19 AUG 2025 - 19 AUG 2025	FACBIND	MR CHEN YIY FON [DIR/CEO]	320	9,215	10.985
19 AUG 2025 - 19 AUG 2025	FACBIND	MR CHEN YIY FON [SSH]	320	9,215	10.985
18 AUG 2025 - 18 AUG 2025	FACBIND	MAGNI VANTAGE LIMITED [SSH]	181	8,895	10.605
18 AUG 2025 - 18 AUG 2025	FACBIND	MR CHEN YIY FON [DIR/CEO]	181	8,895	10.605
18 AUG 2025 - 18 AUG 2025	FACBIND	MR CHEN YIY FON [SSH]	181	8,895	10.605
15 AUG 2025 - 15 AUG 2025	FACBIND	MAGNI VANTAGE LIMITED [SSH]	80	8,714	10.389
15 AUG 2025 - 15 AUG 2025	FACBIND	MR CHEN YIY FON [DIR/CEO]	80	8,714	10.389
15 AUG 2025 - 15 AUG 2025	FACBIND	MR CHEN YIY FON [SSH]	80	8,714	10.389
21 AUG 2025 - 21 AUG 2025	FFB	KUMPULAN WANG PERSARAAN (DIPERBADANKAN) [SSH]	-278	182,481	9.724
19 AUG 2025 - 19 AUG 2025	FFB	EMPLOYEES PROVIDENT FUND BOARD [SSH]	346	178,677	9.521
20 AUG 2025 - 20 AUG 2025	FFB	KUMPULAN WANG PERSARAAN (DIPERBADANKAN) [SSH]	-309	182,760	9.739
18 AUG 2025 - 18 AUG 2025	FFB	EMPLOYEES PROVIDENT FUND BOARD [SSH]	154	178,331	9.503
15 AUG 2025 - 15 AUG 2025	FFB	EMPLOYEES PROVIDENT FUND BOARD [SSH]	-468	178,177	9.494
15 AUG 2025 - 15 AUG 2025	FFB	ABERDEEN GROUP PLC (FORMERLY KNOWN AS ABRDN PLC) [SSH]	287	201,122	10.717
15 AUG 2025 - 15 AUG 2025	FFB	ABRDN HOLDINGS LIMITED [SSH]	287	201,122	10.717
15 AUG 2025 - 15 AUG 2025	FFB	ABRDN MALAYSIA SDN BHD [SSH]	287	199,195	10.614
13 AUG 2025 - 13 AUG 2025	FFB	EMPLOYEES PROVIDENT FUND BOARD [SSH]	7,845	178,645	9.519
21 AUG 2025 - 21 AUG 2025	FGV	FEDERAL LAND DEVELOPMENT AUTHORITY (FELDA) [SSH]	1,636	3,290,997	90.209
20 AUG 2025 - 20 AUG 2025	FGV	FEDERAL LAND DEVELOPMENT AUTHORITY (FELDA) [SSH]	4,146	3,289,360	90.165
19 AUG 2025 - 19 AUG 2025	FGV	FEDERAL LAND DEVELOPMENT AUTHORITY (FELDA) [SSH]	1,796	3,285,215	90.051
18 AUG 2025 - 18 AUG 2025	FGV	FEDERAL LAND DEVELOPMENT AUTHORITY (FELDA) [SSH]	1,738	3,283,419	90.002
15 AUG 2025 - 15 AUG 2025	FGV	FEDERAL LAND DEVELOPMENT AUTHORITY (FELDA) [SSH]	6,361	3,281,681	89.954
15 AUG 2025 - 15 AUG 2025	FOCUSP	DATIN GOH POI EONG [DIR/CEO]	78,567	314,267	51.017
15 AUG 2025 - 15 AUG 2025	FOCUSP	DATIN GOH POI EONG [SSH]	78,567	314,267	51.017
15 AUG 2025 - 15 AUG 2025	FOCUSP	DATO' LIAW CHOON LIANG [DIR/CEO]	78,567	314,267	51.018
15 AUG 2025 - 15 AUG 2025	FOCUSP	DATO' LIAW CHOON LIANG [SSH]	78,567	314,267	51.018
15 AUG 2025 - 15 AUG 2025	FOCUSP	PERBADANAN NASIONAL BERHAD [SSH]	12,995	51,981	8.439
19 AUG 2025 - 19 AUG 2025	FRONTKN	EMPLOYEES PROVIDENT FUND BOARD [SSH]	-486	170,396	10.715
18 AUG 2025 - 18 AUG 2025	FRONTKN	EMPLOYEES PROVIDENT FUND BOARD [SSH]	-159	170,883	10.764
15 AUG 2025 - 15 AUG 2025	FRONTKN	DAPE LTD [SSH]	1,000	238,337	15.013
15 AUG 2025 - 15 AUG 2025	FRONTKN	DAZZLE CLEAN LTD [SSH]	1,000	238,337	15.013
15 AUG 2025 - 15 AUG 2025	FRONTKN	DIAMOND GP HOLDINGS II LTD [SSH]	1,000	238,337	15.013
15 AUG 2025 - 15 AUG 2025	FRONTKN	DYMON ASIA CAPITAL LTD [SSH]	1,000	238,337	15.013
15 AUG 2025 - 15 AUG 2025	FRONTKN	DYMON ASIA PRIVATE EQUITY (S.E. ASIA) II LTD [SSH]	1,000	238,337	15.013
15 AUG 2025 - 15 AUG 2025	FRONTKN	MR NG WAI PIN [DIR/CEO]	1,000	250,347	15.769
15 AUG 2025 - 15 AUG 2025	FRONTKN	MR NG WAI PIN [SSH]	1,000	250,347	15.769
15 AUG 2025 - 15 AUG 2025	FRONTKN	MR TAN KENG SOON [SSH]	1,000	238,337	15.013
15 AUG 2025 - 15 AUG 2025	FRONTKN	MR YONG MING CHONG (DANNY) [SSH]	1,000	238,337	15.013
15 AUG 2025 - 15 AUG 2025	FRONTKN	PRISTINE PRISM LTD [SSH]	1,000	238,337	15.013
14 AUG 2025 - 14 AUG 2025	FRONTKN	EMPLOYEES PROVIDENT FUND BOARD [SSH]	-375	171,033	10.792
13 AUG 2025 - 13 AUG 2025	FRONTKN	EMPLOYEES PROVIDENT FUND BOARD [SSH]	1,697	171,408	10.816
15 AUG 2025 - 15 AUG 2025	FRONT-KN-WB	MR NG WAI PIN [DIR/CEO]	1,000	103,146	20.318
20 AUG 2025 - 20 AUG 2025	G3	DATO' SRI AMINUL ISLAM BIN ABDUL NOR [DIR/CEO]	75,210	708,736	17.074
20 AUG 2025 - 20 AUG 2025	G3	DATO' SRI AMINUL ISLAM BIN ABDUL NOR [SSH]	75,210	708,736	17.074
20 AUG 2025 - 20 AUG 2025	G3	ENCIK MUHAMMAD QHAILIZ NORMAN BIN AMINUL ISLAM [SSH]	75,210	513,047	12.36
19 AUG 2025 - 19 AUG 2025	GAMUDA	EMPLOYEES PROVIDENT FUND BOARD (EPF BOARD) [SSH]	-1,574	1,026,811	17.72
18 AUG 2025 - 18 AUG 2025	GAMUDA	EMPLOYEES PROVIDENT FUND BOARD (EPF BOARD) [SSH]	11,332	1,028,384	17.74
15 AUG 2025 - 15 AUG 2025	GAMUDA	EMPLOYEES PROVIDENT FUND BOARD (EPF BOARD) [SSH]	3,048	1,017,053	17.55
14 AUG 2025 - 14 AUG 2025	GAMUDA	EMPLOYEES PROVIDENT FUND BOARD (EPF BOARD) [SSH]	10,967	1,014,005	17.49
13 AUG 2025 - 13 AUG 2025	GAMUDA	EMPLOYEES PROVIDENT FUND BOARD (EPF BOARD) [SSH]	6,886	1,003,038	17.31
21 AUG 2025 - 21 AUG 2025	GASMSIA	LEMBAGA TABUNG HAJI [SSH]	-250	78,269	6.095
20 AUG 2025 - 20 AUG 2025	GASMSIA	LEMBAGA TABUNG HAJI [SSH]	-250	78,519	6.115
14 AUG 2025 - 14 AUG 2025	GASMSIA	EMPLOYEES PROVIDENT FUND BOARD [SSH]	209	65,212	5.078
19 AUG 2025 - 19 AUG 2025	GENETEC	EMPLOYEES PROVIDENT FUND BOARD [SSH]	239	42,415	5.442
18 AUG 2025 - 18 AUG 2025	GENETEC	EMPLOYEES PROVIDENT FUND BOARD [SSH]	507	42,177	5.405
21 AUG 2025 - 21 AUG 2025	GESHEN	DATIN CHEONG KAI MENG [SSH]	8,350	99,066	24.514
21 AUG 2025 - 21 AUG 2025	GESHEN	DATUK KEH CHUAN SENG [SSH]	8,350	99,066	24.514
21 AUG 2025 - 21 AUG 2025	GESHEN	FRAZEL GROUP SDN BHD [SSH]	8,350	99,066	24.514
19 AUG 2025 - 19 AUG 2025	GLOMAC	SHAPADU CAPITAL SDN. BHD. [SSH]	300	92,189	12.012
18 AUG 2025 - 18 AUG 2025	GLOMAC	SHAPADU CAPITAL SDN. BHD. [SSH]	100	91,889	11.97
15 AUG 2025 - 15 AUG 2025	GREENYB	MR THAM CHONG SING [SSH]	11,947	72,383	13.06

Notice Period is 17th August 2025 to 23th August 2025

Effective Change Date	Stock Name	Buyer/ Seller Name [Classification]	Bought / (Sold) ['000]	No. of Shares After Trade ['000]	
			Total	Total	% Held
19 AUG 2025 - 19 AUG 2025	HARBOUR	SAMARANG UCITS - SAMARANG ASIAN PROSPERITY [SSH]	-186	25,745	6.459
18 AUG 2025 - 18 AUG 2025	HARBOUR	SAMARANG UCITS - SAMARANG ASIAN PROSPERITY [SSH]	-36	25,931	6.506
15 AUG 2025 - 15 AUG 2025	HARBOUR	SAMARANG UCITS - SAMARANG ASIAN PROSPERITY [SSH]	-26	25,967	6.515
19 AUG 2025 - 19 AUG 2025	HEGROUP	MR ENG CHOON LEONG [DIR/CEO]	1,000	67,895	15.431
19 AUG 2025 - 19 AUG 2025	HEGROUP	MR ENG CHOON LEONG [SSH]	1,000	67,895	15.431
19 AUG 2025 - 20 AUG 2025	HEGROUP	MR HAW CHEE SENG [DIR/CEO]	124	92,696	21.067
19 AUG 2025 - 20 AUG 2025	HEGROUP	MR HAW CHEE SENG [SSH]	124	92,696	21.067
18 AUG 2025 - 19 AUG 2025	HEGROUP	DATUK WIRA YONG CHONG CHEANG [SSH]	-2,500	56,080	12.746
18 AUG 2025 - 19 AUG 2025	HEGROUP	HEXATECH ENERGY CONSOLIDATED SDN. BHD. [SSH]	-2,500	56,080	12.746
19 AUG 2025 - 21 AUG 2025	HEKTAR	UPAYAPADU (M) SDN BHD [SSH]	305	40,303	5.682
19 AUG 2025 - 19 AUG 2025	HEKTAR	DATO' ONG CHOO MENG [SSH]	-1,447	104,275	14.701
18 AUG 2025 - 18 AUG 2025	HEKTAR	UPAYAPADU (M) SDN BHD [SSH]	84	39,998	5.639
15 JUL 2025 - 13 AUG 2025	HEKTAR	HEKTAR BLACK SDN BHD [SSH]	-700	117,364	16.546
14 AUG 2025 - 14 AUG 2025	HEKTAR	UPAYAPADU (M) SDN BHD [SSH]	21	39,914	5.627
18 AUG 2025 - 18 AUG 2025	HEXCAP	T & J ASSETS HOLDINGS SDN. BHD. [SSH]	-1,741	51,978	10.672
18 AUG 2025 - 18 AUG 2025	HIBISCS	DATUK MICHAEL TANG VEE MUN [SSH]	70	96,193	13.045
19 AUG 2025 - 19 AUG 2025	HLBANK	EMPLOYEES PROVIDENT FUND BOARD [SSH]	229	198,551	9.515
18 AUG 2025 - 18 AUG 2025	HLBANK	EMPLOYEES PROVIDENT FUND BOARD [SSH]	750	198,322	9.504
15 AUG 2025 - 15 AUG 2025	HLBANK	EMPLOYEES PROVIDENT FUND BOARD [SSH]	86	197,572	9.469
13 AUG 2025 - 13 AUG 2025	HLBANK	EMPLOYEES PROVIDENT FUND BOARD [SSH]	189	197,486	9.464
15 AUG 2025 - 15 AUG 2025	HLFG	EMPLOYEES PROVIDENT FUND BOARD [SSH]	1,500	62,497	5.446
13 AUG 2025 - 13 AUG 2025	HLFG	EMPLOYEES PROVIDENT FUND BOARD [SSH]	4	60,996	5.315
19 AUG 2025 - 19 AUG 2025	IGBREIT	EMPLOYEES PROVIDENT FUND BOARD [SSH]	-1,383	365,175	10.077
18 AUG 2025 - 18 AUG 2025	IGBREIT	EMPLOYEES PROVIDENT FUND BOARD [SSH]	-861	366,558	10.115
15 AUG 2025 - 15 AUG 2025	IGBREIT	EMPLOYEES PROVIDENT FUND BOARD [SSH]	-401	367,419	10.139
18 AUG 2025 - 18 AUG 2025	IGBREIT	KUMPULAN WANG PERSARAAN (DIPERBADANKAN) [SSH]	-430	233,595	6.446
14 AUG 2025 - 14 AUG 2025	IGBREIT	EMPLOYEES PROVIDENT FUND BOARD [SSH]	487	367,820	10.15
15 AUG 2025 - 15 AUG 2025	IGBREIT	KUMPULAN WANG PERSARAAN (DIPERBADANKAN) [SSH]	-350	234,025	6.458
13 AUG 2025 - 13 AUG 2025	IGBREIT	EMPLOYEES PROVIDENT FUND BOARD [SSH]	-598	367,333	10.136
19 AUG 2025 - 19 AUG 2025	IHH	EMPLOYEES PROVIDENT FUND BOARD [SSH]	-2,939	990,126	11.205
18 AUG 2025 - 18 AUG 2025	IHH	EMPLOYEES PROVIDENT FUND BOARD [SSH]	962	990,551	11.21
15 AUG 2025 - 15 AUG 2025	IHH	EMPLOYEES PROVIDENT FUND BOARD [SSH]	4,000	989,589	11.199
14 AUG 2025 - 14 AUG 2025	IHH	EMPLOYEES PROVIDENT FUND BOARD [SSH]	-1,647	985,589	11.154
13 AUG 2025 - 13 AUG 2025	IHH	EMPLOYEES PROVIDENT FUND BOARD [SSH]	10,693	987,236	11.173
20 AUG 2025 - 20 AUG 2025	IJM	KUMPULAN WANG PERSARAAN (DIPERBADANKAN) [SSH]	-103	336,659	9.605
18 AUG 2025 - 18 AUG 2025	IJM	EMPLOYEES PROVIDENT FUND BOARD [SSH]	1,810	633,004	18.059
15 AUG 2025 - 15 AUG 2025	IJM	EMPLOYEES PROVIDENT FUND BOARD [SSH]	150	631,194	18.008
18 AUG 2025 - 18 AUG 2025	IJM	KUMPULAN WANG PERSARAAN (DIPERBADANKAN) [SSH]	465	336,761	9.608
14 AUG 2025 - 14 AUG 2025	IJM	EMPLOYEES PROVIDENT FUND BOARD [SSH]	-593	631,044	18.003
18 AUG 2025 - 18 AUG 2025	INFOM	MR YEE CHEE MENG [DIR/CEO]	200	372,757	61.997
18 AUG 2025 - 18 AUG 2025	INFOM	MR YEE CHEE MENG [SSH]	200	372,757	61.997
19 AUG 2025 - 19 AUG 2025	IOICORP	EMPLOYEES PROVIDENT FUND BOARD [SSH]	840	883,339	14.239
18 AUG 2025 - 18 AUG 2025	IOICORP	EMPLOYEES PROVIDENT FUND BOARD [SSH]	1,161	882,499	14.225
15 AUG 2025 - 15 AUG 2025	IOICORP	EMPLOYEES PROVIDENT FUND BOARD [SSH]	910	881,338	14.207
14 AUG 2025 - 14 AUG 2025	IOICORP	EMPLOYEES PROVIDENT FUND BOARD [SSH]	150	880,428	14.192
19 AUG 2025 - 19 AUG 2025	IOIPG	EMPLOYEES PROVIDENT FUND BOARD [SSH]	-5,000	376,412	6.836
18 AUG 2025 - 18 AUG 2025	IOIPG	EMPLOYEES PROVIDENT FUND BOARD [SSH]	-2,888	380,326	6.907
15 AUG 2025 - 15 AUG 2025	IOIPG	EMPLOYEES PROVIDENT FUND BOARD [SSH]	-6,079	383,215	6.96
21 AUG 2025 - 21 AUG 2025	JCY	MR GOUW KIM SAN [DIR/CEO]	1,000	1,000	0.047
19 AUG 2025 - 19 AUG 2025	JPG	EMPLOYEES PROVIDENT FUND BOARD [SSH]	79	284,317	11.373
18 AUG 2025 - 18 AUG 2025	JPG	EMPLOYEES PROVIDENT FUND BOARD [SSH]	1,745	284,238	11.37
15 AUG 2025 - 15 AUG 2025	JPG	EMPLOYEES PROVIDENT FUND BOARD [SSH]	9,000	282,493	11.3
14 AUG 2025 - 14 AUG 2025	JPG	EMPLOYEES PROVIDENT FUND BOARD [SSH]	2,274	273,493	10.94
13 AUG 2025 - 13 AUG 2025	JPG	EMPLOYEES PROVIDENT FUND BOARD [SSH]	-310	271,220	10.849
20 AUG 2025 - 20 AUG 2025	KAB	DATO' GAN KONG HIOK [SSH]	74,837	230,817	10.564
20 AUG 2025 - 20 AUG 2025	KGB	ABERDEEN GROUP PLC (FORMERLY KNOWN AS ABRDN PLC) [SSH]	-266	47,388	6.266
20 AUG 2025 - 20 AUG 2025	KGB	ABRDN HOLDINGS LIMITED [SSH]	-266	47,388	6.266
20 AUG 2025 - 20 AUG 2025	KGB	ABRDN MALAYSIA SDN BHD [SSH]	-266	46,511	6.15
19 AUG 2025 - 19 AUG 2025	KGB	EMPLOYEES PROVIDENT FUND BOARD [SSH]	510	39,222	5.186
22 AUG 2025 - 22 AUG 2025	KIMHIN	MR CHUA SENG HUAT [DIR/CEO]	464	95,836	68.338
22 AUG 2025 - 22 AUG 2025	KIMHIN	MR CHUA SENG HUAT [SSH]	464	95,836	68.338
21 AUG 2025 - 21 AUG 2025	KIMHIN	MR CHUA SENG HUAT [DIR/CEO]	149	95,372	68.007
21 AUG 2025 - 21 AUG 2025	KIMHIN	MR CHUA SENG HUAT [SSH]	149	95,372	68.007
20 AUG 2025 - 20 AUG 2025	KIMHIN	MR CHUA SENG HUAT [DIR/CEO]	26	95,224	67.901
20 AUG 2025 - 20 AUG 2025	KIMHIN	MR CHUA SENG HUAT [SSH]	26	95,224	67.901
19 AUG 2025 - 19 AUG 2025	KIMH				

Notice Period is 17th August 2025 to 23th August 2025

Effective Change Date	Stock Name	Buyer/ Seller Name [Classification]	Bought / (Sold) ['000]	No. of Shares After Trade ['000]	
			Total	Total	% Held
13 AUG 2025 - 14 AUG 2025	LTKM	MR CHIAU BENG TEIK [SSH]	204	9,286	6.488
14 AUG 2025 - 15 AUG 2025	LUXCHEM	DATUK KWAN FOH KWAI [DIR/CEO]	28	4,617	0.432
21 AUG 2025 - 21 AUG 2025	M&A	CIK SITI NUR AISHAH BINTI ISHAK [SSH]	-70	141,275	7.068
20 AUG 2025 - 20 AUG 2025	M&A	CIK SITI NUR AISHAH BINTI ISHAK [SSH]	460	141,345	7.072
19 AUG 2025 - 19 AUG 2025	M&A	CIK SITI NUR AISHAH BINTI ISHAK [SSH]	20	140,885	7.049
18 AUG 2025 - 18 AUG 2025	M&A	CIK SITI NUR AISHAH BINTI ISHAK [SSH]	10	140,865	7.048
19 AUG 2025 - 19 AUG 2025	MALAKOF	EMPLOYEES PROVIDENT FUND BOARD [SSH]	1,094	696,813	14.258
20 AUG 2025 - 20 AUG 2025	MALAKOF	KUMPULAN WANG PERSARAAN (DIPERBADANKAN) ("KWAP") [SSH]	-990	395,922	8.101
19 AUG 2025 - 19 AUG 2025	MALAKOF	KUMPULAN WANG PERSARAAN (DIPERBADANKAN) ("KWAP") [SSH]	-1,500	396,912	8.121
15 AUG 2025 - 15 AUG 2025	MALAKOF	EMPLOYEES PROVIDENT FUND BOARD [SSH]	364	695,719	14.236
19 AUG 2025 - 19 AUG 2025	MALAKOF	KUMPULAN WANG PERSARAAN (DIPERBADANKAN) ("KWAP") [SSH]	-1,500	396,912	8.121
15 AUG 2025 - 15 AUG 2025	MALAKOF	EMPLOYEES PROVIDENT FUND BOARD [SSH]	364	695,196	14.225
14 AUG 2025 - 14 AUG 2025	MALAKOF	URUSHARTA JAMAAH SDN. BHD. [SSH]	1,031	450,615	9.22
15 AUG 2025 - 15 AUG 2025	MALAKOF	KUMPULAN WANG PERSARAAN (DIPERBADANKAN) ("KWAP") [SSH]	-750	398,412	8.152
13 AUG 2025 - 13 AUG 2025	MALAKOF	EMPLOYEES PROVIDENT FUND BOARD [SSH]	1,000	695,832	14.238
13 AUG 2025 - 13 AUG 2025	MALAKOF	URUSHARTA JAMAAH SDN. BHD. [SSH]	-0.7	449,583	9.199
20 AUG 2025 - 21 AUG 2025	MATANG	HUAREN HOLDINGS SDN BHD [SSH]	390	602,724	25.227
20 AUG 2025 - 21 AUG 2025	MATANG	MALAYSIAN CHINESE ASSOCIATION [SSH]	390	625,454	26.178
18 AUG 2025 - 19 AUG 2025	MATANG	HUAREN HOLDINGS SDN BHD [SSH]	323	602,334	25.211
18 AUG 2025 - 19 AUG 2025	MATANG	MALAYSIAN CHINESE ASSOCIATION [SSH]	323	625,064	26.162
14 AUG 2025 - 15 AUG 2025	MATANG	HUAREN HOLDINGS SDN BHD [SSH]	787	602,011	25.197
14 AUG 2025 - 15 AUG 2025	MATANG	MALAYSIAN CHINESE ASSOCIATION [SSH]	787	624,741	26.149
14 AUG 2025 - 14 AUG 2025	MAXIS	EMPLOYEES PROVIDENT FUND BOARD ("EPF BOARD") [SSH]	1,763	951,013	12.138
13 AUG 2025 - 13 AUG 2025	MAXIS	EMPLOYEES PROVIDENT FUND BOARD ("EPF BOARD") [SSH]	1,237	949,250	12.116
21 AUG 2025 - 21 AUG 2025	MAYBANK	AMANAHRAYA TRUSTEES BERHAD - AMANAH SAHAM BUMIPUTERA [SSH]	-5,756	3,500,566	28.976
21 AUG 2025 - 21 AUG 2025	MAYBANK	KUMPULAN WANG PERSARAAN (DIPERBADANKAN) ("KWAP") [SSH]	3,500	647,509	5.36
19 AUG 2025 - 19 AUG 2025	MAYBANK	EMPLOYEES PROVIDENT FUND BOARD [SSH]	-719	1,395,264	11.549
20 AUG 2025 - 20 AUG 2025	MAYBANK	AMANAHRAYA TRUSTEES BERHAD - AMANAH SAHAM BUMIPUTERA [SSH]	-6,708	3,506,323	29.023
20 AUG 2025 - 20 AUG 2025	MAYBANK	KUMPULAN WANG PERSARAAN (DIPERBADANKAN) ("KWAP") [SSH]	1,300	644,009	5.331
18 AUG 2025 - 18 AUG 2025	MAYBANK	EMPLOYEES PROVIDENT FUND BOARD [SSH]	185	1,395,983	11.555
19 AUG 2025 - 19 AUG 2025	MAYBANK	AMANAHRAYA TRUSTEES BERHAD - AMANAH SAHAM BUMIPUTERA [SSH]	-1,633	3,513,031	29.079
19 AUG 2025 - 19 AUG 2025	MAYBANK	KUMPULAN WANG PERSARAAN (DIPERBADANKAN) ("KWAP") [SSH]	1,485	642,709	5.32
15 AUG 2025 - 15 AUG 2025	MAYBANK	EMPLOYEES PROVIDENT FUND BOARD [SSH]	-1,536	1,395,798	11.554
18 AUG 2025 - 18 AUG 2025	MAYBANK	AMANAHRAYA TRUSTEES BERHAD - AMANAH SAHAM BUMIPUTERA [SSH]	-4,516	3,514,664	29.092
18 AUG 2025 - 18 AUG 2025	MAYBANK	KUMPULAN WANG PERSARAAN (DIPERBADANKAN) ("KWAP") [SSH]	342	641,224	5.308
14 AUG 2025 - 14 AUG 2025	MAYBANK	EMPLOYEES PROVIDENT FUND BOARD [SSH]	-511	1,397,334	11.566
15 AUG 2025 - 15 AUG 2025	MAYBANK	AMANAHRAYA TRUSTEES BERHAD - AMANAH SAHAM BUMIPUTERA [SSH]	-394	3,519,179	29.13
15 AUG 2025 - 15 AUG 2025	MAYBANK	KUMPULAN WANG PERSARAAN (DIPERBADANKAN) ("KWAP") [SSH]	100	640,882	5.305
13 AUG 2025 - 13 AUG 2025	MAYBANK	EMPLOYEES PROVIDENT FUND BOARD [SSH]	-3,365	1,397,846	11.571
14 AUG 2025 - 14 AUG 2025	MCEMENT	EASTSPRING INVESTMENT BERHAD [SSH]	706	80,873	5.967
14 AUG 2025 - 14 AUG 2025	MCEMENT	PRUDENTIAL ASSUANCE MALAYSIA BERHAD [SSH]	701	77,446	5.714
14 AUG 2025 - 14 AUG 2025	MCEMENT	PRUDENTIAL PLC [SSH]	706	99,913	7.372
14 AUG 2025 - 14 AUG 2025	MESTRON	DATO' TEO CHEE HONG [SSH]	-6,000	106,150	10.612
14 AUG 2025 - 14 AUG 2025	MESTRON	DATO' TEO CHEE HONG [SSH]	-6,000	106,150	10.612
15 AUG 2025 - 15 AUG 2025	MFCB	EMPLOYEES PROVIDENT FUND BOARD [SSH]	150	93,664	9.94
14 AUG 2025 - 14 AUG 2025	MFCB	EMPLOYEES PROVIDENT FUND BOARD [SSH]	200	93,514	9.924
15 AUG 2025 - 15 AUG 2025	MFCB	CAM PROPERTY (MALAYSIA) SDN BHD [SSH]	66	205,946	21.855
15 AUG 2025 - 15 AUG 2025	MFCB	CAMASIA LIMITED [SSH]	66	207,431	22.013
15 AUG 2025 - 15 AUG 2025	MFCB	GOH NAN KIOH [DIR/CEO]	66	333,511	35.392
15 AUG 2025 - 15 AUG 2025	MFCB	KEEN CAPITAL INVESTMENTS LIMITED [SSH]	66	282,716	30.002
15 AUG 2025 - 15 AUG 2025	MFCB	LAJU RIANG SDN BHD [SSH]	66	205,946	21.855
15 AUG 2025 - 15 AUG 2025	MFCB	MR GOH NAN KIOH [SSH]	66	333,511	35.392
15 AUG 2025 - 15 AUG 2025	MFCB	RUBBER THREAD INDUSTRIES (M) SDN BERHAD [SSH]	66	205,946	21.855
20 AUG 2025 - 21 AUG 2025	MGB	DATUK LIM LIT CHEK [DIR/CEO]	326	80,551	13.614
20 AUG 2025 - 21 AUG 2025	MGB	DATUK LIM LIT CHEK [SSH]	326	80,551	13.614
19 AUG 2025 - 19 AUG 2025	MISC	EMPLOYEES PROVIDENT FUND BOARD [SSH]	3,301	642,584	14.396
18 AUG 2025 - 18 AUG 2025	MISC	EMPLOYEES PROVIDENT FUND BOARD [SSH]	7,178	639,284	14.322
15 AUG 2025 - 15 AUG 2025	MISC	EMPLOYEES PROVIDENT FUND BOARD [SSH]	1,109	632,106	14.161
14 AUG 2025 - 14 AUG 2025	MISC	EMPLOYEES PROVIDENT FUND BOARD [SSH]	-145	630,997	14.136
13 AUG 2025 - 13 AUG 2025	MISC	EMPLOYEES PROVIDENT FUND BOARD [SSH]	12,274	631,142	14.139
15 AUG 2025 - 15 AUG 2025	MRDIY	EMPLOYEES PROVIDENT FUND BOARD [SSH]	10,000	859,265	9.071
14 AUG 2025 - 14 AUG 2025	MRDIY	EMPLOYEES PROVIDENT FUND BOARD [SSH]	10,000	849,525	8.969
22 AUG 2025 - 22 AUG 2025	MYTECH	MR WONG THEAN SOON [SSH]	-11,700	43,353	17.613
15 AUG 2025 - 15 AUG 2025	MYTECH	MR WONG THEAN SOON [SSH]	-2,000	55,053	22.367
21 AUG 2025 - 21 AUG 2025	NZN	QUAH CHOON WAH [SSH]	283	45,323	8.119
15 AUG 2025 - 15 AUG 2025	NCT	DATO' SRI YAP NGAN CHOY [DIR/CEO]	-15,428	952,694	49.202
15 AUG 2025 - 15 AUG 2025	NCT	DATO' SRI YAP NGAN CHOY [SSH]	-15,428	952,694	49.202
15 AUG 2025 - 15 AUG 2025	NCT	DATO' YAP FOOK CHOY [DIR/CEO]	-14,265	931,865	48.126
15 AUG 2025 - 15 AUG 2025	NCT	DATO' YAP FOOK CHOY [SSH]	-14,265	931,865	48.126
15 AUG 2025 - 15 AUG 2025	NCT	YBG YAP CONSOLIDATED SDN. BHD. [SSH]	-14,265	892,460	46.091
22 AUG 2025 - 22 AUG 2025	OHM	DATIN TANG JING WEN [DIR/CEO]	680	24,119	4.824
27 MAY 2025 - 21 JUL 2025	OVH	MR KENNY RONALD NGALIN [DIR/CEO]	-4,617	7,695	1.832
21 JUL 2025 - 21 JUL 2025	OVH	MR CHAI MING YUNG [SSH]	-1,930	37,665	8.969
19 AUG 2025 - 19 AUG 2025	PA	TAN SRI LAU KUAN KAM [DIR/CEO]	2,000	100,460	6.677

Notice Period is 17th August 2025 to 23th August 2025

Effective Change Date	Stock Name	Buyer/ Seller Name [Classification]	Bought / (Sold) ['000]	No. of Shares After Trade ['000]	
			Total	Total	% Held
14 AUG 2025 - 14 AUG 2025	PA	TAN SRI LAU KUAN KAM [SSH]	1,000	98,460	6.544
21 AUG 2025 - 21 AUG 2025	PADINI	KUMPULAN WANG PERSARAAN (DIPERBADANKAN) [SSH]	528	101,509	10.286
20 AUG 2025 - 20 AUG 2025	PADINI	KUMPULAN WANG PERSARAAN (DIPERBADANKAN) [SSH]	-150	100,981	10.232
15 AUG 2025 - 15 AUG 2025	PADINI	EMPLOYEES PROVIDENT FUND BOARD [SSH]	151	93,731	9.498
13 AUG 2025 - 13 AUG 2025	PADINI	EMPLOYEES PROVIDENT FUND BOARD [SSH]	7,100	93,580	9.483
15 AUG 2025 - 15 AUG 2025	PANAMY	KUMPULAN WANG PERSARAAN (DIPERBADANKAN) [SSH]	-13	3,283	5.404
21 AUG 2025 - 21 AUG 2025	PANTECH	DATIN SHUM KAH LIN [SSH]	290	161,596	19.511
21 AUG 2025 - 21 AUG 2025	PANTECH	DATO' CHEW TING LENG [DIR/CEO]	290	161,596	19.511
21 AUG 2025 - 21 AUG 2025	PANTECH	DATO' CHEW TING LENG [SSH]	290	161,596	19.511
19 AUG 2025 - 19 AUG 2025	PAVREIT	EMPLOYEES PROVIDENT FUND BOARD [SSH]	1,738	463,433	11.808
18 AUG 2025 - 18 AUG 2025	PAVREIT	EMPLOYEES PROVIDENT FUND BOARD [SSH]	-3,615	461,696	11.763
19 AUG 2025 - 19 AUG 2025	PAVREIT	KUMPULAN WANG PERSARAAN (DIPERBADANKAN) [SSH]	86	230,312	5.868
15 AUG 2025 - 15 AUG 2025	PAVREIT	EMPLOYEES PROVIDENT FUND BOARD [SSH]	-1,493	465,310	11.856
14 AUG 2025 - 14 AUG 2025	PAVREIT	EMPLOYEES PROVIDENT FUND BOARD [SSH]	-2,000	466,803	11.894
13 AUG 2025 - 13 AUG 2025	PAVREIT	EMPLOYEES PROVIDENT FUND BOARD [SSH]	-1,800	468,803	11.945
19 AUG 2025 - 19 AUG 2025	PBBANK	EMPLOYEES PROVIDENT FUND BOARD [SSH]	5,377	3,262,830	16.81
18 AUG 2025 - 18 AUG 2025	PBBANK	EMPLOYEES PROVIDENT FUND BOARD [SSH]	7,827	3,257,453	16.78
15 AUG 2025 - 15 AUG 2025	PBBANK	EMPLOYEES PROVIDENT FUND BOARD [SSH]	6,975	3,249,626	16.74
14 AUG 2025 - 14 AUG 2025	PBBANK	EMPLOYEES PROVIDENT FUND BOARD [SSH]	5,057	3,242,651	16.71
13 AUG 2025 - 13 AUG 2025	PBBANK	EMPLOYEES PROVIDENT FUND BOARD [SSH]	-2,539	3,237,594	16.68
15 AUG 2025 - 15 AUG 2025	PCHEM	EMPLOYEES PROVIDENT FUND BOARD ("EPF BOARD") [SSH]	130	941,441	11.768
14 AUG 2025 - 14 AUG 2025	PCHEM	EMPLOYEES PROVIDENT FUND BOARD ("EPF BOARD") [SSH]	636	941,312	11.766
13 AUG 2025 - 13 AUG 2025	PCHEM	EMPLOYEES PROVIDENT FUND BOARD ("EPF BOARD") [SSH]	3,656	940,676	11.758
19 AUG 2025 - 21 AUG 2025	PEKAT	MR WEE CHEK AIK [SSH]	-1,199	48,018	7.445
19 AUG 2025 - 19 AUG 2025	PENTA	EMPLOYEES PROVIDENT FUND BOARD [SSH]	-30	75,243	10.578
19 AUG 2025 - 19 AUG 2025	PENTA	KUMPULAN WANG PERSARAAN (DIPERBADANKAN) [SSH]	-236	59,814	8.408
18 AUG 2025 - 18 AUG 2025	PENTA	LEMBAGA TABUNG HAJI [SSH]	150	39,706	5.589
14 AUG 2025 - 14 AUG 2025	PENTA	EMPLOYEES PROVIDENT FUND BOARD [SSH]	11	75,273	10.582
13 AUG 2025 - 13 AUG 2025	PENTA	EMPLOYEES PROVIDENT FUND BOARD [SSH]	-608	75,262	10.581
19 AUG 2025 - 19 AUG 2025	PESONA	KOMBINASI EMAS SDN BHD [SSH]	70	292,700	42.116
19 AUG 2025 - 19 AUG 2025	PESONA	MR WIE HOCK KIONG [DIR/CEO]	70	292,700	42.116
19 AUG 2025 - 19 AUG 2025	PESONA	MR WIE HOCK KIONG [SSH]	70	292,700	42.116
18 AUG 2025 - 18 AUG 2025	PESONA	KOMBINASI EMAS SDN BHD [SSH]	80	292,630	42.106
18 AUG 2025 - 18 AUG 2025	PESONA	MR WIE HOCK KIONG [DIR/CEO]	80	292,630	42.106
18 AUG 2025 - 18 AUG 2025	PESONA	MR WIE HOCK KIONG [SSH]	80	292,630	42.106
15 AUG 2025 - 15 AUG 2025	PESONA	KOMBINASI EMAS SDN BHD [SSH]	100	292,550	42.094
15 AUG 2025 - 15 AUG 2025	PESONA	MR WIE HOCK KIONG [DIR/CEO]	100	292,550	42.094
15 AUG 2025 - 15 AUG 2025	PESONA	MR WIE HOCK KIONG [SSH]	100	292,550	42.094
20 AUG 2025 - 20 AUG 2025	PESTEC	DATUK SERI (DR.) SUBRAMANIAM PILLAI A/L SANKARAN PILLAI [SSH]	2,500	15,701,74	61.583
20 AUG 2025 - 20 AUG 2025	PESTEC	DATUK SERI (DR.) SUBRAMANIAM PILLAI A/L SANKARAN PILLAI [DIR/CEO]	2,500	15,701,74	61.583
19 AUG 2025 - 19 AUG 2025	PESTEC	DATUK SERI (DR.) SUBRAMANIAM PILLAI A/L SANKARAN PILLAI [SSH]	950	15,676,74	61.485
19 AUG 2025 - 19 AUG 2025	PESTEC	DATUK SERI (DR.) SUBRAMANIAM PILLAI A/L SANKARAN PILLAI [DIR/CEO]	950	15,676,74	61.485
18 AUG 2025 - 18 AUG 2025	PETDAG	EMPLOYEES PROVIDENT FUND BOARD ("EPF BOARD") [SSH]	25	12,496	12.578
14 AUG 2025 - 14 AUG 2025	PETDAG	EMPLOYEES PROVIDENT FUND BOARD ("EPF BOARD") [SSH]	20	12,496	12.576
13 AUG 2025 - 13 AUG 2025	PETDAG	EMPLOYEES PROVIDENT FUND BOARD ("EPF BOARD") [SSH]	80	12,496	12.574
21 AUG 2025 - 21 AUG 2025	PETGAS	KUMPULAN WANG PERSARAAN (DIPERBADANKAN) ("KWAP") [SSH]	-205	196,311	9.921
19 AUG 2025 - 19 AUG 2025	PETGAS	EMPLOYEES PROVIDENT FUND BOARD [SSH]	237	255,981	12.937
18 AUG 2025 - 18 AUG 2025	PETGAS	EMPLOYEES PROVIDENT FUND BOARD [SSH]	673	255,744	12.925
19 AUG 2025 - 19 AUG 2025	PETGAS	KUMPULAN WANG PERSARAAN (DIPERBADANKAN) ("KWAP") [SSH]	-200	196,516	9.931
15 AUG 2025 - 15 AUG 2025	PETGAS	EMPLOYEES PROVIDENT FUND BOARD [SSH]	284	255,072	12.891
20 AUG 2025 - 20 AUG 2025	PGF	MR FONG WERN SHENG [DIR/CEO]	10	35,105	18.1
20 AUG 2025 - 20 AUG 2025	PGF	MR FONG WERN SHENG [SSH]	10	35,105	18.1
14 AUG 2025 - 14 AUG 2025	PGF	MR FONG WERN SHENG [DIR/CEO]	6	35,095	18.095
14 AUG 2025 - 14 AUG 2025	PGF	MR FONG WERN SHENG [SSH]	6	35,095	18.095
19 AUG 2025 - 19 AUG 2025	PLINTAS	EMPLOYEES PROVIDENT FUND BOARD [SSH]	-244	86,422	7.857
18 AUG 2025 - 18 AUG 2025	PLINTAS	EMPLOYEES PROVIDENT FUND BOARD [SSH]	-36	86,666	7.879
19 AUG 2025 - 19 AUG 2025	PMETAL	EMPLOYEES PROVIDENT FUND BOARD [SSH]	2,121	558,903	6.783
18 AUG 2025 - 18 AUG 2025	PMETAL	EMPLOYEES PROVIDENT FUND BOARD [SSH]	1,512	556,781	6.757
15 AUG 2025 - 15 AUG 2025	PMETAL	EMPLOYEES PROVIDENT FUND BOARD [SSH]	801	555,269	6.739
14 AUG 2025 - 14 AUG 2025	PMETAL	EMPLOYEES PROVIDENT FUND BOARD [SSH]	585	554,468	6.729
13 AUG 2025 - 13 AUG 2025	PMETAL	EMPLOYEES PROVIDENT FUND BOARD [SSH]	419	553,884	6.722
20 AUG 2025 - 21 AUG 2025	PTRANS	DATIN SRI LIM SOW KENG [SSH]	6,829	18,741	16.26
20 AUG 2025 - 21 AUG 2025	PTRANS	DATO' SRI CHEONG KONG FITT [DIR/CEO]	6,829	18,741	16.259
20 AUG 2025 - 21 AUG 2025	PTRANS	DATO' SRI CHEONG KONG FITT [SSH]	6,829	18,741	16.259
18 AUG 2025 - 19 AUG 2025	PTRANS	DATIN SRI LIM SOW KENG [SSH]	3,014	18,058	15.667
18 AUG 2025					

Notice Period is 17th August 2025 to 23th August 2025

Effective Change Date	Stock Name	Buyer/ Seller Name [Classification]	Bought / (Sold) ['000]	No. of Shares After Trade ['000]	
			Total	Total	% Held
15 AUG 2025 - 15 AUG 2025	RCECAP	CLEAR GOAL SDN BHD [SSH]	180	867411	59.087
15 AUG 2025 - 15 AUG 2025	RCECAP	TAN SRI AZMAN BIN HASHIM [SSH]	180	867411	59.087
18 AUG 2025 - 19 AUG 2025	RGTBHD	DATUK LIM SEAT HOE [DIR/CEO]	508	98210	28.706
18 AUG 2025 - 19 AUG 2025	RGTBHD	DATUK LIM SEAT HOE [SSH]	508	98210	28.706
18 AUG 2025 - 19 AUG 2025	RGTBHD	MADAM HOR LIM CHEE [SSH]	428	121473	35.506
18 AUG 2025 - 19 AUG 2025	RGTBHD	MR NG CHOOON KEAT [DIR/CEO]	428	107788	31.506
18 AUG 2025 - 19 AUG 2025	RGTBHD	MR NG CHOOON KEAT [SSH]	428	107788	31.506
18 AUG 2025 - 19 AUG 2025	RGTBHD	MR TAN SONG CHAI [SSH]	428	107773	31.502
18 AUG 2025 - 19 AUG 2025	RGTBHD	RGT EQUITY HOLDINGS SDN. BHD. [SSH]	428	90180	26.359
15 AUG 2025 - 15 AUG 2025	RGTBHD	DATUK LIM SEAT HOE [DIR/CEO]	140	97702	28.558
15 AUG 2025 - 15 AUG 2025	RGTBHD	DATUK LIM SEAT HOE [SSH]	140	97702	28.558
19 AUG 2025 - 19 AUG 2025	RHBBANK	EMPLOYEES PROVIDENT FUND BOARD [SSH]	3,046	1645671	37.728
18 AUG 2025 - 18 AUG 2025	RHBBANK	EMPLOYEES PROVIDENT FUND BOARD [SSH]	4,724	1642626	37.658
15 AUG 2025 - 15 AUG 2025	RHBBANK	EMPLOYEES PROVIDENT FUND BOARD [SSH]	910	1637901	37.55
13 AUG 2025 - 13 AUG 2025	RHBBANK	EMPLOYEES PROVIDENT FUND BOARD [SSH]	3,344	1636991	37.529
20 AUG 2025 - 20 AUG 2025	RL	DATO' WAN HASSAN BIN MOHD JAMIL [DIR/CEO]	-1,400	36076	9.954
20 AUG 2025 - 20 AUG 2025	RL	DATO' WAN HASSAN BIN MOHD JAMIL [SSH]	-1,400	36076	9.954
20 AUG 2025 - 20 AUG 2025	RL	ENCIK MAD HAIMI BIN ABU HASSAN [SSH]	-1,400	36248	10.002
20 AUG 2025 - 20 AUG 2025	RL	MR THIEN CHIET CHAI [DIR/CEO]	-1,690	57482	15.86
20 AUG 2025 - 20 AUG 2025	RL	MR THIEN CHIET CHAI [SSH]	-1,690	57482	15.86
20 AUG 2025 - 20 AUG 2025	RL	RESERVOIR LINK HOLDINGS SDN. BHD. [SSH]	-1,400	33622	9.277
15 AUG 2025 - 15 AUG 2025	SAM	EMPLOYEES PROVIDENT FUND BOARD [SSH]	-130	38299	5.657
14 AUG 2025 - 14 AUG 2025	SAM	EMPLOYEES PROVIDENT FUND BOARD [SSH]	-2	38429	5.677
13 AUG 2025 - 13 AUG 2025	SAM	EMPLOYEES PROVIDENT FUND BOARD [SSH]	-83	38432	5.677
20 AUG 2025 - 20 AUG 2025	SAPIND	MR KOH KOK HOOI [SSH]	18	8247	11.332
15 AUG 2025 - 15 AUG 2025	SAPIND	MR KOH KOK HOOI [SSH]	3	8229	11.308
20 AUG 2025 - 20 AUG 2025	SASBADI	MISS LAW YI CHIAN [DIR/CEO]	1,000	1000	0.235
20 AUG 2025 - 20 AUG 2025	SASBADI	MR LEE ENG SANG [SSH]	-2,000	91095	21.412
20 AUG 2025 - 21 AUG 2025	SASBADI	MR LEE SWEE HANG [DIR/CEO]	300	114922	27.012
20 AUG 2025 - 21 AUG 2025	SASBADI	MR LEE SWEE HANG [SSH]	300	114922	27.012
14 AUG 2025 - 15 AUG 2025	SASBADI	MR LEE ENG SANG [SSH]	-2	93095	21.882
18 AUG 2025 - 18 AUG 2025	SCICOM	DATO' NICHOLAS JOHN LOUGH @ SHARIF LOUGH BIN ABDULLAH [DIR/CEO]	-1,045	2108	0.59
13 AUG 2025 - 13 AUG 2025	SCOMNET	EMPLOYEES PROVIDENT FUND BOARD [SSH]	500	72455	8.433
20 AUG 2025 - 20 AUG 2025	SDG	AMANAHRAYA TRUSTEES BERHAD - AMANAH SAHAM BUMIPUTERA [SSH]	-1,000	3145044	45.477
20 AUG 2025 - 20 AUG 2025	SDG	KUMPULAN WANG PERSARAAN (DIPERBADANKAN) [SSH]	-247	510518	7.382
18 AUG 2025 - 19 AUG 2025	SDG	EMPLOYEES PROVIDENT FUND BOARD [SSH]	321	1166715	16.87
19 AUG 2025 - 19 AUG 2025	SDG	AMANAHRAYA TRUSTEES BERHAD - AMANAH SAHAM BUMIPUTERA [SSH]	-2,000	3146044	45.491
18 AUG 2025 - 18 AUG 2025	SDG	AMANAHRAYA TRUSTEES BERHAD - AMANAH SAHAM BUMIPUTERA [SSH]	-4,330	3148044	45.52
14 AUG 2025 - 14 AUG 2025	SDG	EMPLOYEES PROVIDENT FUND BOARD [SSH]	-1,013	1166394	16.866
15 AUG 2025 - 15 AUG 2025	SDG	AMANAHRAYA TRUSTEES BERHAD - AMANAH SAHAM BUMIPUTERA [SSH]	-277	3152375	45.583
14 AUG 2025 - 14 AUG 2025	SDG	AMANAHRAYA TRUSTEES BERHAD - AMANAH SAHAM BUMIPUTERA [SSH]	-580	3152651	45.587
12 AUG 2025 - 12 AUG 2025	SDG	EMPLOYEES PROVIDENT FUND BOARD [SSH]	329	1167408	16.88
21 AUG 2025 - 21 AUG 2025	SERNKOU	LOW PENG SIAN @ CHUA PENG SIAN [DIR/CEO]	-2,500	256030	23.748
21 AUG 2025 - 21 AUG 2025	SERNKOU	MR LOW PENG SIAN @ CHUA PENG SIAN [SSH]	-2,500	256030	23.748
21 AUG 2025 - 21 AUG 2025	SIME	AMANAHRAYA TRUSTEES BERHAD - AMANAH SAHAM BUMIPUTERA [SSH]	14,000	2470764	36.252
21 AUG 2025 - 21 AUG 2025	SIME	KUMPULAN WANG PERSARAAN (DIPERBADANKAN) [SSH]	17	455066	6.677
20 AUG 2025 - 20 AUG 2025	SIME	AMANAHRAYA TRUSTEES BERHAD - AMANAH SAHAM BUMIPUTERA [SSH]	10,527	2456764	36.046
20 AUG 2025 - 20 AUG 2025	SIME	KUMPULAN WANG PERSARAAN (DIPERBADANKAN) [SSH]	94	455049	6.676
19 AUG 2025 - 19 AUG 2025	SIME	EMPLOYEES PROVIDENT FUND BOARD [SSH]	5,350	1172658	17.204
18 AUG 2025 - 18 AUG 2025	SIME	EMPLOYEES PROVIDENT FUND BOARD [SSH]	1,913	1166808	17.118
19 AUG 2025 - 19 AUG 2025	SIME	AMANAHRAYA TRUSTEES BERHAD - AMANAH SAHAM BUMIPUTERA [SSH]	139	2446236	35.892
19 AUG 2025 - 19 AUG 2025	SIME	KUMPULAN WANG PERSARAAN (DIPERBADANKAN) [SSH]	-402	454955	6.675
18 AUG 2025 - 18 AUG 2025	SIME	KUMPULAN WANG PERSARAAN (DIPERBADANKAN) [SSH]	1,237	455357	6.681
18 AUG 2025 - 18 AUG 2025	SIME	AMANAHRAYA TRUSTEES BERHAD - AMANAH SAHAM BUMIPUTERA [SSH]	5,334	2446098	35.89
15 AUG 2025 - 15 AUG 2025	SIME	AMANAHRAYA TRUSTEES BERHAD - AMANAH SAHAM BUMIPUTERA [SSH]	600	2440764	35.811
19 AUG 2025 - 19 AUG 2025	SIMEPROP	EMPLOYEES PROVIDENT FUND BOARD [SSH]	-5,289	917048	13.484
20 AUG 2025 - 20 AUG 2025	SIMEPROP	AMANAHRAYA TRUSTEES BERHAD - AMANAH SAHAM BUMIPUTERA [SSH]	-2,000	2415900	35.524
20 AUG 2025 - 20 AUG 2025	SIMEPROP	KUMPULAN WANG PERSARAAN (DIPERBADANKAN) [SSH]	-365	428180	6.296
18 AUG 2025 - 18 AUG 2025	SIMEPROP	EMPLOYEES PROVIDENT FUND BOARD [SSH]	-1,722	921988	13.557
19 AUG 2025 - 19 AUG 2025	SIMEPROP	AMANAHRAYA TRUSTEES BERHAD - AMANAH SAHAM BUMIPUTERA [SSH]	-1,695	2417900	35.553
15 AUG 2025 - 15 AUG 2025	SIMEPROP	EMPLOYEES PROVIDENT FUND BOARD [SSH]	-1,643	923710	13.583
18 AUG 2025 - 18 AUG 2025	SIMEPROP	AMANAHRAYA TRUSTEES BERHAD - AMANAH SAHAM BUMIPUTERA [SSH]	-26,306	2419595	35.578
18 AUG 2025 - 18 AUG 2025	SIMEPROP	KUMPULAN WANG PERSARAAN (DIPERBADANKAN) [SSH]	-150	428544	6.301
14 AUG 2025 - 14 AUG 2025	SIMEPROP	EMPLOYEES PROVIDENT FUND BOARD [SSH]	2,811	925352	13.607
15 AUG 2025 - 15 AUG 2025	SIMEPROP	AMANAHRAYA TRUSTEES BERHAD - AMANAH SAHAM BUMIPUTERA [SSH]	-8,742	2445900	35.965
15 AUG 2025 - 15 AUG 2025	SIMEPROP	KUMPULAN WANG PERSARAAN (DIPERBADANKAN) [SSH]	668	428694	6.304
13 AUG 2025 - 13 AUG 2025	SIMEPROP	EMPLOYEES PROVIDENT FUND BOARD [SSH]	4,290	922541	13.565
21 AUG 2025 - 21 AUG 2025	SKPRES	KUMPULAN WANG PERSARAAN (DIPERBADANKAN) [SSH]	250	155356	9.943
18 AUG 2025 - 18 AUG 2025	SKPRES	EMPLOYEES PROVIDENT FUND BOARD [SSH]	20	198881	12.73
18 AUG 2025 - 18 AUG 2025	SKPRES	ABERDEEN GROUP PLC (FORMERLY KNOWN AS ABRDN PLC) [SSH]	23	116896	7.482

Notice Period is 17th August 2025 to 23th August 2025

Effective Change Date	Stock Name	Buyer/ Seller Name [Classification]	Bought / (Sold) ['000]	No. of Shares After Trade ['000]	
			Total	Total	% Held
15 AUG 2025 - 15 AUG 2025	SKPRES	EMPLOYEES PROVIDENT FUND BOARD [SSH]	90	198861	12.728
18 AUG 2025 - 18 AUG 2025	SKPRES	KUMPULAN WANG PERSARAAN (DIPERBADANKAN) [SSH]	3	155107	9.927
15 AUG 2025 - 15 AUG 2025	SKPRES	ABERDEEN GROUP PLC (FORMERLY KNOWN AS ABRDN PLC) [SSH]	102	116873	7.481
15 AUG 2025 - 15 AUG 2025	SKPRES	ABRDN HOLDINGS LIMITED [SSH]	102	116873	7.481
15 AUG 2025 - 15 AUG 2025	SKPRES	ABRDN MALAYSIA SDN BHD [SSH]	102	116873	7.481
14 AUG 2025 - 14 AUG 2025	SKPRES	EMPLOYEES PROVIDENT FUND BOARD [SSH]	177	198771	12.722
15 AUG 2025 - 15 AUG 2025	SKPRES	KUMPULAN WANG PERSARAAN (DIPERBADANKAN) [SSH]	12	155104	9.927
14 AUG 2025 - 14 AUG 2025	SKPRES	ABERDEEN GROUP PLC (FORMERLY KNOWN AS ABRDN PLC) [SSH]	203	116771	7.474
14 AUG 2025 - 14 AUG 2025	SKPRES	ABRDN HOLDINGS LIMITED [SSH]	203	116771	7.474
14 AUG 2025 - 14 AUG 2025	SKPRES	ABRDN MALAYSIA SDN BHD [SSH]	203	116771	7.474
13 AUG 2025 - 13 AUG 2025	SKPRES	EMPLOYEES PROVIDENT FUND BOARD [SSH]	54	198594	12.711
19 AUG 2025 - 19 AUG 2025	SKYGATE	MR GOH KIANG TENG [DIR/CEO]	1,600	14807	4.634
18 AUG 2025 - 18 AUG 2025	SLP	MR KHAW SEANG CHUAN [DIR/CEO]	728	185486	58.52
18 AUG 2025 - 18 AUG 2025	SLP	MR KHAW SEANG CHUAN [SSH]	728	185486	58.52
21 AUG 2025 - 21 AUG 2025	SLVEST	ATLANTIC BLUE HOLDINGS SDN. BHD. [SSH]	4,000	161652	19.894
21 AUG 2025 - 21 AUG 2025	SLVEST	MR LIM CHIN SIU [DIR/CEO]	4,000	218417	26.88
21 AUG 2025 - 21 AUG 2025	SLVEST	MR LIM CHIN SIU [SSH]	4,000	218417	26.88
21 AUG 2025 - 21 AUG 2025	SLVEST	MR TAN CHYI BOON [DIR/CEO]	4,000	214477	26.395
21 AUG 2025 - 21 AUG 2025	SLVEST	MR TAN CHYI BOON [SSH]	4,000	214477	26.395
21 AUG 2025 - 21 AUG 2025	SLVEST-WA	ATLANTIC BLUE HOLDINGS SDN. BHD. [SSH]	4,000	9236	17.165
21 AUG 2025 - 21 AUG 2025	SLVEST-WA	MR LIM CHIN SIU [DIR/CEO]	4,000	11111	20.65
21 AUG 2025 - 21 AUG 2025	SLVEST-WA	MR LIM CHIN SIU [SSH]	4,000	11111	20.65
21 AUG 2025 - 21 AUG 2025	SLVEST-WA	MR TAN CHYI BOON [DIR/CEO]	4,000	11736	21.811
21 AUG 2025 - 21 AUG 2025	SLVEST-WA	MR TAN CHYI BOON [SSH]	4,000	11736	21.811
19 AUG 2025 - 19 AUG 2025	SUNREIT	EMPLOYEES PROVIDENT FUND BOARD [SSH]	-3,388	543587	15.872
18 AUG 2025 - 18 AUG 2025	SUNREIT	EMPLOYEES PROVIDENT FUND BOARD [SSH]	2,066	546974	15.971
19 AUG 2025 - 19 AUG 2025	SUNREIT	KUMPULAN WANG PERSARAAN (DIPERBADANKAN) ("KWAP") [SSH]	6,500	207142	6.048
15 AUG 2025 - 15 AUG 2025	SUNREIT	EMPLOYEES PROVIDENT FUND BOARD [SSH]	3,152	544908	15.911
14 AUG 2025 - 14 AUG 2025	SUNREIT	EMPLOYEES PROVIDENT FUND BOARD [SSH]	3,105	541756	15.819
15 AUG 2025 - 15 AUG 2025	SUNREIT	KUMPULAN WANG PERSARAAN (DIPERBADANKAN) ("KWAP") [SSH]	-1,352	200642	5.859
13 AUG 2025 - 13 AUG 2025	SUNREIT	EMPLOYEES PROVIDENT FUND BOARD [SSH]	3,207	538651	15.728
19 AUG 2025 - 19 AUG 2025	SUNWAY	EMPLOYEES PROVIDENT FUND BOARD [SSH]	-5,181	466407	7.49
18 AUG 2025 - 18 AUG 2025	SUNWAY	EMPLOYEES PROVIDENT FUND BOARD [SSH]	-4,849	471588	7.58
15 AUG 2025 - 15 AUG 2025	SUNWAY	EMPLOYEES PROVIDENT FUND BOARD [SSH]	-2,917	476436	7.65
14 AUG 2025 - 14 AUG 2025	SUNWAY	EMPLOYEES PROVIDENT FUND BOARD [SSH]	-1,920	479353	7.7
13 AUG 2025 - 13 AUG 2025	SUNWAY	EMPLOYEES PROVIDENT FUND BOARD [SSH]	-2,936	481273	7.73
18 AUG 2025 - 18 AUG 2025	SWIFT	MR LOO HOOI KEAT [DIR/CEO]	-1,000	256063	29.416
18 AUG 2025 - 18 AUG 2025	SWIFT	MR LOO HOOI KEAT [SSH]	-1,000	256063	29.416
22 AUG 2025 - 22 AUG 2025	SYSTECH	MR CHAN SOON TAT [DIR/CEO]	146	13790	2.098
21 AUG 2025 - 21 AUG 2025	SYSTECH	MR CHAN SOON TAT [DIR/CEO]	2,000	13645	2.075
18 AUG 2025 - 18 AUG 2025	SYSTECH	DATO' HOOI JIA HAO [SSH]	-400	242384	36.867
20 AUG 2025 - 21 AUG 2025	TAMBUN	MR TEH KIAK SENG [DIR/CEO]	191	222306	50.61
20 AUG 2025 - 21 AUG 2025	TAMBUN	MR TEH KIAK SENG [SSH]	191	222306	50.61
18 AUG 2025 - 19 AUG 2025	TAMBUN	MR TEH KIAK SENG [DIR/CEO]	170	222115	50.56
18 AUG 2025 - 19 AUG 2025	TAMBUN	MR TEH KIAK SENG [SSH]	170	222115	50.56
19 AUG 2025 - 19 AUG 2025	TENAGA	EMPLOYEES PROVIDENT FUND BOARD [SSH]	931	1100438	18.88
20 AUG 2025 - 20 AUG 2025	TENAGA	KUMPULAN WANG PERSARAAN (DIPERBADANKAN) [SSH]	21	429494	7.37
18 AUG 2025 - 18 AUG 2025	TENAGA	EMPLOYEES PROVIDENT FUND BOARD [SSH]	537	1099508	18.86
15 AUG 2025 - 15 AUG 2025	TENAGA	EMPLOYEES PROVIDENT FUND BOARD [SSH]	400	1098970	18.85
13 AUG 2025 - 13 AUG 2025	TENAGA	EMPLOYEES PROVIDENT FUND BOARD [SSH]	-87	1098570	18.85
19 AUG 2025 - 19 AUG 2025	TFP	DATO' HUSSIAN @ RIZAL BIN A. RAHMAN [DIR/CEO]	10,000	141346	21.94
19 AUG 2025 - 19 AUG 2025	TFP	DATO' HUSSIAN @ RIZAL BIN A. RAHMAN [SSH]	10,000	141346	21.94
19 AUG 2025 - 19 AUG 2025	TFP	RAPPORTRANS SDN BHD [SSH]	10,000	141346	21.94
19 AUG 2025 - 19 AUG 2025	TFP-WB	DATO' HUSSIAN @ RIZAL BIN A. RAHMAN [DIR/CEO]	10,000	29377	26.16
21 AUG 2025 - 21 AUG 2025	TIMECOM	KUMPULAN WANG PERSARAAN (DIPERBADANKAN) [SSH]	638	148854	8.051
19 AUG 2025 - 19 AUG 2025	TIMECOM	EMPLOYEES PROVIDENT FUND BOARD [SSH]	160	248714	13.453
20 AUG 2025 - 20 AUG 2025	TIMECOM	KUMPULAN WANG PERSARAAN (DIPERBADANKAN) [SSH]	35	148215	8.017
18 AUG 2025 - 18 AUG 2025	TIMECOM	EMPLOYEES PROVIDENT FUND BOARD [SSH]	324	248554	13.444
18 AUG 2025 - 18 AUG 2025	TIMECOM	KUMPULAN WANG PERSARAAN (DIPERBADANKAN) [SSH]	-14	148181	8.015
15 AUG 2025 - 15 AUG 2025	TIMECOM	KUMPULAN WANG PERSARAAN (DIPERBADANKAN) [SSH]	500	148195	8.016
19 AUG 2025 - 19 AUG 2025	TM	EMPLOYEES PROVIDENT FUND BOARD (EPF BOARD) [SSH]	10,074	799706	20.838
20 AUG 2025 - 20 AUG 2025	TM	KUMPULAN WANG PERSARAAN (DIPERBADANKAN) [KWAP] [SSH]	-3,000	391078	10.19
18 AUG 2025 - 18 AUG 2025	TM	EMPLOYEES PROVIDENT FUND BOARD (EPF BOARD) [SSH]	7,447	789632	20.575
19 AUG 2025 - 19 AUG 2025	TM	KUMPULAN WANG PERSARAAN (DIPERBADANKAN) [KWAP] [SSH]	-2,000	394078	10.268
15 AUG 2025 - 15 AUG 2025	TM	EMPLOYEES PROVIDENT FUND BOARD (EPF BOARD) [SSH]	2,134	782185	20.381
18 AUG 2025 - 18 AUG 2025	TM	KUMPULAN WANG PERSARAAN (DIPERBADANKAN) [KWAP] [SSH]	-1,000	396078	10.32
14 AUG 2025 - 14 AUG 2025	TM	EMPLOYEES PROVIDENT FUND BOARD (EPF BOARD) [SSH]	9,293	780051	20.326
15 AUG 2025 - 15 AUG 2025	TM	KUMPULAN WANG PERSARAAN (DIPERBADANKAN) [KWAP] [SSH]	77	397078	10.346
13 AUG 2025 - 13 AUG 2025	TM	EMPLOYEES PROVIDENT FUND BOARD (EPF BOARD) [SSH]	14,260	770757	20.084
20 AUG 2025 - 20 AUG 2025	TOMYPAK	MR YONG KWET ON [DIR/CEO]	80	107746	24.992

Notice Period is 17th August 2025 to 23th August 2025

Effective Change Date	Stock Name	Buyer/ Seller Name [Classification]	Bought / (Sold) ['000]	No. of Shares After Trade ['000]	
			Total	Total	% Held
21 AUG 2025 - 21 AUG 2025	UCHITEC	KUMPULAN WANG PERSARAAN (DIPERBADANKAN) [SSH]	145	24899	5.382
20 AUG 2025 - 20 AUG 2025	UCHITEC	KUMPULAN WANG PERSARAAN (DIPERBADANKAN) [SSH]	200	24753	5.351
18 AUG 2025 - 18 AUG 2025	UCHITEC	KUMPULAN WANG PERSARAAN (DIPERBADANKAN) [SSH]	100	24553	5.308
19 AUG 2025 - 19 AUG 2025	UOAEV	EMPLOYEES PROVIDENT FUND BOARD ("EPF BOARD") [SSH]	27	367643	13.847
15 AUG 2025 - 15 AUG 2025	UOAEV	EMPLOYEES PROVIDENT FUND BOARD ("EPF BOARD") [SSH]	377	367616	13.846
15 AUG 2025 - 15 AUG 2025	UTDPLT	EMPLOYEES PROVIDENT FUND BOARD [SSH]	-29	38799	6.236
14 AUG 2025 - 14 AUG 2025	UTDPLT	EMPLOYEES PROVIDENT FUND BOARD [SSH]	-106	38305	6.157
13 AUG 2025 - 13 AUG 2025	UTDPLT	EMPLOYEES PROVIDENT FUND BOARD [SSH]	19	38411	6.173
14 AUG 2025 - 14 AUG 2025	UWC	ABERDEEN GROUP PLC (FORMERLY KNOWN AS ABRDN PLC) [SSH]	-105	63397	5.748
14 AUG 2025 - 14 AUG 2025	UWC	ABRDN HOLDINGS LIMITED [SSH]	-105	63397	5.748
14 AUG 2025 - 14 AUG 2025	UWC	ABRDN MALAYSIA SDN BHD [SSH]	-105	63118	5.723
13 AUG 2025 - 13 AUG 2025	UWC	EMPLOYEES PROVIDENT FUND BOARD [SSH]	232	98094	8.894
19 AUG 2025 - 19 AUG 2025	VELESTO	ABERDEEN GROUP PLC (FORMERLY KNOWN AS ABRDN PLC) [SSH]	53,386	628206	7.646
19 AUG 2025 - 19 AUG 2025	VELESTO	ABRDN HOLDINGS LIMITED [SSH]	53,386	628206	7.646
19 AUG 2025 - 19 AUG 2025	VELESTO	ABRDN MALAYSIA SDN BHD [SSH]	53,386	628206	7.646
18 AUG 2025 - 18 AUG 2025	VELESTO	ABERDEEN GROUP PLC (FORMERLY KNOWN AS ABRDN PLC) [SSH]	30,000	574820	6.997
18 AUG 2025 - 18 AUG 2025	VELESTO	ABRDN HOLDINGS LIMITED [SSH]	30,000	574820	6.997
18 AUG 2025 - 18 AUG 2025	VELESTO	ABRDN MALAYSIA SDN BHD [SSH]	30,000	574820	6.997
19 AUG 2025 - 19 AUG 2025	VITROX	EMPLOYEES PROVIDENT FUND BOARD [SSH]	-98	112362	5.935
18 AUG 2025 - 18 AUG 2025	VITROX	EMPLOYEES PROVIDENT FUND BOARD [SSH]	302	112460	5.94
14 AUG 2025 - 14 AUG 2025	VITROX	EMPLOYEES PROVIDENT FUND BOARD [SSH]	429	112158	5.925
14 AUG 2025 - 14 AUG 2025	VITROX	DATO' SERI DR KIEW KWONG SEN [DIR/CEO]	-50	25959	1.371
13 AUG 2025 - 13 AUG 2025	VITROX	EMPLOYEES PROVIDENT FUND BOARD [SSH]	-20	111729	5.902
19 AUG 2025 - 19 AUG 2025	VS	EMPLOYEES PROVIDENT FUND BOARD [SSH]	2,000	377612	9.797
19 AUG 2025 - 19 AUG 2025	WPRTS	EMPLOYEES PROVIDENT FUND BOARD [SSH]	-248	202966	5.952
19 AUG 2025 - 19 AUG 2025	WPRTS	KUMPULAN WANG PERSARAAN (DIPERBADANKAN) [SSH]	0.6	220112	6.455
19 AUG 2025 - 19 AUG 2025	WPRTS	KUMPULAN WANG PERSARAAN (DIPERBADANKAN) [SSH]	35	220111	6.455

Notice Period is 17th August 2025 to 23th August 2025

Effective Change Date	Stock Name	Buyer/ Seller Name [Classification]	Bought / (Sold) ['000]	No. of Shares After Trade ['000]	
			Total	Total	% Held
13 AUG 2025 - 13 AUG 2025	WPRTS	EMPLOYEES PROVIDENT FUND BOARD [SSH]	-517	201815	5.918
21 AUG 2025 - 21 AUG 2025	YINSON	KUMPULAN WANG PERSARAAN (DIPERBADANKAN) [SSH]	-655	202531	6.94
19 AUG 2025 - 19 AUG 2025	YINSON	KUMPULAN WANG PERSARAAN (DIPERBADANKAN) [SSH]	-114	203186	6.963
18 AUG 2025 - 18 AUG 2025	YINSON	KUMPULAN WANG PERSARAAN (DIPERBADANKAN) [SSH]	-954	203300	6.966
14 AUG 2025 - 14 AUG 2025	YINSON	EMPLOYEES PROVIDENT FUND BOARD [SSH]	502	503702	17.26
15 AUG 2025 - 15 AUG 2025	YINSON	KUMPULAN WANG PERSARAAN (DIPERBADANKAN) [SSH]	-387	204254	6.999
13 AUG 2025 - 13 AUG 2025	YINSON	EMPLOYEES PROVIDENT FUND BOARD [SSH]	325	503200	17.243
18 AUG 2025 - 18 AUG 2025	YTL	EMPLOYEES PROVIDENT FUND BOARD [SSH]	10,837	945822	8.271
15 AUG 2025 - 15 AUG 2025	YTL	EMPLOYEES PROVIDENT FUND BOARD [SSH]	4,286	935759	8.183
14 AUG 2025 - 14 AUG 2025	YTL	EMPLOYEES PROVIDENT FUND BOARD [SSH]	7,699	932459	8.154
19 AUG 2025 - 19 AUG 2025	YTLPOWR	EMPLOYEES PROVIDENT FUND BOARD [SSH]	-494	832561	9.724
18 AUG 2025 - 18 AUG 2025	YTLPOWR	EMPLOYEES PROVIDENT FUND BOARD [SSH]	5,211	833056	9.73
15 AUG 2025 - 15 AUG 2025	YTLPOWR	EMPLOYEES PROVIDENT FUND BOARD [SSH]	10,000	827845	9.669
14 AUG 2025 - 14 AUG 2025	YTLPOWR	EMPLOYEES PROVIDENT FUND BOARD [SSH]	8,894	817845	9.552
13 AUG 2025 - 13 AUG 2025	YTLPOWR	EMPLOYEES PROVIDENT FUND BOARD [SSH]	4,623	808951	9.451
20 AUG 2025 - 20 AUG 2025	ZETRIX	MR WONG THEAN SOON [DIR/CEO]	3,000	2081267	27.059
20 AUG 2025 - 20 AUG 2025	ZETRIX	MR WONG THEAN SOON [SSH]	3,000	2081267	27.059
18 AUG 2025 - 18 AUG 2025	ZETRIX	ASIA INTERNET HOLDINGS SDN. BHD. [SSH]	-2,500	1035355	13.461
20 AUG 2025 - 20 AUG 2025	ZHULIAN	MR TEOH BENG SENG [SSH]	15	268216	58.305
20 AUG 2025 - 20 AUG 2025	ZHULIAN	THE BEST SOURCE HOLDINGS PTE. LTD. [SSH]	15	65269	14.189
19 AUG 2025 - 19 AUG 2025	ZHULIAN	MR TEOH BENG SENG [SSH]	82	268201	58.301
19 AUG 2025 - 19 AUG 2025	ZHULIAN	THE BEST SOURCE HOLDINGS PTE. LTD. [SSH]	82	65254	14.186
18 AUG 2025 - 18 AUG 2025	ZHULIAN	MR TEOH BENG SENG [SSH]	146	268119	58.284
18 AUG 2025 - 18 AUG 2025	ZHULIAN	THE BEST SOURCE HOLDINGS PTE. LTD. [SSH]	146	65172	14.168
15 AUG 2025 - 15 AUG 2025	ZHULIAN	MR TEOH BENG SENG [SSH]	46	267973	58.252
15 AUG 2025 - 15 AUG 2025	ZHULIAN	THE BEST SOURCE HOLDINGS PTE. LTD. [SSH]	46	65026	14.136
14 AUG 2025 - 14 AUG 2025	ZHULIAN	MR TEOH BENG SENG [SSH]	32	267926	58.242
14 AUG 2025 - 14 AUG 2025	ZHULIAN	THE BEST SOURCE HOLDINGS PTE. LTD. [SSH]	32	64979	14.126

Disclaimer: The Information in Insider Activity is extracted from www.shareinvestor.com/fundamental/insider_trades. The information on this page is provided as a service to readers. It does not constitute financial advice and/or any investment recommendations. We assume no liability for damages resulting from or arising out of the use of such information. Whilst every effort is made to ensure accuracy, the information presented is not the official record of shareholder filings. Readers are advised to read the original filings on the Bursa Malaysia website at www.bursamalaysia.com



What's Next for Steel Hawk?
After a stellar IPO and major contract wins in hand...

Dato' Sharman K Michael
Deputy Chairman and Executive Director
Steel Hawk Berhad

MARKET SENTIMENTS
IRB, MyDigital ID strengthen cooperation to accelerate digital identity adoption
Gig Workers Bill aims to make SOCSO contribution mandatory - Steven Sim

Learn how to identify Hot Stocks using Technical Analysis (TA) and Fundamental Analysis (FA)

SIGN UP FOR Invest NOW IT'S FREE!!!

Click here

Scan me



Via email, every Friday.

Get market moving news and analyses. Regular columns include **Behind The Action** and **From The Observer**

Leaderboard • Shariah Hot Stocks • Shariah Momentum Up Stocks • Non Shariah Hot Stocks • Up Trending Stocks • Growth Stocks • Dividend Stocks • Long Companies • Insider Activity • Investor Relations • Regional Markets













The Board of Directors of **Able Global Berhad (ABLEGLOB)** is pleased to declare a Single Tier 2nd Interim Dividend of 2 sen per share in respect of the financial year ending 31 December 2025.

We wish to inform that the Board of Directors of **Axiata Group Berhad (AXIATA)**, had on 27 August 2025 declared a tax exempt dividend of 5.0 sen under single tier system per ordinary share of the Company in respect of the financial year ending 31 December 2025.



FSBM Holdings Berhad (FSBM) recorded revenue of RM3.56 million for the second quarter ended 30 June 2025, representing a 3.25% year-on-year increase from RM3.45 million in the corresponding quarter of FY2024. The Group's 2QFY2025 revenue performance

was largely driven by the Intelligent Application and Digital Solutions segment, which contributed RM3.12 million, an increase of 39.2% compared to RM2.24 million in 2QFY2024. This growth reflects sustained demand for enterprise technology and digital transformation solutions.

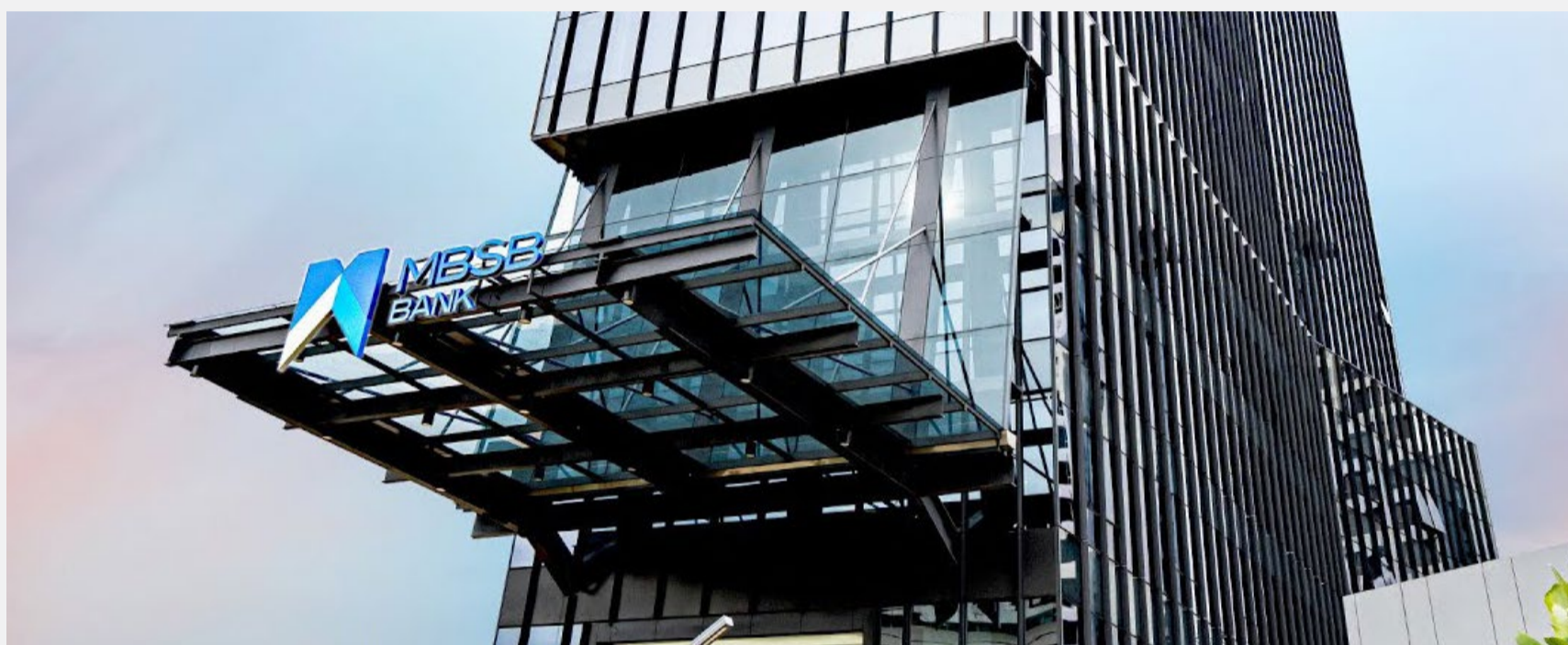
HSS Engineers Berhad (HSSEB) wishes to announce that on 28th August 2025, Unique HEB Energy Sdn Bhd has issued a LOA to Samaiden Sdn. Bhd. for the undertaking of the Engineering, Procurement, Construction and Commissioning works for the development of 95MWAC large scale solar 5 photovoltaic plant in Hilir Perak, Perak Darul Ridzuan.



[READ MORE](#)

Gamuda Berhad (GAMUDA) wishes to announce that its 30% associate company, Naim Gamuda (NAGA) JV Sdn Bhd in which Naim Engineering Sdn Bhd and Gamuda hold 70% and 30% equity interest respectively, has on 25 August 2025 accepted the award of the

project known as Proposed Development of The Northern Coastal Highway, Limbang Work Package Section 1 from the Regional Corridor Development Authority, a Sarawak State government agency for the proposed development of the Northern Coastal Highway.



MBSB Group (MBSB) today announced its financial results for the second quarter ended 30 June 2025, reflecting stronger profitability, healthier asset quality, and the steady advancement of its FLIGHT26 transformation strategy. The Group's Profit Before Tax rose 24% to RM251 million for the first half of 2025, compared to RM202 million in the corresponding period of 2024. This was underpinned by higher non-funded income (NFI) and lower impairment provisions. NFI growth was supported by stronger contributions from investment income, government scheme funds, and corporate advisory fees. Profit After Tax grew 35% year-on-year to RM180 million, versus RM133 million in the same period last year.

[READ MORE](#)



Naim Holdings Berhad (NAIM) wishes to announce that one of our subsidiaries, Naim Gamuda (NAGA) JV Sdn. Bhd., had on 25 August 2025 accepted the award from the Regional Corridor Development Authority, a Sarawak State government agency for

the proposed development of the Northern Coastal Highway, Work Package: Limbang Section 1 at the contract price of about RM1.13 billion (excluding SST) for a contract period of 48 months commencing from the date of site possession.

Sarawak Consolidated Industries Berhad (SCIB) today announced its financial results for the fourth quarter ended 30 June 2025 reporting continued progress and stable growth momentum. In Q4FY2025, SCIB recorded revenue of RM42.33 million, supported by resilient contributions from its Manufacturing and Construction/Engineering, Procurement, Construction and Commissioning divisions.



SkyWorld Development Berhad (SKYWLD), today announced its financial results for the first quarter ended 30 June 2025. For the quarter under review, SkyWorld Development recorded a revenue of RM74.6 million with a profit before tax and profit after tax of RM5.6 million and RM2.8 million respectively. These results were underpinned by steady progress from its two remaining on-going projects, specifically Curvo Residences and Vesta Residences.



Disclaimer: The information in the Investor Relations page is extracted from individual companies' announcements in www.bursamalaysia.com. The information on this page is provided as a service to readers. We assume no liability for damages resulting from or arising out of the use of such information. Whilst every effort is made to ensure accuracy, the information presented has been simplified for your reading pleasure. Readers are advised to read the original and complete filings on the Bursa Malaysia website at https://www.bursamalaysia.com/market_information/announcements/company_announcement

Upcoming IPO					
NAME OF COMPANY	OFFER PERIOD		ISSUE PRICE (Per Ordinary Share)	LISTING SOUGHT	DATE OF LISTING
	OPENING	CLOSING			
EXPRESS POWERR SOLUTIONS (M) BHD	20 Aug 2025	8 Sept 2025	RM0.20	ACE MARKET	24 September 2025
JS SOLAR HOLDING BERHAD	28 Aug 2025	9 Sept 2025	RM0.31	ACE MARKET	23 September 2025



Learn how to identify Hot Stocks using Technical Analysis (TA) and Fundamental Analysis (FA)

SIGN UP FOR Invest

IT'S FREE!!!

[Click here](#)

