

Invest

ISSUE
265

FRIDAY
1 AUG 2025

Scan/Click QR to Register



Via email, every Friday

A Weekly e-Publication by SHAREINVESTOR

SAC

SMART ASIA CHEMICAL BHD



From Humble Beginnings
To A Total Building
Protection Powerhouse,

SMART Races Ahead

See more on pages 30-39

JS Goh,

Director,
Smart Paint Manufacturing Sdn Bhd
Smart Paints (M) Sdn Bhd
Smart CKS Manufacturing Sdn Bhd

MARKET SENTIMENTS

See more on pages 40-45

Q3 2025 Outlook:
Tariffs, tensions,
and a ticking clock –
Eastspring



HEINEKEN Malaysia's
Purpose-Driven Partnerships
Deliver Award-Winning
Sustainability Impact

BEHIND THE TICKER:
DECODING COMPANY FUNDAMENTALS

ISSUE AUG 01 2025 Invest | 20



He has been associated with the Summing Group for many years charting the path for its manufacturing arm, first under Summand Holdings Berhad and the subsequent acquisition of Shellad.
Before that, he was with PK Management Consulting for a decade where he was the Director of Studies for the Certified Financial Program in Malaysia.
Educated at the Royal Military College, Cahir, he has an engineering degree from the University of Glasgow, and a MBA from the University of Bradford, UK.

JS **FM Global**
an investment
opportunity?

SUMMARY

- FM Global Logistics Holdings Bhd's (FMGL or the Group) (7210.MY) revenue and profitability peaked in 2022 and have since declined. Efficiency metrics and return measures show stagnation or underperformance over the past decade.

Disclaimer: This article is written for informational purposes only. It does not constitute a solicitation, offer, advice, counselling or recommendation to buy or sell. As such it is not intended to promote the purchase of shares in any way. As a reminder, any type of asset has a risk factor and needs to be evaluated from multiple perspectives. Therefore, any investment decision and the associated risk remains with the investor. The views expressed here are solely the writer's own.

See more on pages 21-28

CONTENTS

04	LEADERBOARD	13	VALUE STOCKS	54	INSIDER ACTIVITY
05	SHARIAH HOT STOCKS	14	GROWTH STOCKS	58	INVESTOR RELATIONS
06	COMPANY SPOTLIGHT	16	DIVIDEND STOCKS		
08	SHARIAH MOMENTUM UP STOCKS	17	BROKERS' CALL		
10	NON SHARIAH HOT STOCKS	18	LONG COMPANIES		
12	UP TRENDING STOCKS	46	REGIONAL MARKETS		
		47	FROM MSWG's THE OBSERVER		

ISSUE
265
FRIDAY
01 AUGUST 2024

SHAREINVESTOR®

An AlphaInvest Company

Invest with Knowledge

INVESTOR PLATFORMS

Director
Darren Chong
darren.chong@shareinvestor.com

Business Development Manager
Jay Cheong
jay.cheong@shareinvestor.com

ADMIN & OPERATIONS

Senior Executive
Watie Nordin
watie.nordin@shareinvestor.com

Executive
Silas Emmanuel Joseph
silas.joseph@shareinvestor.com

PROCESS AUTOMATION & DATA ANALYTICS

Data Analyst
Lee Khai Bing

INVESTOR RELATIONS

Group Managing Director & Publisher
Edward Stanislaus
edward@shareinvestor.com

Senior Manager
Letticia Wong
letticia.wong@shareinvestor.com

Manager
Aida Norzeti Talib
aida.norzeti@shareinvestor.com

ALPHAINVEST HOLDINGS BOARD OF DIRECTORS

Chairman	Patrick Daniel
Group CEO	Christopher Lee
Group COO	Lim Dau Hee
Group MD	Shanison Lin



ShareInvestor Malaysia Sdn. Bhd.
(200001023956) (526564-M)
L15-03 & 03A, PJX HM Shah Tower,
No 16A, Jalan Persiaran Barat, PJS 52,
46200 Petaling Jaya, Selangor

Hotline : 603 8681 0580
Mobile : 011 6343 8939
Website : www.ShareInvestor.com.my
www.alphainvestholdings.com
www.Facebook.com/ShareInvestorMalaysia

ADVERTISEMENT ENQUIRY

Abraham-Louis Breguet,

...in search of a wider audience

To protect himself from the violence of the French Revolution, A.-L. Breguet returned to Switzerland in 1793, staying in Neuchâtel and Le Locle. In 1795 he went back to Paris where, in 1775, he had set up his workshop, on the Île de la Cité, and had already achieved fame. On his return, he set about turning his company around, developing numerous projects, including the Souscription watch.

A beating heart, ...of mechanical art

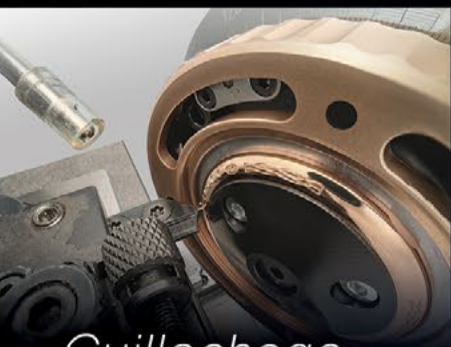
[Discover More
- Play Now](#)

On the back of the case, the generously sized, slightly domed, sapphire crystal reveals the mechanical construction of the new VS00 calibre in gilded brass in the same shade as Breguet gold. It is decorated with an entirely new type of guilloché pattern unveiled this year, called Quai de l'Horloge. This new design is inspired by the singular curves of the Île de la Cité and the slender refinement of the Île Saint-Louis to create a harmonious rhythm that can be infinitely modulated. This new creation celebrates guilloché as a living art, sublimated by Breguet's expertise. The structural typology of the movements in the first Souscription watches produced by A.-L. Breguet was the inspiration for this calibre.

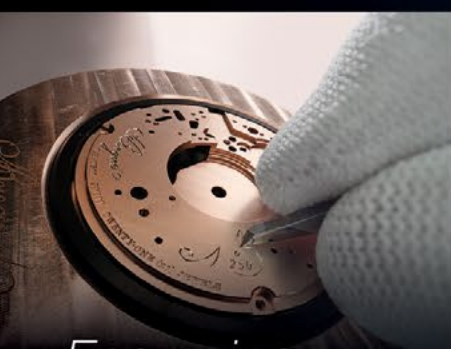
The crafts:



Breguet blued hans



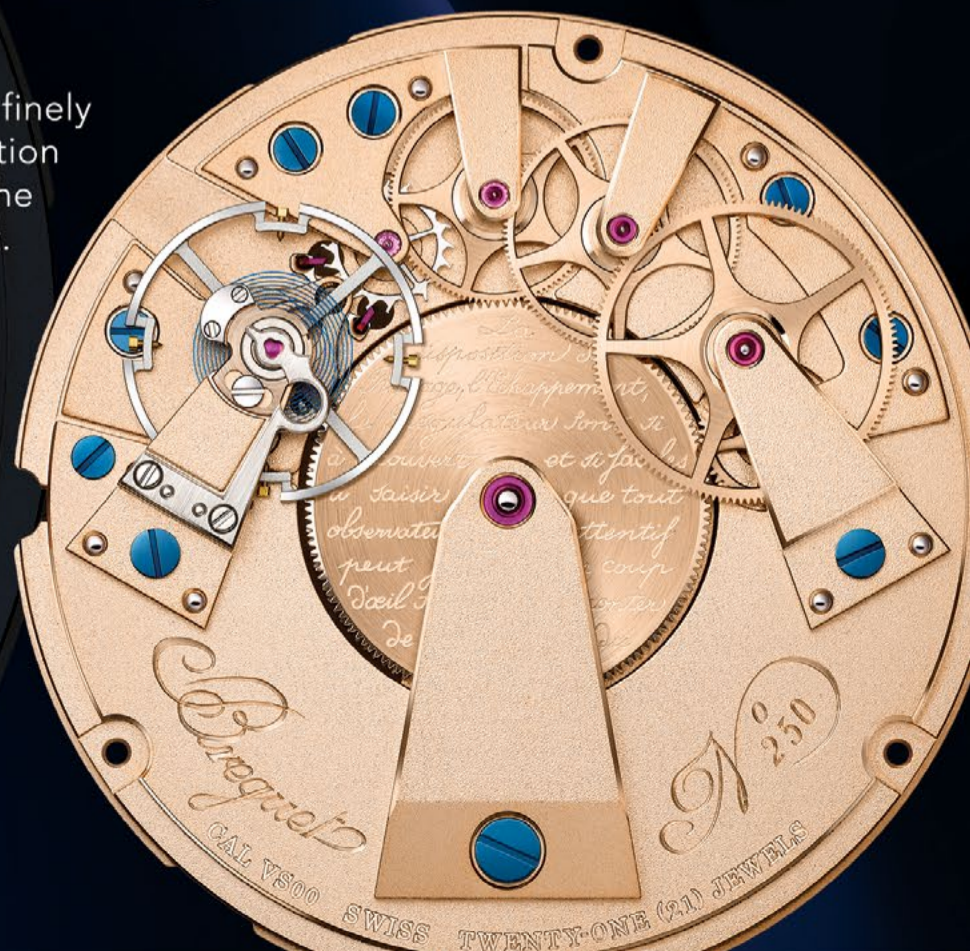
Guillochage



Engraving

The result of a meticulous development process, this movement beats at a frequency of 3Hz (21,600 vibrations per hour) and delivers an impressive four-day power reserve using only a single barrel. The balance spring, a small, coiled spring that is at the heart of the precision timekeeping of the watch, is blued and features a Breguet overcoil. It is made from Nivachron™, a non-magnetic alloy essentially composed of titanium. This makes the movement more resistant to temperature variations, magnetic fields and shocks.

The plate and bridges are finely shot-blasted, a new decoration directly inspired by the movements of A.-L. Breguet. Blued steel screws and rubies further enhance the movement. At the centre sits the imposing ratchet wheel, which features an engraved inscription: the founder's words, explaining the design of the Souscription movement and taken from his advertising brochure, are faithfully reproduced in his characteristic cursive script.



www.shareinvestor.com - market data at your fingertips



ShareInvestor WebPro (www.shareinvestor.com/my)
Prices > Stock Prices > Bursa > click Stocks tab

1. mouse over Ranking > select Top Active > all Shariah stocks are denoted with an [S] > mouse over Column Layout > select Edit Customs > select Name > select Volume > select Last Done Price > Mouse Over Column Layout > select Custom
2. mouse over Ranking > select Top Turnover > all Shariah stocks are denoted with an [S] > mouse over Column Layout > select Edit Customs > select Name > select Last Done Price > select Value > Mouse Over Column Layout > select Custom
3. mouse over Ranking > select Top Gainers (Over 5 Trading Days) > mouse over Column Layout > select Edit Customs > select Name > select Last Done Price > select 5 Days Change > select 5 Days % Change > Mouse Over Column Layout > select Custom
4. mouse over Ranking > select Top Losers (Over 5 Trading Days)
5. mouse over Ranking > select Top % Gainers (Over 5 Trading Days)
6. mouse over Ranking > select Top % Losers (Over 5 Trading Days)

Shariah Top Actives (As at Yesterday)

Name	Price (RM)	Volume
PHARMA [S]	0.175	2,185,873.000
TWL [S]	0.025	1,050,161.000
ZETRIX [S]	0.880	559,269.000
TOPGLOV [S]	0.685	462,426.000
TANCO [S]	0.835	427,095.000
VS [S]	0.805	401,946.000
NEXG [S]	0.535	293,321.000
INARI [S]	2.110	285,648.000
G3 [S]	0.020	281,696.000
ECOSHOP [S]	1.340	280,069.000

Shariah Top Turnover (As at Yesterday)

Name	Price (RM)	Value (RM)
TENAGA [S]	13.020	163,162,376
GAMUDA [S]	5.180	80,476,383
INARI [S]	2.110	60,368,053
AXIATA [S]	2.700	49,548,162
ZETRIX [S]	0.880	48,776,743
ECOSHOP [S]	1.340	37,567,477
MISC [S]	7.460	37,346,406
WPRTS [S]	5.600	36,083,294
TM [S]	6.750	36,053,608
TANCO [S]	0.835	35,864,302

Top Gainers (over 5 Trading days as at Yesterday)

Name	Price (RM)	Change (RM)
NESTLE	88.080	+5.760
MPI	20.140	+0.760
BAT	5.170	+0.590
CHINTEK	9.800	+0.350
MCEMENT	5.600	+0.340
FAREAST	4.000	+0.300
PCHEM	3.880	+0.190
INFOM	1.130	+0.170
LFG	1.160	+0.160
AXIATA	2.700	+0.150

Top % Gainers (over 5 Trading days as at Yesterday)

Name	Price (RM)	Change (%)
MERIDIAN	0.035	+250.00
IREKA	0.240	+152.63
TECHBASE	0.130	+36.84
G3	0.020	+33.33
PUC	0.025	+25.00
HOHUP	0.055	+22.22
PINEPAC	0.280	+21.74
ENGKAH	0.260	+20.93
ITRONIC	0.030	+20.00
INFOM	1.130	+17.71

Top Losers (over 5 Trading days as at Yesterday)

Name	Price (RM)	Change (RM)
TENAGA	13.020	-0.920
PANAMY	10.500	-0.460
UTDPLT	21.660	-0.440
CARLSBG	18.080	-0.420
HLBANK	19.000	-0.380
KLK	19.580	-0.360
HEIM	23.920	-0.320
KESM	2.650	-0.250
MAYBANK	9.390	-0.240
F&N	28.640	-0.200

Top % Losers (over 5 Trading days as at Yesterday)

Name	Price (RM)	Change (%)
MMM	0.015	-75.00
BIOHLDG	0.010	-50.00
FOCUS	0.005	-50.00
HONGSENG	0.005	-50.00
PHB	0.005	-50.00
ZENTECH	0.005	-50.00
AIM	0.015	-40.00
OVERSEA	0.025	-37.50
MTRONIC	0.010	-33.33
NETX	0.040	-33.33

Price & Volume Distribution Charts (as at Yesterday)

Technical Analysis

DEFINITION: Shariah compliant stocks with Technical Analysis showing 5-days & 10-days Moving Average Price below Yesterday's Close over past 3 days and with Volume Spike.

CHART GUIDE: Volume Distribution Chart is a statistical interpretation of the current sentiment on each stock in graphical format. The highest bar categorized as >150k is likely to be traded by institutions or super dealers, while the lowest bar categorized as <15k usually represents retail investors. "Buy Up" refers to more buyers snatching up the lots queued at selling price. "Sell Down" refers to sellers selling their shares to the buying queue



ShareInvestor WebPro > Screener > Market Screener (FA & TA) > select BURSA > add criteria

A. Criteria

- > click Add Criteria
- Technical Analysis Conditions tab select (i) Moving Average Below Close (ii) Volume Spike
- Fundamental Analysis Conditions tab > select (iii) Revenue
- Prices & Other Conditions tab > select (iv) Is Shariah Compliant
- Technical Analysis Conditions tab select (v) Moving Average Below Close
- Prices & Other Conditions tab > select (vi) Last Done Price
- Technical Analysis Conditions tab select (vii) Moving Average Below Close

B. Conditions (Criteria Filters)

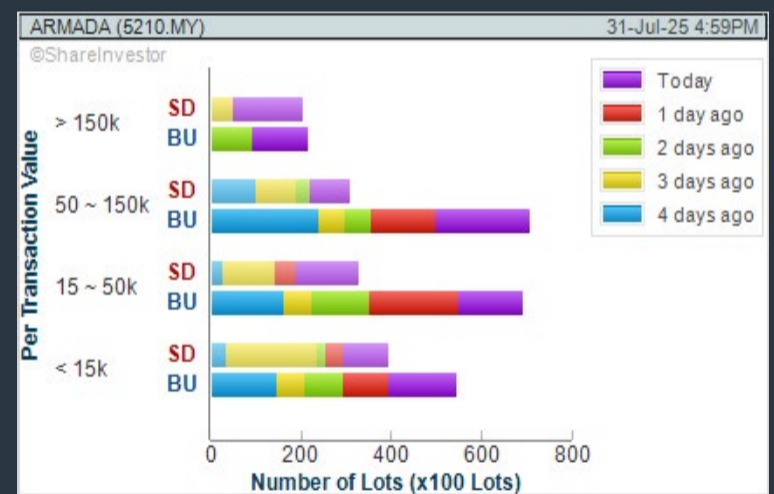
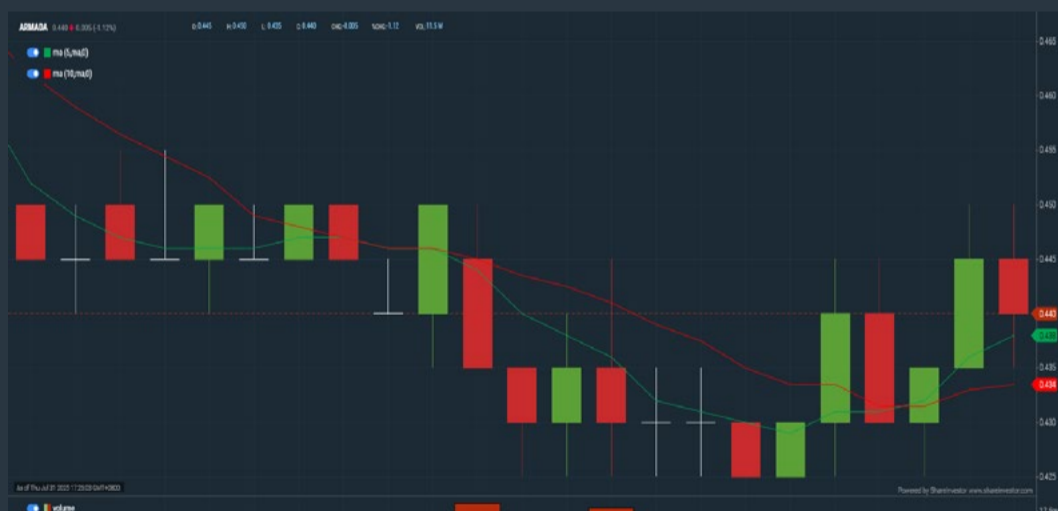
1. Moving Average Below Close - select (MA) type (5) below close price for type (3) days
2. Volume Spike - Volume type (1) greater than type (5) days average
3. Revenue ("000) - select (more than) type (1) for the past select (1) financial year(s)
4. Is Shariah Compliant - select **Yes**
5. Moving Average Below Close - select (MA) type (10) below close price for type (3) days
6. Last Done Price - select (more than) type (0.3)
7. Moving Average Below Close - select (EMA) type (5) below close price for type (3) days

- > click Save Template > Create New Template type (Shariah Hot Stocks) > click Create
- > click Save Template as > select Shariah Hot Stocks > click Save
- > click Screen Now (may take a few minutes)
- > Sort By: Select (Vol) Select (Desc)
- > Mouse over stock name > Charts > click C² Charts or Volume Distribution

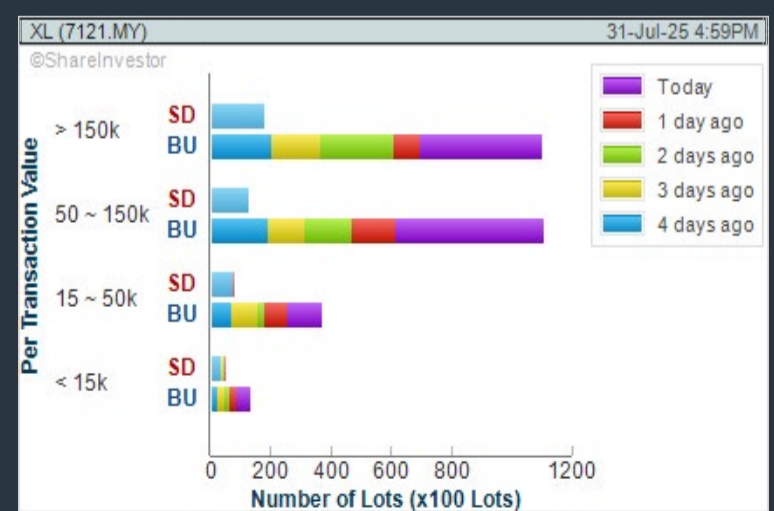
DIALOG GROUP BHD (7277) C² Chart



BUMI ARMADA BERHAD (5210) C² Chart



XL HOLDINGS BERHAD (7121) C² Chart



Disclaimer: The information on this page is provided as a service to readers. It does not constitute financial advice and/or any investment recommendations. Past performance is not indicative of future results. We assume no liability for damages resulting from or arising out of the use of such information. It would be best if you did your own research to make your personal investment decisions wisely or consult a licenced investment advisor.



making places collaborative



usm.com

XTRA

XTRA FURNITURE SDN BHD
The Gardens Mall, Mid Valley City, Lot S-236 & 237
Lingkar Syed Putra, 59200 Kuala Lumpur
T. +603 2282 9088 | living@xtrafurniture.com | xtrafurniture.com
📍 XTRAFurniture | 🌐 xtrafurnituremsia

Price & Volume Distribution Charts (as at Yesterday)

Technical Analysis

DEFINITION: Shariah compliant stocks with Technical Analysis showing Bullish Momentum and Price Uptrend. The share price closed at the highest price yesterday. The typical price was higher than the previous day's typical price.

CHART GUIDE: Volume Distribution Chart is a statistical interpretation of the current sentiment on each stock in graphical format. The highest bar categorized as >150k is likely to be traded by institutions or super dealers, while the lowest bar categorized as <15k usually represents retail investors. "Buy Up" refers to more buyers snatching up the lots queued at selling price. "Sell Down" refers to sellers selling their shares to the buying queue.



ShareInvestor WebPro > Screener > Market Screener (FA & TA) > select BURSA > add criteria

A. Criteria

- > click Add Criteria
- Fundamental Analysis Conditions tab > select (i) Revenue
- Technical Analysis Conditions tab select (ii) Average Volume
- Prices & Other Conditions tab > select (iii) Last Done Price
- Prices & Other Conditions tab > select (iv) Is Shariah Compliant
- Technical Analysis Conditions tab select (v) RSI Overbought
- Technical Analysis Conditions tab select (vi) Moving Average Below Close
- Technical Analysis Conditions tab select (vii) CCI Overbought

B. Conditions (Criteria Filters)

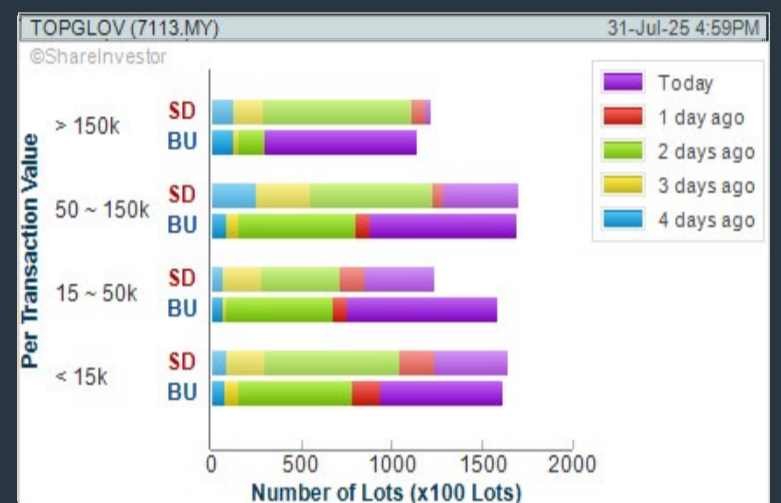
1. Revenue ("000) - select (more than) type (1) for the past select (1) financial year(s)
2. Average Volume - type (1) days average volume greater than type (10000) lots
3. Last Done Price - select (more than) type (0.3)
4. Is Shariah Compliant - select Yes
5. RSI Overbought - select RSI 1 above 99 for 1 days
6. Moving Average Below Close - select (MA) type (10) below close price for type (1) days
7. CCI Overbought - select CCI (2) above (0) for (1) days

- > click Save Template > Create New Template type (Shariah Momentum Up Stocks) > click Create
- > click Save Template as > select Shariah Momentum Up Stocks > click Save
- > click Screen Now (may take a few minutes)
- Sort By: Select (Vol) Select (Desc)
- Mouse over stock name > Charts > click C² Charts tab or Volume Distribution

TOP GLOVE CORPORATION BHD (7113)

C² Chart

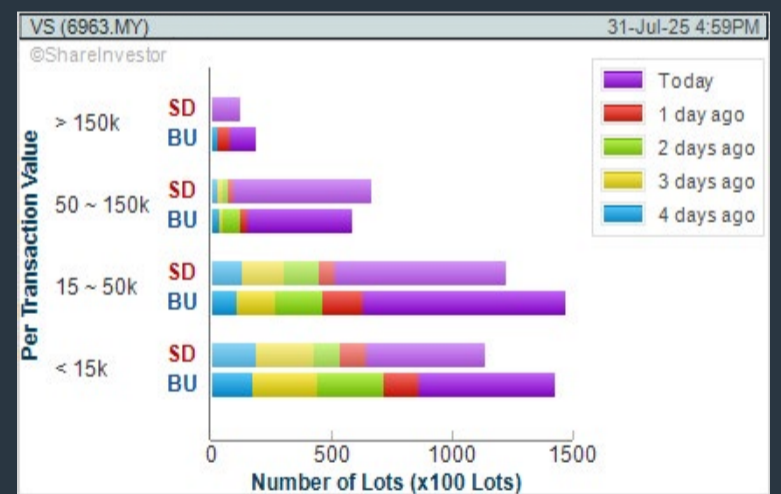
Analysis



V.S INDUSTRY BHD (6963)

C² Chart

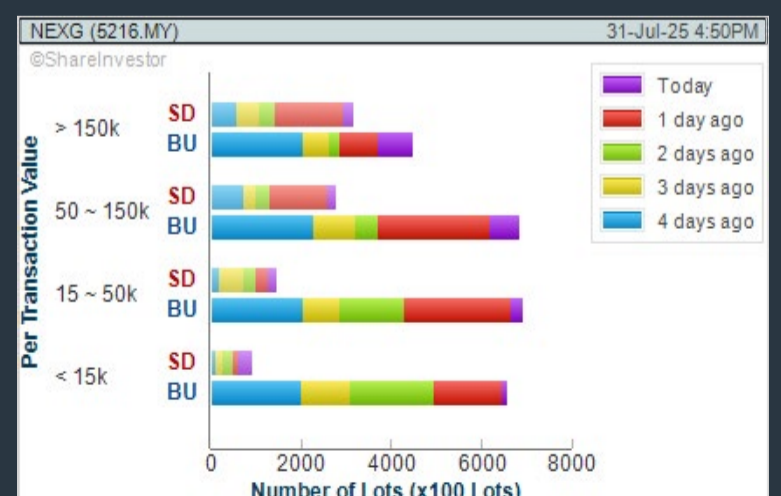
Analysis



NEXG BERHAD (5216)

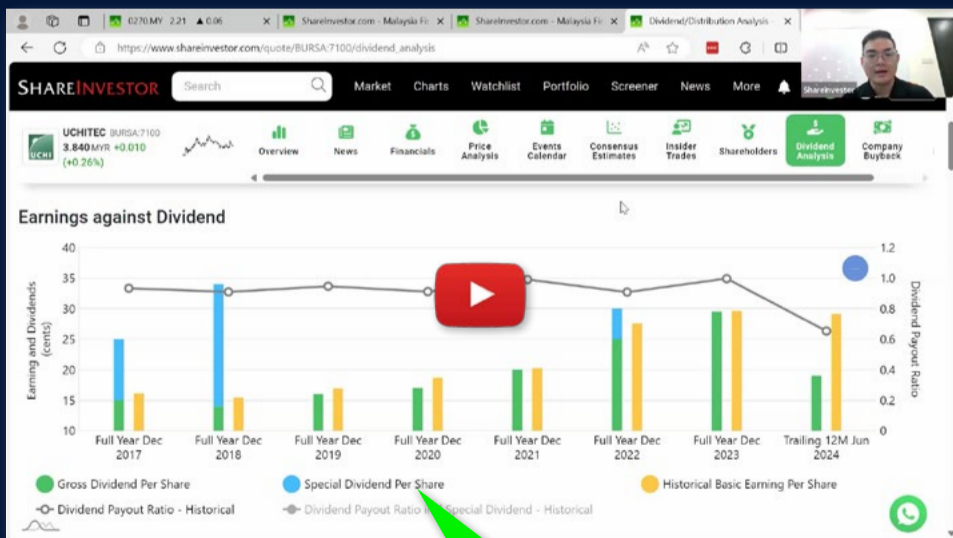
C² Chart

Analysis



Disclaimer: The information on this page is provided as a service to readers. It does not constitute financial advice and/or any investment recommendations. Past performance is not indicative of future results. We assume no liability for damages resulting from or arising out of the use of such information. It would be best if you did your own research to make your personal investment decisions wisely or consult a licenced investment advisor.

Ultimate Guide to use **ShareInvestor**



YOU WILL LEARN HOW TO USE:

- Company Financials
- Market Screener
- Company Insider Trades
- Dividend Analysis
- Consensus Estimation
and more...

**Watch
now!**

Price & Volume Distribution Charts (as at Yesterday)

Technical Analysis

DEFINITION: Stocks with Technical Analysis showing 5-days & 10-days Moving Average Price below Close over past 1 days and with Volume Spike

CHART GUIDE: Volume Distribution Chart is a statistical interpretation of the current sentiment on each stock in graphical format. The highest bar categorized as >150k is likely to be traded by institutions or super dealers, while the lowest bar categorized as <15k usually represents retail investors. "Buy Up" refers to more buyers snatching up the lots queued at selling price. "Sell Down" refers to sellers selling their shares to the buying queue.



ShareInvestor WebPro > Screener > Market Screener (FA & TA) > select BURSA > add criteria

A. Criteria

- > click Add Criteria
- Technical Analysis Conditions tab select (i) Moving Average Below Close (ii) Volume Spike
- Fundamental Analysis Conditions tab >select (iii) Revenue
- Prices & Other Conditions tab > select (iv) Is Shariah Compliant
- Technical Analysis Conditions tab select (v) Moving Average Below Close
- Prices & Other Conditions tab > select (vi) Last Done Price
- Technical Analysis Conditions tab select (vii) Moving Average Below Close

B. Conditions (Criteria Filters)

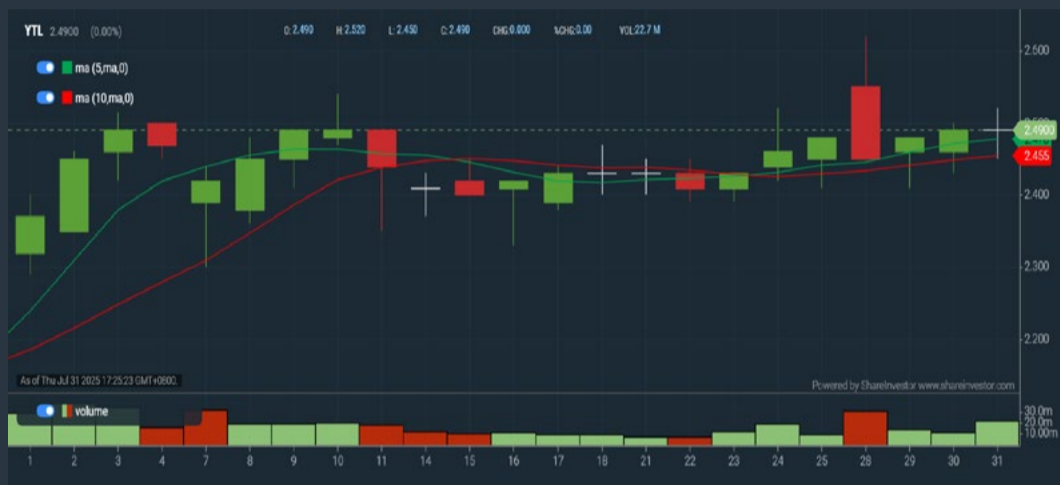
1. Moving Average Below Close - select (MA) type (5) below close price for type (3) days
2. Volume Spike - Volume type (1) greater than type (5) days average
3. Revenue ("000) - select (more than) type (1) for the past select (1) financial year(s)
4. Is Shariah Compliant - select NO
5. Moving Average Below Close - select (MA) type (10) below close price for type (1) days
6. Last Done Price - select (more than) type (0.3)
7. Moving Average Below Close - select (EMA) type (5) below close price for type (1) days

- > click Save Template > Create New Template type (Non-Shariah Hot Stocks) > click Create
- > click Save Template as > select Non-Shariah Hot Stocks > click Save
- > click Screen Now (may take a few minutes)
- Sort By: Select (Vol) Select (Desc)
- Mouse over stock name > Charts > click C² Charts tab or Volume Distribution

YTL CORPORATION BHD (4677)

C² Chart

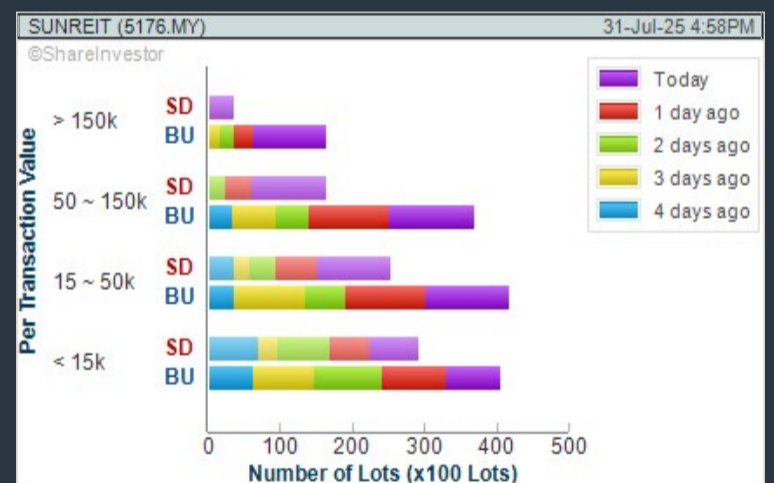
Analysis



SUNWAY REAL ESTATE INVT TRUST (5176)

C² Chart

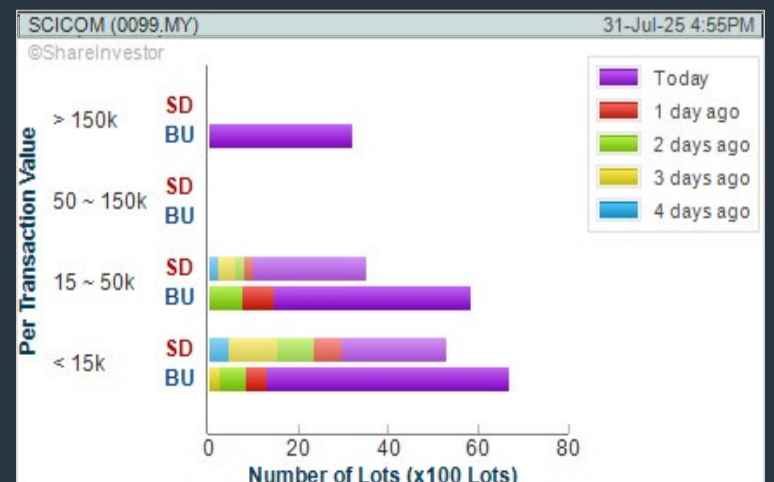
Analysis



SCICOM (MSC) BERHAD (0099)

C² Chart

Analysis



Disclaimer: The information on this page is provided as a service to readers. It does not constitute financial advice and/or any investment recommendations. Past performance is not indicative of future results. We assume no liability for damages resulting from or arising out of the use of such information. It would be best if you did your own research to make your personal investment decisions wisely or consult a licenced investment advisor.

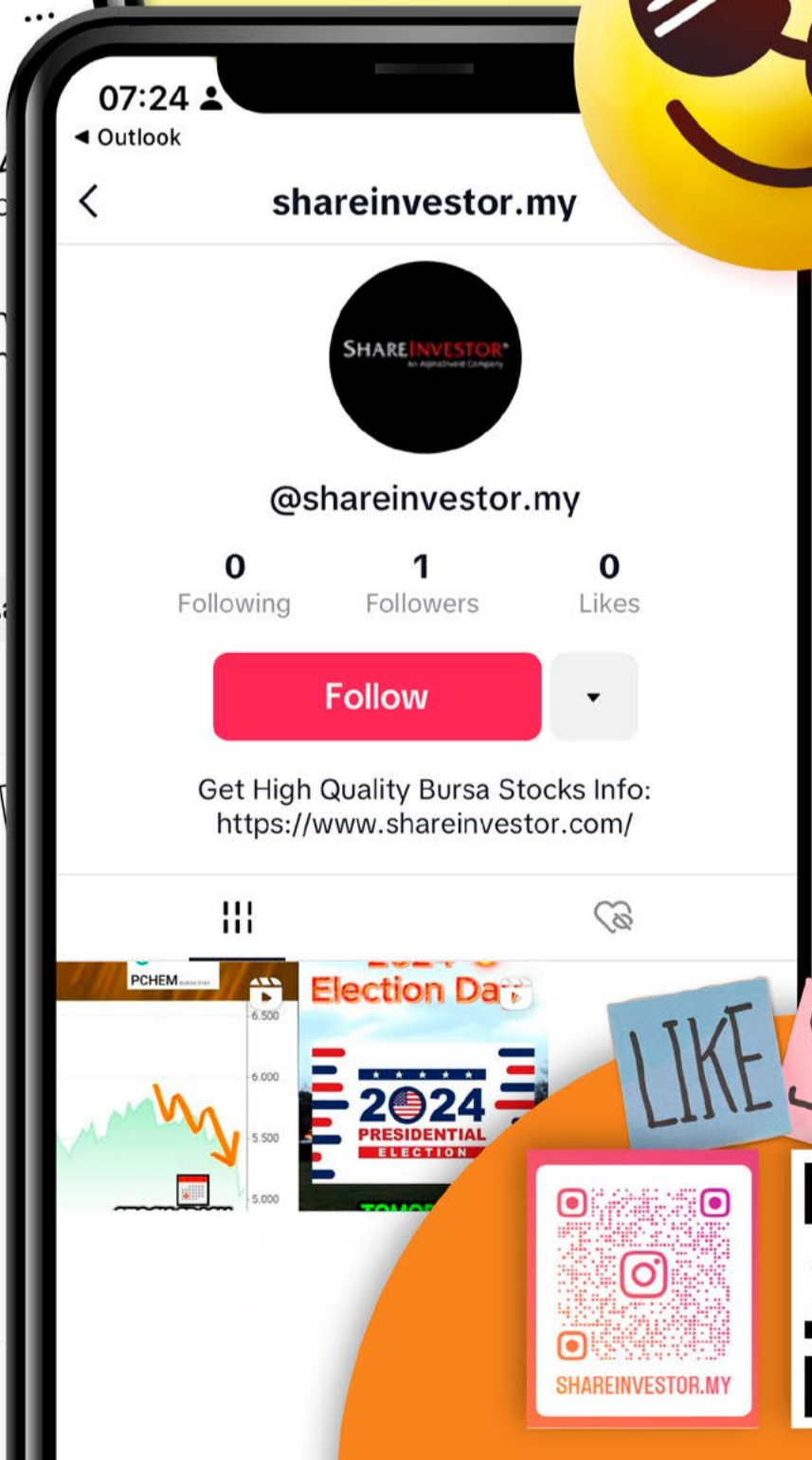
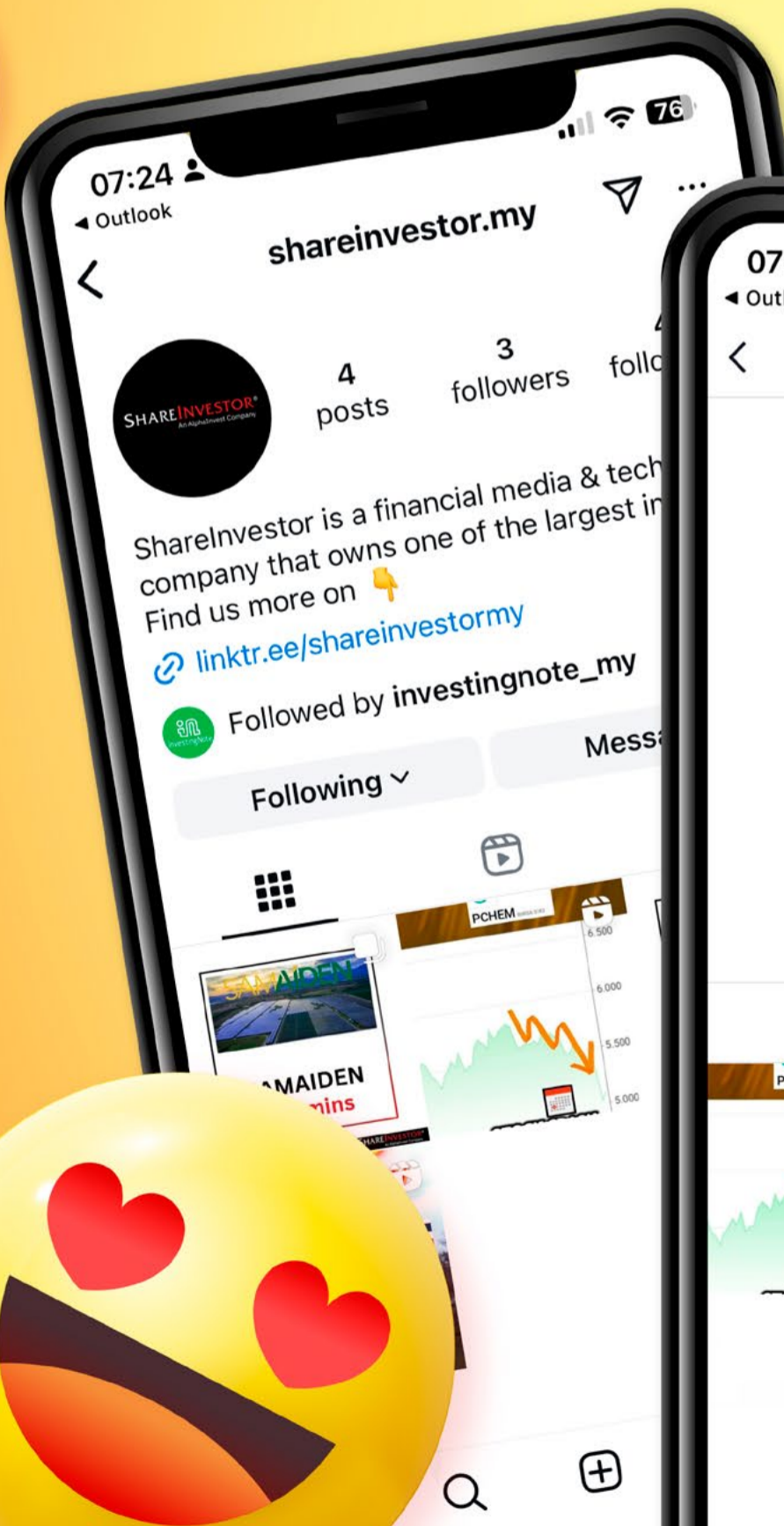
SHAREINVESTOR[®]
An AlphaInvest Company



We're Officially on TikTok & Instagram!



Follow us now for more information!



LIKE SHARE



Price & Volume Distribution Charts (Over 3 trading days as at Yesterday)

Technical Analysis

DEFINITION: Stocks with Technical Analysis showing Bullish Momentum and Price Uptrend

CHART GUIDE: Volume Distribution Chart is a statistical interpretation of the current sentiment on each stock in graphical format. The highest bar categorized as >150k is likely to be traded by institutions or super dealers, while the lowest bar categorized as <15k usually represents retail investors. "Buy Up" refers to more buyers snatching up the lots queued at selling price. "Sell Down" refers to sellers selling their shares to the buying queue.



ShareInvestor WebPro > Screener > Market Screener (FA & TA) > select BURSA > add criteria

A. Criteria

- > click Add Criteria
- Fundamental Analysis Conditions tab > select (i) Revenue
- Technical Analysis Conditions tab select (ii) Moving Average Below Close
- Technical Analysis Conditions tab select (iii) Average Volume
- Prices & Other Conditions tab > select (iv) Last Done Price
- Technical Analysis Conditions tab select (v) Moving Average Below Close
- Technical Analysis Conditions tab select (v) Moving Average Bullish Crossover

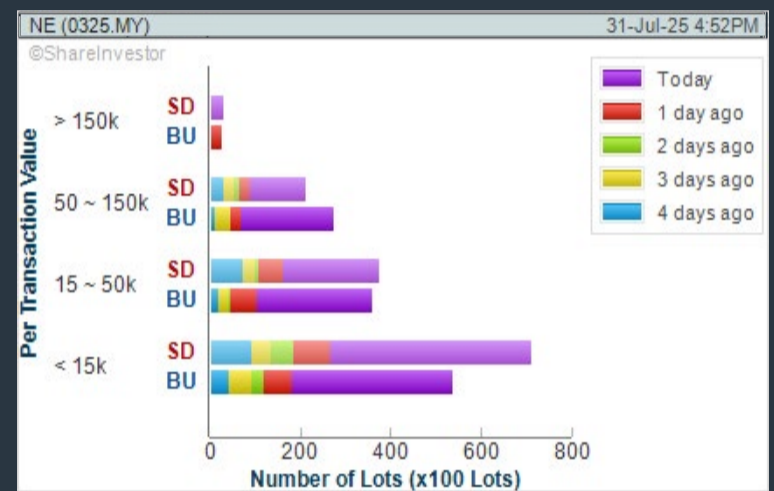
B. Conditions

1. Revenue - select (more than) type (1) for the past select (1) financial year(s)
2. Moving Average Below Close - select (MA) type (20) below close price for type (1) days
3. Average Volume - type (5) days average volume type (10000) lots
4. Last Done Price - select (more than) type (0.3)
5. Moving Average Below Close - select (MA) type (10) below close price for type (1) days
6. Moving Average Bullish Crossover - select (MA) type (5) crossed above select (MA) type (10)

> click Save Template > Create New Template type (Non-Shariah Up-Trending Stocks) > click Create Click Save Template As > select Non-Shariah Up Trending Stocks > click Save > click Screen Now (may take a few minutes) Sort By: Select (Vol) Select (Desc) Mouse over stock name > Charts > click C² Charts tab or Volume Distribution

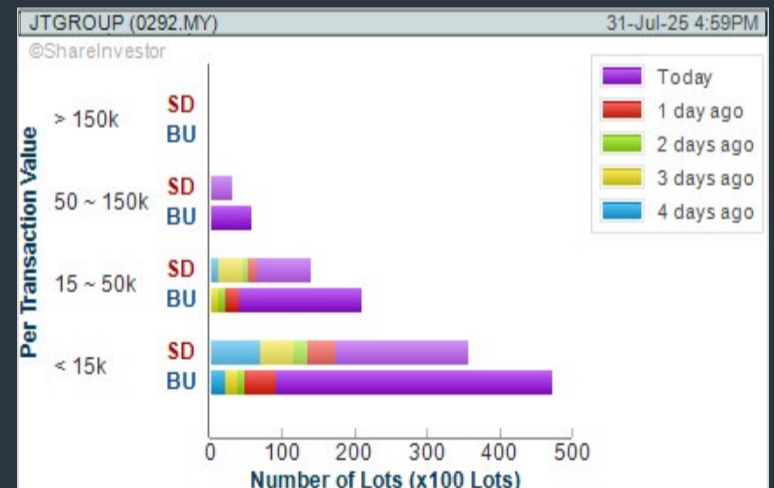
NORTHEAST GROUP BERHAD (0325)

C² Chart



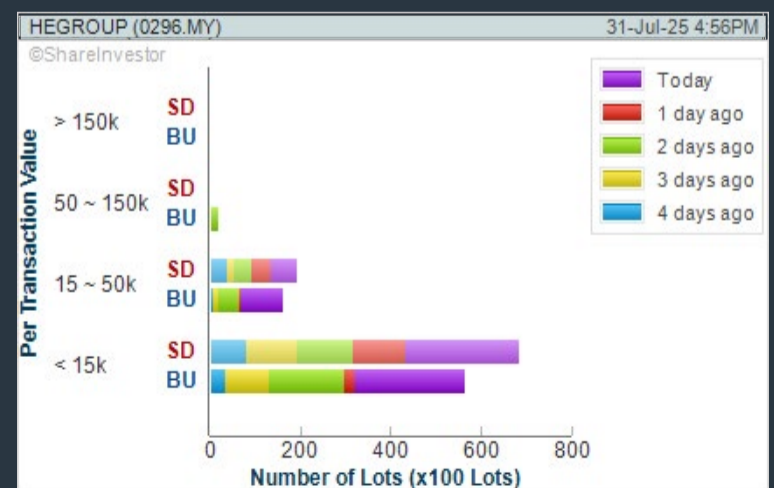
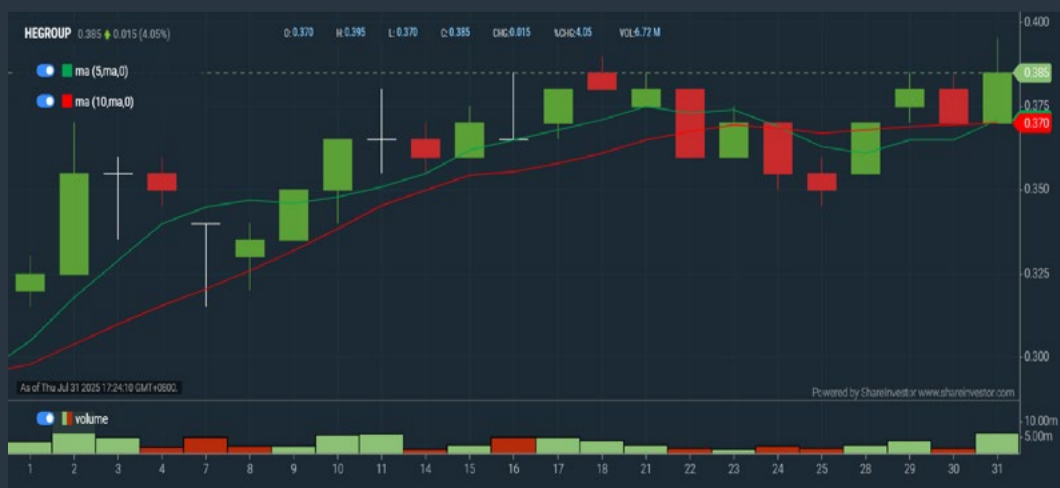
JATI TINGGI GROUP BERHAD (0292)

C² Chart



HE GROUP BERHAD (0296)

C² Chart



Disclaimer: The information on this page is provided as a service to readers. It does not constitute financial advice and/or any investment recommendations. Past performance is not indicative of future results. We assume no liability for damages resulting from or arising out of the use of such information. It would be best if you did your own research to make your personal investment decisions wisely or consult a licenced investment advisor.

Price & Total Shareholder Return (as at Yesterday)

Fundamental Analysis

DEFINITION: Share price of a company trading at a lower price as compared to its fundamentals (FA) such as financial performance and dividend, allowing it to be attractive to value investors.

CHART GUIDE: Total Shareholder Return (TSR) combines share price appreciation and dividend distributions paid to show the total return to the shareholder expressed as a percentage.



ShareInvestor WebPro > Screener > Market Screener (FA & TA) > select BURSA > add criteria

A. Criteria

- > click Add Criteria
- Fundamental Analysis Conditions tab (i) Price Earnings Ratio
- Fundamental Analysis Conditions tab >select (ii) CAGR of Net Earnings
- Fundamental Analysis Conditions tab >select (iii) Net Debt To Equity
- Fundamental Analysis Conditions tab >select (iv) Return On Equity (ROE)

B. Conditions

1. Price Earnings Ratio - select (less than) type (15) times now
2. CAGR of Net Earnings - select (more than) type (10) % for the past type (3) financial year(s)
3. Net Debt To Equity – select (less than) type (1) for the past select (1) financial year(s)
4. Return On Equity (ROE) – select (more than) type (10) % for the past select (1) financial year(s)

- > click Save Template > Create New Template type (Value Stock) > click Create
- > click Save Template as > select Value Companies > click Save
- > click Screen Now (may take a few minutes)
- Sort by: Select (PE Ratio) Select (Ascending)
- > Mouse over stock name > Factsheet > looking for Total Shareholder Return
- > Mouse over stock name > Charts > click C2 Charts tab

INGENIEUR GUDANG BERHAD (5178)

C² Chart

Analysis



Period	Dividend Received	Capital Appreciation	Total Shareholder Return
Short Term Return	1 Day	-0.00	-0.0%
	10 Day	-0.00	-0.0%
	20 Day	-	-
Medium Term Return	30 Day	-0.01	-0.0%
	60 Day	-0.02	-0.0%
	1 Year	-0.02	-0.0%
Long Term Return	2 Year	-0.00	-0.0%
	3 Year	-0.00	-0.0%
	5 Year	-0.00	-0.0%
Annualized Return	Annualized	-	-0.0%
Long Term Return	3 Year	0.00	-0.0%
	5 Year	0.00	-0.0%
	Annualized Return	Annualized	-

MUDAJAYA GROUP BHD (5085)

C² Chart

Analysis



Period	Dividend Received	Capital Appreciation	Total Shareholder Return
Short Term Return	1 Day	-	-0.0%
	10 Day	-0.00	-0.0%
	20 Day	-0.00	-0.0%
Medium Term Return	30 Day	-0.00	-0.0%
	60 Day	-0.00	-0.0%
	1 Year	-0.00	-0.0%
Long Term Return	2 Year	-0.00	-0.0%
	3 Year	0.00	-0.0%
	5 Year	0.00	-0.0%
Annualized Return	Annualized	-	-0.0%
Long Term Return	3 Year	0.00	-0.0%
	5 Year	0.00	-0.0%
	Annualized Return	Annualized	-

MUAR BAN LEE GROUP BERHAD (5152)

C² Chart

Analysis



Period	Dividend Received	Capital Appreciation	Total Shareholder Return
Short Term Return	1 Day	-0.00	-0.0%
	10 Day	-0.00	-0.0%
	20 Day	-0.00	-0.0%
Medium Term Return	30 Day	-0.00	-0.0%
	60 Day	-0.00	-0.0%
	1 Year	-0.00	-0.0%
Long Term Return	2 Year	0.00	-0.0%
	3 Year	-0.00	-0.0%
	5 Year	-0.00	-0.0%
Annualized Return	Annualized	-	-0.0%
Long Term Return	3 Year	0.00	-0.0%
	5 Year	0.00	0.0%
	Annualized Return	Annualized	-

Disclaimer: The information on this page is provided as a service to readers. It does not constitute financial advice and/or any investment recommendations. Past performance is not indicative of future results. We assume no liability for damages resulting from or arising out of the use of such information. It would be best if you did your own research to make your personal investment decisions wisely or consult a licenced investment advisor.

Price & Total Shareholder Return (as at Yesterday)

Fundamental Analysis

DEFINITION: Company revenue is growing and making good quality of earnings with positive Free Cash Flow.

CHART GUIDE: Total Shareholder Return (TSR) combines share price appreciation and distributions paid to show the total return to the shareholder expressed as a percentage.



ShareInvestor WebPro > Screener > Market Screener (FA & TA) > select BURSA > add criteria

A. Criteria

1. Fundamental Analysis Conditions tab > select (i) Free Cash Flow, (ii) Revenue Growth, (iii) Gross Profit (Earnings) Margin, (iv) Quality of Earnings, (v) Total Shareholder Returns, > click Add Criteria
2. Fundamental Analysis Conditions tab > select (vi) Total Shareholder Returns > click Add Criteria

B. Conditions (Criteria Filters)

1. Free Cash Flow - select (more than) type (1) for the past select (1) financial year(s)
2. Revenue Growth - select (more than) type (1) for the past select (1) financial year(s)
3. Gross Profit (Earnings) Margin - select (more than) type (30) % for the past select (1) financial year(s)
4. Quality of Earnings - select (more than) type (1) for the past select (1) financial year(s)
5. Total Shareholder Return - select (more than) type (5) % for the past select (3) financial year(s)
6. Total Shareholder Return - select (more than) type (5) % for the past select (5) financial year(s)

- > click Save Template > Create New Template type (Growth Companies) > click Create
- > click Save Template as > select Growth Companies > click Save
- > click Screen Now (may take a few minutes)
- > Sort By: Select (Revenue Growth) Select (Desc)
- > Mouse over stock name > Factsheet > looking for Total Shareholder Return

CHIN TECK PLANTATIONS BHD (1929)

C² Chart

Analysis



Period	Dividend Received	Capital Appreciation	Total Shareholder Return
Short Term Returns			
1 Day	-	+0.00	+0.0%
10 Days	-	+0.00	+0.0%
30 Days	-	+0.00	+0.0%
90 Days	-	+0.00	+0.0%
Medium Term Returns			
1 Year	0.00	+0.00	+0.0%
2 Years	0.00	+0.00	+0.0%
Long Term Returns			
3 Years	0.00	+0.00	+0.0%
5 Years	0.00	+0.00	+0.0%
Annualized Returns			
Annualized	-	-	+0.0%

INNOPRISE PLANTATIONS BERHAD (6262)

C² Chart

Analysis



Period	Dividend Received	Capital Appreciation	Total Shareholder Return
Short Term Returns			
1 Day	-	+0.00	+0.0%
10 Days	-	+0.00	+0.0%
30 Days	-	+0.00	+0.0%
90 Days	-	+0.00	+0.0%
Medium Term Returns			
1 Year	0.00	+0.00	+0.0%
2 Years	0.00	+0.00	+0.0%
Long Term Returns			
3 Years	0.00	+0.00	+0.0%
5 Years	0.00	+0.00	+0.0%
Annualized Returns			
Annualized	-	-	+0.0%

PBA HOLDINGS BHD (5041)

C² Chart

Analysis



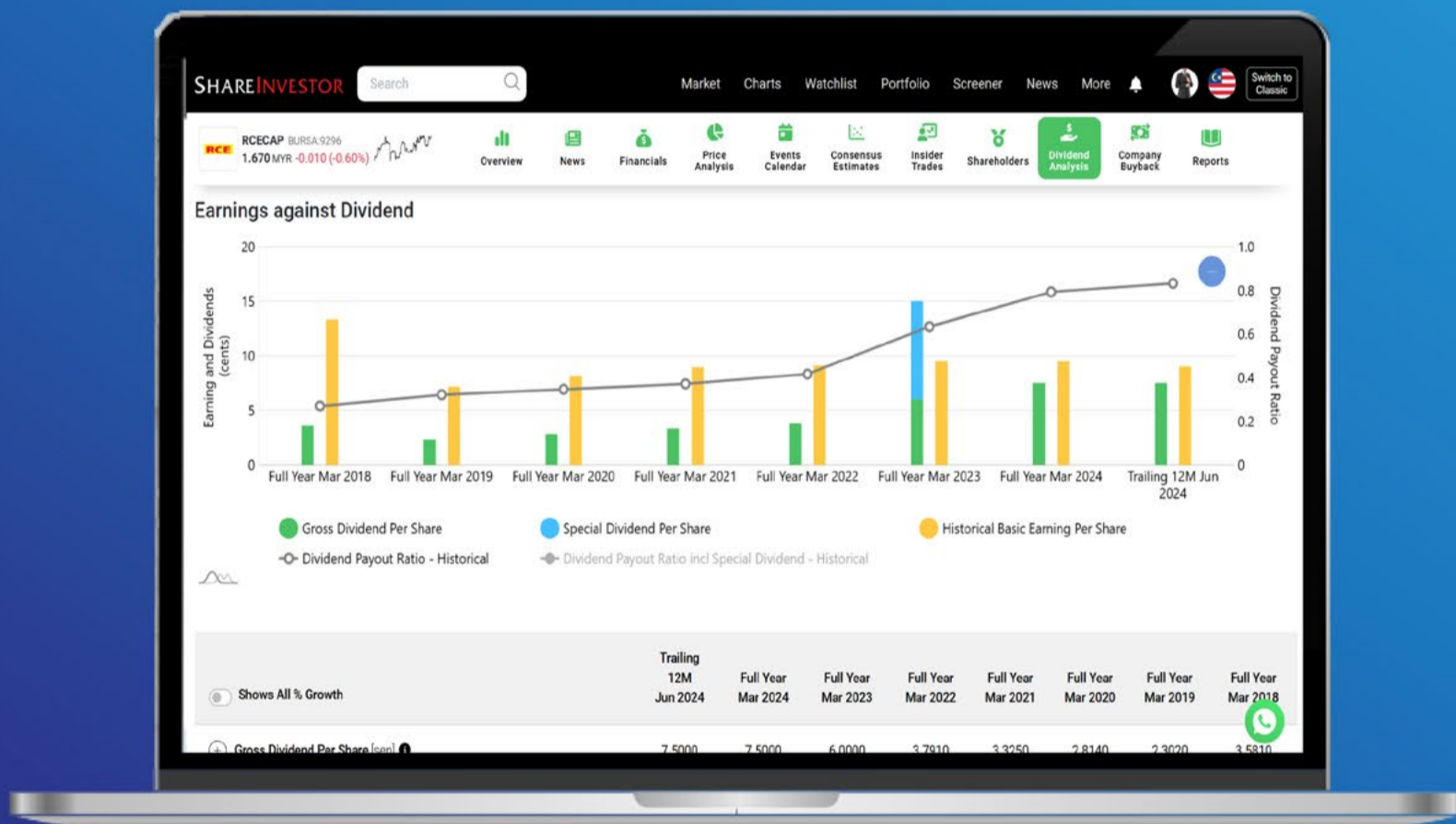
Period	Dividend Received	Capital Appreciation	Total Shareholder Return
Short Term Returns			
1 Day	-	+0.00	+0.0%
10 Days	-	+0.00	+0.0%
30 Days	0.00	+0.00	+0.0%
90 Days	0.00	+0.00	+0.0%
Medium Term Returns			
1 Year	0.00	+0.00	+0.0%
2 Years	0.00	+0.00	+0.0%
Long Term Returns			
3 Years	0.00	+0.00	+0.0%
5 Years	0.00	+0.00	+0.0%
Annualized Returns			
Annualized	-	-	+0.0%

Disclaimer: The information on this page is provided as a service to readers. It does not constitute financial advice and/or any investment recommendations. Past performance is not indicative of future results. We assume no liability for damages resulting from or arising out of the use of such information. It would be best if you did your own research to make your personal investment decisions wisely or consult a licenced investment advisor.

Tired of low returns?

Let's talk high-paying

Dividends!



✓ **Top Dividend Picks Right Now**

✓ **Insider Tips** – Advanced strategies for experienced investors

✓ **Easy-to-Follow Tutorial**

Get the most out of dividends, use our Dividend Analysis function –
Click to Watch Our Tutorial Below!

Upgrade Your Dividend Strategy Here



Price & Total Shareholder Return (as at Yesterday)

Fundamental Analysis

DEFINITION: Company is paying out dividend with low or moderate leverage.

CHART GUIDE: Total Shareholder Return (TSR) combines share price appreciation and distributions paid to show the total return to the shareholder expressed as a percentage.



ShareInvestor WebPro > Screener > Market Screener (FA & TA) > select BURSA > add criteria

A. Criteria

- > click Add Criteria
- Fundamental Analysis Conditions tab >select (i) Dividend Yield (Historical)
- Fundamental Analysis Conditions tab >select (ii) Dividend Payout (Historical)
- Fundamental Analysis Conditions tab >select (iii) Total Debt To Equity
- Fundamental Analysis Conditions tab >select (iv) Total Shareholder Returns
- Fundamental Analysis Conditions tab >select (v) Total Shareholder Returns
- Fundamental Analysis Conditions tab / >select (vi) CAGR of Dividend Per Share

• Fundamental Analysis Conditions tab >select (vii) CAGR of Dividend Per Share

B. Conditions (Criteria Filters)

1. Dividend Yield - select (more than) type (1) % for the past select (1) financial year(s)
2. Dividend Payout (Historical) - select (between) type (0.5) to type (1) times for the past select (1) financial year(s)
3. Total Debt to Equity - select (less than) type (1) for the past select (1) financial year(s)
4. Total Shareholder Return - select (more than) type (5) % for the past select (3) financial year(s)
5. Total Shareholder Return - select (more than) type (5) % for the past select (5) financial year(s)

6. CAGR of Dividend Per Share - select (less than) type (30) % for the past select (5) financial year(s)
7. CAGR of Dividend Per Share - select (more than) type (1) % for the past select (5) financial year(s)

- > click Save Template > Create New Template type (Dividend Companies) > click Create
- > click Save Template as > select Dividend Companies > click Save
- > click Screen Now (may take a few minutes)
- > Sort By: Select (Dividend Yield) Select (Desc)
- > Mouse over stock name > Factsheet > looking for Total Shareholder Return

PETRA ENERGY BERHAD (5133)

C² Chart



Analysis

Period	Dividend Received	Capital Appreciation	Total Shareholder Return
Short Term Returns			
1 Day	-	-	0.0%
10 Days	-	-0.02	-0.04%
20 Days	-	-	-
30 Days	-	-	-
Medium Term Returns			
3 Months	0.04	-0.02	0.04%
1 Year	0.05	-0.05	0.00%
2 Years	0.07	-0.09	0.00%
3 Years	0.07	-0.07	0.00%
Long Term Returns			
1 Year	0.06	-0.06	0.00%
3 Years	0.07	-0.07	0.00%
5 Years	0.08	-0.08	0.00%
Annualized Returns			
Annualized	-	-	0.00%

KENANGA INVESTMENT BANK BERHAD (6483)

C² Chart



Analysis

Period	Dividend Received	Capital Appreciation	Total Shareholder Return
Short Term Returns			
1 Day	-	-	-
10 Days	-	-0.02	-0.04%
20 Days	-	-0.02	-0.04%
30 Days	-	-	-
Medium Term Returns			
3 Months	0.02	-0.02	0.00%
1 Year	0.02	-0.02	0.00%
2 Years	0.02	-0.02	0.00%
3 Years	0.02	-0.02	0.00%
Long Term Returns			
1 Year	0.02	-0.02	0.00%
3 Years	0.02	-0.02	0.00%
5 Years	0.02	-0.02	0.00%
Annualized Returns			
Annualized	-	-	0.00%

APM AUTOMOTIVE HOLDINGS BHD (5015)

C² Chart



Analysis

Period	Dividend Received	Capital Appreciation	Total Shareholder Return
Short Term Returns			
1 Day	-	-	0.0%
10 Days	-	0.02	0.04%
20 Days	-	0.02	0.04%
30 Days	-	0.02	0.04%
Medium Term Returns			
3 Months	0.02	-0.02	0.00%
1 Year	0.02	-0.02	0.00%
2 Years	0.02	-0.02	0.00%
3 Years	0.02	-0.02	0.00%
Long Term Returns			
1 Year	0.02	-0.02	0.00%
3 Years	0.02	-0.02	0.00%
5 Years	0.02	-0.02	0.00%
Annualized Returns			
Annualized	-	-	0.00%

Disclaimer: The information on this page is provided as a service to readers. It does not constitute financial advice and/or any investment recommendations. Past performance is not indicative of future results. We assume no liability for damages resulting from or arising out of the use of such information. It would be best if you did your own research to make your personal investment decisions wisely or consult a licenced investment advisor.

Week: 25 Jul 2025 - 31 Jul 2025

More Brokers' Call 

AMINVESTMENT BANK <small>... See More</small>	Call	Target Price	Release Date
Nestle (Malaysia) Berhad (4707)	HOLD	RM73.00	28 Jul 25
Bursa Malaysia Berhad (1818)	HOLD	RM7.70	29 Jul 25
APEX SECURITIES <small>... See More</small>	Call	Target Price	Release Date
Tasco Berhad (5140)	HOLD	RM0.51	29 Jul 25
Samaiden Group Berhad (0223)	BUY	RM1.60	30 Jul 25
Hong Leong Investment Bank <small>... See More</small>	Call	Target Price	Release Date
Axis REIT (5106)	BUY	RM2.25	31 Jul 25
CIMB Group Holdings Berhad (1023)	BUY	RM8.80	31 Jul 25
KENANGA <small>... See More</small>	Call	Target Price	Release Date
Axis REIT (5106)	MARKET PERFORM	RM1.86	31 Jul 25
Samaiden Group Berhad (0223)	OUTPERFORM	RM1.47	31 Jul 25
MALACCA SECURITIES <small>... See More</small>	Call	Target Price	Release Date
Wentel Engineering Holdings Berhad (0298)	BUY	RM0.48	29 Jul 25
IGB Commercial Real Estate Investment Trust (5299)	BUY	RM0.72	30 Jul 25
MIDF <small>... See More</small>	Call	Target Price	Release Date
Axis REIT (5106)	NEUTRAL	RM2.06	31 Jul 25
CIMB Group Holdings Berhad (1023)	BUY	RM8.22	31 Jul 25
Dialog Group Berhad (7277)	BUY	RM1.85	31 Jul 25
PUBLIC INVESTMENT BANK <small>... See More</small>	Call	Target Price	Release Date
Axis REIT (5106)	NEUTRAL	RM1.96	31 Jul 25
Dialog Group Berhad (7277)	NEUTRAL	RM1.70	31 Jul 25
LBS Bina Group Berhad (5789)	OUTPERFORM	RM0.67	31 Jul 25
UOB KAY HIAN <small>... See More</small>	Call	Target Price	Release Date
Bursa Malaysia Berhad (1818)	HOLD	RM7.87	30 Jul 25
Hap Seng Plantations Holdings Berhad (5138)	BUY	RM2.20	30 Jul 25

Disclaimer: InveSt does not accept any liability whatsoever for any direct, indirect or consequential losses (including loss of profit) or damages that may arise from the use of information or opinions in this publication. The information and opinions in InveSt are not to be considered as an offer to sell or buy any of the securities discussed. Opinions expressed are subject to change without notice. The Brokers may, from time to time, have interests or positions in the securities mentioned. For the full report on each item listed on this page, please visit https://www.shareinvestor.com/my/brokers_call.

DEFINITION: Top 10 stocks with Technical Analysis plus Pattern Matching by 60 pre-defined indicators by the system showing a higher probability of bullish sentiment on the share price.



ShareInvestor WebPro > Screener > Predefined TA Screens > select market BURSA > Most Long Signals > click Scan Results or mouse over each company

IREKA CORPORATION BHD (8834.MY)

IREKA

Price updated at 31 Jul 2025 17:31

Last: 0.240	Change: +0.060	Volume: 36,176
	Change (%): +33.33	Range: 0.200 - 0.330

TA Scanner Results based on historical data up to 31 Jul 2025

Condition	Signal	Explanation
Bollinger Band: High Above Upper Bollinger Band	Neutral	"1. High above upper bollinger band(14,2). 2. Average volume(5) is above 100,000."
DM: Bullish Directional Movement	Long	-DI(14) crossed below +DI(14)
Donchian Channels: High Above Upper Donchian Channels	Long	High crossed above the upper Donchian Channel(14,4)
Parabolic SAR: Bearish Parabolic SAR Reversal	Neutral	"1. Parabolic SAR 1 day ago above close price 1 day ago for the last 5 days. 2. Parabolic SAR below close price"
Price: New 52 Week Low	Short	"1. Stock reach a new 52 week low. 2. Average volume(30) is above 50000."
RSI: Short Term RSI 30 Bullish Crossover	Long	"1. RSI(20) crossed above 30 within the last 1 day and RSI(20) 1 day ago below 30 for the last 5 days. 2. Volume above average volume(125). 3. Average volume(5) is above 100,000."
Stochastic: Fast Stochastic Buy Signal	Long	"1. Fast Stochastic(15,5) %K crossed above 20. 2. Fast Stochastic(15,5) %K 1 day ago was below 20 for the last 5 days. 3. Average volume(30) is above 50000"
Volume: Volume Spike	Long	"1. Volume is more than 500% above average volume(10). 2. Volume above 200000. 3. Close price above 0.10"

QL RESOURCES BHD (7084.MY)

QL

Price updated at 31 Jul 2025 17:31

Last: 4.250	Change: -0.030	Volume: 19,037
	Change (%): -0.70	Range: 4.250 - 4.320

TA Scanner Results based on historical data up to 31 Jul 2025

Condition	Signal	Explanation
Bollinger Band: Bullish Lower Bollinger Band Support	Long	"1. Low 1 day ago below lower bollinger band(20,2). 2. Close above close 1 day ago. 3. Average volume(5) is above 100,000."
Candlestick: Bullish Harami	Long	Bullish: Harami
Volume: 5 Days large value Buy Up trade	Long	"1. 150K value Buy Up greater than Sell Down by 20% for 5 days. 2. 50K-100K value Buy Up greater than Sell Down by 20% for 5 days. 3. Average volume(10) is above 1000000"
Williams %R: Bullish Williams %R	Long	"1. Williams %R(26) between -80 and -100. 2. Average volume(5) is above 100,000."

SUNWAY REAL ESTATE INVT TRUST (5176.MY)

SUNREIT

Price updated at 31 Jul 2025 17:31

Last: 2.240	Change: +0.030	Volume: 101,244
	Change (%): +1.36	Range: 2.210 - 2.280

TA Scanner Results based on historical data up to 31 Jul 2025

Condition	Signal	Explanation
Bollinger Band: Bullish Long Term Volatility Breakout and Trending	Long	"1. Close price above upper bollinger band(33,1). 2. Volume above average volume(50). 3. Average volume(50) is above 300,000."
Bollinger Band: Bullish Short Term Volatility Breakout and Trending	Long	"1. Close price above upper bollinger band(33,1). 2. Volume above average volume(10). 3. Average volume(10) is above 300,000."
MA: Short Term Bullish Moving Average Crossover	Long	MA(10) crossed above MA(15) within the last 1 day.
Volume: 10 Days large value Buy Up trade	Long	"1. 150K value Buy Up greater than Sell Down by 20% for 10 days. 2. 50K-100K value Buy Up greater than Sell Down by 20% for 10 days. 3. Average volume(10) is above 1000000"
Volume: 5 Days large value Buy Up trade	Long	"1. 150K value Buy Up greater than Sell Down by 20% for 5 days. 2. 50K-100K value Buy Up greater than Sell Down by 20% for 5 days. 3. Average volume(10) is above 1000000"
Williams %R: Bearish Williams %R	Short	"1. Williams %R(26) between 0 and -20. 2. Average volume(5) is above 100,000."

ES CERAMICS TECHNOLOGY BHD (0100.MY)

ES CERAM

Price updated at 31 Jul 2025 17:30

Last: 0.095	Change: -0.005	Volume: 4,627
	Change (%): -5.00	Range: 0.095 - 0.100

TA Scanner Results based on historical data up to 31 Jul 2025

Condition	Signal	Explanation
MA: Bullish Price Crossover	Long	"1. Close price crossed above MA(40) within the last 1 day. 2. Previous day close price is below the MA(10) for the last 5 days"
MACD: Bullish MACD Crossover	Long	"1. MACD(12,26) diff line crossed above the MACD(12,26) signal line. 2. MACD Histogram(12,26) is above 0."
Price: New 52 Week Low	Short	"1. Stock reach a new 52 week low. 2. Average volume(30) is above 50000."
RSI: Short Term RSI 50 Bullish Crossover	Long	"1. RSI(20) crossed above 50 within the last 1 day and RSI(20) 1 day ago below 50 for the last 5 days. 2. Volume above average volume(125). 3. Average volume(5) is above 100,000."
Volume: Consecutive Days Of Increasing Average Volume	Long	"1. Average Volume(20) has been increasing over the last 2 weeks. 2. Average volume(20) is above 100000"

Disclaimer: The information on this page is provided as a service to readers. It does not constitute financial advice and/or any investment recommendations. Past performance is not indicative of future results. We assume no liability for damages resulting from or arising out of the use of such information. It would be best if you did your own research to make your personal investment decisions wisely or consult a licenced investment advisor.



LBS BINA GROUP BHD (5789.MY)

LBS

Price updated at 31 Jul 2025 17:31

Last: 0.465	Change: -	Volume: 58,653
	Change (%): -	Range: 0.465 - 0.485

TA Scanner Results based on historical data up to 31 Jul 2025

Condition	Signal	Explanation
Bollinger Band: Bullish Long Term Volatility Breakout and Trending	Long	"1. Close price above upper bollinger band(33,1). 2. Volume above average volume(50). 3. Average volume(50) is above 300,000."
Bollinger Band: Bullish Short Term Volatility Breakout and Trending	Long	"1. Close price above upper bollinger band(33,1). 2. Volume above average volume(10). 3. Average volume(10) is above 300,000."
Bollinger Band: High Above Upper Bollinger Band	Neutral	"1. High above upper bollinger band(14,2). 2. Average volume(5) is above 100,000."
Bollinger Band: Low Below Lower Bollinger Band	Neutral	"1. Low below lower bollinger band(14,2). 2. Average volume(5) is above 100,000."
DM: Bullish Directional Movement	Long	-DI(14) crossed below +DI(14)
MA: Bullish Price Crossover	Long	"1. Close price crossed above MA(40) within the last 1 day. 2. Previous day close price is below the MA(10) for the last 5 days"
RSI: Short Term RSI 50 Bullish Crossover	Long	"1. RSI(20) crossed above 50 within the last 1 day and RSI(20) 1 day ago below 50 for the last 5 days. 2. Volume above average volume(125). 3. Average volume(5) is above 100,000."
Williams %R: Bearish Williams %R	Short	"1. Williams %R(26) between 0 and -20. 2. Average volume(5) is above 100,000."



PDZ HOLDINGS BHD (6254.MY)

PDZ

Price updated at 31 Jul 2025 17:31

Last: 0.035	Change: -	Volume: -
	Change (%): -	Range: 0.035 - 0.035

TA Scanner Results based on historical data up to 31 Jul 2025

Condition	Signal	Explanation
DM: Bullish Directional Movement	Long	-DI(14) crossed below +DI(14)
MA: Bullish Price Crossover	Long	"1. Close price crossed above MA(40) within the last 1 day. 2. Previous day close price is below the MA(10) for the last 5 days"
MACD: Bullish MACD Crossover	Long	"1. MACD(12,26) diff line crossed above the MACD(12,26) signal line. 2. MACD Histogram(12,26) is above 0."
Stochastic: Fast Stochastic Buy Signal	Long	"1. Fast Stochastic(15,5) %K crossed above 20. 2. Fast Stochastic(15,5) %K 1 day ago was below 20 for the last 5 days. 3. Average volume(30) is above 50000"



BRITISH AMERICAN TOBACCO (M) (4162.MY)

BAT

Price updated at 31 Jul 2025 17:31

Last: 5.170	Change: -0.150	Volume: 10,974
	Change (%): -2.82	Range: 5.100 - 5.320

TA Scanner Results based on historical data up to 31 Jul 2025

Condition	Signal	Explanation
Bollinger Band: High Above Upper Bollinger Band	Neutral	"1. High above upper bollinger band(14,2). 2. Average volume(5) is above 100,000."
Candlestick: Bullish Engulfing	Long	Bullish: Engulfing
MA: Short Term Bullish Moving Average Crossover	Long	MA(10) crossed above MA(15) within the last 1 day.
MACD: Overbought	Short	"1. MACD Histogram(12,26,9) reached a new 6 month high. 2. MACD Histogram(12,26,9) has been above 0 for the last 3 weeks."
RSI: Short Term RSI 50 Bullish Crossover	Long	"1. RSI(20) crossed above 50 within the last 1 day and RSI(20) 1 day ago below 50 for the last 5 days. 2. Volume above average volume(125). 3. Average volume(5) is above 100,000."
Volume: Volume Spike	Long	"1. Volume is more than 500% above average volume(10). 2. Volume above 200000. 3. Close price above 0.10"
Williams %R: Bearish Williams %R	Short	"1. Williams %R(26) between 0 and -20. 2. Average volume(5) is above 100,000."



NOTION VTEC BHD (0083.MY)

NOTION

Price updated at 31 Jul 2025 17:31

Last: 0.595	Change: +0.020	Volume: 53,102
	Change (%): +3.48	Range: 0.570 - 0.605

TA Scanner Results based on historical data up to 31 Jul 2025

Condition	Signal	Explanation
Bollinger Band: Low Below Lower Bollinger Band	Neutral	"1. Low below lower bollinger band(14,2). 2. Average volume(5) is above 100,000."
CCI: Bullish CCI Oversold And Reversing	Long	"1. CCI(26) below -100 and CCI(26) 1 day ago decreasing for the last 3 days. 2. CCI(26) above CCI(26) 1 day ago"
Volume: 10 Days large value Buy Up trade	Long	"1. 150K value Buy Up greater than Sell Down by 20% for 10 days. 2. 50K-100K value Buy Up greater than Sell Down by 20% for 10 days. 3. Average volume(10) is above 1000000"
Volume: 5 Days large value Buy Up trade	Long	"1. 150K value Buy Up greater than Sell Down by 20% for 5 days. 2. 50K-100K value Buy Up greater than Sell Down by 20% for 5 days. 3. Average volume(10) is above 1000000"
Williams %R: Bullish Williams %R	Long	"1. Williams %R(26) between -80 and -100. 2. Average volume(5) is above 100,000."

Disclaimer: The information on this page is provided as a service to readers. It does not constitute financial advice and/or any investment recommendations. Past performance is not indicative of future results. We assume no liability for damages resulting from or arising out of the use of such information. It would be best if you did your own research to make your personal investment decisions wisely or consult a licenced investment advisor.

AHMAD ZAKI RESOURCES BERHAD (7078.MY)

AZRB

Price updated at 31 Jul 2025 17:31

Last: 0.245	Change: -	Volume: 6,563
	Change (%): -	Range: 0.240 - 0.250

TA Scanner Results based on historical data up to 31 Jul 2025

Condition	Signal	Explanation
Bollinger Band: Bullish Long Term Volatility Breakout and Trending	Long	"1. Close price above upper bollinger band(33,1). 2. Volume above average volume(50). 3. Average volume(50) is above 300,000."
Bollinger Band: Bullish Short Term Volatility Breakout and Trending	Long	"1. Close price above upper bollinger band(33,1). 2. Volume above average volume(10). 3. Average volume(10) is above 300,000."
Bollinger Band: High Above Upper Bollinger Band	Neutral	"1. High above upper bollinger band(14,2). 2. Average volume(5) is above 100,000."
Candlestick: Bullish Engulfing	Long	Bullish: Engulfing
MA: Long Term Bullish Moving Average Crossover	Long	MA(50) crossed above MA(200) within the last 1 day.
Williams %R: Bearish Williams %R	Short	"1. Williams %R(26) between 0 and -20. 2. Average volume(5) is above 100,000."

FORMOSA PROSONIC INDUSTRIES BERHAD (9172.MY)

FPI

Price updated at 31 Jul 2025 17:31

Last: 1.270	Change: +0.050	Volume: 14,396
	Change (%): +4.10	Range: 1.200 - 1.290

TA Scanner Results based on historical data up to 31 Jul 2025

Condition	Signal	Explanation
Bollinger Band: Bullish Lower Bollinger Band Support	Long	"1. Low 1 day ago below lower bollinger band(20,2). 2. Close above close 1 day ago. 3. Average volume(5) is above 100,000."
Bollinger Band: Low Below Lower Bollinger Band	Neutral	"1. Low below lower bollinger band(14,2). 2. Average volume(5) is above 100,000."
Candlestick: Bullish Harami	Long	Bullish: Harami
Price: New 52 Week Low	Short	"1. Stock reach a new 52 week low. 2. Average volume(30) is above 50000."
Volume: Consecutive Days Of Increasing Average Volume	Long	"1. Average Volume(20) has been increasing over the last 2 weeks. 2. Average volume(20) is above 100000"
Williams %R: Bullish Williams %R	Long	"1. Williams %R(26) between -80 and -100. 2. Average volume(5) is above 100,000."

Disclaimer: The information on this page is provided as a service to readers. It does not constitute financial advice and/or any investment recommendations. Past performance is not indicative of future results. We assume no liability for damages resulting from or arising out of the use of such information. It would be best if you did your own research to make your personal investment decisions wisely or consult a licenced investment advisor.



Learn how to identify Hot Stocks using Technical Analysis (TA) and Fundamental Analysis (FA)

SIGN UP FOR Invest NOW IT'S FREE!!!

[Click here](#)

Scan me



Via email, every Friday.

Get market moving news and analyses. Regular columns include **Behind The Action** and **From The Observer**

- Leaderboard
- Shariah Hot Stocks
- Shariah Momentum Up Stocks
- Non Shariah Hot Stocks
- Up Trending Stocks
- Growth Stocks
- Dividend Stocks
- Long Companies
- Insider Activity
- Investor Relations
- Regional Markets





Dato' Eu Hong Chew
Former Group CEO i-Berhad
Non-Executive Director

He has been associated with the Sumurwang Group for many years charting the path for its manufacturing arm, firstly under Dreamland Holdings Berhad and the subsequent acquisition of I-Berhad.

Before that, he was with PA Management Consulting for a decade where he was the Director of Studies for the Cranfield PA MBA Programme in Malaysia.

Educated at the Royal Military College, Dato' Eu has an engineering degree from the University of Glasgow, and a MBA from the University of Bradford, UK.



FM Global an investment opportunity?

SUMMARY

- FM Global Logistics Holdings Bhd's (FMGL or the Group) (7210.MY) revenue and profitability peaked in 2022 and have since declined. Efficiency metrics and return measures show stagnation or underperformance over the past decade.

Disclaimer: This article is written for informational purposes only. It does not constitute a solicitation, offer, advice, counseling or recommendation to buy or sell. As such it is not intended to promote the purchase of shares in any way. As a reminder, any type of asset has a risk factor and needs to be evaluated from multiple perspectives. Therefore, any investment decision and the associated risk remains with the investor. The views expressed here are entirely the writer's own.

- Although FMGL outpaced peers in revenue growth and EPS trend, it lagged in capital efficiency and profitability, resulting in an overall average performance compared to competitors.
- FMGL has maintained a healthy financial position with positive operating cash flow every year, low reinvestment needs, and disciplined capital allocation. However, its cash flow to net income conversion has been poor.
- Despite appearing cheap, based on asset value and a low Acquirer's Multiple, a weak free cash flow yield and subpar intrinsic value margin limit its appeal. It may suit deep value investors, but it lacks the qualities of a long-term compounder.

BACKGROUND

FMGL was listed on the Second Board of the Kuala Lumpur Stock Exchange in February 2005 and subsequently transferred to the Main Board in December 2007. This milestone made FMGL one of the first Malaysian-owned freight services companies to achieve a Main Board listing on Bursa Malaysia. Today, FMGL operates across 127 countries through a global network of agents, supported by over 1,800 logistics professionals across 9 Group offices and 42 regional offices.

In 2021, the Group streamlined its integrated logistics operations into two core segments:

- **International Freight:** This covers sea, air, and land freight, including cross-border trucking.

- **Domestic Logistics:** Encompassing warehousing and distribution, along with supporting services such as customs brokerage, haulage, e-commerce fulfilment, and last-mile delivery.

FMGL’s Malaysian operations remain the Group’s largest revenue contributor, accounting for approximately 70% of total revenue in 2024. Refer to Chart 1.

Note: The Group has its financial year end as June. The result for 2024 was based on the unaudited result from TIRK.com. The years referred to in this article refer to the financial years.

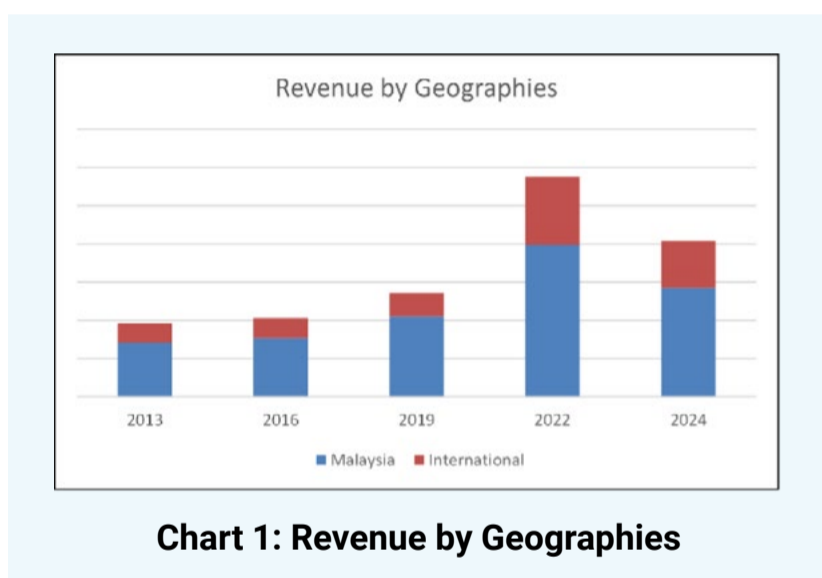


Chart 1: Revenue by Geographies

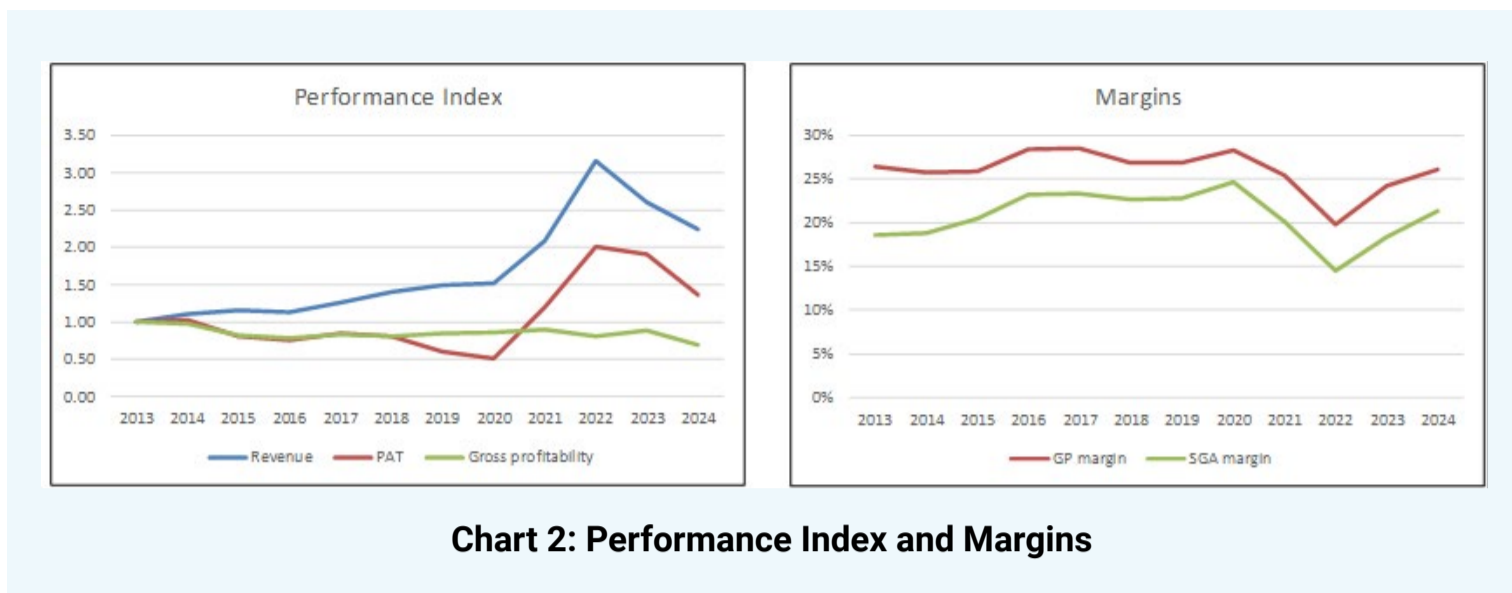
OPERATING PERFORMANCE

Over the past 12 years, FMGL recorded a revenue growth of CAGR of 7.6%, with revenue peaking in 2022 before declining over the subsequent two years. Refer to the left part of Chart 2.

In its 2023 reporting, the Group attributed the downturn to weakening global trade conditions:

“Global trade and external demand experienced a gradual decline, causing freight rates to plummet from previously elevated levels... International freight rates have dropped by more than 80% since peaking in late 2021, while statistics from MATRADE indicated trade was lower by an estimated 14% YoY in the first half of 2023.”

However, the Group did not explain the continued revenue decline in 2024, raising questions about the transparency of its reporting.



Note: The 2024 gross profit margin was extrapolated assuming the same dollar SGA for 2024 as that in 2023.

Excluding 2020, PAT largely mirrored revenue trends. The exception in 2020 was due to:

- Losses from the Tug & Barge associate business and distribution operations; and
- Provisions for receivables and investment impairments, reflecting a deteriorating business environment.

The right side of Chart 2 illustrates the impact on gross profit margins, while more concerning patterns emerge in FMGL's efficiency metrics:

Operating efficiencies deteriorated steadily between 2013 and 2020. Although 2020 marked a low point, the 2024 figures remain below 2013 levels, signalling no structural recovery.

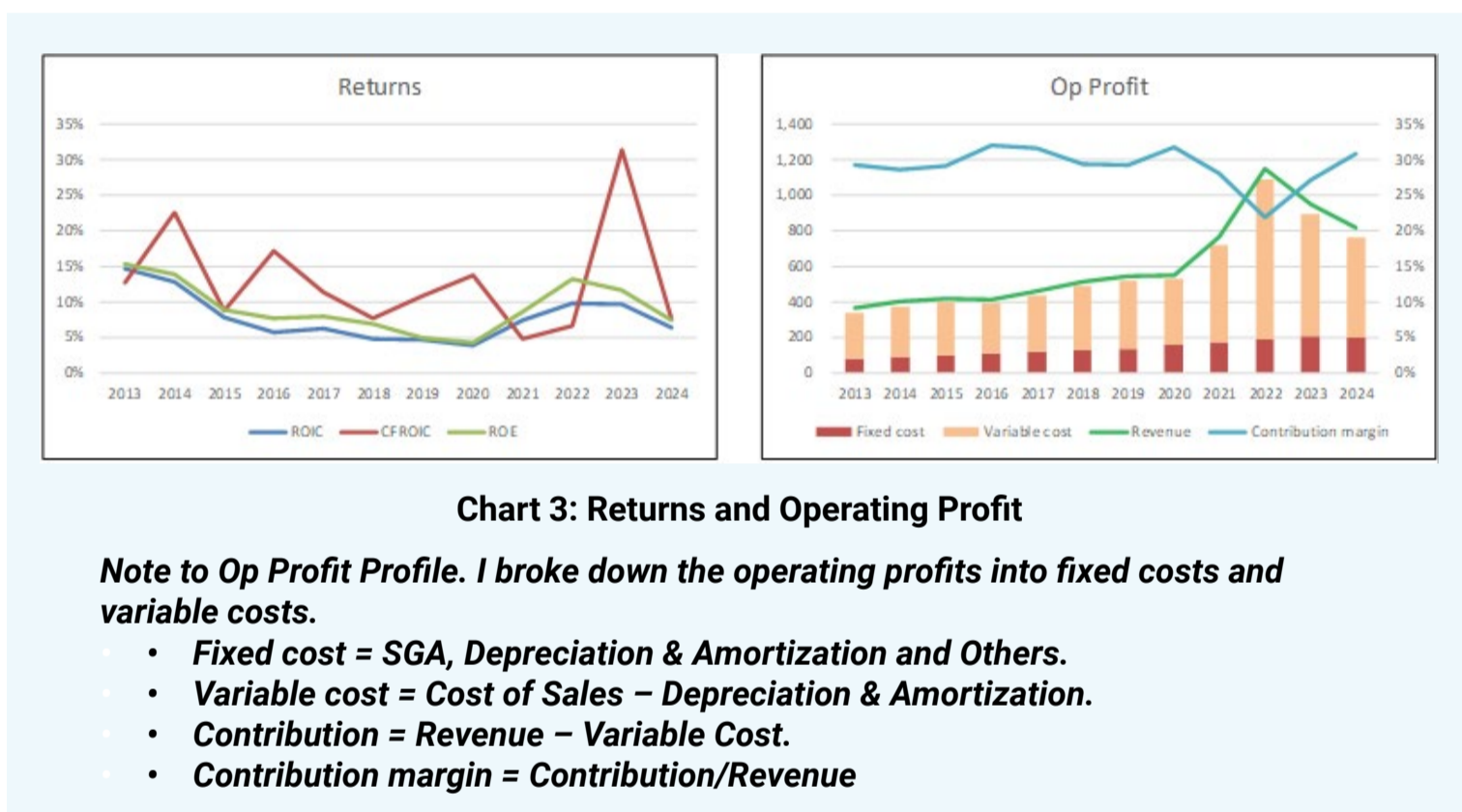
Capital efficiencies were similarly underwhelming. Despite stable gross profitability, capital turnover mostly trailed 2013 benchmarks.

Given this picture, you should not be surprised to find that returns failed to show any improving trend. Refer to the left part of Chart 3. From 2013 to 2024:

- ROIC averaged 8%, barely above the estimated WACC of 7%.
- ROE averaged 9%, aligning with the assumed cost of equity.
- CFROIC was volatile, pointing to fluctuating operating cash flows.

These metrics suggest that shareholder value was, at best, preserved - not created - over the past 12 years.

Lastly, the right side of Chart 3 shows no consistent trend in contribution margin, reinforcing the narrative of uneven profitability and limited operational leverage.



Company	Rvenueue	
	2023 RM m	2015 to 2023 CAGR %
CJ Century	737	12%
ARKA	39	5%
FM Global	948	11%
Hextar Tech	162	3%
POS Malaysia	1,871	3%
Tiong Nam	726	2%
Xin Hwa	118	1%

Table 1: Peer revenue

PEER COMPARISON

I compared FMGL's performance with several Bursa logistics and transportation companies. You can see from Table 1 that FMGL is among the

larger companies in the peer group. It achieved one of the best revenue growths over the past 9 years.

I also assessed FMGL's performance across four key metrics - return on capital, EBIT margin, levered free cash flow margin, and EPS. Overall, I would characterize its performance as average.

- **Capital and Operating Efficiency:** The trendlines for all four metrics were relatively flat over time, indicating no meaningful improvement in capital efficiency. On the positive side, there was also no evident deterioration.
- **Profitability Management:** Relative to peers, FMGL's performance was unremarkable across most metrics, except EPS, which showed a more favourable trajectory.
- **Value Creation:** Despite average operating metrics, FMGL's superior revenue growth and positive EPS trend suggest that it outperformed peers in creating shareholder value over the period.

FINANCIAL POSITION

I would rate FMGL's financial standing as good based on the following:

- As of the end of March 2025, it had RM90 million in cash, equal to about 10% of its total assets.
- Its Debt Equity ratio at the end of March 2025 was 56%. This was its past decade high.
- Over the past 12 years, it generated positive cash flow from operations every year.
- Over the past 12 years, it had an average Reinvestment rate (Reinvestment/NOPAT) of 10%. This is a good rate as a big part of its NOPAT could be returned to shareholders. I defined Reinvestment = CAPEX & acquisitions – Depreciation & amortization + increase in Net Working Capital.

FMGL has a good capital allocation track record. Refer to Table 2. The cash flow from operations was sufficient to fund its CAPEX and acquisitions. Excess was used to reduce debt and returned to shareholders as dividends.

Item	Sources RM m	Uses RM m
Cash flow from Ops	492	
New shares	23	
Net Debt		115
Acquisition		28
CAPEX		106
Dividends		139
Buybacks		0
Misc		128
Total	516	516

Table 2: Sources and Uses of Funds 2013 to 2024

The key negative point was that over the past 12 years, it generated RM492 million cash flow from operations compared to its PAT of RM318 million. This is a poor cash flow conversion ratio.

Metric	Units	Valuation
Asset value	RM per share	0.77
Intrinsic value	RM per share	0.70
Acquirer's multiple (a)	Number	5.5
Free cash flow yield (b)	%	2%
Market price 31 Dec 2024	RM per share	0.58

Table 3: Valuation metrics

Notes to Table 3:

a) EV / EBITDA. A ratio less than 6 is considered cheap.

b) Free cash flow/market price.

VALUATION

I looked at several valuation metrics to assess whether there is a margin of safety. Refer to Table 3. You can see that there are 33% and 21% margins of safety

under the asset value and intrinsic value, respectively. However, the intrinsic value is less than my target of 30%. Refer to the original article for details on how I estimated the intrinsic value.

The Acquirer's Multiple of 5.5 indicates that it is a cheap stock. But the Free Cash Flow yield of 2% is not good enough.

Overall, I would wait for the price to drop further before considering it an investment. Given its fundamentals, I would consider this a cigar-butt type of investment rather than a "wonderful" company.

CONCLUSION

FMGL presents a mixed picture for investors, marked by red flags that temper optimism, yet not severe enough to classify it as a

*Please refer to the disclaimer on first page and last page.

value trap. Since peaking in 2022, both revenue and profitability have declined, with the lack of transparency around the 2024 revenue drop adding to investor uncertainty. Compounding this, FMGL's operating and capital efficiencies have remained stagnant over the past decade.

While the company has outperformed some peers in terms of revenue growth, its results in key financial metrics remain average at best. This undermines its case as a high-quality compounder.

From a valuation perspective, FMGL may appear attractively priced based on its asset value and intrinsic value. The low Acquirer's Multiple supports the notion of undervaluation. However, the low free cash flow yield and narrow margin of safety suggest investors should be cautious.

That said, FMGL remains a profitable and operationally viable business with no signs of financial distress. It is not a value trap. Rather, it could offer upside if freight rates improve and the company succeeds in stabilizing earnings and enhancing efficiency. In short, FMGL may appeal to deep value or cigar-butt investors looking for a turnaround opportunity, but it lacks the hallmarks of a high-quality compounding story.

I am a long-term value investor who has held onto stocks for more than 5 years. My analysis and valuation are from such a perspective. I consider quarterly results "noisy" and focus on long-term trends.

This article was derived from a detailed analysis, emphasizing the intersection of business performance and valuation metrics, which was first published on i4value as ["Is FM Global an investment opportunity?"](#) Refer to the article for further insights on its investment risk vs business performance.

Disclaimer: This article is written for informational purposes only. It does not constitute a solicitation, offer, advice, counseling or recommendation to buy or sell. As such it is not intended to promote the purchase of shares in any way. As a reminder, any type of asset has a risk factor and needs to be evaluated from multiple perspectives. Therefore, any investment decision and the associated risk remains with the investor. The views expressed here are entirely the writer's own.

UNLOCK THE SECRET OF WEALTH

DO YOU REALLY WANT TO MASTER VALUE INVESTING



SEE HOW TO GET HIGHER RETURNS WITH LOWER RISK



Home-grown paint brand, Smart Asia Chemical Bhd. aims to lead the market with its integrated suite of complete building materials solutions for the construction industry.



In the heart of Malaysia's vibrant SME landscape, few stories carry the weight of heritage and ambition quite like that of Smart Asia Chemical Bhd. (SMART). Born from a family legacy rooted in resilience, SMART's journey is as much a tale of entrepreneurial grit as it is a modern-day transformation story – culminating in its listing on the ACE Market of Bursa Malaysia in May 2024.

It all began over four decades ago when SMART's Managing Director Goh Chye Hin, then a young man from Penang, ventured south and entered the paint trade. He saw a glaring gap: while foreign paint giants dominated Malaysia's skyline, there was no flagship homegrown brand to call our own. This insight led to the creation of Colourland in 1999, and later, following Goh's divestment in the company, he moved on to found Smart Paints, renowned for brands like Smart Paints, Durra, Toplus and Hunter.

Fast forward to today, SMART, under the watchful eye of Goh's young, energetic son JS Goh, is redefining its market position by entering the waterproofing and construction chemicals segment. This strategic transformation reinforces SMART's commitment to providing complete building materials solutions for the building and construction industry, from the floor to rooftop.

“ The industry has been dominated by foreign giants for decades.. It's time for Malaysia to lead with our own expertise and innovation. ”



A STRATEGIC PARTNERSHIP THAT BRINGS WORLD-CLASS EXPERTISE TO MALAYSIA

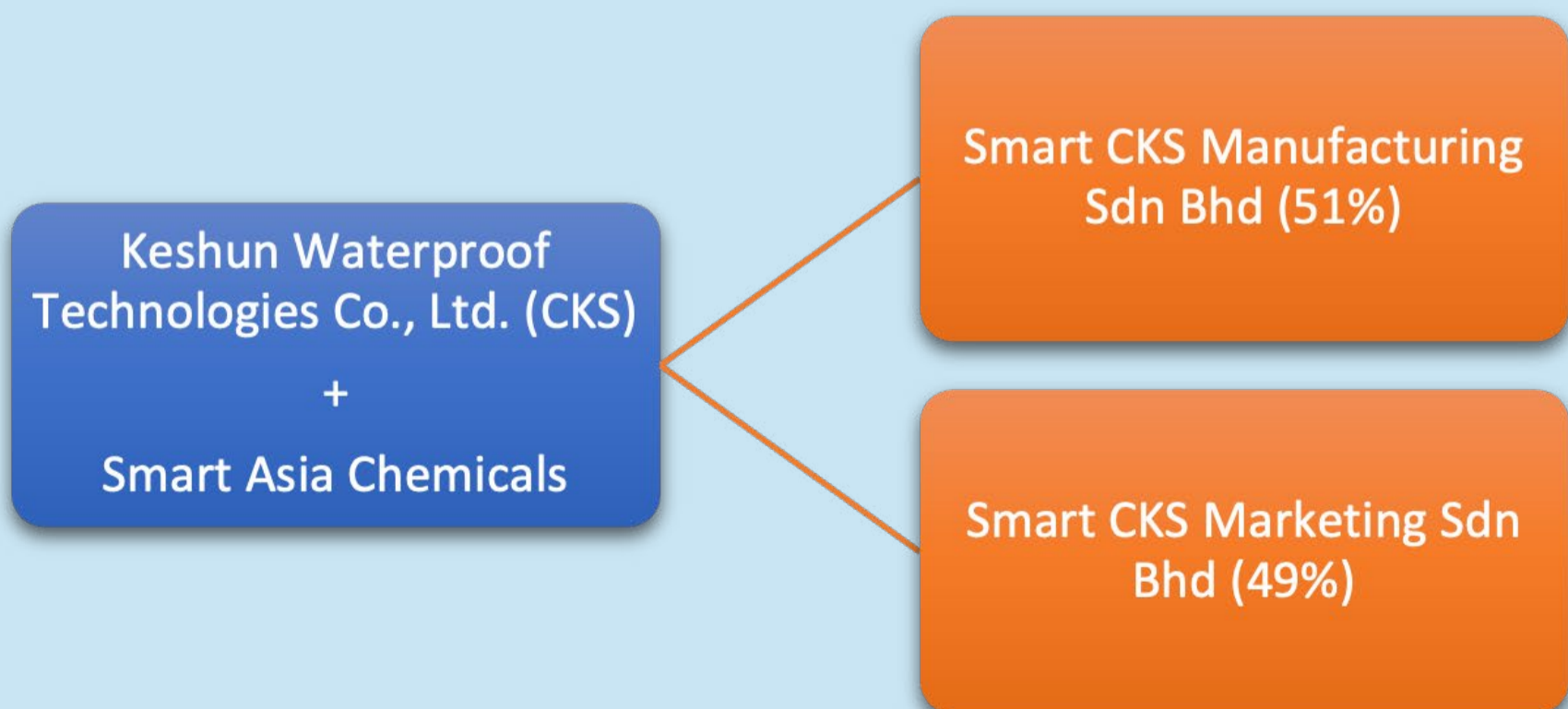
Previously focused solely on decorative and protective coatings, SMART's new direction is a direct response to industry needs for more integrated and performance-guaranteed offerings. The company observed that many defects related to paint application, such as peeling, discolouration or water seepage, are rarely due to the paint itself, but instead originate from substrate conditions or ineffective waterproofing. SMART now aims to deliver bundled, end-to-end protection through a combined system of high-performance paint and engineered waterproofing, positioning itself as a one-stop solution provider.

“ This shift is not just product evolution, it's a strategic transformation. ”



Goh explains that SMART is now positioning itself as an all-in-one provider of paints and waterproofing systems, aiming to bridge the current market gap between these two crucial elements in construction and maintenance. To accelerate its entry into this new market segment, SMART has established a strategic joint venture with China's Keshun Waterproof Technologies Co., Ltd. (CKS), a Shenzhen-listed company with more than RM4.5 billion in annual revenue, over 700 patents, and a portfolio of mega-projects including the Beijing Daxing Airport, Hong Kong-Zhuhai-Macau Bridge and Malaysia's TRX.

The collaboration will see an investment commitment of RM10 million and the formation of two new companies: Smart CKS Manufacturing Sdn Bhd and Smart CKS Marketing Sdn Bhd. SMART holds a 51% stake in the manufacturing entity and 49% in the marketing company. Under this partnership, SMART will manufacture products locally, while CKS provides technical expertise and proprietary formulations adapted for Malaysian building conditions.





“ Fully integrated solutions like this for the building industry is not commonly available, so we want to be the one to change that. ”

INTEGRATED PAINT AND WATERPROOFING SYSTEM

Unlike existing industry players that focus exclusively on either paints or waterproofing solutions, SMART is pioneering a unique offering that combines both. This is aimed at solving the long-standing industry gap where paint and waterproofing systems often fail to complement each other optimally. By offering synchronised solutions under one roof, SMART is setting a new benchmark in product integration and performance assurance.

This alignment allows SMART to provide a comprehensive warranty package that addresses not just surface aesthetics but substrate integrity, bringing meaningful value to developers, contractors, and homeowners alike.

LOCAL MANUFACTURING WITH GLOBAL STANDARDS

SMART's new Perak manufacturing facility is central to this expansion. Construction of the facility is partly funded from the proceeds of its IPO, while RM11 million has been allocated for the purchase and commissioning of an automated paint production system. "Through this Towards Industry 4.0 facility, we aim to enhance production efficiency while offering comprehensive architectural coating solutions suitable for all types of buildings," Goh explained.

“ By combining SMART's local market insights with CKS's global expertise, we foresee this partnership setting a new benchmark in the industry. Our vision is to become the go-to brand for total building solutions one day. ”

He elaborated that the first phase of the joint venture will focus on penetrating the residential and commercial segments, where demand for reliable waterproofing solutions is high. Phase 2 will target infrastructure and industrial markets, leveraging CKS's project experience and SMART's expanded production capabilities.

"CKS's technologies are already trusted in regional mega-infrastructure, so we are confident that our locally manufactured products will meet the premium standards the industry demands," Goh said confidently.

CITY-LEVEL WATERPROOFING FOR CLIMATE RESILIENCE

As part of SMART's long-term strategic roadmap, the company is looking beyond conventional paint and waterproofing products to engage in broader urban planning solutions that address one of Malaysia's most pressing environmental issues – flooding. While building-level waterproofing enhances individual property protection, SMART recognises that recurring floods are often caused by systemic urban challenges such as outdated drainage infrastructure and poor land planning.

Through its strategic joint venture with CKS, ranked among the top two waterproofing specialists in China, SMART aims to introduce advanced urban planning methodologies. CKS has extensive experience developing “CKS Oasis Rainwater Management System” models that implement integrated water management systems including smart drainage, stormwater collection, and water reuse infrastructure. These systems are already in place in Chinese cities.

For further details of utilisation of proceeds from SAC's IPO, please refer to the table below:

Details of use of proceeds	Proposed Utilisation (RM'000)	Amount Utilised (RM'000)	Balance Unutilised as at 31 March 2025 (RM'000)	Estimated timeframe for use from the date of Listing
(a) Establishment of Perak Plant:				
(i) Construction of Perak Plant	16,000	16,000	-	Within 12 months
(ii) Purchase and commissioning of automated paint production system	11,000	10,038	962	Within 12 months
(b) Purchase of 250 sets of Smart Colour POS Tinting Machine	5,000	639	4,361	Within 36 months
(c) Working capital	1,300	1,300	-	Within 12 months
(d) Listing expenses	4,100	4,100	-	Within 1 month
Total	37,400	32,077	5,323	

Source: Smart Asia Chemical Bhd. Annual Report 2024



“CKS Oasis Rainwater Management System not only manage stormwater efficiently but also integrate recycling for utility use – showcasing innovations that could inspire the next phase of Malaysia’s water management evolution.”

“We are actively engaging with relevant government stakeholders, including Jabatan Kerja Raya (JKR) and local councils, to advocate for sustainable urban waterproofing solutions,” Goh revealed. He told Inve\$t that SMART has established a dedicated government liaison team to participate in technical discussions, present solutions, and offer implementation strategies. The company is also planning a knowledge-sharing mission to CKS’s headquarters in Guangzhou, China, for Malaysian government officials to observe successful case studies first-hand.

DRIVING SUSTAINABILITY THROUGH INNOVATION AND RESPONSIBILITY

SMART continues to advance its commitment to sustainability by integrating environmentally responsible practices across its operations. As a pioneer in Malaysia's coatings industry, SMART was the first to introduce a Zero VOC Series, setting a new benchmark for healthier, eco-friendly paints. Building on this foundation, SMART is preparing to launch a new series of paints certified under the prestigious French Air Plus Standards, widely recognised across Europe for ensuring superior indoor air quality. Several SMART products have already achieved this certification, with full commercial release planned in the near future.

SMART is also making strides in sustainable manufacturing. Through increased automation, the Group has significantly reduced material wastage. Notably, SMART now reuses water from equipment cleaning in its production processes, marking a meaningful step towards circular water use and improved resource efficiency. These initiatives reflect SMART's broader strategy of leading with purpose, offering solutions that not only protect buildings but also contribute to a cleaner, healthier environment for all.



“ Every household in Malaysia will eventually come into contact with a SMART brand, whether through our paints, waterproofing solutions, or future technologies. That is our vision. ”



White Wall and Light Colour Finishes	Natural daylight	Natural Cross Ventilation	Rainwater harvest system
<i>Enhances energy efficiency by reducing heat gain, lowering cooling demand, and improving occupant comfort</i>	<i>Translucent window panels diffuse natural daylight, reducing reliance on artificial lighting</i>	<i>Enhances indoor comfort by reducing reliance on mechanical cooling, improving energy efficiency and occupant well-being</i>	<i>Conserves water, reduces costs, and promotes resource efficiency</i>

ESG Design Features of SMART’s plant in Perak

A MESSAGE TO INVESTORS

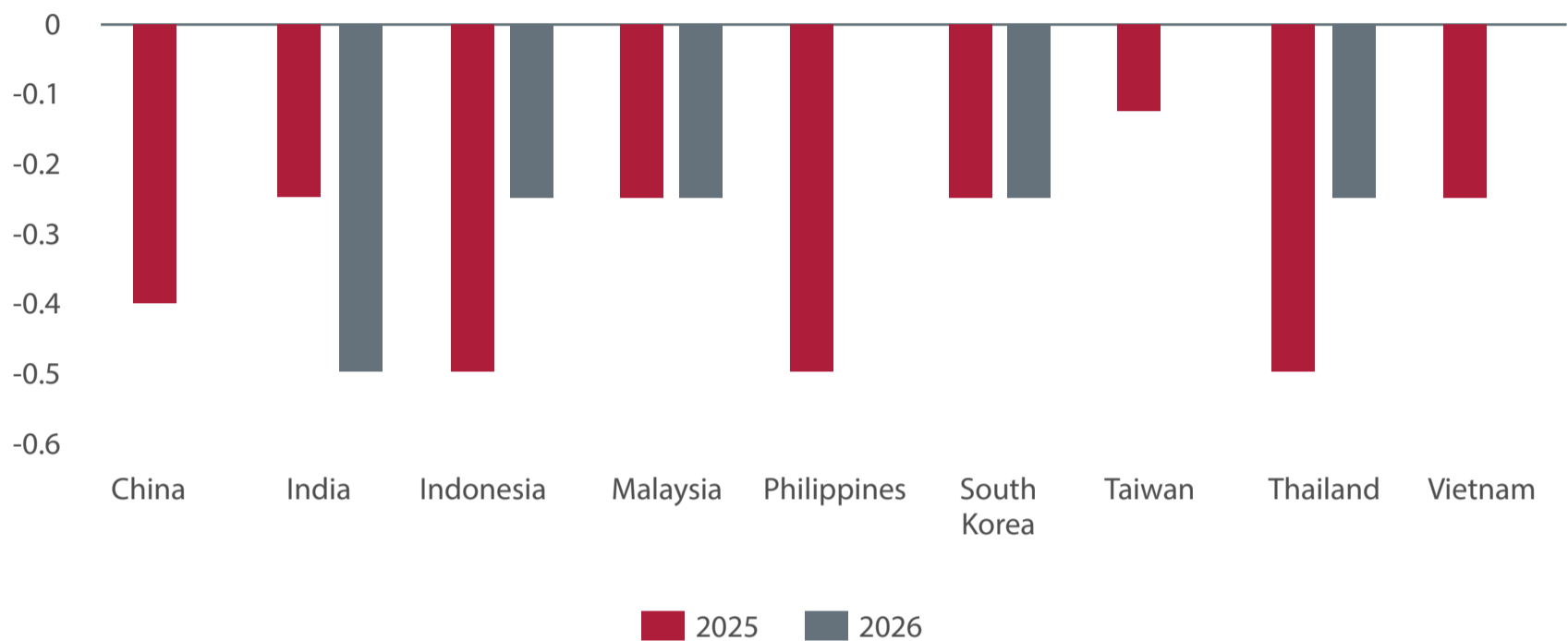
For prospective investors, SMART offers more than just growth potential – it offers relevance. The company is riding the crest of national construction demand, offering a unique proposition that blends local insight with global innovation. In the next two to three years, SMART plans to solidify its presence in every Malaysian household and potentially scale its partnerships across other verticals.

Q3 2025 Outlook: Tariffs, tensions, and a ticking clock – Eastspring

According to Eastspring Investments in their Q3 2025 Outlook, the US growth outperformed in H1 due to tariff delays but is expected to slow to 1.6% y-o-y by end 2025 and remain sub-trend in 2026. Rising tariffs and trade deal uncertainty may pressure US consumption and global growth, though extreme downside risks are easing. Asia's export boost from US frontloading is fading, but China and India are relatively resilient. China's Q3 growth may moderate, with stimulus supporting a Q4 rebound; India's growth is gradually improving, aided by rate cuts and low inflation.

US inflation is rebounding as tariffs begin to impact prices, prompting companies to pass on costs. In contrast, Asia ex-Japan faces disinflationary pressures from weak growth, low oil prices, and strong harvests, though easing policies may reduce this by year-end. China's policy shift on manufacturing adds uncertainty but is unlikely to offset property-driven disinflation.

The Fed may cut rates by 25–50bps by year-end if unemployment rises, though timing depends on inflation data. Most Asian central banks are expected to ease. The USD is likely to weaken 3–5% over the next 6–9 months, supporting modest appreciation in most Asian currencies, though gains may be tempered by regional rate cuts.



Asia forecast policy rate change, %

Asset Allocation: Tariff uncertainty persists, but de-escalating trade tensions afford runway for tactical risk positioning

Following President Trump’s “Liberation Day” announcement on April 2—which initially triggered sharp declines in equities and widening credit spreads—market sentiment has since recovered, supported by factors such as the 90-day tariff truce and a general easing in trade tensions.

Eastspring’s Multi-Asset Portfolio Solutions (MAPS) team now views the economic impact of tariffs as less severe than previously assessed. As a result, the team has reduced cash allocations and adopted a more constructive tactical stance across risk assets, particularly in equities and credit. Key indicators such as global PMIs and corporate earnings revisions continue to support a near-term positive outlook.

Given ongoing trade policy uncertainty beyond the extended August 1 deadline, the team is implementing barbell strategies using equity options to balance upside participation with downside protection.

Over the 3-month tactical horizon, the team favours Emerging Markets and Asia equities over US, citing more attractive valuations and macro conditions. In credit, US high yield remains compelling with a 7% yield, while EM bonds offer potential upside from USD depreciation. US Treasuries are also held constructively, serving both as a yield opportunity and a hedge against a potential US growth slowdown.

This is an extract of Eastspring's Q3 2025 Market Outlook. Click [here](#) to download the full report which includes a special feature "The tariff landscape is rapidly becoming messy".



CHECK OUT SHAREINVESTOR

BROKER'S CALL

Weekly Buy/Sell/Hold calls
from leading Malaysian Brokerages.

Go To Broker's Call

BUY

HOLD

SELL

HEINEKEN Malaysia's Purpose-Driven Partnerships Deliver Award-Winning Sustainability Impact



HEINEKEN Malaysia bags four awards at The Star ESG Positive Impact Awards 2024

HEINEKEN Malaysia has once again raised the bar for corporate sustainability, taking home six prestigious accolades at The Star ESG Positive Impact Awards 2024 and the Sustainability & CSR Malaysia Awards 2025. These awards reinforce the strength of its partnerships in driving meaningful environmental and social impact.

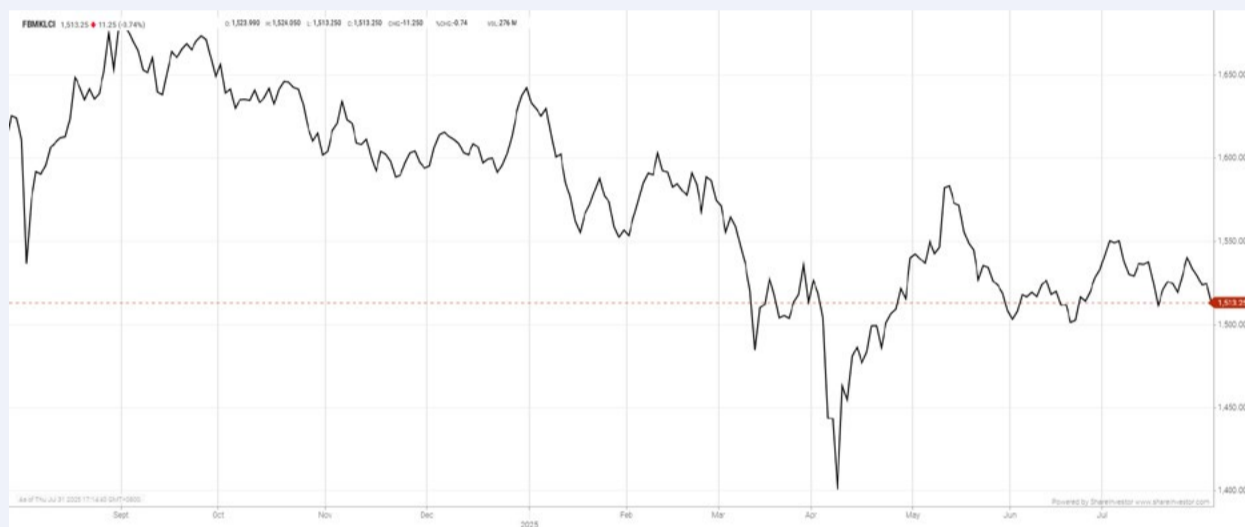
At The Star ESG Positive Impact Awards 2024, the brewer earned four accolades: the coveted title of Most Outstanding ESG Initiative in the Large Companies category for its Water Management and Efficiency programme, Gold in Renewable Energy, Gold in Water Management and Efficiency, and Silver in Waste Management. HEINEKEN Malaysia also received two recognitions at the Sustainability & CSR Malaysia Awards 2025.

Martijn van Keulen, Managing Director of HEINEKEN Malaysia said, “This year marks meaningful progress as we demonstrate the impact of long-term, purpose-driven initiatives. As we remain focused on our Brew a Better World (BaBW) 2030 ambitions, these awards reflect the progress made and the milestones we have achieved. Through our BaBW strategy, we strive to create value beyond our business for the benefit of people and the planet.”

According to Renuka Indrarajah, Corporate Affairs and Legal Director of HEINEKEN Malaysia, the BaBW sustainability strategy is anchored in three pillars, namely environmental sustainability, social sustainability and responsible consumption. She added that progress of these pillars is driven by purposeful partnerships with NGOs, suppliers, and communities. The collaboration with like-minded partners have provided meaningful impact, especially in water within the operations and beyond the brewery walls.

EYE ON THE MARKETS

On Thursday (31 July), the Ringgit closed at 4.2630 against the USD and 3.2910 to the Sing Dollar. On Monday (28 July), the FBM KLCI opened at 1538.05. As at Thursday (31 July) 5:00pm, the FBM KLCI closed down 24.80 points at 1513.25. Over in US, the overnight Dow Jones Industrial Average closed down 330.30 points (-0.74%) to 44,130.98 whilst the NASDAQ shed 7.23 points (-0.03%) to 21,122.45.



KLCI 1 Year Chart



Learn how to identify Hot Stocks using Technical Analysis (TA) and Fundamental Analysis (FA)

SIGN UP FOR Invest NOW IT'S FREE!!!

[Click here](#)

Scan me



Via email, every Friday.

Get market moving news and analyses. Regular columns include **Behind The Action** and **From The Observer**

- Leaderboard • Shariah Hot Stocks • Shariah Momentum Up Stocks • Non Shariah Hot Stocks • Up Trending Stocks • Growth Stocks • Dividend Stocks • Long Companies • Insider Activity • Investor Relations • Regional Markets



Over 5 Trading Days (as at Yesterday)



ShareInvestor WebPro (www.shareinvestor.com/my)

1. Price > Stock Prices
2. Select Market: NASDAQ / NYSE / IDX / SET / HKEX / SGX (One bourse at a time)
3. select Stocks Tab
4. select Ranking Top Gainers or Top Losers (Over 5 Trading Days)
5. Mouse over Column Layout > select Edit Customs > select Name > select Last Done Price > select 5 Days Change > select 52 Weeks High > select 52 Weeks Low > Mouse Over Column Layout > select Custom

NASDAQ (USD)

Top Gainers

Name	Last Done	Change Over 5 Days	52 Weeks High	52 Weeks Low
CyberArk Software	435.190	+59.850	452.000	230.000
Wingstop	368.260	+49.000	433.860	204.000
Cadence Design Systems	371.030	+46.390	374.050	221.560
Axon Enterprise	748.600	+39.340	830.210	279.020
FTAI Aviation	144.460	+34.540	181.640	75.060

Top Losers

Name	Last Done	Change Over 5 Days	52 Weeks High	52 Weeks Low
Charter Communications A	279.890	-100.110	437.060	274.000
First Citizens BancShares A	2,017.020	-141.210	2,412.930	1,473.620
Booking Holdings	5,612.910	-37.090	5,839.410	3,180.000
Check Point Software Tech	186.670	-35.340	234.355	169.015
Avis Budget Group	172.460	-35.090	212.810	54.030

NYSE (USD)

Top Gainers

Name	Last Done	Change Over 5 Days	52 Weeks High	52 Weeks Low
Comfort Systems USA	702.970	+140.140	709.400	272.925
United Rentals	880.420	+77.170	903.605	525.914
EMCOR Group	639.330	+60.530	642.555	319.490
TX Pac Land	986.090	+54.810	1,769.140	736.750
Graham Holdings B	952.590	+40.400	1,015.000	691.410

Top Losers

Name	Last Done	Change Over 5 Days	52 Weeks High	52 Weeks Low
Berkshire Hathaway A	714,175.000	-11,525.000	812,855.000	609,578.550
NVR	7,633.400	-155.990	9,964.770	6,562.850
Watsco B	434.480	-52.840	535.000	390.850
Lennox	615.570	-48.970	689.440	500.100
Chemed	416.570	-46.450	623.605	410.000

IDX (Rupiah)

Top Gainers

Name	Last Done	Change Over 5 Days	52 Weeks High	52 Weeks Low
MULTIPOLAR TECHNOLOGY TBK	39,075.000	+6,725.000	48,000.000	1,295.000
MSIG LIFE INSURANCE INDONESIA TBK	7,825.000	+1,450.000	11,600.000	4,610.000
AKASHA WIRA INTERNATIONAL TBK	13,725.000	+1,025.000	14,000.000	8,850.000
PINAGO UTAMA TBK	2,810.000	+895.000	2,950.000	1,480.000
INDAH KIAT PULP & PAPER TBK	7,125.000	+850.000	9,000.000	4,220.000

Top Losers

Name	Last Done	Change Over 5 Days	52 Weeks High	52 Weeks Low
PANTAI INDAH KAPUK DUA TBK	16,025.000	-675.000	19,650.000	4,970.000
INDOFOOD CBP SUKSES MAKMUR TBK	9,925.000	-525.000	12,875.000	9,450.000
BAYAN RESOURCES TBK	18,725.000	-475.000	21,375.000	15,975.000
MULTI BINTANG INDONESIA TBK	6,000.000	-475.000	7,200.000	5,500.000
DIAN SWASTATIKA SENTOSA TBK	65,175.000	-325.000	69,500.000	29,500.000

SET (Thai Baht)

Top Gainers

Name	Last Done	Change Over 5 Days	52 Weeks High	52 Weeks Low
BH	162.000	+21.000	284.000	130.000
SCC	207.000	+12.000	255.000	124.500
PTTEP	126.000	+9.000	151.000	93.000
KDH	88.000	+8.000	99.750	80.000
KCE	25.750	+3.850	45.750	13.700

Top Losers

Name	Last Done	Change Over 5 Days	52 Weeks High	52 Weeks Low
OHTL	266.000	-10.000	410.000	248.000
ADVANC	288.000	-9.000	309.000	230.000
TMW	48.750	-3.500	66.750	44.750
TSTE	11.700	-2.700	15.900	8.600
CBG	55.500	-2.000	82.000	46.500

HKEX (HKD)

Top Gainers

Name	Last Done	Change Over 5 Days	52 Weeks High	52 Weeks Low
DUALITYBIO-B (9606)	357.200	+39.800	370.400	165.500
UNISOUND (9678)	584.000	+36.000	593.500	198.000
WUXI APPTec (2359)	112.000	+18.850	116.500	29.850
POP MART (9992)	256.600	+14.200	283.400	36.500
SKB BIO-B (6990)	388.600	+13.600	401.800	145.500

Top Losers

Name	Last Done	Change Over 5 Days	52 Weeks High	52 Weeks Low
MIXUE GROUP (2097)	467.400	-27.800	618.500	256.000
QFIN-S (3660)	138.600	-18.700	204.000	70.100
BILIBILI-W (9626)	179.000	-18.500	238.800	98.900
LI AUTO-W (2015)	104.500	-16.900	138.300	69.050
NTES-S (9999)	205.200	-16.600	222.800	116.000

SGX (SGD)

Top Gainers

Name	Last Done	Change Over 5 Days	52 Weeks High	52 Weeks Low
JMH USD	56.900	+1.570	57.140	33.930
IFAST	8.880	+1.410	9.000	6.020
Haw Par	14.130	+1.340	14.590	9.092
ST Engineering	8.730	+0.460	8.940	4.150
Jardine C&C	27.350	+0.400	29.500	23.100

Top Losers

Name	Last Done	Change Over 5 Days	52 Weeks High	52 Weeks Low
UOB	36.520	-0.710	38.926	28.797
SIA	6.900	-0.540	7.630	5.860
NIO Inc. USD OV	4.690	-0.390	7.750	3.090
Azeus	16.110	-0.380	17.280	9.340
Sembcorp Ind	7.620	-0.220	7.860	4.350



Sentoria Group Berhad's current distress is a classic case of how such persistent lapses can eventually lead to severe consequences. It reflects a culmination of prolonged shortcomings in operations, financial management, and corporate governance.



Learn how to identify Hot Stocks using Technical Analysis (TA) and Fundamental Analysis (FA)

SIGN UP FOR Invest

IT'S FREE!!!

[Click here](#)

Scan me



Via email, every Friday.

SENTORIA'S TURMOIL DEEPENS AMID GOING CONCERN DOUBTS

Sentoria Group Berhad's current predicament is a textbook example of how years of operational, financial, and governance lapses have culminated in its existing distress condition. Sentoria's downward spiral began as early as 2020, when its operations and finances were severely impacted by the COVID-19 pandemic, impairment losses, and high finance costs. It has not regained its former glory since then.

Over the course of five financial periods spanning 75 months¹ since FPE2020, the hospitality player and property developer have incurred accumulated losses of RM509 million, while total revenue was merely RM286.96 million. As its losses pile up, shareholders' equity has dwindled from RM439.73 million to RM44.52 million as of 31 December 2024. Its auditors' report in the audited financial statements of Sentoria for the period ended 30 September 2023 had highlighted a material uncertainty related to its ability to continue as a going concern and its shareholders' equity was 33% against its share capital. Accordingly, it was classified as a Practice Note 17 (PN17) counter since 4 December 2024.

Its trouble was far from over. Shares of the counter were suspended for trading on 9 May 2025 due to the failure to submit its annual report for the financial period ended 31 December 2024 (FPE2024) on time. The suspension was lifted on 14 May 2025 upon the submission of its annual report to the stock exchange for public release.

Meanwhile, its auditors changed hands twice in a year. On 2 September 2024, Grant Thornton Malaysia voluntarily resigned as Sentoria's auditor. The replacement, Kreston John & Gan, was appointed on 9 September 2024, but it swiftly retired upon the conclusion of the AGM held in June 2025.

¹ Due to constant changes to its financial year end

Today, Sentoria operates without an auditor, a situation that reflects the Company's challenging operation and financial condition. The Company has suspended two major construction projects, and has experienced a revolving door of turnover in senior management and board members. Its challenges can be understood through three critical areas that reveal the depth and breadth of Sentoria's current crisis.

AUDIT DISCLAIMER AND FINANCIAL RED FLAGS

When Sentoria finally released its delayed annual report and audited financial statements following a trading suspension in May 2025, these documents revealed the extent of the Company's difficulties.

The disclaimer of opinion issued by Kreston John & Gan represents one of the most serious forms of audit qualification available.

The auditors expressed particular concern about Sentoria's ability to continue as a going concern, following the Company's RM96.9 million net loss for the FPE2024. As of the end of the financial period, its current liabilities exceed current assets by more than RM600 million. On top of this, it is a PN17 affected listed issuer with a default of debt restructuring scheme. These elements, combined with the deteriorating equity position, raised fundamental questions about its operational viability and financial sustainability.

Second, the auditor said it was unable to obtain sufficient appropriate audit evidence to form an opinion about the financial statements' accuracy and completeness, relating to the areas of (i) work-in-progress, (ii) property, plant and equipment, (iii) investment properties, and (iv) property development cost. The auditors also could not confirm RM8.27 million in receivables or RM75.5 million in payables due to insufficient third-party confirmations and supporting documentation.

Other verification issues penetrated the financial statements. Despite policy requiring annual fair valuation, the Company failed to conduct required revaluations of land and buildings in 2024. Investment properties totalling RM74.2 million used both cost and fair value models, breaching Malaysian Financial Reporting Standard.

Sentoria also experienced deterioration in receivables collection with RM8.34 million of receivables written off in FPE2024 compared to nil in FY2023.

These audit issues extend beyond technical accounting matters. They represent fundamental breakdowns in financial controls, management, and reporting processes are essential for effective corporate governance and investor confidence.

OPERATIONAL, LEGAL AND REGULATORY PRESSURES

Sentoria faces mounting pressures from operational, legal and regulatory perspectives, straining its already limited financial resources. The Company's major development projects have encountered funding shortfalls. The Morib Water Park project has consumed RM62.7 million in investment but requires an additional RM45.2 million for completion. Similarly, the Ataria International Convention Centre has utilised RM43.1 million with RM5.2 million remaining for project completion. These funding variances create uncertainty about project operational viability and potential asset impairments.

Sentoria's operational capacity has been compromised across fundamental business functions. In its reply letter to our questions raised, Sentoria acknowledged its inability to recruit qualified accounting personnel, engage independent property valuers, or pursue legal action against defaulting debtors due to financial constraints. These operational deficiencies represent core

competency failures that any public listed company must possess to function effectively.

Legal actions from bankers have intensified as financial pressures mount. Affin Hwang Investment Bank has initiated legal proceedings to recover RM6.19 million plus accrued interest, with Sentoria acknowledging its inability to meet this obligation. RHB Bank is pursuing legal recovery of RM3.5 million in unpaid quit rent related to properties pledged as loan collateral.

At the regulatory front, Bursa Malaysia has classified Sentoria as a PN17 company due to auditors' qualification on its ability to continue as a going concern and its shareholder equity falling below the required threshold of 50% or less of issued share capital. The Company must submit a comprehensive regularisation plan by December 2025 or face potential delisting.

Its Annual Report 2024 demonstrates compliance deficiencies, notably the absence of the mandatory Management Discussion & Analysis (MD&A) section. This omission represents a failure to meet basic regulatory disclosure of Main Market Listing Requirements and deprives stakeholders of management's perspective on operational performance and strategic direction. These legal and regulatory pressures create a constraining environment that limits management's operational flexibility while demanding resources the Company appears unable to provide.

LEADERSHIP AND GOVERNANCE GLITCHES

Sentoria's governance structure has experienced instability across executive leadership and board composition, especially in 2024. Executive leadership has undergone disruption. Former Group CEO Dato' Loh Yuen Tuck was suspended in May 2024, reinstated in June, and ultimately resigned in August. Current operations are managed by Joint Managing Directors Dato' Chan Kong San and Dato' Gan Kim Leong.

In August 2024, Loh claimed that he was constructively dismissed by Sentoria, and the Company's actions unfairly compelled him to leave his position. Meanwhile, Sentoria refuted his claim and alleged that Loh violated his contractual obligations. In January 2025, Loh took Sentoria to the industrial court. On 23 July, Sentoria said it reached a settlement with Loh where Sentoria will pay RM142,800 to the latter. Both parties have voluntarily consented to the terms without admission of liability and agreed not to undertake any actions that may defame or disparage one another.

The Board composition has undergone the resignation of four independent directors between May and July 2024, all owing to personal commitments. Their departures were significant as independent directors serve crucial collective oversight functions and protect minority shareholder interests. This raised serious concerns about the Company's prospects and governance practices. Recently, an independent director retired on 26 June 2025.

STRATEGIC ASSESSMENT AND INVESTMENT IMPLICATIONS

Sentoria's current situation represents a convergence of financial, legal, and governance failures that collectively present severe challenges to corporate recovery and shareholder value protection. The audit disclaimer undermines confidence in the reliability of financial statements, creating uncertainty about the Company's true financial position and asset values. Legal and regulatory pressures continue to intensify while available resources diminish, constraining management's ability to address fundamental operational issues. Governance interruption may have compromised organisational capacity and strategic direction at a time when strong leadership is most critical.

Prospective investors should reckon that Sentoria's current circumstances extend beyond typical investment risk parameters. The Company exhibits characteristics of fundamental business failure across multiple operational dimensions rather than temporary market or industry challenges. Shareholders face a critical decision point as the deadline to submit a regularisation plan by December 2025 looms. Failure to do so will result in suspension and delisting of the counter.

For shareholders, investment decisions regarding Sentoria should be based on careful evaluation of these multiple risk factors and a realistic assessment of the Company's capacity to address its fundamental operational and financial challenges within the available timeframe.

After all, recovery remains a long and arduous journey that hinges upon extraordinary measures such as substantial capital injection, asset monetisation, or comprehensive debt restructuring arrangements. Given its constrained operations and weakened financial position, these outcomes appear improbable if without a white knight riding by.



CHECK OUT
SHAREINVESTOR
BROKERS' CALL
Weekly Buy/Sell/Hold calls from leading Malaysian Brokerages.

[Go To Brokers' Call](#)

The advertisement features a hand moving a wooden block labeled 'BUY' (in green) from a row of three blocks. The other two blocks are labeled 'HOLD' (in orange) and 'SELL' (in red). The background is a dark blue candlestick chart with green and red bars, suggesting a financial market context.

DEFINITION: Insider Activity shows the trades made by substantial shareholders or directors of the company. Purchases by the directors and company share buyback may indicate the share price is undervalued and brings confidence to the price trend of the share price.



ShareInvestor WebPro > Fundamental > Insider Trades > click Search tab > Select Bursa > click Stock name > scroll up and leave at <Select Counter> Type Date Range for Announcement Date > click Search

Notice Period is 20th July 2025 to 26th July 2025

Effective Change Date	Stock Name	Buyer/ Seller Name [Classification]	Bought / (Sold) ['000]	No. of Shares After Trade ['000]	
			Total	Total	% Held
18 JUL 2025 - 18 JUL 2025	99SMART	EMPLOYEES PROVIDENT FUND BOARD [SSH]	10,000	444,722	5.294
17 JUL 2025 - 17 JUL 2025	99SMART	EMPLOYEES PROVIDENT FUND BOARD [SSH]	150	434,722	5.175
21 JUL 2025 - 21 JUL 2025	ABMB	EMPLOYEES PROVIDENT FUND BOARD [SSH]	2,313	167,884	9.703
18 JUL 2025 - 18 JUL 2025	AGRICOR	DATIN CHEONG KAI MENG [SSH]	-6,000	61,082	30.12
18 JUL 2025 - 18 JUL 2025	AGRICOR	DATUK KEH CHUAN SENG [SSH]	-6,000	60,996	30.077
18 JUL 2025 - 18 JUL 2025	AGRICOR	FRAZEL GROUP SDN. BHD. [SSH]	-6,000	60,996	30.077
17 JUL 2025 - 17 JUL 2025	AGX	DATO' ROZALILA BINTI ABDUL RAHMAN [DIR/CEO]	-35	2,255	0.521
16 JUL 2025 - 16 JUL 2025	AGX	DATO' ROZALILA BINTI ABDUL RAHMAN [DIR/CEO]	-20	2,290	0.529
16 JUL 2025 - 16 JUL 2025	ALLIANZ	EMPLOYEES PROVIDENT FUND BOARD [SSH]	-8	11,972	6.608
21 JUL 2025 - 21 JUL 2025	AMBANK	EMPLOYEES PROVIDENT FUND BOARD [SSH]	2,932	430815	13.022
18 JUL 2025 - 18 JUL 2025	AMBANK	EMPLOYEES PROVIDENT FUND BOARD [SSH]	1,836	427884	12.933
17 JUL 2025 - 17 JUL 2025	AMBANK	EMPLOYEES PROVIDENT FUND BOARD [SSH]	985	426048	12.878
18 JUL 2025 - 22 JUL 2025	ASIAPLY	DATO' YEO BOON LEONG [DIR/CEO]	15,072	224,341	21.278
18 JUL 2025 - 22 JUL 2025	ASIAPLY	DATO' YEO BOON LEONG [SSH]	15,072	224,341	21.278
21 JUL 2025 - 23 JUL 2025	AWANTEC	LEMBAGA TABUNG AMANAH WARISAN NEGERI TERENGGANU [SSH]	19	43,140	5.473
17 JUL 2025 - 18 JUL 2025	AWANTEC	LEMBAGA TABUNG AMANAH WARISAN NEGERI TERENGGANU [SSH]	9	43,121	5.47
21 JUL 2025 - 21 JUL 2025	AXIATA	EMPLOYEES PROVIDENT FUND BOARD [SSH]	700	1,676,627	18.253
18 JUL 2025 - 18 JUL 2025	AXIATA	EMPLOYEES PROVIDENT FUND BOARD [SSH]	700	1,675,927	18.245
17 JUL 2025 - 17 JUL 2025	AXIATA	EMPLOYEES PROVIDENT FUND BOARD [SSH]	700	1,675,227	18.238
16 JUL 2025 - 16 JUL 2025	AXIATA	EMPLOYEES PROVIDENT FUND BOARD [SSH]	700	1,674,527	18.23
23 JUL 2025 - 23 JUL 2025	AXREIT	KUMPULAN WANG PERSARAAN (DIPERBADANKAN) [SSH]	89	174,914	8.655
21 JUL 2025 - 21 JUL 2025	AXREIT	EMPLOYEES PROVIDENT FUND BOARD [SSH]	957	390,446	19.322
18 JUL 2025 - 18 JUL 2025	AXREIT	EMPLOYEES PROVIDENT FUND BOARD [SSH]	1,400	389,490	19.274
16 JUL 2025 - 16 JUL 2025	AXREIT	EMPLOYEES PROVIDENT FUND BOARD [SSH]	-150	388,090	19.025
21 JUL 2025 - 23 JUL 2025	BESHOM	MADAM PHAN VAN DENH [SSH]	102	81,231	27.143
21 JUL 2025 - 23 JUL 2025	BESHOM	MR TAN KENG KANG [DIR/CEO]	102	81,231	27.144
21 JUL 2025 - 23 JUL 2025	BESHOM	MR TAN KENG KANG [SSH]	102	81,231	27.144
21 JUL 2025 - 23 JUL 2025	BESHOM	TAN KAI HEE FAMILY HOLDINGS SDN BHD [SSH]	102	67,208	22.457
17 JUL 2025 - 18 JUL 2025	BESHOM	MADAM PHAN VAN DENH [SSH]	101	81,129	27.109
17 JUL 2025 - 18 JUL 2025	BESHOM	MR TAN KENG KANG [DIR/CEO]	101	81,129	27.11
17 JUL 2025 - 18 JUL 2025	BESHOM	MR TAN KENG KANG [SSH]	101	81,129	27.11
17 JUL 2025 - 18 JUL 2025	BESHOM	TAN KAI HEE FAMILY HOLDINGS SDN BHD [SSH]	101	67,106	22.423
21 JUL 2025 - 21 JUL 2025	BIMB	EMPLOYEES PROVIDENT FUND BOARD [SSH]	117	384,504	16.965
18 JUL 2025 - 18 JUL 2025	BIMB	EMPLOYEES PROVIDENT FUND BOARD [SSH]	86	384,387	16.96
22 JUL 2025 - 22 JUL 2025	BKAWAN	ARUSHA ENTERPRISE SDN. BHD. [SSH]	-3,167	169,843	43.647
22 JUL 2025 - 22 JUL 2025	BKAWAN	CUBIC CRYSTAL CORPORATION [SSH]	-1,520	211,013	54.227
22 JUL 2025 - 22 JUL 2025	BKAWAN	DATO' LEE HAU HIAN [DIR/CEO]	-1,520	215,988	55.505
22 JUL 2025 - 22 JUL 2025	BKAWAN	DATO' LEE HAU HIAN [SSH]	-1,520	215,988	55.505
22 JUL 2025 - 22 JUL 2025	BKAWAN	DI-YI SDN. BHD. [SSH]	-1,647	214,012	54.998
22 JUL 2025 - 22 JUL 2025	BKAWAN	GRATEFUL BLESSINGS FOUNDATION [SSH]	-1,647	214,012	54.998
22 JUL 2025 - 22 JUL 2025	BKAWAN	GRATEFUL BLESSINGS INC. [SSH]	-1,647	214,012	54.998
22 JUL 2025 - 22 JUL 2025	BKAWAN	HIGH QUEST ANSTALT [SSH]	-1,520	211,013	54.227
22 JUL 2025 - 22 JUL 2025	BKAWAN	HIGH QUEST HOLDINGS SDN. BHD. [SSH]	-1,520	211,013	54.227
22 JUL 2025 - 22 JUL 2025	BKAWAN	TAN SRI DATO' SERI LEE OI HIAN [DIR/CEO]	-1,647	218,658	56.191
22 JUL 2025 - 22 JUL 2025	BKAWAN	TAN SRI DATO' SERI LEE OI HIAN [SSH]	-1,647	218,658	56.191
22 JUL 2025 - 22 JUL 2025	BKAWAN	WAN HIN INVESTMENTS SDN. BERHAD [SSH]	-3,167	193,049	49.61
21 JUL 2025 - 21 JUL 2025	BORNOIL	DATUK JOSEPH LEE YOK MIN @ AMBROSE [DIR/CEO]	-100,000	1,876,762	12.695
21 JUL 2025 - 21 JUL 2025	BORNOIL	DATUK JOSEPH LEE YOK MIN @ AMBROSE [SSH]	-100,000	549,747	12.695
21 JUL 2025 - 21 JUL 2025	BORNOIL	MR RIORN LEE KAH VUI [DIR/CEO]	-100,000	618,565	4.185
21 JUL 2025 - 21 JUL 2025	BORNOIL	MR RIORN LEE KAH VUI [SSH]	-100,000	68,818	4.185
17 JUL 2025 - 18 JUL 2025	CBIP	DATUK LIM CHAI BENG [DIR/CEO]	-1,031	192,071	41.265
17 JUL 2025 - 18 JUL 2025	CBIP	DATUK LIM CHAI BENG [SSH]	-1,031	192,071	41.265
17 JUL 2025 - 18 JUL 2025	CBIP	ZEE CAPITAL SDN BHD [SSH]	-1,031	42,356	9.1
22 JUL 2025 - 22 JUL 2025	CEPCO	FA SECURITIES SDN BHD [SSH]	859	11,534	15.46
17 JUL 2025 - 17 JUL 2025	CGB	MR LEE CHEE VUI [DIR/CEO]	-2,049	99,147	12.426
17 JUL 2025 - 17 JUL 2025	CGB	MR LEE CHEE VUI [SSH]	-2,049	99,147	12.426
17 JUL 2025 - 17 JUL 2025	CGB	MR SOO YU CHAI [SSH]	-2,049	87,511	10.968
17 JUL 2025 - 17 JUL 2025	CGB	RYRT HOLDINGS SDN. BHD. [SSH]	-2,049	86,728	10.87
21 JUL 2025 - 21 JUL 2025	CHINHIN	DATUK SERI CHIAU BENG TEIK JP [DIR/CEO]	-2,170	2,126,740	60.097
21 JUL 2025 - 21 JUL 2025	CHINHIN	DATUK SERI CHIAU BENG TEIK JP [SSH]	-2,170	2,126,740	60.097
22 JUL 2025 - 22 JUL 2025	CIMB	KUMPULAN WANG PERSARAAN (DIPERBADANKAN) [SSH]	-189	699,254	6.51
18 JUL 2025 - 18 JUL 2025	CIMB	EMPLOYEES PROVIDENT FUND BOARD [SSH]	-3,348	1,699,681	15.8

Notice Period is 20th July 2025 to 26th July 2025

Effective Change Date	Stock Name	Buyer/ Seller Name [Classification]	Bought / (Sold) ['000]	No. of Shares After Trade ['000]	
			Total	Total	% Held
16 JUL 2025 - 16 JUL 2025	CIMB	EMPLOYEES PROVIDENT FUND BOARD [SSH]	-3,029	1,703,103	15.84
23 JUL 2025 - 23 JUL 2025	CLMT	KUMPULAN WANG PERSARAAN (DIPERBADANKAN) [SSH]	-1,663	278,405	9.53
21 JUL 2025 - 21 JUL 2025	CLMT	EMPLOYEES PROVIDENT FUND BOARD [SSH]	-263	437,049	14.96
22 JUL 2025 - 22 JUL 2025	CLMT	KUMPULAN WANG PERSARAAN (DIPERBADANKAN) [SSH]	-1,980	280,067	9.587
21 JUL 2025 - 21 JUL 2025	CLMT	KUMPULAN WANG PERSARAAN (DIPERBADANKAN) [SSH]	-368	282,048	9.655
17 JUL 2025 - 17 JUL 2025	CLMT	EMPLOYEES PROVIDENT FUND BOARD [SSH]	-1,137	437,312	14.969
17 JUL 2025 - 17 JUL 2025	CTOS	ABERDEEN GROUP PLC (FORMERLY KNOWN AS ABRDN PLC) [SSH]	340	358,541	15.521
17 JUL 2025 - 17 JUL 2025	CTOS	ABRDN HOLDINGS LIMITED [SSH]	340	358,541	15.521
17 JUL 2025 - 17 JUL 2025	CTOS	ABRDN MALAYSIA SDN BHD [SSH]	340	354,943	15.365
17 JUL 2025 - 17 JUL 2025	CTOS	KUMPULAN WANG PERSARAAN (DIPERBADANKAN) [SSH]	340	206,595	8.944
21 JUL 2025 - 21 JUL 2025	DAYANG	EMPLOYEES PROVIDENT FUND BOARD [SSH]	162	94,316	8.146
23 JUL 2025 - 23 JUL 2025	DIALOG	KUMPULAN WANG PERSARAAN (DIPERBADANKAN) [SSH]	1,000	600,739	10.65
18 JUL 2025 - 18 JUL 2025	DRBHCOR	EMPLOYEES PROVIDENT FUND BOARD [SSH]	-100	143,726	7.434
17 JUL 2025 - 17 JUL 2025	DRBHCOR	EMPLOYEES PROVIDENT FUND BOARD [SSH]	-50	143,576	7.427
16 JUL 2025 - 16 JUL 2025	DRBHCOR	EMPLOYEES PROVIDENT FUND BOARD [SSH]	-119	143,626	7.429
18 JUL 2025 - 18 JUL 2025	DSS	MISS LUCILLE TEOH SOO LIEN [DIR/CEO]	-158,112	163,142	33.988
18 JUL 2025 - 18 JUL 2025	DSS	MISS LUCILLE TEOH SOO LIEN [SSH]	-158,112	163,142	33.988
23 JUL 2025 - 23 JUL 2025	E&O	KUMPULAN WANG PERSARAAN (DIPERBADANKAN) [SSH]	116	153,408	6.158
21 JUL 2025 - 21 JUL 2025	ECOWLD	TAN SRI DATO' SRI LIEW KEE SIN [DIR/CEO]	-50,000	555,113	18.624
21 JUL 2025 - 21 JUL 2025	ECOWLD	TAN SRI DATO' SRI LIEW KEE SIN [SSH]	-50,000	555,113	18.624
21 JUL 2025 - 21 JUL 2025	ECOWLD	ECO WORLD DEVELOPMENT HOLDINGS SDN. BHD. [SSH]	-48,875	171,000	5.737
18 JUL 2025 - 21 JUL 2025	ECOWLD	TAN SRI DATO' SRI LIEW KEE SIN [DIR/CEO]	-50,000	605,113	20.301
18 JUL 2025 - 21 JUL 2025	ECOWLD	TAN SRI DATO' SRI LIEW KEE SIN [SSH]	-50,000	605,113	20.301
23 JUL 2025 - 23 JUL 2025	EDUSPEC	DATO' SRI GAN CHOW TEE [DIR/CEO]	1,500	102,758	7.27
23 JUL 2025 - 23 JUL 2025	EDUSPEC	DATO' SRI GAN CHOW TEE [SSH]	1,500	102,758	7.27
21 JUL 2025 - 21 JUL 2025	EDUSPEC	DATO' SRI GAN CHOW TEE [DIR/CEO]	745	101,258	7.564
21 JUL 2025 - 21 JUL 2025	EDUSPEC	DATO' SRI GAN CHOW TEE [SSH]	745	101,258	7.564
18 JUL 2025 - 18 JUL 2025	ENRA	ABK HOLDINGS SDN BHD [SSH]	4,000	20,610	12.238
18 JUL 2025 - 18 JUL 2025	ENRA	TAN SRI DATO' KAMALUDDIN BIN ABDULLAH [DIR/CEO]	4,000	54,720	32.492
18 JUL 2025 - 18 JUL 2025	ENRA	TAN SRI DATO' KAMALUDDIN BIN ABDULLAH [SSH]	4,000	54,720	32.492
18 JUL 2025 - 18 JUL 2025	ENRA-WA	TAN SRI DATO' KAMALUDDIN BIN ABDULLAH [DIR/CEO]	-4,000	3,573	14.309
23 JUL 2025 - 23 JUL 2025	FACBIND	MAGNI VANTAGE LIMITED [SSH]	1,000	5,610	6.687
23 JUL 2025 - 23 JUL 2025	FACBIND	MR CHEN YIY FON [DIR/CEO]	1,000	5,610	6.687
23 JUL 2025 - 23 JUL 2025	FACBIND	MR CHEN YIY FON [SSH]	1,000	5,610	6.687
22 JUL 2025 - 22 JUL 2025	FACBIND	MR CHEN YIY FON [DIR/CEO]	4,579	4,610	5.496
21 JUL 2025 - 21 JUL 2025	FACBIND	MR CHEN YIY FON [DIR/CEO]	31	31	0.037
23 JUL 2025 - 23 JUL 2025	FFB	KUMPULAN WANG PERSARAAN (DIPERBADANKAN) [SSH]	518	176,724	9.417
21 JUL 2025 - 21 JUL 2025	FFB	ABERDEEN GROUP PLC (FORMERLY KNOWN AS ABRDN PLC) [SSH]	211	175,936	9.375
21 JUL 2025 - 21 JUL 2025	FFB	ABRDN HOLDINGS LIMITED [SSH]	211	175,936	9.375
21 JUL 2025 - 21 JUL 2025	FFB	ABRDN MALAYSIA SDN BHD [SSH]	211	174,536	9.301
21 JUL 2025 - 21 JUL 2025	FFB	KUMPULAN WANG PERSARAAN (DIPERBADANKAN) [SSH]	211	176,206	9.389
18 JUL 2025 - 18 JUL 2025	FFB	ABERDEEN GROUP PLC (FORMERLY KNOWN AS ABRDN PLC) [SSH]	108	175,725	9.364
18 JUL 2025 - 18 JUL 2025	FFB	ABRDN HOLDINGS LIMITED [SSH]	108	175,725	9.364
18 JUL 2025 - 18 JUL 2025	FFB	ABRDN MALAYSIA SDN BHD [SSH]	108	174,326	9.289
18 JUL 2025 - 18 JUL 2025	FFB	KUMPULAN WANG PERSARAAN (DIPERBADANKAN) [SSH]	108	175,996	9.378
17 JUL 2025 - 17 JUL 2025	FFB	ABERDEEN GROUP PLC (FORMERLY KNOWN AS ABRDN PLC) [SSH]	544	175,618	9.358
17 JUL 2025 - 17 JUL 2025	FFB	ABRDN HOLDINGS LIMITED [SSH]	544	175,618	9.358
17 JUL 2025 - 17 JUL 2025	FFB	ABRDN MALAYSIA SDN BHD [SSH]	544	174,218	9.284
23 JUL 2025 - 23 JUL 2025	FGV	FEDERAL LAND DEVELOPMENT AUTHORITY (FELDA) [SSH]	519	3,095,541	84.852
22 JUL 2025 - 22 JUL 2025	FGV	FEDERAL LAND DEVELOPMENT AUTHORITY (FELDA) [SSH]	726	3,095,022	84.838
21 JUL 2025 - 21 JUL 2025	FGV	FEDERAL LAND DEVELOPMENT AUTHORITY (FELDA) [SSH]	263	3,094,296	84.818
18 JUL 2025 - 18 JUL 2025	FGV	FEDERAL LAND DEVELOPMENT AUTHORITY (FELDA) [SSH]	995	3,094,034	84.811
21 JUL 2025 - 21 JUL 2025	FIBRO	MR NG KIAN BOON [DIR/CEO]	200	162,100	65.29

Disclaimer: The Information in Insider Activity is extracted from www.shareinvestor.com/fundamental/insider_trades. The information on this page is provided as a service to readers. It does not constitute financial advice and/or any investment recommendations. We assume no liability for damages resulting from or arising out of the use of such information. Whilst every effort is made to ensure accuracy, the information presented is not the official record of shareholder filings. Readers are advised to read the original filings on the Bursa Malaysia website at www.bursamalaysia.com



STROM
SWISS TIMEPIECES & JEWELLERY



StromWatch Asia
Tele : +65.9817.3378
Email : ll.stromasia@gmail.com
WWW.STROMWATCH.SWISS

Notice Period is 20th July 2025 to 26th July 2025

Effective Change Date	Stock Name	Buyer/ Seller Name [Classification]	Bought / (Sold) ['000]	No. of Shares After Trade ['000]	
			Total	Total	% Held
17 JUL 2025 - 17 JUL 2025	FIBRO	MR NG KIAN BOON [SSH]	8	161,900	65.21
22 JUL 2025 - 23 JUL 2025	FPI	WISTRON CORPORATION [SSH]	-400	65,260	25.465
21 JUL 2025 - 21 JUL 2025	FPI	WISTRON CORPORATION [SSH]	-200	65,660	25.621
18 JUL 2025 - 18 JUL 2025	FPI	WISTRON CORPORATION [SSH]	-200	65,860	25.699
21 JUL 2025 - 21 JUL 2025	FRONTKN	EMPLOYEES PROVIDENT FUND BOARD [SSH]	397	166,562	10.51
18 JUL 2025 - 18 JUL 2025	FRONTKN	EMPLOYEES PROVIDENT FUND BOARD [SSH]	391	166,418	10.501
17 JUL 2025 - 17 JUL 2025	FRONTKN	EMPLOYEES PROVIDENT FUND BOARD [SSH]	993	166,272	10.492
16 JUL 2025 - 16 JUL 2025	FRONTKN	EMPLOYEES PROVIDENT FUND BOARD [SSH]	-70	165,279	10.429
21 JUL 2025 - 21 JUL 2025	GAMUDA	EMPLOYEES PROVIDENT FUND BOARD (EPF BOARD) [SSH]	4,717	946,758	16.35
18 JUL 2025 - 18 JUL 2025	GAMUDA	EMPLOYEES PROVIDENT FUND BOARD (EPF BOARD) [SSH]	3,908	942,041	16.27
17 JUL 2025 - 17 JUL 2025	GAMUDA	EMPLOYEES PROVIDENT FUND BOARD (EPF BOARD) [SSH]	8,822	938,133	16.25
16 JUL 2025 - 16 JUL 2025	GAMUDA	EMPLOYEES PROVIDENT FUND BOARD (EPF BOARD) [SSH]	9,489	929,311	16.1
16 JUL 2025 - 16 JUL 2025	GCAP	DATUK YAP YEE PING [DIR/CEO]	445	12,790	3.901
18 JUL 2025 - 22 JUL 2025	GCB	MR TAY HOW SIK @ TAY HOW SICK [DIR/CEO]	-250	64,358	2.348
22 JUL 2025 - 22 JUL 2025	HARBOUR	SAMARANG UCITS - SAMARANG ASIAN PROSPERITY [SSH]	-51	27,193	6.822
21 JUL 2025 - 21 JUL 2025	HARBOUR	SAMARANG UCITS - SAMARANG ASIAN PROSPERITY [SSH]	-60	27,244	6.835
18 JUL 2025 - 18 JUL 2025	HARBOUR	SAMARANG UCITS - SAMARANG ASIAN PROSPERITY [SSH]	-148	27,304	6.85
21 JUL 2025 - 21 JUL 2025	HARTA	KUMPULAN WANG PERSARAAN (DIPERBADANKAN) [SSH]	-1,158	216,600	6.345
21 JUL 2025 - 21 JUL 2025	HEKTAR	UPAYAPADU (M) SDN BHD [SSH]	792	39,204	5.527
17 JUL 2025 - 17 JUL 2025	HEKTAR	UPAYAPADU (M) SDN BHD [SSH]	480	38,412	5.416
23 JUL 2025 - 23 JUL 2025	HHRG	BATU KAWI CAPITAL SDN BHD [SSH]	1,225	82,662	8.101
23 JUL 2025 - 23 JUL 2025	HHRG	MR TAI CHIN HWANG [SSH]	1,225	98,225	9.626
17 JUL 2025 - 21 JUL 2025	HHRG	BATU KAWI CAPITAL SDN BHD [SSH]	4,453	81,437	7.981
17 JUL 2025 - 21 JUL 2025	HHRG	MR TAI CHIN HWANG [SSH]	4,453	97,000	9.506
18 JUL 2025 - 18 JUL 2025	HLBANK	EMPLOYEES PROVIDENT FUND BOARD [SSH]	415	193,120	9.255
17 JUL 2025 - 17 JUL 2025	HLBANK	EMPLOYEES PROVIDENT FUND BOARD [SSH]	126	192,705	9.235
16 JUL 2025 - 16 JUL 2025	HLBANK	EMPLOYEES PROVIDENT FUND BOARD [SSH]	335	192,579	9.229
17 JUL 2025 - 17 JUL 2025	HSSEB	DATO' MOHD ZAKHIR SIDDIQY BIN SIDEK [DIR/CEO]	10	2,018	0.396
17 JUL 2025 - 17 JUL 2025	ICENTS	MISS MICHELLE MARIE MAMAN [DIR/CEO]	-150	150	0.03
21 JUL 2025 - 21 JUL 2025	IGBREIT	EMPLOYEES PROVIDENT FUND BOARD [SSH]	880	370,162	10.221
18 JUL 2025 - 18 JUL 2025	IGBREIT	EMPLOYEES PROVIDENT FUND BOARD [SSH]	51	369,282	10.197
17 JUL 2025 - 17 JUL 2025	IGBREIT	EMPLOYEES PROVIDENT FUND BOARD [SSH]	-6	369,232	10.195
16 JUL 2025 - 16 JUL 2025	IGBREIT	EMPLOYEES PROVIDENT FUND BOARD [SSH]	-179	369,238	10.196
21 JUL 2025 - 21 JUL 2025	IHH	EMPLOYEES PROVIDENT FUND BOARD [SSH]	618	1,001,592	11.335
18 JUL 2025 - 18 JUL 2025	IHH	EMPLOYEES PROVIDENT FUND BOARD [SSH]	243	1,000,974	11.328
17 JUL 2025 - 17 JUL 2025	IHH	EMPLOYEES PROVIDENT FUND BOARD [SSH]	-32	1,000,730	11.325
21 JUL 2025 - 21 JUL 2025	IJM	EMPLOYEES PROVIDENT FUND BOARD [SSH]	1,655	600,024	17.118
18 JUL 2025 - 18 JUL 2025	IJM	EMPLOYEES PROVIDENT FUND BOARD [SSH]	1,457	598,369	17.071
21 JUL 2025 - 21 JUL 2025	IJM	KUMPULAN WANG PERSARAAN (DIPERBADANKAN) [SSH]	132	339,165	9.676
17 JUL 2025 - 17 JUL 2025	IJM	EMPLOYEES PROVIDENT FUND BOARD [SSH]	254	596,912	17.03
18 JUL 2025 - 18 JUL 2025	IJM	KUMPULAN WANG PERSARAAN (DIPERBADANKAN) [SSH]	-3,560	339,033	9.672
16 JUL 2025 - 16 JUL 2025	IJM	EMPLOYEES PROVIDENT FUND BOARD [SSH]	-422	596,659	17.022
17 JUL 2025 - 17 JUL 2025	INARI	EMPLOYEES PROVIDENT FUND BOARD [SSH]	379	509,405	13.445
22 JUL 2025 - 22 JUL 2025	INCKEN	FA SECURITIES SDN BHD [SSH]	324	44,112	11.65
22 JUL 2025 - 23 JUL 2025	INTA	ENCIK AHMAD BIN AWI [DIR/CEO]	-1,000	50,873	8.353
22 JUL 2025 - 23 JUL 2025	INTA	ENCIK AHMAD BIN AWI [SSH]	-1,000	50,873	8.353
17 JUL 2025 - 17 JUL 2025	IOICORP	EMPLOYEES PROVIDENT FUND BOARD [SSH]	37	876,396	14.127
16 JUL 2025 - 16 JUL 2025	IOICORP	DATO' LEE YEOW CHOR [DIR/CEO]	199	3,165,780	51.031
16 JUL 2025 - 16 JUL 2025	IOICORP	DATO' LEE YEOW CHOR [SSH]	199	3,165,580	51.027
21 JUL 2025 - 21 JUL 2025	IOIPG	EMPLOYEES PROVIDENT FUND BOARD [SSH]	-1,216	432,841	7.861
18 JUL 2025 - 18 JUL 2025	IOIPG	EMPLOYEES PROVIDENT FUND BOARD [SSH]	252	434,057	7.883
17 JUL 2025 - 17 JUL 2025	IOIPG	EMPLOYEES PROVIDENT FUND BOARD [SSH]	-4,000	433,805	7.879
16 JUL 2025 - 16 JUL 2025	IOIPG	EMPLOYEES PROVIDENT FUND BOARD [SSH]	-956	437,805	7.951
21 JUL 2025 - 21 JUL 2025	ITMAX	TAN SRI DATUK DR. IR. AHMAD TAJUDDIN BIN ALI [DIR/CEO]	-3	452	0.044
21 JUL 2025 - 21 JUL 2025	JPG	EMPLOYEES PROVIDENT FUND BOARD [SSH]	56	262,386	10.495
18 JUL 2025 - 18 JUL 2025	JPG	EMPLOYEES PROVIDENT FUND BOARD [SSH]	62	262,331	10.493
17 JUL 2025 - 17 JUL 2025	JPG	EMPLOYEES PROVIDENT FUND BOARD [SSH]	877	262,269	10.491
21 JUL 2025 - 21 JUL 2025	KENERGY	MR LIM THOU LAI [DIR/CEO]	-2,000	363,660	66.12
21 JUL 2025 - 21 JUL 2025	KENERGY	MR LIM THOU LAI [SSH]	-2,000	363,660	66.12
18 JUL 2025 - 18 JUL 2025	KENERGY	MR LIM THOU LAI [DIR/CEO]	-3,000	365,660	66.484
18 JUL 2025 - 18 JUL 2025	KENERGY	MR LIM THOU LAI [SSH]	-3,000	365,660	66.484
22 JUL 2025 - 22 JUL 2025	KFIMA	DATIN ROZILAWATI BINTI HAJI BASIR [DIR/CEO]	40	171,410	59.989
22 JUL 2025 - 22 JUL 2025	KFIMA	DATO' ROSLAN BIN HAMIR [DIR/CEO]	320	1,931	0.676
22 JUL 2025 - 22 JUL 2025	KFIMA	DR ROZHAYATI BINTI BASIR [SSH]	40	171,410	59.989
22 JUL 2025 - 22 JUL 2025	KFIMA	PUAN ROZANA ZETI BINTI BASIR [SSH]	40	171,410	59.989
22 JUL 2025 - 22 JUL 2025	KFIMA	ROZANA ZETI BINTI BASIR [DIR/CEO]	40	171,410	59.989
18 JUL 2025 - 18 JUL 2025	KGB	EMPLOYEES PROVIDENT FUND BOARD [SSH]	545	43,433	5.773
17 JUL 2025 - 17 JUL 2025	KGB	EMPLOYEES PROVIDENT FUND BOARD [SSH]	-100	42,887	5.701
16 JUL 2025 - 16 JUL 2025	KGB	EMPLOYEES PROVIDENT FUND BOARD [SSH]	795	42,987	5.714
24 JUL 2025 - 24 JUL 2025	KIMHIN	MR CHUA SENG HUAT [DIR/CEO]	159	87,732	62.559
24 JUL 2025 - 24 JUL 2025	KIMHIN	MR CHUA SENG HUAT [SSH]	159	1,543	62.559
23 JUL 2025 - 23 JUL 2025	KIMHIN	MR CHUA SENG HUAT [DIR/CEO]	100	87,573	62.445
23 JUL 2025 - 23 JUL 2025	KIMHIN	MR CHUA SENG HUAT [SSH]	100	1,383	62.445
21 JUL 2025 - 21 JUL 2025	KIMHIN	MR CHUA SENG HUAT [DIR/CEO]	170	87,473	62.284
21 JUL 2025 - 21 JUL 2025	KIMHIN	MR CHUA SENG HUAT [SSH]	170	1,283	62.284
21 JUL 2025 - 21 JUL 2025	KIMHIN	MR CHUA SENG HUAT [DIR/CEO]	170	1,283	0.825
21 JUL 2025 - 21 JUL 2025	KIMHIN	MR CHUA SENG HUAT [SSH]	170	1,283	0.825
16 JUL 2025 - 16 JUL 2025	KIPREIT	EMPLOYEES PROVIDENT FUND BOARD [SSH]	-1,000	45,438	5.69
21 JUL 2025 - 21 JUL 2025	KLCC	EMPLOYEES PROVIDENT FUND BOARD [SSH]	-34	220,911	12.237

Notice Period is 20th July 2025 to 26th July 2025

Effective Change Date	Stock Name	Buyer/ Seller Name [Classification]	Bought / (Sold) ['000]	No. of Shares After Trade ['000]	
			Total	Total	% Held
18 JUL 2025 - 18 JUL 2025	KLCC	EMPLOYEES PROVIDENT FUND BOARD [SSH]	-834	220,945	12.238
17 JUL 2025 - 17 JUL 2025	KLCC	EMPLOYEES PROVIDENT FUND BOARD [SSH]	-2,764	221,780	12.285
17 JUL 2025 - 17 JUL 2025	KLCC	EMPLOYEES PROVIDENT FUND BOARD [SSH]	-2,764	221,780	12.285
16 JUL 2025 - 16 JUL 2025	KLCC	EMPLOYEES PROVIDENT FUND BOARD [SSH]	-459	224,543	12.438
16 JUL 2025 - 16 JUL 2025	KLCC	EMPLOYEES PROVIDENT FUND BOARD [SSH]	-459	224,543	12.438
18 JUL 2025 - 21 JUL 2025	KOSSAN	TAN SRI DATO' LIM KUANG SIA [DIR/CEO]	1,800	968,285	38.253
18 JUL 2025 - 21 JUL 2025	KOSSAN	TAN SRI DATO' LIM KUANG SIA [SSH]	1,800	968,285	38.253
17 JUL 2025 - 17 JUL 2025	LFG	LIANNEX CORPORATION (S) PTE LTD [SSH]	206,818	559,455	51.699
17 JUL 2025 - 17 JUL 2025	LFG	MR LIM HAN WENG [SSH]	227,273	761,727	70.391
17 JUL 2025 - 17 JUL 2025	LWSABAH	MADAM CHIN LEE LING [DIR/CEO]	50	173,724	36.714
17 JUL 2025 - 17 JUL 2025	LWSABAH	MADAM CHIN LEE LING [SSH]	50	173,724	36.714
23 JUL 2025 - 23 JUL 2025	M&A	CIK SITI NUR AISHAH BINTI ISHAK [SSH]	-800	141,275	7.068
22 JUL 2025 - 22 JUL 2025	M&A	CIK SITI NUR AISHAH BINTI ISHAK [SSH]	0.1	142,075	7.108
18 JUL 2025 - 18 JUL 2025	M&A	CIK SITI NUR AISHAH BINTI ISHAK [SSH]	1,498	142,075	7.108
23 JUL 2025 - 24 JUL 2025	MAG	MR NG MIN LIN [DIR/CEO]	7,514	513,817	27.007
23 JUL 2025 - 24 JUL 2025	MAG	MR NG MIN LIN [SSH]	7,514	513,817	27.007
21 JUL 2025 - 21 JUL 2025	MALAKOF	EMPLOYEES PROVIDENT FUND BOARD [SSH]	959	676,355	13.84
22 JUL 2025 - 22 JUL 2025	MALAKOF	KUMPULAN WANG PERSARAAN (DIPERBADANKAN) ("KWAP") [SSH]	-184	410,098	8.392
17 JUL 2025 - 17 JUL 2025	MALAKOF	EMPLOYEES PROVIDENT FUND BOARD [SSH]	207	675,396	13.82
18 JUL 2025 - 18 JUL 2025	MALAKOF	KUMPULAN WANG PERSARAAN (DIPERBADANKAN) ("KWAP") [SSH]	1,000	410,283	8.395
23 JUL 2025 - 23 JUL 2025	MATRIX	LEMBAGA TABUNG HAJI [SSH]	400	114,746	6.113
22 JUL 2025 - 22 JUL 2025	MATRIX	LEMBAGA TABUNG HAJI [SSH]	300	114,346	6.092
21 JUL 2025 - 21 JUL 2025	MAXLAND	DATO' ABD AZIZ BIN HAJI SHEIKH FADZIR [DIR/CEO]	752	21,770	1.358
23 JUL 2025 - 23 JUL 2025	MAYBANK	AMANAHRAYA TRUSTEES BERHAD - AMANAH SAHAM BUMIPUTERA [SSH]	752	3,580,618	29.638
23 JUL 2025 - 23 JUL 2025	MAYBANK	KUMPULAN WANG PERSARAAN (DIPERBADANKAN) ("KWAP") [SSH]	800	629,813	5.213
21 JUL 2025 - 21 JUL 2025	MAYBANK	EMPLOYEES PROVIDENT FUND BOARD [SSH]	-4,162	1,476,858	12.225
22 JUL 2025 - 22 JUL 2025	MAYBANK	AMANAHRAYA TRUSTEES BERHAD - AMANAH SAHAM BUMIPUTERA [SSH]	1,816	3,579,865	29.632
18 JUL 2025 - 18 JUL 2025	MAYBANK	EMPLOYEES PROVIDENT FUND BOARD [SSH]	-4,908	1,481,020	12.259
21 JUL 2025 - 21 JUL 2025	MAYBANK	AMANAHRAYA TRUSTEES BERHAD - AMANAH SAHAM BUMIPUTERA [SSH]	1,000	3,578,050	29.617
21 JUL 2025 - 21 JUL 2025	MAYBANK	KUMPULAN WANG PERSARAAN (DIPERBADANKAN) ("KWAP") [SSH]	100	629,013	5.206
17 JUL 2025 - 17 JUL 2025	MAYBANK	EMPLOYEES PROVIDENT FUND BOARD [SSH]	-837	1,485,928	12.3
18 JUL 2025 - 18 JUL 2025	MAYBANK	AMANAHRAYA TRUSTEES BERHAD - AMANAH SAHAM BUMIPUTERA [SSH]	4,001	3,577,050	29.609
18 JUL 2025 - 18 JUL 2025	MAYBANK	KUMPULAN WANG PERSARAAN (DIPERBADANKAN) ("KWAP") [SSH]	171	628,913	5.205
16 JUL 2025 - 16 JUL 2025	MAYBANK	EMPLOYEES PROVIDENT FUND BOARD [SSH]	-6,059	1,486,765	12.307
23 JUL 2025 - 23 JUL 2025	MCLEAN	ACCRELIST CROWDFUNDING PTE. LTD. [SSH]	1,000	65,943	26.783
23 JUL 2025 - 23 JUL 2025	MCLEAN	DATUK DR TERENCE TEA YEOK KIAN [DIR/CEO]	1,000	65,943	26.783
23 JUL 2025 - 23 JUL 2025	MCLEAN	DATUK DR TERENCE TEA YEOK KIAN [SSH]	1,000	65,943	26.783
22 JUL 2025 - 22 JUL 2025	MCLEAN	ACCRELIST CROWDFUNDING PTE. LTD. [SSH]	2,650	64,943	26.377
22 JUL 2025 - 22 JUL 2025	MCLEAN	DATUK DR TERENCE TEA YEOK KIAN [DIR/CEO]	2,650	64,943	26.377
22 JUL 2025 - 22 JUL 2025	MCLEAN	DATUK DR TERENCE TEA YEOK KIAN [SSH]	2,650	64,943	26.377
18 JUL 2025 - 18 JUL 2025	MCLEAN	ACCRELIST CROWDFUNDING PTE. LTD. [SSH]	1,024	62,293	25.301
18 JUL 2025 - 18 JUL 2025	MCLEAN	DATUK DR TERENCE TEA YEOK KIAN [DIR/CEO]	1,024	62,293	25.301
18 JUL 2025 - 18 JUL 2025	MCLEAN	DATUK DR. TERENCE TEA YEOK KIAN [SSH]	1,024	62,293	25.301
21 JUL 2025 - 21 JUL 2025	METRO	MR LIM WAI KHONG [DIR/CEO]	0.1	7,661	0.783
18 JUL 2025 - 18 JUL 2025	MFCB	CAM PROPERTY (MALAYSIA) SDN BHD [SSH]	130	204,884	21.739
18 JUL 2025 - 18 JUL 2025	MFCB	CAMASIA LIMITED [SSH]	130	206,369	21.897
18 JUL 2025 - 18 JUL 2025	MFCB	GOH NAN KIOH [DIR/CEO]	130	332,449	35.274
18 JUL 2025 - 18 JUL 2025	MFCB	KEEN CAPITAL INVESTMENT LIMITED [SSH]	130	281,654	29.885
18 JUL 2025 - 18 JUL 2025	MFCB	LAJU RIANG SDN BHD [SSH]	130	204,884	21.739
18 JUL 2025 - 18 JUL 2025	MFCB	MR GOH NAN KIOH [SSH]	130	332,449	35.274
18 JUL 2025 - 18 JUL 2025	MFCB	RUBBER THREAD INDUSTRIES (M) SDN BERHAD [SSH]	130	204,884	21.739
22 JUL 2025 - 22 JUL 2025	MI	NORGES BANK [SSH]	560	45,695	5.132
21 JUL 2025 - 21 JUL 2025	MI	NORGES BANK [SSH]	185	45,135	5.069
18 JUL 2025 - 18 JUL 2025	MI	NORGES BANK [SSH]	23	44,951	5.048
17 JUL 2025 - 17 JUL 2025	MI	NORGES BANK [SSH]	32	44,928	5.045
17 JUL 2025 - 17 JUL 2025	MISC	EMPLOYEES PROVIDENT FUND BOARD [SSH]	-924	645,377	14.458
16 JUL 2025 - 16 JUL 2025	MISC	EMPLOYEES PROVIDENT FUND BOARD [SSH]	-506	646,301	14.479
21 JUL 2025 - 21 JUL 2025	MRDIY	EMPLOYEES PROVIDENT FUND BOARD [SSH]	1,000	826,206	8.723
17 JUL 2025 - 17 JUL 2025	MRDIY	EMPLOYEES PROVIDENT FUND BOARD [SSH]	-1,739	824,880	8.709
16 JUL 2025 - 16 JUL 2025	MRDIY	EMPLOYEES PROVIDENT FUND BOARD [SSH]	461	826,209	8.723
18 JUL 2025 - 18 JUL 2025	NATGATE	DATO' OOI ENG LEONG [DIR/CEO]	40	47	0.747
18 JUL 2025 - 18 JUL 2025	NATGATE	MR LEE KIM SAN [DIR/CEO]	80	150	2.389
18 JUL 2025 - 18 JUL 2025	NCT	DATO' SRI YAP NGAN CHOY [DIR/CEO]	-72	1,008,867	

Notice Period is 20th July 2025 to 26th July 2025

Effective Change Date	Stock Name	Buyer/ Seller Name [Classification]	Bought / (Sold) ['000]	No. of Shares After Trade ['000]	
			Total	Total	% Held
21 JUL 2025 - 21 JUL 2025	PBBANK	EMPLOYEES PROVIDENT FUND BOARD [SSH]	1,895	3,177,225	16.37
18 JUL 2025 - 18 JUL 2025	PBBANK	EMPLOYEES PROVIDENT FUND BOARD [SSH]	436	3,175,331	16.36
17 JUL 2025 - 17 JUL 2025	PBBANK	EMPLOYEES PROVIDENT FUND BOARD [SSH]	4,517	3,174,894	16.36
16 JUL 2025 - 16 JUL 2025	PBBANK	EMPLOYEES PROVIDENT FUND BOARD [SSH]	6,808	3,170,377	16.33
23 JUL 2025 - 23 JUL 2025	PENTA	KUMPULAN WANG PERSARAAN (DIPERBADANKAN) [SSH]	-310	65,063	9.147
21 JUL 2025 - 21 JUL 2025	PENTA	EMPLOYEES PROVIDENT FUND BOARD [SSH]	367	76,881	10.808
22 JUL 2025 - 22 JUL 2025	PENTA	KUMPULAN WANG PERSARAAN (DIPERBADANKAN) [SSH]	28	65,373	9.19
18 JUL 2025 - 18 JUL 2025	PENTA	EMPLOYEES PROVIDENT FUND BOARD [SSH]	263	76,514	10.757
21 JUL 2025 - 21 JUL 2025	PENTA	KUMPULAN WANG PERSARAAN (DIPERBADANKAN) [SSH]	-529	65,346	9.186
17 JUL 2025 - 17 JUL 2025	PENTA	EMPLOYEES PROVIDENT FUND BOARD [SSH]	230	76,251	10.72
18 JUL 2025 - 18 JUL 2025	PENTA	KUMPULAN WANG PERSARAAN (DIPERBADANKAN) [SSH]	-946	65,875	9.261
16 JUL 2025 - 16 JUL 2025	PENTA	EMPLOYEES PROVIDENT FUND BOARD [SSH]	239	76,021	10.687
17 JUL 2025 - 17 JUL 2025	PETGAS	EMPLOYEES PROVIDENT FUND BOARD [SSH]	-136	263,320	13.308
18 JUL 2025 - 18 JUL 2025	PICORP	DATO DR LUKMAN BIN IBRAHIM [DIR/CEO]	814	2,500	0.381
22 JUL 2025 - 23 JUL 2025	PJBUMI	PUAN HAFIDAH BINTI PAWANCIK [SSH]	-54	4,607	5.619
21 JUL 2025 - 21 JUL 2025	PJBUMI	PUAN HAFIDAH BINTI PAWANCIK [SSH]	-93	4,661	5.684
21 JUL 2025 - 21 JUL 2025	PMETAL	EMPLOYEES PROVIDENT FUND BOARD [SSH]	1,770	532,169	6.459
18 JUL 2025 - 18 JUL 2025	PMETAL	EMPLOYEES PROVIDENT FUND BOARD [SSH]	200	530,399	6.437
17 JUL 2025 - 17 JUL 2025	PMETAL	EMPLOYEES PROVIDENT FUND BOARD [SSH]	261	530,199	6.435
16 JUL 2025 - 16 JUL 2025	PMETAL	EMPLOYEES PROVIDENT FUND BOARD [SSH]	491	529,937	6.432
24 JUL 2025 - 24 JUL 2025	PMIBHD	DATUK TAN LEH KIAH [DIR/CEO]	200	500	0.05
17 JUL 2025 - 17 JUL 2025	PPB	EMPLOYEES PROVIDENT FUND BOARD [SSH]	200	188,415	13.244
22 JUL 2025 - 22 JUL 2025	PTRANS	DATIN SRI LIM SOW KENG [SSH]	1,000	179,566	15.736
22 JUL 2025 - 22 JUL 2025	PTRANS	DATO' SRI CHEONG KONG FITT [DIR/CEO]	1,000	179,566	15.737
22 JUL 2025 - 22 JUL 2025	PTRANS	DATO' SRI CHEONG KONG FITT [SSH]	1,000	179,566	15.737
18 JUL 2025 - 18 JUL 2025	PTRANS	DATIN SRI LIM SOW KENG [SSH]	4,000	178,566	15.653
18 JUL 2025 - 18 JUL 2025	PTRANS	DATO' SRI CHEONG KONG FITT [DIR/CEO]	4,000	178,566	15.653
18 JUL 2025 - 18 JUL 2025	PTRANS	DATO' SRI CHEONG KONG FITT [SSH]	4,000	178,566	15.653
16 JUL 2025 - 18 JUL 2025	QL	CHIA SEONG FATT [DIR/CEO]	243	433,829	11.888
16 JUL 2025 - 18 JUL 2025	QL	CHIA SEONG FATT [SSH]	243	433,829	11.888
16 JUL 2025 - 18 JUL 2025	QL	CHIA SEONG POW [SSH]	243	443,307	12.148
16 JUL 2025 - 18 JUL 2025	QL	CHIA SONG KUN [DIR/CEO]	243	1,504,563	41.228
16 JUL 2025 - 18 JUL 2025	QL	CHIA SONG KUN [SSH]	243	1,504,563	41.228
16 JUL 2025 - 18 JUL 2025	QL	MR CHIA SEONG POW [DIR/CEO]	243	443,307	12.148
18 JUL 2025 - 18 JUL 2025	REX	ETA CAPITAL SDN BHD [SSH]	82,746	349,724	53.176
18 JUL 2025 - 18 JUL 2025	REX	ETA INDUSTRIES SDN BHD [SSH]	82,746	349,724	53.176
18 JUL 2025 - 18 JUL 2025	REX	MR LIM CHIN HUI [SSH]	82,746	349,724	53.176
18 JUL 2025 - 18 JUL 2025	RHBBANK	EMPLOYEES PROVIDENT FUND BOARD [SSH]	-2,276	1,675,861	38.42
17 JUL 2025 - 17 JUL 2025	RHBBANK	EMPLOYEES PROVIDENT FUND BOARD [SSH]	-90	1,678,137	38.472
16 JUL 2025 - 16 JUL 2025	RHBBANK	EMPLOYEES PROVIDENT FUND BOARD [SSH]	-3,119	1,678,227	38.475
22 JUL 2025 - 22 JUL 2025	SALCON	INFRA TROPIKA SDN BHD [SSH]	13,816	92,246	8.16
22 JUL 2025 - 22 JUL 2025	SALCON	MR TEE XUN HAO [SSH]	13,816	92,483	8.181
22 JUL 2025 - 22 JUL 2025	SALCON	TAN SRI DATO' TEE TIAM LEE [DIR/CEO]	13,816	171,403	15.162
22 JUL 2025 - 22 JUL 2025	SALCON	TAN SRI DATO' TEE TIAM LEE [SSH]	13,816	171,167	15.141
18 JUL 2025 - 18 JUL 2025	SAM	EMPLOYEES PROVIDENT FUND BOARD [SSH]	0.2	38,745	5.723
22 JUL 2025 - 22 JUL 2025	SAPIND	MR KOH KOK HOOI [SSH]	2	8,165	11.219
18 JUL 2025 - 18 JUL 2025	SAPIND	MR KOH KOK HOOI [SSH]	1	8,163	11.216
21 JUL 2025 - 22 JUL 2025	SCIENTX	MR LIM PENG CHEONG [DIR/CEO]	120	871,648	56.009
21 JUL 2025 - 22 JUL 2025	SCIENTX	MR LIM PENG CHEONG [SSH]	120	865,590	55.62
18 JUL 2025 - 18 JUL 2025	SDG	EMPLOYEES PROVIDENT FUND BOARD [SSH]	727	1,164,518	16.839
17 JUL 2025 - 17 JUL 2025	SDG	KUMPULAN WANG PERSARAAN (DIPERBADANKAN) [SSH]	50	509,887	7.373
17 JUL 2025 - 17 JUL 2025	SEAL	DATUK WIRA SYED AMIR SYAKIB ARSALAN BIN SYED IBRAHIM [DIR/CEO]	20	130	0.029
18 JUL 2025 - 18 JUL 2025	SIME	EMPLOYEES PROVIDENT FUND BOARD [SSH]	-680	1,165,017	17.091
21 JUL 2025 - 21 JUL 2025	SIME	KUMPULAN WANG PERSARAAN (DIPERBADANKAN) [SSH]	-79	453,706	6.657
18 JUL 2025 - 18 JUL 2025	SIME	KUMPULAN WANG PERSARAAN (DIPERBADANKAN) [SSH]	-2,631	453,785	6.658
17 JUL 2025 - 17 JUL 2025	SIME	KUMPULAN WANG PERSARAAN (DIPERBADANKAN) [SSH]	970	456,415	6.697
21 JUL 2025 - 21 JUL 2025	SIMEPROP	EMPLOYEES PROVIDENT FUND BOARD [SSH]	4,298	886,271	13.031
18 JUL 2025 - 18 JUL 2025	SIMEPROP	EMPLOYEES PROVIDENT FUND BOARD [SSH]	-4,704	881,973	12.968
17 JUL 2025 - 17 JUL 2025	SIMEPROP	EMPLOYEES PROVIDENT FUND BOARD [SSH]	9,098	886,677	13.038
18 JUL 2025 - 18 JUL 2025	SIMEPROP	KUMPULAN WANG PERSARAAN (DIPERBADANKAN) [SSH]	-216	435,336	6.401
16 JUL 2025 - 16 JUL 2025	SIMEPROP	EMPLOYEES PROVIDENT FUND BOARD [SSH]	5,163	877,579	12.904

Notice Period is 20th July 2025 to 26th July 2025

Effective Change Date	Stock Name	Buyer/ Seller Name [Classification]	Bought / (Sold) ['000]	No. of Shares After Trade ['000]	
			Total	Total	% Held
22 JUL 2025 - 22 JUL 2025	SKPRES	ABRDN MALAYSIA SDN BHD [SSH]	308	106,749	6.833
21 JUL 2025 - 21 JUL 2025	SKPRES	EMPLOYEES PROVIDENT FUND BOARD [SSH]	224	188,631	12.073
21 JUL 2025 - 21 JUL 2025	SKPRES	ABERDEEN GROUP PLC (FORMERLY KNOWN AS ABRDN PLC) [SSH]	224	106,441	6.813
21 JUL 2025 - 21 JUL 2025	SKPRES	ABRDN HOLDINGS LIMITED [SSH]	224	106,441	6.813
21 JUL 2025 - 21 JUL 2025	SKPRES	ABRDN MALAYSIA SDN BHD [SSH]	224	106,441	6.813
18 JUL 2025 - 18 JUL 2025	SLVEST	MR LIEW CHEE ING [DIR/CEO]	-377	2,523	0.325
21 JUL 2025 - 21 JUL 2025	SPSETIA	EMPLOYEES PROVIDENT FUND BOARD [SSH]	307	468,902	9.372
21 JUL 2025 - 21 JUL 2025	SPSETIA	KUMPULAN WANG PERSARAAN (DIPERBADANKAN) [SSH]	-250	403,765	8.07
18 JUL 2025 - 18 JUL 2025	SPSETIA	KUMPULAN WANG PERSARAAN (DIPERBADANKAN) [SSH]	221	404,015	8.075
21 JUL 2025 - 22 JUL 2025	SSTEEL	MR YEHO CHONG KWEE [DIR/CEO]	542	1,123	0.075
21 JUL 2025 - 21 JUL 2025	SUNCON	MR WONG KWAN SONG [DIR/CEO]	30	160	0.012
21 JUL 2025 - 21 JUL 2025	SUNREIT	EMPLOYEES PROVIDENT FUND BOARD [SSH]	-856	544,520	15.899
18 JUL 2025 - 18 JUL 2025	SUNREIT	EMPLOYEES PROVIDENT FUND BOARD [SSH]	950	545,375	15.924
17 JUL 2025 - 17 JUL 2025	SUNREIT	EMPLOYEES PROVIDENT FUND BOARD [SSH]	-1,028	544,425	15.897
16 JUL 2025 - 16 JUL 2025	SUNREIT	EMPLOYEES PROVIDENT FUND BOARD [SSH]	1,308	545,453	15.927
21 JUL 2025 - 21 JUL 2025	SUNWAY	EMPLOYEES PROVIDENT FUND BOARD [SSH]	-6,350	533,035	8.56
18 JUL 2025 - 18 JUL 2025	SUNWAY	EMPLOYEES PROVIDENT FUND BOARD [SSH]	-4,447	539,384	8.66
17 JUL 2025 - 17 JUL 2025	SUNWAY	EMPLOYEES PROVIDENT FUND BOARD [SSH]	-6,100	543,831	8.74
16 JUL 2025 - 16 JUL 2025	SUNWAY	EMPLOYEES PROVIDENT FUND BOARD [SSH]	8,512	549,931	8.83
16 JUL 2025 - 18 JUL 2025	SUNWAY	TAN SRI DATO' (DR.) CHEW CHEE KIN [DIR/CEO]	-1,050	2,044	0.03
23 JUL 2025 - 23 JUL 2025	TAANN	WONG SIK ONN [DIR/CEO]	-190	230	0.052
22 JUL 2025 - 22 JUL 2025	TAANN	WONG SIK ONN [DIR/CEO]	-80	420	0.095
21 JUL 2025 - 21 JUL 2025	TAANN	TING LINA @ DING LINA [DIR/CEO]	30	950	0.215
22 JUL 2025 - 22 JUL 2025	TAFI	ARMANI SYNERGY SDN. BHD. [SSH]	10	208,464	54.942
22 JUL 2025 - 22 JUL 2025	TAFI	DATO' SRI ANDREW LIM ENG GUAN [DIR/CEO]	10	219,266	57.789
22 JUL 2025 - 22 JUL 2025	TAFI	DATO' SRI ANDREW LIM ENG GUAN [SSH]	10	219,266	57.789
22 JUL 2025 - 22 JUL 2025	TAFI	DATO' SRI AZLAN BIN AZMI [DIR/CEO]	10	209,022	55.089
22 JUL 2025 - 22 JUL 2025	TAFI	DATO' SRI AZLAN BIN AZMI [SSH]	10	209,022	55.089
22 JUL 2025 - 22 JUL 2025	TAFI	DATO' SRI WONG SZE CHIEN [DIR/CEO]	10	226,123	59.596
22 JUL 2025 - 22 JUL 2025	TAFI	DATO' SRI WONG SZE CHIEN [SSH]	10	226,123	59.596
16 JUL 2025 - 16 JUL 2025	TAKAFUL	EMPLOYEES PROVIDENT FUND BOARD [SSH]	-93	162,480	18.629
21 JUL 2025 - 22 JUL 2025	TAMBUN	MR TEH KIAK SENG [DIR/CEO]	100	221,379	50.4
21 JUL 2025 - 22 JUL 2025	TAMBUN	MR TEH KIAK SENG [SSH]	100	221,379	50.4
24 JUL 2025 - 24 JUL 2025	TANCO	DATO' SRI ANDREW TAN JUN SUAN [DIR/CEO]	-7,800	3,071,120	55.991
24 JUL 2025 - 24 JUL 2025	TANCO	DATO' SRI ANDREW TAN JUN SUAN [DIR/CEO]	9,300	3,080,420	56.161
24 JUL 2025 - 24 JUL 2025	TANCO	DATO' SRI ANDREW TAN JUN SUAN [SSH]	-7,800	3,071,120	55.991
24 JUL 2025 - 24 JUL 2025	TANCO	DATO' SRI ANDREW TAN JUN SUAN [SSH]	9,300	3,080,420	56.161
23 JUL 2025 - 23 JUL 2025	TANCO	DATO' SRI ANDREW TAN JUN SUAN [DIR/CEO]	50,000	3,078,920	56.134
23 JUL 2025 - 23 JUL 2025	TANCO	DATO' SRI ANDREW TAN JUN SUAN [DIR/CEO]	50,000	98,302	8.946
23 JUL 2025 - 23 JUL 2025	TANCO	DATO' SRI ANDREW TAN JUN SUAN [SSH]	50,000	3,078,920	56.134
23 JUL 2025 - 23 JUL 2025	TANCO	DATO' SRI ANDREW TAN JUN SUAN [DIR/CEO]	-6,600	3,019,220	55.045
23 JUL 2025 - 23 JUL 2025	TANCO	DATO' SRI ANDREW TAN JUN SUAN [DIR/CEO]	9,700	3,028,920	55.222
23 JUL 2025 - 23 JUL 2025	TANCO	DATO' SRI ANDREW TAN JUN SUAN [SSH]	-6,600	3,019,220	55.045
23 JUL 2025 - 23 JUL 2025	TANCO	DATO' SRI ANDREW TAN JUN SUAN [SSH]	9,700	3,028,920	55.222
22 JUL 2025 - 22 JUL 2025	TANCO	DATO' SRI ANDREW TAN JUN SUAN [DIR/CEO]	-3,800	3,014,342	55.499
22 JUL 2025 - 22 JUL 2025	TANCO	DATO' SRI ANDREW TAN JUN SUAN [DIR/CEO]	3,278	3,017,620	55.559
22 JUL 2025 - 22 JUL 2025	TANCO	DATO' SRI ANDREW TAN JUN SUAN [DIR/CEO]	-3,375	3,018,142	55.569
22 JUL 2025 - 22 JUL 2025	TANCO	DATO' SRI ANDREW TAN JUN SUAN [DIR/CEO]	8,200	3,025,820	55.71
22 JUL 2025 - 22 JUL 2025	TANCO	DATO' SRI ANDREW TAN JUN SUAN [SSH]	-3,800	3,014,342	55.499
22 JUL 2025 - 22 JUL 2025	TANCO	DATO' SRI ANDREW TAN JUN SUAN [SSH]	3,278	3,017,620	55.559
22 JUL 2025 - 22 JUL 2025	TANCO	DATO' SRI ANDREW TAN JUN SUAN [SSH]	8,200	3,025,820	55.71
22 JUL 2025 - 22 JUL 2025	TANCO	DATO' SRI ANDREW TAN JUN SUAN [SSH]	-3,375	3,018,142	55.569
21 JUL 2025 - 21 JUL 2025	TANCO	DATO' SRI ANDREW TAN JUN SUAN [DIR/CEO]	9,951	3,020,317	55.613
21 JUL 2025 - 21 JUL 2025	TANCO	DATO' SRI ANDREW TAN JUN SUAN [DIR/CEO]	1,200	3,021,517	55.635
21 JUL 2025 - 21 JUL 2025	TANCO	DATO' SRI ANDREW TAN JUN SUAN [DIR/CEO]	-8,739	3,010,366	55.43
21 JUL 2025 - 21 JUL 2025	TANCO	DATO' SRI ANDREW TAN JUN SUAN [SSH]	1,200	3,021,517	55.635
21 JUL 2025 - 21 JUL 2025	TANCO	DATO' SRI ANDREW TAN JUN SUAN [SSH]	9,951	3,020,317	55.613
21 JUL 2025 - 21 JUL 2025	TANCO	DATO' SRI ANDREW TAN JUN SUAN [SSH]	-8,739	3,010,366	55.43
22 JUL 2025 - 22 JUL 2025	TCS-WB	DATO' IR TEE CHAI SENG [DIR/CEO]	-49,641	8718	8.467
21 JUL 2025 - 21 JUL 2025	TENAGA	EMPLOYEES PROVIDENT FUND BOARD [SSH]	-590	109,849	18.84
18 JUL 2025 - 18 JUL 2025	TENAGA	EMPLOYEES PROVIDENT FUND BOARD [SSH]	-65	109,903	18.85
21 JUL 2025 - 21 JUL 2025	TENAGA	KUMPULAN WANG PERSARAAN (DIPERBADANKAN) [SSH]	500	422,663	7.25
17 JUL 2025 - 17 JUL 2025	TENAGA	EMPLOYEES PROVIDENT FUND BOARD [SSH]	-2,086	109,910	18.86
18 JUL 2025 - 18 JUL 2025	TENAGA	KUMPULAN WANG PERSARAAN (DIPERBADANKAN) [SSH]	1,500	422,163	7.24

Disclaimer: The Information in Insider Activity is extracted from www.shareinvestor.com/fundamental/insider_trades. The information on this page is provided as a service to readers. It does not constitute financial advice and/or any investment recommendations. We assume no liability for damages resulting from or arising out of the use of such information. Whilst every effort is made to ensure accuracy, the information presented is not the official record of shareholder filings. Readers are advised to read the original filings on the Bursa Malaysia website at www.bursamalaysia.com

Invest 216
ISSUE
FRIDAY 19 JULY 2024

How L&P Global Stays Ahead

Ooi Lay Pheng
Executive Director / CEO, L&P Global Berhad

Learn how to identify Hot Stocks using Technical Analysis (TA) and Fundamental Analysis (FA)

SIGN UP FOR Invest
IT'S FREE!!!

[Click here](#)

Scan me

Via email, every Friday.

Notice Period is 20th July 2025 to 26th July 2025

Effective Change Date	Stock Name	Buyer/ Seller Name [Classification]	Bought / (Sold) ['000]	No. of Shares After Trade ['000]	
			Total	Total	% Held
18 JUL 2025 - 18 JUL 2025	THETA	MR HILARY FERNANDEZ [SSH]	-242	7153	6.064
22 JUL 2025 - 22 JUL 2025	TIMECOM	KUMPULAN WANG PERSARAAN (DIPERBADANKAN) [SSH]	500	144048	7.791
21 JUL 2025 - 21 JUL 2025	TIMECOM	ENCIK AFZAL ABDUL RAHIM [DIR/CEO]	2,000	395808	21.409
21 JUL 2025 - 21 JUL 2025	TIMECOM	ENCIK AFZAL ABDUL RAHIM [SSH]	2,000	395808	21.409
21 JUL 2025 - 21 JUL 2025	TIMECOM	KUMPULAN WANG PERSARAAN (DIPERBADANKAN) [SSH]	3,200	143548	7.764
21 JUL 2025 - 21 JUL 2025	TIMECOM	MR PATRICK CORSO [DIR/CEO]	-25,000	221720	11.993
21 JUL 2025 - 21 JUL 2025	TIMECOM	MR PATRICK CORSO [SSH]	-25,000	221720	11.993
18 JUL 2025 - 18 JUL 2025	TIMECOM	EMPLOYEES PROVIDENT FUND BOARD [SSH]	14	247394	13.381
21 JUL 2025 - 21 JUL 2025	TIMECOM	KUMPULAN WANG PERSARAAN (DIPERBADANKAN) [SSH]	817	140348	7.591
17 JUL 2025 - 17 JUL 2025	TIMECOM	EMPLOYEES PROVIDENT FUND BOARD [SSH]	11	247380	13.38
18 JUL 2025 - 18 JUL 2025	TIMECOM	KUMPULAN WANG PERSARAAN (DIPERBADANKAN) [SSH]	500	139532	7.547
16 JUL 2025 - 16 JUL 2025	TIMECOM	EMPLOYEES PROVIDENT FUND BOARD [SSH]	192	247369	13.38
21 JUL 2025 - 21 JUL 2025	TM	EMPLOYEES PROVIDENT FUND BOARD (EPF BOARD) [SSH]	3,541	725993	18.917
22 JUL 2025 - 22 JUL 2025	TM	KUMPULAN WANG PERSARAAN (DIPERBADANKAN) [KWAP] [SSH]	24	397132	10.348
18 JUL 2025 - 18 JUL 2025	TM	EMPLOYEES PROVIDENT FUND BOARD (EPF BOARD) [SSH]	4,620	722452	18.825
21 JUL 2025 - 21 JUL 2025	TM	KUMPULAN WANG PERSARAAN (DIPERBADANKAN) [KWAP] [SSH]	10	397108	10.347
17 JUL 2025 - 17 JUL 2025	TM	EMPLOYEES PROVIDENT FUND BOARD (EPF BOARD) [SSH]	3,396	717831	18.705
18 JUL 2025 - 18 JUL 2025	TM	KUMPULAN WANG PERSARAAN (DIPERBADANKAN) [KWAP] [SSH]	1,013	397098	10.347
16 JUL 2025 - 16 JUL 2025	TM	EMPLOYEES PROVIDENT FUND BOARD (EPF BOARD) [SSH]	1,245	714436	18.616
24 JUL 2025 - 24 JUL 2025	TOMYPAK	MR YONG KWET ON [DIR/CEO]	135	107219	24.87
24 JUL 2025 - 24 JUL 2025	TOMYPAK	MR YONG KWET ON [SSH]	135	107219	24.87
18 JUL 2025 - 18 JUL 2025	TOMYPAK	MR YONG KWET ON [DIR/CEO]	104	107084	24.839
18 JUL 2025 - 18 JUL 2025	TOMYPAK	MR YONG KWET ON [SSH]	104	107084	24.839
18 JUL 2025 - 18 JUL 2025	TOPMIX	MR CHANG TIAN KWANG [DIR/CEO]	84	884	0.224
16 JUL 2025 - 17 JUL 2025	UMCCA	MR TEE CHENG HUA [DIR/CEO]	20	60270	28.732
16 JUL 2025 - 17 JUL 2025	UMCCA	MR TEE LIP ZHUN [DIR/CEO]	20	58168	27.73
18 JUL 2025 - 18 JUL 2025	UTDPLT	EMPLOYEES PROVIDENT FUND BOARD [SSH]	43	37819	6.078
17 JUL 2025 - 17 JUL 2025	UTDPLT	EMPLOYEES PROVIDENT FUND BOARD [SSH]	23	37775	6.071
16 JUL 2025 - 16 JUL 2025	UTDPLT	EMPLOYEES PROVIDENT FUND BOARD [SSH]	79	37752	6.068
18 JUL 2025 - 18 JUL 2025	VANZO	MISS CHOE SOOK LING [DIR/CEO]	-11,500	68480	14.671
18 JUL 2025 - 18 JUL 2025	VANZO	MISS CHOE SOOK LING [SSH]	-11,500	68480	14.671
18 JUL 2025 - 18 JUL 2025	VANZO	MR LIM CHEE LIP [SSH]	-11,500	68480	14.671
17 JUL 2025 - 17 JUL 2025	VELESTO	ABERDEEN GROUP PLC (FORMERLY KNOWN AS ABRDN PLC) [SSH]	4,446	526453	6.408

Notice Period is 20th July 2025 to 26th July 2025

Effective Change Date	Stock Name	Buyer/ Seller Name [Classification]	Bought / (Sold) ['000]	No. of Shares After Trade ['000]	
			Total	Total	% Held
17 JUL 2025 - 17 JUL 2025	VITROX	EMPLOYEES PROVIDENT FUND BOARD [SSH]	78	110165	5.819
22 JUL 2025 - 22 JUL 2025	VOLCANO	MR ANDREW SU MENG KIT [DIR/CEO]	60	17540	9.657
22 JUL 2025 - 22 JUL 2025	VOLCANO	MR ANDREW SU MENG KIT [SSH]	60	17540	9.657
18 JUL 2025 - 18 JUL 2025	VS	DATUK BEH KIM LING [DIR/CEO]	4,610	580816	14.991
18 JUL 2025 - 18 JUL 2025	VS	DATUK BEH KIM LING [SSH]	4,610	580816	14.991
18 JUL 2025 - 18 JUL 2025	VS	EMPLOYEES PROVIDENT FUND BOARD [SSH]	2,826	376112	9.708
17 JUL 2025 - 17 JUL 2025	VS	EMPLOYEES PROVIDENT FUND BOARD [SSH]	5,292	373286	9.635
16 JUL 2025 - 16 JUL 2025	VS	EMPLOYEES PROVIDENT FUND BOARD [SSH]	1,600	367994	9.498
10 JUL 2025 - 10 JUL 2025	WANGZNG	MR HUI CHING CHI [DIR/CEO]	40	112715	70.376
10 JUL 2025 - 10 JUL 2025	WANGZNG	MR HUI CHING CHI [SSH]	40	112715	70.376
17 JUL 2025 - 17 JUL 2025	WASCO	EMPLOYEES PROVIDENT FUND BOARD [SSH]	14	52847	6.824
16 JUL 2025 - 16 JUL 2025	WASCO	EMPLOYEES PROVIDENT FUND BOARD [SSH]	50	52832	6.823
17 JUL 2025 - 17 JUL 2025	WILLOW	MR WONG AH CHEW [DIR/CEO]	37	276472	57.036
17 JUL 2025 - 17 JUL 2025	WILLOW	MR WONG AH CHEW [SSH]	37	276472	57.036
21 JUL 2025 - 21 JUL 2025	WPRTS	EMPLOYEES PROVIDENT FUND BOARD [SSH]	-3,067	263871	7.738
22 JUL 2025 - 22 JUL 2025	WPRTS	KUMPULAN WANG PERSARAAN (DIPERBADANKAN) [SSH]	-80	219062	6.424
18 JUL 2025 - 18 JUL 2025	WPRTS	EMPLOYEES PROVIDENT FUND BOARD [SSH]	-12,694	266938	7.828
21 JUL 2025 - 21 JUL 2025	WPRTS	KUMPULAN WANG PERSARAAN (DIPERBADANKAN) [SSH]	-80	219142	6.426
17 JUL 2025 - 17 JUL 2025	WPRTS	EMPLOYEES PROVIDENT FUND BOARD [SSH]	-2,640	279632	8.2
18 JUL 2025 - 18 JUL 2025	WPRTS	KUMPULAN WANG PERSARAAN (DIPERBADANKAN) [SSH]	-34	219222	6.429
16 JUL 2025 - 16 JUL 2025	WPRTS	EMPLOYEES PROVIDENT FUND BOARD [SSH]	-20,582	283272	8.307
21 JUL 2025 - 22 JUL 2025	XIN	MR CHONG SIN KIONG [SSH]	2,270	33470	5.879
23 JUL 2025 - 23 JUL 2025	YINSON	KUMPULAN WANG PERSARAAN (DIPERBADANKAN) [SSH]	88	204896	7.021
18 JUL 2025 - 18 JUL 2025	YINSON	KUMPULAN WANG PERSARAAN (DIPERBADANKAN) [SSH]	271	204808	7.018
21 JUL 2025 - 21 JUL 2025	YTLPOWR	EMPLOYEES PROVIDENT FUND BOARD [SSH]	99	725036	8.523
18 JUL 2025 - 18 JUL 2025	YTLPOWR	EMPLOYEES PROVIDENT FUND BOARD [SSH]	2,942	724936	8.524
17 JUL 2025 - 17 JUL 2025	YTLPOWR	EMPLOYEES PROVIDENT FUND BOARD [SSH]	405	721995	8.49
16 JUL 2025 - 16 JUL 2025	YTLPOWR	EMPLOYEES PROVIDENT FUND BOARD [SSH]	810	721589	8.485
23 JUL 2025 - 23 JUL 2025	ZETRIX	ASIA INTERNET HOLDINGS SDN. BHD. [SSH]	-5,350	1034855	13.444
21 JUL 2025 - 21 JUL 2025	ZETRIX	ASIA INTERNET HOLDINGS SDN. BHD. [SSH]	3,000	1040205	13.503
21 JUL 2025 - 21 JUL 2025	ZETRIX	MR WONG THEAN SOON [DIR/CEO]	3,000	2074767	26.932
21 JUL 2025 - 21 JUL 2025	ZETRIX	MR WONG THEAN SOON [SSH]	3,000	2074767	26.932
22 JUL 2025 - 22 JUL 2025	ZHULIAN	MR TEOH BENG SENG [SSH]	72	266312	57.891
22 JUL 2025 - 22 JUL 2025	ZHULIAN	THE BEST SOURCE HOLDINGS PTE. LTD. [SSH]	72	63365	13.775
18 JUL 2025 - 18 JUL 2025	ZHULIAN	MR TEOH BENG SENG [SSH]	92	266240	57.875
18 JUL 2025 - 18 JUL 2025	ZHULIAN	THE BEST SOURCE HOLDINGS PTE. LTD. [SSH]	92	63293	13.759

Disclaimer: The Information in Insider Activity is extracted from www.shareinvestor.com/fundamental/insider_trades. The information on this page is provided as a service to readers. It does not constitute financial advice and/or any investment recommendations. We assume no liability for damages resulting from or arising out of the use of such information. Whilst every effort is made to ensure accuracy, the information presented is not the official record of shareholder filings. Readers are advised to read the original filings on the Bursa Malaysia website at www.bursamalaysia.com

CHECK OUT SHAREINVESTOR

BROKER'S CALL

Weekly Buy/Sell/Hold calls from leading Malaysian Brokerages.

[Go To Broker's Call](#)

BUY **HOLD** **SELL**



The Board of Directors of **Able Global Berhad (ABLEGLOB)** wishes to announce the Recurrent Related Party Transaction entered into by the Company's wholly-owned subsidiary companies from 18 June 2025 to 25 July 2025.



On behalf of the Board of **AirAsia X Berhad (AAX)**, Interpac wishes to announce that the Company and the Vendor had on 31 July 2025 agreed to extend the period for the satisfaction or fulfilment of the relevant conditions precedent under the SSPAs which remain unsatisfied up to 31 August 2025. This is to allow more time for the Company and the Vendor to, amongst others, obtain the approvals and consents of the relevant authorities, financiers / lenders and/or third parties as well as for the Company to finalise the definitive terms with the identified investors in relation to the Proposed Private Placement.





The Board of Directors of **Dayang Enterprise Holdings Bhd (DAYANG)** is pleased

to announce that its wholly-owned subsidiary company,

DESB Marine Services Sdn Bhd, has been

awarded a work order for Provision of

Accommodation Work Barge from PETRONAS Carigali Sdn Bhd.



DAYANG

Focus towards excellence

[READ MORE](#)



The Board of Directors of **Daythree Digital**

Berhad (DAY3) wishes to announce that the

Company and M&A Securities Sdn Bhd have

mutually agreed that M&A Securities will cease

its role as Sponsor to the Company effective 26

July 2025. For information purposes, M&A

Securities has fulfilled its role as Sponsor to

Daythree for at least one full financial year

following the admission of Daythree to the ACE Market of Bursa

Malaysia Securities Berhad on 26 July 2023. UOB Kay Hian

(M) Sdn Bhd (has been appointed as the new Sponsor of the

Company with effect from 26 July 2025.

[READ MORE](#)





Further to the Announcement made on 28 July 2025, the Board of **Ekovest Berhad (EKOVEST)** wishes to announce the following additional information, as required by Bursa Malaysia Securities Berhad. (1) The Heads of Merger Agreement between the Company and Knusford Berhad to explore and negotiate the Proposed Knusford-ECSB Merger has been extended three times, with the final extension announced on 27 January 2025. Despite ongoing efforts, the parties were unable to reach an agreement on the transaction value and key terms of the Proposed Merger. (2) No termination fees were incurred for this Proposed Merger. (3) The Company remains open to revisiting the Proposed Merger should suitable opportunities arise in the future. (4) The lapse of the Merger Agreement is not expected to have any material financial, operational, legal, or risk-related impact on the Company.

On behalf of the Board of **Gamuda Berhad (GAMUDA)**, RHB Investment Bank wishes to announce that the Board had, on 30 July 2025, resolved to fix the issue price of the new Gamuda Shares to be issued pursuant to the DRP Application at RM4.66 per new Gamuda Share.



Learn how to identify Hot Stocks using Technical Analysis (TA) and Fundamental Analysis (FA)

SIGN UP FOR Invest
IT'S FREE!!!





The Board of **Heineken Malaysia Berhad (HEIM)** wishes to inform that HEINEKEN Malaysia has scheduled to release its financial report for the second quarter and six months ended 30 June 2025 on Friday, 15 August 2025 in accordance with Paragraph 9.22 of the Main Market Listing

Requirements of Bursa Malaysia Securities Berhad. Details on the Company’s performance for the said period will be reported thereon. Heineken N.V. is a corporation incorporated in the Netherlands and its shares are traded on the Euronext in Amsterdam. It indirectly holds 51% equity interest in HEINEKEN Malaysia via its wholly-owned subsidiary GAPL Pte Ltd.

The Board of Directors of **Hua Yang Berhad (HYB)** is proposing to table the shareholder mandate to give power to the Company to purchase its own shares of up to 10% of the total number issued shares of the Company for the shareholders’ approval at the forthcoming Annual General Meeting.



The Heads of Merger Agreement between the **Knusford Berhad (KNUSFOR)** and Ekovest Berhad to explore and negotiate the Proposed Knusford-ECSB Merger has been extended three times, with the final extension announced on 27 January 2025. Despite ongoing efforts, the parties were unable to reach an agreement on the transaction value and key terms of the Proposed Merger.

Circular to Shareholders of **SkyWorld Development Berhad (SKYWLD)** in relation to the Proposed Renewal of Shareholders' Mandate for Recurrent Related Party Transactions of a Revenue or Trading Nature.






The Board of Directors of **Steel Hawk Berhad (HAWK)** is pleased to announce that Steel Hawk Engineering Sdn Bhd, a wholly-owned subsidiary of Steel Hawk, had on 25th July 2025 secured a contract for the PROVISION OF SCAFFOLDING SERVICES FOR EPOMS OPERATIONS from EPOMS SDN BHD. Subsequently, the Company had on 30th July 2025 obtained written consent from EPOMS to release the announcement to Bursa Malaysia Securities Berhad pertaining to the Contract awarded to SHESB.

UEM Sunrise Berhad (UEMS) is pleased to announce the successful completion of its issuances of Islamic Medium-Term Notes totalling RM500.0 million in nominal value under its existing IMTN Programme. The New IMTNs were issued in two tranches. This comprised RM200.0 million with a tenure of ten (10) years maturing on 30 July 2035 and RM300.0 million with a tenure of twelve (12) years maturing on 30 July 2037.