



MARKET SENTIMENTS

Banking sector 'oversold' despite resilient fundamentals - Kenanga Research

page 30

ALSO

COMPANY
SPOTLIGHT

Zetrix AI Berhad

See more on page 06

Johor-Singapore SEZ to boost state
GDP share above 12% by 2030 –
CIMB IB

page 32

M'sian firms bag RM450m
potential digital exports
to Indonesia - MDEC

page 34

BEHIND THE TICKER:
DECODING COMPANY FUNDAMENTALS

FRIDAY JUL 4 2025 Invest 120

Owen Cheong Cheong
Former Group CEO, Zetrix Berhad
Regional Executive Director

He has been associated with the Turnaround Group for many years charting the path for its manufacturing units, firstly under Daimond Holdings Berhad and the subsequent acquisition of Zetrix.

Before that, he was with P&G Management Consulting for a decade where he was the Director of Studies for the Graduate P&M Program in Malaysia. Educated at the Royal Military College, Owen Cheong has an engineering degree from the University of Glasgow, and a MBA from the University of Bradford, UK.

Is Coastal Contracts an investment opportunity?

SUMMARY

- **Strategic shift:** After 2016, Coastal Contracts Berhad (BURSA:5071) transitioned from a shipbuilding focused company to an energy infrastructure provider, with the Onshore Gas Processing segment now driving most of its revenue and profits.

Disclaimer: This article is written for informational purposes only. It does not constitute a solicitation, offer, advice, counselling or recommendation to buy or sell. As such it is not intended to promote the purchase of shares in any way. As a member, any page of Invest that a link factor and needs to be evaluated from multiple perspectives. Therefore, any investment decision and the associated risk remains with the investor. The views expressed here are entirely the writer's own.

See more on pages 21-28

04 LEADERBOARD

05 SHARIAH HOT STOCKS

08 SHARIAH MOMENTUM UP STOCKS

10 NON SHARIAH HOT STOCKS

12 UP TRENDING STOCKS

13 VALUE STOCKS

14 GROWTH STOCKS

16 DIVIDEND STOCKS

17 BROKERS' CALL

18 LONG COMPANIES

36 REGIONAL MARKETS

37 INSIDER ACTIVITY

41 INVESTOR RELATIONS

SHAREINVESTOR®

An AlphaInvest Company

Invest with Knowledge

INVESTOR PLATFORMS

Director
Darren Chong
darren.chong@shareinvestor.com

Business Development Manager
Jay Cheong
jay.cheong.@shareinvestor.com

ADMIN & OPERATIONS

Senior Executive
Watie Nordin
watie.nordin@shareinvestor.com

Executive
Silas Emmanuel Joseph
silas.joseph@shareinvestor.com

PROCESS AUTOMATION & DATA ANALYTICS

Data Analyst
Lee Khai Bing

INVESTOR RELATIONS

Group Managing Director & Publisher
Edward Stanislaus
edward@shareinvestor.com

Senior Manager
Letticia Wong
letticia.wong@shareinvestor.com

Manager
Aida Norzeti Talib
aida.norzeti@shareinvestor.com

ALPHAINVEST HOLDINGS BOARD OF DIRECTORS

Chairman	Patrick Daniel
Group CEO	Christopher Lee
Group COO	Lim Dau Hee
Group MD	Shanison Lin



“ GIVE A MAN A FISH AND YOU FEED HIM FOR A DAY; TEACH A MAN TO FISH AND YOU FEED HIM FOR A LIFETIME ”

ShareInvestor Malaysia Sdn. Bhd.
(200001023956) (526564-M)
L15-03 & 03A, PJX HM Shah Tower,
No 16A, Jalan Persiaran Barat, PJS 52,
46200 Petaling Jaya, Selangor

Hotline : 603 8681 0580
Mobile : 011 6343 8939
Website : www.ShareInvestor.com.my
www.alphainvestholdings.com
www.Facebook.com/ShareInvestorMalaysia

ADVERTISEMENT ENQUIRY



Learn how to identify Hot Stocks using Technical Analysis (TA) and Fundamental Analysis (FA)

SIGN UP FOR Invest NOW IT'S FREE!!!

Click here

Scan me



Via email, every Friday.

Get market moving news and analyses. Regular columns include **Behind The Action** and **From The Observer**

Leaderboard • Shariah Hot Stocks • Shariah Momentum Up Stocks • Non Shariah Hot Stocks • Up Trending Stocks • Growth Stocks • Dividend Stocks • Long Companies • Insider Activity • Investor Relations • Regional Markets



Beyond Stocks

How Futures Trader Think & Win



Esther Tio

Head of Marketing
Bursa Malaysia
Derivatives Berhad



CC Yong

Director &
Professional Trader
Straits Index (M)
Sdn Bhd



David Ng

Proprietary Trader
IcebergX Sdn Bhd



Ng Khai Sern

Portfolio Manager &
Full-Time Trader
Straits Index (M)
Sdn Bhd

 12 July 2025

 9:00am -12:30pm

 Bursa Malaysia Conference Room

JOIN NOW



In conjunction with

DERIVATIVES
VIRTUAL TRADING
CHALLENGE 2025

Co-Organiser

BURSA
MALAYSIA

 **InvestingNote**
by AlphaInvest

Broker Partners

 **AFFIN HWANG**
INVESTMENT BANK

 **CGS**
International

 **PhillipCapital**
Your Partner In Finance

www.shareinvestor.com - market data at your fingertips



ShareInvestor WebPro (www.shareinvestor.com/my)
Prices > Stock Prices > Bursa > click Stocks tab

1. mouse over Ranking > select Top Active > all Shariah stocks are denoted with an [S] > mouse over Column Layout > select Edit Customs > select Name > select Volume > select Last Done Price > Mouse Over Column Layout > select Custom
2. mouse over Ranking > select Top Turnover > all Shariah stocks are denoted with an [S] > mouse over Column Layout > select Edit Customs > select Name > select Last Done Price > select Value > Mouse Over Column Layout > select Custom
3. mouse over Ranking > select Top Gainers (Over 5 Trading Days) > mouse over Column Layout > select Edit Customs > select Name > select Last Done Price > select 5 Days Change > select 5 Days % Change > Mouse Over Column Layout > select Custom
4. mouse over Ranking > select Top Losers (Over 5 Trading Days)
5. mouse over Ranking > select Top % Gainers (Over 5 Trading Days)
6. mouse over Ranking > select Top % Losers (Over 5 Trading Days)

Shariah Top Actives (As at Yesterday)

Name	Price (RM)	Volume
BORNOIL [S]	0.005	13,311,045.000
ZETRIX [S]	0.975	683,901.000
NEXG [S]	0.390	561,281.000
TANCO [S]	0.900	457,558.000
INARI [S]	2.150	446,390.000
GAMUDA [S]	5.040	423,499.000
TENAGA [S]	14.020	333,116.000
NATGATE [S]	1.670	330,400.000
DNEX [S]	0.300	285,684.000
SIMEPROP [S]	1.540	259,727.000

Shariah Top Turnover (As at Yesterday)

Name	Price (RM)	Value (RM)
TENAGA [S]	14.020	467,614,798
GAMUDA [S]	5.040	213,744,446
INARI [S]	2.150	92,380,341
TM [S]	6.800	82,853,236
ZETRIX [S]	0.975	66,946,269
PMETAL [S]	5.210	47,947,829
TANCO [S]	0.900	41,143,931
SIMEPROP [S]	1.540	39,610,268
SUNWAY [S]	4.870	37,600,461
KPJ [S]	2.660	28,938,347

Top Gainers (over 5 Trading days as at Yesterday)

Name	Price (RM)	Change (RM)
NESTLE	80.000	+2.520
MPI	22.600	+1.860
F&N	29.000	+0.680
PENTA	3.570	+0.540
WPRTS	5.800	+0.490
PETDAG	21.960	+0.460
PANAMY	12.100	+0.420
PETGAS	18.160	+0.400
GAMUDA	5.040	+0.390
BAT	4.810	+0.380

Top % Gainers (over 5 Trading days as at Yesterday)

Name	Price (RM)	Change (%)
HONGSENG	0.010	+100.00
PARKWD	0.110	+69.23
ZELAN	0.040	+60.00
MTRONIC	0.015	+50.00
TRIVE	0.020	+33.33
SAPRES	0.245	+25.64
CNOUHUA	0.050	+25.00
JADI	0.025	+25.00
ENGKAH	0.270	+22.73
TIMWELL	0.390	+21.88

Top Losers (over 5 Trading days as at Yesterday)

Name	Price (RM)	Change (RM)
ALLIANZ	18.700	-0.420
KLK	20.840	-0.360
CARLSBG	19.040	-0.320
TENAGA	14.020	-0.240
AJI	12.900	-0.200
HLBANK	19.580	-0.200
AMWAY	5.030	-0.170
AEONCR	5.780	-0.140
DKSH	4.990	-0.120
EUROSP	2.180	-0.120

Top % Losers (over 5 Trading days as at Yesterday)

Name	Price (RM)	Change (%)
BORNOIL	0.005	-50.00
PHB	0.005	-50.00
CME	0.010	-33.33
XDL	0.010	-33.33
PRKCORP	0.255	-26.09
WANGZNG	0.390	-22.00
IVORY	0.020	-20.00
M&G	0.180	-20.00
MERIDIAN	0.020	-20.00
SCIB	0.120	-20.00

Price & Volume Distribution Charts (as at Yesterday)

Technical Analysis

DEFINITION: Shariah compliant stocks with Technical Analysis showing 5-days & 10-days Moving Average Price below Yesterday's Close over past 3 days and with Volume Spike.

CHART GUIDE: Volume Distribution Chart is a statistical interpretation of the current sentiment on each stock in graphical format. The highest bar categorized as >150k is likely to be traded by institutions or super dealers, while the lowest bar categorized as <15k usually represents retail investors. "Buy Up" refers to more buyers snatching up the lots queued at selling price. "Sell Down" refers to sellers selling their shares to the buying queue



ShareInvestor WebPro > Screener > Market Screener (FA & TA) > select BURSA > add criteria

A. Criteria

- > click Add Criteria
- Technical Analysis Conditions tab select (i) Moving Average Below Close (ii) Volume Spike
- Fundamental Analysis Conditions tab > select (iii) Revenue
- Prices & Other Conditions tab > select (iv) Is Shariah Compliant
- Technical Analysis Conditions tab select (v) Moving Average Below Close
- Prices & Other Conditions tab > select (vi) Last Done Price
- Technical Analysis Conditions tab select (vii) Moving Average Below Close

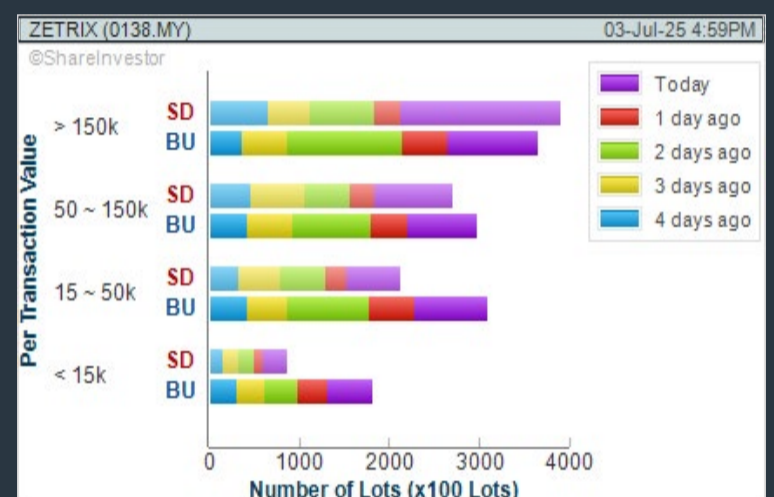
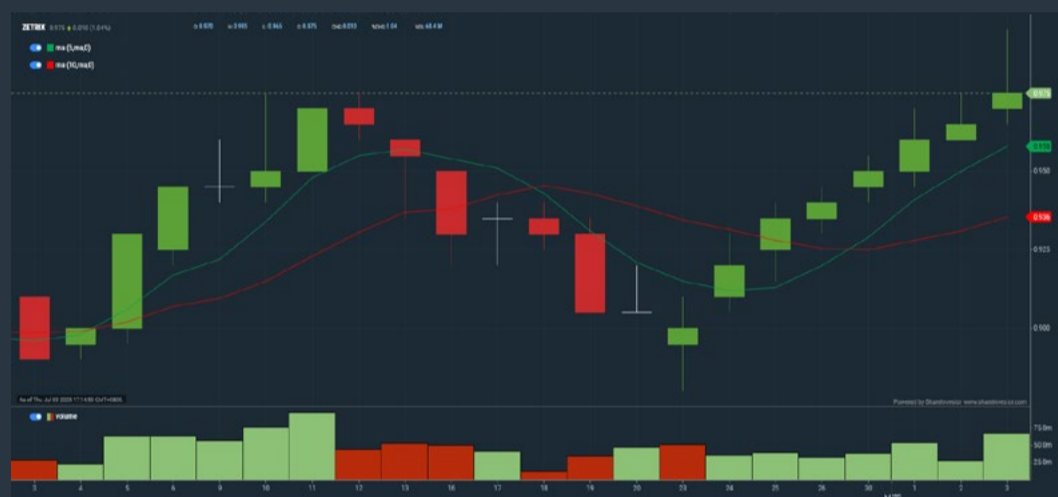
B. Conditions (Criteria Filters)

1. Moving Average Below Close - select (MA) type (5) below close price for type (3) days
2. Volume Spike - Volume type (1) greater than type (5) days average
3. Revenue ("000) - select (more than) type (1) for the past select (1) financial year(s)
4. Is Shariah Compliant - select **Yes**
5. Moving Average Below Close - select (MA) type (10) below close price for type (3) days
6. Last Done Price - select (more than) type (0.3)
7. Moving Average Below Close - select (EMA) type (5) below close price for type (3) days

- > click Save Template > Create New Template type (Shariah Hot Stocks) > click Create
- > click Save Template as > select Shariah Hot Stocks > click Save
- > click Screen Now (may take a few minutes)
- > Sort By: Select (Vol) Select (Desc)
- > Mouse over stock name > Charts > click C² Charts or Volume Distribution

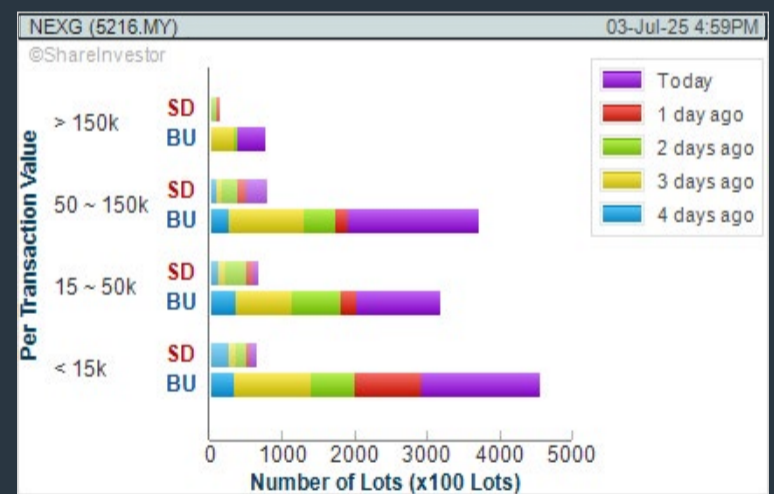
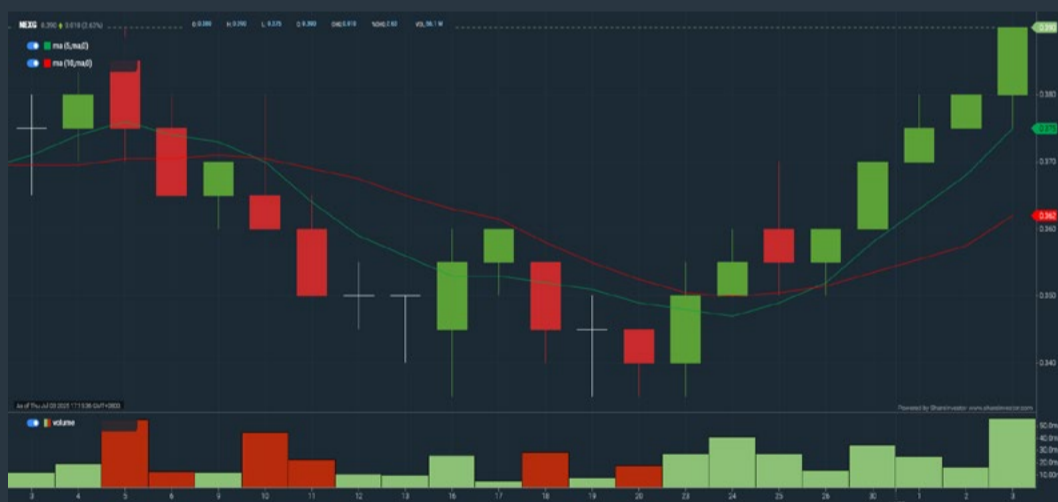
ZETRIX AI BERHAD (0138)

C² Chart



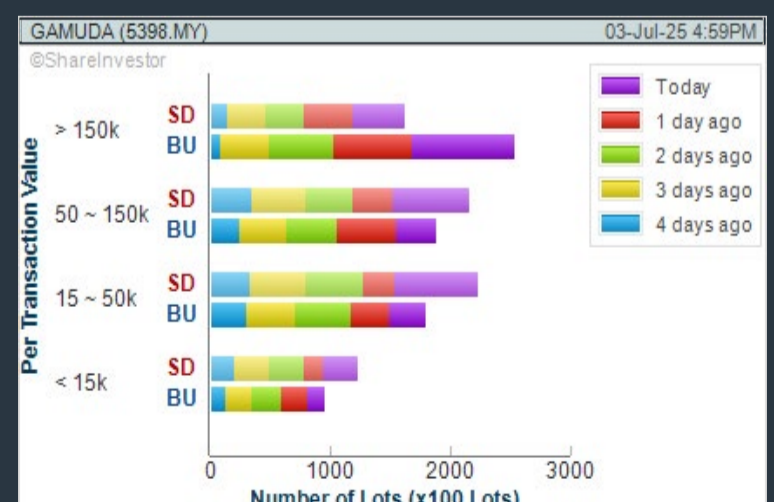
NEXG BERHAD (5216)

C² Chart



GAMUDA BHD (5398)

C² Chart



Disclaimer: The information on this page is provided as a service to readers. It does not constitute financial advice and/or any investment recommendations. Past performance is not indicative of future results. We assume no liability for damages resulting from or arising out of the use of such information. It would be best if you did your own research to make your personal investment decisions wisely or consult a licenced investment advisor.

COMPANY BACKGROUND

Zetrix AI Berhad, formerly known as MY E.G. Services Berhad, is a digital services company. It is a concessionaire for the Malaysia Electronic-Government (E-Government) MSC Flagship Application. The Company builds, operates and owns the electronic channel to deliver services from various Government agencies to Malaysian citizens and businesses in the areas of immigration, automotive, healthcare and financial services, among others. The name change reflects the company's growing focus on blockchain, artificial intelligence, and robotics with plans to establish a global presence.



ZETRIX ZETRIX AI BERHAD		Remarks: s	
Last (MYR): 0.975 ↑	Change: +0.010	High: 0.995	Remarks: s
	Change (%): +1.04	Low: 0.965	
Open: 0.970	Yesterday's Close: 0.965		
Buy Price: 0.970	Sell Price: 0.975		
Buy Volume ('00): 13,079	Sell Volume ('00): 13,690		
Cumulative Volume ('00): 683,901	Cumulative Value: 66,946,269		

Financial Analysis

Revenue Growth Increasing revenue in last 2 consecutive years	😊	Profit Growth Increasing profit in last 3 consecutive years and min growth is 10% (with at least 4 profitable years)	😊
Piotroski F Score The company has above average financial strength (Piotroski F-Score of 6-7)	😊	Dividend Payout No dividend paid in most recent year but dividends paid in prior years	😞
Current Ratio The company is well-positioned to cover its short-term obligations with its current assets (ratio between 1.5 to 10) for 3 consecutive years	😊	Debt to Cashflow High debt to cash flow for most recent year	😞
Free Cash Flow Positive and increasing free cash flow for at least three years	😊	Gross Profit Margin Consistently high gross profit margin of at least 40% for 3 years	😊
Gross Profit Margin Gross profit margin is improving by 5% a year over the past 60 months.	😊	Net Earnings Margin Consistently high net profit margin of at least 20% for 3 years	😊
Return on Assets (ROA) ROA above 10% for 3 consecutive years	😊	Return on Equity (ROE) ROE: above 20% for 3 consecutive years	😊

😊 Excellent 😊 Good 😐 Neutral 😡 Re Alert 😱 Watch Out



Historical Financials

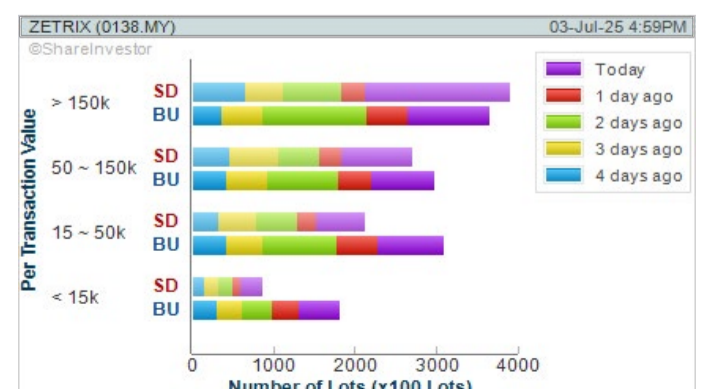


WebPro 9-Days Free Trial Registration (worth RM10) Sign Up Now



Key Statistics with Total Shareholder Returns

Period	Dividend Received	Capital Appreciation	Total Shareholder Return
Short Term Return	5 Days	-	+0.040
	10 Days	-	+0.045
	20 Days	-	+0.075
Medium Term Return	3 Months	-	+0.045
	6 Months	-	+0.015
	1 Year	0.019	-0.045
Long Term Return	2 Years	0.034	+0.236
	3 Years	0.046	+0.124
	5 Years	0.091	+0.228
Annualised Return	Annualised	-	-



Disclaimer: The information on this page is provided as a service to readers. It does not constitute financial advice and/or any investment recommendations. Past performance is not indicative of future results. We assume no liability for damages resulting from or arising out of the use of such information. It would be best if you did your own research to make your personal investment decisions wisely or consult a licenced investment advisor.



making places collaborative



usm.com

XTRA

XTRA FURNITURE SDN BHD
The Gardens Mall, Mid Valley City, Lot S-236 & 237
Lingkar Syed Putra, 59200 Kuala Lumpur
T. +603 2282 9088 | living@xtrafurniture.com | xtrafurniture.com
● XTRAFurniture | ● xtrafurnituremsia

Price & Volume Distribution Charts (as at Yesterday)

Technical Analysis

DEFINITION: Shariah compliant stocks with Technical Analysis showing Bullish Momentum and Price Uptrend. The share price closed at the highest price yesterday. The typical price was higher than the previous day's typical price.

CHART GUIDE: Volume Distribution Chart is a statistical interpretation of the current sentiment on each stock in graphical format. The highest bar categorized as >150k is likely to be traded by institutions or super dealers, while the lowest bar categorized as <15k usually represents retail investors. "Buy Up" refers to more buyers snatching up the lots queued at selling price. "Sell Down" refers to sellers selling their shares to the buying queue.



ShareInvestor WebPro > Screener > Market Screener (FA & TA)>select BURSA>add criteria

A. Criteria

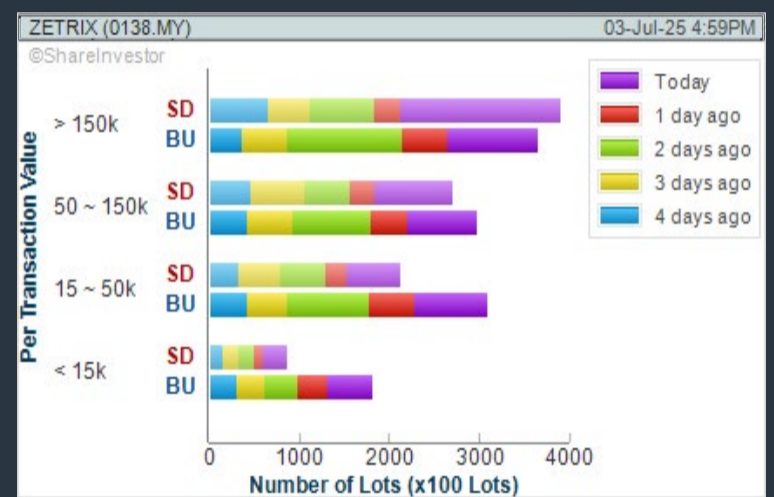
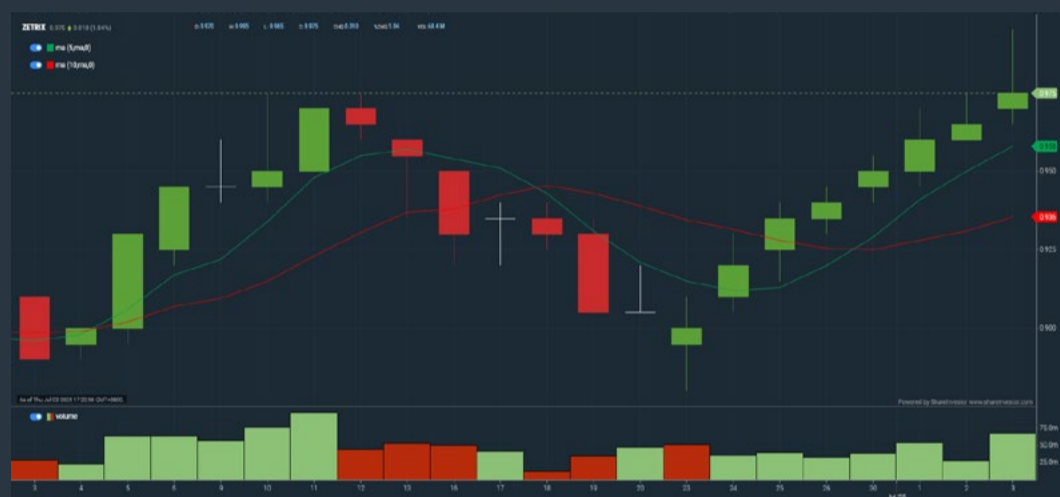
- > click Add Criteria
- Fundamental Analysis Conditions tab >select (i) Revenue
- Technical Analysis Conditions tab select (ii) Average Volume
- Prices & Other Conditions tab > select (iii) Last Done Price
- Prices & Other Conditions tab > select (iv) Is Shariah Compliant
- Technical Analysis Conditions tab select (v) RSI Overbought
- Technical Analysis Conditions tab select (vi) Moving Average Below Close
- Technical Analysis Conditions tab select (vii) CCI Overbought

B. Conditions (Criteria Filters)

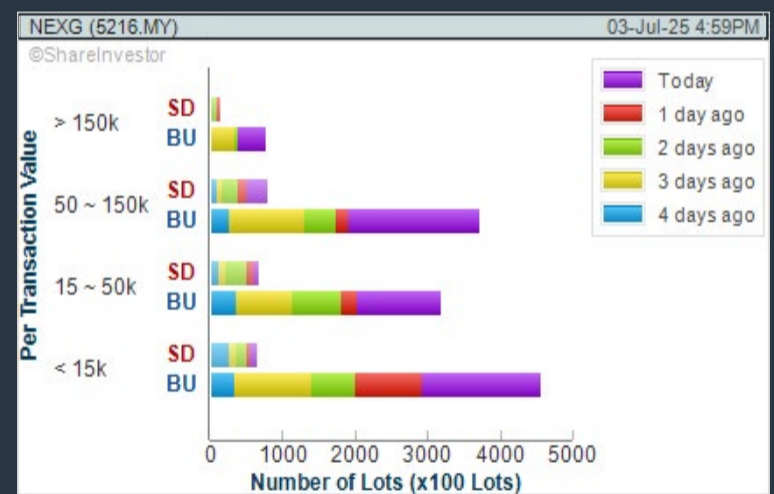
1. Revenue ("000) - select (more than) type (1) for the past select (1) financial year(s)
2. Average Volume - type (1) days average volume greater than type (10000) lots
3. Last Done Price - select (more than) type (0.3)
4. Is Shariah Compliant - select Yes
5. RSI Overbought - select RSI 1 above 99 for 1 days
6. Moving Average Below Close - select (MA) type (10) below close price for type (1) days
7. CCI Overbought - select CCI (2) above (0) for (1) days

- > click Save Template > Create New Template type (Shariah Momentum Up Stocks) > click Create
- > click Save Template as > select Shariah Momentum Up Stocks > click Save
- > click Screen Now (may take a few minutes)
- Sort By: Select (Vol) Select (Desc)
- Mouse over stock name > Charts > click C² Charts tab or Volume Distribution

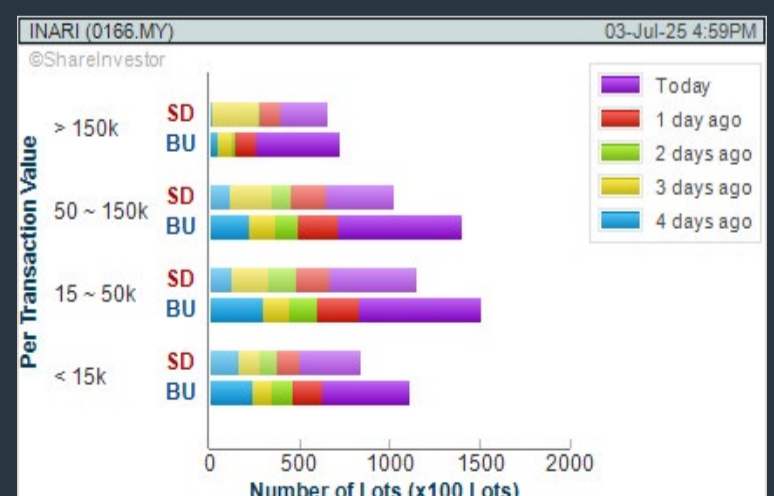
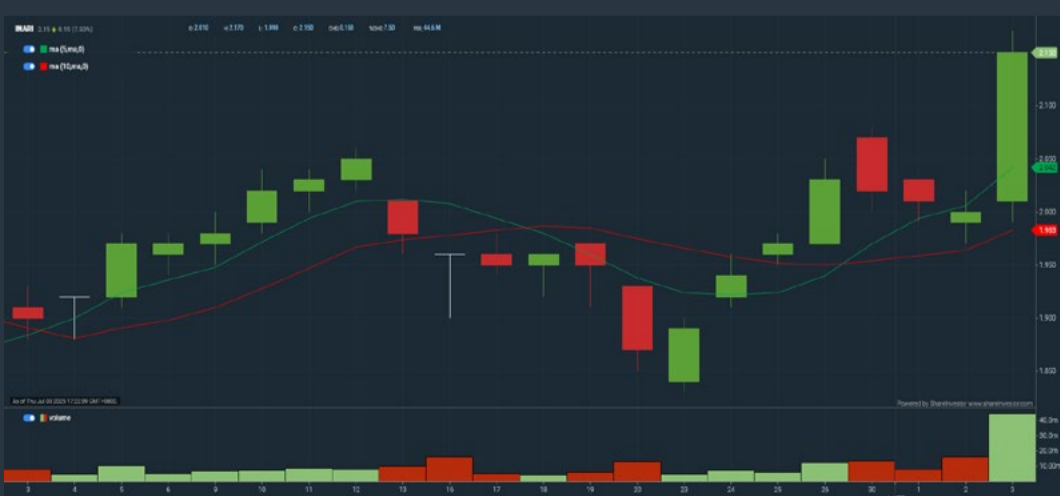
ZETRIX AI BERHAD (0138) C² Chart



NEXG BERHAD (5216) C² Chart

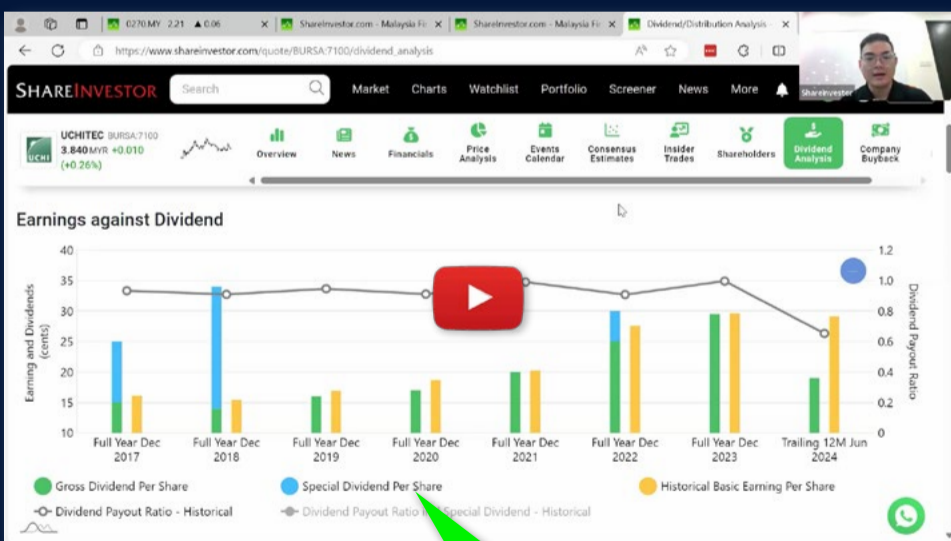


INARI AMERTRON BERHAD (0166) C² Chart



Disclaimer: The information on this page is provided as a service to readers. It does not constitute financial advice and/or any investment recommendations. Past performance is not indicative of future results. We assume no liability for damages resulting from or arising out of the use of such information. It would be best if you did your own research to make your personal investment decisions wisely or consult a licenced investment advisor.

Ultimate Guide to use **ShareInvestor**



YOU WILL LEARN HOW TO USE:

- Company Financials
- Market Screener
- Company Insider Trades
- Dividend Analysis
- Consensus Estimation
and more...

**Watch
now!**

Price & Volume Distribution Charts (as at Yesterday)

Technical Analysis

DEFINITION: Stocks with Technical Analysis showing 5-days & 10-days Moving Average Price below Close over past 1 days and with Volume Spike

CHART GUIDE: Volume Distribution Chart is a statistical interpretation of the current sentiment on each stock in graphical format. The highest bar categorized as >150k is likely to be traded by institutions or super dealers, while the lowest bar categorized as <15k usually represents retail investors. "Buy Up" refers to more buyers snatching up the lots queued at selling price. "Sell Down" refers to sellers selling their shares to the buying queue.



ShareInvestor WebPro > Screener > Market Screener (FA & TA) > select BURSA > add criteria

A. Criteria

- > click Add Criteria
- Technical Analysis Conditions tab select (i) Moving Average Below Close (ii) Volume Spike
- Fundamental Analysis Conditions tab >select (iii) Revenue
- Prices & Other Conditions tab > select (iv) Is Shariah Compliant
- Technical Analysis Conditions tab select (v) Moving Average Below Close
- Prices & Other Conditions tab > select (vi) Last Done Price
- Technical Analysis Conditions tab select (vii) Moving Average Below Close

B. Conditions (Criteria Filters)

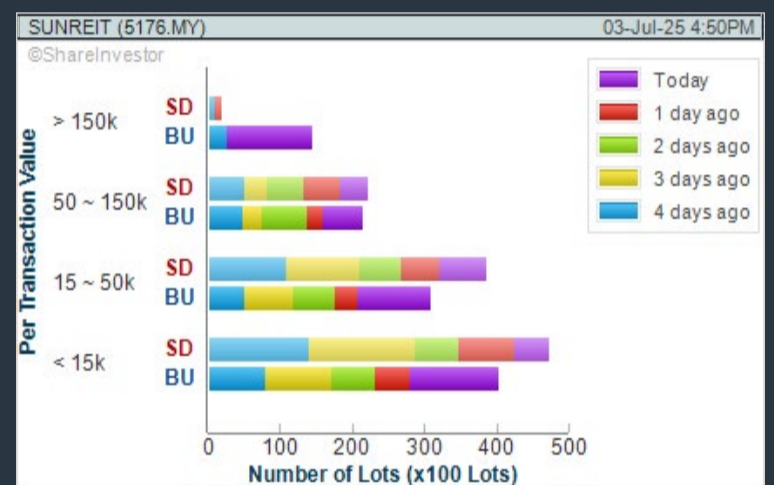
1. Moving Average Below Close - select (MA) type (5) below close price for type (3) days
2. Volume Spike - Volume type (1) greater than type (5) days average
3. Revenue ("000) - select (more than) type (1) for the past select (1) financial year(s)
4. Is Shariah Compliant - select NO
5. Moving Average Below Close - select (MA) type (10) below close price for type (1) days
6. Last Done Price - select (more than) type (0.3)
7. Moving Average Below Close - select (EMA) type (5) below close price for type (1) days

- > click Save Template > Create New Template type (Non-Shariah Hot Stocks) > click Create
- > click Save Template as > select Non-Shariah Hot Stocks > click Save
- > click Screen Now (may take a few minutes)
- Sort By: Select (Vol) Select (Desc)
- Mouse over stock name > Charts > click C² Charts tab or Volume Distribution

SUNWAY REAL ESTATE INVT TRUST (5176)

C² Chart

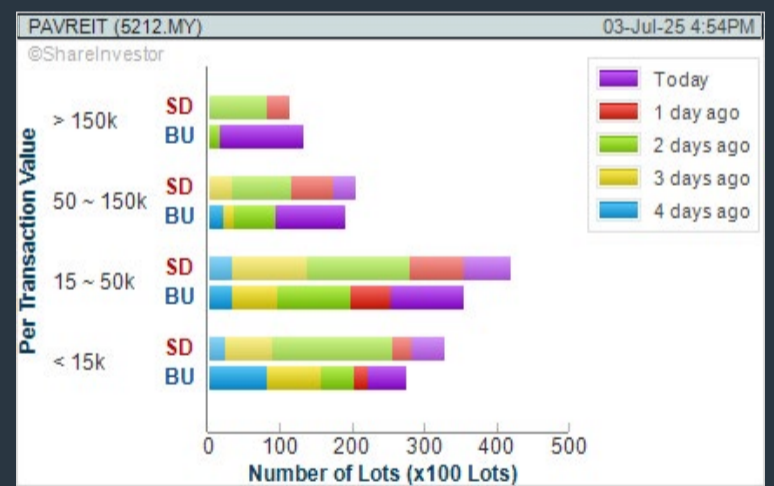
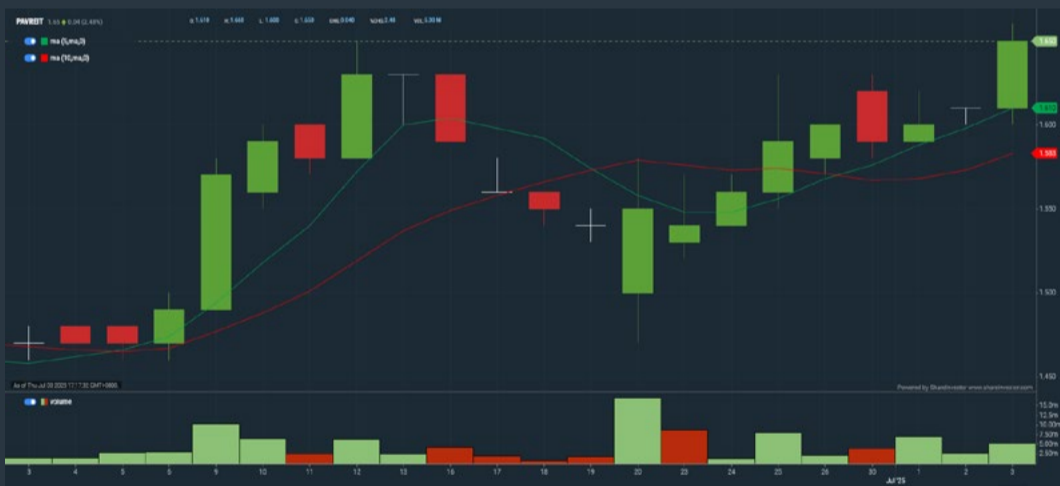
Analysis



PAVILION REAL ESTATE INV TRUST (5212)

C² Chart

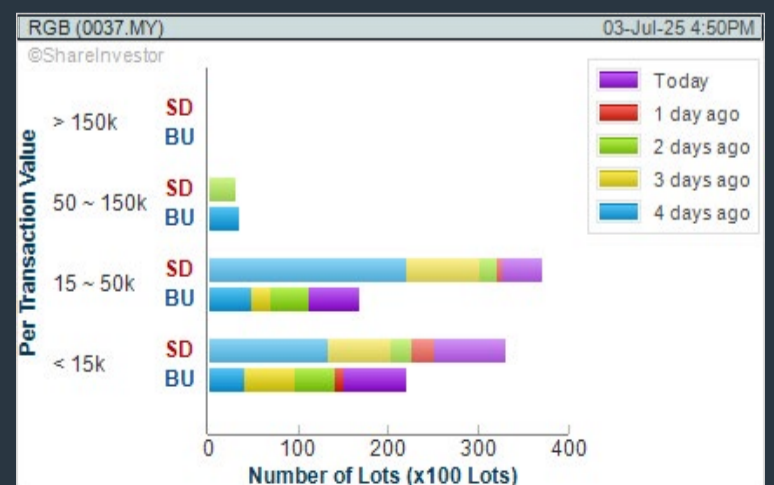
Analysis



RGB INTERNATIONAL BHD (0037)

C² Chart

Analysis



Disclaimer: The information on this page is provided as a service to readers. It does not constitute financial advice and/or any investment recommendations. Past performance is not indicative of future results. We assume no liability for damages resulting from or arising out of the use of such information. It would be best if you did your own research to make your personal investment decisions wisely or consult a licenced investment advisor.

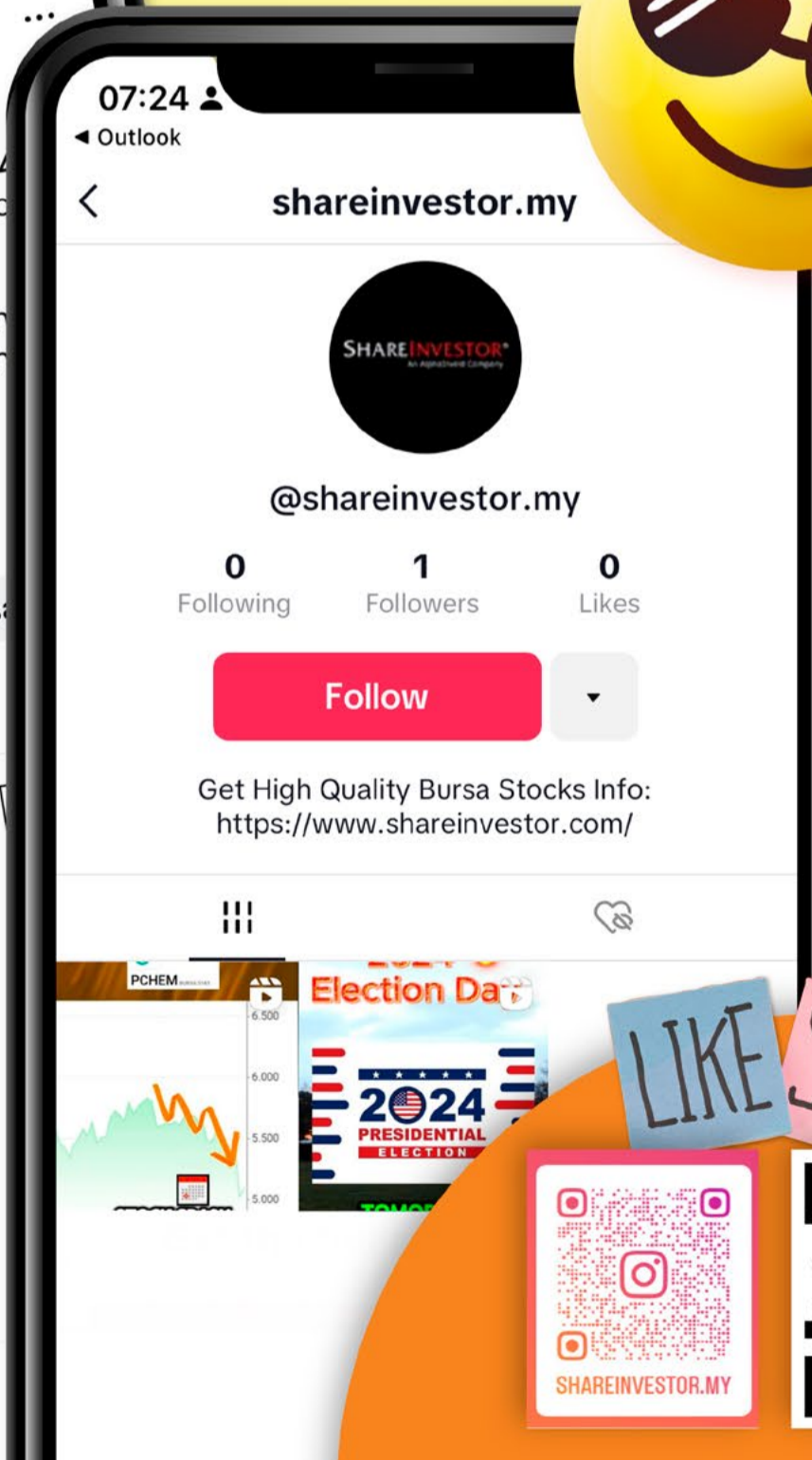
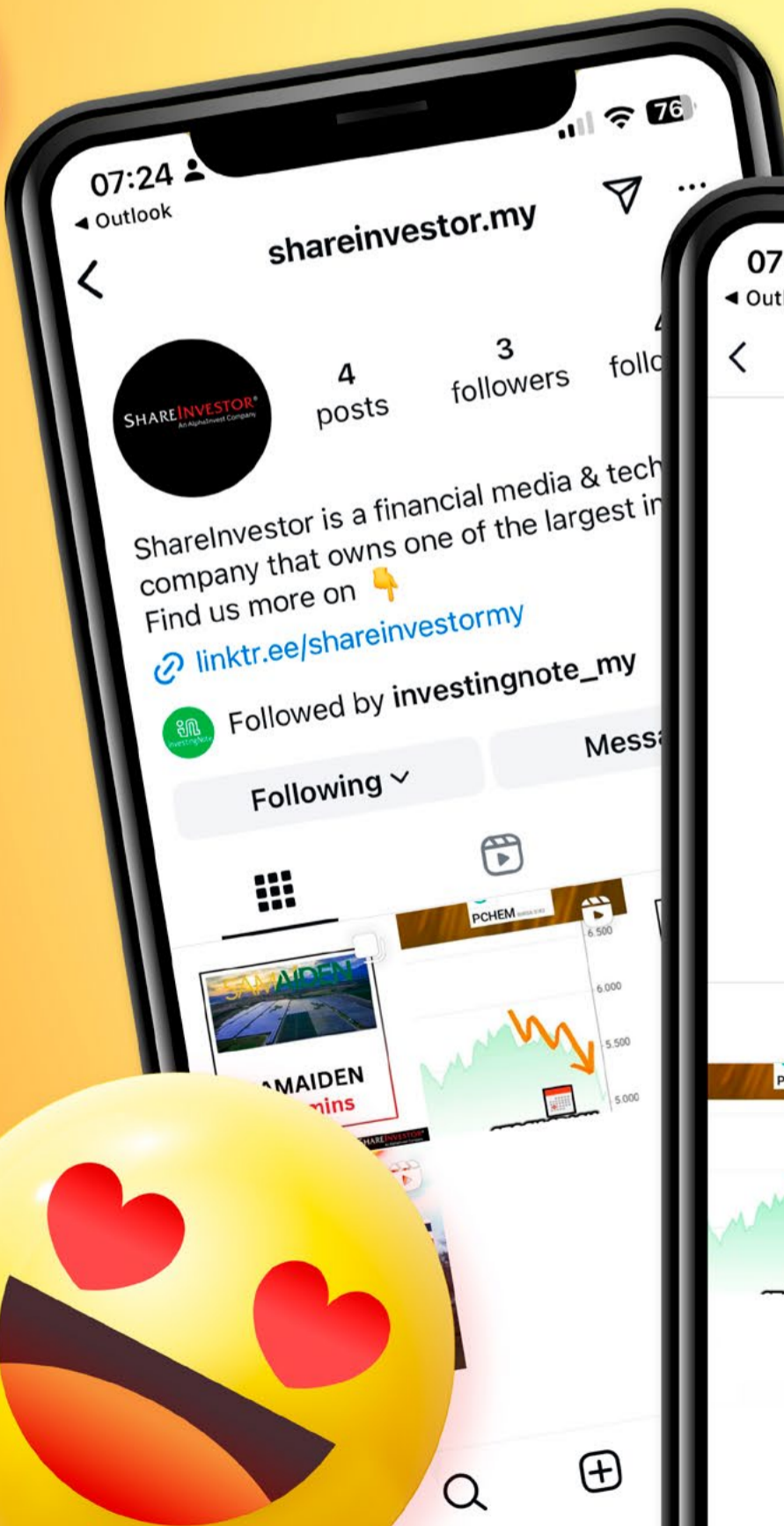
SHAREINVESTOR[®]
An AlphaInvest Company



We're Officially on TikTok & Instagram!



Follow us now for more information!



LIKE SHARE



Price & Volume Distribution Charts (Over 3 trading days as at Yesterday)

Technical Analysis

DEFINITION: Stocks with Technical Analysis showing Bullish Momentum and Price Uptrend

CHART GUIDE: Volume Distribution Chart is a statistical interpretation of the current sentiment on each stock in graphical format. The highest bar categorized as >150k is likely to be traded by institutions or super dealers, while the lowest bar categorized as <15k usually represents retail investors. "Buy Up" refers to more buyers snatching up the lots queued at selling price. "Sell Down" refers to sellers selling their shares to the buying queue.



ShareInvestor WebPro > Screener > Market Screener (FA & TA) > select BURSA > add criteria

A. Criteria

- > click Add Criteria
- Fundamental Analysis Conditions tab > select (i) Revenue
- Technical Analysis Conditions tab select (ii) Moving Average Below Close
- Technical Analysis Conditions tab select (iii) Average Volume
- Prices & Other Conditions tab > select (iv) Last Done Price
- Technical Analysis Conditions tab select (v) Moving Average Below Close
- Technical Analysis Conditions tab select (v) Moving Average Bullish Crossover

B. Conditions

1. Revenue - select (more than) type (1) for the past select (1) financial year(s)
2. Moving Average Below Close - select (MA) type (20) below close price for type (1) days
3. Average Volume - type (5) days average volume type (10000) lots
4. Last Done Price - select (more than) type (0.3)
5. Moving Average Below Close - select (MA) type (10) below close price for type (1) days
6. Moving Average Bullish Crossover - select (MA) type (5) crossed above select (MA) type (10)

> click Save Template > Create New Template type (Non-Shariah Up-Trending Stocks) > click Create Click Save Template As > select Non-Shariah Up Trending Stocks > click Save
> click Screen Now (may take a few minutes)
Sort By: Select (Vol) Select (Desc)
Mouse over stock name > Charts > click C² Charts tab or Volume Distribution

JCY INTERNATIONAL BERHAD (5161)

C² Chart



Analysis

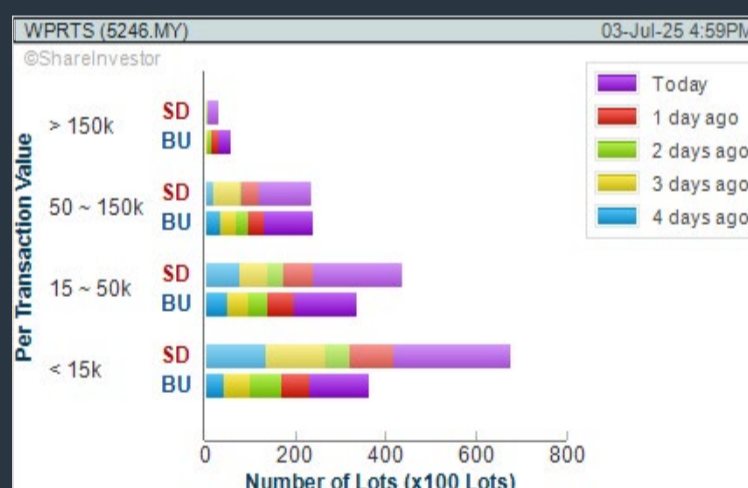


WESTPORTS HOLDINGS BERHAD (5246)

C² Chart

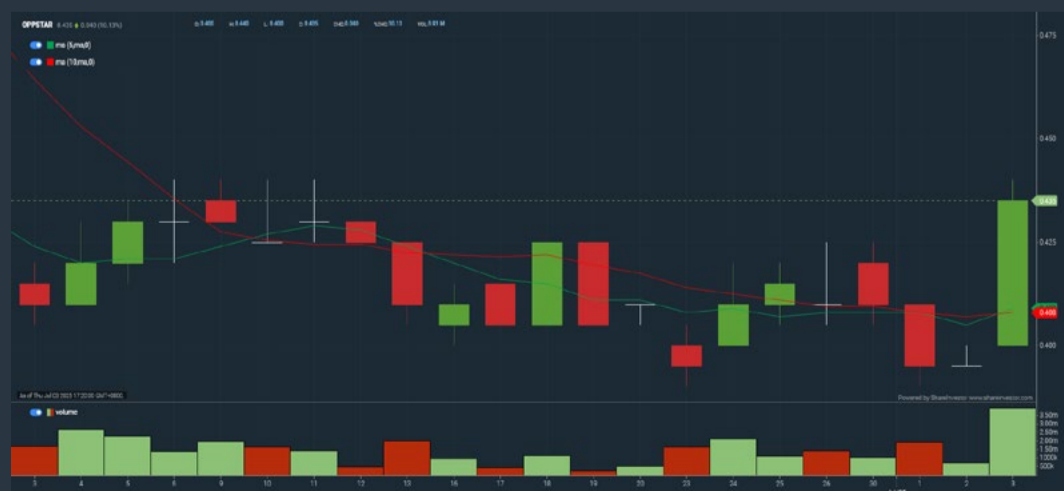


Analysis

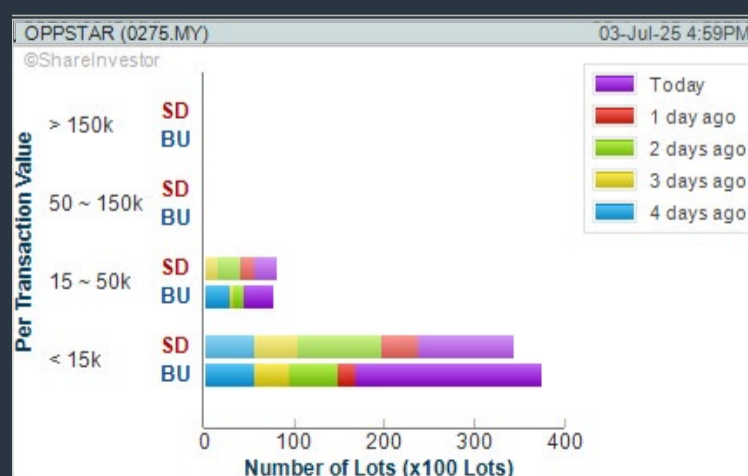


OPPSTAR BERHAD (0275)

C² Chart



Analysis



Disclaimer: The information on this page is provided as a service to readers. It does not constitute financial advice and/or any investment recommendations. Past performance is not indicative of future results. We assume no liability for damages resulting from or arising out of the use of such information. It would be best if you did your own research to make your personal investment decisions wisely or consult a licenced investment advisor.

Price & Total Shareholder Return (as at Yesterday)

Fundamental Analysis

DEFINITION: Share price of a company trading at a lower price as compared to its fundamentals (FA) such as financial performance and dividend, allowing it to be attractive to value investors.

CHART GUIDE: Total Shareholder Return (TSR) combines share price appreciation and dividend distributions paid to show the total return to the shareholder expressed as a percentage.



ShareInvestor WebPro > Screener > Market Screener (FA & TA) > select BURSA > add criteria

A. Criteria

- > click Add Criteria
- Fundamental Analysis Conditions tab (i) Price Earnings Ratio
- Fundamental Analysis Conditions tab >select (ii) CAGR of Net Earnings
- Fundamental Analysis Conditions tab >select (iii) Net Debt To Equity
- Fundamental Analysis Conditions tab >select (iv) Return On Equity (ROE)

B. Conditions

1. Price Earnings Ratio - select (less than) type (15) times now
2. CAGR of Net Earnings - select (more than) type (10) % for the past type (3) financial year(s)
3. Net Debt To Equity – select (less than) type (1) for the past select (1) financial year(s)
4. Return On Equity (ROE) – select (more than) type (10) % for the past select (1) financial year(s)

- > click Save Template > Create New Template type (Value Stock) > click Create
- > click Save Template as > select Value Companies > click Save
- > click Screen Now (may take a few minutes)
- Sort by: Select (PE Ratio) Select (Ascending)
- > Mouse over stock name > Factsheet > looking for Total Shareholder Return
- > Mouse over stock name > Charts > click C2 Charts tab

INGENIEUR GUDANG BERHAD (5178)

C² Chart



Period	Dividend Received	Capital Appreciation	Total Shareholder Return
Short Term Return	5 Days	-	-
	10 Days	-	-0.025
	20 Days	-	-0.025
Medium Term Return	3 Months	-	-0.010
	6 Months	-	-0.015
	1 Year	-	-0.020
Long Term Return	2 Years	-	-0.030
	3 Years	-	-0.035
	5 Years	-	-0.040
Annualised Return	Annualised	-	-0.048%

MUAR BAN LEE GROUP BERHAD (5152)

C² Chart



Period	Dividend Received	Capital Appreciation	Total Shareholder Return
Short Term Return	5 Days	-	-0.005
	10 Days	-	-0.010
	20 Days	-	-0.005
Medium Term Return	3 Months	-	-0.040
	6 Months	-	-0.030
	1 Year	-	-0.000
Long Term Return	2 Years	-	-0.100
	3 Years	-	-0.010
	5 Years	-	-0.300
Annualised Return	Annualised	-	-0.20%

MUDAJAYA GROUP BHD (5085)

C² Chart



Period	Dividend Received	Capital Appreciation	Total Shareholder Return
Short Term Return	5 Days	-	-
	10 Days	-	-
	20 Days	-	-0.006
Medium Term Return	3 Months	-	-0.010
	6 Months	-	-0.025
	1 Year	-	-0.050
Long Term Return	2 Years	-	-0.100
	3 Years	0.040	-0.120
	5 Years	0.040	-0.100
Annualised Return	Annualised	-	0.023%

Disclaimer: The information on this page is provided as a service to readers. It does not constitute financial advice and/or any investment recommendations. Past performance is not indicative of future results. We assume no liability for damages resulting from or arising out of the use of such information. It would be best if you did your own research to make your personal investment decisions wisely or consult a licenced investment advisor.

Price & Total Shareholder Return (as at Yesterday)

Fundamental Analysis

DEFINITION: Company revenue is growing and making good quality of earnings with positive Free Cash Flow.

CHART GUIDE: Total Shareholder Return (TSR) combines share price appreciation and distributions paid to show the total return to the shareholder expressed as a percentage.



ShareInvestor WebPro > Screener > Market Screener (FA & TA) > select BURSA > add criteria

A. Criteria

1. Fundamental Analysis Conditions tab >select (i) Free Cash Flow, (ii) Revenue Growth, (iii) Gross Profit (Earnings) Margin, (iv) Quality of Earnings, (v) Total Shareholder Returns, > click Add Criteria
2. Fundamental Analysis Conditions tab >select (vi) Total Shareholder Returns > click Add Criteria

B. Conditions (Criteria Filters)

1. Free Cash Flow - select (more than) type (1) for the past select (1) financial year(s)
2. Revenue Growth - select (more than) type (1) for the past select (1) financial year(s)
3. Gross Profit (Earnings) Margin - select (more than) type (30) % for the past select (1) financial year(s)
4. Quality of Earnings - select (more than) type (1) for the past select (1) financial year(s)
5. Total Shareholder Return - select (more than) type (5) % for the past select (3) financial year(s)
6. Total Shareholder Return - select (more than) type (5) % for the past select (5) financial year(s)

- > click Save Template > Create New Template type (Growth Companies) > click Create
- > click Save Template as > select Growth Companies > click Save
- > click Screen Now (may take a few minutes)
- > Sort By: Select (Revenue Growth) Select (Desc)
- > Mouse over stock name > Factsheet > looking for Total Shareholder Return

COUNTRY VIEW BERHAD (5049)

C² Chart

Analysis

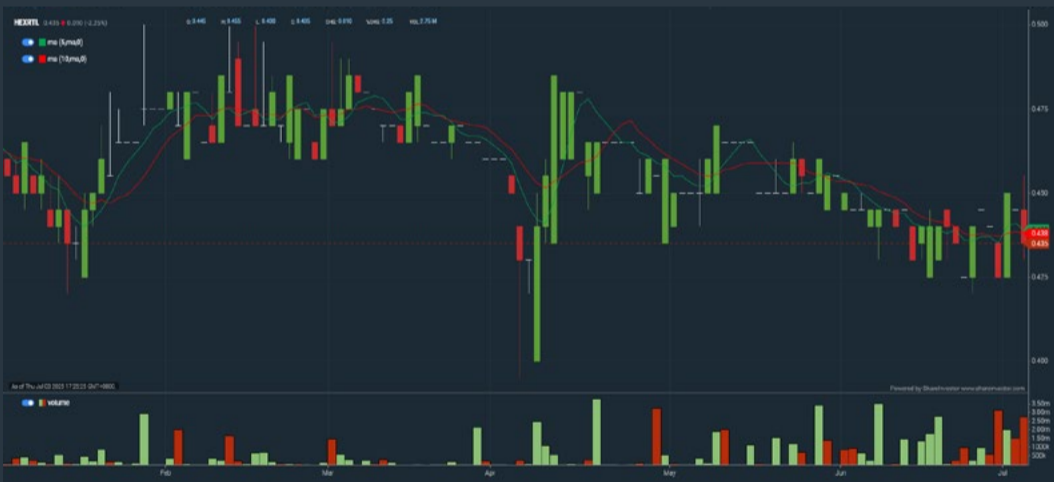


Period	Dividend Received	Capital Appreciation	Total Shareholder Return
Short Term Return	15Sep	-	+15%
	15Sep	-	-
	20Sep	-	+10%
Medium Term Return	30Sep	+20	+15%
	10Oct	+20	+10%
	21Nov	+40	+10.4%
Long Term Return	31Dec	+40	+10.2%
	31Dec	+20	+10.6%
Annualized Return	Annualized	-	+10.3%

HEXTAR RETAIL BERHAD (7202)

C² Chart

Analysis



Period	Dividend Received	Capital Appreciation	Total Shareholder Return
Short Term Return	12Jun	-	+2%
	15Sep	-	+1%
	20Sep	-	+2%
	20Sep	-	+4%
Medium Term Return	8Nov	-	+4%
	17Nov	-	+3%
Long Term Return	27Nov	+40	+10%
	27Nov	+20	+10.6%
Annualized Return	Annualized	-	+10.5%

CHIN TECK PLANTATIONS BHD (1929)

C² Chart

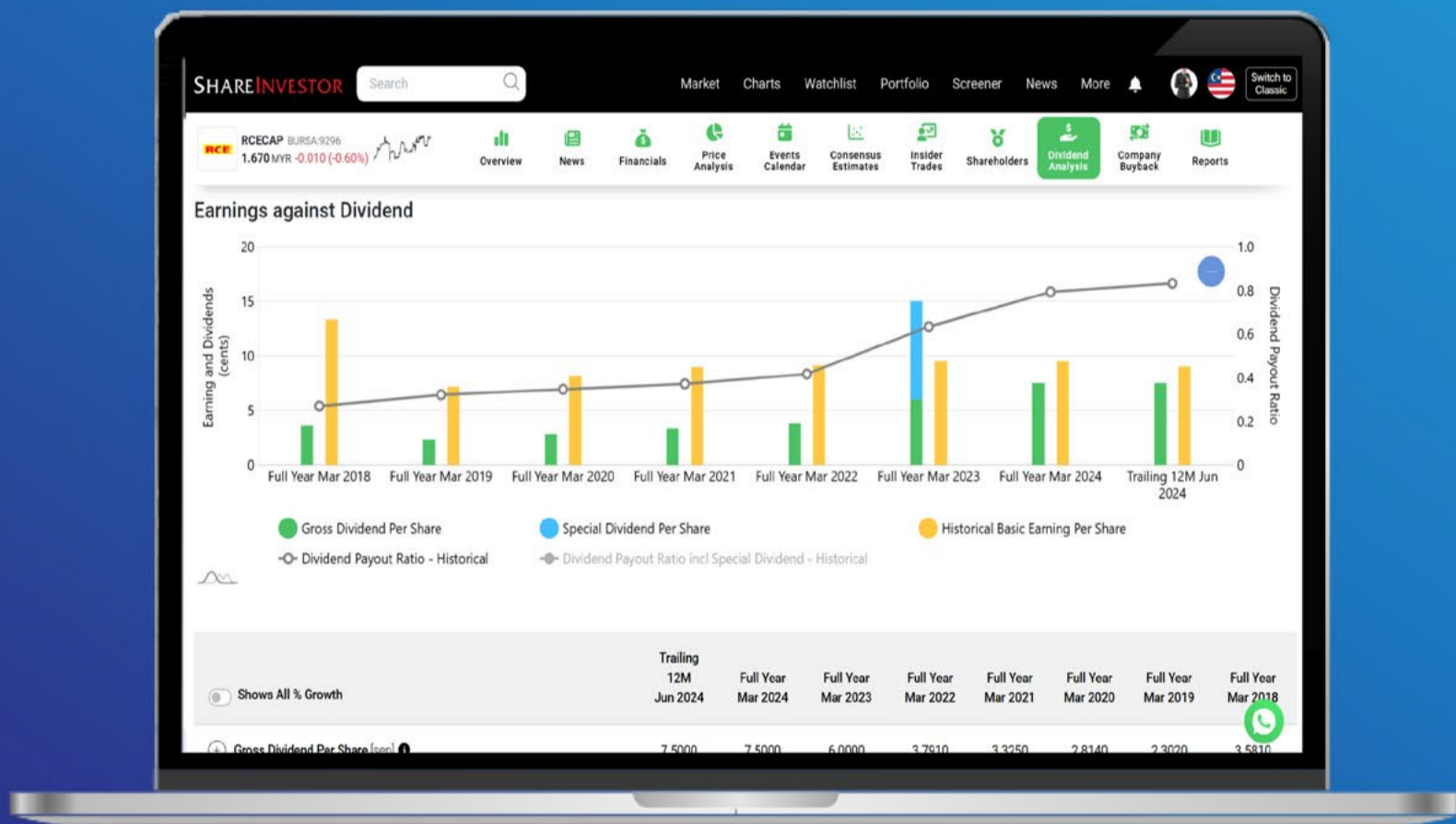
Analysis



Period	Dividend Received	Capital Appreciation	Total Shareholder Return
Short Term Return	12Jun	-	+10%
	15Sep	-	+2%
	20Sep	-	+10%
	20Sep	-	+10%
Medium Term Return	30Sep	-	+10%
	10Oct	+10	+10.4%
	27Nov	+20	+10.2%
Long Term Return	31Dec	+10	+10.1%
	31Dec	+20	+10.2%
Annualized Return	Annualized	-	+10.2%

Disclaimer: The information on this page is provided as a service to readers. It does not constitute financial advice and/or any investment recommendations. Past performance is not indicative of future results. We assume no liability for damages resulting from or arising out of the use of such information. It would be best if you did your own research to make your personal investment decisions wisely or consult a licenced investment advisor.

Tired of low returns? Let's talk high-paying Dividends!



- ✓ **Top Dividend Picks Right Now**
- ✓ **Insider Tips – Advanced strategies for experienced investors**
- ✓ **Easy-to-Follow Tutorial**

Get the most out of dividends, use our Dividend Analysis function –
Click to Watch Our Tutorial Below!

Upgrade Your Dividend Strategy Here



Price & Total Shareholder Return (as at Yesterday)

Fundamental Analysis

DEFINITION: Company is paying out dividend with low or moderate leverage.

CHART GUIDE: Total Shareholder Return (TSR) combines share price appreciation and distributions paid to show the total return to the shareholder expressed as a percentage.



ShareInvestor WebPro > Screener > Market Screener (FA & TA) > select BURSA > add criteria

A. Criteria

- > click Add Criteria
- Fundamental Analysis Conditions tab >select (i) Dividend Yield (Historical)
- Fundamental Analysis Conditions tab >select (ii) Dividend Payout (Historical)
- Fundamental Analysis Conditions tab >select (iii) Total Debt To Equity
- Fundamental Analysis Conditions tab >select (iv) Total Shareholder Returns
- Fundamental Analysis Conditions tab >select (v) Total Shareholder Returns
- Fundamental Analysis Conditions tab / >select (vi) CAGR of Dividend Per Share

• Fundamental Analysis Conditions tab >select (vii) CAGR of Dividend Per Share

B. Conditions (Criteria Filters)

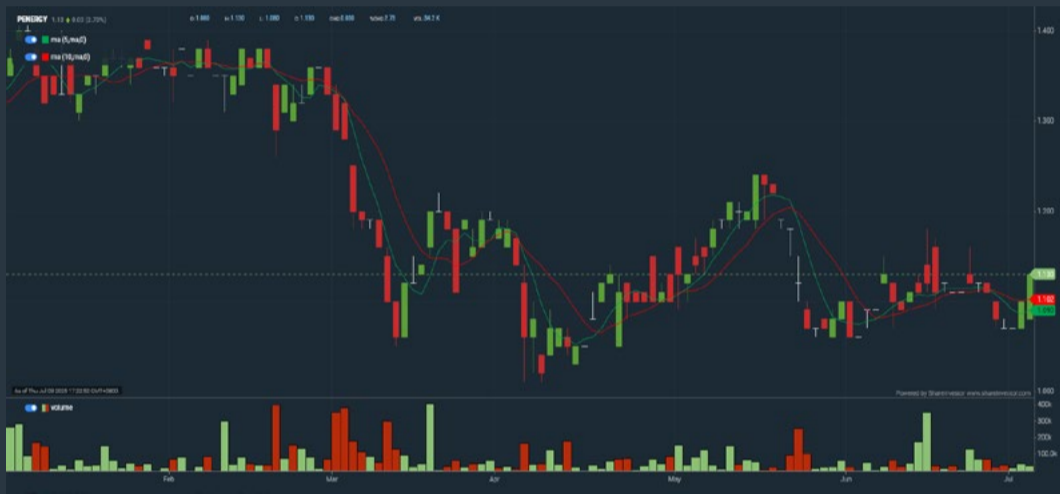
1. Dividend Yield - select (more than) type (1) % for the past select (1) financial year(s)
2. Dividend Payout (Historical) - select (between) type (0.5) to type (1) times for the past select (1) financial year(s)
3. Total Debt to Equity - select (less than) type (1) for the past select (1) financial year(s)
4. Total Shareholder Return - select (more than) type (5) % for the past select (3) financial year(s)
5. Total Shareholder Return - select (more than) type (5) % for the past select (5) financial year(s)

6. CAGR of Dividend Per Share - select (less than) type (30) % for the past select (5) financial year(s)
7. CAGR of Dividend Per Share - select (more than) type (1) % for the past select (5) financial year(s)

- > click Save Template > Create New Template type (Dividend Companies) > click Create
- > click Save Template as > select Dividend Companies > click Save
- > click Screen Now (may take a few minutes)
- > Sort By: Select (Dividend Yield) Select (Desc)
- > Mouse over stock name > Factsheet > looking for Total Shareholder Return

PETRA ENERGY BERHAD (5133)

C² Chart



PENERGY (5133.MY)				
Period	Dividend Received	Capital Appreciation	Total Shareholder Return	
Short Term Return	5 Days	-0.020	-	-1.03%
	10 Days	-0.010	-	-0.89%
	20 Days	-0.010	-	-0.60%
Medium Term Return	3 Months	-0.050	-	-2.24%
	6 Months	-0.040	-0.100	-11.36%
	1 Year	-0.010	-0.400	-22.81%
Long Term Return	2 Years	0.200	-0.346	-12.15%
	3 Years	0.270	-0.540	-19.59%
	5 Years	0.350	-0.400	-10.69%
Annualised Return	Annualised	-	-	-15.44%

KENANGA INVESTMENT BANK BERHAD (6483)

C² Chart



KENANGA (6483.MY)				
Period	Dividend Received	Capital Appreciation	Total Shareholder Return	
Short Term Return	5 Days	-	-0.020	-0.84%
	10 Days	-	-0.020	-0.80%
	20 Days	-	-0.010	-0.68%
Medium Term Return	3 Months	0.000	-0.100	-2.74%
	6 Months	0.000	-0.220	-6.94%
	1 Year	0.000	-0.280	-9.20%
Long Term Return	2 Years	0.000	-0.520	-16.00%
	3 Years	0.000	-0.530	-16.00%
	5 Years	0.400	-0.500	-10.00%
Annualised Return	Annualised	-	-	-10.00%

APM AUTOMOTIVE HOLDINGS BHD (5015)

C² Chart



APM (5015.MY)				
Period	Dividend Received	Capital Appreciation	Total Shareholder Return	
Short Term Return	5 Days	-	0.010	0.84%
	10 Days	-	-0.020	-0.80%
	20 Days	-	-0.010	-0.68%
Medium Term Return	3 Months	-	-0.030	-2.55%
	6 Months	0.010	-0.050	-0.93%
	1 Year	0.020	-0.400	-9.33%
Long Term Return	2 Years	0.040	-0.150	-3.73%
	3 Years	0.050	-0.250	-6.00%
	5 Years	0.150	-0.100	-2.00%
Annualised Return	Annualised	-	-	-6.00%

Disclaimer: The information on this page is provided as a service to readers. It does not constitute financial advice and/or any investment recommendations. Past performance is not indicative of future results. We assume no liability for damages resulting from or arising out of the use of such information. It would be best if you did your own research to make your personal investment decisions wisely or consult a licenced investment advisor.

Week: 27 Jun 2025 - 3 Jul 2025

More Brokers' Call 

AMINVESTMENT BANK <small>... See More</small>	Call	Target Price	Release Date
Kim Loong Resources Berhad (5027)	BUY	RM2.75	30 Jun 25
Top Glove Corporation Bhd (7113)	SELL	RM0.50	30 Jun 25

APEX SECURITIES BERHAD <small>... See More</small>	Call	Target Price	Release Date
ICents Group Holdings Berhad (0366)	BUY	RM0.29	1 Jul 25
Kerjaya Prospek Group Berhad (7161)	BUY	RM2.50	2 Jul 25

Hong Leong Investment Bank <small>... See More</small>	Call	Target Price	Release Date
Hiap Teck Venture Berhad (5072)	BUY	RM0.34	2 Jul 25
Tenaga Nasional Bhd (5347)	BUY	RM16.20	3 Jul 25

KENANGA <small>... See More</small>	Call	Target Price	Release Date
Westports Holdings Berhad (5246)	OUTPERFORM	RM6.00	30 Jun 25
Yinson Holdings Berhad (7293)	OUTPERFORM	RM3.15	1 Jul 25
Kerjaya Prospek Group Berhad (7161)	OUTPERFORM	RM2.30	2 Jul 25

MIDF <small>... See More</small>	Call	Target Price	Release Date
Gamuda Berhad (5398)	BUY	RM5.42	1 Jul 25
Gamuda Berhad (5398)	BUY	RM5.42	2 Jul 25
Gas Malaysia Berhad (5209)	NEUTRAL	RM4.48	3 Jul 25

PUBLIC INVESTMENT BANK <small>... See More</small>	Call	Target Price	Release Date
Gamuda Berhad (5398)	OUTPERFORM	RM5.30	1 Jul 25
Kerjaya Prospek Group Berhad (7161)	OUTPERFORM	RM2.85	2 Jul 25
Top Glove Corporation Bhd (7113)	NEUTRAL	RM0.78	30 Jun 25

UOB KAYHIAN <small>... See More</small>	Call	Target Price	Release Date
MNRB Holdings	BUY	RM2.19	1 Jul 25
Ame Elite Consortium Berhad (5293)	BUY	RM1.79	2 Jul 25
UEM Sunrise Berhad (5148)	BUY	RM0.95	2 Jul 25

DEFINITION: Top 10 stocks with Technical Analysis plus Pattern Matching by 60 pre-defined indicators by the system showing a higher probability of bullish sentiment on the share price.



ShareInvestor WebPro > Screener > Predefined TA Screens > select market BURSA > Most Long Signals > click Scan Results or mouse over each company

SUPREME CONSOLIDATED RESOURCES BHD (0330.MY)

SUPREME

Price updated at 03 Jul 2025 17:30

Last: 0.245	Change: +0.005	Volume: 2,041
	Change (%): +2.08	Range: 0.235 - 0.245

TA Scanner Results based on historical data up to 03 Jul 2025

Condition	Signal	Explanation
Bollinger Band: Bullish Long Term Volatility Breakout and Trending	Long	"1. Close price above upper bollinger band(33,1). 2. Volume above average volume(50). 3. Average volume(50) is above 300,000."
Bollinger Band: Bullish Short Term Volatility Breakout and Trending	Long	"1. Close price above upper bollinger band(33,1). 2. Volume above average volume(10). 3. Average volume(10) is above 300,000."
Bollinger Band: High Above Upper Bollinger Band	Neutral	"1. High above upper bollinger band(14,2). 2. Average volume(5) is above 100,000."
CCI: Bearish CCI Overbought And Reversing	Short	"1. CCI(26) above 100 and CCI(26) 1 day ago increasing for the last 3 days. 2. CCI(26) below CCI(26) 1 day ago"
DM: Bullish Directional Movement	Long	-DI(14) crossed below +DI(14)
Donchian Channels: High Above Upper Donchian Channels	Long	High crossed above the upper Donchian Channel(14,4)
MACD: Bullish MACD Crossover	Long	"1. MACD(12,26) diff line crossed above the MACD(12,26) signal line. 2. MACD Histogram(12,26) is above 0."
Parabolic SAR: Bearish Parabolic SAR Reversal	Neutral	"1. Parabolic SAR 1 day ago above close price 1 day ago for the last 5 days. 2. Parabolic SAR below close price"
Volume: Volume Spike	Long	"1. Volume is more than 500% above average volume(10). 2. Volume above 200000. 3. Close price above 0.10"

NAIM HOLDINGS BHD (5073.MY)

NAIM

Price updated at 03 Jul 2025 17:31

Last: 0.880	Change: +0.025	Volume: 8,171
	Change (%): +2.92	Range: 0.845 - 0.880

TA Scanner Results based on historical data up to 03 Jul 2025

Condition	Signal	Explanation
DM: Bullish Directional Movement	Long	-DI(14) crossed below +DI(14)
MACD: Bullish MACD Crossover	Long	"1. MACD(12,26) diff line crossed above the MACD(12,26) signal line. 2. MACD Histogram(12,26) is above 0."
RSI: Short Term RSI 50 Bullish Crossover	Long	"1. RSI(20) crossed above 50 within the last 1 day and RSI(20) 1 day ago below 50 for the last 5 days. 2. Volume above average volume(125). 3. Average volume(5) is above 100,000."
Volume: Volume Spike	Long	"1. Volume is more than 500% above average volume(10). 2. Volume above 200000. 3. Close price above 0.10"

HE GROUP BERHAD (0296.MY)

HEGROUP

Price updated at 03 Jul 2025 17:30

Last: 0.355	Change: -	Volume: 50,508
	Change (%): -	Range: 0.335 - 0.360

TA Scanner Results based on historical data up to 25 Jun 2025

Condition	Signal	Explanation
Bollinger Band: High Above Upper Bollinger Band	Neutral	"1. High above upper bollinger band(14,2). 2. Average volume(5) is above 100,000."
Donchian Channels: High Above Upper Donchian Channels	Long	High crossed above the upper Donchian Channel(14,4)
MA: Short Term Bullish Moving Average Crossover	Long	MA(10) crossed above MA(15) within the last 1 day.
Volume: 10 Days large value Buy Up trade	Long	"1. 150K value Buy Up greater than Sell Down by 20% for 10 days. 2. 50K-100K value Buy Up greater than Sell Down by 20% for 10 days. 3. Average volume(10) is above 1000000"
Volume: 5 Days large value Buy Up trade	Long	"1. 150K value Buy Up greater than Sell Down by 20% for 5 days. 2. 50K-100K value Buy Up greater than Sell Down by 20% for 5 days. 3. Average volume(10) is above 1000000"
Volume: Consecutive Days Of Increasing Average Volume	Long	"1. Average Volume(20) has been increasing over the last 2 weeks. 2. Average volume(20) is above 100000"
Williams %R: Bearish Williams %R	Short	"1. Williams %R(26) between 0 and -20. 2. Average volume(5) is above 100,000."

MALAYSIAN PACIFIC INDUSTRIES BERHAD (3867.MY)

MPI

Price updated at 03 Jul 2025 17:31

Last: 22.600	Change: +0.200	Volume: 6,572
	Change (%): +0.89	Range: 21.900 - 22.900

TA Scanner Results based on historical data up to 03 Jul 2025

Condition	Signal	Explanation
Bollinger Band: High Above Upper Bollinger Band	Neutral	"1. High above upper bollinger band(14,2). 2. Average volume(5) is above 100,000."
CCI: Bearish CCI Overbought And Reversing	Short	"1. CCI(26) above 100 and CCI(26) 1 day ago increasing for the last 3 days. 2. CCI(26) below CCI(26) 1 day ago"
Candlestick: Bullish 3 White Soldiers	Long	Bullish: 3 White Soldiers
Donchian Channels: High Above Upper Donchian Channels	Long	High crossed above the upper Donchian Channel(14,4)
MA: Short Term Bullish Moving Average Crossover	Long	MA(10) crossed above MA(15) within the last 1 day.
Price: Consecutive Days Gains	Long	"1. Close price has been increasing over the last 5 days. 2. Average volume(5) above 100,000."

Disclaimer: The information on this page is provided as a service to readers. It does not constitute financial advice and/or any investment recommendations. Past performance is not indicative of future results. We assume no liability for damages resulting from or arising out of the use of such information. It would be best if you did your own research to make your personal investment decisions wisely or consult a licenced investment advisor.



TELEKOM MALAYSIA BHD
(4863.MY)

TM

Price updated at 03 Jul 2025 17:31

Last: 6.800	Change: +0.090	Volume: 121,912
	Change (%): +1.34	Range: 6.700 - 6.830

TA Scanner Results based on historical data up to 03 Jul 2025

Condition	Signal	Explanation
Bollinger Band: Bullish Lower Bollinger Band Support	Long	"1. Low 1 day ago below lower bollinger band(20,2). 2. Close above close 1 day ago. 3. Average volume(5) is above 100,000."
Bollinger Band: High Above Upper Bollinger Band	Neutral	"1. High above upper bollinger band(14,2). 2. Average volume(5) is above 100,000."
DM: Bullish Directional Movement	Long	-DI(14) crossed below +DI(14)
Donchian Channels: High Above Upper Donchian Channels	Long	High crossed above the upper Donchian Channel(14,4)
Parabolic SAR: Bearish Parabolic SAR Reversal	Neutral	"1. Parabolic SAR 1 day ago above close price 1 day ago for the last 5 days. 2. Parabolic SAR below close price"
RSI: Short Term RSI 50 Bullish Crossover	Long	"1. RSI(20) crossed above 50 within the last 1 day and RSI(20) 1 day ago below 50 for the last 5 days. 2. Volume above average volume(125). 3. Average volume(5) is above 100,000."



YTL CORPORATION BHD
(4677.MY)

YTL

Price updated at 03 Jul 2025 17:31

Last: 2.490	Change: +0.040	Volume: 342,274
	Change (%): +1.63	Range: 2.420 - 2.520

TA Scanner Results based on historical data up to 03 Jul 2025

Condition	Signal	Explanation
Accumulation Distribution: Bullish Accumulation Distribution	Long	Accumulation distribution increasing for the last 7 days
Bollinger Band: High Above Upper Bollinger Band	Neutral	"1. High above upper bollinger band(14,2). 2. Average volume(5) is above 100,000."
CCI: Bearish CCI Overbought And Reversing	Short	"1. CCI(26) above 100 and CCI(26) 1 day ago increasing for the last 3 days. 2. CCI(26) below CCI(26) 1 day ago"
Price: Consecutive Days Gains	Long	"1. Close price has been increasing over the last 5 days. 2. Average volume(5) above 100,000."
Volume: 10 Days large value Buy Up trade	Long	"1. 150K value Buy Up greater than Sell Down by 20% for 10 days. 2. 50K-100K value Buy Up greater than Sell Down by 20% for 10 days. 3. Average volume(10) is above 1000000"
Volume: 5 Days large value Buy Up trade	Long	"1. 150K value Buy Up greater than Sell Down by 20% for 5 days. 2. 50K-100K value Buy Up greater than Sell Down by 20% for 5 days. 3. Average volume(10) is above 1000000"
Williams %R: Bearish Williams %R	Short	"1. Williams %R(26) between 0 and -20. 2. Average volume(5) is above 100,000."



EDELTEQ HOLDINGS BERHAD
(0278.MY)

EDELTEQ

Price updated at 25 Jun 2025 16:59

Last: 0.280	Change: +0.010	Volume: 32,582
	Change (%): +3.70	Range: 0.265 - 0.280

TA Scanner Results based on historical data up to 03 Jul 2025

Condition	Signal	Explanation
Bollinger Band: Bullish Long Term Volatility Breakout and Trending	Long	"1. Close price above upper bollinger band(33,1). 2. Volume above average volume(50). 3. Average volume(50) is above 300,000."
Bollinger Band: Bullish Short Term Volatility Breakout and Trending	Long	"1. Close price above upper bollinger band(33,1). 2. Volume above average volume(10). 3. Average volume(10) is above 300,000."
Bollinger Band: High Above Upper Bollinger Band	Neutral	"1. High above upper bollinger band(14,2). 2. Average volume(5) is above 100,000."
Candlestick: Bullish Engulfing	Long	Bullish: Engulfing
MA: Short Term Bullish Moving Average Crossover	Long	MA(10) crossed above MA(15) within the last 1 day.



TANCO HOLDINGS BHD
(2429.MY)

TANCO

Price updated at 03 Jul 2025 17:31

Last: 0.900	Change: +0.010	Volume: 457,558
	Change (%): +1.12	Range: 0.890 - 0.905

TA Scanner Results based on historical data up to 03 Jul 2025

Condition	Signal	Explanation
Bollinger Band: Low Below Lower Bollinger Band	Neutral	"1. Low below lower bollinger band(14,2). 2. Average volume(5) is above 100,000."
CCI: Bullish CCI Oversold And Reversing	Long	"1. CCI(26) below -100 and CCI(26) 1 day ago decreasing for the last 3 days. 2. CCI(26) above CCI(26) 1 day ago"
Volume: 10 Days large value Buy Up trade	Long	"1. 150K value Buy Up greater than Sell Down by 20% for 10 days. 2. 50K-100K value Buy Up greater than Sell Down by 20% for 10 days. 3. Average volume(10) is above 1000000"
Volume: 5 Days large value Buy Up trade	Long	"1. 150K value Buy Up greater than Sell Down by 20% for 5 days. 2. 50K-100K value Buy Up greater than Sell Down by 20% for 5 days. 3. Average volume(10) is above 1000000"
Williams %R: Bullish Williams %R	Long	"1. Williams %R(26) between -80 and -100. 2. Average volume(5) is above 100,000."

Disclaimer: The information on this page is provided as a service to readers. It does not constitute financial advice and/or any investment recommendations. Past performance is not indicative of future results. We assume no liability for damages resulting from or arising out of the use of such information. It would be best if you did your own research to make your personal investment decisions wisely or consult a licenced investment advisor.



SHH RESOURCES HOLDINGS BHD (7412.MY)

SHH

Price updated at 03 Jul 2025 17:31

Last: 1.280	Change: -	Volume: -
	Change (%): -	Range: 1.280 - 1.280

TA Scanner Results based on historical data up to 03 Jul 2025

Condition	Signal	Explanation
DM: Bullish Directional Movement	Long	-DI(14) crossed below +DI(14)
Donchian Channels: High Above Upper Donchian Channels	Long	High crossed above the upper Donchian Channel(14,4)
MA: Bullish Price Crossover	Long	"1. Close price crossed above MA(40) within the last 1 day. 2. Previous day close price is below the MA(10) for the last 5 days"
Parabolic SAR: Bearish Parabolic SAR Reversal	Neutral	"1. Parabolic SAR 1 day ago above close price 1 day ago for the last 5 days. 2. Parabolic SAR below close price"
Volume: Volume Spike	Long	"1. Volume is more than 500% above average volume(10). 2. Volume above 200000. 3. Close price above 0.10"
RSI: Short Term RSI 50 Bullish Crossover	Long	"1. RSI(20) crossed above 50 within the last 1 day and RSI(20) 1 day ago below 50 for the last 5 days. 2. Volume above average volume(125). 3. Average volume(5) is above 100,000."



DESTINI BERHAD (7212.MY)

DESTINI

Price updated at 03 Jul 2025 17:31

Last: 0.455	Change: -0.015	Volume: 8,854
	Change (%): -3.19	Range: 0.455 - 0.470

TA Scanner Results based on historical data up to 03 Jul 2025

Condition	Signal	Explanation
Bollinger Band: Bearish Upper Bollinger Band Resistance	Short	"1. High 1 day ago above upper bollinger band(20,2). 2. Close below close 1 day ago. 3. Average volume(5) is above 100,000."
Volume: 10 Days large value Buy Up trade	Long	"1. 150K value Buy Up greater than Sell Down by 20% for 10 days. 2. 50K-100K value Buy Up greater than Sell Down by 20% for 10 days. 3. Average volume(10) is above 1000000"
Volume: 5 Days large value Buy Up trade	Long	"1. 150K value Buy Up greater than Sell Down by 20% for 5 days. 2. 50K-100K value Buy Up greater than Sell Down by 20% for 5 days. 3. Average volume(10) is above 1000000"
Volume: Consecutive Days Of Increasing Average Volume	Long	"1. Average Volume(20) has been increasing over the last 2 weeks. 2. Average volume(20) is above 100000"
Williams %R: Bearish Williams %R	Short	"1. Williams %R(26) between 0 and -20. 2. Average volume(5) is above 100,000."

Disclaimer: The information on this page is provided as a service to readers. It does not constitute financial advice and/or any investment recommendations. Past performance is not indicative of future results. We assume no liability for damages resulting from or arising out of the use of such information. It would be best if you did your own research to make your personal investment decisions wisely or consult a licenced investment advisor.

CHECK OUT SHAREINVESTOR

BROKER'S CALL

Weekly Buy/Sell/Hold calls from leading Malaysian Brokerages.

[Go To Broker's Call](#)

BUY HOLD SELL



Dato' Eu Hong Chew
Former Group CEO i-Berhad
Non-Executive Director

He has been associated with the Sumurwang Group for many years charting the path for its manufacturing arm, firstly under Dreamland Holdings Berhad and the subsequent acquisition of I-Berhad.

Before that, he was with PA Management Consulting for a decade where he was the Director of Studies for the Cranfield PA MBA Programme in Malaysia.

Educated at the Royal Military College, Dato' Eu has an engineering degree from the University of Glasgow, and a MBA from the University of Bradford, UK.

Is Coastal Contracts an investment opportunity?

SUMMARY

- **Strategic shift:** After 2016, Coastal Contracts Berhad (BURSA:5071) transitioned from a shipbuilding-focused company to an energy infrastructure provider, with the Onshore Gas Processing segment now driving most of its revenue and profits.

Disclaimer: This article is written for informational purposes only. It does not constitute a solicitation, offer, advice, counseling or recommendation to buy or sell. As such it is not intended to promote the purchase of shares in any way. As a reminder, any type of asset has a risk factor and needs to be evaluated from multiple perspectives. Therefore, any investment decision and the associated risk remains with the investor. The views expressed here are entirely the writer's own.

- **Mixed operating performance:** While revenue and profits grew between 2019 and 2024, operating and capital efficiency declined. ROIC stayed below the cost of capital, indicating no shareholder value creation.
- **Strong financial position:** The Group maintains low debt, strong cash reserves, and consistent operating cash flow. But its capital allocation has been inefficient, and much of its asset base appears underutilized.
- **Valuation signals caution:** Valuation offers a margin of safety based on asset value, not earnings power. This highlights underperformance relative to potential and requires a cautious approach for long-term investors.

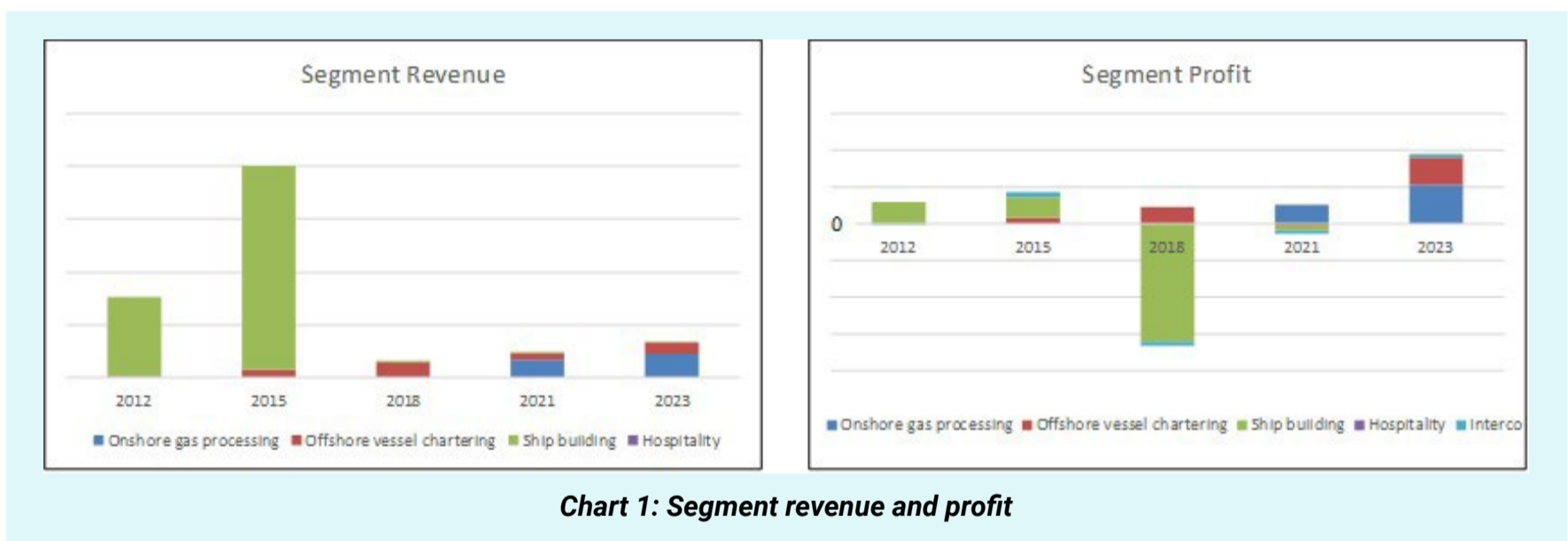
BACKGROUND

The Group describes itself as a global integrated oil & gas services and energy infrastructure solutions provider, operating across four business segments:

- **Onshore Gas Processing** – This division executes large-scale, complex energy-related projects. Its first major success was an onshore gas sweetening plant in Mexico, which has been operational since 2021.
- **Offshore Vessel Owning and Chartering** – The Group owns and operates a fleet of offshore support vessels serving the oil and gas sector.
- **Shipbuilding and Repairs** – The Group designs and constructs a range of vessels, from barges and tugboats to more advanced offshore support ships. It owns and operates two shipyards in Sabah, Malaysia, covering a total of over 97 acres.
- **Hospitality** – Its most recent venture is a luxury twin-resort development in Semporna, Sabah, targeting the 5- to 6-star segment.

Historically, the Group was primarily focused on shipbuilding. As of 2012, this segment accounted for the majority of both its revenue and earnings. However, its business profile underwent a significant transformation around 2016/2017. The Group attributed this shift to the severe cyclical downturn in the oil and gas industry in 2016, driven by a global supply glut and weakening economic growth, which resulted in a sharp drop in oil prices. This prompted a strategic reassessment. The success of this strategic pivot is evident in the evolution of its financial performance (see Chart 1).

Before 2018, both the shipbuilding and vessel chartering segments were profitable. However, in 2018, the Shipbuilding segment suffered a major setback due to a RM528 million inventory write-down, leading to significant losses.



Since then, the Group’s revenue and profit contributions have come predominantly from its Onshore Gas Processing segment, with shipbuilding playing only a minor role in its financials. The Group today more closely resembles a provider and operator of gas infrastructure assets than a traditional shipbuilder.

OPERATING PERFORMANCE

The change in the business direction in 2016/17 enabled Coastal to be profitable post-2018. If Coastal had continued to focus on its shipbuilding business, its performance today would be worse. But even with the pivot, the picture is not so rosy:

**Please refer to the disclaimer on first page and last page.*

- While there was profit growth post-2018, ROIC and CFROIC returns declined. Only the ROE showed an uptrend.
- Coastal did not create any shareholder value.
- There were no clear signs of improving capital and operating efficiency.
- While Coastal's financial position was better than its peers, the peers did better when looking at capital efficiency.

The following sections summarize the basis for the above conclusions:

REVENUE AND PROFIT GROWTH

To assess the direction of the business post-2018, I analysed the Group's operating performance from 2019 to 2024.

- The Group's revenue grew at a CAGR of 3.4% over the period, reflecting steady topline expansion (see Chart 2, left panel).
- PAT showed an upward trajectory, although 2023 featured a one-off RM140 million gain from the disposal of three offshore support vessels. Even after excluding this exceptional item, PAT maintained a positive trend.
- From 2022 to 2024, profitability was further supported by favourable tax treatment, with effective tax rates averaging only 13%. This was attributed to both lower tax rates in certain jurisdictions and the recognition of income not subject to taxation.

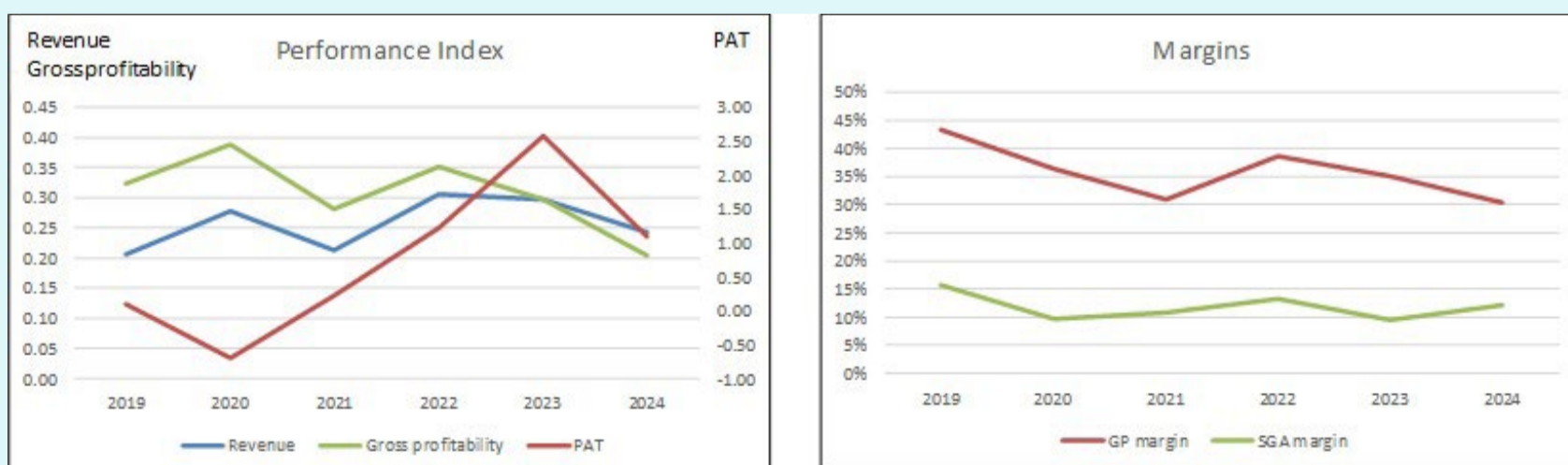


Chart 2: Performance Index and Margins

Note: The 2024 figures are based on the latest twelve months (LTM) ended March 2024.

EFFICIENCY AND MARGINS

Despite the revenue and profit growth, there was no corresponding improvement in efficiency.

- Operating efficiency showed mixed signals. Only ROA improved from 2019 to 2023, while other efficiency metrics – operating profit margin, operating expense ratio, and asset turnover deteriorated. The narrowing gap between gross profit margin and Selling, General and Administrative (SGA) margin (see Chart 2, right panel) signalled rising overhead costs relative to gross profits.
- Capital efficiency also declined. All three capital efficiency indicators – gross profitability, capital turnover, and cash conversion cycle - weakened between 2019 and 2024.
- The Group's cost base remains heavily fixed. In 2023, fixed costs accounted for 90% of total operating costs. This high degree of operating leverage limited the Group's ability to adjust to demand fluctuations. In addition, the contribution margin showed no discernible trend, further underscoring the lack of meaningful improvement in operational efficiency.

SHAREHOLDER VALUE CREATION

Both the 2024 ROIC and cash flow return on invested capital (CFROIC) were lower than those in 2019. While ROE improved, this was largely due to the lower effective tax rates noted earlier, and not necessarily stronger operating fundamentals. The discrepancy between ROE and the other return metrics points to a tax-driven, rather than operations-driven, improvement.

The Group's return metrics over 2019–2024 also fell short of its cost of capital benchmarks:

- ROIC averaged 1%, significantly below the estimated 9% weighted average cost of capital (WACC).
- ROE averaged 6%, trailing the estimated 10% cost of equity.

These figures suggest that the Group did not generate economic value for shareholders during this period.

PEER COMPARISON

I also compared Coastal's performance with the Bursa energy services and equipment sector's median performance.

- From a capital efficiency perspective, Coastal's gross profitability and ROE were worse than its peers, especially post-2018.
- From a financial perspective, Coastal had a lower Debt Equity ratio and a higher cash flow from Op to PAT conversion ratio compared to its peers.

FINANCIAL POSITION

I would rate Coastal as financially sound. While there were some negative points, they were more than offset by the positive ones.

The main positive points were:

- As of the end of March 2025, it had RM1.0 billion in cash and short-term investments, equal to 54% of its total assets.
- In the peer comparison, I have pointed out its better cash flow conversion rate. From 2013 to 2024, it generated RM1.2 billion cash flow from operations compared to its PAT of RM0.8 billion. This is a good cash conversion rate.
- From 2013 to 2024, it generated positive cash flow from operations every year. This was despite incurring 2 years of losses during this period.
- It had a Debt Equity ratio of 0.03 as of the end of March 2024. This had come down from its 2016 high of 0.35

On the negative side, I have already mentioned the deterioration in the returns.

The other concern is the poor capital allocation plan, as shown

Item	Sources RM m	Uses RM m
Cash flow from Ops	1,192	
New shares	222	
Net Debt	386	
Cash		
CAPEX		1,080
Dividends		182
Buybacks		17
Misc		521
Total	1,801	1,801

Table 1: Sources and Uses of Funds 2012 to 2023

in Table 1. You can see that the cash flow from Ops was just enough to cover the CAPEX. But in mitigation, this was offset by the negative Reinvestment from 2019 to 2023.

I defined Reinvestment = CAPEX – Depreciation & amortization + increase in Net Working Capital. The negative values arose because the amount spent on CAPEX and/or Net Working Capital was smaller than the Depreciation & amortization.

VALUATION

I looked at several valuation metrics to assess whether there is a margin of safety. Refer to Table 2. You can see that there are only margins of safety under the Asset Value and Acquirer’s Multiple. **(Refer to the original article for details of the valuation.)**

Metric	Units	Valuation	Target
Asset value	RM per share	3.49	> 30 % market price
Intrinsic value	RM per share	1.35	> 30 % market price
Acquirer's multiple (a)	Number	5.7	< 6
Free cash flow yield (b)	%	0%	> 5 %
Market price 23 Aug 2024	RM per share	1.75	

Table 2: Valuation metrics

Notes to Table 2:

a) EV / (Average past 3 years EBITDA)

b) (Free cash flow from valuation model)/market price

You can see that the Earnings Value (intrinsic value) is significantly lower than the Asset Value. According to Professor Bruce Greenwald, this suggests underutilization of assets. You should not be surprised as:

- Cash and short-term investments accounted for a significant part of the total assets.
- We have declining returns, and the Group did not create shareholder value.

CONCLUSION

Coastal has undergone a significant transformation since 2016, evolving from a traditional shipbuilder into a provider of integrated energy infrastructure solutions. While this pivot enabled the Group to restore profitability, the underlying performance tells a more nuanced story.

- Revenue and profit have grown, but these gains have not translated into improvements in capital or operating efficiency.
- ROIC remains below the cost of capital, indicating an absence of shareholder value creation.

Despite a sound financial position marked by strong cash reserves and low leverage, Coastal suffers from subpar capital allocation and asset underutilization. Its valuation metrics suggest there may be a margin of safety based on asset value, but not on earnings power, reinforcing the narrative of an inefficient deployment of resources.

I am a long-term value investor who has held onto stocks for more than 5 years. My analysis and valuation are from such a perspective. I consider quarterly results “noisy” and focus on long-term trends.

This article was derived from a detailed analysis, emphasizing the intersection of business performance and valuation metrics, which was first published on i4value as [“Is Coastal Contracts an investment opportunity?”](#) Refer to the article for further insights on its investment risk vs business performance.

UNLOCK THE SECRET OF WEALTH

DO YOU REALLY WANT TO MASTER VALUE INVESTING



SEE HOW TO GET HIGHER RETURNS WITH LOWER RISK



Banking sector 'oversold' despite resilient fundamentals - Kenanga Research

According to Kenanga Research, Malaysian banking stocks are now trading at valuations last seen during major financial crises and highlighted a disconnect between the sector's depressed prices and its resilient fundamentals.

The banking sector's price-to-book value ratio – benchmarked against the KL Financial Index – fell to a one-year low of 1.08 times in May 2025. This is only the second time the sector's valuation has breached this level outside of crisis periods, with the last instance occurring during the US regional banking fallout in 2023.

It attributed the current downturn to concerns over sluggish loan growth, persistently tight net interest margins (NIMs), and broader

market jitters stemming from trade tariff uncertainties. However, despite these challenges, the sector is supported by historically strong asset quality. Gross impaired loan (GIL) ratios remain below 1.5%, while banks are well provisioned with average loan loss coverage – including regulatory reserves – at around 140%.

Kenanga added that the environment now is far healthier than during recent crises, with asset quality appearing to be a minor concern. The research house maintained its 'overweight' call on the banking sector, citing robust fundamentals and a potential turnaround in valuations, with its top picks for the third quarter of 2025 being AMMB Holdings Bhd, CIMB Group Holdings Bhd, and Malayan Banking Bhd.

On the OPR, Kenanga believes BNM will keep it unchanged at 3% for the rest of the year. Kenanga expects banks to continue facing pressure on NIMs due to weaker asset yields, estimating that every 25-basis-point rate cut could reduce sector NIMs by one to three basis points, leading to an average 2% drop in earnings.



CHECK OUT SHAREINVESTOR

BROKER'S CALL

Weekly Buy/Sell/Hold calls
from leading Malaysian Brokerages.

[Go To Broker's Call](#)

BUY **HOLD** **SELL**

Johor-Singapore SEZ to boost state GDP share above 12% by 2030 – CIMB IB

According to CIMB Investment Bank Bhd (CIMB IB), the Johor-Singapore Special Economic Zone (JS-SEZ) is expected to propel Johor's share of national GDP to exceed 12% by 2030 on condition that their investments materialise according to plan.

CIMB IB estimates that JS-SEZ could contribute RM117.1 billion to the country's GDP by 2030, representing an average annual rise of RM19.5 billion — equivalent to 0.6–1.0 per cent of GDP per year from 2025 to 2030. Achieving this would require a compound annual growth rate (CAGR) of around 8.4 per cent per annum, more than double its 3.8 p.a. growth during 2016–2023.

This estimate assumes steady growth and a national GDP growth rate of 6.0 per cent. Key growth drivers would include

rising domestic and foreign investment in sectors like logistics, healthcare, tourism, and the digital economy, as well as enhanced labour mobility, improved cross-border trade facilitation, and major infrastructure upgrades.

Johor's investment momentum has surged in the first quarter of 2025 (1Q 2025), securing a total of RM30.1 billion in approved investments, driven by JS-SEZ initiatives and pro-business reforms.

Singapore was the largest investor in 1Q 2025 with 65 projects worth RM28.3 billion in approved FDI, ahead of other countries such as the United States (RM9.9 billion) and China (RM7.9 billion). These investments are expected to generate 33,000 new jobs and put Johor on track to surpass its 2024 approved investments record of RM48.5 billion. Based on this, Johor Menteri Besar Datuk Onn Hafiz Ghazi is now targeting RM60 billion-RM100 billion in approved investments for 2025.

CIMB IB noted that investors' focus will be on key zones like Forest City and Sedenak, led by data centres, electrical and electronics (E&E), electric vehicles (EV), and the logistics sectors. The JS-SEZ blueprint clearly outlines sector priorities to designated zones, ensuring focused development and ecosystem clustering and that delivering on these projects will establish Johor as a diversified and globally connected economic engine by 2030.

CIMB IB added that the JS-SEZ is also expected to strengthen the Johor-Singapore economic corridor, enabling a twin-city model similar to Shenzhen-Hong Kong. Johor offers scale, land, and labour, while Singapore brings capital, finance, and global networks. Their integration creates a compelling, cost-efficient destination for global investors, with seamless operations across both jurisdictions.

M'sian firms bag RM450m potential digital exports to Indonesia - MDEC

According to Malaysia Digital Economy Corporation (MDEC) CEO Anuar Fariz Fadzil, the agency's latest initiative under the DEX CONNEX Indonesia programme brought 83 Malaysian tech companies into the Indonesian market, which generated more than RM450 million in digital export opportunities. It is a key regional initiative that facilitated the exchange of 26 MoUs between Malaysian and Indonesian firms.

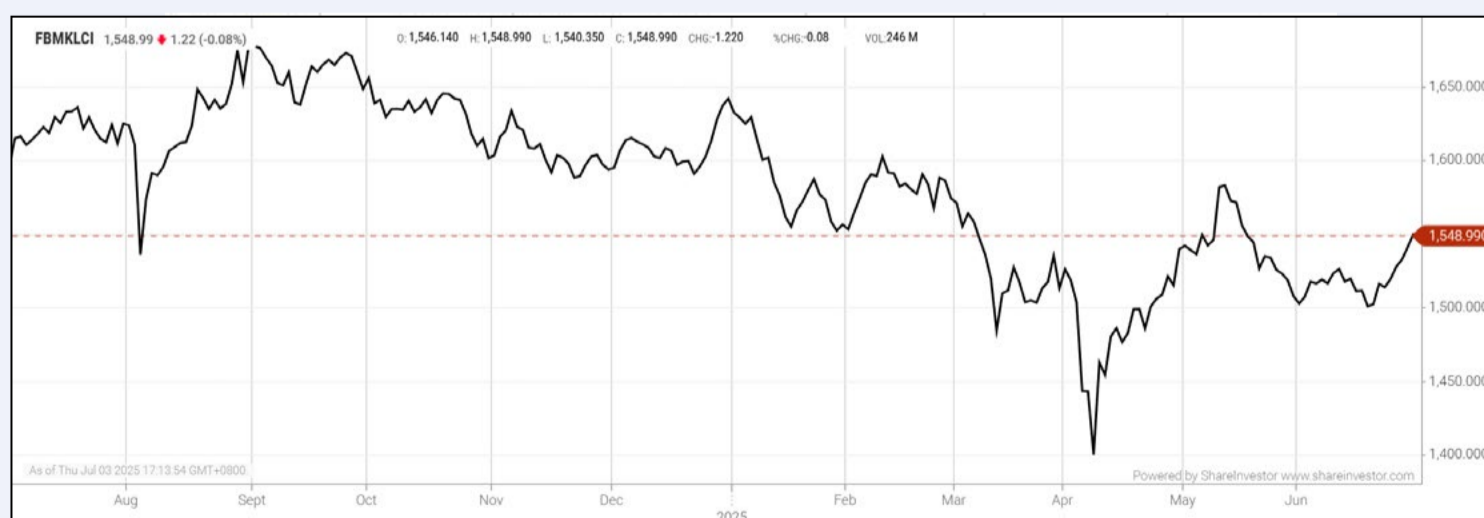
He called Indonesia a key partner in Malaysia's digital goals and that through DEX CONNEX Indonesia, Malaysia is focusing on cross-border collaborations to continue building a resilient digital bridge between the two thriving ecosystems. He added that with a strong tech ecosystem and ASEAN unity, both nations are shaping an inclusive, sustainable digital future for all.

This initiative is supported by the Embassy of Malaysia in Jakarta, the Ministry of Investment, Trade and Industry Malaysia, Matrade Jakarta, the Ministry of Communication and Digital Affairs of Indonesia, and corporate partners from both nations.

Meanwhile, MDEC continues to drive the nation’s digital economy across ASEAN, strengthening regional cooperation and market access for Malaysian companies. These agreements span sectors such as cybersecurity, AI, cloud services, F&B, digital platforms, and talent development, aimed at creating a robust and collaborative digital ecosystem across Asean, primarily as Malaysia serves as ASEAN Chair that champions innovation as a driver of regional growth and resilience.

EYE ON THE MARKETS

On Thursday (03July), the Ringgit closed at 4.2195 against the USD and 3.3162 to the Sing Dollar. On Monday (30June), the FBM KLCI opened at 1533.41. As at Thursday (03July) 5:00pm, the FBM KLCI closed up 15.58 points at 1548.99. Over in US, the overnight Dow Jones Industrial Average closed up 344.11 points (+0.77%) to 44,828.53 whilst the NASDAQ added 207.97 points (+1.02%) to 20,601.10.



KLCI 1 Year Chart

Over 5 Trading Days (as at Yesterday)



ShareInvestor WebPro (www.shareinvestor.com/my)

1. Price > Stock Prices
2. Select Market: NASDAQ / NYSE / IDX / SET / HKEX / SGX (One bourse at a time)
3. select Stocks Tab
4. select Ranking Top Gainers or Top Losers (Over 5 Trading Days)
5. Mouse over Column Layout > select Edit Customs > select Name > select Last Done Price > select 5 Days Change > select 52 Weeks High > select 52 Weeks Low > Mouse Over Column Layout > select Custom

NASDAQ (USD)

Top Gainers

Name	Last Done	Change Over 5 Days	52 Weeks High	52 Weeks Low
First Citizens BancShares A	2,073.905	+113.915	2,412.930	1,473.620
Blue Gold A	133.000	+112.890	166.500	17.000
Booking Holdings	5,701.760	+105.760	5,799.010	3,180.000
Equinix	795.150	+49.620	994.030	701.410
Monolithic Power Systems	764.400	+41.580	959.640	438.860

Top Losers

Name	Last Done	Change Over 5 Days	52 Weeks High	52 Weeks Low
Mercadolibre	2,472.050	-68.450	2,645.220	1,563.210
Wingstop	326.290	-29.800	433.860	204.000
Axon Enterprise	774.550	-29.400	830.210	279.020
AeroVironment	246.250	-26.120	295.900	102.250
Coinbase Global A	354.450	-20.620	382.000	142.580

NYSE (USD)

Top Gainers

Name	Last Done	Change Over 5 Days	52 Weeks High	52 Weeks Low
NVR	7,768.510	+575.330	9,964.770	6,562.850
AutoZone	3,685.340	+163.090	3,916.810	2,801.490
TransDigm Group	1,511.650	+54.410	1,528.450	1,176.310
United Rentals	787.790	+51.610	896.980	525.914
NewMarket	720.100	+46.210	706.525	480.000

Top Losers

Name	Last Done	Change Over 5 Days	52 Weeks High	52 Weeks Low
Berkshire Hathaway A	720,500.000	-9,500.000	812,855.000	607,954.790
Chemed	471.240	-81.260	623.605	473.553
Molina Healthcare	239.000	-55.140	365.230	262.320
Fair Isaac	1,842.780	-50.670	2,402.515	1,484.290
Circle Internet Group A	177.970	-20.650	298.990	64.000

IDX (Rupiah)

Top Gainers

Name	Last Done	Change Over 5 Days	52 Weeks High	52 Weeks Low
AKASHA WIRA INTERNATIONAL TBK	11,375.000	+850.000	12,500.000	8,850.000
INDORITEL MAKMUR INTERNASIONAL TBK	9,800.000	+625.000	12,825.000	4,750.000
CHANDRA ASRI PACIFIC TBK	10,100.000	+600.000	11,225.000	5,275.000
VALE INDONESIA TBK	3,430.000	+340.000	4,430.000	1,825.000
AGRO BAHARI NUSANTARA TBK	1,225.000	+300.000	1,225.000	37.000

Top Losers

Name	Last Done	Change Over 5 Days	52 Weeks High	52 Weeks Low
DCI INDONESIA TBK	151,950.000	-2,050.000	226,150.000	37,250.000
MULTIPOLAR TECHNOLOGY TBK	33,925.000	-2,025.000	48,000.000	1,200.000
DIAN SWATATIKA SENTOSA TBK	54,300.000	-1,775.000	60,800.000	26,300.000
ABADI NUSANTARA HIJAU INVESTAMA TBK	3,640.000	-1,330.000	4,970.000	25.000
METROPOLITAN KENTJANA TBK	22,225.000	-1,025.000	27,225.000	20,025.000

SET (Thai Baht)

Top Gainers

Name	Last Done	Change Over 5 Days	52 Weeks High	52 Weeks Low
DELTA	104.500	+5.500	173.500	51.250
STANLY	195.500	+4.000	227.000	190.500
TTI	28.000	+2.750	34.000	22.200
AOT	30.500	+2.000	65.000	26.750
JCT	80.000	+2.000	84.000	75.000

Top Losers

Name	Last Done	Change Over 5 Days	52 Weeks High	52 Weeks Low
KWC	276.000	-46.000	366.000	263.000
AEONTS	93.750	-3.750	148.000	90.500
OHTL	262.000	-3.000	410.000	248.000
MTC	35.250	-2.500	54.000	33.750
MFC	26.750	-2.250	31.250	19.000

HKEX (HKD)

Top Gainers

Name	Last Done	Change Over 5 Days	52 Weeks High	52 Weeks Low
LAOPU GOLD (6181)	988.000	+124.500	1,035.000	72.000
ZHOU LIU FU (6168)	43.300	+43.139	52.500	26.700
CATL (3750)	334.600	+15.600	343.400	291.000
POP MART (9992)	258.200	+10.800	283.400	34.400
YUM CHINA (9987)	363.400	+9.200	421.400	225.200

Top Losers

Name	Last Done	Change Over 5 Days	52 Weeks High	52 Weeks Low
ETERNAL BEAUTY (6883)	2.200	-44.450	2.790	1.990
BEIGENE (6160)	145.000	-18.000	178.000	85.300
REMEGEN (9995)	55.250	-11.800	70.100	10.200
TENCENT-R (80700)	457.400	-11.400	507.000	320.000
QFIN-S (3660)	167.900	-11.100	204.000	70.100

SGX (SGD)

Top Gainers

Name	Last Done	Change Over 5 Days	52 Weeks High	52 Weeks Low
JMH USD	49.580	+2.540	49.790	33.930
Haw Par	12.850	+1.000	12.920	9.046
Jardine C&C	24.870	+1.000	29.500	23.100
SGX	15.170	+0.760	15.250	9.450
HongkongLand USD	6.310	+0.740	6.330	3.160

Top Losers

Name	Last Done	Change Over 5 Days	52 Weeks High	52 Weeks Low
Zhongmin Baihui	0.490	-0.100	0.750	0.470
Penguin Intl	1.120	-0.060	1.180	0.815
Spackman Entmt	0.190	-0.060	0.275	0.020
Digilife Tech	0.700	-0.050	1.790	0.700
Man Oriental USD	1.900	-0.050	2.000	1.560

INSIDER ACTIVITY

FRIDAY JULY 4 2025

DEFINITION: Insider Activity shows the trades made by substantial shareholders or directors of the company. Purchases by the directors and company share buyback may indicate the share price is undervalued and brings confidence to the price trend of the share price.



ShareInvestor WebPro > Fundamental > Insider Trades > click Search tab > Select Bursa > click Stock name > scroll up and leave at <Select Counter> Type Date Range for Announcement Date > click Search

Notice Period is 22nd June 2025 to 28th June 2025

Effective Change Date	Stock Name	Buyer/ Seller Name [Classification]	Bought / (Sold) ['000]		
			Total	No. of Shares After Trade ['000]	% Held
23 JUN 2025 - 23 JUN 2025	99SMART	EMPLOYEES PROVIDENT FUND BOARD [SSH]	286	423,942	5.047
20 JUN 2025 - 20 JUN 2025	99SMART	EMPLOYEES PROVIDENT FUND BOARD [SSH]	-385	423,656	5.044
19 JUN 2025 - 19 JUN 2025	99SMART	EMPLOYEES PROVIDENT FUND BOARD [SSH]	241	424,041	5.048
18 JUN 2025 - 18 JUN 2025	99SMART	EMPLOYEES PROVIDENT FUND BOARD [SSH]	282	423,800	5.045
23 JUN 2025 - 23 JUN 2025	ABMB	EMPLOYEES PROVIDENT FUND BOARD [SSH]	37	135,419	8.747
20 JUN 2025 - 20 JUN 2025	ABMB	EMPLOYEES PROVIDENT FUND BOARD [SSH]	200	135,492	8.752
19 JUN 2025 - 19 JUN 2025	ABMB	EMPLOYEES PROVIDENT FUND BOARD [SSH]	404	135,396	8.746
23 JUN 2025 - 23 JUN 2025	AEM	AT PRECISION TOOLING SDN. BHD. [SSH]	-5,315	49,579	22.916
23 JUN 2025 - 23 JUN 2025	AEM	ERDASAN GROUP BERHAD (FORMERLY KNOWN AS AT SYSTEMATIZATION BERHAD) [SSH]	-5,315	49,579	22.916
20 JUN 2025 - 20 JUN 2025	AEM	AT PRECISION TOOLING SDN. BHD. [SSH]	-12,899	54894	25.373
20 JUN 2025 - 20 JUN 2025	AEM	ERDASAN GROUP BERHAD (FORMERLY KNOWN AS AT SYSTEMATIZATION BERHAD) [SSH]	-12,899	54894	25.373
23 JUN 2025 - 23 JUN 2025	AEON	EMPLOYEES PROVIDENT FUND BOARD [SSH]	84	84563	6.023
23 JUN 2025 - 23 JUN 2025	AMBANK	EMPLOYEES PROVIDENT FUND BOARD [SSH]	1,714	411,693	12.465
20 JUN 2025 - 20 JUN 2025	AMBANK	EMPLOYEES PROVIDENT FUND BOARD [SSH]	500	409,979	12.414
20 JUN 2025 - 23 JUN 2025	ANEKA	MR LOKE KIEN TUCK [DIR/CEO]	47	101,233	14.576
20 JUN 2025 - 23 JUN 2025	ANEKA	MR LOKE KIEN TUCK [SSH]	47	101,233	14.576
19 JUN 2025 - 23 JUN 2025	APM	DATO' TAN HENG CHEW [DIR/CEO]	68	105,630	54.033
19 JUN 2025 - 23 JUN 2025	APM	DATO' TAN HENG CHEW [SSH]	68	97,299	49.771
26 JUN 2025 - 26 JUN 2025	ASIAPLY	MR LIM TECK SENG [DIR/CEO]	10	993	0.094
24 JUN 2025 - 24 JUN 2025	ATECH	DATO' F'NG MEOW CHENG [DIR/CEO]	28	41	0.003
24 JUN 2025 - 24 JUN 2025	ATECH	KUMPULAN WANG PERSARAAN (DIPERBADANKAN) [SSH]	43,934	65,900	5.067
24 JUN 2025 - 24 JUN 2025	ATECH	MAIN STREAM HOLDINGS SDN. BHD. [SSH]	139,960	209,940	16.14
24 JUN 2025 - 24 JUN 2025	ATECH	MAIN STREAM LIMITED [SSH]	152,586	228,879	17.6
24 JUN 2025 - 24 JUN 2025	ATECH	MISS JAMIE HWE PING LEE [DIR/CEO]	15,273	22,909	1.761
24 JUN 2025 - 24 JUN 2025	ATECH	MR JONATHAN MING CHIAN LEE [DIR/CEO]	307,818	461,728	35.501
24 JUN 2025 - 24 JUN 2025	ATECH	MR LEE CHONG YEOW @ LEE CHONG YAN ESTATE HELD BY JONATHAN MING CHIAN LEE [SSH]	292,546	438,819	33.74
24 JUN 2025 - 24 JUN 2025	ATECH	MR LOH HOCK CHIANG [DIR/CEO]	353,636	530,455	40.786
24 JUN 2025 - 24 JUN 2025	ATECH	MR LOH HOCK CHIANG [SSH]	353,636	530,455	40.786
24 JUN 2025 - 24 JUN 2025	ATECH	MR TAN CHONG HIN [DIR/CEO]	46,771	70,157	5.395
24 JUN 2025 - 24 JUN 2025	ATECH	MR TAN CHONG HIN [SSH]	46,771	70,157	5.395
24 JUN 2025 - 24 JUN 2025	ATECH	PIXEL ADVISERS PTE. LTD. [SSH]	46,609	69,914	5.376
23 JUN 2025 - 23 JUN 2025	ATECH	EMPLOYEES PROVIDENT FUND BOARD [SSH]	-280	50,902	11.741
23 JUN 2025 - 23 JUN 2025	ATECH	ABERDEEN GROUP PLC [SSH]	-280	46,964	10.833
23 JUN 2025 - 23 JUN 2025	ATECH	ABRDN HOLDINGS LIMITED [SSH]	-280	46,964	10.833
23 JUN 2025 - 23 JUN 2025	ATECH	ABRDN MALAYSIA SDN. BHD. [SSH]	-280	46,384	10.699
20 JUN 2025 - 20 JUN 2025	ATECH	EMPLOYEES PROVIDENT FUND BOARD [SSH]	-81	51,182	11.806
23 JUN 2025 - 25 JUN 2025	AWANTEC	LEMBAGA TABUNG AMANAH WARISAN NEGERI TERENGGANU [SSH]	22	43,045	5.461
19 JUN 2025 - 20 JUN 2025	AWANTEC	LEMBAGA TABUNG AMANAH WARISAN NEGERI TERENGGANU [SSH]	9	43,023	5.458
19 JUN 2025 - 19 JUN 2025	AXIATA	EMPLOYEES PROVIDENT FUND BOARD [SSH]	108	1,664,427	18.12
18 JUN 2025 - 18 JUN 2025	AXIATA	EMPLOYEES PROVIDENT FUND BOARD [SSH]	442	1,664,319	18.119
20 JUN 2025 - 20 JUN 2025	AXREIT	EMPLOYEES PROVIDENT FUND BOARD [SSH]	211	385,036	19.054
19 JUN 2025 - 19 JUN 2025	AXREIT	EMPLOYEES PROVIDENT FUND BOARD [SSH]	-480	384,825	19.043
23 JUN 2025 - 23 JUN 2025	AYS	MR OH CHIEW HO [SSH]	42	265,596	63.47
23 JUN 2025 - 23 JUN 2025	AYS	OH CHIEW HO [DIR/CEO]	42	265,596	63.47
19 JUN 2025 - 20 JUN 2025	AYS	MR OH CHIEW HO [SSH]	121	265,554	63.46
19 JUN 2025 - 20 JUN 2025	AYS	OH CHIEW HO [DIR/CEO]	121	265,554	63.46
23 JUN 2025 - 23 JUN 2025	BAUTO	DATO' AMER HAMZAH BIN AHMAD [SSH]	150	182,561	15.757
23 JUN 2025 - 23 JUN 2025	BAUTO	DATO' LEE KOK CHUAN [DIR/CEO]	150	182,607	15.761
23 JUN 2025 - 23 JUN 2025	BAUTO	DATO' LEE KOK CHUAN [SSH]	150	182,607	15.761
23 JUN 2025 - 23 JUN 2025	BAUTO	DYNAMIC MILESTONE SDN BHD [SSH]	150	178,117	15.373
23 JUN 2025 - 23 JUN 2025	BAUTO	EMPLOYEES PROVIDENT FUND BOARD [SSH]	-455	143,198	12.359
23 JUN 2025 - 23 JUN 2025	BAUTO	TAN SRI DATO' SRI YEOH CHOON SAN [DIR/CEO]	150	182,334	15.737
23 JUN 2025 - 23 JUN 2025	BAUTO	TAN SRI DATO' SRI YEOH CHOON SAN [SSH]	150	182,334	15.737
19 JUN 2025 - 19 JUN 2025	BAUTO	EMPLOYEES PROVIDENT FUND BOARD [SSH]	-3,000	143,653	12.396
18 JUN 2025 - 18 JUN 2025	BAUTO	EMPLOYEES PROVIDENT FUND BOARD [SSH]	-1,500	146,653	12.651
20 JUN 2025 - 20 JUN 2025	BIMB	EMPLOYEES PROVIDENT FUND BOARD [SSH]	50	383,904	16.938
20 JUN 2025 - 20 JUN 2025	BINTAI	DATUK NG CHOON KOON [DIR/CEO]	173	100,000	6.831
20 JUN 2025 - 20 JUN 2025	BINTAI	DATUK NG CHOON KOON [SSH]	173	100,000	6.831
26 JUN 2025 - 26 JUN 2025	BORNOIL	DATUK JOSEPH LEE YOK MIN @ AMBROSE [DIR/CEO]	3,300	2,858,837	20.348
26 JUN 2025 - 26 JUN 2025	BORNOIL	DATUK JOSEPH LEE YOK MIN @ AMBROSE [SSH]	3,300	1,320,822	20.348
26 JUN 2025 - 26 JUN 2025	BORNOIL	MR RIORN LEE KAH VUI [DIR/CEO]	3,300	1,600,640	11.393

Notice Period is 22nd June 2025 to 28th June 2025

Effective Change Date	Stock Name	Buyer/ Seller Name [Classification]	Bought / (Sold) ['000]		
			Total	No. of Shares After Trade ['000]	% Held
25 JUN 2025 - 25 JUN 2025	BORNOIL	DATUK JOSEPH LEE YOK MIN @ AMBROSE [SSH]	2,700	1,317,522	20.325
24 JUN 2025 - 24 JUN 2025	BORNOIL	DATUK JOSEPH LEE YOK MIN @ AMBROSE [DIR/CEO]	2,700	2,852,837	20.306
24 JUN 2025 - 24 JUN 2025	BORNOIL	DATUK JOSEPH LEE YOK MIN @ AMBROSE [SSH]	2,700	1,314,822	20.306
24 JUN 2025 - 24 JUN 2025	BORNOIL	MR RIORN LEE KAH VUI [DIR/CEO]	2,700	1,594,640	11.351
24 JUN 2025 - 24 JUN 2025	BORNOIL	MR RIORN LEE KAH VUI [SSH]	2,700	279,818	11.351
23 JUN 2025 - 23 JUN 2025	BORNOIL	DATUK JOSEPH LEE YOK MIN @ AMBROSE [DIR/CEO]	2,100	2,850,137	20.286
23 JUN 2025 - 23 JUN 2025	BORNOIL	DATUK JOSEPH LEE YOK MIN @ AMBROSE [SSH]	2,100	1,312,122	20.286
23 JUN 2025 - 23 JUN 2025	BORNOIL	MR RIORN LEE KAH VUI [DIR/CEO]	2,100	1,591,940	11.331
23 JUN 2025 - 23 JUN 2025	BORNOIL	MR RIORN LEE KAH VUI [SSH]	2,100	279,818	11.331
23 JUN 2025 - 23 JUN 2025	BSLCORP	MR TAN KOK HUI [SSH]	10,040	130,840	6.779
24 JUN 2025 - 24 JUN 2025	CBHB	MR CHEAH BOON HWA [DIR/CEO]	200	1,373,761	73.037
24 JUN 2025 - 24 JUN 2025	CBHB	MR CHEAH BOON HWA [SSH]	200	1,373,761	73.037
19 JUN 2025 - 19 JUN 2025	CBIP	DATUK LIM CHAI BENG [DIR/CEO]	-12,500	193,102	41.487
19 JUN 2025 - 19 JUN 2025	CBIP	DATUK LIM CHAI BENG [SSH]	-12,500	193,102	41.487
23 JUN 2025 - 23 JUN 2025	CDB	EMPLOYEES PROVIDENT FUND BOARD [SSH]	203	1,253,746	10.687
19 JUN 2025 - 19 JUN 2025	CDB	EMPLOYEES PROVIDENT FUND BOARD [SSH]	200	1,251,683	10.669
18 JUN 2025 - 18 JUN 2025	CDB	EMPLOYEES PROVIDENT FUND BOARD [SSH]	227	1,251,483	10.668
24 JUN 2025 - 24 JUN 2025	CGB	MR CHEW HIAN TAT [DIR/CEO]	-1,163	238,892	30.213
24 JUN 2025 - 24 JUN 2025	CGB	MR CHEW HIAN TAT [SSH]	-1,163	238,892	30.213
23 JUN 2025 - 23 JUN 2025	CHINTEK	MR GHO LIAN CHIN [DIR/CEO]	23	33,851	37.05
23 JUN 2025 - 23 JUN 2025	CHINTEK	MR GHO LIAN CHIN [SSH]	23	33,851	37.05
23 JUN 2025 - 23 JUN 2025	CHINTEK	MR GOH CHIH YUAN [DIR/CEO]	23	34,158	37.39
23 JUN 2025 - 23 JUN 2025	CHINTEK	MR GOH CHIH YUAN [SSH]	23	34,158	37.39
23 JUN 2025 - 23 JUN 2025	CHINTEK	MR GOH WEI LEI [DIR/CEO]	23	34,158	37.39
23 JUN 2025 - 23 JUN 2025	CHINTEK	MR GOH WEI LEI [SSH]	23	34,158	37.39
23 JUN 2025 - 23 JUN 2025	CHINTEK	TAI CHUAN COMPANY (PRIVATE) LIMITED [SSH]	23	33,643	36.82
23 JUN 2025 - 23 JUN 2025	CHINTEK	TIONG THYE COMPANY SDN BHD [SSH]	23	33,643	36.82
24 JUN 2025 - 25 JUN 2025	CHINWEL	MISS TSAI CHIA LING [DIR/CEO]	315	166,211	58.02
24 JUN 2025 - 25 JUN 2025	CHINWEL	MR TSAI CHENG HSUN [DIR/CEO]	315	165,372	57.73
24 JUN 2025 - 25 JUN 2025	CHINWEL	MR TSAI YUNG CHUAN [DIR/CEO]	315	165,372	57.73
23 JUN 2025 - 23 JUN 2025	CIMB	EMPLOYEES PROVIDENT FUND BOARD [SSH]	562	1,788,047	16.63
20 JUN 2025 - 20 JUN 2025	CIMB	EMPLOYEES PROVIDENT FUND BOARD [SSH]	5,046	1,787,485	16.62
19 JUN 2025 - 19 JUN 2025	CIMB	EMPLOYEES PROVIDENT FUND BOARD [SSH]	-2,453	1,782,439	17.78
18 JUN 2025 - 18 JUN 2025	CIMB	EMPLOYEES PROVIDENT FUND BOARD [SSH]	-6,365	1,784,892	16.6
23 JUN 2025 - 25 JUN 2025	CITAGLB	TAN SRI DATO' SRI DR MOHAMAD NORZA BIN ZAKARIA [DIR/CEO]	47	139,432	32.768
23 JUN 2025 - 25 JUN 2025	CITAGLB	TAN SRI DATO' SRI DR MOHAMAD NORZA BIN ZAKARIA [SSH]	47	139,432	32.768
23 JUN 2025 - 25 JUN 2025	CITAGLB	TIZA GLOBAL SDN. BHD. [SSH]	47	132,457	31.129
15 JAN 2025 - 15 JAN 2025	CITAGLB	ENCIK IKHLAS BIN KAMARUDIN [DIR/CEO]	-6,029	6,029	1.417
20 JUN 2025 - 20 JUN 2025	CKI	CUCKOO HOMESYS CO. LTD. [SSH]	-46,984	759,441	53.004
20 JUN 2025 - 20 JUN 2025	CKI	MR HOE KIAN CHOON [DIR/CEO]	-7,928	175,799	12.207
20 JUN 2025 - 20 JUN 2025	CKI	MR HOE KIAN CHOON [SSH]	-7,928	175,799	12.207
20 JUN 2025 - 20 JUN 2025	CKI	MR KOO BON HAK [DIR/CEO]	-127,607	935,240	65.274
20 JUN 2025 - 20 JUN 2025	CKI	MR KOO BON HAK [SSH]	-127,607	935,240	65.274
23 JUN 2025 - 23 JUN 2025	CLMT	EMPLOYEES PROVIDENT FUND BOARD [SSH]	365	445,233	15.24
19 JUN 2025 - 19 JUN 2025	CLMT	EMPLOYEES PROVIDENT FUND BOARD [SSH]	150	444,868	15.228
18 JUN 2025 - 18 JUN 2025	CLMT	EMPLOYEES PROVIDENT FUND BOARD [SSH]	-2,041	444,718	15.223
23 JUN 2025 - 23 JUN 2025	COASTAL	MR JACOB O PANG SU YIN [DIR/CEO]	-1	69	0.013
25 JUN 2025 - 25 JUN 2025	COMPUGT	MADAM SEE THOO CHAN [DIR/CEO]	999	865,516	14.305
25 JUN 2025 - 25 JUN 2025	COMPUGT	MADAM SEE THOO CHAN [SSH]	999	865,516	14.305
25 JUN 2025 - 25 JUN 2025	COMPUGT	MR GOH KHENG PEOW [SSH]	999	865,516	14.305
24 JUN 2025 - 24 JUN 2025	COMPUGT	MADAM SEE THOO CHAN [DIR/CEO]	2,811	864,517	14.289
24 JUN 2025 - 24 JUN 2025	COMPUGT	MADAM SEE THOO CHAN [SSH]	2,811	864,517	14.289
24 JUN 2025 - 24 JUN 2025	COMPUGT	MR GOH KHENG PEOW [SSH]	2,811	864,517	14.289
23 JUN 2025 - 23 JUN 2025	COMPUGT	MADAM SEE THOO CHAN [DIR/CEO]	110	861,706	14.242
23 JUN 2025 - 23 JUN 2025	COMPUGT	MADAM SEE THOO CHAN [SSH]	110	861,706	14.242
23 JUN 2025 - 23 JUN 2025	COMPUGT	MR GOH KHENG PEOW [SSH]	110	861,706	14.242
20 JUN 2025 - 20 JUN 2025	COMPUGT	MADAM SEE THOO CHAN [DIR/CEO]	80	861,596	14.24
20 JUN 2025 - 20 JUN 2025	COMPUGT	MADAM SEE THOO CHAN [SSH]	80	861,596	14.24
20 JUN 2025 - 20 JUN 2025	COMPUGT	MR GOH KHENG PEOW [SSH]	80	861,596	14.24
23 JUN 2025 - 24 JUN 2025	CRPMATE	MR LEE CHIN YOK [DIR/CEO]	1,430	216,530	29.34
23 JUN 2025 - 24 JUN 2025	CRPMATE	MR LEE CHIN YOK [SSH]	1,430	216,530	29.34
25 JUN 2025 - 25 JUN 2025	CTOS	KUMPULAN WANG PERSARAAN (DIPERBADANKAN) [SSH]	204	199,893	8.653

Disclaimer: The Information in Insider Activity is extracted from www.shareinvestor.com/fundamental/insider_trades. The information on this page is provided as a service to readers. It does not constitute financial advice and/or any investment recommendations. We assume no liability for damages resulting from or arising out of the use of such information. Whilst every effort is made to ensure accuracy, the information presented is not the official record of shareholder filings. Readers are advised to read the original filings on the Bursa Malaysia website at www.bursamalaysia.com



STROM
SWISS TIMEPIECES & JEWELLERY



StromWatch Asia
Tele : +65.9817.3378
Email : ll.stromasia@gmail.com
WWW.STROMWATCH.SWISS

Notice Period is 22nd June 2025 to 28th June 2025

Effective Change Date	Stock Name	Buyer/ Seller Name [Classification]	Bought / (Sold) ['000]	No. of Shares After Trade ['000]	
			Total	Total	% Held
24 JUN 2025 - 24 JUN 2025	CTOS	ABRDN MALAYSIA SDN BHD [SSH]	489	348,038	15.067
23 JUN 2025 - 23 JUN 2025	CTOS	EMPLOYEES PROVIDENT FUND BOARD [SSH]	3,000	460,817	19.949
23 JUN 2025 - 23 JUN 2025	CTOS	ABERDEEN GROUP PLC (FORMERLY KNOWN AS ABRDN PLC) [SSH]	105	351,147	15.201
23 JUN 2025 - 23 JUN 2025	CTOS	ABRDN HOLDINGS LIMITED [SSH]	105	351,147	15.201
23 JUN 2025 - 23 JUN 2025	CTOS	ABRDN MALAYSIA SDN BHD [SSH]	67	347,549	15.045
23 JUN 2025 - 23 JUN 2025	CTOS	KUMPULAN WANG PERSARAAN (DIPERBADANKAN) [SSH]	105	199,201	8.619
20 JUN 2025 - 20 JUN 2025	CTOS	ABERDEEN GROUP PLC (FORMERLY KNOWN AS ABRDN PLC) [SSH]	67	351,042	15.197
20 JUN 2025 - 20 JUN 2025	CTOS	ABRDN HOLDINGS LIMITED [SSH]	67	351,042	15.197
20 JUN 2025 - 20 JUN 2025	CTOS	ABRDN MALAYSIA SDN BHD [SSH]	67	347,445	15.041
20 JUN 2025 - 20 JUN 2025	CTOS	KUMPULAN WANG PERSARAAN (DIPERBADANKAN) [SSH]	67	199,096	8.619
26 JUN 2025 - 26 JUN 2025	CUSCAPI	MR WONG THEAN SOON [SSH]	30,000	265,198	28.067
23 JUN 2025 - 23 JUN 2025	CVIEW	PUAN SADIAH BINTI SULEIMAN [SSH]	-5	8,060	8.06
04 JUN 2025 - 13 JUN 2025	DATAPRP	ENCIK SHAMSHURI BIN ABDUL MAJID [SSH]	-16,878	116,366	14.467
18 JUN 2025 - 18 JUN 2025	DIALOG	EMPLOYEES PROVIDENT FUND BOARD [SSH]	500	946,662	16.78
23 JUN 2025 - 25 JUN 2025	DNONCE	GENERAL LABELS & LABELLING (M) SDN. BHD. [SSH]	32,700	123,929	14.273
23 JUN 2025 - 25 JUN 2025	DNONCE	KOMARKCORP BERHAD [SSH]	32,700	123,929	14.273
26 JUN 2025 - 26 JUN 2025	DXN	DATIN LEONG BEE LING [SSH]	-450,000	2,444,781	49.169
26 JUN 2025 - 26 JUN 2025	DXN	LSJ GLOBAL SDN. BHD. [SSH]	-450,000	1,444,781	29.057
25 JUN 2025 - 25 JUN 2025	E&O	KUMPULAN WANG PERSARAAN (DIPERBADANKAN) [SSH]	28	153,292	6.153
24 JUN 2025 - 24 JUN 2025	E&O	ABERDEEN GROUP PLC (FORMERLY KNOWN AS ABRDN PLC) [SSH]	462	148,105	5.945
24 JUN 2025 - 24 JUN 2025	E&O	ABRDN HOLDINGS LIMITED [SSH]	462	148,105	5.945
24 JUN 2025 - 24 JUN 2025	E&O	ABRDN MALAYSIA SDN BHD [SSH]	462	146,759	5.891
23 JUN 2025 - 23 JUN 2025	E&O	EMPLOYEES PROVIDENT FUND BOARD [SSH]	306	154,791	6.214
24 JUN 2025 - 24 JUN 2025	E&O	KUMPULAN WANG PERSARAAN (DIPERBADANKAN) [SSH]	48	153,265	6.152
23 JUN 2025 - 23 JUN 2025	E&O	ABERDEEN GROUP PLC (FORMERLY KNOWN AS ABRDN PLC) [SSH]	341	147,643	5.927
23 JUN 2025 - 23 JUN 2025	E&O	ABRDN HOLDINGS LIMITED [SSH]	341	147,643	5.927
20 JUN 2025 - 20 JUN 2025	E&O	EMPLOYEES PROVIDENT FUND BOARD [SSH]	454	154,485	6.201
23 JUN 2025 - 23 JUN 2025	E&O	KUMPULAN WANG PERSARAAN (DIPERBADANKAN) [SSH]	36	153,216	6.15
20 JUN 2025 - 20 JUN 2025	E&O	ABERDEEN GROUP PLC (FORMERLY KNOWN AS ABRDN PLC) [SSH]	507	147,301	5.913
20 JUN 2025 - 20 JUN 2025	E&O	ABRDN HOLDINGS LIMITED [SSH]	507	147,301	5.913
20 JUN 2025 - 20 JUN 2025	E&O	ABRDN MALAYSIA SDN BHD [SSH]	507	145,955	5.859
19 JUN 2025 - 19 JUN 2025	E&O	EMPLOYEES PROVIDENT FUND BOARD [SSH]	48	154,031	6.183
20 JUN 2025 - 20 JUN 2025	E&O	KUMPULAN WANG PERSARAAN (DIPERBADANKAN) [SSH]	53	153,181	6.149
19 JUN 2025 - 19 JUN 2025	E&O	ABERDEEN GROUP PLC (FORMERLY KNOWN AS ABRDN PLC) [SSH]	54	146,794	5.893
19 JUN 2025 - 19 JUN 2025	E&O	ABRDN HOLDINGS LIMITED [SSH]	54	146,794	5.893
19 JUN 2025 - 19 JUN 2025	E&O	ABRDN MALAYSIA SDN BHD [SSH]	54	145,448	5.839
19 JUN 2025 - 19 JUN 2025	E&O	AMAZING PARADE SDN BHD [SSH]	1,000	628,952	25.247
19 JUN 2025 - 19 JUN 2025	E&O	DATIN SERI TOH SIEW CHUON [SSH]	1,000	779,434	31.288
19 JUN 2025 - 19 JUN 2025	E&O	DATO' TEE ENG SENG [DIR/CEO]	1,000	1,463,515	58.748
19 JUN 2025 - 19 JUN 2025	E&O	DATO' TEE ENG SENG [SSH]	1,000	1,463,515	58.748
19 JUN 2025 - 19 JUN 2025	E&O	DATO' SERI TEE ENG HO [DIR/CEO]	1,000	1,469,032	58.97
19 JUN 2025 - 19 JUN 2025	E&O	DATO' SERI TEE ENG HO [SSH]	1,000	1,463,515	58.748
18 JUN 2025 - 18 JUN 2025	E&O	EMPLOYEES PROVIDENT FUND BOARD [SSH]	144	153,983	6.181
18 JUN 2025 - 18 JUN 2025	ECONBHD	EMPLOYEES PROVIDENT FUND BOARD [SSH]	179	122,858	8.667
23 JUN 2025 - 23 JUN 2025	EDARAN	VALIANT CHAPTER SDN BHD [SSH]	10	14,444	24.944
20 JUN 2025 - 20 JUN 2025	EDUSPEC	DATO' SRI GAN CHOW TEE [DIR/CEO]	400	94,634	7.072
20 JUN 2025 - 20 JUN 2025	EDUSPEC	DATO' SRI GAN CHOW TEE [SSH]	400	94,634	7.072
23 JUN 2025 - 24 JUN 2025	EFRAME	DATO HOOI JIA HAO [SSH]	857	52,718	14.405
23 JUN 2025 - 23 JUN 2025	ELKDESA	MR TEOH HOCK CHAI @ TEW HOCK CHAI [SSH]	50	197,662	43.757
23 JUN 2025 - 23 JUN 2025	ELKDESA	MR TEOH HOCK CHAI@TEW HOCK CHAI [DIR/CEO]	50	197,662	43.757
23 JUN 2025 - 23 JUN 2025	ELKDESA	TEOH HOCK CHAI FAMILY (L) FOUNDATION [SSH]	50	186,900	41.375
23 JUN 2025 - 23 JUN 2025	ELKDESA	ZHONGXIN RESOURCES SDN BHD [SSH]	50	176,900	39.161
23 JUN 2025 - 23 JUN 2025	F&N	EMPLOYEES PROVIDENT FUND BOARD [SSH]	24	43,801	11.942
25 JUN 2025 - 25 JUN 2025	F&N	CHAROEN NUM SUB 1 CO. LTD. [SSH]	203,471	203,471	55.475
25 JUN 2025 - 25 JUN 2025	F&N	OPULENT BUSINESS SOLUTIONS PTE. LTD. [SSH]	203,471	203,471	55.475
25 JUN 2025 - 25 JUN 2025	F&N	OPULENT BUSINESS SOLUTIONS PTE. LTD. [SSH]	203,471	203,471	55.475
25 JUN 2025 - 25 JUN 2025	F&N	TAWEE PATTANASUB 3 CO. LTD. [SSH]	203,471	203,471	55.475
20 JUN 2025 - 20 JUN 2025	F&N	EMPLOYEES PROVIDENT FUND BOARD [SSH]	2	43,777	11.936
19 JUN 2025 - 19 JUN 2025	F&N	EMPLOYEES PROVIDENT FUND BOARD [SSH]	10	43,775	11.935
18 JUN 2025 - 18 JUN 2025	F&N	EMPLOYEES PROVIDENT FUND BOARD [SSH]	35	43,765	11.932
19 JUN 2025 - 19 JUN 2025	FEYTECH	MISS TAN SUN SUN [DIR/CEO]	-500	294,630	34.942
25 JUN 2025 - 25 JUN 2025	FFB	KUMPULAN WANG PERSARAAN (DIPERBADANKAN) [SSH]	50	173,611	9.251
24 JUN 2025 - 24 JUN 2025	FFB	ABERDEEN GROUP PLC (FORMERLY KNOWN AS ABRDN PLC) [SSH]	-793	179,719	9.577
24 JUN 2025 - 24 JUN 2025	FFB	ABRDN HOLDINGS LIMITED [SSH]	-793	179,719	9.577
24 JUN 2025 - 24 JUN 2025	FFB	ABRDN MALAYSIA SDN BHD [SSH]	-793	178,320	9.503
23 JUN 2025 - 23 JUN 2025	FFB	EMPLOYEES PROVIDENT FUND BOARD [SSH]	-1,158	191,466	10.203
23 JUN 2025 - 23 JUN 2025	FFB	ABERDEEN GROUP PLC (FORMERLY KNOWN AS ABRDN PLC) [SSH]	-1,069	180,512	9.619
23 JUN 2025 - 23 JUN 2025	FFB	ABRDN HOLDINGS LIMITED [SSH]	-1,069	180,512	9.619
23 JUN 2025 - 23 JUN 2025	FFB	ABRDN MALAYSIA SDN BHD [SSH]	-1,069	179,113	9.545
20 JUN 2025 - 20 JUN 2025	FFB	EMPLOYEES PROVIDENT FUND BOARD [SSH]	-20	192,625	10.265
19 JUN 2025 - 19 JUN 2025	FFB	EMPLOYEES PROVIDENT FUND BOARD [SSH]	-396	192,645	10.266
18 JUN 2025 - 18 JUN 2025	FFB	EMPLOYEES PROVIDENT FUND BOARD [SSH]	-680	193,040	10.287
25 JUN 2025 - 25 JUN 2025	FGV	FEDERAL LAND DEVELOPMENT AUTHORITY (FELDA) [SSH]	1,103	3,026,373	82.956
24 JUN 2025 - 24 JUN 2025	FGV	FEDERAL LAND DEVELOPMENT AUTHORITY (FELDA) [SSH]	819	3,025,269	82.926
23 JUN 2025 - 23 JUN 2025	FGV	FEDERAL LAND DEVELOPMENT AUTHORITY (FELDA) [SSH]	6,604	3,024,450	82.904

Notice Period is 22nd June 2025 to 28th June 2025

Effective Change Date	Stock Name	Buyer/ Seller Name [Classification]	Bought / (Sold) ['000]	No. of Shares After Trade ['000]	
			Total	Total	% Held
23 JUN 2025 - 23 JUN 2025	GAMUDA	EMPLOYEES PROVIDENT FUND BOARD (EPF BOARD) [SSH]	4,598	829,041	14.36
19 JUN 2025 - 19 JUN 2025	GAMUDA	EMPLOYEES PROVIDENT FUND BOARD (EPF BOARD) [SSH]	3,985	817,627	14.17
18 JUN 2025 - 18 JUN 2025	GAMUDA	EMPLOYEES PROVIDENT FUND BOARD (EPF BOARD) [SSH]	4,374	813,642	14.1
25 JUN 2025 - 25 JUN 2025	GASMSIA	LEMBAGA TABUNG HAJI [SSH]	-100	80,427	6.263
24 JUN 2025 - 24 JUN 2025	GASMSIA	LEMBAGA TABUNG HAJI [SSH]	-100	80,527	6.271
23 JUN 2025 - 23 JUN 2025	GASMSIA	LEMBAGA TABUNG HAJI [SSH]	-100	80,627	6.279
20 JUN 2025 - 20 JUN 2025	GASMSIA	LEMBAGA TABUNG HAJI [SSH]	-100	80,727	6.287
23 JUN 2025 - 24 JUN 2025	GBAY	MR PETER LING EE KONG [DIR/CEO]	7	13,544	17.07
23 JUN 2025 - 24 JUN 2025	GBAY	MR PETER LING EE KONG [SSH]	7	13,544	17.07
18 JUN 2025 - 18 JUN 2025	GBAY	MR PETER LING EE KONG [DIR/CEO]	30	13,537	17.061
18 JUN 2025 - 18 JUN 2025	GBAY	MR PETER LING EE KONG [SSH]	30	13,537	17.061
20 JUN 2025 - 20 JUN 2025	GCB	GUAN CHONG RESOURCES SDN. BHD. [SSH]	780,754	1,366,319	49.856
20 JUN 2025 - 20 JUN 2025	GCB	MR HIA CHENG [DIR/CEO]	106,786	186,876	6.819
20 JUN 2025 - 20 JUN 2025	GCB	MR HIA CHENG [SSH]	106,786	186,876	6.819
20 JUN 2025 - 20 JUN 2025	GCB	MR TAY HOE LIAN [DIR/CEO]	76,363	133,635	4.876
20 JUN 2025 - 20 JUN 2025	GCB	MR TAY HOW SIK @ TAY HOW SICK [DIR/CEO]	36,919	64,608	2.358
20 JUN 2025 - 20 JUN 2025	GCB-WC	MISS ANG NYEE NYEE [DIR/CEO]	2	2	0.001
20 JUN 2025 - 20 JUN 2025	GCB-WC	MR HIA CHENG [DIR/CEO]	20,022	20,022	6.819
20 JUN 2025 - 20 JUN 2025	GCB-WC	MR TAY HOE LIAN [DIR/CEO]	14,318	14,318	4.876
20 JUN 2025 - 20 JUN 2025	GCB-WC	MR TAY HOW SIK @ TAY HOW SICK [DIR/CEO]	6,922	6,922	2.358
23 JUN 2025 - 23 JUN 2025	GENP	EMPLOYEES PROVIDENT FUND BOARD [SSH]	8	121,297	13.52
20 JUN 2025 - 20 JUN 2025	GIIB	MR TAI QISHENG [DIR/CEO]	139	69,644	10.708
20 JUN 2025 - 20 JUN 2025	GIIB	MR TAI QISHENG [SSH]	139	69,644	10.708
24 JUN 2025 - 24 JUN 2025	GUH	DATUK SERI KENNETH H'NG BAK TEE [DIR/CEO]	329	13,069	4.614
18 JUN 2025 - 20 JUN 2025	GUH	DATUK SERI KENNETH H'NG BAK TEE [DIR/CEO]	500	12,741	4.498
20 JUN 2025 - 23 JUN 2025	HEGROUP	MR HAW CHEE SENG [DIR/CEO]	126	92,342	20.987
20 JUN 2025 - 23 JUN 2025	HEGROUP	MR HAW CHEE SENG [SSH]	126	92,342	20.987
24 JUN 2025 - 24 JUN 2025	HHRG	MR TAI CHIN HWANG [SSH]	1,843	92,547	9.088
25 JUN 2025 - 25 JUN 2025	HIBISCS	DATUK MICHAEL TANG VEE MUN [SSH]	904	94,449	12.809
23 JUN 2025 - 23 JUN 2025	HLBANK	EMPLOYEES PROVIDENT FUND BOARD [SSH]	46	191,234	9.165
20 JUN 2025 - 20 JUN 2025	HLBANK	EMPLOYEES PROVIDENT FUND BOARD [SSH]	94	191,188	9.163
19 JUN 2025 - 19 JUN 2025	HLBANK	EMPLOYEES PROVIDENT FUND BOARD [SSH]	455	191,094	9.158
18 JUN 2025 - 18 JUN 2025	HLBANK	EMPLOYEES PROVIDENT FUND BOARD [SSH]	1,000	190,639	9.136
19 JUN 2025 - 19 JUN 2025	HLFG	EMPLOYEES PROVIDENT FUND BOARD [SSH]	50	60,032	5.231
18 JUN 2025 - 18 JUN 2025	HLFG	EMPLOYEES PROVIDENT FUND BOARD [SSH]	47	59,982	5.227
19 JUN 2025 - 23 JUN 2025	HSSEB	DATO' MOHD ZAKHIR SIDDIQY BIN SIDEK [DIR/CEO]	40	1,853	0.364
25 JUN 2025 - 25 JUN 2025	IGBREIT	KUMPULAN WANG PERSARAAN (DEPERBADANKAN) [SSH]	1,552	249,201	6.881
23 JUN 2025 - 23 JUN 2025	IGBREIT	EMPLOYEES PROVIDENT FUND BOARD [SSH]	691	372,060	10.273
20 JUN 2025 - 20 JUN 2025	IGBREIT	EMPLOYEES PROVIDENT FUND BOARD [SSH]	-70	372,690	10.291
23 JUN 2025 - 23 JUN 2025	IGBREIT	KUMPULAN WANG PERSARAAN (DEPERBADANKAN) [SSH]	-1,705	247,649	6.839
19 JUN 2025 - 19 JUN 2025	IGBREIT	EMPLOYEES PROVIDENT FUND BOARD [SSH]	-578	372,900	10.297
20 JUN 2025 - 20 JUN 2025	IGBREIT	KUMPULAN WANG PERSARAAN (DEPERBADANKAN) [SSH]	-70	249,354	6.886
18 JUN 2025 - 18 JUN 2025	IGBREIT	EMPLOYEES PROVIDENT FUND BOARD [SSH]	-994	374,975	10.354
23 JUN 2025 - 23 JUN 2025	IHH	EMPLOYEES PROVIDENT FUND BOARD [SSH]	1,017	999,126	11.307
23 JUN 2025 - 23 JUN 2025	IHH	EMPLOYEES PROVIDENT FUND BOARD [SSH]	1,017	999,126	11.307
20 JUN 2025 - 20 JUN 2025	IHH	EMPLOYEES PROVIDENT FUND BOARD [SSH]	2,560	998,508	11.3
19 JUN 2025 - 19 JUN 2025	IHH	EMPLOYEES PROVIDENT FUND BOARD [SSH]	1,582	996,140	11.28
18 JUN 2025 - 18 JUN 2025	IHH	EMPLOYEES PROVIDENT FUND BOARD [SSH]	3,947	994,871	11.266
23 JUN 2025 - 23 JUN 2025	IJM	EMPLOYEES PROVIDENT FUND BOARD [SSH]	1,093	590,090	16.835
20 JUN 2025 - 20 JUN 2025	IJM	EMPLOYEES PROVIDENT FUND BOARD [SSH]	5,000	588,997	16.804
19 JUN 2025 - 19 JUN 2025	IJM	EMPLOYEES PROVIDENT FUND BOARD [SSH]	2,241	583,997	16.661
18 JUN 2025 - 18 JUN 2025	IJM	EMPLOYEES PROVIDENT FUND BOARD [SSH]	209	581,756	16.597
24 JUN 2025 - 24 JUN 2025	INARI	DATO' SRI THONG KOK KHEE [DIR/CEO]	-1	511,582	13.502
24 JUN 2025 - 24 JUN 2025	INARI	DATO' SRI THONG KOK KHEE [SSH]	-1	511,582	13.502
20 JUN 2025 - 20 JUN 2025	INARI	EMPLOYEES PROVIDENT FUND BOARD [SSH]	113	496,923	13.115
03 JUN 2025 - 03 JUN 2025	INCKEN	CONCRETE ENGINEERING PRODUCTS BERHAD [SSH]	-7,000	51,088	13.49
24 JUN 2025 - 24 JUN 2025	INNATURE	DATO' FOONG CHOONG HENG [DIR/CEO]	430	482,534	68.359
24 JUN 2025 - 24 JUN 2025	INNATURE	DATO' FOONG CHOONG HENG [SSH]	430	482,534	68.359
23 JUN 2025 - 23 JUN 2025	INNATURE	DATO' FOONG CHOONG HENG [DIR/CEO]	675	482,104	68.298
23 JUN 2025 - 23 JUN 2025	INNATURE	DATO' FOONG CHOONG HENG [SSH]	675	4,925	68.298
23 JUN 2025 - 24 JUN 2025	IOICORP	DATO' LEE YEOW CHOR [DIR/CEO]	218	3,165,581	51.028
23 JUN 2025 - 24 JUN 2025	IOICORP	DATO' LEE YEOW CHOR [SSH]	218	3,165,381	51.024
23 JUN 2025 - 23 JUN 2025	IOICORP	EMPLOYEES PROVIDENT FUND BOARD [SSH]	48	872,116	14.058
20 JUN 2025 - 20 JUN 2025	IOICORP	EMPLOYEES PROVIDENT FUND BOARD [SSH]	1,719	872,068	14.057
18 JUN 2025 - 20 JUN 2025	IOICORP	DATO' LEE YEOW CHOR [DIR/CEO]	1,491	3,165,363	51.024
18 JUN 2025 - 20 JUN 2025	IOICORP	DATO' LEE YEOW CHOR [SSH]	1,491	3,165,163	51

Notice Period is 22nd June 2025 to 28th June 2025

Effective Change Date	Stock Name	Buyer/ Seller Name [Classification]	Bought / (Sold) ['000]	No. of Shares After Trade ['000]	
			Total	Total	% Held
23 JUN 2025 - 23 JUN 2025	KGB	ABRDN HOLDINGS LIMITED [SSH]	-323	54,924	7.399
19 JUN 2025 - 19 JUN 2025	KGB	EMPLOYEES PROVIDENT FUND BOARD [SSH]	-46	45,453	6.123
18 JUN 2025 - 18 JUN 2025	KGB	EMPLOYEES PROVIDENT FUND BOARD [SSH]	-500	45,500	6.129
23 JUN 2025 - 23 JUN 2025	KLCC	EMPLOYEES PROVIDENT FUND BOARD [SSH]	439	215,996	11.964
23 JUN 2025 - 23 JUN 2025	KLCC	EMPLOYEES PROVIDENT FUND BOARD [SSH]	439	215,996	11.964
20 JUN 2025 - 20 JUN 2025	KLCC	EMPLOYEES PROVIDENT FUND BOARD [SSH]	0.4	215,556	11.94
20 JUN 2025 - 20 JUN 2025	KLCC	EMPLOYEES PROVIDENT FUND BOARD [SSH]	0.4	215,556	11.94
19 JUN 2025 - 19 JUN 2025	KLCC	EMPLOYEES PROVIDENT FUND BOARD [SSH]	1,000	215,556	11.94
19 JUN 2025 - 19 JUN 2025	KLCC	EMPLOYEES PROVIDENT FUND BOARD [SSH]	1,000	215,556	11.94
18 JUN 2025 - 18 JUN 2025	KLCC	EMPLOYEES PROVIDENT FUND BOARD [SSH]	99	214,556	11.884
18 JUN 2025 - 18 JUN 2025	KLCC	EMPLOYEES PROVIDENT FUND BOARD [SSH]	99	214,556	11.884
20 JUN 2025 - 20 JUN 2025	KLK	EMPLOYEES PROVIDENT FUND BOARD [SSH]	373	179,776	16.143
23 JUN 2025 - 23 JUN 2025	KOSSAN	MR LIM KUANG YONG [SSH]	100	952,847	37.582
24 JUN 2025 - 25 JUN 2025	KUCINGKO	MR KU CHIA LOON [DIR/CEO]	600	10,900	2.18
20 JUN 2025 - 20 JUN 2025	LTKM	DATIN LIM HOOI TIN [DIR/CEO]	0.6	102,043	71.302
20 JUN 2025 - 20 JUN 2025	LTKM	DATIN LIM HOOI TIN [SSH]	0.6	102,043	71.302
20 JUN 2025 - 20 JUN 2025	LTKM	DATUK TAN KOK [DIR/CEO]	0.6	104,901	73.299
20 JUN 2025 - 20 JUN 2025	LTKM	DATUK TAN KOK [SSH]	0.6	104,901	73.299
20 JUN 2025 - 20 JUN 2025	LTKM	MISS LOH WEI LING [DIR/CEO]	0.6	505	0.354
25 JUN 2025 - 25 JUN 2025	M&A	CIK SITI NUR AISHAH BINTI ISHAK [SSH]	50	142,167	7.113
24 JUN 2025 - 24 JUN 2025	M&A	CIK SITI NUR AISHAH BINTI ISHAK [SSH]	898	142,117	7.11
23 JUN 2025 - 23 JUN 2025	M&A	CIK SITI NUR AISHAH BINTI ISHAK [SSH]	-575	141,220	7.065
20 JUN 2025 - 20 JUN 2025	M&A	CIK SITI NUR AISHAH BINTI ISHAK [SSH]	260	141,794	7.094
25 JUN 2025 - 25 JUN 2025	MALAKOF	KUMPULAN WANG PERSARAAN (DIPERBADANKAN) ("KWAP") [SSH]	-3,922	420,201	8.598
23 JUN 2025 - 23 JUN 2025	MALAKOF	EMPLOYEES PROVIDENT FUND BOARD [SSH]	1,156	662,672	13.56
20 JUN 2025 - 20 JUN 2025	MALAKOF	EMPLOYEES PROVIDENT FUND BOARD [SSH]	1,050	661,516	13.536
19 JUN 2025 - 19 JUN 2025	MATANG	HUAREN HOLDINGS SDN BHD [SSH]	400	600,460	25.132
19 JUN 2025 - 19 JUN 2025	MATANG	MALAYSIAN CHINESE ASSOCIATION [SSH]	400	623,190	26.084
23 JUN 2025 - 24 JUN 2025	MAXIM	TAN SRI DATUK SERI GAN SEONG LIAM [DIR/CEO]	1,301	154,188	20.977
23 JUN 2025 - 24 JUN 2025	MAXIM	TAN SRI DATUK SERI GAN SEONG LIAM [SSH]	1,301	154,188	20.977
23 JUN 2025 - 23 JUN 2025	MAYBANK	EMPLOYEES PROVIDENT FUND BOARD [SSH]	309	1,549,487	12.826
24 JUN 2025 - 24 JUN 2025	MAYBANK	AMANAHRAYA TRUSTEES BERHAD - AMANAH SAHAM BUMIPUTERA [SSH]	-10,000	3,588,325	29.703
24 JUN 2025 - 24 JUN 2025	MAYBANK	KUMPULAN WANG PERSARAAN (DIPERBADANKAN) ("KWAP") [SSH]	450	625,598	5.178
20 JUN 2025 - 20 JUN 2025	MAYBANK	EMPLOYEES PROVIDENT FUND BOARD [SSH]	2,554	1,549,177	12.824
23 JUN 2025 - 23 JUN 2025	MAYBANK	KUMPULAN WANG PERSARAAN (DIPERBADANKAN) ("KWAP") [SSH]	250	625,148	5.174
20 JUN 2025 - 20 JUN 2025	MAYBANK	KUMPULAN WANG PERSARAAN (DIPERBADANKAN) ("KWAP") [SSH]	500	624,898	5.172
19 JUN 2025 - 19 JUN 2025	MAYBANK	EMPLOYEES PROVIDENT FUND BOARD [SSH]	-212	1,546,624	12.802
18 JUN 2025 - 18 JUN 2025	MAYBANK	EMPLOYEES PROVIDENT FUND BOARD [SSH]	-2,003	1,546,835	12.804
23 JUN 2025 - 23 JUN 2025	MCEMENT	TAN SRI SIR YEOH SOCK PING [DIR/CEO]	3,000	3,500	0.259
20 JUN 2025 - 20 JUN 2025	MENANG	CHIN LEONG THYE SDN. BHD. [SSH]	10,300	93,768	13.452
20 JUN 2025 - 20 JUN 2025	MENANG	MR LEE MIN HUAT [SSH]	10,300	120,728	17.32
23 JUN 2025 - 26 JUN 2025	MFCB	CAM PROPERTY (MALAYSIA) SDN BHD [SSH]	292	204,009	21.646
23 JUN 2025 - 26 JUN 2025	MFCB	CAMASIA LIMITED [SSH]	292	205,495	21.804
23 JUN 2025 - 23 JUN 2025	MFCB	EMPLOYEES PROVIDENT FUND BOARD [SSH]	420	87,955	9.332
23 JUN 2025 - 26 JUN 2025	MFCB	GOH NAN KIOH [DIR/CEO]	292	331,574	35.181
23 JUN 2025 - 26 JUN 2025	MFCB	KEEN CAPITAL INVESTMENT LIMITED [SSH]	292	280,780	29.792
23 JUN 2025 - 26 JUN 2025	MFCB	LAJU RIANG SDN BHD [SSH]	292	204,009	21.646
23 JUN 2025 - 26 JUN 2025	MFCB	MR GOH NAN KIOH [SSH]	292	331,574	35.181
23 JUN 2025 - 26 JUN 2025	MFCB	RUBBER THREAD INDUSTRIES (M) SDN BERHAD [SSH]	292	204,009	21.646
19 JUN 2025 - 19 JUN 2025	MFCB	EMPLOYEES PROVIDENT FUND BOARD [SSH]	500	87,535	9.288
23 JUN 2025 - 23 JUN 2025	MINOX	MISS LOOI POO POO [DIR/CEO]	200	34,084	9.468
23 JUN 2025 - 23 JUN 2025	MINOX	MISS LOOI POO POO [SSH]	200	34,084	9.468
23 JUN 2025 - 23 JUN 2025	MISC	EMPLOYEES PROVIDENT FUND BOARD [SSH]	-50	640,516	14.349
20 JUN 2025 - 20 JUN 2025	MISC	EMPLOYEES PROVIDENT FUND BOARD [SSH]	100	640,566	14.35
23 JUN 2025 - 23 JUN 2025	MRDIY	EMPLOYEES PROVIDENT FUND BOARD [SSH]	706	796,158	8.406
20 JUN 2025 - 20 JUN 2025	MRDIY	EMPLOYEES PROVIDENT FUND BOARD [SSH]	6,000	795,452	8.399
19 JUN 2025 - 19 JUN 2025	MRDIY	EMPLOYEES PROVIDENT FUND BOARD [SSH]	2,000	789,593	8.337
18 JUN 2025 - 18 JUN 2025	MRDIY	EMPLOYEES PROVIDENT FUND BOARD [SSH]	593	788,004	8.32
23 JUN 2025 - 23 JUN 2025	MSTGOLF	ALL SPORTZ SDN BHD [SSH]	800	441,241	53.753
23 JUN 2025 - 23 JUN 2025	MSTGOLF	MR LOW KOK POH [DIR/CEO]	800	471,460	57.434
23 JUN 2025 - 23 JUN 2025	MSTGOLF	MR LOW KOK POH [SSH]	800	471,460	57.434
23 JUN 2025 - 23 JUN 2025	MSTGOLF	MR NG YAP SIO [DIR/CEO]	800	503,508	61.339
23 JUN 2025 - 23 JUN 2025	MSTGOLF	MR NG YAP SIO [SSH]	800	503,508	61.339
25 JUN 2025 - 25 JUN 2025	MYEG	KUMPULAN WANG PERSARAAN (DIPERBADANKAN) [SSH]	-2,000	394,588	5.121
23 JUN 2025 - 23 JUN 2025	MYEG	KUMPULAN WANG PERSARAAN (DIPERBADANKAN) [SSH]	2,000	396,588	5.147
20 JUN 2025 - 20 JUN 2025	MYEG	KUMPULAN WANG PERSARAAN (DIPERBADANKAN) [SSH]	2,000	394,588	5.121
20 JUN 2025 - 20 JUN 2025	MYEG	MR WONG THEAN SOON [DIR/CEO]	-6,000	2,081,267	27.013
20 JUN 2025 - 20 JUN 2025	MYEG	MR WONG THEAN SOON [SSH]	-6,000	2,081,267	27.013
25 JUN 2025 - 26 JUN 2025	N2N	QUAH CHOON WAH [SSH]	79	42,640	7.639
20 JUN 2025 - 23 JUN 2025	N2N	QUAH CHOON WAH [SSH]	1,083	42,561	7.625
24 JUN 2025 - 25 JUN 2025	NATGATE	MR LEE KIM SAN [DIR/CEO]	-300	12,701	0.558
23 JUN 2025 - 23 JUN 2025	NE	DATO' FAIZA BINTI ZULKIFLI [DIR/CEO]	-25	64	0.009
19 JUN 2025 - 19 JUN 2025	NE	DATO' FAIZA BINTI ZULKIFLI [DIR/CEO]	-30	89	0.012
23 JUN 2025 - 23 JUN 2025	NESTLE	EMPLOYEES PROVIDENT FUND BOARD [SSH]	-3	30038	12.81
20 JUN 2025 - 20 JUN 2025	NESTLE	EMPLOYEES PROVIDENT FUND BOARD [SSH]	3	30,041	12.811
19 JUN 2025 - 19 JUN 2025	NESTLE	EMPLOYEES PROVIDENT FUND BOARD [SSH]	3	30,038	12.809
24 JUN 2025 - 26 JUN 2025	NGGB	DATO' GAN KONG HIOK [SSH]	548	161,033	15.078
19 JUN 2025 - 20 JUN 2025	OHM	DATIN TANG JING WEN [DIR/CEO]	190	23,105	4.621
23 JUN 2025 - 25 JUN 2025	OLYMPIA	DATO' SRI YAP WEE KEAT [DIR/CEO]	467	583,568	57.024
23 JUN 2025 - 25 JUN 2025	OLYMPIA	DATO' SRI YAP WEE KEAT [SSH]	467	583,568	57.024
23 JUN 2025 - 25 JUN 2025	OLYMPIA	DATUK YAP WEE CHUN [SSH]	467	583,524	57.02
23 JUN 2025 - 25 JUN 2025	OLYMPIA	DUTA EQUITIES SDN BHD [SSH]	467	583,524	57.02

Notice Period is 22nd June 2025 to 28th June 2025

Effective Change Date	Stock Name	Buyer/ Seller Name [Classification]	Bought / (Sold) ['000]	No. of Shares After Trade ['000]	
			Total	Total	% Held
18 JUN 2025 - 20 JUN 2025	OLYMPIA	DATO' SRI YAP WEE KEAT [DIR/CEO]	3,645	583,101	56.974
18 JUN 2025 - 20 JUN 2025	OLYMPIA	DUTA EQUITIES SDN BHD [SSH]	3,645	583,057	56.97
18 JUN 2025 - 20 JUN 2025	OLYMPIA	TAN SRI DATO' YAP YONG SEONG [DIR/CEO]	3,645	583,113	56.975
18 JUN 2025 - 20 JUN 2025	OLYMPIA	TAN SRI DATO' YAP YONG SEONG [SSH]	3,645	583,113	56.975
19 JUN 2025 - 20 JUN 2025	OMESTI	MR MONTEIRO GERARD CLAIR [DIR/CEO]	1,623	73,155	13.531
19 JUN 2025 - 20 JUN 2025	OMESTI	MR MONTEIRO GERARD CLAIR [SSH]	1,623	73,155	13.531
23 JUN 2025 - 23 JUN 2025	OSK	MR LEONG KENG YUEN [DIR/CEO]	270	811	0.026
23 JUN 2025 - 23 JUN 2025	OSK	MR ONG JU XING [DIR/CEO]	11,505	34,516	1.116
23 JUN 2025 - 23 JUN 2025	OSK	MR ONG JU YAN [DIR/CEO]	13,703	41,108	1.329
23 JUN 2025 - 24 JUN 2025	OSK	TAN SRI ONG LEONG HUAT @ WONG JOO HWA [DIR/CEO]	579,784	173,6913	56.153
23 JUN 2025 - 24 JUN 2025	OSK	TAN SRI ONG LEONG HUAT @ WONG JOO HWA [SSH]	544,865	1,632,155	52.766
23 JUN 2025 - 23 JUN 2025	OSK	YELLOW ROCK (L) FOUNDATION [SSH]	516,557	15,49671	50.1
20 JUN 2025 - 20 JUN 2025	PADINI	EMPLOYEES PROVIDENT FUND BOARD [SSH]	250	78872	7.992
19 JUN 2025 - 19 JUN 2025	PADINI	EMPLOYEES PROVIDENT FUND BOARD [SSH]	300	78,481	7.953
18 JUN 2025 - 18 JUN 2025	PADINI	EMPLOYEES PROVIDENT FUND BOARD [SSH]	500	78,181	7.922
24 JUN 2025 - 24 JUN 2025	PAOS	MISS LIM CHANG CHING [DIR/CEO]	-1,800	61,006	33.674
24 JUN 2025 - 24 JUN 2025	PAOS	MISS LIM CHANG CHING [SSH]	-1,800	61,006	33.674
20 JUN 2025 - 23 JUN 2025	PAOS	MISS LIM CHANG CHING [DIR/CEO]	-2,800	62,806	34.668
20 JUN 2025 - 23 JUN 2025	PAOS	MISS LIM CHANG CHING [SSH]	-2,800	62,806	34.668
23 JUN 2025 - 24 JUN 2025	PARKSON	IRELIA MANAGEMENT SDN BHD [SSH]	12,515	78,300	6.815
23 JUN 2025 - 23 JUN 2025	PAVREIT	EMPLOYEES PROVIDENT FUND BOARD [SSH]	874	472,496	12.049
20 JUN 2025 - 20 JUN 2025	PAVREIT	EMPLOYEES PROVIDENT FUND BOARD [SSH]	52,378	471,622	12.026
20 JUN 2025 - 20 JUN 2025	PAVREIT	KUMPULAN WANG PERSARAAN (DIPERBADANKAN) [SSH]	8,010	227,563	5.803
23 JUN 2025 - 23 JUN 2025	PBBANK	EMPLOYEES PROVIDENT FUND BOARD [SSH]	3,601	308,694	15.9
19 JUN 2025 - 19 JUN 2025	PBBANK	EMPLOYEES PROVIDENT FUND BOARD [SSH]	5,000	307,9640	15.87
18 JUN 2025 - 18 JUN 2025	PBBANK	EMPLOYEES PROVIDENT FUND BOARD [SSH]	5,732	307,4640	15.84
19 JUN 2025 - 19 JUN 2025	PCCS	CCS CAPITAL SDN. BHD. [SSH]	60	91,222	41.354
19 JUN 2025 - 19 JUN 2025	PCCS	MADAM TAN KWEE KEE [SSH]	60	101,700	46.104
19 JUN 2025 - 19 JUN 2025	PCCS	MR CHAN CHOO SING [SSH]	60	101,700	46.103
19 JUN 2025 - 19 JUN 2025	PCCS	MR CHAN WEE KIANG [DIR/CEO]	60	93,434	42.357
19 JUN 2025 - 19 JUN 2025	PCCS	MR CHAN WEE KIANG [SSH]	60	93,434	42.357
23 JUN 2025 - 24 JUN 2025	PESONA	KOMBINASI EMAS SDN BHD [SSH]	200	290,700	41.828
23 JUN 2025 - 24 JUN 2025	PESONA	MR WIE HOCK KIONG [DIR/CEO]	200	290,700	41.828
23 JUN 2025 - 24 JUN 2025	PESONA	MR WIE HOCK KIONG [SSH]	200	290,700	41.828
23 JUN 2025 - 23 JUN 2025	PETGAS	EMPLOYEES PROVIDENT FUND BOARD [SSH]	85	261,546	13.218
20 JUN 2025 - 20 JUN 2025	PETGAS	EMPLOYEES PROVIDENT FUND BOARD [SSH]	-393	261,760	13.229
19 JUN 2025 - 19 JUN 2025	PETGAS	EMPLOYEES PROVIDENT FUND BOARD [SSH]	-14	262,153	13.249
18 JUN 2025 - 18 JUN 2025	PETGAS	EMPLOYEES PROVIDENT FUND BOARD [SSH]	-48	262,206	13.251
23 JUN 2025 - 23 JUN 2025	PLINTAS	EMPLOYEES PROVIDENT FUND BOARD [SSH]	19	86,483	7.862
20 JUN 2025 - 20 JUN 2025	PLINTAS	EMPLOYEES PROVIDENT FUND BOARD [SSH]	28	86,464	7.86
23 JUN 2025 - 23 JUN 2025	PMETAL	EMPLOYEES PROVIDENT FUND BOARD [SSH]	18	518,446	6.292
20 JUN 2025 - 20 JUN 2025	PMETAL	EMPLOYEES PROVIDENT FUND BOARD [SSH]	2,920	518,429	6.292
19 JUN 2025 - 19 JUN 2025	PMETAL	EMPLOYEES PROVIDENT FUND BOARD [SSH]	2,794	515,509	6.256
18 JUN 2025 - 18 JUN 2025	PMETAL	EMPLOYEES PROVIDENT FUND BOARD [SSH]	4,516	512,715	6.223
19 JUN 2025 - 19 JUN 2025	PPB	EMPLOYEES PROVIDENT FUND BOARD [SSH]	-5	188,386	13.242
18 JUN 2025 - 18 JUN 2025	PPB	EMPLOYEES PROVIDENT FUND BOARD [SSH]	-81	188,392	13.243
23 JUN 2025 - 23 JUN 2025	PPHB	MR KOAY TENG LIANG [DIR/CEO]	30	20,368	7.63
23 JUN 2025 - 23 JUN 2025	PPHB	MR KOAY TENG LIANG [DIR/CEO]	30	20,368	7.63

Notice Period is 22nd June 2025 to 28th June 2025

Effective Change Date	Stock Name	Buyer/ Seller Name [Classification]	Bought / (Sold) ['000]	No. of Shares After Trade ['000]	
			Total	Total	% Held
25 JUN 2025 - 25 JUN 2025	STRAITS	DATO' SRI HO KAM CHOY [DIR/CEO]	-34,291	192129	19.321
25 JUN 2025 - 25 JUN 2025	STRAITS	DATO' SRI HO KAM CHOY [SSH]	-34,291	192129	19.321
18 JUN 2025 - 20 JUN 2025	SUCCESS	MISS TAN CHUNG CHIAH [DIR/CEO]	331	10581	4.485
23 JUN 2025 - 23 JUN 2025	SUNCON	EMPLOYEES PROVIDENT FUND BOARD [SSH]	-33	79309	6.081
23 JUN 2025 - 23 JUN 2025	SUNCON	MR WONG KWAN SONG [DIR/CEO]	160	160	0.012
25 JUN 2025 - 25 JUN 2025	SUNREIT	KUMPULAN WANG PERSARAAN (DIPERBADANKAN) ("KWAP") [SSH]	-465	207051	6.045
23 JUN 2025 - 23 JUN 2025	SUNREIT	EMPLOYEES PROVIDENT FUND BOARD [SSH]	337	536210	15.657
24 JUN 2025 - 24 JUN 2025	SUNREIT	KUMPULAN WANG PERSARAAN (DIPERBADANKAN) ("KWAP") [SSH]	-91	207515	6.059
23 JUN 2025 - 23 JUN 2025	SUNREIT	KUMPULAN WANG PERSARAAN (DIPERBADANKAN) ("KWAP") [SSH]	-195	207606	6.061
19 JUN 2025 - 19 JUN 2025	SUNREIT	EMPLOYEES PROVIDENT FUND BOARD [SSH]	400	537603	15.697
18 JUN 2025 - 18 JUN 2025	SUNREIT	EMPLOYEES PROVIDENT FUND BOARD [SSH]	300	537203	15.686
23 JUN 2025 - 23 JUN 2025	SUNWAY	EMPLOYEES PROVIDENT FUND BOARD [SSH]	2,402	529322	8.5
20 JUN 2025 - 20 JUN 2025	SUNWAY	EMPLOYEES PROVIDENT FUND BOARD [SSH]	70	529920	8.51
19 JUN 2025 - 19 JUN 2025	SUNWAY	EMPLOYEES PROVIDENT FUND BOARD [SSH]	845	529851	8.51
18 JUN 2025 - 18 JUN 2025	SUNWAY	EMPLOYEES PROVIDENT FUND BOARD [SSH]	-716	529006	8.5
20 JUN 2025 - 20 JUN 2025	SWSCAP	TAN SRI DATO' SERI TAN KING TAI @ TAN KHOON HAI [SSH]	158	28062	9.284
25 JUN 2025 - 25 JUN 2025	TAANN	DATUK AMAR ABDUL HAMED BIN HAJI SEPAWI [DIR/CEO]	80	152871	34.706
25 JUN 2025 - 25 JUN 2025	TAANN	DATUK AMAR ABDUL HAMED BIN HAJI SEPAWI [SSH]	80	152871	34.706
25 JUN 2025 - 25 JUN 2025	TAMBUN	MR TEH KIAK SENG [DIR/CEO]	2	220774	50.26
23 JUN 2025 - 24 JUN 2025	TAMBUN	MR TEH KIAK SENG [DIR/CEO]	65	220772	50.26
23 JUN 2025 - 24 JUN 2025	TAMBUN	MR TEH KIAK SENG [SSH]	65	220772	50.26
20 JUN 2025 - 20 JUN 2025	TAMBUN	MR TEH KIAK SENG [DIR/CEO]	42	220707	50.24
20 JUN 2025 - 20 JUN 2025	TAMBUN	MR TEH KIAK SENG [SSH]	42	220707	50.24
26 JUN 2025 - 26 JUN 2025	TANCO	DATO' SRI ANDREW TAN JUN SUAN [DIR/CEO]	5,000	3000971	56.101
26 JUN 2025 - 26 JUN 2025	TANCO	DATO' SRI ANDREW TAN JUN SUAN [DIR/CEO]	-5,000	2995971	56.007
26 JUN 2025 - 26 JUN 2025	TANCO	DATO' SRI ANDREW TAN JUN SUAN [SSH]	5,000	3000971	56.101
26 JUN 2025 - 26 JUN 2025	TANCO	DATO' SRI ANDREW TAN JUN SUAN [SSH]	-5,000	2995971	56.007
25 JUN 2025 - 25 JUN 2025	TANCO	DATO' SRI ANDREW TAN JUN SUAN [DIR/CEO]	2,000	3000971	56.101
25 JUN 2025 - 25 JUN 2025	TANCO	DATO' SRI ANDREW TAN JUN SUAN [DIR/CEO]	-1,915	2991623	55.926
25 JUN 2025 - 25 JUN 2025	TANCO	DATO' SRI ANDREW TAN JUN SUAN [DIR/CEO]	7,348	2998971	56.063
25 JUN 2025 - 25 JUN 2025	TANCO	DATO' SRI ANDREW TAN JUN SUAN [SSH]	-1,915	2991623	55.926
25 JUN 2025 - 25 JUN 2025	TANCO	DATO' SRI ANDREW TAN JUN SUAN [SSH]	7,348	2998971	56.063
25 JUN 2025 - 25 JUN 2025	TANCO	DATO' SRI ANDREW TAN JUN SUAN [SSH]	2,000	3000971	56.101
24 JUN 2025 - 24 JUN 2025	TANCO	DATO' SRI ANDREW TAN JUN SUAN [DIR/CEO]	-4,929	2988481	55.867
24 JUN 2025 - 24 JUN 2025	TANCO	DATO' SRI ANDREW TAN JUN SUAN [DIR/CEO]	5,058	2993539	55.962
24 JUN 2025 - 24 JUN 2025	TANCO	DATO' SRI ANDREW TAN JUN SUAN [SSH]	5,058	2993539	55.962
24 JUN 2025 - 24 JUN 2025	TANCO	DATO' SRI ANDREW TAN JUN SUAN [SSH]	-4,929	2988481	55.867
23 JUN 2025 - 23 JUN 2025	TANCO	DATO' SRI ANDREW TAN JUN SUAN [DIR/CEO]	5,023	2993410	55.959
23 JUN 2025 - 23 JUN 2025	TANCO	DATO' SRI ANDREW TAN JUN SUAN [SSH]	5,023	2993410	55.959
25 JUN 2025 - 25 JUN 2025	TENAGA	AMANAHRAYA TRUSTEES BERHAD - AMANAH SAHAM BUMIPUTERA [SSH]	-848	403720	6.93
25 JUN 2025 - 25 JUN 2025	TENAGA	KUMPULAN WANG PERSARAAN (DIPERBADANKAN) [SSH]	250	414238	7.11
23 JUN 2025 - 23 JUN 2025	TENAGA	EMPLOYEES PROVIDENT FUND BOARD [SSH]	-284	1177992	20.21
24 JUN 2025 - 24 JUN 2025	TENAGA	AMANAHRAYA TRUSTEES BERHAD - AMANAH SAHAM BUMIPUTERA [SSH]	-432	404568	6.94
24 JUN 2025 - 24 JUN 2025	TENAGA	KUMPULAN WANG PERSARAAN (DIPERBADANKAN) [SSH]	331	413988	7.11
20 JUN 2025 - 20 JUN 2025	TENAGA	EMPLOYEES PROVIDENT FUND BOARD [SSH]	3,653	1178276	20.21
23 JUN 2025 - 23 JUN 2025	TENAGA	KUMPULAN WANG PERSARAAN (DIPERBADANKAN) [SSH]	150	413657	7.1
19 JUN 2025 - 19 JUN 2025	TENAGA	EMPLOYEES PROVIDENT FUND BOARD [SSH]	3,481	1174623	20.15
20 JUN 2025 - 20 JUN 2025	TENAGA	KUMPULAN WANG PERSARAAN (DIPERBADANKAN) [SSH]	125	413507	7.1
18 JUN 2025 - 18 JUN 2025	TENAGA	EMPLOYEES PROVIDENT FUND BOARD [SSH]	-27	1171142	20.09
23 JUN 2025 - 23 JUN 2025	TIMECOM	EMPLOYEES PROVIDENT FUND BOARD [SSH]	6	243631	13.178
20 JUN 2025 - 20 JUN 2025	TIMECOM	EMPLOYEES PROVIDENT FUND BOARD [SSH]	109	243625	13.177
20 JUN 2025 - 20 JUN 2025	TIMECOM	KUMPULAN WANG PERSARAAN (DIPERBADANKAN) [SSH]	-53	133540	7.223
25 JUN 2025 - 25 JUN 2025	TM	KUMPULAN WANG PERSARAAN (DIPERBADANKAN) [KWAP] [SSH]	344	395231	10.298

Notice Period is 22nd June 2025 to 28th June 2025

Effective Change Date	Stock Name	Buyer/ Seller Name [Classification]	Bought / (Sold) ['000]	No. of Shares After Trade ['000]	
			Total	Total	% Held
20 JUN 2025 - 20 JUN 2025	TM	EMPLOYEES PROVIDENT FUND BOARD (EPF BOARD) [SSH]	-118	634306	16.528
23 JUN 2025 - 23 JUN 2025	TM	KUMPULAN WANG PERSARAAN (DIPERBADANKAN) [KWAP] [SSH]	1,060	394731	10.285
19 JUN 2025 - 19 JUN 2025	TM	EMPLOYEES PROVIDENT FUND BOARD (EPF BOARD) [SSH]	147	634424	16.531
20 JUN 2025 - 20 JUN 2025	TM	KUMPULAN WANG PERSARAAN (DIPERBADANKAN) [KWAP] [SSH]	532	393671	10.258
18 JUN 2025 - 18 JUN 2025	TM	EMPLOYEES PROVIDENT FUND BOARD (EPF BOARD) [SSH]	-652	634276	16.527
20 JUN 2025 - 20 JUN 2025	TOMYPAK	MR YONG KWET ON [SSH]	195	106899	24.796
24 JUN 2025 - 25 JUN 2025	TROP	TAN SRI DR LIM WEE CHAI [SSH]	-2,331	147814	6.061
18 JUN 2025 - 19 JUN 2025	TWL	DATIN SEK CHIAN NEE [SSH]	-26,854	1727664	27.624
18 JUN 2025 - 19 JUN 2025	TWL	DATO' TAN WEI LIAN [DIR/CEO]	-26,854	1727664	27.624
18 JUN 2025 - 19 JUN 2025	TWL	DATO' TAN WEI LIAN [SSH]	-26,854	1727664	27.624
18 JUN 2025 - 19 JUN 2025	TWL	TWL CAPITAL BERHAD [SSH]	-26,854	1727664	27.624
20 JUN 2025 - 20 JUN 2025	UCHITEC	KUMPULAN WANG PERSARAAN (DIPERBADANKAN) [SSH]	61	24016	5.192
23 JUN 2025 - 23 JUN 2025	UOAEV	EMPLOYEES PROVIDENT FUND BOARD ("EPF BOARD") [SSH]	86	342470	13.053
19 JUN 2025 - 19 JUN 2025	UOAEV	EMPLOYEES PROVIDENT FUND BOARD ("EPF BOARD") [SSH]	413	342384	13.049
23 JUN 2025 - 23 JUN 2025	UTDPLT	EMPLOYEES PROVIDENT FUND BOARD [SSH]	-117	37761	6.069
20 JUN 2025 - 20 JUN 2025	UTDPLT	EMPLOYEES PROVIDENT FUND BOARD [SSH]	200	37878	6.088
19 JUN 2025 - 19 JUN 2025	UTDPLT	EMPLOYEES PROVIDENT FUND BOARD [SSH]	103	37678	6.056
18 JUN 2025 - 18 JUN 2025	UTDPLT	EMPLOYEES PROVIDENT FUND BOARD [SSH]	-42	37574	6.039
23 JUN 2025 - 23 JUN 2025	UWC	EMPLOYEES PROVIDENT FUND BOARD [SSH]	5	91357	8.288
23 JUN 2025 - 23 JUN 2025	VS	EMPLOYEES PROVIDENT FUND BOARD [SSH]	752	351987	9.158
20 JUN 2025 - 20 JUN 2025	VS	EMPLOYEES PROVIDENT FUND BOARD [SSH]	2,000	351235	9.138
19 JUN 2025 - 19 JUN 2025	VS	EMPLOYEES PROVIDENT FUND BOARD [SSH]	2,000	349235	9.086
23 JUN 2025 - 23 JUN 2025	VS	DATUK BEH KIM LING [DIR/CEO]	115	576207	14.991
23 JUN 2025 - 23 JUN 2025	VS	DATUK BEH KIM LING [SSH]	115	576207	14.991
20 JUN 2025 - 23 JUN 2025	VS	MR BEH CHERN WEI [DIR/CEO]	23	129144	3.36
18 JUN 2025 - 18 JUN 2025	VS	EMPLOYEES PROVIDENT FUND BOARD [SSH]	2,000	347235	9.034
19 JUN 2025 - 20 JUN 2025	WANGZNG	MR HUI CHING CHI [DIR/CEO]	104	112675	70.351
19 JUN 2025 - 20 JUN 2025	WANGZNG	MR HUI CHING CHI [SSH]	104	112675	70.351
24 JUN 2025 - 24 JUN 2025	WENTEL	LEMBAGA TABUNG HAJI [SSH]	1,000	60430	5.255
25 JUN 2025 - 25 JUN 2025	WPRTS	KUMPULAN WANG PERSARAAN (DIPERBADANKAN) [SSH]	-910	227369	6.668
23 JUN 2025 - 23 JUN 2025	WPRTS	EMPLOYEES PROVIDENT FUND BOARD [SSH]	-862	312479	9.164
24 JUN 2025 - 24 JUN 2025	WPRTS	KUMPULAN WANG PERSARAAN (DIPERBADANKAN) [SSH]	-1,184	228278	6.694
23 JUN 2025 - 23 JUN 2025	WPRTS	KUMPULAN WANG PERSARAAN (DIPERBADANKAN) [SSH]	-476	229463	6.729
19 JUN 2025 - 19 JUN 2025	WPRTS	EMPLOYEES PROVIDENT FUND BOARD [SSH]	-650	314001	9.208
20 JUN 2025 - 20 JUN 2025	WPRTS	KUMPULAN WANG PERSARAAN (DIPERBADANKAN) [SSH]	-699	229938	6.743
18 JUN 2025 - 18 JUN 2025	WPRTS	EMPLOYEES PROVIDENT FUND BOARD [SSH]	1,215	314651	9.227
25 JUN 2025 - 25 JUN 2025	YINSON	MADAM BAH KIM LIAN [DIR/CEO]	275	645924	23.11
25 JUN 2025 - 25 JUN 2025	YINSON	MADAM BAH KIM LIAN [SSH]	275	645924	23.11
25 JUN 2025 - 25 JUN 2025	YINSON	MR LIM CHERN YUAN [DIR/CEO]	0.754	5014	0.179
25 JUN 2025 - 25 JUN 2025	YINSON	MR LIM HAN WENG [DIR/CEO]	693	742477	26.564
25 JUN 2025 - 25 JUN 2025	YINSON	MR LIM HAN WENG [SSH]	693	742477	26.564
20 JUN 2025 - 20 JUN 2025	YINSON	KUMPULAN WANG PERSARAAN (DIPERBADANKAN) [SSH]	186	199599	7.164
19 JUN 2025 - 19 JUN 2025	YSPSAH	DATO' DR LEE FANG HSIN [DIR/CEO]	50	69264	48.831
19 JUN 2025 - 19 JUN 2025	YSPSAH	DATO' DR LEE FANG HSIN [SSH]	50	69264	48.831
23 JUN 2025 - 23 JUN 2025	YTL	EMPLOYEES PROVIDENT FUND BOARD [SSH]	10,000	718574	6.351
20 JUN 2025 - 20 JUN 2025	YTL	EMPLOYEES PROVIDENT FUND BOARD [SSH]	6,000	708574	6.274
18 JUN 2025 - 18 JUN 2025	YTL	EMPLOYEES PROVIDENT FUND BOARD [SSH]	1,178	702574	6.23
23 JUN 2025 - 23 JUN 2025	YTLPOWR	DATO' YEOH SOO KENG [DIR/CEO]	113	38131	0.452
23 JUN 2025 - 23 JUN 2025	YTLPOWR	EMPLOYEES PROVIDENT FUND BOARD [SSH]	8,289	592645	7.013
23 JUN 2025 - 23 JUN 2025	YTLPOWR	TAN SRI (SIR) YEOH SOCK PING [DIR/CEO]	733	26466	0.313
20 JUN 2025 - 20 JUN 2025	YTLPOWR	EMPLOYEES PROVIDENT FUND BOARD [SSH]	3,000	584356	6.918
19 JUN 2025 - 19 JUN 2025	YTLPOWR	EMPLOYEES PROVIDENT FUND BOARD [SSH]	-1,069	581356	6.883
24 JUN 2025 - 25 JUN 2025	ZECON	TAN SRI TOMMY BIN BUGO@HAMID BIN BUGO [SSH]	-100	19115	12.65
20 JUN 2025 - 20 JUN 2025	ZECON	DATO SIM KHENG BOON [DIR/CEO]	200	490	0.288

Disclaimer: The Information in Insider Activity is extracted from www.shareinvestor.com/fundamental/insider_trades. The information on this page is provided as a service to readers. It does not constitute financial advice and/or any investment recommendations. We assume no liability for damages resulting from or arising out of the use of such information. Whilst every effort is made to ensure accuracy, the information presented is not the official record of shareholder filings. Readers are advised to read the original filings on the Bursa Malaysia website at www.bursamalaysia.com

Invest 216
A Weekly e-Publication by SHAREINVESTOR
ISSUE 216
FRIDAY 19 JULY 2024

How L&P Global Stays Ahead

Ooi Lay Pheng
Executive Director / CEO, L&P Global Berhad

Learn how to identify Hot Stocks using Technical Analysis (TA) and Fundamental Analysis (FA)

SIGN UP FOR Invest
IT'S FREE!!!

[Click here](#)

Scan me

Via email, every Friday.



Further to **Cypark Resources Berhad (CYPARK)** announcement made on 27 March 2025, the Board of Directors wishes to update the status of the following

Memorandum of Understanding (i) Memorandum of Business Exploration dated 1 August 2023 between RGFC Ventures Sdn. Bhd. and the Company - There has been no material development since the previous announcement dated 27 March 2025. (ii) MOU dated 1 December 2023 between Abu Dhabi Future Energy Company PJSC - Masdar and the Company - There has been no material development since the previous announcement dated 27 March 2025.



Reference is made to the **Hiap Huat Holdings Berhad (HHHCORP)** announcement dated 23 June 2025, the Board wishes to announce the additional information as requested by Bursa Malaysia Securities Berhad pertaining to the Proposed Acquisition.



The Board of Directors of **Sunsuria Berhad (SUNSURIA)** is pleased to announce that Icon Sunsuria Sdn. Bhd. has expanded its operations to Kuala Lumpur.



FOCUS POINT

Vision Perfection

Circular to shareholder of **Focus Point Holdings Berhad (FOCUSP)** in relation to the following :- (i) Proposed

bonus issue of up to 153,999,680 new ordinary shares in Focus Point Holdings Berhad on the basis of 1 bonus share for every 3 existing ordinary shares in Focus Point whose names appear in the company's record of the depositors on an entitlement date to be determined and announced later, upon the receipt of all relevant approvals and (ii) Proposed establishment of a Dividend Reinvestment Plan, which will provide shareholders of Focus Point with an option to elect, the whole or in part, to reinvest their cash dividend as may be declared by Focus Point, which includes any interim, final, special, or other types of cash dividend in Focus Point shares.



Gamuda Berhad (GAMUDA) wishes to announce that the Company, together with Dong Pi Co., Limited, a Taiwan-based company, has been awarded

the contract for the Construction of Wharf and Connecting Roads (Bridges) for the Kaohsiung Port Intercontinental LNG Terminal Construction Project in Taiwan R.O.C. by the Taiwan International Ports Corp., Ltd, Kaohsiung, the state-owned port authority managing the Port of Kaohsiung, on 30 June 2025.



FSBM Holdings Berhad (FSBM) enters Key Strategic Partnership with Visiontech to drive generative AI adoption in Malaysia.





ENGINEERS

HSS Engineers Berhad (HSSEB) wishes to announce that HSS Integrated Sdn. Bhd., an associate of HEB, has entered into a Contract Agreement with Department of Transportation, Republic of Philippines, appointing OCG-HSSI JV, a Joint Venture

comprising Oriental Consultants Global Co., Ltd., Japan, and HSSI to provide consulting services for the Davao Public Transport Modernization Project – Contract Package No. 9: General Consultant.



Life Water Berhad (LWSABAH) proposed acquisition of 100% equity interest in Twinine Sdn Bhd. The Board wishes to announce that the full purchase price has been duly paid by LWB pursuant to the terms and conditions of the Share Sale Agreement and the Proposed Acquisition has been completed.



Pertama Digital Berhad (PERTAMA) proposed acquisitions of 80% equity interest in each of D-Ron Singapore Pte Ltd and D-Ron Malaysia Sdn Bhd. Reply to Bursa Malaysia Securities Berhad’s query on the proposed acquisitions of 80% equity interest in each of D-Ron Singapore Pte Ltd (“D-RON SG”) and D-RON Malaysia Sdn Bhd (“D-RON MY”) (collectively, “ProposedAcquisitions”).





A member of **UEM Group**

UEM Sunrise Berhad (UEMS) proposed built to rent development on a property measuring 5,390 square metres or 1.33 acres at 21-53 Hoddle Street,

Collingwood VIC 3066 in Melbourne, Australia via collaboration with Greystar Real Estate Partners by way of contract of sales for the property and a fund through agreement for the development of the property with an estimated total transaction value of AUD277.3 million.



Disclaimer: The information in the Investor Relations page is extracted from individual companies' announcements in www.bursamalaysia.com. The information on this page is provided as a service to readers. We assume no liability for damages resulting from or arising out of the use of such information. Whilst every effort is made to ensure accuracy, the information presented has been simplified for your reading pleasure. Readers are advised to read the original and complete filings on the Bursa Malaysia website at https://www.bursamalaysia.com/market_information/announcements/company_announcement

NAME OF COMPANY	OFFER PERIOD		ISSUE PRICE (Per Ordinary Share)	LISTING SOUGHT	DATE OF LISTING
	OPENING	CLOSING			
PMCK BERHAD	26 May 2025	25 June 2025	RM0.22	ACE MARKET	9 July 2025
A1 A.K. KOH GROUP BERHAD	18 June 2025	30 June 2025	RM0.25	ACE MARKET	11 July 2025
ICENTS GROUP HOLDINGS BERHAD	25 June 2025	2 July 2025	RM0.24	ACE MARKET	17 July 2025
ENPROSERVE GROUP BERHAD	26 June 2025	8 July 2025	RM0.24	ACE MARKET	18 July 2025
OXFORD INNOTECH BERHAD	26 June 2025	16 July 2025	RM0.29	ACE MARKET	29 July 2025



Learn how to identify Hot Stocks using Technical Analysis (TA) and Fundamental Analysis (FA)

SIGN UP FOR Invest
IT'S FREE!!!

