

Invest

A Weekly e-Publication by SHAREINVESTOR

ISSUE

260

THURSDAY
26 JUN 2025

Scan/Click QR to Register



Via email, every Friday

ALSO

COMPANY SPOTLIGHT

SNS Network Technology Berhad

See more on page 06



From MSWG's The Observer

The Missing Chair

See more on pages 34-38



See more on pages 20-27

MARKET SENTIMENTS

Govt introduces new tax incentives to strengthen venture capital, private equity sectors page 29

Employers, foreign workers to start 2% contribution each from October - EPF page 31

04 LEADERBOARD

05 SHARIAH HOT STOCKS

08 SHARIAH MOMENTUM UP STOCKS

10 NON SHARIAH HOT STOCKS

12 UP TRENDING STOCKS

13 VALUE STOCKS

14 GROWTH STOCKS

16 DIVIDEND STOCKS

17 BROKERS' CALL

18 LONG COMPANIES

33 REGIONAL MARKETS

39 INSIDER ACTIVITY

44 INVESTOR RELATIONS

SHAREINVESTOR®

An AlphaInvest Company

Invest with Knowledge

INVESTOR PLATFORMS

Director
Darren Chong
darren.chong@shareinvestor.com

Business Development Manager
Jay Cheong
jay.cheong.@shareinvestor.com

ADMIN & OPERATIONS

Senior Executive
Watie Nordin
watie.nordin@shareinvestor.com

Executive
Silas Emmanuel Joseph
silas.joseph@shareinvestor.com

PROCESS AUTOMATION & DATA ANALYTICS

Data Analyst
Lee Khai Bing

INVESTOR RELATIONS

Group Managing Director & Publisher
Edward Stanislaus
edward@shareinvestor.com

Senior Manager
Letticia Wong
letticia.wong@shareinvestor.com

Manager
Aida Norzeti Talib
aida.norzeti@shareinvestor.com

ALPHAINVEST HOLDINGS BOARD OF DIRECTORS

Chairman	Patrick Daniel
Group CEO	Christopher Lee
Group COO	Lim Dau Hee
Group MD	Shanison Lin



“ GIVE A MAN A FISH AND YOU FEED HIM FOR A DAY; TEACH A MAN TO FISH AND YOU FEED HIM FOR A LIFETIME ”

ShareInvestor Malaysia Sdn. Bhd.
(200001023956) (526564-M)
L15-03 & 03A, PJX HM Shah Tower,
No 16A, Jalan Persiaran Barat, PJS 52,
46200 Petaling Jaya, Selangor

Hotline : 603 8681 0580
Mobile : 011 6343 8939
Website : www.ShareInvestor.com.my
www.alphainvestholdings.com
www.Facebook.com/ShareInvestorMalaysia

ADVERTISEMENT ENQUIRY



Learn how to identify Hot Stocks using Technical Analysis (TA) and Fundamental Analysis (FA)

SIGN UP FOR Invest NOW IT'S FREE!!!

[Click here](#)

Scan me



Via email, every Friday.

Get market moving news and analyses. Regular columns include **Behind The Action** and **From The Observer**

Leaderboard • Shariah Hot Stocks • Shariah Momentum Up Stocks • Non Shariah Hot Stocks • Up Trending Stocks • Growth Stocks • Dividend Stocks • Long Companies • Insider Activity • Investor Relations • Regional Markets



We've Moved

to Serve You Better



Unit 17-7, Level 7
The Boulevard, Mid Valley City
Lingkaran Syed Putra
59200, Kuala Lumpur



SWAN
CONSULTANCY

Financial Communications

 **triven**
marketing
group

Consumer Public

 **KOA**
international

*Global Investor Relations
Communications*

Let's Connect

Our new space, same mission:
delivering bespoke strategies for
companies navigating today's
fast-evolving markets



www.shareinvestor.com - market data at your fingertips



ShareInvestor WebPro (www.shareinvestor.com/my)
Prices > Stock Prices > Bursa > click Stocks tab

1. mouse over Ranking > select Top Active > all Shariah stocks are denoted with an [S] > mouse over Column Layout > select Edit Customs > select Name > select Volume > select Last Done Price > Mouse Over Column Layout > select Custom
2. mouse over Ranking > select Top Turnover > all Shariah stocks are denoted with an [S] > mouse over Column Layout > select Edit Customs > select Name > select Last Done Price > select Value > Mouse Over Column Layout > select Custom
3. mouse over Ranking > select Top Gainers (Over 5 Trading Days) > mouse over Column Layout > select Edit Customs > select Name > select Last Done Price > select 5 Days Change > select 5 Days % Change > Mouse Over Column Layout > select Custom
4. mouse over Ranking > select Top Losers (Over 5 Trading Days)
5. mouse over Ranking > select Top % Gainers (Over 5 Trading Days)
6. mouse over Ranking > select Top % Losers (Over 5 Trading Days)

Shariah Top Actives (as at Wednesday)

Name	Price (RM)	Volume
RL [S]	0.225	648,871.000
TANCO [S]	0.930	415,508.000
MYEG [S]	0.935	400,980.000
NEXG [S]	0.355	277,236.000
NATGATE [S]	1.620	273,932.000
KPJ [S]	2.560	248,910.000
SNS [S]	0.560	241,403.000
TOPGLOV [S]	0.745	184,916.000
SCGBHD [S]	1.400	178,567.000
ECOSHOP [S]	1.230	167,548.000

Shariah Top Turnover (as at Wednesday)

Name	Price (RM)	Value (RM)
TENAGA [S]	14.240	114,036,588
KPJ [S]	2.560	63,593,337
GAMUDA [S]	4.690	58,902,143
TM [S]	6.580	49,449,444
NATGATE [S]	1.620	43,507,437
IHH [S]	6.700	41,871,698
TANCO [S]	0.930	38,945,517
MYEG [S]	0.935	37,226,012
WPRTS [S]	5.300	30,504,060
SLVEST [S]	1.980	29,757,145

Top Gainers (over 5 Trading days as at Wednesday)

Name	Price (RM)	Change (RM)
NESTLE	77.600	+5.980
MPI	20.580	+0.940
HLFG	16.280	+0.380
HLBANK	19.780	+0.360
DLADY	29.800	+0.300
CHINTEK	9.120	+0.270
AMWAY	5.200	+0.260
IGBB	2.830	+0.240
ALLIANZ	19.280	+0.220
OIB	1.440	+0.209

Top % Gainers (over 5 Trading days as at Wednesday)

Name	Price (RM)	Change (%)
ZENTECH	0.010	+100.00
CME	0.015	+50.00
TRIVE	0.015	+50.00
XOXNET	0.015	+50.00
ALRICH	0.025	+25.00
WAJA	0.055	+22.22
BDB	0.270	+20.00
ECOHLDS	0.030	+20.00
FITTERS	0.030	+20.00
SYCAL	0.195	+18.18

Top Losers (over 5 Trading days as at Wednesday)

Name	Price (RM)	Change (RM)
HEIM	25.400	-1.480
PETGAS	17.660	-0.500
PANAMY	11.340	-0.440
BAT	4.390	-0.410
PETRONM	3.600	-0.400
UTDPLT	21.660	-0.240
KLUANG	5.710	-0.200
WPRTS	5.300	-0.200
PPB	10.220	-0.160
ARKA	1.050	-0.150

Top % Losers (over 5 Trading days as at Wednesday)

Name	Price (RM)	Change (%)
GOCEAN	0.115	-50.00
SNTORIA	0.005	-50.00
BIOHLDG	0.015	-40.00
RL	0.225	-37.50
FOCUS	0.010	-33.33
PUC	0.020	-33.33
INNITY	0.205	-30.51
PASUKGB	0.070	-30.00
MAYU	0.100	-25.93
Y&G	0.400	-25.93

Price & Volume Distribution Charts (as at Wednesday)

Technical Analysis

DEFINITION: Shariah compliant stocks with Technical Analysis showing 5-days & 10-days Moving Average Price below Yesterday's Close over past 3 days and with Volume Spike.

CHART GUIDE: Volume Distribution Chart is a statistical interpretation of the current sentiment on each stock in graphical format. The highest bar categorized as >150k is likely to be traded by institutions or super dealers, while the lowest bar categorized as <15k usually represents retail investors. "Buy Up" refers to more buyers snatching up the lots queued at selling price. "Sell Down" refers to sellers selling their shares to the buying queue



ShareInvestor WebPro > Screener > Market Screener (FA & TA) > select BURSA > add criteria

A. Criteria

- > click Add Criteria
- Technical Analysis Conditions tab select (i) Moving Average Below Close (ii) Volume Spike
- Fundamental Analysis Conditions tab > select (iii) Revenue
- Prices & Other Conditions tab > select (iv) Is Shariah Compliant
- Technical Analysis Conditions tab select (v) Moving Average Below Close
- Prices & Other Conditions tab > select (vi) Last Done Price
- Technical Analysis Conditions tab select (vii) Moving Average Below Close

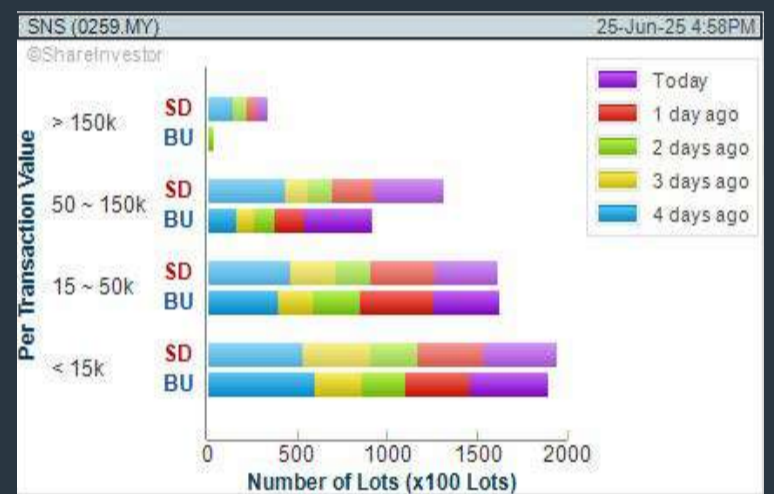
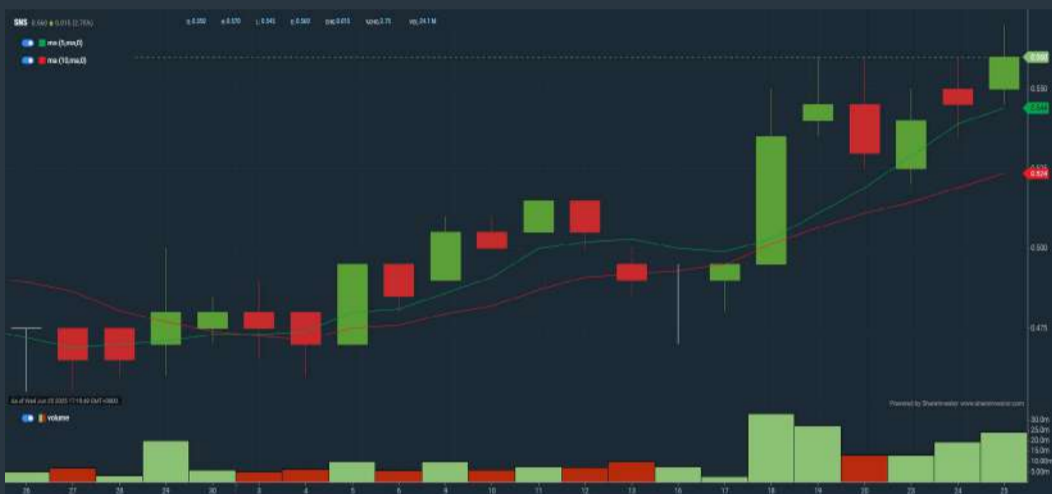
B. Conditions (Criteria Filters)

1. Moving Average Below Close - select (MA) type (5) below close price for type (3) days
2. Volume Spike - Volume type (1) greater than type (5) days average
3. Revenue ("000) - select (more than) type (1) for the past select (1) financial year(s)
4. Is Shariah Compliant - select **Yes**
5. Moving Average Below Close - select (MA) type (10) below close price for type (3) days
6. Last Done Price - select (more than) type (0.3)
7. Moving Average Below Close - select (EMA) type (5) below close price for type (3) days

- > click Save Template > Create New Template type (Shariah Hot Stocks) > click Create
- > click Save Template as > select Shariah Hot Stocks > click Save
- > click Screen Now (may take a few minutes)
- > Sort By: Select (Vol) Select (Desc)
- > Mouse over stock name > Charts > click C² Charts or Volume Distribution

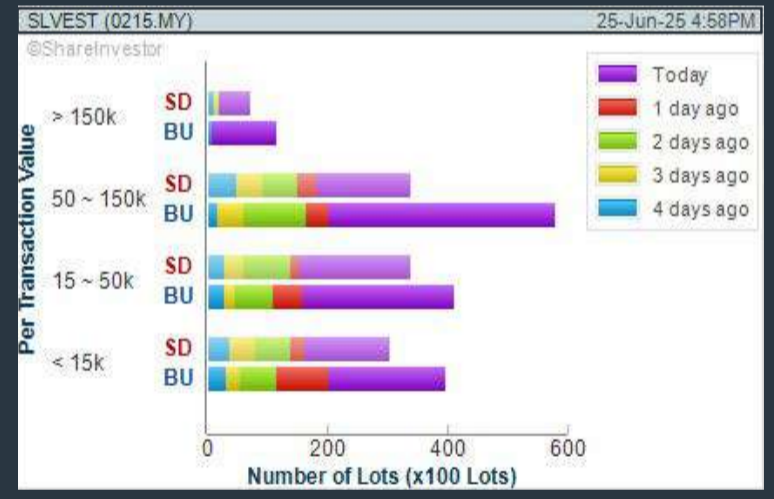
SNS NETWORK TECHNOLOGY BERHAD (0259) C² Chart

Analysis



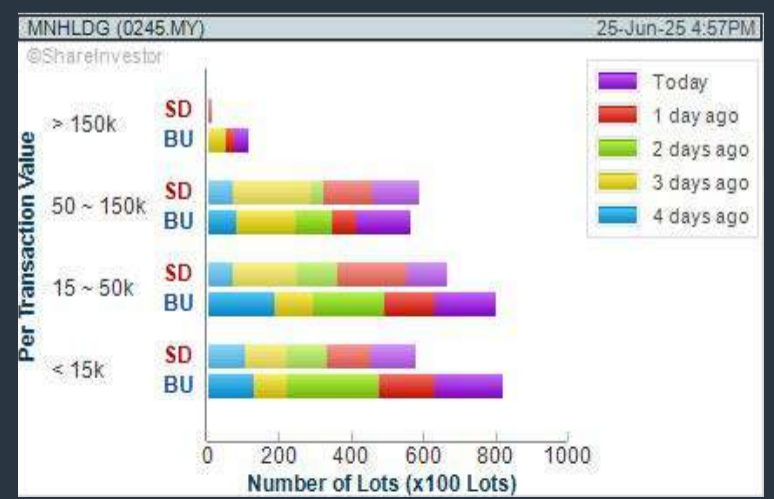
SOLARVEST HOLDINGS BERHAD (0215) C² Chart

Analysis



MN HOLDINGS BERHAD (0245) C² Chart

Analysis



Disclaimer: The information on this page is provided as a service to readers. It does not constitute financial advice and/or any investment recommendations. Past performance is not indicative of future results. We assume no liability for damages resulting from or arising out of the use of such information. It would be best if you did your own research to make your personal investment decisions wisely or consult a licenced investment advisor.

COMPANY BACKGROUND

SNS Network Technology Berhad is an Information Communication Technology (ICT) solutions provider of cutting-edge solutions tailored to meet the needs its clientele including end consumers, small and medium-sized enterprises (SMEs), large corporations and government institutions.



SNS (0256.MY)		High: 0.570	Remarks: s
Last (MYR): 0.560 ↑	Change: +0.015	Low: 0.545	
	Change (%): +2.75	Yesterday's Close: 0.545	
Open: 0.550		Sell Price: 0.565	
Buy Price: 0.560		Sell Volume ('00): 7,863	
Buy Volume ('00): 16,950		Cumulative Value: 13,514,154	
Cumulative Volume ('00): 241,403			

Financial Analysis

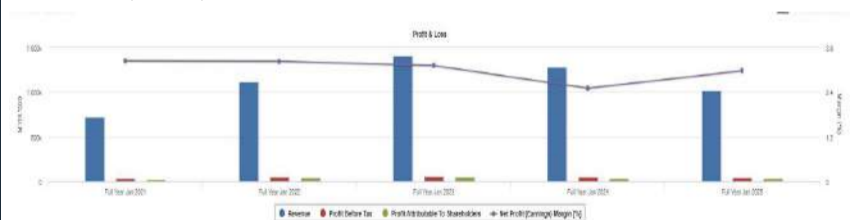
Revenue Growth Decreasing revenue in last 2 years	Profit Growth Decreasing profit for last 2 consecutive years (with last 3 profitable years)
Piotroski F Score The company has below average financial strength (Piotroski F-Score of 3-4)	Dividend Payout No dividend paid in most recent year but dividends paid in prior years
Current Ratio The company is well-positioned to cover its short-term obligations with its current assets (ratio between 1.5 to 10) for 3 consecutive years	Debt to Cashflow The company has negative cash flow from operations in most recent year
Free Cash Flow Negative free cash flow for the most recent year	Gross Profit Margin Low gross profit margin for 3 years
Net Earnings Margin Low net profit margin for 3 years	Return on Equity (ROE) ROE above 10% for 3 consecutive years
Return on Equity (ROE) ROE is decreasing by 5% a year over the past 35 months.	

🟢 Excellent
🟡 Good
🟠 Neutral
🔴 Be Alert
🚫 Watch Out



Historical Financials

Profit & Loss (MYR '000)

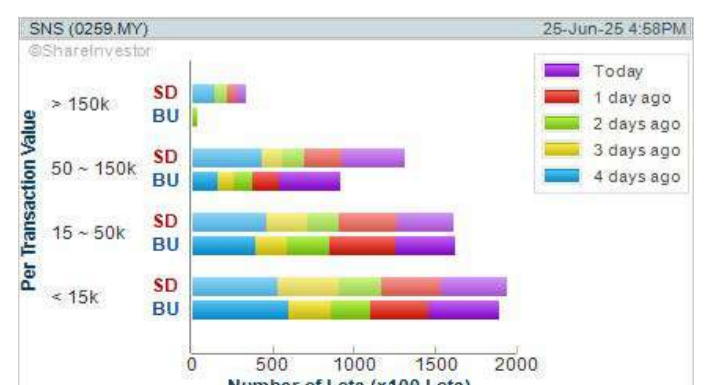


WebPro 9-Days Free Trial Registration (worth RM10) Sign Up Now



Key Statistics with Total Shareholder Returns

Period	Dividend Received	Capital Appreciation	Total Shareholder Return
Short Term Return	5 Days	+0.005	+12.01%
	10 Days	-	+12.06%
	20 Days	-	+20.40%
Medium Term Return	3 Months	0.001	+26.07%
	6 Months	0.001	-1.98%
Long Term Return	1 Year	0.009	-20.87%
	2 Years	0.016	+126.10%
Annualised Return	Annualised	-	+51.33%



Disclaimer: The information on this page is provided as a service to readers. It does not constitute financial advice and/or any investment recommendations. Past performance is not indicative of future results. We assume no liability for damages resulting from or arising out of the use of such information. It would be best if you did your own research to make your personal investment decisions wisely or consult a licenced investment advisor.



making
places
timeless



usm.com

XTRA

XTRA FURNITURE SDN BHD
The Gardens Mall, Mid Valley City, Lot S-236 & 237
Lingkar Syed Putra, 59200 Kuala Lumpur
T. +603 2282 9088 | living@xtrafurniture.com | xtrafurniture.com
📍 XTRAFurniture | 📱 xtrafurnituremsia

Price & Volume Distribution Charts (as at Wednesday)

Technical Analysis

DEFINITION: Shariah compliant stocks with Technical Analysis showing Bullish Momentum and Price Uptrend. The share price closed at the highest price yesterday. The typical price was higher than the previous day's typical price.

CHART GUIDE: Volume Distribution Chart is a statistical interpretation of the current sentiment on each stock in graphical format. The highest bar categorized as >150k is likely to be traded by institutions or super dealers, while the lowest bar categorized as <15k usually represents retail investors. "Buy Up" refers to more buyers snatching up the lots queued at selling price. "Sell Down" refers to sellers selling their shares to the buying queue.



ShareInvestor WebPro > Screener > Market Screener (FA & TA)>select BURSA>add criteria

A. Criteria

- > click Add Criteria
- Fundamental Analysis Conditions tab >select (i) Revenue
- Technical Analysis Conditions tab select (ii) Average Volume
- Prices & Other Conditions tab > select (iii) Last Done Price
- Prices & Other Conditions tab > select (iv) Is Shariah Compliant
- Technical Analysis Conditions tab select (v) RSI Overbought
- Technical Analysis Conditions tab select (vi) Moving Average Below Close
- Technical Analysis Conditions tab select (vii) CCI Overbought

B. Conditions (Criteria Filters)

1. Revenue ("000) - select (more than) type (1) for the past select (1) financial year(s)
2. Average Volume - type (1) days average volume greater than type (10000) lots
3. Last Done Price - select (more than) type (0.3)
4. Is Shariah Compliant - select Yes
5. RSI Overbought - select RSI 1 above 99 for 1 days
6. Moving Average Below Close - select (MA) type (10) below close price for type (1) days
7. CCI Overbought - select CCI (2) above (0) for (1) days

- > click Save Template > Create New Template type (Shariah Momentum Up Stocks) > click Create
- > click Save Template as > select Shariah Momentum Up Stocks > click Save
- > click Screen Now (may take a few minutes)
- Sort By: Select (Vol) Select (Desc)
- Mouse over stock name > Charts > click C² Charts tab or Volume Distribution

MY E.G. SERVICES BHD (0138) C² Chart

Analysis



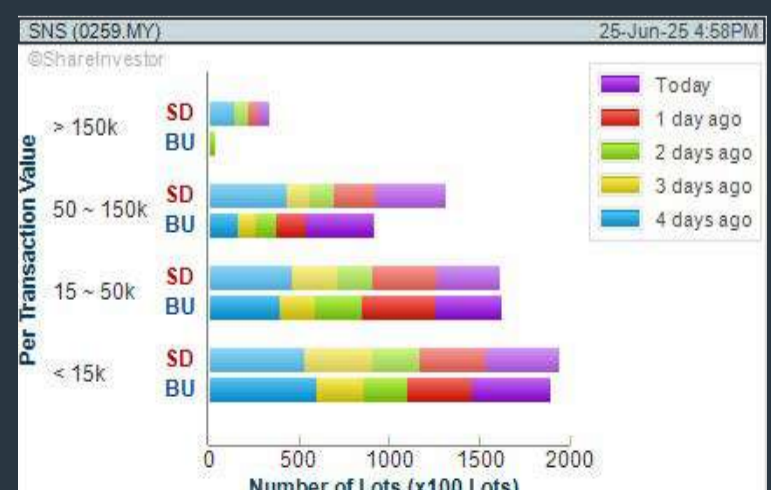
NATIONGATE HOLDINGS BERHAD (0270) C² Chart

Analysis



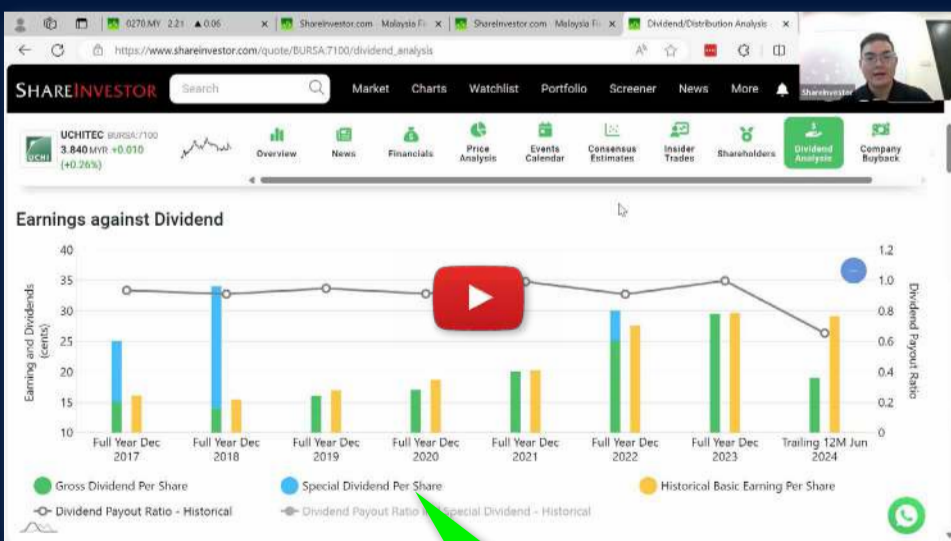
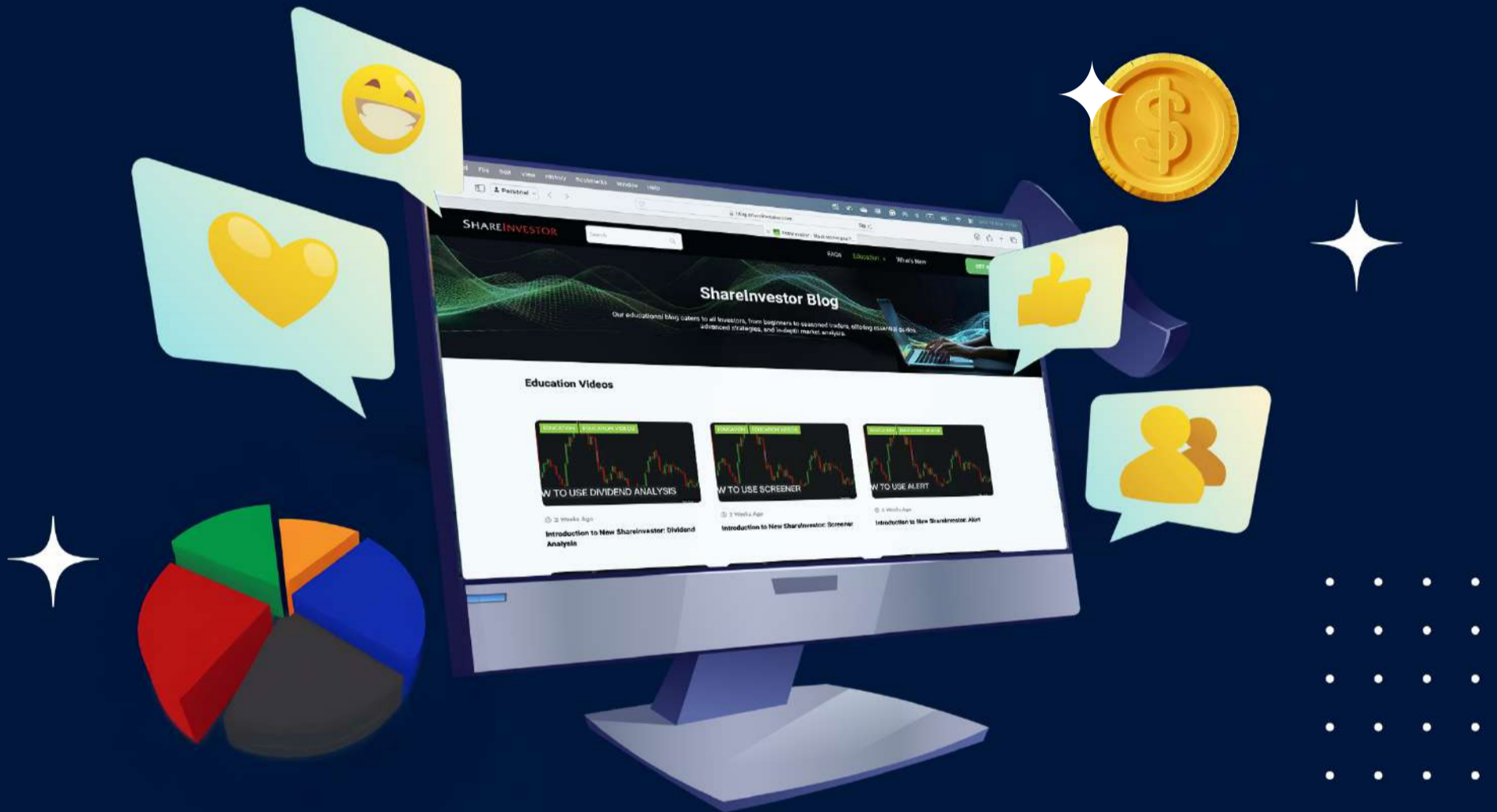
SNS NETWORK TECHNOLOGY BERHAD (0259) C² Chart

Analysis



Disclaimer: The information on this page is provided as a service to readers. It does not constitute financial advice and/or any investment recommendations. Past performance is not indicative of future results. We assume no liability for damages resulting from or arising out of the use of such information. It would be best if you did your own research to make your personal investment decisions wisely or consult a licenced investment advisor.

Ultimate Guide to use **ShareInvestor**



YOU WILL LEARN HOW TO USE:

- Company Financials
- Market Screener
- Company Insider Trades
- Dividend Analysis
- Consensus Estimation
and more...

**Watch
now!**

Price & Volume Distribution Charts (as at Wednesday)

Technical Analysis

DEFINITION: Stocks with Technical Analysis showing 5-days & 10-days Moving Average Price below Close over past 1 days and with Volume Spike

CHART GUIDE: Volume Distribution Chart is a statistical interpretation of the current sentiment on each stock in graphical format. The highest bar categorized as >150k is likely to be traded by institutions or super dealers, while the lowest bar categorized as <15k usually represents retail investors. "Buy Up" refers to more buyers snatching up the lots queued at selling price. "Sell Down" refers to sellers selling their shares to the buying queue.



ShareInvestor WebPro > Screener > Market Screener (FA & TA) > select BURSA > add criteria

A. Criteria

- > click Add Criteria
- Technical Analysis Conditions tab select (i) Moving Average Below Close (ii) Volume Spike
- Fundamental Analysis Conditions tab >select (iii) Revenue
- Prices & Other Conditions tab > select (iv) Is Shariah Compliant
- Technical Analysis Conditions tab select (v) Moving Average Below Close
- Prices & Other Conditions tab > select (vi) Last Done Price
- Technical Analysis Conditions tab select (vii) Moving Average Below Close

B. Conditions (Criteria Filters)

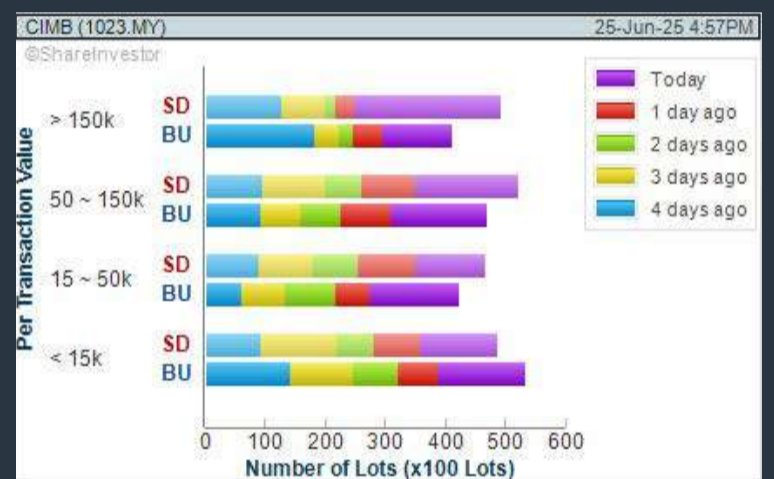
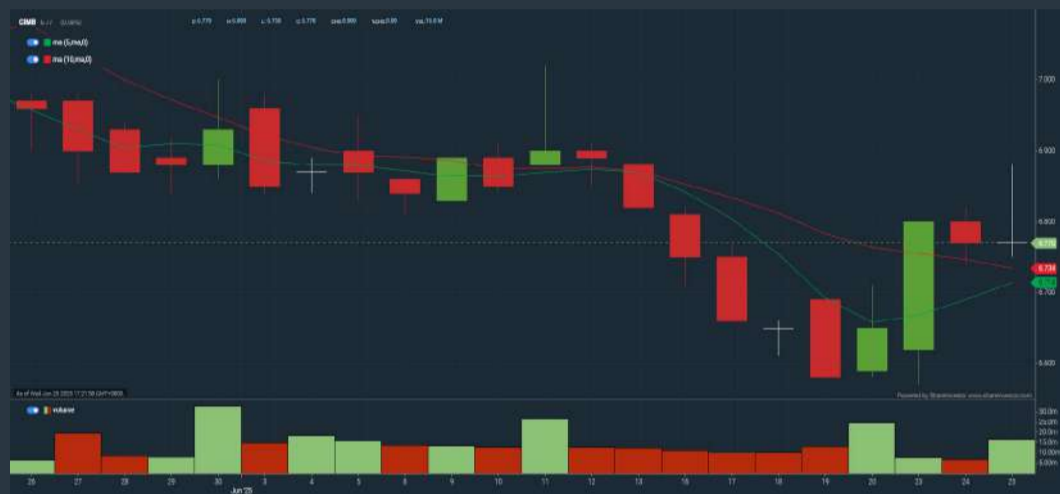
1. Moving Average Below Close - select (MA) type (5) below close price for type (3) days
2. Volume Spike - Volume type (1) greater than type (5) days average
3. Revenue ("000) - select (more than) type (1) for the past select (1) financial year(s)
4. Is Shariah Compliant - select NO
5. Moving Average Below Close - select (MA) type (10) below close price for type (1) days
6. Last Done Price - select (more than) type (0.3)
7. Moving Average Below Close - select (EMA) type (5) below close price for type (1) days

- > click Save Template > Create New Template type (Non-Shariah Hot Stocks) > click Create
- > click Save Template as > select Non-Shariah Hot Stocks > click Save
- > click Screen Now (may take a few minutes)
- Sort By: Select (Vol) Select (Desc)
- Mouse over stock name > Charts > click C² Charts tab or Volume Distribution

CIMB GROUP HOLDINGS BERHAD (1023)

C² Chart

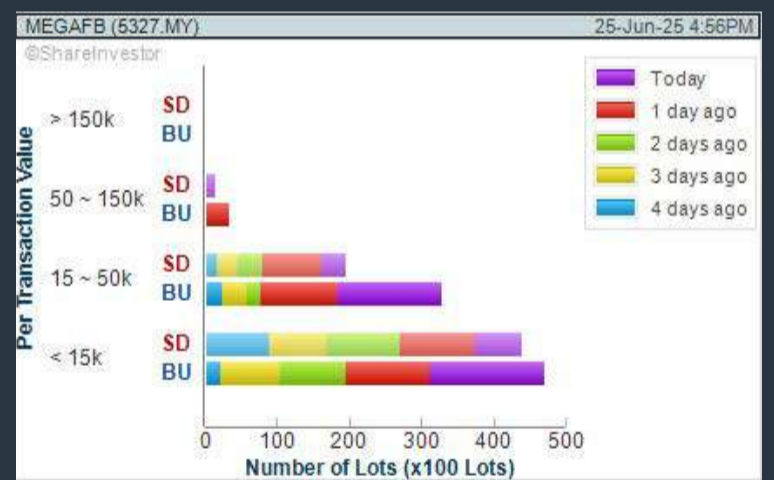
Analysis



MEGA FORTRIS BERHAD (5327)

C² Chart

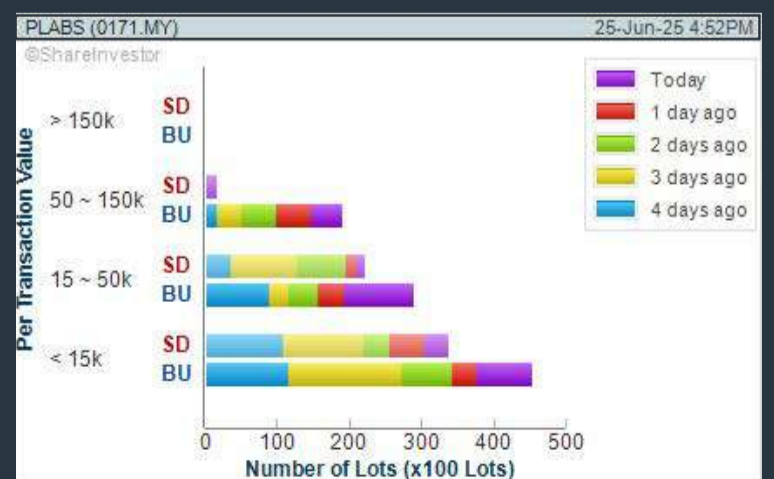
Analysis



PETERLABS HOLDINGS BERHAD (0171)

C² Chart

Analysis



Disclaimer: The information on this page is provided as a service to readers. It does not constitute financial advice and/or any investment recommendations. Past performance is not indicative of future results. We assume no liability for damages resulting from or arising out of the use of such information. It would be best if you did your own research to make your personal investment decisions wisely or consult a licenced investment advisor.

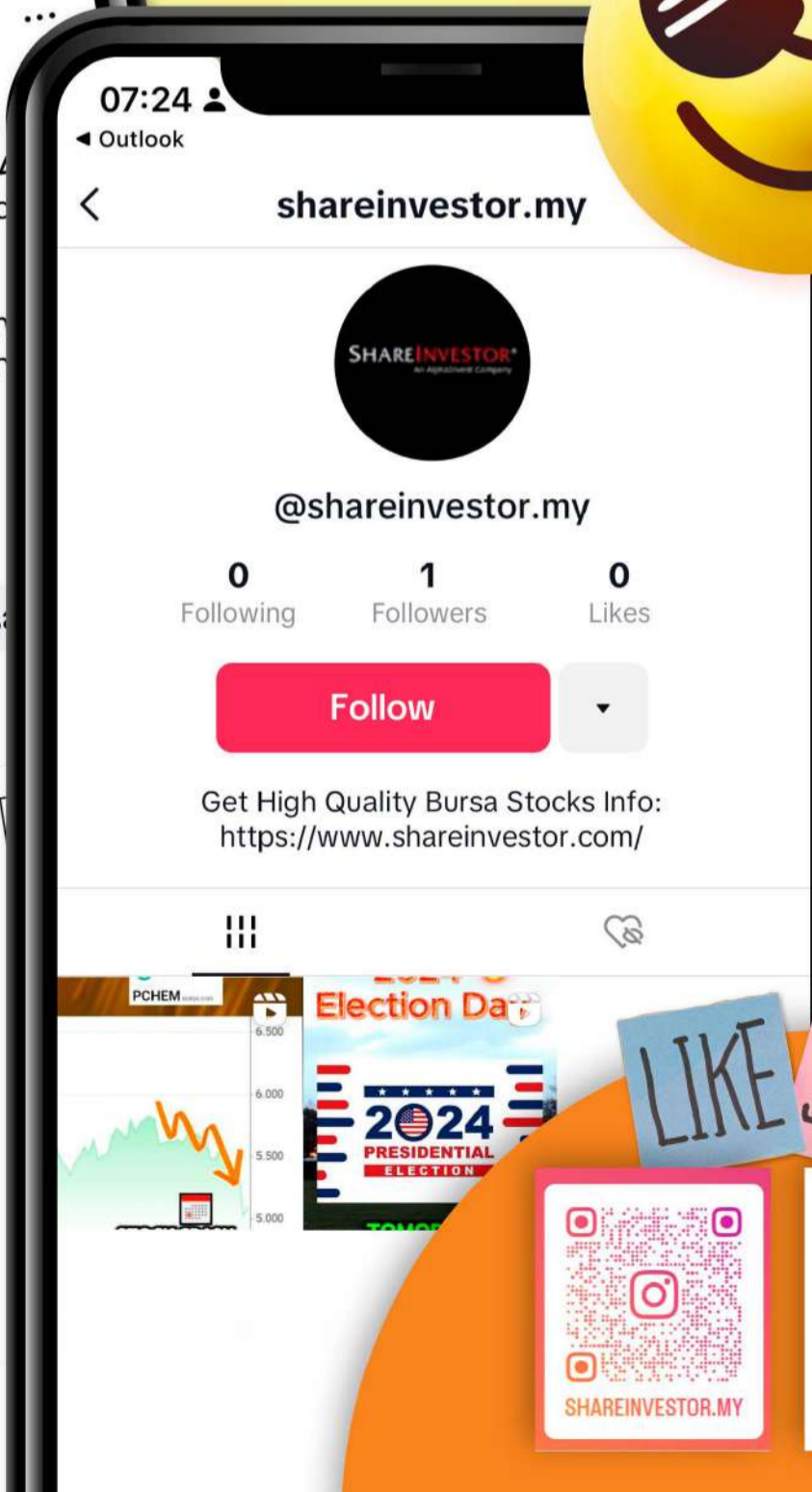
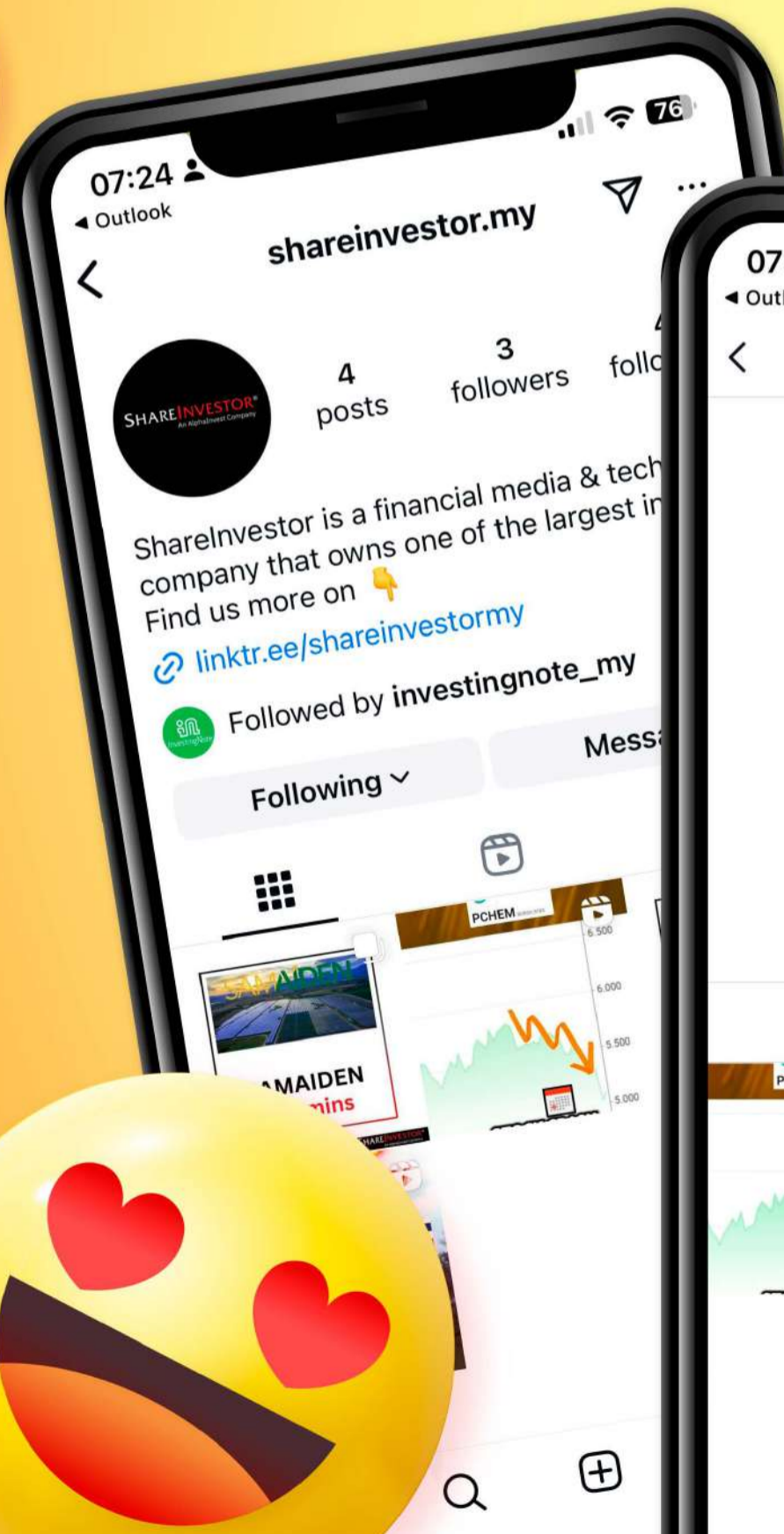
SHAREINVESTOR[®]
An AlphaInvest Company



We're Officially on TikTok & Instagram!



Follow us now for more information!



LIKE SHARE



Price & Volume Distribution Charts (Over 3 trading days as at Wednesday)

Technical Analysis

DEFINITION: Stocks with Technical Analysis showing Bullish Momentum and Price Uptrend

CHART GUIDE: Volume Distribution Chart is a statistical interpretation of the current sentiment on each stock in graphical format. The highest bar categorized as >150k is likely to be traded by institutions or super dealers, while the lowest bar categorized as <15k usually represents retail investors. "Buy Up" refers to more buyers snatching up the lots queued at selling price. "Sell Down" refers to sellers selling their shares to the buying queue.



ShareInvestor WebPro > Screener > Market Screener (FA & TA) > select BURSA > add criteria

A. Criteria

- > click Add Criteria
- Fundamental Analysis Conditions tab > select (i) Revenue
- Technical Analysis Conditions tab select (ii) Moving Average Below Close
- Technical Analysis Conditions tab select (iii) Average Volume
- Prices & Other Conditions tab > select (iv) Last Done Price
- Technical Analysis Conditions tab select (v) Moving Average Below Close
- Technical Analysis Conditions tab select (v) Moving Average Bullish Crossover

B. Conditions

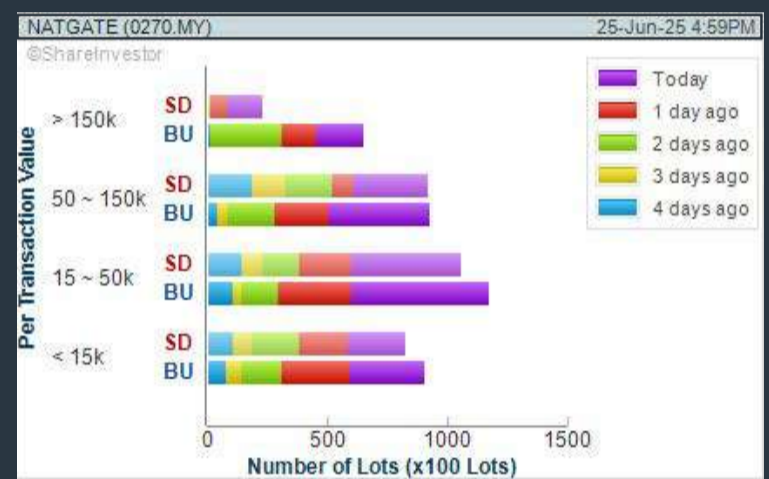
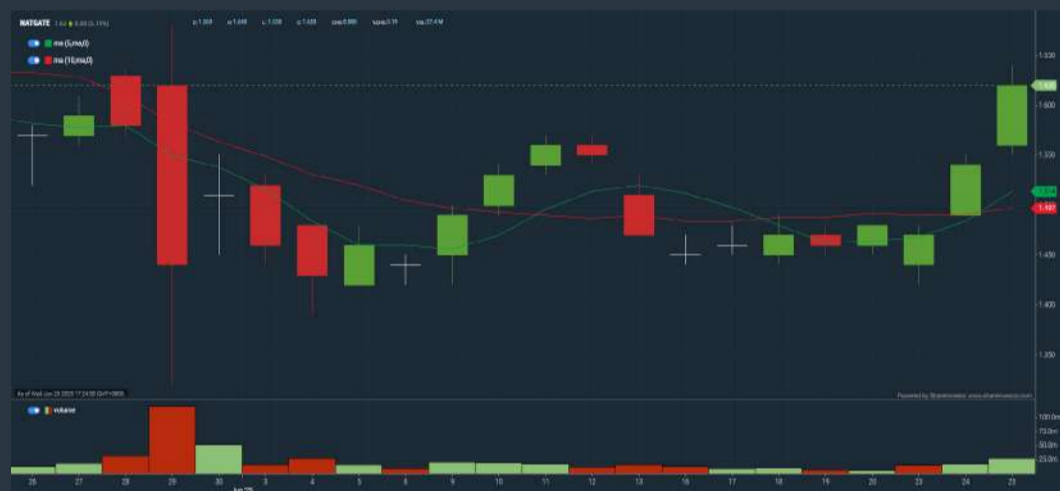
1. Revenue - select (more than) type (1) for the past select (1) financial year(s)
2. Moving Average Below Close - select (MA) type (20) below close price for type (1) days
3. Average Volume - type (5) days average volume type (10000) lots
4. Last Done Price - select (more than) type (0.3)
5. Moving Average Below Close - select (MA) type (10) below close price for type (1) days
6. Moving Average Bullish Crossover - select (MA) type (5) crossed above select (MA) type (10)

> click Save Template > Create New Template type (Non-Shariah Up-Trending Stocks) > click Create Click Save Template As > select Non-Shariah Up Trending Stocks > click Save
> click Screen Now (may take a few minutes)
Sort By: Select (Vol) Select (Desc)
Mouse over stock name > Charts > click C² Charts tab or Volume Distribution

NATIONGATE HOLDINGS BERHAD (0270)

C² Chart

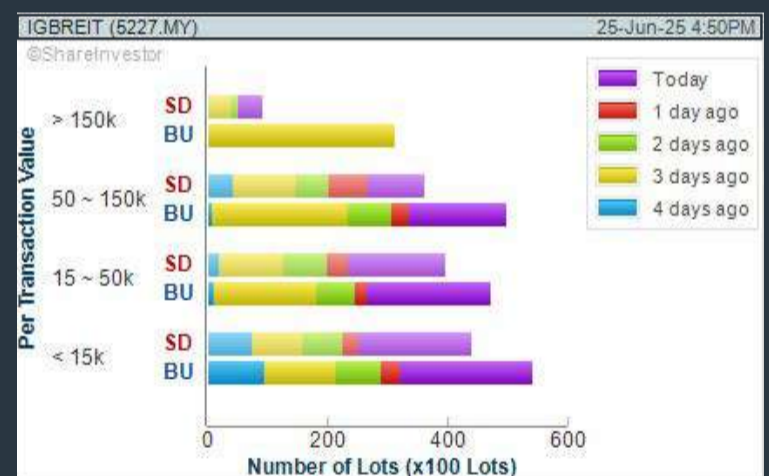
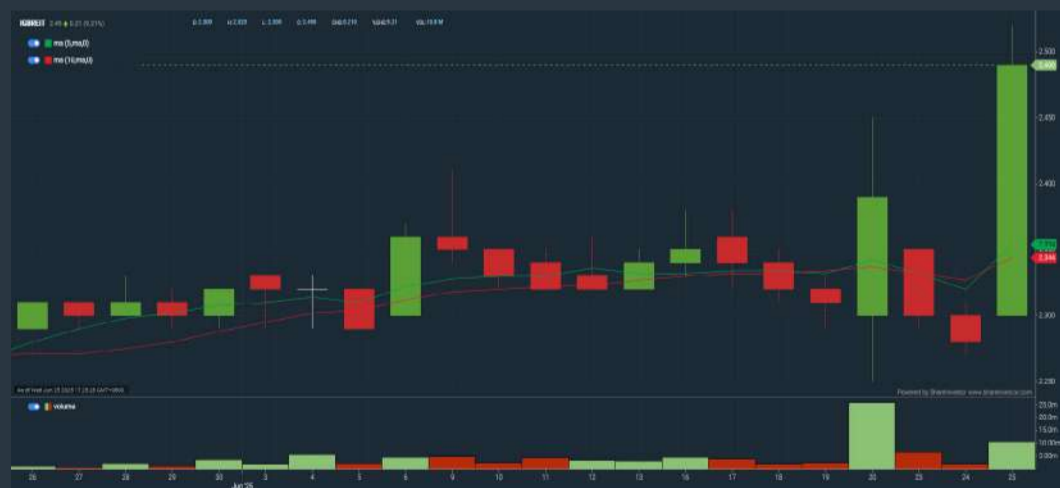
Analysis



IGB REAL ESTATE INV TRUST (5227)

C² Chart

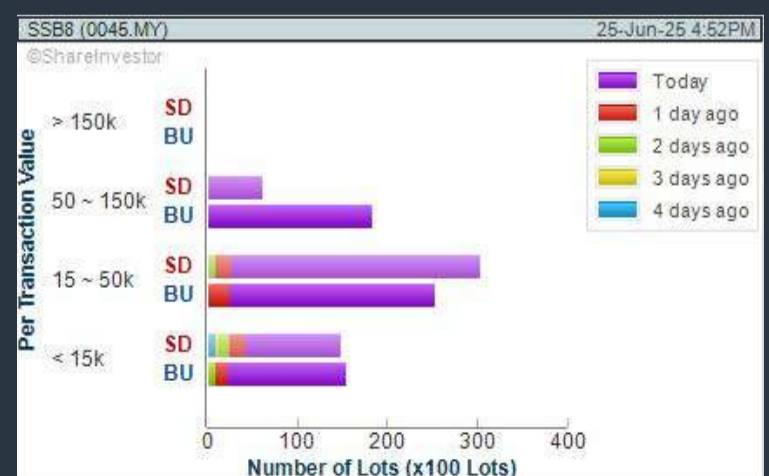
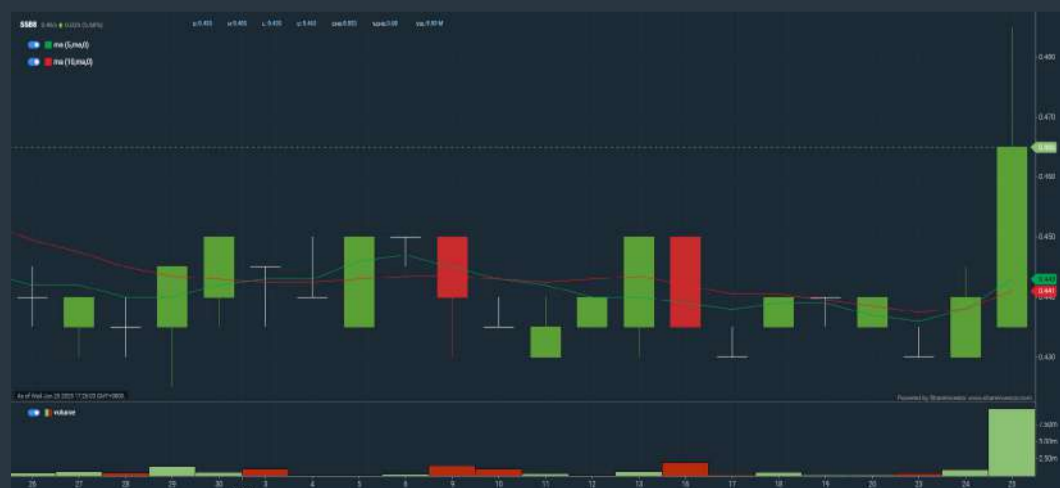
Analysis



SOUTHERN SCORE BUILDERS BERHAD (0045)

C² Chart

Analysis



Disclaimer: The information on this page is provided as a service to readers. It does not constitute financial advice and/or any investment recommendations. Past performance is not indicative of future results. We assume no liability for damages resulting from or arising out of the use of such information. It would be best if you did your own research to make your personal investment decisions wisely or consult a licenced investment advisor.

Price & Total Shareholder Return (as at Wednesday)

Fundamental Analysis

DEFINITION: Share price of a company trading at a lower price as compared to its fundamentals (FA) such as financial performance and dividend, allowing it to be attractive to value investors.

CHART GUIDE: Total Shareholder Return (TSR) combines share price appreciation and dividend distributions paid to show the total return to the shareholder expressed as a percentage.



ShareInvestor WebPro > Screener > Market Screener (FA & TA) > select BURSA > add criteria

A. Criteria

- > click Add Criteria
- Fundamental Analysis Conditions tab (i) Price Earnings Ratio
- Fundamental Analysis Conditions tab >select (ii) CAGR of Net Earnings
- Fundamental Analysis Conditions tab >select (iii) Net Debt To Equity
- Fundamental Analysis Conditions tab >select (iv) Return On Equity (ROE)

B. Conditions

1. Price Earnings Ratio - select (less than) type (15) times now
2. CAGR of Net Earnings - select (more than) type (10) % for the past type (3) financial year(s)
3. Net Debt To Equity – select (less than) type (1) for the past select (1) financial year(s)
4. Return On Equity (ROE) – select (more than) type (10) % for the past select (1) financial year(s)

- > click Save Template > Create New Template type (Value Stock) > click Create
- > click Save Template as > select Value Companies > click Save
- > click Screen Now (may take a few minutes)
- Sort by: Select (PE Ratio) Select (Ascending)
- > Mouse over stock name > Factsheet > looking for Total Shareholder Return
- > Mouse over stock name > Charts > click C2 Charts tab

INGENIEUR GUDANG BERHAD (5178)

C² Chart

Analysis



Period	Dividend Received	Capital Appreciation	Total Shareholder Return
Short Term Return	5 Days	-	-
	10 Days	-	-
	20 Days	-	-4.0%
Medium Term Return	3 Months	-	-8.6%
	6 Months	-	-14.4%
	1 Year	-	-21.4%
Long Term Return	2 Years	-	-33.9%
	3 Years	-	-40.7%
	5 Years	-	-49.5%
Annualized Return	Annualized	-	-19.9%

CRESCENDO CORPORATION BERHAD (6718)

C² Chart

Analysis



Period	Dividend Received	Capital Appreciation	Total Shareholder Return
Short Term Return	5 Days	-	-0.8%
	10 Days	-	-2.2%
	20 Days	-	2.8%
Medium Term Return	3 Months	0.9%	2.6%
	6 Months	0.9%	-0.7%
	1 Year	1.0%	-10.6%
Long Term Return	2 Years	1.3%	-20.2%
	3 Years	1.3%	-30.7%
	5 Years	1.4%	-38.2%
Annualized Return	Annualized	-	-10.8%

SOLID AUTOMOTIVE BERHAD (5242)

C² Chart

Analysis



Period	Dividend Received	Capital Appreciation	Total Shareholder Return
Short Term Return	5 Days	-	0.9%
	10 Days	-	0.8%
	20 Days	-	-
Medium Term Return	3 Months	-	-3.0%
	6 Months	-	-13.1%
	1 Year	0.0%	-19.4%
Long Term Return	2 Years	0.0%	-18.6%
	3 Years	0.0%	-28.0%
	5 Years	0.0%	-34.6%
Annualized Return	Annualized	-	-13.4%

Disclaimer: The information on this page is provided as a service to readers. It does not constitute financial advice and/or any investment recommendations. Past performance is not indicative of future results. We assume no liability for damages resulting from or arising out of the use of such information. It would be best if you did your own research to make your personal investment decisions wisely or consult a licenced investment advisor.

Price & Total Shareholder Return (as at Wednesday)

Fundamental Analysis

DEFINITION: Company revenue is growing and making good quality of earnings with positive Free Cash Flow.

CHART GUIDE: Total Shareholder Return (TSR) combines share price appreciation and distributions paid to show the total return to the shareholder expressed as a percentage.



ShareInvestor WebPro > Screener > Market Screener (FA & TA) > select BURSA > add criteria

A. Criteria

1. Fundamental Analysis Conditions tab >select (i) Free Cash Flow, (ii) Revenue Growth, (iii) Gross Profit (Earnings) Margin, (iv) Quality of Earnings, (v) Total Shareholder Returns, > click Add Criteria
2. Fundamental Analysis Conditions tab >select (vi) Total Shareholder Returns > click Add Criteria

B. Conditions (Criteria Filters)

1. Free Cash Flow - select (more than) type (1) for the past select (1) financial year(s)
2. Revenue Growth - select (more than) type (1) for the past select (1) financial year(s)
3. Gross Profit (Earnings) Margin - select (more than) type (30) % for the past select (1) financial year(s)
4. Quality of Earnings - select (more than) type (1) for the past select (1) financial year(s)
5. Total Shareholder Return - select (more than) type (5) % for the past select (3) financial year(s)
6. Total Shareholder Return - select (more than) type (5) % for the past select (5) financial year(s)

- > click Save Template > Create New Template type (Growth Companies) > click Create
- > click Save Template as > select Growth Companies > click Save
- > click Screen Now (may take a few minutes)
- > Sort By: Select (Revenue Growth) Select (Desc)
- > Mouse over stock name > Factsheet > looking for Total Shareholder Return

COUNTRY VIEW BERHAD (5049)

C² Chart

Analysis



Period	Dividend Received	Capital Appreciation	Total Shareholder Return
Short Term Return	5 Days	4.07	-3.0%
	10 Days	4.30	-8.2%
	20 Days	4.20	-8.0%
Medium Term Return	3 Months	0.30	-10.1%
	6 Months	0.32	-10.0%
	1 Year	0.25	-10.2%
Long Term Return	2 Years	0.43	-10.1%
	3 Years	0.40	-10.2%
	5 Years	0.40	-10.0%
Annualized Return	Annualized	-	-10.1%

2. IFCA MSC BHD (0023)

C² Chart

Analysis



Period	Dividend Received	Capital Appreciation	Total Shareholder Return
Short Term Return	5 Days	4.05	-3.2%
	10 Days	0.20	-4.0%
	20 Days	0.18	-5.8%
Medium Term Return	3 Months	0.21	-6.8%
	6 Months	0.21	-8.1%
	1 Year	0.25	-8.9%
Long Term Return	2 Years	0.28	-10.1%
	3 Years	0.28	-10.1%
	5 Years	0.30	-10.1%
Annualized Return	Annualized	-	-10.1%

3. HEXTAR RETAIL BERHAD (7202)

C² Chart

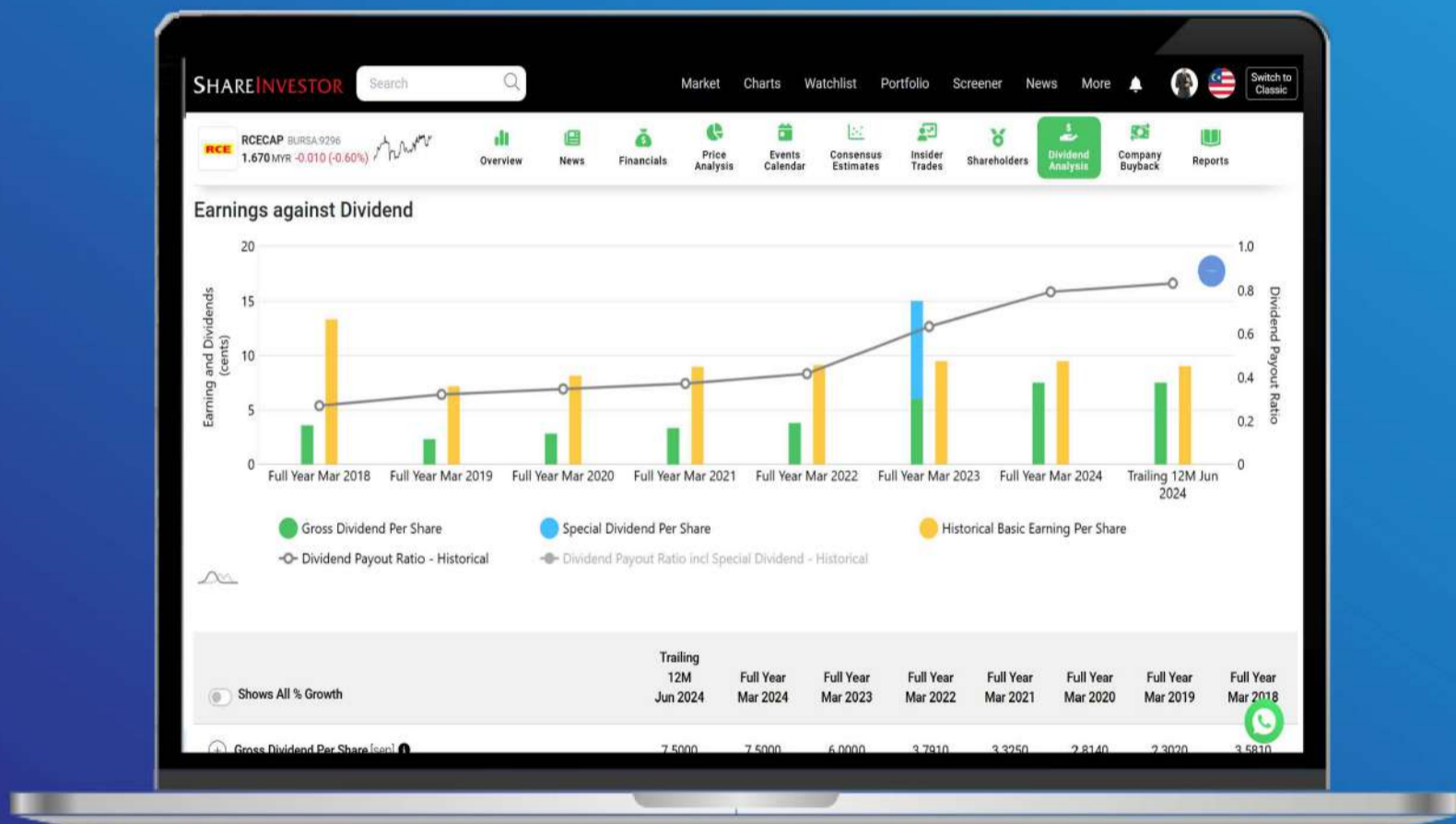
Analysis



Period	Dividend Received	Capital Appreciation	Total Shareholder Return
Short Term Return	5 Days	4.05	+1.8%
	10 Days	-	-
	20 Days	0.05	-0.1%
Medium Term Return	3 Months	0.05	-0.1%
	6 Months	0.05	-0.2%
	1 Year	0.25	-0.8%
Long Term Return	2 Years	0.05	+1.8%
	3 Years	0.05	+5.4%
	5 Years	0.05	+10.1%
Annualized Return	Annualized	-	+5.0%

Disclaimer: The information on this page is provided as a service to readers. It does not constitute financial advice and/or any investment recommendations. Past performance is not indicative of future results. We assume no liability for damages resulting from or arising out of the use of such information. It would be best if you did your own research to make your personal investment decisions wisely or consult a licenced investment advisor.

Tired of low returns? Let's talk high-paying Dividends!



- ✓ **Top Dividend Picks Right Now**
- ✓ **Insider Tips – Advanced strategies for experienced investors**
- ✓ **Easy-to-Follow Tutorial**

Get the most out of dividends, use our Dividend Analysis function –
Click to Watch Our Tutorial Below!

Upgrade Your Dividend Strategy Here



Price & Total Shareholder Return (as at Wednesday)

Fundamental Analysis

DEFINITION: Company is paying out dividend with low or moderate leverage.

CHART GUIDE: Total Shareholder Return (TSR) combines share price appreciation and distributions paid to show the total return to the shareholder expressed as a percentage.



ShareInvestor WebPro > Screener > Market Screener (FA & TA) > select BURSA > add criteria

A. Criteria

- > click Add Criteria
- Fundamental Analysis Conditions tab >select (i) Dividend Yield
- Fundamental Analysis Conditions tab >select (ii) Dividend Payout (Historical)
- Fundamental Analysis Conditions tab >select (iii) Total Debt To Equity
- Fundamental Analysis Conditions tab >select (iv) Total Shareholder Returns
- Fundamental Analysis Conditions tab >select (v) Total Shareholder Returns
- Fundamental Analysis Conditions tab / >select (vi) CAGR of Dividend Per Share

• Fundamental Analysis Conditions tab >select (vii) CAGR of Dividend Per Share

B. Conditions (Criteria Filters)

1. Dividend Yield - select (more than) type (1) % for the past select (1) financial year(s)
2. Dividend Payout (Historical) - select (between) type (0.5) to type (1) times for the past select (1) financial year(s)
3. Total Debt to Equity - select (less than) type (1) for the past select (1) financial year(s)
4. Total Shareholder Return - - select (more than) type (5) % for the past select (3) financial year(s)
5. Total Shareholder Return - - select (more than) type (5) % for the past select (5) financial year(s)

6. CAGR of Dividend Per Share - - select (less than) type (30) % for the past select (5) financial year(s)
7. CAGR of Dividend Per Share - - select (more than) type (1) % for the past select (5) financial year(s)

- > click Save Template > Create New Template type (Dividend Companies) > click Create
- > click Save Template as > select Dividend Companies > click Save
- > click Screen Now (may take a few minutes)
- > Sort By: Select (Dividend Yield) Select (Desc)
- > Mouse over stock name > Factsheet > looking for Total Shareholder Return

PETRA ENERGY BERHAD (5133)

C² Chart



Period	Dividend Received	Capital Appreciation	Total Shareholder Return
Short Term Return	5Days	-	-
	10Days	-	-0.01%
	20Days	-	-0.06%
Medium Term Return	3Months	-	-0.22%
	6Months	0.00	0.00%
	1Year	0.00	0.00%
Long Term Return	2Years	0.20	0.04%
	3Years	0.20	0.04%
	5Years	0.30	0.06%
Annualized Return	Annualized	-	0.01%

KENANGA INVESTMENT BANK BERHAD (6483)

C² Chart



Period	Dividend Received	Capital Appreciation	Total Shareholder Return
Short Term Return	5Days	-	-0.02%
	10Days	-	-0.05%
	20Days	-	-0.15%
Medium Term Return	3Months	0.00	0.00%
	6Months	0.00	0.00%
	1Year	0.00	0.00%
Long Term Return	2Years	0.00	0.00%
	3Years	0.20	0.03%
	5Years	0.40	0.06%
Annualized Return	Annualized	-	0.01%

IFCA MSC BERHAD (0023)

C² Chart



Period	Dividend Received	Capital Appreciation	Total Shareholder Return
Short Term Return	5Days	-	-0.22%
	10Days	0.00	-0.08%
	20Days	0.00	-0.38%
Medium Term Return	3Months	0.00	-0.08%
	6Months	0.00	0.05%
	1Year	0.00	-0.34%
Long Term Return	2Years	0.00	-0.05%
	3Years	0.00	-0.02%
	5Years	0.00	-0.01%
Annualized Return	Annualized	-	-0.01%

Disclaimer: The information on this page is provided as a service to readers. It does not constitute financial advice and/or any investment recommendations. Past performance is not indicative of future results. We assume no liability for damages resulting from or arising out of the use of such information. It would be best if you did your own research to make your personal investment decisions wisely or consult a licenced investment advisor.

Week: 19 Jun 2025 - 25 Jun 2025

More Brokers' Call 

AMINVESTMENT BANK <small>... See More</small>	Call	Target Price	Release Date
Hektar Reits (5121)	BUY	RM0.55	24 Jun 2025
Tenaga Nasional Bhd (5347)	HOLD	RM14.18	23 Jun 2025

APEX SECURITIES BERHAD <small>... See More</small>	Call	Target Price	Release Date
Aurelius Technologies Berhad (5302)	BUY	RM1.39	25 Jun 2025
Tenaga Nasional Bhd (5347)	BUY	RM16.04	23 Jun 2025

Hong Leong Investment Bank <small>... See More</small>	Call	Target Price	Release Date
Axiata Group Berhad (6888)	BUY	RM2.50	25 Jun 2025
Focus Point Holdings Berhad (0157)	BUY	RM1.10	24 Jun 2025
IOI Properties Group Berhad (5249)	BUY	RM4.05	23 Jun 2025

KENANGA <small>... See More</small>	Call	Target Price	Release Date
IGB REIT (5227)	MARKET PERFORM	RM2.40	25 Jun 2025
SD Guthrie Berhad (5285)	MARKET PERFORM	RM4.60	25 Jun 2025
Tenaga Nasional Berhad (5347)	OUTPERFORM	RM17.20	23 Jun 2025

MIDF <small>... See More</small>	Call	Target Price	Release Date
Gamuda Berhad (5398)	BUY	RM5.42	25 Jun 2025
IGB REIT (5227)	BUY	RM2.48	25 Jun 2025
Sunway Berhad (5211)	NEUTRAL	RM4.86	24 Jun 2025

PUBLIC INVESTMENT BANK <small>... See More</small>	Call	Target Price	Release Date
IGB Real Estate Investment Trust (5227)	NEUTRAL	RM2.10	25 Jun 2025
Magni-Tech Industries Berhad (7087)	NEUTRAL	RM2.30	24 Jun 2025

UOB KAYHIAN <small>... See More</small>	Call	Target Price	Release Date
Hibiscus Petroleum Berhad (5199)	BUY	RM2.22	24 Jun 2025
Petronas Dagangan Berhad (5861)	BUY	RM23.82	24 Jun 2025
Gas Malaysia Berhad (5209)	BUY	RM5.11	23 Jun 2025

Disclaimer: InveSt does not accept any liability whatsoever for any direct, indirect or consequential losses (including loss of profit) or damages that may arise from the use of information or opinions in this publication. The information and opinions in InveSt are not to be considered as an offer to sell or buy any of the securities discussed. Opinions expressed are subject to change without notice. The Brokers may, from time to time, have interests or positions in the securities mentioned. For the full report on each item listed on this page, please visit https://www.shareinvestor.com/my/brokers_call.

DEFINITION: Top 9 stocks with Technical Analysis plus Pattern Matching by 60 pre-defined indicators by the system showing a higher probability of bullish sentiment on the share price.



ShareInvestor WebPro > Screener > Predefined TA Screens > select market BURSA > Most Long Signals > click Scan Results or mouse over each company

CME GROUP BERHAD (7018.MY)

CME

Price updated at 25 Jun 2025 14:00

Last: 0.015	Change: -	Volume: -
	Change (%): -	Range: 0.015 - 0.015

TA Scanner Results based on historical data up to 25 Jun 2025

Condition	Signal	Explanation
Bollinger Band: Bullish Long Term Volatility Breakout and Trending	Long	1. Close price above upper bollinger band(33,1). 2. Volume above average volume(50). 3. Average volume(50) is above 300,000.
Bollinger Band: Bullish Short Term Volatility Breakout and Trending	Long	1. Close price above upper bollinger band(33,1). 2. Volume above average volume(10). 3. Average volume(10) is above 300,000.
DM: Bullish Directional Movement	Long	-DI(14) crossed below +DI(14)
MACD: Bullish MACD Crossover	Long	1. MACD(12,26) diff line crossed above the MACD(12,26) signal line. 2. MACD Histogram(12,26) is above 0.
RSI: Short Term RSI 50 Bullish Crossover	Long	1. RSI(20) crossed above 50 within the last 1 day and RSI(20) 1 day ago below 50 for the last 5 days. 2. Volume above average volume(125). 3. Average volume(5) is above 100,000.

KUB MALAYSIA BERHAD (6874.MY)

KUB

Price updated at 25 Jun 2025 16:50

Last: 0.660	Change: +0.030	Volume: 2,421
	Change (%): +4.76	Range: 0.630 - 0.660

TA Scanner Results based on historical data up to 25 Jun 2025

Condition	Signal	Explanation
Bollinger Band: Bullish Lower Bollinger Band Support	Long	1. Low 1 day ago below lower bollinger band(20,2). 2. Close above close 1 day ago. 3. Average volume(5) is above 100,000.
DM: Bullish Directional Movement	Long	-DI(14) crossed below +DI(14)
MA: Bullish Price Crossover	Long	1. Close price crossed above MA(40) within the last 1 day. 2. Previous day close price is below the MA(10) for the last 5 days
RSI: Short Term RSI 50 Bullish Crossover	Long	1. RSI(20) crossed above 50 within the last 1 day and RSI(20) 1 day ago below 50 for the last 5 days. 2. Volume above average volume(125). 3. Average volume(5) is above 100,000.

Disclaimer: The information on this page is provided as a service to readers. It does not constitute financial advice and/or any investment recommendations. Past performance is not indicative of future results. We assume no liability for damages resulting from or arising out of the use of such information. It would be best if you did your own research to make your personal investment decisions wisely or consult a licenced investment advisor.

TEO SENG CAPITAL BERHAD (7252.MY)

TEOSEN

Price updated at 25 Jun 2025 16:50

Last: 0.950	Change: +0.030	Volume: 5,098
	Change (%): +3.26	Range: 0.925 - 0.960

TA Scanner Results based on historical data up to 25 Jun 2025

Condition	Signal	Explanation
Bollinger Band: Bullish Lower Bollinger Band Support	Long	1. Low 1 day ago below lower bollinger band(20,2). 2. Close above close 1 day ago. 3. Average volume(5) is above 100,000.
Candlestick: Bullish Engulfing	Long	Bullish: Engulfing
Stochastic: Fast Stochastic Buy Signal	Long	1. Fast Stochastic(15,5) %K crossed above 20. 2. Fast Stochastic(15,5) %K 1 day ago was below 20 for the last 5 days. 3. Average volume(30) is above 50000
Williams %R: Bullish Williams %R	Long	1. Williams %R(26) between -80 and -100. 2. Average volume(5) is above 100,000.

SKB SHUTTERS CORPORATION BERHAD (7115.MY)

SKBSHUT

Price updated at 25 Jun 2025 16:57

Last: 0.740	Change: -0.010	Volume: 1,069
	Change (%): -1.33	Range: 0.740 - 0.750

TA Scanner Results based on historical data up to 25 Jun 2025

Condition	Signal	Explanation
Bollinger Band: Bullish Lower Bollinger Band Support	Long	1. Low 1 day ago below lower bollinger band(20,2). 2. Close above close 1 day ago. 3. Average volume(5) is above 100,000.
Candlestick: Bullish Harami	Long	Bullish: Harami
Stochastic: Fast Stochastic Buy Signal	Long	1. Fast Stochastic(15,5) %K crossed above 20. 2. Fast Stochastic(15,5) %K 1 day ago was below 20 for the last 5 days. 3. Average volume(30) is above 50000
Volume: Consecutive Days Of Increasing Average Volume	Long	1. Average Volume(20) has been increasing over the last 2 weeks. 2. Average volume(20) is above 100000

ARB BERHAD (7181.MY)

ARBB

Price updated at 25 Jun 2025 16:50

Last: 0.030	Change: -0.005	Volume: 2,832
	Change (%): -14.29	Range: 0.030 - 0.035

TA Scanner Results based on historical data up to 25 Jun 2025

Condition	Signal	Explanation
Bollinger Band: Bullish Lower Bollinger Band Support	Long	1. Low 1 day ago below lower bollinger band(20,2). 2. Close above close 1 day ago. 3. Average volume(5) is above 100,000.
DM: Bullish Directional Movement	Long	-DI(14) crossed below +DI(14)
MA: Bullish Price Crossover	Long	1. Close price crossed above MA(40) within the last 1 day. 2. Previous day close price is below the MA(10) for the last 5 days
MACD: Bullish MACD Crossover	Long	1. MACD(12,26) diff line crossed above the MACD(12,26) signal line. 2. MACD Histogram(12,26) is above 0.
Parabolic SAR: Bearish Parabolic SAR Reversal	Neutral	1. Parabolic SAR 1 day ago above close price 1 day ago for the last 5 days. 2. Parabolic SAR below close price



BESHOM HOLDINGS BERHAD (7668.MY)

BESHOM

Price updated at 25 Jun 2025 16:54

Last: 0.595	Change: -0.005	Volume: 429
	Change (%): -0.83	Range: 0.590 - 0.600

TA Scanner Results based on historical data up to 25 Jun 2025

Condition	Signal	Explanation
Bollinger Band: Bullish Lower Bollinger Band Support	Long	1. Low 1 day ago below lower bollinger band(20,2). 2. Close above close 1 day ago. 3. Average volume(5) is above 100,000.
Candlestick: Bullish Harami	Long	Bullish: Harami
Stochastic: Fast Stochastic Buy Signal	Long	1. Fast Stochastic(15,5) %K crossed above 20. 2. Fast Stochastic(15,5) %K 1 day ago was below 20 for the last 5 days. 3. Average volume(30) is above 50000
Williams %R: Bullish Williams %R	Long	1. Williams %R(26) between -80 and -100. 2. Average volume(5) is above 100,000.



SIME DARBY BERHAD (4197.MY)

SIME

Price updated at 25 Jun 2025 16:59

Last: 1.710	Change: +0.060	Volume: 91,780
	Change (%): +3.64	Range: 1.650 - 1.710

TA Scanner Results based on historical data up to 25 Jun 2025

Condition	Signal	Explanation
Volume: 10 Days large value Buy Up trade	Long	1. 150K value Buy Up greater than Sell Down by 20% for 10 days. 2. 50K-100K value Buy Up greater than Sell Down by 20% for 10 days. 3. Average volume(10) is above 1000000
Volume: 5 Days large value Buy Up trade	Long	1. 150K value Buy Up greater than Sell Down by 20% for 5 days. 2. 50K-100K value Buy Up greater than Sell Down by 20% for 5 days. 3. Average volume(10) is above 1000000
Volume: Consecutive Days Of Increasing Average Volume	Long	1. Average Volume(20) has been increasing over the last 2 weeks. 2. Average volume(20) is above 100000
Williams %R: Bullish Williams %R	Long	1. Williams %R(26) between -80 and -100. 2. Average volume(5) is above 100,000.



V.S INDUSTRY BERHAD (6963.MY)

VS

Price updated at 25 Jun 2025 16:59

Last: 0.810	Change: -	Volume: 46,425
	Change (%): -	Range: 0.810 - 0.825

TA Scanner Results based on historical data up to 25 Jun 2025

Condition	Signal	Explanation
Bollinger Band: High Above Upper Bollinger Band	Neutral	1. High above upper bollinger band(14,2). 2. Average volume(5) is above 100,000.
DM: Bullish Directional Movement	Long	-DI(14) crossed below +DI(14)
MA: Medium Term Bearish Moving Average Crossover	Short	MA(25) crossed below MA(50) within the last 1 day.
MA: Short Term Bullish Moving Average Crossover	Long	MA(10) crossed above MA(15) within the last 1 day.
MACD: Bullish MACD Crossover	Long	1. MACD(12,26) diff line crossed above the MACD(12,26) signal line. 2. MACD Histogram(12,26) is above 0.
Parabolic SAR: Bearish Parabolic SAR Reversal	Neutral	1. Parabolic SAR 1 day ago above close price 1 day ago for the last 5 days. 2. Parabolic SAR below close price
Volume: 10 Days large value Buy Up trade	Long	1. 150K value Buy Up greater than Sell Down by 20% for 10 days. 2. 50K-100K value Buy Up greater than Sell Down by 20% for 10 days. 3. Average volume(10) is above 1000000



KENANGA INVESTMENT BANK BERHAD (6483.MY)

KENANGA

Price updated at 25 Jun 2025 16:57

Last: 0.880	Change: -	Volume: 2,722
	Change (%): -	Range: 0.875 - 0.895

TA Scanner Results based on historical data up to 25 Jun 2025

Condition	Signal	Explanation
Candlestick: Bullish Harami	Long	Bullish: Harami
MA: Short Term Bullish Moving Average Crossover	Long	MA(10) crossed above MA(15) within the last 1 day.
MACD: Bullish MACD Crossover	Long	1. MACD(12,26) diff line crossed above the MACD(12,26) signal line. 2. MACD Histogram(12,26) is above 0.
Williams %R: Bullish Williams %R	Long	1. Williams %R(26) between -80 and -100. 2. Average volume(5) is above 100,000.

Disclaimer: The information on this page is provided as a service to readers. It does not constitute financial advice and/or any investment recommendations. Past performance is not indicative of future results. We assume no liability for damages resulting from or arising out of the use of such information. It would be best if you did your own research to make your personal investment decisions wisely or consult a licenced investment advisor.



Dato' Eu Hong Chew
Former Group CEO i-Berhad
Non-Executive Director

He has been associated with the Sumurwang Group for many years charting the path for its manufacturing arm, firstly under Dreamland Holdings Berhad and the subsequent acquisition of I-Berhad.

Before that, he was with PA Management Consulting for a decade where he was the Director of Studies for the Cranfield PA MBA Programme in Malaysia.

Educated at the Royal Military College, Dato' Eu has an engineering degree from the University of Glasgow, and a MBA from the University of Bradford, UK.

Is there an investment opportunity in **DOVER CORP**

SUMMARY

- **Low growth despite acquisitions:** Dover spent a net USD3.5 billion on acquisitions over the past decade, yet revenue only grew at a 2.2% CAGR, indicating it operates in a mature, low-growth industry.

Disclaimer: This article is written for informational purposes only. It does not constitute a solicitation, offer, advice, counseling or recommendation to buy or sell. As such it is not intended to promote the purchase of shares in any way. As a reminder, any type of asset has a risk factor and needs to be evaluated from multiple perspectives. Therefore, any investment decision and the associated risk remains with the investor. The views expressed here are entirely the writer's own.

- **Improving profitability:** The company improved returns through better cost control and efficiency gains, achieving an average ROIC of 13% and ROE of 22%, both above its cost of capital.
- **Strong financial position:** Dover consistently generated positive operating cash flow, maintained good cash conversion, and effectively allocated capital through reinvestment, dividends, and buybacks.
- **Valuation offers no margin of safety:** Even under optimistic assumptions of continued efficiency gains and 4% growth, the estimated intrinsic value of USD161 is below the market price of USD187 (end Dec 2024).

BACKGROUND

Dover Corporation (NYSE:DOV) is a “diversified global manufacturer that delivers innovative equipment and components, consumable supplies, aftermarket parts, software, digital solutions, and support services.”

In reality, this is a polished way of presenting what is fundamentally a traditional business:

- It supplies components that customers use in their production processes.
- It provides equipment and parts for the aftermarket.

Despite the plain nature of its operations, the company has set clear strategic goals:

- Achieve organic sales growth above GDP.
- Improve return on capital.
- Increase free cash flow and earnings per share.

As a global operator, Dover derives 56% of its revenue from the US. Yet over the past 10 years, US revenue grew at just 1.1% CAGR. By contrast, Europe and Asia performed better, with 5.8% and 4.4% CAGRs, respectively.

Note: In my analysis, the 2024 performance was based on the September 2024 LTM performance unless stated otherwise.

RESHUFFLING SEGMENTS, NOT MOVING THE NEEDLE

Over the past decade, Dover has repeatedly reshuffled its reporting lines - starting with four segments in 2015, shifting to three in 2018, expanding to five in 2019, and renaming two of those in 2021. These changes likely reflect its nature as a “serial acquirer and divestor,” with frequent portfolio adjustments driving reporting realignments.

Between 2015 and 2024, Dover undertook acquisitions every year, spending approximately USD5.9 billion on purchases while divesting assets worth around USD2.4 billion. The result: a net cash outflow of USD3.5 billion - a significant figure given the company’s average total assets of USD10 billion over the same period.

Despite this aggressive M&A activity, revenue growth has been modest. From 2015 to 2024, Dover’s top line grew at just a 2.2% CAGR, suggesting it operates in a structurally low-growth industry.

To better understand the drivers of this growth, I analysed two dimensions:

- Organic growth vs. net acquisitions (Chart 1, left panel).
- Price vs. volume contributions (Chart 1, right panel).

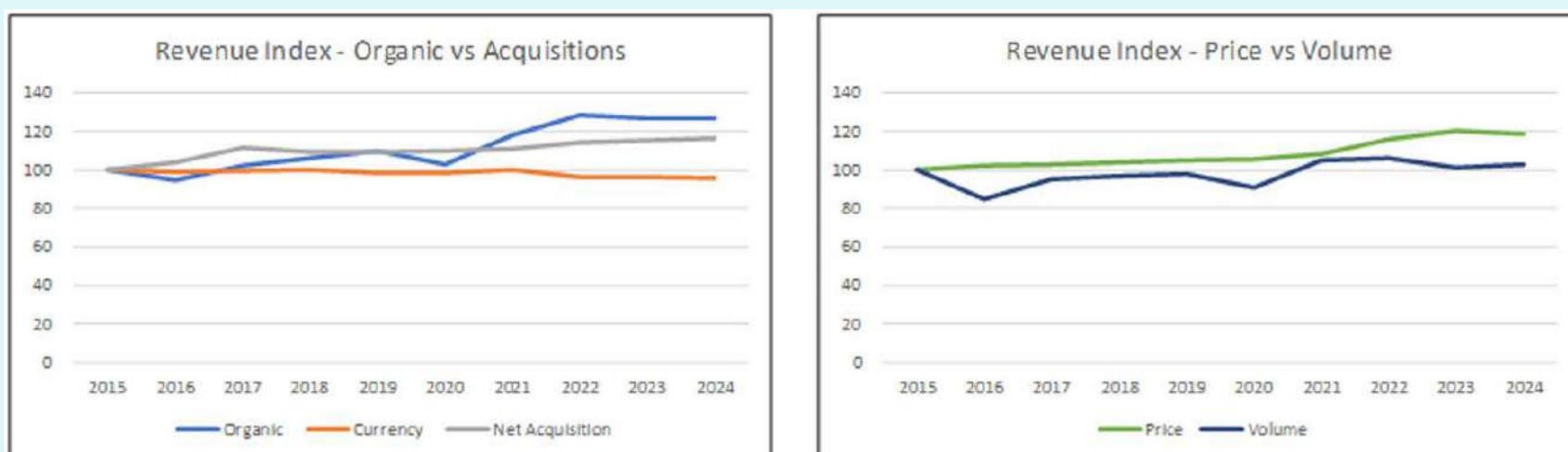


Chart 1: Revenue growth analysis

Notes to Chart 1.

- a) I obtained the annual growth rates for each of the components from the respective Form 10-K. The index for each component was then derived with 2015 as the base of 100.
- b) The 2024 growth rates were assumed to be the Sep 2024 YTD rates.
- c) The company provided the annual price growth rate. The annual volume growth was assumed to be the difference between the total growth rate and the price growth rate.

Interestingly, organic growth appears to have played a bigger role than acquisitions. Although the company did not define “organic growth,” it likely compares current-year revenue to the prior year’s, excluding newly acquired businesses. However, if the prior year’s figures already included recent acquisitions, this metric may overstate true organic momentum.

Based on my organic index, Dover’s organic CAGR was about 2.7%. Even more telling is that most of this organic growth came from price increases rather than volume expansion. Price growth, however, only averaged 1.9% CAGR over the decade, less than the global inflation rate.

In short, Dover’s performance reflects that of a mature, slow-growth business. Despite substantial acquisitions, it has been unable to break out of single-digit revenue growth. In this context, future returns will likely depend more on improving operational efficiency and capital allocation than on topline expansion.

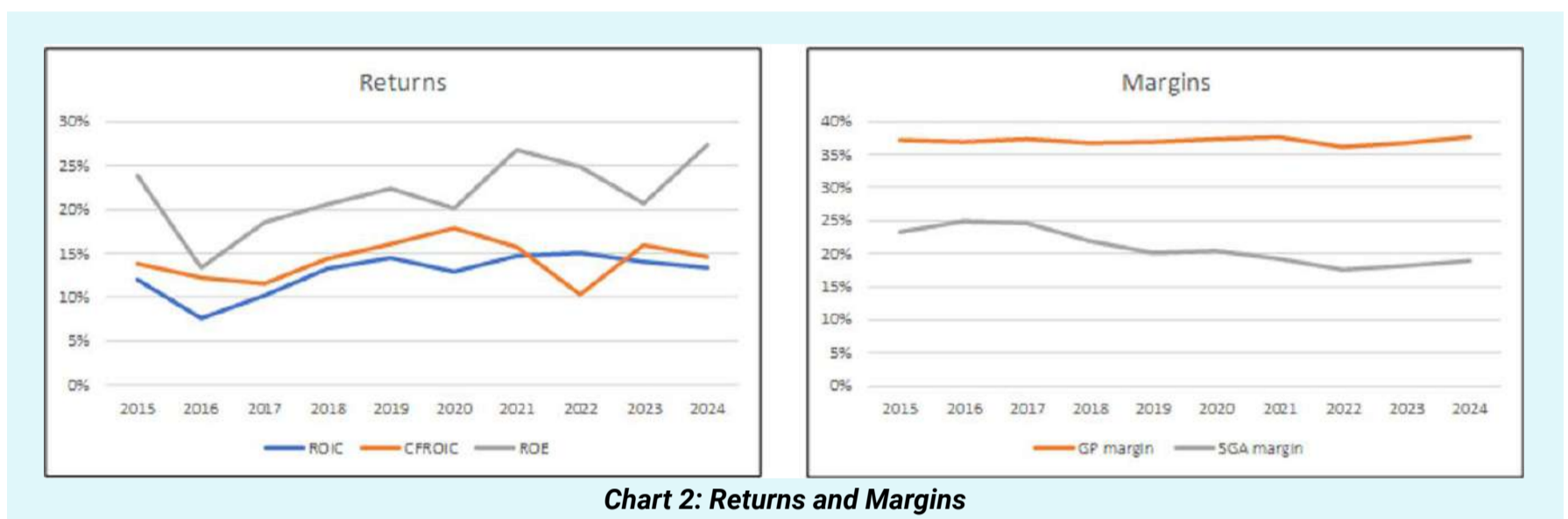
IMPROVING RETURNS

Chart 2 (left) shows a clear uptrend in returns over the past decade. Dover achieved an average ROIC of 13% and an average

**Please refer to the disclaimer on first page and last page.*

ROE of 22%, both well above its current WACC of 9% and cost of equity of 10%. This positive spread indicates consistent value creation for shareholders.

A key contributor to this improved profitability appears to be the declining Selling, General, and Administrative (SGA) margin (Chart 2, right). Gross profit margins remained relatively flat over the period, so the gains in operating margin likely stem from tighter cost control rather than pricing or product mix improvements.



Can these return improvements continue? To answer this, I examined the underlying drivers of operational and capital efficiency.

- **Operating efficiency:** Aside from inventory turnover, which remained flat, the other three metrics – ROA, operating profit margin, and operating expense ratio - showed positive trends.
- **Capital efficiency:** Here, all four indicators – Reinvestment margin, gross profitability, cash conversion cycle, and asset turnover - improved steadily, suggesting disciplined capital deployment.

Taken together, these trends point to a broad-based enhancement in Dover's efficiency. While there may still be room for incremental improvement, the pace of gains is likely to moderate as the company approaches its structural limits. Nonetheless, the

foundation laid over the past decade supports the case for continued, albeit slower, improvements in returns going forward.

FINANCIAL POSITION

I would rate Dover to be financially sound based on the following:

- From 2015 to 2024, it delivered positive cash flow from operations every year. During this period, it generated USD9.9 billion cash flow from operations compared to its USD8.9 billion net income. This is a good cash conversion ratio.
- It had USD1.8 billion in cash and short-term investments as of the end of Mar 2024. This was about 14% of its total assets.
- Over the past decade, Dover had an average Reinvestment rate of 30%, despite the continuous acquisitions.
- It is a cash cow with a good capital allocation plan as shown in Table 1. The cash flow from operations was enough to fund its CAPEX and acquisitions. Excess was returned to shareholders as dividends and share buybacks.

Item	Sources USD m	Uses USD m
Cash flow from Ops	9,914	
New shares	12	
Net Debt	595	
Net Acquisitions		3,510
Net CAPEX		1,672
Dividends		2,802
Buybacks		3,190
Misc		-653
Total	10,521	10,521

Table 1: Sources and Uses of Funds 2017 to 2024

The main concern would be its debt-capital position. While it had a debt-capital ratio of 99% as of March 2025, this has come down from its 2018 high of 114%. I would not worry too much about this debt level, given its historical cash generation ability as illustrated in Table 1.

VALUATION *(Refer to the original article for the details)*

I adopted the following picture in valuing Dover:

- **This is a mature company with low revenue growth** - While the company would continue with its organic growth and acquisitions, it would only deliver a 4% CAGR in perpetuity. The Sep 2024 LTM revenue would be the base revenue.
- **Dover would deliver another 10% improvement in the operating and capital efficiency in the terminal year, i.e., in 6 years** - The company would achieve these improvements proportionately from the base year to the terminal year.

On such a basis, I obtained an intrinsic value of USD161 per share compared to its market price of USD187 per share (end Dec 2024). There is no margin of safety.

I believe this is an optimistic valuation as at the terminal stage, the company is projected to:

- Achieve a ROIC of 18% compared to the 2022 to 2024 average of 14%.
- Incur a Reinvestment rate of 18%. This is much lower than the average 30% achieved over the past decade.
- Have an EPS of USD0.14 per share compared to the 2024 EPS of USD0.11.

CONCLUSION

Dover has demonstrated its strength as a consistent cash generator with improving capital and operating efficiencies. Over the past decade, it created shareholder value by generating returns

above its cost of capital and maintaining a disciplined approach to capital allocation.

However, the company operates in a structurally low-growth sector, and its extensive acquisition strategy has not translated into meaningful topline acceleration.

At the current market price, there is no margin of safety. The valuation assumes continued improvements in efficiency and moderate growth, yet even under these optimistic assumptions, the intrinsic value remains below the market price.

For long-term investors, Dover is a financially sound business with strong fundamentals, but not a compelling opportunity at current valuations.

I am a long-term value investor who has held onto stocks for more than 5 years. My analysis and valuation are from such a perspective. I consider quarterly results “noisy” and focus on long-term trends.

This article was re-purposed from my article “Dover Corp: The Market Price Has Run Ahead For This Strong Income Generator,” which was first published in Seeking Alpha.

Refer to this [link](#) for more of my insights on other US companies.

Disclaimer: This article is written for informational purposes only. It does not constitute a solicitation, offer, advice, counseling or recommendation to buy or sell. As such it is not intended to promote the purchase of shares in any way. As a reminder, any type of asset has a risk factor and needs to be evaluated from multiple perspectives. Therefore, any investment decision and the associated risk remains with the investor. The views expressed here are entirely the writer's own.



Learn how to identify Hot Stocks using Technical Analysis (TA) and Fundamental Analysis (FA)

SIGN UP FOR Invest
IT'S FREE!!!

[Click here](#)

Scan me



Via email, every Friday.

UNLOCK THE SECRET OF WEALTH

DO YOU REALLY WANT TO MASTER VALUE INVESTING



SEE HOW TO GET HIGHER RETURNS WITH LOWER RISK



Govt introduces new tax incentives to strengthen venture capital, private equity sectors

According to Finance Minister II Datuk Seri Amir Hamzah Azizan, the government has introduced new tax incentives to strengthen the venture capital (VC) and private equity (PE) sectors in the country. The new incentive offers a concessionary tax rate of 5% for up to 10 years for investment funds that invest at least 20% of their capital in local startups.

Additionally, VC and PE management companies registered with the Securities Commission Malaysia will benefit from a 10% tax rate. The incentives also apply to onshore limited liability partnership structures.

He was speaking at the announcement of the appointment of Fund Managers under Jelawang Capital's Emerging Fund Managers'

Programme (EMP) and Regional Fund Managers' Initiative (RMI). He said that capital alone is not enough for innovation to flourish and that policy reform must walk hand in hand with investment.

Previously, Malaysia offered tax exemptions rather than concessionary rates.

Now, VC firms investing at least 70% of their funds in early-stage startups could apply for a 100% tax exemption on statutory income for five years, and could apply to extend it. Management companies also enjoyed exemptions, but only on income from VC management fees, and were subject to strict qualifying conditions and definitions.

To complement these changes, Bank Negara Malaysia is enhancing the Foreign Exchange Policy (FEP) framework. He added that VC and PE firms may now apply based on their fund mandate size, rather than on a transactional basis, for cross-border fundraising and investments exceeding standard FEP limits. This streamlines VC and PE operations to enable capital to move more efficiently across Malaysia's borders and boosting regional competitiveness. These reforms mark meaningful progress in positioning Malaysia as a globally competitive hub for venture and private capital.

Khazanah Nasional Bhd and its subsidiary Jelawang Capital have selected the first five VC firms under the EMP and the RMI. **For more information, [please click this link](#).**

CHECK OUT
SHAREINVESTOR
BROKERS' CALL
 Weekly Buy/Sell/Hold calls from leading Malaysian Brokerages.

[Go To Brokers' Call](#)

Employers, foreign workers to start 2% contribution each from October - EPF

The Employees Provident Fund (EPF) announced that starting with 2025 October's wages, employers and their non-Malaysian workers must each contribute 2% of their monthly pay.

In a statement, EPF said the new rule will cover all non-Malaysian workers in Malaysia (except domestic helpers) who have a valid passport and work pass from the Immigration Department.

Up until now, EPF contributions for non-Malaysian citizen employees have been optional. This move to make them mandatory marks a significant step towards supporting the national agenda of ensuring social protection for all workers, regardless of nationality, have access to social protection, thereby fostering greater equity and fairness within the labour market.

Employers are required to register their companies with the EPF to ensure a smooth transition and compliance with the expansion of mandatory EPF contribution coverage to non-Malaysian citizen employees. Employer registration can be done online via the official EPF website or at any EPF office nationwide.

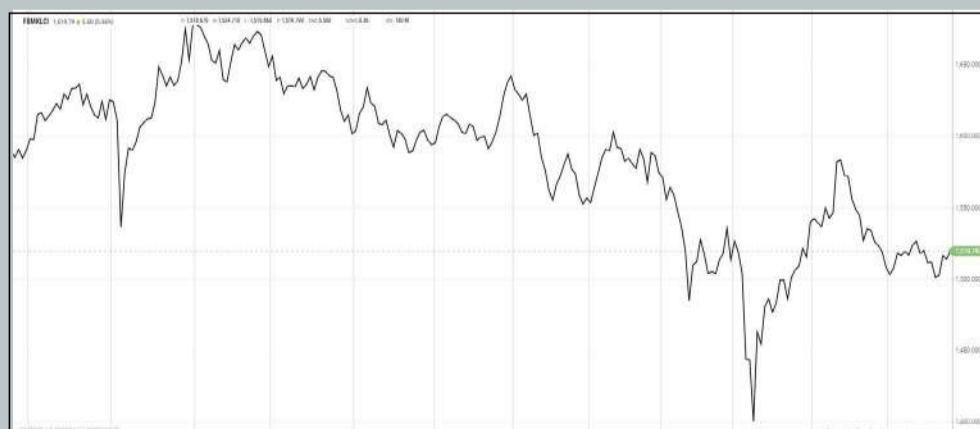
Since the Budget 2025 announcement in October 2024 on extending mandatory EPF coverage to non-Malaysian employees, EPF has held over 30 engagement sessions with key stakeholders, including government agencies, employers, non-governmental organisations and foreign worker representatives. Prime Minister Datuk Seri Anwar Ibrahim had said the mandatory EPF would be implemented in phases.

Industry groups, meanwhile, have raised concern over the new foreign labour policy, warning it could raise labour costs and hurt Malaysia's competitiveness. These include the Federation of Malaysian Manufacturing, which has called for a two-year delay to allow for proper consultation and business adjustments, and the Master Builders Association Malaysia, which highlighted the potential cost burden on the construction sector.

EYE ON THE MARKETS

On Wednesday (25June), the Ringgit closed at 4.2355 against the USD and 3.3117 to the Sing Dollar. On Monday (23June), the FBM KLCI opened at 1493.19. As at Wednesday (25June) 5:00pm, the FBM KLCI closed up 26.60 points at 1519.79.

Over in US, the overnight Dow Jones Industrial Average closed down 106.59 points (-0.25%) to 42,982.43 whilst the NASDAQ added 61.02 points (+0.31%) to 19,973.55.



KLCI 1 Year Chart

Over 5 Trading Days (as at Yesterday)



ShareInvestor WebPro (www.shareinvestor.com/my)

1. Price > Stock Prices
2. Select Market: NASDAQ / NYSE / IDX / SET / HKEX / SGX (One bourse at a time)
3. select Stocks Tab
4. select Ranking Top Gainers or Top Losers (Over 5 Trading Days)
5. Mouse over Column Layout > select Edit Customs > select Name > select Last Done Price > select 5 Days Change > select 52 Weeks High > select 52 Weeks Low > Mouse Over Column Layout > select Custom

NASDAQ (USD)

Top Gainers

Name	Last Done	Change Over 5 Days	52 Weeks High	52 Weeks Low
BOOKING HOLDINGS	5,482.230	+195.970	5,639.700	3,180.000
MERCADOLIBRE	2,528.950	+139.470	2,635.880	1,563.210
FIRST CITIZENS BANCSHARES A	1,908.420	+99.920	2,412.930	1,473.620
NETFLIX	1,279.110	+58.440	1,262.810	587.040
ASML HOLD NY REG	813.360	+51.720	1,110.090	578.510

Top Losers

Name	Last Done	Change Over 5 Days	52 Weeks High	52 Weeks Low
WINMARK	376.370	-67.670	459.925	295.785
DUOLINGO A	422.790	-53.510	544.930	145.050
REGENCELL BIOSCIENCE HOLDINGS	22.950	-55.050	83.600	0.080
LPL FINANCIAL	354.100	-23.910	390.230	187.190
ELBIT SYSTEMS	422.540	-31.370	476.040	175.300

NYSE (USD)

Top Gainers

Name	Last Done	Change Over 5 Days	52 Weeks High	52 Weeks Low
BERKSHIRE HATHAWAY A	740,085.000	+11,885.000	812,855.000	607,954.790
NVR	7,277.590	+284.660	9,964.770	6,562.850
FAIR ISAAC	1,926.520	+149.580	2,402.515	1,410.655
TRANSDIGM GROUP	1,472.950	+47.570	1,488.540	1,176.310
BIGLARI HOLDINGS A	1,389.830	+46.730	1,444.870	805.040

Top Losers

Name	Last Done	Change Over 5 Days	52 Weeks High	52 Weeks Low
TX PAC LAND	1,059.940	-27.660	1,769.140	724.750
AUTOZONE	3,577.540	-26.090	3,916.810	2,801.490
HIMS & HERS HEALTH A	42.950	-18.120	72.980	13.470
ALPHA METALLURGICAL	104.340	-11.370	334.720	100.000
DEERE	514.100	-10.880	533.780	340.200

IDX (Rupiah)

Top Gainers

Name	Last Done	Change Over 5 Days	52 Weeks High	52 Weeks Low
CITRA TUBINDO TBK	8,100.000	+1,025.000	8,925.000	1,090.000
PANTAI INDAH KAPUK DUA TBK	11,800.000	+700.000	19,650.000	4,800.000
CHARNIC CAPITAL TBK	1,450.000	+420.000	1,500.000	270.000
BAYAN RESOURCES TBK	19,800.000	+225.000	21,375.000	15,125.000
SURYA SEMESTA INTERNUSA TBK	1,515.000	+215.000	1,670.000	700.000

Top Losers

Name	Last Done	Change Over 5 Days	52 Weeks High	52 Weeks Low
DIAN SWASTATIKA SENTOSA TBK	54,250.000	-5,250.000	60,800.000	23,900.000
DCI INDONESIA TBK	150,600.000	-2,900.000	226,150.000	35,200.000
METROPOLITAN KENTJANA TBK	22,650.000	-1,300.000	27,225.000	20,025.000
MITRABAHTERA SEGARA SEJATI TBK	1,505.000	-1,255.000	2,850.000	890.000
INDO TAMBANGRAYA MEGAH TBK	22,200.000	-1,225.000	28,650.000	21,400.000

SET (Thai Baht)

Top Gainers

Name	Last Done	Change Over 5 Days	52 Weeks High	52 Weeks Low
DELTA	104.500	+5.500	173.500	51.250
STANLY	195.500	+4.000	227.000	190.500
TTI	28.000	+2.750	34.000	22.200
AOT	30.500	+2.000	65.000	26.750
JCT	80.000	+2.000	84.000	75.000

Top Losers

Name	Last Done	Change Over 5 Days	52 Weeks High	52 Weeks Low
KTC	25.000	-11.750	52.250	25.000
JASMINE TECHNOLOGY SOLUTION NVDR	32.750	-6.000	54.000	26.000
BUMRUNGRAD HOSPITAL NVDR	133.500	-5.000	195.500	131.500
ELECTRICITY GENERATING NVDR	100.000	-5.000	111.500	87.000
GULF DEVELOPMENT NVDR	39.000	-4.750	58.500	38.750

HKEX (HKD)

Top Gainers

Name	Last Done	Change Over 5 Days	52 Weeks High	52 Weeks Low
ASCENTAGE-B (6855)	77.000	+14.300	77.900	24.700
REMEGEN (9995)	64.500	+14.200	64.600	10.200
QUNABOX GP-100 (917)	127.900	+10.900	129.900	43.400
MIXUE GROUP (2097)	533.000	+9.500	618.500	256.000
GUOFUHEE-50 (2582)	111.600	+9.000	156.700	76.800

Top Losers

Name	Last Done	Change Over 5 Days	52 Weeks High	52 Weeks Low
TRIP.COM-S (9961)	454.000	-26.000	598.000	300.200
LAOPU GOLD (6181)	860.000	-21.500	1,015.000	60.950
BLOKS (325)	138.300	-17.900	198.000	73.500
KINGFARPROPERTY (1354)	6.600	-15.500	41.550	5.100
REFIRE (2570)	184.400	-11.400	316.200	118.000

SGX (SGD)

Top Gainers

Name	Last Done	Change Over 5 Days	52 Weeks High	52 Weeks Low
UOB	35.320	+0.370	38.926	28.797
SPACKMAN ENTMT	0.220	+0.120	0.230	0.020
PARKWAYLIFE REIT	4.110	+0.100	4.330	3.420
JMH USD	46.350	+0.090	49.790	33.720
CENTURION	1.640	+0.080	1.650	0.570

Top Losers

Name	Last Done	Change Over 5 Days	52 Weeks High	52 Weeks Low
AZEUS	15.740	-1.160	16.900	9.010
JARDINE C&C	23.640	-0.360	29.500	23.100
VENTURE	11.260	-0.320	15.640	10.170
SGX	13.900	-0.290	14.800	9.330
SHANGRI-LA HKD	4.080	-0.200	6.100	4.020



Notwithstanding a strong track record of profitability and a consistent dividend payout track record, the corporate governance regime of Formosa Prosonic falls short of expectations.

PORT KLANG HIT BY GOVERNANCE GALE

Despite stable dividends and solid cash flows, Formosa Prosonic Industries Berhad (FPI), an electronics manufacturer based in Port Klang, finds itself under the microscope for several longstanding governance lapses. These issues, including the over-decade-long absence of a formally appointed Board Chairman, the refusal to disclose individual directors' remuneration as required by Bursa

Malaysia, and the awarding of share options to independent directors, raise troubling questions about board accountability, transparency, and the independence of oversight functions.

FPI is listed on the Main Market of Bursa Malaysia and specialises in audio electronics manufacturing for global OEM clients. With manufacturing plants in Port Klang, the Company has been operational since the late 1980s. It has weathered economic downturns while maintaining a strong balance sheet, with zero debt, and has consistently paid dividends.

In FY2024, FPI recorded RM639.2 million in revenue, a 5% decline year-on-year, and RM66.8 million in profit after tax, a 43% drop from FY2023. While still profitable, this marked the second consecutive year of earnings contraction, attributed to global overcapacity, inflationary pressures, and foreign exchange losses.

Yet, it is not financials that are currently raising eyebrows; it is governance.

STILL WAITING FOR THE CHAIR TO ARRIVE

One of the most striking governance lapses is FPI's persistent absence of a formally designated Chairman. The company has been operating without a named Board Chairman since June 2014. Instead, chairing duties are rotated informally among the independent directors.

<i>FPI response to the question raised by MSWG</i>	
<p>4. Based on FPI's reply letter dated 26 May 2023 to MSWG's question raised in FPI's 35th AGM previously, the Company responded that it intends to appoint a board Chairman and is still searching for a suitable candidate to fill the vacancy in due course.</p> <p>Given that the Chairman position has been vacant since June 2014 and has remained vacant until now, what challenges does the Company face in identifying the right candidate for the position? How many potential candidates has the Nomination Committee interviewed for the Chairman position? What is the targeted timeline for the appointment of a permanent Chairman?</p>	<p>The challenges that we face are the need for candidates with deep understanding of audio transducer manufacturing and OEM client ecosystems and preference for leaders with audio technology experience. We also need to balance the requirements with operational needs, board diversity and independence criteria of the candidates.</p> <p>The Nomination Committee has so far conducted several informal candidate assessments.</p>

This practice is explicitly acknowledged in the Company's 2024 Corporate Governance Report. The Company notes that "Board meetings are chaired by an Independent Director," while explaining that it has yet to appoint a permanent Chairman.

While FPI maintains that this arrangement still enables effective governance, it is far from ideal. The Malaysian Code on Corporate Governance (MCCG) clearly states that the Chairman plays a pivotal role in setting board agendas, ensuring orderly conduct, and providing leadership to the board. A rotating chairmanship lacks this continuity and can dilute leadership accountability.

MSWG raised this issue at the AGM, and FPI acknowledged that the Chairman position has been vacant for more than 10 years. The Company cited difficulty in finding candidates with both an audio technology background and corporate governance credentials. Yet it admitted only to conducting “informal candidate assessments” without any concrete timeline for resolution. That begs the question: after a decade, how serious is FPI about addressing this gap?

WHEN DISCLOSURE BECOMES A DISGUISE

Paragraph 11, Appendix 9C (Part A) of Bursa Malaysia's Main Market Listing Requirements mandates that all listed companies disclose the remuneration of each director and the CEO on a named basis, including a breakdown by component (e.g., fees, salary, bonus, benefits-in-kind).

<i>FPI response to the question raised by MSWG</i>	
3.	<p>Paragraph 11 Part A Appendix 9C of the Main Market Listing Requirements requires remuneration of directors and chief executive of the listed issuer (including the remuneration for services rendered to the listed issuer as a group) for the financial year on a named basis, stating the amount received or to be received from the listed issuer and on a group basis respectively. The disclosure must include the amount in each remuneration component (e.g. fees, salaries, percentages, bonuses, commission, compensation for loss of office, benefits in kind based on an estimated money value) for each director and chief executive. The disclosure on page 40 of AR 2024 for the remuneration of Directors and CEO does not meet the requirement under Appendix 9C of the Listing Requirements. Please note that the non-disclosure of the directors' remuneration on a named basis is a breach of the Main Market Listing Requirements.</p>
	<p>Disclosure of such details is not in the Company's best interest due to the highly competitive nature of the industry and the sensitive nature of the information involved.</p>

FPI, however, continues to provide only aggregate figures and refuses to name individuals or break down components. In its 2024 Annual Report, the company merely discloses total directors' fees and benefits without naming the recipients or specifying the amount each director received.

When queried, FPI defended this approach, stating that "disclosure of such details is not in the Company's best interest due to the highly competitive nature of the industry and the sensitive nature of the information."

This justification, however, falls flat. Numerous companies operating in similarly competitive environments comply with the exact requirement. The intent of the regulation is not to aid competitors; it is to ensure shareholders have visibility over how their board is compensated.

By defying this requirement, FPI breaches not just the letter of the Listing Requirements but also its spirit: transparency, fairness, and accountability to shareholders.

WHEN OVERSIGHT COMES WITH A PRICE TAG

FPI's decision to grant Employee Share Option Scheme (ESOS) options to independent non-executive directors (INEDs) has also drawn concern.

At its 2025 AGM, the company sought shareholders' approval to grant ESOS options to its three INEDs, Wayne Leow Tze Waye, Leong Ngai Seng, and Goh Saw Tin, under Resolutions 8, 9, and 10.

MSWG voiced its objections, pointing out that INEDs are expected to exercise independent oversight, including over remuneration and share schemes. Receiving stock options whose value depends on the company's share price may create misaligned incentives and undermine independence.

<i>FPI response to the question raised by MSWG</i>	
<p>5. Under Resolutions 8, 9 and 10, shareholders' approval is being sought for the proposed granting of employees' share option scheme ("ESOS") Options to Mr. Wayne Leow Tze Waye, Mr. Leong Ngai Seng, and Ms. Goh Saw Tin, being the Independent Non-Executive Director ("INED") the Company.</p> <p>MSWG discourages the participation of independent directors in any form of share options due to their non-executive management roles and responsibilities in overseeing the allocation of share options to executive directors and employees.</p> <p>The granting of share options to independent directors raises concerns regarding potential conflicts of interest, dilution of independence and impaired objectivity. These risks arise from the possibility that independent directors may be influenced by personal financial interests aligned with share price performance, compromising their objectivity in oversight duties and decision-making processes.</p> <p>Considering that independent directors do not have executive responsibilities and are already adequately compensated through directors' fees and other benefits, please justify granting share options to the independent directors.</p>	<p>We appreciate your thoughtful observations regarding the proposed granting of Employees' Share Option Scheme (ESOS) options to our Independent Non-Executive Director (INED).</p> <p>Granting share options to INEDs is intended to align their interests with those of the shareholders by providing a stake in the company's long-term success. This alignment can enhance their commitment to safeguarding shareholder value.</p> <p>We acknowledge the concern regarding potential conflicts of interest. However, the company has established governance frameworks and conflict-of-interest policies to ensure that INEDs maintain their independence and objectivity.</p>

FPI argued that granting options “aligns INEDs’ interests with shareholders and enhances their commitment to safeguarding shareholder value”. It also claimed to have governance mechanisms in place to avoid conflicts of interest.

Yet, granting ESOS to INEDs remains a deeply problematic practice. MCCG discourages such schemes for non-executive directors, who are supposed to provide impartial oversight. Their compensation should reflect their fiduciary duties, not their ability to influence share price outcomes. When independent directors are incentivised like executives, lines begin to blur.

A GOVERNANCE HOUSE IN NEED OF REPAIR

FPI’s performance in recent years may reflect resilience, but its corporate governance practices tell a different story. A decade without a Chairman, refusal to comply with listing requirements on remuneration disclosure, and misaligned share incentives for independent directors cumulatively point to systemic weaknesses in board leadership and transparency.

The Company cannot rely solely on financial conservatism and dividend consistency to maintain shareholder trust. Governance is not merely a box-ticking exercise; it is the foundation of long-term sustainability and investor confidence.

At a time when corporate accountability is under sharper focus than ever, especially among Bursa Malaysia-listed issuers, FPI’s lapses are not just anomalies. They are warnings.

Suppose FPI hopes to regain credibility and stand as a responsible steward of shareholder value. In that case, it must urgently fix the cracks, starting with appointing a Chairman, complying with remuneration transparency requirements, and rethinking the role of INEDs in share option schemes.

DEFINITION: Insider Activity shows the trades made by substantial shareholders or directors of the company. Purchases by the directors and company share buyback may indicate the share price is undervalued and brings confidence to the price trend of the share price.



ShareInvestor WebPro > Fundamental > Insider Trades > click Search tab > Select Bursa > click Stock name > scroll up and leave at <Select Counter> Type Date Range for Announcement Date > click Search

Notice Period is 15th June 2025 – 21st June 2025

Effective Change Date	Stock Name	Buyer/ Seller Name [Classification]	Bought / (Sold) ['000]	No. of Shares After Trade ['000]	
			Total	Total	% Held
13 JUN 2025 - 13 JUN 2025	99SMART	EMPLOYEES PROVIDENT FUND BOARD [SSH]	1,727	423,518	5.042
17 JUN 2025 - 17 JUN 2025	ABMB	EMPLOYEES PROVIDENT FUND BOARD [SSH]	410	135,112	8.728
11 JUN 2025 - 11 JUN 2025	ABMB	EMPLOYEES PROVIDENT FUND BOARD [SSH]	500	144,878	9.358
16 JUN 2025 - 16 JUN 2025	AMBANK	EMPLOYEES PROVIDENT FUND BOARD [SSH]	-1,000	409,679	12.401
13 JUN 2025 - 13 JUN 2025	AMBANK	EMPLOYEES PROVIDENT FUND BOARD [SSH]	-1,000	410,679	12.431
12 JUN 2025 - 12 JUN 2025	AMBANK	EMPLOYEES PROVIDENT FUND BOARD [SSH]	-96	411,679	12.461
11 JUN 2025 - 11 JUN 2025	AMBANK	EMPLOYEES PROVIDENT FUND BOARD [SSH]	500	411,775	12.463
19 JUN 2025 - 19 JUN 2025	ANEKA	MR LOKE KIEN TUCK [DIR/CEO]	10	101,186	14.57
19 JUN 2025 - 19 JUN 2025	ANEKA	MR LOKE KIEN TUCK [SSH]	10	101,186	14.57
16 JUN 2025 - 17 JUN 2025	ANEKA	MR PANG TSE FUJ [DIR/CEO]	64	91606	13.19
16 JUN 2025 - 17 JUN 2025	ANEKA	MR PANG TSE FUJ [SSH]	64	91606	13.19
13 JUN 2025 - 17 JUN 2025	APM	DATO' TAN HENG CHEW [DIR/CEO]	55	105563	53.998
13 JUN 2025 - 17 JUN 2025	APM	DATO' TAN HENG CHEW [SSH]	55	97,231	49.736
17 JUN 2025 - 17 JUN 2025	ASIAFLE	DATO' LIM SOON HUAT [DIR/CEO]	1,334	98,349	51.938
17 JUN 2025 - 17 JUN 2025	ASIAFLE	DATO' LIM SOON HUAT [SSH]	1,334	92,181	48.681
17 JUN 2025 - 17 JUN 2025	ATECH	EMPLOYEES PROVIDENT FUND BOARD [SSH]	-225	51,262	11.824
16 JUN 2025 - 16 JUN 2025	ATECH	EMPLOYEES PROVIDENT FUND BOARD [SSH]	-565	51,487	11.876
18 JUN 2025 - 18 JUN 2025	ATLAN	BERJAYA CORPORATION BERHAD [SSH]	53	67,337	26.547
18 JUN 2025 - 18 JUN 2025	ATLAN	BERJAYA GROUP BERHAD [SSH]	53	23,137	9.121
18 JUN 2025 - 18 JUN 2025	ATLAN	JUARA SEJATI SDN BHD [SSH]	53	19,603	7.728
16 JUN 2025 - 18 JUN 2025	AWANTEC	LEMBAGA TABUNG AMANAH WARISAN NEGERI TERENGGANU [SSH]	24	43,014	5.457
13 JUN 2025 - 13 JUN 2025	AWANTEC	LEMBAGA TABUNG AMANAH WARISAN NEGERI TERENGGANU [SSH]	4	42,990	5.454
17 JUN 2025 - 17 JUN 2025	AXIATA	EMPLOYEES PROVIDENT FUND BOARD [SSH]	1,613	1,663,877	18.114
16 JUN 2025 - 16 JUN 2025	AXIATA	EMPLOYEES PROVIDENT FUND BOARD [SSH]	1,486	1,662,264	18.097
12 JUN 2025 - 12 JUN 2025	AXIATA	EMPLOYEES PROVIDENT FUND BOARD [SSH]	580	1,660,778	18.08
11 JUN 2025 - 11 JUN 2025	AXIATA	EMPLOYEES PROVIDENT FUND BOARD [SSH]	70	1,660,198	18.074
17 JUN 2025 - 17 JUN 2025	AXREIT	EMPLOYEES PROVIDENT FUND BOARD [SSH]	-118	385,305	19.067
16 JUN 2025 - 16 JUN 2025	AXREIT	EMPLOYEES PROVIDENT FUND BOARD [SSH]	-108	385,424	19.073
13 JUN 2025 - 13 JUN 2025	AXREIT	EMPLOYEES PROVIDENT FUND BOARD [SSH]	26	385,531	19.078
12 JUN 2025 - 12 JUN 2025	AXREIT	EMPLOYEES PROVIDENT FUND BOARD [SSH]	1,000	385,505	19.077
11 JUN 2025 - 11 JUN 2025	AXREIT	EMPLOYEES PROVIDENT FUND BOARD [SSH]	1,062	384,506	19.028
16 JUN 2025 - 18 JUN 2025	AYS	MR OH CHIEW HO [SSH]	339	265,433	63.43
16 JUN 2025 - 18 JUN 2025	AYS	OH CHIEW HO [DIR/CEO]	339	265,433	63.43
12 JUN 2025 - 13 JUN 2025	AYS	MR OH CHIEW HO [DIR/CEO]	112	265,094	63.35
12 JUN 2025 - 13 JUN 2025	AYS	MR OH CHIEW HO [SSH]	112	265,094	63.35
17 JUN 2025 - 17 JUN 2025	BAUTO	DATO' AMER HAMZAH BIN AHMAD [SSH]	50	182,411	15.735
17 JUN 2025 - 17 JUN 2025	BAUTO	DATO' LEE KOK CHUAN [DIR/CEO]	50	182,457	15.739
17 JUN 2025 - 17 JUN 2025	BAUTO	DATO' LEE KOK CHUAN [SSH]	50	182,457	15.739
17 JUN 2025 - 17 JUN 2025	BAUTO	DYNAMIC MILESTONE SDN BHD [SSH]	50	177,967	15.352
17 JUN 2025 - 17 JUN 2025	BAUTO	EMPLOYEES PROVIDENT FUND BOARD [SSH]	-5,000	148,153	12.78
17 JUN 2025 - 17 JUN 2025	BAUTO	TAN SRI DATO' SRI YEOH CHOON SAN [DIR/CEO]	50	182,184	15.716
17 JUN 2025 - 17 JUN 2025	BAUTO	TAN SRI DATO' SRI YEOH CHOON SAN [SSH]	50	182,184	15.716
16 JUN 2025 - 16 JUN 2025	BAUTO	EMPLOYEES PROVIDENT FUND BOARD [SSH]	-5,275	153,153	13.209
13 JUN 2025 - 13 JUN 2025	BAUTO	EMPLOYEES PROVIDENT FUND BOARD [SSH]	-11,500	158,428	13.661
13 JUN 2025 - 16 JUN 2025	BAUTO	DATO' AMER HAMZAH BIN AHMAD [SSH]	550	182,361	15.728
13 JUN 2025 - 16 JUN 2025	BAUTO	DATO' LEE KOK CHUAN [DIR/CEO]	550	182,407	15.732
13 JUN 2025 - 16 JUN 2025	BAUTO	DATO' LEE KOK CHUAN [SSH]	550	182,407	15.732
13 JUN 2025 - 16 JUN 2025	BAUTO	DYNAMIC MILESTONE SDN BHD [SSH]	550	177,917	15.345
13 JUN 2025 - 16 JUN 2025	BAUTO	TAN SRI DATO' SRI YEOH CHOON SAN [DIR/CEO]	550	182,135	15.709
13 JUN 2025 - 16 JUN 2025	BAUTO	TAN SRI DATO' SRI YEOH CHOON SAN [SSH]	550	182,135	15.709
17 JUN 2025 - 17 JUN 2025	BIMB	EMPLOYEES PROVIDENT FUND BOARD [SSH]	-1,323	383,854	16.936
13 JUN 2025 - 13 JUN 2025	BIMB	EMPLOYEES PROVIDENT FUND BOARD [SSH]	-35	385,177	16.995
11 JUN 2025 - 11 JUN 2025	BIMB	EMPLOYEES PROVIDENT FUND BOARD [SSH]	-280	385,212	16.996
18 JUN 2025 - 18 JUN 2025	BINACOM	DATO' ONG CHOO MENG [SSH]	40,000	136,222	28.609
18 JUN 2025 - 18 JUN 2025	BINACOM	HEXTAR CAPITAL BERHAD [SSH]	40,000	136,222	28.609
18 JUN 2025 - 18 JUN 2025	BINACOM	OPCOM VC SDN. BHD. [SSH]	40,000	136,222	28.609
16 JUN 2025 - 16 JUN 2025	BINTAI	DATUK NG CHOON KOON [DIR/CEO]	827	99,827	6.819
16 JUN 2025 - 16 JUN 2025	BINTAI	DATUK NG CHOON KOON [SSH]	827	99,827	6.819
18 JUN 2025 - 18 JUN 2025	BJASSET	BERJAYA CAPITAL BERHAD [SSH]	42,500	212,108	8.291
18 JUN 2025 - 18 JUN 2025	BJASSET	BERJAYA CORPORATION BERHAD [SSH]	42,500	467,638	18.279
18 JUN 2025 - 18 JUN 2025	BJASSET	BERJAYA GROUP BERHAD [SSH]	42,500	467,638	18.279
18 JUN 2025 - 18 JUN 2025	BJASSET	JUARA SEJATI SDN BHD [SSH]	42,500	447,688	17.5
13 JUN 2025 - 13 JUN 2025	BJASSET	TAN SRI DATO' SRI VINCENT TAN CHEE YIOUN [SSH]	229	1,198,951	46.865
18 JUN 2025 - 18 JUN 2025	BJCORP	TAN SRI DATO' SRI VINCENT TAN CHEE YIOUN [SSH]	5,000	1,012,065	17.353
18 JUN 2025 - 18 JUN 2025	BJFOOD	BERJAYA CORPORATION BERHAD [SSH]	1,125	1,108,760	62.578

Notice Period is 15th June 2025 – 21st June 2025

Effective Change Date	Stock Name	Buyer/ Seller Name [Classification]	Bought / (Sold) ['000]	No. of Shares After Trade ['000]	
			Total	Total	% Held
18 JUN 2025 - 18 JUN 2025	BJFOOD	BERJAYA GROUP BERHAD [SSH]	1,125	1,007,774	56.878
18 JUN 2025 - 18 JUN 2025	BJFOOD	JUARA SEJATI SDN BHD [SSH]	1,125	279,466	15.773
18 JUN 2025 - 18 JUN 2025	BJLAND	BERJAYA CORPORATION BERHAD [SSH]	113,910	3,611,165	73.865
18 JUN 2025 - 18 JUN 2025	BJLAND	BERJAYA GROUP BERHAD [SSH]	113,910	3,193,065	65.313
18 JUN 2025 - 18 JUN 2025	BJLAND	BIZURAI BIJAK (M) SDN BHD [SSH]	113,910	872,625	17.849
18 JUN 2025 - 18 JUN 2025	BJLAND	JUARA SEJATI SDN BHD [SSH]	113,910	1,530,466	31.305
16 JUN 2025 - 16 JUN 2025	BJLAND	BERJAYA CORPORATION BERHAD [SSH]	500	3,497,255	71.535
16 JUN 2025 - 16 JUN 2025	BJLAND	BERJAYA GROUP BERHAD [SSH]	500	3,079,155	62.983
16 JUN 2025 - 16 JUN 2025	BJLAND	JUARA SEJATI SDN BHD [SSH]	500	1,416,556	28.975
12 JUN 2025 - 13 JUN 2025	BJLAND	BERJAYA CORPORATION BERHAD [SSH]	1,167	3,496,755	71.525
12 JUN 2025 - 13 JUN 2025	BJLAND	BERJAYA GROUP BERHAD [SSH]	1,167	3,078,655	62.973
12 JUN 2025 - 13 JUN 2025	BJLAND	JUARA SEJATI SDN BHD [SSH]	1,167	1,416,056	28.965
20 JUN 2025 - 20 JUN 2025	BORNOIL	DATUK JOSEPH LEE YOK MIN @ AMBROSE [DIR/CEO]	3,700	2,848,037	20.271
20 JUN 2025 - 20 JUN 2025	BORNOIL	DATUK JOSEPH LEE YOK MIN @ AMBROSE [SSH]	3,700	1,310,022	20.271
20 JUN 2025 - 20 JUN 2025	BORNOIL	MR RIORN LEE KAH VUI [DIR/CEO]	3,700	1,589,840	11.316
20 JUN 2025 - 20 JUN 2025	BORNOIL	MR RIORN LEE KAH VUI [SSH]	3,700	279,818	11.316
19 JUN 2025 - 19 JUN 2025	BORNOIL	DATUK JOSEPH LEE YOK MIN @ AMBROSE [DIR/CEO]	3,800	2,844,337	20.245
19 JUN 2025 - 19 JUN 2025	BORNOIL	DATUK JOSEPH LEE YOK MIN @ AMBROSE [SSH]	3,800	1,306,322	20.245
19 JUN 2025 - 19 JUN 2025	BORNOIL	MR RIORN LEE KAH VUI [DIR/CEO]	3,800	1,586,140	11.29
19 JUN 2025 - 19 JUN 2025	BORNOIL	MR RIORN LEE KAH VUI [SSH]	3,800	279,818	11.29
18 JUN 2025 - 18 JUN 2025	BORNOIL	DATUK JOSEPH LEE YOK MIN @ AMBROSE [DIR/CEO]	-60,000	2,840,537	20.218
18 JUN 2025 - 18 JUN 2025	BORNOIL	DATUK JOSEPH LEE YOK MIN @ AMBROSE [SSH]	-60,000	1,302,522	20.218
18 JUN 2025 - 18 JUN 2025	BORNOIL	MR RIORN LEE KAH VUI [DIR/CEO]	-60,000	1,582,340	11.263
18 JUN 2025 - 18 JUN 2025	BORNOIL	MR RIORN LEE KAH VUI [SSH]	-60,000	279,818	11.263
18 JUN 2025 - 18 JUN 2025	BORNOIL	VICTORIA CAPITAL SDN BHD [SSH]	4,200	1,102,471	7.847
17 JUN 2025 - 17 JUN 2025	BORNOIL	DATUK JOSEPH LEE YOK MIN @ AMBROSE [DIR/CEO]	1,800	2,900,537	20.645
17 JUN 2025 - 17 JUN 2025	BORNOIL	DATUK JOSEPH LEE YOK MIN @ AMBROSE [SSH]	1,800	1,362,522	20.645
17 JUN 2025 - 17 JUN 2025	BORNOIL	MR RIORN LEE KAH VUI [DIR/CEO]	1,800	1,642,340	11.69
17 JUN 2025 - 17 JUN 2025	BORNOIL	MR RIORN LEE KAH VUI [SSH]	1,800	279,818	11.69
17 JUN 2025 - 17 JUN 2025	BORNOIL	VICTORIA CAPITAL SDN BHD [SSH]	-20,000	1,098,271	7.817
16 JUN 2025 - 16 JUN 2025	BORNOIL	DATUK JOSEPH LEE YOK MIN @ AMBROSE [DIR/CEO]	1,900	2,898,737	20.632
16 JUN 2025 - 16 JUN 2025	BORNOIL	DATUK JOSEPH LEE YOK MIN @ AMBROSE [SSH]	1,900	1,360,722	20.632
16 JUN 2025 - 16 JUN 2025	BORNOIL	MR RIORN LEE KAH VUI [DIR/CEO]	1,900	1,640,540	11.677
16 JUN 2025 - 16 JUN 2025	BORNOIL	MR RIORN LEE KAH VUI [SSH]	1,900	279,818	11.677
11 JUN 2025 - 11 JUN 2025	BURSA	EMPLOYEES PROVIDENT FUND BOARD [SSH]	-130	112,768	13.934
17 JUN 2025 - 17 JUN 2025	CDB	EMPLOYEES PROVIDENT FUND BOARD [SSH]	254	1,251,256	10.666
13 JUN 2025 - 13 JUN 2025	CDB	EMPLOYEES PROVIDENT FUND BOARD [SSH]	300	1,251,002	10.664
12 JUN 2025 - 12 JUN 2025	CDB	EMPLOYEES PROVIDENT FUND BOARD [SSH]	200	1,250,702	10.661
19 JUN 2025 - 19 JUN 2025	CHINTEK	MR GHO LIAN CHIN [DIR/CEO]	54	33,828	37.02
19 JUN 2025 - 19 JUN 2025	CHINTEK	MR GHO LIAN CHIN [SSH]	54	33,828	37.02
19 JUN 2025 - 19 JUN 2025	CHINTEK	MR GOH CHIH YUAN [DIR/CEO]	54	34,135	37.36
19 JUN 2025 - 19 JUN 2025	CHINTEK	MR GOH CHIH YUAN [SSH]	54	34,135	37.36
19 JUN 2025 - 19 JUN 2025	CHINTEK	MR GOH WEI LEI [DIR/CEO]	54	34,135	37.36
19 JUN 2025 - 19 JUN 2025	CHINTEK	MR GOH WEI LEI [SSH]	54	34,135	37.36
19 JUN 2025 - 19 JUN 2025	CHINTEK	TAI CHUAN COMPANY (PRIVATE) LIMITED [SSH]	54	33,621	36.8
19 JUN 2025 - 19 JUN 2025	CHINTEK	TIONG THYE COMPANY SDN BHD [SSH]	54	33,621	36.79
17 JUN 2025 - 17 JUN 2025	CIMB	EMPLOYEES PROVIDENT FUND BOARD [SSH]	-2,595	1,791,257	16.66
16 JUN 2025 - 16 JUN 2025	CIMB	EMPLOYEES PROVIDENT FUND BOARD [SSH]	-2,896	1,793,852	16.68
13 JUN 2025 - 13 JUN 2025	CIMB	EMPLOYEES PROVIDENT FUND BOARD [SSH]	-395	1,796,748	16.71
12 JUN 2025 - 12 JUN 2025	CIMB	EMPLOYEES PROVIDENT FUND BOARD [SSH]	-4,526	1,797,143	16.71
11 JUN 2025 - 11 JUN 2025	CIMB	EMPLOYEES PROVIDENT FUND BOARD [SSH]	-8,500	1,801,669	16.76
10 JUN 2025 - 10 JUN 2025	CIMB	EMPLOYEES PROVIDENT FUND BOARD [SSH]	-4,271	1,810,169	16.84
13 JUN 2025 - 13 JUN 2025	CITAGLB	TAN SRI DATO' SRI DR MOHAMAD NORZA BIN ZAKARIA [DIR/CEO]	110	139,385	32.757
13 JUN 2025 - 13 JUN 2025	CITAGLB	TAN SRI DATO' SRI DR MOHAMAD NORZA BIN ZAKARIA [SSH]	110	139,385	32.757
13 JUN 2025 - 13 JUN 2025	CITAGLB	TIZA GLOBAL SDN. BHD. [SSH]	110	132,410	31.118
19 JUN 2025 - 19 JUN 2025	CLMT	KUMPULAN WANG PERSARAAN (DIPERBADANKAN) [SSH]	-530	285,289	9.766
17 JUN 2025 - 17 JUN 2025	CLMT	EMPLOYEES PROVIDENT FUND BOARD [SSH]	-959	446,759	15.292
18 JUN 2025 - 18 JUN 2025	CLMT	KUMPULAN WANG PERSARAAN (DIPERBADANKAN) [SSH]	-250	285,820	9.784
16 JUN 2025 - 16 JUN 2025	CLMT	EMPLOYEES PROVIDENT FUND BOARD [SSH]	-1,000	447,718	15.325
17 JUN 2025 - 17 JUN 2025	CLMT	KUMPULAN WANG PERSARAAN (DIPERBADANKAN) [SSH]	-175	286,070	9.792
13 JUN 2025 - 13 JUN 2025	CLMT	EMPLOYEES PROVIDENT FUND BOARD [SSH]	-1,000	448,718	15.359
16 JUN 2025 - 16 JUN 2025	CLMT	KUMPULAN WANG PERSARAAN (DIPERBADANKAN) [SSH]	-3,203	286,244	9.798

Disclaimer: The information in Insider Activity is extracted from www.shareinvestor.com/fundamental/insider_trades. The information on this page is provided as a service to readers. It does not constitute financial advice and/or any investment recommendations. We assume no liability for damages resulting from or arising out of the use of such information. Whilst every effort is made to ensure accuracy, the information presented is not the official record of shareholder filings. Readers are advised to read the original filings on the Bursa Malaysia website at www.bursamalaysia.com



STROM
SWISS TIMEPIECES & JEWELLERY



StromWatch Asia
Tele : +65.9817.3378
Email : ll.stromasia@gmail.com
WWW.STROMWATCH.SWISS

Notice Period is 15th June 2025 – 21st June 2025

Effective Change Date	Stock Name	Buyer/ Seller Name [Classification]	Bought / (Sold) ['000]	No. of Shares After Trade ['000]	
			Total	Total	% Held
13 JUN 2025 - 13 JUN 2025	CLMT	KUMPULAN WANG PERSARAAN (DIPERBADANKAN) [SSH]	-263	289,447	9.908
13 JUN 2025 - 16 JUN 2025	COASTAL	MR JACOB O PANG SU YIN [DIR/CEO]	-30	70	0.013
19 JUN 2025 - 19 JUN 2025	COMPUGT	MADAM SEE THOO CHAN [DIR/CEO]	1,190	861,516	14.239
19 JUN 2025 - 19 JUN 2025	COMPUGT	MADAM SEE THOO CHAN [SSH]	1,190	861,516	14.239
19 JUN 2025 - 19 JUN 2025	COMPUGT	MR GOH KHENG PEOW [SSH]	1,190	861,516	14.239
18 JUN 2025 - 18 JUN 2025	COMPUGT	MADAM SEE THOO CHAN [DIR/CEO]	339	860,326	14.219
18 JUN 2025 - 18 JUN 2025	COMPUGT	MADAM SEE THOO CHAN [SSH]	339	860,326	14.219
18 JUN 2025 - 18 JUN 2025	COMPUGT	MR GOH KHENG PEOW [SSH]	339	860,326	14.219
17 JUN 2025 - 17 JUN 2025	COMPUGT	MADAM SEE THOO CHAN [DIR/CEO]	550	859,987	14.214
17 JUN 2025 - 17 JUN 2025	COMPUGT	MADAM SEE THOO CHAN [SSH]	550	859,987	14.214
17 JUN 2025 - 17 JUN 2025	COMPUGT	MR GOH KHENG PEOW [SSH]	550	859,987	14.214
16 JUN 2025 - 16 JUN 2025	COMPUGT	MADAM SEE THOO CHAN [DIR/CEO]	3,602	859,437	14.205
16 JUN 2025 - 16 JUN 2025	COMPUGT	MADAM SEE THOO CHAN [SSH]	3,602	859,437	14.205
16 JUN 2025 - 16 JUN 2025	COMPUGT	MR GOH KHENG PEOW [SSH]	3,602	859,437	14.205
13 JUN 2025 - 13 JUN 2025	COMPUGT	MADAM SEE THOO CHAN [DIR/CEO]	7,087	855,836	14.145
13 JUN 2025 - 13 JUN 2025	COMPUGT	MADAM SEE THOO CHAN [SSH]	7,087	855,836	14.145
13 JUN 2025 - 13 JUN 2025	COMPUGT	MR GOH KHENG PEOW [SSH]	7,087	855,836	14.145
13 JUN 2025 - 13 JUN 2025	CTOS	EMPLOYEES PROVIDENT FUND BOARD [SSH]	1,176	458,380	19.843
16 JUN 2025 - 16 JUN 2025	DAY3	CLOUD MARSHAL SDN. BHD. [SSH]	27,720	138,600	23.1
16 JUN 2025 - 16 JUN 2025	DAY3	DAYSRING CAPITAL SDN. BHD. [SSH]	43,200	216,000	36
16 JUN 2025 - 16 JUN 2025	DAY3	ENCIK SYED IZMI BIN SYED KAMARUL BAHRAIN [DIR/CEO]	70	350	0.058
16 JUN 2025 - 16 JUN 2025	DAY3	MISS GAN JHIA JHIA [DIR/CEO]	27,720	138,600	23.1
16 JUN 2025 - 16 JUN 2025	DAY3	MISS GAN JHIA JHIA [SSH]	27,720	138,600	23.1
16 JUN 2025 - 16 JUN 2025	DAY3	MR LEE KING LOON [SSH]	27,720	138,600	23.1
16 JUN 2025 - 16 JUN 2025	DAY3	MR LEONG KOK CHENG [SSH]	27,720	138,600	23.1
16 JUN 2025 - 16 JUN 2025	DAY3	MR PAUL RAYMOND RAJ A/L DAVADASS [DIR/CEO]	43,200	216,000	36
16 JUN 2025 - 16 JUN 2025	DAY3	MR PAUL RAYMOND RAJ A/L DAVADASS [SSH]	43,200	216,000	36
16 JUN 2025 - 16 JUN 2025	DAY3	THANOS CAPITAL SDN. BHD. [SSH]	27,720	138,600	23.1
13 JUN 2025 - 13 JUN 2025	DAYANG	EMPLOYEES PROVIDENT FUND BOARD [SSH]	1,000	84,536	7.302
12 JUN 2025 - 12 JUN 2025	DAYANG	EMPLOYEES PROVIDENT FUND BOARD [SSH]	3,039	83,536	7.215
11 JUN 2025 - 11 JUN 2025	DAYANG	EMPLOYEES PROVIDENT FUND BOARD [SSH]	1,908	80,497	6.953
13 JUN 2025 - 13 JUN 2025	DIALOG	EMPLOYEES PROVIDENT FUND BOARD [SSH]	2,703	948,474	16.81
11 JUN 2025 - 11 JUN 2025	DPHARMA	EMPLOYEES PROVIDENT FUND BOARD [SSH]	500	85,139	8.851
17 JUN 2025 - 17 JUN 2025	DUFU	LEE SU HUI-FEN ALSO KNOWN AS FLORA SU [SSH]	115	49,297	9.256
17 JUN 2025 - 17 JUN 2025	DUFU	LEE WEN-JUNG [SSH]	115	49,340	9.264
17 JUN 2025 - 17 JUN 2025	DUFU	PERFECT COMMERCE SDN. BHD. [SSH]	115	49,275	9.252
11 JUN 2025 - 11 JUN 2025	DXN	DATUK LIM SIOW JIN [DIR/CEO]	-160,000	3,191,720	64.19
11 JUN 2025 - 11 JUN 2025	DXN	DATUK LIM SIOW JIN [SSH]	-160,000	1,941,720	39.051
19 JUN 2025 - 19 JUN 2025	E&O	KUMPULAN WANG PERSARAAN (DIPERBADANKAN) [SSH]	6	153,127	6.147
18 JUN 2025 - 18 JUN 2025	E&O	ABERDEEN GROUP PLC (FORMERLY KNOWN AS ABRDN PLC) [SSH]	161	146,740	5.89
18 JUN 2025 - 18 JUN 2025	E&O	ABRDN HOLDINGS LIMITED [SSH]	161	146,740	5.89
18 JUN 2025 - 18 JUN 2025	E&O	ABRDN MALAYSIA SDN BHD [SSH]	161	145,394	5.836
17 JUN 2025 - 17 JUN 2025	E&O	EMPLOYEES PROVIDENT FUND BOARD [SSH]	308	153,839	6.175
18 JUN 2025 - 18 JUN 2025	E&O	KUMPULAN WANG PERSARAAN (DIPERBADANKAN) [SSH]	17	153,122	6.147
17 JUN 2025 - 17 JUN 2025	E&O	ABERDEEN GROUP PLC (FORMERLY KNOWN AS ABRDN PLC) [SSH]	345	146,579	5.884
17 JUN 2025 - 17 JUN 2025	E&O	ABRDN HOLDINGS LIMITED [SSH]	345	146,579	5.884
17 JUN 2025 - 17 JUN 2025	E&O	ABRDN MALAYSIA SDN BHD [SSH]	345	145,233	5.83
16 JUN 2025 - 16 JUN 2025	E&O	EMPLOYEES PROVIDENT FUND BOARD [SSH]	185	153,531	6.163
17 JUN 2025 - 17 JUN 2025	E&O	KUMPULAN WANG PERSARAAN (DIPERBADANKAN) [SSH]	37	153,104	6.146
16 JUN 2025 - 16 JUN 2025	E&O	ABERDEEN GROUP PLC (FORMERLY KNOWN AS ABRDN PLC) [SSH]	207	146,234	5.87
16 JUN 2025 - 16 JUN 2025	E&O	ABRDN HOLDINGS LIMITED [SSH]	207	146,234	5.87
16 JUN 2025 - 16 JUN 2025	E&O	ABRDN MALAYSIA SDN BHD [SSH]	207	144,888	5.816
13 JUN 2025 - 13 JUN 2025	E&O	EMPLOYEES PROVIDENT FUND BOARD [SSH]	262	153,347	6.156
16 JUN 2025 - 16 JUN 2025	E&O	KUMPULAN WANG PERSARAAN (DIPERBADANKAN) [SSH]	23	153,067	6.144
13 JUN 2025 - 13 JUN 2025	E&O	ABERDEEN GROUP PLC (FORMERLY KNOWN AS ABRDN PLC) [SSH]	293	146,027	5.862
13 JUN 2025 - 13 JUN 2025	E&O	ABRDN HOLDINGS LIMITED [SSH]	293	146,027	5.862
13 JUN 2025 - 13 JUN 2025	E&O	ABRDN MALAYSIA SDN BHD [SSH]	293	144,681	5.808
13 JUN 2025 - 13 JUN 2025	E&O	KUMPULAN WANG PERSARAAN (DIPERBADANKAN) [SSH]	31	153,045	6.143
17 JUN 2025 - 17 JUN 2025	ECONBHD	EMPLOYEES PROVIDENT FUND BOARD [SSH]	821	122,679	8.655
13 JUN 2025 - 13 JUN 2025	ECONBHD	EMPLOYEES PROVIDENT FUND BOARD [SSH]	1,000	121,858	8.597
12 JUN 2025 - 12 JUN 2025	ECONBHD	EMPLOYEES PROVIDENT FUND BOARD [SSH]	1,000	120,858	8.526
18 JUN 2025 - 18 JUN 2025	EDUSPEC	DATO' SRI GAN CHOW TEE [DIR/CEO]	600	94,234	7.042
18 JUN 2025 - 18 JUN 2025	EDUSPEC	DATO' SRI GAN CHOW TEE [SSH]	600	94,234	7.042
16 JUN 2025 - 16 JUN 2025	EDUSPEC	DATO' SRI GAN CHOW TEE [DIR/CEO]	900	93,634	6.997
16 JUN 2025 - 16 JUN 2025	EDUSPEC	DATO' SRI GAN CHOW TEE [SSH]	900	93,634	6.997
16 JUN 2025 - 17 JUN 2025	EKSONS	DATO' PHILIP CHAN HON KEONG [DIR/CEO]	100	451	0.279
13 JUN 2025 - 16 JUN 2025	ELKDESA	MR TEOH HOCK CHAI @ TEW HOCK CHAI [SSH]	250	197,612	43.746
13 JUN 2025 - 16 JUN 2025	ELKDESA	MR TEOH HOCK CHAI@TEW HOCK CHAI [DIR/CEO]	250	197,612	43.746
13 JUN 2025 - 16 JUN 2025	ELKDESA	TEOH HOCK CHAI FAMILY (L) FOUNDATION [SSH]	250	186,850	41.364
13 JUN 2025 - 16 JUN 2025	ELKDESA	ZHONGXIN RESOURCES SDN BHD [SSH]	250	176,850	39.15
17 JUN 2025 - 17 JUN 2025	F&N	EMPLOYEES PROVIDENT FUND BOARD [SSH]	17	43,731	11.923
16 JUN 2025 - 16 JUN 2025	F&N	EMPLOYEES PROVIDENT FUND BOARD [SSH]	96	43,714	11.918
13 JUN 2025 - 13 JUN 2025	F&N	EMPLOYEES PROVIDENT FUND BOARD [SSH]	45	43,618	11.892
12 JUN 2025 - 12 JUN 2025	F&N	EMPLOYEES PROVIDENT FUND BOARD [SSH]	72	43,572	11.88
11 JUN 2025 - 11 JUN 2025	F&N	EMPLOYEES PROVIDENT FUND BOARD [SSH]	7	43,501	11.86
16 JUN 2025 - 16 JUN 2025	FAREAST	DATO' ASMIN BINTI YAHYA [DIR/CEO]	2	376	0.063
19 JUN 2025 - 19 JUN 2025	FEYTECH	MISS TAN SUN SUN [DIR/CEO]	-500	294,630	34.942
19 JUN 2025 - 19 JUN 2025	FEYTECH	MISS TAN SUN SUN [SSH]	-500	294,630	34.942
17 JUN 2025 - 17 JUN 2025	FFB	EMPLOYEES PROVIDENT FUND BOARD [SSH]	-1,954	193,720	10.323
16 JUN 2025 - 16 JUN 2025	FFB	EMPLOYEES PROVIDENT FUND BOARD [SSH]	434	195,674	10.428
13 JUN 2025 - 13 JUN 2025	FFB	EMPLOYEES PROVIDENT FUND BOARD [SSH]	-49	195,241	10.405

Notice Period is 15th June 2025 – 21st June 2025

Effective Change Date	Stock Name	Buyer/ Seller Name [Classification]	Bought / (Sold) ['000]	No. of Shares After Trade ['000]	
			Total	Total	% Held
12 JUN 2025 - 12 JUN 2025	FFB	EMPLOYEES PROVIDENT FUND BOARD [SSH]	-773	195,290	10.408
19 JUN 2025 - 19 JUN 2025	FGV	FEDERAL LAND DEVELOPMENT AUTHORITY (FELDA) [SSH]	1,881	3,010,984	82.534
18 JUN 2025 - 18 JUN 2025	FGV	FEDERAL LAND DEVELOPMENT AUTHORITY (FELDA) [SSH]	872	3,009,103	82.483
17 JUN 2025 - 17 JUN 2025	FGV	FEDERAL LAND DEVELOPMENT AUTHORITY (FELDA) [SSH]	428	3,008,231	82.459
16 JUN 2025 - 16 JUN 2025	FGV	FEDERAL LAND DEVELOPMENT AUTHORITY (FELDA) [SSH]	247	3,007,803	82.447
13 JUN 2025 - 13 JUN 2025	FGV	FEDERAL LAND DEVELOPMENT AUTHORITY (FELDA) [SSH]	1,435	3,007,556	82.44
17 JUN 2025 - 17 JUN 2025	FIBRO	MR NG KIAN BOON [DIR/CEO]	745	160,932	64.82
17 JUN 2025 - 17 JUN 2025	FIBRO	MR NG KIAN BOON [SSH]	745	160,932	64.82
16 JUN 2025 - 16 JUN 2025	FIBRO	ENCIK MOHD TARMIM BIN SIDEK [DIR/CEO]	-400	2,600	1.047
16 JUN 2025 - 16 JUN 2025	FIBRO	MR NG KIAN BOON [DIR/CEO]	690	160,187	64.52
16 JUN 2025 - 16 JUN 2025	FIBRO	MR NG KIAN BOON [SSH]	690	160,187	64.52
12 JUN 2025 - 12 JUN 2025	FIBRO	MR NG KIAN BOON [DIR/CEO]	272	159,497	64.241
12 JUN 2025 - 12 JUN 2025	FIBRO	MR NG KIAN BOON [SSH]	272	159,497	64.241
16 JUN 2025 - 16 JUN 2025	FPI	WISTRON CORPORATION [SSH]	-200	67,260	26.245
12 JUN 2025 - 13 JUN 2025	FPI	WISTRON CORPORATION [SSH]	-400	67,460	26.323
17 JUN 2025 - 17 JUN 2025	FRONTKN	EMPLOYEES PROVIDENT FUND BOARD [SSH]	829	163,511	10.317
16 JUN 2025 - 16 JUN 2025	FRONTKN	EMPLOYEES PROVIDENT FUND BOARD [SSH]	1,017	162,366	10.245
13 JUN 2025 - 13 JUN 2025	FRONTKN	EMPLOYEES PROVIDENT FUND BOARD [SSH]	600	161,300	10.178
12 JUN 2025 - 12 JUN 2025	FRONTKN	EMPLOYEES PROVIDENT FUND BOARD [SSH]	300	160,819	10.147
11 JUN 2025 - 11 JUN 2025	FRONTKN	EMPLOYEES PROVIDENT FUND BOARD [SSH]	610	160,769	10.144
11 JUN 2025 - 11 JUN 2025	FSBM	TAN SRI DATO' SRI SYED ZAINAL ABIDIN BIN SYED MOHAMED TAHIR [SSH]	-4,300	45,095	8.804
17 JUN 2025 - 17 JUN 2025	GAMUDA	EMPLOYEES PROVIDENT FUND BOARD (EPF BOARD) [SSH]	2,012	809,268	14.03
16 JUN 2025 - 16 JUN 2025	GAMUDA	EMPLOYEES PROVIDENT FUND BOARD (EPF BOARD) [SSH]	787	807,256	13.99
13 JUN 2025 - 13 JUN 2025	GAMUDA	EMPLOYEES PROVIDENT FUND BOARD (EPF BOARD) [SSH]	1,165	806,470	13.98
12 JUN 2025 - 12 JUN 2025	GAMUDA	EMPLOYEES PROVIDENT FUND BOARD (EPF BOARD) [SSH]	-136	805,304	13.96
11 JUN 2025 - 11 JUN 2025	GAMUDA	EMPLOYEES PROVIDENT FUND BOARD (EPF BOARD) [SSH]	-3,064	805,440	13.96
19 JUN 2025 - 19 JUN 2025	GASMSIA	LEMBAGA TABUNG HAJI [SSH]	-100	80,827	6.294
18 JUN 2025 - 18 JUN 2025	GASMSIA	LEMBAGA TABUNG HAJI [SSH]	-100	80,927	6.302
17 JUN 2025 - 17 JUN 2025	GASMSIA	LEMBAGA TABUNG HAJI [SSH]	-100	81,027	6.31
16 JUN 2025 - 16 JUN 2025	GASMSIA	LEMBAGA TABUNG HAJI [SSH]	-100	81,127	6.318
13 JUN 2025 - 13 JUN 2025	GASMSIA	LEMBAGA TABUNG HAJI [SSH]	-100	81,227	6.326
13 JUN 2025 - 17 JUN 2025	GBAY	MR PETER LING EE KONG [DIR/CEO]	50	13,507	17.02
13 JUN 2025 - 17 JUN 2025	GBAY	MR PETER LING EE KONG [SSH]	50	13,507	17.02
13 JUN 2025 - 16 JUN 2025	GLOMAC	DATUK SERI FATEH ISKANDAR BIN TAN SRI DATO' MOHAMED MANSOR [DIR/CEO]	46	333,657	43.473
19 JUN 2025 - 19 JUN 2025	HARTA	KUMPULAN WANG PERSARAAN (DIPERBADANKAN) [SSH]	500	219,141	6.42
18 JUN 2025 - 18 JUN 2025	HARTA	KUMPULAN WANG PERSARAAN (DIPERBADANKAN) [SSH]	-513	218,641	6.405
17 JUN 2025 - 17 JUN 2025	HARTA	KUMPULAN WANG PERSARAAN (DIPERBADANKAN) [SSH]	-1,793	219,154	6.42
16 JUN 2025 - 16 JUN 2025	HARTA	KUMPULAN WANG PERSARAAN (DIPERBADANKAN) [SSH]	857	220,948	6.473
13 JUN 2025 - 13 JUN 2025	HARTA	KUMPULAN WANG PERSARAAN (DIPERBADANKAN) [SSH]	-66	220,091	6.448
13 JUN 2025 - 16 JUN 2025	HEKTAR	DATO' ONG CHOO MENG [SSH]	-2,826	116,275	16.393
13 JUN 2025 - 16 JUN 2025	HEKTAR	HEXTAR RUBBER SDN BHD [SSH]	-2,826	116,275	16.393
16 JUN 2025 - 18 JUN 2025	HIL	DATO' MILTON NORMAN NG KWEE LEONG [DIR/CEO]	46	224,563	67.651
16 JUN 2025 - 18 JUN 2025	HIL	DATO' MILTON NORMAN NG KWEE LEONG [SSH]	46	224,563	67.651
16 JUN 2025 - 18 JUN 2025	HIL	PUAN SRI DATIN CATHERINE YEOH ENG NEO [SSH]	46	242,592	73.083
16 JUN 2025 - 18 JUN 2025	HIL	TAN SRI DATO' IR NG BOON THONG @ NG THIAN HOCK [DIR/CEO]	46	242,592	73.083
16 JUN 2025 - 18 JUN 2025	HIL	TAN SRI DATO' IR NG BOON THONG @ NG THIAN HOCK [SSH]	46	242,592	73.083
12 JUN 2025 - 12 JUN 2025	HIL	DATO' MILTON NORMAN NG KWEE LEONG [DIR/CEO]	59	224,517	67.638
12 JUN 2025 - 12 JUN 2025	HIL	DATO' MILTON NORMAN NG KWEE LEONG [SSH]	59	224,517	67.638
12 JUN 2025 - 12 JUN 2025	HIL	PUAN SRI DATIN CATHERINE YEOH ENG NEO [SSH]	59	242,546	73.069
12 JUN 2025 - 12 JUN 2025	HIL	TAN SRI DATO' IR NG BOON THONG @ NG THIAN HOCK [DIR/CEO]	59	242,546	73.069
12 JUN 2025 - 12 JUN 2025	HIL	TAN SRI DATO' IR NG BOON THONG @ NG THIAN HOCK [SSH]	59	242,546	73.069
17 JUN 2025 - 17 JUN 2025	HLBANK	EMPLOYEES PROVIDENT FUND BOARD [SSH]	430	189,639	9.088
16 JUN 2025 - 16 JUN 2025	HLBANK	EMPLOYEES PROVIDENT FUND BOARD [SSH]	555	189,209	9.068
13 JUN 2025 - 13 JUN 2025	HLBANK	EMPLOYEES PROVIDENT FUND BOARD [SSH]	425	188,654	9.041
12 JUN 2025 - 12 JUN 2025	HLBANK	EMPLOYEES PROVIDENT FUND BOARD [SSH]	485	188,229	9.021
11 JUN 2025 - 11 JUN 2025	HLBANK	EMPLOYEES PROVIDENT FUND BOARD [SSH]	273	187,745	8.998
16 JUN 2025 - 16 JUN 2025	HLT	MADAM CHAN YOKE CHUN [DIR/CEO]	297,327	594,654	47.39
16 JUN 2025 - 16 JUN 2025	HLT	MADAM CHAN YOKE CHUN [SSH]	297,327	594,654	47.39
16 JUN 2025 - 16 JUN 2025	HLT	MADAM WONG WAI TING [DIR/CEO]	56	169	0.01
16 JUN 2025 - 16 JUN 2025	HLT	MISS CHUI MEE CHUEN [DIR/CEO]	375	1,125	0.09
16 JUN 2025 - 16 JUN 2025					

Notice Period is 15th June 2025 – 21st June 2025

Effective Change Date	Stock Name	Buyer/ Seller Name [Classification]	Bought / (Sold) ['000]	No. of Shares After Trade ['000]	
			Total	Total	% Held
16 JUN 2025 - 17 JUN 2025	IFCAMSC	MR YONG KIAN KEONG [SSH]	1,777	217,833	36.301
19 JUN 2025 - 19 JUN 2025	IGBREIT	KUMPULAN WANG PERSARAAN (DEPERBADANKAN) [SSH]	-375	249,424	6.888
17 JUN 2025 - 17 JUN 2025	IGBREIT	EMPLOYEES PROVIDENT FUND BOARD [SSH]	-1,388	375,969	10.381
18 JUN 2025 - 18 JUN 2025	IGBREIT	KUMPULAN WANG PERSARAAN (DEPERBADANKAN) [SSH]	-173	249,799	6.898
16 JUN 2025 - 16 JUN 2025	IGBREIT	EMPLOYEES PROVIDENT FUND BOARD [SSH]	-1,433	377,358	10.42
13 JUN 2025 - 13 JUN 2025	IGBREIT	EMPLOYEES PROVIDENT FUND BOARD [SSH]	-971	378,791	10.459
16 JUN 2025 - 16 JUN 2025	IGBREIT	KUMPULAN WANG PERSARAAN (DEPERBADANKAN) [SSH]	300	249,971	6.903
12 JUN 2025 - 12 JUN 2025	IGBREIT	EMPLOYEES PROVIDENT FUND BOARD [SSH]	-1,584	379,762	10.486
11 JUN 2025 - 11 JUN 2025	IGBREIT	EMPLOYEES PROVIDENT FUND BOARD [SSH]	-1,806	381,346	10.53
17 JUN 2025 - 17 JUN 2025	IHH	EMPLOYEES PROVIDENT FUND BOARD [SSH]	311	990,793	11.222
16 JUN 2025 - 16 JUN 2025	IHH	EMPLOYEES PROVIDENT FUND BOARD [SSH]	197	990,482	11.219
13 JUN 2025 - 13 JUN 2025	IHH	EMPLOYEES PROVIDENT FUND BOARD [SSH]	543	990,285	11.217
12 JUN 2025 - 12 JUN 2025	IHH	EMPLOYEES PROVIDENT FUND BOARD [SSH]	-3,447	989,742	11.211
11 JUN 2025 - 11 JUN 2025	IHH	EMPLOYEES PROVIDENT FUND BOARD [SSH]	-201	993,251	11.251
17 JUN 2025 - 17 JUN 2025	IJM	EMPLOYEES PROVIDENT FUND BOARD [SSH]	454	581,547	16.591
16 JUN 2025 - 16 JUN 2025	IJM	EMPLOYEES PROVIDENT FUND BOARD [SSH]	635	581,093	16.578
13 JUN 2025 - 13 JUN 2025	IJM	EMPLOYEES PROVIDENT FUND BOARD [SSH]	351	580,459	16.56
12 JUN 2025 - 12 JUN 2025	IJM	EMPLOYEES PROVIDENT FUND BOARD [SSH]	4,858	580,108	16.55
11 JUN 2025 - 11 JUN 2025	IJM	EMPLOYEES PROVIDENT FUND BOARD [SSH]	719	575,250	16.411
13 JUN 2025 - 13 JUN 2025	INARI	EMPLOYEES PROVIDENT FUND BOARD [SSH]	926	496,810	13.112
12 JUN 2025 - 12 JUN 2025	INARI	EMPLOYEES PROVIDENT FUND BOARD [SSH]	1,274	495,884	13.088
11 JUN 2025 - 11 JUN 2025	INARI	EMPLOYEES PROVIDENT FUND BOARD [SSH]	5,218	494,610	13.054
13 JUN 2025 - 13 JUN 2025	IOICORP	EMPLOYEES PROVIDENT FUND BOARD [SSH]	19	870,507	14.032
12 JUN 2025 - 12 JUN 2025	IOICORP	EMPLOYEES PROVIDENT FUND BOARD [SSH]	76	870,489	14.032
11 JUN 2025 - 11 JUN 2025	IOICORP	EMPLOYEES PROVIDENT FUND BOARD [SSH]	944	870,412	14.031
13 JUN 2025 - 13 JUN 2025	IOIPG	EMPLOYEES PROVIDENT FUND BOARD [SSH]	-127	453,064	8.228
12 JUN 2025 - 12 JUN 2025	IOIPG	EMPLOYEES PROVIDENT FUND BOARD [SSH]	-2,579	453,061	8.228
17 JUN 2025 - 17 JUN 2025	JPG	EMPLOYEES PROVIDENT FUND BOARD [SSH]	1,036	252,630	10.105
16 JUN 2025 - 16 JUN 2025	JPG	EMPLOYEES PROVIDENT FUND BOARD [SSH]	572	251,594	10.064
13 JUN 2025 - 13 JUN 2025	JPG	EMPLOYEES PROVIDENT FUND BOARD [SSH]	1,012	251,021	10.041
12 JUN 2025 - 12 JUN 2025	JPG	EMPLOYEES PROVIDENT FUND BOARD [SSH]	773	250,009	10
11 JUN 2025 - 11 JUN 2025	JPG	EMPLOYEES PROVIDENT FUND BOARD [SSH]	-37	249,237	9.969
17 JUN 2025 - 17 JUN 2025	KAREX	ABERDEEN GROUP PLC (FKA ABRDN PLC) [SSH]	454	63,873	6.063
17 JUN 2025 - 17 JUN 2025	KAREX	ABRDN HOLDINGS LIMITED [SSH]	454	63,873	6.063
17 JUN 2025 - 17 JUN 2025	KAREX	ABRDN MALAYSIA SDN. BHD. [SSH]	454	61,192	5.809
16 JUN 2025 - 16 JUN 2025	KAREX	ABERDEEN GROUP PLC (FKA ABRDN PLC) [SSH]	86	63,419	6.02
16 JUN 2025 - 16 JUN 2025	KAREX	ABRDN HOLDINGS LIMITED [SSH]	86	63,419	6.02
16 JUN 2025 - 16 JUN 2025	KAREX	ABRDN MALAYSIA SDN. BHD. [SSH]	86	60,738	5.766
13 JUN 2025 - 13 JUN 2025	KAREX	ABERDEEN GROUP PLC (FKA ABRDN PLC) [SSH]	608	63,333	6.012
13 JUN 2025 - 13 JUN 2025	KAREX	ABRDN HOLDINGS LIMITED [SSH]	608	63,333	6.012
13 JUN 2025 - 13 JUN 2025	KAREX	ABRDN MALAYSIA SDN. BHD. [SSH]	608	60,652	5.757
12 JUN 2025 - 12 JUN 2025	KAREX	ABERDEEN GROUP PLC (FKA ABRDN PLC) [SSH]	17	62,724	5.954
12 JUN 2025 - 12 JUN 2025	KAREX	ABRDN HOLDINGS LIMITED [SSH]	17	62,724	5.954
12 JUN 2025 - 12 JUN 2025	KAREX	ABRDN MALAYSIA SDN. BHD. [SSH]	17	60,043	5.7
20 JUN 2025 - 20 JUN 2025	KGB	MR SOH TONG HWA [DIR/CEO]	1,500	143,875	19.381
20 JUN 2025 - 20 JUN 2025	KGB	MR SOH TONG HWA [DIR/CEO]	1,500	55,992	43.972
20 JUN 2025 - 20 JUN 2025	KGB	MR SOH TONG HWA [SSH]	1,500	143,875	19.381
17 JUN 2025 - 17 JUN 2025	KGB	EMPLOYEES PROVIDENT FUND BOARD [SSH]	-253	46,000	6.197
13 JUN 2025 - 13 JUN 2025	KGB	EMPLOYEES PROVIDENT FUND BOARD [SSH]	-616	46,253	6.248
12 JUN 2025 - 12 JUN 2025	KGB	EMPLOYEES PROVIDENT FUND BOARD [SSH]	-1,714	46,869	6.375
11 JUN 2025 - 11 JUN 2025	KGB	EMPLOYEES PROVIDENT FUND BOARD [SSH]	-621	48,583	6.608
17 JUN 2025 - 17 JUN 2025	KLCC	EMPLOYEES PROVIDENT FUND BOARD [SSH]	588	214,457	11.879
17 JUN 2025 - 17 JUN 2025	KLCC	EMPLOYEES PROVIDENT FUND BOARD [SSH]	588	214,457	11.879
16 JUN 2025 - 16 JUN 2025	KLCC	EMPLOYEES PROVIDENT FUND BOARD [SSH]	1,592	213,869	11.847
16 JUN 2025 - 16 JUN 2025	KLCC	EMPLOYEES PROVIDENT FUND BOARD [SSH]	1,592	213,869	11.847
13 JUN 2025 - 13 JUN 2025	KLCC	EMPLOYEES PROVIDENT FUND BOARD [SSH]	-20	212,277	11.758
13 JUN 2025 - 13 JUN 2025	KLCC	EMPLOYEES PROVIDENT FUND BOARD [SSH]	-20	212,277	11.758
12 JUN 2025 - 12 JUN 2025	KLCC	EMPLOYEES PROVIDENT FUND BOARD [SSH]	1,650	212,297	11.759
12 JUN 2025 - 12 JUN 2025	KLCC	EMPLOYEES PROVIDENT FUND BOARD [SSH]	1,650	212,297	11.759
11 JUN 2025 - 11 JUN 2025	KLCC	EMPLOYEES PROVIDENT FUND BOARD [SSH]	1,434	210,647	11.668
11 JUN 2025 - 11 JUN 2025	KLCC	EMPLOYEES PROVIDENT FUND BOARD [SSH]	1,434	210,647	11.668
13 JUN 2025 - 13 JUN 2025	KLK	EMPLOYEES PROVIDENT FUND BOARD [SSH]	17	179,551	16.123
12 JUN 2025 - 12 JUN 2025	KLK	EMPLOYEES PROVIDENT FUND BOARD [SSH]	373	179,418	16.111
17 JUN 2025 - 17 JUN 2025	KOSSAN	MR LIM KUANG WANG [SSH]	200	65,770	37.705
17 JUN 2025 - 17 JUN 2025	KSENG	MR HO CHUNG KAIN (HE CHONGJING) [DIR/CEO]	50	1,400	0.39
20 JUN 2025 - 20 JUN 2025	LBICAP	NG C.H. HOLDINGS SDN. BHD. [SSH]	7,566	57,020	49.79
17 JUN 2025 - 17 JUN 2025	LBS	KUMPULAN WANG PERSARAAN (DIPERBADANKAN) [SSH]	-618	136,973	8.885
19 JUN 2025 - 19 JUN 2025	M&A	CIK SITI NUR AISHAH BINTI ISHAK [SSH]	390	141,534	7.081
18 JUN 2025 - 18 JUN 2025	M&A	CIK SITI NUR AISHAH BINTI ISHAK [SSH]	-280	141,144	7.062
17 JUN 2025 - 17 JUN 2025	M&A	CIK SITI NUR AISHAH BINTI ISHAK [SSH]	160	141,424	7.076
16 JUN 2025 - 16 JUN 2025	M&A	CIK SITI NUR AISHAH BINTI ISHAK [SSH]	70	141,264	7.068
13 JUN 2025 - 13 JUN 2025	M&A	CIK SITI NUR AISHAH BINTI ISHAK [SSH]	90	141,194	7.064
19 JUN 2025 - 19 JUN 2025	MALAKOF	KUMPULAN WANG PERSARAAN (DIPERBADANKAN) ("KWAP") [SSH]	-2,203	425,523	8.707
16 JUN 2025 - 16 JUN 2025	MALAKOF	EMPLOYEES PROVIDENT FUND BOARD [SSH]	1,255	660,466	13.514
17 JUN 2025 - 17 JUN 2025	MALAKOF	KUMPULAN WANG PERSARAAN (DIPERBADANKAN) ("KWAP") [SSH]	-308	427,727	8.752
13 JUN 2025 - 13 JUN 2025	MALAKOF	EMPLOYEES PROVIDENT FUND BOARD [SSH]	1,478	659,211	13.489
16 JUN 2025 - 16 JUN 2025	MALAKOF	KUMPULAN WANG PERSARAAN (DIPERBADANKAN) ("KWAP") [SSH]	-1,000	428,034	8.758
12 JUN 2025 - 12 JUN 2025	MALAKOF	EMPLOYEES PROVIDENT FUND BOARD [SSH]	1,239	657,733	13.458
11 JUN 2025 - 11 JUN 2025	MALAKOF	EMPLOYEES PROVIDENT FUND BOARD [SSH]	4,606	656,494	13.433
11 JUN 2025 - 11 JUN 2025	MALAKOF	URUSHARTA JAMA'AH SDN. BHD. [SSH]	-1,872	449,089	9.189
17 JUN 2025 - 18 JUN 2025	MATANG	HUAREN HOLDINGS SDN BHD [SSH]	8,239	600,060	25.116
17 JUN 2025 - 18 JUN 2025	MATANG	MALAYSIAN CHINESE ASSOCIATION [SSH]	8,239	622,790	26.067
13 JUN 2025 - 16 JUN 2025	MATANG	HUAREN HOLDINGS SDN BHD [SSH]	102	591,821	24.771
13 JUN 2025 - 16 JUN 2025	MATANG	MALAYSIAN CHINESE ASSOCIATION [SSH]	102	614,551	25.722

Notice Period is 15th June 2025 – 21st June 2025

Effective Change Date	Stock Name	Buyer/ Seller Name [Classification]	Bought / (Sold) ['000]	No. of Shares After Trade ['000]	
			Total	Total	% Held
18 JUN 2025 - 19 JUN 2025	MAXIM	TAN SRI DATUK SERI GAN SEONG LIAM [DIR/CEO]	1,147	152,887	20.8
18 JUN 2025 - 19 JUN 2025	MAXIM	TAN SRI DATUK SERI GAN SEONG LIAM [SSH]	1,147	152,887	20.8
19 JUN 2025 - 19 JUN 2025	MAYBANK	KUMPULAN WANG PERSARAAN (DIPERBADANKAN) ("KWAP") [SSH]	100	624,398	5.168
17 JUN 2025 - 17 JUN 2025	MAYBANK	EMPLOYEES PROVIDENT FUND BOARD [SSH]	-380	154,880	12.82
16 JUN 2025 - 16 JUN 2025	MAYBANK	EMPLOYEES PROVIDENT FUND BOARD [SSH]	-700	154,918	12.824
17 JUN 2025 - 17 JUN 2025	MAYBANK	KUMPULAN WANG PERSARAAN (DIPERBADANKAN) ("KWAP") [SSH]	237	624,298	5.167
13 JUN 2025 - 13 JUN 2025	MAYBANK	EMPLOYEES PROVIDENT FUND BOARD [SSH]	-1,135	1,549,883	12.829
16 JUN 2025 - 16 JUN 2025	MAYBANK	KUMPULAN WANG PERSARAAN (DIPERBADANKAN) ("KWAP") [SSH]	2,914	624,061	5.165
12 JUN 2025 - 12 JUN 2025	MAYBANK	EMPLOYEES PROVIDENT FUND BOARD [SSH]	-2,204	1,551,218	12.84
13 JUN 2025 - 13 JUN 2025	MAYBANK	KUMPULAN WANG PERSARAAN (DIPERBADANKAN) ("KWAP") [SSH]	1,186	621,147	5.141
11 JUN 2025 - 11 JUN 2025	MAYBANK	EMPLOYEES PROVIDENT FUND BOARD [SSH]	-1,990	1,553,422	12.859
12 JUN 2025 - 13 JUN 2025	MBL	TAN SRI DATO' SERI TAN KING TAI @ TAN KHOON HAI [DIR/CEO]	14	22,209	9.76
12 JUN 2025 - 13 JUN 2025	MBL	TAN SRI DATO' SERI TAN KING TAI @ TAN KHOON HAI [SSH]	14	22,209	9.76
16 JUN 2025 - 16 JUN 2025	MENANG	CHIN LEONG THYE SDN. BHD. [SSH]	8,300	83,468	11.974
16 JUN 2025 - 16 JUN 2025	MENANG	MR LEE MIN HUAT [SSH]	8,300	110,428	15.842
16 JUN 2025 - 17 JUN 2025	MERCURY	BRIGHT MEADOW SDN BHD [SSH]	-76	38,559	59.967
16 JUN 2025 - 17 JUN 2025	MERCURY	DATO' DOH TEE LEONG [DIR/CEO]	-76	38,559	59.967
16 JUN 2025 - 17 JUN 2025	MERCURY	DATO' DOH TEE LEONG [SSH]	-76	38,559	59.967
12 JUN 2025 - 13 JUN 2025	MERCURY	BRIGHT MEADOW SDN BHD [SSH]	-44	38,635	60.085
12 JUN 2025 - 13 JUN 2025	MERCURY	DATO' DOH TEE LEONG [DIR/CEO]	-44	38,635	60.085
12 JUN 2025 - 13 JUN 2025	MERCURY	DATO' DOH TEE LEONG [SSH]	-44	38,635	60.085
17 JUN 2025 - 20 JUN 2025	MFCB	CAM PROPERTY (MALAYSIA) SDN BHD [SSH]	99	203,717	21.615
17 JUN 2025 - 20 JUN 2025	MFCB	CAMASIA LIMITED [SSH]	99	205,203	21.773
17 JUN 2025 - 17 JUN 2025	MFCB	EMPLOYEES PROVIDENT FUND BOARD [SSH]	361	87,035	9.235
17 JUN 2025 - 20 JUN 2025	MFCB	GOH NAN KIOH [DIR/CEO]	99	331,282	35.15
17 JUN 2025 - 20 JUN 2025	MFCB	KEEN CAPITAL INVESTMENT LIMITED [SSH]	99	280,488	29.761
17 JUN 2025 - 20 JUN 2025	MFCB	LAJU RIANG SDN BHD [SSH]	99	203,717	21.615
17 JUN 2025 - 20 JUN 2025	MFCB	MR GOH NAN KIOH [SSH]	99	331,282	35.15
17 JUN 2025 - 20 JUN 2025	MFCB	RUBBER THREAD INDUSTRIES (M) SDN BERHAD [SSH]	99	203,717	21.615
16 JUN 2025 - 16 JUN 2025	MFCB	EMPLOYEES PROVIDENT FUND BOARD [SSH]	739	86,674	9.196
13 JUN 2025 - 13 JUN 2025	MFCB	EMPLOYEES PROVIDENT FUND BOARD [SSH]	743	85,935	9.118
12 JUN 2025 - 12 JUN 2025	MFCB	EMPLOYEES PROVIDENT FUND BOARD [SSH]	1,224	85,192	9.039
13 JUN 2025 - 16 JUN 2025	MFCB	CAM PROPERTY (MALAYSIA) SDN BHD [SSH]	100	203,618	21.605
13 JUN 2025 - 16 JUN 2025	MFCB	CAMASIA LIMITED [SSH]	100	205,103	21.763
13 JUN 2025 - 16 JUN 2025	MFCB	GOH NAN KIOH [DIR/CEO]	100	331,183	35.139
13 JUN 2025 - 16 JUN 2025	MFCB	KEEN CAPITAL INVESTMENT LIMITED [SSH]	100	280,388	29.751
13 JUN 2025 - 16 JUN 2025	MFCB	LAJU RIANG SDN BHD [SSH]	100	203,618	21.605
13 JUN 2025 - 16 JUN 2025	MFCB	MR GOH NAN KIOH [SSH]	100	331,183	35.139
13 JUN 2025 - 16 JUN 2025	MFCB	RUBBER THREAD INDUSTRIES (M) SDN BERHAD [SSH]	100	203,618	21.605
11 JUN 2025 - 11 JUN 2025	MFCB	EMPLOYEES PROVIDENT FUND BOARD [SSH]	203	83,969	8.909
17 JUN 2025 - 17 JUN 2025	MINOX	MR CHEONG CHEE SON [DIR/CEO]	166	175,095	48.637
17 JUN 2025 - 17 JUN 2025	MINOX	MR CHEONG CHEE SON [SSH]	166	175,095	48.637
12 JUN 2025 - 12 JUN 2025	MISC	EMPLOYEES PROVIDENT FUND BOARD [SSH]	2,678	640,711	14.354
11 JUN 2025 - 11 JUN 2025	MISC	EMPLOYEES PROVIDENT FUND BOARD [SSH]	481	638,088	14.295
17 JUN 2025 - 17 JUN 2025	MPIRE	DATO' GOH SOO WEE [DIR/CEO]	171,993	281,086	31.285
17 JUN 2025 - 17 JUN 2025	MPIRE	DATO' GOH SOO WEE [SSH]	171,993	281,086	31.285
17 JUN 2025 - 17 JUN 2025	MPIRE	MAYAPADA ASSET SDN BHD [SSH]	171,993	277,216	30.854
17 JUN 2025 - 17 JUN 2025	MPIRE	MR TEH KOK LIANG [DIR/CEO]	171,993	277,216	30.854
17 JUN 2025 - 17 JUN 2025	MPIRE	MR TEH KOK LIANG [SSH]	171,993	277,216	30.854
17 JUN 2025 - 17 JUN 2025	MRDIY	EMPLOYEES PROVIDENT FUND BOARD [SSH]	403	786,691	8.306
16 JUN 2025 - 16 JUN 2025	MRDIY	EMPLOYEES PROVIDENT FUND BOARD [SSH]	4,000	786,289	8.302
13 JUN 2025 - 13 JUN 2025	MRDIY	EMPLOYEES PROVIDENT FUND BOARD [SSH]	3,272	782,143	8.258
12 JUN 2025 - 12 JUN 2025	MRDIY	EMPLOYEES PROVIDENT FUND BOARD [SSH]	3,000	778,245	8.217
11 JUN 2025 - 11 JUN 2025	MRDIY	EMPLOYEES PROVIDENT FUND BOARD [SSH]	1,483	775,057	8.184
16 JUN 2025 - 17 JUN 2025	MSTGOLF	ALL SPORTZ SDN BHD [SSH]	264	440,441	53.656
16 JUN 2025 - 17 JUN 2025	MSTGOLF	MR LOW KOK POH [DIR/CEO]	264	470,660	57.337
16 JUN 2025 - 17 JUN 2025	MSTGOLF	MR LOW KOK POH [SSH]	264	470,660	57.337
16 JUN 2025 - 17 JUN 2025	MSTGOLF	MR NG YAP SIO [DIR/CEO]	264	502,708	61.241

Notice Period is 15th June 2025 – 21st June 2025

Effective Change Date	Stock Name	Buyer/ Seller Name [Classification]	Bought / (Sold) ['000]	No. of Shares After Trade ['000]	
			Total	Total	% Held
16 JUN 2025 - 16 JUN 2025	PADINI	KUMPULAN WANG PERSARAAN (DIPERBADANKAN) [SSH]	162	101206	10.255
13 JUN 2025 - 16 JUN 2025	PAOS	MISS LIM CHANG CHING [DIR/CEO]	-3,200	65606	36.214
13 JUN 2025 - 16 JUN 2025	PAOS	MISS LIM CHANG CHING [SSH]	-3,200	65606	36.214
19 JUN 2025 - 19 JUN 2025	PAVREIT	KUMPULAN WANG PERSARAAN (DIPERBADANKAN) [SSH]	4,300	219553	5.599
17 JUN 2025 - 17 JUN 2025	PAVREIT	EMPLOYEES PROVIDENT FUND BOARD [SSH]	150	417516	11.394
16 JUN 2025 - 16 JUN 2025	PAVREIT	EMPLOYEES PROVIDENT FUND BOARD [SSH]	700	417366	11.39
13 JUN 2025 - 13 JUN 2025	PAVREIT	EMPLOYEES PROVIDENT FUND BOARD [SSH]	535	416666	11.371
16 JUN 2025 - 16 JUN 2025	PAVREIT	KUMPULAN WANG PERSARAAN (DIPERBADANKAN) [SSH]	300	215253	5.874
12 JUN 2025 - 12 JUN 2025	PAVREIT	EMPLOYEES PROVIDENT FUND BOARD [SSH]	1,446	416131	11.356
13 JUN 2025 - 13 JUN 2025	PAVREIT	KUMPULAN WANG PERSARAAN (DIPERBADANKAN) [SSH]	163	214953	5.866
11 JUN 2025 - 11 JUN 2025	PAVREIT	EMPLOYEES PROVIDENT FUND BOARD [SSH]	890	414685	11.317
17 JUN 2025 - 17 JUN 2025	PBBANK	EMPLOYEES PROVIDENT FUND BOARD [SSH]	5,000	3068908	15.81
16 JUN 2025 - 16 JUN 2025	PBBANK	EMPLOYEES PROVIDENT FUND BOARD [SSH]	5,000	3063908	15.78
13 JUN 2025 - 13 JUN 2025	PBBANK	EMPLOYEES PROVIDENT FUND BOARD [SSH]	5,000	3058908	15.76
12 JUN 2025 - 12 JUN 2025	PBBANK	EMPLOYEES PROVIDENT FUND BOARD [SSH]	5,348	3053908	15.73
11 JUN 2025 - 11 JUN 2025	PBBANK	EMPLOYEES PROVIDENT FUND BOARD [SSH]	2,870	3048561	15.71
19 JUN 2025 - 19 JUN 2025	PENTA	KUMPULAN WANG PERSARAAN (DIPERBADANKAN) [SSH]	163	68791	9.671
17 JUN 2025 - 17 JUN 2025	PENTA	KUMPULAN WANG PERSARAAN (DIPERBADANKAN) [SSH]	4	68628	9.648
16 JUN 2025 - 16 JUN 2025	PENTA	KUMPULAN WANG PERSARAAN (DIPERBADANKAN) [SSH]	-238	68625	9.648
12 JUN 2025 - 12 JUN 2025	PENTA	EMPLOYEES PROVIDENT FUND BOARD [SSH]	545	74207	10.432
18 JUN 2025 - 19 JUN 2025	PESONA	KOMBINASI EMAS SDN BHD [SSH]	500	290500	41.799
18 JUN 2025 - 19 JUN 2025	PESONA	MR WIE HOCK KIONG [DIR/CEO]	500	290500	41.799
18 JUN 2025 - 19 JUN 2025	PESONA	MR WIE HOCK KIONG [SSH]	500	290500	41.799
17 JUN 2025 - 17 JUN 2025	PETDAG	EMPLOYEES PROVIDENT FUND BOARD ("EPF BOARD") [SSH]	-170	125468	12.629
16 JUN 2025 - 16 JUN 2025	PETDAG	EMPLOYEES PROVIDENT FUND BOARD ("EPF BOARD") [SSH]	-119	125688	12.652
17 JUN 2025 - 17 JUN 2025	PETGAS	EMPLOYEES PROVIDENT FUND BOARD [SSH]	-596	262254	13.254
18 JUN 2025 - 18 JUN 2025	PETGAS	KUMPULAN WANG PERSARAAN (DIPERBADANKAN) ("KWAP") [SSH]	-15	197567	9.985
16 JUN 2025 - 16 JUN 2025	PETGAS	EMPLOYEES PROVIDENT FUND BOARD [SSH]	-225	262850	13.284
13 JUN 2025 - 13 JUN 2025	PETGAS	EMPLOYEES PROVIDENT FUND BOARD [SSH]	246	263075	13.295
16 JUN 2025 - 16 JUN 2025	PETGAS	KUMPULAN WANG PERSARAAN (DIPERBADANKAN) ("KWAP") [SSH]	-198	197582	9.986
13 JUN 2025 - 13 JUN 2025	PETGAS	KUMPULAN WANG PERSARAAN (DIPERBADANKAN) ("KWAP") [SSH]	-316	197780	9.996
11 JUN 2025 - 11 JUN 2025	PETGAS	EMPLOYEES PROVIDENT FUND BOARD [SSH]	1,170	262829	13.283
20 JUN 2025 - 20 JUN 2025	PJBUMI	PUAN HAFIDAH BINTI PAWANCIK [SSH]	25	5743	7.004
18 JUN 2025 - 19 JUN 2025	PJBUMI	PUAN HAFIDAH BINTI PAWANCIK [SSH]	122	5718	6.974
09 JUN 2025 - 17 JUN 2025	PJBUMI	PUAN HAFIDAH BINTI PAWANCIK [SSH]	-327	5596	6.825
13 JUN 2025 - 13 JUN 2025	PLINTAS	EMPLOYEES PROVIDENT FUND BOARD [SSH]	93	86436	7.858
11 JUN 2025 - 11 JUN 2025	PLINTAS	EMPLOYEES PROVIDENT FUND BOARD [SSH]	248	86343	7.849
17 JUN 2025 - 17 JUN 2025	PMETAL	EMPLOYEES PROVIDENT FUND BOARD [SSH]	1,012	508199	6.168
16 JUN 2025 - 16 JUN 2025	PMETAL	EMPLOYEES PROVIDENT FUND BOARD [SSH]	1,772	507187	6.155
13 JUN 2025 - 13 JUN 2025	PMETAL	EMPLOYEES PROVIDENT FUND BOARD [SSH]	499	505415	6.134
12 JUN 2025 - 12 JUN 2025	PMETAL	EMPLOYEES PROVIDENT FUND BOARD [SSH]	2,226	504916	6.128
11 JUN 2025 - 11 JUN 2025	PMETAL	EMPLOYEES PROVIDENT FUND BOARD [SSH]	2,863	502691	6.101
17 JUN 2025 - 17 JUN 2025	PPB	EMPLOYEES PROVIDENT FUND BOARD [SSH]	-32	188472	13.248
18 JUN 2025 - 18 JUN 2025	RCECAP	AMCORP GROUP BERHAD [SSH]	27	864485	58.887
18 JUN 2025 - 18 JUN 2025	RCECAP	CEMPAKA EMPAYAR SDN BHD [SSH]	27	864485	58.887
18 JUN 2025 - 18 JUN 2025	RCECAP	CLEAR GOAL SDN BHD [SSH]	27	864485	58.887
18 JUN 2025 - 18 JUN 2025	RCECAP	TAN SRI AZMAN BIN HASHIM [SSH]	27	864485	58.887
16 JUN 2025 - 16 JUN 2025	RCECAP	AMCORP GROUP BERHAD [SSH]	60	864458	58.885
16 JUN 2025 - 16 JUN 2025	RCECAP	CEMPAKA EMPAYAR SDN BHD [SSH]	60	864458	58.885
16 JUN 2025 - 16 JUN 2025	RCECAP	CLEAR GOAL SDN BHD [SSH]	60	864458	58.885
16 JUN 2025 - 16 JUN 2025	RCECAP	TAN SRI AZMAN BIN HASHIM [SSH]	60	864458	58.885
12 JUN 2025 - 12 JUN 2025	RCECAP	AMCORP GROUP BERHAD [SSH]	190	864398	58.881
12 JUN 2025 - 12 JUN 2025	RCECAP	CEMPAKA EMPAYAR SDN BHD [SSH]	190	864398	58.881
12 JUN 2025 - 12 JUN 2025	RCECAP	CLEAR GOAL SDN BHD [SSH]	190	864398	58.881
12 JUN 2025 - 12 JUN 2025	RCECAP	TAN SRI AZMAN BIN HASHIM [SSH]	190	864398	58.881
17 JUN 2025 - 17 JUN 2025	RHBBANK	EMPLOYEES PROVIDENT FUND BOARD [SSH]	1,781	1706426	39.143
16 JUN 2025 - 16 JUN 2025	RHBBANK	EMPLOYEES PROVIDENT FUND BOARD [SSH]	-26	1704645	39.102
13 JUN 2025 - 13 JUN 2025	RHBBANK	EMPLOYEES PROVIDENT FUND BOARD [SSH]	-989	1704671	39.103
12 JUN 2025 - 12 JUN 2025	RHBBANK	EMPLOYEES PROVIDENT FUND BOARD [SSH]	-3,500	1705661	39.125
11 JUN 2025 - 11 JUN 2025	RHBBANK	EMPLOYEES PROVIDENT FUND BOARD [SSH]	-3,500	1709161	39.206
18 JUN 2025 - 18 JUN 2025	SALCON	TAN SRI DATO' TEE TIAM LEE [DIR/CEO]	20,376	147587	13.596
18 JUN 2025 - 18 JUN 2025	SALCON	TAN SRI DATO' TEE TIAM LEE [SSH]	20,376	147351	13.574
16 JUN 2025 - 16 JUN 2025	SALCON	DATIN GOH PHAIK LYNN [DIR/CEO]	12,500	121477	11.41
16 JUN 2025 - 16 JUN 2025	SALCON	DATIN GOH PHAIK LYNN [SSH]	12,500	121477	11.41
16 JUN 2025 - 16 JUN 2025	SALCON	DATO' LEONG KOK WAH [DIR/CEO]	12,500	121477	11.41
16 JUN 2025 - 16 JUN 2025	SALCON	DATO' LEONG KOK WAH [SSH]	12,500	121477	11.41
16 JUN 2025 - 16 JUN 2025	SALCON	NAGA MUHIBAH SDN. BHD. [SSH]	12,500	113662	10.676
18 JUN 2025 - 18 JUN 2025	SALCON-WB	TAN SRI DATO' TEE TIAM LEE [DIR/CEO]	20,376	23898	9.081
16 JUN 2025 - 16 JUN 2025	SAPIND	MR KOH KOK HOI [SSH]	1	8112	11.146
13 JUN 2025 - 13 JUN 2025	SAPIND	MR KOH KOK HOI [SSH]	20	8111	11.145
13 JUN 2025 - 16 JUN 2025	SBH	MR TAN BOO NAM [DIR/CEO]	124	375456	42.281
13 JUN 2025 - 16 JUN 2025	SBH	MR TAN BOO NAM [SSH]	124	286378	32.249
13 JUN 2025 - 16 JUN 2025	SBH	TAN BOO NAM HOLDINGS SDN. BHD. [SSH]	124	158885	17.892
12 JUN 2025 - 12 JUN 2025	SCGBHD	MR RIZVI BIN ABD HALIM [DIR/CEO]	-20	120	0.043
16 JUN 2025 - 16 JUN 2025	SDG	EMPLOYEES PROVIDENT FUND BOARD [SSH]	-70	1155307	16.706
12 JUN 2025 - 12 JUN 2025	SDG	KUMPULAN WANG PERSARAAN (DIPERBADANKAN) [SSH]	125	509634	7.369
19 JUN 2025 - 19 JUN 2025	SEM	BERJAYA GROUP BERHAD [SSH]	-6,600	131336	11.842
17 JUN 2025 - 17 JUN 2025	SEM	TAN SRI DATO' SERI VINCENT TAN CHEE YIOUN [SSH]	-2,700	300256	27.073
12 JUN 2025 - 12 JUN 2025	SERSOL	DATO' MOHAMED SUFFIAN BIN AWANG [DIR/CEO]	100,000	100000	13.671
17 JUN 2025 - 17 JUN 2025	SIME	KUMPULAN WANG PERSARAAN (DIPERBADANKAN) [SSH]	300	456298	6.695

Notice Period is 15th June 2025 – 21st June 2025

Effective Change Date	Stock Name	Buyer/ Seller Name [Classification]	Bought / (Sold) ['000]	No. of Shares After Trade ['000]	
			Total	Total	% Held
16 JUN 2025 - 16 JUN 2025	SIME	KUMPULAN WANG PERSARAAN (DIPERBADANKAN) [SSH]	2,200	455998	6.69
12 JUN 2025 - 12 JUN 2025	SIME	KUMPULAN WANG PERSARAAN (DIPERBADANKAN) [SSH]	-156	453798	6.658
17 JUN 2025 - 17 JUN 2025	SIMEPROP	EMPLOYEES PROVIDENT FUND BOARD [SSH]	2,000	839211	12.34
16 JUN 2025 - 16 JUN 2025	SIMEPROP	EMPLOYEES PROVIDENT FUND BOARD [SSH]	1,974	837211	12.311
13 JUN 2025 - 13 JUN 2025	SIMEPROP	EMPLOYEES PROVIDENT FUND BOARD [SSH]	46	835237	12.282
12 JUN 2025 - 12 JUN 2025	SIMEPROP	EMPLOYEES PROVIDENT FUND BOARD [SSH]	-2,400	835192	12.281
13 JUN 2025 - 13 JUN 2025	SIMEPROP	AMANAHRAYA TRUSTEES BERHAD - AMANAH SAHAM BUMIPUTERA [SSH]	3,000	2495900	36.7
13 JUN 2025 - 13 JUN 2025	SIMEPROP	KUMPULAN WANG PERSARAAN (DIPERBADANKAN) [SSH]	400	439032	6.456
11 JUN 2025 - 11 JUN 2025	SIMEPROP	EMPLOYEES PROVIDENT FUND BOARD [SSH]	-4,500	837592	12.316
16 JUN 2025 - 16 JUN 2025	SKPRES	EMPLOYEES PROVIDENT FUND BOARD [SSH]	584	184217	11.791
13 JUN 2025 - 13 JUN 2025	SKPRES	EMPLOYEES PROVIDENT FUND BOARD [SSH]	669	183633	11.754
11 JUN 2025 - 11 JUN 2025	SKPRES	EMPLOYEES PROVIDENT FUND BOARD [SSH]	27	182964	11.711
16 JUN 2025 - 16 JUN 2025	SPSETIA	EMPLOYEES PROVIDENT FUND BOARD [SSH]	200	464245	9.279
17 JUN 2025 - 17 JUN 2025	SPSETIA	KUMPULAN WANG PERSARAAN (DIPERBADANKAN) [SSH]	-85	407896	8.153
17 JUN 2025 - 17 JUN 2025	SUBUR	DATO' TIONG ING [DIR/CEO]	10	2935	1.557
17 JUN 2025 - 17 JUN 2025	SUNCON	MR LIEW KOK WING [DIR/CEO]	-100	640	0.049
13 JUN 2025 - 13 JUN 2025	SUNCON	MR LIEW KOK WING [DIR/CEO]	740	740	0.057
11 JUN 2025 - 11 JUN 2025	SUNCON	EMPLOYEES PROVIDENT FUND BOARD [SSH]	-70	79336	6.097
11 JUN 2025 - 11 JUN 2025	SUNCON	TAN SRI DATO' DR CHEW CHEE KIN [DIR/CEO]	-350	692	0.053
17 JUN 2025 - 17 JUN 2025	SUNREIT	EMPLOYEES PROVIDENT FUND BOARD [SSH]	300	536903	15.677
12 JUN 2025 - 12 JUN 2025	SUNREIT	EMPLOYEES PROVIDENT FUND BOARD [SSH]	343	536603	15.668
11 JUN 2025 - 11 JUN 2025	SUNREIT	EMPLOYEES PROVIDENT FUND BOARD [SSH]	-843	536050	15.652
17 JUN 2025 - 17 JUN 2025	SUNWAY	EMPLOYEES PROVIDENT FUND BOARD [SSH]	-2,621	529722	8.51
16 JUN 2025 - 16 JUN 2025	SUNWAY	EMPLOYEES PROVIDENT FUND BOARD [SSH]	1,327	533317	8.57
13 JUN 2025 - 13 JUN 2025	SUNWAY	EMPLOYEES PROVIDENT FUND BOARD [SSH]	34	531991	8.55
12 JUN 2025 - 12 JUN 2025	SUNWAY	EMPLOYEES PROVIDENT FUND BOARD [SSH]	2,030	531956	8.54
12 JUN 2025 - 12 JUN 2025	SUNWAY	TAN SRI DATO' (DR.) CHEW CHEE KIN [DIR/CEO]	-130	4204	0.07
11 JUN 2025 - 11 JUN 2025	SUNWAY	EMPLOYEES PROVIDENT FUND BOARD [SSH]	-3,048	529926	8.51
16 JUN 2025 - 18 JUN 2025	TAFI	ARMANI SYNERGY SDN. BHD. [SSH]	-6,915	208352	54.912
16 JUN 2025 - 18 JUN 2025	TAFI	DATO' SRI ANDREW LIM ENG GUAN [DIR/CEO]	-6,915	219154	57.759
16 JUN 2025 - 18 JUN 2025	TAFI	DATO' SRI ANDREW LIM ENG GUAN [SSH]	-6,915	219154	57.759
16 JUN 2025 - 18 JUN 2025	TAFI	DATO' SRI AZLAN BIN AZMI [DIR/CEO]	-6,915	208858	55.045
16 JUN 2025 - 18 JUN 2025	TAFI	DATO' SRI AZLAN BIN AZMI [SSH]	-6,915	208858	55.045
16 JUN 2025 - 18 JUN 2025	TAFI	DATO' SRI WONG SZE CHIEN [DIR/CEO]	85	226011	59.566
16 JUN 2025 - 18 JUN 2025	TAFI	DATO' SRI WONG SZE CHIEN [SSH]	85	226011	59.566
19 JUN 2025 - 19 JUN 2025	TAMBUN	MR TEH KIAK SENG [DIR/CEO]	106	220665	50.23
19 JUN 2025 - 19 JUN 2025	TAMBUN	MR TEH KIAK SENG [SSH]	106	220665	50.23
20 JUN 2025 - 20 JUN 2025	TANCO	DATO' SRI ANDREW TAN JUN SUAN [DIR/CEO]	-4,000	2981787	55.762
20 JUN 2025 - 20 JUN 2025	TANCO	DATO' SRI ANDREW TAN JUN SUAN [DIR/CEO]	6,600	2988387	55.886
20 JUN 2025 - 20 JUN 2025	TANCO	DATO' SRI ANDREW TAN JUN SUAN [SSH]	6,600	2988387	55.886
20 JUN 2025 - 20 JUN 2025	TANCO	DATO' SRI ANDREW TAN JUN SUAN [SSH]	-4,000	2981787	55.762
19 JUN 2025 - 19 JUN 2025	TANCO	DATO' SRI ANDREW TAN JUN SUAN [DIR/CEO]	4,730	2985787	55.837
19 JUN 2025 - 19 JUN 2025	TANCO	DATO' SRI ANDREW TAN JUN SUAN [DIR/CEO]	-1,800	2981057	55.749
19 JUN 2025 - 19 JUN 2025	TANCO	DATO' SRI ANDREW TAN JUN SUAN [SSH]	4,730	2985787	55.837
19 JUN 2025 - 19 JUN 2025	TANCO	DATO' SRI ANDREW TAN JUN SUAN [SSH]	-1,800	2981057	55.749
18 JUN 2025 - 18 JUN 2025	TANCO	DATO' SRI ANDREW TAN JUN SUAN [DIR/CEO]	1,700	2982857	55.782
18 JUN 2025 - 18 JUN 2025	TANCO	DATO' SRI ANDREW TAN JUN SUAN [SSH]	1,700	2982857	55.782
17 JUN 2025 - 17 JUN 2025	TANCO	DATO' SRI ANDREW TAN JUN SUAN [DIR/CEO]	-2,400	2977657	55.737
17 JUN 2025 - 17 JUN 2025	TANCO	DATO' SRI ANDREW TAN JUN SUAN [DIR/CEO]	3,500	2981157	55.803
17 JUN 2025 - 17 JUN 2025	TANCO	DATO' SRI ANDREW TAN JUN SUAN [SSH]			

Notice Period is 15th June 2025 – 21st June 2025

Effective Change Date	Stock Name	Buyer/ Seller Name [Classification]	Bought / (Sold) ['000]	No. of Shares After Trade ['000]	
			Total	Total	% Held
12 JUN 2025 - 12 JUN 2025	TM	EMPLOYEES PROVIDENT FUND BOARD (EPF BOARD) [SSH]	-2,164	635426	16.557
13 JUN 2025 - 13 JUN 2025	TM	KUMPULAN WANG PERSARAAN (DIPERBADANKAN) [KWAP] [SSH]	-250	394072	10.268
11 JUN 2025 - 11 JUN 2025	TM	EMPLOYEES PROVIDENT FUND BOARD (EPF BOARD) [SSH]	51	637590	16.614
12 JUN 2025 - 13 JUN 2025	TOMYPAK	MR YONG KWET ON [DIR/CEO]	178	106704	24.751
12 JUN 2025 - 13 JUN 2025	TOMYPAK	MR YONG KWET ON [SSH]	178	106704	24.751
16 JUN 2025 - 16 JUN 2025	TOPGLOV	KUMPULAN WANG PERSARAAN (DIPERBADANKAN) [SSH]	-1,381	619310	7.724
13 JUN 2025 - 13 JUN 2025	TOPGLOV	KUMPULAN WANG PERSARAAN (DIPERBADANKAN) [SSH]	-1,488	620691	7.741
19 JUN 2025 - 19 JUN 2025	TRIVE	AT PRECISION TOOLING SDN. BHD. [SSH]	-18,675	251157	19.876
19 JUN 2025 - 19 JUN 2025	TRIVE	ERDASAN GROUP BERHAD (F.K.A. AT SYSTEMATIZATION BERHAD) [SSH]	-18,675	251157	19.876
17 JUN 2025 - 17 JUN 2025	TRIVE	AT PRECISION TOOLING SDN. BHD. [SSH]	-17,785	269832	21.354
17 JUN 2025 - 17 JUN 2025	TRIVE	ERDASAN GROUP BERHAD (F.K.A. AT SYSTEMATIZATION BERHAD) [SSH]	-17,785	269832	21.354
13 JUN 2025 - 16 JUN 2025	TRIVE	AT PRECISION TOOLING SDN. BHD. [SSH]	-36,909	287617	22.761
13 JUN 2025 - 16 JUN 2025	TRIVE	ERDASAN GROUP BERHAD (F.K.A. AT SYSTEMATIZATION BERHAD) [SSH]	-36,909	287617	22.761
17 JUN 2025 - 17 JUN 2025	UCHITEC	KUMPULAN WANG PERSARAAN (DIPERBADANKAN) [SSH]	134	23956	5.18
17 JUN 2025 - 17 JUN 2025	UOADEV	EMPLOYEES PROVIDENT FUND BOARD ("EPF BOARD") [SSH]	128	341971	13.033
16 JUN 2025 - 16 JUN 2025	UOADEV	EMPLOYEES PROVIDENT FUND BOARD ("EPF BOARD") [SSH]	233	341844	13.029
13 JUN 2025 - 13 JUN 2025	UOADEV	EMPLOYEES PROVIDENT FUND BOARD ("EPF BOARD") [SSH]	134	341611	13.019
17 JUN 2025 - 17 JUN 2025	UTDPLT	EMPLOYEES PROVIDENT FUND BOARD [SSH]	34	37617	6.046
16 JUN 2025 - 16 JUN 2025	UTDPLT	EMPLOYEES PROVIDENT FUND BOARD [SSH]	-497	37582	6.04
13 JUN 2025 - 13 JUN 2025	UTDPLT	EMPLOYEES PROVIDENT FUND BOARD [SSH]	110	38080	6.12
12 JUN 2025 - 12 JUN 2025	UTDPLT	EMPLOYEES PROVIDENT FUND BOARD [SSH]	93	37970	6.103
11 JUN 2025 - 11 JUN 2025	UTDPLT	EMPLOYEES PROVIDENT FUND BOARD [SSH]	71	37877	6.088
17 JUN 2025 - 17 JUN 2025	UWC	ABERDEEN GROUP PLC (FORMERLY KNOWN AS ABRDN PLC) [SSH]	227	68090	6.177
17 JUN 2025 - 17 JUN 2025	UWC	ABRDN HOLDINGS LIMITED [SSH]	227	68090	6.177
17 JUN 2025 - 17 JUN 2025	UWC	ABRDN MALAYSIA SDN BHD [SSH]	227	67811	6.152
16 JUN 2025 - 16 JUN 2025	UWC	ABERDEEN GROUP PLC (FORMERLY KNOWN AS ABRDN PLC) [SSH]	330	67863	6.156
16 JUN 2025 - 16 JUN 2025	UWC	ABRDN HOLDINGS LIMITED [SSH]	330	67863	6.156
16 JUN 2025 - 16 JUN 2025	UWC	ABRDN MALAYSIA SDN BHD [SSH]	330	67584	6.131
13 JUN 2025 - 13 JUN 2025	UWC	ABRDN MALAYSIA SDN BHD [SSH]	448	67254	6.101
13 JUN 2025 - 13 JUN 2025	UWC	ABERDEEN GROUP PLC (FORMERLY KNOWN AS ABRDN PLC) [SSH]	448	67533	6.126
13 JUN 2025 - 13 JUN 2025	UWC	ABRDN HOLDINGS LIMITED [SSH]	448	67533	6.126
13 JUN 2025 - 13 JUN 2025	UWC	ABRDN MALAYSIA SDN BHD [SSH]	448	67254	6.101
17 JUN 2025 - 17 JUN 2025	UZMA	URUSHARTA JAMAHAH SDN. BHD. [SSH]	-200	34271	5.824
13 JUN 2025 - 13 JUN 2025	UZMA	URUSHARTA JAMAHAH SDN. BHD. [SSH]	-300	34471	5.858
18 JUN 2025 - 18 JUN 2025	VANZO	FRAGRANCE CENTURY SDN. BHD. [SSH]	-18,670	233376	50
18 JUN 2025 - 18 JUN 2025	VANZO	MR WONG LIANG TZER [DIR/CEO]	-18,670	233376	50
18 JUN 2025 - 18 JUN 2025	VANZO	MR WONG LIANG TZER [SSH]	-18,670	233376	50
12 JUN 2025 - 12 JUN 2025	VANZO	MISS CHOE SOOK LING [DIR/CEO]	18,000	79980	17.135
12 JUN 2025 - 12 JUN 2025	VANZO	MISS CHOE SOOK LING [SSH]	18,000	79980	17.135

Notice Period is 15th June 2025 – 21st June 2025

Effective Change Date	Stock Name	Buyer/ Seller Name [Classification]	Bought / (Sold) ['000]	No. of Shares After Trade ['000]	
			Total	Total	% Held
12 JUN 2025 - 12 JUN 2025	VANZO	MR LIM CHEE LIP [SSH]	18,000	79980	17.135
13 JUN 2025 - 13 JUN 2025	VERSATL	MR LIM AH CHAI [SSH]	1,515	125639	44.855
13 JUN 2025 - 13 JUN 2025	VERSATL	MR LIM AH CHUAN [SSH]	1,515	125639	44.855
13 JUN 2025 - 13 JUN 2025	VERSATL	MR LIM CHOU BU [SSH]	1,515	125639	44.855
13 JUN 2025 - 13 JUN 2025	VERSATL	NSK TRADING SDN BHD [SSH]	1,515	125639	44.855
13 JUN 2025 - 13 JUN 2025	VITROX	EMPLOYEES PROVIDENT FUND BOARD [SSH]	568	111415	5.885
19 JUN 2025 - 19 JUN 2025	VOLCANO	MR ANDREW SU MENG KIT [DIR/CEO]	20	17300	9.525
19 JUN 2025 - 19 JUN 2025	VOLCANO	MR ANDREW SU MENG KIT [SSH]	20	17300	9.525
17 JUN 2025 - 17 JUN 2025	VOLCANO	MR ANDREW SU MENG KIT [DIR/CEO]	80	17280	9.514
17 JUN 2025 - 17 JUN 2025	VOLCANO	MR ANDREW SU MENG KIT [SSH]	80	17280	9.514
16 JUN 2025 - 16 JUN 2025	VOLCANO	MR ANDREW SU MENG KIT [DIR/CEO]	20	17200	9.47
16 JUN 2025 - 16 JUN 2025	VOLCANO	MR ANDREW SU MENG KIT [SSH]	20	17200	9.47
13 JUN 2025 - 13 JUN 2025	VOLCANO	MR ANDREW SU MENG KIT [DIR/CEO]	30	17180	9.459
13 JUN 2025 - 13 JUN 2025	VOLCANO	MR ANDREW SU MENG KIT [SSH]	30	17180	9.459
17 JUN 2025 - 17 JUN 2025	VS	EMPLOYEES PROVIDENT FUND BOARD [SSH]	2,000	345235	8.98
16 JUN 2025 - 16 JUN 2025	VS	EMPLOYEES PROVIDENT FUND BOARD [SSH]	379	343235	8.928
13 JUN 2025 - 13 JUN 2025	VS	EMPLOYEES PROVIDENT FUND BOARD [SSH]	7,000	342857	8.919
12 JUN 2025 - 12 JUN 2025	VS	EMPLOYEES PROVIDENT FUND BOARD [SSH]	848	335857	8.737
11 JUN 2025 - 11 JUN 2025	VS	EMPLOYEES PROVIDENT FUND BOARD [SSH]	3,100	335008	8.714
17 JUN 2025 - 17 JUN 2025	WANGZNG	MR HUI CHING CHI [DIR/CEO]	68	112571	70.286
17 JUN 2025 - 17 JUN 2025	WANGZNG	MR HUI CHING CHI [SSH]	68	112571	70.286
12 JUN 2025 - 12 JUN 2025	WASCO	EMPLOYEES PROVIDENT FUND BOARD [SSH]	110	42195	5.449
13 JUN 2025 - 13 JUN 2025	WILLOW	MR WONG AH CHIEW [DIR/CEO]	100	276435	57.028
13 JUN 2025 - 13 JUN 2025	WILLOW	MR WONG AH CHIEW [SSH]	100	276435	57.028
16 JUN 2025 - 16 JUN 2025	WINSTAR	MISS BEH OI SIEW [DIR/CEO]	-50	200	0.069
19 JUN 2025 - 19 JUN 2025	WPRTS	KUMPULAN WANG PERSARAAN (DIPERBADANKAN) [SSH]	-2,400	230638	6.763
17 JUN 2025 - 17 JUN 2025	WPRTS	EMPLOYEES PROVIDENT FUND BOARD [SSH]	352	313436	9.192
18 JUN 2025 - 18 JUN 2025	WPRTS	KUMPULAN WANG PERSARAAN (DIPERBADANKAN) [SSH]	-2,666	233037	6.834
16 JUN 2025 - 16 JUN 2025	WPRTS	EMPLOYEES PROVIDENT FUND BOARD [SSH]	41	313084	9.181
17 JUN 2025 - 17 JUN 2025	WPRTS	KUMPULAN WANG PERSARAAN (DIPERBADANKAN) [SSH]	-3,361	235704	6.912
13 JUN 2025 - 13 JUN 2025	WPRTS	EMPLOYEES PROVIDENT FUND BOARD [SSH]	-546	313043	9.18
16 JUN 2025 - 16 JUN 2025	WPRTS	KUMPULAN WANG PERSARAAN (DIPERBADANKAN) [SSH]	1,821	239065	7.01
12 JUN 2025 - 12 JUN 2025	WPRTS	EMPLOYEES PROVIDENT FUND BOARD [SSH]	-365	313588	9.196
16 JUN 2025 - 17 JUN 2025	YBS	MADAM GOR SIEW YENG [DIR/CEO]	237	627	0.213
17 JUN 2025 - 17 JUN 2025	YTL	EMPLOYEES PROVIDENT FUND BOARD [SSH]	5,370	701396	6.219
16 JUN 2025 - 16 JUN 2025	YTL	EMPLOYEES PROVIDENT FUND BOARD [SSH]	1,972	696026	6.244
13 JUN 2025 - 13 JUN 2025	YTL	EMPLOYEES PROVIDENT FUND BOARD [SSH]	1,185	694055	6.226
12 JUN 2025 - 12 JUN 2025	YTL	EMPLOYEES PROVIDENT FUND BOARD [SSH]	1,869	692870	6.229
11 JUN 2025 - 11 JUN 2025	YTL	EMPLOYEES PROVIDENT FUND BOARD [SSH]	306	691002	6.215
16 JUN 2025 - 16 JUN 2025	YTLPOWR	EMPLOYEES PROVIDENT FUND BOARD [SSH]	1,833	582425	7.025
12 JUN 2025 - 12 JUN 2025	YTLPOWR	EMPLOYEES PROVIDENT FUND BOARD [SSH]	510	580592	7.041
11 JUN 2025 - 11 JUN 2025	YTLPOWR	EMPLOYEES PROVIDENT FUND BOARD [SSH]	265	580082	7.041
13 JUN 2025 - 13 JUN 2025	ZHULIAN	MR TEOH BENG SENG [SSH]	109	266148	57.855
13 JUN 2025 - 13 JUN 2025	ZHULIAN	THE BEST SOURCE HOLDINGS PTE. LTD. [SSH]	109	63201	13.739

Disclaimer: The Information in Insider Activity is extracted from www.shareinvestor.com/fundamental/insider_trades. The information on this page is provided as a service to readers. It does not constitute financial advice and/or any investment recommendations. We assume no liability for damages resulting from or arising out of the use of such information. Whilst every effort is made to ensure accuracy, the information presented is not the official record of shareholder filings. Readers are advised to read the original filings on the Bursa Malaysia website at www.bursamalaysia.com

CHECK OUT SHAREINVESTOR

BROKER'S CALL

Weekly Buy/Sell/Hold calls
from leading Malaysian Brokerages.

Go To Broker's Call

BUY

HOLD

SELL



The Board of Directors of **Axiata Group Berhad, (AXIATA)** wishes to announce that Axiata Enterprise Sdn Bhd, a wholly owned subsidiary of Axiata, had on 20 June 2025

commenced the Members' voluntary winding up of Xpand Investments (Labuan) Limited pursuant to the Labuan Companies Act 1990. In relation thereto, Datuk Chin Chee Kee JP of Level 1, Lot 7, Block F, Saguking Commercial Building, Jalan Patau-Patau, 87000 Federal Territory of Labuan was appointed as the Liquidator for Xpand.

[READ MORE](#) 



The Board is pleased to share that **FSBM Holdings Berhad (FSBM)** marked a strong start to 2025 with the signing of five strategic agreements across three core technology segments: Smart Manufacturing, Intelligent Applications, and Cybersecurity. These collaborations

[READ MORE](#) 

underscore the Group's commitment to expanding its presence in high-growth digital sectors and driving innovation throughout Malaysia and the region.



ENGINEERS

HSS Engineers Berhad (HSSEB) wishes to announce that HSS Engineering Sdn. Bhd., a wholly owned subsidiary of HEB, has accepted a Letter Of Appointment by M/s Ocean Lifespaces India Pvt. Ltd for Building Information Modelling and Engineering

Design Consultancy Services for the Proposed Development of Container Terminal at Tuna Tekra, India – Design And Build [Package 2] for Hindustan Gateway Container Terminal Kandla Private Limited.



Disclaimer: The information in the Investor Relations page is extracted from individual companies' announcements in www.bursamalaysia.com. The information on this page is provided as a service to readers. We assume no liability for damages resulting from or arising out of the use of such information. Whilst every effort is made to ensure accuracy, the information presented has been simplified for your reading pleasure. Readers are advised to read the original and complete filings on the Bursa Malaysia website at https://www.bursamalaysia.com/market_information/announcements/company_announcement

Upcoming IPO

NAME OF COMPANY	OFFER PERIOD		ISSUE PRICE (Per Ordinary Share)	LISTING SOUGHT	DATE OF LISTING
	OPENING	CLOSING			
ICENTS GROUP HOLDINGS BERHAD	25 June 2025	2 July 2025	RM0.24	ACE MARKET	17 July 2025
A1 A.K. KOH GROUP BERHAD	18 June 2025	30 June 2025	RM0.25	ACE MARKET	11 Jul 2025
PMCK BERHAD	26 May 2025	25 Jun 2025	RM0.22	ACE MARKET	9 Jul 2025
ASM AUTOMATION GROUP BERHAD	29 May 2025	19 Jun 2025	RM0.17	ACE MARKET	2 Jul 2025
PAN MERCHANT BERHAD	6 June 2025	17 June 2025	RM0.27	ACE MARKET	26 June 2025



Learn how to identify Hot Stocks using Technical Analysis (TA) and Fundamental Analysis (FA)

SIGN UP FOR Invest
IT'S FREE!!!

