

Invest

A Weekly e-Publication by SHAREINVESTOR

ISSUE
245

FRIDAY
07 MARCH 2025

Scan/Click QR to Register



Via email, every Friday

MARKET SENTIMENTS

Malaysia's growth momentum to continue at 4.7% in 2025 - IMF

on page 28

Local institutions' net buying on Bursa enters 19th week with RM817.4 million - MIDF Amanah

on page 30

ALSO

COMPANY SPOTLIGHT
MBSB Bank Berhad

See more on page 06

From MSWG's
The Observer
The Press
Pause Play

See more on pages 33-40

BEHIND THE TICKETS
DECODING COMPANY FUNDAMENTALS

Is APOLLO FOOD an investment opportunity?

SUMMARY

- Apollo Food Holdings Berhad (Apollo Food or The Group) (6432.MY) experienced stagnant revenue growth from 2013 to 2022 but showed improvement in 2023 and 2024. This was driven primarily by increased revenue and lower tax rates, despite declining gross profit margins.

See more on pages 20-26

04 LEADERBOARD

05 SHARIAH HOT STOCKS

08 SHARIAH MOMENTUM UP STOCKS

10 NON SHARIAH HOT STOCKS

12 UP TRENDING STOCKS

13 VALUE STOCKS

14 GROWTH STOCKS

16 DIVIDEND STOCKS

17 BROKERS' CALL

18 LONG COMPANIES

32 REGIONAL MARKETS

41 INSIDER ACTIVITY

45 INVESTOR RELATIONS

SHAREINVESTOR®
An AlphaInvest Company

Invest with Knowledge

INVESTOR PLATFORMS

Director
Darren Chong
darren.chong@shareinvestor.com

Business Development Manager
Jay Cheong
jay.cheong@shareinvestor.com

ADMIN & OPERATIONS

Senior Executive
Watie Nordin
watie.nordin@shareinvestor.com

Executive
Silas Emmanuel Joseph
silas.joseph@shareinvestor.com

PROCESS AUTOMATION &
DATA ANALYTICS

Data Analyst
Tan Yong Sheng

INVESTOR RELATIONS

Group Managing Director & Publisher
Edward Stanislaus
edward@shareinvestor.com

Senior Manager
Letticia Wong
letticia.wong@shareinvestor.com

Manager
Aida Norzeti Talib
aida.norzeti@shareinvestor.com

ALPHA INVEST HOLDINGS
BOARD OF DIRECTORS

Chairman	Patrick Daniel
Group CEO	Christopher Lee
Group COO	Lim Dau Hee
Group MD	Shanison Lin



“ GIVE A MAN A FISH AND YOU FEED HIM FOR A DAY; TEACH A MAN TO FISH AND YOU FEED HIM FOR A LIFETIME ”

ShareInvestor Malaysia Sdn. Bhd.
(200001023956) (526564-M)
L15-03 & 03A, PJX HM Shah Tower,
No 16A, Jalan Persiaran Barat, PJS 52,
46200 Petaling Jaya, Selangor

Hotline : 603 8681 0580
Mobile : 011 6343 8939
Website : www.ShareInvestor.com.my
www.alphainvestholdings.com
www.Facebook.com/ShareInvestorMalaysia

ADVERTISEMENT ENQUIRY

bulthaup takes care of the details so that you can enjoy a harmonious environment.



XTRA

XTRA FURNITURE SDN BHD
The Gardens Mall, Mid Valley City
xtrafurniture.com/bulthaup
fb.com/bulthaupmalaysia



bulthaup

Stressless®
Cinema Blanket

Stressless

Lean back..

your body and mind will thank you



CELEBRATION OF CINEMATOGGRAPHY


XTRA
The Gardens Mall

www.shareinvestor.com - market data at your fingertips



ShareInvestor WebPro (www.shareinvestor.com/my)
Prices > Stock Prices > Bursa > click Stocks tab

1. mouse over Ranking > select Top Active > all Shariah stocks are denoted with an [S] > mouse over Column Layout > select Edit Customs > select Name > select Volume > select Last Done Price > Mouse Over Column Layout > select Custom

2. mouse over Ranking > select Top Turnover > all Shariah stocks are denoted with an [S] > mouse over Column Layout > select Edit Customs > select Name > select Last Done Price > select Value > Mouse Over Column Layout > select Custom
3. mouse over Ranking > select Top Gainers (Over 5 Trading Days) > mouse over Column Layout > select Edit Customs > select Name > select Last Done Price > select 5 Days Change > select 5 Days % Change > Mouse Over Column Layout > select Custom

4. mouse over Ranking > select Top Losers (Over 5 Trading Days)

5. mouse over Ranking > select Top % Gainers (Over 5 Trading Days)

6. mouse over Ranking > select Top % Losers (Over 5 Trading Days)

Shariah Top Actives (as at Yesterday)

Name	Price (RM)	Volume
MYEG [S]	0.970	1,184,300.000
G3 [S]	0.010	859,302.000
NEXG [S]	0.265	694,538.000
NATGATE [S]	1.420	307,274.000
OCR [S]	0.035	301,053.000
DNEX [S]	0.280	294,983.000
SNS [S]	0.385	263,355.000
SFPTECH [S]	0.275	256,068.000
TANCO [S]	1.830	233,363.000
ARMADA [S]	0.540	215,542.000

Shariah Top Turnover (as at Yesterday)

Name	Price (RM)	Value (RM)
MYEG [S]	0.970	113,706,000
TENAGA [S]	13.860	63,310,100
GAMUDA [S]	4.130	56,273,100
NATGATE [S]	1.420	44,568,600
TANCO [S]	1.830	42,839,300
IHH [S]	7.360	42,247,400
SUNWAY [S]	4.670	40,846,100
KPJ [S]	2.790	39,931,600
INARI [S]	2.070	36,547,200
SUNCON [S]	4.360	35,171,000

Top Gainers (over 5 Trading days as at Yesterday)

Name	Price (RM)	Change (RM)
PPB	11.340	+0.380
KPJ	2.790	+0.300
TENAGA	13.860	+0.300
LEBTECH	0.780	+0.200
BKAWAN	19.700	+0.180
QL	4.900	+0.180
AEONCR	5.890	+0.170
UTDPLT	23.000	+0.160
RHBBANK	6.910	+0.150
COASTAL	1.360	+0.130

Top % Gainers (over 5 Trading days as at Yesterday)

Name	Price (RM)	Change (%)
BCMALL	0.010	+100.00
ICTZONE	0.280	+40.00
LEBTECH	0.780	+34.48
KGROUP	0.200	+33.33
SG	0.020	+33.33
ASIAPLY	0.125	+25.00
NOVAMSC	0.075	+25.00
INNITY	0.380	+22.58
MNC	0.085	+21.43
ENRA	0.620	+14.81

Top Losers (over 5 Trading days as at Yesterday)

Name	Price (RM)	Change (RM)
NESTLE	73.000	-15.000
PETDAG	18.000	-2.133
DLADY	27.900	-2.100
MPI	17.300	-1.600
PANAMY	16.020	-1.180
F&N	25.000	-1.140
PIE	3.220	-0.980
ALLIANZ	18.100	-0.740
CIMB	7.500	-0.720
HEIM	26.840	-0.680

Top % Losers (over 5 Trading days as at Yesterday)

Name	Price (RM)	Change (%)
G3	0.010	-50.00
GOINNO	0.030	-50.00
AMLEX	0.250	-37.50
DNONCE	0.030	-33.33
SMTRACK	0.010	-33.33
XDL	0.010	-33.33
KPPROP	0.410	-29.91
NATGATE	1.420	-28.64
SMCAP	0.040	-27.27
IHB	0.070	-26.32

Disclaimer: The information on this page is provided as a service to readers. It does not constitute financial advice and/or any investment recommendations. Past performance is not indicative of future results. We assume no liability for damages resulting from or arising out of the use of such information. It would be best if you did your own research to make your personal investment decisions wisely or consult a licenced investment advisor.

Price & Volume Distribution Charts (as at Yesterday)

Technical Analysis

DEFINITION: Shariah compliant stocks with Technical Analysis showing 5-days & 10-days Moving Average Price below Yesterday's Close over past 3 days and with Volume Spike.

CHART GUIDE: Volume Distribution Chart is a statistical interpretation of the current sentiment on each stock in graphical format. The highest bar categorized as >150k is likely to be traded by institutions or super dealers, while the lowest bar categorized as <15k usually represents retail investors. "Buy Up" refers to more buyers snatching up the lots queued at selling price. "Sell Down" refers to sellers selling their shares to the buying queue



ShareInvestor WebPro > Screener > Market Screener (FA & TA)>select BURSA>add criteria

A. Criteria

> click Add Criteria

- Technical Analysis Conditions tab select (i) Moving Average Below Close (ii) Volume Spike
- Fundamental Analysis Conditions tab >select (iii) Revenue
- Prices & Other Conditions tab > select (iv) Is Shariah Compliant
- Technical Analysis Conditions tab select (v) Moving Average Below Close
- Prices & Other Conditions tab > select (vi) Last Done Price
- Technical Analysis Conditions tab select (vii) Moving Average Below Close

B. Conditions (Criteria Filters)

1. Moving Average Below Close - select (MA) type (5) below close price for type (3) days
2. Volume Spike - Volume type (1) greater than type (5) days average
3. Revenue ("000) - select (more than) type (1) for the past select (1) financial year(s)
4. Is Shariah Compliant - select **Yes**
5. Moving Average Below Close - select (MA) type (10) below close price for type (3) days
6. Last Done Price - select (more than) type (0.3)
7. Moving Average Below Close - select (EMA) type (5) below close price for type (3) days

> click Save Template > Create New Template type (Shariah Hot Stocks) > click Create

> click Save Template as > select Shariah Hot Stocks > click Save

> click Screen Now (may take a few minutes)

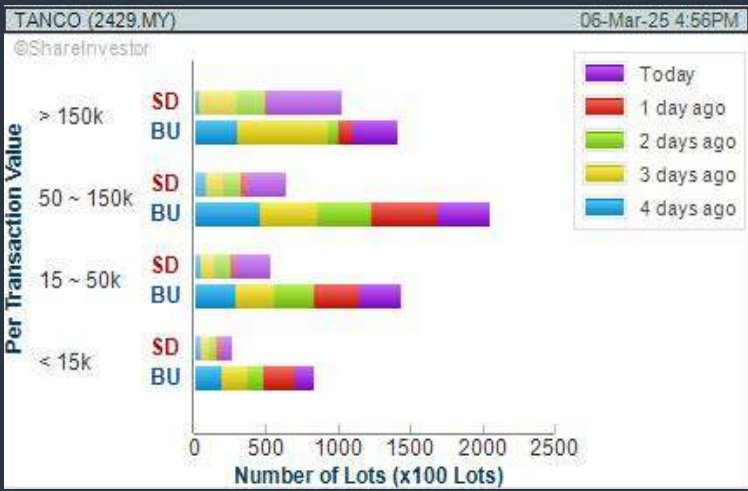
> Sort By: Select (Vol) Select (Desc)

> Mouse over stock name > Charts > click C² Charts or Volume Distribution

TANCO HOLDINGS BERHAD (2429)

C² Chart

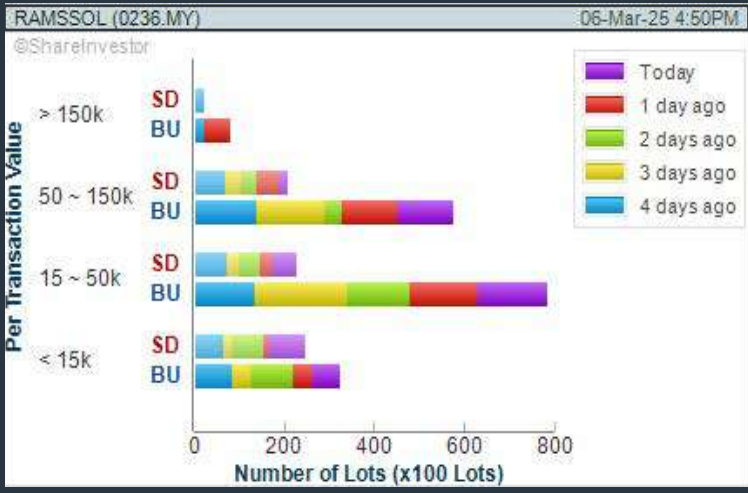
Analysis



RAMSSOL GROUP BERHAD (0236)

C² Chart

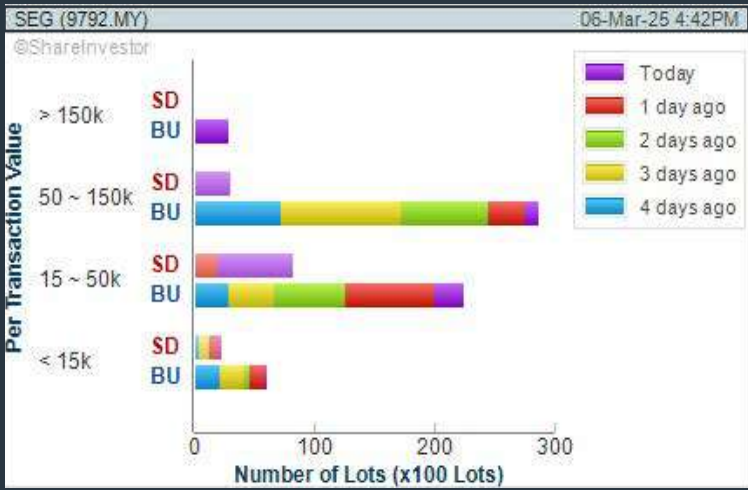
Analysis



SEG INTERNATIONAL BERHAD (9792)

C² Chart

Analysis



Disclaimer: The information on this page is provided as a service to readers. It does not constitute financial advice and/or any investment recommendations. Past performance is not indicative of future results. We assume no liability for damages resulting from or arising out of the use of such information. It would be best if you did your own research to make your personal investment decisions wisely or consult a licenced investment advisor.

COMPANY BACKGROUND

MBSB Bank Berhad (MBSB Bank) is regulated and supervised by Bank Negara Malaysia under the Islamic Financial Services Act, 2013. It is a full-fledged Islamic Bank in Malaysia that provides shariah compliant banking facilities to retail, SME and corporate customers. A wholly owned subsidiary of Malaysia Building Society Berhad (MBSB), the Bank provides a wide range of financing products through its digital capabilities and product innovation. It extends its distribution channels through its nationwide network of branches and online services such as mobile banking and virtual branch.



Select Counter: Bursa

MBSB (11/1 MY)

View

Free Trial

Broker's Call

MBSB MBSB BERHAD

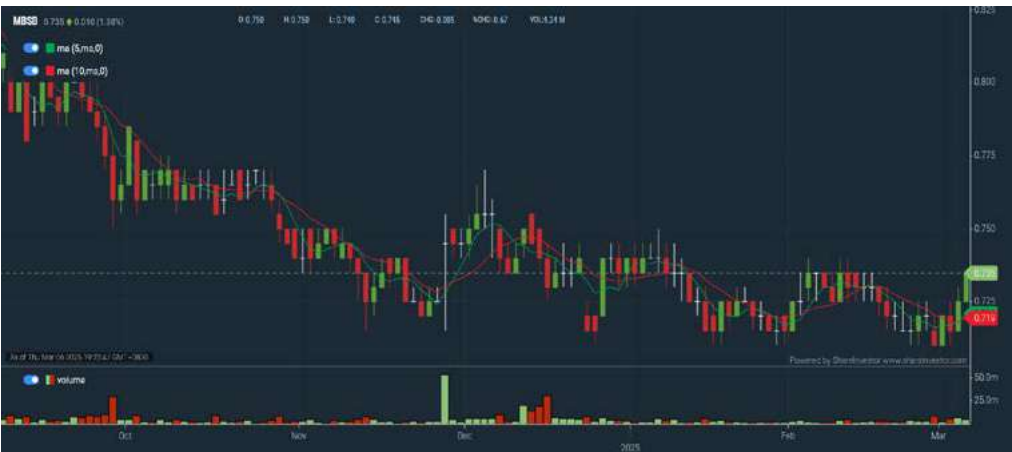
Updated at 06 Mar 2025 16:59

Last (MYR): 0.735	Change: +0.010	High: 0.735	Remarks: [e] s
	Change (%): +1.38	Low: 0.726	
Open	0.725	Yesterday's Close	0.725
Buy Price	0.725	Sell Price	0.735
Buy Volume ('00)	7,266	Sell Volume ('00)	9,742
Cumulative Volume ('00)	57,172	Cumulative Value	4,164,600

Financial Analysis

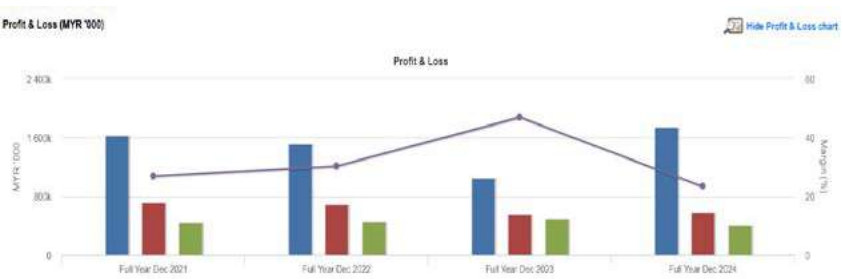
	Profit Growth Decreasing profit in latest year (with last 3 profitable years)			Piotroski F Score The company has below average financial strength (Piotroski F-Score of 3-4)	
	Dividend Payout No dividend paid in most recent year but dividends paid in prior years			Current Ratio The company may have difficulty meeting short-term obligations with its current assets for 3 consecutive years	
	Debt to Cashflow The company has negative cash flow from operations in most recent year			Debt to Equity High debt to equity for most recent year	
	Free Cash Flow Negative free cash flow for the most recent year			Net Earnings Margin Consistently high net profit margin of at least 20% for 3 years	

Excellent Good Neutral Be Alert Watch Out



Historical Financials

Profit & Loss (MYR '000)



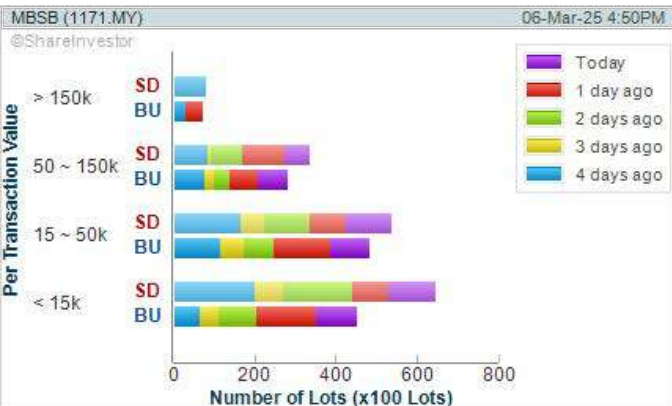
WebPro 9-Days Free Trial Registration (worth RM10) Sign Up Now



Key Statistics with Total Shareholder Returns

Total Shareholder Return

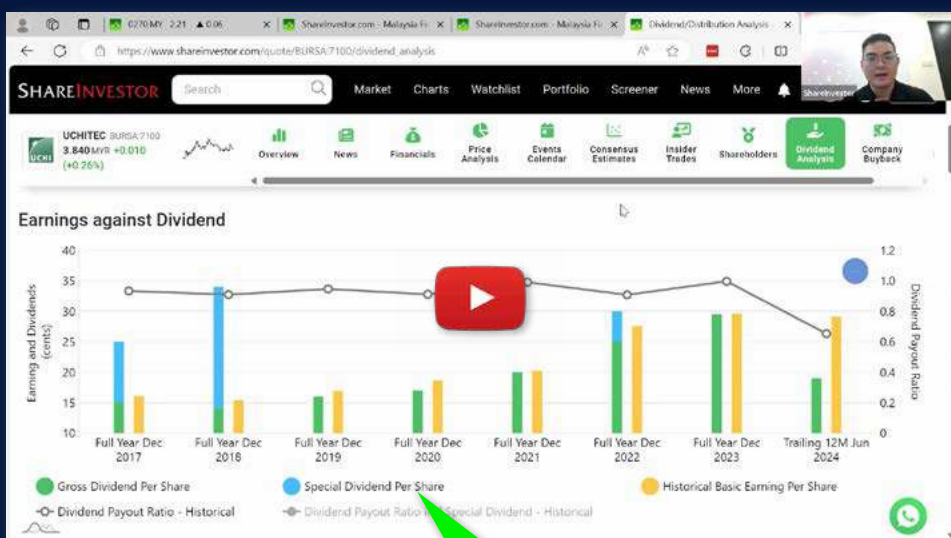
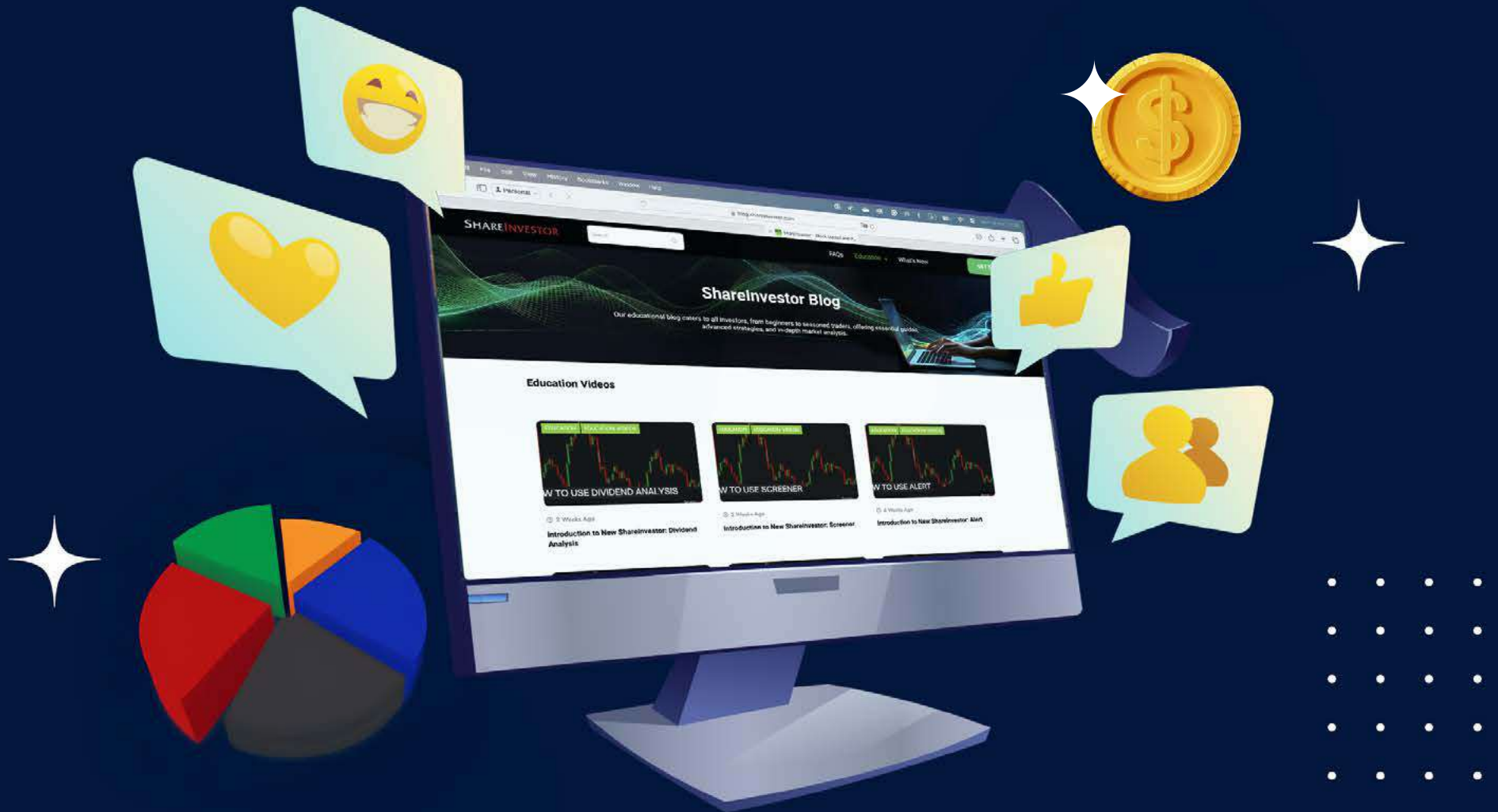
Period		Dividend Received	Capital Appreciation	Total Shareholder Return	
Short Term Return	5 Days	-	+0.015		+2.08 %
	10 Days	-	+0.010		+1.38 %
	20 Days	-	-		-
Medium Term Return	3 Months	-	-0.020		-2.65 %
	6 Months	-	-0.080		-9.82 %
	1 Year	-	-0.040		-5.16 %
Long Term Return	2 Years	-	+0.125		+20.49 %
	3 Years	-	+0.165		+28.95 %
	5 Years	0.080	+0.005		+11.64 %
Annualised Return	Annualised	-	-		+2.23 %



Disclaimer: The information on this page is provided as a service to readers. It does not constitute financial advice and/or any investment recommendations. Past performance is not indicative of future results. We assume no liability for damages resulting from or arising out of the use of such information. It would be best if you did your own research to make your personal investment decisions wisely or consult a licenced investment advisor.

SHAREINVESTOR®
An AlphaInvest Company

Ultimate Guide to use ShareInvestor



Watch
now!

YOU WILL LEARN HOW TO USE:

- Company Financials
- Market Screener
- Company Insider Trades
- Dividend Analysis
- Consensus Estimation
- and more...*

Price & Volume Distribution Charts (as at Yesterday)

Technical Analysis

DEFINITION: Shariah compliant stocks with Technical Analysis showing Bullish Momentum and Price Uptrend. The share price closed at the highest price yesterday. The typical price was higher than the previous day's typical price.

CHART GUIDE: Volume Distribution Chart is a statistical interpretation of the current sentiment on each stock in graphical format. The highest bar categorized as >150k is likely to be traded by institutions or super dealers, while the lowest bar categorized as <15k usually represents retail investors. "Buy Up" refers to more buyers snatching up the lots queued at selling price. "Sell Down" refers to sellers selling their shares to the buying queue.



ShareInvestor WebPro > Screener > Market Screener (FA & TA)>select BURSA>add criteria

A. Criteria

> click Add Criteria

- Fundamental Analysis Conditions tab >select (i) Revenue
- Technical Analysis Conditions tab select (ii) Average Volume
- Prices & Other Conditions tab > select (iii) Last Done Price
- Prices & Other Conditions tab > select (iv) Is Shariah Compliant
- Technical Analysis Conditions tab select (v) RSI Overbought
- Technical Analysis Conditions tab select (vi) Moving Average Below Close
- Technical Analysis Conditions tab select (vii) CCI Overbought

B. Conditions (Criteria Filters)

1. Revenue ("000) - select (more than) type (1) for the past select (1) financial year(s)
2. Average Volume - type (1) days average volume greater than type (10000) lots
3. Last Done Price - select (more than) type (0.3)
4. Is Shariah Compliant - select Yes
5. RSI Overbought - select RSI 1 above 99 for 1 days
6. Moving Average Below Close - select (MA) type (10) below close price for type (1) days
7. CCI Overbought - select CCI (2) above (0) for (1) days

> click Save Template > Create New Template type (Shariah Momentum Up Stocks) > click Create

> click Save Template as > select Shariah Momentum Up Stocks > click Save

> click Screen Now (may take a few minutes)

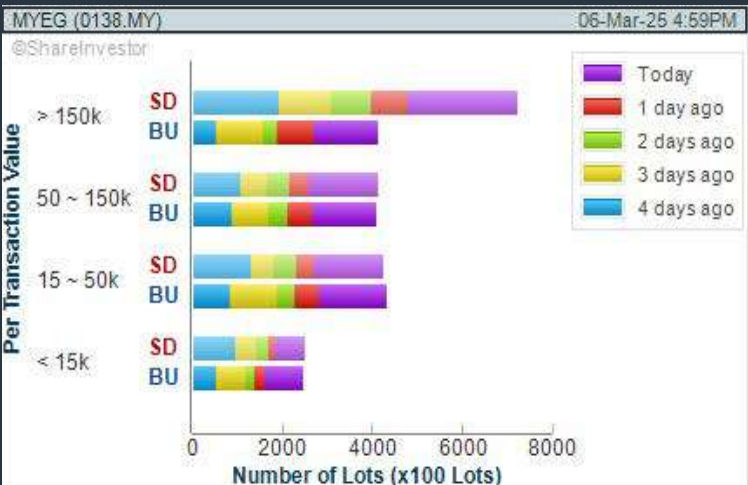
Sort By: Select (Vol) Select (Desc)

Mouse over stock name > Charts > click C² Charts tab or Volume Distribution

MY E.G. SERVICES BERHAD (0138)

C² Chart

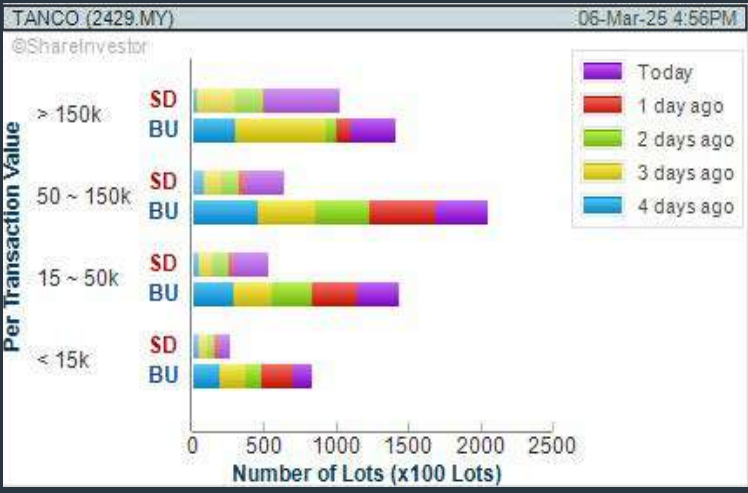
Analysis



TANCO HOLDINGS BERHAD (2429)

C² Chart

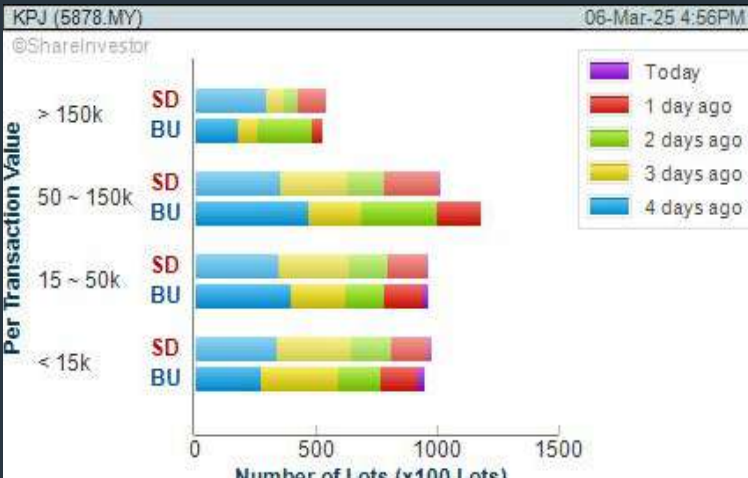
Analysis



KPJ HEALTHCARE BERHAD (5878)

C² Chart

Analysis

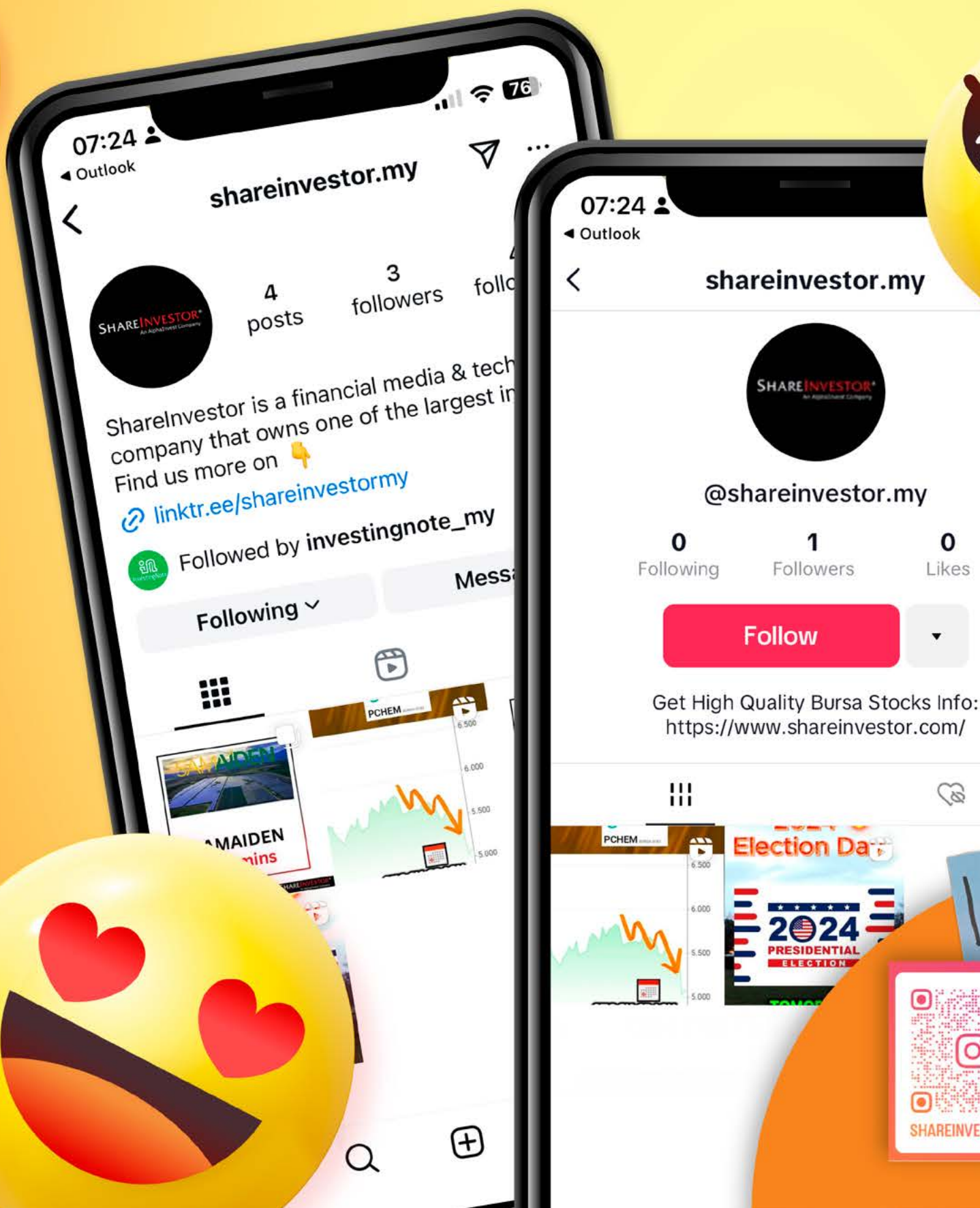


Disclaimer: The information on this page is provided as a service to readers. It does not constitute financial advice and/or any investment recommendations. Past performance is not indicative of future results. We assume no liability for damages resulting from or arising out of the use of such information. It would be best if you did your own research to make your personal investment decisions wisely or consult a licenced investment advisor.

SHAREINVESTOR®
An AlphaInvest Company

We're Officially on TikTok & Instagram!

Follow us now for more information!



Price & Volume Distribution Charts (as at Yesterday)

Technical Analysis

DEFINITION: Stocks with Technical Analysis showing 5-days & 10-days Moving Average Price below Close over past 1 days and with Volume Spike

CHART GUIDE: Volume Distribution Chart is a statistical interpretation of the current sentiment on each stock in graphical format. The highest bar categorized as >150k is likely to be traded by institutions or super dealers, while the lowest bar categorized as <15k usually represents retail investors. "Buy Up" refers to more buyers snatching up the lots queued at selling price. "Sell Down" refers to sellers selling their shares to the buying queue.



ShareInvestor WebPro > Screener > Market Screener (FA & TA) > select BURSA > add criteria

A. Criteria

> click Add Criteria

- Technical Analysis Conditions tab select (i) Moving Average Below Close (ii) Volume Spike
- Fundamental Analysis Conditions tab >select (iii) Revenue
- Prices & Other Conditions tab > select (iv) Is Shariah Compliant
- Technical Analysis Conditions tab select (v) Moving Average Below Close
- Prices & Other Conditions tab > select (vi) Last Done Price
- Technical Analysis Conditions tab select (vii) Moving Average Below Close

B. Conditions (Criteria Filters)

1. Moving Average Below Close - select (MA) type (5) below close price for type (3) days
2. Volume Spike - Volume type (1) greater than type (5) days average
3. Revenue ("000) - select (more than) type (1) for the past select (1) financial year(s)
4. Is Shariah Compliant - select NO
5. Moving Average Below Close - select (MA) type (10) below close price for type (1) days
6. Last Done Price - select (more than) type (0.3)
7. Moving Average Below Close - select (EMA) type (5) below close price for type (1) days

> click Save Template > Create New Template type (Non-Shariah Hot Stocks) > click Create

> click Save Template as > select Non-Shariah Hot Stocks > click Save

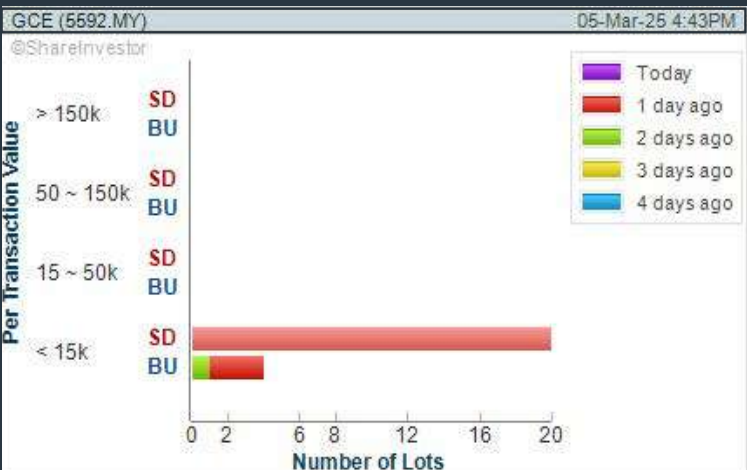
> click Screen Now (may take a few minutes)

Sort By: Select (Vol) Select (Desc)

Mouse over stock name > Charts > click C² Charts tab or Volume Distribution

GRAND CENTRAL ENTERPRISES BERHAD (5592)
C² Chart

Analysis



Disclaimer: The information on this page is provided as a service to readers. It does not constitute financial advice and/or any investment recommendations. Past performance is not indicative of future results. We assume no liability for damages resulting from or arising out of the use of such information. It would be best if you did your own research to make your personal investment decisions wisely or consult a licenced investment advisor.

BUY

HOLD

SELL

CHECK OUT

SHAREINVESTOR

BROKERS' CALL

Weekly Buy/Sell/Hold calls from leading Malaysian Brokerages.

Go To Brokers' Call

Main Sponsors



**SRI KOTA
SPECIALIST
MEDICAL CENTRE**
The Heart of Healthcare



VCI GLOBAL LIMITED
(NASDAQ:VCIG)

TEE OFF FOR HOPE

Since 2010, Make-A-Wish Malaysia has been granting wishes of critically ill children around the country. Funds from this event will help us reach these critically ill children without delay.

BOOK NOW

Date: Wednesday, 7 May 2025

Time: 1.30pm Tee Off

Venue: Tropicana GCR

Flight cost: RM6,000 (for 4 golfers)

Format of play:
**Texas Scramble Stableford
System 36**



SHARE THE POWER OF A WISH

To find out more please contact:

Make-A-Wish Malaysia

(03) 2276 3344

info@makeawish.org.my

www.facebook.com/MakeawishMalaysia • www.makeawish.org.my

Price & Volume Distribution Charts (Over 3 trading days as at Yesterday)

Technical Analysis

DEFINITION: Stocks with Technical Analysis showing Bullish Momentum and Price Uptrend

CHART GUIDE: Volume Distribution Chart is a statistical interpretation of the current sentiment on each stock in graphical format. The highest bar categorized as >150k is likely to be traded by institutions or super dealers, while the lowest bar categorized as <15k usually represents retail investors. “Buy Up” refers to more buyers snatching up the lots queued at selling price. “Sell Down” refers to sellers selling their shares to the buying queue.

SHAREINVESTOR
WEBPRO
step-by-step
GUIDE

ShareInvestor WebPro > Screener > Market Screener (FA & TA) > select BURSA > add criteria

A. Criteria

- > click Add Criteria
- Fundamental Analysis Conditions tab > select (i) Revenue
- Technical Analysis Conditions tab select (ii) Moving Average Below Close
- Technical Analysis Conditions tab select (iii) Average Volume
- Prices & Other Conditions tab > select (iv) Last Done Price
- Technical Analysis Conditions tab select (v) Moving Average Below Close
- Technical Analysis Conditions tab select (v) Moving Average Bullish Crossover

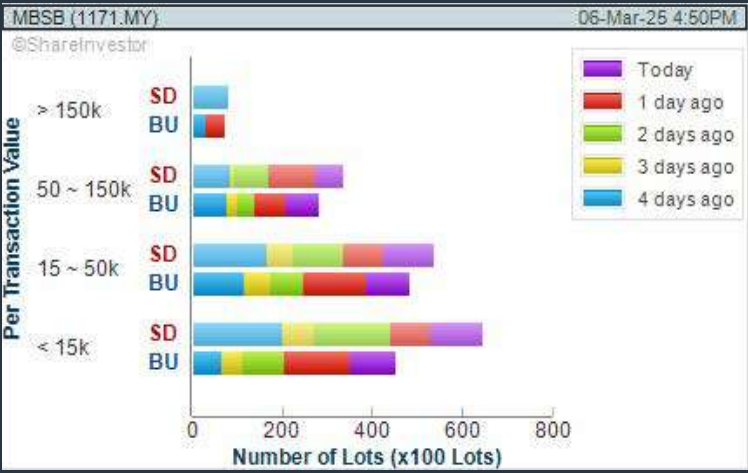
- B. Conditions**
1. Revenue - select (more than) type (1) for the past select (1) financial year(s)
 2. Moving Average Below Close - select (MA) type (20) below close price for type (1) days
 3. Average Volume - type (5) days average volume type (10000) lots
 4. Last Done Price - select (more than) type (0.3)
 5. Moving Average Below Close - select (MA) type (10) below close price for type (1) days
 6. Moving Average Bullish Crossover - select (MA) type (5) crossed above select (MA) type (10)

> click Save Template > Create New Template type (Non-Shariah Up-Trending Stocks) > click Create Click Save Template As > select Non-Shariah Up Trending Stocks > click Save
> click Screen Now (may take a few minutes)
Sort By: Select (Vol) Select (Desc)
Mouse over stock name > Charts > click C² Charts tab or Volume Distribution

MBSB BERHAD (1171)

C² Chart

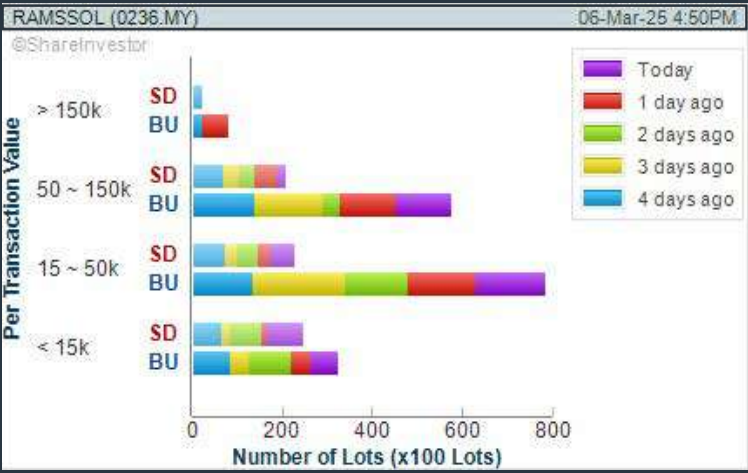
Analysis



RAMSSOL GROUP BERHAD (0236)

C² Chart

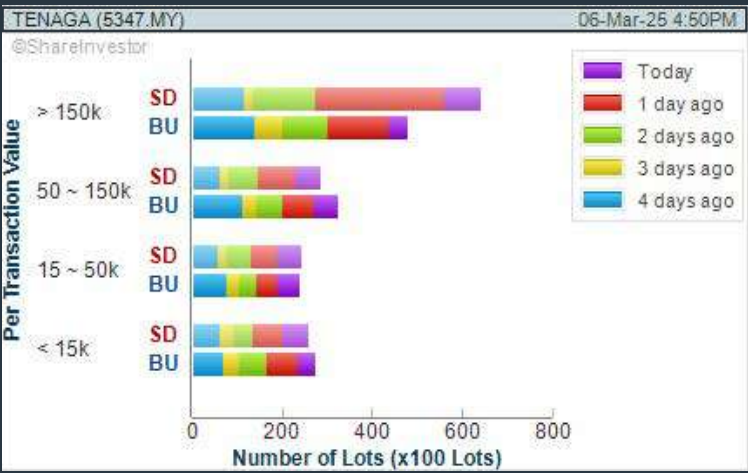
Analysis



TENAGA NASIONAL BERHAD (5347)

C² Chart

Analysis



Disclaimer: The information on this page is provided as a service to readers. It does not constitute financial advice and/or any investment recommendations. Past performance is not indicative of future results. We assume no liability for damages resulting from or arising out of the use of such information. It would be best if you did your own research to make your personal investment decisions wisely or consult a licenced investment advisor.

Price & Total Shareholder Return (as at Yesterday)

Fundamental Analysis

DEFINITION: Share price of a company trading at a lower price as compared to its fundamentals (FA) such as financial performance and dividend, allowing it to be attractive to value investors.

CHART GUIDE: Total Shareholder Return (TSR) combines share price appreciation and dividend distributions paid to show the total return to the shareholder expressed as a percentage.



ShareInvestor WebPro > Screener > Market Screener (FA & TA) > select BURSA > add criteria

A. Criteria

- > click Add Criteria
- Fundamental Analysis Conditions tab (i) Price Earnings Ratio
- Fundamental Analysis Conditions tab >select (ii) CAGR of Net Earnings
- Fundamental Analysis Conditions tab >select (iii) Net Debt To Equity
- Fundamental Analysis Conditions tab >select (iv) Return On Equity (ROE)

B. Conditions

1. Price Earnings Ratio - select (less than) type (15) times now
2. CAGR of Net Earnings - select (more than) type (10) % for the past type (3) financial year(s)
3. Net Debt To Equity – select (less than) type (1) for the past select (1) financial year(s)
4. Return On Equity (ROE) – select (more than) type (10) % for the past select (1) financial year(s)

> click Save Template > Create New Template type (Value Stock) > click Create

> click Save Template as > select Value Companies > click Save

> click Screen Now (may take a few minutes)

Sort by: Select (PE Ratio) Select (Ascending)

> Mouse over stock name > Factsheet > looking for Total Shareholder Return

> Mouse over stock name > Charts > click C2 Charts tab

INGENIEUR GUDANG BERHAD (5178)

C² Chart

Analysis



INGENIEU (5178.MY)		Dividend Received	Capital Appreciation	Total Shareholder Return	
Short Term Return	5 Days	-	-0.010		-25.00 %
	10 Days	-	-0.025		-45.45 %
	20 Days	-	0.015		-33.33 %
Medium Term Return	3 Months	-	-0.015		-33.33 %
	6 Months	-	-0.020		-40.00 %
	1 Year	-	-0.110		-78.57 %
Long Term Return	2 Years	-	0.070		-70.00 %
	3 Years	-	-0.065		-58.42 %
	5 Years	-	-0.020		-40.00 %
Annualised Return	Annualised	-	-		0.71 %

AJINOMOTO (M) BERHAD (2658)

C² Chart

Analysis



AJI (2658.MY)		Dividend Received	Capital Appreciation	Total Shareholder Return	
Short Term Return	5 Days	-	-0.360		-2.40 %
	10 Days	-	-0.360		-2.40 %
	20 Days	-	0.420		2.79 %
Medium Term Return	3 Months	-	-1.040		-6.63 %
	6 Months	-	-0.300		-2.51 %
	1 Year	-	-1.938		-11.88 %
Long Term Return	2 Years	-	+1.722		+13.33 %
	3 Years	-	+2.1807		+15.89 %
	5 Years	0.075	+2.024		+22.98 %
Annualised Return	Annualised	-	-		+4.22 %

SOLID AUTOMOTIVE BERHAD (5242)

C² Chart

Analysis



SOLID (5242.MY)		Dividend Received	Capital Appreciation	Total Shareholder Return	
Short Term Return	5 Days	-	-0.010		-5.71 %
	10 Days	-	-0.015		-8.33 %
	20 Days	-	-0.025		-13.16 %
Medium Term Return	3 Months	-	-0.020		-10.81 %
	6 Months	-	0.040		-19.81 %
	1 Year	-	-0.015		-8.33 %
Long Term Return	2 Years	-	0.030		-16.38 %
	3 Years	-	-0.035		-17.50 %
	5 Years	-	-0.165		-50.00 %
Annualised Return	Annualised	-	-		-12.84 %

Disclaimer: The information on this page is provided as a service to readers. It does not constitute financial advice and/or any investment recommendations. Past performance is not indicative of future results. We assume no liability for damages resulting from or arising out of the use of such information. It would be best if you did your own research to make your personal investment decisions wisely or consult a licenced investment advisor.

Price & Total Shareholder Return (as at Yesterday)

Fundamental Analysis

DEFINITION: Company revenue is growing and making good quality of earnings with positive Free Cash Flow.

CHART GUIDE: Total Shareholder Return (TSR) combines share price appreciation and distributions paid to show the total return to the shareholder expressed as a percentage.



ShareInvestor WebPro > Screener > Market Screener (FA & TA) > select BURSA > add criteria
A. Criteria
1. Fundamental Analysis Conditions tab >select (i) Free Cash Flow, (ii) Revenue Growth, (iii) Gross Profit (Earnings) Margin, (iv) Quality of Earnings, (v) Total Shareholder Returns, > click Add Criteria
2. Fundamental Analysis Conditions tab >select (vi) Total Shareholder Returns > click Add Criteria

B. Conditions (Criteria Filters)
1. Free Cash Flow - select (more than) type (1) for the past select (1) financial year(s)
2. Revenue Growth - select (more than) type (1) for the past select (1) financial year(s)
3. Gross Profit (Earnings) Margin - select (more than) type (30) % for the past select (1) financial year(s)
4. Quality of Earnings - select (more than) type (1) for the past select (1) financial year(s)
5. Total Shareholder Return - -- select (more than) type (5) % for the past select (3) financial year(s)
6. Total Shareholder Return - -- select (more than) type (5) % for the past select (5) financial year(s)

> click Save Template > Create New Template type (Growth Companies) > click Create
> click Save Template as > select Growth Companies > click Save
> click Screen Now (may take a few minutes)
> Sort By: Select (Revenue Growth) Select (Desc)
> Mouse over stock name > Factsheet > looking for Total Shareholder Return

COUNTRY VIEW BERHAD (5049)
C² Chart

Analysis



Period		Dividend Received	Capital Appreciation	Total Shareholder Return	
Short Term Return	5 Days	-	-0.010		-0.55 %
	10 Days	-	-0.000		-0.84 %
	20 Days	-	-0.130		-5.84 %
Medium Term Return	3 Months	-	+0.050		+2.81 %
	6 Months	-	+0.070		+4.12 %
	1 Year	-	+0.510		+40.40 %
Long Term Return	2 Years	-	+0.750		+73.63 %
	3 Years	-	+0.815		+85.54 %
	5 Years	0.150	+0.440		+44.38 %
Annualised Return	Annualised	-	-		+7.89 %

IFCA MSC BERHAD (0023)
C² Chart

Analysis



Period		Dividend Received	Capital Appreciation	Total Shareholder Return	
Short Term Return	5 Days	-	-0.055		-10.88 %
	10 Days	-	-0.110		-19.30 %
	20 Days	-	-0.145		-23.97 %
Medium Term Return	3 Months	-	-0.190		-29.23 %
	6 Months	-	0.190		29.23 %
	1 Year	-	+0.160		+33.33 %
Long Term Return	2 Years	-	+0.220		+91.67 %
	3 Years	-	+0.185		+67.27 %
	5 Years	0.010	+0.150		+56.61 %
Annualised Return	Annualised	-	-		+0.00 %

WMG HOLDINGS BERHAD (6378)
C² Chart

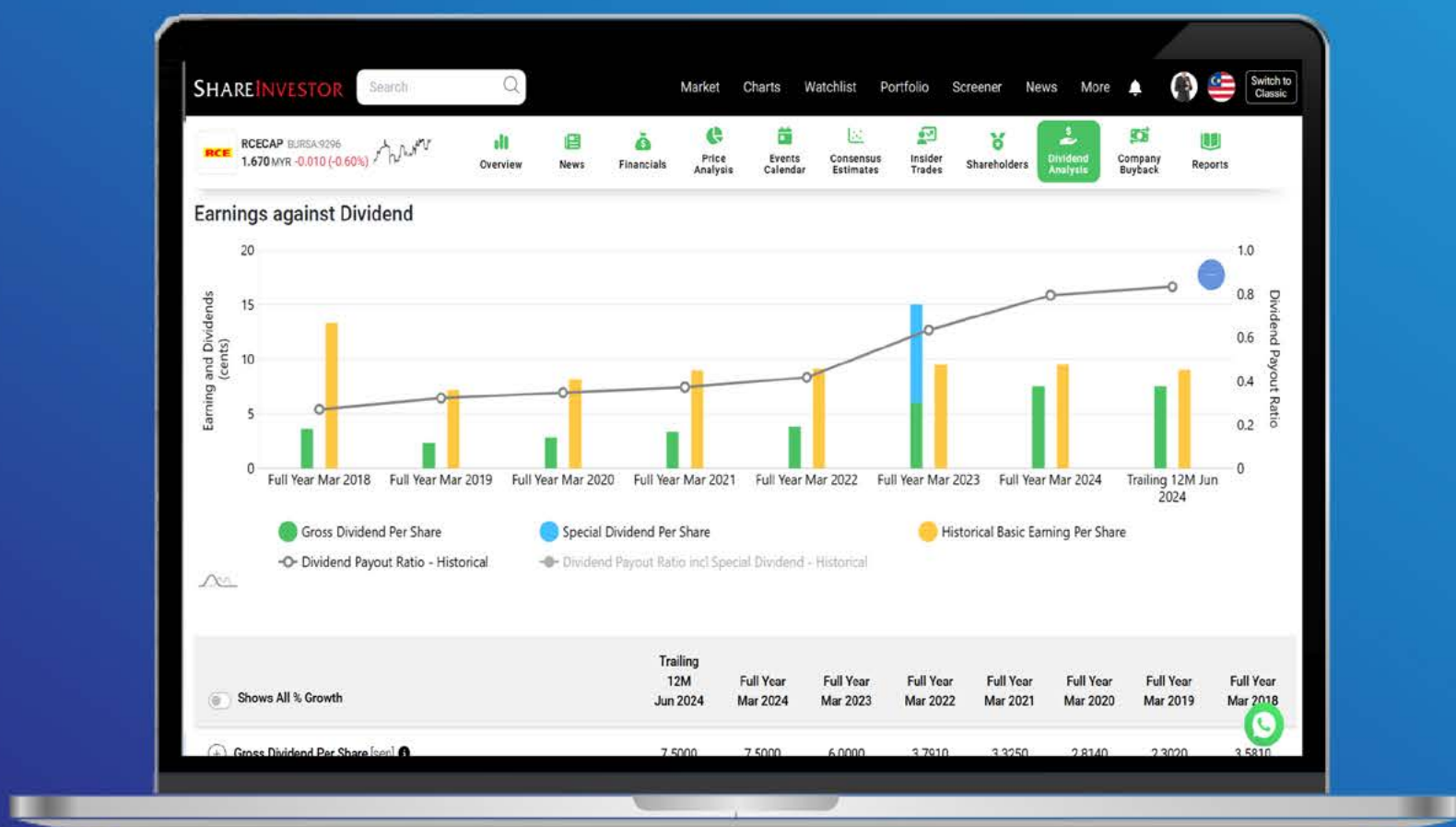
Analysis



Period		Dividend Received	Capital Appreciation	Total Shareholder Return	
Short Term Return	5 Days	-	-0.010		-2.50 %
	10 Days	-	-0.005		-1.27 %
	20 Days	-	-0.010		-2.50 %
Medium Term Return	3 Months	-	+0.035		+9.86 %
	6 Months	-	-0.110		-22.00 %
	1 Year	-	+0.150		+62.50 %
Long Term Return	2 Years	-	+0.205		+271.43 %
	3 Years	-	+0.205		+271.43 %
	5 Years	-	+0.325		+500.00 %
Annualised Return	Annualised	-	-		+81.41 %

Disclaimer: The information on this page is provided as a service to readers. It does not constitute financial advice and/or any investment recommendations. Past performance is not indicative of future results. We assume no liability for damages resulting from or arising out of the use of such information. It would be best if you did your own research to make your personal investment decisions wisely or consult a licenced investment advisor.

Tired of low returns? Let's talk high-paying Dividends!



- ✓ **Top Dividend Picks Right Now**
- ✓ **Insider Tips** – Advanced strategies for experienced investors
- ✓ **Easy-to-Follow Tutorial**

Get the most out of dividends, use our Dividend Analysis function – Click to Watch Our Tutorial Below!

Upgrade Your Dividend Strategy Here



Price & Total Shareholder Return (as at Yesterday)

Fundamental Analysis

DEFINITION: Company is paying out dividend with low or moderate leverage.

CHART GUIDE: Total Shareholder Return (TSR) combines share price appreciation and distributions paid to show the total return to the shareholder expressed as a percentage.



ShareInvestor WebPro > Screener > Market Screener (FA & TA) > select BURSA > add criteria
A. Criteria
> click Add Criteria
• Fundamental Analysis Conditions tab >select (i) Dividend Yield
• Fundamental Analysis Conditions tab >select (ii) Dividend Payout (Historical)
• Fundamental Analysis Conditions tab >select (iii) Total Debt To Equity
• Fundamental Analysis Conditions tab >select (iv) Total Shareholder Returns
• Fundamental Analysis Conditions tab >select (v) Total Shareholder Returns
• Fundamental Analysis Conditions tab / >select (vi) CAGR of Dividend Per Share

• Fundamental Analysis Conditions tab >select (vii) CAGR of Dividend Per Share
B. Conditions (Criteria Filters)
1. Dividend Yield - select (more than) type (1) % for the past select (1) financial year(s)
2. Dividend Payout (Historical) - select (between) type (0.5) to type (1) times for the past select (1) financial year(s)
3. Total Debt to Equity - select (less than) type (1) for the past select (1) financial year(s)
4. Total Shareholder Return - - select (more than) type (5) % for the past select (3) financial year(s)
5. Total Shareholder Return - - select (more than) type (5) % for the past select (5) financial year(s)

6. CAGR of Dividend Per Share - - select (less than) type (30) % for the past select (5) financial year(s)
7. CAGR of Dividend Per Share - - select (more than) type (1) % for the past select (5) financial year(s)

> click Save Template > Create New Template type (Dividend Companies) > click Create
> click Save Template as > select Dividend Companies > click Save
> click Screen Now (may take a few minutes)
> Sort By: Select (Dividend Yield) Select (Desc)
> Mouse over stock name > Factsheet > looking for Total Shareholder Return

APM AUTOMOTIVE HOLDINGS BERHAD (5015)

C² Chart

Analysis



Period		Dividend Received	Capital Appreciation	Total Shareholder Return	
Short Term Return	5 Days	-	+0.020		+0.85 %
	10 Days	-	+0.340		+12.32 %
	20 Days	-	+0.370		+13.55 %
Medium Term Return	3 Months	-	+0.300		+10.71 %
	6 Months	-	+0.100		+3.33 %
	1 Year	-	+0.100		+3.33 %
Long Term Return	2 Years	-	+1.210		+64.02 %
	3 Years	-	+1.150		+50.97 %
	5 Years	0.050	+1.220		+67.55 %
Annualised Return	Annualised	-	-		+10.07 %

SHL CONSOLIDATED BERHAD (6017)

C² Chart

Analysis



Period		Dividend Received	Capital Appreciation	Total Shareholder Return	
Short Term Return	5 Days	-	+0.070		+0.88 %
	10 Days	-	+0.020		+0.88 %
	20 Days	-	-		-
Medium Term Return	3 Months	-	-0.090		-3.77 %
	6 Months	-	0.560		19.30 %
	1 Year	-	+0.150		+6.98 %
Long Term Return	2 Years	-	+0.450		+24.32 %
	3 Years	-	+0.400		+21.05 %
	5 Years	0.170	+0.750		+18.05 %
Annualised Return	Annualised	-	-		+3.37 %

DELEUM BERHAD (5132)

C² Chart

Analysis



Period		Dividend Received	Capital Appreciation	Total Shareholder Return	
Short Term Return	5 Days	-	+0.100		+7.52 %
	10 Days	-	+0.070		+5.15 %
	20 Days	-	+0.050		+3.82 %
Medium Term Return	3 Months	-	+0.040		+2.88 %
	6 Months	-	-0.040		-2.72 %
	1 Year	-	+0.080		+5.93 %
Long Term Return	2 Years	-	+0.450		+45.92 %
	3 Years	0.012	+0.845		+146.50 %
	5 Years	0.062	+0.790		+133.12 %
Annualised Return	Annualised	-	-		+18.45 %

Disclaimer: The information on this page is provided as a service to readers. It does not constitute financial advice and/or any investment recommendations. Past performance is not indicative of future results. We assume no liability for damages resulting from or arising out of the use of such information. It would be best if you did your own research to make your personal investment decisions wisely or consult a licenced investment advisor.

Week: 28 February 2025 - 6 March 2025

More Brokers' Call 

AMINVESTMENT BANK ... See More	Call	Target Price	Release Date
Tenaga Nasional Berhad (5347)	UNDERWEIGHT	RM12.60	3 Mar 2025
Vitrox Corporation Berhad (0097)	BUY	RM4.40	3 Mar 2025
APEX SECURITIES BERHAD ... See More	Call	Target Price	Release Date
CBH Engineering Holding Berhad (0339)	BUY	RM0.54	6 Mar 2025
Samaiden Group Berhad (0223)	BUY	RM1.71	5 Mar 2025
Tenaga Nasional Berhad (5347)	BUY	RM16.04	4 Mar 2025
BIMB SECURITIES SDN BHD ... See More	Call	Target Price	Release Date
Padini Holdings Berhad (7052)	BUY	RM2.10	4 Mar 2025
Sunway Construction Berhad (6777)	BUY	RM5.04	6 Mar 2025
Hong Leong Investment Bank ... See More	Call	Target Price	Release Date
CIMB Group Holdings Berhad (1023)	BUY	RM9.20	6 Mar 2025
Tan Chong Motor Holdings Berhad (4405)	HOLD	RM0.35	5 Mar 2025
Tenaga Nasional Berhad (5347)	BUY	RM16.20	4 Mar 2025
KENANGA ... See More	Call	Target Price	Release Date
PPB Group Berhad (4065)	OUTPERFORM	RM16.00	6 Mar 2025
Sunway Construction Group Berhad (5263)	OUTPERFORM	RM5.31	6 Mar 2025
MIDF ... See More	Call	Target Price	Release Date
Samaiden Group Berhad (0223)	BUY	RM1.69	5 Mar 2025
Sunview Group Berhad (0262)	BUY	RM0.62	6 Mar 2025
PUBLIC INVESTMENT BANK ... See More	Call	Target Price	Release Date
CIMB Group Holdings Berhad (1023)	OUTPERFORM	RM8.90	6 Mar 2025
QES Group Berhad (0196)	OUTPERFORM	RM0.64	6 Mar 2025
UOB KAYHIAN ... See More	Call	Target Price	Release Date
Bank Islam Malaysia Berhad (5258)	BUY	RM2.83	5 Mar 2025
KPJ Healthcare Berhad (5878)	BUY	RM2.99	5 Mar 2025

Disclaimer: InveSt does not accept any liability whatsoever for any direct, indirect or consequential losses (including loss of profit) or damages that may arise from the use of information or opinions in this publication. The information and opinions in InveSt are not to be considered as an offer to sell or buy any of the securities discussed. Opinions expressed are subject to change without notice. The Brokers may, from time to time, have interests or positions in the securities mentioned. For the full report on each item listed on this page , please visit https://www.shareinvestor.com/my/brokers_call.

DEFINITION: Top 10 stocks with Technical Analysis plus Pattern Matching by 60 pre-defined indicators by the system showing a higher probability of bullish sentiment on the share price.



ShareInvestor WebPro > Screener > Predefined TA Screens > select market BURSA > Most Long Signals > click Scan Results or mouse over each company

CLASSITA HOLDINGS BERHAD
(7154.MY)

CLASSITA

Price updated at 06 Mar 2025 16:50

Last: 0.065	Change: -	Volume: 26,085
	Change (%): -	Range: 0.060 - 0.065

TA Scanner Results based on historical data up to 06 Mar 2025

Condition	Signal	Explanation
Bollinger Band: Bullish Long Term Volatility Breakout and Trending	Long	1. Close price above upper bollinger band(33,1). 2. Volume above average volume(50). 3. Average volume(50) is above 300,000.
Bollinger Band: Bullish Short Term Volatility Breakout and Trending	Long	1. Close price above upper bollinger band(33,1). 2. Volume above average volume(10). 3. Average volume(10) is above 300,000.
Bollinger Band: High Above Upper Bollinger Band	Neutral	1. High above upper bollinger band(14,2). 2. Average volume(5) is above 100,000.
MA: Bullish Price Crossover	Long	1. Close price crossed above MA(40) within the last 1 day. 2. Previous day close price is below the MA(10) for the last 5 days
MA: Short Term Bearish Moving Average Crossover	Short	MA(10) crossed below MA(15) within the last 1 day.
MACD: Bullish MACD Crossover	Long	1. MACD(12,26) diff line crossed above the MACD(12,26) signal line. 2. MACD Histogram(12,26) is above 0.
Parabolic SAR: Bearish Parabolic SAR Reversal	Neutral	1. Parabolic SAR 1 day ago above close price 1 day ago for the last 5 days. 2. Parabolic SAR below close price
Stochastic: Fast Stochastic Buy Signal	Long	1. Fast Stochastic(15,5) %K crossed above 20. 2. Fast Stochastic(15,5) %K 1 day ago was below 20 for the last 5 days. 3. Average volume(30) is above 50000

MALAYSIA SMELTING CORPORATION (5916.MY)

MSC

Price updated at 06 Mar 2025 16:59

Last: 2.340	Change: +0.010	Volume: 3,574
	Change (%): +0.43	Range: 2.300 - 2.350

TA Scanner Results based on historical data up to 06 Mar 2025

Condition	Signal	Explanation
Bollinger Band: Bullish Long Term Volatility Breakout and Trending	Long	1. Close price above upper bollinger band(33,1). 2. Volume above average volume(50). 3. Average volume(50) is above 300,000.
Bollinger Band: Bullish Short Term Volatility Breakout and Trending	Long	1. Close price above upper bollinger band(33,1). 2. Volume above average volume(10). 3. Average volume(10) is above 300,000.
Bollinger Band: High Above Upper Bollinger Band	Neutral	1. High above upper bollinger band(14,2). 2. Average volume(5) is above 100,000.
DM: Bullish Directional Movement	Long	-DI(14) crossed below +DI(14)
MA: Medium Term Bullish Moving Average Crossover	Long	MA(25) crossed above MA(50) within the last 1 day.
MACD: Bullish MACD Crossover	Long	1. MACD(12,26) diff line crossed above the MACD(12,26) signal line. 2. MACD Histogram(12,26) is above 0.
Williams %R: Bearish Williams %R	Short	1. Williams %R(26) between 0 and -20. 2. Average volume(5) is above 100,000.

Disclaimer: The information on this page is provided as a service to readers. It does not constitute financial advice and/or any investment recommendations. Past performance is not indicative of future results. We assume no liability for damages resulting from or arising out of the use of such information. It would be best if you did your own research to make your personal investment decisions wisely or consult a licenced investment advisor.

MI TECHNOVATION BERHAD
(5286.MY)

MI

Price updated at 06 Mar 2025 16:57

Last: 1.710	Change: -0.010	Volume: 34,479
	Change (%): -0.58	Range: 1.700 - 1.770

TA Scanner Results based on historical data up to 06 Mar 2025

Condition	Signal	Explanation
Bollinger Band: Bullish Lower Bollinger Band Support	Long	1. Low 1 day ago below lower bollinger band(20,2). 2. Close above close 1 day ago. 3. Average volume(5) is above 100,000.
Candlestick: Bullish Harami	Long	Bullish: Harami
MACD: Oversold	Long	1. MACD Histogram(12,26,9) reached a new 6 month low. 2. MACD Histogram(12,26,9) has been below 0 for the last 3 weeks.
Volume: 5 Days large value Buy Up trade	Long	1. 150K value Buy Up greater than Sell Down by 20% for 5 days. 2. 50K-100K value Buy Up greater than Sell Down by 20% for 5 days. 3. Average volume(10) is above 1000000
Williams %R: Bullish Williams %R	Long	1. Williams %R(26) between -80 and -100. 2. Average volume(5) is above 100,000.

EG INDUSTRIES BERHAD
(8907.MY)

EG

Price updated at 06 Mar 2025 16:59

Last: 2.050	Change: +0.010	Volume: 9,470
	Change (%): +0.49	Range: 2.010 - 2.100

TA Scanner Results based on historical data up to 06 Mar 2025

Condition	Signal	Explanation
Bollinger Band: Bullish Lower Bollinger Band Support	Long	1. Low 1 day ago below lower bollinger band(20,2). 2. Close above close 1 day ago. 3. Average volume(5) is above 100,000.
Candlestick: Bullish Harami	Long	Bullish: Harami
MACD: Oversold	Long	1. MACD Histogram(12,26,9) reached a new 6 month low. 2. MACD Histogram(12,26,9) has been below 0 for the last 3 weeks.
Volume: 10 Days large value Buy Up trade	Long	1. 150K value Buy Up greater than Sell Down by 20% for 10 days. 2. 50K-100K value Buy Up greater than Sell Down by 20% for 10 days. 3. Average volume(10) is above 1000000
Williams %R: Bullish Williams %R	Long	1. Williams %R(26) between -80 and -100. 2. Average volume(5) is above 100,000.

LBS BINA GROUP BERHAD
(5789.MY)

LBS

Price updated at 06 Mar 2025 16:54

Last: 0.480	Change: -	Volume: 17,921
	Change (%): -	Range: 0.480 - 0.485

TA Scanner Results based on historical data up to 06 Mar 2025

Condition	Signal	Explanation
Bollinger Band: Bullish Lower Bollinger Band Support	Long	1. Low 1 day ago below lower bollinger band(20,2). 2. Close above close 1 day ago. 3. Average volume(5) is above 100,000.
Candlestick: Bullish Harami	Long	Bullish: Harami
MACD: Oversold	Long	1. MACD Histogram(12,26,9) reached a new 6 month low. 2. MACD Histogram(12,26,9) has been below 0 for the last 3 weeks.
Williams %R: Bullish Williams %R	Long	1. Williams %R(26) between -80 and -100. 2. Average volume(5) is above 100,000.



ZEN TECH INTERNATIONAL
BERHAD (0094.MY)

ZENTECH

Price updated at 06 Mar 2025 16:50

Last: 0.005	Change: -0.005	Volume: 11,918
	Change (%): -50.00	Range: 0.005 - 0.010

TA Scanner Results based on historical data up to 06 Mar 2025

Condition	Signal	Explanation
Bollinger Band: Bullish Short Term Volatility Breakout and Trending	Long	1. Close price above upper bollinger band(33,1). 2. Volume above average volume(10). 3. Average volume(10) is above 300,000.
MA: Bullish Price Crossover	Long	1. Close price crossed above MA(40) within the last 1 day. 2. Previous day close price is below the MA(10) for the last 5 days
MA: Short Term Bullish Moving Average Crossover	Long	MA(10) crossed above MA(15) within the last 1 day.
MACD: Bullish MACD Crossover	Long	1. MACD(12,26) diff line crossed above the MACD(12,26) signal line. 2. MACD Histogram(12,26) is above 0.
Price: New 52 Week Low	Short	1. Stock reach a new 52 week low. 2. Average volume(30) is above 50000.
Stochastic: Fast Stochastic Buy Signal	Long	1. Fast Stochastic(15,5) %K crossed above 20. 2. Fast Stochastic(15,5) %K 1 day ago was below 20 for the last 5 days. 3. Average volume(30) is above 50000



SUNWAY REAL ESTATE INVT
TRUST (5176.MY)

SUNREIT

Price updated at 06 Mar 2025 16:59

Last: 1.920	Change: +0.010	Volume: 13,660
	Change (%): +0.52	Range: 1.900 - 1.930

TA Scanner Results based on historical data up to 06 Mar 2025

Condition	Signal	Explanation
DM: Bullish Directional Movement	Long	-DI(14) crossed below +DI(14)
MA: Bullish Price Crossover	Long	1. Close price crossed above MA(40) within the last 1 day. 2. Previous day close price is below the MA(10) for the last 5 days
Stochastic: Fast Stochastic Buy Signal	Long	1. Fast Stochastic(15,5) %K crossed above 20. 2. Fast Stochastic(15,5) %K 1 day ago was below 20 for the last 5 days. 3. Average volume(30) is above 50000
Volume: 10 Days large value Buy Up trade	Long	1. 150K value Buy Up greater than Sell Down by 20% for 10 days. 2. 50K-100K value Buy Up greater than Sell Down by 20% for 10 days. 3. Average volume(10) is above 1000000
Volume: 5 Days large value Buy Up trade	Long	1. 150K value Buy Up greater than Sell Down by 20% for 5 days. 2. 50K-100K value Buy Up greater than Sell Down by 20% for 5 days. 3. Average volume(10) is above 1000000



INSAS BERHAD (3379.MY)

INSAS

Price updated at 06 Mar 2025 16:53

Last: 0.845	Change: -	Volume: 5,133
	Change (%): -	Range: 0.845 - 0.880

TA Scanner Results based on historical data up to 06 Mar 2025

Condition	Signal	Explanation
Bollinger Band: Bullish Lower Bollinger Band Support	Long	1. Low 1 day ago below lower bollinger band(20,2). 2. Close above close 1 day ago. 3. Average volume(5) is above 100,000.
Candlestick: Bullish Engulfing	Long	Bullish: Engulfing



ELRIDGE ENERGY HOLDINGS
BERHAD (0318.MY)

ELRIDGE

Price updated at 06 Mar 2025 16:59

Last: 0.475	Change: +0.005	Volume: 78,496
	Change (%): +1.06	Range: 0.465 - 0.475

TA Scanner Results based on historical data up to 06 Mar 2025

Condition	Signal	Explanation
Bollinger Band: Bullish Long Term Volatility Breakout and Trending	Long	1. Close price above upper bollinger band(33,1). 2. Volume above average volume(50). 3. Average volume(50) is above 300,000.
MA: Short Term Bearish Moving Average Crossover	Short	MA(10) crossed below MA(15) within the last 1 day.
Volume: 10 Days large value Buy Up trade	Long	1. 150K value Buy Up greater than Sell Down by 20% for 10 days. 2. 50K-100K value Buy Up greater than Sell Down by 20% for 10 days. 3. Average volume(10) is above 1000000
Volume: 5 Days large value Buy Up trade	Long	1. 150K value Buy Up greater than Sell Down by 20% for 5 days. 2. 50K-100K value Buy Up greater than Sell Down by 20% for 5 days. 3. Average volume(10) is above 1000000
Volume: Consecutive Days Of Increasing Average Volume	Long	1. Average Volume(20) has been increasing over the last 2 weeks. 2. Average volume(20) is above 100000
Williams %R: Bearish Williams %R	Short	1. Williams %R(26) between 0 and -20. 2. Average volume(5) is above 100,000.



RHB BANK BERHAD (1066.MY)

RHBBANK

Price updated at 06 Mar 2025 16:57

Last: 6.910	Change: -0.030	Volume: 71,188
	Change (%): -0.43	Range: 6.900 - 6.970

TA Scanner Results based on historical data up to 06 Mar 2025

Condition	Signal	Explanation
Bollinger Band: High Above Upper Bollinger Band	Neutral	1. High above upper bollinger band(14,2). 2. Average volume(5) is above 100,000.
Candlestick: Bullish Engulfing	Long	Bullish: Engulfing
Price: New 52 Week High	Long	1. Stock reach a new 52 week high. 2. Average volume(30) is above 50000.
Volume: 10 Days large value Buy Up trade	Long	1. 150K value Buy Up greater than Sell Down by 20% for 10 days. 2. 50K-100K value Buy Up greater than Sell Down by 20% for 10 days. 3. Average volume(10) is above 1000000
Volume: 5 Days large value Buy Up trade	Long	1. 150K value Buy Up greater than Sell Down by 20% for 5 days. 2. 50K-100K value Buy Up greater than Sell Down by 20% for 5 days. 3. Average volume(10) is above 1000000
Williams %R: Bearish Williams %R	Short	1. Williams %R(26) between 0 and -20. 2. Average volume(5) is above 100,000.

Disclaimer:

The information on this page is provided as a service to readers. It does not constitute financial advice and/or any investment recommendations. Past performance is not indicative of future results. We assume no liability for damages resulting from or arising out of the use of such information. It would be best if you did your own research to make your personal investment decisions wisely or consult a licenced investment advisor.

Condition	Signal	Explanation
DM: Bullish Directional Movement	Long	-DI(14) crossed below +DI(14)
Parabolic SAR: Bearish Parabolic SAR Reversal	Neutral	1. Parabolic SAR 1 day ago above close price 1 day ago for the last 5 days. 2. Parabolic SAR below close price
Williams %R: Bullish Williams %R	Long	1. Williams %R(26) between -80 and -100. 2. Average volume(5) is above 100,000.



Dato' Eu Hong Chew
Former Group CEO i-Berhad
Non-Executive Director

He has been associated with the Sumurwang Group for many years charting the path for its manufacturing arm, firstly under Dreamland Holdings Berhad and the subsequent acquisition of I-Berhad.

Before that, he was with PA Management Consulting for a decade where he was the Director of Studies for the Cranfield PA MBA Programme in Malaysia.

Educated at the Royal Military College, Dato' Eu has an engineering degree from the University of Glasgow, and a MBA from the University of Bradford, UK.

Is APOLLO FOOD an investment opportunity?

SUMMARY

- Apollo Food Holdings Berhad (Apollo Food or The Group) (**6432.MY**) experienced stagnant revenue growth from 2013 to 2022 but showed improvement in 2023 and 2024. This was driven primarily by increased revenue and lower tax rates, despite declining gross profit margins.

- The Group is financially sound with zero debt over the past 12 years, and consistently positive operating cash flow. These underscore its status as a cash cow with effective capital allocation.
- I estimated its Earnings Power Value (EPV) to range between RM5.11 and RM6.78 per share. The market price of about RM6.59 at the end of 2024 suggests expectations of sustained improved returns. But the mixed historical performance and management transition make its investment appeal uncertain.

BACKGROUND

The Group is one of Malaysia's leading manufacturers of chocolate confectionery products and layer cakes. In 2023, Malaysia accounted for about 68% of its revenue. Sales to ASEAN countries (excluding Malaysia) accounted for another 29% with the balance from other countries.

The controlling shareholder changed towards the end of 2023, and the new controlling shareholders took over the operations in Jan 2024. The new controlling party is the indirect major shareholder of Golden Scoop, which has been the master franchisee of Baskin-Robbins in Malaysia and Singapore since 1988 and 2011, respectively. The new controlling party has stated that it intends to continue with the existing businesses of the Group. However, it may consider expanding the product ranges of Apollo either organically or via acquisitions.

Note that the Group has April as its financial year-end. The 2024 performance refers to the FYE April 2024 performance. Unless stated otherwise, the years in this article refer to the financial years.

OPERATING PERFORMANCE

The Group's historical performance is nothing much to shout about. Refer to Chart 1.

- From 2013 to 2024, revenue grew at 1.2% CAGR while PAT grew at 4.8% CAGR. However, revenue and PAT declined from 2013 to 2022. The turnaround started in 2023. There was a similar pattern for gross profitability.
- Over the past 12 years, ROIC averaged 14% while ROE averaged 10%. A big part of the returns was driven by the better returns over the last 2 years.

Was the improvement over the past 2 years due to some management turnaround effort or some externally driven one-off events?

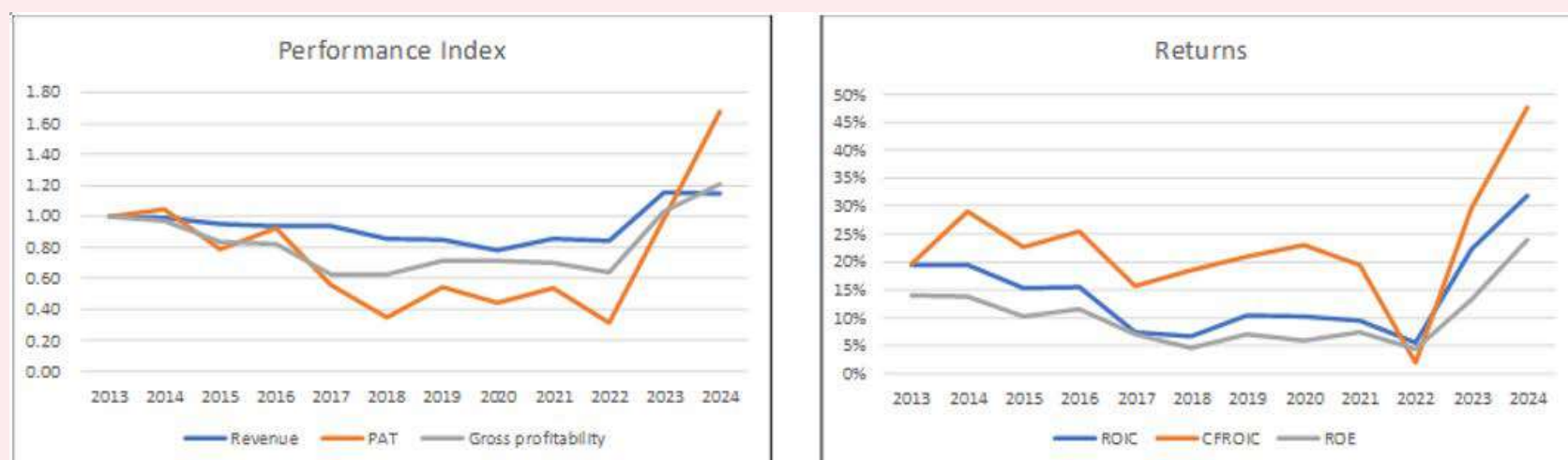


Chart 1: Performance Index and Returns

The Group did not provide many details on its operations in its Annual Reports. However, I think there are several reasons for the performance pattern:

- Gross profit margin averaged 27% for 2023/24 compared to the 2013/14 average of 29%. So, the growth in PAT in 2023/24 was more attributable to revenue growth than gross profit margin improvements.

- There were lower effective tax rates of 21% and 18% respectively for 2023 and 2024 compared to 25% for 2021 and 2022.
- The profit in 2024 was boosted by an RM18.7 million one-off gain from the sale of an investment property.
- I would also conclude that the improvement in the gross profitability in 2023 and 2024 was due more to lower growth in the total assets relative to gross profits.

GROWTH PROSPECTS

The Malaysian confectionery market is not a high growth one as exemplified by the following:

“The Malaysia confectionery market was valued at MYR1.38 billion... in 2021 and is expected to grow at a CAGR of more than 3% during the forecast period (2021 to 2026)” - Global Data

The key point was that based on the above market research quote and the growth rate shown in Chart 2, Apollo appeared to have lost market share.



FINANCIAL POSITION

I would rate Apollo as financially sound based on the following criteria.

As of the end of Oct 2024,

- It had RM142 million in cash and short-term investments. This is about 52% of the total assets.
- It had zero debt over the past 12 years.
- Over the past 12 years, the Group generated positive cash flow from operations every year. During this period, it generated RM375 million cash flow from operations compared to the RM294 million PAT. This is a good cash conversion ratio.

From 2013 to 2024, Apollo had an average negative Reinvestment rate due to the total negative Reinvestment.

- $\text{Reinvestment} = \text{CAPEX \& Acquisition} - \text{Depreciation \& Amortization} + \text{Increase in Net Working Capital}$.
- $\text{Reinvestment rate} = \text{Reinvestment} / \text{NOPAT}$
- The negative Reinvestment was because, in many years, the amount spent on CAPEX was less than the Depreciation & Amortization. Furthermore, in certain years, there was a decrease in the Net Working Capital.

Apollo also had a good capital allocation plan as shown in Table 1. Given its low CAPEX, it had lots of excess funds, the bulk of which was returned to shareholders. I would consider Apollo a cash cow.

Item	Sources RM m	Uses RM m
Cash flow from Ops	375	
Net Debt	0	
CAPEX		31
Dividends		284
Buybacks		0
Cash and Others		60
Total	375	375

Table 1: Sources and Uses of Funds 2013 to 2024

*Please refer to the disclaimer on first page and last page.

VALUATION

The picture that emerged from the above analysis is that Apollo is a low-growth but financially sound business operating in a low-growth sector. The operating improvements over the past two years appear to be driven primarily by external factors rather than a sweeping management-led turnaround.

Given its low earnings growth track record, I think it is more appropriate to value Apollo based on its Earnings Power Value (EPV). I considered 2 Scenarios.

- **Scenario 1:** based on the past 12 years' time-weighted average values.
- **Scenario 2:** based on the 2023 and 2024 average values.

On such a basis, I found that it had an EPV of RM5.11 per share under Scenario 1 and RM6.78 per share under Scenario 2. The market price of Apollo as of the end of 2024 was RM6.59 per share. Refer to the original article for details of the valuation.

Given the change in management, a realistic intrinsic value is probably in between the 2 Scenarios.

The new controlling shareholders acquired the controlling stake for RM5.80 per share. Compared to my EPV under Scenario 2, I would deduce that they do not think that the past 2 years' performance is sustainable. They probably looked at the past 12 years' performance and included some premium for control. I suspect that the previous controlling shareholders would not have sold off their stake without some premium. The market price of RM6.59 almost matches the value under Scenario 2. Why is the current market price higher than the take-over price? I suspect that the market is anticipating improving returns.

- These could be due to improvements in the existing business.
- I also suspect that some in the market may think that the Baskin-Robbins business could be injected into Apollo.

CONCLUSION

The historical performance of Apollo is not something to be excited about. Its revenue, profits, and returns were trending down from 2013 to 2022. But there were extraordinary growths over the past 2 years. My analysis showed that the PAT growth was due to higher revenue and lower tax rates. But the revenue in 2024 seemed to have levelled off and I do not think the lower tax rates are sustainable. As such I would expect that 2024 would be the peak PAT.

You can see why I consider Scenario 1 as more likely. But I have a caveat. All the above conclusions did not account for the change in management. There is always the possibility of improved performance or the injection of new businesses.

Is Apollo an investment opportunity? I would say that it is based on the take-over price of RM5.80 per share. But at the current market price of RM6.56 per share, there is not enough information to draw a meaningful conclusion.

I am a long-term value investor who has held onto stocks for more than 5 years. My analysis and valuation are from such a perspective. I consider quarterly results “noisy” and focus on long-term trends.

This article was derived from a detailed analysis, emphasizing the intersection of business performance and valuation metrics, which was first published on i4value as “[Is Apollo Food an investment opportunity?](#)” Refer to the article for further insights on its investment risk vs business performance.

UNLOCK THE SECRET OF WEALTH

DO YOU REALLY WANT TO MASTER VALUE INVESTING



SEE HOW TO GET HIGHER
RETURNS WITH LOWER RISK



Malaysia's growth momentum to continue at 4.7% in 2025 - IMF

According to the International Monetary Fund (IMF), Malaysia's strong growth momentum is expected to continue in the near term, with the economy projected to expand by 4.7 per cent this year. The favourable economic conditions present an opportunity to strengthen macroeconomic policy buffers and accelerate structural reforms.

In a statement, the IMF said that Malaysia's external position in 2024 is preliminarily assessed to be stronger than the level implied by medium-term fundamentals and desirable policies. Fiscal consolidation should continue to rebuild buffers and meet the medium-term targets set under the Fiscal Responsibility Act (FRA).

The IMF welcomed the historic enactment of the FRA and urged its swift and thorough implementation. It also recommended achieving a small structural primary balance by 2027. Building on successful subsidy reforms, including for electricity and diesel, it advised gradually phasing out the remaining fuel subsidies.

The IMF also added that inflation, which eased to 1.8 per cent in 2024, is projected to rise to 2.6 per cent this year due to the expected implementation of gasoline subsidy reforms, before moderating to 2.3 per cent in 2026. Risks to growth, mostly external, are tilted to the downside, while inflation risks are tilted to the upside.

Downside external risks include deepening geoeconomic fragmentation, a slowdown in major trading partners, and escalating geopolitical conflicts. Upside growth risks include the faster implementation of investment projects. The upside inflation risks stem from global commodity price shocks and potential wage pressures from increases in the minimum wage and civil servants' pay. The current neutral monetary policy stance is appropriate.

The IMF noted that systemic financial risks appear contained and that the financial sector remains sound. Banks' capital and liquidity positions are robust. Credit growth, corporate and household balance sheets, and real estate markets do not pose systemic risks at this juncture.

The findings were based on the IMF Article IV consultation paper, which reports on discussions between the IMF and a member country.

Local institutions' net buying on Bursa enters 19th week with RM817.4 million - MIDF Amanah

According to MIDF Amanah Investment Bank Bhd (MIDF Amanah), local institutions remained a pillar of support in Bursa Malaysia, marking their nineteenth consecutive week of net buying with a substantial RM817.4 million inflow into domestic equities, up from RM316.3 million the previous week.

In its Fund Flow Report for the week ended Feb 28, MIDF Amanah said local retail investors extended their net buying streak for a third week, recording a net inflow of RM447.9 million, up from RM245.7

million. The average daily trading volume (ADTV) saw broad-based increases. Foreign investors recorded a sharp rise of 80.3% in ADTV, while local institutions saw a 5.8% uptick. Local retail investors posted a modest decline of 1.6%.

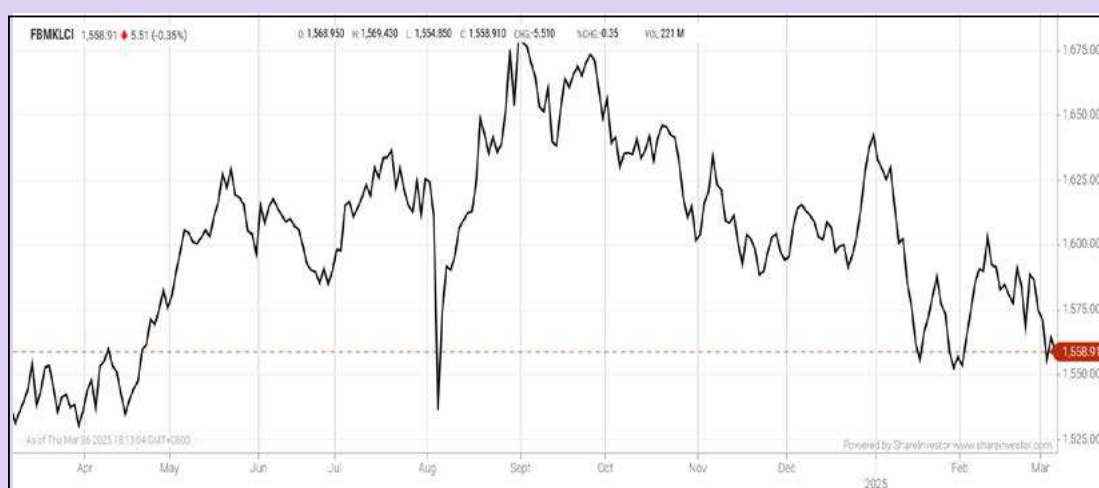
Foreign investors extended their selling streak on Bursa Malaysia for the nineteenth consecutive week, with a significantly larger net outflow of RM1.27 billion, compared with RM562 million the previous week. It noted that foreign investors' selling pressure persisted throughout the week, with Friday seeing the heaviest outflow at RM646.2 million.

The only sectors that saw net foreign inflows were construction (RM24.1 million), telecommunications and media (RM14.7 million), and real estate investment trusts (RM6.7 million).

Meanwhile, the top three sectors with the highest net foreign outflows were financial services (RM362.1 million), consumer products and services (RM314.9 million), and utilities (RM255.1 million).

EYE ON THE MARKETS

On Thursday (06Mar), the Ringgit closed at 4.4225 against the USD and 3.3191 to the Sing Dollar. On Monday (03Mar), the FBM KLCI opened at 1572.27. As at Thursday (06Mar) 5:00pm, the FBM KLCI closed down 13.36 points at 1558.91. Over in US, the overnight Dow Jones Industrial Average closed down 427.51 points (-0.99%) to 42,579.08 whilst the NASDAQ shed 483.48 points (-2.61%) to 18,069.26.



KLCI 1 Year Chart

Over 5 Trading Days
(as at Wednesday)



- ShareInvestor WebPro (www.shareinvestor.com/my)
- 1. Price > Stock Prices
 - 2. Select Market: NASDAQ / NYSE / IDX / SET / HKEX / SGX (One bourse at a time)
 - 3. select Stocks Tab
 - 4. select Ranking Top Gainers or Top Losers (Over 5 Trading Days)
 - 5. Mouse over Column Layout > select Edit Customs > select Name > select Last Done Price > select 5 Days Change > select 52 Weeks High > select 52 Weeks Low > Mouse Over Column Layout > select Custom

NASDAQ (USD)

Top Gainers					Top Losers				
Name	Last Done	Change Over 5 Days	52 Weeks High	52 Weeks Low	Name	Last Done	Change Over 5 Days	52 Weeks High	52 Weeks Low
ERIE INDEMNITY A	440.440	+40.770	547.000	345.090	MERCADOLIBRE	2,059.870	-137.770	2,374.540	1,324.990
ELBIT SYSTEMS	340.000	+36.870	338.100	175.300	FIRST CITIZENS BANCSHARES A	1,901.910	-122.500	2,412.930	1,505.730
ROOT A	132.350	+33.640	142.720	34.040	MONOLITHIC POWER SYSTEMS	588.150	-83.430	959.640	546.705
O REILLY AUTOMOTIVE	1,356.770	+26.350	1,386.360	947.490	DUOLINGO A	294.150	-92.410	441.765	145.050
NEXSTAR MEDIA GROUP	169.750	+23.410	191.855	146.040	COCA-COLA CONSOLIDATED	1,335.370	-35.360	1,460.920	800.760

NYSE (USD)

Top Gainers					Top Losers				
Name	Last Done	Change Over 5 Days	52 Weeks High	52 Weeks Low	Name	Last Done	Change Over 5 Days	52 Weeks High	52 Weeks Low
FAIR ISAAC	1,871.030	+34.850	2,402.515	1,105.650	BERKSHIRE HATHAWAY A	742,800.000	-10,580.000	777,749.000	596,000.000
AUTOZONE	3,473.660	+28.970	3,563.570	2,728.965	BIGLARI HOLDINGS A	1,086.960	-92.830	1,330.660	805.040
MCKESSON	643.690	+22.840	653.920	464.415	RH	292.180	-61.590	457.260	212.430
NVR	7,201.710	+19.760	9,964.770	7,015.000	LENNOX	572.970	-50.000	682.500	445.625
CACI INTERNATIONAL A	353.020	+17.390	588.260	318.595	METTLER-TOLEDO	1,240.970	-48.550	1,546.930	1,142.910

IDX (Rupiah)

Top Gainers					Top Losers				
Name	Last Done	Change Over 5 Days	52 Weeks High	52 Weeks Low	Name	Last Done	Change Over 5 Days	52 Weeks High	52 Weeks Low
DCI INDONESIA TBK	127,725.000	+11,600.000	127,725.000	34,600.000	JAKARTA SETIABUDI INTERNASIONAL TBK	9,200.000	-6,325.000	21,250.000	1,200.000
SURYAMAS DUTAMAKMUR TBK	2,270.000	+845.000	2,270.000	140.000	DIAN SWASTATIKA SENTOSA TBK	31,375.000	-4,375.000	53,200.000	10,500.000
ABADI NUSANTARA HIJAU INVESTAMA TBK	2,790.000	+650.000	2,790.000	25.000	MULTIPOLAR TECHNOLOGY TBK	38,375.000	-3,625.000	42,150.000	1,185.000
BAYAN RESOURCES TBK	19,750.000	+650.000	21,375.000	14,950.000	INDO TAMBANGRAYA MEGAH TBK	23,225.000	-1,450.000	28,775.000	23,000.000
BANK PERMATA TBK	2,530.000	+420.000	2,640.000	850.000	INDOINTERNET TBK	5,450.000	-1,250.000	7,425.000	3,500.000

SET (Thai Baht)

Top Gainers					Top Losers				
Name	Last Done	Change Over 5 Days	52 Weeks High	52 Weeks Low	Name	Last Done	Change Over 5 Days	52 Weeks High	52 Weeks Low
KWC	345.000	+40.000	366.000	258.000	FE	181.000	-42.000	223.000	137.500
SCC	150.000	+12.500	273.000	124.500	ADVANC	272.000	-13.000	307.000	193.000
INSURE	99.250	+9.250	121.000	70.000	DELTA	75.500	-7.000	173.500	63.250
BH	190.000	+6.500	284.000	171.500	GYT	173.000	-6.000	187.000	135.000
S&J	39.000	+5.250	53.750	29.500	SAWAD	34.500	-6.000	45.500	27.250

HKEX (HKD)

Top Gainers					Top Losers				
Name	Last Done	Change Over 5 Days	52 Weeks High	52 Weeks Low	Name	Last Done	Change Over 5 Days	52 Weeks High	52 Weeks Low
LAOPU GOLD (6181)	600.000	+63.000	613.000	60.950	BYD COMPANY (1211)	349.200	-40.600	408.800	186.600
SKB BIO-B (6990)	242.800	+18.000	247.400	111.000	BYD COMPANY-R (81211)	326.200	-38.400	378.800	173.000
REFIRE (2570)	229.400	+16.600	272.400	140.600	LI AUTO-W (2015)	109.800	-18.900	156.700	68.650
DPC DASH (1405)	104.200	+10.450	104.200	45.800	HKEX (388)	347.600	-13.600	397.800	212.200
SINOHYTEC (2402)	28.950	+7.800	35.714	18.320	HKEX-R (80388)	325.000	-11.800	362.200	196.900

SGX (SGD)

Top Gainers					Top Losers				
Name	Last Done	Change Over 5 Days	52 Weeks High	52 Weeks Low	Name	Last Done	Change Over 5 Days	52 Weeks High	52 Weeks Low
YZJ SHIPBLDG CNY	12.700	+7.410	13.300	5.280	JARDINE C&C	25.510	-1.150	29.500	23.760
ST ENGINEERING	5.970	+0.910	6.050	3.840	DBS	45.620	-1.050	46.850	30.409
SEMBCORP IND	6.350	+0.470	6.360	4.350	IFAST	8.150	-0.430	8.830	6.500
UOL	5.660	+0.240	5.870	5.010	JMH USD	39.910	-0.320	46.430	33.720
FIRST RESOURCES	1.620	+0.180	1.640	1.320	VENTURE	12.450	-0.300	15.640	12.110

Disclaimer: The information on this page is provided as a service to readers. It does not constitute financial advice and/or any investment recommendations. Past performance is not indicative of future results. We assume no liability for damages resulting from or arising out of the use of such information. It would be best if you did your own research to make your personal investment decisions wisely or consult a licenced investment advisor.



BINA PURI's VARIOUS ANNOUNCEMENTS DRAW SCRUTINY

Recent announcements by Main Market-listed construction and property development outfit Bina Puri Holdings Bhd suggested that it had not been making prompt announcements on material matters on at least five separate occasions.

According to the Bursa Malaysia Main Market Listing Requirements (Main Market LRs), a PLC must immediately disclose any "material information" to the public.

For the uninitiated, "material information" is reasonably expected to have a material effect on the price, value or market activity of a PLC's securities.

Very broadly, "material information" can take the form of any development that impacts a PLC's business direction or financial performance, i.e. acquisition/disposal of a business, legal disputes, key management personnel changes or essentially, any information that could influence an investor's decision-making process promptly.

DELAY IN MAKING ANNOUNCEMENTS

Excerpts of announcements on the five occasions are detailed below:

1. **26 November 2024:** Bina Puri revealed that its wholly-owned subsidiary Bina Puri Construction Sdn Bhd (BPCSB) had been served with a winding-up petition on 11 November 2024 - two weeks before the announcement - by Toshiba Elevator (M) Sdn Bhd via its lawyer Messrs. Simrenjeet, Tay & Co¹.

The petition was initiated to wind up Bina Puri Construction due to default payment under a notice of demand issued by the Petitioner for the amount of RM974,724.74.

As of the date of the announcement, Bina Puri said they were **"seeking legal advice on the matter"**. It did not explain the reason for the delay in making the announcement.

Bina Puri said there will be no immediate material financial and operational impact and no expected loss to the Group arising from the Petition as the petition amount is 1.1% of the Group's net assets.

¹https://www.bursamalaysia.com/market_information/announcements/company_announcement/announcement_details?ann_id=3503218

2. **26 November 2024** - It announced that its indirect wholly-owned subsidiary Bina Puri Mining Sdn Bhd (BPMSB) had also 15 days earlier, on 11 November 2024, been served with a winding-up petition by Golden Hiapfatt Quarry & Premix (Sarawak) Sdn Bhd via its lawyer Messrs. Lee Kok Heng & Co².

The petition was intended to wind up BPMSB on the basis of default payment pursuant to a judgment dated 9 February 2022 at the Kuching Sessions Court amounting to RM95,216.48 (including accrued late payment interest rate of 5%).

Bina Puri acknowledged the delay in announcing the winding-up petition. It said the Board believed that making any announcement regarding the petition ***“would be premature as the group remains in discussions with the Petitioner to resolve the matter amicably”***.

3. **27 January 2025:** Bina Puri clarified its lawsuit with Wisma Majujaya Sdn Bhd (Majujaya or the Plaintiff) after The Edge financial daily had on the same day published an article entitled *“Bina Puri, its Director Tee Hock Seng Face RM28.1m Suit for Purportedly Failing to Pay Up Full Sum in JVA”*³.

Bina Puri said the Company, its wholly-owned subsidiary Bina Puri Properties Sdn Bhd (BPPSB) and Bina Puri's director Tan Sri Datuk Tee Hock Seng (collectively the Defendants) had received a Writ and Statement of Claim dated 16 May 2024 from the solicitors of the Plaintiff.

The filing of the case is based on the Plaintiff's contention that the Defendants had failed to fulfil its obligation to pay the Plaintiff the sum of RM28.17 million that is allegedly due and payable under the Joint Venture Agreement (JVA) dated 23 November 2017.

²https://www.bursamalaysia.com/market_information/announcements/company_announcement/announcement_details?ann_id=3503217

³https://www.bursamalaysia.com/market_information/announcements/company_announcement/announcement_details?ann_id=3519843

At that point, Bina Puri claimed that the case is not expected to have any significant financial and operational impact on BPPSB or the Company for FY2025. Furthermore, the Board opined that ***“Bina Puri has a fair and reasonable chance of success against the Plaintiff’s claim”***.

4. **4 February 2025:** Referring to the lawsuit Majujaya v Bina Puri, Bina Puri attributed its delay in making an announcement on the lawsuit to it ***“being actively engaging with the relevant parties to formulate a resolution to the lawsuit”***.⁴

In the announcement, Bina Puri also updated the public that the Court had granted summary judgment against the Company and BPPSB on 3 February 2025. Accordingly, Bina Puri and the other defendants are ordered to pay the judgment sum of RM28.17 million, with 8% interest, within 14 days of the date of summary judgment delivered. Accordingly, the Company had directed its solicitors to file an appeal and a stay of the judgment.

5. **4 February 2025:** Separately, Bina Puri announced that it had on 29 November 2024 – slightly more than two months earlier – was served with a winding-up petition dated 25 November 2024 by Export-Import Bank of Malaysia Bhd (EXIM Bank) via the latter’s advocates & solicitors, Messrs. Amin Karlos⁵.

EXIM Bank has initiated the petition to wind up Bina Puri on the basis of default payment under a notice of demand for the amount of US\$4.89 million and RM17,253.47. Bina Puri said the delay in announcing the Petition was due to ongoing negotiations on the disputed sum.

⁴https://www.bursamalaysia.com/market_information/announcements/company_announcement/announcement_details?ann_id=3521259

⁵https://www.bursamalaysia.com/market_information/announcements/company_announcement/announcement_details?ann_id=3521260

6. **6 February 2025:** This is pertaining to Bina Puri having defaulted in the payment to EXIM Bank for a US\$7.645 million US dollar-denominated loan with an initial interest rate of 4% since March 2024 pending finalisation of the restructuring of the said loan⁶.

As the Group is in discussion with EXIM Bank to restructure the loan sum, it has temporarily ceased the repayment pending the finalisation of the loan restructuring plan. It claimed it had been delayed in announcing the default in payment as ***“the Board believed that making any announcement regarding the default in payment would be premature”***.

WINDING UP PETITIONS, LAWSUIT AND DEFAULT IN PAYMENT

A review of the announcements above suggests that Bina Puri has not been making timely disclosures on three winding-up petitions, a lawsuit and a default in payment.

The Company's disclosures consistently cited ongoing discussions, negotiations, and procedural resolutions as reasons for delaying announcements. However, these explanations do not align with the clear requirements of the Main Market LRs.

We find these justifications unconvincing, particularly in the case of the RM28.1 million lawsuit with Majujaya. Why Bina Puri withheld details of the lawsuit from the public since receiving the Writ and Statement of Claim on 20 May 2024, representing an eight-month delay in disclosure, remains unclear.

The reason for the extended delay remains unclear and is best known to the Board. However, the circumstances create the impression that Bina Puri only disclosed the lawsuit under external pressure after it was reported in the press.

Likewise, Bina Puri has not been forthcoming about three winding-up petitions filed against the Company and its subsidiaries. Under Paragraph 9.19(19) of the Main Market LRs, a PLC must make an immediate announcement of winding-up petition against itself, its subsidiaries, or major associated companies irrespective of whether⁷:

- The winding-up has a financial or operational impact on the listed issuer;
- The listed issuer is contesting the winding-up petition or forms the view that there is no merit to the winding-up petition; or
- The listed issuer is in negotiation with the petitioner to arrive at a settlement arrangement.

Lastly, a PLC must immediately announce to the stock exchange any default in payment of either interest, principal sums, or both, in respect of any credit facility or debt securities by the PLC, or any of its subsidiaries or associated companies, irrespective of whether a demand has been made, where:-

- the total amount outstanding of the defaulted credit facility or debt securities, either singly or collectively, is 5% or more of the net assets of the listed issuer based on the latest published or announced financial statements; or
- the default in payment is reasonably expected to have a material effect on the price, value or market activity of any of the listed issuer's securities or the decision of the listed issuer's securities holder or investor in determining his choice of action.

⁷ Pages 9-6 and 9-7, Questions and Answers in relation to Bursa Malaysia Securities Berhad Main Market Listing Requirements (as at 31 December 2024), accessed via https://www.bursamalaysia.com/sites/5d809dcf39fba22790cad230/assets/67738df0cd34aaedf427dc6b/QA_MainChap9_SRF_NewIssue_ESOS_31Dec2024_.pdf

As of 30 June 2024, Bina Puri's net assets amount to RM87.22 million. Meanwhile, the amount demanded by EXIM Bank under the petition dated 25 November 2024 amounted to US\$4.895 million, or equivalent to RM21.646 million based on a conversion rate of US\$: RM4.422.

TIMELINESS, TRANSPARENCY AND ACCOUNTABILITY

It is uncertain whether Bina Puri has breached the Main Market LRs as this is a matter best determined through regulatory investigation. However, in today's technology-driven world, where information is increasingly accessible, timeliness and transparency in corporate disclosures are more critical than ever.

Recall that the stock exchange recently reprimanded and fined Waja Konsortium Berhad⁸, IQZAN Holdings Berhad⁹ (de-listed on 30 July 2024) and their seven directors for various breaches, of which some are related to failures to make immediate

⁸ Bursa Malaysia Securities Publicly Reprimands and/or Fines Waja Konsortium Berhad and Two (2) Directors, accessed via https://www.bursamalaysia.com/sites/5bb54be15f36ca0af339077a/content_entry5c11a9db758f8d31544574c6/67af09eee6414a4e41f9daf3/files/140225_MEDIA_NOTIFICATION_BURSA_MALAYSIA_SECURITIES_PUBLICLY_REPRIMANDS_AND_OR_FINES_WAJA_KONSORTIUM_BERHAD_AND_TWO_2_DIRECTORS.pdf?1739524877

⁹ Bursa Malaysia Securities Publicly Reprimands and/or Fines Iqzan Holding Berhad And Five (5) Directors, accessed via https://www.bursamalaysia.com/sites/5bb54be15f36ca0af339077a/content_entry5c11a9db758f8d31544574c6/67af0ac8e6414a4e2cf9db5e/files/140225_MEDIA_NOTIFICATION_BURSA_MALAYSIA_SECURITIES_PUBLICLY_REPRIMANDS_AND_OR_FINES_IQZAN_HOLDING_BERHAD_AND_FIVE_5_DIRECTORS.pdf?1739524872

announcements of financial condition and the transfer of sale shares of a wholly-owned subsidiary to two purchasers.

The two directors of Waja Konsortium were imposed a fine of RM100,000 each, while the five directors of IQZAN were imposed total fines ranging from RM300,000 to RM375,000.

Again, MSWG wishes to reiterate that PLCs and their directors must uphold the principles of full, fair, and timely public disclosure of any material information to enable investors to make informed investment decisions is of paramount importance in ensuring an orderly and fair market.

Reproduced with permission from The Observer, a weekly newsletter published by the Minority Shareholders Watch Group (MSWG). Subscribe to The Observer for free at www.mswg.org.my and follow @MSWGMalaysia on social media for the latest updates.



Invest 216
A Weekly e-Publication by SHAREINVESTOR
ISSUE 216
FRIDAY 19 JULY 2024
See more on pages 30-40
See more on pages 41-45
See more on pages 19-28

How L&P Global Stays Ahead
See more on pages 30-40

Ooi Lay Pheng
Executive Director / CEO, L&P Global Berhad

Advanced Drainage Systems
See more on pages 19-28

MARKET SENTIMENTS
FBM KLCI has upside potential in 2H2024 - StarChart
Malaysia's trade performance maintains positive trend in June 2024 - DOSM

Learn how to identify Hot Stocks using Technical Analysis (TA) and Fundamental Analysis (FA)

SIGN UP FOR Invest NOW IT'S FREE!!!

Click here

Get market moving news and analyses. Regular columns include **Behind The Action** and **From The Observer**

Leaderboard • Shariah Hot Stocks • Shariah Momentum Up Stocks • Non Shariah Hot Stocks • Up Trending Stocks • Growth Stocks • Dividend Stocks • Long Companies • Insider Activity • Investor Relations • Regional Markets

Scan me



Via email, every Friday.



DEFINITION: Insider Activity shows the trades made by substantial shareholders or directors of the company. Purchases by the directors and company share buyback may indicate the share price is undervalued and brings confidence to the price trend of the share price.



ShareInvestor WebPro > Fundamental > Insider Trades > click Search tab > Select Bursa > click Stock name > scroll up and leave at <Select Counter> Type Date Range for Announcement Date > click Search

Notice Period is 23th February 2025 – 1st March 2025					
Effective Change Date	Stock Name	Buyer/ Seller Name [Classification]	Bought / (Sold) ['000]	No. of Shares After Trade ['000]	
			Total	Total	% Held
21 FEB 2025 - 21 FEB 2025	ABMB	EMPLOYEES PROVIDENT FUND BOARD [SSH]	441	127,652	8.246
27 FEB 2025 - 27 FEB 2025	AIZO	MR LO LING [DIR/CEO]	1,440	7,972	0.411
24 FEB 2025 - 24 FEB 2025	AIZO	MR LO LING [DIR/CEO]	3,959	6,532	0.337
21 FEB 2025 - 21 FEB 2025	AIZO	MR LO LING [DIR/CEO]	2,572	2,572	0.133
25 FEB 2025 - 25 FEB 2025	AMBANK	EMPLOYEES PROVIDENT FUND BOARD [SSH]	1,518	441,355	13.346
24 FEB 2025 - 24 FEB 2025	AMBANK	EMPLOYEES PROVIDENT FUND BOARD [SSH]	-53	439,836	13.299
21 FEB 2025 - 21 FEB 2025	AMBANK	EMPLOYEES PROVIDENT FUND BOARD [SSH]	1,678	439,889	13.301
20 FEB 2025 - 20 FEB 2025	AMBANK	EMPLOYEES PROVIDENT FUND BOARD [SSH]	391	438,211	13.25
20 FEB 2025 - 20 FEB 2025	AME	EMPLOYEES PROVIDENT FUND BOARD [SSH]	-310	37,407	5.853
19 FEB 2025 - 19 FEB 2025	AME	EMPLOYEES PROVIDENT FUND BOARD [SSH]	-26	37718	5.902
25 FEB 2025 - 25 FEB 2025	ANEKA	MR LOKE KIEN TUCK [DIR/CEO]	20	100586	14.506
25 FEB 2025 - 25 FEB 2025	ANEKA	MR LOKE KIEN TUCK [SSH]	20	100586	14.506
27 FEB 2025 - 27 FEB 2025	ASIAPLY	DATO' YEO BOON LEONG [DIR/CEO]	4,957	191,602	18.172
27 FEB 2025 - 27 FEB 2025	ASIAPLY	DATO' YEO BOON LEONG [SSH]	4,957	191,602	18.172
21 FEB 2025 - 21 FEB 2025	ASIAPLY	TAN SOON HUI [SSH]	202	90,769	8.609
25 FEB 2025 - 25 FEB 2025	ATECH	EMPLOYEES PROVIDENT FUND BOARD [SSH]	86	48,221	11.124
25 FEB 2025 - 25 FEB 2025	ATECH	ABRDN HOLDINGS LIMITED [SSH]	86	42,305	9.76
25 FEB 2025 - 25 FEB 2025	ATECH	ABRDN MALAYSIA SDN. BHD. [SSH]	86	41,725	9.626
25 FEB 2025 - 25 FEB 2025	ATECH	ABRDN PLC [SSH]	86	42,305	9.76
21 FEB 2025 - 21 FEB 2025	ATECH	EMPLOYEES PROVIDENT FUND BOARD [SSH]	-27	48,135	11.104
21 FEB 2025 - 21 FEB 2025	ATECH	ABRDN HOLDINGS LIMITED [SSH]	177	42,219	9.74
21 FEB 2025 - 21 FEB 2025	ATECH	ABRDN MALAYSIA SDN. BHD. [SSH]	177	41,639	9.606
21 FEB 2025 - 21 FEB 2025	ATECH	ABRDN PLC [SSH]	177	42,219	9.74
20 FEB 2025 - 20 FEB 2025	ATECH	EMPLOYEES PROVIDENT FUND BOARD [SSH]	64	48,162	11.11
20 FEB 2025 - 20 FEB 2025	ATECH	ABRDN HOLDINGS LIMITED [SSH]	64	42,042	9.699
20 FEB 2025 - 20 FEB 2025	ATECH	ABRDN MALAYSIA SDN. BHD. [SSH]	64	41,461	9.565
20 FEB 2025 - 20 FEB 2025	ATECH	ABRDN PLC [SSH]	64	42,042	9.699
19 FEB 2025 - 19 FEB 2025	ATECH	EMPLOYEES PROVIDENT FUND BOARD [SSH]	32	48,098	11.096
24 FEB 2025 - 26 FEB 2025	AWANTEC	LEMBAGA TABUNG AMANAH WARISAN NEGERI TERENGGANU [SSH]	28	42,461	5.386
20 FEB 2025 - 21 FEB 2025	AWANTEC	LEMBAGA TABUNG AMANAH WARISAN NEGERI TERENGGANU [SSH]	12	42,433	5.383
25 FEB 2025 - 25 FEB 2025	AXIATA	EMPLOYEES PROVIDENT FUND BOARD [SSH]	-1,007	1,693,382	18.441
24 FEB 2025 - 24 FEB 2025	AXIATA	EMPLOYEES PROVIDENT FUND BOARD [SSH]	-2,162	1,694,389	18.452
21 FEB 2025 - 21 FEB 2025	AXIATA	EMPLOYEES PROVIDENT FUND BOARD [SSH]	-1,940	1,696,551	18.475
20 FEB 2025 - 20 FEB 2025	AXIATA	EMPLOYEES PROVIDENT FUND BOARD [SSH]	250	1,698,491	18.496
19 FEB 2025 - 19 FEB 2025	AXIATA	EMPLOYEES PROVIDENT FUND BOARD [SSH]	1,000	1,698,241	18.494
25 FEB 2025 - 25 FEB 2025	AXREIT	EMPLOYEES PROVIDENT FUND BOARD [SSH]	-1,000	369,654	18.386
24 FEB 2025 - 24 FEB 2025	AXREIT	EMPLOYEES PROVIDENT FUND BOARD [SSH]	220	370,654	18.436
24 FEB 2025 - 24 FEB 2025	AXREIT	PRUDENTIAL PLC [SSH]	80	103,070	5.127
20 FEB 2025 - 20 FEB 2025	AXREIT	EMPLOYEES PROVIDENT FUND BOARD [SSH]	200	370,434	18.425
21 FEB 2025 - 21 FEB 2025	BAUTO	DATO' LEE KOK CHUAN [DIR/CEO]	50	181,037	15.523
21 FEB 2025 - 21 FEB 2025	BAUTO	DATO' LEE KOK CHUAN [SSH]	50	181,037	15.523
24 FEB 2025 - 24 FEB 2025	BINTAI	DATUK TAY CHOR HAN [DIR/CEO]	2,000	93,339	7.651
24 FEB 2025 - 24 FEB 2025	BINTAI	DATUK TAY CHOR HAN [SSH]	2,000	93,339	7.651
28 FEB 2025 - 28 FEB 2025	BORNOIL	DATUK JOSEPH LEE YOK MIN @ AMBROSE [DIR/CEO]	230,250	2,132,547	15.806
28 FEB 2025 - 28 FEB 2025	BORNOIL	DATUK JOSEPH LEE YOK MIN @ AMBROSE [SSH]	230,250	704,642	15.806
28 FEB 2025 - 28 FEB 2025	BORNOIL	VICTORIA CAPITAL SDN BHD [SSH]	8,400	902,771	6.691
25 FEB 2025 - 25 FEB 2025	BPURI	DATUK MATTHEW TEE KAI WOON [DIR/CEO]	63	72,178	8.954
25 FEB 2025 - 25 FEB 2025	BPURI	DATUK MATTHEW TEE KAI WOON [SSH]	63	72,178	8.954
25 FEB 2025 - 25 FEB 2025	BPURI	TAN SRI DATUK TEE HOCK SENG [DIR/CEO]	63	72,178	8.955
25 FEB 2025 - 25 FEB 2025	BPURI	TAN SRI DATUK TEE HOCK SENG [SSH]	63	72,178	8.955
25 FEB 2025 - 25 FEB 2025	BPURI-WB	DATUK MATTHEW TEE KAI WOON [DIR/CEO]	63	5,973	11.565
25 FEB 2025 - 25 FEB 2025	BPURI-WB	TAN SRI DATUK TEE HOCK SENG [DIR/CEO]	63	5,973	11.564
21 FEB 2025 - 21 FEB 2025	BURSA	EMPLOYEES PROVIDENT FUND BOARD [SSH]	313	92,907	11.48
19 FEB 2025 - 19 FEB 2025	BURSA	EMPLOYEES PROVIDENT FUND BOARD [SSH]	177	92,479	11.427
21 FEB 2025 - 24 FEB 2025	CAREPLS	MADAM NG SHU SI [SSH]	400	110,135	14.427
21 FEB 2025 - 24 FEB 2025	CAREPLS	MR LIM KWEE SHYAN [DIR/CEO]	400	111,578	14.616
21 FEB 2025 - 24 FEB 2025	CAREPLS	MR LIM KWEE SHYAN [SSH]	400	111,578	14.616
25 FEB 2025 - 26 FEB 2025	CARLORINO	DATO' SRI CHIANG FONG YEE [DIR/CEO]	1,150	284,371	29.092
25 FEB 2025 - 26 FEB 2025	CARLORINO	DATO' SRI CHIANG FONG YEE [SSH]	1,150	260,202	26.619
24 FEB 2025 - 24 FEB 2025	CDB	EMPLOYEES PROVIDENT FUND BOARD [SSH]	487	1,233,097	10.511
19 FEB 2025 - 19 FEB 2025	CDB	EMPLOYEES PROVIDENT FUND BOARD [SSH]	579	1,233,149	10.511
24 FEB 2025 - 25 FEB 2025	CEB	MR CHUNG CHEE YANG [SSH]	2,165	87,165	8.787
25 FEB 2025 - 25 FEB 2025	CGB	MR CHEW HIAN TAT [DIR/CEO]	-30,656	212,933	27.784
25 FEB 2025 - 25 FEB 2025	CGB	MR CHEW HIAN TAT [SSH]	-30,656	212,933	27.784
27 JAN 2025 - 26 FEB 2025	CHHB	MR TANG KIAH MING [SSH]	70	26,724	8.285
27 FEB 2025 - 27 FEB 2025	CIHLDG	DATO' SUKUMARAN S/O RAMASAMY [DIR/CEO]	35	16,788	10.363
27 FEB 2025 - 27 FEB 2025	CIHLDG	DATO' SUKUMARAN S/O RAMASAMY [SSH]	35	16,788	10.363
25 FEB 2025 - 25 FEB 2025	CIMB	EMPLOYEES PROVIDENT FUND BOARD [SSH]	7,100	1,781,937	16.6

Notice Period is 23th February 2025 – 1st March 2025					
Effective Change Date	Stock Name	Buyer/ Seller Name [Classification]	Bought / (Sold) ['000]	No. of Shares After Trade ['000]	
			Total	Total	% Held
26 FEB 2025 - 26 FEB 2025	CIMB	KUMPULAN WANG PERSARAAN (DIPERBADANKAN) [SSH]	228	649,504	6.05
25 FEB 2025 - 25 FEB 2025	CIMB	KUMPULAN WANG PERSARAAN (DIPERBADANKAN) [SSH]	400	649,276	6.05
24 FEB 2025 - 24 FEB 2025	CIMB	EMPLOYEES PROVIDENT FUND BOARD [SSH]	2,720	1,774,837	16.54
21 FEB 2025 - 21 FEB 2025	CIMB	EMPLOYEES PROVIDENT FUND BOARD [SSH]	8,461	1,772,117	16.51
24 FEB 2025 - 24 FEB 2025	CIMB	KUMPULAN WANG PERSARAAN (DIPERBADANKAN) [SSH]	-232	648,876	6.05
20 FEB 2025 - 20 FEB 2025	CIMB	EMPLOYEES PROVIDENT FUND BOARD [SSH]	3,803	1,763,656	16.43
21 FEB 2025 - 21 FEB 2025	CIMB	KUMPULAN WANG PERSARAAN (DIPERBADANKAN) [SSH]	80	651,372	6.07
19 FEB 2025 - 19 FEB 2025	CIMB	EMPLOYEES PROVIDENT FUND BOARD [SSH]	3,996	1,759,853	16.4
25 FEB 2025 - 25 FEB 2025	CITAGLB	TAN SRI DATO' SRI DR MOHAMAD NORZA BIN ZAKARIA [DIR/CEO]	13	137,808	32.39
25 FEB 2025 - 25 FEB 2025	CITAGLB	TAN SRI DATO' SRI DR MOHAMAD NORZA BIN ZAKARIA [SSH]	13	137,808	32.39
17 JAN 2025 - 21 FEB 2025	CITAGLB	DATO' SRI RAJA MUFIK AFFANDI BIN RAJA KHALID [SSH]	230	22,429	5.272
21 FEB 2025 - 21 FEB 2025	CLMT	DATO' NG TIONG LIP [DIR/CEO]	67	67	0.002
21 FEB 2025 - 21 FEB 2025	CLMT	MISS TAN MING-LI [DIR/CEO]	50	50	0.002
21 FEB 2025 - 21 FEB 2025	CLMT	MR FOO WEI HOONG [DIR/CEO]	65	65	0.002
21 FEB 2025 - 21 FEB 2025	CLMT	MR TAN BOON PENG [DIR/CEO]	47	47	0.002
21 FEB 2025 - 21 FEB 2025	CLOUDPT	DATUK WIRA CHOONG WAI HOONG [DIR/CEO]	250	226,653	42.636
21 FEB 2025 - 21 FEB 2025	CLOUDPT	DATUK WIRA CHOONG WAI HOONG [SSH]	250	226,653	42.636
21 FEB 2025 - 21 FEB 2025	CLOUDPT	ERA JASAKITA SDN. BHD. [SSH]	250	183,580	34.534
21 FEB 2025 - 21 FEB 2025	CLOUDPT	MR YEW CHOONG CHEONG [DIR/CEO]	250	226,653	42.636
21 FEB 2025 - 21 FEB 2025	CLOUDPT	MR YEW CHOONG CHEONG [SSH]	250	226,653	42.636
21 FEB 2025 - 21 FEB 2025	COASTAL	SAMARANG UCITS - SAMARANG ASIAN PROSPERITY [SSH]	-379	51,345	9.561
26 FEB 2025 - 26 FEB 2025	COMPUGT	MADAM SEE THOO CHAN [DIR/CEO]	484	767,016	12.677
26 FEB 2025 - 26 FEB 2025	COMPUGT	MADAM SEE THOO CHAN [SSH]	484	767,016	12.677
26 FEB 2025 - 26 FEB 2025	COMPUGT	MR GOH KHENG PEOW [SSH]	484	767,016	12.677
25 FEB 2025 - 25 FEB 2025	COMPUGT	MADAM SEE THOO CHAN [DIR/CEO]	12,482	766,533	12.669
25 FEB 2025 - 25 FEB 2025	COMPUGT	MADAM SEE THOO CHAN [SSH]	12,482	766,533	12.669
25 FEB 2025 - 25 FEB 2025	COMPUGT	MR GOH KHENG PEOW [SSH]	12,482	766,533	12.669
24 FEB 2025 - 24 FEB 2025	COMPUGT	MADAM SEE THOO CHAN [DIR/CEO]	569	754,051	12.463
24 FEB 2025 - 24 FEB 2025	COMPUGT	MADAM SEE THOO CHAN [SSH]	569	754,051	12.463
24 FEB 2025 - 24 FEB 2025	COMPUGT	MR GOH KHENG PEOW [SSH]	569	754,051	12.463
21 FEB 2025 - 21 FEB 2025	COMPUGT	MADAM SEE THOO CHAN [DIR/CEO]	1,510	753,482	12.454
21 FEB 2025 - 21 FEB 2025	COMPUGT	MADAM SEE THOO CHAN [SSH]	1,510	753,482	12.454
21 FEB 2025 - 21 FEB 2025	COMPUGT	MR GOH KHENG PEOW [SSH]	1,510	753,482	12.454
21 FEB 2025 - 21 FEB 2025	CTOS	EMPLOYEES PROVIDENT FUND BOARD [SSH]	2,109	436,761	18.907
27 FEB 2025 - 27 FEB 2025	CYBERE	MR MAHA RAMANATHAN PALAN [DIR/CEO]	31	2,598	1.524
26 FEB 2025 - 26 FEB 2025	CYBERE	MR MAHA RAMANATHAN PALAN [DIR/CEO]	2	2,566	1.506
21 FEB 2025 - 21 FEB 2025	CYBERE	MR MAHA RAMANATHAN PALAN [DIR/CEO]	71	2,445	1.434
27 FEB 2025 - 27 FEB 2025	D&O	KUMPULAN WANG PERSARAAN (DIPERBADANKAN) [SSH]	44	74,297	5.995
25 FEB 2025 - 25 FEB 2025	D&O	EMPLOYEES PROVIDENT FUND BOARD [SSH]	1,082	86,727	6.997
26 FEB 2025 - 26 FEB 2025	D&O	KUMPULAN WANG PERSARAAN (DIPERBADANKAN) [SSH]	192	74,252	5.991
25 FEB 2025 - 25 FEB 2025	D&O	KUMPULAN WANG PERSARAAN (DIPERBADANKAN) [SSH]	408	74,061	5.976
24 FEB 2025 - 24 FEB 2025	D&O	KUMPULAN WANG PERSARAAN (DIPERBADANKAN) [SSH]	322	73,653	5.943
25 DEC 2024 - 26 FEB 2025	DAYANG	DATO' TENGKU YUSOF BIN TENGKU AHMAD SHAHRUD-DIN [DIR/CEO]	418	34,724	2.999
24 FEB 2025 - 24 FEB 2025	DIALOG	EMPLOYEES PROVIDENT FUND BOARD [SSH]	-99	934,496	16.56
21 FEB 2025 - 21 FEB 2025	DIALOG	EMPLOYEES PROVIDENT FUND BOARD [SSH]	388	934,595	16.56
21 FEB 2025 - 21 FEB 2025	DRBHCOM	EMPLOYEES PROVIDENT FUND BOARD [SSH]	350	145,631	7.533
20 FEB 2025 - 20 FEB 2025	DRBHCOM	EMPLOYEES PROVIDENT FUND BOARD [SSH]	200	145,581	7.53
19 FEB 2025 - 19 FEB 2025	DRBHCOM	EMPLOYEES PROVIDENT FUND BOARD [SSH]	1,000	146,881	7.598
26 NOV 2024 - 09 JAN 2025	DXN	DATUK LIM SIOW JIN [DIR/CEO]	2,000,000	3,490,720	70.204
27 FEB 2025 - 27 FEB 2025	E&O	KUMPULAN WANG PERSARAAN (DIPERBADANKAN) [SSH]	507	131,720	5.291
25 FEB 2025 - 25 FEB 2025	E&O	EMPLOYEES PROVIDENT FUND BOARD [SSH]	1,513	128,520	5.162
21 FEB 2025 - 21 FEB 2025	E&O	KUMPULAN WANG PERSARAAN (DIPERBADANKAN) [SSH]	2,746	128,667	5.168
24 FEB 2025 - 24 FEB 2025	ECOFIRS	MITSUBISHI UFJ FINANCIALGROUP INC [SSH]	1,600	69,282	5.863
24 FEB 2025 - 24 FEB 2025	ECOFIRS	MORGAN STANLEY [SSH]	1,600	69,282	5.863
21 FEB 2025 - 21 FEB 2025	ECOFIRS	MITSUBISHI UFJ FINANCIAL GROUP INC [SSH]	1,000	67,682	5.728
21 FEB 2025 - 21 FEB 2025	ECOFIRS	MORGAN STANLEY [SSH]	1,000	67,682	5.728
20 FEB 2025 - 20 FEB 2025	ECONBHD	EMPLOYEES PROVIDENT FUND BOARD [SSH]	1,454	104,618	7.38
26 FEB 2025 - 26 FEB 2025	EG	DATO' KANG PANG KIANG [DIR/CEO]	3,029	71,465	15.722
26 FEB 2025 - 26 FEB 2025	EG	DATO' KANG PANG KIANG [SSH]	3,029	71,465	15.722
25 FEB 2025 - 25 FEB 2025	EG	DATO' KANG PANG KIANG [DIR/CEO]	1,435	68,435	15.056

Disclaimer: The Information in Insider Activity is extracted from www.shareinvestor.com/fundamental/insider_trades. The information on this page is provided as a service to readers. It does not constitute financial advice and/or any investment recommendations. We assume no liability for damages resulting from or arising out of the use of such information. Whilst every effort is made to ensure accuracy, the information presented is not the official record of shareholder filings. Readers are advised to read the original filings on the Bursa Malaysia website at www.bursamalaysia.com



STROM
SWISS TIMEPIECES & JEWELLERY



StromWatch Asia
Tele : +65.9817.3378
Email : ll.stromasia@gmail.com
WWW.STROMWATCH.SWISS

Notice Period is 23th February 2025 – 1st March 2025

Effective Change Date	Stock Name	Buyer/ Seller Name [Classification]	Bought / (Sold) ['000]	No. of Shares After Trade ['000]	
			Total	Total	% Held
25 FEB 2025 - 25 FEB 2025	EG	DATO' KANG PANG KIANG [SSH]	1,435	68,435	15.056
27 FEB 2025 - 27 FEB 2025	ELRIDGE	MR YEO HOCK CHEONG [DIR/CEO]	9,528	866,505	43.325
27 FEB 2025 - 27 FEB 2025	ELRIDGE	MR YEO HOCK CHEONG [SSH]	9,528	866,505	43.325
26 FEB 2025 - 26 FEB 2025	ENGKAH	EWE ENG KAH [DIR/CEO]	208	61,895	49.91
26 FEB 2025 - 26 FEB 2025	ENGKAH	MADAM NEOH LAY HWA [SSH]	208	61,895	50.11
26 FEB 2025 - 26 FEB 2025	ENGKAH	MR EWE ENG KAH [SSH]	208	61,895	50.11
21 FEB 2025 - 21 FEB 2025	FEYTECH	ABRDN HOLDINGS LIMITED [SSH]	50	49,470	5.867
21 FEB 2025 - 21 FEB 2025	FEYTECH	ABRDN MALAYSIA SDN BHD [SSH]	50	49,470	5.867
21 FEB 2025 - 21 FEB 2025	FEYTECH	ABRDN PLC [SSH]	50	49,470	5.867
20 FEB 2025 - 20 FEB 2025	FEYTECH	ABRDN HOLDINGS LIMITED [SSH]	837	49,420	5.861
20 FEB 2025 - 20 FEB 2025	FEYTECH	ABRDN MALAYSIA SDN BHD [SSH]	837	49,420	5.861
20 FEB 2025 - 20 FEB 2025	FEYTECH	ABRDN PLC [SSH]	837	49,420	5.861
27 FEB 2025 - 27 FEB 2025	FFB	KUMPULAN WANG PERSARAAN (DIPERBADANKAN) [SSH]	-110	162,998	8.693
26 FEB 2025 - 26 FEB 2025	FFB	ABRDN HOLDINGS LIMITED [SSH]	1,250	119,299	6.362
26 FEB 2025 - 26 FEB 2025	FFB	ABRDN MALAYSIA SDN BHD [SSH]	1,250	117,899	6.288
26 FEB 2025 - 26 FEB 2025	FFB	ABRDN PLC [SSH]	1,250	119,299	6.362
25 FEB 2025 - 25 FEB 2025	FFB	EMPLOYEES PROVIDENT FUND BOARD [SSH]	-124	171,865	9.166
26 FEB 2025 - 26 FEB 2025	FFB	KUMPULAN WANG PERSARAAN (DIPERBADANKAN) [SSH]	1,044	163,108	8.698
24 FEB 2025 - 24 FEB 2025	FFB	EMPLOYEES PROVIDENT FUND BOARD [SSH]	-1,500	172,248	9.186
25 FEB 2025 - 25 FEB 2025	FFB	KUMPULAN WANG PERSARAAN (DIPERBADANKAN) [SSH]	-22	162,064	8.643
21 FEB 2025 - 21 FEB 2025	FFB	EMPLOYEES PROVIDENT FUND BOARD [SSH]	-216	174,008	9.28
20 FEB 2025 - 20 FEB 2025	FFB	EMPLOYEES PROVIDENT FUND BOARD [SSH]	-132	174,504	9.306
19 FEB 2025 - 19 FEB 2025	FFB	EMPLOYEES PROVIDENT FUND BOARD [SSH]	-638	174,896	9.327
25 FEB 2025 - 25 FEB 2025	FLBHD	MR LIN HAO YU [DIR/CEO]	123	29,924	13.699
25 FEB 2025 - 25 FEB 2025	FLBHD	MR LIN HAO YU [SSH]	123	29,924	13.699
20 FEB 2025 - 20 FEB 2025	FLBHD	MR LIN HAO YU [DIR/CEO]	200	29,801	13.643
20 FEB 2025 - 20 FEB 2025	FLBHD	MR LIN HAO YU [SSH]	200	29,801	13.643
06 FEB 2025 - 19 FEB 2025	FLBHD	MR LIN HAO YU [DIR/CEO]	80	29,601	13.551
06 FEB 2025 - 19 FEB 2025	FLBHD	MR LIN HAO YU [SSH]	80	29,601	13.551
26 FEB 2025 - 26 FEB 2025	FM	MR YANG HENG LAM [DIR/CEO]	26	104,456	18.704
26 FEB 2025 - 26 FEB 2025	FM	MR YANG HENG LAM [SSH]	26	104,456	18.704
26 FEB 2025 - 26 FEB 2025	FOCUSP	DATIN GOH POI EONG [DIR/CEO]	92	235,661	51.009
26 FEB 2025 - 26 FEB 2025	FOCUSP	DATIN GOH POI EONG [SSH]	92	235,661	51.009
26 FEB 2025 - 26 FEB 2025	FOCUSP	DATO' LIAW CHOON LIANG [DIR/CEO]	92	235,661	51.009
26 FEB 2025 - 26 FEB 2025	FOCUSP	DATO' LIAW CHOON LIANG [SSH]	92	235,661	51.009
24 FEB 2025 - 24 FEB 2025	FRONTKN	EMPLOYEES PROVIDENT FUND BOARD [SSH]	-260	152,761	9.628
21 FEB 2025 - 21 FEB 2025	FRONTKN	EMPLOYEES PROVIDENT FUND BOARD [SSH]	-130	153,021	9.644
24 FEB 2025 - 24 FEB 2025	GAMUDA	EMPLOYEES PROVIDENT FUND BOARD (EPF BOARD) [SSH]	2,305	558,202	9.79
21 FEB 2025 - 21 FEB 2025	GAMUDA	EMPLOYEES PROVIDENT FUND BOARD (EPF BOARD) [SSH]	1,548	555,897	9.75
20 FEB 2025 - 20 FEB 2025	GAMUDA	EMPLOYEES PROVIDENT FUND BOARD (EPF BOARD) [SSH]	2,183	554,348	9.72
19 FEB 2025 - 19 FEB 2025	GAMUDA	EMPLOYEES PROVIDENT FUND BOARD (EPF BOARD) [SSH]	1,705	552,165	9.68
24 FEB 2025 - 24 FEB 2025	GBAY	MR PETER LING EE KONG [DIR/CEO]	100	12,271	15.083
24 FEB 2025 - 24 FEB 2025	GBAY	MR PETER LING EE KONG [SSH]	100	12,271	15.083
21 FEB 2025 - 21 FEB 2025	GLOMAC	DATUK SERI FATEH ISKANDAR BIN TAN SRI DATO' MOHAMED MANSOR [DIR/CEO]	54	309,573	40.336
21 FEB 2025 - 21 FEB 2025	HARTA	KUMPULAN WANG PERSARAAN (DIPERBADANKAN) [SSH]	737	222,068	6.506
28 FEB 2025 - 28 FEB 2025	HEXCARE	KHOO CHIN LENG [DIR/CEO]	10	65	0.006
20 FEB 2025 - 20 FEB 2025	HLBANK	EMPLOYEES PROVIDENT FUND BOARD [SSH]	-750	187,499	8.986
27 FEB 2025 - 27 FEB 2025	HWGB	MR CHIEN CHAO-CHUAN [SSH]	100	15,935	7.75
26 FEB 2025 - 26 FEB 2025	HWGB	MR CHIEN CHAO-CHUAN [SSH]	94	15,835	7.7
24 FEB 2025 - 24 FEB 2025	HWGB	MR CHIEN CHAO-CHUAN [SSH]	300	15,591	7.59
21 FEB 2025 - 21 FEB 2025	HWGB	MR CHIEN CHAO-CHUAN [SSH]	133	15,291	7.44
25 FEB 2025 - 25 FEB 2025	IFCAMSC	MR YONG KEANG CHEUN [DIR/CEO]	2,000	214,943	35.647
25 FEB 2025 - 25 FEB 2025	IFCAMSC	MR YONG KEANG CHEUN [SSH]	2,000	214,943	35.647
25 FEB 2025 - 25 FEB 2025	IFCAMSC	MR YONG KIAN KEONG [DIR/CEO]	2,000	214,943	35.648
25 FEB 2025 - 25 FEB 2025	IFCAMSC	MR YONG KIAN KEONG [SSH]	2,000	212,943	35.648
21 FEB 2025 - 21 FEB 2025	IGBREIT	EMPLOYEES PROVIDENT FUND BOARD ("EPF BOARD") [SSH]	-160	407,087	11.25
20 FEB 2025 - 20 FEB 2025	IGBREIT	EMPLOYEES PROVIDENT FUND BOARD ("EPF BOARD") [SSH]	-348	407,248	11.255
25 FEB 2025 - 25 FEB 2025	IHH	EMPLOYEES PROVIDENT FUND BOARD [SSH]	-3,695	898,606	10.194
24 FEB 2025 - 24 FEB 2025	IHH	EMPLOYEES PROVIDENT FUND BOARD [SSH]	-1,381	902,301	10.236
21 FEB 2025 - 21 FEB 2025	IHH	EMPLOYEES PROVIDENT FUND BOARD [SSH]	808	903,682	10.252
20 FEB 2025 - 20 FEB 2025	IHH	EMPLOYEES PROVIDENT FUND BOARD [SSH]	-665	902,874	10.243
19 FEB 2025 - 19 FEB 2025	IHH	EMPLOYEES PROVIDENT FUND BOARD [SSH]	914	903,539	10.25
26 FEB 2025 - 26 FEB 2025	IJM	KUMPULAN WANG PERSARAAN (DIPERBADANKAN) [SSH]	700	333,532	9.513
24 FEB 2025 - 24 FEB 2025	IJM	KUMPULAN WANG PERSARAAN (DIPERBADANKAN) [SSH]	250	332,832	9.493
25 FEB 2025 - 25 FEB 2025	INARI	KUMPULAN WANG PERSARAAN (DIPERBADANKAN) [SSH]	698	371,214	9.797
21 FEB 2025 - 21 FEB 2025	INARI	EMPLOYEES PROVIDENT FUND BOARD [SSH]	-4,243	412,924	10.898
24 FEB 2025 - 24 FEB 2025	INARI	KUMPULAN WANG PERSARAAN (DIPERBADANKAN) [SSH]	714	370,516	9.778
21 FEB 2025 - 21 FEB 2025	INARI	KUMPULAN WANG PERSARAAN (DIPERBADANKAN) [SSH]	57	369,802	9.76
21 FEB 2025 - 21 FEB 2025	IOICORP	DATO' LEE YEOW CHOR [DIR/CEO]	154	3,150,771	50.789
21 FEB 2025 - 21 FEB 2025	IOICORP	DATO' LEE YEOW CHOR [SSH]	154	3,150,571	50.785
26 FEB 2025 - 26 FEB 2025	JCY	MR YEOH SAI KONG [DIR/CEO]	2,500	4,176	0.196
21 FEB 2025 - 21 FEB 2025	KERJAYA	EMPLOYEES PROVIDENT FUND BOARD [SSH]	-67	71,870	5.699
20 FEB 2025 - 20 FEB 2025	KERJAYA	EMPLOYEES PROVIDENT FUND BOARD [SSH]	458	71,937	5.705
13 FEB 2025 - 13 FEB 2025	KHEESAN	MR KOH CHEE MENG [SSH]	-1,000	7,600	5.54
25 FEB 2025 - 25 FEB 2025	KLCC	EMPLOYEES PROVIDENT FUND BOARD [SSH]	-24	207,093	11.471
24 FEB 2025 - 24 FEB 2025	KLCC	EMPLOYEES PROVIDENT FUND BOARD [SSH]	5	207,117	11.473
24 FEB 2025 - 24 FEB 2025	KLCC	EMPLOYEES PROVIDENT FUND BOARD [SSH]	5	207,117	11.473
21 FEB 2025 - 21 FEB 2025	KLCC	EMPLOYEES PROVIDENT FUND BOARD [SSH]	41	207,112	11.472
21 FEB 2025 - 21 FEB 2025	KLCC	EMPLOYEES PROVIDENT FUND BOARD [SSH]	41	207,112	11.472
20 FEB 2025 - 20 FEB 2025	KLCC	EMPLOYEES PROVIDENT FUND BOARD [SSH]	14	207,071	11.47
20 FEB 2025 - 20 FEB 2025	KLCC	EMPLOYEES PROVIDENT FUND BOARD [SSH]	14	207,071	11.47
25 FEB 2025 - 25 FEB 2025	KLK	EMPLOYEES PROVIDENT FUND BOARD [SSH]	-45	172,785	15.759
24 FEB 2025 - 24 FEB 2025	KLK	EMPLOYEES PROVIDENT FUND BOARD [SSH]	156	172,808	15.761
26 FEB 2025 - 26 FEB 2025	KLK	ARUSHA ENTERPRISE SDN. BHD. [SSH]	10,796	537,098	48.228

Notice Period is 23th February 2025 – 1st March 2025

Effective Change Date	Stock Name	Buyer/ Seller Name [Classification]	Bought / (Sold) ['000]	No. of Shares After Trade ['000]	
			Total	Total	% Held
26 FEB 2025 - 26 FEB 2025	KLK	BATU KAWAN BERHAD [SSH]	10,796	537,098	48.228
26 FEB 2025 - 26 FEB 2025	KLK	CUBIC CRYSTAL CORPORATION [SSH]	10,806	537,595	48.273
26 FEB 2025 - 26 FEB 2025	KLK	DATO' LEE HAU HIAN [DIR/CEO]	10,808	537,683	48.281
26 FEB 2025 - 26 FEB 2025	KLK	DATO' LEE HAU HIAN [SSH]	10,808	537,683	48.281
26 FEB 2025 - 26 FEB 2025	KLK	DATO' YEOH ENG KHOON [DIR/CEO]	108	5,392	0.484
26 FEB 2025 - 26 FEB 2025	KLK	DI-YI SDN. BHD. [SSH]	10,806	537,595	48.273
26 FEB 2025 - 26 FEB 2025	KLK	GRATEFUL BLESSINGS FOUNDATION [SSH]	10,806	537,595	48.273
26 FEB 2025 - 26 FEB 2025	KLK	GRATEFUL BLESSINGS INC. [SSH]	10,806	537,595	48.273
26 FEB 2025 - 26 FEB 2025	KLK	HIGH QUEST ANSTALT [SSH]	10,806	537,595	48.273
26 FEB 2025 - 26 FEB 2025	KLK	HIGH QUEST HOLDINGS SDN. BHD. [SSH]	10,806	537,595	48.273
26 FEB 2025 - 26 FEB 2025	KLK	MR LEE JIA ZHANG [DIR/CEO]	4	193	0.017
26 FEB 2025 - 26 FEB 2025	KLK	TAN SRI DATO' SERI LEE OI HIAN [SSH]	10,813	537,946	48.304
26 FEB 2025 - 26 FEB 2025	KLK	TAN SRI DATO' SERI LEE OI HIAN [DIR/CEO]	10,813	537,946	48.304
26 FEB 2025 - 26 FEB 2025	KLK	WAN HIN INVESTMENTS SDN. BERHAD [SSH]	10,805	537,572	48.271
21 FEB 2025 - 21 FEB 2025	KLK	EMPLOYEES PROVIDENT FUND BOARD [SSH]	129	172,651	15.746
20 FEB 2025 - 20 FEB 2025	KLK	EMPLOYEES PROVIDENT FUND BOARD [SSH]	71	172,545	15.737
26 FEB 2025 - 26 FEB 2025	KOSSAN	MR LIM KUANG WANG [SSH]	100	958,438	37.613
25 FEB 2025 - 25 FEB 2025	KOSSAN	EMPLOYEES PROVIDENT FUND BOARD [SSH]	494	143,872	5.642
25 FEB 2025 - 25 FEB 2025	KOSSAN	ABRDN HOLDINGS LIMITED [SSH]	494	140,901	5.525
25 FEB 2025 - 25 FEB 2025	KOSSAN	ABRDN MALAYSIA SDN BHD [SSH]	494	138,928	5.448
25 FEB 2025 - 25 FEB 2025	KOSSAN	ABRDN PLC [SSH]	494	140,901	5.525
24 FEB 2025 - 24 FEB 2025	KOSSAN	EMPLOYEES PROVIDENT FUND BOARD [SSH]	282	143,378	5.619
24 FEB 2025 - 24 FEB 2025	KOSSAN	ABRDN HOLDINGS LIMITED [SSH]	128	140,408	5.503
24 FEB 2025 - 24 FEB 2025	KOSSAN	ABRDN MALAYSIA SDN BHD [SSH]	128	138,435	5.425
24 FEB 2025 - 24 FEB 2025	KOSSAN	ABRDN PLC [SSH]	128	140,408	5.503
24 FEB 2025 - 24 FEB 2025	KOSSAN	MR LIM KUANG WANG [SSH]	100	958,338	37.558
21 FEB 2025 - 21 FEB 2025	KOSSAN	EMPLOYEES PROVIDENT FUND BOARD [SSH]	3,000	143,096	5.608
21 FEB 2025 - 21 FEB 2025	KOSSAN	MR TAN KONG CHANG [DIR/CEO]	100	50,200	1.968
19 FEB 2025 - 19 FEB 2025	KOSSAN	EMPLOYEES PROVIDENT FUND BOARD [SSH]	-680	140,096	5.491
21 NOV 2024 - 21 NOV 2024	KSENG	MR HO ENG CHONG @ HO KIAN CHEONG [DIR/CEO]	18,000	42,662	11.87
21 NOV 2024 - 21 NOV 2024	KSENG	MR HO ENG CHONG @ HO KIAN CHEONG [SSH]	18,000	42,662	11.87
24 FEB 2025 - 24 FEB 2025	KUCINGKO	MR OOI KOK HONG [DIR/CEO]	10	173,909	34.784
24 FEB 2025 - 24 FEB 2025	KUCINGKO	MR OOI KOK HONG [SSH]	10	173,899	34.784
21 FEB 2025 - 21 FEB 2025	KUCINGKO	MR SEE CHIN JOO [DIR/CEO]	3	173,375	34.677
21 FEB 2025 - 21 FEB 2025	KUCINGKO	MR SEE CHIN JOO [SSH]	3	173,375	34.677
27 FEB 2025 - 27 FEB 2025	LBS	DATO' WIRA LIM HOCK GUAN JP [DIR/CEO]	342	595,621	38.532
27 FEB 2025 - 27 FEB 2025	LBS	DATUK WIRA LIM HOCK GUAN JP [SSH]	342	592,994	38.362
27 FEB 2025 - 27 FEB 2025	LBS	GATERICH SDN BHD [SSH]	342	574,864	37.189
27 FEB 2025 - 27 FEB 2025	LBS	TAN SRI DATO' SRI IR. (DR.) LIM HOCK SAN JP [DIR/ CEO]	342	621,201	40.186
27 FEB 2025 - 27 FEB 2025	LBS	TAN SRI DATO' SRI IR. (DR.) LIM HOCK SAN JP [SSH]	342	617,932	39.975
25 FEB 2025 - 26 FEB 2025	LBS	DATUK WIRA LIM HOCK GUAN JP [DIR/CEO]	800	595,279	38.51
25 FEB 2025 - 26 FEB 2025	LBS	DATUK WIRA LIM HOCK GUAN JP [SSH]	800	592,653	38.34
25 FEB 2025 - 26 FEB 2025	LBS	GATERICH SDN BHD [SSH]	800	574522	37.167
25 FEB 2025 - 26 FEB 2025	LBS	TAN SRI DATO' SRI IR. (DR.) LIM HOCK SAN JP [DIR/ CEO]	800	620,860	40.164
25 FEB 2025 - 26 FEB 2025	LBS	TAN SRI DATO' SRI IR. (DR.) LIM HOCK SAN JP [SSH]	800	617,590	39.953
21 FEB 2025 - 24 FEB 2025	LBS	DATUK WIRA LIM HOCK GUAN JP [DIR/CEO]	800	594,479	38.458
21 FEB 2025 - 24 FEB 2025	LBS	DATUK WIRA LIM HOCK GUAN JP [SSH]	800	591,853	38.288
21 FEB 2025 - 24 FEB 2025	LBS	GATERICH SDN BHD [SSH]	800	573,722	37.115
21 FEB 2025 - 24 FEB 2025	LBS	TAN SRI DATO' SRI IR. (DR.) LIM HOCK SAN JP [DIR/ CEO]	800	620,060	40.113
21 FEB 2025 - 24 FEB 2025	LBS	TAN SRI DATO' SRI IR. (DR.) LIM HOCK SAN JP [SSH]	800	616,790	39.901
20 FEB 2025 - 20 FEB 2025	LFECORP	MR CHUAH CHONG EWE [DIR/CEO]	10,000	209,376	18.886
20 FEB 2025 - 20 FEB 2025	LFECORP	MR CHUAH CHONG EWE [SSH]	10,000	209,376	18.886
27 FEB 2025 - 27 FEB 2025	M&A	CIK SITI NUR AISHAH BINTI ISHAK [SSH]	20	132,542	6.631
26 FEB 2025 - 26 FEB 2025	M&A	CIK SITI NUR AISHAH BINTI ISHAK [SSH]	356	132,522	6.63
21 FEB 2025 - 22 FEB 2025	M&A	CIK SITI NUR AISHAH BINTI ISHAK [SSH]	-375	131,153	6.562
25 FEB 2025 - 25 FEB 2025	MAG	MR NG MIN LIN [DIR/CEO]	100	506,302	26.634
25 FEB 2025 - 25 FEB 2025	MAG	MR NG MIN LIN [SSH]	100	506,302	26.634
25 FEB 2025 - 26 FEB 2025	MAGNI	TAN SRI DATO' SERI TAN KOK PING [DIR/CEO]	184	109,447	25.25
25 FEB 2025 - 26 FEB 2025	MAGNI	TAN SRI DATO' SERI TAN KOK PING [SSH]	184	81,527	18.81
21 FEB 2025 - 21 FEB 2025	MAGNI	MR TAN POAY SENG [DIR/CEO]	41	129,208	29.81
21 FEB 2025 - 21 FEB 2025	MAGNI	MR TAN POAY SENG [SSH]	41	129,208	2

Notice Period is 23th February 2025 – 1st March 2025

Effective Change Date	Stock Name	Buyer/ Seller Name [Classification]	Bought / (Sold) ['000]	No. of Shares After Trade ['000]	
			Total	Total	% Held
21 FEB 2025 - 24 FEB 2025	MGB	GATERICH SDN. BHD. [SSH]	75	341,681	57.75
21 FEB 2025 - 24 FEB 2025	MGB	LBS BINA GROUP BERHAD [SSH]	75	341,681	57.75
21 FEB 2025 - 24 FEB 2025	MGB	TAN SRI DATO' SRI IR. (DR.) LIM HOCK SAN JP [DIR/CEO]	75	343,951	58.134
21 FEB 2025 - 24 FEB 2025	MGB	TAN SRI DATO' SRI IR. (DR.) LIM HOCK SAN JP [SSH]	75	343,951	58.134
21 FEB 2025 - 21 FEB 2025	MGRC	MR LEONG YIEN HUNG [DIR/CEO]	2,000	8,433	6.146
25 FEB 2025 - 25 FEB 2025	MISC	EMPLOYEES PROVIDENT FUND BOARD [SSH]	153	580,854	13.013
25 FEB 2025 - 25 FEB 2025	MISC	KUMPULAN WANG PERSARAAN (DIPERBADANKAN) (KWAP) [SSH]	-137	223,412	5.005
21 FEB 2025 - 21 FEB 2025	MISC	EMPLOYEES PROVIDENT FUND BOARD [SSH]	3,945	580,764	13.011
24 FEB 2025 - 24 FEB 2025	MISC	KUMPULAN WANG PERSARAAN (DIPERBADANKAN) (KWAP) [SSH]	-138	223,548	5.008
20 FEB 2025 - 20 FEB 2025	MISC	EMPLOYEES PROVIDENT FUND BOARD [SSH]	310	576,819	12.922
28 FEB 2025 - 28 FEB 2025	MKHOP	MR TAN HOE HING [DIR/CEO]	33	180	0.018
24 FEB 2025 - 24 FEB 2025	MMM	MR OH TEIK KENG [DIR/CEO]	200	900	0.289
24 FEB 2025 - 24 FEB 2025	MNHLDG	MR PANKAJKUMAR A/L BIPINCHANDRA [DIR/CEO]	-100	500	0.09
28 FEB 2025 - 28 FEB 2025	MRDIY	MR TAN YU YEH [DIR/CEO]	11,102	4,749,565	50.173
28 FEB 2025 - 28 FEB 2025	MRDIY	MR TAN YU YEH [SSH]	11,102	4,749,565	50.173
24 FEB 2025 - 24 FEB 2025	MRDIY	EMPLOYEES PROVIDENT FUND BOARD [SSH]	299	705,732	7.456
21 FEB 2025 - 21 FEB 2025	MRDIY	EMPLOYEES PROVIDENT FUND BOARD [SSH]	60	707,347	7.473
20 FEB 2025 - 20 FEB 2025	MRDIY	EMPLOYEES PROVIDENT FUND BOARD [SSH]	300	707,687	7.477
19 FEB 2025 - 19 FEB 2025	MRDIY	EMPLOYEES PROVIDENT FUND BOARD [SSH]	3,000	711,158	7.513
26 FEB 2025 - 26 FEB 2025	MTRONIC	CITA REALITI SDN BHD [SSH]	10	265,369	17.332
20 FEB 2025 - 20 FEB 2025	MTRONIC	CITA REALITI SDN. BHD. [SSH]	10	265,359	17.331
27 FEB 2025 - 27 FEB 2025	MYEG	KUMPULAN WANG PERSARAAN (DIPERBADANKAN) [SSH]	-580	390,921	5.191
26 FEB 2025 - 26 FEB 2025	MYEG	KUMPULAN WANG PERSARAAN (DIPERBADANKAN) [SSH]	544	391,501	5.199
25 FEB 2025 - 25 FEB 2025	MYEG	KUMPULAN WANG PERSARAAN (DIPERBADANKAN) [SSH]	544	390,958	5.192
24 FEB 2025 - 24 FEB 2025	MYEG	KUMPULAN WANG PERSARAAN (DIPERBADANKAN) [SSH]	544	390,414	5.185
21 FEB 2025 - 21 FEB 2025	MYEG	KUMPULAN WANG PERSARAAN (DIPERBADANKAN) [SSH]	-1,456	389,870	5.177
27 FEB 2025 - 27 FEB 2025	NATGATE	DATO' SERI WONG SIEW HAI [DIR/CEO]	-5	5,559	0.244
27 FEB 2025 - 27 FEB 2025	NCT	DATO' SRI YAP NGAN CHOY [DIR/CEO]	100	1,011,889	54.31
27 FEB 2025 - 27 FEB 2025	NCT	DATO' SRI YAP NGAN CHOY [SSH]	100	1,011,889	54.31
27 FEB 2025 - 27 FEB 2025	NCT	DATO' YAP FOOK CHOY [DIR/CEO]	100	988,838	53.074
27 FEB 2025 - 27 FEB 2025	NCT	DATO' YAP FOOK CHOY [SSH]	100	988,838	53.074
27 FEB 2025 - 27 FEB 2025	NCT	YBG YAP CONSOLIDATED SDN. BHD. [SSH]	100	949,494	50.962
26 FEB 2025 - 26 FEB 2025	NCT	DATO' SRI YAP NGAN CHOY [DIR/CEO]	320	1,011,789	54.305
26 FEB 2025 - 26 FEB 2025	NCT	DATO' SRI YAP NGAN CHOY [SSH]	320	1,011,789	54.305
26 FEB 2025 - 26 FEB 2025	NCT	DATO' YAP FOOK CHOY [DIR/CEO]	320	988,738	53.068
26 FEB 2025 - 26 FEB 2025	NCT	DATO' YAP FOOK CHOY [SSH]	320	988,738	53.068
26 FEB 2025 - 26 FEB 2025	NCT	YBG YAP CONSOLIDATED SDN. BHD. [SSH]	320	949,394	50.956
25 FEB 2025 - 25 FEB 2025	NCT	DATO' SRI YAP NGAN CHOY [DIR/CEO]	160	1,011,469	54.288
25 FEB 2025 - 25 FEB 2025	NCT	DATO' SRI YAP NGAN CHOY [SSH]	160	1,011,469	54.288
25 FEB 2025 - 25 FEB 2025	NCT	DATO' YAP FOOK CHOY [DIR/CEO]	160	988,418	53.051
25 FEB 2025 - 25 FEB 2025	NCT	DATO' YAP FOOK CHOY [SSH]	160	988,418	53.051
25 FEB 2025 - 25 FEB 2025	NCT	YBG YAP CONSOLIDATED SDN. BHD. [SSH]	160	949,074	50.939
21 FEB 2025 - 21 FEB 2025	NCT	DATO' SRI YAP NGAN CHOY [DIR/CEO]	100	1,011,309	54.279
21 FEB 2025 - 21 FEB 2025	NCT	DATO' SRI YAP NGAN CHOY [SSH]	100	1,011,309	54.279
21 FEB 2025 - 21 FEB 2025	NCT	DATO' YAP FOOK CHOY [DIR/CEO]	100	988,258	53.042
21 FEB 2025 - 21 FEB 2025	NCT	DATO' YAP FOOK CHOY [SSH]	100	988,258	53.042
21 FEB 2025 - 21 FEB 2025	NCT	YBG YAP CONSOLIDATED SDN. BHD. [SSH]	100	948,914	50.93
24 FEB 2025 - 24 FEB 2025	NESTLE	EMPLOYEES PROVIDENT FUND BOARD [SSH]	0.5	29,476	12.57
21 FEB 2025 - 21 FEB 2025	NESTLE	EMPLOYEES PROVIDENT FUND BOARD [SSH]	8	29,475	12.569
25 FEB 2025 - 25 FEB 2025	NEXG	URUSHARTA JAMAAH SDN. BHD. [SSH]	-3,000	194,463	6.99
24 FEB 2025 - 24 FEB 2025	NEXG	URUSHARTA JAMAAH SDN. BHD. [SSH]	-2,000	197,463	7.097
21 FEB 2025 - 21 FEB 2025	NEXG	URUSHARTA JAMAAH SDN. BHD. [SSH]	-3,000	199,463	7.169
24 FEB 2025 - 24 FEB 2025	NEXG	MR CHEW CHI HONG [SSH]	-500	144,100	5.18
20 FEB 2025 - 20 FEB 2025	NEXG	URUSHARTA JAMAAH SDN. BHD. [SSH]	-3,000	202,463	7.277
19 FEB 2025 - 19 FEB 2025	NEXG	URUSHARTA JAMAAH SDN. BHD. [SSH]	-3,000	205,463	7.385
26 FEB 2025 - 27 FEB 2025	NEXG-WB	TAN SRI DATO' SERI MOHD KHAIRUL ADIB BIN ABD RAHMAN [DIR/CEO]	28,252	178,204	12.811
24 FEB 2025 - 25 FEB 2025	NEXG-WB	TAN SRI DATO' SERI MOHD KHAIRUL ADIB BIN ABD RAHMAN [DIR/CEO]	149,952	149,952	10.78
21 FEB 2025 - 21 FEB 2025	NORTHERN	AMIRUL AZHAR BIN BAHAROM [DIR/CEO]	-4	80	0.02
25 FEB 2025 - 25 FEB 2025	PADINI	CHONG CHIN LIN [SSH]	74	451,913	45.792
25 FEB 2025 - 25 FEB 2025	PADINI	MR ANDREW YONG TZE HOW [DIR/CEO]	30	155	0.016
25 FEB 2025 - 25 FEB 2025	PADINI	MR BENJAMIN YONG TZE JET [DIR/CEO]	29	535	0.054
25 FEB 2025 - 25 FEB 2025	PADINI	MR CHRISTOPHER YONG TZE-YAO [DIR/CEO]	15	210	0.021
25 FEB 2025 - 25 FEB 2025	PADINI	YONG PANG CHAUN [DIR/CEO]	74	451,913	45.793
25 FEB 2025 - 25 FEB 2025	PADINI	YONG PANG CHAUN [SSH]	74	451,913	45.793
21 FEB 2025 - 21 FEB 2025	PADINI	EMPLOYEES PROVIDENT FUND BOARD [SSH]	150	75,081	7.608
24 FEB 2025 - 24 FEB 2025	PADINI	CHONG CHIN LIN [SSH]	45	451,839	45.785
24 FEB 2025 - 24 FEB 2025	PADINI	MR ANDREW YONG TZE HOW [DIR/CEO]	25	125	0.013
24 FEB 2025 - 24 FEB 2025	PADINI	MR CHRISTOPHER YONG TZE-YAO [DIR/CEO]	20	195	0.02
24 FEB 2025 - 24 FEB 2025	PADINI	YONG PANG CHAUN [DIR/CEO]	45	451839	45.785
24 FEB 2025 - 24 FEB 2025	PADINI	YONG PANG CHAUN [SSH]	45	451839	45.785
20 FEB 2025 - 20 FEB 2025	PADINI	EMPLOYEES PROVIDENT FUND BOARD [SSH]	600	74931	7.593
21 FEB 2025 - 21 FEB 2025	PADINI	CHONG CHIN LIN [SSH]	62	451,794	45.78
21 FEB 2025 - 21 FEB 2025	PADINI	MR ANDREW YONG TZE HOW [DIR/CEO]	32	100	0.01
21 FEB 2025 - 21 FEB 2025	PADINI	MR CHRISTOPHER YONG TZE-YAO [DIR/CEO]	30	175	0.018
21 FEB 2025 - 21 FEB 2025	PADINI	YONG PANG CHAUN [DIR/CEO]	62	451,794	45.781
21 FEB 2025 - 21 FEB 2025	PADINI	YONG PANG CHAUN [SSH]	62	451,794	45.781
21 FEB 2025 - 21 FEB 2025	PANAMY	EMPLOYEES PROVIDENT FUND BOARD [SSH]	4	6,409	10.551
19 FEB 2025 - 19 FEB 2025	PANAMY	EMPLOYEES PROVIDENT FUND BOARD [SSH]	10	6,405	10.544
28 FEB 2025 - 28 FEB 2025	PANTECH	DATIN SHUM KAH LIN [SSH]	200	157,041	18.953
28 FEB 2025 - 28 FEB 2025	PANTECH	DATO' CHEW TING LENG [DIR/CEO]	200	157,041	18.953
28 FEB 2025 - 28 FEB 2025	PANTECH	DATO' CHEW TING LENG [SSH]	200	157,041	18.953
24 FEB 2025 - 24 FEB 2025	PAVREIT	EMPLOYEES PROVIDENT FUND BOARD [SSH]	-1,050	428,600	11.708

Notice Period is 23th February 2025 – 1st March 2025

Effective Change Date	Stock Name	Buyer/ Seller Name [Classification]	Bought / (Sold) ['000]	No. of Shares After Trade ['000]	
			Total	Total	% Held
21 FEB 2025 - 21 FEB 2025	PAVREIT	EMPLOYEES PROVIDENT FUND BOARD [SSH]	-586	429,650	11.737
20 FEB 2025 - 20 FEB 2025	PAVREIT	EMPLOYEES PROVIDENT FUND BOARD [SSH]	-927	430,235	11.753
19 FEB 2025 - 19 FEB 2025	PAVREIT	EMPLOYEES PROVIDENT FUND BOARD [SSH]	-447	431,162	11.778
25 FEB 2025 - 25 FEB 2025	PBBANK	EMPLOYEES PROVIDENT FUND BOARD [SSH]	509	2,941,074	15.15
24 FEB 2025 - 24 FEB 2025	PBBANK	EMPLOYEES PROVIDENT FUND BOARD [SSH]	4,700	2,940,565	15.15
24 FEB 2025 - 24 FEB 2025	PCHEM	EMPLOYEES PROVIDENT FUND BOARD ("EPF BOARD") [SSH]	-824	919,426	11.493
21 FEB 2025 - 21 FEB 2025	PCHEM	EMPLOYEES PROVIDENT FUND BOARD ("EPF BOARD") [SSH]	-4,032	920458	11.506
20 FEB 2025 - 20 FEB 2025	PCHEM	EMPLOYEES PROVIDENT FUND BOARD ("EPF BOARD") [SSH]	464	924489	11.556
27 FEB 2025 - 27 FEB 2025	PENTA	KUMPULAN WANG PERSARAAN (DIPERBADANKAN) [SSH]	32	46845	6.586
25 FEB 2025 - 25 FEB 2025	PENTA	EMPLOYEES PROVIDENT FUND BOARD [SSH]	489	62525	8.79
26 FEB 2025 - 26 FEB 2025	PENTA	KUMPULAN WANG PERSARAAN (DIPERBADANKAN) [SSH]	-58	46814	6.581
24 FEB 2025 - 24 FEB 2025	PENTA	EMPLOYEES PROVIDENT FUND BOARD [SSH]	-149	62036	8.721
25 FEB 2025 - 25 FEB 2025	PENTA	KUMPULAN WANG PERSARAAN (DIPERBADANKAN) [SSH]	398	46872	6.589
21 FEB 2025 - 21 FEB 2025	PENTA	EMPLOYEES PROVIDENT FUND BOARD [SSH]	-12	62185	8.742
24 FEB 2025 - 24 FEB 2025	PENTA	KUMPULAN WANG PERSARAAN (DIPERBADANKAN) [SSH]	1,037	46474	6.533
25 FEB 2025 - 26 FEB 2025	PERDANA	ENCIK JAMALLUDIN BIN OBENG [DIR/CEO]	440	440	0.02
27 FEB 2025 - 27 FEB 2025	PETGAS	KUMPULAN WANG PERSARAAN (DIPERBADANKAN) ("KWAP") [SSH]	86	198075	10.01
25 FEB 2025 - 25 FEB 2025	PETGAS	EMPLOYEES PROVIDENT FUND BOARD [SSH]	2	250159	12.642
24 FEB 2025 - 24 FEB 2025	PETGAS	EMPLOYEES PROVIDENT FUND BOARD [SSH]	41	250157	12.642
25 FEB 2025 - 25 FEB 2025	PETGAS	KUMPULAN WANG PERSARAAN (DIPERBADANKAN) ("KWAP") [SSH]	2	197989	10.005
21 FEB 2025 - 21 FEB 2025	PETGAS	EMPLOYEES PROVIDENT FUND BOARD [SSH]	1,847	250216	12.645
24 FEB 2025 - 24 FEB 2025	PETGAS	KUMPULAN WANG PERSARAAN (DIPERBADANKAN) ("KWAP") [SSH]	25	197987	10.005
24 FEB 2025 - 24 FEB 2025	PGLOBE	DATO' SRI EDWIN TAN PEI SENG [DIR/CEO]	20,500	407485	54.577
24 FEB 2025 - 24 FEB 2025	PGLOBE	DATO' SRI EDWIN TAN PEI SENG [SSH]	20,500	407485	54.577
24 FEB 2025 - 24 FEB 2025	PGLOBE	DATO' SRI GODWIN TAN PEI POH [DIR/CEO]	20,500	407318	54.555
24 FEB 2025 - 24 FEB 2025	PGLOBE	DATO' SRI GODWIN TAN PEI POH [SSH]	20,500	407318	54.555
24 FEB 2025 - 24 FEB 2025	PGLOBE	PARAGON ADVENTURE SDN BHD [SSH]	20,500	407310	54.554
25 FEB 2025 - 25 FEB 2025	PLINTAS	EMPLOYEES PROVIDENT FUND BOARD [SSH]	12	83375	7.58
20 FEB 2025 - 20 FEB 2025	PLINTAS	EMPLOYEES PROVIDENT FUND BOARD [SSH]	12	83362	7.578
19 FEB 2025 - 19 FEB 2025	PLINTAS	EMPLOYEES PROVIDENT FUND BOARD [SSH]	78	83351	7.577
19 FEB 2025 - 19 FEB 2025	PMETAL	EMPLOYEES PROVIDENT FUND BOARD [SSH]	721	423886	5.144
25 FEB 2025 - 25 FEB 2025	PPB	EMPLOYEES PROVIDENT FUND BOARD [SSH]	282	188245	13.232
24 FEB 2025 - 24 FEB 2025	PPB	EMPLOYEES PROVIDENT FUND BOARD [SSH]	107	187963	13.213
21 FEB 2025 - 21 FEB 2025	PPB	EMPLOYEES PROVIDENT FUND BOARD [SSH]	60	187855	13.205
19 FEB 2025 - 19 FEB 2025	PPB	EMPLOYEES PROVIDENT FUND BOARD [SSH]	300	187796	13.201
26 FEB 2025 - 26 FEB 2025	PRJACK	MR LAW BOOK CHING [DIR/CEO]	100	324880	42.291
26 FEB 2025 - 26 FEB 2025	PRJACK	MR LAW BOOK CHING [SSH]	100	324880	42.291
24 FEB 2025 - 24 FEB 2025	PRJACK	MADAM LEE KOOI LAN [SSH]	683	384165	49.922
24 FEB 2025 - 24 FEB 2025	PRJACK	MR LIM BOON HUA [DIR/CEO]	683	384165	50.012
24 FEB 2025 - 24 FEB 2025	PRJACK	MR LIM BOON HUA [SSH]	683	384165	50.012
21 FEB 2025 - 21 FEB 2025	PRJACK	MR LAW BOOK CHING [DIR/CEO]	50	324575	42.252
21 FEB 2025 - 21 FEB 2025	PRJACK	MR LAW BOOK CHING [SSH]	50	324575	42.252
25 FEB 2025 - 25 FEB 2025	RCECAP	AMCORP GROUP BERHAD [SSH]	3,000	861063	58.654
25 FEB 2025 - 25 FEB 2025	RCECAP	CEMPAKA EMPAYAR SDN BHD [SSH]	3,000	861063	58.654
25 FEB 2025 - 25 FEB 2025	RCECAP	CLEAR GOAL SDN BHD [SSH]	3,000	861063	58.654
25 FEB 2025 - 25 FEB 2025	RESINTC	MISS WEI HWEI HONG [DIR/CEO]	500	17753	9.132
25 FEB 2025 - 25 FEB 2025	RESINTC	MISS WEI HWEI HONG [SSH]	500	17753	9.132
25 FEB 2025 - 25 FEB 2025	RESINTC	MR TEH LENG KANG [DIR/CEO]	500	17753	9.132
25 FEB 2025 - 25 FEB 2025	RESINTC	MR TEH LENG KANG [SSH]	500	17753	9.132
25 FEB 2025 - 25 FEB 2025	RHBBANK	EMPLOYEES PROVIDENT FUND BOARD [SSH]	-44	1712294	39.277
24 FEB 2025 - 24 FEB 2025	RHBBANK	EMPLOYEES PROVIDENT FUND BOARD [SSH]	-14	1712338	39.278
21 FEB 2025 - 21 FEB 2025	RHBBANK	EMPLOYEES PROVIDENT FUND BOARD [SSH]	-527	1712353	39.279
24 FEB 2025 - 24 FEB 2025	RHBBANK	KUMPULAN WANG PERSARAAN (DIPERBADANKAN) [SSH]	-1,000	219859	5.043
20 FEB 2025 - 20 FEB 2025	RHBBANK	EMPLOYEES PROVIDENT FUND BOARD [SSH]	-450	1712880	39.291
26 FEB 2025 - 26 FEB 2025	RKI	SAMARANG UCITS - SAMARANG ASIAN PROSPERITY [SSH]	-4	14425	7.386
25 FEB 2025 - 25 FEB 2025	RKI	SAMARANG UCITS - SAMARANG ASIAN PROSPERITY [SSH]	-15	14429	7.388
24 FEB 2025 - 24 FEB 2025	RKI	SAMARANG UCITS - SAMARANG ASIAN PROSPERITY [SSH]	-21	14444	7.396
21 FEB 2025 - 21 FEB 2025	RKI	SAMARANG UCITS - SAMARANG ASIAN PROSPERITY [SSH]	-7	14465	7.407
20 FEB 2025 - 20 FEB 2025	RKI	SAMARANG UCITS - SAMARANG ASIAN PROSPERITY [SSH]	-13	14472	7.41
19 FEB 2025 - 19 FEB 2025	RKI	SAMARANG UCITS - SAMARANG ASIAN PROSPERITY [SSH]	-21	14485	7.417
26 FEB 2025 - 27 FEB 2025	SAMCHEM	MR NG THIN POH [DIR/CEO]	644	249672	45.895
26 FEB 2025 - 27 FEB 2025	SAMCHEM	MR NG THIN POH [SSH]	644	644	45.895
24 FEB 2025 - 24 FEB 2025	SAPIND	MR KOH KOK HOOI [SSH]	20	8046	11.056
21 FEB 2025 - 21 FEB 2025	SAPIND	MR KOH KOK HOOI [SSH]	5	8026	11.028
20 FEB 2025 - 20 FEB 2025	SAPIND	MR KOH KOK HOOI [SSH]	15	8021	11.022
10 JAN 2025 - 10 JAN 2025	SCC	CHER LIP CHUN [DIR/CEO]	3,330	36363	25.76
27 FEB 2025 - 27 FEB 2025	SCIB	DATO' TAN BOK KOON [DIR/CEO]	200	3429	0.49
25 FEB 2025 - 25 FEB 2025	SCIB	MR KU CHONG HONG [DIR/CEO]	-29,643	30999	4.43
21 FEB 2025 - 21 FEB 2025	SCIENXT	MR LIM PENG CHEONG [DIR/CEO]	-162	866406	55.672
21 FEB 2025 - 21 FEB 2025	SCIENXT	MR LIM PENG CHEONG [SSH]	-162	860348	55.283
27 FEB 2025 - 27 FEB 2025	SCNWOLF	DATO' SRI ANDREW LIM ENG GUAN [SSH]	507	89961	42.599
27 FEB 2025 - 27 FEB 2025	SCNWOLF	DATO' SRI AZLAN BIN AZMI [SSH]	507	86154	40.796
27 FEB 2025 - 27 FEB 2025	SCNWOLF	DATO' SRI WONG SZE CHIEN [SSH]	507	89554	42.406
27 FEB 2025 - 27 FEB 2025	SCNWOLF	MIGHTY ALLIANCE SDN. BHD. [SSH]	507	86154	40.796
27 FEB 2025 - 27 FEB 2025	SCNWOLF	MR SEAH LEY HONG [DIR/CEO]	507	87573	41.468
27 FEB 2025 - 27 FEB 2025	SCNWOLF	MR SEAH LEY HONG [SSH]	507	87573	41.468
26 FEB 2025 - 26 FEB 2025	SCNWOLF	DATO' SRI ANDREW LIM ENG GUAN [SSH]	674	89455	42.359
26 FEB 2025 - 26 FEB 2025	SCNWOLF	DATO' SRI AZLAN BIN AZMI [SSH]	674	85648	40.556
26 FEB 2025 - 26 FEB 2025	SCNWOLF	DATO' SRI WONG SZE CHIEN [SSH]	674	89047	42.166

Notice Period is 23th February 2025 – 1st March 2025

Effective Change Date	Stock Name	Buyer/ Seller Name [Classification]	Bought / (Sold) ['000]	No. of Shares After Trade ['000]	
			Total	Total	% Held
26 FEB 2025 - 26 FEB 2025	SCNWOLF	MIGHTY ALLIANCE SDN. BHD. [SSH]	674	85648	40.556
26 FEB 2025 - 26 FEB 2025	SCNWOLF	MR SEAH LEY HONG [DIR/CEO]	674	87067	41.228
26 FEB 2025 - 26 FEB 2025	SCNWOLF	MR SEAH LEY HONG [SSH]	674	87067	41.228
25 FEB 2025 - 25 FEB 2025	SCNWOLF	DATO' SRI ANDREW LIM ENG GUAN [SSH]	102	88781	42.04
25 FEB 2025 - 25 FEB 2025	SCNWOLF	DATO' SRI AZLAN BIN AZMI [SSH]	102	84974	40.237
25 FEB 2025 - 25 FEB 2025	SCNWOLF	DATO' SRI WONG SZE CHIEN [SSH]	102	88374	41.847
25 FEB 2025 - 25 FEB 2025	SCNWOLF	MIGHTY ALLIANCE SDN. BHD. [SSH]	102	84974	40.237
25 FEB 2025 - 25 FEB 2025	SCNWOLF	MR SEAH LEY HONG [DIR/CEO]	102	86393	40.909
25 FEB 2025 - 25 FEB 2025	SCNWOLF	MR SEAH LEY HONG [SSH]	102	86393	40.909
24 FEB 2025 - 24 FEB 2025	SCNWOLF	DATO' SRI ANDREW LIM ENG GUAN [SSH]	404	88679	41.992
24 FEB 2025 - 24 FEB 2025	SCNWOLF	DATO' SRI AZLAN BIN AZMI [SSH]	404	84872	40.189
24 FEB 2025 - 24 FEB 2025	SCNWOLF	DATO' SRI WONG SZE CHIEN [SSH]	404	88272	41.799
24 FEB 2025 - 24 FEB 2025	SCNWOLF	MIGHTY ALLIANCE SDN. BHD. [SSH]	404	84872	40.189
24 FEB 2025 - 24 FEB 2025	SCNWOLF	MR SEAH LEY HONG [DIR/CEO]	404	86291	40.861
24 FEB 2025 - 24 FEB 2025	SCNWOLF	MR SEAH LEY HONG [SSH]	404	86291	40.861
21 FEB 2025 - 21 FEB 2025	SCNWOLF	DATO' SRI ANDREW LIM ENG GUAN [SSH]	52	88276	41.801
21 FEB 2025 - 21 FEB 2025	SCNWOLF	DATO' SRI AZLAN BIN AZMI [SSH]	52	84469	39.998
21 FEB 2025 - 21 FEB 2025	SCNWOLF	DATO' SRI WONG SZE CHIEN [SSH]	52	87869	41.608
21 FEB 2025 - 21 FEB 2025	SCNWOLF	MIGHTY ALLIANCE SDN. BHD. [SSH]	52	84469	39.998
21 FEB 2025 - 21 FEB 2025	SCNWOLF	MR SEAH LEY HONG [DIR/CEO]	52	85888	40.67
21 FEB 2025 - 21 FEB 2025	SCNWOLF	MR SEAH LEY HONG [SSH]	52	85888	40.67
27 FEB 2025 - 27 FEB 2025	SCN-WOLF-WA	MR SEAH LEY HONG [DIR/CEO]	1,212	15030	37.512
26 FEB 2025 - 26 FEB 2025	SCN-WOLF-WA	MR SEAH LEY HONG [DIR/CEO]	1,963	13819	34.488
25 FEB 2025 - 25 FEB 2025	SCN-WOLF-WA	MR SEAH LEY HONG [DIR/CEO]	1,227	11855	29.588
24 FEB 2025 - 24 FEB 2025	SCN-WOLF-WA	MR SEAH LEY HONG [DIR/CEO]	93	10628	26.525
21 FEB 2025 - 21 FEB 2025	SCN-WOLF-WA	MR SEAH LEY HONG [DIR/CEO]	17	10535	26.293
24 FEB 2025 - 24 FEB 2025	SCOMNET	EMPLOYEES PROVIDENT FUND BOARD [SSH]	1,569	64611	7.514
25 FEB 2025 - 25 FEB 2025	SDG	KUMPULAN WANG PERSARAAN (DIPERBADANKAN) [SSH]	119	498670	7.211
21 FEB 2025 - 21 FEB 2025	SDG	EMPLOYEES PROVIDENT FUND BOARD [SSH]	31	1136355	16.432
27 FEB 2025 - 27 FEB 2025	SIMEPROP	KUMPULAN WANG PERSARAAN (DIPERBADANKAN) [SSH]	40	420732	6.186
25 FEB 2025 - 25 FEB 2025	SIMEPROP	EMPLOYEES PROVIDENT FUND BOARD [SSH]	851	704291	10.356
26 FEB 2025 - 26 FEB 2025	SIMEPROP	KUMPULAN WANG PERSARAAN (DIPERBADANKAN) [SSH]	48	420692	6.186
24 FEB 2025 - 24 FEB 2025	SIMEPROP	EMPLOYEES PROVIDENT FUND BOARD [SSH]	993	703441	10.344
25 FEB 2025 - 25 FEB 2025	SIMEPROP	KUMPULAN WANG PERSARAAN (DIPERBADANKAN) [SSH]	86	420644	6.185
24 FEB 2025 - 24 FEB 2025	SIMEPROP	KUMPULAN WANG PERSARAAN (DIPERBADANKAN) [SSH]	-1,000	420558	6.184
20 FEB 2025 - 20 FEB 2025	SIMEPROP	EMPLOYEES PROVIDENT FUND BOARD [SSH]	1,043	702448	10.328
19 FEB 2025 - 19 FEB 2025	SIMEPROP	EMPLOYEES PROVIDENT FUND BOARD [SSH]	6,561	701405	10.313
25 FEB 2025 - 25 FEB 2025	SKPRES	EMPLOYEES PROVIDENT FUND BOARD [SSH]	90	157051	10.052
20 FEB 2025 - 20 FEB 2025	SKPRES	EMPLOYEES PROVIDENT FUND BOARD [SSH]	400	156961	10.046
20 FEB 2025 - 20 FEB 2025	SKPRES	ABRDN HOLDINGS LIMITED [SSH]	2,924	99310	6.356
20 FEB 2025 - 20 FEB 2025	SKPRES	ABRDN MALAYSIA SDN BHD [SSH]	2,924	99310	6.356
20 FEB 2025 - 20 FEB 2025	SKPRES	ABRDN PLC [SSH]	2,924	99310	6.356
24 FEB 2025 - 24 FEB 2025	SLVEST	EMPLOYEES PROVIDENT FUND BOARD [SSH]	198	43743	6.003
21 FEB 2025 - 21 FEB 2025	SLVEST	EMPLOYEES PROVIDENT FUND BOARD [SSH]	20	43545	5.977
20 FEB 2025 - 21 FEB 2025	SMART	MISS KEE HUI LANG [DIR/CEO]	243	41997	11.355
20 FEB 2025 - 21 FEB 2025	SMART	MISS KEE HUI LANG [SSH]	243	41997	11.355
21 FEB 2025 - 21 FEB 2025	SNS	EASTSPRING INVESTMENTS BERHAD [SSH]	400	91777	5.477
21 FEB 2025 - 21 FEB 2025	SNS	PRUDENTIAL PLC [SSH]	400	97797	5.836
21 FEB 2025 - 21 FEB 2025	SRIDGE	DATO' KHOO YIK CHOU [DIR/CEO]	560	23527	8.88
21 FEB 2025 - 21 FEB 2025	SRIDGE	DATO' KHOO YIK CHOU [SSH]	560	23527	8.88
21 FEB 2025 - 21 FEB 2025	SRIDGE	DATO' KHOO YIK CHOU [DIR/CEO]	3,300	22967	8.668
21 FEB 2025 - 21 FEB 2025	SRIDGE	DATO' KHOO YIK CHOU [SSH]	3,300	22967	8.668
25 FEB 2025 - 25 FEB 2025	SSTEEL	MR YEOH CHOON KWEE [DIR/CEO]	163	244	0.016
25 FEB 2025 - 25 FEB 2025	SUNCON	EMPLOYEES PROVIDENT FUND BOARD [SSH]	-1,460	90903	7.05
21 FEB 2025 - 21 FEB 2025	SUNCON	EMPLOYEES PROVIDENT FUND BOARD [SSH]	-1,009	92561	7.179
19 FEB 2025 - 19 FEB 2025	SUNCON	EMPLOYEES PROVIDENT FUND BOARD [SSH]	700	93749	7.271
20 FEB 2025 - 20 FEB 2025	SUNMOW	LEE YEW CHEN [DIR/CEO]	19	26647	11.39
20 FEB 2025 - 20 FEB 2025	SUNMOW	LEE YEW CHEN [SSH]	19	26647	11.39
25 FEB 2025 - 25 FEB 2025	SUNREIT	EMPLOYEES PROVIDENT FUND BOARD [SSH]	119	554351	16.186
24 FEB 2025 - 24 FEB 2025	SUNREIT	EMPLOYEES PROVIDENT FUND BOARD [SSH]	472	554233	16.183
21 FEB 2025 - 21 FEB 2025	SUNREIT	EMPLOYEES PROVIDENT FUND BOARD [SSH]	60	553761	16.169
24 FEB 2025 - 24 FEB 2025	SUNWAY	EMPLOYEES PROVIDENT FUND BOARD [SSH]	616	501758	8.12
21 FEB 2025 - 21 FEB 2025	SUNWAY	EMPLOYEES PROVIDENT FUND BOARD [SSH]	-46	501142	8.11
20 FEB 2025 - 20 FEB 2025	SUNWAY	EMPLOYEES PROVIDENT FUND BOARD [SSH]	342	501189	8.11
19 FEB 2025 - 19 FEB 2025	SUNWAY	EMPLOYEES PROVIDENT FUND BOARD [SSH]	475	500847	8.11
25 FEB 2025 - 25 FEB 2025	SUPERMX	DATO' SERI THAI KIM SIM [DIR/CEO]	207,603	1245620	40.743
25 FEB 2025 - 25 FEB 2025	SUPERMX	DATO' SERI THAI KIM SIM [SSH]	207,603	1245620	40.743
25 FEB 2025 - 25 FEB 2025	SUPERMX	DATO' TING HENG PENG [DIR/CEO]	2,536	15213	0.498
25 FEB 2025 - 25 FEB 2025	SUPERMX	DATUK WIRA TAN BEE GEOK [SSH]	207,603	1245620	40.743
25 FEB 2025 - 25 FEB 2025	SUPERMX	MR ALBERT SAYCHUAN CHEOK [DIR/CEO]	35	208	0.007
25 FEB 2025 - 25 FEB 2025	SUPERMX	MR TAN CHEE KEONG [DIR/CEO]	193	1156	0.038
25 FEB 2025 - 27 FEB 2025	SUPERMX	MR YIP KIT WENG [DIR/CEO]	22	84	0.003
25 FEB 2025 - 25 FEB 2025	SUPERMX	PUAN ROZITA BINTI ABDUL RAHMAN [DIR/CEO]	58	346	0.011
25 FEB 2025 - 25 FEB 2025	SUPERMX	SUPERMAX HOLDINGS SDN BHD [SSH]	207,603	1245620	40.743
21 FEB 2025 - 21 FEB 2025	TAFI	DATO' SRI WONG SZE CHIEN [DIR/CEO]	304	218862	57.682
21 FEB 2025 - 21 FEB 2025	TAFI	DATO' SRI WONG SZE CHIEN [SSH]	304	218862	57.682
21 FEB 2025 - 21 FEB 2025	TAGHILL	PROVEN VENTURE CAPITAL PLT [SSH]	-56,715	126791	8.147
28 FEB 2025 - 28 FEB 2025	TANCO	DATO' SRI ANDREW TAN JUN SUAN [DIR/CEO]	-1,100	82991	15.186
28 FEB 2025 - 28 FEB 2025	TANCO	DATO' SRI ANDREW TAN JUN SUAN [DIR/CEO]	1,318	1210900	54.932
28 FEB 2025 - 28 FEB 2025	TANCO	DATO' SRI ANDREW TAN JUN SUAN [SSH]	1,318	1210900	54.932

Notice Period is 23th February 2025 – 1st March 2025

Effective Change Date	Stock Name	Buyer/ Seller Name [Classification]	Bought / (Sold) ['000]	No. of Shares After Trade ['000]	
			Total	Total	% Held
27 FEB 2025 - 27 FEB 2025	TANCO	DATO' SRI ANDREW TAN JUN SUAN [DIR/CEO]	1,400	1209582	54.872
27 FEB 2025 - 27 FEB 2025	TANCO	DATO' SRI ANDREW TAN JUN SUAN [SSH]	1,400	1209582	54.872
26 FEB 2025 - 26 FEB 2025	TANCO	DATO' SRI ANDREW TAN JUN SUAN [DIR/CEO]	-2,049	84091	15.387
26 FEB 2025 - 26 FEB 2025	TANCO	DATO' SRI ANDREW TAN JUN SUAN [DIR/CEO]	3,000	1208182	54.808
26 FEB 2025 - 26 FEB 2025	TANCO	DATO' SRI ANDREW TAN JUN SUAN [SSH]	3,000	1208182	54.808
25 FEB 2025 - 25 FEB 2025	TANCO	DATO' SRI ANDREW TAN JUN SUAN [DIR/CEO]	6,240	1205182	54.672
25 FEB 2025 - 25 FEB 2025	TANCO	DATO' SRI ANDREW TAN JUN SUAN [SSH]	6,240	1205182	54.672
24 FEB 2025 - 24 FEB 2025	TANCO	DATO' SRI ANDREW TAN JUN SUAN [DIR/CEO]	36,740	1198942	54.389
24 FEB 2025 - 24 FEB 2025	TANCO	DATO' SRI ANDREW TAN JUN SUAN [DIR/CEO]	-1,000	86140	15.762
24 FEB 2025 - 24 FEB 2025	TANCO	DATO' SRI ANDREW TAN JUN SUAN [SSH]	36,740	1198942	54.389
25 FEB 2025 - 25 FEB 2025	TENAGA	EMPLOYEES PROVIDENT FUND BOARD [SSH]	3,277	1120131	19.27
24 FEB 2025 - 24 FEB 2025	TENAGA	EMPLOYEES PROVIDENT FUND BOARD [SSH]	4,000	1116854	19.21
21 FEB 2025 - 21 FEB 2025	TENAGA	EMPLOYEES PROVIDENT FUND BOARD [SSH]	140	1112854	19.14
20 FEB 2025 - 20 FEB 2025	TENAGA	EMPLOYEES PROVIDENT FUND BOARD [SSH]	3,410	1112715	19.14
19 FEB 2025 - 19 FEB 2025	TENAGA	EMPLOYEES PROVIDENT FUND BOARD [SSH]	890	1109305	19.08
26 FEB 2025 - 26 FEB 2025	TGUAN	DATUK ANG POON SEONG [DIR/CEO]	10	5832	1.452
24 FEB 2025 - 25 FEB 2025	TGUAN	DATUK ANG POON SEONG [DIR/CEO]	46	5822	1.449
27 FEB 2025 - 27 FEB 2025	TIMECOM	KUMPULAN WANG PERSARAAN (DIPERBADANKAN) [SSH]	-263	135617	7.335
19 FEB 2025 - 19 FEB 2025	TIMECOM	EMPLOYEES PROVIDENT FUND BOARD [SSH]	229	245869	13.299
25 FEB 2025 - 25 FEB 2025	TM	EMPLOYEES PROVIDENT FUND BOARD (EPF BOARD) [SSH]	1,635	654030	17.042
25 FEB 2025 - 25 FEB 2025	TM	EMPLOYEES PROVIDENT FUND BOARD (EPF BOARD) [SSH]	1,635	654030	17.042
26 FEB 2025 - 26 FEB 2025	TM	KUMPULAN WANG PERSARAAN (DIPERBADANKAN) [KWAP] [SSH]	-29	381440	9.939
25 FEB 2025 - 25 FEB 2025	TM	KUMPULAN WANG PERSARAAN (DIPERBADANKAN) [KWAP] [SSH]	-537	381469	9.94
24 FEB 2025 - 24 FEB 2025	TM	EMPLOYEES PROVIDENT FUND BOARD (EPF BOARD) [SSH]	1,673	652395	17
21 FEB 2025 - 21 FEB 2025	TM	EMPLOYEES PROVIDENT FUND BOARD (EPF BOARD) [SSH]	2,119	650860	16.96
24 FEB 2025 - 24 FEB 2025	TM	KUMPULAN WANG PERSARAAN (DIPERBADANKAN) [KWAP] [SSH]	-1,000	382007	9.954
20 FEB 2025 - 20 FEB 2025	TM	EMPLOYEES PROVIDENT FUND BOARD (EPF BOARD) [SSH]	500	648741	16.904
21 FEB 2025 - 21 FEB 2025	TM	KUMPULAN WANG PERSARAAN (DIPERBADANKAN) [KWAP] [SSH]	53	383007	9.98
19 FEB 2025 - 19 FEB 2025	TM	EMPLOYEES PROVIDENT FUND BOARD (EPF BOARD) [SSH]	-588	648241	16.891
21 FEB 2025 - 21 FEB 2025	TOPGLOV	KUMPULAN WANG PERSARAAN (DIPERBADANKAN) [SSH]	-226	623490	7.776
26 FEB 2025 - 26 FEB 2025	TTVHB	EASTSPRING INVESTMENTS BERHAD [SSH]	-177	24051	5.015
26 FEB 2025 - 26 FEB 2025	TTVHB	PRUDENTIAL PLC [SSH]	-177	26594	5.545
21 FEB 2025 - 21 FEB 2025	TTVHB	EASTSPRING INVESTMENTS BERHAD [SSH]	-77	24228	5.052
21 FEB 2025 - 21 FEB 2025	TTVHB	PRUDENTIAL PLC [SSH]	-77	26771	5.582
27 FEB 2025 - 27 FEB 2025	UCHITEC	KAO DE-TSAN ALSO KNOWN AS TED KAO [SSH]	125	86636	18.754
27 FEB 2025 - 27 FEB 2025	UCHITEC	MR KAO DE-TSAN ALSO KNOWN AS TED KAO [DIR/ CEO]	125	90123	19.514
27 FEB 2025 - 27 FEB 2025	UCHITEC	MR LIM TIAN HOW [DIR/CEO]	70	254	0.055
27 FEB 2025 - 27 FEB 2025	UCHITEC	MR TAN BOON HOE [DIR/CEO]	50	700	0.152
25 FEB 2025 - 25 FEB 2025	UTDPLT	EMPLOYEES PROVIDENT FUND BOARD [SSH]	-179	24993	6.026
27 FEB 2025 - 27 FEB 2025	UTDPLT	BROTHERS HOLDINGS LIMITED [SSH]	100,326	300979	48.375
27 FEB 2025 - 27 FEB 2025	UTDPLT	C&M HOLDINGS LIMITED [SSH]	100,326	300979	48.375
27 FEB 2025 - 27 FEB 2025	UTDPLT	DATO' CARL BEK-NIELSEN [DIR/CEO]	102,952	308856	49.641
27 FEB 2025 - 27 FEB 2025	UTDPLT	DATO' CARL BEK-NIELSEN [SSH]	102,952	308856	49.641
27 FEB 2025 - 27 FEB 2025	UTDPLT	DATO' MOHAMAD NASIR BIN AB. LATIF [DIR/CEO]	70	210	0.034
27 FEB 2025 - 27 FEB 2025	UTDPLT	MAXIMUM VISTA SDN BHD [SSH]	90,608	271823	43.689
27 FEB 2025 - 27 FEB 2025	UTDPLT	MR JORGEN BALLE [DIR/CEO]	2	6	0.001
27 FEB 2025 - 27 FEB 2025	UTDPLT	MR LOH HANG PAI @ LOW HENG FONG [DIR/CEO]	500	1500	0.241
27 FEB 2025 - 27 FEB 2025	UTDPLT	MR MARTIN BEK-NIELSEN [DIR/CEO]	101,069	303208	48.733
27 FEB 2025 - 27 FEB 2025	UTDPLT	MR MARTIN BEK-NIELSEN [SSH]	101,069	303208	48.733
27 FEB 2025 - 27 FEB 2025	UTDPLT	MR R. NADARAJAN [DIR/CEO]	84	251	0.041
27 FEB 2025 - 27 FEB 2025	UTDPLT	UIE PLC [SSH]	9,719	29156	4.686
20 FEB 2025 - 20 FEB 2025	UTDPLT	EMPLOYEES PROVIDENT FUND BOARD [SSH]	191	25076	6.046
19 FEB 2025 - 19 FEB 2025	UTDPLT	EMPLOYEES PROVIDENT FUND BOARD [SSH]	-277	24886	6
25 FEB 2025 - 25 FEB 2025	UWC	EMPLOYEES PROVIDENT FUND BOARD [SSH]	30	87150	7.908
21 FEB 2025 - 21 FEB 2025	UWC	EMPLOYEES PROVIDENT FUND BOARD [SSH]	44	87075	7.901
20 FEB 2025 - 20 FEB 2025	VS	EMPLOYEES PROVIDENT FUND BOARD [SSH]	-1,518	324270	8.37
24 FEB 2025 - 24 FEB 2025	WASCO	MR GIAN CARLO MACCAGNO [DIR/CEO]	200	5009	0.647
21 FEB 2025 - 24 FEB 2025	WENTEL	MR SIOW CHIN HOW [DIR/CEO]	400	1500	0.13
27 FEB 2025 - 27 FEB 2025	WPRTS	KUMPULAN WANG PERSARAAN (DIPERBADANKAN) [SSH]	-238	224593	6.587
25 FEB 2025 - 25 FEB 2025	WPRTS	EMPLOYEES PROVIDENT FUND BOARD [SSH]	123	297513	8.725
26 FEB 2025 - 26 FEB 2025	WPRTS	KUMPULAN WANG PERSARAAN (DIPERBADANKAN) [SSH]	-259	224831	6.594
24 FEB 2025 - 24 FEB 2025	WPRTS	EMPLOYEES PROVIDENT FUND BOARD [SSH]	40	297488	8.724
25 FEB 2025 - 25 FEB 2025	WPRTS	KUMPULAN WANG PERSARAAN (DIPERBADANKAN) [SSH]	-56	225091	6.601
21 FEB 2025 - 21 FEB 2025	WPRTS	EMPLOYEES PROVIDENT FUND BOARD [SSH]	-388	297553	8.726
24 FEB 2025 - 24 FEB 2025	WPRTS	KUMPULAN WANG PERSARAAN (DIPERBADANKAN) [SSH]	1	225147	6.603
20 FEB 2025 - 20 FEB 2025	WPRTS	EMPLOYEES PROVIDENT FUND BOARD [SSH]	-672	297941	8.737
21 FEB 2025 - 21 FEB 2025	WPRTS	KUMPULAN WANG PERSARAAN (DIPERBADANKAN) [SSH]	2	225145	6.603
19 FEB 2025 - 19 FEB 2025	WPRTS	EMPLOYEES PROVIDENT FUND BOARD [SSH]	-160	298548	8.755
25 FEB 2025 - 26 FEB 2025	XL	MR NG MIN LIN [DIR/CEO]	153	137860	31.26
25 FEB 2025 - 26 FEB 2025	XL	MR NG MIN LIN [SSH]	153	137860	31.26
20 FEB 2025 - 20 FEB 2025	YTL	MR CHOO YOO KWAN @ CHOO YEE KWAN [DIR/CEO]	1,000	1000	0.255
26 FEB 2025 - 27 FEB 2025	ZANTAT	MR CHAN BIN IUAN [DIR/CEO]	300	8774	3.081
25 FEB 2025 - 25 FEB 2025	ZANTAT	MR CHAN BIN IUAN [DIR/CEO]	300	8474	2.976
24 FEB 2025 - 24 FEB 2025	ZANTAT	MR CHAN BIN IUAN [DIR/CEO]	160	8174	2.87
24 FEB 2025 - 24 FEB 2025	ZHULIAN	THE BEST SOURCE HOLDINGS PTE. LTD. [SSH]	100	59082	12.844

[READ MORE](#)

The Board of Directors of **Able Global Berhad (ABLEGLOB)** is pleased to declare a Single Tier 4th Interim Dividend of 1.5 sen per share in respect of the financial year ended 31 December 2024.



The Board of Directors of **Aemulus Holdings Berhad (AEMULUS)** wishes to provide herewith the following additional information in relation to the Letter of Intent on In-depth Cooperation entered between Suzhou Tangming Shengshi Semiconductor Co., Ltd. and Shanghai Unique Test Technology Co., Ltd

[READ MORE](#)**AFFIN BANK**

On behalf of the Board of Directors of **Affin Bank Berhad (AFFIN)**, Affin Hwang

Investment Bank Berhad wishes to announce that the additional listing application in relation to the Proposed Bonus Issue has been submitted to Bursa Securities today.

[READ MORE](#)

Axiata Group Berhad (AXIATA) wishes to announce the results of the Consent Solicitation. As the votes received for each of the Extraordinary Resolutions in respect of the Notes and Sukuk, respectively,

represented a majority of not less than three-quarters of the total votes received, each of the Extraordinary Resolutions was passed.

[READ MORE](#)



On behalf of the Board of **Gamuda Berhad (GAMUDA)**, RHB Investment Bank wishes to announce that based on the valid dividend reinvestment forms received by Tricor Investor & Issuing House Services Sdn Bhd, the share registrar of the Company, Gamuda will be issuing 55,820,618 new Gamuda Shares at an issue price of RM3.81 per New Share pursuant to the DRP Application. The New Shares to be issued represent approximately 74.59% of the total number of 74,836,521 New Shares that would have been issued pursuant to the DRP Application had all the entitled shareholders of Gamuda elected to reinvest the electable portion of their FYE 2025 First Interim Dividend into New Shares.

[READ MORE](#)

On behalf of the Board of Directors of **Leform Berhad (LEFORM)**, UOB Kay Hian Securities (M) Sdn Bhd wishes to announce that the Company proposes to undertake a private placement of up to 10% of the total number of issued shares in Leform (excluding treasury shares, if any) to third party investor(s) to be identified later, at an issue price to be determined and announced later, in accordance with Sections 75 and 76 of the Companies Act 2016.

[READ MORE](#)

MALAYSIA BUILDING SOCIETY BERHAD (9417-K)

[READ MORE](#)

The Board of Directors of **MBSB Berhad (MBSB)** is pleased to announce that a Single-Tier Interim Cash Dividend of 1.80 sen per share has been declared for the financial year ended 31 December 2024 to be payable on 27 March 2025 to shareholders whose names appear in the Records of Depositors at the closure of business on 17 March 2025.



On behalf of the Board of **NextGreen Global Berhad (NGGB)**, TA Securities wishes to announce that the Company had on even date submitted an application

to seek Bursa Securities' approval for an extension of time up to 21 September 2025 for the Company to implement and complete the Private Placement.

[READ MORE](#)

The Board of Directors of **Southern Score Builders Berhad (SSB8)** wishes to

inform that the Nomination and Remuneration Committee has been separated to two distinct Board Committees, namely, the Nomination Committee and Remuneration Committee, with effect from 5 March 2025.

[READ MORE](#)

**TAN CHONG MOTOR
HOLDINGS BERHAD**
(12969-P)

The Board of Directors of **Tan Chong Motor Holdings Berhad (TCHONG)** wishes to inform that the Company will seek shareholders' approval on the following proposals at the forthcoming 53rd Annual General Meeting of the Company.

[READ MORE](#)

On behalf of the Board of Directors of **Technodex Bhd (TDEX)**, Mercury Securities Sdn Bhd wishes to announce that Bursa Securities had,

vide its letter dated 5 March 2025, approved TDEX's application for second extension of time of another 6 months up to 28 August 2025 to complete the implementation of the Private Placement.

[READ MORE](#)



UEM Sunrise Berhad (UEMS) is pleased to announce the successful completion of its issuance of Islamic Medium-Term Notes totalling RM300.0 million in nominal value under its existing IMTN Programme.

The New IMTNs were issued in three tranches. This comprised RM100.0 million with a tenure of six years maturing on 4 March 2031, RM100.0 million with a tenure of seven years maturing on 4 March 2032, and RM100.0 million with a tenure of ten years maturing on 2 March 2035.

READ MORE



YNH PROPERTY BHD

The Board of Directors of **YNH Property Berhad (YNHPROP)** is pleased to announce that the Company has successfully redeemed

the Sukuk Wakalah Series 1, with a nominal value of RM153.0 million, from its Sukuk Wakalah Programme on 28 February 2025.

READ MORE

Disclaimer: The information in the Investor Relations page is extracted from individual companies' announcements in www.bursamalaysia.com. The information on this page is provided as a service to readers. We assume no liability for damages resulting from or arising out of the use of such information. Whilst every effort is made to ensure accuracy, the information presented has been simplified for your reading pleasure. Readers are advised to read the original and complete filings on the Bursa Malaysia website at https://www.bursamalaysia.com/market_information/announcements/company_announcement

Upcoming IPO					
NAME OF COMPANY	OFFER PERIOD		ISSUE PRICE (Per Ordinary Share)	LISTING SOUGHT	DATE OF LISTING
	OPENING	CLOSING			
SALIRAN GROUP BERHAD	19 Feb 2025	28 Feb 2025	RM0.27	ACE MARKET	13 Mar 2025
LIM SEONG HAI CAPITAL BERHAD	28 Feb 2025	6 Mar 2025	RM0.88	ACE MARKET	21 Mar 2025
WAWASAN DENGKIL HOLDINGS BERHAD	28 Feb 2025	11 Mar 2025	RM0.25	ACE MARKET	25 Mar 2025
CHEMLITE INNOVATION BERHAD	5 Mar 2025	12 Mar 2025	RM0.25	ACE MARKET	26 Mar 2025