

Invest

ISSUE
240

A Weekly e-Publication by SHAREINVESTOR

FRIDAY
24 JANUARY 2025

Scan/Click QR to Register



Via email, every Friday

新春快樂

Happy
**CHINESE
NEW YEAR
2025**

Gong Xi Fa Cai

From all of us at

SHAREINVESTOR®
An AlphaInvest Company

Invest

A Weekly e-Publication by SHAREINVESTOR

ISSUE
240
FRIDAY
24 JANUARY 2025

Scan/Click QR to Register



Via email, every Friday

MARKET SENTIMENTS

BNM MAINTAINS OPR AT 3% on page 28

Govt committed to enabling
policies to drive growth in
key industries for 13MP
— Rafizi on page 30

ALSO

COMPANY SPOTLIGHT

Malayan
Banking Berhad

See more on page 06

BEHIND THE TICKER:
DECODING COMPANY FUNDAMENTALS

18 JANUARY 2025 Invest 120


Daniel Cheong Chien
Founder (2011) Berhad
Next Fund for Growth

Has been associated with the investment group for many years, including the past 10 years, as a Managing Director, Senior Advisor, and Investment Consultant at Fitch.

Before that, he was with Fitch Management Consulting for a decade where he was the Director of Studies for the Corporate Finance Programme in Malaysia.

Graduated from the Royal Military College, Canada. He has an engineering degree from the University of Toronto, and a MBA from the University of Waterloo, ON.

Is there an investment opportunity in XYLEM

SUMMARY

- Xylem Inc.'s (NYSE: XYL) growth came from organic efforts and acquisitions. While revenue grew at a 7.7% CAGR over the past 7 years, profitability metrics declined.
- But Xylem is financially sound, with a strong cash position, manageable debt levels, and excellent cash flow generation. It is a cash cow.

Disclaimer: This article is written for informational purposes only. It does not constitute a recommendation, offer, advice, or any other financial product. It is not intended to be used as a basis for investment decisions. The author assumes no responsibility for any loss or damage caused by the use of the information provided. The author is not a financial advisor and the information provided is not intended to be used as a basis for investment decisions. The author is not a financial advisor and the information provided is not intended to be used as a basis for investment decisions.

See more on pages 20-26

Invest will take a break next Friday Jan 31st due to the CNY Holidays. We will be back on Friday Feb 7th, 2025.

04 LEADERBOARD

05 SHARIAH HOT STOCKS

08 SHARIAH MOMENTUM UP STOCKS

10 NON SHARIAH HOT STOCKS

12 UP TRENDING STOCKS

13 VALUE STOCKS

14 GROWTH STOCKS

16 DIVIDEND STOCKS

17 BROKERS' CALL

18 LONG COMPANIES

33 REGIONAL MARKETS

34 INSIDER ACTIVITY

38 INVESTOR RELATIONS

SHAREINVESTOR®

An AlphaInvest Company

Invest with Knowledge

INVESTOR PLATFORMS

Director

Darren Chong
darren.chong@shareinvestor.com

Business Development Manager

Jay Cheong
jay.cheong@shareinvestor.com

ADMIN & OPERATIONS

Senior Executive

Watie Nordin
watie.nordin@shareinvestor.com

Executive

Silas Emmanuel Joseph
silas.joseph@shareinvestor.com

PROCESS AUTOMATION & DATA ANALYTICS

Data Analyst

Tan Yong Sheng

INVESTOR RELATIONS

Group Managing Director & Publisher

Edward Stanislaus
edward@shareinvestor.com

Senior Manager

Letticia Wong
letticia.wong@shareinvestor.com

Manager

Aida Norzeti Talib
aida.norzeti@shareinvestor.com

Inve\$t WEEKLY

Senior Manager

Advertising Sales & Marketing

Tang Kooi Ching
kooiching.tang@shareinvestor.com
+6016- 403 2789

ALPHA INVEST HOLDINGS BOARD OF DIRECTORS

Chairman	Patrick Daniel
Group CEO	Christopher Lee
Group COO	Lim Dau Hee
Group MD	Shanison Lin



ShareInvestor Malaysia Sdn. Bhd.

(200001023956) (526564-M)

L15-03 & 03A, PJX HM Shah Tower,
No 16A, Jalan Persiaran Barat, PJS 52,
46200 Petaling Jaya, Selangor

Hotline : 603 8681 0580

Mobile : 011 6343 8939

Website : www.ShareInvestor.com.my

www.alphainvestholdings.com

www.facebook.com/ShareInvestorMalaysia

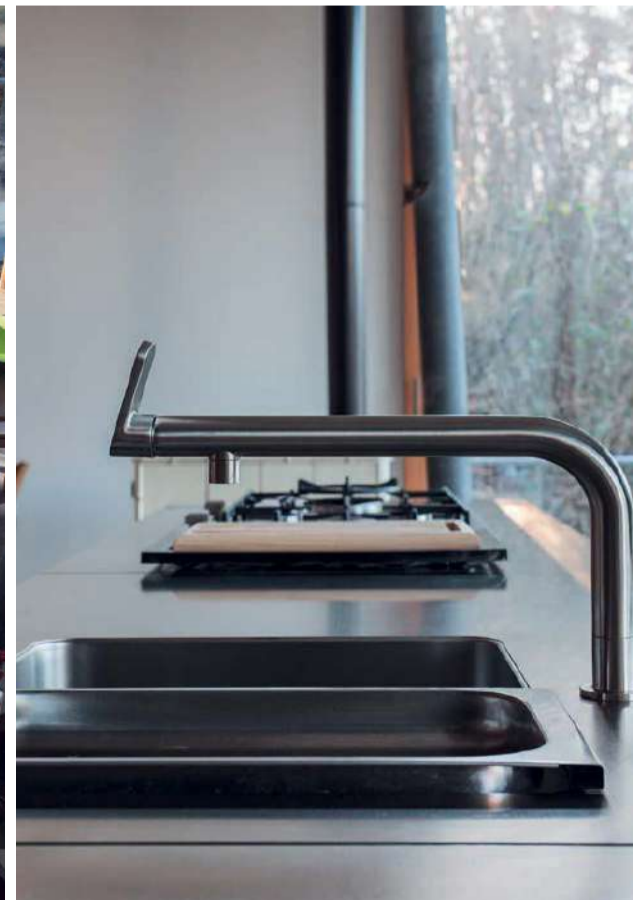
ADVERTISEMENT ENQUIRY

bulthaup takes care of the details so that you can enjoy a harmonious environment.



XTRA

XTRA FURNITURE SDN BHD
The Gardens Mall, Mid Valley City
xtrafurniture.com/bulthaup
fb.com/bulthaupmalaysia



bulthaup

SHAREINVESTOR®
An AlphaInvest Company

HAPPY CHINESE NEW YEAR

Enjoy
20% OFF

PROMOTION PERIOD:
15 – 31 Jan 2025

Coupon Code: ANGPAO2025

**SUBSCRIBE
NOW!**

**T&C Apply*

www.shareinvestor.com - market data at your fingertips



ShareInvestor WebPro (www.shareinvestor.com/my)
Prices > Stock Prices > Bursa > click Stocks tab

1. mouse over Ranking > select Top Active > all Shariah stocks are denoted with an [S] > mouse over Column Layout > select Edit Customs > select Name > select Volume > select Last Done Price > Mouse Over Column Layout > select Custom

2. mouse over Ranking > select Top Turnover > all Shariah stocks are denoted with an [S] > mouse over Column Layout > select Edit Customs > select Name > select Last Done Price > select Value > Mouse Over Column Layout > select Custom
3. mouse over Ranking > select Top Gainers (Over 5 Trading Days) > mouse over Column Layout > select Edit Customs > select Name > select Last Done Price > select 5 Days Change > select 5 Days % Change > Mouse Over Column Layout > select Custom

4. mouse over Ranking > select Top Losers (Over 5 Trading Days)

5. mouse over Ranking > select Top % Gainers (Over 5 Trading Days)

6. mouse over Ranking > select Top % Losers (Over 5 Trading Days)

Shariah Top Actives (as at Yesterday)

Name	Price (RM)	Volume
CBHB [S]	0.370	640,184.000
SET [S]	0.365	331,298.000
PUC [S]	0.045	302,924.000
GAMUDA [S]	4.290	281,023.000
PERTAMA [S]	0.180	236,996.000
MAHSING [S]	1.470	235,197.000
SIMEPROP [S]	1.510	205,370.000
VELESTO [S]	0.190	201,360.000
RL [S]	0.355	183,059.000
KAB [S]	0.335	172,239.000

Shariah Top Turnover (as at Yesterday)

Name	Price (RM)	Value (RM)
TENAGA [S]	13.800	147,583,218
GAMUDA [S]	4.290	120,447,900
SUNWAY [S]	4.540	46,700,330
MAHSING [S]	1.470	35,786,743
TANCO [S]	2.130	35,452,217
INARI [S]	2.620	34,192,884
SIMEPROP [S]	1.510	31,313,995
TM [S]	6.500	30,847,143
NATGATE [S]	2.200	28,582,622
PMETAL [S]	4.990	27,709,384

Top Gainers (over 5 Trading days as at Yesterday)

Name	Price (RM)	Change (RM)
DLADY	31.780	+0.780
TENAGA	13.800	+0.680
MPI	23.400	+0.660
GCB	4.360	+0.510
SUNWAY	4.540	+0.440
UTDPLT	30.920	+0.420
HLIND	13.320	+0.340
HEIM	24.780	+0.280
KSENG	5.780	+0.280
ABMB	5.230	+0.270

Top % Gainers (over 5 Trading days as at Yesterday)

Name	Price (RM)	Change (%)
BORNOIL	0.010	+100.00
KGROUP	0.010	+100.00
SCBUILD	0.010	+100.00
KPSCB	0.550	+23.60
PICORP	0.055	+22.22
AWC	1.080	+18.68
GENETEC	1.550	+17.42
CABNET	0.445	+17.11
VTC	0.480	+17.07
ALAM	0.035	+16.67

Top Losers (over 5 Trading days as at Yesterday)

Name	Price (RM)	Change (RM)
NESTLE	91.000	-1.480
ALLIANZ	18.900	-1.100
PIE	5.080	-0.680
KLK	20.140	-0.460
PETGAS	17.080	-0.360
YINSON	2.400	-0.240
MCEMENT	4.610	-0.180
MBMR	5.880	-0.160
NSOP	3.820	-0.160
AYER	6.950	-0.150

Top % Losers (over 5 Trading days as at Yesterday)

Name	Price (RM)	Change (%)
SNTORIA	0.010	-33.33
SALUTE	0.285	-32.14
MTRONIC	0.015	-25.00
SMTRACK	0.015	-25.00
XDL	0.015	-25.00
RPLANET	0.220	-21.43
MERIDIAN	0.060	-20.00
TALAMT	0.020	-20.00
ANNUM	0.050	-16.67
NETX	0.075	-16.67

Disclaimer: The information on this page is provided as a service to readers. It does not constitute financial advice and/or any investment recommendations. Past performance is not indicative of future results. We assume no liability for damages resulting from or arising out of the use of such information. It would be best if you did your own research to make your personal investment decisions wisely or consult a licenced investment advisor.

Price & Volume Distribution Charts (as at Yesterday)

Technical Analysis

DEFINITION: Shariah compliant stocks with Technical Analysis showing 5-days & 10-days Moving Average Price below Yesterday's Close over past 3 days and with Volume Spike.

CHART GUIDE: Volume Distribution Chart is a statistical interpretation of the current sentiment on each stock in graphical format. The highest bar categorized as >150k is likely to be traded by institutions or super dealers, while the lowest bar categorized as <15k usually represents retail investors. "Buy Up" refers to more buyers snatching up the lots queued at selling price. "Sell Down" refers to sellers selling their shares to the buying queue



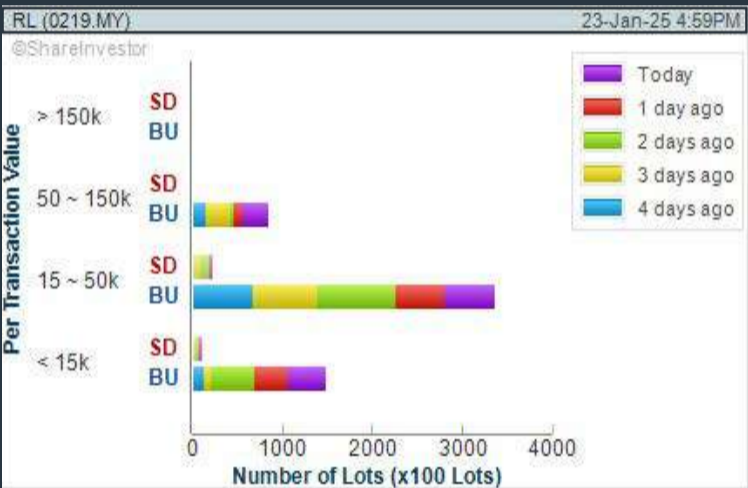
ShareInvestor WebPro > Screener > Market Screener (FA & TA)>select BURSA>add criteria
A. Criteria
> click Add Criteria
• Technical Analysis Conditions tab select (i) Moving Average Below Close (ii) Volume Spike
• Fundamental Analysis Conditions tab >select (iii) Revenue
• Prices & Other Conditions tab > select (iv) Is Shariah Compliant
• Technical Analysis Conditions tab select (v) Moving Average Below Close
• Prices & Other Conditions tab > select (vi) Last Done Price
• Technical Analysis Conditions tab select (vii) Moving Average Below Close

B. Conditions (Criteria Filters)
1. Moving Average Below Close - select (MA) type (5) below close price for type (3) days
2. Volume Spike – Volume type (1) greater than type (5) days average
3. Revenue ("000) - select (more than) type (1) for the past select (1) financial year(s)
4. Is Shariah Compliant – select **Yes**
5. Moving Average Below Close - select (MA) type (10) below close price for type (3) days
6. Last Done Price - select (more than) type (0.3)
7. Moving Average Below Close - select (EMA) type (5) below close price for type (3) days

> click Save Template > Create New Template type (Shariah Hot Stocks) > click Create
> click Save Template as > select Shariah Hot Stocks > click Save
> click Screen Now (may take a few minutes)
> Sort By: Select (Vol) Select (Desc)
> Mouse over stock name > Charts > click C² Charts or Volume Distribution

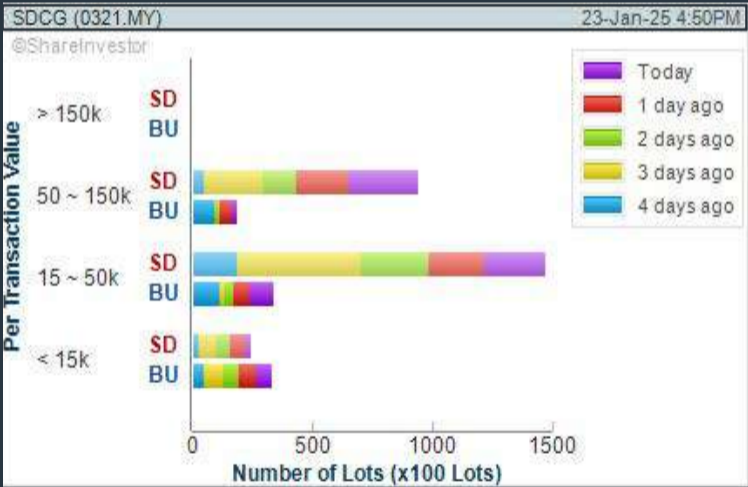
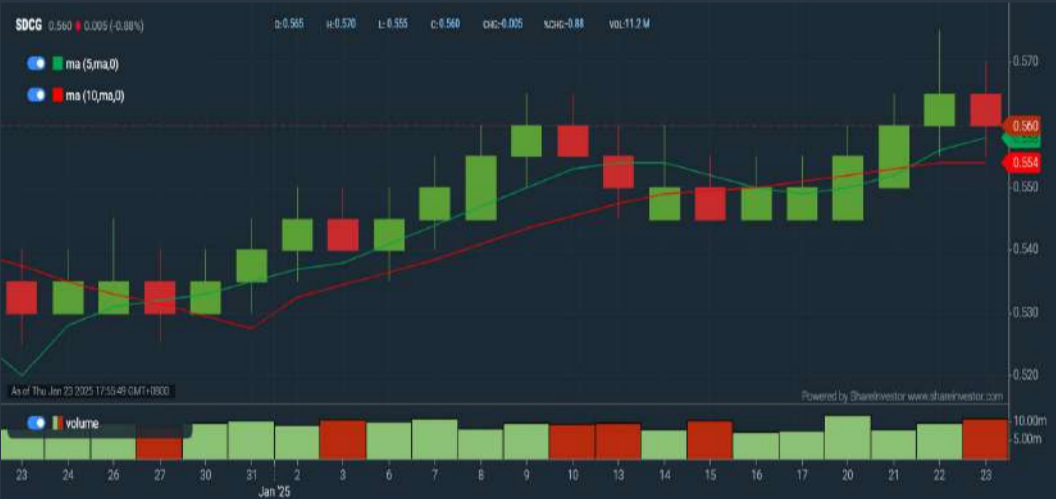
RESERVOIR LINK ENERGY BERHAD (0219)
C² Chart

Analysis



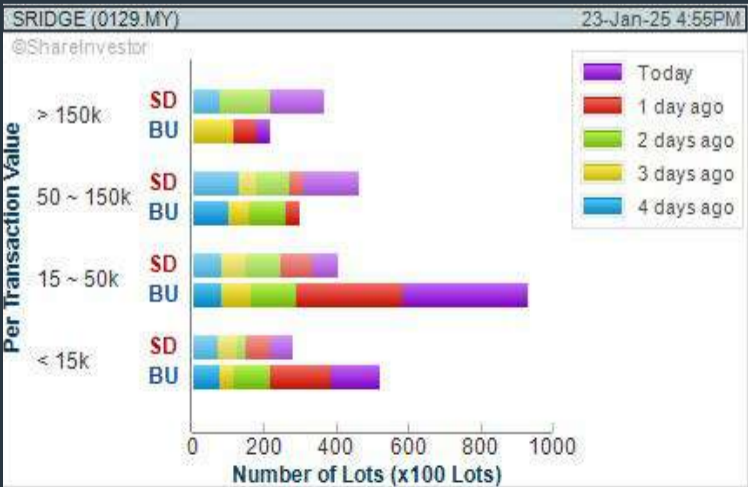
SOLAR DISTRICT COOLING GROUP BERHAD (0321)
C² Chart

Analysis



SILVER RIDGE HOLDINGS BERHAD (0129)
C² Chart

Analysis



Disclaimer: The information on this page is provided as a service to readers. It does not constitute financial advice and/or any investment recommendations. Past performance is not indicative of future results. We assume no liability for damages resulting from or arising out of the use of such information. It would be best if you did your own research to make your personal investment decisions wisely or consult a licenced investment advisor.

COMPANY BACKGROUND

Malayan Banking Berhad is the holding company and listed entity for Maybank Group. The Group, through its subsidiaries, offers an extensive range of products and services, which includes consumer and corporate banking, investment banking including stockbroking, Islamic banking, insurance and takaful, trustee and nominee services and asset management.



Analysis

MAYBANK MALAYAN BANKING BHD				Updated at: 23 Jan 2025 17:31
Last (MYR): 10.360	Change: -	High: 10.380	Remarks: s ?	
	Change (%): -	Low: 10.280		
Open	10.360	Yesterday's Close	10.360	
Buy Price	10.300	Sell Price	10.380	
Buy Volume ('00)	514	Sell Volume ('00)	149	
Cumulative Volume ('00)	96,978	Cumulative Value	100,239,052	

Financial Analysis

Profit Growth Increasing profit in last 3 consecutive years (with at least 4 profitable years)		Piotroski F Score The company has above average financial strength (Piotroski F-Score of 6-7)	
Dividend Payout Dividend is increasing over the past 60 months.		Current Ratio The company may have difficulty meeting short-term obligations with its current assets for 3 consecutive years	
Debt to Cashflow High debt to cash flow for most recent year		Debt to Equity High debt to equity for most recent year	
Net Earnings Margin High net profit margin of at least 20% for most recent year but trailing 12 months margin is below 20%			

Excellent Good Neutral Be Alert Watch Out



Historical Financials

Profit & Loss (MYR '000)

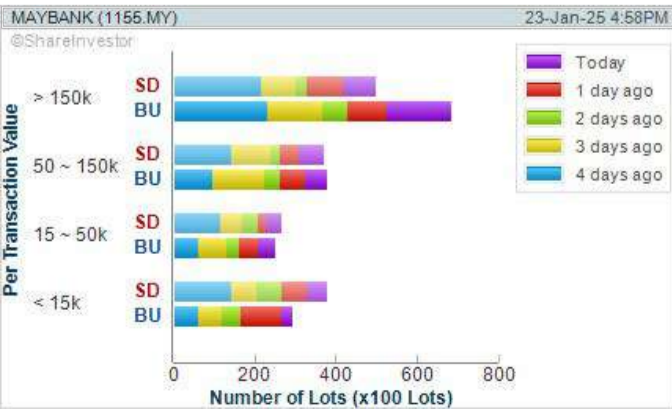


WebPro 9-Days Free Trial Registration (worth RM10) Sign Up Now



Key Statistics with Total Shareholder Returns

Period	Dividend Received	Capital Appreciation	Total Shareholder Return
Short Term Return	5 Days	+0.220	+2.17 %
	10 Days	+0.300	+2.98 %
	20 Days	+0.280	+2.78 %
Medium Term Return	3 Months	-0.260	-2.46 %
	6 Months	+0.240	+2.37 %
	1 Year	+1.260	+13.85 %
Long Term Return	2 Years	+1.550	+17.59 %
	3 Years	+2.060	+24.82 %
	5 Years	0.910	+33.37 %
Annualised Return	Annualised	-	+5.93 %



Disclaimer: The information on this page is provided as a service to readers. It does not constitute financial advice and/or any investment recommendations. Past performance is not indicative of future results. We assume no liability for damages resulting from or arising out of the use of such information. It would be best if you did your own research to make your personal investment decisions wisely or consult a licenced investment advisor.

Stressless®
Cinema Blanket

Stressless

Lean back..

your body and mind will thank you



CELEBRATION OF CINEMATOGGRAPHY


XTRA
The Gardens Mall

Price & Volume Distribution Charts (as at Yesterday)

Technical Analysis

DEFINITION: Shariah compliant stocks with Technical Analysis showing Bullish Momentum and Price Uptrend. The share price closed at the highest price yesterday. The typical price was higher than the previous day's typical price.

CHART GUIDE: Volume Distribution Chart is a statistical interpretation of the current sentiment on each stock in graphical format. The highest bar categorized as >150k is likely to be traded by institutions or super dealers, while the lowest bar categorized as <15k usually represents retail investors. "Buy Up" refers to more buyers snatching up the lots queued at selling price. "Sell Down" refers to sellers selling their shares to the buying queue.



ShareInvestor WebPro > Screener > Market Screener (FA & TA)>select BURSA>add criteria

A. Criteria

> click Add Criteria

- Fundamental Analysis Conditions tab >select (i) Revenue
- Technical Analysis Conditions tab select (ii) Average Volume
- Prices & Other Conditions tab > select (iii) Last Done Price
- Prices & Other Conditions tab > select (iv) Is Shariah Compliant
- Technical Analysis Conditions tab select (v) RSI Overbought
- Technical Analysis Conditions tab select (vi) Moving Average Below Close
- Technical Analysis Conditions tab select (vii) CCI Overbought

B. Conditions (Criteria Filters)

1. Revenue (*000) - select (more than) type (1) for the past select (1) financial year(s)
2. Average Volume - type (1) days average volume greater than type (10000) lots
3. Last Done Price - select (more than) type (0.3)
4. Is Shariah Compliant - select Yes
5. RSI Overbought - select RSI 1 above 99 for 1 days
6. Moving Average Below Close - select (MA) type (10) below close price for type (1) days
7. CCI Overbought - select CCI (2) above (0) for (1) days

> click Save Template > Create New Template type (Shariah Momentum Up Stocks) > click Create

> click Save Template as > select Shariah Momentum Up Stocks > click Save

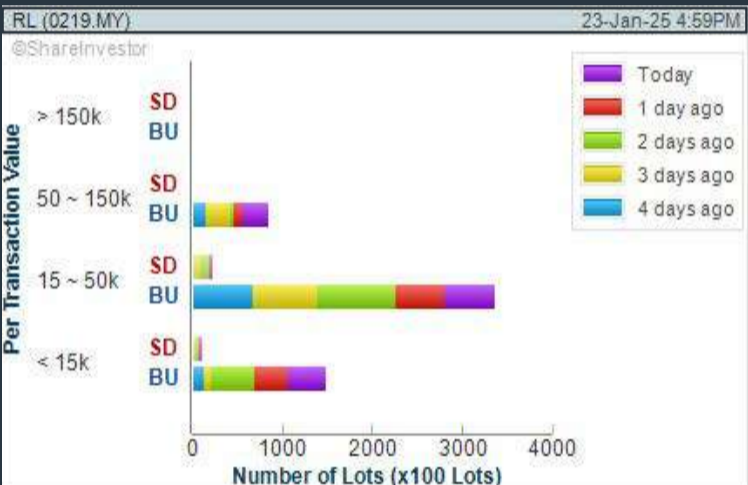
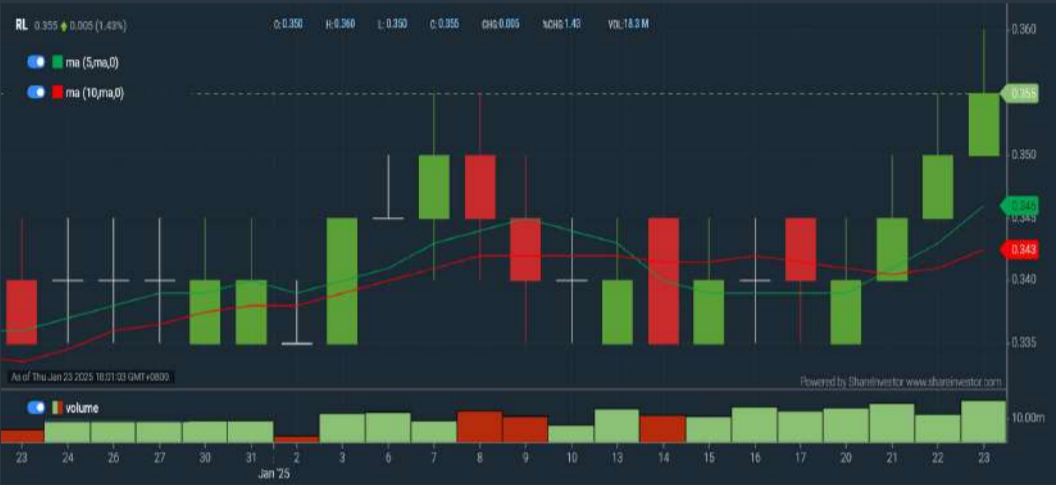
> click Screen Now (may take a few minutes)

Sort By: Select (Vol) Select (Desc)

Mouse over stock name > Charts > click C² Charts tab or Volume Distribution

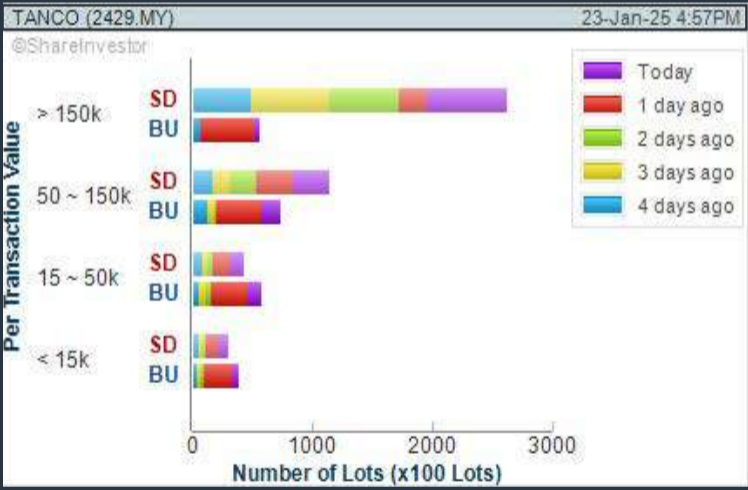
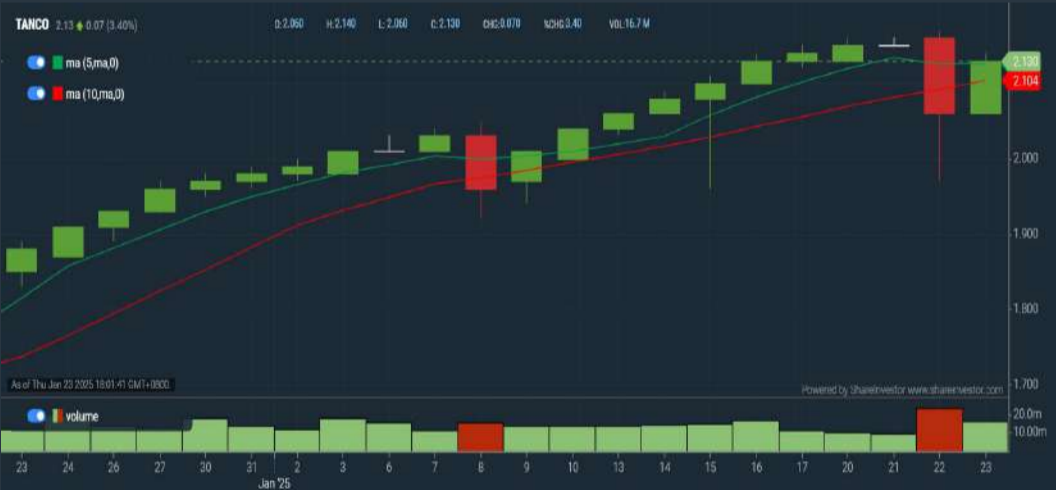
RESERVOIR LINK ENERGY BERHAD (0219)

C² Chart



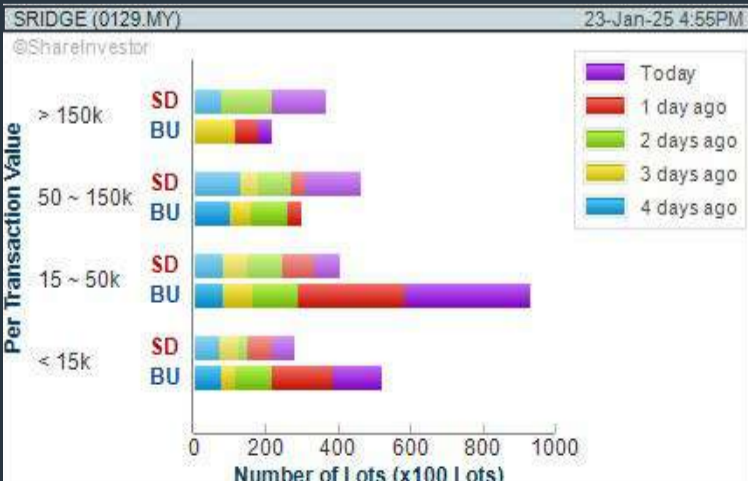
TANCO HOLDINGS BERHAD (2429)

C² Chart



SILVER RIDGE HOLDINGS BERHAD (0129)

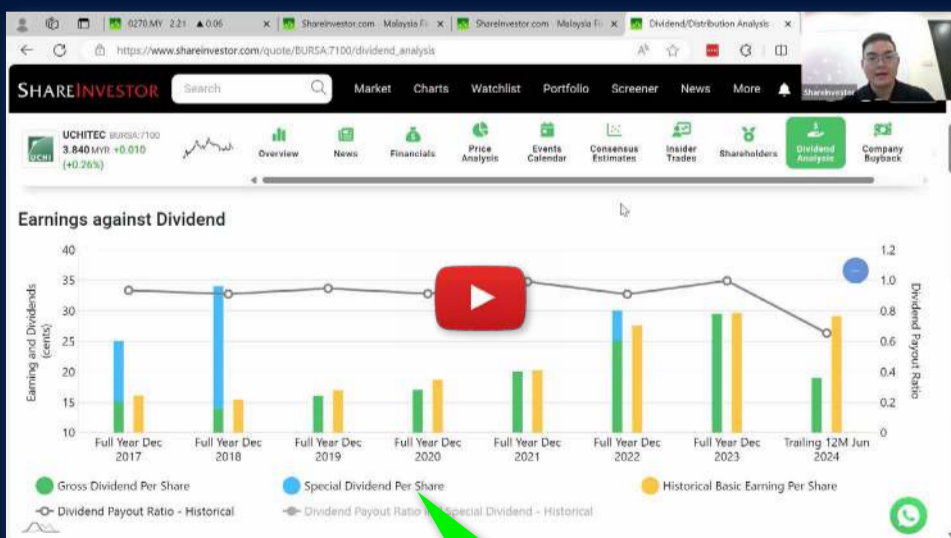
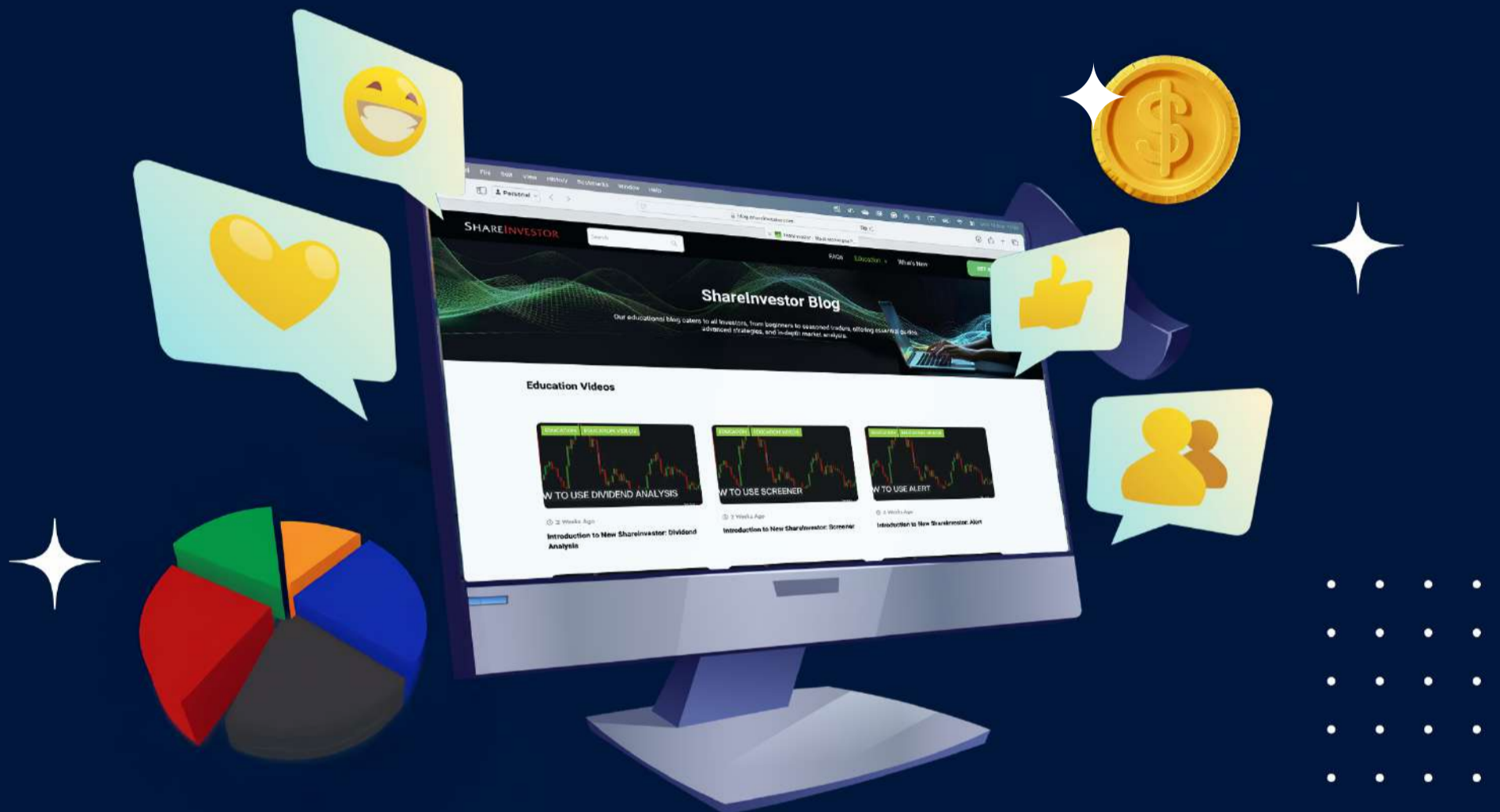
C² Chart



Disclaimer: The information on this page is provided as a service to readers. It does not constitute financial advice and/or any investment recommendations. Past performance is not indicative of future results. We assume no liability for damages resulting from or arising out of the use of such information. It would be best if you did your own research to make your personal investment decisions wisely or consult a licenced investment advisor.

SHAREINVESTOR®
An AlphaInvest Company

Ultimate Guide to use **ShareInvestor**



**Watch
now!**

YOU WILL LEARN HOW TO USE:

- Company Financials
 - Market Screener
 - Company Insider Trades
 - Dividend Analysis
 - Consensus Estimation
- and more...**

Price & Volume Distribution Charts (as at Yesterday)

Technical Analysis

DEFINITION: Stocks with Technical Analysis showing 5-days & 10-days Moving Average Price below Close over past 1 days and with Volume Spike

CHART GUIDE: Volume Distribution Chart is a statistical interpretation of the current sentiment on each stock in graphical format. The highest bar categorized as >150k is likely to be traded by institutions or super dealers, while the lowest bar categorized as <15k usually represents retail investors. "Buy Up" refers to more buyers snatching up the lots queued at selling price. "Sell Down" refers to sellers selling their shares to the buying queue.



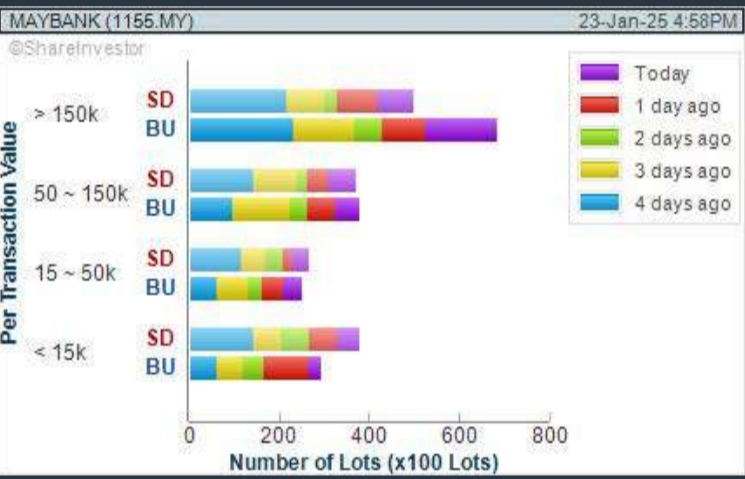
- ShareInvestor WebPro > Screener > Market Screener (FA & TA) > select BURSA > add criteria
- A. Criteria**
- > click Add Criteria
 - Technical Analysis Conditions tab select (i) Moving Average Below Close (ii) Volume Spike
 - Fundamental Analysis Conditions tab >select (iii) Revenue
 - Prices & Other Conditions tab > select (iv) Is Shariah Compliant
 - Technical Analysis Conditions tab select (v) Moving Average Below Close
 - Prices & Other Conditions tab > select (vi) Last Done Price
 - Technical Analysis Conditions tab select (vii) Moving Average Below Close

- B. Conditions (Criteria Filters)**
1. Moving Average Below Close - select (MA) type (5) below close price for type (3) days
 2. Volume Spike - Volume type (1) greater than type (5) days average
 3. Revenue ("000) - select (more than) type (1) for the past select (1) financial year(s)
 4. Is Shariah Compliant - select NO
 5. Moving Average Below Close - select (MA) type (10) below close price for type (1) days
 6. Last Done Price - select (more than) type (0.3)
 7. Moving Average Below Close - select (EMA) type (5) below close price for type (1) days

- > click Save Template > Create New Template type (Non-Shariah Hot Stocks) > click Create
 - > click Save Template as > select Non-Shariah Hot Stocks > click Save
 - > click Screen Now (may take a few minutes)
- Sort By: Select (Vol) Select (Desc)
- Mouse over stock name > Charts > click C² Charts tab or Volume Distribution

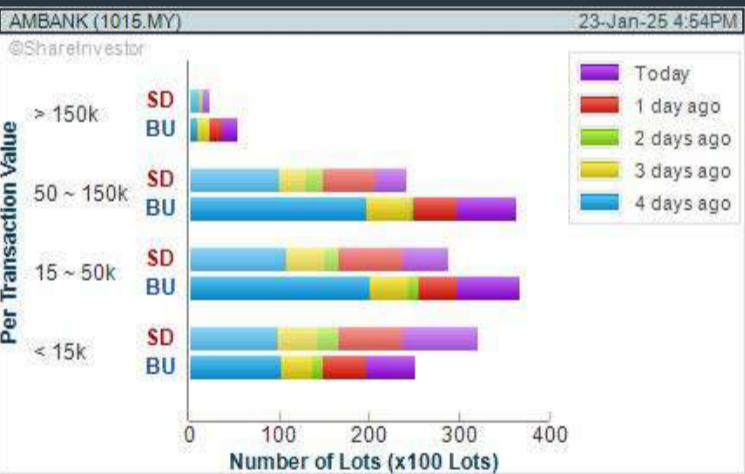
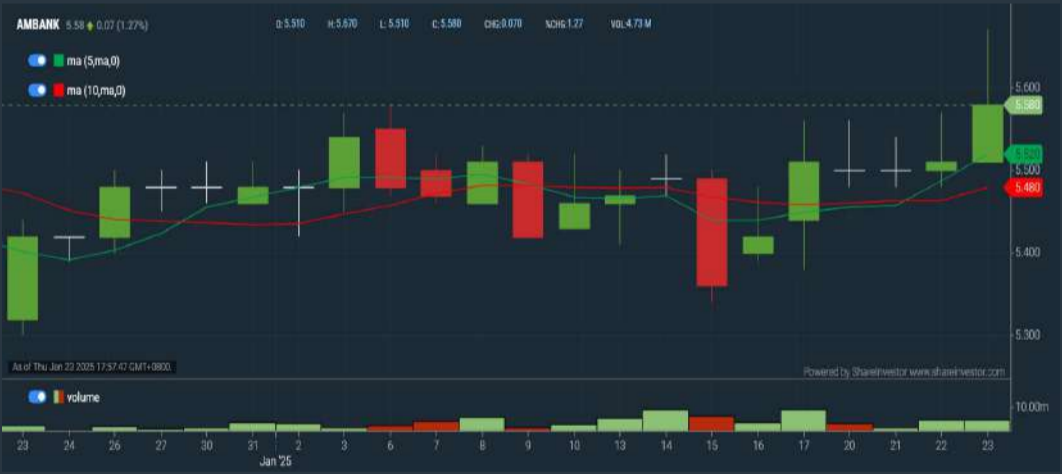
MALAYAN BANKING BERHAD (1155)
C² Chart

Analysis



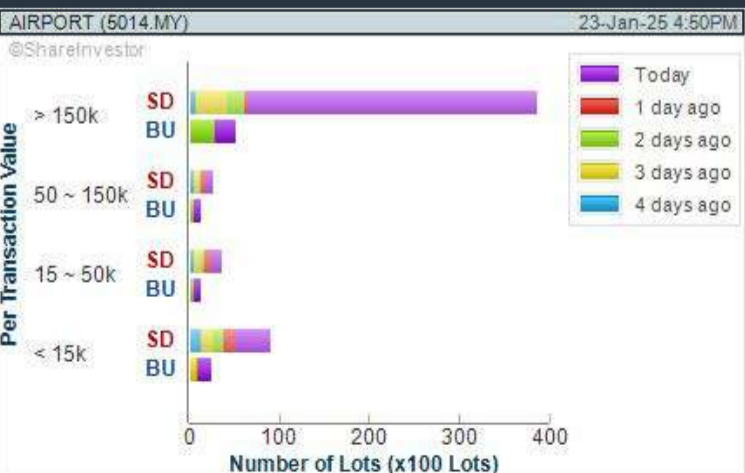
AMMB HOLDINGS BERHAD (1015)
C² Chart

Analysis



MALAYSIA AIRPORTS HOLDINGS BERHAD (5014)
C² Chart

Analysis

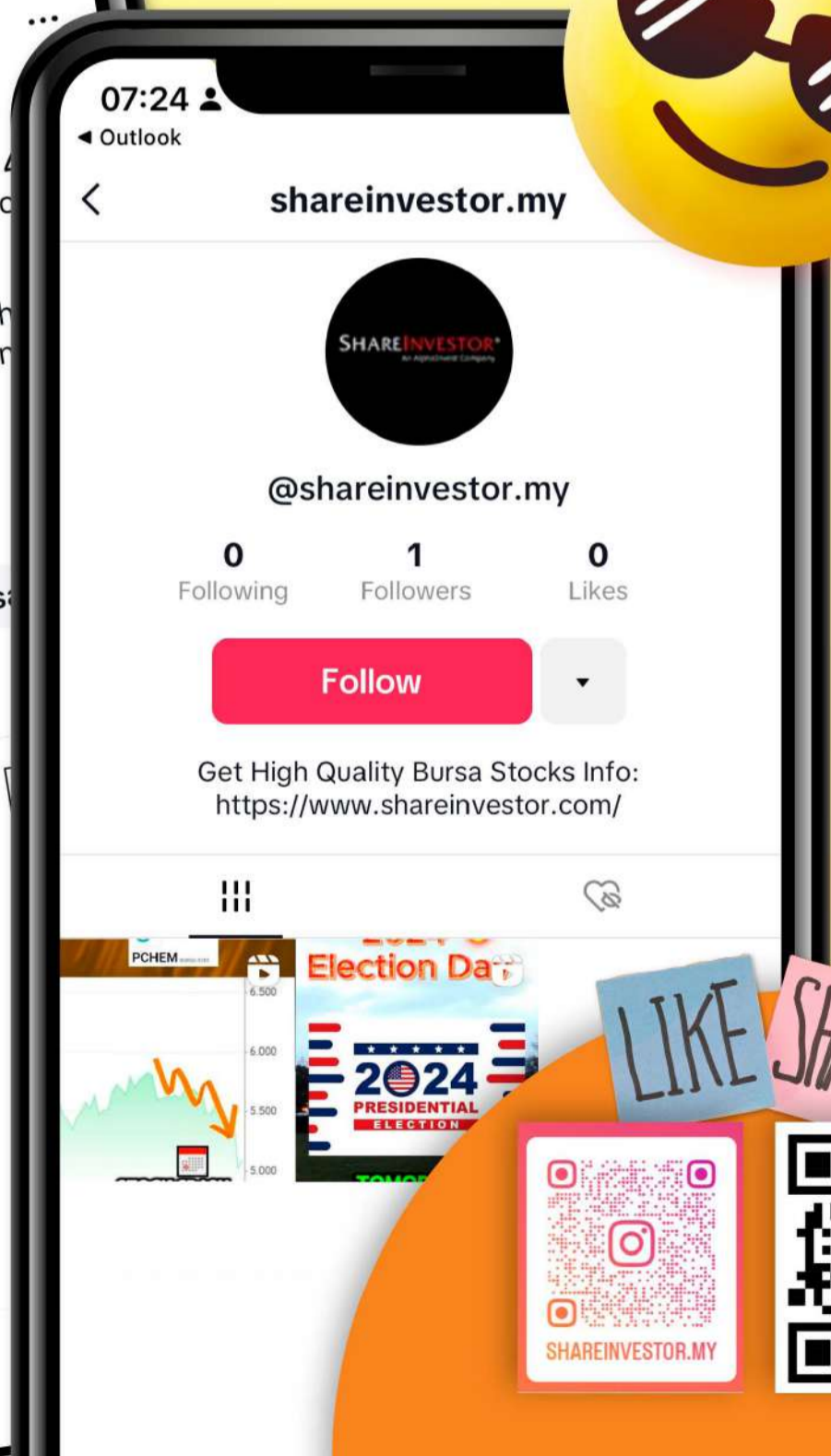
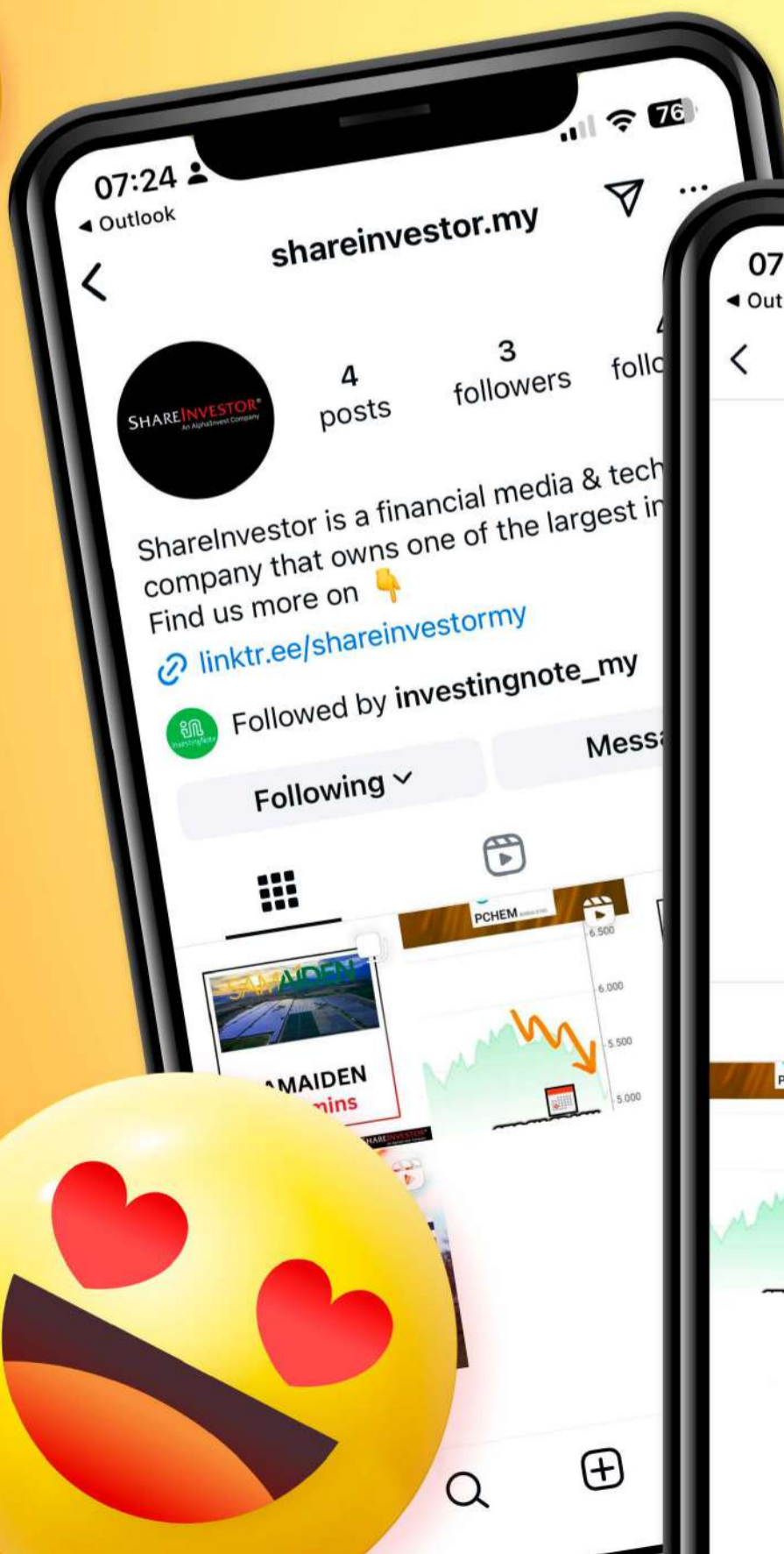


Disclaimer: The information on this page is provided as a service to readers. It does not constitute financial advice and/or any investment recommendations. Past performance is not indicative of future results. We assume no liability for damages resulting from or arising out of the use of such information. It would be best if you did your own research to make your personal investment decisions wisely or consult a licenced investment advisor.

SHAREINVESTOR®
An AlphaInvest Company

We're Officially on TikTok & Instagram!

Follow us now for more information!



Price & Volume Distribution Charts (Over 3 trading days as at Yesterday)

Technical Analysis

DEFINITION: Stocks with Technical Analysis showing Bullish Momentum and Price Uptrend

CHART GUIDE: Volume Distribution Chart is a statistical interpretation of the current sentiment on each stock in graphical format. The highest bar categorized as >150k is likely to be traded by institutions or super dealers, while the lowest bar categorized as <15k usually represents retail investors. "Buy Up" refers to more buyers snatching up the lots queued at selling price. "Sell Down" refers to sellers selling their shares to the buying queue.

SHAREINVESTOR

WEBPRO

step-by-step

GUIDE

ShareInvestor WebPro > Screener > Market Screener (FA & TA) > select BURSA > add criteria

A. Criteria

- > click Add Criteria
- Fundamental Analysis Conditions tab > select (i) Revenue
- Technical Analysis Conditions tab select (ii) Moving Average Below Close
- Technical Analysis Conditions tab select (iii) Average Volume
- Prices & Other Conditions tab > select (iv) Last Done Price
- Technical Analysis Conditions tab select (v) Moving Average Below Close
- Technical Analysis Conditions tab select (v) Moving Average Bullish Crossover

B. Conditions

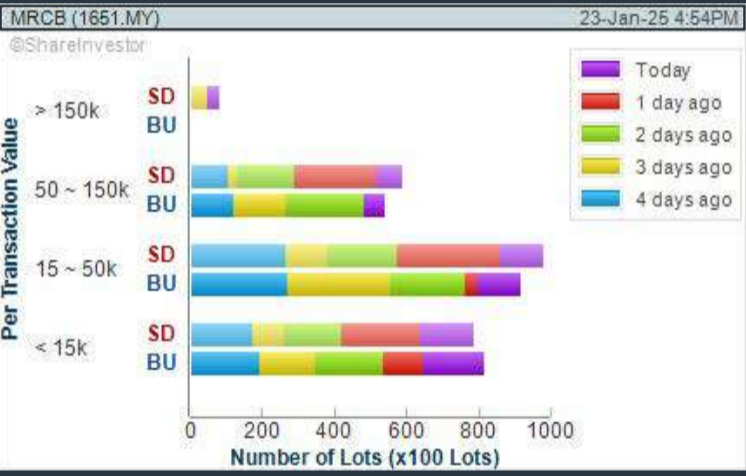
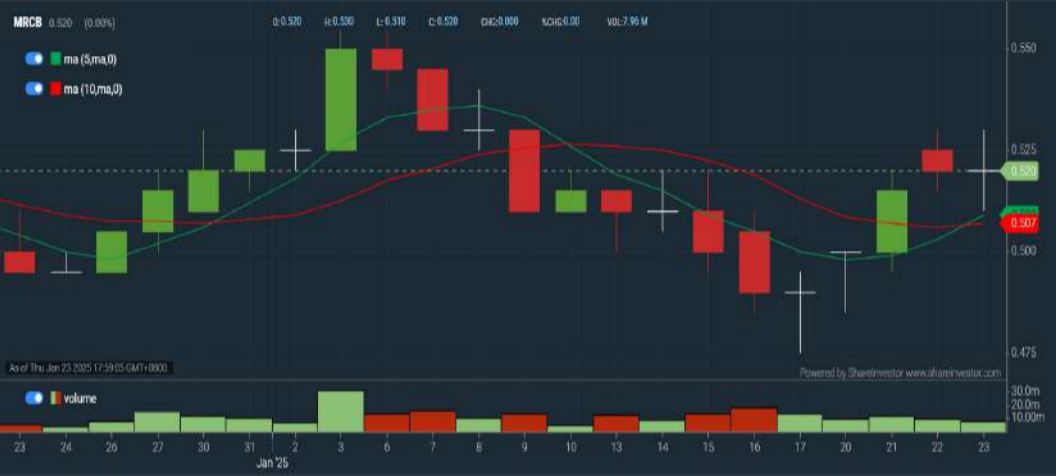
1. Revenue - select (more than) type (1) for the past select (1) financial year(s)
2. Moving Average Below Close - select (MA) type (20) below close price for type (1) days
3. Average Volume - type (5) days average volume type (10000) lots
4. Last Done Price - select (more than) type (0.3)
5. Moving Average Below Close - select (MA) type (10) below close price for type (1) days
6. Moving Average Bullish Crossover - select (MA) type (5) crossed above select (MA) type (10)

> click Save Template > Create New Template type (Non-Shariah Up-Trending Stocks) > click Create Click Save Template As > select Non-Shariah Up Trending Stocks > click Save
> click Screen Now (may take a few minutes)
Sort By: Select (Vol) Select (Desc)
Mouse over stock name > Charts > click C² Charts tab or Volume Distribution

MALAYSIAN RESOURCES CORPORATION BERHAD (1651)

C² Chart

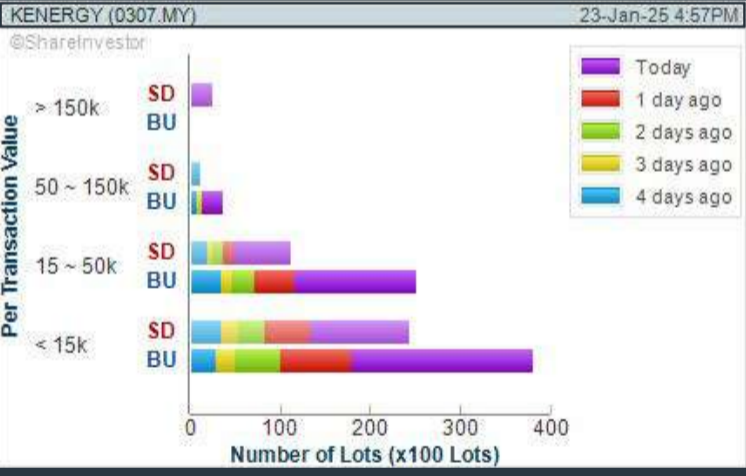
Analysis



KAWAN RENENERGY BERHAD (0307)

C² Chart

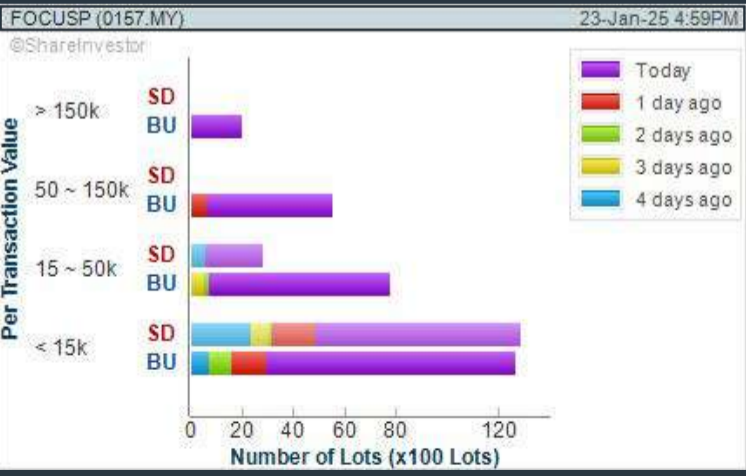
Analysis



FOCUS POINT HOLDINGS BERHAD (0157)

C² Chart

Analysis



Disclaimer: The information on this page is provided as a service to readers. It does not constitute financial advice and/or any investment recommendations. Past performance is not indicative of future results. We assume no liability for damages resulting from or arising out of the use of such information. It would be best if you did your own research to make your personal investment decisions wisely or consult a licenced investment advisor.

Price & Total Shareholder Return (as at Yesterday)

Fundamental Analysis

DEFINITION: Share price of a company trading at a lower price as compared to its fundamentals (FA) such as financial performance and dividend, allowing it to be attractive to value investors.

CHART GUIDE: Total Shareholder Return (TSR) combines share price appreciation and dividend distributions paid to show the total return to the shareholder expressed as a percentage.



ShareInvestor WebPro > Screener > Market Screener (FA & TA) > select BURSA > add criteria

A. Criteria

- > click Add Criteria
- Fundamental Analysis Conditions tab (i) Price Earnings Ratio
- Fundamental Analysis Conditions tab >select (ii) CAGR of Net Earnings
- Fundamental Analysis Conditions tab >select (iii) Net Debt To Equity
- Fundamental Analysis Conditions tab >select (iv) Return On Equity (ROE)

B. Conditions

1. Price Earnings Ratio - select (less than) type (15) times now
2. CAGR of Net Earnings - select (more than) type (10) % for the past type (3) financial year(s)
3. Net Debt To Equity – select (less than) type (1) for the past select (1) financial year(s)
4. Return On Equity (ROE) – select (more than) type (10) % for the past select (1) financial year(s)

- > click Save Template > Create New Template type (Value Stock) > click Create
- > click Save Template as > select Value Companies > click Save
- > click Screen Now (may take a few minutes)
- Sort by: Select (PE Ratio) Select (Ascending)
- > Mouse over stock name > Factsheet > looking for Total Shareholder Return
- > Mouse over stock name > Charts > click C2 Charts tab

LAY HONG BERHAD (9385)

C² Chart

Analysis



Period	Dividend Received	Capital Appreciation	Total Shareholder Return
Short Term Return	5 Days	0.005	+1.47 %
	10 Days	-	-
	20 Days	-0.010	-2.82 %
Medium Term Return	3 Months	-0.035	-9.21 %
	6 Months	-0.035	-9.21 %
	1 Year	0.050	+15.29 %
Long Term Return	2 Years	0.085	+22.89 %
	3 Years	0.100	+28.82 %
	5 Years	0.008	-15.86 %
Annualised Return	Annualised	-	-0.42 %

FAJARBARU BUILDER GRP BERHAD (7047)

C² Chart

Analysis



Period	Received	Appreciation	Total Shareholder Return
Short Term Return	5 Days	-0.015	-4.40 %
	10 Days	-0.015	-4.11 %
	20 Days	-0.005	-1.41 %
Medium Term Return	3 Months	-0.065	-16.86 %
	6 Months	-0.100	-23.96 %
	1 Year	-0.025	-11.11 %
Long Term Return	2 Years	0.050	+29.69 %
	3 Years	0.020	+6.06 %
	5 Years	0.018	+8.04 %
Annualised Return	Annualised	-	+18.94 %

AJINOMOTO (M) BERHAD (2658)

C² Chart

Analysis



Period	Dividend Received	Capital Appreciation	Total Shareholder Return
Short Term Return	5 Days	-0.400	-2.71 %
	10 Days	-0.900	-6.09 %
	20 Days	-0.980	-6.39 %
Medium Term Return	3 Months	0.060	+1.74 %
	6 Months	0.130	+1.20 %
	1 Year	0.661	+4.58 %
Long Term Return	2 Years	+2.500	+20.81 %
	3 Years	+1.622	+14.52 %
	5 Years	0.815	+27.40 %
Annualised Return	Annualised	-	+4.91 %

Disclaimer: The information on this page is provided as a service to readers. It does not constitute financial advice and/or any investment recommendations. Past performance is not indicative of future results. We assume no liability for damages resulting from or arising out of the use of such information. It would be best if you did your own research to make your personal investment decisions wisely or consult a licenced investment advisor.

Price & Total Shareholder Return (as at Yesterday)

Fundamental Analysis

DEFINITION: Company revenue is growing and making good quality of earnings with positive Free Cash Flow.

CHART GUIDE: Total Shareholder Return (TSR) combines share price appreciation and distributions paid to show the total return to the shareholder expressed as a percentage.



ShareInvestor WebPro > Screener > Market Screener (FA & TA) > select BURSA > add criteria
A. Criteria
1. Fundamental Analysis Conditions tab >select (i) Free Cash Flow, (ii) Revenue Growth, (iii) Gross Profit (Earnings) Margin, (iv) Quality of Earnings, (v) Total Shareholder Returns, > click Add Criteria
2. Fundamental Analysis Conditions tab >select (vi) Total Shareholder Returns > click Add Criteria

B. Conditions (Criteria Filters)
1. Free Cash Flow - select (more than) type (1) for the past select (1) financial year(s)
2. Revenue Growth - select (more than) type (1) for the past select (1) financial year(s)
3. Gross Profit (Earnings) Margin - select (more than) type (30) % for the past select (1) financial year(s)
4. Quality of Earnings - select (more than) type (1) for the past select (1) financial year(s)
5. Total Shareholder Return - -- select (more than) type (5) % for the past select (3) financial year(s)
6. Total Shareholder Return - -- select (more than) type (5) % for the past select (5) financial year(s)

> click Save Template > Create New Template type (Growth Companies) > click Create
> click Save Template as > select Growth Companies > click Save
> click Screen Now (may take a few minutes)
> Sort By: Select (Revenue Growth) Select (Desc)
> Mouse over stock name > Factsheet > looking for Total Shareholder Return

CHIN TECK PLANTATIONS BERHAD (1929)
C² Chart

Analysis



CHINTEK (1929.MY)					
Period		Dividend Received	Capital Appreciation	Total Shareholder Return	
Short Term Return	5 Days	-	+0.120		+1.49 %
	10 Days	-	-0.100		-1.26 %
	20 Days	-	+0.250		+3.14 %
Medium Term Return	3 Months	-	+0.515		+6.70 %
	6 Months	-	+0.880		+12.02 %
	1 Year	-	+1.000		+13.50 %
Long Term Return	2 Years	-	+0.257		+2.98 %
	3 Years	-	+1.719		+26.52 %
	5 Years	0.510	+2.010		+40.71 %
Annualised Return	Annualised	-	-		+7.07 %

AUMAS RESOURCES BERHAD (0098)
C² Chart

Analysis



AUMAS (0098.MY)					
Period		Dividend Received	Capital Appreciation	Total Shareholder Return	
Short Term Return	5 Days	-	+0.010		+2.65 %
	10 Days	-	-0.005		-0.64 %
	20 Days	-	-0.060		-7.18 %
Medium Term Return	3 Months	-	-0.045		-5.49 %
	6 Months	-	+0.325		+72.22 %
	1 Year	-	+0.330		+74.16 %
Long Term Return	2 Years	-	+0.460		+145.03 %
	3 Years	-	+0.370		+91.35 %
	5 Years	-	+0.190		+30.25 %
Annualised Return	Annualised	-	-		+5.43 %

MALAYSIA AIRPORTS HOLDINGS BERHAD (5014)
C² Chart

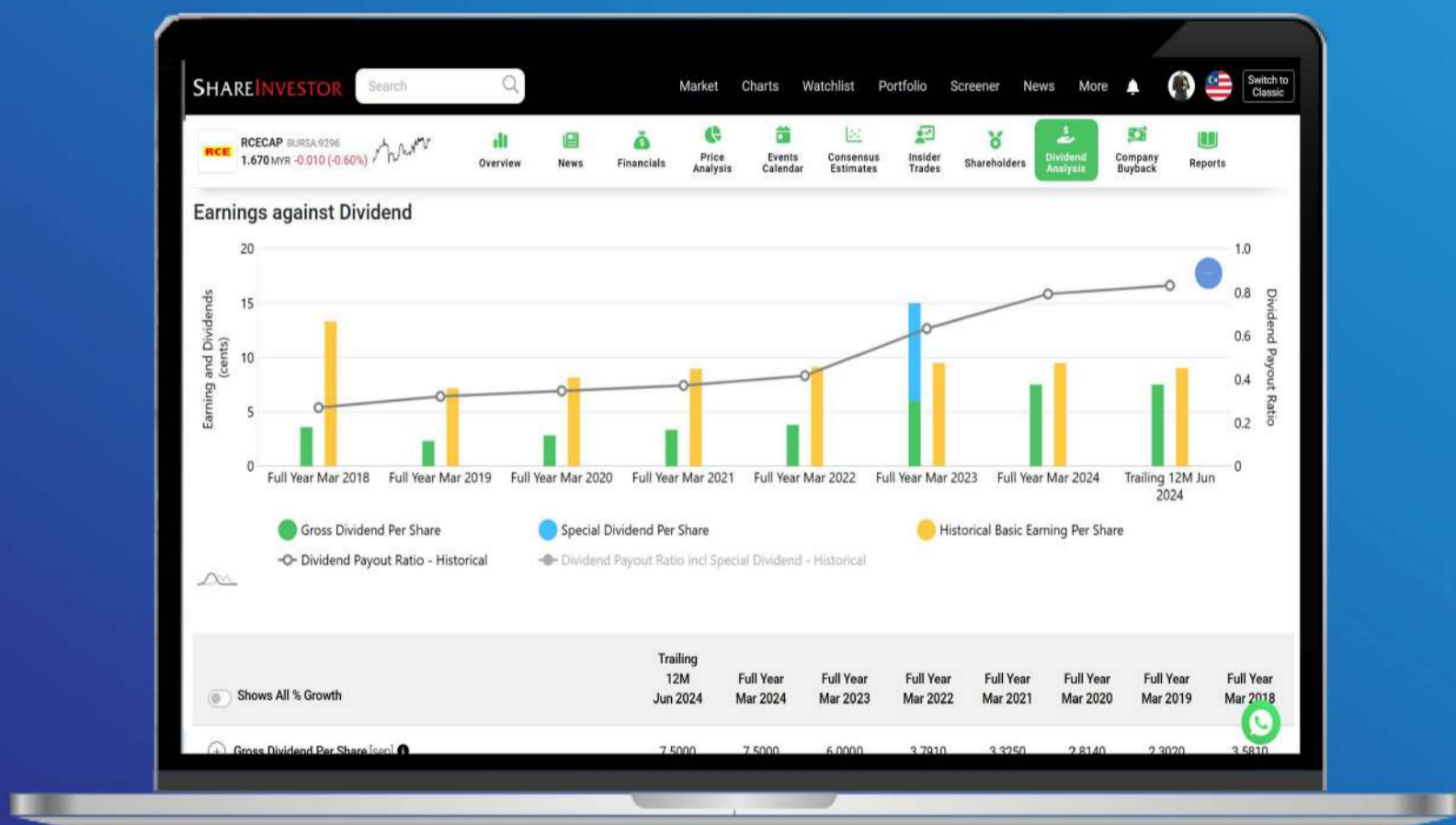
Analysis



AIRPORT (5014.MY)					
Period		Dividend Received	Capital Appreciation	Total Shareholder Return	
Short Term Return	5 Days	-	+0.040		+0.37 %
	10 Days	-	+0.160		+1.48 %
	20 Days	-	+0.500		+4.79 %
Medium Term Return	3 Months	-	+0.720		+7.05 %
	6 Months	-	+1.030		+10.39 %
	1 Year	-	+1.330		+13.76 %
Long Term Return	2 Years	-	+3.780		+52.79 %
	3 Years	-	+5.040		+65.42 %
	5 Years	0.160	+4.260		+65.17 %
Annualised Return	Annualised	-	-		+10.57 %

Disclaimer: The information on this page is provided as a service to readers. It does not constitute financial advice and/or any investment recommendations. Past performance is not indicative of future results. We assume no liability for damages resulting from or arising out of the use of such information. It would be best if you did your own research to make your personal investment decisions wisely or consult a licenced investment advisor.

Tired of low returns? Let's talk high-paying Dividends!



- ✓ **Top Dividend Picks Right Now**
- ✓ **Insider Tips** – Advanced strategies for experienced investors
- ✓ **Easy-to-Follow Tutorial**

Get the most out of dividends, use our Dividend Analysis function –
Click to Watch Our Tutorial Below!

Upgrade Your Dividend Strategy Here



Price & Total Shareholder Return (as at Yesterday)

Fundamental Analysis

DEFINITION: Company is paying out dividend with low or moderate leverage.

CHART GUIDE: Total Shareholder Return (TSR) combines share price appreciation and distributions paid to show the total return to the shareholder expressed as a percentage.



ShareInvestor WebPro > Screener > Market Screener (FA & TA) > select BURSA > add criteria
A. Criteria
> click Add Criteria
• Fundamental Analysis Conditions tab >select (i) Dividend Yield
• Fundamental Analysis Conditions tab >select (ii) Dividend Payout (Historical)
• Fundamental Analysis Conditions tab >select (iii) Total Debt To Equity
• Fundamental Analysis Conditions tab >select (iv) Total Shareholder Returns
• Fundamental Analysis Conditions tab >select (v) Total Shareholder Returns
• Fundamental Analysis Conditions tab / >select (vi) CAGR of Dividend Per Share

• Fundamental Analysis Conditions tab >select (vii) CAGR of Dividend Per Share
B. Conditions (Criteria Filters)
1. Dividend Yield - select (more than) type (1) % for the past select (1) financial year(s)
2. Dividend Payout (Historical) - select (between) type (0.5) to type (1) times for the past select (1) financial year(s)
3. Total Debt to Equity – select (less than) type (1) for the past select (1) financial year(s)
4. Total Shareholder Return – select (more than) type (5) % for the past select (3) financial year(s)
5. Total Shareholder Return – select (more than) type (5) % for the past select (5) financial year(s)

6. CAGR of Dividend Per Share – select (less than) type (30) % for the past select (5) financial year(s)
7. CAGR of Dividend Per Share – select (more than) type (1) % for the past select (5) financial year(s)

> click Save Template > Create New Template type (Dividend Companies) > click Create
> click Save Template as > select Dividend Companies > click Save
> click Screen Now (may take a few minutes)
> Sort By: Select (Dividend Yield) Select (Desc)
> Mouse over stock name > Factsheet > looking for Total Shareholder Return

AMWAY (M) HOLDINGS BERHAD (6351)

C² Chart

Analysis



AMWAY (6351.MY)					
Period		Dividend Received	Capital Appreciation	Total Shareholder Return	
Short Term Return	5 Days	-	+0.130		+1.94 %
	10 Days	-	-0.010		-0.15 %
	20 Days	-	-0.020		-0.29 %
Medium Term Return	3 Months	-	-0.220		-3.12 %
	6 Months	-	-0.170		-2.43 %
	1 Year	-	+0.030		+0.28 %
Long Term Return	2 Years	-	+1.550		+20.36 %
	3 Years	-	+1.520		+28.63 %
	5 Years	0.200	+1.263		+26.28 %
Annualised Return	Annualised	-	-		+4.78 %

HARRISONS HOLDINGS (M) BERHAD (5008)

C² Chart

Analysis



HARISON (5008.MY)					
Period		Dividend Received	Capital Appreciation	Total Shareholder Return	
Short Term Return	5 Days	-	+0.040		+2.70 %
	10 Days	-	+0.020		+1.33 %
	20 Days	-	-0.010		-0.66 %
Medium Term Return	3 Months	-	-0.106		-10.00 %
	6 Months	-	-0.310		-16.94 %
	1 Year	-	-0.146		-8.76 %
Long Term Return	2 Years	-	+0.180		+13.43 %
	3 Years	0.300	+0.550		+60.00 %
	5 Years	0.700	+0.742		+195.36 %
Annualised Return	Annualised	-	-		+23.33 %

PARAMOUNT CORPORATION BERHAD (1724)

C² Chart

Analysis



PARAMON (1724.MY)					
Period		Dividend Received	Capital Appreciation	Total Shareholder Return	
Short Term Return	5 Days	-	+0.040		+3.85 %
	10 Days	-	+0.030		+2.86 %
	20 Days	-	+0.040		+3.85 %
Medium Term Return	3 Months	-	+0.010		+0.93 %
	6 Months	-	-0.040		-3.57 %
	1 Year	-	+0.015		+1.92 %
Long Term Return	2 Years	-	+0.425		+64.09 %
	3 Years	-	+0.405		+61.51 %
	5 Years	0.335	+0.182		+57.57 %
Annualised Return	Annualised	-	-		+9.52 %

Disclaimer: The information on this page is provided as a service to readers. It does not constitute financial advice and/or any investment recommendations. Past performance is not indicative of future results. We assume no liability for damages resulting from or arising out of the use of such information. It would be best if you did your own research to make your personal investment decisions wisely or consult a licenced investment advisor.

Week: 17 January 2025 - 23 January 2025

More Brokers' Call

AMINVESTMENT BANK... See More	Call	Target Price	Release Date
Keyfield International Berhad (5321)	BUY	RM3.25	22 Jan 2025
Sunway REIT (5176)	BUY	RM2.08	22 Jan 2025

APEX SECURITIES BERHAD... See More	Call	Target Price	Release Date
UUE Holdings Berhad (0310)	BUY	RM1.10	21 Jan 2025
Pekato Group Berhad (0233)	HOLD	RM1.17	20 Jan 2025

BIMB SECURITIES SDN BHD... See More	Call	Target Price	Release Date
Datasonic Group Berhad (5216)	BUY	RM0.63	21 Jan 2025
Inari Amertron Berhad (0166)	HOLD	RM2.69	20 Jan 2025

Hong Leong Investment Bank... See More	Call	Target Price	Release Date
Oriental Kopi Holdings Berhad (0338)	BUY	RM0.81	23 Jan 2025
Sunway Berhad (5211)	BUY	RM5.75	22 Jan 2025

KENANGA... See More	Call	Target Price	Release Date
CapitaLand Malaysia Trust (5180)	OUTPERFORM	RM0.75	23 Jan 2025
CIMB Group Holdings Berhad (1023)	MARKET PERFORM	RM7.60	22 Jan 2025
Keyfield International Berhad (5321)	OUTPERFORM	RM3.18	21 Jan 2025

MIDF... See More	Call	Target Price	Release Date
Oriental Kopi Holdings Berhad (0338)	BUY	RM0.83	23 Jan 2025
Mah Sing Group Berhad (8583)	BUY	RM2.09	22 Jan 2025
Sunway Construction Group Berhad (5263)	BUY	RM4.46	22 Jan 2025

PUBLIC INVESTMENT BANK... See More	Call	Target Price	Release Date
Homeritz Corporation Berhad (5160)	NEUTRAL	RM0.62	22 Jan 2025
Northern Solar Holdings Berhad (0340)	SELL	RM1.00	20 Jan 2025

UOB KAYHIAN... See More	Call	Target Price	Release Date
Alpha IVF Group Berhad (0303)	BUY	RM0.40	22 Jan 2025
Pekato Group Berhad (0233)	BUY	RM1.30	21 Jan 2025

Disclaimer: InveSt does not accept any liability whatsoever for any direct, indirect or consequential losses (including loss of profit) or damages that may arise from the use of information or opinions in this publication. The information and opinions in InveSt are not to be considered as an offer to sell or buy any of the securities discussed. Opinions expressed are subject to change without notice. The Brokers may, from time to time, have interests or positions in the securities mentioned. For the full report on each item listed on this page , please visit https://www.shareinvestor.com/my/brokers_call.

DEFINITION: Top 9 stocks with Technical Analysis plus Pattern Matching by 60 pre-defined indicators by the system showing a higher probability of bullish sentiment on the share price.



ShareInvestor WebPro > Screener > Predefined TA Screens > select market BURSA > Most Long Signals > click Scan Results or mouse over each company

TAGHILL HOLDINGS BERHAD
(0241.MY)

TAGHILL

Price updated at 23 Jan 2025 16:52

Last: 0.115	Change: -0.005	Volume: 8,552
	Change (%): -4.17	Range: 0.115 - 0.120

TA Scanner Results based on historical data up to 23 Jan 2025

Condition	Signal	Explanation
Bollinger Band: Bullish Long Term Volatility Breakout and Trending	Long	1. Close price above upper bollinger band(33,1). 2. Volume above average volume(50). 3. Average volume(50) is above 300,000.
Bollinger Band: Bullish Short Term Volatility Breakout and Trending	Long	1. Close price above upper bollinger band(33,1). 2. Volume above average volume(10). 3. Average volume(10) is above 300,000.
DM: Bullish Directional Movement	Long	-DI(14) crossed below +DI(14)
MA: Bullish Price Crossover	Long	1. Close price crossed above MA(40) within the last 1 day. 2. Previous day close price is below the MA(10) for the last 5 days
MACD: Bullish MACD Crossover	Long	1. MACD(12,26) diff line crossed above the MACD(12,26) signal line. 2. MACD Histogram(12,26) is above 0.
Parabolic SAR: Bearish Parabolic SAR Reversal	Neutral	1. Parabolic SAR 1 day ago above close price 1 day ago for the last 5 days. 2. Parabolic SAR below close price
RSI: Short Term RSI 50 Bullish Crossover	Long	1. RSI(20) crossed above 50 within the last 1 day and RSI(20) 1 day ago below 50 for the last 5 days. 2. Volume above average volume(125). 3. Average volume(5) is above 100,000.

SSF HOME GROUP BERHAD
(0287.MY)

SSF

Price updated at 23 Jan 2025 16:49

Last: 0.345	Change: -0.005	Volume: 5,530
	Change (%): -1.43	Range: 0.345 - 0.350

TA Scanner Results based on historical data up to 23 Jan 2025

Condition	Signal	Explanation
Bollinger Band: Bullish Long Term Volatility Breakout and Trending	Long	1. Close price above upper bollinger band(33,1). 2. Volume above average volume(50). 3. Average volume(50) is above 300,000.
Bollinger Band: Bullish Short Term Volatility Breakout and Trending	Long	1. Close price above upper bollinger band(33,1). 2. Volume above average volume(10). 3. Average volume(10) is above 300,000.
DM: Bullish Directional Movement	Long	-DI(14) crossed below +DI(14)
MACD: Bullish MACD Crossover	Long	1. MACD(12,26) diff line crossed above the MACD(12,26) signal line. 2. MACD Histogram(12,26) is above 0.
Volume: 10 Days large value Buy Up trade	Long	1. 150K value Buy Up greater than Sell Down by 20% for 10 days. 2. 50K-100K value Buy Up greater than Sell Down by 20% for 10 days. 3. Average volume(10) is above 1000000
Volume: 5 Days large value Buy Up trade	Long	1. 150K value Buy Up greater than Sell Down by 20% for 5 days. 2. 50K-100K value Buy Up greater than Sell Down by 20% for 5 days. 3. Average volume(10) is above 1000000

MARCO HOLDINGS BERHAD
(3514.MY)

MARCO

Price updated at 23 Jan 2025 16:50

Last: 0.140	Change: -0.005	Volume: 3,510
	Change (%): -3.45	Range: 0.140 - 0.140

TA Scanner Results based on historical data up to 23 Jan 2025

Condition	Signal	Explanation
Bollinger Band: Bullish Long Term Volatility Breakout and Trending	Long	1. Close price above upper bollinger band(33,1). 2. Volume above average volume(50). 3. Average volume(50) is above 300,000.
Bollinger Band: Bullish Lower Bollinger Band Support	Long	1. Low 1 day ago below lower bollinger band(20,2). 2. Close above close 1 day ago. 3. Average volume(5) is above 100,000.
Bollinger Band: Bullish Short Term Volatility Breakout and Trending	Long	1. Close price above upper bollinger band(33,1). 2. Volume above average volume(10). 3. Average volume(10) is above 300,000.
Bollinger Band: High Above Upper Bollinger Band	Neutral	1. High above upper bollinger band(14,2). 2. Average volume(5) is above 100,000.
DM: Bullish Directional Movement	Long	-DI(14) crossed below +DI(14)
MA: Short Term Bullish Moving Average Crossover	Long	MA(10) crossed above MA(15) within the last 1 day.
Parabolic SAR: Bearish Parabolic SAR Reversal	Neutral	1. Parabolic SAR 1 day ago above close price 1 day ago for the last 5 days. 2. Parabolic SAR below close price
RSI: Short Term RSI 50 Bullish Crossover	Long	1. RSI(20) crossed above 50 within the last 1 day and RSI(20) 1 day ago below 50 for the last 5 days. 2. Volume above average volume(125). 3. Average volume(5) is above 100,000.

KPS CONSORTIUM BERHAD
(9121.MY)

KPSCB

Price updated at 23 Jan 2025 16:23

Last: 0.550	Change: -	Volume: -
	Change (%): -	Range: 0.550 - 0.550

TA Scanner Results based on historical data up to 23 Jan 2025

Condition	Signal	Explanation
DM: Bullish Directional Movement	Long	-DI(14) crossed below +DI(14)
Donchian Channels: High Above Upper Donchian Channels	Long	High crossed above the upper Donchian Channel(14,4)
Historical Volatility: Increasing Historical Volatility	Neutral	Historical Volatility(100,365) increasing for the last 10 days
MA: Bullish Price Crossover	Long	1. Close price crossed above MA(40) within the last 1 day. 2. Previous day close price is below the MA(10) for the last 5 days
MA: Medium Term Bullish Moving Average Crossover	Long	MA(25) crossed above MA(50) within the last 1 day.
MA: Short Term Bullish Moving Average Crossover	Long	MA(10) crossed above MA(15) within the last 1 day.
MACD: Bullish MACD Crossover	Long	1. MACD(12,26) diff line crossed above the MACD(12,26) signal line. 2. MACD Histogram(12,26) is above 0.
Parabolic SAR: Bearish Parabolic SAR Reversal	Neutral	1. Parabolic SAR 1 day ago above close price 1 day ago for the last 5 days. 2. Parabolic SAR below close price

Disclaimer: The information on this page is provided as a service to readers. It does not constitute financial advice and/or any investment recommendations. Past performance is not indicative of future results. We assume no liability for damages resulting from or arising out of the use of such information. It would be best if you did your own research to make your personal investment decisions wisely or consult a licenced investment advisor.

MNRB HOLDINGS BERHAD
(6459.MY)

MNRB

Price updated at 23 Jan 2025 16:52

Last: 2.240	Change: -0.030	Volume: 1,863
	Change (%): -1.32	Range: 2.240 - 2.280

TA Scanner Results based on historical data up to 23 Jan 2025

Condition	Signal	Explanation
Bollinger Band: Bullish Long Term Volatility Breakout and Trending	Long	1. Close price above upper bollinger band(33,1). 2. Volume above average volume(50). 3. Average volume(50) is above 300,000.
Bollinger Band: Bullish Short Term Volatility Breakout and Trending	Long	1. Close price above upper bollinger band(33,1). 2. Volume above average volume(10). 3. Average volume(10) is above 300,000.
Bollinger Band: High Above Upper Bollinger Band	Neutral	1. High above upper bollinger band(14,2). 2. Average volume(5) is above 100,000.
DM: Bullish Directional Movement	Long	-DI(14) crossed below +DI(14)
Donchian Channels: High Above Upper Donchian Channels	Long	High crossed above the upper Donchian Channel(14,4)
MACD: Bullish MACD Crossover	Long	1. MACD(12,26) diff line crossed above the MACD(12,26) signal line. 2. MACD Histogram(12,26) is above 0.
Parabolic SAR: Bearish Parabolic SAR Reversal	Neutral	1. Parabolic SAR 1 day ago above close price 1 day ago for the last 5 days. 2. Parabolic SAR below close price
Williams %R: Bearish Williams %R	Short	1. Williams %R(26) between 0 and -20. 2. Average volume(5) is above 100,000.

LUXCHEM CORPORATION BERHAD (5143.MY)

LUXCHEM

Price updated at 23 Jan 2025 16:51

Last: 0.495	Change: -0.005	Volume: 776
	Change (%): -1.00	Range: 0.480 - 0.505

TA Scanner Results based on historical data up to 23 Jan 2025

Condition	Signal	Explanation
Bollinger Band: Bullish Lower Bollinger Band Support	Long	1. Low 1 day ago below lower bollinger band(20,2). 2. Close above close 1 day ago. 3. Average volume(5) is above 100,000.
Candlestick: Bullish Engulfing	Long	Bullish: Engulfing
MA: Bullish Price Crossover	Long	1. Close price crossed above MA(40) within the last 1 day. 2. Previous day close price is below the MA(10) for the last 5 days
RSI: Short Term RSI 50 Bullish Crossover	Long	1. RSI(20) crossed above 50 within the last 1 day and RSI(20) 1 day ago below 50 for the last 5 days. 2. Volume above average volume(125). 3. Average volume(5) is above 100,000.
Stochastic: Fast Stochastic Buy Signal	Long	1. Fast Stochastic(15,5) %K crossed above 20. 2. Fast Stochastic(15,5) %K 1 day ago was below 20 for the last 5 days. 3. Average volume(30) is above 50000

PECCA GROUP BERHAD (5271.MY)

PECCA

Price updated at 23 Jan 2025 16:55

Last: 1.490	Change: -0.030	Volume: 20,535
	Change (%): -1.97	Range: 1.490 - 1.530

TA Scanner Results based on historical data up to 23 Jan 2025

Condition	Signal	Explanation
Bollinger Band: Bullish Long Term Volatility Breakout and Trending	Long	1. Close price above upper bollinger band(33,1). 2. Volume above average volume(50). 3. Average volume(50) is above 300,000.
Bollinger Band: Bullish Short Term Volatility Breakout and Trending	Long	1. Close price above upper bollinger band(33,1). 2. Volume above average volume(10). 3. Average volume(10) is above 300,000.
DM: Bullish Directional Movement	Long	-DI(14) crossed below +DI(14)

AWC BERHAD (7579.MY)

AWC

Price updated at 23 Jan 2025 16:59

Last: 1.080	Change: +0.020	Volume: 27,453
	Change (%): +1.89	Range: 1.050 - 1.100

TA Scanner Results based on historical data up to 23 Jan 2025

Condition	Signal	Explanation
Bollinger Band: Bullish Long Term Volatility Breakout and Trending	Long	1. Close price above upper bollinger band(33,1). 2. Volume above average volume(50). 3. Average volume(50) is above 300,000.
Bollinger Band: Bullish Short Term Volatility Breakout and Trending	Long	1. Close price above upper bollinger band(33,1). 2. Volume above average volume(10). 3. Average volume(10) is above 300,000.
Bollinger Band: High Above Upper Bollinger Band	Neutral	1. High above upper bollinger band(14,2). 2. Average volume(5) is above 100,000.
CCI: Bearish CCI Overbought And Reversing	Short	1. CCI(26) above 100 and CCI(26) 1 day ago increasing for the last 3 days. 2. CCI(26) below CCI(26) 1 day ago
Donchian Channels: High Above Upper Donchian Channels	Long	High crossed above the upper Donchian Channel(14,4)
MACD: Bullish MACD Crossover	Long	1. MACD(12,26) diff line crossed above the MACD(12,26) signal line. 2. MACD Histogram(12,26) is above 0.
Parabolic SAR: Bearish Parabolic SAR Reversal	Neutral	1. Parabolic SAR 1 day ago above close price 1 day ago for the last 5 days. 2. Parabolic SAR below close price
Volume: Volume Spike	Long	1. Volume is more than 500% above average volume(10). 2. Volume above 200000. 3. Close price above 0.10
Williams %R: Bearish Williams %R	Short	1. Williams %R(26) between 0 and -20. 2. Average volume(5) is above 100,000.

MATRIX CONCEPTS HOLDINGS BERHAD (5236.MY)

MATRIX

Price updated at 23 Jan 2025 16:59

Last: 2.250	Change: -0.030	Volume: 18,939
	Change (%): -1.32	Range: 2.230 - 2.290

TA Scanner Results based on historical data up to 23 Jan 2025

Condition	Signal	Explanation
Bollinger Band: Bullish Lower Bollinger Band Support	Long	1. Low 1 day ago below lower bollinger band(20,2). 2. Close above close 1 day ago. 3. Average volume(5) is above 100,000.
Bollinger Band: Low Below Lower Bollinger Band	Neutral	1. Low below lower bollinger band(14,2). 2. Average volume(5) is above 100,000.
Candlestick: Bullish Harami	Long	Bullish: Harami
Chaikin Volatility: Increasing Chaikin Volatility	Neutral	Chaikin Volatility(10,10) has been increasing for 5 days
MACD: Oversold	Long	1. MACD Histogram(12,26,9) reached a new 6 month low. 2. MACD Histogram(12,26,9) has been below 0 for the last 3 weeks.
Volume: 5 Days large value Buy Up trade	Long	1. 150K value Buy Up greater than Sell Down by 20% for 5 days. 2. 50K-100K value Buy Up greater than Sell Down by 20% for 5 days. 3. Average volume(10) is above 1000000
Williams %R: Bullish Williams %R	Long	1. Williams %R(26) between -80 and -100. 2. Average volume(5) is above 100,000.

Condition	Signal	Explanation
Volume: 10 Days large value Buy Up trade	Long	1. 150K value Buy Up greater than Sell Down by 20% for 10 days. 2. 50K-100K value Buy Up greater than Sell Down by 20% for 10 days. 3. Average volume(10) is above 1000000
Volume: 5 Days large value Buy Up trade	Long	1. 150K value Buy Up greater than Sell Down by 20% for 5 days. 2. 50K-100K value Buy Up greater than Sell Down by 20% for 5 days. 3. Average volume(10) is above 1000000
Williams %R: Bearish Williams %R	Short	1. Williams %R(26) between 0 and -20. 2. Average volume(5) is above 100,000.



Dato' Eu Hong Chew
Former Group CEO i-Berhad
Non-Executive Director

He has been associated with the Sumurwang Group for many years charting the path for its manufacturing arm, firstly under Dreamland Holdings Berhad and the subsequent acquisition of I-Berhad.

Before that, he was with PA Management Consulting for a decade where he was the Director of Studies for the Cranfield PA MBA Programme in Malaysia.

Educated at the Royal Military College, Dato' Eu has an engineering degree from the University of Glasgow, and a MBA from the University of Bradford, UK.

Is there an investment opportunity in **XYLEM**

SUMMARY

- Xylem Inc.'s (NYSE: XYL) growth came from organic efforts and acquisitions. While revenue grew at a 7.7% CAGR over the past 7 years, profitability metrics declined.
- But Xylem is financially sound, with a strong cash position, manageable debt levels, and excellent cash flow generation. It is a cash cow.

- My valuation shows that there is no margin of safety based on a conservative scenario and only a 4% margin of safety in an optimistic scenario. Combined with declining margins, single-digit growth, and a low-growth industry, I would not consider Xylem an investment opportunity.

BACKGROUND

Xylem is a global company that focuses on water technology. It designs, builds, and services specialized products and solutions mainly related to water. The company's business is divided into four main areas:

- **Water Infrastructure:** This involves moving and treating water.
- **Applied Water:** This provides water-related products for homes, businesses, and industries.
- **Measurement and Control Solutions:** This develops technology to help save water and energy and creates tools to analyse water quality.
- **Integrated Solutions and Services:** This was introduced in 2023 to offer customized solutions for improving operations and meeting environmental standards.

Xylem grew both by improving its existing business and by buying other companies. Most of these purchases are relatively small compared to what the company spent on CAPEX.

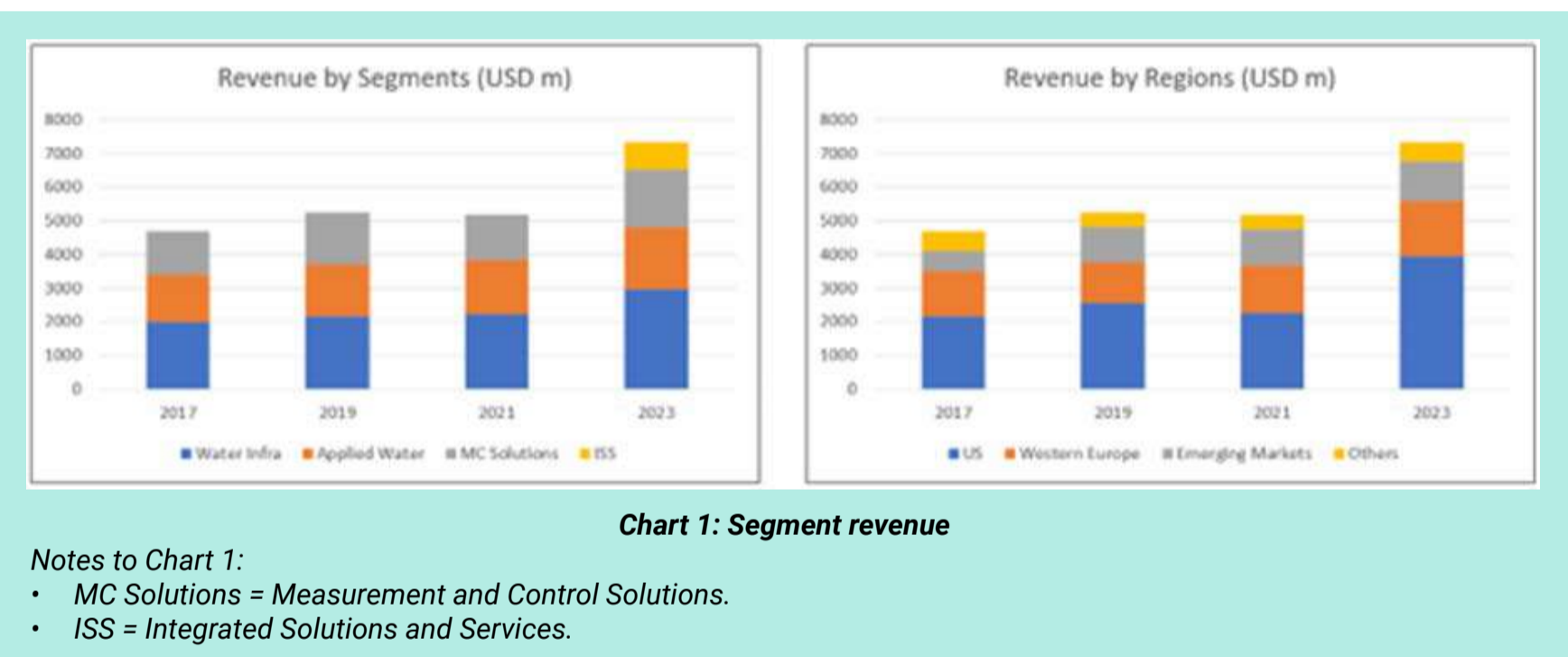
However, there were two major acquisitions in recent years:

- In 2016, Xylem bought Sensus Worldwide Limited for USD 1.7 billion. This helped increase revenue starting in 2017.

- In May 2023, Xylem acquired Evoqua Water Technologies in an all-stock deal valued at about USD 7.5 billion. This was a big move, as it almost matched Xylem's total assets of USD 8 billion in 2022.

Over the past 7 years, the Water Infrastructure segment has been the biggest contributor to Xylem's revenue, making up 40% of total revenue in 2023. (See the left side of Chart 1.)

While Xylem operates worldwide, about half of its revenue consistently comes from the United States. In 2023, the US accounted for 54% of total revenue. (See the right side of Chart 1.)



OPERATING PERFORMANCE

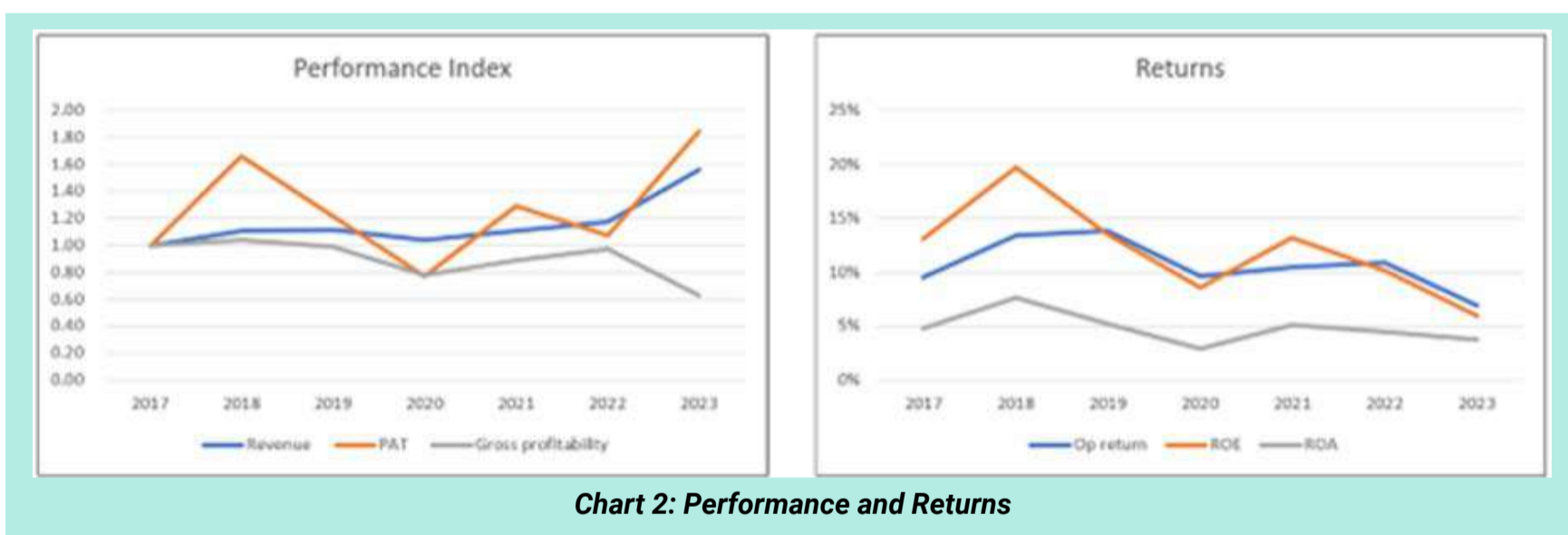
Over the past 7 years, while there were uptrends for the top-line and bottom-line, capital efficiency as measured by the gross profitability declined. Refer to the left part of Chart 2.

Over the past 7 years, revenue grew at 7.7% CAGR. During this period the company incurred about USD806 million on cash acquisitions compared to USD1,494 million on net CAPEX. Assuming proportionate contribution, I would reckon that acquisitions contributed to about 1/3 of the revenue growth.

While revenue growth was steady, profits were more volatile:

- The increase in the PAT in 2018 was due to a reduction in the tax rate due to the US Tax Cuts and Jobs Act.
- The decline in profits in 2019 was partly due to one-off charges for impairments, restructuring, and realignment costs.
- The performance of 2020 was impacted by COVID-19.

Returns were also volatile following the profit pattern. You can see from the right part of Chart 2 that there were some declining trends. Over the past 7 years, ROIC averaged 11% while ROE averaged 12%. These were higher than the current cost of funds suggesting that despite the declining trends, the company created shareholders' value.



A key issue for Xylem was the decline in gross profitability from 2019 to 2022 compared to 2017. This led to lower efficiency in how the company used its capital. The drop was especially noticeable in operating returns. To understand this better, I broke down



Chart 3: Operating Profit Trend

Note to Op Profit Profile: I broke down the operating profits into fixed costs and variable costs.

- Fixed cost = SGA, Depreciation & Amortization and Others.
- Variable cost = Cost of Sales – Depreciation & Amortization.
- Contribution = Revenue – Variable Cost.
- Contribution margin = Contribution/Revenue.

operating profit into its components, as shown in Chart 3. Although revenue grew during this period, the contribution margin decreased between 2017 and 2022.

FINANCIAL POSITION

I would assess Xylem as financially sound and a cash cow based on the following:

- As of the end of Sep 2024, it had USD1 billion in cash and short-term investments. This was about 6% of its total assets.
- It has a 16% debt-capital ratio as of the end of Sep 2024. This has come down from its 2020 high of 51%.
- From 2017 to 2023, it generated USD4.9 billion cash flow from operations compared to the net income of USD2.9 billion. This is a very good cash conversion ratio.
- It has a good capital allocation track record as can be seen from Table 1. It was able to cover the CAPEX, acquisitions, dividends, and share buybacks with the cash flow from operation.

Items	Sources (USD m)	Uses (USD m)
Cash flow from Ops	4,906	
New shares	145	
Net Debt		396
Net share buyback		330
Dividends		1,363
Net CAPEX incl intangibles		1,494
Net Acquisitions		806
Misc, Cash		662
Total	5,051	5,051

Table 1: Sources and Uses of Funds 2017 to 2023

VALUATION

When valuing Xylem, I looked at two possible scenarios:

Scenario 1: A conservative approach.

In this scenario, I assumed Xylem would not make any major acquisitions and would grow at a steady 4% per year indefinitely. For this, I used a single-stage valuation model. The intrinsic value of Xylem in this scenario came out to USD84 per share.

Scenario 2: An optimistic approach

Here, I assumed Xylem would make another major acquisition, leading to a 20% boost in revenue in Year 1. Thereafter revenue growth would be reduced proportionately till the 4% terminal value. For this scenario, I used a multi-stage valuation model. The intrinsic value in this scenario was USD141 per share.

Refer to the original article for details of the valuation. As of Sep 2024, Xylem's market price was USD135 per share.

- Under Scenario 1, the price is higher than the intrinsic value, meaning there's no margin of safety.
- Under Scenario 2, the price is below the intrinsic value, giving a 4% margin of safety.

CONCLUSION

I do not consider Xylem a "wonderful company." While it is financially stable, there are several operational concerns:

- Its contribution margin has been declining.

- Its returns are also on a downtrend.
- Growth has come from both acquisitions and organic expansion, but even with acquisitions, the company only achieved a single-digit CAGR.
- The water sector itself is not a high-growth industry, with no double-digit growth potential.

Even with an optimistic valuation, there is no 30% margin of safety. This is why I do not see Xylem as a good investment opportunity.

I am a long-term value investor who has held onto stocks for more than 5 years. My analysis and valuation are from such a perspective. I consider quarterly results “noisy” and focus on long-term trends.

*This article was re-purposed from my article “**Xylem: Bigger Does Not Mean Better Shareholder Value**” which was first published in Seeking Alpha. Refer to this [link](#) for more of my insights on other US companies.*

Disclaimer: This article is written for informational purposes only. It does not constitute a solicitation, offer, advice, counseling or recommendation to buy or sell. As such it is not intended to promote the purchase of shares in any way. As a reminder, any type of asset has a risk factor and needs to be evaluated from multiple perspectives. Therefore, any investment decision and the associated risk remains with the investor. The views expressed here are entirely the writer's own.



Learn how to identify Hot Stocks using Technical Analysis (TA) and Fundamental Analysis (FA)

SIGN UP FOR Invest
IT'S FREE!!!

[Click here](#)

Scan me



Via email, every Friday.

UNLOCK THE SECRET OF WEALTH

DO YOU REALLY WANT TO MASTER VALUE INVESTING



SEE HOW TO GET HIGHER
RETURNS WITH LOWER RISK



BNM MAINTAINS OPR AT 3%

The Monetary Policy Committee (MPC) of Bank Negara Malaysia decided to maintain the Overnight Policy Rate at 3%. In a statement, the MPC said that at the current OPR level, the monetary policy stance remains supportive of the economy and is consistent with the current assessment of inflation and growth prospects. It remains vigilant to ongoing developments to inform the assessment on the domestic inflation and growth outlook. It will ensure that the monetary policy stance remains conducive to sustainable economic growth amid price stability.

It added that the global growth for 2024 turned out higher than expected, reflecting better outturns in the major economies and stronger global trade. For 2025, the global economy is anticipated to be sustained by positive labour market conditions, moderating inflation and less restrictive monetary policy. Global trade is expected to remain broadly sustained, supported by the continued tech upcycle. However, this outlook could be affected by the uncertainty surrounding more trade and investment restrictions. The elevated policy uncertainties could also lead to greater volatility in the global financial markets.

As for the Malaysian economy, the MPC said that the overall growth for 2024 was within expectations. Moving forward, the strength in economic activity is expected to be sustained in 2025,

driven by resilient domestic expenditure. Employment and wage growth, as well as policy measures, including the upward revision of the minimum wage and civil servant salaries, will support household spending.

The robust expansion in investment activity will be sustained by the progress of multi-year projects in both the private and public sectors, the continued high realisation of approved investments, as well as the ongoing implementation of catalytic initiatives under the national master plans. These investments, supported by higher capital imports, will raise exports and expand the productive capacity of the economy. Exports are expected to be supported by the global tech upcycle, continued growth in non-electrical and electronics goods and higher tourist spending. The growth outlook is subject to downside risks from an economic slowdown in major trading partners amid heightened risk of trade and investment restrictions, and lower-than-expected commodity production. Meanwhile, growth could potentially be higher from greater spillover from the tech upcycle, more robust tourism activity, and faster implementation of investment projects.

The MPC added that the headline and core inflation averaged 1.8% in 2024. Going into 2025, inflation is expected to remain manageable, amid the easing global cost conditions and the absence of excessive domestic demand pressures. Global commodity prices are expected to continue to trend lower, contributing to moderate cost conditions in the near term. In this environment, the overall impact of the recently announced domestic policy reforms on inflation is expected to be contained. Upside risk to inflation would be dependent on the extent of spillover effects of domestic policy measures, as well as global commodity prices and financial market developments.

Ringgit performance continues to be primarily driven by external factors. The narrowing interest rate differentials between Malaysia and the advanced economies is positive for the ringgit. While

financial markets could experience bouts of volatility due to global policy uncertainties, Malaysia's favourable economic prospects and domestic structural reforms, complemented by ongoing initiatives to encourage flows, will continue to provide enduring support to the ringgit.

GOVT COMMITTED TO ENABLING POLICIES TO DRIVE GROWTH IN KEY INDUSTRIES FOR 13MP — RAFIZI

According to Economy Minister Datuk Seri Rafizi Ramli, the government is committed to prioritising enabling policies over direct intervention to drive creativity and growth in key industries for the 13th Malaysia Plan (13MP). The focus would be on fostering a robust ecosystem through policy support, efficiency improvements, talent development and structural incentives to position Malaysia as a high-income nation by 2028 or 2029.

Speaking at the final engagement session with industry representatives for the 13MP, he said the government's role should be to enable and facilitate, allowing industries to leverage their creativity and expand independently, which requires policies that strengthen the overall ecosystem.

The session was attended by stakeholders from retail, private healthcare, tourism, construction, logistics and other service sectors, highlighted the increasing reliance of Malaysia's economy on the service industry. Rafizi said that the service sector is expected to dominate Malaysia's economic activities over the next 10-20 years, aligning with the rise of ASEAN as a major global economic power.

He added that ASEAN is projected to become the fourth-largest economy, or even the third, within 10-15 years, and its growing middle class, young population, and digital connectivity make it a consumption powerhouse, and Malaysia is well-positioned to benefit from this growth.

He said that the 13MP presents the best opportunity to restructure the economy and implement reforms necessary for Malaysia's development trajectory and unlike previous plans, the 13MP focuses on structural changes to support sustainable growth and align with the evolving global economy.

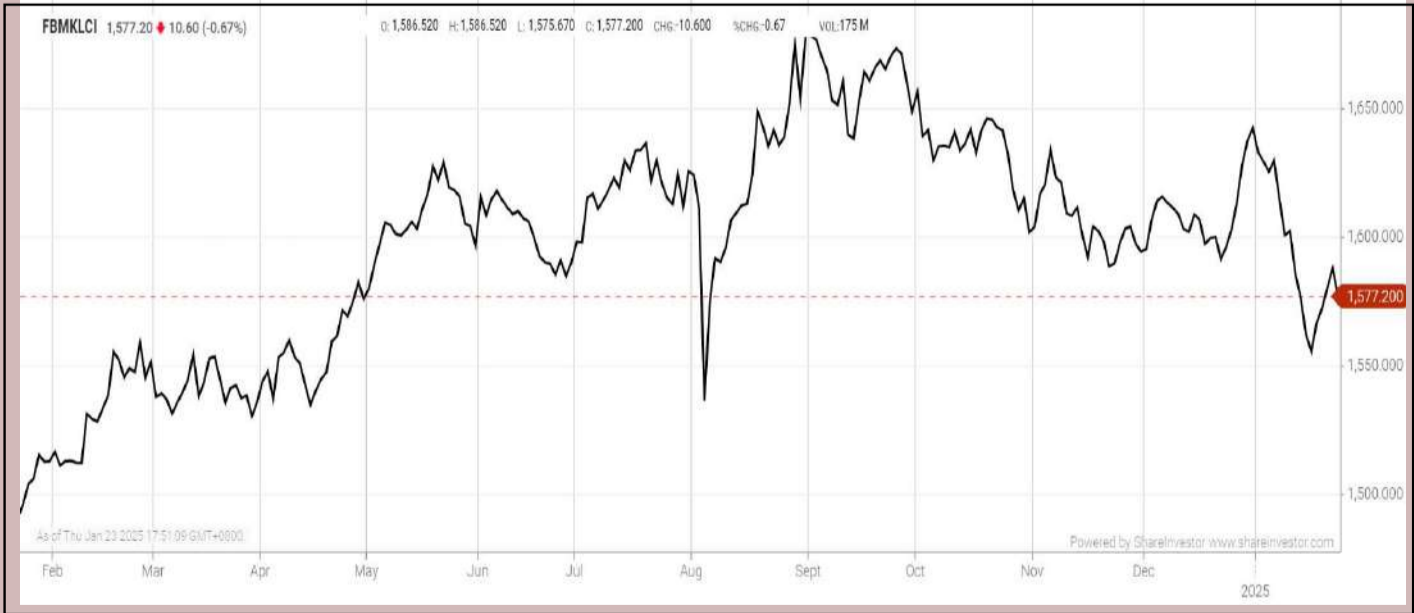
The Ministry of Economy is taking a holistic approach to macro-level planning, covering all areas including the infrastructure, social development, education and healthcare to support the country's progress. He noted that policy implementation could have unintended consequences and urged stakeholders to share their views to address blind spots. There will always be trade-offs in policymaking. Insights from industry players and parliamentarians are critical to refining our strategies and ensuring the policies achieve their intended outcomes.

Note From The Publisher:

Please note Inve\$t will take a break next Friday Jan 31st due to the CNY Holidays. We will be back on Friday Feb 7th, 2025. Wishing you Happy Lunar New Year. Remember to always #investwithknowledge #dontgamblewithstocks #dontspeculatewithstocks.

EYE ON THE MARKETS

On Thursday (23Jan), the Ringgit closed at 4.4465 against the USD and 3.2755 to the Sing Dollar. On Monday (20Jan), the FBM KLCI opened at 1571.14. As at Thursday (23Jan) 5:00pm, the FBM KLCI closed up 6.06 points at 1577.20. Over in US, the overnight Dow Jones Industrial Average closed up 408.53 points (+0.93%) to 44,565.26 whilst the NASDAQ added 44.34 points (+0.22%) to 20,053.68.



KLCI 1 Year Chart

Over 5 Trading Days
(as at Wednesday)



- ShareInvestor WebPro (www.shareinvestor.com/my)
1. Price > Stock Prices
 2. Select Market: NASDAQ / NYSE / IDX / SET / HKEX / SGX (One bourse at a time)
 3. select Stocks Tab
 4. select Ranking Top Gainers or Top Losers (Over 5 Trading Days)
 5. Mouse over Column Layout > select Edit Customs > select Name > select Last Done Price > select 5 Days Change > select 52 Weeks High > select 52 Weeks Low > Mouse Over Column Layout > select Custom

NASDAQ (USD)

Top Gainers					Top Losers				
Name	Last Done	Change Over 5 Days	52 Weeks High	52 Weeks Low	Name	Last Done	Change Over 5 Days	52 Weeks High	52 Weeks Low
NETFLIX INC	953.990	+105.730	941.750	479.900	BOOKING HOLDINGS INC	4,619.210	-210.430	5,337.240	3,180.000
MONOLITHIC POWER SYSTEM INC	689.420	+87.010	959.640	546.705	AGILYSYS INC	100.670	-32.300	142.640	74.030
FIRST CITIZENS BANCSHARES INC NRTH	2,218.110	+65.590	2,388.780	1,383.000	SEZZLE INC	229.510	-30.060	477.525	30.410
POWELL INDUSTRIES INC	311.380	+62.140	364.980	76.290	DAILY JOURNAL CO	483.140	-45.760	602.000	309.220
IES HOLDINGS INC	316.260	+60.690	320.085	80.860	FTAI AVIATION LTD	91.990	-24.090	181.640	49.810

NYSE (USD)

Top Gainers					Top Losers				
Name	Last Done	Change Over 5 Days	52 Weeks High	52 Weeks Low	Name	Last Done	Change Over 5 Days	52 Weeks High	52 Weeks Low
AUTOZONE INC	3,326.010	+132.050	3,416.710	2,672.310	BERKSHIRE HATHAWAY INC	691,500.000	-1,404.030	741,971.390	564,000.010
NVR INC	8,381.500	+122.420	9,964.770	6,800.000	FAIR ISAAC CORP	1,880.320	-150.150	2,402.515	1,105.650
SERVICENOW INC	1,125.170	+71.040	1,157.900	637.990	UNITEDHEALTH GROUP INC	519.720	-23.700	630.730	436.380
MARKEL GROUP INC	1,810.820	+64.520	1,811.810	1,342.660	CHENIERE ENERGY INC	233.360	-20.300	257.650	152.310
TRANSDIGM GROUP INC	1,354.000	+60.470	1,451.320	1,058.940	E L F BEAUTY INC	116.690	-11.720	221.830	98.500

IDX (Rupiah)

Top Gainers					Top Losers				
Name	Last Done	Change Over 5 Days	52 Weeks High	52 Weeks Low	Name	Last Done	Change Over 5 Days	52 Weeks High	52 Weeks Low
JAKARTA SETIABUDI INTERNASI-ONAL	21,250.00	8,175.00	21,250.00	1,175.00	PANTAI INDAH KAPUK DUA TBK	13,825.00	-1,975.00	19,650.00	4,540.00
DIAN SWASTATIKA SENTOSA TBK	42,100.00	5,825.00	48,250.00	10,285.00	SINGARAJA PUTRA TBK	2,990.00	-1,330.00	5,700.00	565
DCI INDONESIA TBK	46,525.00	5,325.00	63,800.00	32,525.00	MULTIPOLAR TECHNOLOGY TBK	17,975.00	-475	37,000.00	1,185.00
BANGUN KOSAMBI SUKSES	9,425.00	2,150.00	11,450.00	4,060.00	SONA TOPAS TOURISM	2,910.00	-430	10,300.00	640
RAHARJA ENERGI CEPU TBK	5,925.00	1,595.00	5,925.00	1,150.00	MSIG LIFE INSURANCE INDONESIA TBK	6,450.00	-300	11,600.00	4,610.00

SET (Thai Baht)

Top Gainers					Top Losers				
Name	Last Done	Change Over 5 Days	52 Weeks High	52 Weeks Low	Name	Last Done	Change Over 5 Days	52 Weeks High	52 Weeks Low
DELTA	147	7	173.5	63.25	MASTER	30.75	-9.5	81.75	24.8
AEONTS	118	6	168.5	107	NEW	100	-7	141.5	60
CBG	79	5.5	82	61.25	PTTEP	124	-5	164.5	116
EGCO	115	5	135	94.5	KBANK	159.5	-4	163.5	118.5
TCOAT	27.5	4	31.75	20	OHTL	320	-4	486	311

HKEX (HKD)


Top Gainers					Top Losers				
Name	Last Done	Change Over 5 Days	52 Weeks High	52 Weeks Low	Name	Last Done	Change Over 5 Days	52 Weeks High	52 Weeks Low
LAOPU GOLD (6181)	348.2	67.2	366.4	60.95	MARKETINGFORCE (2556)	63.1	-11.75	144	45
REFIRE (2570)	226.8	25.8	233.8	140.6	NEW ORIENTAL-S (9901)	35.4	-10.8	77.05	31.8
BYD COMPANY (1211)	276.6	17.8	320.8	167.8	WS-SK TARGET (8427)	15.62	-5.38	29	0.54
TRIP.COM-S (9961)	523	17	598	275.4	VOICECOMM (2495)	213.2	-4.6	264	121
GUOFUHEE (2582)	138.6	16.1	139.2	76.8	RIMAG GROUP (2522)	37	-3	72.8	13.5

SGX (SGD)

Top Gainers					Top Losers				
Name	Last Done	Change Over 5 Days	52 Weeks High	52 Weeks Low	Name	Last Done	Change Over 5 Days	52 Weeks High	52 Weeks Low
JMH USD	41.01	0.5	46.43	33.72	JARDINE C&C	27.71	-0.74	29.5	23.76
UOB	37.01	0.43	37.94	27.74	AZEUS	11.1	-0.22	12	7.7
VENTURE	12.84	0.26	15.64	12.38	DBS	43.32	-0.18	45.44	28.727
IFAST	7.43	0.25	8.5	6.5	LINCOTRADE	0.09	-0.115	0.215	0.09
NIO INC. USD OV	4.29	0.18	7.75	3.71	DIGILIFE TECH	0.91	-0.1	1.91	0.91

Disclaimer: The information on this page is provided as a service to readers. It does not constitute financial advice and/or any investment recommendations. Past performance is not indicative of future results. We assume no liability for damages resulting from or arising out of the use of such information. It would be best if you did your own research to make your personal investment decisions wisely or consult a licenced investment advisor.

DEFINITION: Insider Activity shows the trades made by substantial shareholders or directors of the company. Purchases by the directors and company share buyback may indicate the share price is undervalued and brings confidence to the price trend of the share price.



ShareInvestor WebPro > Fundamental > Insider Trades > click Search tab > Select Bursa > click Stock name > scroll up and leave at <Select Counter> Type Date Range for Announcement Date > click Search

Notice Period is 12th January 2025 – 18th January 2025					
Effective Change Date	Stock Name	Buyer/ Seller Name [Classification]	Bought / (Sold) ['000]	No. of Shares After Trade ['000]	
			Total	Total	% Held
10 JAN 2025 - 10 JAN 2025	ABMB	EMPLOYEES PROVIDENT FUND BOARD [SSH]	-246	125,280	8.092
14 JAN 2025 - 14 JAN 2025	AMBANK	EMPLOYEES PROVIDENT FUND BOARD [SSH]	-2,157	447,399	13.528
13 JAN 2025 - 13 JAN 2025	AMBANK	EMPLOYEES PROVIDENT FUND BOARD [SSH]	3,420	449,556	13.593
10 JAN 2025 - 10 JAN 2025	AMBANK	EMPLOYEES PROVIDENT FUND BOARD [SSH]	906	446,136	13.49
08 JAN 2025 - 08 JAN 2025	AMBANK	EMPLOYEES PROVIDENT FUND BOARD [SSH]	1,042	445,230	13.462
16 JAN 2025 - 16 JAN 2025	ANEKA-WA	MR PANG TSE FUI [DIR/CEO]	-300	14,500	5.654
10 JAN 2025 - 10 JAN 2025	ASIAPLY	MR LIM TECK SENG [DIR/CEO]	100	833	0.079
08 JAN 2025 - 08 JAN 2025	ASIAPLY	DATO' YEO BOON LEONG [DIR/CEO]	391	220,420	20.906
08 JAN 2025 - 08 JAN 2025	ASIAPLY	DATO' YEO BOON LEONG [SSH]	391	220,420	20.906
10 JAN 2025 - 10 JAN 2025	AXIATA	EMPLOYEES PROVIDENT FUND BOARD [SSH]	895	1694130	18.449
09 JAN 2025 - 09 JAN 2025	AXIATA	EMPLOYEES PROVIDENT FUND BOARD [SSH]	2,000	1693236	18.439
08 JAN 2025 - 08 JAN 2025	AXIATA	EMPLOYEES PROVIDENT FUND BOARD [SSH]	2,000	1691236	18.417
09 JAN 2025 - 09 JAN 2025	AXREIT	EMPLOYEES PROVIDENT FUND BOARD [SSH]	-1,417	370,117	18.409
08 JAN 2025 - 08 JAN 2025	AXREIT	EMPLOYEES PROVIDENT FUND BOARD [SSH]	-1,117	371,535	18.48
13 JAN 2025 - 15 JAN 2025	BAUTO	DATO' AMER HAMZAH BIN AHMAD [SSH]	450	180,611	15.445
13 JAN 2025 - 15 JAN 2025	BAUTO	DATO' LEE KOK CHUAN [DIR/CEO]	450	180,537	15.439
13 JAN 2025 - 15 JAN 2025	BAUTO	DATO' LEE KOK CHUAN [SSH]	450	180,537	15.439
13 JAN 2025 - 15 JAN 2025	BAUTO	DYNAMIC MILESTONE SDN BHD [SSH]	450	176,167	15.065
13 JAN 2025 - 13 JAN 2025	BAUTO	EMPLOYEES PROVIDENT FUND BOARD [SSH]	250	157,128	13.437
13 JAN 2025 - 15 JAN 2025	BAUTO	TAN SRI DATO' SRI YEOH CHOON SAN [DIR/CEO]	450	180,385	15.426
13 JAN 2025 - 15 JAN 2025	BAUTO	TAN SRI DATO' SRI YEOH CHOON SAN [SSH]	450	180,385	15.426
10 JAN 2025 - 10 JAN 2025	BAUTO	EMPLOYEES PROVIDENT FUND BOARD [SSH]	-120	156,878	13.416
09 JAN 2025 - 09 JAN 2025	BAUTO	EMPLOYEES PROVIDENT FUND BOARD [SSH]	-640	156,998	13.426
15 JAN 2025 - 16 JAN 2025	BESHOM	MADAM PHAN VAN DENH [SSH]	121	79,686	26.578
15 JAN 2025 - 16 JAN 2025	BESHOM	MR TAN KENG KANG [DIR/CEO]	121	79,686	26.578
15 JAN 2025 - 16 JAN 2025	BESHOM	MR TAN KENG KANG [SSH]	121	79,686	26.578
15 JAN 2025 - 16 JAN 2025	BESHOM	TAN KAI HEE FAMILY HOLDINGS SDN BHD [SSH]	121	65,662	21.901
13 JAN 2025 - 14 JAN 2025	BESHOM	MADAM PHAN VAN DENH [SSH]	106	79,564	26.538
13 JAN 2025 - 14 JAN 2025	BESHOM	MR TAN KENG KANG [DIR/CEO]	106	79,564	26.538
13 JAN 2025 - 14 JAN 2025	BESHOM	MR TAN KENG KANG [SSH]	106	79,564	26.538
13 JAN 2025 - 14 JAN 2025	BESHOM	TAN KAI HEE FAMILY HOLDINGS SDN BHD [SSH]	106	65,541	21.86
14 JAN 2025 - 14 JAN 2025	BIMB	EMPLOYEES PROVIDENT FUND BOARD [SSH]	500	393,231	17.35
13 JAN 2025 - 13 JAN 2025	BIMB	EMPLOYEES PROVIDENT FUND BOARD [SSH]	300	392,931	17.337
10 JAN 2025 - 10 JAN 2025	BIMB	EMPLOYEES PROVIDENT FUND BOARD [SSH]	500	392,631	17.323
09 JAN 2025 - 09 JAN 2025	BIMB	EMPLOYEES PROVIDENT FUND BOARD [SSH]	483	392,131	17.301
14 JAN 2025 - 14 JAN 2025	BJCORP	TAN SRI DATO' SERI VINCENT TAN CHEE YIOUN [SSH]	-30,589	915,755	15.702
10 JAN 2025 - 10 JAN 2025	BLDPLNT	DATO' SRI LAW KIU KIONG [SSH]	3	6,042	6.462
10 JAN 2025 - 10 JAN 2025	BLDPLNT	LAW KIONG HOLDINGS SDN. BHD. [SSH]	3	6,042	6.462
15 JAN 2025 - 15 JAN 2025	BTM	DATUK DR HON TIAN KOK @ WILLIAM [SSH]	-27,000	65,660	5.22
14 JAN 2025 - 14 JAN 2025	BURSA	EMPLOYEES PROVIDENT FUND BOARD [SSH]	1,000	86,525	10.691
13 JAN 2025 - 13 JAN 2025	BURSA	EMPLOYEES PROVIDENT FUND BOARD [SSH]	419	85,525	10.568
10 JAN 2025 - 10 JAN 2025	BURSA	EMPLOYEES PROVIDENT FUND BOARD [SSH]	306	85,106	10.516
09 JAN 2025 - 09 JAN 2025	BURSA	EMPLOYEES PROVIDENT FUND BOARD [SSH]	476	84,799	10.478
15 JAN 2025 - 15 JAN 2025	CAPITALA	DATUK KAMARUDIN BIN MERANUN [DIR/CEO]	50	1,028,859	23.75
15 JAN 2025 - 15 JAN 2025	CAPITALA	DATUK KAMARUDIN BIN MERANUN [SSH]	50	1,028,859	23.75
14 JAN 2025 - 14 JAN 2025	CAPITALA	DATUK KAMARUDIN BIN MERANUN [DIR/CEO]	177	344,863	39.9
14 JAN 2025 - 14 JAN 2025	CAPITALA	DATUK KAMARUDIN BIN MERANUN [DIR/CEO]	200	1,028,809	23.75
14 JAN 2025 - 14 JAN 2025	CAPITALA	DATUK KAMARUDIN BIN MERANUN [SSH]	200	1,028,809	23.75
14 JAN 2025 - 14 JAN 2025	CAPITALA	DATUK KAMARUDIN BIN MERANUN [SSH]	177	344,863	39.9
14 JAN 2025 - 14 JAN 2025	CAREPLS	MADAM NG SHU SI [SSH]	140	109,435	14.335
14 JAN 2025 - 14 JAN 2025	CAREPLS	MR LIM KWEE SHYAN [DIR/CEO]	140	110,878	14.524
14 JAN 2025 - 14 JAN 2025	CAREPLS	MR LIM KWEE SHYAN [SSH]	140	110,878	14.524
09 JAN 2025 - 09 JAN 2025	CAREPLS	MADAM NG SHU SI [SSH]	-7,700	109,295	14.317
09 JAN 2025 - 09 JAN 2025	CAREPLS	MR LIM KWEE SHYAN [DIR/CEO]	-7,700	110,738	14.505
09 JAN 2025 - 09 JAN 2025	CAREPLS	MR LIM KWEE SHYAN [SSH]	-7,700	110,738	14.505
14 JAN 2025 - 14 JAN 2025	CBHB	MRS CHEAH CHAI SIEW [SSH]	-188,090	1,368,491	72.757
14 JAN 2025 - 14 JAN 2025	CBHB	MRS CHIN SIN PENG [DIR/CEO]	200	200	0.011
14 JAN 2025 - 14 JAN 2025	CBHB	MRS LIM BEE HUA [DIR/CEO]	200	200	0.011
14 JAN 2025 - 14 JAN 2025	CBHB	MRS SAW BEE YEE [DIR/CEO]	200	200	0.011
14 JAN 2025 - 14 JAN 2025	CBHB	MRS TAN SUAT HOON [DIR/CEO]	200	200	0.011

Notice Period is 12th January 2025 – 18th January 2025					
Effective Change Date	Stock Name	Buyer/ Seller Name [Classification]	Bought / (Sold) ['000]	No. of Shares After Trade ['000]	
			Total	Total	% Held
14 JAN 2025 - 14 JAN 2025	CBHB	MR CHEAH BOON HOE [SSH]	-188,090	1,368,491	72.757
14 JAN 2025 - 14 JAN 2025	CBHB	MR CHEAH BOON HUAT [DIR/CEO]	-188,090	1,368,491	72.757
14 JAN 2025 - 14 JAN 2025	CBHB	MR CHEAH BOON HUAT [SSH]	-188,090	1,368,491	72.757
14 JAN 2025 - 14 JAN 2025	CBHB	MR CHEAH BOON HWA [DIR/CEO]	-188,090	1,368,491	72.757
14 JAN 2025 - 14 JAN 2025	CBHB	MR CHEAH BOON HWA [SSH]	-188,090	1,368,491	72.757
14 JAN 2025 - 14 JAN 2025	CBHB	MR CHEAH BOON KIAT [SSH]	-188,090	1,368,491	72.757
14 JAN 2025 - 14 JAN 2025	CBHB	QUAY HOLDINGS SDN. BHD. (FORMERLY KNOWN AS CBH EQUITIES SDN. BHD.) [SSH]	-188,090	1,368,491	72.757
08 JAN 2025 - 09 JAN 2025	CDB	EMPLOYEES PROVIDENT FUND BOARD [SSH]	72	1,231,894	10.501
08 JAN 2025 - 08 JAN 2025	CDB	EMPLOYEES PROVIDENT FUND BOARD [SSH]	1,123	1,231,822	10.5
15 JAN 2025 - 15 JAN 2025	CGB	MR LEE CHEE VUI [DIR/CEO]	-1,170	114,444	14.958
15 JAN 2025 - 15 JAN 2025	CGB	MR LEE CHEE VUI [SSH]	-1,170	114,444	14.958
15 JAN 2025 - 15 JAN 2025	CGB	MR SOO YU CHAI [SSH]	-1,170	102,808	13.437
15 JAN 2025 - 15 JAN 2025	CGB	RYRT HOLDINGS SDN. BHD. [SSH]	-1,170	102,026	13.335
09 JAN 2025 - 09 JAN 2025	CGB	MR CHEW HIAN TAT [DIR/CEO]	1,250	243,589	31.839
09 JAN 2025 - 09 JAN 2025	CGB	MR CHEW HIAN TAT [SSH]	1,250	243,589	31.839
10 JAN 2025 - 10 JAN 2025	CIMB	EMPLOYEES PROVIDENT FUND BOARD [SSH]	-6,487	1,772,353	16.51
13 JAN 2025 - 13 JAN 2025	CIMB	KUMPULAN WANG PERSARAAN (DIPERBADANKAN) [SSH]	111	651,585	6.07
09 JAN 2025 - 09 JAN 2025	CIMB	EMPLOYEES PROVIDENT FUND BOARD [SSH]	76	1,778,839	16.58
09 JAN 2025 - 09 JAN 2025	CIMB	KUMPULAN WANG PERSARAAN (DIPERBADANKAN) [SSH]	9	651,474	6.07
08 JAN 2025 - 08 JAN 2025	CIMB	EMPLOYEES PROVIDENT FUND BOARD [SSH]	508	1,778,764	16.58
07 JAN 2025 - 07 JAN 2025	CIMB	EMPLOYEES PROVIDENT FUND BOARD [SSH]	1,930	1,778,256	16.57
14 JAN 2025 - 14 JAN 2025	CITAGLB	TAN SRI DATO' SRI DR MOHAMAD NORZA BIN ZAKARIA [DIR/CEO]	137	137,167	32.239
14 JAN 2025 - 14 JAN 2025	CITAGLB	TAN SRI DATO' SRI DR MOHAMAD NORZA BIN ZAKARIA [SSH]	137	137,167	32.239
14 JAN 2025 - 14 JAN 2025	CLMT	EMPLOYEES PROVIDENT FUND BOARD [SSH]	2,000	439,239	15.252
13 JAN 2025 - 13 JAN 2025	CLMT	EMPLOYEES PROVIDENT FUND BOARD [SSH]	186	437,239	15.182
14 JAN 2025 - 14 JAN 2025	CLMT	KUMPULAN WANG PERSARAAN (DIPERBADANKAN) [SSH]	-1,300	297,051	10.314
08 JAN 2025 - 10 JAN 2025	CNERGEN	MR LYE THIM LOONG [DIR/CEO]	210	11,300	2.269
08 JAN 2025 - 08 JAN 2025	CTOS	EMPLOYEES PROVIDENT FUND BOARD [SSH]	420	426,645	18.469
16 JAN 2025 - 16 JAN 2025	CYBERE	MR MAHA RAMANATHAN PALAN [DIR/CEO]	55	2,029	1.191
15 JAN 2025 - 15 JAN 2025	CYBERE	MR MAHA RAMANATHAN PALAN [DIR/CEO]	34	1,940	1.158
14 JAN 2025 - 14 JAN 2025	CYBERE	MR MAHA RAMANATHAN PALAN [DIR/CEO]	63	1,940	1.138
13 JAN 2025 - 13 JAN 2025	CYBERE	MR MAHA RAMANATHAN PALAN [DIR/CEO]	11	1,877	1.101
15 JAN 2025 - 15 JAN 2025	DPS	EDMUND SOW YONG MING [SSH]	2,392	165,175	62.158
15 JAN 2025 - 15 JAN 2025	DPS	EDWARD SOW YUEN SENG [DIR/CEO]	2,392	165,175	62.158
15 JAN 2025 - 15 JAN 2025	DPS	EMILY SOW MEI CHET [DIR/CEO]	2,392	165,175	62.158
15 JAN 2025 - 15 JAN 2025	DPS	EUGENE SOW CHUAN SHENG [DIR/CEO]	2,392	165,175	62.158
15 JAN 2025 - 15 JAN 2025	DPS	EUGENE SOW CHUAN SHENG [SSH]	2,392	165,175	62.158
15 JAN 2025 - 15 JAN 2025	DPS	MISS EMILY SOW MEI CHET [SSH]	2,392	165,175	62.158
15 JAN 2025 - 15 JAN 2025	DPS	MR EDWARD SOW YUEN SENG [SSH]	2,392	165,175	62.158
15 JAN 2025 - 15 JAN 2025	DPS	MR ERIC SOW YONG SHING [SSH]	2,392	165,217	62.174
15 JAN 2025 - 15 JAN 2025	DPS	PUAN SRI CHU KIM GUEK [DIR/CEO]	2,392	165,217	62.174
15 JAN 2025 - 15 JAN 2025	DPS	PUAN SRI CHU KIM GUEK [SSH]	2,392	165,217	62.174
15 JAN 2025 - 15 JAN 2025	DPS	TAN SRI (DR) SOW CHIN CHUAN [DIR/CEO]	2,392	165,217	62.174
15 JAN 2025 - 15 JAN 2025	DPS	TAN SRI (DR) SOW CHIN CHUAN [SSH]	2,392	165,217	62.174
10 JAN 2025 - 10 JAN 2025	DSOINIC	URUSHARTA JAMAAH SDN. BHD. [SSH]	-1,000	244,663	8.794
09 JAN 2025 - 09 JAN 2025	DSOINIC	URUSHARTA JAMAAH SDN. BHD. [SSH]	-1,000	245,663	8.83
13 JAN 2025 - 15 JAN 2025	DUTALND	DATO' SRI YAP WEE KEAT [SSH]	5,863	524,873	64.68
13 JAN 2025 - 15 JAN 2025	DUTALND	TAN SRI DATO' YAP YONG SEONG [SSH]	5,863	524,798	64.67
08 JAN 2025 - 10 JAN 2025	DUTALND	DATO' SRI YAP WEE KEAT [DIR/CEO]	14,101	519,010	63.96
08 JAN 2025 - 10 JAN 2025	DUTALND	DATO' SRI YAP WEE KEAT [SSH]	14,101	519,010	63.96
08 JAN 2025 - 10 JAN 2025	DUTALND	DATUK YAP WEE CHUN [DIR/CEO]	14,101	518,938	63.95
08 JAN 2025 - 10 JAN 2025	DUTALND	DATUK YAP WEE CHUN [SSH]	14,101	518,938	63.95
08 JAN 2025 - 10 JAN 2025	DUTALND	KENNY HEIGHT DEVELOPMENTS SDN BHD [SSH]	14,101	518,826	63.94
08 JAN 2025 - 10 JAN 2025	DUTALND	PUAN SRI DATIN LEONG LI NAR [SSH]	14,101	518,826	63.94
08 JAN 2025 - 10 JAN 2025	DUTALND	TAN SRI DATO' YAP YONG SEONG [DIR/CEO]	14,101	518,935	63.95
08 JAN 2025 - 10 JAN 2025	DUTALND	TAN SRI DATO' YAP YONG SEONG [SSH]	14,101	518,935	63.95
09 JAN 2025 - 09 JAN 2025	DXN	DATIN LEONG BEE LING [SSH]	2,000,000	3,394,781	68.275

Disclaimer: The Information in Insider Activity is extracted from www.shareinvestor.com/fundamental/insider_trades. The information on this page is provided as a service to readers. It does not constitute financial advice and/or any investment recommendations. We assume no liability for damages resulting from or arising out of the use of such information. Whilst every effort is made to ensure accuracy, the information presented is not the official record of shareholder filings. Readers are advised to read the original filings on the Bursa Malaysia website at www.bursamalaysia.com



STROM
SWISS TIMEPIECES & JEWELLERY



StromWatch Asia
Tele : +65.9817.3378
Email : ll.stromasia@gmail.com
WWW.STROMWATCH.SWISS

Notice Period is 12th January 2025 – 18th January 2025

Effective Change Date	Stock Name	Buyer/ Seller Name [Classification]	Bought / (Sold) ['000]	No. of Shares After Trade ['000]	
			Total	Total	% Held
09 JAN 2025 - 09 JAN 2025	DXN	LSJ GLOBAL SDN. BHD. [SSH]	1,000,000	2,394,781	48.163
26 NOV 2024 - 09 JAN 2025	DXN	DATUK LIM SIOW JIN [DIR/CEO]	1,950,000	3,440,720	69.198
26 NOV 2024 - 09 JAN 2025	DXN	DATUK LIM SIOW JIN [SSH]	950,000	2,440,720	49.087
15 JAN 2025 - 15 JAN 2025	ECOFIRS	MR CHEW HIAN TAT [DIR/CEO]	2,470	109,308	9.244
15 JAN 2025 - 15 JAN 2025	ECOFIRS	MR CHEW HIAN TAT [SSH]	2,470	109,308	9.244
16 JAN 2025 - 17 JAN 2025	EG	DATO' KANG PANG KIANG [DIR/CEO]	477	67,001	14.74
16 JAN 2025 - 17 JAN 2025	EG	DATO' KANG PANG KIANG [SSH]	477	67,001	14.74
15 JAN 2025 - 15 JAN 2025	EG	DATO' KANG PANG KIANG [DIR/CEO]	821	66,524	14.635
15 JAN 2025 - 15 JAN 2025	EG	DATO' KANG PANG KIANG [SSH]	821	66,524	14.635
10 JAN 2025 - 10 JAN 2025	EITA	MADAM GOH KIN BEE [SSH]	10	43,741	14.493
10 JAN 2025 - 10 JAN 2025	EITA	MR LIM JOO SWEE [DIR/CEO]	10	43,848	14.528
10 JAN 2025 - 10 JAN 2025	EITA	MR LIM JOO SWEE [SSH]	10	43,848	14.528
14 JAN 2025 - 14 JAN 2025	ELRIDGE	MR YEO HOCK CHEONG [DIR/CEO]	-20,000	856,977	42.849
10 JAN 2025 - 10 JAN 2025	F&N	EMPLOYEES PROVIDENT FUND BOARD [SSH]	44	43,253	11.793
13 JAN 2025 - 13 JAN 2025	FEYTECH	ABRDN HOLDINGS LIMITED [SSH]	31	47,698	5.657
13 JAN 2025 - 13 JAN 2025	FEYTECH	ABRDN MALAYSIA SDN BHD [SSH]	31	47,698	5.657
13 JAN 2025 - 13 JAN 2025	FEYTECH	ABRDN PLC [SSH]	31	47,698	5.657
09 JAN 2025 - 09 JAN 2025	FEYTECH	ABRDN HOLDINGS LIMITED [SSH]	214	47,666	5.653
09 JAN 2025 - 09 JAN 2025	FEYTECH	ABRDN MALAYSIA SDN BHD [SSH]	214	47,666	5.653
09 JAN 2025 - 09 JAN 2025	FEYTECH	ABRDN PLC [SSH]	214	47,666	5.653
16 JAN 2025 - 16 JAN 2025	FFB	KUMPULAN WANG PERSARAAN (DIPERBADANKAN) [SSH]	1,034	155,409	8.288
14 JAN 2025 - 14 JAN 2025	FFB	EMPLOYEES PROVIDENT FUND BOARD [SSH]	155	177,560	9.47
15 JAN 2025 - 15 JAN 2025	FFB	KUMPULAN WANG PERSARAAN (DIPERBADANKAN) [SSH]	1,003	154,375	8.233
13 JAN 2025 - 13 JAN 2025	FFB	EMPLOYEES PROVIDENT FUND BOARD [SSH]	-212	177,405	9.462
14 JAN 2025 - 14 JAN 2025	FFB	KUMPULAN WANG PERSARAAN (DIPERBADANKAN) [SSH]	2,203	153,373	8.18
10 JAN 2025 - 10 JAN 2025	FFB	EMPLOYEES PROVIDENT FUND BOARD [SSH]	-881	177,617	9.473
13 JAN 2025 - 13 JAN 2025	FFB	KUMPULAN WANG PERSARAAN (DIPERBADANKAN) [SSH]	2,000	151,170	8.062
10 JAN 2025 - 10 JAN 2025	FFB	EMPLOYEES PROVIDENT FUND BOARD [SSH]	136	178,498	9.52
09 JAN 2025 - 10 JAN 2025	FPHB	MRS LIEW TSUEY ER [DIR/CEO]	203	283,215	62.937
09 JAN 2025 - 10 JAN 2025	FPHB	MRS LIEW TSUEY ER [SSH]	203	283,215	62.937
14 JAN 2025 - 14 JAN 2025	GAMUDA	EMPLOYEES PROVIDENT FUND BOARD (EPF BOARD) [SSH]	3,118	480,604	8.44
13 JAN 2025 - 13 JAN 2025	GAMUDA	EMPLOYEES PROVIDENT FUND BOARD (EPF BOARD) [SSH]	-101	477,486	8.38
10 JAN 2025 - 10 JAN 2025	GAMUDA	EMPLOYEES PROVIDENT FUND BOARD (EPF BOARD) [SSH]	6,024	477,587	8.39
09 JAN 2025 - 09 JAN 2025	GAMUDA	EMPLOYEES PROVIDENT FUND BOARD (EPF BOARD) [SSH]	8,019	471,562	8.28
14 JAN 2025 - 14 JAN 2025	GENP	EMPLOYEES PROVIDENT FUND BOARD [SSH]	0.2	118,985	13.262
15 JAN 2025 - 15 JAN 2025	GENP	KUMPULAN WANG PERSARAAN (DIPERBADANKAN) [SSH]	500	67,407	7.513
13 JAN 2025 - 13 JAN 2025	GENP	KUMPULAN WANG PERSARAAN (DIPERBADANKAN) [SSH]	10	66,907	7.458
08 JAN 2025 - 08 JAN 2025	GENP	EMPLOYEES PROVIDENT FUND BOARD [SSH]	58	118,985	13.262
08 JAN 2025 - 08 JAN 2025	HARNLEN	DATUK MOHAMED NIZAM BIN MOHAMED JAKEL [SSH]	47,222	78,488	12.854
14 JAN 2025 - 14 JAN 2025	HARTA	KUMPULAN WANG PERSARAAN (DIPERBADANKAN) [SSH]	-67	219,907	6.443
13 JAN 2025 - 13 JAN 2025	HARTA	KUMPULAN WANG PERSARAAN (DIPERBADANKAN) [SSH]	1,710	219,974	6.445
16 JAN 2025 - 16 JAN 2025	HAWK	PUAN AZNITA BINTI ABDUL AZIZ [DIR/CEO]	20	20	0.004
16 JAN 2025 - 16 JAN 2025	HCK	DATO' DIONG TAK CHONG @ TIONG TAK CHONG [DIR/CEO]	2,600	29,777	4.871
13 JAN 2025 - 15 JAN 2025	HCK	TAN SRI HII CHII KOK @ HII CHEE KOK [DIR/CEO]	900	342,386	56.252
13 JAN 2025 - 15 JAN 2025	HCK	TAN SRI HII CHII KOK @ HII CHEE KOK [SSH]	900	342,386	56.252
16 JAN 2025 - 16 JAN 2025	HCK-WA	DATO' DIONG TAK CHONG @ TIONG TAK CHONG [DIR/CEO]	2,600	30,455	43.891
16 JAN 2025 - 16 JAN 2025	HEGROUP	DATUK WIRA YONG CHONG CHEANG [SSH]	250	87,893	19.976
16 JAN 2025 - 16 JAN 2025	HEGROUP	HEXATECH ENERGY CONSOLIDATED SDN. BHD. [SSH]	250	87,893	19.976
13 JAN 2025 - 15 JAN 2025	HEGROUP	DATUK WIRA YONG CHONG CHEANG [SSH]	631	87,643	19.919
13 JAN 2025 - 15 JAN 2025	HEGROUP	HEXATECH ENERGY CONSOLIDATED SDN. BHD. [SSH]	631	87,643	19.919
14 JAN 2025 - 14 JAN 2025	HEKTAR	HEKTAR BLACK SDN BHD [SSH]	-204	123,423	17.401
10 JAN 2025 - 10 JAN 2025	HLBANK	EMPLOYEES PROVIDENT FUND BOARD [SSH]	349	185,250	8.878
09 JAN 2025 - 09 JAN 2025	HLBANK	EMPLOYEES PROVIDENT FUND BOARD [SSH]	-1,227	184,901	8.861
08 JAN 2025 - 08 JAN 2025	HLBANK	EMPLOYEES PROVIDENT FUND BOARD [SSH]	277	186,129	8.92
14 JAN 2025 - 14 JAN 2025	HM	DATO DATO LIU HAN MING [DIR/CEO]	395,361	497,536	30.327
14 JAN 2025 - 14 JAN 2025	HM	DATO LIU HAN MING [SSH]	395,361	497,536	30.327
14 JAN 2025 - 14 JAN 2025	HM	FORTRESS PARADE SDN. BHD. [SSH]	395,361	497,536	30.327
14 JAN 2025 - 14 JAN 2025	HWGB	MR CHIEN CHAO-CHUAN [SSH]	150	12,402	6.03
13 JAN 2025 - 13 JAN 2025	HWGB	MR CHIEN CHAO-CHUAN [SSH]	150	12,252	5.96
10 JAN 2025 - 10 JAN 2025	HWGB	MR CHIEN CHAO-CHUAN [SSH]	150	12,102	5.89
14 JAN 2025 - 14 JAN 2025	IHH	EMPLOYEES PROVIDENT FUND BOARD [SSH]	-629	913,830	10.368
13 JAN 2025 - 13 JAN 2025	IHH	EMPLOYEES PROVIDENT FUND BOARD [SSH]	1,245	914,458	10.375
10 JAN 2025 - 10 JAN 2025	IHH	EMPLOYEES PROVIDENT FUND BOARD [SSH]	2,608	913,213	10.361
09 JAN 2025 - 09 JAN 2025	IHH	EMPLOYEES PROVIDENT FUND BOARD [SSH]	2,000	910,605	10.331
08 JAN 2025 - 08 JAN 2025	IHH	EMPLOYEES PROVIDENT FUND BOARD [SSH]	891	908,605	10.309
16 JAN 2025 - 16 JAN 2025	IJM	KUMPULAN WANG PERSARAAN (DIPERBADANKAN) [SSH]	-1,000	332,899	9.495
13 JAN 2025 - 13 JAN 2025	IJM	KUMPULAN WANG PERSARAAN (DIPERBADANKAN) [SSH]	250	333,899	9.523
08 JAN 2025 - 08 JAN 2025	IJM	EMPLOYEES PROVIDENT FUND BOARD [SSH]	926	499,230	14.239
16 JAN 2025 - 16 JAN 2025	INARI	KUMPULAN WANG PERSARAAN (DIPERBADANKAN) [SSH]	-500	369,807	9.761

Disclaimer: The Information in Insider Activity is extracted from www.shareinvestor.com/fundamental/insider_trades. The information on this page is provided as a service to readers. It does not constitute financial advice and/or any investment recommendations. We assume no liability for damages resulting from or arising out of the use of such information. Whilst every effort is made to ensure accuracy, the information presented is not the official record of shareholder filings. Readers are advised to read the original filings on the Bursa Malaysia website at www.bursamalaysia.com

Notice Period is 12th January 2025 – 18th January 2025

Effective Change Date	Stock Name	Buyer/ Seller Name [Classification]	Bought / (Sold) ['000]	No. of Shares After Trade ['000]	
			Total	Total	% Held
13 JAN 2025 - 14 JAN 2025	INTA	APEXJAYA INDUSTRIES SDN BHD [SSH]	600	169,406	30.692
13 JAN 2025 - 14 JAN 2025	INTA	MADAM KOK CHIN SEOW [SSH]	600	170,713	30.929
13 JAN 2025 - 14 JAN 2025	INTA	MR LIM OOI JOO [DIR/CEO]	600	218,561	39.598
13 JAN 2025 - 14 JAN 2025	INTA	MR LIM OOI JOO [SSH]	600	218,561	39.598
14 JAN 2025 - 14 JAN 2025	IOICORP	EMPLOYEES PROVIDENT FUND BOARD [SSH]	1,000	849,702	13.697
13 JAN 2025 - 13 JAN 2025	IOICORP	DATO' LEE YEOW CHOR [DIR/CEO]	314	3,141,868	50.646
13 JAN 2025 - 13 JAN 2025	IOICORP	DATO' LEE YEOW CHOR [SSH]	314	3,141,668	50.642
10 JAN 2025 - 10 JAN 2025	IOICORP	EMPLOYEES PROVIDENT FUND BOARD [SSH]	455	848,702	13.681
09 JAN 2025 - 09 JAN 2025	IOICORP	EMPLOYEES PROVIDENT FUND BOARD [SSH]	2,000	848,247	13.673
14 JAN 2025 - 14 JAN 2025	IOIPG	EMPLOYEES PROVIDENT FUND BOARD [SSH]	393	454,716	8.258
13 JAN 2025 - 13 JAN 2025	IOIPG	EMPLOYEES PROVIDENT FUND BOARD [SSH]	1,157	454,578	8.256
08 JAN 2025 - 08 JAN 2025	IOIPG	EMPLOYEES PROVIDENT FUND BOARD [SSH]	511	453,633	8.239
14 JAN 2025 - 14 JAN 2025	JPG	KULIM (MALAYSIA) BERHAD [SSH]	-14,000	1,611,000	64.44
13 JAN 2025 - 13 JAN 2025	JPG	EMPLOYEES PROVIDENT FUND BOARD [SSH]	-3,207	172,420	6.897
10 JAN 2025 - 10 JAN 2025	JPG	EMPLOYEES PROVIDENT FUND BOARD [SSH]	-2,156	175,627	7.025
09 JAN 2025 - 09 JAN 2025	JPG	EMPLOYEES PROVIDENT FUND BOARD [SSH]	-1,495	177,783	7.111
14 JAN 2025 - 15 JAN 2025	KARYON	MADAM CHUA LING LEE [SSH]	879	73,768	15.51
14 JAN 2025 - 15 JAN 2025	KARYON	MADAM TEOH KOOI KIM [SSH]	879	106,731	22.43
10 JAN 2025 - 10 JAN 2025	KERJAYA	EMPLOYEES PROVIDENT FUND BOARD [SSH]	516	72,028	5.712
09 JAN 2025 - 09 JAN 2025	KERJAYA	EMPLOYEES PROVIDENT FUND BOARD [SSH]	1,604	71,512	5.671
10 JAN 2025 - 10 JAN 2025	KLCC	EMPLOYEES PROVIDENT FUND BOARD [SSH]	5	204,768	11.342
10 JAN 2025 - 10 JAN 2025	KLCC	EMPLOYEES PROVIDENT FUND BOARD [SSH]	5	204,768	11.342
08 JAN 2025 - 08 JAN 2025	KLCC	EMPLOYEES PROVIDENT FUND BOARD [SSH]	159	204,763	11.342
08 JAN 2025 - 08 JAN 2025	KLCC	EMPLOYEES PROVIDENT FUND BOARD [SSH]	159	204,763	11.342
13 JAN 2025 - 13 JAN 2025	KLK	DATO' LEE HAU HIAN [DIR/CEO]	29	526,876	48.055
13 JAN 2025 - 13 JAN 2025	KLK	TAN SRI DATO' SERI LEE OI HIAN [DIR/CEO]	29	527,133	48.078
10 JAN 2025 - 10 JAN 2025	KLK	EMPLOYEES PROVIDENT FUND BOARD [SSH]	112	172,322	15.717
09 JAN 2025 - 09 JAN 2025	KLK	EMPLOYEES PROVIDENT FUND BOARD [SSH]	202	172,142	15.701
09 JAN 2025 - 10 JAN 2025	KLK	ARUSHA ENTERPRISE SDN. BHD. [SSH]	220	526,273	48
09 JAN 2025 - 10 JAN 2025	KLK	BATU KAWAN BERHAD [SSH]	220	526,273	48
09 JAN 2025 - 10 JAN 2025	KLK	CUBIC CRYSTAL CORPORATION [SSH]	220	526,761	48.044
09 JAN 2025 - 10 JAN 2025	KLK	DATO' LEE HAU HIAN [DIR/CEO]	220	526,847	48.052
09 JAN 2025 - 10 JAN 2025	KLK	DATO' LEE HAU HIAN [SSH]	220	526,847	48.052
09 JAN 2025 - 10 JAN 2025	KLK	DI-YI SDN. BHD. [SSH]	220	526,761	48.044
09 JAN 2025 - 10 JAN 2025	KLK	GRATEFUL BLESSINGS FOUNDATION [SSH]	220	526,761	48.044
09 JAN 2025 - 10 JAN 2025	KLK	GRATEFUL BLESSINGS INC. [SSH]	220	526,761	48.044
09 JAN 2025 - 10 JAN 2025	KLK	HIGH QUEST ANSTALT [SSH]	220	526,761	48.044
09 JAN 2025 - 10 JAN 2025	KLK	HIGH QUEST HOLDINGS SDN BHD [SSH]	220	526,761	48.044
09 JAN 2025 - 10 JAN 2025	KLK	TAN SRI DATO' SERI LEE OI HIAN [SSH]	220	527,104	48.076
09 JAN 2025 - 10 JAN 2025	KLK	TAN SRI DATO' SERI LEE OI HIAN [DIR/CEO]	220	527,104	48.076
09 JAN 2025 - 10 JAN 2025	KLK	WAN HIN INVESTMENTS SDN. BERHAD [SSH]	220	526,738	48.042
08 JAN 2025 - 08 JAN 2025	KLK	EMPLOYEES PROVIDENT FUND BOARD [SSH]	100	171,940	15.682
15 JAN 2025 - 15 JAN 2025	KOSSAN	MR LIM KUANG WANG [SSH]	100	957,638	37.531
14 JAN 2025 - 14 JAN 2025	KOSSAN	EMPLOYEES PROVIDENT FUND BOARD [SSH]	-126	140,492	5.506
13 JAN 2025 - 13 JAN 2025	KOSSAN	EMPLOYEES PROVIDENT FUND BOARD [SSH]	2,196	140,618	5.511
10 JAN 2025 - 10 JAN 2025	KOSSAN	EMPLOYEES PROVIDENT FUND BOARD [SSH]	1,920	138,422	5.425
09 JAN 2025 - 09 JAN 2025	KOSSAN	EMPLOYEES PROVIDENT FUND BOARD [SSH]	140	136,502	5.35
08 JAN 2025 - 08 JAN 2025	KOSSAN	EMPLOYEES PROVIDENT FUND BOARD [SSH]	274	136,362	5.344
10 JAN 2025 - 10 JAN 2025	KRONO	MR EDMOND TAY NAM HIONG [DIR/CEO]	-250	48,264	5.421
10 JAN 2025 - 10 JAN 2025	KRONO	MR EDMOND TAY NAM HIONG [SSH]	-250	48,264	5.421
16 JAN 2025 - 16 JAN 2025	KUCINGKO	MR OOI KOK HONG [DIR/CEO]	50	173,639	34.73
16 JAN 2025 - 16 JAN 2025	KUCINGKO	MR OOI KOK HONG [SSH]	50	173,639	34.73
05 JUL 2024 - 05 JUL 2024	LBICAP	ENCIK AZLAN BIN ARSHAD [DIR/CEO]	7	1,349	1.174
16 JAN 2025 - 16 JAN 2025	LBS	TAN SRI DATO' SRI IR. (DR.) LIM HOCK SAN JP [DIR/CEO]	100	614,361	39.744
16 JAN 2025 - 16 JAN 2025	LBS	TAN SRI DATO' SRI IR. (DR.) LIM HOCK SAN JP [SSH]	100	611,091	39.533
13 JAN 2025 - 13 JAN 2025	LUXCHEM	MADAM CHIN SONG MOOI [DIR/CEO]	59	464,256	43.398
13 JAN 2025 - 13 JAN 2025	LUXCHEM	MADAM CHIN SONG MOOI [SSH]	59	464,256	43.398
13 JAN 2025 - 13 JAN 2025	LUXCHEM	MR TANG YING SEE [DIR/CEO]	59	464,256	43.398
13 JAN 2025 - 13 JAN 2025	LUXCHEM	MR TANG YING SEE [SSH]	59	464,256	43.398
10 JAN 2025 - 10 JAN 2025	LUXCHEM	MADAM CHIN SONG MOOI [DIR/CEO]	78	464,197	43.393
10 JAN 2025 - 10 JAN 2025	LUXCHEM	MADAM CHIN SONG MOOI [SSH]	78	464,197	43.393
10 JAN 2025 - 10 JAN 2025	LUXCHEM	MR TANG YING SEE [DIR/CEO]	78	464,197	43.393
10 JAN 2025 - 10 JAN 2025	LUXCHEM	MR TANG YING SEE [SSH]	78	464,197	43.393
14 JAN 2025 - 14 JAN 2025	M&A	CIK SITI NUR AISHAH BINTI ISHAK [SSH]	-80	126,127	6.31
16 JAN 2025 - 16 JAN 2025	MAG	MR NG MIN LIN [DIR/CEO]	5,000	504,802	26.589
16 JAN 2025 - 16 JAN 2025	MAG	MR NG MIN LIN [SSH]	5,000	504,802	26.589
16 JAN 2025 - 16 JAN 2025	MAG	MR YEOH WOUI KIA [DIR/CEO]	250	250	0.013
15 JAN 2025 - 15 JAN 2025	MAG	MR NG MIN LIN [DIR/CEO]	20,000	499,802	26.405
15 JAN 2025 - 15 JAN 2025	MAG	MR NG MIN LIN [SSH]	20,000	499802	26.405
13 JAN 2025 - 13 JAN 2025	MALAKOF	EMPLOYEES PROVIDENT FUND BOARD [SSH]	173	558,134	11.42
10 JAN 2025 - 10 JAN 2025	MALAKOF	EMPLOYEES PROVIDENT FUND BOARD [SSH]	630	557,961	11.417
09 JAN 2025 - 09 JAN 2025	MALAKOF	EMPLOYEES PROVIDENT FUND BOARD [SSH]	1,350	557,331	11.404
09 JAN 2025 - 09 JAN 2025	MATANG	HUAREN HOLDINGS SDN BHD [SSH]	2,600	585,217	24.494
09 JAN 2025 - 09 JAN 2025	MATANG	MALAYSIAN CHINESE ASSOCIATION [SSH]	2,600	607,035	25.408
15 JAN 2025 - 15 JAN 2025	MATRIX	LEMBAGA TABUNG HAJI [SSH]	-500	71,148	5.686
13 JAN 2025 - 13 JAN 2025	MAXIS	EMPLOYEES PROVIDENT FUND BOARD ('EPF BOARD') [SSH]	65	945,424	12.069

Notice Period is 12th January 2025 – 18th January 2025

Effective Change Date	Stock Name	Buyer/ Seller Name [Classification]	Bought / (Sold) ['000]	No. of Shares After Trade ['000]	
			Total	Total	% Held
10 JAN 2025 - 10 JAN 2025	MAXIS	EMPLOYEES PROVIDENT FUND BOARD (EPF BOARD) [SSH]	-289	945,359	12.069
09 JAN 2025 - 09 JAN 2025	MAXIS	EMPLOYEES PROVIDENT FUND BOARD (EPF BOARD) [SSH]	-488	945,647	12.073
16 JAN 2025 - 16 JAN 2025	MAYBANK	KUMPULAN WANG PERSARAAN (DIPERBADANKAN) (KWAP) [SSH]	1,095	611,872	5.071
14 JAN 2025 - 14 JAN 2025	MAYBANK	EMPLOYEES PROVIDENT FUND BOARD [SSH]	-2,000	1,575,021	13.052
14 JAN 2025 - 14 JAN 2025	MAYBANK	KUMPULAN WANG PERSARAAN (DIPERBADANKAN) (KWAP) [SSH]	1,590	610,778	5.062
10 JAN 2025 - 10 JAN 2025	MAYBANK	EMPLOYEES PROVIDENT FUND BOARD [SSH]	-58	1,574,521	13.048
13 JAN 2025 - 13 JAN 2025	MAYBANK	KUMPULAN WANG PERSARAAN (DIPERBADANKAN) (KWAP) [SSH]	500	609,188	5.049
09 JAN 2025 - 09 JAN 2025	MAYBANK	EMPLOYEES PROVIDENT FUND BOARD [SSH]	-3,700	1,574,579	13.049
14 JAN 2025 - 14 JAN 2025	MESTRON	MR POR TEONG ENG [DIR/CEO]	650	146,515	14.64
14 JAN 2025 - 14 JAN 2025	MESTRON	MR POR TEONG ENG [SSH]	650	146,515	14.64
14 JAN 2025 - 14 JAN 2025	MFCB	EMPLOYEES PROVIDENT FUND BOARD [SSH]	500	56,865	6.033
16 JAN 2025 - 16 JAN 2025	MISC	KUMPULAN WANG PERSARAAN (DIPERBADANKAN) (KWAP) [SSH]	54	223,435	5.006
09 JAN 2025 - 09 JAN 2025	MISC	EMPLOYEES PROVIDENT FUND BOARD [SSH]	3,159	575,085	12.883
08 JAN 2025 - 08 JAN 2025	MISC	EMPLOYEES PROVIDENT FUND BOARD [SSH]	1,394	571,926	12.813
15 JAN 2025 - 15 JAN 2025	MITRA	MISS TAN MEI YIN [DIR/CEO]	200	5,808	0.766
14 JAN 2025 - 14 JAN 2025	MITRA	MISS TAN MEI YIN [DIR/CEO]	251	5,608	0.74
10 JAN 2025 - 10 JAN 2025	MITRA	MISS TAN MEI YIN [DIR/CEO]	64	5,357	0.707
09 JAN 2025 - 10 JAN 2025	MMIS	MR LOW OO SENG [SSH]	-303	120,197	20.033
17 JAN 2025 - 17 JAN 2025	MNHLDG	DATUK DANG SIONG DIANG [DIR/CEO]	200	34,796	6.445
17 JAN 2025 - 17 JAN 2025	MNHLDG	DATUK DANG SIONG DIANG [SSH]	200	34,796	6.445
15 JAN 2025 - 15 JAN 2025	MNHLDG	DATO' TOH ENG KEAT [DIR/CEO]	100	90,899	16.852
15 JAN 2025 - 15 JAN 2025	MNHLDG	DATO' TOH ENG KEAT [SSH]	100	90,899	16.852
15 JAN 2025 - 15 JAN 2025	MNHLDG	DATUK DANG SIONG DIANG [DIR/CEO]	250	34,096	6.321
15 JAN 2025 - 15 JAN 2025	MNHLDG	DATUK DANG SIONG DIANG [SSH]	250	34,096	6.321
14 JAN 2025 - 14 JAN 2025	MNHLDG	DATUK LOY SIONG HAY [DIR/CEO]	15,000	88,605	16.427
14 JAN 2025 - 14 JAN 2025	MNHLDG	DATUK LOY SIONG HAY [SSH]	15,000	88,605	16.427
10 JAN 2025 - 10 JAN 2025	MNHLDG	DATUK DANG SIONG DIANG [DIR/CEO]	1,750	33,846	6.482
10 JAN 2025 - 10 JAN 2025	MNHLDG	DATUK DANG SIONG DIANG [SSH]	1,750	33,846	6.482
14 JAN 2025 - 14 JAN 2025	MN-HLDG-WA	DATUK LOY SIONG HAY [DIR/CEO]	-15,000	22,126	17.399
10 JAN 2025 - 10 JAN 2025	MN-HLDG-WA	DATUK DANG SIONG DIANG [DIR/CEO]	-1,750	15,558	10.775
14 JAN 2025 - 14 JAN 2025	MRDIY	EMPLOYEES PROVIDENT FUND BOARD [SSH]	1,276	699,612	7.393
10 JAN 2025 - 10 JAN 2025	MRDIY	EMPLOYEES PROVIDENT FUND BOARD [SSH]	100	698,336	7.379
08 JAN 2025 - 08 JAN 2025	MRDIY	EMPLOYEES PROVIDENT FUND BOARD [SSH]	225	698,236	7.378
15 JAN 2025 - 15 JAN 2025	MYEG	KUMPULAN WANG PERSARAAN (DIPERBADANKAN) [SSH]	958	396,574	5.266
14 JAN 2025 - 14 JAN 2025	MYEG	KUMPULAN WANG PERSARAAN (DIPERBADANKAN) [SSH]	1,286	395,617	5.253
13 JAN 2025 - 13 JAN 2025	MYEG	KUMPULAN WANG PERSARAAN (DIPERBADANKAN) [SSH]	114	394,331	5.236
15 JAN 2025 - 16 JAN 2025	NATGATE	DATO' SERI WONG SIEW HAI [DIR/CEO]	45	5,554	0.244
13 JAN 2025 - 13 JAN 2025	NATGATE	MR LEE KIM SAN [DIR/CEO]	50	12,961	0.569
15 JAN 2025 - 15 JAN 2025	NCT	DATO' SRI YAP NGAN CHOY [DIR/CEO]	257	1,008,341	54.12
15 JAN 2025 - 15 JAN 2025	NCT	DATO' SRI YAP NGAN CHOY [SSH]	257	1,008,341	54.12
15 JAN 2025 - 16 JAN 2025	NCT	DATO' YAP FOOK CHOY [DIR/CEO]	81	984,971	52.866
15 JAN 2025 - 16 JAN 2025	NCT	DATO' YAP FOOK CHOY [SSH]	81	984,971	52.866
14 JAN 2025 - 14 JAN 2025	NCT	DATO' YAP FOOK CHOY [DIR/CEO]	-6,500	984,889	52.861
14 JAN 2025 - 14 JAN 2025	NCT	DATO' YAP FOOK CHOY [SSH]	-6,500	984,889	52.861
14 JAN 2025 - 14 JAN 2025	NCT	YBG YAP CONSOLIDATED SDN. BHD. [SSH]	-6,500	945,946	50.771
13 JAN 2025 - 14 JAN 2025	NCT	DATO' SRI YAP NGAN CHOY [DIR/CEO]	-10,495	1,008,084	54.106
13 JAN 2025 - 14 JAN 2025	NCT	DATO' SRI YAP NGAN CHOY [SSH]	-10,495	1,008,084	54.106
09 JAN 2025 - 09 JAN 2025	NCT	DATO' SRI YAP NGAN CHOY [DIR/CEO]	14	1,018,579	54.67
09 JAN 2025 - 09 JAN 2025	NCT	DATO' SRI YAP NGAN CHOY [SSH]	14	1,018,579	54.67
13 JAN 2025 - 13 JAN 2025	NE	MR NG CHAY CHIN [DIR/CEO]	1,636	432,714	58.475
13 JAN 2025 - 13 JAN 2025	NE	MR NG CHAY CHIN [SSH]	1,636	432,714	58.475
09 JAN 2025 - 09 JAN 2025	NESTLE	EMPLOYEES PROVIDENT FUND BOARD [SSH]	9	29,312	12.5
13 JAN 2025 - 13 JAN 2025	NIHSIN	MISS KHOO WUAN RU [DIR/CEO]	500	98,475	18.805
13 JAN 2025 - 13 JAN 2025	NIHSIN	MR KHOO CHEE KONG [SSH]	500	98,475	18.805
09 JAN 2025 - 09 JAN 2025	PADINI	EMPLOYEES PROVIDENT FUND BOARD [SSH]	-249	73,879	7.486
15 JAN 2025 - 15 JAN 2025	PANDA	GOLDCOIN CAPITAL SDN. BHD. [SSH]	-1,500	465,720	69.387
15 JAN 2025 - 15 JAN 2025	PANDA	MR LOO CHEE WEE [DIR/CEO]	-1,500	465,720	69.387
15 JAN 2025 - 15 JAN 2025	PANDA	MR LOO CHEE WEE [SSH]	-1,500	465,720	69.387
15 JAN 2025 - 15 JAN 2025	PANDA	MR TAY KHENG SENG [DIR/CEO]	-1,500	476,717	71.026
15 JAN 2025 - 15 JAN 2025	PANDA	MR TAY KHENG SENG [SSH]	-1,500	476,717	71.026
10 JAN 2025 - 14 JAN 2025	PARLO	MR HON TIAN KOK @ WILLIAM [SSH]	60,809	98,617	16.405
14 JAN 2025 - 14 JAN 2025	PAVREIT	EMPLOYEES PROVIDENT FUND BOARD [SSH]	-446	450,552	12.308
13 JAN 2025 - 13 JAN 2025	PAVREIT	EMPLOYEES PROVIDENT FUND BOARD [SSH]	-500	450,998	12.32
08 JAN 2025 - 08 JAN 2025	PAVREIT	EMPLOYEES PROVIDENT FUND BOARD [SSH]	-786	451,498	12.334
13 JAN 2025 - 13 JAN 2025	PBBANK	EMPLOYEES PROVIDENT FUND BOARD [SSH]	5,421	2,915,648	15.02
10 JAN 2025 - 10 JAN 2025	PBBANK	EMPLOYEES PROVIDENT FUND BOARD [SSH]	668	2,910,227	14.99
09 JAN 2025 - 09 JAN 2025	PBBANK	EMPLOYEES PROVIDENT FUND BOARD [SSH]	-525	2,909,558	14.99
10 JAN 2025 - 10 JAN 2025	PENTA	EMPLOYEES PROVIDENT FUND BOARD [SSH]	130	62,187	8.742
09 JAN 2025 - 09 JAN 2025	PENTA	EMPLOYEES PROVIDENT FUND BOARD [SSH]	445	62,057	8.724
10 JAN 2025 - 10 JAN 2025	PENTA	KUMPULAN WANG PERSARAAN (DIPERBADANKAN) [SSH]	28	43,109	6.061

Notice Period is 12th January 2025 – 18th January 2025

Effective Change Date	Stock Name	Buyer/ Seller Name [Classification]	Bought / (Sold) ['000]	No. of Shares After Trade ['000]	
			Total	Total	% Held
08 JAN 2025 - 08 JAN 2025	PENTA	EMPLOYEES PROVIDENT FUND BOARD [SSH]	247	61,611	8.662
13 JAN 2025 - 13 JAN 2025	PETGAS	EMPLOYEES PROVIDENT FUND BOARD [SSH]	20	248,462	12.557
10 JAN 2025 - 10 JAN 2025	PETGAS	EMPLOYEES PROVIDENT FUND BOARD [SSH]	60	248,442	12.556
10 JAN 2025 - 10 JAN 2025	PLABS	MR BU YAW SENG [SSH]	238	24,509	8.905
10 JAN 2025 - 10 JAN 2025	PLINTAS	EMPLOYEES PROVIDENT FUND BOARD [SSH]	-350	83,454	7.587
09 JAN 2025 - 09 JAN 2025	PLINTAS	EMPLOYEES PROVIDENT FUND BOARD [SSH]	-73	83,804	7.619
15 JAN 2025 - 15 JAN 2025	PLYTEC	MR./ IR. LOUIS TAY CHEE SIONG [DIR/CEO]	200	300	0.05
10 JAN 2025 - 10 JAN 2025	PMETAL	EMPLOYEES PROVIDENT FUND BOARD [SSH]	989	426,770	5.179
09 JAN 2025 - 09 JAN 2025	PMETAL	EMPLOYEES PROVIDENT FUND BOARD [SSH]	4,000	425,781	5.167
08 JAN 2025 - 08 JAN 2025	PMETAL	EMPLOYEES PROVIDENT FUND BOARD [SSH]	2,560	421,781	5.119
13 JAN 2025 - 13 JAN 2025	PPB	EMPLOYEES PROVIDENT FUND BOARD [SSH]	300	186,680	13.122
10 JAN 2025 - 10 JAN 2025	PPB	EMPLOYEES PROVIDENT FUND BOARD [SSH]	34	186,380	13.101
09 JAN 2025 - 09 JAN 2025	PPB	EMPLOYEES PROVIDENT FUND BOARD [SSH]	113	186,321	13.097
08 JAN 2025 - 08 JAN 2025	PPB	EMPLOYEES PROVIDENT FUND BOARD [SSH]	300	186,208	13.089
10 JAN 2025 - 10 JAN 2025	RHBBANK	EMPLOYEES PROVIDENT FUND BOARD [SSH]	2,736	1,719,540	39.444
08 JAN 2025 - 08 JAN 2025	RHBBANK	EMPLOYEES PROVIDENT FUND BOARD [SSH]	1,609	1,716,803	39.381
14 JAN 2025 - 15 JAN 2025	RHONEMA	TEO KWEE HOCK [SSH]	-21	14,880	6.726
13 JAN 2025 - 13 JAN 2025	SAM	EMPLOYEES PROVIDENT FUND BOARD [SSH]	75	44,258	6.538
10 JAN 2025 - 10 JAN 2025	SAM	EMPLOYEES PROVIDENT FUND BOARD [SSH]	20	44,183	6.526
16 JAN 2025 - 16 JAN 2025	SANCY	DR IZHAR BIN CHE MEE [DIR/CEO]	-10,064	298,203	43.907
16 JAN 2025 - 16 JAN 2025	SANCY	DR IZHAR BIN CHE MEE [SSH]	-10,064	298,203	43.907
16 JAN 2025 - 16 JAN 2025	SANCY	MR PRABUDDHA KUMAR PRONOB CHAKRAVERTTY [DIR/CEO]	-10,064	452,928	66.688
16 JAN 2025 - 16 JAN 2025	SANCY	MR PRABUDDHA KUMAR PRONOB CHAKRAVERTTY [SSH]	-10,064	452,928	66.688
16 JAN 2025 - 16 JAN 2025	SANCY	SANCY CONSULTING SDN. BHD. [SSH]	-10,064	297,803	43.848
16 JAN 2025 - 16 JAN 2025	SCBUILD	MR LOH BOON GINN [DIR/CEO]	-28,000	232,014	5.67
16 JAN 2025 - 16 JAN 2025	SCBUILD	MR LOH BOON GINN [SSH]	-28,000	232,014	5.67
10 JAN 2025 - 10 JAN 2025	SCC	MR CHEE LONG SING @ CHER HWEE SENG [SSH]	3,330	34223	25.557
10 JAN 2025 - 10 JAN 2025	SCC	MR CHER LIP CHUN [DIR/CEO]	3,330	36,223	25.661
10 JAN 2025 - 10 JAN 2025	SCC	MR CHER LIP TER [DIR/CEO]	3,330	36,223	25.661
10 JAN 2025 - 10 JAN 2025	SCC	MR GOH AH HENG @ GOH KENG CHIN [SSH]	-3,330	8,480	6.008
13 JAN 2025 - 16 JAN 2025	SCIB	MR NG CHENG SHIN [DIR/CEO]	40	40	0.006
13 JAN 2025 - 15 JAN 2025	SCIENTX	MR LIM PENG CHEONG [DIR/CEO]	809	864,855	55.572
13 JAN 2025 - 15 JAN 2025	SCIENTX	MR LIM PENG CHEONG [SSH]	809	858,797	55.183
13 JAN 2025 - 15 JAN 2025	SCIENTX	MR LIM PENG JIN [DIR/CEO]	809	910,966	58.535
13 JAN 2025 - 15 JAN 2025	SCIENTX	MR LIM PENG JIN [SSH]	809	910,874	58.53
13 JAN 2025 - 15 JAN 2025	SCIENTX	SCIENTEX INFINITY SDN BHD [SSH]	809	726,650	46.692
10 JAN 2025 - 10 JAN 2025	SCOMNET	EMPLOYEES PROVIDENT FUND BOARD [SSH]	-129	60,294	7.01
09 JAN 2025 - 09 JAN 2025	SCOMNET	EMPLOYEES PROVIDENT FUND BOARD [SSH]	152	60423	7.025
15 JAN 2025 - 15 JAN 2025	SDG	KUMPULAN WANG PERSARAAN (DIPERBADANKAN) [SSH]	1,000	489112	7.073
10 JAN 2025 - 10 JAN 2025	SDG	EMPLOYEES PROVIDENT FUND BOARD [SSH]	32	1135452	16.418
13 JAN 2025 - 13 JAN 2025	SDG	KUMPULAN WANG PERSARAAN (DIPERBADANKAN) [SSH]	2,000	488,112	7.058
10 JAN 2025 - 10 JAN 2025	SDG	KUMPULAN WANG PERSARAAN (DIPERBADANKAN) [SSH]	2,000	486,112	7.029
08 JAN 2025 - 08 JAN 2025	SDG	EMPLOYEES PROVIDENT FUND BOARD [SSH]	2,000	1,135,282	16.416
13 JAN 2025 - 15 JAN 2025	SDS	DR LIM PANG KIAM [DIR/CEO]	43	80	0.02
16 JAN 2025 - 16 JAN 2025	SEDANIA	DATUK NOOR AZRIN BIN MOHD NOOR [DIR/CEO]	159	125,317	34.3
16 JAN 2025 - 16 JAN 2025	SEDANIA	DATUK NOOR AZRIN BIN MOHD NOOR [SSH]	159	125,317	34.3
14 JAN 2025 - 14 JAN 2025	SERNKOU	MR LOW PENG SIAN @ CHUA PENG SIAN [DIR/CEO]	2,360	255,058	23.658
14 JAN 2025 - 14 JAN 2025	SERNKOU	MR LOW PENG SIAN @ CHUA PENG SIAN [SSH]	2,360	255,058	23.658
09 JAN 2025 - 10 JAN 2025	SERSOL	DATO' MOHAMED SUFFIAN BIN AWANG [DIR/CEO]	100,000	100,000	13.671
09 JAN 2025 - 09 JAN 2025	SERSOL	HILLCOVE SDN. BHD. [SSH]	-10,000	90,000	12.304
13 JAN 2025 - 13 JAN 2025	SHCHAN	DATO' CHOO KENG WENG [DIR/CEO]	6,000	61,111	20.111
13 JAN 2025 - 13 JAN 2025	SHCHAN	DATO' CHOO KENG WENG [SSH]	6,000	61,111	20.111
13 JAN 2025 - 13 JAN 2025	SHCHAN	MR CHOO KIN CHOONG [DIR/CEO]	6,000	61,111	20.11
13 JAN 2025 - 13 JAN 2025	SHCHAN	MR CHOO KIN CHOONG [SSH]	6,000	61,111	20.11
13 JAN 2025 - 13 JAN 2025	SHCHAN	SENG HOE & CHOONG CORPORATION SDN BHD [SSH]	6,000	22,360	7.358
13 JAN 2025 - 13 JAN 2025	SHCHAN	TAN SRI DATO' SERI HAJI ESA BIN HAJI MOHAMED [SSH]	6,000	94,099	30.966
13 JAN 2025 - 13 JAN 2025	SHCHAN	TUNAS SELATAN SDN BHD [SSH]	6,000	77,360	25.457
13 JAN 2025 - 13 JAN 2025	SHCHAN	WAN JIN RESOURCES SDN BHD [SSH]	6,000	19182	6.312
10 JAN 2025 - 14 JAN 2025	SHH	MR LEE VUI HAN@ANTHONY LEE VUI HAN [SSH]	2,436	15350	15.351
13 JAN 2025 - 13 JAN 2025	SIME	EMPLOYEES PROVIDENT FUND BOARD [SSH]	3,000	1134057	16.639
15 JAN 2025 - 15 JAN 2025	SIMEPROP	AMANAHRAYA TRUSTEES BERHAD - AMANAH SAHAM BUMIPUTERA [SSH]	-100	2500158	36.762
14 JAN 2025 - 14 JAN 2025	SIMEPROP	EMPLOYEES PROVIDENT FUND BOARD [SSH]	6,139	685735	10.083
15 JAN 2025 - 15 JAN 2025	SIMEPROP	KUMPULAN WANG PERSARAAN (DIPERBADANKAN) [SSH]	1,000	413342	6.078
14 JAN 2025 - 14 JAN 2025	SIMEPROP	AMANAHRAYA TRUSTEES BERHAD - AMANAH SAHAM BUMIPUTERA [SSH]	-3,374	2500258	36.764
13 JAN 2025 - 13 JAN 2025	SIMEPROP	EMPLOYEES PROVIDENT FUND BOARD [SSH]	4,595	679596	9.992
14 JAN 2025 - 14 JAN 2025	SIMEPROP	KUMPULAN WANG PERSARAAN (DIPERBADANKAN) [SSH]	-241	412342	6.063
10 JAN 2025 - 10 JAN 2025	SIMEPROP	EMPLOYEES PROVIDENT FUND BOARD [SSH]	-858	675001	9.925
09 JAN 2025 - 09 JAN 2025	SIMEPROP	EMPLOYEES PROVIDENT FUND BOARD [SSH]	2,219	675859	9.938
10 JAN 2025 - 10 JAN 2025	SIMEPROP	KUMPULAN WANG PERSARAAN (DIPERBADANKAN) [SSH]	-1,219	412583	6.066
09 JAN 2025 - 09 JAN 2025	SIMEPROP	AMANAHRAYA TRUSTEES BERHAD - AMANAH SAHAM BUMIPUTERA [SSH]	-627	2503632	36.814

Disclaimer: The Information in Insider Activity is extracted from www.shareinvestor.com/fundamental/insider_trades. The information on this page is provided as a service to readers. It does not constitute financial advice and/or any investment recommendations. We assume no liability for damages resulting from or arising out of the use of such information. Whilst every effort is made to ensure accuracy, the information presented is not the official record of shareholder filings. Readers are advised to read the original filings on the Bursa Malaysia website at www.bursamalaysia.com

Notice Period is 12th January 2025 – 18th January 2025

Effective Change Date	Stock Name	Buyer/ Seller Name [Classification]	Bought / (Sold) ['000]	No. of Shares After Trade ['000]	
			Total	Total	% Held
08 JAN 2025 - 08 JAN 2025	SIMEPROP	EMPLOYEES PROVIDENT FUND BOARD [SSH]	1,175	673640	9.905
13 JAN 2025 - 13 JAN 2025	SKYWLD	DATUK SERI NG THIEN PHING [DIR/CEO]	6,000	431656	43.166
13 JAN 2025 - 13 JAN 2025	SKYWLD	DATUK SERI NG THIEN PHING [SSH]	6,000	431656	43.166
13 JAN 2025 - 13 JAN 2025	SLVEST	EMPLOYEES PROVIDENT FUND BOARD [SSH]	-365	43385	6.006
10 JAN 2025 - 10 JAN 2025	SLVEST	EMPLOYEES PROVIDENT FUND BOARD [SSH]	-347	43750	6.056
09 JAN 2025 - 09 JAN 2025	SLVEST	EMPLOYEES PROVIDENT FUND BOARD [SSH]	-282	44096	6.104
08 JAN 2025 - 08 JAN 2025	SLVEST	EMPLOYEES PROVIDENT FUND BOARD [SSH]	-604	44379	6.143
13 JAN 2025 - 13 JAN 2025	SMART	MISS KEE HUI LANG [DIR/CEO]	577	39668	10.726
13 JAN 2025 - 13 JAN 2025	SMART	MISS KEE HUI LANG [SSH]	577	39668	10.726
09 JAN 2025 - 10 JAN 2025	SMART	MISS KEE HUI LANG [DIR/CEO]	350	39091	10.57
09 JAN 2025 - 10 JAN 2025	SMART	MISS KEE HUI LANG [SSH]	350	39091	10.57
15 JAN 2025 - 15 JAN 2025	SNS	EASTSPRING INVESTMENTS BERHAD [SSH]	-72	84209	5.197
15 JAN 2025 - 15 JAN 2025	SNS	PRUDENTIAL PLC [SSH]	-72	90229	5.569
14 JAN 2025 - 14 JAN 2025	SNS	DATO' F'NG MEOW CHENG [DIR/CEO]	80	360	0.021
14 JAN 2025 - 14 JAN 2025	SNS	MISS ENG SU FERN [SSH]	9,677	436579	26.053
14 JAN 2025 - 14 JAN 2025	SNS	MISS TAN EE MING [DIR/CEO]	80	260	0.016
14 JAN 2025 - 14 JAN 2025	SNS	MR KO YUN HUNG [DIR/CEO]	19,353	510356	30.456
14 JAN 2025 - 14 JAN 2025	SNS	MR KO YUN HUNG [SSH]	19,353	510356	30.456
14 JAN 2025 - 14 JAN 2025	SNS	MR PAH WAI ONN [DIR/CEO]	19,353	510356	30.456
14 JAN 2025 - 14 JAN 2025	SNS	MR PAH WAI ONN [SSH]	19,353	510356	30.456
14 JAN 2025 - 14 JAN 2025	SNS	MR SIOW WEI MING [DIR/CEO]	9,509	112482	6.712
14 JAN 2025 - 14 JAN 2025	SNS	MR SIOW WEI MING [SSH]	9,509	112482	6.712
13 JAN 2025 - 13 JAN 2025	SNS	EASTSPRING INVESTMENTS BERHAD [SSH]	-1,280	84281	5.202
13 JAN 2025 - 13 JAN 2025	SNS	PRUDENTIAL PLC [SSH]	-1,280	90301	5.573
09 JAN 2025 - 09 JAN 2025	SNS	EASTSPRING INVESTMENTS BERHAD [SSH]	-497	85561	5.281
09 JAN 2025 - 09 JAN 2025	SNS	PRUDENTIAL PLC [SSH]	-497	91581	5.652
15 JAN 2025 - 15 JAN 2025	SPRITZER	MR LAM SANG [DIR/CEO]	35	3315	1.041
13 JAN 2025 - 15 JAN 2025	SPRITZER	DATIN SERI CHUA SHOK TIM @ CHUA SIOK HOON [SSH]	180	166770	52.383
13 JAN 2025 - 15 JAN 2025	SPRITZER	DATO' SERI LIM A HENG @ LIM KOK CHEONG [DIR/CEO]	180	166770	52.383
13 JAN 2025 - 15 JAN 2025	SPRITZER	DATO' SERI LIM A HENG @ LIM KOK CHEONG [SSH]	180	166770	52.383
15 JAN 2025 - 15 JAN 2025	SPSETIA	KUMPULAN WANG PERSARAAN (DIPERBADANKAN) [SSH]	132	404994	8.096
13 JAN 2025 - 13 JAN 2025	SPSETIA	EMPLOYEES PROVIDENT FUND BOARD [SSH]	-1,765	448306	8.962
10 JAN 2025 - 10 JAN 2025	SPSETIA	EMPLOYEES PROVIDENT FUND BOARD [SSH]	-2,154	450070	8.997
10 JAN 2025 - 10 JAN 2025	SPSETIA	AMANAHRAYA TRUSTEES BERHAD - AMANAH SAHAM BUMIPUTERA [SSH]	-2,000	1020102	20.392
09 JAN 2025 - 09 JAN 2025	SPSETIA	EMPLOYEES PROVIDENT FUND BOARD [SSH]	-662	452224	9.04
10 JAN 2025 - 10 JAN 2025	SRIDGE	DATO' KHOO YIK CHOU [DIR/CEO]	625	19292	7.374
10 JAN 2025 - 10 JAN 2025	SRIDGE	DATO' KHOO YIK CHOU [SSH]	625	19292	7.374
14 JAN 2025 - 14 JAN 2025	SSB8	DATO HAJI MOHD AMRAN BIN WAHID [DIR/CEO]	-156	434	0.019
09 JAN 2025 - 10 JAN 2025	SUBUR	DATO' TIONG ING [DIR/CEO]	15	2797	1.484
13 JAN 2025 - 13 JAN 2025	SUNCON	EMPLOYEES PROVIDENT FUND BOARD [SSH]	-534	101846	7.899
10 JAN 2025 - 10 JAN 2025	SUNCON	EMPLOYEES PROVIDENT FUND BOARD [SSH]	-283	102380	7.94
09 JAN 2025 - 09 JAN 2025	SUNCON	EMPLOYEES PROVIDENT FUND BOARD [SSH]	-665	102663	7.962
13 JAN 2025 - 13 JAN 2025	SUNWAY	EMPLOYEES PROVIDENT FUND BOARD [SSH]	4,222	491579	7.96
10 JAN 2025 - 10 JAN 2025	SUNWAY	EMPLOYEES PROVIDENT FUND BOARD [SSH]	5,000	487357	7.89
09 JAN 2025 - 09 JAN 2025	SUNWAY	EMPLOYEES PROVIDENT FUND BOARD [SSH]	1,518	480112	7.77
08 JAN 2025 - 08 JAN 2025	SUNWAY	EMPLOYEES PROVIDENT FUND BOARD [SSH]	-1,850	477691	7.73
13 JAN 2025 - 14 JAN 2025	SYSTECH	DATO' HOOI JIA HAO [DIR/CEO]	-5,895	252910	39.356
13 JAN 2025 - 14 JAN 2025	SYSTECH	DATO' HOOI JIA HAO [SSH]	-5,895	252910	39.356
14 JAN 2025 - 14 JAN 2025	T7GLOBAL	ABYSSINA RESOURCES (M) SDN. BHD. [SSH]	9,700	92341	10.776
14 JAN 2025 - 14 JAN 2025	T7GLOBAL	TAN SRI DATUK SERI DR. NIK NORZRUL THANI BIN N. HASSAN THANI [DIR/CEO]	9,700	93341	10.893
14 JAN 2025 - 14 JAN 2025	T7GLOBAL	TAN SRI DATUK SERI DR. NIK NORZRUL THANI BIN N. HASSAN THANI [SSH]	9,700	92341	10.893
09 JAN 2025 - 09 JAN 2025	TAKAFUL	EMPLOYEES PROVIDENT FUND BOARD [SSH]	75	154794	18.487
16 JAN 2025 - 16 JAN 2025	TANCO	DATO' SRI ANDREW TAN JUN SUAN [DIR/CEO]	100	1147321	52.151
16 JAN 2025 - 16 JAN 2025	TANCO	DATO' SRI ANDREW TAN JUN SUAN [DIR/CEO]	-481	97935	17.777
16 JAN 2025 - 16 JAN 2025	TANCO	DATO' SRI ANDREW TAN JUN SUAN [SSH]	100	1147321	52.151
15 JAN 2025 - 15 JAN 2025	TANCO	DATO' SRI ANDREW TAN JUN SUAN [DIR/CEO]	746	1147221	52.148
15 JAN 2025 - 15 JAN 2025	TANCO	DATO' SRI ANDREW TAN JUN SUAN [DIR/CEO]	-300	98416	17.864
15 JAN 2025 - 15 JAN 2025	TANCO	DATO' SRI ANDREW TAN JUN SUAN [SSH]	746	1147221	52.148
15 JAN 2025 - 15 JAN 2025	TASHIN	MR TEH JIAN YANG [DIR/CEO]	-99,887	99887	28.622
10 JAN 2025 - 10 JAN 2025	TASHIN	MR LIM CHOON TEIK [DIR/CEO]	-96,716	4000	1.146
15 JAN 2025 - 15 JAN 2025	TCHONG	DATO' TAN HENG CHEW [DIR/CEO]	30	325103	49.891
15 JAN 2025 - 15 JAN 2025	TCHONG	DATO' TAN HENG CHEW [SSH]	30	309296	47.466
10 JAN 2025 - 10 JAN 2025	TECHBND	MR LEE SENG THYE [DIR/CEO]	500	355438	50.5
10 JAN 2025 - 10 JAN 2025	TECHBND	MR LEE SENG THYE [DIR/CEO]	1,018	1511	2.396
10 JAN 2025 - 10 JAN 2025	TECHBND	MR LEE SENG THYE [SSH]	1,018	1511	2.396
10 JAN 2025 - 10 JAN 2025	TECHBND	MR LEE SENG THYE [SSH]	500	355438	50.5
10 JAN 2025 - 10 JAN 2025	TECHBND	SONICBOND SDN BHD [SSH]	1,018	1511	2.396
10 JAN 2025 - 10 JAN 2025	TECHBND	SONICBOND SDN BHD [SSH]	500	355438	50.5
09 JAN 2025 - 09 JAN 2025	TECHBND	MR LEE SENG THYE [DIR/CEO]	494	494	0.774
09 JAN 2025 - 09 JAN 2025	TECHBND	MR LEE SENG THYE [SSH]	494	494	0.774
09 JAN 2025 - 09 JAN 2025	TECHBND	SONICBOND SDN BHD [SSH]	494	494	0.774
16 JAN 2025 - 16 JAN 2025	TENAGA	KUMPULAN WANG PERSARAAN (DIPERBADANKAN) [SSH]	-454	404194	6.95

Notice Period is 12th January 2025 – 18th January 2025

Effective Change Date	Stock Name	Buyer/ Seller Name [Classification]	Bought / (Sold) ['000]	No. of Shares After Trade ['000]	
			Total	Total	% Held
15 JAN 2025 - 15 JAN 2025	TENAGA	AMANAHRAYA TRUSTEES BERHAD - AMANAH SAHAM BUMIPUTERA [SSH]	-500	432391	7.44
14 JAN 2025 - 14 JAN 2025	TENAGA	EMPLOYEES PROVIDENT FUND BOARD [SSH]	4,959	1081307	18.6
15 JAN 2025 - 15 JAN 2025	TENAGA	KUMPULAN WANG PERSARAAN (DIPERBADANKAN) [SSH]	100	404648	6.96
14 JAN 2025 - 14 JAN 2025	TENAGA	AMANAHRAYA TRUSTEES BERHAD - AMANAH SAHAM BUMIPUTERA [SSH]	-813	432891	7.45
13 JAN 2025 - 13 JAN 2025	TENAGA	EMPLOYEES PROVIDENT FUND BOARD [SSH]	2,531	1076348	18.52
10 JAN 2025 - 10 JAN 2025	TENAGA	EMPLOYEES PROVIDENT FUND BOARD [SSH]	4,509	1073817	18.47
13 JAN 2025 - 13 JAN 2025	TENAGA	KUMPULAN WANG PERSARAAN (DIPERBADANKAN) [SSH]	-53	404548	6.95
10 JAN 2025 - 10 JAN 2025	TENAGA	AMANAHRAYA TRUSTEES BERHAD - AMANAH SAHAM BUMIPUTERA [SSH]	-58	433704	7.46
09 JAN 2025 - 09 JAN 2025	TENAGA	EMPLOYEES PROVIDENT FUND BOARD [SSH]	2,000	1070136	18.41
10 JAN 2025 - 10 JAN 2025	TENAGA	KUMPULAN WANG PERSARAAN (DIPERBADANKAN) [SSH]	-453	404601	6.96
08 JAN 2025 - 08 JAN 2025	TENAGA	EMPLOYEES PROVIDENT FUND BOARD [SSH]	923	1068136	18.38
15 JAN 2025 - 15 JAN 2025	TFP	DATO' HUSSIAN @ RIZAL BIN A. RAHMAN [DIR/CEO]	-10,000	124680	19.87
15 JAN 2025 - 15 JAN 2025	TFP	DATO' HUSSIAN @ RIZAL BIN A. RAHMAN [SSH]	-10,000	124680	19.87
15 JAN 2025 - 15 JAN 2025	TFP	RAPPORTRANS SDN BHD [SSH]	-10,000	124680	19.87
13 JAN 2025 - 13 JAN 2025	TGL	MISS TOH KIAN BENG [DIR/CEO]	75	75	8.269
13 JAN 2025 - 13 JAN 2025	TGL	MISS TOH KIAN BENG [DIR/CEO]	75	75	10.623
13 JAN 2025 - 13 JAN 2025	TGL	TOH CHOON GUAN [DIR/CEO]	75	75	10.623
13 JAN 2025 - 13 JAN 2025	TGL	TOH CHOON GUAN [DIR/CEO]	75	75	8.269
13 JAN 2025 - 13 JAN 2025	TGL	TOH CHOON KEAT [DIR/CEO]	75	75	10.623
13 JAN 2025 - 13 JAN 2025	TGL	TOH CHOON KEAT [DIR/CEO]	75	75	8.269
15 JAN 2025 - 16 JAN 2025	TGUAN	DATUK ANG POON SEONG [DIR/CEO]	23	5763	1.435
14 JAN 2025 - 15 JAN 2025	TGUAN	DATUK ANG POON SEONG [DIR/CEO]	25	5740	1.429
09 SEP 2024 - 09 SEP 2024	TGUAN	DATUK ANG POON SEONG [DIR/CEO]	767	5715	1.423
16 JAN 2025 - 16 JAN 2025	TM	KUMPULAN WANG PERSARAAN (DIPERBADANKAN) [KWAP] [SSH]	3,268	369486	9.628
14 JAN 2025 - 14 JAN 2025	TM	EMPLOYEES PROVIDENT FUND BOARD (EPF BOARD) [SSH]	33	630163	16.421
15 JAN 2025 - 15 JAN 2025	TM	KUMPULAN WANG PERSARAAN (DIPERBADANKAN) [KWAP] [SSH]	4,775	366219	9.543
13 JAN 2025 - 13 JAN 2025	TM	EMPLOYEES PROVIDENT FUND BOARD (EPF BOARD) [SSH]	2,768	630163	16.42
14 JAN 2025 - 14 JAN 2025	TM	KUMPULAN WANG PERSARAAN (DIPERBADANKAN) [KWAP] [SSH]	1,451	361444	9.419
10 JAN 2025 - 10 JAN 2025	TM	EMPLOYEES PROVIDENT FUND BOARD (EPF BOARD) [SSH]	364	627395	16.348
13 JAN 2025 - 13 JAN 2025	TM	KUMPULAN WANG PERSARAAN (DIPERBADANKAN) [KWAP] [SSH]	345	359993	9.381
09 JAN 2025 - 09 JAN 2025	TM	EMPLOYEES PROVIDENT FUND BOARD (EPF BOARD) [SSH]	2,904	627031	16.339
10 JAN 2025 - 10 JAN 2025	TM	KUMPULAN WANG PERSARAAN (DIPERBADANKAN) [KWAP] [SSH]	1,111	359648	9.372
08 JAN 2025 - 08 JAN 2025	TM	EMPLOYEES PROVIDENT FUND BOARD (EPF BOARD) [SSH]	669	624127	16.263
16 JAN 2025 - 16 JAN 2025	TOPGLOV	KUMPULAN WANG PERSARAAN (DIPERBADANKAN) [SSH]	879	629999	7.861
14 JAN 2025 - 14 JAN 2025	TOPGLOV	KUMPULAN WANG PERSARAAN (DIPERBADANKAN) [SSH]	-698	629120	7.85
13 JAN 2025 - 13 JAN 2025	TOPGLOV	KUMPULAN WANG PERSARAAN (DIPERBADANKAN) [SSH]	-601	629818	7.859
10 JAN 2025 - 10 JAN 2025	TOPGLOV	KUMPULAN WANG PERSARAAN (DIPERBADANKAN) [SSH]	-1,310	630419	7.866
10 JAN 2025 - 10 JAN 2025	TOYOVEN	ENG LIAN (L) INC [SSH]	33,000	42729	25.755
10 JAN 2025 - 10 JAN 2025	TOYOVEN	ENG LIAN ENTERPRISE SDN. BHD. [SSH]	33,000	52854	31.858
10 JAN 2025 - 10 JAN 2025	TOYOVEN	MISS YVONNE PO LENG LAM [SSH]	33,000	53004	31.948
10 JAN 2025 - 10 JAN 2025	TOYOVEN	MR NG EARN CHIN [SSH]	33,000	52854	31.858
15 JAN 2025 - 15 JAN 2025	TSH	TAN AIK PEN [SSH]	14,000	356709	26.17
15 JAN 2025 - 15 JAN 2025	TSH	TAN AIK PEN [DIR/CEO]	14,000	356709	26.17
14 JAN 2025 - 16 JAN 2025	TTVHB	MADAM TAN OON PHENG [SSH]	165	112546	23.466
14 JAN 2025 - 16 JAN 2025	TTVHB	MR GOON KOON YIN [DIR/CEO]	165	112546	23.466
14 JAN 2025 - 16 JAN 2025	TTVHB	MR GOON KOON YIN [SSH]	165	112546	23.466
10 JAN 2025 - 10 JAN 2025	UOADEV	EMPLOYEES PROVIDENT FUND BOARD ("EPF BOARD") [SSH]	227	330389	12.592
10 JAN 2025 - 10 JAN 2025	UTDPLT	EMPLOYEES PROVIDENT FUND BOARD [SSH]	-84	23862	5.753
09 JAN 2025 - 09 JAN 2025	UTDPLT	EMPLOYEES PROVIDENT FUND BOARD [SSH]	72	23946	5.773
16 JAN 2025 - 16 JAN 2025	WPPTS	KUMPULAN WANG PERSARAAN (DIPERBADANKAN) [SSH]	11	224529	6.585
15 JAN 2025 - 15 JAN 2025	WPPTS	KUMPULAN WANG PERSARAAN (DIPERBADANKAN) [SSH]	244	224518	6.585
10 JAN 2025 - 10 JAN 2025	WPPTS	EMPLOYEES PROVIDENT FUND BOARD [SSH]	-200	295266	8.659
09 JAN 2025 - 09 JAN 2025	WPPTS	EMPLOYEES PROVIDENT FUND BOARD [SSH]	76	295466	8.665
08 JAN 2025 - 08 JAN 2025	WPPTS	EMPLOYEES PROVIDENT FUND BOARD [SSH]	-205	295389	8.662
15 JAN 2025 - 15 JAN 2025	WTK	MR LIM HONG HIN [DIR/CEO]	50	150	0.032
14 JAN 2025 - 14 JAN 2025	XL	DATO' NG JET HEONG [DIR/CEO]	-1,000	5212	1.197
10 JAN 2025 - 10 JAN 2025	YINSON	EMPLOYEES PROVIDENT FUND BOARD [SSH]	142	511284	17.452
13 JAN 2025 - 13 JAN 2025	YINSON	KUMPULAN WANG PERSARAAN (DIPERBADANKAN) [SSH]	-280	223209	7.62
09 JAN 2025 - 09 JAN 2025	YINSON	EMPLOYEES PROVIDENT FUND BOARD [SSH]	-407	510687	17.431
10 JAN 2025 - 10 JAN 2025	YINSON	KUMPULAN WANG PERSARAAN (DIPERBADANKAN) [SSH]	-411	223489	7.628
08 JAN 2025 - 08 JAN 2025	YINSON	EMPLOYEES PROVIDENT FUND BOARD [SSH]	172	511094	17.44
16 JAN 2025 - 16 JAN 2025	YTLPOWR	ENCIK FAIZAL SHAM BIN ABU MANSOR [DIR/CEO]	1,000	1000	0.326
09 JAN 2025 - 09 JAN 2025	YTLPOWR	DATO' YEOH SOO KENG [DIR/CEO]	70	37547	0.457

Disclaimer: The Information in Insider Activity is extracted from www.shareinvestor.com/fundamental/insider_trades. The information on this page is provided as a service to readers. It does not constitute financial advice and/or any investment recommendations. We assume no liability for damages resulting from or arising out of the use of such information. Whilst every effort is made to ensure accuracy, the information presented is not the official record of shareholder filings. Readers are advised to read the original filings on the Bursa Malaysia website at www.bursamalaysia.com



On behalf of the Board of Directors of **Capitaland Malaysia Trust (CLMT)**, CIMB Investment Bank Berhad wishes to announce that the additional listing application in relation to the issuance of new CLMT Units pursuant to the DRP has been submitted to Bursa Malaysia Securities Berhad on 23 January 2025.

[READ MORE](#)

The Board of Directors of **FSBM Holdings Berhad (FSBM)** wishes to announce that C2M Elite Sdn. Bhd., a wholly-owned subsidiary of FSBM, has on 21 January 2025 entered into a Strategic Alliance Agreement with Synergies Intelligent Systems, Inc. and Zhong Yang Technology Co., Ltd. for exploration of collaboration opportunities and partnership opportunities.

[READ MORE](#)

On behalf of the Board of **Gamuda Berhad (GAMUDA)**, RHB Investment Bank Berhad wishes to announce that the Company had on 21 January 2025 submitted an application to Bursa Securities for the listing and quotation of an additional of up to 8,000,000 new Gamuda Shares to be issued pursuant to the Proposed DRP Application on the Main Market of Bursa Securities.

[READ MORE](#)

**ENGINEERS**

HSS Engineers Berhad (HSSEB) acceptance of letter of notification from Energy Commission for The Development of the large scale solar Photovoltaic Plant of 95.00MW in Hilir Perak, Perak. The Company wishes to announce that on 17 January 2025, the SPV, namely

Unique HEB Energy Sdn. Bhd., has been incorporated in Malaysia for the implementation of the Project.

[READ MORE](#)

Salcon Berhad (SALCON) wishes to announce that Nusantara Megajuta Sdn Bhd and Exsim Kebun Teh Sdn Bhd had entered into a supplemental agreement

dated 23 January to waive, vary and supplement certain terms and conditions of the JVA, further details as set out in the attachment.

[READ MORE](#)

On behalf of the Board of Directors of **SkyWorld Development Berhad (SKYWLD)**, UOB Kay Hian Securities (M) Sdn Bhd wishes to announce

that SkyWorld Development proposes to diversify the existing business operations of SkyWorld Development and its subsidiaries to include the business of manufacturing of prefabricated and prefinished modular systems. The Prefabricated Manufacturing Business is envisaged to be undertaken through a collaboration with Teambuild Holding (S) Pte Ltd. This collaboration will be undertaken through SkyWorld Development's subsidiary, Prefab Master Sdn Bhd based on the terms and conditions set out in the Shareholders' Agreement dated 20 January 2025.

[READ MORE](#)



On behalf of Southern Score Builders Berhad (SSB8),
Kenanga IB wishes to

announce that the parties have proceeded with the completion of the Proposed Acquisition on 17 January 2025 in accordance with the terms and conditions of the SJEE SSA including the payment of the balance Purchase Consideration of RM20,655,000.

READ MORE



The Board of YNH Property Berhad (YNHPROP) wishes to announce that a Sale and Purchase Agreement has been entered into

between Kar Sin Bhd and YNH Hospitality Sdn Bhd, both the wholly-owned subsidiary of the Company, with RHB Trustees Berhad [As Trustee of Sunway Real Estate Investment Trust], on 20 January 2025 for the disposal of Aeon Mall Seri Manjung for a total consideration of RM138.0 million.

READ MORE

Disclaimer: The information in the Investor Relations page is extracted from individual companies' announcements in www.bursamalaysia.com. The information on this page is provided as a service to readers. We assume no liability for damages resulting from or arising out of the use of such information. Whilst every effort is made to ensure accuracy, the information presented has been simplified for your reading pleasure. Readers are advised to read the original and complete filings on the Bursa Malaysia website at https://www.bursamalaysia.com/market_information/announcements/company_announcement

Upcoming IPO					
NAME OF COMPANY	OFFER PERIOD		ISSUE PRICE (Per Ordinary Share)	LISTING SOUGHT	DATE OF LISTING
	OPENING	CLOSING			
NORTHERN SOLAR HOLDINGS BERHAD	18 Dec 2024	20 Jan 2025	RM0.63	ACE MARKET	6 Feb 2025
COLFORM GROUP BERHAD	5 Jan 2025	23 Jan 2025	RM0.36	ACE MARKET	10 Feb 2025
RICHTEC DIGITAL BERHAD	21 Jan 2025	31 Jan 2025	RM0.25	ACE MARKET	17 Feb 2025
TECHSTORE BERHAD	22 Jan 2025	4 Feb 2025	RM0.20	ACE MARKET	18 Feb 2025