

Invest

A Weekly e-Publication by SHAREINVESTOR

ISSUE

221

FRIDAY
23 AUGUST 2024

Scan/Click QR to Register



Via email, every Friday

SHAREINVESTOR®
An AlphaInvest Company

SHAREINVESTOR®
An AlphaInvest Company

STATION

WEBPRO

Merdeka Kaw Kaw Promotion

PROMOTION PERIOD: 12 - 31 Aug 2024

Enjoy

20%

OFF



SUBSCRIBE
NOW!

Coupon Code

MYMERDEKA24

*T&C Apply

Invest

A Weekly e-Publication by SHAREINVESTOR

ISSUE

221

FRIDAY
23 AUGUST 2024

Scan/Click QR to Register



Via email, every Friday

MARKET SENTIMENTS

INDIA VISIT A SUCCESS, SECURING POTENTIAL TRADE WORTH RM8 BILLION - PM ANWAR

+

GG56 KOREA TO INVEST US\$1 BILLION IN FOREST CITY TO DEVELOP MALAYSIA'S FIRST KOREAN CULTURE TOWN

see more on pages 29-32

ALSO

COMPANY SPOTLIGHT

MUI Properties Berhad

See more on page 07

MSWG

No Rush Hush Hush

See more on pages 34-38

PLUS



See more on pages 19-27

04 LEADERBOARD

06 SHARIAH HOT STOCKS

08 SHARIAH MOMENTUM UP STOCKS

10 NON SHARIAH HOT STOCKS

12 UP TRENDING STOCKS

13 VALUE STOCKS

14 GROWTH STOCKS

15 DIVIDEND STOCKS

16 BROKERS' CALL

17 LONG COMPANIES

33 REGIONAL MARKETS

39 INSIDER ACTIVITY

43 INVESTOR RELATIONS

SHAREINVESTOR®

An AlphaInvest Company

Invest with Knowledge

INVESTOR PLATFORMS

Director
Darren Chong
darren.chong@shareinvestor.com

Business Development Manager
Jay Cheong
jay.cheong@shareinvestor.com

Product & Marketing Manager
Daniel Wong
daniel.wong@shareinvestor.com

ADMIN & OPERATIONS

Senior Executive
Watie Nordin
watie.nordin@shareinvestor.com

Executive
Silas Emmanuel Joseph
silas.joseph@shareinvestor.com

PROCESS AUTOMATION & DATA ANALYTICS

Data Analyst
Tan Yong Sheng

INVESTOR RELATIONS

Group Managing Director & Publisher
Edward Stanislaus
edward@shareinvestor.com

Senior Manager
Letticia Wong
letticia.wong@shareinvestor.com

Manager
Aida Norzeti Talib
aida.norzeti@shareinvestor.com

Inve\$t WEEKLY

Senior Manager
Advertising Sales & Marketing
Mark Rodrigues
mark.rodrigues@shareinvestor.com

ALPHAINVEST HOLDINGS BOARD OF DIRECTORS

Chairman	Patrick Daniel
Group CEO	Christopher Lee
Group COO	Lim Dau Hee
Group MD	Shanison Lin



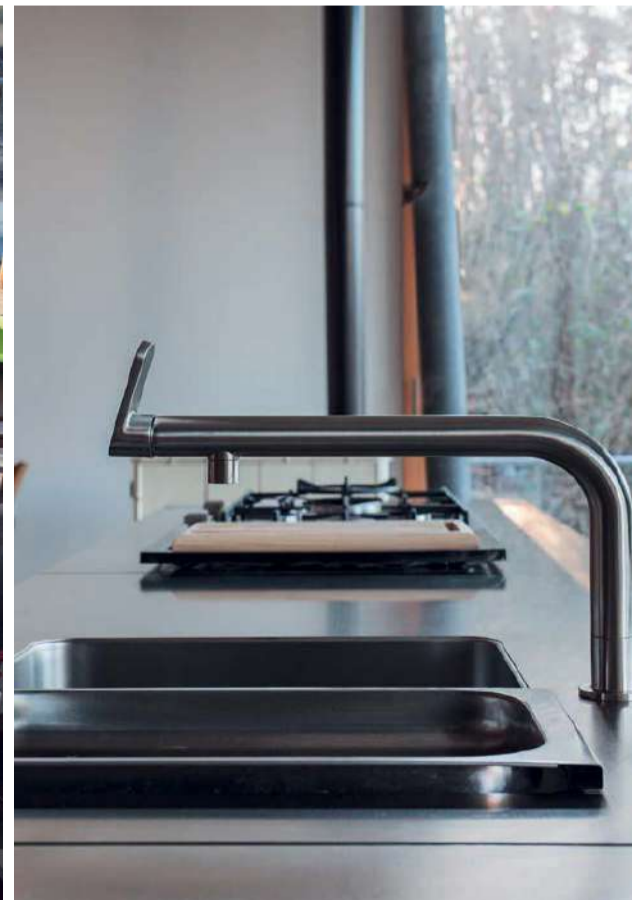
“ GIVE A MAN A FISH AND YOU FEED HIM FOR A DAY; TEACH A MAN TO FISH AND YOU FEED HIM FOR A LIFETIME ”

ShareInvestor Malaysia Sdn. Bhd.
(200001023956) (526564-M)
L15-03 & 03A, PJX HM Shah Tower,
No 16A, Jalan Persiaran Barat, PJS 52,
46200 Petaling Jaya, Selangor

Hotline : 603 8681 0580
Mobile : 011 6343 8939
Website : www.ShareInvestor.com.my
www.alphainvestholdings.com
www.Facebook.com/ShareInvestorMalaysia

ADVERTISEMENT ENQUIRY

bulthaup takes care of the details so that you can enjoy a harmonious environment.



XTRA

XTRA FURNITURE SDN BHD
The Gardens Mall, Mid Valley City
xtrafurniture.com/bulthaup
fb.com/bulthaupmalaysia

bulthaup

ACTIVE TRADING TOURNAMENT 2024 PRIZES



Cash Prizes



iPhone 15



Cash Vouchers



1ST PRIZE
RM10,000



2ND PRIZE
RM6,000



3RD PRIZE
RM3,000

DAILY TOP TRADE PRIZES

(15 X WINNERS)

Touch n' Go eWallet reload pin (RM 120)

REGISTRATION PRIZES

1 X IPHONE 15

MAKE-A-TRADE PRIZE

Touch n' Go eWallet reload pin (RM 60)
FOR 30X LUCKY PARTICIPANTS

www.shareinvestor.com - market data at your fingertips



ShareInvestor WebPro (www.shareinvestor.com/my)
Prices > Stock Prices > Bursa > click Stocks tab

1. mouse over Ranking > select Top Active > all Shariah stocks are denoted with an [S] > mouse over Column Layout > select Edit Customs > select Name > select Volume > select Last Done Price > Mouse Over Column Layout > select Custom
2. mouse over Ranking > select Top Turnover > all Shariah stocks are denoted with an [S] > mouse over Column Layout > select Edit Customs > select Name > select Last Done Price > select Value > Mouse Over Column Layout > select Custom
3. mouse over Ranking > select Top Gainers (Over 5 Trading Days) > mouse over Column Layout > select Edit Customs > select Name > select Last Done Price > select 5 Days Change > select 5 Days % Change > Mouse Over Column Layout > select Custom
4. mouse over Ranking > select Top Losers (Over 5 Trading Days)
5. mouse over Ranking > select Top % Gainers (Over 5 Trading Days)
6. mouse over Ranking > select Top % Losers (Over 5 Trading Days)

Shariah Top Actives (as at Yesterday)

Name	Price (RM)	Volume
ELRIDGE [S]	0.400	3,190,489.000
MYEG [S]	0.940	674,546.000
MIKROMB [S]	0.260	571,601.000
VELESTO [S]	0.205	540,197.000
SIMEPROP [S]	1.400	355,804.000
TOPGLOV [S]	1.010	348,331.000
MUIPROP [S]	0.470	336,829.000
GENETEC [S]	1.420	312,057.000
SEALINK [S]	0.335	292,657.000
PERDANA [S]	0.385	264,522.000

Shariah Top Turnover (as at Yesterday)

Name	Price (RM)	Value (RM)
ELRIDGE [S]	0.400	116,474,878
GAMUDA [S]	7.510	105,360,974
MYEG [S]	0.940	62,954,575
SUNWAY [S]	4.080	54,446,784
TENAGA [S]	13.860	52,075,170
PCHEM [S]	5.800	51,599,459
SIMEPROP [S]	1.400	50,301,976
GENETEC [S]	1.420	46,609,456
IJM [S]	3.210	38,305,755
TM [S]	6.890	37,583,405

Top Gainers (over 5 Trading days as at Yesterday)

Name	Price (RM)	Change (RM)
PETDAG	20.340	+1.360
LPI	13.300	+0.880
HLFG	18.100	+0.860
HLBANK	20.180	+0.620
DLADY	31.200	+0.600
PCHEM	5.800	+0.500
AMBANK	5.130	+0.470
UTDPLT	26.000	+0.400
CIMB	7.890	+0.360
F&N	29.500	+0.320

Top % Gainers (over 5 Trading days as at Yesterday)

Name	Price (RM)	Change (%)
BORNOIL	0.010	+100.00
HONGSENG	0.015	+50.00
MQTECH	0.015	+50.00
ZENTECH	0.015	+50.00
MUIPROP	0.470	+44.62
GCAP	0.390	+41.82
MJPERAK	0.285	+23.91
ASTRA	0.500	+23.46
FIHB	0.450	+20.00
DCHCARE	0.215	+16.22

Top Losers (over 5 Trading days as at Yesterday)

Name	Price (RM)	Change (RM)
NESTLE	103.000	-3.100
HEIM	22.660	-0.960
GENETEC	1.420	-0.430
NOTION	1.370	-0.340
YTL	3.130	-0.330
AMWAY	6.750	-0.290
CDB	3.530	-0.270
KEYFIELD	2.460	-0.240
MSM	1.480	-0.230
BAT	7.710	-0.220

Top % Losers (over 5 Trading days as at Yesterday)

Name	Price (RM)	Change (%)
KGROUP	0.005	-50.00
BCMALL	0.010	-33.33
COMPUGT	0.010	-33.33
SCBUILD	0.010	-33.33
IDBTECH	0.130	-29.73
FOCUS	0.015	-25.00
MTRONIC	0.015	-25.00
GENETEC	1.420	-23.24
LAMBO	0.020	-20.00
TALAMT	0.020	-20.00

SHAREINVESTOR WEBPRO

STOCK MARKET DATA AT YOUR FINGERTIPS

Powerful browser-based market analytics platform.
Access from anywhere



8 Markets Data

- ▶ Get access to data from Bursa, NYSE, Nasdaq, HKEX, SGX, IDX, SET & ASX

Portfolio Management

- ▶ Profit & Loss Summary
- ▶ Stock Alert
- ▶ News & Events filtering
- ▶ Customizable column layout

Fundamental Analysis

Financial Analysis Statement

- ▶ Profit & Loss
- ▶ Balance Sheet
- ▶ Cash Flow Statement
- ▶ More than 20 Financial Ratios
- ▶ Dividend Analysis

Technical Charting

- ▶ C² chart (Customisable & Comprehensive)

Brokers' Call

Intrinsic Value Calculator

FactSheet

- ▶ Key Stock Information
- ▶ Ownership
- ▶ Consensus Estimates
- ▶ Annual Report
- ▶ Historical Price
- ▶ Insider Trades

What's new on WebPro (Stable Release 12.1.0)

In our effort to keep our platform at the forefront of trading technology, we have added on some new features onto our C² Chart in WebPro

ADDITIONAL NEW FEATURES:

- ▶ Anchor selector for AVWAP, PVAT, and PAV indicators
- ▶ Volume profile indicator by date range
- ▶ Moving Average Cross indicator
- ▶ Guppy Multiple Moving Average (GMMA) indicator
- ▶ GoNoGo Trend Signal indicators
- ▶ SignalIQ

So what are you waiting for? Head to our platform today and check out our new trading chart features and indicators. We're confident that you'll love the improvements we've made and that they'll help you become a more successful trader.

Click here to start your 9 days FREE trial
(Valued at RM10)



Price & Volume Distribution Charts (as at Yesterday)

Technical Analysis

DEFINITION: Shariah compliant stocks with Technical Analysis showing 5-days & 10-days Moving Average Price below Yesterday's Close over past 3 days and with Volume Spike.

CHART GUIDE: Volume Distribution Chart is a statistical interpretation of the current sentiment on each stock in graphical format. The highest bar categorized as >150k is likely to be traded by institutions or super dealers, while the lowest bar categorized as <15k usually represents retail investors. "Buy Up" refers to more buyers snatching up the lots queued at selling price. "Sell Down" refers to sellers selling their shares to the buying queue



ShareInvestor WebPro > Screener > Market Screener (FA & TA) > select BURSA > add criteria

A. Criteria

- > click Add Criteria
- Technical Analysis Conditions tab select (i) Moving Average Below Close (ii) Volume Spike
- Fundamental Analysis Conditions tab > select (iii) Revenue
- Prices & Other Conditions tab > select (iv) Is Shariah Compliant
- Technical Analysis Conditions tab select (v) Moving Average Below Close
- Prices & Other Conditions tab > select (vi) Last Done Price
- Technical Analysis Conditions tab select (vii) Moving Average Below Close

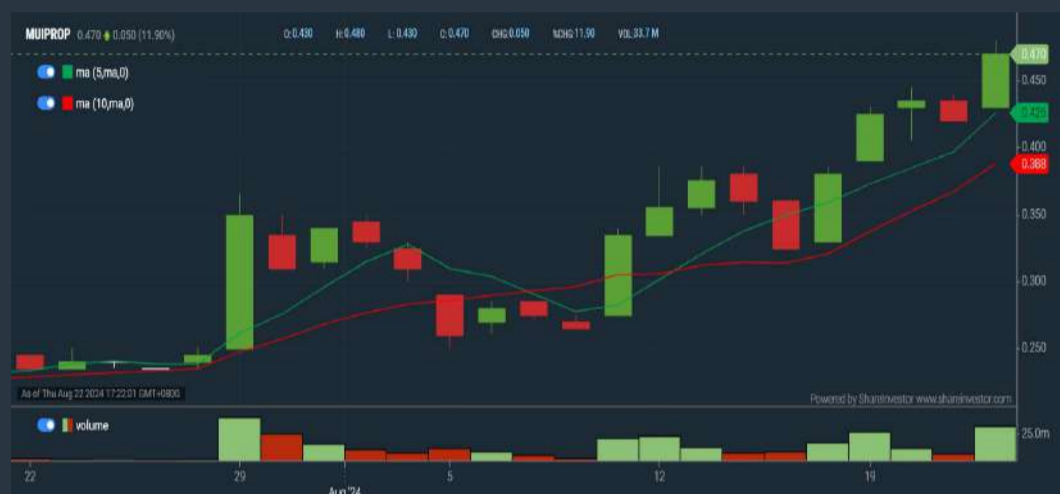
B. Conditions (Criteria Filters)

1. Moving Average Below Close - select (MA) type (5) below close price for type (3) days
2. Volume Spike - Volume type (1) greater than type (5) days average
3. Revenue ("000) - select (more than) type (1) for the past select (1) financial year(s)
4. Is Shariah Compliant - select **Yes**
5. Moving Average Below Close - select (MA) type (10) below close price for type (3) days
6. Last Done Price - select (more than) type (0.3)
7. Moving Average Below Close - select (EMA) type (5) below close price for type (3) days

- > click Save Template > Create New Template type (Shariah Hot Stocks) > click Create
- > click Save Template as > select Shariah Hot Stocks > click Save
- > click Screen Now (may take a few minutes)
- > Sort By: Select (Vol) Select (Desc)
- > Mouse over stock name > Charts > click C² Charts or Volume Distribution

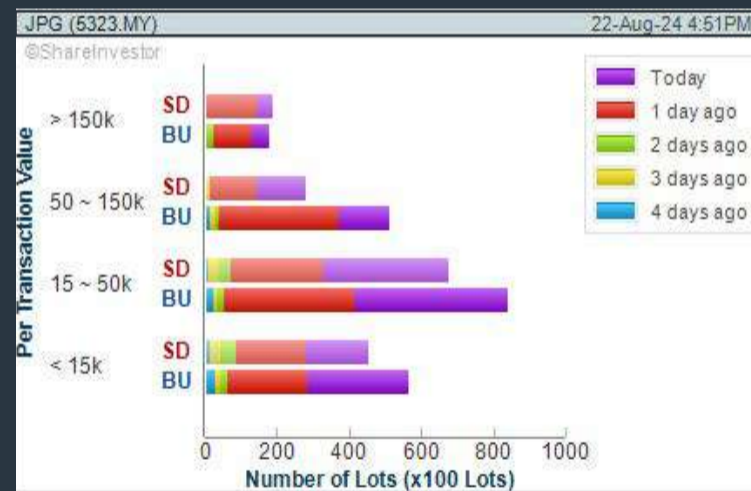
MUI PROPERTIES BERHAD (3913) C² Chart

Analysis



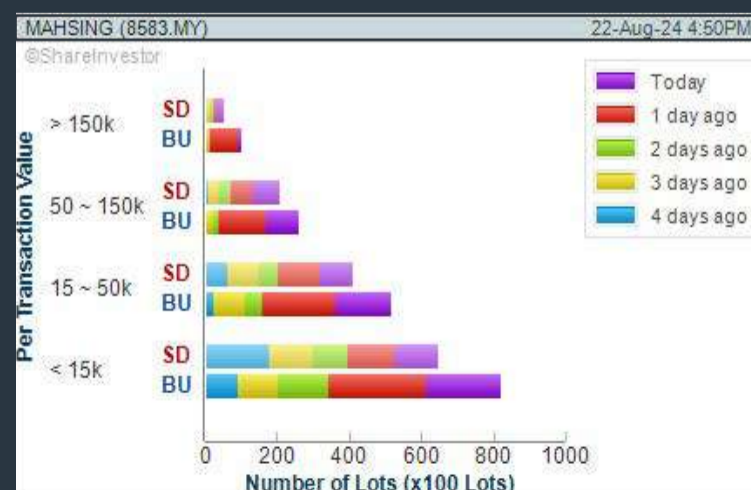
JOHOR PLANTATIONS GROUP BERHAD (5323) C² Chart

Analysis



MAH SING GROUP BERHAD (8583) C² Chart

Analysis



Disclaimer: The information on this page is provided as a service to readers. It does not constitute financial advice and/or any investment recommendations. Past performance is not indicative of future results. We assume no liability for damages resulting from or arising out of the use of such information. It would be best if you did your own research to make your personal investment decisions wisely or consult a licenced investment advisor.

COMPANY BACKGROUND

MUI Properties Berhad (MPB) is an investment holding company. The Group is primarily involved in property development, via its 60%-owned subsidiary West Synergy Sdn Bhd. The main development project of West Synergy is Bandar Springhill, a 1,990-acre freehold township in Lukut, located centrally between Seremban and Port Dickson in Negeri Sembilan. MPB is a member of The MUI Group.



MUIPROP MUI PROPERTIES BHD		Updated at 22 Aug 2024 17:31	
Last (MYR): 0.470 ↑	Change: +0.050	High: 0.480	Remarks: -
	Change (%): +11.90	Low: 0.430	
Open	0.430	Yesterday's Close	0.420
Buy Price	0.465	Sell Price	0.475
Buy Volume ('00)	20	Sell Volume ('00)	10
Cumulative Volume ('00)	336,829	Cumulative Value	15,563,011

Financial Analysis

Revenue Growth Decreasing revenue in most recent year after at least 4 years of consecutive increasing revenue	Neutral	Profit Growth Increasing profit in last 2 consecutive years (with last 3 profitable years)	Excellent
Piotroski F Score The company has below average financial strength (Piotroski F-Score of 3-4)	Be Alert	Dividend Payout No dividend paid in most recent year but dividends paid in prior years	Be Alert
Debt to Cashflow The company has negative cash flow from operations in most recent year	Be Alert	Free Cash Flow Negative free cash flow for the most recent year	Be Alert
Gross Profit Margin Consistently good gross profit margin of 20%-40% for 3 years	Good	Net Earnings Margin High net profit margin of at least 20% for most recent year	Good

😊 Excellent
🙂 Good
😐 Neutral
😟 Be Alert
😱 Watch Out



Historical Financials

Profit & Loss (MYR '000)



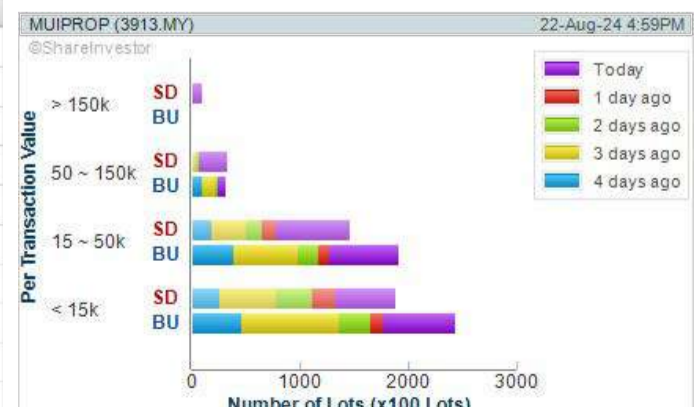
WebPro 9-Days Free Trial Registration (worth RM10) Sign Up Now



Key Statistics with Total Shareholder Returns

Total Shareholder Return

Period	Dividend Received	Capital Appreciation	Total Shareholder Return
Short Term Return	5 Days	-0.110	+30.56%
	10 Days	-0.195	+70.91%
	20 Days	-0.230	+95.83%
Medium Term Return	3 Months	-0.265	+129.27%
	6 Months	-0.270	+135.00%
	1 Year	-0.275	+141.03%
Long Term Return	2 Years	-0.305	+184.85%
	3 Years	-0.275	+141.03%
	5 Years	-0.295	+160.57%
Annualised Return	Annualised	-	+24.65%



Disclaimer: The information on this page is provided as a service to readers. It does not constitute financial advice and/or any investment recommendations. Past performance is not indicative of future results. We assume no liability for damages resulting from or arising out of the use of such information. It would be best if you did your own research to make your personal investment decisions wisely or consult a licenced investment advisor.

Price & Volume Distribution Charts (as at Yesterday)

Technical Analysis

DEFINITION: Shariah compliant stocks with Technical Analysis showing Bullish Momentum and Price Uptrend. The share price closed at the highest price yesterday. The typical price was higher than the previous day's typical price.

CHART GUIDE: Volume Distribution Chart is a statistical interpretation of the current sentiment on each stock in graphical format. The highest bar categorized as >150k is likely to be traded by institutions or super dealers, while the lowest bar categorized as <15k usually represents retail investors. "Buy Up" refers to more buyers snatching up the lots queued at selling price. "Sell Down" refers to sellers selling their shares to the buying queue.



ShareInvestor WebPro > Screener > Market Screener (FA & TA)>select BURSA>add criteria

A. Criteria

- > click Add Criteria
- Fundamental Analysis Conditions tab >select (i) Revenue
- Technical Analysis Conditions tab select (ii) Average Volume
- Prices & Other Conditions tab > select (iii) Last Done Price
- Prices & Other Conditions tab > select (iv) Is Shariah Compliant
- Technical Analysis Conditions tab select (v) RSI Overbought
- Technical Analysis Conditions tab select (vi) Moving Average Below Close
- Technical Analysis Conditions tab select (vii) CCI Overbought

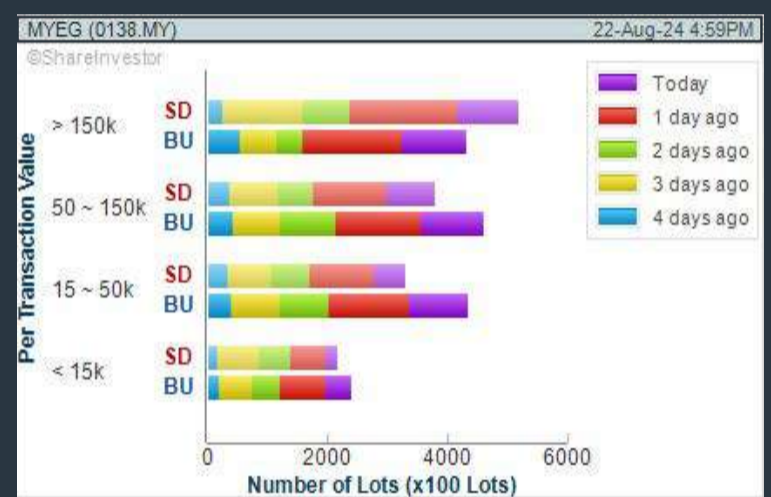
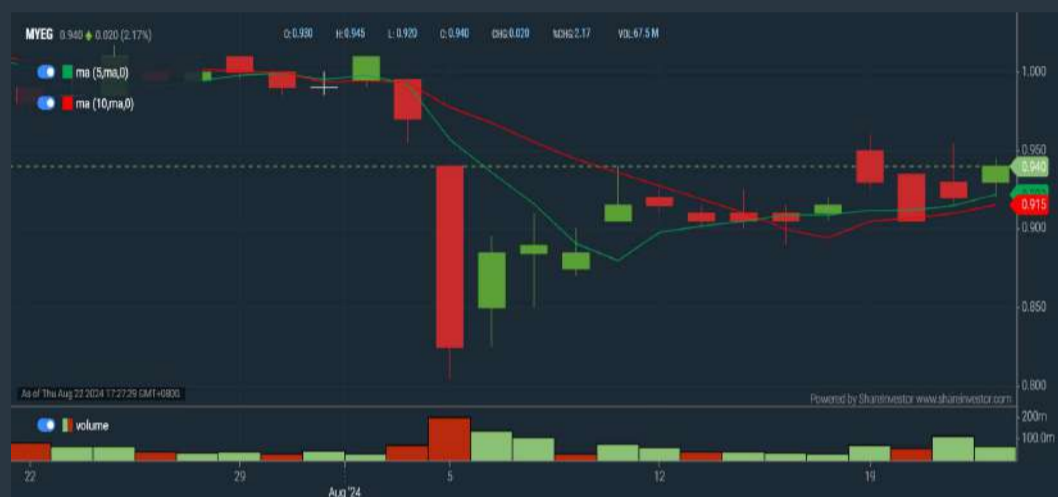
B. Conditions (Criteria Filters)

1. Revenue ("000) - select (more than) type (1) for the past select (1) financial year(s)
2. Average Volume - type (1) days average volume greater than type (10000) lots
3. Last Done Price - select (more than) type (0.3)
4. Is Shariah Compliant - select Yes
5. RSI Overbought - select RSI 1 above 99 for 1 days
6. Moving Average Below Close - select (MA) type (10) below close price for type (1) days
7. CCI Overbought - select CCI (2) above (0) for (1) days

- > click Save Template > Create New Template type (Shariah Momentum Up Stocks) > click Create
- > click Save Template as > select Shariah Momentum Up Stocks > click Save
- > click Screen Now (may take a few minutes)
- Sort By: Select (Vol) Select (Desc)
- Mouse over stock name > Charts > click C² Charts tab or Volume Distribution

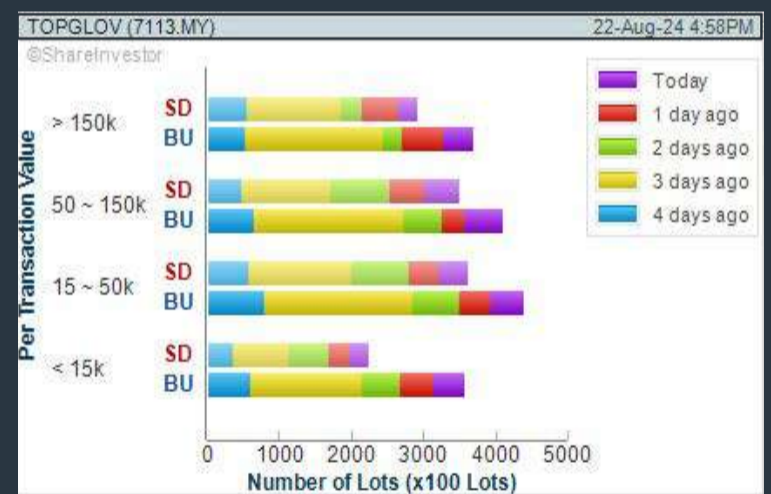
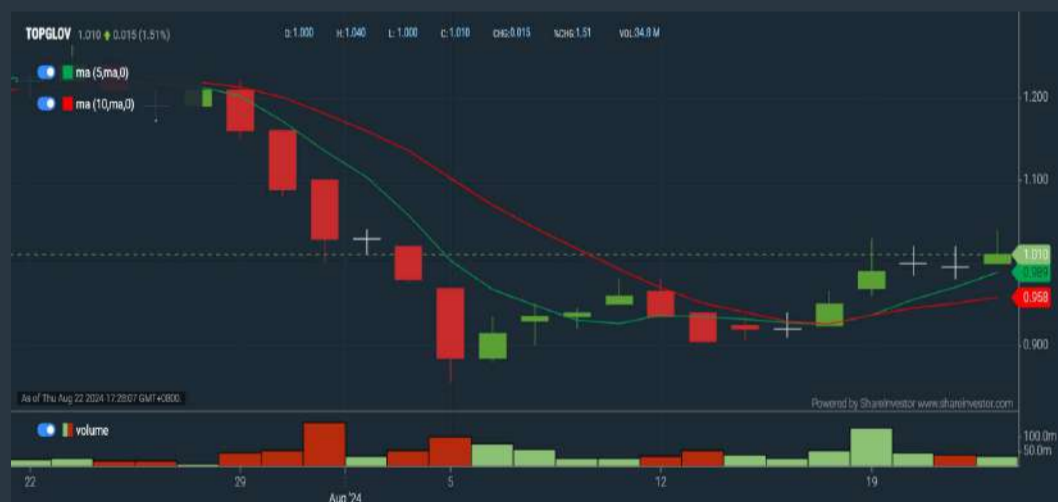
MY E.G. SERVICES BERHAD (0138) C² Chart

Analysis



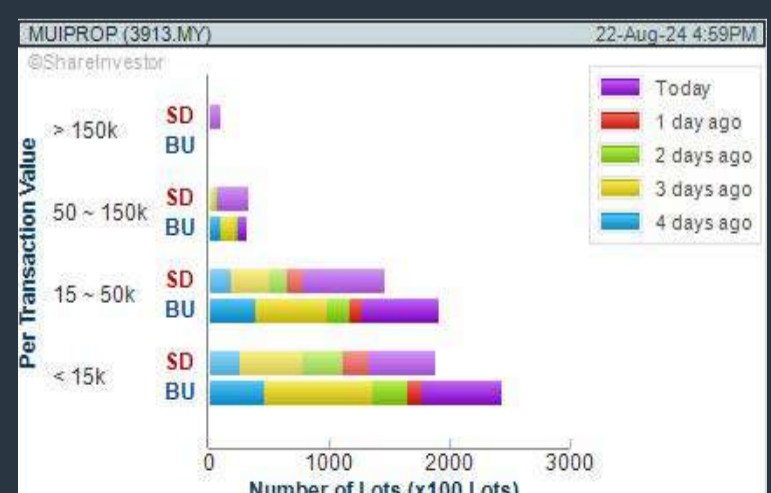
TOP GLOVE CORPORATION BERHAD (7113) C² Chart

Analysis



MUI PROPERTIES BERHAD (3913) C² Chart

Analysis



Disclaimer: The information on this page is provided as a service to readers. It does not constitute financial advice and/or any investment recommendations. Past performance is not indicative of future results. We assume no liability for damages resulting from or arising out of the use of such information. It would be best if you did your own research to make your personal investment decisions wisely or consult a licenced investment advisor.

MAKE BETTER TRADING STRATEGIES

with

SHARE INVESTOR STATION



8 Markets Data

- ▶ Get access to data from Bursa, NYSE, Nasdaq, HKEX, SGX, IDX, SET & ASX

Dynamic Chart

- ▶ Candlestick Pattern Recognition
- ▶ 111 Indicators
- ▶ 39 Drawing Tools
- ▶ Performance Comparison Chart

Intraday Data

- ▶ Market Depth
- ▶ Trade Summary Matrix & Chart
- ▶ Times & Sales
- ▶ Intraday Market Ticker

Market Screener

- ▶ 96 criteria ranging from FA, TA, Consensus Estimate
- ▶ Real-time Data

Power Frame

- ▶ Combining few Dynamic Charts together with intraday information in one frame

Technical Analysis

Fundamental Analysis

Financial Analysis Statement

- ▶ Profit & Loss
- ▶ Balance Sheet
- ▶ Cash Flow Statement
- ▶ More than 20 Financial Ratios
- ▶ Dividend Analysis

FactSheet

- ▶ Key Stock Information
- ▶ Ownership
- ▶ Consensus Estimates
- ▶ Annual Report
- ▶ Historical Price
- ▶ Insider Trades

**Start your 18 days
FREE trial now
(Valued at RM82)**



Price & Volume Distribution Charts (as at Yesterday)

Technical Analysis

DEFINITION: Stocks with Technical Analysis showing 5-days & 10-days Moving Average Price below Close over past 1 days and with Volume Spike

CHART GUIDE: Volume Distribution Chart is a statistical interpretation of the current sentiment on each stock in graphical format. The highest bar categorized as >150k is likely to be traded by institutions or super dealers, while the lowest bar categorized as <15k usually represents retail investors. "Buy Up" refers to more buyers snatching up the lots queued at selling price. "Sell Down" refers to sellers selling their shares to the buying queue.



ShareInvestor WebPro > Screener > Market Screener (FA & TA) > select BURSA > add criteria

A. Criteria

- > click Add Criteria
- Technical Analysis Conditions tab select (i) Moving Average Below Close (ii) Volume Spike
- Fundamental Analysis Conditions tab >select (iii) Revenue
- Prices & Other Conditions tab > select (iv) Is Shariah Compliant
- Technical Analysis Conditions tab select (v) Moving Average Below Close
- Prices & Other Conditions tab > select (vi) Last Done Price
- Technical Analysis Conditions tab select (vii) Moving Average Below Close

B. Conditions (Criteria Filters)

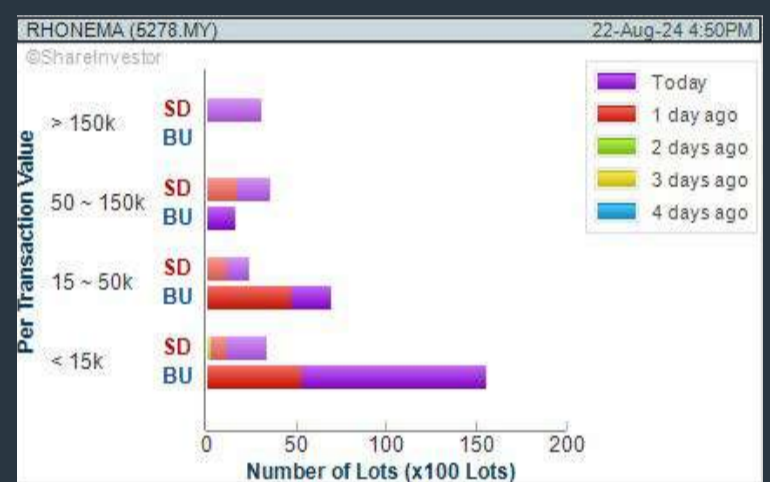
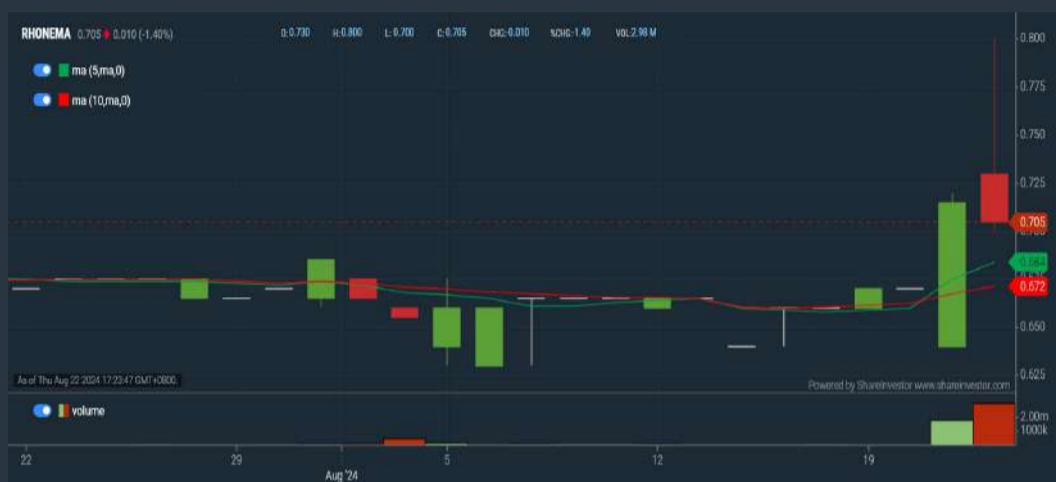
1. Moving Average Below Close - select (MA) type (5) below close price for type (3) days
2. Volume Spike - Volume type (1) greater than type (5) days average
3. Revenue ("000) - select (more than) type (1) for the past select (1) financial year(s)
4. Is Shariah Compliant - select NO
5. Moving Average Below Close - select (MA) type (10) below close price for type (1) days
6. Last Done Price - select (more than) type (0.3)
7. Moving Average Below Close - select (EMA) type (5) below close price for type (1) days

- > click Save Template > Create New Template type (Non-Shariah Hot Stocks) > click Create
- > click Save Template as > select Non-Shariah Hot Stocks > click Save
- > click Screen Now (may take a few minutes)
- Sort By: Select (Vol) Select (Desc)
- Mouse over stock name > Charts > click C² Charts tab or Volume Distribution

RHONE MA HOLDINGS BERHAD (5278)

C² Chart

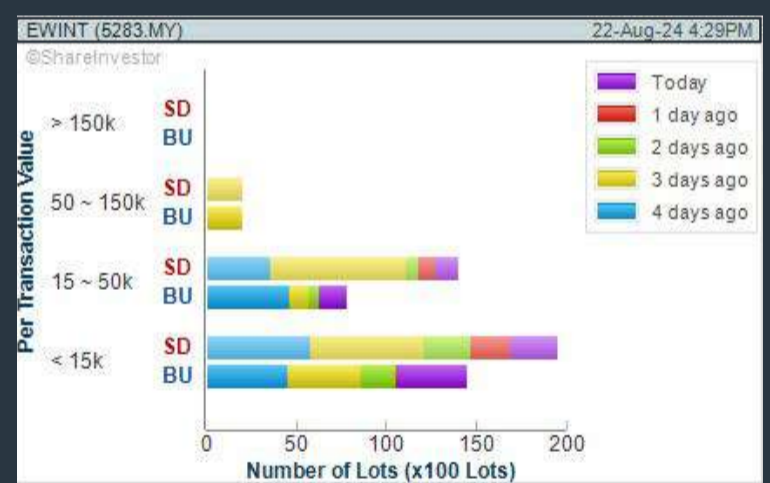
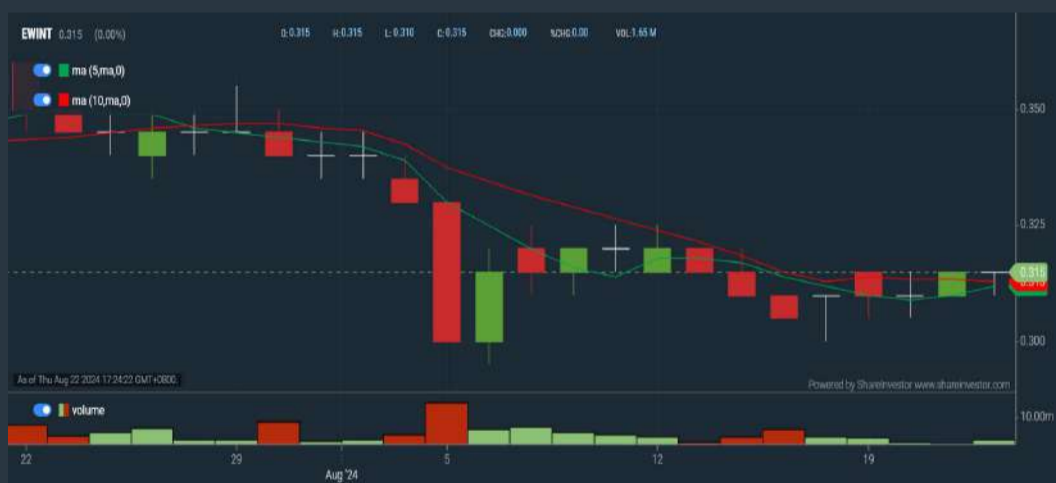
Analysis



ECO WORLD INTERNATIONAL BERHAD (5283)

C² Chart

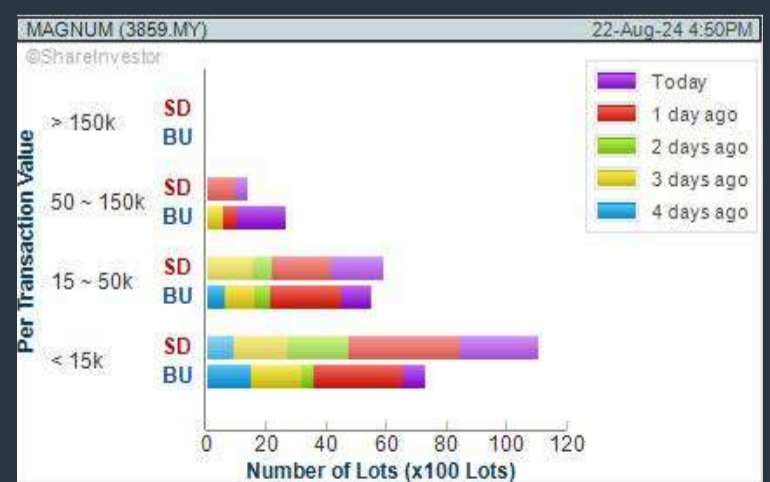
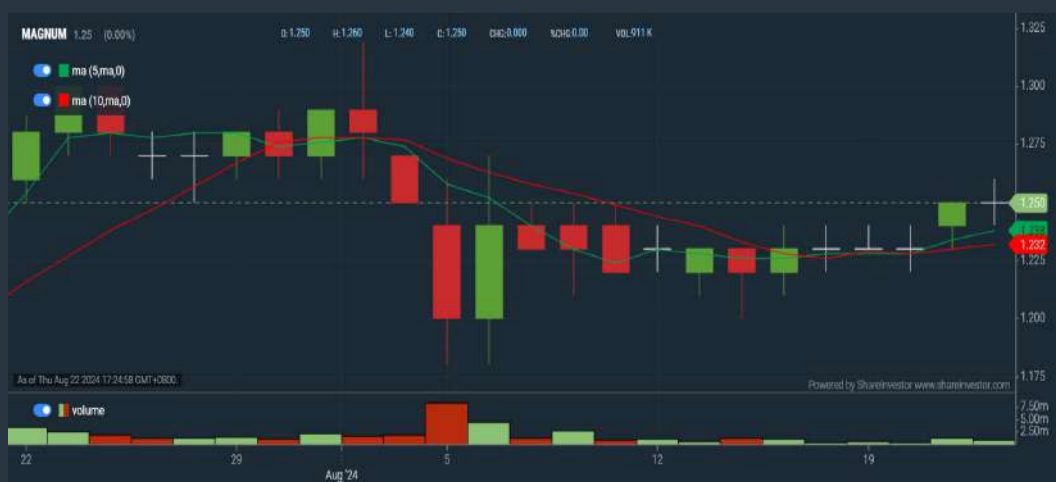
Analysis



MAGNUM BERHAD (3859)

C² Chart

Analysis



Disclaimer: The information on this page is provided as a service to readers. It does not constitute financial advice and/or any investment recommendations. Past performance is not indicative of future results. We assume no liability for damages resulting from or arising out of the use of such information. It would be best if you did your own research to make your personal investment decisions wisely or consult a licenced investment advisor.



making places infinite



usm.com

XTRA

XTRA FURNITURE SDN BHD
The Gardens Mall, Mid Valley City, Lot S-236 & 237
Lingkar Syed Putra, 59200 Kuala Lumpur
T. +603 2282 9088 | living@xtrafurniture.com | xtrafurniture.com
📍 XTRAFurniture | 🌐 xtrafurnituremsia

Price & Volume Distribution Charts (Over 3 trading days as at Yesterday)

Technical Analysis

DEFINITION: Stocks with Technical Analysis showing Bullish Momentum and Price Uptrend

CHART GUIDE: Volume Distribution Chart is a statistical interpretation of the current sentiment on each stock in graphical format. The highest bar categorized as >150k is likely to be traded by institutions or super dealers, while the lowest bar categorized as <15k usually represents retail investors. "Buy Up" refers to more buyers snatching up the lots queued at selling price. "Sell Down" refers to sellers selling their shares to the buying queue.



ShareInvestor WebPro > Screener > Market Screener (FA & TA) > select BURSA > add criteria

A. Criteria

- > click Add Criteria
- Fundamental Analysis Conditions tab > select (i) Revenue
- Technical Analysis Conditions tab select (ii) Moving Average Below Close
- Technical Analysis Conditions tab select (iii) Average Volume
- Prices & Other Conditions tab > select (iv) Last Done Price
- Technical Analysis Conditions tab select (v) Moving Average Below Close
- Technical Analysis Conditions tab select (v) Moving Average Bullish Crossover

B. Conditions

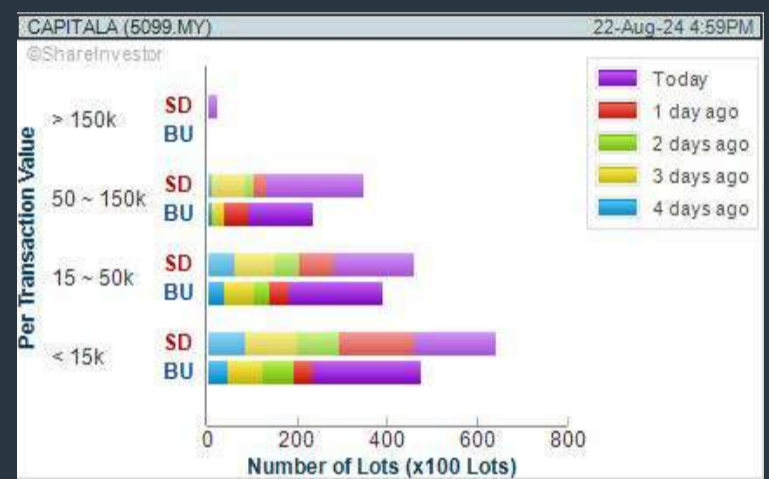
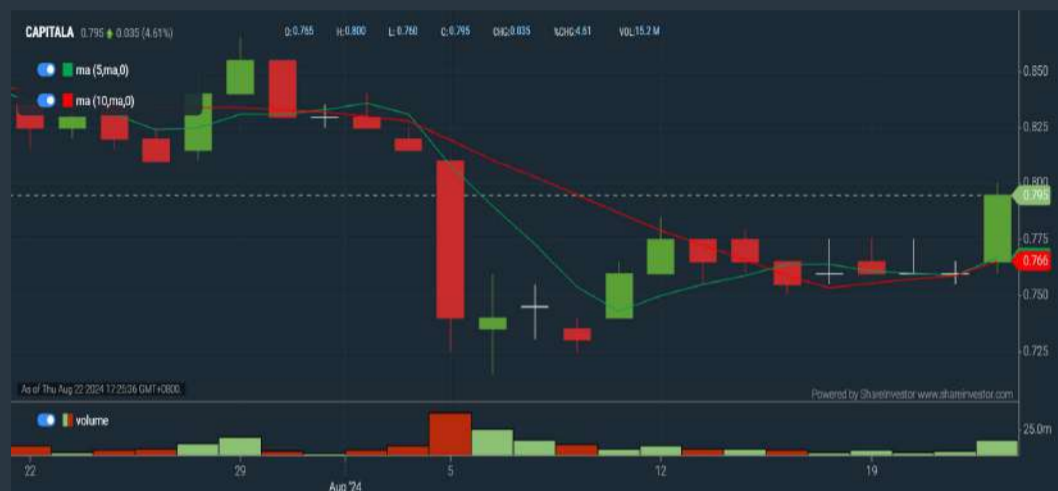
1. Revenue - select (more than) type (1) for the past select (1) financial year(s)
2. Moving Average Below Close - select (MA) type (20) below close price for type (1) days
3. Average Volume - type (5) days average volume type (10000) lots
4. Last Done Price - select (more than) type (0.3)
5. Moving Average Below Close - select (MA) type (10) below close price for type (1) days
6. Moving Average Bullish Crossover - select (MA) type (5) crossed above select (MA) type (10)

> click Save Template > Create New Template type (Non-Shariah Up-Trending Stocks) > click Create Click Save Template As > select Non-Shariah Up Trending Stocks > click Save
> click Screen Now (may take a few minutes)
Sort By: Select (Vol) Select (Desc)
Mouse over stock name > Charts > click C² Charts tab or Volume Distribution

CAPITAL A BERHAD (5099)

C² Chart

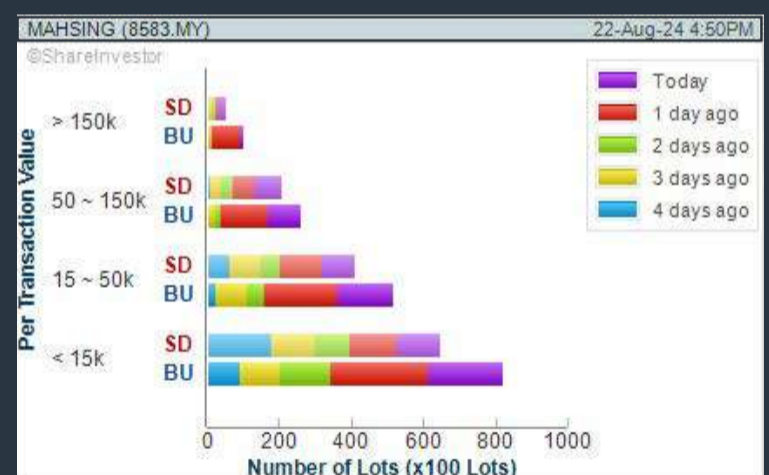
Analysis



MAH SING GROUP BERHAD (8583)

C² Chart

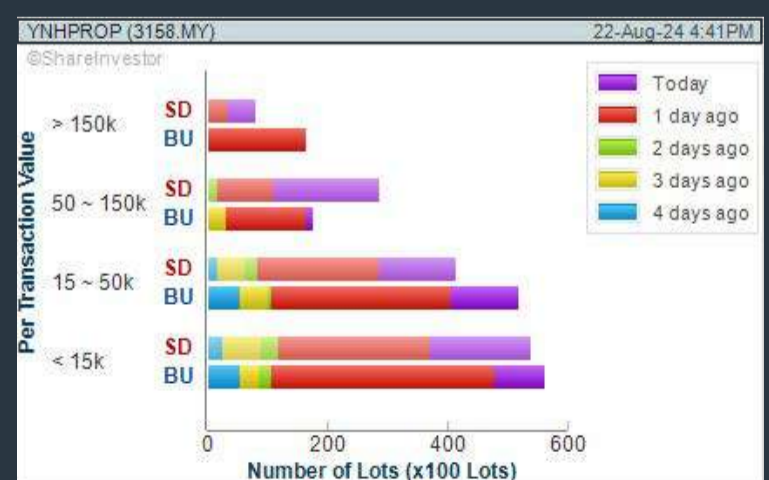
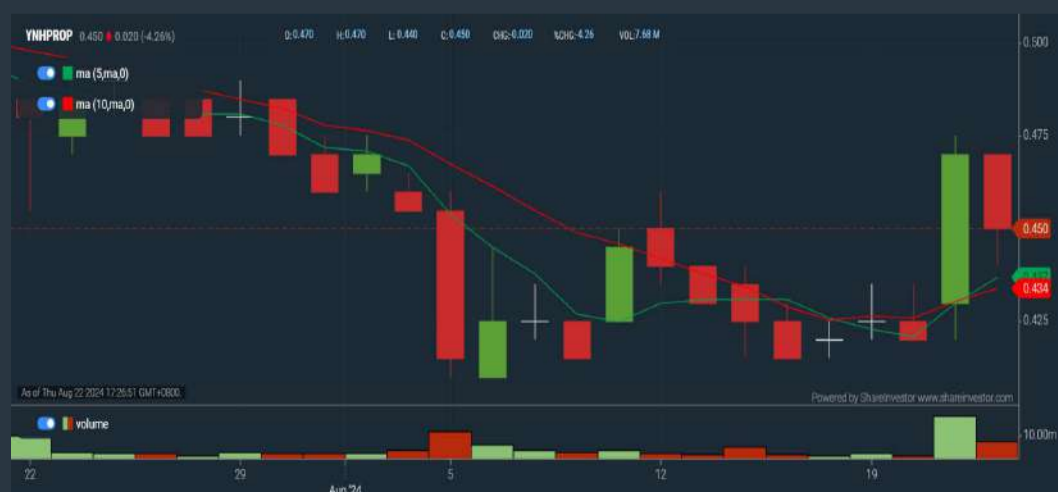
Analysis



YNH PROPERTY BERHAD (3158)

C² Chart

Analysis



Disclaimer: The information on this page is provided as a service to readers. It does not constitute financial advice and/or any investment recommendations. Past performance is not indicative of future results. We assume no liability for damages resulting from or arising out of the use of such information. It would be best if you did your own research to make your personal investment decisions wisely or consult a licenced investment advisor.

Price & Total Shareholder Return (as at Yesterday)

Fundamental Analysis

DEFINITION: Share price of a company trading at a lower price as compared to its fundamentals (FA) such as financial performance and dividend, allowing it to be attractive to value investors.

CHART GUIDE: Total Shareholder Return (TSR) combines share price appreciation and dividend distributions paid to show the total return to the shareholder expressed as a percentage.



ShareInvestor WebPro > Screener > Market Screener (FA & TA) > select BURSA > add criteria

A. Criteria

- > click Add Criteria
- Fundamental Analysis Conditions tab (i) Price Earnings Ratio
- Fundamental Analysis Conditions tab >select (ii) CAGR of Net Earnings
- Fundamental Analysis Conditions tab >select (iii) Net Debt To Equity
- Fundamental Analysis Conditions tab >select (iv) Return On Equity (ROE)

B. Conditions

1. Price Earnings Ratio - select (less than) type (15) times now
2. CAGR of Net Earnings - select (more than) type (10) % for the past type (3) financial year(s)
3. Net Debt To Equity – select (less than) type (1) for the past select (1) financial year(s)
4. Return On Equity (ROE) – select (more than) type (10) % for the past select (1) financial year(s)

- > click Save Template > Create New Template type (Value Stock) > click Create
- > click Save Template as > select Value Companies > click Save
- > click Screen Now (may take a few minutes)
- Sort by: Select (PE Ratio) Select (Ascending)
- > Mouse over stock name > Factsheet > looking for Total Shareholder Return
- > Mouse over stock name > Charts > click C2 Charts tab

SYNERGY HOUSE BERHAD (0279)

C² Chart



Period	Dividend Received	Capital Appreciation	Total Shareholder Return
Short Term Return	5 Days	+0.010	+0.93 %
	10 Days	+0.010	-0.91 %
	20 Days	+0.170	-13.48 %
Medium Term Return	3 Months	+0.520	-32.30 %
	6 Months	+0.260	+31.33 %
	1 Year	+0.690	+172.50 %
Annualised Return	Annualised	-	+172.50 %

AJINOMOTO (M) BERHAD (2658)

C² Chart



Period	Dividend Received	Capital Appreciation	Total Shareholder Return
Short Term Return	5 Days	+0.280	+1.82 %
	10 Days	+0.300	+2.19 %
	20 Days	+0.420	-2.89 %
Medium Term Return	3 Months	+1.680	-10.23 %
	6 Months	+0.721	-4.72 %
	1 Year	+0.114	+0.79 %
Long Term Return	2 Years	+3.988	+37.72 %
	3 Years	0.383	+4.34 %
	5 Years	1.348	+1.15 %
Annualised Return	Annualised	-	+0.23 %

SOLID AUTOMOTIVE BERHAD (5242)

C² Chart



Period	Dividend Received	Capital Appreciation	Total Shareholder Return
Short Term Return	5 Days	-	-
	10 Days	+0.015	+8.11 %
	20 Days	+0.005	-11.11 %
Medium Term Return	3 Months	+0.015	+8.11 %
	6 Months	+0.005	+11.11 %
	1 Year	+0.015	+8.11 %
Long Term Return	2 Years	+0.000	+11.11 %
	3 Years	-0.045	-18.17 %
	5 Years	+0.075	-27.27 %
Annualised Return	Annualised	-	-4.17 %

Disclaimer: The information on this page is provided as a service to readers. It does not constitute financial advice and/or any investment recommendations. Past performance is not indicative of future results. We assume no liability for damages resulting from or arising out of the use of such information. It would be best if you did your own research to make your personal investment decisions wisely or consult a licenced investment advisor.

Price & Total Shareholder Return (as at Yesterday)

Fundamental Analysis

DEFINITION: Company revenue is growing and making good quality of earnings with positive Free Cash Flow.

CHART GUIDE: Total Shareholder Return (TSR) combines share price appreciation and distributions paid to show the total return to the shareholder expressed as a percentage.



ShareInvestor WebPro > Screener > Market Screener (FA & TA) > select BURSA > add criteria

A. Criteria

1. Fundamental Analysis Conditions tab > select (i) Free Cash Flow, (ii) Revenue Growth, (iii) Gross Profit (Earnings) Margin, (iv) Quality of Earnings, (v) Total Shareholder Returns, > click Add Criteria
2. Fundamental Analysis Conditions tab > select (vi) Total Shareholder Returns > click Add Criteria

B. Conditions (Criteria Filters)

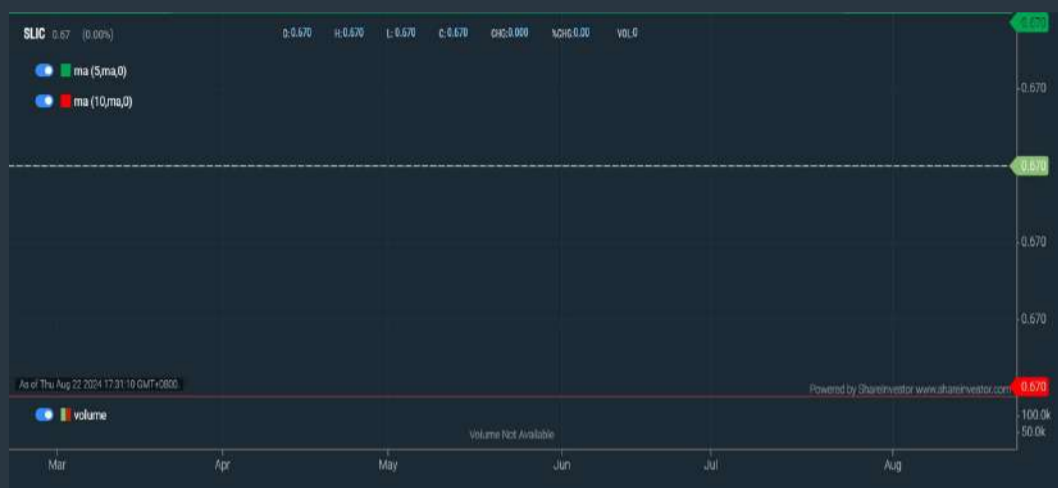
1. Free Cash Flow - select (more than) type (1) for the past select (1) financial year(s)
2. Revenue Growth - select (more than) type (1) for the past select (1) financial year(s)
3. Gross Profit (Earnings) Margin - select (more than) type (30) % for the past select (1) financial year(s)
4. Quality of Earnings - select (more than) type (1) for the past select (1) financial year(s)
5. Total Shareholder Return - select (more than) type (5) % for the past select (3) financial year(s)
6. Total Shareholder Return - select (more than) type (5) % for the past select (5) financial year(s)

- > click Save Template > Create New Template type (Growth Companies) > click Create
- > click Save Template as > select Growth Companies > click Save
- > click Screen Now (may take a few minutes)
- > Sort By: Select (Revenue Growth) Select (Desc)
- > Mouse over stock name > Factsheet > looking for Total Shareholder Return

SL INNOVATION CAPITAL BERHAD (03008)

C² Chart

Analysis

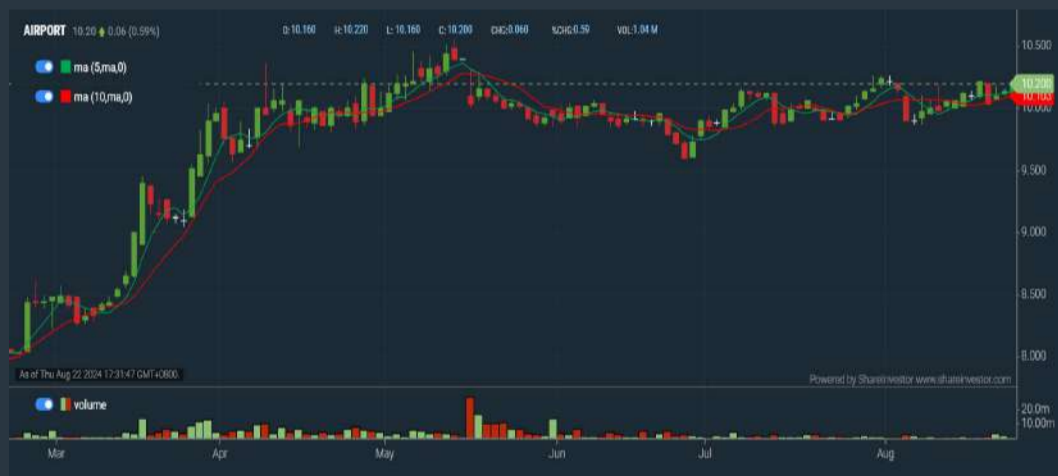


Period	Dividend Received	Capital Appreciation	Total Shareholder Return
Short Term Return	5 Days	-	-
	10 Days	-	-
	20 Days	-	-
Medium Term Return	3 Months	-	-
	6 Months	-	-
	1 Year	-	-
Long Term Return	2 Years	+0.265	+65.43%
	3 Years	+0.265	+65.43%
	5 Years	0.005	+0.260
Annualised Return	Annualised	-	+16.49%

MALAYSIA AIRPORTS HOLDINGS BERHAD (5014)

C² Chart

Analysis



Period	Dividend Received	Capital Appreciation	Total Shareholder Return
Short Term Return	5 Days	-	+0.78%
	10 Days	-	+2.20%
	20 Days	-	+2.93%
Medium Term Return	3 Months	-	+1.39%
	6 Months	-	+26.55%
	1 Year	-	+47.83%
Long Term Return	2 Years	-	+76.00%
	3 Years	-	+80.88%
	5 Years	0.006	+1.740
Annualised Return	Annualised	-	+4.01%

PBA HOLDINGS BERHAD (5041)

C² Chart

Analysis



Period	Dividend Received	Capital Appreciation	Total Shareholder Return	
Short Term Return	5 Days	-	+3.47%	
	10 Days	-	+10.49%	
	20 Days	-	-6.59%	
Medium Term Return	3 Months	-	-16.36%	
	6 Months	-	-20.06%	
	1 Year	-	+116.86%	
Long Term Return	2 Years	-	+133.99%	
	3 Years	0.023	+0.955	+117.53%
	5 Years	0.000	-0.600	+70.00%
Annualised Return	Annualised	-	+11.20%	

Disclaimer: The information on this page is provided as a service to readers. It does not constitute financial advice and/or any investment recommendations. Past performance is not indicative of future results. We assume no liability for damages resulting from or arising out of the use of such information. It would be best if you did your own research to make your personal investment decisions wisely or consult a licenced investment advisor.

Price & Total Shareholder Return (as at Yesterday)

Fundamental Analysis

DEFINITION: Company is paying out dividend with low or moderate leverage.

CHART GUIDE: Total Shareholder Return (TSR) combines share price appreciation and distributions paid to show the total return to the shareholder expressed as a percentage.



ShareInvestor WebPro > Screener > Market Screener (FA & TA) > select BURSA > add criteria

A. Criteria

- > click Add Criteria
- Fundamental Analysis Conditions tab >select (i) Dividend Yield (Historical)
- Fundamental Analysis Conditions tab >select (ii) Dividend Payout (Historical)
- Fundamental Analysis Conditions tab >select (iii) Total Debt To Equity
- Fundamental Analysis Conditions tab >select (iv) Total Shareholder Returns
- Fundamental Analysis Conditions tab >select (v) Total Shareholder Returns
- Fundamental Analysis Conditions tab / >select (vi) CAGR of Dividend Per Share

• Fundamental Analysis Conditions tab >select (vii) CAGR of Dividend Per Share

B. Conditions (Criteria Filters)

1. Dividend Yield - select (more than) type (1) % for the past select (1) financial year(s)
2. Dividend Payout (Historical) - select (between) type (0.5) to type (1) times for the past select (1) financial year(s)
3. Total Debt to Equity - select (less than) type (1) for the past select (1) financial year(s)
4. Total Shareholder Return - select (more than) type (5) % for the past select (3) financial year(s)
5. Total Shareholder Return - select (more than) type (5) % for the past select (5) financial year(s)

6. CAGR of Dividend Per Share - select (less than) type (30) % for the past select (5) financial year(s)
7. CAGR of Dividend Per Share - select (more than) type (1) % for the past select (5) financial year(s)

- > click Save Template > Create New Template type (Dividend Companies) > click Create
- > click Save Template as > select Dividend Companies > click Save
- > click Screen Now (may take a few minutes)
- > Sort By: Select (Dividend Yield) Select (Desc)
- > Mouse over stock name > Factsheet > looking for Total Shareholder Return

AMWAY (M) HOLDINGS BERHAD (6351)

C² Chart

Analysis



Period	Dividend Received	Capital Appreciation	Total Shareholder Return
Short Term Return	5 Days	-0.200	-3.98%
	10 Days	-0.150	-2.17%
	20 Days	-0.250	-3.67%
Medium Term Return	3 Months	-0.700	-9.40%
	6 Months	-0.700	-1.68%
	1 Year	-1.370	+26.16%
Long Term Return	2 Years	-1.750	+35.00%
	3 Years	-1.030	+18.81%
	5 Years	0.300	+19.16%
Annualised Return	Annualised	-	+3.57%

PARAMOUNT CORPORATION BERHAD (1724)

C² Chart

Analysis



Period	Dividend Received	Capital Appreciation	Total Shareholder Return
Short Term Return	5 Days	+0.050	+2.88%
	10 Days	+0.040	+3.88%
	20 Days	-0.050	-4.46%
Medium Term Return	3 Months	-0.100	-15.08%
	6 Months	+0.050	+4.90%
	1 Year	+0.175	+18.55%
Long Term Return	2 Years	+0.475	+75.03%
	3 Years	+0.380	+56.05%
	5 Years	0.355	+66.03%
Annualised Return	Annualised	-	+10.69%

TA ANN HOLDINGS BERHAD (5012)

C² Chart

Analysis



Period	Dividend Received	Capital Appreciation	Total Shareholder Return
Short Term Return	5 Days	+0.120	+3.22%
	10 Days	-	-
	20 Days	-0.090	-2.28%
Medium Term Return	3 Months	-0.090	-2.28%
	6 Months	+0.060	+1.58%
	1 Year	+0.200	+7.84%
Long Term Return	2 Years	-0.110	-2.76%
	3 Years	0.200	+6.74%
	5 Years	0.500	+14.39%
Annualised Return	Annualised	-	+6.03%

Disclaimer: The information on this page is provided as a service to readers. It does not constitute financial advice and/or any investment recommendations. Past performance is not indicative of future results. We assume no liability for damages resulting from or arising out of the use of such information. It would be best if you did your own research to make your personal investment decisions wisely or consult a licenced investment advisor.

Week: 16 August 2024 - 22 August 2024

More Brokers' Call 

AMINVESTMENT BANK <small>... See More</small>	Call	Target Price	Release Date
MBSB Berhad (1171)	HOLD	RM0.80	21 Aug 2024
Petronas Gas Berhad (6033)	BUY	RM19.97	21 Aug 2024

APEX <small>... See More</small>	Call	Target Price	Release Date
Maxis Berhad (6012)	BUY	RM4.32	22 Aug 2024
Pekat Group Berhad (0233)	BUY	RM1.20	22 Aug 2024
QES Group Berhad (0196)	BUY	RM0.86	22 Aug 2024

BIMB SECURITIES SDN BHD <small>... See More</small>	Call	Target Price	Release Date
Dutch Lady Milk Industries Berhad (3026)	HOLD	RM34.00	22 Aug 2024
Maxis Berhad (6012)	BUY	RM3.95	22 Aug 2024
SD Guthrie Berhad (5285)	HOLD	RM4.68	22 Aug 2024

KENANGA <small>... See More</small>	Call	Target Price	Release Date
LPI Capital Berhad (8621)	OUTPERFORM	RM15.00	22 Aug 2024
Maxis Berhad (6012)	MARKET PERFORM	RM3.74	22 Aug 2024
Petronas Dagangan Berhad (5681)	OUTPERFORM	RM21.20	22 Aug 2024

MALACCA SECURITIES SDN BHD <small>... See More</small>	Call	Target Price	Release Date
OSK Holdings Berhad (5053)	BUY	RM1.96	21 Aug 2024

MIDF <small>... See More</small>	Call	Target Price	Release Date
Deleum Berhad (5132)	BUY	RM1.64	22 Aug 2024
LPI Capital Berhad (8621)	BUY	RM14.52	22 Aug 2024
Malayan Cement Berhad (3794)	BUY	RM6.60	22 Aug 2024

UOB KAYHIAN <small>... See More</small>	Call	Target Price	Release Date
AMMB Holdings Berhad (1015)	HOLD	RM4.77	21 Aug 2024
My E.G. Services Berhad (0138)	BUY	RM1.42	21 Aug 2024
Petronas Dagangan Bhd (5681)	HOLD	RM17.50	21 Aug 2024

Disclaimer: InveSt does not accept any liability whatsoever for any direct, indirect or consequential losses (including loss of profit) or damages that may arise from the use of information or opinions in this publication. The information and opinions in InveSt are not to be considered as an offer to sell or buy any of the securities discussed. Opinions expressed are subject to change without notice. The Brokers may, from time to time, have interests or positions in the securities mentioned. For the full report on each item listed on this page, please visit https://www.shareinvestor.com/my/brokers_call.

DEFINITION: Top 9 stocks with Technical Analysis plus Pattern Matching by 60 pre-defined indicators by the system showing a higher probability of bullish sentiment on the share price.



ShareInvestor WebPro > Screener > Predefined TA Screens > select market BURSA > Most Long Signals > click Scan Results or mouse over each company

MALAYSIA MARINE AND HEAVY ENG (5186.MY)

MHB

Price updated at 22 Aug 2024 17:31

Last: 0.465	Change: -0.005	Volume: 17,814
	Change (%): -1.06	Range: 0.455 - 0.470

TA Scanner Results based on historical data up to 22 Aug 2024

Condition	Signal	Explanation
Bollinger Band: Bullish Long Term Volatility Breakout and Trending	Long	1. Close price above upper bollinger band(33,1). 2. Volume above average volume(50). 3. Average volume(50) is above 300,000.
Bollinger Band: Bullish Short Term Volatility Breakout and Trending	Long	1. Close price above upper bollinger band(33,1). 2. Volume above average volume(10). 3. Average volume(10) is above 300,000.
Bollinger Band: High Above Upper Bollinger Band	Neutral	1. High above upper bollinger band(14,2). 2. Average volume(5) is above 100,000.
DM: Bullish Directional Movement	Long	-DI(14) crossed below +DI(14)
Donchian Channels: High Above Upper Donchian Channels	Long	High crossed above the upper Donchian Channel(14,4)
MA: Short Term Bullish Moving Average Crossover	Long	MA(10) crossed above MA(15) within the last 1 day.
RSI: Short Term RSI 50 Bullish Crossover	Long	1. RSI(20) crossed above 50 within the last 1 day and RSI(20) 1 day ago below 50 for the last 5 days. 2. Volume above average volume(125). 3. Average volume(5) is above 100,000.
Volume: Volume Spike	Long	1. Volume is more than 500% above average volume(10). 2. Volume above 200000. 3. Close price above 0.10
Williams %R: Bearish Williams %R	Short	1. Williams %R(26) between 0 and -20. 2. Average volume(5) is above 100,000.

ASIAN PAC HOLDINGS BERHAD (4057.MY)

ASIAPAC

Price updated at 22 Aug 2024 17:31

Last: 0.115	Change: -0.005	Volume: 5,853
	Change (%): -4.17	Range: 0.110 - 0.120

TA Scanner Results based on historical data up to 22 Aug 2024

Condition	Signal	Explanation
Bollinger Band: Bullish Long Term Volatility Breakout and Trending	Long	1. Close price above upper bollinger band(33,1). 2. Volume above average volume(50). 3. Average volume(50) is above 300,000.
Bollinger Band: Bullish Short Term Volatility Breakout and Trending	Long	1. Close price above upper bollinger band(33,1). 2. Volume above average volume(10). 3. Average volume(10) is above 300,000.
Bollinger Band: High Above Upper Bollinger Band	Neutral	1. High above upper bollinger band(14,2). 2. Average volume(5) is above 100,000.
DM: Bullish Directional Movement	Long	-DI(14) crossed below +DI(14)
Donchian Channels: High Above Upper Donchian Channels	Long	High crossed above the upper Donchian Channel(14,4)
MA: Short Term Bullish Moving Average Crossover	Long	MA(10) crossed above MA(15) within the last 1 day.
Volume: Volume Spike	Long	1. Volume is more than 500% above average volume(10). 2. Volume above 200000. 3. Close price above 0.10
Williams %R: Bearish Williams %R	Short	1. Williams %R(26) between 0 and -20. 2. Average volume(5) is above 100,000.

RHONE MA HOLDINGS BERHAD (5278.MY)

RHONEMA

Price updated at 22 Aug 2024 17:31

Last: 0.705	Change: -0.010	Volume: 29,847
	Change (%): -1.40	Range: 0.700 - 0.800

TA Scanner Results based on historical data up to 22 Aug 2024

Condition	Signal	Explanation
Bollinger Band: High Above Upper Bollinger Band	Neutral	1. High above upper bollinger band(14,2). 2. Average volume(5) is above 100,000.
CCI: Bearish CCI Overbought And Reversing	Short	1. CCI(26) above 100 and CCI(26) 1 day ago increasing for the last 3 days. 2. CCI(26) below CCI(26) 1 day ago
DM: Bullish Directional Movement	Long	-DI(14) crossed below +DI(14)
Donchian Channels: High Above Upper Donchian Channels	Long	High crossed above the upper Donchian Channel(14,4)
MA: Long Term Bullish Moving Average Crossover	Long	MA(50) crossed above MA(200) within the last 1 day.
MA: Short Term Bullish Moving Average Crossover	Long	MA(10) crossed above MA(15) within the last 1 day.
Volume: Volume Spike	Long	1. Volume is more than 500% above average volume(10). 2. Volume above 200000. 3. Close price above 0.10
Williams %R: Bearish Williams %R	Short	1. Williams %R(26) between 0 and -20. 2. Average volume(5) is above 100,000.

CCK CONSOLIDATED HOLDINGS BERHAD (7035.MY)

CCK

Price updated at 22 Aug 2024 17:31

Last: 1.760	Change: -0.020	Volume: 9,053
	Change (%): -1.12	Range: 1.750 - 1.780

TA Scanner Results based on historical data up to 22 Aug 2024

Condition	Signal	Explanation
Bollinger Band: Bullish Long Term Volatility Breakout and Trending	Long	1. Close price above upper bollinger band(33,1). 2. Volume above average volume(50). 3. Average volume(50) is above 300,000.
Bollinger Band: Bullish Short Term Volatility Breakout and Trending	Long	1. Close price above upper bollinger band(33,1). 2. Volume above average volume(10). 3. Average volume(10) is above 300,000.
Price: New 52 Week High	Long	1. Stock reach a new 52 week high. 2. Average volume(30) is above 50000.
Volume: 10 Days large value Buy Up trade	Long	1. 150K value Buy Up greater than Sell Down by 20% for 10 days. 2. 50K-100K value Buy Up greater than Sell Down by 20% for 10 days. 3. Average volume(10) is above 1000000
Volume: 5 Days large value Buy Up trade	Long	1. 150K value Buy Up greater than Sell Down by 20% for 5 days. 2. 50K-100K value Buy Up greater than Sell Down by 20% for 5 days. 3. Average volume(10) is above 1000000

Disclaimer: The information on this page is provided as a service to readers. It does not constitute financial advice and/or any investment recommendations. Past performance is not indicative of future results. We assume no liability for damages resulting from or arising out of the use of such information. It would be best if you did your own research to make your personal investment decisions wisely or consult a licenced investment advisor.

**DC HEALTHCARE HOLDINGS BERHAD (0283.MY)****DCHCARE**

Price updated at 22 Aug 2024 17:30

Last: 0.215	Change: -	Volume: 6,463
	Change (%): -	Range: 0.205 - 0.215

TA Scanner Results based on historical data up to 22 Aug 2024

Condition	Signal	Explanation
Bollinger Band: High Above Upper Bollinger Band	Neutral	1. High above upper bollinger band(14,2). 2. Average volume(5) is above 100,000.
DM: Bullish Directional Movement	Long	-DI(14) crossed below +DI(14)
Donchian Channels: High Above Upper Donchian Channels	Long	High crossed above the upper Donchian Channel(14,4)
MA: Short Term Bullish Moving Average Crossover	Long	MA(10) crossed above MA(15) within the last 1 day.
RSI: Short Term RSI 50 Bullish Crossover	Long	1. RSI(20) crossed above 50 within the last 1 day and RSI(20) 1 day ago below 50 for the last 5 days. 2. Volume above average volume(125). 3. Average volume(5) is above 100,000.
Volume: Volume Spike	Long	1. Volume is more than 500% above average volume(10). 2. Volume above 200000. 3. Close price above 0.10
Williams %R: Bearish Williams %R	Short	1. Williams %R(26) between 0 and -20. 2. Average volume(5) is above 100,000.

**WENTEL ENGINEERING HOLDINGS BERHAD (0298.MY)****WENTEL**

Price updated at 22 Aug 2024 17:30

Last: 0.340	Change: +0.010	Volume: 45,961
	Change (%): +3.03	Range: 0.325 - 0.340

TA Scanner Results based on historical data up to 22 Aug 2024

Condition	Signal	Explanation
Bollinger Band: High Above Upper Bollinger Band	Neutral	1. High above upper bollinger band(14,2). 2. Average volume(5) is above 100,000.
DM: Bullish Directional Movement	Long	-DI(14) crossed below +DI(14)
Donchian Channels: High Above Upper Donchian Channels	Long	High crossed above the upper Donchian Channel(14,4)
Volume: 10 Days large value Buy Up trade	Long	1. 150K value Buy Up greater than Sell Down by 20% for 10 days. 2. 50K-100K value Buy Up greater than Sell Down by 20% for 10 days. 3. Average volume(10) is above 1000000
Volume: 5 Days large value Buy Up trade	Long	1. 150K value Buy Up greater than Sell Down by 20% for 5 days. 2. 50K-100K value Buy Up greater than Sell Down by 20% for 5 days. 3. Average volume(10) is above 1000000
Volume: Volume Spike	Long	1. Volume is more than 500% above average volume(10). 2. Volume above 200000. 3. Close price above 0.10

**UNIQUE FIRE HOLDINGS BERHAD (0257.MY)****UNIQUE**

Price updated at 22 Aug 2024 17:30

Last: 0.390	Change: -0.020	Volume: 45,431
	Change (%): -4.88	Range: 0.390 - 0.410

TA Scanner Results based on historical data up to 22 Aug 2024

Condition	Signal	Explanation
Bollinger Band: Bullish Long Term Volatility Breakout and Trending	Long	1. Close price above upper bollinger band(33,1). 2. Volume above average volume(50). 3. Average volume(50) is above 300,000.

**BINA PURI HOLDINGS BERHAD (5932.MY)****BPURI**

Price updated at 22 Aug 2024 17:31

Last: 0.390	Change: -0.010	Volume: 75,948
	Change (%): -2.50	Range: 0.380 - 0.400

TA Scanner Results based on historical data up to 22 Aug 2024

Condition	Signal	Explanation
Donchian Channels: High Above Upper Donchian Channels	Long	High crossed above the upper Donchian Channel(14,4)
MA: Short Term Bullish Moving Average Crossover	Long	MA(10) crossed above MA(15) within the last 1 day.
Volume: 10 Days large value Buy Up trade	Long	1. 150K value Buy Up greater than Sell Down by 20% for 10 days. 2. 50K-100K value Buy Up greater than Sell Down by 20% for 10 days. 3. Average volume(10) is above 1000000
Volume: 5 Days large value Buy Up trade	Long	1. 150K value Buy Up greater than Sell Down by 20% for 5 days. 2. 50K-100K value Buy Up greater than Sell Down by 20% for 5 days. 3. Average volume(10) is above 1000000

**MAH SING GROUP BERHAD (8583.MY)****MAHSING**

Price updated at 22 Aug 2024 17:31

Last: 1.760	Change: -	Volume: 87,420
	Change (%): -	Range: 1.740 - 1.800

TA Scanner Results based on historical data up to 22 Aug 2024

Condition	Signal	Explanation
MA: Short Term Bullish Moving Average Crossover	Long	MA(10) crossed above MA(15) within the last 1 day.
MACD: Bullish MACD Crossover	Long	1. MACD(12,26) diff line crossed above the MACD(12,26) signal line. 2. MACD Histogram(12,26) is above 0.
Volume: 10 Days large value Buy Up trade	Long	1. 150K value Buy Up greater than Sell Down by 20% for 10 days. 2. 50K-100K value Buy Up greater than Sell Down by 20% for 10 days. 3. Average volume(10) is above 1000000
Volume: 5 Days large value Buy Up trade	Long	1. 150K value Buy Up greater than Sell Down by 20% for 5 days. 2. 50K-100K value Buy Up greater than Sell Down by 20% for 5 days. 3. Average volume(10) is above 1000000

Disclaimer: The information on this page is provided as a service to readers. It does not constitute financial advice and/or any investment recommendations. Past performance is not indicative of future results. We assume no liability for damages resulting from or arising out of the use of such information. It would be best if you did your own research to make your personal investment decisions wisely or consult a licenced investment advisor.

Condition	Signal	Explanation
Bollinger Band: Bullish Short Term Volatility Breakout and Trending	Long	1. Close price above upper bollinger band(33,1). 2. Volume above average volume(10). 3. Average volume(10) is above 300,000.
Volume: 10 Days large value Buy Up trade	Long	1. 150K value Buy Up greater than Sell Down by 20% for 10 days. 2. 50K-100K value Buy Up greater than Sell Down by 20% for 10 days. 3. Average volume(10) is above 1000000
Volume: 5 Days large value Buy Up trade	Long	1. 150K value Buy Up greater than Sell Down by 20% for 5 days. 2. 50K-100K value Buy Up greater than Sell Down by 20% for 5 days. 3. Average volume(10) is above 1000000



Dato' Eu Hong Chew
Former Group CEO i-Berhad
Non-Executive Director

He has been associated with the Sumurwang Group for many years charting the path for its manufacturing arm, firstly under Dreamland Holdings Berhad and the subsequent acquisition of I-Berhad.

Before that, he was with PA Management Consulting for a decade where he was the Director of Studies for the Cranfield PA MBA Programme in Malaysia.

Educated at the Royal Military College, Dato' Eu has an engineering degree from the University of Glasgow, and a MBA from the University of Bradford, UK.

Is OSK a value trap?

SUMMARY

- From 2015 to 2023, OSK Holdings Berhad (OSK or the Group) (OSK:5053.MY) saw strong revenue and PAT growth, largely in the last three years. However, gross profitability grew at a slower rate, raising concerns about capital efficiency.
- OSK's financial position is mixed, with a solid cash reserve and manageable debt levels, but weak cash flow from operations. Its reliance on debt for CAPEX and dividends is concerning.
- OSK has a significant margin of safety compared to its market price (as of March 2024). Despite average fundamentals, it offers an investment opportunity due to its under-pricing, particularly concerning its RHB investment.

Disclaimer: This article is written for informational purposes only. It does not constitute a solicitation, offer, advice, counseling or recommendation to buy or sell. As such it is not intended to promote the purchase of shares in any way. As a reminder, any type of asset has a risk factor and needs to be evaluated from multiple perspectives. Therefore, any investment decision and the associated risk remains with the investor. The views expressed here are entirely the writer's own.

INVESTMENT THESIS

Over the past 8 years, OSK has transformed itself from a financial services company to a property group. While OSK's main operation is property development, a big part of the profits came from its investment in RHB. From an operations perspective, the Group is not strong fundamentally. I also assessed its financial standing as average. As a property company, the Group did not perform as well as its peers. Its ROE was boosted by the investments in RHB.

OSK is trading below its Earnings Value and Asset Value (as of March 2024). While part of the reason for this could be due to market sentiments, I think that its operations' result has a role. Nevertheless, there is a large enough margin of safety so that OSK is not a value trap.

BACKGROUND

The Group today has 5 major business segments:

- **Financial Services:** This segment includes a substantial stake in RHB Capital Berhad, Malaysia's 4th largest banking group. This arm also provides venture capital and private equity via its affiliate company, OSK Ventures International Berhad, and moneylending and capital financing via OSK Capital Sdn Bhd.
- **Property:** This is a core business interest of the Group. Represented by OSK Property, the property division is formed through the integration of OSK Property Holdings and the property arm of PJD Holdings.
- **Construction:** Established in 1979, the segment has constructed and built multiple residential and commercial properties and infrastructure projects in Malaysia. Currently, this segment focuses on in-house projects.

- **Hospitality:** Swiss-Garden International is the home-grown hospitality brand under the Group and comprises the hotels business and the vacation club business.
- **Industries:** This segment is involved in the manufacturing and sale of high-quality cables and integrated building systems wall panels.

While the Financial Services segment employed the largest amount of the net assets, its revenue contribution was small. This was because a big part of the net assets was for its investment in RHB. Refer to Table 1.

The biggest revenue contribution came from the Property and Construction segments. I have grouped the Construction business with the Property one as the majority of the Construction projects are in-house ones.

Segment	Revenue (a) RM m	Net Assets (b) RM m
Financial services	187	3,451
Property & Construction	752	1,929
Hospitality	88	209
Industries	294	166
Total	1,321	5,755

Table 1: Segment profile

Notes:

a) Revenue for FYE 2022.

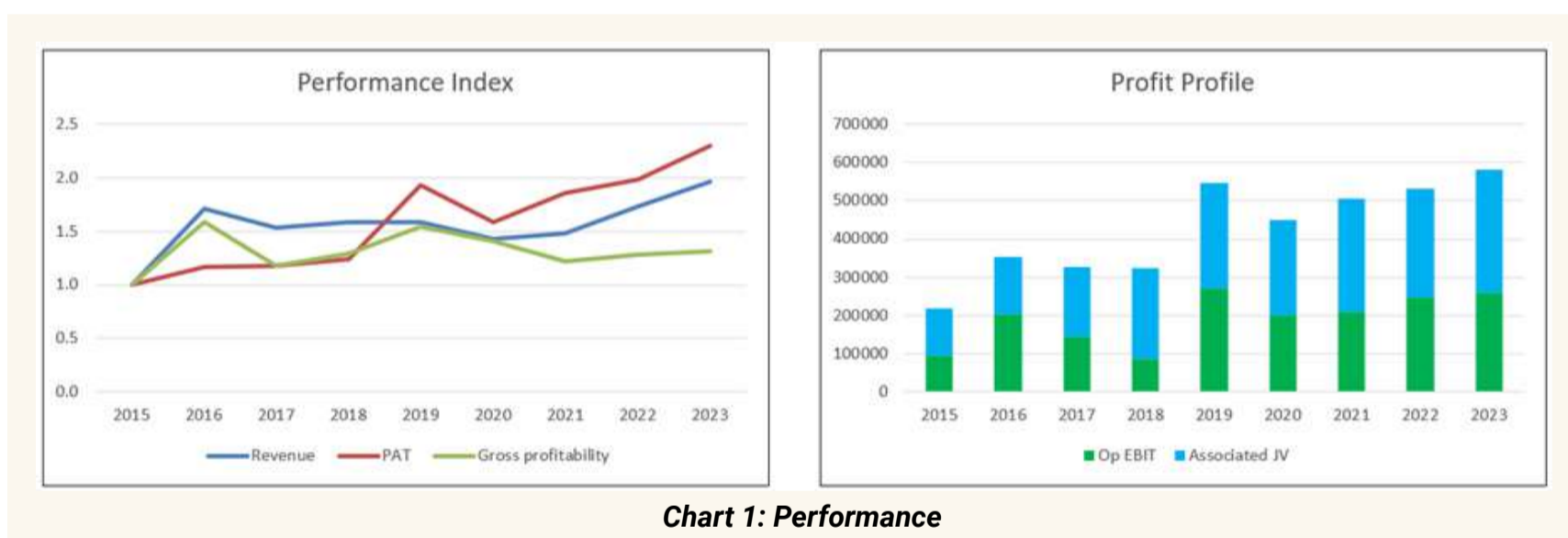
b) Net Assets as of FYE 2022. The total added up to SHF + MI.

OPERATING TRENDS

To get an overview of OSK's performance, I looked at 3 metrics – revenue, PAT, and gross profitability (gross profits/total assets). The left part of Chart 1 illustrates the trends for these 3 metrics:

- From 2015 to 2023, revenue and PAT grew at 8.8% and 10.9 % CAGR respectively. But as shown in the left part of Chart 2, a big part of the revenue growth was in the past 3 years.
- The jump in profits in 2019 was attributed to the turnaround of the Financial Services segment and improvements in the Property Development segment. And of course, in 2020 we had Covid-19.

The only concern I have is with the comparatively lower growth of 3.5% CAGR for gross profitability. You can see that over the past 3 years, despite the high revenue and profit growth, there was not much growth in gross profitability.



OSK has an unusual business model in that a significant part of its PAT came from its investments in associates and JV. You can see this clearly from the right part of Chart 1.

Over the past few years, the contribution from the investments in associates and JV (especially from its investment in RHB) was much larger than its operating profits. One characteristic of this is that the ROE was much higher than the Operating return (NOPAT / Total Capital Employed) as shown in the left part of Chart 2.

- ROE represents the profits inclusive of those from investments in associates and JV. It averaged 6.6% over the past 9 years.
- The Operating return is from the operations before accounting for the contribution from the associates and JV. This averaged 2.2% from 2015 to 2023.

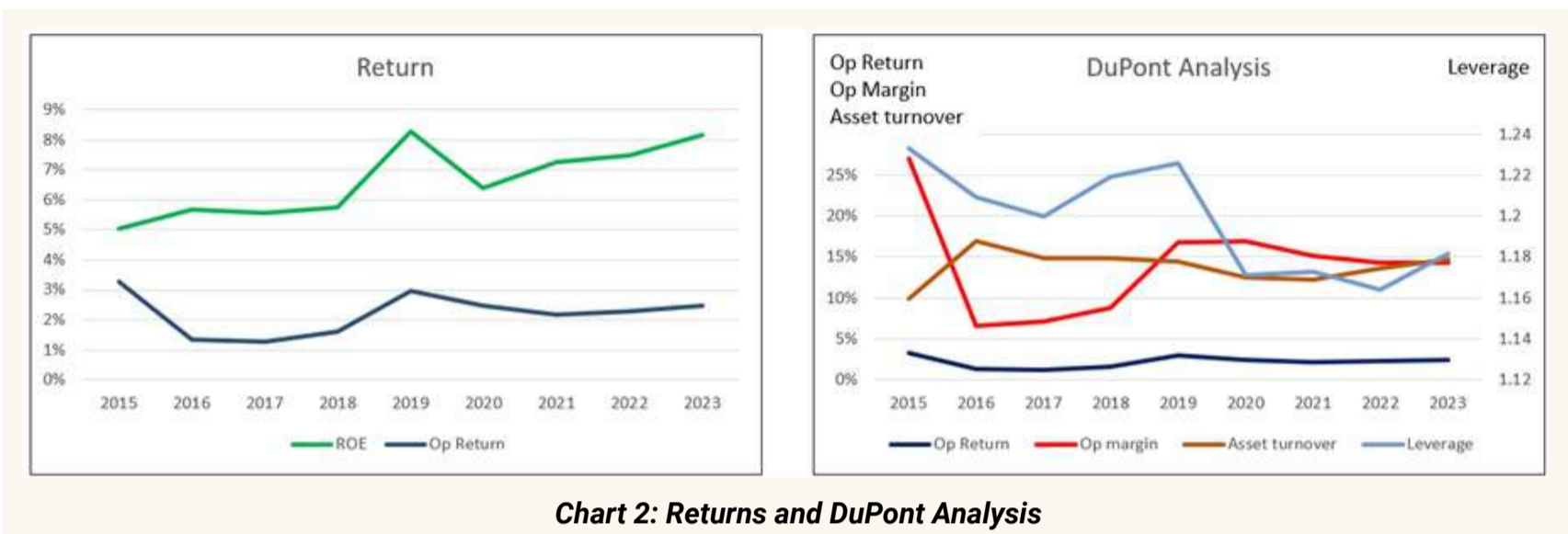


Chart 2: Returns and DuPont Analysis

From an operations perspective, the Op returns are more important as it is a measure of the capability of management. In this context, a DuPont Analysis of the Op Return (refer to the right part of Chart 2) showed that:

- There has not been much improvement in Asset turnover. You should not be surprised as this is in line with the low growth in gross profitability.
- Leverage (in the Dupont Analysis context), declined because debt grew at a faster rate than equity or total assets. This is not a good sign.
- The operating margins over the past few years were lower than that in 2015.

PEER COMPARISONS

Table 3 compares the performance of OSK with those of its peers for this period. Except for revenue growth, OSK underperformed

the sector for the other metrics. It is not a good endorsement of management.

Metrics	Average performance 2015 to 2022	
	Sector (a)	OSK
ROA	2.6%	1.4%
Revenue growth rate	-4.1%	8.3%
Gross profitability	5.9%	4.3%
Asset Turnover	0.17	0.14

Table 2: Peer comparisons

Note: The sector performance was based on the median rates presented in my article "[Will the Malaysian Property Industry turn around by 2024?](#)", revised to cover only 2015 to 2022.

From a fundamental perspective, I would assess OSK as average as the negative points were balanced by the plus points.

FINANCIAL POSITION

I would assess OSK's financial position as average as there were both negative and positive points. Positive points included the following:

- As of the end of Sep 2023, it had RM640 million cash. This is about 6% of its total assets.
- It has a DE of 0.52 as of Sep 2023 compared to my cut-off of 1.0.
- It has an interest coverage ratio of 5.4. I defined this as EBIT/ interest. This is equal to an -A (Fitch) synthetic rating as per the Damodaran approach.

The negative points included the following:

- From 2015 to 2023, it managed to generate a cumulative RM140 million Cash flow from Operations compared to a cumulative

PAT of RM3.7 billion. This is a very low cash conversion cycle. Part of the reason was that about RM2.0 billion of the PAT came from its associated/JV.

- Over the past 9 years, there was negative Cash flow from Operations 1/3 of the time.
- It did not have a good capital allocation plan. As can be seen from Table 3, it had to resort to debt to fund its CAPEX and dividends.

Item	Sources RM m	Uses RM m
Cash flow from Ops	140	
Debt	2,455	
Other financing	174	
CAPEX		946
Dividends and buybacks		1,042
Securities		152
Cash and misc		630
Total	2,769	2,769

Table 3: Sources and Uses of Funds 2012 to 2023

VALUATION

The value of a company = value to operating assets + value of non-operating assets. Normally,

Value of operating assets = present value of the cash flow generated by the operating assets.

Value of non-operating assets = book value.

In the case of OSK, we should not follow the normal approach for the non-operating assets because of its large contribution to the profits. This is especially true for the investments in RHB. Rather it would be more appropriate to estimate the intrinsic value of RHB.

Value of OSK = value of operating assets + value of other non-operating assets + value of RHB.

VALUATION OF OPERATING ASSETS PLUS OTHER NON-OPERATING ASSETS

Looking at the right part of Chart 1, you can see that from 2015 to 2023, there was hardly any operating EBIT growth. Over this period the NOPAT grew at 0.6% CAGR. Given this, it makes more sense to value the operating assets on an EPV basis. I estimated the value of the operating assets plus other non-operating assets to be RM0.96 per share.

VALUE OF RHB

I estimate the Earnings Value of RHB based on the average values of 3 methods:

- **Actual dividend:** This came to RM 2.38 per share.
- **Notional dividend:** This came to RM 11.94 per share.
- **Residual income:** This came to RM 8.46 per share.

I then assumed that the Earnings value of RHB is the average of these 3 values. This came to RM7.59 per share or RM32,331.5 million. In 2022, OSK had a 10.18% interest in RHB. This is equal to RM3,291 million or RM1.60 per share.

SUM-OF-PARTS VALUE

The value of OSK then becomes: $RM0.96 + RM1.60 = RM2.56$ per share.

The market price of OSK as of 7 Feb 2024 is RM1.50 per share. There is thus a 70% margin of safety. You can see that the biggest contributor is its investment in RHB.

The book value of OSK as of the end of Dec 2023 was RM2.92 per share. You can see that the sum-of-parts value is lower than the book value. You should not be surprised by this as OSK had low returns. Refer to the original article for details of the valuation cited above.

CONCLUSION

There are two general questions value investors ask before investing in a company:

- Is it a good company? In other words, is it fundamentally strong?
- Is it a good investment? I assess this by looking at whether there is a sufficient margin of safety (> 30%) at the current price.

OSK does not meet the first test. But it did well on the second test.

From a value investor perspective, there is a sufficient margin of safety. OSK is trading at a price equivalent to the value of its investment in RHB (as of March 2024). In other words, the market is ascribing zero value to its property operations. This is too pessimistic. While it may not be the best company from a fundamental perspective, it does not look like a company whose operations are going to collapse. As such I would see OSK as an investment opportunity even for a fresh investor. It is not a value trap.

I am a long-term value investor who has held onto stocks for more than 5 years. My analysis and valuation are from such a perspective. I consider quarterly results “noisy” and focus on long-term trends.

This article was re-purposed from [“Is OSK a value trap?”](#) which was first published on i4value. Asia. Refer to the article for more detailed fundamental analysis and valuation.

UNLOCK THE SECRET OF WEALTH

DO YOU REALLY WANT TO MASTER VALUE INVESTING



SEE HOW TO GET HIGHER RETURNS WITH LOWER RISK



INDIA VISIT A SUCCESS, SECURING POTENTIAL TRADE WORTH RM8 BILLION - PM ANWAR

According to Prime Minister Datuk Seri Anwar Ibrahim, his 3-day official visit to India is a success having obtained potential trade worth RM8 billion in the palm oil and palm oil-based product, chemicals and chemical product, oil and gas, as well as aircraft spare part sectors. He said that during the India visit, investment commitments totalling RM4.5 billion were secured from various sectors and companies.

The total trade between Malaysia and India amounted to RM72.31 billion in 2023. Up to March 2024, 168 investment projects valued at RM4.5 billion with an expected 16,640 jobs opportunities were implemented.

PM Anwar added that this latest visit to India also saw the signing of eight MoUs between the Malaysian and Indian governments (G2G) and seven business-to-business (B2B) MoUs. He ended by saying that he was grateful to Indian Prime Minister Narendra Modi for inviting him for the official visit to India, which has been gratifying.

SHAREINVESTOR WEBPRO

Stock Market Data At Your Fingertips

Powerful browser-based market analytics platform. Access from anywhere

Intrinsic Value Calculator

Consensus Estimates

C2 Charts (Customizable & Comprehensive)

Advance Market Screener

Ownership Tracker

click here to start your 9 Day free trial

GG56 KOREA TO INVEST US\$1 BILLION IN FOREST CITY TO DEVELOP MALAYSIA'S FIRST KOREAN CULTURE TOWN

South Korean investment firm GG56 Korea Ltd will invest US\$1 billion (RM4.37 billion) in Forest City to develop Malaysia's first Korean Culture Town. This is following the signing of a memorandum of agreement (MoA) with Forest City's master developer Country Garden Pacificview Sdn Bhd (CGPV) to develop the project, which will include K-Content Production Studios, an international Cultural District and a world-class residential development.

According to CGPV executive director Datuk Md Othman Yusof, the MoA marked a significant milestone in the ongoing development of Forest City, further solidifying its position as a global hub for innovation, culture and sustainable growth. He said that this MoA is

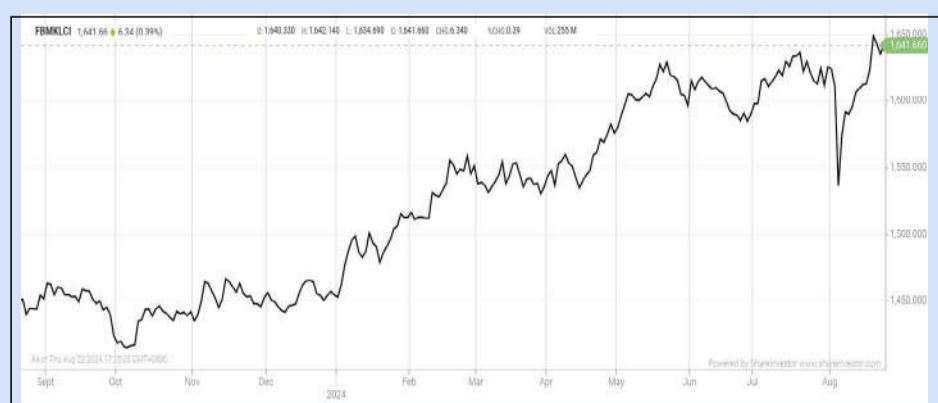
not just a formal agreement and that it reflects the shared vision for Forest City. He is thrilled to collaborate with GG56 Korea to bring these transformative projects to life. He added that together with GG56, they will build a city that stands as a testament to innovation, culture, and sustainable development.

The MoA was signed by Datuk Md Othman on behalf of CGPV while GG56 Korea was represented by its CEO and co-founder Kim Young Kun, and Chung Dong Wan, chairman of CMK Consortium, a subsidiary of GG56 Korea. According to Kim Young Kun, the agreement provided an opportunity for the company to create something extraordinary in Forest City. Through the collaboration with CGPV, GG56 aims to contribute to the city’s growth and establish it as a leading global destination.

Forest City, a visionary urban project in Johor Bahru, is designed to be a smart, green and sustainable city that integrates residential, commercial and industrial spaces with cutting-edge technology and infrastructure. Whereas GG56 Korea is an investment firm with a focus on high-impact projects in areas such as healthcare, entertainment, technology, and real estate.

EYE ON THE MARKETS

On Thursday (22Aug), the Ringgit closed at 4.3800 against the USD and 3.3495 to the Sing Dollar. On Monday (19Aug), the FBM KLCI opened at 1625.14. As at Thursday (22Aug) 5:00pm, the FBM KLCI closed up 16.52 points at 1641.66. Over in US, the overnight Dow Jones Industrial Average closed down 177.71 points (-0.43%) to 40,712.78 whilst the NASDAQ shed 292.92 points (-1.63%) to 17,626.07.



KLCI 1 Year Chart

Over 5 trading days



ShareInvestor WebPro (www.shareinvestor.com/my)

1. Price > Stock Prices
2. Select Market: NASDAQ / NYSE / IDX / SET / HKEX / SGX (One bourse at a time)
3. select Stocks Tab
4. select Ranking Top Gainers or Top Losers (Over 5 Trading Days)
5. Mouse over Column Layout > select Edit Customs > select Name > select Last Done Price > select 5 Days Change > select 52 Weeks High > select 52 Weeks Low > Mouse Over Column Layout > select Custom

NASDAQ (USD)

Top Gainers

Name	Last Done	Change Over 5 Days	52 Weeks High	52 Weeks Low
BOOKING HOLDINGS INC	3,768.090	+133.420	4,144.320	2,733.040
COCA-COLA CONSOLIDATED INC	1,355.990	+85.820	1,305.780	614.220
NETFLIX INC	688.960	+25.740	711.330	344.730
UNITED THERAPEUTICS CORP	346.870	+23.790	353.380	208.625
ERIE INDEMNITY CO	485.570	+18.230	480.750	270.360

Top Losers

Name	Last Done	Change Over 5 Days	52 Weeks High	52 Weeks Low
FIRST CITIZENS BANCSHARES INC NRTH	1,993.650	-54.780	2,174.800	1,274.910
LAM RESEARCH CORP	835.720	-54.380	1,130.000	574.420
KLA CORPORATION	798.520	-37.670	896.320	440.150
LANCASTER COLONY CORP	173.230	-25.120	215.310	158.880
SUPER MICRO COMPUTER INC	604.820	-21.870	1,229.000	226.590

NYSE (USD)

Top Gainers

Name	Last Done	Change Over 5 Days	52 Weeks High	52 Weeks Low
BERKSHIRE HATHAWAY INC	674,000.000	+12,855.000	741,971.390	502,000.000
NVR INC	8,983.560	+382.520	9,042.390	5,210.490
WHITE MOUNTAINS INSURANCE GROUP	1,807.720	+102.720	1,899.210	1,401.010
HOVNANIAN ENTERPRISES INC	238.300	+43.170	224.520	65.220
TRANSDIGM GROUP INC	1,304.380	+32.040	1,369.575	802.460

Top Losers

Name	Last Done	Change Over 5 Days	52 Weeks High	52 Weeks Low
AUTOZONE INC	3,170.890	-41.980	3,256.370	2,375.350
CABLE ONE INC	334.970	-30.200	671.620	318.685
DOMINOS PIZZA INC	416.230	-28.350	542.750	330.050
DYCOM INDUSTRIES	175.690	-15.920	196.340	78.420
BIO RAD LABORATORIES INC	310.030	-15.590	406.440	261.590

IDX (Rupiah)

Top Gainers

Name	Last Done	Change Over 5 Days	52 Weeks High	52 Weeks Low
UNITED TRACTORS	26,225.000	+1,425.000	28,775.000	20,925.000
GUDANG GARAM TBK	16,250.000	+1,400.000	27,125.000	14,475.000
MERATUS JASA PRIMA	3,390.000	+1,270.000	3,390.000	50.000
RODA VIVATEX	15,250.000	+950.000	16,000.000	12,375.000
ARGO PANTES	1,810.000	+705.000	2,000.000	510.000

Top Losers

Name	Last Done	Change Over 5 Days	52 Weeks High	52 Weeks Low
CHANDRA ASRI PACIFIC TBK	9,475.000	-1,000.000	11,225.000	1,995.000
INDOSAT(P.T. INDOSAT TBK)	10,600.000	-600.000	12,250.000	8,650.000
BAYAN RESOURCES TBK	17,000.000	-425.000	20,250.000	14,950.000
GOWA MAKASSAR TOURISM DEVELOPMENT	4,990.000	-310.000	7,000.000	1,485.000
DCI INDONESIA TBK	41,600.000	-300.000	59,050.000	32,525.000

SET (Thai Baht)

Top Gainers

Name	Last Done	Change Over 5 Days	52 Weeks High	52 Weeks Low
AEONTS	131.000	+20.500	179.000	107.000
SCCC	158.500	+17.500	159.000	127.500
SCC	209.000	+12.000	320.000	195.500
KYE	296.000	+11.000	342.000	275.000
OHTL	370.000	+10.000	500.000	352.000

Top Losers

Name	Last Done	Change Over 5 Days	52 Weeks High	52 Weeks Low
SAPPE	74.000	-18.750	107.500	71.250
PTTEP	141.000	-3.000	175.000	137.500
NEO	46.250	-2.000	60.500	39.000
ITC	20.800	-1.600	24.700	16.400
MTI	104.500	-1.500	124.000	101.500

HKEX (HKD)

Top Gainers

Name	Last Done	Change Over 5 Days	52 Weeks High	52 Weeks Low
VOICECOMM (2495)	222.600	+20.600	224.000	121.000
TRIP.COM-S (9961)	339.600	+17.000	452.200	251.400
SKB BIO-B (6990)	167.400	+13.500	195.000	62.000
BYD COMPANY (1211)	227.600	+13.000	260.800	167.800
ZTO EXPRESS-W (2057)	165.500	+12.900	203.400	124.100

Top Losers

Name	Last Done	Change Over 5 Days	52 Weeks High	52 Weeks Low
FOURTH PARADIGM (6682)	41.400	-6.900	115.000	37.000
CONCORD HC GP (2453)	28.700	-6.100	55.000	9.700
YANCOAL AUS (3668)	30.200	-5.450	39.350	22.950
ROBOSENSE (2498)	12.280	-5.140	137.500	12.080
KUAISHOU-W (1024)	39.850	-4.150	69.600	38.400

SGX (SGD)

Top Gainers

Name	Last Done	Change Over 5 Days	52 Weeks High	52 Weeks Low
JARDINE C&C	27.830	+1.430	33.900	23.760
DBS	35.550	+0.790	38.550	28.191
UOB	30.560	+0.530	33.330	26.820
POWERMATIC DATA	3.580	+0.380	3.931	2.315
SGX	10.600	+0.380	10.650	8.870

Top Losers

Name	Last Done	Change Over 5 Days	52 Weeks High	52 Weeks Low
JMH USD	36.800	-0.260	48.140	33.720
HAW PAR	10.140	-0.120	10.570	9.350
AZEUS	10.200	-0.100	10.800	7.400
SBS TRANSIT	2.370	-0.090	2.750	2.360
YZJ SHIPBLDG SGD	2.510	-0.090	2.750	1.370

NO RUSH HUSH HUSH

Minority shareholders should be mindful of PLCs with a history of delayed disclosures, as this reflects poorly on their corporate governance practices. PLCs and their directors must uphold the principles of full, fair, and timely public disclosure of any material information.

10 DAYS TOO LATE: ICON OFFSHORE'S DISCLOSURE DILEMMA

Timeliness and transparency are critical in corporate disclosure, especially in today's technology-driven world where no secret can be kept unknown. Recently, Icon Offshore Berhad has drawn criticism from the public over its handling of a fatal explosion that took place on one of its platform supply vessels (PSV). The Company, which provides offshore support vessel services, finally addressed the tragic incident in a public announcement on 12 August 2024 – 10 days after the incident happened. In the filing, Icon Offshore said the incident occurred on 2 August 2024 at approximately 10.30pm in the waters off Bintulu, Sarawak. The explosion took place at PSV Icon Amara, resulting in two fatalities and one serious injury.

Icon Offshore explained that the delay in releasing details about this incident was due to its collaboration with its client

and relevant authorities to ensure all information was accurate and adequately handled. It added an investigation is underway to determine the cause of the incident. Notwithstanding this, Icon Offshore does not expect the incident to impact its overall operations or financial performance significantly, and the vessel is anticipated to return to service once the investigation concludes.

WHY WAS THERE A DELAY?

The fact that it took more than a week for Icon Offshore to come out with the announcement may not sit well with some investors. In the digital age, it is questionable that a PLC would need such a prolonged period to gather information and data for a brief, five-paragraph statement with scant details. The delay is particularly puzzling given the incident occurred in Malaysia – not in a remote or inaccessible location. Additionally, the incident had already been reported by several media outlets before Icon Offshore issued its official statement to Bursa Malaysia. The delay raised essential questions about the timing and content of corporate disclosures. Certainly, PLCs do not wish to be seen as under-disclosed or over-disclosed.

In all fairness, an explosion on PSV does not fall under the material events requiring an immediate disclosure as outlined in Paragraph 9.19 of Chapter 9 – Continuing Disclosure, Bursa Malaysia Listing Requirements. Determining the materiality of such events can be subjective and heavily depends on the judgment and discretion of the board and management. However, other companies in the same industry have demonstrated swifter responses. For instance, in October 2020, Dayang Enterprise Holdings Berhad filed with Bursa Malaysia on the same day that one of its vessels was involved in an incident off the coast of Miri. Though brief, the announcement assured investors that rescue efforts were

underway and that the vessel, MV Dayang Topaz, remained seaworthy. This quick disclosure helped quell rumours that the vessel had sustained significant damage or sunk after colliding with an offshore oil platform during adverse weather.

Other sectors have also shown promptness in reporting incidents like fire and power outages. For example, Main Market-listed Tomypak Holdings Berhad immediately notified the stock exchange after a fire broke out at its Senai manufacturing plant on 19 December 2021 - despite the incident occurring on a Sunday, a non-market trading day. The next day, Tomypak provided further details, including insurance coverage figures of up to RM271 million for property damage and RM80 million for business interruption. The company also committed to offering a more accurate assessment of the damage and losses once it had access to the premises. These examples highlight the importance of swift disclosure to manage market perceptions and investor confidence, regardless of industry sector.

BREACHES OF DISCLOSURE REQUIREMENTS

Failure to ensure immediate disclosure of any material information that is factual, precise and accurate, is a severe breach of the Bursa Malaysia Listing Requirements. Material information is any fact, event, or circumstance that is likely to impact the price or value of a company's securities, influence market activity surrounding those securities, or affect investors' decisions about their investment strategies.

On this subject, Zen Tech International Berhad (formerly known as Inix Technologies Holdings Berhad) and eight of its directors were publicly reprimanded on 31 July 2024 by Bursa Malaysia for breaches of ACE Market Listing Requirements (ACE LR), including a COVID-19 disclosure breach. In addition to the public reprimand,

the bourse operator imposed a total of RM757,500 fines on the eight directors.

Bursa Malaysia found that Zen Tech issued unclear, inaccurate, and misleading disclosures regarding its venture into the COVID-19 vaccine distribution business. It claimed to have applied for the registration of Sinovac, CanSino and Sinopharm vaccines with the National Pharmaceutical Regulatory Agency (NPRA). Further, it asserted that its subsidiary had been appointed a vaccine distributor. In reality, Zen Tech had only submitted a product classification application for Sinovac and Sinopharm vaccines, which did not equate to the official registration of vaccines for distribution. Furthermore, it failed to provide evidence of any supply or distribution agreement for these vaccines.

There are instances where companies delay the public disclosure of critical information without valid justification, raising concerns about transparency. Minority shareholders should be mindful of PLCs with a history of delayed disclosures, as this reflects poorly on their corporate governance practices.

Chapter 9 of Bursa Malaysia Listing Requirements spells out the continuing disclosure obligations that PLCs must comply with. PLCs and their directors must uphold the principles of full, fair, and timely public disclosure of material information.

Lack of quality in Health & Safety disclosure

The fatal incident involving Icon Offshore Berhad underscores the critical importance of Health and Safety (H&S) disclosures - one of the 11 Common Sustainability Matters under Bursa's Enhanced Sustainability Reporting Framework (ESRF).

On 26 September 2022, Bursa Malaysia Securities Berhad unveiled amendments to enhance the sustainability reporting requirements in the Main Market and ACE Market Listing Requirements. The new requirements are applied to the Sustainability Statements issued by Main Market-listed companies for the financial year ending on or after 31 December 2023. For ACE Market-listed companies, the changes will be reflected in annual reports issued from 31 December 2025 onwards.

Under the ESRF, PLCs are required to disclose key H&S metrics such as work-related fatalities, lost time incident rate, and the number of employees trained on H&S standards. While these companies comply with the reporting requirement, the quality of disclosure tends to be lacking.

Key information, such as the root causes of incidents, how they occurred, and the hazard control measures implemented to prevent similar occurrences, is usually absent.

A positive and vibrant work environment, built on a foundation of safety and health, can motivate employees, foster a sense of purpose, and improve overall productivity and morale. Such an environment enables performance excellence and contributes to a company's long-term success.

As the framework unfolds, we hope to see more comprehensive and meaningful H&S disclosures from PLCs, providing deeper insights into not just the numbers, but the actions and strategies to ensure a safer workplace.

This article appeared in the The Observer, a weekly newsletter published by The Minority Shareholders Watch Group (MSWG) and reproduced here with their permission. Do follow MSWG's Twitter account at @MSWGMalaysia and share your thought on their tweets from time to time.

**CHECK OUT
SHAREINVESTOR
BROKERS'
CALL**

Weekly Buy/Sell/Hold calls
from leading Malaysian Brokerages.

[Go To Brokers' Call](#)

BUY **HOLD** **SELL**

DEFINITION: Insider Activity shows the trades made by substantial shareholders or directors of the company. Purchases by the directors and company share buyback may indicate the share price is undervalued and brings confidence to the price trend of the share price.



ShareInvestor WebPro > Fundamental > Insider Trades > click Search tab > Select Bursa > click Stock name > scroll up and leave at <Select Counter> Type Date Range for Announcement Date > click Search

Notice Period is 11th August 2024 – 17th August 2024

Effective Change Date	Stock Name	Buyer/ Seller Name [Classification]	Bought / (Sold) ['000]		
			Total	No. of Shares After Trade ['000]	% Held
13 AUG 2024 - 13 AUG 2024	ABMB	EMPLOYEES PROVIDENT FUND BOARD [SSH]	-491	136,845	8.84
12 AUG 2024 - 12 AUG 2024	ABMB	EMPLOYEES PROVIDENT FUND BOARD [SSH]	-620	137,337	8.871
09 AUG 2024 - 09 AUG 2024	ABMB	EMPLOYEES PROVIDENT FUND BOARD [SSH]	-1,122	137,957	8.911
08 AUG 2024 - 08 AUG 2024	ABMB	EMPLOYEES PROVIDENT FUND BOARD [SSH]	-190	139,078	8.984
07 AUG 2024 - 07 AUG 2024	ABMB	EMPLOYEES PROVIDENT FUND BOARD [SSH]	-3,000	139,261	8.996
13 AUG 2024 - 13 AUG 2024	ACME	MR GOH CHOON LYE [SSH]	-112	37,216	10.374
13 AUG 2024 - 13 AUG 2024	ACME	WWT WELLNESS SOLUTIONS SDN BHD [SSH]	-112	37,216	10.374
12 AUG 2024 - 12 AUG 2024	ACME	MR GOH CHOON LYE [SSH]	-350	37,329	10.405
12 AUG 2024 - 12 AUG 2024	ACME	WWT WELLNESS SOLUTIONS SDN BHD [SSH]	-350	37,329	10.405
12 AUG 2024 - 12 AUG 2024	AEON	EMPLOYEES PROVIDENT FUND BOARD [SSH]	-900	94,463	6.728
09 AUG 2024 - 09 AUG 2024	AEON	EMPLOYEES PROVIDENT FUND BOARD [SSH]	350	95,363	6.792
07 AUG 2024 - 07 AUG 2024	AEON	EMPLOYEES PROVIDENT FUND BOARD [SSH]	300	95,013	6.767
13 AUG 2024 - 13 AUG 2024	AMBANK	EMPLOYEES PROVIDENT FUND BOARD [SSH]	-1,494	506,656	15.327
12 AUG 2024 - 12 AUG 2024	AMBANK	EMPLOYEES PROVIDENT FUND BOARD [SSH]	-2,582	508,150	15.372
07 AUG 2024 - 07 AUG 2024	AMBANK	EMPLOYEES PROVIDENT FUND BOARD [SSH]	-818	510,732	15.45
15 AUG 2024 - 15 AUG 2024	AME	MR KANG AH CHEE [DIR/CEO]	50	114,079	17.85
15 AUG 2024 - 15 AUG 2024	AME	MR KANG AH CHEE [SSH]	50	114,079	17.85
13 AUG 2024 - 13 AUG 2024	AME	EMPLOYEES PROVIDENT FUND BOARD [SSH]	-610	32,018	5.01
14 AUG 2024 - 14 AUG 2024	AME	MR TAN TECK ENG [DIR/CEO]	20	156	0.024
12 AUG 2024 - 12 AUG 2024	AME	EMPLOYEES PROVIDENT FUND BOARD [SSH]	-303	32,629	5.105
12 AUG 2024 - 13 AUG 2024	ANCOMNY	DATO' SIEW KA WEI [DIR/CEO]	10	18,443	21.044
13 AUG 2024 - 14 AUG 2024	ANEKA	MR CHONG NGIT SOOI [DIR/CEO]	1,000	100,553	14.929
13 AUG 2024 - 14 AUG 2024	ANEKA	MR CHONG NGIT SOOI [SSH]	1,000	100,553	14.929
12 AUG 2024 - 12 AUG 2024	APPASIA	PELABURAN MARA BERHAD [SSH]	-1,000	63,396	5.242
09 AUG 2024 - 09 AUG 2024	APPASIA	PELABURAN MARA BERHAD [SSH]	-500	64,396	5.407
13 AUG 2024 - 13 AUG 2024	ASIAFLE	DATO' LIM SOON HUAT [DIR/CEO]	25	96,879	49.661
13 AUG 2024 - 13 AUG 2024	ASIAFLE	DATO' LIM SOON HUAT [SSH]	25	90,710	46.5
12 AUG 2024 - 12 AUG 2024	ASIAFLE	DATO' LIM SOON HUAT [DIR/CEO]	4	96,854	49.648
12 AUG 2024 - 12 AUG 2024	ASIAFLE	DATO' LIM SOON HUAT [SSH]	4	90,685	46.487
14 AUG 2024 - 14 AUG 2024	ATECH	ABRDN HOLDINGS LIMITED [SSH]	12	29,361	6.773
14 AUG 2024 - 14 AUG 2024	ATECH	ABRDN MALAYSIA SDN. BHD. [SSH]	12	28,836	6.652
14 AUG 2024 - 14 AUG 2024	ATECH	ABRDN PLC [SSH]	12	29,361	6.773
13 AUG 2024 - 13 AUG 2024	ATECH	EMPLOYEES PROVIDENT FUND BOARD [SSH]	37	35,821	8.264
12 AUG 2024 - 12 AUG 2024	ATECH	EMPLOYEES PROVIDENT FUND BOARD [SSH]	45	35,784	8.256
09 AUG 2024 - 09 AUG 2024	ATECH	EMPLOYEES PROVIDENT FUND BOARD [SSH]	257	35,740	8.245
09 AUG 2024 - 09 AUG 2024	ATECH	ABRDN HOLDINGS LIMITED [SSH]	219	29,349	6.771
09 AUG 2024 - 09 AUG 2024	ATECH	ABRDN MALAYSIA SDN. BHD. [SSH]	219	28,824	6.65
09 AUG 2024 - 09 AUG 2024	ATECH	ABRDN PLC [SSH]	219	29,349	6.771
08 AUG 2024 - 08 AUG 2024	ATECH	EMPLOYEES PROVIDENT FUND BOARD [SSH]	346	35,483	8.186
08 AUG 2024 - 08 AUG 2024	ATECH	ABRDN MALAYSIA SDN. BHD. [SSH]	160	28,605	6.599
08 AUG 2024 - 08 AUG 2024	ATECH	ABRDN PLC [SSH]	160	29,130	6.72
07 AUG 2024 - 07 AUG 2024	ATECH	EMPLOYEES PROVIDENT FUND BOARD [SSH]	159	35,137	8.106
13 AUG 2024 - 13 AUG 2024	AXIATA	EMPLOYEES PROVIDENT FUND BOARD [SSH]	-1,046	1,704,327	18.562
12 AUG 2024 - 12 AUG 2024	AXIATA	EMPLOYEES PROVIDENT FUND BOARD [SSH]	-954	1,705,373	18.573
09 AUG 2024 - 09 AUG 2024	AXIATA	EMPLOYEES PROVIDENT FUND BOARD [SSH]	-425	1,706,327	18.584
08 AUG 2024 - 08 AUG 2024	AXIATA	EMPLOYEES PROVIDENT FUND BOARD [SSH]	-2,173	1,706,752	18.588
13 AUG 2024 - 13 AUG 2024	BAHVEST	RHB TRUSTEES BERHAD [SSH]	80,084	145,984	10.08
09 AUG 2024 - 12 AUG 2024	BAHVEST	MR CHONG MEE FAH @ FREDERICK CHONG [DIR/CEO]	600	24,947	1.811
13 AUG 2024 - 13 AUG 2024	BAUTO	EMPLOYEES PROVIDENT FUND BOARD [SSH]	460	159,404	13.638
12 AUG 2024 - 12 AUG 2024	BAUTO	EMPLOYEES PROVIDENT FUND BOARD [SSH]	250	158,944	13.599
09 AUG 2024 - 09 AUG 2024	BAUTO	EMPLOYEES PROVIDENT FUND BOARD [SSH]	290	158,694	13.577
08 AUG 2024 - 08 AUG 2024	BAUTO	EMPLOYEES PROVIDENT FUND BOARD [SSH]	0.3	158,404	13.553
07 AUG 2024 - 07 AUG 2024	BAUTO	EMPLOYEES PROVIDENT FUND BOARD [SSH]	500	158,404	13.552
14 AUG 2024 - 15 AUG 2024	BESHOM	MADAM PHAN VAN DENH [SSH]	51	78,839	26.283
14 AUG 2024 - 15 AUG 2024	BESHOM	MR TAN KENG KANG [DIR/CEO]	51	78,839	26.283
14 AUG 2024 - 15 AUG 2024	BESHOM	MR TAN KENG KANG [SSH]	51	78,839	26.283
14 AUG 2024 - 15 AUG 2024	BESHOM	TAN KAI HEE FAMILY HOLDINGS SDN BHD [SSH]	51	64,816	21.608
13 AUG 2024 - 13 AUG 2024	BIMB	EMPLOYEES PROVIDENT FUND BOARD [SSH]	-1,201	398,267	17.572
12 AUG 2024 - 12 AUG 2024	BIMB	EMPLOYEES PROVIDENT FUND BOARD [SSH]	-3,365	399,468	17.625
07 AUG 2024 - 07 AUG 2024	BIMB	EMPLOYEES PROVIDENT FUND BOARD [SSH]	18	402,832	17.774
13 AUG 2024 - 13 AUG 2024	BURSA	EMPLOYEES PROVIDENT FUND BOARD [SSH]	6	81,317	10.048
13 AUG 2024 - 13 AUG 2024	BURSA	EMPLOYEES PROVIDENT FUND BOARD [SSH]	-240	81,077	10.018
12 AUG 2024 - 12 AUG 2024	BURSA	EMPLOYEES PROVIDENT FUND BOARD [SSH]	-850	81,311	10.047
09 AUG 2024 - 09 AUG 2024	BURSA	EMPLOYEES PROVIDENT FUND BOARD [SSH]	-1,182	82,161	10.152
08 AUG 2024 - 08 AUG 2024	BURSA	EMPLOYEES PROVIDENT FUND BOARD [SSH]	-1,750	83,342	10.298
07 AUG 2024 - 07 AUG 2024	BURSA	EMPLOYEES PROVIDENT FUND BOARD [SSH]	-2,633	85,092	10.514
13 AUG 2024 - 14 AUG 2024	CBIP	DATUK LIM CHAI BENG [DIR/CEO]	883	199,896	42.653

Notice Period is 11th August 2024 – 17th August 2024

Effective Change Date	Stock Name	Buyer/ Seller Name [Classification]	Bought / (Sold) ['000]		
			Total	No. of Shares After Trade ['000]	% Held
13 AUG 2024 - 14 AUG 2024	CBIP	DATUK LIM CHAI BENG [SSH]	883	199,896	42.653
13 AUG 2024 - 14 AUG 2024	CBIP	ZEE CAPITAL SDN BHD [SSH]	883	37,819	8.07
13 AUG 2024 - 13 AUG 2024	CDB	EMPLOYEES PROVIDENT FUND BOARD [SSH]	1,054	1,178,646	10.047
12 AUG 2024 - 12 AUG 2024	CDB	EMPLOYEES PROVIDENT FUND BOARD [SSH]	2,073	1,177,592	10.038
09 AUG 2024 - 09 AUG 2024	CDB	EMPLOYEES PROVIDENT FUND BOARD [SSH]	2,750	1,175,519	10.02
07 AUG 2024 - 07 AUG 2024	CDB	EMPLOYEES PROVIDENT FUND BOARD [SSH]	82	1,172,769	9.997
09 AUG 2024 - 09 AUG 2024	CEB	MISS TEE KIM CHIN [DIR/CEO]	-350	110,384	11.127
09 AUG 2024 - 09 AUG 2024	CEB	MISS TEE KIM CHIN [SSH]	-350	110,384	11.127
14 AUG 2024 - 14 AUG 2024	CGB	MR CHEW HIAN TAT [DIR/CEO]	926	238,432	31.54
14 AUG 2024 - 14 AUG 2024	CGB	MR CHEW HIAN TAT [SSH]	926	238,432	31.54
13 AUG 2024 - 13 AUG 2024	CHHB	MR LIM CHOW SEN @ LIM CHOW SOON [SSH]	7,250	38,086	12.588
15 AUG 2024 - 15 AUG 2024	CHINHIN	DATUK SERI CHIAU BENG TEIK JP [DIR/CEO]	567	2,089,862	59.055
15 AUG 2024 - 15 AUG 2024	CHINHIN	DATUK SERI CHIAU BENG TEIK JP [SSH]	567	2,089,862	59.055
14 AUG 2024 - 14 AUG 2024	CHINHIN	DATUK SERI CHIAU BENG TEIK JP [DIR/CEO]	1,475	2,089,296	59.039
14 AUG 2024 - 14 AUG 2024	CHINHIN	DATUK SERI CHIAU BENG TEIK JP [SSH]	1,475	2,089,296	59.039
14 AUG 2024 - 14 AUG 2024	CHINHIN	DIVINE INVENTIONS SDN BHD [SSH]	1,300	1,315,420	37.171
14 AUG 2024 - 14 AUG 2024	CHINHIN	MR CHIAU HAW CHOON [DIR/CEO]	1,300	1,518,988	42.923
14 AUG 2024 - 14 AUG 2024	CHINHIN	MR CHIAU HAW CHOON [SSH]	1,300	1,518,988	42.923
14 AUG 2024 - 14 AUG 2024	CHINHIN	PP CHIN HIN REALTY SDN BHD [SSH]	1,300	1,315,420	37.171
13 AUG 2024 - 13 AUG 2024	CHINHIN	DATUK SERI CHIAU BENG TEIK JP [DIR/CEO]	48	2,087,821	58.997
13 AUG 2024 - 13 AUG 2024	CHINHIN	DATUK SERI CHIAU BENG TEIK JP [SSH]	48	2,087,821	58.997
12 AUG 2024 - 12 AUG 2024	CHINHIN	DATUK SERI CHIAU BENG TEIK JP [DIR/CEO]	255	2,087,773	58.996
12 AUG 2024 - 12 AUG 2024	CHINHIN	DATUK SERI CHIAU BENG TEIK JP [SSH]	255	2,087,773	58.996
15 AUG 2024 - 15 AUG 2024	CIMB	KUMPULAN WANG PERSARAAN (DIPERBADANKAN) [SSH]	-2,347	650,580	6.08
13 AUG 2024 - 13 AUG 2024	CIMB	EMPLOYEES PROVIDENT FUND BOARD [SSH]	-7,315	1,492,445	13.95
14 AUG 2024 - 14 AUG 2024	CIMB	KUMPULAN WANG PERSARAAN (DIPERBADANKAN) [SSH]	-414	652,927	6.1
12 AUG 2024 - 12 AUG 2024	CIMB	EMPLOYEES PROVIDENT FUND BOARD [SSH]	-11,658	1,499,760	14.02
13 AUG 2024 - 13 AUG 2024	CIMB	KUMPULAN WANG PERSARAAN (DIPERBADANKAN) [SSH]	-1,479	653,341	6.11
09 AUG 2024 - 09 AUG 2024	CIMB	EMPLOYEES PROVIDENT FUND BOARD [SSH]	-10,240	1,511,418	14.13
12 AUG 2024 - 12 AUG 2024	CIMB	KUMPULAN WANG PERSARAAN (DIPERBADANKAN) [SSH]	-657	654,820	6.12
08 AUG 2024 - 08 AUG 2024	CIMB	EMPLOYEES PROVIDENT FUND BOARD [SSH]	-3,964	1,521,658	14.22
07 AUG 2024 - 07 AUG 2024	CIMB	EMPLOYEES PROVIDENT FUND BOARD [SSH]	-5,378	1,525,623	14.26
07 AUG 2024 - 07 AUG 2024	CIMB	KUMPULAN WANG PERSARAAN (DIPERBADANKAN) [SSH]	-756	655,477	6.13
06 AUG 2024 - 06 AUG 2024	CIMB	EMPLOYEES PROVIDENT FUND BOARD [SSH]	797	1,531,001	14.31
05 AUG 2024 - 05 AUG 2024	CIMB	EMPLOYEES PROVIDENT FUND BOARD [SSH]	8,806	1,530,204	14.3
08 AUG 2024 - 08 AUG 2024	CLMT	EMPLOYEES PROVIDENT FUND BOARD [SSH]	168	437,010	15.419
07 AUG 2024 - 07 AUG 2024	CLMT	EMPLOYEES PROVIDENT FUND BOARD [SSH]	1,270	436,842	15.413
13 AUG 2024 - 13 AUG 2024	CTOS	CREADOR V L.P. [SSH]	500	453,836	19.647
13 AUG 2024 - 13 AUG 2024	CTOS	JADE VINE SDN. BHD. [SSH]	500	453,836	19.647
08 AUG 2024 - 08 AUG 2024	CTOS	WASATCH ADVISORS LP [SSH]	-201	127,198	5.506
12 AUG 2024 - 12 AUG 2024	CVIEW	PUAN SADIHAH BINTI SULEIMAN [SSH]	-18	9,582	9.582
13 AUG 2024 - 13 AUG 2024	D&O	EMPLOYEES PROVIDENT FUND BOARD [SSH]	115	94,858	7.653
12 AUG 2024 - 12 AUG 2024	D&O	EMPLOYEES PROVIDENT FUND BOARD [SSH]	30	94,743	7.644
09 AUG 2024 - 09 AUG 2024	D&O	EMPLOYEES PROVIDENT FUND BOARD [SSH]	129	94,713	7.641
08 AUG 2024 - 08 AUG 2024	D&O	EMPLOYEES PROVIDENT FUND BOARD [SSH]	101	94,584	7.631
07 AUG 2024 - 07 AUG 2024	D&O	EMPLOYEES PROVIDENT FUND BOARD [SSH]	327	94,483	7.623
13 AUG 2024 - 13 AUG 2024	DATAPRP	ENCIK SHAMSHURI BIN ABDUL MAJID [SSH]	38,180	76,343	10.108
12 AUG 2024 - 12 AUG 2024	DIALOG	EMPLOYEES PROVIDENT FUND BOARD [SSH]	200	920,359	16.31
09 AUG 2024 - 09 AUG 2024	DIALOG	KUMPULAN WANG PERSARAAN (DIPERBADANKAN) [SSH]	400	614,498	10.89
07 AUG 2024 - 07 AUG 2024	DIALOG	EMPLOYEES PROVIDENT FUND BOARD [SSH]	479	920,159	16.31
09 AUG 2024 - 09 AUG 2024	DLADY	AMANAHRAYA TRUSTEES BERHAD - AMANAH SAHAM BUMIPUTERA [SSH]	-30	4,400	6.875
08 AUG 2024 - 08 AUG 2024	DLADY	AMANAHRAYA TRUSTEES BERHAD - AMANAH SAHAM BUMIPUTERA [SSH]	-3	4,430	6.921
07 AUG 2024 - 07 AUG 2024	DPHARMA	EMPLOYEES PROVIDENT FUND BOARD [SSH]	150	84,851	8.821
07 AUG 2024 - 07 AUG 2024	DRBHCORP	EMPLOYEES PROVIDENT FUND BOARD [SSH]	114	159,024	8.226
09 AUG 2024 - 09 AUG 2024	ECOFIRS	DATO' TEOH SENG KIAN [DIR/CEO]	3,600	83,522	7.064
09 AUG 2024 - 09 AUG 2024	ECOFIRS	DATO' TEOH SENG KIAN [SSH]	3,600	83,522	7.064
08 AUG 2024 - 08 AUG 2024	ECOFIRS	MR CHEW HIAN TAT [DIR/CEO]	730	80,755	6.829
08 AUG 2024 - 08 AUG 2024	ECOFIRS	MR CHEW HIAN TAT [SSH]	730	80,755	6.829
13 AUG 2024 - 13 AUG 2024	ECONBHD	EMPLOYEES PROVIDENT FUND BOARD [SSH]	1,500	113,541	8.01
12 AUG 2024 - 12 AUG 2024	ECONBHD	EMPLOYEES PROVIDENT FUND BOARD [SSH]	825	112,041	7.904
09 AUG 2024 - 09 AUG 2024	ECONBHD	EMPLOYEES PROVIDENT FUND BOARD [SSH]	230	111,216	7.846
08 AUG 2024 - 08 AUG 2024	ECONBHD	EMPLOYEES PROVIDENT FUND BOARD [SSH]	500	110,986	7.83

Disclaimer: The Information in Insider Activity is extracted from www.shareinvestor.com/fundamental/insider_trades. The information on this page is provided as a service to readers. It does not constitute financial advice and/or any investment recommendations. We assume no liability for damages resulting from or arising out of the use of such information. Whilst every effort is made to ensure accuracy, the information presented is not the official record of shareholder filings. Readers are advised to read the original filings on the Bursa Malaysia website at www.bursamalaysia.com



STROM
SWISS TIMEPIECES & JEWELLERY



YouTube

StromWatch Asia
Tele : +65.9817.3378
Email : ll.stromasia@gmail.com
WWW.STROMWATCH.SWISS

Notice Period is 11th August 2024 – 17th August 2024

Effective Change Date	Stock Name	Buyer/ Seller Name [Classification]	Bought / (Sold) ['000]	No. of Shares After Trade ['000]	
			Total	Total	% Held
13 AUG 2024 - 15 AUG 2024	ECOWLD-WB	MR LIEW TIAN XIONG [DIR/CEO]	2,604	62,046	10.615
12 AUG 2024 - 12 AUG 2024	ECOWLD-WB	MR LIEW TIAN XIONG [DIR/CEO]	60	59,442	10.17
14 AUG 2024 - 15 AUG 2024	EG	DATO' KANG PANG KIANG [DIR/CEO]	605	76,110	16.744
14 AUG 2024 - 15 AUG 2024	EG	DATO' KANG PANG KIANG [SSH]	605	76,110	16.744
12 AUG 2024 - 12 AUG 2024	ELKDESA	ENG LEE KREDIT SDN BHD [SSH]	-3,000	138,000	30.342
12 AUG 2024 - 12 AUG 2024	ENGTGX	MR NG CHOOI GUAN [DIR/CEO]	14,930	34,836	4.472
12 AUG 2024 - 12 AUG 2024	ENGTGX	NG YIK SOON [DIR/CEO]	7,339	17,123	2.198
12 AUG 2024 - 12 AUG 2024	ENGTGX	NH HOLDINGS SDN BHD [SSH]	82,109	191,587	24.597
12 AUG 2024 - 12 AUG 2024	ENGTGX	NKG RESOURCES SDN BHD [SSH]	19,095	44,556	5.72
12 AUG 2024 - 12 AUG 2024	ENGTGX	PUAN SRI DATIN YAP SENG KUAN [DIR/CEO]	101,204	236,143	30.317
12 AUG 2024 - 12 AUG 2024	ENGTGX	PUAN SRI DATIN YAP SENG KUAN [SSH]	101,204	236,143	30.317
12 AUG 2024 - 12 AUG 2024	ENGTGX	TAN SRI DATO' NG HOOK [DIR/CEO]	101,204	236,143	30.317
12 AUG 2024 - 12 AUG 2024	ENGTGX	TAN SRI DATO' NG HOOK [SSH]	101,204	236,143	30.317
12 AUG 2024 - 12 AUG 2024	ENGTGX-WB	MR NG CHOOI GUAN [DIR/CEO]	1,275	2,976	1.584
12 AUG 2024 - 12 AUG 2024	ENGTGX-WB	NG YIK SOON [DIR/CEO]	2,052	4,788	2.55
12 AUG 2024 - 12 AUG 2024	ENGTGX-WB	NH HOLDINGS SDN BHD [SSH]	19,992	46,647	24.838
12 AUG 2024 - 12 AUG 2024	ENGTGX-WB	NKG RESOURCES SDN BHD [SSH]	6,527	15,229	8.109
12 AUG 2024 - 12 AUG 2024	ENGTGX-WB	PUAN SRI DATIN YAP SENG KUAN [DIR/CEO]	26,518	61,876	32.947
12 AUG 2024 - 12 AUG 2024	ENGTGX-WB	PUAN SRI DATIN YAP SENG KUAN [SSH]	26,518	61,876	32.947
12 AUG 2024 - 12 AUG 2024	ENGTGX-WB	TAN SRI DATO' NG HOOK [DIR/CEO]	26,518	61,876	32.947
12 AUG 2024 - 12 AUG 2024	ENGTGX-WB	TAN SRI DATO' NG HOOK [SSH]	26,518	61,876	32.947
09 AUG 2024 - 09 AUG 2024	ENGTGX-WB	MR NG CHOOI GUAN [DIR/CEO]	-700	1,000	0.932
12 AUG 2024 - 13 AUG 2024	EVD-PA	MR MAH SEONG HUAK [DIR/CEO]	-33,000	1,071,000	43.746
14 AUG 2024 - 14 AUG 2024	F&N	AMANAHRAYA TRUSTEES BERHAD - AMANAH SAHAM BUMIPUTERA [SSH]	-358	25,936	7.071
13 AUG 2024 - 13 AUG 2024	F&N	EMPLOYEES PROVIDENT FUND BOARD [SSH]	-31	42,359	11.549
12 AUG 2024 - 12 AUG 2024	F&N	EMPLOYEES PROVIDENT FUND BOARD [SSH]	60	42,387	11.557
12 AUG 2024 - 12 AUG 2024	F&N	AMANAHRAYA TRUSTEES BERHAD - AMANAH SAHAM BUMIPUTERA [SSH]	-1	26,294	7.169
09 AUG 2024 - 09 AUG 2024	F&N	AMANAHRAYA TRUSTEES BERHAD - AMANAH SAHAM BUMIPUTERA [SSH]	-95	26,295	7.169
08 AUG 2024 - 08 AUG 2024	F&N	EMPLOYEES PROVIDENT FUND BOARD [SSH]	23	42,327	11.54
08 AUG 2024 - 08 AUG 2024	F&N	AMANAHRAYA TRUSTEES BERHAD - AMANAH SAHAM BUMIPUTERA [SSH]	-130	26,391	7.195
13 AUG 2024 - 13 AUG 2024	FFB	EMPLOYEES PROVIDENT FUND BOARD [SSH]	58	230,346	12.298
12 AUG 2024 - 12 AUG 2024	FFB	EMPLOYEES PROVIDENT FUND BOARD [SSH]	51	230,288	12.295
08 AUG 2024 - 08 AUG 2024	FFB	EMPLOYEES PROVIDENT FUND BOARD [SSH]	6	230,153	12.287
08 AUG 2024 - 08 AUG 2024	FFB	ABRDN HOLDINGS LIMITED [SSH]	6	120,569	6.437
08 AUG 2024 - 08 AUG 2024	FFB	ABRDN MALAYSIA SDN BHD [SSH]	6	119,170	6.362
08 AUG 2024 - 08 AUG 2024	FFB	ABRDN PLC [SSH]	6	120,569	6.437
07 AUG 2024 - 07 AUG 2024	FFB	EMPLOYEES PROVIDENT FUND BOARD [SSH]	831	229,009	12.226
09 AUG 2024 - 09 AUG 2024	FPHB	MRS LIEW TSUEY ER [DIR/CEO]	600	282,817	62.848
09 AUG 2024 - 09 AUG 2024	FPHB	MRS LIEW TSUEY ER [SSH]	600	282,817	62.848
13 AUG 2024 - 13 AUG 2024	FRONTKN	EMPLOYEES PROVIDENT FUND BOARD [SSH]	-51	174,264	11.014
13 AUG 2024 - 13 AUG 2024	GAMUDA	EMPLOYEES PROVIDENT FUND BOARD (EPF BOARD) [SSH]	-1,493	309,521	11.1
12 AUG 2024 - 12 AUG 2024	GAMUDA	EMPLOYEES PROVIDENT FUND BOARD (EPF BOARD) [SSH]	2,342	311,013	11.15
12 AUG 2024 - 12 AUG 2024	GAMUDA	YTM RAJA DATO' SERI ELEENA BINTI ALMARHUM SULTAN AZLAN MUHIBBUDDIN SHAH AL-MAGHFUR-LAH [DIR/CEO]	-300	115,075	4.13
09 AUG 2024 - 09 AUG 2024	GAMUDA	EMPLOYEES PROVIDENT FUND BOARD (EPF BOARD) [SSH]	387	308,672	11.07
08 AUG 2024 - 08 AUG 2024	GAMUDA	EMPLOYEES PROVIDENT FUND BOARD (EPF BOARD) [SSH]	-1,900	308,285	11.05
07 AUG 2024 - 07 AUG 2024	GAMUDA	EMPLOYEES PROVIDENT FUND BOARD (EPF BOARD) [SSH]	2,342	310,185	11.12
13 AUG 2024 - 13 AUG 2024	GASMSIA	EMPLOYEES PROVIDENT FUND BOARD [SSH]	-106	72,106	5.615
12 AUG 2024 - 12 AUG 2024	GASMSIA	EMPLOYEES PROVIDENT FUND BOARD [SSH]	-17	72,212	5.623
07 AUG 2024 - 07 AUG 2024	GASMSIA	EMPLOYEES PROVIDENT FUND BOARD [SSH]	70	72,229	5.625
15 AUG 2024 - 15 AUG 2024	GBGAQRS	YM TUNKU ALIZAN BIN RAJA MUHAMMAD ALIAS [DIR/CEO]	10	1,390	0.256
15 AUG 2024 - 15 AUG 2024	GCE	ADITAN HOLDINGS SDN. BHD. [SSH]	126	97,637	73.351
15 AUG 2024 - 15 AUG 2024	GCE	BIZEST SDN. BHD. [SSH]	126	97,637	73.351
15 AUG 2024 - 15 AUG 2024	GCE	MR TAN ENG HOW [DIR/CEO]	126	144,562	73.381
15 AUG 2024 - 15 AUG 2024	GCE	MR TAN ENG HOW [SSH]	126	97,637	73.381
15 AUG 2024 - 15 AUG 2024	GCE	MR TAN ENG SIN [SSH]	126	97,637	73.38
15 AUG 2024 - 15 AUG 2024	GCE	MR TAN ENG TEONG [DIR/CEO]	126	145,119	73.664
15 AUG 2024 - 15 AUG 2024	GCE	MR TAN ENG TEONG [SSH]	126	97,637	73.664
15 AUG 2024 - 15 AUG 2024	GCE	MR TAN TECK LIN [DIR/CEO]	126	145,628	73.923
15 AUG 2024 - 15 AUG 2024	GCE	MR TAN TECK LIN [SSH]	126	97,637	73.923
15 AUG 2024 - 15 AUG 2024	GCE	TAN CHEE HOE & SONS SDN. BHD. [SSH]	126	97,637	73.351
15 AUG 2024 - 15 AUG 2024	GCE	TAN ENG TEONG HOLDINGS SDN. BHD. [SSH]	126	97,637	73.351
15 AUG 2024 - 15 AUG 2024	GCE	TAN TECK LIN HOLDINGS SDN. BHD. [SSH]	126	97,637	73.509
13 AUG 2024 - 13 AUG 2024	GCE	ADITAN HOLDINGS SDN. BHD. [SSH]	2	97,512	73.287
13 AUG 2024 - 13 AUG 2024	GCE	BIZEST SDN. BHD. [SSH]	2	97,512	73.287
13 AUG 2024 - 13 AUG 2024	GCE	MR TAN ENG HOW [DIR/CEO]	2	144,437	73.317
13 AUG 2024 - 13 AUG 2024	GCE	MR TAN ENG HOW [SSH]	2	97,512	73.317
13 AUG 2024 - 13 AUG 2024	GCE	MR TAN ENG SIN [SSH]	2	97,512	73.316
13 AUG 2024 - 13 AUG 2024	GCE	MR TAN ENG TEONG [DIR/CEO]	2	144,994	73.6
13 AUG 2024 - 13 AUG 2024	GCE	MR TAN ENG TEONG [SSH]	2	97,512	73.6
13 AUG 2024 - 13 AUG 2024	GCE	MR TAN TECK LIN [DIR/CEO]	2	145,502	73.859
13 AUG 2024 - 13 AUG 2024	GCE	MR TAN TECK LIN [SSH]	2	97,512	73.859
13 AUG 2024 - 13 AUG 2024	GCE	TAN CHEE HOE & SONS SDN. BHD. [SSH]	2	97,512	73.287
13 AUG 2024 - 13 AUG 2024	GCE	TAN ENG TEONG HOLDINGS SDN. BHD. [SSH]	2	97,512	73.287
13 AUG 2024 - 13 AUG 2024	GCE	TAN TECK LIN HOLDINGS SDN. BHD. [SSH]	2	97,512	73.445
12 AUG 2024 - 12 AUG 2024	GCE	ADITAN HOLDINGS SDN. BHD. [SSH]	1	97,510	73.286
12 AUG 2024 - 12 AUG 2024	GCE	BIZEST SDN. BHD. [SSH]	1	97,510	73.286
12 AUG 2024 - 12 AUG 2024	GCE	MR TAN ENG HOW [DIR/CEO]	1	144,435	73.316
12 AUG 2024 - 12 AUG 2024	GCE	MR TAN ENG HOW [SSH]	1	97,510	73.316
12 AUG 2024 - 12 AUG 2024	GCE	MR TAN ENG SIN [SSH]	1	97,510	73.315
12 AUG 2024 - 12 AUG 2024	GCE	MR TAN ENG TEONG [DIR/CEO]	1	144,992	73.599

Notice Period is 11th August 2024 – 17th August 2024

Effective Change Date	Stock Name	Buyer/ Seller Name [Classification]	Bought / (Sold) ['000]	No. of Shares After Trade ['000]	
			Total	Total	% Held
12 AUG 2024 - 12 AUG 2024	GCE	MR TAN ENG TEONG [SSH]	1	97,510	73.599
12 AUG 2024 - 12 AUG 2024	GCE	MR TAN TECK LIN [DIR/CEO]	1	145,500	73.857
12 AUG 2024 - 12 AUG 2024	GCE	MR TAN TECK LIN [SSH]	1	97,510	73.858
12 AUG 2024 - 12 AUG 2024	GCE	TAN CHEE HOE & SONS SDN. BHD. [SSH]	1	97,510	73.286
12 AUG 2024 - 12 AUG 2024	GCE	TAN ENG TEONG HOLDINGS SDN. BHD. [SSH]	1	97,510	73.286
12 AUG 2024 - 12 AUG 2024	GCE	TAN TECK LIN HOLDINGS SDN. BHD. [SSH]	1	97,510	73.444
09 AUG 2024 - 09 AUG 2024	GCE	ADITAN HOLDINGS SDN. BHD. [SSH]	24	97,509	73.285
09 AUG 2024 - 09 AUG 2024	GCE	BIZEST SDN. BHD. [SSH]	24	97,509	73.285
09 AUG 2024 - 09 AUG 2024	GCE	MR TAN ENG HOW [DIR/CEO]	24	144,434	73.316
09 AUG 2024 - 09 AUG 2024	GCE	MR TAN ENG HOW [SSH]	24	97,509	73.316
09 AUG 2024 - 09 AUG 2024	GCE	MR TAN ENG SIN [SSH]	24	97,509	73.315
09 AUG 2024 - 09 AUG 2024	GCE	MR TAN ENG TEONG [DIR/CEO]	24	144,991	73.599
09 AUG 2024 - 09 AUG 2024	GCE	MR TAN ENG TEONG [SSH]	24	97,509	73.599
09 AUG 2024 - 09 AUG 2024	GCE	MR TAN TECK LIN [DIR/CEO]	24	145,499	73.857
09 AUG 2024 - 09 AUG 2024	GCE	MR TAN TECK LIN [SSH]	24	97,509	73.857
09 AUG 2024 - 09 AUG 2024	GCE	TAN CHEE HOE & SONS SDN. BHD. [SSH]	24	97,509	73.285
09 AUG 2024 - 09 AUG 2024	GCE	TAN ENG TEONG HOLDINGS SDN. BHD. [SSH]	24	97,509	73.285
09 AUG 2024 - 09 AUG 2024	GCE	TAN TECK LIN HOLDINGS SDN. BHD. [SSH]	24	97,509	73.443
13 AUG 2024 - 13 AUG 2024	GENETEC	EMPLOYEES PROVIDENT FUND BOARD [SSH]	778	70,560	9.085
12 AUG 2024 - 12 AUG 2024	GENETEC	EMPLOYEES PROVIDENT FUND BOARD [SSH]	778	69,782	8.985
08 AUG 2024 - 08 AUG 2024	GENETEC	EMPLOYEES PROVIDENT FUND BOARD [SSH]	655	69,005	8.885
07 AUG 2024 - 07 AUG 2024	GENETEC	EMPLOYEES PROVIDENT FUND BOARD [SSH]	2,353	68,349	8.801
12 AUG 2024 - 12 AUG 2024	GENP	EMPLOYEES PROVIDENT FUND BOARD [SSH]	7	121,646	13.559
09 AUG 2024 - 09 AUG 2024	GLOMAC	SHAPADU CAPITAL SDN. BHD. [SSH]	200	90,372	11.775
12 AUG 2024 - 12 AUG 2024	GREENYB	MR THAM CHONG SING [SSH]	-200	232,509	42.875
12 AUG 2024 - 13 AUG 2024	HEGROUP	HEXATECH ENERGY CONSOLIDATED SDN. BHD. [SSH]	-12,947	92,992	21.135
12 AUG 2024 - 13 AUG 2024	HEGROUP	MR YONG CHONG CHEANG [SSH]	-12,947	92,992	21.135
15 AUG 2024 - 15 AUG 2024	HEXCAP	DATIN SRI M. SARASWATHY A/P MANIKUM [SSH]	-500	48,760	10.909
15 AUG 2024 - 15 AUG 2024	HEXCAP	DATO SRI J.O. NANTHA KUMAR A/L J.C. RAMALU [SSH]	-500	48,760	10.909
07 AUG 2024 - 14 AUG 2024	HEXCAP	DATIN SRI M. SARASWATHY A/P MANIKUM [SSH]	-3,681	49,260	11.021
07 AUG 2024 - 14 AUG 2024	HEXCAP	DATO SRI J.O. NANTHA KUMAR A/L J.C. RAMALU [SSH]	-3,681	49,260	11.021
13 AUG 2024 - 13 AUG 2024	HEXTAR	DATO' ONG CHOO MENG [SSH]	-24,775	2,336,659	60.284
13 AUG 2024 - 13 AUG 2024	HEXTAR	DATO' ONG SOON HO [DIR/CEO]	-24,775	2,336,659	60.284
13 AUG 2024 - 13 AUG 2024	HEXTAR	DATO' ONG SOON HO [SSH]	-24,775	2,336,659	60.284
13 AUG 2024 - 13 AUG 2024	HEXTAR	HEXTAR HOLDINGS SDN. BHD. [SSH]	-4,713	2,030,203	52.378
12 AUG 2024 - 13 AUG 2024	HHRG	BATU KAWI CAPITAL SDN BHD [SSH]	1,284	58,300	6.099
12 AUG 2024 - 13 AUG 2024	HHRG	MR TAI CHIN HWANG [SSH]	1,284	80,380	8.411
13 AUG 2024 - 13 AUG 2024	HLBANK	EMPLOYEES PROVIDENT FUND BOARD [SSH]	-34	204,639	9.807
12 AUG 2024 - 12 AUG 2024	HLBANK	EMPLOYEES PROVIDENT FUND BOARD [SSH]	-254	204,673	9.809
09 AUG 2024 - 09 AUG 2024	HLBANK	EMPLOYEES PROVIDENT FUND BOARD [SSH]	-303	204,927	9.821
08 AUG 2024 - 08 AUG 2024	HLBANK	EMPLOYEES PROVIDENT FUND BOARD [SSH]	-641	205,230	9.836
07 AUG 2024 - 07 AUG 2024	HLBANK	EMPLOYEES PROVIDENT FUND BOARD [SSH]	-180	205,871	9.866
14 AUG 2024 - 16 AUG 2024	IBHD	TAN SRI LIM KIM HONG [DIR/CEO]	436	1,402,088	75.491
14 AUG 2024 - 16 AUG 2024	IBHD	TAN SRI LIM KIM HONG [SSH]	436	1,402,088	75.491
09 AUG 2024 - 09 AUG 2024	IGBREIT	EMPLOYEES PROVIDENT FUND BOARD ("EPF BOARD") [SSH]	-2,784	405,091	11.214
08 AUG 2024 - 08 AUG 2024	IGBREIT	EMPLOYEES PROVIDENT FUND BOARD ("EPF BOARD") [SSH]	-2,454	407,874	11.291
13 AUG 2024 - 13 AUG 2024	IHH	EMPLOYEES PROVIDENT FUND BOARD [SSH]	-718	997,491	11.326
12 AUG 2024 - 12 AUG 2024	IHH	EMPLOYEES PROVIDENT FUND BOARD [SSH]	-113	998,209	11.334
09 AUG 2024 - 09 AUG 2024	IHH	EMPLOYEES PROVIDENT FUND BOARD [SSH]	-1,431	998,397	11.336
08 AUG 2024 - 08 AUG 2024	IHH	EMPLOYEES PROVIDENT FUND BOARD [SSH]	1,600	999,944	11.354
07 AUG 2024 - 07 AUG 2024	IHH	EMPLOYEES PROVIDENT FUND BOARD [SSH]	-1,525	998,345	11.336
13 AUG 2024 - 13 AUG 2024	IJM	EMPLOYEES PROVIDENT FUND BOARD [SSH]	-3,165	481,518	13.733
12 AUG 2024 - 12 AUG 2024	IJM	EMPLOYEES PROVIDENT FUND BOARD [SSH]	2,666	484,683	13.824
09 AUG 2024 - 09 AUG 2024	IJM	EMPLOYEES PROVIDENT FUND BOARD [SSH]	-2,240	482,017	13.748
08 AUG 2024 - 08 AUG 2024	IJM	EMPLOYEES PROVIDENT FUND BOARD [SSH]	-1,320	484,257	13.812
09 AUG 2024 - 09 AUG 2024	IJM	KUMPULAN WANG PERSARAAN (DIPERBADANKAN) [SSH]	-1,000	331,096	9.443
07 AUG 2024 - 07 AUG 2024	IJM	EMPLOYEES PROVIDENT FUND BOARD [SSH]	-2,685	485,417	13.845
13 AUG 2024 - 13 AUG 2024	INARI	EMPLOYEES PROVIDENT FUND BOARD [SSH]	-1,000	388,754	10.274
14 AUG 2024 - 14 AUG 2024	INARI	KUMPULAN WANG PERSARAAN (DIPERBADANKAN) [SSH]	265	361,291	9.548
12 AUG 2024 - 12 AUG 2024	INARI	EMPLOYEES PROVIDENT FUND BOARD [SSH]	2,000	389,754	10.3
13 AUG 2024 - 13 AUG 2024	INARI	KUMPULAN WANG PERSARAAN (DIPERBADANKAN) [SSH]	2,095	361,026	9.541
09 AUG 2024 - 09 AUG 2024	INARI	EMPLOYEES PROVIDENT FUND BOARD [SSH]	4,389	387,754	10.247
12 AUG 2024 - 12 AUG 2024	INARI	KUMPULAN WANG PERSARAAN (DIPERBADANKAN) [SSH]	2,480	358,931	9.485
08 AUG 2024 - 0					

Notice Period is 11th August 2024 – 17th August 2024

Effective Change Date	Stock Name	Buyer/ Seller Name [Classification]	Bought / (Sold) ['000]	No. of Shares After Trade ['000]	
			Total	Total	% Held
07 AUG 2024 - 07 AUG 2024	KERJAYA	EMPLOYEES PROVIDENT FUND BOARD [SSH]	-361	69,302	5.496
13 AUG 2024 - 13 AUG 2024	KLCC	EMPLOYEES PROVIDENT FUND BOARD [SSH]	223	194,892	10.795
13 AUG 2024 - 13 AUG 2024	KLCC	EMPLOYEES PROVIDENT FUND BOARD [SSH]	223	194,892	10.795
12 AUG 2024 - 12 AUG 2024	KLCC	EMPLOYEES PROVIDENT FUND BOARD [SSH]	500	194,669	10.783
12 AUG 2024 - 12 AUG 2024	KLCC	EMPLOYEES PROVIDENT FUND BOARD [SSH]	500	194,669	10.783
08 AUG 2024 - 08 AUG 2024	KLCC	EMPLOYEES PROVIDENT FUND BOARD [SSH]	508	194,169	10.755
08 AUG 2024 - 08 AUG 2024	KLCC	EMPLOYEES PROVIDENT FUND BOARD [SSH]	508	194,169	10.755
13 AUG 2024 - 13 AUG 2024	KLK	EMPLOYEES PROVIDENT FUND BOARD [SSH]	171	168,687	15.386
12 AUG 2024 - 12 AUG 2024	KLK	EMPLOYEES PROVIDENT FUND BOARD [SSH]	132	168,415	15.361
09 AUG 2024 - 09 AUG 2024	KLK	EMPLOYEES PROVIDENT FUND BOARD [SSH]	107	168,361	15.356
08 AUG 2024 - 08 AUG 2024	KLK	EMPLOYEES PROVIDENT FUND BOARD [SSH]	49	168,276	15.348
07 AUG 2024 - 07 AUG 2024	KLK	EMPLOYEES PROVIDENT FUND BOARD [SSH]	50	168,056	15.328
15 AUG 2024 - 15 AUG 2024	KNM	DATO' TUNKU YAACOB KHYRA [DIR/CEO]	1,500	777,716	19.231
15 AUG 2024 - 15 AUG 2024	KNM	DATO' TUNKU YAACOB KHYRA [SSH]	1,500	777,716	19.231
15 AUG 2024 - 15 AUG 2024	KNM	MAA GROUP BERHAD [SSH]	1,500	739,516	18.286
12 AUG 2024 - 13 AUG 2024	KNM	DATO' TUNKU YAACOB KHYRA [DIR/CEO]	2,876	776,216	19.194
12 AUG 2024 - 13 AUG 2024	KNM	DATO' TUNKU YAACOB KHYRA [SSH]	2,876	776,216	19.194
12 AUG 2024 - 13 AUG 2024	KNM	MAA GROUP BERHAD [SSH]	2,876	738,016	18.249
09 AUG 2024 - 09 AUG 2024	KNM	DATO' TUNKU YAACOB KHYRA [DIR/CEO]	1,500	773,340	19.123
09 AUG 2024 - 09 AUG 2024	KNM	DATO' TUNKU YAACOB KHYRA [SSH]	1,500	773,340	19.123
09 AUG 2024 - 09 AUG 2024	KNM	MAA GROUP BERHAD [SSH]	1,500	735,140	18.178
15 AUG 2024 - 15 AUG 2024	KOBAY	DATO SERI KOAY HEAN ENG [DIR/CEO]	315	110,660	34.561
15 AUG 2024 - 15 AUG 2024	KOBAY	KOBAY HOLDINGS SDN. BHD. [SSH]	315	110,660	34.561
15 AUG 2024 - 15 AUG 2024	KOBAY	MR KOAY ZEE EE [DIR/CEO]	315	110,660	34.561
14 AUG 2024 - 14 AUG 2024	KOBAY	DATO SERI KOAY HEAN ENG [DIR/CEO]	317	110,345	34.463
14 AUG 2024 - 14 AUG 2024	KOBAY	KOBAY HOLDINGS SDN. BHD. [SSH]	317	110,345	34.463
14 AUG 2024 - 14 AUG 2024	KOBAY	MR KOAY ZEE EE [DIR/CEO]	317	110,345	34.463
13 AUG 2024 - 13 AUG 2024	KOBAY	DATO SERI KOAY HEAN ENG [DIR/CEO]	347	110,028	34.364
13 AUG 2024 - 13 AUG 2024	KOBAY	KOBAY HOLDINGS SDN. BHD. [SSH]	347	110,028	34.364
13 AUG 2024 - 13 AUG 2024	KOBAY	MR KOAY ZEE EE [DIR/CEO]	347	110,028	34.364
12 AUG 2024 - 12 AUG 2024	KOBAY	DATO SERI KOAY HEAN ENG [DIR/CEO]	265	109,681	34.256
12 AUG 2024 - 12 AUG 2024	KOBAY	KOBAY HOLDINGS SDN. BHD. [SSH]	265	109,681	34.256
12 AUG 2024 - 12 AUG 2024	KOBAY	MR KOAY ZEE EE [DIR/CEO]	265	109,681	34.256
09 AUG 2024 - 09 AUG 2024	KOBAY	DATO' SERI KOAY HEAN ENG [DIR/CEO]	240	109,417	34.173
09 AUG 2024 - 09 AUG 2024	KOBAY	KOBAY HOLDINGS SDN. BHD. [SSH]	240	109,417	34.173
09 AUG 2024 - 09 AUG 2024	KOBAY	MR KOAY ZEE EE [DIR/CEO]	240	109,417	34.173
13 AUG 2024 - 13 AUG 2024	KOSSAN	EMPLOYEES PROVIDENT FUND BOARD [SSH]	422	151,443	5.935
13 AUG 2024 - 13 AUG 2024	KOSSAN	MR TAN KONG CHANG [DIR/CEO]	150	50,300	1.972
07 AUG 2024 - 07 AUG 2024	KOSSAN	EMPLOYEES PROVIDENT FUND BOARD [SSH]	513	151,020	5.919
12 AUG 2024 - 12 AUG 2024	LHI	DATUK LAU JOO HONG [DIR/CEO]	1,350	1,350	2.824
12 AUG 2024 - 12 AUG 2024	LHI	MR LAU CHIA NGUANG [DIR/CEO]	3,068	3,068	6.417
12 AUG 2024 - 12 AUG 2024	LHI	MR LAU JOO HAN [DIR/CEO]	1,275	1,275	2.667
12 AUG 2024 - 12 AUG 2024	LHI	MR LAU JOO KEAT [DIR/CEO]	1,275	1,275	2.667
12 AUG 2024 - 12 AUG 2024	LHI	TAN SRI DATO' LAU ENG GUANG [DIR/CEO]	1,530	1,530	3.2
12 AUG 2024 - 12 AUG 2024	LHI	TAN SRI LAU TUANG NGUANG [DIR/CEO]	1,530	1,530	3.2
15 AUG 2024 - 15 AUG 2024	M&A	CIK SITI NUR AISHAH BINTI ISHAK [SSH]	-53	119,932	6
12 AUG 2024 - 13 AUG 2024	M&A	CIK SITI NUR AISHAH BINTI ISHAK [SSH]	350	119,985	6.003
08 AUG 2024 - 09 AUG 2024	M&A	CIK SITI NUR AISHAH BINTI ISHAK [SSH]	-23	119,635	5.986
13 AUG 2024 - 13 AUG 2024	M&G	TAN SRI MOHAMMED AZLAN BIN HASHIM [DIR/CEO]	32,000	172,677	22.844
13 AUG 2024 - 13 AUG 2024	M&G	TAN SRI MOHAMMED AZLAN BIN HASHIM [SSH]	32,000	172,677	22.844
11 JUL 2024 - 05 AUG 2024	MAGMA	DATO' SERI ISMAIL @ FAROUK BIN ABDULLAH [SSH]	-12,000	87,541	9.235
11 JUL 2024 - 05 AUG 2024	MAGMA	IMPPIANA SDN BHD [SSH]	-8,000	55,008	5.803
14 AUG 2024 - 15 AUG 2024	MAGNI	MR TAN POAY SENG [DIR/CEO]	116	127,255	29.36
13 AUG 2024 - 13 AUG 2024	MALAKOF	EMPLOYEES PROVIDENT FUND BOARD [SSH]	-941	542,441	11.099
13 AUG 2024 - 13 AUG 2024	MALAKOF	KUMPULAN WANG PERSARAAN (DIPERBADANKAN) ('KWAP') [SSH]	5,411	479,176	9.805
12 AUG 2024 - 12 AUG 2024	MALAKOF	KUMPULAN WANG PERSARAAN (DIPERBADANKAN) ('KWAP') [SSH]	3,693	473,766	9.694
08 AUG 2024 - 08 AUG 2024	MALAKOF	EMPLOYEES PROVIDENT FUND BOARD [SSH]	135	543,212	11.115
07 AUG 2024 - 07 AUG 2024	MALAKOF	EMPLOYEES PROVIDENT FUND BOARD [SSH]	951	542,651	11.104
13 AUG 2024 - 13 AUG 2024	MASTEEL	ESTATE OF TAI CHET SIANG DECEASED [SSH]	1,400	217,782	32.156
13 AUG 2024 - 13 AUG 2024	MASTEEL	DATO' SRI TAI HEAN LENG @ TEK HEAN LENG [DIR/CEO]	1,400	219,207	32.366
13 AUG 2024 - 13 AUG 2024	MASTEEL	DATO' SRI TAI HEAN LENG @ TEK HEAN LENG [SSH]	1,400	219,207	32.366
13 AUG 2024 - 13 AUG 2024	MASTEEL	TYT RESOURCES SDN. BHD. [SSH]	1,400	217,782	32.156
13 AUG 2024 - 15 AUG 2024	MATANG	HUAREN HOLDINGS SDN BHD [SSH]	218	408,130	17.082
13 AUG 2024 - 15 AUG 2024	MATANG	MALAYSIAN CHINESE ASSOCIATION [SSH]	218	429,948	17.995
09 AUG 2024 - 12 AUG 2024	MATANG	HUAREN HOLDINGS SDN BHD [SSH]	118	407,912	17.073
09 AUG 2024 - 12 AUG 2024	MATANG	MALAYSIAN CHINESE ASSOCIATION [SSH]	118	429,730	17.986
22 JUL 2024 - 08 AUG 2024	MATANG	MR ANG KIAN YOU [SSH]	1,022	208,560	8.729
14 AUG 2024 - 14 AUG 2024	MATRIX	LEMBAGA TABUNG HAJI [SSH]	200	72,098	5.762
13 AUG 2024 - 13 AUG 2024	MATRIX	LEMBAGA TABUNG HAJI [SSH]	200	71,898	5.746
13 AUG 2024 - 13 AUG 2024	MAXIS	EMPLOYEES PROVIDENT FUND BOARD ('EPF BOARD') [SSH]	116	908,902	11.603
12 AUG 2024 - 12 AUG 2024	MAXIS	EMPLOYEES PROVIDENT FUND BOARD ('EPF BOARD') [SSH]	181	908,787	11.602
09 AUG 2024 - 09 AUG 2024	MAXIS	EMPLOYEES PROVIDENT FUND BOARD ('EPF BOARD') [SSH]	1,000	908,605	11.599
08 AUG 2024 - 08 AUG 2024	MAXIS	EMPLOYEES PROVIDENT FUND BOARD ('EPF BOARD') [SSH]	201	907,605	11.587
07 AUG 2024 - 07 AUG 2024	MAXIS	EMPLOYEES PROVIDENT FUND BOARD ('EPF BOARD') [SSH]	124	907,405	11.584
13 AUG 2024 - 13 AUG 2024	MAYBANK	EMPLOYEES PROVIDENT FUND BOARD [SSH]	-1,319	1,540,979	12.77
12 AUG 2024 - 12 AUG 2024	MAYBANK	EMPLOYEES PROVIDENT FUND BOARD [SSH]	-6,305	1,542,299	12.781
09 AUG 2024 - 09 AUG 2024	MAYBANK	EMPLOYEES PROVIDENT FUND BOARD [SSH]	-4,458	1,548,603	12.833
08 AUG 2024 - 08 AUG 2024	MAYBANK	EMPLOYEES PROVIDENT FUND BOARD [SSH]	810	1,553,061	12.87
07 AUG 2024 - 07 AUG 2024	MAYBANK	EMPLOYEES PROVIDENT FUND BOARD [SSH]	1,058	1,552,251	12.864
13 AUG 2024 - 13 AUG 2024	MISC	EMPLOYEES PROVIDENT FUND BOARD [SSH]	-1,623	527,567	11.819
12 AUG 2024 - 12 AUG 2024	MISC	EMPLOYEES PROVIDENT FUND BOARD [SSH]	-459	529,190	11.855
09 AUG 2024 - 09 AUG 2024	MISC	EMPLOYEES PROVIDENT FUND BOARD [SSH]	-1,540	529,649	11.866
08 AUG 2024 - 08 AUG 2024	MISC	EMPLOYEES PROVIDENT FUND BOARD [SSH]	-84	531,189	11.9

Notice Period is 11th August 2024 – 17th August 2024

Effective Change Date	Stock Name	Buyer/ Seller Name [Classification]	Bought / (Sold) ['000]	No. of Shares After Trade ['000]	
			Total	Total	% Held
07 AUG 2024 - 07 AUG 2024	MISC	EMPLOYEES PROVIDENT FUND BOARD [SSH]	1,090	531,273	11.902
12 AUG 2024 - 12 AUG 2024	MKH	TAN SRI DATUK CHEN LOK LOI [SSH]	5	255,978	44.333
12 AUG 2024 - 12 AUG 2024	MKH	TAN SRI DATUK CHEN LOK LOI [DIR/CEO]	5	255,978	44.333
08 AUG 2024 - 08 AUG 2024	MPAY	DATO' CHEW CHEE SENG [SSH]	0.007	264,282	27.239
13 AUG 2024 - 13 AUG 2024	MRDIY	EMPLOYEES PROVIDENT FUND BOARD [SSH]	-1,234	632,792	6.694
12 AUG 2024 - 12 AUG 2024	MRDIY	EMPLOYEES PROVIDENT FUND BOARD [SSH]	-3,143	634,026	6.707
09 AUG 2024 - 09 AUG 2024	MRDIY	EMPLOYEES PROVIDENT FUND BOARD [SSH]	-2,698	637,169	6.74
08 AUG 2024 - 08 AUG 2024	MRDIY	EMPLOYEES PROVIDENT FUND BOARD [SSH]	2,830	639,867	6.769
07 AUG 2024 - 07 AUG 2024	MRDIY	EMPLOYEES PROVIDENT FUND BOARD [SSH]	300	637,037	6.739
09 AUG 2024 - 09 AUG 2024	MSC	DATUK LIM HONG TAT [DIR/CEO]	87	87	0.021
14 AUG 2024 - 14 AUG 2024	MYEG	KUMPULAN WANG PERSARAAN (DIPERBADANKAN) [SSH]	-450	377,671	5.063
13 AUG 2024 - 13 AUG 2024	MYEG	KUMPULAN WANG PERSARAAN (DIPERBADANKAN) [SSH]	-11,994	378,121	5.069
13 AUG 2024 - 13 AUG 2024	MYEG	ASIA INTERNET HOLDINGS SDN BHD [SSH]	-691	1,208,891	16.207
12 AUG 2024 - 12 AUG 2024	MYEG	KUMPULAN WANG PERSARAAN (DIPERBADANKAN) [SSH]	-1,022	390,116	5.23
12 AUG 2024 - 12 AUG 2024	MYEG	ASIA INTERNET HOLDINGS SDN BHD [SSH]	-12,000	1,209,582	16.216
12 AUG 2024 - 14 AUG 2024	NCT	DATUK SERI CHIAU BENG TEIK [SSH]	2,363	114,950	6.878
09 AUG 2024 - 09 AUG 2024	NCT	MR CHIAU HAW CHOON [SSH]	150	145,781	8.723
08 AUG 2024 - 08 AUG 2024	NCT	DATUK SERI CHIAU BENG TEIK [SSH]	6	112,588	6.737
13 AUG 2024 - 13 AUG 2024	NESTLE	EMPLOYEES PROVIDENT FUND BOARD [SSH]	30	27,568	11.756
12 AUG 2024 - 12 AUG 2024	NESTLE	EMPLOYEES PROVIDENT FUND BOARD [SSH]	-21	27,537	11.743
09 AUG 2024 - 09 AUG 2024	NESTLE	EMPLOYEES PROVIDENT FUND BOARD [SSH]	0.2	27,560	11.753
08 AUG 2024 - 08 AUG 2024	NESTLE	EMPLOYEES PROVIDENT FUND BOARD [SSH]	41	27,590	11.765
07 AUG 2024 - 07 AUG 2024	NESTLE	EMPLOYEES PROVIDENT FUND BOARD [SSH]	70	27,549	11.748
15 AUG 2024 - 15 AUG 2024	NOTION-WD	MR THOO CHOW FAH [DIR/CEO]	-585	158	0.308
12 AUG 2024 - 12 AUG 2024	OCR	MR TAN CHIN HOONG [SSH]	-26,667	27,2645	13.601
08 AUG 2024 - 08 AUG 2024	PADINI	EMPLOYEES PROVIDENT FUND BOARD [SSH]	150	49,086	7.461
12 AUG 2024 - 12 AUG 2024	PANAMY	EMPLOYEES PROVIDENT FUND BOARD [SSH]	-2	6,194	10.197
08 AUG 2024 - 08 AUG 2024	PAVREIT	EMPLOYEES PROVIDENT FUND BOARD [SSH]	160	44,9237	12.272
07 AUG 2024 - 07 AUG 2024	PAVREIT	EMPLOYEES PROVIDENT FUND BOARD [SSH]	710	44,9076	12.268
13 AUG 2024 - 13 AUG 2024	PBBANK	EMPLOYEES PROVIDENT FUND BOARD [SSH]	-720	30,98409	15.96
12 AUG 2024 - 12 AUG 2024	PBBANK	EMPLOYEES PROVIDENT FUND BOARD [SSH]	-551	30,99328	15.97
08 AUG 2024 - 08 AUG 2024	PBBANK	EMPLOYEES PROVIDENT FUND BOARD [SSH]	-552	30,99880	15.97
07 AUG 2024 - 07 AUG 2024	PBBANK	EMPLOYEES PROVIDENT FUND BOARD [SSH]	-1,988	31,00431	15.97
12 AUG 2024 - 12 AUG 2024	PCHEM	EMPLOYEES PROVIDENT FUND BOARD ('EPF BOARD') [SSH]	486	94,4867	11.811
09 AUG 2024 - 09 AUG 2024	PCHEM	EMPLOYEES PROVIDENT FUND BOARD ('EPF BOARD') [SSH]	1,444	94,3701	11.796
08 AUG 2024 - 08 AUG 2024	PCHEM	EMPLOYEES PROVIDENT FUND BOARD ('EPF BOARD') [SSH]	1,919	94,2057	11.776
07 AUG 2024 - 07 AUG 2024	PCHEM	EMPLOYEES PROVIDENT FUND BOARD ('EPF BOARD') [SSH]	482	93,9191	11.74
07 AUG 2024 - 07 AUG 2024	PENTA	EMPLOYEES PROVIDENT FUND BOARD [SSH]	266	54,329	7.638
09 AUG 2024 - 09 AUG 2024	PETDAG	EMPLOYEES PROVIDENT FUND BOARD ('EPF BOARD') [SSH]	25	124,270	12.509
08 AUG 2024 - 08 AUG 2024	PETDAG	EMPLOYEES PROVIDENT FUND BOARD ('EPF BOARD') [SSH]	57	124,174	12.499
07 AUG 2024 - 07 AUG 2024	PETDAG	EMPLOYEES PROVIDENT FUND BOARD ('EPF BOARD') [SSH]	54	123,642	12.446
13 AUG 2024 - 13 AUG 2024	PETGAS	EMPLOYEES PROVIDENT FUND BOARD [SSH]	-32	26,3373	13.31
12 AUG 2024 - 12 AUG 2024	PETGAS	EMPLOYEES PROVIDENT FUND BOARD [SSH]	-9	26,3404	13.312
09 AUG 2024 - 09 AUG 2024	PETGAS	EMPLOYEES PROVIDENT FUND BOARD [SSH]	148	26,3413	13.312
08 AUG 2024 - 08 AUG 2024	PETGAS	EMPLOYEES PROVIDENT FUND BOARD [SSH]	67	26,3265	13.305
09 AUG 2024 - 09 AUG 2024	PETGAS	KUMPULAN WANG PERSARAAN (DIPERBADANKAN) ('KWAP') [SSH]	-131	196,582	9.935
07 AUG 2024 - 07 AUG 2024	PETGAS				

Notice Period is 11th August 2024 – 17th August 2024

Effective Change Date	Stock Name	Buyer/ Seller Name [Classification]	Bought / (Sold) ['000]	No. of Shares After Trade ['000]	
			Total	Total	% Held
08 AUG 2024 - 08 AUG 2024	SCIENTX	MR LIM PENG JIN [DIR/CEO]	123	902047	58.149
08 AUG 2024 - 08 AUG 2024	SCIENTX	MR LIM PENG JIN [SSH]	123	901955	58.143
08 AUG 2024 - 08 AUG 2024	SCIENTX	SCIENTEX INFINITY SDN BHD [SSH]	123	717731	46.267
08 AUG 2024 - 08 AUG 2024	SCIENTX	TAN SRI DATO' MOHD SHERIFF BIN MOHD KASSIM [DIR/CEO]	-259	536	0.035
08 AUG 2024 - 08 AUG 2024	SCOMNET	EMPLOYEES PROVIDENT FUND BOARD [SSH]	44	49812	5.792
07 AUG 2024 - 07 AUG 2024	SCOMNET	EMPLOYEES PROVIDENT FUND BOARD [SSH]	75	49768	5.787
09 AUG 2024 - 12 AUG 2024	SDG	KUMPULAN WANG PERSARAAN (DIPERBADANKAN) [SSH]	-1,053	464347	6.714
08 AUG 2024 - 09 AUG 2024	SDG	EMPLOYEES PROVIDENT FUND BOARD [SSH]	164	1129206	16.328
07 AUG 2024 - 07 AUG 2024	SDG	EMPLOYEES PROVIDENT FUND BOARD [SSH]	-389	1128781	16.322
14 AUG 2024 - 14 AUG 2024	SIME	KUMPULAN WANG PERSARAAN (DIPERBADANKAN) [SSH]	-1,000	460755	6.76
12 AUG 2024 - 12 AUG 2024	SIME	EMPLOYEES PROVIDENT FUND BOARD [SSH]	2,455	966806	14.185
13 AUG 2024 - 13 AUG 2024	SIME	KUMPULAN WANG PERSARAAN (DIPERBADANKAN) [SSH]	-3,000	461755	6.775
09 AUG 2024 - 09 AUG 2024	SIME	EMPLOYEES PROVIDENT FUND BOARD [SSH]	5,000	964351	14.149
12 AUG 2024 - 12 AUG 2024	SIME	KUMPULAN WANG PERSARAAN (DIPERBADANKAN) [SSH]	-4,000	464755	6.819
09 AUG 2024 - 09 AUG 2024	SIME	AMANAHRAYA TRUSTEES BERHAD - AMANAH SAHAM BUMIPUTERA [SSH]	5,494	2443209	35.847
09 AUG 2024 - 09 AUG 2024	SIME	KUMPULAN WANG PERSARAAN (DIPERBADANKAN) [SSH]	-2,000	468755	6.877
08 AUG 2024 - 08 AUG 2024	SIME	AMANAHRAYA TRUSTEES BERHAD - AMANAH SAHAM BUMIPUTERA [SSH]	6,071	2437715	35.767
07 AUG 2024 - 07 AUG 2024	SIME	EMPLOYEES PROVIDENT FUND BOARD [SSH]	144	959351	14.076
07 AUG 2024 - 07 AUG 2024	SIME	AMANAHRAYA TRUSTEES BERHAD - AMANAH SAHAM BUMIPUTERA [SSH]	3,000	2431644	35.678
06 AUG 2024 - 06 AUG 2024	SIME	EMPLOYEES PROVIDENT FUND BOARD [SSH]	2,934	959207	14.074
15 AUG 2024 - 15 AUG 2024	SIMEPROP	KUMPULAN WANG PERSARAAN (DIPERBADANKAN) [SSH]	918	443837	6.526
13 AUG 2024 - 13 AUG 2024	SIMEPROP	EMPLOYEES PROVIDENT FUND BOARD [SSH]	3,276	521790	7.673
12 AUG 2024 - 12 AUG 2024	SIMEPROP	EMPLOYEES PROVIDENT FUND BOARD [SSH]	1,162	518820	7.629
13 AUG 2024 - 13 AUG 2024	SIMEPROP	KUMPULAN WANG PERSARAAN (DIPERBADANKAN) [SSH]	-1,000	442919	6.513
09 AUG 2024 - 09 AUG 2024	SIMEPROP	EMPLOYEES PROVIDENT FUND BOARD [SSH]	530	518411	7.623
12 AUG 2024 - 12 AUG 2024	SIMEPROP	KUMPULAN WANG PERSARAAN (DIPERBADANKAN) [SSH]	-1,000	443919	6.527
08 AUG 2024 - 08 AUG 2024	SIMEPROP	EMPLOYEES PROVIDENT FUND BOARD [SSH]	2,395	519499	7.638
09 AUG 2024 - 09 AUG 2024	SIMEPROP	KUMPULAN WANG PERSARAAN (DIPERBADANKAN) [SSH]	350	444919	6.542
07 AUG 2024 - 07 AUG 2024	SIMEPROP	EMPLOYEES PROVIDENT FUND BOARD [SSH]	3,618	514215	7.561
09 AUG 2024 - 09 AUG 2024	SKPRES	EMPLOYEES PROVIDENT FUND BOARD [SSH]	344	155108	9.928
08 AUG 2024 - 08 AUG 2024	SKPRES	EMPLOYEES PROVIDENT FUND BOARD [SSH]	109	154764	9.906
07 AUG 2024 - 07 AUG 2024	SKPRES	EMPLOYEES PROVIDENT FUND BOARD [SSH]	721	154656	9.899
12 AUG 2024 - 13 AUG 2024	SMILE	DATIN WONG CHIEN YUE [DIR/CEO]	508	129415	51.305
12 AUG 2024 - 13 AUG 2024	SMILE	DATIN WONG CHIEN YUE [SSH]	508	129415	51.305
12 AUG 2024 - 13 AUG 2024	SMILE	DATO DR WONG RUEN YUAN [SSH]	508	129760	51.442
12 AUG 2024 - 13 AUG 2024	SMILE	DATO' DR WONG RUEN YUAN [DIR/CEO]	508	129760	51.442
09 AUG 2024 - 09 AUG 2024	SMRT	EMPLOYEES PROVIDENT FUND BOARD [SSH]	250	23177	5.117
08 AUG 2024 - 08 AUG 2024	SMRT	EMPLOYEES PROVIDENT FUND BOARD [SSH]	200	22927	5.062
14 AUG 2024 - 14 AUG 2024	SMTRACK	DATUK AZMI BIN OSMAN [DIR/CEO]	3,444	87644	6.632
14 AUG 2024 - 14 AUG 2024	SMTRACK	DATUK AZMI BIN OSMAN [SSH]	3,444	87644	6.632
15 AUG 2024 - 15 AUG 2024	SPSETIA	KUMPULAN WANG PERSARAAN (DIPERBADANKAN) [SSH]	1,979	426727	8.783
13 AUG 2024 - 13 AUG 2024	SPSETIA	EMPLOYEES PROVIDENT FUND BOARD [SSH]	1,653	282206	5.808
12 AUG 2024 - 12 AUG 2024	SPSETIA	EMPLOYEES PROVIDENT FUND BOARD [SSH]	-2,000	280553	5.774
09 AUG 2024 - 09 AUG 2024	SPSETIA	EMPLOYEES PROVIDENT FUND BOARD [SSH]	2,337	282553	5.815
12 AUG 2024 - 12 AUG 2024	SPSETIA	KUMPULAN WANG PERSARAAN (DIPERBADANKAN) [SSH]	3,953	424748	8.742
08 AUG 2024 - 08 AUG 2024	SPSETIA	EMPLOYEES PROVIDENT FUND BOARD [SSH]	901	280215	5.767
09 AUG 2024 - 09 AUG 2024	SPSETIA	KUMPULAN WANG PERSARAAN (DIPERBADANKAN) [SSH]	150	420795	8.661
07 AUG 2024 - 07 AUG 2024	SPSETIA	EMPLOYEES PROVIDENT FUND BOARD [SSH]	4,055	279315	5.749
14 AUG 2024 - 14 AUG 2024	SRIDGE	DATO' KHOO YIK CHOU [SSH]	1,316	12727	5.05
14 AUG 2024 - 14 AUG 2024	SRIDGE	DATO KHOO YIK CHOU [DIR/CEO]	1,316	12727	5.05
14 AUG 2024 - 14 AUG 2024	SSF	MISS CHIN SEE KEW [DIR/CEO]	2,800	38320	4.79
13 AUG 2024 - 13 AUG 2024	SUNCON	EMPLOYEES PROVIDENT FUND BOARD [SSH]	-500	81490	6.32
12 AUG 2024 - 12 AUG 2024	SUNCON	EMPLOYEES PROVIDENT FUND BOARD [SSH]	472	81990	6.359
08 AUG 2024 - 08 AUG 2024	SUNCON	EMPLOYEES PROVIDENT FUND BOARD [SSH]	48	81519	6.322
07 AUG 2024 - 07 AUG 2024	SUNCON	EMPLOYEES PROVIDENT FUND BOARD [SSH]	1,240	81471	6.319
14 AUG 2024 - 14 AUG 2024	SUNVIEW	MR CHOW KIAN HUNG [DIR/CEO]	-3,355	170266	32.761
14 AUG 2024 - 14 AUG 2024	SUNVIEW	MR CHOW KIAN HUNG [SSH]	-3,355	170266	32.761
14 AUG 2024 - 14 AUG 2024	SUNVIEW	MR ONG HANG PING [DIR/CEO]	-3,355	177213	34.098
14 AUG 2024 - 14 AUG 2024	SUNVIEW	MR ONG HANG PING [SSH]	-3,355	177213	34.098
14 AUG 2024 - 14 AUG 2024	SUNVIEW	NEW ENERGY CAPITAL SDN. BHD. [SSH]	-800	156260	30.066
13 AUG 2024 - 13 AUG 2024	SUNWAY	EMPLOYEES PROVIDENT FUND BOARD [SSH]	5,329	341991	6.05
12 AUG 2024 - 12 AUG 2024	SUNWAY	EMPLOYEES PROVIDENT FUND BOARD [SSH]	-7,621	336662	5.95
09 AUG 2024 - 09 AUG 2024	SUNWAY	EMPLOYEES PROVIDENT FUND BOARD [SSH]	-2,349	344283	6.09
08 AUG 2024 - 08 AUG 2024	SUNWAY	EMPLOYEES PROVIDENT FUND BOARD [SSH]	-1,909	349497	6.18
07 AUG 2024 - 07 AUG 2024	SUNWAY	EMPLOYEES PROVIDENT FUND BOARD [SSH]	-3,800	351160	6.21
13 AUG 2024 - 13 AUG 2024	TAKAFUL	EMPLOYEES PROVIDENT FUND BOARD [SSH]	34	133779	15.977
12 AUG 2024 - 12 AUG 2024	TAKAFUL	EMPLOYEES PROVIDENT FUND BOARD [SSH]	42	133745	15.973
09 AUG 2024 - 09 AUG 2024	TAKAFUL	EMPLOYEES PROVIDENT FUND BOARD [SSH]	26	133703	15.968
08 AUG 2024 - 08 AUG 2024	TAKAFUL	EMPLOYEES PROVIDENT FUND BOARD [SSH]	83	133678	15.965
07 AUG 2024 - 07 AUG 2024	TAKAFUL	EMPLOYEES PROVIDENT FUND BOARD [SSH]	43	133595	15.955
15 AUG 2024 - 15 AUG 2024	TANCO	DATO' SRI ANDREW TAN JUN SUAN [DIR/CEO]	2,000	1098651	51.031
15 AUG 2024 - 15 AUG 2024	TANCO	DATO' SRI ANDREW TAN JUN SUAN [SSH]	2,000	1098651	51.031
14 AUG 2024 - 14 AUG 2024	TANCO	DATO' SRI ANDREW TAN JUN SUAN [DIR/CEO]	-6,000	121902	20.369
14 AUG 2024 - 14 AUG 2024	TANCO	DATO' SRI ANDREW TAN JUN SUAN [DIR/CEO]	2,030	1096651	50.95
14 AUG 2024 - 14 AUG 2024	TANCO	DATO' SRI ANDREW TAN JUN SUAN [SSH]	2,030	1096651	50.95
15 AUG 2024 - 15 AUG 2024	TENAGA	KUMPULAN WANG PERSARAAN (DIPERBADANKAN) [SSH]	-500	409907	7.05

Notice Period is 11th August 2024 – 17th August 2024

Effective Change Date	Stock Name	Buyer/ Seller Name [Classification]	Bought / (Sold) ['000]	No. of Shares After Trade ['000]	
			Total	Total	% Held
14 AUG 2024 - 14 AUG 2024	TENAGA	AMANAHRAYA TRUSTEES BERHAD - AMANAH SAHAM BUMIPUTERA [SSH]	-344	501646	8.63
13 AUG 2024 - 13 AUG 2024	TENAGA	EMPLOYEES PROVIDENT FUND BOARD [SSH]	-328	1012507	17.42
14 AUG 2024 - 14 AUG 2024	TENAGA	KUMPULAN WANG PERSARAAN (DIPERBADANKAN) [SSH]	-10	410407	7.06
13 AUG 2024 - 13 AUG 2024	TENAGA	AMANAHRAYA TRUSTEES BERHAD - AMANAH SAHAM BUMIPUTERA [SSH]	-3,000	501990	8.64
12 AUG 2024 - 12 AUG 2024	TENAGA	EMPLOYEES PROVIDENT FUND BOARD [SSH]	-185	1012876	17.42
13 AUG 2024 - 13 AUG 2024	TENAGA	KUMPULAN WANG PERSARAAN (DIPERBADANKAN) [SSH]	-500	410417	7.06
12 AUG 2024 - 12 AUG 2024	TENAGA	AMANAHRAYA TRUSTEES BERHAD - AMANAH SAHAM BUMIPUTERA [SSH]	-1,104	504990	8.69
09 AUG 2024 - 09 AUG 2024	TENAGA	EMPLOYEES PROVIDENT FUND BOARD [SSH]	1,274	1013143	17.43
12 AUG 2024 - 12 AUG 2024	TENAGA	KUMPULAN WANG PERSARAAN (DIPERBADANKAN) [SSH]	-1,646	410917	7.06
09 AUG 2024 - 09 AUG 2024	TENAGA	AMANAHRAYA TRUSTEES BERHAD - AMANAH SAHAM BUMIPUTERA [SSH]	-148	506094	8.71
08 AUG 2024 - 08 AUG 2024	TENAGA	EMPLOYEES PROVIDENT FUND BOARD [SSH]	-1,809	1011870	17.41
08 AUG 2024 - 08 AUG 2024	TENAGA	AMANAHRAYA TRUSTEES BERHAD - AMANAH SAHAM BUMIPUTERA [SSH]	-424	506241	8.71
07 AUG 2024 - 07 AUG 2024	TENAGA	EMPLOYEES PROVIDENT FUND BOARD [SSH]	-5,472	1013679	17.44
12 AUG 2024 - 12 AUG 2024	TIMECOM	EMPLOYEES PROVIDENT FUND BOARD [SSH]	2,000	242454	13.114
13 AUG 2024 - 13 AUG 2024	TM	EMPLOYEE PROVIDENT FUND BOARD (EPF BOARD) [SSH]	-213	678222	17.673
14 AUG 2024 - 14 AUG 2024	TM	KUMPULAN WANG PERSARAAN (DIPERBADANKAN) [SSH]	-311	346795	9.037
12 AUG 2024 - 12 AUG 2024	TM	EMPLOYEE PROVIDENT FUND BOARD (EPF BOARD) [SSH]	-251	678435	17.678
09 AUG 2024 - 09 AUG 2024	TM	EMPLOYEE PROVIDENT FUND BOARD (EPF BOARD) [SSH]	-1,467	678686	17.685
12 AUG 2024 - 12 AUG 2024	TM	KUMPULAN WANG PERSARAAN (DIPERBADANKAN) [SSH]	9	347106	9.045
08 AUG 2024 - 08 AUG 2024	TM	EMPLOYEE PROVIDENT FUND BOARD (EPF BOARD) [SSH]	-1,846	680153	17.723
09 AUG 2024 - 09 AUG 2024	TM	KUMPULAN WANG PERSARAAN (DIPERBADANKAN) [SSH]	80	347097	9.044
07 AUG 2024 - 07 AUG 2024	TM	EMPLOYEE PROVIDENT FUND BOARD (EPF BOARD) [SSH]	-465	681999	17.771
07 AUG 2024 - 07 AUG 2024	UMCCA	MR HAN KEE JUAN [DIR/CEO]	21	644	0.307
13 AUG 2024 - 13 AUG 2024	UOAEV	EMPLOYEES PROVIDENT FUND BOARD ("EPF BOARD") [SSH]	96	327834	12.495
12 AUG 2024 - 12 AUG 2024	UOAEV	EMPLOYEES PROVIDENT FUND BOARD ("EPF BOARD") [SSH]	38	327738	12.491
09 AUG 2024 - 09 AUG 2024	UOAEV	EMPLOYEES PROVIDENT FUND BOARD ("EPF BOARD") [SSH]	28	327700	12.49
08 AUG 2024 - 08 AUG 2024	UOAEV	EMPLOYEES PROVIDENT FUND BOARD ("EPF BOARD") [SSH]	149	327672	12.489
07 AUG 2024 - 07 AUG 2024	UOAEV	EMPLOYEES PROVIDENT FUND BOARD ("EPF BOARD") [SSH]	39	327523	12.483
13 AUG 2024 - 13 AUG 2024	UPA	MR CHUA NGEUN LOK [DIR/CEO]	81	11453	4.944
13 AUG 2024 - 13 AUG 2024	UTDPLT	EMPLOYEES PROVIDENT FUND BOARD [SSH]	-318	28377	6.841
12 AUG 2024 - 12 AUG 2024	UTDPLT	EMPLOYEES PROVIDENT FUND BOARD [SSH]	27	28695	6.918
09 AUG 2024 - 09 AUG 2024	UTDPLT	EMPLOYEES PROVIDENT FUND BOARD [SSH]	-2	28668	6.912
08 AUG 2024 - 08 AUG 2024	UTDPLT	EMPLOYEES PROVIDENT FUND BOARD [SSH]	16	28671	6.912
07 AUG 2024 - 07 AUG 2024	UTDPLT	EMPLOYEES PROVIDENT FUND BOARD [SSH]	-17	28655	6.908
13 AUG 2024 - 13 AUG 2024	UWC	EMPLOYEES PROVIDENT FUND BOARD [SSH]	62	91558	8.309
12 AUG 2024 - 12 AUG 2024	UWC	EMPLOYEES PROVIDENT FUND BOARD [SSH]	16	91496	8.303
08 AUG 2024 - 08 AUG 2024	UWC	EMPLOYEES PROVIDENT FUND BOARD [SSH]	83	91650	8.317
07 AUG 2024 - 07 AUG 2024	UWC	EMPLOYEES PROVIDENT FUND BOARD [SSH]	524	91527	8.306
14 AUG 2024 - 14 AUG 2024	VS	KUMPULAN WANG PERSARAAN [SSH]	-2,726	220925	5.713
09 AUG 2024 - 09 AUG 2024	VS	EMPLOYEES PROVIDENT FUND BOARD [SSH]	899	313939	8.117
12 AUG 2024 - 12 AUG 2024	VS	KUMPULAN WANG PERSARAAN [SSH]	-7,750	223651	5.783
09 AUG 2024 - 09 AUG 2024	VS	KUMPULAN WANG PERSARAAN [SSH]	-2,000	231401	5.983
07 AUG 2024 - 07 AUG 2024	VS	EMPLOYEES PROVIDENT FUND BOARD [SSH]	1,000	313040	8.094
14 AUG 2024 - 15 AUG 2024	WASCO	MIDVEST ASIA SDN BHD [SSH]	-91	43786	5.655
14 AUG 2024 - 15 AUG 2024	WASCO	MR CHAN CHEU LEONG [SSH]	-91	64464	8.325
12 AUG 2024 - 12 AUG 2024	WOODLAN	DATO' SERI MUN WENG SUM [DIR/CEO]	3	7299	18.247
12 AUG 2024 - 12 AUG 2024	WOODLAN	DATO' SERI MUN WENG SUM [SSH]	3	7299	18.247
15 AUG 2024 - 15 AUG 2024	WPRTS	KUMPULAN WANG PERSARAAN (DIPERBADANKAN) [SSH]	-38	226836	6.652
13 AUG 2024 - 13 AUG 2024	WPRTS	EMPLOYEES PROVIDENT FUND BOARD [SSH]	-16	314991	9.237
14 AUG 2024 - 14 AUG 2024	WPRTS	KUMPULAN WANG PERSARAAN (DIPERBADANKAN) [SSH]	35	226873	6.653
12 AUG 2024 - 12 AUG 2024	WPRTS	EMPLOYEES PROVIDENT FUND BOARD [SSH]	-678	315007	9.238
09 AUG 2024 - 09 AUG 2024	WPRTS	EMPLOYEES PROVIDENT FUND BOARD [SSH]	-771	315685	9.258
12 AUG 2024 - 12 AUG 2024	WPRTS	KUMPULAN WANG PERSARAAN (DIPERBADANKAN) [SSH]	-74	226838	6.652
08 AUG 2024 - 08 AUG 2024	WPRTS	EMPLOYEES PROVIDENT FUND BOARD [SSH]	-470	316480	9.281
09 AUG 2024 - 09 AUG 2024	WPRTS	KUMPULAN WANG PERSARAAN (DIPERBADANKAN) [SSH]	165	226911	6.655
07 AUG 2024 - 07 AUG 2024	WPRTS	EMPLOYEES PROVIDENT FUND BOARD [SSH]	-81	316840	9.291
13 AUG 2024 - 13 AUG 2024	YINSON	EMPLOYEES PROVIDENT FUND BOARD [SSH]	567	528902	17.789
12 AUG 2024 - 12 AUG 2024	YINSON	EMPLOYEES PROVIDENT FUND BOARD [SSH]	567	528212	17.764
09 AUG 2024 - 09 AUG 2024	YINSON	EMPLOYEES PROVIDENT FUND BOARD [SSH]	-725	527565	17.735
08 AUG 2024 - 08 AUG 2024	YINSON	EMPLOYEES PROVIDENT FUND BOARD [SSH]	-406	528290	17.753
07 AUG 2024 - 07 AUG 2024	YINSON	EMPLOYEES PROVIDENT FUND BOARD [SSH]	-662	528696	17.761
13 AUG 2024 - 15 AUG 2024	YONGTAI	DATO' LEONG SIR LEY [SSH]	-9,023	42500	10.007
13 AUG 2024 - 15 AUG 2024	YONGTAI	DOMAIN CAPITAL SDN BHD [SSH]	-9,023	42500	10.007
15 AUG 2024 - 15 AUG 2024	ZECON	TAN SRI TOMMY BIN BUGO@HAMID BIN BUGO [SSH]	-155	19514	13.21
15 AUG 2024 - 15 AUG 2024	ZHULIAN	MR TEOH BENG SENG [SSH]	-68	263470	57.273
15 AUG 2024 - 15 AUG 2024	ZHULIAN	THE BEST SOURCE HOLDINGS PTE. LTD. [SSH]	-68	60523	13.157
14 AUG 2024 - 14 AUG 2024					



The Board of Directors of **Capital A Berhad (CAPITALA)** wishes to announce that AirAsia RB 1 Ltd., which is the wholly-owned special purpose vehicle of AirAsia Berhad, which in turn is the wholly-owned subsidiary of Capital A, had on 21 August 2024 entered into the definitive agreements with aircraft lessors and private credit funds for the issuance by AARB1, of Regulation S secured notes of up to USD443.0 million, due September 2026 and August 2028, with AAB as a third party security provider, and both AAB and Capital A as corporate guarantors.



The Board of Directors of **Dayang Enterprise Holdings Bhd (DAYANG)** is pleased to announce that a single tier dividend in the aggregate amount of RM34.7 million, being the first interim dividend of RM 0.030 per ordinary share in respect of the financial year ending 31 December 2024 has been declared by the Company and shall be paid on 18 September 2024 to the depositors registered in the Records of Depositors at the close of business on 6 September 2024.



MALAYSIA BUILDING SOCIETY BERHAD (9417-K)



The Board of Directors of **MBSB Berhad (MBSB)** wishes to announce that Encik Mohamed Rafe bin Mohamed Haneef, the Group Chief Executive Officer of MBSB, has been appointed as Chief Executive Officer of MBSB Bank Berhad with effect from 19 August 2024.



Maxis Berhad (MAXIS) Media Release for 2Q2024 Financial Results for the Quarter Ended 30 June 2024.



Initial Public Offering of 134,700,000 ordinary shares in **Steel Hawk Berhad (SKHAWK)** in conjunction with the transfer of listing of Steel Hawk from Leap Market of Bursa Malaysia Securities Berhad to Ace Market of Bursa Securities.

[READ MORE](#)



Titijaya Land Berhad (TITIJYA) is pleased to announce that Titijaya had on 19 August 2024 lodged with the Securities Commission

Malaysia, the required information and relevant documents pursuant to the SC's Guidelines on Unlisted Capital Market Products under the Lodge and Launch Framework issued by SC on 9 March 2015 and as revised on 5 February 2024 for the establishment of an Islamic Medium Term Notes Programme of up to RM500.0 million in nominal value and an Islamic Commercial Papers Programme of up to RM300.0 million both based on the Shariah principle of Murabahah.

[READ MORE](#)



Upcoming IPO

NAME OF COMPANY	OFFER PERIOD		ISSUE PRICE (Per Ordinary Share)	LISTING SOUGHT	DATE OF LISTING
	OPENING	CLOSING			
EPB GROUP BERHAD	27 June 2024	31 July 2024	RM0.56	ACE MARKET	23 Aug 2024
VETECE HOLDINGS BERHAD	8 Aug 2024	14 Aug 2024	RM0.25	ACE MARKET	28 Aug 2024
STEEL HAWK BERHAD	16 Aug 2024	23 Aug 2024	RM0.15	ACE MARKET	5 Sep 2024
99 SPEED MART RETAIL HOLDINGS BERHAD	15 Aug 2024	23 Aug 2024	RM1.65	MAIN MARKET	9 Sep 2024