

Invest

A Weekly e-Publication by SHAREINVESTOR

ISSUE
210

FRIDAY
07 JUNE 2024

Scan/Click QR to Register



Via email, every Friday

INVEST FAIR[®]

by AlphaInvest

22 & 23
June 2024

MIDVALLEY
Exhibition Centre Hall 1

10am
– **9pm**

REGISTER FOR FREE

JOIN US FOR THE LARGEST

INVESTMENT FAIR

IN MALAYSIA!



Over 20 exhibitors
Win up to RM50,000 worth of amazing prizes

Organizers

SHAREINVESTOR[®]
An AlphaInvest Company

InvestingNote
By AlphaInvest

Supporting partners

BURSA MALAYSIA

CFA Society Malaysia

Platinum Sponsors

BURSA MALAYSIA

CGS International

FSM one

moomoo

Rakuten Trade

Gold Sponsors

AHAM CAPITAL ASSET MANAGEMENT

CP GLOBAL

Halogen

UOB KayHian
Your trusted financial partner

NU VENDING

Silver Sponsors

AFFIN HWANG INVESTMENT BANK

funding societies

MACQUARIE

AmInvestment Bank

FIMM
Federation of Islamic Banks

M&A
Asset Management

bix
Bond-Sukuk Information Exchange

HELP University
university of achievers

SMART ROBIE

capbay

LUNO

TAYLOR'S UNIVERSITY
WISDOM · INTEGRITY · EXCELLENCE

FIRST REIT
ASIA'S PREMIER HEALTHCARE TRUST

LKE GROUP

Versa

Invest

A Weekly e-Publication by SHAREINVESTOR

ISSUE

210

FRIDAY
07 JUNE 2024

Scan/Click QR to Register



Via email, every Friday

ALSO

COMPANY SPOTLIGHT

WCT Holdings Berhad

See more on page 07

MSWG

Risk diversification
- Don't put all eggs in one basket

See more on pages 34-37

PLUS

BEHIND THE TICKER: DECODING COMPANY FUNDAMENTALS

Is there an investment opportunity in DIGITAL TURBINE?

SUMMARY

- While there was a significant revenue increase in 2022 due to acquisitions, PAT did not follow suit. Gross profitability improved from 11% in 2017 to 23% in 2024. However, returns have declined since 2021, with a negative operating return in 2024.

See more on pages 19-25

MARKET SENTIMENTS

See more on pages 27-32

Digital banks expected to boost e-payment transactions
- PM Anwar



SIDC's new initiatives to boost capital market, address demand for sustainable investments and shariah-compliant products



Limited upside ahead for Malaysian banks' profitability
- RAM Ratings

04 LEADERBOARD

06 SHARIAH HOT STOCKS

08 SHARIAH MOMENTUM UP STOCKS

10 NON SHARIAH HOT STOCKS

12 UP TRENDING STOCKS

13 VALUE STOCKS

14 GROWTH STOCKS

15 DIVIDEND STOCKS

16 BROKERS' CALL

17 LONG COMPANIES

33 REGIONAL MARKETS

38 INSIDER ACTIVITY

42 INVESTOR RELATIONS

SHAREINVESTOR®

An AlphaInvest Company

Invest with Knowledge

INVESTOR PLATFORMS

Director
Darren Chong
darren.chong@shareinvestor.com

Business Development Manager
Jay Cheong
jay.cheong.@shareinvestor.com

Product & Marketing Manager
Daniel Wong
daniel.wong@shareinvestor.com

ADMIN & OPERATIONS

Senior Executive
Watie Nordin
watie.nordin@shareinvestor.com

Executive
Silas Emmanuel Joseph
silas.joseph@shareinvestor.com

PROCESS AUTOMATION & DATA ANALYTICS

Data Analyst
Tan Yong Sheng

INVESTOR RELATIONS

Group Managing Director & Publisher
Edward Stanislaus
edward@shareinvestor.com

Senior Manager
Letticia Wong
letticia.wong@shareinvestor.com

Manager
Aida Norzeti Talib
aida.norzeti@shareinvestor.com

Inve\$t WEEKLY

Senior Manager Advertising Sales & Marketing
Mark Rodrigues
mark.rodrigues@shareinvestor.com

ALPHAINVEST HOLDINGS BOARD OF DIRECTORS

Chairman		Patrick Daniel
Group CEO		Christopher Lee
Group COO		Lim Dau Hee
Group MD		Shanison Lin



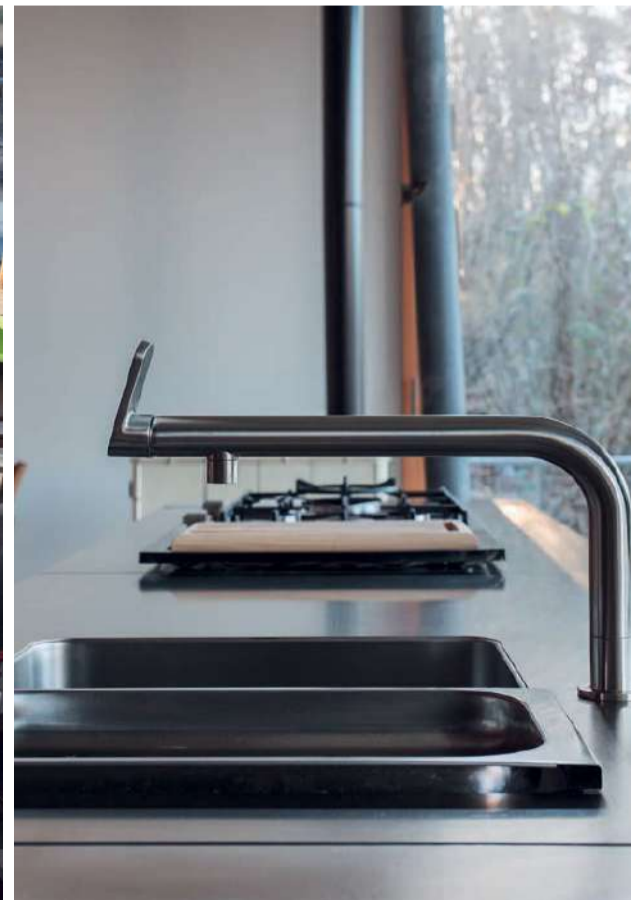
“ GIVE A MAN A FISH AND YOU FEED HIM FOR A DAY; TEACH A MAN TO FISH AND YOU FEED HIM FOR A LIFETIME ”

ShareInvestor Malaysia Sdn. Bhd.
(200001023956) (526564-M)
Unit No. DF2-07-03A, Level 7,
Persoft Tower, 6B Persiaran Tropicana,
47410 Petaling Jaya, Selangor Darul Ehsan.

Hotline : 603 7803 1791
Mobile : 011 6343 8939
Website : www.ShareInvestor.com.my
www.alphainvestholdings.com
www.Facebook.com/ShareInvestorMalaysia

ADVERTISEMENT ENQUIRY

bulthaup takes care of the details so that you can enjoy a harmonious environment.



XTRA

XTRA FURNITURE SDN BHD
The Gardens Mall, Mid Valley City
xtrafurniture.com/bulthaup
fb.com/bulthaupmalaysia

bulthaup



STROM

SWISS TIMEPIECES & JEWELLERY



StromWatch Asia

Tele : +65.9817.3378 Email : ll.stromasia@gmail.com

WWW.STROMWATCH.SWISS



www.shareinvestor.com - market data at your fingertips



ShareInvestor WebPro (www.shareinvestor.com/my)
 Prices > Stock Prices > Bursa > click Stocks tab

1. mouse over Ranking > select Top Active > all Shariah stocks are denoted with an [S] > mouse over Column Layout > select Edit Customs > select Name > select Volume > select Last Done Price > Mouse Over Column Layout > select Custom
2. mouse over Ranking > select Top Turnover > all Shariah stocks are denoted with an [S] > mouse over Column Layout > select Edit Customs > select Name > select Last Done Price > select Value > Mouse Over Column Layout > select Custom
3. mouse over Ranking > select Top Gainers (Over 5 Trading Days) > mouse over Column Layout > select Edit Customs > select Name > select Last Done Price > select 5 Days Change > select 5 Days % Change > Mouse Over Column Layout > select Custom
4. mouse over Ranking > select Top Losers (Over 5 Trading Days)
5. mouse over Ranking > select Top % Gainers (Over 5 Trading Days)
6. mouse over Ranking > select Top % Losers (Over 5 Trading Days)

Shariah Top Actives (as at Yesterday)

Name	Price (RM)	Volume
WCT [S]	0.775	2,312,221.000
JCY [S]	0.615	1,436,012.000
SNS [S]	0.650	934,863.000
KENERGY [S]	0.800	805,343.000
DSONIC [S]	0.550	735,988.000
MYEG [S]	1.050	682,788.000
KGW [S]	0.225	658,520.000
SEALINK [S]	0.335	656,969.000
EKOVEST [S]	0.455	595,792.000
DNEX [S]	0.475	566,027.000

Shariah Top Turnover (as at Yesterday)

Name	Price (RM)	Value (RM)
TENAGA [S]	13.700	281,842,970
WCT [S]	0.775	178,185,865
PMETAL [S]	5.800	103,511,387
JCY [S]	0.615	92,506,754
MAHSING [S]	1.750	81,360,457
SUNWAY [S]	3.600	77,951,419
MYEG [S]	1.050	73,089,073
INARI [S]	3.400	66,084,444
SIMEPROP [S]	1.300	62,884,677
SNS [S]	0.650	62,854,908

Top Gainers (over 5 Trading days as at Yesterday)

Name	Price (RM)	Change (RM)
DLADY	38.460	+2.480
PANAMY	20.640	+0.580
TENAGA	13.700	+0.520
SAM	6.550	+0.500
SHL	2.560	+0.320
BMGREEN	1.620	+0.260
MISC	8.500	+0.220
GTRONIC	1.470	+0.210
PMETAL	5.800	+0.210
GENETEC	2.390	+0.200

Top % Gainers (over 5 Trading days as at Yesterday)

Name	Price (RM)	Change (%)
TALAMT	0.015	+50.00
HEXCAP	0.445	+30.88
KENERGY	0.800	+30.08
WCT	0.775	+29.17
TECHNAX	0.380	+26.67
SEALINK	0.335	+26.42
VIZIONE	0.050	+25.00
IRIS	0.425	+23.19
PASUKGB	0.190	+22.58
M&G	0.330	+22.22

Top Losers (over 5 Trading days as at Yesterday)

Name	Price (RM)	Change (RM)
NESTLE	124.800	-2.800
PETDAG	18.300	-1.120
AJI	15.600	-0.840
RGTBHD	0.305	-0.610
HLIND	11.400	-0.600
UTDPLT	24.500	-0.600
KLK	21.040	-0.420
HLFG	17.160	-0.340
CHGP	2.620	-0.330
GCB	4.000	-0.300

Top % Losers (over 5 Trading days as at Yesterday)

Name	Price (RM)	Change (%)
REDIDEA	0.040	-80.00
RGTBHD	0.305	-66.67
EAH	0.005	-50.00
HONGSENG	0.010	-33.33
XOX	0.010	-33.33
MTRONIC	0.015	-25.00
ZENTECH	0.015	-25.00
OMESTI	0.130	-23.53
LAMBO	0.020	-20.00
NEXGRAM	0.020	-20.00

Disclaimer: The information on this page is provided as a service to readers. It does not constitute financial advice and/or any investment recommendations. Past performance is not indicative of future results. We assume no liability for damages resulting from or arising out of the use of such information. It would be best if you did your own research to make your personal investment decisions wisely or consult a licenced investment advisor.

SHAREINVESTOR WEBPRO

STOCK MARKET DATA AT YOUR FINGERTIPS

Powerful browser-based market analytics platform.
Access from anywhere



8 Markets Data

- ▶ Get access to data from Bursa, NYSE, Nasdaq, HKEX, SGX, IDX, SET & ASX

Portfolio Management

- ▶ Profit & Loss Summary
- ▶ Stock Alert
- ▶ News & Events filtering
- ▶ Customizable column layout

Fundamental Analysis

Financial Analysis Statement

- ▶ Profit & Loss
- ▶ Balance Sheet
- ▶ Cash Flow Statement
- ▶ More than 20 Financial Ratios
- ▶ Dividend Analysis

Technical Charting

- ▶ C² chart (Customisable & Comprehensive)

Brokers' Call

Intrinsic Value Calculator

FactSheet

- ▶ Key Stock Information
- ▶ Ownership
- ▶ Consensus Estimates
- ▶ Annual Report
- ▶ Historical Price
- ▶ Insider Trades

What's new on WebPro (Stable Release 12.1.0)

In our effort to keep our platform at the forefront of trading technology, we have added on some new features onto our C² Chart in WebPro

ADDITIONAL NEW FEATURES:

- ▶ Anchor selector for AVWAP, PVAT, and PAV indicators
- ▶ Volume profile indicator by date range
- ▶ Moving Average Cross indicator
- ▶ Guppy Multiple Moving Average (GMMA) indicator
- ▶ GoNoGo Trend Signal indicators
- ▶ SignalIQ

So what are you waiting for? Head to our platform today and check out our new trading chart features and indicators. We're confident that you'll love the improvements we've made and that they'll help you become a more successful trader.

Click here to start your 9 days FREE trial
(Valued at RM10)



Price & Volume Distribution Charts (as at Yesterday)

Technical Analysis

DEFINITION: Shariah compliant stocks with Technical Analysis showing 5-days & 10-days Moving Average Price below Yesterday's Close over past 3 days and with Volume Spike.

CHART GUIDE: Volume Distribution Chart is a statistical interpretation of the current sentiment on each stock in graphical format. The highest bar categorized as >150k is likely to be traded by institutions or super dealers, while the lowest bar categorized as <15k usually represents retail investors. "Buy Up" refers to more buyers snatching up the lots queued at selling price. "Sell Down" refers to sellers selling their shares to the buying queue



ShareInvestor WebPro > Screener > Market Screener (FA & TA) > select BURSA > add criteria

A. Criteria

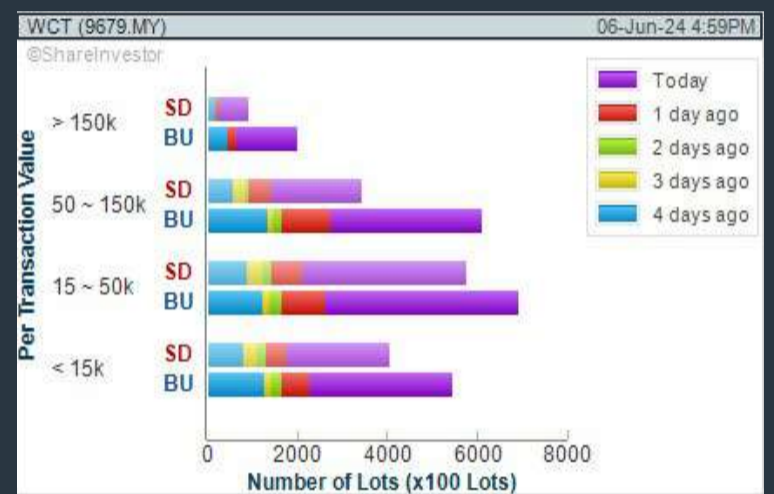
- > click Add Criteria
- Technical Analysis Conditions tab select (i) Moving Average Below Close (ii) Volume Spike
- Fundamental Analysis Conditions tab > select (iii) Revenue
- Prices & Other Conditions tab > select (iv) Is Shariah Compliant
- Technical Analysis Conditions tab select (v) Moving Average Below Close
- Prices & Other Conditions tab > select (vi) Last Done Price
- Technical Analysis Conditions tab select (vii) Moving Average Below Close

B. Conditions (Criteria Filters)

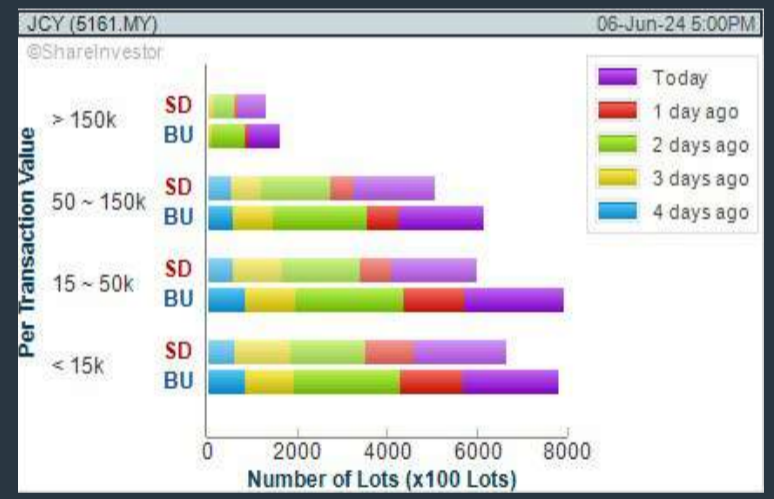
- Moving Average Below Close - select (MA) type (5) below close price for type (3) days
- Volume Spike - Volume type (1) greater than type (5) days average
- Revenue ("000) - select (more than) type (1) for the past select (1) financial year(s)
- Is Shariah Compliant - select **Yes**
- Moving Average Below Close - select (MA) type (10) below close price for type (3) days
- Last Done Price - select (more than) type (0.3)
- Moving Average Below Close - select (EMA) type (5) below close price for type (3) days

- > click Save Template > Create New Template type (Shariah Hot Stocks) > click Create
- > click Save Template as > select Shariah Hot Stocks > click Save
- > click Screen Now (may take a few minutes)
- > Sort By: Select (Vol) Select (Desc)
- > Mouse over stock name > Charts > click C² Charts or Volume Distribution

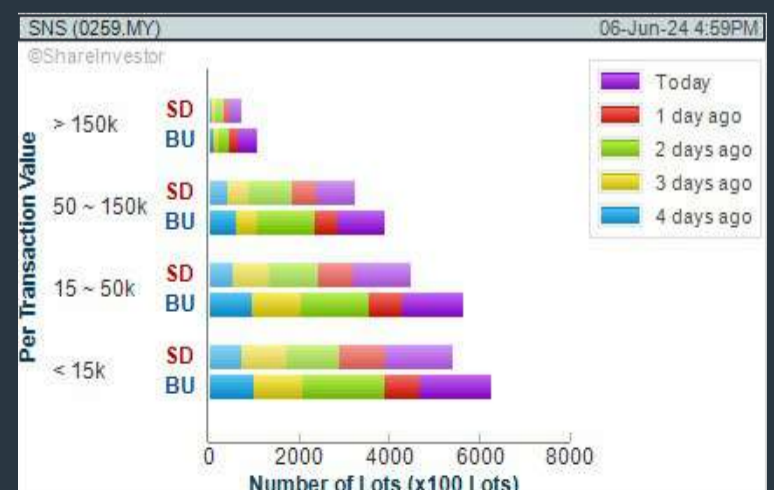
WCT HOLDINGS BERHAD (9679) C² Chart



JCY INTERNATIONAL BERHAD (5161) C² Chart



SNS NETWORK TECHNOLOGY BERHAD (0259) C² Chart



Disclaimer: The information on this page is provided as a service to readers. It does not constitute financial advice and/or any investment recommendations. Past performance is not indicative of future results. We assume no liability for damages resulting from or arising out of the use of such information. It would be best if you did your own research to make your personal investment decisions wisely or consult a licenced investment advisor.

COMPANY BACKGROUND

WCT Holdings Berhad is an investment holding company which also provides management services to its subsidiaries and joint venture companies. The three core businesses of the Company are Engineering and Construction, Property Development and Property Investment and Management.



WCT WCT HOLDINGS BERHAD		Updated at 06 Jun 2024 17:31	
Last (MYR): 0.775 ↑	Change: +0.150	High: 0.875	Remarks: s ?
	Change (%): +24.00	Low: 0.630	
Open	0.630	Yesterday's Close	0.625
Buy Price	0.770	Sell Price	0.775
Buy Volume ('00)	364	Sell Volume ('00)	603
Cumulative Volume ('00)	2,312,221	Cumulative Value	178,185.855

Financial Analysis

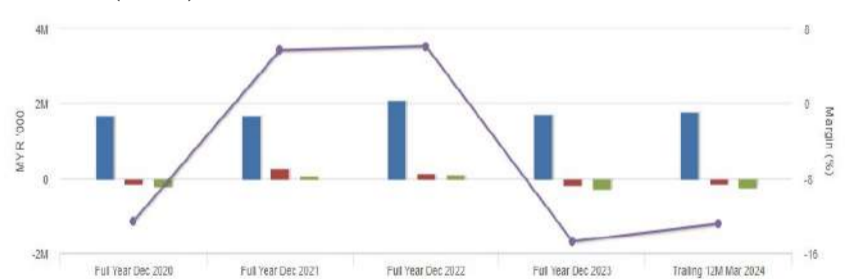
Revenue Growth Revenue up and down in past years	😊	Profit Growth Profit to loss in most recent year	😞
Piotroski F Score The company has below average financial strength (Piotroski F-Score of 3-4)	😞	Dividend Payout No dividend paid in most recent year but dividends paid in prior years	😞
Debt to Cashflow High debt to cash flow for most recent year	😞	Debt to Equity High debt to equity for most recent year	😞
Free Cash Flow Negative free cash flow for the most recent year	😞	Gross Profit Margin Low gross profit margin for 3 years	😞
Net Earnings Margin Company is losing money and margin is not improving.	😞	Return on Assets (ROA) Negative ROA for most recent year	😞
Return on Equity (ROE) Negative ROE for most recent year	😞		

😊 Excellent 😊 Good 😐 Neutral 😟 Be Alert 😞 Watch Out



Historical Financials

Profit & Loss (MYR '000)

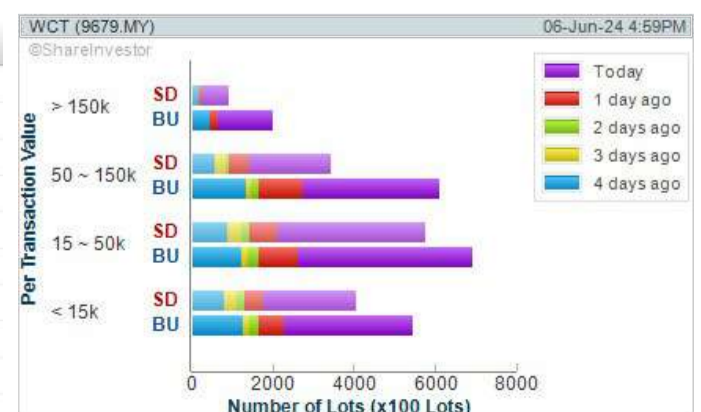


WebPro 9-Days Free Trial Registration (worth RM10) Sign Up Now



Key Statistics with Total Shareholder Returns

Period	Dividend Received	Capital Appreciation	Total Shareholder Return
Short Term Return	5 Days	-	+42.20 %
	10 Days	-	+47.62 %
	20 Days	-	+44.86 %
Medium Term Return	3 Months	-	+64.69 %
	6 Months	-	+66.67 %
	1 Year	-	+86.75 %
Long Term Return	2 Years	0.005	+51.46 %
	3 Years	0.005	+60.00 %
	5 Years	0.005	-23.53 %
Annualised Return	Annualised	-	-5.22 %



Disclaimer: The information on this page is provided as a service to readers. It does not constitute financial advice and/or any investment recommendations. Past performance is not indicative of future results. We assume no liability for damages resulting from or arising out of the use of such information. It would be best if you did your own research to make your personal investment decisions wisely or consult a licenced investment advisor.

Price & Volume Distribution Charts (as at Yesterday)

Technical Analysis

DEFINITION: Shariah compliant stocks with Technical Analysis showing Bullish Momentum and Price Uptrend. The share price closed at the highest price yesterday. The typical price was higher than the previous day's typical price.

CHART GUIDE: Volume Distribution Chart is a statistical interpretation of the current sentiment on each stock in graphical format. The highest bar categorized as >150k is likely to be traded by institutions or super dealers, while the lowest bar categorized as <15k usually represents retail investors. "Buy Up" refers to more buyers snatching up the lots queued at selling price. "Sell Down" refers to sellers selling their shares to the buying queue.



ShareInvestor WebPro > Screener > Market Screener (FA & TA) > select BURSA > add criteria

A. Criteria

- > click Add Criteria
- Fundamental Analysis Conditions tab > select (i) Revenue
- Technical Analysis Conditions tab select (ii) Average Volume
- Prices & Other Conditions tab > select (iii) Last Done Price
- Prices & Other Conditions tab > select (iv) Is Shariah Compliant
- Technical Analysis Conditions tab select (v) RSI Overbought
- Technical Analysis Conditions tab select (vi) Moving Average Below Close
- Technical Analysis Conditions tab select (vii) CCI Overbought

B. Conditions (Criteria Filters)

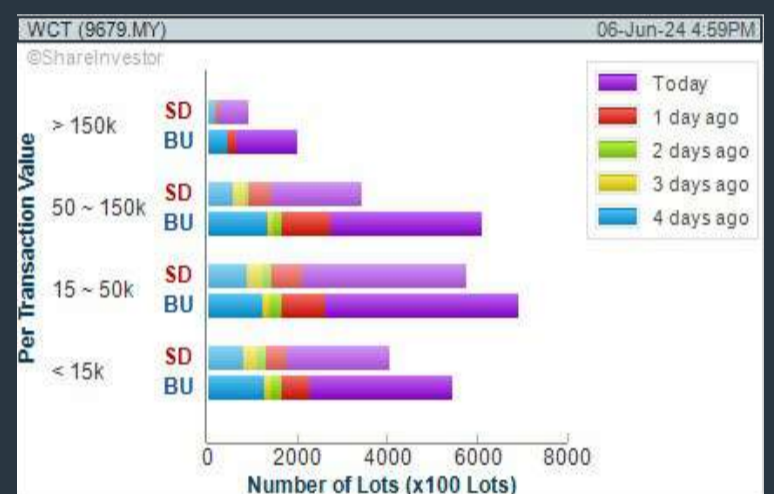
1. Revenue ("000) - select (more than) type (1) for the past select (1) financial year(s)
2. Average Volume - type (1) days average volume greater than type (10000) lots
3. Last Done Price - select (more than) type (0.3)
4. Is Shariah Compliant - select Yes
5. RSI Overbought - select RSI 1 above 99 for 1 days
6. Moving Average Below Close - select (MA) type (10) below close price for type (1) days
7. CCI Overbought - select CCI (2) above (0) for (1) days

- > click Save Template > Create New Template type (Shariah Momentum Up Stocks) > click Create
- > click Save Template as > select Shariah Momentum Up Stocks > click Save
- > click Screen Now (may take a few minutes)
- Sort By: Select (Vol) Select (Desc)
- Mouse over stock name > Charts > click C² Charts tab or Volume Distribution

WCT HOLDINGS BERHAD (9679)

C² Chart

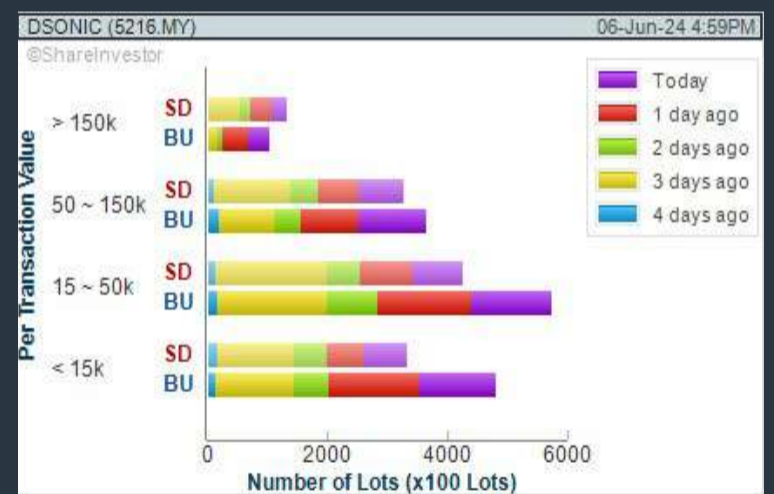
Analysis



DATASONIC GROUP BERHAD (5216)

C² Chart

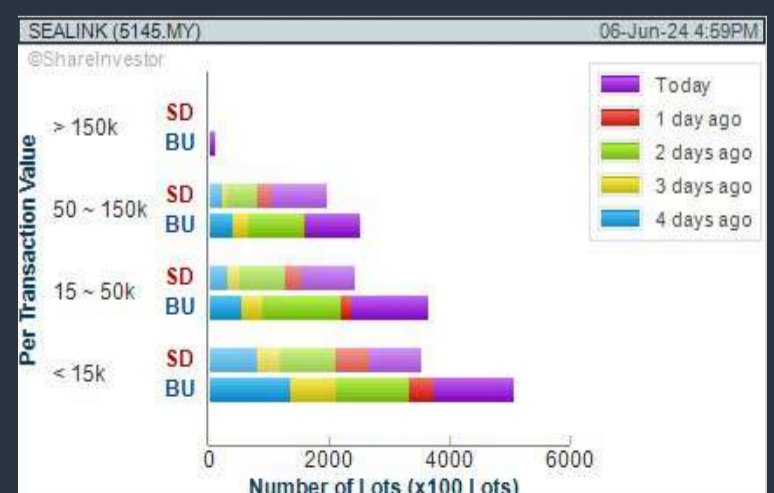
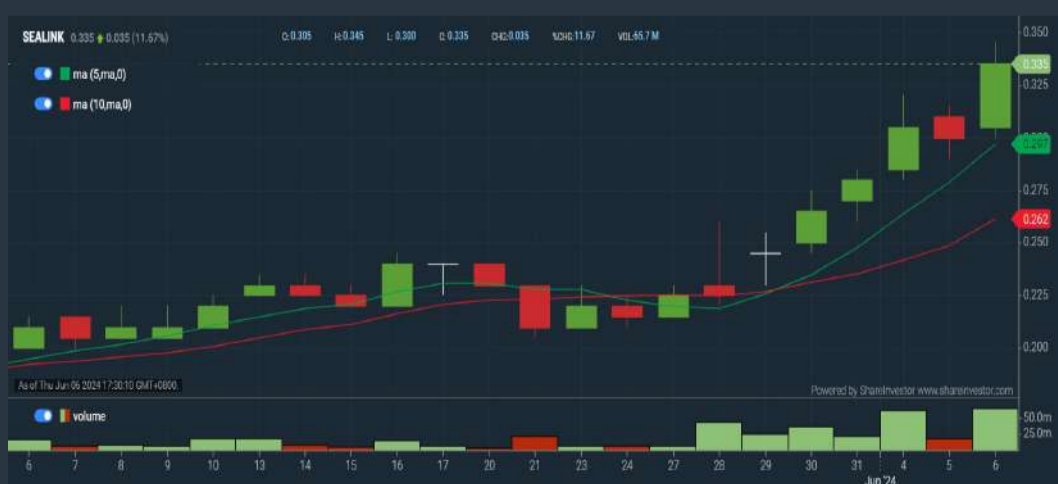
Analysis



SEALINK INTERNATIONAL BERHAD (5145)

C² Chart

Analysis



Disclaimer: The information on this page is provided as a service to readers. It does not constitute financial advice and/or any investment recommendations. Past performance is not indicative of future results. We assume no liability for damages resulting from or arising out of the use of such information. It would be best if you did your own research to make your personal investment decisions wisely or consult a licenced investment advisor.

MAKE BETTER TRADING STRATEGIES

with

SHARE INVESTOR STATION



8 Markets Data

- ▶ Get access to data from Bursa, NYSE, Nasdaq, HKEX, SGX, IDX, SET & ASX

Dynamic Chart

- ▶ Candlestick Pattern Recognition
- ▶ 111 Indicators
- ▶ 39 Drawing Tools
- ▶ Performance Comparison Chart

Intraday Data

- ▶ Market Depth
- ▶ Trade Summary Matrix & Chart
- ▶ Times & Sales
- ▶ Intraday Market Ticker

Market Screener

- ▶ 96 criteria ranging from FA, TA, Consensus Estimate
- ▶ Real-time Data

Power Frame

- ▶ Combining few Dynamic Charts together with intraday information in one frame

Technical Analysis

Fundamental Analysis

Financial Analysis Statement

- ▶ Profit & Loss
- ▶ Balance Sheet
- ▶ Cash Flow Statement
- ▶ More than 20 Financial Ratios
- ▶ Dividend Analysis

FactSheet

- ▶ Key Stock Information
- ▶ Ownership
- ▶ Consensus Estimates
- ▶ Annual Report
- ▶ Historical Price
- ▶ Insider Trades

**Start your 18 days
FREE trial now
(Valued at RM82)**



Price & Volume Distribution Charts (as at Yesterday)

Technical Analysis

DEFINITION: Stocks with Technical Analysis showing 5-days & 10-days Moving Average Price below Close over past 1 days and with Volume Spike

CHART GUIDE: Volume Distribution Chart is a statistical interpretation of the current sentiment on each stock in graphical format. The highest bar categorized as >150k is likely to be traded by institutions or super dealers, while the lowest bar categorized as <15k usually represents retail investors. "Buy Up" refers to more buyers snatching up the lots queued at selling price. "Sell Down" refers to sellers selling their shares to the buying queue.



ShareInvestor WebPro > Screener > Market Screener (FA & TA) > select BURSA > add criteria

A. Criteria

- > click Add Criteria
- Technical Analysis Conditions tab select (i) Moving Average Below Close (ii) Volume Spike
- Fundamental Analysis Conditions tab >select (iii) Revenue
- Prices & Other Conditions tab > select (iv) Is Shariah Compliant
- Technical Analysis Conditions tab select (v) Moving Average Below Close
- Prices & Other Conditions tab > select (vi) Last Done Price
- Technical Analysis Conditions tab select (vii) Moving Average Below Close

B. Conditions (Criteria Filters)

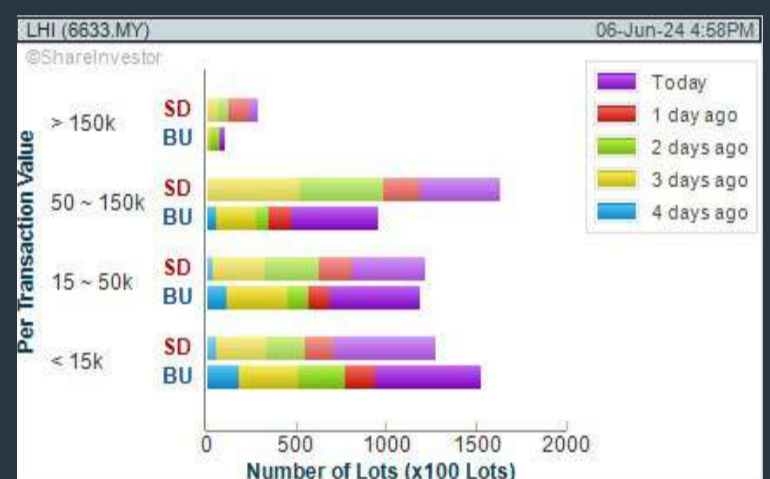
1. Moving Average Below Close - select (MA) type (5) below close price for type (3) days
2. Volume Spike - Volume type (1) greater than type (5) days average
3. Revenue ("000) - select (more than) type (1) for the past select (1) financial year(s)
4. Is Shariah Compliant - select NO
5. Moving Average Below Close - select (MA) type (10) below close price for type (1) days
6. Last Done Price - select (more than) type (0.3)
7. Moving Average Below Close - select (EMA) type (5) below close price for type (1) days

- > click Save Template > Create New Template type (Non-Shariah Hot Stocks) > click Create
- > click Save Template as > select Non-Shariah Hot Stocks > click Save
- > click Screen Now (may take a few minutes)
- Sort By: Select (Vol) Select (Desc)
- Mouse over stock name > Charts > click C² Charts tab or Volume Distribution

LEONG HUP INTERNATIONAL BERHAD (6633)

C² Chart

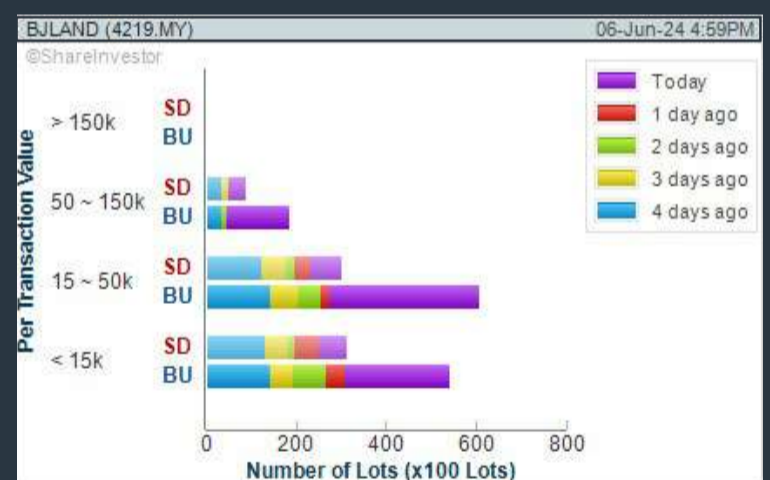
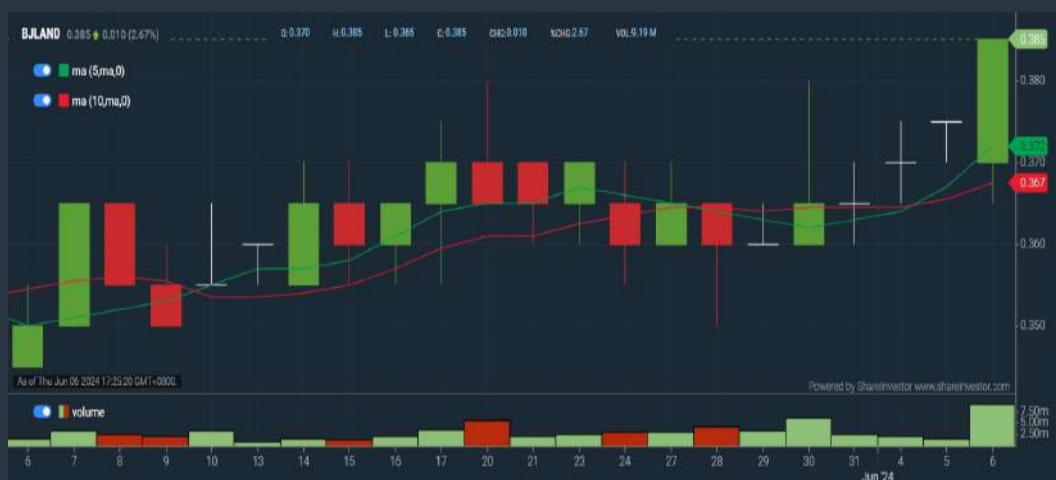
Analysis



BERJAYA LAND BERHAD (4219)

C² Chart

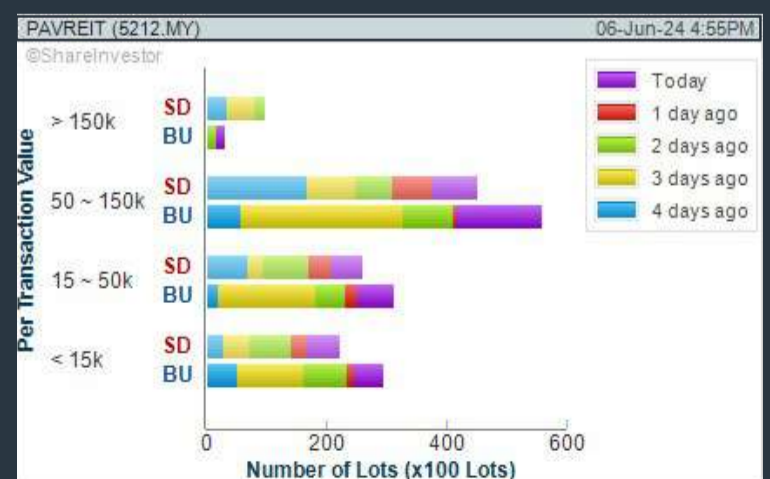
Analysis



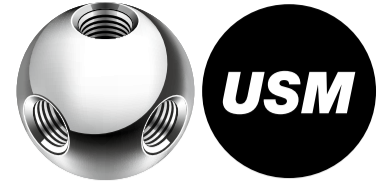
PAVILION REAL ESTATE INV TRUST (5212)

C² Chart

Analysis



Disclaimer: The information on this page is provided as a service to readers. It does not constitute financial advice and/or any investment recommendations. Past performance is not indicative of future results. We assume no liability for damages resulting from or arising out of the use of such information. It would be best if you did your own research to make your personal investment decisions wisely or consult a licenced investment advisor.



making places relaxing



usm.com

XTRA

XTRA FURNITURE SDN BHD
The Gardens Mall, Mid Valley City, Lot S-236 & 237
Lingkar Syed Putra, 59200 Kuala Lumpur
T. +603 2282 9088 | living@xtrafurniture.com | xtrafurniture.com
📍 XTRAFurniture | 🌐 xtrafurnituremsia

Price & Volume Distribution Charts (Over 3 trading days as at Yesterday)

Technical Analysis

DEFINITION: Stocks with Technical Analysis showing Bullish Momentum and Price Uptrend

CHART GUIDE: Volume Distribution Chart is a statistical interpretation of the current sentiment on each stock in graphical format. The highest bar categorized as >150k is likely to be traded by institutions or super dealers, while the lowest bar categorized as <15k usually represents retail investors. "Buy Up" refers to more buyers snatching up the lots queued at selling price. "Sell Down" refers to sellers selling their shares to the buying queue.



ShareInvestor WebPro > Screener > Market Screener (FA & TA) > select BURSA > add criteria

A. Criteria

- > click Add Criteria
- Fundamental Analysis Conditions tab > select (i) Revenue
- Technical Analysis Conditions tab select (ii) Moving Average Below Close
- Technical Analysis Conditions tab select (iii) Average Volume
- Prices & Other Conditions tab > select (iv) Last Done Price
- Technical Analysis Conditions tab select (v) Moving Average Below Close
- Technical Analysis Conditions tab select (v) Moving Average Bullish Crossover

B. Conditions

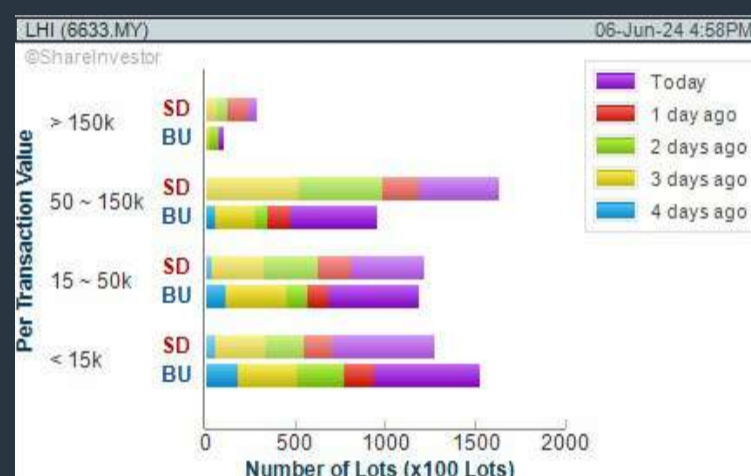
1. Revenue - select (more than) type (1) for the past select (1) financial year(s)
2. Moving Average Below Close - select (MA) type (20) below close price for type (1) days
3. Average Volume - type (5) days average volume type (10000) lots
4. Last Done Price - select (more than) type (0.3)
5. Moving Average Below Close - select (MA) type (10) below close price for type (1) days
6. Moving Average Bullish Crossover - select (MA) type (5) crossed above select (MA) type (10)

> click Save Template > Create New Template type (Non-Shariah Up-Trending Stocks) > click Create Click Save Template As > select Non-Shariah Up Trending Stocks > click Save
> click Screen Now (may take a few minutes)
Sort By: Select (Vol) Select (Desc)
Mouse over stock name > Charts > click C² Charts tab or Volume Distribution

LEONG HUP INTERNATIONAL BERHAD (6633)

C² Chart

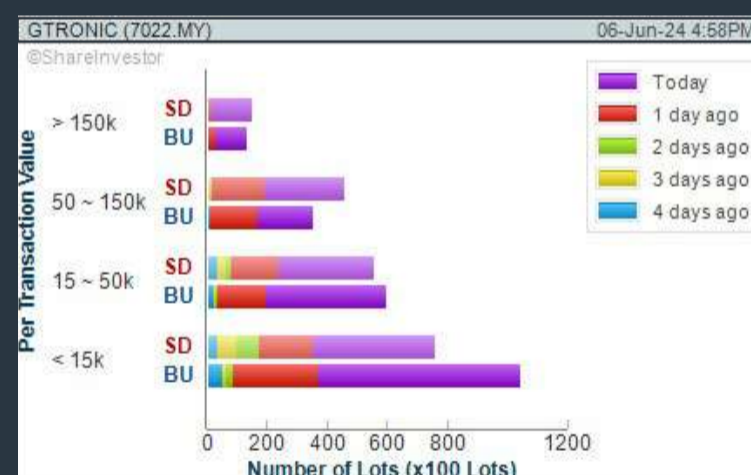
Analysis



GLOBETRONICS TECHNOLOGY BERHAD (7022)

C² Chart

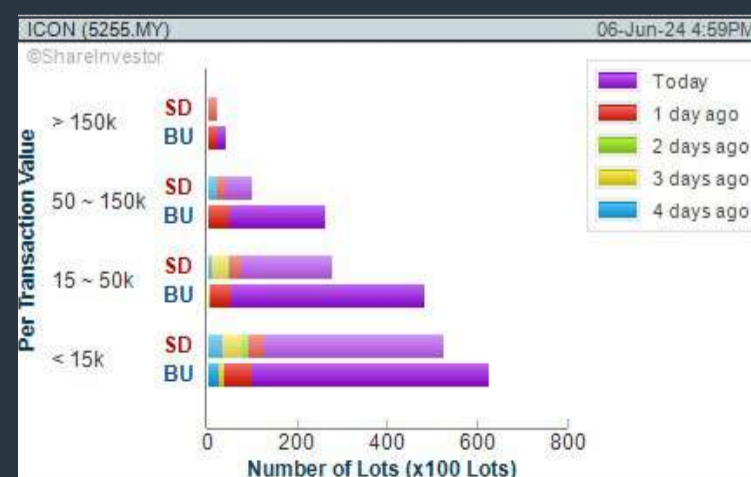
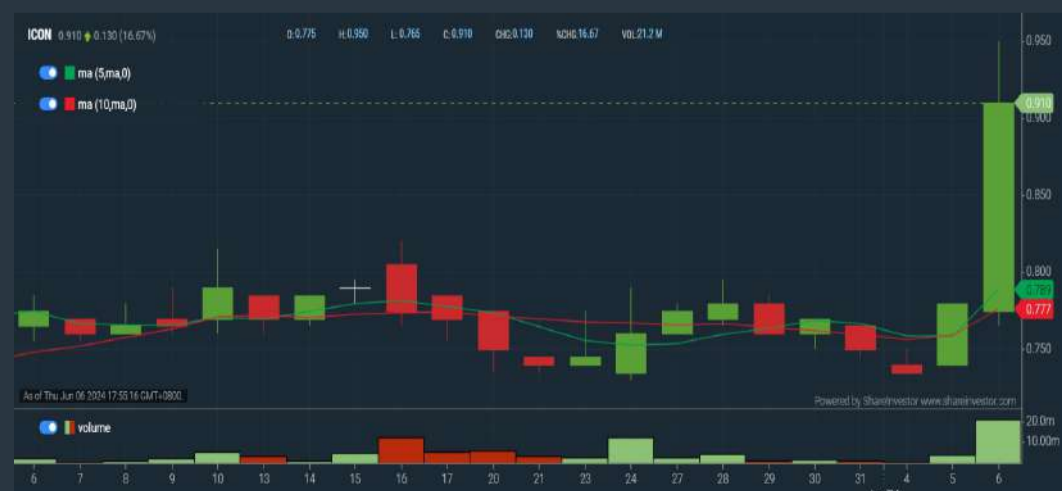
Analysis



ICON OFFSHORE BERHAD (5255)

C² Chart

Analysis



Disclaimer: The information on this page is provided as a service to readers. It does not constitute financial advice and/or any investment recommendations. Past performance is not indicative of future results. We assume no liability for damages resulting from or arising out of the use of such information. It would be best if you did your own research to make your personal investment decisions wisely or consult a licenced investment advisor.

Price & Total Shareholder Return (as at Yesterday)

Fundamental Analysis

DEFINITION: Share price of a company trading at a lower price as compared to its fundamentals (FA) such as financial performance and dividend, allowing it to be attractive to value investors.

CHART GUIDE: Total Shareholder Return (TSR) combines share price appreciation and dividend distributions paid to show the total return to the shareholder expressed as a percentage.



ShareInvestor WebPro > Screener > Market Screener (FA & TA) > select BURSA > add criteria

A. Criteria

- > click Add Criteria
- Fundamental Analysis Conditions tab (i) Price Earnings Ratio
- Fundamental Analysis Conditions tab >select (ii) CAGR of Net Earnings
- Fundamental Analysis Conditions tab >select (iii) Net Debt To Equity
- Fundamental Analysis Conditions tab >select (iv) Return On Equity (ROE)

B. Conditions

1. Price Earnings Ratio - select (less than) type (15) times now
2. CAGR of Net Earnings - select (more than) type (10) % for the past type (3) financial year(s)
3. Net Debt To Equity – select (less than) type (1) for the past select (1) financial year(s)
4. Return On Equity (ROE) – select (more than) type (10) % for the past select (1) financial year(s)

- > click Save Template > Create New Template type (Value Stock) > click Create
- > click Save Template as > select Value Companies > click Save
- > click Screen Now (may take a few minutes)
- Sort by: Select (PE Ratio) Select (Ascending)
- > Mouse over stock name > Factsheet > looking for Total Shareholder Return
- > Mouse over stock name > Charts > click C2 Charts tab

SYNERGY HOUSE BERHAD (0279)

C² Chart

Analysis



Period	Dividend Received	Capital Appreciation	Total Shareholder Return
Short Term Return	5 Days	-0.020	+1.31%
	10 Days	-0.060	-3.73%
	20 Days	-0.040	-2.52%
Medium Term Return	3 Months	+0.750	+93.75%
	6 Months	+0.910	+142.18%
	1 Year	+1.210	+365.88%
Annualised Return	Annualised	-	+365.88%

AJINOMOTO (M) BERHAD (2658)

C² Chart

Analysis



Period	Dividend Received	Capital Appreciation	Total Shareholder Return
Short Term Return	5 Days	-1.900	-6.02%
	10 Days	-6.620	-3.02%
	20 Days	-1.368	-0.07%
Medium Term Return	3 Months	-0.978	-5.90%
	6 Months	-1.352	+9.34%
	1 Year	+2.522	+18.28%
Long Term Return	2 Years	+4.086	+36.49%
	3 Years	0.383	+14.15%
	5 Years	1.346	+7.89%
Annualised Return	Annualised	-	+1.53%

TEO SENG CAPITAL BERHAD (7252)

C² Chart

Analysis



Period	Dividend Received	Capital Appreciation	Total Shareholder Return
Short Term Return	5 Days	-0.020	+1.18%
	10 Days	-0.050	-2.71%
	20 Days	-0.080	-4.69%
Medium Term Return	3 Months	-0.211	-10.76%
	6 Months	+0.124	+7.63%
	1 Year	+0.693	+104.20%
Long Term Return	2 Years	+0.657	+120.88%
	3 Years	+0.696	+132.10%
	5 Years	0.090	+63.95%
Annualised Return	Annualised	-	+10.39%

Disclaimer: The information on this page is provided as a service to readers. It does not constitute financial advice and/or any investment recommendations. Past performance is not indicative of future results. We assume no liability for damages resulting from or arising out of the use of such information. It would be best if you did your own research to make your personal investment decisions wisely or consult a licenced investment advisor.

Price & Total Shareholder Return (as at Yesterday)

Fundamental Analysis

DEFINITION: Company revenue is growing and making good quality of earnings with positive Free Cash Flow.

CHART GUIDE: Total Shareholder Return (TSR) combines share price appreciation and distributions paid to show the total return to the shareholder expressed as a percentage.



ShareInvestor WebPro > Screener > Market Screener (FA & TA) > select BURSA > add criteria

A. Criteria

1. Fundamental Analysis Conditions tab >select (i) Free Cash Flow, (ii) Revenue Growth, (iii) Gross Profit (Earnings) Margin, (iv) Quality of Earnings, (v) Total Shareholder Returns, > click Add Criteria
2. Fundamental Analysis Conditions tab >select (vi) Total Shareholder Returns > click Add Criteria

B. Conditions (Criteria Filters)

1. Free Cash Flow - select (more than) type (1) for the past select (1) financial year(s)
2. Revenue Growth - select (more than) type (1) for the past select (1) financial year(s)
3. Gross Profit (Earnings) Margin - select (more than) type (30) % for the past select (1) financial year(s)
4. Quality of Earnings - select (more than) type (1) for the past select (1) financial year(s)
5. Total Shareholder Return - select (more than) type (5) % for the past select (3) financial year(s)
6. Total Shareholder Return - select (more than) type (5) % for the past select (5) financial year(s)

- > click Save Template > Create New Template type (Growth Companies) > click Create
- > click Save Template as > select Growth Companies > click Save
- > click Screen Now (may take a few minutes)
- > Sort By: Select (Revenue Growth) Select (Desc)
- > Mouse over stock name > Factsheet > looking for Total Shareholder Return

SL INNOVATION CAPITAL BERHAD (03008)

C² Chart

Analysis



Period	Dividend Received	Capital Appreciation	Total Shareholder Return
Short Term Return	5 Days	-	-
	10 Days	-	-
	20 Days	-	-
Medium Term Return	3 Months	-	-
	6 Months	-	-
	1 Year	+0.285	+74.03%
Long Term Return	2 Years	+0.265	+65.43%
	3 Years	+0.265	+65.43%
	5 Years	0.015	+65.10%
Annualised Return	Annualised	-	+10.28%

MALAYSIA AIRPORTS HOLDINGS BERHAD (5014)

C² Chart

Analysis



Period	Dividend Received	Capital Appreciation	Total Shareholder Return
Short Term Return	5 Days	+0.050	+0.51%
	10 Days	-0.130	-1.29%
	20 Days	-0.330	-3.22%
Medium Term Return	3 Months	+1.000	+9.21%
	6 Months	+2.000	+18.45%
	1 Year	+3.000	+27.69%
Long Term Return	2 Years	+3.100	+27.71%
	3 Years	+3.040	+26.05%
	5 Years	0.100	+0.84%
Annualised Return	Annualised	-	+4.84%

GOLDEN PHAROS BERHAD (5649)

C² Chart

Analysis



Period	Dividend Received	Capital Appreciation	Total Shareholder Return
Short Term Return	5 Days	-0.029	-4.30%
	10 Days	-0.035	-6.04%
	20 Days	-0.025	-3.32%
Medium Term Return	3 Months	-0.050	-10.10%
	6 Months	+0.150	+33.33%
	1 Year	+0.165	+37.50%
Long Term Return	2 Years	0.069	+15.33%
	3 Years	0.069	+15.33%
	5 Years	0.022	+4.94%
Annualised Return	Annualised	-	+12.38%

Disclaimer: The information on this page is provided as a service to readers. It does not constitute financial advice and/or any investment recommendations. Past performance is not indicative of future results. We assume no liability for damages resulting from or arising out of the use of such information. It would be best if you did your own research to make your personal investment decisions wisely or consult a licenced investment advisor.

Price & Total Shareholder Return (as at Yesterday)

Fundamental Analysis

DEFINITION: Company is paying out dividend with low or moderate leverage.

CHART GUIDE: Total Shareholder Return (TSR) combines share price appreciation and distributions paid to show the total return to the shareholder expressed as a percentage.



ShareInvestor WebPro > Screener > Market Screener (FA & TA) > select BURSA > add criteria

A. Criteria

- > click Add Criteria
- Fundamental Analysis Conditions tab >select (i) Dividend Yield (Historical)
- Fundamental Analysis Conditions tab >select (ii) Dividend Payout (Historical)
- Fundamental Analysis Conditions tab >select (iii) Total Debt To Equity
- Fundamental Analysis Conditions tab >select (iv) Total Shareholder Returns
- Fundamental Analysis Conditions tab >select (v) Total Shareholder Returns
- Fundamental Analysis Conditions tab / >select (vi) CAGR of Dividend Per Share

- Fundamental Analysis Conditions tab >select (vii) CAGR of Dividend Per Share

B. Conditions (Criteria Filters)

1. Dividend Yield - select (more than) type (1) % for the past select (1) financial year(s)
2. Dividend Payout (Historical) - select (between) type (0.5) to type (1) times for the past select (1) financial year(s)
3. Total Debt to Equity - select (less than) type (1) for the past select (1) financial year(s)
4. Total Shareholder Return - select (more than) type (5) % for the past select (3) financial year(s)
5. Total Shareholder Return - select (more than) type (5) % for the past select (5) financial year(s)

6. CAGR of Dividend Per Share - select (less than) type (30) % for the past select (5) financial year(s)
7. CAGR of Dividend Per Share - select (more than) type (1) % for the past select (5) financial year(s)

- > click Save Template > Create New Template type (Dividend Companies) > click Create
- > click Save Template as > select Dividend Companies > click Save
- > click Screen Now (may take a few minutes)
- > Sort By: Select (Dividend Yield) Select (Desc)
- > Mouse over stock name > Factsheet > looking for Total Shareholder Return

AMWAY (M) HOLDINGS BERHAD (6351)

C² Chart



Period	Dividend Received	Capital Appreciation	Total Shareholder Return
Short Term Return	5 Days	-0.100	-1.35%
	10 Days	-0.150	-2.01%
	20 Days	+0.000	+1.11%
Medium Term Return	3 Months	-0.600	-7.59%
	6 Months	+1.700	+21.77%
Long Term Return	1 Year	+1.900	+25.91%
	2 Years	+2.200	+30.14%
	3 Years	+1.600	+20.89%
5 Years	0.350	+4.32	+10.37%
Annualised Return	Annualised	-	+5.46%

GAS MALAYSIA BERHAD (5209)

C² Chart



Period	Dividend Received	Capital Appreciation	Total Shareholder Return	
Short Term Return	5 Days	+0.070	+1.94%	
	10 Days	+0.100	+2.80%	
	20 Days	+0.100	+3.67%	
Medium Term Return	3 Months	+0.320	+9.65%	
	6 Months	+0.530	+16.88%	
Long Term Return	1 Year	+0.600	+19.54%	
	2 Years	0.069	+0.560	+20.23%
	3 Years	0.231	+0.900	+23.37%
5 Years	0.466	+0.820	+45.19%	
Annualised Return	Annualised	-	+7.74%	

PARAMOUNT CORPORATION BERHAD (1724)

C² Chart



Period	Dividend Received	Capital Appreciation	Total Shareholder Return
Short Term Return	5 Days	-0.100	-8.20%
	10 Days	-0.140	-11.11%
	20 Days	-	-
Medium Term Return	3 Months	+0.040	+3.70%
	6 Months	+0.165	+19.79%
Long Term Return	1 Year	+0.310	+38.27%
	2 Years	+0.473	+75.11%
	3 Years	+0.425	+61.15%
5 Years	0.415	+0.141	+56.79%
Annualised Return	Annualised	-	+9.41%

Disclaimer: The information on this page is provided as a service to readers. It does not constitute financial advice and/or any investment recommendations. Past performance is not indicative of future results. We assume no liability for damages resulting from or arising out of the use of such information. It would be best if you did your own research to make your personal investment decisions wisely or consult a licenced investment advisor.

Week: 31 May 2024 - 6 June 2024

More Brokers' Call 

AMINVESTMENT BANK <small>... See More</small>	Call	Target Price	Release Date
SD Guthrie Berhad (5285)	HOLD	RM4.55	04 Jun 2024
Tenaga Nasional Berhad (5347)	BUY	RM14.55	04 Jun 2024

APEX <small>... See More</small>	Call	Target Price	Release Date
Optimax Holdings Berhad (0222)	HOLD	RM0.72	05 Jun 2024
CCK Consolidated Holdings Berhad (7035)	HOLD	RM1.48	04 Jun 2024
Padini Holdings Berhad (7052)	BUY	RM4.32	31 May 2024

BIMB SECURITIES SDN BHD <small>... See More</small>	Call	Target Price	Release Date
DataSonic Group Berhad (5216)	BUY	RM0.60	05 Jun 2024
Sime Darby Plantation Berhad (5285)	HOLD	RM4.68	04 Jun 2024
Kumpulan Perangsang Selangor Berhad (5843)	HOLD	RM0.72	03 Jun 2024

KENANGA <small>... See More</small>	Call	Target Price	Release Date
QL Resources Berhad (7084)	MARKET PERFORM	RM6.25	06 Jun 2024
Wasco Berhad (5142)	OUTPERFORM	RM1.70	06 Jun 2024
Aeon Co. (M) Berhad (6599)	MARKET PERFORM	RM1.21	05 Jun 2024

MALACCA SECURITIES SDN BHD <small>... See More</small>	Call	Target Price	Release Date
OSK Holdings Berhad (5053)	BUY	RM1.96	05 Jun 2024
Asia File Corporation Berhad (7129)	BUY	RM2.70	04 Jun 2024

MIDF <small>... See More</small>	Call	Target Price	Release Date
QL Resources Berhad (7084)	BUY	RM7.25	06 Jun 2024
Suria Capital Holdings Berhad (6521)	SELL	RM1.60	06 Jun 2024
Malaysia Marine & Heavy Engineering Berhad (5186)	BUY	RM0.65	05 Jun 2024

UOB KAYHIAN <small>... See More</small>	Call	Target Price	Release Date
Swift Haulage Berhad (5303)	BUY	RM0.68	05 Jun 2024
Nationgate Holdings Berhad (0270)	BUY	RM2.15	04 Jun 2024

DEFINITION: Top 8 stocks with Technical Analysis plus Pattern Matching by 60 pre-defined indicators by the system showing a higher probability of bullish sentiment on the share price.



ShareInvestor WebPro > Screener > Predefined TA Screens > select market BURSA > Most Long Signals > click Scan Results or mouse over each company

INTA BINA GROUP BERHAD (0192.MY)

INTA

Price updated at 06 Jun 2024 16:59

Last: 0.520	Change: +0.055	Volume: 391,847
	Change (%): +11.83	Range: 0.470 - 0.520

TA Scanner Results based on historical data up to 06 Jun 2024

Condition	Signal	Explanation
Bollinger Band: Bullish Long Term Volatility Breakout and Trending	Long	1. Close price above upper bollinger band(33,1). 2. Volume above average volume(50). 3. Average volume(50) is above 300,000.
Bollinger Band: Bullish Short Term Volatility Breakout and Trending	Long	1. Close price above upper bollinger band(33,1). 2. Volume above average volume(10). 3. Average volume(10) is above 300,000.
Bollinger Band: High Above Upper Bollinger Band	Neutral	1. High above upper bollinger band(14,2). 2. Average volume(5) is above 100,000.
Donchian Channels: High Above Upper Donchian Channels	Long	High crossed above the upper Donchian Channel(14,4)
Price: New 52 Week High	Long	1. Stock reach a new 52 week high. 2. Average volume(30) is above 50000.
Volume: 10 Days large value Buy Up trade	Long	1. 150K value Buy Up greater than Sell Down by 20% for 10 days. 2. 50K-100K value Buy Up greater than Sell Down by 20% for 10 days. 3. Average volume(10) is above 1000000
Volume: 5 Days large value Buy Up trade	Long	1. 150K value Buy Up greater than Sell Down by 20% for 5 days. 2. 50K-100K value Buy Up greater than Sell Down by 20% for 5 days. 3. Average volume(10) is above 1000000
Williams %R: Bearish Williams %R	Short	1. Williams %R(26) between 0 and -20. 2. Average volume(5) is above 100,000.

HEXTAR CAPITAL BERHAD (0035.MY)

HEXCAP

Price updated at 06 Jun 2024 16:59

Last: 0.445	Change: +0.005	Volume: 20,186
	Change (%): +1.14	Range: 0.440 - 0.465

TA Scanner Results based on historical data up to 06 Jun 2024

Condition	Signal	Explanation
Bollinger Band: Bullish Long Term Volatility Breakout and Trending	Long	1. Close price above upper bollinger band(33,1). 2. Volume above average volume(50). 3. Average volume(50) is above 300,000.
Bollinger Band: Bullish Short Term Volatility Breakout and Trending	Long	1. Close price above upper bollinger band(33,1). 2. Volume above average volume(10). 3. Average volume(10) is above 300,000.
Bollinger Band: High Above Upper Bollinger Band	Neutral	1. High above upper bollinger band(14,2). 2. Average volume(5) is above 100,000.
Donchian Channels: High Above Upper Donchian Channels	Long	High crossed above the upper Donchian Channel(14,4)
MACD: Bullish MACD Crossover	Long	1. MACD(12,26) diff line crossed above the MACD(12,26) signal line. 2. MACD Histogram(12,26) is above 0.
RSI: Short Term RSI 50 Bullish Crossover	Long	1. RSI(20) crossed above 50 within the last 1 day and RSI(20) 1 day ago below 50 for the last 5 days. 2. Volume above average volume(125). 3. Average volume(5) is above 100,000.
Volume: Volume Spike	Long	1. Volume is more than 500% above average volume(10). 2. Volume above 200000. 3. Close price above 0.10

GLOBETRONICS TECHNOLOGY BERHAD (7022.MY)

GTRONIC

Price updated at 06 Jun 2024 16:59

Last: 1.470	Change: +0.140	Volume: 292,766
	Change (%): +10.53	Range: 1.340 - 1.490

TA Scanner Results based on historical data up to 06 Jun 2024

Condition	Signal	Explanation
Bollinger Band: Bullish Long Term Volatility Breakout and Trending	Long	1. Close price above upper bollinger band(33,1). 2. Volume above average volume(50). 3. Average volume(50) is above 300,000.
Bollinger Band: Bullish Short Term Volatility Breakout and Trending	Long	1. Close price above upper bollinger band(33,1). 2. Volume above average volume(10). 3. Average volume(10) is above 300,000.
Bollinger Band: High Above Upper Bollinger Band	Neutral	1. High above upper bollinger band(14,2). 2. Average volume(5) is above 100,000.
DM: Bullish Directional Movement	Long	-DI(14) crossed below +DI(14)
Donchian Channels: High Above Upper Donchian Channels	Long	High crossed above the upper Donchian Channel(14,4)
MA: Bullish Price Crossover	Long	1. Close price crossed above MA(40) within the last 1 day. 2. Previous day close price is below the MA(10) for the last 5 days
MA: Short Term Bearish Moving Average Crossover	Short	MA(10) crossed below MA(15) within the last 1 day.
RSI: Short Term RSI 50 Bullish Crossover	Long	1. RSI(20) crossed above 50 within the last 1 day and RSI(20) 1 day ago below 50 for the last 5 days. 2. Volume above average volume(125). 3. Average volume(5) is above 100,000.
Williams %R: Bearish Williams %R	Short	1. Williams %R(26) between 0 and -20. 2. Average volume(5) is above 100,000.

XL HOLDINGS BERHAD (7121.MY)

XL

Price updated at 06 Jun 2024 16:47

Last: 0.745	Change: -0.005	Volume: 51,492
	Change (%): -0.67	Range: 0.740 - 0.750

TA Scanner Results based on historical data up to 06 Jun 2024

Condition	Signal	Explanation
Bollinger Band: Bullish Long Term Volatility Breakout and Trending	Long	1. Close price above upper bollinger band(33,1). 2. Volume above average volume(50). 3. Average volume(50) is above 300,000.
Bollinger Band: Bullish Short Term Volatility Breakout and Trending	Long	1. Close price above upper bollinger band(33,1). 2. Volume above average volume(10). 3. Average volume(10) is above 300,000.
Bollinger Band: High Above Upper Bollinger Band	Neutral	1. High above upper bollinger band(14,2). 2. Average volume(5) is above 100,000.
Donchian Channels: High Above Upper Donchian Channels	Long	High crossed above the upper Donchian Channel(14,4)
Volume: 10 Days large value Buy Up trade	Long	1. 150K value Buy Up greater than Sell Down by 20% for 10 days. 2. 50K-100K value Buy Up greater than Sell Down by 20% for 10 days. 3. Average volume(10) is above 1000000
Volume: 5 Days large value Buy Up trade	Long	1. 150K value Buy Up greater than Sell Down by 20% for 5 days. 2. 50K-100K value Buy Up greater than Sell Down by 20% for 5 days. 3. Average volume(10) is above 1000000

Disclaimer: The information on this page is provided as a service to readers. It does not constitute financial advice and/or any investment recommendations. Past performance is not indicative of future results. We assume no liability for damages resulting from or arising out of the use of such information. It would be best if you did your own research to make your personal investment decisions wisely or consult a licenced investment advisor.

CJ CENTURY LOGISTICS HOLDINGS BERHAD (7117.MY)

IRIS CORPORATION BERHAD (0010.MY)

CJCN

Price updated at 06 Jun 2024 16:48

Last: 0.355	Change: +0.010	Volume: 19,534
	Change (%): +2.90	Range: 0.345 - 0.355

TA Scanner Results based on historical data up to 06 Jun 2024

Condition	Signal	Explanation
Bollinger Band: Bullish Long Term Volatility Breakout and Trending	Long	1. Close price above upper bollinger band(33,1). 2. Volume above average volume(50). 3. Average volume(50) is above 300,000.
Bollinger Band: Bullish Short Term Volatility Breakout and Trending	Long	1. Close price above upper bollinger band(33,1). 2. Volume above average volume(10). 3. Average volume(10) is above 300,000.
Bollinger Band: High Above Upper Bollinger Band	Neutral	1. High above upper bollinger band(14,2). 2. Average volume(5) is above 100,000.
CCI: Bearish CCI Overbought And Reversing	Short	1. CCI(26) above 100 and CCI(26) 1 day ago increasing for the last 3 days. 2. CCI(26) below CCI(26) 1 day ago
Donchian Channels: High Above Upper Donchian Channels	Long	High crossed above the upper Donchian Channel(14,4)
MA: Short Term Bullish Moving Average Crossover	Long	MA(10) crossed above MA(15) within the last 1 day.
RSI: Short Term RSI 50 Bullish Crossover	Long	1. RSI(20) crossed above 50 within the last 1 day and RSI(20) 1 day ago below 50 for the last 5 days. 2. Volume above average volume(125). 3. Average volume(5) is above 100,000.
Williams %R: Bearish Williams %R	Short	1. Williams %R(26) between 0 and -20. 2. Average volume(5) is above 100,000.

IRIS

Price updated at 06 Jun 2024 16:57

Last: 0.425	Change: +0.025	Volume: 206,545
	Change (%): +6.25	Range: 0.395 - 0.430

TA Scanner Results based on historical data up to 06 Jun 2024

Condition	Signal	Explanation
Bollinger Band: High Above Upper Bollinger Band	Neutral	1. High above upper bollinger band(14,2). 2. Average volume(5) is above 100,000.
Donchian Channels: High Above Upper Donchian Channels	Long	High crossed above the upper Donchian Channel(14,4)
Volume: 10 Days large value Buy Up trade	Long	1. 150K value Buy Up greater than Sell Down by 20% for 10 days. 2. 50K-100K value Buy Up greater than Sell Down by 20% for 10 days. 3. Average volume(10) is above 1000000
Volume: 5 Days large value Buy Up trade	Long	1. 150K value Buy Up greater than Sell Down by 20% for 5 days. 2. 50K-100K value Buy Up greater than Sell Down by 20% for 5 days. 3. Average volume(10) is above 1000000
Volume: Consecutive Days Of Increasing Average Volume	Long	1. Average Volume(20) has been increasing over the last 2 weeks. 2. Average volume(20) is above 100000
Volume: Volume Spike	Long	1. Volume is more than 500% above average volume(10). 2. Volume above 200000. 3. Close price above 0.10
Williams %R: Bearish Williams %R	Short	1. Williams %R(26) between 0 and -20. 2. Average volume(5) is above 100,000.

SENG FONG HOLDINGS BERHAD (5308.MY)

HUP SENG INDUSTRIES BERHAD (5024.MY)

SENFONG

Price updated at 06 Jun 2024 16:58

Last: 0.875	Change: -0.010	Volume: 27,913
	Change (%): -1.13	Range: 0.855 - 0.900

TA Scanner Results based on historical data up to 06 Jun 2024

Condition	Signal	Explanation
Bollinger Band: High Above Upper Bollinger Band	Neutral	1. High above upper bollinger band(14,2). 2. Average volume(5) is above 100,000.
CCI: Bearish CCI Overbought And Reversing	Short	1. CCI(26) above 100 and CCI(26) 1 day ago increasing for the last 3 days. 2. CCI(26) below CCI(26) 1 day ago
Donchian Channels: High Above Upper Donchian Channels	Long	High crossed above the upper Donchian Channel(14,4)
Historical Volatility: Increasing Historical Volatility	Neutral	Historical Volatility(100,365) increasing for the last 10 days
MACD: Bullish MACD Crossover	Long	1. MACD(12,26) diff line crossed above the MACD(12,26) signal line. 2. MACD Histogram(12,26) is above 0.
Price: New 52 Week High	Long	1. Stock reach a new 52 week high. 2. Average volume(30) is above 50000.
RSI: RSI Overbought	Short	1. RSI(20) is above 80. 2. RSI(20) is increasing for the last 3 days. 3. Stock has more than 75 days of historical data.
Volume: 10 Days large value Buy Up trade	Long	1. 150K value Buy Up greater than Sell Down by 20% for 10 days. 2. 50K-100K value Buy Up greater than Sell Down by 20% for 10 days. 3. Average volume(10) is above 1000000
Volume: 5 Days large value Buy Up trade	Long	1. 150K value Buy Up greater than Sell Down by 20% for 5 days. 2. 50K-100K value Buy Up greater than Sell Down by 20% for 5 days. 3. Average volume(10) is above 1000000
Williams %R: Bearish Williams %R	Short	1. Williams %R(26) between 0 and -20. 2. Average volume(5) is above 100,000.

HUPSENG

Price updated at 06 Jun 2024 16:59

Last: 0.995	Change: +0.030	Volume: 72,631
	Change (%): +3.11	Range: 0.970 - 1.010

TA Scanner Results based on historical data up to 06 Jun 2024

Condition	Signal	Explanation
Bollinger Band: High Above Upper Bollinger Band	Neutral	1. High above upper bollinger band(14,2). 2. Average volume(5) is above 100,000.
CCI: Bearish CCI Overbought And Reversing	Short	1. CCI(26) above 100 and CCI(26) 1 day ago increasing for the last 3 days. 2. CCI(26) below CCI(26) 1 day ago
Price: New 52 Week High	Long	1. Stock reach a new 52 week high. 2. Average volume(30) is above 50000.
Volume: 10 Days large value Buy Up trade	Long	1. 150K value Buy Up greater than Sell Down by 20% for 10 days. 2. 50K-100K value Buy Up greater than Sell Down by 20% for 10 days. 3. Average volume(10) is above 1000000
Volume: 5 Days large value Buy Up trade	Long	1. 150K value Buy Up greater than Sell Down by 20% for 5 days. 2. 50K-100K value Buy Up greater than Sell Down by 20% for 5 days. 3. Average volume(10) is above 1000000
Volume: Consecutive Days Of Increasing Average Volume	Long	1. Average Volume(20) has been increasing over the last 2 weeks. 2. Average volume(20) is above 100000
Williams %R: Bearish Williams %R	Short	1. Williams %R(26) between 0 and -20. 2. Average volume(5) is above 100,000.

Disclaimer: The information on this page is provided as a service to readers. It does not constitute financial advice and/or any investment recommendations. Past performance is not indicative of future results. We assume no liability for damages resulting from or arising out of the use of such information. It would be best if you did your own research to make your personal investment decisions wisely or consult a licenced investment advisor.



Dato' Eu Hong Chew
Former Group CEO i-Berhad
Non-Executive Director

He has been associated with the Sumurwang Group for many years charting the path for its manufacturing arm, firstly under Dreamland Holdings Berhad and the subsequent acquisition of I-Berhad.

Before that, he was with PA Management Consulting for a decade where he was the Director of Studies for the Cranfield PA MBA Programme in Malaysia.

Educated at the Royal Military College, Dato' Eu has an engineering degree from the University of Glasgow, and a MBA from the University of Bradford, UK.

Is there an investment opportunity in DIGITAL TURBINE?

SUMMARY

- While there was a significant revenue increase in 2022 due to acquisitions, PAT did not follow suit. Gross profitability improved from 11% in 2017 to 23% in 2024. However, returns have declined since 2021, with a negative operating return in 2024.

- Despite poor operating performance, the company's financial position remains manageable, with a debt-capital ratio of 0.45. The company's cash flow from operations has been strong, primarily spent on acquisitions.
- The company is undergoing a challenging turnaround. A valuation suggests no margin of safety for a turnaround investment, even under optimistic assumptions.

INVESTMENT THESIS

Digital Turbine's (NASDAQ: APPS) triple-digit revenue growth in 2021 and 2022 was due to its acquisitions. Since then, revenue has declined despite increasing worldwide advertising spend. Accordingly, its return has been declining with negative returns for 2024. The company is undergoing a challenging turnaround. My valuation based on an optimistic turnaround scenario did not provide any margin of safety.

BACKGROUND

Digital Turbine operates in the mobile platform business. The company enables its customers to monetize mobile content and generate higher-value user acquisition. Their products and services are currently reported under two segments:

- **On-Device Solutions:** This segment simplifies the discovery and delivery of mobile apps and content media for end-users.

- App Growth Platform: This segment comprises Advertising Solutions and Ad Monetization Solutions, catering to app developers and brands/agencies.

Over the past 2 years, the On Device Solutions segment accounted for about 2/3 of the revenue.

OPERATING TRENDS

I looked at 2 groups of metrics to get a picture of the operating trends over the past 8 years.

- The left part of Chart 1 shows the trends for 3 metrics – revenue, PAT, and gross profitability (gross profits / total assets).
- The right part of Chart 1 shows the returns – Operating return (NOPAT/Total Capital Employed), ROE, and ROA.

There was a substantial jump in revenue in 2022 following the completion of several acquisitions. Unfortunately, this did not lead to a jump in PAT. While the revenue in 2024 was significantly higher than in 2017, the PAT in 2024 was lower than in 2017. The only positive sign was the improvement in gross profitability from 11% in 2017 to 23% in 2024. Furthermore, since peaking in 2021, returns have been on a downtrend.

The average returns from 2021 to 2024 were:

- 15% for the Operating return.
- 1% for the ROE.
- 2 % for the ROA.

As seen from the right part of Chart 1, these low returns in 2024 were due to the negative results for revenue, PAT and gross profitability. There was even negative Operating return.

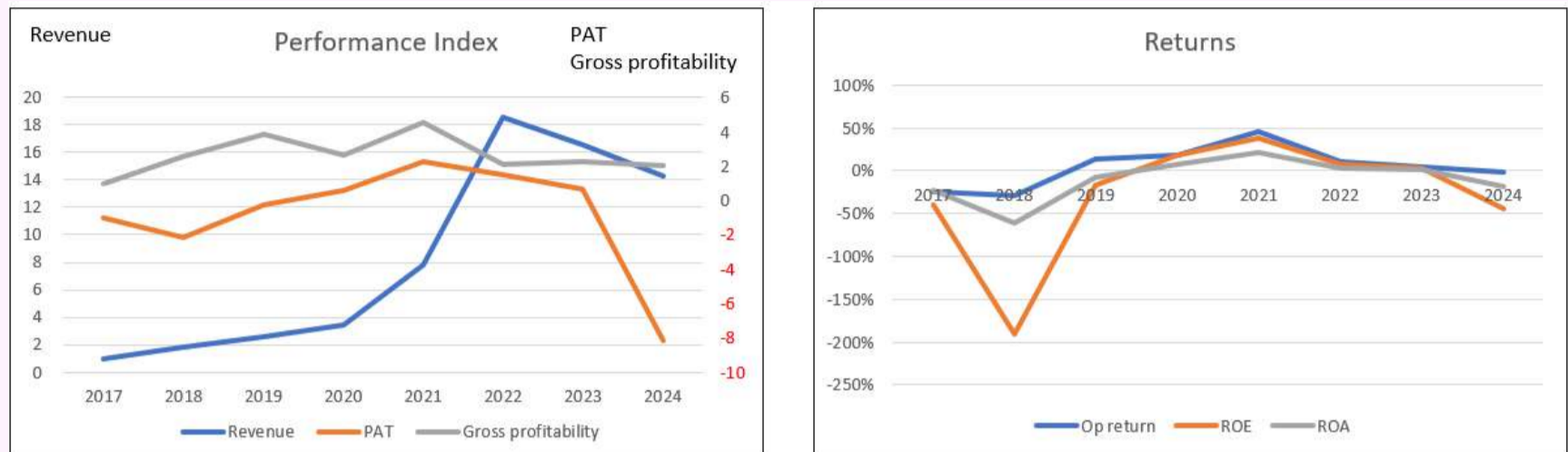


Chart 1: Performance Index and Returns

Notes

- a) Performance Index chart. I have converted the various metrics into indices to plot the various metrics on one chart. The respective index was created by dividing the annual values by the respective 2017 values.
- b) The 2024 values were based on the Dec 2023 LTM values.

I also worry about the declining revenue because the company's performance is the opposite of the global digital advertising spending trend. Refer to Chart 2.

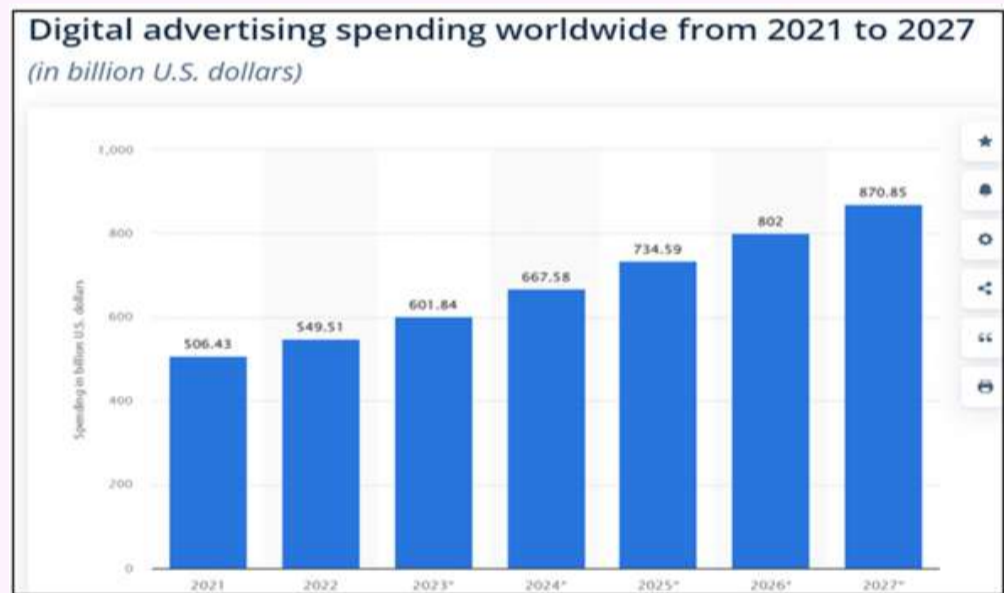


Chart 2: Digital advertising spending: Source: Statista

FINANCIAL STRENGTHS

Despite its poor operating performance, its financial position did not seem too dire. While it had a high debt level, this is manageable. As of the end of Dec 2023, it has a debt capital ratio

*Please refer to the disclaimer on first page and last page.

of 0.45. This has come down from its 2022 high of 0.50. According to the Damodaran Jan 2023 dataset, the debt capital ratio was 0.31 for the advertising sector and 0.12 for the information services sector.

Over the past 8 years, it generated about USD350 million from its cash flow from operations compared to its cumulative loss of USD160 million. This is a good cash-generation track record. Its CAPEX was relatively low relative to the cash flow from operations suggesting that it has cash cow features. A big part of the cash flow from operations

was spent on acquisitions.

Refer to Table

1. Management controls acquisitions, which suggests that the debt level can be reduced.

Items	Sources (USD m)	Uses (USD m)
Cash flow from Ops	350	
New shares	25	
Net Debt	343	
Dividends, Buybacks		17
CAPEX		90
Acquisitions		222
Misc		390
Total	719	719

Table 1: Sources and Uses of Funds 2017 to 2024

VALUATION

Digital Turbine is not a wonderful company from a fundamental perspective. You would only consider this an investment opportunity from a turnaround perspective. The challenge with valuing a turnaround is projecting the turnaround performance. In this context, I assumed an optimistic scenario where the company would turn around by next year with the following performances:

- The revenue, contribution margin, and capital efficiency would be the same for its 2022 peak.
- Its fixed cost would be the 2022 to 2024 average.

On such a basis, I estimated its intrinsic value to be USD 0.71 per share. The market price of Digital Turbine as of 23 May 2024 was USD2.34 per share. There is no margin of safety to consider this a turnaround investment.

VALUATION MODEL

I valued the company using a single-stage Free Cash Flow to the Firm (FCFF) valuation model. Refer to the original article for details of the valuation model.

Value of the firm = FCFF X (1+ g) / (WACC – g).

FCFF = EBIT X (1 – tax rate) X (1 – Reinvestment rate).

EBIT = (Revenue X Contribution margin) – Fixed cost.

Reinvestment was derived from the fundamental growth equation and = Growth / Return.

The model is susceptible to the fixed cost. For example, if the fixed cost was assumed to be the 2022 value instead of the average past 3 years, the intrinsic value increases to USD8.48 per share. The question is whether you think the company can reduce the fixed cost.

The other point is that I assumed that the company would be able to reverse the revenue trend by next year. If it takes a longer time to do so, the discounting process would result in a lower intrinsic value.

CONCLUSION

I would not consider Digital Turbine a wonderful company in the Buffett sense. It does not seem to be able to grow its revenue despite the acquisitions and growing worldwide digital advertising spending. It also had not been able to improve its bottom line despite improving gross profitability. The results are declining return trends post-2021.

The company is undergoing a turnaround and the only positive sign is that it is financially sound to give it time to turn around. Unfortunately, there is no margin of safety assuming that it can return to the 2022 performance next year. This is a challenging turnaround to bet on.

I am a long-term value investor who has held onto stocks for more than 5 years. My analysis and valuation are from such a perspective. I consider quarterly results “noisy” and focus on long-term trends.

*This article was re-purposed from my article “**Digital Turbine Is Facing A Turnaround Challenge**” which was first published in Hedge Fund Alpha. Refer to this [link](#) for more of my insights on other US companies.*

UNLOCK THE SECRET OF WEALTH

DO YOU REALLY WANT TO MASTER VALUE INVESTING



SEE HOW TO GET HIGHER RETURNS WITH LOWER RISK



DIGITAL BANKS EXPECTED TO BOOST E-PAYMENT TRANSACTIONS – PM ANWAR

According to Prime Minister Datuk Seri Anwar Ibrahim, he is confident the target of 400 e-payment transactions per capita can be achieved earlier than the original target of 2026 through efforts by digital banks. There has been an increase in e-payment transactions since 2011 but the numbers are still low and it is the responsibility of all parties to spread the benefits of using the facility to all Malaysians.

During his speech at the launch of digital bank Boost Bank, he said that this is not a target that is too high and difficult to achieve and he expects that if we have a stronger desire, we should achieve it sooner. Boost Bank is a 40:60 digital bank venture by RHB Bank Bhd and Boost Holdings Sdn Bhd, an indirect subsidiary of Axiata Group Bhd.

He continued by saying that to achieve the target, the effort needs to be implemented immediately and earnestly. If banks give a lot of general information about banking to consumers, they should also inform consumers about new findings about digital. Serious efforts should be made to ensure that the people are able to assimilate "digital literacy" in order to take advantage of the latest technological developments including artificial intelligence.

He hopes the components in Boost Bank, Axiata and RHB as the pillars, would make the effort to spread knowledge about the facilities so that they can be used by micro, small and medium enterprises (MSMEs) as their priority and to most of the people. The effort will be assisted by the Digital Ministry in giving suitable ideas and recommendations to Boost Bank. He also requested that a report on the efforts made by Boost Bank be presented by Digital Minister Gobind Singh Deo to the Cabinet within six months.

**CHECK OUT
SHAREINVESTOR
BROKERS'
CALL**

Weekly Buy/Sell/Hold calls
from leading Malaysian Brokerages.

[Go To Brokers' Call](#)

BUY **HOLD** **SELL**

SIDC'S NEW INITIATIVES TO BOOST CAPITAL MARKET, ADDRESS DEMAND FOR SUSTAINABLE INVESTMENTS AND SHARIAH-COMPLIANT PRODUCTS

The Securities Industry Development Corporation (SIDC) has introduced new initiatives under the Industry Competency Framework (ICF) to address the growing demand for sustainable and responsible investments (SRIs) and Shariah-compliant products and services. The SIDC said in a statement that there will be two new competencies covering the fundamental

components of sustainable and responsible investment products, and their analysis. The third competency relates to Shariah advisory, to equip capital market professionals with skills and knowledge to engage in activities related to Islamic capital market products and services.

It added that updates have been made to ensure a holistic understanding of Islamic capital market regulations and products. The new competencies are designed to meet the needs of the evolving landscape in the capital market and are pivotal in guiding professionals in the industry to grow and enhance their skills. The ICF details professionals' knowledge, skills and attributes (behavioural) for capital market activities. This includes activities which deal with securities and derivatives, fund management, corporate and investment advice, financial planning and private retirement schemes. There are now 61 titles, covering 149 job roles under the framework.

According to SIDC chief executive officer Tengku Zarina Tengku Chik, as SIDC navigates a constant change in today's capital market and competitive market environment, the ICF will help professionals to be future-ready and will equip them with the right skills. The new competencies will allow organisations to identify capacity-building gaps in their workforce, so they could strategise and plan to grow their organisations. The ICF is accessible via the competency management system, an online industry-wide utility platform that facilitates continuous professional development of the capital market industry.

LIMITED UPSIDE AHEAD FOR MALAYSIAN BANKS' PROFITABILITY - RAM RATINGS

A ccording to RAM Ratings, Malaysian banks' profit outperformance in 2024 will be constrained by lower provisioning charges, which may be offset by more moderate loan growth, despite steady profitability in the first quarter (1Q2024). Tracking eight selected local banks, RAM Ratings said that the average pre-tax return for these banks stood at an annualised rate of 1.37%, compared with 1.38% in 1Q2023. The return on equity remained stable at 13.8%, slightly lower than the 13.9% recorded over the same period last year.

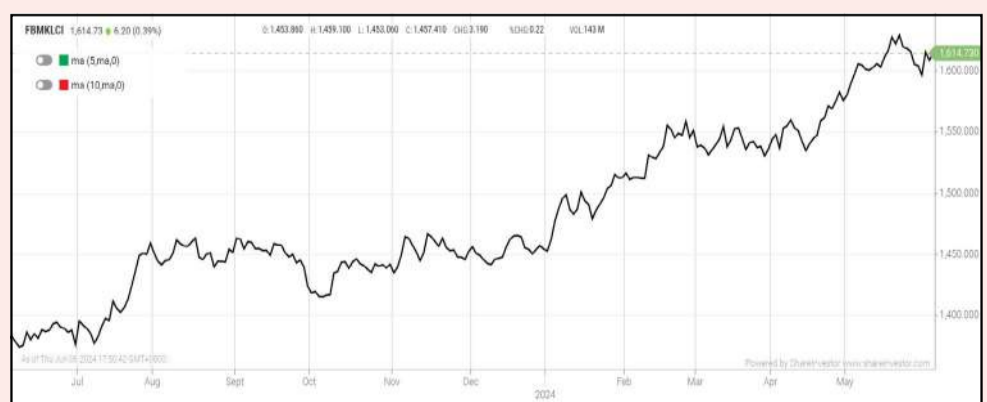
In a statement, the rating agency said loan growth was also sustained at an annualised rate of 5.3% as of end-March 2024, consistent with the recovery in exports driven by the emerging semiconductor upcycle. However, household credit demand showed moderation, except for passenger car hire purchase, which recorded softer growth. Considering the impending petrol subsidy retargeting, which may also have a dampening effect on credit demand in the second half of 2024, RAM Ratings projects a loan growth of 5% for the full year.

According to RAM Ratings' co-head of financial institution ratings Wong Yin Ching, during the quarter, net interest margins (NIMs) faced 'significant compression', due to elevated funding costs resulting from multiple rate hikes and heightened deposit competition in 2023. Although the average NIM of the eight banks contracted by 10 basis points (bps) year-on-year to 2.03% in 1Q2024, there was a modest uptick on a quarter-on-quarter basis (4Q2023: 2.02%). Full-year margins in 2024 are expected to remain largely suppressed, similar to the previous year.

On asset quality, RAM Ratings anticipated a gross impaired loan ratio of 1.6% to 1.7% by year end, after first-quarter data showed a marginal decrease to 1.62% (end-December 2023: 1.65%). Favourable labour market conditions – with the unemployment rate recovering to the pre-pandemic level of 3.3% – should help contain the adverse impact of the roll-out of subsidy rationalisation. The eight banks' average credit cost ratio also stayed relatively benign at 22 bps in 1Q2024 (1Q2023: 18 bps; 2023: 23 bps), given the sizeable management overlays that remain. Some write-backs of these overlays are anticipated, but banks are prudently assessing the quantum and timing of reversals, in view of the macro headwinds.

EYE ON THE MARKETS

On Thursday (06 June), the Ringgit closed at 4.6945 against the USD and 3.4846 to the Sing Dollar. On Tuesday (04 June), the FBM KLCI opened at 1595.94. As at Thursday (06 June) 5:00pm, the FBM KLCI closed up 18.79 points at 1614.73. Over in US, the overnight Dow Jones Industrial Average closed up 78.84 points (+0.20%) to 38,886.17 whilst the NASDAQ shed 17.26 points (-0.10%) to 17,170.64.



KLCI 1 Year Chart

Over 5 trading days



ShareInvestor WebPro (www.shareinvestor.com/my)

1. Price > Stock Prices
2. Select Market: NASDAQ / NYSE / IDX / SET / HKEX / SGX (One bourse at a time)
3. select Stocks Tab
4. select Ranking Top Gainers or Top Losers (Over 5 Trading Days)
5. Mouse over Column Layout > select Edit Customs > select Name > select Last Done Price > select 5 Days Change > select 52 Weeks High > select 52 Weeks Low > Mouse Over Column Layout > select Custom

NASDAQ (USD)

Top Gainers

Name	Last Done	Change Over 5 Days	52 Weeks High	52 Weeks Low
MICROSTRATEGY	1,656.630	+115.630	1,999.990	266.000
NVIDIA CORP	1,209.980	+104.980	1,166.000	373.560
ASML HOLDING NV EURO.09 NY REGISTRY SHS 2012	1,052.610	+92.260	1,056.340	563.995
BOOKING HOLDINGS INC	3,810.060	+55.440	3,918.000	2,579.365
SAIA INC	452.610	+48.870	628.335	288.720

Top Losers

Name	Last Done	Change Over 5 Days	52 Weeks High	52 Weeks Low
MONGODB INC	229.880	-80.120	509.620	225.250
MERCADOLIBRE INC	1,621.090	-78.860	1,825.000	1,063.020
SUPER MICRO COMPUTER INC	777.920	-50.020	1,229.000	213.080
POWELL INDUSTRIES INC	158.070	-47.880	209.140	56.050
FIRST CITIZENS BANCSHARES INC NRTH	1,695.630	-29.370	1,810.030	1,181.707

NYSE (USD)

Top Gainers

Name	Last Done	Change Over 5 Days	52 Weeks High	52 Weeks Low
NVR INC	7,590.420	+135.110	8,211.400	5,210.490
CHIPOTLE MEXICAN GRILL	3,211.660	+105.820	3,260.000	1,768.635
SERVICENOW INC	703.160	+59.870	815.320	526.110
METTLER-TOLEDO INTERNATIONAL INC	1,438.030	+54.460	1,535.860	928.495
ELEVANCE HEALTH INC	541.040	+33.700	550.340	412.000

Top Losers

Name	Last Done	Change Over 5 Days	52 Weeks High	52 Weeks Low
BERKSHIRE HATHAWAY INC	620,000.000	-7,400.000	741,971.390	502,000.000
UNITED RENTALS INC	630.520	-28.710	732.370	374.220
DECKERS OUTDOOR CORP	1,065.430	-28.490	1,106.890	484.020
GRAINGER W W INC	879.030	-28.440	1,034.180	674.410
IBOTTA INC	77.770	-27.030	117.590	79.875

IDX (Rupiah)

Top Gainers

Name	Last Done	Change Over 5 Days	52 Weeks High	52 Weeks Low
GOWA MAKASSAR TOURISM DEVELOPMENT	6,175.000	+1,175.000	6,250.000	1,485.000
PETROSEA	7,875.000	+1,125.000	9,850.000	2,810.000
GOLDEN ENERGY MINES TBK	7,000.000	+925.000	7,975.000	5,475.000
INTI BANGUN SEJAHTERA	4,840.000	+840.000	5,800.000	4,000.000
INDOCEMENT TUNGGAL PRAKARSA	7,300.000	+825.000	11,500.000	6,275.000

Top Losers

Name	Last Done	Change Over 5 Days	52 Weeks High	52 Weeks Low
DIAN SWASTATIKA SENTOSA TBK	197,000.000	-15,000.000	220,000.000	37,300.000
BARITO RENEWABLES ENERGY TBK	6,700.000	-2,425.000	12,200.000	975.000
DCI INDONESIA TBK	35,600.000	-800.000	59,050.000	32,525.000
GUDANG GARAM TBK	18,300.000	-700.000	29,550.000	17,875.000
DUTA PERTIWI	4,020.000	-510.000	4,950.000	3,970.000

SET (Thai Baht)

Top Gainers

Name	Last Done	Change Over 5 Days	52 Weeks High	52 Weeks Low
CSR	69.750	+4.750	77.750	62.000
TTT	51.250	+3.250	51.750	40.250
NEW	82.000	+3.250	176.000	76.000
ADVANC	208.000	+3.000	231.000	193.000
JCT	83.500	+3.000	86.000	77.000

Top Losers

Name	Last Done	Change Over 5 Days	52 Weeks High	52 Weeks Low
OHTL	393.000	-17.000	518.000	352.000
EGCO	101.500	-6.000	144.500	101.000
AEONTS	146.500	-5.500	203.000	144.000
CREDIT	18.800	-4.600	30.250	17.000
ALUCON	170.000	-4.500	190.000	170.000

HKEX (HKD)

Top Gainers

Name	Last Done	Change Over 5 Days	52 Weeks High	52 Weeks Low
CHANGJIU HLDGS (6959)	82.300	+32.100	89.000	6.050
SKB BIO-B (6990)	185.900	+23.800	195.000	60.600
MARKETINGFORCE (2556)	82.150	+15.350	86.650	45.000
TENCENT (700)	381.600	+13.600	401.000	260.200
TENCENT-R (80700)	354.200	+12.600	370.400	240.000

Top Losers

Name	Last Done	Change Over 5 Days	52 Weeks High	52 Weeks Low
HAOHAI BIOTEC (6826)	30.050	-11.550	50.200	29.900
UBTECH ROBOTICS (9880)	159.100	-9.000	328.000	69.800
NEW ORIENTAL-S (9901)	59.000	-6.200	77.050	29.000
QYUNS-B (2509)	23.500	-5.450	30.550	18.140
MNSO (9896)	42.000	-4.500	59.850	30.300

SGX (SGD)

Top Gainers

Name	Last Done	Change Over 5 Days	52 Weeks High	52 Weeks Low
AZEUS	10.640	+1.940	10.800	7.400
JMH USD	37.940	+1.000	52.570	34.920
NIO Inc. USD OV	5.290	+0.370	15.780	3.730
JARDINE C&C	26.370	+0.310	34.900	23.760
UOB	30.770	+0.210	31.350	26.820

Top Losers

Name	Last Done	Change Over 5 Days	52 Weeks High	52 Weeks Low
CITYDEV	5.500	-0.420	7.455	5.500
GREAT EASTERN	26.000	-0.380	26.500	16.850
VENTURE	13.950	-0.200	16.380	11.360
SEATRIUM LTD	1.690	-0.170	0.147	0.074
DBS	35.500	-0.120	36.150	27.745

RISK DIVERSIFICATION - DON'T PUT ALL EGGS IN ONE BASKET

Navigating the corporate world is a perilous journey. Who would have thought that climatic changes stemming from the ill effects of global warming could severely devastate the supply chain and potentially trigger disruption along the entire production line? A case in point is Guan Chong Berhad—Asia's largest and the world's fourth largest cocoa processor—which is facing cocoa bean supply risk-cum-record prices given the current climate crisis and disease that is pummeling crops among top West African growers.

KEY HIGHLIGHTS

- From Guan Chong to InNature, their challenges have adequately illustrated the criticality of sound and robust risk management.
- The types and levels of risks are constantly evolving. It has become imperative for PLCs to be cognisant of wide-ranging disruptive factors from the sourcing of raw materials to the manufacturing and selling of the finished products.

The New York and London-listed cocoa futures markets experienced considerable volatility in 2023, reaching 35-year and 46-year highs of more than US\$4,200 and GBP 3,500 per metric tonne, respectively. Prices have continued to rise and reach new historical highs in 2024, with nearly US\$10,000 per metric ton in March 2024. This price surge has presented a challenge for cocoa grinders, who face increased input costs for raw materials. Given this situation, shareholders are concerned about how the Company manages the impact of high input costs due to supply shortages amid the climate change environment.

In response to shareholders' concern, Guan Chong stressed that it had diversified the source of cocoa beans from minor growers in the likes of Ecuador, Peru, and Indonesia to diversify supply risk from cocoa bean heavyweights like Ivory Coast and Ghana. Ivory Coast and Ghana are home to 60% of the world's cocoa output. The high cocoa bean prices are a double-edged sword. While acknowledging that Guan Chong has embarked on contingency measures by sourcing beans from minor growers in other countries to minimise disruption to operations and cash flow generation, credit rating agency MARC Ratings remains concerned about the impact on the credit profile of the cocoa grinder Guan Chong from a prolonged supplydemand dislocation due to the high cocoa bean price environment.

MARC Ratings has downgraded its rating on Guan Chong's sukuk programmes to "negative" from "stable." The revision came about because the significant spike in cocoa bean prices from US\$3,835/tonne to US\$9,193/tonne—or a 140% jump—between October 2023 and March 2024 has piled considerable pressure on Guan Chong's working capital needs. "This could lead to a sharp increase in their borrowing levels, with leverage positions potentially increasing to above 1.5 times," projected MARC Ratings. Although cocoa prices are forecasted to decline from the recent peak recorded in

March 2024, MARC Ratings nevertheless expects prices to remain elevated compared to pre-escalation levels of US\$3,000/tonne.

Meanwhile, the higher-than-expected margin from average selling price (ASP) upticks and favourable hedging position have propelled Guan Chong to historic high net earnings of RM92 million on the back of RM1.87 billion revenue for its 1Q FY2024 ended 31 March 2024.

INNATURE'S SUPPLY RISK CHALLENGE

On the other hand, hot on the heels of unfavourable developments in The Body Shop (TBS) UK, Germany and Belgium early this year, cosmetic and personal care products retailer InNature Berhad announced its plan to enter the food and beverage (F&B) business. In May 2024, it proposed acquiring Blu Restaurant Sdn Bhd – the “Burger & Lobster” franchisee in Malaysia (excluding the outlet Genting Highlands), for RM21.25 million. InNature said the proposed diversification into the F&B business will contribute immediately to the Group while diversifying its revenue stream. Ultimately, it expects the contribution from the F&B business to contribute 25% or more of its net profit.

InNature is the franchisee of TBS in Malaysia, Vietnam and Cambodia. As of end-1Q 2024, the Group has 120 stores, of which 76 are in Malaysia, 41 in Vietnam, and 3 in Cambodia. Since its listing on the Main Market of Bursa Securities in 2020, the Group has been reliant on the revenue generated from retailing cosmetic and personal care products, which accounts for nearly all of its total revenue.

Since the beginning of 2024, TBS UK, Germany and Belgium were reportedly put under administration due to financial distress.

Subsequently, InNature reassured the market that the Company was operating as usual, as its franchisor, The Body Shop International (TBSI), clarified that events in the UK and several European markets had nothing to do with franchise partners like InNature. TBSI is also the sole supplier of The Body Shop products, according to InNature's prospectus. Despite such assurance, its share prices told us otherwise. On 4 March 2024, InNature closed at an all-time low of 28 sen on mounting concerns about supply and revenue concentration risks. The counter went public in February 2020 with an IPO price of 64 sen per share.

CONCLUSION

The various incidents above illustrate the criticality of sound and robust risk management. Risks may stem from multiple sources, including financial uncertainties, legal liabilities, technology issues, strategic management errors, accidents and natural disasters. The types and levels of risks are constantly evolving. It has become imperative for PLCs to be cognisant of wide-ranging disruptive factors, from the sourcing of raw materials to the manufacturing and selling of finished products. This can be done by implementing a feasible risk management framework to identify, assess, control and mitigate threats to an organisation's capital, earnings and operations.

In essence, robust risk management is essential to identifying and controlling threats and vulnerabilities that could negatively impact an organisation.

By MSWG team

DEFINITION: Insider Activity shows the trades made by substantial shareholders or directors of the company. Purchases by the directors and company share buyback may indicate the share price is undervalued and brings confidence to the price trend of the share price.



ShareInvestor WebPro > Fundamental > Insider Trades > click Search tab > Select Bursa > click Stock name > scroll up and leave at <Select Counter> Type Date Range for Announcement Date > click Search

Notice Period is 26th May 2024 – 1st June 2024

Effective Change Date	Stock Name	Buyer/ Seller Name [Classification]	Bought / (Sold) ['000]	No. of Shares After Trade ['000]	
			Total	Total	% Held
28 MAY 2024 - 29 MAY 2024	3A	MR TEO KWEE HOCK [SSH]	374	49,971	10.219
24 MAY 2024 - 27 MAY 2024	3A	MR TEO KWEE HOCK [SSH]	362	49,597	10.143
29 MAY 2024 - 29 MAY 2024	ACME	MR LIM SHIOU GHAY [DIR/CEO]	-591	5,098	1.387
29 MAY 2024 - 29 MAY 2024	ACME	NADA WANGI SDN BHD [SSH]	591	73,493	19.996
24 MAY 2024 - 24 MAY 2024	AEON	EMPLOYEES PROVIDENT FUND BOARD [SSH]	-2,409	92,563	6.593
23 MAY 2024 - 23 MAY 2024	AEON	EMPLOYEES PROVIDENT FUND BOARD [SSH]	-3,096	94,972	6.764
21 MAY 2024 - 21 MAY 2024	AEON	EMPLOYEES PROVIDENT FUND BOARD [SSH]	-193	97,948	6.976
30 MAY 2024 - 30 MAY 2024	ALPHA	DATO DR LEE SOON SOO [SSH]	5,000	2,136,631	43.964
30 MAY 2024 - 30 MAY 2024	ALPHA	DATO' DR LEE SOON SOO [DIR/CEO]	5,000	2,136,631	43.964
29 MAY 2024 - 29 MAY 2024	ALPHA	DATO DR LEE SOON SOO [SSH]	20,000	213,631	43.861
29 MAY 2024 - 29 MAY 2024	ALPHA	DATO' DR LEE SOON SOO [DIR/CEO]	20,000	213,631	43.861
27 MAY 2024 - 27 MAY 2024	AMBANK	EMPLOYEES PROVIDENT FUND BOARD [SSH]	577	47,390	14.331
24 MAY 2024 - 24 MAY 2024	AMBANK	EMPLOYEES PROVIDENT FUND BOARD [SSH]	359	47,330	14.314
23 MAY 2024 - 23 MAY 2024	AMBANK	EMPLOYEES PROVIDENT FUND BOARD [SSH]	-382	47,271	14.303
21 MAY 2024 - 21 MAY 2024	AMBANK	EMPLOYEES PROVIDENT FUND BOARD [SSH]	886	47,353	14.314
27 MAY 2024 - 28 MAY 2024	ANCOMNY	DATO' SIEW KA WEI [DIR/CEO]	70	156,698	16.364
27 MAY 2024 - 29 MAY 2024	ANCOMNY	DATO' SIEW KA WEI [DIR/CEO]	67	17,887	19.632
27 MAY 2024 - 28 MAY 2024	ANCOMNY	DATO' SIEW KA WEI [SSH]	70	156,698	16.364
23 MAY 2024 - 24 MAY 2024	ANCOMNY	DATO' SIEW KA WEI [DIR/CEO]	120	156,628	16.36
23 MAY 2024 - 24 MAY 2024	ANCOMNY	DATO' SIEW KA WEI [SSH]	120	156,628	16.36
21 MAY 2024 - 24 MAY 2024	ANCOMNY	DATO' SIEW KA WEI [DIR/CEO]	53	17,821	19.527
28 MAY 2024 - 28 MAY 2024	ANEKA	MR PANG TSE FUJ [DIR/CEO]	1,000	100,553	15.318
28 MAY 2024 - 28 MAY 2024	ANEKA	MR PANG TSE FUJ [SSH]	1,000	100,553	15.318
28 MAY 2024 - 28 MAY 2024	ANEKA	MR TAN HOON THEAN [SSH]	1,000	83,308	12.691
23 MAY 2024 - 24 MAY 2024	ANEKA-WA	MR PANG TSE FUJ [DIR/CEO]	-11,900	19,576	6.734
30 MAY 2024 - 30 MAY 2024	APPASIA	MR TOH HONG CHYE [DIR/CEO]	486	303,720	27.091
30 MAY 2024 - 30 MAY 2024	APPASIA	MR TOH HONG CHYE [SSH]	486	303,720	27.091
29 MAY 2024 - 29 MAY 2024	APPASIA	MR TOH HONG CHYE [DIR/CEO]	162	303,234	27.072
29 MAY 2024 - 29 MAY 2024	APPASIA	MR TOH HONG CHYE [SSH]	162	303,234	27.072
28 MAY 2024 - 28 MAY 2024	APPASIA	MR TOH HONG CHYE [DIR/CEO]	731	303,072	27.057
28 MAY 2024 - 28 MAY 2024	APPASIA	MR TOH HONG CHYE [SSH]	731	303,072	27.057
27 MAY 2024 - 27 MAY 2024	APPASIA	MR TOH HONG CHYE [DIR/CEO]	74	302,341	26.992
27 MAY 2024 - 27 MAY 2024	APPASIA	MR TOH HONG CHYE [SSH]	74	302,341	26.992
29 MAY 2024 - 29 MAY 2024	APPASIA-WA	MR TOH HONG CHYE [DIR/CEO]	314	1,314	0.513
28 MAY 2024 - 28 MAY 2024	APPASIA-WA	MR TOH HONG CHYE [DIR/CEO]	1,000	1,000	0.391
27 MAY 2024 - 27 MAY 2024	AXIATA	EMPLOYEES PROVIDENT FUND BOARD [SSH]	1,331	1,648,752	17.957
24 MAY 2024 - 24 MAY 2024	AXIATA	EMPLOYEES PROVIDENT FUND BOARD [SSH]	1,820	1,647,421	17.942
23 MAY 2024 - 23 MAY 2024	AXIATA	EMPLOYEES PROVIDENT FUND BOARD [SSH]	656	1,645,601	17.922
21 MAY 2024 - 21 MAY 2024	AXIATA	EMPLOYEES PROVIDENT FUND BOARD [SSH]	1,144	1,644,945	17.915
28 MAY 2024 - 28 MAY 2024	AXREIT	EMPLOYEES PROVIDENT FUND BOARD [SSH]	450	303,249	17.353
27 MAY 2024 - 27 MAY 2024	AXREIT	EMPLOYEES PROVIDENT FUND BOARD [SSH]	488	302,799	17.328
24 MAY 2024 - 24 MAY 2024	AXREIT	EMPLOYEES PROVIDENT FUND BOARD [SSH]	360	302,310	17.3
21 MAY 2024 - 21 MAY 2024	AXREIT	EMPLOYEES PROVIDENT FUND BOARD [SSH]	3,136	301,950	17.279
28 MAY 2024 - 28 MAY 2024	BAUTO	EMPLOYEES PROVIDENT FUND BOARD [SSH]	3,690	149,819	12.83
27 MAY 2024 - 27 MAY 2024	BAUTO	EMPLOYEES PROVIDENT FUND BOARD [SSH]	139	146,110	12.513
24 MAY 2024 - 24 MAY 2024	BAUTO	EMPLOYEES PROVIDENT FUND BOARD [SSH]	1,115	145,969	12.502
23 MAY 2024 - 23 MAY 2024	BAUTO	EMPLOYEES PROVIDENT FUND BOARD [SSH]	-679	144,855	12.406
21 MAY 2024 - 21 MAY 2024	BAUTO	EMPLOYEES PROVIDENT FUND BOARD [SSH]	-62	145,534	12.464
28 MAY 2024 - 28 MAY 2024	BIMB	EMPLOYEES PROVIDENT FUND BOARD [SSH]	4	390,580	17.233
27 MAY 2024 - 27 MAY 2024	BIMB	EMPLOYEES PROVIDENT FUND BOARD [SSH]	-73	390,577	17.233
24 MAY 2024 - 24 MAY 2024	BIMB	EMPLOYEES PROVIDENT FUND BOARD [SSH]	-265	390,650	17.236
23 MAY 2024 - 23 MAY 2024	BIMB	EMPLOYEES PROVIDENT FUND BOARD [SSH]	1,143	390,915	17.248
21 MAY 2024 - 21 MAY 2024	BIMB	EMPLOYEES PROVIDENT FUND BOARD [SSH]	197	389,772	17.197
29 MAY 2024 - 30 MAY 2024	BJCORP	TAN SRI DATO' SERI VINCENT TAN CHEE YOUNG [SSH]	2,802	945,601	16.19
28 MAY 2024 - 28 MAY 2024	BURSA	EMPLOYEES PROVIDENT FUND BOARD [SSH]	1,000	89,100	11.01
28 MAY 2024 - 28 MAY 2024	BURSA	EMPLOYEES PROVIDENT FUND BOARD [SSH]	-252	88,849	10.978
27 MAY 2024 - 27 MAY 2024	BURSA	EMPLOYEES PROVIDENT FUND BOARD [SSH]	878	88,556	10.942
27 MAY 2024 - 27 MAY 2024	BURSA	EMPLOYEES PROVIDENT FUND BOARD [SSH]	-456	88,100	10.886
24 MAY 2024 - 24 MAY 2024	BURSA	EMPLOYEES PROVIDENT FUND BOARD [SSH]	1,076	87,678	10.834
24 MAY 2024 - 24 MAY 2024	BURSA	EMPLOYEES PROVIDENT FUND BOARD [SSH]	-2,399	86,603	10.701
23 MAY 2024 - 23 MAY 2024	BURSA	EMPLOYEES PROVIDENT FUND BOARD [SSH]	-2,965	89,002	10.997
21 MAY 2024 - 21 MAY 2024	BURSA	EMPLOYEES PROVIDENT FUND BOARD [SSH]	250	91,967	11.364
21 MAY 2024 - 21 MAY 2024	BURSA	EMPLOYEES PROVIDENT FUND BOARD [SSH]	-451	91,717	11.333
28 MAY 2024 - 28 MAY 2024	CHINHIN	DATUK SERI CHIAU BENG TEIK JP [DIR/CEO]	5,115	2,060,177	58.217
28 MAY 2024 - 28 MAY 2024	CHINHIN	DATUK SERI CHIAU BENG TEIK JP [SSH]	5,115	2,060,177	58.217
28 MAY 2024 - 28 MAY 2024	CHINHIN	DIVINE INVENTIONS SDN BHD [SSH]	5,115	1,342,911	37.948
28 MAY 2024 - 28 MAY 2024	CHINHIN	MR CHIAU HAW CHOON [DIR/CEO]	5,115	1,546,479	43.7
28 MAY 2024 - 28 MAY 2024	CHINHIN	MR CHIAU HAW CHOON [SSH]	5,115	1,546,479	43.7
28 MAY 2024 - 28 MAY 2024	CHINHIN	PP CHIN HIN REALTY SDN BHD [SSH]	5,115	1,342,911	37.948
27 MAY 2024 - 27 MAY 2024	CHINHIN	DATUK SERI CHIAU BENG TEIK JP [DIR/CEO]	3,784	2,055,062	58.072
27 MAY 2024 - 27 MAY 2024	CHINHIN	DATUK SERI CHIAU BENG TEIK JP [SSH]	3,784	2,055,062	58.072
27 MAY 2024 - 27 MAY 2024	CHINHIN	DIVINE INVENTIONS SDN BHD [SSH]	3,784	1,337,796	37.803
27 MAY 2024 - 27 MAY 2024	CHINHIN	MR CHIAU HAW CHOON [DIR/CEO]	3,784	1,541,364	43.555
27 MAY 2024 - 27 MAY 2024	CHINHIN	MR CHIAU HAW CHOON [SSH]	3,784	1,541,364	43.555
27 MAY 2024 - 27 MAY 2024	CHINHIN	PP CHIN HIN REALTY SDN BHD [SSH]	3,784	1,337,796	37.803

Notice Period is 26th May 2024 – 1st June 2024

Effective Change Date	Stock Name	Buyer/ Seller Name [Classification]	Bought / (Sold) ['000]	No. of Shares After Trade ['000]	
			Total	Total	% Held
29 MAY 2024 - 29 MAY 2024	CIMB	KUMPULAN WANG PERSARAAN (DIPERBADANKAN) [SSH]	-604	668,860	6.27
28 MAY 2024 - 28 MAY 2024	CIMB	KUMPULAN WANG PERSARAAN (DIPERBADANKAN) [SSH]	-1,106	669,464	6.27
27 MAY 2024 - 27 MAY 2024	CIMB	EMPLOYEES PROVIDENT FUND BOARD [SSH]	1,256	1,613,695	15.11
24 MAY 2024 - 24 MAY 2024	CIMB	EMPLOYEES PROVIDENT FUND BOARD [SSH]	11,499	1,612,438	15.1
24 MAY 2024 - 24 MAY 2024	CIMB	KUMPULAN WANG PERSARAAN (DIPERBADANKAN) [SSH]	-1,146	670,570	6.28
23 MAY 2024 - 23 MAY 2024	CIMB	EMPLOYEES PROVIDENT FUND BOARD [SSH]	-2,558	1,600,939	14.99
21 MAY 2024 - 21 MAY 2024	CIMB	EMPLOYEES PROVIDENT FUND BOARD [SSH]	7,668	1,603,498	15.01
28 MAY 2024 - 28 MAY 2024	CLMT	EMPLOYEES PROVIDENT FUND BOARD [SSH]	865	428,247	15.11
27 MAY 2024 - 27 MAY 2024	CLMT	EMPLOYEES PROVIDENT FUND BOARD [SSH]	600	427,382	15.079
24 MAY 2024 - 24 MAY 2024	CLMT	EMPLOYEES PROVIDENT FUND BOARD [SSH]	150	426,782	15.058
23 MAY 2024 - 23 MAY 2024	CLMT	EMPLOYEES PROVIDENT FUND BOARD [SSH]	90	426,632	15.053
21 MAY 2024 - 21 MAY 2024	CLMT	EMPLOYEES PROVIDENT FUND BOARD [SSH]	200	426,542	15.049
30 MAY 2024 - 30 MAY 2024	CMSB	LEMBAGA TABUNG HAJI [SSH]	-200	73,480	6.841
29 MAY 2024 - 29 MAY 2024	CMSB	DATO SRI MAHMUD ABU BEKIR TAIB [DIR/CEO]	-1,000	4,407	0.41
29 MAY 2024 - 29 MAY 2024	CMSB	LEMBAGA TABUNG HAJI [SSH]	-250	73,680	6.859
28 MAY 2024 - 28 MAY 2024	CMSB	LEMBAGA TABUNG HAJI [SSH]	-400	73,930	6.882
27 MAY 2024 - 27 MAY 2024	CMSB	LEMBAGA TABUNG HAJI [SSH]	-300	74,330	6.92
24 MAY 2024 - 24 MAY 2024	CMSB	LEMBAGA TABUNG HAJI [SSH]	-300	74,630	6.948
29 MAY 2024 - 29 MAY 2024	CTOS	ABRDN HOLDINGS LIMITED [SSH]	1,250	272,830	11.811
29 MAY 2024 - 29 MAY 2024	CTOS	ABRDN MALAYSIA SDN BHD [SSH]	1,250	270,495	11.71
29 MAY 2024 - 29 MAY 2024	CTOS	ABRDN PLC [SSH]	1,250	272,830	11.811
28 MAY 2024 - 28 MAY 2024	CTOS	EMPLOYEES PROVIDENT FUND BOARD [SSH]	1,047	341,641	14.79
28 MAY 2024 - 28 MAY 2024	CTOS	ABRDN HOLDINGS LIMITED [SSH]	1,235	271,580	11.757
28 MAY 2024 - 28 MAY 2024	CTOS	ABRDN MALAYSIA SDN BHD [SSH]	1,235	269,245	11.656
28 MAY 2024 - 28 MAY 2024	CTOS	ABRDN PLC [SSH]	1,235	271,580	11.757
27 MAY 2024 - 27 MAY 2024	CTOS	EMPLOYEES PROVIDENT FUND BOARD [SSH]	354	340,594	14.744
28 MAY 2024 - 28 MAY 2024	CTOS	KUMPULAN WANG PERSARAAN (DIPERBADANKAN) [SSH]	188	160,757	6.959
27 MAY 2024 - 27 MAY 2024	CTOS	ABRDN HOLDINGS LIMITED [SSH]	417	270,345	11.703
27 MAY 2024 - 27 MAY 2024	CTOS	ABRDN MALAYSIA SDN BHD [SSH]	417	268,010	11.602
27 MAY 2024 - 27 MAY 2024	CTOS	ABRDN PLC [SSH]	417	270,345	11.703
24 MAY 2024 - 24 MAY 2024	CTOS	EMPLOYEES PROVIDENT FUND BOARD [SSH]	9,401	340,241	14.729
27 MAY 2024 - 27 MAY 2024	CTOS	KUMPULAN WANG PERSARAAN (DIPERBADANKAN) [SSH]	64	160,569	6.951
24 MAY 2024 - 24 MAY 2024	CTOS	ABRDN HOLDINGS LIMITED [SSH]	11,092	269,928	11.685
24 MAY 2024 - 24 MAY 2024	CTOS	ABRDN MALAYSIA SDN BHD [SSH]	11,092	267,593	11.584
24 MAY 2024 - 24 MAY 2024	CTOS	ABRDN PLC [SSH]	11,092	269,928	11.685
23 MAY 2024 - 23 MAY 2024	CTOS	EMPLOYEES PROVIDENT FUND BOARD [SSH]	3,018	330,840	14.322
24 MAY 2024 - 24 MAY 2024	CTOS	KUMPULAN WANG PERSARAAN (DIPERBADANKAN) [SSH]	1,691	160,505	6.948
23 MAY 2024 - 23 MAY 2024	CTOS	ABRDN HOLDINGS LIMITED [SSH]	3,209	258,837	11.205
23 MAY 2024 - 23 MAY 2024	CTOS	ABRDN MALAYSIA SDN BHD [SSH]	3,209	256,502	11.104
23 MAY 2024 - 23 MAY 2024	CTOS	ABRDN PLC [SSH]	3,209	258,837	11.205
21 MAY 2024 - 21 MAY 2024	CTOS	EMPLOYEES PROVIDENT FUND BOARD [SSH]	1,443	327,822	14.191
29 MAY 2024 - 29 MAY 2024	CYPARK	MR CHUNG CHEE YANG [SSH]	700	47,395	5.76
27 MAY 2024 - 27 MAY 2024	CYPARK	MR CHUNG CHEE YANG [SSH]	250	46,695	5.675
24 MAY 2024 - 24 MAY 2024	CYPARK	MOHAMED IZANI BIN MOHAMED JAKEL [SSH]	1,800	188,599	22.921
24 MAY 2024 - 24 MAY 2024	CYPARK	MOHAMED NIZAM BIN MOHAMED JAKEL [SSH]	1,800	190,840	23.194
28 MAY 2024 - 28 MAY 2024	D&O	EMPLOYEES PROVIDENT FUND BOARD [SSH]	1,743	89,577	7.233
27 MAY 2024 - 27 MAY 2024	D&O	EMPLOYEES PROVIDENT FUND BOARD [SSH]	287	87,834	7.093
28 MAY 2024 - 28 MAY 2024	D&O	MR TAY KHENG CHIONG [DIR/CEO]	170	24,507	1.979
21 MAY 2024 - 21 MAY 2024	D&O	EMPLOYEES PROVIDENT FUND BOARD [SSH]	481	87,547	7.07
28 MAY 2024 - 31 MAY 2024	DHCARE	DC HEALTHCARE GROUP SDN. BERHAD [SSH]	-75,873	545,665	54.769
28 MAY 2024 - 31 MAY 2024	DHCARE	DR CHONG TZE SHENG [DIR/CEO]	-75,873	622,854	62.517
28 MAY 2024 - 31 MAY 2024	DHCARE	DR CHONG TZE SHENG [SSH]	-75,873	622,854	62.517
28 MAY 2024 - 31 MAY 2024	DHCARE	DR LAI NGAN CHEE [DIR/CEO]	-75,873	622,854	62.516
28 MAY 2024 - 31 MAY 2024	DHCARE	DR LAI NGAN CHEE [SSH]	-75,873	622,854	62.516
30 MAY 2024 - 30 MAY 2024	DIALOG	KUMPULAN WANG PERSARAAN (DIPERBADANKAN) [SSH]	-490	618,583	10.96
27 MAY 2024 - 27 MAY 2024	DIALOG	EMPLOYEES PROVIDENT FUND BOARD [SSH]	3,310	906,548	16.07
28 MAY 2024 - 28 MAY 2024	DIALOG	KUMPULAN WANG PERSARAAN (DIPERBADANKAN) [SSH]	-500	619,073	10.97
24 MAY 2024 - 24 MAY 2024	DIALOG	EMPLOYEES PROVIDENT FUND BOARD [SSH]	2,546	903,237	16.01
27 MAY 2024 - 27 MAY 2024	DIALOG	KUMPULAN WANG PERSARAAN (DIPERBADANKAN) [SSH]	-1,000	619,573	10.98
23 MAY 2024 - 23 MAY 2024	DIALOG	EMPLOYEES PROVIDENT FUND BOARD [SSH]	2,200	900,691	15.96
24 MAY 2024 - 24 MAY 2024	DIALOG	KUMPULAN WANG PERSARAAN (DIPERBADANKAN) [SSH]	276	620,573	10.99
21 MAY 2024 - 21 MAY 2024	DIALOG	EMPLOYEES PROVIDENT FUND BOARD [SSH]	631	898,491	15.92
28 MAY 2024 - 28 MAY 2024	DRBHCORP	EMPLOYEES PROVIDENT FUND BOARD [SSH]	755	161,939	8.377
27 MAY 2024 - 27 MAY 2024	DRBHCORP	EMPLOYEES PROVIDENT FUND BOARD [SSH]	-842	161,184	8.338
24 MAY 202					

Notice Period is 26th May 2024 – 1st June 2024

Effective Change Date	Stock Name	Buyer/ Seller Name [Classification]	Bought / (Sold) ('000)		No. of Shares After Trade ('000)	
			Total	Total	% Held	
27 MAY 2024 - 27 MAY 2024	ECONBHD	EMPLOYEES PROVIDENT FUND BOARD [SSH]	-903	103,955	7.334	
23 MAY 2024 - 23 MAY 2024	ECONBHD	EMPLOYEES PROVIDENT FUND BOARD [SSH]	-500	104,857	7.397	
21 MAY 2024 - 21 MAY 2024	ECONBHD	EMPLOYEES PROVIDENT FUND BOARD [SSH]	-1,000	105,357	7.433	
28 MAY 2024 - 28 MAY 2024	EDUSPEC	SEM GLOBAL SDN BHD [SSH]	20,000	95,764	8.154	
28 MAY 2024 - 29 MAY 2024	EITA	MR CHIA MAK HOOI [DIR/CEO]	159	750	0.249	
24 MAY 2024 - 27 MAY 2024	ENGTEX	MR NG CHOOI GUAN [DIR/CEO]	350	19,906	4.51	
24 MAY 2024 - 27 MAY 2024	ENGTEX-WB	MR NG CHOOI GUAN [DIR/CEO]	-923	4,347	3.984	
24 MAY 2024 - 24 MAY 2024	EUROSP	DATO' SRI TAN HAN CHUAN [SSH]	23,507	29,827	67.144	
28 MAY 2024 - 28 MAY 2024	F&N	EMPLOYEES PROVIDENT FUND BOARD [SSH]	-94	41,086	11.202	
27 MAY 2024 - 27 MAY 2024	F&N	EMPLOYEES PROVIDENT FUND BOARD [SSH]	21	41,180	11.227	
24 MAY 2024 - 24 MAY 2024	F&N	EMPLOYEES PROVIDENT FUND BOARD [SSH]	-24	41,159	11.222	
23 MAY 2024 - 23 MAY 2024	F&N	EMPLOYEES PROVIDENT FUND BOARD [SSH]	-24	41,183	11.228	
21 MAY 2024 - 21 MAY 2024	F&N	EMPLOYEES PROVIDENT FUND BOARD [SSH]	-56	41,207	11.235	
29 MAY 2024 - 29 MAY 2024	FFB	FARMCHOICE FOODS SDN. BHD. [SSH]	-13,106	209,013	11.163	
29 MAY 2024 - 29 MAY 2024	FFB	LOI FOON KION [DIR/CEO]	-26,889	546,795	29.203	
29 MAY 2024 - 29 MAY 2024	FFB	LOI FOON KION [SSH]	-26,889	546,795	29.203	
29 MAY 2024 - 29 MAY 2024	FFB	LOI TUAN EE [SSH]	-46,810	753,136	40.223	
29 MAY 2024 - 29 MAY 2024	FFB	MR LOI TUAN EE [DIR/CEO]	-46,810	753,136	40.223	
29 MAY 2024 - 29 MAY 2024	FFB	RAINFOREST CAPITAL SDN. BHD. [SSH]	-26,889	544,123	29.06	
21 MAY 2024 - 21 MAY 2024	FFB	EMPLOYEES PROVIDENT FUND BOARD [SSH]	332	162,947	8.703	
29 MAY 2024 - 29 MAY 2024	FOCUSP	PERBADANAN NASIONAL BERHAD [SSH]	-1,009	51,313	11.107	
28 MAY 2024 - 28 MAY 2024	FOCUSP	PERBADANAN NASIONAL BERHAD [SSH]	-7,551	52,322	11.325	
27 MAY 2024 - 27 MAY 2024	FOCUSP	PERBADANAN NASIONAL BERHAD [SSH]	-2,000	59,873	12.96	
28 MAY 2024 - 28 MAY 2024	FRONTKN	EMPLOYEES PROVIDENT FUND BOARD [SSH]	1,549	166,458	10.583	
27 MAY 2024 - 27 MAY 2024	FRONTKN	EMPLOYEES PROVIDENT FUND BOARD [SSH]	1,996	164,909	10.484	
24 MAY 2024 - 24 MAY 2024	FRONTKN	EMPLOYEES PROVIDENT FUND BOARD [SSH]	613	162,913	10.357	
23 MAY 2024 - 23 MAY 2024	FRONTKN	EMPLOYEES PROVIDENT FUND BOARD [SSH]	-390	162,300	10.319	
21 MAY 2024 - 21 MAY 2024	FRONTKN	EMPLOYEES PROVIDENT FUND BOARD [SSH]	34	162,691	10.343	
28 MAY 2024 - 28 MAY 2024	GAMUDA	EMPLOYEES PROVIDENT FUND BOARD (EPF BOARD) [SSH]	1,322	255,893	9.24	
27 MAY 2024 - 27 MAY 2024	GAMUDA	EMPLOYEES PROVIDENT FUND BOARD (EPF BOARD) [SSH]	1,000	254,571	9.19	
24 MAY 2024 - 24 MAY 2024	GAMUDA	EMPLOYEES PROVIDENT FUND BOARD (EPF BOARD) [SSH]	-2,298	253,571	9.15	
23 MAY 2024 - 23 MAY 2024	GAMUDA	EMPLOYEES PROVIDENT FUND BOARD (EPF BOARD) [SSH]	-376	255,869	9.24	
21 MAY 2024 - 21 MAY 2024	GAMUDA	EMPLOYEES PROVIDENT FUND BOARD (EPF BOARD) [SSH]	-1,113	256,246	9.25	
28 MAY 2024 - 28 MAY 2024	GASMSIA	EMPLOYEES PROVIDENT FUND BOARD [SSH]	-177	69,514	5.413	
24 MAY 2024 - 24 MAY 2024	GASMSIA	EMPLOYEES PROVIDENT FUND BOARD [SSH]	-200	69,691	5.427	
23 MAY 2024 - 23 MAY 2024	GASMSIA	EMPLOYEES PROVIDENT FUND BOARD [SSH]	-31	69,891	5.443	
28 MAY 2024 - 28 MAY 2024	GENETEC	EMPLOYEES PROVIDENT FUND BOARD [SSH]	1,500	54,392	7.003	
28 MAY 2024 - 28 MAY 2024	GLOMAC	SHAPADU CAPITAL SDN. BHD. [SSH]	30	89,140	11.614	
28 MAY 2024 - 29 MAY 2024	GREATEC	DATO' SERI TAN ENG KEE [DIR/CEO]	-29,000	729,337	58.152	
28 MAY 2024 - 29 MAY 2024	GREATEC	DATO' SERI TAN ENG KEE [SSH]	-29,000	729,337	58.152	
28 MAY 2024 - 29 MAY 2024	GREATEC	GTECH HOLDINGS SDN BHD [SSH]	-29,000	724,389	57.757	
27 MAY 2024 - 27 MAY 2024	GREATEC	DATO' SERI TAN ENG KEE [DIR/CEO]	-14,500	758,337	60.464	
27 MAY 2024 - 27 MAY 2024	GREATEC	DATO' SERI TAN ENG KEE [SSH]	-14,500	758,337	60.464	
27 MAY 2024 - 27 MAY 2024	GREATEC	GTECH HOLDINGS SDN BHD [SSH]	-14,500	753,389	60.069	
24 MAY 2024 - 24 MAY 2024	GREATEC	PUAN MARIAMAH BINTI DAUD [DIR/CEO]	-40	675	0.054	
29 MAY 2024 - 29 MAY 2024	GUH	DATUK SERI KENNETH HNG BAK TEE [DIR/CEO]	489	7,460	2.645	
29 MAY 2024 - 29 MAY 2024	HEXIND	MR SHAM WENG KONG [DIR/CEO]	300	1,300	0.047	
29 MAY 2024 - 30 MAY 2024	HHRG	MR CHNG CHEN MONG [SSH]	-1,027	161,441	18.595	
28 MAY 2024 - 28 MAY 2024	HHRG	MR CHNG CHEN MONG [SSH]	-3,500	162,468	18.713	
27 MAY 2024 - 29 MAY 2024	HHRG	MR GOH BOON LEONG [SSH]	-70,000	191,764	22.087	
28 MAY 2024 - 28 MAY 2024	HHRG	DATO' HNG CHOO SENG [DIR/CEO]	-8,230	120,267	13.852	
28 MAY 2024 - 28 MAY 2024	HHRG	DATO' HNG CHOO SENG [SSH]	-8,230	120,267	13.852	
27 MAY 2024 - 27 MAY 2024	HHRG	DATO' HNG CHOO SENG [DIR/CEO]	-13,000	128,497	14.8	
27 MAY 2024 - 27 MAY 2024	HHRG	DATO' HNG CHOO SENG [SSH]	-13,000	128,497	14.8	
28 MAY 2024 - 28 MAY 2024	HHRG-WA	DATO' HNG CHOO SENG [DIR/CEO]	-1,160	1,329	1.827	
21 MAY 2024 - 21 MAY 2024	HLBANK	EMPLOYEES PROVIDENT FUND BOARD [SSH]	778	202,910	9.724	
28 MAY 2024 - 28 MAY 2024	IFCAMSC	MR ENG KIM HAW [DIR/CEO]	52	87	0.014	
24 MAY 2024 - 24 MAY 2024	IFCAMSC	MR ENG KIM HAW [DIR/CEO]	35	35	0.005	
29 MAY 2024 - 29 MAY 2024	IGBB	HSBC ASIA HOLDINGS LIMITED (HAHO) [SSH]	-56	97,737	7.282	
29 MAY 2024 - 29 MAY 2024	IGBB	HSBC HOLDINGS PLC (HGHO) [SSH]	-56	97,737	7.282	
29 MAY 2024 - 29 MAY 2024	IGBB	HSBC INTERNATIONAL TRUSTEE (HOLDINGS) PTE. LTD. (HTHL) [SSH]	-56	97,737	7.282	
29 MAY 2024 - 29 MAY 2024	IGBB	HSBC INTERNATIONAL TRUSTEE LIMITED (HKIT) [SSH]	-56	97,737	7.282	
29 MAY 2024 - 29 MAY 2024	IGBB	THE HONGKONG AND SHANGHAI BANKING CORPORATION LIMITED (HBAP) [SSH]	-56	97,737	7.282	
23 MAY 2024 - 23 MAY 2024	IGBB	HSBC ASIA HOLDINGS LIMITED (HAHO) [SSH]	-613	97,793	7.286	
23 MAY 2024 - 23 MAY 2024	IGBB	HSBC HOLDINGS PLC (HGHO) [SSH]	-613	97,793	7.286	
23 MAY 2024 - 23 MAY 2024	IGBB	HSBC INTERNATIONAL TRUSTEE (HOLDINGS) PTE. LTD. (HTHL) [SSH]	-613	97,793	7.286	
23 MAY 2024 - 23 MAY 2024	IGBB	HSBC INTERNATIONAL TRUSTEE LIMITED (HKIT) [SSH]	-613	97,793	7.286	
23 MAY 2024 - 23 MAY 2024	IGBB	THE HONGKONG AND SHANGHAI BANKING CORPORATION LIMITED (HBAP) [SSH]	-613	97,793	7.286	
28 MAY 2024 - 28 MAY 2024	IGBREIT	EMPLOYEES PROVIDENT FUND BOARD ("EPF BOARD") [SSH]	-600	412,333	11.424	
27 MAY 2024 - 27 MAY 2024	IGBREIT	EMPLOYEES PROVIDENT FUND BOARD ("EPF BOARD") [SSH]	-146	412,933	11.441	
24 MAY 2024 - 24 MAY 2024	IGBREIT	EMPLOYEES PROVIDENT FUND BOARD ("EPF BOARD") [SSH]	-226	413,078	11.445	
23 MAY 2024 - 23 MAY 2024	IGBREIT	EMPLOYEES PROVIDENT FUND BOARD ("EPF BOARD") [SSH]	-656	413,304	11.451	
21 MAY 2024 - 21 MAY 2024	IGBREIT	EMPLOYEES PROVIDENT FUND BOARD ("EPF BOARD") [SSH]	-529	413,960	11.469	
28 MAY 2024 - 28 MAY 2024	IHH	EMPLOYEES PROVIDENT FUND BOARD [SSH]	1,609	981,685	11.147	
27 MAY 2024 - 27 MAY 2024	IHH	EMPLOYEES PROVIDENT FUND BOARD [SSH]	3,052	980,076	11.128	
24 MAY 2024 - 24 MAY 2024	IHH	EMPLOYEES PROVIDENT FUND BOARD [SSH]	2,827	977,024	11.094	
23 MAY 2024 - 23 MAY 2024	IHH	EMPLOYEES PROVIDENT FUND BOARD [SSH]	2,612	974,198	11.062	
21 MAY 2024 - 21 MAY 2024	IHH	EMPLOYEES PROVIDENT FUND BOARD [SSH]	3,162	971,586	11.032	
28 MAY 2024 - 28 MAY 2024	IJM	EMPLOYEES PROVIDENT FUND BOARD [SSH]	22	621,978	17.74	
27 MAY 2024 - 27 MAY 2024	IJM	EMPLOYEES PROVIDENT FUND BOARD [SSH]	1,620	621,957	17.739	
28 MAY 2024 - 28 MAY 2024	IJM	KUMPULAN WANG PERSARAAN (DIPERBADANKAN) [SSH]	1,013	347,734	9.918	
24 MAY 2024 - 24 MAY 2024	IJM	EMPLOYEES PROVIDENT FUND BOARD [SSH]	4,782	620,336	17.693	
27 MAY 2024 - 27 MAY 2024	IJM	KUMPULAN WANG PERSARAAN (DIPERBADANKAN) [SSH]	906	346,721	9.889	
23 MAY 2024 - 23 MAY 2024	IJM	EMPLOYEES PROVIDENT FUND BOARD [SSH]	2,832	615,304	17.549	
24 MAY 2024 - 24 MAY 2024	IJM	KUMPULAN WANG PERSARAAN (DIPERBADANKAN) [SSH]	-1,936	345,816	9.863	
21 MAY 2024 - 21 MAY 2024	IJM	EMPLOYEES PROVIDENT FUND BOARD [SSH]	2,504	612,472	17.468	
30 MAY 2024 - 30 MAY 2024	INARI	KUMPULAN WANG PERSARAAN (DIPERBADANKAN) [SSH]	332	357,923	9.508	
28 MAY 2024 - 28 MAY 2024	INARI	EMPLOYEES PROVIDENT FUND BOARD [SSH]	-1,676	396,128	10.523	
29 MAY 2024 - 29 MAY 2024	INARI	KUMPULAN WANG PERSARAAN (DIPERBADANKAN) [SSH]	405	357,591	9.499	

Notice Period is 26th May 2024 – 1st June 2024

Effective Change Date	Stock Name	Buyer/ Seller Name [Classification]	Bought / (Sold) ('000)		No. of Shares After Trade ('000)	
			Total	Total	% Held	
27 MAY 2024 - 27 MAY 2024	INARI	EMPLOYEES PROVIDENT FUND BOARD [SSH]	5,059	397,804	10.568	
28 MAY 2024 - 28 MAY 2024	INARI	KUMPULAN WANG PERSARAAN (DIPERBADANKAN) [SSH]	463	357,186	9.49	
27 MAY 2024 - 28 MAY 2024	INARI	DATO' DR TAN SENG CHUAN [DIR/CEO]	-500	1,256	0.033	
24 MAY 2024 - 24 MAY 2024	INARI	EMPLOYEES PROVIDENT FUND BOARD [SSH]	1,880	392,745	10.435	
27 MAY 2024 - 27 MAY 2024	INARI	KUMPULAN WANG PERSARAAN (DIPERBADANKAN) [SSH]	-3,000	356,723	9.477	
23 MAY 2024 - 23 MAY 2024	INARI	EMPLOYEES PROVIDENT FUND BOARD [SSH]	-1,156	390,865	10.385	
24 MAY 2024 - 24 MAY 2024	INARI	KUMPULAN WANG PERSARAAN (DIPERBADANKAN) [SSH]	193	359,723	9.557	
21 MAY 2024 - 21 MAY 2024	INARI	EMPLOYEES PROVIDENT FUND BOARD [SSH]	2,794	392,021	10.416	
28 MAY 2024 - 28 MAY 2024	IOICORP	EMPLOYEES PROVIDENT FUND BOARD [SSH]	2,307	760,611	12.261	
29 MAY 2024 - 29 MAY 2024	IOICORP	DATO' LEE YEOW CHOR [DIR/CEO]	30	3,139,554	50.608	
27 MAY 2024 - 27 MAY 2024	IOICORP	EMPLOYEES PROVIDENT FUND BOARD [SSH]	1,646	758,232	12.222	
24 MAY 2024 - 24 MAY 2024	IOICORP	EMPLOYEES PROVIDENT FUND BOARD [SSH]	1,286	756,586	12.196	
23 MAY 2024 - 23 MAY 2024	IOICORP	EMPLOYEES PROVIDENT FUND BOARD [SSH]	896	755,300	12.175	
21 MAY 2024 - 23 MAY 2024	IOICORP	DATO' LEE YEOW CHOR [DIR/CEO]	40	3,139,524	50.607	
24 MAY 2024 - 24 MAY 2024	IOIPG	EMPLOYEES PROVIDENT FUND BOARD [SSH]	-45	357,090	6.485	
23 MAY 2024 - 23 MAY 2024	IOIPG	EMPLOYEES PROVIDENT FUND BOARD [SSH]	1,700	357,135	6.486	
21 MAY 2024 - 21 MAY 2024	IOIPG	EMPLOYEES PROVIDENT FUND BOARD [SSH]	770	353,035	6.412	
28 MAY 2024 - 28 MAY 2024	ITRONIC	BLUEMOUNT INVESTMENT FUND SPC [SSH]	-2,000	46,037	6.506	
27 MAY 2024 - 27 MAY 2024	KENERGY	DR CHUAH CHAW TEO [DIR/CEO]	75	75	0.01	
27 MAY 2024 - 27 MAY 2024	KENERGY	MISS HENG SIEW AUN [DIR/CEO]	6,160	11,000	2	
27 MAY 2024 - 27 MAY 2024	KENERGY	MISS LIEW LI PING [DIR/CEO]	75	75	0.01	
27 MAY 2024 - 27 MAY 2024	KENERGY	MISS NGOI EVON [DIR/CEO]	75	75	0.01	
27 MAY 2024 - 27 MAY 2024	KENERGY	MR CHONG HON CHOONG [DIR/CEO]	275	6,435	1.2	
27 MAY 2024 - 27 MAY 2024	KENERGY	MR LIM THOU LAI [DIR/CEO]	-34,500	387,900	70.5	
27 MAY 2024 - 27 MAY 2024	KENERGY	MR LIM THOU LAI [SSH]	-34,500	387,900	70.5	
27 MAY 2024 - 27 MAY 2024	KENERGY	MR LOH LENG SEM [DIR/CEO]	75	75	0.01	
28 MAY 2024 - 28 MAY 2024	KERJAYA	EMPLOYEES PROVIDENT FUND BOARD [SSH]	-804	63,944	5.071	
27 MAY 2024 - 27 MAY 2024	KERJAYA	EMPLOYEES PROVIDENT FUND BOARD [SSH]	15	64,738	5.134	
21 MAY 2024 - 21 MAY 2024	KERJAYA	EMPLOYEES PROVIDENT FUND BOARD [SSH]	52	64,723	5.132	
23 MAY 2024 - 23 MAY 2024	KEYASIC	DATUK MD ZUBIR ANSORI BIN YAHAYA [DIR/CEO]	4,000	4,000	2.289	
24 MAY 2024 - 28 MAY 2024	KGB	MR SOO YUIT WENG [DIR/CEO]	50	420	0.221	
27 MAY 2024 - 27 MAY 2024	KGB	MR SOO YUIT WENG [DIR/CEO]	200	370	0.194	
27 MAY 2024 - 27 MAY 2024	KGB	MR SOO YUIT WENG [DIR/CEO]	200	2,137	0.32	
27 MAY 2024 - 27 MAY 2024	KLCC	EMPLOYEES PROVIDENT FUND BOARD [SSH]	-32	190,940	10.576	
27 MAY 2024 - 27 MAY 2024	KLCC	EMPLOYEES PROVIDENT FUND BOARD [SSH]	-32	190,940	10.576	
24 MAY 2024 - 24 MAY 2024	KLCC	EMPLOYEES PROVIDENT FUND BOARD [SSH]	134	190,972	10.578	
24 MAY 2024 - 24 MAY 2024	KLCC	EMPLOYEES PROVIDENT FUND BOARD [SSH]	134	190,972	10.578	
23 MAY 2024 - 23 MAY 2024	KLCC	EMPLOYEES PROVIDENT FUND BOARD [SSH]	-221	190,837	10.571	
23 MAY 2024 - 23 MAY 2024	KLCC	EMPLOYEES PROVIDENT FUND BOARD [SSH]	-221	190,837	10.571	
21 MAY 2024 - 21 MAY 2024	KLCC	EMPLOYEES PROVIDENT FUND BOARD [SSH]	-33	191,059	10.583	
21 MAY 2024 - 21 MAY 2024	KLCC	EMPLOYEES PROVIDENT FUND BOARD [SSH]	-33	191,059	10.583	
28 MAY 2024 - 30 MAY 2024	KLK	ARUSHA ENTERPRISE SDN. BHD. [SSH]	48	525,149	47.897	
28 MAY 2024 - 30 MAY 2024	KLK	BATU KAWAN BERHAD [SSH]	48	525,149	47.897	
28 MAY 2024 - 30 MAY 2024	KLK	CUBIC CRYSTAL CORPORATION [SSH]	48	525,636	47.942	
28 MAY 2024 - 30 MAY 2024	KLK	DATO' LEE HAU HIAN [DIR/CEO]	48	525,723	47.95	
28 MAY 2024 - 30 MAY 2024	KLK	DATO' LEE HAU HIAN [SSH]	48	525,723	47.95	
28 MAY 2024 - 30 MAY 2024	KLK	DI-YI SDN. BHD. [SSH]	48	525,636	47.492	
28 MAY 2024 - 28 MAY 2024	KLK	EMPLOYEES PROVIDENT FUND BOARD [SSH]	985	150,937	13.766	
28 MAY 2024 - 30 MAY 2024	KLK	GRATEFUL BLESSINGS FOUNDATION [SSH]	48	525,636	47.942	
28 MAY 2024 - 30 MAY 2024	KLK	GRATEFUL BLESSINGS INC. [SSH]	48	525,636	47.942	
28 MAY 2024 - 30 MAY 2024	KLK	HIGH QUEST ANSTALT [SSH]	48	525,636	47.942	
28 MAY 2024 - 30 MAY 2024	KLK	HIGH QUEST HOLDINGS SDN BHD [SSH]	48	525,636	47.942	
28 MAY 2024 - 30 MAY 2024	KLK	TAN SRI DATO' SERI LEE OI HIAN [SSH]	48	525,920	47.968	
28 MAY 2024 - 30 MAY 2024	KLK	TAN SRI DATO' SERI LEE OI HIAN [DIR/CEO]	48	5		

Notice Period is 26th May 2024 – 1st June 2024

Effective Change Date	Stock Name	Buyer/ Seller Name [Classification]	Bought / (Sold) ('000)		No. of Shares After Trade ('000)	
			Total	Total	% Held	% Held
23 MAY 2024 - 23 MAY 2024	LTKM	DATIN LIM HOOI TIN [DIR/CEO]	11	101,924	71.219	
23 MAY 2024 - 23 MAY 2024	LTKM	DATIN LIM HOOI TIN [SSH]	11	101,924	71.219	
23 MAY 2024 - 23 MAY 2024	LTKM	DATUK TAN KOK [DIR/CEO]	11	104,782	73.216	
23 MAY 2024 - 23 MAY 2024	LTKM	DATUK TAN KOK [SSH]	11	104,782	73.216	
23 MAY 2024 - 23 MAY 2024	LTKM	MISS TAN CHEE HUEY [DIR/CEO]	11	4,397	3.072	
30 MAY 2024 - 30 MAY 2024	M&A	CIK SITI NUR AISHAH BINTI ISHAK [SSH]	-700	107,944	5.401	
30 MAY 2024 - 30 MAY 2024	MAGNI	MR TAN POAY SENG [DIR/CEO]	160	125,548	28.96	
27 MAY 2024 - 27 MAY 2024	MAGNI	MR TAN POAY SENG [DIR/CEO]	300	125,388	28.93	
28 MAY 2024 - 28 MAY 2024	MALAKOF	EMPLOYEES PROVIDENT FUND BOARD [SSH]	-300	487,786	9.981	
27 MAY 2024 - 27 MAY 2024	MALAKOF	EMPLOYEES PROVIDENT FUND BOARD [SSH]	-232	488,086	9.987	
24 MAY 2024 - 24 MAY 2024	MATRIX	LEMBAGA TABUNG HAJI [SSH]	-500	69,798	5.578	
30 MAY 2024 - 30 MAY 2024	MAXIM	TAN SRI DATUK SERI GAN SEONG LIAM [DIR/CEO]	655	188,025	25.581	
30 MAY 2024 - 30 MAY 2024	MAXIM	TAN SRI DATUK SERI GAN SEONG LIAM [SSH]	655	188,025	25.581	
27 MAY 2024 - 27 MAY 2024	MAXIM	TAN SRI DATUK SERI GAN SEONG LIAM [DIR/CEO]	-57,500	187,370	25.492	
27 MAY 2024 - 27 MAY 2024	MAXIM	TAN SRI DATUK SERI GAN SEONG LIAM [SSH]	-57,500	187,370	25.492	
24 MAY 2024 - 24 MAY 2024	MAXIM	TAN SRI DATUK SERI GAN SEONG LIAM [DIR/CEO]	600	186,870	25.423	
24 MAY 2024 - 24 MAY 2024	MAXIM	TAN SRI DATUK SERI GAN SEONG LIAM [SSH]	600	186,870	25.423	
28 MAY 2024 - 28 MAY 2024	MAXIS	EMPLOYEES PROVIDENT FUND BOARD (EPF BOARD) [SSH]	1,540	890,547	11.37	
27 MAY 2024 - 27 MAY 2024	MAXIS	EMPLOYEES PROVIDENT FUND BOARD (EPF BOARD) [SSH]	449	889,007	11.351	
24 MAY 2024 - 24 MAY 2024	MAXIS	EMPLOYEES PROVIDENT FUND BOARD (EPF BOARD) [SSH]	895	888,558	11.345	
23 MAY 2024 - 23 MAY 2024	MAXIS	EMPLOYEES PROVIDENT FUND BOARD (EPF BOARD) [SSH]	1,000	887,663	11.334	
21 MAY 2024 - 21 MAY 2024	MAXIS	EMPLOYEES PROVIDENT FUND BOARD (EPF BOARD) [SSH]	1,500	886,663	11.321	
29 MAY 2024 - 29 MAY 2024	MAYBANK	AMANAHRAYA TRUSTEES BERHAD - AMANAH SAHAM BUMIPUTERA [SSH]	2,790	3,735,683	30.958	
28 MAY 2024 - 29 MAY 2024	MAYBANK	EMPLOYEES PROVIDENT FUND BOARD [SSH]	2,387	1,563,038	12.953	
28 MAY 2024 - 28 MAY 2024	MAYBANK	AMANAHRAYA TRUSTEES BERHAD - AMANAH SAHAM BUMIPUTERA [SSH]	3,710	3,732,893	30.935	
27 MAY 2024 - 27 MAY 2024	MAYBANK	EMPLOYEES PROVIDENT FUND BOARD [SSH]	1,696	1,560,650	12.933	
24 MAY 2024 - 24 MAY 2024	MAYBANK	EMPLOYEES PROVIDENT FUND BOARD [SSH]	4,053	1,558,955	12.919	
23 MAY 2024 - 23 MAY 2024	MAYBANK	EMPLOYEES PROVIDENT FUND BOARD [SSH]	3,891	1,554,901	12.886	
23 MAY 2024 - 23 MAY 2024	MAYBANK	AMANAHRAYA TRUSTEES BERHAD - AMANAH SAHAM BUMIPUTERA [SSH]	25,000	3,729,183	30.904	
23 MAY 2024 - 23 MAY 2024	MAYBANK	PERMODALAN NASIONAL BERHAD [SSH]	-25,000	696,691	5.774	
23 MAY 2024 - 23 MAY 2024	MAYBANK	YAYASAN PELABURAN BUMIPUTRA [SSH]	-25,000	696,691	5.774	
21 MAY 2024 - 21 MAY 2024	MAYBANK	EMPLOYEES PROVIDENT FUND BOARD [SSH]	11,645	1,551,011	12.853	
30 MAY 2024 - 30 MAY 2024	MCEMENT	DATO' SERI YEOH SEOK HONG [DIR/CEO]	3,000	3,000	0.225	
30 MAY 2024 - 30 MAY 2024	MCEMENT	DATO' YEOH SOO KENG [DIR/CEO]	3,000	3,000	0.225	
29 MAY 2024 - 29 MAY 2024	MENANG	MR LEE MIN HUAT [DIR/CEO]	9,000	64,752	12.37	
29 MAY 2024 - 29 MAY 2024	MENANG	MR LEE MIN HUAT [SSH]	9,000	64,752	12.37	
29 MAY 2024 - 29 MAY 2024	MESTRON	MR POR TEONG ENG [DIR/CEO]	-2,000	129,487	12.938	
29 MAY 2024 - 29 MAY 2024	MESTRON	MR POR TEONG ENG [SSH]	-2,000	129,487	12.938	
23 MAY 2024 - 23 MAY 2024	MGB	TAN SRI DATO' SRI IR. (DR.) LIM HOCK SAN JP [DIR/CEO]	79	344,388	58.208	
23 MAY 2024 - 23 MAY 2024	MGB	TAN SRI DATO' SRI IR. (DR.) LIM HOCK SAN JP [SSH]	79	344,388	58.208	
28 MAY 2024 - 28 MAY 2024	MICROLN	MR MONTEIRO GERARD CLAIR [DIR/CEO]	-1,043	5,144	0.48	
27 MAY 2024 - 28 MAY 2024	MICROLN	OMESTI BERHAD [SSH]	-10,912	315,480	29.418	
27 MAY 2024 - 28 MAY 2024	MICROLN	OMESTI HOLDINGS BERHAD [SSH]	-10,912	315,480	29.418	
24 MAY 2024 - 24 MAY 2024	MICROLN	MR MONTEIRO GERARD CLAIR [DIR/CEO]	-3,000	6,187	0.577	
23 MAY 2024 - 24 MAY 2024	MICROLN	OMESTI BERHAD [SSH]	-9,279	326,392	30.436	
23 MAY 2024 - 24 MAY 2024	MICROLN	OMESTI HOLDINGS BERHAD [SSH]	-9,279	326,392	30.436	
28 MAY 2024 - 28 MAY 2024	MISC	EMPLOYEES PROVIDENT FUND BOARD [SSH]	1,537	526,828	11.802	
27 MAY 2024 - 27 MAY 2024	MISC	EMPLOYEES PROVIDENT FUND BOARD [SSH]	3,042	525,291	11.768	
28 MAY 2024 - 28 MAY 2024	MISC	KUMPULAN WANG PERSARAAN (DIPERBADANKAN) (KWAP) [SSH]	-412	236,423	5.297	
24 MAY 2024 - 24 MAY 2024	MISC	EMPLOYEES PROVIDENT FUND BOARD [SSH]	-1,153	522,249	11.7	
27 MAY 2024 - 27 MAY 2024	MISC	KUMPULAN WANG PERSARAAN (DIPERBADANKAN) (KWAP) [SSH]	-1,163	236,835	5.306	
23 MAY 2024 - 23 MAY 2024	MISC	EMPLOYEES PROVIDENT FUND BOARD [SSH]	1,377	523,402	11.726	
24 MAY 2024 - 24 MAY 2024	MISC	KUMPULAN WANG PERSARAAN (DIPERBADANKAN) (KWAP) [SSH]	-500	237,999	5.332	
21 MAY 2024 - 21 MAY 2024	MISC	EMPLOYEES PROVIDENT FUND BOARD [SSH]	-593	522,025	11.695	
29 MAY 2024 - 29 MAY 2024	MPI	MR MANUEL ZARAUZA BRANDULAS [DIR/CEO]	-1	411	0.206	
27 MAY 2024 - 28 MAY 2024	MPI	MR MANUEL ZARAUZA BRANDULAS [DIR/CEO]	-35	412	0.207	
30 MAY 2024 - 30 MAY 2024	MQTECH	MR TERENCE CHEAH EU LEE [DIR/CEO]	36,000	36,000	2.201	
28 MAY 2024 - 28 MAY 2024	MRDIY	EMPLOYEES PROVIDENT FUND BOARD [SSH]	1,521	596,835	6.316	
27 MAY 2024 - 27 MAY 2024	MRDIY	EMPLOYEES PROVIDENT FUND BOARD [SSH]	1,876	595,314	6.3	
23 MAY 2024 - 23 MAY 2024	MRDIY	EMPLOYEES PROVIDENT FUND BOARD [SSH]	3,848	593,437	6.28	
21 MAY 2024 - 21 MAY 2024	MRDIY	EMPLOYEES PROVIDENT FUND BOARD [SSH]	2,210	589,990	6.239	
24 MAY 2024 - 24 MAY 2024	MSM	AMANAHRAYA TRUSTEES BERHAD - AMANAH SAHAM BUMIPUTERA [SSH]	3,054	50,000	7.113	
30 MAY 2024 - 30 MAY 2024	MYEG	KUMPULAN WANG PERSARAAN (DIPERBADANKAN) [SSH]	-4,000	50,208	6.731	
29 MAY 2024 - 29 MAY 2024	MYEG	KUMPULAN WANG PERSARAAN (DIPERBADANKAN) [SSH]	1,003	50,608	6.785	
29 MAY 2024 - 29 MAY 2024	MYEG	ASIA INTERNET HOLDINGS SDN BHD [SSH]	368	1,221,582	16.377	
29 MAY 2024 - 29 MAY 2024	MYEG	MR WONG THEAN SOON [DIR/CEO]	368	215,397	28.877	
29 MAY 2024 - 29 MAY 2024	MYEG	MR WONG THEAN SOON [SSH]	368	215,397	28.877	
28 MAY 2024 - 28 MAY 2024	MYEG	KUMPULAN WANG PERSARAAN (DIPERBADANKAN) [SSH]	-3,335	50,508	6.772	
27 MAY 2024 - 27 MAY 2024	MYEG	KUMPULAN WANG PERSARAAN (DIPERBADANKAN) [SSH]	-10,000	50,847	6.817	
24 MAY 2024 - 24 MAY 2024	MYEG	KUMPULAN WANG PERSARAAN (DIPERBADANKAN) [SSH]	-10,272	51,847	6.951	
29 MAY 2024 - 29 MAY 2024	NCT	DATO' SRI YAP NGAN CHOY [DIR/CEO]	3,450	821,255	52.633	
29 MAY 2024 - 29 MAY 2024	NCT	DATO' SRI YAP NGAN CHOY [SSH]	3,450	821,255	52.633	
28 MAY 2024 - 28 MAY 2024	NESTLE	EMPLOYEES PROVIDENT FUND BOARD [SSH]	51	26,693	11.383	
27 MAY 2024 - 27 MAY 2024	NESTLE	EMPLOYEES PROVIDENT FUND BOARD [SSH]	33	26,642	11.361	
24 MAY 2024 - 24 MAY 2024	NESTLE	EMPLOYEES PROVIDENT FUND BOARD [SSH]	60	26,609	11.347	
23 MAY 2024 - 23 MAY 2024	NESTLE	EMPLOYEES PROVIDENT FUND BOARD [SSH]	43	26,549	11.322	
21 MAY 2024 - 21 MAY 2024	NESTLE	EMPLOYEES PROVIDENT FUND BOARD [SSH]	64	26,506	11.303	
24 MAY 2024 - 24 MAY 2024	NEXGRAM	RFC HOLDINGS SDN BHD [SSH]	-15,253	52,716	5.931	
27 MAY 2024 - 27 MAY 2024	NIHSIN	ENCIK SOFIYAN BIN YAHYA [DIR/CEO]	8	19,367	3.698	
31 MAY 2024 - 31 MAY 2024	NOTION	MR LEE TIAN YOKE [DIR/CEO]	150	19,279	3.736	
29 MAY 2024 - 29 MAY 2024	NOTION	MR CHOO WING YEW [DIR/CEO]	-3,750	9,900	1.918	
29 MAY 2024 - 29 MAY 2024	NOTION-WD	MR CHOO WING YEW [DIR/CEO]	-375	990	1.918	
28 MAY 2024 - 29 MAY 2024	NOTION-WD	MR CHOO WING HONG [DIR/CEO]	-830	2,887	5.595	
27 MAY 2024 - 28 MAY 2024	NOTION-WD	MR CHOO WING ONN [DIR/CEO]	-1,160	2,164	4.193	
27 MAY 2024 - 27 MAY 2024	NOVAMSC	MR LAI TEIK KIN [DIR/CEO]	3,000	7,623	0.615	
23 MAY 2024 - 23 MAY 2024	NOVAMSC	MR LOH GUAN HUAT SUNNY [DIR/CEO]	33,333	78,788	6.38	
23 MAY 2024 - 23 MAY 2024	NOVAMSC	MR LOH GUAN HUAT SUNNY [DIR/CEO]	33,333	50,789	55.093	
29 MAY 2024 - 29 MAY 2024	OMESTI	MR MONTEIRO GERARD CLAIR [DIR/CEO]	-1,500	76,343	14.12	
29 MAY 2024 - 29 MAY 2024	OMESTI	MR MONTEIRO GERARD CLAIR [SSH]	-1,500	76,343	14.12	

Notice Period is 26th May 2024 – 1st June 2024

Effective Change Date	Stock Name	Buyer/ Seller Name [Classification]	Bought / (Sold) ('000)		No. of Shares After Trade ('000)	
			Total	Total	% Held	% Held
28 MAY 2024 - 28 MAY 2024	OMESTI	MR MONTEIRO GERARD CLAIR [DIR/CEO]	-1,091	77,843	14.398	
28 MAY 2024 - 28 MAY 2024	OMESTI	MR MONTEIRO GERARD CLAIR [SSH]	-1,091	77,843	14.398	
27 MAY 2024 - 27 MAY 2024	OMESTI	MR MONTEIRO GERARD CLAIR [DIR/CEO]	-139	78,934	14.6	
27 MAY 2024 - 27 MAY 2024	OMESTI	MR MONTEIRO GERARD CLAIR [SSH]	-139	78,934	14.6	
28 MAY 2024 - 28 MAY 2024	PADINI	EMPLOYEES PROVIDENT FUND BOARD [SSH]	196	45,496	6.915	
27 MAY 2024 - 27 MAY 2024	PADINI	EMPLOYEES PROVIDENT FUND BOARD [SSH]	309	45,501	6.916	
24 MAY 2024 - 24 MAY 2024	PADINI	EMPLOYEES PROVIDENT FUND BOARD [SSH]	250	45,192	6.869	
21 MAY 2024 - 21 MAY 2024	PADINI	EMPLOYEES PROVIDENT FUND BOARD [SSH]	49	44,942	6.831	
28 MAY 2024 - 28 MAY 2024	PANAMY	EMPLOYEES PROVIDENT FUND BOARD [SSH]	-4	6,461	10.636	
27 MAY 2024 - 27 MAY 2024	PANAMY	EMPLOYEES PROVIDENT FUND BOARD [SSH]	-0.9	6,464	10.642	
23 MAY 2024 - 23 MAY 2024	PANAMY	EMPLOYEES PROVIDENT FUND BOARD [SSH]	-3	6,465	10.643	
23 MAY 2024 - 23 MAY 2024	PAVREIT	EMPLOYEES PROVIDENT FUND BOARD [SSH]	1,842	43,627	11.93	
21 MAY 2024 - 21 MAY 2024	PAVREIT	EMPLOYEES PROVIDENT FUND BOARD [SSH]	1,500	43,443	11.88	
27 MAY 2024 - 27 MAY 2024	PBBANK	EMPLOYEES PROVIDENT FUND BOARD [SSH]	3,000	31,229	16.09	
23 MAY 2024 - 23 MAY 2024	PBBANK	EMPLOYEES PROVIDENT FUND BOARD [SSH]	211	31,199	16.07	
21 MAY 2024 - 21 MAY 2024	PBBANK	EMPLOYEES PROVIDENT FUND BOARD [SSH]	9,387	31,197	16.07	
27 MAY 2024 - 27 MAY 2024	PCHEM	EMPLOYEES PROVIDENT FUND BOARD (EPF BOARD) [SSH]	99	93,603	11.7	
30 MAY 2024 - 30 MAY 2024	PENTA	LEMBAGA TABUNG HAJI [SSH]	500	37,311	5.245	
28 MAY 2024 - 28 MAY 2024	PENTA	EMPLOYEES PROVIDENT FUND BOARD [SSH]	-164	60,139	8.455	
29 MAY 2024 - 29 MAY 2024	PENTA	LEMBAGA TABUNG HAJI [SSH]	500	36,811	5.175	
27 MAY 2024 - 27 MAY 2024	PENTA	EMPLOYEES PROVIDENT FUND BOARD [SSH]	-48	60,303	8.478	
28 MAY 2024 - 28 MAY 2024	PENTA	LEMBAGA TABUNG HAJI [SSH]	400	36,311	5.105	
23 MAY 2024 - 23 MAY 2024	PENTA	EMPLOYEES PROVIDENT FUND BOARD [SSH]	-1,293	60,351	8.484	
21 MAY 2024 - 21 MAY 2024	PENTA	EMPLOYEES PROVIDENT FUND BOARD [SSH]	-211	61,644	8.666	
23 MAY 2024 - 23 MAY 2024	PESTECH	MR LIM PAY CHUAN [DIR/CEO]	-1,000	13,623	13.837	
23 MAY 2024 - 23 MAY 2024	PESTECH	MR LIM PAY CHUAN [SSH]	-1,000	13,623	13.837	
28 MAY 2024 - 28 MAY 2024	PETDAG	EMPLOYEES PROVIDENT FUND BOARD (EPF BOARD) [SSH]	170	122,725	12.353	
27 MAY 2024 - 27 MAY 2024	PETDAG	EMPLOYEES PROVIDENT FUND BOARD (EPF BOARD) [SSH]	13	122,555	12.336	
24 MAY 2024 - 24 MAY 2024	PETDAG	EMPLOYEES PROVIDENT FUND BOARD (EPF BOARD) [SSH]	-436	122,542	12.335	
23 MAY 2024 - 23 MAY 2024	PETDAG	EMPLOYEES PROVIDENT FUND BOARD (EPF BOARD) [SSH]	-616	122,979	12.379	
21 MAY 2024 - 21 MAY 2024	PETDAG	EMPLOYEES PROVIDENT FUND BOARD (EPF BOARD) [SSH]	123	123,596	12.441	
28 MAY 2024 - 28 MAY 2024	PETGAS	EMPLOYEES PROVIDENT FUND BOARD [SSH]	525	25,764	13.022	
27 MAY 2024 - 27 MAY 2024	PETGAS	EMPLOYEES PROVIDENT FUND BOARD [SSH]	782	25,710	12.995	
24 MAY 2024 - 24 MAY 2024	PETGAS	EMPLOYEES PROVIDENT FUND BOARD [SSH]	-58	25,637	12.956	
23 MAY 2024 - 23 MAY 2024	PETGAS	EMPLOYEES PROVIDENT FUND BOARD [SSH]	400	25,645	12.959	
21 MAY 2024 - 21 MAY 2024	PETGAS	EMPLOYEES PROVIDENT FUND BOARD [SSH]	82	25,601	12.938	
29 MAY 2024 - 29 MAY 2024	PGF	EQUAPLUS SDN BHD [SSH]	16,856	71,193	39.28	
29 MAY 2024 - 29 MAY 2024	PGF	MR FONG WAH KAI [DIR/CEO]	16,856	77,975	43.02	
29 MAY 2024 - 29 MAY 2024	PGF	MR FONG WAH KAI [SSH]	16,856	77,975	43.02	
23 MAY 2024 - 27 MAY 2024	PUBUMI	PUAN HAFIDAH BINTI PAWANCIK [SSH]	-163	50,52	6.161	
30 MAY 2024 - 30 MAY 2024	PLABS	MR BU YAW SENG [SSH]	97	19,949	7.248	
24 MAY 2024 - 24 MAY 2024	PLABS	MR BU YAW SENG [SSH]	80	19,851	7.213	
20 MAY 2024 - 20 MAY 2024	POHKONG	MADAM LIM MEE HWA [SSH]	-800	26,950	6.568	
20 MAY 2024 - 20 MAY 2024	POHKONG	MR YEO SENG CHONG [SSH]	-800	26,950	6.567	
20 MAY 2024 - 20 MAY 2024	POHKONG	YEOMAN 3-RIGHTS VALUE ASIA FUND VCC [SSH]	-800	21,750	5.3	
20 MAY 2024 - 20 MAY 2024	POHKONG	YEOMAN CAPITAL MANAGEMENT PTE LTD [SSH]	-800	22,		

Notice Period is 26th May 2024 – 1st June 2024

Effective Change Date	Stock Name	Buyer/ Seller Name [Classification]	Bought / (Sold) ('000)		No. of Shares After Trade ('000)	
			Total	Total	% Held	
29 MAY 2024 - 29 MAY 2024	SIME	KUMPULAN WANG PERSARAAN (DIPERBADANKAN) [SSH]	-2,942	493204	7.237	
28 MAY 2024 - 28 MAY 2024	SIME	AMANAHRAYA TRUSTEES BERHAD - AMANAH SAHAM BUMIPUTERA [SSH]	-5,000	2461000	36.108	
27 MAY 2024 - 27 MAY 2024	SIME	EMPLOYEES PROVIDENT FUND BOARD [SSH]	8,132	1012793	14.86	
28 MAY 2024 - 28 MAY 2024	SIME	KUMPULAN WANG PERSARAAN (DIPERBADANKAN) [SSH]	-2,230	496146	7.279	
27 MAY 2024 - 27 MAY 2024	SIME	KUMPULAN WANG PERSARAAN (DIPERBADANKAN) [SSH]	-3,809	498375	7.312	
24 MAY 2024 - 24 MAY 2024	SIME	EMPLOYEES PROVIDENT FUND BOARD [SSH]	10,330	1004661	14.741	
24 MAY 2024 - 24 MAY 2024	SIME	KUMPULAN WANG PERSARAAN (DIPERBADANKAN) [SSH]	-1,000	502184	7.368	
23 MAY 2024 - 24 MAY 2024	SIME	AMANAHRAYA TRUSTEES BERHAD - AMANAH SAHAM BUMIPUTERA [SSH]	-8,048	2466000	36.182	
21 MAY 2024 - 23 MAY 2024	SIME	EMPLOYEES PROVIDENT FUND BOARD [SSH]	14,440	994332	14.589	
23 MAY 2024 - 23 MAY 2024	SIME	KUMPULAN WANG PERSARAAN (DIPERBADANKAN) [SSH]	-4,800	503184	7.383	
20 MAY 2024 - 20 MAY 2024	SIME	EMPLOYEES PROVIDENT FUND BOARD [SSH]	126	979892	14.377	
28 MAY 2024 - 28 MAY 2024	SIMEPLT	EMPLOYEES PROVIDENT FUND BOARD [SSH]	1,749	1066972	15.428	
27 MAY 2024 - 27 MAY 2024	SIMEPLT	EMPLOYEES PROVIDENT FUND BOARD [SSH]	1,066	1065223	15.403	
27 MAY 2024 - 27 MAY 2024	SIMEPLT	KUMPULAN WANG PERSARAAN (DIPERBADANKAN) [SSH]	1,000	460336	6.656	
24 MAY 2024 - 24 MAY 2024	SIMEPLT	EMPLOYEES PROVIDENT FUND BOARD [SSH]	3,000	1064157	15.387	
23 MAY 2024 - 23 MAY 2024	SIMEPLT	EMPLOYEES PROVIDENT FUND BOARD [SSH]	126	1061157	15.344	
21 MAY 2024 - 21 MAY 2024	SIMEPLT	EMPLOYEES PROVIDENT FUND BOARD [SSH]	874	1061031	15.342	
30 MAY 2024 - 30 MAY 2024	SIMEPROP	KUMPULAN WANG PERSARAAN (DIPERBADANKAN) [SSH]	1,163	453086	6.662	
29 MAY 2024 - 29 MAY 2024	SIMEPROP	TAN SRI JAGANATH DEREK STEVEN SABAPATHY [DIR/CEO]	300	300	0.004	
27 MAY 2024 - 27 MAY 2024	SIMEPROP	KUMPULAN WANG PERSARAAN (DIPERBADANKAN) [SSH]	-289	451923	6.645	
24 MAY 2024 - 24 MAY 2024	SIMEPROP	DATO AZMIR MERICAN BIN AZMI MERICAN [DIR/CEO]	100	100	0.001	
24 MAY 2024 - 24 MAY 2024	SIMEPROP	KUMPULAN WANG PERSARAAN (DIPERBADANKAN) [SSH]	1,993	452212	6.649	
23 MAY 2024 - 23 MAY 2024	SLVEST	EMPLOYEES PROVIDENT FUND BOARD [SSH]	1,800	36353	5.25	
23 MAY 2024 - 23 MAY 2024	SLVEST	EMPLOYEES PROVIDENT FUND BOARD [SSH]	10,000	36353	5.25	
23 MAY 2024 - 24 MAY 2024	SMILE	DATIN WONG CHIEN YUE [DIR/CEO]	250	126982	50.34	
23 MAY 2024 - 24 MAY 2024	SMILE	DATIN WONG CHIEN YUE [SSH]	250	126982	50.34	
23 MAY 2024 - 24 MAY 2024	SMILE	DATO DR WONG RUEN YUAN [SSH]	250	126900	50.308	
23 MAY 2024 - 24 MAY 2024	SMILE	DATO DR WONG RUEN YUAN [DIR/CEO]	250	126900	50.308	
24 MAY 2024 - 24 MAY 2024	SMRT	URUSHARTA JAMAHAH SDN. BHD. [SSH]	248	38265	8.448	
29 MAY 2024 - 29 MAY 2024	SPSETIA	KUMPULAN WANG PERSARAAN (DIPERBADANKAN) [SSH]	-1,000	433408	9.122	
24 MAY 2024 - 24 MAY 2024	SPSETIA	AMANAHRAYA TRUSTEES BERHAD - AMANAH SAHAM BUMIPUTERA [SSH]	-325	1104729	23.271	
23 MAY 2024 - 23 MAY 2024	SPSETIA	AMANAHRAYA TRUSTEES BERHAD - AMANAH SAHAM BUMIPUTERA [SSH]	-2,800	1105054	23.295	
23 MAY 2024 - 24 MAY 2024	SPTOTO	BERJAYA CORPORATION BERHAD [SSH]	1,790	689391	51.092	
23 MAY 2024 - 24 MAY 2024	SPTOTO	BERJAYA GROUP BERHAD [SSH]	1,790	649623	48.145	
23 MAY 2024 - 24 MAY 2024	SPTOTO	JUARA SEJATI SDN BHD [SSH]	1,790	599500	44.43	
30 MAY 2024 - 30 MAY 2024	SSB8	MR CHAI THAM POH [DIR/CEO]	-500	1706	0.075	
23 MAY 2024 - 23 MAY 2024	SSF	MR LOK KOK KHONG [DIR/CEO]	-10,000	110000	13.75	
23 MAY 2024 - 23 MAY 2024	SSF	MR LOK KOK KHONG [SSH]	-10,000	110000	13.75	
28 MAY 2024 - 28 MAY 2024	SUNCON	EMPLOYEES PROVIDENT FUND BOARD [SSH]	11	83631	6.486	
24 MAY 2024 - 24 MAY 2024	SUNCON	EMPLOYEES PROVIDENT FUND BOARD [SSH]	345	83619	6.485	
23 MAY 2024 - 23 MAY 2024	SUNCON	EMPLOYEES PROVIDENT FUND BOARD [SSH]	-225	83274	6.459	
21 MAY 2024 - 21 MAY 2024	SUNCON	EMPLOYEES PROVIDENT FUND BOARD [SSH]	2,041	83499	6.476	
28 MAY 2024 - 28 MAY 2024	SUNWAY	EMPLOYEES PROVIDENT FUND BOARD [SSH]	1,149	297144	5.28	
27 MAY 2024 - 27 MAY 2024	SUNWAY	EMPLOYEES PROVIDENT FUND BOARD [SSH]	1,410	295995	5.26	
24 MAY 2024 - 24 MAY 2024	SUNWAY	EMPLOYEES PROVIDENT FUND BOARD [SSH]	-1,246	296296	5.26	
23 MAY 2024 - 23 MAY 2024	SUNWAY	EMPLOYEES PROVIDENT FUND BOARD [SSH]	-6,374	297542	5.28	
21 MAY 2024 - 21 MAY 2024	SUNWAY	EMPLOYEES PROVIDENT FUND BOARD [SSH]	-1,615	303416	5.39	
29 MAY 2024 - 29 MAY 2024	SUNZEN	MR TEO YEK MING [DIR/CEO]	5,000	124074	17.548	
29 MAY 2024 - 29 MAY 2024	SUNZEN	MR TEO YEK MING [SSH]	5,000	124074	17.548	
29 MAY 2024 - 29 MAY 2024	SWSCAP	PUAN SRI DATIN SERI CHAN MEI CHENG [SSH]	690	19988	6.612	
29 MAY 2024 - 29 MAY 2024	SWSCAP	TAN SRI DATO' SERI TAN KING TAI @ TAN KHOON HAI [DIR/CEO]	690	19988	6.612	
29 MAY 2024 - 29 MAY 2024	SWSCAP	TAN SRI DATO' SERI TAN KING TAI @ TAN KHOON HAI [SSH]	690	19988	6.612	
28 MAY 2024 - 28 MAY 2024	SWSCAP	PUAN SRI DATIN SERI CHAN MEI CHENG [SSH]	588	19298	6.384	
28 MAY 2024 - 28 MAY 2024	SWSCAP	TAN SRI DATO' SERI TAN KING TAI @ TAN KHOON HAI [DIR/CEO]	588	19298	6.384	
28 MAY 2024 - 28 MAY 2024	SWSCAP	TAN SRI DATO' SERI TAN KING TAI @ TAN KHOON HAI [SSH]	588	19298	6.384	
27 MAY 2024 - 27 MAY 2024	SWSCAP	PUAN SRI DATIN SERI CHAN MEI CHENG [SSH]	548	18710	6.189	
27 MAY 2024 - 27 MAY 2024	SWSCAP	TAN SRI DATO' SERI TAN KING TAI @ TAN KHOON HAI [DIR/CEO]	548	18710	6.189	
27 MAY 2024 - 27 MAY 2024	SWSCAP	TAN SRI DATO' SERI TAN KING TAI @ TAN KHOON HAI [SSH]	548	18710	6.189	
29 MAY 2024 - 29 MAY 2024	SYSTECH	MR HOOI JIA HAO [SSH]	-17,777	272500	42.405	
29 MAY 2024 - 30 MAY 2024	TAFI	DATO' SRI ANDREW LIM ENG GUAN [DIR/CEO]	179	216837	57.148	
29 MAY 2024 - 30 MAY 2024	TAFI	DATO' SRI ANDREW LIM ENG GUAN [SSH]	179	216837	57.148	
24 MAY 2024 - 24 MAY 2024	TAFI	ARMANI SYNERGY SDN. BHD. [SSH]	114	206228	54.352	
24 MAY 2024 - 24 MAY 2024	TAFI	DATO' SRI ANDREW LIM ENG GUAN [DIR/CEO]	114	216657	57.101	
24 MAY 2024 - 24 MAY 2024	TAFI	DATO' SRI ANDREW LIM ENG GUAN [SSH]	114	216657	57.101	
24 MAY 2024 - 24 MAY 2024	TAFI	DATO' SRI AZLAN BIN AZMI [DIR/CEO]	114	206393	54.395	
24 MAY 2024 - 24 MAY 2024	TAFI	DATO' SRI AZLAN BIN AZMI [SSH]	114	206393	54.395	
24 MAY 2024 - 24 MAY 2024	TAFI	DATO' SRI WONG SZE CHIEN [DIR/CEO]	114	216533	57.068	
24 MAY 2024 - 24 MAY 2024	TAFI	DATO' SRI WONG SZE CHIEN [SSH]	114	216533	57.068	
27 MAY 2024 - 27 MAY 2024	TAKAFUL	EMPLOYEES PROVIDENT FUND BOARD [SSH]	92	128770	15.379	
24 MAY 2024 - 24 MAY 2024	TAKAFUL	EMPLOYEES PROVIDENT FUND BOARD [SSH]	-50	128678	15.368	
23 MAY 2024 - 23 MAY 2024	TAKAFUL	EMPLOYEES PROVIDENT FUND BOARD [SSH]	-354	128728	15.374	
21 MAY 2024 - 21 MAY 2024	TAKAFUL	EMPLOYEES PROVIDENT FUND BOARD [SSH]	-107	129082	15.416	
30 MAY 2024 - 30 MAY 2024	TENAGA	KUMPULAN WANG PERSARAAN (DIPERBADANKAN) [SSH]	-500	427195	7.38	
28 MAY 2024 - 28 MAY 2024	TENAGA	EMPLOYEES PROVIDENT FUND BOARD [SSH]	1,065	1050463	18.15	
27 MAY 2024 - 27 MAY 2024	TENAGA	EMPLOYEES PROVIDENT FUND BOARD [SSH]	-1,806	1049398	18.13	
28 MAY 2024 - 28 MAY 2024	TENAGA	KUMPULAN WANG PERSARAAN (DIPERBADANKAN) [SSH]	-500	427695	7.39	
24 MAY 2024 - 24 MAY 2024	TENAGA	EMPLOYEES PROVIDENT FUND BOARD [SSH]	-463	1051204	18.16	
27 MAY 2024 - 27 MAY 2024	TENAGA	KUMPULAN WANG PERSARAAN (DIPERBADANKAN) [SSH]	-500	428195	7.4	
23 MAY 2024 - 23 MAY 2024	TENAGA	EMPLOYEES PROVIDENT FUND BOARD [SSH]	-4,427	1051666	18.17	
24 MAY 2024 - 24 MAY 2024	TENAGA	KUMPULAN WANG PERSARAAN (DIPERBADANKAN) [SSH]	-36	428695	7.41	

Notice Period is 26th May 2024 – 1st June 2024

Effective Change Date	Stock Name	Buyer/ Seller Name [Classification]	Bought / (Sold) ('000)		No. of Shares After Trade ('000)	
			Total	Total	% Held	
21 MAY 2024 - 21 MAY 2024	TENAGA	EMPLOYEES PROVIDENT FUND BOARD [SSH]	-1,831	1056093	18.25	
28 MAY 2024 - 28 MAY 2024	TIMECOM	EMPLOYEES PROVIDENT FUND BOARD [SSH]	2,000	220431	11.923	
27 MAY 2024 - 27 MAY 2024	TIMECOM	EMPLOYEES PROVIDENT FUND BOARD [SSH]	424	218253	11.805	
27 MAY 2024 - 27 MAY 2024	TIMECOM	KUMPULAN WANG PERSARAAN (DIPERBADANKAN) ("KWAP") [SSH]	893	132003	7.14	
23 MAY 2024 - 23 MAY 2024	TIMECOM	EMPLOYEES PROVIDENT FUND BOARD [SSH]	174	217829	11.782	
21 MAY 2024 - 21 MAY 2024	TIMECOM	EMPLOYEES PROVIDENT FUND BOARD [SSH]	1,846	217655	11.773	
28 MAY 2024 - 28 MAY 2024	TM	EMPLOYEE PROVIDENT FUND BOARD (EPF BOARD) [SSH]	3,400	677960	17.666	
28 MAY 2024 - 28 MAY 2024	TM	AMANAHRAYA TRUSTEES BERHAD-AMANAH SAHAM BUMIPUTERA [SSH]	-619	302181	7.874	
27 MAY 2024 - 27 MAY 2024	TM	EMPLOYEE PROVIDENT FUND BOARD (EPF BOARD) [SSH]	-624	674560	17.578	
28 MAY 2024 - 28 MAY 2024	TM	KUMPULAN WANG PERSARAAN (DIPERBADANKAN) [SSH]	-156	357896	9.326	
24 MAY 2024 - 24 MAY 2024	TM	EMPLOYEE PROVIDENT FUND BOARD (EPF BOARD) [SSH]	1,790	675184	17.594	
27 MAY 2024 - 27 MAY 2024	TM	KUMPULAN WANG PERSARAAN (DIPERBADANKAN) [SSH]	-500	358052	9.33	
24 MAY 2024 - 24 MAY 2024	TM	AMANAHRAYA TRUSTEES BERHAD-AMANAH SAHAM BUMIPUTERA [SSH]	-1,700	302800	7.89	
23 MAY 2024 - 23 MAY 2024	TM	EMPLOYEE PROVIDENT FUND BOARD (EPF BOARD) [SSH]	1,589	673394	17.547	
24 MAY 2024 - 24 MAY 2024	TM	KUMPULAN WANG PERSARAAN (DIPERBADANKAN) [SSH]	-840	358552	9.343	
23 MAY 2024 - 23 MAY 2024	TM	AMANAHRAYA TRUSTEES BERHAD-AMANAH SAHAM BUMIPUTERA [SSH]	-2,414	304500	7.935	
21 MAY 2024 - 21 MAY 2024	TM	EMPLOYEE PROVIDENT FUND BOARD (EPF BOARD) [SSH]	3,873	671805	17.506	
24 MAY 2024 - 24 MAY 2024	TOPGLOV	KUMPULAN WANG PERSARAAN (DIPERBADANKAN) [SSH]	-31	527243	6.584	
24 MAY 2024 - 24 MAY 2024	TRIMODE	DATIN SAM CHOI LAI [DIR/CEO]	50	34337	20.685	
24 MAY 2024 - 24 MAY 2024	TRIMODE	DATIN SAM CHOI LAI [SSH]	50	34337	20.685	
24 MAY 2024 - 24 MAY 2024	TRIMODE	DATO' HEW HAN SENG [DIR/CEO]	50	118239	71.228	
24 MAY 2024 - 24 MAY 2024	TRIMODE	DATO' HEW HAN SENG [SSH]	50	118239	71.228	
28 MAY 2024 - 30 MAY 2024	TWL	DATIN SEK CHIAN NEE [DIR/CEO]	-46,655	1481817	25.772	
28 MAY 2024 - 30 MAY 2024	TWL	DATIN SEK CHIAN NEE [SSH]	-46,655	1481817	25.772	
28 MAY 2024 - 30 MAY 2024	TWL	DATO' TAN WEI LIAN [DIR/CEO]	-46,655	1481817	25.772	
28 MAY 2024 - 30 MAY 2024	TWL	DATO' TAN WEI LIAN [SSH]	-46,655	1481817	25.772	
28 MAY 2024 - 30 MAY 2024	TWL	MISS TAN LEE CHIN [DIR/CEO]	-46,655	1481817	25.771	
28 MAY 2024 - 30 MAY 2024	TWL	MISS TAN LEE CHIN [SSH]	-46,655	1481817	25.772	
28 MAY 2024 - 30 MAY 2024	TWL	TWL CAPITAL BERHAD [SSH]	-46,655	1481817	25.771	
24 MAY 2024 - 24 MAY 2024	TWRREIT	DATO' TAN ANG MENG [DIR/CEO]	30	63	0.013	
28 MAY 2024 - 28 MAY 2024	UMCCA	MR TEE CHENG HUA [DIR/CEO]	6	59508	28.369	
24 MAY 2024 - 27 MAY 2024	UMCCA	MR TEE CHENG HUA [DIR/CEO]	10	59502	28.366	
28 MAY 2024 - 28 MAY 2024	UOAEV	EMPLOYEES PROVIDENT FUND BOARD ("EPF BOARD") [SSH]	-55	306001	12.287	
27 MAY 2024 - 27 MAY 2024	UOAEV	EMPLOYEES PROVIDENT FUND BOARD ("EPF BOARD") [SSH]	-311	306057	12.289	
28 MAY 2024 - 28 MAY 2024	UTDPLT	EMPLOYEES PROVIDENT FUND BOARD [SSH]	74	28578	6.889	
27 MAY 2024 - 27 MAY 2024	UTDPLT	EMPLOYEES PROVIDENT FUND BOARD [SSH]	308	28504	6.872	
24 MAY 2024 - 24 MAY 2024	UTDPLT	EMPLOYEES PROVIDENT FUND BOARD [SSH]	167	28196	6.798	
23 MAY 2024 - 23 MAY 2024	UTDPLT	EMPLOYEES PROVIDENT FUND BOARD [SSH]	71	28029	6.758	
21 MAY 2024 - 21 MAY 2024	UTDPLT	EMPLOYEES PROVIDENT FUND BOARD [SSH]	81	27958	6.74	
27 MAY 2024 - 27 MAY 2024	UWC	EMPLOYEES PROVIDENT FUND BOARD [SSH]	57	93742	8.507	
28 MAY 2024 - 28 MAY 2024	VOLCANO	MR ANDREW SU MENG KIT [DIR/CEO]	2,000	2300	1.266	
28 MAY 2024 - 28 MAY 2024	VOLCANO	MR KHOO BOO WUI [SSH]	-2,000	19000	10.461	
30 MAY 2024 - 30 MAY 2024	VS	KUMPULAN WANG PERSARAAN [SSH]	-3,496	356798	9.337	
28 MAY 2024 - 28 MAY 2024	VS	EMPLOYEES PROVIDENT FUND BOARD [SSH]	2,870	303289	7.936	
29 MAY 2024 - 29 MAY 2024	VS	KUMPULAN WANG PERSARAAN [SSH]	-922	360295	9.428	
27 MAY 2024 - 27 MAY 2024	VS	EMPLOYEES PROVIDENT FUND BOARD [SSH]	2,083	300420	7.861	
28 MAY 2024 - 28 MAY 2024	VS	KUMPULAN WANG PERSARAAN [SSH]	139	361217	9.452	
24 MAY 2024 - 24 MAY 2024	VS	EMPLOYEES PROVIDENT FUND BOARD [SSH]	4,167	298336	7.807	
27 MAY 2024 - 27 MAY 2024	VS	KUMPULAN WANG PERSARAAN [SSH]	197	361077		



Axiata Group Berhad (AXIATA)

wishes to announce that Boost Bank has today launched its pioneering embedded digital bank application (Embedded Digital Bank App) which is now officially open to the Malaysian public. A unique pioneering feature is that existing Premium Wallet customers on the Boost eWallet app can open a Boost Bank account via a seamless onboarding process. This positions Boost Bank at the forefront of embedded banking that effortlessly syncs with Malaysians' daily routines.

[READ MORE](#)



The Board of Directors of **Feytech Holdings Berhad (FEYTECH)**

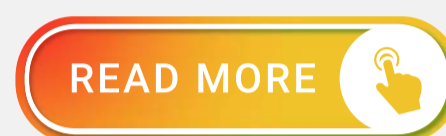
wishes to announce that Feytech Sdn Bhd, a wholly-owned subsidiary of Feytech Holdings Berhad, had on 31 May 2024 entered into a sale and purchase agreement with Proton City Development Corporation Sdn Bhd for the acquisition of the Subject Land at a consideration of RM19,981,843.20.

[READ MORE](#)



Reference is made to the announcement dated 8 May 2023 (Initial Announcement) in relation to the Memorandum of Understanding between **FSBM Holdings Berhad's (FSBM)** wholly-owned

subsidiary, namely FSBM MES Elite Sdn. Bhd. and Selangor Human Resource Development Centre for the joint collaboration in application-based research and development in technology applications suited for industrial applications.



Optimax Holdings Berhad (OPTIMAX) announced that its new outlet, Neumax Clinic has obtained

the aesthetic services licence from Ministry of Health Malaysia to offer aesthetic services. Neumax Clinic, the first full-fledged aesthetic clinic by Optimax, provides a comprehensive range of services including cosmetic injection, laser treatment as well as skin rejuvenation therapy. Located at the ground floor of Atria Mall in Damansara Jaya, it occupies 3,871 sq ft for patients to undergo consultation and aesthetic procedures.



Disclaimer: The information in the Investor Relations page is extracted from individual companies' announcements in www.bursamalaysia.com. The information on this page is provided as a service to readers. We assume no liability for damages resulting from or arising out of the use of such information. Whilst every effort is made to ensure accuracy, the information presented has been simplified for your reading pleasure. Readers are advised to read the original and complete filings on the Bursa Malaysia website at https://www.bursamalaysia.com/market_information/announcements/company_announcement

Upcoming IPO					
NAME OF COMPANY	OFFER PERIOD		ISSUE PRICE (Per Ordinary Share)	LISTING SOUGHT	DATE OF LISTING
	OPENING	CLOSING			
UUE HOLDINGS BERHAD	28 May 2024	18 June 2024	RM0.24	ACE MARKET	2 July 2024
AGRICORE CS HOLDINGS BERHAD	30 May 2024	7 June 2024	RM0.50	ACE MARKET	21 June 2024
KTI LANDMARK BERHAD	21 May 2024	4 June 2024	RM0.30	ACE MARKET	19 June 2024