

# Invest

A Weekly e-Publication by SHAREINVESTOR

ISSUE  
**207**

FRIDAY  
17 MAY 2024

Scan/Click QR to Register



Via email, every Friday

Malaysia's inflation recorded a slower increase of 2.5% in 2023 - DOSM

+

Islamic wealth management industry set to evolve with changing market trends — SC

see more on pages 29-33

**ALSO**

**COMPANY SPOTLIGHT**

Top Glove Corporation Berhad

See more on page 07

**MSWG**

Navigating the role of chairman to safeguard corporate governance

See more on pages 35-38

**PLUS**

BEHIND THE TICKER: DECODING COMPANY FUNDAMENTALS

Dear Da Hong Chen, Investment Director

### Is PETRON MALAYSIA an investment opportunity?

**SUMMARY**

PETRON MALAYSIA REFINING & MARKETING BERHAD's (PETRONM:3042MY) revenue has shown a cyclical pattern over the past 12 years. While profits were volatile resulting in volatile returns, the average returns were greater than the cost of funds. This implied that Petron Malaysia was able to create shareholders' value.

See more on pages 20-27

- 04 LEADERBOARD
- 06 SHARIAH HOT STOCKS
- 08 SHARIAH MOMENTUM UP STOCKS
- 10 NON SHARIAH HOT STOCKS
- 12 UP TRENDING STOCKS

- 14 VALUE STOCKS
- 15 GROWTH STOCKS
- 16 DIVIDEND STOCKS
- 17 BROKERS' CALL
- 18 LONG COMPANIES

- 34 REGIONAL MARKETS
- 39 INSIDER ACTIVITY
- 44 INVESTOR RELATIONS



# SHAREINVESTOR®

An AlphaInvest Company

Invest with Knowledge

## INVESTOR PLATFORMS

**Director**  
Darren Chong  
darren.chong@shareinvestor.com

**Business Development Manager**  
Jay Cheong  
jay.cheong.@shareinvestor.com

**Senior Executive**  
Daniel Wong  
daniel.wong@shareinvestor.com

## ADMIN & OPERATIONS

**Senior Executive**  
Watie Nordin  
watie.nordin@shareinvestor.com

**Executive**  
Silas Emmanuel Joseph  
silas.joseph@shareinvestor.com

## PROCESS AUTOMATION & DATA ANALYTICS

**Data Analyst**  
Tan Yong Sheng

## INVESTOR RELATIONS

**Group Managing Director & Publisher**  
Edward Stanislaus  
edward@shareinvestor.com

**Senior Manager**  
Letticia Wong  
letticia.wong@shareinvestor.com

**Manager**  
Aida Norzeti Binti Ab Talib  
aida.norzeti@shareinvestor.com

## Inve\$t WEEKLY

**Senior Manager Advertising Sales & Marketing**  
Mark Rodrigues  
mark.rodrigues@shareinvestor.com

## ALPHAINVEST HOLDINGS BOARD OF DIRECTORS

<b>Chairman</b>		Patrick Daniel
<b>Group CEO</b>		Christopher Lee
<b>Group COO</b>		Lim Dau Hee
<b>Group CFO</b>		Teo Siew May
<b>Group MD</b>		Shanison Lin



“ GIVE A MAN A FISH AND YOU FEED HIM FOR A DAY; TEACH A MAN TO FISH AND YOU FEED HIM FOR A LIFETIME ”

### ShareInvestor Malaysia Sdn. Bhd.

(200001023956) (526564-M)  
Unit No. DF2-07-03A, Level 7,  
Persoft Tower, 6B Persiaran Tropicana,  
47410 Petaling Jaya, Selangor Darul Ehsan.

Hotline : 603 7803 1791  
Mobile : 011 6343 8939  
Website : [www.ShareInvestor.com.my](http://www.ShareInvestor.com.my)  
[www.alphainvestholdings.com](http://www.alphainvestholdings.com)  
[www.Facebook.com/ShareInvestorMalaysia](https://www.Facebook.com/ShareInvestorMalaysia)

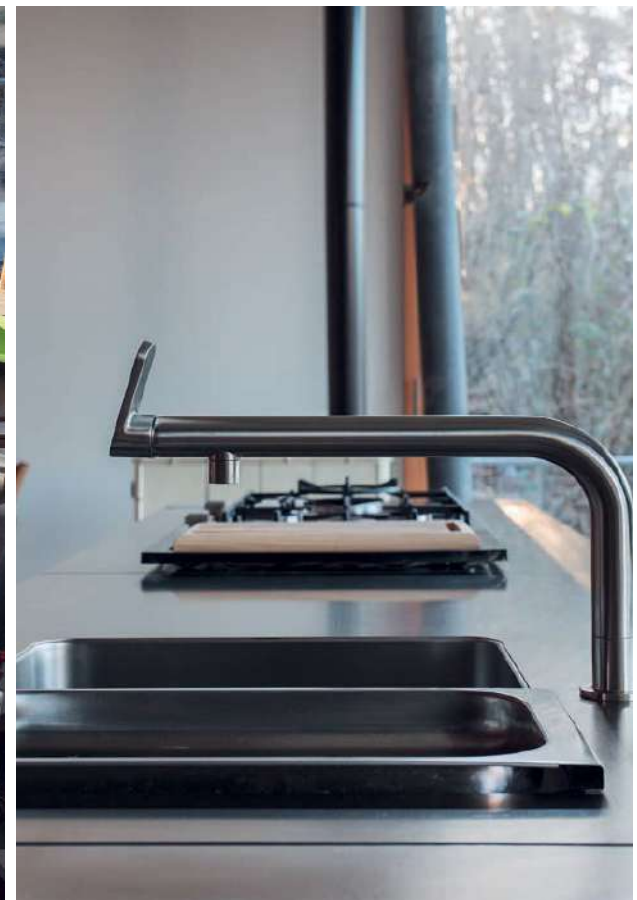
ADVERTISEMENT ENQUIRY

bulthaup takes care of the details so that you can enjoy a harmonious environment.



**XTRA**

XTRA FURNITURE SDN BHD  
The Gardens Mall, Mid Valley City  
[xtrafurniture.com/bulthaup](http://xtrafurniture.com/bulthaup)  
[fb.com/bulthaupmalaysia](https://fb.com/bulthaupmalaysia)



bulthaup





# STROM

SWISS TIMEPIECES & JEWELLERY



StromWatch Asia

Tele : +65.9817.3378 Email : ll.stromasia@gmail.com

[WWW.STROMWATCH.SWISS](http://WWW.STROMWATCH.SWISS)



[www.shareinvestor.com](http://www.shareinvestor.com) - market data at your fingertips



ShareInvestor WebPro ([www.shareinvestor.com/my](http://www.shareinvestor.com/my))  
 Prices > Stock Prices > Bursa > click Stocks tab

1. mouse over Ranking > select Top Active > all Shariah stocks are denoted with an [S] > mouse over Column Layout > select Edit Customs > select Name > select Volume > select Last Done Price > Mouse Over Column Layout > select Custom
2. mouse over Ranking > select Top Turnover > all Shariah stocks are denoted with an [S] > mouse over Column Layout > select Edit Customs > select Name > select Last Done Price > select Value > Mouse Over Column Layout > select Custom
3. mouse over Ranking > select Top Gainers (Over 5 Trading Days) > mouse over Column Layout > select Edit Customs > select Name > select Last Done Price > select 5 Days Change > select 5 Days % Change > Mouse Over Column Layout > select Custom
4. mouse over Ranking > select Top Losers (Over 5 Trading Days)
5. mouse over Ranking > select Top % Gainers (Over 5 Trading Days)
6. mouse over Ranking > select Top % Losers (Over 5 Trading Days)

### Shariah Top Actives (as at Yesterday)

Name	Price (RM)	Volume
TOPGLOV [S]	1.200	2,975,225.000
REVENUE [S]	0.230	2,802,657.000
MQTECH [S]	0.015	1,609,549.000
CAREPLS [S]	0.350	1,061,489.000
SINKUNG [S]	0.145	1,036,181.000
MYEG [S]	1.030	1,019,839.000
FITTERS [S]	0.050	657,911.000
SNS [S]	0.505	657,191.000
NOTION [S]	0.820	639,430.000
MBSB [S]	0.840	538,472.000

### Shariah Top Turnover (as at Yesterday)

Name	Price (RM)	Value (RM)
TOPGLOV [S]	1.200	353,250,039
HARTA [S]	3.650	133,920,612
MYEG [S]	1.030	104,988,578
TENAGA [S]	12.660	78,628,470
REVENUE [S]	0.230	70,452,957
KOSSAN [S]	2.480	60,716,041
AEON [S]	1.340	54,503,453
SUNWAY [S]	3.420	50,974,579
NOTION [S]	0.820	49,694,973
MBSB [S]	0.840	45,037,011

### Top Gainers (over 5 Trading days as at Yesterday)

Name	Price (RM)	Change (RM)
MPI	33.500	+2.500
SBAGAN	6.360	+1.390
KLUANG	5.840	+1.030
NESTLE	129.500	+1.000
HEIM	24.760	+0.860
CARLSBG	20.100	+0.800
HARTA	3.650	+0.760
UTDPLT	26.200	+0.700
F&N	33.160	+0.640
PTT	1.870	+0.610

### Top % Gainers (over 5 Trading days as at Yesterday)

Name	Price (RM)	Change (%)
MMAG	0.305	+56.41
WMG	0.385	+54.00
YLI	0.775	+51.96
PTT	1.870	+48.41
NOTION	0.820	+47.75
FINTEC	0.225	+45.16
AWANTEC	0.360	+41.18
TECHNAX	0.260	+36.84
TOPGLOV	1.200	+31.15
HBGLOB	0.150	+30.43

### Top Losers (over 5 Trading days as at Yesterday)

Name	Price (RM)	Change (RM)
AJI	16.120	-1.009
DLADY	32.740	-0.640
PETDAG	20.880	-0.580
KLK	22.520	-0.400
MSM	2.880	-0.380
PPB	15.480	-0.320
AIRPORT	10.040	-0.280
AHEALTH	2.930	-0.270
HLBANK	19.400	-0.200
BKAWAN	20.200	-0.160

### Top % Losers (over 5 Trading days as at Yesterday)

Name	Price (RM)	Change (%)
CLOUD	0.020	-50.00
KGROUP	0.005	-50.00
HONGSENG	0.010	-33.33
NEXGRAM	0.020	-33.33
SCBUILD	0.010	-33.33
ZENTECH	0.015	-25.00
JISHAN	0.520	-21.21
ANNUM	0.070	-17.65
DESTINI	0.025	-16.67
LAMBO	0.025	-16.67



# INVEST FAMA®

by AlphaInvest

22 & 23  
June 2024

MIDVALLEY

Exhibition Centre Hall 1

10am

- 9pm

REGISTER FOR FREE

**KUMAR GAUTAM**

Quantitative Equity Strategist, Bloomberg Intelligence



**IN CHER BOH**

APAC Head of Product Management & Support, Investment Intelligence, Nasdaq



**CHONG JIN YOONG**

CFA, President, CFA Society Malaysia



**JERRY LEE CHEE YEONG**

FSMOne Assistant Director, Portfolio Management



**PAUL YONG RAJAN**

FSMOne Assistant Portfolio Manager



**ONG WEI SHIN**

Head of Dealing, MooMoo MY



**AHMAD FIDAUDIN**

Senior Dealer, Moomoo MY



## Our SPEAKERS

**SHO TOH YIH JANG**

CEO, CP Global Fintech Solutions



**LIEW OOI HANN**

CFP, CFA, Founder & CEO, Halogen Capital



**CHOONG KUM KIE**

Equity Derivatives Sales, Macquarie



**AMINUDDIN JAMIL**

Senior Manager, Research & Business Development, BIX Malaysia



**MELISSA SINN KENG MAN**

Senior Manager, Customer Experience, Funding Societies



**NG ZHU HANN**

CEO of Tradeview Capital Sdn. Bhd.



**MARTIN WONG**

Co-founder of TradeVSA System Sdn. Bhd.





## Price & Volume Distribution Charts (as at Yesterday)

Technical Analysis

**DEFINITION:** Shariah compliant stocks with Technical Analysis showing 5-days & 10-days Moving Average Price below Yesterday's Close over past 3 days and with Volume Spike.

**CHART GUIDE:** Volume Distribution Chart is a statistical interpretation of the current sentiment on each stock in graphical format. The highest bar categorized as >150k is likely to be traded by institutions or super dealers, while the lowest bar categorized as <15k usually represents retail investors. "Buy Up" refers to more buyers snatching up the lots queued at selling price. "Sell Down" refers to sellers selling their shares to the buying queue



ShareInvestor WebPro > Screener > Market Screener (FA & TA) > select BURSA > add criteria

**A. Criteria**

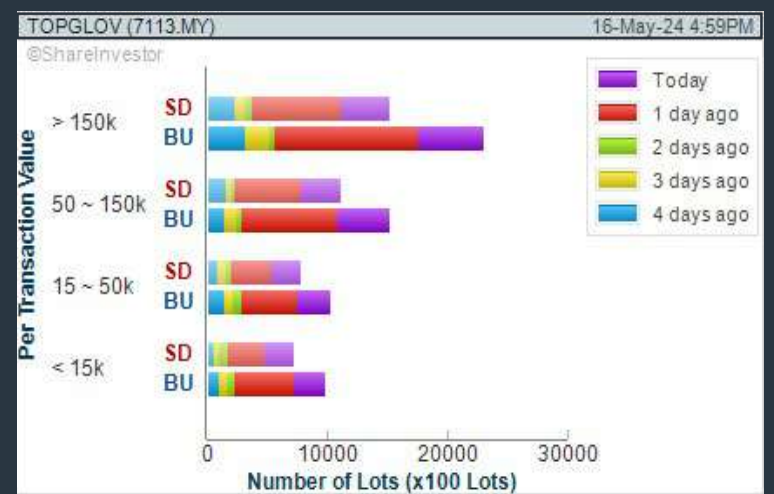
- > click Add Criteria
- Technical Analysis Conditions tab select (i) Moving Average Below Close (ii) Volume Spike
- Fundamental Analysis Conditions tab > select (iii) Revenue
- Prices & Other Conditions tab > select (iv) Is Shariah Compliant
- Technical Analysis Conditions tab select (v) Moving Average Below Close
- Prices & Other Conditions tab > select (vi) Last Done Price
- Technical Analysis Conditions tab select (vii) Moving Average Below Close

**B. Conditions (Criteria Filters)**

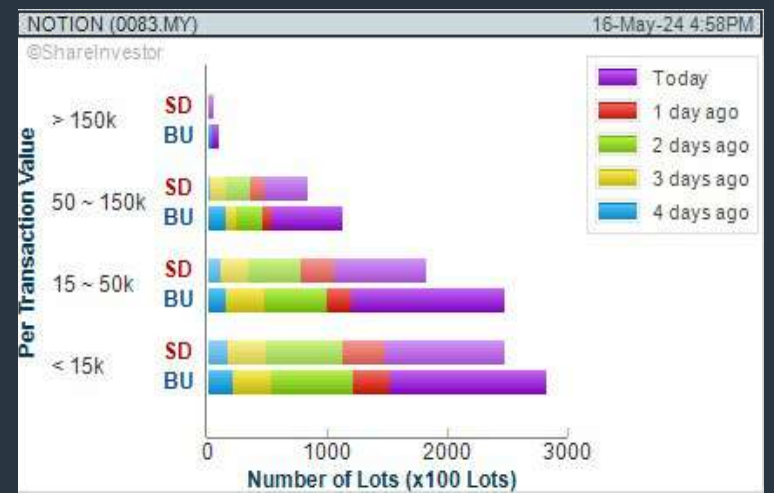
- Moving Average Below Close - select (MA) type (5) below close price for type (3) days
- Volume Spike - Volume type (1) greater than type (5) days average
- Revenue ("000) - select (more than) type (1) for the past select (1) financial year(s)
- Is Shariah Compliant - select **Yes**
- Moving Average Below Close - select (MA) type (10) below close price for type (3) days
- Last Done Price - select (more than) type (0.3)
- Moving Average Below Close - select (EMA) type (5) below close price for type (3) days

- > click Save Template > Create New Template type (Shariah Hot Stocks) > click Create
- > click Save Template as > select Shariah Hot Stocks > click Save
- > click Screen Now (may take a few minutes)
- > Sort By: Select (Vol) Select (Desc)
- > Mouse over stock name > Charts > click C<sup>2</sup> Charts or Volume Distribution

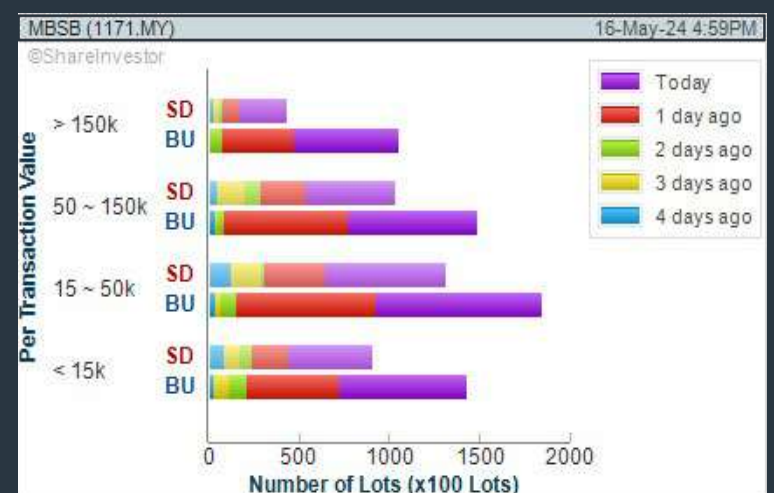
### TOP GLOVE CORPORATION BERHAD (7113) C<sup>2</sup> Chart



### NOTION VTEC BERHAD (0083) C<sup>2</sup> Chart



### MALAYSIA BUILDING SOCIETY BERHAD (1171) C<sup>2</sup> Chart



**Disclaimer:** The information on this page is provided as a service to readers. It does not constitute financial advice and/or any investment recommendations. Past performance is not indicative of future results. We assume no liability for damages resulting from or arising out of the use of such information. It would be best if you did your own research to make your personal investment decisions wisely or consult a licenced investment advisor.



## COMPANY BACKGROUND

**Top Glove Corporation Berhad** is the world's largest rubber glove manufacturer. It is a comprehensive one-stop glove sourcing centre, with more than a dozen variations of latex and nitrile gloves. It also offers a wide range non-glove products. It's market spans every corner of the globe with operations in Malaysia, Thailand, Vietnam, China, USA, Germany and Brazil. In the glove segment, it's products serve the medical, surgical procedure, food & services, clean room and safety & industrial sectors. The non-glove segment serves



medical care, personal care, oral care, home care, industrial care and the food sectors.

TOPGLOV TOP GLOVE CORPORATION BHD		Update at: 16 May 2024 17:31	
Last (MYR):	1.200 ↓	Change: -0.060	High: 1.310
		Change (%): -4.76	Low: 1.110
Open	1.280	Yesterday's Close	1.260
Buy Price	1.200	Sell Price	1.210
Buy Volume ('00)	750	Sell Volume ('00)	30
Cumulative Volume ('00)	2,975,225	Cumulative Value	353,250,039

### Financial Analysis

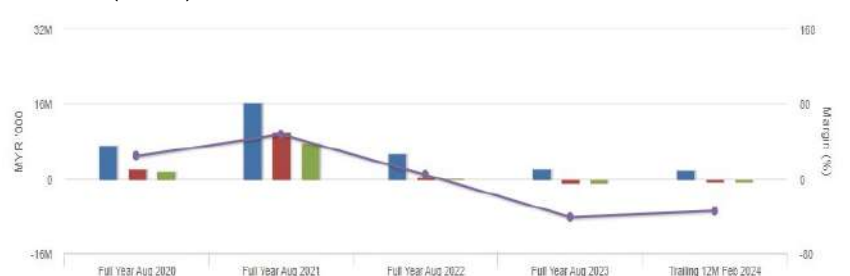
<b>Revenue Growth</b> Revenue down sharply in last 2 consecutive years (> 25%)	🔴	<b>Profit Growth</b> Profit to loss in most recent year	🔴
<b>Piotroski F Score</b> The company has weak financial strength (Piotroski F-Score of 0-2)	🔴	<b>Dividend Payout</b> No dividend paid in most recent year but dividends paid in prior years	🔴
<b>Current Ratio</b> The company is well-positioned to cover its short-term obligations with its current assets (ratio between 1.5 to 10) for 3 consecutive years	🟢	<b>Debt to Cashflow</b> High debt to cash flow for most recent year	🔴
<b>Free Cash Flow</b> Negative free cash flow for two years or more	🔴	<b>Gross Profit Margin</b> Low gross profit margin for 3 years	🔴
<b>Gross Profit Margin</b> Gross profit margin is decreasing by 5% a year over the past 60 months.	🔴	<b>Net Earnings Margin</b> Company is losing money but net profit margin is improving by 5% a year over the past 60 months.	🟡
<b>Return on Assets (ROA)</b> Negative ROA for most recent year	🔴	<b>Return on Assets (ROA)</b> ROA is decreasing by 10% a year over the past 36 months.	🔴
<b>Return on Equity (ROE)</b> Negative ROE for most recent year	🔴	<b>Return on Equity (ROE)</b> ROE is decreasing by 10% a year over the past 36 months.	🔴

🟢 Excellent    🟡 Good    🟠 Neutral    🔴 Be Alert    🔴 Watch Out



### Historical Financials

Profit & Loss (MYR '000)

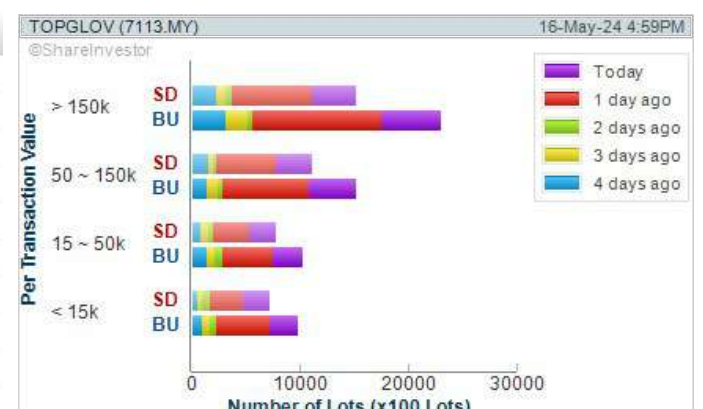


WebPro 9-Days Free Trial Registration (worth RM10) Sign Up Now



### Key Statistics with Total Shareholder Returns

Period	Dividend Received	Capital Appreciation	Total Shareholder Return
Short Term Return	5 Days	-	+0.280
	10 Days	-	+0.320
	20 Days	-	+0.375
Medium Term Return	3 Months	-	+0.300
	6 Months	-	+0.450
	1 Year	-	+0.090
Long Term Return	2 Years	-	-0.330
	3 Years	0.246	-4.188
	5 Years	0.923	-0.464
Annualised Return	Annualised	-	-



**Disclaimer:** The information on this page is provided as a service to readers. It does not constitute financial advice and/or any investment recommendations. Past performance is not indicative of future results. We assume no liability for damages resulting from or arising out of the use of such information. It would be best if you did your own research to make your personal investment decisions wisely or consult a licenced investment advisor.



## Price & Volume Distribution Charts (as at Yesterday)

Technical Analysis

**DEFINITION:** Shariah compliant stocks with Technical Analysis showing Bullish Momentum and Price Uptrend. The share price closed at the highest price yesterday. The typical price was higher than the previous day's typical price.

**CHART GUIDE:** Volume Distribution Chart is a statistical interpretation of the current sentiment on each stock in graphical format. The highest bar categorized as >150k is likely to be traded by institutions or super dealers, while the lowest bar categorized as <15k usually represents retail investors. "Buy Up" refers to more buyers snatching up the lots queued at selling price. "Sell Down" refers to sellers selling their shares to the buying queue.



ShareInvestor WebPro > Screener > Market Screener (FA & TA) > select BURSA > add criteria

**A. Criteria**

- > click Add Criteria
- Fundamental Analysis Conditions tab > select (i) Revenue
- Technical Analysis Conditions tab select (ii) Average Volume
- Prices & Other Conditions tab > select (iii) Last Done Price
- Prices & Other Conditions tab > select (iv) Is Shariah Compliant
- Technical Analysis Conditions tab select (v) RSI Overbought
- Technical Analysis Conditions tab select (vi) Moving Average Below Close
- Technical Analysis Conditions tab select (vii) CCI Overbought

**B. Conditions (Criteria Filters)**

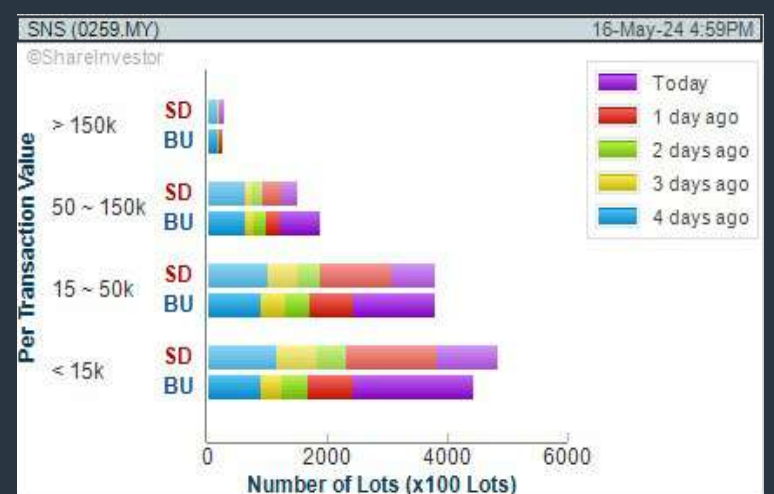
1. Revenue ("000) - select (more than) type (1) for the past select (1) financial year(s)
2. Average Volume - type (1) days average volume greater than type (10000) lots
3. Last Done Price - select (more than) type (0.3)
4. Is Shariah Compliant - select Yes
5. RSI Overbought - select RSI 1 above 99 for 1 days
6. Moving Average Below Close - select (MA) type (10) below close price for type (1) days
7. CCI Overbought - select CCI (2) above (0) for (1) days

- > click Save Template > Create New Template type (Shariah Momentum Up Stocks) > click Create
- > click Save Template as > select Shariah Momentum Up Stocks > click Save
- > click Screen Now (may take a few minutes)
- Sort By: Select (Vol) Select (Desc)
- Mouse over stock name > Charts > click C<sup>2</sup> Charts tab or Volume Distribution

### SNS NETWORK TECHNOLOGY BERHAD (0259)

C<sup>2</sup> Chart

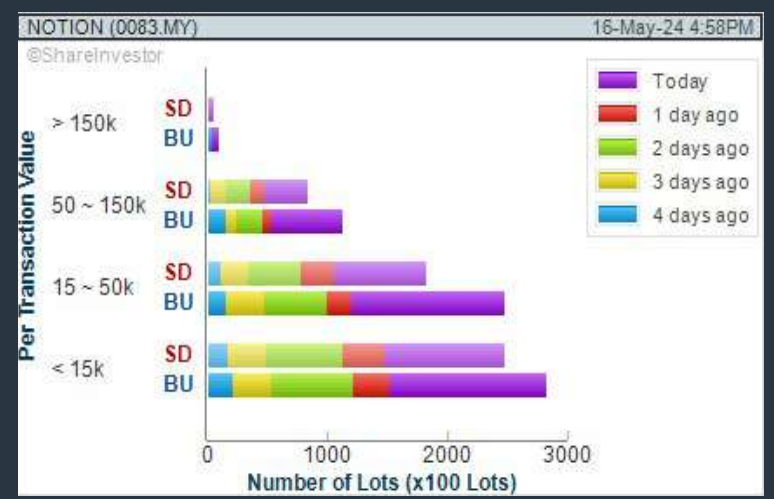
Analysis



### NOTION VTEC BERHAD (0083)

C<sup>2</sup> Chart

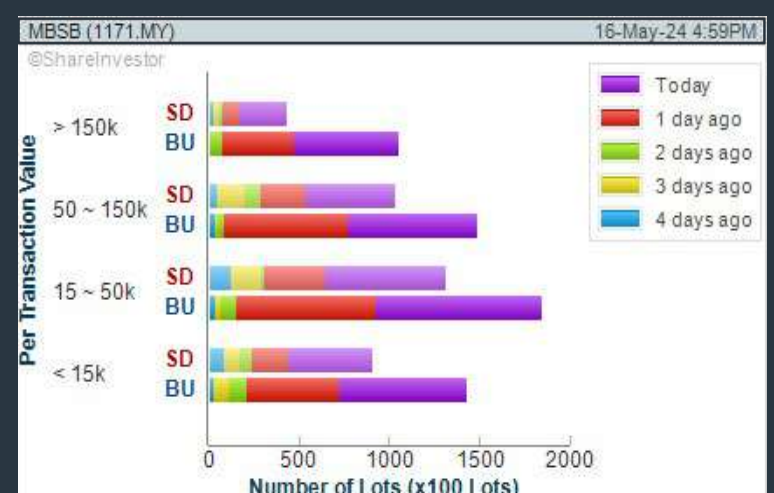
Analysis



### MALAYSIA BUILDING SOCIETY BERHAD (1171)

C<sup>2</sup> Chart

Analysis



**Disclaimer:** The information on this page is provided as a service to readers. It does not constitute financial advice and/or any investment recommendations. Past performance is not indicative of future results. We assume no liability for damages resulting from or arising out of the use of such information. It would be best if you did your own research to make your personal investment decisions wisely or consult a licenced investment advisor.



# SHAREINVESTOR WEBPRO

## STOCK MARKET DATA AT YOUR FINGERTIPS

Powerful browser-based market analytics platform.  
Access from anywhere



### 8 Markets Data

- ▶ Get access to data from Bursa, NYSE, Nasdaq, HKEX, SGX, IDX, SET & ASX

### Portfolio Management

- ▶ Profit & Loss Summary
- ▶ Stock Alert
- ▶ News & Events filtering
- ▶ Customizable column layout

## Fundamental Analysis

### Financial Analysis Statement

- ▶ Profit & Loss
- ▶ Balance Sheet
- ▶ Cash Flow Statement
- ▶ More than 20 Financial Ratios
- ▶ Dividend Analysis

### Technical Charting

- ▶ C<sup>2</sup> chart (Customisable & Comprehensive)

### Brokers' Call

### Intrinsic Value Calculator

### FactSheet

- ▶ Key Stock Information
- ▶ Ownership
- ▶ Consensus Estimates
- ▶ Annual Report
- ▶ Historical Price
- ▶ Insider Trades

## What's new on WebPro (Stable Release 12.1.0)

In our effort to keep our platform at the forefront of trading technology, we have added on some new features onto our C<sup>2</sup> Chart in WebPro

### ADDITIONAL NEW FEATURES:

- ▶ Anchor selector for AVWAP, PVAT, and PAV indicators
- ▶ Volume profile indicator by date range
- ▶ Moving Average Cross indicator
- ▶ Guppy Multiple Moving Average (GMMA) indicator
- ▶ GoNoGo Trend Signal indicators
- ▶ SignalIQ

So what are you waiting for? Head to our platform today and check out our new trading chart features and indicators. We're confident that you'll love the improvements we've made and that they'll help you become a more successful trader.

Click here to start your 9 days FREE trial  
(Valued at RM10)





## Price & Volume Distribution Charts (as at Yesterday)

Technical Analysis

**DEFINITION:** Stocks with Technical Analysis showing 5-days & 10-days Moving Average Price below Close over past 1 days and with Volume Spike

**CHART GUIDE:** Volume Distribution Chart is a statistical interpretation of the current sentiment on each stock in graphical format. The highest bar categorized as >150k is likely to be traded by institutions or super dealers, while the lowest bar categorized as <15k usually represents retail investors. "Buy Up" refers to more buyers snatching up the lots queued at selling price. "Sell Down" refers to sellers selling their shares to the buying queue.



ShareInvestor WebPro > Screener > Market Screener (FA & TA) > select BURSA > add criteria

**A. Criteria**

- > click Add Criteria
- Technical Analysis Conditions tab select (i) Moving Average Below Close (ii) Volume Spike
- Fundamental Analysis Conditions tab >select (iii) Revenue
- Prices & Other Conditions tab > select (iv) Is Shariah Compliant
- Technical Analysis Conditions tab select (v) Moving Average Below Close
- Prices & Other Conditions tab > select (vi) Last Done Price
- Technical Analysis Conditions tab select (vii) Moving Average Below Close

**B. Conditions (Criteria Filters)**

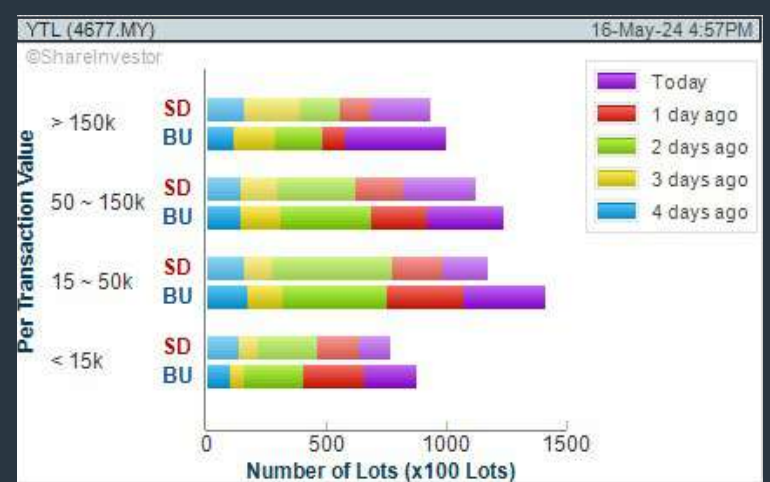
1. Moving Average Below Close - select (MA) type (5) below close price for type (3) days
2. Volume Spike - Volume type (1) greater than type (5) days average
3. Revenue ("000) - select (more than) type (1) for the past select (1) financial year(s)
4. Is Shariah Compliant - select NO
5. Moving Average Below Close - select (MA) type (10) below close price for type (1) days
6. Last Done Price - select (more than) type (0.3)
7. Moving Average Below Close - select (EMA) type (5) below close price for type (1) days

- > click Save Template > Create New Template type (Non-Shariah Hot Stocks) > click Create
- > click Save Template as > select Non-Shariah Hot Stocks > click Save
- > click Screen Now (may take a few minutes)
- Sort By: Select (Vol) Select (Desc)
- Mouse over stock name > Charts > click C<sup>2</sup> Charts tab or Volume Distribution

### YTL CORPORATION BERHAD (4677)

C<sup>2</sup> Chart

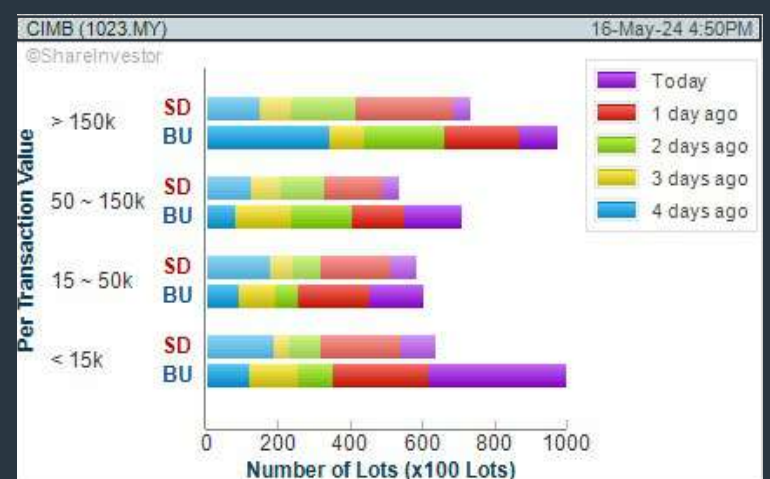
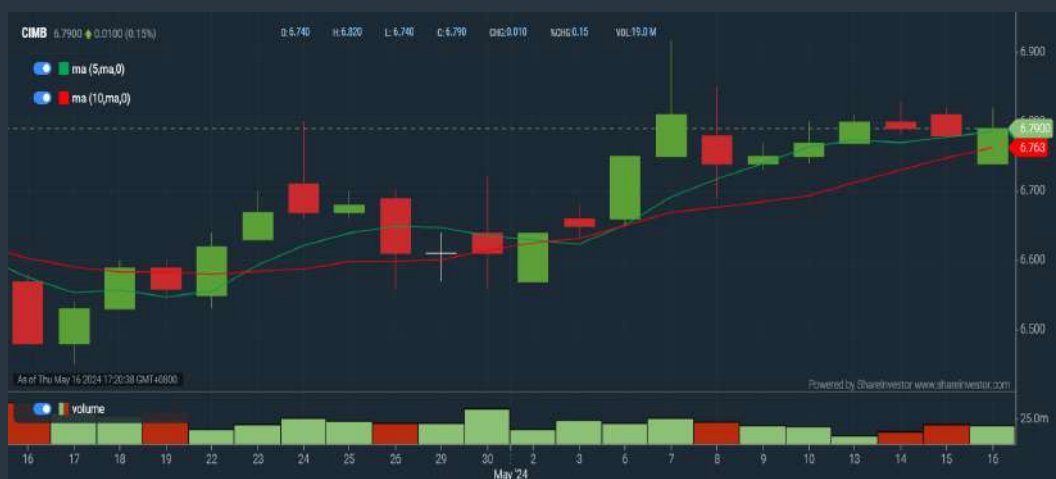
Analysis



### CIMB GROUP HOLDINGS BERHAD (1023)

C<sup>2</sup> Chart

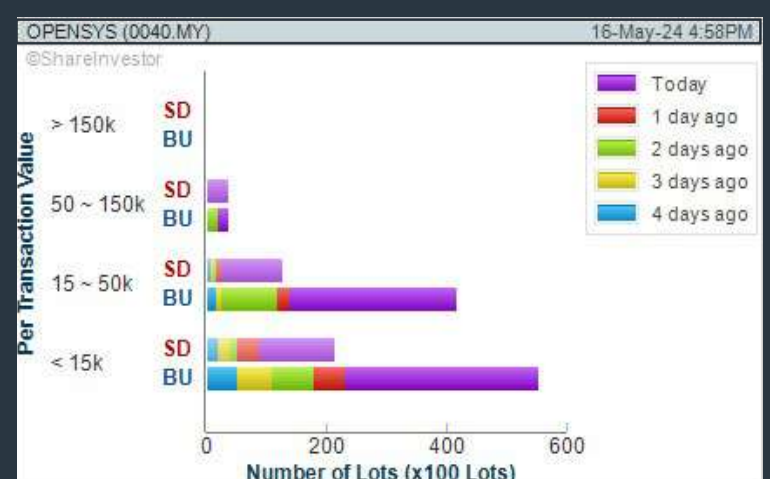
Analysis



### OPENSYS (M) BERHAD (0040)

C<sup>2</sup> Chart

Analysis



**Disclaimer:** The information on this page is provided as a service to readers. It does not constitute financial advice and/or any investment recommendations. Past performance is not indicative of future results. We assume no liability for damages resulting from or arising out of the use of such information. It would be best if you did your own research to make your personal investment decisions wisely or consult a licenced investment advisor.



# MAKE BETTER TRADING STRATEGIES

with

# SHARE INVESTOR STATION



## 8 Markets Data

- ▶ Get access to data from Bursa, NYSE, Nasdaq, HKEX, SGX, IDX, SET & ASX

## Dynamic Chart

- ▶ Candlestick Pattern Recognition
- ▶ 111 Indicators
- ▶ 39 Drawing Tools
- ▶ Performance Comparison Chart

## Intraday Data

- ▶ Market Depth
- ▶ Trade Summary Matrix & Chart
- ▶ Times & Sales
- ▶ Intraday Market Ticker

## Market Screener

- ▶ 96 criteria ranging from FA, TA, Consensus Estimate
- ▶ Real-time Data

## Power Frame

- ▶ Combining few Dynamic Charts together with intraday information in one frame

## Technical Analysis

## Fundamental Analysis

### Financial Analysis Statement

- ▶ Profit & Loss
- ▶ Balance Sheet
- ▶ Cash Flow Statement
- ▶ More than 20 Financial Ratios
- ▶ Dividend Analysis

### FactSheet

- ▶ Key Stock Information
- ▶ Ownership
- ▶ Consensus Estimates
- ▶ Annual Report
- ▶ Historical Price
- ▶ Insider Trades

**Start your 18 days  
FREE trial now  
(Valued at RM82)**





## Price & Volume Distribution Charts (Over 3 trading days as at Yesterday)

Technical Analysis

**DEFINITION:** Stocks with Technical Analysis showing Bullish Momentum and Price Uptrend

**CHART GUIDE:** Volume Distribution Chart is a statistical interpretation of the current sentiment on each stock in graphical format. The highest bar categorized as >150k is likely to be traded by institutions or super dealers, while the lowest bar categorized as <15k usually represents retail investors. "Buy Up" refers to more buyers snatching up the lots queued at selling price. "Sell Down" refers to sellers selling their shares to the buying queue.



ShareInvestor WebPro > Screener > Market Screener (FA & TA) > select BURSA > add criteria

**A. Criteria**

- > click Add Criteria
- Fundamental Analysis Conditions tab > select (i) Revenue
- Technical Analysis Conditions tab select (ii) Moving Average Below Close
- Technical Analysis Conditions tab select (iii) Average Volume
- Prices & Other Conditions tab > select (iv) Last Done Price
- Technical Analysis Conditions tab select (v) Moving Average Below Close
- Technical Analysis Conditions tab select (v) Moving Average Bullish Crossover

**B. Conditions**

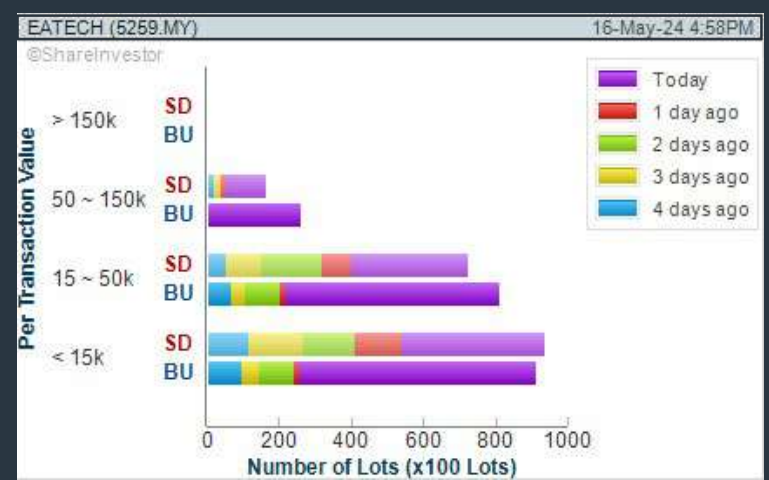
1. Revenue - select (more than) type (1) for the past select (1) financial year(s)
2. Moving Average Below Close - select (MA) type (20) below close price for type (1) days
3. Average Volume - type (5) days average volume type (10000) lots
4. Last Done Price - select (more than) type (0.3)
5. Moving Average Below Close - select (MA) type (10) below close price for type (1) days
6. Moving Average Bullish Crossover - select (MA) type (5) crossed above select (MA) type (10)

> click Save Template > Create New Template type (Non-Shariah Up-Trending Stocks) > click Create Click Save Template As > select Non-Shariah Up Trending Stocks > click Save  
> click Screen Now (may take a few minutes)  
Sort By: Select (Vol) Select (Desc)  
Mouse over stock name > Charts > click C<sup>2</sup> Charts tab or Volume Distribution

### E.A. TECHNIQUE (M) BERHAD (5259)

C<sup>2</sup> Chart

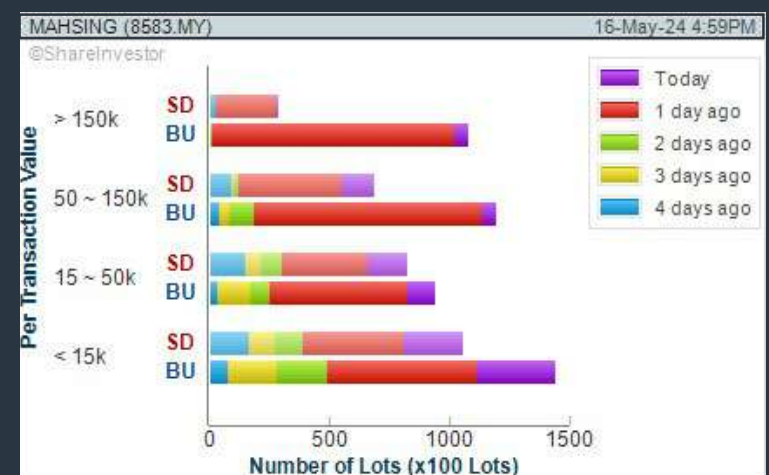
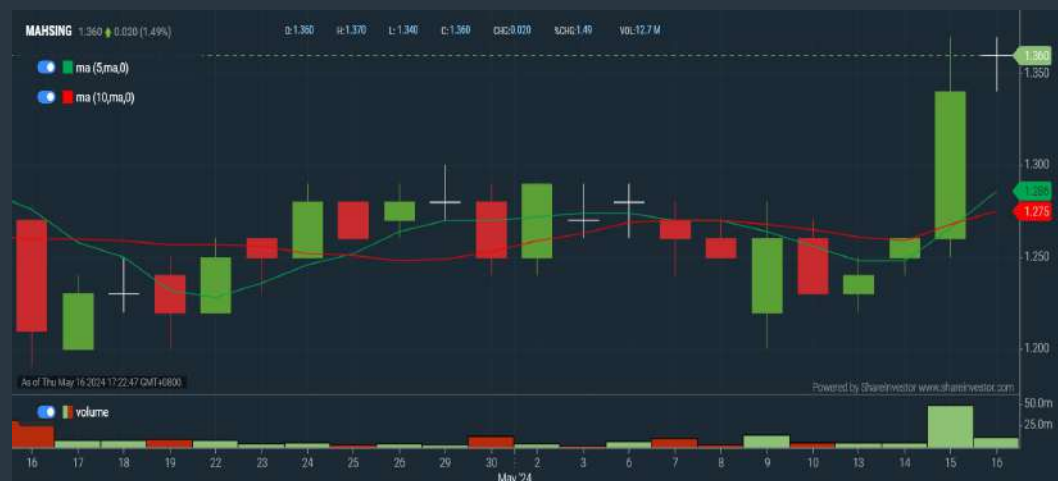
Analysis



### MAH SING GROUP BERHAD (8583)

C<sup>2</sup> Chart

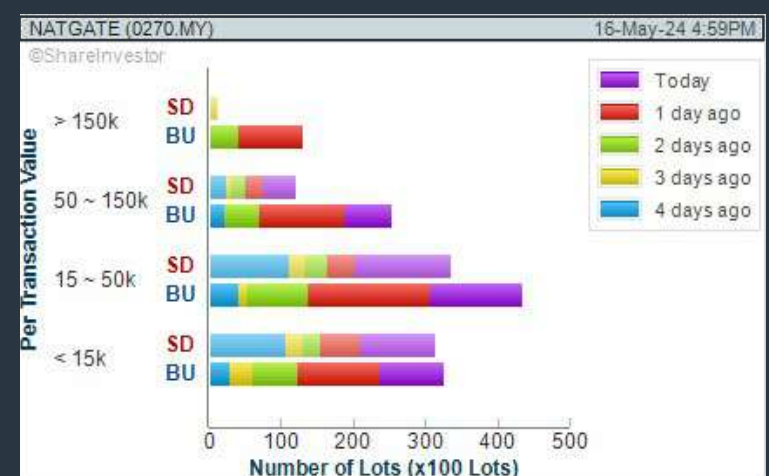
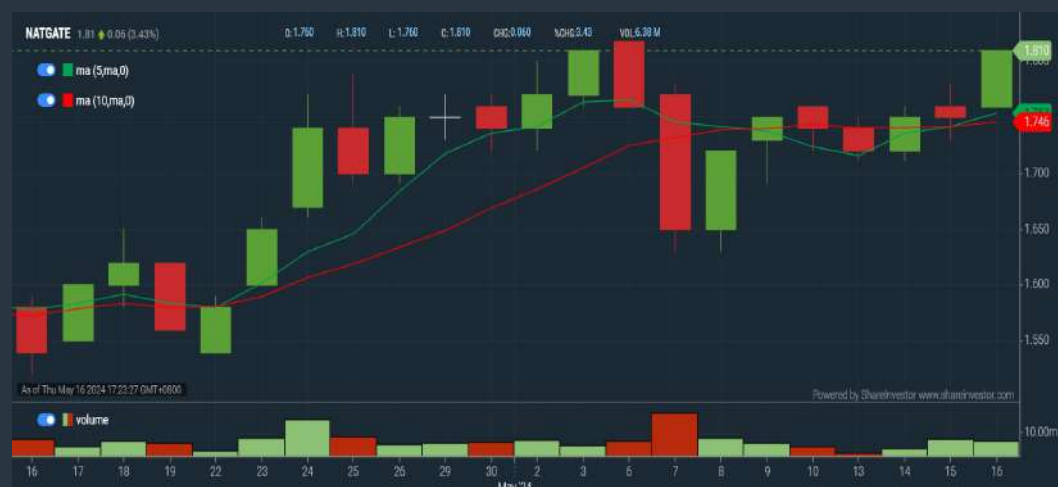
Analysis



### NATIONGATE HOLDINGS BERHAD (0270)

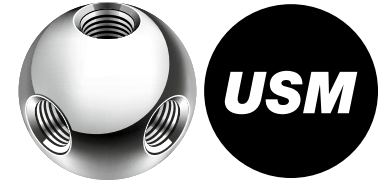
C<sup>2</sup> Chart

Analysis



**Disclaimer:** The information on this page is provided as a service to readers. It does not constitute financial advice and/or any investment recommendations. Past performance is not indicative of future results. We assume no liability for damages resulting from or arising out of the use of such information. It would be best if you did your own research to make your personal investment decisions wisely or consult a licenced investment advisor.





# making places shine



usm.com

# XTRA

XTRA FURNITURE SDN BHD  
The Gardens Mall, Mid Valley City, Lot S-236 & 237  
Lingkar Syed Putra, 59200 Kuala Lumpur  
T. +603 2282 9088 | living@xtrafurniture.com | xtrafurniture.com  
📍 XTRAFurniture | 🌐 xtrafurnituremsia



## Price & Total Shareholder Return (as at Yesterday)

Fundamental Analysis

**DEFINITION:** Share price of a company trading at a lower price as compared to its fundamentals (FA) such as financial performance and dividend, allowing it to be attractive to value investors.

**CHART GUIDE:** Total Shareholder Return (TSR) combines share price appreciation and dividend distributions paid to show the total return to the shareholder expressed as a percentage.



ShareInvestor WebPro > Screener > Market Screener (FA & TA) > select BURSA > add criteria

**A. Criteria**

- > click Add Criteria
- Fundamental Analysis Conditions tab (i) Price Earnings Ratio
- Fundamental Analysis Conditions tab >select (ii) CAGR of Net Earnings
- Fundamental Analysis Conditions tab >select (iii) Net Debt To Equity
- Fundamental Analysis Conditions tab >select (iv) Return On Equity (ROE)

**B. Conditions**

1. Price Earnings Ratio - select (less than) type (15) times now
2. CAGR of Net Earnings - select (more than) type (10) % for the past type (3) financial year(s)
3. Net Debt To Equity – select (less than) type (1) for the past select (1) financial year(s)
4. Return On Equity (ROE) – select (more than) type (10) % for the past select (1) financial year(s)

- > click Save Template > Create New Template type (Value Stock) > click Create
- > click Save Template as > select Value Companies > click Save
- > click Screen Now (may take a few minutes)
- Sort by: Select (PE Ratio) Select (Ascending)
- > Mouse over stock name > Factsheet > looking for Total Shareholder Return
- > Mouse over stock name > Charts > click C2 Charts tab

## SYNERGY HOUSE BERHAD (0279)

C<sup>2</sup> Chart

Analysis



Period	Dividend Received	Capital Appreciation	Total Shareholder Return
Short Term Return	5 Days	-0.070	-4.40%
	10 Days	-0.030	+2.01%
	20 Days	-0.420	+38.18%
Medium Term Return	3 Months	-0.045	+73.71%
	6 Months	-0.970	+176.36%

## TEO SENG CAPITAL BERHAD (7252)

C<sup>2</sup> Chart

Analysis



Period	Dividend Received	Capital Appreciation	Total Shareholder Return
Short Term Return	5 Days	-0.030	-1.63%
	10 Days	-0.040	+2.26%
	20 Days	-0.070	+4.02%
Medium Term Return	3 Months	-0.238	-13.77%
	6 Months	-0.400	+38.09%
Long Term Return	1 Year	-0.933	+106.39%
	2 Years	-1.022	+126.70%
	3 Years	-1.076	+146.59%
5 Years	0.060	-0.726	+72.51%

## TIME DOTCOM BERHAD (5031)

C<sup>2</sup> Chart

Analysis



Period	Dividend Received	Capital Appreciation	Total Shareholder Return
Short Term Return	5 Days	-0.060	-1.13%
	10 Days	-0.110	+2.13%
	20 Days	-0.070	+1.35%
Medium Term Return	3 Months	-0.290	-5.22%
	6 Months	-0.090	+1.74%
Long Term Return	1 Year	-0.030	+0.57%
	2 Years	-0.610	+18.16%
	3 Years	0.214	-0.753
5 Years	0.835	-2.482	+119.76%

**Disclaimer:** The information on this page is provided as a service to readers. It does not constitute financial advice and/or any investment recommendations. Past performance is not indicative of future results. We assume no liability for damages resulting from or arising out of the use of such information. It would be best if you did your own research to make your personal investment decisions wisely or consult a licenced investment advisor.



## Price & Total Shareholder Return (as at Yesterday)

Fundamental Analysis

**DEFINITION:** Company revenue is growing and making good quality of earnings with positive Free Cash Flow.

**CHART GUIDE:** Total Shareholder Return (TSR) combines share price appreciation and distributions paid to show the total return to the shareholder expressed as a percentage.



ShareInvestor WebPro > Screener > Market Screener (FA & TA) > select BURSA > add criteria

**A. Criteria**

1. Fundamental Analysis Conditions tab >select (i) Free Cash Flow, (ii) Revenue Growth, (iii) Gross Profit (Earnings) Margin, (iv) Quality of Earnings, (v) Total Shareholder Returns, > click Add Criteria
2. Fundamental Analysis Conditions tab >select (vi) Total Shareholder Returns > click Add Criteria

**B. Conditions (Criteria Filters)**

1. Free Cash Flow - select (more than) type (1) for the past select (1) financial year(s)
2. Revenue Growth - select (more than) type (1) for the past select (1) financial year(s)
3. Gross Profit (Earnings) Margin - select (more than) type (30) % for the past select (1) financial year(s)
4. Quality of Earnings - select (more than) type (1) for the past select (1) financial year(s)
5. Total Shareholder Return - -- select (more than) type (5) % for the past select (3) financial year(s)
6. Total Shareholder Return - -- select (more than) type (5) % for the past select (5) financial year(s)

- > click Save Template > Create New Template type (Growth Companies) > click Create
- > click Save Template as > select Growth Companies > click Save
- > click Screen Now (may take a few minutes)
- > Sort By: Select (Revenue Growth) Select (Desc)
- > Mouse over stock name > Factsheet > looking for Total Shareholder Return

## CUSCAPI BERHAD (0051)

C<sup>2</sup> Chart

Analysis



Period	Dividend Received	Capital Appreciation	Total Shareholder Return
Short Term Return	5 Days	-	-
	10 Days	+0.035	+43.73%
	20 Days	+0.010	+61.11%
Medium Term Return	3 Months	+0.015	+65.71%
	6 Months	+0.010	+61.11%
	1 Year	+0.120	+70.59%
Long Term Return	2 Years	-	-
	3 Years	+0.055	+20.40%
	5 Years	+0.010	+61.11%
Annualised Return	Annualised	-	+10.01%

## MALAYSIA AIRPORTS HOLDINGS BERHAD (5014)

C<sup>2</sup> Chart

Analysis

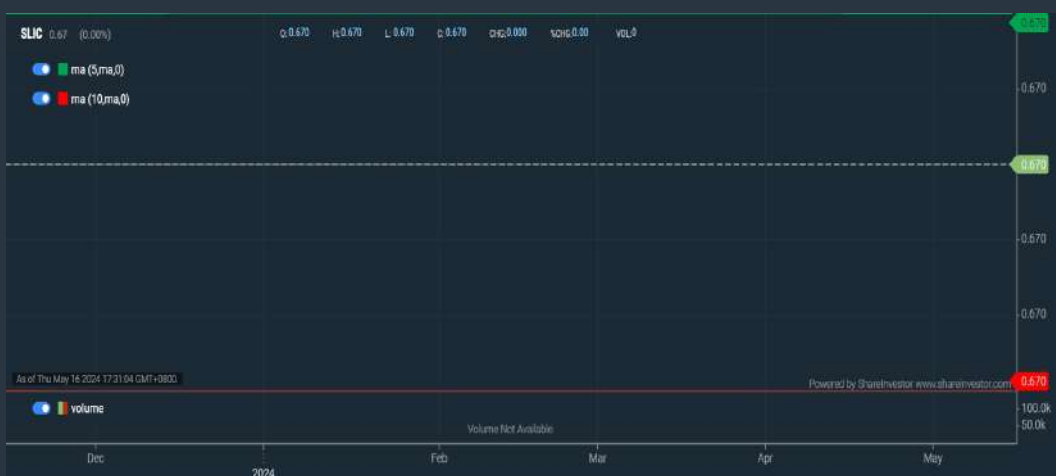


Period	Dividend Received	Capital Appreciation	Total Shareholder Return
Short Term Return	5 Days	-0.220	-2.14%
	10 Days	+0.040	+0.40%
	20 Days	+0.150	+1.62%
Medium Term Return	3 Months	+2.050	+25.66%
	6 Months	+2.480	+32.95%
	1 Year	+2.630	+35.49%
Long Term Return	2 Years	+3.400	+53.05%
	3 Years	+4.650	+86.27%
	5 Years	0.000	+44.24%
Annualised Return	Annualised	-	+7.60%

## SL INNOVATION CAPITAL BERHAD (03008)

C<sup>2</sup> Chart

Analysis



Period	Dividend Received	Capital Appreciation	Total Shareholder Return
Short Term Return	5 Days	-	-
	10 Days	-	-
	20 Days	-	-
Medium Term Return	3 Months	-	-
	6 Months	-	-
	1 Year	-0.205	+74.03%
Long Term Return	2 Years	+0.205	+65.43%
	3 Years	+0.205	+65.43%
	5 Years	0.015	+63.10%
Annualised Return	Annualised	-	+10.28%

**Disclaimer:** The information on this page is provided as a service to readers. It does not constitute financial advice and/or any investment recommendations. Past performance is not indicative of future results. We assume no liability for damages resulting from or arising out of the use of such information. It would be best if you did your own research to make your personal investment decisions wisely or consult a licenced investment advisor.



## Price & Total Shareholder Return (as at Yesterday)

Fundamental Analysis

**DEFINITION:** Company is paying out dividend with low or moderate leverage.

**CHART GUIDE:** Total Shareholder Return (TSR) combines share price appreciation and distributions paid to show the total return to the shareholder expressed as a percentage.



ShareInvestor WebPro > Screener > Market Screener (FA & TA) > select BURSA > add criteria

**A. Criteria**

- > click Add Criteria
- Fundamental Analysis Conditions tab >select (i) Dividend Yield (Historical)
- Fundamental Analysis Conditions tab >select (ii) Dividend Payout (Historical)
- Fundamental Analysis Conditions tab >select (iii) Total Debt To Equity
- Fundamental Analysis Conditions tab >select (iv) Total Shareholder Returns
- Fundamental Analysis Conditions tab >select (v) Total Shareholder Returns
- Fundamental Analysis Conditions tab / >select (vi) CAGR of Dividend Per Share

• Fundamental Analysis Conditions tab >select (vii) CAGR of Dividend Per Share

**B. Conditions (Criteria Filters)**

1. Dividend Yield - select (more than) type (1) % for the past select (1) financial year(s)
2. Dividend Payout (Historical) - select (between) type (0.5) to type (1) times for the past select (1) financial year(s)
3. Total Debt to Equity - select (less than) type (1) for the past select (1) financial year(s)
4. Total Shareholder Return - select (more than) type (5) % for the past select (3) financial year(s)
5. Total Shareholder Return - select (more than) type (5) % for the past select (5) financial year(s)

6. CAGR of Dividend Per Share - select (less than) type (30) % for the past select (5) financial year(s)
7. CAGR of Dividend Per Share - select (more than) type (1) % for the past select (5) financial year(s)

- > click Save Template > Create New Template type (Dividend Companies) > click Create
- > click Save Template as > select Dividend Companies > click Save
- > click Screen Now (may take a few minutes)
- > Sort By: Select (Dividend Yield) Select (Desc)
- > Mouse over stock name > Factsheet > looking for Total Shareholder Return

## FORMOSA PROSONIC INDUSTRIES (9172)

C<sup>2</sup> Chart



Period	Dividend Received	Capital Appreciation	Total Shareholder Return
Short Term Return	5 Days	+0.119	+3.78%
	10 Days	+0.140	+4.86%
	20 Days	+0.190	+6.71%
Medium Term Return	3 Months	-0.456	-0.88%
	6 Months	+0.060	+2.03%
	1 Year	+0.430	+16.80%
Long Term Return	2 Years	-0.168	-5.03%
	3 Years	0.200	+34.17%
	5 Years	0.450	+102.92%
Annualised Return	Annualised	-	+15.20%

## GAS MALAYSIA BERHAD (5209)

C<sup>2</sup> Chart



Period	Dividend Received	Capital Appreciation	Total Shareholder Return
Short Term Return	5 Days	-0.040	-1.13%
	10 Days	-0.120	-3.31%
	20 Days	-0.116	-0.28%
Medium Term Return	3 Months	+0.150	+4.48%
	6 Months	+0.150	+4.48%
	1 Year	+0.290	+8.03%
Long Term Return	2 Years	0.069	+17.02%
	3 Years	0.231	+36.19%
	5 Years	0.513	+41.30%
Annualised Return	Annualised	-	+7.16%

## BERMAZ AUTO BERHAD (5248)

C<sup>2</sup> Chart



Period	Dividend Received	Capital Appreciation	Total Shareholder Return
Short Term Return	5 Days	+0.100	+4.29%
	10 Days	+0.130	+5.19%
	20 Days	+0.010	+0.41%
Medium Term Return	3 Months	-0.040	-1.62%
	6 Months	-0.056	-2.02%
	1 Year	+0.206	+13.34%
Long Term Return	2 Years	+0.773	+46.65%
	3 Years	0.075	+56.25%
	5 Years	0.267	+26.65%
Annualised Return	Annualised	-	+5.17%

**Disclaimer:** The information on this page is provided as a service to readers. It does not constitute financial advice and/or any investment recommendations. Past performance is not indicative of future results. We assume no liability for damages resulting from or arising out of the use of such information. It would be best if you did your own research to make your personal investment decisions wisely or consult a licenced investment advisor.



Week: 10 May 2024 - 16 May 2024

More Brokers' Call 

AMINVESTMENT BANK <small>... See More</small>	Call	Target Price	Release Date
Pentamaster Corporation Berhad (7160)	BUY	RM5.50	13 May 2024
Dialog Group Berhad (7277)	BUY	RM2.91	14 May 2024
Deleum Berhad (5132)	BUY	RM1.50	15 May 2024

APEX <small>... See More</small>	Call	Target Price	Release Date
Ame Elite Consortium Berhad (5293)	HOLD	RM1.95	14 May 2024
Swift Haulage Berhad (5303)	BUY	RM0.68	14 May 2024

BIMB SECURITIES SDN BHD <small>... See More</small>	Call	Target Price	Release Date
Petronas Gas Berhad (6033)	HOLD	RM16.52	10 May 2024
IHH Healthcare Berhad (5225)	BUY	RM7.17	13 May 2024
Swift Haulage Berhad (5303)	HOLD	RM0.55	14 May 2024

KENANGA <small>... See More</small>	Call	Target Price	Release Date
Mah Sing Group Berhad (8583)	OUTPERFORM	RM1.60	15 May 2024
Aeon Co. (M) Berhad (6599)	MARKET PERFORM	RM1.21	16 May 2024
Axiata Group Berhad (6888)	OUTPERFORM	RM3.00	16 May 2024

MIDF <small>... See More</small>	Call	Target Price	Release Date
Dialog Group Berhad (7277)	BUY	RM2.72	14 May 2024
MISC Berhad (3816)	BUY	RM8.48	14 May 2024
Swift Haulage Berhad (5303)	NEUTRAL	RM0.54	14 May 2024
Aeon Co. (M) Berhad (6599)	BUY	RM1.40	16 May 2024

UOB KAYHIAN <small>... See More</small>	Call	Target Price	Release Date
Aemulus Holdings Berhad (0181)	BUY	RM0.50	15 May 2024
Alpha IVF Group Berhad (0303)	BUY	RM0.40	15 May 2024
Heineken Malaysia Berhad (3255)	BUY	RM29.20	15 May 2024



**DEFINITION:** Top 8 stocks with Technical Analysis plus Pattern Matching by 60 pre-defined indicators by the system showing a higher probability of bullish sentiment on the share price.



ShareInvestor WebPro > Screener > Predefined TA Screens > select market BURSA > Most Long Signals > click Scan Results or mouse over each company

**INFRAHARTA HOLDINGS BERHAD (7240.MY)**

**IHB**

Price updated at 16 May 2024 17:31

Last: <b>0.195</b>	Change: -	Volume: <b>15,045</b>
	Change (%): -	Range: <b>0.185 - 0.195</b>

TA Scanner Results based on historical data up to 16 May 2024

Condition	Signal	Explanation
Accumulation Distribution: Bullish Accumulation Distribution	Long	Accumulation distribution increasing for the last 7 days
Bollinger Band: Bullish Long Term Volatility Breakout and Trending	Long	1. Close price above upper bollinger band(33,1). 2. Volume above average volume(50). 3. Average volume(50) is above 300,000.
Bollinger Band: Bullish Short Term Volatility Breakout and Trending	Long	1. Close price above upper bollinger band(33,1). 2. Volume above average volume(10). 3. Average volume(10) is above 300,000.
Bollinger Band: High Above Upper Bollinger Band	Neutral	1. High above upper bollinger band(14,2). 2. Average volume(5) is above 100,000.
DM: Bullish Directional Movement	Long	-DI(14) crossed below +DI(14)
Donchian Channels: High Above Upper Donchian Channels	Long	High crossed above the upper Donchian Channel(14,4)
MA: Short Term Bullish Moving Average Crossover	Long	MA(10) crossed above MA(15) within the last 1 day.
Volume: Volume Spike	Long	1. Volume is more than 500% above average volume(10). 2. Volume above 200000. 3. Close price above 0.10
Williams %R: Bearish Williams %R	Short	1. Williams %R(26) between 0 and -20. 2. Average volume(5) is above 100,000.

**TOP GLOVE CORPORATION BERHAD (7113.MY)**

**TOPGLOV**

Price updated at 16 May 2024 17:31

Last: <b>1.200</b>	Change: <b>-0.060</b>	Volume: <b>2,975,225</b>
	Change (%): <b>-4.76</b>	Range: <b>1.110 - 1.310</b>

TA Scanner Results based on historical data up to 16 May 2024

Condition	Signal	Explanation
Bollinger Band: High Above Upper Bollinger Band	Neutral	1. High above upper bollinger band(14,2). 2. Average volume(5) is above 100,000.
MA: Long Term Bullish Moving Average Crossover	Long	MA(50) crossed above MA(200) within the last 1 day.
MACD: Overbought	Short	1. MACD Histogram(12,26,9) reached a new 6 month high. 2. MACD Histogram(12,26,9) has been above 0 for the last 3 weeks.
Price: New 52 Week High	Long	1. Stock reach a new 52 week high. 2. Average volume(30) is above 50000.
Volume: 10 Days large value Buy Up trade	Long	1. 150K value Buy Up greater than Sell Down by 20% for 10 days. 2. 50K-100K value Buy Up greater than Sell Down by 20% for 10 days. 3. Average volume(10) is above 1000000
Volume: 5 Days large value Buy Up trade	Long	1. 150K value Buy Up greater than Sell Down by 20% for 5 days. 2. 50K-100K value Buy Up greater than Sell Down by 20% for 5 days. 3. Average volume(10) is above 1000000
Volume: Volume Spike	Long	1. Volume is more than 500% above average volume(10). 2. Volume above 200000. 3. Close price above 0.10

**MAH SING GROUP BERHAD (8583.MY)**

**MAHSING**

Price updated at 16 May 2024 17:31

Last: <b>1.360</b>	Change: <b>+0.020</b>	Volume: <b>127,178</b>
	Change (%): <b>+1.49</b>	Range: <b>1.340 - 1.370</b>

TA Scanner Results based on historical data up to 16 May 2024

Condition	Signal	Explanation
Bollinger Band: Bullish Long Term Volatility Breakout and Trending	Long	1. Close price above upper bollinger band(33,1). 2. Volume above average volume(50). 3. Average volume(50) is above 300,000.
Bollinger Band: Bullish Short Term Volatility Breakout and Trending	Long	1. Close price above upper bollinger band(33,1). 2. Volume above average volume(10). 3. Average volume(10) is above 300,000.
Bollinger Band: High Above Upper Bollinger Band	Neutral	1. High above upper bollinger band(14,2). 2. Average volume(5) is above 100,000.
DM: Bullish Directional Movement	Long	-DI(14) crossed below +DI(14)
Donchian Channels: High Above Upper Donchian Channels	Long	High crossed above the upper Donchian Channel(14,4)
Price: New 52 Week High	Long	1. Stock reach a new 52 week high. 2. Average volume(30) is above 50000.
Volume: 10 Days large value Buy Up trade	Long	1. 150K value Buy Up greater than Sell Down by 20% for 10 days. 2. 50K-100K value Buy Up greater than Sell Down by 20% for 10 days. 3. Average volume(10) is above 1000000
Volume: 5 Days large value Buy Up trade	Long	1. 150K value Buy Up greater than Sell Down by 20% for 5 days. 2. 50K-100K value Buy Up greater than Sell Down by 20% for 5 days. 3. Average volume(10) is above 1000000
Williams %R: Bearish Williams %R	Short	1. Williams %R(26) between 0 and -20. 2. Average volume(5) is above 100,000.

**YEW LEE PACIFIC GROUP BERHAD (0248.MY)**

**YEWLEE**

Price updated at 16 May 2024 17:30

Last: <b>0.415</b>	Change: <b>-0.005</b>	Volume: <b>121,344</b>
	Change (%): <b>-1.19</b>	Range: <b>0.410 - 0.425</b>

TA Scanner Results based on historical data up to 16 May 2024

Condition	Signal	Explanation
Bollinger Band: Bullish Long Term Volatility Breakout and Trending	Long	1. Close price above upper bollinger band(33,1). 2. Volume above average volume(50). 3. Average volume(50) is above 300,000.
Bollinger Band: Bullish Short Term Volatility Breakout and Trending	Long	1. Close price above upper bollinger band(33,1). 2. Volume above average volume(10). 3. Average volume(10) is above 300,000.
Bollinger Band: High Above Upper Bollinger Band	Neutral	1. High above upper bollinger band(14,2). 2. Average volume(5) is above 100,000.
Donchian Channels: High Above Upper Donchian Channels	Long	High crossed above the upper Donchian Channel(14,4)
MA: Short Term Bullish Moving Average Crossover	Long	MA(10) crossed above MA(15) within the last 1 day.
MACD: Bullish MACD Crossover	Long	1. MACD(12,26) diff line crossed above the MACD(12,26) signal line. 2. MACD Histogram(12,26) is above 0.
Volume: 10 Days large value Buy Up trade	Long	1. 150K value Buy Up greater than Sell Down by 20% for 10 days. 2. 50K-100K value Buy Up greater than Sell Down by 20% for 10 days. 3. Average volume(10) is above 1000000
Volume: 5 Days large value Buy Up trade	Long	1. 150K value Buy Up greater than Sell Down by 20% for 5 days. 2. 50K-100K value Buy Up greater than Sell Down by 20% for 5 days. 3. Average volume(10) is above 1000000



**AHB HOLDINGS BERHAD (7315.MY)**

**AHB**

Price updated at 16 May 2024 17:31

Last: <b>0.160</b>	Change: <b>+0.015</b>	Volume: <b>276,540</b>
	Change (%): <b>+10.34</b>	Range: <b>0.150 - 0.165</b>

TA Scanner Results based on historical data up to 16 May 2024

Condition	Signal	Explanation
Bollinger Band: Bullish Long Term Volatility Breakout and Trending	Long	1. Close price above upper bollinger band(33,1). 2. Volume above average volume(50). 3. Average volume(50) is above 300,000.
Bollinger Band: Bullish Short Term Volatility Breakout and Trending	Long	1. Close price above upper bollinger band(33,1). 2. Volume above average volume(10). 3. Average volume(10) is above 300,000.
Bollinger Band: High Above Upper Bollinger Band	Neutral	1. High above upper bollinger band(14,2). 2. Average volume(5) is above 100,000.
Candlestick: Bullish Engulfing	Long	Bullish: Engulfing
DM: Bullish Directional Movement	Long	-DI(14) crossed below +DI(14)
Donchian Channels: High Above Upper Donchian Channels	Long	High crossed above the upper Donchian Channel(14,4)
Volume: Consecutive Days Of Increasing Average Volume	Long	1. Average Volume(20) has been increasing over the last 2 weeks. 2. Average volume(20) is above 100000

**EA HOLDINGS BERHAD (0154.MY)**

**EAH**

Price updated at 16 May 2024 17:30

Last: <b>0.005</b>	Change: <b>-0.005</b>	Volume: <b>4,510</b>
	Change (%): <b>-50.00</b>	Range: <b>0.005 - 0.010</b>

TA Scanner Results based on historical data up to 16 May 2024

Condition	Signal	Explanation
Bollinger Band: Bullish Long Term Volatility Breakout and Trending	Long	1. Close price above upper bollinger band(33,1). 2. Volume above average volume(50). 3. Average volume(50) is above 300,000.
Bollinger Band: Bullish Short Term Volatility Breakout and Trending	Long	1. Close price above upper bollinger band(33,1). 2. Volume above average volume(10). 3. Average volume(10) is above 300,000.
MA: Bullish Price Crossover	Long	1. Close price crossed above MA(40) within the last 1 day. 2. Previous day close price is below the MA(10) for the last 5 days
MA: Medium Term Bullish Moving Average Crossover	Long	MA(25) crossed above MA(50) within the last 1 day.
MA: Short Term Bearish Moving Average Crossover	Short	MA(10) crossed below MA(15) within the last 1 day.
MACD: Bullish MACD Crossover	Long	1. MACD(12,26) diff line crossed above the MACD(12,26) signal line. 2. MACD Histogram(12,26) is above 0.
Parabolic SAR: Bearish Parabolic SAR Reversal	Neutral	1. Parabolic SAR 1 day ago above close price 1 day ago for the last 5 days. 2. Parabolic SAR below close price
Price: New 52 Week Low	Short	1. Stock reach a new 52 week low. 2. Average volume(30) is above 50000.
RSI: Short Term RSI 50 Bullish Crossover	Long	1. RSI(20) crossed above 50 within the last 1 day and RSI(20) 1 day ago below 50 for the last 5 days. 2. Volume above average volume(125). 3. Average volume(5) is above 100,000.
Stochastic: Fast Stochastic Buy Signal	Long	1. Fast Stochastic(15,5) %K crossed above 20. 2. Fast Stochastic(15,5) %K 1 day ago was below 20 for the last 5 days. 3. Average volume(30) is above 50000

**ES CERAMICS TECHNOLOGY BERHAD (0100.MY)**

**ES CERAM**

Price updated at 16 May 2024 17:30

Last: <b>0.205</b>	Change: <b>-0.010</b>	Volume: <b>140,787</b>
	Change (%): <b>-4.65</b>	Range: <b>0.200 - 0.215</b>

TA Scanner Results based on historical data up to 16 May 2024

Condition	Signal	Explanation
Bollinger Band: Bullish Long Term Volatility Breakout and Trending	Long	1. Close price above upper bollinger band(33,1). 2. Volume above average volume(50). 3. Average volume(50) is above 300,000.
Bollinger Band: Bullish Short Term Volatility Breakout and Trending	Long	1. Close price above upper bollinger band(33,1). 2. Volume above average volume(10). 3. Average volume(10) is above 300,000.
Bollinger Band: High Above Upper Bollinger Band	Neutral	1. High above upper bollinger band(14,2). 2. Average volume(5) is above 100,000.
Donchian Channels: High Above Upper Donchian Channels	Long	High crossed above the upper Donchian Channel(14,4)
MA: Short Term Bullish Moving Average Crossover	Long	MA(10) crossed above MA(15) within the last 1 day.
Parabolic SAR: Bearish Parabolic SAR Reversal	Neutral	1. Parabolic SAR 1 day ago above close price 1 day ago for the last 5 days. 2. Parabolic SAR below close price
RSI: Short Term RSI 50 Bullish Crossover	Long	1. RSI(20) crossed above 50 within the last 1 day and RSI(20) 1 day ago below 50 for the last 5 days. 2. Volume above average volume(125). 3. Average volume(5) is above 100,000.
Volume: Volume Spike	Long	1. Volume is more than 500% above average volume(10). 2. Volume above 200000. 3. Close price above 0.10

**GREATECH TECHNOLOGY BERHAD (0208.MY)**

**GREATEC**

Price updated at 16 May 2024 17:31

Last: <b>4.830</b>	Change: <b>+0.110</b>	Volume: <b>28,527</b>
	Change (%): <b>+2.33</b>	Range: <b>4.710 - 4.900</b>

TA Scanner Results based on historical data up to 16 May 2024

Condition	Signal	Explanation
Bollinger Band: Bullish Long Term Volatility Breakout and Trending	Long	1. Close price above upper bollinger band(33,1). 2. Volume above average volume(50). 3. Average volume(50) is above 300,000.
Bollinger Band: Bullish Short Term Volatility Breakout and Trending	Long	1. Close price above upper bollinger band(33,1). 2. Volume above average volume(10). 3. Average volume(10) is above 300,000.
Bollinger Band: High Above Upper Bollinger Band	Neutral	1. High above upper bollinger band(14,2). 2. Average volume(5) is above 100,000.
DM: Bullish Directional Movement	Long	-DI(14) crossed below +DI(14)
Donchian Channels: High Above Upper Donchian Channels	Long	High crossed above the upper Donchian Channel(14,4)
MA: Long Term Bearish Moving Average Crossover	Short	MA(50) crossed below MA(200) within the last 1 day.
MA: Short Term Bullish Moving Average Crossover	Long	MA(10) crossed above MA(15) within the last 1 day.
RSI: Short Term RSI 50 Bullish Crossover	Long	1. RSI(20) crossed above 50 within the last 1 day and RSI(20) 1 day ago below 50 for the last 5 days. 2. Volume above average volume(125). 3. Average volume(5) is above 100,000.
Williams %R: Bearish Williams %R	Short	1. Williams %R(26) between 0 and -20. 2. Average volume(5) is above 100,000.

**Disclaimer:** The information on this page is provided as a service to readers. It does not constitute financial advice and/or any investment recommendations. Past performance is not indicative of future results. We assume no liability for damages resulting from or arising out of the use of such information. It would be best if you did your own research to make your personal investment decisions wisely or consult a licenced investment advisor.





**Dato' Eu Hong Chew**  
Former Group CEO i-Berhad  
Non-Executive Director

He has been associated with the Sumurwang Group for many years charting the path for its manufacturing arm, firstly under Dreamland Holdings Berhad and the subsequent acquisition of I-Berhad.

Before that, he was with PA Management Consulting for a decade where he was the Director of Studies for the Cranfield PA MBA Programme in Malaysia.

Educated at the Royal Military College, Dato' Eu has an engineering degree from the University of Glasgow, and a MBA from the University of Bradford, UK.

# Is PETRON MALAYSIA an investment opportunity?

## SUMMARY

- **PETRON MALAYSIA REFINING & MARKETING BERHAD's (PETRONM:3042MY)** revenue has shown a cyclical pattern over the past 12 years. While profits were volatile resulting in volatile returns, the average returns were greater than the cost of funds. This implied that Petron Malaysia was able to create shareholders' value.



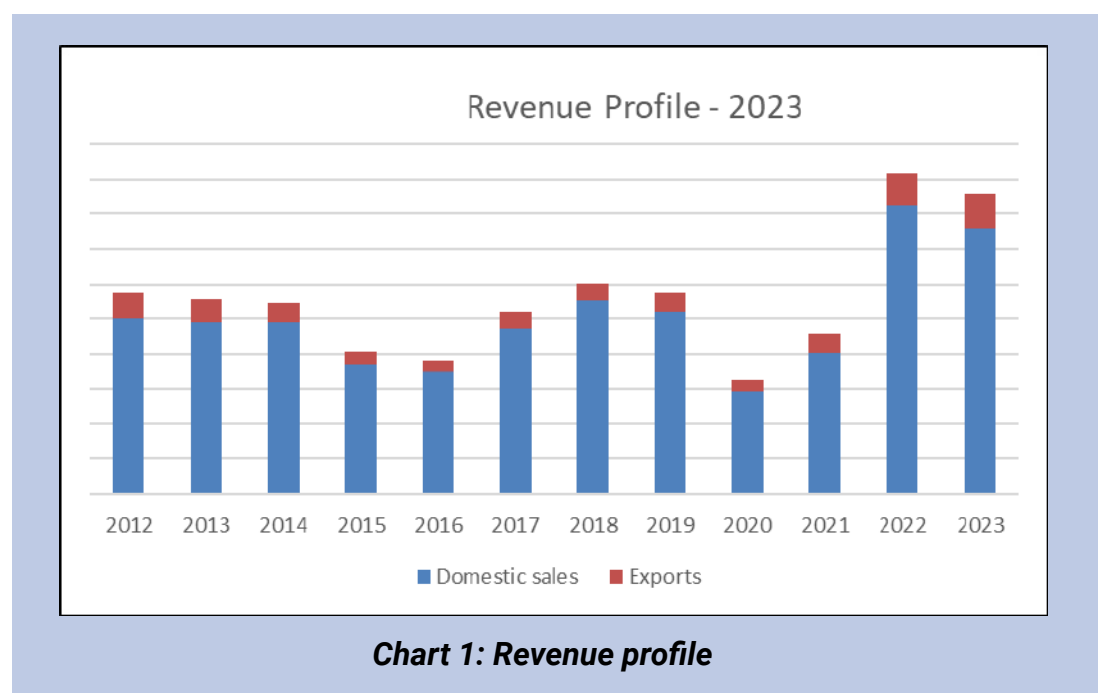
- Financially, Petron Malaysia appears sound, with a healthy cash position, improving debt-equity ratio, and positive cash flow. However, there is a risk of disruption in the fuel retail industry although the impact may not be immediate.
- My valuation suggests a considerable margin of safety in the market price compared to estimated asset and earnings values.

## BACKGROUND

Petron Malaysia is part of Petron Corporation (Petron Corp) of the Philippines. Petron Corp is the largest integrated oil refining and marketing company in the Philippines. Petron Malaysia and its sisters' facilities in Malaysia included:

- The Petron Port Dickson Refinery which has a rated capacity of 88,000 barrels per day. It produces a wide range of petroleum products.
- 11 strategically located depots and affiliated terminals.
- 770 service stations throughout Malaysia. Note that Petron Malaysia directly owns the majority of these.
- The Lumut Palm Oil Methyl Ester (POME) plant.

About 88% of its 2023 revenue was generated from domestic sales with the balance exported. Refer to Chart 1. You can see that over the past 12 years, the revenue was the lowest in 2020. But the





2022 revenue was a 12-year record. In Malaysia, its main market segments are:

- Transportation - served by the service stations network.
- Households with its LPG.
- Commercial with its industrial fuel products.

## **SEGMENT PERFORMANCE**

I looked at 3 metrics to get an overview of the overall performance – revenue, PAT, and gross profitability (gross profits / total assets). Refer to the left part of Chart 2.

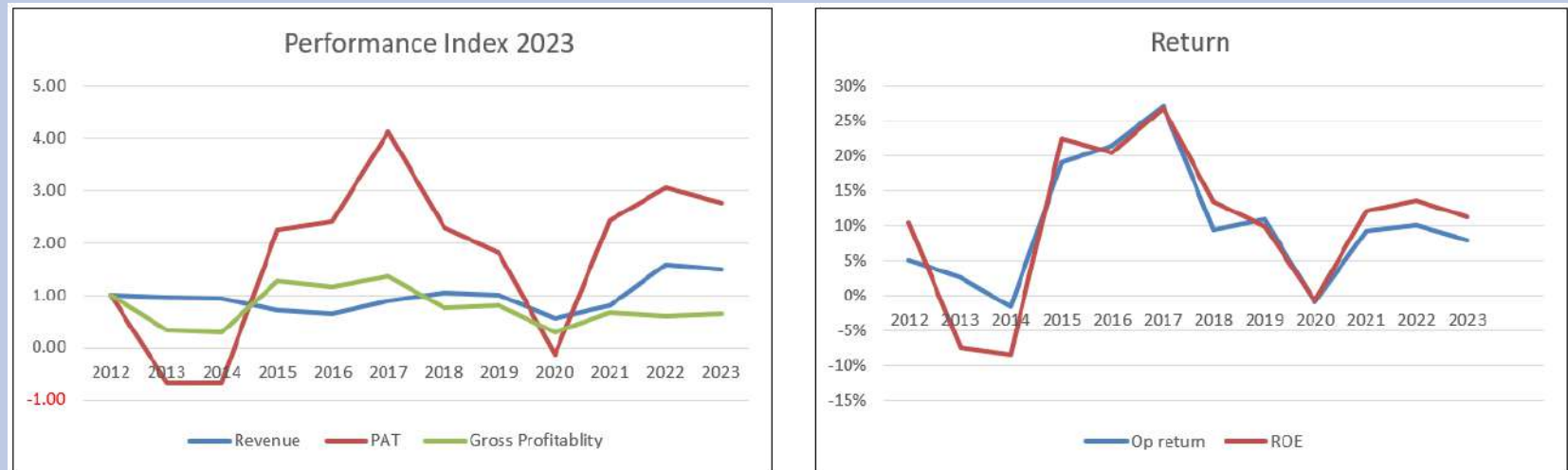
- Revenue and profits over the past 12 years showed a cyclical pattern.
- PAT was relatively volatile with the Group incurring losses in 2013, 2014, and 2020. The PAT peaked in 2017 but declined in 2018. According to Petron Malaysia, this was “...mainly due to the significant inventory losses caused by the sudden drop in oil prices in the fourth quarter.”
- The concern was that while gross profitability improved from 2015 to 2017, it had been declining since then. The 2023 gross profitability was lower than that in 2012.

Given the volatile profits, you should not be surprised to see volatile returns. Refer to the right part of Chart 2. While the returns were volatile, the average returns over the past 12 years were greater than the cost of funds:

- Operating return defined as NOPAT/Total Capital Employed averaged 10.0 % compared to the current WACC of 6.7%.
- ROE averaged 10.3% compared to its current cost of equity of 9.4%.



This meant that Petron Malaysia was able to create shareholders' value.



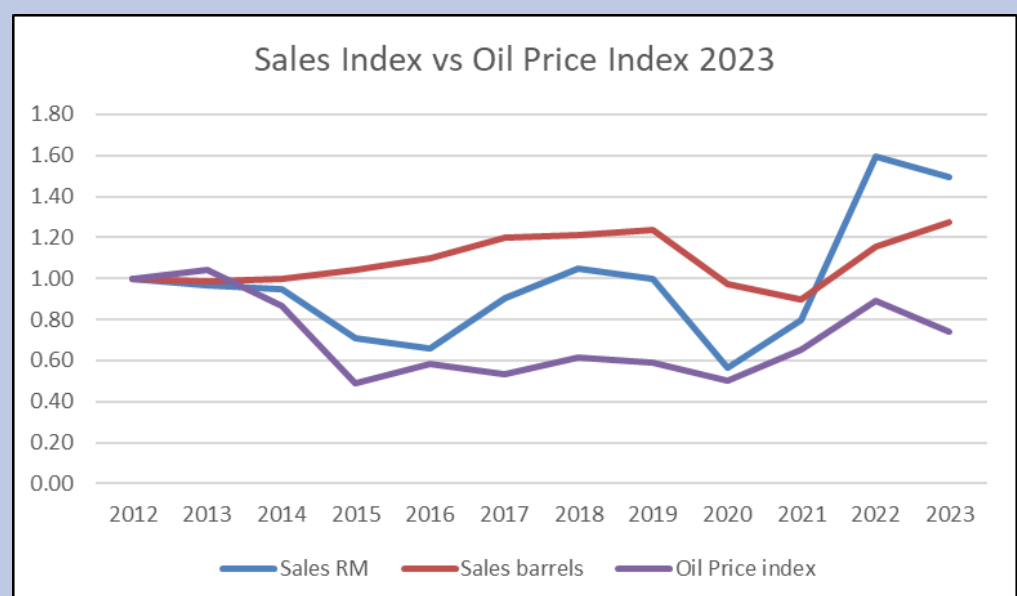
**Chart 2: Performance Index and Returns**

**Note to Performance Index chart:** To plot the various metrics onto one chart, I converted them into indices by dividing the values for each year by the respective 2012 values.

We have been experiencing volatile oil prices over the past few years. To wash out the effect of the oil prices, I compared the sales (RM revenue and number of barrels sold) with the crude oil prices. Refer to Chart 3. While RM revenue grew at 3.7% CAGR from 2012 to 2023, the number of barrels sold only grew at 2.2% CAGR. You can attribute the higher RM revenue growth rate to changes in oil prices.

You can see the impact of the oil prices.

- From 2012 to 2015, oil prices declined. While there was an increase in the number of barrels sold, it was not sufficient to offset the impact of lower oil prices.



**Chart 3: Revenue vs Crude Oil Price**

**Note:** To plot the various metrics onto one chart, I converted them into indices by dividing the values for each year by the respective 2012 values.



- From 2020 to 2022, both crude oil prices and the number of barrels sold grew boosting revenue.

Looking at the number of barrels sold, I would not consider Petron Malaysia as a high-growth company.

## FINANCIAL STRENGTHS

I would rate Petron Malaysia as financially sound based on the following:

- As of the end of Dec 2023, it had RM164 million cash and short-term securities. This was equivalent to 3% of its total assets.
- It had a debt-equity ratio of 42% as of Dec 2023. This was much lower than its peak debt-equity ratio of 130% in 2014.
- Over the past 12 years, there were 3 years where it had negative cash flow from operations. During this period, it generated RM2.4 billion from cash flow from operations compared to RM2.0 billion of PAT. This is a good cash conversion ratio.
- The Group also had a good capital allocation plan as shown in Table 1. You can see that its cash flow from operations was well deployed for CAPEX and dividends. As shown earlier, the investments in CAPEX resulted in returns that were greater than the cost of funds.

Items	Sources (USD m)	Uses (USD m)
Cash flow from Ops	2,427	
Net Debt	102	
Net share buyback		
Dividends		497
Net CAPEX incl intangibles		1,713
Cash and Misc		319
Total	2,529	2,529

*Table 1: Sources and Uses of Funds 2012 to 2023*



## **RISK OF DISRUPTION**

In its June 2021 article titled “What are the trends disrupting the fuel-retail industry?” McKinsey & Company opined the following:

“...the fuel value pool will decline, driven by fuel efficiency and the substitution of traditional internal-combustion-engine cars by electric vehicles...”

While the report is in the context of the global fuel retail industry, Malaysia is not immune to them. The best analogy is how the Malaysian print media and taxi sector succumbed to the same disruption suffered by these industries in developed countries. Even Petronas Dagangan has recognized this changing environment. Its 2019 Annual Report stated that higher usage of public transportation and the push toward EVs is leading to waning fuel demand.

**For the fuel retail industry in Malaysia, it is not whether the disruption will occur. It is when.** Taking a leaf from what has happened to the print media and taxi industries, there are two possible scenarios:

- The first is the “traditional” industry being in a secular decline. This is what is happening to the print media and taxi sectors in Malaysia.
- The second is for the existing players to re-invent themselves. A good example of this is the Malaysian food retailers that have adopted online ordering with delivery via Grab.

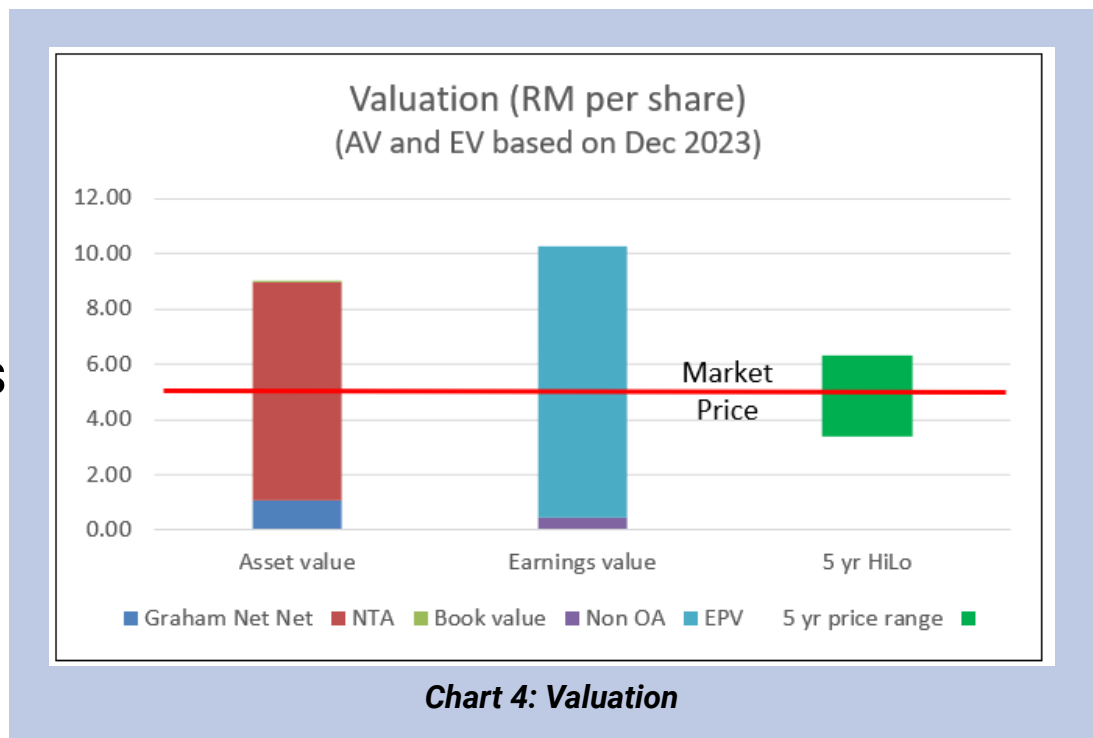
Whether Petron Malaysia will reinvent itself remains to be seen.

Petronas is the dominant fuel retail player in Malaysia and like the taxi industry, there will be political-economic forces to delay the effects of the disruption. This may buy Petron Malaysia time to re-invent itself.

## VALUATION

My valuation of Petron Malaysia is summarized in Chart 4.

- I estimated its Asset Value as RM8.97 per share
- I estimated its Earnings Power Value as RM10.29 per share. I have shown earlier that it had a low-growth track record. As such I ignore growth in my valuation and used the Earnings Power Value.



The market price for Petron Malaysia as of 3 May 2024 was RM4.92 per share. You can see that there is more than a 30% margin of safety under both the Asset Value and Earnings Value.

## VALUATION MODEL

My Earnings Power Value of the company was derived based on the average values from 2 valuation approaches:

- Free Cash Flow to the Firm model as per Damodaran.
- Residual Income model as per Penman.

For both models, I used the past 12 years' time-weighted average value to represent the normalized value. The cost of capital used in the model was based on the Capital Asset Pricing Model. I followed Damodaran's approach to determine the Beta and the risk premiums. These resulted in a 9.4% cost of equity and a 6.7% WACC.



## CONCLUSION

I would rate Petron Malaysia as fundamentally sound.

- The Group is financially sound. I have shown that to some extent, Petron Malaysia's performance is affected by high crude oil prices. But I have already accounted for this by taking the past 12 years' performance in my valuation.
- Its business in terms of sales of barrels of oil has been growing.
- While there is the threat of a disruption of the petrol station business model, this is not imminent. As such I do not see the assets being in danger of write-offs.
- It has been able to generate returns that are more than its cost of funds.

I have also estimated there is a sufficient margin of safety from both the Asset Value and Earnings Power Value. But given the volatile crude oil prices, any investment in Petron Malaysia should be on a long-term holding perspective.

*I am a long-term value investor who has held onto stocks for more than 5 years. My analysis and valuation are from such a perspective. I consider quarterly results "noisy" and focus on long-term trends.*

*This article was re-purposed from "[Petron Malaysia is still not a value trap](#)" which was first published on i4value. Asia. Refer to the article for more detailed fundamental analysis and valuation.*

# UNLOCK THE SECRET OF WEALTH

DO YOU REALLY WANT TO MASTER VALUE INVESTING



SEE HOW TO GET HIGHER RETURNS WITH LOWER RISK





# MALAYSIA'S INFLATION RECORDED A SLOWER INCREASE OF 2.5% IN 2023 - DOSM

**A**ccording to Chief statistician Datuk Seri Dr Mohd Uzir Mahidin, Malaysia's inflation in 2023 recorded a slower increase of 2.5%, from 3.3% in 2022, with the index at 130.4 against 127.2 in 2022. The slower increase of inflation in 2023 was in tandem with the decline in most global commodity prices, the easing of supply disruptions, price controls, and the provision of subsidies for selected goods.

In a statement on the Analysis of Annual Consumer Price Index (CPI) 2023, he said that despite a decrease in energy commodity prices in 2023 (-29.9%) as compared to 2022 (60.0%), the price level of this commodity is still higher compared to pre-pandemic prices. The increase in fuel costs and dependence on imported liquefied natural gas (LNG) has prompted the government to adjust electricity tariffs under the implementation of the Imbalance

Cost Pass-Through (ICPT) mechanism for users in Peninsular Malaysia, for the period of July 1, 2023 to Dec 31, 2023.

Inflation for the main groups in 2023 showed an increase except for communication (-3.0%), with the highest increase recorded by restaurants and hotels at 5.6%. This was followed by the food and beverages (4.8%) group; miscellaneous goods and services (2.4%); furnishings, household equipment and routine household maintenance (2.3%); health (2.2%); education (1.9%); housing, water, electricity, gas and other fuels (1.7%); recreation services and culture (1.5%); transport (1.1%); alcoholic beverages and tobacco (0.6%), and clothing and footwear (0.3%).

The food and beverages group, which is the largest component of household spending in Malaysia with a contribution of 29.5% of total CPI weight, started to ease to 4.8%, compared to 5.8% in 2022. The slower increase of this group is largely due to an increase in the food at home component, which increased 3.5%, compared to 5.3% recorded in 2022. Meanwhile, food away from home increased at 6.7% in 2023, from 6.6% in 2022.

On inflation at the state level, he said that all states registered increases in inflation, with five states showing an increase above the national inflation level of 2.5% in 2023. The highest increase was recorded by the Federal Territory of Putrajaya (3.4%), followed by Sarawak (3.1%), Selangor (2.9%), Perak (2.8%) and Pahang (2.6%). The Federal Territory of Labuan recorded the lowest inflation of 1.6%.



**SIGN UP FOR Invest**  
**IT'S FREE!!!**

[Click here](#)

Scan me



Via email, every Friday.



# ISLAMIC WEALTH MANAGEMENT INDUSTRY SET TO EVOLVE WITH CHANGING MARKET TRENDS — SC

**A**ccording to Securities Commission Malaysia (SC) executive chairman Datuk Seri Dr Awang Adek Hussin, the Islamic wealth management industry is poised to continue evolving in response to changing market needs and emerging trends. The industry must embrace innovation, while adhering to the highest standards of corporate governance and professionalism guided by Islamic values, to remain competitive and relevant in the present day's environment. Practitioners of Islamic wealth management can harness the power of technology to optimise their services.

In his keynote address at the 11th Malaysian Financial Planning Council (MFPC) conference on shariah wealth management and financial planning, he said that by embracing digital solutions,

practitioners can stay ahead of the curve and deliver greater value to their clients. He noted that mobile apps and online portals, developed by financial technology firms, can provide clients with comprehensive access to real investment portfolios, real-time market insights, and personalised financial advice.

The SC had spearheaded efforts to strengthen the regulatory framework and facilitate innovation, to promote the growth of Islamic wealth management in Malaysia. This includes the Islamic Wealth Management Blueprint, introduced in 2017, which outlines three strategic thrusts: strengthening Malaysia's position as a global hub for Islamic finance; establishing the country as a regional centre for Shariah-compliant sustainable and responsible investment (SRI), and developing it as an international provider of Islamic wealth management services.

As a result, the blueprint has led to the introduction of frameworks and regulatory efforts to support innovation and further strengthen the market infrastructure for Islamic wealth management. This includes the revision of key frameworks and guidelines, such as the SRI Sukuk framework in 2019, the Shariah advisors' guidelines in 2020, and the guidelines on Islamic fund management. These efforts have significantly broadened the scope and sophistication of Shariah-compliant investment products and services available in the market.

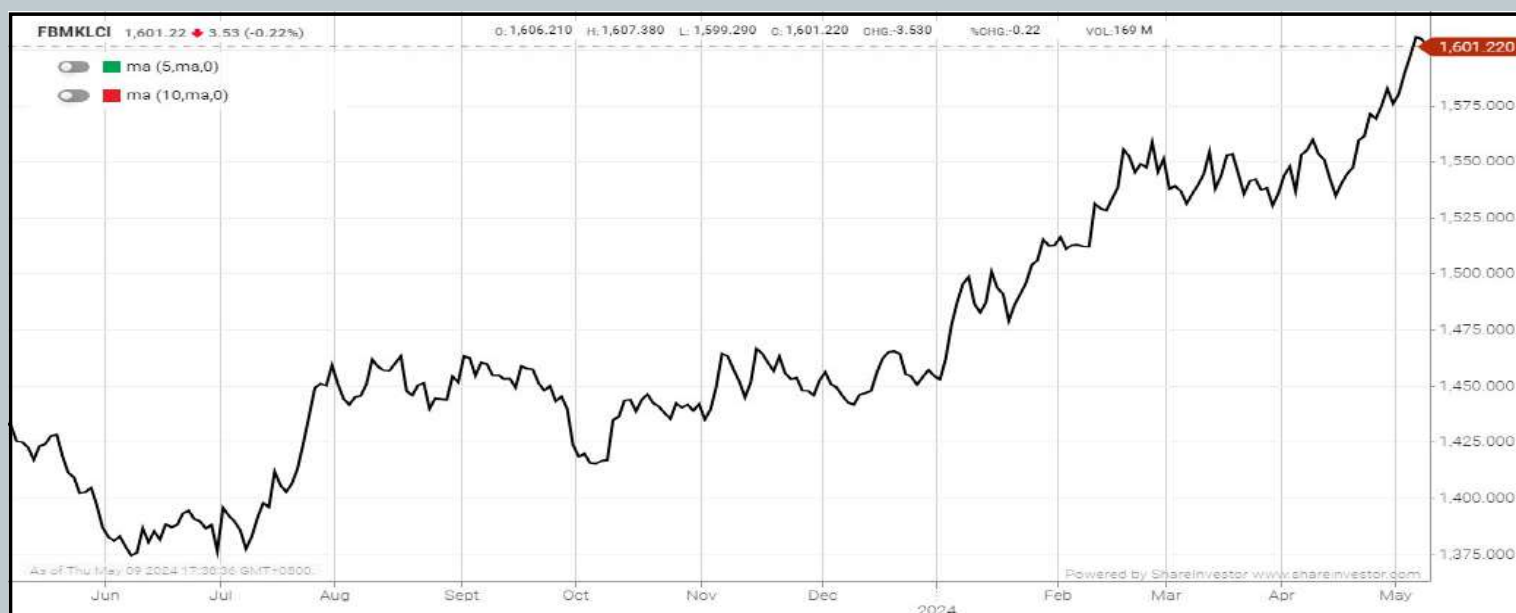
The SC introduced the waqf-featured fund framework in 2020 in efforts to promote a greater value proposition aligned with the tenets of maqasid al-shariah. Under the framework, returns from the investment can be channelled back to charity in the form of cash waqf in various focus sectors, including health, community empowerment and education. In 2022, the framework was further expanded to include Islamic real estate investment trusts (REITs) and Islamic exchange-traded funds (ETFs).



He highlighted that the index fund management sector saw commendable growth in Islamic assets under management (AUM), which rose to RM226 billion in 2023, constituting 22.7% of total industry AUM. The number of fund management companies operating shariah-compliant funds increased to 59 in 2023, from 53 in 2018, underpinned by an ecosystem characterised by strong intermediation and innovative product offerings.

## EYE ON THE MARKETS

On Thursday (16May), the Ringgit closed at 4.6845 against the USD and 3.4843 to the Sing Dollar. On Monday (13May), the FBM KLCI opened at 1602.30. As at Thursday (16May) 5:00pm, the FBM KLCI closed up 8.81 points at 1611.11. Over in US, the overnight Dow Jones Industrial Average closed down 38.62 points (-0.10%) to 39,869.38 whilst the NASDAQ shed 44.07 points (-0.26%) to 16,698.32.



KLCI 1 Year Chart

## Over 5 trading days



ShareInvestor WebPro ([www.shareinvestor.com/my](http://www.shareinvestor.com/my))

1. Price > Stock Prices
2. Select Market: NASDAQ / NYSE / IDX / SET / HKEX / SGX (One bourse at a time)
3. select Stocks Tab
4. select Ranking Top Gainers or Top Losers (Over 5 Trading Days)
5. Mouse over Column Layout > select Edit Customs > select Name > select Last Done Price > select 5 Days Change > select 52 Weeks High > select 52 Weeks Low > Mouse Over Column Layout > select Custom

### NASDAQ (USD)

#### Top Gainers

Name	Last Done	Change Over 5 Days	52 Weeks High	52 Weeks Low
MICROSTRATEGY	1,439.980	+176.340	1,999.990	266.000
SUPER MICRO COMPUTER INC	904.400	+104.700	1,229.000	137.600
BROADCOM INC	1,412.130	+106.460	1,438.170	638.730
NVIDIA CORP	943.590	+56.120	974.000	288.320
MONDAY COM LTD	228.400	+47.400	239.220	122.130

#### Top Losers

Name	Last Done	Change Over 5 Days	52 Weeks High	52 Weeks Low
BOOKING HOLDINGS INC	3,735.010	-45.020	3,918.000	2,456.930
CREDIT ACCEPTANCE CORPORATION	498.410	-25.410	616.660	379.770
O'REILLY AUTOMOTIVE INC NEW	1,005.980	-24.740	1,169.110	860.100
DUOLINGO INC	176.080	-24.500	251.300	121.890
NICE LTD ADR-EACH CNV INTO 1 ORD ILS1	198.600	-24.250	270.730	149.540

### NYSE (USD)

#### Top Gainers

Name	Last Done	Change Over 5 Days	52 Weeks High	52 Weeks Low
BERKSHIRE HATHAWAY INC	625,100.000	+3,100.000	647,039.000	482,500.000
METTLER-TOLEDO INTERNATIONAL INC	1,530.550	+240.130	1,524.610	928.495
FAIR ISAAC CORP	1,404.430	+117.650	1,397.790	745.450
BIGLARI HOLDINGS INC	1,077.200	+42.200	1,077.200	700.000
SERVICENOW INC	758.010	+35.070	815.320	477.160

#### Top Losers

Name	Last Done	Change Over 5 Days	52 Weeks High	52 Weeks Low
WHITE MOUNTAINS INSURANCE GROUP	1,736.320	-127.920	1,899.210	1,319.050
CHIPOTLE MEXICAN GRILL	3,145.880	-93.350	3,260.000	1,768.635
AUTOZONE INC	2,900.990	-78.330	3,256.370	2,277.880
TRANSDIGM GROUP INC	1,286.320	-32.540	1,330.820	768.050
COMFORT SYSTEMS USA	321.600	-23.200	352.450	144.450

### IDX (Rupiah)

#### Top Gainers

Name	Last Done	Change Over 5 Days	52 Weeks High	52 Weeks Low
PETROSEA	8,975.000	+2,125.000	9,850.000	2,810.000
DCI INDONESIA TBK	37,500.000	+2,000.000	59,050.000	32,525.000
GUDANG GARAM TBK	19,325.000	+1,450.000	29,550.000	17,875.000
PETRINDO JAYA KREASI TBK	8,250.000	+1,200.000	13,750.000	740.000
CHANDRA ASRI PACIFIC TBK	9,150.000	+1,175.000	9,300.000	1,995.000

#### Top Losers

Name	Last Done	Change Over 5 Days	52 Weeks High	52 Weeks Low
INDO TAMBANGRAYA MEGAH TBK	24,200.000	-1,150.000	31,425.000	22,125.000
LIPPO GENERAL INSURANCE	3,300.000	-500.000	6,900.000	3,000.000
CITRA TUBINDO	1,320.000	-450.000	2,570.000	990.000
JEMBO CABLE CO	3,730.000	-450.000	4,550.000	1,490.000
SONA TOPAS TOURISM	1,170.000	-420.000	1,960.000	605.000

### SET (Thai Baht)

#### Top Gainers

Name	Last Done	Change Over 5 Days	52 Weeks High	52 Weeks Low
FE	179.000	+41.500	201.000	137.500
JTS	73.250	+20.500	93.500	23.200
SAPPE	103.000	+9.000	106.500	70.750
LRH	47.250	+5.750	48.000	33.000
CBG	70.000	+3.750	89.500	61.250

#### Top Losers

Name	Last Done	Change Over 5 Days	52 Weeks High	52 Weeks Low
METCO	202.000	-22.000	250.000	200.000
BKI	285.000	-7.000	321.000	284.000
STANLY	214.000	-7.000	233.000	171.500
TOPP	160.000	-5.500	172.000	130.000
AEONTS	158.000	-5.000	203.000	144.000

### HKEX (HKD)

#### Top Gainers

Name	Last Done	Change Over 5 Days	52 Weeks High	52 Weeks Low
APPL MATERIAL-T (4336)	1,620.000	+1,020.000	1,620.000	600.000
TENCENT (700)	397.000	+27.200	401.000	260.200
HKEX (388)	292.000	+26.400	336.000	212.200
TENCENT-R (80700)	367.000	+25.400	370.000	240.000
HKEX-R (80388)	270.000	+24.400	307.600	196.900

#### Top Losers

Name	Last Done	Change Over 5 Days	52 Weeks High	52 Weeks Low
LI AUTO-W (2015)	99.700	-7.500	185.500	91.550
TECHTRONIC IND (669)	106.100	-5.400	116.100	67.350
SKB BIO-B (6990)	172.800	-4.700	192.800	60.600
BYD COMPANY-R (81211)	204.400	-4.200	255.800	155.000
BYD COMPANY (1211)	221.800	-4.000	280.600	167.800

### SGX (SGD)

#### Top Gainers

Name	Last Done	Change Over 5 Days	52 Weeks High	52 Weeks Low
GREAT EASTERN	25.870	+7.170	26.220	16.850
OCBC BANK	14.300	+0.390	14.550	12.000
JARDINE C&C	26.950	+0.370	35.580	23.760
TJ DARENTANG USD	2.340	+0.330	2.440	1.660
ST ENGINEERING	4.230	+0.320	4.300	3.540

#### Top Losers

Name	Last Done	Change Over 5 Days	52 Weeks High	52 Weeks Low
JMH USD	39.380	-0.580	52.570	34.920
SEATRIUM LTD	1.610	-0.250	0.147	0.074
UMS	1.060	-0.240	1.580	0.930
UOB	30.120	-0.230	31.350	26.820
AEM SGD	1.860	-0.160	4.020	1.800



# NAVIGATING THE ROLE OF CHAIRMAN TO SAFEGUARD CORPORATE GOVERNANCE

In the intricate landscape of corporate governance (CG), a chairman is a beacon of leadership, guiding the board through the complexities of decision-making and oversight. However, board chairmen may sometimes fall short of fulfilling their duties. They may be found dereliction of duties in the following forms:

## KEY HIGHLIGHTS

- A board chairman is the custodian of governance, plays a pivotal role in shaping the board's trajectory and upholding the principles of integrity, transparency, and accountability.
- However, board chairmen may sometimes fall short of fulfilling their duties in the forms of communication lapses, suppression of shareholders' rights and going overboard in performing their duties.

**COMMUNICATION LAPSES:** The primary role of a chairman is to preside over board and general meetings and ensure the smooth functioning of the board in the interest of good corporate governance.

However, instances have arisen where chairmen exhibit a lack of awareness regarding director attendance, as evidenced in a recently held extraordinary general meeting (EGM) where shareholders were left uninformed about absent directors, including an executive director (ED).

The chairman appeared clueless when queried by shareholders and could not explain their absence satisfactorily. Moreover, the attendance of board meetings by the ED was unsatisfactory at 60%. Directors are expected to devote sufficient time and attention to perform their fiduciary duties as directors of a company.

A hectic schedule should not serve as a justification for their absence from board meetings, considering that meeting dates are usually scheduled well in advance at the outset of the year. Such occurrences raise concerns about accountability and highlight the importance of clear and concise communication in fostering collaboration and alignment among board members.

**SUPPRESSION OF SHAREHOLDERS' RIGHTS:** General meetings are crucial forums for shareholders to query the board of directors and hold them accountable for their decisions and policies.

Therefore, it is important that shareholders are given the chance to speak out and discuss the decisions of the board which have direct bearing over the shares held by them. Unfortunately, some PLCs were found curtailing minority shareholders' participation by prematurely ending the questions and answers (Q&A) session or bypassing shareholder inquiries altogether. For instance, a PLC cited directors' hectic travelling schedules for cutting the Q&A



session short. Later, the PLC was found to have squeezed multiple agendas, including investors' briefings, press conferences and the AGM within the same day.

In another AGM held by a local hard disk driver player, its board chairman bulldozed the meeting without allowing questions from shareholders. Although we received comprehensive responses for questions raised during sideline discussions, the inability to share these insights during the AGM undermines the essence of general meetings, which are intended as platforms for constructive dialogue and open discourse.

Addressing shareholder queries during AGMs is integral as it demonstrates transparency and accountability of a company. It is incumbent upon the chairman to facilitate a conducive environment that allows the expression of views and effective debate. The failure to effectively facilitate a general meeting deprives shareholders of valuable opportunities to engage with directors and voice concerns.

**OVERBOARDING:** The issue of overboarding, wherein chairmen hold multiple committee positions, poses inherent risks to governance integrity. The Corporate Governance Monitor 2022 found that about half of the 869 companies it assessed have departed from Practice 1.4 of the Malaysian Code on Corporate Governance (MCCG), which states that a board chairman should refrain from being a member of the Audit Committee, Nomination Committee and Remuneration Committee.

One of the justifications for PLCs' departure from the said Practice is having a small board, and that the chairman does not chair the committee meeting should alleviate the concern of his independence. Such practice poses risks of self-review and erosion of objectivity in the discussions at the board level.

On the other hand, there are instances of board chairmen attending committee meetings as observers. While participation as an observer in committee meetings may seem benign, it can inadvertently stifle open discourse and hinder effective communication among committee members.

To maintain governance integrity and foster impartial decision-making, the board chairman should neither be a committee member nor join the meetings as an observer.

## **IMPACT ON CORPORATE GOVERNANCE**

A board chairman, as the custodian of governance, plays a pivotal role in shaping the board's trajectory and upholding the principles of integrity, transparency, and accountability that lie at the heart of effective governance. The repercussions of these challenges extend beyond the boardroom, impacting crucial aspects of corporate governance. The instances of communication lapses and suppression of shareholder rights can erode trust among stakeholders, leading to reputational damage and diminished confidence in the organisation's leadership.

Addressing these challenges requires concerted efforts. By acknowledging the issue, implementing proactive measures, and fostering a culture of communication and accountability, organisations can navigate these challenges and steer towards a future of strengthened governance and sustainable growth.

**By MSWG team**



**DEFINITION:** Insider Activity shows the trades made by substantial shareholders or directors of the company. Purchases by the directors and company share buyback may indicate the share price is undervalued and brings confidence to the price trend of the share price.



ShareInvestor WebPro > Fundamental > Insider Trades > click Search tab > Select Bursa > click Stock name > scroll up and leave at <Select Counter> Type Date Range for Announcement Date > click Search

Notice Period is 05th May 2024 - 11th May 2024

Effective Change Date	Stock Name	Buyer/ Seller Name [Classification]	Bought / (Sold) ['000]		No. of Shares After Trade ['000]	
			Total	% Held	Total	% Held
09 MAY 2024 - 09 MAY 2024	AGX	PUAN AIDA MOSIRA BINTI MOKHTAR [DIR/CEO]	-10	34	0.008	
07 MAY 2024 - 07 MAY 2024	AIRPORT	EMPLOYEES PROVIDENT FUND BOARD [SSH]	73	133,557	8.004	
06 MAY 2024 - 06 MAY 2024	AIRPORT	EMPLOYEES PROVIDENT FUND BOARD [SSH]	95	133,484	8	
03 MAY 2024 - 03 MAY 2024	AIRPORT	EMPLOYEES PROVIDENT FUND BOARD [SSH]	290	133,389	7.994	
02 MAY 2024 - 02 MAY 2024	AIRPORT	EMPLOYEES PROVIDENT FUND BOARD [SSH]	351	133,098	7.977	
30 APR 2024 - 30 APR 2024	AIRPORT	EMPLOYEES PROVIDENT FUND BOARD [SSH]	1,124	132,747	7.956	
02 MAY 2024 - 02 MAY 2024	ALLIANZ	EMPLOYEES PROVIDENT FUND BOARD [SSH]	-37	11,981	6.732	
18 APR 2024 - 22 APR 2024	ALPHA	DATO' DR TAN KEE KWONG [DIR/CEO]	-300	300	0.006	
07 MAY 2024 - 07 MAY 2024	AMBANK	EMPLOYEES PROVIDENT FUND BOARD [SSH]	288	478,616	14.473	
06 MAY 2024 - 06 MAY 2024	AMBANK	EMPLOYEES PROVIDENT FUND BOARD [SSH]	3,738	478,328	14.465	
03 MAY 2024 - 03 MAY 2024	AMBANK	EMPLOYEES PROVIDENT FUND BOARD [SSH]	1,559	474,590	14.352	
02 MAY 2024 - 02 MAY 2024	AMBANK	EMPLOYEES PROVIDENT FUND BOARD [SSH]	110	473,644	14.323	
30 APR 2024 - 30 APR 2024	AMBANK	EMPLOYEES PROVIDENT FUND BOARD [SSH]	1,482	473,533	14.32	
06 MAY 2024 - 06 MAY 2024	AMEREIT	AME ELITE CONSORTIUM BERHAD [SSH]	783	260,765	49.616	
06 MAY 2024 - 06 MAY 2024	AMEREIT	MR KANG AH CHEE [SSH]	783	285,277	54.281	
06 MAY 2024 - 06 MAY 2024	AMEREIT	MR LEE CHAI [SSH]	783	287,480	54.699	
06 MAY 2024 - 06 MAY 2024	AMEREIT	MR LEE SAI BOON [SSH]	783	269,939	51.361	
06 MAY 2024 - 06 MAY 2024	AMEREIT	MR LIM YOOK KIM [SSH]	783	285,632	54.347	
03 MAY 2024 - 03 MAY 2024	AMWAY	KUMPULAN WANG PERSARAAN (DIPERBADANKAN) [SSH]	27	14,756	8.976	
06 MAY 2024 - 06 MAY 2024	ANCOMNY	MR LEE CHEUN WEI [DIR/CEO]	2,000	94,378	9.845	
06 MAY 2024 - 06 MAY 2024	ANCOMNY	MR LEE CHEUN WEI [SSH]	2,000	94,378	9.845	
10 MAY 2024 - 10 MAY 2024	APPASIA	MR TOH HONG CHYE [DIR/CEO]	12,750	298,638	26.725	
10 MAY 2024 - 10 MAY 2024	APPASIA	MR TOH HONG CHYE [SSH]	12,750	172,638	26.725	
08 MAY 2024 - 08 MAY 2024	ARMADA	MR GARY NEAL CHRISTENSON [DIR/CEO]	5,147	40,476	0.683	
06 MAY 2024 - 06 MAY 2024	ASIAPLY	MR LIM TECK SENG [DIR/CEO]	1,500	3,300	0.344	
06 MAY 2024 - 06 MAY 2024	ASTRA	DATIN WONG MUH RONG [DIR/CEO]	500	46,601	17.123	
06 MAY 2024 - 06 MAY 2024	ASTRA	DATIN WONG MUH RONG [SSH]	500	46,601	17.123	
07 MAY 2024 - 07 MAY 2024	AXIATA	EMPLOYEES PROVIDENT FUND BOARD [SSH]	2,154	1,649,331	17.963	
06 MAY 2024 - 06 MAY 2024	AXIATA	EMPLOYEES PROVIDENT FUND BOARD [SSH]	390	1,647,177	17.939	
03 MAY 2024 - 03 MAY 2024	AXIATA	EMPLOYEES PROVIDENT FUND BOARD [SSH]	-157	1,646,787	17.935	
02 MAY 2024 - 02 MAY 2024	AXIATA	EMPLOYEES PROVIDENT FUND BOARD [SSH]	1,271	1,646,944	17.937	
30 APR 2024 - 30 APR 2024	AXIATA	EMPLOYEES PROVIDENT FUND BOARD [SSH]	152	1,645,673	17.923	
29 APR 2024 - 29 APR 2024	AXIATA	EMPLOYEES PROVIDENT FUND BOARD [SSH]	809	1,645,521	17.921	
22 APR 2024 - 22 APR 2024	AXIATA	EMPLOYEES PROVIDENT FUND BOARD [SSH]	182	1,644,649	17.912	
07 MAY 2024 - 07 MAY 2024	AXREIT	EMPLOYEES PROVIDENT FUND BOARD [SSH]	1,240	293,852	16.816	
06 MAY 2024 - 06 MAY 2024	AXREIT	EMPLOYEES PROVIDENT FUND BOARD [SSH]	1,000	292,612	16.745	
07 MAY 2024 - 07 MAY 2024	AXREIT	KUMPULAN WANG PERSARAAN (DIPERBADANKAN) [SSH]	520	184,166	10.539	
03 MAY 2024 - 03 MAY 2024	AXREIT	EMPLOYEES PROVIDENT FUND BOARD [SSH]	1,055	291,612	16.687	
02 MAY 2024 - 02 MAY 2024	AXREIT	EMPLOYEES PROVIDENT FUND BOARD [SSH]	2,277	290,556	16.627	
30 APR 2024 - 30 APR 2024	AXREIT	EMPLOYEES PROVIDENT FUND BOARD [SSH]	2,000	288,280	16.497	
07 MAY 2024 - 07 MAY 2024	BAUTO	EMPLOYEES PROVIDENT FUND BOARD [SSH]	105	150,886	12.923	
06 MAY 2024 - 06 MAY 2024	BAUTO	EMPLOYEES PROVIDENT FUND BOARD [SSH]	201	150,781	12.914	
03 MAY 2024 - 03 MAY 2024	BAUTO	EMPLOYEES PROVIDENT FUND BOARD [SSH]	-1,190	150,580	12.897	
03 MAY 2024 - 03 MAY 2024	BAUTO	DATO' AMER HAMZAH BIN AHMAD [SSH]	50	178,430	15.282	
03 MAY 2024 - 03 MAY 2024	BAUTO	DATO' LEE KOK CHUAN [DIR/CEO]	88	178,081	15.252	
03 MAY 2024 - 03 MAY 2024	BAUTO	DATO' LEE KOK CHUAN [SSH]	88	178,081	15.252	
03 MAY 2024 - 03 MAY 2024	BAUTO	DYNAMIC MILESTONE SDN BHD [SSH]	50	173,986	14.901	
03 MAY 2024 - 03 MAY 2024	BAUTO	TAN SRI DATO' SRI YEOH CHOON SAN [DIR/CEO]	50	178,084	15.252	
03 MAY 2024 - 03 MAY 2024	BAUTO	TAN SRI DATO' SRI YEOH CHOON SAN [SSH]	50	178,084	15.252	
30 APR 2024 - 30 APR 2024	BAUTO	EMPLOYEES PROVIDENT FUND BOARD [SSH]	-3,000	151,770	12.998	
07 MAY 2024 - 07 MAY 2024	BIMB	EMPLOYEES PROVIDENT FUND BOARD [SSH]	-336	392,506	17.318	
06 MAY 2024 - 06 MAY 2024	BIMB	EMPLOYEES PROVIDENT FUND BOARD [SSH]	472	392,842	17.333	
03 MAY 2024 - 03 MAY 2024	BIMB	EMPLOYEES PROVIDENT FUND BOARD [SSH]	349	392,369	17.312	
30 APR 2024 - 30 APR 2024	BIMB	EMPLOYEES PROVIDENT FUND BOARD [SSH]	500	392,020	17.296	
07 MAY 2024 - 07 MAY 2024	BURSA	EMPLOYEES PROVIDENT FUND BOARD [SSH]	-466	100,868	12.464	
06 MAY 2024 - 06 MAY 2024	BURSA	EMPLOYEES PROVIDENT FUND BOARD [SSH]	-1,459	101,334	12.521	
03 MAY 2024 - 03 MAY 2024	BURSA	EMPLOYEES PROVIDENT FUND BOARD [SSH]	-500	102,792	12.701	
02 MAY 2024 - 02 MAY 2024	BURSA	EMPLOYEES PROVIDENT FUND BOARD [SSH]	397	103,292	12.763	
02 MAY 2024 - 02 MAY 2024	BURSA	EMPLOYEES PROVIDENT FUND BOARD [SSH]	-883	102,896	12.714	
30 APR 2024 - 30 APR 2024	BURSA	EMPLOYEES PROVIDENT FUND BOARD [SSH]	-500	103,778	12.823	
03 MAY 2024 - 03 MAY 2024	CHGP	DATUK CHENG LAI HOCK [DIR/CEO]	18	336	0.051	

Notice Period is 05th May 2024 - 11th May 2024

Effective Change Date	Stock Name	Buyer/ Seller Name [Classification]	Bought / (Sold) ['000]		No. of Shares After Trade ['000]	
			Total	% Held	Total	% Held
06 MAY 2024 - 06 MAY 2024	CHINHIN	DATUK SERI CHIAU BENG TEIK JP [DIR/CEO]	1,000	2,050,665	57.948	
06 MAY 2024 - 06 MAY 2024	CHINHIN	DATUK SERI CHIAU BENG TEIK JP [SSH]	1,000	2,050,665	57.948	
03 MAY 2024 - 03 MAY 2024	CHINHIN	DATUK SERI CHIAU BENG TEIK JP [DIR/CEO]	1,024,833	2,049,665	57.919	
03 MAY 2024 - 03 MAY 2024	CHINHIN	DATUK SERI CHIAU BENG TEIK JP [SSH]	1,024,833	2,049,665	57.919	
03 MAY 2024 - 03 MAY 2024	CHINHIN	DATUK CHENG LAI HOCK [DIR/CEO]	300	600	0.017	
03 MAY 2024 - 03 MAY 2024	CHINHIN	DIVINE INVENTIONS SDN BHD [SSH]	666,700	1,333,399	37.679	
03 MAY 2024 - 03 MAY 2024	CHINHIN	MISS SHELLY CHIAU YEE WERN [DIR/CEO]	3,650	7,300	0.206	
03 MAY 2024 - 03 MAY 2024	CHINHIN	MR CHIAU HAW CHOON [DIR/CEO]	768,483	1,536,966	43.431	
03 MAY 2024 - 03 MAY 2024	CHINHIN	MR CHIAU HAW CHOON [SSH]	768,483	1,536,966	43.431	
03 MAY 2024 - 03 MAY 2024	CHINHIN	MR YEOH CHIN HOE [DIR/CEO]	50	100	0.003	
03 MAY 2024 - 03 MAY 2024	CHINHIN	PP CHIN HIN REALTY SDN BHD [SSH]	666,700	1,333,399	37.679	
07 MAY 2024 - 07 MAY 2024	CIMB	EMPLOYEES PROVIDENT FUND BOARD [SSH]	4,206	1,580,087	14.82	
08 MAY 2024 - 08 MAY 2024	CIMB	KUMPULAN WANG PERSARAAN (DIPERBADANKAN) [SSH]	1,000	673,688	6.32	
06 MAY 2024 - 06 MAY 2024	CIMB	EMPLOYEES PROVIDENT FUND BOARD [SSH]	3,897	1,575,881	14.78	
07 MAY 2024 - 07 MAY 2024	CIMB	KUMPULAN WANG PERSARAAN (DIPERBADANKAN) [SSH]	-2,000	672,688	6.31	
03 MAY 2024 - 03 MAY 2024	CIMB	EMPLOYEES PROVIDENT FUND BOARD [SSH]	2,056	1,571,984	14.74	
03 MAY 2024 - 03 MAY 2024	CIMB	KUMPULAN WANG PERSARAAN (DIPERBADANKAN) [SSH]	443	674,688	6.33	
02 MAY 2024 - 02 MAY 2024	CIMB	EMPLOYEES PROVIDENT FUND BOARD [SSH]	-5,624	1,569,928	14.72	
30 APR 2024 - 30 APR 2024	CIMB	EMPLOYEES PROVIDENT FUND BOARD [SSH]	6,305	1,575,552	14.77	
07 MAY 2024 - 07 MAY 2024	CLMT	EMPLOYEES PROVIDENT FUND BOARD [SSH]	-386	427,185	15.072	
06 MAY 2024 - 06 MAY 2024	CLMT	EMPLOYEES PROVIDENT FUND BOARD [SSH]	-164	427,571	15.132	
03 MAY 2024 - 03 MAY 2024	CLMT	EMPLOYEES PROVIDENT FUND BOARD [SSH]	-1,462	427,200	15.119	
30 APR 2024 - 30 APR 2024	CLMT	EMPLOYEES PROVIDENT FUND BOARD [SSH]	-2,047	428,661	15.171	
09 MAY 2024 - 09 MAY 2024	CTOS	KUMPULAN WANG PERSARAAN (DIPERBADANKAN) [SSH]	3,640	157,461	6.816	
08 MAY 2024 - 08 MAY 2024	CTOS	ABRDN HOLDINGS LIMITED [SSH]	8,810	242,567	10.501	
08 MAY 2024 - 08 MAY 2024	CTOS	ABRDN MALAYSIA SDN BHD [SSH]	8,810	240,232	10.4	
08 MAY 2024 - 08 MAY 2024	CTOS	ABRDN PLC [SSH]	8,810	242,567	10.501	
07 MAY 2024 - 07 MAY 2024	CTOS	EMPLOYEES PROVIDENT FUND BOARD [SSH]	1,595	311,568	13.488	
08 MAY 2024 - 08 MAY 2024	CTOS	KUMPULAN WANG PERSARAAN (DIPERBADANKAN) [SSH]	2,424	153,821	6.659	
07 MAY 2024 - 07 MAY 2024	CTOS	ABRDN HOLDINGS LIMITED [SSH]	904	233,757	10.119	
07 MAY 2024 - 07 MAY 2024	CTOS	ABRDN MALAYSIA SDN BHD [SSH]	904	231,422	10.018	
07 MAY 2024 - 07 MAY 2024	CTOS	ABRDN PLC [SSH]	904	233,757	10.119	
06 MAY 2024 - 06 MAY 2024	CTOS	EMPLOYEES PROVIDENT FUND BOARD [SSH]	1,311	309,973	13.419	
06 MAY 2024 - 06 MAY 2024	CTOS	ABRDN HOLDINGS LIMITED [SSH]	1,311	232,854	10.08	
06 MAY 2024 - 06 MAY 2024	CTOS	ABRDN MALAYSIA SDN BHD [SSH]	1,311	230,519	9.979	
06 MAY 2024 - 06 MAY 2024	CTOS	ABRDN PLC [SSH]	1,311	232,854	10.08	
03 MAY 2024 - 03 MAY 2024	CTOS	EMPLOYEES PROVIDENT FUND BOARD [SSH]	1,925	308,662	13.362	
03 MAY 2024 - 03 MAY 2024	CTOS	ABRDN HOLDINGS LIMITED [SSH]	1,925	231,542	10.023	
03 MAY 2024 - 03 MAY 2024	CTOS	ABRDN MALAYSIA SDN BHD [SSH]	1,925	229,207	9.922	
03 MAY 2024 - 03 MAY 2024	CTOS	ABRDN PLC [SSH]	1,925	231,542	10.023	
02 MAY 2024 - 02 MAY 2024	CTOS	EMPLOYEES PROVIDENT FUND BOARD [SSH]	1,085	306,737	13.279	
02 MAY 2024 - 02 MAY 2024	CTOS	ABRDN HOLDINGS LIMITED [SSH]	1,085	229,617	9.94	
02 MAY 2024 - 02 MAY 2024	CTOS	ABRDN MALAYSIA SDN BHD [SSH]	1,085	227,282	9.839	
02 MAY 2024 - 02 MAY 2024	CTOS	ABRDN PLC [SSH]	1,085	229,617	9.94	
30 APR 2024 - 30 APR 2024	CTOS	EMPLOYEES PROVIDENT FUND BOARD [SSH]	481	305,652	13.232	
08 MAY 2024 - 08 MAY 2024	CVIEW	PUAN SADIHA BINTI SULEIMAN [SSH]	-68	9,965	9.965	
03 MAY 2024 - 03 MAY 2024	D&O	EMPLOYEES PROVIDENT FUND BOARD [SSH]	83	86,283	6.968	
09 MAY 2024 - 09 MAY 2024	DIALOG	KUMPULAN WANG PERSARAAN (DIPERBADANKAN) [SSH]	-545	623,609	11.06	
07 MAY 2024 - 07 MAY 2024	DIALOG	EMPLOYEES PROVIDENT FUND BOARD [SSH]	1,862	895,387	15.87	
08 MAY 2024 - 08 MAY 2024	DIALOG	KUMPULAN WANG PERSARAAN (DIPERBADANKAN) [SSH]	435	624,154	11.07	
06 MAY 2024 - 06 MAY 2024	DIALOG	EMPLOYEES PROVIDENT FUND BOARD [SSH]	2,000	893,525	15.84	
07 MAY 2024 - 07 MAY 2024	DIALOG	KUMPULAN WANG PERSARAAN (DIPERBADANKAN) [SSH]	210	623,720	11.06	
30 APR 2024 - 30 APR 2024	DIALOG	EMPLOYEES PROVIDENT FUND BOARD [SSH]	148	891,525	15.8	
03 MAY 2024 - 03 MAY 2024	DPHARMA	EMPLOYEES PROVIDENT FUND BOARD [SSH]	65	83,417	8.672	
02 MAY 2024 - 02 MAY 2024	DPHARMA	EMPLOYEES PROVIDENT FUND BOARD [SSH]	602	83,352	8.665	
06 MAY 2024 - 06 MAY 2024	DRBHCORP	EMPLOYEES PROVIDENT FUND BOARD [SSH]	-350	168,023	8.691	
30 APR 2024 - 30 APR 2024	DRBHCORP	EMPLOYEES PROVIDENT FUND BOARD [SSH]	-300	168,373	8.709	

**Disclaimer:** The Information in Insider Activity is extracted from [www.shareinvestor.com/fundamental/insider\\_trades](http://www.shareinvestor.com/fundamental/insider_trades). The information on this page is provided as a service to readers. It does not constitute financial advice and/or any investment recommendations. We assume no liability for damages resulting from or arising out of the use of such information. Whilst every effort is made to ensure accuracy, the information presented is not the official record of shareholder filings. Readers are advised to read the original filings on the Bursa Malaysia website at [www.bursamalaysia.com](http://www.bursamalaysia.com)



**STROM**  
SWISS TIMEPIECES & JEWELLERY



StromWatch Asia  
Tele : +65.9817.3378  
Email : ll.stromasia@gmail.com  
[WWW.STROMWATCH.SWISS](http://WWW.STROMWATCH.SWISS)

Notice Period is 05th May 2024 - 11th May 2024

Effective Change Date	Stock Name	Buyer/ Seller Name [Classification]	Bought / (Sold) ['000]		No. of Shares After Trade ['000]	
			Total	Total	% Held	% Held
09 MAY 2024 - 09 MAY 2024	DSONIC	DATO SAFIAN BIN MOHD YUNUS [SSH]	-800	417,774	14.956	
08 MAY 2024 - 08 MAY 2024	DSONIC	DATO SAFIAN BIN MOHD YUNUS [SSH]	-1,000	418,574	14.985	
07 MAY 2024 - 07 MAY 2024	DSONIC	DATO SAFIAN BIN MOHD YUNUS [SSH]	-1,700	419,574	15.021	
03 MAY 2024 - 03 MAY 2024	DSONIC	DATO SAFIAN BIN MOHD YUNUS [SSH]	-450	421,274	15.078	
09 MAY 2024 - 09 MAY 2024	ECONBHD	KUMPULAN WANG PERSARAAN (DIPERBADANKAN) [SSH]	-733	78,150	5.513	
08 MAY 2024 - 08 MAY 2024	ECONBHD	KUMPULAN WANG PERSARAAN (DIPERBADANKAN) [SSH]	800	78,883	5.565	
06 MAY 2024 - 06 MAY 2024	ECONBHD	EMPLOYEES PROVIDENT FUND BOARD [SSH]	500	103,936	7.332	
07 MAY 2024 - 07 MAY 2024	ECONBHD	KUMPULAN WANG PERSARAAN (DIPERBADANKAN) [SSH]	800	78,083	5.508	
03 MAY 2024 - 03 MAY 2024	ECONBHD	EMPLOYEES PROVIDENT FUND BOARD [SSH]	500	103,436	7.297	
06 MAY 2024 - 06 MAY 2024	ECONBHD	KUMPULAN WANG PERSARAAN (DIPERBADANKAN) [SSH]	458	77,283	5.452	
02 MAY 2024 - 02 MAY 2024	ECONBHD	EMPLOYEES PROVIDENT FUND BOARD [SSH]	332	102,936	7.262	
30 APR 2024 - 30 APR 2024	ECONBHD	EMPLOYEES PROVIDENT FUND BOARD [SSH]	169	102,605	7.238	
06 MAY 2024 - 06 MAY 2024	EDUSPEC	DATO' KANG PANG KIANG [DIR/CEO]	22,400	177,861	15.143	
06 MAY 2024 - 06 MAY 2024	EDUSPEC	DATO' KANG PANG KIANG [SSH]	22,400	177,861	15.143	
02 MAY 2024 - 03 MAY 2024	EDUSPEC	DATO' SRI GAN CHOW TEE [DIR/CEO]	2,515	87,105	7.416	
02 MAY 2024 - 03 MAY 2024	EDUSPEC	DATO' SRI GAN CHOW TEE [SSH]	2,515	87,105	7.416	
07 MAY 2024 - 07 MAY 2024	F&N	EMPLOYEES PROVIDENT FUND BOARD [SSH]	-12	42,186	11.502	
06 MAY 2024 - 06 MAY 2024	F&N	EMPLOYEES PROVIDENT FUND BOARD [SSH]	25	42,198	11.505	
03 MAY 2024 - 03 MAY 2024	F&N	EMPLOYEES PROVIDENT FUND BOARD [SSH]	-190	42,174	11.498	
02 MAY 2024 - 02 MAY 2024	F&N	EMPLOYEES PROVIDENT FUND BOARD [SSH]	22	42,363	11.55	
30 APR 2024 - 30 APR 2024	F&N	EMPLOYEES PROVIDENT FUND BOARD [SSH]	-87	42,342	11.54	
07 MAY 2024 - 07 MAY 2024	FFB	EMPLOYEES PROVIDENT FUND BOARD [SSH]	-250	167,113	8.925	
02 MAY 2024 - 02 MAY 2024	FFB	EMPLOYEES PROVIDENT FUND BOARD [SSH]	232	167,362	8.939	
30 APR 2024 - 30 APR 2024	FFB	EMPLOYEES PROVIDENT FUND BOARD [SSH]	346	167,451	8.943	
03 MAY 2024 - 03 MAY 2024	FITTERS	MISS FLORENCE WONG WEI WEI [SSH]	-90,000	186,854	7.981	
07 MAY 2024 - 07 MAY 2024	FRONTKN	EMPLOYEES PROVIDENT FUND BOARD [SSH]	856	157,208	9.995	
06 MAY 2024 - 06 MAY 2024	FRONTKN	EMPLOYEES PROVIDENT FUND BOARD [SSH]	3,328	156,352	9.94	
03 MAY 2024 - 03 MAY 2024	FRONTKN	EMPLOYEES PROVIDENT FUND BOARD [SSH]	1,941	153,025	9.729	
02 MAY 2024 - 02 MAY 2024	FRONTKN	EMPLOYEES PROVIDENT FUND BOARD [SSH]	1,934	151,083	9.605	
30 APR 2024 - 30 APR 2024	FRONTKN	EMPLOYEES PROVIDENT FUND BOARD [SSH]	462	149,149	9.482	
07 MAY 2024 - 07 MAY 2024	GAMUDA	EMPLOYEES PROVIDENT FUND BOARD (EPF BOARD) [SSH]	602	256,802	9.27	
06 MAY 2024 - 06 MAY 2024	GAMUDA	EMPLOYEES PROVIDENT FUND BOARD (EPF BOARD) [SSH]	1,997	256,201	9.25	
03 MAY 2024 - 03 MAY 2024	GAMUDA	EMPLOYEES PROVIDENT FUND BOARD (EPF BOARD) [SSH]	378	254,203	9.18	
02 MAY 2024 - 02 MAY 2024	GAMUDA	EMPLOYEES PROVIDENT FUND BOARD (EPF BOARD) [SSH]	424	253,826	9.16	
30 APR 2024 - 30 APR 2024	GAMUDA	EMPLOYEES PROVIDENT FUND BOARD (EPF BOARD) [SSH]	4,123	253,402	9.15	
07 MAY 2024 - 07 MAY 2024	GASMSIA	EMPLOYEES PROVIDENT FUND BOARD [SSH]	-38	71,042	5.532	
06 MAY 2024 - 06 MAY 2024	GASMSIA	EMPLOYEES PROVIDENT FUND BOARD [SSH]	-7	71,079	5.535	
03 MAY 2024 - 03 MAY 2024	GASMSIA	EMPLOYEES PROVIDENT FUND BOARD [SSH]	-17	71,086	5.536	
30 APR 2024 - 30 APR 2024	GCAP	BAN-SENG PACKAGING SDN BHD [SSH]	400	20,000	6.131	
30 APR 2024 - 30 APR 2024	GCAP	MR LEE POH HIN [SSH]	400	45,726	14.018	
30 APR 2024 - 30 APR 2024	GCAP	MR LEE YEE LONG [SSH]	400	43,338	13.286	
08 MAY 2024 - 09 MAY 2024	GDB	MR ALEXANDER LO TZONE LEONG [DIR/CEO]	-2,152	50,525	20.21	
06 MAY 2024 - 07 MAY 2024	GENETEC	MR CHEN KHAI VOON [SSH]	-17,688	74,740	9.642	
03 MAY 2024 - 03 MAY 2024	GENP	EMPLOYEES PROVIDENT FUND BOARD [SSH]	-439	117,720	13.121	
02 MAY 2024 - 02 MAY 2024	GENP	EMPLOYEES PROVIDENT FUND BOARD [SSH]	-354	118,160	13.17	
06 MAY 2024 - 08 MAY 2024	GIIB	DATO' SRI LIM KOK HAN [SSH]	-7,113	45,292	6.963	
02 MAY 2024 - 02 MAY 2024	GIIB	DATO' SRI LIM KOK HAN [SSH]	-11,350	52,404	8.057	
03 MAY 2024 - 03 MAY 2024	HANDAL	MISS XU TIAN TIAN [DIR/CEO]	16,799	16,799	4.094	
03 MAY 2024 - 03 MAY 2024	HANDAL	MR YEN SOON JIN [DIR/CEO]	5,600	5,600	1.365	
07 MAY 2024 - 07 MAY 2024	HARNLEN	LNH ENTERPRISE SDN. BHD. [SSH]	-7,500	130,192	23.101	
07 MAY 2024 - 07 MAY 2024	HARNLEN	MR LOW KOK YAOW [DIR/CEO]	-7,500	285,034	50.575	
07 MAY 2024 - 07 MAY 2024	HARNLEN	MR LOW KOK YAOW [SSH]	-7,500	285,034	50.575	
07 MAY 2024 - 07 MAY 2024	HARNLEN	MR LOW KOK YONG [SSH]	-7,500	286,029	50.752	
07 MAY 2024 - 07 MAY 2024	HARNLEN	MR LOW KUECK SHIN [DIR/CEO]	-7,500	273,347	48.502	
07 MAY 2024 - 07 MAY 2024	HARNLEN	MR LOW KUECK SHIN [SSH]	-7,500	273,217	48.479	
07 MAY 2024 - 07 MAY 2024	HARNLEN	MR LOW KUEK KONG [DIR/CEO]	-7,500	272,967	48.434	
07 MAY 2024 - 07 MAY 2024	HARNLEN	MR LOW KUEK KONG [SSH]	-7,500	272,967	48.434	
07 MAY 2024 - 07 MAY 2024	HARNLEN	MR LOW KWEEK LEE [DIR/CEO]	-7,500	273,177	48.471	
07 MAY 2024 - 07 MAY 2024	HARNLEN	MR LOW KWEEK LEE [SSH]	-7,500	273,177	48.471	
07 MAY 2024 - 07 MAY 2024	HARNLEN	MR LOW QUEK KIONG [DIR/CEO]	-7,500	308,891	54.809	
07 MAY 2024 - 07 MAY 2024	HARNLEN	MR LOW QUEK KIONG [SSH]	-7,500	301,211	53.446	
07 MAY 2024 - 07 MAY 2024	HARNLEN	PUAN SRI DATIN CHAN PUI LEORN [DIR/CEO]	-7,500	286,061	50.757	
07 MAY 2024 - 07 MAY 2024	HARNLEN	PUAN SRI DATIN CHAN PUI LEORN [SSH]	-7,500	286,061	50.757	
07 MAY 2024 - 07 MAY 2024	HARNLEN	TAN SRI LOW NAM HUI [SSH]	-7,500	272,177	48.294	
22 APR 2024 - 03 MAY 2024	HEKTAR	HEKTAR BLACK SDN BHD [SSH]	-210	124,253	17.579	
06 MAY 2024 - 07 MAY 2024	HIBISCS	DATUK MICHAEL TANG VEE MUN [SSH]	331	90,099	11.282	
07 MAY 2024 - 07 MAY 2024	HLBANK	EMPLOYEES PROVIDENT FUND BOARD [SSH]	430	200,961	9.631	
06 MAY 2024 - 06 MAY 2024	HLBANK	EMPLOYEES PROVIDENT FUND BOARD [SSH]	455	200,531	9.61	
03 MAY 2024 - 03 MAY 2024	HLBANK	EMPLOYEES PROVIDENT FUND BOARD [SSH]	830	200,077	9.589	
08 MAY 2024 - 08 MAY 2024	HUBLINE	BILLION POWER SDN. BHD. [SSH]	26,000	422,695	9.853	
08 MAY 2024 - 08 MAY 2024	HUBLINE	MADAM KATRINA LING SHIEK NGEE [DIR/CEO]	26,000	785,541	18.311	
08 MAY 2024 - 08 MAY 2024	HUBLINE	MADAM KATRINA LING SHIEK NGEE [SSH]	26,000	785,541	18.311	
08 MAY 2024 - 08 MAY 2024	HUBLINE	MADAM LAU SWEE ENG [SSH]	26,000	785,541	18.311	
08 MAY 2024 - 08 MAY 2024	HUBLINE	MR BERNARD LING ING TAH [SSH]	26,000	785,541	18.311	
08 MAY 2024 - 08 MAY 2024	HUBLINE	MR LING LI KUANG [DIR/CEO]	26,000	785,541	18.311	
08 MAY 2024 - 08 MAY 2024	HUBLINE	MR LING LI KUANG [SSH]	26,000	785,541	18.311	
08 MAY 2024 - 08 MAY 2024	HUBLINE	MR ROYSTON LING ING DING [DIR/CEO]	26,000	785,541	18.31	

Notice Period is 05th May 2024 - 11th May 2024

Effective Change Date	Stock Name	Buyer/ Seller Name [Classification]	Bought / (Sold) ['000]		No. of Shares After Trade ['000]	
			Total	Total	% Held	% Held
08 MAY 2024 - 08 MAY 2024	HUBLINE	MR ROYSTON LING ING DING [SSH]	26,000	785,541	18.31	
06 MAY 2024 - 06 MAY 2024	HUBLINE	BILLION POWER SDN. BHD. [SSH]	26,000	396,695	9.247	
06 MAY 2024 - 06 MAY 2024	HUBLINE	MADAM KATRINA LING SHIEK NGEE [DIR/CEO]	26,000	759,541	17.704	
06 MAY 2024 - 06 MAY 2024	HUBLINE	MADAM KATRINA LING SHIEK NGEE [SSH]	26,000	759,541	17.704	
06 MAY 2024 - 06 MAY 2024	HUBLINE	MADAM LAU SWEE ENG [SSH]	26,000	759,541	17.705	
06 MAY 2024 - 06 MAY 2024	HUBLINE	MR BERNARD LING ING TAH [SSH]	26,000	759,541	17.705	
06 MAY 2024 - 06 MAY 2024	HUBLINE	MR LING LI KUANG [DIR/CEO]	26,000	759,541	17.705	
06 MAY 2024 - 06 MAY 2024	HUBLINE	MR LING LI KUANG [SSH]	26,000	759,541	17.705	
06 MAY 2024 - 06 MAY 2024	HUBLINE	MR ROYSTON LING ING DING [DIR/CEO]	26,000	759,541	17.704	
06 MAY 2024 - 06 MAY 2024	HUBLINE	MR ROYSTON LING ING DING [SSH]	26,000	759,541	17.704	
25 APR 2024 - 07 MAY 2024	ICON	LIANNEX CORPORATION (S) PTE LTD [SSH]	38,867	352,636	56.673	
25 APR 2024 - 07 MAY 2024	ICON	LIANNEX MARITIME SDN. BHD. [SSH]	38,867	352,636	56.673	
25 APR 2024 - 07 MAY 2024	ICON	MR LIM HAN WENG [SSH]	38,867	352,636	56.673	
23 APR 2024 - 03 MAY 2024	ICON	LIANNEX CORPORATION (S) PTE LTD [SSH]	41,764	313,769	50.426	
23 APR 2024 - 03 MAY 2024	ICON	LIANNEX MARITIME SDN. BHD. [SSH]	41,764	313,769	50.426	
23 APR 2024 - 03 MAY 2024	ICON	MR LIM HAN WENG [SSH]	41,764	313,769	50.426	
06 MAY 2024 - 06 MAY 2024	ICONIC	DATO' SERI TAN KEAN TET [DIR/CEO]	10,000	632,360	37.483	
06 MAY 2024 - 06 MAY 2024	ICONIC	DATO' SERI TAN KEAN TET [SSH]	10,000	632,360	37.483	
06 MAY 2024 - 06 MAY 2024	ICONIC	MR TAN CHO CHIA [DIR/CEO]	10,000	53,108	3.148	
07 MAY 2024 - 08 MAY 2024	IGBB	HSBC ASIA HOLDINGS LIMITED (HAHO) [SSH]	-101	101,737	7.577	
07 MAY 2024 - 08 MAY 2024	IGBB	HSBC HOLDINGS PLC (GHQ) [SSH]	-101	101,737	7.577	
07 MAY 2024 - 08 MAY 2024	IGBB	HSBC INTERNATIONAL TRUSTEE (HOLDINGS) PTE. LTD. (HTHL) [SSH]	-101	101,737	7.577	
07 MAY 2024 - 08 MAY 2024	IGBB	HSBC INTERNATIONAL TRUSTEE LIMITED (HKIT) [SSH]	-101	101,737	7.577	
07 MAY 2024 - 08 MAY 2024	IGBB	THE HONGKONG AND SHANGHAI BANKING CORPORATION LIMITED (HBAP) [SSH]	-101	101,737	7.577	
06 MAY 2024 - 06 MAY 2024	IGBB	HSBC ASIA HOLDINGS LIMITED (HAHO) [SSH]	-150	101,838	7.576	
06 MAY 2024 - 06 MAY 2024	IGBB	HSBC HOLDINGS PLC (GHQ) [SSH]	-150	101,838	7.576	
06 MAY 2024 - 06 MAY 2024	IGBB	HSBC INTERNATIONAL TRUSTEE (HOLDINGS) PTE. LTD. (HTHL) [SSH]	-150	101,838	7.576	
06 MAY 2024 - 06 MAY 2024	IGBB	HSBC INTERNATIONAL TRUSTEE LIMITED (HKIT) [SSH]	-150	101,838	7.576	
06 MAY 2024 - 06 MAY 2024	IGBB	THE HONGKONG AND SHANGHAI BANKING CORPORATION LIMITED (HBAP) [SSH]	-150	101,838	7.576	
03 MAY 2024 - 03 MAY 2024	IGBB	HSBC ASIA HOLDINGS LIMITED (HAHO) [SSH]	-2	101,988	7.587	
03 MAY 2024 - 03 MAY 2024	IGBB	HSBC HOLDINGS PLC (GHQ) [SSH]	-2	101,988	7.587	
03 MAY 2024 - 03 MAY 2024	IGBB	HSBC INTERNATIONAL TRUSTEE (HOLDINGS) PTE. LTD. (HTHL) [SSH]	-2	101,988	7.587	
03 MAY 2024 - 03 MAY 2024	IGBB	HSBC INTERNATIONAL TRUSTEE LIMITED (HKIT) [SSH]	-2	101,988	7.587	
03 MAY 2024 - 03 MAY 2024	IGBB	THE HONGKONG AND SHANGHAI BANKING CORPORATION LIMITED (HBAP) [SSH]	-2	101,988	7.587	
30 APR 2024 - 30 APR 2024	IGBB	HSBC ASIA HOLDINGS LIMITED (HAHO) [SSH]	-0.2	101,990	7.587	
30 APR 2024 - 30 APR 2024	IGBB	HSBC HOLDINGS PLC (GHQ) [SSH]	-0.2	101,990	7.587	
30 APR 2024 - 30 APR 2024	IGBB	HSBC INTERNATIONAL TRUSTEE (HOLDINGS) PTE. LTD. (HTHL) [SSH]	-0.2	101,990	7.587	
30 APR 2024 - 30 APR 2024	IGBB	HSBC INTERNATIONAL TRUSTEE LIMITED (HKIT) [SSH]	-0.2	101,990	7.587	
30 APR 2024 - 30 APR 2024	IGBB	THE HONGKONG AND SHANGHAI BANKING CORPORATION LIMITED (HBAP) [SSH]	-0.2	101,990	7.587	
29 APR 2024 - 29 APR 2024	IGBB	HSBC ASIA HOLDINGS LIMITED (HAHO) [SSH]	-0.7	101,990	7.587	
29 APR 2024 - 29 APR 2024	IGBB	HSBC HOLDINGS PLC (GHQ) [SSH]	-0.7	101,990	7.587	
29 APR 2024 - 29 APR 2024	IGBB	HSBC INTERNATIONAL TRUSTEE (HOLDINGS) PTE. LTD. (HTHL) [SSH]	-0.7	101,990	7.587	
29 APR 2024 - 29 APR 2024	IGBB	HSBC INTERNATIONAL TRUSTEE LIMITED (HKIT) [SSH]	-0.7	101,990	7.587	
29 APR 2024 - 29 APR 2024	IGBB	THE HONGKONG AND SHANGHAI BANKING CORPORATION LIMITED (HBAP) [SSH]	-0.7	101,990	7.587	
07 MAY 2024 - 07 MAY 2024	IGBREIT	EMPLOYEES PROVIDENT FUND BOARD ("EPF BOARD") [SSH]	-343	417,716	11.574	
06 MAY 2024 - 06 MAY 2024	IGBREIT	EMPLOYEES PROVIDENT FUND BOARD ("EPF BOARD") [SSH]	817	418,059	11.583	
03 MAY 2024 - 03 MAY 2024	IGBREIT	EMPLOYEES PROVIDENT FUND BOARD ("EPF BOARD") [SSH]	-594	416,971	11.553	
02 MAY 2024 - 02 MAY 2024	IGBREIT	EMPLOYEES PROVIDENT FUND BOARD ("EPF BOARD") [SSH]	-185	417,565	11.569	
03 MAY 2024 - 03 MAY 2024	IGBREIT	KUMPULAN WANG PERSARAAN (DEPERBADANKAN) [SSH]	-7	247,084	6.846	
30 APR 2024 - 30 APR 2024	IGBREIT	EMPLOYEES PROVIDENT FUND BOARD ("EPF BOARD") [SSH]	-20	417,750	11.574	
07 MAY 2024 - 07 MAY 2024	IHH	EMPLOYEES PROVIDENT FUND BOARD [SSH]	249	961,010	10.912	
06 MAY 2024 - 06 MAY 2024	IHH	EMPLOYEES PROVIDENT FUND BOARD [SSH]	484	960,761	10.909	
03 MAY 2024 - 03 MAY 2024	IHH	EMPLOYEES PROVIDENT FUND BOARD [SSH]	-129	960,277	10.904	
02 MAY 2024 - 02 MAY 2024	IHH	EMPLOYEES PROVIDENT FUND BOARD [SSH]	-1,530	960,406	10.905	
30 APR 2024 - 30 APR 2024	IHH	EMPLOYEES PROVIDENT FUND BOARD [SSH]	1,641	961,936	10.922	
07 MAY 2024 - 07 MAY 2024	IJM	EMPLOYEES PROVIDENT FUND BOARD [SSH]	628	608,169	17.346	
06 MAY 2024 - 06 MAY 2024	IJM	EMPLOYEES PROVIDENT FUND BOARD [SSH]	-828	607,541	17.328	
03 MAY 2024 - 03 MAY 2024	IJM	EMPLOYEES PROVIDENT FUND BOARD [				



Notice Period is 05th May 2024 - 11th May 2024

Effective Change Date	Stock Name	Buyer/ Seller Name [Classification]	Bought / (Sold) ['000]		No. of Shares After Trade ['000]	
			Total	Total	% Held	% Held
06 MAY 2024 - 06 MAY 2024	INTA	ENCIK AHMAD BIN AWI [DIR/CEO]	-200	66,243	12.219	
06 MAY 2024 - 06 MAY 2024	INTA	ENCIK AHMAD BIN AWI [SSH]	-200	66,243	12.219	
06 MAY 2024 - 06 MAY 2024	INTA-WA	ENCIK AHMAD BIN AWI [DIR/CEO]	-1,500	12,361	9.237	
07 MAY 2024 - 07 MAY 2024	IOIPG	EMPLOYEES PROVIDENT FUND BOARD [SSH]	-16,441	361,063	6.557	
06 MAY 2024 - 06 MAY 2024	IOIPG	EMPLOYEES PROVIDENT FUND BOARD [SSH]	-819	377,431	6.855	
03 MAY 2024 - 03 MAY 2024	IOIPG	EMPLOYEES PROVIDENT FUND BOARD [SSH]	-3,000	377,995	6.865	
02 MAY 2024 - 02 MAY 2024	IOIPG	EMPLOYEES PROVIDENT FUND BOARD [SSH]	10,495	380,995	6.919	
30 APR 2024 - 30 APR 2024	IOIPG	EMPLOYEES PROVIDENT FUND BOARD [SSH]	-923	370,500	6.729	
03 MAY 2024 - 03 MAY 2024	KAB	DATO' LAI KENG ONN [DIR/CEO]	-8,046	608,005	30.61	
03 MAY 2024 - 03 MAY 2024	KAB	DATO' LAI KENG ONN [SSH]	-8,046	608,005	30.61	
07 MAY 2024 - 07 MAY 2024	KERJAYA	EMPLOYEES PROVIDENT FUND BOARD [SSH]	144	67,347	5.341	
06 MAY 2024 - 06 MAY 2024	KERJAYA	EMPLOYEES PROVIDENT FUND BOARD [SSH]	410	67,204	5.329	
25 APR 2024 - 25 APR 2024	KERJAYA	EMPLOYEES PROVIDENT FUND BOARD [SSH]	-3,577	66,988	5.312	
07 MAY 2024 - 07 MAY 2024	KGROUP	MR SANDRARUBEN A/L NEELAMAGHAM [DIR/CEO]	10,000	10,000	0.272	
07 MAY 2024 - 07 MAY 2024	KLCC	EMPLOYEES PROVIDENT FUND BOARD [SSH]	-6	190,957	10.577	
07 MAY 2024 - 07 MAY 2024	KLCC	EMPLOYEES PROVIDENT FUND BOARD [SSH]	-6	190,957	10.577	
06 MAY 2024 - 06 MAY 2024	KLCC	EMPLOYEES PROVIDENT FUND BOARD [SSH]	-165	190,962	10.578	
06 MAY 2024 - 06 MAY 2024	KLCC	EMPLOYEES PROVIDENT FUND BOARD [SSH]	-165	190,962	10.578	
02 MAY 2024 - 02 MAY 2024	KLCC	EMPLOYEES PROVIDENT FUND BOARD [SSH]	1,000	191,127	10.587	
02 MAY 2024 - 02 MAY 2024	KLCC	EMPLOYEES PROVIDENT FUND BOARD [SSH]	1,000	191,127	10.587	
07 MAY 2024 - 07 MAY 2024	KLK	EMPLOYEES PROVIDENT FUND BOARD [SSH]	857	147,639	13.466	
06 MAY 2024 - 06 MAY 2024	KLK	EMPLOYEES PROVIDENT FUND BOARD [SSH]	185	146,783	13.388	
03 MAY 2024 - 03 MAY 2024	KLK	EMPLOYEES PROVIDENT FUND BOARD [SSH]	750	146,628	13.374	
02 MAY 2024 - 02 MAY 2024	KLK	EMPLOYEES PROVIDENT FUND BOARD [SSH]	1,591	145,883	13.306	
30 APR 2024 - 30 APR 2024	KLK	EMPLOYEES PROVIDENT FUND BOARD [SSH]	716	144,436	13.174	
29 APR 2024 - 29 APR 2024	KLK	EMPLOYEES PROVIDENT FUND BOARD [SSH]	2,150	143,720	13.108	
07 MAY 2024 - 07 MAY 2024	KOSSAN	EMPLOYEES PROVIDENT FUND BOARD [SSH]	754	140,299	5.498	
06 MAY 2024 - 06 MAY 2024	KOSSAN	EMPLOYEES PROVIDENT FUND BOARD [SSH]	1,260	139,545	5.469	
03 MAY 2024 - 03 MAY 2024	KOSSAN	EMPLOYEES PROVIDENT FUND BOARD [SSH]	1,580	138,285	5.42	
02 MAY 2024 - 02 MAY 2024	KOSSAN	EMPLOYEES PROVIDENT FUND BOARD [SSH]	775	136,705	5.358	
30 APR 2024 - 30 APR 2024	KOSSAN	EMPLOYEES PROVIDENT FUND BOARD [SSH]	-830	135,930	5.327	
07 MAY 2024 - 08 MAY 2024	KRONO	MR EDMOND TAY NAM HIONG [DIR/CEO]	-1,107	50,006	6.156	
07 MAY 2024 - 08 MAY 2024	KRONO	MR EDMOND TAY NAM HIONG [SSH]	-1,107	50,006	6.156	
09 MAY 2024 - 09 MAY 2024	LAYHONG	DATO' YAP HOONG CHAI [DIR/CEO]	-70	277,471	37.009	
08 MAY 2024 - 08 MAY 2024	LAYHONG	DATO' YAP HOONG CHAI [DIR/CEO]	-110	277,541	37.018	
09 MAY 2024 - 09 MAY 2024	LFECORP	MR CHUAH CHONG EWE [DIR/CEO]	294	158,787	14.322	
09 MAY 2024 - 09 MAY 2024	LFECORP	MR CHUAH CHONG EWE [SSH]	294	158,787	14.322	
02 MAY 2024 - 02 MAY 2024	LUXCHEM	MADAM CHIN SONG MOOI [DIR/CEO]	175	461,695	43.159	
02 MAY 2024 - 02 MAY 2024	LUXCHEM	MADAM CHIN SONG MOOI [SSH]	175	461,695	43.159	
02 MAY 2024 - 02 MAY 2024	LUXCHEM	MR TANG YING SEE [DIR/CEO]	175	461,695	43.159	
02 MAY 2024 - 02 MAY 2024	LUXCHEM	MR TANG YING SEE [SSH]	175	461,695	43.159	
07 MAY 2024 - 08 MAY 2024	M&A	CIK SITI NUR AISHAH BINTI ISHAK [SSH]	-2,199	113,65	5.684	
06 MAY 2024 - 06 MAY 2024	M&A	CIK SITI NUR AISHAH BINTI ISHAK [SSH]	4,500	115,804	5.794	
03 MAY 2024 - 03 MAY 2024	M&A	CIK SITI NUR AISHAH BINTI ISHAK [SSH]	3,500	111,304	5.569	
08 MAY 2024 - 08 MAY 2024	MAGNI	KP HOLDINGS SDN. BHD. [SSH]	200	58,000	13.38	
08 MAY 2024 - 08 MAY 2024	MAGNI	TAN SRI DATO' SERI TAN KOK PING [DIR/CEO]	200	105,500	24.34	
08 MAY 2024 - 08 MAY 2024	MAGNI	TAN SRI DATO' SERI TAN KOK PING [SSH]	200	87,700	20.23	
06 MAY 2024 - 06 MAY 2024	MALAKOF	EMPLOYEES PROVIDENT FUND BOARD [SSH]	32	488,318	9.992	
03 MAY 2024 - 03 MAY 2024	MALAKOF	EMPLOYEES PROVIDENT FUND BOARD [SSH]	-823	488,286	9.991	
06 MAY 2024 - 06 MAY 2024	MALAKOF	KUMPULAN WANG PERSARAAN (DIPERBADANKAN) ('KWAP') [SSH]	1,959	463,311	9.48	
02 MAY 2024 - 02 MAY 2024	MALAKOF	EMPLOYEES PROVIDENT FUND BOARD [SSH]	309	489,109	10.008	
30 APR 2024 - 30 APR 2024	MALAKOF	EMPLOYEES PROVIDENT FUND BOARD [SSH]	284	488,800	10.002	
02 MAY 2024 - 02 MAY 2024	MATRIX	LEMBAGA TABUNG HAJI [SSH]	700	71,598	5.721	
07 MAY 2024 - 07 MAY 2024	MAXIS	EMPLOYEES PROVIDENT FUND BOARD ('EPF BOARD') [SSH]	437	879,514	11.23	
06 MAY 2024 - 06 MAY 2024	MAXIS	EMPLOYEES PROVIDENT FUND BOARD ('EPF BOARD') [SSH]	1,000	879,078	11.225	
07 MAY 2024 - 07 MAY 2024	MAYBANK	EMPLOYEES PROVIDENT FUND BOARD [SSH]	-2,938	1,511,108	12.523	
07 MAY 2024 - 07 MAY 2024	MAYBANK	AMANAHRAYA TRUSTEES BERHAD - AMANAH SAHAM BUMIPUTERA [SSH]	-2,652	3,664,398	30.367	
07 MAY 2024 - 07 MAY 2024	MAYBANK	PERMODALAN NASIONAL BERHAD [SSH]	-10,000	766,691	6.354	
07 MAY 2024 - 07 MAY 2024	MAYBANK	YAYASAN PELABURAN BUMIPUTRA [SSH]	-10,000	766,691	6.354	
06 MAY 2024 - 06 MAY 2024	MAYBANK	EMPLOYEES PROVIDENT FUND BOARD [SSH]	1,036	1,514,046	12.547	
03 MAY 2024 - 03 MAY 2024	MAYBANK	EMPLOYEES PROVIDENT FUND BOARD [SSH]	-279	1,513,010	12.538	
03 MAY 2024 - 03 MAY 2024	MAYBANK	AMANAHRAYA TRUSTEES BERHAD - AMANAH SAHAM BUMIPUTERA [SSH]	-2,000	3,667,050	30.389	
03 MAY 2024 - 03 MAY 2024	MAYBANK	PERMODALAN NASIONAL BERHAD [SSH]	-370	776,691	6.437	
03 MAY 2024 - 03 MAY 2024	MAYBANK	YAYASAN PELABURAN BUMIPUTRA [SSH]	-370	776,691	6.437	
02 MAY 2024 - 02 MAY 2024	MAYBANK	EMPLOYEES PROVIDENT FUND BOARD [SSH]	6,620	1,513,289	12.541	
02 MAY 2024 - 02 MAY 2024	MAYBANK	AMANAHRAYA TRUSTEES BERHAD - AMANAH SAHAM BUMIPUTERA [SSH]	-4,920	3,669,050	30.406	
02 MAY 2024 - 02 MAY 2024	MAYBANK	PERMODALAN NASIONAL BERHAD [SSH]	-2,590	777,060	6.44	
02 MAY 2024 - 02 MAY 2024	MAYBANK	YAYASAN PELABURAN BUMIPUTRA [SSH]	-2,590	777,060	6.44	
30 APR 2024 - 30 APR 2024	MAYBANK	EMPLOYEES PROVIDENT FUND BOARD [SSH]	5,230	1,506,669	12.486	
03 MAY 2024 - 03 MAY 2024	MESTRON	MR LOON CHIN SENG [DIR/CEO]	-6,000	192,253	19.211	
03 MAY 2024 - 03 MAY 2024	MESTRON	MR LOON CHIN SENG [SSH]	-6,000	192,253	19.211	
03 MAY 2024 - 03 MAY 2024	MESTRON	MR POR TEONG ENG [DIR/CEO]	-6,000	145,487	14.537	
03 MAY 2024 - 03 MAY 2024	MESTRON	MR POR TEONG ENG [SSH]	-6,000	145,487	14.537	
07 MAY 2024 - 07 MAY 2024	MISC	EMPLOYEES PROVIDENT FUND BOARD [SSH]	-485	531,672	11.911	
08 MAY 2024 - 08 MAY 2024	MISC	KUMPULAN WANG PERSARAAN (DIPERBADANKAN) ('KWAP') [SSH]	100	240,649	5.391	
06 MAY 2024 - 06 MAY 2024	MISC	EMPLOYEES PROVIDENT FUND BOARD [SSH]	-586	532,156	11.922	
03 MAY 2024 - 03 MAY 2024	MISC	EMPLOYEES PROVIDENT FUND BOARD [SSH]	-830	532,742	11.935	
02 MAY 2024 - 02 MAY 2024	MISC	EMPLOYEES PROVIDENT FUND BOARD [SSH]	-1,230	533,572	11.953	

Notice Period is 05th May 2024 - 11th May 2024

Effective Change Date	Stock Name	Buyer/ Seller Name [Classification]	Bought / (Sold) ['000]		No. of Shares After Trade ['000]	
			Total	Total	% Held	% Held
03 MAY 2024 - 03 MAY 2024	MISC	KUMPULAN WANG PERSARAAN (DIPERBADANKAN) ('KWAP') [SSH]	116	240,549	5.389	
30 APR 2024 - 30 APR 2024	MISC	EMPLOYEES PROVIDENT FUND BOARD [SSH]	-1,636	534,802	11.981	
06 MAY 2024 - 06 MAY 2024	MKHOP	CHEN CHOY & SONS REALTY SDN. BHD. [SSH]	832	693,358	67.738	
06 MAY 2024 - 06 MAY 2024	MKHOP	DATUK CHEN FOOK WAH [SSH]	832	693,475	67.749	
06 MAY 2024 - 06 MAY 2024	MKHOP	MKH BERHAD [SSH]	832	659,597	64.44	
06 MAY 2024 - 06 MAY 2024	MKHOP	TAN SRI DATO' CHEN KOOI CHIEW @ CHENG NGI CHONG [DIR/CEO]	832	695,798	67.976	
06 MAY 2024 - 06 MAY 2024	MKHOP	TAN SRI DATO' CHEN KOOI CHIEW @ CHENG NGI CHONG [SSH]	832	695,798	67.976	
06 MAY 2024 - 06 MAY 2024	MKHOP	TAN SRI DATUK CHEN LOK LOI [DIR/CEO]	832	696,143	68.01	
06 MAY 2024 - 06 MAY 2024	MKHOP	TAN SRI DATUK CHEN LOK LOI [SSH]	832	696,143	68.01	
03 MAY 2024 - 03 MAY 2024	MKHOP	METRO KAJANG (OVERSEA) SDN. BHD. [SSH]	221	316,480	30.919	
02 MAY 2024 - 03 MAY 2024	MKHOP	CHEN CHOY & SONS REALTY SDN. BHD. [SSH]	631	692,526	67.657	
02 MAY 2024 - 03 MAY 2024	MKHOP	DATUK CHEN FOOK WAH [SSH]	631	692,643	67.668	
02 MAY 2024 - 03 MAY 2024	MKHOP	MKH BERHAD [SSH]	631	658,765	64.359	
02 MAY 2024 - 03 MAY 2024	MKHOP	TAN SRI DATO' CHEN KOOI CHIEW @ CHENG NGI CHONG [DIR/CEO]	631	694,966	67.895	
02 MAY 2024 - 03 MAY 2024	MKHOP	TAN SRI DATO' CHEN KOOI CHIEW @ CHENG NGI CHONG [SSH]	631	694,966	67.895	
02 MAY 2024 - 03 MAY 2024	MKHOP	TAN SRI DATUK CHEN LOK LOI [DIR/CEO]	631	695,311	67.929	
02 MAY 2024 - 03 MAY 2024	MKHOP	TAN SRI DATUK CHEN LOK LOI [SSH]	631	695,311	67.929	
09 MAY 2024 - 09 MAY 2024	MNHLDG	MISS SOH ENG HOOI [DIR/CEO]	-75	236	0.053	
03 MAY 2024 - 03 MAY 2024	MPAY	DATO' CHEW CHEE SENG [DIR/CEO]	30,000	256,722	29.632	
03 MAY 2024 - 03 MAY 2024	MPAY	DATO' CHEW CHEE SENG [SSH]	30,000	256,722	29.632	
03 MAY 2024 - 03 MAY 2024	MPAY	MR CHIN SHEA FONG [DIR/CEO]	-30,000	6,111	0.705	
07 MAY 2024 - 07 MAY 2024	MRDIY	EMPLOYEES PROVIDENT FUND BOARD [SSH]	3,449	570,255	6.035	
06 MAY 2024 - 06 MAY 2024	MRDIY	EMPLOYEES PROVIDENT FUND BOARD [SSH]	1,798	566,807	5.999	
03 MAY 2024 - 03 MAY 2024	MRDIY	EMPLOYEES PROVIDENT FUND BOARD [SSH]	5,775	565,008	5.98	
02 MAY 2024 - 02 MAY 2024	MRDIY	EMPLOYEES PROVIDENT FUND BOARD [SSH]	989	559,233	5.919	
30 APR 2024 - 30 APR 2024	MRDIY	EMPLOYEES PROVIDENT FUND BOARD [SSH]	224	558,244	5.908	
02 MAY 2024 - 02 MAY 2024	MTOUCHE	MITSUBISHI UFJ FINANCIAL GROUP INC [SSH]	-2,599	59201	6.388	
02 MAY 2024 - 02 MAY 2024	MTOUCHE	MORGAN STANLEY [SSH]	-2,599	59201	6.388	
09 MAY 2024 - 09 MAY 2024	MYEG	KUMPULAN WANG PERSARAAN (DIPERBADANKAN) [SSH]	1,000	546,241	7.323	
07 MAY 2024 - 07 MAY 2024	MYEG	EMPLOYEES PROVIDENT FUND BOARD [SSH]	5,678	403,393	5.408	
08 MAY 2024 - 08 MAY 2024	MYEG	KUMPULAN WANG PERSARAAN (DIPERBADANKAN) [SSH]	1,650	545,241	7.31	
06 MAY 2024 - 06 MAY 2024	MYEG	EMPLOYEES PROVIDENT FUND BOARD [SSH]	6,277	397,715	5.332	
03 MAY 2024 - 03 MAY 2024	MYEG	EMPLOYEES PROVIDENT FUND BOARD [SSH]	7,764	391,438	5.248	
06 MAY 2024 - 06 MAY 2024	MYEG	KUMPULAN WANG PERSARAAN (DIPERBADANKAN) [SSH]	-3,000	543,591	7.288	
02 MAY 2024 - 02 MAY 2024	MYEG	EMPLOYEES PROVIDENT FUND BOARD [SSH]	-3,000	383,673	5.144	
03 MAY 2024 - 03 MAY 2024	MYEG	KUMPULAN WANG PERSARAAN (DIPERBADANKAN) [SSH]	-2,000	546,591	7.328	
30 APR 2024 - 30 APR 2024	MYEG	EMPLOYEES PROVIDENT FUND BOARD [SSH]	-2,053	386,673	5.184	
03 MAY 2024 - 03 MAY 2024	NATGATE	MR LEE KIM SAN [DIR/CEO]	-100	15,200	0.733	
06 MAY 2024 - 06 MAY 2024	NESTLE	EMPLOYEES PROVIDENT FUND BOARD [SSH]	6	26,238	11.189	
03 MAY 2024 - 03 MAY 2024	NESTLE	EMPLOYEES PROVIDENT FUND BOARD [SSH]	40	26,23	11.187	
02 MAY 2024 - 02 MAY 2024	NESTLE	EMPLOYEES PROVIDENT FUND BOARD [SSH]	175	26,192	11.169	
30 APR 2024 - 30 APR 2024	NESTLE	EMPLOYEES PROVIDENT FUND BOARD [SSH]	-28	26,017	11.095	
09 MAY 2024 - 09 MAY 2024	NIHSIN	ENCIK SOFIYAN BIN YAHYA [DIR/CEO]	963	18,991	3.627	
07 MAY 2024 - 07 MAY 2024	NIHSIN	ENCIK SOFIYAN BIN YAHYA [DIR/CEO]	37	18,029	3.443	
09 MAY 2024 - 09 MAY 2024	OCK	ALIRAN ARMADA SDN BHD [SSH]	-30,000	337,430	31.887	
09 MAY 2024 - 09 MAY 2024	OCK	DATUK WIRA OOI CHIN KHOON [DIR/CEO]	-30,000	338,905	32.027	
09 MAY 2024 - 09 MAY 2024	OCK	DATUK WIRA OOI CHIN KHOON [SSH]	-30,000	338,905	32.027	
09 MAY 2024 - 09 MAY 2024	OCK	MR LOW HOCK KEONG [DIR/CEO]	-5,000	11,718	1.107	
03 MAY 2024 - 03 MAY 2024	OCNCASH	MISS CHEN LEE CHEW [SSH]	66	138,543	53.123	
03 MAY 2024 - 03 MAY 2024	OCNCASH	MR TAN SIEW CHIN [DIR/CEO]	66	138,543	53.123	
03 MAY 2024 - 03 MAY 2024	OCNCASH	MR TAN SIEW CHIN [SSH]	66	138,543	53.123	
07 MAY 2024 - 07 MAY 2024	PADINI	EMPLOYEES PROVIDENT FUND BOARD [SSH]	-1,137	47,439	7.211	
08 MAY 2024 - 08 MAY 2024	PADINI	KUMPULAN WANG PERSARAAN (DIPERBADANKAN) [SSH]	2,000	63,497	9.652	
06 MAY 2024 - 06 MAY 2024	PADINI	EMPLOYEES PROVIDENT FUND BOARD [SSH]	151	48,576	7.383	
06 MAY 2024 - 06 MAY 2024	PADINI	KUMPULAN WANG PERSARAAN (DIPERBADANKAN) [SSH]	-661	61,497	9.348	
02 MAY 2024 - 02 MAY 2024	PADINI	EMPLOYEES PROVIDENT FUND BOARD [SSH]	426	48,42		

Notice Period is 05th May 2024 - 11th May 2024

Effective Change Date	Stock Name	Buyer/ Seller Name [Classification]	Bought / (Sold) ['000]		No. of Shares After Trade ['000]	
			Total	Total	% Held	% Held
06 MAY 2024 - 07 MAY 2024	PENTA	MR CHUAH CHONG EWE [SSH]	-79	53401	6.3	
03 MAY 2024 - 03 MAY 2024	PENTA	EMPLOYEES PROVIDENT FUND BOARD [SSH]	21	63058	8.865	
06 MAY 2024 - 06 MAY 2024	PENTA	KUMPULAN WANG PERSARAAN (DIPERBADANKAN) [SSH]	494	44876	6.309	
02 MAY 2024 - 02 MAY 2024	PENTA	EMPLOYEES PROVIDENT FUND BOARD [SSH]	65	63037	8.862	
03 MAY 2024 - 03 MAY 2024	PENTA	KUMPULAN WANG PERSARAAN (DIPERBADANKAN) [SSH]	664	44383	6.24	
30 APR 2024 - 30 APR 2024	PENTA	EMPLOYEES PROVIDENT FUND BOARD [SSH]	50	62972	8.853	
07 MAY 2024 - 07 MAY 2024	PETGAS	EMPLOYEES PROVIDENT FUND BOARD [SSH]	-172	255628	12.919	
06 MAY 2024 - 06 MAY 2024	PETGAS	EMPLOYEES PROVIDENT FUND BOARD [SSH]	74	255800	12.927	
03 MAY 2024 - 03 MAY 2024	PETGAS	EMPLOYEES PROVIDENT FUND BOARD [SSH]	98	255726	12.924	
02 MAY 2024 - 02 MAY 2024	PETGAS	EMPLOYEES PROVIDENT FUND BOARD [SSH]	-486	255628	12.919	
30 APR 2024 - 30 APR 2024	PETGAS	EMPLOYEES PROVIDENT FUND BOARD [SSH]	207	256114	12.943	
09 MAY 2024 - 10 MAY 2024	PLABS	MR BU YAW SENG [SSH]	288	19570	7.111	
03 MAY 2024 - 03 MAY 2024	PLB	DATO' SERI ONG CHOO HOON [DIR/CEO]	-1,625	67833	60.353	
03 MAY 2024 - 03 MAY 2024	PLB	DATO' SERI ONG CHOO HOON [SSH]	-1,625	67833	60.353	
03 MAY 2024 - 03 MAY 2024	PLB	LEADING BUILDERS SDN BHD [SSH]	-1,625	60592	53.91	
06 MAY 2024 - 06 MAY 2024	PLINTAS	URUSHARTA JAMAAH SDN. BHD. [SSH]	7,438	62774	5.707	
03 MAY 2024 - 03 MAY 2024	PLINTAS	URUSHARTA JAMAAH SDN. BHD. [SSH]	300	55336	5.031	
07 MAY 2024 - 07 MAY 2024	PPB	EMPLOYEES PROVIDENT FUND BOARD [SSH]	212	160303	11.268	
06 MAY 2024 - 06 MAY 2024	PPB	EMPLOYEES PROVIDENT FUND BOARD [SSH]	194	160091	11.253	
03 MAY 2024 - 03 MAY 2024	PPB	EMPLOYEES PROVIDENT FUND BOARD [SSH]	999	159859	11.237	
02 MAY 2024 - 02 MAY 2024	PPB	EMPLOYEES PROVIDENT FUND BOARD [SSH]	530	158865	11.167	
30 APR 2024 - 30 APR 2024	PPB	EMPLOYEES PROVIDENT FUND BOARD [SSH]	1,373	158335	11.13	
07 MAY 2024 - 07 MAY 2024	PWORTH	DATO' ABD AZIZ BIN HAJI SHEIKH FADZIR [DIR/CEO]	50	2122	1.323	
03 MAY 2024 - 03 MAY 2024	PWROOT	KUMPULAN WANG PERSARAAN (DIPERBADANKAN) [SSH]	-275	26355	5.722	
07 MAY 2024 - 07 MAY 2024	QL	EMPLOYEES PROVIDENT FUND BOARD [SSH]	2,913	127433	5.236	
06 MAY 2024 - 06 MAY 2024	QL	EMPLOYEES PROVIDENT FUND BOARD [SSH]	1,000	124520	5.117	
03 MAY 2024 - 03 MAY 2024	QL	EMPLOYEES PROVIDENT FUND BOARD [SSH]	164	123520	5.075	
02 MAY 2024 - 02 MAY 2024	QL	EMPLOYEES PROVIDENT FUND BOARD [SSH]	1,421	123356	5.069	
07 MAY 2024 - 07 MAY 2024	RHBBANK	EMPLOYEES PROVIDENT FUND BOARD [SSH]	2,919	1727656	40.306	
06 MAY 2024 - 06 MAY 2024	RHBBANK	EMPLOYEES PROVIDENT FUND BOARD [SSH]	-432	1724737	40.238	
03 MAY 2024 - 03 MAY 2024	RHBBANK	EMPLOYEES PROVIDENT FUND BOARD [SSH]	-2,598	1725168	40.248	
02 MAY 2024 - 02 MAY 2024	RHBBANK	EMPLOYEES PROVIDENT FUND BOARD [SSH]	-209	1727766	40.309	
30 APR 2024 - 30 APR 2024	RHBBANK	EMPLOYEES PROVIDENT FUND BOARD [SSH]	6,208	1727976	40.313	
06 MAY 2024 - 07 MAY 2024	SALCON	BERJAYA CAPITAL BERHAD [SSH]	513	120658	11.922	
06 MAY 2024 - 07 MAY 2024	SALCON	BERJAYA CORPORATION BERHAD [SSH]	513	164188	16.223	
06 MAY 2024 - 07 MAY 2024	SALCON	BERJAYA GROUP BERHAD [SSH]	513	164188	16.223	
06 MAY 2024 - 07 MAY 2024	SALCON	BIZURAI BIJAK (M) SDN BHD [SSH]	513	120658	11.922	
06 MAY 2024 - 07 MAY 2024	SALCON	INTER-PACIFIC CAPITAL SDN BHD [SSH]	513	120658	11.921	
06 MAY 2024 - 07 MAY 2024	SALCON	JUARA SEJATI SDN BHD [SSH]	513	164188	16.223	
02 MAY 2024 - 03 MAY 2024	SALCON	BERJAYA CAPITAL BERHAD [SSH]	300	120145	11.871	
02 MAY 2024 - 03 MAY 2024	SALCON	BERJAYA CORPORATION BERHAD [SSH]	300	163675	16.172	
02 MAY 2024 - 03 MAY 2024	SALCON	BERJAYA GROUP BERHAD [SSH]	300	163675	16.172	
02 MAY 2024 - 03 MAY 2024	SALCON	BIZURAI BIJAK (M) SDN BHD [SSH]	300	120145	11.871	
02 MAY 2024 - 03 MAY 2024	SALCON	INTER-PACIFIC CAPITAL SDN BHD [SSH]	300	120145	11.871	
02 MAY 2024 - 03 MAY 2024	SALCON	JUARA SEJATI SDN BHD [SSH]	300	163675	16.172	
07 MAY 2024 - 07 MAY 2024	SAM	EMPLOYEES PROVIDENT FUND BOARD [SSH]	51	45144	6.668	
07 MAY 2024 - 08 MAY 2024	SCIENTX	TAN SRI DATO' MOHD SHERIFF BIN MOHD KASSIM [DIR/CEO]	-10	810	0.053	
07 MAY 2024 - 07 MAY 2024	SCOMNET	EMPLOYEES PROVIDENT FUND BOARD [SSH]	14	45865	5.554	
06 MAY 2024 - 06 MAY 2024	SCOMNET	EMPLOYEES PROVIDENT FUND BOARD [SSH]	-2,097	45851	5.553	
03 MAY 2024 - 03 MAY 2024	SCOMNET	EMPLOYEES PROVIDENT FUND BOARD [SSH]	373	47949	5.822	
02 MAY 2024 - 02 MAY 2024	SCOMNET	EMPLOYEES PROVIDENT FUND BOARD [SSH]	174	47575	5.778	
30 APR 2024 - 30 APR 2024	SCOMNET	EMPLOYEES PROVIDENT FUND BOARD [SSH]	1,617	47401	5.756	
29 APR 2024 - 29 APR 2024	SCOMNET	EMPLOYEES PROVIDENT FUND BOARD [SSH]	-1,464	45784	5.56	
06 MAY 2024 - 06 MAY 2024	SERNKOU	MR LOW PENG SIAN @ CHUA PENG SIAN [DIR/CEO]	-797	262777	24.374	
06 MAY 2024 - 06 MAY 2024	SERNKOU	MR LOW PENG SIAN @ CHUA PENG SIAN [SSH]	-797	262777	24.374	
07 MAY 2024 - 07 MAY 2024	SIGN	CHIN HIN GROUP BERHAD [SSH]	0.14	455227	71.724	
07 MAY 2024 - 07 MAY 2024	SIGN	DATUK SERI CHIAU BENG TEIK JP [DIR/CEO]	0.14	455227	71.724	
07 MAY 2024 - 07 MAY 2024	SIGN	DATUK SERI CHIAU BENG TEIK JP [SSH]	0.14	455227	71.724	
07 MAY 2024 - 07 MAY 2024	SIGN	DIVINE INVENTIONS SDN BHD [SSH]	0.14	455227	71.724	
07 MAY 2024 - 07 MAY 2024	SIGN	MR CHIAU HAW CHOON [DIR/CEO]	0.14	455227	71.724	
07 MAY 2024 - 07 MAY 2024	SIGN	MR CHIAU HAW CHOON [SSH]	0.14	455227	71.724	
07 MAY 2024 - 07 MAY 2024	SIGN	PP CHIN HIN REALTY SDN BHD [SSH]	0.14	455227	71.724	
02 MAY 2024 - 03 MAY 2024	SIGN	CHIN HIN GROUP BERHAD [SSH]	8,195	455227	71.724	
02 MAY 2024 - 03 MAY 2024	SIGN	DATUK SERI CHIAU BENG TEIK JP [DIR/CEO]	8,195	455227	71.724	
02 MAY 2024 - 03 MAY 2024	SIGN	DATUK SERI CHIAU BENG TEIK JP [SSH]	8,195	455227	71.724	
02 MAY 2024 - 03 MAY 2024	SIGN	DIVINE INVENTIONS SDN BHD [SSH]	8,195	455227	71.724	
02 MAY 2024 - 03 MAY 2024	SIGN	MR CHIAU HAW CHOON [DIR/CEO]	8,195	455227	71.724	
02 MAY 2024 - 03 MAY 2024	SIGN	MR CHIAU HAW CHOON [SSH]	8,195	455227	71.724	
02 MAY 2024 - 03 MAY 2024	SIGN	PP CHIN HIN REALTY SDN BHD [SSH]	8,195	455227	71.724	
07 MAY 2024 - 07 MAY 2024	SIME	KUMPULAN WANG PERSARAAN (DIPERBADANKAN) [SSH]	-812	512199	7.516	
06 MAY 2024 - 06 MAY 2024	SIME	KUMPULAN WANG PERSARAAN (DIPERBADANKAN) [SSH]	-405	513011	7.527	
03 MAY 2024 - 03 MAY 2024	SIME	EMPLOYEES PROVIDENT FUND BOARD [SSH]	1,734	1000981	14.686	
02 MAY 2024 - 02 MAY 2024	SIME	EMPLOYEES PROVIDENT FUND BOARD [SSH]	11,521	999247	14.661	
03 MAY 2024 - 03 MAY 2024	SIME	KUMPULAN WANG PERSARAAN (DIPERBADANKAN) [SSH]	-685	513416	7.533	
30 APR 2024 - 30 APR 2024	SIME	EMPLOYEES PROVIDENT FUND BOARD [SSH]	-7,687	987726	14.492	
09 MAY 2024 - 09 MAY 2024	SIMEPLT	KUMPULAN WANG PERSARAAN (DIPERBADANKAN) [SSH]	234	459084	6.638	
07 MAY 2024 - 07 MAY 2024	SIMEPLT	EMPLOYEES PROVIDENT FUND BOARD [SSH]	1,203	1058416	15.305	
03 MAY 2024 - 06 MAY 2024	SIMEPLT	EMPLOYEES PROVIDENT FUND BOARD [SSH]	423	1057213	15.287	

Notice Period is 05th May 2024 - 11th May 2024

Effective Change Date	Stock Name	Buyer/ Seller Name [Classification]	Bought / (Sold) ['000]		No. of Shares After Trade ['000]	
			Total	Total	% Held	% Held
02 MAY 2024 - 02 MAY 2024	SIMEPLT	EMPLOYEES PROVIDENT FUND BOARD [SSH]	208	1056790	15.281	
30 APR 2024 - 30 APR 2024	SIMEPLT	EMPLOYEES PROVIDENT FUND BOARD [SSH]	208	1056583	15.278	
29 APR 2024 - 29 APR 2024	SIMEPLT	EMPLOYEES PROVIDENT FUND BOARD [SSH]	208	1056375	15.275	
07 MAY 2024 - 07 MAY 2024	SIMEPROP	AMANAHRAYA TRUSTEES BERHAD - AMANAH SAHAM BUMIPUTERA [SSH]	-2,799	2949950	43.376	
03 MAY 2024 - 03 MAY 2024	SIMEPROP	AMANAHRAYA TRUSTEES BERHAD - AMANAH SAHAM BUMIPUTERA [SSH]	-11,596	2952749	43.417	
03 MAY 2024 - 03 MAY 2024	SIMEPROP	KUMPULAN WANG PERSARAAN (DIPERBADANKAN) [SSH]	-216	447528	6.58	
02 MAY 2024 - 02 MAY 2024	SIMEPROP	AMANAHRAYA TRUSTEES BERHAD - AMANAH SAHAM BUMIPUTERA [SSH]	-2,463	294344	43.588	
07 MAY 2024 - 08 MAY 2024	SMILE	DATIN WONG CHIEN YUE [DIR/CEO]	156	126632	50.202	
07 MAY 2024 - 08 MAY 2024	SMILE	DATIN WONG CHIEN YUE [SSH]	156	126632	50.202	
07 MAY 2024 - 08 MAY 2024	SMILE	DATO DR WONG RUEN YUAN [SSH]	156	126550	50.17	
07 MAY 2024 - 08 MAY 2024	SMILE	DATO' DR WONG RUEN YUAN [DIR/CEO]	156	126550	50.17	
07 MAY 2024 - 07 MAY 2024	SMRT	URUSHARTA JAMAAH SDN. BHD. [SSH]	1,365	37935	8.375	
06 MAY 2024 - 06 MAY 2024	SMRT	URUSHARTA JAMAAH SDN. BHD. [SSH]	377	36570	8.074	
03 MAY 2024 - 03 MAY 2024	SMRT	URUSHARTA JAMAAH SDN. BHD. [SSH]	343	36193	7.99	
07 MAY 2024 - 07 MAY 2024	SPSETIA	KUMPULAN WANG PERSARAAN (DIPERBADANKAN) [SSH]	-495	435522	9.42	
03 MAY 2024 - 06 MAY 2024	SPTOTO	BERJAYA CORPORATION BERHAD [SSH]	1,050	677301	50.196	
03 MAY 2024 - 06 MAY 2024	SPTOTO	BERJAYA GROUP BERHAD [SSH]	1,050	637533	47.249	
03 MAY 2024 - 06 MAY 2024	SPTOTO	JUARA SEJATI SDN BHD [SSH]	1,050	587410	43.534	
03 MAY 2024 - 03 MAY 2024	SUCCESS	DATO' YEOW KIM WAH [DIR/CEO]	-100	1224	0.52	
06 MAY 2024 - 06 MAY 2024	SUNCON	EMPLOYEES PROVIDENT FUND BOARD [SSH]	177	76495	5.933	
03 MAY 2024 - 03 MAY 2024	SUNCON	EMPLOYEES PROVIDENT FUND BOARD [SSH]	-1,000	76318	5.919	
02 MAY 2024 - 02 MAY 2024	SUNCON	EMPLOYEES PROVIDENT FUND BOARD [SSH]	-357	77318	5.997	
30 APR 2024 - 30 APR 2024	SUNCON	EMPLOYEES PROVIDENT FUND BOARD [SSH]	525	77675	6.024	
07 MAY 2024 - 07 MAY 2024	SUNREIT	EMPLOYEES PROVIDENT FUND BOARD [SSH]	339	544672	15.904	
06 MAY 2024 - 06 MAY 2024	SUNREIT	EMPLOYEES PROVIDENT FUND BOARD [SSH]	276	544333	15.894	
03 MAY 2024 - 03 MAY 2024	SUNREIT	EMPLOYEES PROVIDENT FUND BOARD [SSH]	342	543621	15.873	
02 MAY 2024 - 02 MAY 2024	SUNREIT	EMPLOYEES PROVIDENT FUND BOARD [SSH]	1,417	543279	15.863	
30 APR 2024 - 30 APR 2024	SUNREIT	EMPLOYEES PROVIDENT FUND BOARD [SSH]	1,397	541862	15.822	
07 MAY 2024 - 07 MAY 2024	SUNWAY	EMPLOYEES PROVIDENT FUND BOARD [SSH]	-1,963	296877	5.28	
06 MAY 2024 - 06 MAY 2024	SUNWAY	EMPLOYEES PROVIDENT FUND BOARD [SSH]	1,957	298840	5.31	
03 MAY 2024 - 03 MAY 2024	SUNWAY	EMPLOYEES PROVIDENT FUND BOARD [SSH]	3,133	297395	5.29	
02 MAY 2024 - 02 MAY 2024	SUNWAY	EMPLOYEES PROVIDENT FUND BOARD [SSH]	-5,021	293766	5.22	
30 APR 2024 - 30 APR 2024	SUNWAY	EMPLOYEES PROVIDENT FUND BOARD [SSH]	-1,881	299787	5.33	
06 MAY 2024 - 06 MAY 2024	SWIFT	DATO' GOPIKRISHNAN A/L N.S. MENON [DIR/CEO]	-100	550	0.062	
06 MAY 2024 - 06 MAY 2024	SWIFT	MR LOO HOOI KEAT [DIR/CEO]	121	255038	28.886	
06 MAY 2024 - 06 MAY 2024	SWIFT	MR LOO HOOI KEAT [SSH]	121	255038	28.886	
06 MAY 2024 - 06 MAY 2024	T7GLOBAL	PUAN SRI SHIRLEY LAW SIONG HIONG [SSH]	10,000	47774	6.081	
03 MAY 2024 - 03 MAY 2024	TAKAFUL	KUMPULAN WANG PERSARAAN (DIPERBADANKAN) [SSH]	-753	57213	6.833	
02 MAY 2024 - 02 MAY 2024	TAKAFUL	KUMPULAN WANG PERSARAAN (DIPERBADANKAN) [SSH]	-72	57966	6.923	
07 MAY 2024 - 07 MAY 2024	TENAGA	EMPLOYEES PROVIDENT FUND BOARD [SSH]	-1,322	1058861	18.3	
07 MAY 2024 - 07 MAY 2024	TENAGA	AMANAHRAYA TRUSTEES BERHAD - AMANAH SAHAM BUMIPUTERA [SSH]	-5,000	567400	9.8	
06 MAY 2024 - 06 MAY 2024	TENAGA	EMPLOYEES PROVIDENT FUND BOARD [SSH]	962	1060183	9.8	
03 MAY 2024 - 03 MAY 2024	TENAGA	EMPLOYEES PROVIDENT FUND BOARD [SSH]	-4,901	1059221	18.3	
03 MAY 2024 - 03 MAY 2024	TENAGA	AMANAHRAYA TRUSTEES BERHAD - AMANAH SAHAM BUMIPUTERA [SSH]	-245	572400	9.89	
02 MAY 2024 - 02 MAY 2024	TENAGA	EMPLOYEES PROVIDENT FUND BOARD [SSH]	-667	1064122	18.39	
02 MAY 2024 - 02 MAY 2024	TENAGA	AMANAHRAYA TRUSTEES BERHAD - AMANAH SAHAM BUMIPUTERA [SSH]	-1,755	572645	9.89	
30 APR 2024 - 30 APR 2024	TENAGA	EMPLOYEES PROVIDENT FUND BOARD [SSH]	-978	1064789	18.4	
07 MAY 2024 - 07 MAY 2024	TIMECOM	EMPLOYEES PROVIDENT FUND BOARD [SSH]	1,359	210787	11.401	
08 MAY 2024 - 08 MAY 2024	TIMECOM	KUMPULAN WANG PERSARAAN (DIPERBADANKAN) ("KWAP") [SSH]	5	131110	7.092	
06 MAY 2024 - 06 MAY 2024	TIMECOM	EMPLOYEES PROVIDENT FUND BOARD [SSH]	1,992	209355	11.324	
07 MAY 2024 - 07 MAY 2024	TIMECOM	KUMPULAN WANG PERSARAAN (DIPERBADANKAN) ("KWAP") [SSH]	14	131105	7.091	
03 MAY 2024 - 03 MAY 2024	TIMECOM	EMPLOYEES PROVIDENT FUND BOARD [SSH]	1,849	207473	11.222	
06 MAY 2024 - 06 MAY 2024	TIMECOM	KUMPULAN WANG PERSARAAN (DIPERBADANKAN) ("KWAP") [SSH]	13	131091	7.091	
02 MAY 2024 - 02 MAY 2024	TIMECOM	EMPLOYEES PROVIDENT FUND BOARD [SSH]	638	205924	11.138	
03 MAY 2024 - 03 MAY 2024	TIMECOM	KUMPULAN WANG PERSARAAN (DIPERBADANKAN) ("KWAP") [SSH]	27	131078	7.09	
30 APR 2024 - 30 APR 2024	TIMECOM	EMPLOYEES PROVIDENT FUND BOARD [SSH]	1,000	205385	11.109	
08 MAY 2024 - 08 MAY 2024	TM	AMANAHRAYA TRUSTEES BERHAD-AMANAH SAHAM BUMIPUTERA [SSH]	-4,938	320363	8.348	
07 MAY 2024 - 07 MAY 2024	TM	EMPLOYEE PROVIDENT FUND BOARD (EPF BOARD) [SSH]	-298	667063	17.382	
07 MAY 2024 -						



Notice Period is 05th May 2024 - 11th May 2024

Effective Change Date	Stock Name	Buyer/ Seller Name [Classification]	Bought / (Sold) ['000]		No. of Shares After Trade ['000]	
			Total	% Held	Total	% Held
08 MAY 2024 - 08 MAY 2024	TOPGLOV	KUMPULAN WANG PERSARAAN (DIPERBADANKAN) [SSH]	11,000	5.856	468953	5.856
07 MAY 2024 - 07 MAY 2024	TOPGLOV	KUMPULAN WANG PERSARAAN (DIPERBADANKAN) [SSH]	3,000	5.719	457953	5.719
06 MAY 2024 - 06 MAY 2024	TOPGLOV	KUMPULAN WANG PERSARAAN (DIPERBADANKAN) [SSH]	5,000	5.681	454953	5.681
09 MAY 2024 - 09 MAY 2024	UMCCA	MR TEE CHENG HUA [DIR/CEO]	95	28.334	59434	28.334
08 MAY 2024 - 08 MAY 2024	UMCCA	MR TEE CHENG HUA [DIR/CEO]	18	28.288	59339	28.288
07 MAY 2024 - 07 MAY 2024	UMCCA	MR TEE CHENG HUA [DIR/CEO]	21	28.279	59321	28.279
07 MAY 2024 - 07 MAY 2024	UMCCA	MR TEE CHENG HUA [DIR/CEO]	21	28.279	59067	28.279
06 MAY 2024 - 06 MAY 2024	UMCCA	MR TEE CHENG HUA [DIR/CEO]	15	28.27	59300	28.27
03 MAY 2024 - 03 MAY 2024	UMCCA	MR TEE CHENG HUA [DIR/CEO]	3	28.263	59285	28.263
06 MAY 2024 - 06 MAY 2024	UOAEV	EMPLOYEES PROVIDENT FUND BOARD ("EPF BOARD") [SSH]	54	12.302	306368	12.302
03 MAY 2024 - 03 MAY 2024	UOAEV	EMPLOYEES PROVIDENT FUND BOARD ("EPF BOARD") [SSH]	-365	12.299	306314	12.299
02 MAY 2024 - 02 MAY 2024	UOAEV	EMPLOYEES PROVIDENT FUND BOARD ("EPF BOARD") [SSH]	-268	12.314	306678	12.314
30 APR 2024 - 30 APR 2024	UOAEV	EMPLOYEES PROVIDENT FUND BOARD ("EPF BOARD") [SSH]	-140	12.325	306947	12.325
07 MAY 2024 - 07 MAY 2024	UTDPLT	EMPLOYEES PROVIDENT FUND BOARD [SSH]	166	6.619	27453	6.619
06 MAY 2024 - 06 MAY 2024	UTDPLT	EMPLOYEES PROVIDENT FUND BOARD [SSH]	208	6.578	27286	6.578
03 MAY 2024 - 03 MAY 2024	UTDPLT	EMPLOYEES PROVIDENT FUND BOARD [SSH]	11	6.528	27079	6.528
02 MAY 2024 - 02 MAY 2024	UTDPLT	EMPLOYEES PROVIDENT FUND BOARD [SSH]	466	6.526	27068	6.526
30 APR 2024 - 30 APR 2024	UTDPLT	EMPLOYEES PROVIDENT FUND BOARD [SSH]	74	6.414	26602	6.414
07 MAY 2024 - 07 MAY 2024	UWC	EMPLOYEES PROVIDENT FUND BOARD [SSH]	24	8.433	92931	8.433
03 MAY 2024 - 03 MAY 2024	UWC	EMPLOYEES PROVIDENT FUND BOARD [SSH]	500	8.377	92308	8.377
06 MAY 2024 - 06 MAY 2024	VS	EMPLOYEES PROVIDENT FUND BOARD [SSH]	-650	7.637	291859	7.637
07 MAY 2024 - 07 MAY 2024	VS	DATUK GAN SEM YAM [DIR/CEO]	2,640	4.78	182663	4.78
07 MAY 2024 - 07 MAY 2024	VS	MR GAN PEE YONG [DIR/CEO]	400	1.365	52166	1.365
30 APR 2024 - 30 APR 2024	VS	EMPLOYEES PROVIDENT FUND BOARD [SSH]	-39	7.661	292509	7.661
09 MAY 2024 - 09 MAY 2024	WIDAD	TAN SRI MUHAMMAD IKMAL OPAT BIN ABDULLAH [SSH]	-552	17.767	550150	17.767
09 MAY 2024 - 09 MAY 2024	WIDAD	WIDAD BUSINESS GROUP SDN. BHD. [SSH]	-552	17.506	542075	17.506
08 MAY 2024 - 08 MAY 2024	WIDAD	TAN SRI MUHAMMAD IKMAL OPAT BIN ABDULLAH [SSH]	-500	17.785	550703	17.785
08 MAY 2024 - 08 MAY 2024	WIDAD	WIDAD BUSINESS GROUP SDN. BHD. [SSH]	-500	17.524	542628	17.524
07 MAY 2024 - 07 MAY 2024	WIDAD	TAN SRI MUHAMMAD IKMAL OPAT BIN ABDULLAH [SSH]	-500	17.706	551203	17.706

Notice Period is 05th May 2024 - 11th May 2024

Effective Change Date	Stock Name	Buyer/ Seller Name [Classification]	Bought / (Sold) ['000]		No. of Shares After Trade ['000]	
			Total	% Held	Total	% Held
07 MAY 2024 - 07 MAY 2024	WIDAD	WIDAD BUSINESS GROUP SDN. BHD. [SSH]	-500	17.54	543128	17.54
06 MAY 2024 - 06 MAY 2024	WIDAD	TAN SRI MUHAMMAD IKMAL OPAT BIN ABDULLAH [SSH]	-500	17.817	551703	17.817
06 MAY 2024 - 06 MAY 2024	WIDAD	WIDAD BUSINESS GROUP SDN. BHD. [SSH]	-500	17.556	543628	17.556
03 MAY 2024 - 03 MAY 2024	WIDAD	TAN SRI MUHAMMAD IKMAL OPAT BIN ABDULLAH [SSH]	-500	17.834	552203	17.834
03 MAY 2024 - 03 MAY 2024	WIDAD	WIDAD BUSINESS GROUP SDN. BHD. [SSH]	-500	17.573	544128	17.573
08 MAY 2024 - 10 MAY 2024	WOODLAN	DATO' SERI MUN WENG SUM [DIR/CEO]	18	18.108	7244	18.108
08 MAY 2024 - 10 MAY 2024	WOODLAN	DATO' SERI MUN WENG SUM [SSH]	18	18.108	7244	18.108
03 MAY 2024 - 03 MAY 2024	WPRTS	EMPLOYEES PROVIDENT FUND BOARD [SSH]	-1	9.498	323881	9.498
02 MAY 2024 - 02 MAY 2024	WPRTS	EMPLOYEES PROVIDENT FUND BOARD [SSH]	-112	9.498	323882	9.498
30 APR 2024 - 30 APR 2024	WPRTS	EMPLOYEES PROVIDENT FUND BOARD [SSH]	493	9.501	323994	9.501
06 MAY 2024 - 06 MAY 2024	XL	MR NG MIN LIN [DIR/CEO]	773	26.91	75753	26.91
06 MAY 2024 - 06 MAY 2024	XL	MR NG MIN LIN [SSH]	773	26.91	75753	26.91
03 MAY 2024 - 03 MAY 2024	XL	MR NG MIN LIN [DIR/CEO]	882	26.635	74980	26.635
03 MAY 2024 - 03 MAY 2024	XL	MR NG MIN LIN [SSH]	882	26.635	74980	26.635
08 MAY 2024 - 08 MAY 2024	YEWLEE	MR ANG LEE LEONG [DIR/CEO]	-2,530	72.386	387125	72.386
08 MAY 2024 - 08 MAY 2024	YEWLEE	MR ANG LEE LEONG [SSH]	-2,530	72.386	387125	72.386
08 MAY 2024 - 08 MAY 2024	YEWLEE	MR ANG LEE SENG [DIR/CEO]	-2,530	63.889	341681	63.889
08 MAY 2024 - 08 MAY 2024	YEWLEE	MR ANG LEE SENG [SSH]	-2,530	63.889	341681	63.889
08 MAY 2024 - 08 MAY 2024	YEW-LEE-WA	MR ANG LEE LEONG [DIR/CEO]	-3,700	50.952	134432	50.952
08 MAY 2024 - 08 MAY 2024	YEW-LEE-WA	MR ANG LEE SENG [DIR/CEO]	-3,700	46.509	122711	46.509
07 MAY 2024 - 07 MAY 2024	YINSON	EMPLOYEES PROVIDENT FUND BOARD [SSH]	1,243	17.373	525904	17.373
06 MAY 2024 - 06 MAY 2024	YINSON	EMPLOYEES PROVIDENT FUND BOARD [SSH]	1,627	17.332	524657	17.332
03 MAY 2024 - 03 MAY 2024	YINSON	EMPLOYEES PROVIDENT FUND BOARD [SSH]	1,967	17.291	523423	17.291
02 MAY 2024 - 02 MAY 2024	YTLPOWR	DATUK LOO TOOK GEE [DIR/CEO]	-100	0.001	100	0.001
09 MAY 2024 - 09 MAY 2024	ZHULIAN	MR TEOH BENG SENG [SSH]	-300	58.742	270229	58.742
09 MAY 2024 - 09 MAY 2024	ZHULIAN	THE BEST SOURCE HOLDINGS PTE. LTD. [SSH]	-300	14.627	67282	14.627
03 MAY 2024 - 03 MAY 2024	ZHULIAN	MR TEOH BENG SENG [SSH]	-300	58.808	270529	58.808
03 MAY 2024 - 03 MAY 2024	ZHULIAN	THE BEST SOURCE HOLDINGS PTE. LTD. [SSH]	-300	14.492	67582	14.492

**Disclaimer:** The Information in Insider Activity is extracted from [www.shareinvestor.com/fundamental/insider\\_trades](http://www.shareinvestor.com/fundamental/insider_trades). The information on this page is provided as a service to readers. It does not constitute financial advice and/or any investment recommendations. We assume no liability for damages resulting from or arising out of the use of such information. Whilst every effort is made to ensure accuracy, the information presented is not the official record of shareholder filings. Readers are advised to read the original filings on the Bursa Malaysia website at [www.bursamalaysia.com](http://www.bursamalaysia.com)



Learn how to identify Hot Stocks using Technical Analysis (TA) and Fundamental Analysis (FA)

**SIGN UP FOR Invest NOW IT'S FREE!!!**

[Click here](#)

Scan me



Via email, every Friday.

Get market moving news and analyses. Regular columns include **Behind The Action** and **From The Observer**

**Leaderboard • Shariah Hot Stocks • Shariah Momentum Up Stocks • Non Shariah Hot Stocks • Up Trending Stocks • Growth Stocks • Dividend Stocks • Long Companies • Insider Activity • Investor Relations • Regional Markets**







**Affin Bank Berhad (AFFIN)** dividend reinvestment plan applicable to the final dividend in respect of the financial year ended 31 December 2023.



[READ MORE](#)



On behalf of **AwanBiru Technology Berhad (AWANTEC)** Board, Maybank Investment Bank Berhad

wishes to announce that Bursa Securities had vide its letter dated 10 May 2024 resolved to grant the Company a waiver from complying with Paragraph 8.04(3)(a) of the Listing Requirements which requires the Company to submit a regularisation plan to Bursa Securities.

[READ MORE](#)



**Axiata Group Berhad (AXIATA)** non-binding memorandum of understanding for the proposed merger of PT XL Axiata TBK and PT Smartfren Telecom TBK.

[READ MORE](#)





Pursuant to Chapter 14, Paragraph 14.09 of the Main Market Listing Requirements of Bursa Malaysia Securities Berhad, CapitaLand

Malaysia REIT Management Sdn. Bhd, the manager of **CapitaLand Malaysia Trust (CLMT)**, wishes to announce that the Company has given notice in relation to its dealing in units of CLMT outside closed period.



Statement to shareholders in relation to the proposed authority for **KPJ Healthcare Berhad (KPJ)** to purchase its own shares of up to 10% of the total number of issued shares of the company.



Circular to **Leong Hup International Berhad (LHI)** shareholders in relation to proposed establishment of an employees share option scheme of up to 5% of the total number of the issued ordinary shares of Leong Hup International Berhad (LHI) at any point in time over the Esos period or extended Esos period for the eligible persons.





The Board of Directors of the **Malaysia Airports Holding Berhad (Airport)** wishes to announce that the Board had on 15 May 2024, been notified by AmlInvestment Bank Berhad, on behalf of Gateway Development Alliance Sdn Bhd, Pantai Panorama Sdn Bhd, Kwasa Aktif Sdn Bhd and GIP Aurea Pte Ltd, of a pre-conditional voluntary conditional take-over offer announcement pertaining to the Joint Offerors' intention, subject to and contingent upon the satisfaction or waiver of the Pre-Conditions, to acquire all the remaining 1,118,098,325 ordinary shares in MAHB not already held by the Joint Offerors, representing 67.01% of the total issued MAHB Shares, for a cash offer price of RM11.00 per Offer Share in accordance with the Rules on Take-overs, Mergers and Compulsory Acquisitions issued by the Securities Commission Malaysia.

[READ MORE](#)

SMART ASIA CHEMICAL BHD

on the Ace Market of Bursa Malaysia  
Securities Berhad

**Smart Asia Chemical Bhd (SMART)** initial public offering in conjunction with the listing of a quotation for the entire enlarged issue share capital of Smart Asia

[READ MORE](#)[READ MORE](#)

Errata to the statement to **Salcon Berhad (SALCON)** shareholders in relation to the proposed renewal of shareholders mandate for the company to purchase its own shares up to ten percent per centum of the total number of issued shares.





Reference is made to the utilisation of proceeds raised from the public issue under the initial public offering of the Company as disclosed in the Company's prospectus dated 20 June 2023 that was issued in conjunction with the listing of the Company on the Main Market of Bursa Malaysia Securities Berhad. The Board of Directors of **SkyWorld Development (SKYWLD)** wishes to announce that the Company intends to undertake the Proposed Variation.

[READ MORE](#)



**Southern Score Builders Berhad (SSBB)** proposed acquisition by SSBB of 1,275,000 ordinary shares in Sjee Engineering Sdn Bhd, representing 51% equity in interest in Sjee from Ngo Bing for a total cash consideration of RM22,950,000.

[READ MORE](#)



**Telekom Malaysia Berhad (TM)** response to the article entitled "More Details of These 14 Contracts, Please" by The Edge Malaysia

[READ MORE](#)





**VSTECS Berhad (VSTECS)** has made a press release on "VSTECS TO CAPITALISE ON STRATEGIC TECHNOLOGIES"



The Board of Directors of **YNH Property Berhad (YNHPROP)** wishes to announce that Kar Sin Bhd had executed a Supplemental

Agreement dated 10 May 2024 in respect of the Sale and Purchase Agreement dated 12 May 2023 with the following parties to vary certain terms and conditions of the SPA in relation to the Proposed Disposal.



**Disclaimer:** The information in the Investor Relations page is extracted from individual companies' announcements in [www.bursamalaysia.com](http://www.bursamalaysia.com). The information on this page is provided as a service to readers. We assume no liability for damages resulting from or arising out of the use of such information. Whilst every effort is made to ensure accuracy, the information presented has been simplified for your reading pleasure. Readers are advised to read the original and complete filings on the Bursa Malaysia website at [https://www.bursamalaysia.com/market\\_information/announcements/company\\_announcement](https://www.bursamalaysia.com/market_information/announcements/company_announcement)

NAME OF COMPANY	OFFER PERIOD		ISSUE PRICE (Per Ordinary Share)	LISTING SOUGHT	DATE OF LISTING
	OPENING	CLOSING			
<b>KAWAN RENERGY BERHAD</b>	29 Apr 2024	14 May 2024	RM0.30	ACE MARKET	29 May 2024
<b>SMART ASIA CHEMICAL BERHAD</b>	02 May 2024	13 May 2024	RM0.40	ACE MARKET	28 May 2024
<b>FEYTECH HOLDINGS BERHAD</b>	02 May 2024	08 May 2024	RM0.80	MAIN MARKET	21 May 2024

**Upcoming IPO**