

Invest

A Weekly e-Publication by SHAREINVESTOR.com

ISSUE
202

FRIDAY
05 APRIL
2024

Scan/Click QR to Register



Via email, every Friday

Malaysia's
semiconductor
exports set to increase
this year - MSIA



Contract awards from
big ticket infrastructure
projects to drive jobs
higher in 2024 - HLIB

see more
pages
33-36

ALSO

**COMPANY
SPOTLIGHT**
Dagang
Nexchange
Berhad

See more on page **07**

MSWG

A few investing
lessons from Warren
Buffett's latest annual
letter

See more on pages **38-40**

PLUS

**BEHIND THE
TICKET**
which helps to
decode company
fundamentals

See more on pages **21-32**

BEHIND THE TICKET: DECODING COMPANY FUNDAMENTALS

Is there an investment opportunity in AVERY DENNISON?

SUMMARY

- Avery Dennison Corporation's (NYSE: AVY) revenue grew modestly at a 3.1% CAGR over the past 11 years. But PBT surged at a faster 9.8% CAGR.
- AVY's growth has been a mix of organic and acquisition-driven with high historical reinvestment rates. Financially, AVY shows strengths in positive cash flow generation and capital allocation, but its high debt-to-capital ratio raises concerns.
- Despite these positives, the stock appears fully priced based on my valuation model.

04 LEADERBOARD

06 SHARIAH HOT STOCKS

08 SHARIAH MOMENTUM UP STOCKS

10 NON SHARIAH HOT STOCKS

12 UP TRENDING STOCKS

14 VALUE STOCKS

16 GROWTH STOCKS

17 DIVIDEND STOCKS

18 BROKERS' CALL

19 LONG COMPANIES

37 REGIONAL MARKETS

41 INSIDER ACTIVITY

45 INVESTOR RELATIONS

SHAREINVESTOR®

An AlphaInvest Company

Invest with Knowledge

INVESTOR PLATFORMS

Director
Darren Chong
darren.chong@shareinvestor.com

Business Development Manager
Jay Cheong
jay.cheong.@shareinvestor.com

Senior Executive
Daniel Wong
daniel.wong@shareinvestor.com

ADMIN & OPERATIONS

Senior Executive
Watie Nordin
watie.nordin@shareinvestor.com

Executive
Silas Emmanuel Joseph
silas.joseph@shareinvestor.com

PROCESS AUTOMATION & DATA ANALYTICS

Data Analyst
Tan Yong Sheng

INVESTOR RELATIONS

Group Managing Director & Publisher
Edward Stanislaus
edward@shareinvestor.com

Senior Manager
Letticia Wong
letticia.wong@shareinvestor.com

Manager
Aida Norzeti Binti Ab Talib
aida.norzeti@shareinvestor.com

Inve\$t WEEKLY

Senior Manager Advertising Sales & Marketing
Mark Rodrigues
mark.rodrigues@shareinvestor.com

ALPHAINVEST HOLDINGS BOARD OF DIRECTORS

Chairman	Patrick Daniel
Group CEO	Christopher Lee
Group COO	Lim Dau Hee
Group CFO	Teo Siew May
Group MD	Shanison Lin



“ GIVE A MAN A FISH AND YOU FEED HIM FOR A DAY; TEACH A MAN TO FISH AND YOU FEED HIM FOR A LIFETIME ”

ShareInvestor Malaysia Sdn. Bhd.

(200001023956) (526564-M)
Unit No. DF2-07-03A, Level 7,
Persoft Tower, 6B Persiaran Tropicana,
47410 Petaling Jaya, Selangor Darul Ehsan.

Hotline : 603 7803 1791
Mobile : 011 6343 8939
Website : www.ShareInvestor.com.my
www.ShareInvestorHoldings.com
www.Facebook.com/ShareInvestorMalaysia

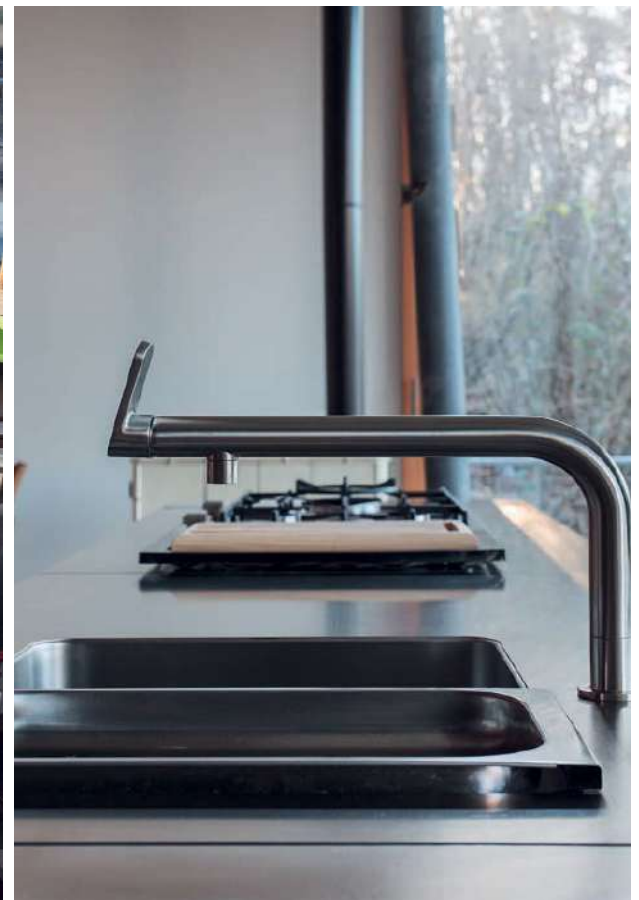
ADVERTISEMENT ENQUIRY

bulthaup takes care of the details so that you can enjoy a harmonious environment.



XTRA

XTRA FURNITURE SDN BHD
The Gardens Mall, Mid Valley City
xfurniture.com/bulthaup
fb.com/bulthaupmalaysia

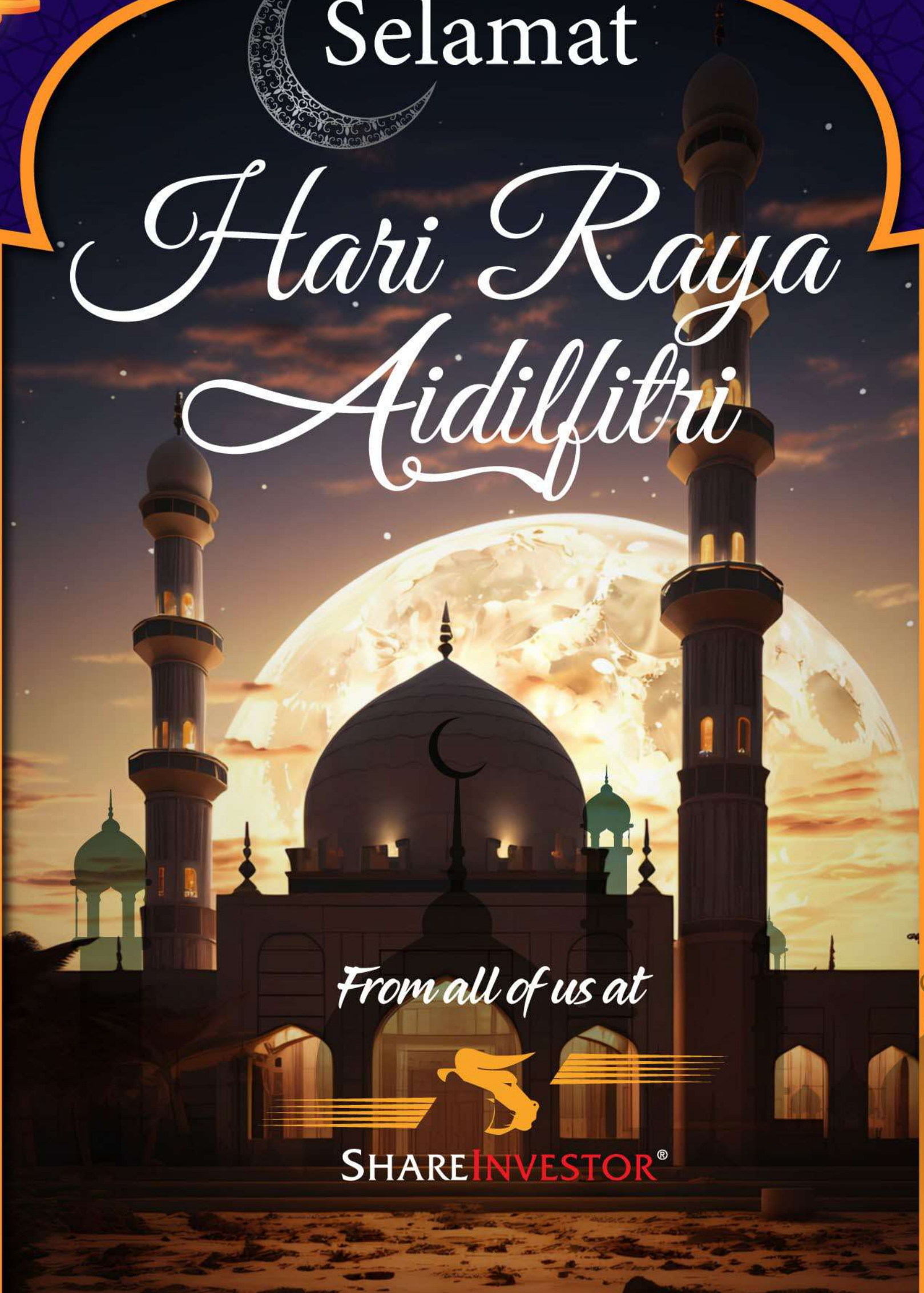


bulthaup



Selamat

*Harri Raya
Aidilfitri*



From all of us at



SHAREINVESTOR[®]

www.shareinvestor.com - market data at your fingertips



ShareInvestor WebPro (www.shareinvestor.com/my)
Prices > Stock Prices > Bursa > click Stocks tab

1. mouse over Ranking > select Top Active > all Shariah stocks are denoted with an [S] > mouse over Column Layout > select Edit Customs > select Name > select Volume > select Last Done Price > Mouse Over Column Layout > select Custom
2. mouse over Ranking > select Top Turnover > all Shariah stocks are denoted with an [S] > mouse over Column Layout > select Edit Customs > select Name > select Last Done Price > select Value > Mouse Over Column Layout > select Custom
3. mouse over Ranking > select Top Gainers (Over 5 Trading Days) > mouse over Column Layout > select Edit Customs > select Name > select Last Done Price > select 5 Days Change > select 5 Days % Change > Mouse Over Column Layout > select Custom
4. mouse over Ranking > select Top Losers (Over 5 Trading Days)
5. mouse over Ranking > select Top % Gainers (Over 5 Trading Days)
6. mouse over Ranking > select Top % Losers (Over 5 Trading Days)

Shariah Top Actives (as at Yesterday)

Name	Price (RM)	Volume
TWL [S]	0.030	2,025,035.000
VELESTO [S]	0.305	990,242.000
ZANTAT [S]	0.530	800,477.000
FITTERS [S]	0.055	633,426.000
TDM [S]	0.325	624,156.000
WIDAD [S]	0.080	408,386.000
SNS [S]	0.380	388,401.000
GLXT [S]	0.235	340,223.000
NCT [S]	0.535	325,794.000
SPSETIA [S]	1.430	319,976.000

Shariah Top Turnover (as at Yesterday)

Name	Price (RM)	Value (RM)
PMETAL [S]	5.120	117,202,312
TENAGA [S]	11.500	71,818,854
GAMUDA [S]	5.330	58,873,220
SPSETIA [S]	1.430	46,149,952
ZANTAT [S]	0.530	42,960,559
SIME [S]	2.740	41,239,284
SUNWAY [S]	3.400	33,381,891
KLK [S]	22.780	30,847,268
VELESTO [S]	0.305	30,304,681
TM [S]	6.120	29,632,874

Top Gainers (over 5 Trading days as at Yesterday)

Name	Price (RM)	Change (RM)
DLADY	33.340	+5.360
NESTLE	120.600	+2.600
PANAMY	19.600	+1.420
MPI	31.700	+1.400
F&N	30.740	+1.340
AJI	19.300	+0.700
CHGP	1.850	+0.670
AEONCR	6.610	+0.490
KLK	22.780	+0.480
HLIND	10.680	+0.460

Top % Gainers (over 5 Trading days as at Yesterday)

Name	Price (RM)	Change (%)
FINTEC	0.010	+100.00
CHGP	1.850	+56.78
FOCUS	0.015	+50.00
TECHNAX	0.015	+50.00
XOX	0.015	+50.00
ZANTAT	0.530	+41.33
SNS	0.380	+38.18
HBGLOB	0.130	+36.84
MTRONIC	0.020	+33.33
ZENTECH	0.020	+33.33

Top Losers (over 5 Trading days as at Yesterday)

Name	Price (RM)	Change (RM)
UTDPLT	23.420	-1.080
TECGUAN	1.760	-0.230
SAM	4.830	-0.210
LPI	12.100	-0.200
AIRPORT	9.700	-0.200
HSSEB	1.040	-0.140
APOLLO	7.020	-0.130
HEXTECH	1.210	-0.130
TELADAN	1.120	-0.130
FAREAST	3.500	-0.100

Top % Losers (over 5 Trading days as at Yesterday)

Name	Price (RM)	Change (%)
KGROUP	0.005	-50.00
TALAMT	0.010	-33.33
VIZIONE	0.035	-22.22
ECOHLDS	0.065	-18.75
LAMBO	0.025	-16.67
NEXGRAM	0.025	-16.67
SAUDEE	0.025	-16.67
ALRICH	0.030	-14.29
DNONCE	0.060	-14.29
PINEPAC	0.320	-13.51



CONFERENCE

Date: 13 April 2024 Time: 9am - 1pm
Location: Level 21, The iSpace KL

Our Speakers



Billy Toh Kian Hin
SGX Specialist at CGS
International



Alvin Li
Director of Equity Derivatives
Sales Asia, UBS AG



Shanison Lin
Group MD of ShareInvestor
Holdings



天哥
第一天投资理财
日记博主



Chia Wan Chow
REIT Investment
author



Jou Tang
Founder,
TrendWaker



Tan Kyzen, Max
Co-Founder of
12Invest

SCAN TO REGISTER



REGISTER NOW



Organized by



Sponsored by



Price & Volume Distribution Charts (as at Yesterday)

Technical Analysis

DEFINITION: Shariah compliant stocks with Technical Analysis showing 5-days & 10-days Moving Average Price below Yesterday's Close over past 3 days and with Volume Spike.

CHART GUIDE: Volume Distribution Chart is a statistical interpretation of the current sentiment on each stock in graphical format. The highest bar categorized as >150k is likely to be traded by institutions or super dealers, while the lowest bar categorized as <15k usually represents retail investors. "Buy Up" refers to more buyers snatching up the lots queued at selling price. "Sell Down" refers to sellers selling their shares to the buying queue



ShareInvestor WebPro > Screener > Market Screener (FA & TA) > select BURSA > add criteria

A. Criteria

- > click Add Criteria
- Technical Analysis Conditions tab select (i) Moving Average Below Close (ii) Volume Spike
- Fundamental Analysis Conditions tab > select (iii) Revenue
- Prices & Other Conditions tab > select (iv) Is Shariah Compliant
- Technical Analysis Conditions tab select (v) Moving Average Below Close
- Prices & Other Conditions tab > select (vi) Last Done Price
- Technical Analysis Conditions tab select (vii) Moving Average Below Close

B. Conditions (Criteria Filters)

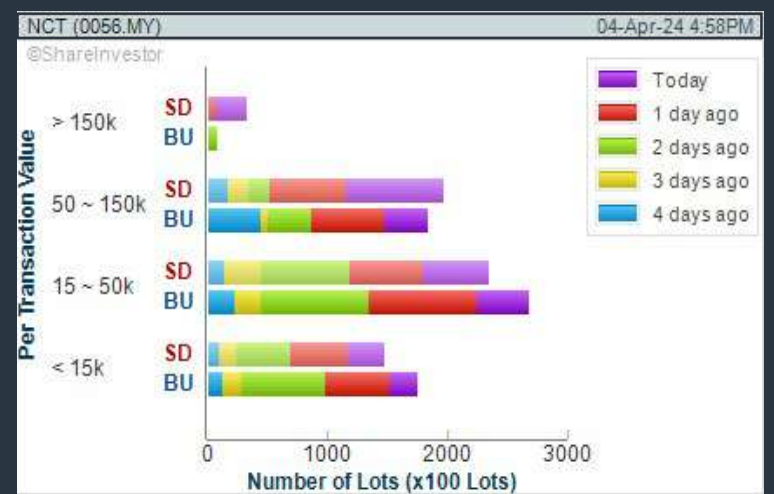
- Moving Average Below Close - select (MA) type (5) below close price for type (3) days
- Volume Spike - Volume type (1) greater than type (5) days average
- Revenue ("000) - select (more than) type (1) for the past select (1) financial year(s)
- Is Shariah Compliant - select **Yes**
- Moving Average Below Close - select (MA) type (10) below close price for type (3) days
- Last Done Price - select (more than) type (0.3)
- Moving Average Below Close - select (EMA) type (5) below close price for type (3) days

- > click Save Template > Create New Template type (Shariah Hot Stocks) > click Create
- > click Save Template as > select Shariah Hot Stocks > click Save
- > click Screen Now (may take a few minutes)
- > Sort By: Select (Vol) Select (Desc)
- > Mouse over stock name > Charts > click C² Charts or Volume Distribution

NCT ALLIANCE BERHAD (0056)

C² Chart

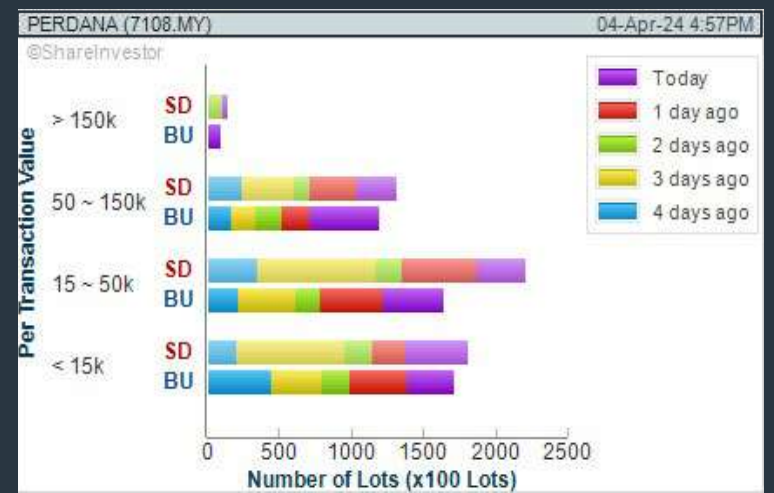
Analysis



PERDANA PETROLEUM BERHAD (7108)

C² Chart

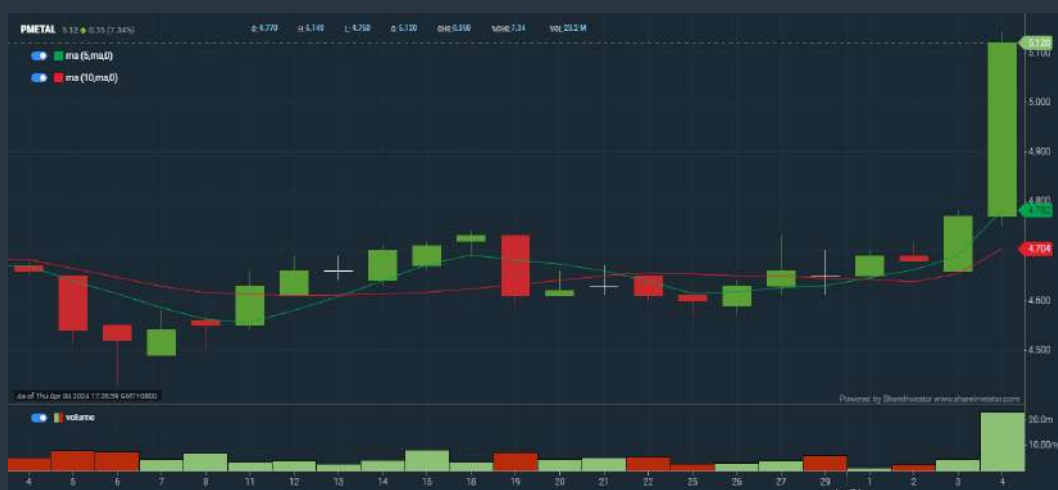
Analysis



PRESS METAL ALUMINIUM HOLDINGS BERHAD (8869)

C² Chart

Analysis



Disclaimer: The information on this page is provided as a service to readers. It does not constitute financial advice and/or any investment recommendations. Past performance is not indicative of future results. We assume no liability for damages resulting from or arising out of the use of such information. It would be best if you did your own research to make your personal investment decisions wisely or consult a licenced investment advisor.

COMPANY BACKGROUND

Dagang NeXchange Berhad operates through three segments, namely Technology, Energy and Information Technology. In Technology it operates as a semiconductor foundry. Whereas in Energy, the company is involved in upstream exploration and production as well as equipment supply and maintenance. In IT, the company provides eServices for Trade Facilitation, Technology Consulting and System Integration, as well as Subsea Telecommunications.



DNEX DAGANG NEXCHANGE BERHAD				Updated at 04 Apr 2024 17:31
Last (MYR): 0.360 ↑	Change: +0.010	High: 0.365	Remarks: s ?	
	Change (%): +2.86	Low: 0.350		
Open	0.355	Yesterday's Close	0.350	
Buy Price	0.355	Sell Price	0.360	
Buy Volume ('00)	23,017	Sell Volume ('00)	8,617	
Cumulative Volume ('00)	211,280	Cumulative Value	7,560,335	

Financial Analysis

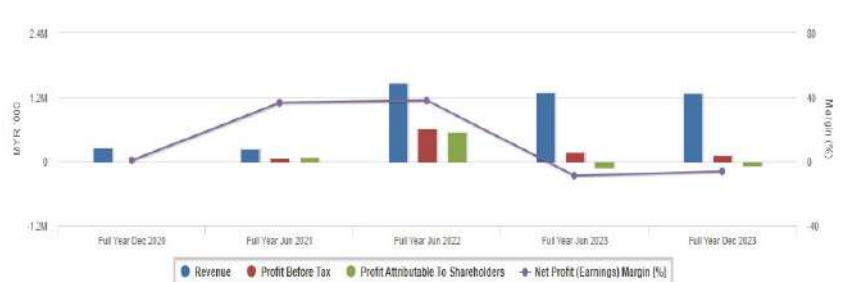
	Revenue Growth Decreasing revenue in last 2 years			Profit Growth Losses for past 2 years	
	Piotroski F Score The company has below average financial strength (Piotroski F-Score of 3-4)			Dividend Payout No dividend paid in most recent year but dividends paid in prior years	
	Free Cash Flow Negative free cash flow for two years or more			Gross Profit Margin Consistently good gross profit margin of 20%-40% for 3 years	
	Net Earnings Margin Company is losing money and margin is not improving.			Return on Assets (ROA) Negative ROA for 2 consecutive years	
	Return on Equity (ROE) Negative ROE for 2 consecutive years			Return on Equity (ROE) ROE is decreasing by 5% a year over the past 36 months.	

Excellent
 Good
 Neutral
 Be Alert
 Watch Out



Historical Financials

Profit & Loss (MYR '000)

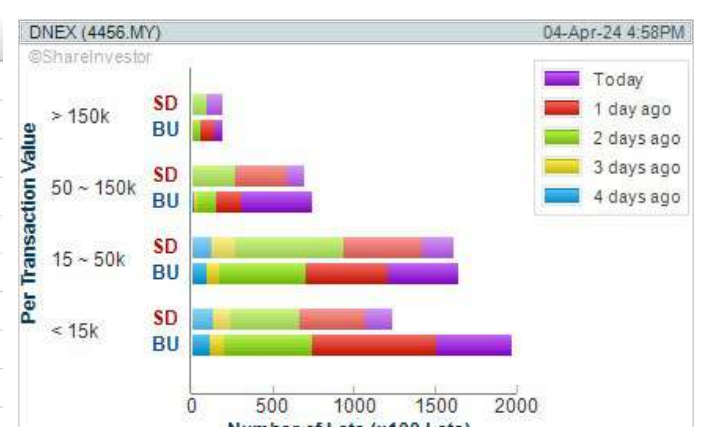


WebPro 9-Days Free Trial Registration (worth RM10) Sign Up Now



Key Statistics with Total Shareholder Returns

Period	Dividend Received	Capital Appreciation	Total Shareholder Return
Short Term Return	5 Days	-	+4.35 %
	10 Days	-	+2.86 %
	20 Days	-	+2.86 %
Medium Term Return	3 Months	-0.045	-11.11 %
	6 Months	-0.065	-16.29 %
	1 Year	-0.230	-38.96 %
Long Term Return	2 Years	0.006	-66.73 %
	3 Years	0.006	-57.44 %
	5 Years	0.011	+21.64 %
Annualised Return	Annualised	-	+4.00 %



Disclaimer: The information on this page is provided as a service to readers. It does not constitute financial advice and/or any investment recommendations. Past performance is not indicative of future results. We assume no liability for damages resulting from or arising out of the use of such information. It would be best if you did your own research to make your personal investment decisions wisely or consult a licenced investment advisor.

Price & Volume Distribution Charts (as at Yesterday)

Technical Analysis

DEFINITION: Shariah compliant stocks with Technical Analysis showing Bullish Momentum and Price Uptrend. The share price closed at the highest price yesterday. The typical price was higher than the previous day's typical price.

CHART GUIDE: Volume Distribution Chart is a statistical interpretation of the current sentiment on each stock in graphical format. The highest bar categorized as >150k is likely to be traded by institutions or super dealers, while the lowest bar categorized as <15k usually represents retail investors. "Buy Up" refers to more buyers snatching up the lots queued at selling price. "Sell Down" refers to sellers selling their shares to the buying queue.



ShareInvestor WebPro > Screener > Market Screener (FA & TA) > select BURSA > add criteria

A. Criteria

- > click Add Criteria
- Fundamental Analysis Conditions tab > select (i) Revenue
- Technical Analysis Conditions tab select (ii) Average Volume
- Prices & Other Conditions tab > select (iii) Last Done Price
- Prices & Other Conditions tab > select (iv) Is Shariah Compliant
- Technical Analysis Conditions tab select (v) RSI Overbought
- Technical Analysis Conditions tab select (vi) Moving Average Below Close
- Technical Analysis Conditions tab select (vii) CCI Overbought

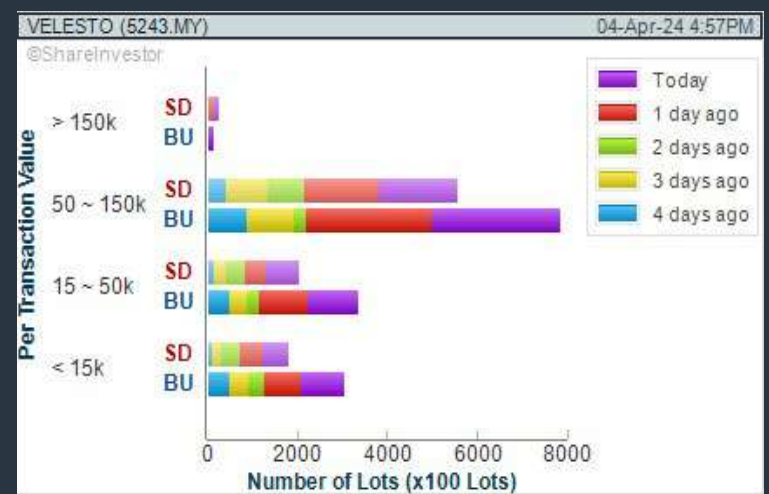
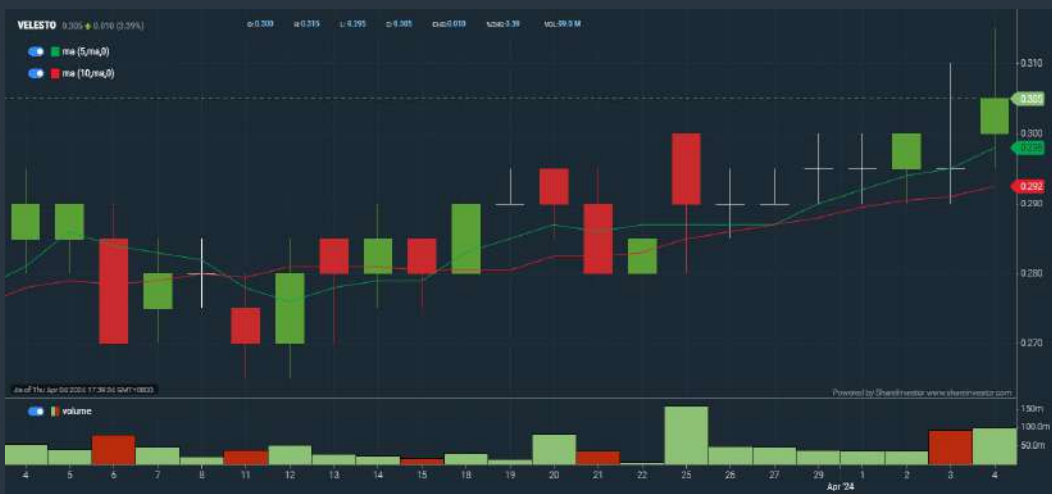
B. Conditions (Criteria Filters)

1. Revenue ("000) - select (more than) type (1) for the past select (1) financial year(s)
2. Average Volume - type (1) days average volume greater than type (10000) lots
3. Last Done Price - select (more than) type (0.3)
4. Is Shariah Compliant - select Yes
5. RSI Overbought - select RSI 1 above 99 for 1 days
6. Moving Average Below Close - select (MA) type (10) below close price for type (1) days
7. CCI Overbought - select CCI (2) above (0) for (1) days

- > click Save Template > Create New Template type (Shariah Momentum Up Stocks) > click Create
- > click Save Template as > select Shariah Momentum Up Stocks > click Save
- > click Screen Now (may take a few minutes)
- Sort By: Select (Vol) Select (Desc)
- Mouse over stock name > Charts > click C² Charts tab or Volume Distribution

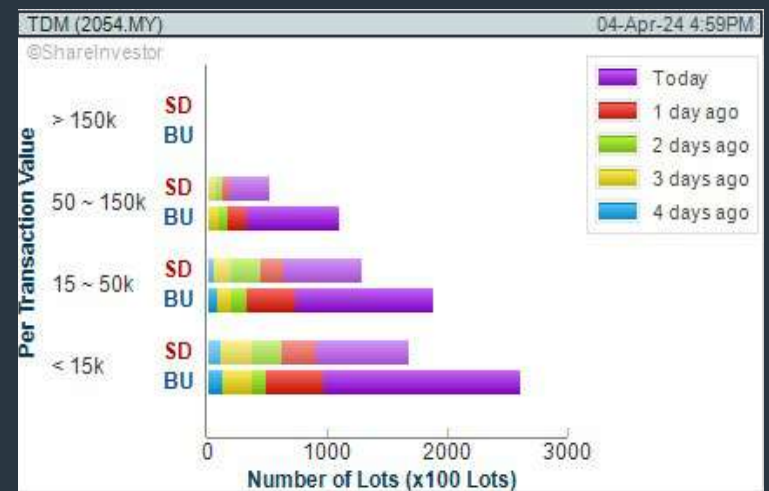
VELESTO ENERGY BERHAD (5243) C² Chart

Analysis



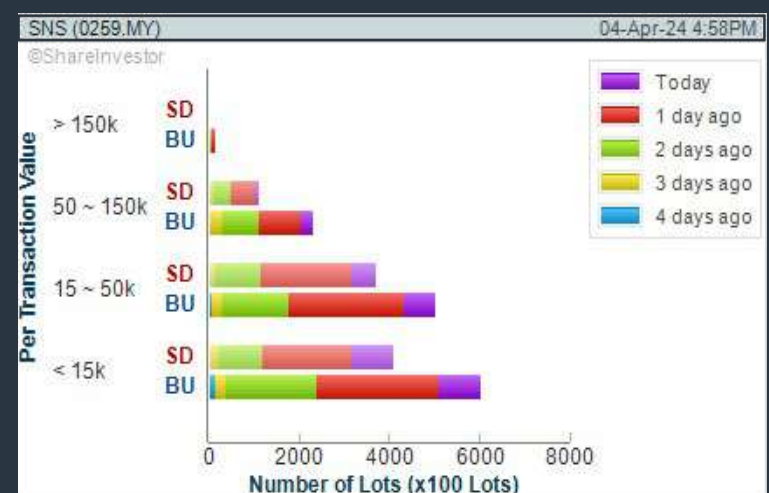
TDM BERHAD (2054) C² Chart

Analysis



SNS NETWORK TECHNOLOGY BERHAD (0259) C² Chart

Analysis



Disclaimer: The information on this page is provided as a service to readers. It does not constitute financial advice and/or any investment recommendations. Past performance is not indicative of future results. We assume no liability for damages resulting from or arising out of the use of such information. It would be best if you did your own research to make your personal investment decisions wisely or consult a licenced investment advisor.



Main Sponsors



SRI KOTA SPECIALIST MEDICAL CENTRE
The Heart of Healthcare



Southern Acids (M) Berhad



VCI GLOBAL LIMITED
(NASDAQ: VCIG)

TEE OFF FOR HOPE

Since 2010, Make-A-Wish Malaysia has been granting wishes of critically ill children around the country. Funds from this event will help us reach these critically ill children without delay.



BOOK NOW

Date: **Wednesday, 8 May 2024**

Time: **1.30pm Tee Off**

Venue: **Tropicana GCR**

Flight cost: **RM5,000** (for 4 golfers)



SHARE THE POWER OF A WISH

To find out more please call **Make-A-Wish**
T: (03) 2276 3344 E: info@makeawish.org.my

Price & Volume Distribution Charts (as at Yesterday)

Technical Analysis

DEFINITION: Stocks with Technical Analysis showing 5-days & 10-days Moving Average Price below Close over past 1 days and with Volume Spike

CHART GUIDE: Volume Distribution Chart is a statistical interpretation of the current sentiment on each stock in graphical format. The highest bar categorized as >150k is likely to be traded by institutions or super dealers, while the lowest bar categorized as <15k usually represents retail investors. "Buy Up" refers to more buyers snatching up the lots queued at selling price. "Sell Down" refers to sellers selling their shares to the buying queue.



ShareInvestor WebPro > Screener > Market Screener (FA & TA) > select BURSA > add criteria

A. Criteria

- > click Add Criteria
- Technical Analysis Conditions tab select (i) Moving Average Below Close (ii) Volume Spike
- Fundamental Analysis Conditions tab >select (iii) Revenue
- Prices & Other Conditions tab > select (iv) Is Shariah Compliant
- Technical Analysis Conditions tab select (v) Moving Average Below Close
- Prices & Other Conditions tab > select (vi) Last Done Price
- Technical Analysis Conditions tab select (vii) Moving Average Below Close

B. Conditions (Criteria Filters)

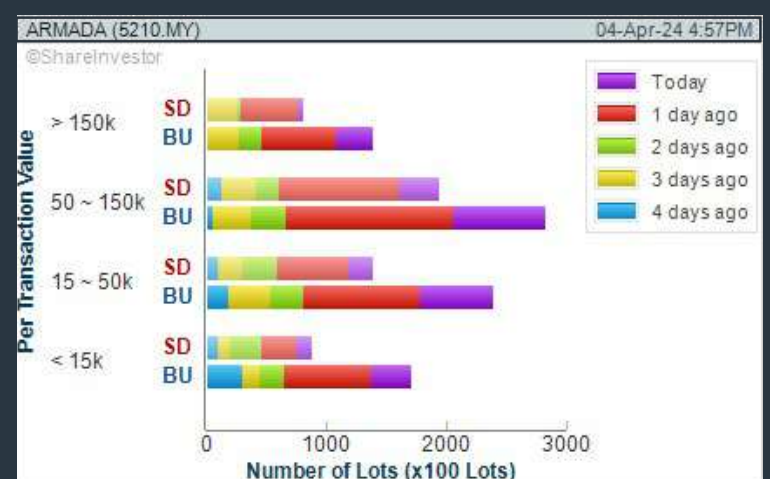
1. Moving Average Below Close - select (MA) type (5) below close price for type (3) days
2. Volume Spike - Volume type (1) greater than type (5) days average
3. Revenue ("000) - select (more than) type (1) for the past select (1) financial year(s)
4. Is Shariah Compliant - select NO
5. Moving Average Below Close - select (MA) type (10) below close price for type (1) days
6. Last Done Price - select (more than) type (0.3)
7. Moving Average Below Close - select (EMA) type (5) below close price for type (1) days

- > click Save Template > Create New Template type (Non-Shariah Hot Stocks) > click Create
- > click Save Template as > select Non-Shariah Hot Stocks > click Save
- > click Screen Now (may take a few minutes)
- Sort By: Select (Vol) Select (Desc)
- Mouse over stock name > Charts > click C² Charts tab or Volume Distribution

BUMI ARMADA BERHAD (5210)

C² Chart

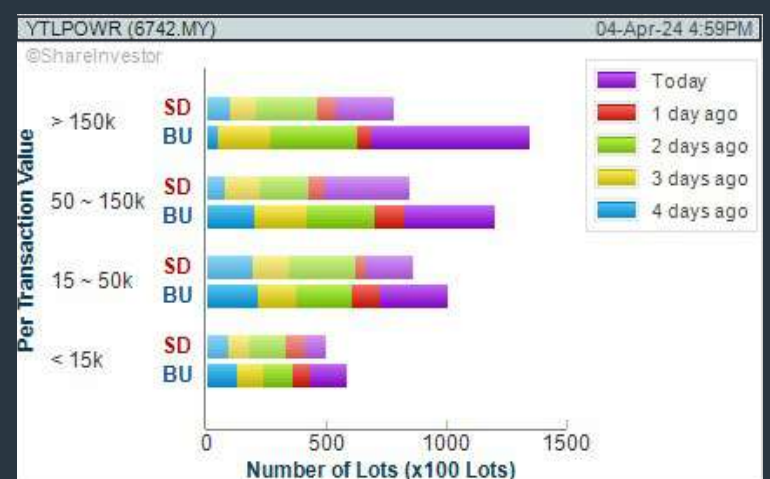
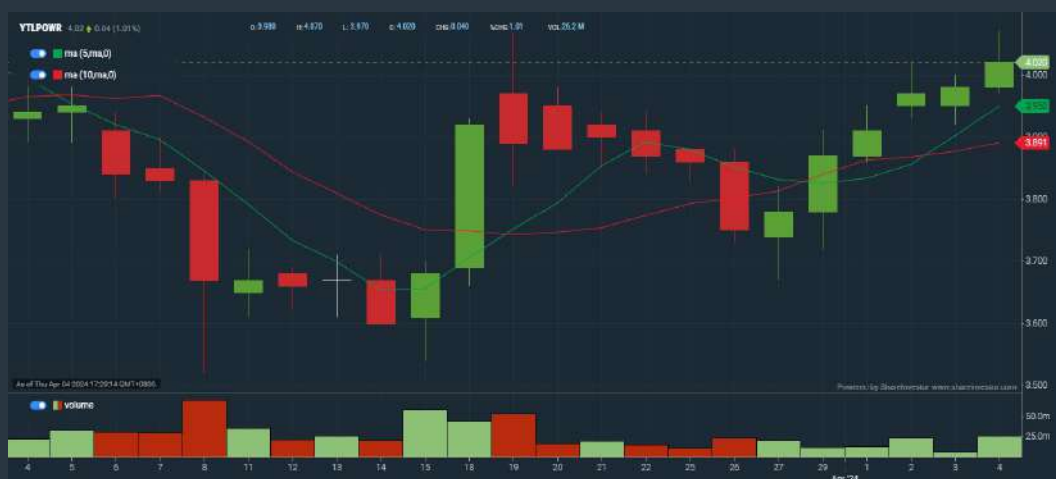
Analysis



YTL POWER INTERNATIONAL BERHAD (6742)

C² Chart

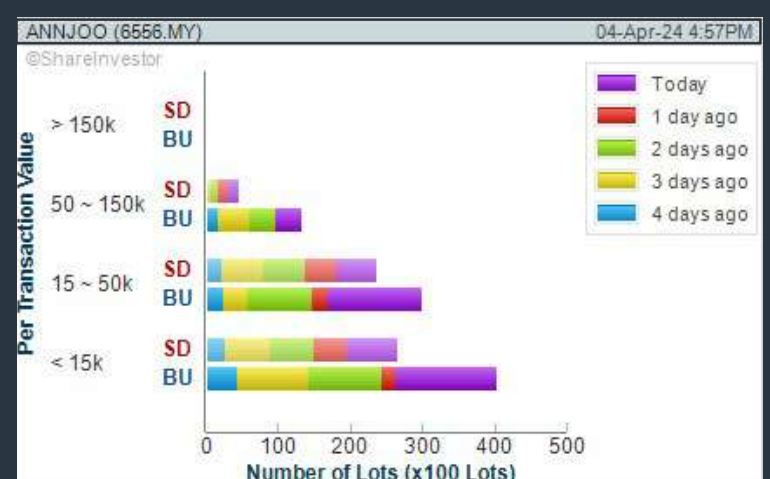
Analysis



ANN JOO RESOURCES BERHAD (6556)

C² Chart

Analysis



Disclaimer: The information on this page is provided as a service to readers. It does not constitute financial advice and/or any investment recommendations. Past performance is not indicative of future results. We assume no liability for damages resulting from or arising out of the use of such information. It would be best if you did your own research to make your personal investment decisions wisely or consult a licenced investment advisor.

SHAREINVESTOR WEBPRO

STOCK MARKET DATA AT YOUR FINGERTIPS

Powerful browser-based market analytics platform.
Access from anywhere



8 Markets Data

- ▶ Get access to data from Bursa, NYSE, Nasdaq, HKEX, SGX, IDX, SET & ASX

Portfolio Management

- ▶ Profit & Loss Summary
- ▶ Stock Alert
- ▶ News & Events filtering
- ▶ Customizable column layout

Fundamental Analysis

Financial Analysis Statement

- ▶ Profit & Loss
- ▶ Balance Sheet
- ▶ Cash Flow Statement
- ▶ More than 20 Financial Ratios
- ▶ Dividend Analysis

Technical Charting

- ▶ C² chart (Customisable & Comprehensive)

Brokers' Call

Intrinsic Value Calculator

FactSheet

- ▶ Key Stock Information
- ▶ Ownership
- ▶ Consensus Estimates
- ▶ Annual Report
- ▶ Historical Price
- ▶ Insider Trades

What's new on WebPro (Stable Release 12.1.0)

In our effort to keep our platform at the forefront of trading technology, we have added on some new features onto our C² Chart in WebPro

ADDITIONAL NEW FEATURES:

- ▶ Anchor selector for AVWAP, PVAT, and PAV indicators
- ▶ Volume profile indicator by date range
- ▶ Moving Average Cross indicator
- ▶ Guppy Multiple Moving Average (GMMA) indicator
- ▶ GoNoGo Trend Signal indicators
- ▶ SignalIQ

So what are you waiting for? Head to our platform today and check out our new trading chart features and indicators. We're confident that you'll love the improvements we've made and that they'll help you become a more successful trader.

Click here to start your 9 days FREE trial
(Valued at RM10)



Price & Volume Distribution Charts (Over 3 trading days as at Yesterday)

Technical Analysis

DEFINITION: Stocks with Technical Analysis showing Bullish Momentum and Price Uptrend

CHART GUIDE: Volume Distribution Chart is a statistical interpretation of the current sentiment on each stock in graphical format. The highest bar categorized as >150k is likely to be traded by institutions or super dealers, while the lowest bar categorized as <15k usually represents retail investors. "Buy Up" refers to more buyers snatching up the lots queued at selling price. "Sell Down" refers to sellers selling their shares to the buying queue.



ShareInvestor WebPro > Screener > Market Screener (FA & TA) > select BURSA > add criteria

A. Criteria

- > click Add Criteria
- Fundamental Analysis Conditions tab > select (i) Revenue
- Technical Analysis Conditions tab select (ii) Moving Average Below Close
- Technical Analysis Conditions tab select (iii) Average Volume
- Prices & Other Conditions tab > select (iv) Last Done Price
- Technical Analysis Conditions tab select (v) Moving Average Below Close
- Technical Analysis Conditions tab select (v) Moving Average Bullish Crossover

B. Conditions

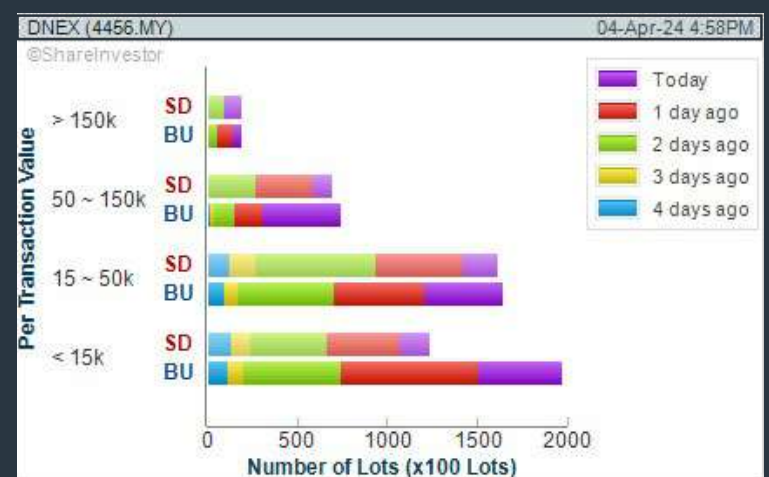
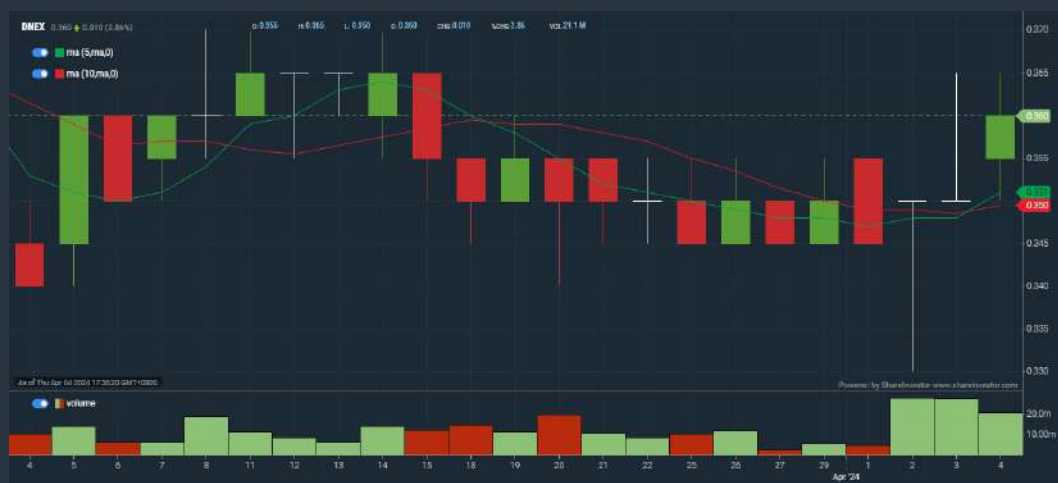
1. Revenue - select (more than) type (1) for the past select (1) financial year(s)
2. Moving Average Below Close - select (MA) type (20) below close price for type (1) days
3. Average Volume - type (5) days average volume type (10000) lots
4. Last Done Price - select (more than) type (0.3)
5. Moving Average Below Close - select (MA) type (10) below close price for type (1) days
6. Moving Average Bullish Crossover - select (MA) type (5) crossed above select (MA) type (10)

> click Save Template > Create New Template type (Non-Shariah Up-Trending Stocks) > click Create Click Save Template As > select Non-Shariah Up Trending Stocks > click Save > click Screen Now (may take a few minutes) Sort By: Select (Vol) Select (Desc) Mouse over stock name > Charts > click C² Charts tab or Volume Distribution

DAGANG NEXCHANGE BERHAD (4456)

C² Chart

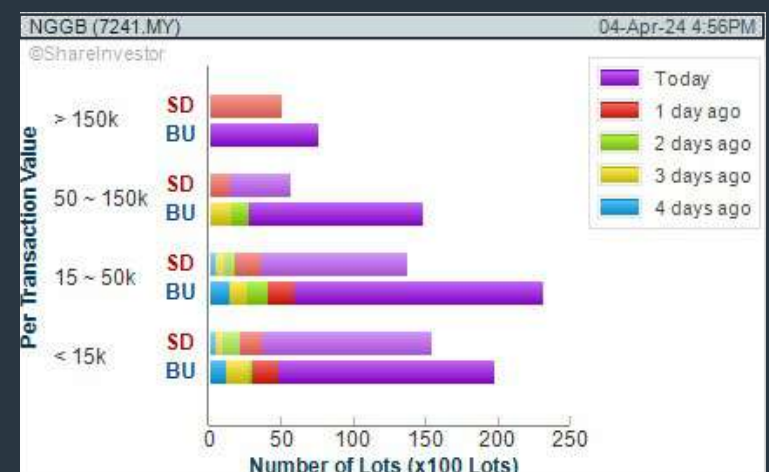
Analysis



NEXTGREEN GLOBAL BERHAD (7241)

C² Chart

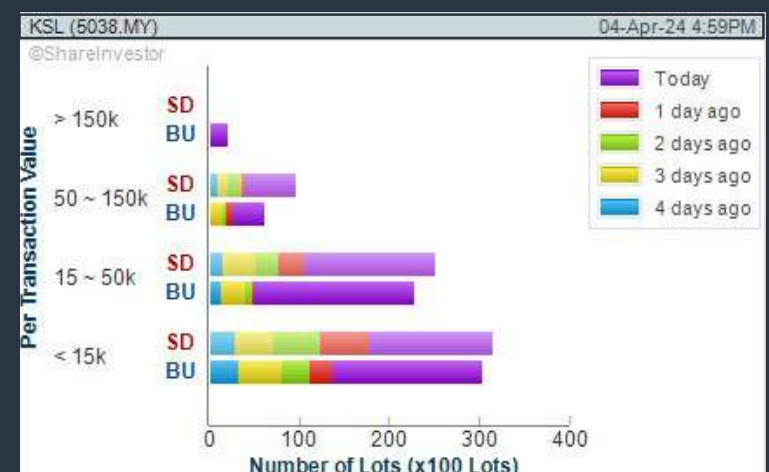
Analysis



KSL HOLDINGS BERHAD (5038)

C² Chart

Analysis



Disclaimer: The information on this page is provided as a service to readers. It does not constitute financial advice and/or any investment recommendations. Past performance is not indicative of future results. We assume no liability for damages resulting from or arising out of the use of such information. It would be best if you did your own research to make your personal investment decisions wisely or consult a licenced investment advisor.

MAKE BETTER TRADING STRATEGIES

with

SHARE INVESTOR STATION



8 Markets Data

- ▶ Get access to data from Bursa, NYSE, Nasdaq, HKEX, SGX, IDX, SET & ASX

Dynamic Chart

- ▶ Candlestick Pattern Recognition
- ▶ 111 Indicators
- ▶ 39 Drawing Tools
- ▶ Performance Comparison Chart

Intraday Data

- ▶ Market Depth
- ▶ Trade Summary Matrix & Chart
- ▶ Times & Sales
- ▶ Intraday Market Ticker

Market Screener

- ▶ 96 criteria ranging from FA, TA, Consensus Estimate
- ▶ Real-time Data

Power Frame

- ▶ Combining few Dynamic Charts together with intraday information in one frame

Technical Analysis

Fundamental Analysis

Financial Analysis Statement

- ▶ Profit & Loss
- ▶ Balance Sheet
- ▶ Cash Flow Statement
- ▶ More than 20 Financial Ratios
- ▶ Dividend Analysis

FactSheet

- ▶ Key Stock Information
- ▶ Ownership
- ▶ Consensus Estimates
- ▶ Annual Report
- ▶ Historical Price
- ▶ Insider Trades

**Start your 18 days
FREE trial now
(Valued at RM82)**



Price & Total Shareholder Return (as at Yesterday)

Fundamental Analysis

DEFINITION: Share price of a company trading at a lower price as compared to its fundamentals (FA) such as financial performance and dividend, allowing it to be attractive to value investors.

CHART GUIDE: Total Shareholder Return (TSR) combines share price appreciation and dividend distributions paid to show the total return to the shareholder expressed as a percentage.



ShareInvestor WebPro > Screener > Market Screener (FA & TA) > select BURSA > add criteria

A. Criteria

- > click Add Criteria
- Fundamental Analysis Conditions tab (i) Price Earnings Ratio
- Fundamental Analysis Conditions tab >select (ii) CAGR of Net Earnings
- Fundamental Analysis Conditions tab >select (iii) Net Debt To Equity
- Fundamental Analysis Conditions tab >select (iv) Return On Equity (ROE)

B. Conditions

1. Price Earnings Ratio - select (less than) type (15) times now
2. CAGR of Net Earnings - select (more than) type (10) % for the past type (3) financial year(s)
3. Net Debt To Equity – select (less than) type (1) for the past select (1) financial year(s)
4. Return On Equity (ROE) – select (more than) type (10) % for the past select (1) financial year(s)

- > click Save Template > Create New Template type (Value Stock) > click Create
- > click Save Template as > select Value Companies > click Save
- > click Screen Now (may take a few minutes)
- Sort by: Select (PE Ratio) Select (Ascending)
- > Mouse over stock name > Factsheet > looking for Total Shareholder Return
- > Mouse over stock name > Charts > click C2 Charts tab

SYNERGY HOUSE BERHAD (0279)

C² Chart



Period	Dividend Received	Capital Appreciation	Total Shareholder Return
Short Term Return	5 Days	+0.095	+11.96%
	10 Days	+0.080	+9.88%
	20 Days	+0.090	+11.25%
Medium Term Return	3 Months	+0.115	+24.48%
	6 Months	+0.450	+102.27%

SUNMOW HOLDING BERHAD (03050)

C² Chart



Period	Dividend Received	Capital Appreciation	Total Shareholder Return
Short Term Return	5 Days	-	-
	10 Days	-	-
	20 Days	-	-
Medium Term Return	3 Months	-	-
	6 Months	-0.040	-3.64%
Long Term Return	1 Year	+0.430	+81.25%
	2 Years	+0.925	+19.37%
Annualised Return	Annualised	-	+6.47%

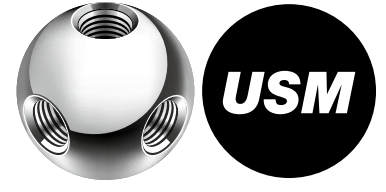
TEO SENG CAPITAL BERHAD (7252)

C² Chart



Period	Dividend Received	Capital Appreciation	Total Shareholder Return
Short Term Return	5 Days	+0.030	+1.59%
	10 Days	-0.051	-2.59%
	20 Days	-0.041	-2.09%
Medium Term Return	3 Months	+0.294	+18.88%
	6 Months	+0.600	+65.84%
	1 Year	+1.102	+134.72%
Long Term Return	2 Years	+1.102	+143.65%
	3 Years	+1.022	+140.80%
	5 Years	0.085	+69.83%
Annualised Return	Annualised	-	+11.55%

Disclaimer: The information on this page is provided as a service to readers. It does not constitute financial advice and/or any investment recommendations. Past performance is not indicative of future results. We assume no liability for damages resulting from or arising out of the use of such information. It would be best if you did your own research to make your personal investment decisions wisely or consult a licenced investment advisor.



making
places
relaxing



usm.com

XTRA

XTRA FURNITURE SDN BHD
The Gardens Mall, Mid Valley City, Lot S-236 & 237
Lingkar Syed Putra, 59200 Kuala Lumpur
T. +603 2282 9088 | living@xtrafurniture.com | xtrafurniture.com
📍 XTRAFurniture | 🌐 xtrafurnituremsia

Price & Total Shareholder Return (as at Yesterday)

Fundamental Analysis

DEFINITION: Company revenue is growing and making good quality of earnings with positive Free Cash Flow.

CHART GUIDE: Total Shareholder Return (TSR) combines share price appreciation and distributions paid to show the total return to the shareholder expressed as a percentage.



ShareInvestor WebPro > Screener > Market Screener (FA & TA) > select BURSA > add criteria

A. Criteria

1. Fundamental Analysis Conditions tab >select (i) Free Cash Flow, (ii) Revenue Growth, (iii) Gross Profit (Earnings) Margin, (iv) Quality of Earnings, (v) Total Shareholder Returns, > click Add Criteria
2. Fundamental Analysis Conditions tab >select (vi) Total Shareholder Returns > click Add Criteria

B. Conditions (Criteria Filters)

1. Free Cash Flow - select (more than) type (1) for the past select (1) financial year(s)
2. Revenue Growth - select (more than) type (1) for the past select (1) financial year(s)
3. Gross Profit (Earnings) Margin - select (more than) type (30) % for the past select (1) financial year(s)
4. Quality of Earnings - select (more than) type (1) for the past select (1) financial year(s)
5. Total Shareholder Return - -- select (more than) type (5) % for the past select (3) financial year(s)
6. Total Shareholder Return - -- select (more than) type (5) % for the past select (5) financial year(s)

- > click Save Template > Create New Template type (Growth Companies) > click Create
- > click Save Template as > select Growth Companies > click Save
- > click Screen Now (may take a few minutes)
- > Sort By: Select (Revenue Growth) Select (Desc)
- > Mouse over stock name > Factsheet > looking for Total Shareholder Return

MALAYSIA AIRPORTS HOLDINGS BERHAD (5014)

C² Chart

Analysis



Period	Dividend Received	Capital Appreciation	Total Shareholder Return
Short Term Return	5 Days	-0.200	-2.00%
	10 Days	+0.500	+6.36%
	20 Days	+1.370	+18.43%
Medium Term Return	3 Months	+2.250	+30.20%
	6 Months	+2.400	+32.81%
	1 Year	+3.000	+44.71%
Long Term Return	2 Years	+2.600	+38.37%
	3 Years	+3.210	+48.48%
	5 Years	0.190	+46.62%
Annualised Return	Annualised	-	+7.94%

SL INNOVATION CAPITAL BERHAD (03008)

C² Chart

Analysis



Period	Dividend Received	Capital Appreciation	Total Shareholder Return
Short Term Return	5 Days	-	-
	10 Days	-	-
	20 Days	-	-
Medium Term Return	3 Months	-	-
	6 Months	-	-
	1 Year	+0.200	+17.79%
Long Term Return	2 Years	+0.385	+45.43%
	3 Years	+0.335	+45.42%
	5 Years	0.015	+43.14%
Annualised Return	Annualised	-	+10.28%

EDARAN BERHAD (5036)

C² Chart

Analysis



Period	Dividend Received	Capital Appreciation	Total Shareholder Return
Short Term Return	5 Days	-0.010	-0.86%
	10 Days	-0.150	-15.19%
	20 Days	-0.010	-0.86%
Medium Term Return	3 Months	-0.020	-1.85%
	6 Months	-0.005	-0.46%
	1 Year	+0.000	+0.33%
Long Term Return	2 Years	+0.535	+48.68%
	3 Years	0.035	+7.29%
	5 Years	0.003	+0.81%
Annualised Return	Annualised	-	+16.87%

Disclaimer: The information on this page is provided as a service to readers. It does not constitute financial advice and/or any investment recommendations. Past performance is not indicative of future results. We assume no liability for damages resulting from or arising out of the use of such information. It would be best if you did your own research to make your personal investment decisions wisely or consult a licenced investment advisor.

Price & Total Shareholder Return (as at Yesterday)

Fundamental Analysis

DEFINITION: Company is paying out dividend with low or moderate leverage.

CHART GUIDE: Total Shareholder Return (TSR) combines share price appreciation and distributions paid to show the total return to the shareholder expressed as a percentage.



ShareInvestor WebPro > Screener > Market Screener (FA & TA) > select BURSA > add criteria

A. Criteria

- > click Add Criteria
- Fundamental Analysis Conditions tab >select (i) Dividend Yield (Historical)
- Fundamental Analysis Conditions tab >select (ii) Dividend Payout (Historical)
- Fundamental Analysis Conditions tab >select (iii) Total Debt To Equity
- Fundamental Analysis Conditions tab >select (iv) Total Shareholder Returns
- Fundamental Analysis Conditions tab >select (v) Total Shareholder Returns
- Fundamental Analysis Conditions tab / >select (vi) CAGR of Dividend Per Share

- Fundamental Analysis Conditions tab >select (vii) CAGR of Dividend Per Share

B. Conditions (Criteria Filters)

1. Dividend Yield - select (more than) type (1) % for the past select (1) financial year(s)
2. Dividend Payout (Historical) - select (between) type (0.5) to type (1) times for the past select (1) financial year(s)
3. Total Debt to Equity - select (less than) type (1) for the past select (1) financial year(s)
4. Total Shareholder Return - select (more than) type (5) % for the past select (3) financial year(s)
5. Total Shareholder Return - select (more than) type (5) % for the past select (5) financial year(s)

6. CAGR of Dividend Per Share - select (less than) type (30) % for the past select (5) financial year(s)
7. CAGR of Dividend Per Share - select (more than) type (1) % for the past select (5) financial year(s)

- > click Save Template > Create New Template type (Dividend Companies) > click Create
- > click Save Template as > select Dividend Companies > click Save
- > click Screen Now (may take a few minutes)
- > Sort By: Select (Dividend Yield) Select (Desc)
- > Mouse over stock name > Factsheet > looking for Total Shareholder Return

FORMOSA PROSONIC INDUSTRIES (9172)

C² Chart



Period	Dividend Received	Capital Appreciation	Total Shareholder Return
Short Term Return	5 Days	-0.030	-0.97%
	10 Days	-0.040	-1.28%
	20 Days	-0.060	-1.55%
Medium Term Return	3 Months	-0.200	-3.82%
	6 Months	-0.400	-10.11%
	1 Year	-0.120	-3.69%
Long Term Return	2 Years	0.210	-2.27%
	3 Years	0.210	-24.72%
	5 Years	0.450	-108.14%
Annualised Return	Annualised	-	-15.79%

GAS MALAYSIA BERHAD (5209)

C² Chart



Period	Dividend Received	Capital Appreciation	Total Shareholder Return
Short Term Return	5 Days	-0.040	-1.15%
	10 Days	-0.120	-3.56%
	20 Days	-0.140	-4.19%
Medium Term Return	3 Months	-0.260	-8.05%
	6 Months	-0.450	-14.89%
	1 Year	-0.290	-8.06%
Long Term Return	2 Years	0.060	-31.85%
	3 Years	0.230	-37.81%
	5 Years	0.510	-39.99%
Annualised Return	Annualised	-	-6.81%

BERMAZ AUTO BERHAD (5248)

C² Chart



Period	Dividend Received	Capital Appreciation	Total Shareholder Return
Short Term Return	5 Days	-0.000	-2.51%
	10 Days	-0.010	-2.94%
	20 Days	-0.040	-1.00%
Medium Term Return	3 Months	-0.050	-2.08%
	6 Months	-0.050	-2.21%
	1 Year	-0.100	-7.50%
Long Term Return	2 Years	0.020	-46.69%
	3 Years	0.090	-78.37%
	5 Years	0.200	-80.00%
Annualised Return	Annualised	-	-4.87%

Disclaimer: The information on this page is provided as a service to readers. It does not constitute financial advice and/or any investment recommendations. Past performance is not indicative of future results. We assume no liability for damages resulting from or arising out of the use of such information. It would be best if you did your own research to make your personal investment decisions wisely or consult a licenced investment advisor.

Week: 29 March 2024 - 4 April 2024

More Brokers' Call 

AMINVESTMENT BANK <small>... See More</small>	Call	Target Price	Release Date
Mega First Corporation Berhad (3069)	BUY	RM5.40	3 Apr 2024
MISC Berhad (3816)	BUY	RM8.60	2 Apr 2024
Gamuda Berhad (5398)	BUY	RM6.54	1 Apr 2024
LPI Capital Bhd (8621)	HOLD	RM12.80	29 Mar 2024

APEX <small>... See More</small>	Call	Target Price	Release Date
Kronologi Asia Berhad (0176)	BUY	RM0.44	29 Mar 2024

BIMB SECURITIES SDN BHD <small>... See More</small>	Call	Target Price	Release Date
Cypark Resources Berhad (5184)	HOLD	RM0.89	1 Apr 2024
Gamuda Berhad (5398)	BUY	RM6.30	29 Mar 2024

KENANGA <small>... See More</small>	Call	Target Price	Release Date
Ancom Nylex Berhad (4758)	OUTPERFORM	RM1.50	4 Apr 2024
Kerjaya Prospek Group Berhad (7161)	OUTPERFORM	RM1.90	2 Apr 2024
Star Media Group Berhad (6084)	UNDERPERFORM	RM0.31	1 Apr 2024
Gamuda Berhad (5398)	OUTPERFORM	RM6.20	29 Mar 2024

MIDF <small>... See More</small>	Call	Target Price	Release Date
MSM Malaysia Holdings Berhad (5202)	BUY	RM4.48	3 Apr 2024
MISC Berhad (3816)	BUY	RM8.48	2 Apr 2024
Gamuda Berhad (5398)	BUY	RM5.98	29 Mar 2024

JOB KAYHIAN <small>... See More</small>	Call	Target Price	Release Date
Hartalega Holdings Berhad (5168)	BUY	RM3.27	3 Apr 2024
MTAG Group Berhad (0213)	BUY	RM0.56	3 Apr 2024
S P Setia Berhad (8664)	BUY	RM1.80	2 Apr 2024

Disclaimer: InveSt does not accept any liability whatsoever for any direct, indirect or consequential losses (including loss of profit) or damages that may arise from the use of information or opinions in this publication. The information and opinions in InveSt are not to be considered as an offer to sell or buy any of the securities discussed. Opinions expressed are subject to change without notice. The Brokers may, from time to time, have interests or positions in the securities mentioned. For the full report on each item listed on this page, please visit https://www.shareinvestor.com/my/brokers_call.

DEFINITION: Top 9 stocks with Technical Analysis plus Pattern Matching by 60 pre-defined indicators by the system showing a higher probability of bullish sentiment on the share price.



ShareInvestor WebPro > Screener > Predefined TA Screens > select market BURSA > Most Long Signals > click Scan Results or mouse over each company

HPMT HOLDINGS BERHAD (5291.MY)

HPMT

Price updated at 04 Apr 2024 17:31

Last: 0.335	Change: -0.005	Volume: 1,980
	Change (%): -1.47	Range: 0.335 - 0.345

TA Scanner Results based on historical data up to 04 Apr 2024

Condition	Signal	Explanation
Bollinger Band: Bullish Short Term Volatility Breakout and Trending	Long	1. Close price above upper bollinger band(33,1). 2. Volume above average volume(10). 3. Average volume(10) is above 300,000.
Bollinger Band: High Above Upper Bollinger Band	Neutral	1. High above upper bollinger band(14,2). 2. Average volume(5) is above 100,000.
DM: Bullish Directional Movement	Long	-DI(14) crossed below +DI(14)
Donchian Channels: High Above Upper Donchian Channels	Long	High crossed above the upper Donchian Channel(14,4)
Historical Volatility: Increasing Historical Volatility	Neutral	Historical Volatility(100,365) increasing for the last 10 days
Parabolic SAR: Bearish Parabolic SAR Reversal	Neutral	1. Parabolic SAR 1 day ago above close price 1 day ago for the last 5 days. 2. Parabolic SAR below close price
RSI: Short Term RSI 50 Bullish Crossover	Long	1. RSI(20) crossed above 50 within the last 1 day and RSI(20) 1 day ago below 50 for the last 5 days. 2. Volume above average volume(125). 3. Average volume(5) is above 100,000.
Volume: Volume Spike	Long	1. Volume is more than 500% above average volume(10). 2. Volume above 200000. 3. Close price above 0.10

AWC BERHAD (7579.MY)

AWC

Price updated at 04 Apr 2024 17:31

Last: 0.800	Change: -0.020	Volume: 132,908
	Change (%): -2.44	Range: 0.765 - 0.820

TA Scanner Results based on historical data up to 04 Apr 2024

Condition	Signal	Explanation
Bollinger Band: High Above Upper Bollinger Band	Neutral	1. High above upper bollinger band(14,2). 2. Average volume(5) is above 100,000.
Chaikin Volatility: Increasing Chaikin Volatility	Neutral	Chaikin Volatility(10,10) has been increasing for 5 days
Price: New 52 Week High	Long	1. Stock reach a new 52 week high. 2. Average volume(30) is above 50000.
Volume: 10 Days large value Buy Up trade	Long	1. 150K value Buy Up greater than Sell Down by 20% for 10 days. 2. 50K-100K value Buy Up greater than Sell Down by 20% for 10 days. 3. Average volume(10) is above 1000000
Volume: 5 Days large value Buy Up trade	Long	1. 150K value Buy Up greater than Sell Down by 20% for 5 days. 2. 50K-100K value Buy Up greater than Sell Down by 20% for 5 days. 3. Average volume(10) is above 1000000
Volume: Volume Spike	Long	1. Volume is more than 500% above average volume(10). 2. Volume above 200000. 3. Close price above 0.10
Williams %R: Bearish Williams %R	Short	1. Williams %R(26) between 0 and -20. 2. Average volume(5) is above 100,000.

Disclaimer: The information on this page is provided as a service to readers. It does not constitute financial advice and/or any investment recommendations. Past performance is not indicative of future results. We assume no liability for damages resulting from or arising out of the use of such information. It would be best if you did your own research to make your personal investment decisions wisely or consult a licenced investment advisor.

ECA INTEGRATED SOLUTION BERHAD (0267.MY)

ECA

Price updated at 04 Apr 2024 17:30

Last: 0.470	Change: +0.020	Volume: 167,286
	Change (%): +4.44	Range: 0.460 - 0.480

TA Scanner Results based on historical data up to 04 Apr 2024

Condition	Signal	Explanation
Bollinger Band: Bullish Long Term Volatility Breakout and Trending	Long	1. Close price above upper bollinger band(33,1). 2. Volume above average volume(50). 3. Average volume(50) is above 300,000.
Bollinger Band: Bullish Short Term Volatility Breakout and Trending	Long	1. Close price above upper bollinger band(33,1). 2. Volume above average volume(10). 3. Average volume(10) is above 300,000.
Bollinger Band: High Above Upper Bollinger Band	Neutral	1. High above upper bollinger band(14,2). 2. Average volume(5) is above 100,000.
MA: Short Term Bullish Moving Average Crossover	Long	MA(10) crossed above MA(15) within the last 1 day.
Volume: 10 Days large value Buy Up trade	Long	1. 150K value Buy Up greater than Sell Down by 20% for 10 days. 2. 50K-100K value Buy Up greater than Sell Down by 20% for 10 days. 3. Average volume(10) is above 1000000
Volume: 5 Days large value Buy Up trade	Long	1. 150K value Buy Up greater than Sell Down by 20% for 5 days. 2. 50K-100K value Buy Up greater than Sell Down by 20% for 5 days. 3. Average volume(10) is above 1000000
Williams %R: Bearish Williams %R	Short	1. Williams %R(26) between 0 and -20. 2. Average volume(5) is above 100,000.

NCT ALLIANCE BERHAD (0056.MY)

NCT

Price updated at 04 Apr 2024 17:31

Last: 0.535	Change: -0.010	Volume: 325,794
	Change (%): -1.83	Range: 0.525 - 0.565

TA Scanner Results based on historical data up to 04 Apr 2024

Condition	Signal	Explanation
Accumulation Distribution: Bullish Accumulation Distribution	Long	Accumulation distribution increasing for the last 7 days
Bollinger Band: High Above Upper Bollinger Band	Neutral	1. High above upper bollinger band(14,2). 2. Average volume(5) is above 100,000.
Historical Volatility: Increasing Historical Volatility	Neutral	Historical Volatility(100,365) increasing for the last 10 days
MACD: Overbought	Short	1. MACD Histogram(12,26,9) reached a new 6 month high. 2. MACD Histogram(12,26,9) has been above 0 for the last 3 weeks.
Price: Consecutive Days Gains	Long	1. Close price has been increasing over the last 5 days. 2. Average volume(5) above 100,000.
Price: New 52 Week High	Long	1. Stock reach a new 52 week high. 2. Average volume(30) is above 50000.
RSI: RSI Overbought	Short	1. RSI(20) is above 80. 2. RSI(20) is increasing for the last 3 days. 3. Stock has more than 75 days of historical data.
Volume: 10 Days large value Buy Up trade	Long	1. 150K value Buy Up greater than Sell Down by 20% for 10 days. 2. 50K-100K value Buy Up greater than Sell Down by 20% for 10 days. 3. Average volume(10) is above 1000000
Volume: Consecutive Days Of Increasing Average Volume	Long	1. Average Volume(20) has been increasing over the last 2 weeks. 2. Average volume(20) is above 100000
Williams %R: Bearish Williams %R	Short	1. Williams %R(26) between 0 and -20. 2. Average volume(5) is above 100,000.

CITAGLOBAL BERHAD (7245.MY)

CITAGLB

Price updated at 04 Apr 2024 17:31

Last: 1.160	Change: -0.010	Volume: 25,711
	Change (%): -0.85	Range: 1.140 - 1.220

TA Scanner Results based on historical data up to 04 Apr 2024

Condition	Signal	Explanation
Bollinger Band: Bullish Lower Bollinger Band Support	Long	1. Low 1 day ago below lower bollinger band(20,2). 2. Close above close 1 day ago. 3. Average volume(5) is above 100,000.
Candlestick: Bullish Engulfing	Long	Bullish: Engulfing
Price: New 52 Week Low	Short	1. Stock reach a new 52 week low. 2. Average volume(30) is above 50000.
RSI: Short Term RSI 30 Bullish Crossover	Long	1. RSI(20) crossed above 30 within the last 1 day and RSI(20) 1 day ago below 30 for the last 5 days. 2. Volume above average volume(125). 3. Average volume(5) is above 100,000.
Stochastic: Fast Stochastic Buy Signal	Long	1. Fast Stochastic(15,5) %K crossed above 20. 2. Fast Stochastic(15,5) %K 1 day ago was below 20 for the last 5 days. 3. Average volume(30) is above 50000
Williams %R: Bullish Williams %R	Long	1. Williams %R(26) between -80 and -100. 2. Average volume(5) is above 100,000.

YBS INTERNATIONAL BERHAD (0025.MY)

YBS

Price updated at 04 Apr 2024 17:30

Last: 0.835	Change: -	Volume: 67,532
	Change (%): -	Range: 0.820 - 0.840

TA Scanner Results based on historical data up to 04 Apr 2024

Condition	Signal	Explanation
Bollinger Band: High Above Upper Bollinger Band	Neutral	1. High above upper bollinger band(14,2). 2. Average volume(5) is above 100,000.
Candlestick: Bullish Engulfing	Long	Bullish: Engulfing
Donchian Channels: High Above Upper Donchian Channels	Long	High crossed above the upper Donchian Channel(14,4)
Price: New 52 Week High	Long	1. Stock reach a new 52 week high. 2. Average volume(30) is above 50000.
Volume: 10 Days large value Buy Up trade	Long	1. 150K value Buy Up greater than Sell Down by 20% for 10 days. 2. 50K-100K value Buy Up greater than Sell Down by 20% for 10 days. 3. Average volume(10) is above 1000000
Volume: 5 Days large value Buy Up trade	Long	1. 150K value Buy Up greater than Sell Down by 20% for 5 days. 2. 50K-100K value Buy Up greater than Sell Down by 20% for 5 days. 3. Average volume(10) is above 1000000
Williams %R: Bearish Williams %R	Short	1. Williams %R(26) between 0 and -20. 2. Average volume(5) is above 100,000.

SIN HENG CHAN (MALAYA) BERHAD (4316.MY)

SHCHAN

Price updated at 04 Apr 2024 17:31

Last: 0.365	Change: +0.005	Volume: 10,565
	Change (%): +1.39	Range: 0.360 - 0.370

TA Scanner Results based on historical data up to 04 Apr 2024

Condition	Signal	Explanation
Bollinger Band: Bullish Long Term Volatility Breakout and Trending	Long	1. Close price above upper bollinger band(33,1). 2. Volume above average volume(50). 3. Average volume(50) is above 300,000.

CSC STEEL HOLDINGS BERHAD (5094.MY)

CSCSTEL

Price updated at 04 Apr 2024 17:31

Last: 1.390	Change: +0.010	Volume: 4,549
	Change (%): +0.72	Range: 1.380 - 1.400

TA Scanner Results based on historical data up to 04 Apr 2024

Condition	Signal	Explanation
Bollinger Band: High Above Upper Bollinger Band	Neutral	1. High above upper bollinger band(14,2). 2. Average volume(5) is above 100,000.
CCI: Bearish CCI Overbought And Reversing	Short	1. CCI(26) above 100 and CCI(26) 1 day ago increasing for the last 3 days. 2. CCI(26) below CCI(26) 1 day ago
Candlestick: Bullish Engulfing	Long	Bullish: Engulfing
Donchian Channels: High Above Upper Donchian Channels	Long	High crossed above the upper Donchian Channel(14,4)
MACD: Bullish MACD Crossover	Long	1. MACD(12,26) diff line crossed above the MACD(12,26) signal line. 2. MACD Histogram(12,26) is above 0.
Price: New 52 Week High	Long	1. Stock reach a new 52 week high. 2. Average volume(30) is above 50000.
Williams %R: Bearish Williams %R	Short	1. Williams %R(26) between 0 and -20. 2. Average volume(5) is above 100,000.

GAMUDA BERHAD (5398.MY)

GAMUDA

Price updated at 04 Apr 2024 17:31

Last: 5.330	Change: +0.070	Volume: 110,484
	Change (%): +1.33	Range: 5.240 - 5.370

TA Scanner Results based on historical data up to 04 Apr 2024

Condition	Signal	Explanation
Accumulation Distribution: Bullish Accumulation Distribution	Long	Accumulation distribution increasing for the last 7 days
Bollinger Band: Bullish Long Term Volatility Breakout and Trending	Long	1. Close price above upper bollinger band(33,1). 2. Volume above average volume(50). 3. Average volume(50) is above 300,000.
Bollinger Band: Bullish Short Term Volatility Breakout and Trending	Long	1. Close price above upper bollinger band(33,1). 2. Volume above average volume(10). 3. Average volume(10) is above 300,000.
Donchian Channels: High Above Upper Donchian Channels	Long	High crossed above the upper Donchian Channel(14,4)
Williams %R: Bearish Williams %R	Short	1. Williams %R(26) between 0 and -20. 2. Average volume(5) is above 100,000.

Disclaimer: The information on this page is provided as a service to readers. It does not constitute financial advice and/or any investment recommendations. Past performance is not indicative of future results. We assume no liability for damages resulting from or arising out of the use of such information. It would be best if you did your own research to make your personal investment decisions wisely or consult a licenced investment advisor.

Condition	Signal	Explanation
Bollinger Band: Bullish Short Term Volatility Breakout and Trending	Long	1. Close price above upper bollinger band(33,1). 2. Volume above average volume(10). 3. Average volume(10) is above 300,000.
Bollinger Band: High Above Upper Bollinger Band	Neutral	1. High above upper bollinger band(14,2). 2. Average volume(5) is above 100,000.
Donchian Channels: High Above Upper Donchian Channels	Long	High crossed above the upper Donchian Channel(14,4)
MA: Short Term Bullish Moving Average Crossover	Long	MA(10) crossed above MA(15) within the last 1 day.
Volume: Volume Spike	Long	1. Volume is more than 500% above average volume(10). 2. Volume above 200000. 3. Close price above 0.10



Dato' Eu Hong Chew
Former Group CEO i-Berhad
Non-Executive Director

He has been associated with the Sumurwang Group for many years charting the path for its manufacturing arm, firstly under Dreamland Holdings Berhad and the subsequent acquisition of I-Berhad.

Before that, he was with PA Management Consulting for a decade where he was the Director of Studies for the Cranfield PA MBA Programme in Malaysia.

Educated at the Royal Military College, Dato' Eu has an engineering degree from the University of Glasgow, and a MBA from the University of Bradford, UK.

Is there an investment opportunity in **AVERY DENNISON?**

SUMMARY

- Avery Dennison Corporation's (NYSE: AVY) revenue grew modestly at a 3.1% CAGR over the past 11 years. But PAT surged at a faster 9.0% CAGR.
- AVY's growth has been a mix of organic and acquisition-driven with high historical reinvestment rates. Financially, AVY shows strengths in positive cash flow generation and capital allocation, but its high debt-to-capital ratio raises concerns.
- Despite these positives, the stock appears fully priced based on my valuation model.

Disclaimer: This article is written for informational purposes only. It does not constitute a solicitation, offer, advice, counseling or recommendation to buy or sell. As such it is not intended to promote the purchase of shares in any way. As a reminder, any type of asset has a risk factor and needs to be evaluated from multiple perspectives. Therefore, any investment decision and the associated risk remains with the investor. The views expressed here are entirely the writer's own.

INVESTMENT THESIS

AVY revenue only grew at 3.1% CAGR over the past 11 years. This is despite spending more on cash acquisitions than CAPEX. If nothing else, this suggests that it is in a mature sector. It is fundamentally sound although I have concerns about its financial strengths. But the market has fully priced in its current performance. As such I do not view it as an investment opportunity.

BACKGROUND

AVY is a global materials science and digital identification solutions company that provides branding and information labeling solutions. As of December 2023, it operated over 200 manufacturing and distribution facilities in more than 50 countries.

AVY reports its performance under 2 business segments:

Materials Group: This consists of its former Label & Graphic Materials and Industrial & Healthcare Materials segments.

Solutions Group: This was formerly the Retail Branding & Information Solutions segment.

In 2023, the Materials Group and Solutions Group accounted for approximately 69% and 31 % respectively of the total sales. The international operations accounted for approximately 69% of the net sales.

OPERATING TRENDS

I looked at 2 groups of metrics to get an overview of the overall performance as shown in Chart 1:

- The left part shows the trends for 3 metrics – revenue, PAT, and gross profitability (gross profits / total assets).
- The right part shows the return trends based on the Operating return (NOPAT/Total capital employed), ROE, and ROA.

Over the past 11 years, while revenue grew at 3.1% CAGR, PAT grew at 9.0% CAGR. There were 3 hiccups in the PAT growth:

- The dip in 2017 was due to the additional tax provisions under the US Tax Cuts and Jobs Act.
- The dip in 2019 was the result of the pension plan settlements and related charges of USD444 million.
- The drop in 2023 was partly due to lower sales as well as USD143 million in restructuring and legal charges.

Despite the growth in profits, there was hardly any growth in gross profitability. This meant more assets were used to drive profits. This is reflected in the relatively flat Operating return as per the right part of Chart 1.

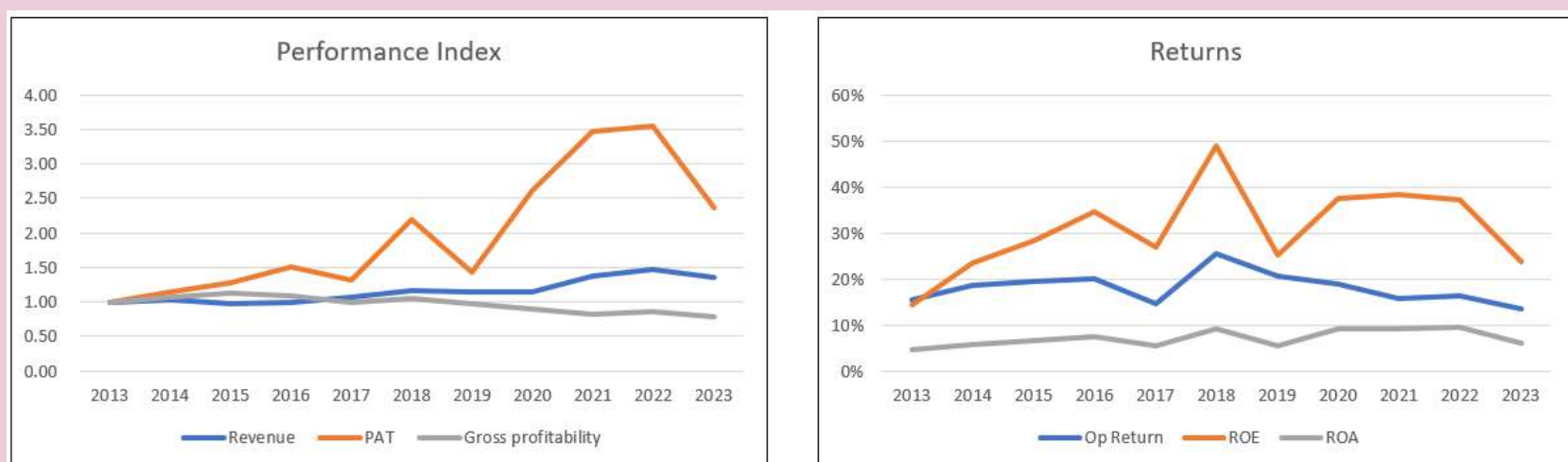


Chart 1: Performance Index and Returns

Notes to Operating index chart:

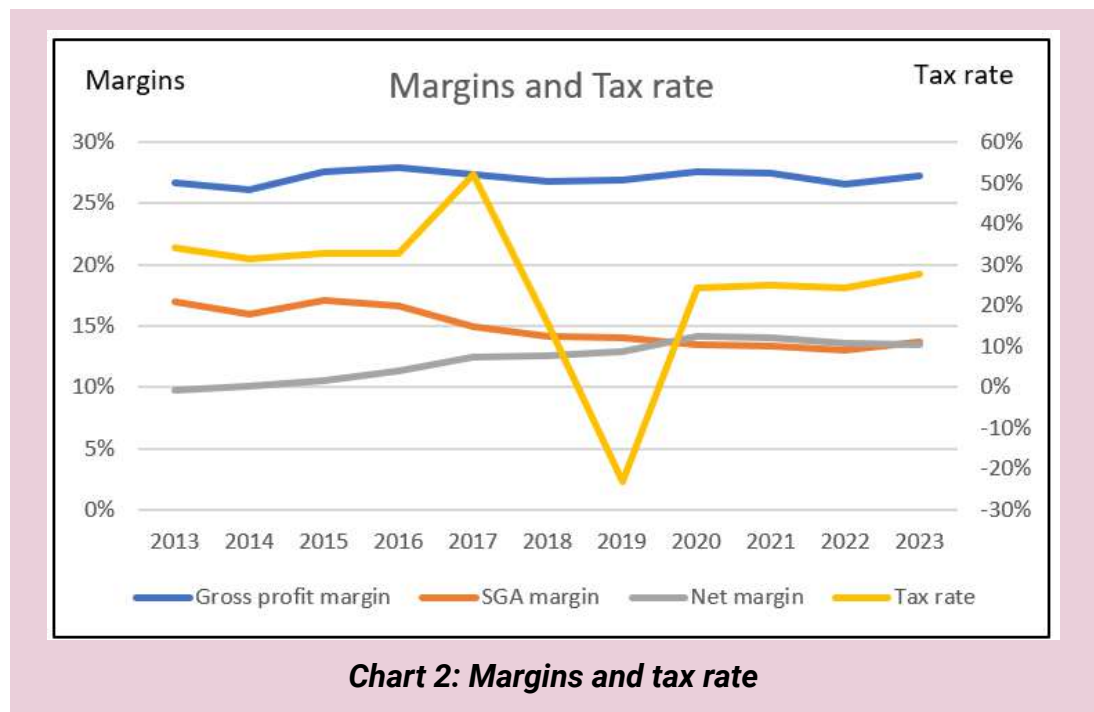
To plot the 3 metrics on one chart, I converted them into indices. I used the respective 2013 value as the base of 1.00.

There were 2 major reasons why the PAT growth was higher than that for revenue – higher net margins and lower effective tax rates.

NET MARGINS

I defined net margin as gross profit margin minus Selling, General, and Administration (SGA) margin.

Chart 2 tracks the gross profit margin, SGA margin, and net margin over the past 11 years. While the gross profit margin was relatively “flat”, there was an improvement in the SGA margin. The result was an uptrend in the net margin from 9.7% in 2013 to 13.5% in 2023.



TAX RATE

Looking at Chart 2, you can discern two periods with different tax rates:

- Pre-2017 that averaged about 33%.
- Post-2020 that averaged about 25%.

Note that there was a negative tax rate in 2019 due to a tax benefit of USD179 million. The jump in 2017 was due to the additional tax provisions under the Tax Cuts and Jobs Act. The higher tax rates pre-2017 were because of the US operations. While this was not very profitable, taxes were paid. This low pre-tax profit for the US

operations accounted for a small part of the overall pre-tax profit. However, the tax component made a significant contribution to the overall tax payable. This resulted in an overall higher tax rate.

The higher tax pre-2017 is an arithmetical issue. It is the way the overall tax rates were computed. A more realistic overall tax rate is to consider those for the past 3 years where both the US and International segments were profitable.

GROWTH

Over the past 11 years, revenue grew at 3.1% CAGR due to both acquisitions and organic growth. If nothing else this suggests that it is a mature sector. From 2013 to 2022 years, the company spent about USD2.0 billion on CAPEX and USD2.5 billion on cash acquisitions. You would be justified to think that about half of the growth was due to acquisitions based on the ratio of the amount spent on CAPEX to that for the acquisitions.

In its annual reports, the company broke down its annual growth due to organic growth and due to others. But despite this, it is hard to allocate the growth to those due to organic growth and those due to acquisitions. This is because the CAPEX for a particular year could include expenditures for facilities acquired earlier.

The other characteristic of AVY is the forex situation. With more than 70% of its sales coming from international sources, its performance is significantly affected by forex. In this context, the company also provides an annual forex impact on its revenue.

To give you a sense of the various

Sources of revenue growth	2013 to 2022 ave
Organic	5.2%
Forex	-1.8%
Misc/acquisitions	1.3%
Overall	4.7%

Table 1: Sources of revenue growth

sources of revenue growth, I averaged the 2013 to 2022 organic growth and the changes in forex. Table 1 summarizes the results. Note that the overall growth is the average % annual revenue growth and not the compounded annual growth rate.

I deduced the growth due to miscellaneous including acquisitions by deducting the organic and forex growths from the overall growth. The key takeaways are:

- Organic growth (inclusive of earlier years' acquisitions) accounted for a big part of the overall growth.
- Forex had reduced its revenue by 1.8%. Note that over the period, there were 6 years with forex losses.

Given these findings, in my valuation model, I would ignore forex. At the same time, I would cap growth at 5%.

REINVESTMENTS

Growth needs to be funded and one metric for this is the Reinvestment rate. This is defined as:

Reinvestment with acquisitions = CAPEX & Acquisitions – Depreciation & Amortization + Net Changes in Working Capital.

I then determined the Reinvestment rate = Reinvestment / NOPAT.

Acquisitions are integral growth drivers for the company. As such I have included the annual acquisition expenditure as part of the CAPEX.

As can be seen from Table 2, the Reinvestment rate with acquisitions is 41%. If you exclude acquisitions, the Reinvestment is negative 4%. The negative value arose because the amount spent on CAPEX and net Working Capital was less than the Depreciation and Amortization.

Year	EBIT(1-t) a (USD m)	Reinvestment incl acquisitions b (USD m)	Reinvestment excl acquisitions c (USD m)	Total capital employed d (USD m)	Return a/d (%)
2013	330	-508	-508	2,151	15%
2014	367	6	6	1,968	19%
2015	359	-7	-7	1,848	19%
2016	402	293	56	2,005	20%
2017	349	390	71	2,381	15%
2018	679	86	86	2,663	25%
2019	1,005	91	91	3,000	34%
2020	662	384	33	3,514	19%
2021	785	1,527	49	5,026	16%
2022	825	73	34	5,093	16%
Average	576	234	-9	2,965	19%
Reinvestment rate		41%	-4%		

Table 2: Estimating the Reinvestment Rate

There is another perspective on the Reinvestment rate that is derived from the fundamental growth equation.

Growth = Return X Reinvestment Rate.

Return = EBIT / TCE.

TCE = Total capital employed = Total equity + total debt – cash.

In Table 2, the average return = 19%.

Taking the historical growth as 4.7% (as per Table 1) and the Return as 19 %, the fundamental Reinvestment rate = $4.7 / 19 = 25\%$. Comparing the historical 41% and the 25%, I would conclude that there is room for the company to improve its Reinvestment rate.

FINANCIAL STRENGTHS

I normally avoid companies with a Debt Equity ratio greater than 1. This was my first red flag for AVY as its Debt Equity ratio was 1.6 as of Dec 2023. The other red flags were:

- As of the end of Dec 2023, it had a Debt / Total Capital ratio of 59%. According to Damodaran Jan 2023 datasets, the packaging and container sector average ratio was 38 %.
- Its average cash conversion cycle increased from 30 days in 2011/12 to about 38 days in 2022/23.

But it had the following positive points:

- As of the end of Dec 2023, it had USD250 million in cash. The cash had increased from USD198 million as of Dec 2022.
- Over the past 11 years, it generated positive cash flow from operations every year. From 2013 to 2023, it generated a total of about USD7.2 billion in cash flow from operations compared to the total PAT of USD4.7 billion. This is a good cash conversion ratio.
- Its EBITDA / Interest expenses for the past 2 years averaged 14. This was an improvement compared to the 2013/14 average of 11.
- It has a good capital allocation program as shown in Table 3. You can see that its cash flow from operations was more than sufficient to fund its CAPEX and acquisitions. The balance was then returned to shareholders.

Given the positive points, I think we can ignore the red flag.

Items	Sources (USD m)	Uses (USD m)
Cash flow from Ops	7,166	
Net Debt	1,931	
Stock issuance	251	
Dividends & buybacks		4,786
Net CAPEX incl intangibles		2,433
Acquisitions		2,159
Misc		-30
Total	9,347	9,347

Table 3: Sources and Uses of Funds

VALUATION

The value of a company depends on its expected future cash flow as per the following equation

Free Cash Flow to the Firm (FCFF) = $EBIT(1-t) \times (1 - \text{Reinvestment rate})$.

Two key variables drive the FCFF i.e. Reinvestment rate and net margin.

Given these, I assumed the following in my valuation

- The Reinvestment rate was based on the fundamental growth equation. As shown earlier this was lower than the historical rate. This meant that my valuation is an optimistic one.
- Net margin was based on the 2021 to 2023 average values.

Based on the above, I estimated the intrinsic value to be USD172 per share. The market price as of 21 March 2024 was USD219 per share. There is no margin of safety.

VALUATION MODEL

I estimated the Earnings Value of AVY based on a single-stage Free Cash Flow to the Firm (FCFF) Model where:

Value of the firm = $FCFF \times (1 + g) / (WACC - g)$.

FCFF = $EBIT(1-t) \times (1 - \text{Reinvestment rate})$.

EBIT = Revenue \times Net margin

Reinvestment = Growth / Return

Return = $EBIT(1-t) / TCE$ where TCE = Total Capital Employed.

WACC = 8.5%. There were the average values based on the first page results of a Google search for the term “AVY WACC”.

Growth = 5% based on the long-term GDP growth rate.

Table 4 shows a sample computation.

Item	Units	Value	Notes
Revenue	USD m	8,364	2023 value
Net margin	USD m	1,148	a. Revenue X net margin
Others (restructuring, etc)	USD m	73	b. 2013 to 2023
EBIT	USD m	1,074	c = a - b
Tax	%	25.6%	d. 2021 to 2023 ave
EBIT(1-t)	USD m	799	e = c X (1 - d)
Growth rate	%	5.0%	f. Cap at 5 %
TCE	USD m	5,011	g. TCE/Revenue for 2021 to 2023 ave
Return	USD m	16%	h = e / g
Reinvestment rate	%	29%	i = h / e
FCFF	USD m	565	j = e X (1 - i)
WACC	%	8.5%	k as per Google search
Value to the firm	USD m	16,802	m = j X (1 + f) / (k - f)
Cash	USD m	250	n. Dec 2023
TCE adjustments	USD m	309	o. Based on Dec 2023 TCE
Debt	USD m	3,442	p. Dec 2023
Minority Interests	USD m	0	q. Dec 2023
Value of equity	USD m	13,919	r = m + n + o - p - q
No of shares	USD m	81	s. Dec 2023
Value of equity per share	USD per share	172	t = r / s
Market price	USD per share	219	21-Mar-24

Table 4: Computation of intrinsic value

CONCLUSION

AVY is fundamentally sound based on the following:

- It has been able to deliver about 5% organic growth.

- Despite the high debt-to-capital ratio, I would rate it as financially ok.
- It has managed to deliver an improvement in net margin.
- It has a good capital allocation plan.
- ROE is trending up.

AVY achieved revenue and profit growth over the past decade due to a combination of organic growth and acquisitions. Growth was also funded by debt rather than just by internally generated funds. My valuation model assumed a continuation of these. But I think that the stock is fully priced.

I am a long-term value investor who has held onto stocks for more than 5 years. My analysis and valuation are from such a perspective. I consider quarterly results "noisy" and focus on long-term trends.

This article was re-purposed from my article "Avery Dennison: Fundamentally Sound But Fully Priced" which was first published in Seeking Article. Refer to this [link](#) for more of my insights on other US companies.

Disclaimer: This article is written for informational purposes only. It does not constitute a solicitation, offer, advice, counseling or recommendation to buy or sell. As such it is not intended to promote the purchase of shares in any way. As a reminder, any type of asset has a risk factor and needs to be evaluated from multiple perspectives. Therefore, any investment decision and the associated risk remains with the investor. The views expressed here are entirely the writer's own.



SIGN UP FOR Invest
IT'S FREE!!!

[Click here](#)

Scan me



Via email, every Friday.

UNLOCK THE SECRET OF WEALTH

DO YOU REALLY WANT TO MASTER VALUE INVESTING



SEE HOW TO GET HIGHER RETURNS WITH LOWER RISK



MALAYSIA'S SEMICONDUCTOR EXPORTS SET TO INCREASE THIS YEAR - MSIA

According to Malaysia Semiconductor Industry Association (MSIA) president Datuk Seri Wong Siew Hai, the country's semiconductor exports this year will be better than the RM575 billion sales in 2023, thanks largely to the relocation and investments in Malaysia by renowned global companies. He said that 20% of exports are shipped to the United States, making Malaysia its largest supplier.

Malaysia reportedly has 7% of the global market share and is rated sixth in the world for semiconductor exports. The local semiconductor sector showed its tenacity last year when exports dropped only 3% from RM595 billion in 2022 when global industry sales dipped 8.2%.

He added that for Malaysia to maintain this position, it needs to ship RM1.2 trillion worth of exports by 2030. It is nearly double (from RM575 billion in 2023) as everybody is building wafer fabrication plants globally. There is no denying that Malaysia faces competition. Vietnam, Thailand, the Philippines and India are also cashing in on the relocation, taking advantage of the US-China trade tensions by getting into the chip

business. But Malaysia has stood out well due to the big names that have invested here.

Intel has made known its intention to invest to the tune of US\$7 billion (RM33 billion), AT&S €1.7 billion (RM8.7 billion), and Infineon €5 billion. This excludes companies with smaller investments of between RM1 billion and RM2 billion each. Austrian semiconductor firm AT&S opened its plant in Kulim, Kedah, in January producing integrated circuit substrates for next-generation microchips.

Intel has announced two fabrication plants in Ohio, two in Arizona and another in Germany. Taiwan Semiconductor Manufacturing Co has announced plans for a fabrication plant in Arizona, its second one there and it inaugurated its first plant in Japan this year. Samsung and some Chinese companies also announced plans to build mid- and high-end fabs.

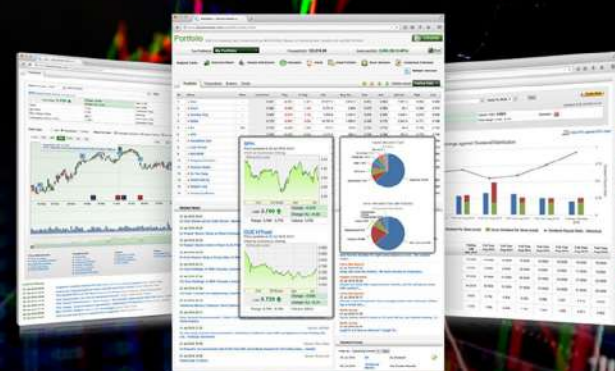
He said that semiconductor companies are increasing their capacities in anticipation of growth as “everybody is trying to capture a piece of the pie”. The US, European Union, South Korea, Japan and China are putting money behind it to position themselves to capitalise on this growth.

SHAREINVESTOR MARKET DATA PLATFORMS



**SHAREINVESTOR
STATION**

Advanced Charting Software
(8 Markets)



**SHAREINVESTOR
WEBPRO**

Browser-Based Market Data
Analytics Platform

CONTRACT AWARDS FROM BIG TICKET INFRASTRUCTURE PROJECTS TO DRIVE JOBS HIGHER IN 2024 - HLIB

Hong Leong Investment Bank (HLIB) has maintained its “overweight” rating on the construction sector and said 1Q2024 domestic contract awards totalled RM6.96 billion, which is up 45% q-o-q but down 3% y-o-y.

In its sector update, the research house said contracts again were dominated by the private sector, which saw robust flows, notably from commercial and residential projects, while the data centre (DC) space contributed too. Going forward, contract awards are expected from several big ticket infrastructure projects to drive jobs higher in 2024. HLIB maintains its sector 'overweight' call keeping to the thesis of contract awards growth driven by mega infra projects and supported by robust private sector job flows.

Against the positive backdrop, sector valuations remain undemanding. HLIB's top picks are Gamuda Bhd ("buy"; target price [TP]: RM6.11) and Sunway Construction Group Bhd ("buy"; TP: RM3.20).

The research house said for the remaining quarters of 2024, it looks forward to the rollout of big ticket infrastructure projects like Penang LRT (more than RM10 billion), Pan Borneo Sabah Phase 1B (RM15.7 billion), flood mitigation packages worth RM11.8 billion, Sabah-Sarawak Link Road (RM7.4 billion), LRT3 reinstatement (RM4.7 billion), KUTS-Green Line as well as water scheme projects. There are also other basic infrastructure projects to come, funded by the high level of development expenditure of RM90 billion.

These projects should help drive contract flows in 2024 while pipeline from industrial projects and data centres remains highly robust — Johor has been touted as the fastest growing DC market in SEA region.

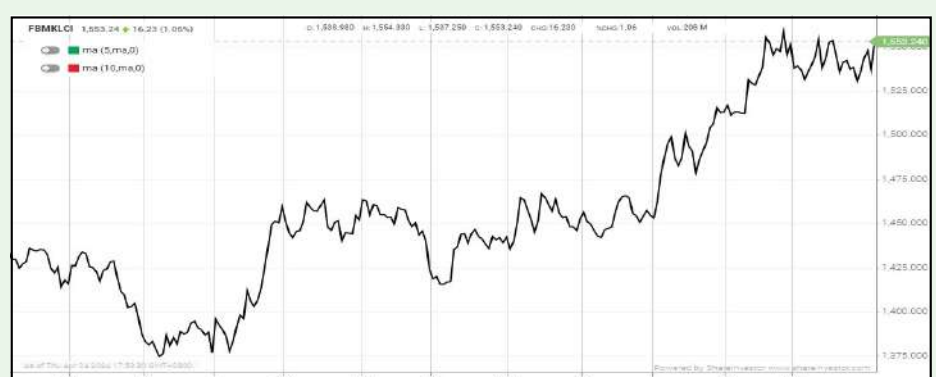
Note From The Publisher: In view of the upcoming 2-days Hari Raya Aidil Fitri holidays on April 10th and 11th, Inve\$ will take a break next week. Our next issue will be on Friday April 19th. We take this opportunity to wish all our Muslim readers

Selamat Hari Raya Aidil Fitri.



EYE ON THE MARKETS

On Thursday (04Apr), the Ringgit closed at 4.7395 against the USD and 3.5186 to the Sing Dollar. On Monday (01Apr), the FBM KLCI opened at 1537.50. As at Thursday (04Apr) 5:00pm, the FBM KLCI closed up 15.74 points at 1553.24. Over in US, the overnight Dow Jones Industrial Average closed down 530.16 points (-1.35%) to 38,596.98 whilst the NASDAQ shed 228.38 points (-1.40%) to 16,049.08.



KLCI 1 Year Chart

Over 5 trading days



ShareInvestor WebPro (www.shareinvestor.com/my)

1. Price > Stock Prices
2. Select Market: NASDAQ / NYSE / IDX / SET / HKEX / SGX (One bourse at a time)
3. select Stocks Tab
4. select Ranking Top Gainers or Top Losers (Over 5 Trading Days)
5. Mouse over Column Layout > select Edit Customs > select Name > select Last Done Price > select 5 Days Change > select 52 Weeks High > select 52 Weeks Low > Mouse Over Column Layout > select Custom

NASDAQ (USD)

Top Gainers

Name	Last Done	Change Over 5 Days	52 Weeks High	52 Weeks Low
META PLATFORMS INC	510.920	+25.340	523.570	207.130
ROOT INC	70.930	+9.850	65.190	3.630
NETFLIX INC	617.140	+9.810	634.390	315.620
ICZOOM GROUP INC	17.980	+9.560	13.590	1.610
WEATHERFORD INTL PLC	123.330	+7.910	125.145	55.814

Top Losers

Name	Last Done	Change Over 5 Days	52 Weeks High	52 Weeks Low
U POWER LIMITED	5.410	-537.590	7,500.000	0.056
BOOKING HOLDINGS INC	3,521.930	-105.950	3,918.000	2,456.930
MICROSTRATEGY	1,615.420	-89.140	1,999.990	266.000
ULTA BEAUTY INC	448.640	-74.240	574.760	368.020
FIRST CITIZENS BANCSHARES INC NRTH	1,578.800	-56.200	1,651.730	942.200

NYSE (USD)

Top Gainers

Name	Last Done	Change Over 5 Days	52 Weeks High	52 Weeks Low
SPOTIFY TECHNOLOGY S.A.	295.960	+32.060	293.000	128.670
HUBSPOT INC	657.850	+31.290	693.850	390.220
TEXAS PACIFIC LAND CORPORATION	597.160	+18.650	666.667	422.070
MARATHON PETROLEUM CORP	216.250	+14.750	218.590	104.320
DELL TECHNOLOGIES INC	127.160	+13.050	136.160	39.900

Top Losers

Name	Last Done	Change Over 5 Days	52 Weeks High	52 Weeks Low
BERKSHIRE HATHAWAY INC	628,419.990	-6,020.010	647,039.000	467,601.010
NVR INC	7,790.000	-309.960	8,211.400	5,210.490
KINSALE CAPITAL GROUP INC	445.440	-79.300	548.470	293.840
AUTOZONE INC	3,085.040	-66.610	3,256.370	2,277.880
RH	282.720	-65.540	406.380	207.260

IDX (Rupiah)

Top Gainers

Name	Last Done	Change Over 5 Days	52 Weeks High	52 Weeks Low
CHANDRA ASRI PACIFIC TBK	6,975.000	+1,150.000	7,000.000	1,995.000
MULTISTRADA ARAH SARANA	5,300.000	+900.000	6,000.000	2,250.000
UNITED TRACTORS	25,050.000	+875.000	31,700.000	20,925.000
ADIRA DINAMIKA MULTI FINANCE TBK	14,025.000	+600.000	14,300.000	9,850.000
AKASHA WIRA INTERNATIONAL TBK	9,650.000	+550.000	14,125.000	7,300.000

Top Losers

Name	Last Done	Change Over 5 Days	52 Weeks High	52 Weeks Low
DIAN SWASTATIKA SENTOSA TBK	115,250.000	-7,750.000	163,000.000	33,950.000
CITRA BORNEO UTAMA TBK	1,380.000	-730.000	4,000.000	1,270.000
SIANTAR TOP	10,125.000	-675.000	16,900.000	6,975.000
INDOFOOD CBP SUKSES MAKMUR TBK PT	11,025.000	-575.000	11,925.000	9,975.000
PT BANK NEGARA INDONESIA(PERSERO)	5,350.000	-550.000	6,250.000	4,312.500

SET (Thai Baht)

Top Gainers

Name	Last Done	Change Over 5 Days	52 Weeks High	52 Weeks Low
PTTEP	158.000	+9.000	175.000	137.500
GYT	185.000	+5.000	212.000	178.000
INSURE	117.500	+4.500	171.000	102.000
BH	227.000	+4.000	272.000	210.000
BBIK	96.500	+3.000	126.000	80.750

Top Losers

Name	Last Done	Change Over 5 Days	52 Weeks High	52 Weeks Low
MGI	21.900	-13.350	65.250	6.200
CHOTI	83.000	-12.000	152.500	83.000
JTS	52.000	-7.750	93.500	23.200
BKI	294.000	-5.000	321.000	285.000
NEW	101.000	-4.000	210.000	79.000

HKEX (HKD)

Top Gainers

Name	Last Done	Change Over 5 Days	52 Weeks High	52 Weeks Low
TRIP COM GROUP LTD	378.400	+31.000	382.400	240.600
UBTECH ROBOTICS CORP LTD	219.400	+27.000	328.000	69.800
CLOUD MUSIC INC	97.900	+7.850	106.000	63.400
MEITUAN	98.950	+7.850	150.000	61.100
MEITUAN	91.750	+7.350	137.200	56.950

Top Losers

Name	Last Done	Change Over 5 Days	52 Weeks High	52 Weeks Low
NETEASE INC	149.600	-11.900	185.700	116.100
TECHTRONIC INDUSTRIES CO	102.500	-6.600	110.000	67.350
BEIJING ENTERPRISE HLDGS	23.900	-5.350	35.550	22.050
CHINA MEDICAL SYSTEM HLDGS LTD	7.500	-5.040	15.860	7.240
ASCENTAGE PHARMA GROUP INTL	17.240	-4.710	28.150	17.000

SGX (SGD)

Top Gainers

Name	Last Done	Change Over 5 Days	52 Weeks High	52 Weeks Low
ISETAN	7.030	+4.190	7.100	2.500
BEST WORLD	2.410	+0.290	2.460	1.440
DBS	36.320	+0.290	36.630	30.300
SHANGRI-LA HKD	5.300	+0.280	7.950	4.860
OCBC BANK	13.760	+0.270	13.850	12.000

Top Losers

Name	Last Done	Change Over 5 Days	52 Weeks High	52 Weeks Low
JMH USD	36.490	-0.810	52.570	36.360
NIO Inc. USD OV	4.600	-0.220	15.780	4.450
POWERMATIC DATA	2.800	-0.200	3.130	2.340
AZEUS	8.110	-0.190	9.190	7.400
SINGTEL 10	2.400	-0.130	2.670	2.260

A FEW INVESTING LESSONS FROM WARREN BUFFETT'S LATEST ANNUAL LETTER

Warren Buffett's annual letters to shareholders are masterclass in investing. His letters are candid, clear, transparent, and full of wisdom. A must-read for investors and CEOs. Buffett recently released his 2023 letter to shareholders of Berkshire Hathaway. It's a good read, as always.

Buffett started the letter with a tribute to his long-time partner Charlie Munger who passed away – just a month shy of his 100th birthday – in November last year.

“Charlie was the “architect” of the present Berkshire, and I acted as the “general contractor” to carry out the day-by-day construction of his vision.”

“Charlie never sought to take credit for his role as creator but instead let me take the bows and receive the accolades. In a way his relationship with me was part older brother, part loving father. Even when he knew he was right, he gave me the reins, and when I blundered he never – never – reminded me of my mistake.”

“Though I have long been in charge of the construction crew; Charlie should forever be credited with being the architect.”

Buffett will usually sprinkle some investing lessons throughout the letter. Here are a few that stand out.

- 1. Invest in wonderful businesses. Focus on companies with strong and sustainable fundamentals (high ROE, low gearing ratio, strong free cash flow generation etc), ability to reinvest capital at high rate of returns and run by able and trustworthy management.**

“We want to own either all or a portion of businesses that enjoy good economics that are fundamental and enduring. Within capitalism, some businesses will flourish for a very long time while others will prove to be sinkholes. At Berkshire, we particularly favor the rare enterprise that can deploy additional capital at high returns in the future. Owning only one of these companies – and simply sitting tight – can deliver wealth almost beyond measure. Even heirs to such a holding can – ugh! – sometimes live a lifetime of leisure. We also hope these favored businesses are run by able and trustworthy managers, though that is a more difficult judgment to make, however, and Berkshire has had its share of disappointments.”

- 2. Pay fair prices for wonderful businesses. Don't invest in lousy businesses even if the price is low. This is because wonderful businesses will continue to earn superior returns while mediocre ones are very likely to remain mediocre. However, wonderful businesses rarely go on sale. Therefore, investors should seize the occasional opportunity when the market offers them wonderful businesses at fair valuations.**

“Charlie, in 1965, promptly advised me: “Warren, forget about ever buying another company like Berkshire. But now that you control Berkshire, add to it wonderful businesses purchased at fair prices and give up buying fair businesses at wonderful prices. In other words, abandon everything you learned from

your hero, Ben Graham. It works but only when practiced at small scale.” With much back-sliding I subsequently followed his instructions.”

- 3. Hold them for a long, long time. You just need to own a few wonderful businesses and sit still for a long, long time. Berkshire Hathaway is a good example. The stock has returned 4,384,748% over the last 59 years. If you have invested only US\$1,000 in Berkshire at the beginning, and sit tight for 59 years, your investment will be worth US\$43.85 million at the end of 2023! That’s the power of compounding.**

“When you find a truly wonderful business, stick with it. Patience pays, and one wonderful business can offset the many mediocre decisions that are inevitable.”

“One investment rule at Berkshire has not and will not change: Never risk permanent loss of capital. Thanks to the American tailwind and the power of compound interest, the arena in which we operate has been – and will be – rewarding if you make a couple of good decisions during a lifetime and avoid serious mistakes.”

“America has been a terrific country for investors. All they have needed to do is sit quietly, listening to no one.”

In a nutshell, Buffett said,

- Invest in wonderful businesses.
- Pay fair prices.
- Hold them for a long, long time.

Simple but not easy.

Jackson Tan
Manager, Corporate Monitoring

DEFINITION: Insider Activity shows the trades made by substantial shareholders or directors of the company. Purchases by the directors and company share buyback may indicate the share price is undervalued and brings confidence to the price trend of the share price.



ShareInvestor WebPro > Fundamental > Insider Trades > click Search tab > Select Bursa > click Stock name > scroll up and leave at <Select Counter> Type Date Range for Announcement Date > click Search

Notice Period is 24th Mar 2024 – 30th Mar 2024

Effective Change Date	Stock Name	Buyer/ Seller Name [Classification]	Bought / (Sold) ['000]	No. of Shares After Trade ['000]	
			Total	Total	% Held
24 MAR 2024 - 25 MAR 2024	3A	MR TEO KWEE HOCK [SSH]	203	49,245	10.071
20 MAR 2024 - 20 MAR 2024	ABMB	EMPLOYEES PROVIDENT FUND BOARD [SSH]	-52	158,689	10.251
20 MAR 2024 - 20 MAR 2024	ACO	IR TANG PEE TEE @ TAN CHANG KIM [DIR/CEO]	605	211,470	60.877
20 MAR 2024 - 20 MAR 2024	ACO	IR TANG PEE TEE @ TAN CHANG KIM [SSH]	605	211,470	60.877
20 MAR 2024 - 20 MAR 2024	ACO	MADAM JIN SIEW YEN [SSH]	605	211,470	60.877
20 MAR 2024 - 20 MAR 2024	ACO	MR TAN YUSHAN [DIR/CEO]	605	211,470	60.877
20 MAR 2024 - 20 MAR 2024	ACO	MR TAN YUSHAN [SSH]	605	211,470	60.877
25 MAR 2024 - 26 MAR 2024	ADVCON	MR LIM SWEE CHAI [SSH]	-5,000	50,381	8.76
26 MAR 2024 - 26 MAR 2024	AIRPORT	KUMPULAN WANG PERSARAAN (DIPERBADANKAN) [SSH]	1,961	115,669	6.933
21 MAR 2024 - 21 MAR 2024	AIRPORT	EMPLOYEES PROVIDENT FUND BOARD [SSH]	-652	116,963	7.01
20 MAR 2024 - 20 MAR 2024	AIRPORT	EMPLOYEES PROVIDENT FUND BOARD [SSH]	4,914	117,614	7.049
22 MAR 2024 - 22 MAR 2024	AMBANK	EMPLOYEES PROVIDENT FUND BOARD [SSH]	-305	440,256	13.313
21 MAR 2024 - 21 MAR 2024	AMBANK	EMPLOYEES PROVIDENT FUND BOARD [SSH]	-937	440,561	13.323
20 MAR 2024 - 20 MAR 2024	AMBANK	EMPLOYEES PROVIDENT FUND BOARD [SSH]	-982	441,498	13.351
22 MAR 2024 - 22 MAR 2024	AMWAY	AMANAHRAYA TRUSTEES BERHAD - AMANAH SAHAM BUMIPUTERA [SSH]	-100	20,379	12.397
21 MAR 2024 - 21 MAR 2024	AMWAY	AMANAHRAYA TRUSTEES BERHAD - AMANAH SAHAM BUMIPUTERA [SSH]	-123	20,479	12.458
20 MAR 2024 - 20 MAR 2024	ANCOMNY	DATO' SIEW KA WEI [DIR/CEO]	-2,000	157,008	16.32
20 MAR 2024 - 20 MAR 2024	ANCOMNY	DATO' SIEW KA WEI [SSH]	-2,000	157,008	16.32
20 MAR 2024 - 20 MAR 2024	ANCOMNY	DATO' SIEW KA WEI [DIR/CEO]	-3,000	159,008	16.516
20 MAR 2024 - 20 MAR 2024	ANCOMNY	DATO' SIEW KA WEI [SSH]	-3,000	159,008	16.516
22 MAR 2024 - 22 MAR 2024	ANEKA-WA	MR LOKE KIEN TUCK [DIR/CEO]	-29,800	17,483	5.937
22 MAR 2024 - 22 MAR 2024	ASDION	KINGDOM SAGA SDN BHD [SSH]	-25,000	49,943	9.78
25 MAR 2024 - 25 MAR 2024	ASTRO	MR RENZO CHRISTOPHER VIEGAS [DIR/CEO]	200	600	0.011
25 MAR 2024 - 25 MAR 2024	AXIATA	EMPLOYEES PROVIDENT FUND BOARD [SSH]	1,930	1,664,126	18.124
22 MAR 2024 - 22 MAR 2024	AXIATA	EMPLOYEES PROVIDENT FUND BOARD [SSH]	945	1,662,196	18.103
21 MAR 2024 - 21 MAR 2024	AXIATA	EMPLOYEES PROVIDENT FUND BOARD [SSH]	-372	1,661,251	18.093
20 MAR 2024 - 20 MAR 2024	AXIATA	EMPLOYEES PROVIDENT FUND BOARD [SSH]	-350	1,661,623	18.097
27 MAR 2024 - 27 MAR 2024	AXREIT	LEMBAGA TABUNG HAJI [SSH]	165	100,322	5.741
25 MAR 2024 - 25 MAR 2024	AXREIT	EMPLOYEES PROVIDENT FUND BOARD [SSH]	-30	284,127	16.259
26 MAR 2024 - 26 MAR 2024	AXREIT	LEMBAGA TABUNG HAJI [SSH]	300	100,157	5.731
22 MAR 2024 - 22 MAR 2024	AXREIT	EMPLOYEES PROVIDENT FUND BOARD [SSH]	120	284,157	16.261
25 MAR 2024 - 25 MAR 2024	AXREIT	LEMBAGA TABUNG HAJI [SSH]	300	99,857	5.714
21 MAR 2024 - 21 MAR 2024	AXREIT	EMPLOYEES PROVIDENT FUND BOARD [SSH]	550	284,037	16.254
22 MAR 2024 - 22 MAR 2024	AXREIT	LEMBAGA TABUNG HAJI [SSH]	150	99,557	5.697
20 MAR 2024 - 20 MAR 2024	AXREIT	EMPLOYEES PROVIDENT FUND BOARD [SSH]	-50	283,487	16.223
29 MAR 2024 - 29 MAR 2024	BAHVEST	MR CHONG TZU KHEN [DIR/CEO]	50	1,800	0.145
22 MAR 2024 - 22 MAR 2024	BAUTO	EMPLOYEES PROVIDENT FUND BOARD [SSH]	1,000	150,775	12.913
21 MAR 2024 - 21 MAR 2024	BAUTO	EMPLOYEES PROVIDENT FUND BOARD [SSH]	891	149,775	12.828
20 MAR 2024 - 20 MAR 2024	BAUTO	EMPLOYEES PROVIDENT FUND BOARD [SSH]	420	148,884	12.751
22 MAR 2024 - 22 MAR 2024	BIMB	EMPLOYEES PROVIDENT FUND BOARD [SSH]	251	383,667	16.928
21 MAR 2024 - 21 MAR 2024	BIMB	EMPLOYEES PROVIDENT FUND BOARD [SSH]	-8	383,416	16.917
20 MAR 2024 - 20 MAR 2024	BIMB	EMPLOYEES PROVIDENT FUND BOARD [SSH]	-115	365,096	16.109
25 MAR 2024 - 25 MAR 2024	BJCORP	TAN SRI DATO? SERI VINCENT TAN CHEE YIUON [SSH]	10,600	937,518	16.052
21 MAR 2024 - 21 MAR 2024	BJCORP	MISS CHRYSSEIS TAN SHEIK LING [DIR/CEO]	-175	77,149	1.321
25 MAR 2024 - 26 MAR 2024	BJFOOD	BERJAYA CORPORATION BERHAD [SSH]	23,431	1,051,941	59.371
25 MAR 2024 - 26 MAR 2024	BJFOOD	BERJAYA GROUP BERHAD [SSH]	23,431	950,955	53.671
25 MAR 2024 - 26 MAR 2024	BJFOOD	JUARA SEJATI SDN BHD [SSH]	23,431	171,847	9.699
22 MAR 2024 - 22 MAR 2024	BURSA	EMPLOYEES PROVIDENT FUND BOARD [SSH]	370	102,770	12.699
22 MAR 2024 - 22 MAR 2024	BURSA	EMPLOYEES PROVIDENT FUND BOARD [SSH]	-161	102,400	12.653
21 MAR 2024 - 21 MAR 2024	BURSA	EMPLOYEES PROVIDENT FUND BOARD [SSH]	-136	102,561	12.673
25 MAR 2024 - 26 MAR 2024	CBIP	DATUK LIM CHAI BENG [DIR/CEO]	373	200,375	42.755
25 MAR 2024 - 26 MAR 2024	CBIP	DATUK LIM CHAI BENG [SSH]	373	200,375	42.755
22 MAR 2024 - 22 MAR 2024	CDB	EMPLOYEES PROVIDENT FUND BOARD [SSH]	-62	1,155,926	9.853
22 MAR 2024 - 22 MAR 2024	CGB	MR LEE CHEE VUI [DIR/CEO]	1,250	68,536	9.331
22 MAR 2024 - 22 MAR 2024	CGB	MR LEE CHEE VUI [SSH]	1,250	68,536	9.331
22 MAR 2024 - 22 MAR 2024	CGB	MR SOO YU CHAI [SSH]	1,250	60,005	8.17
22 MAR 2024 - 22 MAR 2024	CGB	RYRT HOLDINGS SDN. BHD. [SSH]	1,250	59,222	8.063
25 MAR 2024 - 26 MAR 2024	CHGP	CHIN HIN GROUP BERHAD [SSH]	1,097	361,921	54.804
25 MAR 2024 - 26 MAR 2024	CHGP	DATUK SERI CHIAU BENG TEIK [DIR/CEO]	1,097	361,921	54.804
25 MAR 2024 - 26 MAR 2024	CHGP	DATUK SERI CHIAU BENG TEIK [SSH]	1,097	361,921	54.804

Notice Period is 24th Mar 2024 – 30th Mar 2024

Effective Change Date	Stock Name	Buyer/ Seller Name [Classification]	Bought / (Sold) ['000]	No. of Shares After Trade ['000]	
			Total	Total	% Held
25 MAR 2024 - 26 MAR 2024	CHGP	DIVINE INVENTIONS SDN BHD [SSH]	1,097	361,921	54.804
25 MAR 2024 - 26 MAR 2024	CHGP	MR CHIAU HAW CHOON [DIR/CEO]	1,097	361,921	54.804
25 MAR 2024 - 26 MAR 2024	CHGP	MR CHIAU HAW CHOON [SSH]	1,097	361,921	54.804
25 MAR 2024 - 26 MAR 2024	CHGP	PP CHIN HIN REALTY SDN BHD [SSH]	1,097	361,921	54.804
21 MAR 2024 - 22 MAR 2024	CHGP	CHIN HIN GROUP BERHAD [SSH]	264	360,824	54.637
21 MAR 2024 - 22 MAR 2024	CHGP	DATUK SERI CHIAU BENG TEIK [DIR/CEO]	264	360,824	54.637
21 MAR 2024 - 22 MAR 2024	CHGP	DATUK SERI CHIAU BENG TEIK [SSH]	264	360,824	54.637
21 MAR 2024 - 22 MAR 2024	CHGP	DIVINE INVENTIONS SDN BHD [SSH]	264	360,824	54.637
21 MAR 2024 - 22 MAR 2024	CHGP	MR CHIAU HAW CHOON [DIR/CEO]	264	360,824	54.637
21 MAR 2024 - 22 MAR 2024	CHGP	MR CHIAU HAW CHOON [SSH]	264	360,824	54.637
21 MAR 2024 - 22 MAR 2024	CHGP	PP CHIN HIN REALTY SDN BHD [SSH]	264	360,824	54.637
27 MAR 2024 - 27 MAR 2024	CHHB	MR LIM CHOW SEN @ LIM CHOW SOON [SSH]	2,500	28,836	9.72
26 MAR 2024 - 26 MAR 2024	CHINHIN	DATUK SERI CHIAU BENG TEIK JP [DIR/CEO]	725	1,024,764	57.915
26 MAR 2024 - 26 MAR 2024	CHINHIN	DATUK SERI CHIAU BENG TEIK JP [SSH]	725	1,024,764	57.915
21 MAR 2024 - 21 MAR 2024	CIMB	EMPLOYEES PROVIDENT FUND BOARD [SSH]	-3,464	1,530,093	14.35
21 MAR 2024 - 21 MAR 2024	CIMB	KUMPULAN WANG PERSARAAN (DIPERBADANKAN) [SSH]	2,919	675,525	6.3
20 MAR 2024 - 20 MAR 2024	CIMB	EMPLOYEES PROVIDENT FUND BOARD [SSH]	-4,574	1,533,557	14.38
20 MAR 2024 - 20 MAR 2024	CIMB	KUMPULAN WANG PERSARAAN (DIPERBADANKAN) [SSH]	-964	672,606	6.3
19 MAR 2024 - 19 MAR 2024	CIMB	EMPLOYEES PROVIDENT FUND BOARD [SSH]	75,975	1,538,131	14.42
26 MAR 2024 - 26 MAR 2024	CLMT	CMMT INVESTMENT LIMITED [SSH]	42,133	1,031,684	36.512
26 MAR 2024 - 26 MAR 2024	CLMT	ENCIK MOHD YUSOF BIN HUSSIAN [DIR/CEO]	3	71	0.003
26 MAR 2024 - 26 MAR 2024	CLMT	KUMPULAN WANG PERSARAAN (DIPERBADANKAN) [SSH]	9,367	290,845	10.294
22 MAR 2024 - 22 MAR 2024	CLMT	EMPLOYEES PROVIDENT FUND BOARD [SSH]	-1,651	429,251	15.663
25 MAR 2024 - 25 MAR 2024	CLMT	KUMPULAN WANG PERSARAAN (DIPERBADANKAN) [SSH]	2,332	281,477	10.271
21 MAR 2024 - 21 MAR 2024	CLMT	EMPLOYEES PROVIDENT FUND BOARD [SSH]	110	430,902	15.724
22 MAR 2024 - 22 MAR 2024	CLMT	KUMPULAN WANG PERSARAAN (DIPERBADANKAN) [SSH]	1,042	279,145	10.186
27 MAR 2024 - 27 MAR 2024	CTOS	ABRDN HOLDINGS LIMITED [SSH]	6,542	206,705	8.948
27 MAR 2024 - 27 MAR 2024	CTOS	ABRDN MALAYSIA SDN BHD [SSH]	6,519	204,370	8.847
27 MAR 2024 - 27 MAR 2024	CTOS	ABRDN PLC [SSH]	6,542	206,705	8.948
27 MAR 2024 - 27 MAR 2024	CTOS	KUMPULAN WANG PERSARAAN (DIPERBADANKAN) [SSH]	1,187	150,181	6.501
26 MAR 2024 - 26 MAR 2024	CTOS	ABRDN HOLDINGS LIMITED [SSH]	2,600	200,163	8.665
26 MAR 2024 - 26 MAR 2024	CTOS	ABRDN MALAYSIA SDN BHD [SSH]	2,567	197,851	8.565
26 MAR 2024 - 26 MAR 2024	CTOS	ABRDN PLC [SSH]	2,600	200,163	8.665
26 MAR 2024 - 26 MAR 2024	CTOS	KUMPULAN WANG PERSARAAN (DIPERBADANKAN) [SSH]	2,142	148,994	6.45
25 MAR 2024 - 25 MAR 2024	CTOS	ABRDN HOLDINGS LIMITED [SSH]	1,474	197,563	8.553
25 MAR 2024 - 25 MAR 2024	CTOS	ABRDN MALAYSIA SDN BHD [SSH]	1,450	195,284	8.454
25 MAR 2024 - 25 MAR 2024	CTOS	ABRDN PLC [SSH]	1,474	197,563	8.553
25 MAR 2024 - 25 MAR 2024	CTOS	KUMPULAN WANG PERSARAAN (DIPERBADANKAN) [SSH]	1,158	146,852	6.357
22 MAR 2024 - 25 MAR 2024	CTOS	ABRDN HOLDINGS LIMITED [SSH]	2,300	196,089	8.489
22 MAR 2024 - 22 MAR 2024	CTOS	ABRDN MALAYSIA SDN BHD [SSH]	2,270	193,834	8.391
22 MAR 2024 - 22 MAR 2024	CTOS	ABRDN PLC [SSH]	2,300	196,089	8.489
22 MAR 2024 - 22 MAR 2024	CTOS	CREADOR V.L.P. [SSH]	1,000	453,336	19.625
22 MAR 2024 - 22 MAR 2024	CTOS	JADE VINE SDN. BHD. [SSH]	1,000	453,336	19.625
22 MAR 2024 - 22 MAR 2024	CTOS	KUMPULAN WANG PERSARAAN (DIPERBADANKAN) [SSH]	1,894	145,694	6.307
22 MAR 2024 - 22 MAR 2024	CTOS	WASATCH ADVISORS LP [SSH]	-356	132,048	5.716
21 MAR 2024 - 21 MAR 2024	CTOS	ABRDN HOLDINGS LIMITED [SSH]	1,900	193,789	8.389
21 MAR 2024 - 21 MAR 2024	CTOS	ABRDN MALAYSIA SDN BHD [SSH]	1,875	191,564	8.293
21 MAR 2024 - 21 MAR 2024	CTOS	ABRDN PLC [SSH]	1,900	193,789	8.389
22 MAR 2024 - 22 MAR 2024	CYPARK	MOHAMED IZANI BIN MOHAMED JAKEL [SSH]	2,000	186,799	22.703
25 MAR 2024 - 25 MAR 2024	CYPARK	MR CHUNG CHEE YANG [SSH]	360	48,000	5.834
25 MAR 2024 - 25 MAR 2024	CYPARK	MR CHUNG DAO [SSH]	340	43,800	5.323
22 MAR 2024 - 22 MAR 2024	CYPARK	MR CHUNG CHEE YANG [SSH]	40	47,640	5.79
22 MAR 2024 - 22 MAR 2024	D&O	EMPLOYEES PROVIDENT FUND BOARD [SSH]	239	83,042	6.706
21 MAR 2024 - 21 MAR 2024	D&O	EMPLOYEES PROVIDENT FUND BOARD [SSH]	205	82,803	6.687
20 MAR 2024 - 20 MAR 2024	D&O	EMPLOYEES PROVIDENT FUND BOARD [SSH]	290	82,597	6.67
18 MAR 2024 - 22 MAR 2024	DATAPRP	TAN SRI MUHAMMAD IKMAL OPAT BIN ABDULLAH [SSH]	-1,701	46,356	6.282

Disclaimer: The Information in Insider Activity is extracted from www.shareinvestor.com/fundamental/insider_trades. The information on this page is provided as a service to readers. It does not constitute financial advice and/or any investment recommendations. We assume no liability for damages resulting from or arising out of the use of such information. Whilst every effort is made to ensure accuracy, the information presented is not the official record of shareholder filings. Readers are advised to read the original filings on the Bursa Malaysia website at www.bursamalaysia.com



STROM
SWISS TIMEPIECES & JEWELLERY



StromWatch Asia
Tele : +65.9817.3378
Email : ll.stromasia@gmail.com
WWW.STROMWATCH.SWISS

Notice Period is 24th Mar 2024 – 30th Mar 2024

Effective Change Date	Stock Name	Buyer/ Seller Name [Classification]	Bought / (Sold) ['000]		No. of Shares After Trade ['000]	
			Total	Total	% Held	% Held
18 MAR 2024 - 22 MAR 2024	DATAPRP	WARDAH COMMUNICATION SDN BHD [SSH]	-1,701	46,356	6.282	
18 MAR 2024 - 22 MAR 2024	DATAPRP	WIDAD BUSINESS GROUP SDN BHD [SSH]	-1,701	46,356	6.282	
27 MAR 2024 - 27 MAR 2024	DIALOG	KUMPULAN WANG PERSARAAN (DIPERBADANKAN) [SSH]	1,519	617,671	10.95	
25 MAR 2024 - 25 MAR 2024	DIALOG	EMPLOYEES PROVIDENT FUND BOARD [SSH]	815	878,203	15.56	
25 MAR 2024 - 25 MAR 2024	DIALOG	KUMPULAN WANG PERSARAAN (DIPERBADANKAN) [SSH]	3,000	616,152	10.92	
21 MAR 2024 - 21 MAR 2024	DIALOG	EMPLOYEES PROVIDENT FUND BOARD [SSH]	1,504	877,388	15.55	
22 MAR 2024 - 22 MAR 2024	DIALOG	KUMPULAN WANG PERSARAAN (DIPERBADANKAN) [SSH]	882	613,152	10.87	
20 MAR 2024 - 20 MAR 2024	DIALOG	EMPLOYEES PROVIDENT FUND BOARD [SSH]	601	875,884	15.52	
22 MAR 2024 - 22 MAR 2024	DPHARMA	EMPLOYEES PROVIDENT FUND BOARD [SSH]	45	82,515	8.578	
21 MAR 2024 - 21 MAR 2024	DPHARMA	EMPLOYEES PROVIDENT FUND BOARD [SSH]	33	82,470	8.573	
25 MAR 2024 - 25 MAR 2024	DRBHCOM	EMPLOYEES PROVIDENT FUND BOARD [SSH]	-300	179,108	9.265	
21 MAR 2024 - 21 MAR 2024	DRBHCOM	EMPLOYEES PROVIDENT FUND BOARD [SSH]	-230	179,408	9.28	
20 MAR 2024 - 20 MAR 2024	DRBHCOM	EMPLOYEES PROVIDENT FUND BOARD [SSH]	-35	179,638	9.292	
26 MAR 2024 - 26 MAR 2024	E&O	KUMPULAN WANG PERSARAAN (DIPERBADANKAN) [SSH]	2,643	118,206	5.942	
22 MAR 2024 - 22 MAR 2024	E&O	KUMPULAN WANG PERSARAAN (DIPERBADANKAN) [SSH]	-2,916	115,563	5.817	
22 MAR 2024 - 22 MAR 2024	ECOFIRS	MR TEOH SENG AUN [SSH]	375	62,701	5.277	
22 MAR 2024 - 22 MAR 2024	ECONBHD	EMPLOYEES PROVIDENT FUND BOARD [SSH]	-881	90,148	6.36	
25 MAR 2024 - 25 MAR 2024	ECONBHD	KUMPULAN WANG PERSARAAN (DIPERBADANKAN) [SSH]	570	71,110	5.017	
21 MAR 2024 - 21 MAR 2024	ECONBHD	EMPLOYEES PROVIDENT FUND BOARD [SSH]	-1,661	91,029	6.422	
25 MAR 2024 - 25 MAR 2024	EDEN	KOPERASI BELIA ISLAM MALAYSIA BERHAD [SSH]	-3,550	34,363	7.48	
25 MAR 2024 - 25 MAR 2024	EURO	S.P.A. FURNITURE (M) SDN. BHD. [SSH]	-14,000	508,559	39.612	
22 MAR 2024 - 22 MAR 2024	F&N	EMPLOYEES PROVIDENT FUND BOARD [SSH]	70	42,101	11.479	
21 MAR 2024 - 21 MAR 2024	F&N	EMPLOYEES PROVIDENT FUND BOARD [SSH]	99	42,031	11.46	
20 MAR 2024 - 20 MAR 2024	F&N	EMPLOYEES PROVIDENT FUND BOARD [SSH]	64	41,932	11.432	
27 MAR 2024 - 27 MAR 2024	FFB	ABRDN HOLDINGS LIMITED (FORMERLY KNOWN AS ABERDEEN ASSET MANAGEMENT PLC) [SSH]	26	123,850	6.616	
27 MAR 2024 - 27 MAR 2024	FFB	ABRDN MALAYSIA SDN BHD [SSH]	26	122,450	6.541	
27 MAR 2024 - 27 MAR 2024	FFB	ABRDN PLC [SSH]	26	123,850	6.616	
21 MAR 2024 - 21 MAR 2024	FFB	EMPLOYEES PROVIDENT FUND BOARD [SSH]	-800	167,839	8.966	
26 MAR 2024 - 26 MAR 2024	FPI	MR CHEN CHING SEN [DIR/CEO]	-30	1,670	0.652	
22 MAR 2024 - 22 MAR 2024	FRONTKN	EMPLOYEES PROVIDENT FUND BOARD [SSH]	-1,050	141,812	9.016	
21 MAR 2024 - 21 MAR 2024	FRONTKN	EMPLOYEES PROVIDENT FUND BOARD [SSH]	-937	142,862	9.083	
20 MAR 2024 - 20 MAR 2024	FRONTKN	EMPLOYEES PROVIDENT FUND BOARD [SSH]	-312	143,934	9.151	
22 MAR 2024 - 22 MAR 2024	GAMUDA	EMPLOYEES PROVIDENT FUND BOARD (EPF BOARD) [SSH]	955	236,748	8.55	
21 MAR 2024 - 21 MAR 2024	GAMUDA	EMPLOYEES PROVIDENT FUND BOARD (EPF BOARD) [SSH]	1,975	235,793	8.52	
20 MAR 2024 - 20 MAR 2024	GAMUDA	EMPLOYEES PROVIDENT FUND BOARD (EPF BOARD) [SSH]	810	233,208	8.43	
21 MAR 2024 - 21 MAR 2024	GASMSIA	EMPLOYEES PROVIDENT FUND BOARD [SSH]	49	72,723	5.663	
20 MAR 2024 - 20 MAR 2024	GASMSIA	EMPLOYEES PROVIDENT FUND BOARD [SSH]	-17	72,674	5.659	
27 MAR 2024 - 27 MAR 2024	GCB	MR TAY HOW SIK @ TAY HOW SICK [DIR/CEO]	50	27,696	2.358	
25 MAR 2024 - 26 MAR 2024	GCB	MR HIA CHENG [DIR/CEO]	100	78,722	6.702	
25 MAR 2024 - 26 MAR 2024	GCB	MR HIA CHENG [SSH]	100	78,722	6.702	
22 MAR 2024 - 26 MAR 2024	GCB	MR TAY HOW SIK @ TAY HOW SICK [DIR/CEO]	147	27,646	2.354	
21 MAR 2024 - 21 MAR 2024	GCB	EMPLOYEES PROVIDENT FUND BOARD [SSH]	100	66,892	5.695	
25 MAR 2024 - 25 MAR 2024	GCB	MR TAY HOW SIK @ TAY HOW SICK [DIR/CEO]	50	27,499	2.341	
20 MAR 2024 - 20 MAR 2024	GCB	EMPLOYEES PROVIDENT FUND BOARD [SSH]	-3,537	66,792	5.687	
20 MAR 2024 - 21 MAR 2024	GCB	MR HIA CHENG [DIR/CEO]	100	78,622	6.694	
20 MAR 2024 - 21 MAR 2024	GCB	MR HIA CHENG [SSH]	100	78,622	6.694	
22 MAR 2024 - 22 MAR 2024	GENP	EMPLOYEES PROVIDENT FUND BOARD [SSH]	168	119,424	13.311	
25 MAR 2024 - 25 MAR 2024	GENP	KUMPULAN WANG PERSARAAN (DIPERBADANKAN) [SSH]	-10	67,288	7.5	
20 MAR 2024 - 20 MAR 2024	GENP	EMPLOYEES PROVIDENT FUND BOARD [SSH]	17	119,255	13.292	
26 MAR 2024 - 26 MAR 2024	GHLSYS	ALBIZIA ASEAN TENGGARA FUND [SSH]	768	68,090	5.965	
22 MAR 2024 - 22 MAR 2024	GHLSYS	ALBIZIA ASEAN TENGGARA FUND [SSH]	800	67,322	5.898	
22 MAR 2024 - 22 MAR 2024	HEXIND	DATO' ONG CHOO MENG [SSH]	-8,235	1,538,154	55.987	
22 MAR 2024 - 22 MAR 2024	HEXIND	DATO' ONG SOON HO [SSH]	-8,235	1,521,721	55.389	
22 MAR 2024 - 22 MAR 2024	HEXIND	HEXTAR HOLDINGS SDN BHD [SSH]	-8,235	1,521,721	55.389	
25 MAR 2024 - 25 MAR 2024	HEXTAR	DATO' ONG CHOO MENG [SSH]	-12,500	2,421,661	62.477	
25 MAR 2024 - 25 MAR 2024	HEXTAR	DATO' ONG SOON HO [DIR/CEO]	-12,500	2,421,661	62.477	
25 MAR 2024 - 25 MAR 2024	HEXTAR	DATO' ONG SOON HO [SSH]	-12,500	2,421,661	62.477	
25 MAR 2024 - 25 MAR 2024	HEXTAR	HEXTAR HOLDINGS SDN. BHD. [SSH]	-12,500	2,069,966	53.404	
22 MAR 2024 - 22 MAR 2024	HEXTECH	DATO' ONG CHOO MENG [DIR/CEO]	-2,182	1,314,048	63.839	
22 MAR 2024 - 22 MAR 2024	HEXTECH	DATO' ONG CHOO MENG [SSH]	-2,182	1,314,048	63.839	
22 MAR 2024 - 22 MAR 2024	HLBANK	EMPLOYEES PROVIDENT FUND BOARD [SSH]	-9	199,495	9.561	
20 MAR 2024 - 20 MAR 2024	HLBANK	EMPLOYEES PROVIDENT FUND BOARD [SSH]	121	199,504	9.561	
26 MAR 2024 - 26 MAR 2024	HUBLINE	BNDM INCORPORATED HOLDINGS SDN. BHD. [SSH]	-5,000	775,501	18.077	
26 MAR 2024 - 26 MAR 2024	HUBLINE	DATO RICHARD WEE LIANG HUAT @ RICHARD WEE LIANG CHIAT [DIR/CEO]	-5,000	775,573	18.079	
26 MAR 2024 - 26 MAR 2024	HUBLINE	DATO RICHARD WEE LIANG HUAT @ RICHARD WEE LIANG CHIAT [SSH]	-5,000	775,573	18.079	
26 MAR 2024 - 26 MAR 2024	ICON	E-CAP (INTERNAL) THREE SDN. BHD. [SSH]	-272,000	31,290	5.777	
26 MAR 2024 - 26 MAR 2024	ICON	EKUINAS CAPITAL SDN. BHD. [SSH]	-272,000	31,304	5.779	
26 MAR 2024 - 26 MAR 2024	ICON	HALLMARK ODYSSEY SDN. BHD. [SSH]	-272,000	31,290	5.777	
26 MAR 2024 - 26 MAR 2024	ICON	LIANNEX CORPORATION (S) PTE LTD [SSH]	272,000	272,000	50.218	
26 MAR 2024 - 26 MAR 2024	ICON	LIANNEX MARITIME SDN. BHD. [SSH]	272,000	272,000	50.218	
26 MAR 2024 - 26 MAR 2024	ICON	MR LIM HAN WENG [SSH]	272,000	272,000	50.218	
26 MAR 2024 - 26 MAR 2024	ICON	YAYASAN EKUITI NASIONAL [SSH]	-272,000	31,304	5.779	
22 MAR 2024 - 22 MAR 2024	IFCAMSC	MR LEONG NYU KUAN [DIR/CEO]	100	500	0.083	
25 MAR 2024 - 25 MAR 2024	IGBCR	MISS TAN LEI CHENG [DIR/CEO]	-1,235	24,351	1.026	
21 MAR 2024 - 21 MAR 2024	IGBREIT	EMPLOYEES PROVIDENT FUND BOARD ("EPF BOARD") [SSH]	-752	414,227	11.489	

Notice Period is 24th Mar 2024 – 30th Mar 2024

Effective Change Date	Stock Name	Buyer/ Seller Name [Classification]	Bought / (Sold) ['000]		No. of Shares After Trade ['000]	
			Total	Total	% Held	% Held
20 MAR 2024 - 20 MAR 2024	IGBREIT	EMPLOYEES PROVIDENT FUND BOARD ("EPF BOARD") [SSH]	-392	414,979	11.51	
22 MAR 2024 - 22 MAR 2024	IHH	EMPLOYEES PROVIDENT FUND BOARD [SSH]	-65	971,144	11.027	
21 MAR 2024 - 21 MAR 2024	IHH	EMPLOYEES PROVIDENT FUND BOARD [SSH]	-860	971,209	11.028	
20 MAR 2024 - 20 MAR 2024	IHH	EMPLOYEES PROVIDENT FUND BOARD [SSH]	-3,000	972,068	11.037	
26 MAR 2024 - 26 MAR 2024	IJM	KUMPULAN WANG PERSARAAN (DIPERBADANKAN) [SSH]	5,380	346,859	9.893	
22 MAR 2024 - 22 MAR 2024	IJM	EMPLOYEES PROVIDENT FUND BOARD [SSH]	-721	614,043	17.513	
25 MAR 2024 - 25 MAR 2024	IJM	KUMPULAN WANG PERSARAAN (DIPERBADANKAN) [SSH]	3,851	341,479	9.739	
21 MAR 2024 - 21 MAR 2024	IJM	EMPLOYEES PROVIDENT FUND BOARD [SSH]	-200	614,764	17.534	
20 MAR 2024 - 20 MAR 2024	IJM	EMPLOYEES PROVIDENT FUND BOARD [SSH]	-1,000	614,964	17.54	
22 MAR 2024 - 22 MAR 2024	INARI	EMPLOYEES PROVIDENT FUND BOARD [SSH]	850	351,283	9.347	
21 MAR 2024 - 21 MAR 2024	INARI	EMPLOYEES PROVIDENT FUND BOARD [SSH]	430	350,433	9.324	
21 MAR 2024 - 22 MAR 2024	INARI	MR MAI MANG LEE [DIR/CEO]	-1,267	13,881	0.369	
25 MAR 2024 - 25 MAR 2024	INTA-WA	MR CHAU YIK MUN [DIR/CEO]	-1,000	2,103	1.571	
22 MAR 2024 - 22 MAR 2024	IOICORP	EMPLOYEES PROVIDENT FUND BOARD [SSH]	1,073	719,643	11.6	
21 MAR 2024 - 21 MAR 2024	IOICORP	EMPLOYEES PROVIDENT FUND BOARD [SSH]	889	718,570	11.583	
20 MAR 2024 - 20 MAR 2024	IOICORP	EMPLOYEES PROVIDENT FUND BOARD [SSH]	169	717,681	11.569	
22 MAR 2024 - 22 MAR 2024	IOIPG	EMPLOYEES PROVIDENT FUND BOARD [SSH]	-3,000	346,253	6.288	
21 MAR 2024 - 21 MAR 2024	IOIPG	EMPLOYEES PROVIDENT FUND BOARD [SSH]	-293	349,458	6.347	
20 MAR 2024 - 20 MAR 2024	IOIPG	EMPLOYEES PROVIDENT FUND BOARD [SSH]	1,746	345,849	6.281	
21 MAR 2024 - 21 MAR 2024	IWCITY	KUMPULAN PRASARANA RAKYAT JOHOR SDN. BHD. [SSH]	-4,811	347,677	37.745	
22 MAR 2024 - 22 MAR 2024	JFTECH	DATO' FOONG WEI KUONG [DIR/CEO]	31,000	470,062	50.705	
22 MAR 2024 - 22 MAR 2024	JIANKUN	DATO' YONG CHONG LONG [DIR/CEO]	-24,000	24,000	4.858	
26 MAR 2024 - 26 MAR 2024	JTIASA	GENINE CHAIN LIMITED [SSH]	-30	67,456	6.969	
26 MAR 2024 - 26 MAR 2024	JTIASA	MR CHANG MENG [SSH]	-30	67,456	6.969	
26 MAR 2024 - 26 MAR 2024	JTIASA	MR HO CHEUNG CHOI [SSH]	-30	67,456	6.969	
22 MAR 2024 - 22 MAR 2024	KERJAYA	EMPLOYEES PROVIDENT FUND BOARD [SSH]	-470	82,009	6.503	
21 MAR 2024 - 21 MAR 2024	KERJAYA	EMPLOYEES PROVIDENT FUND BOARD [SSH]	-1,783	82,477	6.54	
25 MAR 2024 - 25 MAR 2024	KHEESAN	DATO' NG MENG KEE [SSH]	-5,000	12,052	8.779	
25 MAR 2024 - 25 MAR 2024	KHEESAN	ASIA CAPITAL ASSETS LIMITED [SSH]	5,000	27,880	20.309	
25 MAR 2024 - 25 MAR 2024	KHEESAN	DATO' SRI NGU TIENG UNG [SSH]	5,000	28,000	20.396	
25 MAR 2024 - 25 MAR 2024	KHEESAN	TIMUR ENTERPRISE SDN BHD [SSH]	5,000	27,880	20.309	
25 MAR 2024 - 25 MAR 2024	KLCC	EMPLOYEES PROVIDENT FUND BOARD [SSH]	100	188,688	10.452	
25 MAR 2024 - 25 MAR 2024	KLCC	EMPLOYEES PROVIDENT FUND BOARD [SSH]	100	188,688	10.452	
22 MAR 2024 - 22 MAR 2024	KLCC	EMPLOYEES PROVIDENT FUND BOARD [SSH]	44	188,588	10.446	
22 MAR 2024 - 22 MAR 2024	KLCC	EMPLOYEES PROVIDENT FUND BOARD [SSH]	44	188,588	10.446	
21 MAR 2024 - 21 MAR 2024	KLCC	EMPLOYEES PROVIDENT FUND BOARD [SSH]	39	188,544	10.444	
21 MAR 2024 - 21 MAR 2024	KLCC	EMPLOYEES PROVIDENT FUND BOARD [SSH]	39	188,544	10.444	
20 MAR 2024 - 20 MAR 2024	KLCC	EMPLOYEES PROVIDENT FUND BOARD [SSH]	-11	188,505	10.442	
20 MAR 2024 - 20 MAR 2024	KLCC	EMPLOYEES PROVIDENT FUND BOARD [SSH]	-11	188,505	10.442	
25 MAR 2024 - 25 MAR 2024	KLK	EMPLOYEES PROVIDENT FUND BOARD [SSH]	670	132,183	12.056	
22 MAR 2024 - 22 MAR 2024	KLK	EMPLOYEES PROVIDENT FUND BOARD [SSH]	658	131,513	11.995	
21 MAR 2024 - 21 MAR 2024	KLK	EMPLOYEES PROVIDENT FUND BOARD [SSH]	1,077	130,830	11.933	
20 MAR 2024 - 20 MAR 2024	KLK	EMPLOYEES PROVIDENT FUND BOARD [SSH]	1,000	129,754	11.834	
22 MAR 2024 - 22 MAR 2024	KOSSAN	EMPLOYEES PROVIDENT FUND BOARD [SSH]	400	142,265	5.575	
21 MAR 2024 - 21 MAR 2024	KOSSAN	EMPLOYEES PROVIDENT FUND BOARD [SSH]	25	141,865	5.56	
20 MAR 2024 - 20 MAR 2024	KOSSAN	EMPLOYEES PROVIDENT FUND BOARD [SSH]	49	141,840	5.559	
22 MAR 2024 - 22 MAR 2024	KSSC	MISS CHEONG LAI SIN [SSH]	-200	41,380	27.55	
27 MAR 2024 - 27 MAR 2024	KUB	JAG CAPITAL HOLDINGS SDN BHD [SSH]	2,993	349,730	62.849	
25 MAR 2024 - 25 MAR 2024	LAMBO	CHEETAH HOLDINGS BERHAD [SSH]	-32,031	294,567	19.122	
25 MAR 2024 - 25 MAR 2024	LAMBO	CHEETAH MARKETING SDN BHD [SSH]	-32,031	294,567	19.122	
25 MAR 2024 - 26 MAR 2024	LBS	TAN SRI DATO' SRI IR. (DR.) LIM HOCK SAN JP [DIR/CEO]	300	611,622	39.725	
25 MAR 2024 - 26 MAR 2024	LBS	TAN SRI DATO' SRI IR. (DR.) LIM HOCK SAN JP [SSH]	300	606,869	39.416	
22 MAR 2024 - 22 MAR 2024	LEESK	DATO' LEE KONG SIM [DIR/CEO]	-3,000	93,962	58.232	
22 MAR 2024 - 22 MAR 2024	LEESK	DATO' LEE KONG SIM [SSH]	-3,000	93,962	58.232	
26 MAR 2024 - 26 MAR 2024	LUXCHEM	MADAM CHIN SONG MOOI [DIR/CEO]	226	461,520	43.142	
26 MAR 2024 - 26 MAR 2024	LUXCHEM	MADAM CHIN SONG MOOI [SSH]	226	461,520	43.142	
26 MAR 2024 - 26 MAR 2024	LUXCHEM	MR TANG YING SEE [DIR/CEO]	226	461,520	43.142	
26 MAR 2024 - 26 MAR 2024	LUXCHEM	MR TANG YING SEE [SSH]	226	461,520	43.142	
25 MAR 2024 - 25 MAR 2024	LUXCHEM	MADAM CHIN SONG MOOI [DIR/CEO]	130	461,294	43.121	
25 MAR 2024 - 25 MAR 2024	LUXCHEM	MADAM CHIN SONG MOOI [SSH]	130	461,294	43.121	
25 MAR 2024 - 25 MAR 2024	LUXCHEM					

Notice Period is 24th Mar 2024 – 30th Mar 2024

Effective Change Date	Stock Name	Buyer/ Seller Name [Classification]	Bought / (Sold) ['000]		No. of Shares After Trade ['000]	
			Total	Total	% Held	% Held
21 MAR 2024 - 21 MAR 2024	MISC	EMPLOYEES PROVIDENT FUND BOARD [SSH]	-2,403	535,085	11.987	
20 MAR 2024 - 20 MAR 2024	MISC	EMPLOYEES PROVIDENT FUND BOARD [SSH]	-971	537,488	12.041	
21 MAR 2024 - 21 MAR 2024	MRDIY	EMPLOYEES PROVIDENT FUND BOARD [SSH]	3,000	525,413	5.561	
20 MAR 2024 - 20 MAR 2024	MRDIY	EMPLOYEES PROVIDENT FUND BOARD [SSH]	1,150	522,413	5.53	
25 MAR 2024 - 26 MAR 2024	MSTGOLF	ALL SPORTZ SDN BHD [SSH]	210	434,282	52.905	
25 MAR 2024 - 26 MAR 2024	MSTGOLF	MR LOW KOK POH [DIR/CEO]	210	464,172	56.547	
25 MAR 2024 - 26 MAR 2024	MSTGOLF	MR LOW KOK POH [SSH]	210	464,172	56.547	
25 MAR 2024 - 26 MAR 2024	MSTGOLF	MR NG YAP SIO [DIR/CEO]	210	496,549	60.491	
25 MAR 2024 - 26 MAR 2024	MSTGOLF	MR NG YAP SIO [SSH]	210	496,549	60.491	
27 MAR 2024 - 27 MAR 2024	MYEG	KUMPULAN WANG PERSARAAN (DIPERBADANKAN) [SSH]	1,250	532,941	7.145	
26 MAR 2024 - 26 MAR 2024	MYEG	KUMPULAN WANG PERSARAAN (DIPERBADANKAN) [SSH]	2,250	531,691	7.128	
22 MAR 2024 - 22 MAR 2024	MYEG	DATUK MOHD JIMMY WONG BIN ABDULLAH [DIR/CEO]	-423	6,611	0.089	
22 MAR 2024 - 22 MAR 2024	NCT	DATO' SRI YAP NGAN CHOY [DIR/CEO]	800	817,730	52.447	
22 MAR 2024 - 22 MAR 2024	NCT	DATO' SRI YAP NGAN CHOY [SSH]	800	817,730	52.447	
22 MAR 2024 - 22 MAR 2024	NCT	DATO' YAP FOOK CHOY [DIR/CEO]	800	811,251	52.031	
22 MAR 2024 - 22 MAR 2024	NCT	DATO' YAP FOOK CHOY [SSH]	800	811,251	52.031	
22 MAR 2024 - 22 MAR 2024	NCT	YBG YAP CONSOLIDATED SDN. BHD. [SSH]	800	804,931	51.626	
22 MAR 2024 - 22 MAR 2024	NCT	DATUK SERI CHIAU BENG TEIK [SSH]	1,421	127,625	8.185	
22 MAR 2024 - 22 MAR 2024	NESTLE	EMPLOYEES PROVIDENT FUND BOARD [SSH]	-37	24,659	10.516	
21 MAR 2024 - 21 MAR 2024	NESTLE	EMPLOYEES PROVIDENT FUND BOARD [SSH]	-90	24,696	10.531	
20 MAR 2024 - 20 MAR 2024	NESTLE	EMPLOYEES PROVIDENT FUND BOARD [SSH]	22	24,786	10.57	
21 MAR 2024 - 21 MAR 2024	NOTION	MR CHOO WING ONN [DIR/CEO]	-980	33,238	6.443	
21 MAR 2024 - 21 MAR 2024	NOTION	MR CHOO WING ONN [SSH]	-980	33,238	6.443	
25 MAR 2024 - 25 MAR 2024	NTPM	MR LEE SEE JIN [DIR/CEO]	1,460	467,540	41.632	
25 MAR 2024 - 25 MAR 2024	NTPM	MR LEE SEE JIN [SSH]	1,460	467,540	41.632	
27 MAR 2024 - 27 MAR 2024	ORIENT	DATIN LOH EAN [DIR/CEO]	0.003	42,577	6.863	
27 MAR 2024 - 27 MAR 2024	ORIENT	DATIN LOH EAN [SSH]	0.003	42,577	6.863	
27 MAR 2024 - 27 MAR 2024	ORIENT	DATO' SERI LIM SU TONG @ LIM CHEE TONG [DIR/CEO]	0.051	236,790	38.169	
27 MAR 2024 - 27 MAR 2024	ORIENT	DATO' SERI LIM SU TONG @ LIM CHEE TONG [SSH]	0.051	236,790	38.169	
27 MAR 2024 - 27 MAR 2024	ORIENT	DATO' SERI LOH CHENG YEAN [SSH]	0.003	43,179	6.96	
27 MAR 2024 - 27 MAR 2024	ORIENT	DATO' SRI DATUK WIRA TAN HUI JING [DIR/CEO]	0.051	230,545	37.163	
27 MAR 2024 - 27 MAR 2024	ORIENT	DATO' SRI DATUK WIRA TAN HUI JING [SSH]	0.051	230,545	37.163	
27 MAR 2024 - 27 MAR 2024	ORIENT	DATO' LIM KEAN SENG [SSH]	0.051	233,823	37.691	
27 MAR 2024 - 27 MAR 2024	ORIENT	DATO' WONG LUM KONG [DIR/CEO]	0.003	42,577	6.863	
27 MAR 2024 - 27 MAR 2024	ORIENT	DATO' WONG LUM KONG [SSH]	0.003	42,577	6.863	
27 MAR 2024 - 27 MAR 2024	ORIENT	DATUK LOH KIAN CHONG [DIR/CEO]	0.053	251,900	40.605	
27 MAR 2024 - 27 MAR 2024	ORIENT	DATUK LOH KIAN CHONG [SSH]	0.053	251,900	40.605	
27 MAR 2024 - 27 MAR 2024	ORIENT	LOH CHENG YEAN HOLDINGS SDN BHD [SSH]	0.003	42,234	6.808	
27 MAR 2024 - 27 MAR 2024	ORIENT	LOH EAN HOLDINGS SDN BHD [SSH]	0.003	42,234	6.808	
27 MAR 2024 - 27 MAR 2024	ORIENT	LOH GIM EAN HOLDINGS SDN BHD [SSH]	0.051	230,545	37.163	
27 MAR 2024 - 27 MAR 2024	ORIENT	LOH KAR BEE HOLDINGS SDN BHD [SSH]	0.052	239,153	38.551	
27 MAR 2024 - 27 MAR 2024	ORIENT	LOH PHOY YEN HOLDINGS SDN BHD [SSH]	0.051	230,730	37.193	
27 MAR 2024 - 27 MAR 2024	ORIENT	MISS LIM EE HEAN [SSH]	0.051	232,966	37.553	
27 MAR 2024 - 27 MAR 2024	ORIENT	MISS LIM EE LING [SSH]	0.051	232,966	37.553	
27 MAR 2024 - 27 MAR 2024	ORIENT	MISS LOH OON LING [SSH]	0.052	239,153	38.551	
27 MAR 2024 - 27 MAR 2024	ORIENT	MISS LOH WEI-LYN [SSH]	0.053	243,652	39.276	
27 MAR 2024 - 27 MAR 2024	ORIENT	MISS TAN KHENG HWEE [DIR/CEO]	0.003	42,406	6.836	
27 MAR 2024 - 27 MAR 2024	ORIENT	MISS TAN KHENG HWEE [SSH]	0.003	42,406	6.836	
27 MAR 2024 - 27 MAR 2024	ORIENT	MISS TAN KHENG JU [SSH]	0.003	42,320	6.822	
27 MAR 2024 - 27 MAR 2024	ORIENT	MR TAN HUI MING [SSH]	0.051	230,583	37.169	
27 MAR 2024 - 27 MAR 2024	ORIENT	MR TAN JU NGUAN [SSH]	0.003	42,365	6.829	
27 MAR 2024 - 27 MAR 2024	ORIENT	PACIFIC CARNIVAL SDN BHD [SSH]	0.051	227,913	36.739	
26 MAR 2024 - 26 MAR 2024	ORIENT	DATIN LOH EAN [DIR/CEO]	0.037	42,577	6.863	
26 MAR 2024 - 26 MAR 2024	ORIENT	DATIN LOH EAN [SSH]	0.037	42,577	6.863	
26 MAR 2024 - 26 MAR 2024	ORIENT	DATO' SERI LIM SU TONG @ LIM CHEE TONG [DIR/CEO]	0.57	236,790	38.169	
26 MAR 2024 - 26 MAR 2024	ORIENT	DATO' SERI LIM SU TONG @ LIM CHEE TONG [SSH]	0.57	236,790	38.169	
26 MAR 2024 - 26 MAR 2024	ORIENT	DATO' SERI LOH CHENG YEAN [SSH]	0.037	43,179	6.96	
26 MAR 2024 - 26 MAR 2024	ORIENT	DATO' SRI DATUK WIRA TAN HUI JING [DIR/CEO]	0.57	230,545	37.163	
26 MAR 2024 - 26 MAR 2024	ORIENT	DATO' SRI DATUK WIRA TAN HUI JING [SSH]	0.57	230,545	37.163	
26 MAR 2024 - 26 MAR 2024	ORIENT	DATO' LIM KEAN SENG [SSH]	0.57	233,823	37.691	
26 MAR 2024 - 26 MAR 2024	ORIENT	DATO' WONG LUM KONG [DIR/CEO]	0.037	42,577	6.863	
26 MAR 2024 - 26 MAR 2024	ORIENT	DATO' WONG LUM KONG [SSH]	0.037	42,577	6.863	
26 MAR 2024 - 26 MAR 2024	ORIENT	DATUK LOH KIAN CHONG [DIR/CEO]	0.589	251,900	40.605	
26 MAR 2024 - 26 MAR 2024	ORIENT	DATUK LOH KIAN CHONG [SSH]	0.589	251,900	40.605	
26 MAR 2024 - 26 MAR 2024	ORIENT	LOH CHENG YEAN HOLDINGS SDN BHD [SSH]	0.037	42,234	6.808	
26 MAR 2024 - 26 MAR 2024	ORIENT	LOH EAN HOLDINGS SDN BHD [SSH]	0.037	42,234	6.808	
26 MAR 2024 - 26 MAR 2024	ORIENT	LOH GIM EAN HOLDINGS SDN BHD [SSH]	0.57	230,545	37.163	
26 MAR 2024 - 26 MAR 2024	ORIENT	LOH KAR BEE HOLDINGS SDN BHD [SSH]	0.577	239,153	38.551	
26 MAR 2024 - 26 MAR 2024	ORIENT	LOH PHOY YEN HOLDINGS SDN BHD [SSH]	0.57	230,730	37.193	
26 MAR 2024 - 26 MAR 2024	ORIENT	MISS LIM EE HEAN [SSH]	0.57	232,966	37.553	
26 MAR 2024 - 26 MAR 2024	ORIENT	MISS LIM EE LING [SSH]	0.57	232,966	37.553	
26 MAR 2024 - 26 MAR 2024	ORIENT	MISS LOH OON LING [SSH]	0.577	239,153	38.551	
26 MAR 2024 - 26 MAR 2024	ORIENT	MISS LOH WEI-LYN [SSH]	0.589	243,652	39.276	
26 MAR 2024 - 26 MAR 2024	ORIENT	MISS TAN KHENG HWEE [DIR/CEO]	0.037	42,406	6.836	
26 MAR 2024 - 26 MAR 2024	ORIENT	MISS TAN KHENG HWEE [SSH]	0.037	42,406	6.836	
26 MAR 2024 - 26 MAR 2024	ORIENT	MISS TAN KHENG JU [SSH]	0.037	42,320	6.822	
26 MAR 2024 - 26 MAR 2024	ORIENT	MR TAN HUI MING [SSH]	0.57	230,583	37.169	
26 MAR 2024 - 26 MAR 2024	ORIENT	MR TAN JU NGUAN [SSH]	0.037	42,365	6.829	
26 MAR 2024 - 26 MAR 2024	ORIENT	PACIFIC CARNIVAL SDN BHD [SSH]	0.563	227,913	36.739	
21 MAR 2024 - 21 MAR 2024	ORIENT	EMPLOYEES PROVIDENT FUND BOARD [SSH]	-20	35,713	5.757	
25 MAR 2024 - 25 MAR 2024	ORIENT	DATIN LOH EAN [DIR/CEO]	0.48	42,577	6.863	

Notice Period is 24th Mar 2024 – 30th Mar 2024

Effective Change Date	Stock Name	Buyer/ Seller Name [Classification]	Bought / (Sold) ['000]		No. of Shares After Trade ['000]	
			Total	Total	% Held	% Held
25 MAR 2024 - 25 MAR 2024	ORIENT	DATIN LOH EAN [SSH]	0.48	42,577	6.863	
25 MAR 2024 - 25 MAR 2024	ORIENT	DATO' SERI LIM SU TONG @ LIM CHEE TONG [DIR/CEO]	7	236,790	38.169	
25 MAR 2024 - 25 MAR 2024	ORIENT	DATO' SERI LIM SU TONG @ LIM CHEE TONG [SSH]	7	236,790	38.169	
25 MAR 2024 - 25 MAR 2024	ORIENT	DATO' SERI LOH CHENG YEAN [SSH]	0.48	43,179	6.96	
25 MAR 2024 - 25 MAR 2024	ORIENT	DATO' SRI DATUK WIRA TAN HUI JING [DIR/CEO]	7	230,545	37.163	
25 MAR 2024 - 25 MAR 2024	ORIENT	DATO' SRI DATUK WIRA TAN HUI JING [SSH]	7	230,545	37.163	
25 MAR 2024 - 25 MAR 2024	ORIENT	DATO' LIM KEAN SENG [SSH]	7	233,823	37.691	
25 MAR 2024 - 25 MAR 2024	ORIENT	DATO' WONG LUM KONG [DIR/CEO]	0.48	42,577	6.863	
25 MAR 2024 - 25 MAR 2024	ORIENT	DATO' WONG LUM KONG [SSH]	0.48	42,577	6.863	
25 MAR 2024 - 25 MAR 2024	ORIENT	DATUK LOH KIAN CHONG [DIR/CEO]	8	251,900	40.605	
25 MAR 2024 - 25 MAR 2024	ORIENT	DATUK LOH KIAN CHONG [SSH]	8	251,900	40.605	
25 MAR 2024 - 25 MAR 2024	ORIENT	LOH CHENG YEAN HOLDINGS SDN BHD [SSH]	0.48	42,234	6.808	
25 MAR 2024 - 25 MAR 2024	ORIENT	LOH EAN HOLDINGS SDN BHD [SSH]	0.48	42,234	6.808	
25 MAR 2024 - 25 MAR 2024	ORIENT	LOH GIM EAN HOLDINGS SDN BHD [SSH]	7	230,545	37.163	
25 MAR 2024 - 25 MAR 2024	ORIENT	LOH KAR BEE HOLDINGS SDN BHD [SSH]	7	239,153	38.551	
25 MAR 2024 - 25 MAR 2024	ORIENT	LOH PHOY YEN HOLDINGS SDN BHD [SSH]	7	230,730	37.193	
25 MAR 2024 - 25 MAR 2024	ORIENT	MISS LIM EE HEAN [SSH]	7	232,966	37.553	
25 MAR 2024 - 25 MAR 2024	ORIENT	MISS LIM EE LING [SSH]	7	232,966	37.553	
25 MAR 2024 - 25 MAR 2024	ORIENT	MISS LOH OON LING [SSH]	7	239,153	38.551	
25 MAR 2024 - 25 MAR 2024	ORIENT	MISS LOH WEI-LYN [SSH]	8	243,652	39.276	
25 MAR 2024 - 25 MAR 2024	ORIENT	MISS TAN KHENG HWEE [DIR/CEO]	0.48	42,406	6.836	
25 MAR 2024 - 25 MAR 2024	ORIENT	MISS TAN KHENG HWEE [SSH]	0.48	42,406	6.836	
25 MAR 2024 - 25 MAR 2024	ORIENT	MISS TAN KHENG JU [SSH]	0.48	42,320	6.822	
25 MAR 2024 - 25 MAR 2024	ORIENT	MR TAN HUI MING [SSH]	7	230,583	37.169	
25 MAR 2024 - 25 MAR 2024	ORIENT	MR TAN JU NGUAN [SSH]	0.48	42,365	6.829	
25 MAR 2024 - 25 MAR 2024	ORIENT	PACIFIC CARNIVAL SDN BHD [SSH]	7	227,913	36.739	
20 MAR 2024 - 20 MAR 2024	ORIENT	EMPLOYEES PROVIDENT FUND BOARD [SSH]	-300	35,733	5.76	
20 MAR 2024 - 20 MAR 2024	PADINI	EMPLOYEES PROVIDENT FUND BOARD [SSH]	16	46,636	7.088	
25 MAR 2024 - 25 MAR 2024	PANAMY	EMPLOYEES PROVIDENT FUND BOARD [SSH]	-47	7,151	11.772	
21 MAR 2024 - 21 MAR 2024	PANAMY	EMPLOYEES PROVIDENT FUND BOARD [SSH]	-7	7,198	11.849	
20 MAR 2024 - 20 MAR 2024	PANAMY	EMPLOYEES PROVIDENT FUND BOARD [SSH]	-6	7,205	11.861	
22 MAR 2024 - 22 MAR 2024	PBBANK	EMPLOYEES PROVIDENT FUND BOARD [SSH]	164	3,018,734	15.55	
21 MAR 2024 - 21 MAR 2024	PBBANK	EMPLOYEES PROVIDENT FUND BOARD [SSH]	-1,302	3,018,570	15.55	
20 MAR 2024 - 20 MAR 2024	PBBANK	EMPLOYEES PROVIDENT FUND BOARD [SSH]	-6,733	3,019,872	15.56	
21 MAR 2024 - 21 MAR 2024	PENTA	EMPLOYEES PROVIDENT FUND BOARD [SSH]	238	61,503	8.646	
22 MAR 2024 - 22 MAR 2024	PETGAS	EMPLOYEES PROVIDENT FUND BOARD [SSH]	40	254,975	12.886	
25 MAR 2024 - 25 MAR 2024	PETGAS	KUMPULAN WANG PERSARAAN (DIPERBADANKAN) ("KWAP") [SSH]	33	197,139	9.963	
21 MAR 2024 - 21 MAR 2024	PETGAS	EMPLOYEES PROVIDENT FUND BOARD [SSH]	-31	254,935	12.884	
20 MAR 2024 - 20 MAR 2024	PETGAS	EMPLOYEES PROVIDENT FUND BOARD [SSH]	245	254,966	12.885	
29 MAR 2024 - 29 MAR 2024	PGB	KONG TECK FONG [SSH]	4,200	179,736	26.594	
25 MAR 2024 - 25 MAR 2024	PJBUMI	PUAN HAFIDAH BINTI PAWANCIK [SSH]	245	5291	6.453	
22 MAR 2024 - 22 MAR 2024	PLINTAS	EMPLOYEES PROVIDENT FUND BOARD [SSH]	68,025	68025	6.184	
22 MAR 2024 - 22 MAR 2024	PLINTAS	AMANAHRAYA TRUSTEES BERHAD - AMANAH SAHAM BUMIPUTERA [SSH]	40,903	601903	54.72	
22 MAR 2024 - 22 MAR 2024	PLINTAS	DATO' ABDUL MUTALIB BIN ALIAS [DIR/CEO]	250	250	0.023	
22 MAR 2024 - 22 MAR 2024	PLINTAS	DATO' IKMAL HIJAZ BIN HASHIM [DIR/CEO]	600	600	0.055	
22 MAR 2024 - 22 MAR 2024	PLINTAS	DATO' MOHAMMAD AZLAN BIN ABDULLAH [DIR/CEO]	50	50	0.005	
22 MAR 2024 - 22 MAR 2024	PLINTAS	DATUK SYED AZMI BIN SYED OTHMAN [DIR/CEO]	350	350	0.032	
22 MAR 2024 - 22 MAR 2024	PLINTAS	ENCIK MALIK PARVEZ AHMAD BIN NAZIR AHMAD [DIR/CEO]	100	100	0.009	
22 MAR 2024 - 22 MAR 2024	PLINTAS	LEMBAGA TABUNG HAJI [SSH]	60,000	60000	5.455	
22 MAR 2024 - 22 MAR 2024	PLINTAS	PERMODALAN NASIONAL BERHAD [SSH]	561,000	561000	51	
22 MAR 2024 - 22 MAR 2024	PLINTAS	PROJEK LINTASAN KOTA HOLDINGS SDN BHD [SSH]	-561,000	561000	51	
22 MAR 2024 - 22 MAR 2024	PLINTAS	PUAN NIK FAZILA BINTI NIK MOHAMED SHIHABUDDIN [DIR/CEO]	55	55	0.005	
22 MAR 2024 - 22 MAR 2024	PPB	EMPLOYEES PROVIDENT FUND BOARD [SSH]	802	142065	9.986	
21 MAR 2024 - 21 MAR 2024	PPB	EMPLOYEES PROVIDENT FUND BOARD [SSH]	1,000	141263	9.93	
20 MAR 2024 - 20 MAR 2024	PPB	EMPLOYEES PROVIDENT FUND BOARD [SSH]	152	140262	9.86	
22 MAR 2024 - 25 MAR 2024	PTARAS	DR CHIU HONG KEONG [DIR/CEO]	41	96843</		

Notice Period is 24th Mar 2024 – 30th Mar 2024

Effective Change Date	Stock Name	Buyer/ Seller Name [Classification]	Bought / (Sold) ['000]		No. of Shares After Trade ['000]	
			Total	% Held	Total	% Held
21 MAR 2024 - 22 MAR 2024	SALCON	INTER-PACIFIC CAPITAL SDN BHD [SSH]	2,000	105615	10.435	
21 MAR 2024 - 22 MAR 2024	SALCON	JUARA SEJATI SDN BHD [SSH]	2,000	149145	14.736	
25 MAR 2024 - 25 MAR 2024	SAPIND	MR KOH KOK HOOI [SSH]	4	7080	9.727	
22 MAR 2024 - 22 MAR 2024	SAPIND	MR KOH KOK HOOI [SSH]	19	7076	9.722	
24 MAR 2024 - 24 MAR 2024	SCBUILD	DATUK CHENG LAI HOCK JP [SSH]	367,781	367781	11.414	
24 MAR 2024 - 24 MAR 2024	SCBUILD	MR LOH BOON GINN [DIR/CEO]	-367,781	20000	0.621	
22 MAR 2024 - 22 MAR 2024	SEAL	MR CHEN KHAI VOON [SSH]	215	128260	30.549	
22 MAR 2024 - 22 MAR 2024	SENTRAL	EMPLOYEES PROVIDENT FUND BOARD [SSH]	-1,953	126673	10.596	
26 MAR 2024 - 26 MAR 2024	SHCHAN	DATO' CHOO KENG WENG [DIR/CEO]	-136	62111	21.207	
26 MAR 2024 - 26 MAR 2024	SHCHAN	DATO' CHOO KENG WENG [SSH]	-136	62111	21.207	
26 MAR 2024 - 26 MAR 2024	SHCHAN	MR CHOO KIN CHOONG [DIR/CEO]	-136	62111	21.207	
26 MAR 2024 - 26 MAR 2024	SHCHAN	MR CHOO KIN CHOONG [SSH]	-136	62111	21.207	
26 MAR 2024 - 26 MAR 2024	SHCHAN	SENG HOE & CHOONG CORPORATION SDN BHD [SSH]	-136	23360	7.976	
26 MAR 2024 - 26 MAR 2024	SHCHAN	TAN SRI DATO' SERI HAJI ESA BIN HAJI MOHAMED [SSH]	-136	95099	32.47	
26 MAR 2024 - 26 MAR 2024	SHCHAN	TUNAS SELATAN SDN BHD [SSH]	-136	78360	26.755	
25 MAR 2024 - 25 MAR 2024	SIME	AMANAHRAYA TRUSTEES BERHAD - AMANAH SAHAM BUMIPUTERA [SSH]	7,956	2466000	36.182	
21 MAR 2024 - 21 MAR 2024	SIME	EMPLOYEES PROVIDENT FUND BOARD [SSH]	-11,712	950478	13.946	
19 MAR 2024 - 20 MAR 2024	SIME	EMPLOYEES PROVIDENT FUND BOARD [SSH]	-2,649	962190	14.117	
25 MAR 2024 - 25 MAR 2024	SIMEPLT	KUMPULAN WANG PERSARAAN (DIPERBADANKAN) [SSH]	500	458248	6.626	
21 MAR 2024 - 21 MAR 2024	SIMEPLT	EMPLOYEES PROVIDENT FUND BOARD [SSH]	3	1041096	15.054	
25 MAR 2024 - 25 MAR 2024	SIMEPROP	AMANAHRAYA TRUSTEES BERHAD - AMANAH SAHAM BUMIPUTERA [SSH]	-5,000	2979950	43.817	
25 MAR 2024 - 25 MAR 2024	SIMEPROP	KUMPULAN WANG PERSARAAN (DIPERBADANKAN) [SSH]	-585	451166	6.634	
22 MAR 2024 - 22 MAR 2024	SIMEPROP	AMANAHRAYA TRUSTEES BERHAD - AMANAH SAHAM BUMIPUTERA [SSH]	-4,000	2984950	43.891	
21 MAR 2024 - 21 MAR 2024	SIMEPROP	AMANAHRAYA TRUSTEES BERHAD - AMANAH SAHAM BUMIPUTERA [SSH]	-6,000	2988950	43.95	
25 MAR 2024 - 25 MAR 2024	SKPRES	EMPLOYEES PROVIDENT FUND BOARD [SSH]	165	146612	9.384	
21 MAR 2024 - 21 MAR 2024	SKPRES	EMPLOYEES PROVIDENT FUND BOARD [SSH]	500	146447	9.373	
20 MAR 2024 - 20 MAR 2024	SKPRES	EMPLOYEES PROVIDENT FUND BOARD [SSH]	500	145947	9.341	
21 MAR 2024 - 21 MAR 2024	SMILE	DATIN WONG CHIEN YUE [DIR/CEO]	30	124712	49.44	
21 MAR 2024 - 21 MAR 2024	SMILE	DATIN WONG CHIEN YUE [SSH]	30	124712	49.44	
21 MAR 2024 - 21 MAR 2024	SMILE	DATO DR WONG RUEN YUAN [SSH]	30	125057	49.578	
21 MAR 2024 - 21 MAR 2024	SMILE	DATO' DR WONG RUEN YUAN [DIR/CEO]	30	125057	49.578	
25 MAR 2024 - 25 MAR 2024	SMTRACK	DATUK AZMI BIN OSMAN [DIR/CEO]	35,283	98644	7.648	
25 MAR 2024 - 25 MAR 2024	SMTRACK	DATUK AZMI BIN OSMAN [SSH]	35,283	98644	7.648	
26 MAR 2024 - 26 MAR 2024	SPSETIA	KUMPULAN WANG PERSARAAN (DIPERBADANKAN) [SSH]	-6,091	424627	9.535	
25 MAR 2024 - 25 MAR 2024	SPSETIA	KUMPULAN WANG PERSARAAN (DIPERBADANKAN) [SSH]	-3,533	430718	9.671	
22 MAR 2024 - 22 MAR 2024	SPSETIA	KUMPULAN WANG PERSARAAN (DIPERBADANKAN) [SSH]	-978	434250	9.751	
21 MAR 2024 - 22 MAR 2024	SSB8	MR GAN YEE HIN [DIR/CEO]	-67,000	1440916	63.404	
21 MAR 2024 - 22 MAR 2024	SSB8	MR GAN YEE HIN [SSH]	-67,000	1440916	63.404	
21 MAR 2024 - 22 MAR 2024	SSB8	SUPER ADVANTAGE PROPERTY SDN BHD [SSH]	-67,000	1135273	49.955	
21 MAR 2024 - 22 MAR 2024	SSB8	TAN SRI DATUK SERI GAN YU CHAI [DIR/CEO]	-67,000	1152773	50.725	
21 MAR 2024 - 22 MAR 2024	SSB8	TAN SRI DATUK SERI GAN YU CHAI [SSH]	-67,000	1152773	50.725	
22 MAR 2024 - 22 MAR 2024	SUBUR	DATO' TIONG ING [DIR/CEO]	20	2561	1.359	
25 MAR 2024 - 25 MAR 2024	SUNCON	EMPLOYEES PROVIDENT FUND BOARD [SSH]	-3,047	78469	6.086	
22 MAR 2024 - 22 MAR 2024	SUNCON	EMPLOYEES PROVIDENT FUND BOARD [SSH]	-5,000	81516	6.322	
21 MAR 2024 - 21 MAR 2024	SUNCON	EMPLOYEES PROVIDENT FUND BOARD [SSH]	-262	86516	6.71	
22 MAR 2024 - 22 MAR 2024	SUNWAY	EMPLOYEES PROVIDENT FUND BOARD [SSH]	-1,275	287866	5.22	
21 MAR 2024 - 21 MAR 2024	SUNWAY	EMPLOYEES PROVIDENT FUND BOARD [SSH]	5,052	291954	5.29	
20 MAR 2024 - 20 MAR 2024	SUNWAY	EMPLOYEES PROVIDENT FUND BOARD [SSH]	3,618	288209	5.22	
22 MAR 2024 - 25 MAR 2024	SWIFT	MR LOO HOOI KEAT [DIR/CEO]	55	254152	28.851	
22 MAR 2024 - 25 MAR 2024	SWIFT	MR LOO HOOI KEAT [SSH]	55	254152	28.851	
20 MAR 2024 - 20 MAR 2024	TAKAFUL	EMPLOYEES PROVIDENT FUND BOARD [SSH]	97	128006	15.288	
25 MAR 2024 - 25 MAR 2024	TANCO	DATO' SRI ANDREW TAN JUN SUAN [DIR/CEO]	1,000	1045265	50.339	
25 MAR 2024 - 25 MAR 2024	TANCO	DATO' SRI ANDREW TAN JUN SUAN [DIR/CEO]	-1,500	141902	21.04	
25 MAR 2024 - 25 MAR 2024	TANCO	DATO' SRI ANDREW TAN JUN SUAN [SSH]	1,000	1045265	50.339	
25 MAR 2024 - 25 MAR 2024	TELADAN	MR TEO LAY BAN [DIR/CEO]	2,000	337004	41.49	
25 MAR 2024 - 25 MAR 2024	TELADAN	MR TEO LAY BAN [SSH]	2,000	337004	41.49	
25 MAR 2024 - 25 MAR 2024	TEL-ADAN-WA	MR TEO LAY BAN [DIR/CEO]	-2,000	98501	41.98	
25 MAR 2024 - 25 MAR 2024	TEL-ADAN-WA	MR TEO LAY BAN [SSH]	-2,000	98501	41.98	

Notice Period is 24th Mar 2024 – 30th Mar 2024

Effective Change Date	Stock Name	Buyer/ Seller Name [Classification]	Bought / (Sold) ['000]		No. of Shares After Trade ['000]	
			Total	% Held	Total	% Held
22 MAR 2024 - 22 MAR 2024	TENAGA	EMPLOYEES PROVIDENT FUND BOARD [SSH]	232	1001082	17.3	
21 MAR 2024 - 21 MAR 2024	TENAGA	EMPLOYEES PROVIDENT FUND BOARD [SSH]	226	1000850	17.29	
20 MAR 2024 - 20 MAR 2024	TENAGA	EMPLOYEES PROVIDENT FUND BOARD [SSH]	1,549	1000624	17.29	
26 MAR 2024 - 26 MAR 2024	TIMECOM	KUMPULAN WANG PERSARAAN (DIPERBADANKAN) ("KWAP") [SSH]	227	130289	7.047	
22 MAR 2024 - 22 MAR 2024	TIMECOM	KUMPULAN WANG PERSARAAN (DIPERBADANKAN) ("KWAP") [SSH]	146	130062	7.035	
26 MAR 2024 - 26 MAR 2024	TM	KUMPULAN WANG PERSARAAN (DIPERBADANKAN) [SSH]	-1,000	365027	9.512	
25 MAR 2024 - 25 MAR 2024	TM	AMANAHRAYA TRUSTEES BERHAD-AMANAH SAHAM BUMIPUTERA [SSH]	-3,000	351583	9.16	
22 MAR 2024 - 22 MAR 2024	TM	EMPLOYEE PROVIDENT FUND BOARD (EPF BOARD) [SSH]	2,739	659771	17.192	
22 MAR 2024 - 22 MAR 2024	TM	AMANAHRAYA TRUSTEES BERHAD-AMANAH SAHAM BUMIPUTERA [SSH]	-1,500	354583	9.24	
21 MAR 2024 - 21 MAR 2024	TM	EMPLOYEE PROVIDENT FUND BOARD (EPF BOARD) [SSH]	3,181	657030	17.121	
21 MAR 2024 - 21 MAR 2024	TM	AMANAHRAYA TRUSTEES BERHAD-AMANAH SAHAM BUMIPUTERA [SSH]	-2,500	356083	9.279	
20 MAR 2024 - 20 MAR 2024	TM	EMPLOYEE PROVIDENT FUND BOARD (EPF BOARD) [SSH]	4,000	653847	17.038	
26 MAR 2024 - 26 MAR 2024	TOPGLOV	KUMPULAN WANG PERSARAAN (DIPERBADANKAN) [SSH]	2,000	415069	5.183	
25 MAR 2024 - 26 MAR 2024	TOYOVEN	MR LIM GUAN LEE [SSH]	-228	9524	7.167	
22 MAR 2024 - 22 MAR 2024	TOYOVEN	MR LIM GUAN LEE [SSH]	-428	9752	7.338	
22 MAR 2024 - 22 MAR 2024	UTDPLT	EMPLOYEES PROVIDENT FUND BOARD [SSH]	43	25496	6.147	
21 MAR 2024 - 21 MAR 2024	UTDPLT	EMPLOYEES PROVIDENT FUND BOARD [SSH]	-2	25452	6.136	
20 MAR 2024 - 20 MAR 2024	UTDPLT	EMPLOYEES PROVIDENT FUND BOARD [SSH]	-167	25454	6.136	
22 MAR 2024 - 22 MAR 2024	UWC	EMPLOYEES PROVIDENT FUND BOARD [SSH]	315	89001	8.077	
27 MAR 2024 - 27 MAR 2024	VERSATL	MR LIM AH CHAI [SSH]	111	113242	40.429	
27 MAR 2024 - 27 MAR 2024	VERSATL	MR LIM AH CHUAN [SSH]	111	113242	40.429	
27 MAR 2024 - 27 MAR 2024	VERSATL	MR LIM CHOU BU [SSH]	111	113242	40.429	
27 MAR 2024 - 27 MAR 2024	VERSATL	NSK TRADING SDN BHD [SSH]	111	113242	40.429	
25 MAR 2024 - 26 MAR 2024	VERSATL	MR LIM AH CHAI [SSH]	497	113130	40.389	
25 MAR 2024 - 26 MAR 2024	VERSATL	MR LIM AH CHUAN [SSH]	497	113130	40.389	
25 MAR 2024 - 26 MAR 2024	VERSATL	MR LIM CHOU BU [SSH]	497	113130	40.389	
25 MAR 2024 - 26 MAR 2024	VERSATL	NSK TRADING SDN BHD [SSH]	497	113130	40.389	
22 MAR 2024 - 22 MAR 2024	VERSATL	MR LIM AH CHAI [SSH]	88	112633	40.212	
22 MAR 2024 - 22 MAR 2024	VERSATL	MR LIM AH CHUAN [SSH]	88	112633	40.212	
22 MAR 2024 - 22 MAR 2024	VERSATL	MR LIM CHOU BU [SSH]	88	112633	40.212	
22 MAR 2024 - 22 MAR 2024	VERSATL	NSK TRADING SDN BHD [SSH]	88	112633	40.212	
22 MAR 2024 - 22 MAR 2024	VS	EMPLOYEES PROVIDENT FUND BOARD [SSH]	250	298830	7.827	
21 MAR 2024 - 21 MAR 2024	VS	EMPLOYEES PROVIDENT FUND BOARD [SSH]	2,600	298580	7.82	
20 MAR 2024 - 20 MAR 2024	VS	EMPLOYEES PROVIDENT FUND BOARD [SSH]	3,226	295980	7.752	
21 MAR 2024 - 22 MAR 2024	VSTECs	VSTECs HOLDINGS (SINGAPORE) LIMITED [SSH]	441	160628	45.05	
21 MAR 2024 - 22 MAR 2024	VSTECs	VSTECs HOLDINGS LIMITED [SSH]	441	160628	45.05	
25 MAR 2024 - 26 MAR 2024	WIDAD	TAN SRI MUHAMMAD IKMAL OPAT BIN ABDULLAH [SSH]	-5,600	650493	21.008	
25 MAR 2024 - 26 MAR 2024	WIDAD	WIDAD BUSINESS GROUP SDN. BHD. [SSH]	-5,600	636218	20.547	
22 MAR 2024 - 22 MAR 2024	WIDAD	TAN SRI MUHAMMAD IKMAL OPAT BIN ABDULLAH [SSH]	-5,800	656093	21.188	
22 MAR 2024 - 22 MAR 2024	WIDAD	WIDAD BUSINESS GROUP SDN. BHD. [SSH]	-5,800	641818	20.728	
27 MAR 2024 - 27 MAR 2024	YINSON	KUMPULAN WANG PERSARAAN (DIPERBADANKAN) [SSH]	50,935	232695	7.687	
26 MAR 2024 - 26 MAR 2024	YINSON	KUMPULAN WANG PERSARAAN (DIPERBADANKAN) [SSH]	-180	181760	6.252	
22 MAR 2024 - 22 MAR 2024	YINSON	EMPLOYEES PROVIDENT FUND BOARD [SSH]	290	518934	17.851	
21 MAR 2024 - 21 MAR 2024	YINSON	EMPLOYEES PROVIDENT FUND BOARD [SSH]	290	518644	17.841	
20 MAR 2024 - 20 MAR 2024	YINSON	EMPLOYEES PROVIDENT FUND BOARD [SSH]	15,290	518354	17.831	
25 MAR 2024 - 25 MAR 2024	ZANTAT	CLHF RESOURCES SDN BHD [SSH]	-8,960	110507	39.467	
25 MAR 2024 - 25 MAR 2024	ZANTAT	DR GAN SENG KIAN [DIR/CEO]	850	850	0.304	
25 MAR 2024 - 25 MAR 2024	ZANTAT	MR CHAN BIN IUAN [DIR/CEO]	-627	7736	2.763	
25 MAR 2024 - 25 MAR 2024	ZANTAT	MR CHAN ENG HUE [SSH]	-1,344	16576	5.92	
25 MAR 2024 - 25 MAR 2024	ZANTAT	MR CHAN HUP OOI [DIR/CEO]	-10,842	133713	47.755	
25 MAR 2024 - 25 MAR 2024	ZANTAT	MR CHAN HUP OOI [SSH]	-10,842	133713	47.755	
25 MAR 2024 - 25 MAR 2024	ZANTAT	MR CHAN JEE CHET [DIR/CEO]	-627	7736	2.763	
25 MAR 2024 - 25 MAR 2024	ZANTAT	MR POO LAP TUCK [DIR/CEO]	850	850	0.304	
25 MAR 2024 - 25 MAR 2024	ZANTAT	MR TEH AH SOON @ TEH SOON TICK [SSH]	-1,512	18648	6.66	
25 MAR 2024 - 25 MAR 2024	ZANTAT	MR YAP YOON KONG [DIR/CEO]	850	850	0.304	
25 MAR 2024 - 25 MAR 2024	ZANTAT	PUAN RIMA RAMONA BINTI MUHAMMAD ARIF [DIR/CEO]	250	250	0.089	

Disclaimer: The Information in Insider Activity is extracted from www.shareinvestor.com/fundamental/insider_trades. The information on this page is provided as a service to readers. It does not constitute financial advice and/or any investment recommendations. We assume no liability for damages resulting from or arising out of the use of such information. Whilst every effort is made to ensure accuracy, the information presented is not the official record of shareholder filings. Readers are advised to read the original filings on the Bursa Malaysia website at www.bursamalaysia.com

CHECK OUT
SHAREINVESTOR
BROKERS' CALL

Weekly Buy/Sell/Hold calls from leading Malaysian Brokerages.

[Go To Brokers' Call](#)



[READ MORE](#) 

Axiata Group Berhad (AXIATA) wishes to announce that edotco Investments (Labuan) Limited, a wholly owned subsidiary of EDOTCO Group Sdn Bhd which in turn is a 63% subsidiary of Axiata Group Berhad had today entered into a Share Purchase Agreement for the disposal of its entire 87.5% stake in EDOTCO Investments Singapore Pte. Ltd., a special purpose investment holding company for EDOTCO’s investments in Myanmar and sole shareholder of EDOTCO Myanmar Limited, for a total cash consideration of approximately USD150,000,000 (equivalent to RM713,025,000*), subject to customary closing statement adjustments (“Proposed Divestment – Myanmar”).



The Board of Directors of **Capital A Berhad (CAPITALA)** wishes to announce that the

Company, had on 29 March 2024 entered into a Letter of Intent with Advanced New Technologies (Singapore) Holding Pte Ltd to collaborate for an extensive partnership that is expected to redefine online travel, payments and fintech within the ASEAN region.

[READ MORE](#) 



Southern Score Builders Berhad (SSBB) is pleased to announce that the

Board of Directors of the Company has declared a Single Tier Interim Dividend of 1 sen per ordinary share in respect of the financial year ending 30 June 2024.

[READ MORE](#)



The Board of Directors of **Wellspire Holdings Berhad (WELLS)** wishes to announce that the Company intends to seek the approval from

its shareholders for the Proposed Renewal of Shareholders' Mandate and Proposed New Shareholders' Mandate for Recurrent Related Party Transactions of a Revenue or Trading Nature ("Proposed Shareholders' Mandate") at the forthcoming 2nd Annual General Meeting of the Company.

[READ MORE](#)

Upcoming IPO

NAME OF COMPANY	OFFER PERIOD		ISSUE PRICE (Per Ordinary Share)	LISTING SOUGHT	DATE OF LISTING
	OPENING	CLOSING			
MKH OIL PALM (EAST KALIMANTAN) BERHAD	29 Mar 2024	16 Apr 2024	RM0.62	MAIN MARKET	30 Apr 2024
TOPMIX BERHAD	27 Mar 2024	04 April 2024	RM0.31	ACE MARKET	23 Apr 2024
KEYFIELD INTERNATIONAL BERHAD	26 Mar 2024	3 Apr 2024	RM0.90	MAIN MARKET	22 Apr 2024
SBH MARINE HOLDINGS BERHAD	18 Mar 2024	25 Mar 2024	RM0.22	ACE MARKET	08 Apr 2024

Disclaimer: The information in the Investor Relations page is extracted from individual companies' announcements in www.bursamalaysia.com. The information on this page is provided as a service to readers. We assume no liability for damages resulting from or arising out of the use of such information. Whilst every effort is made to ensure accuracy, the information presented has been simplified for your reading pleasure. Readers are advised to read the original and complete filings on the Bursa Malaysia website at https://www.bursamalaysia.com/market_information/announcements/company_announcement