

# Invest

A Weekly e-Publication by SHAREINVESTOR.com

ISSUE

196

FRIDAY

23 FEBRUARY

2024

Scan/Click QR to Register



Via email, every Friday

**Malaysia records total approved investments of RM329.5 bil in 2023, up 23% from 2022 — PM**

**Malaysia's international reserves up 0.5% to US\$115.4 bil as of Feb 15 — BNM**

**Malaysia's 5G adoption rate at 29.9%, almost 10.07 mil subscribers as of Jan 31 - Fahmi**

see more  
page  
29-33

**PLUS**  
**BEHIND THE TICKET**  
which helps  
to decode  
company  
fundamentals

**ALSO**

**COMPANY SPOTLIGHT**  
**Dialog Group Berhad**

See more on page 07

**BEHIND THE TICKET: DECODING COMPANY FUNDAMENTALS**

**Is there an investment opportunity in RYERSON?**

**SUMMARY**

- Ryerson Holding Corporation's (NYSE: RYI) revenue growth over the past decade was due to both selling price growth and acquisitions. There was hardly any shipment tonnage growth.
- Furthermore, the price growth was due to an extraordinary price spike in 2021/22. Prices has since come down and reverting to cyclical values. There are also not clear signs of improvements in operating efficiencies.
- It is a cyclical company despite its diverse offerings and customer base. A valuation based on its performance over the cycle shows that there is no margin of safety based on its price as of 29 Jan 2024.

See more on page 20-28

04 LEADERBOARD

06 SHARIAH HOT STOCKS

08 SHARIAH MOMENTUM UP STOCKS

10 NON SHARIAH HOT STOCKS

12 UP TRENDING STOCKS

14 VALUE STOCKS

15 GROWTH STOCKS

16 DIVIDEND STOCKS

17 BROKERS' CALL

18 LONG COMPANIES

34 REGIONAL MARKETS

35 INSIDER ACTIVITY

38 INVESTOR RELATIONS



# SHAREINVESTOR®

Invest with Knowledge

## INVESTOR PLATFORMS

**Director**  
Darren Chong  
darren.chong@shareinvestor.com

**Business Development Manager**  
Jay Cheong  
jay.cheong@shareinvestor.com

**Senior Executive**  
Daniel Wong  
daniel.wong@shareinvestor.com

**Executive**  
Tan Yong Sheng  
yongsheng.tan@shareinvestor.com

## ADMIN & OPERATIONS

**Senior Executive**  
Watie Nordin  
watie.nordin@shareinvestor.com

**Executive**  
Silas Emmanuel Joseph  
silas.joseph@shareinvestor.com

## INVESTOR RELATIONS

**Group Managing Director & Publisher**  
Edward Stanislaus  
edward@shareinvestor.com

**Senior Manager**  
Letticia Wong  
letticia.wong@shareinvestor.com

**Manager**  
Aida Norzeti Binti Ab Talib  
aida.norzeti@shareinvestor.com

## PROCESS AUTOMATION & DATA ANALYTICS

**Data Analyst**  
Nickson Aw

## SHAREINVESTOR HOLDINGS BOARD OF DIRECTORS

<b>Chairman</b>		Patrick Daniel
<b>Group CEO</b>		Christopher Lee
<b>Group COO</b>		Lim Dau Hee
<b>Group CFO</b>		Teo Siew May
<b>Group MD</b>		Shanison Lin



“ GIVE A MAN A FISH AND YOU FEED HIM FOR A DAY; TEACH A MAN TO FISH AND YOU FEED HIM FOR A LIFETIME ”

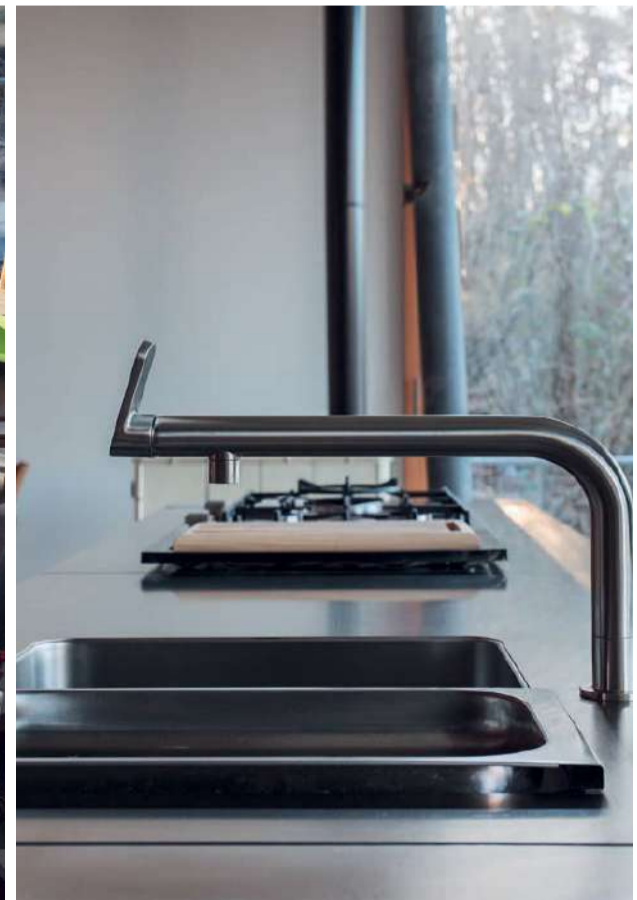
### ShareInvestor Malaysia Sdn. Bhd.

(200001023956) (526564-M)  
Unit No. DF2-07-03A. Level 7,  
Persoft Tower, 6B Persiaran Tropicana,  
47410 Petaling Jaya, Selangor Darul Ehsan.

Hotline : 603 7803 1791  
Mobile : 011 6343 8939  
Website : www.ShareInvestor.com.my  
www.ShareInvestorHoldings.com  
www.Facebook.com/ShareInvestorMalaysia

**ADVERTISEMENT ENQUIRY**

bulthaup takes care of the details so that you can enjoy a harmonious environment.



**XTRA**

XTRA FURNITURE SDN BHD  
The Gardens Mall, Mid Valley City  
xtrafurniture.com/bulthaup  
fb.com/bulthaupmalaysia

bulthaup

SHAREINVESTOR®

Happy Chinese  
New Year  
2024

Enjoy **15% OFF**

ShareInvestor WebPro & Station plans & More!

## Lucky Draw Prizes



**Sony SoundBar  
S400**  
Worth RM1099



**Russell Taylors Air  
Fryer 3.8L (AF-25)**  
Worth RM199

## What our users say about us

### Muhamad Firdaus bin Majid

Remisier ShareInvestor Station,  
User since 2018



As a Remisier, I've used ShareInvestor Station since 2018. This platform stands out for its remarkable coding feature, allowing traders to tailor their strategies with precision. Its market screener is another highlight, efficiently filtering stocks from an extensive database to pinpoint promising opportunities. These tools collectively empower investors with a high degree of customization and insightful market analysis, making ShareInvestor Station a robust choice for serious traders.

### Datuk Haji Mohd Asri Ahmad

Master Trainer & Co-Founder Asri Ahmad  
Academy ShareInvestor Station,  
User since 2019



Shareinvestor Station serves as a comprehensive, friendly tool for investors and traders navigating the stock market. Its intuitive interface simplifies complex technical analysis through a variety of screening tools, helping in informed decision-making.

Shareinvestor Station provides in-depth analysis while remaining accessible to both beginners and seasoned traders. With its user-friendly layout and powerful analytical capabilities in fundamental and technical, it's a valuable asset for anyone seeking efficient and effective stock market analysis.

Subscribe Now >

\*T & C apply

[www.shareinvestor.com](http://www.shareinvestor.com) - market data at your fingertips



ShareInvestor WebPro ([www.shareinvestor.com/my](http://www.shareinvestor.com/my))  
 Prices > Stock Prices > Bursa > click Stocks tab

1. mouse over Ranking > select Top Active > all Shariah stocks are denoted with an [S] > mouse over Column Layout > select Edit Customs > select Name > select Volume > select Last Done Price > Mouse Over Column Layout > select Custom
2. mouse over Ranking > select Top Turnover > all Shariah stocks are denoted with an [S] > mouse over Column Layout > select Edit Customs > select Name > select Last Done Price > select Value > Mouse Over Column Layout > select Custom
3. mouse over Ranking > select Top Gainers (Over 5 Trading Days) > mouse over Column Layout > select Edit Customs > select Name > select Last Done Price > select 5 Days Change > select 5 Days % Change > Mouse Over Column Layout > select Custom
4. mouse over Ranking > select Top Losers (Over 5 Trading Days)
5. mouse over Ranking > select Top % Gainers (Over 5 Trading Days)
6. mouse over Ranking > select Top % Losers (Over 5 Trading Days)

### Shariah Top Actives (as at Yesterday)

Name	Price (RM)	Volume
HONGSENG [S]	0.020	1,946,573.000
RENEUCO [S]	0.090	1,163,910.000
NOTION [S]	0.455	867,191.000
MINETEC [S]	0.175	825,272.000
DNEX [S]	0.355	601,190.000
DIALOG [S]	2.300	595,723.000
TWL [S]	0.040	470,243.000
MTEC [S]	0.545	384,404.000
WENTEL [S]	0.335	366,434.000
WIDAD [S]	0.125	363,582.000

### Shariah Top Turnover (as at Yesterday)

Name	Price (RM)	Value (RM)
DIALOG [S]	2.300	136,363,819
SUNWAY [S]	2.800	64,072,735
PETGAS [S]	17.980	56,973,066
FRONTKN [S]	3.740	52,581,528
INARI [S]	3.330	52,339,412
TENAGA [S]	11.220	45,440,980
SIME [S]	2.610	39,902,037
NOTION [S]	0.455	36,049,918
MYEG [S]	0.785	26,653,315
GAMUDA [S]	5.060	24,772,350

### Top Gainers (over 5 Trading days as at Yesterday)

Name	Price (RM)	Change (RM)
MPI	28.780	+2.580
HLIND	10.280	+0.880
PETDAG	22.720	+0.760
UTDPLT	20.720	+0.720
VITROX	7.640	+0.610
DIALOG	2.300	+0.480
SAM	4.340	+0.470
F&N	29.420	+0.420
KLK	22.860	+0.360
PENTA	4.540	+0.280

### Top % Gainers (over 5 Trading days as at Yesterday)

Name	Price (RM)	Change (%)
EAH	0.010	+100.00
KGROUP	0.010	+100.00
PHB	0.010	+100.00
RENEUCO	0.090	+63.64
NOTION	0.455	+44.44
WMG	0.140	+40.00
EDUSPEC	0.095	+35.71
MTRONIC	0.020	+33.33
THPLANT	0.815	+30.40
TPC	0.465	+29.17

### Top Losers (over 5 Trading days as at Yesterday)

Name	Price (RM)	Change (RM)
HEIM	23.100	-1.700
ALLIANZ	18.640	-0.940
BKAWAN	19.980	-0.440
RCECAP	2.830	-0.270
BAT	8.820	-0.210
AMWAY	6.740	-0.160
SHL	2.150	-0.150
YTL	2.150	-0.150
YTLPOWR	3.780	-0.150
LPI	12.440	-0.140

### Top % Losers (over 5 Trading days as at Yesterday)

Name	Price (RM)	Change (%)
SCBUILD	0.010	-33.33
ZENTECH	0.015	-25.00
MQTECH	0.020	-20.00
SANICHI	0.020	-20.00
LAMBO	0.025	-16.67
XDL	0.025	-16.67
DFCITY	0.330	-15.38
ALRICH	0.030	-14.29
BSLCORP	0.030	-14.29
SRIDGE	0.380	-13.64

**Disclaimer:** The information on this page is provided as a service to readers. It does not constitute financial advice and/or any investment recommendations. Past performance is not indicative of future results. We assume no liability for damages resulting from or arising out of the use of such information. It would be best if you did your own research to make your personal investment decisions wisely or consult a licenced investment advisor.



# STROM

SWISS TIMEPIECES & JEWELLERY



StromWatch Asia

Tele : +65.9817.3378 Email : ll.stromasia@gmail.com

[WWW.STROMWATCH.SWISS](http://WWW.STROMWATCH.SWISS)



## Price & Volume Distribution Charts (as at Yesterday)

Technical Analysis

**DEFINITION:** Shariah compliant stocks with Technical Analysis showing 5-days & 10-days Moving Average Price below Yesterday's Close over past 3 days and with Volume Spike.

**CHART GUIDE:** Volume Distribution Chart is a statistical interpretation of the current sentiment on each stock in graphical format. The highest bar categorized as >150k is likely to be traded by institutions or super dealers, while the lowest bar categorized as <15k usually represents retail investors. "Buy Up" refers to more buyers snatching up the lots queued at selling price. "Sell Down" refers to sellers selling their shares to the buying queue



ShareInvestor WebPro > Screener > Market Screener (FA & TA) > select BURSA > add criteria

**A. Criteria**

- > click Add Criteria
- Technical Analysis Conditions tab select (i) Moving Average Below Close (ii) Volume Spike
- Fundamental Analysis Conditions tab > select (iii) Revenue
- Prices & Other Conditions tab > select (iv) Is Shariah Compliant
- Technical Analysis Conditions tab select (v) Moving Average Below Close
- Prices & Other Conditions tab > select (vi) Last Done Price
- Technical Analysis Conditions tab select (vii) Moving Average Below Close

**B. Conditions (Criteria Filters)**

1. Moving Average Below Close - select (MA) type (5) below close price for type (3) days
2. Volume Spike - Volume type (1) greater than type (5) days average
3. Revenue ("000) - select (more than) type (1) for the past select (1) financial year(s)
4. Is Shariah Compliant - select **Yes**
5. Moving Average Below Close - select (MA) type (10) below close price for type (3) days
6. Last Done Price - select (more than) type (0.3)
7. Moving Average Below Close - select (EMA) type (5) below close price for type (3) days

- > click Save Template > Create New Template type (Shariah Hot Stocks) > click Create
- > click Save Template as > select Shariah Hot Stocks > click Save
- > click Screen Now (may take a few minutes)
- > Sort By: Select (Vol) Select (Desc)
- > Mouse over stock name > Charts > click C<sup>2</sup> Charts or Volume Distribution

### DIALOG GROUP BERHAD (7277)

C<sup>2</sup> Chart



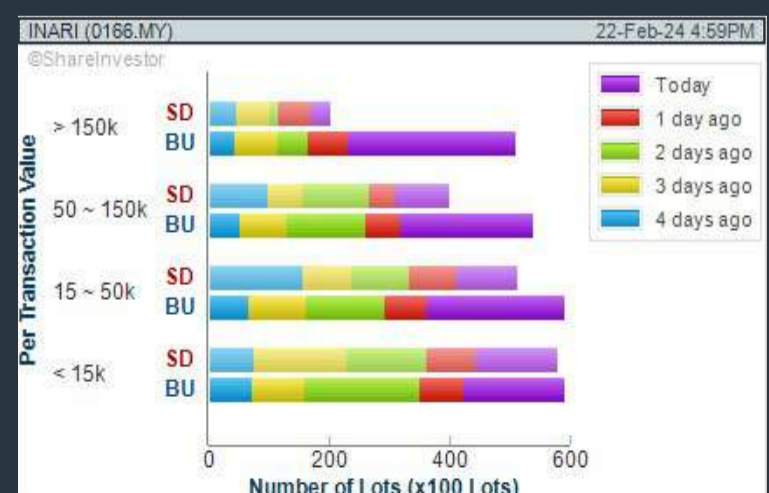
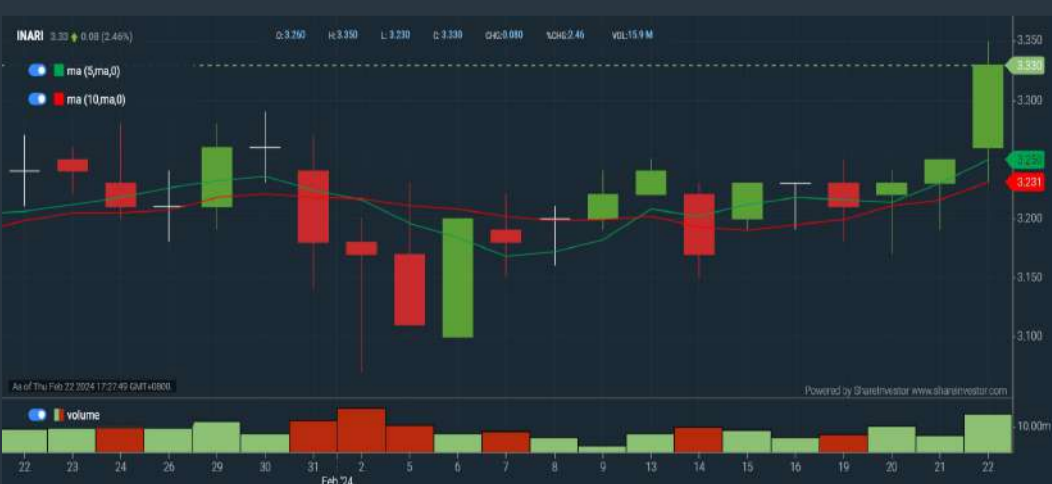
### CLOUDPOINT TECHNOLOGY BERHAD (0277)

C<sup>2</sup> Chart



### INARI AMERTRON BERHAD (0166)

C<sup>2</sup> Chart



**Disclaimer:** The information on this page is provided as a service to readers. It does not constitute financial advice and/or any investment recommendations. Past performance is not indicative of future results. We assume no liability for damages resulting from or arising out of the use of such information. It would be best if you did your own research to make your personal investment decisions wisely or consult a licenced investment advisor.

## COMPANY BACKGROUND

**Dialog Group Berhad** is an integrated technical service provider to the energy sector in Malaysia and international markets. The company operates in 3 core areas: Upstream which involves new field development, rejuvenation, and re-development of mature oil and gas fields; Midstream which involves design, build, own and operate both independent storage and industrial terminals for storing and handling a variety of crude oil, petroleum, LNG and petrochemical products; Downstream to provide a variety of integrated



technical services and solutions across the energy sector.

DIALOG DIALOG GROUP BHD		Updated at 22 Feb 2024 17:31	
Last (MYR): <b>2.300</b> ↑	Change: <b>+0.100</b>	High: 2.350	Remarks: s
	Change (%): <b>+4.55</b>	Low: 2.190	
Open	2.200	Yesterday's Close	2.200
Buy Price	2.270	Sell Price	2.300
Buy Volume ('00)	525	Sell Volume ('00)	34
Cumulative Volume ('00)	595,723	Cumulative Value	136,363,819

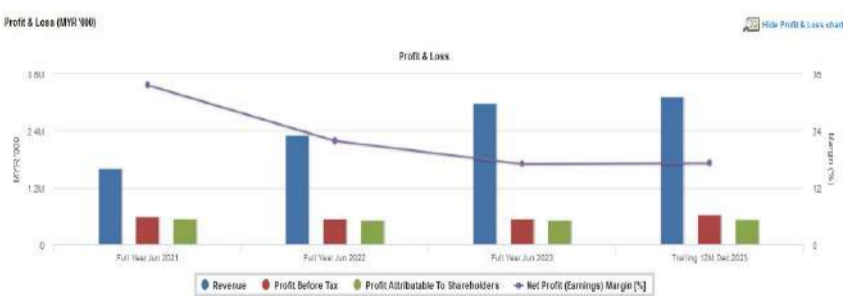
### Financial Analysis

<b>Revenue Growth</b> Increasing revenue in last 2 consecutive years	😊	<b>Profit Growth</b> Increasing profit in latest year (with last 2 profitable years)	😊
<b>Piotroski F Score</b> The company has above average financial strength (Piotroski F-Score of 6-7)	😊	<b>Dividend Payout</b> Dividend is increasing over the past 60 months	😊
<b>Cash Ratio</b> Good cash ratio of at least 0.8 for 3 consecutive years	😊	<b>Current Ratio</b> The company is well-positioned to cover its short-term obligations with its current assets (ratio between 1.5 to 10) for 3 consecutive years	😊
<b>Debt to Cashflow</b> High debt to cash flow for most recent year	😟	<b>Free Cash Flow</b> Positive and increasing free cash flow for at least two years	😊
<b>Gross Profit Margin</b> Low gross profit margin for 3 years	😟	<b>Net Earnings Margin</b> Consistently good net profit margin of at least 15% for 3 years	😊

😊 Excellent    😊 Good    😐 Neutral    😟 Be Alert    😡 Watch Out

### Historical Financials

Profit & Loss (MYR '000)

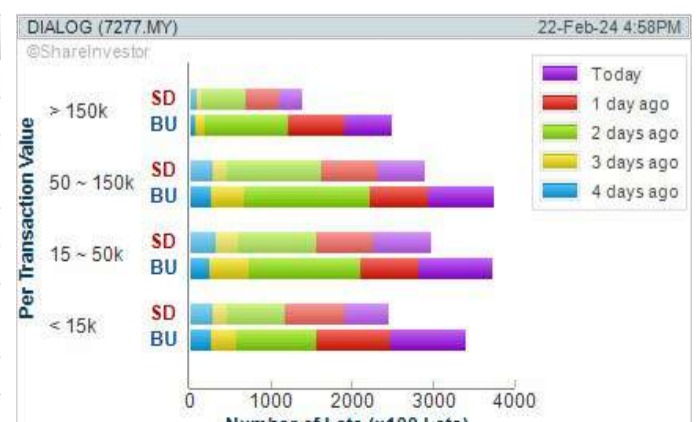


**WebPro 9-Days Free Trial Registration (worth RM9) Sign Up Now**



### Key Statistics with Total Shareholder Returns

Period	Dividend Received	Capital Appreciation	Total Shareholder Return
Short Term Return	5 Days	+0.510	+28.49 %
	10 Days	+0.520	+29.21 %
	20 Days	+0.440	+23.66 %
Medium Term Return	3 Months	+0.190	+9.00 %
	6 Months	+0.170	+7.98 %
	1 Year	-0.030	-1.29 %
Long Term Return	2 Years	0.013	-16.80 %
	3 Years	0.044	-27.20 %
	5 Years	0.113	-25.52 %
Annualised Return	Annualised	-	-5.72 %



**Disclaimer:** The information on this page is provided as a service to readers. It does not constitute financial advice and/or any investment recommendations. Past performance is not indicative of future results. We assume no liability for damages resulting from or arising out of the use of such information. It would be best if you did your own research to make your personal investment decisions wisely or consult a licenced investment advisor.

## Price & Volume Distribution Charts (as at Yesterday)

Technical Analysis

**DEFINITION:** Shariah compliant stocks with Technical Analysis showing Bullish Momentum and Price Uptrend. The share price closed at the highest price yesterday. The typical price was higher than the previous day's typical price.

**CHART GUIDE:** Volume Distribution Chart is a statistical interpretation of the current sentiment on each stock in graphical format. The highest bar categorized as >150k is likely to be traded by institutions or super dealers, while the lowest bar categorized as <15k usually represents retail investors. "Buy Up" refers to more buyers snatching up the lots queued at selling price. "Sell Down" refers to sellers selling their shares to the buying queue.



ShareInvestor WebPro > Screener > Market Screener (FA & TA)>select BURSA>add criteria

**A. Criteria**

- > click Add Criteria
- Fundamental Analysis Conditions tab >select (i) Revenue
- Technical Analysis Conditions tab select (ii) Average Volume
- Prices & Other Conditions tab > select (iii) Last Done Price
- Prices & Other Conditions tab > select (iv) Is Shariah Compliant
- Technical Analysis Conditions tab select (v) RSI Overbought
- Technical Analysis Conditions tab select (vi) Moving Average Below Close
- Technical Analysis Conditions tab select (vii) CCI Overbought

**B. Conditions (Criteria Filters)**

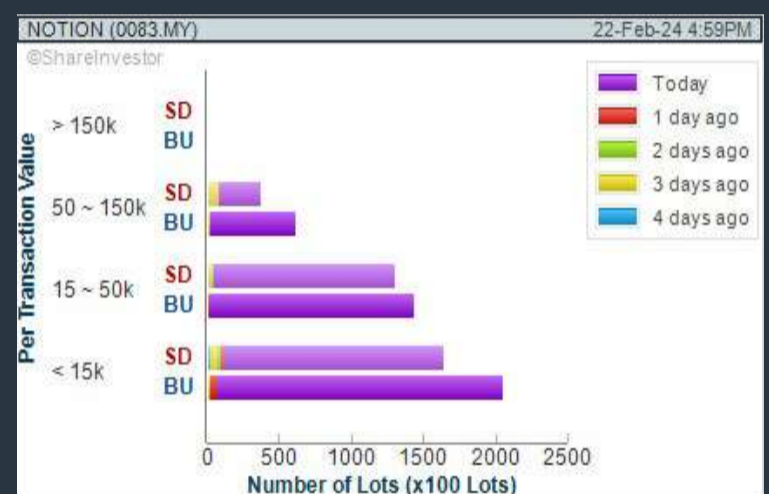
1. Revenue ("000) - select (more than) type (1) for the past select (1) financial year(s)
2. Average Volume - type (1) days average volume greater than type (10000) lots
3. Last Done Price - select (more than) type (0.3)
4. Is Shariah Compliant - select Yes
5. RSI Overbought - select RSI 1 above 99 for 1 days
6. Moving Average Below Close - select (MA) type (10) below close price for type (1) days
7. CCI Overbought - select CCI (2) above (0) for (1) days

- > click Save Template > Create New Template type (Shariah Momentum Up Stocks) > click Create
- > click Save Template as > select Shariah Momentum Up Stocks > click Save
- > click Screen Now (may take a few minutes)
- Sort By: Select (Vol) Select (Desc)
- Mouse over stock name > Charts > click C<sup>2</sup> Charts tab or Volume Distribution

### NOTION VTEC BERHAD (0083)

C<sup>2</sup> Chart

Analysis



### DIALOG GROUP BERHAD (7277)

C<sup>2</sup> Chart

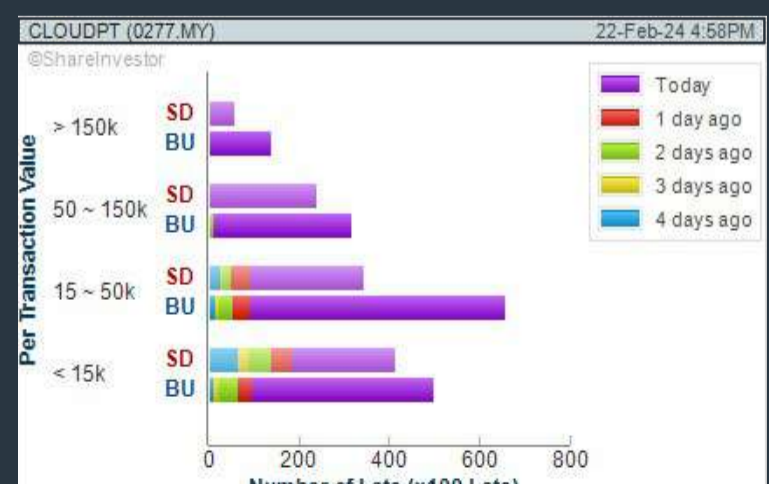
Analysis



### CLOUDPOINT TECHNOLOGY BERHAD (0277)

C<sup>2</sup> Chart

Analysis



**Disclaimer:** The information on this page is provided as a service to readers. It does not constitute financial advice and/or any investment recommendations. Past performance is not indicative of future results. We assume no liability for damages resulting from or arising out of the use of such information. It would be best if you did your own research to make your personal investment decisions wisely or consult a licenced investment advisor.



# SHAREINVESTOR WEBPRO

## STOCK MARKET DATA AT YOUR FINGERTIPS

Powerful browser-based market analytics platform.  
Access from anywhere



### 8 Markets Data

- ▶ Get access to data from Bursa, NYSE, Nasdaq, HKEX, SGX, IDX, SET & ASX

### Portfolio Management

- ▶ Profit & Loss Summary
- ▶ Stock Alert
- ▶ News & Events filtering
- ▶ Customizable column layout

## Fundamental Analysis

### Financial Analysis Statement

- ▶ Profit & Loss
- ▶ Balance Sheet
- ▶ Cash Flow Statement
- ▶ More than 20 Financial Ratios
- ▶ Dividend Analysis

### Technical Charting

- ▶ C<sup>2</sup> chart (Customisable & Comprehensive)

### Brokers' Call

### Intrinsic Value Calculator

### FactSheet

- ▶ Key Stock Information
- ▶ Ownership
- ▶ Consensus Estimates
- ▶ Annual Report
- ▶ Historical Price
- ▶ Insider Trades

## What's new on WebPro (Stable Release 12.1.0)

In our effort to keep our platform at the forefront of trading technology, we have added on some new features onto our C<sup>2</sup> Chart in WebPro

### ADDITIONAL NEW FEATURES:

- ▶ Anchor selector for AVWAP, PVAT, and PAV indicators
- ▶ Volume profile indicator by date range
- ▶ Moving Average Cross indicator
- ▶ Guppy Multiple Moving Average (GMMA) indicator
- ▶ GoNoGo Trend Signal indicators
- ▶ SignalIQ

So what are you waiting for? Head to our platform today and check out our new trading chart features and indicators. We're confident that you'll love the improvements we've made and that they'll help you become a more successful trader.

Click here to start your 9 days FREE trial  
(Valued at RM10)



## Price & Volume Distribution Charts (as at Yesterday)

Technical Analysis

**DEFINITION:** Stocks with Technical Analysis showing 5-days & 10-days Moving Average Price below Close over past 1 days and with Volume Spike

**CHART GUIDE:** Volume Distribution Chart is a statistical interpretation of the current sentiment on each stock in graphical format. The highest bar categorized as >150k is likely to be traded by institutions or super dealers, while the lowest bar categorized as <15k usually represents retail investors. "Buy Up" refers to more buyers snatching up the lots queued at selling price. "Sell Down" refers to sellers selling their shares to the buying queue.



ShareInvestor WebPro > Screener > Market Screener (FA & TA) > select BURSA > add criteria

**A. Criteria**

- > click Add Criteria
- Technical Analysis Conditions tab select (i) Moving Average Below Close (ii) Volume Spike
- Fundamental Analysis Conditions tab >select (iii) Revenue
- Prices & Other Conditions tab > select (iv) Is Shariah Compliant
- Technical Analysis Conditions tab select (v) Moving Average Below Close
- Prices & Other Conditions tab > select (vi) Last Done Price
- Technical Analysis Conditions tab select (vii) Moving Average Below Close

**B. Conditions (Criteria Filters)**

1. Moving Average Below Close - select (MA) type (5) below close price for type (3) days
2. Volume Spike - Volume type (1) greater than type (5) days average
3. Revenue ("000) - select (more than) type (1) for the past select (1) financial year(s)
4. Is Shariah Compliant - select NO
5. Moving Average Below Close - select (MA) type (10) below close price for type (1) days
6. Last Done Price - select (more than) type (0.3)
7. Moving Average Below Close - select (EMA) type (5) below close price for type (1) days

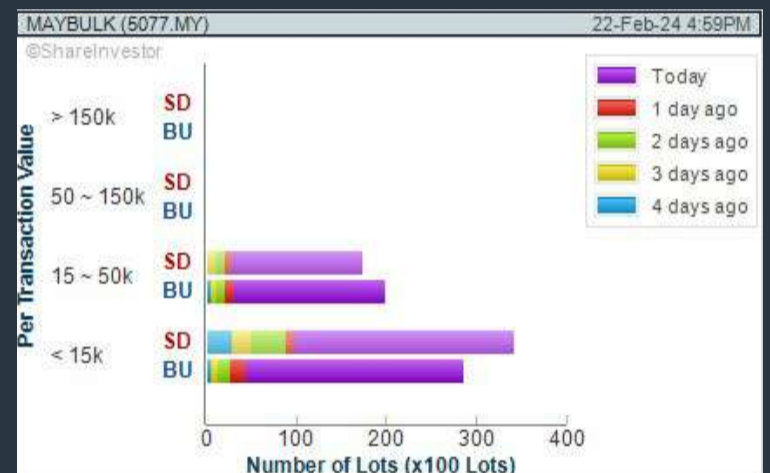
- > click Save Template > Create New Template type (Non-Shariah Hot Stocks) > click Create
- > click Save Template as > select Non-Shariah Hot Stocks > click Save
- > click Screen Now (may take a few minutes)
- Sort By: Select (Vol) Select (Desc)
- Mouse over stock name > Charts > click C<sup>2</sup> Charts tab or Volume Distribution

### MAYBULK BERHAD (5077)

C<sup>2</sup> Chart



Analysis

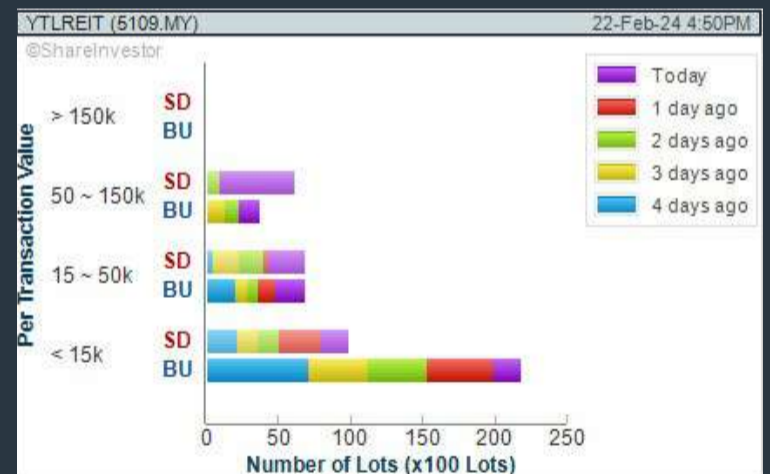


### YTL HOSPITALITY REIT (5109)

C<sup>2</sup> Chart



Analysis

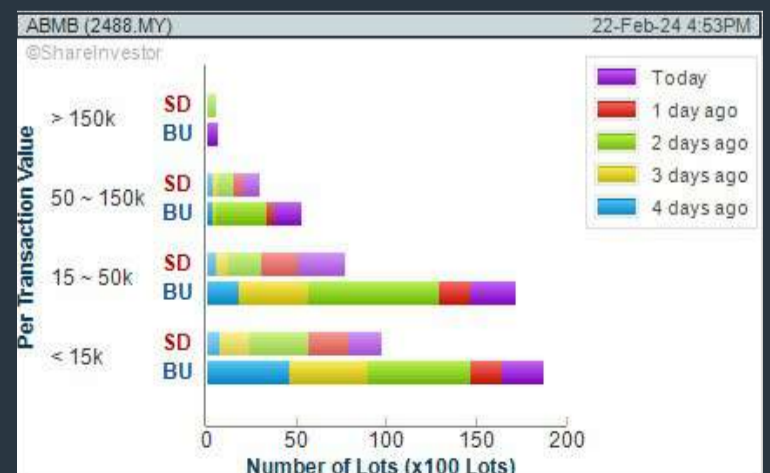


### ALLIANCE BANK MALAYSIA BERHAD (2488)

C<sup>2</sup> Chart



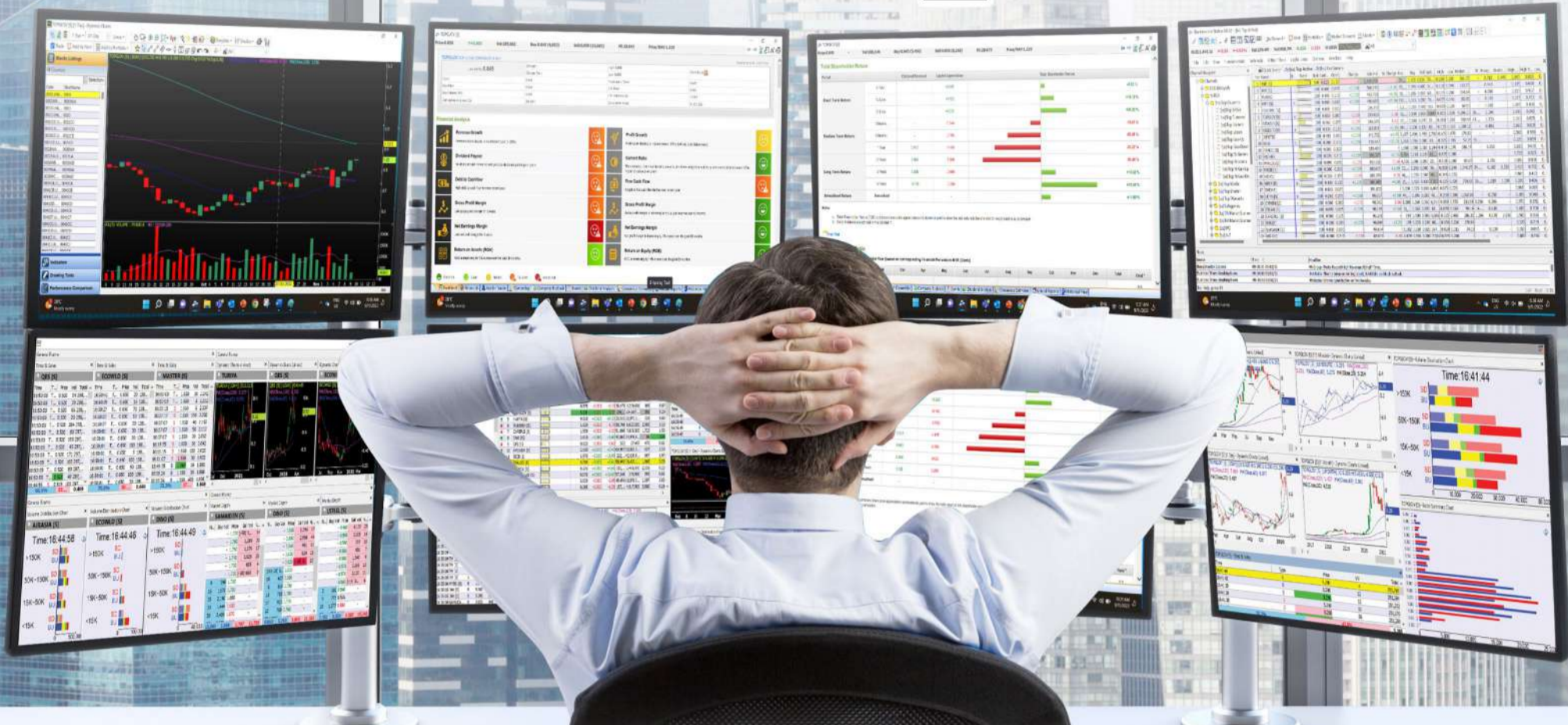
Analysis



**Disclaimer:** The information on this page is provided as a service to readers. It does not constitute financial advice and/or any investment recommendations. Past performance is not indicative of future results. We assume no liability for damages resulting from or arising out of the use of such information. It would be best if you did your own research to make your personal investment decisions wisely or consult a licenced investment advisor.

# MAKE BETTER TRADING STRATEGIES

with  
**SHARE INVESTOR**  
**STATION**



### 8 Markets Data

- ▶ Get access to data from Bursa, NYSE, Nasdaq, HKEX, SGX, IDX, SET & ASX

### Dynamic Chart

- ▶ Candlestick Pattern Recognition
- ▶ 111 Indicators
- ▶ 39 Drawing Tools
- ▶ Performance Comparison Chart

### Intraday Data

- ▶ Market Depth
- ▶ Trade Summary Matrix & Chart
- ▶ Times & Sales
- ▶ Intraday Market Ticker

### Market Screener

- ▶ 96 criteria ranging from FA, TA, Consensus Estimate
- ▶ Real-time Data

### Power Frame

- ▶ Combining few Dynamic Charts together with intraday information in one frame

## Technical Analysis

## Fundamental Analysis

### Financial Analysis Statement

- ▶ Profit & Loss
- ▶ Balance Sheet
- ▶ Cash Flow Statement
- ▶ More than 20 Financial Ratios
- ▶ Dividend Analysis

### FactSheet

- ▶ Key Stock Information
- ▶ Ownership
- ▶ Consensus Estimates
- ▶ Annual Report
- ▶ Historical Price
- ▶ Insider Trades

**Start your 18 days  
 FREE trial now  
 (Valued at RM82)**



## Price & Volume Distribution Charts (Over 3 trading days as at Yesterday)

Technical Analysis

**DEFINITION:** Stocks with Technical Analysis showing Bullish Momentum and Price Uptrend

**CHART GUIDE:** Volume Distribution Chart is a statistical interpretation of the current sentiment on each stock in graphical format. The highest bar categorized as >150k is likely to be traded by institutions or super dealers, while the lowest bar categorized as <15k usually represents retail investors. "Buy Up" refers to more buyers snatching up the lots queued at selling price. "Sell Down" refers to sellers selling their shares to the buying queue.



ShareInvestor WebPro > Screener > Market Screener (FA & TA) > select BURSA > add criteria

**A. Criteria**

- > click Add Criteria
- Fundamental Analysis Conditions tab > select (i) Revenue
- Technical Analysis Conditions tab select (ii) Moving Average Below Close
- Technical Analysis Conditions tab select (iii) Average Volume
- Prices & Other Conditions tab > select (iv) Last Done Price
- Technical Analysis Conditions tab select (v) Moving Average Below Close
- Technical Analysis Conditions tab select (v) Moving Average Bullish Crossover

**B. Conditions**

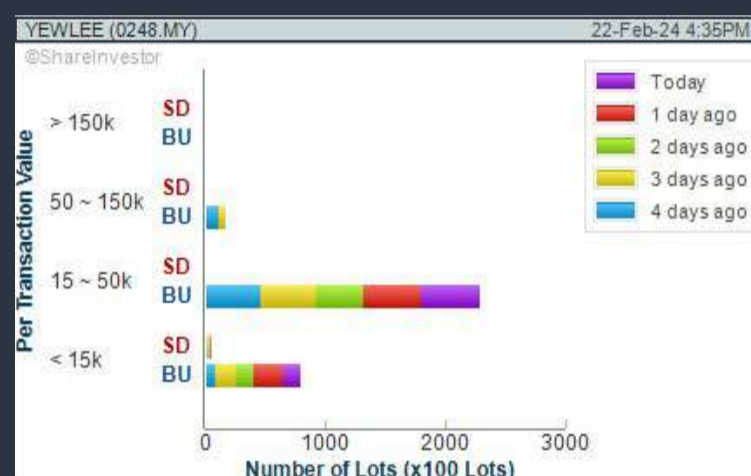
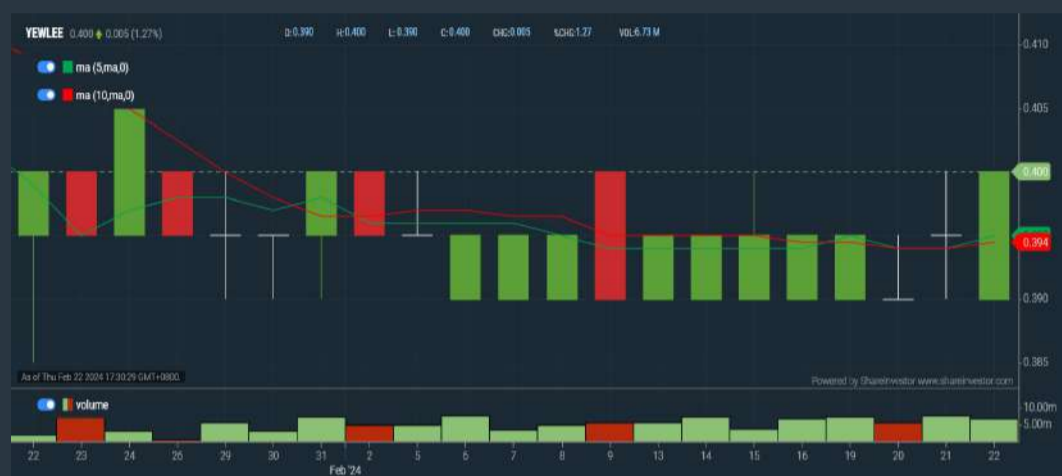
1. Revenue - select (more than) type (1) for the past select (1) financial year(s)
2. Moving Average Below Close - select (MA) type (20) below close price for type (1) days
3. Average Volume - type (5) days average volume type (10000) lots
4. Last Done Price - select (more than) type (0.3)
5. Moving Average Below Close - select (MA) type (10) below close price for type (1) days
6. Moving Average Bullish Crossover - select (MA) type (5) crossed above select (MA) type (10)

> click Save Template > Create New Template type (Non-Shariah Up-Trending Stocks) > click Create Click Save Template As > select Non-Shariah Up Trending Stocks > click Save  
> click Screen Now (may take a few minutes)  
Sort By: Select (Vol) Select (Desc)  
Mouse over stock name > Charts > click C<sup>2</sup> Charts tab or Volume Distribution

### YEW LEE PACIFIC GROUP BERHAD (0248)

C<sup>2</sup> Chart

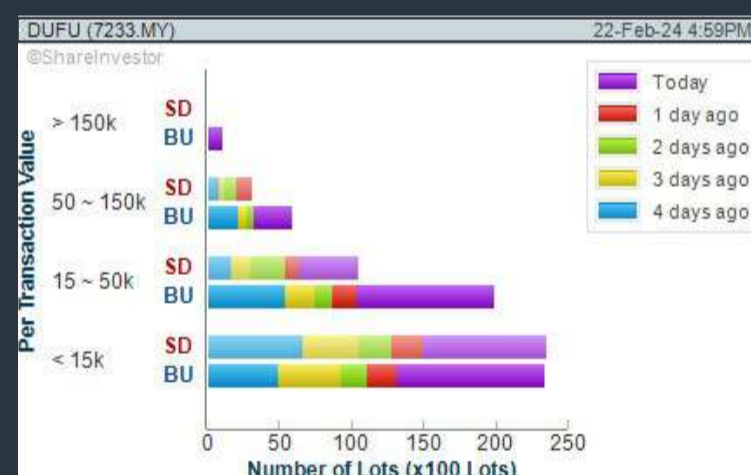
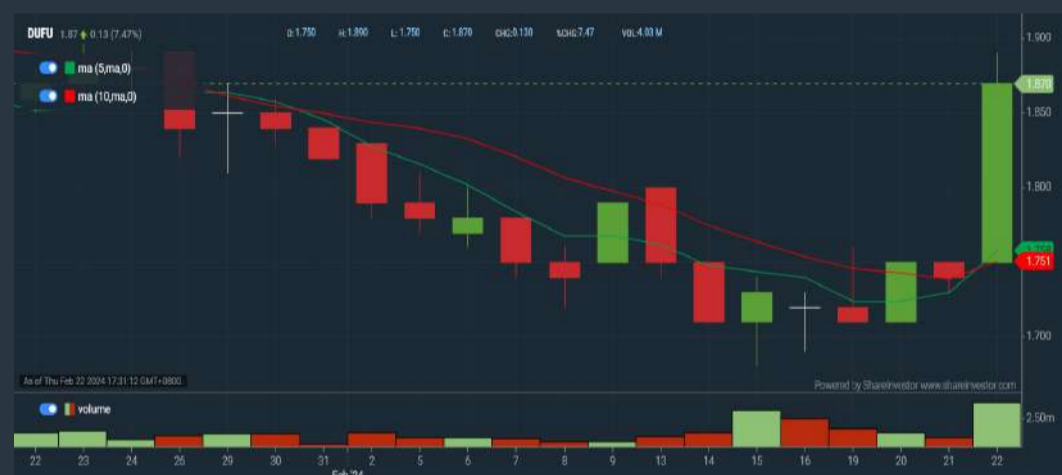
Analysis



### DUFU TECHNOLOGY CORP. BERHAD (7233)

C<sup>2</sup> Chart

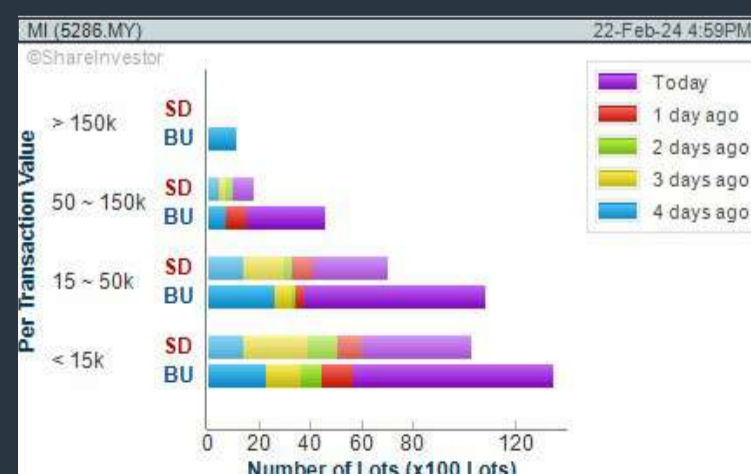
Analysis



### MI TECHNOVATION BERHAD (5286)

C<sup>2</sup> Chart

Analysis



**Disclaimer:** The information on this page is provided as a service to readers. It does not constitute financial advice and/or any investment recommendations. Past performance is not indicative of future results. We assume no liability for damages resulting from or arising out of the use of such information. It would be best if you did your own research to make your personal investment decisions wisely or consult a licenced investment advisor.



# making places multifunctional



usm.com

## **XTRA**

XTRA FURNITURE SDN BHD  
The Gardens Mall, Mid Valley City, Lot S-236 & 237  
Lingkar Syed Putra, 59200 Kuala Lumpur  
T. +603 2282 9088 | living@xtrafurniture.com | xtrafurniture.com  
📍 XTRAFurniture | 🌐 xtrafurnituremsia

# Price & Total Shareholder Return (as at Yesterday)

Fundamental Analysis

**DEFINITION:** Share price of a company trading at a lower price as compared to its fundamentals (FA) such as financial performance and dividend, allowing it to be attractive to value investors.

**CHART GUIDE:** Total Shareholder Return (TSR) combines share price appreciation and dividend distributions paid to show the total return to the shareholder expressed as a percentage.



ShareInvestor WebPro > Screener > Market Screener (FA & TA) > select BURSA > add criteria

**A. Criteria**

- > click Add Criteria
- Fundamental Analysis Conditions tab (i) Price Earnings Ratio
- Fundamental Analysis Conditions tab >select (ii) CAGR of Net Earnings
- Fundamental Analysis Conditions tab >select (iii) Net Debt To Equity
- Fundamental Analysis Conditions tab >select (iv) Return On Equity (ROE)

**B. Conditions**

1. Price Earnings Ratio - select (less than) type (15) times now
2. CAGR of Net Earnings - select (more than) type (10) % for the past type (3) financial year(s)
3. Net Debt To Equity – select (less than) type (1) for the past select (1) financial year(s)
4. Return On Equity (ROE) – select (more than) type (10) % for the past select (1) financial year(s)

- > click Save Template > Create New Template type (Value Stock) > click Create
- > click Save Template as > select Value Companies > click Save
- > click Screen Now (may take a few minutes)
- Sort by: Select (PE Ratio) Select (Ascending)
- > Mouse over stock name > Factsheet > looking for Total Shareholder Return
- > Mouse over stock name > Charts > click C2 Charts tab

## SYNERGY HOUSE BERHAD (0279)

C<sup>2</sup> Chart



Period	Dividend Received	Capital Appreciation	Total Shareholder Return
Short Term Return	5 Days	-0.030	-3.43 %
	10 Days	-0.005	-0.59 %
	20 Days	+0.040	+4.97 %
Medium Term Return	3 Months	+0.270	+46.99 %
	6 Months	+0.445	+111.25 %

## SUNMOW HOLDING BERHAD (03050)

C<sup>2</sup> Chart



Period	Dividend Received	Capital Appreciation	Total Shareholder Return
Short Term Return	5 Days	-	-
	10 Days	-	-
	20 Days	-	-
Medium Term Return	3 Months	-0.290	-21.48 %
	6 Months	-0.140	-11.87 %
Long Term Return	1 Year	+0.410	+53.09 %
	2 Years	+0.160	+17.79 %
Annualised Return	Annualised	-	+8.53 %

## EDELTEQ HOLDINGS BERHAD (0278)

C<sup>2</sup> Chart



Period	Dividend Received	Capital Appreciation	Total Shareholder Return
Short Term Return	5 Days	-0.015	-15.62 %
	10 Days	-0.035	-19.84 %
	20 Days	+0.035	+19.84 %
Medium Term Return	3 Months	-0.005	-4.47 %
	6 Months	-0.140	-28.47 %

**Disclaimer:** The information on this page is provided as a service to readers. It does not constitute financial advice and/or any investment recommendations. Past performance is not indicative of future results. We assume no liability for damages resulting from or arising out of the use of such information. It would be best if you did your own research to make your personal investment decisions wisely or consult a licenced investment advisor.

## Price & Total Shareholder Return (as at Yesterday)

Fundamental Analysis

**DEFINITION:** Company revenue is growing and making good quality of earnings with positive Free Cash Flow.

**CHART GUIDE:** Total Shareholder Return (TSR) combines share price appreciation and distributions paid to show the total return to the shareholder expressed as a percentage.



ShareInvestor WebPro > Screener > Market Screener (FA & TA) > select BURSA > add criteria

**A. Criteria**

1. Fundamental Analysis Conditions tab >select (i) Free Cash Flow, (ii) Revenue Growth, (iii) Gross Profit (Earnings) Margin, (iv) Quality of Earnings, (v) Total Shareholder Returns, > click Add Criteria
2. Fundamental Analysis Conditions tab >select (vi) Total Shareholder Returns > click Add Criteria

**B. Conditions (Criteria Filters)**

1. Free Cash Flow - select (more than) type (1) for the past select (1) financial year(s)
2. Revenue Growth - select (more than) type (1) for the past select (1) financial year(s)
3. Gross Profit (Earnings) Margin - select (more than) type (30) % for the past select (1) financial year(s)
4. Quality of Earnings - select (more than) type (1) for the past select (1) financial year(s)
5. Total Shareholder Return - select (more than) type (5) % for the past select (3) financial year(s)
6. Total Shareholder Return - select (more than) type (5) % for the past select (5) financial year(s)

- > click Save Template > Create New Template type (Growth Companies) > click Create
- > click Save Template as > select Growth Companies > click Save
- > click Screen Now (may take a few minutes)
- > Sort By: Select (Revenue Growth) Select (Desc)
- > Mouse over stock name > Factsheet > looking for Total Shareholder Return

### IGB BERHAD (5606)

C<sup>2</sup> Chart

Analysis



Period	Dividend Received	Capital Appreciation	Total Shareholder Return
Short Term Return	5 Days	+0.050	+2.47%
	10 Days	+0.050	+1.29%
	20 Days	+0.050	+2.47%
Medium Term Return	3 Months	+0.069	+3.02%
	6 Months	+0.297	+12.82%
	1 Year	+0.071	+36.96%
Long Term Return	2 Years	0.050	+87.05%
	3 Years	0.236	+118.33%
	5 Years	0.583	+747.68%
Annualised Return	Annualised	-	+53.34%

### YTL HOSPITALITY REIT (5109)

C<sup>2</sup> Chart

Analysis



Period	Distribution Received	Capital Appreciation	Total Shareholder Return
Short Term Return	5 Days	+0.040	+3.36%
	10 Days	+0.060	+5.43%
	20 Days	+0.070	+6.03%
Medium Term Return	3 Months	+0.210	+20.59%
	6 Months	+0.235	+23.62%
	1 Year	+0.220	+21.78%
Long Term Return	2 Years	0.019	+37.25%
	3 Years	0.061	+46.05%
	5 Years	0.187	+9.00%
Annualised Return	Annualised	-	+1.74%

### MATRIX CONCEPTS HOLDINGS BERHAD (5236)

C<sup>2</sup> Chart

Analysis



Period	Dividend Received	Capital Appreciation	Total Shareholder Return
Short Term Return	5 Days	+0.050	+3.41%
	10 Days	+0.050	+2.82%
	20 Days	+0.070	+4.00%
Medium Term Return	3 Months	+0.200	+12.35%
	6 Months	+0.300	+19.74%
	1 Year	+0.210	+20.53%
Long Term Return	2 Years	+0.267	+17.19%
	3 Years	+0.653	+56.96%
	5 Years	0.188	+53.11%
Annualised Return	Annualised	-	+8.89%

**Disclaimer:** The information on this page is provided as a service to readers. It does not constitute financial advice and/or any investment recommendations. Past performance is not indicative of future results. We assume no liability for damages resulting from or arising out of the use of such information. It would be best if you did your own research to make your personal investment decisions wisely or consult a licenced investment advisor.

## Price & Total Shareholder Return (as at Yesterday)

Fundamental Analysis

**DEFINITION:** Company is paying out dividend with low or moderate leverage.

**CHART GUIDE:** Total Shareholder Return (TSR) combines share price appreciation and distributions paid to show the total return to the shareholder expressed as a percentage.



ShareInvestor WebPro > Screener > Market Screener (FA & TA) > select BURSA > add criteria

**A. Criteria**

- > click Add Criteria
- Fundamental Analysis Conditions tab >select (i) Dividend Yield (Historical)
- Fundamental Analysis Conditions tab >select (ii) Dividend Payout (Historical)
- Fundamental Analysis Conditions tab >select (iii) Total Debt To Equity
- Fundamental Analysis Conditions tab >select (iv) Total Shareholder Returns
- Fundamental Analysis Conditions tab >select (v) Total Shareholder Returns
- Fundamental Analysis Conditions tab / >select (vi) CAGR of Dividend Per Share

• Fundamental Analysis Conditions tab >select (vii) CAGR of Dividend Per Share

**B. Conditions (Criteria Filters)**

1. Dividend Yield - select (more than) type (1) % for the past select (1) financial year(s)
2. Dividend Payout (Historical) - select (between) type (0.5) to type (1) times for the past select (1) financial year(s)
3. Total Debt to Equity - select (less than) type (1) for the past select (1) financial year(s)
4. Total Shareholder Return - select (more than) type (5) % for the past select (3) financial year(s)
5. Total Shareholder Return - select (more than) type (5) % for the past select (5) financial year(s)

6. CAGR of Dividend Per Share - select (less than) type (30) % for the past select (5) financial year(s)
7. CAGR of Dividend Per Share - select (more than) type (1) % for the past select (5) financial year(s)

- > click Save Template > Create New Template type (Dividend Companies) > click Create
- > click Save Template as > select Dividend Companies > click Save
- > click Screen Now (may take a few minutes)
- > Sort By: Select (Dividend Yield) Select (Desc)
- > Mouse over stock name > Factsheet > looking for Total Shareholder Return

## FORMOSA PROSONIC INDUSTRIES (9172)

C<sup>2</sup> Chart

Analysis



Period	Dividend Received	Capital Appreciation	Total Shareholder Return
Short Term Return	5 Days	-0.056	-0.98%
	10 Days	+0.030	+0.20%
	20 Days	+0.140	+4.86%
Medium Term Return	3 Months	+0.150	+6.23%
	6 Months	+0.300	+11.63%
Long Term Return	1 Year	+0.510	+14.46%
	2 Years	0.260	+8.77%
Annualised Return	3 Years	0.340	+25.84%
	5 Years	0.550	+37.24%
Annualised Return	Annualised	-	+14.65%

## BERMAZ AUTO BERHAD (5248)

C<sup>2</sup> Chart

Analysis



Period	Dividend Received	Capital Appreciation	Total Shareholder Return
Short Term Return	5 Days	-	-
	10 Days	-	+0.82%
	20 Days	-	-
Medium Term Return	3 Months	+0.010	+0.41%
	6 Months	+0.290	+11.76%
Long Term Return	1 Year	+0.304	+18.41%
	2 Years	0.023	+0.74%
Annualised Return	3 Years	0.090	+3.67%
	5 Years	0.332	+16.33%
Annualised Return	Annualised	-	+6.66%

## AMWAY (M) HOLDINGS BERHAD (6351)

C<sup>2</sup> Chart

Analysis



Period	Dividend Received	Capital Appreciation	Total Shareholder Return
Short Term Return	5 Days	-0.116	-1.61%
	10 Days	+0.040	+0.60%
	20 Days	+0.240	+3.69%
Medium Term Return	3 Months	+1.140	+16.36%
	6 Months	+1.360	+20.28%
Long Term Return	1 Year	+1.330	+19.50%
	2 Years	+1.330	+19.35%
Annualised Return	3 Years	0.075	+1.12%
	5 Years	0.400	+5.73%
Annualised Return	Annualised	-	+3.51%

**Disclaimer:** The information on this page is provided as a service to readers. It does not constitute financial advice and/or any investment recommendations. Past performance is not indicative of future results. We assume no liability for damages resulting from or arising out of the use of such information. It would be best if you did your own research to make your personal investment decisions wisely or consult a licenced investment advisor.



Week: 16 February 2024 - 22 February 2024

More Brokers' Call 

AMINVESTMENT BANK <small>... See More</small>	Call	Target Price	Release Date
MISC Berhad (3816)	<b>HOLD</b>	RM7.81	21 Feb 2024
Sunway Construction Berhad (6777)	<b>BUY</b>	RM3.59	21 Feb 2024

APEX <small>... See More</small>	Call	Target Price	Release Date
CelcomDigi Berhad (6947)	<b>HOLD</b>	RM4.36	21 Feb 2024
Kuala Lumpur Kepong Berhad (2445)	<b>SELL</b>	RM20.00	21 Feb 2024

BIMB SECURITIES SDN BHD <small>... See More</small>	Call	Target Price	Release Date
Apex Healthcare Berhad (7090)	<b>SELL</b>	RM2.41	22 Feb 2024
Gas Malaysia Berhad (5209)	<b>HOLD</b>	RM3.53	21 Feb 2024
Star Media Group Berhad (6084)	<b>HOLD</b>	RM0.43	21 Feb 2024

KENANGA <small>... See More</small>	Call	Target Price	Release Date
Sime Darby Berhad (4197)	<b>OUTPERFORM</b>	RM2.80	22 Feb 2024
Sunway Berhad (5211)	<b>UNDERPERFORM</b>	RM2.51	22 Feb 2024
Sunway Construction Group Berhad (5263)	<b>OUTPERFORM</b>	RM3.00	22 Feb 2024

MALACCA SECURITIES SDN BHD <small>... See More</small>	Call	Target Price	Release Date
Malaysia Smelting Corporation Berhad (5916)	<b>SELL</b>	RM1.82	16 Feb 2024
Nova Wellness Group Berhad (0201)	<b>HOLD</b>	RM0.57	21 Feb 2024

MIDF <small>... See More</small>	Call	Target Price	Release Date
CIMB Group Holdings Berhad (1023)	<b>BUY</b>	RM6.82	22 Feb 2024
Petronas Chemicals Group Berhad (5183)	<b>NEUTRAL</b>	RM7.16	22 Feb 2024
Samaiden Group Berhad (0223)	<b>BUY</b>	RM1.62	22 Feb 2024

UOB KAYHIAN <small>... See More</small>	Call	Target Price	Release Date
Adventa Berhad (7191)	<b>BUY</b>	RM0.43	21 Feb 2024
GHL Systems Berhad	<b>BUY</b>	RM0.82	21 Feb 2024
Kuala Lumpur Kepong Berhad (2445)	<b>BUY</b>	RM24.80	21 Feb 2024

**Disclaimer:** InveSt does not accept any liability whatsoever for any direct, indirect or consequential losses (including loss of profit) or damages that may arise from the use of information or opinions in this publication. The information and opinions in InveSt are not to be considered as an offer to sell or buy any of the securities discussed. Opinions expressed are subject to change without notice. The Brokers may, from time to time, have interests or positions in the securities mentioned. For the full report on each item listed on this page, please visit [https://www.shareinvestor.com/my/brokers\\_call](https://www.shareinvestor.com/my/brokers_call).

**DEFINITION:** Top 10 stocks with Technical Analysis plus Pattern Matching by 60 pre-defined indicators by the system showing a higher probability of bullish sentiment on the share price.



ShareInvestor WebPro > Screener > Predefined TA Screens > select market BURSA > Most Long Signals > click Scan Results or mouse over each company

## ECOMATE HOLDINGS BERHAD (0239.MY)

### ECOMATE

Price updated at 22 Feb 2024 16:57

Last: <b>0.825</b>	Change: <b>+0.005</b>	Volume: <b>23,670</b>
	Change (%): <b>+0.61</b>	Range: <b>0.800 - 0.825</b>

TA Scanner Results based on historical data up to 22 Feb 2024

Condition	Signal	Explanation
Accumulation Distribution: Bullish Accumulation Distribution	Long	Accumulation distribution increasing for the last 7 days
Bollinger Band: High Above Upper Bollinger Band	Neutral	1. High above upper bollinger band(14,2). 2. Average volume(5) is above 100,000.
CCI: Bearish CCI Overbought And Reversing	Short	1. CCI(26) above 100 and CCI(26) 1 day ago increasing for the last 3 days. 2. CCI(26) below CCI(26) 1 day ago
Candlestick: Bullish 3 White Soldiers	Long	Bullish: 3 White Soldiers
Price: New 52 Week High	Long	1. Stock reach a new 52 week high. 2. Average volume(30) is above 50000.
Volume: 10 Days large value Buy Up trade	Long	1. 150K value Buy Up greater than Sell Down by 20% for 10 days. 2. 50K-100K value Buy Up greater than Sell Down by 20% for 10 days. 3. Average volume(10) is above 1000000
Volume: 5 Days large value Buy Up trade	Long	1. 150K value Buy Up greater than Sell Down by 20% for 5 days. 2. 50K-100K value Buy Up greater than Sell Down by 20% for 5 days. 3. Average volume(10) is above 1000000
Volume: Consecutive Days Of Increasing Average Volume	Long	1. Average Volume(20) has been increasing over the last 2 weeks. 2. Average volume(20) is above 100000

## TENAGA NASIONAL BERHAD (5347.MY)

### TENAGA

Price updated at 22 Feb 2024 16:59

Last: <b>11.220</b>	Change: <b>-0.160</b>	Volume: <b>40,345</b>
	Change (%): <b>-1.41</b>	Range: <b>11.220 - 11.320</b>

TA Scanner Results based on historical data up to 22 Feb 2024

Condition	Signal	Explanation
Accumulation Distribution: Bullish Accumulation Distribution	Long	Accumulation distribution increasing for the last 7 days
Price: Consecutive Days Gains	Long	1. Close price has been increasing over the last 5 days. 2. Average volume(5) above 100,000.
Price: New 52 Week High	Long	1. Stock reach a new 52 week high. 2. Average volume(30) is above 50000.
Volume: 10 Days large value Buy Up trade	Long	1. 150K value Buy Up greater than Sell Down by 20% for 10 days. 2. 50K-100K value Buy Up greater than Sell Down by 20% for 10 days. 3. Average volume(10) is above 1000000
Volume: 5 Days large value Buy Up trade	Long	1. 150K value Buy Up greater than Sell Down by 20% for 5 days. 2. 50K-100K value Buy Up greater than Sell Down by 20% for 5 days. 3. Average volume(10) is above 1000000

## SEDANIA INNOVATOR BERHAD (0178.MY)

### SEDANIA

Price updated at 22 Feb 2024 16:53

Last: <b>0.205</b>	Change: -	Volume: <b>16,947</b>
	Change (%): -	Range: <b>0.195 - 0.205</b>

TA Scanner Results based on historical data up to 22 Feb 2024

Condition	Signal	Explanation
Bollinger Band: Bullish Lower Bollinger Band Support	Long	1. Low 1 day ago below lower bollinger band(20,2). 2. Close above close 1 day ago. 3. Average volume(5) is above 100,000.

## PEGASUS HEIGHTS BERHAD (4464.MY)

### PHB

Price updated at 22 Feb 2024 16:50

Last: <b>0.010</b>	Change: -	Volume: <b>30,581</b>
	Change (%): -	Range: <b>0.005 - 0.010</b>

TA Scanner Results based on historical data up to 22 Feb 2024

Condition	Signal	Explanation
Bollinger Band: Bullish Long Term Volatility Breakout and Trending	Long	1. Close price above upper bollinger band(33,1). 2. Volume above average volume(50). 3. Average volume(50) is above 300,000.
MA: Bullish Price Crossover	Long	1. Close price crossed above MA(40) within the last 1 day. 2. Previous day close price is below the MA(10) for the last 5 days
MACD: Bullish MACD Crossover	Long	1. MACD(12,26) diff line crossed above the MACD(12,26) signal line. 2. MACD Histogram(12,26) is above 0.
RSI: Short Term RSI 50 Bullish Crossover	Long	1. RSI(20) crossed above 50 within the last 1 day and RSI(20) 1 day ago below 50 for the last 5 days. 2. Volume above average volume(125). 3. Average volume(5) is above 100,000.
Stochastic: Fast Stochastic Buy Signal	Long	1. Fast Stochastic(15,5) %K crossed above 20. 2. Fast Stochastic(15,5) %K 1 day ago was below 20 for the last 5 days. 3. Average volume(30) is above 50000

## MALAYSIA AIRPORTS HOLDINGS BERHAD (5014.MY)

### AIRPORT

Price updated at 22 Feb 2024 16:51

Last: <b>8.040</b>	Change: <b>-0.020</b>	Volume: <b>7,190</b>
	Change (%): <b>-0.25</b>	Range: <b>8.030 - 8.060</b>

TA Scanner Results based on historical data up to 22 Feb 2024

Condition	Signal	Explanation
Candlestick: Indecision Doji	Neutral	Indecision: Doji
Donchian Channels: High Above Upper Donchian Channels	Long	High crossed above the upper Donchian Channel(14,4)
Price: New 52 Week High	Long	1. Stock reach a new 52 week high. 2. Average volume(30) is above 50000.
Volume: 10 Days large value Buy Up trade	Long	1. 150K value Buy Up greater than Sell Down by 20% for 10 days. 2. 50K-100K value Buy Up greater than Sell Down by 20% for 10 days. 3. Average volume(10) is above 1000000
Volume: 5 Days large value Buy Up trade	Long	1. 150K value Buy Up greater than Sell Down by 20% for 5 days. 2. 50K-100K value Buy Up greater than Sell Down by 20% for 5 days. 3. Average volume(10) is above 1000000
Williams %R: Bearish Williams %R	Short	1. Williams %R(26) between 0 and -20. 2. Average volume(5) is above 100,000.

**Disclaimer:** The information on this page is provided as a service to readers. It does not constitute financial advice and/or any investment recommendations. Past performance is not indicative of future results. We assume no liability for damages resulting from or arising out of the use of such information. It would be best if you did your own research to make your personal investment decisions wisely or consult a licenced investment advisor.

Condition	Signal	Explanation
Bollinger Band: High Above Upper Bollinger Band	Neutral	1. High above upper bollinger band(14,2). 2. Average volume(5) is above 100,000.
Chaikin Volatility: Increasing Chaikin Volatility	Neutral	Chaikin Volatility(10,10) has been increasing for 5 days
DM: Bullish Directional Movement	Long	-DI(14) crossed below +DI(14)
Donchian Channels: High Above Upper Donchian Channels	Long	High crossed above the upper Donchian Channel(14,4)
MA: Short Term Bullish Moving Average Crossover	Long	MA(10) crossed above MA(15) within the last 1 day.

**NOTION VTEC BERHAD (0083.MY)**

**NOTION**

Price updated at 22 Feb 2024 17:08

Last: <b>0.455</b>	Change: <b>+0.140</b>	Volume: <b>867,191</b>
	Change (%): <b>+44.44</b>	Range: <b>0.370 - 0.460</b>

TA Scanner Results based on historical data up to 22 Feb 2024

Condition	Signal	Explanation
Bollinger Band: High Above Upper Bollinger Band	Neutral	1. High above upper bollinger band(14,2). 2. Average volume(5) is above 100,000.
Bollinger Band: Low Below Lower Bollinger Band	Neutral	1. Low below lower bollinger band(14,2). 2. Average volume(5) is above 100,000.
Candlestick: Bullish Engulfing	Long	Bullish: Engulfing
Chaikin Volatility: Increasing Chaikin Volatility	Neutral	Chaikin Volatility(10,10) has been increasing for 5 days
DM: Bullish Directional Movement	Long	-DI(14) crossed below +DI(14)
Donchian Channels: High Above Upper Donchian Channels	Long	High crossed above the upper Donchian Channel(14,4)
MA: Long Term Bullish Moving Average Crossover	Long	MA(50) crossed above MA(200) within the last 1 day.

**SAMCHEM HOLDINGS BERHAD (5147.MY)**

**SAMCHEM**

Price updated at 22 Feb 2024 16:52

Last: <b>0.650</b>	Change: -	Volume: <b>4,932</b>
	Change (%): -	Range: <b>0.640 - 0.655</b>

TA Scanner Results based on historical data up to 22 Feb 2024

Condition	Signal	Explanation
Bollinger Band: Bullish Long Term Volatility Breakout and Trending	Long	1. Close price above upper bollinger band(33,1). 2. Volume above average volume(50). 3. Average volume(50) is above 300,000.
Bollinger Band: Bullish Short Term Volatility Breakout and Trending	Long	1. Close price above upper bollinger band(33,1). 2. Volume above average volume(10). 3. Average volume(10) is above 300,000.
Bollinger Band: High Above Upper Bollinger Band	Neutral	1. High above upper bollinger band(14,2). 2. Average volume(5) is above 100,000.
Candlestick: Indecision Doji	Neutral	Indecision: Doji
Donchian Channels: High Above Upper Donchian Channels	Long	High crossed above the upper Donchian Channel(14,4)
Volume: Volume Spike	Long	1. Volume is more than 500% above average volume(10). 2. Volume above 200000. 3. Close price above 0.10

**INGENIEUR GUDANG BERHAD (5178.MY)**

**INGENIEU**

Price updated at 22 Feb 2024 16:46

Last: <b>0.140</b>	Change: -	Volume: <b>19,181</b>
	Change (%): -	Range: <b>0.140 - 0.150</b>

TA Scanner Results based on historical data up to 22 Feb 2024

Condition	Signal	Explanation
Bollinger Band: Bullish Long Term Volatility Breakout and Trending	Long	1. Close price above upper bollinger band(33,1). 2. Volume above average volume(50). 3. Average volume(50) is above 300,000.
Bollinger Band: Bullish Short Term Volatility Breakout and Trending	Long	1. Close price above upper bollinger band(33,1). 2. Volume above average volume(10). 3. Average volume(10) is above 300,000.

**RAPID SYNERGY BERHAD (7765.MY)**

**RAPID**

Price updated at 22 Feb 2024 16:59

Last: <b>1.110</b>	Change: <b>+0.030</b>	Volume: <b>37,332</b>
	Change (%): <b>+2.78</b>	Range: <b>1.060 - 1.150</b>

TA Scanner Results based on historical data up to 22 Feb 2024

Condition	Signal	Explanation
Bollinger Band: Low Below Lower Bollinger Band	Neutral	1. Low below lower bollinger band(14,2). 2. Average volume(5) is above 100,000.
MACD: Bullish MACD Divergence	Long	1. Close price is decreasing for the last 3 days. 2. MACD(12,26) diff line is increasing for the last 3 days.
Price: Consecutive Days Loss	Short	1. Close price has been decreasing over the last 5 days. 2. Average volume(5) is above 100,000.
Price: New 52 Week Low	Short	1. Stock reach a new 52 week low. 2. Average volume(30) is above 50000.
RSI: RSI Oversold	Long	1. RSI(20) is below 20. 2. RSI(20) is decreasing for the last 3 days. 3. Stock has more than 75 days of historical data.
Volume: 10 Days large value Buy Up trade	Long	1. 150K value Buy Up greater than Sell Down by 20% for 10 days. 2. 50K-100K value Buy Up greater than Sell Down by 20% for 10 days. 3. Average volume(10) is above 1000000
Volume: Consecutive Days Of Increasing Average Volume	Long	1. Average Volume(20) has been increasing over the last 2 weeks. 2. Average volume(20) is above 100000

**PENSONIC HOLDINGS BERHAD (9997.MY)**

**PENSONI**

Price updated at 22 Feb 2024 16:50

Last: <b>0.685</b>	Change: <b>-0.020</b>	Volume: <b>14,560</b>
	Change (%): <b>-2.84</b>	Range: <b>0.685 - 0.720</b>

TA Scanner Results based on historical data up to 22 Feb 2024

Condition	Signal	Explanation
Bollinger Band: Bullish Long Term Volatility Breakout and Trending	Long	1. Close price above upper bollinger band(33,1). 2. Volume above average volume(50). 3. Average volume(50) is above 300,000.
Bollinger Band: High Above Upper Bollinger Band	Neutral	1. High above upper bollinger band(14,2). 2. Average volume(5) is above 100,000.
DM: Bullish Directional Movement	Long	-DI(14) crossed below +DI(14)
Donchian Channels: High Above Upper Donchian Channels	Long	High crossed above the upper Donchian Channel(14,4)
Volume: Volume Spike	Long	1. Volume is more than 500% above average volume(10). 2. Volume above 200000. 3. Close price above 0.10
Williams %R: Bearish Williams %R	Short	1. Williams %R(26) between 0 and -20. 2. Average volume(5) is above 100,000.

**Disclaimer:** The information on this page is provided as a service to readers. It does not constitute financial advice and/or any investment recommendations. Past performance is not indicative of future results. We assume no liability for damages resulting from or arising out of the use of such information. It would be best if you did your own research to make your personal investment decisions wisely or consult a licenced investment advisor.

Condition	Signal	Explanation
Bollinger Band: High Above Upper Bollinger Band	Neutral	1. High above upper bollinger band(14,2). 2. Average volume(5) is above 100,000.
DM: Bullish Directional Movement	Long	-DI(14) crossed below +DI(14)
Volume: Volume Spike	Long	1. Volume is more than 500% above average volume(10). 2. Volume above 200000. 3. Close price above 0.10



**Dato' Eu Hong Chew**  
Former Group CEO i-Berhad  
Non-Executive Director

He has been associated with the Sumurwang Group for many years charting the path for its manufacturing arm, firstly under Dreamland Holdings Berhad and the subsequent acquisition of I-Berhad.

Before that, he was with PA Management Consulting for a decade where he was the Director of Studies for the Cranfield PA MBA Programme in Malaysia.

Educated at the Royal Military College, Dato' Eu has an engineering degree from the University of Glasgow, and a MBA from the University of Bradford, UK.

# Is there an investment opportunity in RYERSON?

## SUMMARY

- Ryerson Holding Corporation's (NYSE: RYI) revenue growth over the past decade was due to both selling price growth and acquisitions. There was hardly any shipment tonnage growth.
- Furthermore, the price growth was due to an extraordinary price spike in 2021/22. Prices has since come down and reverting to cyclical values. There are also not clear signs of improvements in operating efficiencies.
- It is a cyclical company despite its diverse offerings and customer base. A valuation based on its performance over the cycle shows that there is no margin of safety based on its price as of 29 Jan 2024.

*Disclaimer: This article is written for informational purposes only. It does not constitute a solicitation, offer, advice, counseling or recommendation to buy or sell. As such it is not intended to promote the purchase of shares in any way. As a reminder, any type of asset has a risk factor and needs to be evaluated from multiple perspectives. Therefore, any investment decision and the associated risk remains with the investor. The views expressed here are entirely the writer's own.*

## INVESTMENT THESIS

From 2014 to 2023, RYI’s revenue grew at 4.3% CAGR. But this was due more to changes in the selling price as there was hardly any tonnage growth. The price growth, especially the price spike in the past 2 years, enabled it to generate strong earnings. But this earnings growth is not sustainable as price is reverting to the cycle levels.

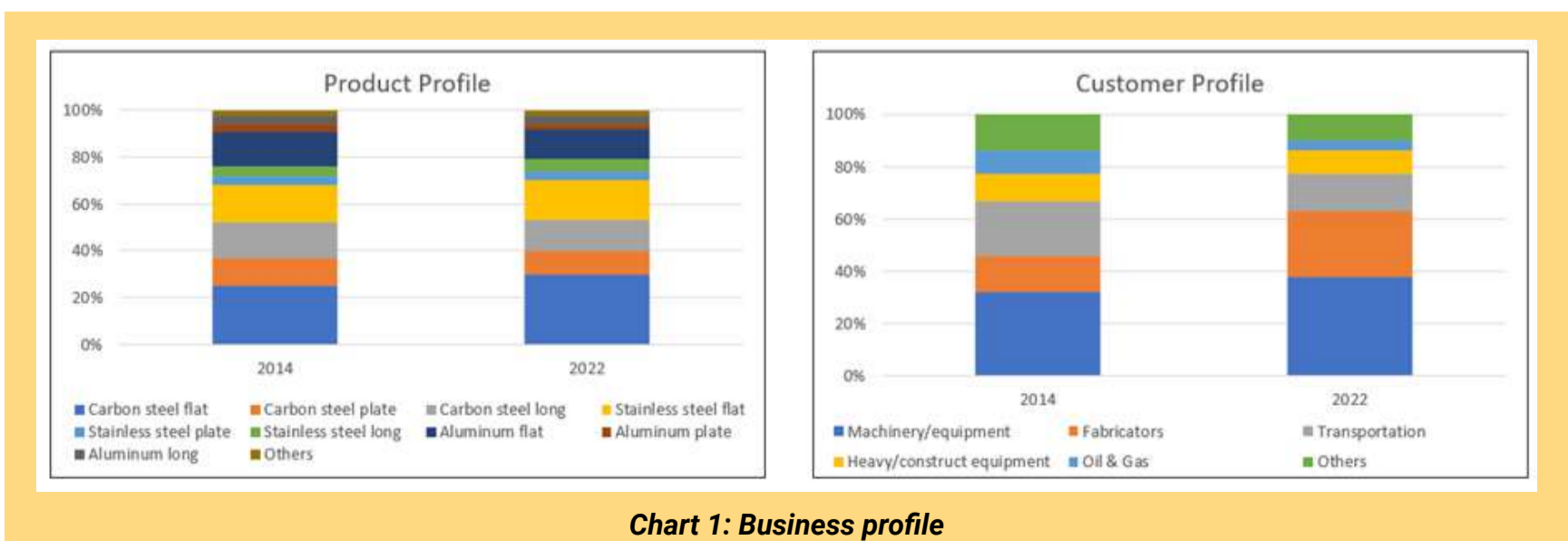
While it is financially sound, there are no clear signs of improving operating efficiencies. Despite its efforts to mitigate the cyclical effect, RYI is a cyclical company. A valuation based on its performance over the cycle showed that there is no margin of safety based on its market price as of 29 Jan 2024.

## BACKGROUND

RYI IPO in 2014 and is today a leading value-added processor and distributor of industrial metals with operations in the United States. The US accounted for about 91% of the revenue in 2022.

RYI has a wide product range and customer base. Refer to Chart 1.

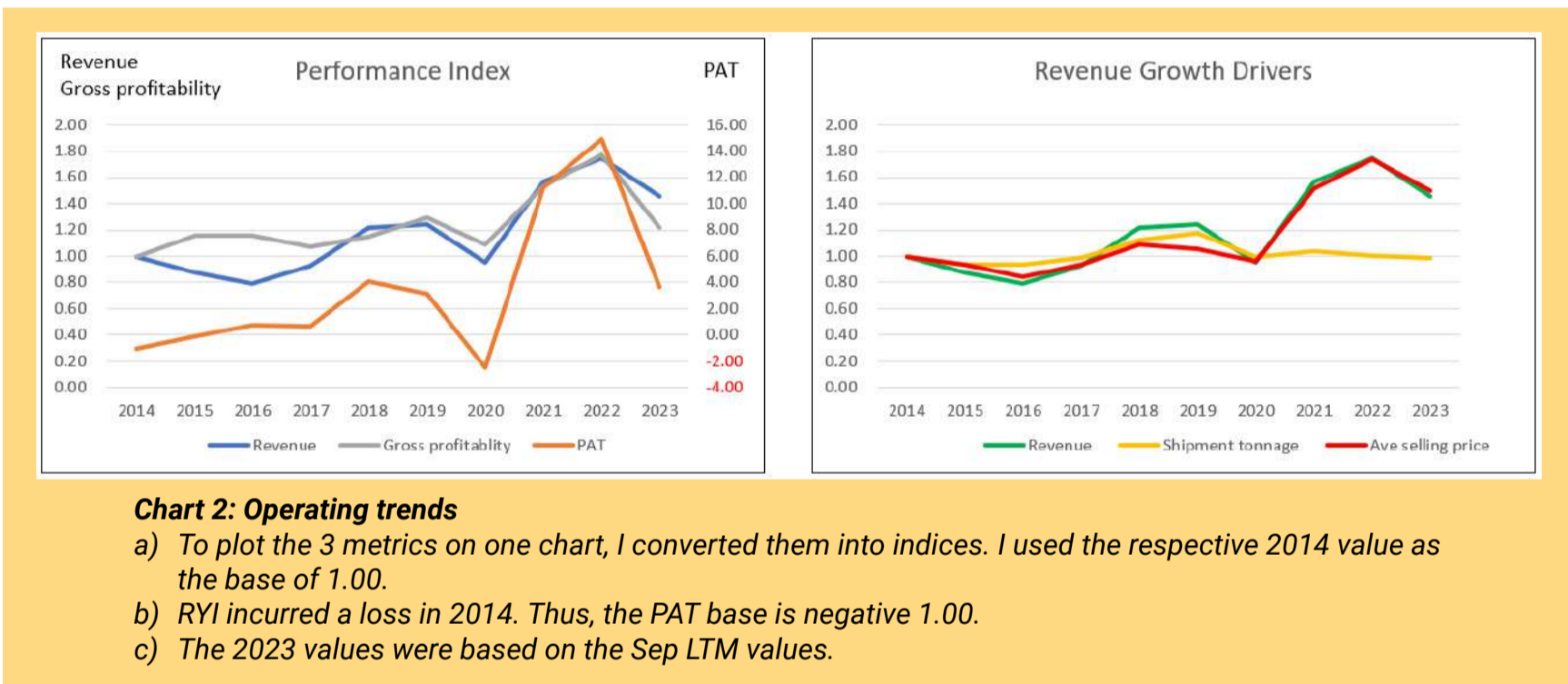
- Carbon steel accounted for about half of the metals distributed. Stainless steel and aluminum accounted for about ¼ each.
- RYI serves a wide range of manufacturing end-markets.



## OPERATING TRENDS

RVI revenue, profits and gross profitability (gross profits/total assets) showed both uptrends and cyclical patterns. Refer to the left portion of Chart 2. You may think that this is a growth company.

But when I broke down the revenue into shipment tonnage and selling price, I found that the revenue growth, especially over the past 3 years, was due more to price growth than shipment tonnage. Refer to the right chart of Chart 2.



But this price growth is not sustainable as there was an extraordinary price spike in 2021/22 as shown in Chart 3. You can see that prices were cyclical and prices today have declined



from the 2021/22 peak. We would expect RVI average selling prices to decline accordingly. The result would be a decline in revenue.

Revenue growth was not just due to product price growth. RYI also grew via acquisitions.

From 2014 to 2023, the total assets increased from USD1.87 billion to USD2.43 billion. During this period RYI spent USD497 million on CAPEX and USD403 million on acquisitions.

The company did not provide a breakdown of the revenue growth due to acquisitions. As such, I could not estimate the portion due to acquisitions. But using the amount spent on CAPEX vs acquisitions, I would say that a significant part of the growth could be attributed to acquisitions.

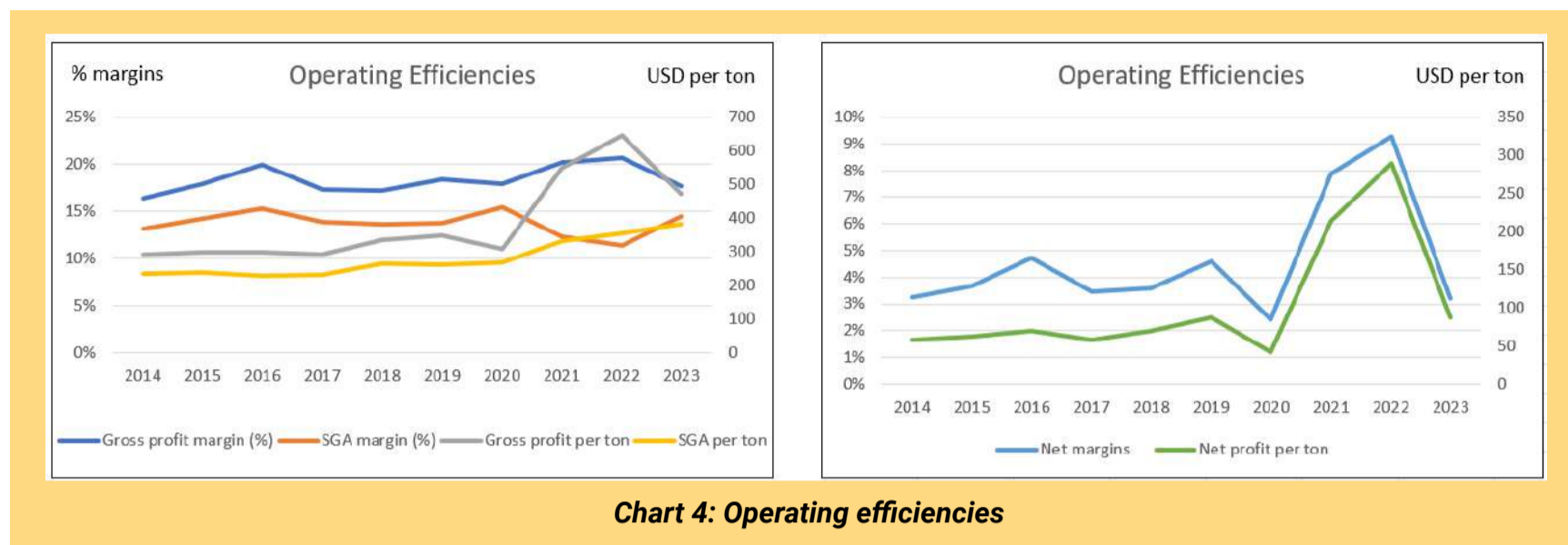
The sad part is that despite the growth of total assets by about 30% comparing 2023 to 2014, there was hardly any increase in shipment tonnage. This is not a growth company from a revenue perspective. This is especially when the CAGR for the past decade was only 4.3%. There was also hardly any growth in the net profit margin and net profit per ton when you ignore the extraordinary price hike years. The other operating metrics also did not show improvements. Refer to Chart 4.

- There were uptrends in gross profit margins and gross profit per ton. But I think this is due more to price growth rather than productivity improvements.
- SGA margins (SGA as % of revenue) were lower over the past few years compared to those a decade ago. But cost control did not look too good as SGA expenses per ton rose. Again, the better SGA margins are probably due to higher revenue resulting from better selling prices.

When I tracked returns, I found that the 2023 ROE was lower than that in 2014. If you relate this to the PAT growth in the left part of Chart 2, you would conclude that:

- The higher PAT in 2021/22 were not just due to higher selling prices but also driven by higher asset usage.

- There is no significant improvement in the returns once you “washout” the extraordinary price spikes.



## FINANCIAL STRENGTHS

I would rate RYI as financially strong.

- Over the past 10 years, it generated a total of USD1.73 billion in cash flow from operations compared to the total PAT of USD0.92 billion. This is a good cash conversion ratio.
- Its 2023 EBITDA / Interest expense ratio was 7.6. As of the end of Sep 2023, it had a Debt / Total Capital ratio of 41%.
- It had a good capital allocation plan. Its cash flow from operations was used to reduce debt as well as fund its CAPEX and acquisitions. Refer to Table 1. I would even conclude that it is a cash cow.

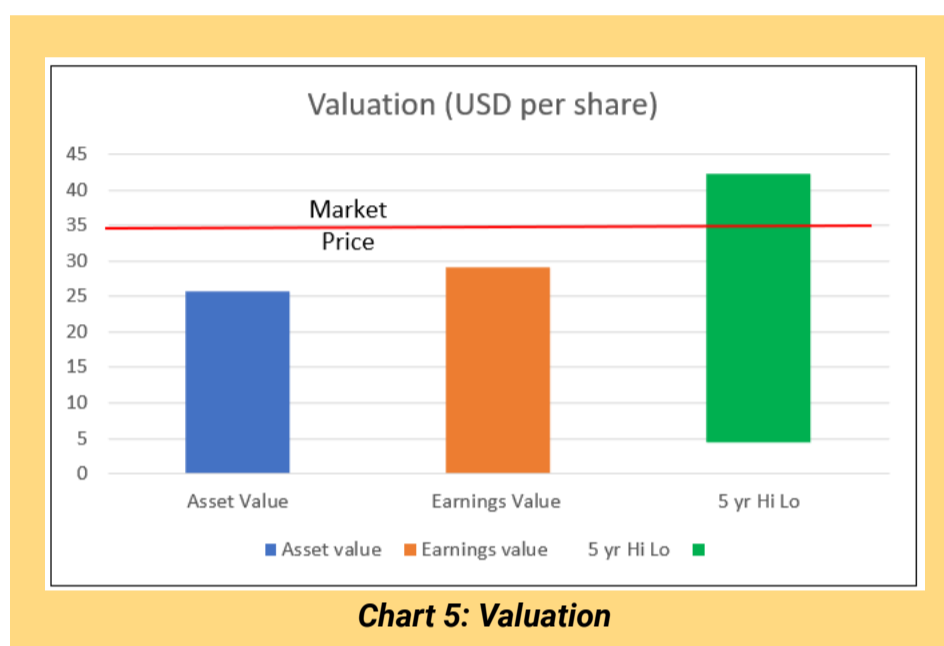
Item	Sources USD m	Uses USD m
Cash flow from Op	1,729	
New share issued	184	
Net Debt		1,071
CAPEX		222
Acquisitions		403
Dividends and buyback		217
Misc and cash		1
<b>Total</b>	<b>1,913</b>	<b>1,913</b>

**Table 1: Sources and Uses of Funds 2014 to 2023**



While there were some negative points in its financial position, they did not seem insurmountable:

- As of the end of Sep 2023, RYI has USD37 million in cash. This was only about 1.5 % of its total assets.
- Over the past 8 years, there were 2 years with negative cash flow from operations.



## VALUATION

I used 2 key approaches to triangulate the intrinsic value of the company:

- **Asset Value:** I used the Book Value here.
- **Earnings Value:** This was estimated based on its performance over the cycle.

Chart 5 summarizes the picture. With the market price of USD35 per share (as of 29 Jan 2024) you can see that there is no margin of safety under both the Asset Value and Earnings Value.

## VALUATION MODEL

I estimated the Earnings Value of RYI based on a single-stage Free Cash Flow to the Firm (FCFF) Model where:

$$\text{Value of the firm} = \text{FCFF} \times (1 + g) / (\text{WACC} - g)$$

$$\text{FCFF} = \text{EBIT}(1-t) \times (1 - \text{Reinvestment rate})$$

The key parameters driving the Free Cash Flow are shipment tonnage, average selling price, gross profit margin and SGA margins. I assumed that the values were the average values from 2014 to 2020 to represent the cycle values.

The discount was 9.4% WACC. This was the average of various sources based on the first page results of a Google search for the term "RYI WACC"

$$\text{The value of Equity} = \text{Value of the Firm} + \text{Cash equivalents} + \text{Investments} - \text{Debt} - \text{Minority Interests.}$$

The Cash, Debt, and Minority Interests were based on the Sep 2023 values.

## CONCLUSION

From a fundamental perspective, I would not rate RYI as very sound. On the positive side, it is financially strong with a good capital allocation plan. I would go as far to say that it is a cash cow. But there seem to be more negatives.

- Revenue growth was driven by price growth rather than shipment growth. At the same time, despite the acquisitions there was hardly any shipment growth.
- SGA expenses on a per ton basis increased. SGA expenses only seemed to have improved due to higher revenue resulting from higher product prices
- Product prices are cyclical and the past 3 years high prices are not sustainable.
- There is no improvement in the returns.

RYI is a cyclical company and its valuation should be based on its performance over the cycle. On such a basis, my valuation also showed that there is no margin of safety at the current market price. You can understand why I do not consider RYI stock an investment opportunity currently - it is not very sound fundamentally and there is no margin of safety.

*I am a long-term value investor who has held onto stocks for more than 5 years. My analysis and valuation are from such a perspective. I consider quarterly results "noisy" and focus on long-term trends.*

*This article was re-purposed from my article "Ryerson Made Hay While The Sun Shone. But Is The Sun Still Shining?" that was first published on Seeking Article. Refer to this [link](#) for more of my insights on other US companies.*

# Unlock the secret of wealth

Learn how to make money  
from the stock market  
while minimizing risk



Get your free e-book preview

# MALAYSIA RECORDS TOTAL APPROVED INVESTMENTS OF RM329.5 BIL IN 2023, UP 23% FROM 2022 — PM

**A**ccording to Prime Minister Datuk Seri Anwar Ibrahim, Malaysia recorded total approved investments of RM329.5 billion in 2023 which is 23% higher than in 2022, and is the highest amount of approved investments in the country's history. Out of the total investments, foreign investments were the main contributor at 57.2% compared to domestic investments of 42.8%. This excellent performance is supported by an increase of 35.1% for domestic investments and 15.3% for foreign investments.

This matter was tabled during the National Investment Council Meeting (MPN) No 2/2024 on Thursday 22 Feb. He stressed that the country's investment landscape which showed a very encouraging performance also reflects the recovery and revival of the economy throughout the Madani government's administration of over one year. Indirectly, this

is a sign that the pro-investment and pro-business friendly policies implemented through the whole-of-government approach have been fruitful in increasing investors' confidence.

The total approved investments involved 5,101 projects and would potentially create over 127,000 new job opportunities to the people and country. The services sector recorded the highest investments, contributing over half or 51.1% of total approved investments at RM168.4 billion, followed by the manufacturing sector at RM152 billion (46.1%) and primary industries at RM9.1 billion (2.8%).

The MPN Meeting No 2/2024 also discussed the direction of the national digital investment, in line with the development of the digital economy which is expanding rapidly and is among the key economic sectors in strengthening the country's investment agenda. The digital economy in Malaysia, which contributed 23.2% to the gross domestic product in 2021, is projected to rise to 25.5% by 2025.

For the 2021-2023 period, a total of 396 digital-related projects were approved with investment value of RM128.9 billion, which included projects approved through the National Committee on Investments (NCI). Investments in the digital projects are expected to create jobs for 36,553 local citizens.

Among the digital investments approved were for data centres, cloud computing, data hosting, big data analytics and artificial intelligence. The presence of renowned global digital companies and global market leaders in Malaysia also gave an important signal that the country has the attraction and conducive investment ecosystem for digital investments. Hence, the government needs to facilitate as best as possible the potential digital investments without any compromise on aspects related to data security and national sovereignty.

# MALAYSIA'S INTERNATIONAL RESERVES UP 0.5% TO US\$115.4 BIL AS OF FEB 15 — BNM

Bank Negara Malaysia said that Malaysia's international reserves rose 0.5% as of Feb 15 from a fortnight earlier. The latest foreign exchange reserves totalled US\$115.4 billion (RM552.5 billion) compared with US\$114.8 billion as of Jan 31. The position is sufficient to finance five-and-a-half months of imports of goods and services, and is one time the total short-term external debt.



Learn how to identify Hot Stocks using Technical Analysis (TA) and Fundamental Analysis (FA)

**SIGN UP FOR Invest NOW IT'S FREE!!!**

[Click here](#)

Scan me



Via email, every Friday.

Get market moving news and analyses. Regular columns include **Behind The Action** and **From The Observer**

- Leaderboard
- Shariah Hot Stocks
- Shariah Momentum Up Stocks
- Non Shariah Hot Stocks
- Up Trending Stocks
- Growth Stocks
- Dividend Stocks
- Long Companies
- Insider Activity
- Investor Relations
- Regional Markets



# MALAYSIA'S 5G ADOPTION RATE AT 29.9%, ALMOST 10.07 MIL SUBSCRIBERS AS OF JAN 31 - FAHMI

**A**ccording to Communications Minister Fahmi Fadzil, Malaysia has recorded almost 10.07 million 5G service subscriptions, representing an adoption rate of 29.9%, as of Jan 31. However, all mobile network operators must be more sensitive and responsible towards the needs of their users in the future.

He said that with greater speed and technology also comes responsibility. So his wish is for all mobile network operators henceforth to be also more sensitive to the needs of users. In his speech at the Maxis 5G-Advanced Trial Showcase on Thursday, he said that the industry has to provide fast, reliable and cheaper Internet as well as better technology and with better service.

The Maxis 5G-Advanced trial will also be part of the Malaysian Pavilion at the Mobile World Congress 2024 (MWC 2024) to be held in Barcelona, Spain, from Feb 26 to 28. Fahmi said that all telecommunication companies in Malaysia will participate in the congress, including several other local companies. This will mark the first time that the country is participating with the involvement of

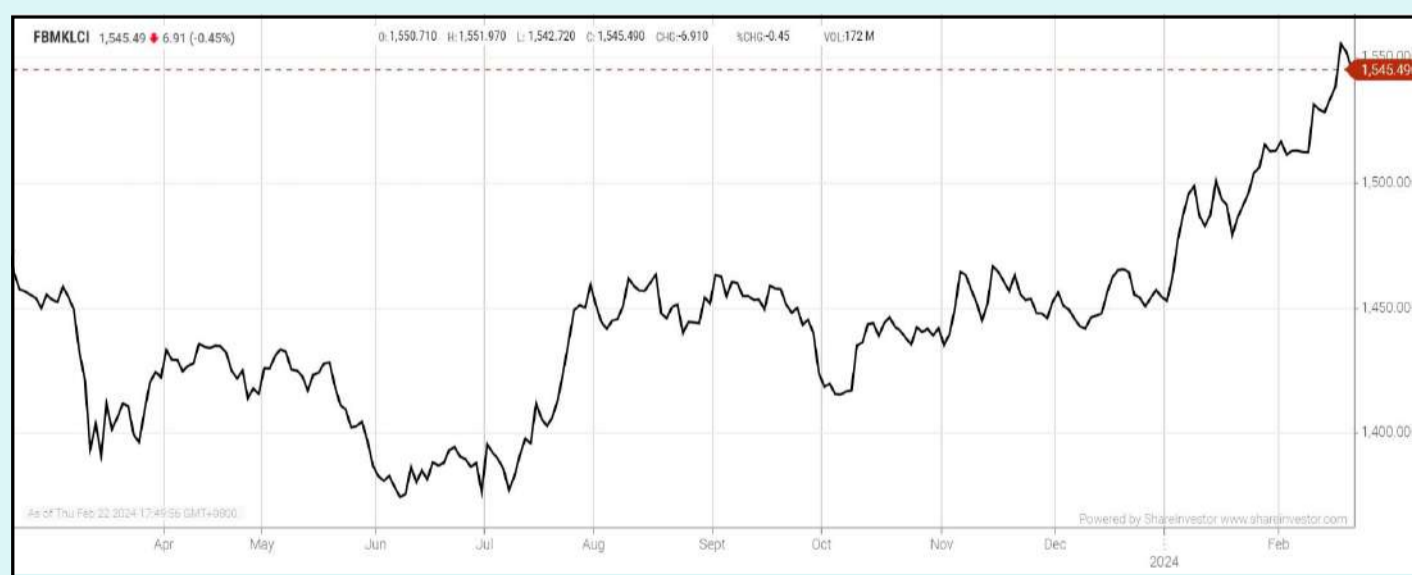


all telcos under one pavilion adding that this is expected to be the country’s largest attendance at MWC.

MWC Barcelona 2024 organised by the Global System for Mobile Communications Association (GSMA) will be attended by industry players from various sectors and backgrounds as well as senior government officials from all over the world. The GSMA Ministerial Programme will be a forum for policymakers to discuss current issues in the telecommunication industry. Last year’s event attracted the participation of 151 countries and 45 international organisations.

## EYE ON THE MARKETS

On Thursday (22Feb), the Ringgit closed at 4.7725 against the USD and 3.5624 to the Sing Dollar. On Monday (19Feb), the FBM KLCI opened at 1533.35. As at Thursday (22Feb) 5:00pm, the FBM KLCI closed up 12.14 points at 1545.49. Over in US, the overnight Dow Jones Industrial Average closed up 456.87 points (+1.18%) to 39,069.11 whilst the NASDAQ added 460.75 points (+2.96%) to 16,041.62.



**KLCI 1 Year Chart**

## Over 5 trading days



ShareInvestor WebPro ([www.shareinvestor.com/my](http://www.shareinvestor.com/my))

1. Price > Stock Prices
2. Select Market: NASDAQ / NYSE / IDX / SET / HKEX / SGX (One bourse at a time)
3. select Stocks Tab
4. select Ranking Top Gainers or Top Losers (Over 5 Trading Days)
5. Mouse over Column Layout > select Edit Customs > select Name > select Last Done Price > select 5 Days Change > select 52 Weeks High > select 52 Weeks Low > Mouse Over Column Layout > select Custom

### NASDAQ (USD)

#### Top Gainers

Name	Last Done	Change Over 5 Days	52 Weeks High	52 Weeks Low
BOOKING HOLDINGS INC	3,901.990	+151.330	3,844.760	2,382.545
BROADCOM INC	1,304.900	+39.830	1,295.970	572.100
NVIDIA CORP	785.380	+58.800	746.110	204.210
MERCADOLIBRE INC	1,817.980	+46.150	1,800.090	1,063.020
SHOCKWAVE MEDICAL INC	270.530	+34.210	315.950	157.000

#### Top Losers

Name	Last Done	Change Over 5 Days	52 Weeks High	52 Weeks Low
PALO ALTO NETWORKS INC	267.820	-99.060	380.840	165.360
COCA-COLA CONSOLIDATED INC	813.630	-50.960	961.910	495.110
ROKU INC	63.290	-31.210	108.840	51.620
SUPER MICRO COMPUTER INC	975.520	-28.480	1,077.870	85.610
ZSCALER INC	226.150	-27.010	259.610	84.930

### NYSE (USD)

#### Top Gainers

Name	Last Done	Change Over 5 Days	52 Weeks High	52 Weeks Low
BERKSHIRE HATHAWAY INC	625,510.000	+15,424.000	626,946.990	442,363.500
TEXAS PACIFIC LAND CORPORATION	1,563.420	+75.860	2,000.000	1,266.210
KINSALE CAPITAL GROUP INC	505.950	+68.380	528.040	277.900
TRANSDIGM GROUP INC	1,192.950	+35.160	1,165.080	686.460
AUTOZONE INC	2,758.770	+30.940	2,855.210	2,277.880

#### Top Losers

Name	Last Done	Change Over 5 Days	52 Weeks High	52 Weeks Low
GRAHAM HOLDINGS CO	711.830	-32.060	749.893	545.000
LITHIA MOTORS INC	285.590	-18.690	331.960	203.650
HOVNANIAN ENTERPRISES INC	150.380	-17.720	183.600	61.010
KADANT INC	323.260	-17.360	354.020	183.190
TELEFLEX INC	237.700	-17.350	276.430	177.633

### IDX (Rupiah)

#### Top Gainers

Name	Last Done	Change Over 5 Days	52 Weeks High	52 Weeks Low
ADIRA DINAMIKA MULTI FINANCE TBK	13,625.000	+1,700.000	13,900.000	9,625.000
AKASHA WIRA INTERNATIONAL TBK	10,600.000	+1,250.000	14,125.000	6,375.000
PETRINDO JAYA KREASI TBK	7,100.000	+1,175.000	13,750.000	240.000
INDORAMA SYNTHETICS	3,950.000	+930.000	5,100.000	2,800.000
INDOSAT (PT INDOSAT TBK)	10,675.000	+675.000	10,850.000	6,475.000

#### Top Losers

Name	Last Done	Change Over 5 Days	52 Weeks High	52 Weeks Low
INDO TAMBANGRAYA MEGAH TBK	26,075.000	-1,000.000	41,500.000	22,125.000
MD PICTURES TBK	4,860.000	-690.000	6,250.000	610.000
BANK JAGO TBK	2,590.000	-520.000	3,860.000	1,530.000
ASURANSI BINA DAN ATRA	5,000.000	-500.000	6,550.000	5,000.000
NFC INDONESIA TBK	3,020.000	-380.000	7,400.000	2,780.000

### SET (Thai Baht)

#### Top Gainers

Name	Last Done	Change Over 5 Days	52 Weeks High	52 Weeks Low
OHTL	458.000	+26.000	546.000	416.000
MGI	50.000	+20.250	50.000	6.200
KWC	278.000	+12.000	319.000	238.000
SCB	111.000	+9.500	118.500	95.500
SCC	273.000	+9.000	340.000	262.000

#### Top Losers

Name	Last Done	Change Over 5 Days	52 Weeks High	52 Weeks Low
BH	238.000	-9.000	272.000	204.000
DELTA	74.250	-7.250	119.500	70.500
KYE	323.000	-7.000	331.000	275.000
SCCC	134.500	-6.500	149.500	130.000
JTS	80.250	-5.000	93.500	23.200

### HKEX (HKD)

#### Top Gainers

Name	Last Done	Change Over 5 Days	52 Weeks High	52 Weeks Low
TRIP COM GROUP LTD	355.600	+37.400	357.800	240.600
GUOCO GROUP	89.500	+17.650	90.000	51.500
LI AUTO INC	137.100	+17.300	185.500	80.100
MANULIFE FINANCIAL CORP	188.000	+11.800	193.500	134.800
ORIENT OVERSEAS INT	121.100	+11.800	172.600	91.700

#### Top Losers

Name	Last Done	Change Over 5 Days	52 Weeks High	52 Weeks Low
SIRNAOMICS LTD	19.980	-7.870	62.500	19.640
ASIAN CITRUS HLDGS	0.020	-4.180	18.017	0.020
BEIJING LUZHU BIOTECHNOLOGY CO LTD	24.800	-3.600	42.000	16.140
J&T GLOBAL EXPRESS LIMITED	11.100	-2.660	16.540	10.200
GAUSH MEDITECH LTD	29.950	-2.500	56.100	25.650

### SGX (SGD)

#### Top Gainers

Name	Last Done	Change Over 5 Days	52 Weeks High	52 Weeks Low
JMH USD	42.900	+1.990	52.570	38.370
JARDINE C&C	26.860	+0.820	35.580	25.750
DBS	33.950	+0.620	34.550	30.300
UOL	6.540	+0.590	7.209	5.600
IFAST	8.340	+0.520	8.510	4.150

#### Top Losers

Name	Last Done	Change Over 5 Days	52 Weeks High	52 Weeks Low
SIA	6.590	-0.640	8.050	5.530
SEMBORP IND	5.330	-0.390	6.100	3.547
UOB	28.500	-0.260	30.710	26.820
SOUTHERN PKG	0.460	-0.140	0.600	0.186
SATS	2.620	-0.130	2.950	2.370

**DEFINITION:** Insider Activity shows the trades made by substantial shareholders or directors of the company. Purchases by the directors and company share buyback may indicate the share price is undervalued and brings confidence to the price trend of the share price.



ShareInvestor WebPro > Fundamental > Insider Trades > click Search tab > Select Bursa > click Stock name > scroll up and leave at <Select Counter> Type Date Range for Announcement Date > click Search

Notice Period is 11st Feb 2024 – 17th Feb 2024

Effective Change Date	Stock Name	Buyer/ Seller Name [Classification]	Bought / (Sold) ['000]	No. of Shares After Trade ['000]	
			Total	Total	% Held
13 FEB 2024 - 13 FEB 2024	ABMB	EMPLOYEES PROVIDENT FUND BOARD [SSH]	-175	158,143	10.215
05 FEB 2024 - 05 FEB 2024	AGX	DATO' GEORGE ALFONSO MIRANDA [DIR/CEO]	250	250	0.06
05 FEB 2024 - 05 FEB 2024	AGX	DATO' PONNUDORAI A/L PERIASAMY [DIR/CEO]	-5,942	49,960	11.542
05 FEB 2024 - 05 FEB 2024	AGX	DATO' PONNUDORAI A/L PERIASAMY [SSH]	-5,942	49,960	11.542
05 FEB 2024 - 05 FEB 2024	AGX	DATO' ROZALILA BINTI ABDUL RAHMAN [DIR/CEO]	15,940	15,940	3.69
05 FEB 2024 - 05 FEB 2024	AGX	MR JAYASIELAN A/L GOPAL [DIR/CEO]	-5,942	49,960	11.542
05 FEB 2024 - 05 FEB 2024	AGX	MR JAYASIELAN A/L GOPAL [SSH]	-5,942	49,960	11.542
05 FEB 2024 - 05 FEB 2024	AGX	MR NEO LIP PHENG PETER [DIR/CEO]	-9,058	76,164	17.6
05 FEB 2024 - 05 FEB 2024	AGX	MR NEO LIP PHENG PETER [SSH]	-9,058	76,164	17.6
05 FEB 2024 - 05 FEB 2024	AGX	MR ONG TENG YAN [DIR/CEO]	100	100	0.023
05 FEB 2024 - 05 FEB 2024	AGX	MR PENU MARK [DIR/CEO]	-9,058	76,164	17.6
05 FEB 2024 - 05 FEB 2024	AGX	MR PENU MARK [SSH]	-9,058	76,164	17.6
05 FEB 2024 - 05 FEB 2024	AGX	PUAN AIDA MOSIRA BINTI MOKHTAR [DIR/CEO]	130	130	0.03
15 FEB 2024 - 15 FEB 2024	AIRPORT	KUMPULAN WANG PERSARAAN (DIPERBADANKAN) [SSH]	-132	118,594	7.108
13 FEB 2024 - 13 FEB 2024	AIRPORT	EMPLOYEES PROVIDENT FUND BOARD [SSH]	-198	119,337	7.152
13 FEB 2024 - 13 FEB 2024	AMBANK	EMPLOYEES PROVIDENT FUND BOARD [SSH]	419	360,034	10.884
09 FEB 2024 - 09 FEB 2024	AMBANK	EMPLOYEES PROVIDENT FUND BOARD [SSH]	160	359,615	10.871
08 FEB 2024 - 08 FEB 2024	AMBANK	EMPLOYEES PROVIDENT FUND BOARD [SSH]	160	359,455	10.866
07 FEB 2024 - 07 FEB 2024	AMBANK	EMPLOYEES PROVIDENT FUND BOARD [SSH]	160	359,295	10.861
07 FEB 2024 - 07 FEB 2024	ANCOMNY	DATO' SIEW KA WEI [DIR/CEO]	-3,000	162,364	17.001
07 FEB 2024 - 07 FEB 2024	ANCOMNY	DATO' SIEW KA WEI [SSH]	-3,000	162,364	17.001
07 FEB 2024 - 07 FEB 2024	ANCOMNY	MR SIEW KA KHEONG [DIR/CEO]	-1,500	28,267	2.96
02 FEB 2024 - 05 FEB 2024	APOLLO	DATO' CHEAH SEE YEONG [DIR/CEO]	293	63,028	78.785
13 FEB 2024 - 13 FEB 2024	AXIATA	EMPLOYEES PROVIDENT FUND BOARD [SSH]	300	1,647,923	17.953
09 FEB 2024 - 09 FEB 2024	AXIATA	EMPLOYEES PROVIDENT FUND BOARD [SSH]	3,001	1,647,799	17.952
08 FEB 2024 - 08 FEB 2024	AXIATA	EMPLOYEES PROVIDENT FUND BOARD [SSH]	409	1,644,798	17.919
07 FEB 2024 - 07 FEB 2024	AXIATA	EMPLOYEES PROVIDENT FUND BOARD [SSH]	3	1,644,389	17.915
13 FEB 2024 - 13 FEB 2024	AXREIT	EMPLOYEES PROVIDENT FUND BOARD [SSH]	350	281,120	16.087
13 FEB 2024 - 13 FEB 2024	BAUTO	EMPLOYEES PROVIDENT FUND BOARD [SSH]	-676	135,892	11.639
08 FEB 2024 - 08 FEB 2024	BAUTO	EMPLOYEES PROVIDENT FUND BOARD [SSH]	-251	136,567	11.696
07 FEB 2024 - 07 FEB 2024	BAUTO	EMPLOYEES PROVIDENT FUND BOARD [SSH]	-292	136,818	11.718
14 FEB 2024 - 14 FEB 2024	BINTAI	DATUK NG CHOON KOON [DIR/CEO]	5,000	66,104	7.044
14 FEB 2024 - 14 FEB 2024	BINTAI	DATUK NG CHOON KOON [SSH]	5,000	66,104	7.044
14 FEB 2024 - 14 FEB 2024	BINTAI	DATUK TAY CHOR HAN [DIR/CEO]	5,000	80,339	8.561
14 FEB 2024 - 14 FEB 2024	BINTAI	DATUK TAY CHOR HAN [SSH]	5,000	80,339	8.561
06 FEB 2024 - 06 FEB 2024	BIOHLDG-WB	MR HON TIAN KOK@WILLIAM [DIR/CEO]	60,110	60,110	11.425
13 FEB 2024 - 13 FEB 2024	BJCORP	MISS CHRYSSEIS TAN SHEIK LING [DIR/CEO]	-3,000	77,444	1.326
13 FEB 2024 - 13 FEB 2024	BURSA	EMPLOYEES PROVIDENT FUND BOARD [SSH]	475	98,844	12.214
09 FEB 2024 - 09 FEB 2024	BURSA	EMPLOYEES PROVIDENT FUND BOARD [SSH]	-361	98,370	12.155
08 FEB 2024 - 08 FEB 2024	BURSA	EMPLOYEES PROVIDENT FUND BOARD [SSH]	-712	98,631	12.187
08 FEB 2024 - 08 FEB 2024	BURSA	EMPLOYEES PROVIDENT FUND BOARD [SSH]	100	98,731	12.2
07 FEB 2024 - 07 FEB 2024	BURSA	EMPLOYEES PROVIDENT FUND BOARD [SSH]	-285	99,343	12.275
13 FEB 2024 - 13 FEB 2024	CDB	EMPLOYEES PROVIDENT FUND BOARD [SSH]	200	1,153,981	9.837
09 FEB 2024 - 09 FEB 2024	CDB	EMPLOYEES PROVIDENT FUND BOARD [SSH]	162	1,153,781	9.835
08 FEB 2024 - 08 FEB 2024	CDB	EMPLOYEES PROVIDENT FUND BOARD [SSH]	162	1,153,619	9.834
07 FEB 2024 - 07 FEB 2024	CDB	EMPLOYEES PROVIDENT FUND BOARD [SSH]	162	1,153,457	9.832
14 FEB 2024 - 14 FEB 2024	CIMB	KUMPULAN WANG PERSARAAN (DIPERBADANKAN) [SSH]	-200	670,371	6.28
09 FEB 2024 - 09 FEB 2024	CIMB	EMPLOYEES PROVIDENT FUND BOARD [SSH]	1,220	1,463,831	13.73
08 FEB 2024 - 08 FEB 2024	CIMB	EMPLOYEES PROVIDENT FUND BOARD [SSH]	229	1,462,611	13.71
07 FEB 2024 - 07 FEB 2024	CIMB	EMPLOYEES PROVIDENT FUND BOARD [SSH]	-5,682	1,462,383	13.71
08 FEB 2024 - 08 FEB 2024	CLMT	EMPLOYEES PROVIDENT FUND BOARD [SSH]	813	425,237	15.517
07 FEB 2024 - 07 FEB 2024	CLMT	EMPLOYEES PROVIDENT FUND BOARD [SSH]	806	424,424	15.487
08 FEB 2024 - 08 FEB 2024	CMSB	NORGES BANK [SSH]	-319	53,718	5
14 FEB 2024 - 14 FEB 2024	CTOS	ABRDN HOLDINGS LIMITED [SSH]	-2,526	153,703	6.654
14 FEB 2024 - 14 FEB 2024	CTOS	ABRDN MALAYSIA SDN BHD [SSH]	-2,526	151,920	6.577
14 FEB 2024 - 14 FEB 2024	CTOS	ABRDN PLC [SSH]	-2,526	153,703	6.654
13 FEB 2024 - 13 FEB 2024	CTOS	EMPLOYEES PROVIDENT FUND BOARD [SSH]	-2,800	263,059	11.388
09 FEB 2024 - 09 FEB 2024	CTOS	EMPLOYEES PROVIDENT FUND BOARD [SSH]	-200	265,859	11.509

Notice Period is 11st Feb 2024 – 17th Feb 2024

Effective Change Date	Stock Name	Buyer/ Seller Name [Classification]	Bought / (Sold) ['000]	No. of Shares After Trade ['000]	
			Total	Total	% Held
08 FEB 2024 - 08 FEB 2024	CTOS	EMPLOYEES PROVIDENT FUND BOARD [SSH]	-1,000	266,059	11.518
07 FEB 2024 - 07 FEB 2024	CTOS	EMPLOYEES PROVIDENT FUND BOARD [SSH]	-381	267,059	11.561
15 FEB 2024 - 15 FEB 2024	CYPARK	MR CHUNG CHEE YANG [SSH]	30	45,430	5.521
14 FEB 2024 - 14 FEB 2024	CYPARK	MR CHUNG CHEE YANG [SSH]	300	45,400	5.518
08 FEB 2024 - 08 FEB 2024	CYPARK	MOHAMED NIZAM BIN MOHAMED JAKEL [SSH]	1,650	188,890	22.957
09 FEB 2024 - 09 FEB 2024	CYPARK	MR CHUNG CHEE YANG [SSH]	100	45,100	5.481
13 FEB 2024 - 13 FEB 2024	D&O	EMPLOYEES PROVIDENT FUND BOARD [SSH]	37	79,963	6.458
09 FEB 2024 - 09 FEB 2024	D&O	EMPLOYEES PROVIDENT FUND BOARD [SSH]	20	79,927	6.455
15 FEB 2024 - 15 FEB 2024	DIALOG	KUMPULAN WANG PERSARAAN (DIPERBADANKAN) [SSH]	500	571,717	10.13
14 FEB 2024 - 14 FEB 2024	DIALOG	KUMPULAN WANG PERSARAAN (DIPERBADANKAN) [SSH]	250	571,217	10.12
07 FEB 2024 - 07 FEB 2024	DIALOG	EMPLOYEES PROVIDENT FUND BOARD [SSH]	145	826,694	14.65
13 FEB 2024 - 13 FEB 2024	DLADY	EMPLOYEES PROVIDENT FUND BOARD [SSH]	-8	5,120	8
13 FEB 2024 - 13 FEB 2024	DPHARMA	EMPLOYEES PROVIDENT FUND BOARD [SSH]	48	82,003	8.525
09 FEB 2024 - 09 FEB 2024	DPHARMA	EMPLOYEES PROVIDENT FUND BOARD [SSH]	55	81,954	8.52
08 FEB 2024 - 08 FEB 2024	DPHARMA	EMPLOYEES PROVIDENT FUND BOARD [SSH]	151	81,849	8.509
13 FEB 2024 - 13 FEB 2024	ECONBHD	KUMPULAN WANG PERSARAAN (DIPERBADANKAN) [SSH]	-873	72,896	5.143
07 FEB 2024 - 07 FEB 2024	ECONBHD	EMPLOYEES PROVIDENT FUND BOARD [SSH]	1,488	84,024	5.928
13 FEB 2024 - 13 FEB 2024	EDEN	KOPERASI BELIA ISLAM MALAYSIA BERHAD [SSH]	-1,811	40,583	8.834
09 FEB 2024 - 09 FEB 2024	EITA	JASA SIMBOLIK SDN. BHD. [SSH]	100	27,237	9.025
09 FEB 2024 - 09 FEB 2024	EITA	MADAM GOH KIN BEE [SSH]	100	43,790	14.51
09 FEB 2024 - 09 FEB 2024	EITA	MR LIM JOO SWEE [DIR/CEO]	100	4,479	9.985
09 FEB 2024 - 09 FEB 2024	EITA	MR LIM JOO SWEE [DIR/CEO]	100	43,897	14.545
09 FEB 2024 - 09 FEB 2024	EITA	MR LIM JOO SWEE [SSH]	100	43,897	14.545
15 FEB 2024 - 15 FEB 2024	ENG-TEX-WB	MR NG YIK SOON [DIR/CEO]	-50	3,177	2.912
14 FEB 2024 - 14 FEB 2024	ENG-TEX-WB	MR NG CHOOI GUAN [DIR/CEO]	-1,000	7,072	6.483
14 FEB 2024 - 14 FEB 2024	ENG-TEX-WB	MR NG CHOOI GUAN [SSH]	-1,000	7,072	6.483
08 FEB 2024 - 08 FEB 2024	ENG-TEX-WB	MR NG CHOOI GUAN [DIR/CEO]	-1,200	8,072	7.4
08 FEB 2024 - 08 FEB 2024	ENG-TEX-WB	MR NG CHOOI GUAN [SSH]	-1,200	8,072	7.4
13 FEB 2024 - 13 FEB 2024	ENG-TEX-WB	NG YIK SOON [DIR/CEO]	-100	3,227	2.958
09 FEB 2024 - 09 FEB 2024	ENG-TEX-WB	NG YIK SOON [DIR/CEO]	-209	3,327	3.05
13 FEB 2024 - 13 FEB 2024	F&N	EMPLOYEES PROVIDENT FUND BOARD [SSH]	53	41,829	11.404
09 FEB 2024 - 09 FEB 2024	F&N	EMPLOYEES PROVIDENT FUND BOARD [SSH]	-0.1	41,776	11.39
08 FEB 2024 - 08 FEB 2024	F&N	EMPLOYEES PROVIDENT FUND BOARD [SSH]	-47	41,776	11.39
07 FEB 2024 - 07 FEB 2024	F&N	EMPLOYEES PROVIDENT FUND BOARD [SSH]	-4	41,823	11.403
14 FEB 2024 - 14 FEB 2024	FFB	ABRDN HOLDINGS LIMITED (FORMERLY KNOWN AS ABERDEEN ASSET MANAGEMENT PLC) [SSH]	-2,145	123,564	6.601
14 FEB 2024 - 14 FEB 2024	FFB	ABRDN MALAYSIA SDN BHD [SSH]	-2,145	122,165	6.526
14 FEB 2024 - 14 FEB 2024	FFB	ABRDN PLC [SSH]	-2,145	123,564	6.601
08 FEB 2024 - 08 FEB 2024	FFB	EMPLOYEES PROVIDENT FUND BOARD [SSH]	-1,309	169,098	9.033
07 FEB 2024 - 07 FEB 2024	FFB	EMPLOYEES PROVIDENT FUND BOARD [SSH]	-1,216	170,408	9.103
13 FEB 2024 - 13 FEB 2024	FRONTKN	EMPLOYEES PROVIDENT FUND BOARD [SSH]	-500	161,020	10.237
09 FEB 2024 - 09 FEB 2024	FRONTKN	EMPLOYEES PROVIDENT FUND BOARD [SSH]	204	161,520	10.269
08 FEB 2024 - 08 FEB 2024	FRONTKN	EMPLOYEES PROVIDENT FUND BOARD [SSH]	163	161,315	10.256
07 FEB 2024 - 07 FEB 2024	FRONTKN	EMPLOYEES PROVIDENT FUND BOARD [SSH]	43	158,574	10.245
13 FEB 2024 - 13 FEB 2024	GAMUDA	EMPLOYEES PROVIDENT FUND BOARD (EPF BOARD) [SSH]	-1,589	272,214	9.94
09 FEB 2024 - 09 FEB 2024	GAMUDA	EMPLOYEES PROVIDENT FUND BOARD (EPF BOARD) [SSH]	-531	273,287	9.98
08 FEB 2024 - 08 FEB 2024	GAMUDA	EMPLOYEES PROVIDENT FUND BOARD (EPF BOARD) [SSH]	-191	273,752	10
07 FEB 2024 - 07 FEB 2024	GAMUDA	EMPLOYEES PROVIDENT FUND BOARD (EPF BOARD) [SSH]	5,792	273,913	10.01
14 FEB 2024 - 14 FEB 2024	GTRONIC	APB RESOURCES BERHAD [SSH]	70,000	70,000	10.37
08 FEB 2024 - 08 FEB 2024	HARNLEN	LNH ENTERPRISE SDN. BHD. [SSH]	380	125,995	22.336
08 FEB 2024 - 08 FEB 2024	HARNLEN	MR LOW KOK YAOW [DIR/CEO]	380	281,647	49.93
08 FEB 2024 - 08 FEB 2024	HARNLEN	MR LOW KOK YAOW [SSH]	380	281,647	49.93
08 FEB 2024 - 08 FEB 2024	HARNLEN	MR LOW KOK YONG [SSH]	380	282,643	50.106

**Disclaimer:** The Information in Insider Activity is extracted from [www.shareinvestor.com/fundamental/insider\\_trades](http://www.shareinvestor.com/fundamental/insider_trades). The information on this page is provided as a service to readers. It does not constitute financial advice and/or any investment recommendations. We assume no liability for damages resulting from or arising out of the use of such information. Whilst every effort is made to ensure accuracy, the information presented is not the official record of shareholder filings. Readers are advised to read the original filings on the Bursa Malaysia website at [www.bursamalaysia.com](http://www.bursamalaysia.com)

# PURNELL

## ESCAPE II FORGED CARBON

PLAY



Notice Period is 11st Feb 2024 – 17th Feb 2024

Effective Change Date	Stock Name	Buyer/ Seller Name [Classification]	Bought / (Sold) ['000]		No. of Shares After Trade ['000]	
			Total	Total	% Held	% Held
08 FEB 2024 - 08 FEB 2024	HARNLEN	MR LOW KUECK SHIN [DIR/CEO]	380	269,961	47.857	
08 FEB 2024 - 08 FEB 2024	HARNLEN	MR LOW KUECK SHIN [SSH]	380	269,831	47.834	
08 FEB 2024 - 08 FEB 2024	HARNLEN	MR LOW KUEK KONG [DIR/CEO]	380	269,581	47.79	
08 FEB 2024 - 08 FEB 2024	HARNLEN	MR LOW KUEK KONG [SSH]	380	269,581	47.79	
08 FEB 2024 - 08 FEB 2024	HARNLEN	MR LOW KWEK LEE [DIR/CEO]	380	269,791	47.827	
08 FEB 2024 - 08 FEB 2024	HARNLEN	MR LOW KWEK LEE [SSH]	380	269,791	47.827	
08 FEB 2024 - 08 FEB 2024	HARNLEN	MR LOW QUEK KIONG [DIR/CEO]	380	302,907	53.699	
08 FEB 2024 - 08 FEB 2024	HARNLEN	MR LOW QUEK KIONG [SSH]	9,480	295,227	52.337	
08 FEB 2024 - 08 FEB 2024	HARNLEN	PUAN SRI DATIN CHAN PUI LEORN [DIR/CEO]	380	282,674	50.112	
08 FEB 2024 - 08 FEB 2024	HARNLEN	PUAN SRI DATIN CHAN PUI LEORN [SSH]	380	282,674	50.112	
08 FEB 2024 - 08 FEB 2024	HARNLEN	TAN SRI LOW NAM HUI [SSH]	380	268,791	47.651	
09 FEB 2024 - 09 FEB 2024	HEGROU	DATUK CHRISTOPHER WAN SOO KEE [DIR/CEO]	-100	150	0.034	
13 FEB 2024 - 13 FEB 2024	HLBANK	EMPLOYEES PROVIDENT FUND BOARD [SSH]	-8	200,863	9.626	
09 FEB 2024 - 09 FEB 2024	HLBANK	EMPLOYEES PROVIDENT FUND BOARD [SSH]	-13	200,871	9.627	
08 FEB 2024 - 08 FEB 2024	HLBANK	EMPLOYEES PROVIDENT FUND BOARD [SSH]	-3	200,884	9.627	
17 OCT 2023 - 17 OCT 2023	HM	MR CHUA EI MING [DIR/CEO]	48,336	48,336	3.366	
13 FEB 2024 - 13 FEB 2024	IGBCR	MISS ELIZABETH TAN HUI NING [DIR/CEO]	300	1,136	0.048	
15 FEB 2024 - 15 FEB 2024	IGBREIT	KUMPULAN WANG PERSARAAN (DEPERBADANKAN) [SSH]	-25	253,559	7.033	
14 FEB 2024 - 14 FEB 2024	IGBREIT	KUMPULAN WANG PERSARAAN (DEPERBADANKAN) [SSH]	-160	253,585	7.033	
13 FEB 2024 - 13 FEB 2024	IGBREIT	EMPLOYEES PROVIDENT FUND BOARD ("EPF BOARD") [SSH]	345	428,281	11.879	
09 FEB 2024 - 09 FEB 2024	IGBREIT	EMPLOYEES PROVIDENT FUND BOARD ("EPF BOARD") [SSH]	-550	427,936	11.869	
13 FEB 2024 - 13 FEB 2024	IGBREIT	KUMPULAN WANG PERSARAAN (DEPERBADANKAN) [SSH]	-197	253,744	7.038	
08 FEB 2024 - 08 FEB 2024	IGBREIT	EMPLOYEES PROVIDENT FUND BOARD ("EPF BOARD") [SSH]	-128	428,486	11.885	
07 FEB 2024 - 07 FEB 2024	IGBREIT	EMPLOYEES PROVIDENT FUND BOARD ("EPF BOARD") [SSH]	-121	428,613	11.888	
13 FEB 2024 - 13 FEB 2024	IHH	EMPLOYEES PROVIDENT FUND BOARD [SSH]	2,055	944,967	10.73	
09 FEB 2024 - 09 FEB 2024	IHH	EMPLOYEES PROVIDENT FUND BOARD [SSH]	3,100	942,912	10.706	
08 FEB 2024 - 08 FEB 2024	IHH	EMPLOYEES PROVIDENT FUND BOARD [SSH]	2,368	939,811	10.671	
07 FEB 2024 - 07 FEB 2024	IHH	EMPLOYEES PROVIDENT FUND BOARD [SSH]	-118	937,444	10.644	
15 FEB 2024 - 15 FEB 2024	IJM	KUMPULAN WANG PERSARAAN (DIPERBADANKAN) [SSH]	146	318,157	9.074	
14 FEB 2024 - 14 FEB 2024	IJM	AMANAHRAYA TRUSTEES BERHAD - AMANAH SAHAM BUMIPUTERA [SSH]	-84	227,939	6.501	
13 FEB 2024 - 13 FEB 2024	IJM	EMPLOYEES PROVIDENT FUND BOARD [SSH]	3,533	619,581	17.671	
13 FEB 2024 - 13 FEB 2024	IJM	URUSHARTA JAMAAH SDN BHD [SSH]	-500	178,274	5.085	
09 FEB 2024 - 09 FEB 2024	IJM	EMPLOYEES PROVIDENT FUND BOARD [SSH]	150	616,048	17.57	
13 FEB 2024 - 13 FEB 2024	IJM	KUMPULAN WANG PERSARAAN (DIPERBADANKAN) [SSH]	667	318,011	9.07	
09 FEB 2024 - 09 FEB 2024	IJM	AMANAHRAYA TRUSTEES BERHAD - AMANAH SAHAM BUMIPUTERA [SSH]	-2,477	228,023	6.503	
08 FEB 2024 - 08 FEB 2024	IJM	EMPLOYEES PROVIDENT FUND BOARD [SSH]	2,167	615,898	17.566	
08 FEB 2024 - 08 FEB 2024	IJM	AMANAHRAYA TRUSTEES BERHAD - AMANAH SAHAM BUMIPUTERA [SSH]	-4,129	230,500	6.574	
13 FEB 2024 - 13 FEB 2024	INARI	EMPLOYEES PROVIDENT FUND BOARD [SSH]	-782	328,879	8.771	
09 FEB 2024 - 09 FEB 2024	INARI	EMPLOYEES PROVIDENT FUND BOARD [SSH]	270	329,470	8.787	
13 FEB 2024 - 13 FEB 2024	INARI	KUMPULAN WANG PERSARAAN (DIPERBADANKAN) [SSH]	-1,000	347,255	9.261	
08 FEB 2024 - 08 FEB 2024	INARI	EMPLOYEES PROVIDENT FUND BOARD [SSH]	2,090	329,200	8.78	
07 FEB 2024 - 07 FEB 2024	INARI	EMPLOYEES PROVIDENT FUND BOARD [SSH]	3,255	327,109	8.724	
13 FEB 2024 - 13 FEB 2024	IOICORP	EMPLOYEES PROVIDENT FUND BOARD [SSH]	-4	705,504	11.372	
09 FEB 2024 - 09 FEB 2024	IOICORP	EMPLOYEES PROVIDENT FUND BOARD [SSH]	243	705,508	11.372	
08 FEB 2024 - 08 FEB 2024	IOICORP	EMPLOYEES PROVIDENT FUND BOARD [SSH]	172	705,266	11.368	
07 FEB 2024 - 07 FEB 2024	IOICORP	EMPLOYEES PROVIDENT FUND BOARD [SSH]	330	705,094	11.366	
13 FEB 2024 - 13 FEB 2024	IOIPG	EMPLOYEES PROVIDENT FUND BOARD [SSH]	-1,957	341,891	6.209	
09 FEB 2024 - 09 FEB 2024	IOIPG	EMPLOYEES PROVIDENT FUND BOARD [SSH]	757	343,941	6.246	
07 FEB 2024 - 07 FEB 2024	IOIPG	EMPLOYEES PROVIDENT FUND BOARD [SSH]	3,963	343,178	6.233	
07 FEB 2024 - 07 FEB 2024	KERJAYA	EMPLOYEES PROVIDENT FUND BOARD [SSH]	441	87,760	6.959	
09 FEB 2024 - 09 FEB 2024	KGB	MR SOO YUIT WENG [DIR/CEO]	108	1,937	0.298	
09 FEB 2024 - 09 FEB 2024	KGB	MR SOO YUIT WENG [DIR/CEO]	108	300	0.143	
13 FEB 2024 - 13 FEB 2024	KLCC	EMPLOYEES PROVIDENT FUND BOARD [SSH]	44	186,385	10.324	
13 FEB 2024 - 13 FEB 2024	KLCC	EMPLOYEES PROVIDENT FUND BOARD [SSH]	44	186,385	10.324	
09 FEB 2024 - 09 FEB 2024	KLCC	EMPLOYEES PROVIDENT FUND BOARD [SSH]	-5	186,341	10.322	
09 FEB 2024 - 09 FEB 2024	KLCC	EMPLOYEES PROVIDENT FUND BOARD [SSH]	-5	186,341	10.322	
08 FEB 2024 - 08 FEB 2024	KLCC	EMPLOYEES PROVIDENT FUND BOARD [SSH]	-82	186,345	10.322	
08 FEB 2024 - 08 FEB 2024	KLCC	EMPLOYEES PROVIDENT FUND BOARD [SSH]	-82	186,345	10.322	
13 FEB 2024 - 13 FEB 2024	KLK	EMPLOYEES PROVIDENT FUND BOARD [SSH]	183	117,756	10.919	
09 FEB 2024 - 09 FEB 2024	KLK	EMPLOYEES PROVIDENT FUND BOARD [SSH]	51	117,574	10.902	
08 FEB 2024 - 08 FEB 2024	KLK	EMPLOYEES PROVIDENT FUND BOARD [SSH]	572	117,523	10.898	
07 FEB 2024 - 07 FEB 2024	KLK	EMPLOYEES PROVIDENT FUND BOARD [SSH]	223	116,951	10.845	
14 FEB 2024 - 14 FEB 2024	KOSSAN	ABRDN HOLDINGS LIMITED (FORMERLY KNOWN AS ABERDEEN ASSET MANAGEMENT PLC) [SSH]	-1,165	134,571	5.274	
14 FEB 2024 - 14 FEB 2024	KOSSAN	ABRDN MALAYSIA SDN BHD [SSH]	-1,165	132,166	5.18	
14 FEB 2024 - 14 FEB 2024	KOSSAN	ABRDN PLC [SSH]	-1,165	134,571	5.274	
15 FEB 2024 - 15 FEB 2024	LBS	TAN SRI DATO' SRI IR. (DR.) LIM HOCK SAN JP [DIR/CEO]	100	610,372	39.644	
15 FEB 2024 - 15 FEB 2024	LBS	TAN SRI DATO' SRI IR. (DR.) LIM HOCK SAN JP [SSH]	100	605,619	39.335	
14 FEB 2024 - 14 FEB 2024	LBS	TAN SRI DATO' SRI IR. (DR.) LIM HOCK SAN JP [DIR/CEO]	150	610,272	39.637	
14 FEB 2024 - 14 FEB 2024	LBS	TAN SRI DATO' SRI IR. (DR.) LIM HOCK SAN JP [SSH]	150	605,519	39.328	
13 FEB 2024 - 13 FEB 2024	LBS	TAN SRI DATO' SRI IR. (DR.) LIM HOCK SAN JP [DIR/CEO]	200	610,122	39.627	

Notice Period is 11st Feb 2024 – 17th Feb 2024

Effective Change Date	Stock Name	Buyer/ Seller Name [Classification]	Bought / (Sold) ['000]		No. of Shares After Trade ['000]	
			Total	Total	% Held	% Held
13 FEB 2024 - 13 FEB 2024	LBS	TAN SRI DATO' SRI IR. (DR.) LIM HOCK SAN JP [SSH]	200	605,369	39.318	
09 FEB 2024 - 09 FEB 2024	LBS	TAN SRI DATO' SRI IR. (DR.) LIM HOCK SAN JP [DIR/CEO]	200	609,922	39.614	
09 FEB 2024 - 09 FEB 2024	LBS	TAN SRI DATO' SRI IR. (DR.) LIM HOCK SAN JP [SSH]	200	605,169	39.305	
14 FEB 2024 - 15 FEB 2024	MAG	MR NG MIN LIN [DIR/CEO]	2,000	465,818	28.503	
14 FEB 2024 - 15 FEB 2024	MAG	MR NG MIN LIN [SSH]	2,000	465,818	28.503	
14 FEB 2024 - 14 FEB 2024	MAG	MR NG MIN LIN [DIR/CEO]	20,000	50,321	15.434	
14 FEB 2024 - 14 FEB 2024	MAG	MR NG MIN LIN [DIR/CEO]	22,000	485,818	29.726	
14 FEB 2024 - 14 FEB 2024	MAG	MR NG MIN LIN [SSH]	22,000	485,818	29.726	
14 FEB 2024 - 15 FEB 2024	MAGNI	MR TAN POAY SENG [DIR/CEO]	419	122,419	28.24	
14 FEB 2024 - 14 FEB 2024	MAGNI	TAN SRI DATO' SRI TAN KOK PING [DIR/CEO]	2,000	105,000	24.22	
13 FEB 2024 - 13 FEB 2024	MAXIS	EMPLOYEES PROVIDENT FUND BOARD ("EPF BOARD") [SSH]	228	886,440	11.318	
14 FEB 2024 - 14 FEB 2024	MAYBANK	AMANAHRAYA TRUSTEES BERHAD - AMANAH SAHAM BUMIPUTERA [SSH]	-3,500	3,641,384	30.193	
13 FEB 2024 - 13 FEB 2024	MAYBANK	EMPLOYEES PROVIDENT FUND BOARD [SSH]	-2,908	1,469,941	12.188	
09 FEB 2024 - 09 FEB 2024	MAYBANK	EMPLOYEES PROVIDENT FUND BOARD [SSH]	-1,302	1,472,849	12.212	
08 FEB 2024 - 08 FEB 2024	MAYBANK	AMANAHRAYA TRUSTEES BERHAD - AMANAH SAHAM BUMIPUTERA [SSH]	-966	3,644,884	30.222	
08 FEB 2024 - 08 FEB 2024	MAYBANK	EMPLOYEES PROVIDENT FUND BOARD [SSH]	3,000	1,474,150	12.223	
07 FEB 2024 - 07 FEB 2024	MAYBANK	EMPLOYEES PROVIDENT FUND BOARD [SSH]	-4,213	1,471,150	12.198	
15 FEB 2024 - 15 FEB 2024	MICROLN	RHB TRUSTEES BERHAD [SSH]	52,830	230,386	21.483	
13 FEB 2024 - 13 FEB 2024	MISC	EMPLOYEES PROVIDENT FUND BOARD [SSH]	-165	559,449	12.533	
09 FEB 2024 - 09 FEB 2024	MISC	EMPLOYEES PROVIDENT FUND BOARD [SSH]	97	559,614	12.537	
08 FEB 2024 - 08 FEB 2024	MISC	EMPLOYEES PROVIDENT FUND BOARD [SSH]	93	559,516	12.535	
07 FEB 2024 - 07 FEB 2024	MISC	EMPLOYEES PROVIDENT FUND BOARD [SSH]	119	559,423	12.533	
06 FEB 2024 - 06 FEB 2024	MISC	EMPLOYEES PROVIDENT FUND BOARD [SSH]	-66	559,303	12.53	
13 FEB 2024 - 13 FEB 2024	MYEG	EMPLOYEES PROVIDENT FUND BOARD [SSH]	-1,000	378,919	5.08	
27 DEC 2023 - 27 DEC 2023	NATGATE	DATO' SRI WONG SIEW HAI [DIR/CEO]	-20	6,085	0.294	
15 DEC 2023 - 15 DEC 2023	NATGATE	DATO' SRI WONG SIEW HAI [DIR/CEO]	-10	6,105	0.295	
13 FEB 2024 - 13 FEB 2024	NESTLE	EMPLOYEES PROVIDENT FUND BOARD [SSH]	-8	23,832	10.163	
09 FEB 2024 - 09 FEB 2024	NESTLE	EMPLOYEES PROVIDENT FUND BOARD [SSH]	4	23,839	10.166	
08 FEB 2024 - 08 FEB 2024	NESTLE	EMPLOYEES PROVIDENT FUND BOARD [SSH]	69	23,836	10.164	
07 FEB 2024 - 07 FEB 2024	NESTLE	EMPLOYEES PROVIDENT FUND BOARD [SSH]	12	23,766	10.135	
06 FEB 2024 - 06 FEB 2024	NESTLE	EMPLOYEES PROVIDENT FUND BOARD [SSH]	39	23,754	10.129	
09 FEB 2024 - 09 FEB 2024	NGGB	DATO' GAN KONG HIOK [SSH]	20,000	176,248	17.7	
13 FEB 2024 - 13 FEB 2024	ORIENT	EMPLOYEES PROVIDENT FUND BOARD [SSH]	-205	42,148	6.794	
09 FEB 2024 - 09 FEB 2024	ORIENT	EMPLOYEES PROVIDENT FUND BOARD [SSH]	-42	42,353	6.827	
08 FEB 2024 - 08 FEB 2024	ORIENT	EMPLOYEES PROVIDENT FUND BOARD [SSH]	-162	42,395	6.834	
07 FEB 2024 - 07 FEB 2024	ORIENT	EMPLOYEES PROVIDENT FUND BOARD [SSH]	-23	42,556	6.86	
13 FEB 2024 - 13 FEB 2024	PANAMY	EMPLOYEES PROVIDENT FUND BOARD [SSH]	-7	7,417	12.21	
09 FEB 2024 - 09 FEB 2024	PANAMY	EMPLOYEES PROVIDENT FUND BOARD [SSH]	-3	7,424	12.222	
08 FEB 2024 - 08 FEB 2024	PANAMY	EMPLOYEES PROVIDENT FUND BOARD [SSH]	-3	7,427	12.226	
07 FEB 2024 - 07 FEB 2024	PANAMY	EMPLOYEES PROVIDENT FUND BOARD [SSH]	-4	7,430	12.232	
13 FEB 2024 - 13 FEB 2024	PAVREIT	EMPLOYEES PROVIDENT FUND BOARD [SSH]	1,195	416,743	11.396	
09 FEB 2024 - 09 FEB 2024	PAVREIT	EMPLOYEES PROVIDENT FUND BOARD [SSH]	280	415,549	11.364	
07 FEB 2024 - 07 FEB 2024	PAVREIT	EMPLOYEES PROVIDENT FUND BOARD [SSH]	1,759	415,269	11.37	
06 FEB 2024 - 06 FEB 2024	PAVREIT	EMPLOYEES PROVIDENT FUND BOARD [SSH]	1,346	413,510	11.322	
13 FEB 2024 - 13 FEB 2024	PBBANK	EMPLOYEES PROVIDENT FUND BOARD [SSH]	-438	2,927,040	15.08	
09 FEB 2024 - 09 FEB 2024	PBBANK	EMPLOYEES PROVIDENT FUND BOARD [SSH]	-1,061	2,927,477	15.08	
08 FEB 2024 - 08 FEB 2024	PBBANK	EMPLOYEES PROVIDENT FUND BOARD [SSH]	3,154	2,928,538	15.09	
07 FEB 2024 - 07 FEB 2024	PBBANK	EMPLOYEES PROVIDENT FUND BOARD [SSH]	-676	2,925,384	15.07	
13 FEB 2024 - 13 FEB 2024	PELIKAN	URUSHARTA JAMAAH SDN. BHD. [SSH]	3	155,351	25.754	
09 FEB 2024 - 09 FEB 2024	PELIKAN	URUSHARTA JAMAAH SDN. BHD. [SSH]	3	155,348	25.754	
08 FEB 2024 - 08 FEB 2024	PELIKAN	URUSHARTA JAMAAH SDN. BHD. [SSH]	4	155,346	25.753	
07 FEB 2024 - 07 FEB 2024	PELIKAN	URUSHARTA JAMAAH SDN. BHD. [SSH]	61	155,342	25.753	
06 FEB 2024 - 06 FEB 2024	PELIKAN	URUSHARTA JAMAAH SDN. BHD. [SSH]	295	155,281	25.743	
13 FEB 2024 - 13 FEB 2024	PENTA	EMPLOYEES PROVIDENT FUND BOARD [SSH]	11	60,443	8.497	
09 FEB 2024 - 09 FEB 2024	PENTA	EMPLOYEES PROVIDENT FUND BOARD [SSH]	55	60,432	8.496	
08 FEB 2024 - 08 FEB 2024	PENTA	EMPLOYEES PROVIDENT FUND BOARD [SSH]	22	60,377	8.488	
13 FEB 2024 - 13 FEB 2024	PETDAG	EMPLOYEES PROVIDENT FUND BOARD ("EPF BOARD") [SSH]	24	124,474	12.529	
13 FEB 2024 - 13 FEB 2024	PETGAS	EMPLOYEES PROVIDENT FUND BOARD [SSH]	-120	267,712	13.529	
09 FEB 2024 - 09 FEB 2024	PETGAS	EMPLOYEES PROVIDENT FUND BOARD [SSH]	-56	267,832	13.536	
08 FEB 2024 - 08 FEB 2024	PETGAS	EMPLOYEES PROVIDENT FUND BOARD [SSH]	170	267,888	13.538	
07 FEB 2024 - 07 FEB 2024	PETGAS	EMPLOYEES PROVIDENT FUND BOARD [SSH]	32	267,718	13.53	
13 FEB 2024 - 13 FEB 2024	PGF	FONG WERN SHENG [DIR/CEO]	-600	34,451	21.058	
13 FEB 2024 - 13 FEB 2024	PGF	GREEN CLUSTER SDN BHD [SSH]	-600	23,658	14.461	
13 FEB 2024 - 13 FEB 2024	PGF	MR FONG WERN SHENG [SSH]	-600	34,451	21.058	
15 FEB 2024 - 15 FEB 2024	RJBUMI	PUAN HAFIDAH BINTI PAWANCIK [SSH]	130	6,118	7.461	
08 FEB 2024 - 13 FEB 2024	RJBUMI					

Notice Period is 11st Feb 2024 – 17th Feb 2024

Effective Change Date	Stock Name	Buyer/ Seller Name [Classification]	Bought / (Sold) ['000]		No. of Shares After Trade ['000]	
			Total	% Held	Total	% Held
13 FEB 2024 - 15 FEB 2024	SCIENTX	MR LIM PENG CHEONG [SSH]	713		842,577	54.315
13 FEB 2024 - 15 FEB 2024	SCIENTX	MR LIM PENG JIN [DIR/CEO]	580		894,766	57.679
13 FEB 2024 - 15 FEB 2024	SCIENTX	MR LIM PENG JIN [SSH]	580		894,675	57.673
13 FEB 2024 - 15 FEB 2024	SCIENTX	SCIENTEX INFINITY SDN BHD [SSH]	580		710,451	45.798
09 FEB 2024 - 09 FEB 2024	SCIENTX	MR LIM PENG CHEONG [DIR/CEO]	205		847,907	54.659
09 FEB 2024 - 09 FEB 2024	SCIENTX	MR LIM PENG CHEONG [SSH]	205		841,864	54.269
09 FEB 2024 - 09 FEB 2024	SCIENTX	MR LIM PENG JIN [DIR/CEO]	205		894,186	57.642
09 FEB 2024 - 09 FEB 2024	SCIENTX	MR LIM PENG JIN [SSH]	205		894,094	57.636
09 FEB 2024 - 09 FEB 2024	SCIENTX	SCIENTEX INFINITY SDN BHD [SSH]	205		709,870	45.761
13 FEB 2024 - 13 FEB 2024	SCOPE	MR LIM CHIOU HOO [DIR/CEO]	1,000		73,113	6.337
13 FEB 2024 - 13 FEB 2024	SCOPE	MR LIM CHIOU HOO [SSH]	1,000		73,113	6.337
14 FEB 2024 - 14 FEB 2024	SEAL	MR CHEN KHAI VOON [SSH]	100		126,688	30.174
09 FEB 2024 - 09 FEB 2024	SEAL	MR CHEN KHAI VOON [SSH]	267		126,588	30.15
14 FEB 2024 - 14 FEB 2024	SHANG	ABRDN HOLDINGS LIMITED [SSH]	-311		22,855	5.194
14 FEB 2024 - 14 FEB 2024	SHANG	ABRDN PLC [SSH]	-311		22,855	5.194
13 FEB 2024 - 13 FEB 2024	SHANG	ABRDN HOLDINGS LIMITED [SSH]	-247		23,167	5.265
13 FEB 2024 - 13 FEB 2024	SHANG	ABRDN PLC [SSH]	-247		23,167	5.265
08 FEB 2024 - 09 FEB 2024	SHANG	ABRDN HOLDINGS LIMITED [SSH]	-291		23,413	5.321
08 FEB 2024 - 09 FEB 2024	SHANG	ABRDN PLC [SSH]	-291		23,413	5.321
13 FEB 2024 - 13 FEB 2024	SIME	EMPLOYEES PROVIDENT FUND BOARD [SSH]	-2,322		1,027,951	15.082
09 FEB 2024 - 09 FEB 2024	SIME	EMPLOYEES PROVIDENT FUND BOARD [SSH]	280		1,030,273	15.116
09 FEB 2024 - 09 FEB 2024	SIME	AMANAHRAYA TRUSTEES BERHAD - AMANAH SAHAM BUMIPUTERA [SSH]	-4,144		2,430,044	35.654
08 FEB 2024 - 08 FEB 2024	SIME	EMPLOYEES PROVIDENT FUND BOARD [SSH]	-2,670		1,029,993	15.112
08 FEB 2024 - 08 FEB 2024	SIME	KUMPULAN WANG PERSARAAN (DIPERBADANKAN) [SSH]	-1,565		521,691	7.655
07 FEB 2024 - 08 FEB 2024	SIME	AMANAHRAYA TRUSTEES BERHAD - AMANAH SAHAM BUMIPUTERA [SSH]	-8,000		2,434,188	35.715
06 FEB 2024 - 07 FEB 2024	SIME	EMPLOYEES PROVIDENT FUND BOARD [SSH]	-1,563		1,032,663	15.151
09 FEB 2024 - 09 FEB 2024	SIMEPLT	EMPLOYEES PROVIDENT FUND BOARD [SSH]	-104		1,027,522	14.858
07 FEB 2024 - 08 FEB 2024	SIMEPLT	EMPLOYEES PROVIDENT FUND BOARD [SSH]	2,855		1,027,626	14.86
15 FEB 2024 - 15 FEB 2024	SKPRES	KUMPULAN WANG PERSARAAN (DIPERBADANKAN) [SSH]	-450		136,755	8.753
14 FEB 2024 - 14 FEB 2024	SKPRES	ABRDN HOLDINGS LIMITED [SSH]	-1,877		79,021	5.058
14 FEB 2024 - 14 FEB 2024	SKPRES	ABRDN MALAYSIA SDN BHD [SSH]	-1,877		78,182	5.004
14 FEB 2024 - 14 FEB 2024	SKPRES	ABRDN PLC [SSH]	-1,877		79,021	5.058
13 FEB 2024 - 13 FEB 2024	SKPRES	EMPLOYEES PROVIDENT FUND BOARD [SSH]	-1,862		138,298	8.852
14 FEB 2024 - 14 FEB 2024	SKPRES	KUMPULAN WANG PERSARAAN (DIPERBADANKAN) [SSH]	-736		137,205	8.782
14 FEB 2024 - 14 FEB 2024	SMRT	ABRDN HOLDINGS LIMITED [SSH]	-2,326		29,111	6.427
14 FEB 2024 - 14 FEB 2024	SMRT	ABRDN MALAYSIA SDN BHD [SSH]	-2,326		27,721	6.12
14 FEB 2024 - 14 FEB 2024	SMRT	ABRDN PLC [SSH]	-2,326		29,111	6.427
08 FEB 2024 - 08 FEB 2024	SMRT	ABRDN HOLDINGS LIMITED (FORMERLY KNOWN AS ABERDEEN ASSET MANAGEMENT PLC) [SSH]	65		31,437	6.94
08 FEB 2024 - 08 FEB 2024	SMRT	ABRDN MALAYSIA SDN BHD [SSH]	65		30,047	6.633
08 FEB 2024 - 08 FEB 2024	SMRT	ABRDN PLC [SSH]	65		31,437	6.94
14 FEB 2024 - 14 FEB 2024	SPSETIA	AMANAHRAYA TRUSTEES BERHAD - AMANAH SAHAM BUMIPUTERA [SSH]	-616		1,009,502	22.685
13 FEB 2024 - 13 FEB 2024	SPSETIA	KUMPULAN WANG PERSARAAN (DIPERBADANKAN) [SSH]	400		414,493	9.462
09 FEB 2024 - 09 FEB 2024	SPSETIA	AMANAHRAYA TRUSTEES BERHAD - AMANAH SAHAM BUMIPUTERA [SSH]	-4,484		1,010,119	23.059
08 FEB 2024 - 08 FEB 2024	SPSETIA	AMANAHRAYA TRUSTEES BERHAD - AMANAH SAHAM BUMIPUTERA [SSH]	-6,449		1,014,602	23.161
13 FEB 2024 - 13 FEB 2024	SUNCON	EMPLOYEES PROVIDENT FUND BOARD [SSH]	-575		116,326	9.022
09 FEB 2024 - 09 FEB 2024	SUNCON	EMPLOYEES PROVIDENT FUND BOARD [SSH]	77		116,901	9.067
08 FEB 2024 - 08 FEB 2024	SUNCON	EMPLOYEES PROVIDENT FUND BOARD [SSH]	-2,813		116,824	9.061
07 FEB 2024 - 07 FEB 2024	SUNCON	EMPLOYEES PROVIDENT FUND BOARD [SSH]	-1,457		119,387	9.259
13 FEB 2024 - 13 FEB 2024	SUNREIT	EMPLOYEES PROVIDENT FUND BOARD [SSH]	-782		533,958	15.591
13 FEB 2024 - 13 FEB 2024	SUNREIT	KUMPULAN WANG PERSARAAN (DIPERBADANKAN) ('KWAP') [SSH]	-218		201,511	5.884
08 FEB 2024 - 08 FEB 2024	SUNREIT	EMPLOYEES PROVIDENT FUND BOARD [SSH]	-782		534,740	15.614
07 FEB 2024 - 07 FEB 2024	SUNREIT	EMPLOYEES PROVIDENT FUND BOARD [SSH]	-307		535,522	15.637
15 FEB 2024 - 15 FEB 2024	SUNVIEW	MR CHOW KIAN HUNG [DIR/CEO]	4,850		169,672	33.448
15 FEB 2024 - 15 FEB 2024	SUNVIEW	MR CHOW KIAN HUNG [SSH]	4,850		169,672	33.448
15 FEB 2024 - 15 FEB 2024	SUNVIEW	MR ONG HANG PING [DIR/CEO]	4,850		176,619	34.818
15 FEB 2024 - 15 FEB 2024	SUNVIEW	MR ONG HANG PING [SSH]	4,850		176,619	34.818
15 FEB 2024 - 15 FEB 2024	SUNVIEW	NEW ENERGY CAPITAL SDN. BHD. [SSH]	4,850		155,666	30.687
13 FEB 2024 - 13 FEB 2024	SUNWAY	EMPLOYEES PROVIDENT FUND BOARD [SSH]	263		287,813	5.24
09 FEB 2024 - 09 FEB 2024	SUNWAY	EMPLOYEES PROVIDENT FUND BOARD [SSH]	333		287,550	5.24
08 FEB 2024 - 08 FEB 2024	SUNWAY	EMPLOYEES PROVIDENT FUND BOARD [SSH]	2,246		287,216	5.23

Notice Period is 11st Feb 2024 – 17th Feb 2024

Effective Change Date	Stock Name	Buyer/ Seller Name [Classification]	Bought / (Sold) ['000]		No. of Shares After Trade ['000]	
			Total	% Held	Total	% Held
07 FEB 2024 - 07 FEB 2024	SUNWAY	EMPLOYEES PROVIDENT FUND BOARD [SSH]	4,746		284,970	5.19
16 FEB 2024 - 16 FEB 2024	SWIFT	MR LOO HOOI KEAT [DIR/CEO]	200		351,782	39.939
16 FEB 2024 - 16 FEB 2024	SWIFT	MR LOO HOOI KEAT [SSH]	200		351,782	39.939
14 FEB 2024 - 15 FEB 2024	SWIFT	MR LOO HOOI KEAT [DIR/CEO]	150		351,582	39.917
14 FEB 2024 - 15 FEB 2024	SWIFT	MR LOO HOOI KEAT [SSH]	150		351,582	39.917
13 FEB 2024 - 13 FEB 2024	SWIFT	MR LOO HOOI KEAT [DIR/CEO]	120		351,432	39.9
13 FEB 2024 - 13 FEB 2024	SWIFT	MR LOO HOOI KEAT [SSH]	120		351,432	39.9
09 FEB 2024 - 13 FEB 2024	SWIFT	MR LOO HOOI KEAT [DIR/CEO]	100		351,312	39.886
09 FEB 2024 - 13 FEB 2024	SWIFT	MR LOO HOOI KEAT [SSH]	100		351,312	39.886
14 FEB 2024 - 15 FEB 2024	SWSCAP	DATO SIMON TOH BOON WAN [DIR/CEO]	387		6,919	2.289
13 FEB 2024 - 13 FEB 2024	TAKAFUL	EMPLOYEES PROVIDENT FUND BOARD [SSH]	327		122,956	14.685
15 FEB 2024 - 15 FEB 2024	TALIWRK	LEMBAGA TABUNG HAJI [SSH]	-205		153,240	7.602
09 FEB 2024 - 09 FEB 2024	TALIWRK	LEMBAGA TABUNG HAJI [SSH]	-5		153,445	7.612
13 FEB 2024 - 13 FEB 2024	TCHONG	EMPLOYEES PROVIDENT FUND BOARD [SSH]	-29		40,477	6.21
15 FEB 2024 - 15 FEB 2024	TENAGA	KUMPULAN WANG PERSARAAN (DIPERBADANKAN) [SSH]	-45		429,185	7.41
13 FEB 2024 - 13 FEB 2024	TENAGA	EMPLOYEES PROVIDENT FUND BOARD [SSH]	932		995,611	17.2
08 FEB 2024 - 08 FEB 2024	TENAGA	EMPLOYEES PROVIDENT FUND BOARD [SSH]	-1,865		994,679	17.19
13 FEB 2024 - 13 FEB 2024	TIMECOM	EMPLOYEES PROVIDENT FUND BOARD [SSH]	1,009		143,469	7.76
08 FEB 2024 - 08 FEB 2024	TIMECOM	EMPLOYEES PROVIDENT FUND BOARD [SSH]	190		142,460	7.705
07 FEB 2024 - 07 FEB 2024	TIMECOM	EMPLOYEES PROVIDENT FUND BOARD [SSH]	1,181		142,270	7.695
13 FEB 2024 - 13 FEB 2024	TM	EMPLOYEE PROVIDENT FUND BOARD (EPF BOARD) [SSH]	-2,329		668,620	17.423
09 FEB 2024 - 09 FEB 2024	TM	EMPLOYEE PROVIDENT FUND BOARD (EPF BOARD) [SSH]	-192		670,947	17.483
08 FEB 2024 - 08 FEB 2024	TM	EMPLOYEE PROVIDENT FUND BOARD (EPF BOARD) [SSH]	360		671,115	17.488
07 FEB 2024 - 07 FEB 2024	TM	EMPLOYEE PROVIDENT FUND BOARD (EPF BOARD) [SSH]	-5		670,754	17.478
07 FEB 2024 - 09 FEB 2024	TOPGLOV	MR LIM HOOI SIN [DIR/CEO]	750		2,930,890	36.599
07 FEB 2024 - 09 FEB 2024	TOPGLOV	MR LIM HOOI SIN [SSH]	750		2,930,890	36.599
07 FEB 2024 - 09 FEB 2024	TOPGLOV	PUAN SRI TONG SIEW BEE [SSH]	750		2,931,090	36.601
07 FEB 2024 - 09 FEB 2024	TOPGLOV	TAN SRI DR LIM WEE CHAI [DIR/CEO]	750		2,931,090	36.601
07 FEB 2024 - 09 FEB 2024	TOPGLOV	TAN SRI DR LIM WEE CHAI [SSH]	750		2,931,090	36.601
15 FEB 2024 - 15 FEB 2024	UMCCA	DATO' SRI TEE LIP SIN [DIR/CEO]	17		65,386	31.171
15 FEB 2024 - 15 FEB 2024	UMCCA	MR TEE CHENG HUA [DIR/CEO]	17		59,233	28.238
15 FEB 2024 - 15 FEB 2024	UMSNGB	CHENG WONG (L) FOUNDATION [SSH]	40,026		40,026	50.836
15 FEB 2024 - 15 FEB 2024	UMSNGB	MADAM DEE KIM HUAY [SSH]	40,026		40,026	50.836
15 FEB 2024 - 15 FEB 2024	UMSNGB	MR CHENG WONG [DIR/CEO]	40,026		40,190	51.044
15 FEB 2024 - 15 FEB 2024	UMSNGB	MR CHENG WONG [SSH]	40,026		40,165	51.013
13 FEB 2024 - 13 FEB 2024	UTDPLT	EMPLOYEES PROVIDENT FUND BOARD [SSH]	-88		24,490	5.904
09 FEB 2024 - 09 FEB 2024	UTDPLT	EMPLOYEES PROVIDENT FUND BOARD [SSH]	-76		24,578	5.926
08 FEB 2024 - 08 FEB 2024	UTDPLT	EMPLOYEES PROVIDENT FUND BOARD [SSH]	-5		24,654	5.944
07 FEB 2024 - 07 FEB 2024	UTDPLT	EMPLOYEES PROVIDENT FUND BOARD [SSH]	58		24,659	5.945
07 FEB 2024 - 07 FEB 2024	UWC	EMPLOYEES PROVIDENT FUND BOARD [SSH]	1,200		89,233	8.1
16 FEB 2024 - 16 FEB 2024	VS	MR BEH CHERN WEI [DIR/CEO]	10		123,441	3.231
14 FEB 2024 - 14 FEB 2024	VS	DATUK GAN SEM YAM [DIR/CEO]	-30,000		175,603	4.593
14 FEB 2024 - 15 FEB 2024	VS	MR CHONG CHIN SIONG [DIR/CEO]	200		1210	0.032
14 FEB 2024 - 14 FEB 2024	VS	MR GAN PEE YONG [DIR/CEO]	30,000		51,766	1.354
13 FEB 2024 - 13 FEB 2024	WIDAD	TAN SRI MUHAMMAD IKMAL OPAT BIN ABDULLAH [SSH]	-250		742,598	23.982
13 FEB 2024 - 13 FEB 2024	WOODLAN	DATO' SERI MUN WENG SUM [DIR/CEO]	0.7		7,178	17.944
13 FEB 2024 - 13 FEB 2024	WOODLAN	DATO' SERI MUN WENG SUM [SSH]	0.7		7,178	17.944
07 FEB 2024 - 07 FEB 2024	WPRTS	EMPLOYEES PROVIDENT FUND BOARD [SSH]	803		321,027	9.414
13 FEB 2024 - 13 FEB 2024	XL	MR NG MIN LIN [DIR/CEO]	2,000		56,121	22.014
13 FEB 2024 - 13 FEB 2024	XL	MR NG MIN LIN [SSH]	2,000		56,121	22.014
13 FEB 2024 - 13 FEB 2024	YINSON	EMPLOYEES PROVIDENT FUND BOARD [SSH]	1,000		497,664	17.119
07 FEB 2024 - 07 FEB 2024	YINSON	EMPLOYEES PROVIDENT FUND BOARD [SSH]	682		496,664	17.085
13 FEB 2024 - 13 FEB 2024	YTL	UBS GROUP AG [SSH]	-7,925		709,850	6.474
09 FEB 2024 - 13 FEB 2024	ZECON	TAN SRI TOMMY BIN BUGO@HAMID BIN BUGO [SSH]	200		21243	14.411
14 FEB 2024 - 14 FEB 2024	ZHULIAN	MR TEOH BENG SENG [SSH]	-343		276097	60.018
14 FEB 2024 - 14 FEB 2024	ZHULIAN	THE BEST SOURCE HOLDINGS PTE. LTD. [SSH]	-343		73150	15.902
13 FEB 2024 - 13 FEB 2024	ZHULIAN	MR TEOH BENG SENG [SSH]	-350		276,440	60.093
13 FEB 2024 - 13 FEB 2024	ZHULIAN	THE BEST SOURCE HOLDINGS PTE. LTD. [SSH]	-350		73,493	15.977
09 FEB 2024 - 09 FEB 2024	ZHULIAN	MR TEOH BENG SENG [SSH]	-136		276,790	60.169
09 FEB 2024 - 09 FEB 2024	ZHULIAN	THE BEST SOURCE HOLDINGS PTE. LTD. [SSH]	-136		73,843	16.053
08 FEB 2024 - 08 FEB 2024	ZHULIAN	MR TEOH BENG SENG [SSH]	-248		276,926	60.198
08 FEB 2024 - 08 FEB 2024	ZHULIAN	THE BEST SOURCE HOLDINGS PTE. LTD. [SSH]	-248		73,979	16.082

**Disclaimer:** The information in Insider Activity is extracted from [www.shareinvestor.com/fundamental/insider\\_trades](http://www.shareinvestor.com/fundamental/insider_trades). The information on this page is provided as a service to readers. It does not constitute financial advice and/or any investment recommendations. We assume no liability for damages resulting from or arising out of the use of such information. Whilst every effort is made to ensure accuracy, the information presented is not the official record of shareholder filings. Readers are advised to read the original filings on the Bursa Malaysia website at [www.bursamalaysia.com](http://www.bursamalaysia.com)



Malacca Securities reveals the hottest investment trends for 2024 post CNY



**SIGN UP FOR Invest**  
**IT'S FREE!!!**

**Click here**

Scan me



Via email, every Friday.

**MARKET SENTIMENTS**  
Wholesale and retail trade saw highest monthly sales of RM142.9b in December - DOSM  
Target of 40% takaful industry penetration rate by 2028 - MTA  
See more on page 40-42

**BEHIND THE TICKER**  
which helps to decode company fundamentals



**Advance Synergy Berhad (ASB)** wishes to inform Bursa Securities that Captii, ASB’s subsidiary which is listed on the SGX, had on 21 February 2024 released their announcement on the unaudited full year financial results for the financial year ended 31 December 2023 to the SGX.



**AwanBiru Technology Berhad (AWANTEC)**, today announced its financial results for the second quarter

(Q2) of the financial year ending 30 June 2024. Continuing the positive momentum from previous quarters, Awantec achieved its third consecutive quarterly profit in Q2 FY2024, reflecting the success of the Group’s ongoing transformation plan initiated in 2021. Revenue grew by 52.5% from RM8.0 million in Q2 FY2023 to RM12.2 million in Q2 FY2024, resulting in a notable turnaround from a loss before taxation of RM2.8 million in Q2 FY2023 to a Profit Before Tax of RM0.9 million in Q2 FY2024.





Axiata Group Berhad (AXIATA) today announced its Quarterly Results for the Financial Year Ended 31 December 2023. Axiata remains a strong growth company

in FY23; continuing operations report revenue growth of 9.9% to RM22 billion and EBITDA growth of 11.7% to RM9.6 billion.



**CelcomDigi Berhad (CDB)** today announced its fourth quarter and full year results for the Financial Year 2023 (FY2023) marking a solid first year of operations as a merged company. The company delivered strong growth performance in line with its 2023 guidance, enabled by solid market execution and efficient cost management. The company also reported significant progress on integration and synergy targets.





The Board of Directors of **Dayang Enterprise Holdings Bhd (DAYANG)** is pleased to announce that a single tier final dividend in the aggregate amount of RM 34.7 million, being an interim dividend RM0.030 per ordinary share in respect of the financial year ending 31 December 2023 has been declared by the Company and shall be paid on 22 March 2024 to depositors registered in the Records of Depositors at the close of business on 12 March 2024.



**Maxis Berhad (MAXIS)** had released 4Q2023 Financial Results for the Quarter Ended 31 December 2023. The company delivered a solid full year performance in the financial year ended 31 December 2023, sustaining its momentum with a 5-year high in service revenue and earnings before interest, tax, depreciation, and amortisation (EBITDA).



**Disclaimer:** The information in the Investor Relations page is extracted from individual companies' announcements in [www.bursamalaysia.com](http://www.bursamalaysia.com). The information on this page is provided as a service to readers. We assume no liability for damages resulting from or arising out of the use of such information. Whilst every effort is made to ensure accuracy, the information presented has been simplified for your reading pleasure. Readers are advised to read the original and complete filings on the Bursa Malaysia website at [https://www.bursamalaysia.com/market\\_information/announcements/company\\_announcement](https://www.bursamalaysia.com/market_information/announcements/company_announcement)

## SHAREINVESTOR MARKET DATA PLATFORMS



**SHAREINVESTOR STATION**  
Advanced Charting Software  
(8 Markets)



**SHAREINVESTOR WEBPRO**  
Browser-Based Market Data  
Analytics Platform

