



Bank Negara Malaysia maintains OPR at 3%

see more
page
20-24



LI contraction in Nov 2023 reflects modest economic growth in near future - DOSM

ALSO

COMPANY SPOTLIGHT

Malaysian Resources
Corporation Berhad

See more on page 07

MSWG

Executive pay
cuts from the CG
perspective

See more on page 26-29

04 LEADERBOARD

06 SHARIAH HOT STOCKS

08 SHARIAH MOMENTUM UP STOCKS

10 NON SHARIAH HOT STOCKS

12 UP TRENDING STOCKS

14 VALUE STOCKS

15 GROWTH STOCKS

16 DIVIDEND STOCKS

17 BROKERS' CALL

18 LONG COMPANIES

25 REGIONAL MARKETS

30 INSIDER ACTIVITY

34 INVESTOR RELATIONS



SHAREINVESTOR®

Invest with Knowledge

INVESTOR PLATFORMS

Director
Darren Chong
darren.chong@shareinvestor.com

Business Development Manager
Jay Cheong
jay.cheong@shareinvestor.com

Senior Executive
Daniel Wong
daniel.wong@shareinvestor.com

Executive
Tan Yong Sheng
yongsheng.tan@shareinvestor.com

ADMIN & OPERATIONS

Senior Executive
Watie Nordin
watie.nordin@shareinvestor.com

Executive
Silas Emmanuel Joseph
silas.joseph@shareinvestor.com

INVESTOR RELATIONS

Group Managing Director & Publisher
Edward Stanislaus
edward@shareinvestor.com

Senior Manager
Letticia Wong
letticia.wong@shareinvestor.com

PROCESS AUTOMATION & DATA ANALYTICS

Data Analyst
Nickson Aw

SHAREINVESTOR HOLDINGS BOARD OF DIRECTORS

Chairman	Patrick Daniel
Group CEO	Christopher Lee
Group COO	Lim Dau Hee
Group CFO	Teo Siew May
Group MD	Shanison Lin



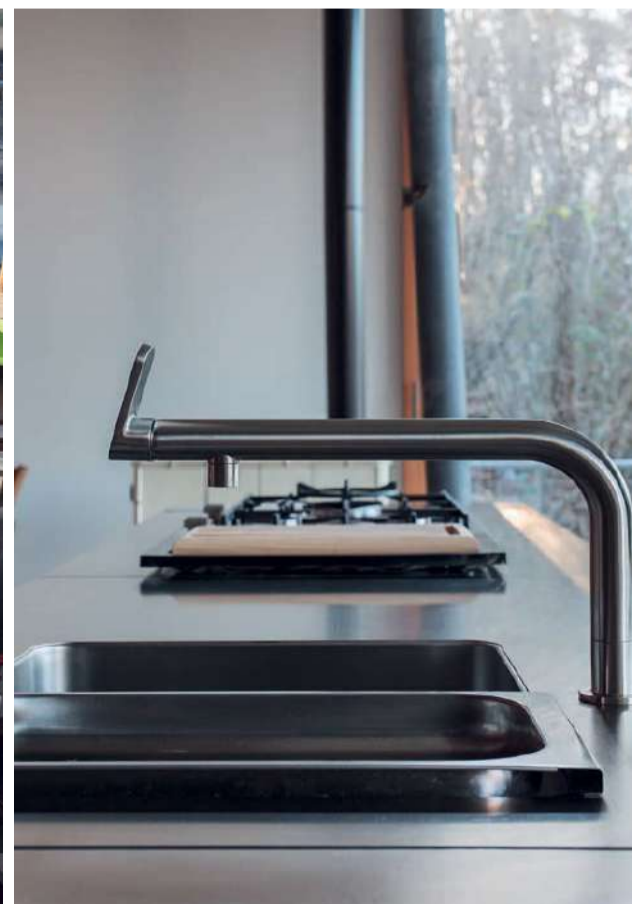
“ GIVE A MAN A FISH AND YOU FEED HIM FOR A DAY; TEACH A MAN TO FISH AND YOU FEED HIM FOR A LIFETIME ”

ShareInvestor Malaysia Sdn. Bhd.
(200001023956) (526564-M)
Unit No. DF2-07-03A, Level 7,
Persoft Tower, 6B Persiaran Tropicana,
47410 Petaling Jaya, Selangor Darul Ehsan.

Hotline : 603 7803 1791
Mobile : 011 6343 8939
Website : www.ShareInvestor.com.my
www.ShareInvestorHoldings.com
www.Facebook.com/ShareInvestorMalaysia

ADVERTISEMENT ENQUIRY

bulthaup takes care of the details so that you can enjoy a harmonious environment.



XTRA

XTRA FURNITURE SDN BHD
The Gardens Mall, Mid Valley City
xtrafurniture.com/bulthaup
fb.com/bulthaupmalaysia

bulthaup



2024龙年， 大马经济能否 龙跃千里？



30 Jan (Tue)
8 PM - 9 PM

Scan Me



黄锦荣博士

马来西亚拉曼大学经济学教授

www.shareinvestor.com - market data at your fingertips



ShareInvestor WebPro (www.shareinvestor.com/my)

Prices > Stock Prices > Bursa > click Stocks tab

1. mouse over Ranking > select Top Active > all Shariah stocks are denoted with an [S] > mouse over Column Layout > select Edit Customs > select Name > select Volume > select Last Done Price > Mouse Over Column Layout > select Custom
2. mouse over Ranking > select Top Turnover > all Shariah stocks are denoted with an [S] > mouse over Column Layout > select Edit Customs > select Name > select Last Done Price > select Value > Mouse Over Column Layout > select Custom
3. mouse over Ranking > select Top Gainers (Over 5 Trading Days) > mouse over Column Layout > select Edit Customs > select Name > select Last Done Price > select 5 Days Change > select 5 Days % Change > Mouse Over Column Layout > select Custom
4. mouse over Ranking > select Top Losers (Over 5 Trading Days)
5. mouse over Ranking > select Top % Gainers (Over 5 Trading Days)
6. mouse over Ranking > select Top % Losers (Over 5 Trading Days)

Shariah Top Actives (as at Wednesday)

Name	Price (RM)	Volume
WIDAD [S]	0.180	3,632,483.000
MRCB [S]	0.580	1,805,294.000
YNHPROP [S]	0.655	1,104,038.000
HANDAL [S]	0.100	926,058.000
LEFORM [S]	0.190	839,510.000
EKOVEST [S]	0.580	790,990.000
SCIB [S]	0.445	633,686.000
IWCITY [S]	0.895	588,419.000
MINETEC [S]	0.155	551,290.000
MYEG [S]	0.780	545,202.000

Shariah Top Turnover (as at Wednesday)

Name	Price (RM)	Value (RM)
MRCB [S]	0.580	102,433,247
SUNWAY [S]	2.600	75,116,392
YNHPROP [S]	0.655	72,147,644
WIDAD [S]	0.180	70,878,218
IWCITY [S]	0.895	53,146,584
UEMS [S]	1.070	53,057,258
E&O [S]	0.930	49,766,575
MSM [S]	2.290	47,682,031
EKOVEST [S]	0.580	46,119,245
MYEG [S]	0.780	42,275,893

Top Gainers (over 5 Trading days as at Wednesday)

Name	Price (RM)	Change (RM)
MPI	29.700	+1.000
HLBANK	19.180	+0.480
PETDAG	21.380	+0.480
MSM	2.290	+0.460
KSENG	5.840	+0.360
UTDPLT	19.640	+0.340
CRESNDO	2.920	+0.330
AJI	16.320	+0.320
DLADY	23.900	+0.280
SUNWAY	2.600	+0.260

Top % Gainers (over 5 Trading days as at Wednesday)

Name	Price (RM)	Change (%)
KGROUP	0.010	+100.00
XOX	0.015	+50.00
HONGSENG	0.020	+33.33
MSM	2.290	+25.14
JTIASA	1.180	+20.41
G3	0.030	+20.00
GDB	0.220	+18.92
KEN	0.665	+18.75
ASDION	0.100	+17.65
PANDA	0.245	+16.67

Top Losers (over 5 Trading days as at Wednesday)

Name	Price (RM)	Change (RM)
RAPID	11.500	-16.200
YNHPROP	2.720	-1.630
IMASPRO	1.990	-1.570
DLADY	23.880	-1.120
PCHEM	6.880	-0.420
GREATEC	4.800	-0.120
MISC	7.300	-0.120
CEB	0.945	-0.115
BOXPAK	0.790	-0.105
PETGAS	17.500	-0.100

Top % Losers (over 5 Trading days as at Wednesday)

Name	Price (RM)	Change (%)
RAPID	11.500	-58.48
IMASPRO	1.990	-44.10
YNHPROP	2.720	-37.47
FINTEC	0.010	-33.33
NEXGRAM	0.035	-30.00
SAUDEE	0.025	-28.57
AEM	0.015	-25.00
SCABLE	0.305	-20.78
HONGSENG	0.020	-20.00
MTRONIC	0.020	-20.00



STROM

SWISS TIMEPIECES & JEWELLERY



StromWatch Asia

Tele : +65.9817.3378 Email : ll.stromasia@gmail.com

WWW.STROMWATCH.SWISS



Price & Volume Distribution Charts (as at Wednesday)

Technical Analysis

DEFINITION: Shariah compliant stocks with Technical Analysis showing 5-days & 10-days Moving Average Price below Yesterday's Close over past 3 days and with Volume Spike.

CHART GUIDE: Volume Distribution Chart is a statistical interpretation of the current sentiment on each stock in graphical format. The highest bar categorized as >150k is likely to be traded by institutions or super dealers, while the lowest bar categorized as <15k usually represents retail investors. "Buy Up" refers to more buyers snatching up the lots queued at selling price. "Sell Down" refers to sellers selling their shares to the buying queue



ShareInvestor WebPro > Screener > Market Screener (FA & TA) > select BURSA > add criteria

A. Criteria

- > click Add Criteria
- Technical Analysis Conditions tab select (i) Moving Average Below Close (ii) Volume Spike
- Fundamental Analysis Conditions tab > select (iii) Revenue
- Prices & Other Conditions tab > select (iv) Is Shariah Compliant
- Technical Analysis Conditions tab select (v) Moving Average Below Close
- Prices & Other Conditions tab > select (vi) Last Done Price
- Technical Analysis Conditions tab select (vii) Moving Average Below Close

B. Conditions (Criteria Filters)

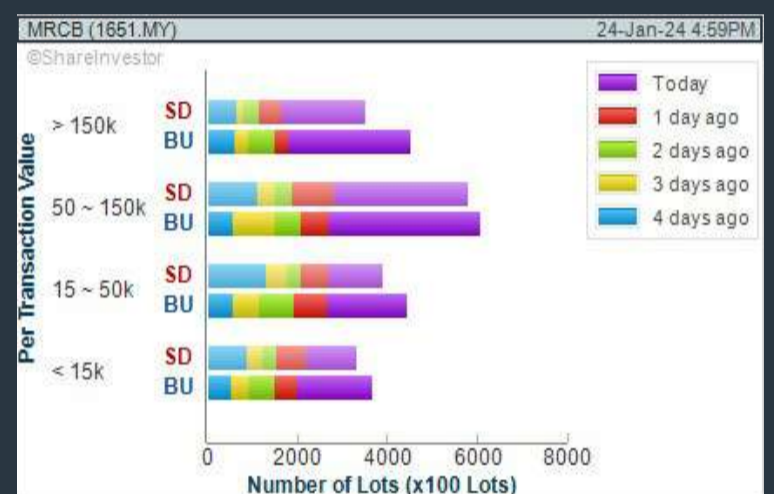
- Moving Average Below Close - select (MA) type (5) below close price for type (3) days
- Volume Spike - Volume type (1) greater than type (5) days average
- Revenue ("000) - select (more than) type (1) for the past select (1) financial year(s)
- Is Shariah Compliant - select **Yes**
- Moving Average Below Close - select (MA) type (10) below close price for type (3) days
- Last Done Price - select (more than) type (0.3)
- Moving Average Below Close - select (EMA) type (5) below close price for type (3) days

- > click Save Template > Create New Template type (Shariah Hot Stocks) > click Create
- > click Save Template as > select Shariah Hot Stocks > click Save
- > click Screen Now (may take a few minutes)
- > Sort By: Select (Vol) Select (Desc)
- > Mouse over stock name > Charts > click C² Charts or Volume Distribution

MALAYSIAN RESOURCES CORPORATION BERHAD (1651)

C² Chart

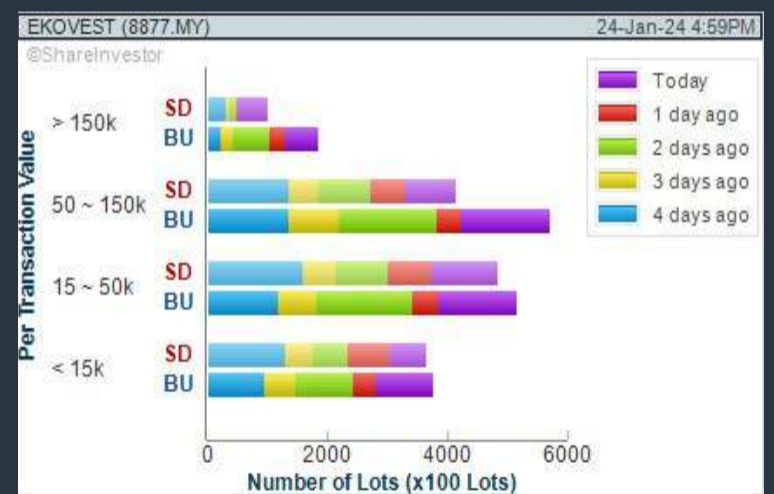
Analysis



EKOVEST BERHAD (8877)

C² Chart

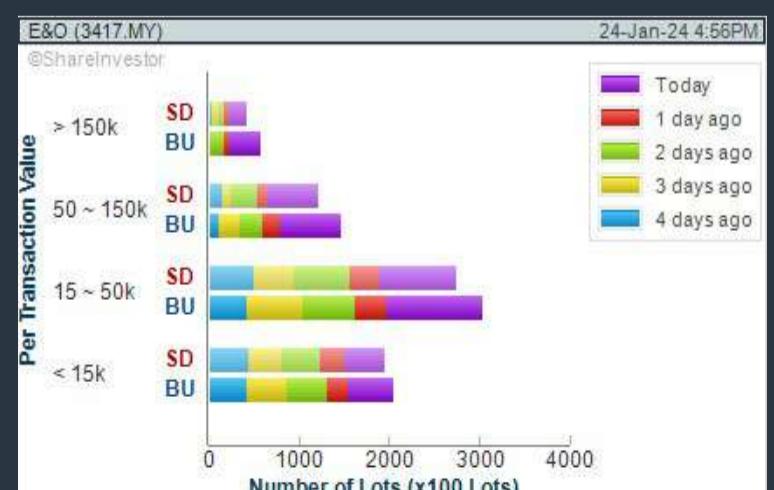
Analysis



EASTERN & ORIENTAL BERHAD (3417)

C² Chart

Analysis



Disclaimer: The information on this page is provided as a service to readers. It does not constitute financial advice and/or any investment recommendations. Past performance is not indicative of future results. We assume no liability for damages resulting from or arising out of the use of such information. It would be best if you did your own research to make your personal investment decisions wisely or consult a licenced investment advisor.

COMPANY BACKGROUND

Malaysian Resources Corporation Berhad (MRCB) is a property and construction company with diverse business segments, including property development and investment, engineering and construction, environmental engineering, facilities management, parking services, and others.

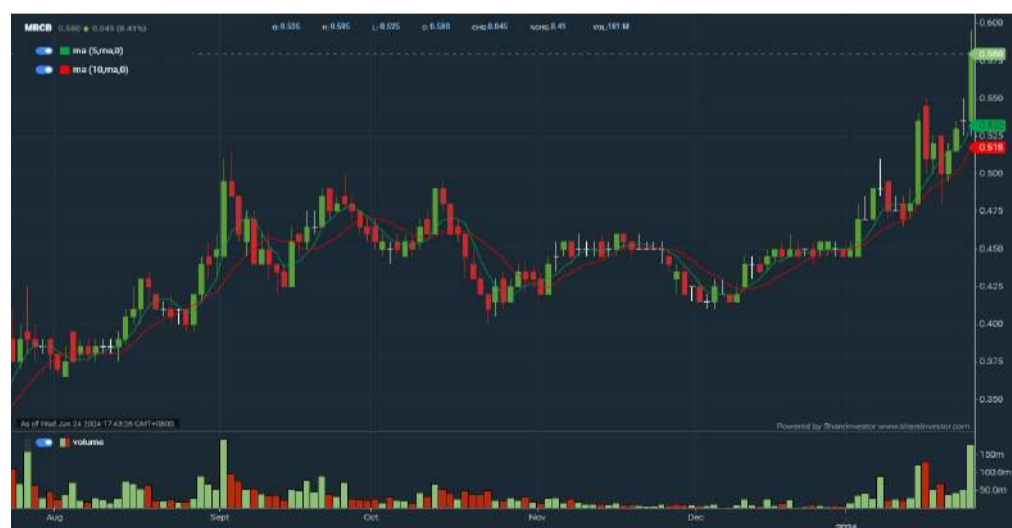


MRCB MALAYSIAN RESOURCES CORPORATION BERHAD		Updated at 24 Jan 2024 17:31	
Last (MYR): 0.580 ↑	Change: +0.045	High: 0.595	Remarks: s ?
	Change (%): +8.41	Low: 0.525	
Open	0.535	Yesterday's Close	0.535
Buy Price	0.580	Sell Price	0.585
Buy Volume ('00)	5,000	Sell Volume ('00)	1,337
Cumulative Volume ('00)	1,805,294	Cumulative Value	102,433,247

Financial Analysis

Revenue Growth Increasing revenue in last 2 consecutive years	😊	Profit Growth Increasing profit in latest year (with last 2 profitable years)	😊
Piotroski F Score The company has above average financial strength (Piotroski F-Score of 6-7)	😊	Dividend Payout Dividend is decreasing over the past 60 months.	😟
Debt to Cashflow The company has negative cash flow from operations in most recent year	😟	Free Cash Flow Negative free cash flow for two years or more	😟
Gross Profit Margin Low gross profit margin for 3 years	😟	Net Earnings Margin Low net profit margin for 2 years	😟

😊 Excellent 😊 Good 😐 Neutral 😟 Be Alert 😱 Watch Out



Historical Financials

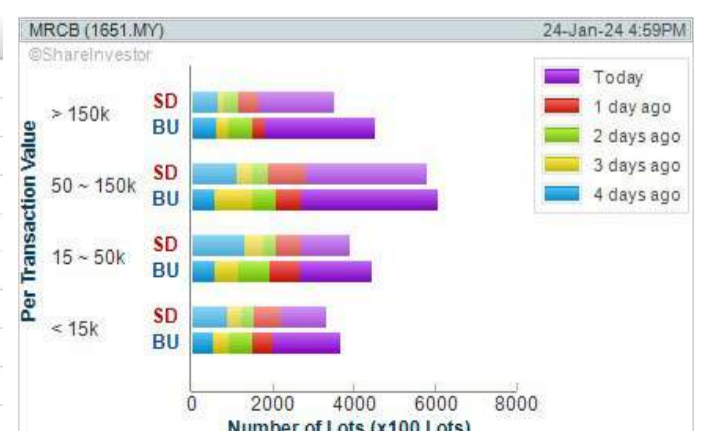


WebPro 9-Days Free Trial Registration (worth RM9) Sign Up Now



Key Statistics with Total Shareholder Returns

Period	Dividend Received	Capital Appreciation	Total Shareholder Return
Short Term Return	5 Days	-	+13.73 %
	10 Days	-	+22.11 %
	20 Days	-	+27.47 %
Medium Term Return	3 Months	-	+36.47 %
	6 Months	-	+48.72 %
	1 Year	-	+87.10 %
Long Term Return	2 Years	0.010	+74.01 %
	3 Years	0.020	+53.85 %
	5 Years	0.046	-9.64 %
Annualised Return	Annualised	-	-2.01 %



Disclaimer: The information on this page is provided as a service to readers. It does not constitute financial advice and/or any investment recommendations. Past performance is not indicative of future results. We assume no liability for damages resulting from or arising out of the use of such information. It would be best if you did your own research to make your personal investment decisions wisely or consult a licenced investment advisor.

Price & Volume Distribution Charts (as at Wednesday)

Technical Analysis

DEFINITION: Shariah compliant stocks with Technical Analysis showing Bullish Momentum and Price Uptrend. The share price closed at the highest price yesterday. The typical price was higher than the previous day's typical price.

CHART GUIDE: Volume Distribution Chart is a statistical interpretation of the current sentiment on each stock in graphical format. The highest bar categorized as >150k is likely to be traded by institutions or super dealers, while the lowest bar categorized as <15k usually represents retail investors. "Buy Up" refers to more buyers snatching up the lots queued at selling price. "Sell Down" refers to sellers selling their shares to the buying queue.



ShareInvestor WebPro > Screener > Market Screener (FA & TA)>select BURSA>add criteria

A. Criteria

- > click Add Criteria
- Fundamental Analysis Conditions tab >select (i) Revenue
- Technical Analysis Conditions tab select (ii) Average Volume
- Prices & Other Conditions tab > select (iii) Last Done Price
- Prices & Other Conditions tab > select (iv) Is Shariah Compliant
- Technical Analysis Conditions tab select (v) RSI Overbought
- Technical Analysis Conditions tab select (vi) Moving Average Below Close
- Technical Analysis Conditions tab select (vii) CCI Overbought

B. Conditions (Criteria Filters)

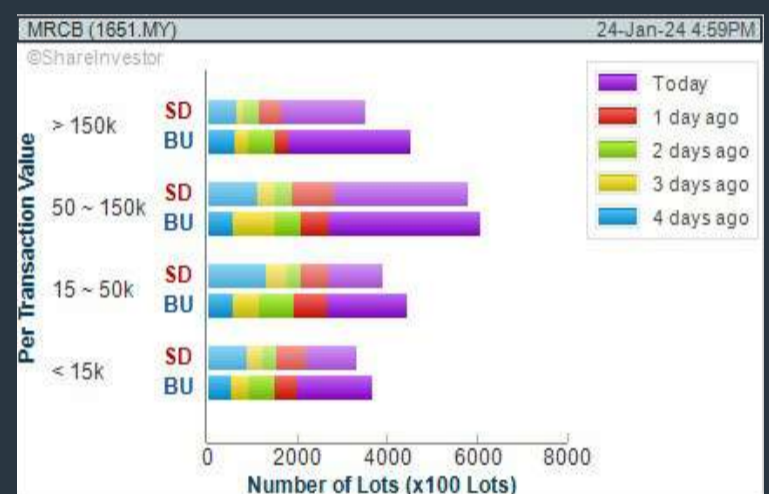
1. Revenue ("000) - select (more than) type (1) for the past select (1) financial year(s)
2. Average Volume - type (1) days average volume greater than type (10000) lots
3. Last Done Price - select (more than) type (0.3)
4. Is Shariah Compliant - select Yes
5. RSI Overbought - select RSI 1 above 99 for 1 days
6. Moving Average Below Close - select (MA) type (10) below close price for type (1) days
7. CCI Overbought - select CCI (2) above (0) for (1) days

- > click Save Template > Create New Template type (Shariah Momentum Up Stocks) > click Create
- > click Save Template as > select Shariah Momentum Up Stocks > click Save
- > click Screen Now (may take a few minutes)
- Sort By: Select (Vol) Select (Desc)
- Mouse over stock name > Charts > click C² Charts tab or Volume Distribution

MALAYSIAN RESOURCES CORPORATION BERHAD (1651)

C² Chart

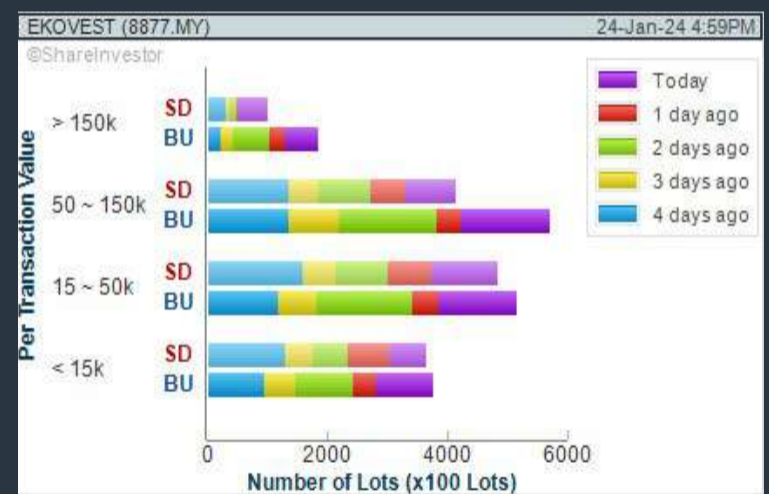
Analysis



EKOVEST BERHAD (8877)

C² Chart

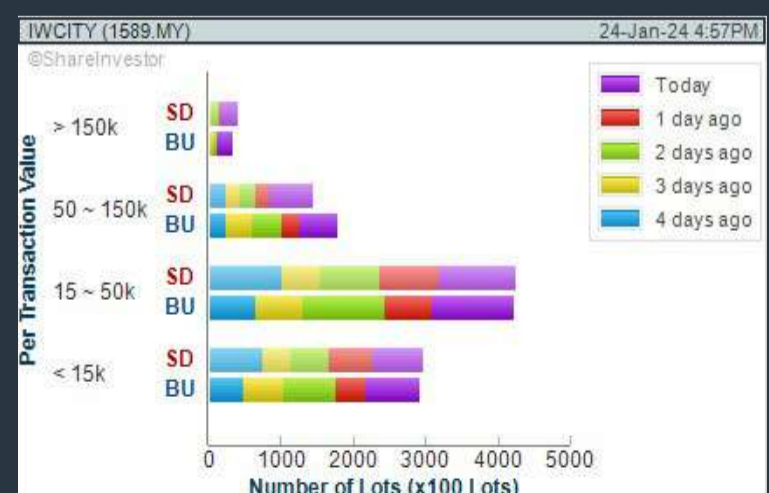
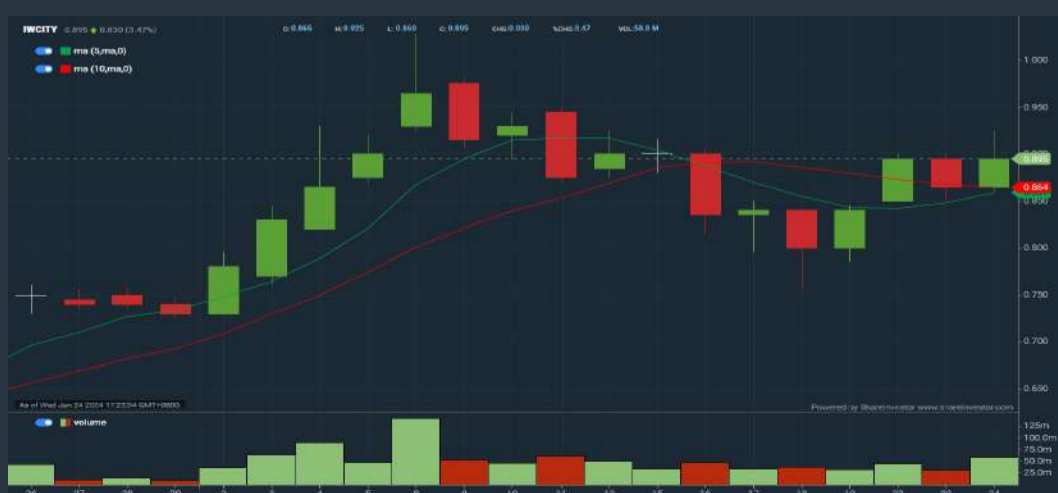
Analysis



ISKANDAR WATERFRONT CITY BERHAD (1589)

C² Chart

Analysis



Disclaimer: The information on this page is provided as a service to readers. It does not constitute financial advice and/or any investment recommendations. Past performance is not indicative of future results. We assume no liability for damages resulting from or arising out of the use of such information. It would be best if you did your own research to make your personal investment decisions wisely or consult a licenced investment advisor.

SHAREINVESTOR WEBPRO

STOCK MARKET DATA AT YOUR FINGERTIPS

Powerful browser-based market analytics platform.
Access from anywhere



8 Markets Data

- ▶ Get access to data from Bursa, NYSE, Nasdaq, HKEX, SGX, IDX, SET & ASX

Portfolio Management

- ▶ Profit & Loss Summary
- ▶ Stock Alert
- ▶ News & Events filtering
- ▶ Customizable column layout

Fundamental Analysis

Financial Analysis Statement

- ▶ Profit & Loss
- ▶ Balance Sheet
- ▶ Cash Flow Statement
- ▶ More than 20 Financial Ratios
- ▶ Dividend Analysis

Technical Charting

- ▶ C² chart (Customisable & Comprehensive)

Brokers' Call

Intrinsic Value Calculator

FactSheet

- ▶ Key Stock Information
- ▶ Ownership
- ▶ Consensus Estimates
- ▶ Annual Report
- ▶ Historical Price
- ▶ Insider Trades

What's new on WebPro (Stable Release 12.1.0)

In our effort to keep our platform at the forefront of trading technology, we have added on some new features onto our C² Chart in WebPro

ADDITIONAL NEW FEATURES:

- ▶ Anchor selector for AVWAP, PVAT, and PAV indicators
- ▶ Volume profile indicator by date range
- ▶ Moving Average Cross indicator
- ▶ Guppy Multiple Moving Average (GMMA) indicator
- ▶ GoNoGo Trend Signal indicators
- ▶ SignalIQ

So what are you waiting for? Head to our platform today and check out our new trading chart features and indicators. We're confident that you'll love the improvements we've made and that they'll help you become a more successful trader.

Click here to start your 9 days FREE trial
(Valued at RM10)



Price & Volume Distribution Charts (as at Wednesday)

Technical Analysis

DEFINITION: Stocks with Technical Analysis showing 5-days & 10-days Moving Average Price below Close over past 1 days and with Volume Spike

CHART GUIDE: Volume Distribution Chart is a statistical interpretation of the current sentiment on each stock in graphical format. The highest bar categorized as >150k is likely to be traded by institutions or super dealers, while the lowest bar categorized as <15k usually represents retail investors. "Buy Up" refers to more buyers snatching up the lots queued at selling price. "Sell Down" refers to sellers selling their shares to the buying queue.



ShareInvestor WebPro > Screener > Market Screener (FA & TA) > select BURSA > add criteria

A. Criteria

- > click Add Criteria
- Technical Analysis Conditions tab select (i) Moving Average Below Close (ii) Volume Spike
- Fundamental Analysis Conditions tab >select (iii) Revenue
- Prices & Other Conditions tab > select (iv) Is Shariah Compliant
- Technical Analysis Conditions tab select (v) Moving Average Below Close
- Prices & Other Conditions tab > select (vi) Last Done Price
- Technical Analysis Conditions tab select (vii) Moving Average Below Close

B. Conditions (Criteria Filters)

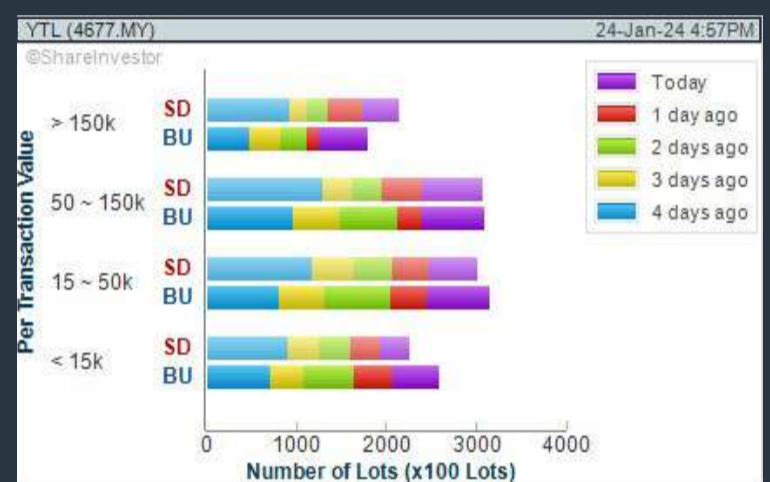
1. Moving Average Below Close - select (MA) type (5) below close price for type (3) days
2. Volume Spike - Volume type (1) greater than type (5) days average
3. Revenue ("000) - select (more than) type (1) for the past select (1) financial year(s)
4. Is Shariah Compliant - select NO
5. Moving Average Below Close - select (MA) type (10) below close price for type (1) days
6. Last Done Price - select (more than) type (0.3)
7. Moving Average Below Close - select (EMA) type (5) below close price for type (1) days

- > click Save Template > Create New Template type (Non-Shariah Hot Stocks) > click Create
- > click Save Template as > select Non-Shariah Hot Stocks > click Save
- > click Screen Now (may take a few minutes)
- Sort By: Select (Vol) Select (Desc)
- Mouse over stock name > Charts > click C² Charts tab or Volume Distribution

YTL CORPORATION BERHAD (4677)

C² Chart

Analysis



YTL POWER INTERNATIONAL BERHAD (6742)

C² Chart

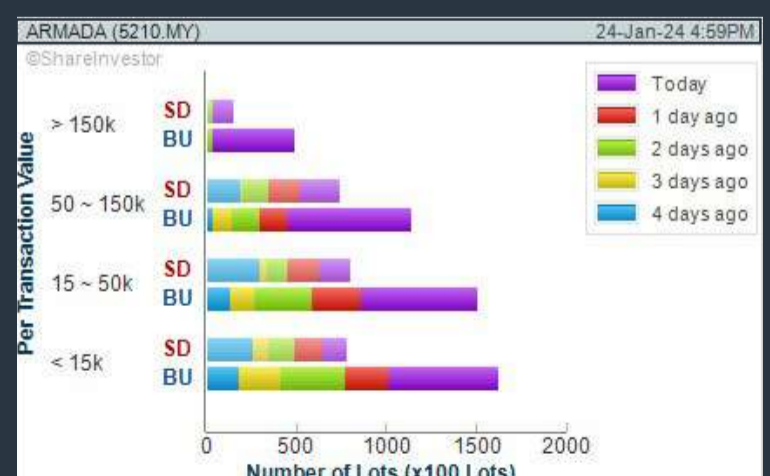
Analysis



BUMI ARMADA BERHAD (5210)

C² Chart

Analysis

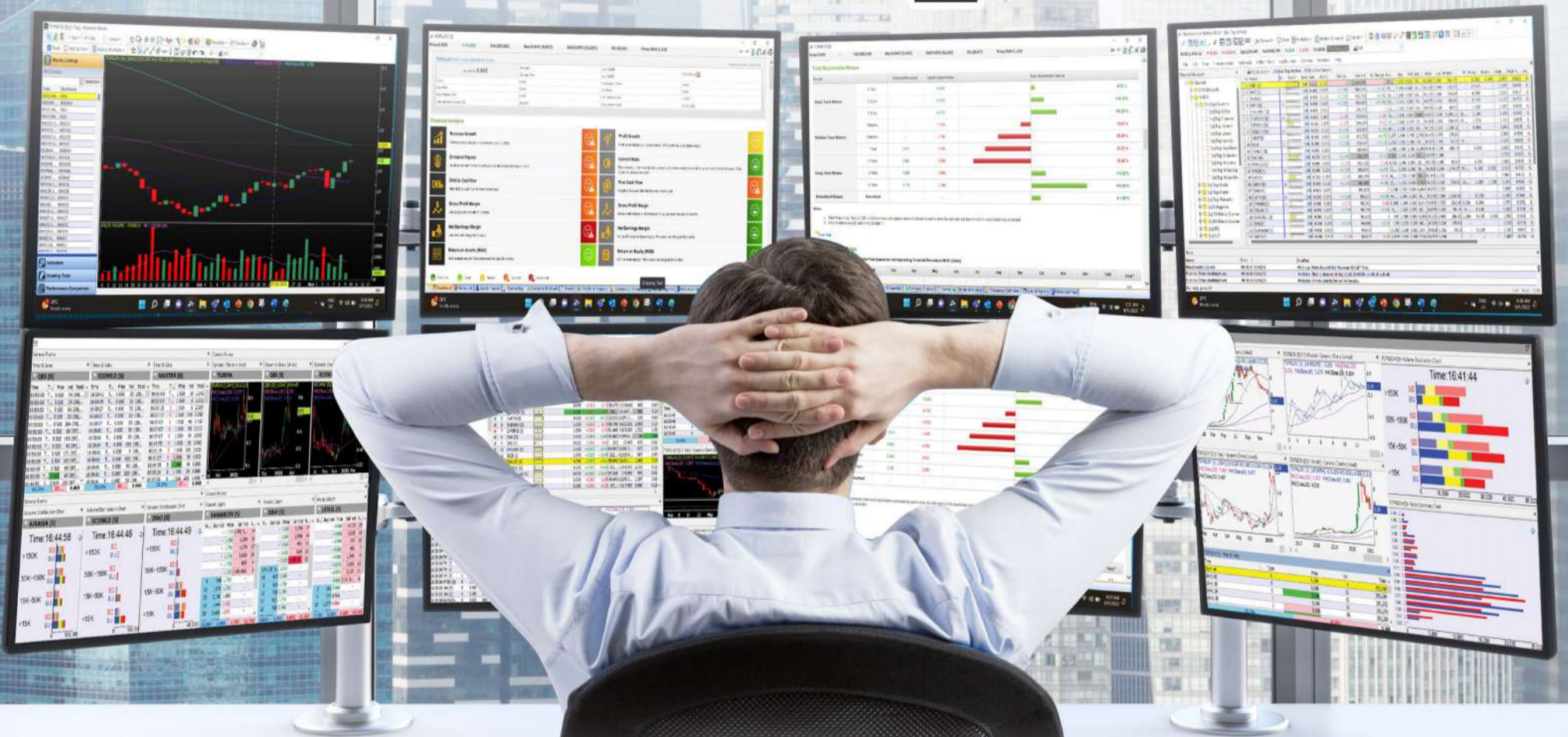


Disclaimer: The information on this page is provided as a service to readers. It does not constitute financial advice and/or any investment recommendations. Past performance is not indicative of future results. We assume no liability for damages resulting from or arising out of the use of such information. It would be best if you did your own research to make your personal investment decisions wisely or consult a licenced investment advisor.

MAKE BETTER TRADING STRATEGIES

with

SHARE INVESTOR STATION



8 Markets Data

- ▶ Get access to data from Bursa, NYSE, Nasdaq, HKEX, SGX, IDX, SET & ASX

Dynamic Chart

- ▶ Candlestick Pattern Recognition
- ▶ 111 Indicators
- ▶ 39 Drawing Tools
- ▶ Performance Comparison Chart

Intraday Data

- ▶ Market Depth
- ▶ Trade Summary Matrix & Chart
- ▶ Times & Sales
- ▶ Intraday Market Ticker

Market Screener

- ▶ 96 criteria ranging from FA, TA, Consensus Estimate
- ▶ Real-time Data

Power Frame

- ▶ Combining few Dynamic Charts together with intraday information in one frame

Technical Analysis

Fundamental Analysis

Financial Analysis Statement

- ▶ Profit & Loss
- ▶ Balance Sheet
- ▶ Cash Flow Statement
- ▶ More than 20 Financial Ratios
- ▶ Dividend Analysis

FactSheet

- ▶ Key Stock Information
- ▶ Ownership
- ▶ Consensus Estimates
- ▶ Annual Report
- ▶ Historical Price
- ▶ Insider Trades

**Start your 18 days
FREE trial now
(Valued at RM82)**



Price & Volume Distribution Charts (Over 3 trading days as at Wednesday)

Technical Analysis

DEFINITION: Stocks with Technical Analysis showing Bullish Momentum and Price Uptrend

CHART GUIDE: Volume Distribution Chart is a statistical interpretation of the current sentiment on each stock in graphical format. The highest bar categorized as >150k is likely to be traded by institutions or super dealers, while the lowest bar categorized as <15k usually represents retail investors. "Buy Up" refers to more buyers snatching up the lots queued at selling price. "Sell Down" refers to sellers selling their shares to the buying queue.



ShareInvestor WebPro > Screener > Market Screener (FA & TA) > select BURSA > add criteria

A. Criteria

- > click Add Criteria
- Fundamental Analysis Conditions tab > select (i) Revenue
- Technical Analysis Conditions tab select (ii) Moving Average Below Close
- Technical Analysis Conditions tab select (iii) Average Volume
- Prices & Other Conditions tab > select (iv) Last Done Price
- Technical Analysis Conditions tab select (v) Moving Average Below Close
- Technical Analysis Conditions tab select (v) Moving Average Bullish Crossover

B. Conditions

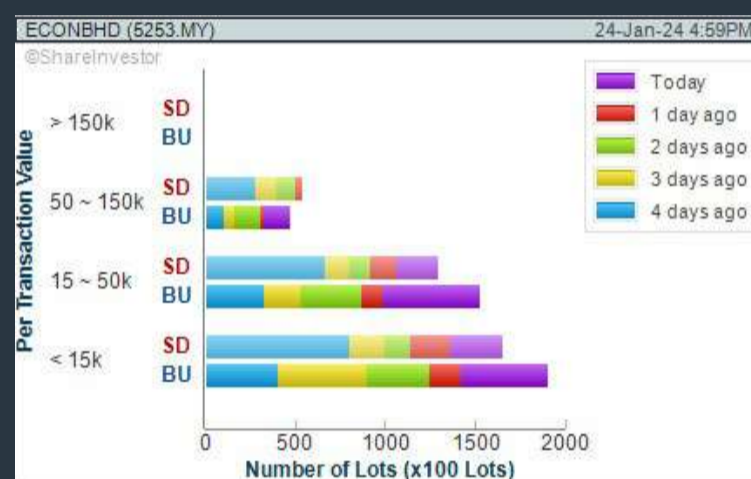
1. Revenue - select (more than) type (1) for the past select (1) financial year(s)
2. Moving Average Below Close - select (MA) type (20) below close price for type (1) days
3. Average Volume - type (5) days average volume type (10000) lots
4. Last Done Price - select (more than) type (0.3)
5. Moving Average Below Close - select (MA) type (10) below close price for type (1) days
6. Moving Average Bullish Crossover - select (MA) type (5) crossed above select (MA) type (10)

> click Save Template > Create New Template type (Non-Shariah Up-Trending Stocks) > click Create Click Save Template As > select Non-Shariah Up Trending Stocks > click Save
> click Screen Now (may take a few minutes)
Sort By: Select (Vol) Select (Desc)
Mouse over stock name > Charts > click C² Charts tab or Volume Distribution

ECONPILE HOLDINGS BERHAD (5253)

C² Chart

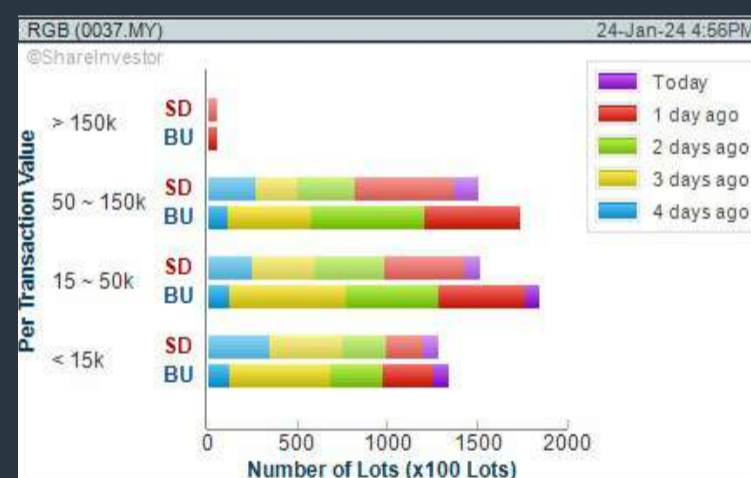
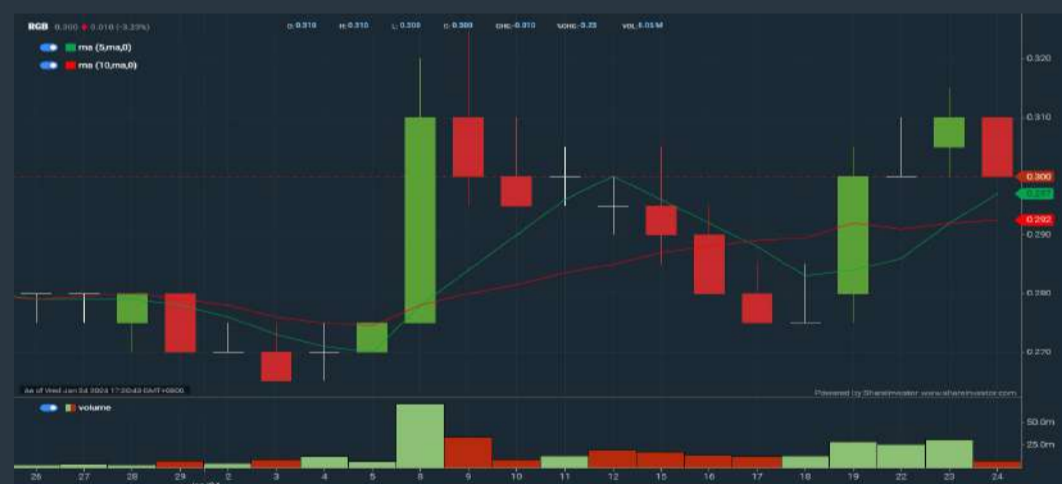
Analysis



RGB INTERNATIONAL BERHAD (0037)

C² Chart

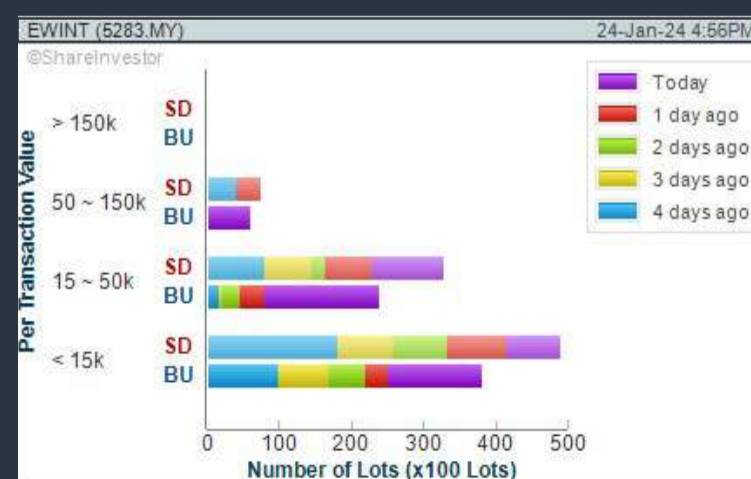
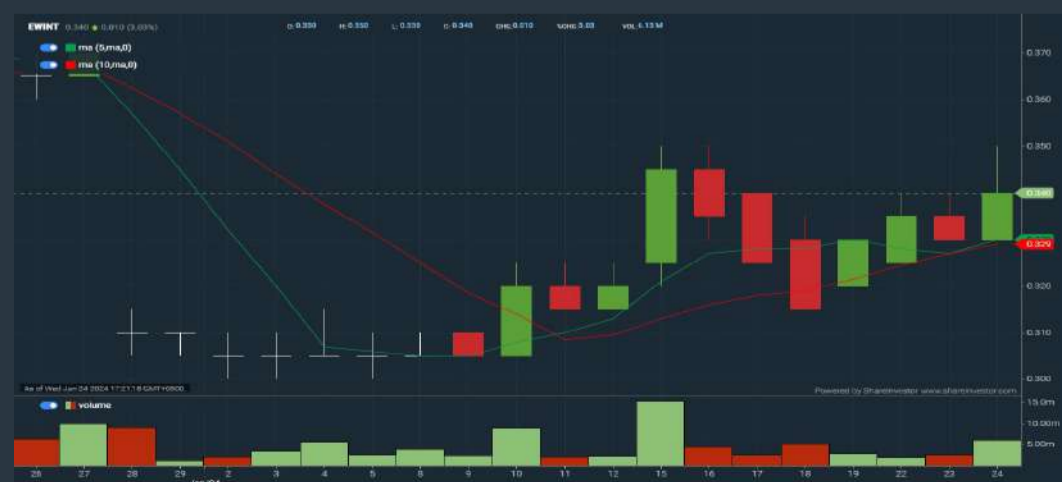
Analysis



ECO WORLD INTERNATIONAL BERHAD (5283)

C² Chart

Analysis



Disclaimer: The information on this page is provided as a service to readers. It does not constitute financial advice and/or any investment recommendations. Past performance is not indicative of future results. We assume no liability for damages resulting from or arising out of the use of such information. It would be best if you did your own research to make your personal investment decisions wisely or consult a licenced investment advisor.

Roberto Lazzeroni

Infinitamente

Limited Edition



Infinitamente – Finishes

Models.

- oval table 220x124
- "∞" shaped table 340x120

Base. Made from black Marquinia marble.

Marble top. Made from glossy White Levigliani marble.

Aesthetic details. A polished stainless steel plate with the serial number of the table and the Poltrona Frau logo is applied to the sloping edge of the supporting panel.

Other details. Limited edition series.

Oval tables 220x124: 48pieces.

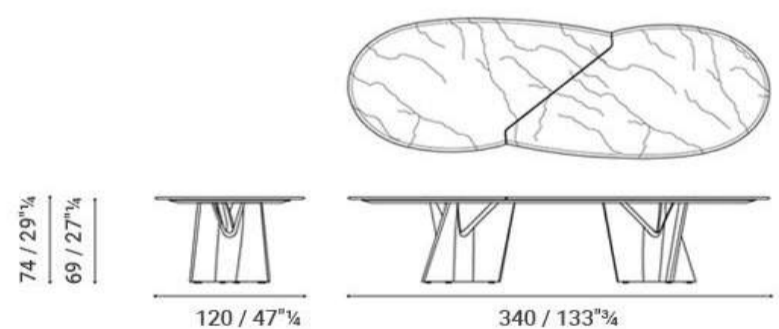
"∞" 340x120 tables: 24pieces.

N.B. Table weight (without packaging).

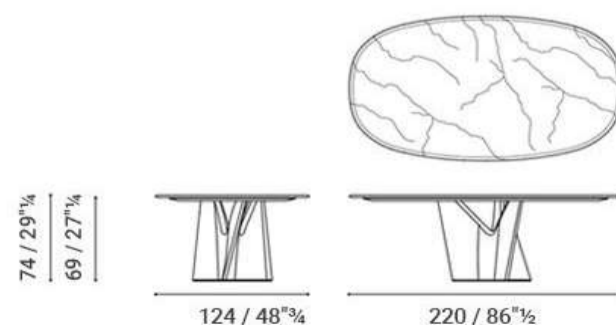
Oval table 220x124: 286.5 kg total (no. 1 base: 126 kg; top: 127 kg; supporting panel: 33.5 kg)

"∞" 340x120 table: 491 kg total

Infinitamente – Table 340x120



Infinitamente – Table 220x124



XTRA

The Gardens Mall, Lot S-236 & 237
2nd floor, Linkaran Syed Putra, Kuala Lumpur
T: +6012 6988 309 E: studio@xtrafurniture.com

Price & Total Shareholder Return (as at Wednesday)

Fundamental Analysis

DEFINITION: Share price of a company trading at a lower price as compared to its fundamentals (FA) such as financial performance and dividend, allowing it to be attractive to value investors.

CHART GUIDE: Total Shareholder Return (TSR) combines share price appreciation and dividend distributions paid to show the total return to the shareholder expressed as a percentage.



ShareInvestor WebPro > Screener > Market Screener (FA & TA) > select BURSA > add criteria

A. Criteria

- > click Add Criteria
- Fundamental Analysis Conditions tab (i) Price Earnings Ratio
- Fundamental Analysis Conditions tab >select (ii) CAGR of Net Earnings
- Fundamental Analysis Conditions tab >select (iii) Net Debt To Equity
- Fundamental Analysis Conditions tab >select (iv) Return On Equity (ROE)

B. Conditions

1. Price Earnings Ratio - select (less than) type (15) times now
2. CAGR of Net Earnings - select (more than) type (10) % for the past type (3) financial year(s)
3. Net Debt To Equity – select (less than) type (1) for the past select (1) financial year(s)
4. Return On Equity (ROE) – select (more than) type (10) % for the past select (1) financial year(s)

- > click Save Template > Create New Template type (Value Stock) > click Create
- > click Save Template as > select Value Companies > click Save
- > click Screen Now (may take a few minutes)
- Sort by: Select (PE Ratio) Select (Ascending)
- > Mouse over stock name > Factsheet > looking for Total Shareholder Return
- > Mouse over stock name > Charts > click C2 Charts tab

SYNERGY HOUSE BERHAD (0279)

C² Chart



SYNERGY (0279.MY)					
Period	Dividend Received	Capital Appreciation	Total Shareholder Return		
Short Term Return	5 Days	-	+0.015		+1.80%
	10 Days	-	+0.065		+11.61%
	20 Days	-	+0.090		+12.69%
Medium Term Return	3 Months	-	+0.360		+60.90%
	6 Months	-	+0.410		+103.80%

EDELTEQ HOLDINGS BERHAD (0278)

C² Chart



EDELTEQ (0278.MY)					
Period	Received	Appreciation	Total Shareholder Return		
Short Term Return	5 Days	-	-0.020		-6.87%
	10 Days	-	-0.045		-13.85%
	20 Days	-	-0.035		-11.11%
Medium Term Return	3 Months	-	-0.060		-17.65%
	6 Months	-	-0.350		-65.56%

SUNMOW HOLDING BERHAD (03050)

C² Chart



SUNMOW (03050.MY)					
Period	Dividend Received	Capital Appreciation	Total Shareholder Return		
Short Term Return	5 Days	-	-		-
	10 Days	-	-		-
	20 Days	-	-		-
Medium Term Return	3 Months	-	-0.290		-21.45%
	6 Months	-	-0.250		-19.70%
	1 Year	-	+0.410		+63.08%
Long Term Return	2 Years	-	+0.245		+38.05%
Annualised Return	Annualised	-	-		+14.04%

Disclaimer: The information on this page is provided as a service to readers. It does not constitute financial advice and/or any investment recommendations. Past performance is not indicative of future results. We assume no liability for damages resulting from or arising out of the use of such information. It would be best if you did your own research to make your personal investment decisions wisely or consult a licenced investment advisor.

Price & Total Shareholder Return (as at Wednesday)

Fundamental Analysis

DEFINITION: Company revenue is growing and making good quality of earnings with positive Free Cash Flow.

CHART GUIDE: Total Shareholder Return (TSR) combines share price appreciation and distributions paid to show the total return to the shareholder expressed as a percentage.



ShareInvestor WebPro > Screener > Market Screener (FA & TA) > select BURSA > add criteria

A. Criteria

1. Fundamental Analysis Conditions tab >select (i) Free Cash Flow, (ii) Revenue Growth, (iii) Gross Profit (Earnings) Margin, (iv) Quality of Earnings, (v) Total Shareholder Returns, > click Add Criteria
2. Fundamental Analysis Conditions tab >select (vi) Total Shareholder Returns > click Add Criteria

B. Conditions (Criteria Filters)

1. Free Cash Flow - select (more than) type (1) for the past select (1) financial year(s)
2. Revenue Growth - select (more than) type (1) for the past select (1) financial year(s)
3. Gross Profit (Earnings) Margin - select (more than) type (30) % for the past select (1) financial year(s)
4. Quality of Earnings - select (more than) type (1) for the past select (1) financial year(s)
5. Total Shareholder Return - select (more than) type (5) % for the past select (3) financial year(s)
6. Total Shareholder Return - select (more than) type (5) % for the past select (5) financial year(s)

- > click Save Template > Create New Template type (Growth Companies) > click Create
- > click Save Template as > select Growth Companies > click Save
- > click Screen Now (may take a few minutes)
- > Sort By: Select (Revenue Growth) Select (Desc)
- > Mouse over stock name > Factsheet > looking for Total Shareholder Return

IGB BERHAD (5606)

C² Chart

Analysis



Period	Dividend Received	Capital Appreciation	Total Shareholder Return
Short Term Return	5 Days	-	+1.32%
	10 Days	-	+2.22%
	20 Days	-	+5.82%
Medium Term Return	3 Months	-	+7.38%
	6 Months	-	+8.39%
Long Term Return	1 Year	-	+8.87%
	2 Years	0.050	+9.53%
	3 Years	0.236	+14.57%
Annualised Return	5 Years	0.303	+18.00%
	Annualised	-	+52.99%

YTL HOSPITALITY REIT (5109)

C² Chart

Analysis



Period	Distribution Received	Capital Appreciation	Total Shareholder Return
Short Term Return	5 Days	-	-
	10 Days	-	+7.41%
	20 Days	-	+13.73%
Medium Term Return	3 Months	-	+16.58%
	6 Months	-	+20.21%
Long Term Return	1 Year	-	+22.11%
	2 Years	0.019	+31.73%
	3 Years	0.061	+47.11%
Annualised Return	5 Years	0.187	+6.90%
	Annualised	-	+1.34%

MATRIX CONCEPTS HOLDINGS BERHAD (5236)

C² Chart

Analysis



Period	Dividend Received	Capital Appreciation	Total Shareholder Return
Short Term Return	5 Days	-	+2.84%
	10 Days	-	+3.55%
	20 Days	-	+6.06%
Medium Term Return	3 Months	-	+15.89%
	6 Months	-	+24.11%
Long Term Return	1 Year	-	+17.45%
	2 Years	-	+18.81%
	3 Years	-	+30.86%
Annualised Return	5 Years	0.108	+30.77%
	Annualised	-	+8.56%

Disclaimer: The information on this page is provided as a service to readers. It does not constitute financial advice and/or any investment recommendations. Past performance is not indicative of future results. We assume no liability for damages resulting from or arising out of the use of such information. It would be best if you did your own research to make your personal investment decisions wisely or consult a licenced investment advisor.

Price & Total Shareholder Return (as at Wednesday)

Fundamental Analysis

DEFINITION: Company is paying out dividend with low or moderate leverage.

CHART GUIDE: Total Shareholder Return (TSR) combines share price appreciation and distributions paid to show the total return to the shareholder expressed as a percentage.



ShareInvestor WebPro > Screener > Market Screener (FA & TA) > select BURSA > add criteria

A. Criteria

- > click Add Criteria
- Fundamental Analysis Conditions tab >select (i) Dividend Yield
- Fundamental Analysis Conditions tab >select (ii) Dividend Payout (Historical)
- Fundamental Analysis Conditions tab >select (iii) Total Debt To Equity
- Fundamental Analysis Conditions tab >select (iv) Total Shareholder Returns
- Fundamental Analysis Conditions tab >select (v) Total Shareholder Returns
- Fundamental Analysis Conditions tab / >select (vi) CAGR of Dividend Per Share

• Fundamental Analysis Conditions tab >select (vii) CAGR of Dividend Per Share

B. Conditions (Criteria Filters)

1. Dividend Yield - select (more than) type (1) % for the past select (1) financial year(s)
2. Dividend Payout (Historical) - select (between) type (0.5) to type (1) times for the past select (1) financial year(s)
3. Total Debt to Equity - select (less than) type (1) for the past select (1) financial year(s)
4. Total Shareholder Return - select (more than) type (5) % for the past select (3) financial year(s)
5. Total Shareholder Return - select (more than) type (5) % for the past select (5) financial year(s)

6. CAGR of Dividend Per Share - select (less than) type (30) % for the past select (5) financial year(s)
7. CAGR of Dividend Per Share - select (more than) type (1) % for the past select (5) financial year(s)

- > click Save Template > Create New Template type (Dividend Companies) > click Create
- > click Save Template as > select Dividend Companies > click Save
- > click Screen Now (may take a few minutes)
- > Sort By: Select (Dividend Yield) Select (Desc)
- > Mouse over stock name > Factsheet > looking for Total Shareholder Return

FORMOSA PROSONIC INDUSTRIES (9172)

C² Chart



Period	Dividend Received	Capital Appreciation	Total Shareholder Return
Short Term Return	5 Days	-	+0.26 %
	10 Days	-	+0.26 %
	20 Days	-	+4.25 %
Medium Term Return	3 Months	-	-1.03 %
	6 Months	-	+10.77 %
	1 Year	-	-14.03 %
Long Term Return	2 Years	0.200	-8.88 %
	3 Years	0.340	+26.27 %
	5 Years	0.550	+30.56 %
Annualised Return	Annualised	-	+13.76 %

HONG LEONG INDUSTRIES BERHAD (3301)

C² Chart



Period	Dividend Received	Capital Appreciation	Total Shareholder Return
Short Term Return	5 Days	-	-
	10 Days	-	-6.43 %
	20 Days	-	+1.20 %
Medium Term Return	3 Months	-	+6.38 %
	6 Months	-	+3.46 %
	1 Year	-	+3.46 %
Long Term Return	2 Years	0.350	+6.63 %
	3 Years	0.870	+26.09 %
	5 Years	1.810	+18.44 %
Annualised Return	Annualised	-	+3.44 %

BERMAZ AUTO BERHAD (5248)

C² Chart



Period	Dividend Received	Capital Appreciation	Total Shareholder Return
Short Term Return	5 Days	-	+3.78 %
	10 Days	-	+3.78 %
	20 Days	-	+0.82 %
Medium Term Return	3 Months	-	-
	6 Months	-	+23.50 %
	1 Year	-	+17.24 %
Long Term Return	2 Years	0.023	+60.63 %
	3 Years	0.090	+83.94 %
	5 Years	0.332	+36.10 %
Annualised Return	Annualised	-	+6.87 %

Disclaimer: The information on this page is provided as a service to readers. It does not constitute financial advice and/or any investment recommendations. Past performance is not indicative of future results. We assume no liability for damages resulting from or arising out of the use of such information. It would be best if you did your own research to make your personal investment decisions wisely or consult a licenced investment advisor.

Week: 19 January 2024 - 25 January 2024

More Brokers' Call 

AMINVESTMENT BANK <small>... See More</small>	Call	Target Price	Release Date
CIMB Group Holdings Berhad (1023)	BUY	RM6.90	22 Jan 2024
UOA Real Estate Investment Trust (5110)	BUY	RM1.23	23 Jan 2024
Westports Holdings Berhad (5246)	BUY	RM4.27	23 Jan 2024

BIMB SECURITIES SDN BHD <small>... See More</small>	Call	Target Price	Release Date
Mah Sing Group Berhad (8583)	HOLD	RM0.87	24 Jan 2024
Telekom Malaysia Berhad (4863)	BUY	RM7.00	21 Jan 2024
TIME DotCom Berhad (5031)	BUY	RM6.090	19 Jan 2024
Malaysia Marine And Heavy Engineering Holdings Berhad (5186)	BUY	RM0.94	23 Jan 2024

KENANGA <small>... See More</small>	Call	Target Price	Release Date
Axis Real Estate Investment Trust (5106)	UNDERPERFORM	RM1.58	24 Jan 2024
KPJ Healthcare Berhad (5878)	OUTPERFORM	RM1.86	24 Jan 2024
Mah Sing Group Berhad (8583)	OUTPERFORM	RM1.00	24 Jan 2024

MALACCA SECURITIES SDN BHD <small>... See More</small>	Call	Target Price	Release Date
UOA Real Estate Investment Trust (5110)	HOLD	RM1.21	23 Jan 2024

MIDF <small>... See More</small>	Call	Target Price	Release Date
Axis Real Estate Investment Trust (5106)	BUY	RM1.97	24 Jan 2024
Samaiden Group Berhad (0223)	BUY	RM1.54	23 Jan 2024
Eco World Development Group Berhad (8206)	BUY	RM1.33	19 Jan 2024

UOB KAYHIAN <small>... See More</small>	Call	Target Price	Release Date
Foundpac Group Berhad (5277)	BUY	RM0.52	23 Jan 2024
Mah Sing Group Berhad (8583)	BUY	RM1.04	23 Jan 2024
MISC Berhad (3816)	BUY	RM8.80	23 Jan 2024
Wellcall Holdings Berhad (7231)	BUY	RM1.84	23 Jan 2024

Disclaimer: InveSt does not accept any liability whatsoever for any direct, indirect or consequential losses (including loss of profit) or damages that may arise from the use of information or opinions in this publication. The information and opinions in InveSt are not to be considered as an offer to sell or buy any of the securities discussed. Opinions expressed are subject to change without notice. The Brokers may, from time to time, have interests or positions in the securities mentioned. For the full report on each item listed on this page, please visit https://www.shareinvestor.com/my/brokers_call.

DEFINITION: Top 9 stocks with Technical Analysis plus Pattern Matching by 60 pre-defined indicators by the system showing a higher probability of bullish sentiment on the share price.



ShareInvestor WebPro > Screener > Predefined TA Screens > select market BURSA > Most Long Signals > click Scan Results or mouse over each company

PANTECH GROUP HOLDINGS BERHAD (5125.MY)

PANTECH

Price updated at 24 Jan 2024 16:57

Last: 0.945	Change: +0.010	Volume: 18,204
	Change (%): +1.07	Range: 0.940 - 0.950

TA Scanner Results based on historical data up to 24 Jan 2024

Condition	Signal	Explanation
Bollinger Band: Bullish Long Term Volatility Breakout and Trending	Long	1. Close price above upper bollinger band(33,1). 2. Volume above average volume(50). 3. Average volume(50) is above 300,000.
Bollinger Band: Bullish Lower Bollinger Band Support	Long	1. Low 1 day ago below lower bollinger band(20,2). 2. Close above close 1 day ago. 3. Average volume(5) is above 100,000.
Bollinger Band: Bullish Short Term Volatility Breakout and Trending	Long	1. Close price above upper bollinger band(33,1). 2. Volume above average volume(10). 3. Average volume(10) is above 300,000.
Bollinger Band: High Above Upper Bollinger Band	Neutral	1. High above upper bollinger band(14,2). 2. Average volume(5) is above 100,000.
DM: Bullish Directional Movement	Long	-DI(14) crossed below +DI(14)
Donchian Channels: High Above Upper Donchian Channels	Long	High crossed above the upper Donchian Channel(14,4)
MACD: Bullish MACD Crossover	Long	1. MACD(12,26) diff line crossed above the MACD(12,26) signal line. 2. MACD Histogram(12,26) is above 0.
Price: New 52 Week High	Long	1. Stock reach a new 52 week high. 2. Average volume(30) is above 50000.
Volume: 10 Days large value Sell Down trade	Short	1. 150K value Sell Down greater than Buy Up by 20% for 10 days. 2. 50K-100K value Sell Down greater than Buy Up by 20% for 10 days. 3. Average volume(10) is above 1000000
Volume: Consecutive Days Of Increasing Average Volume	Long	1. Average Volume(20) has been increasing over the last 2 weeks. 2. Average volume(20) is above 100000

GDB HOLDINGS BERHAD (0198.MY)

GDB

Price updated at 24 Jan 2024 16:59

Last: 0.220	Change: +0.010	Volume: 84,865
	Change (%): +4.76	Range: 0.210 - 0.230

TA Scanner Results based on historical data up to 24 Jan 2024

Condition	Signal	Explanation
Bollinger Band: Bullish Long Term Volatility Breakout and Trending	Long	1. Close price above upper bollinger band(33,1). 2. Volume above average volume(50). 3. Average volume(50) is above 300,000.
Bollinger Band: Bullish Short Term Volatility Breakout and Trending	Long	1. Close price above upper bollinger band(33,1). 2. Volume above average volume(10). 3. Average volume(10) is above 300,000.
Bollinger Band: High Above Upper Bollinger Band	Neutral	1. High above upper bollinger band(14,2). 2. Average volume(5) is above 100,000.
DM: Bullish Directional Movement	Long	-DI(14) crossed below +DI(14)
Donchian Channels: High Above Upper Donchian Channels	Long	High crossed above the upper Donchian Channel(14,4)
MACD: Bullish MACD Crossover	Long	1. MACD(12,26) diff line crossed above the MACD(12,26) signal line. 2. MACD Histogram(12,26) is above 0.
Volume: Consecutive Days Of Increasing Average Volume	Long	1. Average Volume(20) has been increasing over the last 2 weeks. 2. Average volume(20) is above 100000
Williams %R: Bearish Williams %R	Short	1. Williams %R(26) between 0 and -20. 2. Average volume(5) is above 100,000.

JAYA TIASA HOLDINGS BERHAD (4383.MY)

JTIASA

Price updated at 24 Jan 2024 16:58

Last: 1.180	Change: +0.020	Volume: 84,288
	Change (%): +1.72	Range: 1.160 - 1.190

TA Scanner Results based on historical data up to 24 Jan 2024

Condition	Signal	Explanation
Bollinger Band: High Above Upper Bollinger Band	Neutral	1. High above upper bollinger band(14,2). 2. Average volume(5) is above 100,000.
MA: Medium Term Bullish Moving Average Crossover	Long	MA(25) crossed above MA(50) within the last 1 day.
MACD: Overbought	Short	1. MACD Histogram(12,26,9) reached a new 6 month high. 2. MACD Histogram(12,26,9) has been above 0 for the last 3 weeks.
Price: Consecutive Days Gains	Long	1. Close price has been increasing over the last 5 days. 2. Average volume(5) above 100,000.
Price: New 52 Week High	Long	1. Stock reach a new 52 week high. 2. Average volume(30) is above 50000.
Volume: 10 Days large value Buy Up trade	Long	1. 150K value Buy Up greater than Sell Down by 20% for 10 days. 2. 50K-100K value Buy Up greater than Sell Down by 20% for 10 days. 3. Average volume(10) is above 1000000
Volume: 5 Days large value Buy Up trade	Long	1. 150K value Buy Up greater than Sell Down by 20% for 5 days. 2. 50K-100K value Buy Up greater than Sell Down by 20% for 5 days. 3. Average volume(10) is above 1000000
Volume: Consecutive Days Of Increasing Average Volume	Long	1. Average Volume(20) has been increasing over the last 2 weeks. 2. Average volume(20) is above 100000
Williams %R: Bearish Williams %R	Short	1. Williams %R(26) between 0 and -20. 2. Average volume(5) is above 100,000.

RADIUM DEVELOPMENT BERHAD (5313.MY)

RADIUM

Price updated at 24 Jan 2024 16:51

Last: 0.390	Change: -0.005	Volume: 1,742
	Change (%): -1.27	Range: 0.385 - 0.390

TA Scanner Results based on historical data up to 24 Jan 2024

Condition	Signal	Explanation
Bollinger Band: Bullish Long Term Volatility Breakout and Trending	Long	1. Close price above upper bollinger band(33,1). 2. Volume above average volume(50). 3. Average volume(50) is above 300,000.
Bollinger Band: Bullish Lower Bollinger Band Support	Long	1. Low 1 day ago below lower bollinger band(20,2). 2. Close above close 1 day ago. 3. Average volume(5) is above 100,000.
Bollinger Band: Bullish Short Term Volatility Breakout and Trending	Long	1. Close price above upper bollinger band(33,1). 2. Volume above average volume(10). 3. Average volume(10) is above 300,000.
Bollinger Band: Low Below Lower Bollinger Band	Neutral	1. Low below lower bollinger band(14,2). 2. Average volume(5) is above 100,000.
DM: Bullish Directional Movement	Long	-DI(14) crossed below +DI(14)
MACD: Bullish MACD Crossover	Long	1. MACD(12,26) diff line crossed above the MACD(12,26) signal line. 2. MACD Histogram(12,26) is above 0.
RSI: Short Term RSI 50 Bullish Crossover	Long	1. RSI(20) crossed above 50 within the last 1 day and RSI(20) 1 day ago below 50 for the last 5 days. 2. Volume above average volume(125). 3. Average volume(5) is above 100,000.

Disclaimer: The information on this page is provided as a service to readers. It does not constitute financial advice and/or any investment recommendations. Past performance is not indicative of future results. We assume no liability for damages resulting from or arising out of the use of such information. It would be best if you did your own research to make your personal investment decisions wisely or consult a licenced investment advisor.

AVILLION BERHAD (8885.MY)

AVI

Price updated at 24 Jan 2024 16:45

Last: 0.055	Change: -0.005	Volume: 4,007
	Change (%): -8.33	Range: 0.050 - 0.055

TA Scanner Results based on historical data up to 24 Jan 2024

Condition	Signal	Explanation
Bollinger Band: Bullish Long Term Volatility Breakout and Trending	Long	1. Close price above upper bollinger band(33,1). 2. Volume above average volume(50). 3. Average volume(50) is above 300,000.
Bollinger Band: Bullish Short Term Volatility Breakout and Trending	Long	1. Close price above upper bollinger band(33,1). 2. Volume above average volume(10). 3. Average volume(10) is above 300,000.
DM: Bullish Directional Movement	Long	-DI(14) crossed below +DI(14)
MA: Bullish Price Crossover	Long	1. Close price crossed above MA(40) within the last 1 day. 2. Previous day close price is below the MA(10) for the last 5 days
RSI: Short Term RSI 50 Bullish Crossover	Long	1. RSI(20) crossed above 50 within the last 1 day and RSI(20) 1 day ago below 50 for the last 5 days. 2. Volume above average volume(125). 3. Average volume(5) is above 100,000.

JAG BERHAD (0024.MY)

JAG

Price updated at 24 Jan 2024 16:59

Last: 0.310	Change: -	Volume: 24,760
	Change (%): -	Range: 0.305 - 0.310

TA Scanner Results based on historical data up to 24 Jan 2024

Condition	Signal	Explanation
Bollinger Band: Bullish Long Term Volatility Breakout and Trending	Long	1. Close price above upper bollinger band(33,1). 2. Volume above average volume(50). 3. Average volume(50) is above 300,000.
Bollinger Band: Bullish Short Term Volatility Breakout and Trending	Long	1. Close price above upper bollinger band(33,1). 2. Volume above average volume(10). 3. Average volume(10) is above 300,000.
DM: Bullish Directional Movement	Long	-DI(14) crossed below +DI(14)
Volume: 10 Days large value Buy Up trade	Long	1. 150K value Buy Up greater than Sell Down by 20% for 10 days. 2. 50K-100K value Buy Up greater than Sell Down by 20% for 10 days. 3. Average volume(10) is above 1000000
Volume: 5 Days large value Buy Up trade	Long	1. 150K value Buy Up greater than Sell Down by 20% for 5 days. 2. 50K-100K value Buy Up greater than Sell Down by 20% for 5 days. 3. Average volume(10) is above 1000000

PINEAPPLE RESOURCES BERHAD (0006.MY)

PINEAPP

Price updated at 24 Jan 2024 09:43

Last: 0.850	Change: -	Volume: -
	Change (%): -	Range: 0.850 - 0.850

TA Scanner Results based on historical data up to 24 Jan 2024

Condition	Signal	Explanation
Bollinger Band: High Above Upper Bollinger Band	Neutral	1. High above upper bollinger band(14,2). 2. Average volume(5) is above 100,000.
DM: Bullish Directional Movement	Long	-DI(14) crossed below +DI(14)
Donchian Channels: High Above Upper Donchian Channels	Long	High crossed above the upper Donchian Channel(14,4)
MA: Long Term Bullish Moving Average Crossover	Long	MA(50) crossed above MA(200) within the last 1 day.

COSMOS TECHNOLOGY INTERNATIONAL BERHAD (0261.MY)

COSMOS

Price updated at 24 Jan 2024 16:56

Last: 0.415	Change: +0.015	Volume: 20,522
	Change (%): +3.75	Range: 0.405 - 0.425

TA Scanner Results based on historical data up to 24 Jan 2024

Condition	Signal	Explanation
Bollinger Band: Bullish Short Term Volatility Breakout and Trending	Long	1. Close price above upper bollinger band(33,1). 2. Volume above average volume(10). 3. Average volume(10) is above 300,000.
MA: Bullish Price Crossover	Long	1. Close price crossed above MA(40) within the last 1 day. 2. Previous day close price is below the MA(10) for the last 5 days
MACD: Bullish MACD Crossover	Long	1. MACD(12,26) diff line crossed above the MACD(12,26) signal line. 2. MACD Histogram(12,26) is above 0.
RSI: Short Term RSI 50 Bullish Crossover	Long	1. RSI(20) crossed above 50 within the last 1 day and RSI(20) 1 day ago below 50 for the last 5 days. 2. Volume above average volume(125). 3. Average volume(5) is above 100,000.
Volume: Consecutive Days Of Increasing Average Volume	Long	1. Average Volume(20) has been increasing over the last 2 weeks. 2. Average volume(20) is above 100000

INSAS BERHAD (3379.MY)

INSAS

Price updated at 24 Jan 2024 16:57

Last: 1.260	Change: -0.010	Volume: 81,429
	Change (%): -0.79	Range: 1.210 - 1.300

TA Scanner Results based on historical data up to 24 Jan 2024

Condition	Signal	Explanation
Bollinger Band: Bearish Upper Bollinger Band Resistance	Short	1. High 1 day ago above upper bollinger band(20,2). 2. Close below close 1 day ago. 3. Average volume(5) is above 100,000.
Candlestick: Bearish Harami	Short	Bearish: Harami
Donchian Channels: High Above Upper Donchian Channels	Long	High crossed above the upper Donchian Channel(14,4)
Price: New 52 Week High	Long	1. Stock reach a new 52 week high. 2. Average volume(30) is above 50000.
Volume: 10 Days large value Buy Up trade	Long	1. 150K value Buy Up greater than Sell Down by 20% for 10 days. 2. 50K-100K value Buy Up greater than Sell Down by 20% for 10 days. 3. Average volume(10) is above 1000000
Volume: 5 Days large value Buy Up trade	Long	1. 150K value Buy Up greater than Sell Down by 20% for 5 days. 2. 50K-100K value Buy Up greater than Sell Down by 20% for 5 days. 3. Average volume(10) is above 1000000
Volume: Consecutive Days Of Increasing Average Volume	Long	1. Average Volume(20) has been increasing over the last 2 weeks. 2. Average volume(20) is above 100000
Williams %R: Bearish Williams %R	Short	1. Williams %R(26) between 0 and -20. 2. Average volume(5) is above 100,000.

Disclaimer: The information on this page is provided as a service to readers. It does not constitute financial advice and/or any investment recommendations. Past performance is not indicative of future results. We assume no liability for damages resulting from or arising out of the use of such information. It would be best if you did your own research to make your personal investment decisions wisely or consult a licenced investment advisor.

Condition	Signal	Explanation
RSI: Short Term RSI 50 Bullish Crossover	Long	1. RSI(20) crossed above 50 within the last 1 day and RSI(20) 1 day ago below 50 for the last 5 days. 2. Volume above average volume(125). 3. Average volume(5) is above 100,000.
Volume: Volume Spike	Long	1. Volume is more than 500% above average volume(10). 2. Volume above 200000. 3. Close price above 0.10

BANK NEGARA MALAYSIA MAINTAINS OPR AT 3%

The Monetary Policy Committee (MPC) of Bank Negara Malaysia (BNM) today decided to maintain the Overnight Policy Rate (OPR) at 3%. In its monetary policy statement, BNM said that at the current OPR level, the monetary policy stance remains supportive of the economy and is consistent with the current assessment of the inflation and growth prospects. The MPC remains vigilant to ongoing developments to inform the assessment on the outlook of domestic inflation and growth. It will ensure that the monetary policy stance remains conducive to sustainable economic growth amid price stability.

For the Malaysian economy, the fourth quarter advance estimates for gross domestic product (GDP) affirmed that the overall growth for 2023 expanded within expectations. Growth is expected to improve in 2024, supported by the recovery in exports and resilient domestic expenditure. Continued employment and wage growth remain supportive of household spending. Tourist arrivals and spending are expected to improve further. Investment activity would be supported by continued progress of multi-year projects in both the private and public

sectors, and implementation of catalytic initiatives under the national master plans.

The growth outlook remains subject to downside risks stemming from weaker-than-expected external demand and larger declines in commodity production. Meanwhile, upside risks to growth mainly emanate from greater spillover from the tech upcycle, stronger-than-expected tourism activity and faster implementation of existing and new projects.

As expected, both headline and core inflation continued to moderate in the fourth quarter, mainly due to lower cost pressures amid stabilising demand conditions. Overall, both headline and core inflation for 2023 are within expectations, averaging for the year at 2.5% and 3.0%, respectively. In 2024, inflation is expected to remain modest, broadly reflecting stable cost and demand conditions.

Risks to the inflation outlook remain highly subject to changes to domestic policy on subsidies and price controls, as well as global commodity prices and financial market developments. Of note is the government's intention to review price controls and subsidies in 2024 which will affect the outlook for inflation and demand conditions.

Meanwhile, the recent ringgit movements are primarily driven by external factors, and not reflective of the current domestic economic performance and prospects. As the risk of heightened volatility in the global financial and foreign exchange markets remains, the Central Bank will continue to ensure sufficient liquidity to support the orderly functioning of the domestic foreign exchange market. Financial institutions continue to operate with strong capital and liquidity buffers, with domestic financial conditions remaining conducive to sustain credit growth.

Meanwhile, BNM notes that the global economy continues to expand, driven by domestic demand amid strong labour market conditions.

There are further signs of recovery in the electrical and electronics (E&E) sector, but global trade remains soft partly due to the continued shift in spending from goods to services, and ongoing trade restrictions. While China's economy continues to show signs of improvement, its recovery remains modest given the weakness in the property market.

Global headline and core inflation edged downwards in recent months but continue to be above average. Also on the global front, while the monetary policy stance is likely to remain tight in the near term, the tightening cycle has peaked for most central banks.

BNM concluded that the growth outlook remains subject to downside risks, mainly from an escalation of geopolitical tensions, higher-than-anticipated inflation outturns, and heightened volatility in global financial markets.

NEW

SHAREINVESTOR
WEBPRO

C² CHART

PLAY

C² Chart is WebPro's new feature-packed technical analysis tool for the modern stock investor

- Over 100 Indicators**
Select your preferred indicators to best suit your technical strategies
- Drawing Tools**
Multiple drawing tools to easily identify chart patterns
- Events Indicators**
Key events can be pinned onto your charts for a better overview
- Compare Tool**
Conveniently compare multiple stock prices at the same time
- Historical Data**
Extract price data from over 30 years
- Over 10 Chart Styles**
Various charts to suit your preferred style
- No App Needed**
Access your charts from any computer or mobile
- Easy Zoom**
Intuitive zooming function on charts

LI CONTRACTION IN NOV 2023 REFLECTS MODEST ECONOMIC GROWTH IN NEAR FUTURE - DOSM

According to the Department of Statistics Malaysia (DOSM) chief statistician Datuk Seri Mohd Uzir Mahidin, Malaysia's leading index (LI) saw a 0.2 % decrease to 109.8 points in November 2023 as compared to 110.0 points in the same month of the previous year.

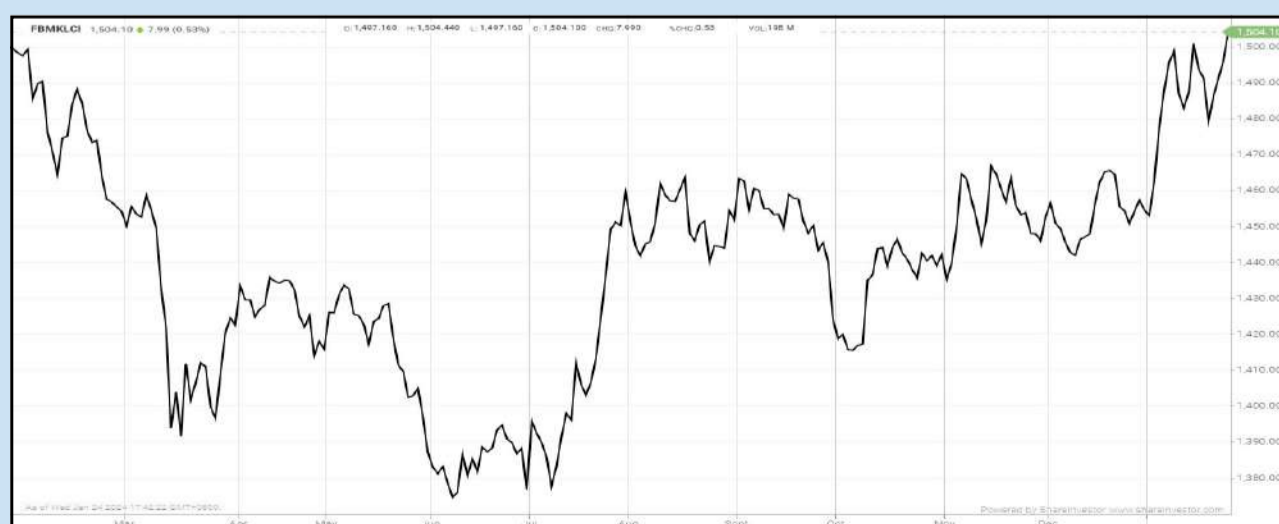
He said that looking at the smoothed long-term trend in November 2023, the LI remained below the 100.0-point trend, and he foresees Malaysia's economy to maintain its moderate growth supported by the resilient performance of domestic-oriented industries despite continuing to face the uncertainty of the international market.

The LI is a tool utilised for predicting economic trends four to six months ahead. The LI decline in November 2023 is due to the unfavourable performance in the number of housing units approved (-25.8%) and real imports of semiconductors (-18.3%). However, the Bursa Malaysia Industrial Index grew 17.1% and has remained positive since May 2023. The monthly performance of the LI rebounded by 0.5% as compared to -0.1 % in October 2023, driven by a significant increase in real imports of semiconductors (1.0 %).

As for the current economic position, the Coincident Index (CI) recorded 123.7 points, an increase of 2.6% as compared to 120.3 points in the same month of the preceding year. This performance was contributed by all components, mainly the Real Contributions Value, Employees Provident Fund (13.7%). In contrast to the annual performance, the monthly CI shrank by a negative 0.3%, influenced by lacklustre performances in all components except for Real Salaries & Wages in Manufacturing (0.1%).

EYE ON THE MARKETS

On Wednesday (24Jan), the Ringgit closed at 4.7355 against the USD and 3.5359 to the Sing Dollar. On Monday (22Jan), the FBM KLCI opened at 1487.35. As at Wednesday (24Jan) 5:00pm, the FBM KLCI closed up 16.75 points at 1504.10. Over in US, the overnight Dow Jones Industrial Average closed up 242.74 points (+0.64%) to 38,049.13 whilst the NASDAQ added 28.58 points (+0.18%) to 15,510.50.



KLCI 1 Year Chart

Over 5 trading days



ShareInvestor WebPro (www.shareinvestor.com/my)

1. Price > Stock Prices
2. Select Market: NASDAQ / NYSE / IDX / SET / HKEX / SGX (One bourse at a time)
3. select Stocks Tab
4. select Ranking Top Gainers or Top Losers (Over 5 Trading Days)
5. Mouse over Column Layout > select Edit Customs > select Name > select Last Done Price > select 5 Days Change > select 52 Weeks High > select 52 Weeks Low > Mouse Over Column Layout > select Custom

NASDAQ (USD)

Top Gainers

Name	Last Done	Change Over 5 Days	52 Weeks High	52 Weeks Low
JIN MEDICAL INTERNATIONAL LTD	276.110	+170.960	509.870	4.840
SUPER MICRO COMPUTER INC	475.580	+164.140	485.860	70.110
ASML HOLDING NV EURO.09 NY REGISTRY SHS 2012	869.080	+111.250	864.590	563.995
LAM RESEARCH CORP	865.600	+79.950	846.610	467.000
MERCADOLIBRE INC	1,738.800	+76.820	1,769.810	1,063.020

Top Losers

Name	Last Done	Change Over 5 Days	52 Weeks High	52 Weeks Low
BOOKING HOLDINGS INC	3,503.250	-113.260	3,669.660	2,289.690
TESLA INC	182.630	-29.250	299.290	138.070
MICROSTRATEGY	457.780	-28.820	727.770	188.300
COCA-COLA CONSOLIDATED INC	840.090	-18.800	961.910	487.220
COSTCO WHOLESALE CORP	679.900	-15.070	698.660	465.330

NYSE (USD)

Top Gainers

Name	Last Done	Change Over 5 Days	52 Weeks High	52 Weeks Low
BERKSHIRE HATHAWAY INC	576,211.000	+19,500.990	577,251.690	442,363.500
UNITED RENTALS INC	651.640	+88.270	591.665	325.150
GRAHAM HOLDINGS CO	746.620	+44.540	736.200	545.000
MARKEL GROUP INC	1,471.930	+40.240	1,560.000	1,186.560
FAIR ISAAC CORP	1,284.270	+33.850	1,307.140	610.665

Top Losers

Name	Last Done	Change Over 5 Days	52 Weeks High	52 Weeks Low
NVR INC	7,019.110	-165.850	7,423.730	4,988.990
HUMANA INC	355.360	-56.620	541.210	390.500
NORTHROP GRUMMAN CORP	434.550	-40.080	496.890	414.560
WHITE MOUNTAINS INSURANCE GROUP	1,595.000	-34.440	1,649.390	1,312.000
NEWMARKET CORP	561.840	-33.920	599.610	334.360

IDX (Rupiah)

Top Gainers

Name	Last Done	Change Over 5 Days	52 Weeks High	52 Weeks Low
DIAN SWASTATIKA SENTOSA TBK	147,700.000	+13,700.000	155,000.000	33,950.000
SINAR MAS MULTIARTHA	19,100.000	+4,600.000	22,200.000	10,975.000
CHANDRA ASRI PETROCHEMICAL TBK	5,525.000	+1,265.000	6,125.000	1,995.000
GOWA MAKASSAR TOURISM DEVELOPMENT	5,175.000	+1,025.000	5,225.000	1,450.000
HOTEL SAHID JAYA INTERNATIONAL	2,700.000	+660.000	3,620.000	625.000

Top Losers

Name	Last Done	Change Over 5 Days	52 Weeks High	52 Weeks Low
PETRINDO JAYA KREASI TBK	8,825.000	-1,000.000	13,750.000	240.000
DCI INDONESIA TBK	38,900.000	-975.000	59,050.000	32,850.000
UNITED TRACTORS	23,125.000	-975.000	31,700.000	20,925.000
INDO TAMBANGRAYA MEGAH TBK	26,525.000	-575.000	41,500.000	22,125.000
M CASH INTEGRASI TBK	3,920.000	-460.000	9,800.000	2,700.000

SET (Thai Baht)

Top Gainers

Name	Last Done	Change Over 5 Days	52 Weeks High	52 Weeks Low
OHTL	452.000	+18.000	546.000	416.000
MASTER	65.750	+5.500	91.500	41.500
BBIK	89.250	+5.000	142.500	80.750
BH	240.000	+5.000	272.000	204.000
SCB	106.000	+3.500	118.500	95.500

Top Losers

Name	Last Done	Change Over 5 Days	52 Weeks High	52 Weeks Low
INSURE	112.000	-13.000	234.000	110.000
STANLY	215.000	-7.000	233.000	171.500
KBANK	123.000	-6.000	148.500	119.000
SCC	267.000	-5.000	344.000	265.000
THG	47.750	-4.750	72.000	46.500

HKEX (HKD)

Top Gainers

Name	Last Done	Change Over 5 Days	52 Weeks High	52 Weeks Low
NETEASE INC	161.500	+24.400	185.700	116.100
YUM CHINA HOLDINGS INC	289.400	+17.200	514.500	260.200
TENCENT HOLDINGS LIMITED	290.800	+13.200	416.600	260.200
HONG KONG EXCHANGES & CLEARING (388.HK)	245.000	+13.000	378.000	219.400
HONG KONG EXCHANGES & CLEARING (80388.HK)	224.600	+10.400	307.600	202.600

Top Losers

Name	Last Done	Change Over 5 Days	52 Weeks High	52 Weeks Low
REMEGEN CO LTD	21.000	-5.850	72.700	20.000
SICHUAN KELUN-BIOTECH BIOPHARMACEUT	88.150	-5.850	113.000	60.600
ZHEJIANG LEAPMOTOR TECHNOLOGY CO	21.650	-5.450	48.500	19.600
DEKON FOOD AND AGRICULTURE GROUP	53.500	-5.300	62.000	35.000
KANZHUN LTD	51.000	-5.000	98.950	51.000

SGX (SGD)

Top Gainers

Name	Last Done	Change Over 5 Days	52 Weeks High	52 Weeks Low
JMH USD	40.650	+0.350	54.890	38.370
UOB	28.150	+0.270	31.000	26.820
SIA	6.640	+0.220	8.050	5.530
FRENCKEN	1.420	+0.140	1.440	0.785
UNION STEEL	1.150	+0.140	1.150	0.585

Top Losers

Name	Last Done	Change Over 5 Days	52 Weeks High	52 Weeks Low
JARDINE C&C	27.150	-1.390	35.580	26.690
GREAT EASTERN	17.780	-0.530	19.240	16.850
NIO Inc. USD OV	6.070	-0.370	15.780	5.750
SHANGRI-LA HKD	5.010	-0.210	8.400	4.890
AEM SGD	2.860	-0.180	4.020	2.700

EXECUTIVE PAY CUTS FROM THE CG PERSPECTIVE

Who could have imagined that within a span of slightly more than three years in the aftermath of the COVID-19 pandemic, the market capitalisation of Top Glove Corporation Bhd (Top Glove) would nosedive almost 90% from the peak of RM74.03 billion on 13 October 2020 when the world's largest glove maker briefly became the second largest listed company on Bursa Malaysia after Maybank.

However, the rapid ascent was short-lived as the global vaccination exercise on a massive scale, coupled with a rapid decline in COVID-19 cases, eventually took a heavy toll on demand for gloves till the sector was brought down to its knees, as evident from Top Glove's market capitalisation of RM7.4 billion today. Doubtlessly, Top Glove was not alone in this financial predicament as all Big Four glovemakers on the local bourse – Hartalega Holdings Berhad, Kossan Rubber Industries Berhad and Supermax Corporation Bhd – also faced a similar pattern of decline.

THE TOP LEADS BY EXAMPLE

Amid the projection of a slow market rebound and stiff competition-cum-price war (particularly from Chinese glove players), it is therefore

commendable that Top Glove's board nomination and remuneration committee (BNRC) had in June 2023 recommended to the Board to accept a pay cut of additional 15% in the proposed directors' fee for the financial year ended 31 August 2023.

To recap, the Board had in its FY2022 undertaken a 10% reduction in the directors' fee due to the challenging business environment post-pandemic. Subsequently, the Board unanimously agreed to the pay cut, and shareholders duly approved the proposal during its AGM on 10 January 2024. Meanwhile, the Board Committees' fees remain unchanged for FY2023. In tandem with the spirit of leadership by example, Top Glove's executive chairman, Tan Sri Dr Lim Wee Chai, continued to accept a 30% salary cut, which took effect on 1 August 2022 in response to a plunge in the company's financial performance during this challenging period. For the record, Lim's entire pay package totalled RM2.72 million, comprised of a salary of RM2.27 million plus other fringe benefits, while the remuneration of managing director Lim Cheong Guan stood at RM997,000 (salary of RM747,000 plus fringe benefits).

"However, with the continual unsatisfactory performance of the group, TS Lim has voluntarily further reduced his salary by 20% this year (2023)," noted Top Glove's Corporate Governance Report 2023. "He was joined by senior management staff who also were seeing salary cuts ranging from 10% to 20% in the quest to enable Top Glove to ride out the storm."

It is worthwhile noticing that Top Glove ended its FY2023 in the red with a gargantuan net loss of RM926.64 million from a net profit position of RM222.56 million a year earlier. At the same time, its revenue plummeted almost 60% to RM2.26 billion for FY2023 from RM5.57 billion a year earlier. However, the good news is that despite remaining in the red for the first quarter that ended 30 November 2023 in FY2024, Top Glove's net loss narrowed to RM57.71 million from RM168.24 million previously, although its revenue was still 22% lower from the

previous corresponding period at RM493.46 million (Q1FY2023: RM632.53 million). Moving forward, Top Glove expects to turn profitable by FY2025) on the back of an improved utilisation rate.

SYMBOLIC, BUT IT MATTERS

It is not unusual to see directors, CEOs, and senior management taking voluntary pay cuts when companies' financial performance is badly hit during crises. For instance, a news report pointed out previously that head honchos of about half (16 CEOs) of the top 30 Bursa Malaysia-listed companies (by market capitalisation) received lower compensation when the COVID-19 pandemic struck in 2020*. Of the 16 CEOs who took a pay cut, four had a cut of more than 25%, eight experienced a cut of more than 10%, two had a cut of less than 10%, and only two had a cut of less than 5%. The extent of the pay cut ranged between 0.21% and 45.48%.

* **Cover Story 2: How much did Malaysia's top guns take home in 2020? (n.d.). The Edge Malaysia.** <https://theedgemalaysia.com/article/cover-story-2-how-much-did-malaysias-top-guns-take-home-2020>

Generally, the large bonuses paid to head honchos were based on the financial performance in the previous year; the impact would only be reflected in the financial statements of the current financial year. In the context of the COVID-19 pandemic, if a CEO were to receive substantial bonus payouts tied to the company's 2019 performance, it could have detrimental repercussions for its reputation. This situation not only fails to demonstrate compassion and empathy from the leadership but also carries the risk of causing considerable reputational damage, particularly as workers grapple with income losses during these challenging times.

On another note, executive pay cuts are more of a signal to the public and employees than a cost-saving move to prevent worker layoffs. The gesture shows those companies are taking stakeholders' perceptions and viewpoints into consideration. All in all, the cut of executive pay, while largely a symbolic gesture, reflects the accountability among senior executives and reinforces the idea that leaders are willing to take responsibility for their performance. Ultimately, it demonstrates a commitment to ethical leadership, responsible management, and the long-term interests of the company and its stakeholders.

By MSWG Team

This article appeared in the The Observer, a weekly newsletter published by The Minority Shareholders Watch Group (MSWG) and reproduced here with their permission. Do follow MSWG's Twitter account at @MSWGMalaysia and share your thought on their tweets from time to time.



Learn how to identify Hot Stocks using Technical Analysis (TA) and Fundamental Analysis (FA)

SIGN UP FOR Invest NOW IT'S FREE!!!

Click here

Scan me



Via email, every Friday.

Get market moving news and analyses. Regular columns include Behind The Action and From The Observer

- Leaderboard • Shariah Hot Stocks • Shariah Momentum Up Stocks • Non Shariah Hot Stocks • Up Trending Stocks • Growth Stocks • Dividend Stocks • Long Companies • Insider Activity • Investor Relations • Regional Markets



INSIDER ACTIVITY

FRIDAY JANUARY 26 2024

DEFINITION: Insider Activity shows the trades made by substantial shareholders or directors of the company. Purchases by the directors and company share buyback may indicate the share price is undervalued and brings confidence to the price trend of the share price.



ShareInvestor WebPro > Fundamental > Insider Trades > click Search tab > Select Bursa > click Stock name > scroll up and leave at <Select Counter> Type Date Range for Announcement Date > click Search

Notice Period is 14th Jan 2024 – 20th Jan 2024

Effective Change Date	Stock Name	Buyer/ Seller Name [Classification]	Bought / (Sold) ['000]		No. of Shares After Trade ['000]	
			Total	% Held	Total	% Held
15 JAN 2024 - 15 JAN 2024	AIRPORT	EMPLOYEES PROVIDENT FUND BOARD [SSH]	259	6.944	115,863	6.944
12 JAN 2024 - 12 JAN 2024	AIRPORT	EMPLOYEES PROVIDENT FUND BOARD [SSH]	1,552	6.928	115,604	6.928
11 JAN 2024 - 11 JAN 2024	AIRPORT	EMPLOYEES PROVIDENT FUND BOARD [SSH]	7,319	6.835	114,052	6.835
16 JAN 2024 - 16 JAN 2024	AMBANK	EMPLOYEES PROVIDENT FUND BOARD [SSH]	734	10.631	351,672	10.631
15 JAN 2024 - 15 JAN 2024	AMBANK	EMPLOYEES PROVIDENT FUND BOARD [SSH]	100	10.609	350,938	10.609
12 JAN 2024 - 12 JAN 2024	AMBANK	EMPLOYEES PROVIDENT FUND BOARD [SSH]	-77	10.606	350,838	10.606
11 JAN 2024 - 11 JAN 2024	AMBANK	EMPLOYEES PROVIDENT FUND BOARD [SSH]	-2,600	10.608	350,914	10.608
10 JAN 2024 - 10 JAN 2024	AMBANK	EMPLOYEES PROVIDENT FUND BOARD [SSH]	483	10.687	353,514	10.687
16 JAN 2024 - 16 JAN 2024	ANCOMNY	MR LEE CHEUN WEI [DIR/CEO]	20	9.136	86,993	9.136
16 JAN 2024 - 16 JAN 2024	ANCOMNY	MR LEE CHEUN WEI [DIR/CEO]	500	21.016	20579	21.016
16 JAN 2024 - 16 JAN 2024	ANCOMNY	MR LEE CHEUN WEI [SSH]	20	9.136	86993	9.136
15 JAN 2024 - 15 JAN 2024	APB	MR LIAW WAY GIAN [DIR/CEO]	1,000	1.707	1893	1.707
17 JAN 2024 - 17 JAN 2024	APOLLO	DATIN SOON GOCK LAN @ SOON GEOK LIN [SSH]	4,031	67.754	54,203	67.754
17 JAN 2024 - 17 JAN 2024	APOLLO	DATO' CHEAH SEE YEONG [SSH]	4,031	67.754	54,203	67.754
17 JAN 2024 - 17 JAN 2024	APOLLO	SCOOP CAPITAL SDN BHD [SSH]	4,031	67.754	54,203	67.754
12 JAN 2024 - 12 JAN 2024	APOLLO	DATIN SOON GOCK LAN @ SOON GEOK LIN [SSH]	9,124	62.715	50,172	62.715
12 JAN 2024 - 12 JAN 2024	APOLLO	DATO' CHEAH SEE YEONG [SSH]	9,124	62.715	50,172	62.715
12 JAN 2024 - 12 JAN 2024	APOLLO	SCOOP CAPITAL SDN BHD [SSH]	9,124	62.715	50,172	62.715
16 JAN 2024 - 16 JAN 2024	AXIATA	EMPLOYEES PROVIDENT FUND BOARD [SSH]	1,024	17.929	1,645,723	17.929
15 JAN 2024 - 15 JAN 2024	AXIATA	EMPLOYEES PROVIDENT FUND BOARD [SSH]	27	17.918	1,644,699	17.918
12 JAN 2024 - 12 JAN 2024	AXIATA	EMPLOYEES PROVIDENT FUND BOARD [SSH]	1,270	17.918	1,644,672	17.918
11 JAN 2024 - 11 JAN 2024	AXIATA	EMPLOYEES PROVIDENT FUND BOARD [SSH]	595	17.914	1,644,369	17.914
10 JAN 2024 - 10 JAN 2024	AXIATA	EMPLOYEES PROVIDENT FUND BOARD [SSH]	2,619	17.908	1,643,774	17.908
12 JAN 2024 - 12 JAN 2024	AXREIT	EMPLOYEES PROVIDENT FUND BOARD [SSH]	1,100	15.836	276,736	15.836
10 JAN 2024 - 10 JAN 2024	AXREIT	EMPLOYEES PROVIDENT FUND BOARD [SSH]	211	15.762	275,436	15.762
16 JAN 2024 - 16 JAN 2024	BAUTO	EMPLOYEES PROVIDENT FUND BOARD [SSH]	551	12.657	147,787	12.657
12 JAN 2024 - 12 JAN 2024	BAUTO	EMPLOYEES PROVIDENT FUND BOARD [SSH]	1,251	12.61	147,236	12.61
11 JAN 2024 - 11 JAN 2024	BAUTO	EMPLOYEES PROVIDENT FUND BOARD [SSH]	-232	12.503	145,985	12.503
10 JAN 2024 - 10 JAN 2024	BAUTO	EMPLOYEES PROVIDENT FUND BOARD [SSH]	-1,124	12.523	146,218	12.523
17 JAN 2024 - 18 JAN 2024	BESHOM	AKINTAN SDN BHD [SSH]	51	8.714	26,151	8.714
17 JAN 2024 - 18 JAN 2024	BESHOM	MADAM PHAN VAN DENH [SSH]	51	26.172	78,542	26.172
17 JAN 2024 - 18 JAN 2024	BESHOM	MR TAN KENG KANG [DIR/CEO]	51	26.172	78,542	26.172
17 JAN 2024 - 18 JAN 2024	BESHOM	MR TAN KENG KANG [SSH]	51	26.172	78,542	26.172
17 JAN 2024 - 18 JAN 2024	BESHOM	TAN KAI HEE FAMILY HOLDINGS SDN BHD [SSH]	51	21.499	64,519	21.499
15 JAN 2024 - 16 JAN 2024	BESHOM	TAN KAI HEE FAMILY HOLDINGS SDN BHD [SSH]	42	21.482	64,468	21.482
16 JAN 2024 - 16 JAN 2024	BIMB	EMPLOYEES PROVIDENT FUND BOARD [SSH]	-158	16.841	381,698	16.841
15 JAN 2024 - 15 JAN 2024	BIMB	EMPLOYEES PROVIDENT FUND BOARD [SSH]	237	16.848	381,855	16.848
12 JAN 2024 - 12 JAN 2024	BIMB	EMPLOYEES PROVIDENT FUND BOARD [SSH]	83	16.838	381,618	16.838
11 JAN 2024 - 11 JAN 2024	BIMB	EMPLOYEES PROVIDENT FUND BOARD [SSH]	108	16.834	381,536	16.834
10 JAN 2024 - 10 JAN 2024	BIMB	EMPLOYEES PROVIDENT FUND BOARD [SSH]	400	16.829	381,427	16.829
09 JAN 2024 - 09 JAN 2024	BIMB	EMPLOYEES PROVIDENT FUND BOARD [SSH]	400	16.811	381,027	16.811
16 JAN 2024 - 17 JAN 2024	BINTAI	DATUK NG CHOON KOON [DIR/CEO]	3,000	6.511	61,104	6.511
16 JAN 2024 - 17 JAN 2024	BINTAI	DATUK NG CHOON KOON [SSH]	3,000	6.511	61,104	6.511
16 JAN 2024 - 18 JAN 2024	BJFOOD	BERJAYA CORPORATION BERHAD [SSH]	3,400	56.852	1,007,300	56.852
12 JAN 2024 - 15 JAN 2024	BJFOOD	BERJAYA CORPORATION BERHAD [SSH]	2,200	56.66	1,003,900	56.66
16 JAN 2024 - 16 JAN 2024	BTM	MR KOH POH SENG [SSH]	-29,800	8.355	104,981	8.355
16 JAN 2024 - 16 JAN 2024	BURSA	EMPLOYEES PROVIDENT FUND BOARD [SSH]	180	12.825	103,790	12.825
16 JAN 2024 - 16 JAN 2024	BURSA	EMPLOYEES PROVIDENT FUND BOARD [SSH]	-390	12.803	103,611	12.803
15 JAN 2024 - 15 JAN 2024	BURSA	EMPLOYEES PROVIDENT FUND BOARD [SSH]	-85	12.851	104,000	12.851
12 JAN 2024 - 12 JAN 2024	BURSA	EMPLOYEES PROVIDENT FUND BOARD [SSH]	-28	12.861	104,085	12.861
12 JAN 2024 - 12 JAN 2024	BURSA	EMPLOYEES PROVIDENT FUND BOARD [SSH]	14	12.865	104,113	12.865
11 JAN 2024 - 11 JAN 2024	BURSA	EMPLOYEES PROVIDENT FUND BOARD [SSH]	-860	12.863	104,099	12.863
15 JAN 2024 - 15 JAN 2024	CDB	EMPLOYEES PROVIDENT FUND BOARD [SSH]	335	9.763	1,145,289	9.763
11 JAN 2024 - 11 JAN 2024	CDB	EMPLOYEES PROVIDENT FUND BOARD [SSH]	28	9.753	1,144,187	9.753
10 JAN 2024 - 10 JAN 2024	CDB	EMPLOYEES PROVIDENT FUND BOARD [SSH]	1,159	9.753	1,144,159	9.753
16 JAN 2024 - 17 JAN 2024	CEB	MISS TEE KIM YOK [DIR/CEO]	1,040	6.808	67,534	6.808
16 JAN 2024 - 17 JAN 2024	CEB	MISS TEE KIM YOK [SSH]	1,040	6.808	67,534	6.808
12 JAN 2024 - 15 JAN 2024	CEB	MISS TEE KIM YOK [DIR/CEO]	1,000	6.703	66,494	6.703
12 JAN 2024 - 15 JAN 2024	CEB	MISS TEE KIM YOK [SSH]	1,000	6.703	66,494	6.703
17 JAN 2024 - 17 JAN 2024	CHB	MR TEH WEI KEONG [DIR/CEO]	-50	0.022	80	0.022
15 JAN 2024 - 15 JAN 2024	CHGP	DATIN LEE TEOH KEE [SSH]	-165	6.28	37,965	6.28
15 JAN 2024 - 17 JAN 2024	CHINHIN	DATUK SERI CHIAU BENG TEIK JP [DIR/CEO]	-16,550	58.482	1,034,784	58.482
15 JAN 2024 - 17 JAN 2024	CHINHIN	DATUK SERI CHIAU BENG TEIK JP [SSH]	-16,550	58.482	1,034,784	58.482

Notice Period is 14th Jan 2024 – 20th Jan 2024

Effective Change Date	Stock Name	Buyer/ Seller Name [Classification]	Bought / (Sold) ['000]		No. of Shares After Trade ['000]	
			Total	% Held	Total	% Held
15 JAN 2024 - 15 JAN 2024	CHINHIN	MISS SHELLY CHIAU YEE WERN [DIR/CEO]	800	0.122	2,150	0.122
16 JAN 2024 - 16 JAN 2024	CIMB	EMPLOYEES PROVIDENT FUND BOARD [SSH]	3,571	13.66	1,457,189	13.66
17 JAN 2024 - 17 JAN 2024	CIMB	KUMPULAN WANG PERSARAAN (DIPERBADANKAN) [SSH]	-600	6.4	682,582	6.4
15 JAN 2024 - 15 JAN 2024	CIMB	EMPLOYEES PROVIDENT FUND BOARD [SSH]	5,821	13.63	1,453,618	13.63
12 JAN 2024 - 12 JAN 2024	CIMB	EMPLOYEES PROVIDENT FUND BOARD [SSH]	3,681	13.58	1,447,798	13.58
15 JAN 2024 - 15 JAN 2024	CIMB	KUMPULAN WANG PERSARAAN (DIPERBADANKAN) [SSH]	-1,000	6.4	683,182	6.4
11 JAN 2024 - 11 JAN 2024	CIMB	KUMPULAN WANG PERSARAAN (DIPERBADANKAN) [SSH]	4,800	6.41	684,182	6.41
10 JAN 2024 - 10 JAN 2024	CIMB	EMPLOYEES PROVIDENT FUND BOARD [SSH]	-18,300	13.61	1,451,817	13.61
09 JAN 2024 - 09 JAN 2024	CIMB	EMPLOYEES PROVIDENT FUND BOARD [SSH]	6,875	13.78	1,470,117	13.78
17 JAN 2024 - 18 JAN 2024	CITAGLB	TAN SRI DATO' SRI DR MOHAMAD NORZA BIN ZAKARIA [DIR/CEO]	104	33.76	141,048	33.76
17 JAN 2024 - 18 JAN 2024	CITAGLB	TAN SRI DATO' SRI DR MOHAMAD NORZA BIN ZAKARIA [SSH]	104	33.76	141,048	33.76
17 JAN 2024 - 17 JAN 2024	CTOS	ABRDN HOLDINGS LIMITED [SSH]	192	6.63	153,164	6.63
17 JAN 2024 - 17 JAN 2024	CTOS	ABRDN MALAYSIA SDN BHD [SSH]	192	6.553	151,381	6.553
17 JAN 2024 - 17 JAN 2024	CTOS	ABRDN PLC [SSH]	192	6.63	153,164	6.63
16 JAN 2024 - 16 JAN 2024	CTOS	ABRDN HOLDINGS LIMITED [SSH]	300	6.622	152,971	6.622
16 JAN 2024 - 16 JAN 2024	CTOS	ABRDN MALAYSIA SDN BHD [SSH]	300	6.545	151,189	6.545
16 JAN 2024 - 16 JAN 2024	CTOS	ABRDN PLC [SSH]	300	6.622	152,971	6.622
16 JAN 2024 - 16 JAN 2024	CUSCAPI	DATUK JAYAKUMAR A/L PANNEER SELVAM [DIR/CEO]	-55,000	2.207	20,857	2.207
12 JAN 2024 - 12 JAN 2024	CYPARK	MR CHUNG CHEE YANG [SSH]	1,100	5.372	44,200	5.372
11 JAN 2024 - 11 JAN 2024	DIALOG	EMPLOYEES PROVIDENT FUND BOARD [SSH]	1,263	14.86	838,343	14.86
10 JAN 2024 - 10 JAN 2024	DIALOG	EMPLOYEES PROVIDENT FUND BOARD [SSH]	850	15	846,610	15
16 JAN 2024 - 16 JAN 2024	DLADY	EMPLOYEES PROVIDENT FUND BOARD [SSH]	-6	8.181	5,236	8.181
15 JAN 2024 - 15 JAN 2024	DLADY	EMPLOYEES PROVIDENT FUND BOARD [SSH]	-5	8.19	5,242	8.19
16 JAN 2024 - 16 JAN 2024	DPHARMA	EMPLOYEES PROVIDENT FUND BOARD [SSH]	250	8.459	81,368	8.459
15 JAN 2024 - 15 JAN 2024	DPHARMA	EMPLOYEES PROVIDENT FUND BOARD [SSH]	300	8.479	81,568	8.479
11 JAN 2024 - 11 JAN 2024	DPHARMA	EMPLOYEES PROVIDENT FUND BOARD [SSH]	300	8.417	80,968	8.417
16 JAN 2024 - 16 JAN 2024	DSOINIC	URUSHARTA JAMAAH SDN. BHD. [SSH]	-500	8.787	246,687	8.787
17 JAN 2024 - 17 JAN 2024	E&O	KUMPULAN WANG PERSARAAN (DIPERBADANKAN) [SSH]	4,643	6.36	117,104	6.36
15 JAN 2024 - 15 JAN 2024	E&O	KUMPULAN WANG PERSARAAN (DIPERBADANKAN) [SSH]	4,327	6.12	112,462	6.12
16 JAN 2024 - 16 JAN 2024	EITA	JASA SIMBOLIK SDN. BHD. [SSH]	600	9.097	24,387	9.097
16 JAN 2024 - 16 JAN 2024	EITA	MADAM GOH KIN BEE [SSH]	600	15.271	40,940	15.271
16 JAN 2024 - 16 JAN 2024	EITA	MR LIM JOO SWEE [DIR/CEO]	600	15.311	41,047	15.311
16 JAN 2024 - 16 JAN 2024	EITA	MR LIM JOO SWEE [DIR/CEO]	600	9.326	7,329	9.326
16 JAN 2024 - 16 JAN 2024	EITA	MR LIM JOO SWEE [SSH]	600	15.311	41,047	15.311
16 JAN 2024 - 16 JAN 2024	EKOVEST	TAN SRI DATUK SERI LIM KENG CHENG [DIR/CEO]	-50	3.093	91,707	3.093
12 JAN 2024 - 15 JAN 2024	EKOVEST	TAN SRI DATUK SERI LIM KENG CHENG [DIR/CEO]	-2,100	3.094	91,757	3.094
16 JAN 2024 - 17 JAN 2024	ELKDESA	TEOH SENG HUI [DIR/CEO]	180	1.029	4,680	1.029
16 JAN 2024 - 17 JAN 2024	ENGTEX	DATO' LIM KIAM LAM [SSH]	-855	5.723	25,260	5.723
16 JAN 2024 - 16 JAN 2024	F&N	EMPLOYEES PROVIDENT FUND BOARD [SSH]	-293	11.472	42,078	11.472
15 JAN 2024 - 15 JAN 2024	F&N	EMPLOYEES PROVIDENT FUND BOARD [SSH]	-27	11.552	42,371	11.552
12 JAN 2024 - 12 JAN 2024	F&N	EMPLOYEES PROVIDENT FUND BOARD [SSH]	-6	11.56	42,398	11.56
11 JAN 2024 - 11 JAN 2024	F&N	EMPLOYEES PROVIDENT FUND BOARD [SSH]	-31	11.561	42,404	11.561
10 JAN 2024 - 10 JAN 2024	F&N	EMPLOYEES PROVIDENT FUND BOARD [SSH]	-64	11.569	42,434	11.569
12 JAN 2024 - 12 JAN 2024	FRONTKN	EMPLOYEES PROVIDENT FUND BOARD [SSH]	-199	9.961	156,682	9.961
11 JAN 2024 - 11 JAN 2024	FRONTKN	EMPLOYEES PROVIDENT FUND BOARD [SSH]	769	9.974	156,881	9.974
10 JAN 2024 - 10 JAN 2024	FRONTKN	EMPLOYEES PROVIDENT FUND BOARD [SSH]	230	9.925	156,112	9.925
16 JAN 2024 - 16 JAN 2024	GAMUDA	EMPLOYEES PROVIDENT FUND BOARD (EPF BOARD) [SSH]	-3,697	8.7	237,876	8.7
15 JAN 2024 - 15 JAN 2024	GAMUDA	EMPLOYEES PROVIDENT FUND BOARD (EPF BOARD) [SSH]	-8,218	8.84	241,453	8.84
12 JAN 2024 - 12 JAN 2024	GAMUDA	EMPLOYEES PROVIDENT FUND BOARD (EPF BOARD) [SSH]	2,094	9.15	249,671	9.15
11 JAN 2024 - 11 JAN 2024	GAMUDA	EMPLOYEES PROVIDENT FUND BOARD (EPF BOARD) [SSH]	1,211	9.07	247,578	9.07
10 JAN 2024 - 10 JAN 2024	GAMUDA	EMPLOYEES PROVIDENT FUND BOARD (EPF BOARD) [SSH]	-2,370	9.02	246,367	9.02
15 JAN 2024 - 15 JAN 2024	GASMSIA	EMPLOYEES PROVIDENT FUND BOARD [SSH]	48	5.898	75,743	5.898
11 JAN 2024 - 11 JAN 2024	GASMSIA	EMPLOYEES PROVIDENT FUND BOARD [SSH]	1,000	5.817	74,695	5.817
11 JAN 2024 - 12 JAN 2024	GBAY	MR PETER LING EE KONG [DIR/CEO]	30	12.537	10,199	12.537
11 JAN 2024 - 12 JAN 2024	GBAY	MR PETER LING EE KONG [SSH]	30	12.537	10,199	12.537
16 JAN 2024 - 16 JAN 2024	GCB	EMPLOYEES PROVIDENT FUND BOARD [SSH]	230	6.156	72,302	6.156

Disclaimer: The Information in Insider Activity is extracted from www.shareinvestor.com/fundamental/insider_trades. The information on this page is provided as a service to readers. It does not constitute financial advice and/or any investment recommendations. We assume no liability for damages resulting from or arising out of the use of such information. Whilst every effort is made to ensure accuracy, the information presented is not the official record of shareholder filings. Readers are advised to read the original filings on the Bursa Malaysia website at www.bursamalaysia.com

PURNELL

ESCAPE II FORGED CARBON



PURNELL ASIA
TEL.: +65.9817.3378

EMAIL: SALES.SG@PURNELLWATCHES.COM

@ PURNELL_OFFICIAL

Notice Period is 14th Jan 2024 – 20th Jan 2024

Effective Change Date	Stock Name	Buyer/ Seller Name [Classification]	Bought / (Sold) ('000)		No. of Shares After Trade ('000)	
			Total	Total	% Held	
16 JAN 2024 - 16 JAN 2024	GCB	MR HIA CHENG [DIR/CEO]	100	70,727	6.022	
16 JAN 2024 - 16 JAN 2024	GCB	MR HIA CHENG [SSH]	100	70,727	6.022	
15 JAN 2024 - 15 JAN 2024	GCB	MR HIA CHENG [DIR/CEO]	200	70,627	6.013	
16 JAN 2024 - 16 JAN 2024	GENP	EMPLOYEES PROVIDENT FUND BOARD [SSH]	846	116,734	13.011	
15 JAN 2024 - 15 JAN 2024	GENP	EMPLOYEES PROVIDENT FUND BOARD [SSH]	246	115,888	12.917	
16 JAN 2024 - 16 JAN 2024	GENP	KUMPULAN WANG PERSARAAN (DIPERBADANKAN) [SSH]	45	67,245	7.495	
12 JAN 2024 - 12 JAN 2024	GENP	EMPLOYEES PROVIDENT FUND BOARD [SSH]	259	115,642	12.89	
10 JAN 2024 - 10 JAN 2024	GENP	EMPLOYEES PROVIDENT FUND BOARD [SSH]	282	115,247	12.846	
16 JAN 2024 - 16 JAN 2024	GESHEN	MR CHAN CHOONG KONG [SSH]	-3,500	31,227	25.677	
16 JAN 2024 - 16 JAN 2024	GESHEN	PELITA NIAGAMAS SDN. BHD. [SSH]	-3,500	31,126	25.594	
15 JAN 2024 - 15 JAN 2024	HARNLEN	LOW NAM HUI UNITED HOLDINGS SDN. BHD. [SSH]	-10,000	105,894	18.748	
15 JAN 2024 - 15 JAN 2024	HARNLEN	MR LOW KOK YAOW [DIR/CEO]	-10,000	286,047	50.642	
15 JAN 2024 - 15 JAN 2024	HARNLEN	MR LOW KOK YAOW [SSH]	-10,000	286,047	50.642	
15 JAN 2024 - 15 JAN 2024	HARNLEN	MR LOW KOK YONG [SSH]	-10,000	287,043	50.819	
15 JAN 2024 - 15 JAN 2024	HARNLEN	MR LOW KUECK SHIN [DIR/CEO]	-10,000	274,361	48.573	
15 JAN 2024 - 15 JAN 2024	HARNLEN	MR LOW KUECK SHIN [SSH]	-10,000	274,231	48.55	
15 JAN 2024 - 15 JAN 2024	HARNLEN	MR LOW KUEK KONG [DIR/CEO]	-10,000	273,981	48.506	
15 JAN 2024 - 15 JAN 2024	HARNLEN	MR LOW KUEK KONG [SSH]	-10,000	273,981	48.506	
15 JAN 2024 - 15 JAN 2024	HARNLEN	MR LOW KWEK LEE [DIR/CEO]	-10,000	274,191	48.543	
15 JAN 2024 - 15 JAN 2024	HARNLEN	MR LOW KWEK LEE [SSH]	-10,000	274,191	48.543	
15 JAN 2024 - 15 JAN 2024	HARNLEN	MR LOW QUEK KIONG [DIR/CEO]	-10,000	298,207	52.795	
15 JAN 2024 - 15 JAN 2024	HARNLEN	MR LOW QUEK KIONG [SSH]	-10,000	290,527	51.435	
15 JAN 2024 - 15 JAN 2024	HARNLEN	PUAN SRI DATIN CHAN PUI LEORN [DIR/CEO]	-10,000	287,074	50.824	
15 JAN 2024 - 15 JAN 2024	HARNLEN	PUAN SRI DATIN CHAN PUI LEORN [SSH]	-10,000	287,074	50.824	
15 JAN 2024 - 15 JAN 2024	HARNLEN	TAN SRI LOW NAM HUI [SSH]	-10,000	273,191	48.366	
15 JAN 2024 - 15 JAN 2024	HARNLEN-WB	MR LOW KOK YAOW [DIR/CEO]	10,000	38,240	42.797	
15 JAN 2024 - 15 JAN 2024	HARNLEN-WB	MR LOW KUECK SHIN [DIR/CEO]	10,000	30,101	33.688	
15 JAN 2024 - 15 JAN 2024	HARNLEN-WB	MR LOW KUEK KONG [DIR/CEO]	10,000	30,101	33.688	
15 JAN 2024 - 15 JAN 2024	HARNLEN-WB	MR LOW KWEK LEE [DIR/CEO]	10,000	30,101	33.688	
15 JAN 2024 - 15 JAN 2024	HARNLEN-WB	MR LOW QUEK KIONG [DIR/CEO]	10,000	35,004	39.176	
15 JAN 2024 - 15 JAN 2024	HARNLEN-WB	PUAN SRI DATIN CHAN PUI LEORN [DIR/CEO]	10,000	38,240	42.797	
17 JAN 2024 - 17 JAN 2024	HEXTECH	DATO' ONG CHOO MENG [DIR/CEO]	1,293,080	1,379,285	67.008	
17 JAN 2024 - 17 JAN 2024	HEXTECH	DATO' ONG CHOO MENG [SSH]	1,293,080	1,379,285	67.008	
17 JAN 2024 - 17 JAN 2024	HEXTECH	HEXTAR HOLDINGS SDN. BHD. [SSH]	150,821	160,875	7.816	
17 JAN 2024 - 17 JAN 2024	HEXTECH	HEXTAR TECH SDN. BHD. [SSH]	966,900	1,031,360	50.105	
15 JAN 2024 - 15 JAN 2024	HLBANK	EMPLOYEES PROVIDENT FUND BOARD [SSH]	460	197,921	9.485	
12 JAN 2024 - 12 JAN 2024	HLBANK	EMPLOYEES PROVIDENT FUND BOARD [SSH]	357	197,462	9.463	
11 JAN 2024 - 11 JAN 2024	HLBANK	EMPLOYEES PROVIDENT FUND BOARD [SSH]	1,375	197,105	9.446	
15 JAN 2024 - 15 JAN 2024	ICAP	CITY OF LONDON INVESTMENT MANAGEMENT COMPANY LIMITED [SSH]	116	32,694	23.353	
16 JAN 2024 - 17 JAN 2024	IGBB	TAN CHIN NAM SDN BHD ("TCNSB") [SSH]	162	658,885	48.899	
18 JAN 2024 - 18 JAN 2024	IGBREIT	KUMPULAN WANG PERSARAAN (DEPERBADANKAN) [SSH]	-78	257,246	7.143	
16 JAN 2024 - 16 JAN 2024	IGBREIT	EMPLOYEES PROVIDENT FUND BOARD ("EPF BOARD") [SSH]	-658	432,778	12.016	
17 JAN 2024 - 17 JAN 2024	IGBREIT	KUMPULAN WANG PERSARAAN (DEPERBADANKAN) [SSH]	-221	257,325	7.145	
15 JAN 2024 - 15 JAN 2024	IGBREIT	EMPLOYEES PROVIDENT FUND BOARD ("EPF BOARD") [SSH]	5,602	433,436	12.034	
16 JAN 2024 - 16 JAN 2024	IGBREIT	KUMPULAN WANG PERSARAAN (DEPERBADANKAN) [SSH]	-152	257,545	7.151	
12 JAN 2024 - 12 JAN 2024	IGBREIT	EMPLOYEES PROVIDENT FUND BOARD ("EPF BOARD") [SSH]	381	427,834	11.879	
11 JAN 2024 - 11 JAN 2024	IGBREIT	EMPLOYEES PROVIDENT FUND BOARD ("EPF BOARD") [SSH]	1,308	427,453	11.868	
16 JAN 2024 - 16 JAN 2024	IHH	EMPLOYEES PROVIDENT FUND BOARD [SSH]	112	920,086	10.447	
15 JAN 2024 - 15 JAN 2024	IHH	EMPLOYEES PROVIDENT FUND BOARD [SSH]	476	919,974	10.446	
12 JAN 2024 - 12 JAN 2024	IHH	EMPLOYEES PROVIDENT FUND BOARD [SSH]	3,000	919,499	10.441	
18 JAN 2024 - 18 JAN 2024	IJM	KUMPULAN WANG PERSARAAN (DIPERBADANKAN) [SSH]	-1,000	317,541	9.057	
16 JAN 2024 - 16 JAN 2024	IJM	EMPLOYEES PROVIDENT FUND BOARD [SSH]	800	600,440	17.125	
17 JAN 2024 - 17 JAN 2024	IJM	KUMPULAN WANG PERSARAAN (DIPERBADANKAN) [SSH]	-1,000	318,541	9.085	
15 JAN 2024 - 15 JAN 2024	IJM	EMPLOYEES PROVIDENT FUND BOARD [SSH]	784	599,640	17.102	
15 JAN 2024 - 15 JAN 2024	IJM	URUSHARTA JAMAHAH SDN BHD [SSH]	-585	177,984	5.076	
16 JAN 2024 - 16 JAN 2024	IJM	KUMPULAN WANG PERSARAAN (DIPERBADANKAN) [SSH]	-1,000	319,541	9.114	
12 JAN 2024 - 12 JAN 2024	IJM	EMPLOYEES PROVIDENT FUND BOARD [SSH]	500	598,856	17.08	
15 JAN 2024 - 15 JAN 2024	IJM	KUMPULAN WANG PERSARAAN (DIPERBADANKAN) [SSH]	-1,500	320,541	9.142	
11 JAN 2024 - 11 JAN 2024	IJM	EMPLOYEES PROVIDENT FUND BOARD [SSH]	600	598,356	17.066	
12 JAN 2024 - 12 JAN 2024	IJM	KUMPULAN WANG PERSARAAN (DIPERBADANKAN) [SSH]	-995	322,041	9.185	
10 JAN 2024 - 10 JAN 2024	IJM	EMPLOYEES PROVIDENT FUND BOARD [SSH]	600	597,756	17.049	
15 JAN 2024 - 01 DEC 2024	IMASPRO	MR CHAN WENG FUJ [DIR/CEO]	497	3,013	3.767	
11 JAN 2024 - 11 JAN 2024	IMASPRO	MR TONG CHIN HEN [DIR/CEO]	650	41,537	51.922	
11 JAN 2024 - 11 JAN 2024	IMASPRO	MR TONG CHIN HEN [SSH]	650	41,537	51.922	
15 JAN 2024 - 15 JAN 2024	INARI	EMPLOYEES PROVIDENT FUND BOARD [SSH]	-1,768	313,012	8.353	
16 JAN 2024 - 16 JAN 2024	INARI	KUMPULAN WANG PERSARAAN (DIPERBADANKAN) [SSH]	-1,000	347,163	9.265	
12 JAN 2024 - 15 JAN 2024	INARI	DATO' SRI THONG KOK KHEE [DIR/CEO]	-1,000	535,553	14.292	
12 JAN 2024 - 15 JAN 2024	INARI	DATO' SRI THONG KOK KHEE [SSH]	-1,000	535,553	14.292	
12 JAN 2024 - 12 JAN 2024	INARI	EMPLOYEES PROVIDENT FUND BOARD [SSH]	2,403	314,780	8.4	
12 JAN 2024 - 15 JAN 2024	INARI	INSAS BERHAD [SSH]	-1,000	532,009	14.198	

Notice Period is 14th Jan 2024 – 20th Jan 2024

Effective Change Date	Stock Name	Buyer/ Seller Name [Classification]	Bought / (Sold) ('000)		No. of Shares After Trade ('000)	
			Total	Total	% Held	
12 JAN 2024 - 15 JAN 2024	INARI	INSAS TECHNOLOGY BERHAD [SSH]	-1,000	426,986	11.394	
15 JAN 2024 - 15 JAN 2024	INARI	KUMPULAN WANG PERSARAAN (DIPERBADANKAN) [SSH]	-1,450	348,163	9.292	
11 JAN 2024 - 11 JAN 2024	INARI	DATO' SRI THONG KOK KHEE [DIR/CEO]	-2,000	536,553	14.319	
11 JAN 2024 - 11 JAN 2024	INARI	DATO' SRI THONG KOK KHEE [SSH]	-2,000	536,553	14.319	
11 JAN 2024 - 11 JAN 2024	INARI	EMPLOYEES PROVIDENT FUND BOARD [SSH]	-950	312,377	8.336	
11 JAN 2024 - 11 JAN 2024	INARI	INSAS BERHAD [SSH]	-2,000	533,009	14.224	
11 JAN 2024 - 11 JAN 2024	INARI	INSAS TECHNOLOGY BERHAD [SSH]	-2,000	427,986	11.421	
12 JAN 2024 - 12 JAN 2024	INTA	MR LIM OOI JOO [DIR/CEO]	45	236,669	44.052	
12 JAN 2024 - 12 JAN 2024	INTA	MR LIM OOI JOO [SSH]	45	236,669	44.052	
11 JAN 2024 - 11 JAN 2024	IOICORP	EMPLOYEES PROVIDENT FUND BOARD [SSH]	23	703,467	11.339	
16 JAN 2024 - 16 JAN 2024	IOIPG	EMPLOYEES PROVIDENT FUND BOARD [SSH]	-2,499	342,574	6.222	
15 JAN 2024 - 15 JAN 2024	IOIPG	EMPLOYEES PROVIDENT FUND BOARD [SSH]	-10,952	345,072	6.267	
17 JAN 2024 - 17 JAN 2024	ITRONIC	MADAM LUK TUNG LAM [SSH]	-3,959	137,708	19.462	
15 JAN 2024 - 17 JAN 2024	ITRONIC	DATUK CHU BOON TIONG [DIR/CEO]	1,000	14,799	2.091	
12 JAN 2024 - 15 JAN 2024	JADEM	MR TAN BOON WOO [DIR/CEO]	2,000	19,800	4.339	
05 JAN 2024 - 10 JAN 2024	JETSON	DATUK TEH KIAN AN [SSH]	600	27,497	10.262	
17 JAN 2024 - 17 JAN 2024	JSB	MITSUBISHI UFJ FINANCIAL GROUP INC [SSH]	1,461	42,373	9.653	
17 JAN 2024 - 17 JAN 2024	JSB	MORGAN STANLEY [SSH]	1,461	42,373	9.653	
15 JAN 2024 - 15 JAN 2024	JSB	MITSUBISHI UFJ FINANCIAL GROUP INC [SSH]	911	40,912	9.321	
15 JAN 2024 - 15 JAN 2024	JSB	MORGAN STANLEY [SSH]	911	40,912	9.321	
12 JAN 2024 - 12 JAN 2024	JSB	MITSUBISHI UFJ FINANCIAL GROUP INC [SSH]	750	40,001	9.519	
12 JAN 2024 - 12 JAN 2024	JSB	MORGAN STANLEY [SSH]	750	40,001	9.519	
15 JAN 2024 - 15 JAN 2024	KANGER	MR WU WAI KONG [DIR/CEO]	50,500	51,353	7.019	
15 JAN 2024 - 15 JAN 2024	KANGER	MR WU WAI KONG [SSH]	50,500	51,353	7.019	
15 JAN 2024 - 15 JAN 2024	KERJAYA	EMPLOYEES PROVIDENT FUND BOARD [SSH]	-3,004	69,611	5.52	
11 JAN 2024 - 11 JAN 2024	KERJAYA	EMPLOYEES PROVIDENT FUND BOARD [SSH]	1,251	70,578	5.597	
17 JAN 2024 - 17 JAN 2024	KITACON	MR TAN AH KEE [DIR/CEO]	206	217,667	43.533	
17 JAN 2024 - 17 JAN 2024	KITACON	MR TAN AH KEE [SSH]	206	217,667	43.533	
15 JAN 2024 - 15 JAN 2024	KITACON	MR TAN AH KEE [DIR/CEO]	60	217,461	43.492	
15 JAN 2024 - 15 JAN 2024	KITACON	MR TAN AH KEE [SSH]	60	217,461	43.492	
12 JAN 2024 - 12 JAN 2024	KLCC	EMPLOYEES PROVIDENT FUND BOARD [SSH]	155	185,729	10.288	
12 JAN 2024 - 12 JAN 2024	KLCC	EMPLOYEES PROVIDENT FUND BOARD [SSH]	155	185,729	10.288	
11 JAN 2024 - 11 JAN 2024	KLCC	EMPLOYEES PROVIDENT FUND BOARD [SSH]	242	185,574	10.279	
11 JAN 2024 - 11 JAN 2024	KLCC	EMPLOYEES PROVIDENT FUND BOARD [SSH]	242	185,574	10.279	
16 JAN 2024 - 16 JAN 2024	KLK	EMPLOYEES PROVIDENT FUND BOARD [SSH]	445	116,504	10.803	
15 JAN 2024 - 15 JAN 2024	KLK	EMPLOYEES PROVIDENT FUND BOARD [SSH]	266	116,059	10.762	
12 JAN 2024 - 12 JAN 2024	KLK	EMPLOYEES PROVIDENT FUND BOARD [SSH]	379	115,793	10.737	
11 JAN 2024 - 11 JAN 2024	KLK	EMPLOYEES PROVIDENT FUND BOARD [SSH]	503	115,414	10.702	
10 JAN 2024 - 10 JAN 2024	KLK	EMPLOYEES PROVIDENT FUND BOARD [SSH]	450	114,911	10.655	
18 JAN 2024 - 18 JAN 2024	KPSCB	MADAM YONG AH PEE [SSH]	500	9,538	5.866	
18 JAN 2024 - 18 JAN 2024	LBS	TAN SRI DATO' SRI IR. (DR.) LIM HOCK SAN JP [DIR/CEO]	100	609,472	39.584	
18 JAN 2024 - 18 JAN 2024	LBS	TAN SRI DATO' SRI IR. (DR.) LIM HOCK SAN JP [SSH]	100	604,719	39.275	
15 JAN 2024 - 15 JAN 2024	LTKM	DATIN LIM HOOI TIN [DIR/CEO]	9	101,907	71.206	
15 JAN 2024 - 15 JAN 2024	LTKM	DATIN LIM HOOI TIN [SSH]	9	101,907	71.206	
15 JAN 2024 - 15 JAN 2024	LTKM	DATUK TAN KOK [DIR/CEO]	9	104,765	73.203	
15 JAN 2024 - 15 JAN 2024	LTKM	DATUK TAN KOK [SSH]	9	104,765	73.203	
15 JAN 2024 - 15 JAN 2024	LTKM	MISS TAN CHEE HUEY [DIR/CEO]	9	4,379	3.06	
17 JAN 2024 - 17 JAN 2024	M&A	CIK SITI NUR AISHAH BINTI ISHAK [SSH]	4,900	120,595	6.034	
15 JAN 2024 - 15 JAN 2024	M&A	DATO' SRI THONG KOK KHEE [SSH]	-100,000	1,115,719	55.822	
15 JAN 2024 - 15 JAN 2024	M&A	INSAS BERHAD [SSH]	-100,000	1,115,719	55.822	
15 JAN 2024 - 15 JAN 2024	M&A	INSAS PLAZA SDN BHD [SSH]	-85,770	106,628	5.335	
15 JAN 2024 - 16 JAN 2024	M&A	CIK SITI NUR AISHAH BINTI ISHAK [SSH]	4,856	115,695	5.788	
18 JAN 2024 - 18 JAN 2024	MAG	MR NG MIN LIN [DIR/CEO]	7,500	76,821	22.592	
18 JAN 2024 - 18 JAN 2024	MAG	MR NG MIN LIN [DIR/CEO]	7,500	433,720	26.986	
18 JAN 2024 - 18 JAN 2024	MAG	MR NG MIN LIN [SSH]	7,500	433,720	26.986	
17 JAN 2024 - 17 JAN 2024	MAG	MR MELVIN LIM CHUN WOEI [DIR/CEO]	-600	47,651	2.979	
12 JAN 2024 - 12 JAN 2024	MAG	MR MELVIN LIM CHUN WOEI [DIR/CEO]	-2,000	2,718	0.799	
17 JAN 2024 - 17 JAN 2024	MAGNI	MR TAN POAY SENG [DIR/CEO]	168	121,088	27.94	
16 JAN 2024 - 18 JAN 2024	MATANG	HUAREN HOLDINGS SDN BHD [SSH]	4,882	407,430	17.053	
16 JAN 2024 - 18 JAN 2024	MATANG	MALAYSIAN CHINESE ASSOCIATION [SSH]	4,882	429,248	17.966	
18 JAN 2024 - 18 JAN 2024	MAXIM	TAN SRI GAN SEONG LIAM [DIR/CEO]	-15,972	177,886	24.201	
18 JAN 2024 - 18 JAN 2024	MAXIM	TAN SRI GAN SEONG LIAM [SSH]	-15,972	177,886	24.201	
15 JAN 2024 - 16 JAN 2024	MAXIM	DATUK TAN KAK SENG [SSH]	1,000	48,496	6.598	
15 JAN 2024 - 15 JAN 2024	MAXIS	EMPLOYEES PROVIDENT FUND BOARD ("EPF BOARD") [SSH]	180	885,318	11.304	
12 JAN 2024 - 12 JAN 2024	MAXIS	EMPLOYEES PROVIDENT FUND BOARD ("EPF BOARD") [SSH]	222	885,138	1	

Notice Period is 14th Jan 2024 – 20th Jan 2024

Effective Change Date	Stock Name	Buyer/ Seller Name [Classification]	Bought / (Sold) ['000]		No. of Shares After Trade ['000]	
			Total	% Held	Total	% Held
15 JAN 2024 - 15 JAN 2024	MENANG	MR TOH MAY FOOK [DIR/CEO]	1,000		74,109	14.326
19 JAN 2024 - 19 JAN 2024	MESTRON	MR LOON CHIN SENG [DIR/CEO]	3,000		251,513	25.186
19 JAN 2024 - 19 JAN 2024	MESTRON	MR LOON CHIN SENG [SSH]	3,000		251,513	25.186
19 JAN 2024 - 19 JAN 2024	MESTRON	MR POR TEONG ENG [DIR/CEO]	5,910		225,897	22.621
19 JAN 2024 - 19 JAN 2024	MESTRON	MR POR TEONG ENG [SSH]	5,910		225,897	22.621
18 JAN 2024 - 18 JAN 2024	MESTRON	MR LOON CHIN SENG [DIR/CEO]	6,000		248,513	24.885
18 JAN 2024 - 18 JAN 2024	MESTRON	MR LOON CHIN SENG [SSH]	6,000		248,513	24.885
18 JAN 2024 - 18 JAN 2024	MESTRON	MR POR TEONG ENG [DIR/CEO]	4,400		219,987	22.028
18 JAN 2024 - 18 JAN 2024	MESTRON	MR POR TEONG ENG [SSH]	4,400		219,987	22.028
17 JAN 2024 - 17 JAN 2024	MESTRON	DATUK IR MOHD DOM BIN AHMAD [DIR/CEO]	2,000		7,701	0.772
17 JAN 2024 - 17 JAN 2024	MESTRON	MR LOON CHIN SENG [DIR/CEO]	5,165		242,513	24.3
17 JAN 2024 - 17 JAN 2024	MESTRON	MR LOON CHIN SENG [SSH]	5,165		242,513	24.3
17 JAN 2024 - 17 JAN 2024	MESTRON	MR POR TEONG ENG [DIR/CEO]	3,485		215,587	21.602
17 JAN 2024 - 17 JAN 2024	MESTRON	MR POR TEONG ENG [SSH]	3,485		215,587	21.602
17 JAN 2024 - 19 JAN 2024	MFCB	CAM PROPERTY (MALAYSIA) SDN BHD [SSH]	112		201,378	21.361
17 JAN 2024 - 19 JAN 2024	MFCB	CAMASIA LIMITED [SSH]	112		202,864	21.519
17 JAN 2024 - 19 JAN 2024	MFCB	GOH NAN KIOH [DIR/CEO]	112		328,943	34.891
17 JAN 2024 - 19 JAN 2024	MFCB	LAJU RIANG SDN BHD [SSH]	112		201,378	21.361
17 JAN 2024 - 19 JAN 2024	MFCB	MR GOH NAN KIOH [SSH]	112		328,943	34.891
17 JAN 2024 - 19 JAN 2024	MFCB	RUBBER THREAD INDUSTRIES (M) SDN BERHAD [SSH]	112		201,378	21.361
12 JAN 2024 - 15 JAN 2024	MFCB	CAM PROPERTY (MALAYSIA) SDN BHD [SSH]	35		201,266	21.349
12 JAN 2024 - 15 JAN 2024	MFCB	CAMASIA LIMITED [SSH]	35		202,752	21.507
12 JAN 2024 - 15 JAN 2024	MFCB	GOH NAN KIOH [DIR/CEO]	35		328,831	34.879
12 JAN 2024 - 15 JAN 2024	MFCB	MR GOH NAN KIOH [SSH]	35		328,831	34.879
12 JAN 2024 - 15 JAN 2024	MFCB	RUBBER THREAD INDUSTRIES (M) SDN BERHAD [SSH]	35		201,266	21.349
17 JAN 2024 - 17 JAN 2024	MIKROMB	CARTABAN NOMINEES (TEMPATAN) SDN BHD - RHB TRUSTEE BERHAD FOR KENANGA ISLAMIC ABSOLUTE RETURN FUND [SSH]	165,900		322,040	30
12 JAN 2024 - 12 JAN 2024	MIKROMB	MR YEO HOCK CHEONG [SSH]	-165,900		162,225	15.112
12 JAN 2024 - 12 JAN 2024	MINETEC	ENCIK AHMAD RUSLAN ZAHARI BIN ZAKARIA [DIR/CEO]	-749		300	0.017
12 JAN 2024 - 12 JAN 2024	MINOX	MR. NG KUAN HUA [DIR/CEO]	500		1,500	0.417
16 JAN 2024 - 16 JAN 2024	MISC	EMPLOYEES PROVIDENT FUND BOARD [SSH]	85		563,912	12.633
15 JAN 2024 - 15 JAN 2024	MISC	EMPLOYEES PROVIDENT FUND BOARD [SSH]	32		563,827	12.631
12 JAN 2024 - 12 JAN 2024	MISC	EMPLOYEES PROVIDENT FUND BOARD [SSH]	-70		563,795	12.631
11 JAN 2024 - 11 JAN 2024	MISC	EMPLOYEES PROVIDENT FUND BOARD [SSH]	301		563,865	12.632
16 JAN 2024 - 16 JAN 2024	MMAG	MADAM CHAN SWEE YING [DIR/CEO]	400,000		432,362	25.498
16 JAN 2024 - 16 JAN 2024	MMAG	MADAM CHAN SWEE YING [SSH]	400,000		432,362	25.498
16 JAN 2024 - 16 JAN 2024	MMAG	MR CHIN BOON LONG [SSH]	400,000		432,362	25.498
16 JAN 2024 - 16 JAN 2024	MMAG	MR CHONG KOON MENG [DIR/CEO]	330		440	0.026
16 JAN 2024 - 16 JAN 2024	MMAG	MR KENNY KHOW CHUAN WAH [DIR/CEO]	15,942		15,942	0.94
12 JAN 2024 - 12 JAN 2024	MNRB	AMANAHRAYA TRUSTEES BERHAD-AMANAH SAHAM BUMIPUTERA [SSH]	-734		331,086	42.28
15 JAN 2024 - 15 JAN 2024	MQTECH	MR TONG SIAN SHYEN [DIR/CEO]	49,600		49,600	3.261
16 JAN 2024 - 16 JAN 2024	MRDIY	MR ONG CHU JIN ADRIAN [DIR/CEO]	619		311	0.466
16 JAN 2024 - 16 JAN 2024	MRDIY	MR TAN YU YEH [DIR/CEO]	619		619	0.927
12 JAN 2024 - 15 JAN 2024	MSC	DATO DR IR YONG MIAN THONG [DIR/CEO]	45		467	0.111
16 JAN 2024 - 16 JAN 2024	MYEG	KUMPULAN WANG PERSARAAN (DIPERBADANKAN) [SSH]	-2,000		536,338	7.19
18 JAN 2024 - 18 JAN 2024	MYNEWS	D&D CONSOLIDATED SDN BHD [SSH]	200		394,646	52.595
18 JAN 2024 - 18 JAN 2024	MYNEWS	MR DANG TAI HOCK [DIR/CEO]	200		402,121	53.591
18 JAN 2024 - 18 JAN 2024	MYNEWS	MR DANG TAI HOCK [SSH]	200		402,121	53.591
18 JAN 2024 - 18 JAN 2024	MYNEWS	MR DANG TAI LUK [DIR/CEO]	200		402,121	53.591
18 JAN 2024 - 18 JAN 2024	MYNEWS	MR DANG TAI LUK [SSH]	200		402,121	53.591
18 JAN 2024 - 18 JAN 2024	MYNEWS	MR DANG TAI WEN [DIR/CEO]	200		402,121	53.591
18 JAN 2024 - 18 JAN 2024	MYNEWS	MR DANG TAI WEN [SSH]	200		402,121	53.591
17 JAN 2024 - 17 JAN 2024	MYNEWS	D&D CONSOLIDATED SDN BHD [SSH]	225		394,446	52.568
17 JAN 2024 - 17 JAN 2024	MYNEWS	MR DANG TAI HOCK [DIR/CEO]	225		401,921	53.564
17 JAN 2024 - 17 JAN 2024	MYNEWS	MR DANG TAI HOCK [SSH]	225		401,921	53.564
17 JAN 2024 - 17 JAN 2024	MYNEWS	MR DANG TAI LUK [DIR/CEO]	225		401,921	53.564
17 JAN 2024 - 17 JAN 2024	MYNEWS	MR DANG TAI LUK [SSH]	225		401,921	53.564
17 JAN 2024 - 17 JAN 2024	MYNEWS	MR DANG TAI WEN [DIR/CEO]	225		401,921	53.564
17 JAN 2024 - 17 JAN 2024	MYNEWS	MR DANG TAI WEN [SSH]	225		401,921	53.564
17 JAN 2024 - 17 JAN 2024	NCT	MR CHIAU HAW CHOON [SSH]	9,300		163,345	10.409
16 JAN 2024 - 16 JAN 2024	NESTLE	EMPLOYEES PROVIDENT FUND BOARD [SSH]	142		23,459	10.004
15 JAN 2024 - 15 JAN 2024	NESTLE	EMPLOYEES PROVIDENT FUND BOARD [SSH]	-4		23,317	9.943
12 JAN 2024 - 12 JAN 2024	NESTLE	EMPLOYEES PROVIDENT FUND BOARD [SSH]	138		23,321	9.945
11 JAN 2024 - 11 JAN 2024	NESTLE	EMPLOYEES PROVIDENT FUND BOARD [SSH]	63		23,183	9.886
16 JAN 2024 - 16 JAN 2024	ORIENT	EMPLOYEES PROVIDENT FUND BOARD [SSH]	-236		43,554	7.021
15 JAN 2024 - 15 JAN 2024	ORIENT	EMPLOYEES PROVIDENT FUND BOARD [SSH]	-423		43,789	7.059
12 JAN 2024 - 12 JAN 2024	ORIENT	EMPLOYEES PROVIDENT FUND BOARD [SSH]	-100		44,213	7.127
11 JAN 2024 - 11 JAN 2024	ORIENT	EMPLOYEES PROVIDENT FUND BOARD [SSH]	-196		44,312	7.143
11 JAN 2024 - 11 JAN 2024	OVH	MR KENNY RONALD NGALIN [DIR/CEO]	-1,000		23,222	5.53
11 JAN 2024 - 11 JAN 2024	OVH	MR KENNY RONALD NGALIN [SSH]	-1,000		23,222	5.53
15 JAN 2024 - 15 JAN 2024	OWG	TAN SRI DATO' SERI DATO' KOH CHENG KEONG [DIR/CEO]	6,010		292,723	63.791
15 JAN 2024 - 15 JAN 2024	OWG	TAN SRI DATO' SERI DATO' KOH CHENG KEONG [SSH]	6,010		292,747	63.796
15 JAN 2024 - 15 JAN 2024	PADINI	KUMPULAN WANG PERSARAAN (DIPERBADANKAN) [SSH]	784		54,897	8.345
16 JAN 2024 - 16 JAN 2024	PANAMY	EMPLOYEES PROVIDENT FUND BOARD [SSH]	-13		7,506	12.356
15 JAN 2024 - 15 JAN 2024	PANAMY	EMPLOYEES PROVIDENT FUND BOARD [SSH]	-7		7,519	12.377
12 JAN 2024 - 12 JAN 2024	PANAMY	EMPLOYEES PROVIDENT FUND BOARD [SSH]	-5		7,525	12.388
10 JAN 2024 - 10 JAN 2024	PANAMY	EMPLOYEES PROVIDENT FUND BOARD [SSH]	-7		7,536	12.406
21 NOV 2023 - 21 NOV 2023	PANTECH	MR LIM YOONG XAO [DIR/CEO]	-100		202	0.024

Notice Period is 14th Jan 2024 – 20th Jan 2024

Effective Change Date	Stock Name	Buyer/ Seller Name [Classification]	Bought / (Sold) ['000]		No. of Shares After Trade ['000]	
			Total	% Held	Total	% Held
16 JAN 2024 - 16 JAN 2024	PAVREIT	EMPLOYEES PROVIDENT FUND BOARD [SSH]	-2		400,250	10.958
15 JAN 2024 - 15 JAN 2024	PAVREIT	EMPLOYEES PROVIDENT FUND BOARD [SSH]	-249		400,253	10.958
12 JAN 2024 - 12 JAN 2024	PAVREIT	EMPLOYEES PROVIDENT FUND BOARD [SSH]	264		400,502	10.965
11 JAN 2024 - 11 JAN 2024	PAVREIT	EMPLOYEES PROVIDENT FUND BOARD [SSH]	1,462		400,238	10.958
16 JAN 2024 - 16 JAN 2024	PBBANK	EMPLOYEES PROVIDENT FUND BOARD [SSH]	2,678		2,936,576	15.13
15 JAN 2024 - 15 JAN 2024	PBBANK	EMPLOYEES PROVIDENT FUND BOARD [SSH]	-3,896		2,933,898	15.11
12 JAN 2024 - 12 JAN 2024	PBBANK	EMPLOYEES PROVIDENT FUND BOARD [SSH]	-6,710		2,937,794	15.13
11 JAN 2024 - 11 JAN 2024	PBBANK	EMPLOYEES PROVIDENT FUND BOARD [SSH]	-3,265		2,944,504	15.17
10 JAN 2024 - 10 JAN 2024	PBBANK	EMPLOYEES PROVIDENT FUND BOARD [SSH]	-5,476		2,947,770	15.19
16 JAN 2024 - 16 JAN 2024	PCHEM	EMPLOYEES PROVIDENT FUND BOARD ("EPF BOARD") [SSH]	60		944,633	11.808
15 JAN 2024 - 15 JAN 2024	PCHEM	EMPLOYEES PROVIDENT FUND BOARD ("EPF BOARD") [SSH]	60		944,573	11.807
12 JAN 2024 - 12 JAN 2024	PCHEM	EMPLOYEES PROVIDENT FUND BOARD ("EPF BOARD") [SSH]	118		944,443	11.806
11 JAN 2024 - 11 JAN 2024	PCHEM	EMPLOYEES PROVIDENT FUND BOARD ("EPF BOARD") [SSH]	201		944,405	11.805
17 JAN 2024 - 17 JAN 2024	PELIKAN	IKHLAS CAPITAL MASTER FUND PTE. LTD. [SSH]	-1,400		34,133	5.659
17 JAN 2024 - 17 JAN 2024	PELIKAN	IKHLAS CAPITAL SINGAPORE PTE. LTD. [SSH]	-1,400		34,133	5.659
17 JAN 2024 - 17 JAN 2024	PELIKAN	MERIT PLUS VENTURES LIMITED [SSH]	-1,400		34,133	5.659
12 JAN 2024 - 12 JAN 2024	PELIKAN	IKHLAS CAPITAL MASTER FUND PTE. LTD. [SSH]	-227		35,533	5.891
12 JAN 2024 - 12 JAN 2024	PELIKAN	IKHLAS CAPITAL SINGAPORE PTE. LTD. [SSH]	-227		35,533	5.891
12 JAN 2024 - 12 JAN 2024	PELIKAN	MERIT PLUS VENTURES LIMITED [SSH]	-227		35,533	5.891
11 JAN 2024 - 11 JAN 2024	PENERGY	URUSHARTA JAMAAH SDN. BHD. [SSH]	-105		27,852	8.678
16 JAN 2024 - 16 JAN 2024	PENTA	EMPLOYEES PROVIDENT FUND BOARD [SSH]	65		60,136	8.454
19 JAN 2024 - 19 JAN 2024	PERDANA	ALIAS BIN MAT LAZIN [DIR/CEO]	5		154	0.007
16 JAN 2024 - 16 JAN 2024	PETGAS	EMPLOYEES PROVIDENT FUND BOARD [SSH]	445		264,440	13.364
15 JAN 2024 - 15 JAN 2024	PETGAS	EMPLOYEES PROVIDENT FUND BOARD [SSH]	42		263,995	13.342
12 JAN 2024 - 12 JAN 2024	PETGAS	EMPLOYEES PROVIDENT FUND BOARD [SSH]	112		263,953	13.34
11 JAN 2024 - 11 JAN 2024	PETGAS	EMPLOYEES PROVIDENT FUND BOARD [SSH]	62		263,871	13.335
12 JAN 2024 - 12 JAN 2024	PETGAS	KUMPULAN WANG PERSARAAN (DIPERBADANKAN) ("KWAP") [SSH]	-102		197,307	9.971
10 JAN 2024 - 10 JAN 2024	PETGAS	EMPLOYEES PROVIDENT FUND BOARD [SSH]	258		263,809	13.332
16 JAN 2024 - 16 JAN 2024	PPB	EMPLOYEES PROVIDENT FUND BOARD [SSH]	111		135,387	9.517
15 JAN 2024 - 15 JAN 2024	PPB	EMPLOYEES PROVIDENT FUND BOARD [SSH]	-81		135,276	9.509
12 JAN 2024 - 12 JAN 2024	PPB	EMPLOYEES PROVIDENT FUND BOARD [SSH]	34		135,357	9.515
11 JAN 2024 - 11 JAN 2024	PPB	EMPLOYEES PROVIDENT FUND BOARD [SSH]	408		135,323	9.512
17 JAN 2024 - 17 JAN 2024	PTRB	MR HENG CHANG HOI [DIR/CEO]	12,333		385,952	72.138
17 JAN 2024 - 17 JAN 2024	PTRB	MR HENG CHANG HOI [SSH]	12,333		385,952	72.138
17 JAN 2024 - 17 JAN 2024	PUC	MR CHEONG CHIA CHOU [SSH]	100,000		158,280	6.414
17 JAN 2024 - 17 JAN 2024	REXIT	BEMAS HOLDINGS SDN. BHD. [SSH]	20,690		20,690	11.945
17 JAN 2024 - 17 JAN 2024	REXIT	DATO' SEOW GIM SHEN [SSH]	40,406		40,406	23.327
17 JAN 2024 - 17 JAN 2024	REXIT	METACO ASSET HOLDINGS SDN. BHD. [SSH]	31,179		31,179	18
17 JAN 2024 - 17 JAN 2024	REXIT	MISS CHUNG CHING CHI [SSH]	20,690		20,690	11.945
17 JAN 2024 - 17 JAN 2024	REXIT	MR CHAN CHAU LOONG [SSH]	31,179		31,179	18
17 JAN 2024 - 17 JAN 2024	REXIT	MR KONG CHIEU HOI [SSH]	31,179		31,179	18
17 JAN 2024 - 17 JAN 2024	REXIT	MR LEOW KIAN YONG [SSH]	31,179		31,179	18
18 JAN 2024 - 18 JAN 2024	RGB	DATO' SERI CHUAH KIM SEAH [DIR/CEO]	500		467,463	30.338
18 JAN 2024 - 18 JAN 2024	RGB	DATO' SERI CHUAH KIM SEAH [SSH]	500		467,062	30.312
15 JAN 2024 - 15 JAN 2024	RHBBANK	EMPLOYEES PROVIDENT FUND BOARD [SSH]	473		1,715,293	40.018
12 JAN 2024 - 12 JAN 2024	RHBBANK	EMPLOYEES PROVIDENT FUND BOARD [SSH]	74		171,4820	40.007
11 JAN 2024 - 11 JAN 2024	RHBBANK	EMPLOYEES PROVIDENT FUND BOARD [SSH]	-2,753		171,4746	40.005
16 JAN 2024 - 16 JAN 2024	RHONE-MA-WA	MR FOONG KAM WENG [DIR/CEO]	-6,000		2620	3.272
15 JAN 2024 - 15 JAN 2024	SAPIND	MR KOH KOK HOI [SSH]	4		6851	9.413
12 JAN 2024 - 12 JAN 2024	SAPIND	MR KOH KOK HOI [SSH]	2		6847	9.408
16 JAN 2024 - 16 JAN 2024	SCABLE	DATIN H'NG HSIEH LING [SSH]	-1,300		27,978	7.012
16 JAN 2024 - 16 JAN 2024	SCABLE	DATO' H'NG CHUN HSIANG [SSH]	-1,300		28,128	7.05
16 JAN 2024 - 16 JAN 2024	SCABLE	HNG CAPITAL SDN BHD [SSH]	-1,300		25,507	6.393
16 JAN 2024 - 16 JAN 2024	SCABLE	TAN SRI DATO' SERI H'NG BOK SAN @ H'NG AH BA [SSH]	-1,300		25,507	6.393
12 JAN 2024 - 12 JAN 2024	SCABLE	DATO SRI MAHMUD ABU BEKIR TAIB [DIR/CEO]	-5,000		74,347	18.634
12 JAN 2024 - 12 JAN 2024	SCABLE	DATO SRI MAHMUD ABU BEKIR TAIB [SSH]	-5,000		74,347	18.634
19 JAN 2024 - 19 JAN 2024	SCIB	DATO' TAN BOK KOON [DIR/CEO]	1,100		26,29	0.411
17 JAN 2024 - 17 JAN 2024	SCIB	DATO' TAN BOK KOON [DIR/CEO]	100		15,29	0.239
16 JAN 2024 - 16 JAN 2024	SDS	DR LIM PANG KIAM [DIR/CEO]	6		37	0.009
22 JUN 2023 - 27 JUN 202						

Notice Period is 14th Jan 2024 – 20th Jan 2024

Effective Change Date	Stock Name	Buyer/ Seller Name [Classification]	Bought / (Sold) ['000]		No. of Shares After Trade ['000]	
			Total	Total	% Held	% Held
17 JAN 2024 - 17 JAN 2024	SIMEPROP	AMANAHRAYA TRUSTEES BERHAD - AMANAH SAHAM BUMIPUTERA [SSH]	-200	3026786	44.506	
16 JAN 2024 - 16 JAN 2024	SIMEPROP	AMANAHRAYA TRUSTEES BERHAD - AMANAH SAHAM BUMIPUTERA [SSH]	-3,823	3026986	44.509	
15 JAN 2024 - 15 JAN 2024	SIMEPROP	AMANAHRAYA TRUSTEES BERHAD - AMANAH SAHAM BUMIPUTERA [SSH]	-3,000	3030810	44.565	
12 JAN 2024 - 12 JAN 2024	SIMEPROP	AMANAHRAYA TRUSTEES BERHAD - AMANAH SAHAM BUMIPUTERA [SSH]	-2,586	3033810	44.609	
16 JAN 2024 - 16 JAN 2024	SKPRES	EMPLOYEES PROVIDENT FUND BOARD [SSH]	-1,145	142132	9.097	
15 JAN 2024 - 15 JAN 2024	SKPRES	EMPLOYEES PROVIDENT FUND BOARD [SSH]	-374	143277	9.171	
12 JAN 2024 - 12 JAN 2024	SKPRES	EMPLOYEES PROVIDENT FUND BOARD [SSH]	-163	143651	9.194	
11 JAN 2024 - 11 JAN 2024	SKPRES	EMPLOYEES PROVIDENT FUND BOARD [SSH]	57	143814	9.205	
10 JAN 2024 - 10 JAN 2024	SKPRES	EMPLOYEES PROVIDENT FUND BOARD [SSH]	234	143757	9.201	
16 JAN 2024 - 16 JAN 2024	SMRT	ABRDN HOLDINGS LIMITED (FORMERLY KNOWN AS ABERDEEN ASSET MANAGEMENT PLC) [SSH]	529	30087	6.642	
16 JAN 2024 - 16 JAN 2024	SMRT	ABRDN MALAYSIA SDN BHD [SSH]	529	28932	6.387	
16 JAN 2024 - 16 JAN 2024	SMRT	ABRDN PLC [SSH]	529	30087	6.642	
15 JAN 2024 - 15 JAN 2024	SMRT	ABRDN HOLDINGS LIMITED (FORMERLY KNOWN AS ABERDEEN ASSET MANAGEMENT PLC) [SSH]	379	29558	6.525	
15 JAN 2024 - 15 JAN 2024	SMRT	ABRDN MALAYSIA SDN BHD [SSH]	379	28403	6.271	
15 JAN 2024 - 15 JAN 2024	SMRT	ABRDN PLC [SSH]	379	29558	6.525	
12 JAN 2024 - 12 JAN 2024	SMRT	URUSHARTA JAMAAH SDN. BHD. [SSH]	7	32453	7.165	
11 JAN 2024 - 11 JAN 2024	SMRT	URUSHARTA JAMAAH SDN. BHD. [SSH]	493	32446	7.163	
17 JAN 2024 - 17 JAN 2024	SPRITZER	DATIN LAI YIN LENG [SSH]	176	22432	7.026	
17 JAN 2024 - 17 JAN 2024	SPRITZER	DATO' LIM KOK BOON [SSH]	176	22432	7.025	
12 JAN 2024 - 12 JAN 2024	SPRITZER	DATIN LAI YIN LENG [SSH]	20	22256	6.971	
12 JAN 2024 - 12 JAN 2024	SPRITZER	DATO' LIM KOK BOON [DIR/CEO]	20	22256	6.97	
12 JAN 2024 - 12 JAN 2024	SPRITZER	DATO' LIM KOK BOON [SSH]	20	22256	6.97	
17 JAN 2024 - 17 JAN 2024	SPSETIA	KUMPULAN WANG PERSARAAN (DIPERBADANKAN) [SSH]	2,500	407481	9.342	
16 JAN 2024 - 16 JAN 2024	SPSETIA	AMANAHRAYA TRUSTEES BERHAD - AMANAH SAHAM BUMIPUTERA [SSH]	-1,700	1090903	25.012	
15 JAN 2024 - 15 JAN 2024	SPSETIA	AMANAHRAYA TRUSTEES BERHAD - AMANAH SAHAM BUMIPUTERA [SSH]	-5,000	1092602	25.051	
15 JAN 2024 - 15 JAN 2024	SPSETIA	KUMPULAN WANG PERSARAAN (DIPERBADANKAN) [SSH]	-260	404981	9.285	
12 JAN 2024 - 12 JAN 2024	SPSETIA	AMANAHRAYA TRUSTEES BERHAD - AMANAH SAHAM BUMIPUTERA [SSH]	-7,988	1097602	25.204	
18 JAN 2024 - 19 JAN 2024	SRIDGE	DATO' KHOO YIK CHOU [DIR/CEO]	121	17558	7.887	
18 JAN 2024 - 19 JAN 2024	SRIDGE	DATO' KHOO YIK CHOU [SSH]	121	17558	7.887	
18 JAN 2024 - 18 JAN 2024	SRIDGE	MR TAN WIN SEN [DIR/CEO]	235	793	0.356	
16 JAN 2024 - 16 JAN 2024	SRIDGE	DATO' KHOO YIK CHOU [DIR/CEO]	84	17437	7.833	
16 JAN 2024 - 16 JAN 2024	SRIDGE	DATO' KHOO YIK CHOU [SSH]	84	17437	7.833	
16 JAN 2024 - 16 JAN 2024	SUBUR	DATO' TIONG ING [DIR/CEO]	10	2531	1.343	
16 JAN 2024 - 16 JAN 2024	SUNCON	EMPLOYEES PROVIDENT FUND BOARD [SSH]	66	130240	10.101	
11 JAN 2024 - 11 JAN 2024	SUNCON	EMPLOYEES PROVIDENT FUND BOARD [SSH]	240	130423	10.115	
17 JAN 2024 - 17 JAN 2024	SUNWAY	ACTIVE EQUITY SDN BHD [SSH]	-150,000	2885907	52.69	
17 JAN 2024 - 17 JAN 2024	SUNWAY	MADAM SARENA CHEAH YEAN TIH [DIR/CEO]	-150,000	3551146	64.83	
17 JAN 2024 - 17 JAN 2024	SUNWAY	MADAM SARENA CHEAH YEAN TIH [SSH]	-150,000	3551146	64.83	
17 JAN 2024 - 17 JAN 2024	SUNWAY	MR ADRIAN CHEAH YEAN SUN [SSH]	-150,000	3545115	64.72	
17 JAN 2024 - 17 JAN 2024	SUNWAY	MR EVAN CHEAH YEAN SHIN [SSH]	-150,000	3549933	64.81	
17 JAN 2024 - 17 JAN 2024	SUNWAY	PUAN SRI DATIN SERI (DR) SUSAN CHEAH SEOK CHENG [SSH]	-150,000	3555961	64.91	
17 JAN 2024 - 17 JAN 2024	SUNWAY	SUNGEI WAY CORPORATION SDN BHD [SSH]	-150,000	2719581	49.65	
17 JAN 2024 - 17 JAN 2024	SUNWAY	TAN SRI SIR DR JEFFREY CHEAH FOOK LING KBE AO [DIR/CEO]	-150,000	3555961	64.91	
17 JAN 2024 - 17 JAN 2024	SUNWAY	TAN SRI SIR DR JEFFREY CHEAH FOOK LING KBE AO [SSH]	-150,000	3555961	64.91	
11 JAN 2024 - 11 JAN 2024	SUNWAY	TAN SRI DATO' (DR.) CHEW CHEE KIN [DIR/CEO]	-3,350	19581	0.36	
17 JAN 2024 - 17 JAN 2024	SUNZEN	MISS POO LONG YI [DIR/CEO]	17	100	0.014	
16 JAN 2024 - 18 JAN 2024	SWIFT	MR LOO HOUI KEAT [DIR/CEO]	730	351023	39.856	
16 JAN 2024 - 18 JAN 2024	SWIFT	MR LOO HOUI KEAT [SSH]	730	351023	39.856	
15 JAN 2024 - 17 JAN 2024	TAFI	ARMANI SYNERGY SDN. BHD. [SSH]	208	204407	53.872	
15 JAN 2024 - 17 JAN 2024	TAFI	DATO' SRI ANDREW LIM ENG GUAN [DIR/CEO]	208	214525	56.539	
15 JAN 2024 - 17 JAN 2024	TAFI	DATO' SRI ANDREW LIM ENG GUAN [SSH]	208	214525	56.539	
15 JAN 2024 - 17 JAN 2024	TAFI	DATO' SRI AZLAN BIN AZMI [DIR/CEO]	208	204572	53.915	
15 JAN 2024 - 17 JAN 2024	TAFI	DATO' SRI AZLAN BIN AZMI [SSH]	208	204572	53.915	
15 JAN 2024 - 17 JAN 2024	TAFI	DATO' SRI WONG SZE CHIEN [DIR/CEO]	208	213932	56.382	
15 JAN 2024 - 17 JAN 2024	TAFI	DATO' SRI WONG SZE CHIEN [SSH]	208	213932	56.382	
12 JAN 2024 - 12 JAN 2024	TAFI	ARMANI SYNERGY SDN. BHD. [SSH]	80	204199	53.818	
12 JAN 2024 - 12 JAN 2024	TAFI	DATO' SRI ANDREW LIM ENG GUAN [DIR/CEO]	80	214317	56.485	
12 JAN 2024 - 12 JAN 2024	TAFI	DATO' SRI ANDREW LIM ENG GUAN [SSH]	80	214317	56.485	
12 JAN 2024 - 12 JAN 2024	TAFI	DATO' SRI AZLAN BIN AZMI [DIR/CEO]	80	204364	53.861	
12 JAN 2024 - 12 JAN 2024	TAFI	DATO' SRI AZLAN BIN AZMI [SSH]	80	204364	53.861	
12 JAN 2024 - 12 JAN 2024	TAFI	DATO' SRI ONG CHEE KEAN [DIR/CEO]	30	1250	0.329	
12 JAN 2024 - 12 JAN 2024	TAFI	DATO' SRI WONG SZE CHIEN [DIR/CEO]	80	213724	56.328	
12 JAN 2024 - 12 JAN 2024	TAFI	DATO' SRI WONG SZE CHIEN [SSH]	80	213724	56.328	
18 JAN 2024 - 18 JAN 2024	TANCO	DATO' SRI ANDREW TAN JUN SUAN [DIR/CEO]	12,000	1027535	50.763	
18 JAN 2024 - 18 JAN 2024	TANCO	DATO' SRI ANDREW TAN JUN SUAN [SSH]	12,000	1027535	50.763	
16 JAN 2024 - 16 JAN 2024	TCHONG	EMPLOYEES PROVIDENT FUND BOARD [SSH]	-108	40976	6.287	
15 JAN 2024 - 17 JAN 2024	TCHONG	DATO' TAN HENG CHEW [DIR/CEO]	65	323393	49.615	
15 JAN 2024 - 17 JAN 2024	TCHONG	DATO' TAN HENG CHEW [SSH]	65	307811	47.225	
15 JAN 2024 - 15 JAN 2024	TCHONG	EMPLOYEES PROVIDENT FUND BOARD [SSH]	-83	41084	6.303	
15 JAN 2024 - 15 JAN 2024	TENAGA	EMPLOYEES PROVIDENT FUND BOARD [SSH]	571	980562	16.94	
12 JAN 2024 - 12 JAN 2024	TENAGA	EMPLOYEES PROVIDENT FUND BOARD [SSH]	1,200	979991	16.93	
11 JAN 2024 - 11 JAN 2024	TENAGA	EMPLOYEES PROVIDENT FUND BOARD [SSH]	1,000	978847	16.91	
15 JAN 2024 - 17 JAN 2024	TEOSEN	CW LAU & SONS SDN BHD [SSH]	485	163418	55.71	
15 JAN 2024 - 17 JAN 2024	TEOSEN	DATUK LAU JOO HONG [SSH]	485	163418	55.71	

Notice Period is 14th Jan 2024 – 20th Jan 2024

Effective Change Date	Stock Name	Buyer/ Seller Name [Classification]	Bought / (Sold) ['000]		No. of Shares After Trade ['000]	
			Total	Total	% Held	% Held
15 JAN 2024 - 17 JAN 2024	TEOSEN	EMERGING GLORY SDN BHD [SSH]	485	163418	55.71	
15 JAN 2024 - 17 JAN 2024	TEOSEN	LEONG HUP (MALAYSIA) SDN BHD [SSH]	485	163418	55.71	
15 JAN 2024 - 17 JAN 2024	TEOSEN	LEONG HUP INTERNATIONAL BERHAD [SSH]	485	163418	55.71	
15 JAN 2024 - 17 JAN 2024	TEOSEN	MR LAU JOO HAN [SSH]	485	163418	55.71	
15 JAN 2024 - 17 JAN 2024	TEOSEN	MR LAU JOO HENG [SSH]	485	163418	55.71	
15 JAN 2024 - 17 JAN 2024	TEOSEN	MR LAU JUI PENG [DIR/CEO]	485	163418	55.71	
15 JAN 2024 - 17 JAN 2024	TEOSEN	MR LAU JUI PENG [SSH]	485	163418	55.71	
16 JAN 2024 - 16 JAN 2024	TGUAN	DATO' ANG POON CHUAN [DIR/CEO]	60	3720	0.94	
16 JAN 2024 - 16 JAN 2024	TIMCOM	EMPLOYEES PROVIDENT FUND BOARD [SSH]	1,627	136461	7.381	
17 JAN 2024 - 17 JAN 2024	TIMCOM	KUMPULAN WANG PERSARAAN (DIPERBADANKAN) ("KWAP") [SSH]	-189	130768	7.073	
15 JAN 2024 - 15 JAN 2024	TIMCOM	EMPLOYEES PROVIDENT FUND BOARD [SSH]	2,278	134834	7.293	
12 JAN 2024 - 12 JAN 2024	TIMCOM	EMPLOYEES PROVIDENT FUND BOARD [SSH]	1,488	132556	7.17	
15 JAN 2024 - 15 JAN 2024	TIMCOM	KUMPULAN WANG PERSARAAN (DIPERBADANKAN) ("KWAP") [SSH]	212	130957	7.083	
15 JAN 2024 - 15 JAN 2024	TIMCOM	MR PATRICK CORSO [DIR/CEO]	-3,144	469326	25.385	
15 JAN 2024 - 15 JAN 2024	TIMCOM	MR PATRICK CORSO [SSH]	-3,144	469326	25.385	
11 JAN 2024 - 11 JAN 2024	TIMCOM	EMPLOYEES PROVIDENT FUND BOARD [SSH]	5	131068	7.089	
18 JAN 2024 - 18 JAN 2024	TM	KUMPULAN WANG PERSARAAN (DIPERBADANKAN) [SSH]	-308	373296	9.727	
16 JAN 2024 - 16 JAN 2024	TM	EMPLOYEE PROVIDENT FUND BOARD (EPF BOARD) [SSH]	-803	679096	17.696	
17 JAN 2024 - 17 JAN 2024	TM	KUMPULAN WANG PERSARAAN (DIPERBADANKAN) [SSH]	-1,000	373604	9.736	
15 JAN 2024 - 15 JAN 2024	TM	EMPLOYEE PROVIDENT FUND BOARD (EPF BOARD) [SSH]	1,695	679899	17.717	
16 JAN 2024 - 16 JAN 2024	TM	KUMPULAN WANG PERSARAAN (DIPERBADANKAN) [SSH]	-410	374604	9.762	
12 JAN 2024 - 12 JAN 2024	TM	EMPLOYEE PROVIDENT FUND BOARD (EPF BOARD) [SSH]	85	678203	17.672	
10 JAN 2024 - 10 JAN 2024	TM	KUMPULAN WANG PERSARAAN (DIPERBADANKAN) [SSH]	-2,070	375401	9.782	
11 JAN 2024 - 11 JAN 2024	TM	EMPLOYEE PROVIDENT FUND BOARD (EPF BOARD) [SSH]	-1,000	678118	17.67	
15 JAN 2024 - 15 JAN 2024	TOPGLOV	MR LIM HOUI SIN [DIR/CEO]	600	2925220	36.528	
15 JAN 2024 - 15 JAN 2024	TOPGLOV	MR LIM HOUI SIN [SSH]	600	2925220	36.528	
15 JAN 2024 - 15 JAN 2024	TOPGLOV	PUAN SRI TONG SIEW BEE [SSH]	600	2925420	36.53	
15 JAN 2024 - 15 JAN 2024	TOPGLOV	TAN SRI DR LIM WEE CHAI [DIR/CEO]	600	2925420	36.53	
15 JAN 2024 - 15 JAN 2024	TOPGLOV	TAN SRI DR LIM WEE CHAI [SSH]	600	2925420	36.53	
12 JAN 2024 - 12 JAN 2024	UMCCA	DATO' SRI TEE LIP SIN [DIR/CEO]	80	65086	30.234	
12 JAN 2024 - 12 JAN 2024	UMCCA	MR TEE CHENG HUA [DIR/CEO]	80	58934	28.095	
12 JAN 2024 - 12 JAN 2024	UMCCA	PROSPER CAPITAL HOLDINGS SDN BHD [SSH]	80	40107	19.119	
17 JAN 2024 - 17 JAN 2024	UMW	SIME DARBY BERHAD [SSH]	809	1138905	97.484	
17 JAN 2024 - 17 JAN 2024	UMW	SIME DARBY ENTERPRISE SDN BHD [SSH]	809	1138905	97.484	
17 JAN 2024 - 17 JAN 2024	UMW	SIME DARBY HOLDINGS BERHAD [SSH]	809	1138905	97.484	
15 JAN 2024 - 15 JAN 2024	UMW	SIME DARBY BERHAD [SSH]	31,043	1131013	96.809	
15 JAN 2024 - 15 JAN 2024	UMW	SIME DARBY ENTERPRISE SDN BHD [SSH]	31,043	1131013	96.809	
15 JAN 2024 - 15 JAN 2024	UMW	SIME DARBY HOLDINGS BERHAD [SSH]	31,043	1131013	96.809	
17 JAN 2024 - 18 JAN 2024	UNIMECH	MR SIM YEE FUAN [DIR/CEO]	32	82	0.056	
11 JAN 2024 - 11 JAN 2024	UOAEV	EMPLOYEES PROVIDENT FUND BOARD ("EPF BOARD") [SSH]	5	306793	12.319	
18 JAN 2024 - 18 JAN 2024	UPA	MISS MA PIN YEN [DIR/CEO]	-483	555	0.24	
15 JAN 2024 - 17 JAN 2024	UPA	MR CHUA NGEUN LOK [DIR/CEO]	-1,460	8684	3.749	
15 JAN 2024 - 15 JAN 2024	UTDPLT	EMPLOYEES PROVIDENT FUND BOARD [SSH]	-240	23966	5.778	
15 JAN 2024 - 17 JAN 2024	UTDPLT	MR LOH HANG PAI @ LOW HENG FONG [DIR/CEO]	185	570	0.137	
11 JAN 2024 - 11 JAN 2024	UTDPLT	EMPLOYEES PROVIDENT FUND BOARD [SSH]	-396	24272	5.852	
11 JAN 2024 - 11 JAN 2024	UWC	EMPLOYEES PROVIDENT FUND BOARD [SSH]	9	87054	7.902	
17 JAN 2024 - 17 JAN 2024	VS	KUMPULAN WANG PERSARAAN [SSH]	891	352908	9.166	
15 JAN 2024 - 15 JAN 2024	VS	EMPLOYEES PROVIDENT FUND BOARD [SSH]	2,467	275618	7.159	
16 JAN 2024 - 16 JAN 2024	VS	KUMPULAN WANG PERSARAAN [SSH]	898	352017	9.142	
12 JAN 202						



The Board of Directors of **Dayang Enterprise Holdings Bhd (DAYANG)** is pleased to announce that its wholly-owned subsidiary company, Dayang Enterprise Sdn Bhd, has been awarded an extension for the Scope expansion to cover Sarawak Gas (SK Gas) Area under Contract Amendment for the Provision of Offshore Maintenance, Construction and Modification (MCM) Services for PETRONAS Carigali Sdn Bhd, a wholly-owned subsidiary of PETRONAS.

[READ MORE !\[\]\(339a16584d5da0f0a3ca4e9ec17bf6a1_img.jpg\)](#)



The Board of Directors of **Kinergy Advancement Berhad (KAB)** wishes to announce that KAB Energy Holdings Sdn. Bhd., a wholly-owned subsidiary of the Company, had on 19 January 2024 entered into Head of Agreement with LCS Holdings, INC dated 19 January 2024 for the purpose of joint development, construction and operation of the Solar Photovoltaic Plant in Santa, Ilocos Sur.

[READ MORE !\[\]\(3211b5d1d968fc1665909b34f9f16010_img.jpg\)](#)



YNH PROPERTY BHD

This announcement serves as the purpose of rectification of oversight pertaining to the Turnkey Construction Agreement.

On 20 June 2016, the wholly-owned subsidiary of **YNH Property Berhad (YNHPROP)**, namely Kar Sin Bhd entered into a Turnkey Construction Agreement with Great Wall Park Sdn Bhd for the purpose of developing the freehold land held under individual title H.S.(D) 47941 P.T. 48632 in the Mukim of Kuala Lumpur, Daerah Kuala Lumpur, Negeri Wilayah Persekutuan Kuala Lumpur into a mixed residential and commercial development in accordance with the terms and conditions of the TCA.



Upcoming IPO					
NAME OF COMPANY	OFFER PERIOD		ISSUE PRICE (Per Ordinary Share)	LISTING SOUGHT	DATE OF LISTING
	OPENING	CLOSING			
AGX GROUP BERHAD	16 Jan 2024	23 Jan 2024	RM0.35	ACE MARKET	7 Feb 2024
WENTEL ENGINEERING HOLDINGS BERHAD	15 Jan 2024	22 Jan 2024	RM0.26	ACE MARKET	6 Feb 2024
TSA GROUP BERHAD	27 Dec 2023	17 Jan 2024	RM0.55	ACE MARKET	2 Feb 2024
HE GROUP BERHAD	12 Jan 2024	18 Jan 2024	RM0.28	ACE MARKET	30 Jan 2024
MASTER TEC GROUP BERHAD	28 Dec 2023	18 Jan 2024	RM0.39	ACE MARKET	29 Jan 2024
KJTS GROUP BERHAD	5 Jan 2024	11 Jan 2024	RM0.27	ACE MARKET	26 Jan 2024

Disclaimer: The information in the Investor Relations page is extracted from individual companies' announcements in www.bursamalaysia.com. The information on this page is provided as a service to readers. We assume no liability for damages resulting from or arising out of the use of such information. Whilst every effort is made to ensure accuracy, the information presented has been simplified for your reading pleasure. Readers are advised to read the original and complete filings on the Bursa Malaysia website at https://www.bursamalaysia.com/market_information/announcements/company_announcement