



Nearly 80% of Malaysian SMEs bullish about growth prospects in 2024 - Employment Hero

see more
page
21-24



Govt approves 22 RE projects with total capacity of 36.534 MW

ALSO

**COMPANY
SPOTLIGHT**
PBA Holdings Berhad

See more on page 07

MSWG

What lies ahead for
Kuchai? Disposal deal
sets stage for multiple
scenarios

See more on page 26-29

04 LEADERBOARD

06 SHARIAH HOT STOCKS

08 SHARIAH MOMENTUM UP STOCKS

10 NON SHARIAH HOT STOCKS

12 UP TRENDING STOCKS

14 VALUE STOCKS

16 GROWTH STOCKS

17 DIVIDEND STOCKS

18 BROKERS' CALL

19 LONG COMPANIES

25 REGIONAL MARKETS

30 INSIDER ACTIVITY

35 INVESTOR RELATIONS





SHAREINVESTOR®

Invest with Knowledge

INVESTOR PLATFORMS

Director
Darren Chong
darren.chong@shareinvestor.com

Business Development Manager
Jay Cheong
jay.cheong@shareinvestor.com

Senior Executive
Daniel Wong
daniel.wong@shareinvestor.com

Executive
Tan Yong Sheng
yongsheng.tan@shareinvestor.com

ADMIN & OPERATIONS

Senior Executive
Watie Nordin
watie.nordin@shareinvestor.com

Executive
Silas Emmanuel Joseph
silas.joseph@shareinvestor.com

INVESTOR RELATIONS

Group Managing Director & Publisher
Edward Stanislaus
edward@shareinvestor.com

Senior Manager
Letticia Wong
letticia.wong@shareinvestor.com

PROCESS AUTOMATION & DATA ANALYTICS

Data Analyst
Nickson Aw

SHAREINVESTOR HOLDINGS BOARD OF DIRECTORS

Chairman	Patrick Daniel
Group CEO	Christopher Lee
Group COO	Lim Dau Hee
Group CFO	Teo Siew May
Group MD	Shanison Lin



“ GIVE A MAN A FISH AND YOU FEED HIM FOR A DAY; TEACH A MAN TO FISH AND YOU FEED HIM FOR A LIFETIME ”

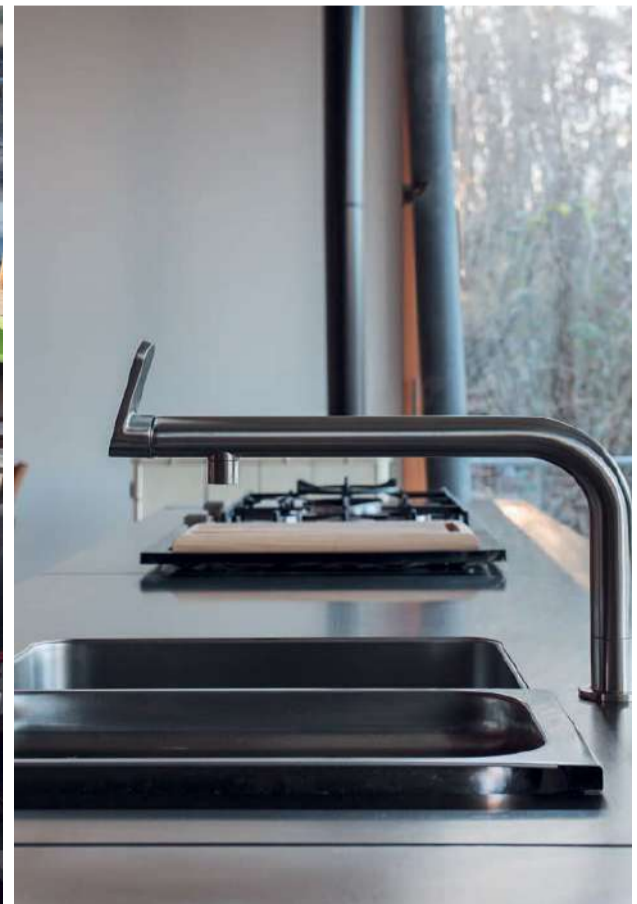
ShareInvestor Malaysia Sdn. Bhd.

(200001023956) (526564-M)
Unit No. DF2-07-03A, Level 7,
Persoft Tower, 6B Persiaran Tropicana,
47410 Petaling Jaya, Selangor Darul Ehsan.

Hotline : 603 7803 1791
Mobile : 011 6343 8939
Website : www.ShareInvestor.com.my
www.ShareInvestorHoldings.com
www.Facebook.com/ShareInvestorMalaysia

ADVERTISEMENT ENQUIRY

bulthaup takes care of the details so that you can enjoy a harmonious environment.



XTRA

XTRA FURNITURE SDN BHD
The Gardens Mall, Mid Valley City
xtrafurniture.com/bulthaup
fb.com/bulthaupmalaysia

bulthaup



2024龙年， 大马经济能否 龙跃千里？



30 Jan (Tue)
8 PM - 9 PM

Scan Me



黄锦荣博士

马来西亚拉曼大学经济学教授

www.shareinvestor.com - market data at your fingertips



ShareInvestor WebPro (www.shareinvestor.com/my) Prices > Stock Prices > Bursa > click Stocks tab

1. mouse over Ranking > select Top Active > all Shariah stocks are denoted with an [S] > mouse over Column Layout > select Edit Customs > select Name > select Volume > select Last Done Price > Mouse Over Column Layout > select Custom
2. mouse over Ranking > select Top Turnover > all Shariah stocks are denoted with an [S] > mouse over Column Layout > select Edit Customs > select Name > select Last Done Price > select Value > Mouse Over Column Layout > select Custom
3. mouse over Ranking > select Top Gainers (Over 5 Trading Days) > mouse over Column Layout > select Edit Customs > select Name > select Last Done Price > select 5 Days Change > select 5 Days % Change > Mouse Over Column Layout > select Custom
4. mouse over Ranking > select Top Losers (Over 5 Trading Days)
5. mouse over Ranking > select Top % Gainers (Over 5 Trading Days)
6. mouse over Ranking > select Top % Losers (Over 5 Trading Days)

Shariah Top Actives (as at Yesterday)

Name	Price (RM)	Volume
ARTRONIQ [S]	0.230	3,135,024.000
WIDAD [S]	0.190	1,903,409.000
FITTERS [S]	0.045	1,694,918.000
DNEX [S]	0.330	1,534,783.000
MINETEC [S]	0.170	1,459,486.000
LEFORM [S]	0.170	1,065,983.000
EKOVEST [S]	0.530	874,102.000
EDUSPEC [S]	0.060	831,063.000
TWL [S]	0.035	779,745.000
MRCB [S]	0.500	695,430.000

Shariah Top Turnover (as at Yesterday)

Name	Price (RM)	Value (RM)
TENAGA [S]	10.360	70,149,040
ARTRONIQ [S]	0.230	69,787,772
GAMUDA [S]	4.890	66,065,732
SIME [S]	2.450	53,477,836
DNEX [S]	0.330	53,350,651
WIDAD [S]	0.190	48,810,270
EKOVEST [S]	0.530	46,188,624
GENP [S]	6.330	38,687,283
UEMS [S]	0.955	38,607,606
PBA [S]	2.520	38,031,014

Top Gainers (over 5 Trading days as at Yesterday)

Name	Price (RM)	Change (RM)
UTDPLT	19.500	+0.980
PBA	2.520	+0.810
SBAGAN	5.050	+0.640
ALLIANZ	19.880	+0.600
KLUANG	4.640	+0.360
MPI	28.360	+0.260
KSENG	5.460	+0.240
CHINHIN	3.680	+0.220
IOIPG	2.110	+0.220
INSAS	1.160	+0.200

Top % Gainers (over 5 Trading days as at Yesterday)

Name	Price (RM)	Change (%)
PBA	2.520	+47.37
ENGKAH	0.465	+22.37
INSAS	1.160	+20.83
E&O	0.890	+18.67
SCBUILD	0.015	+15.38
SBAGAN	5.050	+14.51
ASTRO	0.410	+13.89
REXIT	1.010	+12.85
DYNAFNT	1.000	+12.36
IOIPG	2.110	+11.64

Top Losers (over 5 Trading days as at Yesterday)

Name	Price (RM)	Change (RM)
RAPID	3.960	-7.540
YNHPROP	1.220	-1.500
NESTLE	119.000	-0.800
ARTRONIQ	0.230	-0.635
IMASPRO	1.360	-0.630
SCIB	0.535	-0.585
APB	2.000	-0.540
HEIM	23.680	-0.520
JSB	0.800	-0.500
PETDAG	20.660	-0.440

Top % Losers (over 5 Trading days as at Yesterday)

Name	Price (RM)	Change (%)
ARTRONIQ	0.230	-73.41
RAPID	3.960	-65.57
LEFORM	0.170	-64.95
WIDAD	0.190	-61.22
YNHPROP	1.220	-55.15
SCIB	0.535	-52.23
MERSEC	0.415	-50.89
EAH	0.005	-50.00
PHB	0.005	-50.00
JSB	0.800	-38.46

PURNELL

ONLY TOURBILLON



ESCAPE II
ABSOLUTE
SAPPHIRE

Purnell Asia

Tel.: +65.9817.3378

Email: sales.sg@purnellwatches.com

@ Purnell_Official

www.purnellwatches.com



Price & Volume Distribution Charts (as at Yesterday)

Technical Analysis

DEFINITION: Shariah compliant stocks with Technical Analysis showing 5-days & 10-days Moving Average Price below Yesterday's Close over past 3 days and with Volume Spike.

CHART GUIDE: Volume Distribution Chart is a statistical interpretation of the current sentiment on each stock in graphical format. The highest bar categorized as >150k is likely to be traded by institutions or super dealers, while the lowest bar categorized as <15k usually represents retail investors. "Buy Up" refers to more buyers snatching up the lots queued at selling price. "Sell Down" refers to sellers selling their shares to the buying queue



ShareInvestor WebPro > Screener > Market Screener (FA & TA) > select BURSA > add criteria

A. Criteria

- > click Add Criteria
- Technical Analysis Conditions tab select (i) Moving Average Below Close (ii) Volume Spike
- Fundamental Analysis Conditions tab > select (iii) Revenue
- Prices & Other Conditions tab > select (iv) Is Shariah Compliant
- Technical Analysis Conditions tab select (v) Moving Average Below Close
- Prices & Other Conditions tab > select (vi) Last Done Price
- Technical Analysis Conditions tab select (vii) Moving Average Below Close

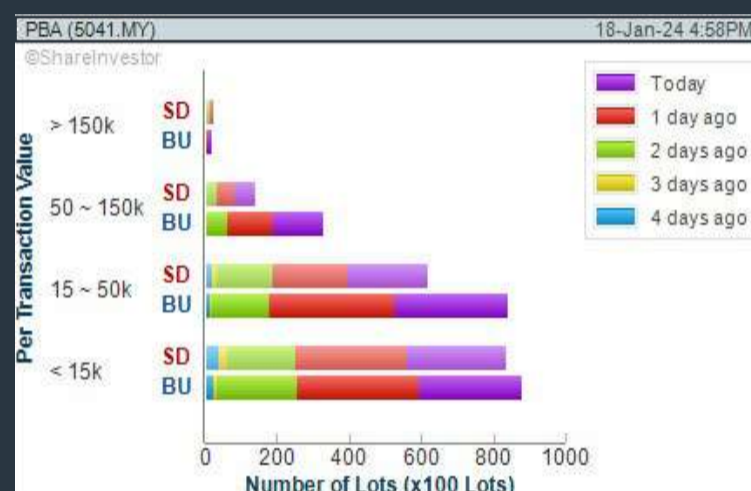
B. Conditions (Criteria Filters)

- Moving Average Below Close - select (MA) type (5) below close price for type (3) days
- Volume Spike - Volume type (1) greater than type (5) days average
- Revenue ("000) - select (more than) type (1) for the past select (1) financial year(s)
- Is Shariah Compliant - select **Yes**
- Moving Average Below Close - select (MA) type (10) below close price for type (3) days
- Last Done Price - select (more than) type (0.3)
- Moving Average Below Close - select (EMA) type (5) below close price for type (3) days

- > click Save Template > Create New Template type (Shariah Hot Stocks) > click Create
- > click Save Template as > select Shariah Hot Stocks > click Save
- > click Screen Now (may take a few minutes)
- > Sort By: Select (Vol) Select (Desc)
- > Mouse over stock name > Charts > click C² Charts or Volume Distribution

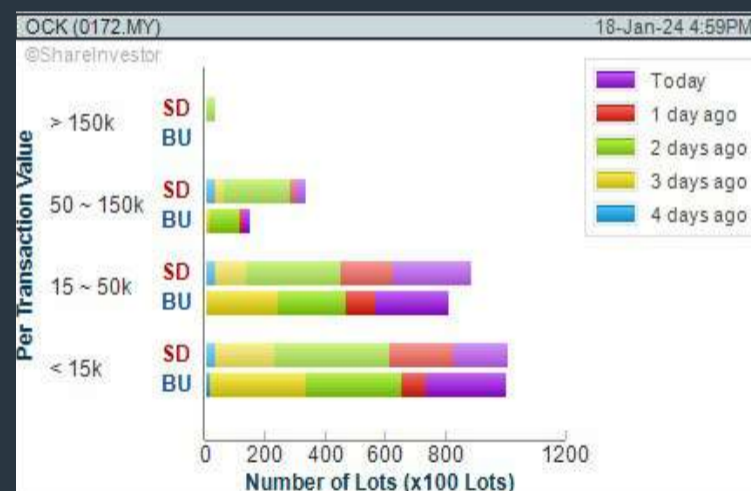
PBA HOLDINGS BERHAD (5041)

C² Chart



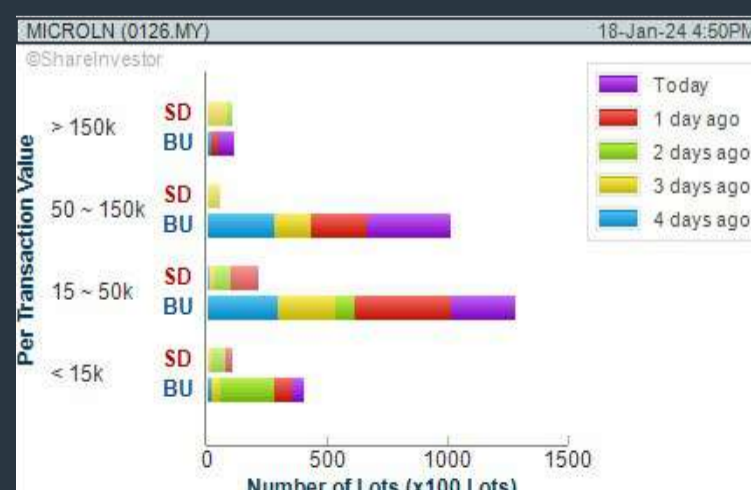
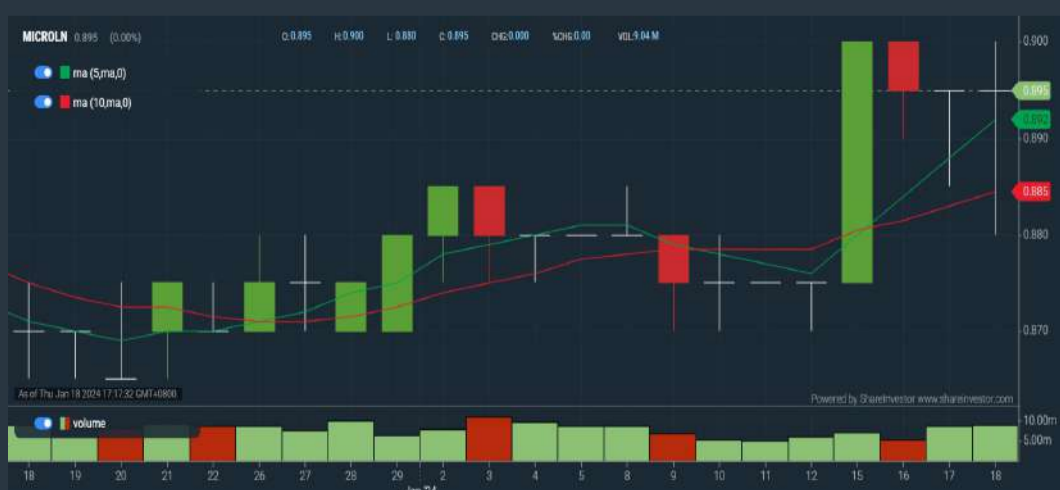
OCK GROUP BERHAD (0172)

C² Chart



MICROLINK SOLUTIONS BERHAD (0126)

C² Chart



Disclaimer: The information on this page is provided as a service to readers. It does not constitute financial advice and/or any investment recommendations. Past performance is not indicative of future results. We assume no liability for damages resulting from or arising out of the use of such information. It would be best if you did your own research to make your personal investment decisions wisely or consult a licenced investment advisor.

COMPANY BACKGROUND

PBA Holdings Berhad is a Malaysia-based company, which is engaged in investment holding activities. The Company is principally engaged in the abstraction of raw water, treatment of water, supply and sale of treated water to consumers in the State of Penang and to engage in water related business.



PBA PBA HOLDINGS BHD		Updated at 18 Jan 2024 17:31	
Last (MYR): 2.520 ↑	Change: +0.230	High: 2.620	Remarks: -
	Change (%): +10.04	Low: 2.300	
Open	2.300	Yesterday's Close	2.290
Buy Price	2.450	Sell Price	2.640
Buy Volume ('00)	82	Sell Volume ('00)	5
Cumulative Volume ('00)	156,615	Cumulative Value	38,031,014

Financial Analysis

Revenue Growth Revenue up and down in past years	😊	Profit Growth Increasing profit in last 3 consecutive years and min growth is 10% (with at least 4 profitable years)	😊😊
Piotroski F Score The company has above average financial strength (Piotroski F-Score of 6-7)	😊	Dividend Payout Dividend is decreasing over the past 60 months.	😞
Debt to Cashflow High debt to cash flow for most recent year	😞	Free Cash Flow Positive and increasing free cash flow for at least three years	😊😊
Gross Profit Margin Consistently good gross profit margin of 20%-40% for 3 years	😊😊	Net Earnings Margin High net profit margin of at least 20% for most recent year but trailing 12 months margin is below 20%	😊😊
Net Earnings Margin Net profit margin is improving by 5% a year over the past 60 months.	😊😊		



Historical Financials

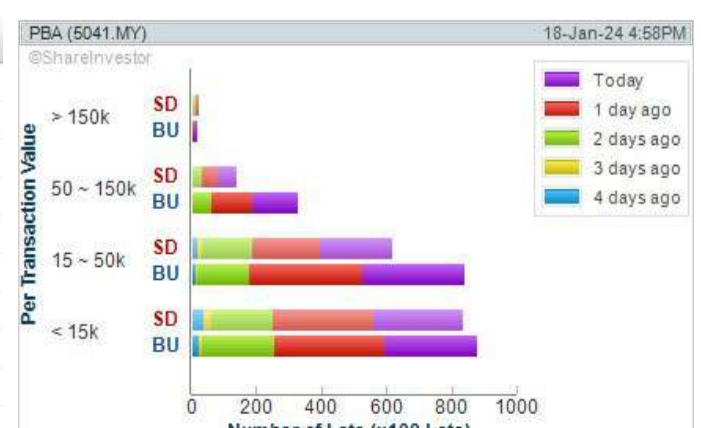


WebPro 9-Days Free Trial Registration (worth RM9) Sign Up Now



Key Statistics with Total Shareholder Returns

Period	Dividend Received	Capital Appreciation	Total Shareholder Return
Short Term Return	5 Days	-	+44.00 %
	10 Days	-	+37.70 %
	20 Days	-	+110.00 %
Medium Term Return	3 Months	-	+216.98 %
	6 Months	-	+207.32 %
	1 Year	-	+225.16 %
Long Term Return	2 Years	0.010	+216.25 %
	3 Years	0.033	+193.45 %
	5 Years	0.098	+123.76 %
Annualised Return	Annualised	-	+17.48 %



Disclaimer: The information on this page is provided as a service to readers. It does not constitute financial advice and/or any investment recommendations. Past performance is not indicative of future results. We assume no liability for damages resulting from or arising out of the use of such information. It would be best if you did your own research to make your personal investment decisions wisely or consult a licenced investment advisor.

Price & Volume Distribution Charts (as at Yesterday)

Technical Analysis

DEFINITION: Shariah compliant stocks with Technical Analysis showing Bullish Momentum and Price Uptrend. The share price closed at the highest price yesterday. The typical price was higher than the previous day's typical price.

CHART GUIDE: Volume Distribution Chart is a statistical interpretation of the current sentiment on each stock in graphical format. The highest bar categorized as >150k is likely to be traded by institutions or super dealers, while the lowest bar categorized as <15k usually represents retail investors. "Buy Up" refers to more buyers snatching up the lots queued at selling price. "Sell Down" refers to sellers selling their shares to the buying queue.



ShareInvestor WebPro > Screener > Market Screener (FA & TA) > select BURSA > add criteria

A. Criteria

- > click Add Criteria
- Fundamental Analysis Conditions tab > select (i) Revenue
- Technical Analysis Conditions tab select (ii) Average Volume
- Prices & Other Conditions tab > select (iii) Last Done Price
- Prices & Other Conditions tab > select (iv) Is Shariah Compliant
- Technical Analysis Conditions tab select (v) RSI Overbought
- Technical Analysis Conditions tab select (vi) Moving Average Below Close
- Technical Analysis Conditions tab select (vii) CCI Overbought

B. Conditions (Criteria Filters)

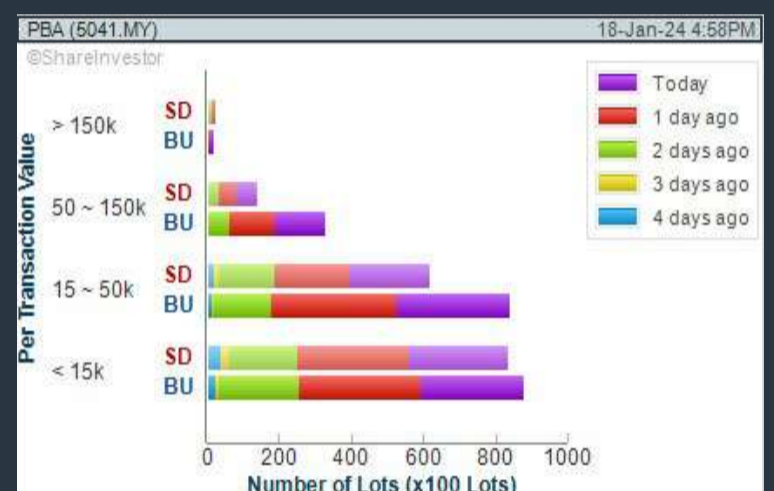
1. Revenue ("000) - select (more than) type (1) for the past select (1) financial year(s)
2. Average Volume - type (1) days average volume greater than type (10000) lots
3. Last Done Price - select (more than) type (0.3)
4. Is Shariah Compliant - select Yes
5. RSI Overbought - select RSI 1 above 99 for 1 days
6. Moving Average Below Close - select (MA) type (10) below close price for type (1) days
7. CCI Overbought - select CCI (2) above (0) for (1) days

- > click Save Template > Create New Template type (Shariah Momentum Up Stocks) > click Create
- > click Save Template as > select Shariah Momentum Up Stocks > click Save
- > click Screen Now (may take a few minutes)
- Sort By: Select (Vol) Select (Desc)
- Mouse over stock name > Charts > click C² Charts tab or Volume Distribution

PBA HOLDINGS BERHAD (5041)

C² Chart

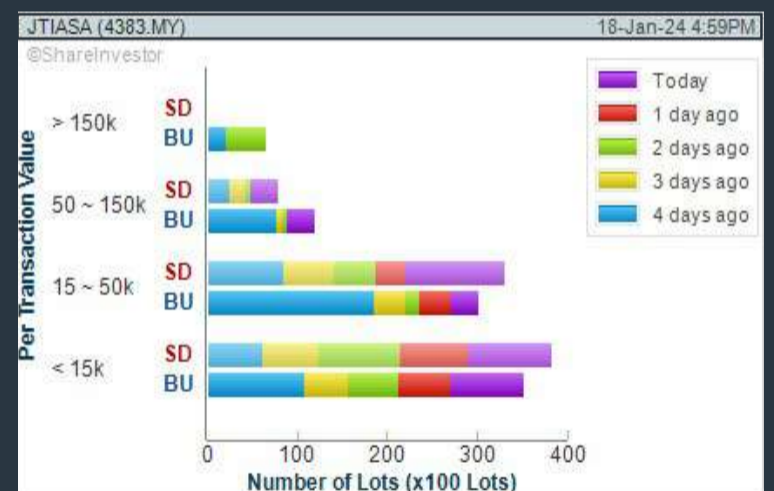
Analysis



JAYA TIASA HOLDINGS BERHAD (4383)

C² Chart

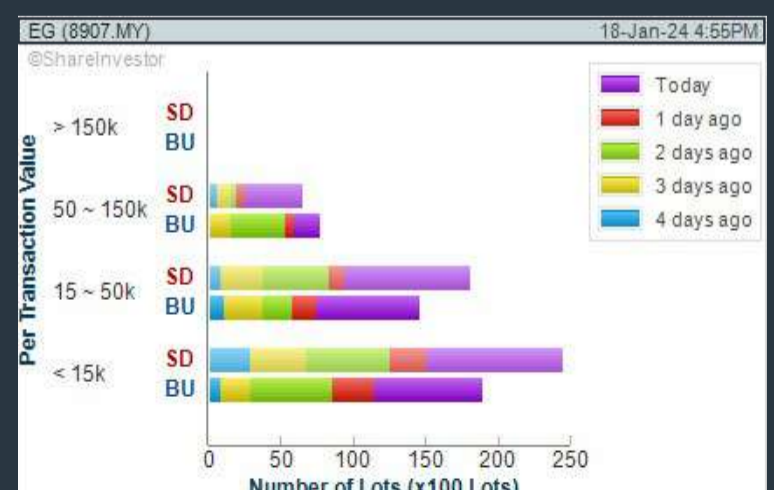
Analysis



EG INDUSTRIES BERHAD (8907)

C² Chart

Analysis



Disclaimer: The information on this page is provided as a service to readers. It does not constitute financial advice and/or any investment recommendations. Past performance is not indicative of future results. We assume no liability for damages resulting from or arising out of the use of such information. It would be best if you did your own research to make your personal investment decisions wisely or consult a licenced investment advisor.

2023 Securities Performance Report In Bursa Market



Get Free Report Now!

- Beta → Basic → CAGR
- Stocks Hitting Highs/Lows
- Trailing EPS vs Historical EPS

No	Name	Rem	Last Done	Chg	% Chg	Vol	Buy Vol	Buy	Sell	Sell Vol	High	Low	Bid	
1	MM2 Asia R		0.004			48,315,244	12,791.7	0.003	0.004	508	0.005	0.003	100	
2	HSI 15600MBWPW240228		0.096	-0.010	-15.15	25,962	5,000	0.055	0.056	5,000	0.062	0.055	100	
3	Sestrium		0.112			23,392.2	28,195.1	0.112	0.113	31,084.9	0.113	0.111	100	
4	Singtel	CD	0.081	+0.020	+0.84	14,852.3	1,422.4	0.082	0.083	1,997.8	0.083	0.075	100	
5	HSI 17400MBWPW240327		0.535	+0.009	+12.50	13,948	1,050	0.082	0.083	4,453.9	0.083	0.075	100	
6	Thaibev		0.041	+0.003	+8.11	11,883.1	8,899.8	0.039	0.040	1,890.8	0.040	0.039	100	
7	SMI VariGate		0.063	-0.003	-4.54	11,245	5,000	0.061	0.061	5,000	0.068	0.062	100	
8	HSI 15200MBWPW240227		0.079	+0.008	+13.89	9,800	5,000	0.061	0.061	5,000	0.042	0.036	100	
9	HSI 17800MBWPW240228		0.041	+0.005	+12.22	7,493.3	1,599.2	0.077	0.078	50.4	0.081	0.077	100	
10	HSTECH 3000MBWPW240427		0.079	+0.008	+13.89	7,450.8	1,052.1	0.182	0.183	1,800.5	0.175	0.181	100	
11	Rex Int		0.182	-0.004	-2.15	7,450.8	142	0.062	0.062	122.8	0.066	0.091	100	
12	COBCO SGP SG		0.173	+0.001	+0.58	6,023.7	210	0.094	0.095	891.7	0.087	0.130	100	
13	Beng Kuang		0.083	+0.002	+2.47	5,703.2	505	1.340	1.350	281.4	1.010	0.996	100	
14	Chasen		0.093	+0.003	+3.28	5,428	505	1.000	1.010	1,785.8	0.879	0.883	100	
15	Frecken		0.096	+0.003	+5.47	4,827.8	2,849.5	0.078	0.079	80.6	0.183	0.183	100	
16	Denting Sing		1.350	+0.070	+5.47	4,565.8	886.2	0.140	0.140	1,214.8	2.030	0.535	100	
17	Manulife US		1.000	+0.002	+2.80	3,965.1	293.9	2.000	2.010	163.9	0.027	0.027	100	
18	Medvca Int		0.078	+0.002	+1.12	3,894.9	377.4	0.500	0.500	786.9	0.740	0.740	100	
19	CapLand IntCom T		0.181	+0.002	+1.12	3,894.9	377.4	0.026	0.027	178.2	0.050	0.050	100	
20	Yanfeng Land		2.010	-0.056	-9.91	3,890.3	93.1	0.735	0.740	91.1	0.112	0.112	100	
21	SunMoorFood		0.500	+0.004	+17.39	3,383.7	87.7	0.048	0.048	947.8	0.310	0.310	100	
22	SamuderaShipping		0.027	+0.004	+18.88	3,133.9	9,237.3	0.305	0.310	1,514.9	0.020	0.020	100	
23	MarcoPolo Marine	CB	0.740	+0.005	+0.68	3,116.4	104.7	1.510	1.520	1,514.9	0.020	0.020	100	
24	Dyna-Mac		0.049	+0.005	+1.67	3,056.1	1,131.5	1.870	1.880	1,260	0.020	0.020	100	
25	Mapletree Pacifica Com Tr		0.305	+0.010	+6.67	3,041	1,345	0.024	0.024	300.2	0.020	0.020	100	
26	Mapletree Log Tr		1.510	+0.010	+6.67	2,895.5	1,345	0.215	0.220	381.8	0.980	0.980	100	
27	MM2 Asia		1.880	-0.001	-0.90	2,233.2	390.7	0.975	0.980	600.9	0.017	0.017	100	
28	Prime US RetUSD		0.004	+0.015	+7.32	2,229.1	2,310	0.005	0.006	3,180	0.121	0.121	100	
29	CapLand Account T		0.220	+0.015	+7.32	2,116	2,310	0.122	0.123	313.4	2.980	0.151	100	
30	ASL M W240723*		0.975			2,115	5,000	2.950	2.960	2,020	0.151	0.151	100	
31	HSTECH 7xLongS2303284		0.006	+0.010	+8.93	2,088.4	276.7	0.155	0.157	110	0.080	0.080	100	
32	CapLand Ascendas REIT		0.122	+0.010	+8.34	2,067.3	500	0.088	0.088	43,949.9	0.004	0.004	100	
33	HSCEI 8xLongS240912		2.980	+0.037	+4.70	2,055	2,055	5,219.8	0.003	0.004	5,000	0.003	0.003	100
34	HSI 16800MBWPW240228		0.156	+0.019	+12.82	2,000	2,000	5,000	0.004	0.004	5,000	0.004	0.004	100
35	Sanku Timber		0.008			2,000	2,000	0.003	0.004	5,000	0.004	0.004	100	
36	HSTECH 600MSHCW240637		0.003	+0.001	+4.36	2,000	2,000	0.003	0.004	5,000	0.004	0.004	100	

This report is powered by **WEBPRO** Shareinvestor

Price & Volume Distribution Charts (as at Yesterday)

Technical Analysis

DEFINITION: Stocks with Technical Analysis showing 5-days & 10-days Moving Average Price below Close over past 1 days and with Volume Spike

CHART GUIDE: Volume Distribution Chart is a statistical interpretation of the current sentiment on each stock in graphical format. The highest bar categorized as >150k is likely to be traded by institutions or super dealers, while the lowest bar categorized as <15k usually represents retail investors. "Buy Up" refers to more buyers snatching up the lots queued at selling price. "Sell Down" refers to sellers selling their shares to the buying queue.



ShareInvestor WebPro > Screener > Market Screener (FA & TA) > select BURSA > add criteria

A. Criteria

- > click Add Criteria
- Technical Analysis Conditions tab select (i) Moving Average Below Close (ii) Volume Spike
- Fundamental Analysis Conditions tab >select (iii) Revenue
- Prices & Other Conditions tab > select (iv) Is Shariah Compliant
- Technical Analysis Conditions tab select (v) Moving Average Below Close
- Prices & Other Conditions tab > select (vi) Last Done Price
- Technical Analysis Conditions tab select (vii) Moving Average Below Close

B. Conditions (Criteria Filters)

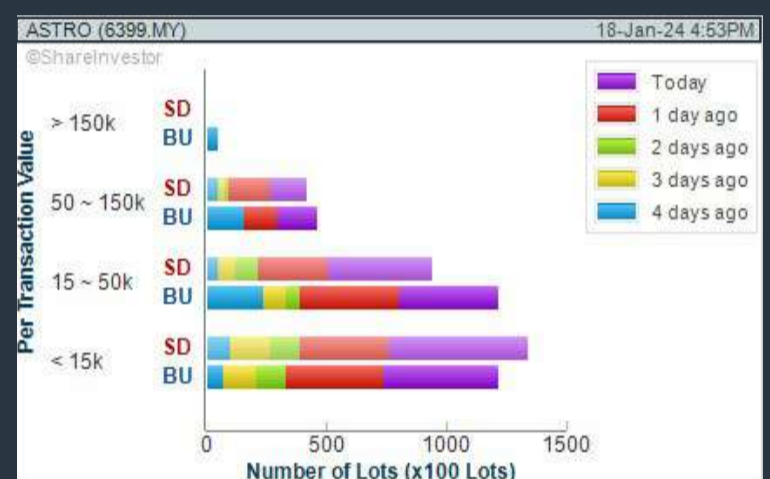
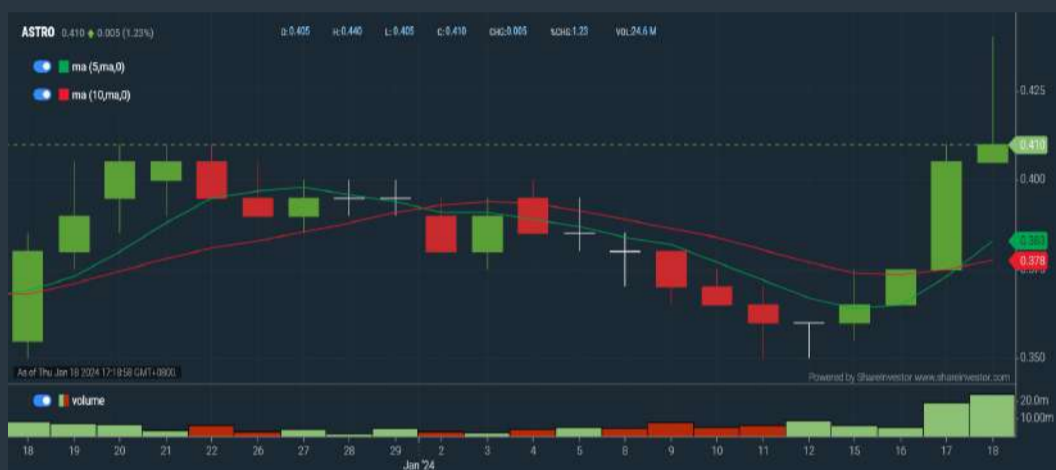
1. Moving Average Below Close - select (MA) type (5) below close price for type (3) days
2. Volume Spike - Volume type (1) greater than type (5) days average
3. Revenue ("000) - select (more than) type (1) for the past select (1) financial year(s)
4. Is Shariah Compliant - select NO
5. Moving Average Below Close - select (MA) type (10) below close price for type (1) days
6. Last Done Price - select (more than) type (0.3)
7. Moving Average Below Close - select (EMA) type (5) below close price for type (1) days

- > click Save Template > Create New Template type (Non-Shariah Hot Stocks) > click Create
- > click Save Template as > select Non-Shariah Hot Stocks > click Save
- > click Screen Now (may take a few minutes)
- Sort By: Select (Vol) Select (Desc)
- Mouse over stock name > Charts > click C² Charts tab or Volume Distribution

ASTRO MALAYSIA HOLDINGS BERHAD (6399)

C² Chart

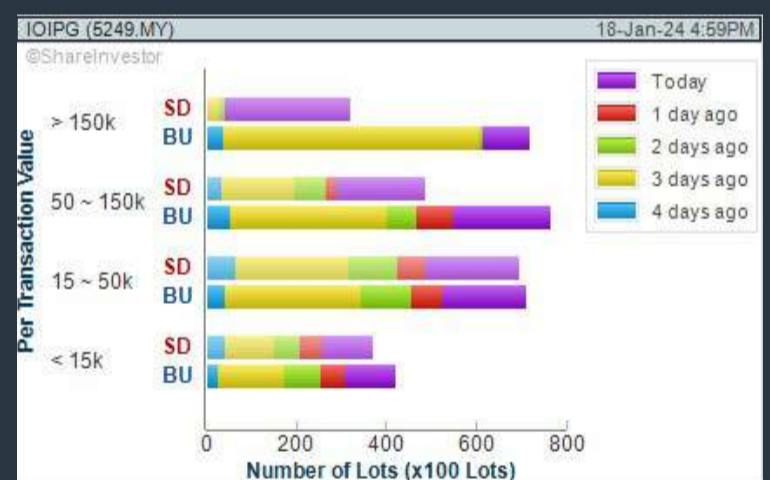
Analysis



IOI PROPERTIES GROUP BERHAD (5249)

C² Chart

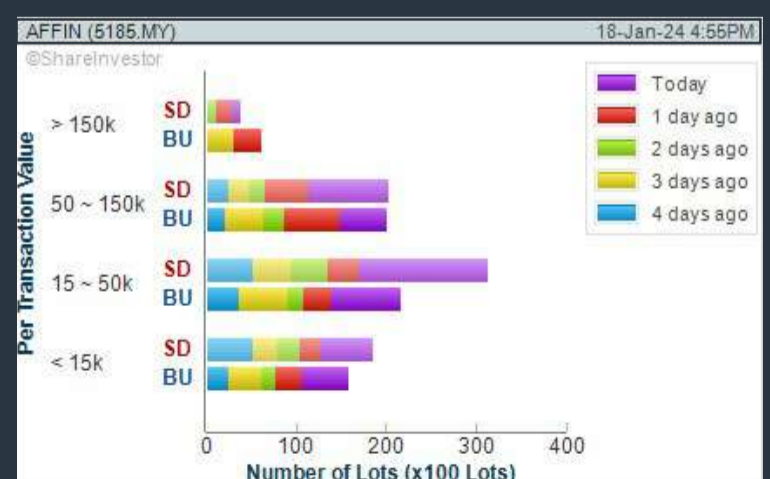
Analysis



AFFIN BANK BERHAD (5185)

C² Chart

Analysis



Disclaimer: The information on this page is provided as a service to readers. It does not constitute financial advice and/or any investment recommendations. Past performance is not indicative of future results. We assume no liability for damages resulting from or arising out of the use of such information. It would be best if you did your own research to make your personal investment decisions wisely or consult a licenced investment advisor.

SHAREINVESTOR WEBPRO

STOCK MARKET DATA AT YOUR FINGERTIPS

Powerful browser-based market analytics platform.
Access from anywhere



8 Markets Data

- ▶ Get access to data from Bursa, NYSE, Nasdaq, HKEX, SGX, IDX, SET & ASX

Portfolio Management

- ▶ Profit & Loss Summary
- ▶ Stock Alert
- ▶ News & Events filtering
- ▶ Customizable column layout

Fundamental Analysis

Financial Analysis Statement

- ▶ Profit & Loss
- ▶ Balance Sheet
- ▶ Cash Flow Statement
- ▶ More than 20 Financial Ratios
- ▶ Dividend Analysis

Technical Charting

- ▶ C² chart (Customisable & Comprehensive)

Brokers' Call

Intrinsic Value Calculator

FactSheet

- ▶ Key Stock Information
- ▶ Ownership
- ▶ Consensus Estimates
- ▶ Annual Report
- ▶ Historical Price
- ▶ Insider Trades

What's new on WebPro (Stable Release 12.1.0)

In our effort to keep our platform at the forefront of trading technology, we have added on some new features onto our C² Chart in WebPro

ADDITIONAL NEW FEATURES:

- ▶ Anchor selector for AVWAP, PVAT, and PAV indicators
- ▶ Volume profile indicator by date range
- ▶ Moving Average Cross indicator
- ▶ Guppy Multiple Moving Average (GMMA) indicator
- ▶ GoNoGo Trend Signal indicators
- ▶ SignalIQ

So what are you waiting for? Head to our platform today and check out our new trading chart features and indicators. We're confident that you'll love the improvements we've made and that they'll help you become a more successful trader.

Click here to start your 9 days FREE trial
(Valued at RM10)



Price & Volume Distribution Charts (Over 3 trading days as at Yesterday)

Technical Analysis

DEFINITION: Stocks with Technical Analysis showing Bullish Momentum and Price Uptrend

CHART GUIDE: Volume Distribution Chart is a statistical interpretation of the current sentiment on each stock in graphical format. The highest bar categorized as >150k is likely to be traded by institutions or super dealers, while the lowest bar categorized as <15k usually represents retail investors. "Buy Up" refers to more buyers snatching up the lots queued at selling price. "Sell Down" refers to sellers selling their shares to the buying queue.



ShareInvestor WebPro > Screener > Market Screener (FA & TA) > select BURSA > add criteria

A. Criteria

- > click Add Criteria
- Fundamental Analysis Conditions tab > select (i) Revenue
- Technical Analysis Conditions tab select (ii) Moving Average Below Close
- Technical Analysis Conditions tab select (iii) Average Volume
- Prices & Other Conditions tab > select (iv) Last Done Price
- Technical Analysis Conditions tab select (v) Moving Average Below Close
- Technical Analysis Conditions tab select (v) Moving Average Bullish Crossover

B. Conditions

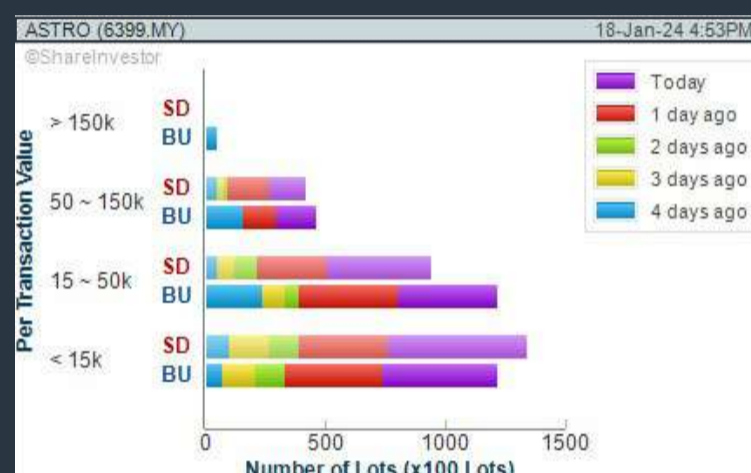
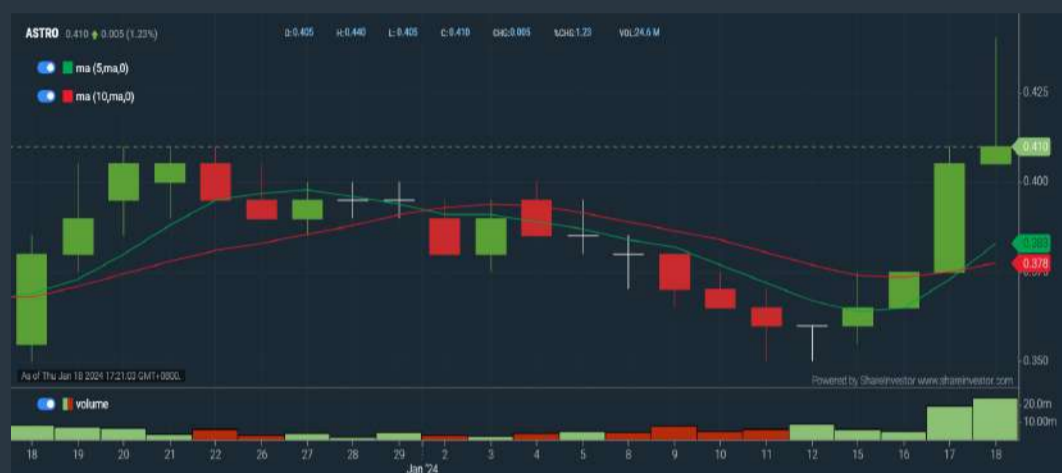
1. Revenue - select (more than) type (1) for the past select (1) financial year(s)
2. Moving Average Below Close - select (MA) type (20) below close price for type (1) days
3. Average Volume - type (5) days average volume type (10000) lots
4. Last Done Price - select (more than) type (0.3)
5. Moving Average Below Close - select (MA) type (10) below close price for type (1) days
6. Moving Average Bullish Crossover - select (MA) type (5) crossed above select (MA) type (10)

> click Save Template > Create New Template type (Non-Shariah Up-Trending Stocks) > click Create Click Save Template As > select Non-Shariah Up Trending Stocks > click Save
> click Screen Now (may take a few minutes)
Sort By: Select (Vol) Select (Desc)
Mouse over stock name > Charts > click C² Charts tab or Volume Distribution

ASTRO MALAYSIA HOLDINGS BERHAD (6399)

C² Chart

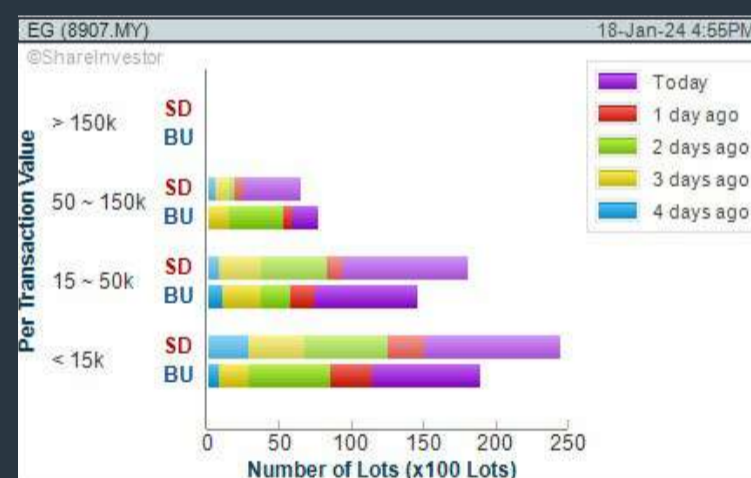
Analysis



EG INDUSTRIES BERHAD (8907)

C² Chart

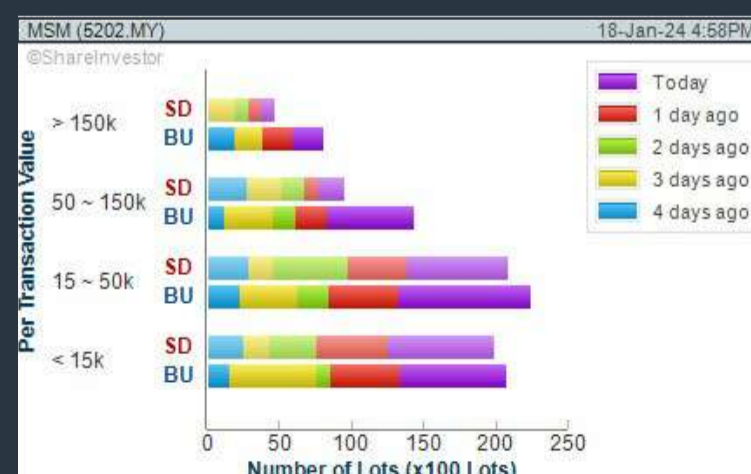
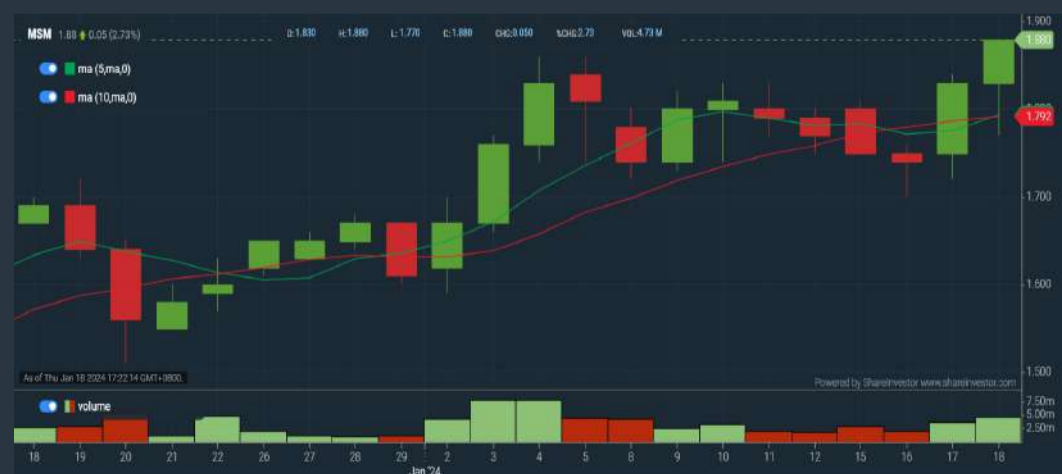
Analysis



MSM MALAYSIA HOLDINGS BERHAD (5202)

C² Chart

Analysis



Disclaimer: The information on this page is provided as a service to readers. It does not constitute financial advice and/or any investment recommendations. Past performance is not indicative of future results. We assume no liability for damages resulting from or arising out of the use of such information. It would be best if you did your own research to make your personal investment decisions wisely or consult a licenced investment advisor.

MAKE BETTER TRADING STRATEGIES

with
SHARE INVESTOR
STATION



8 Markets Data

- ▶ Get access to data from Bursa, NYSE, Nasdaq, HKEX, SGX, IDX, SET & ASX

Dynamic Chart

- ▶ Candlestick Pattern Recognition
- ▶ 111 Indicators
- ▶ 39 Drawing Tools
- ▶ Performance Comparison Chart

Intraday Data

- ▶ Market Depth
- ▶ Trade Summary Matrix & Chart
- ▶ Times & Sales
- ▶ Intraday Market Ticker

Market Screener

- ▶ 96 criteria ranging from FA, TA, Consensus Estimate
- ▶ Real-time Data

Power Frame

- ▶ Combining few Dynamic Charts together with intraday information in one frame

Technical Analysis

Fundamental Analysis

Financial Analysis Statement

- ▶ Profit & Loss
- ▶ Balance Sheet
- ▶ Cash Flow Statement
- ▶ More than 20 Financial Ratios
- ▶ Dividend Analysis

FactSheet

- ▶ Key Stock Information
- ▶ Ownership
- ▶ Consensus Estimates
- ▶ Annual Report
- ▶ Historical Price
- ▶ Insider Trades

**Start your 18 days
 FREE trial now
 (Valued at RM82)**



Price & Total Shareholder Return (as at Yesterday)

Fundamental Analysis

DEFINITION: Share price of a company trading at a lower price as compared to its fundamentals (FA) such as financial performance and dividend, allowing it to be attractive to value investors.

CHART GUIDE: Total Shareholder Return (TSR) combines share price appreciation and dividend distributions paid to show the total return to the shareholder expressed as a percentage.



ShareInvestor WebPro > Screener > Market Screener (FA & TA) > select BURSA > add criteria

A. Criteria

- > click Add Criteria
- Fundamental Analysis Conditions tab (i) Price Earnings Ratio
- Fundamental Analysis Conditions tab >select (ii) CAGR of Net Earnings
- Fundamental Analysis Conditions tab >select (iii) Net Debt To Equity
- Fundamental Analysis Conditions tab >select (iv) Return On Equity (ROE)

B. Conditions

1. Price Earnings Ratio - select (less than) type (15) times now
2. CAGR of Net Earnings - select (more than) type (10) % for the past type (3) financial year(s)
3. Net Debt To Equity – select (less than) type (1) for the past select (1) financial year(s)
4. Return On Equity (ROE) – select (more than) type (10) % for the past select (1) financial year(s)

- > click Save Template > Create New Template type (Value Stock) > click Create
- > click Save Template as > select Value Companies > click Save
- > click Screen Now (may take a few minutes)
- Sort by: Select (PE Ratio) Select (Ascending)
- > Mouse over stock name > Factsheet > looking for Total Shareholder Return
- > Mouse over stock name > Charts > click C2 Charts tab

SYNERGY HOUSE BERHAD (0279)

C² Chart



Period	Dividend Received	Capital Appreciation	Total Shareholder Return
Short Term Return	5 Days	-0.045	+0.25%
	10 Days	-0.050	+6.99%
	20 Days	+0.110	+16.79%
Medium Term Return	3 Months	-0.290	+31.05%
	6 Months	-0.350	+34.34%

EDELTEQ HOLDINGS BERHAD (0278)

C² Chart



Period	Received	Appreciation	Total Shareholder Return
Short Term Return	5 Days	-0.065	-20.63%
	10 Days	-0.070	-21.88%
	20 Days	-0.080	-24.24%
Medium Term Return	3 Months	-0.085	-25.37%
	6 Months	-0.415	-62.41%

SUNMOW HOLDING BERHAD (03050)

C² Chart



Period	Dividend Received	Capital Appreciation	Total Shareholder Return
Short Term Return	5 Days	-	-
	10 Days	-	-
	20 Days	-	-
Medium Term Return	3 Months	-0.040	-3.64%
	6 Months	-0.080	-7.83%
Long Term Return	1 Year	+0.410	+63.08%
	2 Years	+0.180	+20.45%
Annualised Return	Annualised	-	+9.75%

Disclaimer: The information on this page is provided as a service to readers. It does not constitute financial advice and/or any investment recommendations. Past performance is not indicative of future results. We assume no liability for damages resulting from or arising out of the use of such information. It would be best if you did your own research to make your personal investment decisions wisely or consult a licenced investment advisor.



Italian Masterpieces

Martha rocking chair designed by Roberto Lazzeroni

poltronafrau.com



XTRA

The Gardens Mall, Mid Valley City, Lot S-236 & 237
2nd flr Linkaran Syed Putra, Kuala Lumpur
T. +603 2282 9088 | living@xfurniture.com | xfurniture.com
f XTRAfurniture | @xfurnituremsia

Price & Total Shareholder Return (as at Yesterday)

Fundamental Analysis

DEFINITION: Company revenue is growing and making good quality of earnings with positive Free Cash Flow.

CHART GUIDE: Total Shareholder Return (TSR) combines share price appreciation and distributions paid to show the total return to the shareholder expressed as a percentage.



ShareInvestor WebPro > Screener > Market Screener (FA & TA) > select BURSA > add criteria

A. Criteria

1. Fundamental Analysis Conditions tab >select (i) Free Cash Flow, (ii) Revenue Growth, (iii) Gross Profit (Earnings) Margin, (iv) Quality of Earnings, (v) Total Shareholder Returns, > click Add Criteria
2. Fundamental Analysis Conditions tab >select (vi) Total Shareholder Returns > click Add Criteria

B. Conditions (Criteria Filters)

1. Free Cash Flow - select (more than) type (1) for the past select (1) financial year(s)
2. Revenue Growth - select (more than) type (1) for the past select (1) financial year(s)
3. Gross Profit (Earnings) Margin - select (more than) type (30) % for the past select (1) financial year(s)
4. Quality of Earnings - select (more than) type (1) for the past select (1) financial year(s)
5. Total Shareholder Return - select (more than) type (5) % for the past select (3) financial year(s)
6. Total Shareholder Return - select (more than) type (5) % for the past select (5) financial year(s)

- > click Save Template > Create New Template type (Growth Companies) > click Create
- > click Save Template as > select Growth Companies > click Save
- > click Screen Now (may take a few minutes)
- > Sort By: Select (Revenue Growth) Select (Desc)
- > Mouse over stock name > Factsheet > looking for Total Shareholder Return

IGB BERHAD (5606)

C² Chart

Analysis



Period	Dividend Received	Capital Appreciation	Total Shareholder Return
Short Term Return	5 Days	+0.040	+1.79%
	10 Days	+0.070	+3.16%
	20 Days	+0.030	+1.34%
Medium Term Return	3 Months	+0.108	+5.00%
	6 Months	+0.167	+7.94%
	1 Year	+0.723	+48.74%
Long Term Return	2 Years	0.050	+80.83%
	3 Years	0.236	+95.52%
	5 Years	0.583	+79.78%
Annualised Return	Annualised	-	+52.76%

YTL HOSPITALITY REIT (5109)

C² Chart

Analysis



Period	Distribution Received	Capital Appreciation	Total Shareholder Return
Short Term Return	5 Days	+0.060	+5.50%
	10 Days	+0.110	+10.58%
	20 Days	+0.120	+11.65%
Medium Term Return	3 Months	+0.140	+13.86%
	6 Months	+0.185	+18.17%
	1 Year	+0.215	+22.99%
Long Term Return	2 Years	0.019	+31.35%
	3 Years	0.061	+42.47%
	5 Years	0.187	+44.45%
Annualised Return	Annualised	-	+9.80%

MATRIX CONCEPTS HOLDINGS BERHAD (5236)

C² Chart

Analysis



Period	Dividend Received	Capital Appreciation	Total Shareholder Return
Short Term Return	5 Days	+0.010	+0.59%
	10 Days	+0.050	+3.03%
	20 Days	+0.050	+3.03%
Medium Term Return	3 Months	+0.180	+11.34%
	6 Months	+0.310	+22.10%
	1 Year	+0.210	+14.09%
Long Term Return	2 Years	+0.227	+15.41%
	3 Years	+0.540	+45.55%
	5 Years	0.168	+49.21%
Annualised Return	Annualised	-	+9.33%

Disclaimer: The information on this page is provided as a service to readers. It does not constitute financial advice and/or any investment recommendations. Past performance is not indicative of future results. We assume no liability for damages resulting from or arising out of the use of such information. It would be best if you did your own research to make your personal investment decisions wisely or consult a licenced investment advisor.

Price & Total Shareholder Return (as at Yesterday)

Fundamental Analysis

DEFINITION: Company is paying out dividend with low or moderate leverage.

CHART GUIDE: Total Shareholder Return (TSR) combines share price appreciation and distributions paid to show the total return to the shareholder expressed as a percentage.



ShareInvestor WebPro > Screener > Market Screener (FA & TA) > select BURSA > add criteria

A. Criteria

- > click Add Criteria
- Fundamental Analysis Conditions tab >select (i) Dividend Yield (Historical)
- Fundamental Analysis Conditions tab >select (ii) Dividend Payout (Historical)
- Fundamental Analysis Conditions tab >select (iii) Total Debt To Equity
- Fundamental Analysis Conditions tab >select (iv) Total Shareholder Returns
- Fundamental Analysis Conditions tab >select (v) Total Shareholder Returns
- Fundamental Analysis Conditions tab / >select (vi) CAGR of Dividend Per Share

• Fundamental Analysis Conditions tab >select (vii) CAGR of Dividend Per Share

B. Conditions (Criteria Filters)

1. Dividend Yield - select (more than) type (1) % for the past select (1) financial year(s)
2. Dividend Payout (Historical) - select (between) type (0.5) to type (1) times for the past select (1) financial year(s)
3. Total Debt to Equity - select (less than) type (1) for the past select (1) financial year(s)
4. Total Shareholder Return - select (more than) type (5) % for the past select (3) financial year(s)
5. Total Shareholder Return - select (more than) type (5) % for the past select (5) financial year(s)

6. CAGR of Dividend Per Share - select (less than) type (30) % for the past select (5) financial year(s)
7. CAGR of Dividend Per Share - select (more than) type (1) % for the past select (5) financial year(s)

- > click Save Template > Create New Template type (Dividend Companies) > click Create
- > click Save Template as > select Dividend Companies > click Save
- > click Screen Now (may take a few minutes)
- > Sort By: Select (Dividend Yield) Select (Desc)
- > Mouse over stock name > Factsheet > looking for Total Shareholder Return

FORMOSA PROSONIC INDUSTRIES (9172)

C² Chart

Analysis



Period	Dividend Received	Capital Appreciation	Total Shareholder Return
Short Term Return	5 Days	-0.050	-1.73%
	10 Days	-0.010	-0.35%
	20 Days	-0.020	-0.70%
Medium Term Return	3 Months	-0.070	-2.41%
	6 Months	+0.290	+11.37%
Long Term Return	1 Year	-0.400	-14.71%
	2 Years	0.200	+10.06%
Annualised Return	3 Years	0.340	+19.10%
	5 Years	0.500	+14.53%
	Annualised	-	+13.88%

BERMAZ AUTO BERHAD (5248)

C² Chart

Analysis



Period	Dividend Received	Capital Appreciation	Total Shareholder Return
Short Term Return	5 Days	-0.020	-0.84%
	10 Days	-0.030	-1.28%
	20 Days	-0.030	-1.25%
Medium Term Return	3 Months	-0.150	-6.95%
	6 Months	+0.245	+11.53%
Long Term Return	1 Year	+0.332	+16.29%
	2 Years	0.023	+0.70%
Annualised Return	3 Years	0.099	+5.23%
	5 Years	0.332	+33.76%
	Annualised	-	+5.89%

HONG LEONG INDUSTRIES BERHAD (3301)

C² Chart

Analysis



Period	Dividend Received	Capital Appreciation	Total Shareholder Return
Short Term Return	5 Days	-0.010	-0.11%
	10 Days	+0.119	+1.19%
	20 Days	+0.130	+1.41%
Medium Term Return	3 Months	+0.250	+2.87%
	6 Months	+0.310	+3.44%
Long Term Return	1 Year	+0.270	+2.99%
	2 Years	0.356	+4.40%
Annualised Return	3 Years	0.578	+6.77%
	5 Years	1.810	+21.48%
	Annualised	-	+3.97%

Disclaimer: The information on this page is provided as a service to readers. It does not constitute financial advice and/or any investment recommendations. Past performance is not indicative of future results. We assume no liability for damages resulting from or arising out of the use of such information. It would be best if you did your own research to make your personal investment decisions wisely or consult a licenced investment advisor.

Week: 12 January 2024 - 18 January 2024

More Brokers' Call 

AMINVESTMENT BANK <small>... See More</small>	Call	Target Price	Release Date
Alliance Bank Malaysia Berhad (2488)	HOLD	RM3.60	17 Jan 2024
IOI Corporation Berhad (1961)	HOLD	RM4.10	16 Jan 2024
Mah Sing Group Berhad (8583)	BUY	RM0.98	15 Jan 2024

BIMB SECURITIES SDN BHD <small>... See More</small>	Call	Target Price	Release Date
Gamuda Berhad (5398)	BUY	RM5.160	16 Jan 2024
IHH Healthcare Berhad (5225)	BUY	RM7.18	16 Jan 2024
Hibiscus Petroleum Berhad (5199)	BUY	RM3.40	12 Jan 2024
Lotte Chemical Titan Holding Berhad (5284)	HOLD	RM1.39	12 Jan 2024

KENANGA <small>... See More</small>	Call	Target Price	Release Date
Ancom Nylex Berhad (4758)	OUTPERFORM	RM1.50	18 Jan 2024
IJM Corporation Berhad (3336)	OUTPERFORM	RM2.31	18 Jan 2024
Kerjaya Prospek Group Berhad (7161)	OUTPERFORM	RM1.90	17 Jan 2024
Velesto Energy Berhad (5243)	MARKET PERFORM	RM0.26	17 Jan 2024
QL Resources Berhad (7084)	MARKET PERFORM	RM6.25	16 Jan 2024
Swift Haulage Berhad (5303)	MARKET PERFORM	RM0.63	15 Jan 2024

UOB KAYHIAN <small>... See More</small>	Call	Target Price	Release Date
CJ Century Logistics Holdings Berhad (7117)	BUY	RM0.51	17 Jan 2024
EG Industries Berhad (8907)	BUY	RM1.74	17 Jan 2024
Hextar Capital Berhad (0035)	BUY	RM0.81	17 Jan 2024
JHM Consolidation Berhad (0127)	BUY	RM0.87	16 Jan 2024
Microlink Solutions Berhad (0126)	BUY	RM1.04	16 Jan 2024

Disclaimer: InveSt does not accept any liability whatsoever for any direct, indirect or consequential losses (including loss of profit) or damages that may arise from the use of information or opinions in this publication. The information and opinions in InveSt are not to be considered as an offer to sell or buy any of the securities discussed. Opinions expressed are subject to change without notice. The Brokers may, from time to time, have interests or positions in the securities mentioned. For the full report on each item listed on this page, please visit https://www.shareinvestor.com/my/brokers_call.

DEFINITION: Top 9 stocks with Technical Analysis plus Pattern Matching by 60 pre-defined indicators by the system showing a higher probability of bullish sentiment on the share price.



ShareInvestor WebPro > Screener > Predefined TA Screens > select market BURSA > Most Long Signals > click Scan Results or mouse over each company

SUPERCOMNET TECHNOLOGIES BERHAD (0001.MY)

SCOMNET

Price updated at 18 Jan 2024 16:57

Last: 1.230	Change: -0.040	Volume: 11,116
	Change (%): -3.15	Range: 1.220 - 1.280

TA Scanner Results based on historical data up to 18 Jan 2024

Condition	Signal	Explanation
Bollinger Band: Bullish Long Term Volatility Breakout and Trending	Long	1. Close price above upper bollinger band(33,1). 2. Volume above average volume(50). 3. Average volume(50) is above 300,000.
Bollinger Band: Bullish Short Term Volatility Breakout and Trending	Long	1. Close price above upper bollinger band(33,1). 2. Volume above average volume(10). 3. Average volume(10) is above 300,000.
Bollinger Band: High Above Upper Bollinger Band	Neutral	1. High above upper bollinger band(14,2). 2. Average volume(5) is above 100,000.
Candlestick: Bullish Engulfing	Long	Bullish: Engulfing
MA: Bullish Price Crossover	Long	1. Close price crossed above MA(40) within the last 1 day. 2. Previous day close price is below the MA(10) for the last 5 days
MACD: Bullish MACD Crossover	Long	1. MACD(12,26) diff line crossed above the MACD(12,26) signal line. 2. MACD Histogram(12,26) is above 0.
Parabolic SAR: Bearish Parabolic SAR Reversal	Neutral	1. Parabolic SAR 1 day ago above close price 1 day ago for the last 5 days. 2. Parabolic SAR below close price
RSI: Short Term RSI 50 Bullish Crossover	Long	1. RSI(20) crossed above 50 within the last 1 day and RSI(20) 1 day ago below 50 for the last 5 days. 2. Volume above average volume(125). 3. Average volume(5) is above 100,000.
Volume: Consecutive Days Of Increasing Average Volume	Long	1. Average Volume(20) has been increasing over the last 2 weeks. 2. Average volume(20) is above 100000

AFFIN BANK BERHAD (5185.MY)

AFFIN

Price updated at 18 Jan 2024 16:55

Last: 2.390	Change: -0.060	Volume: 65,686
	Change (%): -2.45	Range: 2.350 - 2.460

TA Scanner Results based on historical data up to 18 Jan 2024

Condition	Signal	Explanation
Candlestick: Bullish Engulfing	Long	Bullish: Engulfing
Donchian Channels: High Above Upper Donchian Channels	Long	High crossed above the upper Donchian Channel(14,4)
Price: New 52 Week High	Long	1. Stock reach a new 52 week high. 2. Average volume(30) is above 50000.
Volume: 10 Days large value Buy Up trade	Long	1. 150K value Buy Up greater than Sell Down by 20% for 10 days. 2. 50K-100K value Buy Up greater than Sell Down by 20% for 10 days. 3. Average volume(10) is above 1000000
Volume: 5 Days large value Buy Up trade	Long	1. 150K value Buy Up greater than Sell Down by 20% for 5 days. 2. 50K-100K value Buy Up greater than Sell Down by 20% for 5 days. 3. Average volume(10) is above 1000000
Volume: Consecutive Days Of Increasing Average Volume	Long	1. Average Volume(20) has been increasing over the last 2 weeks. 2. Average volume(20) is above 100000
Williams %R: Bearish Williams %R	Short	1. Williams %R(26) between 0 and -20. 2. Average volume(5) is above 100,000.

SC ESTATE BUILDER BERHAD (0109.MY)

SCBUILD

Price updated at 18 Jan 2024 16:54

Last: 0.015	Change: -0.005	Volume: 130,321
	Change (%): -25.00	Range: 0.010 - 0.020

TA Scanner Results based on historical data up to 18 Jan 2024

Condition	Signal	Explanation
Bollinger Band: Bullish Long Term Volatility Breakout and Trending	Long	1. Close price above upper bollinger band(33,1). 2. Volume above average volume(50). 3. Average volume(50) is above 300,000.
Bollinger Band: Bullish Lower Bollinger Band Support	Long	1. Low 1 day ago below lower bollinger band(20,2). 2. Close above close 1 day ago. 3. Average volume(5) is above 100,000.
Bollinger Band: High Above Upper Bollinger Band	Neutral	1. High above upper bollinger band(14,2). 2. Average volume(5) is above 100,000.
DM: Bullish Directional Movement	Long	-DI(14) crossed below +DI(14)
MA: Bullish Price Crossover	Long	1. Close price crossed above MA(40) within the last 1 day. 2. Previous day close price is below the MA(10) for the last 5 days
MACD: Bullish MACD Crossover	Long	1. MACD(12,26) diff line crossed above the MACD(12,26) signal line. 2. MACD Histogram(12,26) is above 0.
Parabolic SAR: Bearish Parabolic SAR Reversal	Neutral	1. Parabolic SAR 1 day ago above close price 1 day ago for the last 5 days. 2. Parabolic SAR below close price
RSI: Short Term RSI 50 Bullish Crossover	Long	1. RSI(20) crossed above 50 within the last 1 day and RSI(20) 1 day ago below 50 for the last 5 days. 2. Volume above average volume(125). 3. Average volume(5) is above 100,000.

ASTRO MALAYSIA HOLDINGS BERHAD (6399.MY)

ASTRO

Price updated at 18 Jan 2024 16:53

Last: 0.410	Change: +0.005	Volume: 246,144
	Change (%): +1.23	Range: 0.405 - 0.440

TA Scanner Results based on historical data up to 18 Jan 2024

Condition	Signal	Explanation
Bollinger Band: Bullish Long Term Volatility Breakout and Trending	Long	1. Close price above upper bollinger band(33,1). 2. Volume above average volume(50). 3. Average volume(50) is above 300,000.
Bollinger Band: Bullish Short Term Volatility Breakout and Trending	Long	1. Close price above upper bollinger band(33,1). 2. Volume above average volume(10). 3. Average volume(10) is above 300,000.
Bollinger Band: High Above Upper Bollinger Band	Neutral	1. High above upper bollinger band(14,2). 2. Average volume(5) is above 100,000.
DM: Bullish Directional Movement	Long	-DI(14) crossed below +DI(14)
MACD: Bullish MACD Crossover	Long	1. MACD(12,26) diff line crossed above the MACD(12,26) signal line. 2. MACD Histogram(12,26) is above 0.
Parabolic SAR: Bearish Parabolic SAR Reversal	Neutral	1. Parabolic SAR 1 day ago above close price 1 day ago for the last 5 days. 2. Parabolic SAR below close price
RSI: Short Term RSI 50 Bullish Crossover	Long	1. RSI(20) crossed above 50 within the last 1 day and RSI(20) 1 day ago below 50 for the last 5 days. 2. Volume above average volume(125). 3. Average volume(5) is above 100,000.
Williams %R: Bearish Williams %R	Short	1. Williams %R(26) between 0 and -20. 2. Average volume(5) is above 100,000.

Disclaimer: The information on this page is provided as a service to readers. It does not constitute financial advice and/or any investment recommendations. Past performance is not indicative of future results. We assume no liability for damages resulting from or arising out of the use of such information. It would be best if you did your own research to make your personal investment decisions wisely or consult a licenced investment advisor.



REDTONE DIGITAL BERHAD
(0032.MY)

REDTONE

Price updated at 18 Jan 2024 16:56

Last: 0.810	Change: -0.025	Volume: 46,427
	Change (%): -2.99	Range: 0.785 - 0.840

TA Scanner Results based on historical data up to 18 Jan 2024

Condition	Signal	Explanation
Bollinger Band: High Above Upper Bollinger Band	Neutral	1. High above upper bollinger band(14,2). 2. Average volume(5) is above 100,000.
Candlestick: Bullish Engulfing	Long	Bullish: Engulfing
MACD: Overbought	Short	1. MACD Histogram(12,26,9) reached a new 6 month high. 2. MACD Histogram(12,26,9) has been above 0 for the last 3 weeks.
Price: New 52 Week High	Long	1. Stock reach a new 52 week high. 2. Average volume(30) is above 50000.
Volume: 10 Days large value Buy Up trade	Long	1. 150K value Buy Up greater than Sell Down by 20% for 10 days. 2. 50K-100K value Buy Up greater than Sell Down by 20% for 10 days. 3. Average volume(10) is above 1000000
Volume: 5 Days large value Buy Up trade	Long	1. 150K value Buy Up greater than Sell Down by 20% for 5 days. 2. 50K-100K value Buy Up greater than Sell Down by 20% for 5 days. 3. Average volume(10) is above 1000000
Williams %R: Bearish Williams %R	Short	1. Williams %R(26) between 0 and -20. 2. Average volume(5) is above 100,000.



GADANG HOLDINGS BERHAD
(9261.MY)

GADANG

Price updated at 18 Jan 2024 16:59

Last: 0.375	Change: -0.005	Volume: 48,391
	Change (%): -1.32	Range: 0.365 - 0.380

TA Scanner Results based on historical data up to 18 Jan 2024

Condition	Signal	Explanation
Bollinger Band: Bearish Upper Bollinger Band Resistance	Short	1. High 1 day ago above upper bollinger band(20,2). 2. Close below close 1 day ago. 3. Average volume(5) is above 100,000.
Candlestick: Bullish Hammer	Long	Bullish: Hammer
Volume: 10 Days large value Buy Up trade	Long	1. 150K value Buy Up greater than Sell Down by 20% for 10 days. 2. 50K-100K value Buy Up greater than Sell Down by 20% for 10 days. 3. Average volume(10) is above 1000000
Volume: 5 Days large value Buy Up trade	Long	1. 150K value Buy Up greater than Sell Down by 20% for 5 days. 2. 50K-100K value Buy Up greater than Sell Down by 20% for 5 days. 3. Average volume(10) is above 1000000
Volume: Consecutive Days Of Increasing Average Volume	Long	1. Average Volume(20) has been increasing over the last 2 weeks. 2. Average volume(20) is above 100000



HSS ENGINEERS BERHAD
(0185.MY)

HSSEB

Price updated at 18 Jan 2024 16:58

Last: 1.130	Change: -0.040	Volume: 23,095
	Change (%): -3.42	Range: 1.100 - 1.170

TA Scanner Results based on historical data up to 18 Jan 2024

Condition	Signal	Explanation
Bollinger Band: High Above Upper Bollinger Band	Neutral	1. High above upper bollinger band(14,2). 2. Average volume(5) is above 100,000.
Price: New 52 Week High	Long	1. Stock reach a new 52 week high. 2. Average volume(30) is above 50000.
Volume: 10 Days large value Buy Up trade	Long	1. 150K value Buy Up greater than Sell Down by 20% for 10 days. 2. 50K-100K value Buy Up greater than Sell Down by 20% for 10 days. 3. Average volume(10) is above 1000000



CHIN HIN GROUP PROPERTY BERHAD
(7187.MY)

CHGP

Price updated at 18 Jan 2024 16:50

Last: 0.745	Change: -0.005	Volume: 2,560
	Change (%): -0.67	Range: 0.730 - 0.750

TA Scanner Results based on historical data up to 18 Jan 2024

Condition	Signal	Explanation
Bollinger Band: Low Below Lower Bollinger Band	Neutral	1. Low below lower bollinger band(14,2). 2. Average volume(5) is above 100,000.
CCI: Bullish CCI Oversold And Reversing	Long	1. CCI(26) below -100 and CCI(26) 1 day ago decreasing for the last 3 days. 2. CCI(26) above CCI(26) 1 day ago
Chaikin Volatility: Increasing Chaikin Volatility	Neutral	Chaikin Volatility(10,10) has been increasing for 5 days
MACD: Oversold	Long	1. MACD Histogram(12,26,9) reached a new 6 month low. 2. MACD Histogram(12,26,9) has been below 0 for the last 3 weeks.
Price: New 52 Week Low	Short	1. Stock reach a new 52 week low. 2. Average volume(30) is above 50000.
RSI: RSI Oversold	Long	1. RSI(20) is below 20. 2. RSI(20) is decreasing for the last 3 days. 3. Stock has more than 75 days of historical data.
Volume: 10 Days large value Buy Up trade	Long	1. 150K value Buy Up greater than Sell Down by 20% for 10 days. 2. 50K-100K value Buy Up greater than Sell Down by 20% for 10 days. 3. Average volume(10) is above 1000000
Williams %R: Bullish Williams %R	Long	1. Williams %R(26) between -80 and -100. 2. Average volume(5) is above 100,000.



LEFORM BERHAD
(0266.MY)

LEFORM

Price updated at 18 Jan 2024 16:59

Last: 0.170	Change: -0.005	Volume: 1,065,983
	Change (%): -2.86	Range: 0.155 - 0.185

TA Scanner Results based on historical data up to 18 Jan 2024

Condition	Signal	Explanation
Bollinger Band: Low Below Lower Bollinger Band	Neutral	1. Low below lower bollinger band(14,2). 2. Average volume(5) is above 100,000.
CCI: Bullish CCI Oversold And Reversing	Long	1. CCI(26) below -100 and CCI(26) 1 day ago decreasing for the last 3 days. 2. CCI(26) above CCI(26) 1 day ago
MA: Short Term Bearish Moving Average Crossover	Short	MA(10) crossed below MA(15) within the last 1 day.
Price: New 52 Week Low	Short	1. Stock reach a new 52 week low. 2. Average volume(30) is above 50000.
Volume: 10 Days large value Buy Up trade	Long	1. 150K value Buy Up greater than Sell Down by 20% for 10 days. 2. 50K-100K value Buy Up greater than Sell Down by 20% for 10 days. 3. Average volume(10) is above 1000000
Volume: 5 Days large value Buy Up trade	Long	1. 150K value Buy Up greater than Sell Down by 20% for 5 days. 2. 50K-100K value Buy Up greater than Sell Down by 20% for 5 days. 3. Average volume(10) is above 1000000
Williams %R: Bullish Williams %R	Long	1. Williams %R(26) between -80 and -100. 2. Average volume(5) is above 100,000.

Disclaimer: The information on this page is provided as a service to readers. It does not constitute financial advice and/or any investment recommendations. Past performance is not indicative of future results. We assume no liability for damages resulting from or arising out of the use of such information. It would be best if you did your own research to make your personal investment decisions wisely or consult a licenced investment advisor.

Condition	Signal	Explanation
Volume: 5 Days large value Buy Up trade	Long	1. 150K value Buy Up greater than Sell Down by 20% for 5 days. 2. 50K-100K value Buy Up greater than Sell Down by 20% for 5 days. 3. Average volume(10) is above 1000000
Volume: Consecutive Days Of Increasing Average Volume	Long	1. Average Volume(20) has been increasing over the last 2 weeks. 2. Average volume(20) is above 100000
Williams %R: Bearish Williams %R	Short	1. Williams %R(26) between 0 and -20. 2. Average volume(5) is above 100,000.

NEARLY 80% OF MALAYSIAN SMES BULLISH ABOUT GROWTH PROSPECTS IN 2024 - EMPLOYMENT HERO

According to Employment Hero managing director (Asia) Kevin Fitzgerald, Malaysia's SMEs view 2024 as a year of growth despite concerns about rising costs and inflation. This was revealed in Employment Hero's SME Sentiments Report.

The survey, which polled 540 business leaders across Malaysian SMEs in November-December 2023, found that an impressive 79% of respondents are confident about the growth prospects of their companies.

It also found that 50% of SME leaders see Malaysia's economy performing well in the next 12 months, with 18% believing the economy will be poor and 32% remaining cautious that it will be average.

He added that a healthy majority of SMEs in Malaysia are starting to feel more confident having gone through some challenging years, while some are still concerned, tightly managing their expectations and business.

The report also revealed that 48% of respondents regard rising costs and inflation as their biggest challenges for the year. Furthermore, it highlighted that medium-sized businesses are struggling with staff upskilling and manpower shortages, owing to factors such as higher salary expectations, a mismatch between industry needs and skills training and a reported higher-than-average rate of brain drain.

He hoped that this analysis of business sentiments in the Malaysia market serves as a crucial compass for leaders navigating the dynamic landscape of 2024. Whether it involves new approaches, recalibrating operational processes, or optimising resource allocation, these data-driven insights can help with proactive decision-making.

According to the survey, the top three biggest opportunities for Malaysia's SMEs in 2024 comprise digital transformation, artificial intelligence and automation (32%), global expansion and e-commerce (31%) and employee education and training (28%).

However, among the challenges for Malaysia's SMEs in 2024 include cash flow (28%) and lower revenue and customers (23%).



Learn how to identify Hot Stocks using Technical Analysis (TA) and Fundamental Analysis (FA)

SIGN UP FOR Invest

IT'S FREE!!!

[Click here](#)

Scan me



Via email, every Friday.

GOVT APPROVES 22 RE PROJECTS WITH TOTAL CAPACITY OF 36.534 MW

The Ministry of Energy Transition and Public Utilities via the Sustainable Energy Development Authority (SEDA) has approved the development for the implementation of 22 renewable energy (RE) projects from biogas and biomass, with a capacity of 36.534 megawatts (MW).

The green electricity under the Feed-in Tariff (FiT) mechanism would be supplied to Tenaga Nasional Bhd (TNB) as early as 2027.

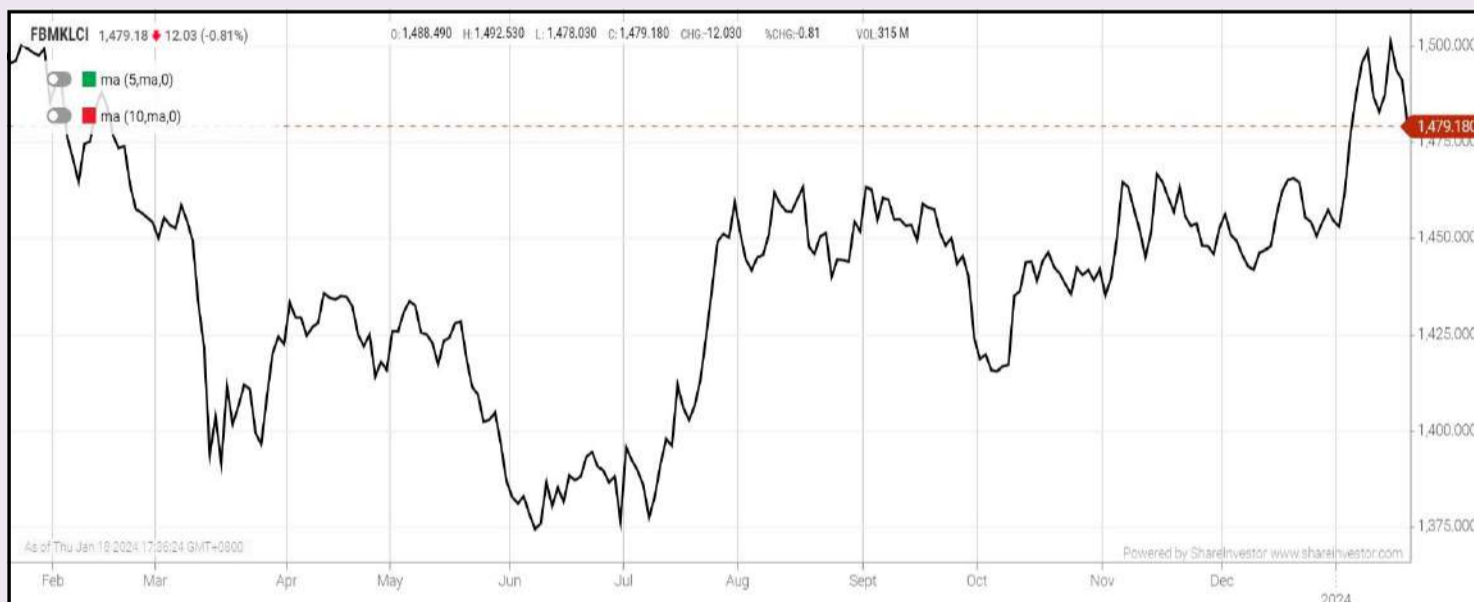
In support of the country's energy transition aspiration of 70% RE capacity mix in electricity supply by 2050, the government has announced the offer and opening of FiT applications through e-bidding for three RE sources, namely biogas, biomass and mini hydropower from July 5 until 26, 2023. 34 applications have been received.

The technical and financial evaluation has been conducted by SEDA Malaysia, and 22 applications that fulfilled the technical and financial criteria have been approved. This encompasses 21 projects with a total quota of 29.534 MW for the generation of green electricity from biogas, and one project with a quota of seven MW for electricity generation from biomass.

The approval for the implementation of the new RE projects under the FiT mechanism would diversify RE generation sources other than solar, and further increase the reliability of the nation’s electricity supply. At the same time, the development of these approved RE projects is expected to create new investment value in the RE industry of up to RM372 million.

EYE ON THE MARKETS

On Thursday (18Jan), the Ringgit closed at 4.7175 against the USD and 3.5104 to the Sing Dollar. On Monday (15Jan), the FBM KLCI opened at 1488.28. As at Thursday (18Jan) 5:00pm, the FBM KLCI closed down 9.10 points at 1479.18. Over in US, the overnight Dow Jones Industrial Average closed up 201.94 points (+0.54%) to 37,468.61 whilst the NASDAQ added 200.03 points (+1.35%) to 15,055.65.



KLCI 1 Year Chart

SHAREINVESTOR MARKET DATA PLATFORMS



SHAREINVESTOR STATION
Advanced Charting Software (8 Markets)

SHAREINVESTOR WEBPRO
Browser-Based Market Data Analytics Platform



Over 5 trading days



ShareInvestor WebPro (www.shareinvestor.com/my)

1. Price > Stock Prices
2. Select Market: NASDAQ / NYSE / IDX / SET / HKEX / SGX (One bourse at a time)
3. select Stocks Tab
4. select Ranking Top Gainers or Top Losers (Over 5 Trading Days)
5. Mouse over Column Layout > select Edit Customs > select Name > select Last Done Price > select 5 Days Change > select 52 Weeks High > select 52 Weeks Low > Mouse Over Column Layout > select Custom

NASDAQ (USD)

Top Gainers

Name	Last Done	Change Over 5 Days	52 Weeks High	52 Weeks Low
OREILLY AUTOMOTIVE INC NEW	1,015.530	+70.920	1,005.960	767.270
MERCADOLIBRE INC	1,661.980	+70.300	1,685.715	1,040.468
BROADCOM INC	1,143.910	+36.230	1,151.820	559.110
ASML HOLDING NV EURO.09 NY REGISTRY SHS 2012	744.530	+31.310	771.980	563.995
KLA CORPORATION	590.000	+27.860	597.430	355.880

Top Losers

Name	Last Done	Change Over 5 Days	52 Weeks High	52 Weeks Low
COCA-COLA CONSOLIDATED INC	858.890	-50.830	961.910	474.280
MICROSTRATEGY	486.600	-49.580	727.770	188.300
IDEXX LABORATORIES INC	525.280	-33.430	568.300	372.500
SUPER MICRO COMPUTER INC	311.440	-31.870	357.990	69.020
ATRIION CORP	331.990	-19.000	700.870	274.980

NYSE (USD)

Top Gainers

Name	Last Done	Change Over 5 Days	52 Weeks High	52 Weeks Low
AUTOZONE INC	2,722.980	+153.880	2,750.000	2,277.880
WHITE MOUNTAINS INSURANCE GROUP	1,629.440	+102.270	1,617.000	1,312.000
CHIPOTLE MEXICAN GRILL	2,322.820	+50.920	2,348.415	1,470.050
TRANSDIGM GROUP INC	1,053.000	+33.180	1,040.670	659.590
NEWMARKET CORP	595.760	+32.070	588.390	334.360

Top Losers

Name	Last Done	Change Over 5 Days	52 Weeks High	52 Weeks Low
BERKSHIRE HATHAWAY INC	549,476.870	-2,323.130	566,569.970	442,363.500
NVR INC	7,184.960	-57.280	7,267.020	4,900.990
BIGLARI HOLDINGS INC	759.000	-42.010	1,058.500	700.000
CABLE ONE INC	523.500	-27.860	861.890	506.180
HUMANA INC	411.980	-26.730	541.210	390.500

IDX (Rupiah)

Top Gainers

Name	Last Done	Change Over 5 Days	52 Weeks High	52 Weeks Low
DIAN SWASTATIKA SENTOSA TBK	134,000.000	+56,900.000	134,700.000	33,950.000
SUCACO(SUPREME CABLE MANUFACTURING)	9,775.000	+1,500.000	11,700.000	8,000.000
GOWA MAKASSAR TOURISM DEVELOPMENT	4,150.000	+1,320.000	4,150.000	1,450.000
CITA MINERAL INVESTINDO TBK	2,860.000	+865.000	4,020.000	1,840.000
UNITED TRACTORS	24,100.000	+800.000	31,700.000	20,925.000

Top Losers

Name	Last Done	Change Over 5 Days	52 Weeks High	52 Weeks Low
PETRINDO JAYA KREASI TBK	9,825.000	-3,600.000	13,750.000	240.000
M CASH INTEGRASI TBK	4,380.000	-450.000	9,800.000	2,700.000
PABRIK KERTAS TJIWI KIMIA	6,650.000	-400.000	10,375.000	5,600.000
GUDANG GARAM TBK	20,350.000	-375.000	30,050.000	17,025.000
LIPPO GENERAL INSURANCE	3,500.000	-350.000	7,025.000	3,500.000

SET (Thai Baht)

Top Gainers

Name	Last Done	Change Over 5 Days	52 Weeks High	52 Weeks Low
STANLY	222.000	+12.000	233.000	171.500
TFMAMA	224.000	+7.000	226.000	187.000
MGI	23.700	+4.600	24.000	6.200
CHOTI	133.000	+4.000	177.500	112.000
GYT	196.000	+3.000	212.000	178.000

Top Losers

Name	Last Done	Change Over 5 Days	52 Weeks High	52 Weeks Low
SCC	272.000	-17.000	358.000	272.000
FE	175.500	-15.500	220.000	160.000
JTS	74.000	-8.750	93.500	23.200
METCO	242.000	-6.000	298.000	223.000
OHTL	434.000	-6.000	546.000	416.000

HKEX (HKD)

Top Gainers

Name	Last Done	Change Over 5 Days	52 Weeks High	52 Weeks Low
ZX INC	56.000	+7.350	58.100	9.320
ORIENT OVERSEAS INT	114.500	+6.800	172.600	91.700
PRADA SPA	44.400	+2.750	63.650	40.000
FAST RETAILING CO LTD HDR (1DR:0.01SHS)	21.500	+1.700	21.500	15.000
FLAT GLASS GROUP CO LTD	15.440	+1.500	27.750	10.700

Top Losers

Name	Last Done	Change Over 5 Days	52 Weeks High	52 Weeks Low
YUM CHINA HOLDINGS INC	272.200	-31.000	514.500	269.600
HONG KONG EXCHANGES & CLEARING	232.000	-18.000	378.000	228.600
LI AUTO INC	113.200	-17.500	185.500	80.100
BYD COMPANY LIMITED	196.400	-16.000	280.600	190.500
HONG KONG EXCHANGES & CLEARING	214.200	-15.000	307.600	211.600

SGX (SGD)

Top Gainers

Name	Last Done	Change Over 5 Days	52 Weeks High	52 Weeks Low
GREAT EASTERN	18.310	+0.140	19.240	16.850
PNE INDUSTRIES	0.625	+0.070	0.790	0.520
A-SONIC AERO	0.430	+0.060	0.642	0.310
SBS TRANSIT	2.750	+0.060	2.780	2.460
BRC ASIA	1.840	+0.040	1.840	1.600

Top Losers

Name	Last Done	Change Over 5 Days	52 Weeks High	52 Weeks Low
NIO Inc. USD OV	6.440	-1.130	15.780	6.280
DBS	31.910	-0.810	35.855	30.300
JARDINE C&C	28.540	-0.740	35.580	27.250
UOB	27.880	-0.450	31.000	26.820
JMH USD	40.300	-0.430	54.890	38.370

WHAT LIES AHEAD FOR KUCHAI? DISPOSAL DEAL SETS STAGE FOR MULTIPLE SCENARIOS

Low-profile Kuchai Development Berhad and Sungei Bagan Rubber Company (Malaya) Berhad (Sg Bagan) recently hogged the public limelight again with major corporate exercises that will streamline the structure and consolidate the assets of the two companies.

On 29 December 2023, Kuchai announced a proposal to dispose of all its assets and liabilities to Sg Bagan for RM275.5 million (Proposed Disposal), which will be satisfied entirely via the issuance of 27.52 million new Sg Bagan shares at an issue price of RM10.01 per share.

Subsequently, Kuchai will hold a 29.37% stake in Sg Bagan, after which the shares will be distributed to Kuchai shareholders (Proposed Distribution) through proposed capital reduction and repayment, and proposed dividend-in-specie. In turn, Kuchai shareholders would have direct exposure to Sg Bagan.

For every 1,000 Kuchai shares shareholders own, they will be entitled to 222 Sg Bagan shares under the proposal. The controlling shareholders, Kluang Rubber Co (Malaya) Bhd (Kluang Rubber), will get the lion's share of the Sg Bagan shares being distributed.

Notably, this would be the second time Kuchai distributed its shares in Sg Bagan after having distributed its 26.51% stake in Sg Bagan to shareholders in September 2022.

Kuchai and Sg Bagan shared similar business activities in investment holdings and rental of property, with the latter also carry out oil palm plantation activities. They are controlled by a common major shareholder, Kluang Rubber, who owns 42.2% stake in Kuchai and 43.5% in Sg Bagan.

WHAT'S IN STORE FOR KUCHAI AND SG BAGAN?

The proposed disposal will eventually enable Kuchai and Sg Bagan to consolidate, synergise and merge their investments into Sg Bagan.

For shareholders of Kuchai, the Proposed Distribution will provide the entitled shareholders with an opportunity to participate in the prospects and future growth of the enlarged Sg Bagan which will take over the assets and liabilities in Kuchai.

Upon completion of the Proposed Distribution, the only assets and liabilities remaining with Kuchai are the cash and bank balances amounting to RM83.81 million, equipment, prepayments, other payables, tax payable and deferred tax liability. This may result in Kuchai being classified as a "Cash Company" that requires a regularisation plan later.

Kuchai said it intends to maintain its listing status and, therefore, will use its best endeavours to identify potential new businesses and assets to be acquired. Furthermore, shareholders of Kuchai should note that the successful implementation of regularisation plans may take years

to materialise. If all else fails, the cash pile amounting to RM83.81 million sitting in Kuchai will need to be returned to its shareholders.

Besides, a back-of-the-envelope calculation (as shown below) to work out the estimated value of Kuchai suggests that its closing price of RM1.55 on 11 January have likely priced in the upside of the proposals.

$$\begin{aligned} & \text{Cash and bank balances in Kuchai after Proposed Disposal} + (\text{total no. of new Sg Bagan shares to} \\ & \text{be issued} \times \text{Sg Bagan closing share price as of 11 January 2024}) \\ = & \frac{\hspace{10em}}{\text{total no. of Kuchai shares as of 18 December 2023}} \\ & = \frac{\text{RM83.81 million} + (27.52 \text{ million} \times \text{RM4.41})}{123.75 \text{ million shares}} \\ & = \text{RM1.66 per Kuchai share} \end{aligned}$$

For now, the movements of Kuchai share would largely hinge upon the ups and downs of Sg Bagan.

As for Sg Bagan, the Group will continue to own its existing businesses, namely the production and sale of fresh oil palm fruit bunches as well as long-term portfolio investment in securities while its wholly owned subsidiaries are involved in investment holding.

At the close of trading on 11 January, Sg Bagan was traded at RM4.41 compared to RM3.23 prior to the announcement of proposals, which suggests investors view the proposals positively. The uptrend movement of Sg Bagan share price is also positive for Sg Bagan's minority shareholders.

The Proposed Disposal is regarded as a related party transaction pursuant to Paragraph 10.08 of the Main Market Listing Requirements of Bursa Malaysia Securities Berhad (MMLR) in view of the interests of certain directors and major shareholders of Kuchai.

In addition, the transaction is deemed a major disposal pursuant to Paragraph 10.02(eA) of the MMLR as it involves the disposal of substantially all of Kuchai's assets to Sg Bagan, which may result in

Kuchai being no longer suitable for continued listing on the Main Market of Bursa Malaysia Securities Berhad.

Given the above, Mercury Securities Sdn Bhd has been appointed as the independent adviser (IA) to Kuchai to advise the non-interested directors and non-interested shareholders of Kuchai on the Proposed Disposal. Meanwhile, Public Investment Bank Berhad has been appointed as the IA to provide the non-interested directors and non-interested shareholders of Sg Bagan with an independent evaluation of the exercise.

Minority shareholders should await the independent advisers' circulars on the exercise to make informed decisions.

By MSWG Team

This article appeared in the The Observer, a weekly newsletter published by The Minority Shareholders Watch Group (MSWG) and reproduced here with their permission. Do follow MSWG's Twitter account at @MSWGMalaysia and share your thought on their tweets from time to time.



Learn how to identify Hot Stocks using Technical Analysis (TA) and Fundamental Analysis (FA)

SIGN UP FOR Invest NOW IT'S FREE!!!

Click here

Scan me



Via email, every Friday.

Get market moving news and analyses. Regular columns include Behind The Action and From The Observer

- Leaderboard • Shariah Hot Stocks • Shariah Momentum Up Stocks • Non Shariah Hot Stocks • Up Trending Stocks • Growth Stocks • Dividend Stocks • Long Companies • Insider Activity • Investor Relations • Regional Markets





The Board of Directors of **Aemulus Holdins Berhad (AEMULUS)** had on 12 January 2024 approved the extension of the timeframe for the full utilisation of the proceeds raised from the Placement.

[READ MORE](#) 



Bursa Malaysia Berhad (BURSA) wishes to announce the launch of a new product offering together with several solutions namely, the new app for gold as an investment asset (Bursa Gold Dinar), a new Customer Portal (MyBURSA), and a new platform to connect investors directly with dealer representatives (BURSA REACH). The above launch is in line with Bursa Malaysia’s strategy to further develop the capital market by providing greater access for investor participation through a wider range of new investment assets and tools. This is also part of the Company’s efforts as an Exchange, to serve customers’ needs and enhance market liquidity, supporting further economic growth in the country.

[READ MORE](#) 



With reference to **Bursa Malaysia Berhad's (BURSA)** earlier announcement made on 16 January 2024 in relation to Bursa Malaysia as a Multi-Asset Exchange, Bursa Malaysia wishes to update that the launch of its new product offering together with several solutions namely, the new app for gold as an investment asset (Bursa Gold Dinar), a new Customer Portal (MyBURSA), and a new platform to connect investors directly with dealer representatives (BURSA REACH). The Exchange strengthens customer centricity with direct-to-market investment products and services such as Bursa Gold Dinar, MyBURSA Customer Portal and BURSA REACH, while unveiling a refreshed brand logo, to symbolise its future-forward approach as a multi-asset exchange.

[READ MORE](#)



The Board of Directors of **Sarawak Consolidated Industries Berhad (SCIB)** wishes to announce that

SCIB Industrialised Building System Sdn. Bhd., a wholly-owned subsidiary of SCIB, had on 16 January 2024, accepted a letter of award and Acceptance for an engineering, procurement, construction and commissioning contract from Landasan Kapital (M) Sdn. Bhd. subject to the terms and conditions as stipulated in the LOA.

[READ MORE](#)



The Board of Directors of **Cypark Resources Berhad (CYPARK)** wishes to announce that it has approved the merging of the Audit Committee and Risk Management Committee into a single committee to be known as the Audit and Risk Management Committee with effect from 18 January 2024.



YNH PROPERTY BHD

YNH Property Berhad (YNHPROP)

wishes to announce that for the acquisition of the freehold land held under individual title H.S.(D) 47941

P.T. 48632 in the Mukim of Kuala Lumpur, Daerah Kuala Lumpur, negeri Wilayah Persekutuan Kuala Lumpur by Kar Sin Bhd from Great Wall Park Sdn Bhd for a total cash consideration of RM150 million, the Company will seek for shareholders' approval at the forthcoming Extraordinary General Meeting as required by the Sale and Purchase Agreement. Details of the EGM and Circular to Shareholders for the Proposed Acquisition will be announced in due course.



Upcoming IPO

NAME OF COMPANY	OFFER PERIOD		ISSUE PRICE (Per Ordinary Share)	LISTING SOUGHT	DATE OF LISTING
	OPENING	CLOSING			
AGX GROUP BERHAD	16 Jan 2024	23 Jan 2024	RM0.35	ACE MARKET	7 Feb 2024
WENTEL ENGINEERING HOLDINGS BERHAD	15 Jan 2024	22 Jan 2024	RM0.26	ACE MARKET	6 Feb 2024
TSA GROUP BERHAD	27 Dec 2023	17 Jan 2024	RM0.55	ACE MARKET	2 Feb 2024
HE GROUP BERHAD	12 Jan 2024	18 Jan 2024	RM0.28	ACE MARKET	30 Jan 2024
MASTER TEC GROUP BERHAD	28 Dec 2023	18 Jan 2024	RM0.39	ACE MARKET	29 Jan 2024
KJTS GROUP BERHAD	5 Jan 2024	11 Jan 2024	RM0.27	ACE MARKET	26 Jan 2024

Disclaimer: The information in the Investor Relations page is extracted from individual companies' announcements in www.bursamalaysia.com. The information on this page is provided as a service to readers. We assume no liability for damages resulting from or arising out of the use of such information. Whilst every effort is made to ensure accuracy, the information presented has been simplified for your reading pleasure. Readers are advised to read the original and complete filings on the Bursa Malaysia website at https://www.bursamalaysia.com/market_information/announcements/company_announcement