

# Invest

A Weekly e-Publication by SHAREINVESTOR.com

ISSUE

190

FRIDAY  
12 JANUARY  
2024

Scan/Click QR to Register



Via email, every Friday

## Malaysia's GDP could grow 4.8% or even reach 5% in 2024 - KSI Strategic Institute

see more  
page  
22-27

+

## Malaysia's palm output to improve amid better labour conditions — MPOB

### ALSO

#### COMPANY SPOTLIGHT

Sarawak Consolidated  
Berhad

See more on page 07

#### MSWG

A wrap-up of 2023

See more on page 29-32

04 LEADERBOARD

06 SHARIAH HOT STOCKS

08 SHARIAH MOMENTUM UP STOCKS

10 NON SHARIAH HOT STOCKS

12 UP TRENDING STOCKS

14 VALUE STOCKS

16 GROWTH STOCKS

18 DIVIDEND STOCKS

19 BROKERS' CALL

20 LONG COMPANIES

28 REGIONAL MARKETS

33 INSIDER ACTIVITY

35 INVESTOR RELATIONS



# SHAREINVESTOR®

Invest with Knowledge

## INVESTOR PLATFORMS

**Director**  
Darren Chong  
darren.chong@shareinvestor.com

**Business Development Manager**  
Jay Cheong  
jay.cheong@shareinvestor.com

**Senior Executive**  
Daniel Wong  
daniel.wong@shareinvestor.com

**Executive**  
Tan Yong Sheng  
yongsheng.tan@shareinvestor.com

## ADMIN & OPERATIONS

**Senior Executive**  
Watie Nordin  
watie.nordin@shareinvestor.com

**Executive**  
Silas Emmanuel Joseph  
silas.joseph@shareinvestor.com

## INVESTOR RELATIONS

**Group Managing Director & Publisher**  
Edward Stanislaus  
edward@shareinvestor.com

**Senior Manager**  
Letticia Wong  
letticia.wong@shareinvestor.com

## PROCESS AUTOMATION & DATA ANALYTICS

**Data Analyst**  
Nickson Aw

## SHAREINVESTOR HOLDINGS BOARD OF DIRECTORS

<b>Chairman</b>	Patrick Daniel
<b>Group CEO</b>	Christopher Lee
<b>Group COO</b>	Lim Dau Hee
<b>Group CFO</b>	Teo Siew May
<b>Group MD</b>	Shanison Lin



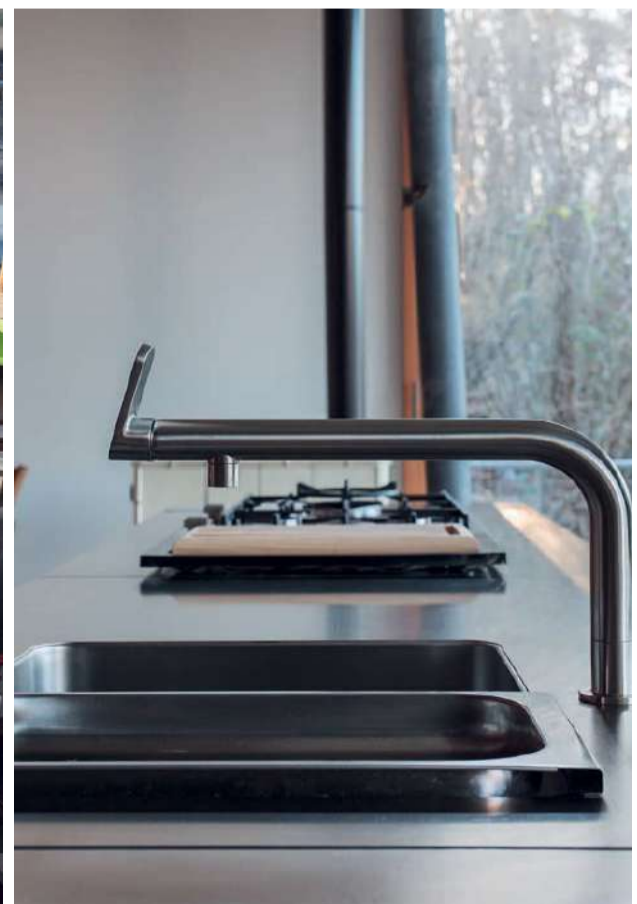
“ GIVE A MAN A FISH AND YOU FEED HIM FOR A DAY; TEACH A MAN TO FISH AND YOU FEED HIM FOR A LIFETIME ”

**ShareInvestor Malaysia Sdn. Bhd.**  
(200001023956) (526564-M)  
Unit No. DF2-07-03A, Level 7,  
Persoft Tower, 6B Persiaran Tropicana,  
47410 Petaling Jaya, Selangor Darul Ehsan.

Hotline : 603 7803 1791  
Mobile : 011 6343 8939  
Website : www.ShareInvestor.com.my  
www.ShareInvestorHoldings.com  
www.Facebook.com/ShareInvestorMalaysia

**ADVERTISEMENT ENQUIRY**

bulthaup takes care of the details so that you can enjoy a harmonious environment.



**XTRA**

XTRA FURNITURE SDN BHD  
The Gardens Mall, Mid Valley City  
xtrafurniture.com/bulthaup  
fb.com/bulthaupmalaysia

bulthaup



*RESEARCH  
SPECIALIST  
M+ GLOBAL*

*CHIEF TRAINER  
BEYOND  
INSIGHTS*

*AUTHOR  
MARKET WIZARD  
SERIES*

*SENIOR TRAINER  
BEYOND  
INSIGHTS*

**Loui Low**

**Kathlyn Toh**

**J. Schwager**

**Jeffery C.**

**BEYOND INSIGHTS® 2024  
SYMPOSIUM**

# CATCHING THE NEXT GLOBAL STOCK MARKET WAVE

**Find Out More**



[beyondinsights.info/sym2024](https://beyondinsights.info/sym2024)



**EVENT SPONSORS**



**ANNEX**  
CREATIVE SOLUTIONS



**HENDSHAKE**

[www.shareinvestor.com](http://www.shareinvestor.com) - market data at your fingertips



ShareInvestor WebPro ([www.shareinvestor.com/my](http://www.shareinvestor.com/my))

Prices > Stock Prices > Bursa > click Stocks tab

1. mouse over Ranking > select Top Active > all Shariah stocks are denoted with an [S] > mouse over Column Layout > select Edit Customs > select Name > select Volume > select Last Done Price > Mouse Over Column Layout > select Custom
2. mouse over Ranking > select Top Turnover > all Shariah stocks are denoted with an [S] > mouse over Column Layout > select Edit Customs > select Name > select Last Done Price > select Value > Mouse Over Column Layout > select Custom
3. mouse over Ranking > select Top Gainers (Over 5 Trading Days) > mouse over Column Layout > select Edit Customs > select Name > select Last Done Price > select 5 Days Change > select 5 Days % Change > Mouse Over Column Layout > select Custom
4. mouse over Ranking > select Top Losers (Over 5 Trading Days)
5. mouse over Ranking > select Top % Gainers (Over 5 Trading Days)
6. mouse over Ranking > select Top % Losers (Over 5 Trading Days)

### Shariah Top Actives (as at Yesterday)

Name	Price (RM)	Volume
HONGSENG [S]	0.020	3,050,775.000
TWL [S]	0.040	1,396,555.000
MINETEC [S]	0.220	1,100,024.000
SCIB [S]	1.120	862,616.000
WIDAD [S]	0.490	822,082.000
VELESTO [S]	0.255	762,983.000
SMTRACK [S]	0.055	722,714.000
IWCITY [S]	0.875	624,543.000
EKOVEST [S]	0.545	616,892.000
CAPITALA [S]	0.735	610,214.000

### Shariah Top Turnover (as at Yesterday)

Name	Price (RM)	Value (RM)
SCIB [S]	1.120	96,189,599
IWCITY [S]	0.875	56,597,230
UEMS [S]	0.950	49,098,306
CAPITALA [S]	0.735	45,815,306
INARI [S]	3.190	44,387,054
WIDAD [S]	0.490	40,470,538
SUNWAY [S]	2.310	38,526,096
E&O [S]	0.750	37,821,232
GENP [S]	6.300	36,544,437
PMETAL [S]	4.820	35,540,803

### Top Gainers (over 5 Trading days as at Yesterday)

Name	Price (RM)	Change (RM)
NESTLE	119.800	+1.100
ALLIANZ	19.280	+0.820
HEIM	24.200	+0.620
GENP	6.300	+0.550
F&N	28.640	+0.460
IDEAL	3.390	+0.450
FRONTKN	3.580	+0.410
KLK	22.400	+0.400
YTLPOWR	3.370	+0.370
MAGNA	0.760	+0.350

### Top % Gainers (over 5 Trading days as at Yesterday)

Name	Price (RM)	Change (%)
PHB	0.010	+100.00
MAGNA	0.760	+85.37
ITRONIC	0.080	+60.00
MLAB	0.015	+50.00
PMHLDG	0.135	+42.11
ROHAS	0.365	+32.73
BJASSET	0.380	+26.67
MERSEC	0.845	+23.36
LUSTER	0.080	+23.08
CNH	0.060	+20.00

### Top Losers (over 5 Trading days as at Yesterday)

Name	Price (RM)	Change (RM)
RAPID	11.500	-16.200
YNHPROP	2.720	-1.630
IMASPRO	1.990	-1.570
DLADY	23.880	-1.120
PCHEM	6.880	-0.420
GREATEC	4.800	-0.120
MISC	7.300	-0.120
CEB	0.945	-0.115
BOXPAK	0.790	-0.105
PETGAS	17.500	-0.100

### Top % Losers (over 5 Trading days as at Yesterday)

Name	Price (RM)	Change (%)
RAPID	11.500	-58.48
IMASPRO	1.990	-44.10
YNHPROP	2.720	-37.47
FINTEC	0.010	-33.33
NEXGRAM	0.035	-30.00
SAUDEE	0.025	-28.57
AEM	0.015	-25.00
SCABLE	0.305	-20.78
HONGSENG	0.020	-20.00
MTRONIC	0.020	-20.00

*Congratulations*

**TELADAN**

**TELADAN GROUP BERHAD**

to have successfully transferred  
listing to the MAIN Market from  
ACE Market on 2nd January 2024.

From



**SHAREINVESTOR**<sup>®</sup>

Online Investor Relations services provider  
for Public Listed Companies

<https://www.shareinvestor.com.my/investor-relations.html>

## Price & Volume Distribution Charts (as at Yesterday)

Technical Analysis

**DEFINITION:** Shariah compliant stocks with Technical Analysis showing 5-days & 10-days Moving Average Price below Yesterday's Close over past 3 days and with Volume Spike.

**CHART GUIDE:** Volume Distribution Chart is a statistical interpretation of the current sentiment on each stock in graphical format. The highest bar categorized as >150k is likely to be traded by institutions or super dealers, while the lowest bar categorized as <15k usually represents retail investors. "Buy Up" refers to more buyers snatching up the lots queued at selling price. "Sell Down" refers to sellers selling their shares to the buying queue



ShareInvestor WebPro > Screener > Market Screener (FA & TA) > select BURSA > add criteria

**A. Criteria**

- > click Add Criteria
- Technical Analysis Conditions tab select (i) Moving Average Below Close (ii) Volume Spike
- Fundamental Analysis Conditions tab > select (iii) Revenue
- Prices & Other Conditions tab > select (iv) Is Shariah Compliant
- Technical Analysis Conditions tab select (v) Moving Average Below Close
- Prices & Other Conditions tab > select (vi) Last Done Price
- Technical Analysis Conditions tab select (vii) Moving Average Below Close

**B. Conditions (Criteria Filters)**

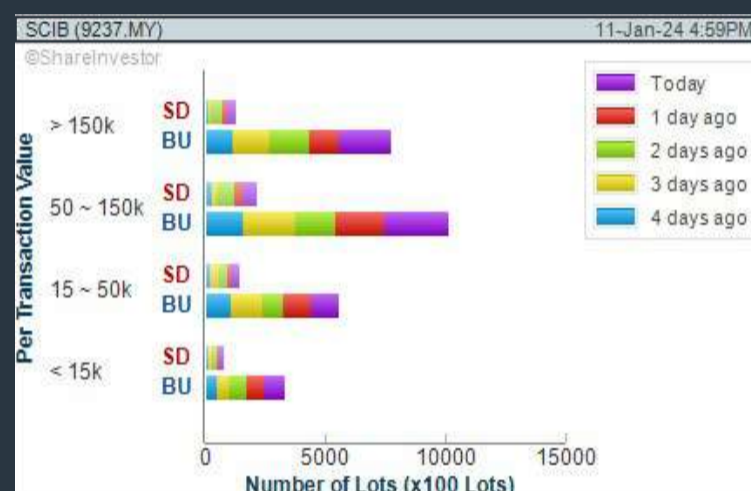
- Moving Average Below Close - select (MA) type (5) below close price for type (3) days
- Volume Spike - Volume type (1) greater than type (5) days average
- Revenue ("000) - select (more than) type (1) for the past select (1) financial year(s)
- Is Shariah Compliant - select **Yes**
- Moving Average Below Close - select (MA) type (10) below close price for type (3) days
- Last Done Price - select (more than) type (0.3)
- Moving Average Below Close - select (EMA) type (5) below close price for type (3) days

- > click Save Template > Create New Template type (Shariah Hot Stocks) > click Create
- > click Save Template as > select Shariah Hot Stocks > click Save
- > click Screen Now (may take a few minutes)
- > Sort By: Select (Vol) Select (Desc)
- > Mouse over stock name > Charts > click C<sup>2</sup> Charts or Volume Distribution

### SARAWAK CONSOLIDATED IND BERHAD (9237)

C<sup>2</sup> Chart

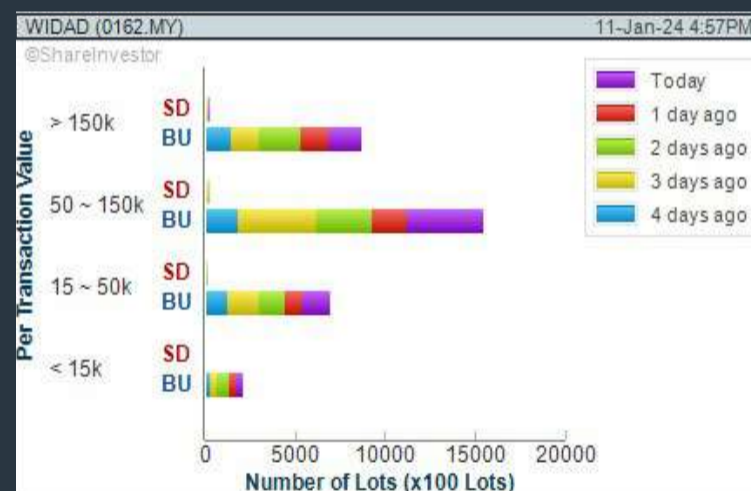
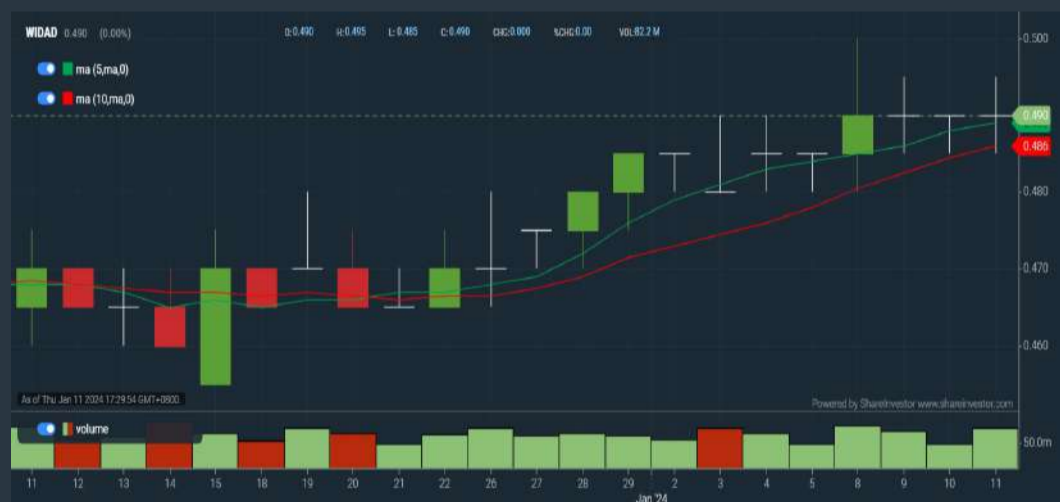
Analysis



### WIDAD GROUP BERHAD (0162)

C<sup>2</sup> Chart

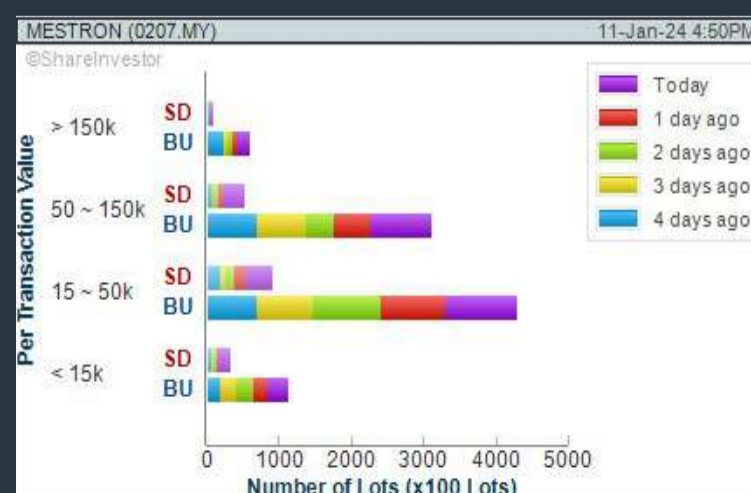
Analysis



### MESTRON HOLDINGS BERHAD (0207)

C<sup>2</sup> Chart

Analysis



**Disclaimer:** The information on this page is provided as a service to readers. It does not constitute financial advice and/or any investment recommendations. Past performance is not indicative of future results. We assume no liability for damages resulting from or arising out of the use of such information. It would be best if you did your own research to make your personal investment decisions wisely or consult a licenced investment advisor.

## COMPANY BACKGROUND

**Sarawak Consolidated Industries Berhad** is engaged in providing Engineering, Manufacturing, Construction and Commissioning services. The company provides Conventional Products, Roofing Products and Industrialised Building Systems to customers who are project developers and owners of infrastructure as well as developers/owners of industrial, commercial and residential properties.



SCIB SARAWAK CONSOLIDATED IND BHD		Updated at 11 Jan 2024 17:31	
Last (MYR): <b>1.120</b> <span style="color: green;">▲</span>	Change: <b>+0.040</b>	High: 1.140	Remarks: <span style="color: red;">?</span>
	Change (%) <b>+3.70</b>	Low: 1.080	
Open	1.080	Yesterday's Close	1.080
Buy Price	1.110	Sell Price	1.120
Buy Volume ('00)	1,026	Sell Volume ('00)	3,600
Cumulative Volume ('00)	862,616	Cumulative Value	96,189,599

### Financial Analysis

<b>Profit Growth</b> Losses for past 3 years	<b>Piotroski F Score</b> The company has weak financial strength (Piotroski F-Score of 0-2)
<b>Debt to Cashflow</b> The company has negative cash flow from operations in most recent year	<b>Free Cash Flow</b> Negative free cash flow for two years or more
<b>Gross Profit Margin</b> Low gross profit margin for 3 years	<b>Net Earnings Margin</b> Company is losing money but net profit margin is improving by 5% a year over the past 60 months.
<b>Return on Assets (ROA)</b> Negative ROA for 3 consecutive years	<b>Return on Assets (ROA)</b> ROA is decreasing by 10% a year over the past 36 months.
<b>Return on Equity (ROE)</b> Negative ROE for 3 consecutive years	<b>Return on Equity (ROE)</b> ROE is decreasing by 10% a year over the past 36 months.

😊 Excellent  
 🙂 Good  
 😐 Neutral  
 😟 Be Alert  
 😱 Watch Out



### Historical Financials

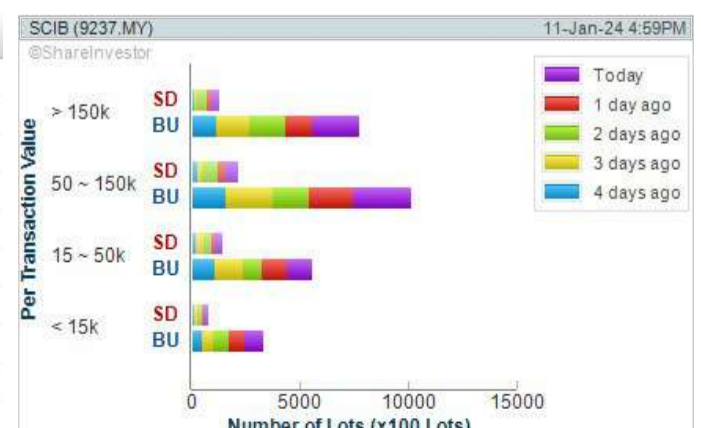


**WebPro 9-Days Free Trial Registration**  
(worth RM9)  
Sign Up Now



### Key Statistics with Total Shareholder Returns

Period	Dividend Received	Capital Appreciation	Total Shareholder Return
Short Term Return	5 Days	-	+0.150
	10 Days	-	+0.205
	20 Days	-	+0.315
Medium Term Return	3 Months	-	+0.695
	6 Months	-	+0.625
	1 Year	-	+0.970
Long Term Return	2 Years	-	+0.915
	3 Years	0.019	-0.470
	5 Years	0.072	+0.996
Annualised Return	Annualised	-	-



**Disclaimer:** The information on this page is provided as a service to readers. It does not constitute financial advice and/or any investment recommendations. Past performance is not indicative of future results. We assume no liability for damages resulting from or arising out of the use of such information. It would be best if you did your own research to make your personal investment decisions wisely or consult a licenced investment advisor.

## Price & Volume Distribution Charts (as at Yesterday)

Technical Analysis

**DEFINITION:** Shariah compliant stocks with Technical Analysis showing Bullish Momentum and Price Uptrend. The share price closed at the highest price yesterday. The typical price was higher than the previous day's typical price.

**CHART GUIDE:** Volume Distribution Chart is a statistical interpretation of the current sentiment on each stock in graphical format. The highest bar categorized as >150k is likely to be traded by institutions or super dealers, while the lowest bar categorized as <15k usually represents retail investors. "Buy Up" refers to more buyers snatching up the lots queued at selling price. "Sell Down" refers to sellers selling their shares to the buying queue.



ShareInvestor WebPro > Screener > Market Screener (FA & TA) > select BURSA > add criteria

**A. Criteria**

- > click Add Criteria
- Fundamental Analysis Conditions tab > select (i) Revenue
- Technical Analysis Conditions tab select (ii) Average Volume
- Prices & Other Conditions tab > select (iii) Last Done Price
- Prices & Other Conditions tab > select (iv) Is Shariah Compliant
- Technical Analysis Conditions tab select (v) RSI Overbought
- Technical Analysis Conditions tab select (vi) Moving Average Below Close
- Technical Analysis Conditions tab select (vii) CCI Overbought

**B. Conditions (Criteria Filters)**

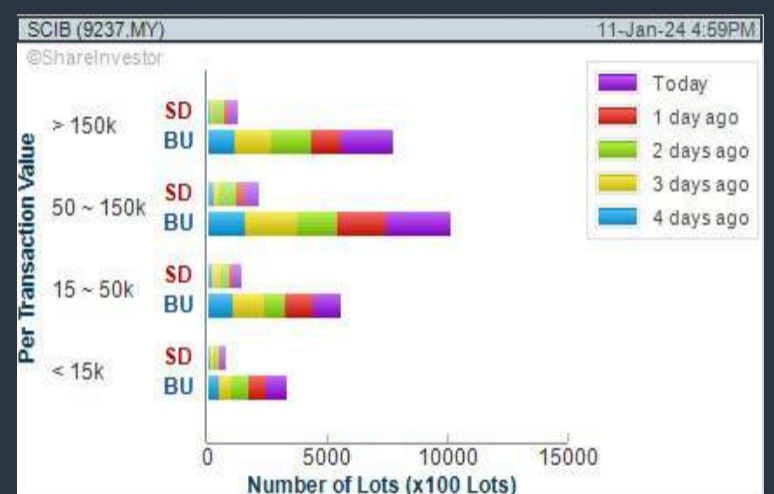
1. Revenue ("000) - select (more than) type (1) for the past select (1) financial year(s)
2. Average Volume - type (1) days average volume greater than type (10000) lots
3. Last Done Price - select (more than) type (0.3)
4. Is Shariah Compliant - select Yes
5. RSI Overbought - select RSI 1 above 99 for 1 days
6. Moving Average Below Close - select (MA) type (10) below close price for type (1) days
7. CCI Overbought - select CCI (2) above (0) for (1) days

- > click Save Template > Create New Template type (Shariah Momentum Up Stocks) > click Create
- > click Save Template as > select Shariah Momentum Up Stocks > click Save
- > click Screen Now (may take a few minutes)
- Sort By: Select (Vol) Select (Desc)
- Mouse over stock name > Charts > click C<sup>2</sup> Charts tab or Volume Distribution

### SARAWAK CONSOLIDATED IND BERHAD (9237)

C<sup>2</sup> Chart

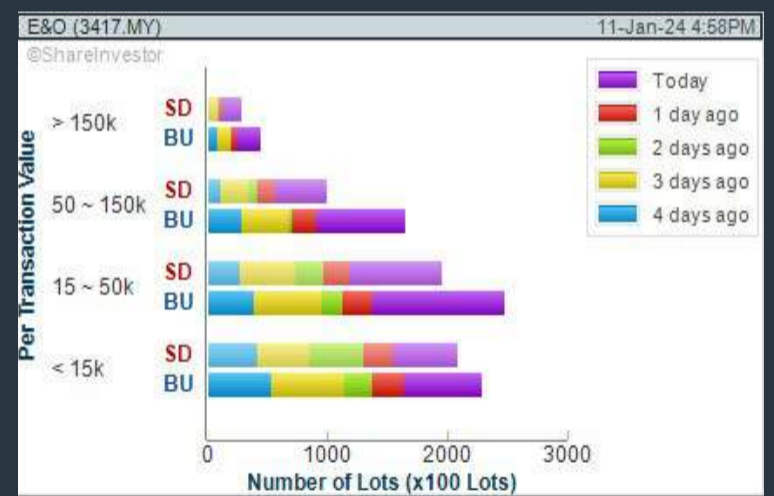
Analysis



### EASTERN & ORIENTAL BERHAD (3417)

C<sup>2</sup> Chart

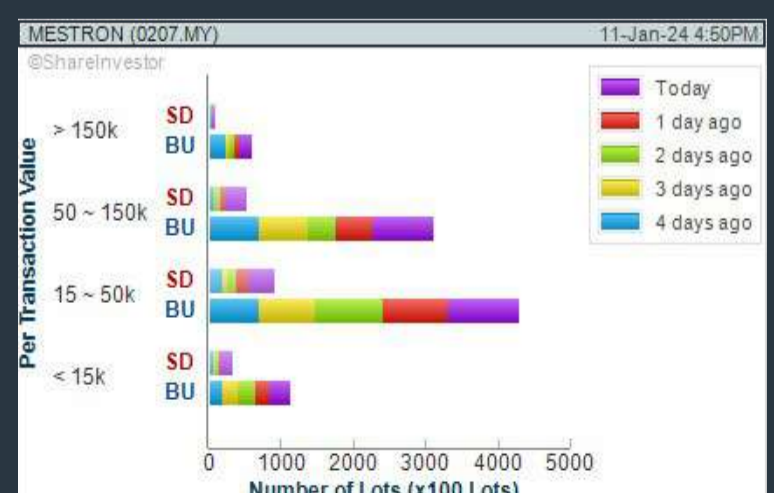
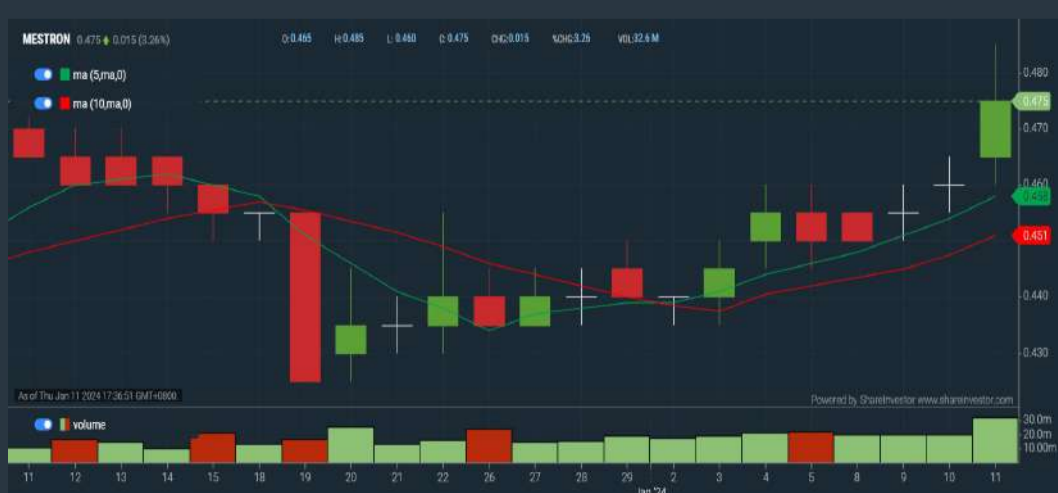
Analysis



### MESTRON HOLDINGS BERHAD (0207)

C<sup>2</sup> Chart

Analysis



**Disclaimer:** The information on this page is provided as a service to readers. It does not constitute financial advice and/or any investment recommendations. Past performance is not indicative of future results. We assume no liability for damages resulting from or arising out of the use of such information. It would be best if you did your own research to make your personal investment decisions wisely or consult a licenced investment advisor.



# 过去、现在与未来： 趋势、挑战与机遇

一起探讨大马股市发展、全球经济走势

18  
LIVE

JANUARY  
THURSDAY  
8PM - 9PM



Scan Me



天哥

第一天投资理财日记博主

## Price & Volume Distribution Charts (as at Yesterday)

Technical Analysis

**DEFINITION:** Stocks with Technical Analysis showing 5-days & 10-days Moving Average Price below Close over past 1 days and with Volume Spike

**CHART GUIDE:** Volume Distribution Chart is a statistical interpretation of the current sentiment on each stock in graphical format. The highest bar categorized as >150k is likely to be traded by institutions or super dealers, while the lowest bar categorized as <15k usually represents retail investors. "Buy Up" refers to more buyers snatching up the lots queued at selling price. "Sell Down" refers to sellers selling their shares to the buying queue.



ShareInvestor WebPro > Screener > Market Screener (FA & TA) > select BURSA > add criteria

**A. Criteria**

- > click Add Criteria
- Technical Analysis Conditions tab select (i) Moving Average Below Close (ii) Volume Spike
- Fundamental Analysis Conditions tab >select (iii) Revenue
- Prices & Other Conditions tab > select (iv) Is Shariah Compliant
- Technical Analysis Conditions tab select (v) Moving Average Below Close
- Prices & Other Conditions tab > select (vi) Last Done Price
- Technical Analysis Conditions tab select (vii) Moving Average Below Close

**B. Conditions (Criteria Filters)**

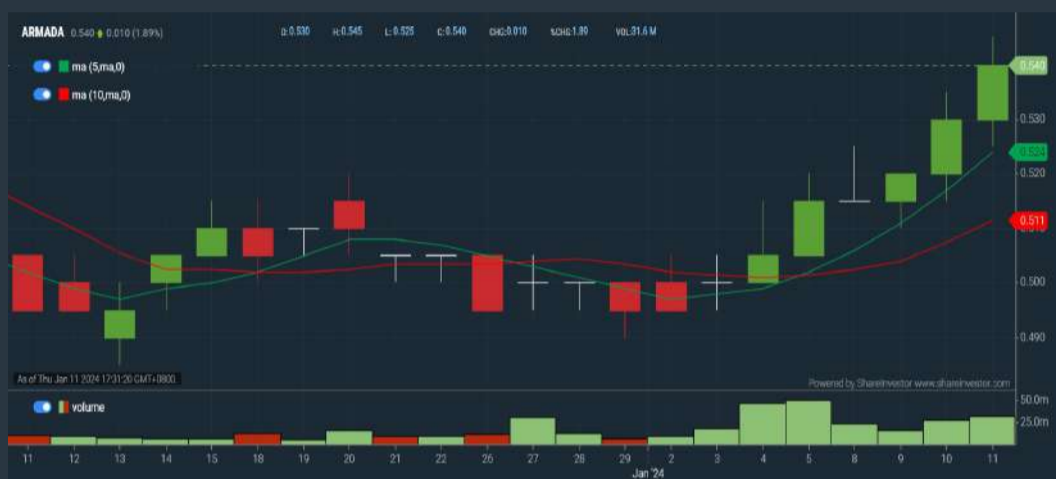
1. Moving Average Below Close - select (MA) type (5) below close price for type (3) days
2. Volume Spike - Volume type (1) greater than type (5) days average
3. Revenue ("000) - select (more than) type (1) for the past select (1) financial year(s)
4. Is Shariah Compliant - select NO
5. Moving Average Below Close - select (MA) type (10) below close price for type (1) days
6. Last Done Price - select (more than) type (0.3)
7. Moving Average Below Close - select (EMA) type (5) below close price for type (1) days

- > click Save Template > Create New Template type (Non-Shariah Hot Stocks) > click Create
- > click Save Template as > select Non-Shariah Hot Stocks > click Save
- > click Screen Now (may take a few minutes)
- Sort By: Select (Vol) Select (Desc)
- Mouse over stock name > Charts > click C<sup>2</sup> Charts tab or Volume Distribution

### BUMI ARMADA BERHAD (5210)

C<sup>2</sup> Chart

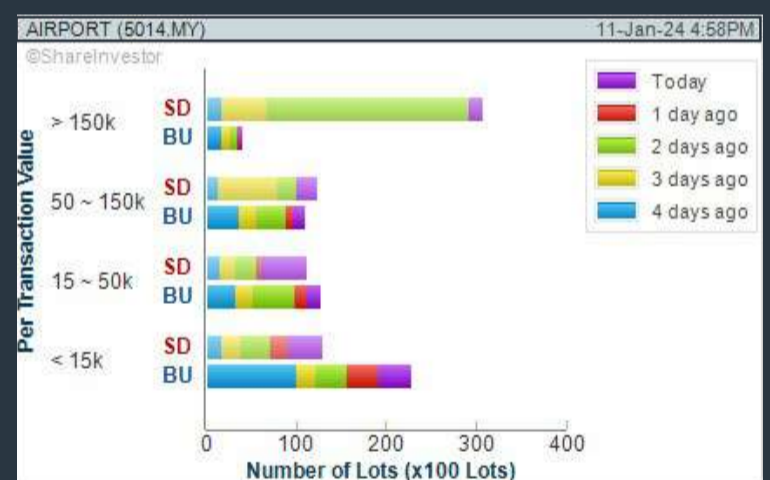
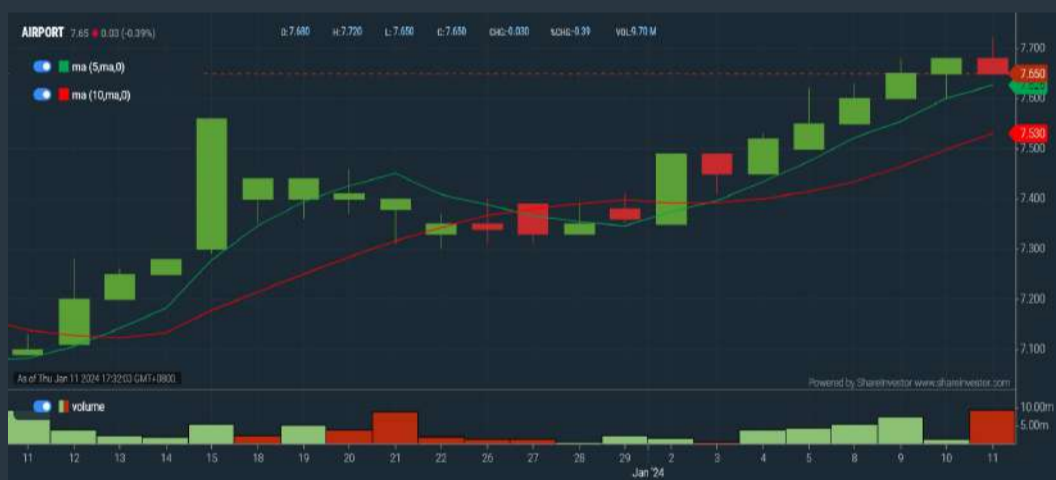
Analysis



### MALAYSIA AIRPORTS HOLDINGS BERHAD (5014)

C<sup>2</sup> Chart

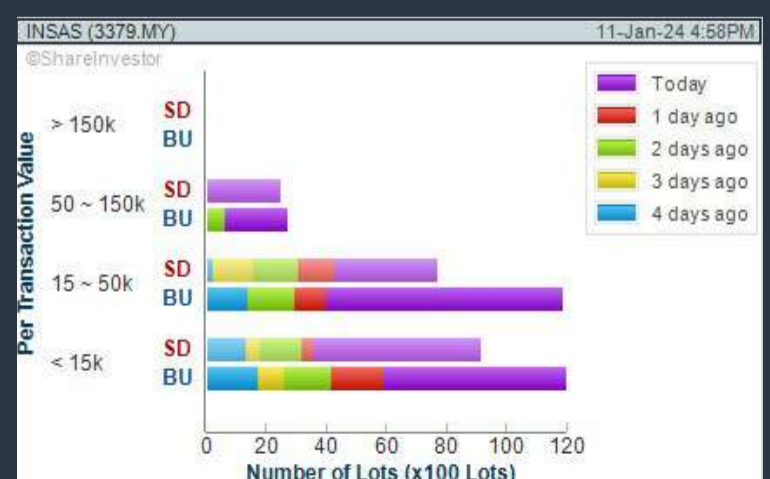
Analysis



### INSAS BERHAD (3379)

C<sup>2</sup> Chart

Analysis



**Disclaimer:** The information on this page is provided as a service to readers. It does not constitute financial advice and/or any investment recommendations. Past performance is not indicative of future results. We assume no liability for damages resulting from or arising out of the use of such information. It would be best if you did your own research to make your personal investment decisions wisely or consult a licenced investment advisor.

# 2023 Securities Performance Report In Bursa Market



**Get Free Report Now!**

- Beta → Basic → CAGR
- Stocks Hitting Highs/Lows
- Trailing EPS vs Historical EPS

No	Name	Rem	Last Done	Chg	% Chg	Vol	Buy Vol	Buy	Sell	Sell Vol	High	Low	B/Lot
1	MM2 Asia R		0.004			48,315,244	12,791.7	0.003	0.004	508	0.005	0.003	100
2	HSI 15600MBWPW240228		0.096	-0.010	-15.15	25,962	5,000	0.055	0.056	5,000	0.062	0.055	100
3	Sestrium		0.112			23,392.2	28,195.1	0.112	0.113	31,084.9	0.113	0.111	100
4	Singtel		0.081			14,852.3	1,422.4	0.082	0.083	1,997.8	0.083	0.075	100
5	HSI 17400MBWPW240327		0.535	+0.003	+0.84	13,948	1,050	0.082	0.083	1,000	0.083	0.075	100
6	Thaibev		0.040			13,598.7	7,536	0.039	0.040	4,453.9	0.040	0.039	100
7	SMI VariGate		0.063	-0.003	-4.54	11,893.1	8,899.8	0.061	0.062	1,890.8	0.068	0.062	100
8	HSI 15200MBWPW240227		0.041	+0.005	+13.89	9,800	5,000	0.041	0.042	5,000	0.042	0.036	100
9	HSI 17800MBWPW240228		0.079	+0.008	+10.11	7,493.3	1,599.2	0.077	0.078	5,000	0.081	0.077	100
10	HSTECH 3000MBWPW240427		0.182	-0.004	-2.15	7,450.8	142	0.082	0.083	1,890.5	0.175	0.181	100
11	Rax Int		0.173	+0.002	+1.22	6,023.7	210	0.094	0.095	891.7	0.087	0.083	100
12	COBCO SGP SG		0.093	+0.003	+3.26	5,703.2	505	1.340	1.350	291.4	1.350	0.996	100
13	Beng Kuang		1.350	+0.070	+5.47	4,827.8	2,845.5	0.078	0.079	1,785.8	0.079	0.183	100
14	Chasen		0.078			4,565.8	886.2	0.140	0.141	80.6	0.141	0.135	100
15	Frecken		0.181	+0.002	+1.12	3,965.1	293.9	2.000	2.010	1,214.5	2.030	0.535	100
16	Dentling Sing		0.079	-0.002	-2.60	3,894.9	377.4	0.500	0.507	163.9	0.507	0.027	100
17	Manulife US		0.181			3,892.3	377.4	0.026	0.027	786.9	0.740	0.740	100
18	Medvca Int		0.500	-0.056	-9.91	3,890.3	93.1	0.735	0.740	91.1	0.740	0.550	100
19	CapLand IntCom T		0.027	+0.004	+17.39	3,383.7	87.7	0.048	0.049	947.8	0.310	0.310	100
20	Yanford Land		0.740	+0.005	+0.68	3,133.9	9,237.3	0.305	0.310	1,514.9	1.487	0.000	100
21	SunMoonFood		0.049	+0.005	+1.67	3,116.4	104.7	1.870	1.880	1,360	0.000	0.000	100
22	SamuderaShipping		0.305	+0.010	+6.67	3,061.1	1,131.5	0.024	0.025	300.2	0.220	0.220	100
23	MarcoPolo Marine		1.510			2,895.5	1,345	0.215	0.220	381.8	0.980	0.980	100
24	Dyna-Mac		1.880			2,233.2	390.7	0.975	0.980	600.9	0.000	0.120	100
25	Mapletree Pacifica Com Tr		0.004	-0.001	-4.00	2,229.1	287.3	0.005	0.006	3,180	0.000	0.000	100
26	Mapletree Log Tr		0.220	+0.015	+7.32	2,216	2,310	0.122	0.123	313.4	2.960	0.150	100
27	MM2 Asia		0.975			2,115	276.7	2.950	2.950	2,020	0.000	0.000	100
28	Prime US RetUSD		0.006	+0.010	+8.93	2,088.4	500	0.155	0.157	110	0.000	0.000	100
29	CapLand Account T		0.122	+0.010	+9.34	2,067.3	500	0.088	0.090	43,949.9	0.004	0.004	100
30	ASL M W240723*		2.980			2,055	2,055	0.003	0.004	5,000	0.004	0.004	100
31	HSTECH 7xLongS230304		0.156	+0.007	+4.70	2,000	5,219.8	0.003	0.004	5,000	0.004	0.004	100
32	CapLand Ascendas REIT		0.068	+0.019	+12.82	2,000	2,000	0.003	0.004	5,000	0.004	0.004	100
33	HSCBJ 8xLongS240912		0.003			2,000	2,000	0.003	0.004	5,000	0.004	0.004	100
34	HSI 16800MBWPW240228		0.004	+0.001	+4.36	2,000	2,000	0.003	0.004	5,000	0.004	0.004	100
35	Sanku Timber												
36	HSTECH 6000MBWPW240627												

This report is powered by **WEBPRO** Shareinvestor

## Price & Volume Distribution Charts (Over 3 trading days as at Yesterday)

Technical Analysis

**DEFINITION:** Stocks with Technical Analysis showing Bullish Momentum and Price Uptrend

**CHART GUIDE:** Volume Distribution Chart is a statistical interpretation of the current sentiment on each stock in graphical format. The highest bar categorized as >150k is likely to be traded by institutions or super dealers, while the lowest bar categorized as <15k usually represents retail investors. "Buy Up" refers to more buyers snatching up the lots queued at selling price. "Sell Down" refers to sellers selling their shares to the buying queue.



ShareInvestor WebPro > Screener > Market Screener (FA & TA) > select BURSA > add criteria

**A. Criteria**

- > click Add Criteria
- Fundamental Analysis Conditions tab > select (i) Revenue
- Technical Analysis Conditions tab select (ii) Moving Average Below Close
- Technical Analysis Conditions tab select (iii) Average Volume
- Prices & Other Conditions tab > select (iv) Last Done Price
- Technical Analysis Conditions tab select (v) Moving Average Below Close
- Technical Analysis Conditions tab select (v) Moving Average Bullish Crossover

**B. Conditions**

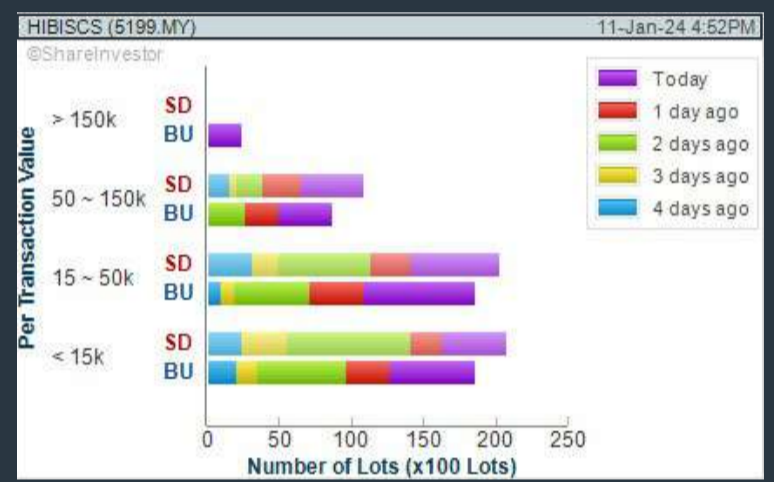
1. Revenue - select (more than) type (1) for the past select (1) financial year(s)
2. Moving Average Below Close - select (MA) type (20) below close price for type (1) days
3. Average Volume - type (5) days average volume type (10000) lots
4. Last Done Price - select (more than) type (0.3)
5. Moving Average Below Close - select (MA) type (10) below close price for type (1) days
6. Moving Average Bullish Crossover - select (MA) type (5) crossed above select (MA) type (10)

> click Save Template > Create New Template type (Non-Shariah Up-Trending Stocks) > click Create Click Save Template As > select Non-Shariah Up Trending Stocks > click Save > click Screen Now (may take a few minutes) Sort By: Select (Vol) Select (Desc) Mouse over stock name > Charts > click C<sup>2</sup> Charts tab or Volume Distribution

### HIBISCUS PETROLEUM BERHAD (5199)

C<sup>2</sup> Chart

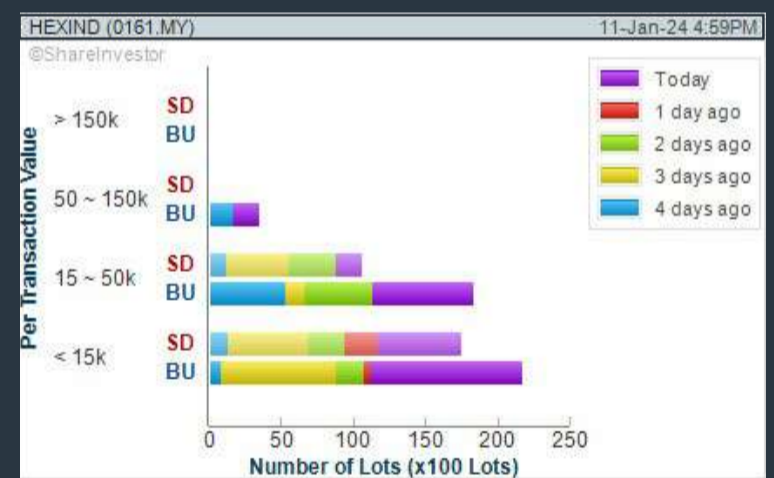
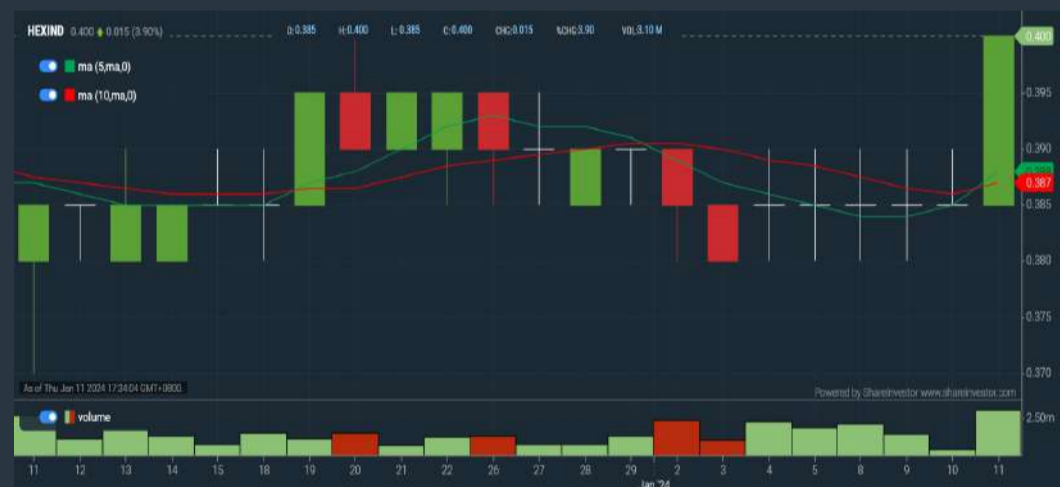
Analysis



### HEXTAR INDUSTRIES BERHAD (0161)

C<sup>2</sup> Chart

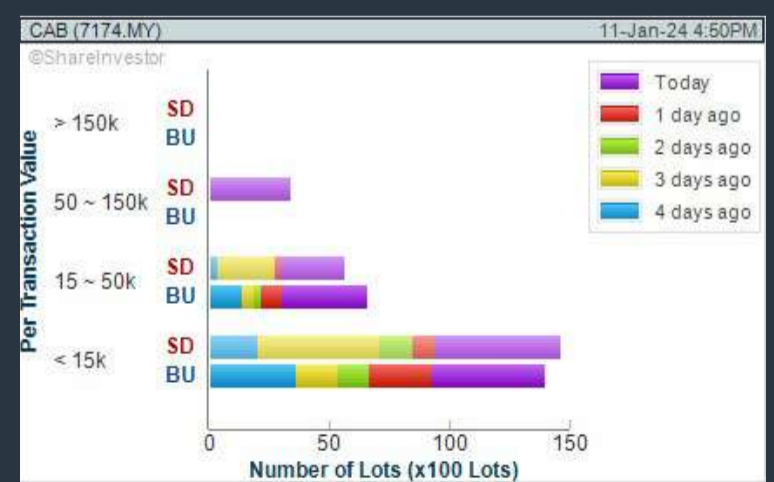
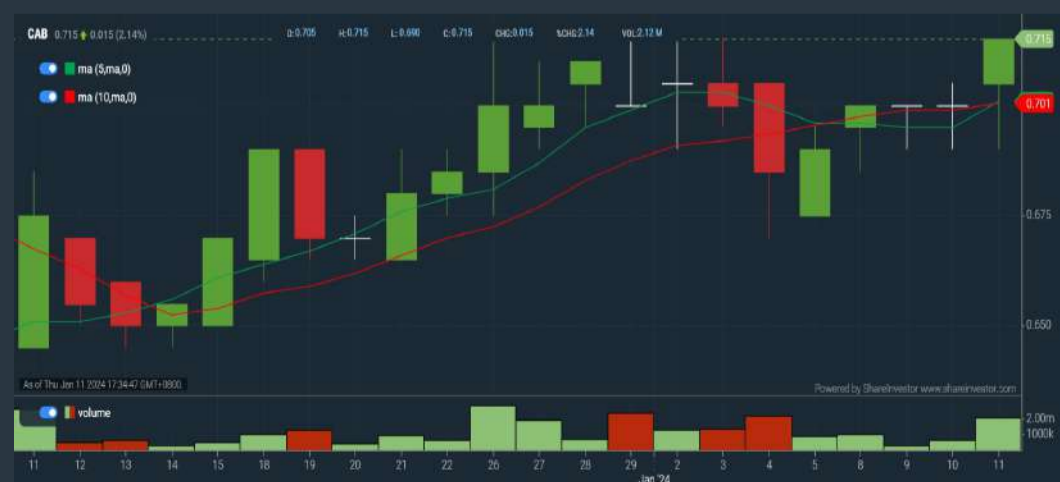
Analysis



### CAB CAKARAN CORPORATION BERHAD (7174)

C<sup>2</sup> Chart

Analysis



**Disclaimer:** The information on this page is provided as a service to readers. It does not constitute financial advice and/or any investment recommendations. Past performance is not indicative of future results. We assume no liability for damages resulting from or arising out of the use of such information. It would be best if you did your own research to make your personal investment decisions wisely or consult a licenced investment advisor.

# SHAREINVESTOR WEBPRO

## STOCK MARKET DATA AT YOUR FINGERTIPS

Powerful browser-based market analytics platform.  
Access from anywhere



### 8 Markets Data

- ▶ Get access to data from Bursa, NYSE, Nasdaq, HKEX, SGX, IDX, SET & ASX

### Portfolio Management

- ▶ Profit & Loss Summary
- ▶ Stock Alert
- ▶ News & Events filtering
- ▶ Customizable column layout

## Fundamental Analysis

### Financial Analysis Statement

- ▶ Profit & Loss
- ▶ Balance Sheet
- ▶ Cash Flow Statement
- ▶ More than 20 Financial Ratios
- ▶ Dividend Analysis

### Technical Charting

- ▶ C<sup>2</sup> chart (Customisable & Comprehensive)

### Brokers' Call

### Intrinsic Value Calculator

### FactSheet

- ▶ Key Stock Information
- ▶ Ownership
- ▶ Consensus Estimates
- ▶ Annual Report
- ▶ Historical Price
- ▶ Insider Trades

## What's new on WebPro (Stable Release 12.1.0)

In our effort to keep our platform at the forefront of trading technology, we have added on some new features onto our C2 Chart in WebPro

### ADDITIONAL NEW FEATURES:

- ▶ Anchor selector for AVWAP, PVAT, and PAV indicators
- ▶ Volume profile indicator by date range
- ▶ Moving Average Cross indicator
- ▶ Guppy Multiple Moving Average (GMMA) indicator
- ▶ GoNoGo Trend Signal indicators
- ▶ SignalIQ

So what are you waiting for? Head to our platform today and check out our new trading chart features and indicators. We're confident that you'll love the improvements we've made and that they'll help you become a more successful trader.

Click here to start your 9 days FREE trial  
(Valued at RM10)



## Price & Total Shareholder Return (as at Yesterday)

Fundamental Analysis

**DEFINITION:** Share price of a company trading at a lower price as compared to its fundamentals (FA) such as financial performance and dividend, allowing it to be attractive to value investors.

**CHART GUIDE:** Total Shareholder Return (TSR) combines share price appreciation and dividend distributions paid to show the total return to the shareholder expressed as a percentage.



ShareInvestor WebPro > Screener > Market Screener (FA & TA) > select BURSA > add criteria

**A. Criteria**

- > click Add Criteria
- Fundamental Analysis Conditions tab (i) Price Earnings Ratio
- Fundamental Analysis Conditions tab >select (ii) CAGR of Net Earnings
- Fundamental Analysis Conditions tab >select (iii) Net Debt To Equity
- Fundamental Analysis Conditions tab >select (iv) Return On Equity (ROE)

**B. Conditions**

1. Price Earnings Ratio - select (less than) type (15) times now
2. CAGR of Net Earnings - select (more than) type (10) % for the past type (3) financial year(s)
3. Net Debt To Equity – select (less than) type (1) for the past select (1) financial year(s)
4. Return On Equity (ROE) – select (more than) type (10) % for the past select (1) financial year(s)

- > click Save Template > Create New Template type (Value Stock) > click Create
- > click Save Template as > select Value Companies > click Save
- > click Screen Now (may take a few minutes)
- Sort by: Select (PE Ratio) Select (Ascending)
- > Mouse over stock name > Factsheet > looking for Total Shareholder Return
- > Mouse over stock name > Charts > click C2 Charts tab

## SYNERGY HOUSE BERHAD (0279)

C<sup>2</sup> Chart



Period	Dividend Received	Capital Appreciation	Total Shareholder Return
Short Term Return	5 Days	-0.005	+0.70 %
	10 Days	-0.005	-0.69 %
	20 Days	-0.000	+0.09 %
Medium Term Return	3 Months	-0.255	+54.84 %
	6 Months	-0.310	+75.61 %

## EDELTEQ HOLDINGS BERHAD (0278)

C<sup>2</sup> Chart



Period	Received	Appreciation	Total Shareholder Return
Short Term Return	5 Days	-0.010	-3.12 %
	10 Days	-	-
	20 Days	-0.020	-6.06 %
Medium Term Return	3 Months	-0.005	-1.52 %
	6 Months	-0.365	-54.07 %

## SUNMOW HOLDING BERHAD (03050)

C<sup>2</sup> Chart

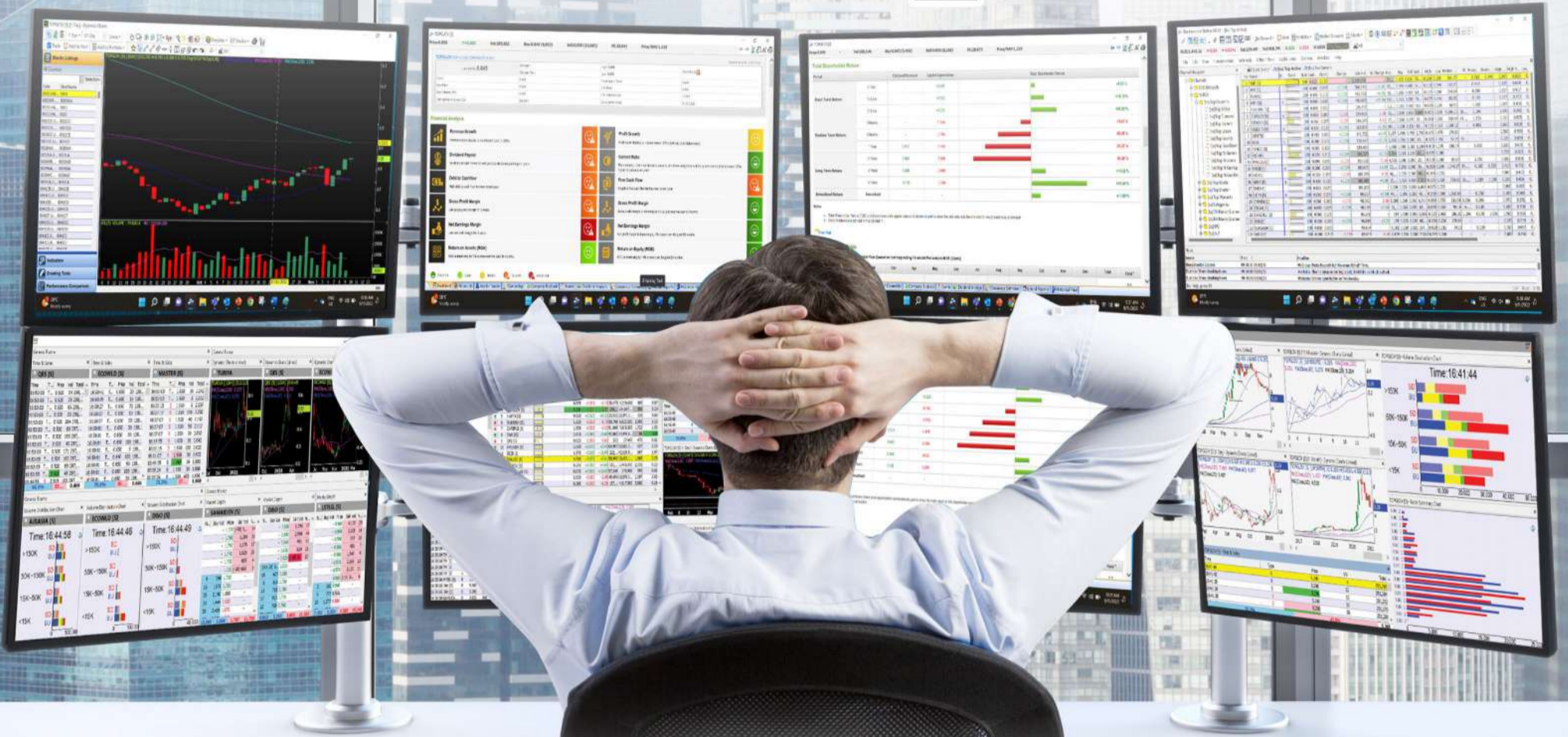


Period	Dividend Received	Capital Appreciation	Total Shareholder Return
Short Term Return	5 Days	-	-
	10 Days	-	-
	20 Days	-	-
Medium Term Return	3 Months	-0.040	-3.64 %
	6 Months	-0.040	-3.64 %
Long Term Return	1 Year	+0.450	+73.77 %
	2 Years	+0.160	+17.78 %
Annualised Return	Annualised	-	+8.53 %

**Disclaimer:** The information on this page is provided as a service to readers. It does not constitute financial advice and/or any investment recommendations. Past performance is not indicative of future results. We assume no liability for damages resulting from or arising out of the use of such information. It would be best if you did your own research to make your personal investment decisions wisely or consult a licenced investment advisor.

# MAKE BETTER TRADING STRATEGIES

with  
**SHARE INVESTOR**  
**STATION**



### 8 Markets Data

- ▶ Get access to data from Bursa, NYSE, Nasdaq, HKEX, SGX, IDX, SET & ASX

### Dynamic Chart

- ▶ Candlestick Pattern Recognition
- ▶ 111 Indicators
- ▶ 39 Drawing Tools
- ▶ Performance Comparison Chart

### Intraday Data

- ▶ Market Depth
- ▶ Trade Summary Matrix & Chart
- ▶ Times & Sales
- ▶ Intraday Market Ticker

### Market Screener

- ▶ 96 criteria ranging from FA, TA, Consensus Estimate
- ▶ Real-time Data

### Power Frame

- ▶ Combining few Dynamic Charts together with intraday information in one frame

## Technical Analysis

## Fundamental Analysis

### Financial Analysis Statement

- ▶ Profit & Loss
- ▶ Balance Sheet
- ▶ Cash Flow Statement
- ▶ More than 20 Financial Ratios
- ▶ Dividend Analysis

### FactSheet

- ▶ Key Stock Information
- ▶ Ownership
- ▶ Consensus Estimates
- ▶ Annual Report
- ▶ Historical Price
- ▶ Insider Trades

**Start your 18 days  
 FREE trial now  
 (Valued at RM82)**



## Price & Total Shareholder Return (as at Yesterday)

Fundamental Analysis

**DEFINITION:** Company revenue is growing and making good quality of earnings with positive Free Cash Flow.

**CHART GUIDE:** Total Shareholder Return (TSR) combines share price appreciation and distributions paid to show the total return to the shareholder expressed as a percentage.



ShareInvestor WebPro > Screener > Market Screener (FA & TA) > select BURSA > add criteria

**A. Criteria**

1. Fundamental Analysis Conditions tab >select (i) Free Cash Flow, (ii) Revenue Growth, (iii) Gross Profit (Earnings) Margin, (iv) Quality of Earnings, (v) Total Shareholder Returns, > click Add Criteria
2. Fundamental Analysis Conditions tab >select (vi) Total Shareholder Returns > click Add Criteria

**B. Conditions (Criteria Filters)**

1. Free Cash Flow - select (more than) type (1) for the past select (1) financial year(s)
2. Revenue Growth - select (more than) type (1) for the past select (1) financial year(s)
3. Gross Profit (Earnings) Margin - select (more than) type (30) % for the past select (1) financial year(s)
4. Quality of Earnings - select (more than) type (1) for the past select (1) financial year(s)
5. Total Shareholder Return - select (more than) type (5) % for the past select (3) financial year(s)
6. Total Shareholder Return - select (more than) type (5) % for the past select (5) financial year(s)

- > click Save Template > Create New Template type (Growth Companies) > click Create
- > click Save Template as > select Growth Companies > click Save
- > click Screen Now (may take a few minutes)
- > Sort By: Select (Revenue Growth) Select (Desc)
- > Mouse over stock name > Factsheet > looking for Total Shareholder Return

### ABLEGROUP BERHAD (7086)

C<sup>2</sup> Chart

Analysis



Period	Dividend Received	Capital Appreciation	Total Shareholder Return
Short Term Return	5 Days	-0.005	-3.86%
	10 Days	+0.010	+8.70%
	20 Days	+0.005	+4.17%
Medium Term Return	3 Months	+0.015	+13.64%
	6 Months	+0.010	+8.70%
	1 Year	-0.010	-7.41%
Long Term Return	2 Years	-	-
	3 Years	+0.010	+8.70%
	5 Years	+0.050	+66.67%
Annualised Return	Annualised	-	+10.78%

### IGB BERHAD (5606)

C<sup>2</sup> Chart

Analysis



Period	Dividend Received	Capital Appreciation	Total Shareholder Return
Short Term Return	5 Days	+0.020	+9.51%
	10 Days	+0.030	+13.77%
	20 Days	-0.060	-2.83%
Medium Term Return	3 Months	+0.070	+3.64%
	6 Months	+0.137	+6.50%
	1 Year	+0.679	+44.06%
Long Term Return	2 Years	0.950	+74.21%
	3 Years	0.236	+93.79%
	5 Years	0.583	+70.12%
Annualised Return	Annualised	-	+51.95%

### MATRIX CONCEPTS HOLDINGS BERHAD (5236)

C<sup>2</sup> Chart

Analysis



Period	Dividend Received	Capital Appreciation	Total Shareholder Return
Short Term Return	5 Days	+0.050	+3.03%
	10 Days	+0.050	+3.66%
	20 Days	+0.020	+1.19%
Medium Term Return	3 Months	+0.180	+11.34%
	6 Months	+0.310	+22.10%
	1 Year	+0.180	+12.59%
Long Term Return	2 Years	+0.200	+13.33%
	3 Years	+0.553	+40.21%
	5 Years	0.188	+51.61%
Annualised Return	Annualised	-	+8.88%

**Disclaimer:** The information on this page is provided as a service to readers. It does not constitute financial advice and/or any investment recommendations. Past performance is not indicative of future results. We assume no liability for damages resulting from or arising out of the use of such information. It would be best if you did your own research to make your personal investment decisions wisely or consult a licenced investment advisor.





# making places multifunctional



usm.com

## **XTRA**

XTRA FURNITURE SDN BHD  
The Gardens Mall, Mid Valley City, Lot S-236 & 237  
Lingkar Syed Putra, 59200 Kuala Lumpur  
T. +603 2282 9088 | living@xtrafurniture.com | xtrafurniture.com  
📍 XTRAFurniture | 🌐 xtrafurnituremsia

## Price & Total Shareholder Return (as at Yesterday)

Fundamental Analysis

**DEFINITION:** Company is paying out dividend with low or moderate leverage.

**CHART GUIDE:** Total Shareholder Return (TSR) combines share price appreciation and distributions paid to show the total return to the shareholder expressed as a percentage.



ShareInvestor WebPro > Screener > Market Screener (FA & TA) > select BURSA > add criteria

**A. Criteria**

- > click Add Criteria
- Fundamental Analysis Conditions tab >select (i) Dividend Yield (Historical)
- Fundamental Analysis Conditions tab >select (ii) Dividend Payout (Historical)
- Fundamental Analysis Conditions tab >select (iii) Total Debt To Equity
- Fundamental Analysis Conditions tab >select (iv) Total Shareholder Returns
- Fundamental Analysis Conditions tab >select (v) Total Shareholder Returns
- Fundamental Analysis Conditions tab / >select (vi) CAGR of Dividend Per Share

• Fundamental Analysis Conditions tab >select (vii) CAGR of Dividend Per Share

**B. Conditions (Criteria Filters)**

1. Dividend Yield - select (more than) type (1) % for the past select (1) financial year(s)
2. Dividend Payout (Historical) - select (between) type (0.5) to type (1) times for the past select (1) financial year(s)
3. Total Debt to Equity - select (less than) type (1) for the past select (1) financial year(s)
4. Total Shareholder Return - select (more than) type (5) % for the past select (3) financial year(s)
5. Total Shareholder Return - select (more than) type (5) % for the past select (5) financial year(s)

6. CAGR of Dividend Per Share - select (less than) type (30) % for the past select (5) financial year(s)
7. CAGR of Dividend Per Share - select (more than) type (1) % for the past select (5) financial year(s)

- > click Save Template > Create New Template type (Dividend Companies) > click Create
- > click Save Template as > select Dividend Companies > click Save
- > click Screen Now (may take a few minutes)
- > Sort By: Select (Dividend Yield) Select (Desc)
- > Mouse over stock name > Factsheet > looking for Total Shareholder Return

## FORMOSA PROSONIC INDUSTRIES (9172)

C<sup>2</sup> Chart



Period	Dividend Received	Capital Appreciation	Total Shareholder Return
Short Term Return	5 Days	+0.040	+4.40 %
	10 Days	+0.010	+0.36 %
	20 Days	+0.120	+4.33 %
Medium Term Return	3 Months	+0.100	+6.64 %
	6 Months	+0.510	+21.43 %
Long Term Return	1 Year	-0.400	-12.66 %
	2 Years	0.200	-0.716 %
Annualised Return	3 Years	0.340	+38.03 %
	5 Years	0.500	+37.70 %
	Annualised	-	+4.60 %

## 2. AMWAY (M) HOLDINGS BHD (6351)

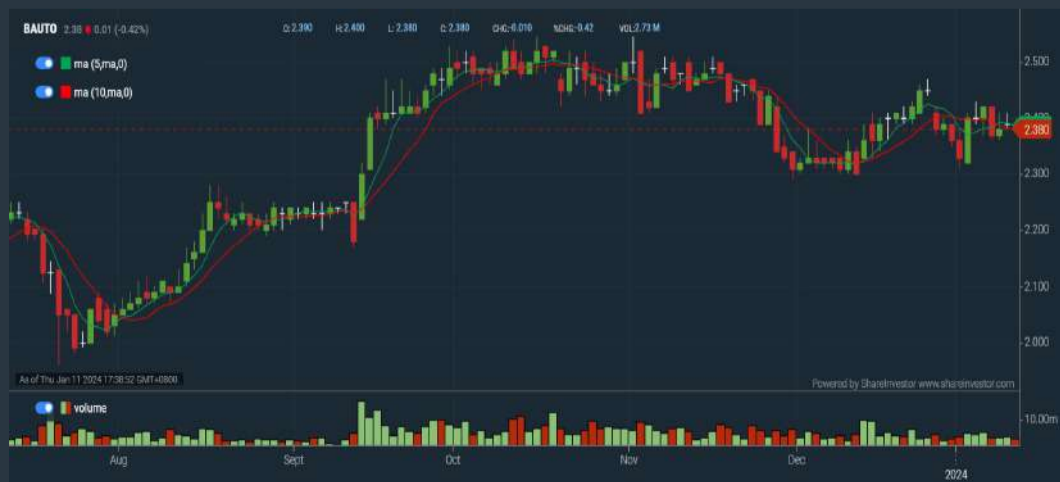
C<sup>2</sup> Chart



Period	Dividend Received	Capital Appreciation	Total Shareholder Return
Short Term Return	5 Days	+0.200	+3.33 %
	10 Days	+0.510	+8.96 %
	20 Days	+0.690	+11.71 %
Medium Term Return	3 Months	+0.900	+16.98 %
	6 Months	+0.900	+16.98 %
Long Term Return	1 Year	+1.100	+21.57 %
	2 Years	+0.910	+16.03 %
Annualised Return	3 Years	0.075	+12.27 %
	5 Years	0.400	+17.99 %
	Annualised	-	+3.36 %

## 3. BERMAZ AUTO BERHAD (5248)

C<sup>2</sup> Chart



Period	Dividend Received	Capital Appreciation	Total Shareholder Return
Short Term Return	5 Days	-0.020	-0.83 %
	10 Days	-	-
	20 Days	+0.020	+0.85 %
Medium Term Return	3 Months	-0.110	-4.42 %
	6 Months	+0.149	+5.68 %
Long Term Return	1 Year	+0.440	+23.19 %
	2 Years	0.023	+0.770 %
Annualised Return	3 Years	0.103	+9.05 %
	5 Years	0.332	+36.08 %
	Annualised	-	+6.35 %

**Disclaimer:** The information on this page is provided as a service to readers. It does not constitute financial advice and/or any investment recommendations. Past performance is not indicative of future results. We assume no liability for damages resulting from or arising out of the use of such information. It would be best if you did your own research to make your personal investment decisions wisely or consult a licenced investment advisor.

Week: 05 January 2024 - 11 January 2024

More Brokers' Call 

AMINVESTMENT BANK <small>... See More</small>	Call	Target Price	Release Date
Spritzer Berhad (7103)	BUY	RM2.27	08 Jan 2024
Bumi Armada Berhad (6793)	BUY	RM0.68	09 Jan 2024
Apex Healthcare Berhad (7090)	HOLD	RM2.64	10 Jan 2024

BIMB SECURITIES SDN BHD <small>... See More</small>	Call	Target Price	Release Date
Gabungan AQRS Berhad (5226)	BUY	RM0.49	10 Jan 2024
Kumpulan Perangsang Selangor Berhad (5843)	TRADING BUY	RM1.25	10 Jan 2024

KENANGA <small>... See More</small>	Call	Target Price	Release Date
Bursa Malaysia Berhad (1818)	UNDERPERFORM	RM6.250	08 Jan 2024
Kerjaya Prospek Group Berhad (7161)	OUTPERFORM	RM1.90	09 Jan 2024
Kelington Group Berhad (0151)	OUTPERFORM	RM3.28	10 Jan 2024
Kumpulan Perangsang Selangor Berhad (5843)	UNDERPERFORM	RM0.45	10 Jan 2024
Telekom Malaysia Berhad (4863)	OUTPERFORM	RM6.76	10 Jan 2024
Bumi Armada Berhad (6793)	MARKET PERFORM	RM0.58	11 Jan 2024
Genting Malaysia Berhad (4715)	MARKET PERFORM	RM2.90	11 Jan 2024

JOB KAYHIAN <small>... See More</small>	Call	Target Price	Release Date
Coastal Contracts Berhad (5071)	BUY	RM2.23	09 Jan 2024
Melewar Industrial Group Berhad (3778)	BUY	RM0.36	09 Jan 2024
Binasat Communications Berhad (0195)	BUY	RM0.38	10 Jan 2024
Kronologi Asia Berhad (0176)	BUY	RM0.52	10 Jan 2024
NationGate Holdings Berhad (0270)	BUY	RM1.83	10 Jan 2024
Pertama Digital Berhad (8532)	BUY	RM3.79	10 Jan 2024

**Disclaimer:** InveSt does not accept any liability whatsoever for any direct, indirect or consequential losses (including loss of profit) or damages that may arise from the use of information or opinions in this publication. The information and opinions in InveSt are not to be considered as an offer to sell or buy any of the securities discussed. Opinions expressed are subject to change without notice. The Brokers may, from time to time, have interests or positions in the securities mentioned. For the full report on each item listed on this page, please visit [https://www.shareinvestor.com/my/brokers\\_call](https://www.shareinvestor.com/my/brokers_call).

**DEFINITION:** Top 9 stocks with Technical Analysis plus Pattern Matching by 60 pre-defined indicators by the system showing a higher probability of bullish sentiment on the share price.



ShareInvestor WebPro > Screener > Predefined TA Screens > select market BURSA > Most Long Signals > click Scan Results or mouse over each company

## HSS ENGINEERS BERHAD (0185.MY)

### HSSEB

Price updated at 11 Jan 2024 17:00

Last: <b>1.060</b>	Change: -	Volume: <b>86,284</b>
	Change (%): -	Range: <b>1.020 - 1.140</b>

TA Scanner Results based on historical data up to 11 Jan 2024

Condition	Signal	Explanation
Bollinger Band: Bullish Long Term Volatility Breakout and Trending	Long	1. Close price above upper bollinger band(33,1). 2. Volume above average volume(50). 3. Average volume(50) is above 300,000.
Bollinger Band: Bullish Short Term Volatility Breakout and Trending	Long	1. Close price above upper bollinger band(33,1). 2. Volume above average volume(10). 3. Average volume(10) is above 300,000.
Bollinger Band: High Above Upper Bollinger Band	Neutral	1. High above upper bollinger band(14,2). 2. Average volume(5) is above 100,000.
Chaikin Volatility: Increasing Chaikin Volatility	Neutral	Chaikin Volatility(10,10) has been increasing for 5 days
DM: Bullish Directional Movement	Long	-DI(14) crossed below +DI(14)
Donchian Channels: High Above Upper Donchian Channels	Long	High crossed above the upper Donchian Channel(14,4)
Volume: 10 Days large value Buy Up trade	Long	1. 150K value Buy Up greater than Sell Down by 20% for 10 days. 2. 50K-100K value Buy Up greater than Sell Down by 20% for 10 days. 3. Average volume(10) is above 1000000

## TH PLANTATIONS BERHAD (5112.MY)

### THPLANT

Price updated at 11 Jan 2024 16:50

Last: <b>0.505</b>	Change: <b>-0.005</b>	Volume: <b>15,935</b>
	Change (%): <b>-0.98</b>	Range: <b>0.500 - 0.510</b>

TA Scanner Results based on historical data up to 11 Jan 2024

Condition	Signal	Explanation
Bollinger Band: Bullish Long Term Volatility Breakout and Trending	Long	1. Close price above upper bollinger band(33,1). 2. Volume above average volume(50). 3. Average volume(50) is above 300,000.
Bollinger Band: Bullish Short Term Volatility Breakout and Trending	Long	1. Close price above upper bollinger band(33,1). 2. Volume above average volume(10). 3. Average volume(10) is above 300,000.
Bollinger Band: High Above Upper Bollinger Band	Neutral	1. High above upper bollinger band(14,2). 2. Average volume(5) is above 100,000.
CCI: Bearish CCI Overbought And Reversing	Short	1. CCI(26) above 100 and CCI(26) 1 day ago increasing for the last 3 days. 2. CCI(26) below CCI(26) 1 day ago
Chaikin Volatility: Increasing Chaikin Volatility	Neutral	Chaikin Volatility(10,10) has been increasing for 5 days
Donchian Channels: High Above Upper Donchian Channels	Long	High crossed above the upper Donchian Channel(14,4)
RSI: Short Term RSI 50 Bullish Crossover	Long	1. RSI(20) crossed above 50 within the last 1 day and RSI(20) 1 day ago below 50 for the last 5 days. 2. Volume above average volume(125). 3. Average volume(5) is above 100,000.
Volume: Consecutive Days Of Increasing Average Volume	Long	1. Average Volume(20) has been increasing over the last 2 weeks. 2. Average volume(20) is above 100000

## ECO WORLD INTERNATIONAL BERHAD (5283.MY)

### EWINT

Price updated at 11 Jan 2024 16:50

Last: <b>0.315</b>	Change: <b>-0.005</b>	Volume: <b>20,516</b>
	Change (%): <b>-1.56</b>	Range: <b>0.315 - 0.325</b>

TA Scanner Results based on historical data up to 11 Jan 2024

Condition	Signal	Explanation
Candlestick: Bullish Engulfing	Long	Bullish: Engulfing
Stochastic: Fast Stochastic Buy Signal	Long	1. Fast Stochastic(15,5) %K crossed above 20. 2. Fast Stochastic(15,5) %K 1 day ago was below 20 for the last 5 days. 3. Average volume(30) is above 50000
Volume: 10 Days large value Buy Up trade	Long	1. 150K value Buy Up greater than Sell Down by 20% for 10 days. 2. 50K-100K value Buy Up greater than Sell Down by 20% for 10 days. 3. Average volume(10) is above 1000000
Volume: 5 Days large value Buy Up trade	Long	1. 150K value Buy Up greater than Sell Down by 20% for 5 days. 2. 50K-100K value Buy Up greater than Sell Down by 20% for 5 days. 3. Average volume(10) is above 1000000
Volume: Consecutive Days Of Increasing Average Volume	Long	1. Average Volume(20) has been increasing over the last 2 weeks. 2. Average volume(20) is above 100000

**Disclaimer:** The information on this page is provided as a service to readers. It does not constitute financial advice and/or any investment recommendations. Past performance is not indicative of future results. We assume no liability for damages resulting from or arising out of the use of such information. It would be best if you did your own research to make your personal investment decisions wisely or consult a licenced investment advisor.

## MESTRON HOLDINGS BERHAD (0207.MY)

### MESTRON

Price updated at 11 Jan 2024 16:58

Last: <b>0.475</b>	Change: <b>+0.015</b>	Volume: <b>326,113</b>
	Change (%): <b>+3.26</b>	Range: <b>0.460 - 0.485</b>

TA Scanner Results based on historical data up to 11 Jan 2024

Condition	Signal	Explanation
Bollinger Band: Bullish Long Term Volatility Breakout and Trending	Long	1. Close price above upper bollinger band(33,1). 2. Volume above average volume(50). 3. Average volume(50) is above 300,000.
Bollinger Band: Bullish Short Term Volatility Breakout and Trending	Long	1. Close price above upper bollinger band(33,1). 2. Volume above average volume(10). 3. Average volume(10) is above 300,000.
Bollinger Band: High Above Upper Bollinger Band	Neutral	1. High above upper bollinger band(14,2). 2. Average volume(5) is above 100,000.
Candlestick: Indecision Doji	Neutral	Indecision: Doji
Parabolic SAR: Bearish Parabolic SAR Reversal	Neutral	1. Parabolic SAR 1 day ago above close price 1 day ago for the last 5 days. 2. Parabolic SAR below close price
Volume: 10 Days large value Buy Up trade	Long	1. 150K value Buy Up greater than Sell Down by 20% for 10 days. 2. 50K-100K value Buy Up greater than Sell Down by 20% for 10 days. 3. Average volume(10) is above 1000000
Volume: 5 Days large value Buy Up trade	Long	1. 150K value Buy Up greater than Sell Down by 20% for 5 days. 2. 50K-100K value Buy Up greater than Sell Down by 20% for 5 days. 3. Average volume(10) is above 1000000
Volume: Consecutive Days Of Increasing Average Volume	Long	1. Average Volume(20) has been increasing over the last 2 weeks. 2. Average volume(20) is above 100000



**SARAWAK CONSOLIDATED IND BERHAD (9237.MY)**

**SCIB**

Price updated at 11 Jan 2024 16:59

Last: <b>1.120</b>	Change: <b>+0.040</b>	Volume: <b>862,616</b>
	Change (%): <b>+3.70</b>	Range: <b>1.080 - 1.140</b>

TA Scanner Results based on historical data up to 11 Jan 2024

Condition	Signal	Explanation
Accumulation Distribution: Bullish Accumulation Distribution	Long	Accumulation distribution increasing for the last 7 days
Bollinger Band: High Above Upper Bollinger Band	Neutral	1. High above upper bollinger band(14,2). 2. Average volume(5) is above 100,000.
Price: New 52 Week High	Long	1. Stock reach a new 52 week high. 2. Average volume(30) is above 50000.
Volume: 10 Days large value Buy Up trade	Long	1. 150K value Buy Up greater than Sell Down by 20% for 10 days. 2. 50K-100K value Buy Up greater than Sell Down by 20% for 10 days. 3. Average volume(10) is above 1000000
Volume: 5 Days large value Buy Up trade	Long	1. 150K value Buy Up greater than Sell Down by 20% for 5 days. 2. 50K-100K value Buy Up greater than Sell Down by 20% for 5 days. 3. Average volume(10) is above 1000000
Williams %R: Bearish Williams %R	Short	1. Williams %R(26) between 0 and -20. 2. Average volume(5) is above 100,000.



**CWG HOLDINGS BERHAD (9423.MY)**

**CWG**

Price updated at 11 Jan 2024 14:13

Last: <b>0.350</b>	Change: -	Volume: <b>233</b>
	Change (%): -	Range: <b>0.350 - 0.355</b>

TA Scanner Results based on historical data up to 11 Jan 2024

Condition	Signal	Explanation
Bollinger Band: High Above Upper Bollinger Band	Neutral	1. High above upper bollinger band(14,2). 2. Average volume(5) is above 100,000.
Candlestick: Bullish Engulfing	Long	Bullish: Engulfing
Donchian Channels: High Above Upper Donchian Channels	Long	High crossed above the upper Donchian Channel(14,4)
MA: Short Term Bullish Moving Average Crossover	Long	MA(10) crossed above MA(15) within the last 1 day.
Volume: Volume Spike	Long	1. Volume is more than 500% above average volume(10). 2. Volume above 200000. 3. Close price above 0.10



**TPC PLUS BERHAD (7176.MY)**

**TPC**

Price updated at 11 Jan 2024 16:24

Last: <b>0.335</b>	Change: <b>-0.005</b>	Volume: <b>885</b>
	Change (%): <b>-1.47</b>	Range: <b>0.335 - 0.345</b>

TA Scanner Results based on historical data up to 11 Jan 2024

Condition	Signal	Explanation
Bollinger Band: High Above Upper Bollinger Band	Neutral	1. High above upper bollinger band(14,2). 2. Average volume(5) is above 100,000.
Candlestick: Bullish Engulfing	Long	Bullish: Engulfing
DM: Bullish Directional Movement	Long	-DI(14) crossed below +DI(14)
Donchian Channels: High Above Upper Donchian Channels	Long	High crossed above the upper Donchian Channel(14,4)
MACD: Bullish MACD Crossover	Long	1. MACD(12,26) diff line crossed above the MACD(12,26) signal line. 2. MACD Histogram(12,26) is above 0.
Parabolic SAR: Bearish Parabolic SAR Reversal	Neutral	1. Parabolic SAR 1 day ago above close price 1 day ago for the last 5 days. 2. Parabolic SAR below close price



**YNH PROPERTY BERHAD (3158.MY)**

**YNHPROP**

Price updated at 11 Jan 2024 16:57

Last: <b>2.720</b>	Change: <b>-0.950</b>	Volume: <b>28,272</b>
	Change (%): <b>-25.89</b>	Range: <b>2.720 - 3.750</b>

TA Scanner Results based on historical data up to 11 Jan 2024

Condition	Signal	Explanation
Bollinger Band: Bullish Lower Bollinger Band Support	Long	1. Low 1 day ago below lower bollinger band(20,2). 2. Close above close 1 day ago. 3. Average volume(5) is above 100,000.
Bollinger Band: Low Below Lower Bollinger Band	Neutral	1. Low below lower bollinger band(14,2). 2. Average volume(5) is above 100,000.
Chaikin Volatility: Increasing Chaikin Volatility	Neutral	Chaikin Volatility(10,10) has been increasing for 5 days
Price: New 52 Week Low	Short	1. Stock reach a new 52 week low. 2. Average volume(30) is above 50000.
Volume: 10 Days large value Buy Up trade	Long	1. 150K value Buy Up greater than Sell Down by 20% for 10 days. 2. 50K-100K value Buy Up greater than Sell Down by 20% for 10 days. 3. Average volume(10) is above 1000000
Volume: 5 Days large value Buy Up trade	Long	1. 150K value Buy Up greater than Sell Down by 20% for 5 days. 2. 50K-100K value Buy Up greater than Sell Down by 20% for 5 days. 3. Average volume(10) is above 1000000
Volume: Consecutive Days Of Increasing Average Volume	Long	1. Average Volume(20) has been increasing over the last 2 weeks. 2. Average volume(20) is above 100000



**SERN KOU RESOURCES BERHAD (7180.MY)**

**SERNKOU**

Price updated at 11 Jan 2024 16:50

Last: <b>0.800</b>	Change: <b>-0.030</b>	Volume: <b>36,562</b>
	Change (%): <b>-3.61</b>	Range: <b>0.785 - 0.830</b>

TA Scanner Results based on historical data up to 11 Jan 2024

Condition	Signal	Explanation
Accumulation Distribution: Bullish Accumulation Distribution	Long	Accumulation distribution increasing for the last 7 days
Bollinger Band: Bearish Upper Bollinger Band Resistance	Short	1. High 1 day ago above upper bollinger band(20,2). 2. Close below close 1 day ago. 3. Average volume(5) is above 100,000.
Candlestick: Bearish Harami	Short	Bearish: Harami
Price: New 52 Week High	Long	1. Stock reach a new 52 week high. 2. Average volume(30) is above 50000.
Volume: 10 Days large value Buy Up trade	Long	1. 150K value Buy Up greater than Sell Down by 20% for 10 days. 2. 50K-100K value Buy Up greater than Sell Down by 20% for 10 days. 3. Average volume(10) is above 1000000
Volume: 5 Days large value Buy Up trade	Long	1. 150K value Buy Up greater than Sell Down by 20% for 5 days. 2. 50K-100K value Buy Up greater than Sell Down by 20% for 5 days. 3. Average volume(10) is above 1000000
Williams %R: Bearish Williams %R	Short	1. Williams %R(26) between 0 and -20. 2. Average volume(5) is above 100,000.

**Disclaimer:** The information on this page is provided as a service to readers. It does not constitute financial advice and/or any investment recommendations. Past performance is not indicative of future results. We assume no liability for damages resulting from or arising out of the use of such information. It would be best if you did your own research to make your personal investment decisions wisely or consult a licenced investment advisor.

# MALAYSIA'S GDP COULD GROW 4.8% OR EVEN REACH 5% IN 2024 - KSI STRATEGIC INSTITUTE

**A**ccording to KSI Strategic Institute For Asia Pacific economic adviser Dr Anthony Dass, Malaysia's GDP could grow by 4.8% or even reach 5.0%. Besides domestic challenges, Malaysia being an open economy, global politics, ongoing geopolitical issues and economic risks remain vulnerable to the GDP. Yet, the economy would find its way up and probably outperform expectations.

In their regional report titled [KSINSIGHTS GLOBAL OUTLOOK 2024](#), (please click the link for the full report) he states that rising real incomes would be one key driver. Cooling inflation to settle at 2.6% in 2024 would improve households' wallets. Fuel subsidy rationalisation and the adjustment in fuel prices would be gradual to mitigate the impact on inflation. Labour market to remain resilient from favourable business sentiments. The unemployment rate should be around 3.3%. Real wage growth would be around 2.5% -3.5%.

The gig economy's popularity is rising. Strong momentum is due to growing digitalisation and connectivity in Malaysia. Widespread use of smartphones and the availability of high-speed internet have made it easier for individuals to access gig platforms and businesses to leverage gig workers. About 40% of the workforce and 25% of the labour force are in this sector.

Interest rates are expected to remain stable in 2024 and remain above the inflation rate. OPR would be at 3.00%. And there is unlikely any indication towards lowering the interest rate in 2024 as the ringgit should strengthen against the US Dollar and provide some cushion on import costs. That means savers will be rewarded for their prudence. They earn positive real returns. Borrowers need to carefully weigh capital costs.

Mortgage rates based on base lending rate/base financing rate is 6.85% per annum. It should remain stable as OPR is unlikely to change in 2024. It will improve the outlook for the housing market which has shown signs of life recently in residential real estate. Each time the mortgage interest rates change by 25bps, the monthly instalment will change by around RM77.

Fiscal support to the economy through development expenditure allocation of RM90 billion in Budget 2024. Industrial development, green investment, road construction and maintenance, public infrastructure and utilities, flood mitigation projects, building of schools and public housing development are the focus areas. Higher private investment growth in 2024. There would be some realisation from the approved investments averaging RM287 billion per year in 2021-2022 and RM225 billion in January-September 2023. Both FDI and DDI will benefit from the implementation of the New Industrial Master Plan (NIMP) 2030, the National Energy Transition Roadmap (NETR) and the Mid-Term Review of the 12th Malaysia Plan (2021-2025).

Benefit from the On-going major infrastructure projects – Klang Valley Light Rail Transit 3 (KVLRT3); East Coast Rail Link (ECRL); Pan Borneo Highway (PBH); Johor Bharu-Singapore Rail Transit System (JB-SG RTS); MyDIGITAL 5G], and the upcoming and potential new major infrastructure projects – Klang Valley Mass Rapid Transit 3 (KVMRT3); five additional stations for KVLRT3; Bayan Lepas LRT; Penang and Johor Bus Rapid Transits (BRT); Subang, Penang and Tawau Airports expansions; new Kota Kinabalu (Sabah) International Airport; Sarawak-Peninsular Malaysia Submarine Power Cable; as well as MYR11.8b for nationwide flood mitigation, Investors' confidence regained following the conclusion of state elections.

Malaysia is on the radar screen from the reversing cyclical downturn of the ICT/semiconductor powered by AI chips, the end of the inventory correction and the increase in government incentives. It would benefit from the New Asian Tiger – Japan, South Korea and Singapore, stand to benefit from shifting geopolitics and domestic catalysts. The semiconductor industry rebound will propel the Malaysian economy.

MADANI Economy, 12MP MTR, NIMP 2030, NETR and Budget 2024 policy frameworks are designed to boost competitiveness and productivity. Greater focus in 2024 to roll out the various policy frameworks. Besides the cyclical growth, emphasis is on new product development, automation, digitalisation, innovation, commercialisation, people, export market expansion, green economy, and ESG. The focus is on high-impact high-value industries, low carbon/renewable energy, EVs, sustainability, domestic-driven investments, logistics, services, halal, food security, smart farming, construction/infrastructure, and MSMEs.

High-Growth High-Value blueprint for technology and digital-based industries to be launched in February 2024. The blueprint would



include intensifying the development of start-ups and attracting global technology companies to Malaysia. It will complement two other blueprints for the other HGHV industries which have been launched – NETR for the energy transition-based industry, and NIMP2030 for the E&E industry.

Potential Memorandum of Understanding (MoU) between Malaysia and Singapore on the Johor-Singapore Special Economic Zone (SEZ) would further enhance and boost the economic activities. It would strengthen the ecosystem of the Iskandar development region; greater flows of investments/capital, goods and people; corporations/ collaborations in areas like RE, tourism, environment, innovation, education and finance; and bodes well for industries/sectors.

Malaysian banks had one of the highest proportions of credit exposure to the real estate sector in Asia-Pacific, with the mortgages, property and construction sectors accounting for just over half of total loans. However, the financial institutions handled interest-rate risks well. Liquidity conditions have eased. The banks are unlikely to face difficulties in accessing deposit and wholesale funding. Stable interest rates and a healthy economy would keep the real estate market favourable.

Strong financing conditions would continue to support GDP. Loan growth would be around 5% in 2024. GDP growth is projected at 4.4% in 2023 and 4.8% in 2024. BNM is expected to maintain the OPR at 3.00% in 2024 and 2025. Gradual appreciation of the ringgit against the US Dollar, reducing interest rate differential, stable inflation environment and sustained economic growth would provide breathing space for BNM to maintain the policy rate at 3.00%.

# MALAYSIA'S PALM OUTPUT TO IMPROVE AMID BETTER LABOUR CONDITIONS — MPOB

**A**ccording to Malaysian Palm Oil Board (MPOB) director-general Ahmad Parveez Ghulam Kadir, the country's palm oil production is expected to improve this year as labour shortage eases. He was speaking at the annual Palm Oil Economic Review & Outlook Seminar 2024.

Output in Malaysia, the world's second-largest producer should come in at 18.75 million metric tonnes, while stocks are seen at 1.95 million metric tonnes this year. For 2024, the labour situation is expected to improve but the concerns on availability are still there. While 2023 showed a mixed performance, most key indicators are expected to improve this year.

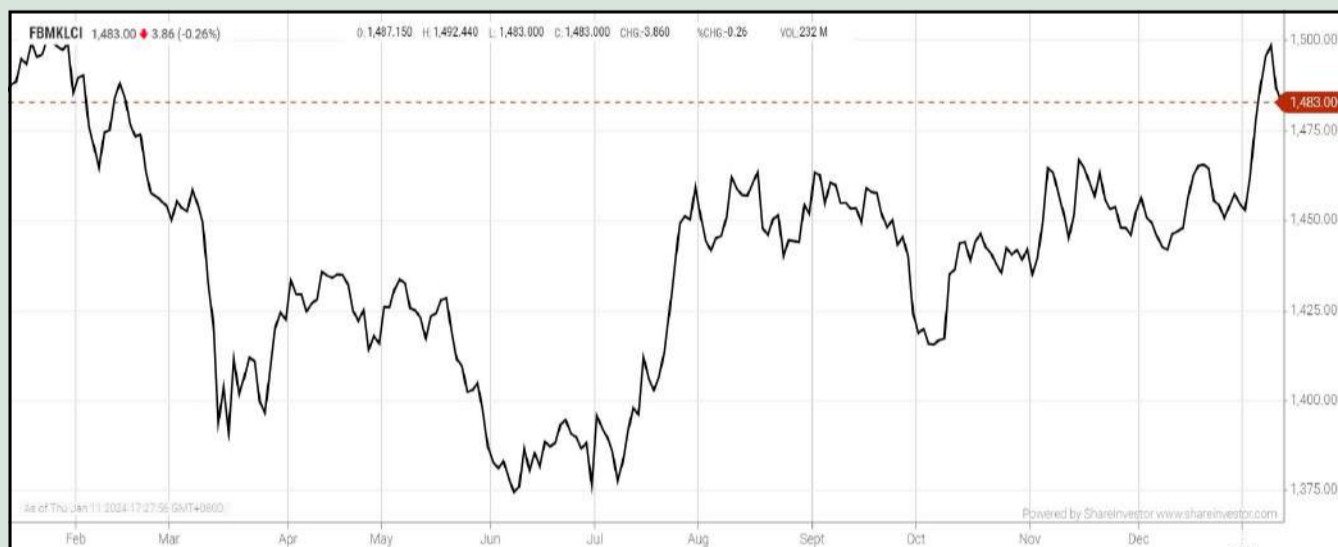
Malaysia's palm oil sector, which relies on foreign workers for 70% of its plantation workforce, saw a severe labour crunch in recent years, in part due to the Covid-19 pandemic. Labour shortages started to ease in 2023 as the arrival of migrant workers picked up, but plantation firms and analysts have raised concerns about potential disruptions to labour supply.

Exports are seen at 15.6 million tonnes versus 15.1 million tonnes last year, while the price of crude palm oil should range between RM3,900-RM4,200 per tonne. Malaysia's palm oil stocks are expected to be below two million tonnes this year, which should stabilise prices.

But the El Nino weather phenomenon, which brought dryness to large parts of Asia last year, is forecast to continue into the first half of 2024, threatening global palm oil production and prices.

## EYE ON THE MARKETS

On Thursday (11 Jan), the Ringgit closed at 4.6420 against the USD and 3.4917 to the Sing Dollar. On Monday (08 Jan), the FBM KLCI opened at 1488.60. As at Thursday (11 Jan) 5:00pm, the FBM KLCI closed down 5.60 points at 1483.00. Over in US, the overnight Dow Jones Industrial Average closed up 15.29 points (+0.04%) to 37,711.02 whilst the NASDAQ added 27.86 points (+0.17%) to 16,820.90.



KLCI 1 Year Chart

## SHAREINVESTOR MARKET DATA PLATFORMS



**SHAREINVESTOR  
STATION**  
 Advanced Charting Software  
 (8 Markets)

**SHAREINVESTOR  
WEBPRO**  
 Browser-Based Market Data  
 Analytics Platform



## Over 5 trading days



ShareInvestor WebPro ([www.shareinvestor.com/my](http://www.shareinvestor.com/my))

1. Price > Stock Prices
2. Select Market: NASDAQ / NYSE / IDX / SET / HKEX / SGX (One bourse at a time)
3. select Stocks Tab
4. select Ranking Top Gainers or Top Losers (Over 5 Trading Days)
5. Mouse over Column Layout > select Edit Customs > select Name > select Last Done Price > select 5 Days Change > select 52 Weeks High > select 52 Weeks Low > Mouse Over Column Layout > select Custom

### NASDAQ (USD)

#### Top Gainers

Name	Last Done	Change Over 5 Days	52 Weeks High	52 Weeks Low
BOOKING HOLDINGS INC	3,552.280	+132.340	3,580.620	2,179.325
MERCADOLIBRE INC	1,591.680	+72.300	1,660.000	896.310
NVIDIA CORP	548.220	+68.240	543.250	154.720
SUPER MICRO COMPUTER INC	343.310	+54.510	357.000	69.020
BROADCOM INC	1,099.980	+50.970	1,151.820	549.990

#### Top Losers

Name	Last Done	Change Over 5 Days	52 Weeks High	52 Weeks Low
MICROSTRATEGY	536.180	-119.630	727.770	169.995
JIN MEDICAL INTERNATIONAL LTD	78.000	-48.890	509.870	4.840
WINMARK CORPORATION	371.010	-19.260	451.300	244.070
ARGENX SE SPON ADR EACH REP 1 ORD SHS	381.270	-7.450	550.760	327.725
FIVE BELOW INC	190.050	-14.910	220.190	144.570

### NYSE (USD)

#### Top Gainers

Name	Last Done	Change Over 5 Days	52 Weeks High	52 Weeks Low
NVR INC	7,242.240	+329.530	7,191.630	4,794.320
FAIR ISAAC CORP	1,214.840	+97.380	1,200.340	584.440
CHIPOTLE MEXICAN GRILL	2,276.570	+63.770	2,348.415	1,470.050
SERVICENOW INC	726.460	+54.590	720.680	383.210
DECKERS OUTDOOR CORP	703.700	+31.480	723.420	395.905

#### Top Losers

Name	Last Done	Change Over 5 Days	52 Weeks High	52 Weeks Low
BERKSHIRE HATHAWAY INC	551,695.000	-2,605.000	566,569.970	442,363.500
TEXAS PACIFIC LAND CORPORATION	1,508.420	-42.080	2,151.160	1,266.210
BOEING CO	222.660	-26.340	267.540	176.250
BIGLARI HOLDINGS INC	801.010	-13.680	1,058.500	700.000
MARKEL GROUP INC	1,421.970	-13.160	1,560.000	1,186.560

### IDX (Rupiah)

#### Top Gainers

Name	Last Done	Change Over 5 Days	52 Weeks High	52 Weeks Low
HOTEL SAHID JAYA INTERNATIONAL	2,380.000	+1,595.000	3,620.000	625.000
AMMAN MINERAL INTERNASIONAL TBK	7,300.000	+875.000	8,350.000	1,700.000
METROPOLITAN KENTJ	27,750.000	+775.000	38,100.000	25,550.000
ADIRA DINAMIKA MULTI FINANCE TBK	11,650.000	+675.000	13,250.000	8,875.000
MD PICTURES TBK	5,025.000	+645.000	5,100.000	610.000

#### Top Losers

Name	Last Done	Change Over 5 Days	52 Weeks High	52 Weeks Low
DCI INDONESIA TBK	40,000.000	-2,700.000	59,050.000	32,850.000
BARITO RENEWABLES ENERGY TBK	5,050.000	-2,475.000	8,200.000	975.000
CHANDRA ASRI PETROCHEMICAL TBK	3,710.000	-2,190.000	6,125.000	1,995.000
PETROSEA	4,810.000	-865.000	7,650.000	2,810.000
INDOINTERNET TBK	4,480.000	-620.000	11,550.000	3,300.000

### SET (Thai Baht)

#### Top Gainers

Name	Last Done	Change Over 5 Days	52 Weeks High	52 Weeks Low
OHTL	440.000	+20.000	546.000	416.000
STANLY	210.000	+18.000	226.000	171.500
BH	238.000	+14.000	272.000	204.000
GYT	193.000	+7.000	212.000	178.000
CHOTI	129.000	+6.000	177.500	112.000

#### Top Losers

Name	Last Done	Change Over 5 Days	52 Weeks High	52 Weeks Low
SCC	289.000	-14.000	359.000	282.000
KBANK	129.000	-5.500	157.500	121.500
BBL	149.500	-5.000	175.000	147.500
SAPPE	87.250	-5.000	100.000	37.000
NEW	105.000	-5.000	210.000	75.250

### HKEX (HKD)

#### Top Gainers

Name	Last Done	Change Over 5 Days	52 Weeks High	52 Weeks Low
TRIP COM GROUP LTD	293.600	+6.600	330.200	240.600
DEKON FOOD AND AGRICULTURE GROUP	60.550	+6.050	62.000	35.000
SHANGHAI CHICMAX COSMETIC CO LTD	31.750	+5.100	35.000	18.380
SICHUAN KELUN-BIOTECH BIOPHARMACEUT	106.500	+4.500	108.000	60.600
IMMUNEONCO BIOPHARMACEUTICALS (SHAN)	28.000	+4.200	32.150	18.600

#### Top Losers

Name	Last Done	Change Over 5 Days	52 Weeks High	52 Weeks Low
YUM CHINA HOLDINGS INC	303.200	-33.400	514.500	296.600
ZTO EXPRESS (CAYMAN) INC	150.400	-12.800	236.400	149.800
TENCENT HOLDINGS LIMITED	287.400	-11.400	416.600	263.600
LI AUTO INC	130.700	-9.400	185.500	80.100
TENCENT HOLDINGS LIMITED	264.400	-8.800	342.000	243.000

### SGX (SGD)

#### Top Gainers

Name	Last Done	Change Over 5 Days	52 Weeks High	52 Weeks Low
GREAT EASTERN	18.170	+0.390	19.240	16.850
VENTURE	13.670	+0.260	18.750	11.360
UOB	28.330	+0.250	31.000	26.820
JMH USD	40.730	+0.240	54.890	38.370
SEMBCORP IND	5.470	+0.220	6.100	3.309

#### Top Losers

Name	Last Done	Change Over 5 Days	52 Weeks High	52 Weeks Low
AMTD IDEA OV	10.000	-2.930	12.950	10.000
NIO Inc. USD OV	7.570	-0.790	15.780	7.070
SHANGRI-LA HKD	5.180	-0.300	8.400	4.890
AZEUS	8.350	-0.150	9.190	7.400
TJ DARENTANG USD	1.970	-0.100	2.440	1.050

# A WRAP-UP OF 2023

**O**n 29 December 2023, Bursa Malaysia wrapped up the year on a muted note, with the benchmark index closing lower at 1,454.66 points compared to 1,488.54 points on the first-day of opening last year. Throughout the year, the performance of FBMKLCI was weighed by persistent selling pressure, with significant outflow of funds recorded as a result of various rate hikes in the United States. Despite the weakness in the local stock market, the overall IPO market continued to be robust, with 32 new listings, raising RM3.55 billion, compared to 35 IPOs that raised RM3.27 billion in 2022.

Meanwhile, 2023 was a record year for MSWG as we attended a record-high number of general meetings of 531, representing a marked increase of 16.2% year-on-year from 457 general meetings attended in 2022. Of the 531 meetings, 424 were AGMs, 105 were EGMs and 2 were court-convened meetings. Virtual platforms remain the preferred mode for PLCs to conduct their meetings, with about 366 (69%) meetings hosted virtually. Meanwhile, physical and hybrid meetings made up 162 (30.5%) and 3 (0.5%) of the total meetings attended, respectively.

As the COVID-19 pandemic subsided, we saw more physical meetings held compared to 2022. MSWG's preference remains for hybrid AGMs and, if not, physical AGMs. For AGMs, MSWG corporate representatives assess how well a PLC conducts its meeting in terms of timeliness,

registration process, conduct of chairman, Q&A session, directors' attendance, poll voting process etc. Our tabulation showed 21 PLCs, primarily large-cap companies, scored 90% and above in their conduct of AGMs. Meanwhile, 103 companies scored between 80% and 89% in the way they conduct AGM. Regarding the ratio of women directors in boardrooms, MSWG found 129 PLCs or 30.4% of its monitoring portfolio, have 33% or more women sitting on their boards. Berjaya Corporation Berhad is the only PLC with a whole board of women directors. Second on the list was Innature Berhad, with 80% of directors being women.

## **SOME OBSERVATIONS FROM MEETINGS**

### **• CONDUCT OF MEETINGS**

One of the common issues MSWG encountered in general meetings is related to the conduct of Q&A sessions. There were instances of companies skipping the session despite receiving our questions way before the meeting. Instead, they explained that they would respond to MSWG questions privately after the conclusion of the meeting.

This defeats the objective of a general meeting, as questions or concerns dealt with after the meeting would not be documented in the meeting minutes. Meeting minutes are a record that shareholders can call upon to exercise checks and balances on the board and management. They serve as legal documents that provide the management and board of directors with a sense of accountability to shareholders and regulators, as proper documentation of meeting minutes is a key corporate governance requirement.

As for virtual meetings, some PLCs presented their answers to shareholders' questions on screen for just a few seconds, giving shareholders little time to read and digest the answers. This does not facilitate effective/productive discourse between shareholders and the board/management.

## • **SHAREHOLDERS' QUESTIONS**

Questions on door gifts, vouchers, or credit reload easily top the list of shareholders' favorite questions during general meetings. PLCs with a substantial number of shareholders often dedicate enormous time to responding to questions like this. Similarly, some minority shareholders were more concerned about door gifts despite the company they invested in was fighting uphill battles for survival. We encourage shareholders to engage in meaningful conversation as AGM is a once-a-year event.

## • **CORPORATE GOVERNANCE ISSUES**

Meanwhile, we observed some interesting developments among PLCs. A PLC was found that it routinely entered into new agreements for acquisitions and paid more than half of the purchase consideration as refundable deposits. However, it subsequently aborted and terminated the deals. As the deposits were not placed in an escrow account, it faced difficulties recovering them. It decided to pursue legal action to recover the said amount.

If it is unable to recover the deposits, the Company must impair the amount to reflect the state of its balance sheet truly. At the same time, its external auditor exercised professional scepticism on the multiple ventures and acquisitions the Company entered earlier. The auditor was also concerned about ongoing litigation to recover the deposits paid. Another corporate governance issue brought up by MSWG in 2023 pertained to the appointment of two new independent directors upon the retirement of two long serving INEDs.

In response to MSWG queries on the relationship between the new and retired directors by the same family name, the Company confirmed that the new directors are close family members of the two recently retired long-serving INEDs, respectively. The Board stressed that it confirmed both directors are independent of management and are free from any business or other relationship that could interfere with their exercise of

independent judgement and the ability to act in good faith and in the company's best interests.

The instances whereby an independent director, upon the end of his or her tenure, is replaced by a family member, giving rise to a scenario dubbed as "independence can be inherited". While such an appointment is not an outright breach of regulatory requirements, it may cast serious doubts on the ability of the director to exercise objective judgment. Independent directors elected in the circumstances above are likely to have a sense of loyalty to the controlling shareholders or the directors who have nominated them, thus potentially impairing their "independence of mind".

In short, 2023 was a fruitful year for MSWG as more companies were on our radar. The team looks forward to continuing to advocate corporate governance through minority shareholder activism.

By MSWG Team

This article appeared in the The Observer, a weekly newsletter published by The Minority Shareholders Watch Group (MSWG) and reproduced here with their permission. Do follow MSWG's Twitter account at @MSWGMalaysia and share your thought on their tweets from time to time.



Learn how to identify Hot Stocks using Technical Analysis (TA) and Fundamental Analysis (FA)

Scan me



Via email, every Friday.

**SIGN UP FOR Invest NOW IT'S FREE!!!**

[Click here](#)

Get market moving news and analyses. Regular columns include **Behind The Action** and **From The Observer**

- Leaderboard
- Shariah Hot Stocks
- Shariah Momentum Up Stocks
- Non Shariah Hot Stocks
- Up Trending Stocks
- Growth Stocks
- Dividend Stocks
- Long Companies
- Insider Activity
- Investor Relations
- Regional Markets





# INSIDER ACTIVITY

FRIDAY JANUARY 12 2024

**DEFINITION:** Insider Activity shows the trades made by substantial shareholders or directors of the company. Purchases by the directors and company share buyback may indicate the share price is undervalued and brings confidence to the price trend of the share price.



ShareInvestor WebPro > Fundamental > Insider Trades > click Search tab > Select Bursa > click Stock name > scroll up and leave at <Select Counter> Type Date Range for Announcement Date > click Search

Notice Period is 31st Dec – 6th Jan 2024

Effective Change Date	Stock Name	Buyer/ Seller Name [Classification]	Bought / (Sold) ['000]	No. of Shares After Trade ['000]	
			Total	Total	% Held
02 JAN 2024 - 03 JAN 2024	3A	MR TEO KWEE HOCK [SSH]	-253	50,591	10.346
29 DEC 2023 - 29 DEC 2023	AEMULUS	MR NG SANG BENG [DIR/CEO]	300	126,104	18.818
29 DEC 2023 - 29 DEC 2023	AEMULUS	MR NG SANG BENG [SSH]	300	126,104	18.818
29 DEC 2023 - 29 DEC 2023	AIRPORT	EMPLOYEES PROVIDENT FUND BOARD [SSH]	-1,143	94,790	5.681
28 DEC 2023 - 28 DEC 2023	AIRPORT	EMPLOYEES PROVIDENT FUND BOARD [SSH]	-621	95,933	5.749
02 JAN 2024 - 03 JAN 2024	AJIYA	CHIN HIN GROUP BERHAD [SSH]	1,159	159,222	53.979
02 JAN 2024 - 03 JAN 2024	AJIYA	DATIN SERI WONG MEE LENG [SSH]	1,159	159,222	53.979
02 JAN 2024 - 03 JAN 2024	AJIYA	DATUK SERI CHIAU BENG TEIK JP [DIR/CEO]	1,159	159,222	53.979
02 JAN 2024 - 03 JAN 2024	AJIYA	DATUK SERI CHIAU BENG TEIK JP [SSH]	1,159	159,222	53.979
02 JAN 2024 - 03 JAN 2024	AJIYA	DIVINE INVENTIONS SDN BHD [SSH]	1,159	159,222	53.979
02 JAN 2024 - 03 JAN 2024	AJIYA	MR CHIAU HAW CHOON [DIR/CEO]	1,159	159,222	53.979
02 JAN 2024 - 03 JAN 2024	AJIYA	MR CHIAU HAW CHOON [SSH]	1,159	159,222	53.979
02 JAN 2024 - 03 JAN 2024	AJIYA	PP CHIN HIN REALTY SDN BHD [SSH]	1,159	159,222	53.979
02 JAN 2024 - 02 JAN 2024	AXIATA	EMPLOYEES PROVIDENT FUND BOARD [SSH]	2,000	1,635,717	17.82
04 JAN 2024 - 04 JAN 2024	BAHVEST	MR CHONG TZU KHEN [DIR/CEO]	50	1,750	0.141
29 DEC 2023 - 29 DEC 2023	BAUTO	EMPLOYEES PROVIDENT FUND BOARD [SSH]	-897	157,201	13.464
28 DEC 2023 - 28 DEC 2023	BAUTO	EMPLOYEES PROVIDENT FUND BOARD [SSH]	1,082	158,098	13.54
29 DEC 2023 - 29 DEC 2023	BJFOOD	BERJAYA CORPORATION BERHAD [SSH]	9,448	992,850	56.036
29 DEC 2023 - 29 DEC 2023	BJFOOD	BERJAYA GROUP BERHAD [SSH]	9,031	917,030	51.756
29 DEC 2023 - 29 DEC 2023	BJFOOD	DATO' SYDNEY LAWRANCE QUAYS [DIR/CEO]	43	4,333	0.245
29 DEC 2023 - 29 DEC 2023	BJFOOD	DATO' SERI DIRAJA TUNKU SHAZUDDIN BIN TUNKU SALLEHUDDIN [DIR/CEO]	6	586	0.033
29 DEC 2023 - 29 DEC 2023	BJFOOD	JUARA SEJATI SDN BHD [SSH]	1,211	127,206	7.18
29 DEC 2023 - 29 DEC 2023	BJFOOD	MR TAN THIAM CHAI [DIR/CEO]	20	2,044	0.115
04 JAN 2024 - 04 JAN 2024	BORNOIL	DATUK JOSEPH LEE YOK MIN @ AMBROSE [DIR/CEO]	5,310	2,071,489	17.274
04 JAN 2024 - 04 JAN 2024	BORNOIL	DATUK JOSEPH LEE YOK MIN @ AMBROSE [SSH]	5,310	764,951	17.274
03 JAN 2024 - 03 JAN 2024	BORNOIL	DATUK JOSEPH LEE YOK MIN @ AMBROSE [DIR/CEO]	2,500	2,066,179	17.23
03 JAN 2024 - 03 JAN 2024	BORNOIL	DATUK JOSEPH LEE YOK MIN @ AMBROSE [SSH]	2,500	760,841	17.23
03 JAN 2024 - 03 JAN 2024	BPLANT	LEMBAGA TABUNG ANGKATAN TENTERA [SSH]	3,179	2,068,544	92.346
29 DEC 2023 - 29 DEC 2023	CHHB	PUAN SRI TAN BEE HONG [SSH]	-13,280	135,645	45.712
29 DEC 2023 - 29 DEC 2023	CHHB	TAN SRI LEE KIM TIONG @ LEE KIM YEW [SSH]	-13,280	135,645	45.712
28 DEC 2023 - 28 DEC 2023	CHHB	COUNTRY HEIGHTS INTERNATIONAL SDN. BHD. [SSH]	-2,500	20,832	7.02
28 DEC 2023 - 28 DEC 2023	CHHB	PUAN SRI TAN BEE HONG [SSH]	-2,500	148,924	50.187
28 DEC 2023 - 28 DEC 2023	CHHB	TAN SRI LEE KIM TIONG @ LEE KIM YEW [SSH]	-2,500	148,924	50.187
29 DEC 2023 - 29 DEC 2023	CIMB	EMPLOYEES PROVIDENT FUND BOARD [SSH]	-10,269	1,468,030	13.76
02 JAN 2024 - 02 JAN 2024	CIMB	KUMPULAN WANG PERSARAAN (DIPERBADANKAN) [SSH]	1,514	697,763	6.54
28 DEC 2023 - 28 DEC 2023	CIMB	EMPLOYEES PROVIDENT FUND BOARD [SSH]	-34,187	1,478,298	16.86
29 DEC 2023 - 29 DEC 2023	CIMB	KUMPULAN WANG PERSARAAN (DIPERBADANKAN) [SSH]	3,251	696,249	6.53
27 DEC 2023 - 27 DEC 2023	CIMB	EMPLOYEES PROVIDENT FUND BOARD [SSH]	-13,571	1,512,485	14.18
28 DEC 2023 - 28 DEC 2023	CLMT	EMPLOYEES PROVIDENT FUND BOARD [SSH]	884	416,875	15.212
02 JAN 2024 - 02 JAN 2024	CLOUDPT	SURESH NARAIN SINGH SIDHU [DIR/CEO]	-150	150	0.028
02 JAN 2024 - 02 JAN 2024	CTOS	ABRDN HOLDINGS LIMITED (FORMERLY KNOWN AS ABERDEEN ASSET MANAGEMENT PLC) [SSH]	282	150,615	6.52
02 JAN 2024 - 02 JAN 2024	CTOS	ABRDN MALAYSIA SDN BHD [SSH]	282	148,833	6.443
02 JAN 2024 - 02 JAN 2024	CTOS	ABRDN PLC [SSH]	282	150,615	6.52
29 DEC 2023 - 29 DEC 2023	CTOS	ABRDN HOLDINGS LIMITED (FORMERLY KNOWN AS ABERDEEN ASSET MANAGEMENT PLC) [SSH]	855	150,333	6.508
29 DEC 2023 - 29 DEC 2023	CTOS	ABRDN MALAYSIA SDN BHD [SSH]	855	148,551	6.431
29 DEC 2023 - 29 DEC 2023	CTOS	ABRDN PLC [SSH]	855	150,333	6.508
28 DEC 2023 - 28 DEC 2023	CTOS	ABRDN HOLDINGS LIMITED (FORMERLY KNOWN AS ABERDEEN ASSET MANAGEMENT PLC) [SSH]	769	149,478	6.471
28 DEC 2023 - 28 DEC 2023	CTOS	ABRDN MALAYSIA SDN BHD [SSH]	769	147,695	6.394
28 DEC 2023 - 28 DEC 2023	CTOS	ABRDN PLC [SSH]	769	149,478	6.471
28 DEC 2023 - 28 DEC 2023	D&O	EMPLOYEES PROVIDENT FUND BOARD [SSH]	270	78,253	6.319
29 DEC 2023 - 29 DEC 2023	DATAPRP	TAN SRI MUHAMMAD IKMAL OPAT BIN ABDULLAH [SSH]	-16,000	58,475	7.924
29 DEC 2023 - 29 DEC 2023	DATAPRP	WARDAH COMMUNICATION SDN BHD [SSH]	-16,000	58,000	7.859
29 DEC 2023 - 29 DEC 2023	DATAPRP	WIDAD BUSINESS GROUP SDN BHD [SSH]	-16,000	58,475	7.923
29 DEC 2023 - 29 DEC 2023	DLADY	CITIGROUP NOMINEES (TEMPATAN) SDN BHD EMPLOYEES PROVIDENT FUND BOARD [SSH]	32	5,271	8.236
28 DEC 2023 - 28 DEC 2023	DLADY	CITIGROUP NOMINEES (TEMPATAN) SDN BHD EMPLOYEES PROVIDENT FUND BOARD [SSH]	12	5,239	8.185
29 DEC 2023 - 29 DEC 2023	ECONBHD	EMPLOYEES PROVIDENT FUND BOARD [SSH]	-2,404	77,249	5.45
28 DEC 2023 - 28 DEC 2023	ECONBHD	EMPLOYEES PROVIDENT FUND BOARD [SSH]	-2,303	79,653	5.619
02 JAN 2024 - 02 JAN 2024	EDEN	KOPERASI BELIA ISLAM MALAYSIA BERHAD [SSH]	-4,936	45,194	9.837

Notice Period is 31st Dec – 6th Jan 2024

Effective Change Date	Stock Name	Buyer/ Seller Name [Classification]	Bought / (Sold) ['000]	No. of Shares After Trade ['000]	
			Total	Total	% Held
02 JAN 2024 - 02 JAN 2024	EG-WD	DATO' KANG PANG KIANG [DIR/CEO]	33,479	33,479	14.872
02 JAN 2024 - 02 JAN 2024	EG-WD	MR LEE KEAN TEONG [DIR/CEO]	16	16	0.007
02 JAN 2024 - 02 JAN 2024	EG-WD	MR ONG LYE SOON [DIR/CEO]	625	625	0.278
29 DEC 2023 - 29 DEC 2023	F&N	EMPLOYEES PROVIDENT FUND BOARD [SSH]	-6	43,169	11.77
28 DEC 2023 - 28 DEC 2023	F&N	EMPLOYEES PROVIDENT FUND BOARD [SSH]	-2	43,176	11.772
02 JAN 2024 - 02 JAN 2024	FFB	ABRDN HOLDINGS LIMITED (FORMERLY KNOWN AS ABERDEEN ASSET MANAGEMENT PLC) [SSH]	604	121,400	6.485
02 JAN 2024 - 02 JAN 2024	FFB	ABRDN PLC [SSH]	604	121,400	6.485
29 DEC 2023 - 29 DEC 2023	FFB	EMPLOYEES PROVIDENT FUND BOARD [SSH]	249	171,535	9.164
29 DEC 2023 - 29 DEC 2023	FFB	ABRDN HOLDINGS LIMITED (FORMERLY KNOWN AS ABERDEEN ASSET MANAGEMENT PLC) [SSH]	336	120,797	6.453
29 DEC 2023 - 29 DEC 2023	FFB	ABRDN MALAYSIA SDN BHD [SSH]	336	119,397	6.378
29 DEC 2023 - 29 DEC 2023	FFB	ABRDN PLC [SSH]	336	120,797	6.453
28 DEC 2023 - 28 DEC 2023	FFB	EMPLOYEES PROVIDENT FUND BOARD [SSH]	606	171,286	9.15
28 DEC 2023 - 28 DEC 2023	FFB	ABRDN HOLDINGS LIMITED (FORMERLY KNOWN AS ABERDEEN ASSET MANAGEMENT PLC) [SSH]	748	120,460	6.435
28 DEC 2023 - 28 DEC 2023	FFB	ABRDN MALAYSIA SDN BHD [SSH]	748	119,061	6.36
28 DEC 2023 - 28 DEC 2023	FFB	ABRDN PLC [SSH]	748	120,460	6.435
29 DEC 2023 - 29 DEC 2023	FRONTKN	EMPLOYEES PROVIDENT FUND BOARD [SSH]	5,176	152,188	9.676
28 DEC 2023 - 28 DEC 2023	FRONTKN	EMPLOYEES PROVIDENT FUND BOARD [SSH]	15,080	147,012	9.347
27 DEC 2023 - 27 DEC 2023	FRONTKN	EMPLOYEES PROVIDENT FUND BOARD [SSH]	1,801	131,933	8.388
29 DEC 2023 - 29 DEC 2023	GAMUDA	EMPLOYEES PROVIDENT FUND BOARD (EPF BOARD) [SSH]	6,596	246,468	9.04
28 DEC 2023 - 28 DEC 2023	GAMUDA	EMPLOYEES PROVIDENT FUND BOARD (EPF BOARD) [SSH]	1,326	239,872	8.79
02 JAN 2024 - 02 JAN 2024	GCB	EMPLOYEES PROVIDENT FUND BOARD [SSH]	250	68,213	5.807
27 DEC 2023 - 27 DEC 2023	GCB	EMPLOYEES PROVIDENT FUND BOARD [SSH]	200	67,963	5.786
02 JAN 2024 - 02 JAN 2024	HANDAL	TRITON CAPITAL FUND VCC [SSH]	21,250	21,250	7.194
02 JAN 2024 - 03 JAN 2024	HARBOUR	SAMARANG UCITS - SAMARANG ASIAN PROSPERITY [SSH]	133	26,907	6.751
29 DEC 2023 - 29 DEC 2023	HLBANK	EMPLOYEES PROVIDENT FUND BOARD [SSH]	423	194,408	9.317
28 DEC 2023 - 28 DEC 2023	HLBANK	EMPLOYEES PROVIDENT FUND BOARD [SSH]	-198	193,985	9.297
29 DEC 2023 - 29 DEC 2023	HWATAI	DATUK SOO CHUNG YEE [DIR/CEO]	68	1,650	2.205
29 DEC 2023 - 29 DEC 2023	HWATAI	SOO THIEN MING @ SOO THIEN SEE [SSH]	-68	30,882	41.268
29 DEC 2023 - 29 DEC 2023	IGBCR	MISS TAN LEI CHENG [DIR/CEO]	48	21,836	0.923
02 JAN 2024 - 02 JAN 2024	IGBCR	TAN CHIN NAM SENDIRIAN BERHAD ("TCNSB") [SSH]	1,170	1,660,721	70.206
29 DEC 2023 - 29 DEC 2023	IGBREIT	EMPLOYEES PROVIDENT FUND BOARD ("EPF BOARD") [SSH]	-11	425,022	11.801
29 DEC 2023 - 29 DEC 2023	IHH	EMPLOYEES PROVIDENT FUND BOARD [SSH]	1,746	910,857	10.342
28 DEC 2023 - 28 DEC 2023	IHH	EMPLOYEES PROVIDENT FUND BOARD [SSH]	1,397	909,111	10.323
03 JAN 2024 - 03 JAN 2024	IJM	KUMPULAN WANG PERSARAAN (DIPERBADANKAN) [SSH]	-885	329,436	9.396
27 DEC 2023 - 27 DEC 2023	IJM	EMPLOYEES PROVIDENT FUND BOARD [SSH]	94	593,056	16.915
03 JAN 2024 - 03 JAN 2024	INARI	KUMPULAN WANG PERSARAAN (DIPERBADANKAN) [SSH]	-650	354,478	9.46
28 DEC 2023 - 28 DEC 2023	INARI	EMPLOYEES PROVIDENT FUND BOARD [SSH]	-588	316,008	8.433
29 DEC 2023 - 29 DEC 2023	IOICORP	EMPLOYEES PROVIDENT FUND BOARD [SSH]	250	703,401	11.338
28 DEC 2023 - 28 DEC 2023	IOICORP	EMPLOYEES PROVIDENT FUND BOARD [SSH]	1,118	703,151	11.334
29 DEC 2023 - 29 DEC 2023	IOIPG	EMPLOYEES PROVIDENT FUND BOARD [SSH]	-1,447	370,685	6.732
28 NOV 2023 - 28 NOV 2023	IOIPG	EMPLOYEES PROVIDENT FUND BOARD [SSH]	-307	372,132	6.758
28 DEC 2023 - 28 DEC 2023	ITRONIC	DATUK CHU BOON TIONG [DIR/CEO]	-697	27,182	3.842
29 DEC 2023 - 29 DEC 2023	KLK	EMPLOYEES PROVIDENT FUND BOARD [SSH]	-98	114,692	10.635
28 DEC 2023 - 28 DEC 2023	KLK	EMPLOYEES PROVIDENT FUND BOARD [SSH]	-510	114,790	10.644
27 DEC 2023 - 27 DEC 2023	KLK	EMPLOYEES PROVIDENT FUND BOARD [SSH]	-555	115,300	10.691
02 JAN 2024 - 02 JAN 2024	KPSCB	MADAM YONG AH PEE [SSH]	500	8,538	5.251
29 DEC 2023 - 29 DEC 2023	LBS	TAN SRI DATO' SRI IR. (DR.) LIM HOCK SAN JP [DIR/CEO]	100	609,272	39.563
29 DEC 2023 - 29 DEC 2023	LBS	TAN SRI DATO' SRI IR. (DR.) LIM HOCK SAN JP [SSH]	100	604,519	39.255
02 JAN 2024 - 02 JAN 2024	MAGNI	MR TAN POAY SENG [DIR/CEO]	200	120,533	27.81
27 DEC 2023 - 02 JAN 2024	MATANG	HUAREN HOLDINGS SDN BHD [SSH]	262	401,810	16.818
29 DEC 2023 - 29 DEC 2023	MAYBANK	EMPLOYEES PROVIDENT FUND BOARD [SSH]	-4,745	1,519,926	12.603
02 JAN 2024 - 02 JAN 2024	MAYBANK	KUMPULAN WANG PERSARAAN (DIPERBADANKAN) ("KWAP") [SSH]	500	606,106	5.025
02 JAN 2024 - 02 JAN 2024	MCEHLDG	DR GOH KAR CHUN [DIR/CEO]	212	2,595	4.2
02 JAN 2024 - 04 JAN 2024	MFCB	CAM PROPERTY (MALAYSIA) SDN BHD [SSH]	98	201,184	21.34
02 JAN 2024 - 04 JAN 2024	MFCB	CAMASIA LIMITED [SSH]	98	202,669	21.498
02 JAN 2024 - 04 JAN 2024	MFCB	GOH NAN KIOH [DIR/CEO]	98	328,749	34.871

**Disclaimer:** The Information in Insider Activity is extracted from [www.shareinvestor.com/fundamental/insider\\_trades](http://www.shareinvestor.com/fundamental/insider_trades). The information on this page is provided as a service to readers. It does not constitute financial advice and/or any investment recommendations. We assume no liability for damages resulting from or arising out of the use of such information. Whilst every effort is made to ensure accuracy, the information presented is not the official record of shareholder filings. Readers are advised to read the original filings on the Bursa Malaysia website at [www.bursamalaysia.com](http://www.bursamalaysia.com)

**PURNELL**

**ESCAPE II  
ABSOLUTE  
SAPPHIRE**

PLAY



Purnell Asia  
Tel. : +65.9817.3378

Email : [sales.sg@purnellwatches.com](mailto:sales.sg@purnellwatches.com)

@ Purnell\_Official

[www.purnellwatches.com](http://www.purnellwatches.com)



Notice Period is 31st Dec - 6th Jan 2024

Effective Change Date	Stock Name	Buyer/ Seller Name [Classification]	Bought / (Sold) ['000]		No. of Shares After Trade ['000]	
			Total	% Held	Total	% Held
02 JAN 2024 - 04 JAN 2024	MFCB	MR GOH NAN KIOH [SSH]	98		328,749	34.871
02 JAN 2024 - 04 JAN 2024	MFCB	RUBBER THREAD INDUSTRIES (M) SDN BERHAD [SSH]	98		201,184	21.34
03 JAN 2024 - 03 JAN 2024	MINETEC	DATIN FERIDAH BINTI BUJANG ISMAIL [DIR/CEO]	-375		550	0.036
29 DEC 2023 - 29 DEC 2023	MISC	EMPLOYEES PROVIDENT FUND BOARD [SSH]	686		562,815	12.609
02 JAN 2024 - 02 JAN 2024	MISC	KUMPULAN WANG PERSARAAN (DIPERBADANKAN) (KWAP) [SSH]	16		242,798	5.439
28 DEC 2023 - 28 DEC 2023	MISC	EMPLOYEES PROVIDENT FUND BOARD [SSH]	70		562,129	12.593
02 JAN 2024 - 02 JAN 2024	MMAG	MR CHIN BOON LONG [SSH]	32,362		32,362	13.36
29 DEC 2023 - 29 DEC 2023	NESTLE	EMPLOYEES PROVIDENT FUND BOARD [SSH]	-2		22,437	9.568
28 DEC 2023 - 28 DEC 2023	NESTLE	EMPLOYEES PROVIDENT FUND BOARD [SSH]	-396		22,439	9.569
29 DEC 2023 - 03 JAN 2024	NOTION	MR LEE TIAN YOKE [DIR/CEO]	1,153		19,129	3.708
29 DEC 2023 - 29 DEC 2023	ORIENT	EMPLOYEES PROVIDENT FUND BOARD [SSH]	-91		45,997	7.414
28 DEC 2023 - 28 DEC 2023	ORIENT	EMPLOYEES PROVIDENT FUND BOARD [SSH]	-108		46,088	7.429
27 DEC 2023 - 27 DEC 2023	ORIENT	EMPLOYEES PROVIDENT FUND BOARD [SSH]	-190		46,196	7.447
29 DEC 2023 - 29 DEC 2023	PBBANK	EMPLOYEES PROVIDENT FUND BOARD [SSH]	4,598		2,966,162	15.28
28 DEC 2023 - 28 DEC 2023	PBBANK	EMPLOYEES PROVIDENT FUND BOARD [SSH]	-3,526		2,961,563	15.26
27 DEC 2023 - 27 DEC 2023	PBBANK	EMPLOYEES PROVIDENT FUND BOARD [SSH]	260		2,965,089	15.28
29 DEC 2023 - 29 DEC 2023	PCHEM	EMPLOYEES PROVIDENT FUND BOARD (EPF BOARD) [SSH]	1,000		942,572	11.782
28 DEC 2023 - 28 DEC 2023	PCHEM	EMPLOYEES PROVIDENT FUND BOARD (EPF BOARD) [SSH]	27		941,572	11.77
29 DEC 2023 - 02 JAN 2024	PELIKAN	IKHLAS CAPITAL MASTER FUND PTE. LTD. [SSH]	-10,079		44,758	7.42
29 DEC 2023 - 02 JAN 2024	PELIKAN	IKHLAS CAPITAL SINGAPORE PTE. LTD. [SSH]	-10,079		44,758	7.42
29 DEC 2023 - 02 JAN 2024	PELIKAN	MERIT PLUS VENTURES LIMITED [SSH]	-10,079		44,758	7.42
29 DEC 2023 - 29 DEC 2023	PENTA	EMPLOYEES PROVIDENT FUND BOARD [SSH]	3,704		59,119	8.311
28 DEC 2023 - 28 DEC 2023	PENTA	EMPLOYEES PROVIDENT FUND BOARD [SSH]	639		55,415	7.79
03 JAN 2024 - 03 JAN 2024	PETGAS	KUMPULAN WANG PERSARAAN (DIPERBADANKAN) (KWAP) [SSH]	-500		198,561	10.034
29 DEC 2023 - 29 DEC 2023	PETGAS	EMPLOYEES PROVIDENT FUND BOARD [SSH]	1,013		260,131	13.146
28 DEC 2023 - 28 DEC 2023	PETGAS	EMPLOYEES PROVIDENT FUND BOARD [SSH]	1,999		259,118	13.095
02 JAN 2024 - 02 JAN 2024	PLABS	MR BU YAW SENG [SSH]	227		17,996	6.539
29 DEC 2023 - 29 DEC 2023	PPB	EMPLOYEES PROVIDENT FUND BOARD [SSH]	336		134,398	9.447
28 DEC 2023 - 28 DEC 2023	PPB	EMPLOYEES PROVIDENT FUND BOARD [SSH]	-671		134,063	9.424
03 JAN 2024 - 03 JAN 2024	RHBBANK	KUMPULAN WANG PERSARAAN (DIPERBADANKAN) [SSH]	425		256,280	5.979
29 DEC 2023 - 29 DEC 2023	RHBBANK	EMPLOYEES PROVIDENT FUND BOARD [SSH]	-230		1,725,031	40.245
28 DEC 2023 - 28 DEC 2023	RHBBANK	EMPLOYEES PROVIDENT FUND BOARD [SSH]	-4,294		1,725,261	40.25
29 DEC 2023 - 29 DEC 2023	SAPIND	MR KOH KOK HOON [SSH]	1		6,840	9.398
28 DEC 2023 - 28 DEC 2023	SAPIND	MR KOH KOK HOON [SSH]	3		6,839	9.397
03 JAN 2024 - 03 JAN 2024	SCIB	DATO' TAN BOK KOON [DIR/CEO]	100		1,429	0.223
03 JAN 2024 - 03 JAN 2024	SDS	DR LIM PANG KIAM [DIR/CEO]	8		20	0.005
02 JAN 2024 - 03 JAN 2024	SERNKOU	MR LOW PENG SIAN @ CHUA PENG SIAN [DIR/CEO]	4,009		268,057	24.864
02 JAN 2024 - 03 JAN 2024	SERNKOU	MR LOW PENG SIAN @ CHUA PENG SIAN [SSH]	4,009		268,057	24.864
29 DEC 2023 - 29 DEC 2023	SIME	KUMPULAN WANG PERSARAAN (DIPERBADANKAN) [SSH]	-20		525,494	7.711
28 DEC 2023 - 28 DEC 2023	SIME	EMPLOYEES PROVIDENT FUND BOARD [SSH]	-1,447		1,008,523	14.797
27 DEC 2023 - 27 DEC 2023	SIME	EMPLOYEES PROVIDENT FUND BOARD [SSH]	-2,010		1,009,970	14.818
28 DEC 2023 - 28 DEC 2023	SIMEPLT	EMPLOYEES PROVIDENT FUND BOARD [SSH]	368		1,025,011	14.822
29 DEC 2023 - 02 JAN 2024	SMILE	DATIN WONG CHIEN YUE [DIR/CEO]	21		136,090	54.34
29 DEC 2023 - 02 JAN 2024	SMILE	DATIN WONG CHIEN YUE [SSH]	21		136,090	54.34
29 DEC 2023 - 02 JAN 2024	SMILE	DATO DR WONG RUEN YUAN [SSH]	21		136,435	54.477
29 DEC 2023 - 02 JAN 2024	SMILE	DATO' DR WONG RUEN YUAN [DIR/CEO]	21		136,435	54.477
29 DEC 2023 - 29 DEC 2023	SMRT	URUSHARTA JAMAAH SDN. BHD. [SSH]	300		31,647	6.987
02 JAN 2024 - 03 JAN 2024	SOLUTN	MISS LIM CHIOU KIM [DIR/CEO]	-1,430		6,982	1.444
02 JAN 2024 - 02 JAN 2024	SPSETIA	KUMPULAN WANG PERSARAAN (DIPERBADANKAN) [SSH]	500		400,272	9.191
04 JAN 2024 - 04 JAN 2024	SRIDGE	MR TAN WIN SEN [DIR/CEO]	51		507	0.228
02 JAN 2024 - 02 JAN 2024	SRIDGE	DATO' KHOO YIK CHOU [DIR/CEO]	87		17,008	7.64
02 JAN 2024 - 02 JAN 2024	SRIDGE	DATO' KHOO YIK CHOU [SSH]	87		17,008	7.64
29 DEC 2023 - 29 DEC 2023	SUNCON	EMPLOYEES PROVIDENT FUND BOARD [SSH]	512		129,914	10.076
29 DEC 2023 - 29 DEC 2023	TAFI	ARMANI SYNERGY SDN. BHD. [SSH]	45		204,119	53.797
29 DEC 2023 - 29 DEC 2023	TAFI	DATO' SRI ANDREW LIM ENG GUAN [DIR/CEO]	45		214,237	56.464
29 DEC 2023 - 29 DEC 2023	TAFI	DATO' SRI ANDREW LIM ENG GUAN [SSH]	45		214,237	56.464
29 DEC 2023 - 29 DEC 2023	TAFI	DATO' SRI AZLAN BIN AZMI [DIR/CEO]	45		204,284	53.84
29 DEC 2023 - 29 DEC 2023	TAFI	DATO' SRI AZLAN BIN AZMI [SSH]	45		204,284	53.84
29 DEC 2023 - 29 DEC 2023	TAFI	DATO' SRI WONG SZE CHIEN [DIR/CEO]	45		213,644	56.307
29 DEC 2023 - 29 DEC 2023	TAFI	DATO' SRI WONG SZE CHIEN [SSH]	45		213,644	56.307
27 DEC 2023 - 27 DEC 2023	TCHONG	EMPLOYEES PROVIDENT FUND BOARD [SSH]	-64		41,555	6.375
02 JAN 2024 - 02 JAN 2024	TENAGA	KUMPULAN WANG PERSARAAN (DIPERBADANKAN) [SSH]	-62		431,224	7.45

Notice Period is 31st Dec - 6th Jan 2024

Effective Change Date	Stock Name	Buyer/ Seller Name [Classification]	Bought / (Sold) ['000]		No. of Shares After Trade ['000]	
			Total	% Held	Total	% Held
02 JAN 2024 - 03 JAN 2024	TEOSEN	MR NA HAP CHENG [SSH]	91		154,564	52.692
03 JAN 2024 - 03 JAN 2024	THETA	ENCIK ZAINAL 'ABIDIN BIN ABD JALIL [DIR/CEO]	-3,500		16,000	13.563
03 JAN 2024 - 03 JAN 2024	THETA	ENCIK ZAINAL 'ABIDIN BIN ABD JALIL [SSH]	-3,500		16,000	13.563
03 JAN 2024 - 03 JAN 2024	THETA	PUAN HASLINAH BINTI HASSAN [SSH]	-3,500		16,000	13.563
03 JAN 2024 - 03 JAN 2024	THETA	THREADSTONE CAPITAL SDN BHD [SSH]	-3,500		16,000	13.563
03 JAN 2024 - 03 JAN 2024	TIMECOM	KUMPULAN WANG PERSARAAN (DIPERBADANKAN) (KWAP) [SSH]	-304		131,224	7.105
02 JAN 2024 - 02 JAN 2024	TIMECOM	KUMPULAN WANG PERSARAAN (DIPERBADANKAN) (KWAP) [SSH]	-173		131,528	7.122
28 DEC 2023 - 28 DEC 2023	TIMECOM	EMPLOYEES PROVIDENT FUND BOARD [SSH]	3,894		128,278	6.946
29 DEC 2023 - 29 DEC 2023	TM	EMPLOYEE PROVIDENT FUND BOARD (EPF BOARD) [SSH]	1,047		670,640	17.475
02 JAN 2024 - 02 JAN 2024	TM	KUMPULAN WANG PERSARAAN (DIPERBADANKAN) [SSH]	-2,000		386,719	10.077
28 DEC 2023 - 28 DEC 2023	TM	EMPLOYEE PROVIDENT FUND BOARD (EPF BOARD) [SSH]	246		669,593	17.448
27 DEC 2023 - 27 DEC 2023	TM	EMPLOYEE PROVIDENT FUND BOARD (EPF BOARD) [SSH]	38		669,348	17.442
29 DEC 2023 - 29 DEC 2023	TOPGLOV	MR LIM HOON SIN [DIR/CEO]	1,086		2,924,620	36.52
29 DEC 2023 - 29 DEC 2023	TOPGLOV	MR LIM HOON SIN [SSH]	1,086		2,924,620	36.52
29 DEC 2023 - 29 DEC 2023	TOPGLOV	MR LIM JIN FENG [SSH]	1,086		2,824,759	35.273
29 DEC 2023 - 29 DEC 2023	TOPGLOV	PUAN SRI TONG SIEW BEE [SSH]	1,086		2,924,820	36.523
29 DEC 2023 - 29 DEC 2023	TOPGLOV	TAN SRI DR LIM WEE CHAI [DIR/CEO]	1,086		2,924,820	36.523
29 DEC 2023 - 29 DEC 2023	TOPGLOV	TAN SRI DR LIM WEE CHAI [SSH]	1,086		2,924,820	36.523
02 JAN 2024 - 02 JAN 2024	TRC	DATO RICHARD KHOO TENG SAN [DIR/CEO]	50		12,261	2.6
02 JAN 2024 - 04 JAN 2024	UMW	SIME DARBY BERHAD [SSH]	263,401		994,511	85.125
02 JAN 2024 - 04 JAN 2024	UMW	SIME DARBY ENTERPRISE SDN BHD [SSH]	263,401		994,511	85.125
02 JAN 2024 - 04 JAN 2024	UMW	SIME DARBY HOLDINGS BERHAD [SSH]	263,401		994,511	85.125
04 JAN 2024 - 04 JAN 2024	UMW	SIME DARBY BERHAD [SSH]	6,300		731,110	62.579
04 JAN 2024 - 04 JAN 2024	UMW	SIME DARBY ENTERPRISE SDN BHD [SSH]	6,300		731,110	62.579
03 JAN 2024 - 03 JAN 2024	UMW	SIME DARBY ENTERPRISE SDN BHD [SSH]	3,800		724,810	62.04
03 JAN 2024 - 03 JAN 2024	UMW	SIME DARBY HOLDINGS BERHAD [SSH]	3,800		724,810	62.04
02 JAN 2024 - 02 JAN 2024	UMW	SIME DARBY BERHAD [SSH]	3,412		721,010	61.715
02 JAN 2024 - 02 JAN 2024	UMW	SIME DARBY ENTERPRISE SDN BHD [SSH]	3,412		721,010	61.715
02 JAN 2024 - 02 JAN 2024	UMW	SIME DARBY HOLDINGS BERHAD [SSH]	3,412		721,010	61.715
29 DEC 2023 - 29 DEC 2023	UMW	SIME DARBY BERHAD [SSH]	2,785		717,599	61.423
29 DEC 2023 - 29 DEC 2023	UMW	SIME DARBY ENTERPRISE SDN BHD [SSH]	2,785		717,599	61.423
29 DEC 2023 - 29 DEC 2023	UMW	SIME DARBY HOLDINGS BERHAD [SSH]	2,785		717,599	61.423
02 JAN 2024 - 03 JAN 2024	UTDPLT	MR LOH HANG PAI @ LOW HENG FONG [DIR/CEO]	26		141	0.033
27 DEC 2023 - 28 DEC 2023	UTDPLT	EMPLOYEES PROVIDENT FUND BOARD [SSH]	1,490		22,719	5.477
02 JAN 2024 - 02 JAN 2024	UWC	EMPLOYEES PROVIDENT FUND BOARD [SSH]	174		86,288	7.832
29 DEC 2023 - 29 DEC 2023	UWC	EMPLOYEES PROVIDENT FUND BOARD [SSH]	97		86,113	7.817
29 DEC 2023 - 29 DEC 2023	VERSATL	MR LOH TECK WAH [DIR/CEO]	301		8,119	2.899
29 DEC 2023 - 29 DEC 2023	WASCO	DATO' SERI ROBERT TAN CHUNG MENG [DIR/CEO]	10,131		330,923	42.737
29 DEC 2023 - 29 DEC 2023	WASCO	DATO' SERI ROBERT TAN CHUNG MENG [SSH]	10,131		330,923	42.737
29 DEC 2023 - 29 DEC 2023	WASCO	MADAM PAULINE TAN SUAT MING [SSH]	10,131		321,162	41.477
29 DEC 2023 - 29 DEC 2023	WASCO	TAN CHIN NAM SENDIRIAN BERHAD [SSH]	10,131		257,701	33.281
29 DEC 2023 - 29 DEC 2023	WASCO	TAN KIM YEOW SENDIRIAN BERHAD [SSH]	10,131		318,995	41.197
29 DEC 2023 - 29 DEC 2023	WASCO	WAH SEONG (MALAYA) TRADING CO. SDN BHD [SSH]	10,131		252,171	32.567
02 JAN 2024 - 03 JAN 2024	WIDAD	TAN SRI MUHAMMAD IKMAL OPAT BIN ABDULLAH [SSH]	2,652		1,034,796	33.419
29 DEC 2023 - 29 DEC 2023	WILLOW	MR WONG AH CHIEW [DIR/CEO]	100		275,916	56.915
29 DEC 2023 - 29 DEC 2023	WILLOW	MR WONG AH CHIEW [SSH]	100		275,916	56.915
03 JAN 2024 - 03 JAN 2024	WPRTS	KUMPULAN WANG PERSARAAN (DIPERBADANKAN) [SSH]	-243		229,551	6.731
29 DEC 2023 - 29 DEC 2023	WPRTS	EMPLOYEES PROVIDENT FUND BOARD [SSH]	-83		314,100	9.211
02 JAN 2024 - 02 JAN 2024	WPRTS	KUMPULAN WANG PERSARAAN (DIPERBADANKAN) [SSH]	-158		229,794	6.739
28 DEC 2023 - 28 DEC 2023	WPRTS	EMPLOYEES PROVIDENT FUND BOARD [SSH]	-535		314,183	9.214
27 DEC 2023 - 27 DEC 2023	WPRTS	EMPLOYEES PROVIDENT FUND BOARD [SSH]	208		314,717	9.229
04 JAN 2024 - 04 JAN 2024	XL	MR NG MIN LIM [DIR/CEO]	1,100		48,539	19.04
02 JAN 2024 - 02 JAN 2024	YEW-LEE-WA	MADAM CHEE WAI YING [DIR/CEO]	-1,000		128,131	48.464
02 JAN 2024 - 02 JAN 2024	YEW-LEE-WA	MR ANG LEE LEONG [DIR/CEO]	-1,000		138,132	52.247
03 JAN 2024 - 03 JAN 2024	YINSON	KUMPULAN WANG PERSARAAN (DIPERBADANKAN) [SSH]	-500		186,633	6.421
29 DEC 2023 - 29 DEC 2023	YINSON	EMPLOYEES PROVIDENT FUND BOARD [SSH]	-21		470,803	16.196
02 JAN 2024 - 02 JAN 2024	YINSON	KUMPULAN WANG PERSARAAN (DIPERBADANKAN) [SSH]	-500		187,133	6.438
28 DEC 2023 - 28 DEC 2023	YINSON	EMPLOYEES PROVIDENT FUND BOARD [SSH]	-2,840		470,823	16.197
27 DEC 2023 - 27 DEC 2023	YINSON	EMPLOYEES PROVIDENT FUND BOARD [SSH]	-881		473,663	16.295

**Disclaimer:** The Information in Insider Activity is extracted from [www.shareinvestor.com/fundamental/insider\\_trades](http://www.shareinvestor.com/fundamental/insider_trades). The information on this page is provided as a service to readers. It does not constitute financial advice and/or any investment recommendations. We assume no liability for damages resulting from or arising out of the use of such information. Whilst every effort is made to ensure accuracy, the information presented is not the official record of shareholder filings. Readers are advised to read the original filings on the Bursa Malaysia website at [www.bursamalaysia.com](http://www.bursamalaysia.com)

**CHECK OUT**  
**SHAREINVESTOR**  
**BROKERS' CALL**

Weekly Buy/Sell/Hold calls from leading Malaysian Brokerages.

[Go To Brokers' Call](#)

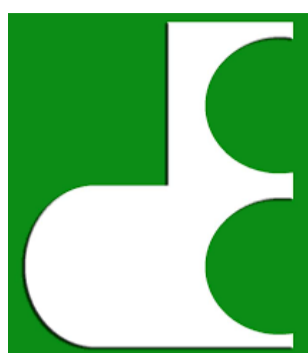


The Board of Directors of **AirAsia X Berhad (AAX)**, wishes to announce that the Company has entered into a non-binding letter of acceptance with Capital A Berhad for the Proposed Acquisitions by the Company of 100% equity interest in AirAsia Berhad and 100% equity interest in AirAsia Aviation Group Limited, both are wholly-owned subsidiary of Capital A.

[READ MORE](#)

**Axiata Group Berhad (AXIATA)** refers to the announcement dated 31 March 2023 where Boost Holdings Sdn Bhd, an indirect subsidiary of the Company, and RHB Bank Berhad had jointly incorporated a company, then known as Boost Berhad, which subject to approval from BNM, will be the legal entity to carry out the digital banking business.

[READ MORE](#)



The Board of Directors of **Dayang Enterprise Holdings Bhd (DAYANG)** are pleased to announce that its wholly-owned subsidiary company, Dayang Enterprise Sdn Bhd, has been awarded a contract extension for the Provision of Pan Malaysia Maintenance, Construction and Modification from Mubadala Energy.

This contract was first awarded by Mubadala Energy on 9 December 2020 and its primary term remains in force until 16 July 2023.



**Upcoming IPO**

NAME OF COMPANY	OFFER PERIOD		ISSUE PRICE (Per Ordinary Share)	LISTING SOUGHT	DATE OF LISTING
	OPENING	CLOSING			
TSA GROUP BERHAD	27 Dec 2023	17 Jan 2024	RM0.55	ACE MARKET	2 Feb 2024
MASTER TEC GROUP BERHAD	28 Dec 2023	18 Jan 2024	RM0.39	ACE MARKET	29 Jan 2024
KJTS GROUP BERHAD	5 Jan 2024	11 Jan 2024	RM0.27	ACE MARKET	26 Jan 2024

**Disclaimer:** The information in the Investor Relations page is extracted from individual companies' announcements in [www.bursamalaysia.com](http://www.bursamalaysia.com). The information on this page is provided as a service to readers. We assume no liability for damages resulting from or arising out of the use of such information. Whilst every effort is made to ensure accuracy, the information presented has been simplified for your reading pleasure. Readers are advised to read the original and complete filings on the Bursa Malaysia website at [https://www.bursamalaysia.com/market\\_information/announcements/company\\_announcement](https://www.bursamalaysia.com/market_information/announcements/company_announcement)