

Invest

A Weekly e-Publication by [SHAREINVESTOR.com](https://www.shareinvestor.com)

ISSUE

189

FRIDAY
05 JANUARY
2024

Scan/Click QR to Register



Via email, every Friday

2024 to be 'take-off' year for Malaysia's economic transition, with GDP growth at 4.4% - Maybank IB

see more
page
21-25

M'sia set to hit 2023 GDP growth target of 4%-5% on positive economic momentum - DOSM

ALSO

COMPANY SPOTLIGHT

Ekovest Berhad

See more on page 07

MSWG

Timely boost for ACE Market listings to gain promotion to Main Market

See more on page 27-29

Happy
New
Year
2024

04 LEADERBOARD

06 SHARIAH HOT STOCKS

08 SHARIAH MOMENTUM UP STOCKS

10 NON SHARIAH HOT STOCKS

12 UP TRENDING STOCKS

14 VALUE STOCKS

16 GROWTH STOCKS

17 DIVIDEND STOCKS

18 BROKERS' CALL

19 LONG COMPANIES

26 REGIONAL MARKETS

30 INSIDER ACTIVITY

32 INVESTOR RELATIONS



SHAREINVESTOR®

Invest with Knowledge

INVESTOR PLATFORMS

Director
Darren Chong
darren.chong@shareinvestor.com

Business Development Manager
Jay Cheong
jay.cheong@shareinvestor.com

Senior Executive
Daniel Wong
daniel.wong@shareinvestor.com

Executive
Tan Yong Sheng
yongsheng.tan@shareinvestor.com

ADMIN & OPERATIONS

Senior Executive
Watie Nordin
watie.nordin@shareinvestor.com

Executive
Silas Emmanuel Joseph
silas.joseph@shareinvestor.com

INVESTOR RELATIONS

Group Managing Director & Publisher
Edward Stanislaus
edward@shareinvestor.com

Senior Manager
Letticia Wong
letticia.wong@shareinvestor.com

PROCESS AUTOMATION & DATA ANALYTICS

Data Analyst
Nickson Aw

SHAREINVESTOR HOLDINGS BOARD OF DIRECTORS

Chairman		Patrick Daniel
Group CEO		Christopher Lee
Group COO		Lim Dau Hee
Group CFO		Teo Siew May
Group MD		Shanison Lin



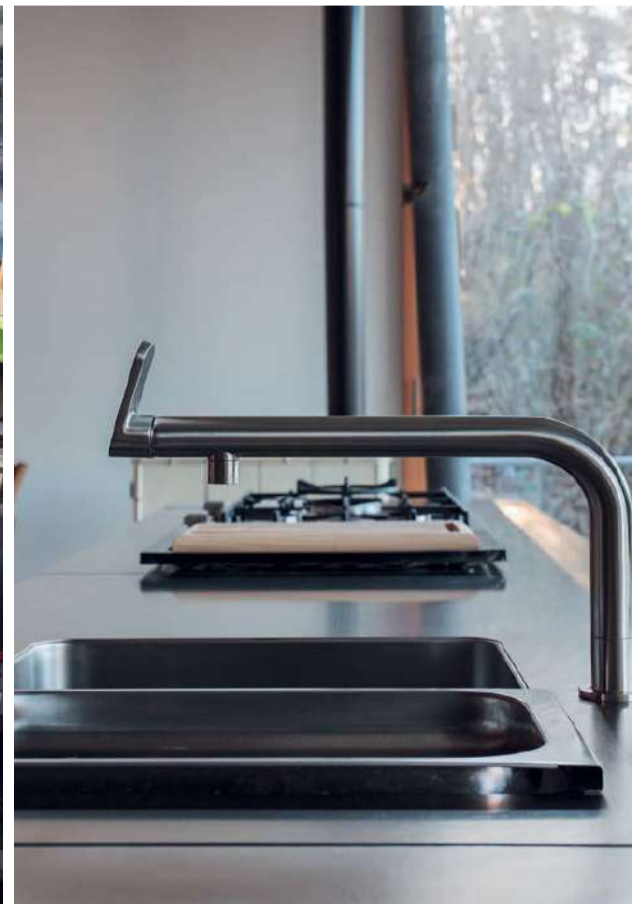
“ GIVE A MAN A FISH AND YOU FEED HIM FOR A DAY; TEACH A MAN TO FISH AND YOU FEED HIM FOR A LIFETIME ”

ShareInvestor Malaysia Sdn. Bhd.
(200001023956) (526564-M)
Unit No. DF2-07-03A, Level 7,
Persoft Tower, 6B Persiaran Tropicana,
47410 Petaling Jaya, Selangor Darul Ehsan.

Hotline : 603 7803 1791
Mobile : 011 6343 8939
Website : www.ShareInvestor.com.my
www.ShareInvestorHoldings.com
www.Facebook.com/ShareInvestorMalaysia

ADVERTISEMENT ENQUIRY

bulthaup takes care of the details so that you can enjoy a harmonious environment.



XTRA

XTRA FURNITURE SDN BHD
The Gardens Mall, Mid Valley City
xtrafurniture.com/bulthaup
fb.com/bulthaupmalaysia

bulthaup



*RESEARCH
SPECIALIST
M+ GLOBAL*

*CHIEF TRAINER
BEYOND
INSIGHTS*

*AUTHOR
MARKET WIZARD
SERIES*

*SENIOR TRAINER
BEYOND
INSIGHTS*

Loui Low

Kathlyn Toh

J. Schwager

Jeffery C.

**BEYOND INSIGHTS® 2024
SYMPOSIUM**

CATCHING THE NEXT GLOBAL STOCK MARKET WAVE

Find Out More



beyondinsights.info/sym2024



EVENT SPONSORS



HENDSHAKE

www.shareinvestor.com - market data at your fingertips



ShareInvestor WebPro (www.shareinvestor.com/my) Prices > Stock Prices > Bursa > click Stocks tab

1. mouse over Ranking > select Top Active > all Shariah stocks are denoted with an [S] > mouse over Column Layout > select Edit Customs > select Name > select Volume > select Last Done Price > Mouse Over Column Layout > select Custom
2. mouse over Ranking > select Top Turnover > all Shariah stocks are denoted with an [S] > mouse over Column Layout > select Edit Customs > select Name > select Last Done Price > select Value > Mouse Over Column Layout > select Custom
3. mouse over Ranking > select Top Gainers (Over 5 Trading Days) > mouse over Column Layout > select Edit Customs > select Name > select Last Done Price > select 5 Days Change > select 5 Days % Change > Mouse Over Column Layout > select Custom
4. mouse over Ranking > select Top Losers (Over 5 Trading Days)
5. mouse over Ranking > select Top % Gainers (Over 5 Trading Days)
6. mouse over Ranking > select Top % Losers (Over 5 Trading Days)

Shariah Top Actives (as at Yesterday)

Name	Price (RM)	Volume
MINETEC [S]	0.210	3,131,100.000
HONGSENG [S]	0.025	2,869,623.000
EKOVEST [S]	0.550	1,535,779.000
ASDION [S]	0.140	1,385,057.000
BSLCORP [S]	0.045	1,322,276.000
SAUDEE [S]	0.035	1,158,726.000
UEMS [S]	1.000	1,010,843.000
SEALINK [S]	0.220	964,452.000
IWCITY [S]	0.865	909,419.000
TOPGLOV [S]	0.970	867,556.000

Shariah Top Turnover (as at Yesterday)

Name	Price (RM)	Value (RM)
UEMS [S]	1.000	103,185,148
TENAGA [S]	10.420	100,652,886
EKOVEST [S]	0.550	85,215,807
TOPGLOV [S]	0.970	83,444,809
IWCITY [S]	0.865	80,516,504
RANHILL [S]	1.140	75,389,730
GAMUDA [S]	4.870	68,396,232
TM [S]	5.700	65,928,355
MINETEC [S]	0.210	61,196,210
SUNWAY [S]	2.210	58,839,549

Top Gainers (over 5 Trading days as at Yesterday)

Name	Price (RM)	Change (RM)
DLADY	25.000	+2.200
SBAGAN	4.180	+0.930
EDARAN	1.380	+0.520
PBA	1.800	+0.520
PMBTECH	3.080	+0.460
YTLPOWR	3.000	+0.460
TENAGA	10.420	+0.420
CRESNDO	2.640	+0.410
KLUANG	4.020	+0.400
MCEMENT	4.660	+0.400

Top % Gainers (over 5 Trading days as at Yesterday)

Name	Price (RM)	Change (%)
FOCUS	0.020	+100.00
EDARAN	1.380	+60.47
GOCEAN	0.195	+56.00
MMAG	0.140	+55.56
PDZ	0.070	+55.56
BENALEC	0.150	+50.00
BORNOIL	0.015	+50.00
FINTEC	0.015	+50.00
LAMBO	0.030	+50.00
FAST	0.155	+47.62

Top Losers (over 5 Trading days as at Yesterday)

Name	Price (RM)	Change (RM)
RAPID	27.700	-1.240
PETDAG	21.080	-0.840
HEIM	23.580	-0.540
IMASPRO	3.560	-0.460
HEXTECH	22.080	-0.420
CARLSBG	19.000	-0.300
NESTLE	118.700	-0.300
TAANN	3.440	-0.260
D&O	3.480	-0.200
PENTA	4.400	-0.180

Top % Losers (over 5 Trading days as at Yesterday)

Name	Price (RM)	Change (%)
VSOLAR	0.180	-20.00
ECOHLD	0.075	-16.67
MQTECH	0.025	-16.67
MJPERAK	0.285	-14.93
PELIKAN	0.285	-14.93
Y&G	0.715	-14.88
ECA	0.490	-13.27
SCBUILD	0.035	-12.50
TDEX	0.070	-12.50
VOLCANO	0.770	-11.49

HAPPY NEW YEAR

2024

Wishing you a
profitable year ahead.

From all of us at



SHAREINVESTOR[®]
Invest With Knowledge

Price & Volume Distribution Charts (as at Yesterday)

Technical Analysis

DEFINITION: Shariah compliant stocks with Technical Analysis showing 5-days & 10-days Moving Average Price below Yesterday's Close over past 3 days and with Volume Spike.

CHART GUIDE: Volume Distribution Chart is a statistical interpretation of the current sentiment on each stock in graphical format. The highest bar categorized as >150k is likely to be traded by institutions or super dealers, while the lowest bar categorized as <15k usually represents retail investors. "Buy Up" refers to more buyers snatching up the lots queued at selling price. "Sell Down" refers to sellers selling their shares to the buying queue



ShareInvestor WebPro > Screener > Market Screener (FA & TA) > select BURSA > add criteria

A. Criteria

- > click Add Criteria
- Technical Analysis Conditions tab select (i) Moving Average Below Close (ii) Volume Spike
- Fundamental Analysis Conditions tab > select (iii) Revenue
- Prices & Other Conditions tab > select (iv) Is Shariah Compliant
- Technical Analysis Conditions tab select (v) Moving Average Below Close
- Prices & Other Conditions tab > select (vi) Last Done Price
- Technical Analysis Conditions tab select (vii) Moving Average Below Close

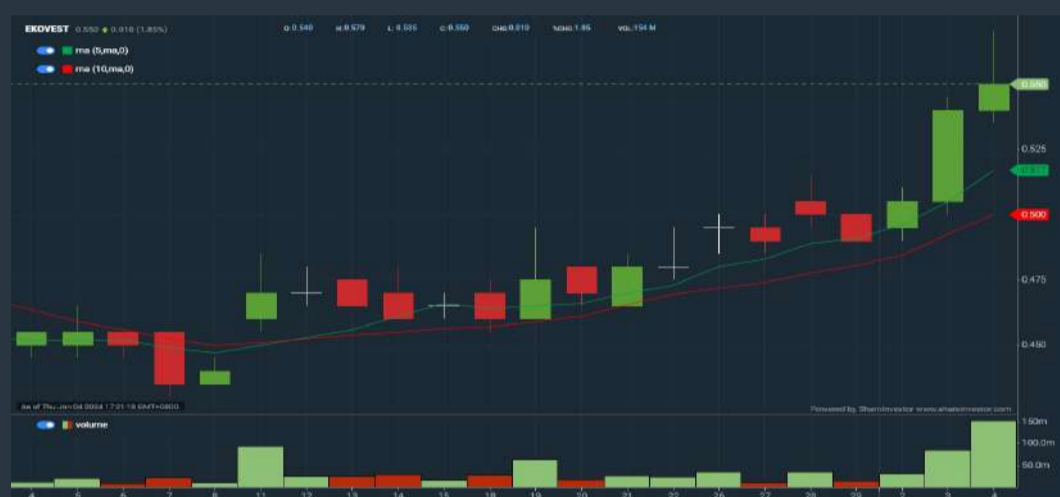
B. Conditions (Criteria Filters)

1. Moving Average Below Close - select (MA) type (5) below close price for type (3) days
2. Volume Spike - Volume type (1) greater than type (5) days average
3. Revenue ("000) - select (more than) type (1) for the past select (1) financial year(s)
4. Is Shariah Compliant - select **Yes**
5. Moving Average Below Close - select (MA) type (10) below close price for type (3) days
6. Last Done Price - select (more than) type (0.3)
7. Moving Average Below Close - select (EMA) type (5) below close price for type (3) days

- > click Save Template > Create New Template type (Shariah Hot Stocks) > click Create
- > click Save Template as > select Shariah Hot Stocks > click Save
- > click Screen Now (may take a few minutes)
- > Sort By: Select (Vol) Select (Desc)
- > Mouse over stock name > Charts > click C² Charts or Volume Distribution

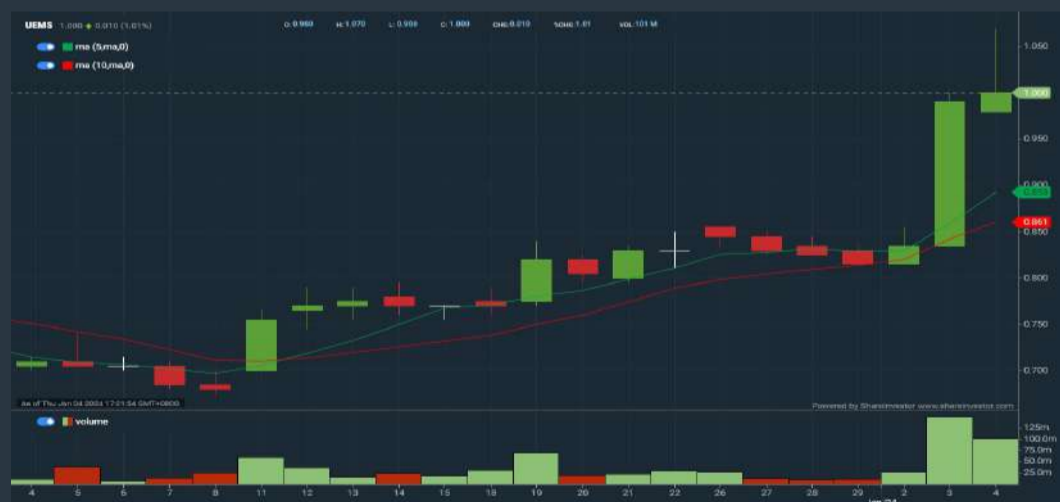
EKOVEST BERHAD (8877)

C² Chart



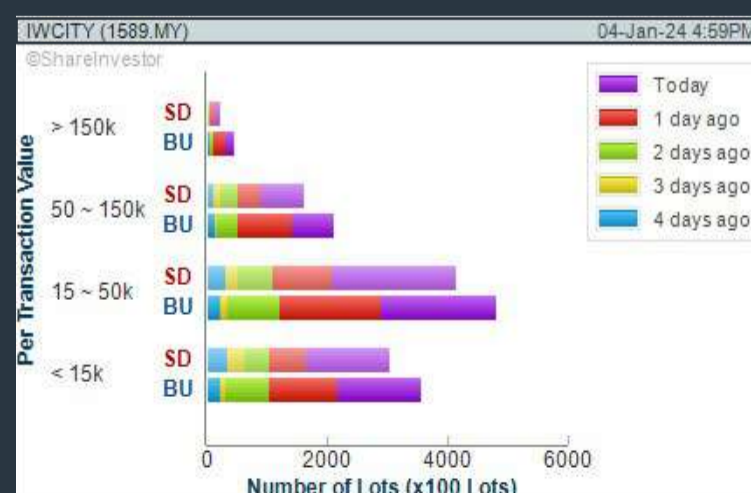
UEM SUNRISE BERHAD (5148)

C² Chart



ISKANDAR WATERFRONT CITY BERHAD (1589)

C² Chart



Disclaimer: The information on this page is provided as a service to readers. It does not constitute financial advice and/or any investment recommendations. Past performance is not indicative of future results. We assume no liability for damages resulting from or arising out of the use of such information. It would be best if you did your own research to make your personal investment decisions wisely or consult a licenced investment advisor.

COMPANY BACKGROUND

Ekovent Berhad is principally engaged in civil engineering and building construction works such as turnkey, design and build projects and project management. It is also in property, construction and infrastructure business.



EKOVEST EKOVEST BHD		Updated at 04 Jan 2024 17:31	
Last (MYR): 0.550 ↑	Change: +0.010	High: 0.570	Remarks: s ?
	Change (%): +1.85	Low: 0.535	
Open	0.540	Yesterday's Close	0.540
Buy Price	0.545	Sell Price	0.550
Buy Volume ('00)	6,052	Sell Volume ('00)	5,157
Cumulative Volume ('00)	1,535,779	Cumulative Value	85,215,807

Financial Analysis

Revenue Growth Revenue up and down in past years	Neutral	Profit Growth Losses for past 2 years	Watch Out
Piotroski F Score The company has below average financial strength (Piotroski F-Score of 3-4)	Be Alert	Debt to Assets High debt to assets for most recent year	Be Alert
Debt to Cashflow High debt to cash flow for most recent year	Be Alert	Debt to Equity High debt to equity for most recent year	Be Alert
Gross Profit Margin Consistently good gross profit margin of 20%-40% for 3 years	Good	Net Earnings Margin Company is losing money but net profit margin is improving by 5% a year over the past 60 months.	Neutral
Return on Assets (ROA) Negative ROA for 2 consecutive years	Be Alert	Return on Equity (ROE) Negative ROE for 2 consecutive years	Be Alert

😊 Excellent
🙂 Good
😐 Neutral
⚠️ Be Alert
🔴 Watch Out



Historical Financials

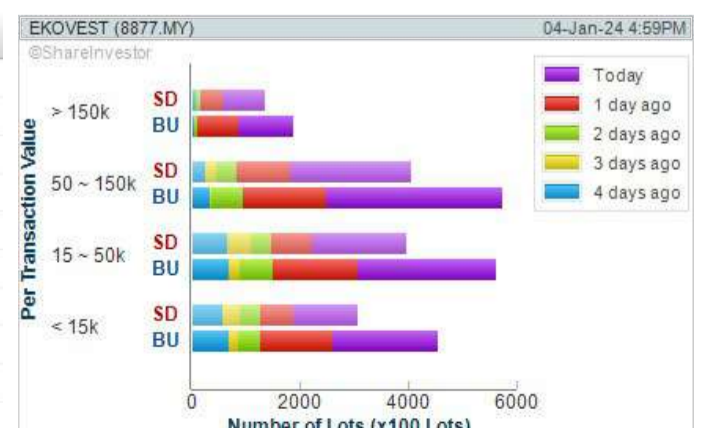


WebPro 9-Days Free Trial Registration
(worth RM9)
Sign Up Now



Key Statistics with Total Shareholder Returns

Period	Dividend Received	Capital Appreciation	Total Shareholder Return
Short Term Return	5 Days	-	+10.00 %
	10 Days	-	+14.58 %
	20 Days	-	+26.44 %
Medium Term Return	3 Months	-	+1.85 %
	6 Months	-	+48.55 %
	1 Year	-	+61.76 %
Long Term Return	2 Years	-	+32.53 %
	3 Years	-	+19.57 %
	5 Years	0.015	+0.050
Annualised Return	Annualised	-	+2.47 %



Disclaimer: The information on this page is provided as a service to readers. It does not constitute financial advice and/or any investment recommendations. Past performance is not indicative of future results. We assume no liability for damages resulting from or arising out of the use of such information. It would be best if you did your own research to make your personal investment decisions wisely or consult a licenced investment advisor.

Price & Volume Distribution Charts (as at Yesterday)

Technical Analysis

DEFINITION: Shariah compliant stocks with Technical Analysis showing Bullish Momentum and Price Uptrend. The share price closed at the highest price yesterday. The typical price was higher than the previous day's typical price.

CHART GUIDE: Volume Distribution Chart is a statistical interpretation of the current sentiment on each stock in graphical format. The highest bar categorized as >150k is likely to be traded by institutions or super dealers, while the lowest bar categorized as <15k usually represents retail investors. "Buy Up" refers to more buyers snatching up the lots queued at selling price. "Sell Down" refers to sellers selling their shares to the buying queue.



ShareInvestor WebPro > Screener > Market Screener (FA & TA)>select BURSA>add criteria

A. Criteria

- > click Add Criteria
- Fundamental Analysis Conditions tab >select (i) Revenue
- Technical Analysis Conditions tab select (ii) Average Volume
- Prices & Other Conditions tab > select (iii) Last Done Price
- Prices & Other Conditions tab > select (iv) Is Shariah Compliant
- Technical Analysis Conditions tab select (v) RSI Overbought
- Technical Analysis Conditions tab select (vi) Moving Average Below Close
- Technical Analysis Conditions tab select (vii) CCI Overbought

B. Conditions (Criteria Filters)

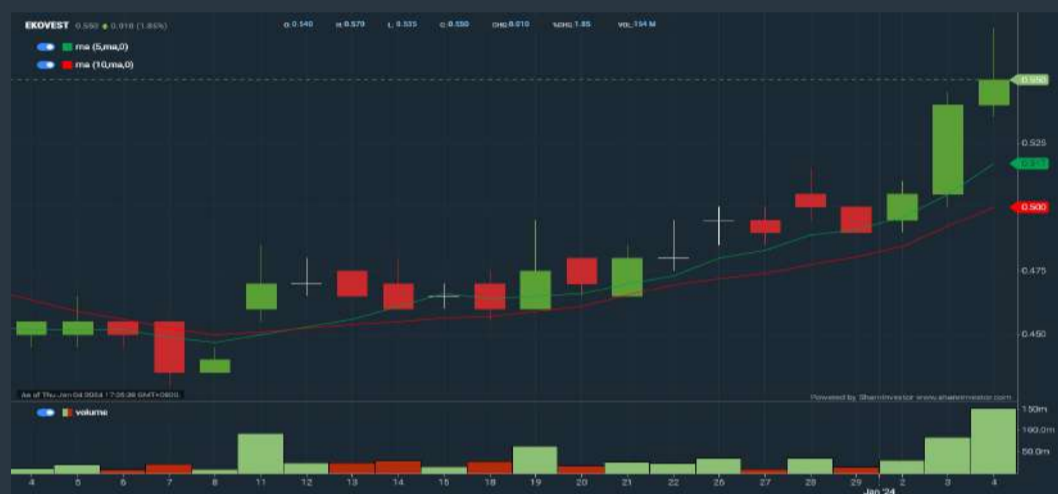
1. Revenue ("000) - select (more than) type (1) for the past select (1) financial year(s)
2. Average Volume - type (1) days average volume greater than type (10000) lots
3. Last Done Price - select (more than) type (0.3)
4. Is Shariah Compliant - select Yes
5. RSI Overbought - select RSI 1 above 99 for 1 days
6. Moving Average Below Close - select (MA) type (10) below close price for type (1) days
7. CCI Overbought - select CCI (2) above (0) for (1) days

- > click Save Template > Create New Template type (Shariah Momentum Up Stocks) > click Create
- > click Save Template as > select Shariah Momentum Up Stocks > click Save
- > click Screen Now (may take a few minutes)
- Sort By: Select (Vol) Select (Desc)
- Mouse over stock name > Charts > click C² Charts tab or Volume Distribution

EKOVEST BERHAD (8877)

C² Chart

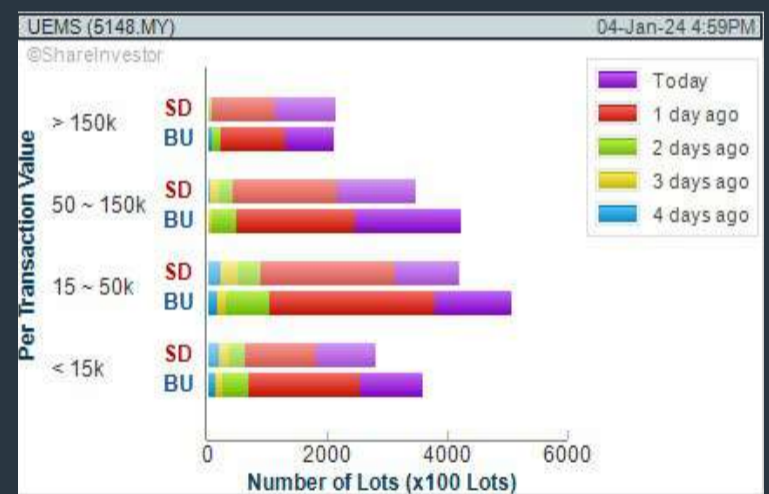
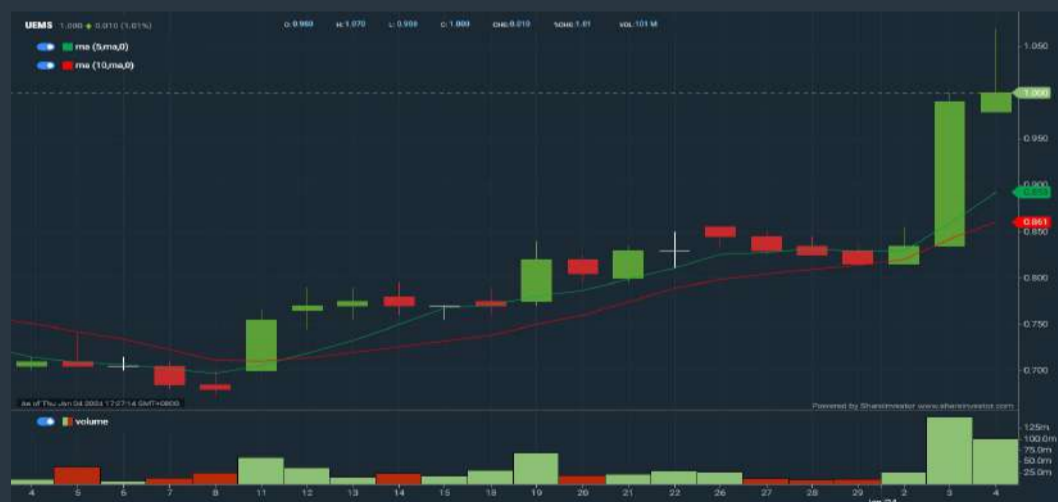
Analysis



UEM SUNRISE BERHAD (5148)

C² Chart

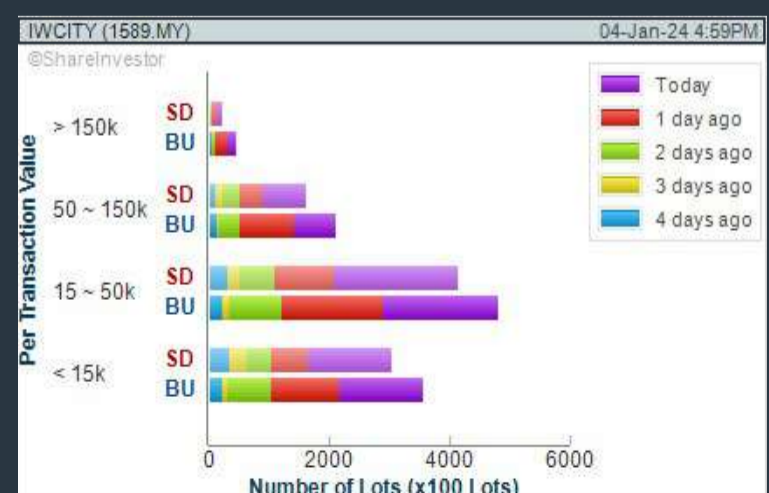
Analysis



ISKANDAR WATERFRONT CITY BERHAD (1589)

C² Chart

Analysis



Disclaimer: The information on this page is provided as a service to readers. It does not constitute financial advice and/or any investment recommendations. Past performance is not indicative of future results. We assume no liability for damages resulting from or arising out of the use of such information. It would be best if you did your own research to make your personal investment decisions wisely or consult a licenced investment advisor.



STROM

SWISS TIMEPIECES & JEWELLERY



StromWatch Asia

Tele : +65.9817.3378 Email : ll.stromasia@gmail.com

WWW.STROMWATCH.SWISS



Price & Volume Distribution Charts (as at Yesterday)

Technical Analysis

DEFINITION: Stocks with Technical Analysis showing 5-days & 10-days Moving Average Price below Close over past 1 days and with Volume Spike

CHART GUIDE: Volume Distribution Chart is a statistical interpretation of the current sentiment on each stock in graphical format. The highest bar categorized as >150k is likely to be traded by institutions or super dealers, while the lowest bar categorized as <15k usually represents retail investors. "Buy Up" refers to more buyers snatching up the lots queued at selling price. "Sell Down" refers to sellers selling their shares to the buying queue.



ShareInvestor WebPro > Screener > Market Screener (FA & TA) > select BURSA > add criteria

A. Criteria

- > click Add Criteria
- Technical Analysis Conditions tab select (i) Moving Average Below Close (ii) Volume Spike
- Fundamental Analysis Conditions tab >select (iii) Revenue
- Prices & Other Conditions tab > select (iv) Is Shariah Compliant
- Technical Analysis Conditions tab select (v) Moving Average Below Close
- Prices & Other Conditions tab > select (vi) Last Done Price
- Technical Analysis Conditions tab select (vii) Moving Average Below Close

B. Conditions (Criteria Filters)

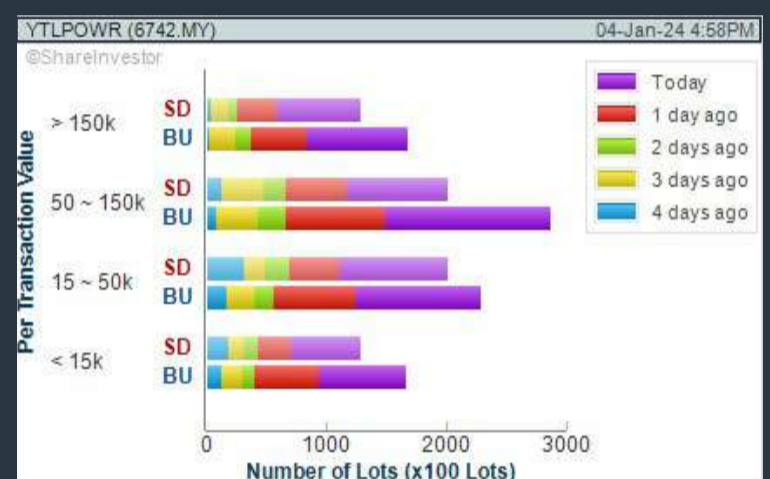
1. Moving Average Below Close - select (MA) type (5) below close price for type (3) days
2. Volume Spike - Volume type (1) greater than type (5) days average
3. Revenue ("000) - select (more than) type (1) for the past select (1) financial year(s)
4. Is Shariah Compliant - select NO
5. Moving Average Below Close - select (MA) type (10) below close price for type (1) days
6. Last Done Price - select (more than) type (0.3)
7. Moving Average Below Close - select (EMA) type (5) below close price for type (1) days

- > click Save Template > Create New Template type (Non-Shariah Hot Stocks) > click Create
- > click Save Template as > select Non-Shariah Hot Stocks > click Save
- > click Screen Now (may take a few minutes)
- Sort By: Select (Vol) Select (Desc)
- Mouse over stock name > Charts > click C² Charts tab or Volume Distribution

YTL POWER INTERNATIONAL BERHAD (6742)

C² Chart

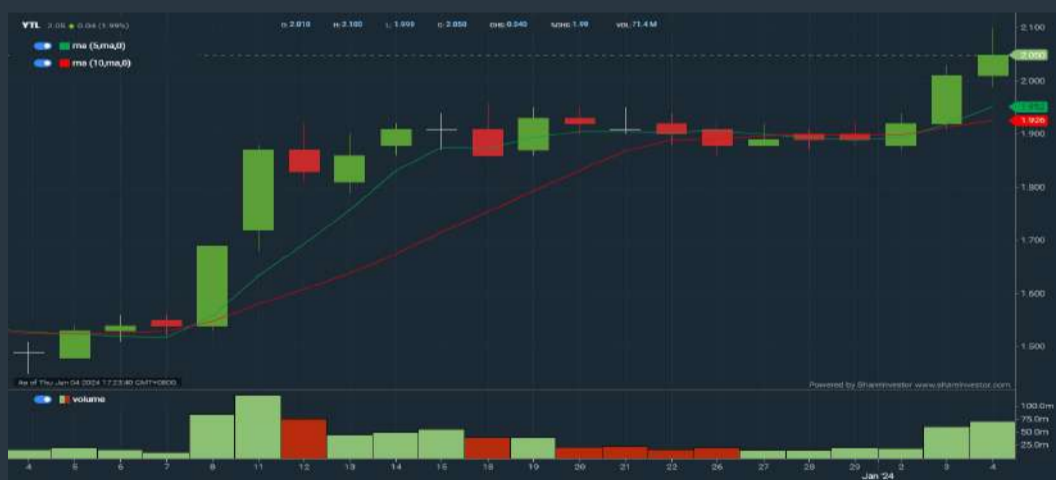
Analysis



YTL CORPORATION BERHAD (4677)

C² Chart

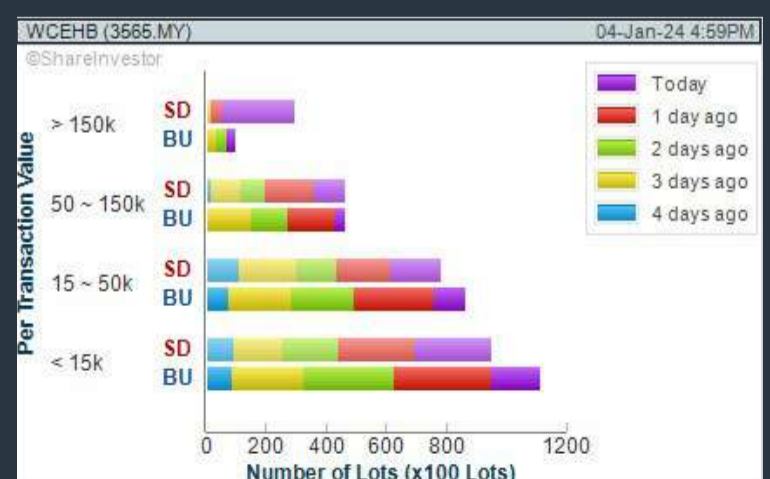
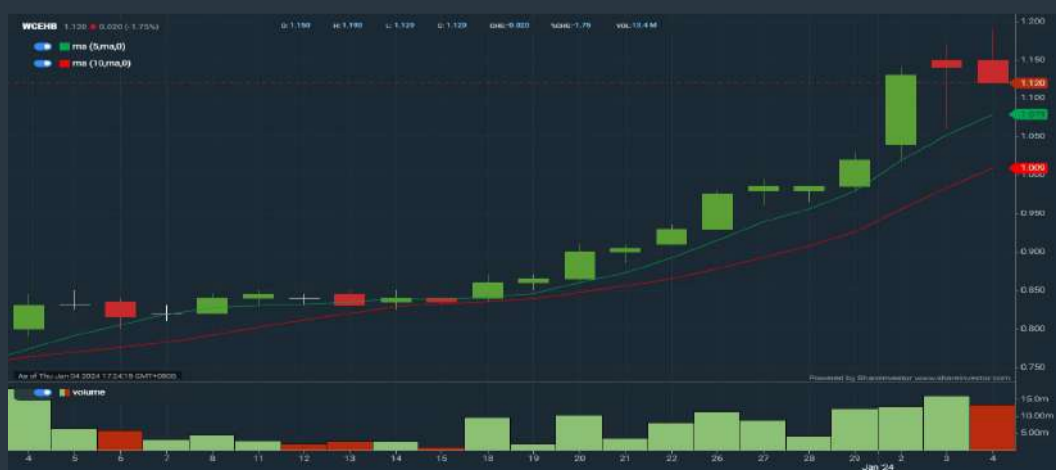
Analysis



WCE HOLDINGS BERHAD (3565)

C² Chart

Analysis



Disclaimer: The information on this page is provided as a service to readers. It does not constitute financial advice and/or any investment recommendations. Past performance is not indicative of future results. We assume no liability for damages resulting from or arising out of the use of such information. It would be best if you did your own research to make your personal investment decisions wisely or consult a licenced investment advisor.

SHAREINVESTOR WEBPRO

STOCK MARKET DATA AT YOUR FINGERTIPS

Powerful browser-based market analytics platform.
Access from anywhere



8 Markets Data

- ▶ Get access to data from Bursa, NYSE, Nasdaq, HKEX, SGX, IDX, SET & ASX

Portfolio Management

- ▶ Profit & Loss Summary
- ▶ Stock Alert
- ▶ News & Events filtering
- ▶ Customizable column layout

Fundamental Analysis

Financial Analysis Statement

- ▶ Profit & Loss
- ▶ Balance Sheet
- ▶ Cash Flow Statement
- ▶ More than 20 Financial Ratios
- ▶ Dividend Analysis

Technical Charting

- ▶ C² chart (Customisable & Comprehensive)

Brokers' Call

Intrinsic Value Calculator

FactSheet

- ▶ Key Stock Information
- ▶ Ownership
- ▶ Consensus Estimates
- ▶ Annual Report
- ▶ Historical Price
- ▶ Insider Trades

What's new on WebPro (Stable Release 12.1.0)

In our effort to keep our platform at the forefront of trading technology, we have added on some new features onto our C2 Chart in WebPro

ADDITIONAL NEW FEATURES:

- ▶ Anchor selector for AVWAP, PVAT, and PAV indicators
- ▶ Volume profile indicator by date range
- ▶ Moving Average Cross indicator
- ▶ Guppy Multiple Moving Average (GMMA) indicator
- ▶ GoNoGo Trend Signal indicators
- ▶ SignalIQ

So what are you waiting for? Head to our platform today and check out our new trading chart features and indicators. We're confident that you'll love the improvements we've made and that they'll help you become a more successful trader.

Click here to start your 9 days FREE trial
(Valued at RM10)



Price & Volume Distribution Charts (Over 3 trading days as at Yesterday)

Technical Analysis

DEFINITION: Stocks with Technical Analysis showing Bullish Momentum and Price Uptrend

CHART GUIDE: Volume Distribution Chart is a statistical interpretation of the current sentiment on each stock in graphical format. The highest bar categorized as >150k is likely to be traded by institutions or super dealers, while the lowest bar categorized as <15k usually represents retail investors. "Buy Up" refers to more buyers snatching up the lots queued at selling price. "Sell Down" refers to sellers selling their shares to the buying queue.



ShareInvestor WebPro > Screener > Market Screener (FA & TA) > select BURSA > add criteria

A. Criteria

- > click Add Criteria
- Fundamental Analysis Conditions tab > select (i) Revenue
- Technical Analysis Conditions tab select (ii) Moving Average Below Close
- Technical Analysis Conditions tab select (iii) Average Volume
- Prices & Other Conditions tab > select (iv) Last Done Price
- Technical Analysis Conditions tab select (v) Moving Average Below Close
- Technical Analysis Conditions tab select (v) Moving Average Bullish Crossover

B. Conditions

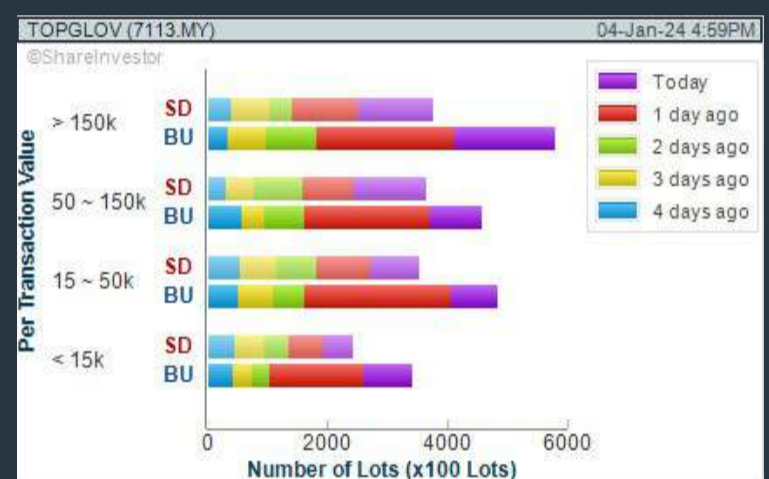
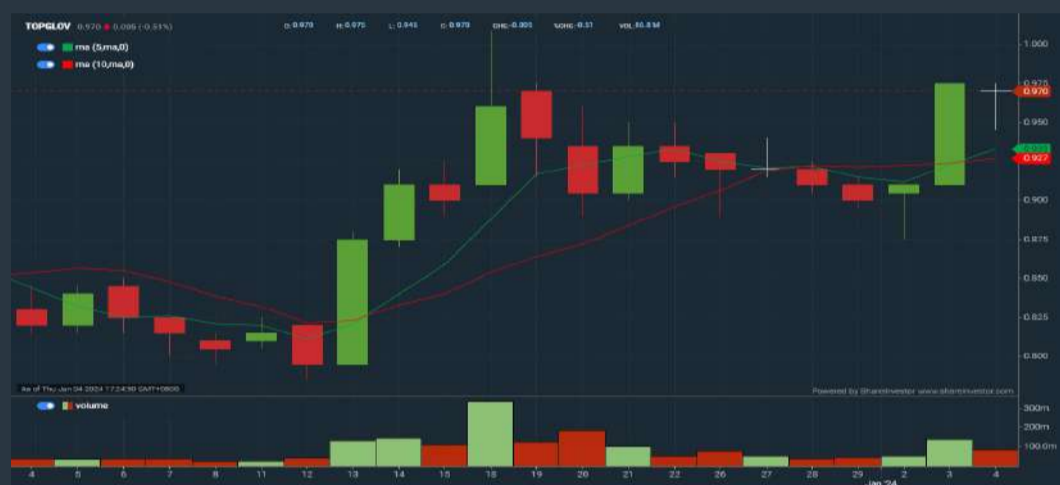
1. Revenue - select (more than) type (1) for the past select (1) financial year(s)
2. Moving Average Below Close - select (MA) type (20) below close price for type (1) days
3. Average Volume - type (5) days average volume type (10000) lots
4. Last Done Price - select (more than) type (0.3)
5. Moving Average Below Close - select (MA) type (10) below close price for type (1) days
6. Moving Average Bullish Crossover - select (MA) type (5) crossed above select (MA) type (10)

> click Save Template > Create New Template type (Non-Shariah Up-Trending Stocks) > click Create Click Save Template As > select Non-Shariah Up Trending Stocks > click Save
> click Screen Now (may take a few minutes)
Sort By: Select (Vol) Select (Desc)
Mouse over stock name > Charts > click C² Charts tab or Volume Distribution

TOP GLOVE CORPORATION BERHAD (7113)

C² Chart

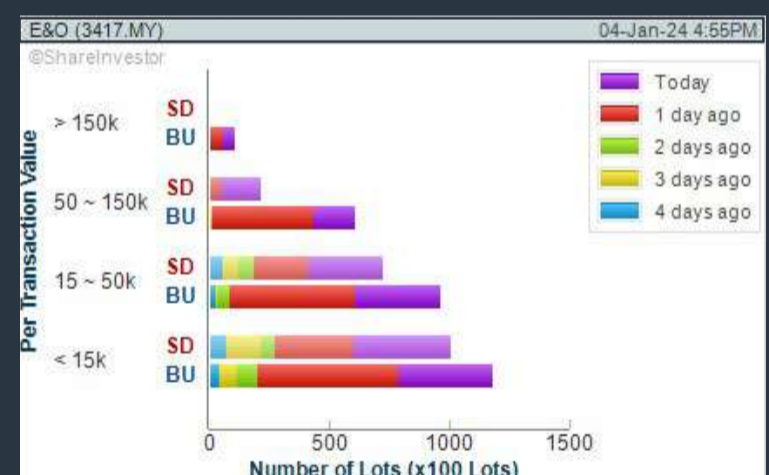
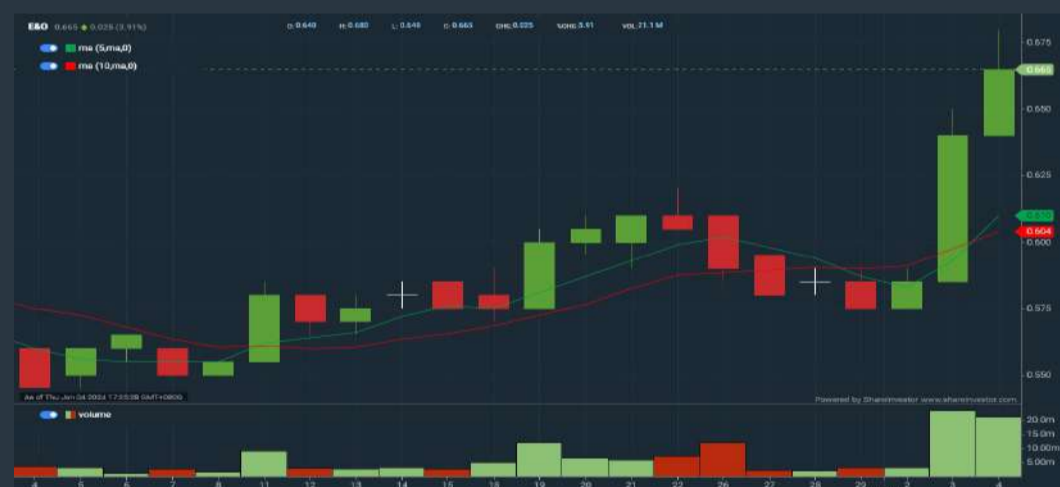
Analysis



EASTERN & ORIENTAL BERHAD (3417)

C² Chart

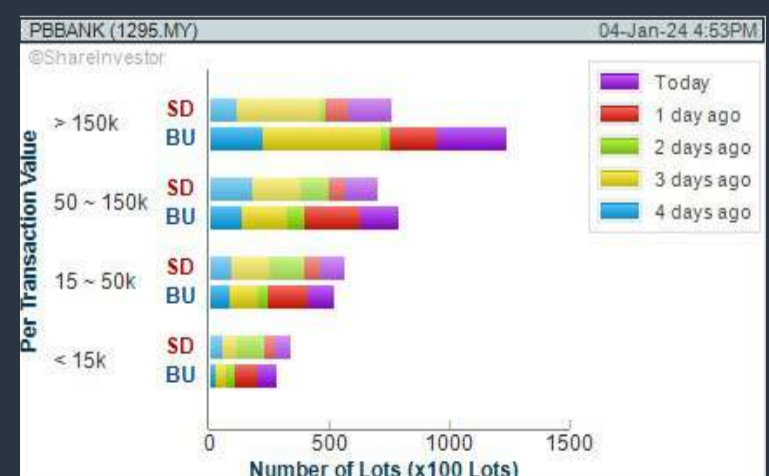
Analysis



PUBLIC BANK BERHAD (1295)

C² Chart

Analysis

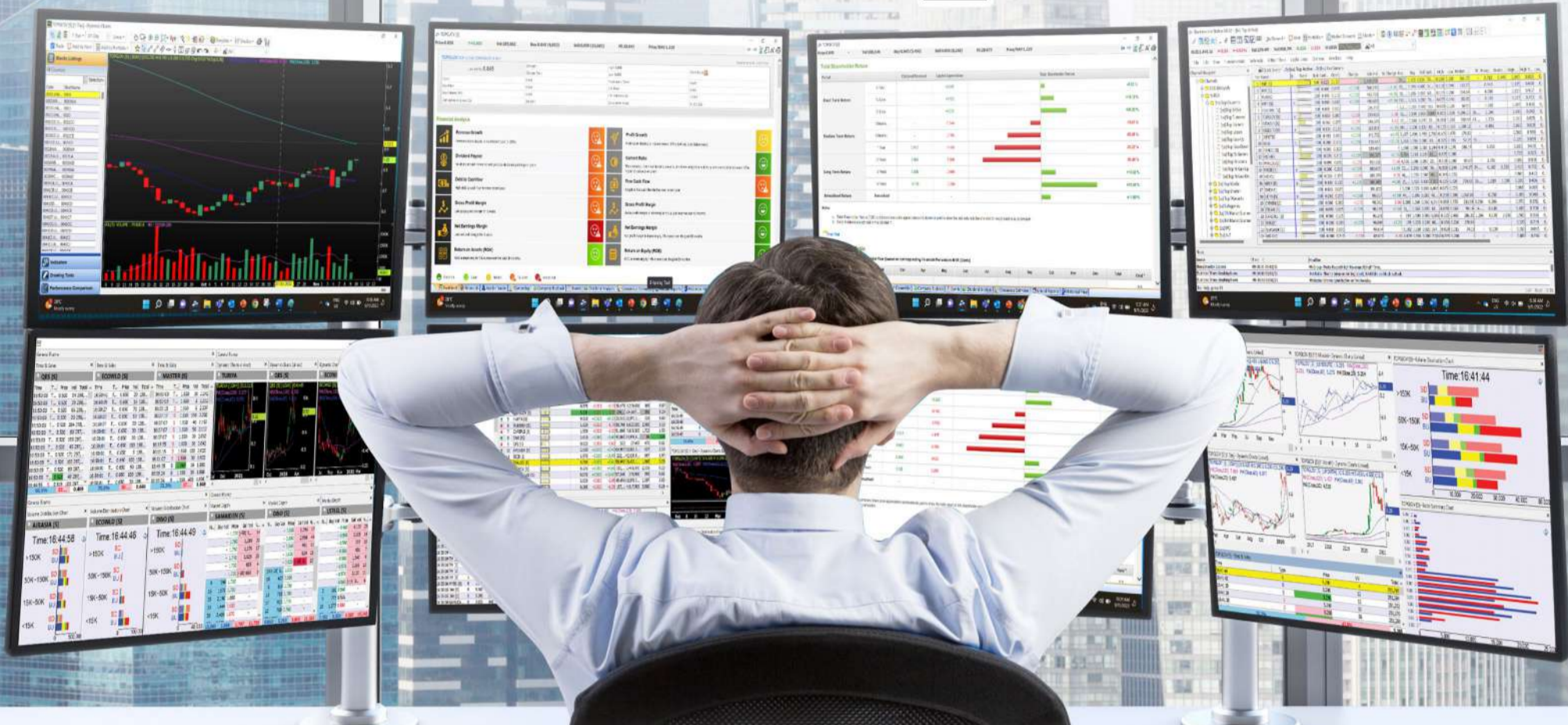


Disclaimer: The information on this page is provided as a service to readers. It does not constitute financial advice and/or any investment recommendations. Past performance is not indicative of future results. We assume no liability for damages resulting from or arising out of the use of such information. It would be best if you did your own research to make your personal investment decisions wisely or consult a licenced investment advisor.

MAKE BETTER TRADING STRATEGIES

with

SHARE INVESTOR STATION



8 Markets Data

- ▶ Get access to data from Bursa, NYSE, Nasdaq, HKEX, SGX, IDX, SET & ASX

Dynamic Chart

- ▶ Candlestick Pattern Recognition
- ▶ 111 Indicators
- ▶ 39 Drawing Tools
- ▶ Performance Comparison Chart

Intraday Data

- ▶ Market Depth
- ▶ Trade Summary Matrix & Chart
- ▶ Times & Sales
- ▶ Intraday Market Ticker

Market Screener

- ▶ 96 criteria ranging from FA, TA, Consensus Estimate
- ▶ Real-time Data

Power Frame

- ▶ Combining few Dynamic Charts together with intraday information in one frame

Technical Analysis

Fundamental Analysis

Financial Analysis Statement

- ▶ Profit & Loss
- ▶ Balance Sheet
- ▶ Cash Flow Statement
- ▶ More than 20 Financial Ratios
- ▶ Dividend Analysis

FactSheet

- ▶ Key Stock Information
- ▶ Ownership
- ▶ Consensus Estimates
- ▶ Annual Report
- ▶ Historical Price
- ▶ Insider Trades

**Start your 18 days
FREE trial now
(Valued at RM82)**



Price & Total Shareholder Return (as at Yesterday)

Fundamental Analysis

DEFINITION: Share price of a company trading at a lower price as compared to its fundamentals (FA) such as financial performance and dividend, allowing it to be attractive to value investors.

CHART GUIDE: Total Shareholder Return (TSR) combines share price appreciation and dividend distributions paid to show the total return to the shareholder expressed as a percentage.



ShareInvestor WebPro > Screener > Market Screener (FA & TA) > select BURSA > add criteria

A. Criteria

- > click Add Criteria
- Fundamental Analysis Conditions tab (i) Price Earnings Ratio
- Fundamental Analysis Conditions tab >select (ii) CAGR of Net Earnings
- Fundamental Analysis Conditions tab >select (iii) Net Debt To Equity
- Fundamental Analysis Conditions tab >select (iv) Return On Equity (ROE)

B. Conditions

1. Price Earnings Ratio - select (less than) type (15) times now
2. CAGR of Net Earnings - select (more than) type (10) % for the past type (3) financial year(s)
3. Net Debt To Equity – select (less than) type (1) for the past select (1) financial year(s)
4. Return On Equity (ROE) – select (more than) type (10) % for the past select (1) financial year(s)

- > click Save Template > Create New Template type (Value Stock) > click Create
- > click Save Template as > select Value Companies > click Save
- > click Screen Now (may take a few minutes)
- Sort by: Select (PE Ratio) Select (Ascending)
- > Mouse over stock name > Factsheet > looking for Total Shareholder Return
- > Mouse over stock name > Charts > click C2 Charts tab

SYNERGY HOUSE BERHAD (0279)

C² Chart



Period	Dividend Received	Capital Appreciation	Total Shareholder Return
Short Term Return	5 Days	-0.040	-5.52%
	10 Days	+0.030	+4.50%
	20 Days	+0.045	+7.03%
Medium Term Return	3 Months	+0.245	+55.68%
	6 Months	+0.250	+61.10%

EDELTEQ HOLDINGS BERHAD (0278)

C² Chart



Period	Received	Appreciation	Total Shareholder Return
Short Term Return	5 Days	+0.010	+3.23%
	10 Days	-0.010	-3.03%
	20 Days	+0.010	+3.23%
Medium Term Return	3 Months	-0.055	-14.67%
	6 Months	-0.410	-56.16%

SUNMOW HOLDING BERHAD (03050)

C² Chart



Period	Dividend Received	Capital Appreciation	Total Shareholder Return
Short Term Return	5 Days	-	-
	10 Days	-	-
	20 Days	-0.020	-1.85%
Medium Term Return	3 Months	-0.040	-3.64%
	6 Months	-0.040	-3.64%
Long Term Return	1 Year	+0.150	+17.78%
	2 Years	+0.050	+5.00%
Annualised Return	Annualised	-	+2.96%

Disclaimer: The information on this page is provided as a service to readers. It does not constitute financial advice and/or any investment recommendations. Past performance is not indicative of future results. We assume no liability for damages resulting from or arising out of the use of such information. It would be best if you did your own research to make your personal investment decisions wisely or consult a licenced investment advisor.



making places energizing



usm.com

XTRA

XTRA FURNITURE SDN BHD
The Gardens Mall, Mid Valley City, Lot S-236 & 237
Lingkar Syed Putra, 59200 Kuala Lumpur
T. +603 2282 9088 | living@xtrafurniture.com | xtrafurniture.com
📍 XTRAFurniture | 🌐 xtrafurnituremsia

Price & Total Shareholder Return (as at Yesterday)

Fundamental Analysis

DEFINITION: Company revenue is growing and making good quality of earnings with positive Free Cash Flow.

CHART GUIDE: Total Shareholder Return (TSR) combines share price appreciation and distributions paid to show the total return to the shareholder expressed as a percentage.



ShareInvestor WebPro > Screener > Market Screener (FA & TA) > select BURSA > add criteria

A. Criteria

1. Fundamental Analysis Conditions tab >select (i) Free Cash Flow, (ii) Revenue Growth, (iii) Gross Profit (Earnings) Margin, (iv) Quality of Earnings, (v) Total Shareholder Returns, > click Add Criteria
2. Fundamental Analysis Conditions tab >select (vi) Total Shareholder Returns > click Add Criteria

B. Conditions (Criteria Filters)

1. Free Cash Flow - select (more than) type (1) for the past select (1) financial year(s)
2. Revenue Growth - select (more than) type (1) for the past select (1) financial year(s)
3. Gross Profit (Earnings) Margin - select (more than) type (30) % for the past select (1) financial year(s)
4. Quality of Earnings - select (more than) type (1) for the past select (1) financial year(s)
5. Total Shareholder Return - select (more than) type (5) % for the past select (3) financial year(s)
6. Total Shareholder Return - select (more than) type (5) % for the past select (5) financial year(s)

- > click Save Template > Create New Template type (Growth Companies) > click Create
- > click Save Template as > select Growth Companies > click Save
- > click Screen Now (may take a few minutes)
- > Sort By: Select (Revenue Growth) Select (Desc)
- > Mouse over stock name > Factsheet > looking for Total Shareholder Return

ABLEGROUP BERHAD (7086)

C² Chart

Analysis



Period	Dividend Received	Capital Appreciation	Total Shareholder Return
Short Term Return	5 Days	+	+6.70%
	10 Days	-	-
	20 Days	+	+4.17%
Medium Term Return	3 Months	+	+6.70%
	6 Months	+	+4.17%
	1 Year	-	-10.71%
Long Term Return	2 Years	-	-
	3 Years	+	+6.70%
	5 Years	+	+66.67%
Annualised Return	Annualised	-	+10.75%

IGB BERHAD (5606)

C² Chart

Analysis



Period	Dividend Received	Capital Appreciation	Total Shareholder Return
Short Term Return	5 Days	+	+3.20%
	10 Days	+	+0.89%
	20 Days	-	-3.83%
Medium Term Return	3 Months	+	+7.01%
	6 Months	+	+13.40%
	1 Year	+	+48.97%
Long Term Return	2 Years	0.050	+77.26%
	3 Years	0.236	+69.19%
	5 Years	0.583	+726.08%
Annualised Return	Annualised	-	+52.85%

MATRIX CONCEPTS HOLDINGS BERHAD (5236)

C² Chart

Analysis



Period	Dividend Received	Capital Appreciation	Total Shareholder Return
Short Term Return	5 Days	+	+0.61%
	10 Days	-	-
	20 Days	-	-1.79%
Medium Term Return	3 Months	+	+6.56%
	6 Months	+	+10.71%
	1 Year	+	+13.01%
Long Term Return	2 Years	+	+10.00%
	3 Years	+	+40.66%
	5 Years	0.108	+47.60%
Annualised Return	Annualised	-	+8.10%

Disclaimer: The information on this page is provided as a service to readers. It does not constitute financial advice and/or any investment recommendations. Past performance is not indicative of future results. We assume no liability for damages resulting from or arising out of the use of such information. It would be best if you did your own research to make your personal investment decisions wisely or consult a licenced investment advisor.

Price & Total Shareholder Return (as at Yesterday)

Fundamental Analysis

DEFINITION: Company is paying out dividend with low or moderate leverage.

CHART GUIDE: Total Shareholder Return (TSR) combines share price appreciation and distributions paid to show the total return to the shareholder expressed as a percentage.



ShareInvestor WebPro > Screener > Market Screener (FA & TA) > select BURSA > add criteria

A. Criteria

- > click Add Criteria
- Fundamental Analysis Conditions tab >select (i) Dividend Yield (Historical)
- Fundamental Analysis Conditions tab >select (ii) Dividend Payout (Historical)
- Fundamental Analysis Conditions tab >select (iii) Total Debt To Equity
- Fundamental Analysis Conditions tab >select (iv) Total Shareholder Returns
- Fundamental Analysis Conditions tab >select (v) Total Shareholder Returns
- Fundamental Analysis Conditions tab / >select (vi) CAGR of Dividend Per Share

• Fundamental Analysis Conditions tab >select (vii) CAGR of Dividend Per Share

B. Conditions (Criteria Filters)

1. Dividend Yield - select (more than) type (1) % for the past select (1) financial year(s)
2. Dividend Payout (Historical) - select (between) type (0.5) to type (1) times for the past select (1) financial year(s)
3. Total Debt to Equity - select (less than) type (1) for the past select (1) financial year(s)
4. Total Shareholder Return - select (more than) type (5) % for the past select (3) financial year(s)
5. Total Shareholder Return - select (more than) type (5) % for the past select (5) financial year(s)

6. CAGR of Dividend Per Share - select (less than) type (30) % for the past select (5) financial year(s)
7. CAGR of Dividend Per Share - select (more than) type (1) % for the past select (5) financial year(s)

- > click Save Template > Create New Template type (Dividend Companies) > click Create
- > click Save Template as > select Dividend Companies > click Save
- > click Screen Now (may take a few minutes)
- > Sort By: Select (Dividend Yield) Select (Desc)
- > Mouse over stock name > Factsheet > looking for Total Shareholder Return

FORMOSA PROSONIC INDUSTRIES (9172)

C² Chart



Period	Dividend Received	Capital Appreciation	Total Shareholder Return
Short Term Return	5 Days	-0.020	-0.69 %
	10 Days	-	-
	20 Days	+0.120	+4.38 %
Medium Term Return	3 Months	+0.210	+7.82 %
	6 Months	+0.440	+18.18 %
	1 Year	+0.360	+11.80 %
Long Term Return	2 Years	0.200	-17.74 %
	3 Years	0.340	+47.47 %
	5 Years	0.550	+97.11 %
Annualised Return	Annualised	-	+14.54 %

KENANGA INVESTMENT BANK BERHAD (6483)

C² Chart



Period	Dividend Received	Capital Appreciation	Total Shareholder Return
Short Term Return	5 Days	+0.025	+2.75 %
	10 Days	+0.025	+2.75 %
	20 Days	+0.055	+6.25 %
Medium Term Return	3 Months	+0.095	+7.47 %
	6 Months	+0.055	+6.25 %
	1 Year	+0.040	+4.47 %
Long Term Return	2 Years	0.105	-7.14 %
	3 Years	0.193	+21.95 %
	5 Years	0.297	+100.34 %
Annualised Return	Annualised	-	+14.91 %

AMWAY (M) HOLDINGS BERHAD (6351)

C² Chart



Period	Dividend Received	Capital Appreciation	Total Shareholder Return
Short Term Return	5 Days	+0.310	+5.45 %
	10 Days	+0.380	+5.26 %
	20 Days	+0.460	+8.30 %
Medium Term Return	3 Months	+0.730	+12.85 %
	6 Months	+0.630	+11.73 %
	1 Year	+1.000	+20.00 %
Long Term Return	2 Years	+0.640	+11.94 %
	3 Years	0.075	+5.18 %
	5 Years	0.400	+44.78 %
Annualised Return	Annualised	-	+2.79 %

Disclaimer: The information on this page is provided as a service to readers. It does not constitute financial advice and/or any investment recommendations. Past performance is not indicative of future results. We assume no liability for damages resulting from or arising out of the use of such information. It would be best if you did your own research to make your personal investment decisions wisely or consult a licenced investment advisor.

Week: 29 December 2023 - 04 January 2024

More Brokers' Call 

AMINVESTMENT BANK <small>... See More</small>	Call	Target Price	Release Date
Kim Loong Resources Berhad (5027)	BUY	RM2.90	29 Dec 2023

APEX <small>... See More</small>	Call	Target Price	Release Date
Aurelius Technologies Berhad (5302)	BUY	RM3.22	04 Jan 2024
Kim Loong Resources Berhad (5027)	HOLD	RM1.84	02 Jan 2024

KENANGA <small>... See More</small>	Call	Target Price	Release Date
Kerjaya Prospek Group Berhad (7161)	OUTPERFORM	RM1.67	04 Jan 2024

UOB KAYHIAN <small>... See More</small>	Call	Target Price	Release Date
Evergreen Fibreboard Berhad (5101)	BUY	RM0.40	03 Jan 2024
HSS Engineers Berhad (0185)	BUY	RM1.24	03 Jan 2024
Kumpulan Perangsang Selangor Berhad (5843)	BUY	RM0.92	03 Jan 2024
Malaysia Airports Holdings Berhad (5014)	BUY	RM8.32	03 Jan 2024
United U-Li Corporation Berhad (7133)	BUY	RM1.84	02 Jan 2024
Astino Berhad (7162)	BUY	RM0.65	02 Jan 2024
Citaglobal Berhad (7245)	BUY	RM1.67	02 Jan 2024

Disclaimer: InveSt does not accept any liability whatsoever for any direct, indirect or consequential losses (including loss of profit) or damages that may arise from the use of information or opinions in this publication. The information and opinions in InveSt are not to be considered as an offer to sell or buy any of the securities discussed. Opinions expressed are subject to change without notice. The Brokers may, from time to time, have interests or positions in the securities mentioned. For the full report on each item listed on this page, please visit https://www.shareinvestor.com/my/brokers_call.

DEFINITION: Top 8 stocks with Technical Analysis plus Pattern Matching by 60 pre-defined indicators by the system showing a higher probability of bullish sentiment on the share price.



ShareInvestor WebPro > Screener > Predefined TA Screens > select market BURSA > Most Long Signals > click Scan Results or mouse over each company

TEXCHEM RESOURCES BERHAD (8702.MY)

TEXCHEM

Price updated at 04 Jan 2024 16:56

Last: 1.010	Change: -	Volume: 4,090
	Change (%): -	Range: 0.990 - 1.030

TA Scanner Results based on historical data up to 04 Jan 2024

Condition	Signal	Explanation
Accumulation Distribution: Bullish Accumulation Distribution	Long	Accumulation distribution increasing for the last 7 days
Bollinger Band: Bullish Long Term Volatility Breakout and Trending	Long	1. Close price above upper bollinger band(33,1). 2. Volume above average volume(50). 3. Average volume(50) is above 300,000.
Bollinger Band: Bullish Lower Bollinger Band Support	Long	1. Low 1 day ago below lower bollinger band(20,2). 2. Close above close 1 day ago. 3. Average volume(5) is above 100,000.
Bollinger Band: High Above Upper Bollinger Band	Neutral	1. High above upper bollinger band(14,2). 2. Average volume(5) is above 100,000.
DM: Bullish Directional Movement	Long	-DI(14) crossed below +DI(14)
Donchian Channels: High Above Upper Donchian Channels	Long	High crossed above the upper Donchian Channel(14,4)
MA: Bullish Price Crossover	Long	1. Close price crossed above MA(40) within the last 1 day. 2. Previous day close price is below the MA(10) for the last 5 days
MACD: Bullish MACD Crossover	Long	1. MACD(12,26) diff line crossed above the MACD(12,26) signal line. 2. MACD Histogram(12,26) is above 0.
Parabolic SAR: Bearish Parabolic SAR Reversal	Neutral	1. Parabolic SAR 1 day ago above close price 1 day ago for the last 5 days. 2. Parabolic SAR below close price
RSI: Short Term RSI 50 Bullish Crossover	Long	1. RSI(20) crossed above 50 within the last 1 day and RSI(20) 1 day ago below 50 for the last 5 days. 2. Volume above average volume(125). 3. Average volume(5) is above 100,000.
Volume: Volume Spike	Long	1. Volume is more than 500% above average volume(10). 2. Volume above 200000. 3. Close price above 0.10

ADVANCE SYNERGY BERHAD (1481.MY)

ASB

Price updated at 04 Jan 2024 16:56

Last: 0.150	Change: -	Volume: 196,044
	Change (%): -	Range: 0.145 - 0.155

TA Scanner Results based on historical data up to 04 Jan 2024

Condition	Signal	Explanation
Bollinger Band: Bullish Long Term Volatility Breakout and Trending	Long	1. Close price above upper bollinger band(33,1). 2. Volume above average volume(50). 3. Average volume(50) is above 300,000.
Bollinger Band: Bullish Lower Bollinger Band Support	Long	1. Low 1 day ago below lower bollinger band(20,2). 2. Close above close 1 day ago. 3. Average volume(5) is above 100,000.
Bollinger Band: Bullish Short Term Volatility Breakout and Trending	Long	1. Close price above upper bollinger band(33,1). 2. Volume above average volume(10). 3. Average volume(10) is above 300,000.
Bollinger Band: High Above Upper Bollinger Band	Neutral	1. High above upper bollinger band(14,2). 2. Average volume(5) is above 100,000.
Donchian Channels: High Above Upper Donchian Channels	Long	High crossed above the upper Donchian Channel(14,4)
MA: Bullish Price Crossover	Long	1. Close price crossed above MA(40) within the last 1 day. 2. Previous day close price is below the MA(10) for the last 5 days
MA: Medium Term Bullish Moving Average Crossover	Long	MA(25) crossed above MA(50) within the last 1 day.

MIKRO MSC BERHAD (0112.MY)

MIKROMB

Price updated at 04 Jan 2024 16:57

Last: 0.240	Change: -0.010	Volume: 47,136
	Change (%): -4.00	Range: 0.240 - 0.255

TA Scanner Results based on historical data up to 04 Jan 2024

Condition	Signal	Explanation
Bollinger Band: Bullish Long Term Volatility Breakout and Trending	Long	1. Close price above upper bollinger band(33,1). 2. Volume above average volume(50). 3. Average volume(50) is above 300,000.
Bollinger Band: Bullish Short Term Volatility Breakout and Trending	Long	1. Close price above upper bollinger band(33,1). 2. Volume above average volume(10). 3. Average volume(10) is above 300,000.
DM: Bullish Directional Movement	Long	-DI(14) crossed below +DI(14)
MA: Bullish Price Crossover	Long	1. Close price crossed above MA(40) within the last 1 day. 2. Previous day close price is below the MA(10) for the last 5 days
MACD: Bullish MACD Crossover	Long	1. MACD(12,26) diff line crossed above the MACD(12,26) signal line. 2. MACD Histogram(12,26) is above 0.
RSI: Short Term RSI 50 Bullish Crossover	Long	1. RSI(20) crossed above 50 within the last 1 day and RSI(20) 1 day ago below 50 for the last 5 days. 2. Volume above average volume(125). 3. Average volume(5) is above 100,000.

SARAWAK CONSOLIDATED IND BERHAD (9237.MY)

SCIB

Price updated at 04 Jan 2024 16:59

Last: 0.980	Change: +0.010	Volume: 495,035
	Change (%): +1.03	Range: 0.965 - 0.980

TA Scanner Results based on historical data up to 04 Jan 2024

Condition	Signal	Explanation
Accumulation Distribution: Bullish Accumulation Distribution	Long	Accumulation distribution increasing for the last 7 days
Price: Consecutive Days Gains	Long	1. Close price has been increasing over the last 5 days. 2. Average volume(5) above 100,000.
Price: New 52 Week High	Long	1. Stock reach a new 52 week high. 2. Average volume(30) is above 50000.
RSI: RSI Overbought	Short	1. RSI(20) is above 80. 2. RSI(20) is increasing for the last 3 days. 3. Stock has more than 75 days of historical data.
Volume: 10 Days large value Buy Up trade	Long	1. 150K value Buy Up greater than Sell Down by 20% for 10 days. 2. 50K-100K value Buy Up greater than Sell Down by 20% for 10 days. 3. Average volume(10) is above 1000000
Volume: 5 Days large value Buy Up trade	Long	1. 150K value Buy Up greater than Sell Down by 20% for 5 days. 2. 50K-100K value Buy Up greater than Sell Down by 20% for 5 days. 3. Average volume(10) is above 1000000
Williams %R: Bearish Williams %R	Short	1. Williams %R(26) between 0 and -20. 2. Average volume(5) is above 100,000.

Disclaimer: The information on this page is provided as a service to readers. It does not constitute financial advice and/or any investment recommendations. Past performance is not indicative of future results. We assume no liability for damages resulting from or arising out of the use of such information. It would be best if you did your own research to make your personal investment decisions wisely or consult a licenced investment advisor.

Condition	Signal	Explanation
MACD: Bullish MACD Crossover	Long	1. MACD(12,26) diff line crossed above the MACD(12,26) signal line. 2. MACD Histogram(12,26) is above 0.
RSI: Short Term RSI 50 Bullish Crossover	Long	1. RSI(20) crossed above 50 within the last 1 day and RSI(20) 1 day ago below 50 for the last 5 days. 2. Volume above average volume(125). 3. Average volume(5) is above 100,000.



AEON CREDIT SERVICE (M) BERHAD (5139.MY)

AEONCR

Price updated at 04 Jan 2024 16:51

Last: 5.780	Change: -	Volume: 3,640
	Change (%): -	Range: 5.720 - 5.800

TA Scanner Results based on historical data up to 04 Jan 2024

Condition	Signal	Explanation
Bollinger Band: Bullish Long Term Volatility Breakout and Trending	Long	1. Close price above upper bollinger band(33,1). 2. Volume above average volume(50). 3. Average volume(50) is above 300,000.
Bollinger Band: Bullish Short Term Volatility Breakout and Trending	Long	1. Close price above upper bollinger band(33,1). 2. Volume above average volume(10). 3. Average volume(10) is above 300,000.
Bollinger Band: High Above Upper Bollinger Band	Neutral	1. High above upper bollinger band(14,2). 2. Average volume(5) is above 100,000.
Donchian Channels: High Above Upper Donchian Channels	Long	High crossed above the upper Donchian Channel(14,4)
MA: Bullish Price Crossover	Long	1. Close price crossed above MA(40) within the last 1 day. 2. Previous day close price is below the MA(10) for the last 5 days
MACD: Bullish MACD Crossover	Long	1. MACD(12,26) diff line crossed above the MACD(12,26) signal line. 2. MACD Histogram(12,26) is above 0.
RSI: Short Term RSI 50 Bullish Crossover	Long	1. RSI(20) crossed above 50 within the last 1 day and RSI(20) 1 day ago below 50 for the last 5 days. 2. Volume above average volume(125). 3. Average volume(5) is above 100,000.
Stochastic: Fast Stochastic Buy Signal	Long	1. Fast Stochastic(15,5) %K crossed above 20. 2. Fast Stochastic(15,5) %K 1 day ago was below 20 for the last 5 days. 3. Average volume(30) is above 50000
Williams %R: Bearish Williams %R	Short	1. Williams %R(26) between 0 and -20. 2. Average volume(5) is above 100,000.



MALTON BERHAD (6181.MY)

MALTON

Price updated at 04 Jan 2024 16:50

Last: 0.400	Change: -	Volume: 5,882
	Change (%): -	Range: 0.395 - 0.405

TA Scanner Results based on historical data up to 04 Jan 2024

Condition	Signal	Explanation
Bollinger Band: Bullish Lower Bollinger Band Support	Long	1. Low 1 day ago below lower bollinger band(20,2). 2. Close above close 1 day ago. 3. Average volume(5) is above 100,000.
Bollinger Band: Bullish Short Term Volatility Breakout and Trending	Long	1. Close price above upper bollinger band(33,1). 2. Volume above average volume(10). 3. Average volume(10) is above 300,000.
Bollinger Band: High Above Upper Bollinger Band	Neutral	1. High above upper bollinger band(14,2). 2. Average volume(5) is above 100,000.
Chaikin Volatility: Increasing Chaikin Volatility	Neutral	Chaikin Volatility(10,10) has been increasing for 5 days
DM: Bullish Directional Movement	Long	-DI(14) crossed below +DI(14)
Donchian Channels: High Above Upper Donchian Channels	Long	High crossed above the upper Donchian Channel(14,4)
RSI: Short Term RSI 50 Bullish Crossover	Long	1. RSI(20) crossed above 50 within the last 1 day and RSI(20) 1 day ago below 50 for the last 5 days. 2. Volume above average volume(125). 3. Average volume(5) is above 100,000.
Volume: Volume Spike	Long	1. Volume is more than 500% above average volume(10). 2. Volume above 200000. 3. Close price above 0.10



SOLID AUTOMOTIVE BERHAD (5242.MY)

SOLID

Price updated at 04 Jan 2024 16:50

Last: 0.190	Change: -	Volume: 2,971
	Change (%): -	Range: 0.185 - 0.190

TA Scanner Results based on historical data up to 04 Jan 2024

Condition	Signal	Explanation
Bollinger Band: High Above Upper Bollinger Band	Neutral	1. High above upper bollinger band(14,2). 2. Average volume(5) is above 100,000.
DM: Bullish Directional Movement	Long	-DI(14) crossed below +DI(14)
Donchian Channels: High Above Upper Donchian Channels	Long	High crossed above the upper Donchian Channel(14,4)
MACD: Bullish MACD Crossover	Long	1. MACD(12,26) diff line crossed above the MACD(12,26) signal line. 2. MACD Histogram(12,26) is above 0.
Parabolic SAR: Bearish Parabolic SAR Reversal	Neutral	1. Parabolic SAR 1 day ago above close price 1 day ago for the last 5 days. 2. Parabolic SAR below close price
RSI: Short Term RSI 50 Bullish Crossover	Long	1. RSI(20) crossed above 50 within the last 1 day and RSI(20) 1 day ago below 50 for the last 5 days. 2. Volume above average volume(125). 3. Average volume(5) is above 100,000.
Volume: Volume Spike	Long	1. Volume is more than 500% above average volume(10). 2. Volume above 200000. 3. Close price above 0.10



EASTERN & ORIENTAL BERHAD (3417.MY)

E&O

Price updated at 04 Jan 2024 16:58

Last: 0.665	Change: +0.025	Volume: 211,130
	Change (%): +3.91	Range: 0.640 - 0.680

TA Scanner Results based on historical data up to 04 Jan 2024

Condition	Signal	Explanation
Bollinger Band: Bullish Long Term Volatility Breakout and Trending	Long	1. Close price above upper bollinger band(33,1). 2. Volume above average volume(50). 3. Average volume(50) is above 300,000.
Bollinger Band: Bullish Short Term Volatility Breakout and Trending	Long	1. Close price above upper bollinger band(33,1). 2. Volume above average volume(10). 3. Average volume(10) is above 300,000.
Bollinger Band: High Above Upper Bollinger Band	Neutral	1. High above upper bollinger band(14,2). 2. Average volume(5) is above 100,000.
DM: Bullish Directional Movement	Long	-DI(14) crossed below +DI(14)
Donchian Channels: High Above Upper Donchian Channels	Long	High crossed above the upper Donchian Channel(14,4)
MACD: Bullish MACD Crossover	Long	1. MACD(12,26) diff line crossed above the MACD(12,26) signal line. 2. MACD Histogram(12,26) is above 0.
Volume: 10 Days large value Buy Up trade	Long	1. 150K value Buy Up greater than Sell Down by 20% for 10 days. 2. 50K-100K value Buy Up greater than Sell Down by 20% for 10 days. 3. Average volume(10) is above 1000000
Volume: 5 Days large value Buy Up trade	Long	1. 150K value Buy Up greater than Sell Down by 20% for 5 days. 2. 50K-100K value Buy Up greater than Sell Down by 20% for 5 days. 3. Average volume(10) is above 1000000
Williams %R: Bearish Williams %R	Short	1. Williams %R(26) between 0 and -20. 2. Average volume(5) is above 100,000.

Disclaimer: The information on this page is provided as a service to readers. It does not constitute financial advice and/or any investment recommendations. Past performance is not indicative of future results. We assume no liability for damages resulting from or arising out of the use of such information. It would be best if you did your own research to make your personal investment decisions wisely or consult a licenced investment advisor.

2024 TO BE 'TAKE-OFF' YEAR FOR MALAYSIA'S ECONOMIC TRANSITION, WITH GDP GROWTH AT 4.4% - MAYBANK IB

A ccording to Maybank Investment Bank (Maybank IB), the year 2024 should be a "take-off" year for Malaysia's medium- to long-term economic transition outlined in last year's blueprints, masterplans, road maps and legislations, with the economy growth expected to be firmer at 4.4% this year.

These include the Madani Economy, National Energy Transition Roadmap (NETR), New Industrial Master Plan (NIMP 2030), 12th Malaysia Plan Mid-Term Review, Hydrogen Economy and Technology Roadmap, Fiscal Responsibility Act (FRA) as well as Energy Efficiency and Conservation Act.

The country's economic growth would be underpinned by resilient consumer spending, sustained private and infrastructure investment momentum, plus recoveries in trade-related services and manufacturing industries, namely tourism and electronics. Fiscal reforms and economic restructuring will be high on the agenda. The key element of fiscal reform in 2024 is targeted fuel subsidy rationalisation, while the main item under economic restructuring is the Progressive Wage Policy to address the cost of living, adequacy of retirement savings and equality issues.

With the recent Cabinet reshuffle, next general election in four years' time, sub-2% monthly inflation rate currently, and fiscal consolidation targets legislated by the FRA are the "carrots and sticks" to execute and implement.

The exact details of the timing and mechanics of targeted fuel subsidy rationalisation are still pending. Strict enforcement to address serious diesel subsidy leakage, the roll-out of the Central Database Hub (Padu) to 'means-testing' eligibility for targeted RON95 subsidies, and gradual adjustments to fuel prices to mitigate the impact on inflation will be needed.

A slight inflation uptick is expected in 2024 amid gradual adjustments to subsidy rationalisation measures to mitigate the impact on inflation, with inflation to re-accelerate to 3.0% in 2024, compared with 2.6% last year. Consequently, Bank Negara Malaysia is expected to keep the overnight policy rate at 3% in 2024, despite the expectations for interest rate cuts in major advanced economies and regional peers, which is expected to be positive for the ringgit versus the US dollar.

Maybank IB has projected the local note to appreciate towards the 4.40 level against the greenback by the end of 2024. For equities, the tail end of global monetary policy tightening is a tailwind, while the stable domestic interest rate policy outlook, economic transformation via the NETR and NIMP 2023, and rising foreign direct investment momentum

are the key catalysts. It also looks forward to better corporate earnings growth in 2024, while maintaining its 2024 FBM KLCI target of 1,610 points.

It added that for investment strategy, it recommends a portfolio of selective trade-related and domestic sectors, balanced with yield and environmental, social and governance stocks.

Global real gross domestic product growth is expected to slow to 2.8% this year, as the US economy 'soft lands' on factors like household excess savings and a resilient job market supporting consumer spending, supply-side or industrial policies lifting US manufacturing investment, and expansionary fiscal policy negating the Federal Reserve's interest rate hikes.

Meanwhile, key risks include higher-for-longer US interest rates, widening of the US-China geopolitical rivalry, escalations in Russian-Ukraine war and Middle East instability due to Israel-Hamas war, as well as China's real estate sector flaring up and souring financial or capital market sentiment.

M'SIA SET TO HIT 2023 GDP GROWTH TARGET OF 4%-5% ON POSITIVE ECONOMIC MOMENTUM - DOSM

According to the Department of Statistics Malaysia (DOSM) Chief statistician Datuk Seri Dr Mohd Uzir Mahidin, Malaysia is set to achieve its 2023 gross domestic product (GDP) growth target of 4%-5%, based on the good economic momentum seen so far. Consumer spending sentiment is normally at an above-average level in the fourth quarter (4Q) of the year compared to other quarters.

It is during 4Q that consumers tend to spend more than usual, including for back-to-school, new year and festive spending, with demand for goods being higher. Demand being the largest component of GDP, there's room for growth in 4Q GDP performance.

GDP growth for 4Q is forecast to be higher than in 3Q and should be gauged based on available data. For the industrial production index for October, the mining, electricity and manufacturing sectors recorded growth, while Malaysia's trade also expanded and continued to show a surplus. It was reported that the trade surplus reached RM12.87 billion in October, marking the 42nd consecutive month of trade surplus since May 2020.

At the same time, unemployment has seen a decline. The country's unemployment rate in October stood at 3.4%. The data for October signals that the Malaysian economy is moving towards growth. Up to this month (January 2024), economic activities in November and December remained in growth territory.

GDP growth for the first three quarters combined was already 3.9%. Therefore, the country's economic growth for 2023 is going in the direction that the government has targeted. According to Bank Negara Malaysia, the Malaysian economy grew by 3.3% in 3Q (2Q: 2.9%), while overall, the economy expanded by 3.9% in the first three quarters of 2023.

On the Central Database Hub (Padu) which went live on Tuesday, Mohd Uzir said that up to 8pm on Wednesday, the system had recorded a total of 396,181 registered users. Malaysians are given until March 31 to update their information in the system. Based on the response towards Padu usage to date, he expressed confidence that the target of getting 29 million Malaysian citizens to register will be achieved.

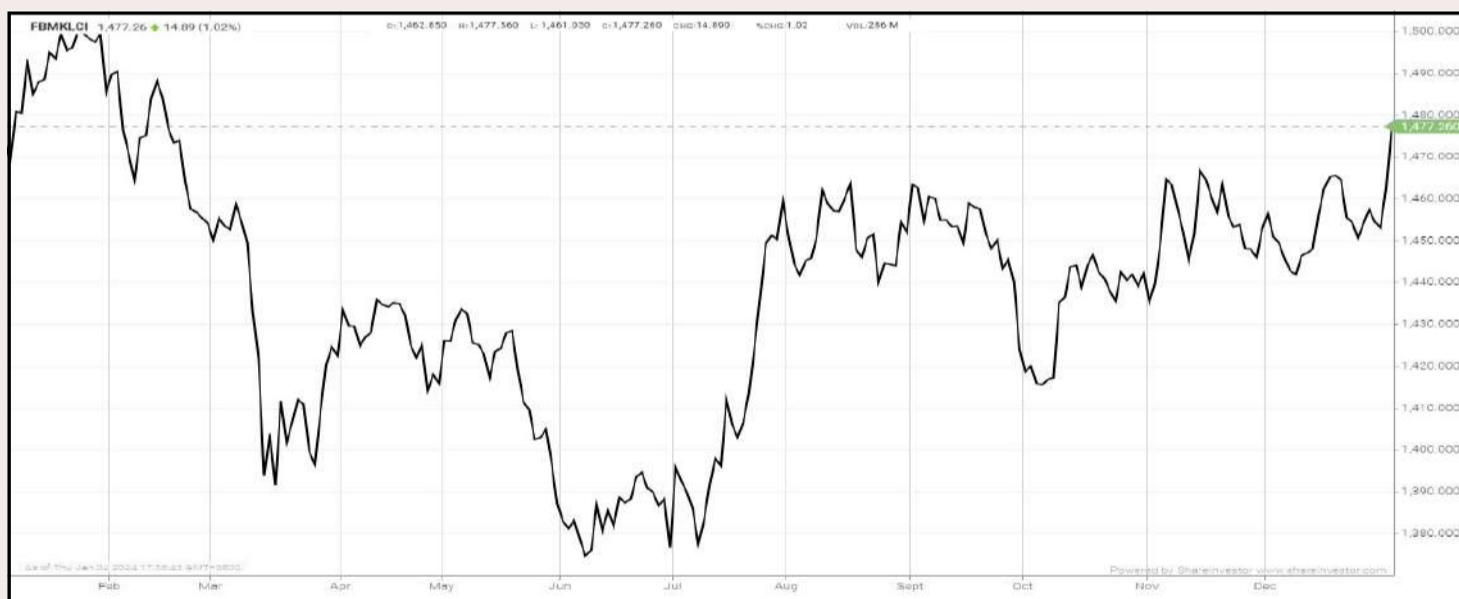
To ensure that no one is left out from benefiting from the implementation of Padu, the government will conduct engagement sessions with leadership at the state government level to achieve the target set. He added that feedback received by the DOSM and its staff on the ground so far had indicated positive reception to the system in rural areas, aided by the efforts of the Information Department.

Note From Publisher:

This is our first issue for 2024. We wish all our readers a Happy, Healthy, Prosperous and Profitable New Year 2024!

EYE ON THE MARKETS

On Thursday (04Jan), the Ringgit closed at 4.6375 against the USD and 3.4933 to the Sing Dollar. On Tuesday (02Jan), the FBM KLCI opened at 1452.20. As at Thursday (04Jan) 5:00pm, the FBM KLCI closed up 25.06 points at 1477.26. Over in US, the overnight Dow Jones Industrial Average closed up 10.15 points (+0.03%) to 37,440.34 whilst the NASDAQ shed 81.91 points (-0.56%) to 14,510.30.



KLCI 1 Year Chart



Learn how to identify Hot Stocks using Technical Analysis (TA) and Fundamental Analysis (FA)

SIGN UP FOR Invest

IT'S FREE!!!

Click here

Scan me



Via email, every Friday.

Over 5 trading days



ShareInvestor WebPro (www.shareinvestor.com/my)

1. Price > Stock Prices
2. Select Market: NASDAQ / NYSE / IDX / SET / HKEX / SGX (One bourse at a time)
3. select Stocks Tab
4. select Ranking Top Gainers or Top Losers (Over 5 Trading Days)
5. Mouse over Column Layout > select Edit Customs > select Name > select Last Done Price > select 5 Days Change > select 52 Weeks High > select 52 Weeks Low > Mouse Over Column Layout > select Custom

NASDAQ (USD)

Top Gainers

Name	Last Done	Change Over 5 Days	52 Weeks High	52 Weeks Low
REGENERON PHARMACEUTICALS INC	912.170	+30.470	905.290	668.000
LONGBOARD PHARMACEUTICALS INC	24.850	+18.650	25.820	3.395
AMGEN INC	303.170	+15.150	303.250	211.710
UNITED THERAPEUTICS CORP	230.110	+10.870	279.140	204.440
MODERNA INC	108.660	+9.870	207.510	62.550

Top Losers

Name	Last Done	Change Over 5 Days	52 Weeks High	52 Weeks Low
BOOKING HOLDINGS INC	3,419.940	-130.530	3,580.620	2,005.570
BROADCOM INC	1,049.010	-73.400	1,151.820	549.990
MERCADOLIBRE INC	1,519.380	-62.220	1,660.000	815.855
MONOLITHIC POWER SYSTEM INC	571.060	-61.160	647.115	339.280
LAM RESEARCH CORP	731.080	-58.590	801.290	407.272

NYSE (USD)

Top Gainers

Name	Last Done	Change Over 5 Days	52 Weeks High	52 Weeks Low
BERKSHIRE HATHAWAY INC	551,549.980	+8,924.950	566,569.970	442,363.500
ELI LILLY AND COMPANY	614.500	+33.650	629.970	302.140
MARKEL GROUP INC	1,435.130	+23.220	1,560.000	1,186.560
KINSALE CAPITAL GROUP INC	358.350	+23.110	457.730	250.895
ALPHA METALLURGICAL RESOURCES INC	361.660	+22.740	379.185	132.720

Top Losers

Name	Last Done	Change Over 5 Days	52 Weeks High	52 Weeks Low
METTLER-TOLEDO INTERNATIONAL INC	1,149.320	-75.940	1,615.970	928.495
NVR INC	6,912.710	-69.000	7,075.000	4,590.000
CHIPOTLE MEXICAN GRILL	2,220.470	-66.490	2,348.415	1,344.050
HUBSPOT INC	530.250	-58.800	593.530	267.990
FAIR ISAAC CORP	1,117.460	-51.880	1,185.420	575.390

IDX (Rupiah)

Top Gainers

Name	Last Done	Change Over 5 Days	52 Weeks High	52 Weeks Low
INDO TAMBANGRAYA MEGAH TBK	26,600.000	+1,100.000	41,500.000	22,125.000
M CASH INTEGRASI TBK	5,000.000	+1,060.000	9,800.000	2,700.000
MD PICTURES TBK	4,380.000	+630.000	4,490.000	610.000
NFC INDONESIA TBK	4,410.000	+610.000	7,600.000	3,270.000
UNITED TRACTORS	23,275.000	+575.000	31,700.000	20,925.000

Top Losers

Name	Last Done	Change Over 5 Days	52 Weeks High	52 Weeks Low
DIAN SWASTATIKA SENTOSA TBK	77,000.000	-3,000.000	84,000.000	33,950.000
PIONEERINDO GOURMET INTERNATIONAL	2,480.000	-380.000	6,675.000	1,315.000
MAHA PROPERTI INDONESIA TBK	2,150.000	-330.000	4,750.000	1,245.000
BAYAN RESOURCES TBK	19,525.000	-300.000	23,800.000	13,200.000
DCI INDONESIA TBK	42,700.000	-300.000	59,050.000	32,850.000

SET (Thai Baht)

Top Gainers

Name	Last Done	Change Over 5 Days	52 Weeks High	52 Weeks Low
STANLY	192.000	+6.500	226.000	171.500
SAPPE	92.250	+5.750	100.000	37.000
CHOTI	123.000	+5.000	178.000	112.000
METCO	246.000	+5.000	298.000	223.000
AOT	64.000	+4.250	76.000	58.000

Top Losers

Name	Last Done	Change Over 5 Days	52 Weeks High	52 Weeks Low
BBIK	90.500	-4.000	142.500	88.500
BCP	40.500	-3.000	45.250	28.750
SCC	303.000	-3.000	360.000	282.000
TFMAMA	215.000	-3.000	226.000	187.000
JTS	85.250	-2.750	92.250	23.200

HKEX (HKD)

Top Gainers

Name	Last Done	Change Over 5 Days	52 Weeks High	52 Weeks Low
BOSERA ASSET MGT (INTL) CO LTD USD MONEY MARKET ETF CNY	7,332.000	+29.000	7,427.750	7,150.603
CENTRAL NEW ENERGY HOLDING GP LTD	19.100	+14.170	19.100	3.820
TRIP COM GROUP LTD	287.000	+10.400	330.200	240.600
NETEASE INC	148.700	+7.600	185.700	116.100
TENCENT HOLDINGS LIMITED	273.200	+7.200	342.000	243.000

Top Losers

Name	Last Done	Change Over 5 Days	52 Weeks High	52 Weeks Low
HONG KONG EXCHANGES & CLEARING	257.800	-9.800	382.400	238.200
STAR CM HOLDINGS LIMITED	11.160	-7.880	132.000	10.920
SUNNY OPTICAL TECHNOLOGY GROUP	64.000	-7.650	119.700	50.300
SIRNAOMICS LTD	31.000	-7.300	62.500	30.000
HONG KONG EXCHANGES & CLEARING	236.200	-6.600	307.600	219.800

SGX (SGD)

Top Gainers

Name	Last Done	Change Over 5 Days	52 Weeks High	52 Weeks Low
AZEUS	8.500	+0.850	9.190	7.400
CORTINA	3.500	+0.190	4.050	3.000
GREAT EASTERN	17.780	+0.180	19.240	16.850
MICRO-MECHANICS	1.960	+0.080	2.620	1.620
POWERMATIC DATA	3.000	+0.080	3.019	2.311

Top Losers

Name	Last Done	Change Over 5 Days	52 Weeks High	52 Weeks Low
NIO Inc. USD OV	8.360	-0.690	15.780	7.070
JMH USD	40.490	-0.310	54.890	38.370
DBS	32.740	-0.300	35.855	30.300
UOB	28.080	-0.300	31.330	26.820
VENTURE	13.410	-0.240	18.750	11.360

TIMELY BOOST FOR ACE MARKET LISTINGS TO GAIN PROMOTION TO MAIN MARKET

Eligible ACE Market listed counters on Bursa Malaysia should take advantage of the simplified and accelerated transfer process approved by the Securities Commission Malaysia (SC) to facilitate their promotion to the Main Market of Bursa Malaysia. The framework, which will take effect on 1 January 2024 through amendments to the Equity Guidelines, should incentivise more ACE Market-listed PLCs to continuously improve their corporate values and achieve sustainable growth for shareholders.

The introduction of accelerated transfer is a timely boost, especially with heaps of companies listed in the ACE Market over the past few years. Under the new accelerated transfer process, an ACE Market PLC

must, among others, have been listed on the ACE Market for at least 12 months prior to submission of its application to the SC, have a daily market capitalisation of at least RM1 billion for the past six months, and has been meeting the profit requirements for companies seeking listing on the Main Market, and has been operating in the same core business for the most recent three full financial years.

Besides, in considering an application for an accelerated transfer process, the SC will consider the applicant's level of adoption of the best practices under the Malaysian Code on Corporate Governance. As of 21 December 2023, there were five ACE Market-listed PLCs which fetched market capitalisation of over RM1 billion.

The accelerated transfer of listing is part of a slew of capital market measures introduced by the SC to improve the stock market vibrancy and reduce market friction. Being listed on the Main Market carries a premium, suggesting that a PLC has achieved certain standards in terms of quality, size, and operations.

EXISTING PROVISIONS FROM ACE TO MAIN MARKET RETAINED

Under the conventional transfer application process, an applicant must have a daily market capitalisation of at least RM500 million for the one-year period preceding the application. In contrast, under the accelerated transfer process, the daily market capitalisation requirement is at least RM1 billion for the six months preceding the transfer application. Despite the stringent requirement, the required information and documents (Appendix 3A of Equity Guidelines) for the accelerated transfer process are less voluminous than the conventional transfer process (Appendix 3 of Equity Guidelines), likely resulting in lower compliance costs and turnaround time.

TIMELY BOOST

The ACE Market remained a significant source of financing within the Malaysian equity capital market, with 20 ACE Market listings raising RM1.26 billion through initial public offerings (IPOs) as of October this year. As of December 2023, it dominated 2023's IPOs with 24 out of 32 listings, while the Main Market saw seven listings compared to five last year. On the other hand, there was a slight dip in listings on the LEAP Market (1 in 2023 versus 3 in 2022), likely due to companies assessing the LEAP transfer framework before deciding to go public.

As of the time of writing, there were 32 IPOs taking place in Bursa Malaysia, surpassing the 31 IPOs target set by the exchange operator. The market expects the IPOs en route for listing on Bursa Malaysia to gather momentum in 2024, boosted by the overall positive business sentiment in the country. Deloitte Malaysia recently said it envisages the local IPO market to remain active led by quality issuers that sustained or exceeded their market capitalisation upon listing and supported by active investor participation. The firm added that the listing requirements for the ACE Market are more accommodating towards companies with good growth propositions while the lower ticket size of IPO shares continues to attract a steady flow of investors.

In terms of dollars and cents, the 28 IPOs listed in the first 10 and half months of 2023 have collectively raised RM3.31 billion. While the total IPO funds raised year-to-date is below the RM3.71 billion garnered for the whole of 2022, the total IPO market capitalisation has touched RM12.83 billion, which surpassed the RM11.81 billion for last year and the RM9.03 billion from the pre-lockdown of 2019.

By MSWG Team

DEFINITION: Insider Activity shows the trades made by substantial shareholders or directors of the company. Purchases by the directors and company share buyback may indicate the share price is undervalued and brings confidence to the price trend of the share price.



ShareInvestor WebPro > Fundamental > Insider Trades > click Search tab > Select Bursa > click Stock name > scroll up and leave at <Select Counter> Type Date Range for Announcement Date > click Search

Notice Period is 24th Dec - 30th Dec 2023

Effective Change Date	Stock Name	Buyer/ Seller Name [Classification]	Bought / (Sold) ['000]		No. of Shares After Trade ['000]	
			Total	% Held	Total	% Held
22 DEC 2023 - 22 DEC 2023	AEON	EMPLOYEES PROVIDENT FUND BOARD [SSH]	-90	128,936	9.183	
21 DEC 2023 - 21 DEC 2023	AEON	EMPLOYEES PROVIDENT FUND BOARD [SSH]	-19	129,026	9.19	
20 DEC 2023 - 20 DEC 2023	AEON	EMPLOYEES PROVIDENT FUND BOARD [SSH]	-91	129,045	9.191	
26 DEC 2023 - 26 DEC 2023	AHB	MR CHOW HUNG KEY [DIR/CEO]	-10,000	6,386	0.947	
27 DEC 2023 - 27 DEC 2023	AIRPORT	KUMPULAN WANG PERSARAAN (DIPERBADANKAN) [SSH]	280	119,312	7.15	
22 DEC 2023 - 22 DEC 2023	AIRPORT	EMPLOYEES PROVIDENT FUND BOARD [SSH]	509	99,736	5.977	
21 DEC 2023 - 21 DEC 2023	AIRPORT	EMPLOYEES PROVIDENT FUND BOARD [SSH]	-5,846	99,227	5.947	
21 DEC 2023 - 21 DEC 2023	ALLIANZ	EMPLOYEES PROVIDENT FUND BOARD [SSH]	-23	12,099	6.798	
26 DEC 2023 - 26 DEC 2023	AXIATA	EMPLOYEES PROVIDENT FUND BOARD [SSH]	309	1,631,732	17.777	
22 DEC 2023 - 22 DEC 2023	AXIATA	EMPLOYEES PROVIDENT FUND BOARD [SSH]	2,000	1,631,424	17.773	
21 DEC 2023 - 21 DEC 2023	AXIATA	EMPLOYEES PROVIDENT FUND BOARD [SSH]	1,091	1,629,424	17.751	
26 DEC 2023 - 26 DEC 2023	BAUTO	EMPLOYEES PROVIDENT FUND BOARD [SSH]	235	1,571,84	13.462	
21 DEC 2023 - 21 DEC 2023	BAUTO	EMPLOYEES PROVIDENT FUND BOARD [SSH]	230	1,56,719	13.422	
27 DEC 2023 - 27 DEC 2023	BJFOOD	BERJAYA CORPORATION BERHAD [SSH]	800	983,402	56.057	
22 DEC 2023 - 22 DEC 2023	BJFOOD	BERJAYA CORPORATION BERHAD [SSH]	800	982,602	56.012	
27 DEC 2023 - 27 DEC 2023	BORNOIL	VICTORIA LIMITED [SSH]	-200	1,257,908	10.49	
26 DEC 2023 - 26 DEC 2023	BORNOIL	DATUK JOSEPH LEE YOK MIN @ AMBROSE [DIR/CEO]	29,000	2,061,679	17.192	
26 DEC 2023 - 26 DEC 2023	BORNOIL	DATUK JOSEPH LEE YOK MIN @ AMBROSE [SSH]	29,000	760,341	17.192	
21 DEC 2023 - 26 DEC 2023	BPLANT	LEMBAGA TABUNG ANGKATAN TENTERA [SSH]	15,796	1,912,580	85.383	
20 DEC 2023 - 20 DEC 2023	BPLANT	UBS GROUP AG [SSH]	-214	118,788	5.303	
21 DEC 2023 - 21 DEC 2023	BURSA	EMPLOYEES PROVIDENT FUND BOARD [SSH]	66	105,347	13.017	
20 DEC 2023 - 20 DEC 2023	BURSA	EMPLOYEES PROVIDENT FUND BOARD [SSH]	15	105,280	13.009	
20 DEC 2023 - 20 DEC 2023	CAREPLS	MR LIM KWEE SHYAN [DIR/CEO]	-100	124,564	20.95	
20 DEC 2023 - 20 DEC 2023	CAREPLS	MR LIM KWEE SHYAN [SSH]	-100	124,564	20.95	
21 DEC 2023 - 22 DEC 2023	CEPAT	DATO' MAH POOI SOO REALTY SDN. BHD. [SSH]	127	121,938	39.47	
21 DEC 2023 - 22 DEC 2023	CEPAT	DATO' SERI MAH KING SENG [DIR/CEO]	127	121,938	39.47	
21 DEC 2023 - 22 DEC 2023	CEPAT	DATO' SERI MAH KING SENG [SSH]	127	121,938	39.47	
21 DEC 2023 - 22 DEC 2023	CEPAT	MHC PLANTATIONS BHD. [SSH]	127	121,938	39.47	
21 DEC 2023 - 22 DEC 2023	CEPAT	TAN SRI DR MAH KING THIAN @ MAH KING THIAM [DIR/CEO]	127	121,938	39.47	
27 DEC 2023 - 27 DEC 2023	CHHB	COUNTRY HEIGHTS INTERNATIONAL SDN. BHD. [SSH]	-4,500	23,332	7.863	
27 DEC 2023 - 27 DEC 2023	CHHB	PUAN SRI TAN BEE HONG [SSH]	-4,500	151,424	51.029	
27 DEC 2023 - 27 DEC 2023	CHHB	TAN SRI LEE KIM TIONG @ LEE KIM YEW [SSH]	-4,500	151,424	51.029	
20 DEC 2023 - 20 DEC 2023	CHHB	COUNTRY HEIGHTS INTERNATIONAL SDN. BHD. [SSH]	-100	27,832	9.379	
20 DEC 2023 - 20 DEC 2023	CHHB	TAN SRI LEE KIM TIONG @ LEE KIM YEW [SSH]	-100	155,924	52.546	
26 DEC 2023 - 26 DEC 2023	CIMB	EMPLOYEES PROVIDENT FUND BOARD [SSH]	10,830	1,526,056	14.31	
26 DEC 2023 - 26 DEC 2023	CIMB	KUMPULAN WANG PERSARAAN (DIPERBADANKAN) [SSH]	-5,607	686,833	6.44	
21 DEC 2023 - 21 DEC 2023	CIMB	EMPLOYEES PROVIDENT FUND BOARD [SSH]	-18,969	1,523,015	14.28	
22 DEC 2023 - 22 DEC 2023	CIMB	KUMPULAN WANG PERSARAAN (DIPERBADANKAN) [SSH]	1,000	692,439	6.49	
20 DEC 2023 - 20 DEC 2023	CIMB	EMPLOYEES PROVIDENT FUND BOARD [SSH]	110	1,541,984	14.46	
27 DEC 2023 - 27 DEC 2023	CLMT	KUMPULAN WANG PERSARAAN (DIPERBADANKAN) [SSH]	228	272,631	9.948	
21 DEC 2023 - 21 DEC 2023	CLMT	EMPLOYEES PROVIDENT FUND BOARD [SSH]	47	415,210	15.151	
20 DEC 2023 - 20 DEC 2023	CLMT	EMPLOYEES PROVIDENT FUND BOARD [SSH]	268	415,163	15.149	
26 DEC 2023 - 26 DEC 2023	CLOUDPT	MR CHOONG WAI HOONG [DIR/CEO]	407	263,083	49.489	
26 DEC 2023 - 26 DEC 2023	CLOUDPT	MR CHOONG WAI HOONG [SSH]	407	263,083	49.489	
26 DEC 2023 - 26 DEC 2023	CLOUDPT	MR YEW CHOONG CHEONG [DIR/CEO]	407	263,083	49.489	
26 DEC 2023 - 26 DEC 2023	CLOUDPT	MR YEW CHOONG CHEONG [SSH]	407	263,083	49.489	
26 DEC 2023 - 26 DEC 2023	CTOS	WASATCH ADVISORS LP [SSH]	393	133,106	5.762	
22 DEC 2023 - 22 DEC 2023	CTOS	WASATCH ADVISORS LP [SSH]	1,531	132,713	5.745	
26 DEC 2023 - 26 DEC 2023	D&O	EMPLOYEES PROVIDENT FUND BOARD [SSH]	120	77,815	6.284	
22 DEC 2023 - 22 DEC 2023	D&O	EMPLOYEES PROVIDENT FUND BOARD [SSH]	221	77,695	6.274	
21 DEC 2023 - 21 DEC 2023	D&O	EMPLOYEES PROVIDENT FUND BOARD [SSH]	600	77,474	6.257	
20 DEC 2023 - 20 DEC 2023	D&O	EMPLOYEES PROVIDENT FUND BOARD [SSH]	434	76,875	6.208	
26 DEC 2023 - 26 DEC 2023	DLADY	CITIGROUP NOMINEES (TEMPATAN) SDN BHD EMPLOYEES PROVIDENT FUND BOARD [SSH]	8	5,222	8.16	
20 DEC 2023 - 20 DEC 2023	DLADY	CITIGROUP NOMINEES (TEMPATAN) SDN BHD EMPLOYEES PROVIDENT FUND BOARD [SSH]	-2	5,214	8.147	
27 DEC 2023 - 27 DEC 2023	EDEN	KOPERASI BELIA ISLAM MALAYSIA BERHAD [SSH]	-3,363	50,130	10.912	
27 DEC 2023 - 27 DEC 2023	EFRAME	MADAM LIM SAW NEE [DIR/CEO]	-40,000	26,649	7.426	

Notice Period is 24th Dec - 30th Dec 2023

Effective Change Date	Stock Name	Buyer/ Seller Name [Classification]	Bought / (Sold) ['000]		No. of Shares After Trade ['000]	
			Total	% Held	Total	% Held
27 DEC 2023 - 27 DEC 2023	EFRAME	MADAM LIM SAW NEE [SSH]	-40,000	26,649	7.426	
27 DEC 2023 - 27 DEC 2023	EFRAME	MR LIM CHIN HORNG [DIR/CEO]	40,000	66,786	18.61	
26 DEC 2023 - 26 DEC 2023	EFRAME	DATO HOOI JIA HAO [SSH]	1,200	37,759	10.522	
22 DEC 2023 - 22 DEC 2023	ENGTEX	DATO' LIM KIAM LAM [SSH]	-100	26,415	5.984	
21 DEC 2023 - 21 DEC 2023	F&N	EMPLOYEES PROVIDENT FUND BOARD [SSH]	-5	43,095	11.75	
20 DEC 2023 - 20 DEC 2023	F&N	EMPLOYEES PROVIDENT FUND BOARD [SSH]	60	43,101	11.751	
26 DEC 2023 - 26 DEC 2023	FAREAST	DATUK MOHD AFRIZAN BIN HUSAIN [DIR/CEO]	7	140	0.024	
28 DEC 2023 - 28 DEC 2023	FFB	FARMCHOICE FOODS SDN. BHD. [SSH]	10,545	222,119	11.866	
28 DEC 2023 - 28 DEC 2023	FFB	MR LOI TUAN EE [DIR/CEO]	10,545	799,946	42.734	
26 DEC 2023 - 26 DEC 2023	FFB	ABRDN HOLDINGS LIMITED (FORMERLY KNOWN AS ABERDEEN ASSET MANAGEMENT PLC) [SSH]	274	119,712	6.395	
26 DEC 2023 - 26 DEC 2023	FFB	ABRDN MALAYSIA SDN BHD [SSH]	274	118,313	6.32	
26 DEC 2023 - 26 DEC 2023	FFB	ABRDN PLC [SSH]	274	119,712	6.395	
22 DEC 2023 - 22 DEC 2023	FFB	ABRDN HOLDINGS LIMITED (FORMERLY KNOWN AS ABERDEEN ASSET MANAGEMENT PLC) [SSH]	61	119,439	6.381	
22 DEC 2023 - 22 DEC 2023	FFB	ABRDN MALAYSIA SDN BHD [SSH]	61	118,039	6.306	
22 DEC 2023 - 22 DEC 2023	FFB	ABRDN PLC [SSH]	61	119,439	6.381	
21 DEC 2023 - 21 DEC 2023	FFB	EMPLOYEES PROVIDENT FUND BOARD [SSH]	496	170,489	9.108	
21 DEC 2023 - 21 DEC 2023	FFB	ABRDN HOLDINGS LIMITED (FORMERLY KNOWN AS ABERDEEN ASSET MANAGEMENT PLC) [SSH]	718	119,378	6.377	
21 DEC 2023 - 21 DEC 2023	FFB	ABRDN MALAYSIA SDN BHD [SSH]	718	117,978	6.303	
21 DEC 2023 - 21 DEC 2023	FFB	ABRDN PLC [SSH]	718	119,378	6.377	
22 DEC 2023 - 22 DEC 2023	FRONTKN	EMPLOYEES PROVIDENT FUND BOARD [SSH]	823	129,408	8.227	
26 DEC 2023 - 26 DEC 2023	FRONTKN	MR OOI KENG THYE [SSH]	-10,658	109,178	6.941	
21 DEC 2023 - 21 DEC 2023	FRONTKN	EMPLOYEES PROVIDENT FUND BOARD [SSH]	276	128,585	8.175	
28 DEC 2023 - 28 DEC 2023	GAMUDA	MR JUSTIN CHIN JING HO [DIR/CEO]	-277	200	0.01	
22 DEC 2023 - 22 DEC 2023	GAMUDA	EMPLOYEES PROVIDENT FUND BOARD (EPF BOARD) [SSH]	-439	235,917	8.66	
22 DEC 2023 - 22 DEC 2023	GAMUDA	MR JUSTIN CHIN JING HO [DIR/CEO]	-123	477	0.02	
21 DEC 2023 - 21 DEC 2023	GAMUDA	EMPLOYEES PROVIDENT FUND BOARD (EPF BOARD) [SSH]	3,430	236,356	8.68	
20 DEC 2023 - 20 DEC 2023	GAMUDA	EMPLOYEES PROVIDENT FUND BOARD (EPF BOARD) [SSH]	-678	232,926	8.55	
21 DEC 2023 - 21 DEC 2023	GASMSIA	EMPLOYEES PROVIDENT FUND BOARD [SSH]	-7	71,691	5.583	
26 DEC 2023 - 26 DEC 2023	GENP	EMPLOYEES PROVIDENT FUND BOARD [SSH]	34	114,057	12.713	
27 DEC 2023 - 27 DEC 2023	HCK	HIICHIKOK EQUITIES SDN BHD [SSH]	4,165	304,239	55.925	
27 DEC 2023 - 27 DEC 2023	HCK	TAN SRI HII CHII KOK @ HII CHEE KOK [DIR/CEO]	4,165	306,289	56.302	
27 DEC 2023 - 27 DEC 2023	HCK	TAN SRI HII CHII KOK @ HII CHEE KOK [SSH]	4,165	306,289	56.302	
27 DEC 2023 - 27 DEC 2023	HCK-WA	TAN SRI HII CHII KOK @ HII CHEE KOK [DIR/CEO]	4,165	12,789	14.309	
21 DEC 2023 - 21 DEC 2023	HLBANK	EMPLOYEES PROVIDENT FUND BOARD [SSH]	-1,272	196,161	9.401	
21 DEC 2023 - 21 DEC 2023	IGBREIT	EMPLOYEES PROVIDENT FUND BOARD ("EPF BOARD") [SSH]	-17	425,033	11.801	
20 DEC 2023 - 20 DEC 2023	IGBREIT	EMPLOYEES PROVIDENT FUND BOARD ("EPF BOARD") [SSH]	-127	425,050	11.802	
22 DEC 2023 - 22 DEC 2023	IHH	EMPLOYEES PROVIDENT FUND BOARD [SSH]	1,226	907,678	10.306	
20 DEC 2023 - 20 DEC 2023	IHH	EMPLOYEES PROVIDENT FUND BOARD [SSH]	2,610	906,452	10.292	
20 DEC 2023 - 20 DEC 2023	IJM	EMPLOYEES PROVIDENT FUND BOARD [SSH]	1,145	592,550	16.9	
21 DEC 2023 - 21 DEC 2023	INARI	EMPLOYEES PROVIDENT FUND BOARD [SSH]	654	325,902	8.697	
20 DEC 2023 - 22 DEC 2023	ITRONIC	DATUK CHU BOON TIONG [DIR/CEO]	-273	27,880	3.94	
29 DEC 2023 - 29 DEC 2023	JIANKUN	DATUK AZMI BIN OSMAN [DIR/CEO]	-575	2,325	0.493	
21 DEC 2023 - 21 DEC 2023	JOE	MITSUBISHI UFJ FINANCIAL GROUP INC [SSH]	-100	17,028	5.566	
26 DEC 2023 - 26 DEC 2023	JSB	MORGAN STANLEY [SSH]	1,456	34,632	8.241	
22 DEC 2023 - 22 DEC 2023	JSB	MORGAN STANLEY [SSH]	1,474	33,176	7.895	
21 DEC 2023 - 22 DEC 2023	JSB	MITSUBISHI UFJ FINANCIAL GROUP INC [SSH]	2,110	33,176	7.895	
21 DEC 2023 - 21 DEC 2023	JSB	MORGAN STANLEY [SSH]	637	31,703	7.544	
21 DEC 2023 - 21 DEC 2023	KLK	EMPLOYEES PROVIDENT FUND BOARD [SSH]	2	115,842	10.742	
22 DEC 2023 - 22 DEC 2023	LBS	DATUK WIRA LIM HOCK GUAN JP [DIR/CEO]	-10,000	589,030	38.248	
21 DEC 2023 - 26 DEC 2023	LEONFB	OOI SENG KHONG [DIR/CEO]	100	100	0.029	
22 DEC 2023 - 22 DEC 2023	LHI	AFFINITY ASIA PACIFIC FUND IV (NO.2) L.P. [SSH]	-116	265,831	7.283	
22 DEC 2023 - 22 DEC 2023	LHI	AFFINITY ASIA PACIFIC FUND IV L.P. [SSH]	-116	265,831	7.283	
22 DEC 2023 - 22 DEC 2023	LHI	CLARINDEN INVESTMENTS PTE LTD [SSH]	-116	265,831	7.283	
22 DEC 2023 - 22 DEC 2023	LHI	CONCORDANT INVESTMENTS PTE LTD [SSH]	-116	265,831	7.283	
19 DEC 2023 - 19 DEC 2023	M&A	CIK SITI NUR AISHAH BINTI ISHAK [SSH]	412	101,602	5.083	

Disclaimer: The Information in Insider Activity is extracted from www.shareinvestor.com/fundamental/insider_trades. The information on this page is provided as a service to readers. It does not constitute financial advice and/or any investment recommendations. We assume no liability for damages resulting from or arising out of the use of such information. Whilst every effort is made to ensure accuracy, the information presented is not the official record of shareholder filings. Readers are advised to read the original filings on the Bursa Malaysia website at www.bursamalaysia.com

PURNELL

ESCAPE II FORGED CARBON



PURNELL ASIA
TEL.: +65.9817.3378

EMAIL: SALES.SG@PURNELLWATCHES.COM

@ PURNELL_OFFICIAL

WWW.PURNELLWATCHES.COM

Notice Period is 24th Dec - 30th Dec 2023

Effective Change Date	Stock Name	Buyer/ Seller Name [Classification]	Bought / (Sold) ['000]		No. of Shares After Trade ['000]	
			Total	% Held	Total	% Held
18 DEC 2023 - 18 DEC 2023	M&A	CIK SITI NUR AISHAH BINTI ISHAK [SSH]	1,058		101,191	5.063
21 DEC 2023 - 21 DEC 2023	MAYBANK	EMPLOYEES PROVIDENT FUND BOARD [SSH]	-9,557		1,547,572	12.832
22 DEC 2023 - 22 DEC 2023	MAYBANK	KUMPULAN WANG PERSARAAN (DIPERBADANKAN) ('KWAP') [SSH]	-1,000		605,606	5.021
20 DEC 2023 - 20 DEC 2023	MAYBANK	EMPLOYEES PROVIDENT FUND BOARD [SSH]	-20,268		1,557,129	12.911
21 DEC 2023 - 21 DEC 2023	MBMR	EMPLOYEES PROVIDENT FUND BOARD [SSH]	1,602		25,412	6.501
29 DEC 2023 - 29 DEC 2023	MFCB	CAM PROPERTY (MALAYSIA) SDN BHD [SSH]	27		201,086	21.329
29 DEC 2023 - 29 DEC 2023	MFCB	CAMASIA LIMITED [SSH]	27		202,571	21.487
29 DEC 2023 - 29 DEC 2023	MFCB	MR GOH NAN KIOH [SSH]	27		328,650	34.86
29 DEC 2023 - 29 DEC 2023	MFCB	RUBBER THREAD INDUSTRIES (M) SDN BERHAD [SSH]	27		201,086	21.33
26 DEC 2023 - 27 DEC 2023	MFCB	CAM PROPERTY (MALAYSIA) SDN BHD [SSH]	55		201,059	21.327
26 DEC 2023 - 27 DEC 2023	MFCB	CAMASIA LIMITED [SSH]	55		202,544	21.485
26 DEC 2023 - 27 DEC 2023	MFCB	GOH NAN KIOH [DIR/CEO]	55		328,623	34.857
26 DEC 2023 - 27 DEC 2023	MFCB	LAJU RIANG SDN BHD [SSH]	55		201,059	21.327
26 DEC 2023 - 27 DEC 2023	MFCB	MR GOH NAN KIOH [SSH]	55		328,623	34.857
26 DEC 2023 - 27 DEC 2023	MFCB	RUBBER THREAD INDUSTRIES (M) SDN BERHAD [SSH]	55		201,059	21.327
26 DEC 2023 - 26 DEC 2023	MINETEC	DATIN FERIDAH BINTI BUJANG ISMAIL [DIR/CEO]	375		925	0.06
26 DEC 2023 - 26 DEC 2023	MINETEC	DATIN FERIDAH BINTI BUJANG ISMAIL [DIR/CEO]	150		525	0.244
26 DEC 2023 - 26 DEC 2023	MINETEC	ENCIK ABANG ABDILLAH IZZARIM BIN ABANG ABDUL RAHMAN ZOHARI [SSH]	240,000		240,000	15.581
26 DEC 2023 - 26 DEC 2023	MINETEC	ENCIK AHMAD RAHIZAL BIN DATO' AHMAD RASIDI [DIR/CEO]	375		375	0.024
26 DEC 2023 - 26 DEC 2023	MINETEC	ENCIK AHMAD RAHIZAL BIN DATO' AHMAD RASIDI [DIR/CEO]	500		875	0.406
26 DEC 2023 - 26 DEC 2023	MINETEC	ENCIK AHMAD RUSLAN ZAHARI BIN ZAKARIA [DIR/CEO]	300		1,049	0.487
26 DEC 2023 - 26 DEC 2023	MINETEC	MR AZLAN SHAH BIN ZAINAL ARIF [DIR/CEO]	12,700		40,146	18.641
26 DEC 2023 - 26 DEC 2023	MINETEC	MR CHIN LEONG CHOY [DIR/CEO]	13,900		43,841	20.357
26 DEC 2023 - 26 DEC 2023	MINETEC	MR CHIN SHEONG CHOY [DIR/CEO]	6,432		10,276	4.771
26 DEC 2023 - 26 DEC 2023	MINETEC	MR CHIN SHEONG CHOY [DIR/CEO]	3,844		3,844	0.25
26 DEC 2023 - 26 DEC 2023	MINETEC	MR CHOY SEN @ CHIN KIM SANG [DIR/CEO]	3,844		239,349	15.539
26 DEC 2023 - 26 DEC 2023	MINETEC	MR CHOY SEN @ CHIN KIM SANG [DIR/CEO]	36,782		103,497	48.057
26 DEC 2023 - 26 DEC 2023	MINETEC	MR CHOY SEN @ CHIN KIM SANG [SSH]	3,844		239,349	15.539
26 DEC 2023 - 26 DEC 2023	MINETEC	MR LOKE KIM MENG [DIR/CEO]	150		525	0.244
26 DEC 2023 - 26 DEC 2023	MINETEC	PUAN SITI AISHAH BINTI OTHMAN [DIR/CEO]	375		375	0.024
26 DEC 2023 - 26 DEC 2023	MINETEC	PUAN SITI AISHAH BINTI OTHMAN [DIR/CEO]	150		525	0.244
21 DEC 2023 - 21 DEC 2023	MINETEC	ENCIK AHMAD RAHIZAL BIN DATO' AHMAD RASIDI [DIR/CEO]	375		500	0.243
18 DEC 2023 - 18 DEC 2023	MINETEC	DATIN FERIDAH BINTI BUJANG ISMAIL [DIR/CEO]	375		150	0.073
18 DEC 2023 - 18 DEC 2023	MINETEC	DATIN FERIDAH BINTI BUJANG ISMAIL [DIR/CEO]	400		550	0.036
21 DEC 2023 - 21 DEC 2023	MISC	EMPLOYEES PROVIDENT FUND BOARD [SSH]	478		561,498	12.579
20 DEC 2023 - 20 DEC 2023	MISC	EMPLOYEES PROVIDENT FUND BOARD [SSH]	102		561,020	12.568
21 DEC 2023 - 21 DEC 2023	MNC	NETX MITSUBISHI UFJ FINANCIAL GROUP INC [SSH]	-100		19,649	8.338
21 DEC 2023 - 21 DEC 2023	MNC	MORGAN STANLEY [SSH]	-100		19,649	8.338
28 DEC 2023 - 28 DEC 2023	MN-HLDG-WA	DATUK LOY SIONG HAY [DIR/CEO]	-9,000		37,126	18.191
27 DEC 2023 - 27 DEC 2023	MYEG	KUMPULAN WANG PERSARAAN (DIPERBADANKAN) [SSH]	-700		542,312	7.27
26 DEC 2023 - 26 DEC 2023	MYEG	KUMPULAN WANG PERSARAAN (DIPERBADANKAN) [SSH]	-1,300		543,012	7.28
27 DEC 2023 - 27 DEC 2023	NATGATE	DATO' SERI WONG SIEW HAI [DIR/CEO]	-20		6,095	0.294
22 DEC 2023 - 22 DEC 2023	NESTLE	EMPLOYEES PROVIDENT FUND BOARD [SSH]	3		22,912	9.771
21 DEC 2023 - 21 DEC 2023	NESTLE	EMPLOYEES PROVIDENT FUND BOARD [SSH]	22		22,910	9.77
21 DEC 2023 - 21 DEC 2023	NETX	NETX MITSUBISHI UFJ FINANCIAL GROUP INC [SSH]	-100		51,606	5.502
21 DEC 2023 - 21 DEC 2023	NETX	MORGAN STANLEY [SSH]	-100		51,606	5.502
26 DEC 2023 - 26 DEC 2023	ORIENT	EMPLOYEES PROVIDENT FUND BOARD [SSH]	-506		46,386	7.477
22 DEC 2023 - 22 DEC 2023	ORIENT	EMPLOYEES PROVIDENT FUND BOARD [SSH]	-94		46,892	7.559
21 DEC 2023 - 21 DEC 2023	ORIENT	EMPLOYEES PROVIDENT FUND BOARD [SSH]	-161		46,986	7.574
21 DEC 2023 - 21 DEC 2023	PADINI	EMPLOYEES PROVIDENT FUND BOARD [SSH]	236		43,580	6.624
20 DEC 2023 - 20 DEC 2023	PADINI	EMPLOYEES PROVIDENT FUND BOARD [SSH]	9		43,344	6.588
22 DEC 2023 - 22 DEC 2023	PANTECH	PUAN NOORAINI BINTI MOHD YASIN [DIR/CEO]	-5		24	0.003
22 DEC 2023 - 22 DEC 2023	PBBANK	EMPLOYEES PROVIDENT FUND BOARD [SSH]	-1,216		2,963,783	15.27
21 DEC 2023 - 21 DEC 2023	PBBANK	EMPLOYEES PROVIDENT FUND BOARD [SSH]	-5,353		2,964,999	15.28
20 DEC 2023 - 20 DEC 2023	PBBANK	EMPLOYEES PROVIDENT FUND BOARD [SSH]	-5,917		2,970,352	15.3
22 DEC 2023 - 22 DEC 2023	PCHEM	EMPLOYEES PROVIDENT FUND BOARD ('EPF BOARD') [SSH]	27		941,545	11.769
20 DEC 2023 - 20 DEC 2023	PCHEM	EMPLOYEES PROVIDENT FUND BOARD ('EPF BOARD') [SSH]	65		941,378	11.767
28 DEC 2023 - 28 DEC 2023	PELIKAN	MR LOO HOUI KEAT [SSH]	-1,000		109,855	18.212
27 DEC 2023 - 27 DEC 2023	PENTA	KUMPULAN WANG PERSARAAN (DIPERBADANKAN) [SSH]	99		38,541	5.418
26 DEC 2023 - 26 DEC 2023	PENTA	KUMPULAN WANG PERSARAAN (DIPERBADANKAN) [SSH]	119		38,442	5.404
21 DEC 2023 - 21 DEC 2023	PENTA	EMPLOYEES PROVIDENT FUND BOARD [SSH]	33		54,680	7.687
26 DEC 2023 - 26 DEC 2023	PETGAS	EMPLOYEES PROVIDENT FUND BOARD [SSH]	293		256,952	12.986
22 DEC 2023 - 22 DEC 2023	PETGAS	EMPLOYEES PROVIDENT FUND BOARD [SSH]	-54		256,659	12.971
26 DEC 2023 - 26 DEC 2023	PETGAS	KUMPULAN WANG PERSARAAN (DIPERBADANKAN) ('KWAP') [SSH]	-98		199,061	10.06
21 DEC 2023 - 21 DEC 2023	PETGAS	EMPLOYEES PROVIDENT FUND BOARD [SSH]	-998		256,713	12.974

Notice Period is 24th Dec - 30th Dec 2023

Effective Change Date	Stock Name	Buyer/ Seller Name [Classification]	Bought / (Sold) ['000]		No. of Shares After Trade ['000]	
			Total	% Held	Total	% Held
20 DEC 2023 - 20 DEC 2023	PETGAS	EMPLOYEES PROVIDENT FUND BOARD [SSH]	1,022		257,711	13.024
20 DEC 2023 - 26 DEC 2023	PLABS	MR BU YAW SENG [SSH]	1,245		17,645	6.411
21 DEC 2023 - 21 DEC 2023	PPB	EMPLOYEES PROVIDENT FUND BOARD [SSH]	13		134,446	9.451
27 DEC 2023 - 27 DEC 2023	RHBBANK	KUMPULAN WANG PERSARAAN (DIPERBADANKAN) [SSH]	1,267		255,505	5.961
22 DEC 2023 - 22 DEC 2023	RHBBANK	EMPLOYEES PROVIDENT FUND BOARD [SSH]	-2,772		1,759,023	41.038
26 DEC 2023 - 26 DEC 2023	RHBBANK	KUMPULAN WANG PERSARAAN (DIPERBADANKAN) [SSH]	9,379		254,238	5.931
21 DEC 2023 - 21 DEC 2023	RHBBANK	EMPLOYEES PROVIDENT FUND BOARD [SSH]	-5,624		1,761,795	41.102
22 DEC 2023 - 22 DEC 2023	RHBBANK	KUMPULAN WANG PERSARAAN (DIPERBADANKAN) [SSH]	-121		244,858	5.712
20 DEC 2023 - 20 DEC 2023	RHBBANK	EMPLOYEES PROVIDENT FUND BOARD [SSH]	934		1,767,418	41.234
22 DEC 2023 - 22 DEC 2023	RSAWIT	MR TIONG CHIONG IE [DIR/CEO]	1,027		1,527	0.075
27 DEC 2023 - 27 DEC 2023	SCIB	MR KU CHONG HONG [DIR/CEO]	100		1,356	0.212
26 DEC 2023 - 26 DEC 2023	SCIB	MR KU CHONG HONG [DIR/CEO]	100		1,256	0.196
21 DEC 2023 - 22 DEC 2023	SEAL	MR CHEN KHAI VOON [SSH]	510		121,573	28.956
29 DEC 2023 - 29 DEC 2023	SEG	DATO' SRI NICHOLAS RUPERT HEYLETT BLOY [SSH]	-22,000		673,360	55.077
29 DEC 2023 - 29 DEC 2023	SEG	HAL HOLDING N.V. [SSH]	-22,000		673,360	55.077
29 DEC 2023 - 29 DEC 2023	SEG	HAL INVESTMENTS (ASIA) LTD [SSH]	-22,000		673,360	55.077
29 DEC 2023 - 29 DEC 2023	SEG	HAL TRUST [SSH]	-22,000		673,360	55.077
29 DEC 2023 - 29 DEC 2023	SEG	NAVIS ASIA FUND VI G.P. LTD [SSH]	-22,000		673,360	55.077
29 DEC 2023 - 29 DEC 2023	SEG	NAVIS GP INVESTMENT HOLDCO LTD [SSH]	-22,000		673,360	55.077
29 DEC 2023 - 29 DEC 2023	SEG	PINNACLE HERITAGE SOLUTIONS SDN BHD [SSH]	-22,000		673,360	55.078
29 DEC 2023 - 29 DEC 2023	SEG	RICHARD ELLESTON FOYSTON [SSH]	-22,000		673,360	55.077
29 DEC 2023 - 29 DEC 2023	SEG	RODNEY CHADWICK MUSE [SSH]	-22,000		673,360	55.077
29 DEC 2023 - 29 DEC 2023	SEG	SMARTUNI 1 LTD [SSH]	-22,000		673,360	55.077
29 DEC 2023 - 29 DEC 2023	SEG	TAN SRI HII CHII KOK @ HII CHEE KOK [DIR/CEO]	-22,000		673,360	55.078
29 DEC 2023 - 29 DEC 2023	SEG	TAN SRI HII CHII KOK @ HII CHEE KOK [SSH]	-22,000		673,360	55.078
26 DEC 2023 - 26 DEC 2023	SIME	KUMPULAN WANG PERSARAAN (DIPERBADANKAN) [SSH]	-10		525,514	7.711
21 DEC 2023 - 21 DEC 2023	SIME	EMPLOYEES PROVIDENT FUND BOARD [SSH]	1,270		1,006,858	14.772
20 DEC 2023 - 20 DEC 2023	SIME	EMPLOYEES PROVIDENT FUND BOARD [SSH]	-600		1,005,588	14.754
21 DEC 2023 - 21 DEC 2023	SIMEPLT	EMPLOYEES PROVIDENT FUND BOARD [SSH]	52		1,024,583	14.815
20 DEC 2023 - 20 DEC 2023	SIMEPLT	EMPLOYEES PROVIDENT FUND BOARD [SSH]	70		1,024,530	14.815
26 DEC 2023 - 26 DEC 2023	SMRT	ABRDN HOLDINGS LIMITED (FORMERLY KNOWN AS ABERDEEN ASSET MANAGEMENT PLC) [SSH]	299		29,038	6.411
26 DEC 2023 - 26 DEC 2023	SMRT	ABRDN MALAYSIA SDN BHD [SSH]	299		27,883	6.156
26 DEC 2023 - 26 DEC 2023	SMRT	ABRDN PLC [SSH]	299		29,038	6.411
22 DEC 2023 - 22 DEC 2023	SMRT	ABRDN HOLDINGS LIMITED (FORMERLY KNOWN AS ABERDEEN ASSET MANAGEMENT PLC) [SSH]	232		28,739	6.345
22 DEC 2023 - 22 DEC 2023	SMRT	ABRDN MALAYSIA SDN BHD [SSH]	232		27,584	6.09
22 DEC 2023 - 22 DEC 2023	SMRT	ABRDN PLC [SSH]	232		28,739	6.345
21 DEC 2023 - 21 DEC 2023	SMRT	ABRDN HOLDINGS LIMITED (FORMERLY KNOWN AS ABERDEEN ASSET MANAGEMENT PLC) [SSH]	116		28,507	6.294
21 DEC 2023 - 21 DEC 2023	SMRT	ABRDN MALAYSIA SDN BHD [SSH]	116		27,353	6.039
21 DEC 2023 - 21 DEC 2023	SMRT	ABRDN PLC [SSH]	116		28,507	6.294
28 DEC 2023 - 28 DEC 2023	SRIDGE	DATO' KHOO YIK CHOU [DIR/CEO]	73		16,878	7.582
26 DEC 2023 - 26 DEC 2023	SRIDGE	MR TAN WIN SEN [DIR/CEO]	36		456	0.205
20 DEC 2023 - 20 DEC 2023	SUNREIT	EMPLOYEES PROVIDENT FUND BOARD [SSH]	500		535,632	15.64
28 DEC 2023 - 28 DEC 2023	SWIFT	MR LOO HOUI KEAT [DIR/CEO]	200		350,243	39.774
28 DEC 2023 - 28 DEC 2023	SWIFT	MR LOO HOUI KEAT [SSH]	200		350,243	39.774
21 DEC 2023 - 21 DEC 2023	TAFI	DATO' SRI ANDREW LIM ENG GUAN [SSH]	118		214,060	56.417
27 DEC 2023 - 28 DEC 2023	TCHONG	DATO' TAN HENG CHEW [DIR/CEO]	44		323,165	49.579
21 DEC 2023 - 21 DEC 2023	TENAGA	EMPLOYEES PROVIDENT FUND BOARD [SSH]	4,457		969,842	16.76
21 DEC 2023 - 21 DEC 2023	TIMECOM	EMPLOYEES PROVIDENT FUND BOARD [SSH]	84		122,853	6.652
20 DEC 2023 - 20 DEC 2023	TIMECOM	EMPLOYEES PROVIDENT FUND BOARD [SSH]	698		122,769	6.648
21 DEC 2023 - 21 DEC 2023	TM	EMPLOYEE PROVIDENT FUND BOARD (EPF BOARD) [SSH]	250		668,577	17.426
20 DEC 2023 - 20 DEC 2023	TM	EMPLOYEE PROVIDENT FUND BOARD (EPF BOARD) [SSH]	1,566		668,327	17.419
26 DEC 2023 - 26 DEC 2023	UMCCA	DATO' SRI TEE LIP SIN [DIR/CEO]	2		64,797	30.89
26 DEC 2023 - 26 DEC 2023	UMCCA	PROSPER CAPITAL HOLDINGS SDN BHD [SSH]	2		39,819	18.982
26 DEC 2023 - 26 DEC 2023	UNITRAD	MR SIM KENG CHOR [DIR/CEO]	-42,000		1,028,747	65.84
26 DEC 2023 - 26 DEC 2023	UNITRAD	MR SIM KENG CHOR [SSH]	-42,000		1,028,747	65.84
21 DEC 2023 - 21 DEC 2023	UWC	EMPLOYEES PROVIDENT FUND BOARD [SSH]	225		85,753	7.784
20 DEC 2023 - 20 DEC 2023	UWC	EMPLOYEES PROVIDENT FUND BOARD [SSH]	440		85,528	7.763
21 DEC 2023 - 21 DEC 2023	VS	EMPLOYEES PROVIDENT FUND BOARD [SSH]	232		269,759	7.001
26 DEC 2023 - 26 DEC 2023	WPRTS	EMPLOYEES PROVIDENT FUND BOARD [SSH]	109		314,509	9.223
26 DEC 2023 - 26 DEC 2023	YINSON	KUMPULAN WANG PERSARAAN (DIPERBADANKAN) [SSH]	161		184,306	6.34
21 DEC 2023 - 21 DEC 2023	YINSON	EMPLOYEES PROVIDENT FUND BOARD [SSH]	-1,022		474,269	16.315
18 DEC 2023 - 18 DEC 2023	YINSON	KUMPULAN WANG PERSARAAN (DIPERBADANKAN) [SSH]	-750		184,145	6.335

Disclaimer: The Information in Insider Activity is extracted from www.shareinvestor.com/fundamental/insider_trades. The information on this page is provided as a service to readers. It does not constitute financial advice and/or any investment recommendations. We assume no liability for damages resulting from or arising out of the use of such information. Whilst every effort is made to ensure accuracy, the information presented is not the official record of shareholder filings. Readers are advised to read the original filings on the Bursa Malaysia website at www.bursamalaysia.com



The Board of Directors of **Awanbiru Technology Berhad (AWANTEC)** wishes to announce that its subsidiary, Awantec Systems Sdn. Bhd., has been awarded a contract for “Perolehan Perkhidmatan Langganan Lesen LMS Bagi Memenuhi Keperluan Kursus Peningkatan Kompetensi Digital Pegawai Perkhidmatan Pendidikan” with the Ministry of Education.

[READ MORE](#)

Bursa Malaysia Berhad (BURSA) wishes to announce the following:- Bursa Malaysia RAM Capital Sdn Bhd (formerly known as BM RAM Capital Sdn Bhd) was incorporated on 27 December 2022, with Bursa Malaysia holding a 51% equity interest and RAM Holdings Berhad holding the remaining 49% equity interest, and will be the vehicle to operate the debt fundraising platform as previously announced. The launch of BR Capital marks another milestone in Bursa Malaysia’s efforts to provide a comprehensive and diverse range of products and services to meet the evolving needs of the market.

[READ MORE](#)



Capital A Berhad (CAPITALA) wishes to announce for public information that as at 29 December 2023,

21.377% of the issued and paid-up

share capital of Capital A of 4,254,582,384 ordinary shares were held by foreigners. The percentage of ownership of shares in the Company by foreigners has not exceeded the limit of 45% of the Company's total issued and paid-up share capital.

[READ MORE](#)



CapitaLand Malaysia REIT Management Sdn Bhd, the manager of **CapitaLand Malaysia Trust (CLMT)**, is pleased to announce that two of its retail properties in Malaysia have been awarded the prestigious Green Mark certification by the Building and Construction Authority of Singapore. Queensbay Mall 1 has achieved the Green Mark Platinum, while The Mines has obtained a Green Mark GoldPLUS certification.

[READ MORE](#)





The Board of Directors of **Dayang Enterprise Holdings Bhd (DAYANG)** is pleased to announce that its wholly-owned subsidiary company, Dayang Enterprise Sdn Bhd, has been awarded a contract for the Provision of Rectification Works and Associated Services for Asset Integrity

Findings – Package A – Sarawak Oil Asset from PETRONAS Carigali Sdn Bhd.



Ekovest Berhad (EKOVEST), announces a strategic collaboration with Universal

Cosmos Co Ltd, a wholly owned subsidiary of Zhejiang Communications Investment Group Co Ltd, ranked 310 among Fortune 500 companies. This partnership marks a significant step in enhancing Malaysia's infrastructure and economic development.



ENGINEERS

HSS Engineers Berhad (HSSEB) wishes to announce that on 3 January 2024, HSS Integrated Sdn Bhd, an associate of HSS Engineers Berhad, has accepted a Letter of Award from Port Klang Cruise Terminal Sdn Bhd for the provision of Project Management



Consultancy Services for Extension of Wharf and Development of Associated Facilities at Port Klang Cruise Terminal, Pulau Indah, Pelabuhan Klang, Selangor.





The Board of Directors of **Leform Berhad (LEFORM)** wishes to announce that the Company

and MIDF Amanah Investment Bank Berhad had mutually agreed to discontinue MIDF Investment's role as the Sponsor of the Company with effect from 1 January 2024. In replacement thereof, UOB Kay Hian Securities (M) Sdn Bhd has been appointed as the new Sponsor of the Company with effect from 1 January 2024.

[READ MORE](#)



MBM Resources Berhad (MBMR)

MBM Resources Berhad (MBMR), today announced the appointment of Encik Rizal Mohd Zin as its new Group Chief Executive Officer effective 2nd January 2024. The Board of Directors, Management and staff are very pleased to welcome Encik Rizal to the Group and

look forward to working closely with him in continuing the journey to be the leading automotive group in Malaysia.

[READ MORE](#)

Upcoming IPO

NAME OF COMPANY	OFFER PERIOD		ISSUE PRICE (Per Ordinary Share)	LISTING SOUGHT	DATE OF LISTING
	OPENING	CLOSING			
TSA GROUP BERHAD	27 Dec 2023	17 Jan 2024	RM0.55	ACE MARKET	2 Feb 2024
MASTER TEC GROUP BERHAD	28 Dec 2023	18 Jan 2024	RM0.39	ACE MARKET	29 Jan 2024

Disclaimer: The information in the Investor Relations page is extracted from individual companies' announcements in www.bursamalaysia.com. The information on this page is provided as a service to readers. We assume no liability for damages resulting from or arising out of the use of such information. Whilst every effort is made to ensure accuracy, the information presented has been simplified for your reading pleasure. Readers are advised to read the original and complete filings on the Bursa Malaysia website at https://www.bursamalaysia.com/market_information/announcements/company_announcement