

# Invest

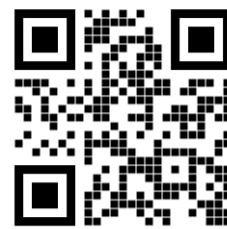
A Weekly e-Publication by SHAREINVESTOR.com

ISSUE

188

FRIDAY  
22 DECEMBER  
2023

Scan/Click QR to Register



Via email, every Friday

## MARKET SENTIMENTS

# Malaysia's economy tipped to post high growth in 2024 on all-round improvement – Datuk Dr Nazri Khan

Stronger economic momentum for Malaysia in 2024 – RAM Ratings (page 21-24)

## ALSO

**07** COMPANY SPOTLIGHT  
Frontken Corporation Berhad

**26** MSWG  
Charlie Munger: The Multidisciplinary Mind Behind Berkshire Hathaway's Success

**04** LEADERBOARD

**06** SHARIAH HOT STOCKS

**08** SHARIAH MOMENTUM UP STOCKS

**10** NON SHARIAH HOT STOCKS

**12** UP TRENDING STOCKS

**14** VALUE STOCKS

**16** GROWTH STOCKS

**17** DIVIDEND STOCKS

**18** BROKERS' CALL

**19** LONG COMPANIES

**25** REGIONAL MARKETS

**30** INSIDER ACTIVITY

**33** INVESTOR RELATIONS



# SHAREINVESTOR®

Invest with Knowledge

## INVESTOR PLATFORMS

**Director**  
Darren Chong  
darren.chong@shareinvestor.com

**Business Development Manager**  
Jay Cheong  
jay.cheong@shareinvestor.com

**Senior Executive**  
Daniel Wong  
daniel.wong@shareinvestor.com

**Executive**  
Tan Yong Sheng  
yongsheng.tan@shareinvestor.com

## ADMIN & OPERATIONS

**Senior Executive**  
Watie Nordin  
watie.nordin@shareinvestor.com

**Executive**  
Silas Emmanuel Joseph  
silas.joseph@shareinvestor.com

## INVESTOR RELATIONS

**Group Managing Director & Publisher**  
Edward Stanislaus  
edward@shareinvestor.com

**Senior Manager**  
Letticia Wong  
letticia.wong@shareinvestor.com

## PROCESS AUTOMATION & DATA ANALYTICS

**Data Analyst**  
Nickson Aw

## SHAREINVESTOR HOLDINGS BOARD OF DIRECTORS

<b>Chairman</b>		Patrick Daniel
<b>Group CEO</b>		Christopher Lee
<b>Group COO</b>		Lim Dau Hee
<b>Group CFO</b>		Teo Siew May
<b>Group MD</b>		Shanison Lin



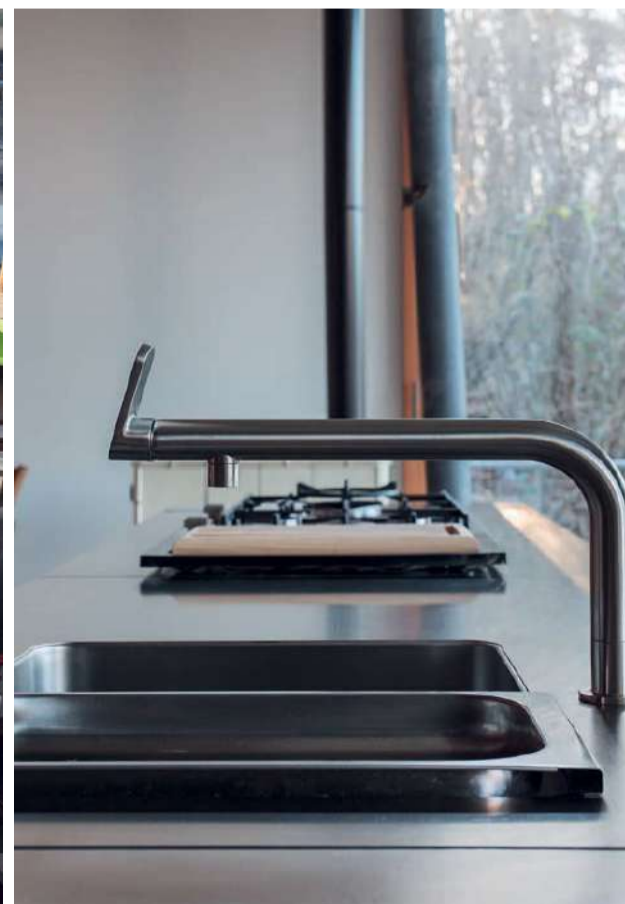
“ GIVE A MAN A FISH AND YOU FEED HIM FOR A DAY; TEACH A MAN TO FISH AND YOU FEED HIM FOR A LIFETIME ”

**ShareInvestor Malaysia Sdn. Bhd.**  
(200001023956) (526564-M)  
Unit No. DF2-07-03A, Level 7,  
Persoft Tower, 6B Persiaran Tropicana,  
47410 Petaling Jaya, Selangor Darul Ehsan.

Hotline : 603 7803 1791  
Mobile : 011 6343 8939  
Website : www.ShareInvestor.com.my  
www.ShareInvestorHoldings.com  
www.Facebook.com/ShareInvestorMalaysia

**ADVERTISEMENT ENQUIRY**

bulthaup takes care of the details so that you can enjoy a harmonious environment.



**XTRA**

XTRA FURNITURE SDN BHD  
The Gardens Mall, Mid Valley City  
xtrafurniture.com/bulthaup  
fb.com/bulthaupmalaysia

bulthaup



*RESEARCH  
SPECIALIST  
M+ GLOBAL*

*CHIEF TRAINER  
BEYOND  
INSIGHTS*

*AUTHOR  
MARKET WIZARD  
SERIES*

*SENIOR TRAINER  
BEYOND  
INSIGHTS*

**Loui Low**

**Kathlyn Toh**

**J. Schwager**

**Jeffery C.**

**BEYOND INSIGHTS**<sup>®</sup>  
INVESTMENT and TRADING EDUCATION

**SYMPOSIUM 2024**

# CATCHING THE NEXT GLOBAL STOCK MARKET WAVE

**14**

JANUARY, 2024

9 AM - 6 PM



**MITEC, KL**

SCAN FOR  
MORE DETAILS



[www.shareinvestor.com](http://www.shareinvestor.com) - market data at your fingertips



ShareInvestor WebPro ([www.shareinvestor.com/my](http://www.shareinvestor.com/my))

Prices > Stock Prices > Bursa > click Stocks tab

1. mouse over Ranking > select Top Active > all Shariah stocks are denoted with an [S] > mouse over Column Layout > select Edit Customs > select Name > select Volume > select Last Done Price > Mouse Over Column Layout > select Custom
2. mouse over Ranking > select Top Turnover > all Shariah stocks are denoted with an [S] > mouse over Column Layout > select Edit Customs > select Name > select Last Done Price > select Value > Mouse Over Column Layout > select Custom
3. mouse over Ranking > select Top Gainers (Over 5 Trading Days) > mouse over Column Layout > select Edit Customs > select Name > select Last Done Price > select 5 Days Change > select 5 Days % Change > Mouse Over Column Layout > select Custom
4. mouse over Ranking > select Top Losers (Over 5 Trading Days)
5. mouse over Ranking > select Top % Gainers (Over 5 Trading Days)
6. mouse over Ranking > select Top % Losers (Over 5 Trading Days)

### Shariah Top Actives (as at Yesterday)

Name	Price (RM)	Volume
TWL [S]	0.035	2,175,528.000
TOPGLOV [S]	0.935	1,023,338.000
LEFORM [S]	0.415	765,865.000
WIDAD [S]	0.465	502,255.000
SCIB [S]	0.875	496,620.000
CAREPLS [S]	0.450	476,031.000
LKL [S]	0.175	426,471.000
KEYASIC [S]	0.070	380,449.000
MYEG [S]	0.815	375,419.000
ARTRONIQ [S]	0.865	303,692.000

### Shariah Top Turnover (as at Yesterday)

Name	Price (RM)	Value (RM)
TOPGLOV [S]	0.935	95,021,723
TENAGA [S]	10.000	59,796,464
SCIB [S]	0.875	43,546,413
MBMR [S]	4.180	38,774,822
LEFORM [S]	0.415	31,798,184
MYEG [S]	0.815	30,830,150
ARTRONIQ [S]	0.865	26,207,895
GAMUDA [S]	4.610	25,403,201
PETGAS [S]	17.460	24,702,082
DIALOG [S]	2.050	24,570,000

### Top Gainers (over 5 Trading days as at Yesterday)

Name	Price (RM)	Change (RM)
NESTLE	119.500	+3.500
RAPID	27.400	+1.040
HEIM	23.780	+1.020
F&N	28.340	+0.840
UTDPLT	18.000	+0.800
MCEHLDG	2.680	+0.550
KLK	21.920	+0.420
ALLIANZ	18.800	+0.400
APOLLO	5.760	+0.370
CARLSBG	19.420	+0.320

### Top % Gainers (over 5 Trading days as at Yesterday)

Name	Price (RM)	Change (%)
AT	0.010	+100.00
EAH	0.010	+100.00
MLAB	0.010	+100.00
NEXGRAM	0.040	+60.00
FOCUS	0.015	+50.00
ITRONIC	0.045	+28.57
PMHLDG	0.090	+28.57
HLT	0.255	+27.50
MCEHLDG	2.680	+25.82
CAREPLS	0.450	+25.00

### Top Losers (over 5 Trading days as at Yesterday)

Name	Price (RM)	Change (RM)
HLBANK	18.980	-0.400
MBMR	4.180	-0.280
YNHPROP	4.470	-0.270
MPI	27.900	-0.260
AJI	15.800	-0.200
ZHULIAN	1.600	-0.200
AYER	6.900	-0.190
UWC	3.410	-0.190
MAYBANK	8.890	-0.160
PANAMY	17.920	-0.160

### Top % Losers (over 5 Trading days as at Yesterday)

Name	Price (RM)	Change (%)
AEM	0.010	-33.33
COMPUGT	0.010	-33.33
TECHNAX	0.010	-33.33
HANDAL	0.095	-20.83
SMTRACK	0.040	-20.00
CME	0.025	-16.67
MQTECH	0.025	-16.67
CHEETAH	0.115	-14.81
HHRG	0.315	-13.70
FLEXI	0.205	-12.77

# PURNELL

ONLY TOURBILLON



## ESCAPE II FORGED CARBON

Purnell Asia

Tel. : +65.9817.3378

Email : sales.sg@purnellwatches.com

@ Purnell\_Official

www.purnellwatches.com



## Price & Volume Distribution Charts (as at Yesterday)

Technical Analysis

**DEFINITION:** Shariah compliant stocks with Technical Analysis showing 5-days & 10-days Moving Average Price below Yesterday's Close over past 3 days and with Volume Spike.

**CHART GUIDE:** Volume Distribution Chart is a statistical interpretation of the current sentiment on each stock in graphical format. The highest bar categorized as >150k is likely to be traded by institutions or super dealers, while the lowest bar categorized as <15k usually represents retail investors. "Buy Up" refers to more buyers snatching up the lots queued at selling price. "Sell Down" refers to sellers selling their shares to the buying queue



ShareInvestor WebPro > Screener > Market Screener (FA & TA) > select BURSA > add criteria

**A. Criteria**

- > click Add Criteria
- Technical Analysis Conditions tab select (i) Moving Average Below Close (ii) Volume Spike
- Fundamental Analysis Conditions tab > select (iii) Revenue
- Prices & Other Conditions tab > select (iv) Is Shariah Compliant
- Technical Analysis Conditions tab select (v) Moving Average Below Close
- Prices & Other Conditions tab > select (vi) Last Done Price
- Technical Analysis Conditions tab select (vii) Moving Average Below Close

**B. Conditions (Criteria Filters)**

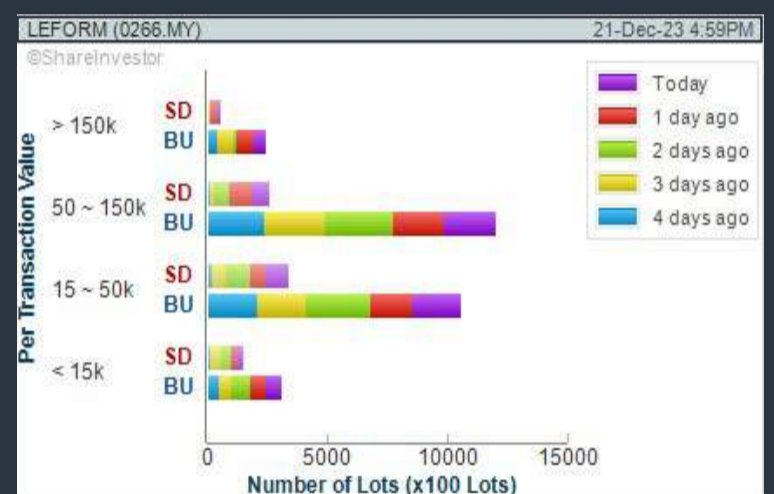
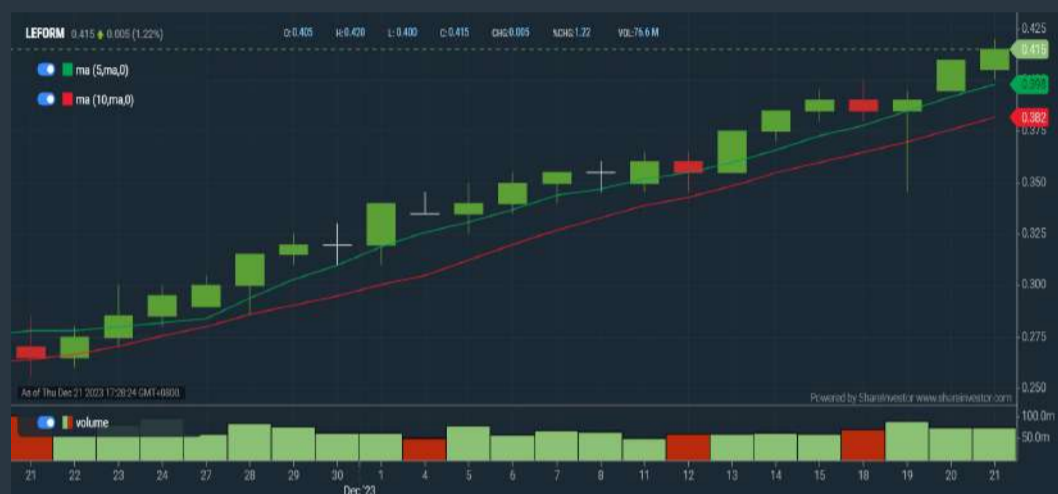
- Moving Average Below Close - select (MA) type (5) below close price for type (3) days
- Volume Spike - Volume type (1) greater than type (5) days average
- Revenue ("000) - select (more than) type (1) for the past select (1) financial year(s)
- Is Shariah Compliant - select **Yes**
- Moving Average Below Close - select (MA) type (10) below close price for type (3) days
- Last Done Price - select (more than) type (0.3)
- Moving Average Below Close - select (EMA) type (5) below close price for type (3) days

- > click Save Template > Create New Template type (Shariah Hot Stocks) > click Create
- > click Save Template as > select Shariah Hot Stocks > click Save
- > click Screen Now (may take a few minutes)
- > Sort By: Select (Vol) Select (Desc)
- > Mouse over stock name > Charts > click C<sup>2</sup> Charts or Volume Distribution

### LEFORM BERHAD (0266)

C<sup>2</sup> Chart

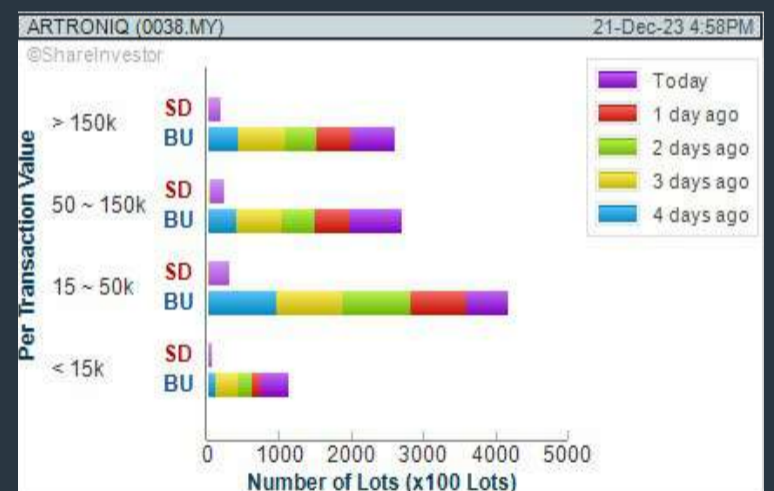
Analysis



### ARTRONIQ BERHAD (0038)

C<sup>2</sup> Chart

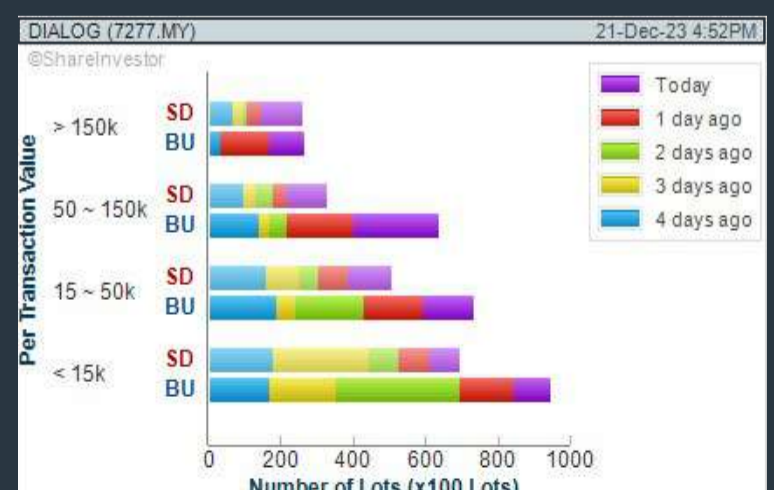
Analysis



### DIALOG GROUP BERHAD (7277)

C<sup>2</sup> Chart

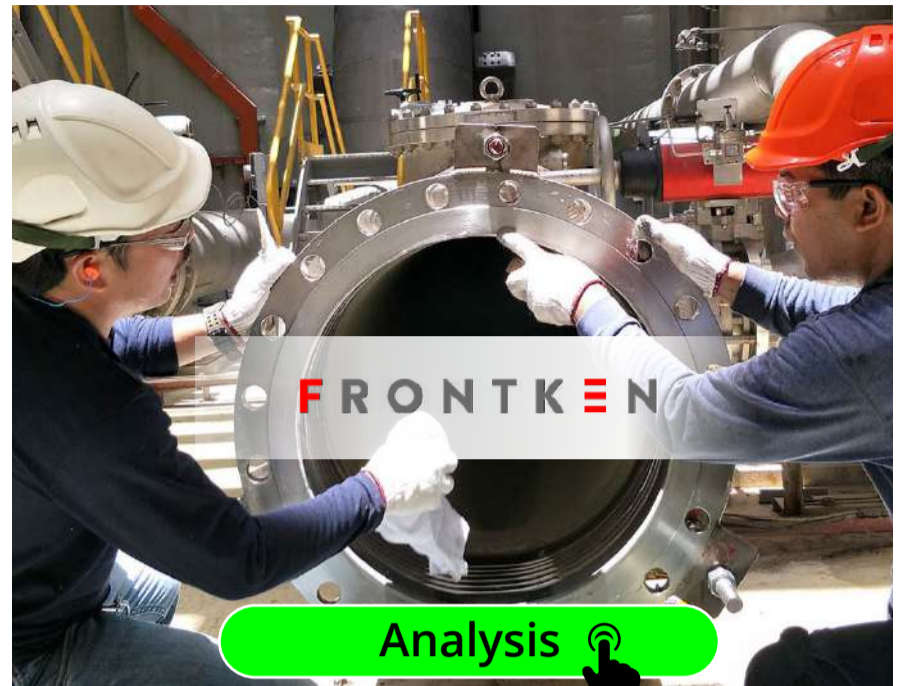
Analysis



**Disclaimer:** The information on this page is provided as a service to readers. It does not constitute financial advice and/or any investment recommendations. Past performance is not indicative of future results. We assume no liability for damages resulting from or arising out of the use of such information. It would be best if you did your own research to make your personal investment decisions wisely or consult a licenced investment advisor.

## COMPANY BACKGROUND

**Frontken Corporation Berhad** is a provider of advanced precision cleaning and surface treatment services for semiconductor process chamber parts and repair and maintenance services for the oil and gas industry. The Company uses cutting edge technology including advanced precision cleaning, advanced surface treatment and specialty spray coating to extend the lifespan of the high precision tools/equipment used in the fabrication of wafers



FRONTKN FRONTKEN CORPORATION BHD		Updated at 21 Dec 2023 17:31	
Last (MYR)	3.150 ↑	Change: +0.030	High: 3.230
Open	3.120	Change (%): +0.96	Low: 3.110
Buy Price	3.140	Yesterday's Close	3.120
Buy Volume ('00)	570	Sell Price	3.180
Cumulative Volume ('00)	40,764	Sell Volume ('00)	11
		Cumulative Value	12,924,757

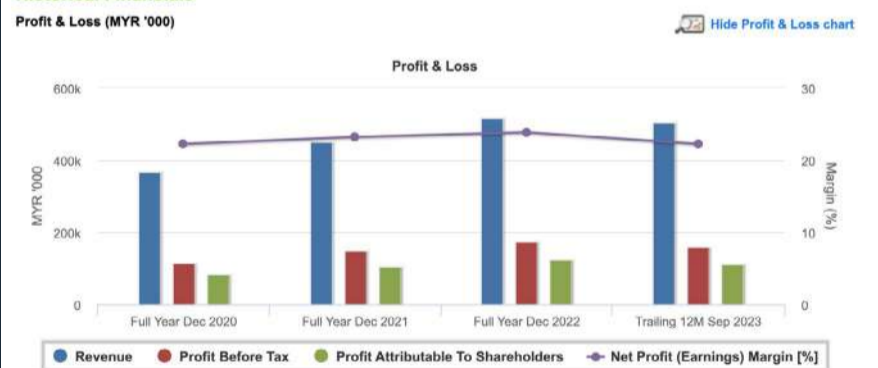
### Financial Analysis

<b>Revenue Growth</b> Increasing revenue in last 5 consecutive years	😊	<b>Profit Growth</b> Increasing profit in last 3 consecutive years and min growth is 10% (with at least 4 profitable years)	😊
<b>Piotroski F Score</b> The company has above average financial strength (Piotroski F-Score of 6-7)	😊	<b>Dividend Payout</b> No dividend paid in most recent year but dividends paid in prior years	😞
<b>Cash Ratio</b> Good cash ratio of at least 0.3 for 3 consecutive years	😊	<b>Current Ratio</b> The company is well-positioned to cover its short-term obligations with its current assets (ratio between 1.5 to 10) for 3 consecutive years	😊
<b>Gross Profit Margin</b> Consistently high gross profit margin of at least 40% for 3 years	😊	<b>Net Earnings Margin</b> Consistently high net profit margin of at least 20% for 3 years	😊
<b>Return on Assets (ROA)</b> ROA above 10% for 3 consecutive years	😊	<b>Return on Equity (ROE)</b> ROE above 20% for 2 consecutive years	😊

😊 Excellent    😊 Good    😐 Neutral    😟 Be Alert    😞 Watch Out



### Historical Financials

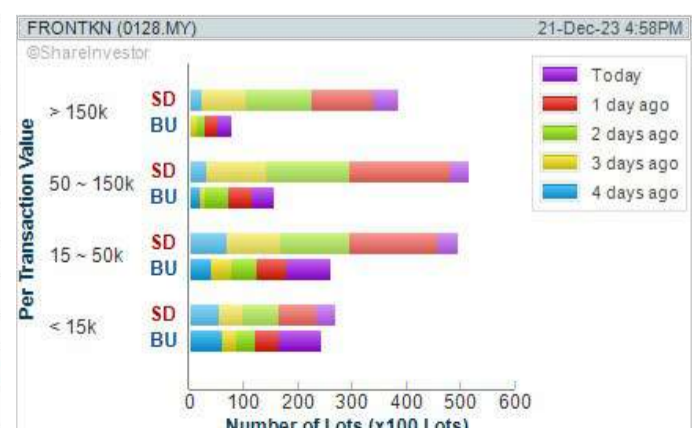


**WebPro 9-Days Free Trial Registration**  
(worth RM9)  
Sign Up Now



### Key Statistics with Total Shareholder Returns

Period	Dividend Received	Capital Appreciation	Total Shareholder Return
<b>Short Term Return</b>	5 Days	-	+1.61 %
	10 Days	-	+0.64 %
	20 Days	-	-4.55 %
<b>Medium Term Return</b>	3 Months	-	-1.87 %
	6 Months	-	+1.29 %
	1 Year	-	+0.96 %
<b>Long Term Return</b>	2 Years	0.025	-18.17 %
	3 Years	0.068	+36.76 %
	5 Years	0.113	+584.07 %
<b>Annualised Return</b>	Annualised	-	+46.90 %



**Disclaimer:** The information on this page is provided as a service to readers. It does not constitute financial advice and/or any investment recommendations. Past performance is not indicative of future results. We assume no liability for damages resulting from or arising out of the use of such information. It would be best if you did your own research to make your personal investment decisions wisely or consult a licenced investment advisor.

## Price & Volume Distribution Charts (as at Yesterday)

Technical Analysis

**DEFINITION:** Shariah compliant stocks with Technical Analysis showing Bullish Momentum and Price Uptrend. The share price closed at the highest price yesterday. The typical price was higher than the previous day's typical price.

**CHART GUIDE:** Volume Distribution Chart is a statistical interpretation of the current sentiment on each stock in graphical format. The highest bar categorized as >150k is likely to be traded by institutions or super dealers, while the lowest bar categorized as <15k usually represents retail investors. "Buy Up" refers to more buyers snatching up the lots queued at selling price. "Sell Down" refers to sellers selling their shares to the buying queue.



ShareInvestor WebPro > Screener > Market Screener (FA & TA) > select BURSA > add criteria

**A. Criteria**

- > click Add Criteria
- Fundamental Analysis Conditions tab > select (i) Revenue
- Technical Analysis Conditions tab select (ii) Average Volume
- Prices & Other Conditions tab > select (iii) Last Done Price
- Prices & Other Conditions tab > select (iv) Is Shariah Compliant
- Technical Analysis Conditions tab select (v) RSI Overbought
- Technical Analysis Conditions tab select (vi) Moving Average Below Close
- Technical Analysis Conditions tab select (vii) CCI Overbought

**B. Conditions (Criteria Filters)**

1. Revenue ("000) - select (more than) type (1) for the past select (1) financial year(s)
2. Average Volume - type (1) days average volume greater than type (10000) lots
3. Last Done Price - select (more than) type (0.3)
4. Is Shariah Compliant - select Yes
5. RSI Overbought - select RSI 1 above 99 for 1 days
6. Moving Average Below Close - select (MA) type (10) below close price for type (1) days
7. CCI Overbought - select CCI (2) above (0) for (1) days

- > click Save Template > Create New Template type (Shariah Momentum Up Stocks) > click Create
- > click Save Template as > select Shariah Momentum Up Stocks > click Save
- > click Screen Now (may take a few minutes)
- Sort By: Select (Vol) Select (Desc)
- Mouse over stock name > Charts > click C<sup>2</sup> Charts tab or Volume Distribution

### TOP GLOVE CORPORATION BERHAD (7113)

C<sup>2</sup> Chart

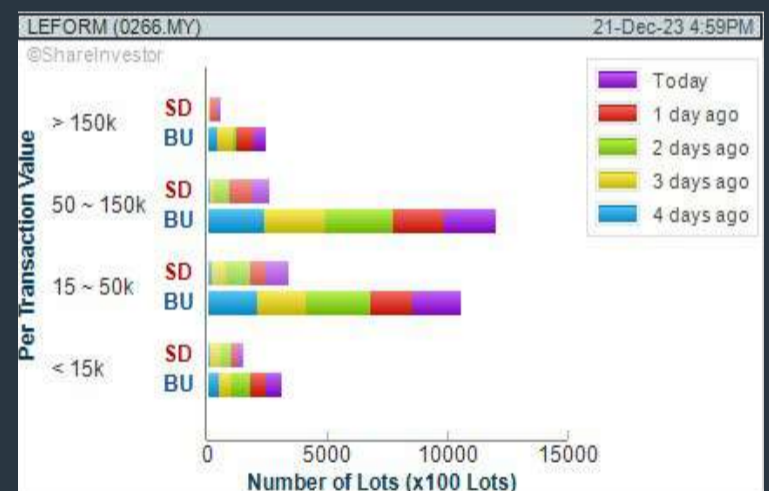
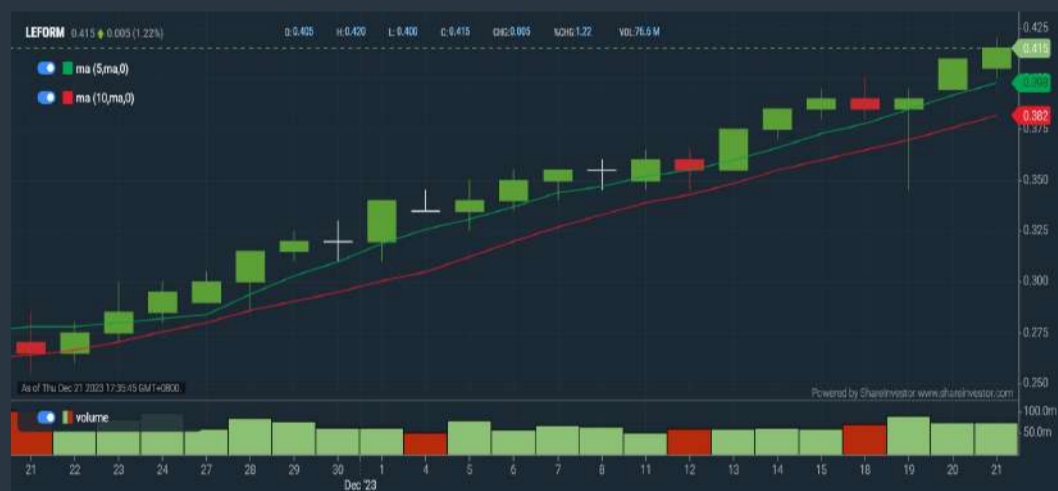
Analysis



### LEFORM BERHAD (0266)

C<sup>2</sup> Chart

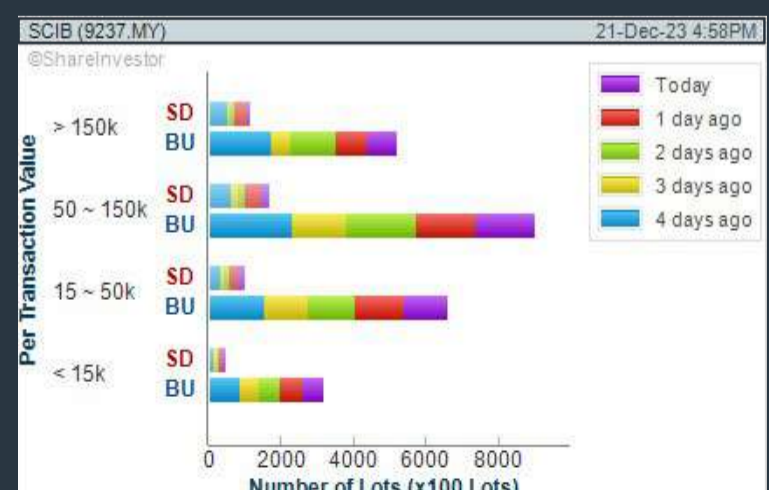
Analysis



### SARAWAK CONSOLIDATED IND BERHAD (9237)

C<sup>2</sup> Chart

Analysis



**Disclaimer:** The information on this page is provided as a service to readers. It does not constitute financial advice and/or any investment recommendations. Past performance is not indicative of future results. We assume no liability for damages resulting from or arising out of the use of such information. It would be best if you did your own research to make your personal investment decisions wisely or consult a licenced investment advisor.



*Joyous*  
**CHRISTMAS**  
— & —  
**HAPPY  
NEW YEAR**  
**2024**

*From all of us at*



## Price & Volume Distribution Charts (as at Yesterday)

Technical Analysis

**DEFINITION:** Stocks with Technical Analysis showing 5-days & 10-days Moving Average Price below Close over past 1 days and with Volume Spike

**CHART GUIDE:** Volume Distribution Chart is a statistical interpretation of the current sentiment on each stock in graphical format. The highest bar categorized as >150k is likely to be traded by institutions or super dealers, while the lowest bar categorized as <15k usually represents retail investors. "Buy Up" refers to more buyers snatching up the lots queued at selling price. "Sell Down" refers to sellers selling their shares to the buying queue.



ShareInvestor WebPro > Screener > Market Screener (FA & TA) > select BURSA > add criteria

**A. Criteria**

- > click Add Criteria
- Technical Analysis Conditions tab select (i) Moving Average Below Close (ii) Volume Spike
- Fundamental Analysis Conditions tab >select (iii) Revenue
- Prices & Other Conditions tab > select (iv) Is Shariah Compliant
- Technical Analysis Conditions tab select (v) Moving Average Below Close
- Prices & Other Conditions tab > select (vi) Last Done Price
- Technical Analysis Conditions tab select (vii) Moving Average Below Close

**B. Conditions (Criteria Filters)**

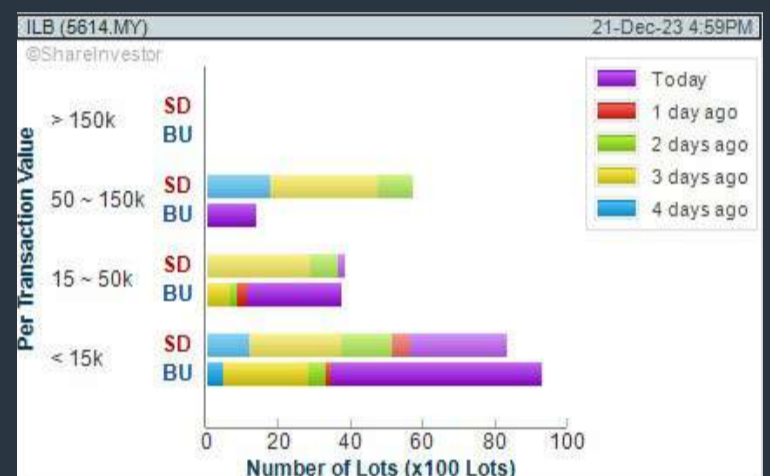
1. Moving Average Below Close - select (MA) type (5) below close price for type (3) days
2. Volume Spike - Volume type (1) greater than type (5) days average
3. Revenue ("000) - select (more than) type (1) for the past select (1) financial year(s)
4. Is Shariah Compliant - select NO
5. Moving Average Below Close - select (MA) type (10) below close price for type (1) days
6. Last Done Price - select (more than) type (0.3)
7. Moving Average Below Close - select (EMA) type (5) below close price for type (1) days

- > click Save Template > Create New Template type (Non-Shariah Hot Stocks) > click Create
- > click Save Template as > select Non-Shariah Hot Stocks > click Save
- > click Screen Now (may take a few minutes)
- Sort By: Select (Vol) Select (Desc)
- Mouse over stock name > Charts > click C<sup>2</sup> Charts tab or Volume Distribution

### ILB GROUP BERHAD (5614)

C<sup>2</sup> Chart

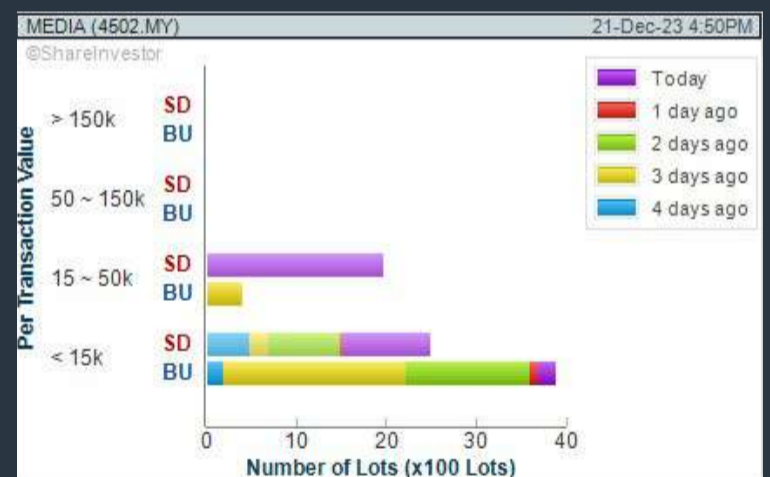
Analysis



### MEDIA PRIMA BERHAD (4502)

C<sup>2</sup> Chart

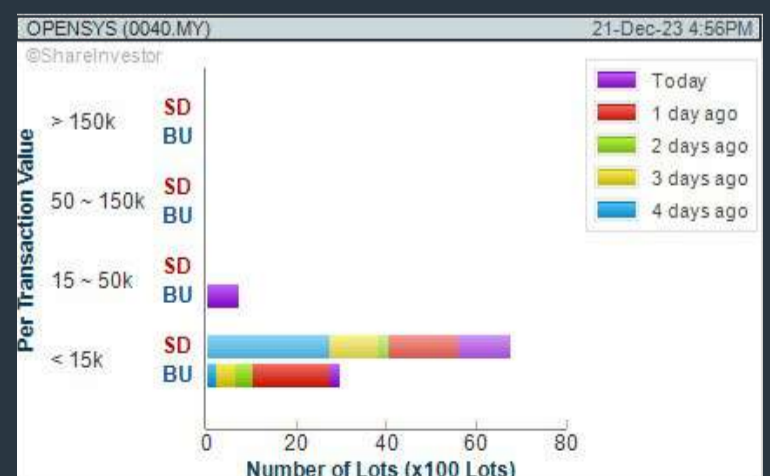
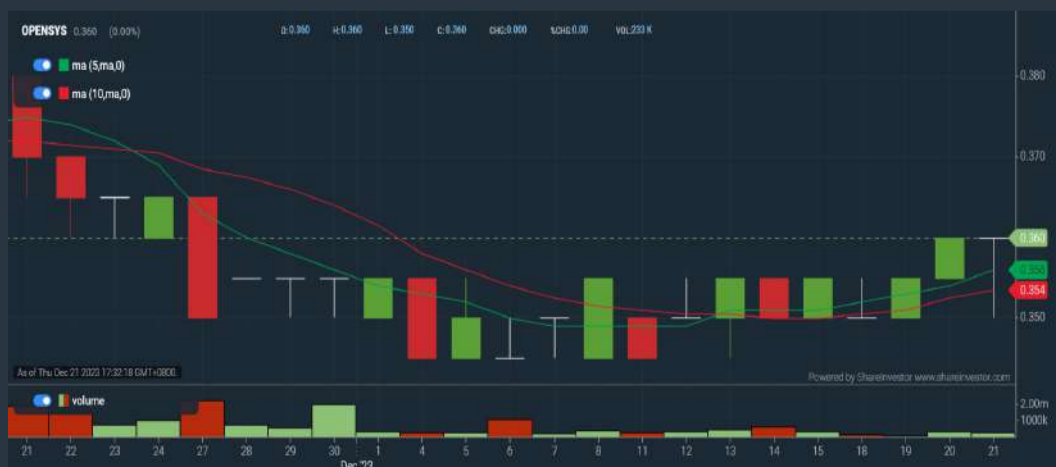
Analysis



### OPENSYS (M) BERHAD (0040)

C<sup>2</sup> Chart

Analysis



**Disclaimer:** The information on this page is provided as a service to readers. It does not constitute financial advice and/or any investment recommendations. Past performance is not indicative of future results. We assume no liability for damages resulting from or arising out of the use of such information. It would be best if you did your own research to make your personal investment decisions wisely or consult a licenced investment advisor.

# SHAREINVESTOR WEBPRO

## STOCK MARKET DATA AT YOUR FINGERTIPS

Powerful browser-based market analytics platform.  
Access from anywhere



### 8 Markets Data

- ▶ Get access to data from Bursa, NYSE, Nasdaq, HKEX, SGX, IDX, SET & ASX

### Portfolio Management

- ▶ Profit & Loss Summary
- ▶ Stock Alert
- ▶ News & Events filtering
- ▶ Customizable column layout

## Fundamental Analysis

### Financial Analysis Statement

- ▶ Profit & Loss
- ▶ Balance Sheet
- ▶ Cash Flow Statement
- ▶ More than 20 Financial Ratios
- ▶ Dividend Analysis

### Technical Charting

- ▶ C<sup>2</sup> chart (Customisable & Comprehensive)

### Brokers' Call

### Intrinsic Value Calculator

### FactSheet

- ▶ Key Stock Information
- ▶ Ownership
- ▶ Consensus Estimates
- ▶ Annual Report
- ▶ Historical Price
- ▶ Insider Trades

## What's new on WebPro (Stable Release 12.1.0)

In our effort to keep our platform at the forefront of trading technology, we have added on some new features onto our C2 Chart in WebPro

### ADDITIONAL NEW FEATURES:

- ▶ Anchor selector for AVWAP, PVAT, and PAV indicators
- ▶ Volume profile indicator by date range
- ▶ Moving Average Cross indicator
- ▶ Guppy Multiple Moving Average (GMMA) indicator
- ▶ GoNoGo Trend Signal indicators
- ▶ SignalIQ

So what are you waiting for? Head to our platform today and check out our new trading chart features and indicators. We're confident that you'll love the improvements we've made and that they'll help you become a more successful trader.

Click here to start your 9 days FREE trial  
(Valued at RM10)



## Price & Volume Distribution Charts (Over 3 trading days as at Yesterday)

Technical Analysis

**DEFINITION:** Stocks with Technical Analysis showing Bullish Momentum and Price Uptrend

**CHART GUIDE:** Volume Distribution Chart is a statistical interpretation of the current sentiment on each stock in graphical format. The highest bar categorized as >150k is likely to be traded by institutions or super dealers, while the lowest bar categorized as <15k usually represents retail investors. "Buy Up" refers to more buyers snatching up the lots queued at selling price. "Sell Down" refers to sellers selling their shares to the buying queue.



ShareInvestor WebPro > Screener > Market Screener (FA & TA) > select BURSA > add criteria

**A. Criteria**

- > click Add Criteria
- Fundamental Analysis Conditions tab > select (i) Revenue
- Technical Analysis Conditions tab select (ii) Moving Average Below Close
- Technical Analysis Conditions tab select (iii) Average Volume
- Prices & Other Conditions tab > select (iv) Last Done Price
- Technical Analysis Conditions tab select (v) Moving Average Below Close
- Technical Analysis Conditions tab select (v) Moving Average Bullish Crossover

**B. Conditions**

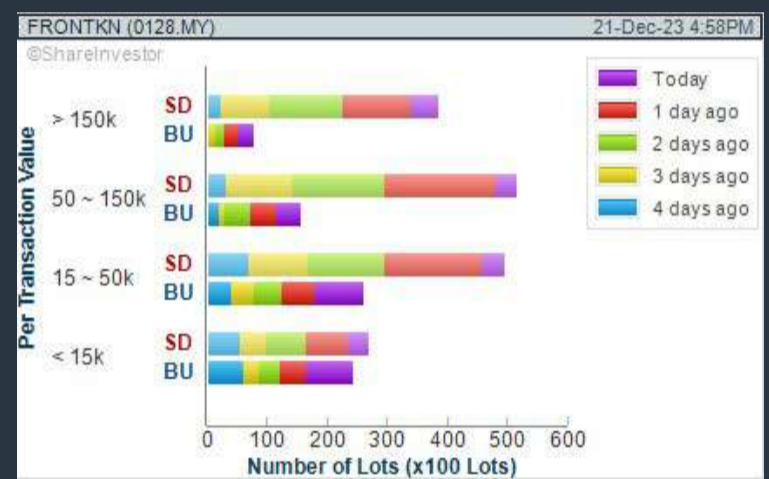
1. Revenue - select (more than) type (1) for the past select (1) financial year(s)
2. Moving Average Below Close - select (MA) type (20) below close price for type (1) days
3. Average Volume - type (5) days average volume type (10000) lots
4. Last Done Price - select (more than) type (0.3)
5. Moving Average Below Close - select (MA) type (10) below close price for type (1) days
6. Moving Average Bullish Crossover - select (MA) type (5) crossed above select (MA) type (10)

> click Save Template > Create New Template type (Non-Shariah Up-Trending Stocks) > click Create Click Save Template As > select Non-Shariah Up Trending Stocks > click Save  
> click Screen Now (may take a few minutes)  
Sort By: Select (Vol) Select (Desc)  
Mouse over stock name > Charts > click C<sup>2</sup> Charts tab or Volume Distribution

## FRONTKEN CORPORATION BERHAD (0128)

C<sup>2</sup> Chart

Analysis



**Disclaimer:** The information on this page is provided as a service to readers. It does not constitute financial advice and/or any investment recommendations. Past performance is not indicative of future results. We assume no liability for damages resulting from or arising out of the use of such information. It would be best if you did your own research to make your personal investment decisions wisely or consult a licenced investment advisor.



Learn how to identify Hot Stocks using Technical Analysis (TA) and Fundamental Analysis (FA)

**SIGN UP FOR Invest NOW IT'S FREE!!!**

Click here

Scan me



Via email, every Friday.

Get market moving news and analyses. Regular columns include **Behind The Action** and **From The Observer**

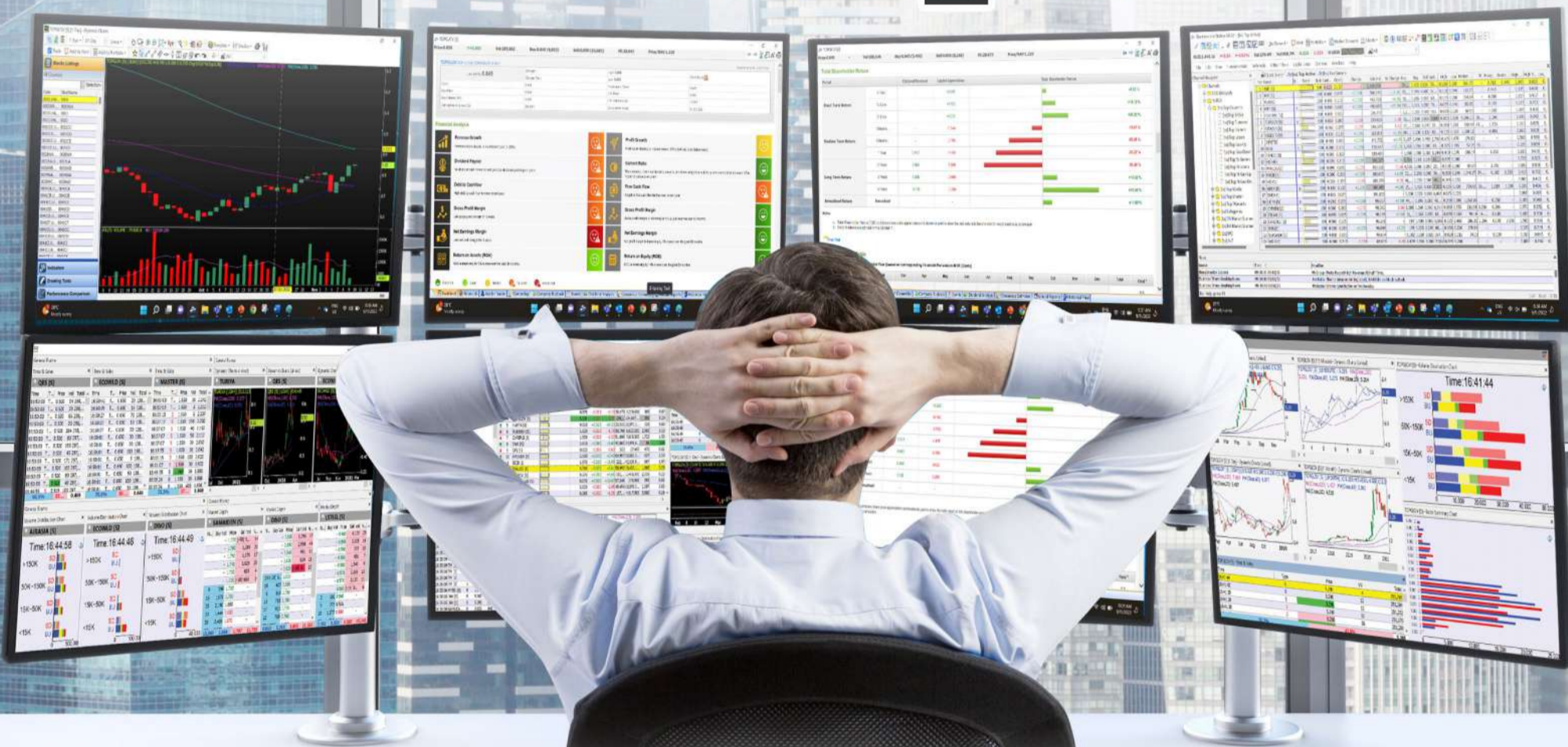
Leaderboard • Shariah Hot Stocks • Shariah Momentum Up Stocks • Non Shariah Hot Stocks • Up Trending Stocks • Growth Stocks • Dividend Stocks • Long Companies • Insider Activity • Investor Relations • Regional Markets



# MAKE BETTER TRADING STRATEGIES

with

# SHARE INVESTOR STATION



## 8 Markets Data

- ▶ Get access to data from Bursa, NYSE, Nasdaq, HKEX, SGX, IDX, SET & ASX

## Dynamic Chart

- ▶ Candlestick Pattern Recognition
- ▶ 111 Indicators
- ▶ 39 Drawing Tools
- ▶ Performance Comparison Chart

## Intraday Data

- ▶ Market Depth
- ▶ Trade Summary Matrix & Chart
- ▶ Times & Sales
- ▶ Intraday Market Ticker

## Market Screener

- ▶ 96 criteria ranging from FA, TA, Consensus Estimate
- ▶ Real-time Data

## Power Frame

- ▶ Combining few Dynamic Charts together with intraday information in one frame

## Technical Analysis

## Fundamental Analysis

### Financial Analysis Statement

- ▶ Profit & Loss
- ▶ Balance Sheet
- ▶ Cash Flow Statement
- ▶ More than 20 Financial Ratios
- ▶ Dividend Analysis

### FactSheet

- ▶ Key Stock Information
- ▶ Ownership
- ▶ Consensus Estimates
- ▶ Annual Report
- ▶ Historical Price
- ▶ Insider Trades

**Start your 18 days FREE trial now (Valued at RM82)**



## Price & Total Shareholder Return (as at Yesterday)

Fundamental Analysis

**DEFINITION:** Share price of a company trading at a lower price as compared to its fundamentals (FA) such as financial performance and dividend, allowing it to be attractive to value investors.

**CHART GUIDE:** Total Shareholder Return (TSR) combines share price appreciation and dividend distributions paid to show the total return to the shareholder expressed as a percentage.



ShareInvestor WebPro > Screener > Market Screener (FA & TA) > select BURSA > add criteria

**A. Criteria**

- > click Add Criteria
- Fundamental Analysis Conditions tab (i) Price Earnings Ratio
- Fundamental Analysis Conditions tab >select (ii) CAGR of Net Earnings
- Fundamental Analysis Conditions tab >select (iii) Net Debt To Equity
- Fundamental Analysis Conditions tab >select (iv) Return On Equity (ROE)

**B. Conditions**

1. Price Earnings Ratio - select (less than) type (15) times now
2. CAGR of Net Earnings - select (more than) type (10) % for the past type (3) financial year(s)
3. Net Debt To Equity – select (less than) type (1) for the past select (1) financial year(s)
4. Return On Equity (ROE) – select (more than) type (10) % for the past select (1) financial year(s)

- > click Save Template > Create New Template type (Value Stock) > click Create
- > click Save Template as > select Value Companies > click Save
- > click Screen Now (may take a few minutes)
- Sort by: Select (PE Ratio) Select (Ascending)
- > Mouse over stock name > Factsheet > looking for Total Shareholder Return
- > Mouse over stock name > Charts > click C2 Charts tab

## SYNERGY HOUSE BERHAD (0279)

C<sup>2</sup> Chart



Period	Dividend Received	Capital Appreciation	Total Shareholder Return
Short Term Return	5 Days	-0.015	+2.27%
	10 Days	-0.035	+6.47%
	20 Days	-0.100	+17.39%
Medium Term Return	3 Months	-0.305	+32.43%
	6 Months	-0.300	+30.00%

## EDELTEQ HOLDINGS BERHAD (0278)

C<sup>2</sup> Chart



Period	Received	Appreciation	Total Shareholder Return
Short Term Return	5 Days	-	-
	10 Days	-	+6.46%
	20 Days	-	-2.84%
Medium Term Return	3 Months	-0.120	-26.67%
	6 Months	-0.355	-51.82%

## SUNMOW HOLDING BERHAD (03050)

C<sup>2</sup> Chart



Period	Dividend Received	Capital Appreciation	Total Shareholder Return
Short Term Return	5 Days	-	-
	10 Days	-	-1.85%
	20 Days	-	-21.40%
Medium Term Return	3 Months	-	-7.83%
	6 Months	-	+7.07%
Long Term Return	1 Year	-	+27.71%
	2 Years	-	+6.00%
Annualised Return	Annualised	-	+2.96%

**Disclaimer:** The information on this page is provided as a service to readers. It does not constitute financial advice and/or any investment recommendations. Past performance is not indicative of future results. We assume no liability for damages resulting from or arising out of the use of such information. It would be best if you did your own research to make your personal investment decisions wisely or consult a licenced investment advisor.



# making places creative



usm.com

# XTRA

XTRA FURNITURE SDN BHD  
The Gardens Mall, Mid Valley City, Lot S-236 & 237  
Lingkar Syed Putra, 59200 Kuala Lumpur  
T. +603 2282 9088 | living@xtrafurniture.com | xtrafurniture.com  
📍 XTRAFurniture | 📱 xtrafurnituremsia

## Price & Total Shareholder Return (as at Yesterday)

Fundamental Analysis

**DEFINITION:** Company revenue is growing and making good quality of earnings with positive Free Cash Flow.

**CHART GUIDE:** Total Shareholder Return (TSR) combines share price appreciation and distributions paid to show the total return to the shareholder expressed as a percentage.



ShareInvestor WebPro > Screener > Market Screener (FA & TA) > select BURSA > add criteria

**A. Criteria**

1. Fundamental Analysis Conditions tab >select (i) Free Cash Flow, (ii) Revenue Growth, (iii) Gross Profit (Earnings) Margin, (iv) Quality of Earnings, (v) Total Shareholder Returns, > click Add Criteria
2. Fundamental Analysis Conditions tab >select (vi) Total Shareholder Returns > click Add Criteria

**B. Conditions (Criteria Filters)**

1. Free Cash Flow - select (more than) type (1) for the past select (1) financial year(s)
2. Revenue Growth - select (more than) type (1) for the past select (1) financial year(s)
3. Gross Profit (Earnings) Margin - select (more than) type (30) % for the past select (1) financial year(s)
4. Quality of Earnings - select (more than) type (1) for the past select (1) financial year(s)
5. Total Shareholder Return - select (more than) type (5) % for the past select (3) financial year(s)
6. Total Shareholder Return - select (more than) type (5) % for the past select (5) financial year(s)

- > click Save Template > Create New Template type (Growth Companies) > click Create
- > click Save Template as > select Growth Companies > click Save
- > click Screen Now (may take a few minutes)
- > Sort By: Select (Revenue Growth) Select (Desc)
- > Mouse over stock name > Factsheet > looking for Total Shareholder Return

### IGB BERHAD (5606)

C<sup>2</sup> Chart

Analysis



Period	Dividend Received	Capital Appreciation	Total Shareholder Return
Short Term Return	5 Days	-0.030	-1.32 %
	10 Days	-0.100	-4.36 %
	20 Days	-0.031	-1.36 %
Medium Term Return	3 Months	+0.108	+5.04 %
	6 Months	+0.295	+15.15 %
	1 Year	+0.735	+48.61 %
Long Term Return	2 Years	0.950	+76.43 %
	3 Years	0.236	+10.64 %
	5 Years	0.583	+18.79 %
Annualised Return	Annualised	-	+52.28 %

### MATRIX CONCEPTS HOLDINGS BERHAD (5236)

C<sup>2</sup> Chart

Analysis



Period	Dividend Received	Capital Appreciation	Total Shareholder Return
Short Term Return	5 Days	-0.040	-2.38 %
	10 Days	-0.040	-2.38 %
	20 Days	+0.020	+1.23 %
Medium Term Return	3 Months	+0.150	+10.07 %
	6 Months	+0.210	+14.69 %
	1 Year	+0.190	+10.01 %
Long Term Return	2 Years	+0.220	+15.49 %
	3 Years	+0.450	+38.16 %
	5 Years	0.160	+8.19 %
Annualised Return	Annualised	-	+13.33 %

### UZMA BERHAD (7250)

C<sup>2</sup> Chart

Analysis



Period	Dividend Received	Capital Appreciation	Total Shareholder Return
Short Term Return	5 Days	+0.015	+2.00 %
	10 Days	+0.005	+0.66 %
	20 Days	-0.050	-7.27 %
Medium Term Return	3 Months	-0.050	-7.27 %
	6 Months	+0.145	+23.39 %
	1 Year	+0.220	+40.37 %
Long Term Return	2 Years	+0.350	+64.34 %
	3 Years	+0.200	+35.49 %
	5 Years	+0.210	+37.84 %
Annualised Return	Annualised	-	+6.63 %

**Disclaimer:** The information on this page is provided as a service to readers. It does not constitute financial advice and/or any investment recommendations. Past performance is not indicative of future results. We assume no liability for damages resulting from or arising out of the use of such information. It would be best if you did your own research to make your personal investment decisions wisely or consult a licenced investment advisor.



## Price & Total Shareholder Return (as at Yesterday)

Fundamental Analysis

**DEFINITION:** Company is paying out dividend with low or moderate leverage.

**CHART GUIDE:** Total Shareholder Return (TSR) combines share price appreciation and distributions paid to show the total return to the shareholder expressed as a percentage.



ShareInvestor WebPro > Screener > Market Screener (FA & TA) > select BURSA > add criteria

**A. Criteria**

- > click Add Criteria
- Fundamental Analysis Conditions tab >select (i) Dividend Yield (Historical)
- Fundamental Analysis Conditions tab >select (ii) Dividend Payout (Historical)
- Fundamental Analysis Conditions tab >select (iii) Total Debt To Equity
- Fundamental Analysis Conditions tab >select (iv) Total Shareholder Returns
- Fundamental Analysis Conditions tab >select (v) Total Shareholder Returns
- Fundamental Analysis Conditions tab / >select (vi) CAGR of Dividend Per Share

• Fundamental Analysis Conditions tab >select (vii) CAGR of Dividend Per Share

**B. Conditions (Criteria Filters)**

1. Dividend Yield - select (more than) type (1) % for the past select (1) financial year(s)
2. Dividend Payout (Historical) - select (between) type (0.5) to type (1) times for the past select (1) financial year(s)
3. Total Debt to Equity - select (less than) type (1) for the past select (1) financial year(s)
4. Total Shareholder Return - select (more than) type (5) % for the past select (3) financial year(s)
5. Total Shareholder Return - select (more than) type (5) % for the past select (5) financial year(s)

6. CAGR of Dividend Per Share - select (less than) type (30) % for the past select (5) financial year(s)
7. CAGR of Dividend Per Share - select (more than) type (1) % for the past select (5) financial year(s)

- > click Save Template > Create New Template type (Dividend Companies) > click Create
- > click Save Template as > select Dividend Companies > click Save
- > click Screen Now (may take a few minutes)
- > Sort By: Select (Dividend Yield) Select (Desc)
- > Mouse over stock name > Factsheet > looking for Total Shareholder Return

## FORMOSA PROSONIC INDUSTRIES (9172)

C<sup>2</sup> Chart



Analysis

Period	Dividend Received	Capital Appreciation	Total Shareholder Return
Short Term Return	5 Days	+0.080	+2.17%
	10 Days	+0.090	+3.28%
	20 Days	-0.640	-1.39%
Medium Term Return	3 Months	+0.170	+6.39%
	6 Months	+0.430	+17.92%
Long Term Return	1 Year	-0.410	-12.66%
	2 Years	0.200	-11.94%
	3 Years	0.340	+0.89%
Annualised Return	5 Years	0.500	+11.25%
	Annualised	-	+6.13%

## KENANGA INVESTMENT BANK BERHAD (6483)

C<sup>2</sup> Chart



Analysis

Period	Dividend Received	Capital Appreciation	Total Shareholder Return
Short Term Return	5 Days	+0.005	+0.98%
	10 Days	+0.005	+0.98%
	20 Days	+0.050	+5.78%
Medium Term Return	3 Months	+0.030	+3.39%
	6 Months	+0.005	+0.98%
Long Term Return	1 Year	+0.030	+3.39%
	2 Years	0.105	-11.38%
	3 Years	0.189	+20.43%
Annualised Return	5 Years	0.237	+32.00%
	Annualised	-	+13.94%

## HONG LEONG INDUSTRIES BERHAD (3301)

C<sup>2</sup> Chart



Analysis

Period	Dividend Received	Capital Appreciation	Total Shareholder Return
Short Term Return	5 Days	-0.630	-0.33%
	10 Days	+0.050	+0.66%
	20 Days	-0.680	-0.66%
Medium Term Return	3 Months	+0.390	+3.38%
	6 Months	+0.370	+4.20%
Long Term Return	1 Year	+0.010	+0.11%
	2 Years	0.350	+5.78%
	3 Years	0.670	+14.35%
Annualised Return	5 Years	1.810	+26.64%
	Annualised	-	+4.84%

**Disclaimer:** The information on this page is provided as a service to readers. It does not constitute financial advice and/or any investment recommendations. Past performance is not indicative of future results. We assume no liability for damages resulting from or arising out of the use of such information. It would be best if you did your own research to make your personal investment decisions wisely or consult a licenced investment advisor.

Week: 15 December 2023 - 21 December 2023

More Brokers' Call 

AMINVESTMENT BANK <small>... See More</small>	Call	Target Price	Release Date
Astro Malaysia Holdings Berhad (6399)	<b>SELL</b>	RM0.31	15 Dec 2023
Kuala Lumpur Kepong Berhad (2445)	<b>BUY</b>	RM25.20	15 Dec 2023
Sunway Real Estate Investment Trust (5176)	<b>BUY</b>	RM1.86	19 Dec 2023
Yinson Holdings Berhad (7293)	<b>BUY</b>	RM4.00	15 Dec 2023

APEX <small>... See More</small>	Call	Target Price	Release Date
Kronologi Asia Berhad (0176)	<b>BUY</b>	RM0.53	20 Dec 2023
Top Glove Corporation Bhd (7113)	<b>SELL</b>	RM0.73	21 Dec 2023

KENANGA <small>... See More</small>	Call	Target Price	Release Date
Kuala Lumpur Kepong Berhad (2445)	<b>OUTPERFORM</b>	RM24.50	20 Dec 2023
Kuala Lumpur Kepong Berhad (2445)	<b>OUTPERFORM</b>	RM24.50	15 Dec 2023
Top Glove Corporation Berhad (7113)	<b>UNDERPERFORM</b>	RM0.75	21 Dec 2023
United Malacca Berhad (2593)	<b>MARKET PERFORM</b>	RM5.00	19 Dec 2023

MIDF <small>... See More</small>	Call	Target Price	Release Date
Asia File Corporation Berhad (7129)	<b>NEUTRAL</b>	RM1.85	18 Dec 2023
Kuala Lumpur Kepong Berhad (2445)	<b>BUY</b>	RM24.60	15 Dec 2023
Suria Capital Holdings Berhad (6521)	<b>NEUTRAL</b>	RM1.70	15 Dec 2023
Top Glove Corporation Berhad (7113)	<b>NEUTRAL</b>	RM0.84	21 Dec 2023

UOB KAYHIAN <small>... See More</small>	Call	Target Price	Release Date
Adventa Berhad (7191)	<b>BUY</b>	RM0.41	15 Dec 2023
Astro Malaysia Holdings Berhad (6399)	<b>HOLD</b>	RM0.32	15 Dec 2023
Eco World Development Group Berhad (8206)	<b>BUY</b>	RM1.26	15 Dec 2023
Yinson Holdings Berhad (7293)	<b>BUY</b>	RM3.75	15 Dec 2023

**Disclaimer:** Inve\$T does not accept any liability whatsoever for any direct, indirect or consequential losses (including loss of profit) or damages that may arise from the use of information or opinions in this publication. The information and opinions in Inve\$T are not to be considered as an offer to sell or buy any of the securities discussed. Opinions expressed are subject to change without notice. The Brokers may, from time to time, have interests or positions in the securities mentioned. For the full report on each item listed on this page, please visit [https://www.shareinvestor.com/my/brokers\\_call](https://www.shareinvestor.com/my/brokers_call).

**DEFINITION:** Top 9 stocks with Technical Analysis plus Pattern Matching by 60 pre-defined indicators by the system showing a higher probability of bullish sentiment on the share price.



ShareInvestor WebPro > Screener > Predefined TA Screens > select market BURSA > Most Long Signals > click Scan Results or mouse over each company

## GLOBAL ORIENTAL BERHAD (1147.MY)

### GOB

Price updated at 21 Dec 2023 17:31

Last: <b>0.215</b>	Change: <b>-0.010</b>	Volume: <b>3,204</b>
	Change (%): <b>-4.44</b>	Range: <b>0.210 - 0.215</b>

TA Scanner Results based on historical data up to 21 Dec 2023

Condition	Signal	Explanation
Bollinger Band: Bullish Long Term Volatility Breakout and Trending	Long	1. Close price above upper bollinger band(33,1). 2. Volume above average volume(50). 3. Average volume(50) is above 300,000.
Bollinger Band: Bullish Short Term Volatility Breakout and Trending	Long	1. Close price above upper bollinger band(33,1). 2. Volume above average volume(10). 3. Average volume(10) is above 300,000.
Bollinger Band: High Above Upper Bollinger Band	Neutral	1. High above upper bollinger band(14,2). 2. Average volume(5) is above 100,000.
CCI: Bearish CCI Overbought And Reversing	Short	1. CCI(26) above 100 and CCI(26) 1 day ago increasing for the last 3 days. 2. CCI(26) below CCI(26) 1 day ago
DM: Bullish Directional Movement	Long	-DI(14) crossed below +DI(14)
Donchian Channels: High Above Upper Donchian Channels	Long	High crossed above the upper Donchian Channel(14,4)
Parabolic SAR: Bearish Parabolic SAR Reversal	Neutral	1. Parabolic SAR 1 day ago above close price 1 day ago for the last 5 days. 2. Parabolic SAR below close price
RSI: Short Term RSI 50 Bullish Crossover	Long	1. RSI(20) crossed above 50 within the last 1 day and RSI(20) 1 day ago below 50 for the last 5 days. 2. Volume above average volume(125). 3. Average volume(5) is above 100,000.
Volume: Volume Spike	Long	1. Volume is more than 500% above average volume(10). 2. Volume above 200000. 3. Close price above 0.10

## D & O GREEN TECHNOLOGIES BERHAD (7204.MY)

### D&O

Price updated at 21 Dec 2023 17:31

Last: <b>3.620</b>	Change: <b>-0.010</b>	Volume: <b>16,010</b>
	Change (%): <b>-0.28</b>	Range: <b>3.570 - 3.620</b>

TA Scanner Results based on historical data up to 21 Dec 2023

Condition	Signal	Explanation
Bollinger Band: Bullish Long Term Volatility Breakout and Trending	Long	1. Close price above upper bollinger band(33,1). 2. Volume above average volume(50). 3. Average volume(50) is above 300,000.
Bollinger Band: Bullish Short Term Volatility Breakout and Trending	Long	1. Close price above upper bollinger band(33,1). 2. Volume above average volume(10). 3. Average volume(10) is above 300,000.
Bollinger Band: High Above Upper Bollinger Band	Neutral	1. High above upper bollinger band(14,2). 2. Average volume(5) is above 100,000.
Candlestick: Bullish Engulfing	Long	Bullish: Engulfing
DM: Bullish Directional Movement	Long	-DI(14) crossed below +DI(14)
Donchian Channels: High Above Upper Donchian Channels	Long	High crossed above the upper Donchian Channel(14,4)
MACD: Bullish MACD Crossover	Long	1. MACD(12,26) diff line crossed above the MACD(12,26) signal line. 2. MACD Histogram(12,26) is above 0.

**Disclaimer:** The information on this page is provided as a service to readers. It does not constitute financial advice and/or any investment recommendations. Past performance is not indicative of future results. We assume no liability for damages resulting from or arising out of the use of such information. It would be best if you did your own research to make your personal investment decisions wisely or consult a licenced investment advisor.

## ARTRONIQ BERHAD (0038.MY)

### ARTRONIQ

Price updated at 21 Dec 2023 17:30

Last: <b>0.865</b>	Change: <b>+0.010</b>	Volume: <b>303,692</b>
	Change (%): <b>+1.17</b>	Range: <b>0.850 - 0.870</b>

TA Scanner Results based on historical data up to 21 Dec 2023

Condition	Signal	Explanation
Bollinger Band: Bullish Long Term Volatility Breakout and Trending	Long	1. Close price above upper bollinger band(33,1). 2. Volume above average volume(50). 3. Average volume(50) is above 300,000.
Bollinger Band: High Above Upper Bollinger Band	Neutral	1. High above upper bollinger band(14,2). 2. Average volume(5) is above 100,000.
MA: Short Term Bullish Moving Average Crossover	Long	MA(10) crossed above MA(15) within the last 1 day.
MACD: Bullish MACD Crossover	Long	1. MACD(12,26) diff line crossed above the MACD(12,26) signal line. 2. MACD Histogram(12,26) is above 0.
Volume: 10 Days large value Buy Up trade	Long	1. 150K value Buy Up greater than Sell Down by 20% for 10 days. 2. 50K-100K value Buy Up greater than Sell Down by 20% for 10 days. 3. Average volume(10) is above 1000000
Volume: 5 Days large value Buy Up trade	Long	1. 150K value Buy Up greater than Sell Down by 20% for 5 days. 2. 50K-100K value Buy Up greater than Sell Down by 20% for 5 days. 3. Average volume(10) is above 1000000
Volume: Consecutive Days Of Increasing Average Volume	Long	1. Average Volume(20) has been increasing over the last 2 weeks. 2. Average volume(20) is above 100000

## INARI AMERTRON BERHAD (0166.MY)

### INARI

Price updated at 21 Dec 2023 17:31

Last: <b>3.000</b>	Change: <b>+0.010</b>	Volume: <b>56,165</b>
	Change (%): <b>+0.33</b>	Range: <b>2.960 - 3.000</b>

TA Scanner Results based on historical data up to 21 Dec 2023

Condition	Signal	Explanation
Accumulation Distribution: Bullish Accumulation Distribution	Long	Accumulation distribution increasing for the last 7 days
Bollinger Band: Bullish Long Term Volatility Breakout and Trending	Long	1. Close price above upper bollinger band(33,1). 2. Volume above average volume(50). 3. Average volume(50) is above 300,000.
Bollinger Band: Bullish Short Term Volatility Breakout and Trending	Long	1. Close price above upper bollinger band(33,1). 2. Volume above average volume(10). 3. Average volume(10) is above 300,000.
DM: Bullish Directional Movement	Long	-DI(14) crossed below +DI(14)
Volume: 10 Days large value Buy Up trade	Long	1. 150K value Buy Up greater than Sell Down by 20% for 10 days. 2. 50K-100K value Buy Up greater than Sell Down by 20% for 10 days. 3. Average volume(10) is above 1000000
Volume: 5 Days large value Buy Up trade	Long	1. 150K value Buy Up greater than Sell Down by 20% for 5 days. 2. 50K-100K value Buy Up greater than Sell Down by 20% for 5 days. 3. Average volume(10) is above 1000000



**CHIN HIN GROUP PROPERTY BERHAD (7187.MY)**

**CHGP**

Price updated at 21 Dec 2023 17:31

Last: <b>0.880</b>	Change: <b>+0.005</b>	Volume: <b>8,430</b>
	Change (%): <b>+0.57</b>	Range: <b>0.870 - 0.880</b>

TA Scanner Results based on historical data up to 21 Dec 2023

Condition	Signal	Explanation
Bollinger Band: Bullish Lower Bollinger Band Support	Long	1. Low 1 day ago below lower bollinger band(20,2). 2. Close above close 1 day ago. 3. Average volume(5) is above 100,000.
DM: Bullish Directional Movement	Long	-DI(14) crossed below +DI(14)
Volume: 10 Days large value Buy Up trade	Long	1. 150K value Buy Up greater than Sell Down by 20% for 10 days. 2. 50K-100K value Buy Up greater than Sell Down by 20% for 10 days. 3. Average volume(10) is above 1000000
Volume: 5 Days large value Buy Up trade	Long	1. 150K value Buy Up greater than Sell Down by 20% for 5 days. 2. 50K-100K value Buy Up greater than Sell Down by 20% for 5 days. 3. Average volume(10) is above 1000000
Williams %R: Bullish Williams %R	Long	1. Williams %R(26) between -80 and -100. 2. Average volume(5) is above 100,000.



**HEXTAR GLOBAL BERHAD (5151.MY)**

**HEXTAR**

Price updated at 21 Dec 2023 17:31

Last: <b>0.755</b>	Change: -	Volume: <b>95,863</b>
	Change (%): -	Range: <b>0.750 - 0.760</b>

TA Scanner Results based on historical data up to 21 Dec 2023

Condition	Signal	Explanation
Bollinger Band: Bullish Long Term Volatility Breakout and Trending	Long	1. Close price above upper bollinger band(33,1). 2. Volume above average volume(50). 3. Average volume(50) is above 300,000.
Bollinger Band: Bullish Short Term Volatility Breakout and Trending	Long	1. Close price above upper bollinger band(33,1). 2. Volume above average volume(10). 3. Average volume(10) is above 300,000.
Bollinger Band: High Above Upper Bollinger Band	Neutral	1. High above upper bollinger band(14,2). 2. Average volume(5) is above 100,000.
DM: Bullish Directional Movement	Long	-DI(14) crossed below +DI(14)
Donchian Channels: High Above Upper Donchian Channels	Long	High crossed above the upper Donchian Channel(14,4)
MA: Short Term Bullish Moving Average Crossover	Long	MA(10) crossed above MA(15) within the last 1 day.
Williams %R: Bearish Williams %R	Short	1. Williams %R(26) between 0 and -20. 2. Average volume(5) is above 100,000.



**REX INDUSTRY BERHAD (9946.MY)**

**REX**

Price updated at 21 Dec 2023 17:31

Last: <b>0.125</b>	Change: -	Volume: <b>48,724</b>
	Change (%): -	Range: <b>0.120 - 0.130</b>

TA Scanner Results based on historical data up to 21 Dec 2023

Condition	Signal	Explanation
Bollinger Band: Bullish Long Term Volatility Breakout and Trending	Long	1. Close price above upper bollinger band(33,1). 2. Volume above average volume(50). 3. Average volume(50) is above 300,000.
Bollinger Band: Bullish Short Term Volatility Breakout and Trending	Long	1. Close price above upper bollinger band(33,1). 2. Volume above average volume(10). 3. Average volume(10) is above 300,000.



**ABLEGROUP BERHAD (7086.MY)**

**ABLEGRP**

Price updated at 21 Dec 2023 17:31

Last: <b>0.120</b>	Change: <b>-0.005</b>	Volume: <b>701</b>
	Change (%): <b>-4.00</b>	Range: <b>0.115 - 0.120</b>

TA Scanner Results based on historical data up to 21 Dec 2023

Condition	Signal	Explanation
Accumulation Distribution: Bullish Accumulation Distribution	Long	Accumulation distribution increasing for the last 7 days
Bollinger Band: Bullish Lower Bollinger Band Support	Long	1. Low 1 day ago below lower bollinger band(20,2). 2. Close above close 1 day ago. 3. Average volume(5) is above 100,000.
Bollinger Band: High Above Upper Bollinger Band	Neutral	1. High above upper bollinger band(14,2). 2. Average volume(5) is above 100,000.
DM: Bullish Directional Movement	Long	-DI(14) crossed below +DI(14)
MACD: Bullish MACD Crossover	Long	1. MACD(12,26) diff line crossed above the MACD(12,26) signal line. 2. MACD Histogram(12,26) is above 0.
Volume: Volume Spike	Long	1. Volume is more than 500% above average volume(10). 2. Volume above 200000. 3. Close price above 0.10



**CYBERJAYA EDUCATION GROUP BERHAD (5166.MY)**

**CYBERE**

Price updated at 21 Dec 2023 17:31

Last: <b>0.125</b>	Change: <b>+0.005</b>	Volume: <b>146,840</b>
	Change (%): <b>+4.17</b>	Range: <b>0.120 - 0.130</b>

TA Scanner Results based on historical data up to 21 Dec 2023

Condition	Signal	Explanation
Bollinger Band: Bullish Long Term Volatility Breakout and Trending	Long	1. Close price above upper bollinger band(33,1). 2. Volume above average volume(50). 3. Average volume(50) is above 300,000.
Bollinger Band: Bullish Short Term Volatility Breakout and Trending	Long	1. Close price above upper bollinger band(33,1). 2. Volume above average volume(10). 3. Average volume(10) is above 300,000.
Bollinger Band: High Above Upper Bollinger Band	Neutral	1. High above upper bollinger band(14,2). 2. Average volume(5) is above 100,000.
Donchian Channels: High Above Upper Donchian Channels	Long	High crossed above the upper Donchian Channel(14,4)
MA: Short Term Bullish Moving Average Crossover	Long	MA(10) crossed above MA(15) within the last 1 day.
Parabolic SAR: Bearish Parabolic SAR Reversal	Neutral	1. Parabolic SAR 1 day ago above close price 1 day ago for the last 5 days. 2. Parabolic SAR below close price
Volume: Volume Spike	Long	1. Volume is more than 500% above average volume(10). 2. Volume above 200000. 3. Close price above 0.10

**Disclaimer:** The information on this page is provided as a service to readers. It does not constitute financial advice and/or any investment recommendations. Past performance is not indicative of future results. We assume no liability for damages resulting from or arising out of the use of such information. It would be best if you did your own research to make your personal investment decisions wisely or consult a licenced investment advisor.

Condition	Signal	Explanation
Bollinger Band: High Above Upper Bollinger Band	Neutral	1. High above upper bollinger band(14,2). 2. Average volume(5) is above 100,000.
Donchian Channels: High Above Upper Donchian Channels	Long	High crossed above the upper Donchian Channel(14,4)
MA: Short Term Bullish Moving Average Crossover	Long	MA(10) crossed above MA(15) within the last 1 day.
Volume: Volume Spike	Long	1. Volume is more than 500% above average volume(10). 2. Volume above 200000. 3. Close price above 0.10

# MALAYSIA'S ECONOMY TIPPED TO POST HIGH GROWTH IN 2024 ON ALL-ROUND IMPROVEMENT – DATUK DR NAZRI KHAN

**A**ccording to Inter-Pacific Asset Management (IPAM) chief economist and independent fund manager Datuk Dr Nazri Khan, Malaysia's economy in 2024 is likely to register high growth, driven by improved performance in all sectors. The local economy has performed significantly well across the board and he expects the momentum to continue next year.

During a press conference on IPAM's Market Outlook 2024, he said that he is optimistic that the economy is going to grow between 4.5% and 5%, at the higher end of 5%. It could be one of the best economic growth that Malaysia has achieved for the last five years.

There are indicators that Malaysia's global trade has improved, particularly for its exports, and FDI which has increased markedly. Private investments have continued to be sustained. Across all sectors, the markets have also gone up, not only in the electrical and electronics (E&E) and technology sectors. Artificial intelligence (AI) will spill over into E&E and technology products. The construction sector has boomed, while property has also boomed slightly. On the plantation sector, he projects crude palm oil prices to increase to RM4,000 per tonne next year, from the current range of RM3,000 to RM3,500.

Touching on Bursa Malaysia, he is optimistic on the local equity market in 2024, underpinned by growing foreign participation. He sees signs of stocks accumulation that are patterns on the stock market that it may have bottomed. He added that he is optimistic on Bursa Malaysia as FDI has come in and foreign participation has gone up, which could be a sign that foreign investors are interested to invest on the exchange, maybe not so much on the IPOs, but on the large cap stocks.

The FBM KLCI is currently in the 1,460 to 1,470 range and he hopes that it will break the 1,500 mark within this month. He also hoped that it would reach a high of 1,900. He is of the opinion that at the moment the banking sector is the strongest sector in the stock market, followed by telecommunications. Moving forward, he feels that the technology sector will strengthen.

On another note, he said that IPAM will collaborate with a US company to introduce AI technology into its system in March next year, to help provide information on the stock market to investors. Investors will be able to make more informed investment decisions, with the help of this AI system in identifying stocks that are trading low and predicting which stocks have the potential to rise in the future.

He added that this AI technology can read chart patterns and fundamental patterns and that while it may not be accurate, the technology can simplify the process towards making the right investment decisions. He advised the public not to be deceived by

illegal investment syndicates or online scams that use his name, pictures and videos.

## **STRONGER ECONOMIC MOMENTUM FOR MALAYSIA IN 2024 – RAM RATINGS**

RAM Ratings expects Malaysia's economic momentum to steadily improve heading into 2024, on the back of the fiscal consolidation by the government, as well as the potential turnaround in external demand and resilient domestic demand. In its Economic Outlook 2024 report, it expects the growth to reach 4.5%–5.5% in 2024, from an estimated 4.0% in 2023.

Meanwhile, the fiscal deficit is projected to clock in at 4.2% of the GDP in 2024, compared to the 5% estimated for 2023, reflecting the fiscal consolidation path of the government. The narrower deficit will mainly be driven by a lower subsidy bill, better management of other operating expenditures, and higher tax revenue collections from an upside in economic conditions next year. However, it added that with a need to fund critical development projects, government debt will remain relatively sticky at RM1.3 trillion in 2024 (62.7% of GDP), while debt servicing will not be insignificant at 16.1% of total projected revenue in 2024.

The risks on the horizon for Malaysia's growth will hinge largely on the global economy successfully achieving a soft landing and avoiding further escalation of geopolitical conflicts. A spike in global food and commodity prices could pressure domestic demand, as will un-intended price ripple effects of a poorly executed retargeting of RON95 subsidies in 2H2024.

It noted that the leading indicators point to signs that global trade and semiconductor demand have reached their nadir in 2023. Hence, coupled with resilient domestic demand which is supported by the benign inflation and interest rates, the growth momentum can be sustained.



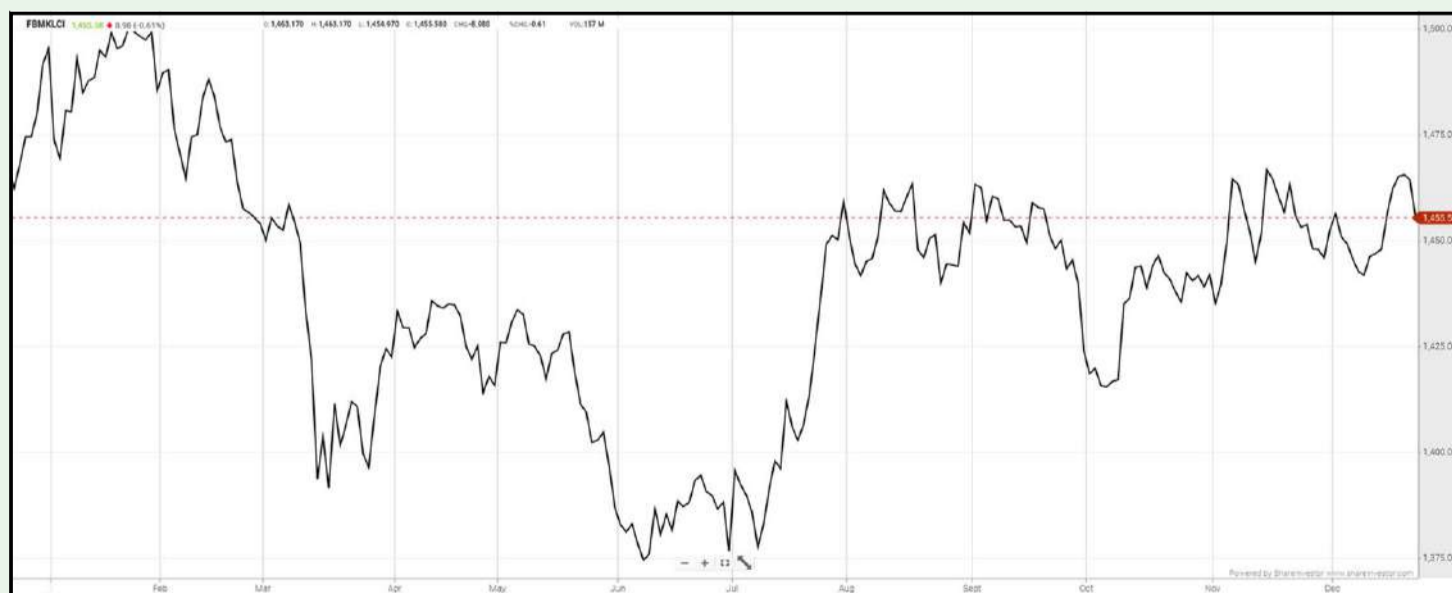
**Note From Publisher:**

1. This week, our Up-trending Stocks Page features only 1 stock that met our Screener's Criteria & Conditions.
2. We wish our Christian readers a Joyful Christmas. And we wish all our readers a Happy, Healthy & Prosperous New Year 2024.
3. Inve\$ will take a break next week (December 29). The next issue of Inve\$ will be on January 5, 2024.



**EYE ON THE MARKETS**

On Thursday (21Dec), the Ringgit closed at 4.6555 against the USD and 3.5001 to the Sing Dollar. On Monday (18Dec), the FBM KLCI opened at 1461.56. As at Thursday (21Dec) 5:00pm, the FBM KLCI closed down 5.98 points at 1455.58. Over in US, the overnight Dow Jones Industrial Average closed up 322.35 points (+0.87%) to 37,404.35 whilst the NASDAQ added 185.92 points (+1.26%) to 14,963.87.



KLCI 1 Year Chart



## Over 5 trading days



ShareInvestor WebPro ([www.shareinvestor.com/my](http://www.shareinvestor.com/my))

1. Price > Stock Prices
2. Select Market: NASDAQ / NYSE / IDX / SET / HKEX / SGX (One bourse at a time)
3. select Stocks Tab
4. select Ranking Top Gainers or Top Losers (Over 5 Trading Days)
5. Mouse over Column Layout > select Edit Customs > select Name > select Last Done Price > select 5 Days Change > select 52 Weeks High > select 52 Weeks Low > Mouse Over Column Layout > select Custom

### NASDAQ (USD)

#### Top Gainers

Name	Last Done	Change Over 5 Days	52 Weeks High	52 Weeks Low
BOOKING HOLDINGS INC	3,519.550	+79.250	3,529.390	1,907.380
SAIA INC	450.670	+44.160	443.850	204.020
JIN MEDICAL INTERNATIONAL LTD	70.480	+36.480	509.870	4.840
COSTCO WHOLESALE CORP	665.160	+34.380	681.910	447.900
COCA-COLA CONSOLIDATED INC	890.350	+30.630	890.000	470.000

#### Top Losers

Name	Last Done	Change Over 5 Days	52 Weeks High	52 Weeks Low
ARGENX SE SPON ADR EACH REP 1 ORD SHS	354.130	-108.870	550.760	331.520
UNITED THERAPEUTICS CORP	218.270	-35.820	280.880	204.440
REGENERON PHARMACEUTICALS INC	841.880	-34.120	887.940	668.000
STRUCTURE THERAPEUTICS INC SPON ADS EACH REP 3 ORD	33.000	-25.590	75.017	20.800
LANTHEUS HOLDINGS INC	59.350	-18.540	100.850	47.460

### NYSE (USD)

#### Top Gainers

Name	Last Done	Change Over 5 Days	52 Weeks High	52 Weeks Low
FAIR ISAAC CORP	1,165.460	+35.870	1,185.420	575.390
WATSCO INC	422.200	+32.200	422.254	250.430
CHIPOTLE MEXICAN GRILL	2,307.100	+31.400	2,348.415	1,344.050
HUBSPOT INC	578.310	+24.960	581.400	267.990
SERVICENOW INC	700.760	+20.370	720.680	353.620

#### Top Losers

Name	Last Done	Change Over 5 Days	52 Weeks High	52 Weeks Low
BERKSHIRE HATHAWAY INC	540,999.980	-3,478.220	566,569.970	442,363.500
BIGLARI HOLDINGS INC	852.000	-38.000	1,058.500	687.500
FEDEX CORP	247.360	-32.100	285.530	167.630
FERRARI N V	336.050	-27.800	372.420	209.880
WHITE MOUNTAINS INSURANCE GROUP	1,442.270	-22.450	1,617.000	1,312.000

### IDX (Rupiah)

#### Top Gainers

Name	Last Done	Change Over 5 Days	52 Weeks High	52 Weeks Low
PETRINDO JAYA KREASI TBK	13,425.000	+1,500.000	13,750.000	240.000
CHANDRA ASRI PETROCHEMICAL TBK	5,875.000	+1,225.000	5,925.000	1,995.000
TEMBAGA MULIA SEMANAN	3,060.000	+1,070.000	3,060.000	1,440.000
INDO TAMBANGRAYA MEGAH TBK	25,025.000	+950.000	41,500.000	22,125.000
M CASH INTEGRASI TBK	3,890.000	+590.000	9,800.000	2,700.000

#### Top Losers

Name	Last Done	Change Over 5 Days	52 Weeks High	52 Weeks Low
DCI INDONESIA TBK	42,825.000	-4,675.000	59,050.000	32,850.000
DIAN SWASTATIKA SENTOSA TBK	80,000.000	-2,000.000	84,000.000	33,950.000
WISMILAK INTI MAKMUR TBK	1,715.000	-1,295.000	3,850.000	600.000
INDOINTERNET TBK	5,100.000	-950.000	11,550.000	3,300.000
NFC INDONESIA TBK	3,970.000	-730.000	9,000.000	3,270.000

### SET (Thai Baht)

#### Top Gainers

Name	Last Done	Change Over 5 Days	52 Weeks High	52 Weeks Low
INSURE	125.000	+13.000	234.000	110.000
SAPPE	84.500	+10.500	100.000	37.000
MGI	16.700	+8.200	20.100	6.200
METCO	240.000	+6.000	298.000	223.000
AEONTS	156.500	+5.500	208.000	145.000

#### Top Losers

Name	Last Done	Change Over 5 Days	52 Weeks High	52 Weeks Low
OHTL	420.000	-24.000	546.000	420.000
JTS	61.250	-4.500	72.000	23.200
CHOTI	120.000	-2.000	179.000	112.000
TCOAT	24.600	-1.900	34.000	23.100
THG	55.750	-1.500	72.000	54.500

### HKEX (HKD)

#### Top Gainers

Name	Last Done	Change Over 5 Days	52 Weeks High	52 Weeks Low
REPT BATTERO ENERGY CO LTD	18.260	+18.051	19.660	18.000
ORIENT OVERSEAS INT	108.700	+14.250	172.600	91.700
DEKON FOOD AND AGRICULTURE GROUP	50.800	+12.850	53.500	35.000
YUM CHINA HOLDINGS INC	320.800	+10.200	514.500	304.400
HONG KONG EXCHANGES & CLEARING	257.400	+8.600	382.400	238.200

#### Top Losers

Name	Last Done	Change Over 5 Days	52 Weeks High	52 Weeks Low
LI AUTO INC	128.800	-8.400	185.500	72.050
YSB INC	8.180	-7.020	64.500	7.670
BEIGENE LTD	103.400	-6.600	170.500	93.200
KEYMED BIOSCIENCES INC	47.500	-6.000	82.850	37.300
BEIJING SINOHYTEC CO LTD	31.700	-5.300	48.500	30.900

### SGX (SGD)

#### Top Gainers

Name	Last Done	Change Over 5 Days	52 Weeks High	52 Weeks Low
NIO Inc. USD OV	8.100	+0.690	15.780	7.070
DBS	31.670	+0.270	35.855	30.300
VENTURE	13.360	+0.210	18.750	11.360
CROMWELL REIT SGD	2.100	+0.170	2.470	1.640
PEGASUS SPAC	4.980	+0.170	5.000	4.300

#### Top Losers

Name	Last Done	Change Over 5 Days	52 Weeks High	52 Weeks Low
AZEUS	7.800	-0.700	9.190	7.790
JARDINE C&C	28.350	-0.440	35.580	27.250
UOB	27.440	-0.350	31.330	26.820
JMH USD	39.630	-0.240	54.890	38.370
KEPPEL DC REIT	1.840	-0.240	2.300	1.670

# CHARLIE MUNGER: THE MULTIDISCIPLINARY MIND BEHIND BERKSHIRE HATHAWAY'S SUCCESS



Devanesan  
Evanson  
**Chief Executive  
Officer, Minority  
Shareholders Watch  
Group**

**C**harlie Munger, vice chairman of Berkshire Hathaway and Warren Buffett's longtime friend and business partner, died in November 2023 at age 99. Munger, born on January 1, 1924, is an American investor, businessman, and philanthropist. Often recognised as Buffett's right-hand man, Munger has played a pivotal role in the success of one of the world's most renowned conglomerates. Beyond his association with Buffett, Munger is esteemed for his multidisciplinary approach to decision-making, his wit, and his deep insights into investing and life.

## EARLY LIFE AND EDUCATION

Munger grew up in Omaha, Nebraska, and displayed an early aptitude for mathematics. He attended the University of Michigan, where he studied mathematics for three years before leaving to join the U.S. Army Air Corps during World War II. After the war, he attended Harvard Law School and later joined a law firm in Los Angeles.

## INVESTMENT PARTNERSHIP AND BERKSHIRE HATHAWAY

In the late 1950s, Munger established his own law practice, but his true passion lay in investing. He started a partnership in the early 1960s, and through a series of mergers, it eventually evolved into the firm that would be later acquired by Berkshire Hathaway. Munger joined Berkshire Hathaway as Vice Chairman in 1978, marking the beginning of one of the most successful partnerships in the world of finance.

## MUNGER'S INVESTMENT APPROACH

Charlie Munger's investment approach is characterized by a set of principles and mental models that emphasize a comprehensive, multidisciplinary perspective on decision-making. While Buffett is often associated with value investing, Munger complements this approach with a broader array of influences, including psychology, economics, and various academic disciplines.

## HERE ARE KEY ASPECTS OF MUNGER'S INVESTMENT PHILOSOPHY:

- 1. LATTICEWORK OF MENTAL MODELS:** Munger is known for advocating a latticework of mental models, drawing insights from a diverse range of disciplines such as psychology, biology, physics, and economics. He believes that a broad understanding of

different fields provides a more comprehensive view of the world, enabling better decision-making. Likewise, we too, must use all our knowledge to understand both the fundamental and behavioural aspects of investing.

2. **INVERSION:** Munger frequently employs the concept of inversion, which involves thinking backward by considering potential problems and obstacles. Instead of focusing solely on what needs to be done, Munger advises considering what should be avoided. This approach helps mitigate risks and enhances the quality of decision-making. Just as we rationalise why we should invest in a stock, we must also make an impassioned consideration of reasons why we should not invest in that stock for only then we would have considered the pros and the cons.
3. **CIRCLE OF COMPETENCE:** Like Buffett, Munger emphasises staying within one's circle of competence. Investors should focus on businesses and industries they understand thoroughly, allowing for more informed and rational investment decisions. Munger famously stated, "The game of investing is one of making better predictions about the future than other people." Put another way, only invest in what you understand.
4. **ECONOMIC MOATS:** Munger and Buffett both place significant importance on identifying businesses with economic moats—sustainable competitive advantages that protect a company from competitors. Businesses with strong moats are better positioned to withstand challenges and generate long-term value.
5. **MARGIN OF SAFETY:** Munger subscribes to the concept of margin of safety, which involves buying assets at a price significantly below their intrinsic value. This approach provides a buffer against unforeseen risks and market volatility. The moat and the margin of safety are the two Ms of investing – the stronger these shields, the greater the protection.

- 6. LONG-TERM PERSPECTIVE:** Munger encourages investors to adopt a long-term perspective. Instead of fixating on short-term market fluctuations, he believes in holding quality investments for an extended period, allowing the power of compounding to work in favour of investors.
- 7. INDEPENDENCE OF THOUGHT:** Munger values independence of thought and urges investors to think for themselves. While learning from others is important, blindly following the crowd can lead to poor decision-making. Critical thinking and intellectual independence are crucial aspects of Munger's approach. Every bubble has its premise on crowd behaviour and we all know how those bubbles eventually turned out.
- 8. CONTINUOUS LEARNING:** Munger is a voracious reader and emphasizes the importance of continuous learning. He believes that a curious and open mind is essential for adapting to changing circumstances and making informed decisions. Just as what we know is important, even more important is realising that there is much that we do not know. Utter humility and the disregard of ego are prerequisites for successful investing.

Charlie Munger's investment approach is distinguished by his multidisciplinary mindset, emphasis on mental models, inversion thinking, focus on the circle of competence, recognition of economic moats, adherence to a margin of safety, long-term perspective, independence of thought, and commitment to continuous learning. Munger's wisdom and principles have not only contributed significantly to Berkshire Hathaway's success but have also influenced countless investors seeking a more thoughtful and holistic approach to the world of finance.

Charlie Munger might be dead, but his wisdom and teachings still live on and will continue to spread and stay with us forever.

**Devanesan Evanson**  
**Chief Executive Officer**











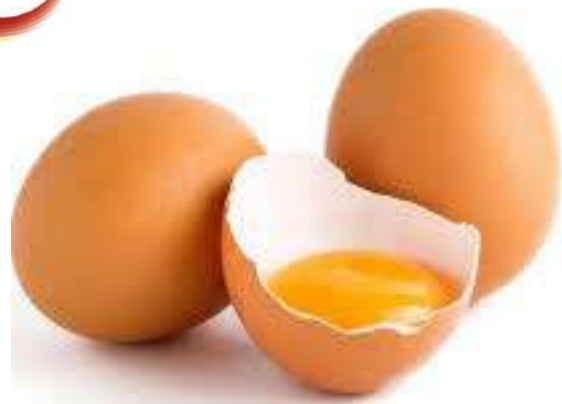
Pursuant to Rule 10.06 of the ACE Market Listing Requirements of Bursa Malaysia Securities Berhad, the Board of Directors of **Hiap Huat Holdings**

**Berhad (HHHCORP)** wishes to announce that the Company had on 15 December 2023 entered into a Share Sale Agreement with KL Platform Support Services Sdn Bhd for the proposed acquisition of 60% of the entire equity interest in KL Bunkering (M) Sdn Bhd at a purchase consideration of Ringgit Malaysia Two Million One Hundred Thousand (RM2,100,000.00) only, subject to the terms and conditions contained in the SSA.



The Board of Directors of **Maxis Berhad (MAXIS)** wishes to announce that Maxis Broadband Sdn. Bhd., a

wholly-owned subsidiary of Maxis Berhad, has on 20 December 2023, signed an Amendment Agreement (which includes an amended and restated High Speed Broadband Premium Service Agreement with TM Technology Services Sdn. Bhd. to extend an existing HSBB Premium Service Agreement. The purpose of the Agreement is for Maxis to procure HSBB Premium Service from TM Technology. This will enable Maxis to reach out to more premise passes for high-speed broadband across the country.



[READ MORE](#)

Further to **QL Resources Berhad's (QL)** announcement made on 7 July 2023, the Company wishes to announce that its wholly-owned subsidiary, namely, **QL Lian Hoe (S) Pte Ltd** had convened the Final Meeting of the members on 18 December 2023 in accordance with Section 180 of Singapore's Insolvency, Restructuring and Dissolution Act 2018.



**Teladan Group Berhad (formerly known as Teladan Setia Group**

**Berhad) (TELADAN)** has today announced that the Group has received approval from Bursa Malaysia Securities Berhad to transfer the listing and quotation for its entire issued share capital from the ACE Market to the Main Market of Bursa Securities.

Teladan has met the profit requirements for the transfer as per the Securities Commission Malaysia Equity Guidelines.

[READ MORE](#)



**Telekom Malaysia Berhad (TM)** wishes to announce that its wholly-owned subsidiary, **TM Technology Services Sdn Bhd** has on 20 December 2023 entered into an Amendment

Agreement with **Maxis Broadband Sdn Bhd**, a subsidiary of **Maxis Berhad**, relating to an existing agreement, **High Speed Broadband Premium Service Agreement**, dated 8 February 2019.

[READ MORE](#)