

## MARKET SENTIMENTS

# Accelerated transfer of listing from Ace Market to Main Market for eligible ace market companies - SC

Wholesale, retail sales value in October rises 6.5% on-year

- DOSM

(page 20-23)

## ALSO

**07** COMPANY SPOTLIGHT

KPJ Healthcare Berhad

**25** MSWG  
Five key financial ratios for sound investment decisions



04	LEADERBOARD
06	SHARIAH HOT STOCKS
08	SHARIAH MOMENTUM UP STOCKS
10	NON SHARIAH HOT STOCKS

12	UP TRENDING STOCKS
14	VALUE STOCKS
15	GROWTH STOCKS
16	DIVIDEND STOCKS
17	BROKERS' CALL

18	LONG COMPANIES
24	REGIONAL MARKETS
29	INSIDER ACTIVITY
34	INVESTOR RELATIONS



# SHAREINVESTOR®

Invest with Knowledge

## INVESTOR PLATFORMS

**Director**  
Darren Chong  
darren.chong@shareinvestor.com

**Business Development Manager**  
Jay Cheong  
jay.cheong@shareinvestor.com

**Senior Executive**  
Daniel Wong  
daniel.wong@shareinvestor.com

**Executive**  
Tan Yong Sheng  
yongsheng.tan@shareinvestor.com

## ADMIN & OPERATIONS

**Senior Executive**  
Watie Nordin  
watie.nordin@shareinvestor.com

**Executive**  
Silas Emmanuel Joseph  
silas.joseph@shareinvestor.com

## INVESTOR RELATIONS

**Group Managing Director & Publisher**  
Edward Stanislaus  
edward@shareinvestor.com

**Senior Manager**  
Letticia Wong  
letticia.wong@shareinvestor.com

## PROCESS AUTOMATION & DATA ANALYTICS

**Data Analyst**  
Nickson Aw

## SHAREINVESTOR HOLDINGS BOARD OF DIRECTORS

<b>Chairman</b>		Patrick Daniel
<b>Group CEO</b>		Christopher Lee
<b>Group COO</b>		Lim Dau Hee
<b>Group CFO</b>		Teo Siew May
<b>Group MD</b>		Shanison Lin



“ GIVE A MAN A FISH AND YOU FEED HIM FOR A DAY; TEACH A MAN TO FISH AND YOU FEED HIM FOR A LIFETIME ”

**ShareInvestor Malaysia Sdn. Bhd.**  
(200001023956) (526564-M)  
Unit No. DF2-07-03A, Level 7,  
Persoft Tower, 6B Persiaran Tropicana,  
47410 Petaling Jaya, Selangor Darul Ehsan.

Hotline : 603 7803 1791  
Mobile : 011 6343 8939  
Website : [www.ShareInvestor.com.my](http://www.ShareInvestor.com.my)  
[www.ShareInvestorHoldings.com](http://www.ShareInvestorHoldings.com)  
[www.Facebook.com/ShareInvestorMalaysia](http://www.Facebook.com/ShareInvestorMalaysia)

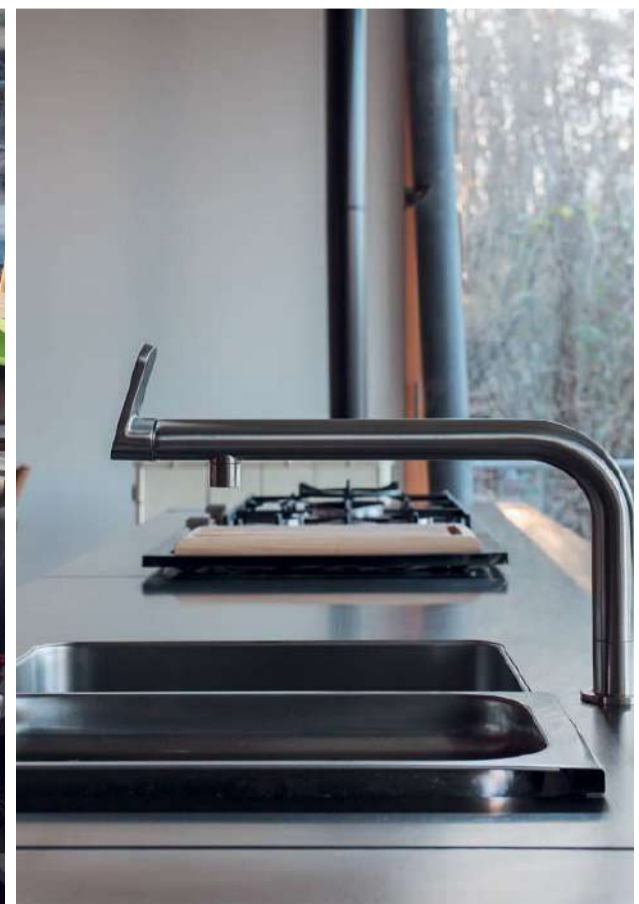
ADVERTISEMENT ENQUIRY

bulthaup takes care of the details so that you can enjoy a harmonious environment.



**XTRA**

XTRA FURNITURE SDN BHD  
The Gardens Mall, Mid Valley City  
[xtrafurniture.com/bulthaup](http://xtrafurniture.com/bulthaup)  
[fb.com/bulthaupmalaysia](https://fb.com/bulthaupmalaysia)



bulthaup

# Singapore Banking and REIT: Looking ahead for 2024

**19**  
LIVE  
DECEMBER  
**TUESDAY**  
8PM - 9PM



**Darren Chan**



**Glenn Thum**

Senior Research Analysts,  
Phillip Securities Research Pte Ltd

Scan Me



[www.shareinvestor.com](http://www.shareinvestor.com) - market data at your fingertips



ShareInvestor WebPro ([www.shareinvestor.com/my](http://www.shareinvestor.com/my))

Prices > Stock Prices > Bursa > click Stocks tab

1. mouse over Ranking > select Top Active > all Shariah stocks are denoted with an [S] > mouse over Column Layout > select Edit Customs > select Name > select Volume > select Last Done Price > Mouse Over Column Layout > select Custom
2. mouse over Ranking > select Top Turnover > all Shariah stocks are denoted with an [S] > mouse over Column Layout > select Edit Customs > select Name > select Last Done Price > select Value > Mouse Over Column Layout > select Custom
3. mouse over Ranking > select Top Gainers (Over 5 Trading Days) > mouse over Column Layout > select Edit Customs > select Name > select Last Done Price > select 5 Days Change > select 5 Days % Change > Mouse Over Column Layout > select Custom
4. mouse over Ranking > select Top Losers (Over 5 Trading Days)
5. mouse over Ranking > select Top % Gainers (Over 5 Trading Days)
6. mouse over Ranking > select Top % Losers (Over 5 Trading Days)

### Shariah Top Actives (as at Yesterday)

Name	Price (RM)	Volume
SAPNRG [S]	0.050	1,936,819.000
TOPGLOV [S]	0.910	1,464,973.000
VELESTO [S]	0.225	1,292,835.000
SMTRACK [S]	0.050	1,232,018.000
MINETEC [S]	0.095	1,174,530.000
WIDAD [S]	0.460	949,692.000
SCIB [S]	0.830	884,914.000
BPURI [S]	0.095	641,403.000
LEFORM [S]	0.385	632,528.000
CAREPLS [S]	0.360	594,340.000

### Shariah Top Turnover (as at Yesterday)

Name	Price (RM)	Value (RM)
TOPGLOV [S]	0.910	131,625,302
HARTA [S]	2.760	86,288,836
SCIB [S]	0.830	72,606,275
KPJ [S]	1.430	49,105,523
WIDAD [S]	0.460	44,207,834
KOSSAN [S]	1.850	43,061,062
GAMUDA [S]	4.540	41,276,181
NESTLE [S]	116.000	39,198,950
INARI [S]	2.940	38,219,372
SIME [S]	2.390	35,301,734

### Top Gainers (over 5 Trading days as at Yesterday)

Name	Price (RM)	Change (RM)
MPI	28.160	+1.800
HEIM	22.760	+1.040
UTDPLT	17.200	+0.700
F&N	27.500	+0.540
PETGAS	17.200	+0.500
HARTA	2.760	+0.430
PPB	14.500	+0.420
YTL	1.910	+0.370
TIMECOM	5.230	+0.330
HAPSENG	4.650	+0.320

### Top % Gainers (over 5 Trading days as at Yesterday)

Name	Price (RM)	Change (%)
SCABLE	0.220	+238.46
COMPUGT	0.015	+50.00
TECHNAX	0.015	+50.00
MINETEC	0.095	+46.15
SMTRACK	0.050	+42.86
AGES	0.070	+40.00
BCMALL	0.020	+33.33
MTRONIC	0.020	+33.33
TALAMT	0.020	+33.33
ZENTECH	0.020	+33.33

### Top Losers (over 5 Trading days as at Yesterday)

Name	Price (RM)	Change (RM)
RAPID	26.360	-2.060
IMASPRO	4.250	-0.710
NESTLE	116.000	-0.500
HARNLEN	0.495	-0.345
PETDAG	21.680	-0.340
AJI	16.000	-0.300
HARISON	8.100	-0.290
YNHPROP	4.740	-0.220
PMBTECH	2.460	-0.210
HLCAP	4.540	-0.160

### Top % Losers (over 5 Trading days as at Yesterday)

Name	Price (RM)	Change (%)
AT	0.005	-50.00
MLAB	0.005	-50.00
HARNLEN	0.495	-41.07
XOX	0.010	-33.33
HONGSENG	0.020	-20.00
ALAM	0.025	-16.67
RENEUCO	0.215	-15.69
IMASPRO	4.250	-14.31
AIM	0.125	-13.79
BSLCORP	0.035	-12.50



# STROM

SWISS TIMEPIECES & JEWELLERY



StromWatch Asia  
Tele : +65.9817.3378 Email : ll.stromasia@gmail.com

[WWW.STROMWATCH.SWISS](http://WWW.STROMWATCH.SWISS)



## Price & Volume Distribution Charts (as at Yesterday)

Technical Analysis

**DEFINITION:** Shariah compliant stocks with Technical Analysis showing 5-days & 10-days Moving Average Price below Yesterday's Close over past 3 days and with Volume Spike.

**CHART GUIDE:** Volume Distribution Chart is a statistical interpretation of the current sentiment on each stock in graphical format. The highest bar categorized as >150k is likely to be traded by institutions or super dealers, while the lowest bar categorized as <15k usually represents retail investors. "Buy Up" refers to more buyers snatching up the lots queued at selling price. "Sell Down" refers to sellers selling their shares to the buying queue



ShareInvestor WebPro > Screener > Market Screener (FA & TA) > select BURSA > add criteria

**A. Criteria**

- > click Add Criteria
- Technical Analysis Conditions tab select (i) Moving Average Below Close (ii) Volume Spike
- Fundamental Analysis Conditions tab > select (iii) Revenue
- Prices & Other Conditions tab > select (iv) Is Shariah Compliant
- Technical Analysis Conditions tab select (v) Moving Average Below Close
- Prices & Other Conditions tab > select (vi) Last Done Price
- Technical Analysis Conditions tab select (vii) Moving Average Below Close

**B. Conditions (Criteria Filters)**

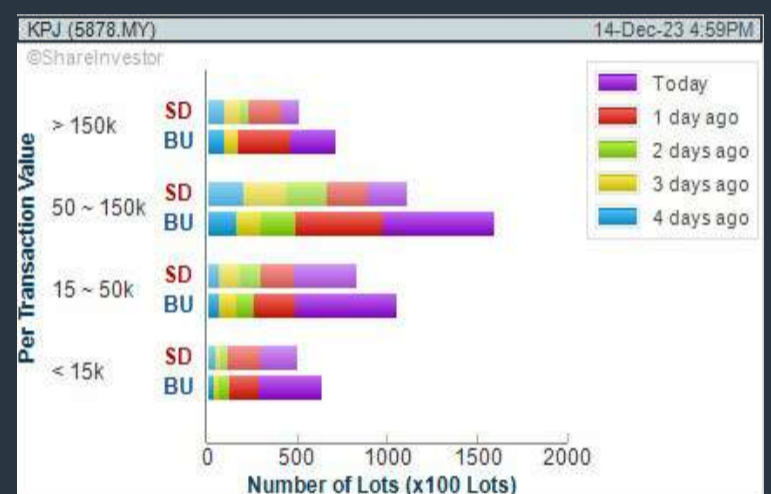
- Moving Average Below Close - select (MA) type (5) below close price for type (3) days
- Volume Spike - Volume type (1) greater than type (5) days average
- Revenue ("000) - select (more than) type (1) for the past select (1) financial year(s)
- Is Shariah Compliant - select **Yes**
- Moving Average Below Close - select (MA) type (10) below close price for type (3) days
- Last Done Price - select (more than) type (0.3)
- Moving Average Below Close - select (EMA) type (5) below close price for type (3) days

- > click Save Template > Create New Template type (Shariah Hot Stocks) > click Create
- > click Save Template as > select Shariah Hot Stocks > click Save
- > click Screen Now (may take a few minutes)
- > Sort By: Select (Vol) Select (Desc)
- > Mouse over stock name > Charts > click C<sup>2</sup> Charts or Volume Distribution

### KPJ HEALTHCARE BERHAD (5878)

C<sup>2</sup> Chart

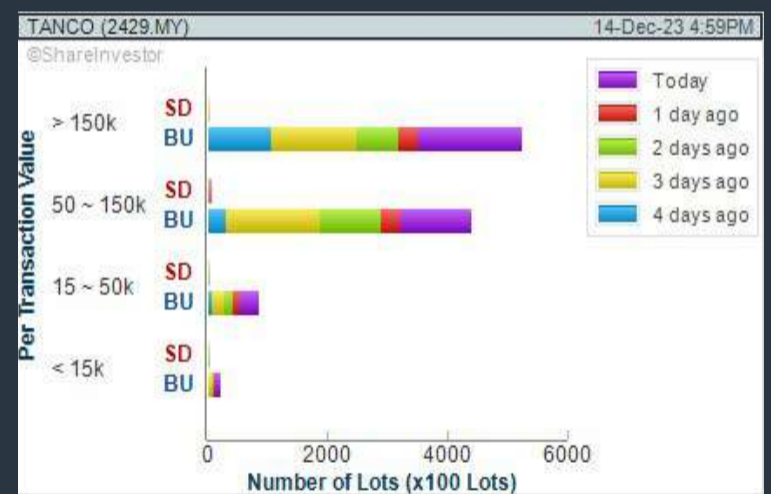
Analysis



### TANCO HOLDINGS BERHAD (2429)

C<sup>2</sup> Chart

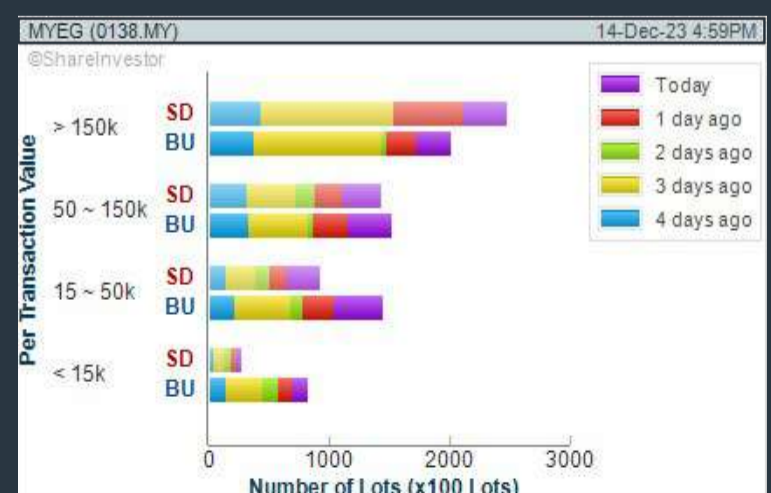
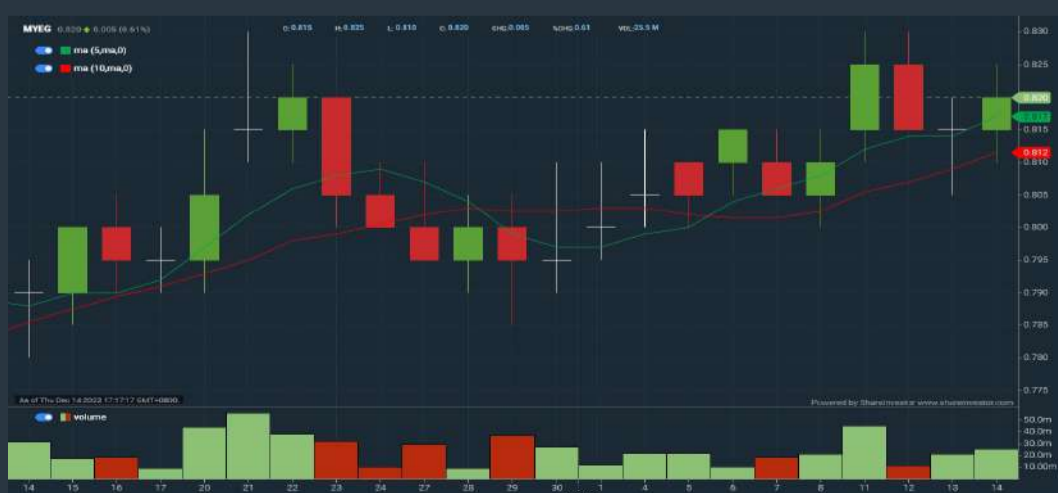
Analysis



### MY E.G. SERVICES BERHAD (0138)

C<sup>2</sup> Chart

Analysis



**Disclaimer:** The information on this page is provided as a service to readers. It does not constitute financial advice and/or any investment recommendations. Past performance is not indicative of future results. We assume no liability for damages resulting from or arising out of the use of such information. It would be best if you did your own research to make your personal investment decisions wisely or consult a licenced investment advisor.

## COMPANY BACKGROUND

**KPJ Healthcare Berhad** is in the business of operating specialist hospitals. As a provider of premium healthcare and eldercare services, the company has operations in Malaysia, Indonesia, Thailand, Bangladesh and Australia. In Malaysia, its services include full healthcare via private hospitals, pathology & laboratory services, and distribution of pharmaceutical, medical and consumer healthcare products. In Indonesia, Thailand & Bangladesh, it operates private hospitals. The Australia business provides retirement village and elder-care facilities



KPJ KPJ HEALTHCARE BHD		Updated at: 14 Dec 2023 17:31	
Last (MYR):	1.430 <span style="color: green;">▲</span>	Change: +0.030	High: 1.440
		Change (%): +2.14	Low: 1.370
Open	1.410	Yesterday's Close	1.400
Buy Price	1.420	Sell Price	1.440
Buy Volume ('00)	3,720	Sell Volume ('00)	1,549
Cumulative Volume ('00)	346,615	Cumulative Value	49,105,623

### Financial Analysis

<b>Revenue Growth</b> Increasing revenue in last 2 consecutive years	<span style="color: green;">😊</span>	<b>Profit Growth</b> Increasing profit in latest year (with last 2 profitable years)	<span style="color: green;">😊</span>
<b>Piotroski F Score</b> The company has above average financial strength (Piotroski F-Score of 6-7)	<span style="color: green;">😊</span>	<b>Dividend Payout</b> Dividend is decreasing over the past 60 months.	<span style="color: orange;">😟</span>
<b>Current Ratio</b> The company may have difficulty meeting short-term obligations with its current assets for 3 consecutive years	<span style="color: red;">😟</span>	<b>Debt to Assets</b> High debt to assets for most recent year	<span style="color: orange;">😟</span>
<b>Debt to Cashflow</b> High debt to cash flow for most recent year	<span style="color: orange;">😟</span>	<b>Debt to Equity</b> High debt to equity for most recent year	<span style="color: orange;">😟</span>
<b>Gross Profit Margin</b> High gross profit margin of at least 40% for most recent year	<span style="color: green;">😊</span>		

😊 Excellent  
 😊 Good  
 😟 Neutral  
 😟 Be Alert  
 😟 Watch Out



### Historical Financials

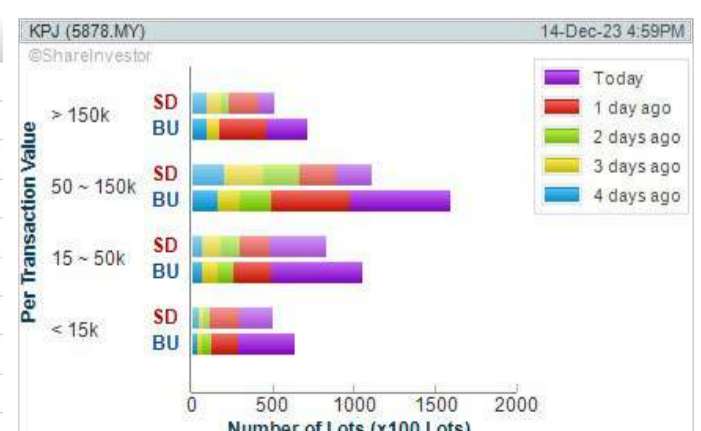


**WebPro 9-Days Free Trial Registration**  
(worth RM9)  
Sign Up Now



### Key Statistics with Total Shareholder Returns

Period	Dividend Received	Capital Appreciation	Total Shareholder Return
Short Term Return	5 Days	-	+0.092
	10 Days	-	+0.082
	20 Days	-	+0.152
Medium Term Return	3 Months	-	+0.242
	6 Months	-	+0.312
	1 Year	-	+0.497
Long Term Return	2 Years	0.005	+0.402
	3 Years	0.010	+0.422
	5 Years	0.042	+0.392
Annualised Return	Annualised	-	-



**Disclaimer:** The information on this page is provided as a service to readers. It does not constitute financial advice and/or any investment recommendations. Past performance is not indicative of future results. We assume no liability for damages resulting from or arising out of the use of such information. It would be best if you did your own research to make your personal investment decisions wisely or consult a licenced investment advisor.

## Price & Volume Distribution Charts (as at Yesterday)

Technical Analysis

**DEFINITION:** Shariah compliant stocks with Technical Analysis showing Bullish Momentum and Price Uptrend. The share price closed at the highest price yesterday. The typical price was higher than the previous day's typical price.

**CHART GUIDE:** Volume Distribution Chart is a statistical interpretation of the current sentiment on each stock in graphical format. The highest bar categorized as >150k is likely to be traded by institutions or super dealers, while the lowest bar categorized as <15k usually represents retail investors. "Buy Up" refers to more buyers snatching up the lots queued at selling price. "Sell Down" refers to sellers selling their shares to the buying queue.



ShareInvestor WebPro > Screener > Market Screener (FA & TA) > select BURSA > add criteria

**A. Criteria**

- > click Add Criteria
- Fundamental Analysis Conditions tab > select (i) Revenue
- Technical Analysis Conditions tab select (ii) Average Volume
- Prices & Other Conditions tab > select (iii) Last Done Price
- Prices & Other Conditions tab > select (iv) Is Shariah Compliant
- Technical Analysis Conditions tab select (v) RSI Overbought
- Technical Analysis Conditions tab select (vi) Moving Average Below Close
- Technical Analysis Conditions tab select (vii) CCI Overbought

**B. Conditions (Criteria Filters)**

1. Revenue ("000) - select (more than) type (1) for the past select (1) financial year(s)
2. Average Volume - type (1) days average volume greater than type (10000) lots
3. Last Done Price - select (more than) type (0.3)
4. Is Shariah Compliant - select Yes
5. RSI Overbought - select RSI 1 above 99 for 1 days
6. Moving Average Below Close - select (MA) type (10) below close price for type (1) days
7. CCI Overbought - select CCI (2) above (0) for (1) days

- > click Save Template > Create New Template type (Shariah Momentum Up Stocks) > click Create
- > click Save Template as > select Shariah Momentum Up Stocks > click Save
- > click Screen Now (may take a few minutes)
- Sort By: Select (Vol) Select (Desc)
- Mouse over stock name > Charts > click C<sup>2</sup> Charts tab or Volume Distribution

### TOP GLOVE CORPORATION BERHAD (7113)

C<sup>2</sup> Chart

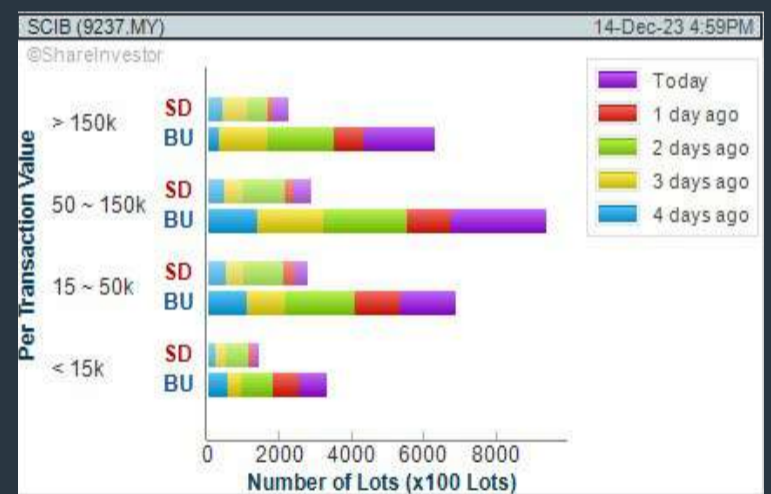
Analysis



### SARAWAK CONSOLIDATED IND BERHAD (9237)

C<sup>2</sup> Chart

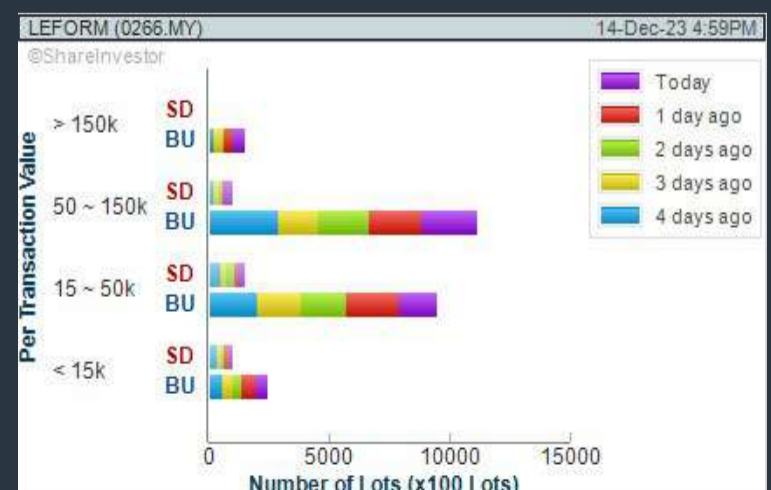
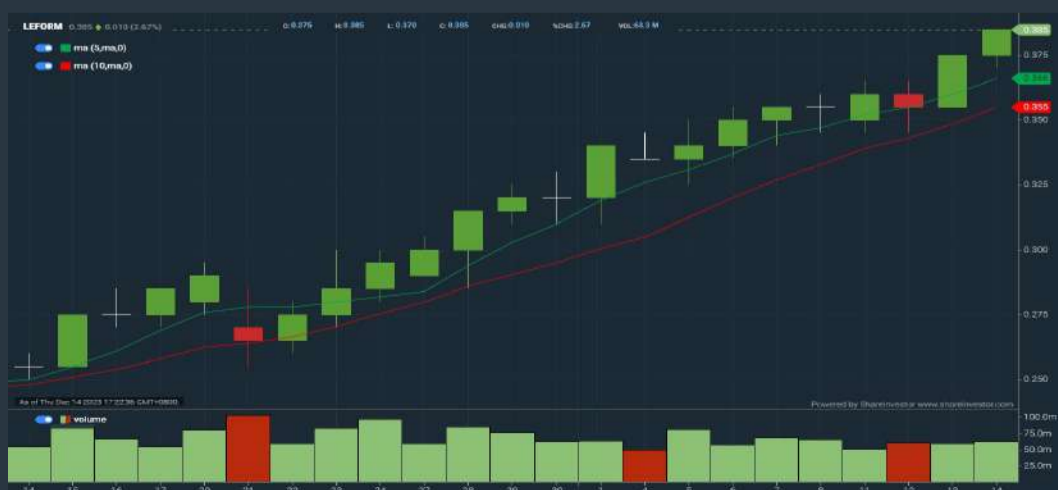
Analysis



### LEFORM BERHAD (0266)

C<sup>2</sup> Chart

Analysis



**Disclaimer:** The information on this page is provided as a service to readers. It does not constitute financial advice and/or any investment recommendations. Past performance is not indicative of future results. We assume no liability for damages resulting from or arising out of the use of such information. It would be best if you did your own research to make your personal investment decisions wisely or consult a licenced investment advisor.



# SHAREINVESTOR WEBPRO

## STOCK MARKET DATA AT YOUR FINGERTIPS

Powerful browser-based market analytics platform.  
Access from anywhere



### 8 Markets Data

- ▶ Get access to data from Bursa, NYSE, Nasdaq, HKEX, SGX, IDX, SET & ASX

### Portfolio Management

- ▶ Profit & Loss Summary
- ▶ Stock Alert
- ▶ News & Events filtering
- ▶ Customizable column layout

## Fundamental Analysis

### Financial Analysis Statement

- ▶ Profit & Loss
- ▶ Balance Sheet
- ▶ Cash Flow Statement
- ▶ More than 20 Financial Ratios
- ▶ Dividend Analysis

### Technical Charting

- ▶ C<sup>2</sup> chart (Customisable & Comprehensive)

### Brokers' Call

### Intrinsic Value Calculator

### FactSheet

- ▶ Key Stock Information
- ▶ Ownership
- ▶ Consensus Estimates
- ▶ Annual Report
- ▶ Historical Price
- ▶ Insider Trades

## What's new on WebPro (Stable Release 12.1.0)

In our effort to keep our platform at the forefront of trading technology, we have added on some new features onto our C<sup>2</sup> Chart in WebPro

### ADDITIONAL NEW FEATURES:

- ▶ Anchor selector for AVWAP, PVAT, and PAV indicators
- ▶ Volume profile indicator by date range
- ▶ Moving Average Cross indicator
- ▶ Guppy Multiple Moving Average (GMMA) indicator
- ▶ GoNoGo Trend Signal indicators
- ▶ SignalIQ

So what are you waiting for? Head to our platform today and check out our new trading chart features and indicators. We're confident that you'll love the improvements we've made and that they'll help you become a more successful trader.

Click here to start your 9 days FREE trial  
(Valued at RM10)



## Price & Volume Distribution Charts (as at Yesterday)

Technical Analysis

**DEFINITION:** Stocks with Technical Analysis showing 5-days & 10-days Moving Average Price below Close over past 1 days and with Volume Spike

**CHART GUIDE:** Volume Distribution Chart is a statistical interpretation of the current sentiment on each stock in graphical format. The highest bar categorized as >150k is likely to be traded by institutions or super dealers, while the lowest bar categorized as <15k usually represents retail investors. "Buy Up" refers to more buyers snatching up the lots queued at selling price. "Sell Down" refers to sellers selling their shares to the buying queue.



ShareInvestor WebPro > Screener > Market Screener (FA & TA) > select BURSA > add criteria

**A. Criteria**

- > click Add Criteria
- Technical Analysis Conditions tab select (i) Moving Average Below Close (ii) Volume Spike
- Fundamental Analysis Conditions tab >select (iii) Revenue
- Prices & Other Conditions tab > select (iv) Is Shariah Compliant
- Technical Analysis Conditions tab select (v) Moving Average Below Close
- Prices & Other Conditions tab > select (vi) Last Done Price
- Technical Analysis Conditions tab select (vii) Moving Average Below Close

**B. Conditions (Criteria Filters)**

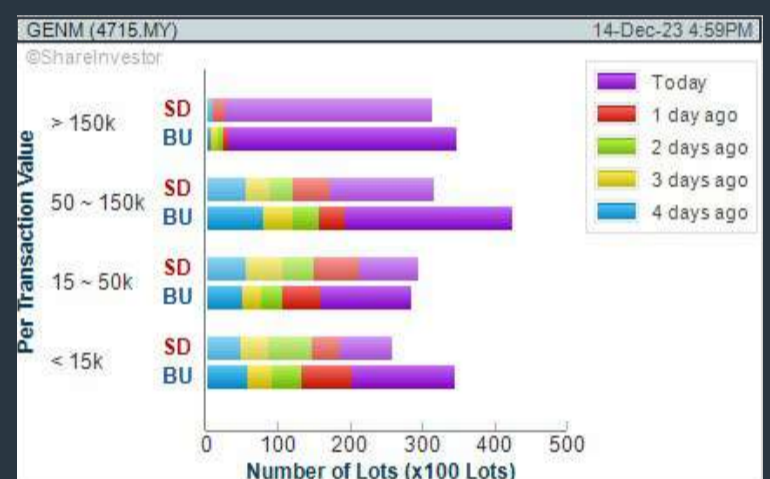
1. Moving Average Below Close - select (MA) type (5) below close price for type (3) days
2. Volume Spike - Volume type (1) greater than type (5) days average
3. Revenue ("000) - select (more than) type (1) for the past select (1) financial year(s)
4. Is Shariah Compliant - select NO
5. Moving Average Below Close - select (MA) type (10) below close price for type (1) days
6. Last Done Price - select (more than) type (0.3)
7. Moving Average Below Close - select (EMA) type (5) below close price for type (1) days

- > click Save Template > Create New Template type (Non-Shariah Hot Stocks) > click Create
- > click Save Template as > select Non-Shariah Hot Stocks > click Save
- > click Screen Now (may take a few minutes)
- Sort By: Select (Vol) Select (Desc)
- Mouse over stock name > Charts > click C<sup>2</sup> Charts tab or Volume Distribution

### GENTING MALAYSIA BERHAD (4715)

C<sup>2</sup> Chart

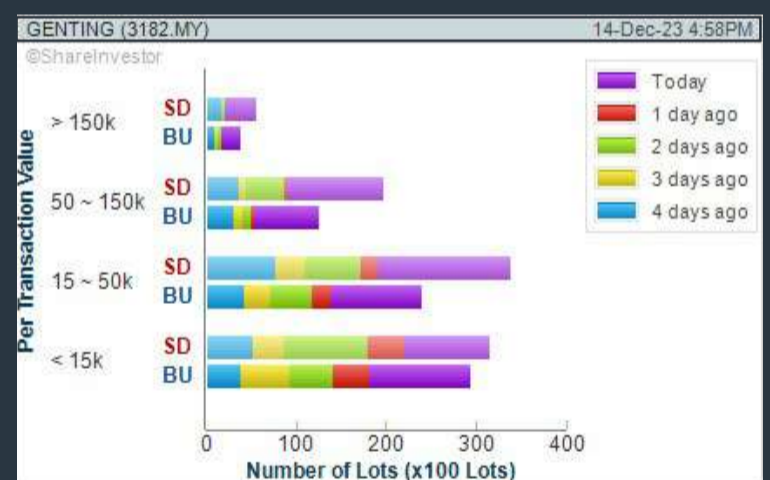
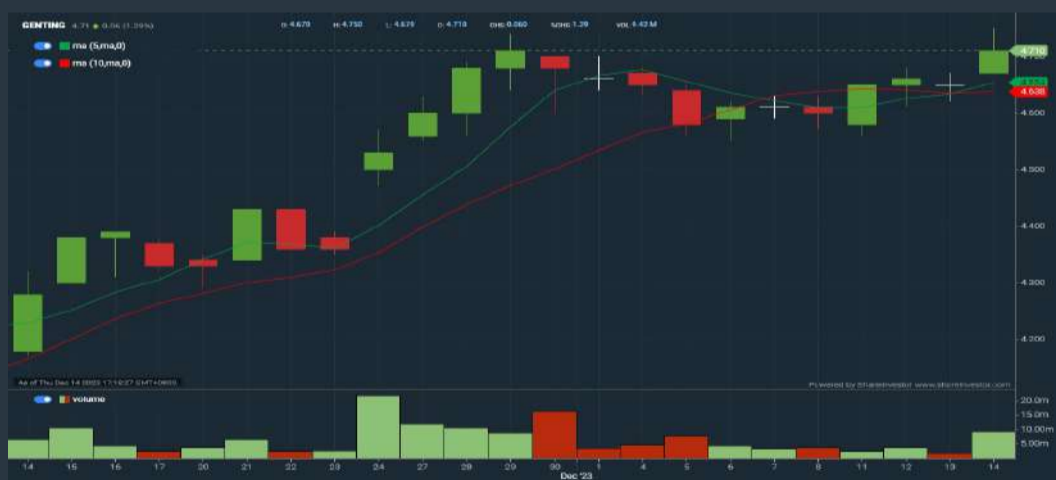
Analysis



### GENTING BERHAD (3182)

C<sup>2</sup> Chart

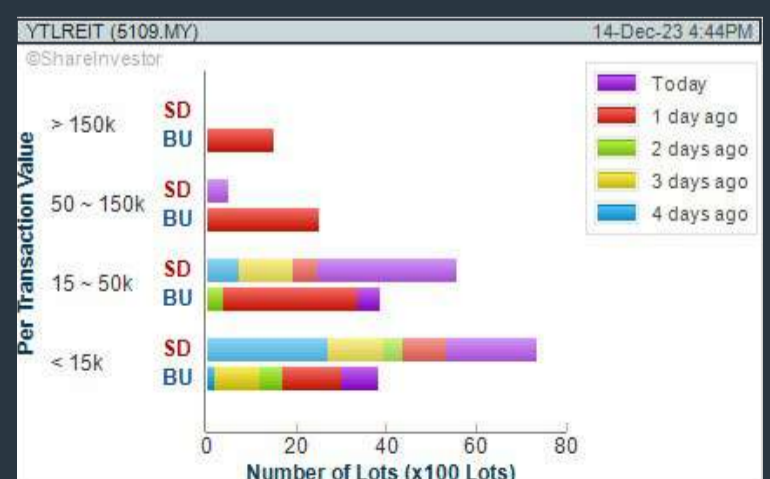
Analysis



### YTL HOSPITALITY REIT (5109)

C<sup>2</sup> Chart

Analysis



**Disclaimer:** The information on this page is provided as a service to readers. It does not constitute financial advice and/or any investment recommendations. Past performance is not indicative of future results. We assume no liability for damages resulting from or arising out of the use of such information. It would be best if you did your own research to make your personal investment decisions wisely or consult a licenced investment advisor.

# MAKE BETTER TRADING STRATEGIES

with

# SHARE INVESTOR STATION



## 8 Markets Data

- ▶ Get access to data from Bursa, NYSE, Nasdaq, HKEX, SGX, IDX, SET & ASX

## Dynamic Chart

- ▶ Candlestick Pattern Recognition
- ▶ 111 Indicators
- ▶ 39 Drawing Tools
- ▶ Performance Comparison Chart

## Intraday Data

- ▶ Market Depth
- ▶ Trade Summary Matrix & Chart
- ▶ Times & Sales
- ▶ Intraday Market Ticker

## Market Screener

- ▶ 96 criteria ranging from FA, TA, Consensus Estimate
- ▶ Real-time Data

## Power Frame

- ▶ Combining few Dynamic Charts together with intraday information in one frame

## Technical Analysis

## Fundamental Analysis

### Financial Analysis Statement

- ▶ Profit & Loss
- ▶ Balance Sheet
- ▶ Cash Flow Statement
- ▶ More than 20 Financial Ratios
- ▶ Dividend Analysis

### FactSheet

- ▶ Key Stock Information
- ▶ Ownership
- ▶ Consensus Estimates
- ▶ Annual Report
- ▶ Historical Price
- ▶ Insider Trades

**Start your 18 days  
FREE trial now  
(Valued at RM82)**



## Price & Volume Distribution Charts (Over 3 trading days as at Yesterday)

Technical Analysis

**DEFINITION:** Stocks with Technical Analysis showing Bullish Momentum and Price Uptrend

**CHART GUIDE:** Volume Distribution Chart is a statistical interpretation of the current sentiment on each stock in graphical format. The highest bar categorized as >150k is likely to be traded by institutions or super dealers, while the lowest bar categorized as <15k usually represents retail investors. "Buy Up" refers to more buyers snatching up the lots queued at selling price. "Sell Down" refers to sellers selling their shares to the buying queue.



ShareInvestor WebPro > Screener > Market Screener (FA & TA) > select BURSA > add criteria

**A. Criteria**

- > click Add Criteria
- Fundamental Analysis Conditions tab > select (i) Revenue
- Technical Analysis Conditions tab select (ii) Moving Average Below Close
- Technical Analysis Conditions tab select (iii) Average Volume
- Prices & Other Conditions tab > select (iv) Last Done Price
- Technical Analysis Conditions tab select (v) Moving Average Below Close
- Technical Analysis Conditions tab select (v) Moving Average Bullish Crossover

**B. Conditions**

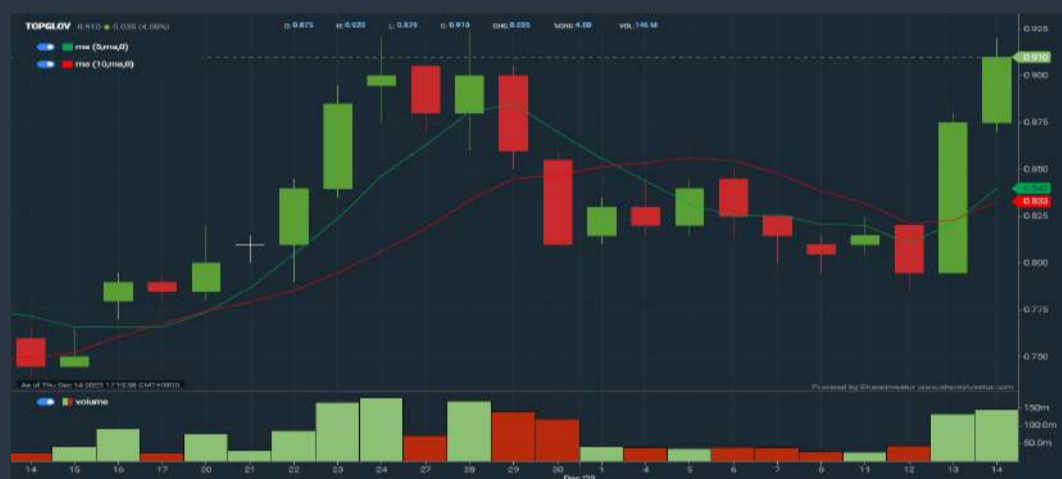
1. Revenue - select (more than) type (1) for the past select (1) financial year(s)
2. Moving Average Below Close - select (MA) type (20) below close price for type (1) days
3. Average Volume - type (5) days average volume type (10000) lots
4. Last Done Price - select (more than) type (0.3)
5. Moving Average Below Close - select (MA) type (10) below close price for type (1) days
6. Moving Average Bullish Crossover - select (MA) type (5) crossed above select (MA) type (10)

> click Save Template > Create New Template type (Non-Shariah Up-Trending Stocks) > click Create Click Save Template As > select Non-Shariah Up Trending Stocks > click Save > click Screen Now (may take a few minutes) Sort By: Select (Vol) Select (Desc) Mouse over stock name > Charts > click C<sup>2</sup> Charts tab or Volume Distribution

### TOP GLOVE CORPORATION BERHAD (7113)

C<sup>2</sup> Chart

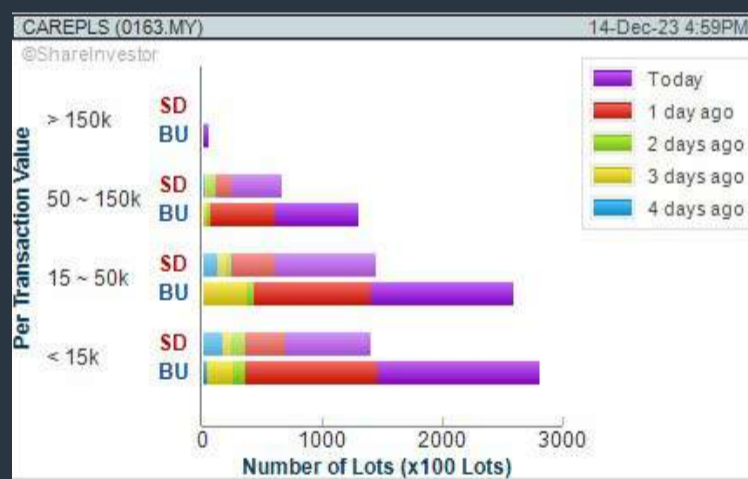
Analysis



### CAREPLUS GROUP BERHAD (0163)

C<sup>2</sup> Chart

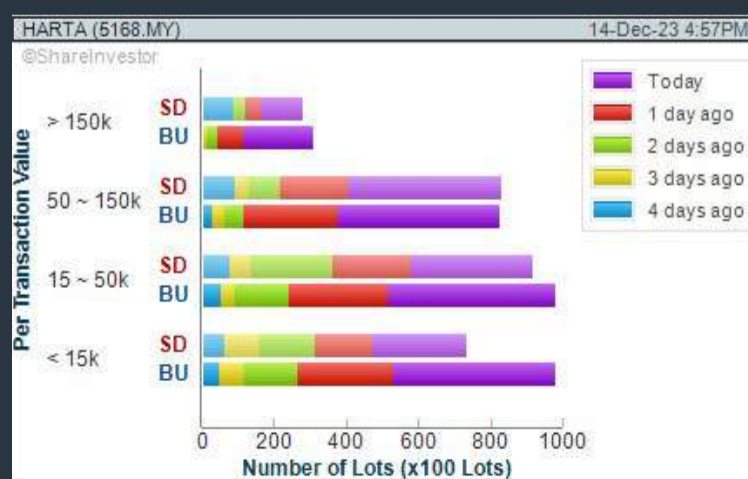
Analysis



### HARTEGA HOLDINGS BERHAD (5168)

C<sup>2</sup> Chart

Analysis



**Disclaimer:** The information on this page is provided as a service to readers. It does not constitute financial advice and/or any investment recommendations. Past performance is not indicative of future results. We assume no liability for damages resulting from or arising out of the use of such information. It would be best if you did your own research to make your personal investment decisions wisely or consult a licenced investment advisor.



making  
places  
remarkable



usm.com

**XTRA**

XTRA FURNITURE SDN BHD  
The Gardens Mall, Mid Valley City, Lot S-236 & 237  
Lingkar Syed Putra, 59200 Kuala Lumpur  
T. +603 2282 9088 | living@xtrafurniture.com | xtrafurniture.com  
● XTRAFurniture | ● xtrafurnituremsia

## Price & Total Shareholder Return (as at Yesterday)

Fundamental Analysis

**DEFINITION:** Share price of a company trading at a lower price as compared to its fundamentals (FA) such as financial performance and dividend, allowing it to be attractive to value investors.

**CHART GUIDE:** Total Shareholder Return (TSR) combines share price appreciation and dividend distributions paid to show the total return to the shareholder expressed as a percentage.



ShareInvestor WebPro > Screener > Market Screener (FA & TA) > select BURSA > add criteria

**A. Criteria**

- > click Add Criteria
- Fundamental Analysis Conditions tab (i) Price Earnings Ratio
- Fundamental Analysis Conditions tab >select (ii) CAGR of Net Earnings
- Fundamental Analysis Conditions tab >select (iii) Net Debt To Equity
- Fundamental Analysis Conditions tab >select (iv) Return On Equity (ROE)

**B. Conditions**

1. Price Earnings Ratio - select (less than) type (15) times now
2. CAGR of Net Earnings - select (more than) type (10) % for the past type (3) financial year(s)
3. Net Debt To Equity – select (less than) type (1) for the past select (1) financial year(s)
4. Return On Equity (ROE) – select (more than) type (10) % for the past select (1) financial year(s)

- > click Save Template > Create New Template type (Value Stock) > click Create
- > click Save Template as > select Value Companies > click Save
- > click Screen Now (may take a few minutes)
- Sort by: Select (PE Ratio) Select (Ascending)
- > Mouse over stock name > Factsheet > looking for Total Shareholder Return
- > Mouse over stock name > Charts > click C2 Charts tab

## SYNERGY HOUSE BERHAD (0279)

C<sup>2</sup> Chart



Period	Dividend Received	Capital Appreciation	Total Shareholder Return
Short Term Return	5 Days	+0.010	+1.55%
	10 Days	+0.008	+14.04%
	20 Days	+0.100	+18.18%
Medium Term Return	3 Months	+0.270	+71.05%
	6 Months	+0.305	+88.41%

## EDELTEQ HOLDINGS BERHAD (0278)

C<sup>2</sup> Chart



Period	Received	Appreciation	Total Shareholder Return
Short Term Return	5 Days	+0.025	+8.06%
	10 Days	+0.015	+4.89%
	20 Days	-0.165	-16.28%
Medium Term Return	3 Months	-0.125	-27.17%
	6 Months	-0.320	-48.85%

## SUNMOW HOLDING BERHAD (03050)

C<sup>2</sup> Chart



Period	Dividend Received	Capital Appreciation	Total Shareholder Return
Short Term Return	5 Days	-0.020	-1.85%
	10 Days	-0.020	-1.85%
	20 Days	-0.290	-24.49%
Medium Term Return	3 Months	-0.340	-24.29%
	6 Months	+0.050	+6.00%
	1 Year	+0.410	+63.00%
Long Term Return	2 Years	+0.250	+27.71%
Annualised Return	Annualised	-	+13.01%

**Disclaimer:** The information on this page is provided as a service to readers. It does not constitute financial advice and/or any investment recommendations. Past performance is not indicative of future results. We assume no liability for damages resulting from or arising out of the use of such information. It would be best if you did your own research to make your personal investment decisions wisely or consult a licenced investment advisor.

## Price & Total Shareholder Return (as at Yesterday)

Fundamental Analysis

**DEFINITION:** Company revenue is growing and making good quality of earnings with positive Free Cash Flow.

**CHART GUIDE:** Total Shareholder Return (TSR) combines share price appreciation and distributions paid to show the total return to the shareholder expressed as a percentage.



ShareInvestor WebPro > Screener > Market Screener (FA & TA) > select BURSA > add criteria

**A. Criteria**

1. Fundamental Analysis Conditions tab >select (i) Free Cash Flow, (ii) Revenue Growth, (iii) Gross Profit (Earnings) Margin, (iv) Quality of Earnings, (v) Total Shareholder Returns, > click Add Criteria
2. Fundamental Analysis Conditions tab >select (vi) Total Shareholder Returns > click Add Criteria

**B. Conditions (Criteria Filters)**

1. Free Cash Flow - select (more than) type (1) for the past select (1) financial year(s)
2. Revenue Growth - select (more than) type (1) for the past select (1) financial year(s)
3. Gross Profit (Earnings) Margin - select (more than) type (30) % for the past select (1) financial year(s)
4. Quality of Earnings - select (more than) type (1) for the past select (1) financial year(s)
5. Total Shareholder Return - select (more than) type (5) % for the past select (3) financial year(s)
6. Total Shareholder Return - select (more than) type (5) % for the past select (5) financial year(s)

- > click Save Template > Create New Template type (Growth Companies) > click Create
- > click Save Template as > select Growth Companies > click Save
- > click Screen Now (may take a few minutes)
- > Sort By: Select (Revenue Growth) Select (Desc)
- > Mouse over stock name > Factsheet > looking for Total Shareholder Return

### IGB BERHAD (5606)

C<sup>2</sup> Chart

Analysis



Period	Dividend Received	Capital Appreciation	Total Shareholder Return
Short Term Return	5 Days	-0.000	-3.40 %
	10 Days	-0.000	-3.40 %
	20 Days	-0.001	-2.82 %
Medium Term Return	3 Months	+0.150	+7.48 %
	6 Months	+0.267	+13.33 %
Long Term Return	1 Year	+0.749	+49.24 %
	2 Years	0.050	+63.69 %
	5 Years	0.236	+108.46 %
Annualised Return	Annualised	-	+52.49 %

### MATRIX CONCEPTS HOLDINGS BERHAD (5236)

C<sup>2</sup> Chart

Analysis



Period	Dividend Received	Capital Appreciation	Total Shareholder Return
Short Term Return	5 Days	-	-
	10 Days	-	+4.36 %
	20 Days	-	+4.36 %
Medium Term Return	3 Months	+0.190	+12.75 %
	6 Months	+0.290	+18.31 %
Long Term Return	1 Year	+0.180	+12.00 %
	2 Years	+0.247	+17.24 %
	5 Years	0.198	+46.95 %
Annualised Return	Annualised	-	+9.80 %

### UZMA BERHAD (7250)

C<sup>2</sup> Chart

Analysis



Period	Dividend Received	Capital Appreciation	Total Shareholder Return
Short Term Return	5 Days	-0.010	-1.32 %
	10 Days	-0.030	-3.85 %
	20 Days	-0.050	-6.25 %
Medium Term Return	3 Months	-0.060	-7.41 %
	6 Months	-0.105	-10.28 %
Long Term Return	1 Year	-0.195	-20.21 %
	2 Years	-0.315	-32.41 %
	5 Years	-0.150	-26.00 %
Annualised Return	Annualised	-	-4.56 %

**Disclaimer:** The information on this page is provided as a service to readers. It does not constitute financial advice and/or any investment recommendations. Past performance is not indicative of future results. We assume no liability for damages resulting from or arising out of the use of such information. It would be best if you did your own research to make your personal investment decisions wisely or consult a licenced investment advisor.

## Price & Total Shareholder Return (as at Yesterday)

Fundamental Analysis

**DEFINITION:** Company is paying out dividend with low or moderate leverage.

**CHART GUIDE:** Total Shareholder Return (TSR) combines share price appreciation and distributions paid to show the total return to the shareholder expressed as a percentage.



ShareInvestor WebPro > Screener > Market Screener (FA & TA) > select BURSA > add criteria

**A. Criteria**

- > click Add Criteria
- Fundamental Analysis Conditions tab >select (i) Dividend Yield (Historical)
- Fundamental Analysis Conditions tab >select (ii) Dividend Payout (Historical)
- Fundamental Analysis Conditions tab >select (iii) Total Debt To Equity
- Fundamental Analysis Conditions tab >select (iv) Total Shareholder Returns
- Fundamental Analysis Conditions tab >select (v) Total Shareholder Returns
- Fundamental Analysis Conditions tab / >select (vi) CAGR of Dividend Per Share

• Fundamental Analysis Conditions tab >select (vii) CAGR of Dividend Per Share

**B. Conditions (Criteria Filters)**

1. Dividend Yield - select (more than) type (1) % for the past select (1) financial year(s)
2. Dividend Payout (Historical) - select (between) type (0.5) to type (1) times for the past select (1) financial year(s)
3. Total Debt to Equity - select (less than) type (1) for the past select (1) financial year(s)
4. Total Shareholder Return - select (more than) type (5) % for the past select (3) financial year(s)
5. Total Shareholder Return - select (more than) type (5) % for the past select (5) financial year(s)

6. CAGR of Dividend Per Share - select (less than) type (30) % for the past select (5) financial year(s)
7. CAGR of Dividend Per Share - select (more than) type (1) % for the past select (5) financial year(s)

> click Save Template > Create New Template type (Dividend Companies) > click Create

> click Save Template as > select Dividend Companies > click Save

> click Screen Now (may take a few minutes)

> Sort By: Select (Dividend Yield) Select (Desc)

> Mouse over stock name > Factsheet > looking for Total Shareholder Return

## FORMOSA PROSONIC INDUSTRIES (9172)

C<sup>2</sup> Chart



Period	Dividend Received	Capital Appreciation	Total Shareholder Return
Short Term Return	5 Days	+0.100	+3.85%
	10 Days	-0.036	+1.87%
	20 Days	-0.120	-4.65%
Medium Term Return	3 Months	+0.100	+6.77%
	6 Months	+0.386	+15.92%
	1 Year	-0.500	-14.87%
Long Term Return	2 Years	0.200	-14.37%
	3 Years	0.340	-44.55%
	5 Years	0.550	+112.21%
Annualised Return	Annualised	-	+16.16%

## KENANGA INVESTMENT BANK BERHAD (6483)

C<sup>2</sup> Chart



Period	Dividend Received	Capital Appreciation	Total Shareholder Return
Short Term Return	5 Days	+0.015	+1.70%
	10 Days	-0.045	+5.29%
	20 Days	-0.035	+4.87%
Medium Term Return	3 Months	-	-
	6 Months	+0.095	+9.56%
	1 Year	-0.030	-3.24%
Long Term Return	2 Years	0.105	-12.28%
	3 Years	0.193	+15.74%
	5 Years	0.297	+88.67%
Annualised Return	Annualised	-	+13.54%

## HONG LEONG INDUSTRIES BERHAD (3301)

C<sup>2</sup> Chart



Period	Dividend Received	Capital Appreciation	Total Shareholder Return
Short Term Return	5 Days	+0.090	+8.99%
	10 Days	-0.130	-1.39%
	20 Days	-0.610	-9.11%
Medium Term Return	3 Months	+0.340	+3.83%
	6 Months	+0.470	+5.38%
	1 Year	-	-
Long Term Return	2 Years	0.350	+6.22%
	3 Years	0.870	+13.39%
	5 Years	1.810	+22.44%
Annualised Return	Annualised	-	+4.13%

**Disclaimer:** The information on this page is provided as a service to readers. It does not constitute financial advice and/or any investment recommendations. Past performance is not indicative of future results. We assume no liability for damages resulting from or arising out of the use of such information. It would be best if you did your own research to make your personal investment decisions wisely or consult a licenced investment advisor.



Week: 08 December 2023 - 14 December 2023

More Brokers' Call 

AMINVESTMENT BANK <small>... See More</small>	Call	Target Price	Release Date
Bermaz Auto Berhad (5248)	BUY	RM3.42	13 Dec 2023
Westports Holdings Berhad (5246)	BUY	RM4.03	11 Dec 2023
YTL Power International Berhad (6742)	BUY	RM2.70	11 Dec 2023

BIMB SECURITIES SDN BHD <small>... See More</small>	Call	Target Price	Release Date
Bermaz Auto Berhad (5248)	BUY	RM2.80	13 Dec 2023
Sapura Energy Berhad (5218)	TRADING BUY	RM0.06	14 Dec 2023
Westports Holdings Berhad (5246)	BUY	RM3.95	11 Dec 2023

KENANGA <small>... See More</small>	Call	Target Price	Release Date
Bermaz Auto Berhad (5248)	MARKET PERFORM	RM2.30	13 Dec 2023
KPJ Healthcare Berhad (5878)	OUTPERFORM	RM1.56	14 Dec 2023
S P Setia Berhad (8664)	UNDERPERFORM	RM0.68	14 Dec 2023
Samaiden Group Berhad (0223)	OUTPERFORM	RM1.44	14 Dec 2023

MIDF <small>... See More</small>	Call	Target Price	Release Date
Al-Aqar Healthcare REIT (5116)	NEUTRAL	RM1.25	14 Dec 2023
Bermaz Auto Berhad (5248)	BUY	RM3.39	13 Dec 2023
QL Resources Berhad (7084)	BUY	RM6.25	14 Dec 2023
Westports Holdings Berhad (5246)	BUY	RM4.30	11 Dec 2023

UOB KAYHIAN <small>... See More</small>	Call	Target Price	Release Date
Bermaz Auto Berhad (5248)	BUY	RM2.86	13 Dec 2023
Hap Seng Consolidated Berhad (3034)	BUY	RM5.83	13 Dec 2023
Pelikan International Corporation Berhad (5231)	BUY	RM1.04	13 Dec 2023
Systech Berhad (0050)	BUY	RM0.62	13 Dec 2023

**Disclaimer:** InveSt does not accept any liability whatsoever for any direct, indirect or consequential losses (including loss of profit) or damages that may arise from the use of information or opinions in this publication. The information and opinions in InveSt are not to be considered as an offer to sell or buy any of the securities discussed. Opinions expressed are subject to change without notice. The Brokers may, from time to time, have interests or positions in the securities mentioned. For the full report on each item listed on this page, please visit [https://www.shareinvestor.com/my/brokers\\_call](https://www.shareinvestor.com/my/brokers_call).

**DEFINITION:** Top 8 stocks with Technical Analysis plus Pattern Matching by 60 pre-defined indicators by the system showing a higher probability of bullish sentiment on the share price.



ShareInvestor WebPro > Screener > Predefined TA Screens > select market BURSA > Most Long Signals > click Scan Results or mouse over each company

**NCT ALLIANCE BERHAD (0056.MY)**

**NCT**

Price updated at 14 Dec 2023 16:59

Last: <b>0.340</b>	Change: -	Volume: <b>36,280</b>
	Change (%): -	Range: <b>0.335 - 0.345</b>

TA Scanner Results based on historical data up to 14 Dec 2023

Condition	Signal	Explanation
Bollinger Band: Bullish Long Term Volatility Breakout and Trending	Long	1. Close price above upper bollinger band(33,1). 2. Volume above average volume(50). 3. Average volume(50) is above 300,000.
Bollinger Band: Bullish Short Term Volatility Breakout and Trending	Long	1. Close price above upper bollinger band(33,1). 2. Volume above average volume(10). 3. Average volume(10) is above 300,000.
Bollinger Band: High Above Upper Bollinger Band	Neutral	1. High above upper bollinger band(14,2). 2. Average volume(5) is above 100,000.
Candlestick: Bullish Engulfing	Long	Bullish: Engulfing
MA: Medium Term Bullish Moving Average Crossover	Long	MA(25) crossed above MA(50) within the last 1 day.
Volume: 10 Days large value Buy Up trade	Long	1. 150K value Buy Up greater than Sell Down by 20% for 10 days. 2. 50K-100K value Buy Up greater than Sell Down by 20% for 10 days. 3. Average volume(10) is above 1000000
Volume: 5 Days large value Buy Up trade	Long	1. 150K value Buy Up greater than Sell Down by 20% for 5 days. 2. 50K-100K value Buy Up greater than Sell Down by 20% for 5 days. 3. Average volume(10) is above 1000000

**BIOALPHA HOLDINGS BERHAD (0179.MY)**

**BIOHLDG**

Price updated at 14 Dec 2023 16:57

Last: <b>0.105</b>	Change: -	Volume: <b>81,056</b>
	Change (%): -	Range: <b>0.100 - 0.110</b>

TA Scanner Results based on historical data up to 14 Dec 2023

Condition	Signal	Explanation
Bollinger Band: Bullish Long Term Volatility Breakout and Trending	Long	1. Close price above upper bollinger band(33,1). 2. Volume above average volume(50). 3. Average volume(50) is above 300,000.
Bollinger Band: Bullish Short Term Volatility Breakout and Trending	Long	1. Close price above upper bollinger band(33,1). 2. Volume above average volume(10). 3. Average volume(10) is above 300,000.
Bollinger Band: High Above Upper Bollinger Band	Neutral	1. High above upper bollinger band(14,2). 2. Average volume(5) is above 100,000.
Donchian Channels: High Above Upper Donchian Channels	Long	High crossed above the upper Donchian Channel(14,4)
MA: Short Term Bullish Moving Average Crossover	Long	MA(10) crossed above MA(15) within the last 1 day.
MACD: Bullish MACD Crossover	Long	1. MACD(12,26) diff line crossed above the MACD(12,26) signal line. 2. MACD Histogram(12,26) is above 0.
Volume: Volume Spike	Long	1. Volume is more than 500% above average volume(10). 2. Volume above 200000. 3. Close price above 0.10

**Disclaimer:** The information on this page is provided as a service to readers. It does not constitute financial advice and/or any investment recommendations. Past performance is not indicative of future results. We assume no liability for damages resulting from or arising out of the use of such information. It would be best if you did your own research to make your personal investment decisions wisely or consult a licenced investment advisor.

**IMASPRO CORPORATION BERHAD (7222.MY)**

**IMASPRO**

Price updated at 14 Dec 2023 16:57

Last: <b>4.250</b>	Change: <b>+0.080</b>	Volume: <b>13,507</b>
	Change (%): <b>+1.92</b>	Range: <b>4.100 - 4.250</b>

TA Scanner Results based on historical data up to 14 Dec 2023

Condition	Signal	Explanation
Bollinger Band: Low Below Lower Bollinger Band	Neutral	1. Low below lower bollinger band(14,2). 2. Average volume(5) is above 100,000.
MACD: Oversold	Long	1. MACD Histogram(12,26,9) reached a new 6 month low. 2. MACD Histogram(12,26,9) has been below 0 for the last 3 weeks.
Price: Consecutive Days Loss	Short	1. Close price has been decreasing over the last 5 days. 2. Average volume(5) is above 100,000.
RSI: RSI Oversold	Long	1. RSI(20) is below 20. 2. RSI(20) is decreasing for the last 3 days. 3. Stock has more than 75 days of historical data.
Volume: 10 Days large value Buy Up trade	Long	1. 150K value Buy Up greater than Sell Down by 20% for 10 days. 2. 50K-100K value Buy Up greater than Sell Down by 20% for 10 days. 3. Average volume(10) is above 1000000
Volume: 5 Days large value Buy Up trade	Long	1. 150K value Buy Up greater than Sell Down by 20% for 5 days. 2. 50K-100K value Buy Up greater than Sell Down by 20% for 5 days. 3. Average volume(10) is above 1000000
Volume: Consecutive Days Of Increasing Average Volume	Long	1. Average Volume(20) has been increasing over the last 2 weeks. 2. Average volume(20) is above 100000
Williams %R: Bullish Williams %R	Long	1. Williams %R(26) between -80 and -100. 2. Average volume(5) is above 100,000.

**ADVENTA BERHAD (7191.MY)**

**ADVENTA**

Price updated at 14 Dec 2023 16:59

Last: <b>0.325</b>	Change: <b>+0.015</b>	Volume: <b>107,160</b>
	Change (%): <b>+4.84</b>	Range: <b>0.305 - 0.330</b>

TA Scanner Results based on historical data up to 14 Dec 2023

Condition	Signal	Explanation
Bollinger Band: Bullish Lower Bollinger Band Support	Long	1. Low 1 day ago below lower bollinger band(20,2). 2. Close above close 1 day ago. 3. Average volume(5) is above 100,000.
Candlestick: Bullish Engulfing	Long	Bullish: Engulfing
DM: Bullish Directional Movement	Long	-DI(14) crossed below +DI(14)
MACD: Bullish MACD Crossover	Long	1. MACD(12,26) diff line crossed above the MACD(12,26) signal line. 2. MACD Histogram(12,26) is above 0.
Parabolic SAR: Bearish Parabolic SAR Reversal	Neutral	1. Parabolic SAR 1 day ago above close price 1 day ago for the last 5 days. 2. Parabolic SAR below close price
Stochastic: Fast Stochastic Buy Signal	Long	1. Fast Stochastic(15,5) %K crossed above 20. 2. Fast Stochastic(15,5) %K 1 day ago was below 20 for the last 5 days. 3. Average volume(30) is above 50000
Volume: Volume Spike	Long	1. Volume is more than 500% above average volume(10). 2. Volume above 200000. 3. Close price above 0.10



**AGESON BERHAD - ICPS**  
**2020/2030 (7145PA.MY)**

**AGES-PA**

Price updated at 14 Dec 2023 16:41

Last: <b>0.015</b>	Change: -	Volume: <b>112</b>
	Change (%): -	Range: <b>0.010 - 0.015</b>

TA Scanner Results based on historical data up to 14 Dec 2023

Condition	Signal	Explanation
Bollinger Band: Bullish Long Term Volatility Breakout and Trending	Long	1. Close price above upper bollinger band(33,1). 2. Volume above average volume(50). 3. Average volume(50) is above 300,000.
Bollinger Band: Bullish Short Term Volatility Breakout and Trending	Long	1. Close price above upper bollinger band(33,1). 2. Volume above average volume(10). 3. Average volume(10) is above 300,000.
Bollinger Band: High Above Upper Bollinger Band	Neutral	1. High above upper bollinger band(14,2). 2. Average volume(5) is above 100,000.
CCI: Bearish CCI Overbought And Reversing	Short	1. CCI(26) above 100 and CCI(26) 1 day ago increasing for the last 3 days. 2. CCI(26) below CCI(26) 1 day ago
Candlestick: Indecision Doji	Neutral	Indecision: Doji
Donchian Channels: High Above Upper Donchian Channels	Long	High crossed above the upper Donchian Channel(14,4)
MA: Short Term Bullish Moving Average Crossover	Long	MA(10) crossed above MA(15) within the last 1 day.
MACD: Bullish MACD Crossover	Long	1. MACD(12,26) diff line crossed above the MACD(12,26) signal line. 2. MACD Histogram(12,26) is above 0.
Stochastic: Fast Stochastic Buy Signal	Long	1. Fast Stochastic(15,5) %K crossed above 20. 2. Fast Stochastic(15,5) %K 1 day ago was below 20 for the last 5 days. 3. Average volume(30) is above 50000



**CLASSIC SCENIC BERHAD**  
**(7202.MY)**

**CSCENIC**

Price updated at 14 Dec 2023 16:32

Last: <b>0.440</b>	Change: -	Volume: <b>16,736</b>
	Change (%): -	Range: <b>0.430 - 0.445</b>

TA Scanner Results based on historical data up to 14 Dec 2023

Condition	Signal	Explanation
Bollinger Band: Bullish Long Term Volatility Breakout and Trending	Long	1. Close price above upper bollinger band(33,1). 2. Volume above average volume(50). 3. Average volume(50) is above 300,000.
Bollinger Band: Bullish Short Term Volatility Breakout and Trending	Long	1. Close price above upper bollinger band(33,1). 2. Volume above average volume(10). 3. Average volume(10) is above 300,000.
Bollinger Band: High Above Upper Bollinger Band	Neutral	1. High above upper bollinger band(14,2). 2. Average volume(5) is above 100,000.
DM: Bullish Directional Movement	Long	-DI(14) crossed below +DI(14)
Donchian Channels: High Above Upper Donchian Channels	Long	High crossed above the upper Donchian Channel(14,4)
Parabolic SAR: Bearish Parabolic SAR Reversal	Neutral	1. Parabolic SAR 1 day ago above close price 1 day ago for the last 5 days. 2. Parabolic SAR below close price
RSI: Short Term RSI 50 Bullish Crossover	Long	1. RSI(20) crossed above 50 within the last 1 day and RSI(20) 1 day ago below 50 for the last 5 days. 2. Volume above average volume(125). 3. Average volume(5) is above 100,000.
Volume: Volume Spike	Long	1. Volume is more than 500% above average volume(10). 2. Volume above 200000. 3. Close price above 0.10



**QL RESOURCES BERHAD**  
**(7084.MY)**

**QL**

Price updated at 14 Dec 2023 16:58

Last: <b>5.800</b>	Change: <b>+0.130</b>	Volume: <b>55,393</b>
	Change (%): <b>+2.29</b>	Range: <b>5.660 - 5.800</b>

TA Scanner Results based on historical data up to 14 Dec 2023

Condition	Signal	Explanation
Bollinger Band: Bullish Long Term Volatility Breakout and Trending	Long	1. Close price above upper bollinger band(33,1). 2. Volume above average volume(50). 3. Average volume(50) is above 300,000.
Bollinger Band: Bullish Short Term Volatility Breakout and Trending	Long	1. Close price above upper bollinger band(33,1). 2. Volume above average volume(10). 3. Average volume(10) is above 300,000.
Bollinger Band: High Above Upper Bollinger Band	Neutral	1. High above upper bollinger band(14,2). 2. Average volume(5) is above 100,000.
Chaikin Volatility: Increasing Chaikin Volatility	Neutral	Chaikin Volatility(10,10) has been increasing for 5 days
DM: Bullish Directional Movement	Long	-DI(14) crossed below +DI(14)
Donchian Channels: High Above Upper Donchian Channels	Long	High crossed above the upper Donchian Channel(14,4)
MACD: Bullish MACD Crossover	Long	1. MACD(12,26) diff line crossed above the MACD(12,26) signal line. 2. MACD Histogram(12,26) is above 0.
Volume: 5 Days large value Buy Up trade	Long	1. 150K value Buy Up greater than Sell Down by 20% for 5 days. 2. 50K-100K value Buy Up greater than Sell Down by 20% for 5 days. 3. Average volume(10) is above 1000000



**PERTAMA DIGITAL BERHAD**  
**(8532.MY)**

**PERTAMA**

Price updated at 14 Dec 2023 16:58

Last: <b>2.570</b>	Change: <b>+0.100</b>	Volume: <b>92,754</b>
	Change (%): <b>+4.05</b>	Range: <b>2.460 - 2.640</b>

TA Scanner Results based on historical data up to 14 Dec 2023

Condition	Signal	Explanation
Candlestick: Bullish Hammer	Long	Bullish: Hammer
Chaikin Volatility: Decreasing Chaikin Volatility	Neutral	Chaikin Volatility(10,10) has been decreasing for 5 days
Volume: 10 Days large value Buy Up trade	Long	1. 150K value Buy Up greater than Sell Down by 20% for 10 days. 2. 50K-100K value Buy Up greater than Sell Down by 20% for 10 days. 3. Average volume(10) is above 1000000
Volume: 5 Days large value Buy Up trade	Long	1. 150K value Buy Up greater than Sell Down by 20% for 5 days. 2. 50K-100K value Buy Up greater than Sell Down by 20% for 5 days. 3. Average volume(10) is above 1000000
Volume: Consecutive Days Of Increasing Average Volume	Long	1. Average Volume(20) has been increasing over the last 2 weeks. 2. Average volume(20) is above 100000
Williams %R: Bullish Williams %R	Long	1. Williams %R(26) between -80 and -100. 2. Average volume(5) is above 100,000.

**Disclaimer:** The information on this page is provided as a service to readers. It does not constitute financial advice and/or any investment recommendations. Past performance is not indicative of future results. We assume no liability for damages resulting from or arising out of the use of such information. It would be best if you did your own research to make your personal investment decisions wisely or consult a licenced investment advisor.

# ACCELERATED TRANSFER OF LISTING FROM ACE MARKET TO MAIN MARKET FOR ELIGIBLE ACE MARKET COMPANIES - SC

**T**he Securities Commission Malaysia (SC) introduced an accelerated transfer process to facilitate the promotion of eligible ACE Market PLCs to the Main Market of Bursa Malaysia. The framework will take effect on 1 January 2024 through amendments to the Equity Guidelines.

According to SC Chairman, Dato' Seri Dr. Awang Adek Hussin, the accelerated transfer of listing is part of a slew of capital market measures introduced by the SC to improve stock market vibrancy and reduce market friction. He said the ACE Market has remained a significant source of financing within the Malaysian equity capital market, with 20 ACE Market listings raising RM1.26 billion through

initial public offerings as of October this year. This accelerated transfer process will benefit sizeable, qualified ACE Market PLCs by accelerating the transfer to the Main Market for greater visibility and access to a larger pool of investors, including foreign and institutional investors.

Transferring to the Main Market, which is the prime market for established companies, demonstrates that the ACE Market PLCs have achieved the standards in terms of quality, size and operations. The newly simplified and accelerated transfer process should incentivise more companies listed on the ACE Market to make continuous efforts to improve their corporate values and achieve sustainable growth for shareholders.

Under the new accelerated transfer process, an ACE Market PLC must, among others, have a daily market capitalisation of at least RM1 billion for the past six months, and meet the profit requirements for companies seeking listing on the Main Market. The revised Equity Guidelines that will facilitate the transfer are available at <https://www.sc.com.my/regulation/guidelines/equity>.

## **WHOLESALE, RETAIL SALES VALUE IN OCTOBER RISES 6.5% ON-YEAR - DOSM**

According to Department of Statistics Malaysia Chief Statistician Datuk Seri Dr Mohd Uzir Mahidin, Malaysia's wholesale & retail trade recorded sales value of RM142.3 billion, increased 6.5% year-on-year in October 2023. However, sales value fell marginally -0.3% as compared to September 2023.

The increase of 6.5% year-on-year for wholesale & retail trade in October 2023 was driven by wholesale trade sub-sector, which rose 5.7% or RM3.4 billion to register RM63.3 billion. Retail trade also expanded by registering 3.9% or RM2.3 billion to RM60.6 billion, followed by motor vehicles with a double-digit growth of 19.1% or RM3 billion to settle at RM18.4 billion. Meanwhile, the marginal decrease of -0.3% from the

previous month was attributed to wholesale trade which contracted -1.4%, followed by retail trade with -0.8%. On the other hand, motor vehicles rebounded 5.2%.

Looking at the performance across sub-sectors, he said the growth of 5.7% year-on-year in wholesale trade was contributed by other specialised wholesale which rose RM1.7 billion or 7.5% to RM24.4 billion. This was followed by wholesale of household goods (4.7%), wholesale of agricultural raw materials & live animals (8.9%), wholesale of food, beverages & tobacco (3.3%), wholesale of machinery, equipment & supplies (3.4%), non-specialised wholesale trade (5.7%), and wholesale on a fee or contract basis (4.2%). However, for monthly comparison, wholesale trade decreased -1.4% mainly due to other specialised wholesale (-2.8%), wholesale of food, beverages & tobacco (-2.5%), and wholesale of agricultural raw materials & live animals (-3.5%).

On retail trade sub-sector, the increase of 3.9% year-on-year in this month was supported by retail sales in non-specialised stores which grew 6.1% or RM1.3 billion to RM22.9 billion. Other groups in this sub-sector also recorded positive growth namely retail sales of food, beverages & tobacco (10.8%), retail sales in specialised stores (2.2%), retail sales of automotive fuel (4.8%), retail sales of household goods (2.0%), retail sales of cultural & recreation goods (1.5%), retail sales in stalls & market (5.2%), and retail sales not in stores, stalls or market (0.2%).

Conversely, for month-on-month comparison, sales of this sub-sector edged down -0.8%, pulled down by retail sales in non-specialised stores (-1.2%), retail sales in specialised stores (-1.1%), retail sales of information & communication equipment (-1.4%), and retail sales of food, beverages & tobacco (-1.3%).

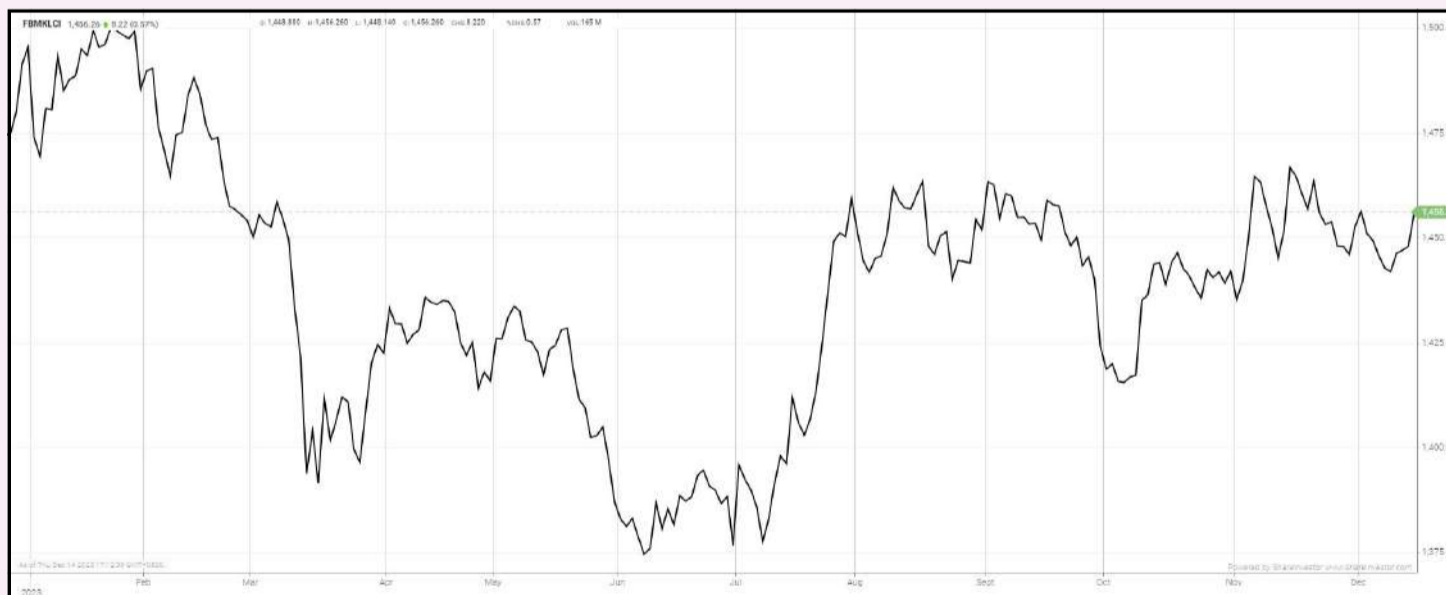
The year-on-year growth of 19.1% for motor vehicles sub-sector in this month was fuelled by sales of motor vehicles which accelerated 24.6%

or RM2 billion to record RM10.3 billion. This was followed by sales of motor vehicles parts & accessories (16.1%) and maintenance & repair of motor vehicles (17.7%).

For monthly comparison, this sub-sector grew 5.2%, supported by sales of motor vehicles (8.6%), sales, maintenance & repair of motorcycles (7%), sales of motor vehicles parts & accessories (0.4%), and maintenance & repair of motor vehicles (0.5%).

## EYE ON THE MARKETS

On Thursday (14Dec), the Ringgit closed at 4.6725 against the USD and 3.5104 to the Sing Dollar. On Monday (11Dec), the FBM KLCI opened at 1441.32. As at Thursday (14Dec) 5:00pm, the FBM KLCI closed up 14.94 points at 1456.26. Over in US, the overnight Dow Jones Industrial Average closed up 158.11 points (+0.43%) to 37,248.35 whilst the NASDAQ added 27.59 points (+0.19%) to 14,761.56.



KLCI 1 Year Chart

## Over 5 trading days



ShareInvestor WebPro ([www.shareinvestor.com/my](http://www.shareinvestor.com/my))

1. Price > Stock Prices
2. Select Market: NASDAQ / NYSE / IDX / SET / HKEX / SGX (One bourse at a time)
3. select Stocks Tab
4. select Ranking Top Gainers or Top Losers (Over 5 Trading Days)
5. Mouse over Column Layout > select Edit Customs > select Name > select Last Done Price > select 5 Days Change > select 52 Weeks High > select 52 Weeks Low > Mouse Over Column Layout > select Custom

### NASDAQ (USD)

#### Top Gainers

Name	Last Done	Change Over 5 Days	52 Weeks High	52 Weeks Low
BOOKING HOLDINGS INC	3,440.300	+202.030	3,404.890	1,907.380
BROADCOM INC	1,106.490	+184.230	1,079.390	540.915
MONOLITHIC POWER SYSTEM INC	637.390	+68.890	598.990	336.630
CREDIT ACCEPTANCE CORPORATION	517.240	+61.510	576.050	358.000
LAM RESEARCH CORP	767.210	+59.180	738.800	397.060

#### Top Losers

Name	Last Done	Change Over 5 Days	52 Weeks High	52 Weeks Low
ADOBE INC	584.640	-25.370	633.890	318.600
DBX ETF TRUST XTRACKERS CALIFORNIA MUNICIPAL BOND ETF	25.195	-19.245	44.470	31.970
XBP EUROPE HLDGS INC	8.480	-11.320	47.400	7.070
APELLIS PHARMACEUTICALS INC	52.180	-11.860	94.750	19.830
DAILY JOURNAL CO	314.570	-10.030	336.900	250.000

### NYSE (USD)

#### Top Gainers

Name	Last Done	Change Over 5 Days	52 Weeks High	52 Weeks Low
BERKSHIRE HATHAWAY INC	549,760.000	+9,760.100	566,569.970	442,363.500
NVR INC	6,934.400	+489.600	6,749.960	4,519.050
BIGLARI HOLDINGS INC	890.000	+151.000	1,058.500	681.510
METTLER-TOLEDO INTERNATIONAL INC	1,224.700	+124.680	1,615.970	928.495
TEXAS PACIFIC LAND CORPORATION	1,603.950	+87.430	2,659.430	1,266.210

#### Top Losers

Name	Last Done	Change Over 5 Days	52 Weeks High	52 Weeks Low
ELI LILLY AND COMPANY	573.670	-14.600	629.970	302.140
EVEREST GROUP LTD	360.780	-22.580	417.920	343.360
FTI CONSULTING INC	206.500	-15.500	232.150	152.420
UNITEDHEALTH GROUP INC	534.240	-14.030	554.700	436.510
GALLAGHER(ARTHUR J.)& CO	227.040	-14.010	254.001	174.445

### IDX (Rupiah)

#### Top Gainers

Name	Last Done	Change Over 5 Days	52 Weeks High	52 Weeks Low
DIAN SWASTATIKA SENTOSA TBK	82,000.000	+30,500.000	84,000.000	33,950.000
DCI INDONESIA TBK	47,500.000	+3,450.000	59,050.000	32,850.000
GOWA MAKASSAR TOURISM DEVELOPMENT	23,875.000	+2,150.000	23,875.000	14,500.000
PETRINDO JAYA KREASI TBK	11,925.000	+2,100.000	11,975.000	240.000
PANTAI INDAH KAPUK DUA TBK	5,375.000	+825.000	6,150.000	930.000

#### Top Losers

Name	Last Done	Change Over 5 Days	52 Weeks High	52 Weeks Low
PETROSEA	5,575.000	-1,625.000	7,650.000	2,810.000
MULTISTRADA ARAH SARANA	4,250.000	-1,000.000	6,000.000	1,985.000
PIONEERINDO GOURMET INTERNATIONAL	3,600.000	-1,000.000	6,675.000	1,315.000
M CASH INTEGRASI TBK	3,300.000	-650.000	9,800.000	2,700.000
BARITO RENEWABLES ENERGY TBK	7,200.000	-550.000	8,175.000	975.000

### SET (Thai Baht)

#### Top Gainers

Name	Last Done	Change Over 5 Days	52 Weeks High	52 Weeks Low
DELTA	85.750	+9.750	119.500	65.400
JTS	65.750	+7.250	66.250	23.200
HANA	49.500	+5.000	66.250	36.000
PTTEP	143.500	+3.000	179.500	134.500
ICC	42.250	+2.250	52.250	31.750

#### Top Losers

Name	Last Done	Change Over 5 Days	52 Weeks High	52 Weeks Low
OHTL	444.000	-24.000	546.000	444.000
MASTER	54.750	-5.000	91.500	41.500
THG	57.250	-4.500	72.000	54.500
BH	216.000	-4.000	272.000	203.000
ADVANC	218.000	-3.000	231.000	184.500

### HKEX (HKD)

#### Top Gainers

Name	Last Done	Change Over 5 Days	52 Weeks High	52 Weeks Low
TECHTRONIC INDUSTRIES CO	87.150	+9.000	110.500	67.350
MANULIFE FINANCIAL CORP	162.100	+8.800	163.000	134.800
SUNNY OPTICAL TECHNOLOGY GROUP	73.600	+6.800	119.700	50.300
ZX INC	35.400	+5.750	36.600	9.320
TRIP COM GROUP LTD	261.200	+5.000	330.200	240.600

#### Top Losers

Name	Last Done	Change Over 5 Days	52 Weeks High	52 Weeks Low
YSB INC	15.200	-14.300	64.500	14.500
ZTO EXPRESS (CAYMAN) INC	158.600	-9.400	236.400	157.500
BYD COMPANY LIMITED (81211.HK)	187.200	-8.200	255.800	185.000
BYD COMPANY LIMITED (1211.HK)	205.200	-7.800	280.600	187.000
CHINA TOURISM GROUP DUTY FREE CORP	70.250	-7.550	280.000	69.600

### SGX (SGD)

#### Top Gainers

Name	Last Done	Change Over 5 Days	52 Weeks High	52 Weeks Low
UOB	27.790	+0.600	31.330	26.820
CITYDEV	6.500	+0.280	8.236	5.960
SEMBCORP IND	5.180	+0.280	6.100	3.240
DBS	31.400	+0.220	35.855	30.300
LHT	1.020	+0.195	1.050	0.685

#### Top Losers

Name	Last Done	Change Over 5 Days	52 Weeks High	52 Weeks Low
17LIVE	1.860	-2.020	4.790	1.780
JARDINE C&C	28.790	-0.530	35.580	27.250
AZEUS	8.500	-0.500	9.190	7.650
JMH USD	39.870	-0.330	54.890	38.370
NIO Inc. USD OV	7.410	-0.290	15.780	7.070



# FIVE KEY FINANCIAL RATIOS FOR SOUND INVESTMENT DECISIONS



Devanesan  
Evanson  
**Chief Executive  
Officer, Minority  
Shareholders Watch  
Group**

**F**inancial or accounting ratios are the relative magnitude of two selected numerical values from an enterprise's financial statements. These standard ratios are used by managers, shareholders, investors and stakeholders to evaluate the overall financial condition of a firm. Below are the five useful financial ratios to evaluate the financial performance of companies, and we may have seen these ratios in the annual reports of public listed companies (PLCs).

## 1. OPERATING PROFIT MARGIN (%)

This is one of the most critical yardsticks from the operational efficiency point of view. The formula is shown below:

Operating profit margin (%)	=	$\frac{\text{Operating profit / profit from operations}}{\text{Revenue}} \times 100$
-----------------------------	---	--

The above formula shows how profitable a company is. A high operating margin indicates a PLC has better earnings capability from its core business (operating profit excludes other income, etc.). This also means that the PLC is well-managed and attractive to investors. Higher ratios are generally better, illustrating the company is efficient in its operations and is good at turning sales into profits.

## 2. EARNINGS PER SHARE (EPS)

EPS indicates the profitability of a business with how much money it makes for each of its shares. EPS equals the following:

$\frac{\text{Net Profit/Income}}{\text{Average Outstanding Shares}}$	Or	$\frac{\text{Net Profit/Income Minus Dividends to Preferred Shareholders}}{\text{Average Outstanding Shares}}$
--	----	--

A higher EPS suggests that the PLC's financial performance is improving, with a potential increase in the share price. A series of past negative EPS with the latest positive EPS may indicate that the PLC is on the verge of a turnaround or a business performance recovery. This could drive upward momentum in the share price of the PLCs. Meanwhile, the emergence of negative EPS after a series of positive EPS may indicate that the business is starting to face problems generating profit. Negative earnings can adversely impact the share price.

There are some limitations to using EPS to value a stock or company. Firstly, non-cash expenses such as depreciation and amortization are subtracted from net income, and the lumpy nature of capital expenditures can cause a company's net income to vary greatly across reporting periods. Secondly, businesses can have different non-

operating expenses, such as tax and interest payments, affecting net income. Looking at a company's net income alone doesn't accurately reflect its cash flow or the health of its business. Additionally, companies can and do manipulate their EPS numbers by changing the number of shares outstanding. Share issuances, splits/consolidation, and stock buybacks all change the denominator by which net income is divided.

### **3. CURRENT RATIO (ALSO KNOWN AS WORKING CAPITAL RATIO)**

The current ratio measures the liquidity of a business, gauging its ability to cover its short-term (within 12 months) obligations based on the existing current assets. Therefore, the current ratio is calculated by dividing current assets by current liabilities. The current ratio of above 1 indicates that a business can meet its short-term liabilities (borrowing, etc.). For example, a PLC with a current ratio of 3 means the size of its current assets is thrice of its short-term liabilities. In contrast, a ratio below 1 indicates that a business might struggle to meet its short-term obligations. In this context, the business faces liquidity issue.

### **4. DEBT-TO-EQUITY (D/E RATIO)**

The D/E ratio measures how much a company uses financial leverage compared to its equity to run its business. The D/E ratio formula is as follows:

Generally, a D/E ratio of 1 or lower is considered healthy or less risky to lenders and shareholders. However, an acceptable or ideal D/E Ratio would vary from industry to industry. A high D/E Ratio suggests elevated financial risk and increases shareholders' investment risk. A low D/E Ratio will provide companies with sufficient headroom to finance their business growth or expansion and achieve an ideal capital structure mix between debt and equity levels.

## 5. RETURN ON EQUITY (ROE)

ROE is calculated by dividing net profit by total shareholders' equity. An ROE of between 15 and 20% is considered good, while an ROE of 5% is considered low. However, ROE's evaluation varies from industry to industry. A high ROE may suggest that a PLC efficiently manages the shareholders' capital to deliver optimal returns and vice versa. However, a low ROE may be due to the PLC's inefficiency elements. An exceptional shock external factor, such as the COVID-19 pandemic, can also adversely impact PLCs and other players in the same industry. In this case, ROEs will be affected.

## CONCLUSION

The abovementioned financial ratios are useful for investors in evaluating a company's business performance. They should compare the financial ratios across different investee companies, industry averages, peers and close competitors. Doing so enables them to make informed investment decisions.

**Norhisam Sidek**  
**Manager, Corporate Monitoring**

*This article appeared in the The Observer, a weekly newsletter published by The Minority Shareholders Watch Group (MSWG) and reproduced here with their permission. Do follow MSWG's Twitter account at @MSWGMalaysia and share your thought on their tweets from time to time.*

## SHAREINVESTOR MARKET DATA PLATFORMS

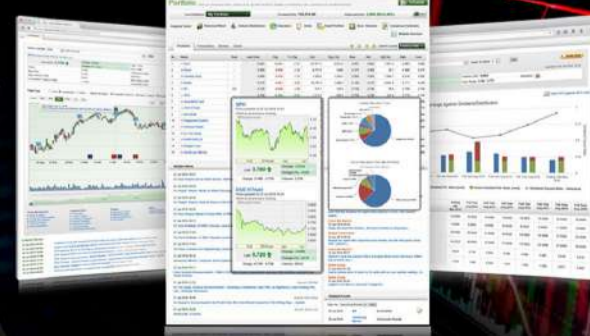


**SHAREINVESTOR**  
**STATION**

Advanced Charting Software  
(8 Markets)

**SHAREINVESTOR**  
**WEBPRO**

Browser-Based Market Data  
Analytics Platform













Notice Period is 03rd Nov - 09th Dec 2023

Effective Change Date	Stock Name	Buyer/ Seller Name [Classification]	Bought / (Sold) ('000)		No. of Shares After Trade ('000)	
			Total	% Held	Total	% Held
05 DEC 2023 - 05 DEC 2023	TTVHB	MR WONG YH HSOW [SSH]	262	24.04	112529	24.04
30 NOV 2023 - 04 DEC 2023	TWL	DATIN SEK CHIAN NEE [DIR/CEO]	31,948	31.469	1543560	31.469
30 NOV 2023 - 04 DEC 2023	TWL	DATIN SEK CHIAN NEE [SSH]	31,948	31.469	1543560	31.469
30 NOV 2023 - 04 DEC 2023	TWL	DATO' TAN WEI LIAN [DIR/CEO]	31,948	31.469	1543560	31.469
30 NOV 2023 - 04 DEC 2023	TWL	DATO' TAN WEI LIAN [SSH]	31,948	31.469	1543560	31.469
30 NOV 2023 - 04 DEC 2023	TWL	MISS TAN LEE CHIN [DIR/CEO]	31,948	31.47	1543560	31.47
30 NOV 2023 - 04 DEC 2023	TWL	MISS TAN LEE CHIN [SSH]	31,948	31.47	1543560	31.47
30 NOV 2023 - 04 DEC 2023	TWL	TWL CAPITAL BERHAD [SSH]	31,948	31.469	1543560	31.469
01 DEC 2023 - 01 DEC 2023	UCHITEC	MISS HAN CHIN LING [DIR/CEO]	90	0.022	100	0.022
01 DEC 2023 - 01 DEC 2023	UCHITEC	MR CHARLIE ONG CHYE LEE [DIR/CEO]	100	0.239	1096	0.239
01 DEC 2023 - 01 DEC 2023	UCHITEC	MR CHIN YAU MENG [DIR/CEO]	169	0.202	928	0.202
01 DEC 2023 - 01 DEC 2023	UCHITEC	MR HUANG YEN-CHANG ALSO KNOWN AS STANLEY HUANG [DIR/CEO]	237	0.148	680	0.148
01 DEC 2023 - 01 DEC 2023	UCHITEC	MR KAO DE-TSANG ALSO KNOWN AS TED KAO [DIR/CEO]	190	19.565	89874	19.565
01 DEC 2023 - 01 DEC 2023	UCHITEC	MR KAO DE-TSANG ALSO KNOWN AS TED KAO [SSH]	190	18.806	86387	18.806
01 DEC 2023 - 01 DEC 2023	UCHITEC	MR TAN BOON HOE [DIR/CEO]	100	0.126	580	0.126
05 DEC 2023 - 05 DEC 2023	UMW	EMPLOYEES PROVIDENT FUND BOARD [SSH]	450	10.669	124641	10.669
04 DEC 2023 - 04 DEC 2023	UMW	EMPLOYEES PROVIDENT FUND BOARD [SSH]	376	10.63	124191	10.63
01 DEC 2023 - 01 DEC 2023	UMW	EMPLOYEES PROVIDENT FUND BOARD [SSH]	205	10.598	123815	10.598
04 DEC 2023 - 04 DEC 2023	UMW	KUMPULAN WANG PERSARAAN (DIPERBADANKAN) (KWAP) [SSH]	-4,177	9.122	106570	9.122
30 NOV 2023 - 30 NOV 2023	UMW	EMPLOYEES PROVIDENT FUND BOARD [SSH]	607	10.58	123610	10.58
29 NOV 2023 - 29 NOV 2023	UMW	EMPLOYEES PROVIDENT FUND BOARD [SSH]	100	10.528	123003	10.528
05 DEC 2023 - 05 DEC 2023	UWC	EMPLOYEES PROVIDENT FUND BOARD [SSH]	185	7.501	82640	7.501
04 DEC 2023 - 04 DEC 2023	UWC	EMPLOYEES PROVIDENT FUND BOARD [SSH]	77	7.485	82455	7.485
30 NOV 2023 - 30 NOV 2023	UWC	EMPLOYEES PROVIDENT FUND BOARD [SSH]	55	7.478	82378	7.478
29 NOV 2023 - 29 NOV 2023	UWC	EMPLOYEES PROVIDENT FUND BOARD [SSH]	40	7.473	82323	7.473
01 DEC 2023 - 01 DEC 2023	VELESTO	DATUK LING KIEN SING [DIR/CEO]	2,370	0.028	2370	0.028
07 DEC 2023 - 07 DEC 2023	VS	KUMPULAN WANG PERSARAAN [SSH]	200	9.086	350077	9.086
05 DEC 2023 - 05 DEC 2023	VS	EMPLOYEES PROVIDENT FUND BOARD [SSH]	1,000	6.918	266527	6.918
06 DEC 2023 - 06 DEC 2023	VS	KUMPULAN WANG PERSARAAN [SSH]	800	9.081	349877	9.081
30 NOV 2023 - 30 NOV 2023	VS	EMPLOYEES PROVIDENT FUND BOARD [SSH]	2,169	6.892	265527	6.892
05 DEC 2023 - 05 DEC 2023	WASCO	DATO' SERI ROBERT TAN CHUNG MENG [SSH]	22,801	41.429	320792	41.429
05 DEC 2023 - 05 DEC 2023	WASCO	DATO' SERI ROBERT TAN CHUNG MENG [DIR/CEO]	22,801	41.429	320792	41.429
05 DEC 2023 - 05 DEC 2023	WASCO	MADAM PAULINE TAN SUAT MING [SSH]	22,801	40.169	311031	40.169

Notice Period is 03rd Nov - 09th Dec 2023

Effective Change Date	Stock Name	Buyer/ Seller Name [Classification]	Bought / (Sold) ('000)		No. of Shares After Trade ('000)	
			Total	% Held	Total	% Held
05 DEC 2023 - 05 DEC 2023	WASCO	MR TONY TAN CHOON KEAT [SSH]	22,801	39.889	308865	39.889
05 DEC 2023 - 05 DEC 2023	WASCO	TAN CHIN NAM SENDIRIAN BERHAD [SSH]	21,530	31.973	247570	31.973
05 DEC 2023 - 05 DEC 2023	WASCO	TAN KIM YEOW SENDIRIAN BERHAD [SSH]	22,801	39.889	308865	39.889
05 DEC 2023 - 05 DEC 2023	WASCO	WAH SEONG (MALAYA) TRADING CO. SDN BHD [SSH]	16,000	31.259	242040	31.259
06 DEC 2023 - 07 DEC 2023	WIDAD	TAN SRI MUHAMMAD IKMAL OPAT BIN ABDULLAH [SSH]	6,339	36.402	1127162	36.402
05 DEC 2023 - 05 DEC 2023	WIDAD	WIDAD BUSINESS GROUP SDN. BHD. [SSH]	-403	32.41	1003556	32.41
04 DEC 2023 - 05 DEC 2023	WIDAD	TAN SRI MUHAMMAD IKMAL OPAT BIN ABDULLAH [SSH]	-5,052	36.197	1120823	36.197
01 DEC 2023 - 01 DEC 2023	WIDAD	TAN SRI MUHAMMAD IKMAL OPAT BIN ABDULLAH [SSH]	-773	36.36	1125875	36.36
05 DEC 2023 - 05 DEC 2023	WPRTS	EMPLOYEES PROVIDENT FUND BOARD [SSH]	46	9.164	312487	9.164
29 NOV 2023 - 29 NOV 2023	WPRTS	EMPLOYEES PROVIDENT FUND BOARD [SSH]	31	9.174	312841	9.174
05 DEC 2023 - 05 DEC 2023	YINSON	EMPLOYEES PROVIDENT FUND BOARD [SSH]	276	15.987	464704	15.987
06 DEC 2023 - 06 DEC 2023	YINSON	KUMPULAN WANG PERSARAAN (DIPERBADANKAN) [SSH]	11	6.365	185026	6.365
04 DEC 2023 - 04 DEC 2023	YINSON	EMPLOYEES PROVIDENT FUND BOARD [SSH]	226	15.977	464429	15.977
05 DEC 2023 - 05 DEC 2023	YINSON	KUMPULAN WANG PERSARAAN (DIPERBADANKAN) [SSH]	24	6.365	185015	6.365
01 DEC 2023 - 01 DEC 2023	YINSON	EMPLOYEES PROVIDENT FUND BOARD [SSH]	473	15.97	464203	15.97
04 DEC 2023 - 04 DEC 2023	YINSON	KUMPULAN WANG PERSARAAN (DIPERBADANKAN) [SSH]	17	6.364	184991	6.364
30 NOV 2023 - 30 NOV 2023	YINSON	EMPLOYEES PROVIDENT FUND BOARD [SSH]	1,788	15.953	463729	15.953
01 DEC 2023 - 01 DEC 2023	YINSON	KUMPULAN WANG PERSARAAN (DIPERBADANKAN) [SSH]	42	6.363	184974	6.363
29 NOV 2023 - 29 NOV 2023	YINSON	EMPLOYEES PROVIDENT FUND BOARD [SSH]	285	15.892	461941	15.892
04 DEC 2023 - 04 DEC 2023	ZECON	TAN SRI TOMMY BIN BUGO@HAMID BIN BUGO [SSH]	188	14.276	21043	14.276
07 DEC 2023 - 07 DEC 2023	ZHULIAN	MR TEOH BENG SENG [SSH]	-230	61.192	281496	61.192
07 DEC 2023 - 07 DEC 2023	ZHULIAN	THE BEST SOURCE HOLDINGS PTE. LTD. [SSH]	-230	17.076	78549	17.076
06 DEC 2023 - 06 DEC 2023	ZHULIAN	MR TEOH BENG SENG [SSH]	-243	61.24	281726	61.24
06 DEC 2023 - 06 DEC 2023	ZHULIAN	THE BEST SOURCE HOLDINGS PTE. LTD. [SSH]	-243	17.13	78779	17.13
05 DEC 2023 - 05 DEC 2023	ZHULIAN	MR TEOH BENG SENG [SSH]	-217	61.29	281969	61.29
05 DEC 2023 - 05 DEC 2023	ZHULIAN	THE BEST SOURCE HOLDINGS PTE. LTD. [SSH]	-217	17.18	79022	17.18
04 DEC 2023 - 04 DEC 2023	ZHULIAN	MR TEOH BENG SENG [SSH]	-23	61.35	282186	61.35
04 DEC 2023 - 04 DEC 2023	ZHULIAN	THE BEST SOURCE HOLDINGS PTE. LTD. [SSH]	-23	17.23	79239	17.23
01 DEC 2023 - 01 DEC 2023	ZHULIAN	MR TEOH BENG SENG [SSH]	-2	61.35	282209	61.35
01 DEC 2023 - 01 DEC 2023	ZHULIAN	THE BEST SOURCE HOLDINGS PTE. LTD. [SSH]	-2	17.23	79262	17.23

**Disclaimer:** The Information in Insider Activity is extracted from [www.shareinvestor.com/fundamental/insider\\_trades](http://www.shareinvestor.com/fundamental/insider_trades). The information on this page is provided as a service to readers. It does not constitute financial advice and/or any investment recommendations. We assume no liability for damages resulting from or arising out of the use of such information. Whilst every effort is made to ensure accuracy, the information presented is not the official record of shareholder filings. Readers are advised to read the original filings on the Bursa Malaysia website at [www.bursamalaysia.com](http://www.bursamalaysia.com)



Learn how to identify Hot Stocks using Technical Analysis (TA) and Fundamental Analysis (FA)

**SIGN UP FOR Invest NOW IT'S FREE!!!**

[Click here](#)

Scan me



Via email, every Friday.

Get market moving news and analyses. Regular columns include **Behind The Action** and **From The Observer**

**Leaderboard • Shariah Hot Stocks • Shariah Momentum Up Stocks • Non Shariah Hot Stocks • Up Trending Stocks • Growth Stocks • Dividend Stocks • Long Companies • Insider Activity • Investor Relations • Regional Markets**





**CapitaLand Malaysia Trust (CLMT)**, through its trustee, MTrustee Berhad, and CIMB Bank Berhad, announced today that CLMT’s loan facility of RM693 million from CIMB has been converted into a sustainability-linked loan facility, for the funding of the acquisition of Queensbay Mall located in Penang, Malaysia. This facility marks CLMT’s largest loan facility to-date and is linked to the sustainability performance targets of Queensbay Mall.



**Kinergy Advancement Berhad (KAB)** has joined hands with Agromate Holdings Sdn. Bhd. to spearhead bioenergy or Renewable Energy generation across Palm Oil Mills in the country. With Malaysia being the world’s second-largest palm oil producer, supported by its 447 Palm Oil Mills that has a processing capacity of 119.5 million tonnes per year, this KAB-AGROMATE collaboration seeks to capitalise on a largely under-tapped market with huge recurring income potentials.





The Board of Directors of **Sarawak Consolidated Industries Berhad (SCIB)** wishes to announce that SCIB Properties Sdn. Bhd., a wholly-

owned subsidiary of SCIB had on 12 December 2023 entered into a Memorandum of Understanding with Kemena City Development Sdn. Bhd. and Smart Borneo Properties Sdn. Bhd. to assess and collaborate on a potential joint venture related to the development on Lot 43 & Lot 44, Block 34, Kemena Land District, Bintulu for residential development purpose wherein, the area of the said land is approximately 50 acres and consists of approximately 600 units of residential houses with an estimated gross development value of RM250,000,000.00.



Further to **SkyWorld Development Berhad (SKYWLD)** announcement made on 7 September 2023, the Board of Directors of the Company wishes to

announce that SkyWorld Vietnam had on 8 December 2023, entered into an Amendment of the Conditional Shares Sale and Purchase Agreement with the Vendors and the Project Company to vary and modify the terms in the Conditional Shares Sale and Purchase Agreement dated 7 September 2023.



**Disclaimer:** The information in the Investor Relations page is extracted from individual companies' announcements in [www.bursamalaysia.com](http://www.bursamalaysia.com). The information on this page is provided as a service to readers. We assume no liability for damages resulting from or arising out of the use of such information. Whilst every effort is made to ensure accuracy, the information presented has been simplified for your reading pleasure. Readers are advised to read the original and complete filings on the Bursa Malaysia website at [https://www.bursamalaysia.com/market\\_information/announcements/company\\_announcement](https://www.bursamalaysia.com/market_information/announcements/company_announcement)

**Upcoming IPO**

NAME OF COMPANY	OFFER PERIOD		ISSUE PRICE (Per Ordinary Share)	LISTING SOUGHT	DATE OF LISTING
	OPENING	CLOSING			
JATI TINGGI GROUP BERHAD	30 Nov 2023	6 Dec 2023	RM0.27	ACE MARKET	20 Dec 2023
CRITICAL HOLDINGS BERHAD	27 Nov 2023	5 Dec 2023	RM0.35	ACE MARKET	18 Dec 2023