

Invest

A Weekly e-Publication by SHAREINVESTOR.com

ISSUE

186

FRIDAY
08 DECEMBER
2023

Scan/Click QR to Register



Via email, every Friday

MARKET SENTIMENTS

BURSA MALAYSIA DERIVATIVES TO LAUNCH FIRST CURRENCY FUTURES ON MONDAY, DEC 11

SC to debut streamlined transfer mechanism to Main Market — chairman

See more on pages 22-25

ALSO

07 COMPANY SPOTLIGHT
Leform Berhad

27 MSWG
A dozen things I learned from Warren Buffett



04 LEADERBOARD

06 SHARIAH HOT STOCKS

08 SHARIAH MOMENTUM UP STOCKS

10 NON SHARIAH HOT STOCKS

12 UP TRENDING STOCKS

14 VALUE STOCKS

16 GROWTH STOCKS

18 DIVIDEND STOCKS

19 BROKERS' CALL

20 LONG COMPANIES

26 REGIONAL MARKETS

31 INSIDER ACTIVITY

35 MADE-IN-MALAYSIA GIFT IDEAS

46 INVESTOR RELATIONS



SHAREINVESTOR®

Invest with Knowledge

INVESTOR PLATFORMS

Director
Darren Chong
darren.chong@shareinvestor.com

Business Development Manager
Jay Cheong
jay.cheong@shareinvestor.com

Senior Executive
Daniel Wong
daniel.wong@shareinvestor.com

Executive
Tan Yong Sheng
yongsheng.tan@shareinvestor.com

ADMIN & OPERATIONS

Senior Executive
Watie Nordin
watie.nordin@shareinvestor.com

Executive
Silas Emmanuel Joseph
silas.joseph@shareinvestor.com

INVESTOR RELATIONS

Group Managing Director & Publisher
Edward Stanislaus
edward@shareinvestor.com

Senior Manager
Letticia Wong
letticia.wong@shareinvestor.com

PROCESS AUTOMATION & DATA ANALYTICS

Data Analyst
Nickson Aw

SHAREINVESTOR HOLDINGS BOARD OF DIRECTORS

Chairman		Patrick Daniel
Group CEO		Christopher Lee
Group COO		Lim Dau Hee
Group CFO		Teo Siew May
Group MD		Shanison Lin



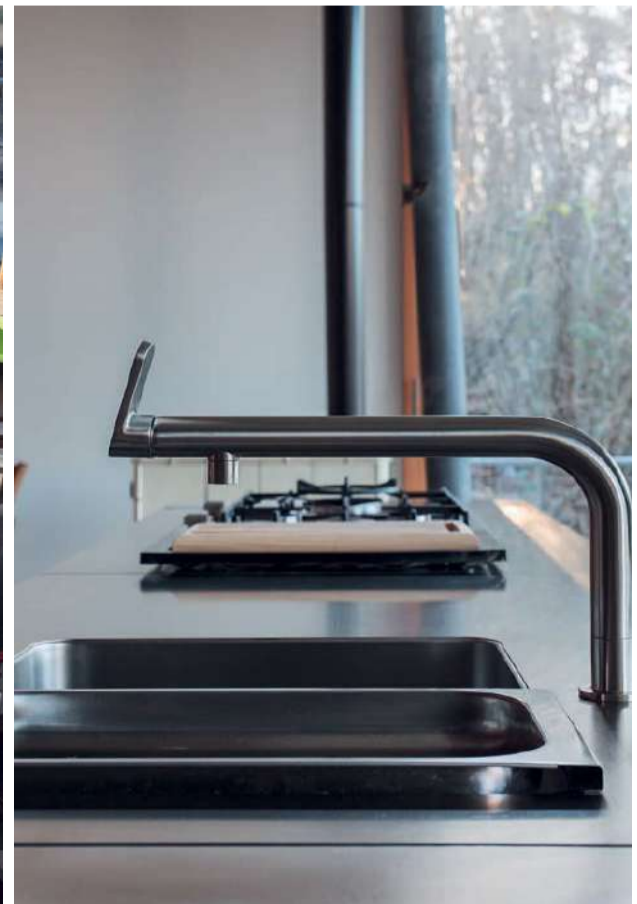
“ GIVE A MAN A FISH AND YOU FEED HIM FOR A DAY; TEACH A MAN TO FISH AND YOU FEED HIM FOR A LIFETIME ”

ShareInvestor Malaysia Sdn. Bhd.
(200001023956) (526564-M)
Unit No. DF2-07-03A, Level 7,
Persoft Tower, 6B Persiaran Tropicana,
47410 Petaling Jaya, Selangor Darul Ehsan.

Hotline : 603 7803 1791
Mobile : 011 6343 8939
Website : www.ShareInvestor.com.my
www.ShareInvestorHoldings.com
www.Facebook.com/ShareInvestorMalaysia

ADVERTISEMENT ENQUIRY

bulthaup takes care of the details so that you can enjoy a harmonious environment.



XTRA

XTRA FURNITURE SDN BHD
The Gardens Mall, Mid Valley City
xtrafurniture.com/bulthaup
fb.com/bulthaupmalaysia

bulthaup

Holiday Giveaway **VOTE & WIN**

**06-19
DEC 2023**

HOW TO WIN

1

**VOTE YOUR
FAVOURITE US STOCKS**
(x1 chance)



Apple?
Google?
Tesla?
or
Vanguard
500?

2

**COMMENT WHY
YOU LIKE IT**
(x3 chance)

**24 LUCKY
WINNERS**

X

**24 FAMILIAR
US STOCKS**

CLICK HERE TO JOIN



Organised by

 **InvestingNote**

Sponsored by

**Rakuten
Trade**

The Disclaimer: The companies shown in the visual is for illustration purpose, not investment advice.

*T&C Apply

www.shareinvestor.com - market data at your fingertips



ShareInvestor WebPro (www.shareinvestor.com/my)

Prices > Stock Prices > Bursa > click Stocks tab

1. mouse over Ranking > select Top Active > all Shariah stocks are denoted with an [S] > mouse over Column Layout > select Edit Customs > select Name > select Volume > select Last Done Price > Mouse Over Column Layout > select Custom
2. mouse over Ranking > select Top Turnover > all Shariah stocks are denoted with an [S] > mouse over Column Layout > select Edit Customs > select Name > select Last Done Price > select Value > Mouse Over Column Layout > select Custom
3. mouse over Ranking > select Top Gainers (Over 5 Trading Days) > mouse over Column Layout > select Edit Customs > select Name > select Last Done Price > select 5 Days Change > select 5 Days % Change > Mouse Over Column Layout > select Custom
4. mouse over Ranking > select Top Losers (Over 5 Trading Days)
5. mouse over Ranking > select Top % Gainers (Over 5 Trading Days)
6. mouse over Ranking > select Top % Losers (Over 5 Trading Days)

Shariah Top Actives (as at Yesterday)

Name	Price (RM)	Volume
CPETECH [S]	0.915	761,995.000
WIDAD [S]	0.470	757,986.000
CLASSITA [S]	0.045	737,618.000
RENEUCO [S]	0.255	731,964.000
LEFORM [S]	0.355	695,877.000
VELESTO [S]	0.210	574,503.000
SCIB [S]	0.810	545,042.000
SIMEPROP [S]	0.590	387,015.000
TOPGLOV [S]	0.815	378,675.000
PANDA [S]	0.210	371,909.000

Shariah Top Turnover (as at Yesterday)

Name	Price (RM)	Value (RM)
CPETECH [S]	0.915	70,054,186
SCIB [S]	0.810	43,893,453
BPLANT [S]	1.550	41,029,003
GAMUDA [S]	4.450	36,353,680
WIDAD [S]	0.470	35,944,257
PETGAS [S]	16.700	33,872,382
NESTLE [S]	116.500	33,840,180
TENAGA [S]	9.900	31,986,879
TOPGLOV [S]	0.815	30,770,265
KPJ [S]	1.320	30,020,108

Top Gainers (over 5 Trading days as at Yesterday)

Name	Price (RM)	Change (RM)
AJI	16.300	+0.700
HLFG	16.540	+0.440
RAPID	28.420	+0.420
VITROX	7.190	+0.190
BKAWAN	20.400	+0.180
RCECAP	2.850	+0.180
EG	1.640	+0.140
MBMR	4.460	+0.129
GENP	5.590	+0.120
HLBANK	19.120	+0.120

Top % Gainers (over 5 Trading days as at Yesterday)

Name	Price (RM)	Change (%)
FINTEC	0.010	+100.00
XOX	0.015	+50.00
RENEUCO	0.255	+34.21
ZELAN	0.060	+33.33
KIALIM	0.510	+30.77
MINETEC	0.065	+30.00
SCABLE	0.065	+30.00
LANDMRK	0.245	+25.64
BERTAM	0.150	+20.00
WAJA	0.060	+20.00

Top Losers (over 5 Trading days as at Yesterday)

Name	Price (RM)	Change (RM)
NESTLE	116.500	-8.900
F&N	26.960	-1.200
PERTAMA	2.360	-0.860
HEXTECH	22.100	-0.560
UTDPLT	16.500	-0.480
MPI	26.360	-0.440
PERSTIM	2.980	-0.430
HEIM	21.720	-0.420
HAPSENG	4.330	-0.400
KLK	21.500	-0.380

Top % Losers (over 5 Trading days as at Yesterday)

Name	Price (RM)	Change (%)
EAH	0.005	-50.00
FOCUS	0.010	-50.00
PHB	0.005	-50.00
COMPUGT	0.010	-33.33
TECHNAX	0.010	-33.33
XOXNET	0.025	-28.57
PERTAMA	2.360	-26.71
BCMALL	0.015	-25.00
TALAMT	0.015	-25.00
ZENTECH	0.015	-25.00

Singapore Banking and REIT: Looking ahead for 2024

19
LIVE
DECEMBER
TUESDAY
8PM - 9PM



Darren Chan



Glenn Thum

Senior Research Analysts,
Phillip Securities Research Pte Ltd

Scan Me

InvestingNote

Price & Volume Distribution Charts (as at Yesterday)

Technical Analysis

DEFINITION: Shariah compliant stocks with Technical Analysis showing 5-days & 10-days Moving Average Price below Yesterday's Close over past 3 days and with Volume Spike.

CHART GUIDE: Volume Distribution Chart is a statistical interpretation of the current sentiment on each stock in graphical format. The highest bar categorized as >150k is likely to be traded by institutions or super dealers, while the lowest bar categorized as <15k usually represents retail investors. "Buy Up" refers to more buyers snatching up the lots queued at selling price. "Sell Down" refers to sellers selling their shares to the buying queue



ShareInvestor WebPro > Screener > Market Screener (FA & TA) > select BURSA > add criteria

A. Criteria

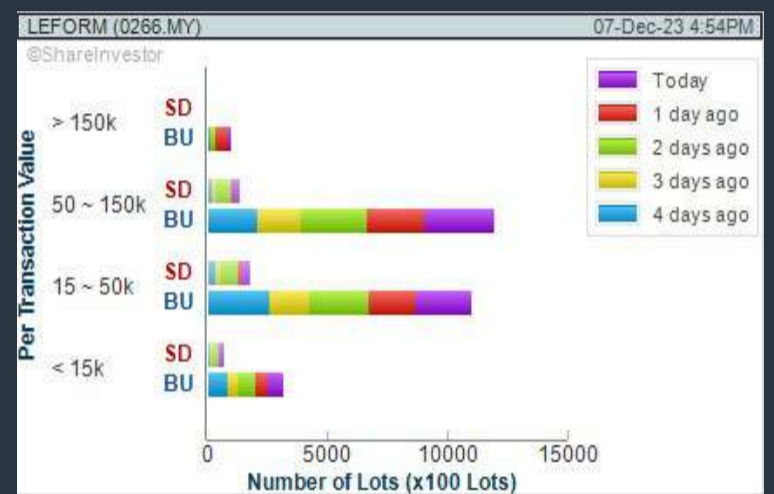
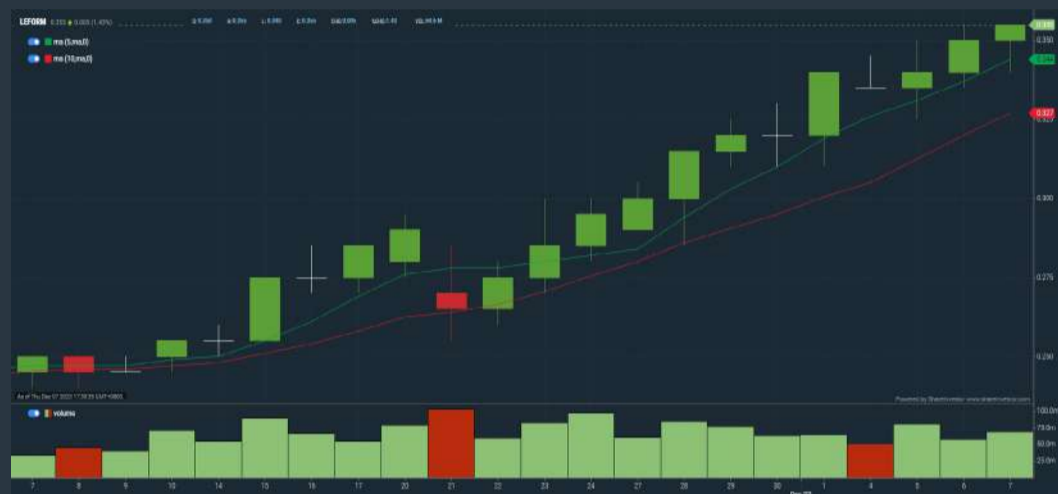
- > click Add Criteria
- Technical Analysis Conditions tab select (i) Moving Average Below Close (ii) Volume Spike
- Fundamental Analysis Conditions tab > select (iii) Revenue
- Prices & Other Conditions tab > select (iv) Is Shariah Compliant
- Technical Analysis Conditions tab select (v) Moving Average Below Close
- Prices & Other Conditions tab > select (vi) Last Done Price
- Technical Analysis Conditions tab select (vii) Moving Average Below Close

B. Conditions (Criteria Filters)

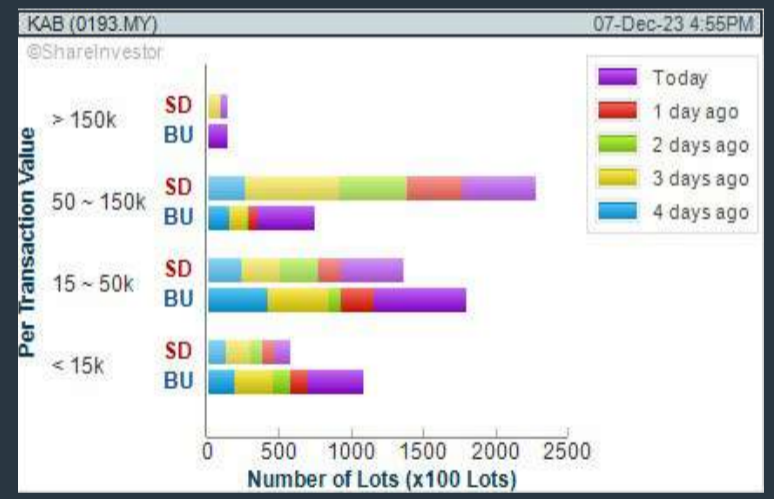
- Moving Average Below Close - select (MA) type (5) below close price for type (3) days
- Volume Spike - Volume type (1) greater than type (5) days average
- Revenue ("000) - select (more than) type (1) for the past select (1) financial year(s)
- Is Shariah Compliant - select **Yes**
- Moving Average Below Close - select (MA) type (10) below close price for type (3) days
- Last Done Price - select (more than) type (0.3)
- Moving Average Below Close - select (EMA) type (5) below close price for type (3) days

- > click Save Template > Create New Template type (Shariah Hot Stocks) > click Create
- > click Save Template as > select Shariah Hot Stocks > click Save
- > click Screen Now (may take a few minutes)
- > Sort By: Select (Vol) Select (Desc)
- > Mouse over stock name > Charts > click C² Charts or Volume Distribution

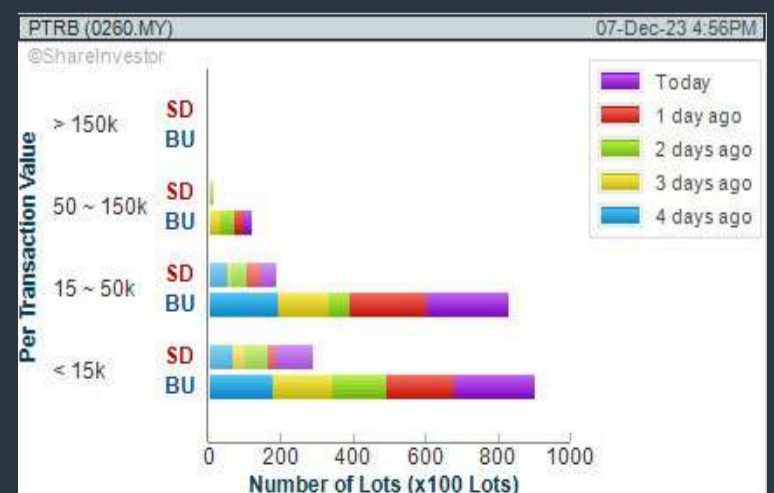
LEFORM BERHAD (0266) C² Chart



KINERGY ADVANCEMENT BERHAD (0193) C² Chart



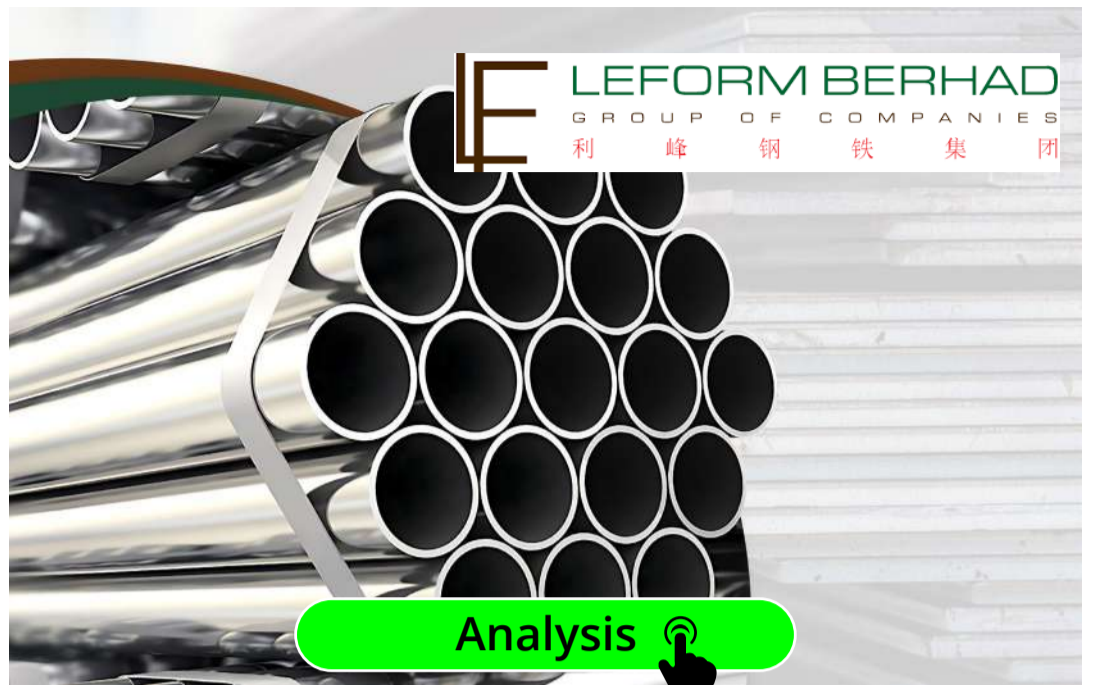
PT RESOURCES HOLDINGS BERHAD (0260) C² Chart



Disclaimer: The information on this page is provided as a service to readers. It does not constitute financial advice and/or any investment recommendations. Past performance is not indicative of future results. We assume no liability for damages resulting from or arising out of the use of such information. It would be best if you did your own research to make your personal investment decisions wisely or consult a licenced investment advisor.

COMPANY BACKGROUND

Leform Berhad is principally involved in the manufacturing and trading in steel products. The Company specialises in the electric resistance welding (ERW) of steel pipes and manufacturing of flat steel products. The products are used in various end-user industries including furniture, construction as well as industrial product manufacturing industries which include automotive parts and



telecommunication tower pole part manufacturing.

LEFORM LEFORM BERHAD		Updated at 07 Dec 2023 17:26	
Last (MYR): 0.355 ↑	Change: +6.00%	High: 0.355	Remarks: -
	Change (%): +1.43	Low: 0.340	
Open: 0.350		Yesterday's Close: 0.350	
Buy Price: 0.350		Sell Price: 0.355	
Buy Volume ('00): 262		Sell Volume ('00): 51 700	
Cumulative Volume ('00): 665,877		Cumulative Value: 24,379,170	

Financial Analysis

Profit Growth Profit to loss in most recent year	🔴	Piotroski F Score The company has below average financial strength (Piotroski F-Score of 3-4)	🔴
Dividend Payout Dividends given out when company is not profitable	🟡	Dividend Payout Dividend is increasing over the past 36 months.	🟢
Debt to Cashflow The company has negative cash flow from operations in most recent year	🔴	Free Cash Flow Negative free cash flow for the most recent year	🔴
Gross Profit Margin Low gross profit margin for 3 years	🟡	Net Earnings Margin Company is losing money but net profit margin is improving slightly over the past 45 months.	🟡
Return on Assets (ROA) Negative ROA for most recent year	🟡	Return on Equity (ROE) Negative ROE for most recent year	🔴
Return on Equity (ROE) ROE is decreasing by 5% a year over the past 33 months.	🔴		

🟢 Excellent 🟡 Good 🟠 Neutral 🔴 Be Alert 🔴 Watch Out



Historical Financials

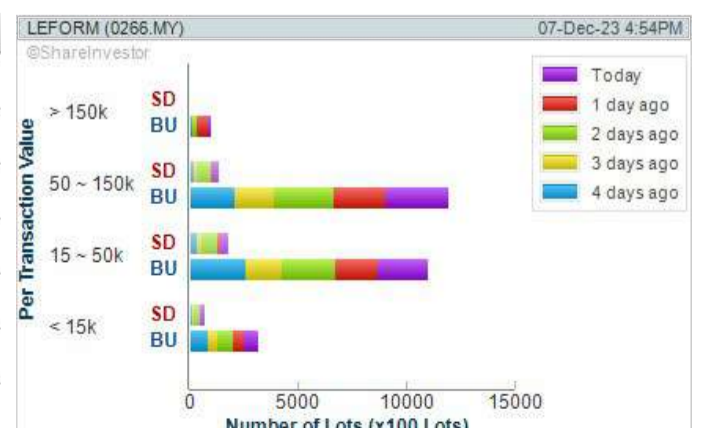


WebPro 9-Days Free Trial Registration
(worth RM9)
Sign Up Now



Key Statistics with Total Shareholder Returns

Period	Dividend Received	Capital Appreciation	Total Shareholder Return
Short Term Return	5 Days	+0.005	+10.94%
	10 Days	-	+26.09%
	20 Days	-	+44.90%
Medium Term Return	3 Months	+0.140	+65.12%
	6 Months	+0.135	+61.36%
	1 Year	+0.149	+72.33%
Annualised Return	Annualised	-	+72.33%



Disclaimer: The information on this page is provided as a service to readers. It does not constitute financial advice and/or any investment recommendations. Past performance is not indicative of future results. We assume no liability for damages resulting from or arising out of the use of such information. It would be best if you did your own research to make your personal investment decisions wisely or consult a licenced investment advisor.

Price & Volume Distribution Charts (as at Yesterday)

Technical Analysis

DEFINITION: Shariah compliant stocks with Technical Analysis showing Bullish Momentum and Price Uptrend. The share price closed at the highest price yesterday. The typical price was higher than the previous day's typical price.

CHART GUIDE: Volume Distribution Chart is a statistical interpretation of the current sentiment on each stock in graphical format. The highest bar categorized as >150k is likely to be traded by institutions or super dealers, while the lowest bar categorized as <15k usually represents retail investors. "Buy Up" refers to more buyers snatching up the lots queued at selling price. "Sell Down" refers to sellers selling their shares to the buying queue.



ShareInvestor WebPro > Screener > Market Screener (FA & TA)>select BURSA>add criteria

A. Criteria

- > click Add Criteria
- Fundamental Analysis Conditions tab >select (i) Revenue
- Technical Analysis Conditions tab select (ii) Average Volume
- Prices & Other Conditions tab > select (iii) Last Done Price
- Prices & Other Conditions tab > select (iv) Is Shariah Compliant
- Technical Analysis Conditions tab select (v) RSI Overbought
- Technical Analysis Conditions tab select (vi) Moving Average Below Close
- Technical Analysis Conditions tab select (vii) CCI Overbought

B. Conditions (Criteria Filters)

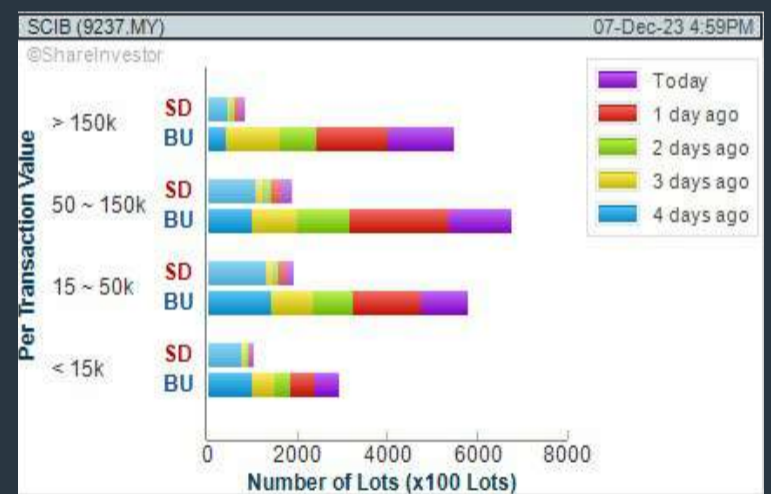
1. Revenue ("000) - select (more than) type (1) for the past select (1) financial year(s)
2. Average Volume - type (1) days average volume greater than type (10000) lots
3. Last Done Price - select (more than) type (0.3)
4. Is Shariah Compliant - select Yes
5. RSI Overbought - select RSI 1 above 99 for 1 days
6. Moving Average Below Close - select (MA) type (10) below close price for type (1) days
7. CCI Overbought - select CCI (2) above (0) for (1) days

- > click Save Template > Create New Template type (Shariah Momentum Up Stocks) > click Create
- > click Save Template as > select Shariah Momentum Up Stocks > click Save
- > click Screen Now (may take a few minutes)
- Sort By: Select (Vol) Select (Desc)
- Mouse over stock name > Charts > click C² Charts tab or Volume Distribution

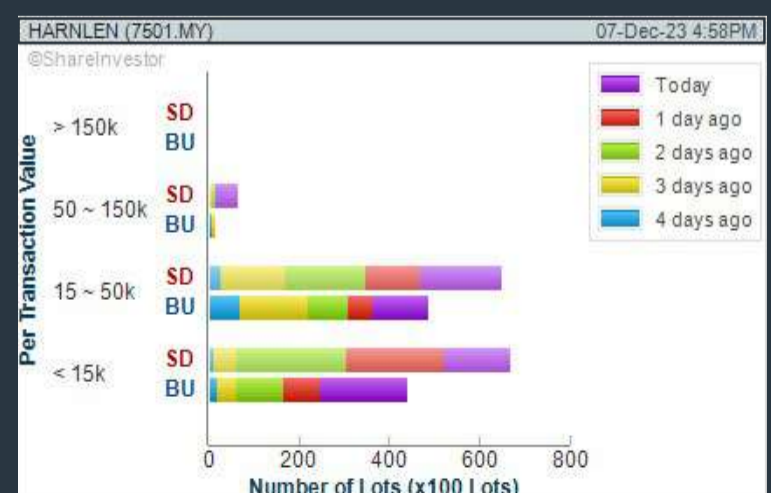
LEFORM BERHAD (0266) C² Chart



SARAWAK CONSOLIDATED IND BERHAD (9237) C² Chart



HARN LEN CORPORATION BERHAD (7501) C² Chart



Disclaimer: The information on this page is provided as a service to readers. It does not constitute financial advice and/or any investment recommendations. Past performance is not indicative of future results. We assume no liability for damages resulting from or arising out of the use of such information. It would be best if you did your own research to make your personal investment decisions wisely or consult a licenced investment advisor.

IMPORTANT Announcement!



We are thrilled to announce an upgrade that will take your investment experience to new heights!

BURSA STATION is evolving and will be merged into the SHAREINVESTOR STATION

starting from 1st November 2023

and we can't wait to share all the amazing benefits with you.

ShareInvestor Station is a desktop application that has a similar user interface to Bursa Station, with additional exciting features such as: access to the

- Global Market*
 - Intrinsic Value Calculator*
 - Interactive Charting Tools*
 - Customisable Indicator Database*
 - Top Shareholder Analysis*
 - Company Forecast Revenue*
 - Consensus Estimates*
 - Dividend Analysis*
- and many more!*



Find out more about ShareInvestor Station here



For Existing Users: Rest assured that you will retain access to Bursa Station until the end of your current subscription period. In addition, as a token of our appreciation for your loyalty, you will receive an email providing complimentary access to explore the ShareInvestor Station.

Thank you for using BursaStation!
We are committed to continuing to serve you better with ShareInvestor Station.

If you have any questions or face any issues, reach out to us at admin.my@shareinvestor.com or dial 03 - 7803 1791.

Price & Volume Distribution Charts (as at Yesterday)

Technical Analysis

DEFINITION: Stocks with Technical Analysis showing 5-days & 10-days Moving Average Price below Close over past 1 days and with Volume Spike

CHART GUIDE: Volume Distribution Chart is a statistical interpretation of the current sentiment on each stock in graphical format. The highest bar categorized as >150k is likely to be traded by institutions or super dealers, while the lowest bar categorized as <15k usually represents retail investors. "Buy Up" refers to more buyers snatching up the lots queued at selling price. "Sell Down" refers to sellers selling their shares to the buying queue.



ShareInvestor WebPro > Screener > Market Screener (FA & TA) > select BURSA > add criteria

A. Criteria

- > click Add Criteria
- Technical Analysis Conditions tab select (i) Moving Average Below Close (ii) Volume Spike
- Fundamental Analysis Conditions tab >select (iii) Revenue
- Prices & Other Conditions tab > select (iv) Is Shariah Compliant
- Technical Analysis Conditions tab select (v) Moving Average Below Close
- Prices & Other Conditions tab > select (vi) Last Done Price
- Technical Analysis Conditions tab select (vii) Moving Average Below Close

B. Conditions (Criteria Filters)

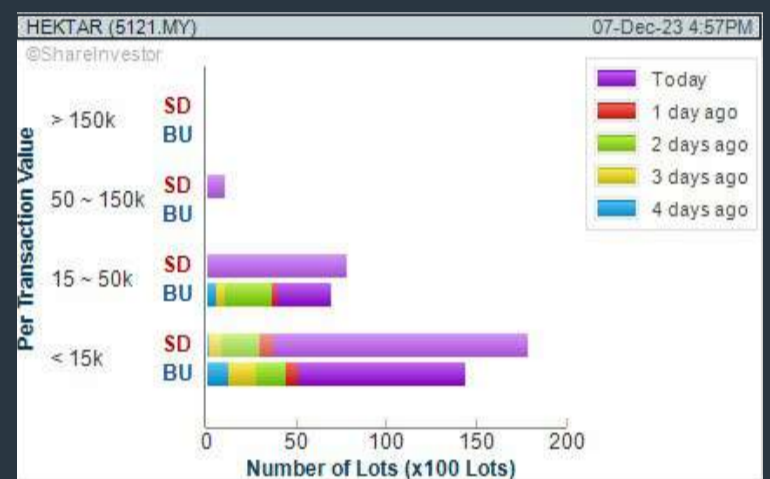
1. Moving Average Below Close - select (MA) type (5) below close price for type (3) days
2. Volume Spike - Volume type (1) greater than type (5) days average
3. Revenue ("000) - select (more than) type (1) for the past select (1) financial year(s)
4. Is Shariah Compliant - select NO
5. Moving Average Below Close - select (MA) type (10) below close price for type (1) days
6. Last Done Price - select (more than) type (0.3)
7. Moving Average Below Close - select (EMA) type (5) below close price for type (1) days

- > click Save Template > Create New Template type (Non-Shariah Hot Stocks) > click Create
- > click Save Template as > select Non-Shariah Hot Stocks > click Save
- > click Screen Now (may take a few minutes)
- Sort By: Select (Vol) Select (Desc)
- Mouse over stock name > Charts > click C² Charts tab or Volume Distribution

HEKTAR REITS (5121)

C² Chart

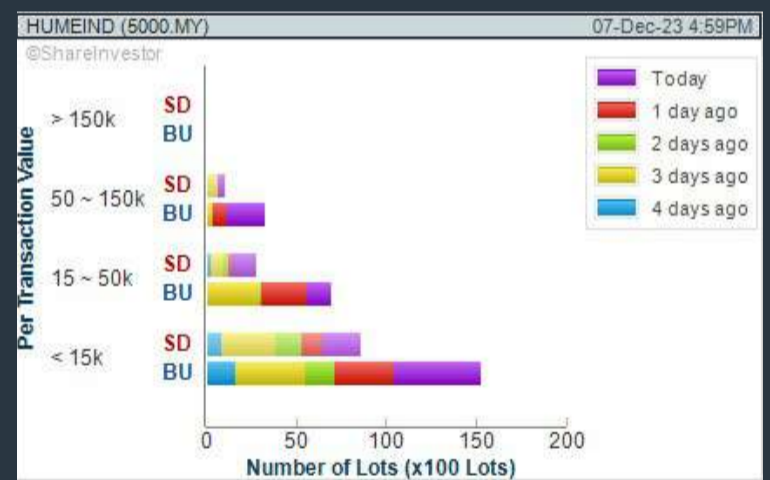
Analysis



HUME CEMENT INDUSTRIES BERHAD (5000)

C² Chart

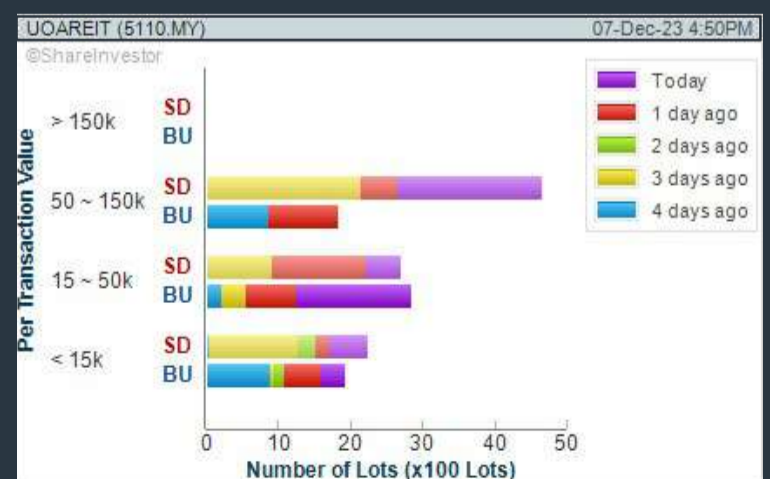
Analysis



UOA REITS (5110)

C² Chart

Analysis



Disclaimer: The information on this page is provided as a service to readers. It does not constitute financial advice and/or any investment recommendations. Past performance is not indicative of future results. We assume no liability for damages resulting from or arising out of the use of such information. It would be best if you did your own research to make your personal investment decisions wisely or consult a licenced investment advisor.

PURNELL

ONLY TOURBILLON



ESCAPE II
ABSOLUTE
SAPPHIRE

Purnell Asia

Tel.: +65.9817.3378

Email: sales.sg@purnellwatches.com

@ Purnell_Official

www.purnellwatches.com

PLAY



Price & Volume Distribution Charts (Over 3 trading days as at Yesterday)

Technical Analysis

DEFINITION: Stocks with Technical Analysis showing Bullish Momentum and Price Uptrend

CHART GUIDE: Volume Distribution Chart is a statistical interpretation of the current sentiment on each stock in graphical format. The highest bar categorized as >150k is likely to be traded by institutions or super dealers, while the lowest bar categorized as <15k usually represents retail investors. "Buy Up" refers to more buyers snatching up the lots queued at selling price. "Sell Down" refers to sellers selling their shares to the buying queue.



ShareInvestor WebPro > Screener > Market Screener (FA & TA) > select BURSA > add criteria

A. Criteria

- > click Add Criteria
- Fundamental Analysis Conditions tab > select (i) Revenue
- Technical Analysis Conditions tab select (ii) Moving Average Below Close
- Technical Analysis Conditions tab select (iii) Average Volume
- Prices & Other Conditions tab > select (iv) Last Done Price
- Technical Analysis Conditions tab select (v) Moving Average Below Close
- Technical Analysis Conditions tab select (v) Moving Average Bullish Crossover

B. Conditions

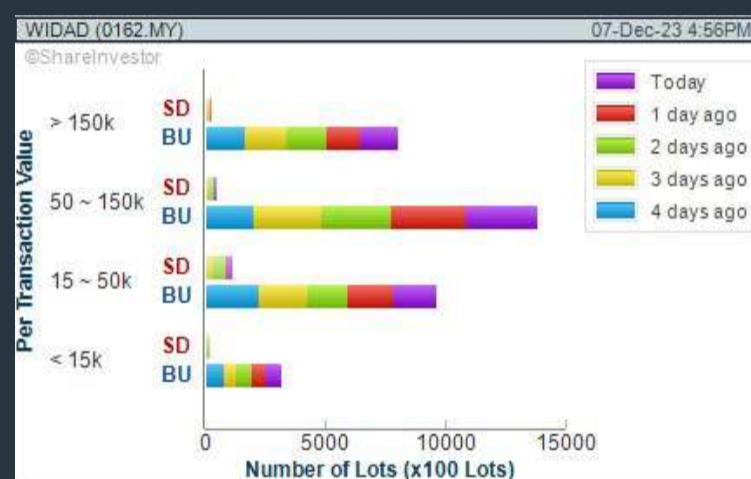
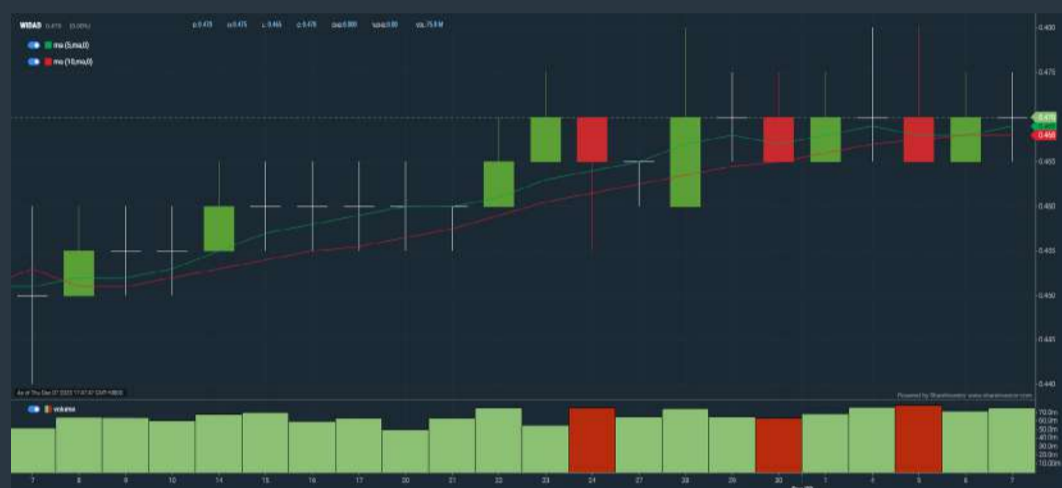
1. Revenue - select (more than) type (1) for the past select (1) financial year(s)
2. Moving Average Below Close - select (MA) type (20) below close price for type (1) days
3. Average Volume - type (5) days average volume type (10000) lots
4. Last Done Price - select (more than) type (0.3)
5. Moving Average Below Close - select (MA) type (10) below close price for type (1) days
6. Moving Average Bullish Crossover - select (MA) type (5) crossed above select (MA) type (10)

> click Save Template > Create New Template type (Non-Shariah Up-Trending Stocks) > click Create Click Save Template As > select Non-Shariah Up Trending Stocks > click Save > click Screen Now (may take a few minutes) Sort By: Select (Vol) Select (Desc) Mouse over stock name > Charts > click C² Charts tab or Volume Distribution

WIDAD GROUP BERHAD (0162)

C² Chart

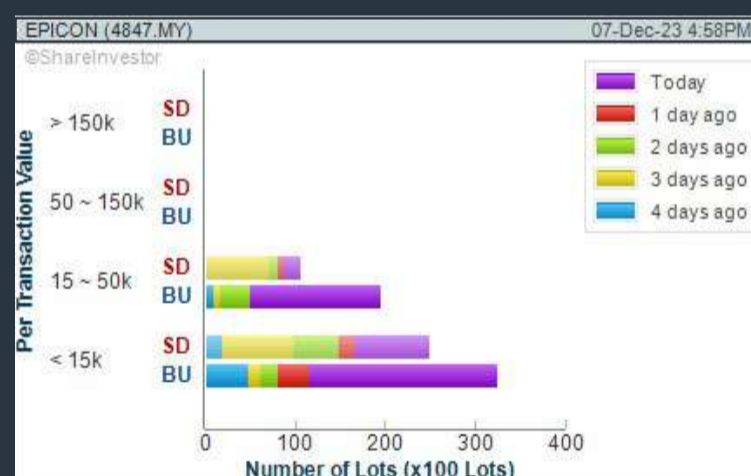
Analysis



EPICON BERHAD (4847)

C² Chart

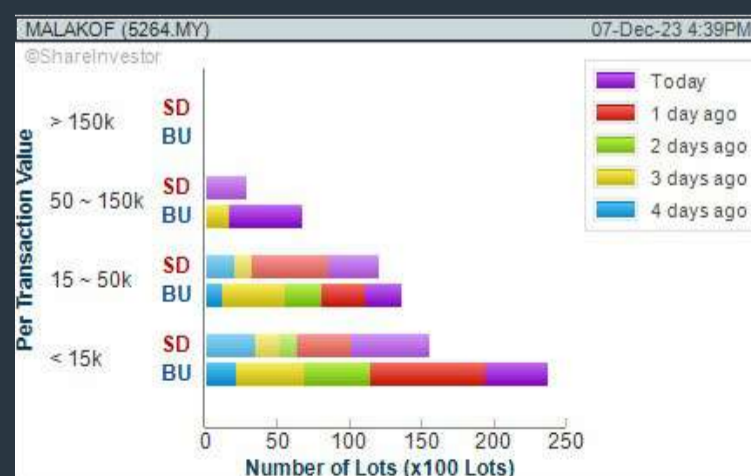
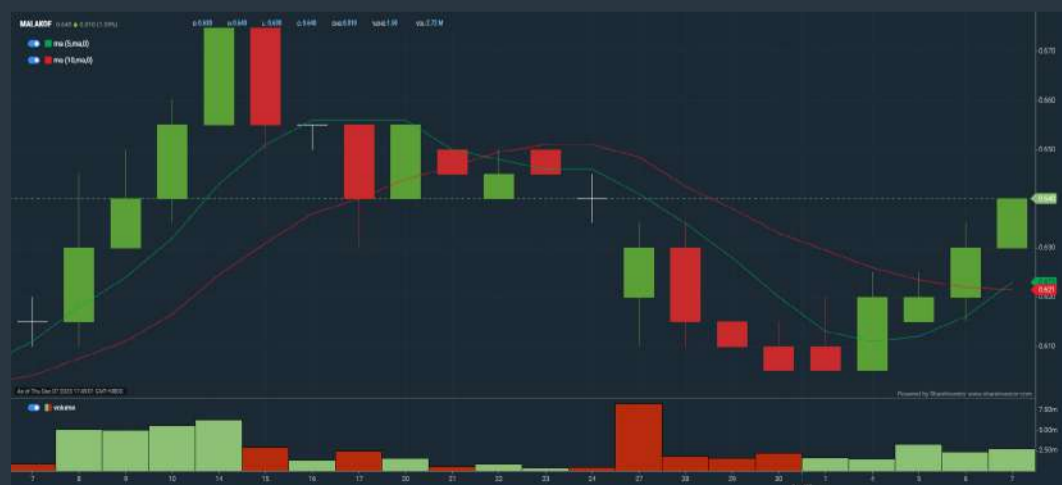
Analysis



MALAKOFF CORPORATION BERHAD (5264)

C² Chart

Analysis



Disclaimer: The information on this page is provided as a service to readers. It does not constitute financial advice and/or any investment recommendations. Past performance is not indicative of future results. We assume no liability for damages resulting from or arising out of the use of such information. It would be best if you did your own research to make your personal investment decisions wisely or consult a licenced investment advisor.

SHAREINVESTOR WEBPRO

STOCK MARKET DATA AT YOUR FINGERTIPS

Powerful browser-based market analytics platform.
Access from anywhere



8 Markets Data

- ▶ Get access to data from Bursa, NYSE, Nasdaq, HKEX, SGX, IDX, SET & ASX

Portfolio Management

- ▶ Profit & Loss Summary
- ▶ Stock Alert
- ▶ News & Events filtering
- ▶ Customizable column layout

Fundamental Analysis

Financial Analysis Statement

- ▶ Profit & Loss
- ▶ Balance Sheet
- ▶ Cash Flow Statement
- ▶ More than 20 Financial Ratios
- ▶ Dividend Analysis

Technical Charting

- ▶ C² chart (Customisable & Comprehensive)

Brokers' Call

Intrinsic Value Calculator

FactSheet

- ▶ Key Stock Information
- ▶ Ownership
- ▶ Consensus Estimates
- ▶ Annual Report
- ▶ Historical Price
- ▶ Insider Trades

What's new on WebPro (Stable Release 12.1.0)

In our effort to keep our platform at the forefront of trading technology, we have added on some new features onto our C² Chart in WebPro

ADDITIONAL NEW FEATURES:

- ▶ Anchor selector for AVWAP, PVAT, and PAV indicators
- ▶ Volume profile indicator by date range
- ▶ Moving Average Cross indicator
- ▶ Guppy Multiple Moving Average (GMMA) indicator
- ▶ GoNoGo Trend Signal indicators
- ▶ SignalIQ

So what are you waiting for? Head to our platform today and check out our new trading chart features and indicators. We're confident that you'll love the improvements we've made and that they'll help you become a more successful trader.

Click here to start your 9 days FREE trial
(Valued at RM10)



Price & Total Shareholder Return (as at Yesterday)

Fundamental Analysis

DEFINITION: Share price of a company trading at a lower price as compared to its fundamentals (FA) such as financial performance and dividend, allowing it to be attractive to value investors.

CHART GUIDE: Total Shareholder Return (TSR) combines share price appreciation and dividend distributions paid to show the total return to the shareholder expressed as a percentage.



ShareInvestor WebPro > Screener > Market Screener (FA & TA) > select BURSA > add criteria

A. Criteria

- > click Add Criteria
- Fundamental Analysis Conditions tab (i) Price Earnings Ratio
- Fundamental Analysis Conditions tab >select (ii) CAGR of Net Earnings
- Fundamental Analysis Conditions tab >select (iii) Net Debt To Equity
- Fundamental Analysis Conditions tab >select (iv) Return On Equity (ROE)

B. Conditions

1. Price Earnings Ratio - select (less than) type (15) times now
2. CAGR of Net Earnings - select (more than) type (10) % for the past type (3) financial year(s)
3. Net Debt To Equity – select (less than) type (1) for the past select (1) financial year(s)
4. Return On Equity (ROE) – select (more than) type (10) % for the past select (1) financial year(s)

- > click Save Template > Create New Template type (Value Stock) > click Create
- > click Save Template as > select Value Companies > click Save
- > click Screen Now (may take a few minutes)
- Sort by: Select (PE Ratio) Select (Ascending)
- > Mouse over stock name > Factsheet > looking for Total Shareholder Return
- > Mouse over stock name > Charts > click C2 Charts tab

SYNERGY HOUSE BERHAD (0279)

C² Chart



Period	Dividend Received	Capital Appreciation	Total Shareholder Return
Short Term Return	5 Days	+1.07%	+15.16%
	10 Days	+1.07%	+15.17%
	30 Days	+1.05%	+17.21%
Medium Term Return	3 Months	+1.25%	+18.32%
	6 Months	+1.35%	+18.11%

EDELTEQ HOLDINGS BERHAD (0278)

C² Chart



Period	Dividend Received	Capital Appreciation	Total Shareholder Return
Short Term Return	5 Days	-0.16%	-1.48%
	10 Days	-0.15%	-1.28%
	30 Days	-0.15%	-1.14%
Medium Term Return	3 Months	-0.15%	-1.46%
	6 Months	-0.45%	-1.22%

SUNMOW HOLDING BERHAD (03050)

C² Chart



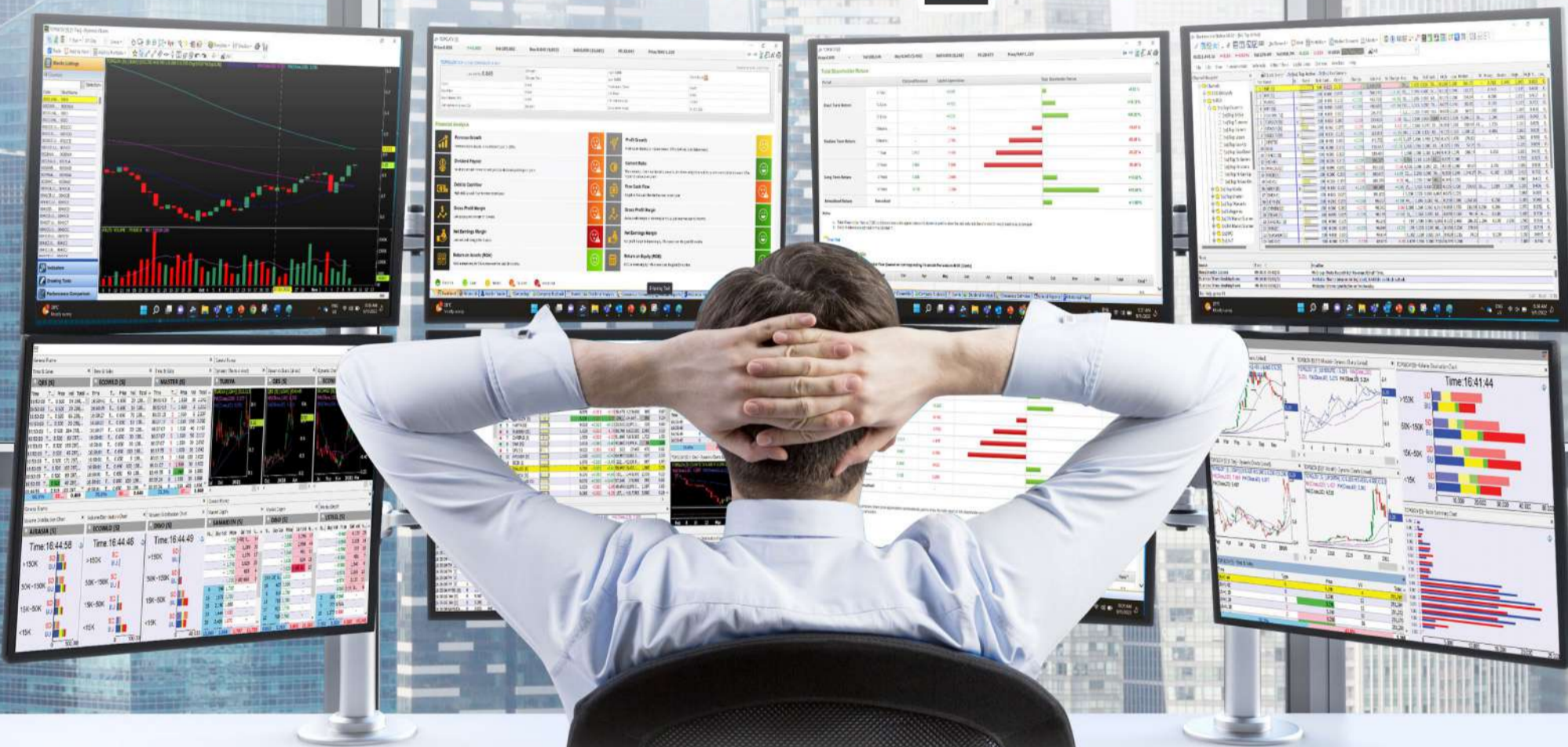
Period	Dividend Received	Capital Appreciation	Total Shareholder Return
Short Term Return	5 Days	-	-
	10 Days	-0.20%	-1.01%
	30 Days	-0.20%	-1.01%
Medium Term Return	3 Months	-0.05%	-1.01%
	6 Months	-0.05%	-0.50%
Long Term Return	1 Year	-0.43%	-0.94%
	3 Year	-0.52%	-0.92%
Annualized Return	Annualized	-	-0.92%

Disclaimer: The information on this page is provided as a service to readers. It does not constitute financial advice and/or any investment recommendations. Past performance is not indicative of future results. We assume no liability for damages resulting from or arising out of the use of such information. It would be best if you did your own research to make your personal investment decisions wisely or consult a licenced investment advisor.

MAKE BETTER TRADING STRATEGIES

with

SHARE INVESTOR STATION



8 Markets Data

- ▶ Get access to data from Bursa, NYSE, Nasdaq, HKEX, SGX, IDX, SET & ASX

Dynamic Chart

- ▶ Candlestick Pattern Recognition
- ▶ 111 Indicators
- ▶ 39 Drawing Tools
- ▶ Performance Comparison Chart

Intraday Data

- ▶ Market Depth
- ▶ Trade Summary Matrix & Chart
- ▶ Times & Sales
- ▶ Intraday Market Ticker

Market Screener

- ▶ 96 criteria ranging from FA, TA, Consensus Estimate
- ▶ Real-time Data

Power Frame

- ▶ Combining few Dynamic Charts together with intraday information in one frame

Technical Analysis

Fundamental Analysis

Financial Analysis Statement

- ▶ Profit & Loss
- ▶ Balance Sheet
- ▶ Cash Flow Statement
- ▶ More than 20 Financial Ratios
- ▶ Dividend Analysis

FactSheet

- ▶ Key Stock Information
- ▶ Ownership
- ▶ Consensus Estimates
- ▶ Annual Report
- ▶ Historical Price
- ▶ Insider Trades

Start your 18 days FREE trial now (Valued at RM82)



Price & Total Shareholder Return (as at Yesterday)

Fundamental Analysis

DEFINITION: Company revenue is growing and making good quality of earnings with positive Free Cash Flow.

CHART GUIDE: Total Shareholder Return (TSR) combines share price appreciation and distributions paid to show the total return to the shareholder expressed as a percentage.



ShareInvestor WebPro > Screener > Market Screener (FA & TA) > select BURSA > add criteria

A. Criteria

1. Fundamental Analysis Conditions tab >select (i) Free Cash Flow, (ii) Revenue Growth, (iii) Gross Profit (Earnings) Margin, (iv) Quality of Earnings, (v) Total Shareholder Returns, > click Add Criteria
2. Fundamental Analysis Conditions tab >select (vi) Total Shareholder Returns > click Add Criteria

B. Conditions (Criteria Filters)

1. Free Cash Flow - select (more than) type (1) for the past select (1) financial year(s)
2. Revenue Growth - select (more than) type (1) for the past select (1) financial year(s)
3. Gross Profit (Earnings) Margin - select (more than) type (30) % for the past select (1) financial year(s)
4. Quality of Earnings - select (more than) type (1) for the past select (1) financial year(s)
5. Total Shareholder Return - select (more than) type (5) % for the past select (3) financial year(s)
6. Total Shareholder Return - select (more than) type (5) % for the past select (5) financial year(s)

- > click Save Template > Create New Template type (Growth Companies) > click Create
- > click Save Template as > select Growth Companies > click Save
- > click Screen Now (may take a few minutes)
- > Sort By: Select (Revenue Growth) Select (Desc)
- > Mouse over stock name > Factsheet > looking for Total Shareholder Return

IGB BERHAD (5606)

C² Chart

Analysis



Period	Dividend Received	Capital Appreciation	Total Shareholder Return
Short Term Return	5Days	-0.00	+0.42%
	10Days	-0.00	+0.48%
	20Days	-0.00	+0.21%
Medium Term Return	3Months	-0.00	+0.26%
	6Months	-0.00	+0.24%
	1Year	-0.00	+0.26%
Long Term Return	2Years	0.00	+0.57%
	3Years	0.00	+0.71%
	5Years	0.00	+0.00%
Annualised Return	Annualised	-	+0.30%

MATRIX CONCEPTS HOLDINGS BERHAD (5236)

C² Chart

Analysis



Period	Dividend Received	Capital Appreciation	Total Shareholder Return
Short Term Return	5Days	-0.00	+0.11%
	10Days	-0.00	+0.41%
	20Days	-0.00	+0.75%
Medium Term Return	3Months	-0.00	+0.21%
	6Months	-0.00	+0.90%
	1Year	-0.00	+0.07%
Long Term Return	2Years	-0.00	+0.04%
	3Years	-0.00	+0.06%
	5Years	0.00	+0.28%
Annualised Return	Annualised	-	+0.16%

UZMA BERHAD (7250)

C² Chart

Analysis



Period	Dividend Received	Capital Appreciation	Total Shareholder Return
Short Term Return	5Days	-0.00	-0.04%
	10Days	-0.00	-0.00%
	20Days	-0.00	-0.00%
Medium Term Return	3Months	-0.00	-0.00%
	6Months	-0.00	+0.00%
	1Year	-0.00	+0.00%
Long Term Return	2Years	-0.00	+0.00%
	3Years	-0.00	+0.00%
	5Years	-0.00	+0.00%
Annualised Return	Annualised	-	+0.00%

Disclaimer: The information on this page is provided as a service to readers. It does not constitute financial advice and/or any investment recommendations. Past performance is not indicative of future results. We assume no liability for damages resulting from or arising out of the use of such information. It would be best if you did your own research to make your personal investment decisions wisely or consult a licenced investment advisor.



making places multifunctional



usm.com

XTRA

XTRA FURNITURE SDN BHD
The Gardens Mall, Mid Valley City, Lot S-236 & 237
Lingkar Syed Putra, 59200 Kuala Lumpur
T. +603 2282 9088 | living@xtrafurniture.com | xtrafurniture.com
📍 XTRAFurniture | 🌐 xtrafurnituremsia

Price & Total Shareholder Return (as at Yesterday)

Fundamental Analysis

DEFINITION: Company is paying out dividend with low or moderate leverage.

CHART GUIDE: Total Shareholder Return (TSR) combines share price appreciation and distributions paid to show the total return to the shareholder expressed as a percentage.



ShareInvestor WebPro > Screener > Market Screener (FA & TA) > select BURSA > add criteria

A. Criteria

- > click Add Criteria
- Fundamental Analysis Conditions tab >select (i) Dividend Yield (Historical)
- Fundamental Analysis Conditions tab >select (ii) Dividend Payout (Historical)
- Fundamental Analysis Conditions tab >select (iii) Total Debt To Equity
- Fundamental Analysis Conditions tab >select (iv) Total Shareholder Returns
- Fundamental Analysis Conditions tab >select (v) Total Shareholder Returns
- Fundamental Analysis Conditions tab / >select (vi) CAGR of Dividend Per Share

• Fundamental Analysis Conditions tab >select (vii) CAGR of Dividend Per Share

B. Conditions (Criteria Filters)

1. Dividend Yield - select (more than) type (1) % for the past select (1) financial year(s)
2. Dividend Payout (Historical) - select (between) type (0.5) to type (1) times for the past select (1) financial year(s)
3. Total Debt to Equity – select (less than) type (1) for the past select (1) financial year(s)
4. Total Shareholder Return – select (more than) type (5) % for the past select (3) financial year(s)
5. Total Shareholder Return – select (more than) type (5) % for the past select (5) financial year(s)

6. CAGR of Dividend Per Share – select (less than) type (30) % for the past select (5) financial year(s)
7. CAGR of Dividend Per Share – select (more than) type (1) % for the past select (5) financial year(s)

> click Save Template > Create New Template type (Dividend Companies) > click Create

> click Save Template as > select Dividend Companies > click Save

> click Screen Now (may take a few minutes)

> Sort By: Select (Dividend Yield) Select (Desc)

> Mouse over stock name > Factsheet > looking for Total Shareholder Return

JAYCORP BERHAD (7152)

C² Chart

Analysis



Period	Dividend Received	Capital Appreciation	Total Shareholder Return
Short Term Return	5 Days	-0.025	-0.88%
	10 Days	-0.030	-1.21%
	30 Days	-0.025	-0.88%
Medium Term Return	3 Months	-0.145	-4.34%
	6 Months	-0.165	-4.81%
	1 Year	-	-
Long Term Return	2 Years	0.625	4.81%
	3 Years	0.170	+5.80%
	5 Years	0.525	+10.77%
Annualised Return	Annualised	-	+9.80%

FORMOSA PROSONIC INDUSTRIES (9172)

C² Chart

Analysis



Period	Dividend Received	Capital Appreciation	Total Shareholder Return
Short Term Return	5 Days	-0.017	-0.81%
	10 Days	-0.020	-1.03%
	30 Days	-0.010	-0.52%
Medium Term Return	3 Months	-0.080	-3.04%
	6 Months	-0.220	-7.26%
	1 Year	-0.220	-8.21%
Long Term Return	2 Years	0.200	-6.71%
	3 Years	0.340	-2.61%
	5 Years	0.520	+8.16%
Annualised Return	Annualised	-	+4.85%

KENANGA INVESTMENT BANK BERHAD (6483)

C² Chart

Analysis



Period	Dividend Received	Capital Appreciation	Total Shareholder Return
Short Term Return	5 Days	-0.005	-0.26%
	10 Days	-0.005	-0.28%
	30 Days	-0.005	-0.27%
Medium Term Return	3 Months	-0.025	-0.87%
	6 Months	-0.020	-0.53%
	1 Year	-0.020	-0.43%
Long Term Return	2 Years	0.105	-6.67%
	3 Years	0.105	-1.84%
	5 Years	0.227	+4.51%
Annualised Return	Annualised	-	+1.01%

Disclaimer: The information on this page is provided as a service to readers. It does not constitute financial advice and/or any investment recommendations. Past performance is not indicative of future results. We assume no liability for damages resulting from or arising out of the use of such information. It would be best if you did your own research to make your personal investment decisions wisely or consult a licenced investment advisor.

Week: 01 December 2023 - 07 December 2023

More Brokers' Call 

AMINVESTMENT BANK <small>... See More</small>	Call	Target Price	Release Date
Hong Leong Bank Berhad (5819)	BUY	RM22.60	06 Dec 2023
Kim Loong Resources Berhad (5027)	BUY	RM2.20	06 Dec 2023
Power Root Berhad (7237)	HOLD	RM2.18	04 Dec 2023

APEX <small>... See More</small>	Call	Target Price	Release Date
Axiata Group Berhad (6888)	BUY	RM3.06	07 Dec 2023
Padini Holdings Berhad (7052)	HOLD	RM3.79	01 Dec 2023

BIMB SECURITIES SDN BHD <small>... See More</small>	Call	Target Price	Release Date
Apex Healthcare Berhad (7090)	HOLD	RM2.41	04 Dec 2023
Gamuda Berhad (5398)	BUY	RM5.16	07 Dec 2023
IHH Healthcare Berhad (5225)	BUY	RM7.18	01 Dec 2023

KENANGA <small>... See More</small>	Call	Target Price	Release Date
Axiata Group Berhad (6888)	OUTPERFORM	RM3.10	07 Dec 2023
Gamuda Berhad (5398)	OUTPERFORM	RM5.45	07 Dec 2023
Pharmaniaga Berhad (7081)	UNDERPERFORM	RM0.31	05 Dec 2023

MALACCA SECURITIES SDN BHD <small>... See More</small>	Call	Target Price	Release Date
Asia File Corporation Berhad (7129)	BUY	RM2.60	01 Dec 2023

MIDF <small>... See More</small>	Call	Target Price	Release Date
Datasonic Group Berhad (5216)	NEUTRAL	RM0.46	04 Dec 2023
Gamuda Berhad (5398)	BUY	RM5.55	07 Dec 2023
Suria Capital Holdings Berhad (6521)	NEUTRAL	RM1.70	01 Dec 2023

UOB KAYHIAN <small>... See More</small>	Call	Target Price	Release Date
LB Aluminium Berhad (9326)	BUY	RM0.55	06 Dec 2023
Sern Kou Resources Berhad (7180)	BUY	RM0.75	06 Dec 2023
Wellcall Holdings Berhad (7231)	BUY	RM1.89	06 Dec 2023

Disclaimer: InveSt does not accept any liability whatsoever for any direct, indirect or consequential losses (including loss of profit) or damages that may arise from the use of information or opinions in this publication. The information and opinions in InveSt are not to be considered as an offer to sell or buy any of the securities discussed. Opinions expressed are subject to change without notice. The Brokers may, from time to time, have interests or positions in the securities mentioned. For the full report on each item listed on this page, please visit https://www.shareinvestor.com/my/brokers_call.

DEFINITION: Top 8 stocks with Technical Analysis plus Pattern Matching by 60 pre-defined indicators by the system showing a higher probability of bullish sentiment on the share price.



ShareInvestor WebPro > Screener > Predefined TA Screens > select market BURSA > Most Long Signals > click Scan Results or mouse over each company

EG INDUSTRIES BERHAD (8907.MY)

EG

Price updated at 07 Dec 2023 17:31

Last: 1.640	Change: -0.040	Volume: 12,755
	Change (%): -2.38	Range: 1.630 - 1.690

TA Scanner Results based on historical data up to 07 Dec 2023

Condition	Signal	Explanation
Bollinger Band: Bullish Long Term Volatility Breakout and Trending	Long	1. Close price above upper bollinger band(33,1). 2. Volume above average volume(50). 3. Average volume(50) is above 300,000.
Bollinger Band: Bullish Short Term Volatility Breakout and Trending	Long	1. Close price above upper bollinger band(33,1). 2. Volume above average volume(10). 3. Average volume(10) is above 300,000.
Bollinger Band: High Above Upper Bollinger Band	Neutral	1. High above upper bollinger band(14,2). 2. Average volume(5) is above 100,000.
Donchian Channels: High Above Upper Donchian Channels	Long	High crossed above the upper Donchian Channel(14,4)
MA: Short Term Bullish Moving Average Crossover	Long	MA(10) crossed above MA(15) within the last 1 day.
MACD: Bullish MACD Crossover	Long	1. MACD(12,26) diff line crossed above the MACD(12,26) signal line. 2. MACD Histogram(12,26) is above 0.
Volume: 10 Days large value Buy Up trade	Long	1. 150K value Buy Up greater than Sell Down by 20% for 10 days. 2. 50K-100K value Buy Up greater than Sell Down by 20% for 10 days. 3. Average volume(10) is above 1000000
Volume: 5 Days large value Buy Up trade	Long	1. 150K value Buy Up greater than Sell Down by 20% for 5 days. 2. 50K-100K value Buy Up greater than Sell Down by 20% for 5 days. 3. Average volume(10) is above 1000000
Williams %R: Bearish Williams %R	Short	1. Williams %R(26) between 0 and -20. 2. Average volume(5) is above 100,000.

M & A EQUITY HOLDINGS BERHAD (7082.MY)

M&A

Price updated at 07 Dec 2023 17:31

Last: 0.340	Change: -0.005	Volume: 22,158
	Change (%): -1.45	Range: 0.340 - 0.345

TA Scanner Results based on historical data up to 07 Dec 2023

Condition	Signal	Explanation
Bollinger Band: Bullish Long Term Volatility Breakout and Trending	Long	1. Close price above upper bollinger band(33,1). 2. Volume above average volume(50). 3. Average volume(50) is above 300,000.
Bollinger Band: Bullish Short Term Volatility Breakout and Trending	Long	1. Close price above upper bollinger band(33,1). 2. Volume above average volume(10). 3. Average volume(10) is above 300,000.
Bollinger Band: High Above Upper Bollinger Band	Neutral	1. High above upper bollinger band(14,2). 2. Average volume(5) is above 100,000.
Donchian Channels: High Above Upper Donchian Channels	Long	High crossed above the upper Donchian Channel(14,4)
MA: Short Term Bullish Moving Average Crossover	Long	MA(10) crossed above MA(15) within the last 1 day.
MACD: Bullish MACD Crossover	Long	1. MACD(12,26) diff line crossed above the MACD(12,26) signal line. 2. MACD Histogram(12,26) is above 0.
Price: New 52 Week High	Long	1. Stock reach a new 52 week high. 2. Average volume(30) is above 50000.
Williams %R: Bearish Williams %R	Short	1. Williams %R(26) between 0 and -20. 2. Average volume(5) is above 100,000.

CENTRAL GLOBAL BERHAD (8052.MY)

CGB

Price updated at 07 Dec 2023 17:31

Last: 3.040	Change: -	Volume: 29,143
	Change (%): -	Range: 3.010 - 3.040

TA Scanner Results based on historical data up to 07 Dec 2023

Condition	Signal	Explanation
Bollinger Band: Bullish Long Term Volatility Breakout and Trending	Long	1. Close price above upper bollinger band(33,1). 2. Volume above average volume(50). 3. Average volume(50) is above 300,000.
Bollinger Band: Bullish Short Term Volatility Breakout and Trending	Long	1. Close price above upper bollinger band(33,1). 2. Volume above average volume(10). 3. Average volume(10) is above 300,000.
CCI: Bearish CCI Overbought And Reversing	Short	1. CCI(26) above 100 and CCI(26) 1 day ago increasing for the last 3 days. 2. CCI(26) below CCI(26) 1 day ago
DM: Bullish Directional Movement	Long	-DI(14) crossed below +DI(14)
MA: Short Term Bearish Moving Average Crossover	Short	MA(10) crossed below MA(15) within the last 1 day.
Volume: 10 Days large value Buy Up trade	Long	1. 150K value Buy Up greater than Sell Down by 20% for 10 days. 2. 50K-100K value Buy Up greater than Sell Down by 20% for 10 days. 3. Average volume(10) is above 1000000
Volume: 5 Days large value Buy Up trade	Long	1. 150K value Buy Up greater than Sell Down by 20% for 5 days. 2. 50K-100K value Buy Up greater than Sell Down by 20% for 5 days. 3. Average volume(10) is above 1000000
Williams %R: Bearish Williams %R	Short	1. Williams %R(26) between 0 and -20. 2. Average volume(5) is above 100,000.

SOUTHERN STEEL BERHAD (5665.MY)

SSTEEL

Price updated at 07 Dec 2023 17:31

Last: 0.690	Change: -0.015	Volume: 3,483
	Change (%): -2.13	Range: 0.680 - 0.710

TA Scanner Results based on historical data up to 07 Dec 2023

Condition	Signal	Explanation
Bollinger Band: High Above Upper Bollinger Band	Neutral	1. High above upper bollinger band(14,2). 2. Average volume(5) is above 100,000.
DM: Bullish Directional Movement	Long	-DI(14) crossed below +DI(14)
MA: Bullish Price Crossover	Long	1. Close price crossed above MA(40) within the last 1 day. 2. Previous day close price is below the MA(10) for the last 5 days
Parabolic SAR: Bearish Parabolic SAR Reversal	Neutral	1. Parabolic SAR 1 day ago above close price 1 day ago for the last 5 days. 2. Parabolic SAR below close price
RSI: Short Term RSI 50 Bullish Crossover	Long	1. RSI(20) crossed above 50 within the last 1 day and RSI(20) 1 day ago below 50 for the last 5 days. 2. Volume above average volume(125). 3. Average volume(5) is above 100,000.
Stochastic: Fast Stochastic Buy Signal	Long	1. Fast Stochastic(15,5) %K crossed above 20. 2. Fast Stochastic(15,5) %K 1 day ago was below 20 for the last 5 days. 3. Average volume(30) is above 50000
Volume: Volume Spike	Long	1. Volume is more than 500% above average volume(10). 2. Volume above 200000. 3. Close price above 0.10

Disclaimer: The information on this page is provided as a service to readers. It does not constitute financial advice and/or any investment recommendations. Past performance is not indicative of future results. We assume no liability for damages resulting from or arising out of the use of such information. It would be best if you did your own research to make your personal investment decisions wisely or consult a licenced investment advisor.



MESTRON HOLDINGS BERHAD
(0207.MY)

MESTRON

Price updated at 07 Dec 2023 17:30

Last: 0.455	Change: -	Volume: 180,096
	Change (%): -	Range: 0.455 - 0.475

TA Scanner Results based on historical data up to 07 Dec 2023

Condition	Signal	Explanation
Bollinger Band: High Above Upper Bollinger Band	Neutral	1. High above upper bollinger band(14,2). 2. Average volume(5) is above 100,000.
DM: Bullish Directional Movement	Long	-DI(14) crossed below +DI(14)
Donchian Channels: High Above Upper Donchian Channels	Long	High crossed above the upper Donchian Channel(14,4)
RSI: Short Term RSI 50 Bullish Crossover	Long	1. RSI(20) crossed above 50 within the last 1 day and RSI(20) 1 day ago below 50 for the last 5 days. 2. Volume above average volume(125). 3. Average volume(5) is above 100,000.
Volume: 10 Days large value Buy Up trade	Long	1. 150K value Buy Up greater than Sell Down by 20% for 10 days. 2. 50K-100K value Buy Up greater than Sell Down by 20% for 10 days. 3. Average volume(10) is above 1000000
Volume: 5 Days large value Buy Up trade	Long	1. 150K value Buy Up greater than Sell Down by 20% for 5 days. 2. 50K-100K value Buy Up greater than Sell Down by 20% for 5 days. 3. Average volume(10) is above 1000000



UMW HOLDINGS BERHAD
(4588.MY)

UMW

Price updated at 07 Dec 2023 17:31

Last: 4.950	Change: +0.010	Volume: 43,334
	Change (%): +0.20	Range: 4.950 - 4.960

TA Scanner Results based on historical data up to 07 Dec 2023

Condition	Signal	Explanation
Bollinger Band: Bullish Long Term Volatility Breakout and Trending	Long	1. Close price above upper bollinger band(33,1). 2. Volume above average volume(50). 3. Average volume(50) is above 300,000.
Bollinger Band: Bullish Short Term Volatility Breakout and Trending	Long	1. Close price above upper bollinger band(33,1). 2. Volume above average volume(10). 3. Average volume(10) is above 300,000.
Bollinger Band: High Above Upper Bollinger Band	Neutral	1. High above upper bollinger band(14,2). 2. Average volume(5) is above 100,000.
Donchian Channels: High Above Upper Donchian Channels	Long	High crossed above the upper Donchian Channel(14,4)
MA: Short Term Bearish Moving Average Crossover	Short	MA(10) crossed below MA(15) within the last 1 day.
Price: New 52 Week High	Long	1. Stock reach a new 52 week high. 2. Average volume(30) is above 50000.
Volume: 10 Days large value Sell Down trade	Short	1. 150K value Sell Down greater than Buy Up by 20% for 10 days. 2. 50K-100K value Sell Down greater than Buy Up by 20% for 10 days. 3. Average volume(10) is above 1000000
Volume: 5 Days large value Sell Down trade	Short	1. 150K value Sell Down greater than Buy Up by 20% for 5 days. 2. 50K-100K value Sell Down greater than Buy Up by 20% for 5 days. 3. Average volume(10) is above 1000000
Volume: Volume Spike	Long	1. Volume is more than 500% above average volume(10). 2. Volume above 200000. 3. Close price above 0.10
Williams %R: Bearish Williams %R	Short	1. Williams %R(26) between 0 and -20. 2. Average volume(5) is above 100,000.



MATRIX CONCEPTS HOLDINGS BERHAD
(5236.MY)

MATRIX

Price updated at 07 Dec 2023 17:31

Last: 1.660	Change: -0.020	Volume: 7,458
	Change (%): -1.19	Range: 1.660 - 1.680

TA Scanner Results based on historical data up to 07 Dec 2023

Condition	Signal	Explanation
Bollinger Band: High Above Upper Bollinger Band	Neutral	1. High above upper bollinger band(14,2). 2. Average volume(5) is above 100,000.
CCI: Bearish CCI Overbought And Reversing	Short	1. CCI(26) above 100 and CCI(26) 1 day ago increasing for the last 3 days. 2. CCI(26) below CCI(26) 1 day ago
Donchian Channels: High Above Upper Donchian Channels	Long	High crossed above the upper Donchian Channel(14,4)
MACD: Bullish MACD Crossover	Long	1. MACD(12,26) diff line crossed above the MACD(12,26) signal line. 2. MACD Histogram(12,26) is above 0.
Parabolic SAR: Bearish Parabolic SAR Reversal	Neutral	1. Parabolic SAR 1 day ago above close price 1 day ago for the last 5 days. 2. Parabolic SAR below close price
Price: New 52 Week High	Long	1. Stock reach a new 52 week high. 2. Average volume(30) is above 50000.
Volume: 10 Days large value Buy Up trade	Long	1. 150K value Buy Up greater than Sell Down by 20% for 10 days. 2. 50K-100K value Buy Up greater than Sell Down by 20% for 10 days. 3. Average volume(10) is above 1000000
Volume: 5 Days large value Buy Up trade	Long	1. 150K value Buy Up greater than Sell Down by 20% for 5 days. 2. 50K-100K value Buy Up greater than Sell Down by 20% for 5 days. 3. Average volume(10) is above 1000000



IMASPRO CORPORATION BERHAD
(7222.MY)

IMASPRO

Price updated at 07 Dec 2023 17:31

Last: 4.960	Change: -0.020	Volume: 18,591
	Change (%): -0.40	Range: 4.910 - 5.040

TA Scanner Results based on historical data up to 07 Dec 2023

Condition	Signal	Explanation
Bollinger Band: Low Below Lower Bollinger Band	Neutral	1. Low below lower bollinger band(14,2). 2. Average volume(5) is above 100,000.
Chaikin Volatility: Increasing Chaikin Volatility	Neutral	Chaikin Volatility(10,10) has been increasing for 5 days
Volume: 10 Days large value Buy Up trade	Long	1. 150K value Buy Up greater than Sell Down by 20% for 10 days. 2. 50K-100K value Buy Up greater than Sell Down by 20% for 10 days. 3. Average volume(10) is above 1000000
Volume: 5 Days large value Buy Up trade	Long	1. 150K value Buy Up greater than Sell Down by 20% for 5 days. 2. 50K-100K value Buy Up greater than Sell Down by 20% for 5 days. 3. Average volume(10) is above 1000000
Volume: Consecutive Days Of Increasing Average Volume	Long	1. Average Volume(20) has been increasing over the last 2 weeks. 2. Average volume(20) is above 100000
Williams %R: Bullish Williams %R	Long	1. Williams %R(26) between -80 and -100. 2. Average volume(5) is above 100,000.

Disclaimer: The information on this page is provided as a service to readers. It does not constitute financial advice and/or any investment recommendations. Past performance is not indicative of future results. We assume no liability for damages resulting from or arising out of the use of such information. It would be best if you did your own research to make your personal investment decisions wisely or consult a licenced investment advisor.

BURSA MALAYSIA DERIVATIVES TO LAUNCH FIRST CURRENCY FUTURES ON MONDAY, DEC 11

Bursa Malaysia Derivatives Bhd (BMDB) is set to launch its first currency futures contract, the Mini USD/CNH Futures (FCNH), through a licensing agreement established with Hong Kong Exchanges and Clearing (HKEX) on Dec 11.

To learn more about trading opportunities with FCNH, the public is invited to log onto the live stream of the FCNH launch on Bursa Malaysia's Facebook page on Dec 11, at 9.00am. The event will include presentations and a panel discussion on 'Navigating the Path to Diversification in Currency Trading: Challenges, Opportunities, and the Evolving Role of RMB'.

FCNH will be the country's inaugural exchange-traded currency futures contract, complementing existing currency markets operated by Malaysian financial institutions. BMDB said that by introducing the new asset class, traders will be presented with enhanced trading

opportunities and arbitrage possibilities across the derivatives markets of Hong Kong and Malaysia.

Designed as a smaller-sized, cash-settled contract, FCNH offers investors a capital-efficient way to achieve renminbi (RMB) currency hedging over their investment holdings since it does not require investors to exchange the initial sum invested. This will be very useful for participants, such as small to medium enterprises (SMEs) and business owners with transactions in China, to hedge their risks on fluctuations in the US dollar and offshore Chinese RMB currencies.

The plan to launch FCNH is also strategic and in line with the recent signing of a licencing agreement with Dalian Commodity Exchange (DCE) on the soybean oil futures settlement price for the Bursa Malaysia DCE Soybean Oil Futures Contract (FSOY), a new product to be listed on Bursa Malaysia Derivatives in 2024.

According to Bursa Malaysia Bhd chief executive officer and Bursa Malaysia Derivatives chairman Datuk Muhamad Umar Swift, the launch of FCNH is timely given the current volatility in global markets, which has led to increasing demand among market participants and businesses to manage their foreign currency exchange exposure. The licencing agreement with HKEX for FCNH and product collaboration with DCE are testaments to Bursa Malaysia Derivatives' commitment to forging strategic alliances and deepening global market connections. He is optimistic that these efforts will enable market participants to effectively navigate the complexities of international markets and adeptly manage cross-market risks.

Meanwhile HKEX group head of Emerging Business & FIC, Glenda So, said that at HKEX, building a suite of RMB-related investment and risk management products forms a key part of its strategy. HKEX is keen to support its partners with the development of a broader RMB and fixed-income product ecosystem in the region and beyond, connecting capital with opportunities.

SC TO DEBUT STREAMLINED TRANSFER MECHANISM TO MAIN MARKET – CHAIRMAN

According to the Securities Commission Malaysia (SC) chairman Datuk Seri Dr Awang Adek Hussin, SC is seeking to introduce a streamlined transfer mechanism that will enable qualifying ACE Market companies to transfer to the Main Market beginning in 2024. The SC, together with Bursa Malaysia, is working to improve efficiency in the public markets to facilitate a start-up's IPO, with measures such as reducing time-to-market for companies seeking to list on the stock exchange. Details of the proposed automatic transfer framework will be announced later this month.

In his speech at the Malaysia Venture Forum 2023, he said that the introduction of a new simplified and accelerated transfer process will facilitate a seamless transfer of listings to promote sizeable and quality ACE Market companies to the Main Market. By being in the Main Market, it will open up opportunities for foreign investors to participate which should encourage greater foreign participation in the capital market.

He said that capital markets play an important role in enabling easier access to funding for start-ups and micro, small and medium enterprises (MSMEs), thus the SC had taken proactive steps to facilitate fundraising for businesses, particularly in the early stage of financing. Efforts include allowing flexible financial instruments, facilitating more efficient exit options, encouraging more investments into private markets, and forging partnerships and collaborations, all of which are pivotal in nurturing a vibrant venture capital and private equity ecosystem.

He added that SC and Bursa will continue to facilitate exits for promising companies, especially in the technology sector, and recent capital market initiatives aimed at supporting IPO-ready companies are expected to have a positive impact. These include tax deductions for eligible tech-based companies on the Main Market and the ACE Market. Concessions on the soon-to-be-implemented capital gains tax will be made available to IPOs on Bursa. These measures are designed to

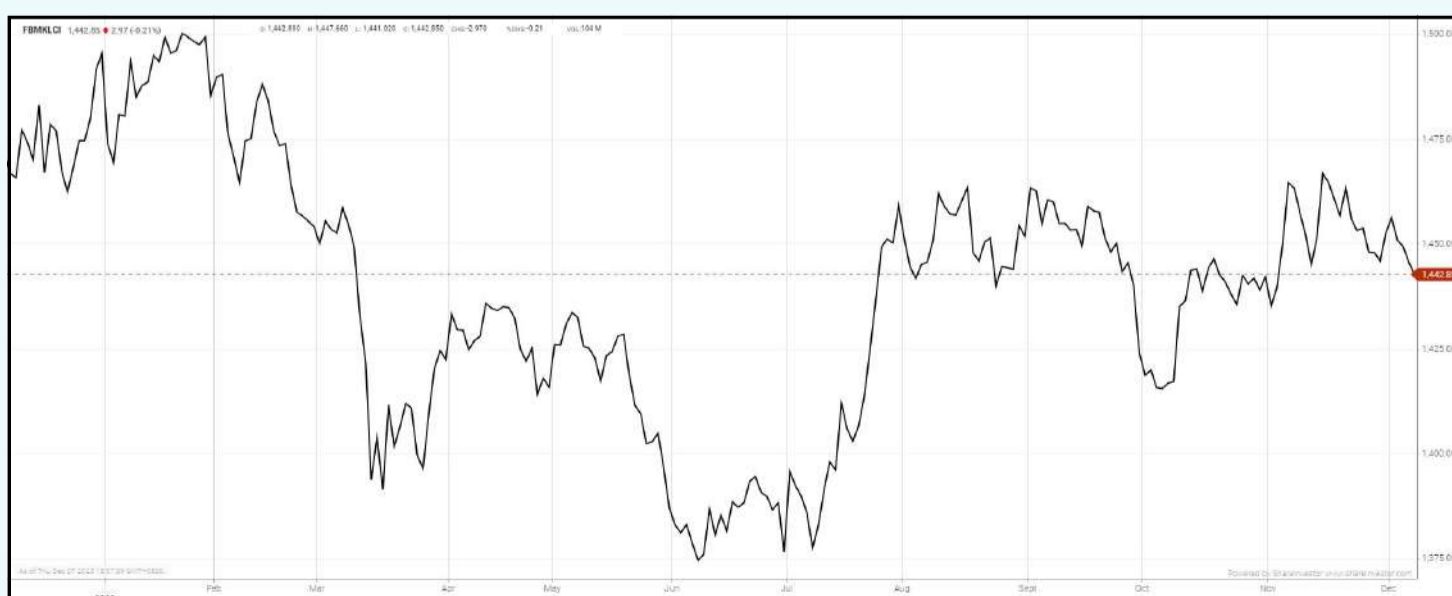
enhance fundraising efforts, sustain the vibrancy of the IPO market, and improve trading liquidity.

The SC is seeing a healthy pipeline of IPOs this year, with 32 companies approved to date for listings on Bursa, many of which are tech-related. Malaysia has implemented targeted policies to foster a more dynamic start-up ecosystem, and this includes RM90 billion to be invested in the New Industrial Master Plan 2030. Start-ups and SMEs are expected to play a crucial role contributing an anticipated RM30.8 billion in gross domestic product by 2030.

The SC is also looking into introducing a small offering exemption in the Capital Markets and Services Act next year, facilitating a clear safe harbour for offerings of a certain size to sophisticated investors. This is intended to reduce the regulatory burden in the fundraising process for start-ups and MSMEs, as well as provide clarity for instruments like simple agreements for future equity and convertible notes, which are becoming increasingly common in start-up funding.

EYE ON THE MARKETS

On Thursday (07Dec), the Ringgit closed at 4.6740 against the USD and 3.4879 to the Sing Dollar. On Monday (04Dec), the FBM KLCI opened at 1454.97. As at Thursday (07Dec) 5:00pm, the FBM KLCI closed down 12.12 points at 1442.85. Over in US, the overnight Dow Jones Industrial Average closed up 62.95 points (+0.17%) to 36,117.38 whilst the NASDAQ added 193.28 points (+1.37%) to 14,339.99.



KLCI 1 Year Chart

Over 5 trading days



ShareInvestor WebPro (www.shareinvestor.com/my)

1. Price > Stock Prices
2. Select Market: NASDAQ / NYSE / IDX / SET / HKEX / SGX (One bourse at a time)
3. select Stocks Tab
4. select Ranking Top Gainers or Top Losers (Over 5 Trading Days)
5. Mouse over Column Layout > select Edit Customs > select Name > select Last Done Price > select 5 Days Change > select 52 Weeks High > select 52 Weeks Low > Mouse Over Column Layout > select Custom

NASDAQ (USD)

Top Gainers

Name	Last Done	Change Over 5 Days	52 Weeks High	52 Weeks Low
BOOKING HOLDINGS INC	3,238.270	+112.570	3,251.709	1,907.380
COCA-COLA CONSOLIDATED INC	809.200	+74.680	759.550	470.000
MICROSTRATEGY	571.090	+72.790	589.900	132.560
ULTA BEAUTY INC	489.850	+63.860	556.600	368.020
IDEXX LABORATORIES INC	523.080	+57.260	564.735	372.500

Top Losers

Name	Last Done	Change Over 5 Days	52 Weeks High	52 Weeks Low
FIRST CITIZENS BANCSHARES INC NRTH	1,429.380	-38.510	1,512.070	505.840
MONGODDB INC	384.240	-31.500	442.840	142.020
CHARTER COMMUNICATIONS INC	368.660	-31.470	458.300	302.210
MERCADOLIBRE INC	1,590.940	-29.520	1,660.000	815.855
O'REILLY AUTOMOTIVE INC NEW	953.710	-28.670	1,005.960	767.270

NYSE (USD)

Top Gainers

Name	Last Done	Change Over 5 Days	52 Weeks High	52 Weeks Low
NVR INC	6,444.800	+289.410	6,525.000	4,519.050
HOVNIANIAN ENTERPRISES INC	129.990	+39.590	127.990	41.280
ELASTIC N V	113.190	+32.830	115.990	46.180
FAIR ISAAC CORP	1,118.060	+30.460	1,151.490	575.390
DECKERS OUTDOOR CORP	694.420	+30.450	698.840	361.620

Top Losers

Name	Last Done	Change Over 5 Days	52 Weeks High	52 Weeks Low
BERKSHIRE HATHAWAY INC	537,780.000	-4,634.000	566,569.970	442,363.500
TEXAS PACIFIC LAND CORPORATION	1,516.520	-155.430	2,659.430	1,266.210
WHITE MOUNTAINS INSURANCE GROUP	1,457.630	-74.290	1,617.000	1,278.594
MARKEL GROUP INC	1,366.180	-72.910	1,560.000	1,186.560
EVEREST GROUP LTD	383.360	-27.190	417.920	343.360

IDX (Rupiah)

Top Gainers

Name	Last Done	Change Over 5 Days	52 Weeks High	52 Weeks Low
PETROSEA	7,200.000	+3,130.000	7,550.000	2,810.000
GOWA MAKASSAR TOURISM DEVELOPMENT	21,725.000	+2,000.000	21,725.000	14,500.000
DCI INDONESIA TBK	44,050.000	+1,575.000	59,050.000	32,850.000
CHANDRA ASRI PETROCHEMICAL TBK	4,350.000	+1,400.000	4,350.000	1,995.000
PETRINDO JAYA KREASI TBK	9,825.000	+1,000.000	10,050.000	240.000

Top Losers

Name	Last Done	Change Over 5 Days	52 Weeks High	52 Weeks Low
M CASH INTEGRASI TBK	3,950.000	-2,000.000	9,800.000	3,690.000
GRAHA LAYAR PRIMA	2,710.000	-1,070.000	4,540.000	1,775.000
NFC INDONESIA TBK	4,860.000	-1,065.000	9,000.000	4,100.000
PIONEERINDO GOURMET INTERNATIONAL	4,600.000	-925.000	6,675.000	1,315.000
INDOFOOD CBP SUKSES MAKMUR TBK PT	10,650.000	-900.000	11,925.000	9,275.000

SET (Thai Baht)

Top Gainers

Name	Last Done	Change Over 5 Days	52 Weeks High	52 Weeks Low
FE	170.000	+10.000	220.000	160.000
SCC	295.000	+8.000	360.000	282.000
MASTER	59.750	+6.000	91.500	41.500
TFMAMA	220.000	+5.000	224.000	187.000
JTS	58.500	+3.500	64.750	23.200

Top Losers

Name	Last Done	Change Over 5 Days	52 Weeks High	52 Weeks Low
PTTEP	140.500	-11.000	179.500	134.500
AEONTS	152.000	-6.500	208.000	145.000
BH	217.000	-6.000	272.000	203.000
TOPP	158.000	-5.500	172.000	150.500
NEW	110.000	-5.000	210.000	65.250

HKEX (HKD)

Top Gainers

Name	Last Done	Change Over 5 Days	52 Weeks High	52 Weeks Low
YSB INC	29.500	+9.560	64.500	14.960
SWIRE PACIFIC	58.050	+7.350	72.600	48.400
BYD COMPANY LIMITED	195.400	+3.900	255.800	185.000
EAST BUY HOLDING LIMITED	32.750	+3.700	74.500	22.650
MANULIFE FINANCIAL CORP	153.300	+3.500	157.200	134.800

Top Losers

Name	Last Done	Change Over 5 Days	52 Weeks High	52 Weeks Low
HONG KONG EXCHANGES & CLEARING (388.HK)	250.800	-26.400	382.400	243.600
HONG KONG EXCHANGES & CLEARING (80388.HK)	230.000	-23.600	307.600	223.800
TENCENT HOLDINGS LIMITED	307.800	-19.200	416.600	282.600
TRIP COM GROUP LTD	256.200	-18.400	330.200	240.600
ASYMCHM LABORATORIES (TIANJIN) CO	89.300	-17.900	140.800	86.350

SGX (SGD)

Top Gainers

Name	Last Done	Change Over 5 Days	52 Weeks High	52 Weeks Low
JMH USD	40.200	+1.590	54.890	38.370
JARDINE C&C	29.320	+0.800	35.580	27.250
VENTURE	13.100	+0.570	18.750	11.360
NIO Inc. USD OV	7.700	+0.460	15.780	7.070
XMH*	0.450	+0.150	0.450	0.193

Top Losers

Name	Last Done	Change Over 5 Days	52 Weeks High	52 Weeks Low
VERTEX SPAC	3.880	-0.910	4.790	3.880
DBS	31.180	-0.560	35.855	30.300
IFAST	8.000	-0.400	8.510	4.150
SEMBCORP IND	4.900	-0.240	6.100	3.161
CORDLIFE	0.295	-0.160	0.570	0.155

A DOZEN THINGS I LEARNED FROM WARREN BUFFETT



Devanesan
Evanson
**Chief Executive
Officer, Minority
Shareholders Watch
Group**

Warren Buffett is a master storyteller. You can learn a lot about investing and life lessons from his annual letters to shareholders, annual general meetings, and articles. But do you remember most of them? Probably not. How about his quotes? Highly likely. This is because they are memorable, short and powerful sentences. In this article, I will try to distil the main pillars of Buffett's investing philosophy using a dozen of his everlasting quotes.

1. "RULE NO. 1: NEVER LOSE MONEY. RULE NO. 2: NEVER FORGET RULE NO. 1."

Capital preservation should be the main priority before you invest in stocks. Invest with a wide margin of safety to allow for unforeseen events.

2. "PRICE IS WHAT YOU PAY, VALUE IS WHAT YOU GET."

Focus on the underlying value of your investment. Not share price volatility. Always pay less than the value that you are getting. Don't overpay.

3. "THE KEY TO INVESTING IS NOT ASSESSING HOW MUCH AN INDUSTRY IS GOING TO AFFECT SOCIETY, OR HOW MUCH IT WILL GROW, BUT RATHER DETERMINING THE COMPETITIVE ADVANTAGE OF ANY GIVEN COMPANY AND, ABOVE ALL, THE DURABILITY OF THAT ADVANTAGE."

Invest in companies with durable competitive advantage or moat (e.g. pricing power, low-cost advantage, strong brand etc). Products or services with wide and sustainable moats around them are the ones that deliver superior returns to investors.

4. "IT'S FAR BETTER TO BUY A WONDERFUL COMPANY AT A FAIR PRICE, THAN A FAIR COMPANY AT A WONDERFUL PRICE."

A fair company at a wonderful price may give you a high return over a short period of time. But a wonderful business delivers higher return over the long term, even if you pay a fair price for it. This is because investment return converges with the return on capital of the business over the long term. If the business earns 10% on capital over 30 years and you hold it for 30 years, your return will be around 10%, even if you buy it at a 50% discount. Conversely, if the business earns 30% on capital over 30 years, your return will be about 30%, even if you buy it at a fair price or at a slight premium.

5. "THE STOCK MARKET IS A NO-CALLED-STRIKE GAME. YOU DON'T HAVE TO SWING AT EVERYTHING -- YOU CAN WAIT FOR YOUR PITCH."

Be patient and wait for the right opportunities. Bet only when the odds are in your favour. If not, do nothing.

6. “NO MATTER HOW GREAT THE TALENT OR EFFORTS, SOME THINGS JUST TAKE TIME. YOU CAN’T PRODUCE A BABY IN ONE MONTH BY GETTING NINE WOMEN PREGNANT.”

It usually takes about 10 years for a business to become an overnight success. Patience and discipline are key traits to success in investing.

7. “WHAT AN INVESTOR NEEDS IS THE ABILITY TO CORRECTLY EVALUATE SELECTED BUSINESSES. NOTE THAT WORD “SELECTED”: YOU DON’T HAVE TO BE AN EXPERT ON EVERY COMPANY, OR EVEN MANY. YOU ONLY HAVE TO BE ABLE TO EVALUATE COMPANIES WITHIN YOUR CIRCLE OF COMPETENCE. THE SIZE OF THAT CIRCLE IS NOT VERY IMPORTANT; KNOWING ITS BOUNDARIES, HOWEVER, IS VITAL.”

You have to figure out your circle of competence and stick to those areas you know best. Mistakes are less likely if you stay away from things you don’t understand. Never be afraid to say, “I don’t know”.

8. “AN INVESTOR SHOULD ACT AS THOUGH HE HAD A LIFETIME DECISION CARD WITH JUST TWENTY PUNCHES ON IT.”

With this mindset, you will be more careful and think hard about your investment ideas before you invest. It also reduces your temptation to trade stocks over the short term.

9. “THE MOST IMPORTANT QUALITY FOR AN INVESTOR IS TEMPERAMENT, NOT INTELLECT.”

Investing is about how you behave when everyone around you is behaving irrationally. It’s not how intelligent you are. Hedge fund LTCM collapsed in the late 1990s due to overleveraged positions, despite being run by a group of highly intelligent individuals.

10. "I NEVER ATTEMPT TO MAKE MONEY ON THE STOCK MARKET. I BUY ON THE ASSUMPTION THAT THEY COULD CLOSE THE MARKET THE NEXT DAY AND NOT REOPEN IT FOR FIVE YEARS."

Focus on a longer time horizon. Anything can happen in the short term. Invest in businesses that lets you sleep well at night.

11. "OPPORTUNITIES COME INFREQUENTLY. WHEN IT RAINS GOLD, PUT OUT THE BUCKET, NOT THE THIMBLE."

Act quickly and decisively when rare opportunities present themselves. Don't just buy a small amount. Be aggressive when the price is right.

12. "THE BEST INVESTMENT YOU CAN MAKE, IS AN INVESTMENT IN YOURSELF"

Be curious. Set aside time to read and think. Never stop learning. Those who keep learning will keep rising in life.

Jackson Tan
Manager, Corporate Monitoring

This article appeared in the The Observer, a weekly newsletter published by The Minority Shareholders Watch Group (MSWG) and reproduced here with their permission. Do follow MSWG's Twitter account at @MSWGMalaysia and share your thought on their tweets from time to time.



Learn how to identify Hot Stocks using Technical Analysis (TA) and Fundamental Analysis (FA)

SIGN UP FOR Invest NOW IT'S FREE!!!

Click here

Scan me



Via email, every Friday.

Get market moving news and analyses. Regular columns include Behind The Action and From The Observer

- Leaderboard • Shariah Hot Stocks • Shariah Momentum Up Stocks • Non Shariah Hot Stocks • Up Trending Stocks • Growth Stocks • Dividend Stocks • Long Companies • Insider Activity • Investor Relations • Regional Markets



DEFINITION: Insider Activity shows the trades made by substantial shareholders or directors of the company. Purchases by the directors and company share buyback may indicate the share price is undervalued and brings confidence to the price trend of the share price.



ShareInvestor WebPro > Fundamental > Insider Trades > click Search tab > Select Bursa > click Stock name > scroll up and leave at <Select Counter> Type Date Range for Announcement Date > click Search

Notice Period is 26th Nov - 02nd Dec 2023

Effective Change Date	Stock Name	Buyer/ Seller Name [Classification]	Bought / (Sold) ['000]	No. of Shares After Trade ['000]	
			Total	Total	% Held
28 NOV 2023 - 29 NOV 2023	3A	MR TEO KWEE HOCK [SSH]	143	49,984	10.221
24 NOV 2023 - 27 NOV 2023	3A	MR TEO KWEE HOCK [SSH]	-60	49,840	10.192
27 NOV 2023 - 27 NOV 2023	ABMB	EMPLOYEES PROVIDENT FUND BOARD [SSH]	-200	156,960	10.139
22 NOV 2023 - 22 NOV 2023	ABMB	EMPLOYEES PROVIDENT FUND BOARD [SSH]	-651	157,160	10.152
28 NOV 2023 - 28 NOV 2023	ACME	MR GOH CHOON LYE [SSH]	-1,100	45,116	12.275
28 NOV 2023 - 28 NOV 2023	ACME	WWT WELLNESS SOLUTIONS SDN BHD [SSH]	-1,100	45,116	12.275
27 NOV 2023 - 27 NOV 2023	ACME	MR GOH CHOON LYE [SSH]	-839	46,216	12.574
27 NOV 2023 - 27 NOV 2023	ACME	WWT WELLNESS SOLUTIONS SDN BHD [SSH]	-839	46,216	12.574
01 DEC 2023 - 01 DEC 2023	AEMULUS	MR NG SANG BENG [DIR/CEO]	780	125,104	18.669
01 DEC 2023 - 01 DEC 2023	AEMULUS	MR NG SANG BENG [SSH]	780	125,104	18.669
30 NOV 2023 - 30 NOV 2023	AIRPORT	KUMPULAN WANG PERSARAAN (DIPERBADANKAN) [SSH]	848	113,712	6.815
28 NOV 2023 - 28 NOV 2023	AIRPORT	EMPLOYEES PROVIDENT FUND BOARD [SSH]	-801	138,423	8.296
27 NOV 2023 - 27 NOV 2023	AIRPORT	EMPLOYEES PROVIDENT FUND BOARD [SSH]	-1,221	139,224	8.344
24 NOV 2023 - 24 NOV 2023	AIRPORT	EMPLOYEES PROVIDENT FUND BOARD [SSH]	-712	140,445	8.417
27 NOV 2023 - 27 NOV 2023	AIRPORT	KUMPULAN WANG PERSARAAN (DIPERBADANKAN) [SSH]	182	112,864	6.764
23 NOV 2023 - 23 NOV 2023	AIRPORT	EMPLOYEES PROVIDENT FUND BOARD [SSH]	-49	141,156	8.46
22 NOV 2023 - 22 NOV 2023	AIRPORT	EMPLOYEES PROVIDENT FUND BOARD [SSH]	-400	141,205	8.463
29 NOV 2023 - 30 NOV 2023	AJIYA	CHIN HIN GROUP BERHAD [SSH]	6,510	91,158	30.904
29 NOV 2023 - 30 NOV 2023	AJIYA	DATIN SERI WONG MEE LENG [SSH]	6,510	112,511	38.143
29 NOV 2023 - 30 NOV 2023	AJIYA	DATUK SERI CHIAU BENG TEIK JP [DIR/CEO]	6,510	112,511	38.143
29 NOV 2023 - 30 NOV 2023	AJIYA	DATUK SERI CHIAU BENG TEIK JP [SSH]	6,510	112,511	38.143
29 NOV 2023 - 30 NOV 2023	AJIYA	DIVINE INVENTIONS SDN BHD [SSH]	6,510	112,511	38.143
29 NOV 2023 - 30 NOV 2023	AJIYA	MR CHIAU HAW CHOON [DIR/CEO]	6,510	112,511	38.143
29 NOV 2023 - 30 NOV 2023	AJIYA	MR CHIAU HAW CHOON [SSH]	6,510	112,511	38.143
29 NOV 2023 - 30 NOV 2023	AJIYA	PP CHIN HIN REALTY SDN BHD [SSH]	13,020	112,511	38.143
27 NOV 2023 - 28 NOV 2023	AJIYA	CHIN HIN GROUP BERHAD [SSH]	6,430	84,648	28.697
27 NOV 2023 - 28 NOV 2023	AJIYA	DATIN SERI WONG MEE LENG [SSH]	6,430	106,001	35.936
27 NOV 2023 - 28 NOV 2023	AJIYA	DATUK SERI CHIAU BENG TEIK JP [SSH]	6,430	106,001	35.936
27 NOV 2023 - 28 NOV 2023	AJIYA	DIVINE INVENTIONS SDN BHD [SSH]	6,430	106,001	35.936
27 NOV 2023 - 28 NOV 2023	AJIYA	MR CHIAU HAW CHOON [SSH]	6,430	106,001	35.936
27 NOV 2023 - 28 NOV 2023	AJIYA	PP CHIN HIN REALTY SDN BHD [SSH]	12,860	106,001	35.936
22 NOV 2023 - 28 NOV 2023	AJIYA	DATUK SERI CHIAU BENG TEIK JP [DIR/CEO]	12,648	106,001	35.936
22 NOV 2023 - 28 NOV 2023	AJIYA	MR CHIAU HAW CHOON [DIR/CEO]	12,648	106,001	35.936
22 NOV 2023 - 22 NOV 2023	AJIYA	CHIN HIN GROUP BERHAD [SSH]	6,218	78,218	26.517
22 NOV 2023 - 22 NOV 2023	AJIYA	DATIN SERI WONG MEE LENG [SSH]	6,218	99,571	33.756
22 NOV 2023 - 22 NOV 2023	AJIYA	DATUK SERI CHIAU BENG TEIK JP [SSH]	6,218	99,571	33.756
22 NOV 2023 - 22 NOV 2023	AJIYA	DIVINE INVENTIONS SDN BHD [SSH]	6,218	99,571	33.756
22 NOV 2023 - 22 NOV 2023	AJIYA	MR CHIAU HAW CHOON [SSH]	6,218	99,571	33.756
22 NOV 2023 - 22 NOV 2023	AJIYA	PP CHIN HIN REALTY SDN BHD [SSH]	12,436	99,571	33.756
24 NOV 2023 - 24 NOV 2023	ALLIANZ	EMPLOYEES PROVIDENT FUND BOARD [SSH]	-10	12,417	6.977
28 NOV 2023 - 28 NOV 2023	AMBANK	EMPLOYEES PROVIDENT FUND BOARD [SSH]	-1,521	343,453	10.378
24 NOV 2023 - 24 NOV 2023	AMBANK	EMPLOYEES PROVIDENT FUND BOARD [SSH]	-80	344,974	10.422
24 NOV 2023 - 24 NOV 2023	AME	MISS LEE LING SIEN [DIR/CEO]	50	386	0.06
24 NOV 2023 - 24 NOV 2023	AME	MR LEE CHAI [DIR/CEO]	100	116,144	18.173
24 NOV 2023 - 24 NOV 2023	AME	MR LEE CHAI [SSH]	100	116,144	18.173
24 NOV 2023 - 24 NOV 2023	AME	MR LIM KHAI WEN [DIR/CEO]	100	812	0.127
24 NOV 2023 - 24 NOV 2023	AME	MR TAN TECK ENG [DIR/CEO]	76	76	0.012
28 NOV 2023 - 28 NOV 2023	AMWAY	EMPLOYEES PROVIDENT FUND BOARD [SSH]	-309	9,906	6.026
27 NOV 2023 - 27 NOV 2023	AMWAY	EMPLOYEES PROVIDENT FUND BOARD [SSH]	-30	10,215	6.214
24 NOV 2023 - 24 NOV 2023	AMWAY	EMPLOYEES PROVIDENT FUND BOARD [SSH]	-22	10,244	6.232
23 NOV 2023 - 23 NOV 2023	AMWAY	EMPLOYEES PROVIDENT FUND BOARD [SSH]	-239	10,266	6.245
22 NOV 2023 - 22 NOV 2023	AMWAY	EMPLOYEES PROVIDENT FUND BOARD [SSH]	-6	10,504	6.39
27 NOV 2023 - 27 NOV 2023	ANCOMNY	DATO' SIEW KA WEI [DIR/CEO]	-500	170,290	17.84
27 NOV 2023 - 27 NOV 2023	ANCOMNY	DATO' SIEW KA WEI [SSH]	-500	170,290	17.84
27 NOV 2023 - 27 NOV 2023	ANCOMNY	MR LEE CHEUN WEI [DIR/CEO]	430	84,973	8.872
27 NOV 2023 - 27 NOV 2023	ANCOMNY	MR LEE CHEUN WEI [SSH]	430	84,973	8.872
27 NOV 2023 - 27 NOV 2023	ANCOMNY	MR SIEW KA KHEONG [DIR/CEO]	-500	45,569	4.774
28 NOV 2023 - 28 NOV 2023	AXIATA	MR VIVEK SOOD [DIR/CEO]	1,539	766	0.008
28 NOV 2023 - 28 NOV 2023	AXIATA	AMANAHRAYA TRUSTEES BERHAD-AMANAH SAHAM BUMIPUTERA [SSH]	2,000	1,142,404	12.446
28 NOV 2023 - 28 NOV 2023	AXREIT	EMPLOYEES PROVIDENT FUND BOARD [SSH]	1,000	272,480	15.65
29 NOV 2023 - 29 NOV 2023	AXREIT	KUMPULAN WANG PERSARAAN (DIPERBADANKAN) [SSH]	-462	180,694	10.378
28 NOV 2023 - 28 NOV 2023	AXREIT	KUMPULAN WANG PERSARAAN (DIPERBADANKAN) [SSH]	-200	181,156	10.405
24 NOV 2023 - 24 NOV 2023	AXREIT	EMPLOYEES PROVIDENT FUND BOARD [SSH]	2,000	271,480	15.593

Notice Period is 26th Nov - 02nd Dec 2023

Effective Change Date	Stock Name	Buyer/ Seller Name [Classification]	Bought / (Sold) ['000]	No. of Shares After Trade ['000]	
			Total	Total	% Held
27 NOV 2023 - 27 NOV 2023	AXREIT	KUMPULAN WANG PERSARAAN (DIPERBADANKAN) [SSH]	-18	181,356	10.416
23 NOV 2023 - 23 NOV 2023	AXREIT	EMPLOYEES PROVIDENT FUND BOARD [SSH]	84	269,480	15.478
22 NOV 2023 - 22 NOV 2023	AXREIT	EMPLOYEES PROVIDENT FUND BOARD [SSH]	41	269,396	15.473
29 NOV 2023 - 30 NOV 2023	BAHVEST	INNOSABAH CAPITAL HOLDINGS SDN BHD [SSH]	2,354	168,932	13.626
29 NOV 2023 - 29 NOV 2023	BAHVEST	MR CHONG TZU KHEN [DIR/CEO]	50	1,650	0.133
27 NOV 2023 - 27 NOV 2023	BAHVEST	LEE VUI HAN [SSH]	500	67,452	5.44
28 NOV 2023 - 28 NOV 2023	BAUTO	EMPLOYEES PROVIDENT FUND BOARD [SSH]	2,369	151,299	12.958
27 NOV 2023 - 27 NOV 2023	BAUTO	EMPLOYEES PROVIDENT FUND BOARD [SSH]	1,699	148,929	12.755
24 NOV 2023 - 24 NOV 2023	BAUTO	EMPLOYEES PROVIDENT FUND BOARD [SSH]	3,000	147,230	12.61
23 NOV 2023 - 23 NOV 2023	BAUTO	EMPLOYEES PROVIDENT FUND BOARD [SSH]	2,532	144,230	12.353
22 NOV 2023 - 22 NOV 2023	BAUTO	EMPLOYEES PROVIDENT FUND BOARD [SSH]	1,458	141,698	12.136
28 NOV 2023 - 28 NOV 2023	BIMB	EMPLOYEES PROVIDENT FUND BOARD [SSH]	88	370,113	16.33
27 NOV 2023 - 28 NOV 2023	BJCORP	TAN SRI DATO' SERI VINCENT TAN CHEE YIOUN [SSH]	-77,300	931,460	16.726
28 NOV 2023 - 28 NOV 2023	BVLH	DATO' GOH KANG BENG [DIR/CEO]	100	126,119	93.008
28 NOV 2023 - 28 NOV 2023	BVLH	DATO' GOH KANG BENG [SSH]	100	126,119	93.008
24 NOV 2023 - 24 NOV 2023	BVLH	DATO' GOH KANG BENG [DIR/CEO]	1,357	126,019	92.934
24 NOV 2023 - 24 NOV 2023	BVLH	DATO' GOH KANG BENG [SSH]	1,357	126,019	92.934
23 NOV 2023 - 23 NOV 2023	BVLH	DATO' GOH KANG BENG [DIR/CEO]	5,329	124,662	91.934
23 NOV 2023 - 23 NOV 2023	BVLH	DATO' GOH KANG BENG [SSH]	5,329	124,662	91.934
29 NOV 2023 - 29 NOV 2023	CAB-WB	MR CHUAH AH BEE [DIR/CEO]	-13,000	83,919	35.896
29 NOV 2023 - 29 NOV 2023	CDB	TELENER ASA [SSH]	3,883,129	3,883,129	33.1
29 NOV 2023 - 29 NOV 2023	CDB	TELENER ASIA HOLDING AS [SSH]	3,883,129	3,883,129	33.1
29 NOV 2023 - 29 NOV 2023	CDB	TELENER MALAYSIA INVESTMENTS PTE LTD [SSH]	3,883,129	3,883,129	33.1
29 NOV 2023 - 29 NOV 2023	CDB	TELENER MOBILE HOLDING AS [SSH]	3,883,129	3,883,129	33.1
29 NOV 2023 - 29 NOV 2023	CDB	TELENER SOUTH EAST ASIA INVESTMENT PTE LTD [SSH]	3,883,129	3,883,129	33.1
28 NOV 2023 - 28 NOV 2023	CDB	EMPLOYEES PROVIDENT FUND BOARD [SSH]	2,187	1,133,614	9.663
27 NOV 2023 - 27 NOV 2023	CDB	EMPLOYEES PROVIDENT FUND BOARD [SSH]	1,000	1,131,427	9.644
24 NOV 2023 - 24 NOV 2023	CDB	EMPLOYEES PROVIDENT FUND BOARD [SSH]	2,150	1,130,427	9.636
23 NOV 2023 - 23 NOV 2023	CDB	EMPLOYEES PROVIDENT FUND BOARD [SSH]	1,150	1,128,277	9.617
22 NOV 2023 - 22 NOV 2023	CDB	EMPLOYEES PROVIDENT FUND BOARD [SSH]	1,707	1,127,127	9.608
29 NOV 2023 - 30 NOV 2023	CEPAT	DATIN SERI OOI AH THIN [SSH]	75	121,330	39.27
29 NOV 2023 - 30 NOV 2023	CEPAT	DATO' MAH POOI SOO REALTY SDN. BHD. [SSH]	75	121,330	39.27
29 NOV 2023 - 30 NOV 2023	CEPAT	DATO' SERI MAH KING SENG [DIR/CEO]	75	121,330	39.27
29 NOV 2023 - 30 NOV 2023	CEPAT	DATO' SERI MAH KING SENG [SSH]	75	121,330	39.27
29 NOV 2023 - 30 NOV 2023	CEPAT	MHC PLANTATIONS BHD. [SSH]	75	121,330	39.27
29 NOV 2023 - 30 NOV 2023	CEPAT	TAN SRI DR MAH KING THIAN @ MAH KING THIAM [DIR/CEO]	75	121,330	39.27
29 NOV 2023 - 30 NOV 2023	CEPAT	TAN SRI DR MAH KING THIAN @ MAH KING THIAM [SSH]	75	121,330	39.27
27 NOV 2023 - 28 NOV 2023	CEPAT	DATIN SERI OOI AH THIN [SSH]	170	121,255	39.25
27 NOV 2023 - 28 NOV 2023	CEPAT	DATO' MAH POOI SOO REALTY SDN. BHD. [SSH]	170	121,255	39.25
27 NOV 2023 - 28 NOV 2023	CEPAT	DATO' SERI MAH KING SENG [DIR/CEO]	170	121,255	39.25
27 NOV 2023 - 28 NOV 2023	CEPAT	DATO' SERI MAH KING SENG [SSH]	170	121,255	39.25
27 NOV 2023 - 28 NOV 2023	CEPAT	MHC PLANTATIONS BHD. [SSH]	170	121,255	39.25
27 NOV 2023 - 28 NOV 2023	CEPAT	TAN SRI DR MAH KING THIAN @ MAH KING THIAM [DIR/CEO]	170	121,255	39.25
27 NOV 2023 - 28 NOV 2023	CEPAT	TAN SRI DR MAH KING THIAN @ MAH KING THIAM [SSH]	170	121,255	39.25
27 NOV 2023 - 27 NOV 2023	CGB	MR CHEW HIAN TAT [DIR/CEO]	1,600	16,574	60.531
27 NOV 2023 - 27 NOV 2023	CGB	MR CHEW HIAN TAT [DIR/CEO]	1,600	53,380	29.847
27 NOV 2023 - 27 NOV 2023	CGB	MR CHEW HIAN TAT [SSH]	1,600	53,380	29.847
28 NOV 2023 - 28 NOV 2023	CIMB	EMPLOYEES PROVIDENT FUND BOARD [SSH]	-1,938	1,632,617	15.31
28 NOV 2023 - 28 NOV 2023	CIMB	KUMPULAN WANG PERSARAAN (DIPERBADANKAN) [SSH]	-31	689,734	6.47
27 NOV 2023 - 27 NOV 2023	CIMB	EMPLOYEES PROVIDENT FUND BOARD [SSH]	6,240	1,634,555	15.33
24 NOV 2023 - 24 NOV 2023	CIMB	EMPLOYEES PROVIDENT FUND BOARD [SSH]	3,318	1,628,315	15.27
27 NOV 2023 - 27 NOV 2023	CIMB	KUMPULAN WANG PERSARAAN (DIPERBADANKAN) [SSH]	-1,478	689,765	6.47
23 NOV 2023 - 23 NOV 2023	CIMB	EMPLOYEES PROVIDENT FUND BOARD [SSH]	-48	1,624,997	15.24
22 NOV 2023 - 22 NOV 2023	CIMB	EMPLOYEES PROVIDENT FUND BOARD [SSH]	3,769	1,625,045	15.24
24 NOV 2023 - 24 NOV 2023	CLMT	EMPLOYEES PROVIDENT FUND BOARD [SSH]	75	408,372	14.94
23 NOV 2023 - 23 NOV 2023	CLMT	EMPLOYEES PROVIDENT FUND BOARD [SSH]	690	408,297	14.937
24 NOV 2023 - 24 NOV 2023	CLMT	KUMPULAN WANG PERSARAAN (DIPERBADANKAN) [SSH]	1,925	264,380	9.672
22 NOV 2023 - 22 NOV 2023	CLMT	EMPLOYEES PROVIDENT FUND BOARD [SSH]	1,068	407,607	14.912
27 NOV 2023 - 27 NOV 2023	CLOUDPT	ERA JASAKITA SDN BHD [SSH]	300	282,104	53.066
27 NOV 2023 - 27 NOV 2023	CLOUDPT	MR CHOONG WAI HOONG [DIR/CEO]	300	325,176	61.168
27 NOV 2023 - 27 NOV 2023	CLOUDPT	MR CHOONG WAI HOONG [SSH]	300	325,176	61.168

Disclaimer: The Information in Insider Activity is extracted from www.shareinvestor.com/fundamental/insider_trades. The information on this page is provided as a service to readers. It does not constitute financial advice and/or any investment recommendations. We assume no liability for damages resulting from or arising out of the use of such information. Whilst every effort is made to ensure accuracy, the information presented is not the official record of shareholder filings. Readers are advised to read the original filings on the Bursa Malaysia website at www.bursamalaysia.com



STROM
SWISS TIMEPIECES & JEWELLERY



StromWatch Asia
Tele : +65.9817.3378
Email : ll.stromasia@gmail.com
WWW.STROMWATCH.SWISS

Notice Period is 26th Nov - 02nd Dec 2023

Effective Change Date	Stock Name	Buyer/ Seller Name [Classification]	Bought / (Sold) ('000)		No. of Shares After Trade ('000)	
			Total	Total	% Held	% Held
27 NOV 2023 - 27 NOV 2023	CLOUDPT	MR YEW CHOONG CHEONG [DIR/CEO]	300	325,176	61.168	
27 NOV 2023 - 27 NOV 2023	CLOUDPT	MR YEW CHOONG CHEONG [SSH]	300	325,176	61.168	
28 NOV 2023 - 28 NOV 2023	CTOS	ABRDN HOLDINGS LIMITED (FORMERLY KNOWN AS ABERDEEN ASSET MANAGEMENT PLC) [SSH]	133	143,888	6.229	
28 NOV 2023 - 28 NOV 2023	CTOS	ABRDN MALAYSIA SDN BHD [SSH]	133	142,106	6.152	
28 NOV 2023 - 28 NOV 2023	CTOS	ABRDN PLC [SSH]	133	143,888	6.229	
27 NOV 2023 - 27 NOV 2023	CTOS	ABRDN HOLDINGS LIMITED (FORMERLY KNOWN AS ABERDEEN ASSET MANAGEMENT PLC) [SSH]	763	143,755	6.223	
27 NOV 2023 - 27 NOV 2023	CTOS	ABRDN MALAYSIA SDN BHD [SSH]	763	141,973	6.146	
27 NOV 2023 - 27 NOV 2023	CTOS	ABRDN PLC [SSH]	763	143,755	6.223	
23 NOV 2023 - 23 NOV 2023	CTOS	ABRDN HOLDINGS LIMITED (FORMERLY KNOWN AS ABERDEEN ASSET MANAGEMENT PLC) [SSH]	153	142,992	6.19	
23 NOV 2023 - 23 NOV 2023	CTOS	ABRDN MALAYSIA SDN BHD [SSH]	153	141,210	6.113	
23 NOV 2023 - 23 NOV 2023	CTOS	ABRDN PLC [SSH]	153	142,992	6.19	
24 NOV 2023 - 27 NOV 2023	CYPARK	MR CHUNG CHEE YANG [SSH]	750	41,900	5.092	
28 NOV 2023 - 28 NOV 2023	D&O	EMPLOYEES PROVIDENT FUND BOARD [SSH]	500	72,717	5.872	
27 NOV 2023 - 27 NOV 2023	D&O	EMPLOYEES PROVIDENT FUND BOARD [SSH]	300	72,217	5.832	
24 NOV 2023 - 24 NOV 2023	D&O	EMPLOYEES PROVIDENT FUND BOARD [SSH]	237	71,917	5.808	
23 NOV 2023 - 23 NOV 2023	D&O	EMPLOYEES PROVIDENT FUND BOARD [SSH]	101	71,680	5.789	
22 NOV 2023 - 22 NOV 2023	D&O	EMPLOYEES PROVIDENT FUND BOARD [SSH]	80	71,579	5.78	
24 NOV 2023 - 24 NOV 2023	DAYANG	DATIN WONG SIEW HONG [SSH]	500	149,551	12.917	
24 NOV 2023 - 24 NOV 2023	DAYANG	DATIN WONG SIEW HONG [SSH]	178	149,551	12.917	
24 NOV 2023 - 24 NOV 2023	DAYANG	DATUK LING SUK KIONG [DIR/CEO]	500	149,551	12.917	
24 NOV 2023 - 24 NOV 2023	DAYANG	DATUK LING SUK KIONG [DIR/CEO]	178	149,551	12.917	
24 NOV 2023 - 24 NOV 2023	DAYANG	DATUK LING SUK KIONG [SSH]	178	149,551	12.917	
24 NOV 2023 - 24 NOV 2023	DAYANG	DATUK LING SUK KIONG [SSH]	500	149,551	12.917	
24 NOV 2023 - 24 NOV 2023	DAYANG	MR JOE LING SIEW LOUNG @ LIN SHOU LONG [DIR/CEO]	500	149,551	12.917	
24 NOV 2023 - 24 NOV 2023	DAYANG	MR JOE LING SIEW LOUNG @ LIN SHOU LONG [DIR/CEO]	178	149,551	12.917	
24 NOV 2023 - 24 NOV 2023	DAYANG	MR JOE LING SIEW LOUNG @ LIN SHOU LONG [SSH]	500	149,551	12.917	
24 NOV 2023 - 24 NOV 2023	DAYANG	MR JOE LING SIEW LOUNG @ LIN SHOU LONG [SSH]	178	149,551	12.917	
27 NOV 2023 - 27 NOV 2023	DESTINI	ENCIK ISMAIL BIN MUSTAFFA [DIR/CEO]	1,360	2,000	0.12	
28 NOV 2023 - 28 NOV 2023	DIALOG	EMPLOYEES PROVIDENT FUND BOARD [SSH]	-701	842,665	14.93	
23 NOV 2023 - 23 NOV 2023	DIALOG	EMPLOYEES PROVIDENT FUND BOARD [SSH]	-1,975	843,366	14.95	
22 NOV 2023 - 22 NOV 2023	DIALOG	EMPLOYEES PROVIDENT FUND BOARD [SSH]	-1,650	845,341	14.98	
28 NOV 2023 - 29 NOV 2023	DXN	DATIN LEONG BEE LING [SSH]	352	3,395,375	68.132	
28 NOV 2023 - 29 NOV 2023	DXN	DATUK LIM SIOW JIN [DIR/CEO]	352	3,395,375	68.132	
28 NOV 2023 - 29 NOV 2023	DXN	DATUK LIM SIOW JIN [SSH]	352	3,395,375	68.132	
28 NOV 2023 - 29 NOV 2023	DXN	LSJ GLOBAL SDN. BHD. [SSH]	352	3,394,436	68.113	
27 NOV 2023 - 27 NOV 2023	DXN	DATIN LEONG BEE LING [SSH]	98	3,395,023	68.125	
27 NOV 2023 - 27 NOV 2023	DXN	DATUK LIM SIOW JIN [DIR/CEO]	98	3,395,023	68.125	
27 NOV 2023 - 27 NOV 2023	DXN	DATUK LIM SIOW JIN [SSH]	98	3,395,023	68.125	
27 NOV 2023 - 27 NOV 2023	DXN	LSJ GLOBAL SDN. BHD. [SSH]	98	3,394,084	68.106	
24 NOV 2023 - 24 NOV 2023	DXN	DATIN LEONG BEE LING [SSH]	292	3,394,925	68.123	
24 NOV 2023 - 24 NOV 2023	DXN	DATUK LIM SIOW JIN [DIR/CEO]	292	3,394,925	68.123	
24 NOV 2023 - 24 NOV 2023	DXN	DATUK LIM SIOW JIN [SSH]	292	3,394,925	68.123	
24 NOV 2023 - 24 NOV 2023	DXN	LSJ GLOBAL SDN. BHD. [SSH]	292	3,393,986	68.104	
22 NOV 2023 - 23 NOV 2023	DXN	DATIN LEONG BEE LING [SSH]	225	3,394,633	68.117	
22 NOV 2023 - 23 NOV 2023	DXN	DATUK LIM SIOW JIN [DIR/CEO]	225	3,394,633	68.117	
22 NOV 2023 - 23 NOV 2023	DXN	DATUK LIM SIOW JIN [SSH]	225	3,394,633	68.117	
22 NOV 2023 - 23 NOV 2023	DXN	LSJ GLOBAL SDN. BHD. [SSH]	225	3,393,694	68.098	
28 NOV 2023 - 29 NOV 2023	ECOFIRS	MADAM YEOH SIOK CHOO [SSH]	4,800	144,236	11.948	
28 NOV 2023 - 29 NOV 2023	ECOFIRS	MR TAN YOU TIONG [SSH]	4,800	227,236	18.824	
24 NOV 2023 - 24 NOV 2023	ECOFIRS	MADAM YEOH SIOK CHOO [SSH]	3,000	139,436	11.551	
24 NOV 2023 - 24 NOV 2023	ECOFIRS	MR TAN YOU TIONG [SSH]	3,000	222,436	18.427	
28 NOV 2023 - 28 NOV 2023	ECONBHD	EMPLOYEES PROVIDENT FUND BOARD [SSH]	664	97,489	6.878	
27 NOV 2023 - 27 NOV 2023	ECONBHD	EMPLOYEES PROVIDENT FUND BOARD [SSH]	614	96,825	6.831	
24 NOV 2023 - 24 NOV 2023	ECONBHD	EMPLOYEES PROVIDENT FUND BOARD [SSH]	-368	96,211	6.787	
23 NOV 2023 - 23 NOV 2023	ECONBHD	EMPLOYEES PROVIDENT FUND BOARD [SSH]	-2,686	96,579	6.813	
22 NOV 2023 - 22 NOV 2023	ECONBHD	EMPLOYEES PROVIDENT FUND BOARD [SSH]	-1,096	99,265	7.003	
30 NOV 2023 - 30 NOV 2023	EDEN	KOPERASI BELIA ISLAM MALAYSIA BERHAD [SSH]	-1,205	54,904	11.951	
24 NOV 2023 - 24 NOV 2023	EDEN	KOPERASI BELIA ISLAM MALAYSIA BERHAD [SSH]	5,107	57,718	12.563	
27 NOV 2023 - 27 NOV 2023	EITA	MR LEE PENG SIAN [DIR/CEO]	-1,000	1,167	1.358	
27 NOV 2023 - 27 NOV 2023	ELKDESA	MR TEOH SENG HEE [DIR/CEO]	159	3,545	0.78	
23 NOV 2023 - 24 NOV 2023	ELKDESA	MR TEOH SENG HEE [DIR/CEO]	106	3,386	0.744	
24 NOV 2023 - 24 NOV 2023	ENGTEX	NG YIK SOON [DIR/CEO]	635	9,785	2.217	
24 NOV 2023 - 24 NOV 2023	ENGTEX-WB	NG YIK SOON [DIR/CEO]	541	4,730	4.336	
28 NOV 2023 - 28 NOV 2023	F&N	EMPLOYEES PROVIDENT FUND BOARD [SSH]	20	43,061	11.74	
27 NOV 2023 - 27 NOV 2023	F&N	EMPLOYEES PROVIDENT FUND BOARD [SSH]	20	43,041	11.735	
24 NOV 2023 - 24 NOV 2023	F&N	EMPLOYEES PROVIDENT FUND BOARD [SSH]	20	43,021	11.73	
23 NOV 2023 - 23 NOV 2023	F&N	EMPLOYEES PROVIDENT FUND BOARD [SSH]	20	43,001	11.724	
22 NOV 2023 - 22 NOV 2023	F&N	EMPLOYEES PROVIDENT FUND BOARD [SSH]	-12	42,981	11.719	
29 NOV 2023 - 29 NOV 2023	FITTERS	MR HO JIEN SHIUNG [SSH]	-49,000	193,211	8.252	
29 NOV 2023 - 29 NOV 2023	FM	MR ONG LOOI CHAI [DIR/CEO]	90	11,181	2.002	
28 NOV 2023 - 28 NOV 2023	FM	MR ONG LOOI CHAI [DIR/CEO]	40	11,091	1.986	
27 NOV 2023 - 27 NOV 2023	FM	MR ONG LOOI CHAI [DIR/CEO]	180	11,051	1.978	
24 NOV 2023 - 24 NOV 2023	FM	MR ONG LOOI CHAI [DIR/CEO]	193	10,871	1.946	
29 NOV 2023 - 29 NOV 2023	FOCUS	mitsubishi UFJ FINANCIAL GROUP INC [SSH]	-371	618,096	9.7	
29 NOV 2023 - 29 NOV 2023	FOCUS	MORGAN STANLEY [SSH]	-371	618,096	9.7	
29 NOV 2023 - 29 NOV 2023	FRONTKN	MR OOI KENG THYE [SSH]	-1,594	144,416	9.193	
28 NOV 2023 - 28 NOV 2023	FRONTKN	EMPLOYEES PROVIDENT FUND BOARD [SSH]	-735	104,545	6.655	
27 NOV 2023 - 27 NOV 2023	FRONTKN	EMPLOYEES PROVIDENT FUND BOARD [SSH]	111	105,280	6.702	
24 NOV 2023 - 24 NOV 2023	FRONTKN	EMPLOYEES PROVIDENT FUND BOARD [SSH]	-130	105,169	6.695	
23 NOV 2023 - 23 NOV 2023	FRONTKN	EMPLOYEES PROVIDENT FUND BOARD [SSH]	92	105,299	6.703	
22 NOV 2023 - 22 NOV 2023	FRONTKN	EMPLOYEES PROVIDENT FUND BOARD [SSH]	-36	105,208	6.697	
28 NOV 2023 - 28 NOV 2023	GAMUDA	EMPLOYEES PROVIDENT FUND BOARD (EPF BOARD) [SSH]	-12,234	282,787	10.48	
27 NOV 2023 - 27 NOV 2023	GAMUDA	EMPLOYEES PROVIDENT FUND BOARD (EPF BOARD) [SSH]	-2,200	295,022	10.93	

Notice Period is 26th Nov - 02nd Dec 2023

Effective Change Date	Stock Name	Buyer/ Seller Name [Classification]	Bought / (Sold) ('000)		No. of Shares After Trade ('000)	
			Total	Total	% Held	% Held
24 NOV 2023 - 24 NOV 2023	GAMUDA	EMPLOYEES PROVIDENT FUND BOARD (EPF BOARD) [SSH]	-1,772	297,221	11.01	
23 NOV 2023 - 23 NOV 2023	GAMUDA	EMPLOYEES PROVIDENT FUND BOARD (EPF BOARD) [SSH]	638	298,994	11.08	
22 NOV 2023 - 22 NOV 2023	GAMUDA	EMPLOYEES PROVIDENT FUND BOARD (EPF BOARD) [SSH]	1,252	298,356	11.05	
28 NOV 2023 - 28 NOV 2023	GASMSIA	EMPLOYEES PROVIDENT FUND BOARD [SSH]	-114	77,553	6.039	
27 NOV 2023 - 27 NOV 2023	GASMSIA	EMPLOYEES PROVIDENT FUND BOARD [SSH]	-132	77,667	6.048	
23 NOV 2023 - 23 NOV 2023	GASMSIA	EMPLOYEES PROVIDENT FUND BOARD [SSH]	-341	77,799	6.059	
22 NOV 2023 - 22 NOV 2023	GASMSIA	EMPLOYEES PROVIDENT FUND BOARD [SSH]	-50	78,140	6.085	
30 NOV 2023 - 30 NOV 2023	GCB	MR TAY HOE LIAN [DIR/CEO]	650	35,952	3.061	
28 NOV 2023 - 28 NOV 2023	GCB	EMPLOYEES PROVIDENT FUND BOARD [SSH]	402	65,411	5.569	
29 NOV 2023 - 29 NOV 2023	GCB	MR TAY HOE LIAN [DIR/CEO]	1,470	35,302	3.005	
27 NOV 2023 - 27 NOV 2023	GREENYB	MR THAM KIN WA [DIR/CEO]	-500	1,500	0.277	
29 NOV 2023 - 29 NOV 2023	HARN-LEN-WB	MR LOW KOK YAOW [DIR/CEO]	2,137	20,240	22.652	
29 NOV 2023 - 29 NOV 2023	HARN-LEN-WB	MR LOW KUECK SHIN [DIR/CEO]	2,137	12,101	13.543	
29 NOV 2023 - 29 NOV 2023	HARN-LEN-WB	MR LOW KUEK KONG [DIR/CEO]	2,137	12,101	13.543	
29 NOV 2023 - 29 NOV 2023	HARN-LEN-WB	MR LOW KWEK LEE [DIR/CEO]	2,137	12,101	13.543	
29 NOV 2023 - 29 NOV 2023	HARN-LEN-WB	MR LOW QUEK KIONG [DIR/CEO]	2,137	17,004	19.031	
29 NOV 2023 - 29 NOV 2023	HARN-LEN-WB	PUAN SRI DATIN CHAN PUI LEORN [DIR/CEO]	2,137	20,240	22.652	
29 NOV 2023 - 29 NOV 2023	HEKTAR	HEKTAR BLACK SDN BHD [SSH]	-1,500	124,463	24.618	
24 NOV 2023 - 24 NOV 2023	HEXTAR	DATO' ONG CHOO MENG [SSH]	-4,000	2,577,107	66.488	
24 NOV 2023 - 24 NOV 2023	HEXTAR	DATO' ONG SOON HO [DIR/CEO]	-4,000	2,577,107	66.488	
24 NOV 2023 - 24 NOV 2023	HEXTAR	DATO' ONG SOON HO [SSH]	-4,000	2,577,107	66.488	
24 NOV 2023 - 24 NOV 2023	HEXTAR	HEXTAR HOLDINGS SDN. BHD. [SSH]	-4,000	2,267,912	58.511	
29 NOV 2023 - 29 NOV 2023	HEXTECH	DATO' ONG CHOO MENG [DIR/CEO]	-128	87,022	67.643	
29 NOV 2023 - 29 NOV 2023	HEXTECH	DATO' ONG CHOO MENG [SSH]	-128	87,022	67.643	
29 NOV 2023 - 29 NOV 2023	HEXTECH	HEXTAR HOLDINGS SDN. BHD. [SSH]	-128	10,872	8.451	
28 NOV 2023 - 28 NOV 2023	HLBANK	EMPLOYEES PROVIDENT FUND BOARD [SSH]	-104	204,054	9.779	
24 NOV 2023 - 24 NOV 2023	HLBANK	EMPLOYEES PROVIDENT FUND BOARD [SSH]	-115	204,158	9.784	
23 NOV 2023 - 23 NOV 2023	HLBANK	EMPLOYEES PROVIDENT FUND BOARD [SSH]	33	204,273	9.79	
22 NOV 2023 - 22 NOV 2023	HLBANK	EMPLOYEES PROVIDENT FUND BOARD [SSH]	-431	204,239	9.788	
29 NOV 2023 - 29 NOV 2023	HLFG	MR TAN KONG KHOON [DIR/CEO]	125	375	0.033	
27 NOV 2023 - 28 NOV 2023	HONGSENG	DALPHON LIMITED [SSH]	-155,000	324,900	6.36	
27 NOV 2023 - 28 NOV 2023	HONGSENG	DATO' SERI TEOH HAI HIN [SSH]	-155,000	324,900	6.36	
27 NOV 2023 - 27 NOV 2023	HUBLINE	BNDM INCORPORATED HOLDINGS SDN. BHD. [SSH]	-15,700	780,501	18.194	
27 NOV 2023 - 27 NOV 2023	HUBLINE	DATO RICHARD WEE LIANG HUAT @ RICHARD WEE LIANG CHIAT [DIR/CEO]	-15,700	780,573	18.196	
27 NOV 2023 - 27 NOV 2023	HUBLINE	DATO RICHARD WEE LIANG HUAT @ RICHARD WEE LIANG CHIAT [SSH]	-15,700	780,573	18.196	
27 NOV 2023 - 27 NOV 2023	HUBLINE	MADAM LAU SWEE ENG [SSH]	12,000	708,541	16.517	
27 NOV 2023 - 27 NOV 2023	HUBLINE	MISS KATRINA LING SHIEK NGE E [DIR/CEO]	12,000	708,541	16.516	
27 NOV 2023 - 27 NOV 2023	HUBLINE	MISS KATRINA LING SHIEK NGE E [SSH]	12,000	708,541	16.516	
27 NOV 2023 - 27 NOV 2023	HUBLINE	MR BERNARD LING ING TAH [SSH]	12,000	708,541	16.516	
27 NOV 2023 - 27 NOV 2023	HUBLINE	MR LING LI KUANG [DIR/CEO]	12,000	708,541	16.516	
27 NOV 2023 - 27 NOV 2023	HUBLINE	MR LING LI KUANG [SSH]	12,000	708,541	16.516	
27 NOV 2023 - 27 NOV 2023	HUBLINE	MR ROYSTON LING ING DING [DIR/CEO]	12,000	708,541	16.517	
27 NOV 2023 - 27 NOV 2023	HUBLINE	MR ROYSTON LING ING DING [SSH]	12,000	708,541	16.517	
28 NOV 2023 - 28 NOV 2023	ICAP	CITY OF LONDON INVESTMENT MANAGEMENT COMPANY LIMITED [SSH]	41	32,371	23.122	
29 NOV 2023 - 29 NOV 2023	IFCAMSC	MR YONG KEANG CHEUN [DIR/CEO]	300	224,595	37.11	
29 NOV 2023 - 29 NOV 2023	IFCAMSC	MR YONG KEANG CHEUN [SSH]	300	224,595	37.11	
29 NOV 2023 - 29 NOV 2023	IFCAMSC	MR YONG KIAN KEONG [DIR/CEO]	300	224,595	37.111	
29 NOV 2023 - 29 NOV 2023	IFCAMSC	MR YONG KIAN KEONG [SSH]	300	224,595	37.111	
28 NOV 2023 - 28 NOV 2023	IGBREIT	KUMPULAN WANG PERSARAAN (DEPERBADANKAN) [SSH]	-332	257,698	7.155	
27 NOV 2023 - 27 NOV 2023	IGBREIT	KUMPULAN WANG PERSARAAN (DEPERBADANKAN) [SSH]	-210	258,030	7.165	
24 NOV 2023 - 24 NOV 2023	IGBREIT	KUMPULAN WANG PERSARAAN (DIPERBADANKAN) [SSH]	-208	258,240	7.17	
28 NOV 2023 - 28 NOV 2023	IHH	EMPLOYEES PROVIDENT FUND BOARD [SSH]	-2,096	918,590	10.43	
27 NOV 2023 - 27 NOV 2023	IHH	EMPLOYEES PROVIDENT FUND BOARD [SSH]	-3,000</			

Notice Period is 26th Nov - 02nd Dec 2023

Effective Change Date	Stock Name	Buyer/ Seller Name [Classification]	Bought / (Sold) ('000)		No. of Shares After Trade ('000)	
			Total	Total	% Held	% Held
24 NOV 2023 - 24 NOV 2023	KAB	MR KINGTON TONG KUM LOONG [SSH]	10,000	209,887	10.791	
28 NOV 2023 - 28 NOV 2023	KERJAYA	EMPLOYEES PROVIDENT FUND BOARD [SSH]	300	69,235	5.49	
27 NOV 2023 - 27 NOV 2023	KLCC	EMPLOYEES PROVIDENT FUND BOARD [SSH]	18	184,215	10.204	
27 NOV 2023 - 27 NOV 2023	KLCC	EMPLOYEES PROVIDENT FUND BOARD [SSH]	18	184,215	10.204	
28 NOV 2023 - 28 NOV 2023	KLK	EMPLOYEES PROVIDENT FUND BOARD [SSH]	-464	116,741	10.825	
27 NOV 2023 - 27 NOV 2023	KLK	EMPLOYEES PROVIDENT FUND BOARD [SSH]	3	117,205	10.868	
24 NOV 2023 - 24 NOV 2023	KLK	EMPLOYEES PROVIDENT FUND BOARD [SSH]	-334	117,202	10.868	
23 NOV 2023 - 23 NOV 2023	KLK	EMPLOYEES PROVIDENT FUND BOARD [SSH]	-48	117,536	10.899	
22 NOV 2023 - 22 NOV 2023	KLK	EMPLOYEES PROVIDENT FUND BOARD [SSH]	-13	117,584	10.903	
27 NOV 2023 - 27 NOV 2023	KOSSAN	EMPLOYEES PROVIDENT FUND BOARD [SSH]	-152	130,306	5.107	
24 NOV 2023 - 24 NOV 2023	KOSSAN	EMPLOYEES PROVIDENT FUND BOARD [SSH]	-92	130,458	5.113	
24 NOV 2023 - 24 NOV 2023	KOSSAN	MR LIM KUANG WANG [SSH]	-300	957,988	37.544	
23 NOV 2023 - 23 NOV 2023	KOSSAN	EMPLOYEES PROVIDENT FUND BOARD [SSH]	700	130,550	5.116	
22 NOV 2023 - 22 NOV 2023	KOSSAN	EMPLOYEES PROVIDENT FUND BOARD [SSH]	-200	129,850	5.089	
27 NOV 2023 - 27 NOV 2023	LAMBO	MITSUBISHI UFJ FINANCIAL GROUP INC [SSH]	188,822	188,822	12.26	
27 NOV 2023 - 27 NOV 2023	LAMBO	MORGAN STANLEY [SSH]	188,822	188,822	12.26	
30 NOV 2023 - 30 NOV 2023	LEFORM	MISS LEE WEE LENG [DIR/CEO]	-100	100	0.007	
29 NOV 2023 - 30 NOV 2023	LHI	AFFINITY ASIA PACIFIC FUND IV (NO.2) L.P. [SSH]	-3,800	288,807	7.913	
29 NOV 2023 - 30 NOV 2023	LHI	AFFINITY ASIA PACIFIC FUND IV L.P. [SSH]	-3,800	288,807	7.913	
29 NOV 2023 - 30 NOV 2023	LHI	CLARINDEN INVESTMENTS PTE LTD [SSH]	-3,800	288,807	7.913	
29 NOV 2023 - 30 NOV 2023	LHI	CONCORDANT INVESTMENTS PTE LTD [SSH]	-3,800	288,807	7.913	
29 NOV 2023 - 29 NOV 2023	LHI	TAN SRI DATO' LAU ENG GUANG [DIR/CEO]	-3,800	107,119	2.935	
27 NOV 2023 - 28 NOV 2023	LHI	AFFINITY ASIA PACIFIC FUND IV (NO.2) L.P. [SSH]	-2,353	292,607	8.017	
27 NOV 2023 - 28 NOV 2023	LHI	AFFINITY ASIA PACIFIC FUND IV L.P. [SSH]	-2,353	292,607	8.017	
27 NOV 2023 - 28 NOV 2023	LHI	CLARINDEN INVESTMENTS PTE LTD [SSH]	-2,353	292,607	8.017	
27 NOV 2023 - 28 NOV 2023	LHI	CONCORDANT INVESTMENTS PTE LTD [SSH]	-2,353	292,607	8.017	
24 NOV 2023 - 24 NOV 2023	LHI	AFFINITY ASIA PACIFIC FUND IV (NO.2) L.P. [SSH]	-2,031	294,959	8.081	
24 NOV 2023 - 24 NOV 2023	LHI	AFFINITY ASIA PACIFIC FUND IV L.P. [SSH]	-2,031	294,959	8.081	
24 NOV 2023 - 24 NOV 2023	LHI	CLARINDEN INVESTMENTS PTE LTD [SSH]	-2,031	294,959	8.081	
24 NOV 2023 - 24 NOV 2023	LHI	CONCORDANT INVESTMENTS PTE LTD [SSH]	-2,031	294,959	8.081	
30 NOV 2023 - 30 NOV 2023	LUXCHEM	MADAM CHIN SONG MOOI [DIR/CEO]	943	458,882	42.896	
30 NOV 2023 - 30 NOV 2023	LUXCHEM	MADAM CHIN SONG MOOI [SSH]	943	458,882	42.896	
30 NOV 2023 - 30 NOV 2023	LUXCHEM	MR TANG YING SEE [DIR/CEO]	943	458,882	42.896	
30 NOV 2023 - 30 NOV 2023	LUXCHEM	MR TANG YING SEE [SSH]	943	458,882	42.896	
27 NOV 2023 - 27 NOV 2023	MALAKOF	KUMPULAN WANG PERSARAAN (DIPERBADANKAN) ("KWAP") [SSH]	3,109	452,444	9.258	
24 NOV 2023 - 27 NOV 2023	MAXIM	TAN SRI DATUK SERI GAN SEONG LIAM [DIR/CEO]	1,000	193,858	26.374	
24 NOV 2023 - 27 NOV 2023	MAXIM	TAN SRI DATUK SERI GAN SEONG LIAM [SSH]	1,000	193,858	26.374	
28 NOV 2023 - 28 NOV 2023	MAXIS	EMPLOYEES PROVIDENT FUND BOARD ("EPF BOARD") [SSH]	525	866,247	11.06	
29 NOV 2023 - 29 NOV 2023	MAYBANK	AMANAHRAYA TRUSTEES BERHAD - AMANAH SAHAM BUMIPUTERA [SSH]	-1,423	3,656,708	30.32	
28 NOV 2023 - 28 NOV 2023	MAYBANK	EMPLOYEES PROVIDENT FUND BOARD [SSH]	-3,969	1,637,351	13.576	
29 NOV 2023 - 29 NOV 2023	MAYBANK	KUMPULAN WANG PERSARAAN (DIPERBADANKAN) ("KWAP") [SSH]	-352	604,006	5.008	
27 NOV 2023 - 27 NOV 2023	MAYBANK	AMANAHRAYA TRUSTEES BERHAD - AMANAH SAHAM BUMIPUTERA [SSH]	-86	3,658,131	30.332	
24 NOV 2023 - 24 NOV 2023	MAYBANK	EMPLOYEES PROVIDENT FUND BOARD [SSH]	2,988	1,641,320	13.609	
24 NOV 2023 - 24 NOV 2023	MAYBANK	AMANAHRAYA TRUSTEES BERHAD - AMANAH SAHAM BUMIPUTERA [SSH]	-5,333	3,658,217	30.333	
23 NOV 2023 - 23 NOV 2023	MAYBANK	EMPLOYEES PROVIDENT FUND BOARD [SSH]	4,922	1,638,332	13.585	
23 NOV 2023 - 23 NOV 2023	MAYBANK	AMANAHRAYA TRUSTEES BERHAD - AMANAH SAHAM BUMIPUTERA [SSH]	-5,500	3,663,550	30.377	
22 NOV 2023 - 22 NOV 2023	MAYBANK	EMPLOYEES PROVIDENT FUND BOARD [SSH]	3,449	1,633,410	13.544	
28 NOV 2023 - 28 NOV 2023	MBMR	EMPLOYEES PROVIDENT FUND BOARD [SSH]	-427	24,264	6.207	
27 NOV 2023 - 27 NOV 2023	MBMR	EMPLOYEES PROVIDENT FUND BOARD [SSH]	-81	24,691	6.317	
24 NOV 2023 - 24 NOV 2023	MBMR	EMPLOYEES PROVIDENT FUND BOARD [SSH]	-262	24,772	6.337	
29 NOV 2023 - 29 NOV 2023	MCEHLDG	WOO CHEW LOONG [SSH]	48	5,500	8.903	
30 NOV 2023 - 01 DEC 2023	MFCB	CAM PROPERTY (MALAYSIA) SDN BHD [SSH]	55	200,749	21.294	
30 NOV 2023 - 01 DEC 2023	MFCB	CAMASIA LIMITED [SSH]	55	202,235	21.452	
30 NOV 2023 - 01 DEC 2023	MFCB	GOH NAN KIOH [DIR/CEO]	55	328,314	34.825	
30 NOV 2023 - 01 DEC 2023	MFCB	LAJU RIANG SDN BHD [SSH]	55	200,749	21.294	
30 NOV 2023 - 01 DEC 2023	MFCB	MR GOH NAN KIOH [SSH]	55	328,314	34.825	
30 NOV 2023 - 01 DEC 2023	MFCB	RUBBER THREAD INDUSTRIES (M) SDN BERHAD [SSH]	55	200,749	21.294	
28 NOV 2023 - 28 NOV 2023	MISC	EMPLOYEES PROVIDENT FUND BOARD [SSH]	205	547,620	12.268	
27 NOV 2023 - 27 NOV 2023	MISC	EMPLOYEES PROVIDENT FUND BOARD [SSH]	1,677	547,415	12.264	
24 NOV 2023 - 24 NOV 2023	MISC	EMPLOYEES PROVIDENT FUND BOARD [SSH]	2,431	545,738	12.226	
23 NOV 2023 - 23 NOV 2023	MISC	EMPLOYEES PROVIDENT FUND BOARD [SSH]	1,195	543,307	12.172	
22 NOV 2023 - 22 NOV 2023	MISC	EMPLOYEES PROVIDENT FUND BOARD [SSH]	-723	542,112	12.145	
30 NOV 2023 - 30 NOV 2023	MKH	DATUK CHEN FOOK WAH [DIR/CEO]	-500	237,851	41.192	
30 NOV 2023 - 30 NOV 2023	MKH	DATUK CHEN FOOK WAH [SSH]	-500	237,851	41.192	
27 NOV 2023 - 27 NOV 2023	MNHLDG	DATO' TOH ENG KEAT [DIR/CEO]	300	90,947	22.25	
27 NOV 2023 - 27 NOV 2023	MNHLDG	DATO' TOH ENG KEAT [SSH]	300	90,947	22.25	
28 NOV 2023 - 28 NOV 2023	MPAY	DATO' CHEW CHEE SENG [DIR/CEO]	10,000	220,222	25.566	
28 NOV 2023 - 28 NOV 2023	MPAY	DATO' CHEW CHEE SENG [SSH]	10,000	220,222	25.566	
29 NOV 2023 - 30 NOV 2023	MYCRON	KHYRA LEGACY BERHAD [SSH]	-538	19,650	90.32	
29 NOV 2023 - 30 NOV 2023	MYCRON	MELEWAR EQUITIES (BVI) LTD [SSH]	-538	19,650	90.32	
29 NOV 2023 - 30 NOV 2023	MYCRON	MELEWAR INDUSTRIAL GROUP BERHAD [SSH]	-538	19,650	90.32	
29 NOV 2023 - 30 NOV 2023	MYCRON	MELEWAR KHYRA SDN BHD [SSH]	-538	19,650	90.32	
29 NOV 2023 - 30 NOV 2023	MYCRON	TUNKU DATO' YAACOB KHYRA [DIR/CEO]	-538	19,650	90.32	
29 NOV 2023 - 30 NOV 2023	MYCRON	TUNKU DATO' YAACOB KHYRA [SSH]	-538	19,650	90.32	
27 NOV 2023 - 27 NOV 2023	MYEG	DATO' DR NORRAESAH BINTI HAJI MOHAMAD [DIR/CEO]	-6,000	40,207	0.539	
28 NOV 2023 - 28 NOV 2023	NATGATE	DATO' SERI WONG SIEW HAI [DIR/CEO]	-20	6,115	0.295	
27 NOV 2023 - 27 NOV 2023	NATGATE	DATO' FAIZA BINTI ZULKIFLI [DIR/CEO]	-154	400	0.019	
28 DEC 2023 - 28 DEC 2023	NESTLE	EMPLOYEES PROVIDENT FUND BOARD [SSH]	-16	22,888	9.76	
27 NOV 2023 - 27 NOV 2023	NESTLE	EMPLOYEES PROVIDENT FUND BOARD [SSH]	71	22,904	9.767	
24 NOV 2023 - 24 NOV 2023	NESTLE	EMPLOYEES PROVIDENT FUND BOARD [SSH]	155	22,833	9.737	
23 NOV 2023 - 23 NOV 2023	NESTLE	EMPLOYEES PROVIDENT FUND BOARD [SSH]	65	22,679	9.671	
22 NOV 2023 - 22 NOV 2023	NESTLE	EMPLOYEES PROVIDENT FUND BOARD [SSH]	57	22,614	9.643	

Notice Period is 26th Nov - 02nd Dec 2023

Effective Change Date	Stock Name	Buyer/ Seller Name [Classification]	Bought / (Sold) ('000)		No. of Shares After Trade ('000)	
			Total	Total	% Held	% Held
27 NOV 2023 - 27 NOV 2023	NICE	MR JULIAN FOO KUAN LIN [DIR/CEO]	15,000	230,930	19.658	
27 NOV 2023 - 27 NOV 2023	NICE	MR JULIAN FOO KUAN LIN [SSH]	15,000	230,930	19.658	
27 NOV 2023 - 27 NOV 2023	NICE-WB	MR JULIAN FOO KUAN LIN [DIR/CEO]	15,000	28,600	15.088	
01 DEC 2023 - 01 DEC 2023	OPPSTAR	BIGCORE TECHNOLOGY SDN. BHD. [SSH]	39	21,262	3.342	
01 DEC 2023 - 01 DEC 2023	OPPSTAR	MR CHEAH HUN WAH [DIR/CEO]	39	155,451	24.434	
01 DEC 2023 - 01 DEC 2023	OPPSTAR	MR CHEAH HUN WAH [SSH]	39	155,451	24.434	
01 DEC 2023 - 01 DEC 2023	OPPSTAR	MR NG MENG THAI [DIR/CEO]	39	148,867	23.399	
01 DEC 2023 - 01 DEC 2023	OPPSTAR	MR NG MENG THAI [SSH]	39	148,867	23.399	
01 DEC 2023 - 01 DEC 2023	OPPSTAR	MR TAN CHUN CHIAT [DIR/CEO]	39	106,498	16.74	
01 DEC 2023 - 01 DEC 2023	OPPSTAR	MR TAN CHUN CHIAT [SSH]	39	106,498	16.74	
30 NOV 2023 - 30 NOV 2023	OPPSTAR	BIGCORE TECHNOLOGY SDN. BHD. [SSH]	39	21,223	3.336	
30 NOV 2023 - 30 NOV 2023	OPPSTAR	MR CHEAH HUN WAH [DIR/CEO]	39	155,412	24.428	
30 NOV 2023 - 30 NOV 2023	OPPSTAR	MR CHEAH HUN WAH [SSH]	39	155,412	24.428	
30 NOV 2023 - 30 NOV 2023	OPPSTAR	MR NG MENG THAI [DIR/CEO]	39	148,828	23.393	
30 NOV 2023 - 30 NOV 2023	OPPSTAR	MR NG MENG THAI [SSH]	39	148,828	23.393	
30 NOV 2023 - 30 NOV 2023	OPPSTAR	MR TAN CHUN CHIAT [DIR/CEO]	39	106,459	16.734	
28 NOV 2023 - 29 NOV 2023	OPPSTAR	DATO' YEO ENG HONG [DIR/CEO]	30	530	0.083	
23 NOV 2023 - 23 NOV 2023	OPPSTAR	MR TAN CHUN CHIAT [SSH]	39	106,459	16.734	
30 NOV 2023 - 30 NOV 2023	OPTIMAX	PUAN SRI DATIN LIM SHO HOO [SSH]	400	307,038	56.859	
30 NOV 2023 - 30 NOV 2023	OPTIMAX	TAN SRI DATO' DR TAN BOON HOCK [DIR/CEO]	400	307,038	56.858	
30 NOV 2023 - 30 NOV 2023	OPTIMAX	TAN SRI DATO' DR TAN BOON HOCK [SSH]	400	307,038	56.858	
28 NOV 2023 - 28 NOV 2023	ORIENT	EMPLOYEES PROVIDENT FUND BOARD [SSH]	-37	49,030	7.903	
27 NOV 2023 - 27 NOV 2023	ORIENT	EMPLOYEES PROVIDENT FUND BOARD [SSH]	-53	49,067	7.909	
24 NOV 2023 - 24 NOV 2023	ORIENT	EMPLOYEES PROVIDENT FUND BOARD [SSH]	-224	49,120	7.918	
23 NOV 2023 - 23 NOV 2023	ORIENT	EMPLOYEES PROVIDENT FUND BOARD [SSH]	-98	49,343	7.954	
22 NOV 2023 - 22 NOV 2023	ORIENT	EMPLOYEES PROVIDENT FUND BOARD [SSH]	-13	49,441	7.97	
29 NOV 2023 - 29 NOV 2023	OSK	TAN SRI ONG LEONG HUAT @ WONG JOO HWA [DIR/CEO]	190	114,348	55.452	
24 NOV 2023 - 27 NOV 2023	OVH	MR KENNY RONALD NGALIN [DIR/CEO]	-1,600	25,422	6.054	
24 NOV 2023 - 27 NOV 2023	OVH	MR KENNY RONALD NGALIN [SSH]	-1,600	25,422	6.054	
28 NOV 2023 - 28 NOV 2023	PADINI	EMPLOYEES PROVIDENT FUND BOARD [SSH]	12	39,366	5.983	
27 NOV 2023 - 27 NOV 2023	PADINI	EMPLOYEES PROVIDENT FUND BOARD [SSH]	51	39,354	5.982	
24 NOV 2023 - 24 NOV 2023	PADINI	EMPLOYEES PROVIDENT FUND BOARD [SSH]	-18	39,304	5.974	
23 NOV 2023 - 23 NOV 2023	PADINI	EMPLOYEES PROVIDENT FUND BOARD [SSH]	-25	39,322	5.977	
22 NOV 2023 - 22 NOV 2023	PADINI	EMPLOYEES PROVIDENT FUND BOARD [SSH]	-76	39,347	5.981	
28 NOV 2023 - 28 NOV 2023	PANAMY	EMPLOYEES PROVIDENT FUND BOARD [SSH]	-2	7,585	12.487	
28 NOV 2023 - 30 NOV 2023	PARAGON	MR KOON HOI CHUN [DIR/CEO]	332	41,919	50.005	
28 NOV 2023 - 30 NOV 2023	PARAGON	MR KOON HOI CHUN [SSH]	332	41,919	50.005	
28 NOV 2023 - 28 NOV 2023	PBBANK	EMPLOYEES PROVIDENT FUND BOARD [SSH]	-5,270	30,327	15.62	
27 NOV 2023 - 27 NOV 2023	PBBANK	EMPLOYEES PROVIDENT FUND BOARD [SSH]	-1,000	30,380	15.65	
24 NOV 2023 - 24 NOV 2023	PBBANK	EMPLOYEES PROVIDENT FUND BOARD [SSH]	-1,991	30,390	15.66	
23 NOV 2023 - 23 NOV 2023	PBBANK	EMPLOYEES PROVIDENT FUND BOARD [SSH]	-1,917	30,410	15.67	
22 NOV 2023 - 22 NOV 2023	PBBANK	EMPLOYEES PROVIDENT FUND BOARD [SSH]	2,005	30,426	15.68	
30 NOV 2023 - 30 NOV 2023	PCCS	CCS CAPITAL SDN. BHD. [SSH]	30	9,258	41.95	
30 NOV 2023 - 30 NOV 2023	PCCS	MADAM TAN KWEE KEE [SSH]	30	10,281	46.609	
30 NOV 2023 - 30 NOV 2023	PCCS	MR CHAN CHOO SING [SSH]	30	10,281	46.609	
30 NOV 2023 - 30 NOV 2023	PCCS	MR CHAN WEE KIANG [DIR/CEO]	30	9,475	42.953	
30 NOV 2023 - 30 NOV 2023	PCCS	MR CHAN WEE KIANG [SSH]	30	9,475	42.953	
27 NOV 2023 - 27 NOV 2023	PCHEM	EMPLOYEES PROVIDENT FUND BOARD ("EPF BOARD") [SSH]	100	93,345	11.668	
23 NOV 2023 - 23 NOV 2023	PCHEM	EMPLOYEES PROVIDENT FUND BOARD ("EPF BOARD") [SSH]	50	93,301	11.663	
22 NOV 2023 - 22 NOV 2023	PCHEM	EMPLOYEES PROVIDENT FUND BOARD ("EPF BOARD") [SSH]	95	93,296	11.662	
30 NOV 2023 - 30 NOV 2023	PENSONI	DATO' DR LAI KIM TENG [SSH]	13,000	26,000	20.031	
30 NOV 2023 - 30 NOV 2023	PENSONI	DATO' SERI CHEW WENG KHAK @ CHEW WENG KIAK [DIR/CEO]	-10,000	17,296	13.326	
30 NOV 2023 - 30 NOV 2023	PENSONI	DATO' SERI CHEW WENG KHAK @ CHEW WENG KIAK [SSH]	-10,000	13,296	10.244	
30 NOV 2023 - 30 NOV 2023	PENSONI	SPHERE CORPORATION SDN BHD [SSH]	13,000	26,000	20.031	
30 NOV 2023 - 30 NOV						

Notice Period is 26th Nov - 02nd Dec 2023

Effective Change Date	Stock Name	Buyer/ Seller Name [Classification]	Bought / (Sold) ['000]		No. of Shares After Trade ['000]	
			Total	% Held	Total	% Held
22 NOV 2023 - 22 NOV 2023	PPB	EMPLOYEES PROVIDENT FUND BOARD [SSH]	-298		135548	9.528
28 NOV 2023 - 28 NOV 2023	PWROOT	MR WONG TAK KEONG [DIR/CEO]	2,400		51731	11.184
28 NOV 2023 - 28 NOV 2023	PWROOT	MR WONG TAK KEONG [SSH]	2,400		51731	11.184
30 NOV 2023 - 30 NOV 2023	RHBBANK	KUMPULAN WANG PERSARAAN (DIPERBADANKAN) [SSH]	-1,078		245998	5.739
28 NOV 2023 - 28 NOV 2023	RHBBANK	EMPLOYEES PROVIDENT FUND BOARD [SSH]	5,171		1758112	41.017
24 NOV 2023 - 24 NOV 2023	RHBBANK	EMPLOYEES PROVIDENT FUND BOARD [SSH]	-995		1752941	40.896
27 NOV 2023 - 27 NOV 2023	RHBBANK	KUMPULAN WANG PERSARAAN (DIPERBADANKAN) [SSH]	-98		247076	5.764
23 NOV 2023 - 23 NOV 2023	RHBBANK	EMPLOYEES PROVIDENT FUND BOARD [SSH]	-1,312		1753936	40.919
22 NOV 2023 - 22 NOV 2023	RHBBANK	EMPLOYEES PROVIDENT FUND BOARD [SSH]	-685		1755248	40.95
29 NOV 2023 - 29 NOV 2023	SAPIND	MR KOH KOK HOUI [SSH]	7		6827	9.38
28 NOV 2023 - 28 NOV 2023	SAPIND	MR KOH KOK HOUI [SSH]	3		6820	9.371
24 NOV 2023 - 24 NOV 2023	SAPIND	MR KOH KOK HOUI [SSH]	4		6817	9.367
23 NOV 2023 - 23 NOV 2023	SAPIND	MR KOH KOK HOUI [SSH]	6		6813	9.361
24 NOV 2023 - 24 NOV 2023	SCGBHD	CIK FAWIZA BINTI FAIZ [DIR/CEO]	-25,000		128028	16.003
24 NOV 2023 - 24 NOV 2023	SCGBHD	CIK FAWIZA BINTI FAIZ [SSH]	-25,000		128028	16.003
24 NOV 2023 - 24 NOV 2023	SCGBHD	SEMANGAT HANDAL SDN. BHD. [SSH]	-25,000		128028	16.003
30 NOV 2023 - 30 NOV 2023	SIME	KUMPULAN WANG PERSARAAN (DIPERBADANKAN) [SSH]	610		526243	7.722
29 NOV 2023 - 29 NOV 2023	SIME	KUMPULAN WANG PERSARAAN (DIPERBADANKAN) [SSH]	228		525633	7.713
28 NOV 2023 - 28 NOV 2023	SIME	EMPLOYEES PROVIDENT FUND BOARD [SSH]	-5,876		1026779	15.065
27 NOV 2023 - 27 NOV 2023	SIME	EMPLOYEES PROVIDENT FUND BOARD [SSH]	-2,413		1032656	15.151
28 NOV 2023 - 28 NOV 2023	SIME	KUMPULAN WANG PERSARAAN (DIPERBADANKAN) [SSH]	431		525405	7.709
24 NOV 2023 - 24 NOV 2023	SIME	EMPLOYEES PROVIDENT FUND BOARD [SSH]	-2,948		1035068	15.187
27 NOV 2023 - 27 NOV 2023	SIME	KUMPULAN WANG PERSARAAN (DIPERBADANKAN) [SSH]	-43		524973	7.703
23 NOV 2023 - 23 NOV 2023	SIME	EMPLOYEES PROVIDENT FUND BOARD [SSH]	1,421		1038016	15.23
22 NOV 2023 - 22 NOV 2023	SIME	EMPLOYEES PROVIDENT FUND BOARD [SSH]	-3,208		1036596	15.209
21 NOV 2023 - 21 NOV 2023	SIME	EMPLOYEES PROVIDENT FUND BOARD [SSH]	-11,723		1039803	15.257
28 NOV 2023 - 28 NOV 2023	SIMEPLT	EMPLOYEES PROVIDENT FUND BOARD [SSH]	12		1025191	14.824
28 NOV 2023 - 28 NOV 2023	SIMEPLT	KUMPULAN WANG PERSARAAN (DIPERBADANKAN) [SSH]	-140		457232	6.611
24 NOV 2023 - 24 NOV 2023	SIMEPLT	EMPLOYEES PROVIDENT FUND BOARD [SSH]	393		1025179	14.824
27 NOV 2023 - 27 NOV 2023	SIMEPROP	KUMPULAN WANG PERSARAAN (DIPERBADANKAN) [SSH]	-3,000		452481	6.653
29 NOV 2023 - 30 NOV 2023	SMRT	MR SUBRAMANIAN A/L AMAMALAY [DIR/CEO]	-310		1472	0.325
27 NOV 2023 - 27 NOV 2023	SMRT	URUSHARTA JAMA'AH SDN. BHD. [SSH]	-10		26614	5.876
24 NOV 2023 - 24 NOV 2023	SMRT	URUSHARTA JAMA'AH SDN. BHD. [SSH]	32		26624	5.878
29 NOV 2023 - 29 NOV 2023	SRIDGE	DATO' KHOO YIK CHOU [DIR/CEO]	52		15651	7.063
29 NOV 2023 - 29 NOV 2023	SRIDGE	DATO' KHOO YIK CHOU [SSH]	52		15651	7.063
27 NOV 2023 - 27 NOV 2023	SRIDGE	MR TAN WIN SEN [DIR/CEO]	196		370	0.166
28 NOV 2023 - 30 NOV 2023	STAR	MALAYSIAN CHINESE ASSOCIATION [SSH]	649		336932	46.489
24 NOV 2023 - 27 NOV 2023	STAR	MALAYSIAN CHINESE ASSOCIATION [SSH]	1,416		336283	46.399
22 NOV 2023 - 23 NOV 2023	STAR	MALAYSIAN CHINESE ASSOCIATION [SSH]	955		334867	46.204
28 NOV 2023 - 28 NOV 2023	SUCCESS	DATO' TAN WEI NENG [DIR/CEO]	4		163	0.069
28 NOV 2023 - 28 NOV 2023	SUCCESS	DATO' YEOH KIM WAH [DIR/CEO]	32		1324	0.563
28 NOV 2023 - 28 NOV 2023	SUCCESS	MADAM PAN KIM FOON [SSH]	2,645		108442	46.101
28 NOV 2023 - 28 NOV 2023	SUCCESS	MISS TAN CHUNG CHIAH [DIR/CEO]	154		6326	2.689
28 NOV 2023 - 28 NOV 2023	SUCCESS	MISS TAN CHUNG LING [DIR/CEO]	4		159	0.068
28 NOV 2023 - 28 NOV 2023	SUCCESS	MR TAN AH BAH @ TAN AH PING [DIR/CEO]	2,645		108442	46.101
28 NOV 2023 - 28 NOV 2023	SUCCESS	MR TAN AH BAH @ TAN AH PING [SSH]	2,645		108442	46.101
28 NOV 2023 - 28 NOV 2023	SUCCESS	OMEGA ATTRACTION SDN. BHD. [SSH]	2,634		108013	45.919
28 NOV 2023 - 28 NOV 2023	SUNCON	EMPLOYEES PROVIDENT FUND BOARD [SSH]	207		129106	10.013
23 NOV 2023 - 23 NOV 2023	SUNREIT	EMPLOYEES PROVIDENT FUND BOARD [SSH]	-70		532836	15.558
22 NOV 2023 - 22 NOV 2023	SUNREIT	EMPLOYEES PROVIDENT FUND BOARD [SSH]	-355		532905	15.56
28 NOV 2023 - 29 NOV 2023	SWKPLNT	DATO WONG KUO HEA [DIR/CEO]	219		88762	31.701
28 NOV 2023 - 29 NOV 2023	SWKPLNT	DATO WONG KUO HEA [SSH]	219		88762	31.701
29 NOV 2023 - 30 NOV 2023	TAANN	TING LINA @ DING LINA [DIR/CEO]	60		705	0.16
29 NOV 2023 - 29 NOV 2023	TAFI	DATO' SRI WONG SZE CHIEN [DIR/CEO]	48		213449	56.255
29 NOV 2023 - 29 NOV 2023	TAFI	DATO' SRI WONG SZE CHIEN [SSH]	48		213449	56.255
24 NOV 2023 - 24 NOV 2023	TAFI	DATO' SRI ONG CHEE KEAN [DIR/CEO]	30		1205	0.318
28 NOV 2023 - 28 NOV 2023	TAKAFUL	EMPLOYEES PROVIDENT FUND BOARD [SSH]	-86		120085	14.342
27 NOV 2023 - 27 NOV 2023	TAKAFUL	EMPLOYEES PROVIDENT FUND BOARD [SSH]	-94		120171	14.352
24 NOV 2023 - 24 NOV 2023	TAKAFUL	EMPLOYEES PROVIDENT FUND BOARD [SSH]	1,150		120265	14.363
29 NOV 2023 - 29 NOV 2023	TANCO	DATO' SRI ANDREW TAN JUN SUAN [DIR/CEO]	4,500		1005535	50.04
29 NOV 2023 - 29 NOV 2023	TANCO	DATO' SRI ANDREW TAN JUN SUAN [SSH]	4,500		1005535	50.04
30 NOV 2023 - 30 NOV 2023	TASHIN	FORMULA NAGA SDN. BHD. [SSH]	-2,100		107516	30.808
30 NOV 2023 - 30 NOV 2023	TASHIN	MR LEE MENG YIM [SSH]	-2,100		111086	31.831
30 NOV 2023 - 30 NOV 2023	TASHIN	MR LIM CHOON TEIK [DIR/CEO]	-2,100		111516	31.954
30 NOV 2023 - 30 NOV 2023	TASHIN	MR LIM CHOON TEIK [SSH]	-2,100		111516	31.954

Notice Period is 26th Nov - 02nd Dec 2023

Effective Change Date	Stock Name	Buyer/ Seller Name [Classification]	Bought / (Sold) ['000]		No. of Shares After Trade ['000]	
			Total	% Held	Total	% Held
28 NOV 2023 - 28 NOV 2023	TCHONG	EMPLOYEES PROVIDENT FUND BOARD [SSH]	-18		41775	6.409
27 NOV 2023 - 27 NOV 2023	TENAGA	EMPLOYEES PROVIDENT FUND BOARD [SSH]	228		957476	16.54
27 NOV 2023 - 27 NOV 2023	TEOSEN	MR NA HAP CHENG [SSH]	30		154473	52.661
28 NOV 2023 - 28 NOV 2023	TGUAN	EASTSPRING INVESTMENTS BERHAD [SSH]	332		20524	5.194
28 NOV 2023 - 28 NOV 2023	TGUAN	PRUDENTIAL PLC [SSH]	332		21504	5.441
23 NOV 2023 - 23 NOV 2023	TGUAN	EASTSPRING INVESTMENTS BERHAD [SSH]	691		20192	5.11
23 NOV 2023 - 23 NOV 2023	TGUAN	PRUDENTIAL PLC [SSH]	691		21171	5.357
30 NOV 2023 - 30 NOV 2023	TIMECOM	KUMPULAN WANG PERSARAAN (DIPERBADANKAN) ("KWAP") [SSH]	229		109677	5.939
28 NOV 2023 - 28 NOV 2023	TIMECOM	EMPLOYEES PROVIDENT FUND BOARD [SSH]	-834		140586	7.612
29 NOV 2023 - 29 NOV 2023	TIMECOM	KUMPULAN WANG PERSARAAN (DIPERBADANKAN) ("KWAP") [SSH]	-373		109448	5.926
27 NOV 2023 - 27 NOV 2023	TIMECOM	EMPLOYEES PROVIDENT FUND BOARD [SSH]	-1,207		141420	7.657
28 NOV 2023 - 28 NOV 2023	TIMECOM	KUMPULAN WANG PERSARAAN (DIPERBADANKAN) ("KWAP") [SSH]	-610		109821	5.946
24 NOV 2023 - 24 NOV 2023	TIMECOM	EMPLOYEES PROVIDENT FUND BOARD [SSH]	-1,148		142627	7.723
27 NOV 2023 - 27 NOV 2023	TIMECOM	KUMPULAN WANG PERSARAAN (DIPERBADANKAN) ("KWAP") [SSH]	-505		110432	5.979
23 NOV 2023 - 23 NOV 2023	TIMECOM	EMPLOYEES PROVIDENT FUND BOARD [SSH]	-419		143775	7.785
24 NOV 2023 - 24 NOV 2023	TIMECOM	KUMPULAN WANG PERSARAAN (DIPERBADANKAN) ("KWAP") [SSH]	20		110937	6.007
22 NOV 2023 - 22 NOV 2023	TIMECOM	EMPLOYEES PROVIDENT FUND BOARD [SSH]	-1,073		144194	7.808
23 NOV 2023 - 23 NOV 2023	TM	EMPLOYEE PROVIDENT FUND BOARD (EPF BOARD) [SSH]	1,300		664350	17.316
22 NOV 2023 - 22 NOV 2023	TM	EMPLOYEE PROVIDENT FUND BOARD (EPF BOARD) [SSH]	2,394		663050	17.282
29 NOV 2023 - 29 NOV 2023	TOCEAN	ENCIK MUHAMMAD HARIZ BIN MOHD NADZMI [SSH]	-30		12075	18.549
29 NOV 2023 - 29 NOV 2023	TOCEAN	IBRONI SDN. BHD. [SSH]	-30		12075	18.549
29 NOV 2023 - 29 NOV 2023	TOCEAN	KUMPULAN KENDERAAN MALAYSIA BERHAD [SSH]	-30		12075	18.55
29 NOV 2023 - 29 NOV 2023	TOCEAN	NADI CORPORATION SDN. BHD. [SSH]	-30		12075	18.549
29 NOV 2023 - 29 NOV 2023	TOCEAN	NADICORP HOLDINGS SDN. BHD. [SSH]	-30		12075	18.549
29 NOV 2023 - 29 NOV 2023	TOCEAN	TRISILCO EQUITY SDN. BHD. [SSH]	-30		12075	18.549
27 NOV 2023 - 27 NOV 2023	TRIVE	MITSUBISHI UFJ FINANCIAL GROUP INC [SSH]	142,896		142896	11.308
27 NOV 2023 - 27 NOV 2023	TRIVE	MORGAN STANLEY [SSH]	142,896		142896	11.308
30 NOV 2023 - 30 NOV 2023	UMCCA	CI RESOURCES LIMITED [SSH]	13,019		13019	6.206
28 NOV 2023 - 28 NOV 2023	UMW	EMPLOYEES PROVIDENT FUND BOARD [SSH]	1,054		122903	10.52
27 NOV 2023 - 27 NOV 2023	UMW	EMPLOYEES PROVIDENT FUND BOARD [SSH]	373		121848	10.43
23 NOV 2023 - 23 NOV 2023	UMW	EMPLOYEES PROVIDENT FUND BOARD [SSH]	36		121475	10.398
22 NOV 2023 - 22 NOV 2023	UMW	EMPLOYEES PROVIDENT FUND BOARD [SSH]	6		121439	10.395
29 NOV 2023 - 29 NOV 2023	UTDPLT	PERBADANAN PEMBANGUNAN PERTANIAN NEGERI PERAK [SSH]	-295		20991	5.061
27 NOV 2023 - 27 NOV 2023	UTDPLT	DATO' MOHAMAD NASIR BIN AB. LATIF [DIR/CEO]	10		130	0.031
24 NOV 2023 - 28 NOV 2023	UTDPLT	PERBADANAN PEMBANGUNAN PERTANIAN NEGERI PERAK [SSH]	-591		21286	5.131
24 NOV 2023 - 24 NOV 2023	UTDPLT	MR R. NADARAJAN [DIR/CEO]	5		167	0.041
22 NOV 2023 - 22 NOV 2023	UTDPLT	EMPLOYEES PROVIDENT FUND BOARD [SSH]	-2,455		20927	5.045
27 NOV 2023 - 27 NOV 2023	UWC	EMPLOYEES PROVIDENT FUND BOARD [SSH]	57		82213	7.463
24 NOV 2023 - 24 NOV 2023	UWC	EMPLOYEES PROVIDENT FUND BOARD [SSH]	89		82156	7.457
23 NOV 2023 - 23 NOV 2023	UWC	EMPLOYEES PROVIDENT FUND BOARD [SSH]	55		82068	7.449
22 NOV 2023 - 22 NOV 2023	UWC	EMPLOYEES PROVIDENT FUND BOARD [SSH]	109		82013	7.444
23 NOV 2023 - 23 NOV 2023	VSTEC	VSTEC HOLDINGS (SINGAPORE) LIMITED [SSH]	145		158666	44.5
23 NOV 2023 - 23 NOV 2023	VSTEC	VSTEC HOLDINGS LIMITED [SSH]	145		158666	44.5
29 NOV 2023 - 29 NOV 2023	WIDAD	WIDAD BUSINESS GROUP SDN. BHD. [SSH]	-3,000		1003959	32.423
28 NOV 2023 - 29 NOV 2023	WIDAD	TAN SRI MUHAMMAD IKMAL OPAT BIN ABDULLAH [SSH]	7,202		1126648	36.385
27 NOV 2023 - 27 NOV 2023	WIDAD	TAN SRI MUHAMMAD IKMAL OPAT BIN ABDULLAH [SSH]	-4,318		1119446	36.152
24 NOV 2023 - 24 NOV 2023	WIDAD	TAN SRI MUHAMMAD IKMAL OPAT BIN ABDULLAH [SSH]	-3,922		1123764	36.292
24 NOV 2023 - 24 NOV 2023	WIDAD	WIDAD BUSINESS GROUP SDN. BHD. [SSH]	-3,922		1006959	32.52
28 NOV 2023 - 28 NOV 2023	WPRTS	EMPLOYEES PROVIDENT FUND BOARD [SSH]	141		312810	9.173
27 NOV 2023 - 27 NOV 2023	WPRTS	EMPLOYEES PROVIDENT FUND BOARD [SSH]	78		312669	9.169
24 NOV 2023 - 24 NOV 2023	WPRTS	EMPLOYEES PROVIDENT FUND BOARD [SSH]	28		312591	9.167
30 NOV 2023 - 30 NOV 2023	XL	DATO' KHOO YIK CHOU [DIR/CEO]	88		5640	2.212
27 NOV 2023 - 27 NOV 2023	XL	DATO' KHOO YIK CHOU [DIR/CEO]	116		5552	2.205
27 NOV 2023 - 27 NOV 2023	YEWLEE	MR ANDREW YAW MUN KENG [DIR/CEO]	-100		300	0.056
28 NOV 2023 - 28 NOV 2023	YINSON	EMPLOYEES PROVIDENT FUND BOARD [SSH]	243		461657	15.882
27 NOV 2023 - 27 NOV 2023	YINSON	EMPLOYEES PROVIDENT FUND BOARD [SSH]	2,200		461414	15.874
24 NOV 2023 - 24 NOV 2023	YINSON	EMPLOYEES PROVIDENT FUND BOARD [SSH]	3,193		459214	15.798
23 NOV 2023 - 23 NOV 2023	YINSON	EMPLOYEES PROVIDENT FUND BOARD [SSH]	1,187		456021	15.688
22 NOV 2023 - 22 NOV 2023	YINSON	EMPLOYEES PROVIDENT FUND BOARD [SSH]	1,536		454834	15.647
29 NOV 2023 - 29 NOV 2023	ZHULIAN	MR TEOH BENG SENG [SSH]	-7		282212	61.35
29 NOV 2023 - 29 NOV 2023	ZHULIAN	THE BEST SOURCE HOLDINGS PTE. LTD. [SSH]	-7		79265	17.23
28 NOV 2023 - 28 NOV 2023	ZHULIAN	MR TEOH BENG SENG [SSH]	-499		282218	61.35
28 NOV 2023 - 28 NOV 2023	ZHULIAN	THE BEST SOURCE HOLDINGS PTE. LTD. [SSH]	-499		79271	17.23

Disclaimer: The Information in Insider Activity is extracted from www.shareinvestor.com/fundamental/insider_trades. The information on this page is provided as a service to readers. It does not constitute financial advice and/or any investment recommendations. We assume no liability for damages resulting from or arising out of the use of such information. Whilst every effort is made to ensure accuracy, the information presented is not the official record of shareholder filings. Readers are advised to read the original filings on the Bursa Malaysia website at www.bursamalaysia.com

SHAREINVESTOR MARKET DATA PLATFORMS



SHAREINVESTOR STATION
Advanced Charting Software (8 Markets)

SHAREINVESTOR WEBPRO
Browser-Based Market Data Analytics Platform



CELEBRATING *MALAYSIAN* *ENTREPRENEURSHIP*

10 Malaysian-Made Gifts for the Holidays

Here's a list of 10 home-grown eco-friendly products to gift yourself and your loved ones!

This year, as the spirit of giving intertwines with social consciousness, we were inspired to spotlight the diverse array of Malaysian-made products, celebrating our nation's talented entrepreneurs and aligning with the sustainability movement. Read on to experience the essence of Malaysia's craftsmanship this holiday season as we looked within our borders to seek out gift ideas before the year wraps up.

Realising the bourses have been on a roller coaster ride this year, our list ranges from moderately priced items around RM100 to those above RM1,000. You'll find that many of the items on our list are also aligned to sustainable practices - made of eco-friendly materials and promote low-energy usage and social impact purchases.





Love leather but concerned about environmental impact and animal cruelty? The fashion industry is abuzz with the rise of vegan leather. Tracey, a local handbag manufacturer, offers an extensive catalogue of options crafted from coffee or apple leather.

This company originated from one man's determination to design an organised handbag for his wife. As Tracey gained momentum, the team realised the need to adopt a more eco-friendly approach. Embracing sustainability in fashion, Tracey ventured into environmentally conscious fashion with its Conscious Edit collection. The brand specifically utilises apple leather, coffee leather, and recycled nylon to fashion its bags.

Coffee leather is derived from coffee pulp combined with natural ingredients, while apple leather utilises waste from juiced apples, treated and blended with recycled materials like polyester and cotton. Items from the Conscious Edit collection are priced around RM299 for apple leather and start from RM229 for coffee leather.

Tracey's sustainable products are endorsed by the Global Recycle Standards, verifying their source and confirming that all items comprise at least 20% recycled material.

You can shop for Tracey bags online at [Tracey – Take it with you](#). Shipping is free for purchases above RM150 within Peninsula Malaysia.



Product name:
City Lite Tote (coffee edition)

Price: **RM 329.00**

Coconest, coconut themed Airbnb

End your year or perhaps begin the new year on an adventurous note by exploring Coconest, a unique glamping retreat in Langkawi available on Airbnb. Nestled at the base of Tanjung Rhu's King Kong Mountain, this Airbnb resembles a floating coconut resting peacefully on the Andaman Sea. Its exterior mimics a coconut husk, while the inside boasts a modern aesthetic with premium wooden furnishings. Although perfect for a cozy stay for two, Coconest also offers communal spaces for larger gatherings.



Floating Stay (@coconest.langkawi) • Instagram photos and videos

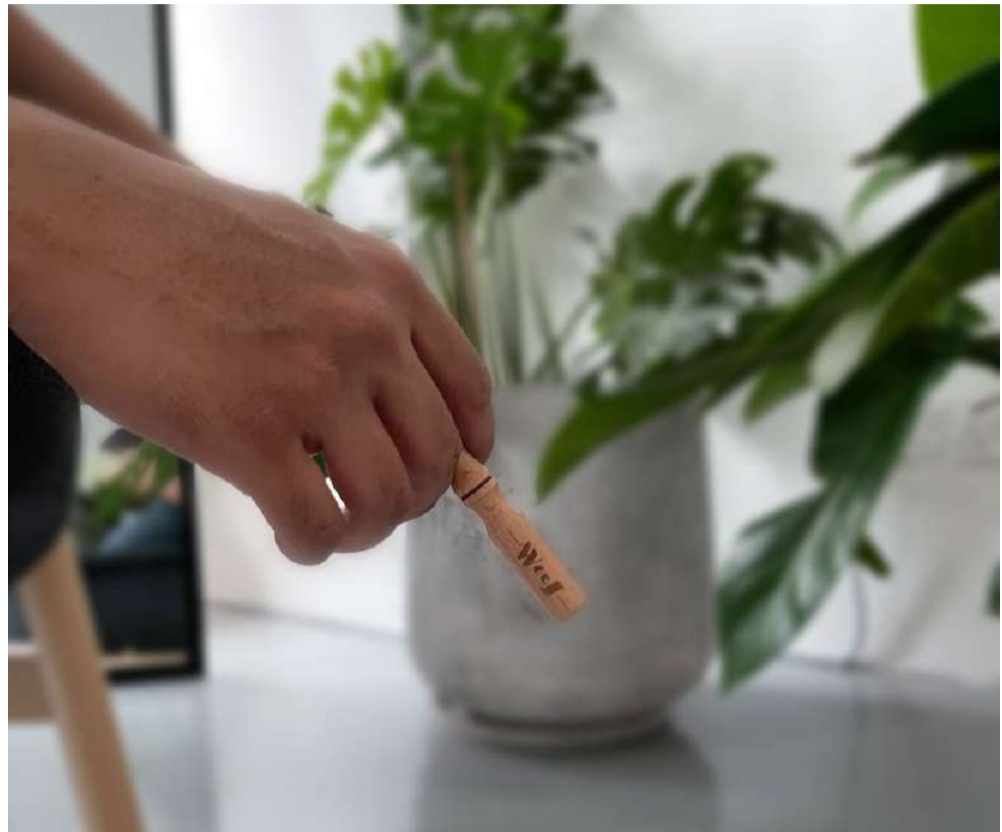
It's important to remember that Coconest is actually out in the middle of the sea! Accessible only by a quick five-minute boat shuttle, so make sure you bring along everything you need. Guests can either cook on-site with available facilities or arrange water taxis to nearby floating restaurants.

Going green, Coconest operates entirely off-the-grid, powered by Solar Panels and Batteries. Beyond its unique design, Coconest, winner of Airbnb's OMG! Fund Competition in 2022, used part of the winnings to establish a coral nursery allowing guests to partake in coral planting. The owners say it's their contribution towards restoring the rapidly dwindling coral reefs in the area and a testament of their dedication to sustainable tourism.

This is an experience no one should miss. Get your bookings done at https://www.airbnb.com/rooms/682474721416529522?source_impression_id=p3_1701682501_0ATY4YcAMBpPtLE.

3 WooS, aromatherapy inhalers

Struggling to kick the smoking habit? Say goodbye to the habit and discover this unique homegrown solution – aromatherapy inhalers. These inhalers come in wood or steel options and are filled with essential oils, providing an inhalation experience similar to smoking or vaping. Designed as a natural alternative, they aim to help you gradually overcome nicotine cravings without substituting one addiction for another. Instead, they harness the aromatherapeutic effects of essential oils, addressing the psychological and sensory aspects of addiction.



These sustainable inhalers are a one-time purchase, available in wood (RM99) or steel (RM109). Users only need to replace the cotton wick containing the essential oils, estimated to last up to three days. A pack of five cotton wicks (RM25 to RM30), available in various flavors, can last up to 15 days. Whether for yourself or as a thoughtful gift for a friend on their journey to a healthier lifestyle, these inhalers are an excellent choice. Get the starter pack at RM119 for a wood inhaler with 2-pack wicks at [WooS \(mywoos.co\)](https://mywoos.co).



This proudly Malaysian-crafted oral-care brand is dedicated to 'changing the world, one smile at a time.' Gogy Natural, formulated with natural ingredients, advocates a skincare approach to oral hygiene.

The dynamic duo behind this innovative brand has ingeniously designed a comprehensive oral-care regimen. The morning cleanse toothpaste, ideal for daily brushing, shields against tooth decay and effectively diminishes plaque buildup.

Complementing this, the night cleanse toothpaste serves as an essential part of the bedtime routine, adept at eradicating food colouring stains and combating bacteria responsible for unpleasant breath.

Adding to this innovative lineup is the night exfoliate paste, recommended three times a week, which works wonders in banishing stubborn coffee, tea, or tobacco stains. Through this gentle exfoliation, it unveils brighter, shinier teeth, promoting a confident smile.

What sets Gogy Natural apart is its commitment to utilising premium-grade natural ingredients. The brand prides itself on avoiding harmful chemicals like Sodium Lauryl Sulfate (SLS), often utilised for its foaming properties but known for potential adverse effects. Gogy Natural champions a safe, natural, and effective oral-care solution, aligning with the ethos of preserving oral health while maintaining an unwavering dedication to environmental sustainability and customer well-being.

For the brightest smile this Christmas, get the bundle set which starts at RM90.10 available online at [Bundles/Kits \(gogynatural.com\)](https://gogynatural.com/Bundles/Kits).



HILCS Guitar

So maybe your mama don't dance and your daddy don't rock and roll, but you sure do! Then you deserve the HILCS hand-crafted, made-to-order guitar. This guitar epitomises precision and delivers exceptional tonal performance. Exclusively introduced by Brado Guitars, the HILCS boasts three distinct models: the Standard Series Custom, the Tonebreaker Roasted Neck Standard, and the Tonebreaker Premium. Each model is meticulously assembled using top-tier components to ensure unparalleled sound quality.



The guitar's body is constructed from high-grade poplar wood, while the neck offers versatility with options like roasted maple or rosewood, catering to various playing preferences. Moreover, the customisable aspect allows you to choose from an array of vibrant hues – solid, metallic, pearl, or candy colors, available in both polyurethane or nitrocellulose finishes.

Priced starting at RM1,650, the HILCS Standard Series also offers a convenient instalment plan, allowing you to pay RM660 per month over three months, making your dream guitar more accessible. To secure your piece, pre-ordering online is required, with an estimated waiting period of approximately 14 days. Order at [Hilcs Guitars – Brado Guitars](#), and start rocking your musical dream.

JackalX and ToyPanic

There's a big market out there for collectibles, and it doesn't take the Big Bang Theory to tell us just how big Comic Cons can get. The inception of ToyPanic traces back to its founder's childhood passion for toys, leading to the creation of Malaysia's inaugural action figure line, JackalX. ToyPanic specialises in curating a diverse array of toys, figures, games, and collectibles from global sources, catering to both collectors and gamers. With a Brick & Mortar store in Penang and an online platform www.ToyPanic.com, ToyPanic also offers a free service enabling enthusiasts to buy, trade, or sell their used collectibles and games.

While ToyPanic fulfills the market for licensed action figures like Star Wars, Marvel, DC, and Transformers, JackalX was conceived to serve an expanding community seeking unique designer toys. These designer toys boast distinctive designs and limited releases, providing collectors with a one-of-a-kind and gratifying collecting experience.

If you're in pursuit of collectibles or seeking the exclusive thrill of designer toys, explore ToyPanic for an exceptional range. Dive into the world of JackalX, Malaysia's pioneering action figure line, each with an enthralling backstory.



Ophiuchus: Dawn of the Humanoids series based on a combination of science fiction and military genre.

Apollo Men's Wellness Centre

While spas and wellness centres often cater predominantly to women, there's now a haven that caters specifically to men's wellness needs. Offering tailored wellness packages designed to rejuvenate and revitalise men, it's an ideal gift for oneself to indulge in or to gift another in need of some pampering. With the holiday season upon us, there's no better time for a much-needed relaxation and rejuvenation session.

These exclusive packages, starting from RM10,000, are meticulously crafted to address specific male needs. Services range from targeted hair loss treatments to addressing tissue hypoxia reversal and utilising innovative technology like Emsculpt Neo—an advanced non-invasive method to simultaneously build muscles and reduce fat.

Furthermore, they provide personalised diagnostic tests to delve into DNA analysis, hormonal status, and early cancer cell detection. Armed with these comprehensive insights, their expert doctors curate bespoke treatment plans, aiming to rectify any imbalances and optimise individual wellness.

Visit [HOME | Apollo Men Wellness \(apollomenswellness.com\)](https://www.apollomenswellness.com) for more information.



MunchBOT by MAEKO

As COP 28 unfolds, here's something to inspire your environmental efforts – the MunchBOT compost machine. This portable hybrid composter, proudly made in Malaysia, features a built-in grinder and is designed to process up to 2kg of daily food waste within a mere 24 hours. Enhanced with an odour-free filtering system, this lightweight, portable machine operates on a low power consumption of 650W, exemplifying its energy-efficient nature and commitment to environmental preservation. It stands out as Inve\$t's greenest gift recommendation this season.

Equipped with sensors and an intelligent control system, the MunchBOT accelerates the necessary metabolic process for composting. Your purchase includes Speedozyme™ Aerobic Microbes, and under the machine's precise temperature, humidity, and aeration conditions, it transforms food waste into nutrient-rich compost usable in your garden within 24 hours.

This compact version of MAEKO's renowned MunchBOT is impeccably designed to fit seamlessly into homes, kitchens, and office pantries. Visit [MunchBOT | Munch it to Mulch](#) and find out how you can get this green-gadget to join your family this season.



Earth Heir

In need of gift ideas for Christmas parties or all out of ideas for the Secret Santa exchange? Explore <https://earthheir.com/> for an impressive collection of handcrafted heritage gifts offered at various price points, all meticulously crafted by refugees and local tribes. Every purchase contributes to improving their lives. Inve\$t showcased Earth Heir's impactful mission in [Inve\\$t Issue #156](#), advocating for conscious consumerism.

Earth Heir stands as a platform featuring sustainable and socially responsible Malaysian-made products curated from several NGOs dedicated to social impact and eco-friendly goods. Their selection includes handbags, jewellery, apparel, snacks, soaps, and candles, all perfect for thoughtful gifting.

These organisations support diverse causes, from empowering refugees and at-risk youth to aiding underprivileged communities in Sarawak. Earth Heir also collaborates with Sea Monkey Project to repurpose ocean plastic waste into necklaces, rulers, and other innovative items. Recognised as Fair Trade Certified, Social Enterprise Certified, and a Certified B Corporation, Earth Heir consistently demonstrates outstanding social and environmental performance.



Description: Ikat Luxury Clutch, on promotion for RM615.



Perfumes remain an evergreen choice for gifting, offering an enduring appeal across all seasons. Amidst a sea of international fragrance brands with varying price tags, there exists a refreshing and distinctive offering in Olfac3—a homegrown brand born from the founder's profound love for scents. At its heart, each Olfac3 perfume embodies uniqueness, drawing inspiration from indelible moments, emotions, and vivid flights of imagination.

This collection of scents is an evocative journey designed to stir memories, evoke mystery, capture beauty, and evoke a spectrum of emotions, creating a captivating experience for the olfactory senses.

Step into the world of OLFAC3 Perfumes and immerse yourself in the enchanting world of scents curated by its chief perfumer. Explore a diverse array of fragrances including Matahari, Bunga, Ombak, Borneo, and Adonis, among other captivating scents. Catering to both men and women, Olfac3 boasts a versatile range, including unisex fragrances. With most 50ml bottles priced at RM250, Olfac3 is currently offering a tempting Buy 1 Free 1 promotion for its 30ml range. Moreover, shipping within Malaysia is complimentary. Visit [OLFAC3 Perfumes](#). [Discover #loveatfirstscent today](#). and experience and explore Olfac3's meticulously crafted perfumes that encapsulate unique stories and emotions within each exquisite bottle.



30ml Eau De Parfum - Buy 1 Free 1
| OLFAC3 Perfumes



Axiata Group Berhad (AXIATA)

announces that it had entered into an unconditional sale and purchase agreement with Spectrlite UK Limited for the sale of Reynolds Holding Limited

which owns approximately 80% equity stake in Ncell Axiata Limited. The Group's decision to withdraw from Nepal is based on a thorough evaluation of the prevailing business environment in Nepal, which led to the conclusion that continuing operations under the current conditions of unfair taxation and regulatory uncertainties was no longer sustainable for Axiata.

[READ MORE](#)

The Board of Directors of Capital A Berhad

(**CAPITALA**) wishes to announce that Asia Aviation Capital Limited, an indirect wholly owned subsidiary of the Company, has on 5 December 2023,

entered into Aircraft Lease Agreement with AirAsia X Berhad for the leasing of one A330-300 aircraft bearing manufacturer serial number 1596 and subject to the terms and conditions as stipulated in the Agreement.

[READ MORE](#)



[READ MORE](#) 

The Board of Directors of **Cypark Resources Berhad (CYPARK)** is pleased to announce that the Company has on 1 December 2023 signed a MOU with Abu Dhabi Future Energy Company PJSC – Masdar to formalise the intention of the Parties to further discuss the following potential areas of collaboration and possibly potential projects and services related thereto, upon the terms and conditions stipulated in the MOU.



celcomdigi

CelcomDigi Berhad (CDB) wishes to announce that its wholly-owned subsidiary, CelcomDigi

had on 1 December 2023 entered into a conditional share subscription agreement with MoF Inc. and Digital Nasional Berhad to subscribe for new ordinary shares in Digital Nasional Berhad and provide shareholder advances to DNB, together with the Proposed Subscription and Proposed Acquisition, in accordance with the terms as set out in the SSA.

[READ MORE](#) 



[READ MORE](#)



The Board of Directors of **Gamuda Berhad (GAMUDA)**

wishes to announce

that its Gamuda Berhad Singapore Branch has been awarded the design and construction of West Coast station and tunnels by the Land Transport Authority of Singapore on 6 December 2023.



[READ MORE](#)



The Board of Directors of **Kinergy Advancement Berhad (KAB)** wishes to announce that the Company had on 5 December 2023 accepted a Letter of Award issued by Myvilla Development Sdn Bhd, a subsidiary of Mah Sing Group Berhad, for the Appointment of the Nominated of Sub-Contractor for Electrical, Telephone and Extra Low Voltage Services for a total of 2,080 units Suite Apartments at Lot 80646, Jalan Lingkaran Tengah II, Mukim Batu, Kuala Lumpur.



The Board of Directors of **Sarawak Consolidated Industries Berhad (SCIB)** wishes to announce that SCIB Industrialised Building System

Sdn Bhd, a wholly-owned subsidiary of SCIB, had on 4 December 2023, accepted a letter of Award and Acceptance for securing a Sub-Contract Works from S & I Urban Designers Sdn Bhd subject to the terms and conditions as stipulated in the LOA.



Telekom Malaysia Berhad (TM) wishes to announce that it has on 1 December 2023 executed a Share Subscription Agreement with Minister of Finance (Incorporated) and Digital

Nasional Berhad to: (i) pay RM100,000.00 to DNB in consideration of 100,000 ordinary shares in DNB; and (ii) advance a sum of RM233,233,333.00 as prepayment under the Access Agreement with DNB, pursuant to an Access Agreement Letter to be executed with DNB and governed by the SSA.



Disclaimer: The information in the Investor Relations page is extracted from individual companies' announcements in www.bursamalaysia.com. The information on this page is provided as a service to readers. We assume no liability for damages resulting from or arising out of the use of such information. Whilst every effort is made to ensure accuracy, the information presented has been simplified for your reading pleasure. Readers are advised to read the original and complete filings on the Bursa Malaysia website at https://www.bursamalaysia.com/market_information/announcements/company_announcement

Upcoming IPO

NAME OF COMPANY	OFFER PERIOD		ISSUE PRICE (Per Ordinary Share)	LISTING SOUGHT	DATE OF LISTING
	OPENING	CLOSING			
JATI TINGGI GROUP BERHAD	30 Nov 2023	6 Dec 2023	RM0.27	ACE MARKET	20 Dec 2023
CRITICAL HOLDINGS BERHAD	27 Nov 2023	5 Dec 2023	RM0.35	ACE MARKET	18 Dec 2023