

# Invest

A Weekly e-Publication by [SHAREINVESTOR.com](http://SHAREINVESTOR.com)

ISSUE

184

FRIDAY  
24 NOVEMBER  
2023

Scan/Click QR to Register



Via email, every Friday

## MARKET SENTIMENTS

# MALAYSIA CAN ACHIEVE ESG GOALS WITHIN SEVEN YEARS OR LESS - MITI

Govt eyeing a 'good slice' of projected US\$2.7bil ASEAN EV market  
- Tengku Zafrul

See more on pages 20-23

## ALSO

**07** COMPANY SPOTLIGHT  
E.A. Technique (M) Berhad

**25** MSWG  
How to evaluate and analyse REITs

**04** LEADERBOARD

**06** SHARIAH HOT STOCKS

**08** SHARIAH MOMENTUM UP STOCKS

**10** NON SHARIAH HOT STOCKS

**12** UP TRENDING STOCKS

**14** VALUE STOCKS

**15** GROWTH STOCKS

**16** DIVIDEND STOCKS

**17** BROKERS' CALL

**18** LONG COMPANIES

**24** REGIONAL MARKETS

**28** INSIDER ACTIVITY

**31** SPECIAL EVENT

**35** INVESTOR RELATIONS



# SHAREINVESTOR®

Invest with Knowledge

## INVESTOR PLATFORMS

**Director**  
Darren Chong  
darren.chong@shareinvestor.com

**Business Development Manager**  
Jay Cheong  
jay.cheong@shareinvestor.com

**Senior Executive**  
Daniel Wong  
daniel.wong@shareinvestor.com

**Executive**  
Farah Azwani  
farah.azwani@shareinvestor.com

**Executive**  
Tan Yong Sheng  
yongsheng.tan@shareinvestor.com

## ADMIN & OPERATIONS

**Senior Executive**  
Watie Nordin  
watie.nordin@shareinvestor.com

**Executive**  
Silas Emmanuel Joseph  
silas.joseph@shareinvestor.com

## INVESTOR RELATIONS

**Group Managing Director & Publisher**  
Edward Stanislaus  
edward@shareinvestor.com

**Senior Manager**  
Letticia Wong  
letticia.wong@shareinvestor.com

## PROCESS AUTOMATION & DATA ANALYTICS

**Data Analyst**  
Nickson Aw

## SHAREINVESTOR HOLDINGS BOARD OF DIRECTORS

<b>Chairman</b>	Patrick Daniel
<b>Group CEO</b>	Christopher Lee
<b>Group COO</b>	Lim Dau Hee
<b>Group CFO</b>	Teo Siew May
<b>Group MD</b>	Shanison Lin



“ GIVE A MAN A FISH AND YOU FEED HIM FOR A DAY; TEACH A MAN TO FISH AND YOU FEED HIM FOR A LIFETIME ”

### ShareInvestor Malaysia Sdn. Bhd.

(200001023956) (526564-M)  
Unit No. DF2-07-03A, Level 7,  
Persoft Tower, 6B Persiaran Tropicana,  
47410 Petaling Jaya, Selangor Darul Ehsan.

Hotline : 603 7803 1791

Mobile : 011 6343 8939

Website : [www.ShareInvestor.com.my](http://www.ShareInvestor.com.my)

[www.ShareInvestorHoldings.com](http://www.ShareInvestorHoldings.com)

[www.facebook.com/ShareInvestorMalaysia](https://www.facebook.com/ShareInvestorMalaysia)

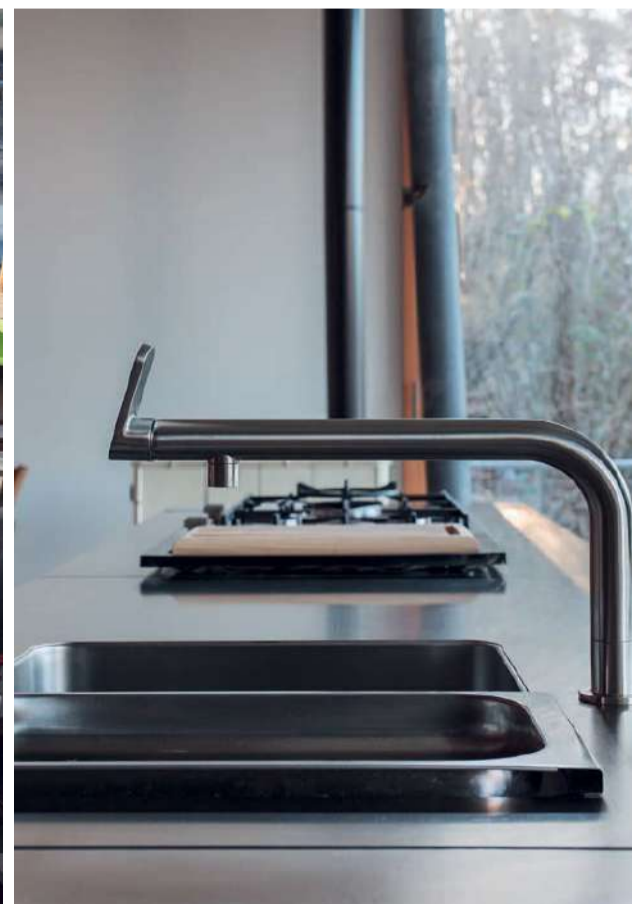
ADVERTISEMENT ENQUIRY

bulthaup takes care of the details so that you can enjoy a harmonious environment.



**XTRA**

XTRA FURNITURE SDN BHD  
The Gardens Mall, Mid Valley City  
[xtrafurniture.com/bulthaup](http://xtrafurniture.com/bulthaup)  
[fb.com/bulthaupmalaysia](https://fb.com/bulthaupmalaysia)



bulthaup

# IMPORTANT Announcement!



We are thrilled to announce an upgrade that will take your investment experience to new heights!

**BURSA STATION is evolving and will be merged into the SHAREINVESTOR STATION**

**starting from 1st November 2023**

and we can't wait to share all the amazing benefits with you.

ShareInvestor Station is a desktop application that has a similar user interface to Bursa Station, with additional exciting features such as: access to the

- ✓ *Global Market*
  - ✓ *Intrinsic Value Calculator*
  - ✓ *Interactive Charting Tools*
  - ✓ *Customisable Indicator Database*
  - ✓ *Top Shareholder Analysis*
  - ✓ *Company Forecast Revenue*
  - ✓ *Consensus Estimates*
  - ✓ *Dividend Analysis*
- and many more!*



**Find out more about ShareInvestor Station here**



**For Existing Users:** Rest assured that you will retain access to Bursa Station until the end of your current subscription period. In addition, as a token of our appreciation for your loyalty, you will receive an email providing complimentary access to explore the ShareInvestor Station.

**Thank you for using BursaStation!**  
**We are committed to continuing to serve you better with ShareInvestor Station.**

*If you have any questions or face any issues, reach out to us at [admin.my@shareinvestor.com](mailto:admin.my@shareinvestor.com) or dial 03 - 7803 1791.*

[www.shareinvestor.com](http://www.shareinvestor.com) - market data at your fingertips



ShareInvestor WebPro ([www.shareinvestor.com/my](http://www.shareinvestor.com/my))  
Prices > Stock Prices > Bursa > click Stocks tab

1. mouse over Ranking > select Top Active > all Shariah stocks are denoted with an [S] > mouse over Column Layout > select Edit Customs > select Name > select Volume > select Last Done Price > Mouse Over Column Layout > select Custom
2. mouse over Ranking > select Top Turnover > all Shariah stocks are denoted with an [S] > mouse over Column Layout > select Edit Customs > select Name > select Last Done Price > select Value > Mouse Over Column Layout > select Custom
3. mouse over Ranking > select Top Gainers (Over 5 Trading Days) > mouse over Column Layout > select Edit Customs > select Name > select Last Done Price > select 5 Days Change > select 5 Days % Change > Mouse Over Column Layout > select Custom
4. mouse over Ranking > select Top Losers (Over 5 Trading Days)
5. mouse over Ranking > select Top % Gainers (Over 5 Trading Days)
6. mouse over Ranking > select Top % Losers (Over 5 Trading Days)

### Shariah Top Actives (as at Yesterday)

Name	Price (RM)	Volume
HONGSENG [S]	0.025	5,855,703.000
TOPGLOV [S]	0.885	1,678,514.000
LEFORM [S]	0.285	832,346.000
WIDAD [S]	0.470	553,453.000
SCIB [S]	0.660	528,006.000
CAREPLS [S]	0.320	376,878.000
CLASSITA [S]	0.055	350,516.000
FITTERS [S]	0.050	333,496.000
KANGER [S]	0.075	325,257.000
MYEG [S]	0.805	324,808.000

### Shariah Top Turnover (as at Yesterday)

Name	Price (RM)	Value (RM)
TOPGLOV [S]	0.885	145,355,695
HARTA [S]	2.620	44,729,020
INARI [S]	2.900	39,685,624
SCIB [S]	0.660	34,634,018
PMETAL [S]	4.900	34,517,445
PERTAMA [S]	3.100	29,812,311
MYEG [S]	0.805	26,240,737
WIDAD [S]	0.470	26,006,939
LEFORM [S]	0.285	23,557,051
KOSSAN [S]	1.750	20,158,412

### Top Gainers (over 5 Trading days as at Yesterday)

Name	Price (RM)	Change (RM)
RAPID	27.400	+2.460
ALLIANZ	17.880	+1.080
PANAMY	18.080	+0.400
TEOSEN	1.740	+0.390
F&N	27.280	+0.380
HEXTECH	23.600	+0.380
BLDPLNT	10.980	+0.360
CRESNDO	1.730	+0.280
HARTA	2.620	+0.250
SHANG	2.460	+0.250

### Top % Gainers (over 5 Trading days as at Yesterday)

Name	Price (RM)	Change (%)
EAH	0.010	+100.00
KGROUP	0.010	+100.00
AEM	0.015	+50.00
G3	0.030	+50.00
PRKCORP	0.415	+33.87
MTRONIC	0.020	+33.33
TEOSEN	1.740	+28.89
FLEXI	0.195	+25.81
XDL	0.025	+25.00
PINEAPP	0.980	+22.50

### Top Losers (over 5 Trading days as at Yesterday)

Name	Price (RM)	Change (RM)
NESTLE	121.600	-1.600
PERTAMA	3.100	-0.730
KLK	21.380	-0.640
PPB	14.280	-0.580
HLFG	16.600	-0.500
PETGAS	16.880	-0.260
ULICORP	1.530	-0.260
AEONCR	5.710	-0.250
AIRPORT	7.300	-0.210
COASTAL	1.750	-0.190

### Top % Losers (over 5 Trading days as at Yesterday)

Name	Price (RM)	Change (%)
MLAB	0.005	-50.00
HONGSENG	0.025	-37.50
XOX	0.010	-33.33
PUC	0.035	-22.22
DCHCARE	0.410	-19.61
PERTAMA	3.100	-19.06
HTPADU	0.850	-18.27
PAOS	0.370	-14.94
ULICORP	1.530	-14.53
ALAM	0.030	-14.29



# STROM

SWISS TIMEPIECES & JEWELLERY



StromWatch Asia

Tele : +65.9817.3378 Email : ll.stromasia@gmail.com

[WWW.STROMWATCH.SWISS](http://WWW.STROMWATCH.SWISS)



## Price & Volume Distribution Charts (as at Yesterday)

Technical Analysis

**DEFINITION:** Shariah compliant stocks with Technical Analysis showing 5-days & 10-days Moving Average Price below Yesterday's Close over past 3 days and with Volume Spike.

**CHART GUIDE:** Volume Distribution Chart is a statistical interpretation of the current sentiment on each stock in graphical format. The highest bar categorized as >150k is likely to be traded by institutions or super dealers, while the lowest bar categorized as <15k usually represents retail investors. "Buy Up" refers to more buyers snatching up the lots queued at selling price. "Sell Down" refers to sellers selling their shares to the buying queue



ShareInvestor WebPro > Screener > Market Screener (FA & TA) > select BURSA > add criteria

**A. Criteria**

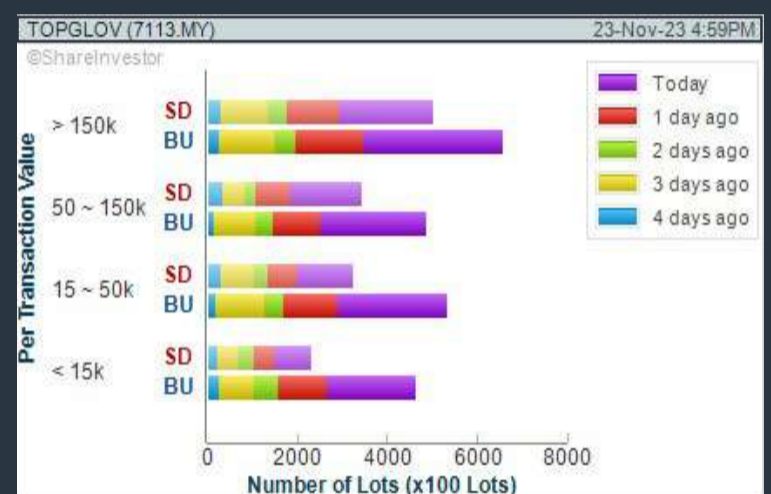
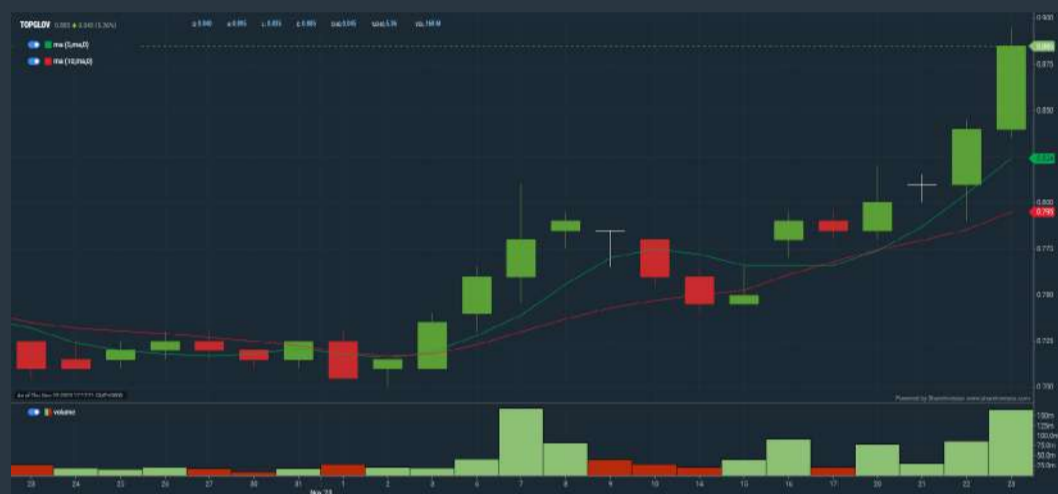
- > click Add Criteria
- Technical Analysis Conditions tab select (i) Moving Average Below Close (ii) Volume Spike
- Fundamental Analysis Conditions tab > select (iii) Revenue
- Prices & Other Conditions tab > select (iv) Is Shariah Compliant
- Technical Analysis Conditions tab select (v) Moving Average Below Close
- Prices & Other Conditions tab > select (vi) Last Done Price
- Technical Analysis Conditions tab select (vii) Moving Average Below Close

**B. Conditions (Criteria Filters)**

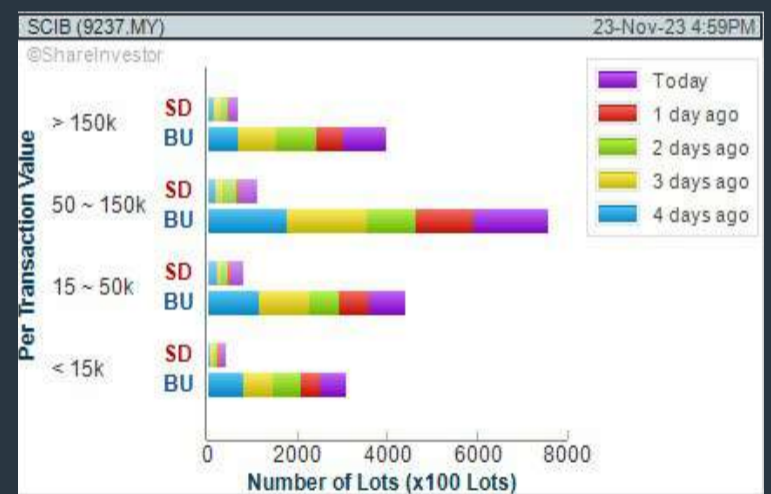
1. Moving Average Below Close - select (MA) type (5) below close price for type (3) days
2. Volume Spike - Volume type (1) greater than type (5) days average
3. Revenue ("000) - select (more than) type (1) for the past select (1) financial year(s)
4. Is Shariah Compliant - select **Yes**
5. Moving Average Below Close - select (MA) type (10) below close price for type (3) days
6. Last Done Price - select (more than) type (0.3)
7. Moving Average Below Close - select (EMA) type (5) below close price for type (3) days

- > click Save Template > Create New Template type (Shariah Hot Stocks) > click Create
- > click Save Template as > select Shariah Hot Stocks > click Save
- > click Screen Now (may take a few minutes)
- > Sort By: Select (Vol) Select (Desc)
- > Mouse over stock name > Charts > click C<sup>2</sup> Charts or Volume Distribution

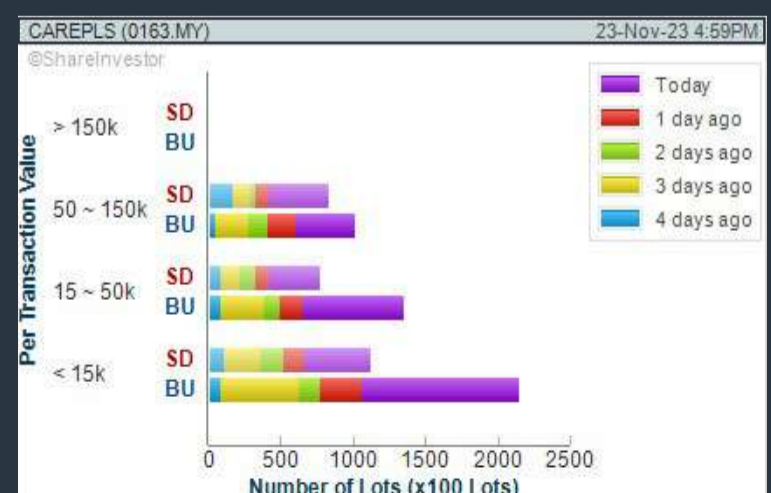
## TOP GLOVE CORPORATION BERHAD (7113) C<sup>2</sup> Chart



## SARAWAK CONSOLIDATED IND BERHAD (9237) C<sup>2</sup> Chart



## CAREPLUS GROUP BERHAD (0163) C<sup>2</sup> Chart



**Disclaimer:** The information on this page is provided as a service to readers. It does not constitute financial advice and/or any investment recommendations. Past performance is not indicative of future results. We assume no liability for damages resulting from or arising out of the use of such information. It would be best if you did your own research to make your personal investment decisions wisely or consult a licenced investment advisor.

## COMPANY BACKGROUND

**E.A. Technique (M) Berhad** is a marine company that owns and operates marine vessels for the purpose of marine transportation and offshore storage of oil & gas, and provision of port marine services. The Company is involved in the charter of various types of tankers for the transportation and offshore storage of oil & gas, charter of marine tug vessels for the provision of port marine services and charter of Offshore Support Vessels in the form of fast crew boats to transport personnel/light cargoes between shore and platform, platform and



platform and other offshore facilities. Through its subsidiary, Johor Shipyard and Engineering Sdn Bhd, the Company provides shipbuilding, ship repair and minor fabrication services

EATECH E.A. TECHNIQUE (M) BERHAD <span style="float: right;">Updated at 23 Nov 2023 17:21</span>			
Last (MYR): <b>0.330</b>	Change: -	High: 0.340	Remarks: -
	Change (%): -	Low: 0.320	
Open	0.330	Yesterday's Close	0.330
Buy Price	0.320	Sell Price	0.330
Buy Volume ('00)	4,923	Sell Volume ('00)	900
Cumulative Volume ('00)	80,251	Cumulative Value	2,661,206

### Financial Analysis

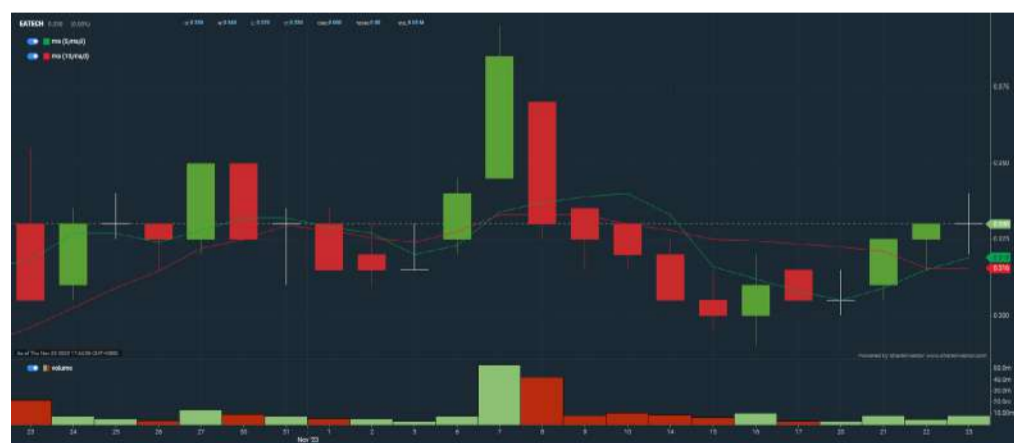
<b>Revenue Growth</b> Decreasing revenue in last 2 years		<b>Profit Growth</b> Profit turnaround in most recent year	
<b>Piotroski F Score</b> The company has above average financial strength (Piotroski F-Score of 6-7)		<b>Current Ratio</b> The company may have difficulty meeting short-term obligations with its current assets for 3 consecutive years	
<b>Debt to Cashflow</b> High debt to cash flow for most recent year		<b>Debt to Equity</b> High debt to equity for most recent year	
<b>Gross Profit Margin</b> Low gross profit margin for 3 years		<b>Net Earnings Margin</b> Net profit margin is decreasing by more than 10% a year over the past 60 months.	
<b>Return on Equity (ROE)</b> ROE is decreasing by 10% a year over the past 36 months.			

Excellent 
 Good 
 Neutral 
 Be Alert 
 Watch Out

### Historical Financials

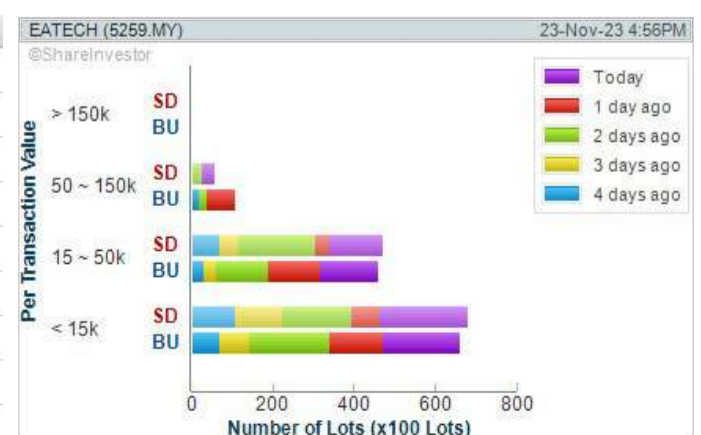


**WebPro 9-Days Free Trial Registration (worth RM9) Sign Up Now**



### Key Statistics with Total Shareholder Returns

Period	Dividend Received	Capital Appreciation	Total Shareholder Return
Short Term Return	5 Days	+0.000	+10.00%
	10 Days	-	-
	20 Days	-	-
Medium Term Return	3 Months	+0.090	+37.50%
	6 Months	+0.160	+84.12%
	1 Year	+0.205	+164.00%
Long Term Return	2 Years	+0.240	+266.67%
	3 Years	+0.040	+13.79%
	5 Years	-0.160	-32.65%
Annualised Return	Annualised	-	-7.80%



**Disclaimer:** The information on this page is provided as a service to readers. It does not constitute financial advice and/or any investment recommendations. Past performance is not indicative of future results. We assume no liability for damages resulting from or arising out of the use of such information. It would be best if you did your own research to make your personal investment decisions wisely or consult a licenced investment advisor.

## Price & Volume Distribution Charts (as at Yesterday)

Technical Analysis

**DEFINITION:** Shariah compliant stocks with Technical Analysis showing Bullish Momentum and Price Uptrend. The share price closed at the highest price yesterday. The typical price was higher than the previous day's typical price.

**CHART GUIDE:** Volume Distribution Chart is a statistical interpretation of the current sentiment on each stock in graphical format. The highest bar categorized as >150k is likely to be traded by institutions or super dealers, while the lowest bar categorized as <15k usually represents retail investors. "Buy Up" refers to more buyers snatching up the lots queued at selling price. "Sell Down" refers to sellers selling their shares to the buying queue.



ShareInvestor WebPro > Screener > Market Screener (FA & TA)>select BURSA>add criteria

**A. Criteria**

- > click Add Criteria
- Fundamental Analysis Conditions tab >select (i) Revenue
- Technical Analysis Conditions tab select (ii) Average Volume
- Prices & Other Conditions tab > select (iii) Last Done Price
- Prices & Other Conditions tab > select (iv) Is Shariah Compliant
- Technical Analysis Conditions tab select (v) RSI Overbought
- Technical Analysis Conditions tab select (vi) Moving Average Below Close
- Technical Analysis Conditions tab select (vii) CCI Overbought

**B. Conditions (Criteria Filters)**

1. Revenue ("000) - select (more than) type (1) for the past select (1) financial year(s)
2. Average Volume - type (1) days average volume greater than type (10000) lots
3. Last Done Price - select (more than) type (0.3)
4. Is Shariah Compliant - select Yes
5. RSI Overbought - select RSI 1 above 99 for 1 days
6. Moving Average Below Close - select (MA) type (10) below close price for type (1) days
7. CCI Overbought - select CCI (2) above (0) for (1) days

- > click Save Template > Create New Template type (Shariah Momentum Up Stocks) > click Create
- > click Save Template as > select Shariah Momentum Up Stocks > click Save
- > click Screen Now (may take a few minutes)
- Sort By: Select (Vol) Select (Desc)
- Mouse over stock name > Charts > click C<sup>2</sup> Charts tab or Volume Distribution

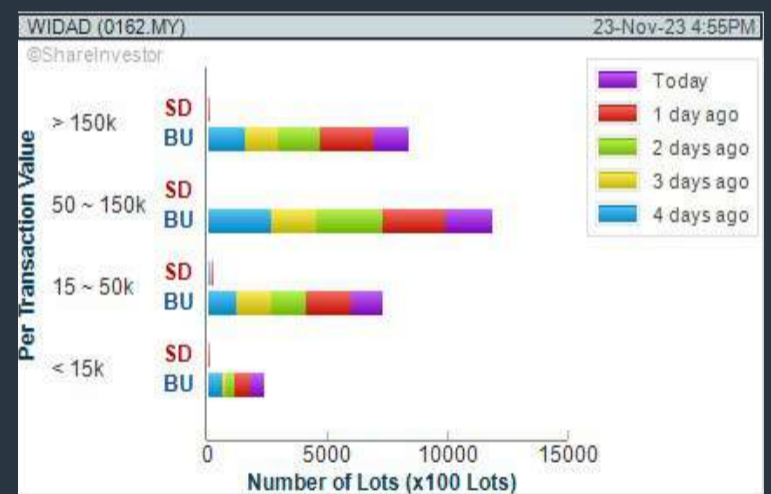
### TOP GLOVE CORPORATION BERHAD (7113) C<sup>2</sup> Chart

Analysis



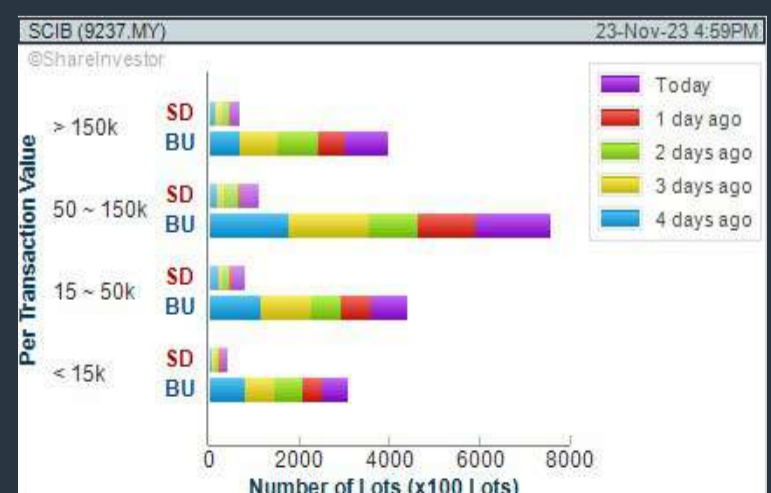
### WIDAD GROUP BERHAD (0162) C<sup>2</sup> Chart

Analysis



### SARAWAK CONSOLIDATED IND BERHAD (9237) C<sup>2</sup> Chart

Analysis



**Disclaimer:** The information on this page is provided as a service to readers. It does not constitute financial advice and/or any investment recommendations. Past performance is not indicative of future results. We assume no liability for damages resulting from or arising out of the use of such information. It would be best if you did your own research to make your personal investment decisions wisely or consult a licenced investment advisor.



# SHAREINVESTOR WEBPRO

## STOCK MARKET DATA AT YOUR FINGERTIPS

Powerful browser-based market analytics platform.  
Access from anywhere



### 8 Markets Data

- ▶ Get access to data from Bursa, NYSE, Nasdaq, HKEX, SGX, IDX, SET & ASX

### Portfolio Management

- ▶ Profit & Loss Summary
- ▶ Stock Alert
- ▶ News & Events filtering
- ▶ Customizable column layout

## Fundamental Analysis

### Financial Analysis Statement

- ▶ Profit & Loss
- ▶ Balance Sheet
- ▶ Cash Flow Statement
- ▶ More than 20 Financial Ratios
- ▶ Dividend Analysis

### Technical Charting

- ▶ C<sup>2</sup> chart (Customisable & Comprehensive)

### Brokers' Call

### Intrinsic Value Calculator

### FactSheet

- ▶ Key Stock Information
- ▶ Ownership
- ▶ Consensus Estimates
- ▶ Annual Report
- ▶ Historical Price
- ▶ Insider Trades

## What's new on WebPro (Stable Release 12.1.0)

In our effort to keep our platform at the forefront of trading technology, we have added on some new features onto our C<sup>2</sup> Chart in WebPro

### ADDITIONAL NEW FEATURES:

- ▶ Anchor selector for AVWAP, PVAT, and PAV indicators
- ▶ Volume profile indicator by date range
- ▶ Moving Average Cross indicator
- ▶ Guppy Multiple Moving Average (GMMA) indicator
- ▶ GoNoGo Trend Signal indicators
- ▶ SignalIQ

So what are you waiting for? Head to our platform today and check out our new trading chart features and indicators. We're confident that you'll love the improvements we've made and that they'll help you become a more successful trader.

Click here to start your 9 days FREE trial  
(Valued at RM10)



## Price & Volume Distribution Charts (as at Yesterday)

Technical Analysis

**DEFINITION:** Stocks with Technical Analysis showing 5-days & 10-days Moving Average Price below Close over past 1 days and with Volume Spike

**CHART GUIDE:** Volume Distribution Chart is a statistical interpretation of the current sentiment on each stock in graphical format. The highest bar categorized as >150k is likely to be traded by institutions or super dealers, while the lowest bar categorized as <15k usually represents retail investors. "Buy Up" refers to more buyers snatching up the lots queued at selling price. "Sell Down" refers to sellers selling their shares to the buying queue.



ShareInvestor WebPro > Screener > Market Screener (FA & TA) > select BURSA > add criteria

**A. Criteria**

- > click Add Criteria
- Technical Analysis Conditions tab select (i) Moving Average Below Close (ii) Volume Spike
- Fundamental Analysis Conditions tab >select (iii) Revenue
- Prices & Other Conditions tab > select (iv) Is Shariah Compliant
- Technical Analysis Conditions tab select (v) Moving Average Below Close
- Prices & Other Conditions tab > select (vi) Last Done Price
- Technical Analysis Conditions tab select (vii) Moving Average Below Close

**B. Conditions (Criteria Filters)**

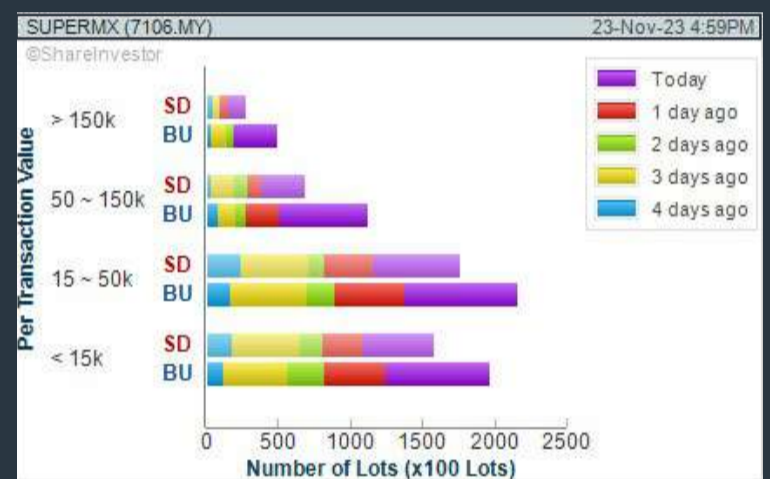
1. Moving Average Below Close - select (MA) type (5) below close price for type (3) days
2. Volume Spike - Volume type (1) greater than type (5) days average
3. Revenue ("000) - select (more than) type (1) for the past select (1) financial year(s)
4. Is Shariah Compliant - select NO
5. Moving Average Below Close - select (MA) type (10) below close price for type (1) days
6. Last Done Price - select (more than) type (0.3)
7. Moving Average Below Close - select (EMA) type (5) below close price for type (1) days

- > click Save Template > Create New Template type (Non-Shariah Hot Stocks) > click Create
- > click Save Template as > select Non-Shariah Hot Stocks > click Save
- > click Screen Now (may take a few minutes)
- Sort By: Select (Vol) Select (Desc)
- Mouse over stock name > Charts > click C<sup>2</sup> Charts tab or Volume Distribution

### SUPERMAX CORPORATION BERHAD (7106)

C<sup>2</sup> Chart

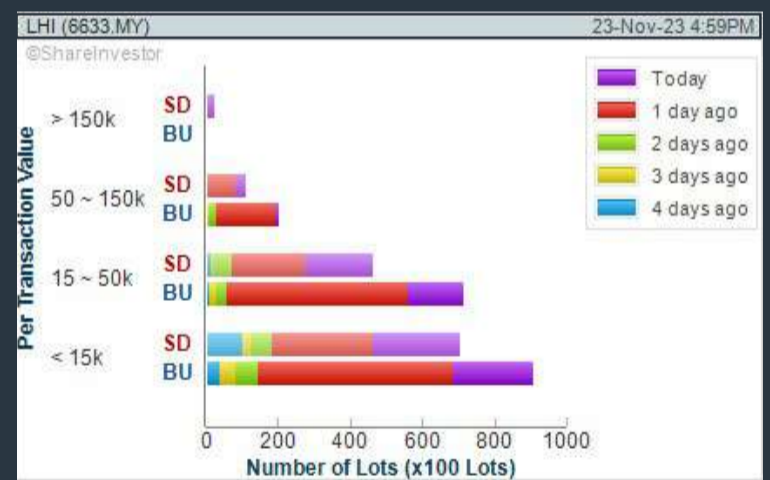
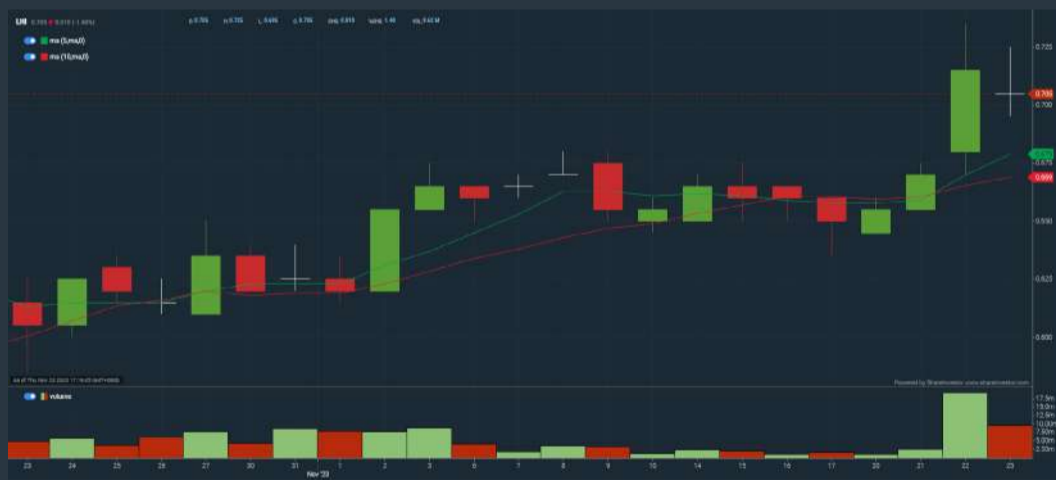
Analysis



### LEONG HUP INTERNATIONAL BERHAD (6633)

C<sup>2</sup> Chart

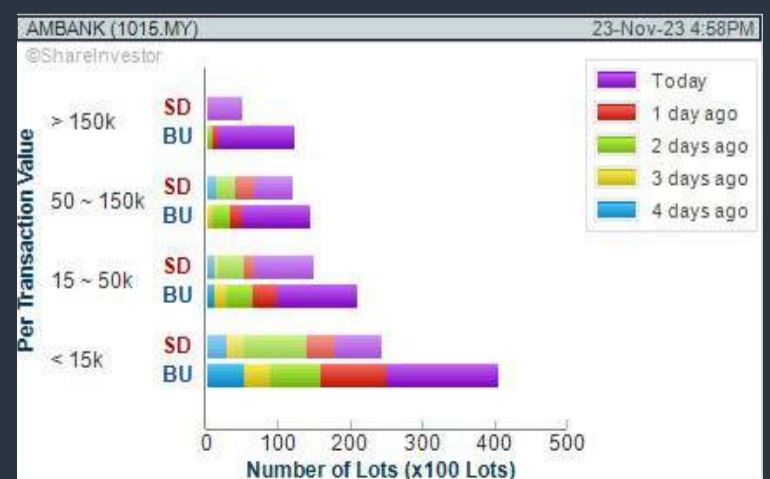
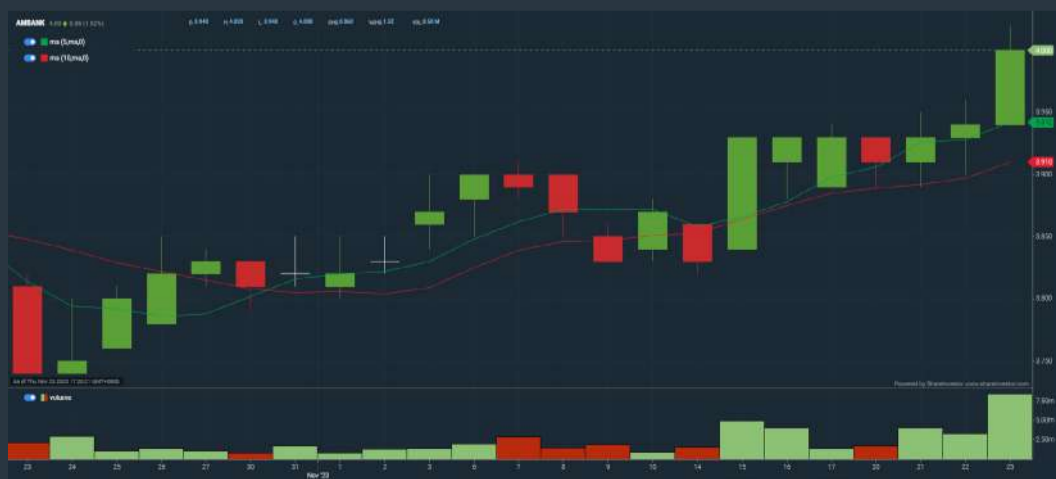
Analysis



### AMMB HOLDINGS BERHAD (1015)

C<sup>2</sup> Chart

Analysis



**Disclaimer:** The information on this page is provided as a service to readers. It does not constitute financial advice and/or any investment recommendations. Past performance is not indicative of future results. We assume no liability for damages resulting from or arising out of the use of such information. It would be best if you did your own research to make your personal investment decisions wisely or consult a licenced investment advisor.

# MAKE BETTER TRADING STRATEGIES

with  
**SHARE INVESTOR**  
**STATION**



### 8 Markets Data

- ▶ Get access to data from Bursa, NYSE, Nasdaq, HKEX, SGX, IDX, SET & ASX

### Dynamic Chart

- ▶ Candlestick Pattern Recognition
- ▶ 111 Indicators
- ▶ 39 Drawing Tools
- ▶ Performance Comparison Chart

### Intraday Data

- ▶ Market Depth
- ▶ Trade Summary Matrix & Chart
- ▶ Times & Sales
- ▶ Intraday Market Ticker

### Market Screener

- ▶ 96 criteria ranging from FA, TA, Consensus Estimate
- ▶ Real-time Data

### Power Frame

- ▶ Combining few Dynamic Charts together with intraday information in one frame

## Technical Analysis

## Fundamental Analysis

### Financial Analysis Statement

- ▶ Profit & Loss
- ▶ Balance Sheet
- ▶ Cash Flow Statement
- ▶ More than 20 Financial Ratios
- ▶ Dividend Analysis

### FactSheet

- ▶ Key Stock Information
- ▶ Ownership
- ▶ Consensus Estimates
- ▶ Annual Report
- ▶ Historical Price
- ▶ Insider Trades

**Start your 18 days  
 FREE trial now  
 (Valued at RM82)**



## Price & Volume Distribution Charts (Over 3 trading days as at Yesterday)

Technical Analysis

**DEFINITION:** Stocks with Technical Analysis showing Bullish Momentum and Price Uptrend

**CHART GUIDE:** Volume Distribution Chart is a statistical interpretation of the current sentiment on each stock in graphical format. The highest bar categorized as >150k is likely to be traded by institutions or super dealers, while the lowest bar categorized as <15k usually represents retail investors. "Buy Up" refers to more buyers snatching up the lots queued at selling price. "Sell Down" refers to sellers selling their shares to the buying queue.



ShareInvestor WebPro > Screener > Market Screener (FA & TA) > select BURSA > add criteria

**A. Criteria**

- > click Add Criteria
- Fundamental Analysis Conditions tab > select (i) Revenue
- Technical Analysis Conditions tab select (ii) Moving Average Below Close
- Technical Analysis Conditions tab select (iii) Average Volume
- Prices & Other Conditions tab > select (iv) Last Done Price
- Technical Analysis Conditions tab select (v) Moving Average Below Close
- Technical Analysis Conditions tab select (v) Moving Average Bullish Crossover

**B. Conditions**

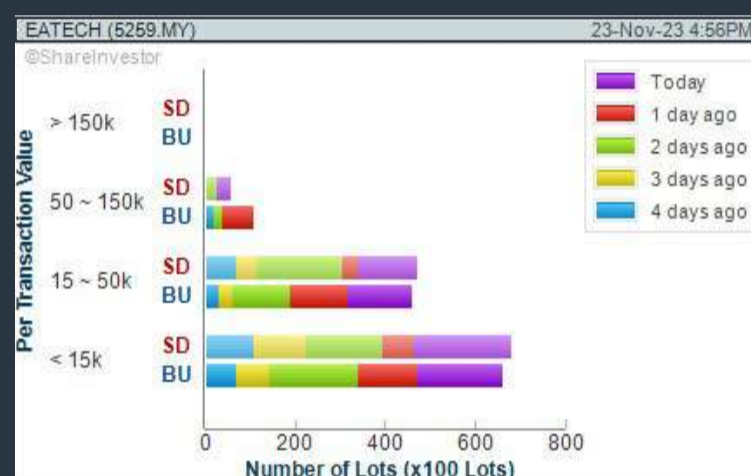
1. Revenue - select (more than) type (1) for the past select (1) financial year(s)
2. Moving Average Below Close - select (MA) type (20) below close price for type (1) days
3. Average Volume - type (5) days average volume type (10000) lots
4. Last Done Price - select (more than) type (0.3)
5. Moving Average Below Close - select (MA) type (10) below close price for type (1) days
6. Moving Average Bullish Crossover - select (MA) type (5) crossed above select (MA) type (10)

> click Save Template > Create New Template type (Non-Shariah Up-Trending Stocks) > click Create Click Save Template As > select Non-Shariah Up Trending Stocks > click Save  
> click Screen Now (may take a few minutes)  
Sort By: Select (Vol) Select (Desc)  
Mouse over stock name > Charts > click C<sup>2</sup> Charts tab or Volume Distribution

### E.A. TECHNIQUE (M) BERHAD (5259)

C<sup>2</sup> Chart

Analysis



### PRESS METAL ALUMINIUM HOLDINGS BERHAD (8869)

C<sup>2</sup> Chart

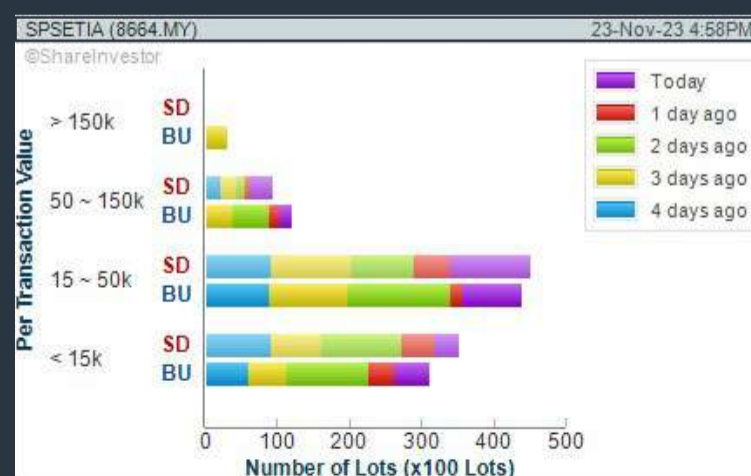
Analysis



### SP SETIA BERHAD (8664)

C<sup>2</sup> Chart

Analysis



**Disclaimer:** The information on this page is provided as a service to readers. It does not constitute financial advice and/or any investment recommendations. Past performance is not indicative of future results. We assume no liability for damages resulting from or arising out of the use of such information. It would be best if you did your own research to make your personal investment decisions wisely or consult a licenced investment advisor.



# making places creative



usm.com

# XTRA

XTRA FURNITURE SDN BHD  
The Gardens Mall, Mid Valley City, Lot S-236 & 237  
Lingkar Syed Putra, 59200 Kuala Lumpur  
T. +603 2282 9088 | living@xtrafurniture.com | xtrafurniture.com  
📍 XTRAFurniture | 📱 xtrafurnituremsia

## Price & Total Shareholder Return (as at Yesterday)

Fundamental Analysis

**DEFINITION:** Share price of a company trading at a lower price as compared to its fundamentals (FA) such as financial performance and dividend, allowing it to be attractive to value investors.

**CHART GUIDE:** Total Shareholder Return (TSR) combines share price appreciation and dividend distributions paid to show the total return to the shareholder expressed as a percentage.



ShareInvestor WebPro > Screener > Market Screener (FA & TA) > select BURSA > add criteria

**A. Criteria**

- > click Add Criteria
- Fundamental Analysis Conditions tab (i) Price Earnings Ratio
- Fundamental Analysis Conditions tab >select (ii) CAGR of Net Earnings
- Fundamental Analysis Conditions tab >select (iii) Net Debt To Equity
- Fundamental Analysis Conditions tab >select (iv) Return On Equity (ROE)

**B. Conditions**

1. Price Earnings Ratio - select (less than) type (15) times now
2. CAGR of Net Earnings - select (more than) type (10) % for the past type (3) financial year(s)
3. Net Debt To Equity – select (less than) type (1) for the past select (1) financial year(s)
4. Return On Equity (ROE) – select (more than) type (10) % for the past select (1) financial year(s)

- > click Save Template > Create New Template type (Value Stock) > click Create
- > click Save Template as > select Value Companies > click Save
- > click Screen Now (may take a few minutes)
- Sort by: Select (PE Ratio) Select (Ascending)
- > Mouse over stock name > Factsheet > looking for Total Shareholder Return
- > Mouse over stock name > Charts > click C2 Charts tab

## SYNERGY HOUSE BERHAD (0279)

C<sup>2</sup> Chart



Period	Dividend Received	Capital Appreciation	Total Shareholder Return
Short Term Return	5Days	+1.03%	+1.03%
	10Days	+1.03%	+1.03%
	20Days	+1.05%	+2.05%
Medium Term Return	3Months	+1.01%	+1.01%

## EDELTEQ HOLDINGS BERHAD (0278)

C<sup>2</sup> Chart



Period	Dividend Received	Capital Appreciation	Total Shareholder Return
Short Term Return	5Days	-1.05%	-1.05%
	10Days	-1.05%	-1.05%
	20Days	+1.01%	+1.01%
Medium Term Return	3Months	-1.01%	-1.01%

## SUNMOW HOLDING BERHAD (03050)

C<sup>2</sup> Chart



Period	Dividend Received	Capital Appreciation	Total Shareholder Return
Short Term Return	5Days	-	-
	10Days	-	-
	20Days	-	-
Medium Term Return	3Months	+1.03%	+1.03%
	6Months	+1.03%	+1.03%
	1Year	+1.03%	+1.03%
Annualised Return	Annualised	-	+1.03%

**Disclaimer:** The information on this page is provided as a service to readers. It does not constitute financial advice and/or any investment recommendations. Past performance is not indicative of future results. We assume no liability for damages resulting from or arising out of the use of such information. It would be best if you did your own research to make your personal investment decisions wisely or consult a licenced investment advisor.

## Price & Total Shareholder Return (as at Yesterday)

Fundamental Analysis

**DEFINITION:** Company revenue is growing and making good quality of earnings with positive Free Cash Flow.

**CHART GUIDE:** Total Shareholder Return (TSR) combines share price appreciation and distributions paid to show the total return to the shareholder expressed as a percentage.



ShareInvestor WebPro > Screener > Market Screener (FA & TA) > select BURSA > add criteria

**A. Criteria**

1. Fundamental Analysis Conditions tab > select (i) Free Cash Flow, (ii) Revenue Growth, (iii) Gross Profit (Earnings) Margin, (iv) Quality of Earnings, (v) Total Shareholder Returns, > click Add Criteria
2. Fundamental Analysis Conditions tab > select (vi) Total Shareholder Returns > click Add Criteria

**B. Conditions (Criteria Filters)**

1. Free Cash Flow - select (more than) type (1) for the past select (1) financial year(s)
2. Revenue Growth - select (more than) type (1) for the past select (1) financial year(s)
3. Gross Profit (Earnings) Margin - select (more than) type (30) % for the past select (1) financial year(s)
4. Quality of Earnings - select (more than) type (1) for the past select (1) financial year(s)
5. Total Shareholder Return - select (more than) type (5) % for the past select (3) financial year(s)
6. Total Shareholder Return - select (more than) type (5) % for the past select (5) financial year(s)

- > click Save Template > Create New Template type (Growth Companies) > click Create
- > click Save Template as > select Growth Companies > click Save
- > click Screen Now (may take a few minutes)
- > Sort By: Select (Revenue Growth) Select (Desc)
- > Mouse over stock name > Factsheet > looking for Total Shareholder Return

### EDARAN BERHAD (5036)

C<sup>2</sup> Chart

Analysis



Period	Dividend Received	Capital Appreciation	Total Shareholder Return
Short Term Return	5 Days	-0.05	-0.02%
	10 Days	-0.05	-0.04%
	20 Days	-0.05	-0.08%
Medium Term Return	3 Months	-0.08	-0.08%
	6 Months	-0.08	-0.08%
	1 Year	-0.04	-0.08%
Long Term Return	2 Years	0.05	+0.05%
	3 Years	0.03	+0.02%
	5 Years	0.03	-0.05%
Annualised Return	Annualised	-	-0.07%

### IGB BERHAD (5606)

C<sup>2</sup> Chart

Analysis



Period	Dividend Received	Capital Appreciation	Total Shareholder Return
Short Term Return	5 Days	-0.01	-0.01%
	10 Days	-0.01	-0.01%
	20 Days	-0.01	-0.01%
Medium Term Return	3 Months	-0.04	-0.04%
	6 Months	-0.01	+0.01%
	1 Year	-0.04	-0.04%
Long Term Return	2 Years	0.03	+0.03%
	3 Years	0.05	+0.05%
	5 Years	0.03	+0.03%
Annualised Return	Annualised	-	+0.03%

### BONIA CORPORATION BERHAD (9288)

C<sup>2</sup> Chart

Analysis



Period	Dividend Received	Capital Appreciation	Total Shareholder Return
Short Term Return	5 Days	-0.00	-0.00%
	10 Days	-0.00	-0.00%
	20 Days	-0.01	-0.01%
Medium Term Return	3 Months	-0.05	-0.05%
	6 Months	-0.07	-0.07%
	1 Year	-0.05	-0.05%
Long Term Return	2 Years	-0.00	+0.00%
	3 Years	-0.01	-0.01%
	5 Years	0.05	+0.05%
Annualised Return	Annualised	-	+0.00%

**Disclaimer:** The information on this page is provided as a service to readers. It does not constitute financial advice and/or any investment recommendations. Past performance is not indicative of future results. We assume no liability for damages resulting from or arising out of the use of such information. It would be best if you did your own research to make your personal investment decisions wisely or consult a licenced investment advisor.

## Price & Total Shareholder Return (as at Yesterday)

Fundamental Analysis

**DEFINITION:** Company is paying out dividend with low or moderate leverage.

**CHART GUIDE:** Total Shareholder Return (TSR) combines share price appreciation and distributions paid to show the total return to the shareholder expressed as a percentage.



ShareInvestor WebPro > Screener > Market Screener (FA & TA) > select BURSA > add criteria

**A. Criteria**

- > click Add Criteria
- Fundamental Analysis Conditions tab >select (i) Dividend Yield (Historical)
- Fundamental Analysis Conditions tab >select (ii) Dividend Payout (Historical)
- Fundamental Analysis Conditions tab >select (iii) Total Debt To Equity
- Fundamental Analysis Conditions tab >select (iv) Total Shareholder Returns
- Fundamental Analysis Conditions tab >select (v) Total Shareholder Returns
- Fundamental Analysis Conditions tab / >select (vi) CAGR of Dividend Per Share

• Fundamental Analysis Conditions tab >select (vii) CAGR of Dividend Per Share

**B. Conditions (Criteria Filters)**

1. Dividend Yield - select (more than) type (1) % for the past select (1) financial year(s)
2. Dividend Payout (Historical) - select (between) type (0.5) to type (1) times for the past select (1) financial year(s)
3. Total Debt to Equity – select (less than) type (1) for the past select (1) financial year(s)
4. Total Shareholder Return – select (more than) type (5) % for the past select (3) financial year(s)
5. Total Shareholder Return – select (more than) type (5) % for the past select (5) financial year(s)

6. CAGR of Dividend Per Share – select (less than) type (30) % for the past select (5) financial year(s)
7. CAGR of Dividend Per Share – select (more than) type (1) % for the past select (5) financial year(s)

- > click Save Template > Create New Template type (Dividend Companies) > click Create
- > click Save Template as > select Dividend Companies > click Save
- > click Screen Now (may take a few minutes)
- > Sort By: Select (Dividend Yield) Select (Desc)
- > Mouse over stock name > Factsheet > looking for Total Shareholder Return

## JAYCORP BERHAD (7152)

C<sup>2</sup> Chart



Analysis

Period	Dividend Received	Capital Appreciation	Total Shareholder Return
Short Term Return	5 Days	-0.065	-0.66%
	10 Days	-0.065	-0.66%
	20 Days	-0.045	-0.80%
Medium Term Return	3 Months	-0.065	-0.33%
	6 Months	-0.065	-0.28%
	1 Year	-0.045	-0.35%
Long Term Return	2 Years	0.055	-0.20%
	3 Years	0.070	+0.88%
	5 Years	0.055	+0.61%
Annualised Return	Annualised	-	+0.34%

## FORMOSA PROSONIC INDUSTRIES (9172)

C<sup>2</sup> Chart



Analysis

Period	Dividend Received	Capital Appreciation	Total Shareholder Return
Short Term Return	5 Days	-0.100	-0.19%
	10 Days	-0.070	-0.84%
	20 Days	-0.110	-0.74%
Medium Term Return	3 Months	-0.110	+0.04%
	6 Months	-0.100	-0.41%
	1 Year	-0.100	-0.72%
Long Term Return	2 Years	0.200	-0.18%
	3 Years	0.240	+0.66%
	5 Years	0.220	+0.83%
Annualised Return	Annualised	-	+0.36%

## GAS MALAYSIA BERHAD (5209)

C<sup>2</sup> Chart



Analysis

Period	Dividend Received	Capital Appreciation	Total Shareholder Return
Short Term Return	5 Days	-0.070	-0.07%
	10 Days	-0.100	-0.30%
	20 Days	-0.070	-0.15%
Medium Term Return	3 Months	-0.100	+0.30%
	6 Months	-0.100	+0.05%
	1 Year	-0.100	-0.56%
Long Term Return	2 Years	0.120	+0.46%
	3 Years	0.205	+0.73%
	5 Years	0.190	+0.04%
Annualised Return	Annualised	-	+0.07%

**Disclaimer:** The information on this page is provided as a service to readers. It does not constitute financial advice and/or any investment recommendations. Past performance is not indicative of future results. We assume no liability for damages resulting from or arising out of the use of such information. It would be best if you did your own research to make your personal investment decisions wisely or consult a licenced investment advisor.



Week: 17 November 2023 - 23 November 2023

More Brokers' Call 

AMINVESTMENT BANK <small>... See More</small>	Call	Target Price	Release Date
MR D.I.Y. Group (M) Berhad (5296)	BUY	RM2.60	21 Nov 2023
Sunway Construction Berhad (6777)	BUY	RM2.18	22 Nov 2023

APEX <small>... See More</small>	Call	Target Price	Release Date
Lagenda Properties Berhad (7179)	BUY	RM1.43	21 Nov 2023
Infoline Tec Group Berhad (0253)	BUY	RM1.15	22 Nov 2023
Kuala Lumpur Kepong Berhad (2445)	HOLD	RM20.00	23 Nov 2023

BIMB SECURITIES SDN BHD <small>... See More</small>	Call	Target Price	Release Date
Sunway Construction Berhad (6777)	HOLD	RM1.99	22 Nov 2023
Hibiscus Petroleum Berhad (5199)	BUY	RM3.40	23 Nov 2023
Kuala Lumpur Kepong Berhad (2445)	BUY	RM24.05	23 Nov 2023

KENANGA <small>... See More</small>	Call	Target Price	Release Date
Bermaz Auto Berhad (5248)	OUTPERFORM	RM3.22	23 Nov 2023
Inari Amertron Berhad (0166)	OUTPERFORM	RM4.17	23 Nov 2023

MALACCA SECURITIES SDN BHD <small>... See More</small>	Call	Target Price	Release Date
UOA Real Estate Investment Trust (5110)	HOLD	RM1.20	17 Nov 2023
Malaysia Smelting Corporation Berhad (5916)	HOLD	RM2.02	20 Nov 2023

MIDF <small>... See More</small>	Call	Target Price	Release Date
Sunway Construction Group Berhad (5263)	BUY	RM2.09	22 Nov 2023
Malayan Banking Berhad (1155)	NEUTRAL	RM9.28	23 Nov 2023
MISC Berhad (3816)	NEUTRAL	RM7.37	23 Nov 2023

UOB KAYHIAN <small>... See More</small>	Call	Target Price	Release Date
Cape EMS Berhad (5311)	BUY	RM1.68	21 Nov 2023
Kerjaya Prospek Group Berhad (7161)	BUY	RM1.74	22 Nov 2023
Sports Toto Berhad (1562)	BUY	RM1.78	22 Nov 2023

**Disclaimer:** InveSt does not accept any liability whatsoever for any direct, indirect or consequential losses (including loss of profit) or damages that may arise from the use of information or opinions in this publication. The information and opinions in InveSt are not to be considered as an offer to sell or buy any of the securities discussed. Opinions expressed are subject to change without notice. The Brokers may, from time to time, have interests or positions in the securities mentioned. For the full report on each item listed on this page, please visit [https://www.shareinvestor.com/my/brokers\\_call](https://www.shareinvestor.com/my/brokers_call).

**DEFINITION:** Top 9 stocks with Technical Analysis plus Pattern Matching by 60 pre-defined indicators by the system showing a higher probability of bullish sentiment on the share price.



ShareInvestor WebPro > Screener > Predefined TA Screens > select market BURSA > Most Long Signals > click Scan Results or mouse over each company

## EASTERN & ORIENTAL BERHAD (3417.MY)

### E&O

Price updated at 23 Nov 2023 16:59

Last: <b>0.595</b>	Change: <b>-0.015</b>	Volume: <b>68,415</b>
	Change (%): <b>-2.46</b>	Range: <b>0.595 - 0.620</b>

TA Scanner Results based on historical data up to 20 Nov 2023

Condition	Signal	Explanation
Bollinger Band: High Above Upper Bollinger Band	Neutral	1. High above upper bollinger band(14,2). 2. Average volume(5) is above 100,000.
DM: Bullish Directional Movement	Long	-DI(14) crossed below +DI(14)
Donchian Channels: High Above Upper Donchian Channels	Long	High crossed above the upper Donchian Channel(14,4)
MA: Short Term Bullish Moving Average Crossover	Long	MA(10) crossed above MA(15) within the last 1 day.
RSI: Short Term RSI 50 Bullish Crossover	Long	1. RSI(20) crossed above 50 within the last 1 day and RSI(20) 1 day ago below 50 for the last 5 days. 2. Volume above average volume(125). 3. Average volume(5) is above 100,000.
Volume: 10 Days large value Buy Up trade	Long	1. 150K value Buy Up greater than Sell Down by 20% for 10 days. 2. 50K-100K value Buy Up greater than Sell Down by 20% for 10 days. 3. Average volume(10) is above 1000000
Volume: 5 Days large value Buy Up trade	Long	1. 150K value Buy Up greater than Sell Down by 20% for 5 days. 2. 50K-100K value Buy Up greater than Sell Down by 20% for 5 days. 3. Average volume(10) is above 1000000

## MISC BERHAD (3816.MY)

### MISC

Price updated at 23 Nov 2023 16:55

Last: <b>7.190</b>	Change: <b>-0.030</b>	Volume: <b>16,029</b>
	Change (%): <b>-0.42</b>	Range: <b>7.140 - 7.210</b>

TA Scanner Results based on historical data up to 20 Nov 2023

Condition	Signal	Explanation
Candlestick: Bullish Engulfing	Long	Bullish: Engulfing
Bollinger Band: High Above Upper Bollinger Band	Neutral	1. High above upper bollinger band(14,2). 2. Average volume(5) is above 100,000.
Donchian Channels: High Above Upper Donchian Channels	Long	High crossed above the upper Donchian Channel(14,4)
Volume: 10 Days large value Buy Up trade	Long	1. 150K value Buy Up greater than Sell Down by 20% for 10 days. 2. 50K-100K value Buy Up greater than Sell Down by 20% for 10 days. 3. Average volume(10) is above 1000000
Volume: 5 Days large value Buy Up trade	Long	1. 150K value Buy Up greater than Sell Down by 20% for 5 days. 2. 50K-100K value Buy Up greater than Sell Down by 20% for 5 days. 3. Average volume(10) is above 1000000
Volume: Consecutive Days Of Increasing Average Volume	Long	1. Average Volume(20) has been increasing over the last 2 weeks. 2. Average volume(20) is above 100000
Williams %R: Bearish Williams %R	Short	1. Williams %R(26) between 0 and -20. 2. Average volume(5) is above 100,000.

## SALCON BERHAD (8567.MY)

### SALCON

Price updated at 23 Nov 2023 16:59

Last: <b>0.315</b>	Change: -	Volume: <b>41,450</b>
	Change (%): -	Range: <b>0.315 - 0.325</b>

TA Scanner Results based on historical data up to 20 Nov 2023

Condition	Signal	Explanation
Accumulation Distribution: Bullish Accumulation Distribution	Long	Accumulation distribution increasing for the last 7 days
Candlestick: Bullish Engulfing	Long	Bullish: Engulfing
Volume: 10 Days large value Buy Up trade	Long	1. 150K value Buy Up greater than Sell Down by 20% for 10 days. 2. 50K-100K value Buy Up greater than Sell Down by 20% for 10 days. 3. Average volume(10) is above 1000000
Volume: 5 Days large value Buy Up trade	Long	1. 150K value Buy Up greater than Sell Down by 20% for 5 days. 2. 50K-100K value Buy Up greater than Sell Down by 20% for 5 days. 3. Average volume(10) is above 1000000
Volume: Consecutive Days Of Increasing Average Volume	Long	1. Average Volume(20) has been increasing over the last 2 weeks. 2. Average volume(20) is above 100000
Williams %R: Bearish Williams %R	Short	1. Williams %R(26) between 0 and -20. 2. Average volume(5) is above 100,000.

## XL HOLDINGS BERHAD (7121.MY)

### XL

Price updated at 23 Nov 2023 16:59

Last: <b>0.885</b>	Change: <b>+0.030</b>	Volume: <b>90,552</b>
	Change (%): <b>+3.51</b>	Range: <b>0.840 - 0.900</b>

TA Scanner Results based on historical data up to 20 Nov 2023

Condition	Signal	Explanation
Accumulation Distribution: Bullish Accumulation Distribution	Long	Accumulation distribution increasing for the last 7 days
Bollinger Band: High Above Upper Bollinger Band	Neutral	1. High above upper bollinger band(14,2). 2. Average volume(5) is above 100,000.
Chaikin Volatility: Decreasing Chaikin Volatility	Neutral	Chaikin Volatility(10,10) has been decreasing for 5 days
Price: Consecutive Days Gains	Long	1. Close price has been increasing over the last 5 days. 2. Average volume(5) above 100,000.
Volume: 10 Days large value Buy Up trade	Long	1. 150K value Buy Up greater than Sell Down by 20% for 10 days. 2. 50K-100K value Buy Up greater than Sell Down by 20% for 10 days. 3. Average volume(10) is above 1000000
Volume: 5 Days large value Buy Up trade	Long	1. 150K value Buy Up greater than Sell Down by 20% for 5 days. 2. 50K-100K value Buy Up greater than Sell Down by 20% for 5 days. 3. Average volume(10) is above 1000000
Williams %R: Bearish Williams %R	Short	1. Williams %R(26) between 0 and -20. 2. Average volume(5) is above 100,000.

**Disclaimer:** The information on this page is provided as a service to readers. It does not constitute financial advice and/or any investment recommendations. Past performance is not indicative of future results. We assume no liability for damages resulting from or arising out of the use of such information. It would be best if you did your own research to make your personal investment decisions wisely or consult a licenced investment advisor.

**MESTRON HOLDINGS BERHAD (0207.MY)**

**MESTRON**

Price updated at 23 Nov 2023 16:59

Last: <b>0.435</b>	Change: <b>-0.005</b>	Volume: <b>132,976</b>
	Change (%): <b>-1.14</b>	Range: <b>0.430 - 0.440</b>

TA Scanner Results based on historical data up to 20 Nov 2023

Condition	Signal	Explanation
MACD: Bullish MACD Crossover	Long	1. MACD(12,26) diff line crossed above the MACD(12,26) signal line. 2. MACD Histogram(12,26) is above 0.
Volume: 10 Days large value Buy Up trade	Long	1. 150K value Buy Up greater than Sell Down by 20% for 10 days. 2. 50K-100K value Buy Up greater than Sell Down by 20% for 10 days. 3. Average volume(10) is above 1000000
Volume: 5 Days large value Buy Up trade	Long	1. 150K value Buy Up greater than Sell Down by 20% for 5 days. 2. 50K-100K value Buy Up greater than Sell Down by 20% for 5 days. 3. Average volume(10) is above 1000000
Volume: Consecutive Days Of Decreasing Average Volume	Short	1. Average Volume(20) has been decreasing over the last 2 week. 2. Average volume(20) is above 50000
Williams %R: Bullish Williams %R	Long	1. Williams %R(26) between -80 and -100. 2. Average volume(5) is above 100,000.

**MICROLINK SOLUTIONS BERHAD (0126.MY)**

**MICROLN**

Price updated at 23 Nov 2023 16:36

Last: <b>0.890</b>	Change: -	Volume: <b>70,873</b>
	Change (%): -	Range: <b>0.890 - 0.895</b>

TA Scanner Results based on historical data up to 20 Nov 2023

Condition	Signal	Explanation
Bollinger Band: Low Below Lower Bollinger Band	Neutral	1. Low below lower bollinger band(14,2). 2. Average volume(5) is above 100,000.
CCI: Bullish CCI Oversold And Reversing	Long	1. CCI(26) below -100 and CCI(26) 1 day ago decreasing for the last 3 days. 2. CCI(26) above CCI(26) 1 day ago
Volume: 10 Days large value Buy Up trade	Long	1. 150K value Buy Up greater than Sell Down by 20% for 10 days. 2. 50K-100K value Buy Up greater than Sell Down by 20% for 10 days. 3. Average volume(10) is above 1000000
Volume: 5 Days large value Buy Up trade	Long	1. 150K value Buy Up greater than Sell Down by 20% for 5 days. 2. 50K-100K value Buy Up greater than Sell Down by 20% for 5 days. 3. Average volume(10) is above 1000000
Volume: Consecutive Days Of Increasing Average Volume	Long	1. Average Volume(20) has been increasing over the last 2 weeks. 2. Average volume(20) is above 100000

**PELIKAN INT.CORPORATION BERHAD (5231.MY)**

**PELIKAN**

Price updated at 23 Nov 2023 16:58

Last: <b>0.870</b>	Change: <b>+0.005</b>	Volume: <b>2,124</b>
	Change (%): <b>+0.58</b>	Range: <b>0.865 - 0.875</b>

TA Scanner Results based on historical data up to 20 Nov 2023

Condition	Signal	Explanation
Bollinger Band: High Above Upper Bollinger Band	Neutral	1. High above upper bollinger band(14,2). 2. Average volume(5) is above 100,000.
DM: Bullish Directional Movement	Long	-DI(14) crossed below +DI(14)
Donchian Channels: High Above Upper Donchian Channels	Long	High crossed above the upper Donchian Channel(14,4)

**UNITED PLANTATIONS BERHAD (2089.MY)**

**UTDPLT**

Price updated at 23 Nov 2023 16:58

Last: <b>16.900</b>	Change: -	Volume: <b>10,210</b>
	Change (%): -	Range: <b>16.880 - 17.040</b>

TA Scanner Results based on historical data up to 20 Nov 2023

Condition	Signal	Explanation
Bollinger Band: Bullish Short Term Volatility Breakout and Trending	Long	1. Close price above upper bollinger band(33,1). 2. Volume above average volume(10). 3. Average volume(10) is above 300,000.
Bollinger Band: High Above Upper Bollinger Band	Neutral	1. High above upper bollinger band(14,2). 2. Average volume(5) is above 100,000.
Donchian Channels: High Above Upper Donchian Channels	Long	High crossed above the upper Donchian Channel(14,4)
MACD: Bullish MACD Crossover	Long	1. MACD(12,26) diff line crossed above the MACD(12,26) signal line. 2. MACD Histogram(12,26) is above 0.
Parabolic SAR: Bearish Parabolic SAR Reversal	Neutral	1. Parabolic SAR 1 day ago above close price 1 day ago for the last 5 days. 2. Parabolic SAR below close price
Price: New 52 Week High	Long	1. Stock reach a new 52 week high. 2. Average volume(30) is above 50000.

**RESINTECH BERHAD (7232.MY)**

**RESINTC**

Price updated at 23 Nov 2023 16:50

Last: <b>0.495</b>	Change: <b>+0.005</b>	Volume: <b>755</b>
	Change (%): <b>+1.02</b>	Range: <b>0.495 - 0.500</b>

TA Scanner Results based on historical data up to 20 Nov 2023

Condition	Signal	Explanation
Bollinger Band: Bullish Short Term Volatility Breakout and Trending	Long	1. Close price above upper bollinger band(33,1). 2. Volume above average volume(10). 3. Average volume(10) is above 300,000.
Bollinger Band: High Above Upper Bollinger Band	Neutral	1. High above upper bollinger band(14,2). 2. Average volume(5) is above 100,000.
CCI: Bearish CCI Overbought And Reversing	Short	1. CCI(26) above 100 and CCI(26) 1 day ago increasing for the last 3 days. 2. CCI(26) below CCI(26) 1 day ago
Candlestick: Bullish Engulfing	Long	Bullish: Engulfing
DM: Bullish Directional Movement	Long	-DI(14) crossed below +DI(14)
Donchian Channels: High Above Upper Donchian Channels	Long	High crossed above the upper Donchian Channel(14,4)
MA: Short Term Bullish Moving Average Crossover	Long	MA(10) crossed above MA(15) within the last 1 day.
Volume: Volume Spike	Long	1. Volume is more than 500% above average volume(10). 2. Volume above 200000. 3. Close price above 0.10

**Disclaimer:** The information on this page is provided as a service to readers. It does not constitute financial advice and/or any investment recommendations. Past performance is not indicative of future results. We assume no liability for damages resulting from or arising out of the use of such information. It would be best if you did your own research to make your personal investment decisions wisely or consult a licenced investment advisor.

Condition	Signal	Explanation
MA: Short Term Bullish Moving Average Crossover	Long	MA(10) crossed above MA(15) within the last 1 day.
RSI: Short Term RSI 50 Bullish Crossover	Long	1. RSI(20) crossed above 50 within the last 1 day and RSI(20) 1 day ago below 50 for the last 5 days. 2. Volume above average volume(125). 3. Average volume(5) is above 100,000.

# MALAYSIA CAN ACHIEVE ESG GOALS WITHIN SEVEN YEARS OR LESS - MITI

**A**ccording to Investment, Trade, and Industry Ministry (MITI) deputy secretary-general (Industry) Datuk Hanafi Sakri, Malaysia is confident it can achieve its ESG goals within seven years or less due to its phased approach.

In his keynote speech at the ESG Evolve 2023 Conference & Exhibition, he said that i-ESG Phase 1.0 lays the groundwork and fosters the development of a robust ecosystem to help ensure companies' readiness to meet the more rigorous demands of Phase 2.0 from 2027 to 2030. This phased, progressive approach is extremely important to ensure Malaysian companies can continue or start to fulfil the growing demand for sustainable products, and the requirements for ESG reporting in export destinations such as the US and EU. Malaysia will begin with the **Phase 1.0 – “Just Transition” from 2024 to 2026, followed by the Phase 2.0 – “Accelerate ESG Practices” from 2027 to 2030.**

During Phase 1.0, manufacturing companies, including MSMEs, will be supported on starting their sustainability/ESG journey through self-readiness assessment, outreach, training/mentoring programmes and financing options. These include **i-ESGReady**, which is a readiness assessment programme, and **i-ESGStart**, which offers a practical guide with step-by-step instructions, illustrative examples and templates. Both are meant to be references for manufacturing businesses to begin their sustainability journey.

Miti has also conducted **KenalESG** outreach and awareness programmes in Kuala Lumpur (200 companies), Penang (190 companies), Johor (130 companies), Pahang (150 companies) and Sarawak (100 companies) to introduce them to the i-ESG Framework. It is imperative that due consideration is given to MSMEs within the manufacturing sector, ensuring they are not left to navigate the complexities of adopting sustainable practices on their own. This is particularly crucial as MSMEs may lack the financial resources, capacity or technical expertise related to ESG principles.

He said that to ensure the success of sustainable practices across the entire manufacturing landscape, targeted assistance, capacity-building initiatives, and accessible resources must be provided to MSMEs. All programmes under the Phase 1.0 will help companies to identify gaps and introduce policies and support systems. For MSMEs, this is extremely important, to ensure participation in ESG-compliant public listed companies and multinational corporation vendor ecosystems as well as access to ESG-sensitive export markets.

The government is committed to facilitating transition for companies by organising informational clinics. These sessions are specifically designed to provide guidance on utilising the i-ESGReady and i-ESGStart. The aim is to empower companies with the knowledge and skills necessary to navigate the intricacies of these tools successfully.

## **GOVT EYEING A 'GOOD SLICE' OF PROJECTED US\$2.7BIL ASEAN EV MARKET – TENGKU ZAFRUL**

According to Investment, Trade and Industry Minister Datuk Seri Tengku Zafrul Abdul Aziz, the government is determined to capture a “good slice” of the ASEAN EV market, which is estimated to reach US\$2.7 billion by 2027, from US\$500 million in 2021. Malaysia has a competitive edge to attract more high-value investments, having developed a comprehensive ecosystem for the EV and Next Generation Vehicles (NxGV) industries.

Speaking at the launch of E-Mobility Asia 2023, he said that in getting the fundamentals right on our NxGV ecosystem, we are diligently building the necessary infrastructure to achieve our target of having EVs and hybrids account for 20% of new car sales by 2030; 50% by 2040 and 80% by 2050. The government has a strong policy push and over the past 50 years, Malaysia has developed a strong electrical and electronics (E&E) industry, mainly in semiconductors, that have firmly entrenched itself in the global supply chain.

He elaborated that semiconductors allow EVs to become smarter and safer, paving the way for a greener future. Malaysia accounts for 7% of global semiconductor trade and 13% of global chip testing and packaging. Therefore, MITI and MIDA are strongly pushing for more semiconductor investments. Between 2018 and June 2023, MIDA approved 59 projects worth RM26.2 billion in the EV and related ecosystems for vehicle assembly, manufacturing parts and charging components.

Malaysia has become a highly attractive destination in the region for all EV investors because of these established existing ecosystem advantages that are highly conducive for the development of EVs and its related components. These are compelling factors for big names such as Tesla to announce its entry into the country, joining global automakers like Geely, Chery and BYD from China, Hyundai from South Korea, as well as Mercedes Benz and BMW from Europe, that are already in the Malaysian market.

However, he added that Malaysia has still a long way to go to ensure a robust EV ecosystem, such as in developing a greener grid and related

power distribution networks. Most importantly, the wide range of new mobility solutions can open up technology transfer and innovation for our SMEs, as well as higher-paying jobs for Malaysians. MITI is constantly reviewing policies to ensure Malaysia's EV ecosystem is holistic and fully supported to attract high-level investments.

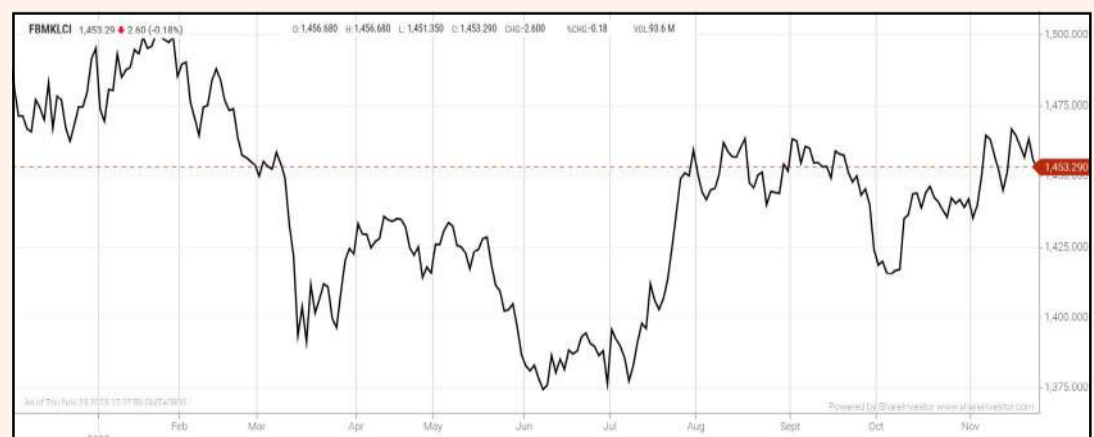
We look forward to welcoming more multinational EV, NxGV and renewable energy (RE) investors to Malaysia, to become our growth partners in developing a strong Malaysian EV supply chain, to meet the needs of the regional and global market. Toward that end, we also hope to collaborate with our neighbours in ASEAN – whether they are from Thailand, Vietnam, Singapore, the Philippines or Indonesia – to complement each other's strengths, in order to capitalise on supply chains that have shifted directly onto our ASEAN doorstep.

The government will commence the operation of the Invest Malaysia Facilitation Centre (IMFC) on Monday Nov 27, ahead of January. It has been scheduled earlier, to facilitate the business community and investors. IMFC is a one-stop centre to speed up approval processes, including the provision of consultation and advisory services, and to reduce bureaucracy in public service delivery. This initiative is an improvement to the existing advisory service centre at MIDA and is in line with Prime Minister Datuk Seri Anwar Ibrahim's recommendations.

## EYE ON THE MARKETS

On Thursday (23Nov), the Ringgit closed at 4.6780 against the USD and 3.4917 to the Sing Dollar. On Monday (20Nov), the FBM KLCI opened at 1460.26. As at Thursday (23Nov) 5:00pm, the FBM KLCI closed down 6.97 points at 1453.29.

Over in US, markets were closed on Thursday for Thanksgiving holiday.



KLCI 1 Year Chart

## Over 5 trading days



ShareInvestor WebPro ([www.shareinvestor.com/my](http://www.shareinvestor.com/my))

1. Price > Stock Prices
2. Select Market: NASDAQ / NYSE / IDX / SET / HKEX / SGX (One bourse at a time)
3. select Stocks Tab
4. select Ranking Top Gainers or Top Losers (Over 5 Trading Days)
5. Mouse over Column Layout > select Edit Customs > select Name > select Last Done Price > select 5 Days Change > select 52 Weeks High > select 52 Weeks Low > Mouse Over Column Layout > select Custom

### NASDAQ (USD)

#### Top Gainers

Name	Last Done	Change Over 5 Days	52 Weeks High	52 Weeks Low
MERCADOLIBRE INC	1,525.000	+82.450	1,503.800	815.855
COCA-COLA CONSOLIDATED INC	728.010	+37.020	745.530	469.535
MADRIGAL PHARMACEUTICALS INC	190.480	+28.800	322.670	57.210
INTUITIVE SURGICAL INC	315.800	+22.580	358.070	222.650
LAM RESEARCH CORP	717.460	+19.560	726.525	397.060

#### Top Losers

Name	Last Done	Change Over 5 Days	52 Weeks High	52 Weeks Low
FIRST CITIZENS BANCSHARES INC NRTH	1,419.380	-58.950	1,512.070	505.840
CREDIT ACCEPTANCE CORPORATION	431.940	-17.880	576.050	358.000
AUTODESK INC	202.660	-14.670	232.150	179.610
CHARTER COMMUNICATIONS INC	405.280	-12.320	458.300	302.210
CAVCO INDUSTRIES	278.440	-11.560	318.000	211.980

### NYSE (USD)

#### Top Gainers

Name	Last Done	Change Over 5 Days	52 Weeks High	52 Weeks Low
BERKSHIRE HATHAWAY INC	549,520.000	+5,330.000	566,569.970	442,363.500
WHITE MOUNTAINS INSURANCE GROUP	1,524.870	+58.820	1,617.000	1,278.594
CHIPOTLE MEXICAN GRILL	2,218.930	+56.710	2,224.800	1,344.050
MARKEL GROUP INC	1,429.500	+50.640	1,560.000	1,186.560
AUTOZONE INC	2,671.770	+44.720	2,750.000	2,277.880

#### Top Losers

Name	Last Done	Change Over 5 Days	52 Weeks High	52 Weeks Low
NVR INC	6,222.890	-69.280	6,525.000	4,412.790
TEXAS PACIFIC LAND CORPORATION	1,642.000	-40.790	2,668.980	1,266.210
TRANSDIGM GROUP INC	970.200	-23.960	1,013.080	599.420
UNITED RENTALS INC	463.420	-16.090	492.330	325.150
CABLE ONE INC	540.000	-15.640	861.890	519.235

### IDX (Rupiah)

#### Top Gainers

Name	Last Done	Change Over 5 Days	52 Weeks High	52 Weeks Low
DCI INDONESIA TBK	49,225.000	+14,975.000	49,225.000	32,850.000
INDOINTERNET TBK	9,625.000	+5,635.000	9,625.000	3,300.000
PIONEERINDO GOURMET INTERNATIONAL	4,570.000	+910.000	4,570.000	1,315.000
MULTISTRADA ARAH SARANA	4,100.000	+780.000	5,475.000	1,960.000
BARITO RENEWABLES ENERGY TBK	6,425.000	+725.000	6,950.000	975.000

#### Top Losers

Name	Last Done	Change Over 5 Days	52 Weeks High	52 Weeks Low
METROPOLITAN KENTJ	27,600.000	-1,850.000	46,200.000	16,950.000
UNITED TRACTORS	22,525.000	-925.000	31,700.000	22,200.000
PABRIK KERTAS TJIWI KIMIA	7,200.000	-500.000	10,375.000	5,600.000
GUDANG GARAM TBK	21,600.000	-400.000	30,050.000	16,500.000
AMMAN MINERAL INTERNASIONAL TBK	6,900.000	-325.000	7,725.000	1,700.000

### SET (Thai Baht)

#### Top Gainers

Name	Last Done	Change Over 5 Days	52 Weeks High	52 Weeks Low
JTS	63.000	+10.750	64.500	23.200
MANRIN	33.000	+4.750	34.000	25.000
SCC	294.000	+4.000	360.000	282.000
TMW	49.500	+4.000	50.250	35.000
CBG	79.500	+3.500	106.000	61.250

#### Top Losers

Name	Last Done	Change Over 5 Days	52 Weeks High	52 Weeks Low
AOT	62.250	-6.500	76.500	61.500
MOSHI	51.250	-4.250	62.000	31.250
BCT	53.750	-3.250	61.000	48.000
DELTA	80.250	-2.750	119.500	64.400
GPSC	45.000	-2.250	75.500	37.000

### HKEX (HKD)

#### Top Gainers

Name	Last Done	Change Over 5 Days	52 Weeks High	52 Weeks Low
WUXI XDC CAYMAN INC	27.900	+27.640	29.400	26.350
LI AUTO INC	164.600	+12.300	185.500	61.950
ZX INC	30.200	+11.860	32.000	9.320
BAIDU INC (9888.HK)	119.800	+11.000	166.300	87.150
BAIDU INC (89888.HK)	109.900	+8.800	143.000	94.200

#### Top Losers

Name	Last Done	Change Over 5 Days	52 Weeks High	52 Weeks Low
ZTO EXPRESS (CAYMAN) INC	174.900	-12.100	236.400	169.500
BYD COMPANY LIMITED	221.400	-11.400	255.800	199.900
CLOUD MUSIC INC	85.200	-10.800	115.200	58.450
BYD COMPANY LIMITED	241.800	-9.400	280.600	165.100
ALIBABA GROUP HOLDING LTD	70.600	-5.050	91.900	67.900

### SGX (SGD)

#### Top Gainers

Name	Last Done	Change Over 5 Days	52 Weeks High	52 Weeks Low
IFAST	7.920	+0.190	8.060	4.150
AEM SGD	3.440	+0.180	4.020	2.700
TJ DARENTANG USD	2.000	+0.150	2.440	1.010
PNE INDUSTRIES	0.650	+0.105	0.830	0.545
BRC ASIA	1.750	+0.100	1.825	1.600

#### Top Losers

Name	Last Done	Change Over 5 Days	52 Weeks High	52 Weeks Low
DBS	31.960	-0.680	35.855	30.300
JMH USD	40.600	-0.600	54.890	38.660
OCBC BANK	12.780	-0.200	13.390	11.930
CHINA YUANBANG	0.220	-0.170	0.400	0.160
SINGTEL 10	2.270	-0.130	2.740	2.260



# HOW TO EVALUATE AND ANALYSE REITs



Devanesan  
Evanson  
**Chief Executive  
Officer, Minority  
Shareholders Watch  
Group**

**R**eal Estate Investment Trusts (“REIT(s)”) are often seen as an attractive investment for dividend-focused investors as they are an affordable way to gain ownership of a wide range of local and global properties. As REITs exhibit some stock-like behaviours (i.e., trading on exchanges, being very liquid and providing dividends), they are often analysed like stocks though there are some key differences.

## HERE ARE 8 KEY THINGS TO CONSIDER WHEN INVESTING IN REITs:

### 1. ECONOMIC OUTLOOK

Like stocks, the state of the economy is a key factor affecting the performance of REITs. When there are stronger economic growth prospects, it is a good time to invest in REITs and vice versa.

## **2. INTEREST RATE ENVIRONMENT**

A higher interest rate environment makes REITs investment less attractive compared to fixed deposits and other fixed income securities as the spread between REITs and fixed deposits become narrower. Malaysian REITs continue to deliver competitive yield to unit holders, with a 5.7% forward dividend yield in FY23 compared to the MGS 10-year yield of 3.7%. If expectations of future interest rates change suddenly, it would result in REITs facing price volatility.

## **3. FUNDS FROM OPERATIONS (“FFO”)**

FFO is a measure to evaluate the cashflow from operations of a REIT. In essence, it measures the net amount of cash and equivalents that flows into a REIT portfolio from regular, ongoing business activities. Higher FFO from REITs indicates the ability to make distributions to unit holders.

## **4. YIELD AND FREQUENCY OF PAYOUTS**

Historical yields are calculated by taking the distribution or dividend per unit in a REIT paid to investors divided by its current unit price. Historical yields are not indicative of future performance of a REIT. They can be a useful measure in understanding how consistent a REIT has maintained its payouts to unitholders. Higher yields do not make a particular REIT more attractive and may indicate a lower chance of stable distributions. Conversely, lower yields are not indicative of a REIT being a less valued buy and might represent a safer investment.

## **5. WEIGHTED AVERAGE LEASE EXPIRY (“WALE”)**

WALE measures the average time to expiry of existing leases of properties in a REIT based on the area a tenant occupies and the rent it pays to the REIT. If a REIT's WALE is 3.2, this means current leases have an average of 3.2 years before the end of the contract. A longer WALE can be an assurance to REIT investors during an economic downturn as the tenants are locked into their tenancy agreements for a longer time.

## 6. GEARING RATIO

Gearing ratio, also known as aggregated leverage, is a metric closely monitored by investors and often used to assess a REIT's financial leverage. It is the ratio of a REIT's total debt to total assets. The maximum gearing ratio permitted by Securities Commission of Malaysia currently is 50%.

## 7. INTEREST COVER RATIO

This is a measure to find out the REIT's ability to meet its interest payments and is calculated by dividing its earnings before interest and taxes (EBIT) by its interest expenses. A higher interest cover ratio indicates the REIT's ability to pay its loans obligations.

## 8. NET ASSET VALUE ("NAV")

NAV, the difference between total assets and liabilities on a per unit basis, is a commonly used metric to assess the valuation of a REIT. NAV is indicative of the value of a REIT portfolio on a per unit basis. It is prudent to invest in a REIT below its NAV for margin of safety as in the event of a liquidation of a REIT, an investor may get back his/her investment in full if the REIT's assets can be realised at book value.

To sum up, please take the time to read up on each REIT so you can make more informed decisions and are comfortable with investing in REITs. Do bear in mind your risk tolerance. Be aware of the asset mix in your portfolio.

**Lee Chee Meng**  
**Manager, Corporate Monitoring**

**DEFINITION:** Insider Activity shows the trades made by substantial shareholders or directors of the company. Purchases by the directors and company share buyback may indicate the share price is undervalued and brings confidence to the price trend of the share price.



ShareInvestor WebPro > Fundamental > Insider Trades > click Search tab > Select Bursa > click Stock name > scroll up and leave at <Select Counter> Type Date Range for Announcement Date > click Search

Notice Period is 12th Nov - 18th Nov 2023

Effective Change Date	Stock Name	Buyer/ Seller Name [Classification]	Bought / (Sold) ['000]		No. of Shares After Trade ['000]	
			Total	Total	Total	% Held
15 NOV 2023 - 15 NOV 2023	3A	MR TEO KWEE HOCK [SSH]	-191		50,569	10.341
14 NOV 2023 - 14 NOV 2023	ABMB	EMPLOYEES PROVIDENT FUND BOARD [SSH]	-157		158,856	10.261
10 NOV 2023 - 10 NOV 2023	ABMB	EMPLOYEES PROVIDENT FUND BOARD [SSH]	-200		159,014	10.272
09 NOV 2023 - 09 NOV 2023	ABMB	EMPLOYEES PROVIDENT FUND BOARD [SSH]	-150		159,214	10.284
10 NOV 2023 - 10 NOV 2023	AIRPORT	EMPLOYEES PROVIDENT FUND BOARD [SSH]	-49		143,911	8.625
09 NOV 2023 - 09 NOV 2023	AIRPORT	EMPLOYEES PROVIDENT FUND BOARD [SSH]	-312		143,959	8.628
08 NOV 2023 - 08 NOV 2023	AIRPORT	EMPLOYEES PROVIDENT FUND BOARD [SSH]	156		144,272	8.647
10 NOV 2023 - 14 NOV 2023	ANCOMNY	DATO' SIEW KA WEI [DIR/CEO]	-3,100		172,390	18.038
10 NOV 2023 - 10 NOV 2023	ANCOMNY	DATO' SIEW KA WEI [DIR/CEO]	-5,000		17,586	17.925
10 NOV 2023 - 14 NOV 2023	ANCOMNY	DATO' SIEW KA WEI [SSH]	-3,100		172,390	18.038
10 NOV 2023 - 10 NOV 2023	ANCOMNY	MR LEE CHEUN WEI [DIR/CEO]	5,000		20,079	20.466
10 NOV 2023 - 10 NOV 2023	ANCOMNY	MR LEE CHEUN WEI [DIR/CEO]	600		84,543	8.846
10 NOV 2023 - 10 NOV 2023	ANCOMNY	MR LEE CHEUN WEI [SSH]	600		84,543	8.846
10 NOV 2023 - 10 NOV 2023	ANCOMNY	MR SIEW KA KHEONG [DIR/CEO]	-600		46,069	4.821
10 NOV 2023 - 10 NOV 2023	AXIATA	AMANAHRAYA TRUSTEES BERHAD-AMANAH SAHAM BUMIPUTERA [SSH]	2,000		1,140,404	12.424
09 NOV 2023 - 09 NOV 2023	AXIATA	AMANAHRAYA TRUSTEES BERHAD-AMANAH SAHAM BUMIPUTERA [SSH]	6,000		1,138,404	12.402
08 NOV 2023 - 08 NOV 2023	AXIATA	EMPLOYEES PROVIDENT FUND BOARD [SSH]	-301		1,619,243	17.641
10 NOV 2023 - 10 NOV 2023	AXREIT	EMPLOYEES PROVIDENT FUND BOARD [SSH]	-754		267,248	15.35
09 NOV 2023 - 09 NOV 2023	AXREIT	EMPLOYEES PROVIDENT FUND BOARD [SSH]	-861		268,002	15.393
14 NOV 2023 - 14 NOV 2023	BAHVEST	INNOSABAH CAPITAL HOLDINGS SDN BHD [SSH]	1,000		166,579	13.44
15 NOV 2023 - 15 NOV 2023	BAUTO	PRUDENTIAL PLC [SSH]	-260		59,027	5.06
14 NOV 2023 - 14 NOV 2023	BAUTO	EMPLOYEES PROVIDENT FUND BOARD [SSH]	-1,200		127,193	10.904
14 NOV 2023 - 14 NOV 2023	BAUTO	PRUDENTIAL PLC [SSH]	633		59,287	5.083
10 NOV 2023 - 10 NOV 2023	BAUTO	EMPLOYEES PROVIDENT FUND BOARD [SSH]	291		128,393	11.007
10 NOV 2023 - 10 NOV 2023	BAUTO	PRUDENTIAL PLC [SSH]	-568		58,654	5.028
09 NOV 2023 - 09 NOV 2023	BAUTO	EMPLOYEES PROVIDENT FUND BOARD [SSH]	-775		128,102	10.984
09 NOV 2023 - 09 NOV 2023	BAUTO	PRUDENTIAL PLC [SSH]	-687		59,222	5.078
08 NOV 2023 - 08 NOV 2023	BAUTO	EMPLOYEES PROVIDENT FUND BOARD [SSH]	1,654		128,877	11.051
09 NOV 2023 - 09 NOV 2023	BIMB	EMPLOYEES PROVIDENT FUND BOARD [SSH]	912		369,426	16.3
08 NOV 2023 - 08 NOV 2023	BIMB	EMPLOYEES PROVIDENT FUND BOARD [SSH]	659		368,514	16.259
08 NOV 2023 - 08 NOV 2023	BIPORT	EMPLOYEES PROVIDENT FUND BOARD [SSH]	-250		23,211	5.046
08 NOV 2023 - 08 NOV 2023	BLDPLNT	SYARIKAT PAYANG SDN. BHD. [SSH]	-3,663		11,474	12.272
17 NOV 2023 - 17 NOV 2023	BORNOIL	DATUK JOSEPH LEE YOK MIN @ AMBROSE [DIR/CEO]	1,200		1,949,255	16.283
17 NOV 2023 - 17 NOV 2023	BORNOIL	DATUK JOSEPH LEE YOK MIN @ AMBROSE [SSH]	1,200		666,817	16.283
16 NOV 2023 - 16 NOV 2023	BORNOIL	DATUK JOSEPH LEE YOK MIN @ AMBROSE [DIR/CEO]	3,000		1,948,055	16.273
16 NOV 2023 - 16 NOV 2023	BORNOIL	DATUK JOSEPH LEE YOK MIN @ AMBROSE [SSH]	3,000		665,617	16.273
15 NOV 2023 - 15 NOV 2023	BORNOIL	DATUK JOSEPH LEE YOK MIN @ AMBROSE [DIR/CEO]	5,350		1,945,055	16.248
15 NOV 2023 - 15 NOV 2023	BORNOIL	DATUK JOSEPH LEE YOK MIN @ AMBROSE [SSH]	5,350		662,617	16.248
14 NOV 2023 - 14 NOV 2023	BORNOIL	DATUK JOSEPH LEE YOK MIN @ AMBROSE [DIR/CEO]	1,600		1,939,705	16.203
14 NOV 2023 - 14 NOV 2023	BORNOIL	DATUK JOSEPH LEE YOK MIN @ AMBROSE [SSH]	1,600		657,267	16.203
10 NOV 2023 - 10 NOV 2023	BPLANT	BOUSTEAD HOLDINGS BERHAD [SSH]	-739,200		546,936	24.417
10 NOV 2023 - 10 NOV 2023	BPLANT	LEMBAGA TABUNG ANGKATAN TENTERA [SSH]	739,200		976,406	43.59
15 NOV 2023 - 15 NOV 2023	CDB	TELENOR ASA [SSH]	-3,883,129		3,883,129	33.1
15 NOV 2023 - 15 NOV 2023	CDB	TELENOR ASIA HOLDING AS [SSH]	3,883,129		3,883,129	33.1
15 NOV 2023 - 15 NOV 2023	CDB	TELENOR MOBILE HOLDING AS [SSH]	-3,883,129		3,883,129	33.1
10 NOV 2023 - 10 NOV 2023	CDB	EMPLOYEES PROVIDENT FUND BOARD [SSH]	200		1,123,266	9.575
09 NOV 2023 - 09 NOV 2023	CDB	EMPLOYEES PROVIDENT FUND BOARD [SSH]	500		1,123,066	9.573
08 NOV 2023 - 08 NOV 2023	CDB	EMPLOYEES PROVIDENT FUND BOARD [SSH]	69		1,122,566	9.569
14 NOV 2023 - 14 NOV 2023	CIMB	EMPLOYEES PROVIDENT FUND BOARD [SSH]	4,000		1,613,001	15.12
15 NOV 2023 - 15 NOV 2023	CIMB	KUMPULAN WANG PERSARAAN (DIPERBADANKAN) [SSH]	-563		695,025	6.52
10 NOV 2023 - 10 NOV 2023	CIMB	EMPLOYEES PROVIDENT FUND BOARD [SSH]	400		1,609,001	15.09
14 NOV 2023 - 14 NOV 2023	CIMB	KUMPULAN WANG PERSARAAN (DIPERBADANKAN) [SSH]	-92		695,588	6.52
09 NOV 2023 - 09 NOV 2023	CIMB	EMPLOYEES PROVIDENT FUND BOARD [SSH]	-230		1,608,601	15.08
10 NOV 2023 - 10 NOV 2023	CIMB	KUMPULAN WANG PERSARAAN (DIPERBADANKAN) [SSH]	983		695,680	6.52
08 NOV 2023 - 08 NOV 2023	CIMB	EMPLOYEES PROVIDENT FUND BOARD [SSH]	850		1,608,830	15.08
14 NOV 2023 - 14 NOV 2023	CLMT	EMPLOYEES PROVIDENT FUND BOARD [SSH]	331		405,519	14.836
15 NOV 2023 - 15 NOV 2023	CLMT	KUMPULAN WANG PERSARAAN (DIPERBADANKAN) [SSH]	553		259,100	9.479
10 NOV 2023 - 10 NOV 2023	CLMT	EMPLOYEES PROVIDENT FUND BOARD [SSH]	73		405,189	14.823
14 NOV 2023 - 14 NOV 2023	CLMT	KUMPULAN WANG PERSARAAN (DIPERBADANKAN) [SSH]	409		258,547	9.459

Notice Period is 12th Nov - 18th Nov 2023

Effective Change Date	Stock Name	Buyer/ Seller Name [Classification]	Bought / (Sold) ['000]		No. of Shares After Trade ['000]	
			Total	Total	Total	% Held
09 NOV 2023 - 09 NOV 2023	CLMT	EMPLOYEES PROVIDENT FUND BOARD [SSH]	55		405,116	14.821
10 NOV 2023 - 10 NOV 2023	CLMT	KUMPULAN WANG PERSARAAN (DIPERBADANKAN) [SSH]	90		258,138	9.444
08 NOV 2023 - 08 NOV 2023	CLMT	EMPLOYEES PROVIDENT FUND BOARD [SSH]	60		405,061	14.819
16 NOV 2023 - 16 NOV 2023	COMCORP	JT CONGLOMERATE SDN BHD [SSH]	-55,000		231,058	51.063
15 NOV 2023 - 15 NOV 2023	CTOS	WASATCH ADVISORS LP [SSH]	-508		132,922	5.754
09 NOV 2023 - 09 NOV 2023	CTOS	ABRDN HOLDINGS LIMITED (FORMERLY KNOWN AS ABERDEEN ASSET MANAGEMENT PLC) [SSH]	208		142,533	6.17
09 NOV 2023 - 09 NOV 2023	CTOS	ABRDN MALAYSIA SDN BHD [SSH]	208		140,814	6.096
09 NOV 2023 - 09 NOV 2023	CTOS	ABRDN PLC [SSH]	208		142,533	6.17
15 NOV 2023 - 15 NOV 2023	CYPARK	MR CHUNG CHEE YANG [SSH]	235		41,150	5.001
10 NOV 2023 - 10 NOV 2023	CYPARK	MR CHUNG DAO [SSH]	130		43,100	5.238
14 NOV 2023 - 14 NOV 2023	D&O	EMPLOYEES PROVIDENT FUND BOARD [SSH]	184		70,288	5.676
10 NOV 2023 - 10 NOV 2023	D&O	EMPLOYEES PROVIDENT FUND BOARD [SSH]	238		70,104	5.661
08 NOV 2023 - 08 NOV 2023	D&O	EMPLOYEES PROVIDENT FUND BOARD [SSH]	0.8		69,865	5.642
15 NOV 2023 - 15 NOV 2023	DIALOG	PUAN ZAINAB BINTI MOHD SALLEH [DIR/CEO]	-400		7,414	0.134
15 NOV 2023 - 15 NOV 2023	DIALOG	KUMPULAN WANG PERSARAAN (DIPERBADANKAN) [SSH]	151		564,082	10
10 NOV 2023 - 10 NOV 2023	DIALOG	EMPLOYEES PROVIDENT FUND BOARD [SSH]	503		847,952	15.03
10 NOV 2023 - 10 NOV 2023	DIALOG	KUMPULAN WANG PERSARAAN (DIPERBADANKAN) [SSH]	41		563,932	10
14 NOV 2023 - 14 NOV 2023	DLADY	CITIGROUP NOMINEES (TEMPATAN) SDN BHD EMPLOYEES PROVIDENT FUND BOARD [SSH]	-4		5,413	8.458
10 NOV 2023 - 10 NOV 2023	DLADY	CITIGROUP NOMINEES (TEMPATAN) SDN BHD EMPLOYEES PROVIDENT FUND BOARD [SSH]	-6		5,418	8.465
09 NOV 2023 - 09 NOV 2023	DLADY	CITIGROUP NOMINEES (TEMPATAN) SDN BHD EMPLOYEES PROVIDENT FUND BOARD [SSH]	-5		5,424	8.475
08 NOV 2023 - 08 NOV 2023	DLADY	CITIGROUP NOMINEES (TEMPATAN) SDN BHD EMPLOYEES PROVIDENT FUND BOARD [SSH]	-49		5,429	8.482
16 NOV 2023 - 16 NOV 2023	EDEN	KOPERASI BELIA ISLAM MALAYSIA BERHAD [SSH]	6,680		56,960	12.398
17 NOV 2023 - 17 NOV 2023	EITA	MR LIM JOO SWEE [DIR/CEO]	-80		7,929	9.161
14 NOV 2023 - 14 NOV 2023	EITA	MR LIM JOO SWEE [DIR/CEO]	-50		8,009	9.253
10 NOV 2023 - 10 NOV 2023	EITA	MR LIM JOO SWEE [DIR/CEO]	-273		8,059	9.311
14 NOV 2023 - 14 NOV 2023	F&N	EMPLOYEES PROVIDENT FUND BOARD [SSH]	-25		43,228	11.786
10 NOV 2023 - 10 NOV 2023	F&N	EMPLOYEES PROVIDENT FUND BOARD [SSH]	-14		43,253	11.793
09 NOV 2023 - 09 NOV 2023	F&N	EMPLOYEES PROVIDENT FUND BOARD [SSH]	-51		43,268	11.797
08 NOV 2023 - 08 NOV 2023	F&N	EMPLOYEES PROVIDENT FUND BOARD [SSH]	-200		43,318	11.81
15 NOV 2023 - 15 NOV 2023	FFB	ABRDN HOLDINGS LIMITED (FORMERLY KNOWN AS ABERDEEN ASSET MANAGEMENT PLC) [SSH]	391		116,479	6.222
15 NOV 2023 - 15 NOV 2023	FFB	ABRDN MALAYSIA SDN BHD [SSH]	391		115,079	6.148
15 NOV 2023 - 15 NOV 2023	FFB	ABRDN PLC [SSH]	391		116,479	6.222
14 NOV 2023 - 14 NOV 2023	FFB	EMPLOYEES PROVIDENT FUND BOARD [SSH]	126		160,927	8.597
14 NOV 2023 - 14 NOV 2023	FFB	ABRDN HOLDINGS LIMITED (FORMERLY KNOWN AS ABERDEEN ASSET MANAGEMENT PLC) [SSH]	200		116,088	6.202
14 NOV 2023 - 14 NOV 2023	FFB	ABRDN MALAYSIA SDN BHD [SSH]	200		114,688	6.127
14 NOV 2023 - 14 NOV 2023	FFB	ABRDN PLC [SSH]	200		116,088	6.202
10 NOV 2023 - 10 NOV 2023	FFB	EMPLOYEES PROVIDENT FUND BOARD [SSH]	237		160,719	8.586
10 NOV 2023 - 10 NOV 2023	FFB	ABRDN HOLDINGS LIMITED (FORMERLY KNOWN AS ABERDEEN ASSET MANAGEMENT PLC) [SSH]	353		115,887	6.191
10 NOV 2023 - 10 NOV 2023	FFB	ABRDN MALAYSIA SDN BHD [SSH]	353		114,488	6.116
10 NOV 2023 - 10 NOV 2023	FFB	ABRDN PLC [SSH]	353		115,887	6.191
15 NOV 2023 - 15 NOV 2023	FRONTKN	MR OOI KENG THYE [SSH]	-2,765		158,409	10.084
14 NOV 2023 - 14 NOV 2023	FRONTKN	EMPLOYEES PROVIDENT FUND BOARD [SSH]	1,169		91,310	5.812
10 NOV 2023 - 10 NOV 2023	FRONTKN	EMPLOYEES PROVIDENT FUND BOARD [SSH]	958		90,140	5.738
10 NOV 2023 - 14 NOV 2023	FRONTKN	MR OOI KENG THYE [SSH]	-4,850		161,173	10.26
09 NOV 2023 - 09 NOV 2023	FRONTKN	EMPLOYEES PROVIDENT FUND BOARD [SSH]	3,530		89,183	5.677
08 NOV 2023 - 08 NOV 2023	FRONTKN	EMPLOYEES PROVIDENT FUND BOARD [SSH]	183		85,653	5.452
14 NOV 2023 - 14 NOV 2023	GAMUDA	EMPLOYEES PROVIDENT FUND BOARD (EPF BOARD) [SSH]	306		300,358	11.13
10 NOV 2023 - 10 NOV 2023	GAMUDA	EMPLOYEES PROVIDENT FUND BOARD (EPF BOARD) [SSH]	1,333		300,052	11.12
09 NOV 2023 - 09 NOV 2023	GAMUDA	EMPLOYEES PROVIDENT FUND BOARD (EPF BOARD) [SSH]	544		298,719	11.07
08 NOV 2023 - 08 NOV 2023	GAMUDA	EMPLOYEES PROVIDENT FUND BOARD (EPF BOARD) [SSH]	-2,290		298,175	11.05
14 NOV 2023 - 14 NOV 2023	GASMSIA	EMPLOYEES PROVIDENT FUND BOARD [SSH]	-233		78,690	6.128
10 NOV 2023 - 10 NOV 2023	GASMSIA	EMPLOYEES PROVIDENT FUND BOARD [SSH]	-17		78,923	6.146
09 NOV 2023 - 09 NOV 2023	GASMSIA	EMPLOYEES PROVIDENT FUND BOARD [SSH]	-378		78,940	6.147
08 NOV 2023 - 08 NOV 2023	GASMSIA	EMPLOYEES PROVIDENT FUND BOARD [SSH]	-500		79,318	6.177

**Disclaimer:** The information in Insider Activity is extracted from [www.shareinvestor.com/fundamental/insider\\_trades](http://www.shareinvestor.com/fundamental/insider_trades). The information on this page is provided as a service to readers. It does not constitute financial advice and/or any investment recommendations. We assume no liability for damages resulting from or arising out of the use of such information. Whilst every effort is made to ensure accuracy, the information presented is not the official record of shareholder filings. Readers are advised to read the original filings on the Bursa Malaysia website at [www.bursamalaysia.com](http://www.bursamalaysia.com)

**PURNELL**

**ESCAPE II  
ABSOLUTE  
SAPPHIRE**

PLAY



Notice Period is 12th Nov – 18th Nov 2023

Effective Change Date	Stock Name	Buyer/ Seller Name [Classification]	Bought / (Sold) ('000)		No. of Shares After Trade ('000)	
			Total	Total	% Held	% Held
16 NOV 2023 - 16 NOV 2023	GBAY	MR PETER LING EE KONG [DIR/CEO]	2	10,099	12.414	
16 NOV 2023 - 16 NOV 2023	GBAY	MR PETER LING EE KONG [SSH]	2	10,099	12.414	
14 NOV 2023 - 14 NOV 2023	GBAY	BRILLIANT SMART INTERNATIONAL LIMITED [SSH]	6,465	6,465	7.947	
14 NOV 2023 - 14 NOV 2023	GBAY	KSL CAPITAL SDN BHD [SSH]	7,335	7,335	9.017	
14 NOV 2023 - 14 NOV 2023	GBAY	MR ANDREW LING YEW CHUNG [DIR/CEO]	-300	300	0.369	
14 NOV 2023 - 14 NOV 2023	GBAY	MR LAW MONG YONG [DIR/CEO]	-2	2	0.002	
14 NOV 2023 - 14 NOV 2023	GBAY	MR LIEW KIT [SSH]	7,339	7,339	9.022	
14 NOV 2023 - 14 NOV 2023	GBAY	MR LIM TIONG HENG [DIR/CEO]	-78	78	0.096	
14 NOV 2023 - 14 NOV 2023	GBAY	MR MAH SIEW SENG [DIR/CEO]	-4,344	4,344	5.339	
14 NOV 2023 - 14 NOV 2023	GBAY	MR MAH SIEW SENG [SSH]	4,344	4,344	5.339	
14 NOV 2023 - 14 NOV 2023	GBAY	MR PANG CHONG YONG [DIR/CEO]	-6,374	6,374	7.835	
14 NOV 2023 - 14 NOV 2023	GBAY	MR PANG CHONG YONG [SSH]	6,374	6,374	7.835	
14 NOV 2023 - 14 NOV 2023	GBAY	MR PETER LING EE KONG [DIR/CEO]	-10,093	10,093	12.407	
14 NOV 2023 - 14 NOV 2023	GBAY	MR PETER LING EE KONG [DIR/CEO]	4	10,097	12.412	
14 NOV 2023 - 14 NOV 2023	GBAY	MR PETER LING EE KONG [SSH]	4	10,097	12.412	
14 NOV 2023 - 14 NOV 2023	GBAY	MR PETER LING EE KONG [SSH]	10,093	10,093	12.407	
14 NOV 2023 - 14 NOV 2023	GCB	EMPLOYEES PROVIDENT FUND BOARD [SSH]	196	64,152	5.462	
09 NOV 2023 - 09 NOV 2023	GCB	EMPLOYEES PROVIDENT FUND BOARD [SSH]	830	63,956	5.445	
15 NOV 2023 - 15 NOV 2023	HEKTAR	HEKTAR BLACK SDN BHD [SSH]	-500	125,963	24.915	
14 NOV 2023 - 14 NOV 2023	HLBANK	EMPLOYEES PROVIDENT FUND BOARD [SSH]	-40	205,099	9.829	
09 NOV 2023 - 09 NOV 2023	HLBANK	EMPLOYEES PROVIDENT FUND BOARD [SSH]	-13	205,139	9.831	
08 NOV 2023 - 08 NOV 2023	HLBANK	EMPLOYEES PROVIDENT FUND BOARD [SSH]	100	205,151	9.832	
10 NOV 2023 - 10 NOV 2023	IFCAMSC	MR YONG KEANG CHEUN [DIR/CEO]	300	224,295	37.061	
10 NOV 2023 - 10 NOV 2023	IFCAMSC	MR YONG KEANG CHEUN [SSH]	300	224,295	37.061	
10 NOV 2023 - 10 NOV 2023	IFCAMSC	MR YONG KIAN KEONG [DIR/CEO]	300	224,295	37.061	
10 NOV 2023 - 10 NOV 2023	IFCAMSC	MR YONG KIAN KEONG [SSH]	300	224,295	37.061	
15 NOV 2023 - 15 NOV 2023	IGBREIT	KUMPULAN WANG PERSARAAN (DIPERBADANKAN) [SSH]	-444	260,986	7.247	
14 NOV 2023 - 14 NOV 2023	IGBREIT	KUMPULAN WANG PERSARAAN (DIPERBADANKAN) [SSH]	-665	261,430	7.259	
10 NOV 2023 - 10 NOV 2023	IGBREIT	KUMPULAN WANG PERSARAAN (DIPERBADANKAN) [SSH]	-422	262,094	7.277	
14 NOV 2023 - 14 NOV 2023	IHH	EMPLOYEES PROVIDENT FUND BOARD [SSH]	-4,449	935,065	10.617	
10 NOV 2023 - 10 NOV 2023	IHH	EMPLOYEES PROVIDENT FUND BOARD [SSH]	-1,567	939,514	10.668	
09 NOV 2023 - 09 NOV 2023	IHH	EMPLOYEES PROVIDENT FUND BOARD [SSH]	-249	941,080	10.686	
08 NOV 2023 - 08 NOV 2023	IHH	EMPLOYEES PROVIDENT FUND BOARD [SSH]	-3,256	941,329	10.688	
14 NOV 2023 - 14 NOV 2023	IJM	EMPLOYEES PROVIDENT FUND BOARD [SSH]	190	590,139	16.831	
10 NOV 2023 - 10 NOV 2023	IJM	EMPLOYEES PROVIDENT FUND BOARD [SSH]	43	589,948	16.826	
14 NOV 2023 - 14 NOV 2023	INARI	EMPLOYEES PROVIDENT FUND BOARD [SSH]	-2,562	352,111	9.403	
10 NOV 2023 - 10 NOV 2023	INARI	EMPLOYEES PROVIDENT FUND BOARD [SSH]	-3,324	356,172	9.511	
09 NOV 2023 - 09 NOV 2023	INARI	EMPLOYEES PROVIDENT FUND BOARD [SSH]	-3,000	359,496	9.6	
08 NOV 2023 - 08 NOV 2023	INARI	EMPLOYEES PROVIDENT FUND BOARD [SSH]	-2,717	362,496	9.68	
08 NOV 2023 - 08 NOV 2023	IOIPG	EMPLOYEES PROVIDENT FUND BOARD [SSH]	277	378,626	6.876	
10 NOV 2023 - 10 NOV 2023	KERJAYA	EMPLOYEES PROVIDENT FUND BOARD [SSH]	57	70,993	5.63	
09 NOV 2023 - 09 NOV 2023	KERJAYA	EMPLOYEES PROVIDENT FUND BOARD [SSH]	-218	70,936	5.625	
08 NOV 2023 - 08 NOV 2023	KERJAYA	EMPLOYEES PROVIDENT FUND BOARD [SSH]	-1,880	71,154	5.642	
14 NOV 2023 - 14 NOV 2023	KLK	EMPLOYEES PROVIDENT FUND BOARD [SSH]	-362	117,989	10.941	
10 NOV 2023 - 10 NOV 2023	KLK	EMPLOYEES PROVIDENT FUND BOARD [SSH]	-30	118,351	10.974	
09 NOV 2023 - 09 NOV 2023	KLK	EMPLOYEES PROVIDENT FUND BOARD [SSH]	-124	118,381	10.977	
08 NOV 2023 - 08 NOV 2023	KLK	EMPLOYEES PROVIDENT FUND BOARD [SSH]	-62	118,505	10.989	
07 NOV 2023 - 07 NOV 2023	KSSC	MISS CHEONG LAI SIN [SSH]	41,580	41,580	27.69	
16 NOV 2023 - 16 NOV 2023	LSH	MADAM LIM PAK LIAN [DIR/CEO]	-11	572,951	81.113	
16 NOV 2023 - 16 NOV 2023	LSH	MADAM LIM PAK LIAN [SSH]	-11	572,951	81.113	
16 NOV 2023 - 16 NOV 2023	LSH	MR LIM KENG HUN [DIR/CEO]	-100	572,951	81.113	
16 NOV 2023 - 16 NOV 2023	LSH	MR LIM KENG HUN [SSH]	-100	572,951	81.113	
15 NOV 2023 - 16 NOV 2023	LSH	TAN SRI DATUK SERI LIM KENG CHENG [DIR/CEO]	-100	572,951	81.113	
15 NOV 2023 - 16 NOV 2023	LSH	TAN SRI DATUK SERI LIM KENG CHENG [SSH]	-100	572,951	81.113	
14 NOV 2023 - 15 NOV 2023	LSH	DATUK LIM KENG GUAN [DIR/CEO]	-40	572,951	81.113	
14 NOV 2023 - 15 NOV 2023	LSH	DATUK LIM KENG GUAN [SSH]	-40	572,951	81.113	
10 NOV 2023 - 10 NOV 2023	LSH	DATUK LIM KENG GUAN [DIR/CEO]	-60	572,991	81.119	
10 NOV 2023 - 10 NOV 2023	LSH	DATUK LIM KENG GUAN [SSH]	-60	572,991	81.119	
16 NOV 2023 - 16 NOV 2023	LUXCHEM	MADAM CHIN SONG MOOI [DIR/CEO]	133	457,816	42.796	
16 NOV 2023 - 16 NOV 2023	LUXCHEM	MADAM CHIN SONG MOOI [SSH]	133	457,816	42.796	
16 NOV 2023 - 16 NOV 2023	LUXCHEM	MR TANG YING SEE [DIR/CEO]	133	457,816	42.796	
16 NOV 2023 - 16 NOV 2023	LUXCHEM	MR TANG YING SEE [SSH]	133	457,816	42.796	
15 NOV 2023 - 15 NOV 2023	MAGNI	MR TAN POAY SENG [DIR/CEO]	300	119,388	27.54	
08 NOV 2023 - 08 NOV 2023	MALAKOF	URUSHARTA JAMAHAH SDN. BHD. [SSH]	100	499,890	10.229	
15 NOV 2023 - 16 NOV 2023	MAXIM	DATUK TAN KAK SENG [SSH]	1,339	44,834	0.182	
10 NOV 2023 - 10 NOV 2023	MAXIS	EMPLOYEES PROVIDENT FUND BOARD ('EPF BOARD') [SSH]	45	865,760	11.054	
09 NOV 2023 - 09 NOV 2023	MAXIS	EMPLOYEES PROVIDENT FUND BOARD ('EPF BOARD') [SSH]	300	865,715	11.053	
08 NOV 2023 - 08 NOV 2023	MAXIS	EMPLOYEES PROVIDENT FUND BOARD ('EPF BOARD') [SSH]	11	865,415	11.05	
15 NOV 2023 - 15 NOV 2023	MAYBANK	AMANAHRAYA TRUSTEES BERHAD - AMANAH SAHAM BUMIPUTERA [SSH]	-6,320	3,685,729	30.561	
15 NOV 2023 - 15 NOV 2023	MAYBANK	KUMPULAN WANG PERSARAAN (DIPERBADANKAN) ('KWAP') [SSH]	507	604,358	5.011	
14 NOV 2023 - 14 NOV 2023	MAYBANK	AMANAHRAYA TRUSTEES BERHAD - AMANAH SAHAM BUMIPUTERA [SSH]	-20,000	3,692,050	30.613	
09 NOV 2023 - 09 NOV 2023	MAYBANK	EMPLOYEES PROVIDENT FUND BOARD [SSH]	986	1,619,961	13.432	
08 NOV 2023 - 08 NOV 2023	MAYBANK	EMPLOYEES PROVIDENT FUND BOARD [SSH]	204	1,618,975	13.424	
14 NOV 2023 - 14 NOV 2023	MBMR	EMPLOYEES PROVIDENT FUND BOARD [SSH]	200	24,992	6.394	
15 NOV 2023 - 15 NOV 2023	MESTRON	MR POR TEONG ENG [DIR/CEO]	-10,400	212,102	21.289	
15 NOV 2023 - 15 NOV 2023	MESTRON	MR POR TEONG ENG [SSH]	-10,400	212,102	21.289	
15 NOV 2023 - 15 NOV 2023	MGB	DATO' BEH HANG KONG [DIR/CEO]	10	3,551	0.6	

Notice Period is 12th Nov – 18th Nov 2023

Effective Change Date	Stock Name	Buyer/ Seller Name [Classification]	Bought / (Sold) ('000)		No. of Shares After Trade ('000)	
			Total	Total	% Held	% Held
14 NOV 2023 - 14 NOV 2023	MISC	EMPLOYEES PROVIDENT FUND BOARD [SSH]	-804	551,189	12.348	
10 NOV 2023 - 10 NOV 2023	MISC	EMPLOYEES PROVIDENT FUND BOARD [SSH]	-1,323	551,993	12.366	
09 NOV 2023 - 09 NOV 2023	MISC	EMPLOYEES PROVIDENT FUND BOARD [SSH]	-2,635	553,316	12.396	
08 NOV 2023 - 08 NOV 2023	MISC	EMPLOYEES PROVIDENT FUND BOARD [SSH]	-1,149	555,951	12.455	
15 NOV 2023 - 15 NOV 2023	MNRB	AMANAHRAYA TRUSTEES BERHAD-AMANAH SAHAM BUMIPUTERA [SSH]	-157	333,032	42.528	
14 NOV 2023 - 14 NOV 2023	MNRB	AMANAHRAYA TRUSTEES BERHAD-AMANAH SAHAM BUMIPUTERA [SSH]	-60	333,189	42.548	
10 NOV 2023 - 10 NOV 2023	NCT	DATUK SERI CHIAU BENG TEIK [SSH]	10,000	123,804	7.881	
10 NOV 2023 - 10 NOV 2023	NCT	MR CHIAU HAW CHOON [SSH]	16,000	154,045	9.806	
14 NOV 2023 - 14 NOV 2023	NESTLE	EMPLOYEES PROVIDENT FUND BOARD [SSH]	38	22,110	9.429	
10 NOV 2023 - 10 NOV 2023	NESTLE	EMPLOYEES PROVIDENT FUND BOARD [SSH]	51	22,072	9.413	
09 NOV 2023 - 09 NOV 2023	NESTLE	EMPLOYEES PROVIDENT FUND BOARD [SSH]	-425	22,022	9.391	
08 NOV 2023 - 08 NOV 2023	NESTLE	EMPLOYEES PROVIDENT FUND BOARD [SSH]	106	22,447	9.572	
14 NOV 2023 - 14 NOV 2023	ORIENT	EMPLOYEES PROVIDENT FUND BOARD [SSH]	41	49,847	8.035	
09 NOV 2023 - 09 NOV 2023	ORIENT	EMPLOYEES PROVIDENT FUND BOARD [SSH]	-52	49,805	8.028	
08 NOV 2023 - 08 NOV 2023	ORIENT	EMPLOYEES PROVIDENT FUND BOARD [SSH]	-77	49,857	8.037	
17 NOV 2023 - 17 NOV 2023	P&O	MR CHAN HUA ENG [DIR/CEO]	1,275	2,249	0.81	
14 NOV 2023 - 14 NOV 2023	PADINI	EMPLOYEES PROVIDENT FUND BOARD [SSH]	13	39,103	5.944	
10 NOV 2023 - 10 NOV 2023	PADINI	EMPLOYEES PROVIDENT FUND BOARD [SSH]	26	39,090	5.942	
09 NOV 2023 - 09 NOV 2023	PADINI	EMPLOYEES PROVIDENT FUND BOARD [SSH]	65	39,070	5.938	
08 NOV 2023 - 08 NOV 2023	PADINI	EMPLOYEES PROVIDENT FUND BOARD [SSH]	574	39,005	5.929	
14 NOV 2023 - 14 NOV 2023	PANAMY	EMPLOYEES PROVIDENT FUND BOARD [SSH]	-2	7,591	12.497	
10 NOV 2023 - 10 NOV 2023	PANAMY	EMPLOYEES PROVIDENT FUND BOARD [SSH]	-3	7,593	12.5	
09 NOV 2023 - 09 NOV 2023	PANAMY	EMPLOYEES PROVIDENT FUND BOARD [SSH]	-2	7,596	12.505	
08 NOV 2023 - 08 NOV 2023	PANAMY	EMPLOYEES PROVIDENT FUND BOARD [SSH]	-3	7,598	12.508	
14 NOV 2023 - 17 NOV 2023	PANSAR	HIGHLINE SHIPPING SDN BHD [SSH]	1,408	32,897	7.004	
16 NOV 2023 - 16 NOV 2023	PANTECH	PUAN NOORAINI BINTI MOHD YASIN [DIR/CEO]	-4	39	0.005	
15 NOV 2023 - 15 NOV 2023	PANTECH	PUAN NOORAINI BINTI MOHD YASIN [DIR/CEO]	-3	43	0.005	
14 NOV 2023 - 14 NOV 2023	PANTECH	PUAN NOORAINI BINTI MOHD YASIN [DIR/CEO]	-5	46	0.006	
14 NOV 2023 - 14 NOV 2023	PBBANK	EMPLOYEES PROVIDENT FUND BOARD [SSH]	807	3,039,619	15.66	
10 NOV 2023 - 10 NOV 2023	PBBANK	EMPLOYEES PROVIDENT FUND BOARD [SSH]	-2,000	3,038,812	15.66	
09 NOV 2023 - 09 NOV 2023	PBBANK	EMPLOYEES PROVIDENT FUND BOARD [SSH]	-122	3,040,812	15.67	
08 NOV 2023 - 08 NOV 2023	PBBANK	EMPLOYEES PROVIDENT FUND BOARD [SSH]	-2,139	3,040,934	15.67	
10 NOV 2023 - 10 NOV 2023	PCHEM	EMPLOYEES PROVIDENT FUND BOARD ('EPF BOARD') [SSH]	54	933,364	11.667	
09 NOV 2023 - 09 NOV 2023	PCHEM	EMPLOYEES PROVIDENT FUND BOARD ('EPF BOARD') [SSH]	50	933,436	11.668	
14 NOV 2023 - 14 NOV 2023	PENTA	EMPLOYEES PROVIDENT FUND BOARD [SSH]	44	53,611	7.537	
14 NOV 2023 - 14 NOV 2023	PETDAG	EMPLOYEES PROVIDENT FUND BOARD ('EPF BOARD') [SSH]	5	120,981	12.178	
08 NOV 2023 - 08 NOV 2023	PETDAG	EMPLOYEES PROVIDENT FUND BOARD ('EPF BOARD') [SSH]	144	120,977	12.177	
14 NOV 2023 - 14 NOV 2023	PETGAS	EMPLOYEES PROVIDENT FUND BOARD [SSH]	-1,387	263,577	13.321	
10 NOV 2023 - 10 NOV 2023	PETGAS	EMPLOYEES PROVIDENT FUND BOARD [SSH]	-1,107	264,964	13.391	
09 NOV 2023 - 09 NOV 2023	PETGAS	EMPLOYEES PROVIDENT FUND BOARD [SSH]	-234	266,071	13.447	
08 NOV 2023 - 08 NOV 2023	PETGAS	EMPLOYEES PROVIDENT FUND BOARD [SSH]	-1,396	266,305	13.458	
10 NOV 2023 - 10 NOV 2023	PLYTEC	IR. HAN LIANG KWANG [DIR/CEO]	400	400	0.066	
10 NOV 2023 - 10 NOV 2023	PLYTEC	MISS ANITA CHEW CHENG IM [DIR/CEO]	300	300	0.05	
10 NOV 2023 - 10 NOV 2023	PLYTEC	MISS KOW HOAY LEE [DIR/CEO]	300	300	0.05	
10 NOV 2023 - 10 NOV 2023	PLYTEC	MR GOIK KENZU [DIR/CEO]	300	300	0.05	
10 NOV 2023 - 10 NOV 2023	PLYTEC	MR YANG KIAN LOCK [DIR/CEO]	-10,672	448,485	74	
10 NOV 2023 - 10 NOV 2023	PLYTEC	MR YANG KIAN LOCK [SSH]	-10,672	448,485	74	
10 NOV 2023 - 10 NOV 2023	PLYTEC	TAN SRI DATUK DR. IR. AHMAD TAJUDDIN BIN ALI [DIR/CEO]	1,000	1,000	0.165	
14 NOV 2023 - 14 NOV 2023	PPB	EMPLOYEES PROVIDENT FUND BOARD [SSH]	-1,276	138,043	9.704	
10 NOV 2023 - 10 NOV 2023	PPB	EMPLOYEES PROVIDENT FUND BOARD [SSH]	-652	139,319	9.793	
09 NOV 2023 - 09 NOV 2023	PPB	EMPLOYEES PROVIDENT FUND BOARD [SSH]	-873	139,971	9.839	
08 NOV 2023 - 08 NOV 2023	PPB	EMPLOYEES PROVIDENT FUND BOARD [SSH]	-952	140,844	9.9	
14 NOV 2023 - 14 NOV 2023	REDTONE	BERJAYA CORPORATION BERHAD [SSH]	-37,800	329,065	42.572	
14 NOV 2023 - 14 NOV 2023	REDTONE	BERJAYA GROUP BERHAD [SSH]	-37,800	329,065	42.572	
14 NOV 2023 - 14 NOV 2023	REDTONE	JUARA SEJATI SDN. BHD. [SSH]	-37,800	319,465	41.331	
15 NOV 2023 - 15 NOV 2023	RHBBANK	KUMPULAN WANG PERSARAAN (DIPERBADANKAN) [SSH]	-750	248,677	5.801	
14 NOV 2023 - 14 NOV 2023	RHBBANK	KUMPULAN WANG PERSARAAN (DIPERBADANKAN) [SSH]	-116	249,427	5.819	
09 NOV 2023 - 09 NOV 2023	RHBBANK	EMPLOYEES PROVIDENT FUND BOARD [SSH]	-144	1,756,589	40.981	
08 NOV 2023 - 08 NOV 2023	RHBBANK	EMPLOYEES PROVIDENT FUND BOARD [SSH]	-140	1,756,733	40.984	
16 NOV 2023 - 16 NOV 2023	SALCON	BERJAYA CORPORATION BERHAD [SSH]	7,500	117,030	11.563	

Notice Period is 12th Nov - 18th Nov 2023

Effective Change Date	Stock Name	Buyer/ Seller Name [Classification]	Bought / (Sold) ['000]		No. of Shares After Trade ['000]	
			Total	% Held	Total	% Held
09 NOV 2023 - 10 NOV 2023	SCIENTX	MR LIM PENG CHEONG [DIR/CEO]	635		847,180	54.619
09 NOV 2023 - 10 NOV 2023	SCIENTX	MR LIM PENG CHEONG [SSH]	635		841,162	54.231
09 NOV 2023 - 10 NOV 2023	SCIENTX	MR LIM PENG JIN [DIR/CEO]	635		893,484	57.604
09 NOV 2023 - 10 NOV 2023	SCIENTX	MR LIM PENG JIN [SSH]	635		893,393	57.598
09 NOV 2023 - 10 NOV 2023	SCIENTX	SCIENTEX INFINITY SDN BHD [SSH]	635		709,169	45.722
14 NOV 2023 - 16 NOV 2023	SCNWOLF	DATO' SRI ANDREW LIM ENG GUAN [SSH]	1,450		29,463	14.735
14 NOV 2023 - 16 NOV 2023	SCNWOLF	DATO' SRI WONG SZE CHIEN [SSH]	1,842		29,169	14.588
09 NOV 2023 - 10 NOV 2023	SCNWOLF	DATO' SRI WONG SZE CHIEN [SSH]	94		27,327	13.667
15 NOV 2023 - 15 NOV 2023	SIME	KUMPULAN WANG PERSARAAN (DIPERBADANKAN) [SSH]	-1,680		525,680	7.713
10 NOV 2023 - 10 NOV 2023	SIME	EMPLOYEES PROVIDENT FUND BOARD [SSH]	5,963		1,059,664	15.547
14 NOV 2023 - 14 NOV 2023	SIME	KUMPULAN WANG PERSARAAN (DIPERBADANKAN) [SSH]	-1,380		527,359	7.738
10 NOV 2023 - 10 NOV 2023	SIME	KUMPULAN WANG PERSARAAN (DIPERBADANKAN) [SSH]	-243		528,739	7.758
09 NOV 2023 - 09 NOV 2023	SIME	EMPLOYEES PROVIDENT FUND BOARD [SSH]	3,776		1,053,701	15.46
08 NOV 2023 - 08 NOV 2023	SIME	EMPLOYEES PROVIDENT FUND BOARD [SSH]	11,346		1,049,926	15.404
15 NOV 2023 - 15 NOV 2023	SIMEPLT	KUMPULAN WANG PERSARAAN (DIPERBADANKAN) [SSH]	-113		457,372	6.613
14 NOV 2023 - 15 NOV 2023	SIMEPLT	AMANAHRAYA TRUSTEES BERHAD - AMANAH SAHAM BUMIPUTERA [SSH]	-1,258		3,171,150	45.854
10 NOV 2023 - 10 NOV 2023	SIMEPLT	EMPLOYEES PROVIDENT FUND BOARD [SSH]	81		1,024,711	14.817
14 NOV 2023 - 14 NOV 2023	SIMEPLT	KUMPULAN WANG PERSARAAN (DIPERBADANKAN) [SSH]	-35		457,485	6.615
09 NOV 2023 - 09 NOV 2023	SIMEPLT	EMPLOYEES PROVIDENT FUND BOARD [SSH]	56		1,024,630	14.816
09 NOV 2023 - 09 NOV 2023	SIMEPLT	AMANAHRAYA TRUSTEES BERHAD - AMANAH SAHAM BUMIPUTERA [SSH]	-381		3,172,408	45.872
14 NOV 2023 - 14 NOV 2023	SIMEPROP	EMPLOYEES PROVIDENT FUND BOARD [SSH]	-7,340		347,896	5.116
10 NOV 2023 - 10 NOV 2023	SIMEPROP	EMPLOYEES PROVIDENT FUND BOARD [SSH]	-17,165		355,235	5.224
09 NOV 2023 - 09 NOV 2023	SIMEPROP	EMPLOYEES PROVIDENT FUND BOARD [SSH]	-22,777		372,401	5.476
08 NOV 2023 - 08 NOV 2023	SIMEPROP	EMPLOYEES PROVIDENT FUND BOARD [SSH]	-21,000		395,178	5.811
14 NOV 2023 - 14 NOV 2023	SKPRES	EMPLOYEES PROVIDENT FUND BOARD [SSH]	335		137,732	8.816
15 NOV 2023 - 15 NOV 2023	SKPRES	KUMPULAN WANG PERSARAAN (DIPERBADANKAN) [SSH]	315		134,170	8.588
14 NOV 2023 - 14 NOV 2023	SKPRES	KUMPULAN WANG PERSARAAN (DIPERBADANKAN) [SSH]	108		133,855	8.567
14 NOV 2023 - 14 NOV 2023	SMRT	URUSHARTA JAMAAH SDN. BHD. [SSH]	311		27,592	6.092
10 NOV 2023 - 10 NOV 2023	SMRT	URUSHARTA JAMAAH SDN. BHD. [SSH]	-727		27,281	6.023
09 NOV 2023 - 09 NOV 2023	SMRT	URUSHARTA JAMAAH SDN. BHD. [SSH]	204		28,009	6.183
15 NOV 2023 - 15 NOV 2023	SPSETIA	AMANAHRAYA TRUSTEES BERHAD - AMANAH SAHAM BUMIPUTERA [SSH]	-37		1,007,602	24.278
14 NOV 2023 - 14 NOV 2023	SPSETIA	AMANAHRAYA TRUSTEES BERHAD - AMANAH SAHAM BUMIPUTERA [SSH]	-188		1,007,639	24.279
08 NOV 2023 - 08 NOV 2023	SUNCON	EMPLOYEES PROVIDENT FUND BOARD [SSH]	500		128,603	9.974
09 NOV 2023 - 09 NOV 2023	TAKAFUL	EMPLOYEES PROVIDENT FUND BOARD [SSH]	1,750		117,601	14.045
08 NOV 2023 - 08 NOV 2023	TAKAFUL	EMPLOYEES PROVIDENT FUND BOARD [SSH]	216		115,851	13.836
15 NOV 2023 - 15 NOV 2023	TANCO	DATO' SRI ANDREW TAN JUN SUAN [DIR/CEO]	5,000		1,001,035	49.945
15 NOV 2023 - 15 NOV 2023	TANCO	DATO' SRI ANDREW TAN JUN SUAN [SSH]	5,000		1,001,035	49.945
09 NOV 2023 - 09 NOV 2023	TENAGA	EMPLOYEES PROVIDENT FUND BOARD [SSH]	50		957,199	16.54
08 NOV 2023 - 08 NOV 2023	TENAGA	EMPLOYEES PROVIDENT FUND BOARD [SSH]	70		957,149	16.54

Notice Period is 12th Nov - 18th Nov 2023

Effective Change Date	Stock Name	Buyer/ Seller Name [Classification]	Bought / (Sold) ['000]		No. of Shares After Trade ['000]	
			Total	% Held	Total	% Held
14 NOV 2023 - 14 NOV 2023	TIMECOM	EMPLOYEES PROVIDENT FUND BOARD [SSH]	-610		146,937	7.956
15 NOV 2023 - 15 NOV 2023	TIMECOM	KUMPULAN WANG PERSARAAN (DIPERBADANKAN) ("KWAP") [SSH]	21		110,801	6
10 NOV 2023 - 10 NOV 2023	TIMECOM	EMPLOYEES PROVIDENT FUND BOARD [SSH]	-1,824		147,547	7.989
14 NOV 2023 - 14 NOV 2023	TIMECOM	KUMPULAN WANG PERSARAAN (DIPERBADANKAN) ("KWAP") [SSH]	21		110,780	5.998
09 NOV 2023 - 09 NOV 2023	TIMECOM	EMPLOYEES PROVIDENT FUND BOARD [SSH]	-4,404		149,371	8.088
10 NOV 2023 - 10 NOV 2023	TIMECOM	KUMPULAN WANG PERSARAAN (DIPERBADANKAN) ("KWAP") [SSH]	21		110,759	5.997
08 NOV 2023 - 08 NOV 2023	TIMECOM	EMPLOYEES PROVIDENT FUND BOARD [SSH]	-1,614		153,775	8.326
14 NOV 2023 - 14 NOV 2023	TM	KUMPULAN WANG PERSARAAN (DIPERBADANKAN) (KWAP) [SSH]	54		388,719	10.132
10 NOV 2023 - 10 NOV 2023	TM	KUMPULAN WANG PERSARAAN (DIPERBADANKAN) (KWAP) [SSH]	77		388,665	10.13
09 NOV 2023 - 09 NOV 2023	UMW	EMPLOYEES PROVIDENT FUND BOARD [SSH]	884		120,105	10.28
17 NOV 2023 - 17 NOV 2023	UTDPLT	DATO' CARL BEK-NIELSEN [DIR/CEO]	55		205,904	49.641
17 NOV 2023 - 17 NOV 2023	UTDPLT	DATO' CARL BEK-NIELSEN [SSH]	55		205,904	49.641
17 NOV 2023 - 17 NOV 2023	UTDPLT	MR MARTIN BEK-NIELSEN [DIR/CEO]	45		202,139	48.733
17 NOV 2023 - 17 NOV 2023	UTDPLT	MR MARTIN BEK-NIELSEN [SSH]	45		202,139	48.733
15 NOV 2023 - 15 NOV 2023	UTDPLT	PERBADANAN PEMBANGUNAN PERTANIAN NEGERI PERAK [SSH]	-295		23,042	5.555
14 NOV 2023 - 14 NOV 2023	UTDPLT	EMPLOYEES PROVIDENT FUND BOARD [SSH]	-258		26,805	6.462
10 NOV 2023 - 10 NOV 2023	UTDPLT	EMPLOYEES PROVIDENT FUND BOARD [SSH]	-202		27,063	6.525
09 NOV 2023 - 09 NOV 2023	UTDPLT	EMPLOYEES PROVIDENT FUND BOARD [SSH]	-20		27,266	6.573
08 NOV 2023 - 08 NOV 2023	UTDPLT	EMPLOYEES PROVIDENT FUND BOARD [SSH]	-28		27,285	6.578
14 NOV 2023 - 14 NOV 2023	UWC	EMPLOYEES PROVIDENT FUND BOARD [SSH]	200		81,551	7.403
10 NOV 2023 - 10 NOV 2023	UWC	EMPLOYEES PROVIDENT FUND BOARD [SSH]	20		81,351	7.384
16 NOV 2023 - 16 NOV 2023	WIDAD	DATO MOHD RIZAL BIN MOHD JAAFAR [DIR/CEO]	-1,100		26,950	0.87
14 NOV 2023 - 14 NOV 2023	WIDAD	TAN SRI MUHAMMAD IKMAL OPAT BIN ABDULLAH [SSH]	-2,959		1,136,543	36.705
14 NOV 2023 - 14 NOV 2023	WIDAD	WIDAD BUSINESS GROUP SDN. BHD. [SSH]	-2,939		1,021,518	32.99
15 NOV 2023 - 15 NOV 2023	WPRTS	KUMPULAN WANG PERSARAAN (DIPERBADANKAN) [SSH]	-69		230,265	6.752
14 NOV 2023 - 14 NOV 2023	WPRTS	KUMPULAN WANG PERSARAAN (DIPERBADANKAN) [SSH]	-45		230,335	6.754
09 NOV 2023 - 09 NOV 2023	WPRTS	EMPLOYEES PROVIDENT FUND BOARD [SSH]	68		312,479	9.164
08 NOV 2023 - 08 NOV 2023	WPRTS	EMPLOYEES PROVIDENT FUND BOARD [SSH]	125		312,412	9.162
16 NOV 2023 - 17 NOV 2023	XL	DATO' KHOO YIK CHOU [DIR/CEO]	438		5,318	2.112
16 NOV 2023 - 16 NOV 2023	YGL	MADAM TAN HOAY LENG [DIR/CEO]	5,200		45,867	16.88
16 NOV 2023 - 16 NOV 2023	YGL	MADAM TAN HOAY LENG [SSH]	5,200		45,867	16.88
16 NOV 2023 - 16 NOV 2023	YGL	MR YEAP KONG CHEAN [DIR/CEO]	5,200		45,867	16.88
16 NOV 2023 - 16 NOV 2023	YGL	MR YEAP KONG CHEAN [SSH]	5,200		45,867	16.88
14 NOV 2023 - 14 NOV 2023	YINSON	EMPLOYEES PROVIDENT FUND BOARD [SSH]	392		448,990	15.446
10 NOV 2023 - 10 NOV 2023	YINSON	EMPLOYEES PROVIDENT FUND BOARD [SSH]	1,066		447,598	15.398
14 NOV 2023 - 14 NOV 2023	YINSON	KUMPULAN WANG PERSARAAN (DIPERBADANKAN) [SSH]	-93		185,332	6.376
09 NOV 2023 - 09 NOV 2023	YINSON	EMPLOYEES PROVIDENT FUND BOARD [SSH]	274		446,532	15.362
08 NOV 2023 - 08 NOV 2023	YINSON	EMPLOYEES PROVIDENT FUND BOARD [SSH]	3,000		446,259	15.352

**Disclaimer:** The Information in Insider Activity is extracted from [www.shareinvestor.com/fundamental/insider\\_trades](http://www.shareinvestor.com/fundamental/insider_trades). The information on this page is provided as a service to readers. It does not constitute financial advice and/or any investment recommendations. We assume no liability for damages resulting from or arising out of the use of such information. Whilst every effort is made to ensure accuracy, the information presented is not the official record of shareholder filings. Readers are advised to read the original filings on the Bursa Malaysia website at [www.bursamalaysia.com](http://www.bursamalaysia.com)

**Invest 176**  
FRIDAY  
29 SEPTEMBER  
2023

**PLUS**  
MARKET SENTIMENTS  
National Energy Transition Roadmap, New Industrial Master Plan To Boost Malaysia's Investment Opportunities - BNM

Malaysia's economy expected to continue to moderate in the near term - DOSM

Median monthly salaries and wages up 7.7% in 2022 after RM1,500 minimum wage implementation - DOSM (page 29-33)

**SSBB Defines The Future Of Construction** (page 22-28)

**MSWG Shareholders Stand To Gain With More Women Directors And IDs On Board** (page 45-49)

Learn how to identify Hot Stocks using Technical Analysis (TA) and Fundamental Analysis (FA)

**SIGN UP FOR Invest NOW IT'S FREE!!!**

[Click here](#)

Scan me



Via email, every Friday.

Get market moving news and analyses. Regular columns include **Behind The Action** and **From The Observer**

**Leaderboard • Shariah Hot Stocks • Shariah Momentum Up Stocks • Non Shariah Hot Stocks • Up Trending Stocks • Growth Stocks • Dividend Stocks • Long Companies • Insider Activity • Investor Relations • Regional Markets**

Articles shown include: **SHARIAH HOT STOCKS**, **LONG COMPANIES**, **INSIDER ACTIVITY**, **NON SHARIAH HOT STOCK**, **INVESTOR RELATIONS**, **KPJ Healthcare Berhad**, **Malaysia's Diversified Economic Structure**, **SSIA-Ukraine**, **Bank Negara Malaysia (BNM) governs**, **Capital A Berhad (5999)**, **EVEREST**, **EVEREST**.

SWAN Hosts

# BIG IN JAPAN

Networking Event

Swan Consultancy celebrated a remarkable 2023 by co-hosting its year-end industry networking extravaganza with clients recently. Themed 'Big in Japan,' the event took place at Ronin Japanese Restobar at Arte Mont Kiara, Kuala Lumpur. With a spread of delectable Japas, Maki, Rice Pizza, and Yakitori, complemented by a mix of Japanese classics and chart-topping hits curated by the talented DJ Jai Kahn, guests from the corporate world were feted to a journey to the Land of the Rising Sun.



Ching Xinyi, Jazzmin Wan, William Yeo, Kahjin Gan, Stefani Wan, Joel Teruya, Fariha Rehmy, Amida Baharim & Chris Ser



Jazzmin Wan, Stefani Wan, Graig Nunis, Ken Farm, Tammy Chan, & Francis Wong



Amy Teoh, Denny Oh & Jayden Oh



Joel Teruya & Chew Sing Guan



Avery Chin, Thye May Ting, YC Foong, Aileen Tan, Jayden Tan & Chan Hwa Jun

Founder and senior director of Swan Consultancy, Stefani Wan said "At Swan Consultancy, we take immense pride in delivering a highly personalized, boutique service that is truly unparalleled. Excellence is not just our goal; it's the very essence of our mission. Our carefully planned industry networking events provide a unique platform for corporate leaders to connect with each other in a relaxed setting, fostering potential collaborations that can drive our clients' growth."



Sabrina Halim & Amida Baharim



Mazlan Ismail, Vincent Khoo, JiaTeng Liew & Christine Lee



Ramesh Manimekalanandan, Fong Soh San, Bingley Sim, Elon Teh & Utah Tan



Wendy Tang, Dr. T.S. Chong & Ryan Liang



Best Dressed Award: Kimberly Wan, Dato' Roger Wong, Wendy Tang, Bro Framestone & Denny Oh's Family





Martin Chen, Lim Kek Siang , Muhammad Bakhtiar UI Haq, Loo Qing Zhe & Heng Lee



May Mun, Mandy Onn & Christine Lee



Yap Jia Ming & Terence Foo



YC Foong, Martin Heng, Jayden Tan, Jayden Pang & Eunice Yuen

Swan Consultancy has witnessed remarkable growth in 2023, steadily expanding its client portfolio to include listed companies, lifestyle brands, and others. At the event, Swan Consultancy also



Alby Thum



Simon Lim, Melnora Yap & Ng Su Hui



Lucas Kang & Wong Shu Yi



Karen Sung, Jamieson Chew, Tey Eng Xin, Dato' Roger Wong, Chew Sing Guan, Jaimie Chew & Jiateng Liew



Heng Lee, Nicson Khoo, Loo Qing Zhe & Lyon Lim



Queenie Tan & Chan Hwa Jun



CS Wong, Utah Tan & Elon Teh



Woon Soon Fai, Ku Mun Fung, Dato' Roger Wong & Kelly Neng



Leticia Wong





Alex Chow, Wendy Kam & Dato' Roger Wong



Edwin Lau, Monica Fung & Henry Yap



Wilson Yong & Martin Heng



Martin Chen & Muhammad Bakhtiar Ul Haq



Fong Soh San, Kahjin Gan, Calvin Ooi & Ooi Pui San



Ong Eu Jin, Tan Poh Lin & Florence Kek



Darren Lee, Wendy Tang & Steve Wan



CS Wong, Wilson Loo, Tony Chan & Tan Swee Wei



William Yeo, Low Yi Ching, Wong Shu Yi & Chris Ser

launched its sister company, Triven Marketing Group, to handle lifestyle brands.



According to Swan Consultancy Partner and director Kahjin Gan, networking plays a pivotal role in the business. He said, "For us, communication is everything, and networking serves as the linchpin for forging and nurturing relationships. We are pleased with the organic growth of Swan. The introduction of our lifestyle arm Triven Group is a testament to our team's ability and dynamics to deliver excellent work." The night ended with the Best Dressed competition and lots of lucky draw prizes.



Reference is made to **AirAsia X Berhad's (AAX)** announcement dated 21 November 2023 on the following:

(i) Bursa Securities' decision on the Company's appeal application for the Proposed Relief & PN17 Upliftment ("Bursa Securities' Decision"); and (ii) Quarterly report for the financial period ended 30 September 2023.

In view that the Company had met the Condition pursuant to Bursa Securities' Decision, Bursa Securities wishes to inform that AAX will be uplifted from being classified as a PN17 company effective 9.00 a.m., Wednesday, 22 November 2023.

[READ MORE](#)

# celcomdigi

**CelcomDigi Berhad (CDB)** has announced its third quarter results for the Financial Year 2023 (Q3

FY2023), highlighting the company's strong growth performance driven by steady integration progress, solid market execution, and cost discipline. CelcomDigi is on track with its overall merger integration efforts, with its network integration and modernisation reaching more than 4,400 sites as at end October 2023. These efforts have uplifted overall network experience, with customers now enjoying better signal strength and improved download speed in areas post consolidation. CelcomDigi is committed to delivering the widest and fastest 4G network in the country, with its 4G LTE and 4G LTE+ network coverage now reaching 96.4% and 91.1% of populated areas nationwide respectively.

[READ MORE](#)



The Board of Directors of **Dayang Enterprise Holdings Bhd (DESB)** is pleased to announce that a single tier interim dividend in the aggregate amount of RM17.4 million, being an interim dividend of RM0.015 per ordinary share in respect of the financial year ending 31 December 2023 has been declared by the Company and shall be paid on 20 December 2023 to depositors registered in the Records of Depositors at the close of business on 8 December 2023.

[READ MORE](#)

The Board of Directors of **KKB Engineering Berhad (KKB)** is pleased to announce that its subsidiary, KKB Industries (Sabah) Sdn Bhd has received a Purchase Order from Seri Ghanimi Contractor Sdn Bhd for the Supply/Export of MSC L Pipes for project use in Brunei, and its subsidiary, OceanMight Sdn Bhd has received a Service Order from Malaysia Marine and Heavy Engineering Sdn Bhd for EPCIC Alliance for Kasawari Carbon Capture & Storage.

[READ MORE](#)



The Board of Directors of **Nextgreen Global Berhad (NGGB)** wishes to announce that the Company had on 17 November 2023 entered into a Memorandum of Agreement with Malaysian Bioeconomy Development

Corporation Sdn Bhd to collaborate in enhancing the potential of biomass into higher value products utilising biotechnology applications for the biomaterial and agricultural farm input sector.

[READ MORE](#)

**MR D.I.Y. Group (M) Berhad (MRDIY)** continues its steady growth trajectory, reporting year-on-year revenue and earnings growth for the third quarter ended 30 September 2023. Revenue for 3QFY2023 rose 10.4% y-o-y to RM1.1 billion, primarily driven by contributions from new stores.



Total transactions rose in tandem by 16.3% y-o-y to 41.6 million in 3QFY2023. Gross Profit Margin for 3QFY2023 rose 3.9 percentage points y-o-y to 45.0%. This significant improvement was mainly due to the normalisation of freight costs as well as the impact of the price adjustment exercise carried out in FY2022. Consequently, Gross Profit increased 20.9% y-o-y to RM479.5 million. Profit before tax for the period rose 24.1% y-o-y to RM167.0 million. Consequently, net earnings rose 22.5% y-o-y to RM123.9 million, while net earnings margin increased 1.1 percentage points to 11.6% compared to 10.5%.

[READ MORE](#)



**SkyWorld Development Berhad (SKYWLD)** has announced it achieved a revenue of RM148.3 million and a profit before tax of RM27.5 million in its unaudited second quarter results during its financial year ending 31 March 2024 (Q2FYE2024). For the quarter under review, SkyWorld also recorded a profit after tax of RM19.0 million and a profit after tax attributable to owners of the Company of RM19.1 million. There are no comparative figures as SkyWorld was only listed on the Main Market of Bursa Malaysia Securities Berhad on 10 July 2023.

[READ MORE](#) 

**Disclaimer:** The information in the Investor Relations page is extracted from individual companies' announcements in [www.bursamalaysia.com](http://www.bursamalaysia.com). The information on this page is provided as a service to readers. We assume no liability for damages resulting from or arising out of the use of such information. Whilst every effort is made to ensure accuracy, the information presented has been simplified for your reading pleasure. Readers are advised to read the original and complete filings on the Bursa Malaysia website at [https://www.bursamalaysia.com/market\\_information/announcements/company\\_announcement](https://www.bursamalaysia.com/market_information/announcements/company_announcement)

**Upcoming IPO**

NAME OF COMPANY	OFFER PERIOD		ISSUE PRICE (Per Ordinary Share)	LISTING SOUGHT	DATE OF LISTING
	OPENING	CLOSING			
PANDA ECO SYSTEM BERHAD	8 Nov 2023	15 Nov 2023	RM0.16	ACE MARKET	27 Nov 2023