

Invest

A Weekly e-Publication by SHAREINVESTOR.com

ISSUE

183

FRIDAY
17 NOVEMBER
2023

Scan/Click QR to Register



Via email, every Friday

MARKET SENTIMENTS

GOVT LOOKING TO INTRODUCE ENERGY TRANSITION FINANCING - RAFIZI

Sime Darby
Receives
Shareholder
Support to
Acquire UMW

See more on pages 21-23

ALSO

07 COMPANY
SPOTLIGHT
KPJ Healthcare
Berhad

25 MSWG
Risks and
opportunities of
diversification

04 LEADERBOARD

06 SHARIAH HOT STOCKS

08 SHARIAH MOMENTUM UP
STOCKS

10 NON SHARIAH HOT STOCKS

12 UP TRENDING STOCKS

14 VALUE STOCKS

16 GROWTH STOCKS

17 DIVIDEND STOCKS

18 BROKERS' CALL

19 LONG COMPANIES

24 REGIONAL MARKETS

30 INSIDER ACTIVITY

33 INVESTOR RELATIONS



SHAREINVESTOR®

Invest with Knowledge

INVESTOR PLATFORMS

Director
Darren Chong
darren.chong@shareinvestor.com

Business Development Manager
Jay Cheong
jay.cheong@shareinvestor.com

Senior Executive
Daniel Wong
daniel.wong@shareinvestor.com

Executive
Farah Azwani
farah.azwani@shareinvestor.com

Executive
Tan Yong Sheng
yongsheng.tan@shareinvestor.com

ADMIN & OPERATIONS

Senior Executive
Watie Nordin
watie.nordin@shareinvestor.com

Executive
Silas Emmanuel Joseph
silas.joseph@shareinvestor.com

INVESTOR RELATIONS

Group Managing Director & Publisher
Edward Stanislaus
edward@shareinvestor.com

Senior Manager
Letticia Wong
letticia.wong@shareinvestor.com

PROCESS AUTOMATION & DATA ANALYTICS

Data Analyst
Nickson Aw

SHAREINVESTOR HOLDINGS BOARD OF DIRECTORS

Chairman	Patrick Daniel
Group CEO	Christopher Lee
Group COO	Lim Dau Hee
Group CFO	Teo Siew May
Group MD	Shanison Lin



“ GIVE A MAN A FISH AND YOU FEED HIM FOR A DAY; TEACH A MAN TO FISH AND YOU FEED HIM FOR A LIFETIME ”

ShareInvestor Malaysia Sdn. Bhd.
(200001023956) (526564-M)
Unit No. DF2-07-03A, Level 7,
Persoft Tower, 6B Persiaran Tropicana,
47410 Petaling Jaya, Selangor Darul Ehsan.

Hotline : 603 7803 1791
Mobile : 011 6343 8939
Website : www.ShareInvestor.com.my
www.ShareInvestorHoldings.com
www.Facebook.com/ShareInvestorMalaysia

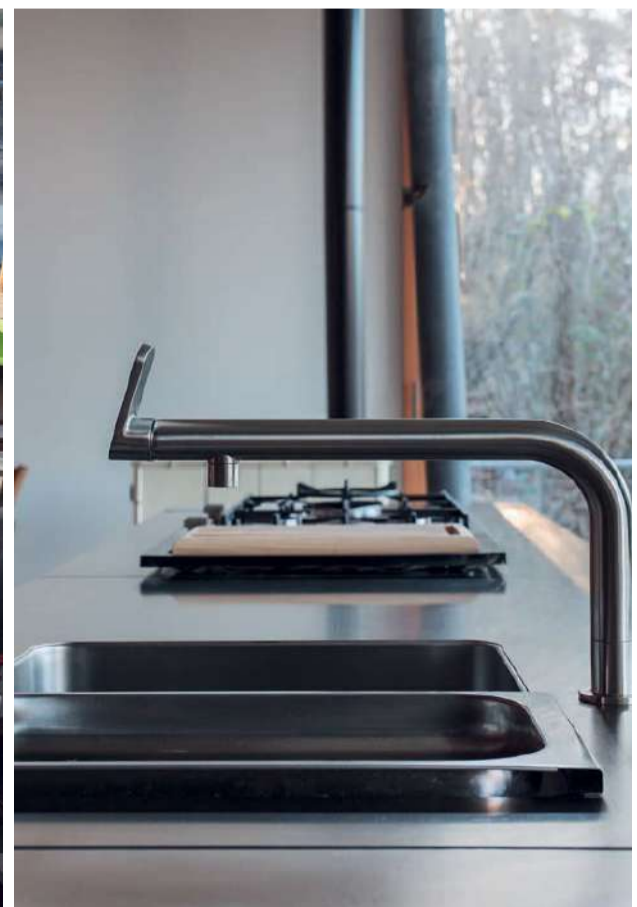
ADVERTISEMENT ENQUIRY

bulthaup takes care of the details so that you can enjoy a harmonious environment.



XTRA

XTRA FURNITURE SDN BHD
The Gardens Mall, Mid Valley City
xtrafurniture.com/bulthaup
fb.com/bulthaupmalaysia



bulthaup

Supercharge Your Investments with **ShareInvestor Station!**

23 Nov 2023 (Thu) | 8:30PM - 10:00PM



Darren Chong
Director of Investor
Platforms, ShareInvestor



Stella Goh
Research Analyst,
WealthFort

REGISTER NOW!

www.shareinvestor.com - market data at your fingertips



ShareInvestor WebPro (www.shareinvestor.com/my)
Prices > Stock Prices > Bursa > click Stocks tab

1. mouse over Ranking > select Top Active > all Shariah stocks are denoted with an [S] > mouse over Column Layout > select Edit Customs > select Name > select Volume > select Last Done Price > Mouse Over Column Layout > select Custom
2. mouse over Ranking > select Top Turnover > all Shariah stocks are denoted with an [S] > mouse over Column Layout > select Edit Customs > select Name > select Last Done Price > select Value > Mouse Over Column Layout > select Custom
3. mouse over Ranking > select Top Gainers (Over 5 Trading Days) > mouse over Column Layout > select Edit Customs > select Name > select Last Done Price > select 5 Days Change > select 5 Days % Change > Mouse Over Column Layout > select Custom
4. mouse over Ranking > select Top Losers (Over 5 Trading Days)
5. mouse over Ranking > select Top % Gainers (Over 5 Trading Days)
6. mouse over Ranking > select Top % Losers (Over 5 Trading Days)

Shariah Top Actives (as at Yesterday)

Name	Price (RM)	Volume
HONGSENG [S]	0.040	2,947,939.000
KANGER [S]	0.065	1,042,419.000
TOPGLOV [S]	0.790	921,387.000
SALUTE [S]	0.865	757,444.000
LEFORM [S]	0.275	669,651.000
WIDAD [S]	0.460	598,510.000
SCIB [S]	0.615	590,299.000
KOSSAN [S]	1.580	450,946.000
RANHILL [S]	0.870	368,474.000
MQTECH [S]	0.025	294,950.000

Shariah Top Turnover (as at Yesterday)

Name	Price (RM)	Value (RM)
TOPGLOV [S]	0.790	72,044,411
KOSSAN [S]	1.580	71,894,642
SALUTE [S]	0.865	66,624,328
HARTA [S]	2.370	42,527,557
SIME [S]	2.400	37,317,153
SCIB [S]	0.615	36,086,259
RANHILL [S]	0.870	31,798,169
INARI [S]	2.990	30,244,236
WIDAD [S]	0.460	27,530,870
IHH [S]	5.980	26,427,369

Top Gainers (over 5 Trading days as at Yesterday)

Name	Price (RM)	Change (RM)
AEONCR	11.920	+5.970
NESTLE	123.200	+1.200
IBRACO	1.100	+0.490
PPB	14.860	+0.360
HTPADU	1.040	+0.340
NHFATT	3.500	+0.270
HLBANK	19.320	+0.260
AMWAY	5.450	+0.250
UTDPLT	16.820	+0.240
AIRPORT	7.510	+0.200

Top % Gainers (over 5 Trading days as at Yesterday)

Name	Price (RM)	Change (%)
AEONCR	11.920	+100.34
IBRACO	1.100	+80.33
COMPUGT	0.015	+50.00
HTPADU	1.040	+48.57
PAOS	0.435	+33.85
MCLEAN	0.180	+33.33
MYCRON	0.435	+31.82
MAA	0.445	+27.14
SHCHAN	0.405	+26.56
LSTEEL	0.520	+22.35

Top Losers (over 5 Trading days as at Yesterday)

Name	Price (RM)	Change (RM)
RAPID	24.940	-1.760
F&N	26.900	-0.580
HEIM	23.400	-0.460
BAT	9.110	-0.310
BLDPLNT	10.620	-0.280
HEXTECH	23.220	-0.260
TTVHB	0.765	-0.220
JFTECH	0.975	-0.175
MCEMENT	3.850	-0.170
PIE	3.030	-0.150

Top % Losers (over 5 Trading days as at Yesterday)

Name	Price (RM)	Change (%)
DGB	0.005	-50.00
GOCEAN	0.010	-33.33
JOE	0.010	-33.33
PARKSON	0.255	-30.14
RGB	0.305	-25.61
FOCUS	0.015	-25.00
XOX	0.015	-25.00
DFCITY	0.290	-19.44
HONGSENG	0.045	-18.18
ALAM	0.025	-16.67

IMPORTANT Announcement!



We are thrilled to announce an upgrade that will take your investment experience to new heights!

BURSA STATION is evolving and will be merged into the SHAREINVESTOR STATION

starting from 1st November 2023

and we can't wait to share all the amazing benefits with you.

ShareInvestor Station is a desktop application that has a similar user interface to Bursa Station, with additional exciting features such as: access to the

- ✓ *Global Market*
 - ✓ *Intrinsic Value Calculator*
 - ✓ *Interactive Charting Tools*
 - ✓ *Customisable Indicator Database*
 - ✓ *Top Shareholder Analysis*
 - ✓ *Company Forecast Revenue*
 - ✓ *Consensus Estimates*
 - ✓ *Dividend Analysis*
- and many more!*



Find out more about ShareInvestor Station here



For Existing Users: Rest assured that you will retain access to Bursa Station until the end of your current subscription period. In addition, as a token of our appreciation for your loyalty, you will receive an email providing complimentary access to explore the ShareInvestor Station.

Thank you for using BursaStation!
We are committed to continuing to serve you better with ShareInvestor Station.

If you have any questions or face any issues, reach out to us at admin.my@shareinvestor.com or dial 03 - 7803 1791.

Price & Volume Distribution Charts (as at Yesterday)

Technical Analysis

DEFINITION: Shariah compliant stocks with Technical Analysis showing 5-days & 10-days Moving Average Price below Yesterday's Close over past 3 days and with Volume Spike.

CHART GUIDE: Volume Distribution Chart is a statistical interpretation of the current sentiment on each stock in graphical format. The highest bar categorized as >150k is likely to be traded by institutions or super dealers, while the lowest bar categorized as <15k usually represents retail investors. "Buy Up" refers to more buyers snatching up the lots queued at selling price. "Sell Down" refers to sellers selling their shares to the buying queue



ShareInvestor WebPro > Screener > Market Screener (FA & TA) > select BURSA > add criteria

A. Criteria

- > click Add Criteria
- Technical Analysis Conditions tab select (i) Moving Average Below Close (ii) Volume Spike
- Fundamental Analysis Conditions tab > select (iii) Revenue
- Prices & Other Conditions tab > select (iv) Is Shariah Compliant
- Technical Analysis Conditions tab select (v) Moving Average Below Close
- Prices & Other Conditions tab > select (vi) Last Done Price
- Technical Analysis Conditions tab select (vii) Moving Average Below Close

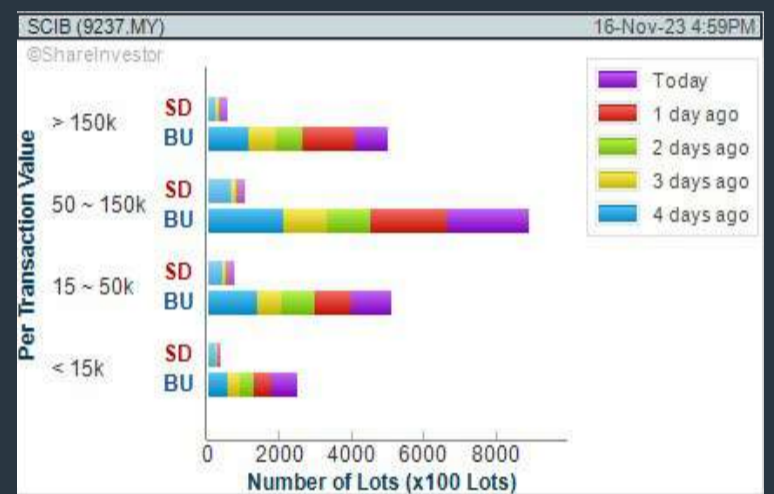
B. Conditions (Criteria Filters)

1. Moving Average Below Close - select (MA) type (5) below close price for type (3) days
2. Volume Spike - Volume type (1) greater than type (5) days average
3. Revenue ("000) - select (more than) type (1) for the past select (1) financial year(s)
4. Is Shariah Compliant - select **Yes**
5. Moving Average Below Close - select (MA) type (10) below close price for type (3) days
6. Last Done Price - select (more than) type (0.3)
7. Moving Average Below Close - select (EMA) type (5) below close price for type (3) days

- > click Save Template > Create New Template type (Shariah Hot Stocks) > click Create
- > click Save Template as > select Shariah Hot Stocks > click Save
- > click Screen Now (may take a few minutes)
- > Sort By: Select (Vol) Select (Desc)
- > Mouse over stock name > Charts > click C² Charts or Volume Distribution

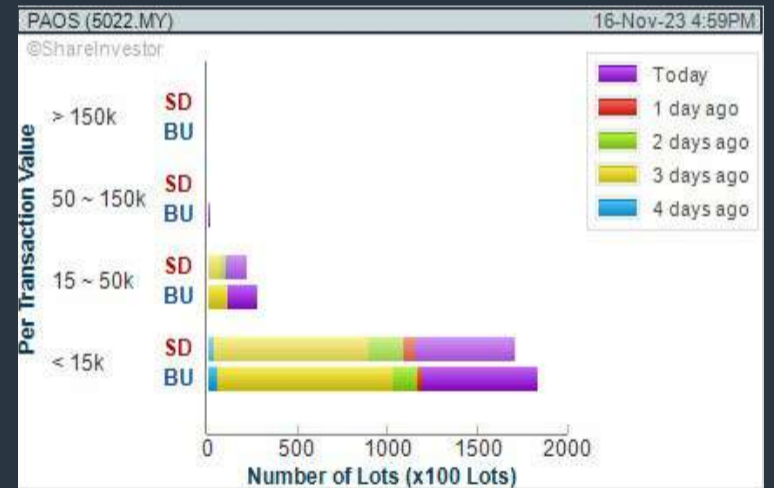
SARAWAK CONSOLIDATED IND BERHAD (9237) C² Chart

Analysis



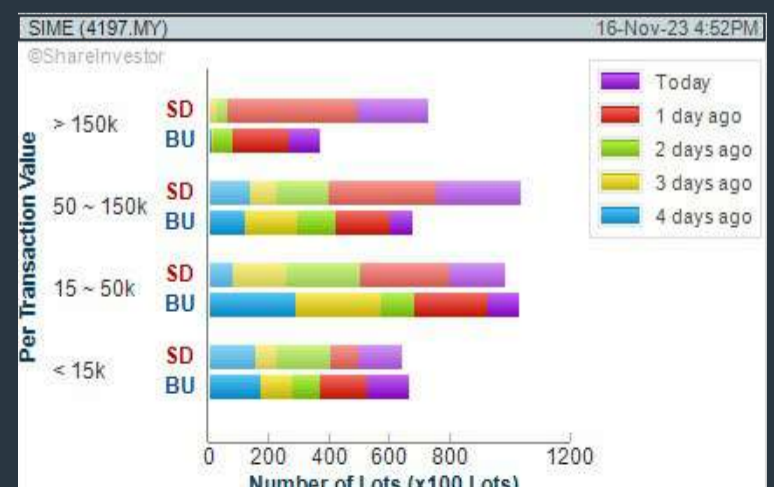
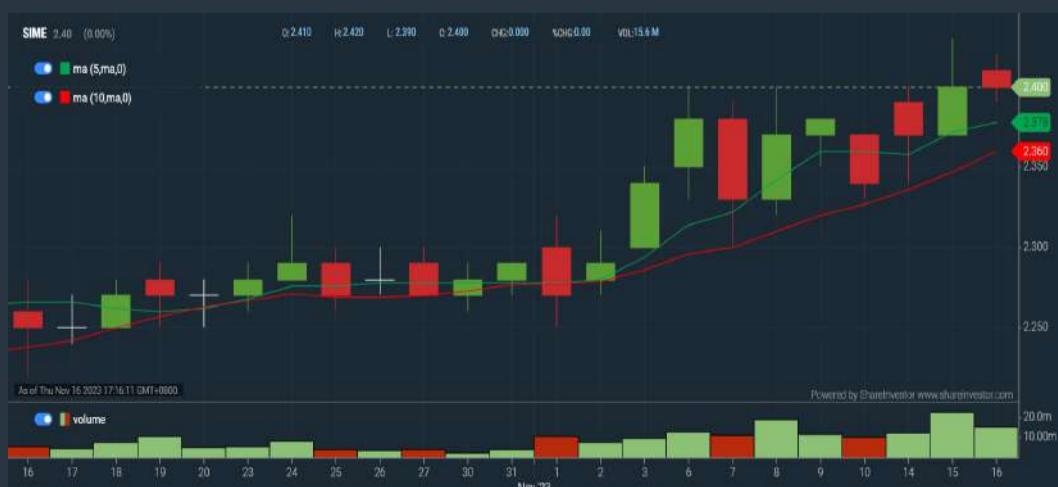
PAOS HOLDINGS BERHAD (5022) C² Chart

Analysis



SIME DARBY BERHAD (4197) C² Chart

Analysis



Disclaimer: The information on this page is provided as a service to readers. It does not constitute financial advice and/or any investment recommendations. Past performance is not indicative of future results. We assume no liability for damages resulting from or arising out of the use of such information. It would be best if you did your own research to make your personal investment decisions wisely or consult a licenced investment advisor.

COMPANY BACKGROUND

KPJ Healthcare Berhad is in the business of operating specialist hospitals. As a provider of premium healthcare and eldercare services, the company has operations in Malaysia, Indonesia, Thailand, Bangladesh and Australia. In Malaysia, its services include full healthcare via private hospitals, pathology & laboratory services, and distribution of pharmaceutical, medical and consumer healthcare products. In Indonesia, Thailand & Bangladesh, it operates private hospitals. The



Australia business provides retirement village and elder-care facilities.

KPJ KPJ HEALTHCARE BHD				Updated at 16 Nov 2023 16:59	
Last (MYR): 1.300 ↑	Change: +0.020	High: 1.300	Remarks: s ?		
	Change (%): +1.56	Low: 1.280			
Open	1.280	Yesterday's Close	1.280		
Buy Price	1.290	Sell Price	1.300		
Buy Volume ('00)	24,638	Sell Volume ('00)	2,889		
Cumulative Volume ('00)	30,036	Cumulative Value	3,885,102		

Financial Analysis

Revenue Growth Increasing revenue in last 2 consecutive years	😊	Profit Growth Increasing profit in latest year (with last 2 profitable years)	😊
Piotroski F Score The company has above average financial strength (Piotroski F-Score of 6-7)	😊	Dividend Payout Dividend is decreasing over the past 60 months.	😞
Current Ratio The company may have difficulty meeting short-term obligations with its current assets for 3 consecutive years	😞	Debt to Assets High debt to assets for most recent year	😞
Debt to Cashflow High debt to cash flow for most recent year	😞	Debt to Equity High debt to equity for most recent year	😞
Gross Profit Margin High gross profit margin of at least 40% for most recent year	😊		

😊 Excellent 😊 Good 😐 Neutral 😟 Be Alert 😞 Watch Out

Historical Financials

Profit & Loss (MYR '000) [Hide Profit & Loss chart](#)

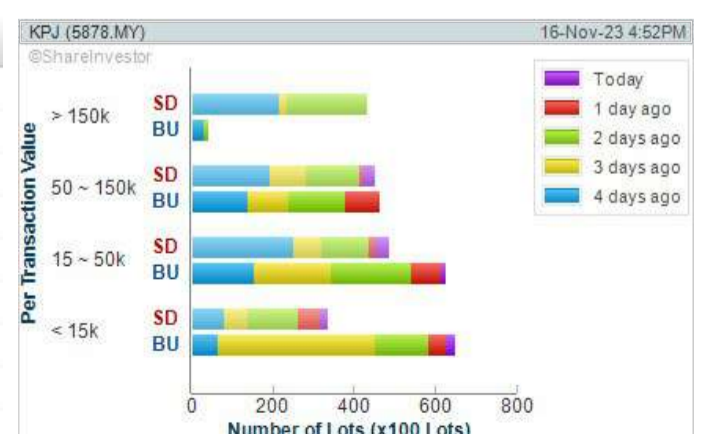


WebPro 9-Days Free Trial Registration
(worth RM9)
Sign Up Now



Key Statistics with Total Shareholder Returns

Period	Dividend Received	Capital Appreciation	Total Shareholder Return
Short Term Return	5 Days	-	+0.040
	10 Days	-	+0.030
	20 Days	-	+0.110
Medium Term Return	3 Months	-	+0.110
	6 Months	-	+0.180
	1 Year	-	+0.450
Long Term Return	2 Years	0.008	+0.190
	3 Years	0.014	+0.375
	5 Years	0.047	+0.200
Annualised Return	Annualised	-	-



Disclaimer: The information on this page is provided as a service to readers. It does not constitute financial advice and/or any investment recommendations. Past performance is not indicative of future results. We assume no liability for damages resulting from or arising out of the use of such information. It would be best if you did your own research to make your personal investment decisions wisely or consult a licenced investment advisor.

Price & Volume Distribution Charts (as at Yesterday)

Technical Analysis

DEFINITION: Shariah compliant stocks with Technical Analysis showing Bullish Momentum and Price Uptrend. The share price closed at the highest price yesterday. The typical price was higher than the previous day's typical price.

CHART GUIDE: Volume Distribution Chart is a statistical interpretation of the current sentiment on each stock in graphical format. The highest bar categorized as >150k is likely to be traded by institutions or super dealers, while the lowest bar categorized as <15k usually represents retail investors. "Buy Up" refers to more buyers snatching up the lots queued at selling price. "Sell Down" refers to sellers selling their shares to the buying queue.



ShareInvestor WebPro > Screener > Market Screener (FA & TA) > select BURSA > add criteria

A. Criteria

- > click Add Criteria
- Fundamental Analysis Conditions tab > select (i) Revenue
- Technical Analysis Conditions tab select (ii) Average Volume
- Prices & Other Conditions tab > select (iii) Last Done Price
- Prices & Other Conditions tab > select (iv) Is Shariah Compliant
- Technical Analysis Conditions tab select (v) RSI Overbought
- Technical Analysis Conditions tab select (vi) Moving Average Below Close
- Technical Analysis Conditions tab select (vii) CCI Overbought

B. Conditions (Criteria Filters)

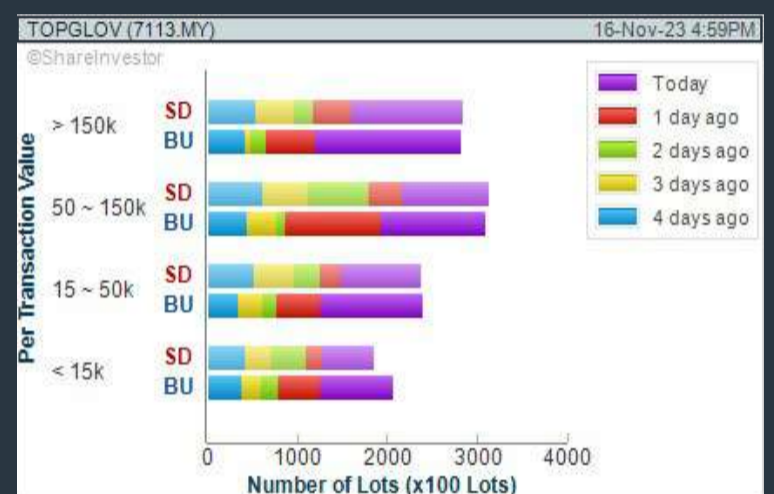
1. Revenue ("000) - select (more than) type (1) for the past select (1) financial year(s)
2. Average Volume - type (1) days average volume greater than type (10000) lots
3. Last Done Price - select (more than) type (0.3)
4. Is Shariah Compliant - select Yes
5. RSI Overbought - select RSI 1 above 99 for 1 days
6. Moving Average Below Close - select (MA) type (10) below close price for type (1) days
7. CCI Overbought - select CCI (2) above (0) for (1) days

- > click Save Template > Create New Template type (Shariah Momentum Up Stocks) > click Create
- > click Save Template as > select Shariah Momentum Up Stocks > click Save
- > click Screen Now (may take a few minutes)
- Sort By: Select (Vol) Select (Desc)
- Mouse over stock name > Charts > click C² Charts tab or Volume Distribution

TOP GLOVE CORPORATION BERHAD (7113)

C² Chart

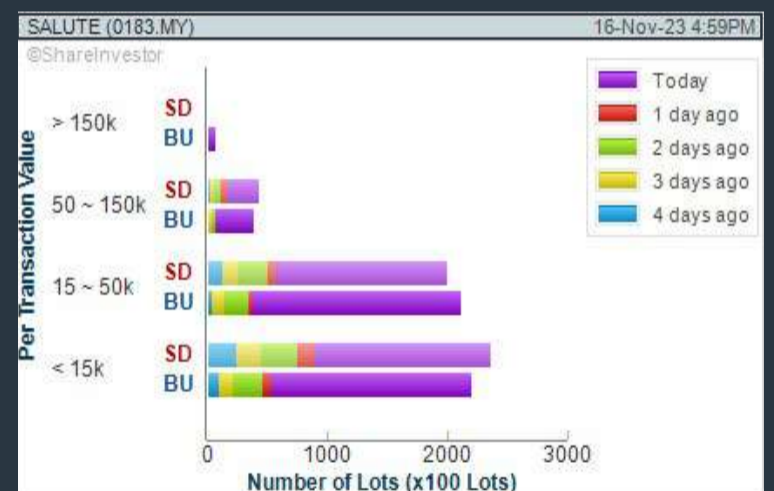
Analysis



SALUTICA BERHAD (0183)

C² Chart

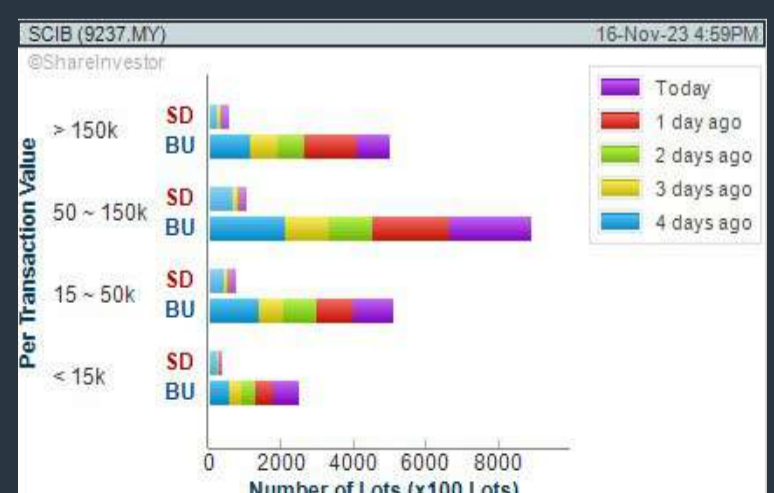
Analysis



SARAWAK CONSOLIDATED IND BERHAD (9237)

C² Chart

Analysis



Disclaimer: The information on this page is provided as a service to readers. It does not constitute financial advice and/or any investment recommendations. Past performance is not indicative of future results. We assume no liability for damages resulting from or arising out of the use of such information. It would be best if you did your own research to make your personal investment decisions wisely or consult a licenced investment advisor.



STROM

SWISS TIMEPIECES & JEWELLERY



StromWatch Asia

Tele : +65.9817.3378 Email : ll.stromasia@gmail.com

WWW.STROMWATCH.SWISS



YouTube

Price & Volume Distribution Charts (as at Yesterday)

Technical Analysis

DEFINITION: Stocks with Technical Analysis showing 5-days & 10-days Moving Average Price below Close over past 1 days and with Volume Spike

CHART GUIDE: Volume Distribution Chart is a statistical interpretation of the current sentiment on each stock in graphical format. The highest bar categorized as >150k is likely to be traded by institutions or super dealers, while the lowest bar categorized as <15k usually represents retail investors. "Buy Up" refers to more buyers snatching up the lots queued at selling price. "Sell Down" refers to sellers selling their shares to the buying queue.



ShareInvestor WebPro > Screener > Market Screener (FA & TA) > select BURSA > add criteria

A. Criteria

- > click Add Criteria
- Technical Analysis Conditions tab select (i) Moving Average Below Close (ii) Volume Spike
- Fundamental Analysis Conditions tab >select (iii) Revenue
- Prices & Other Conditions tab > select (iv) Is Shariah Compliant
- Technical Analysis Conditions tab select (v) Moving Average Below Close
- Prices & Other Conditions tab > select (vi) Last Done Price
- Technical Analysis Conditions tab select (vii) Moving Average Below Close

B. Conditions (Criteria Filters)

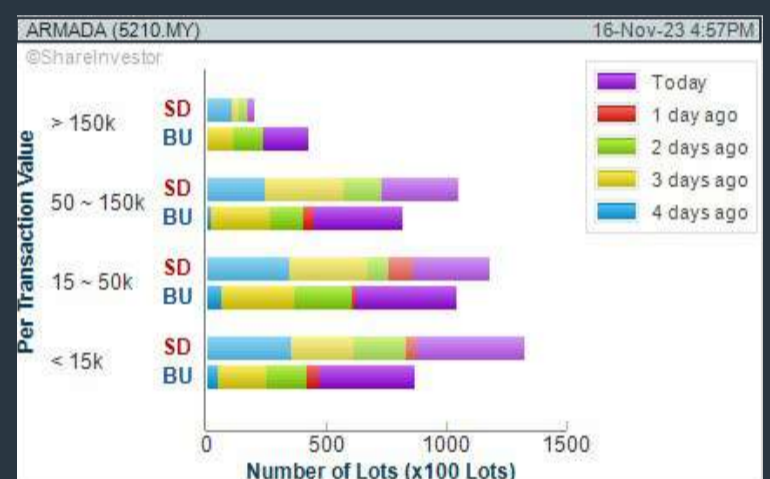
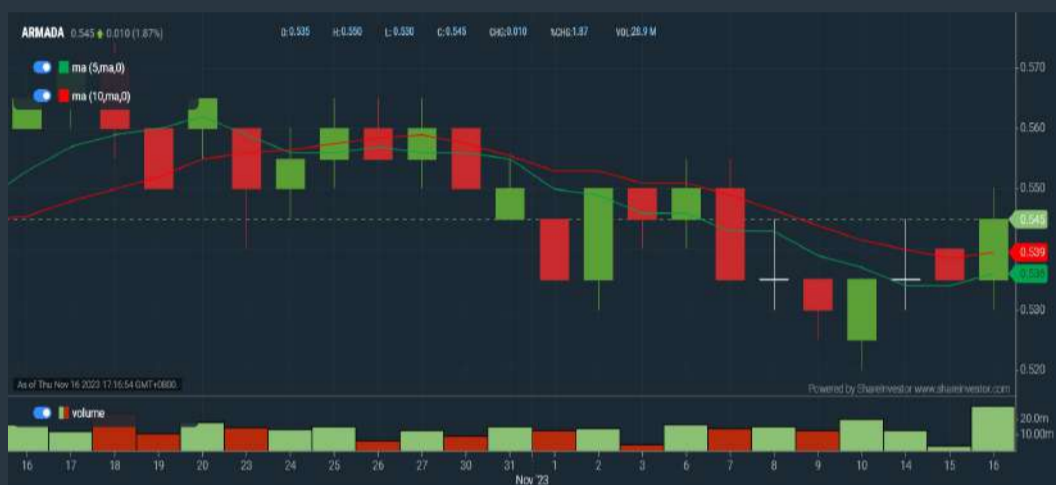
1. Moving Average Below Close - select (MA) type (5) below close price for type (3) days
2. Volume Spike - Volume type (1) greater than type (5) days average
3. Revenue ("000) - select (more than) type (1) for the past select (1) financial year(s)
4. Is Shariah Compliant - select NO
5. Moving Average Below Close - select (MA) type (10) below close price for type (1) days
6. Last Done Price - select (more than) type (0.3)
7. Moving Average Below Close - select (EMA) type (5) below close price for type (1) days

- > click Save Template > Create New Template type (Non-Shariah Hot Stocks) > click Create
- > click Save Template as > select Non-Shariah Hot Stocks > click Save
- > click Screen Now (may take a few minutes)
- Sort By: Select (Vol) Select (Desc)
- Mouse over stock name > Charts > click C² Charts tab or Volume Distribution

BUMI ARMADA BERHAD (5210)

C² Chart

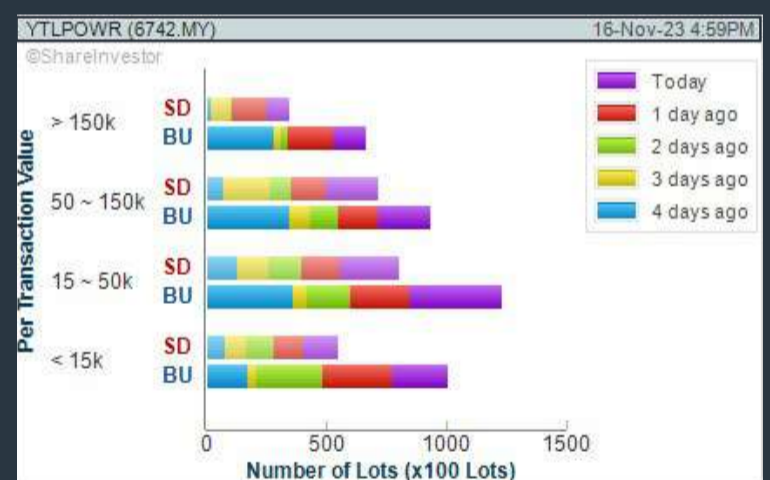
Analysis



YTL POWER INTERNATIONAL BERHAD (6742)

C² Chart

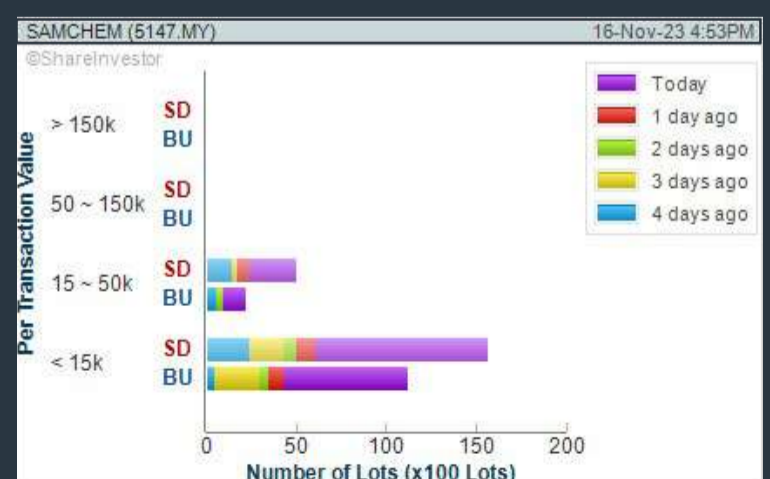
Analysis



SAMCHEM HOLDINGS BERHAD (5147)

C² Chart

Analysis



Disclaimer: The information on this page is provided as a service to readers. It does not constitute financial advice and/or any investment recommendations. Past performance is not indicative of future results. We assume no liability for damages resulting from or arising out of the use of such information. It would be best if you did your own research to make your personal investment decisions wisely or consult a licenced investment advisor.

SHAREINVESTOR WEBPRO

STOCK MARKET DATA AT YOUR FINGERTIPS

Powerful browser-based market analytics platform.
Access from anywhere



8 Markets Data

- ▶ Get access to data from Bursa, NYSE, Nasdaq, HKEX, SGX, IDX, SET & ASX

Portfolio Management

- ▶ Profit & Loss Summary
- ▶ Stock Alert
- ▶ News & Events filtering
- ▶ Customizable column layout

Fundamental Analysis

Financial Analysis Statement

- ▶ Profit & Loss
- ▶ Balance Sheet
- ▶ Cash Flow Statement
- ▶ More than 20 Financial Ratios
- ▶ Dividend Analysis

Technical Charting

- ▶ C² chart (Customisable & Comprehensive)

Brokers' Call

Intrinsic Value Calculator

FactSheet

- ▶ Key Stock Information
- ▶ Ownership
- ▶ Consensus Estimates
- ▶ Annual Report
- ▶ Historical Price
- ▶ Insider Trades

What's new on WebPro (Stable Release 12.1.0)

In our effort to keep our platform at the forefront of trading technology, we have added on some new features onto our C² Chart in WebPro

ADDITIONAL NEW FEATURES:

- ▶ Anchor selector for AVWAP, PVAT, and PAV indicators
- ▶ Volume profile indicator by date range
- ▶ Moving Average Cross indicator
- ▶ Guppy Multiple Moving Average (GMMA) indicator
- ▶ GoNoGo Trend Signal indicators
- ▶ SignalIQ

So what are you waiting for? Head to our platform today and check out our new trading chart features and indicators. We're confident that you'll love the improvements we've made and that they'll help you become a more successful trader.

Click here to start your 9 days FREE trial
(Valued at RM10)



Price & Volume Distribution Charts (Over 3 trading days as at Yesterday)

Technical Analysis

DEFINITION: Stocks with Technical Analysis showing Bullish Momentum and Price Uptrend

CHART GUIDE: Volume Distribution Chart is a statistical interpretation of the current sentiment on each stock in graphical format. The highest bar categorized as >150k is likely to be traded by institutions or super dealers, while the lowest bar categorized as <15k usually represents retail investors. "Buy Up" refers to more buyers snatching up the lots queued at selling price. "Sell Down" refers to sellers selling their shares to the buying queue.



ShareInvestor WebPro > Screener > Market Screener (FA & TA) > select BURSA > add criteria

A. Criteria

- > click Add Criteria
- Fundamental Analysis Conditions tab > select (i) Revenue
- Technical Analysis Conditions tab select (ii) Moving Average Below Close
- Technical Analysis Conditions tab select (iii) Average Volume
- Prices & Other Conditions tab > select (iv) Last Done Price
- Technical Analysis Conditions tab select (v) Moving Average Below Close
- Technical Analysis Conditions tab select (v) Moving Average Bullish Crossover

B. Conditions

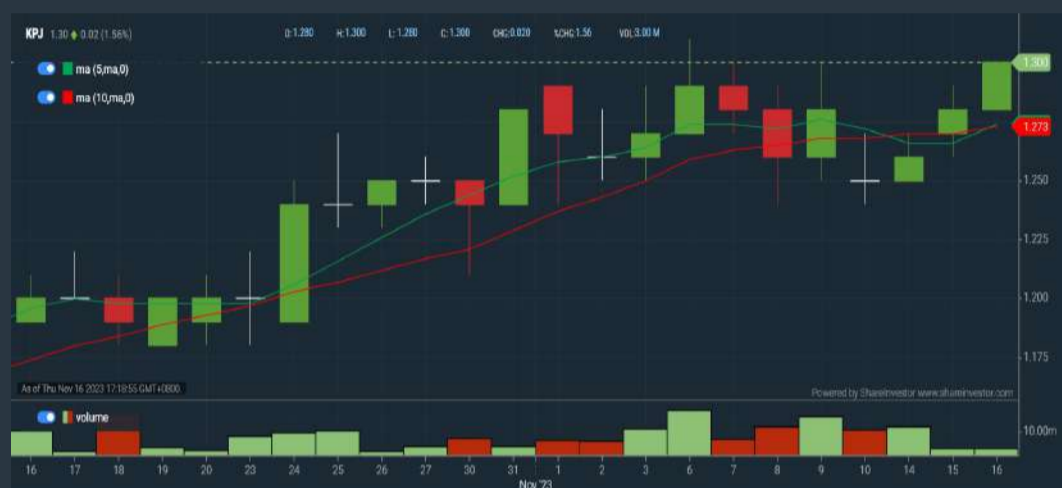
1. Revenue - select (more than) type (1) for the past select (1) financial year(s)
2. Moving Average Below Close - select (MA) type (20) below close price for type (1) days
3. Average Volume - type (5) days average volume type (10000) lots
4. Last Done Price - select (more than) type (0.3)
5. Moving Average Below Close - select (MA) type (10) below close price for type (1) days
6. Moving Average Bullish Crossover - select (MA) type (5) crossed above select (MA) type (10)

> click Save Template > Create New Template type (Non-Shariah Up-Trending Stocks) > click Create Click Save Template As > select Non-Shariah Up Trending Stocks > click Save > click Screen Now (may take a few minutes) Sort By: Select (Vol) Select (Desc) Mouse over stock name > Charts > click C² Charts tab or Volume Distribution

KPJ HEALTHCARE BERHAD (5878)

C² Chart

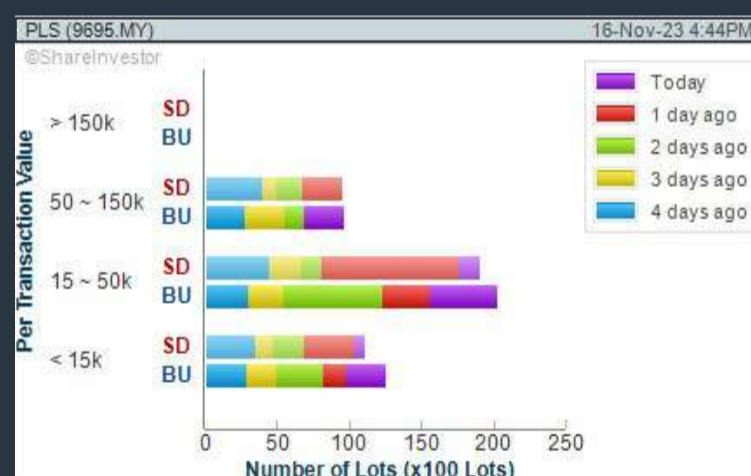
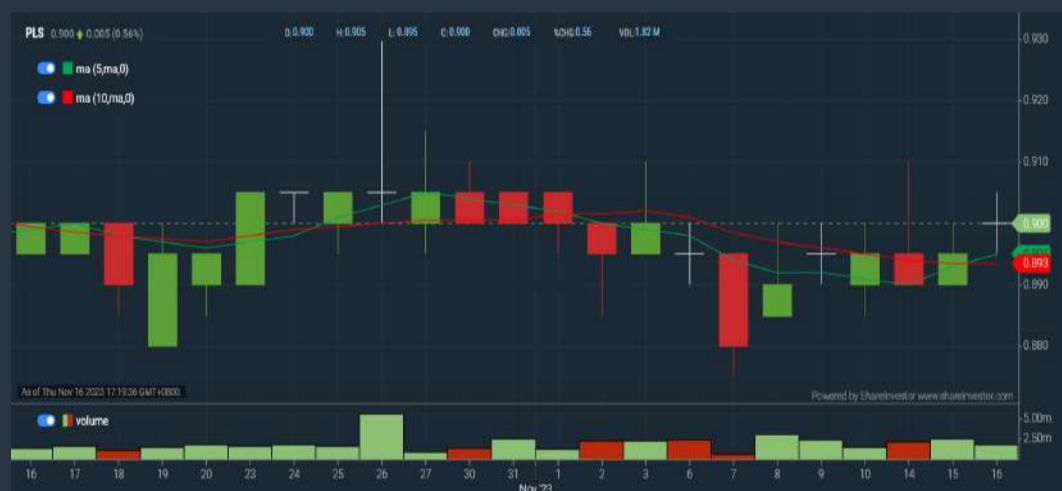
Analysis



PLS PLANTATIONS BERHAD (9695)

C² Chart

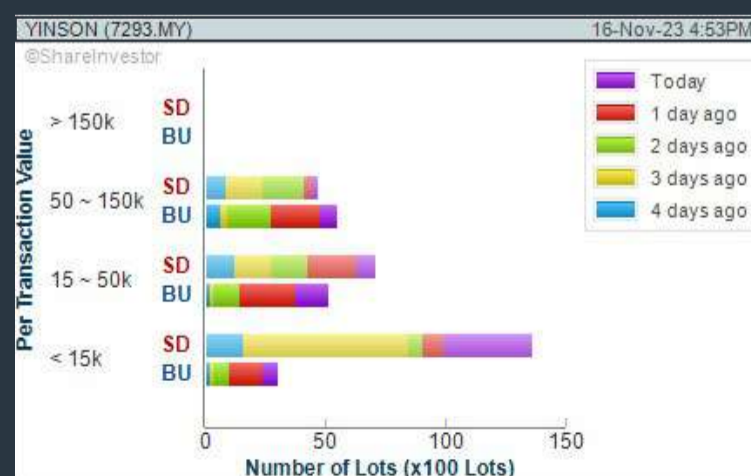
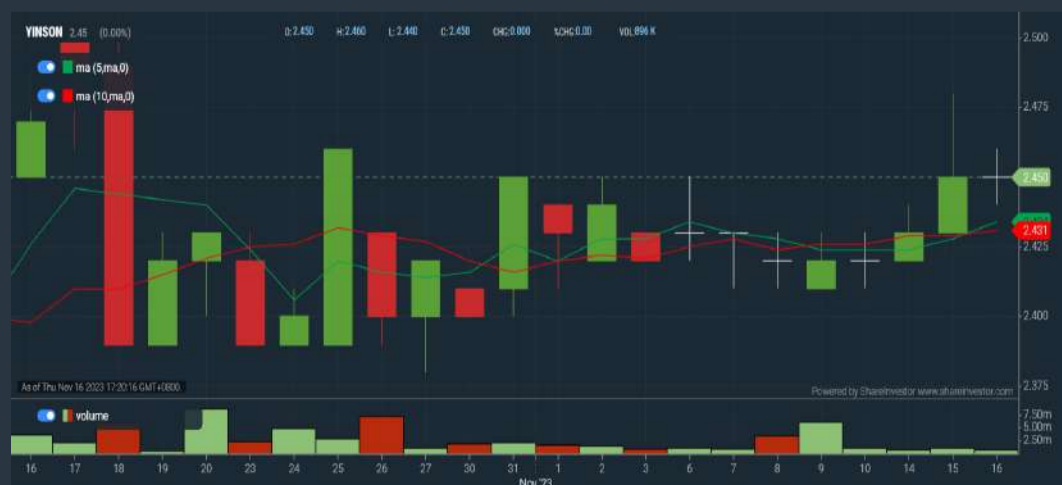
Analysis



YINSON HOLDINGS BERHAD (7293)

C² Chart

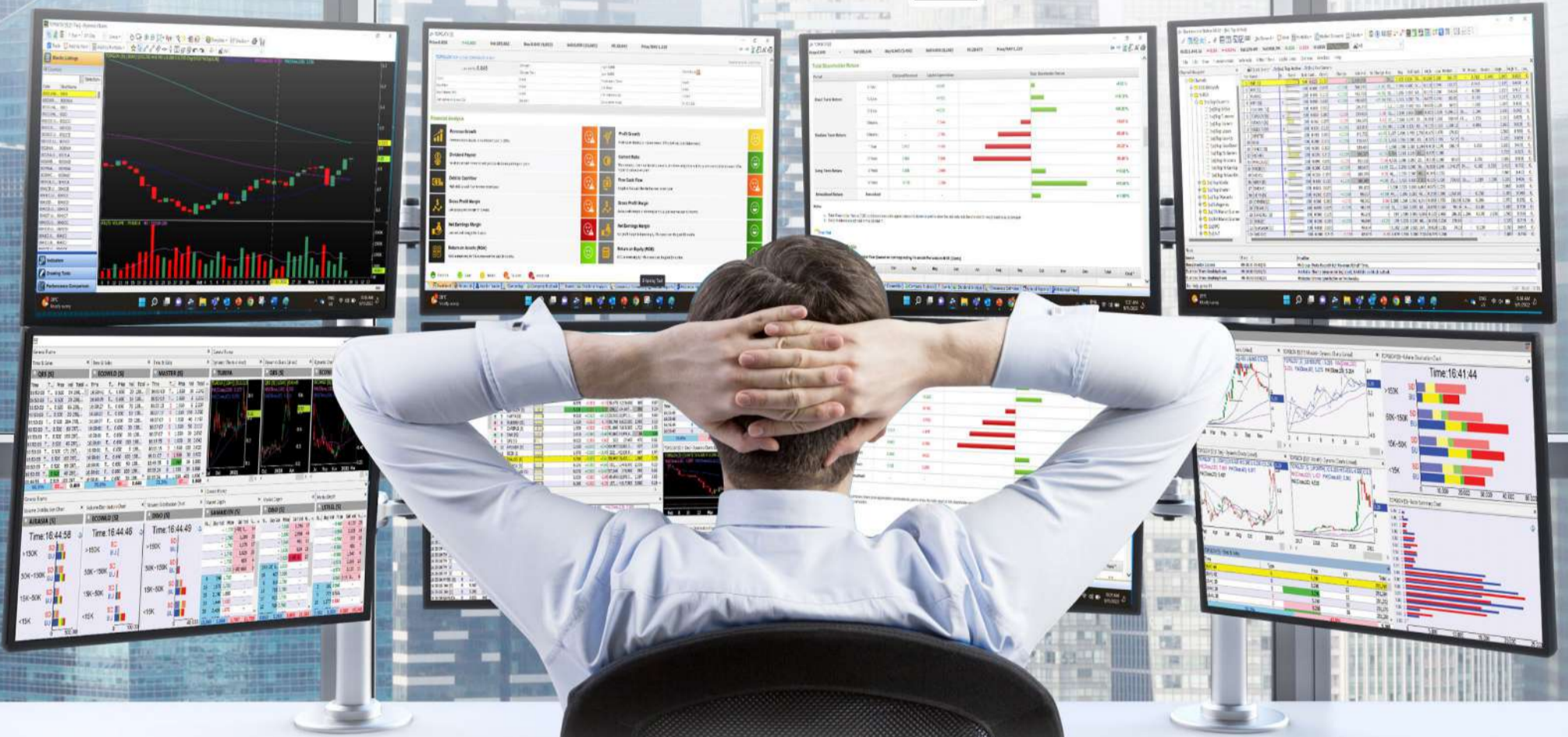
Analysis



Disclaimer: The information on this page is provided as a service to readers. It does not constitute financial advice and/or any investment recommendations. Past performance is not indicative of future results. We assume no liability for damages resulting from or arising out of the use of such information. It would be best if you did your own research to make your personal investment decisions wisely or consult a licenced investment advisor.

MAKE BETTER TRADING STRATEGIES

with
SHARE INVESTOR
STATION



8 Markets Data

- ▶ Get access to data from Bursa, NYSE, Nasdaq, HKEX, SGX, IDX, SET & ASX

Dynamic Chart

- ▶ Candlestick Pattern Recognition
- ▶ 111 Indicators
- ▶ 39 Drawing Tools
- ▶ Performance Comparison Chart

Intraday Data

- ▶ Market Depth
- ▶ Trade Summary Matrix & Chart
- ▶ Times & Sales
- ▶ Intraday Market Ticker

Market Screener

- ▶ 96 criteria ranging from FA, TA, Consensus Estimate
- ▶ Real-time Data

Power Frame

- ▶ Combining few Dynamic Charts together with intraday information in one frame

Technical Analysis

Fundamental Analysis

Financial Analysis Statement

- ▶ Profit & Loss
- ▶ Balance Sheet
- ▶ Cash Flow Statement
- ▶ More than 20 Financial Ratios
- ▶ Dividend Analysis

FactSheet

- ▶ Key Stock Information
- ▶ Ownership
- ▶ Consensus Estimates
- ▶ Annual Report
- ▶ Historical Price
- ▶ Insider Trades

**Start your 18 days
 FREE trial now
 (Valued at RM82)**



Price & Total Shareholder Return (as at Yesterday)

Fundamental Analysis

DEFINITION: Share price of a company trading at a lower price as compared to its fundamentals (FA) such as financial performance and dividend, allowing it to be attractive to value investors.

CHART GUIDE: Total Shareholder Return (TSR) combines share price appreciation and dividend distributions paid to show the total return to the shareholder expressed as a percentage.



ShareInvestor WebPro > Screener > Market Screener (FA & TA) > select BURSA > add criteria

A. Criteria

- > click Add Criteria
- Fundamental Analysis Conditions tab (i) Price Earnings Ratio
- Fundamental Analysis Conditions tab >select (ii) CAGR of Net Earnings
- Fundamental Analysis Conditions tab >select (iii) Net Debt To Equity
- Fundamental Analysis Conditions tab >select (iv) Return On Equity (ROE)

B. Conditions

1. Price Earnings Ratio - select (less than) type (15) times now
2. CAGR of Net Earnings - select (more than) type (10) % for the past type (3) financial year(s)
3. Net Debt To Equity – select (less than) type (1) for the past select (1) financial year(s)
4. Return On Equity (ROE) – select (more than) type (10) % for the past select (1) financial year(s)

- > click Save Template > Create New Template type (Value Stock) > click Create
- > click Save Template as > select Value Companies > click Save
- > click Screen Now (may take a few minutes)
- Sort by: Select (PE Ratio) Select (Ascending)
- > Mouse over stock name > Factsheet > looking for Total Shareholder Return
- > Mouse over stock name > Charts > click C2 Charts tab

SYNERGY HOUSE BERHAD (0279)

C² Chart



Period	Dividend Received	Capital Appreciation	Total Shareholder Return
Short Term Return	5 Days	-	-
	10 Days	+	+14.58%
	20 Days	+	+15.79%
Medium Term Return	3 Months	+	+46.67%

EDELTEQ HOLDINGS BERHAD (0278)

C² Chart



Period	Dividend Received	Capital Appreciation	Total Shareholder Return
Short Term Return	5 Days	-	+1.32%
	10 Days	-	+22.22%
	20 Days	-	+14.93%
Medium Term Return	3 Months	-	-26.04%

SUNMOW HOLDING BERHAD (03050)

C² Chart



Period	Dividend Received	Capital Appreciation	Total Shareholder Return
Short Term Return	5 Days	-	-
	10 Days	-	-
	20 Days	-	+22.73%
Medium Term Return	3 Months	-	+12.60%
	6 Months	-	+67.69%
Annualised Return	1 Year	-	+42.11%
	Annualised	-	+42.11%

Disclaimer: The information on this page is provided as a service to readers. It does not constitute financial advice and/or any investment recommendations. Past performance is not indicative of future results. We assume no liability for damages resulting from or arising out of the use of such information. It would be best if you did your own research to make your personal investment decisions wisely or consult a licenced investment advisor.



making
places
remarkable



usm.com

XTRA

XTRA FURNITURE SDN BHD
The Gardens Mall, Mid Valley City, Lot S-236 & 237
Lingkar Syed Putra, 59200 Kuala Lumpur
T. +603 2282 9088 | living@xtrafurniture.com | xtrafurniture.com
📍 XTRAFurniture | 🌐 xtrafurnituremsia

Price & Total Shareholder Return (as at Yesterday)

Fundamental Analysis

DEFINITION: Company revenue is growing and making good quality of earnings with positive Free Cash Flow.

CHART GUIDE: Total Shareholder Return (TSR) combines share price appreciation and distributions paid to show the total return to the shareholder expressed as a percentage.



ShareInvestor WebPro > Screener > Market Screener (FA & TA) > select BURSA > add criteria

A. Criteria

1. Fundamental Analysis Conditions tab > select (i) Free Cash Flow, (ii) Revenue Growth, (iii) Gross Profit (Earnings) Margin, (iv) Quality of Earnings, (v) Total Shareholder Returns, > click Add Criteria
2. Fundamental Analysis Conditions tab > select (vi) Total Shareholder Returns > click Add Criteria

B. Conditions (Criteria Filters)

1. Free Cash Flow - select (more than) type (1) for the past select (1) financial year(s)
2. Revenue Growth - select (more than) type (1) for the past select (1) financial year(s)
3. Gross Profit (Earnings) Margin - select (more than) type (30) % for the past select (1) financial year(s)
4. Quality of Earnings - select (more than) type (1) for the past select (1) financial year(s)
5. Total Shareholder Return - select (more than) type (5) % for the past select (3) financial year(s)
6. Total Shareholder Return - select (more than) type (5) % for the past select (5) financial year(s)

- > click Save Template > Create New Template type (Growth Companies) > click Create
- > click Save Template as > select Growth Companies > click Save
- > click Screen Now (may take a few minutes)
- > Sort By: Select (Revenue Growth) Select (Desc)
- > Mouse over stock name > Factsheet > looking for Total Shareholder Return

EDARAN BERHAD (5036)

C² Chart

Analysis



Period	Dividend Received	Capital Appreciation	Total Shareholder Return
Short Term Return	5 Days	-0.110	-11.49%
	10 Days	+0.335	+64.42%
	20 Days	+0.345	+67.65%
Medium Term Return	3 Months	+0.345	+67.65%
	6 Months	+0.415	+90.00%
	1 Year	+0.330	+62.86%
Long Term Return	2 Years	0.035	-0.56%
	3 Years	0.053	+5.93%
	5 Years	0.053	+76.31%
Annualised Return	Annualised	-	+12.01%

ABLEGROUP BERHAD (7086)

C² Chart

Analysis



Period	Dividend Received	Capital Appreciation	Total Shareholder Return
Short Term Return	5 Days	+0.020	+18.18%
	10 Days	+0.020	+18.18%
	20 Days	+0.015	+13.04%
Medium Term Return	3 Months	+0.010	+8.33%
	6 Months	+0.015	+13.04%
	1 Year	+0.015	+13.04%
Long Term Return	2 Years	+0.025	+20.81%
	3 Years	+0.010	+8.33%
	5 Years	+0.045	+52.94%
Annualised Return	Annualised	-	+8.87%

REDTONE DIGITAL BERHAD (0032)

C² Chart

Analysis



Period	Dividend Received	Capital Appreciation	Total Shareholder Return
Short Term Return	5 Days	+0.055	+7.89%
	10 Days	+0.065	+9.69%
	20 Days	+0.060	+8.33%
Medium Term Return	3 Months	+0.080	+11.43%
	6 Months	+0.205	+26.65%
	1 Year	+0.330	+43.33%
Long Term Return	2 Years	+0.325	+41.43%
	3 Years	+0.420	+56.67%
	5 Years	0.010	+1.33%
Annualised Return	Annualised	-	+30.34%

Disclaimer: The information on this page is provided as a service to readers. It does not constitute financial advice and/or any investment recommendations. Past performance is not indicative of future results. We assume no liability for damages resulting from or arising out of the use of such information. It would be best if you did your own research to make your personal investment decisions wisely or consult a licenced investment advisor.

Price & Total Shareholder Return (as at Yesterday)

Fundamental Analysis

DEFINITION: Company is paying out dividend with low or moderate leverage.

CHART GUIDE: Total Shareholder Return (TSR) combines share price appreciation and distributions paid to show the total return to the shareholder expressed as a percentage.



ShareInvestor WebPro > Screener > Market Screener (FA & TA) > select BURSA > add criteria

A. Criteria

- > click Add Criteria
- Fundamental Analysis Conditions tab >select (i) Dividend Yield (Historical)
- Fundamental Analysis Conditions tab >select (ii) Dividend Payout (Historical)
- Fundamental Analysis Conditions tab >select (iii) Total Debt To Equity
- Fundamental Analysis Conditions tab >select (iv) Total Shareholder Returns
- Fundamental Analysis Conditions tab >select (v) Total Shareholder Returns
- Fundamental Analysis Conditions tab / >select (vi) CAGR of Dividend Per Share

• Fundamental Analysis Conditions tab >select (vii) CAGR of Dividend Per Share

B. Conditions (Criteria Filters)

1. Dividend Yield - select (more than) type (1) % for the past select (1) financial year(s)
2. Dividend Payout (Historical) - select (between) type (0.5) to type (1) times for the past select (1) financial year(s)
3. Total Debt to Equity - select (less than) type (1) for the past select (1) financial year(s)
4. Total Shareholder Return - select (more than) type (5) % for the past select (3) financial year(s)
5. Total Shareholder Return - select (more than) type (5) % for the past select (5) financial year(s)

6. CAGR of Dividend Per Share - select (less than) type (30) % for the past select (5) financial year(s)
7. CAGR of Dividend Per Share - select (more than) type (1) % for the past select (5) financial year(s)

- > click Save Template > Create New Template type (Dividend Companies) > click Create
- > click Save Template as > select Dividend Companies > click Save
- > click Screen Now (may take a few minutes)
- > Sort By: Select (Dividend Yield) Select (Desc)
- > Mouse over stock name > Factsheet > looking for Total Shareholder Return

FORMOSA PROSONIC INDUSTRIES (9172)

C² Chart



Analysis

Period	Dividend Received	Capital Appreciation	Total Shareholder Return
Short Term Return	5 Days	+0.040	+1.38 %
	10 Days	+0.070	+9.44 %
	20 Days	+0.030	+1.03 %
Medium Term Return	3 Months	+0.310	+11.79 %
	6 Months	+0.350	+13.61 %
Long Term Return	1 Year	-0.240	-7.55 %
	2 Years	0.200	+6.58 %
Annualised Return	3 Years	0.340	+7.70 %
	5 Years	0.550	+8.63 %
Annualised Return	Annualised	-	+13.41 %

KENANGA INVESTMENT BANK BERHAD (6483)

C² Chart



Analysis

Period	Dividend Received	Capital Appreciation	Total Shareholder Return
Short Term Return	5 Days	-0.030	-3.43 %
	10 Days	-0.010	-1.17 %
	20 Days	-0.015	-1.74 %
Medium Term Return	3 Months	-0.060	-6.63 %
	6 Months	-0.045	-5.06 %
Long Term Return	1 Year	-0.020	-2.31 %
	2 Years	0.105	+12.60 %
Annualised Return	3 Years	0.193	+15.98 %
	5 Years	0.237	+12.12 %
Annualised Return	Annualised	-	+11.00 %

GAS MALAYSIA BERHAD (5209)

C² Chart



Analysis

Period	Dividend Received	Capital Appreciation	Total Shareholder Return
Short Term Return	5 Days	-0.040	-1.19 %
	10 Days	-0.060	-1.78 %
	20 Days	+0.100	+5.73 %
Medium Term Return	3 Months	+0.300	+9.93 %
	6 Months	+0.110	+3.43 %
Long Term Return	1 Year	-0.080	-1.78 %
	2 Years	0.129	+26.66 %
Annualised Return	3 Years	0.285	+33.03 %
	5 Years	0.558	+34.65 %
Annualised Return	Annualised	-	+6.53 %

Disclaimer: The information on this page is provided as a service to readers. It does not constitute financial advice and/or any investment recommendations. Past performance is not indicative of future results. We assume no liability for damages resulting from or arising out of the use of such information. It would be best if you did your own research to make your personal investment decisions wisely or consult a licenced investment advisor.

Week: 10 November 2023 - 16 November 2023

More Brokers' Call 

AMINVESTMENT BANK <small>... See More</small>	Call	Target Price	Release Date
Dialog Group Berhad (7277)	BUY	RM3.46	15 Nov 2023
Malayan Banking Berhad (1155)	HOLD	RM9.50	15 Nov 2023
Maxis Berhad (6012)	HOLD	RM3.90	14 Nov 2023
Westports Holdings Berhad (5246)	BUY	RM4.03	10 Nov 2023

APEX <small>... See More</small>	Call	Target Price	Release Date
Maxis Berhad (6012)	HOLD	RM4.35	14 Nov 2023
Panda Eco System Berhad (0290)	BUY	RM0.23	16 Nov 2023

BIMB SECURITIES SDN BHD <small>... See More</small>	Call	Target Price	Release Date
Maxis Berhad (6012)	HOLD	RM3.95	13 Nov 2023
Westports Holdings Berhad (5246)	BUY	RM3.95	10 Nov 2023

KENANGA <small>... See More</small>	Call	Target Price	Release Date
Kossan Rubber Industries Berhad (7153)	UNDERPERFORM	RM1.34	16 Nov 2023
Malaysian Pacific Industries Berhad (3867)	MARKET PERFORM	RM27.20	16 Nov 2023
NationGate Holdings Berhad (0270)	OUTPERFORM	RM1.70	16 Nov 2023

MIDF <small>... See More</small>	Call	Target Price	Release Date
Dialog Group Berhad (7277)	BUY	RM3.28	15 Nov 2023
Kossan Rubber Industries Berhad (7153)	NEUTRAL	RM1.38	16 Nov 2023
Ranhill Utilities Berhad (5272)	NEUTRAL	RM0.80	15 Nov 2023

UOB KAYHIAN <small>... See More</small>	Call	Target Price	Release Date
Dialog Group Berhad (7277)	BUY	RM2.85	15 Nov 2023
LBS Bina Group Berhad (5789)	BUY	RM0.70	15 Nov 2023
NationGate Holdings Berhad (0270)	BUY	RM1.83	15 Nov 2023
XL Holdings Berhad (7121)	BUY	RM1.00	15 Nov 2023

Disclaimer: InveSt does not accept any liability whatsoever for any direct, indirect or consequential losses (including loss of profit) or damages that may arise from the use of information or opinions in this publication. The information and opinions in InveSt are not to be considered as an offer to sell or buy any of the securities discussed. Opinions expressed are subject to change without notice. The Brokers may, from time to time, have interests or positions in the securities mentioned. For the full report on each item listed on this page, please visit https://www.shareinvestor.com/my/brokers_call.

DEFINITION: Top 8 stocks with Technical Analysis plus Pattern Matching by 60 pre-defined indicators by the system showing a higher probability of bullish sentiment on the share price.



ShareInvestor WebPro > Screener > Predefined TA Screens > select market BURSA > Most Long Signals > click Scan Results or mouse over each company

MYCRON STEEL BERHAD (5087.MY)

MYCRON

Price updated at 16 Nov 2023 16:58

Last: 0.435	Change: -0.005	Volume: 60,185
	Change (%): -1.14	Range: 0.405 - 0.455

TA Scanner Results based on historical data up to 16 Nov 2023

Condition	Signal	Explanation
Bollinger Band: Bullish Long Term Volatility Breakout and Trending	Long	1. Close price above upper bollinger band(33,1). 2. Volume above average volume(50). 3. Average volume(50) is above 300,000.
Bollinger Band: Bullish Short Term Volatility Breakout and Trending	Long	1. Close price above upper bollinger band(33,1). 2. Volume above average volume(10). 3. Average volume(10) is above 300,000.
Bollinger Band: High Above Upper Bollinger Band	Neutral	1. High above upper bollinger band(14,2). 2. Average volume(5) is above 100,000.
Candlestick: Bullish Engulfing	Long	Bullish: Engulfing
Donchian Channels: High Above Upper Donchian Channels	Long	High crossed above the upper Donchian Channel(14,4)
MA: Short Term Bullish Moving Average Crossover	Long	MA(10) crossed above MA(15) within the last 1 day.
Price: New 52 Week High	Long	1. Stock reach a new 52 week high. 2. Average volume(30) is above 50000.
RSI: Short Term RSI 50 Bullish Crossover	Long	1. RSI(20) crossed above 50 within the last 1 day and RSI(20) 1 day ago below 50 for the last 5 days. 2. Volume above average volume(125). 3. Average volume(5) is above 100,000.
Volume: Volume Spike	Long	1. Volume is more than 500% above average volume(10). 2. Volume above 200000. 3. Close price above 0.10

DIALOG GROUP BERHAD (7277.MY)

DIALOG

Price updated at 16 Nov 2023 16:55

Last: 2.200	Change: -	Volume: 40,689
	Change (%): -	Range: 2.170 - 2.210

TA Scanner Results based on historical data up to 16 Nov 2023

Condition	Signal	Explanation
Bollinger Band: Bullish Long Term Volatility Breakout and Trending	Long	1. Close price above upper bollinger band(33,1). 2. Volume above average volume(50). 3. Average volume(50) is above 300,000.
Bollinger Band: Bullish Short Term Volatility Breakout and Trending	Long	1. Close price above upper bollinger band(33,1). 2. Volume above average volume(10). 3. Average volume(10) is above 300,000.
Bollinger Band: High Above Upper Bollinger Band	Neutral	1. High above upper bollinger band(14,2). 2. Average volume(5) is above 100,000.
DM: Bullish Directional Movement	Long	-DI(14) crossed below +DI(14)
Donchian Channels: High Above Upper Donchian Channels	Long	High crossed above the upper Donchian Channel(14,4)
MACD: Bullish MACD Crossover	Long	1. MACD(12,26) diff line crossed above the MACD(12,26) signal line. 2. MACD Histogram(12,26) is above 0.
Parabolic SAR: Bearish Parabolic SAR Reversal	Neutral	1. Parabolic SAR 1 day ago above close price 1 day ago for the last 5 days. 2. Parabolic SAR below close price
RSI: Short Term RSI 50 Bullish Crossover	Long	1. RSI(20) crossed above 50 within the last 1 day and RSI(20) 1 day ago below 50 for the last 5 days. 2. Volume above average volume(125). 3. Average volume(5) is above 100,000.
Williams %R: Bearish Williams %R	Short	1. Williams %R(26) between 0 and -20. 2. Average volume(5) is above 100,000.

EONMETALL GROUP BERHAD (7217.MY)

EMETALL

Price updated at 16 Nov 2023 16:50

Last: 0.500	Change: -0.005	Volume: 53,840
	Change (%): -0.99	Range: 0.490 - 0.505

TA Scanner Results based on historical data up to 16 Nov 2023

Condition	Signal	Explanation
Bollinger Band: Bullish Long Term Volatility Breakout and Trending	Long	1. Close price above upper bollinger band(33,1). 2. Volume above average volume(50). 3. Average volume(50) is above 300,000.
Bollinger Band: Bullish Short Term Volatility Breakout and Trending	Long	1. Close price above upper bollinger band(33,1). 2. Volume above average volume(10). 3. Average volume(10) is above 300,000.
Bollinger Band: High Above Upper Bollinger Band	Neutral	1. High above upper bollinger band(14,2). 2. Average volume(5) is above 100,000.
CCI: Bearish CCI Overbought And Reversing	Short	1. CCI(26) above 100 and CCI(26) 1 day ago increasing for the last 3 days. 2. CCI(26) below CCI(26) 1 day ago
DM: Bullish Directional Movement	Long	-DI(14) crossed below +DI(14)
Donchian Channels: High Above Upper Donchian Channels	Long	High crossed above the upper Donchian Channel(14,4)
MA: Short Term Bullish Moving Average Crossover	Long	MA(10) crossed above MA(15) within the last 1 day.
RSI: Short Term RSI 50 Bullish Crossover	Long	1. RSI(20) crossed above 50 within the last 1 day and RSI(20) 1 day ago below 50 for the last 5 days. 2. Volume above average volume(125). 3. Average volume(5) is above 100,000.
Williams %R: Bearish Williams %R	Short	1. Williams %R(26) between 0 and -20. 2. Average volume(5) is above 100,000.

MELEWAR INDUSTRIAL GROUP BERHAD (3778.MY)

MELEWAR

Price updated at 16 Nov 2023 16:57

Last: 0.285	Change: -0.005	Volume: 16,680
	Change (%): -1.72	Range: 0.280 - 0.295

TA Scanner Results based on historical data up to 16 Nov 2023

Condition	Signal	Explanation
Bollinger Band: Bullish Long Term Volatility Breakout and Trending	Long	1. Close price above upper bollinger band(33,1). 2. Volume above average volume(50). 3. Average volume(50) is above 300,000.
Bollinger Band: Bullish Short Term Volatility Breakout and Trending	Long	1. Close price above upper bollinger band(33,1). 2. Volume above average volume(10). 3. Average volume(10) is above 300,000.
Bollinger Band: High Above Upper Bollinger Band	Neutral	1. High above upper bollinger band(14,2). 2. Average volume(5) is above 100,000.
DM: Bullish Directional Movement	Long	-DI(14) crossed below +DI(14)
Donchian Channels: High Above Upper Donchian Channels	Long	High crossed above the upper Donchian Channel(14,4)
RSI: Short Term RSI 50 Bullish Crossover	Long	1. RSI(20) crossed above 50 within the last 1 day and RSI(20) 1 day ago below 50 for the last 5 days. 2. Volume above average volume(125). 3. Average volume(5) is above 100,000.
Volume: Volume Spike	Long	1. Volume is more than 500% above average volume(10). 2. Volume above 200000. 3. Close price above 0.10

Disclaimer: The information on this page is provided as a service to readers. It does not constitute financial advice and/or any investment recommendations. Past performance is not indicative of future results. We assume no liability for damages resulting from or arising out of the use of such information. It would be best if you did your own research to make your personal investment decisions wisely or consult a licenced investment advisor.

 **AYS VENTURES BERHAD (5021.MY)**

AYS

Price updated at 16 Nov 2023 16:59

Last: 0.390	Change: -0.005	Volume: 3,635
	Change (%): -1.27	Range: 0.385 - 0.395

TA Scanner Results based on historical data up to 16 Nov 2023

Condition	Signal	Explanation
Bollinger Band: Bullish Long Term Volatility Breakout and Trending	Long	1. Close price above upper bollinger band(33,1). 2. Volume above average volume(50). 3. Average volume(50) is above 300,000.
Bollinger Band: Bullish Short Term Volatility Breakout and Trending	Long	1. Close price above upper bollinger band(33,1). 2. Volume above average volume(10). 3. Average volume(10) is above 300,000.
Bollinger Band: High Above Upper Bollinger Band	Neutral	1. High above upper bollinger band(14,2). 2. Average volume(5) is above 100,000.
Candlestick: Bullish Engulfing	Long	Bullish: Engulfing
Donchian Channels: High Above Upper Donchian Channels	Long	High crossed above the upper Donchian Channel(14,4)
RSI: Short Term RSI 50 Bullish Crossover	Long	1. RSI(20) crossed above 50 within the last 1 day and RSI(20) 1 day ago below 50 for the last 5 days. 2. Volume above average volume(125). 3. Average volume(5) is above 100,000.
Volume: Volume Spike	Long	1. Volume is more than 500% above average volume(10). 2. Volume above 200000. 3. Close price above 0.10

 **MISC BERHAD (3816.MY)**

MISC

Price updated at 16 Nov 2023 16:55

Last: 7.320	Change: -	Volume: 25,759
	Change (%): -	Range: 7.300 - 7.330

TA Scanner Results based on historical data up to 16 Nov 2023

Condition	Signal	Explanation
Bollinger Band: Bullish Long Term Volatility Breakout and Trending	Long	1. Close price above upper bollinger band(33,1). 2. Volume above average volume(50). 3. Average volume(50) is above 300,000.
Bollinger Band: High Above Upper Bollinger Band	Neutral	1. High above upper bollinger band(14,2). 2. Average volume(5) is above 100,000.
DM: Bullish Directional Movement	Long	-DI(14) crossed below +DI(14)
Volume: 10 Days large value Buy Up trade	Long	1. 150K value Buy Up greater than Sell Down by 20% for 10 days. 2. 50K-100K value Buy Up greater than Sell Down by 20% for 10 days. 3. Average volume(10) is above 1000000
Volume: 5 Days large value Buy Up trade	Long	1. 150K value Buy Up greater than Sell Down by 20% for 5 days. 2. 50K-100K value Buy Up greater than Sell Down by 20% for 5 days. 3. Average volume(10) is above 1000000
Volume: Consecutive Days Of Increasing Average Volume	Long	1. Average Volume(20) has been increasing over the last 2 weeks. 2. Average volume(20) is above 100000
Williams %R: Bearish Williams %R	Short	1. Williams %R(26) between 0 and -20. 2. Average volume(5) is above 100,000.

 **QES GROUP BERHAD (0196.MY)**

QES

Price updated at 16 Nov 2023 16:57

Last: 0.530	Change: -0.015	Volume: 24,608
	Change (%): -2.75	Range: 0.525 - 0.550

TA Scanner Results based on historical data up to 16 Nov 2023

Condition	Signal	Explanation
Bollinger Band: Bullish Long Term Volatility Breakout and Trending	Long	1. Close price above upper bollinger band(33,1). 2. Volume above average volume(50). 3. Average volume(50) is above 300,000.
Bollinger Band: Bullish Short Term Volatility Breakout and Trending	Long	1. Close price above upper bollinger band(33,1). 2. Volume above average volume(10). 3. Average volume(10) is above 300,000.
Chaikin Volatility: Decreasing Chaikin Volatility	Neutral	Chaikin Volatility(10,10) has been decreasing for 5 days
DM: Bullish Directional Movement	Long	-DI(14) crossed below +DI(14)
MA: Short Term Bullish Moving Average Crossover	Long	MA(10) crossed above MA(15) within the last 1 day.
RSI: Short Term RSI 50 Bullish Crossover	Long	1. RSI(20) crossed above 50 within the last 1 day and RSI(20) 1 day ago below 50 for the last 5 days. 2. Volume above average volume(125). 3. Average volume(5) is above 100,000.
Williams %R: Bearish Williams %R	Short	1. Williams %R(26) between 0 and -20. 2. Average volume(5) is above 100,000.

 **SALCON BERHAD (8567.MY)**

SALCON

Price updated at 16 Nov 2023 16:58

Last: 0.335	Change: -0.020	Volume: 204,161
	Change (%): -5.63	Range: 0.305 - 0.350

TA Scanner Results based on historical data up to 16 Nov 2023

Condition	Signal	Explanation
Accumulation Distribution: Bullish Accumulation Distribution	Long	Accumulation distribution increasing for the last 7 days
Price: Consecutive Days Gains	Long	1. Close price has been increasing over the last 5 days. 2. Average volume(5) above 100,000.
Price: New 52 Week High	Long	1. Stock reach a new 52 week high. 2. Average volume(30) is above 50000.
RSI: RSI Overbought	Short	1. RSI(20) is above 80. 2. RSI(20) is increasing for the last 3 days. 3. Stock has more than 75 days of historical data.
Volume: 10 Days large value Buy Up trade	Long	1. 150K value Buy Up greater than Sell Down by 20% for 10 days. 2. 50K-100K value Buy Up greater than Sell Down by 20% for 10 days. 3. Average volume(10) is above 1000000
Volume: 5 Days large value Buy Up trade	Long	1. 150K value Buy Up greater than Sell Down by 20% for 5 days. 2. 50K-100K value Buy Up greater than Sell Down by 20% for 5 days. 3. Average volume(10) is above 1000000
Williams %R: Bearish Williams %R	Short	1. Williams %R(26) between 0 and -20. 2. Average volume(5) is above 100,000.

Disclaimer: The information on this page is provided as a service to readers. It does not constitute financial advice and/or any investment recommendations. Past performance is not indicative of future results. We assume no liability for damages resulting from or arising out of the use of such information. It would be best if you did your own research to make your personal investment decisions wisely or consult a licenced investment advisor.

GOVT LOOKING TO INTRODUCE ENERGY TRANSITION FINANCING - RAFIZI

According to Economy Minister Rafizi Ramli, the government wants to work with the financial sector to introduce transition financing to support Malaysia's energy transition agenda. While the government and the banking industries have supported green projects through green financing, it does not encompass all forms of sustainable projects and there are sectors or industries or even projects that may not qualify for green financing.

Citing equipment which increases energy efficiency as an example, he said that by definition it does not qualify as a green project. However increasing energy efficiency is an integral part of energy transition. He was speaking to journalists at the ASLI Banking & Finance Summit 2023 themed 'Future of Finance & Financing the Sustainable Development Goals'

He added that his ministry is looking at working with the banking and finance industries in order to develop another stream of financing, which can be termed as 'transition financing'. He said that for energy transition to work and for the National Energy Transition Roadmap (NETR) to achieve its objectives, the overall ecosystem is needed. The transition financing aims to include supporting industries which contribute towards green projects and ultimately to support the country's green ambitions.

He said that hydrogen projects will most likely not pass the standard banking evaluation in terms of returns, but if we have a 10-15 years roadmap to build a hydrogen economy, the banking industry cannot wait for everything to be ready before providing funding. The funding has to start from now and that is where the idea of transition financing has to be developed in the economy.

Through NETR, the government has allocated RM2 billion in financing for energy transition projects. His ministry will work with banks and financial institutions with the RM2 billion fund allocation and that it would need to make calculated decisions in terms of approval for project financing. It is hoped that the public funding will also be complemented by additional funding from the financial industries, to support the government's transition initiatives. With the support of the government, there has never been a more opportune time for the banking and finance sector to act.

SIME DARBY RECEIVES SHAREHOLDER SUPPORT TO ACQUIRE UMW

Sime Darby Berhad held an EGM on Thursday November 16th, to seek its shareholders' approval on the company's proposal to acquire PNB's 61.2% stake in UMW Holdings Berhad and thereafter to launch a mandatory general offer to acquire the remaining UMW shares not owned. At the EGM, shareholders voted to approve the proposed resolution which allows Sime Darby to move forward with the strategic acquisition. With shareholders' approval secured, Sime Darby is

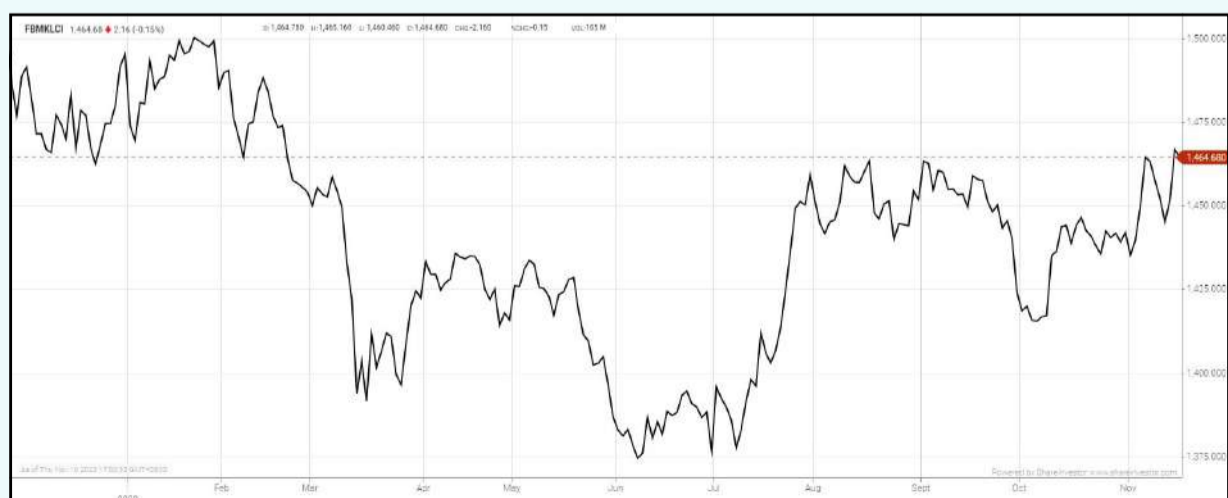
confident of fulfilling all conditions for the deal. Following the outcome of the EGM, Sime Darby will launch an MGO to acquire the remaining UMW shares to gain full ownership of UMW.

Dato' Jeffri Salim Davidson, Sime Darby's Group Chief Executive Officer said, "We are delighted with the shareholder support. It shows that shareholders share our vision in growing our automotive presence in Malaysia. We appreciate our shareholders' trust and confidence and are committed to continue delivering value for them."

Shareholders of UMW will receive an offer document setting out details of the MGO in the coming weeks. The acquisition of the 61.2% stake in UMW is expected to be completed by the end of November 2023; whilst the MGO, assuming the acceptance period is fully extended, is expected to close in February 2024. On 24 August 2023, Sime Darby announced that it entered into a conditional share purchase agreement with PNB to acquire PNB's 61.2% stake in UMW, a well-established conglomerate with a diverse portfolio of businesses including automotive, equipment, aerospace and manufacturing & engineering (M&E) segments.

EYE ON THE MARKETS

On Thursday (16Nov), the Ringgit closed at 4.6920 against the USD and 3.4796 to the Sing Dollar. On Tuesday (14Nov), the FBM KLCI opened at 1444.90. As at Thursday (16Nov) 5:00pm, the FBM KLCI closed up 19.78 points at 1464.68. Over in US, the overnight Dow Jones Industrial Average closed down 45.74 points (-0.13%) to 34,945.47 whilst the NASDAQ added 9.84 points (+0.07%) to 14,113.67.



KLCI 1 Year Chart

Over 5 trading days



ShareInvestor WebPro (www.shareinvestor.com/my)

1. Price > Stock Prices
2. Select Market: NASDAQ / NYSE / IDX / SET / HKEX / SGX (One bourse at a time)
3. select Stocks Tab
4. select Ranking Top Gainers or Top Losers (Over 5 Trading Days)
5. Mouse over Column Layout > select Edit Customs > select Name > select Last Done Price > select 5 Days Change > select 52 Weeks High > select 52 Weeks Low > Mouse Over Column Layout > select Custom

NASDAQ (USD)

Top Gainers

Name	Last Done	Change Over 5 Days	52 Weeks High	52 Weeks Low
MERCADOLIBRE INC	1,469.550	+128.170	1,466.920	815.855
FIRST CITIZENS BANCSHARES INC NRTH	1,450.800	+65.470	1,512.070	505.840
MONOLITHIC POWER SYSTEM INC	536.980	+54.920	595.980	336.630
BOOKING HOLDINGS INC	3,128.850	+54.620	3,251.709	1,899.310
LAM RESEARCH CORP	700.440	+50.180	726.525	397.060

Top Losers

Name	Last Done	Change Over 5 Days	52 Weeks High	52 Weeks Low
VERTEX PHARMACEUTICAL	343.000	-25.570	387.420	282.210
XORTX THERAPEUTICS INC	2.300	-22.810	100.440	2.340
ATRIION CORP	293.400	-19.580	705.740	305.050
ILLUMINA INC	95.200	-11.780	243.090	89.000
THE TRADE DESK INC	66.300	-10.510	91.850	41.200

NYSE (USD)

Top Gainers

Name	Last Done	Change Over 5 Days	52 Weeks High	52 Weeks Low
BERKSHIRE HATHAWAY INC	546,635.010	+14,749.010	566,569.970	442,363.500
NVR INC	6,290.590	+454.070	6,525.000	4,295.510
CHIPOTLE MEXICAN GRILL	2,173.100	+52.520	2,177.770	1,344.050
BLACKROCK INC	714.900	+49.900	781.770	596.180
PENUMBRA INC	223.670	+39.790	348.670	180.930

Top Losers

Name	Last Done	Change Over 5 Days	52 Weeks High	52 Weeks Low
TEXAS PACIFIC LAND CORPORATION	1,612.580	-45.870	2,707.230	1,266.210
AUTOZONE INC	2,658.230	-44.110	2,750.000	2,277.880
BIGLARI HOLDINGS INC	712.800	-26.200	1,058.500	673.230
WHITE MOUNTAINS INSURANCE GROUP	1,469.040	-19.050	1,617.000	1,278.594
DECKERS OUTDOOR CORP	615.460	-17.280	638.000	337.220

IDX (Rupiah)

Top Gainers

Name	Last Done	Change Over 5 Days	52 Weeks High	52 Weeks Low
PIONEERINDO GOURMET INTERNATIONAL	3,660.000	+2,150.000	4,160.000	1,315.000
MULTISTRADA ARAH SARANA	3,320.000	+1,010.000	5,475.000	1,960.000
MD PICTURES TBK	3,240.000	+770.000	4,020.000	610.000
METROPOLITAN KENTJ	29,450.000	+700.000	46,200.000	16,950.000
INDO TAMBANGRAYA MEGAH TBK	25,425.000	+650.000	42,350.000	22,125.000

Top Losers

Name	Last Done	Change Over 5 Days	52 Weeks High	52 Weeks Low
AKASHA WIRA INTERNATIONAL TBK	9,200.000	-1,000.000	14,125.000	6,375.000
M CASH INTEGRASI TBK	6,200.000	-375.000	9,800.000	5,300.000
PETRINDO JAYA KREASI TBK	6,650.000	-350.000	7,050.000	240.000
WISMILAK INTI MAKMUR TBK	3,100.000	-330.000	3,850.000	600.000
CHAROEN POKPHAND INDONESIA	5,400.000	-250.000	6,275.000	4,330.000

SET (Thai Baht)

Top Gainers

Name	Last Done	Change Over 5 Days	52 Weeks High	52 Weeks Low
JTS	52.250	+8.250	61.000	23.200
TMW	45.500	+6.500	46.750	35.000
CHOTI	128.500	+6.000	179.000	112.000
MASTER	51.750	+5.250	91.500	41.500
BKI	307.000	+5.000	321.000	272.000

Top Losers

Name	Last Done	Change Over 5 Days	52 Weeks High	52 Weeks Low
BH	221.000	-12.000	272.000	203.000
HANA	45.250	-7.000	66.250	36.000
JMT	26.000	-6.750	71.250	23.300
BBL	151.000	-6.000	175.000	142.000
SAPPE	75.250	-5.500	100.000	37.000

HKEX (HKD)

Top Gainers

Name	Last Done	Change Over 5 Days	52 Weeks High	52 Weeks Low
TENCENT HOLDINGS LIMITED	324.800	+18.000	416.600	245.454
TRIP COM GROUP LTD	273.400	+11.000	330.200	190.600
TECHTRONIC INDUSTRIES CO	81.750	+7.650	110.500	67.350
ZX INC	18.340	+6.900	21.750	9.320
YUM CHINA HOLDINGS INC	350.200	+6.200	514.500	326.800

Top Losers

Name	Last Done	Change Over 5 Days	52 Weeks High	52 Weeks Low
HUASHI GROUP HLDGS LTD	1.900	-19.000	2.070	1.400
KEYMED BIOSCIENCES INC	50.250	-7.150	82.850	37.300
ANTA SPORTS PRODUCTS	79.050	-6.700	86.950	71.500
ANTA SPORTS PRODUCTS	85.050	-5.950	125.300	76.300
ALPHAMAB ONCOLOGY	6.750	-5.870	17.700	6.170

SGX (SGD)

Top Gainers

Name	Last Done	Change Over 5 Days	52 Weeks High	52 Weeks Low
JMH USD	41.200	+0.880	54.890	38.660
IFAST	7.730	+0.530	7.800	4.150
JARDINE C&C	29.720	+0.350	35.580	27.250
VENTURE	12.860	+0.300	18.750	11.360
UOL	6.260	+0.270	7.209	5.600

Top Losers

Name	Last Done	Change Over 5 Days	52 Weeks High	52 Weeks Low
DBS	32.640	-0.720	35.855	30.300
AEM SGD	3.260	-0.240	4.020	2.700
UOB	27.420	-0.240	31.400	26.820
NIO Inc. USD OV	7.710	-0.200	15.780	7.250
SGX	9.560	-0.130	9.980	8.600

RISKS AND OPPORTUNITIES OF DIVERSIFICATION



Devanesan
Evanson
**Chief Executive
Officer, Minority
Shareholders Watch
Group**

Glovemakers Careplus Group Berhad (Careplus) announced its foray into manufacturing and assembly of energy efficient vehicles (EEV) recently. Careplus said that it was seeking opportunities to diversify into other viable businesses, given the challenges faced by all the major glove players in the market. This market was in a 'red ocean' fraught with over-supply and low average selling prices (ASPs).

On 25 October 2023, Careplus, at its EGM, explained to shareholders its reasons for diversifying into the electric vehicle (EV) industry. There was some scepticism on how it would fund its diversification into an industry far removed from glove manufacturing and the expertise of its new partners. Nevertheless, the explanation must have been convincing since 99.99% of shareholders voted in favour of the diversification.

Diversification is a strategic choice companies make to enter new business sectors, aiming to spread risk, capture new opportunities, and

create long-term value. While diversification can be a powerful growth strategy, it comes with various risks and opportunities.

RISKS OF DIVERSIFICATION

FINANCIAL RISK:

One of the primary risks associated with diversification is financial. Entering a new sector requires significant capital investment, which can strain a company's financial resources. If the new venture does not perform as expected, it can lead to financial losses that affect the core business.

OPERATIONAL CHALLENGES:

Each industry has its unique operational requirements, and transitioning into a new sector often involves a steep learning curve. Inefficiencies or mistakes in operations can lead to increased costs and decreased profitability.

MARKET RISK:

Market conditions can change rapidly, and diversifying into a new sector can expose a company to unexpected market risks. For example, economic downturns or shifts in consumer preferences can negatively impact the performance of the newly diversified business.

BRAND AND REPUTATION RISK:

A company's reputation is valuable. Diversifying into a sector with different values or ethical considerations can pose a risk to the company's brand if not managed carefully. Negative perceptions about one business can spill over and affect the entire brand.

CULTURAL MISALIGNMENT:

Different industries may have distinct corporate cultures and norms. A lack of cultural alignment can lead to issues in integration, employee morale, and teamwork, which can ultimately affect the success of the diversification strategy.

OPPORTUNITIES FOR DIVERSIFICATION

RISK MITIGATION:

Diversification can reduce the company's reliance on a single market or industry. This is particularly important in industries prone to cyclical fluctuations. By spreading investments across various sectors, a company can better weather economic downturn.

REVENUE GROWTH:

Diversification offers the opportunity to tap into new sources of revenue. This can result from cross-selling products or services to existing customers, entering emerging markets, or capitalising on synergies between the diversified businesses.

INNOVATION AND LEARNING:

Diversifying into a new sector often requires acquiring new skills and knowledge. This can lead to innovation and the development of new capabilities that benefit the entire organisation. Learning from different industries can foster creativity and a competitive edge.

GLOBAL EXPANSION:

Diversification can provide opportunities for global expansion. A company can leverage its existing resources, such as distribution networks or supply chain capabilities, to enter international markets more effectively.

PORTFOLIO BALANCING:

Companies can balance their portfolios to ensure a mix of businesses that are at different stages of life cycles. While some sectors may be mature and generate steady cash flow, others may be high growth, offering the potential for substantial returns.

SUCCESSFUL DIVERSIFICATION STRATEGIES

THOROUGH MARKET RESEARCH:

Prior to diversifying, extensive market research is crucial to understand the dynamics, potential risks, and opportunities of the new sector. This includes evaluating market size, competition, customer behaviour, and regulatory factors.

SYNERGY IDENTIFICATION:

Seek sectors where synergies can be leveraged between the core business and the new venture. This can lead to cost savings, cross-selling opportunities, and enhanced overall performance.

RISK MANAGEMENT:

Implement robust risk management practices to mitigate potential downsides. This includes financial contingency plans, monitoring of market conditions, and a well-defined exit strategy if the new venture underperforms.

TALENT AND LEADERSHIP:

Ensure the right talent and leadership are in place to drive the diversified business. This may involve hiring experts from the new sector or training existing employees to bridge the knowledge gap.

BALANCED PORTFOLIO:

Maintain a balanced portfolio of businesses to ensure a mix of cash cows and growth opportunities. This diversification strategy minimises the impact of business cycles and economic downturns.

FLEXIBILITY AND ADAPTABILITY:

Companies should be flexible and adaptable, ready to adjust their diversification strategy in response to changing market conditions or new opportunities. Agility is key to success.

Diversification is a strategic decision for companies seeking growth and risk mitigation, but it has its challenges. A case in point is the merger between Malaysia Building Society Berhad (MBSB) and Malaysian Industrial Development Finance Berhad (MIDF) from Permodalan Nasional Berhad (PNB). The merger would fill MBSB's current void in the corporate and investment banking segment. Here is a merger of two government-linked companies (GLCs) owned by two government-linked investment companies (GLICs) – PNB and Employees Provident Fund (EPF). The merger would face relatively lesser challenges as the merging parties have the GLC culture. But even amongst GLCs, there are varying cultural differences, and it will not necessarily be a walk in the park.

On the other hand, the transactions between Lembaga Tabung Angkatan Tentera (LTAT), Boustead Holdings Berhad (BHB), and Kuala Lumpur Kepong Berhad (KLK) for the latter to acquire a 33% stake in Boustead Plantation Berhad (BPlant), drew mixed responses from the investing community. Had the deal gone through, there may have been challenges in merging the GLC culture with the entrepreneur-driven culture – they both have their respective strengths. This was probably a missed opportunity as the parties could have leveraged each other's strengths. BPlant would have benefitted from the superior yields and replanting expertise of KLK and its deep pockets, while LTAT and BHB as shareholders of BPlant would have reaped the resultant benefits.

To succeed in diversification, companies must carefully assess the risks, undertake thorough market research, and develop strategies that leverage synergies and innovation. Maintaining a flexible and adaptable approach is also essential in a constantly evolving business landscape. Successful diversification can lead to revenue growth, portfolio balancing, and enhanced competitiveness, ultimately creating long-term value for the company and its stakeholders.

However, a poorly executed diversification strategy can turn a venture into 'diworsification', resulting in financial setbacks and damaging the brand's reputation.

DEFINITION: Insider Activity shows the trades made by substantial shareholders or directors of the company. Purchases by the directors and company share buyback may indicate the share price is undervalued and brings confidence to the price trend of the share price.



ShareInvestor WebPro > Fundamental > Insider Trades > click Search tab > Select Bursa > click Stock name > scroll up and leave at <Select Counter> Type Date Range for Announcement Date > click Search

Notice Period is 05th Nov - 11st Nov 2023

Effective Change Date	Stock Name	Buyer/ Seller Name [Classification]	Bought / (Sold) ['000]	No. of Shares After Trade ['000]	
			Total	Total	% Held
07 NOV 2023 - 07 NOV 2023	ABMB	EMPLOYEES PROVIDENT FUND BOARD [SSH]	-250	159,364	10.294
01 NOV 2023 - 01 NOV 2023	ABMB	EMPLOYEES PROVIDENT FUND BOARD [SSH]	-200	159,614	10.31
07 NOV 2023 - 07 NOV 2023	ACO	IR DR NG KOK CHIANG [DIR/CEO]	-100	988	0.284
06 NOV 2023 - 06 NOV 2023	AIRPORT	EMPLOYEES PROVIDENT FUND BOARD [SSH]	-170	144,116	8.637
02 NOV 2023 - 02 NOV 2023	AIRPORT	EMPLOYEES PROVIDENT FUND BOARD [SSH]	3	144,286	8.647
01 NOV 2023 - 01 NOV 2023	AIRPORT	EMPLOYEES PROVIDENT FUND BOARD [SSH]	330	144,283	8.647
07 NOV 2023 - 07 NOV 2023	AMBANK	EMPLOYEES PROVIDENT FUND BOARD [SSH]	-213	343,233	10.369
07 NOV 2023 - 07 NOV 2023	ANCOMNY	DATO' SIEW KA WEI [DIR/CEO]	-5,000	175,490	18.358
07 NOV 2023 - 07 NOV 2023	ANCOMNY	DATO' SIEW KA WEI [SSH]	-5,000	175,490	18.358
06 NOV 2023 - 06 NOV 2023	ARREIT	KUMPULAN WANG BERSAMA [SSH]	-10,000	261,186	45.565
08 NOV 2023 - 08 NOV 2023	AXIATA	AMANAHRAYA TRUSTEES BERHAD-AMANAH SAHAM BUMIPUTERA [SSH]	2,200	1132404	12.337
07 NOV 2023 - 07 NOV 2023	AXIATA	AMANAHRAYA TRUSTEES BERHAD-AMANAH SAHAM BUMIPUTERA [SSH]	10,000	1130204	12.313
06 NOV 2023 - 06 NOV 2023	AXIATA	AMANAHRAYA TRUSTEES BERHAD-AMANAH SAHAM BUMIPUTERA [SSH]	9,800	1,120,204	12.204
07 NOV 2023 - 07 NOV 2023	AXREIT	EMPLOYEES PROVIDENT FUND BOARD [SSH]	-758	268,863	15.443
06 NOV 2023 - 06 NOV 2023	AXREIT	EMPLOYEES PROVIDENT FUND BOARD [SSH]	-2,492	269,621	15.486
03 NOV 2023 - 03 NOV 2023	AXREIT	EMPLOYEES PROVIDENT FUND BOARD [SSH]	-252	272,113	15.629
06 NOV 2023 - 06 NOV 2023	AXREIT	LEMBAGA TABUNG HAJI [SSH]	250	95,095	5.462
02 NOV 2023 - 02 NOV 2023	AXREIT	EMPLOYEES PROVIDENT FUND BOARD [SSH]	-192	272,365	15.644
03 NOV 2023 - 03 NOV 2023	AXREIT	LEMBAGA TABUNG HAJI [SSH]	500	94,845	5.448
01 NOV 2023 - 01 NOV 2023	AXREIT	EMPLOYEES PROVIDENT FUND BOARD [SSH]	-2,971	272,557	15.655
08 NOV 2023 - 08 NOV 2023	BAUTO	PRUDENTIAL PLC [SSH]	-732	59,909	5.137
07 NOV 2023 - 07 NOV 2023	BAUTO	EMPLOYEES PROVIDENT FUND BOARD [SSH]	1,972	127,224	10.909
07 NOV 2023 - 07 NOV 2023	BAUTO	PRUDENTIAL PLC [SSH]	-653	60,641	5.2
06 NOV 2023 - 06 NOV 2023	BAUTO	EMPLOYEES PROVIDENT FUND BOARD [SSH]	4,000	125,252	10.74
06 NOV 2023 - 06 NOV 2023	BAUTO	PRUDENTIAL PLC [SSH]	-520	61,294	5.256
03 NOV 2023 - 03 NOV 2023	BAUTO	EMPLOYEES PROVIDENT FUND BOARD [SSH]	2,402	121,252	10.399
03 NOV 2023 - 03 NOV 2023	BAUTO	PRUDENTIAL PLC [SSH]	-1,106	61,814	5.301
02 NOV 2023 - 02 NOV 2023	BAUTO	EMPLOYEES PROVIDENT FUND BOARD [SSH]	2,503	118,850	10.193
02 NOV 2023 - 02 NOV 2023	BAUTO	PRUDENTIAL PLC [SSH]	-163	62,920	5.396
01 NOV 2023 - 01 NOV 2023	BAUTO	EMPLOYEES PROVIDENT FUND BOARD [SSH]	2,468	116,347	9.978
01 AUG 2023 - 01 AUG 2023	BERTAM	LIM POH CHOO [SSH]	50	12,447	5.017
03 NOV 2023 - 03 NOV 2023	BIMB	EMPLOYEES PROVIDENT FUND BOARD [SSH]	1,909	367,454	16.213
06 NOV 2023 - 06 NOV 2023	BIPORT	EMPLOYEES PROVIDENT FUND BOARD [SSH]	-100	23,461	5.1
03 NOV 2023 - 03 NOV 2023	BJFOOD	BERJAYA GROUP BERHAD [SSH]	-77,300	892,974	50.903
03 NOV 2023 - 03 NOV 2023	BJFOOD	JUARA SEJATI SDN BHD [SSH]	-77,300	110,971	6.326
01 NOV 2023 - 03 NOV 2023	BJFOOD	BERJAYA CORPORATION BERHAD [SSH]	-74,300	934,725	53.283
10 NOV 2023 - 10 NOV 2023	BORNOIL	DATUK JOSEPH LEE YOK MIN @ AMBROSE [DIR/CEO]	900	1,938,105	16.19
10 NOV 2023 - 10 NOV 2023	BORNOIL	DATUK JOSEPH LEE YOK MIN @ AMBROSE [SSH]	900	655,667	16.19
09 NOV 2023 - 09 NOV 2023	BORNOIL	DATUK JOSEPH LEE YOK MIN @ AMBROSE [DIR/CEO]	3,500	1,937,205	16.182
09 NOV 2023 - 09 NOV 2023	BORNOIL	DATUK JOSEPH LEE YOK MIN @ AMBROSE [SSH]	3,500	654,767	16.182
07 NOV 2023 - 07 NOV 2023	BORNOIL	DATUK JOSEPH LEE YOK MIN @ AMBROSE [DIR/CEO]	2,350	1,933,705	16.153
07 NOV 2023 - 07 NOV 2023	BORNOIL	DATUK JOSEPH LEE YOK MIN @ AMBROSE [SSH]	2,350	651,267	16.153
02 NOV 2023 - 02 NOV 2023	BSLCORP	BC MEDICARE SDN. BHD. [SSH]	-17,500	150,818	7.814
02 NOV 2023 - 02 NOV 2023	BSLCORP	BCM ALLIANCE BERHAD [SSH]	-17,500	150,818	7.814
03 NOV 2023 - 07 NOV 2023	BTM	DATO SERI YONG TU SANG [SSH]	-28,728	204,154	16.247
03 NOV 2023 - 07 NOV 2023	BTM	DATO' SERI YONG TU SANG [DIR/CEO]	-28,728	204,154	16.247
06 NOV 2023 - 06 NOV 2023	BURSA	EMPLOYEES PROVIDENT FUND BOARD [SSH]	40	105,057	12.981
03 NOV 2023 - 03 NOV 2023	BURSA	EMPLOYEES PROVIDENT FUND BOARD [SSH]	146	105,017	12.976
02 NOV 2023 - 02 NOV 2023	BURSA	EMPLOYEES PROVIDENT FUND BOARD [SSH]	202	104,871	12.958
06 NOV 2023 - 06 NOV 2023	CDB	EMPLOYEES PROVIDENT FUND BOARD [SSH]	0.5	1,122,496	9.568
03 NOV 2023 - 03 NOV 2023	CDB	EMPLOYEES PROVIDENT FUND BOARD [SSH]	500	1,122,496	9.568
01 NOV 2023 - 01 NOV 2023	CDB	EMPLOYEES PROVIDENT FUND BOARD [SSH]	500	1,121,996	9.564
15 SEP 2023 - 02 OCT 2023	CHGP	MR GOH BOON LEONG [SSH]	-150	34,410	6.253
03 NOV 2023 - 03 NOV 2023	CHHB	MR LIM CHOW SEN @ LIM CHOW SOON [SSH]	1,300	21,300	0.438
09 NOV 2023 - 09 NOV 2023	CIMB	KUMPULAN WANG PERSARAAN (DIPERBADANKAN) [SSH]	2,200	694,697	6.51
07 NOV 2023 - 07 NOV 2023	CIMB	EMPLOYEES PROVIDENT FUND BOARD [SSH]	5,764	1,607,981	15.08
08 NOV 2023 - 08 NOV 2023	CIMB	KUMPULAN WANG PERSARAAN (DIPERBADANKAN) [SSH]	3,800	692,497	6.49
06 NOV 2023 - 06 NOV 2023	CIMB	EMPLOYEES PROVIDENT FUND BOARD [SSH]	-10,338	1,610,057	15.1
07 NOV 2023 - 07 NOV 2023	CIMB	KUMPULAN WANG PERSARAAN (DIPERBADANKAN) [SSH]	-1,533	688,697	6.46
03 NOV 2023 - 03 NOV 2023	CIMB	EMPLOYEES PROVIDENT FUND BOARD [SSH]	-6,353	1,620,394	15.19
06 NOV 2023 - 06 NOV 2023	CIMB	KUMPULAN WANG PERSARAAN (DIPERBADANKAN) [SSH]	388	690,230	6.47
03 NOV 2023 - 03 NOV 2023	CIMB	KUMPULAN WANG PERSARAAN (DIPERBADANKAN) [SSH]	-3,000	689,843	6.47

Notice Period is 05th Nov - 11st Nov 2023

Effective Change Date	Stock Name	Buyer/ Seller Name [Classification]	Bought / (Sold) ['000]	No. of Shares After Trade ['000]	
			Total	Total	% Held
02 NOV 2023 - 02 NOV 2023	CIMB	EMPLOYEES PROVIDENT FUND BOARD [SSH]	2,743	1,626,747	15.25
01 NOV 2023 - 01 NOV 2023	CIMB	EMPLOYEES PROVIDENT FUND BOARD [SSH]	2,774	1,624,004	15.23
09 NOV 2023 - 09 NOV 2023	CLMT	KUMPULAN WANG PERSARAAN (DIPERBADANKAN) [SSH]	68	258,048	9.441
07 NOV 2023 - 07 NOV 2023	CLMT	EMPLOYEES PROVIDENT FUND BOARD [SSH]	1,695	405,001	14.817
08 NOV 2023 - 08 NOV 2023	CLMT	KUMPULAN WANG PERSARAAN (DIPERBADANKAN) [SSH]	75	257,980	9.438
06 NOV 2023 - 06 NOV 2023	CLMT	EMPLOYEES PROVIDENT FUND BOARD [SSH]	1,609	403,306	14.755
07 NOV 2023 - 07 NOV 2023	CLMT	KUMPULAN WANG PERSARAAN (DIPERBADANKAN) [SSH]	883	257,905	9.435
03 NOV 2023 - 03 NOV 2023	CLMT	EMPLOYEES PROVIDENT FUND BOARD [SSH]	254	401,697	14.696
06 NOV 2023 - 06 NOV 2023	CLMT	KUMPULAN WANG PERSARAAN (DIPERBADANKAN) [SSH]	391	257,022	9.403
02 NOV 2023 - 02 NOV 2023	CLMT	EMPLOYEES PROVIDENT FUND BOARD [SSH]	126	401,443	14.686
03 NOV 2023 - 03 NOV 2023	CLMT	KUMPULAN WANG PERSARAAN (DIPERBADANKAN) [SSH]	62	256,631	9.389
01 NOV 2023 - 01 NOV 2023	CLMT	EMPLOYEES PROVIDENT FUND BOARD [SSH]	161	401,317	14.682
10 NOV 2023 - 10 NOV 2023	CLOUDPT	ERA JASAKITA SDN BHD [SSH]	400	281,804	53.01
10 NOV 2023 - 10 NOV 2023	CLOUDPT	MR CHOONG WAI HOONG [DIR/CEO]	400	324,876	61.112
10 NOV 2023 - 10 NOV 2023	CLOUDPT	MR CHOONG WAI HOONG [SSH]	400	324,876	61.112
10 NOV 2023 - 10 NOV 2023	CLOUDPT	MR YEW CHOONG CHEONG [DIR/CEO]	400	324,876	61.112
10 NOV 2023 - 10 NOV 2023	CLOUDPT	MR YEW CHOONG CHEONG [SSH]	400	324,876	61.112
08 NOV 2023 - 08 NOV 2023	COMCORP	DATUK TAN KAK SENG [DIR/CEO]	70,000	286,058	63.217
08 NOV 2023 - 08 NOV 2023	COMCORP	DATUK TAN KAK SENG [SSH]	70,000	286,058	63.217
08 NOV 2023 - 08 NOV 2023	COMCORP	JT CONGLOMERATE SDN. BHD. [SSH]	70,000	286,058	63.217
07 NOV 2023 - 07 NOV 2023	CTOS	ABRDN HOLDINGS LIMITED (FORMERLY KNOWN AS ABERDEEN ASSET MANAGEMENT PLC) [SSH]	102	142,324	6.161
07 NOV 2023 - 07 NOV 2023	CTOS	ABRDN MALAYSIA SDN BHD [SSH]	102	140,606	6.087
07 NOV 2023 - 07 NOV 2023	CTOS	ABRDN PLC [SSH]	102	142,324	6.161
06 NOV 2023 - 06 NOV 2023	CTOS	ABRDN HOLDINGS LIMITED (FORMERLY KNOWN AS ABERDEEN ASSET MANAGEMENT PLC) [SSH]	111	142,223	6.157
06 NOV 2023 - 06 NOV 2023	CTOS	ABRDN MALAYSIA SDN BHD [SSH]	111	140,504	6.082
06 NOV 2023 - 06 NOV 2023	CTOS	ABRDN PLC [SSH]	111	142,223	6.157
03 NOV 2023 - 03 NOV 2023	CTOS	ABRDN HOLDINGS LIMITED (FORMERLY KNOWN AS ABERDEEN ASSET MANAGEMENT PLC) [SSH]	201	142,112	6.152
03 NOV 2023 - 03 NOV 2023	CTOS	ABRDN MALAYSIA SDN BHD [SSH]	201	140,393	6.078
03 NOV 2023 - 03 NOV 2023	CTOS	ABRDN PLC [SSH]	201	142,112	6.152
02 NOV 2023 - 02 NOV 2023	CTOS	ABRDN HOLDINGS LIMITED (FORMERLY KNOWN AS ABERDEEN ASSET MANAGEMENT PLC) [SSH]	1,835	141,911	6.143
02 NOV 2023 - 02 NOV 2023	CTOS	ABRDN MALAYSIA SDN BHD [SSH]	1,835	140,193	6.069
02 NOV 2023 - 02 NOV 2023	CTOS	ABRDN PLC [SSH]	1,835	141,911	6.143
08 NOV 2023 - 08 NOV 2023	CYBERE	TAN SRI DATUK DR RAFIAH BINTI SALIM [DIR/CEO]	405	688	0.041
08 NOV 2023 - 08 NOV 2023	CYPARK	DATO' DAUD BIN AHMAD [SSH]	5,500	68,839	8.366
03 NOV 2023 - 03 NOV 2023	CYPARK	DATO' DAUD BIN AHMAD [SSH]	18,000	63,339	7.749
06 NOV 2023 - 06 NOV 2023	D&O	EMPLOYEES PROVIDENT FUND BOARD [SSH]	100	69,865	5.642
03 NOV 2023 - 03 NOV 2023	D&O	EMPLOYEES PROVIDENT FUND BOARD [SSH]	198	69,765	5.634
01 NOV 2023 - 01 NOV 2023	D&O	EMPLOYEES PROVIDENT FUND BOARD [SSH]	300	69,566	5.618
02 NOV 2023 - 02 NOV 2023	DIALOG	EMPLOYEES PROVIDENT FUND BOARD [SSH]	1,340	847,449	15.02
01 NOV 2023 - 01 NOV 2023	DIALOG	EMPLOYEES PROVIDENT FUND BOARD [SSH]	1,886	846,109	15
07 NOV 2023 - 07 NOV 2023	DLADY	CITIGROUP NOMINEES (TEMPATAN) SDN BHD EMPLOYEES PROVIDENT FUND BOARD [SSH]	-2	5,478	8.559
06 NOV 2023 - 06 NOV 2023	DLADY	CITIGROUP NOMINEES (TEMPATAN) SDN BHD EMPLOYEES PROVIDENT FUND BOARD [SSH]	-8	5,480	8.563
03 NOV 2023 - 03 NOV 2023	DLADY	CITIGROUP NOMINEES (TEMPATAN) SDN BHD EMPLOYEES PROVIDENT FUND BOARD [SSH]	-3	5,489	8.576
02 NOV 2023 - 02 NOV 2023	DLADY	CITIGROUP NOMINEES (TEMPATAN) SDN BHD EMPLOYEES PROVIDENT FUND BOARD [SSH]	-5	5,492	8.581
01 NOV 2023 - 01 NOV 2023	DLADY	CITIGROUP NOMINEES (TEMPATAN) SDN BHD EMPLOYEES PROVIDENT FUND BOARD [SSH]	-1	5,497	8.59
01 NOV 2023 - 01 NOV 2023	ECONBHD	EMPLOYEES PROVIDENT FUND BOARD [SSH]	-800	101,839	7.184
07 NOV 2023 - 07 NOV 2023	ECOWLD	TAN SRI DATO' SRI LIEW KEE SIN [DIR/CEO]	219,875	655,113	22.249
07 NOV 2023 - 07 NOV 2023	ECOWLD	TAN SRI DATO' SRI LIEW KEE SIN [SSH]	219,875	655,113	22.249
07 NOV 2023 - 07 NOV 2023	ECOWLD-WB	TAN SRI DATO' SRI LIEW KEE SIN [DIR/CEO]	44,495	131,543	22.338
06 NOV 2023 - 07 NOV 2023	EDEN	KOPERASI BELIA ISLAM MALAYSIA BERHAD [SSH]	12,762	50,280	10.944
09 NOV 2023 - 09 NOV 2023	EITA	MR LIM JOO SWEE [DIR/CEO]	-400	8,332	9.627
08 NOV 2023 - 08 NOV 2023	EITA	MR LIM JOO SWEE [DIR/CEO]	-200	8,732	10.089
07 NOV 2023 - 07 NOV 2023	EITA	MR LIM JOO SWEE [DIR/CEO]	-200	8,932	10.32
02 NOV 2023 - 02 NOV 2023	F&N	EMPLOYEES PROVIDENT FUND BOARD [SSH]	128	43,518	11.865
07 NOV 2023 - 07 NOV 2023	FFB	EMPLOYEES PROVIDENT FUND BOARD [SSH]	52	160,444	8.571
07 NOV 2023 - 07 NOV 2023	FFB	ABRDN HOLDINGS LIMITED (FORMERLY KNOWN AS ABERDEEN ASSET MANAGEMENT PLC) [SSH]	106	115,534	6.172
07 NOV 2023 - 07 NOV 2023	FFB	ABRDN MALAYSIA SDN BHD [SSH]	77	114,135	6.097

Disclaimer: The Information in Insider Activity is extracted from www.shareinvestor.com/fundamental/insider_trades. The information on this page is provided as a service to readers. It does not constitute financial advice and/or any investment recommendations. We assume no liability for damages resulting from or arising out of the use of such information. Whilst every effort is made to ensure accuracy, the information presented is not the official record of shareholder filings. Readers are advised to read the original filings on the Bursa Malaysia website at www.bursamalaysia.com

PURNELL

ESCAPE II FORGED CARBON



PURNELL ASIA
TEL.: +65.98173378

EMAIL: SALES.SG@PURNELLWATCHES.COM

@ PURNELL_OFFICIAL

WWW.PURNELLWATCHES.COM

Notice Period is 05th Nov - 11st Nov 2023

Effective Change Date	Stock Name	Buyer/ Seller Name [Classification]	Bought / (Sold) ['000]		No. of Shares After Trade ['000]	
			Total	Total	% Held	% Held
07 NOV 2023 - 07 NOV 2023	FFB	ABRDN PLC [SSH]	106	115,534	6.172	
03 NOV 2023 - 03 NOV 2023	FFB	EMPLOYEES PROVIDENT FUND BOARD [SSH]	114	160,822	8.591	
03 NOV 2023 - 03 NOV 2023	FFB	ABRDN HOLDINGS LIMITED (FORMERLY KNOWN AS ABERDEEN ASSET MANAGEMENT PLC) [SSH]	168	115,428	6.166	
03 NOV 2023 - 03 NOV 2023	FFB	ABRDN MALAYSIA SDN BHD [SSH]	168	114,058	6.093	
03 NOV 2023 - 03 NOV 2023	FFB	ABRDN PLC [SSH]	168	115,428	6.166	
02 NOV 2023 - 02 NOV 2023	FFB	EMPLOYEES PROVIDENT FUND BOARD [SSH]	541	161,138	8.608	
02 NOV 2023 - 02 NOV 2023	FFB	ABRDN HOLDINGS LIMITED (FORMERLY KNOWN AS ABERDEEN ASSET MANAGEMENT PLC) [SSH]	822	115,260	6.157	
02 NOV 2023 - 02 NOV 2023	FFB	ABRDN MALAYSIA SDN BHD [SSH]	795	113,890	6.084	
02 NOV 2023 - 02 NOV 2023	FFB	ABRDN PLC [SSH]	822	115,260	6.157	
08 NOV 2023 - 09 NOV 2023	FRONTKN	MR OOI KENG THYE [SSH]	-4,200	166,024	10.568	
07 NOV 2023 - 07 NOV 2023	FRONTKN	EMPLOYEES PROVIDENT FUND BOARD [SSH]	501	85,470	5.441	
06 NOV 2023 - 06 NOV 2023	FRONTKN	EMPLOYEES PROVIDENT FUND BOARD [SSH]	700	84,969	5.409	
06 NOV 2023 - 07 NOV 2023	FRONTKN	MR OOI KENG THYE [SSH]	-4,630	170,224	10.836	
03 NOV 2023 - 03 NOV 2023	FRONTKN	EMPLOYEES PROVIDENT FUND BOARD [SSH]	444	85,366	5.434	
02 NOV 2023 - 02 NOV 2023	FRONTKN	EMPLOYEES PROVIDENT FUND BOARD [SSH]	431	84,922	5.406	
02 NOV 2023 - 03 NOV 2023	FRONTKN	MR OOI KENG THYE [SSH]	-3,999	174,854	11.13	
01 NOV 2023 - 01 NOV 2023	FRONTKN	EMPLOYEES PROVIDENT FUND BOARD [SSH]	2,756	84,491	5.378	
07 NOV 2023 - 07 NOV 2023	GAMUDA	EMPLOYEES PROVIDENT FUND BOARD (EPF BOARD) [SSH]	-1,815	300,465	11.13	
06 NOV 2023 - 06 NOV 2023	GAMUDA	EMPLOYEES PROVIDENT FUND BOARD (EPF BOARD) [SSH]	-2,850	302,280	11.2	
03 NOV 2023 - 03 NOV 2023	GAMUDA	EMPLOYEES PROVIDENT FUND BOARD (EPF BOARD) [SSH]	-1,768	305,130	11.31	
02 NOV 2023 - 02 NOV 2023	GAMUDA	EMPLOYEES PROVIDENT FUND BOARD (EPF BOARD) [SSH]	-570	306,897	11.37	
01 NOV 2023 - 01 NOV 2023	GAMUDA	EMPLOYEES PROVIDENT FUND BOARD (EPF BOARD) [SSH]	-1,750	307,467	11.4	
07 NOV 2023 - 07 NOV 2023	GASMSIA	EMPLOYEES PROVIDENT FUND BOARD [SSH]	-102	79,818	6.216	
06 NOV 2023 - 06 NOV 2023	GASMSIA	EMPLOYEES PROVIDENT FUND BOARD [SSH]	-257	79,920	6.224	
02 NOV 2023 - 02 NOV 2023	GASMSIA	EMPLOYEES PROVIDENT FUND BOARD [SSH]	195	80,176	6.244	
01 NOV 2023 - 01 NOV 2023	GASMSIA	EMPLOYEES PROVIDENT FUND BOARD [SSH]	-48	79,981	6.229	
07 NOV 2023 - 07 NOV 2023	GCB	EMPLOYEES PROVIDENT FUND BOARD [SSH]	1,000	63,126	5.375	
01 NOV 2023 - 01 NOV 2023	GCB	EMPLOYEES PROVIDENT FUND BOARD [SSH]	169	62,126	5.289	
08 NOV 2023 - 08 NOV 2023	GESHEN	MR CHAN CHOONG KONG [SSH]	-7,000	34,727	28.563	
08 NOV 2023 - 08 NOV 2023	GESHEN	PELITA NIAGAMAS SDN. BHD. [SSH]	-7,000	34,626	28.48	
10 NOV 2023 - 10 NOV 2023	HCK	DATO' DIONG TAK CHONG @ TIONG TAK CHONG [DIR/CEO]	-500	1,764	0.343	
09 NOV 2023 - 09 NOV 2023	HCK	HIICHIKOK EQUITIES SDN BHD [SSH]	4,062	291,847	56.66	
09 NOV 2023 - 09 NOV 2023	HCK	TAN SRI HII CHII KOK @ HII CHEE KOK [DIR/CEO]	4,062	293,897	57.058	
09 NOV 2023 - 09 NOV 2023	HCK	TAN SRI HII CHII KOK @ HII CHEE KOK [SSH]	4,062	293,897	57.058	
09 NOV 2023 - 09 NOV 2023	HCK-WA	TAN SRI HII CHII KOK @ HII CHEE KOK [DIR/CEO]	4,062	24,181	20.439	
06 NOV 2023 - 07 NOV 2023	HEKTAR	HEKTAR BLACK SDN BHD [SSH]	-1,550	126,463	25.014	
01 NOV 2023 - 02 NOV 2023	HEKTAR	HEKTAR BLACK SDN BHD [SSH]	-950	128,013	25.32	
07 NOV 2023 - 07 NOV 2023	HLBANK	EMPLOYEES PROVIDENT FUND BOARD [SSH]	-452	205,051	9.827	
06 NOV 2023 - 06 NOV 2023	HLBANK	EMPLOYEES PROVIDENT FUND BOARD [SSH]	-425	205,503	9.849	
01 NOV 2023 - 01 NOV 2023	HLBANK	EMPLOYEES PROVIDENT FUND BOARD [SSH]	-76	205,928	9.869	
03 NOV 2023 - 03 NOV 2023	IFCAMSC	MR YONG KEANG CHEUN [DIR/CEO]	300	223,995	37.011	
03 NOV 2023 - 03 NOV 2023	IFCAMSC	MR YONG KEANG CHEUN [SSH]	300	223,995	37.011	
03 NOV 2023 - 03 NOV 2023	IFCAMSC	MR YONG KIAN KEONG [DIR/CEO]	300	223,995	37.012	
03 NOV 2023 - 03 NOV 2023	IFCAMSC	MR YONG KIAN KEONG [SSH]	300	223,995	37.012	
09 NOV 2023 - 09 NOV 2023	IGBREIT	KUMPULAN WANG PERSARAAN (DIPERBADANKAN) [SSH]	-49	262,517	7.289	
08 NOV 2023 - 08 NOV 2023	IGBREIT	KUMPULAN WANG PERSARAAN (DIPERBADANKAN) [SSH]	-537	262,566	7.29	
07 NOV 2023 - 07 NOV 2023	IGBREIT	KUMPULAN WANG PERSARAAN (DIPERBADANKAN) [SSH]	-434	263,103	7.305	
06 NOV 2023 - 06 NOV 2023	IGBREIT	KUMPULAN WANG PERSARAAN (DIPERBADANKAN) [SSH]	-810	263,537	7.317	
03 NOV 2023 - 03 NOV 2023	IGBREIT	KUMPULAN WANG PERSARAAN (DIPERBADANKAN) [SSH]	-570	264,347	7.34	
07 NOV 2023 - 07 NOV 2023	IHH	EMPLOYEES PROVIDENT FUND BOARD [SSH]	-1,998	944,585	10.725	
06 NOV 2023 - 06 NOV 2023	IHH	EMPLOYEES PROVIDENT FUND BOARD [SSH]	947	946,582	10.748	
03 NOV 2023 - 03 NOV 2023	IHH	EMPLOYEES PROVIDENT FUND BOARD [SSH]	-1,589	945,636	10.737	
02 NOV 2023 - 02 NOV 2023	IHH	EMPLOYEES PROVIDENT FUND BOARD [SSH]	-1,192	947,225	10.755	
01 NOV 2023 - 01 NOV 2023	IHH	EMPLOYEES PROVIDENT FUND BOARD [SSH]	2,500	948,404	10.769	
07 NOV 2023 - 07 NOV 2023	IJM	EMPLOYEES PROVIDENT FUND BOARD [SSH]	206	589,906	16.825	
06 NOV 2023 - 06 NOV 2023	IJM	EMPLOYEES PROVIDENT FUND BOARD [SSH]	44	589,700	16.819	
03 NOV 2023 - 03 NOV 2023	IJM	URUSHARTA JAMAAH SDN BHD [SSH]	938	177,237	5.055	
02 NOV 2023 - 02 NOV 2023	IJM	EMPLOYEES PROVIDENT FUND BOARD [SSH]	-501	589,656	16.818	
07 NOV 2023 - 08 NOV 2023	IMASPRO	MR YU KUAN CHON [SSH]	759	11,629	14.536	
03 NOV 2023 - 03 NOV 2023	IMPIANA	ADVANCE OPPORTUNITIES FUND I [SSH]	42,589	42,589	5.013	
07 NOV 2023 - 07 NOV 2023	INARI	EMPLOYEES PROVIDENT FUND BOARD [SSH]	-2,730	365,213	9.753	
06 NOV 2023 - 06 NOV 2023	INARI	EMPLOYEES PROVIDENT FUND BOARD [SSH]	-700	367,943	9.825	
03 NOV 2023 - 03 NOV 2023	INARI	EMPLOYEES PROVIDENT FUND BOARD [SSH]	-3,369	368,643	9.844	
02 NOV 2023 - 02 NOV 2023	INARI	EMPLOYEES PROVIDENT FUND BOARD [SSH]	-1,500	372,012	9.934	
01 NOV 2023 - 01 NOV 2023	INARI	EMPLOYEES PROVIDENT FUND BOARD [SSH]	-216	373,512	9.974	
03 NOV 2023 - 03 NOV 2023	IOICORP	EMPLOYEES PROVIDENT FUND BOARD [SSH]	2	697,953	11.251	
02 NOV 2023 - 02 NOV 2023	IOICORP	EMPLOYEES PROVIDENT FUND BOARD [SSH]	591	697,952	11.251	
01 NOV 2023 - 01 NOV 2023	IOICORP	EMPLOYEES PROVIDENT FUND BOARD [SSH]	1,129	697,361	11.241	
07 NOV 2023 - 07 NOV 2023	IOIPG	EMPLOYEES PROVIDENT FUND BOARD [SSH]	-43	378,349	6.871	
06 NOV 2023 - 06 NOV 2023	IOIPG	EMPLOYEES PROVIDENT FUND BOARD [SSH]	-1,311	378,392	6.872	
02 NOV 2023 - 02 NOV 2023	IOIPG	EMPLOYEES PROVIDENT FUND BOARD [SSH]	-363	379,969	6.901	
06 NOV 2023 - 06 NOV 2023	JIANKUN	MR EDWIN SILVESTER DAS [DIR/CEO]	10,989	10,989	2.915	
07 NOV 2023 - 07 NOV 2023	KERJAYA	EMPLOYEES PROVIDENT FUND BOARD [SSH]	490	73,034	5.792	
06 NOV 2023 - 06 NOV 2023	KERJAYA	EMPLOYEES PROVIDENT FUND BOARD [SSH]	-2,500	72,544	5.753	
03 NOV 2023 - 03 NOV 2023	KERJAYA	EMPLOYEES PROVIDENT FUND BOARD [SSH]	-1,311	75,044	5.951	

Notice Period is 05th Nov - 11st Nov 2023

Effective Change Date	Stock Name	Buyer/ Seller Name [Classification]	Bought / (Sold) ['000]		No. of Shares After Trade ['000]	
			Total	Total	% Held	% Held
02 NOV 2023 - 02 NOV 2023	KERJAYA	EMPLOYEES PROVIDENT FUND BOARD [SSH]	-1,641	76,355	6.055	
01 NOV 2023 - 01 NOV 2023	KERJAYA	EMPLOYEES PROVIDENT FUND BOARD [SSH]	-300	77,996	6.185	
01 NOV 2023 - 02 NOV 2023	KEYASIC	NG GEOK LUI [SSH]	-2,590	93,106	6.681	
07 NOV 2023 - 07 NOV 2023	KLK	EMPLOYEES PROVIDENT FUND BOARD [SSH]	-67	118,567	10.994	
06 NOV 2023 - 06 NOV 2023	KLK	EMPLOYEES PROVIDENT FUND BOARD [SSH]	-214	118,633	11	
03 NOV 2023 - 03 NOV 2023	KLK	EMPLOYEES PROVIDENT FUND BOARD [SSH]	-122	118,847	11.02	
02 NOV 2023 - 02 NOV 2023	KLK	EMPLOYEES PROVIDENT FUND BOARD [SSH]	-5	118,969	11.032	
01 NOV 2023 - 01 NOV 2023	KLK	EMPLOYEES PROVIDENT FUND BOARD [SSH]	444	118,974	11.032	
03 NOV 2023 - 03 NOV 2023	KOSSAN	ABRDN HOLDINGS LIMITED (FORMERLY KNOWN AS ABERDEEN ASSET MANAGEMENT PLC) [SSH]	23	152,112	5.961	
03 NOV 2023 - 03 NOV 2023	KOSSAN	ABRDN MALAYSIA SDN BHD [SSH]	23	149,707	5.867	
03 NOV 2023 - 03 NOV 2023	KOSSAN	ABRDN PLC [SSH]	23	152,112	5.961	
02 NOV 2023 - 02 NOV 2023	KOSSAN	ABRDN HOLDINGS LIMITED (FORMERLY KNOWN AS ABERDEEN ASSET MANAGEMENT PLC) [SSH]	76	152,089	5.96	
02 NOV 2023 - 02 NOV 2023	KOSSAN	ABRDN MALAYSIA SDN BHD [SSH]	76	149,684	5.866	
02 NOV 2023 - 02 NOV 2023	KOSSAN	ABRDN PLC [SSH]	76	152,089	5.96	
09 NOV 2023 - 09 NOV 2023	LBS	TAN SRI DATO' SRI IR. LIM HOCK SAN JP [DIR/CEO]	100	609,172	39.553	
09 NOV 2023 - 09 NOV 2023	LBS	TAN SRI DATO' SRI IR. LIM HOCK SAN JP [SSH]	100	604,419	39.245	
06 NOV 2023 - 07 NOV 2023	LSH	DATUK LIM KENG GUAN [DIR/CEO]	-40	573,051	81.127	
06 NOV 2023 - 07 NOV 2023	LSH	DATUK LIM KENG GUAN [SSH]	-40	573,051	81.127	
03 NOV 2023 - 03 NOV 2023	MAGNI	MR TAN POAY SENG [DIR/CEO]	65	119,088	27.47	
08 NOV 2023 - 08 NOV 2023	MALAKOF	KUMPULAN WANG PERSARAAN (DIPERBADANKAN) ("KWAP") [SSH]	1,619	448,684	9.181	
02 NOV 2023 - 02 NOV 2023	MALAKOF	URUSHARTA JAMAAH SDN. BHD. [SSH]	-40	499,790	10.227	
26 OCT 2023 - 26 OCT 2023	MALAKOF	URUSHARTA JAMAAH SDN. BHD. [SSH]	-50	499,830	10.227	
25 OCT 2023 - 25 OCT 2023	MALAKOF	URUSHARTA JAMAAH SDN. BHD. [SSH]	-50	499,880	10.228	
24 OCT 2023 - 24 OCT 2023	MALAKOF	URUSHARTA JAMAAH SDN. BHD. [SSH]	-70	499,930	10.229	
07 NOV 2023 - 07 NOV 2023	MAXIS	EMPLOYEES PROVIDENT FUND BOARD (EPF BOARD) [SSH]	300	865,404	11.049	
06 NOV 2023 - 06 NOV 2023	MAXIS	EMPLOYEES PROVIDENT FUND BOARD (EPF BOARD) [SSH]	300	865,104	11.046	
07 NOV 2023 - 07 NOV 2023	MAYBANK	EMPLOYEES PROVIDENT FUND BOARD [SSH]	-2,098	1,618,771	13.422	
06 NOV 2023 - 06 NOV 2023	MAYBANK	EMPLOYEES PROVIDENT FUND BOARD [SSH]	-5,507	1,620,869	13.44	
03 NOV 2023 - 03 NOV 2023	MAYBANK	EMPLOYEES PROVIDENT FUND BOARD [SSH]	-3,686	1,626,376	13.485	
02 NOV 2023 - 02 NOV 2023	MAYBANK	EMPLOYEES PROVIDENT FUND BOARD [SSH]	2,343	1,630,061	13.516	
02 NOV 2023 - 02 NOV 2023	MAYBANK	PERMODALAN NASIONAL BERHAD [SSH]	-1,560	815,560	6.762	
02 NOV 2023 - 02 NOV 2023	MAYBANK	YAYASAN PELABURAN BUMIPUTRA [SSH]	-1,560	815,560	6.762	
03 NOV 2023 - 03 NOV 2023	MAYBANK	KUMPULAN WANG PERSARAAN (DIPERBADANKAN) ("KWAP") [SSH]	500	603,851	5.007	
01 NOV 2023 - 01 NOV 2023	MAYBANK	EMPLOYEES PROVIDENT FUND BOARD [SSH]	378	1,627,718	13.497	
02 NOV 2023 - 02 NOV 2023	MBMR	EMPLOYEES PROVIDENT FUND BOARD [SSH]	-285	24,792	6.342	
01 NOV 2023 - 01 NOV 2023	MBMR	EMPLOYEES PROVIDENT FUND BOARD [SSH]	-187	25,077	6.415	
07 NOV 2023 - 07 NOV 2023	MBRIGHT	MR PHANG KIEW LIM [DIR/CEO]	7,500	7,500	0.314	
07 NOV 2023 - 07 NOV 2023	MCEHLDG	WOO CHIEW LOONG [SSH]	15	5,452	8.825	
03 NOV 2023 - 06 NOV 2023	MCEHLDG	WOO CHIEW LOONG [SSH]	37	5,437	8.801	
06 NOV 2023 - 06 NOV 2023	MESTRON	MR LOON CHIN SENG [DIR/CEO]	-25,000	23,674	6.103	
06 NOV 2023 - 07 NOV 2023	MESTRON	MR POR TEONG ENG [DIR/CEO]	-25,000	11,051	2.849	
07 NOV 2023 - 07 NOV 2023	MISC	EMPLOYEES PROVIDENT FUND BOARD [SSH]	-1,332	557,100	12.481	
06 NOV 2023 - 06 NOV 2023	MISC	EMPLOYEES PROVIDENT FUND BOARD [SSH]	-1,811	558,431	12.51	
03 NOV 2023 - 03 NOV 2023	MISC	EMPLOYEES PROVIDENT FUND BOARD [SSH]	-1,240	560,242	12.551	
02 NOV 2023 - 02 NOV 2023	MISC	EMPLOYEES PROVIDENT FUND BOARD [SSH]	-4,616	561,482	12.579	
01 NOV 2023 - 01 NOV 2023	MISC	EMPLOYEES PROVIDENT FUND BOARD [SSH]	-2,000	566,098	12.682	
07 NOV 2023 - 07 NOV 2023	NESTLE	EMPLOYEES PROVIDENT FUND BOARD [SSH]	147	22,341	9.527	
06 NOV 2023 - 06 NOV 2023	NESTLE	EMPLOYEES PROVIDENT FUND BOARD [SSH]	49	22,193	9.464	
01 NOV 2023 - 01 NOV 2023	NESTLE	EMPLOYEES PROVIDENT FUND BOARD [SSH]	132	22,144	9.443	
07 NOV 2023 - 07 NOV 2023	ORIENT	EMPLOYEES PROVIDENT FUND BOARD [SSH]	-1	49,934	8.049	
06 NOV 2023 - 06 NOV 2023	ORIENT	EMPLOYEES PROVIDENT FUND BOARD [SSH]	146	49,935	8.049	
02 NOV 2023 - 02 NOV 2023	ORIENT	EMPLOYEES PROVIDENT FUND BOARD [SSH]	-173	49,790	8.026	
01 NOV 2023 - 01 NOV 2023	ORIENT	EMPLOYEES PROVIDENT FUND BOARD [SSH]	59	49,963	8.054	
07 NOV 2023 - 07 NOV 2023	PADINI	EMPLOYEES PROVIDENT FUND BOARD [SSH]	-13	38,431	5.841	
06 NOV 2023 - 06 NOV 2023	PADINI	EMPLOYEES PROVIDENT FUND BOARD [SSH]	90	38,444	5.843	
03 NOV 2023 - 03 NOV 2023	PADINI	EMPLOYEES PROVIDENT FUND BOARD [SSH]	-8	38,355	5.83	
02 NOV 2023 - 02 NOV 2023	PADINI	EMPLOYEES PROVIDENT FUND BOARD [SSH]	94	38,363	5.831	
01 NOV 2023 - 01 NOV 2023	PADINI	EMPLOYEES PROVIDENT FUND BOARD [SSH]	145	38,269	5.817	
03 NOV 2023 - 03 NOV 2023	PANAMY	EMPLOYEES PROVIDENT FUND BOARD [SSH]	-2	7,601	12.513	
02 NOV 2023 - 02 NOV 2023	PANAMY	EMPLOYEES PROVIDENT FUND BOARD [SSH]	-4	7,603	12.515	
01 NOV 2023 - 01 NOV 2023	PANAMY	EMPLOYEES PROVIDENT FUND BOARD [SSH]	31	7,607		

Notice Period is 05th Nov – 11st Nov 2023

Effective Change Date	Stock Name	Buyer/ Seller Name [Classification]	Bought / (Sold) ('000)	No. of Shares After Trade ('000)	
			Total	Total	% Held
02 NOV 2023 - 02 NOV 2023	PETDAG	EMPLOYEES PROVIDENT FUND BOARD ("EPF BOARD") [SSH]	0.3	120,833	12.163
07 NOV 2023 - 07 NOV 2023	PETGAS	EMPLOYEES PROVIDENT FUND BOARD [SSH]	-871	267,701	13.529
06 NOV 2023 - 06 NOV 2023	PETGAS	EMPLOYEES PROVIDENT FUND BOARD [SSH]	-2,000	268,572	13.573
03 NOV 2023 - 03 NOV 2023	PETGAS	EMPLOYEES PROVIDENT FUND BOARD [SSH]	-295	270,572	13.674
06 NOV 2023 - 06 NOV 2023	PETGAS	KUMPULAN WANG PERSARAAN (DIPERBADANKAN) ("KWAP") [SSH]	49	199,329	10.074
02 NOV 2023 - 02 NOV 2023	PETGAS	EMPLOYEES PROVIDENT FUND BOARD [SSH]	-669	270,867	13.689
03 NOV 2023 - 03 NOV 2023	PETGAS	KUMPULAN WANG PERSARAAN (DIPERBADANKAN) ("KWAP") [SSH]	50	199,280	10.071
01 NOV 2023 - 01 NOV 2023	PETGAS	EMPLOYEES PROVIDENT FUND BOARD [SSH]	-1,826	271,537	13.723
07 NOV 2023 - 07 NOV 2023	PPB	EMPLOYEES PROVIDENT FUND BOARD [SSH]	-165	141,796	9.967
06 NOV 2023 - 06 NOV 2023	PPB	EMPLOYEES PROVIDENT FUND BOARD [SSH]	-760	141,961	9.979
03 NOV 2023 - 03 NOV 2023	PPB	EMPLOYEES PROVIDENT FUND BOARD [SSH]	-500	142,746	10.034
02 NOV 2023 - 02 NOV 2023	PPB	EMPLOYEES PROVIDENT FUND BOARD [SSH]	-552	143,261	10.07
01 NOV 2023 - 01 NOV 2023	PPB	EMPLOYEES PROVIDENT FUND BOARD [SSH]	-153	143,813	10.109
08 NOV 2023 - 08 NOV 2023	PPHB	KOAY CHIEW POH [DIR/CEO]	530	129,254	48.542
07 NOV 2023 - 07 NOV 2023	PTRANS	DATIN SRI LIM SOW KENG [SSH]	-968	216,922	29.646
07 NOV 2023 - 07 NOV 2023	PTRANS	DATO' SRI CHEONG KONG FITT [DIR/CEO]	-968	216,922	29.645
07 NOV 2023 - 07 NOV 2023	PTRANS	DATO' SRI CHEONG KONG FITT [SSH]	-968	216,922	29.645
07 NOV 2023 - 07 NOV 2023	RHBBANK	EMPLOYEES PROVIDENT FUND BOARD [SSH]	-97	1,756,873	40.988
06 NOV 2023 - 06 NOV 2023	RHBBANK	EMPLOYEES PROVIDENT FUND BOARD [SSH]	732	1,756,970	40.99
03 NOV 2023 - 03 NOV 2023	RHBBANK	EMPLOYEES PROVIDENT FUND BOARD [SSH]	-476	1,756,238	40.973
02 NOV 2023 - 02 NOV 2023	RHBBANK	EMPLOYEES PROVIDENT FUND BOARD [SSH]	1,388	1,756,714	40.984
08 NOV 2023 - 09 NOV 2023	SALCON	BERJAYA CAPITAL BERHAD [SSH]	12,000	75,100	7.42
08 NOV 2023 - 09 NOV 2023	SALCON	BERJAYA CORPORATION BERHAD [SSH]	12,000	75,100	7.42
08 NOV 2023 - 09 NOV 2023	SALCON	BERJAYA GROUP BERHAD [SSH]	12,000	75,100	7.42
08 NOV 2023 - 09 NOV 2023	SALCON	BIZURAI BIJAK (M) SDN BHD [SSH]	12,000	75,100	7.42
08 NOV 2023 - 09 NOV 2023	SALCON	INTER-PACIFIC CAPITAL SDN BHD [SSH]	12,000	75,100	7.42
08 NOV 2023 - 09 NOV 2023	SALCON	JUARA SEJATI SDN BHD [SSH]	12,000	75,100	7.42
03 NOV 2023 - 03 NOV 2023	SALCON	BERJAYA CAPITAL BERHAD [SSH]	8,100	63,100	6.235
03 NOV 2023 - 03 NOV 2023	SALCON	BERJAYA CORPORATION BERHAD [SSH]	8,100	63,100	6.235
03 NOV 2023 - 03 NOV 2023	SALCON	BERJAYA GROUP BERHAD [SSH]	8,100	63,100	6.235
03 NOV 2023 - 03 NOV 2023	SALCON	BIZURAI BIJAK (M) SDN BHD [SSH]	8,100	63,100	6.235
03 NOV 2023 - 03 NOV 2023	SALCON	INTER-PACIFIC CAPITAL SDN BHD [SSH]	8,100	63,100	6.235
03 NOV 2023 - 03 NOV 2023	SALCON	JUARA SEJATI SDN BHD [SSH]	8,100	63,100	6.235
02 NOV 2023 - 02 NOV 2023	SALCON	BERJAYA GROUP BERHAD [SSH]	4,775	55,000	5.434
02 NOV 2023 - 02 NOV 2023	SALCON	BIZURAI BIJAK (M) SDN BHD [SSH]	4,775	55,000	5.434
02 NOV 2023 - 02 NOV 2023	SALCON	JUARA SEJATI SDN BHD [SSH]	4,775	55,000	5.434
08 NOV 2023 - 08 NOV 2023	SAPIND	MR KOH KOK HOOI [SSH]	23	6,777	9.312
07 NOV 2023 - 07 NOV 2023	SAPIND	MR KOH KOK HOOI [SSH]	17	6,754	9.28
06 NOV 2023 - 06 NOV 2023	SAPIND	MR KOH KOK HOOI [SSH]	4	6,737	9.257
03 NOV 2023 - 03 NOV 2023	SAPIND	MR KOH KOK HOOI [SSH]	19	6,733	9.251
06 NOV 2023 - 08 NOV 2023	SCIENTX	MR LIM PENG CHEONG [DIR/CEO]	807	846,545	54.578
06 NOV 2023 - 08 NOV 2023	SCIENTX	MR LIM PENG CHEONG [SSH]	807	840,527	54.19
06 NOV 2023 - 08 NOV 2023	SCIENTX	MR LIM PENG JIN [DIR/CEO]	807	892,850	57.563
06 NOV 2023 - 08 NOV 2023	SCIENTX	MR LIM PENG JIN [SSH]	807	892,758	57.557
06 NOV 2023 - 08 NOV 2023	SCIENTX	SCIENTEX INFINITY SDN BHD [SSH]	807	708,534	45.681
03 NOV 2023 - 03 NOV 2023	SCIENTX	MR LIM PENG CHEONG [DIR/CEO]	240	845,738	54.526
03 NOV 2023 - 03 NOV 2023	SCIENTX	MR LIM PENG CHEONG [SSH]	240	839,721	54.138
03 NOV 2023 - 03 NOV 2023	SCIENTX	MR LIM PENG JIN [DIR/CEO]	240	892,043	57.511
03 NOV 2023 - 03 NOV 2023	SCIENTX	MR LIM PENG JIN [SSH]	240	891,951	57.505
03 NOV 2023 - 03 NOV 2023	SCIENTX	SCIENTEX INFINITY SDN BHD [SSH]	240	707,727	45.629
06 NOV 2023 - 06 NOV 2023	SERNKOU	GENIUS SUCCESS CAPITAL SDN BHD [SSH]	-17,500	119,500	11.084
06 NOV 2023 - 06 NOV 2023	SERNKOU	MR LOW PENG SIAN @ CHUA PENG SIAN [DIR/CEO]	-17,500	284,482	26.387
06 NOV 2023 - 06 NOV 2023	SERNKOU	MR LOW PENG SIAN @ CHUA PENG SIAN [SSH]	-17,500	284,482	26.387
08 NOV 2023 - 08 NOV 2023	SFPTECH	MR KEOH BENG HUAT [SSH]	150	1,622,821	67.618
08 NOV 2023 - 08 NOV 2023	SFPTECH	MR KEOH BENG HUAT [DIR/CEO]	150	1,652,821	68.868
09 NOV 2023 - 09 NOV 2023	SIME	KUMPULAN WANG PERSARAAN (DIPERBADANKAN) [SSH]	-1,134	528,982	7.762
07 NOV 2023 - 07 NOV 2023	SIME	EMPLOYEES PROVIDENT FUND BOARD [SSH]	675	1,038,579	15.239
08 NOV 2023 - 08 NOV 2023	SIME	KUMPULAN WANG PERSARAAN (DIPERBADANKAN) [SSH]	-1,200	530,116	7.778
06 NOV 2023 - 06 NOV 2023	SIME	EMPLOYEES PROVIDENT FUND BOARD [SSH]	-2,037	1,037,904	15.229
07 NOV 2023 - 07 NOV 2023	SIME	KUMPULAN WANG PERSARAAN (DIPERBADANKAN) [SSH]	-748	531,316	7.796
03 NOV 2023 - 03 NOV 2023	SIME	EMPLOYEES PROVIDENT FUND BOARD [SSH]	1,550	1,039,941	15.258
06 NOV 2023 - 06 NOV 2023	SIME	KUMPULAN WANG PERSARAAN (DIPERBADANKAN) [SSH]	-432	532,063	7.807
02 NOV 2023 - 02 NOV 2023	SIME	EMPLOYEES PROVIDENT FUND BOARD [SSH]	562	1,038,391	15.236
03 NOV 2023 - 03 NOV 2023	SIME	KUMPULAN WANG PERSARAAN (DIPERBADANKAN) [SSH]	-1,500	532,495	7.813
02 NOV 2023 - 02 NOV 2023	SIME	KUMPULAN WANG PERSARAAN (DIPERBADANKAN) [SSH]	-60	533,995	7.835
01 NOV 2023 - 01 NOV 2023	SIME	EMPLOYEES PROVIDENT FUND BOARD [SSH]	6,265	1,037,830	15.227
31 OCT 2023 - 31 OCT 2023	SIME	EMPLOYEES PROVIDENT FUND BOARD [SSH]	1,520	1,031,565	15.135
07 NOV 2023 - 07 NOV 2023	SIMEPLT	EMPLOYEES PROVIDENT FUND BOARD [SSH]	66	1,024,574	14.815
07 NOV 2023 - 07 NOV 2023	SIMEPLT	AMANAHRAYA TRUSTEES BERHAD - AMANAH SAHAM BUMIPUTERA [SSH]	-16	3,172,789	45.878
06 NOV 2023 - 06 NOV 2023	SIMEPLT	AMANAHRAYA TRUSTEES BERHAD - AMANAH SAHAM BUMIPUTERA [SSH]	-350	3,172,805	45.878
06 NOV 2023 - 06 NOV 2023	SIMEPLT	KUMPULAN WANG PERSARAAN (DIPERBADANKAN) [SSH]	-90	457,520	6.616
02 NOV 2023 - 02 NOV 2023	SIMEPLT	EMPLOYEES PROVIDENT FUND BOARD [SSH]	788	1,024,508	14.814
01 NOV 2023 - 01 NOV 2023	SIMEPLT	EMPLOYEES PROVIDENT FUND BOARD [SSH]	809	1,023,720	14.803
07 NOV 2023 - 07 NOV 2023	SIMEPROP	EMPLOYEES PROVIDENT FUND BOARD [SSH]	-12,774	416,178	6.12
06 NOV 2023 - 06 NOV 2023	SIMEPROP	EMPLOYEES PROVIDENT FUND BOARD [SSH]	-20,150	428,952	6.307
03 NOV 2023 - 03 NOV 2023	SIMEPROP	EMPLOYEES PROVIDENT FUND BOARD [SSH]	-9,300	449,102	6.604

Notice Period is 05th Nov – 11st Nov 2023

Effective Change Date	Stock Name	Buyer/ Seller Name [Classification]	Bought / (Sold) ('000)	No. of Shares After Trade ('000)	
			Total	Total	% Held
02 NOV 2023 - 02 NOV 2023	SIMEPROP	EMPLOYEES PROVIDENT FUND BOARD [SSH]	-11,391	458,402	6.74
01 NOV 2023 - 01 NOV 2023	SIMEPROP	EMPLOYEES PROVIDENT FUND BOARD [SSH]	-7,764	469,794	6.907
02 NOV 2023 - 02 NOV 2023	SMRT	URUSHARTA JAMAAH SDN. BHD. [SSH]	-200	27,805	6.139
08 NOV 2023 - 08 NOV 2023	SPSETIA	AMANAHRAYA TRUSTEES BERHAD - AMANAH SAHAM BUMIPUTERA [SSH]	-1,029	1,007,828	24.284
07 NOV 2023 - 07 NOV 2023	SPSETIA	AMANAHRAYA TRUSTEES BERHAD - AMANAH SAHAM BUMIPUTERA [SSH]	-754	1,008,857	24.309
06 NOV 2023 - 06 NOV 2023	SPSETIA	AMANAHRAYA TRUSTEES BERHAD - AMANAH SAHAM BUMIPUTERA [SSH]	-752	1,009,610	24.327
03 NOV 2023 - 03 NOV 2023	SPSETIA	AMANAHRAYA TRUSTEES BERHAD - AMANAH SAHAM BUMIPUTERA [SSH]	-6,901	1,010,362	24.345
02 NOV 2023 - 02 NOV 2023	SPSETIA	AMANAHRAYA TRUSTEES BERHAD - AMANAH SAHAM BUMIPUTERA [SSH]	-202	1,017,264	24.512
08 NOV 2023 - 08 NOV 2023	SRIDGE	DATO' KHOO YIK CHOU [DIR/CEO]	1,050	15,599	7.155
08 NOV 2023 - 08 NOV 2023	SRIDGE	DATO' KHOO YIK CHOU [SSH]	1,050	15,599	7.155
07 NOV 2023 - 07 NOV 2023	SRIDGE	DATO' KHOO YIK CHOU [DIR/CEO]	775	14,549	6.673
07 NOV 2023 - 07 NOV 2023	SRIDGE	DATO' KHOO YIK CHOU [SSH]	775	14,549	6.673
07 NOV 2023 - 07 NOV 2023	SUNCON	EMPLOYEES PROVIDENT FUND BOARD [SSH]	37	128,103	9.935
06 NOV 2023 - 06 NOV 2023	SUNCON	EMPLOYEES PROVIDENT FUND BOARD [SSH]	5	128,066	9.933
03 NOV 2023 - 03 NOV 2023	SUNCON	EMPLOYEES PROVIDENT FUND BOARD [SSH]	94	128,061	9.932
02 NOV 2023 - 02 NOV 2023	SUNCON	EMPLOYEES PROVIDENT FUND BOARD [SSH]	482	127,967	9.925
01 NOV 2023 - 01 NOV 2023	SUNCON	EMPLOYEES PROVIDENT FUND BOARD [SSH]	695	127,484	9.887
06 NOV 2023 - 06 NOV 2023	SUNWAY	EMPLOYEES PROVIDENT FUND BOARD [SSH]	-10,891	251,878	5.08
03 NOV 2023 - 03 NOV 2023	SUNWAY	EMPLOYEES PROVIDENT FUND BOARD [SSH]	-3,331	262,768	5.3
02 NOV 2023 - 02 NOV 2023	SUNWAY	EMPLOYEES PROVIDENT FUND BOARD [SSH]	-4,858	266,099	5.36
01 NOV 2023 - 01 NOV 2023	SUNWAY	EMPLOYEES PROVIDENT FUND BOARD [SSH]	-700	270,957	5.46
09 NOV 2023 - 09 NOV 2023	SUPERLN	MR LIN PO-CHIH [DIR/CEO]	15	4,635	2.92
08 NOV 2023 - 08 NOV 2023	SUPERLN	MR LIN PO-CHIH [DIR/CEO]	20	4,620	2.911
07 NOV 2023 - 07 NOV 2023	SUPERLN	MR LIN PO-CHIH [DIR/CEO]	50	4,600	2.898
08 NOV 2023 - 08 NOV 2023	TAFI	DATO' SRI WONG SZE CHIEN [DIR/CEO]	148	21,340	56.243
08 NOV 2023 - 08 NOV 2023	TAFI	DATO' SRI WONG SZE CHIEN [SSH]	148	21,340	56.243
06 NOV 2023 - 06 NOV 2023	TAKAFUL	EMPLOYEES PROVIDENT FUND BOARD [SSH]	626	115,635	13.81
03 NOV 2023 - 03 NOV 2023	TAKAFUL	EMPLOYEES PROVIDENT FUND BOARD [SSH]	100	115,009	13.736
02 NOV 2023 - 02 NOV 2023	TAKAFUL	EMPLOYEES PROVIDENT FUND BOARD [SSH]	-24	114,909	13.724
01 NOV 2023 - 01 NOV 2023	TAKAFUL	EMPLOYEES PROVIDENT FUND BOARD [SSH]	-308	114,932	13.726
02 NOV 2023 - 02 NOV 2023	TENAGA	EMPLOYEES PROVIDENT FUND BOARD [SSH]	166	957,079	16.54
09 NOV 2023 - 09 NOV 2023	TIMCOM	KUMPULAN WANG PERSARAAN (DIPERBADANKAN) ("KWAP") [SSH]	12	110,738	5.996
07 NOV 2023 - 07 NOV 2023	TIMCOM	EMPLOYEES PROVIDENT FUND BOARD [SSH]	-234	155,390	8.414
08 NOV 2023 - 08 NOV 2023	TIMCOM	KUMPULAN WANG PERSARAAN (DIPERBADANKAN) ("KWAP") [SSH]	33	110,726	5.995
06 NOV 2023 - 06 NOV 2023	TIMCOM	EMPLOYEES PROVIDENT FUND BOARD [SSH]	307	155,624	8.426
07 NOV 2023 - 07 NOV 2023	TIMCOM	KUMPULAN WANG PERSARAAN (DIPERBADANKAN) ("KWAP") [SSH]	26	110,693	5.994
03 NOV 2023 - 03 NOV 2023	TIMCOM	EMPLOYEES PROVIDENT FUND BOARD [SSH]	-886	155,317	8.41
06 NOV 2023 - 06 NOV 2023	TIMCOM	KUMPULAN WANG PERSARAAN (DIPERBADANKAN) ("KWAP") [SSH]	56	110,667	5.992
02 NOV 2023 - 02 NOV 2023	TIMCOM	EMPLOYEES PROVIDENT FUND BOARD [SSH]	-1,438	156,203	8.458
03 NOV 2023 - 03 NOV 2023	TIMCOM	KUMPULAN WANG PERSARAAN (DIPERBADANKAN) ("KWAP") [SSH]	103	110,611	5.989
01 NOV 2023 - 01 NOV 2023	TIMCOM	EMPLOYEES PROVIDENT FUND BOARD [SSH]	-1,714	157,641	8.536
06 NOV 2023 - 06 NOV 2023	TM	EMPLOYEE PROVIDENT FUND BOARD (EPF BOARD) [SSH]	46	658,619	17.167
06 NOV 2023 - 06 NOV 2023	UMW	EMPLOYEES PROVIDENT FUND BOARD [SSH]	10	119,222	10.205
03 NOV 2023 - 03 NOV 2023	UMW	EMPLOYEES PROVIDENT FUND BOARD [SSH]	108	119,212	10.204
02 NOV 2023 - 02 NOV 2023	UMW	EMPLOYEES PROVIDENT FUND BOARD [SSH]	244	119,104	10.195
01 NOV 2023 - 01 NOV 2023	UMW	EMPLOYEES PROVIDENT FUND BOARD [SSH]	160	118,859	10.174
09 NOV 2023 - 09 NOV 2023	UTDPLT	PERBADANAN PEMBANGUNAN PERTANIAN NEGERI PERAK [SSH]	-300	23337	5.626
07 NOV 2023 - 07 NOV 2023	UTDPLT	EMPLOYEES PROVIDENT FUND BOARD [SSH]	150	27313	6.585
07 NOV 2023 - 07 NOV 2023	UTDPLT	PERBADANAN PEMBANGUNAN PERTANIAN NEGERI PERAK [SSH]	-295	23637	5.699
06 NOV 2023 - 06 NOV 2023	UTDPLT	EMPLOYEES PROVIDENT FUND BOARD [SSH]	-128	27164	6.549
03 NOV 2023 - 03 NOV 2023	UTDPLT	EMPLOYEES PROVIDENT FUND BOARD [SSH]	-96	27291	6.58
02 NOV 2023 - 02 NOV 2023	UTDPLT	EMPLOYEES PROVIDENT FUND BOARD [SSH]	68	27387	6.603
31 OCT 2023 - 01 NOV 2023	UTDPLT	EMPLOYEES PROVIDENT FUND BOARD [SSH]	-216	27319	6.586</



Pursuant to paragraph 9.19(40) of the Main Market Listing Requirements of Bursa Malaysia Securities Berhad, **Advance Synergy Berhad (ASB)** wishes to inform Bursa Securities that Captii, our subsidiary which is listed on the SGX, had on 10 November 2023 released their announcement

on the unaudited third quarter financial results for the period ended 30 September 2023 to the SGX.

[READ MORE](#)



**BINTAI KINDEN
CORPORATION
BERHAD**



Pursuant to Chapter 14 of the Main Market Listing Requirements of Bursa Malaysia Securities Berhad, **Bintai Kinden Corporation Berhad (BINTAI)** wishes to announce on the dealings in the securities done by Datuk Tay Chor Han, who was the Chief Executive Officer of the Company for the period from 24 February 2022 to 3 March 2023.

[READ MORE](#)





The Board of Directors of **Dayang Enterprise Holdings Berhad (DAYANG)** is pleased to announce that the Company has fully redeemed the last two series of issue of Sukuk Murabahah i.e. Series 5 and Series 6 amounting to RM220.497 million (from the original amount of RM313.950 million as part was redeemed earlier with funds from the earlier private placement

exercise and internally generated funds) of the Sukuk Murabahah on 15 November 2023, ahead of the due redemption dates in 2024/2025. The Company had used internal funds and fresh borrowings for this redemption.

[READ MORE](#) 



ELK-DESA[®]

ELK-Desa Resources Berhad (ELKDESA), a non-bank lender focused in the used-car segment, announced its financial results for the second quarter ended 30 September 2023.

The Group's revenue for the quarter increased by 9% to RM39.20 million compared to the corresponding quarter a year ago. This was due to higher revenue contribution from its hire purchase segment. Nevertheless, profit before tax for the quarter decreased by 22% to RM11.83 million as compared to a year ago due to lower contribution from both its hire purchase and furniture segment.

[READ MORE](#) 



ENGINEERS

HSS Engineers Berhad (HSSEB) is pleased to announce that on 15 November 2023, HSS International Sdn Bhd, a wholly owned subsidiary of HSS Engineers Berhad, entered into a binding Heads of Agreement with Engineering and Development Corporation of the Philippines for the incorporation of a joint venture vehicle in Philippines and to regulate their rights in relation to the same.



[READ MORE](#)



maxis



Maxis Berhad (MAXIS) continued to deliver stable revenue growth in the third quarter ended 30 September 2023, underpinned by its core Consumer and

Enterprise lines of business. Service revenue rose by 1.8% year-on-year (YoY) to RM2.145 million, contributed by steady growth in both segments. Earnings before interest, tax, depreciation, and amortisation (EBITDA) stood at RM929 million, with Profit After Tax (PAT) of RM287 million. The Company declared an interim dividend of 4 sen per share for the quarter.

[READ MORE](#)





VSTECS Berhad (VSTECS) has released its third quarter financial results for the three months ended 30 September 2023 (3Q FY2023). For the nine months ended 30 September 2023 (9M

FY2023), the Group posted revenue of RM1.92 billion as compared to RM2.09 billion in 9M FY2022. Net profit grew slightly to RM43.2 million versus RM41.4 million in 9M FY2022. In the first nine months of the year, revenue from ICT Services grew 66.4% YoY while the revenue Enterprise Systems segment remained relatively comparable to last year. The ICT Distribution segment however experienced a revenue decline of 22.3% compared to 9M FY2022, as the consumer spending remain cautious.

[READ MORE](#) 

Disclaimer: The information in the Investor Relations page is extracted from individual companies' announcements in www.bursamalaysia.com. The information on this page is provided as a service to readers. We assume no liability for damages resulting from or arising out of the use of such information. Whilst every effort is made to ensure accuracy, the information presented has been simplified for your reading pleasure. Readers are advised to read the original and complete filings on the Bursa Malaysia website at https://www.bursamalaysia.com/market_information/announcements/company_announcement

Upcoming IPO

NAME OF COMPANY	OFFER PERIOD		ISSUE PRICE (Per Ordinary Share)	LISTING SOUGHT	DATE OF LISTING
	OPENING	CLOSING			
PANDA ECO SYSTEM BERHAD	8 Nov 2023	15 Nov 2023	RM0.16	ACE MARKET	27 Nov 2023