

# Invest

A Weekly e-Publication by SHAREINVESTOR.com

ISSUE

181

FRIDAY  
03 NOVEMBER  
2023

Scan/Click QR to Register



Via email, every Friday

## MARKET SENTIMENTS

# BNM KEEPS OPR AT 3% IN LAST MPC MEETING OF 2023

Implementation of tax on high-value goods starting May 2024 - MOF

Rent-to-own scheme to be expanded to allow B40, M40 groups to own homes

Bursa, Dalian Commodity Exchange ink agreement for soybean oil futures settlement price

See more on pages 19-23

## ALSO

**06** COMPANY SPOTLIGHT  
MN Holdings Berhad

**25** MSWG  
Some reflections on an ESOS

**04** LEADERBOARD

**05** SHARIAH HOT STOCKS

**07** SHARIAH MOMENTUM UP STOCKS

**08** NON SHARIAH HOT STOCKS

**10** UP TRENDING STOCKS

**12** VALUE STOCKS

**14** GROWTH STOCKS

**15** DIVIDEND STOCKS

**16** BROKERS' CALL

**17** LONG COMPANIES

**24** REGIONAL MARKETS

**30** INSIDER ACTIVITY

**34** INVESTOR RELATIONS





# SHAREINVESTOR®

Invest with Knowledge

## INVESTOR PLATFORMS

**Director**  
Darren Chong  
darren.chong@shareinvestor.com

**Business Development Manager**  
Jay Cheong  
jay.cheong.@shareinvestor.com

**Senior Executive**  
Daniel Wong  
daniel.wong@shareinvestor.com

**Executive**  
Farah Azwani  
farah.azwani@shareinvestor.com

**Executive**  
Tan Yong Sheng  
yongsheng.tan@shareinvestor.com

## ADMIN & OPERATIONS

**Senior Executive**  
Watie Nordin  
watie.nordin@shareinvestor.com

**Executive**  
Silas Emmanuel Joseph  
silas.joseph@shareinvestor.com

## INVESTOR RELATIONS

**Group Managing Director & Publisher**  
Edward Stanislaus  
edward@shareinvestor.com

**Senior Manager**  
Letticia Wong  
letticia.wong@shareinvestor.com

## PROCESS AUTOMATION & DATA ANALYTICS

**Data Analyst**  
Nickson Aw

## SHAREINVESTOR HOLDINGS BOARD OF DIRECTORS

<b>Chairman</b>	Patrick Daniel
<b>Group CEO</b>	Christopher Lee
<b>Group COO</b>	Lim Dau Hee
<b>Group CFO</b>	Teo Siew May
<b>Group MD</b>	Shanison Lin



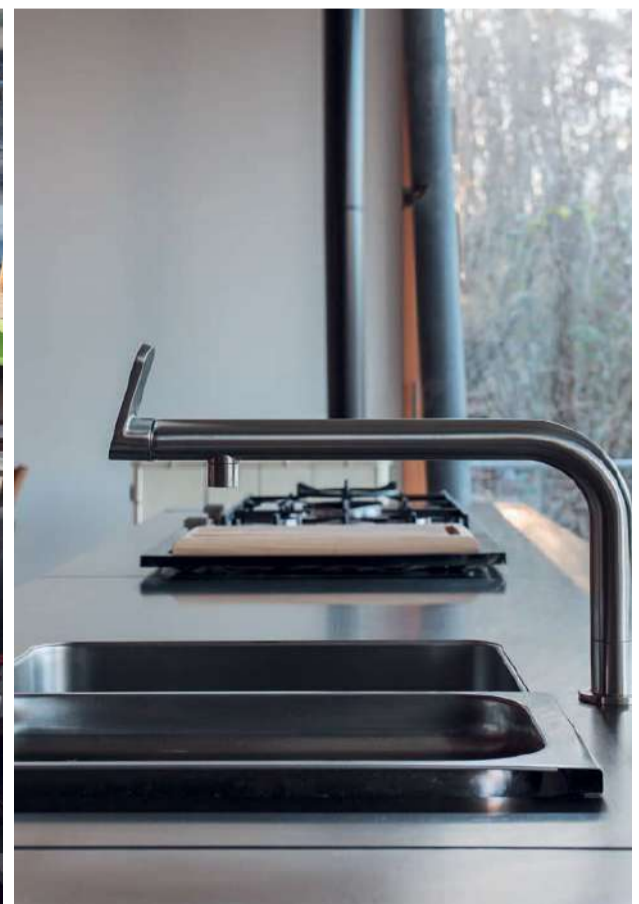
“ GIVE A MAN A FISH AND YOU FEED HIM FOR A DAY; TEACH A MAN TO FISH AND YOU FEED HIM FOR A LIFETIME ”

**ShareInvestor Malaysia Sdn. Bhd.**  
(200001023956) (526564-M)  
Unit No. DF2-07-03A, Level 7,  
Persoft Tower, 6B Persiaran Tropicana,  
47410 Petaling Jaya, Selangor Darul Ehsan.

Hotline : 603 7803 1791  
Mobile : 011 6343 8939  
Website : www.ShareInvestor.com.my  
www.ShareInvestorHoldings.com  
www.Facebook.com/ShareInvestorMalaysia

**ADVERTISEMENT ENQUIRY**

bulthaup takes care of the details so that you can enjoy a harmonious environment.



**XTRA**

XTRA FURNITURE SDN BHD  
The Gardens Mall, Mid Valley City  
xtrafurniture.com/bulthaup  
fb.com/bulthaupmalaysia

bulthaup



# PURNELL

ONLY TOURBILLON



## ESCAPE II FORGED CARBON

Purnell Asia

Tel.: +65.9817.3378

Email: [sales.sg@purnellwatches.com](mailto:sales.sg@purnellwatches.com)

[@ Purnell\\_Official](#)

[www.purnellwatches.com](http://www.purnellwatches.com)

PLAY





[www.shareinvestor.com](http://www.shareinvestor.com) - market data at your fingertips



ShareInvestor WebPro ([www.shareinvestor.com/my](http://www.shareinvestor.com/my))  
Prices > Stock Prices > Bursa > click Stocks tab

1. mouse over Ranking > select Top Active > all Shariah stocks are denoted with an [S] > mouse over Column Layout > select Edit Customs > select Name > select Volume > select Last Done Price > Mouse Over Column Layout > select Custom
2. mouse over Ranking > select Top Turnover > all Shariah stocks are denoted with an [S] > mouse over Column Layout > select Edit Customs > select Name > select Last Done Price > select Value > Mouse Over Column Layout > select Custom
3. mouse over Ranking > select Top Gainers (Over 5 Trading Days) > mouse over Column Layout > select Edit Customs > select Name > select Last Done Price > select 5 Days Change > select 5 Days % Change > Mouse Over Column Layout > select Custom
4. mouse over Ranking > select Top Losers (Over 5 Trading Days)
5. mouse over Ranking > select Top % Gainers (Over 5 Trading Days)
6. mouse over Ranking > select Top % Losers (Over 5 Trading Days)

### Shariah Top Actives (as at Yesterday)

Name	Price (RM)	Volume
SMTRACK [S]	0.050	2,219,711.000
KANGER [S]	0.115	1,029,472.000
RANHILL [S]	0.785	752,680.000
WIDAD [S]	0.455	744,609.000
BSLCORP [S]	0.035	625,457.000
SALUTE [S]	0.690	583,678.000
CLASSITA [S]	0.060	577,569.000
SCIB [S]	0.570	550,187.000
MQTECH [S]	0.025	395,203.000
KEYASIC [S]	0.075	383,608.000

### Shariah Top Turnover (as at Yesterday)

Name	Price (RM)	Value (RM)
RANHILL [S]	0.785	59,340,260
SALUTE [S]	0.690	42,283,270
MISC [S]	7.210	35,604,807
WIDAD [S]	0.455	33,877,582
SCIB [S]	0.570	31,053,267
IHH [S]	5.980	29,075,381
CAPITALA [S]	0.825	27,940,265
PETGAS [S]	17.100	25,841,566
GAMUDA [S]	4.640	22,885,347
BAUTO [S]	2.410	22,868,079

### Top Gainers (over 5 Trading days as at Yesterday)

Name	Price (RM)	Change (RM)
RAPID	26.600	+0.740
ALLIANZ	16.200	+0.300
YTLPOWR	2.290	+0.250
PETDAG	22.800	+0.240
F&N	26.180	+0.200
RANHILL	0.785	+0.200
HLIND	9.190	+0.190
MCEMENT	3.710	+0.180
LPI	12.160	+0.160
SBAGAN	3.390	+0.150

### Top % Gainers (over 5 Trading days as at Yesterday)

Name	Price (RM)	Change (%)
AGES	0.065	+116.67
IMPIANA	0.175	+75.00
SMTRACK	0.050	+66.67
AEM	0.015	+50.00
COMPUGT	0.015	+50.00
RANHILL	0.785	+34.19
CME	0.040	+33.33
LAMBO	0.020	+33.33
MTRONIC	0.020	+33.33
TFP	0.055	+22.22

### Top Losers (over 5 Trading days as at Yesterday)

Name	Price (RM)	Change (RM)
NESTLE	122.900	-2.000
MPI	25.980	-0.740
HAPSENG	4.720	-0.460
VITROX	6.790	-0.410
HLBANK	19.180	-0.300
PANAMY	17.640	-0.300
ORIENT	6.310	-0.240
PPB	15.000	-0.240
HLCAP	4.740	-0.220
AJI	15.300	-0.200

### Top % Losers (over 5 Trading days as at Yesterday)

Name	Price (RM)	Change (%)
BARAKAH	0.035	-36.36
MLAB	0.010	-33.33
BCMALL	0.015	-25.00
CSH	0.045	-25.00
FOCUS	0.015	-25.00
REKATECH	0.050	-23.08
KEYASIC	0.075	-21.05
ASDION	0.080	-20.00
GOINNO	0.200	-20.00
XDL	0.020	-20.00

## Price & Volume Distribution Charts (as at Yesterday)

Technical Analysis

**DEFINITION:** Shariah compliant stocks with Technical Analysis showing 5-days & 10-days Moving Average Price below Yesterday's Close over past 3 days and with Volume Spike.

**CHART GUIDE:** Volume Distribution Chart is a statistical interpretation of the current sentiment on each stock in graphical format. The highest bar categorized as >150k is likely to be traded by institutions or super dealers, while the lowest bar categorized as <15k usually represents retail investors. "Buy Up" refers to more buyers snatching up the lots queued at selling price. "Sell Down" refers to sellers selling their shares to the buying queue



ShareInvestor WebPro > Screener > Market Screener (FA & TA) > select BURSA > add criteria

**A. Criteria**

- > click Add Criteria
- Technical Analysis Conditions tab select (i) Moving Average Below Close (ii) Volume Spike
- Fundamental Analysis Conditions tab > select (iii) Revenue
- Prices & Other Conditions tab > select (iv) Is Shariah Compliant
- Technical Analysis Conditions tab select (v) Moving Average Below Close
- Prices & Other Conditions tab > select (vi) Last Done Price
- Technical Analysis Conditions tab select (vii) Moving Average Below Close

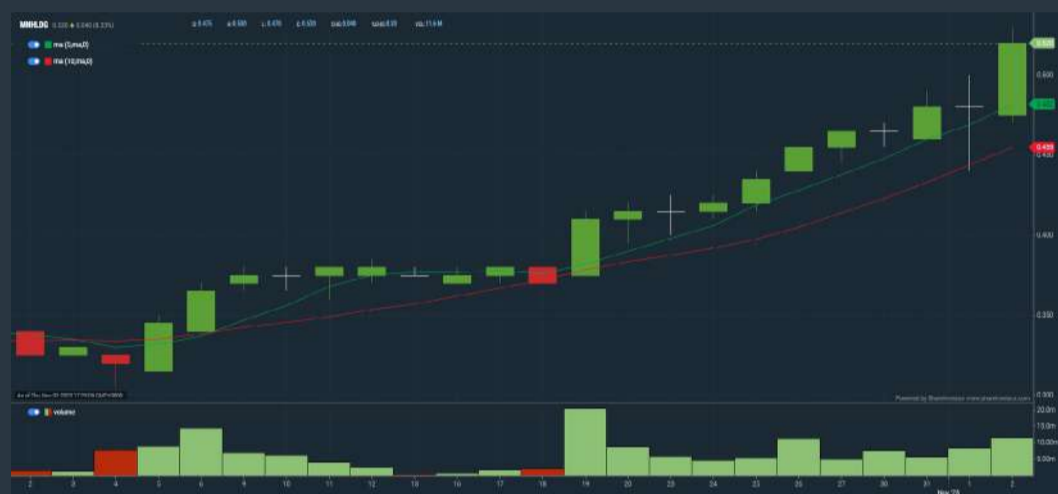
**B. Conditions (Criteria Filters)**

1. Moving Average Below Close - select (MA) type (5) below close price for type (3) days
2. Volume Spike - Volume type (1) greater than type (5) days average
3. Revenue ("000) - select (more than) type (1) for the past select (1) financial year(s)
4. Is Shariah Compliant - select **Yes**
5. Moving Average Below Close - select (MA) type (10) below close price for type (3) days
6. Last Done Price - select (more than) type (0.3)
7. Moving Average Below Close - select (EMA) type (5) below close price for type (3) days

- > click Save Template > Create New Template type (Shariah Hot Stocks) > click Create
- > click Save Template as > select Shariah Hot Stocks > click Save
- > click Screen Now (may take a few minutes)
- > Sort By: Select (Vol) Select (Desc)
- > Mouse over stock name > Charts > click C<sup>2</sup> Charts or Volume Distribution

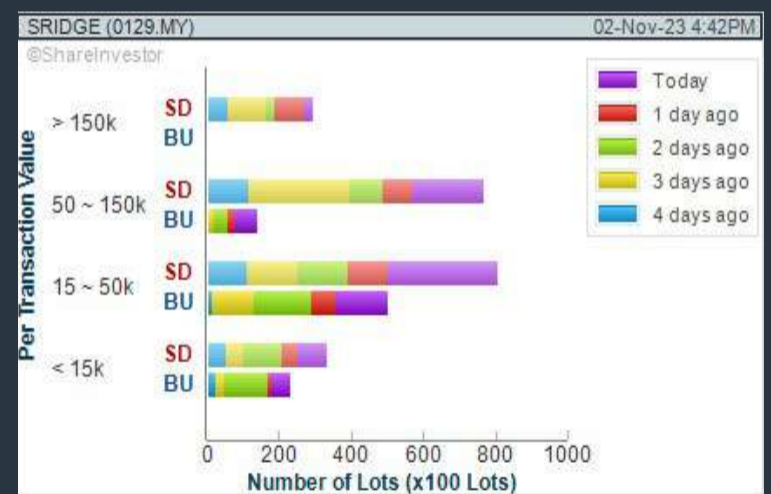
### MN HOLDINGS BERHAD (0245)

C<sup>2</sup> Chart



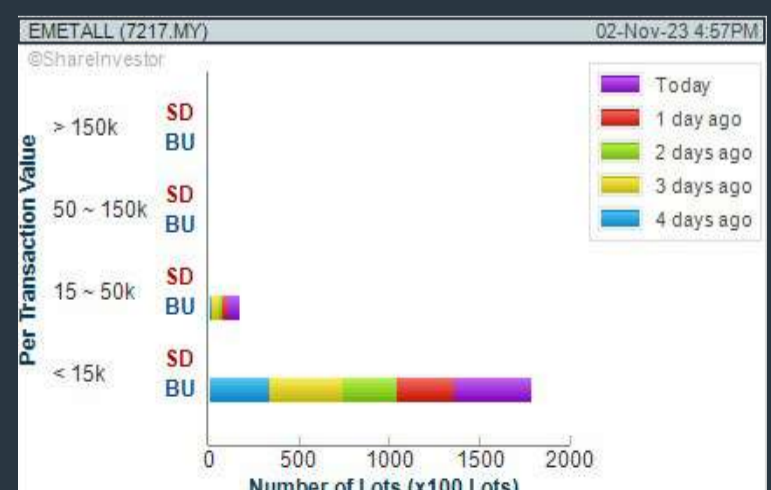
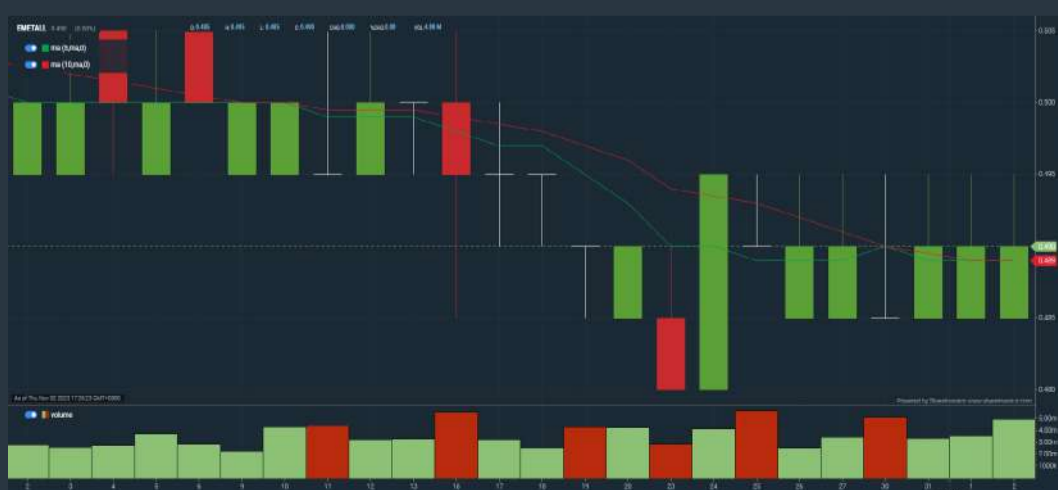
### SILVER RIDGE HOLDINGS BERHAD (0129)

C<sup>2</sup> Chart



### EONMETALL GROUP BERHAD (7217)

C<sup>2</sup> Chart

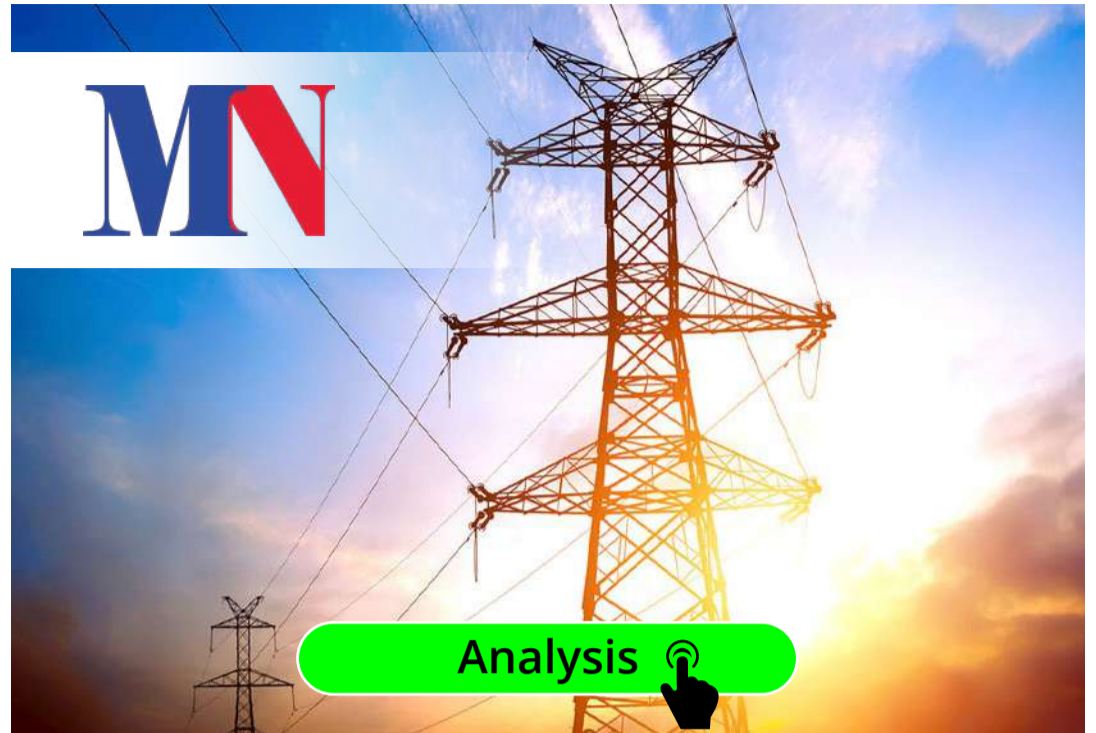


**Disclaimer:** The information on this page is provided as a service to readers. It does not constitute financial advice and/or any investment recommendations. Past performance is not indicative of future results. We assume no liability for damages resulting from or arising out of the use of such information. It would be best if you did your own research to make your personal investment decisions wisely or consult a licenced investment advisor.



## COMPANY BACKGROUND

**MN Holdings Berhad** operates as a solution provider for infrastructure utilities construction industries, especially in the power industry. The Company provides substation engineering services and maintenance works for electrical power system and components in substations. It also partners with world renowned product manufacturers for distribution of power control systems and components for substations.



MNHLDG MN HOLDINGS BERHAD		Updated at 02 Nov 2023 16:58	
Last (MYR): <b>0.520</b> ↑	Change: +0.040	High: 0.530	Remarks: -
	Change (%): +8.33	Low: 0.470	
Open	0.475	Yesterday's Close	0.480
Buy Price	0.515	Sell Price	0.520
Buy Volume ('00)	200	Sell Volume ('00)	176
Cumulative Volume ('00)	115,930	Cumulative Value	5,843,428

### Financial Analysis

<b>Revenue Growth</b> Revenue up and down in past years		<b>Profit Growth</b> Profit up and down in last 3 years (with last 3 profitable years)	
<b>Piotroski F Score</b> The company has above average financial strength (Piotroski F-Score of 6-7)		<b>Current Ratio</b> The company is well-positioned to cover its short-term obligations with its current assets (ratio between 1.5 to 10) for 3 consecutive years	
<b>Debt to Cashflow</b> High debt to cash flow for most recent year		<b>Gross Profit Margin</b> Good gross profit margin of 20%-40% for 2 years	

Excellent 
 Good 
 Neutral 
 Be Alert 
 Watch Out

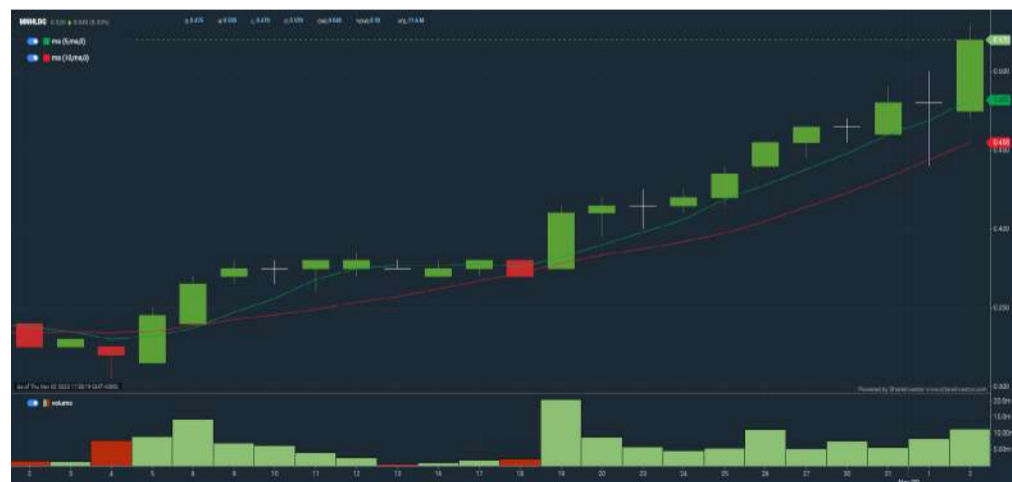
### Historical Financials

Profit & Loss (MYR '000)

[Hide Profit & Loss chart](#)

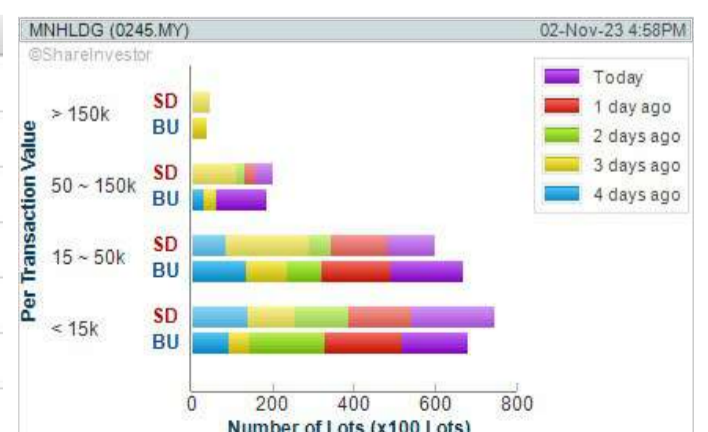


**WebPro 9-Days Free Trial Registration (worth RM9) Sign Up Now**



### Key Statistics with Total Shareholder Returns

Period	Dividend Received	Capital Appreciation	Total Shareholder Return
Short Term Return	5 Days	+0.005	+18.54%
	10 Days	-	+40.54%
	20 Days	-	+62.50%
Medium Term Return	3 Months	+0.225	+76.27%
	6 Months	+0.210	+62.50%
	1 Year	+0.310	+147.62%
Annualised Return	-	-	+147.62%



**Disclaimer:** The information on this page is provided as a service to readers. It does not constitute financial advice and/or any investment recommendations. Past performance is not indicative of future results. We assume no liability for damages resulting from or arising out of the use of such information. It would be best if you did your own research to make your personal investment decisions wisely or consult a licenced investment advisor.

## Price & Volume Distribution Charts (as at Yesterday)

Technical Analysis

**DEFINITION:** Shariah compliant stocks with Technical Analysis showing Bullish Momentum and Price Uptrend. The share price closed at the highest price yesterday. The typical price was higher than the previous day's typical price.

**CHART GUIDE:** Volume Distribution Chart is a statistical interpretation of the current sentiment on each stock in graphical format. The highest bar categorized as >150k is likely to be traded by institutions or super dealers, while the lowest bar categorized as <15k usually represents retail investors. "Buy Up" refers to more buyers snatching up the lots queued at selling price. "Sell Down" refers to sellers selling their shares to the buying queue.



ShareInvestor WebPro > Screener > Market Screener (FA & TA) > select BURSA > add criteria

**A. Criteria**

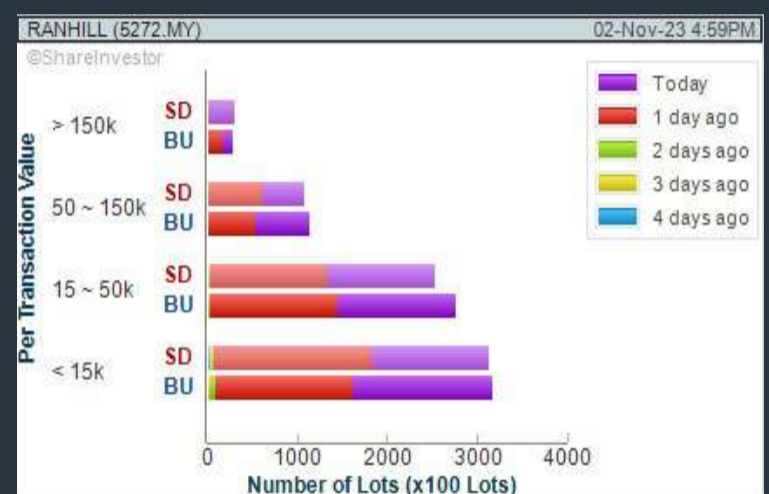
- > click Add Criteria
- Fundamental Analysis Conditions tab > select (i) Revenue
- Technical Analysis Conditions tab select (ii) Average Volume
- Prices & Other Conditions tab > select (iii) Last Done Price
- Prices & Other Conditions tab > select (iv) Is Shariah Compliant
- Technical Analysis Conditions tab select (v) RSI Overbought
- Technical Analysis Conditions tab select (vi) Moving Average Below Close
- Technical Analysis Conditions tab select (vii) CCI Overbought

**B. Conditions (Criteria Filters)**

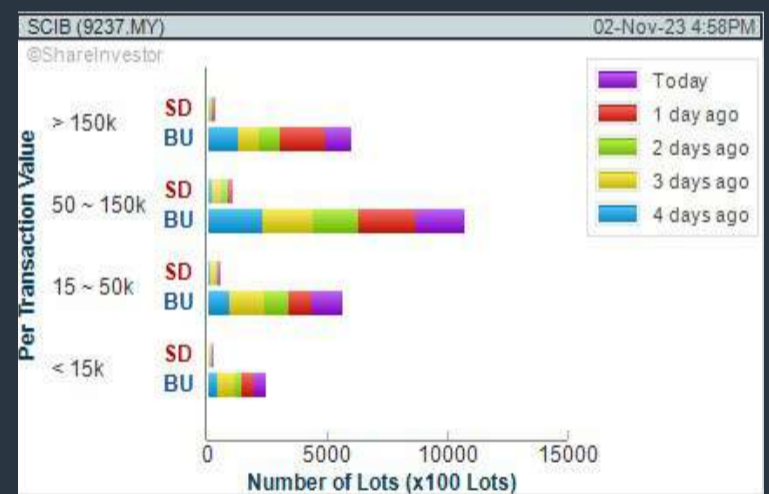
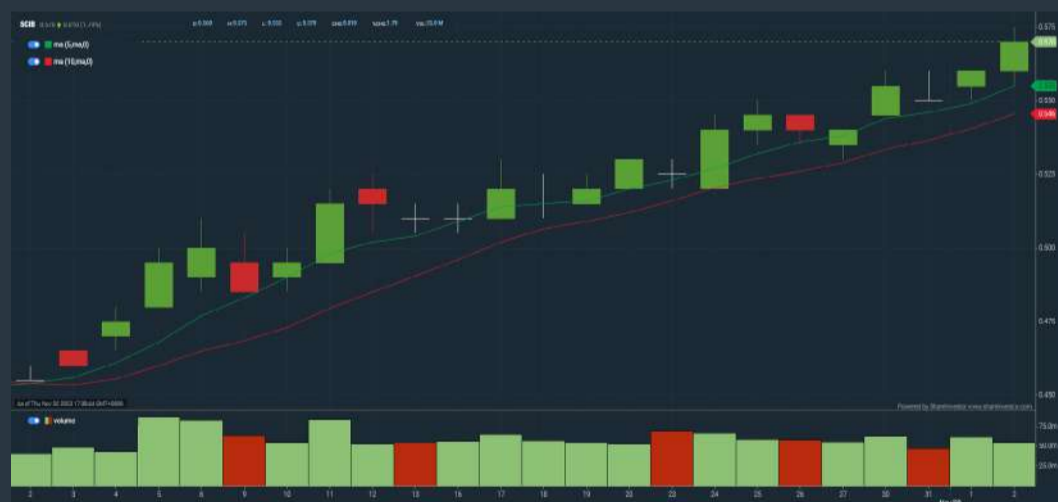
1. Revenue ("000) - select (more than) type (1) for the past select (1) financial year(s)
2. Average Volume - type (1) days average volume greater than type (10000) lots
3. Last Done Price - select (more than) type (0.3)
4. Is Shariah Compliant - select Yes
5. RSI Overbought - select RSI 1 above 99 for 1 days
6. Moving Average Below Close - select (MA) type (10) below close price for type (1) days
7. CCI Overbought - select CCI (2) above (0) for (1) days

- > click Save Template > Create New Template type (Shariah Momentum Up Stocks) > click Create
- > click Save Template as > select Shariah Momentum Up Stocks > click Save
- > click Screen Now (may take a few minutes)
- Sort By: Select (Vol) Select (Desc)
- Mouse over stock name > Charts > click C<sup>2</sup> Charts tab or Volume Distribution

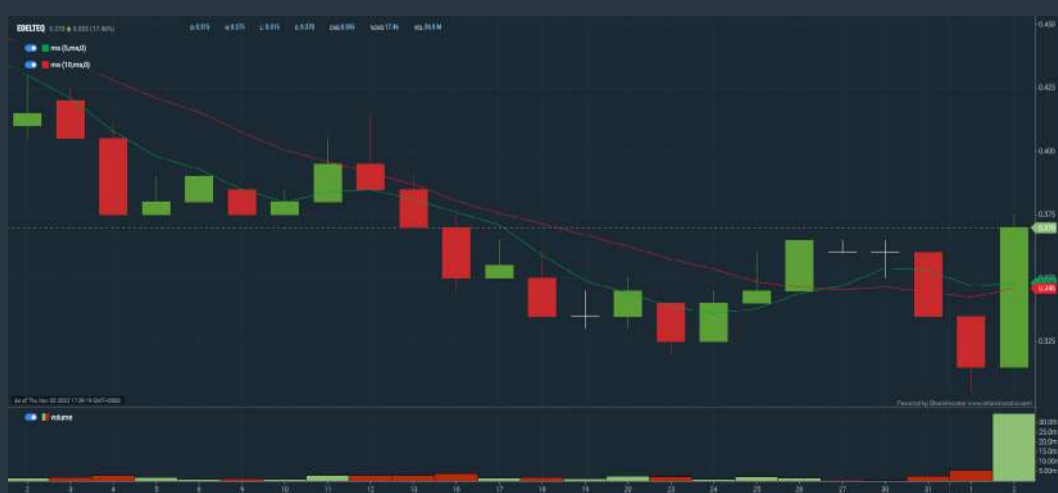
### RANHILL UTILITIES BERHAD (5272) C<sup>2</sup> Chart



### SARAWAK CONSOLIDATED IND BERHAD (9237) C<sup>2</sup> Chart



### EDELTEQ HOLDINGS BERHAD (0278) C<sup>2</sup> Chart



**Disclaimer:** The information on this page is provided as a service to readers. It does not constitute financial advice and/or any investment recommendations. Past performance is not indicative of future results. We assume no liability for damages resulting from or arising out of the use of such information. It would be best if you did your own research to make your personal investment decisions wisely or consult a licenced investment advisor.



## Price & Volume Distribution Charts (as at Yesterday)

Technical Analysis

**DEFINITION:** Stocks with Technical Analysis showing 5-days & 10-days Moving Average Price below Close over past 1 days and with Volume Spike

**CHART GUIDE:** Volume Distribution Chart is a statistical interpretation of the current sentiment on each stock in graphical format. The highest bar categorized as >150k is likely to be traded by institutions or super dealers, while the lowest bar categorized as <15k usually represents retail investors. "Buy Up" refers to more buyers snatching up the lots queued at selling price. "Sell Down" refers to sellers selling their shares to the buying queue.



ShareInvestor WebPro > Screener > Market Screener (FA & TA) > select BURSA > add criteria

**A. Criteria**

- > click Add Criteria
- Technical Analysis Conditions tab select (i) Moving Average Below Close (ii) Volume Spike
- Fundamental Analysis Conditions tab >select (iii) Revenue
- Prices & Other Conditions tab > select (iv) Is Shariah Compliant
- Technical Analysis Conditions tab select (v) Moving Average Below Close
- Prices & Other Conditions tab > select (vi) Last Done Price
- Technical Analysis Conditions tab select (vii) Moving Average Below Close

**B. Conditions (Criteria Filters)**

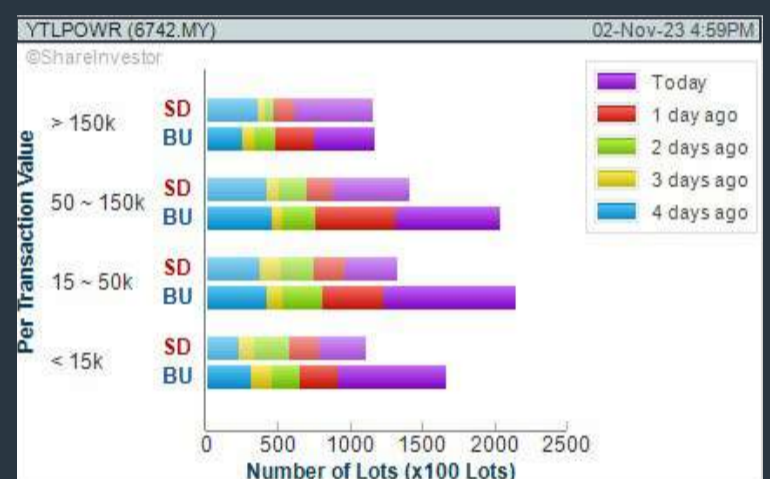
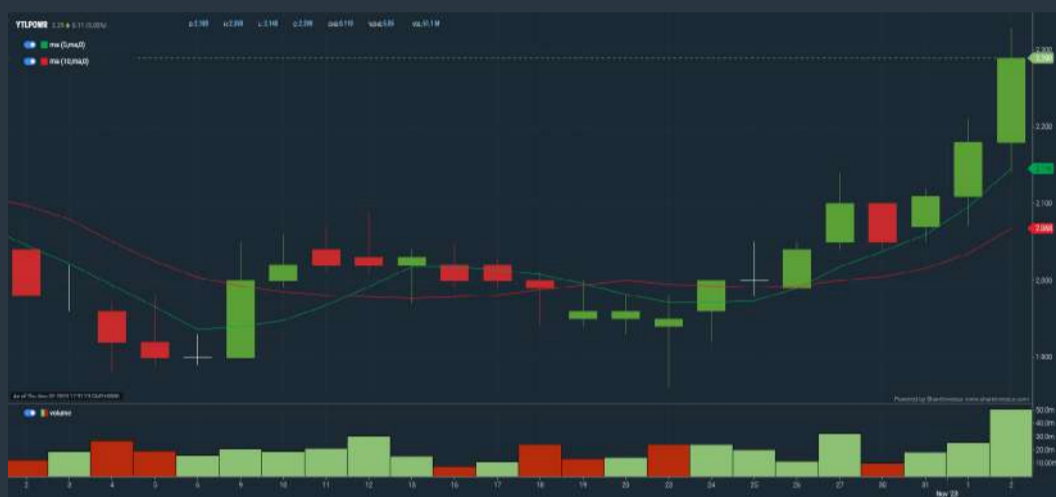
1. Moving Average Below Close - select (MA) type (5) below close price for type (3) days
2. Volume Spike - Volume type (1) greater than type (5) days average
3. Revenue ("000) - select (more than) type (1) for the past select (1) financial year(s)
4. Is Shariah Compliant - select NO
5. Moving Average Below Close - select (MA) type (10) below close price for type (1) days
6. Last Done Price - select (more than) type (0.3)
7. Moving Average Below Close - select (EMA) type (5) below close price for type (1) days

- > click Save Template > Create New Template type (Non-Shariah Hot Stocks) > click Create
- > click Save Template as > select Non-Shariah Hot Stocks > click Save
- > click Screen Now (may take a few minutes)
- Sort By: Select (Vol) Select (Desc)
- Mouse over stock name > Charts > click C<sup>2</sup> Charts tab or Volume Distribution

### YTL POWER INTERNATIONAL BERHAD (6742)

C<sup>2</sup> Chart

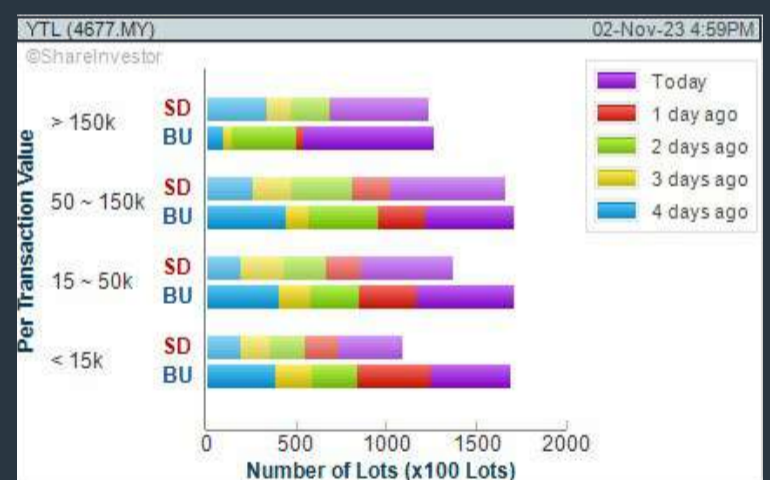
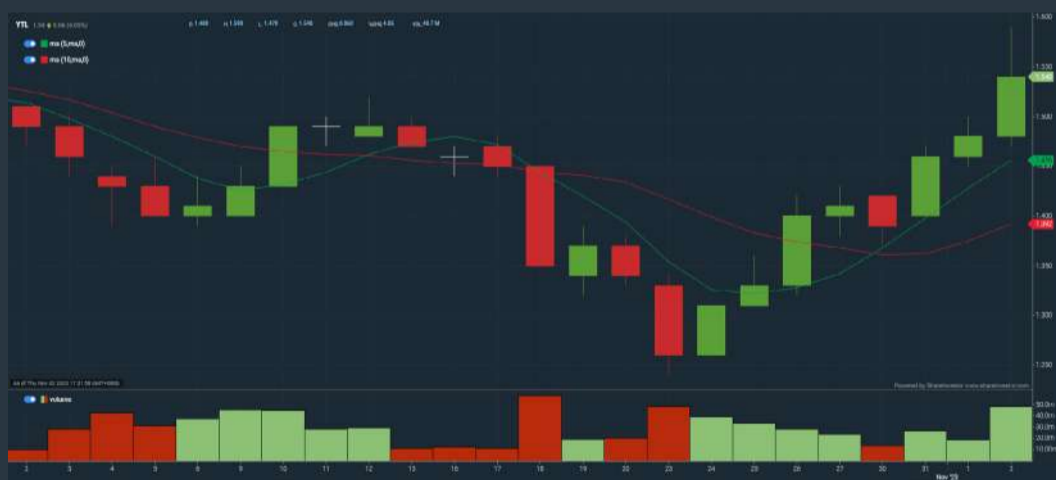
Analysis



### YTL CORPORATION BERHAD (4677)

C<sup>2</sup> Chart

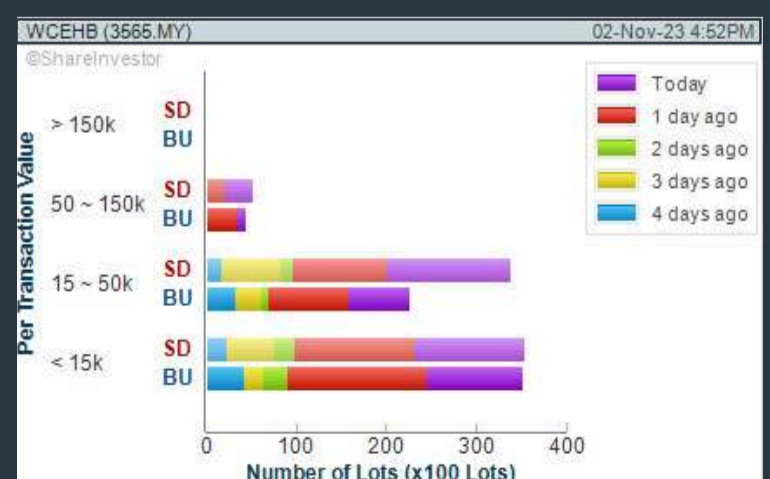
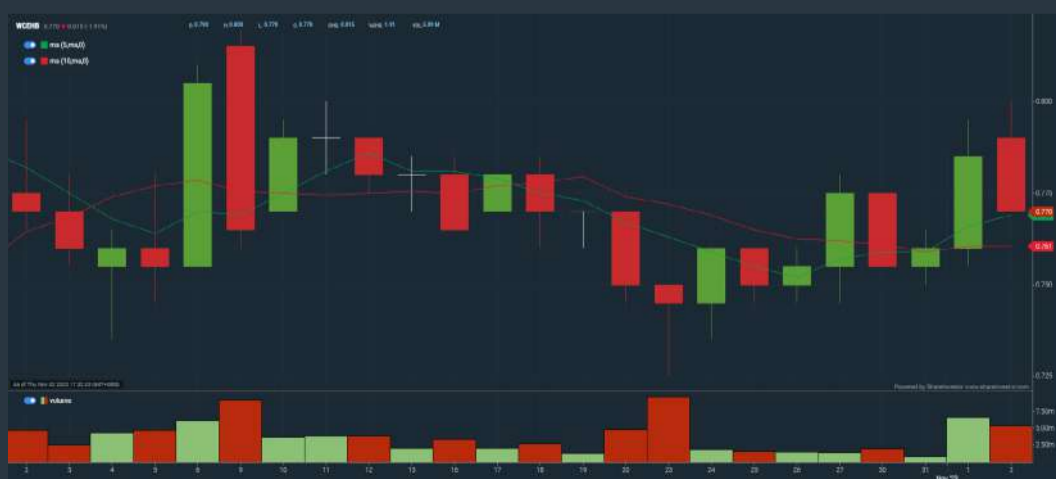
Analysis



### WCE HOLDINGS BERHAD (3565)

C<sup>2</sup> Chart

Analysis



**Disclaimer:** The information on this page is provided as a service to readers. It does not constitute financial advice and/or any investment recommendations. Past performance is not indicative of future results. We assume no liability for damages resulting from or arising out of the use of such information. It would be best if you did your own research to make your personal investment decisions wisely or consult a licenced investment advisor.



# SHAREINVESTOR WEBPRO

## STOCK MARKET DATA AT YOUR FINGERTIPS

Powerful browser-based market analytics platform.  
Access from anywhere



### 8 Markets Data

- ▶ Get access to data from Bursa, NYSE, Nasdaq, HKEX, SGX, IDX, SET & ASX

### Portfolio Management

- ▶ Profit & Loss Summary
- ▶ Stock Alert
- ▶ News & Events filtering
- ▶ Customizable column layout

## Fundamental Analysis

### Financial Analysis Statement

- ▶ Profit & Loss
- ▶ Balance Sheet
- ▶ Cash Flow Statement
- ▶ More than 20 Financial Ratios
- ▶ Dividend Analysis

### Technical Charting

- ▶ C<sup>2</sup> chart (Customisable & Comprehensive)

### Brokers' Call

### Intrinsic Value Calculator

### FactSheet

- ▶ Key Stock Information
- ▶ Ownership
- ▶ Consensus Estimates
- ▶ Annual Report
- ▶ Historical Price
- ▶ Insider Trades

## What's new on WebPro (Stable Release 12.1.0)

In our effort to keep our platform at the forefront of trading technology, we have added on some new features onto our C<sup>2</sup> Chart in WebPro

### ADDITIONAL NEW FEATURES:

- ▶ Anchor selector for AVWAP, PVAT, and PAV indicators
- ▶ Volume profile indicator by date range
- ▶ Moving Average Cross indicator
- ▶ Guppy Multiple Moving Average (GMMA) indicator
- ▶ GoNoGo Trend Signal indicators
- ▶ SignalIQ

So what are you waiting for? Head to our platform today and check out our new trading chart features and indicators. We're confident that you'll love the improvements we've made and that they'll help you become a more successful trader.

Click here to start your 9 days FREE trial  
(Valued at RM10)





## Price & Volume Distribution Charts (Over 3 trading days as at Yesterday)

Technical Analysis

**DEFINITION:** Stocks with Technical Analysis showing Bullish Momentum and Price Uptrend

**CHART GUIDE:** Volume Distribution Chart is a statistical interpretation of the current sentiment on each stock in graphical format. The highest bar categorized as >150k is likely to be traded by institutions or super dealers, while the lowest bar categorized as <15k usually represents retail investors. "Buy Up" refers to more buyers snatching up the lots queued at selling price. "Sell Down" refers to sellers selling their shares to the buying queue.



ShareInvestor WebPro > Screener > Market Screener (FA & TA) > select BURSA > add criteria

**A. Criteria**

- > click Add Criteria
- Fundamental Analysis Conditions tab > select (i) Revenue
- Technical Analysis Conditions tab select (ii) Moving Average Below Close
- Technical Analysis Conditions tab select (iii) Average Volume
- Prices & Other Conditions tab > select (iv) Last Done Price
- Technical Analysis Conditions tab select (v) Moving Average Below Close
- Technical Analysis Conditions tab select (v) Moving Average Bullish Crossover

**B. Conditions**

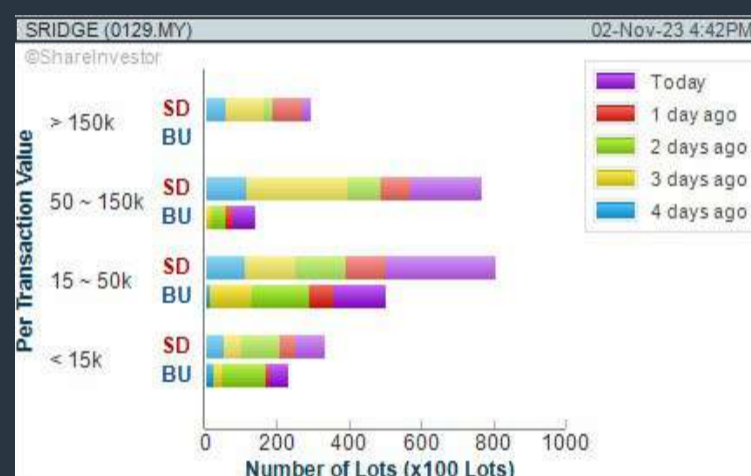
1. Revenue - select (more than) type (1) for the past select (1) financial year(s)
2. Moving Average Below Close - select (MA) type (20) below close price for type (1) days
3. Average Volume - type (5) days average volume type (10000) lots
4. Last Done Price - select (more than) type (0.3)
5. Moving Average Below Close - select (MA) type (10) below close price for type (1) days
6. Moving Average Bullish Crossover - select (MA) type (5) crossed above select (MA) type (10)

> click Save Template > Create New Template type (Non-Shariah Up-Trending Stocks) > click Create Click Save Template As > select Non-Shariah Up Trending Stocks > click Save > click Screen Now (may take a few minutes) Sort By: Select (Vol) Select (Desc) Mouse over stock name > Charts > click C<sup>2</sup> Charts tab or Volume Distribution

## SILVER RIDGE HOLDINGS BERHAD (0129)

C<sup>2</sup> Chart

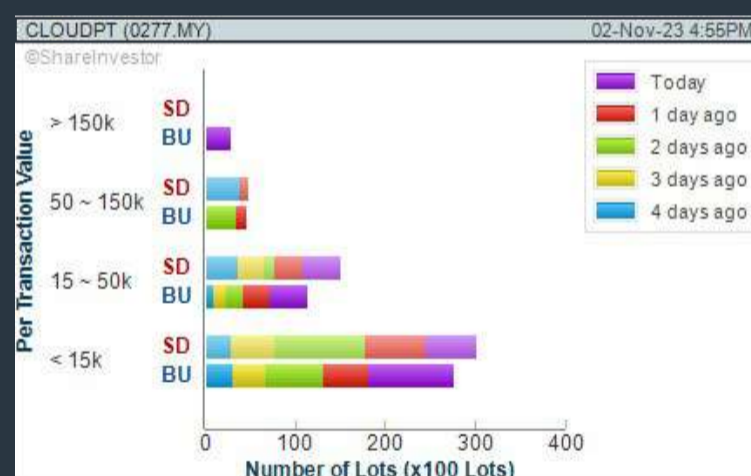
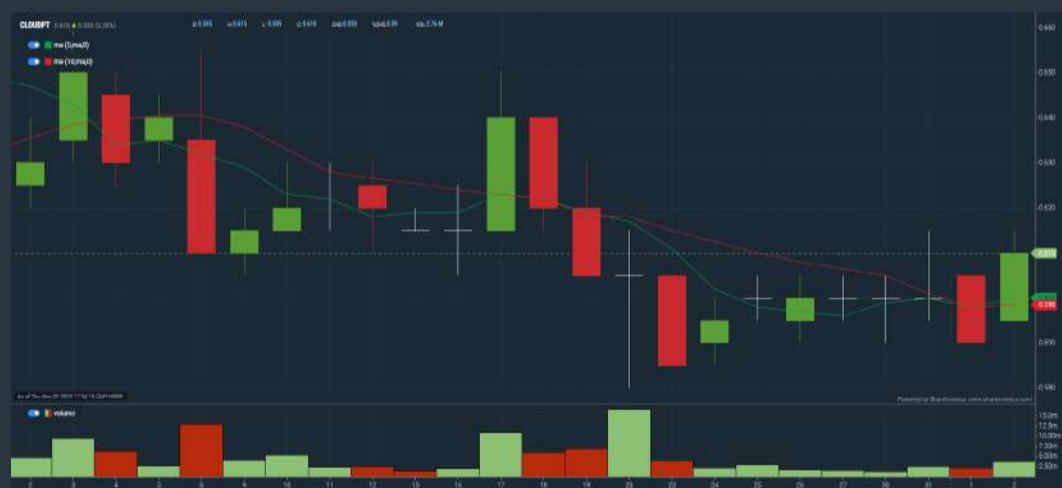
Analysis



## CLOUDPOINT TECHNOLOGY BERHAD (0277)

C<sup>2</sup> Chart

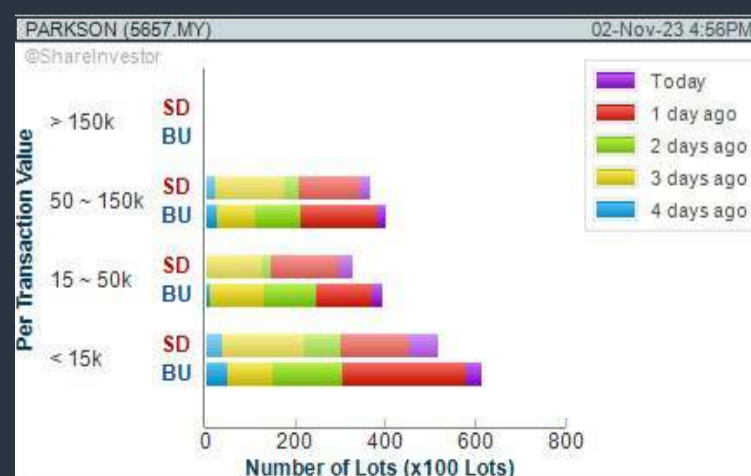
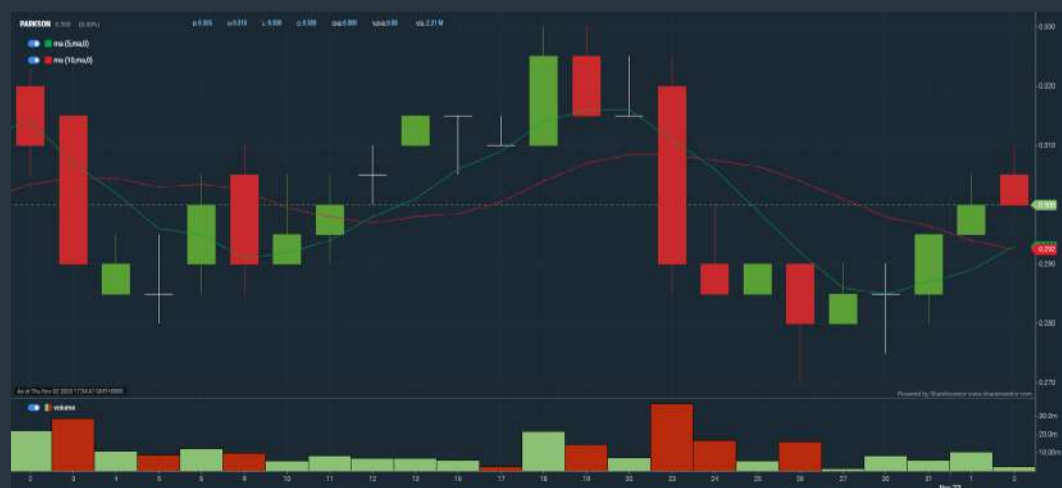
Analysis



## PARKSON HOLDINGS BERHAD (5657)

C<sup>2</sup> Chart

Analysis

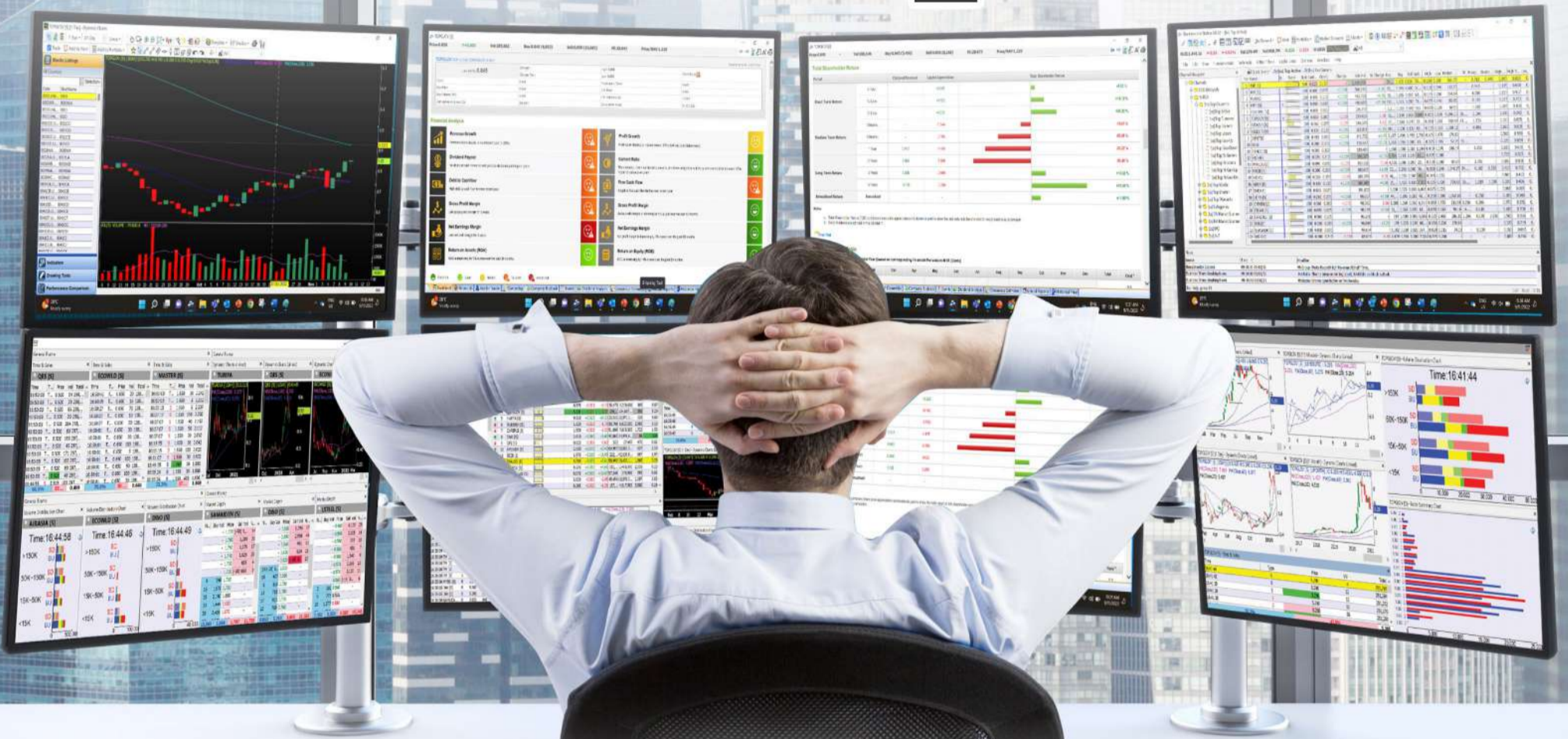


**Disclaimer:** The information on this page is provided as a service to readers. It does not constitute financial advice and/or any investment recommendations. Past performance is not indicative of future results. We assume no liability for damages resulting from or arising out of the use of such information. It would be best if you did your own research to make your personal investment decisions wisely or consult a licenced investment advisor.



# MAKE BETTER TRADING STRATEGIES

with  
**SHARE INVESTOR**  
**STATION**



## 8 Markets Data

- ▶ Get access to data from Bursa, NYSE, Nasdaq, HKEX, SGX, IDX, SET & ASX

## Dynamic Chart

- ▶ Candlestick Pattern Recognition
- ▶ 111 Indicators
- ▶ 39 Drawing Tools
- ▶ Performance Comparison Chart

## Intraday Data

- ▶ Market Depth
- ▶ Trade Summary Matrix & Chart
- ▶ Times & Sales
- ▶ Intraday Market Ticker

## Market Screener

- ▶ 96 criteria ranging from FA, TA, Consensus Estimate
- ▶ Real-time Data

## Power Frame

- ▶ Combining few Dynamic Charts together with intraday information in one frame

# Technical Analysis

# Fundamental Analysis

## Financial Analysis Statement

- ▶ Profit & Loss
- ▶ Balance Sheet
- ▶ Cash Flow Statement
- ▶ More than 20 Financial Ratios
- ▶ Dividend Analysis

## FactSheet

- ▶ Key Stock Information
- ▶ Ownership
- ▶ Consensus Estimates
- ▶ Annual Report
- ▶ Historical Price
- ▶ Insider Trades

**Start your 18 days  
 FREE trial now  
 (Valued at RM82)**





## Price & Total Shareholder Return (as at Yesterday)

Fundamental Analysis

**DEFINITION:** Share price of a company trading at a lower price as compared to its fundamentals (FA) such as financial performance and dividend, allowing it to be attractive to value investors.

**CHART GUIDE:** Total Shareholder Return (TSR) combines share price appreciation and dividend distributions paid to show the total return to the shareholder expressed as a percentage.



ShareInvestor WebPro > Screener > Market Screener (FA & TA) > select BURSA > add criteria

**A. Criteria**

- > click Add Criteria
- Fundamental Analysis Conditions tab (i) Price Earnings Ratio
- Fundamental Analysis Conditions tab >select (ii) CAGR of Net Earnings
- Fundamental Analysis Conditions tab >select (iii) Net Debt To Equity
- Fundamental Analysis Conditions tab >select (iv) Return On Equity (ROE)

**B. Conditions**

1. Price Earnings Ratio - select (less than) type (15) times now
2. CAGR of Net Earnings - select (more than) type (10) % for the past type (3) financial year(s)
3. Net Debt To Equity – select (less than) type (1) for the past select (1) financial year(s)
4. Return On Equity (ROE) – select (more than) type (10) % for the past select (1) financial year(s)

- > click Save Template > Create New Template type (Value Stock) > click Create
- > click Save Template as > select Value Companies > click Save
- > click Screen Now (may take a few minutes)
- Sort by: Select (PE Ratio) Select (Ascending)
- > Mouse over stock name > Factsheet > looking for Total Shareholder Return
- > Mouse over stock name > Charts > click C2 Charts tab

## SYNERGY HOUSE BERHAD (0279)

C<sup>2</sup> Chart



Period	Dividend Received	Capital Appreciation	Total Shareholder Return
Short Term Return	5Days	+1.85%	+1.85%
	10Days	+1.84%	+1.84%
	30Days	+1.80%	+1.80%
Medium Term Return	3Months	+3.94%	+3.94%

## EDELTEQ HOLDINGS BERHAD (0278)

C<sup>2</sup> Chart



Period	Dividend Received	Capital Appreciation	Total Shareholder Return
Short Term Return	5Days	+1.25%	+1.25%
	10Days	+1.03%	+1.03%
	30Days	-1.05%	-1.05%
Medium Term Return	3Months	-3.26%	-3.26%

## SUNMOW HOLDING BERHAD (03050)

C<sup>2</sup> Chart



Period	Dividend Received	Capital Appreciation	Total Shareholder Return
Short Term Return	5Days	-	-
	10Days	+1.50%	+1.51%
	30Days	+1.20%	+1.21%
Medium Term Return	3Months	+1.00%	+1.00%
	6Months	+1.70%	+1.83%
Annualised Return	Annualised	+1.40%	+1.41%

**Disclaimer:** The information on this page is provided as a service to readers. It does not constitute financial advice and/or any investment recommendations. Past performance is not indicative of future results. We assume no liability for damages resulting from or arising out of the use of such information. It would be best if you did your own research to make your personal investment decisions wisely or consult a licenced investment advisor.





# making places energizing



usm.com

## **XTRA**

XTRA FURNITURE SDN BHD  
The Gardens Mall, Mid Valley City, Lot S-236 & 237  
Lingkar Syed Putra, 59200 Kuala Lumpur  
T. +603 2282 9088 | living@xtrafurniture.com | xtrafurniture.com  
📍 XTRAFurniture | 📱 xtrafurnituremsia



## Price & Total Shareholder Return (as at Yesterday)

Fundamental Analysis

**DEFINITION:** Company revenue is growing and making good quality of earnings with positive Free Cash Flow.

**CHART GUIDE:** Total Shareholder Return (TSR) combines share price appreciation and distributions paid to show the total return to the shareholder expressed as a percentage.



ShareInvestor WebPro > Screener > Market Screener (FA & TA) > select BURSA > add criteria

**A. Criteria**

1. Fundamental Analysis Conditions tab >select (i) Free Cash Flow, (ii) Revenue Growth, (iii) Gross Profit (Earnings) Margin, (iv) Quality of Earnings, (v) Total Shareholder Returns, > click Add Criteria
2. Fundamental Analysis Conditions tab >select (vi) Total Shareholder Returns > click Add Criteria

**B. Conditions (Criteria Filters)**

1. Free Cash Flow - select (more than) type (1) for the past select (1) financial year(s)
2. Revenue Growth - select (more than) type (1) for the past select (1) financial year(s)
3. Gross Profit (Earnings) Margin - select (more than) type (30) % for the past select (1) financial year(s)
4. Quality of Earnings - select (more than) type (1) for the past select (1) financial year(s)
5. Total Shareholder Return - select (more than) type (5) % for the past select (3) financial year(s)
6. Total Shareholder Return - select (more than) type (5) % for the past select (5) financial year(s)

- > click Save Template > Create New Template type (Growth Companies) > click Create
- > click Save Template as > select Growth Companies > click Save
- > click Screen Now (may take a few minutes)
- > Sort By: Select (Revenue Growth) Select (Desc)
- > Mouse over stock name > Factsheet > looking for Total Shareholder Return

### EDARAN BERHAD (5036)

C<sup>2</sup> Chart

Analysis



Period	Dividend Received	Capital Appreciation	Total Shareholder Return
Short Term Return	5 Days	-	-
	10 Days	-0.05	-0.05%
	20 Days	-	-
Medium Term Return	3 Months	-0.05	-0.05%
	6 Months	-0.03	-0.03%
	1 Year	-0.10	-0.10%
Long Term Return	2 Years	0.05	0.05%
	3 Years	0.03	0.03%
	5 Years	0.03	0.03%
Annualized Return	Annualized	-	-0.05%

### REDTONE DIGITAL BERHAD (0032)

C<sup>2</sup> Chart

Analysis



Period	Dividend Received	Capital Appreciation	Total Shareholder Return
Short Term Return	5 Days	-0.03	-0.03%
	10 Days	-0.10	-0.10%
	20 Days	-0.05	-0.05%
Medium Term Return	3 Months	-0.05	-0.05%
	6 Months	-0.10	-0.10%
	1 Year	-0.20	-0.20%
Long Term Return	2 Years	-0.10	-0.10%
	3 Years	-0.05	-0.05%
	5 Years	0.00	0.00%
Annualized Return	Annualized	-	-0.14%

### IGB BERHAD (5606)

C<sup>2</sup> Chart

Analysis



Period	Dividend Received	Capital Appreciation	Total Shareholder Return
Short Term Return	5 Days	-0.03	-0.03%
	10 Days	-	-
	20 Days	-0.03	-0.03%
Medium Term Return	3 Months	-0.03	-0.03%
	6 Months	-	-
	1 Year	-0.03	-0.03%
Long Term Return	2 Years	0.10	0.10%
	3 Years	0.25	0.25%
	5 Years	0.50	0.50%
Annualized Return	Annualized	-	0.10%

**Disclaimer:** The information on this page is provided as a service to readers. It does not constitute financial advice and/or any investment recommendations. Past performance is not indicative of future results. We assume no liability for damages resulting from or arising out of the use of such information. It would be best if you did your own research to make your personal investment decisions wisely or consult a licenced investment advisor.



## Price & Total Shareholder Return (as at Yesterday)

Fundamental Analysis

**DEFINITION:** Company is paying out dividend with low or moderate leverage.

**CHART GUIDE:** Total Shareholder Return (TSR) combines share price appreciation and distributions paid to show the total return to the shareholder expressed as a percentage.



ShareInvestor WebPro > Screener > Market Screener (FA & TA) > select BURSA > add criteria

**A. Criteria**

- > click Add Criteria
- Fundamental Analysis Conditions tab >select (i) Dividend Yield (Historical)
- Fundamental Analysis Conditions tab >select (ii) Dividend Payout (Historical)
- Fundamental Analysis Conditions tab >select (iii) Total Debt To Equity
- Fundamental Analysis Conditions tab >select (iv) Total Shareholder Returns
- Fundamental Analysis Conditions tab >select (v) Total Shareholder Returns
- Fundamental Analysis Conditions tab / >select (vi) CAGR of Dividend Per Share

- Fundamental Analysis Conditions tab >select (vii) CAGR of Dividend Per Share

**B. Conditions (Criteria Filters)**

1. Dividend Yield - select (more than) type (1) % for the past select (1) financial year(s)
2. Dividend Payout (Historical) - select (between) type (0.5) to type (1) times for the past select (1) financial year(s)
3. Total Debt to Equity – select (less than) type (1) for the past select (1) financial year(s)
4. Total Shareholder Return – select (more than) type (5) % for the past select (3) financial year(s)
5. Total Shareholder Return – select (more than) type (5) % for the past select (5) financial year(s)

6. CAGR of Dividend Per Share – select (less than) type (30) % for the past select (5) financial year(s)
7. CAGR of Dividend Per Share – select (more than) type (1) % for the past select (5) financial year(s)

- > click Save Template > Create New Template type (Dividend Companies) > click Create
- > click Save Template as > select Dividend Companies > click Save
- > click Screen Now (may take a few minutes)
- > Sort By: Select (Dividend Yield) Select (Desc)
- > Mouse over stock name > Factsheet > looking for Total Shareholder Return

## FORMOSA PROSONIC INDUSTRIES (9172)

C<sup>2</sup> Chart

Analysis



Period	Dividend Received	Capital Appreciation	Total Shareholder Return
Short Term Return	5 Days	-0.00	-0.00%
	10 Days	-0.07	-0.01%
	20 Days	-0.08	-0.01%
Medium Term Return	3 Months	-0.30	+0.04%
	6 Months	-0.40	+0.11%
	1 Year	-0.50	+0.20%
Long Term Return	2 Years	0.00	-0.07%
	3 Years	0.00	+0.20%
	5 Years	0.50	+0.21%
Annualised Return	Annualised	-	+0.15%

## KENANGA INVESTMENT BANK BERHAD (6483)

C<sup>2</sup> Chart

Analysis



Period	Dividend Received	Capital Appreciation	Total Shareholder Return
Short Term Return	5 Days	-0.00	-0.00%
	10 Days	-0.00	-0.00%
	20 Days	-0.00	-0.00%
Medium Term Return	3 Months	-0.00	-0.00%
	6 Months	-0.00	-0.00%
	1 Year	-0.00	-0.00%
Long Term Return	2 Years	0.00	-0.00%
	3 Years	0.00	-0.00%
	5 Years	0.00	-0.00%
Annualised Return	Annualised	-	-0.00%

## GAS MALAYSIA BERHAD (5209)

C<sup>2</sup> Chart

Analysis



Period	Dividend Received	Capital Appreciation	Total Shareholder Return
Short Term Return	5 Days	+0.00	+0.00%
	10 Days	+0.00	+0.00%
	20 Days	+0.00	+0.00%
Medium Term Return	3 Months	+0.00	+0.00%
	6 Months	+0.00	+0.00%
	1 Year	+0.00	+0.00%
Long Term Return	2 Years	0.00	+0.00%
	3 Years	0.00	+0.00%
	5 Years	0.00	+0.00%
Annualised Return	Annualised	-	+0.00%

**Disclaimer:** The information on this page is provided as a service to readers. It does not constitute financial advice and/or any investment recommendations. Past performance is not indicative of future results. We assume no liability for damages resulting from or arising out of the use of such information. It would be best if you did your own research to make your personal investment decisions wisely or consult a licenced investment advisor.



Week: 27 October 2023 - 2 November 2023

More Brokers' Call 

AMINVESTMENT BANK <small>... See More</small>	Call	Target Price	Release Date
Malakoff Berhad (2496)	BUY	RM0.75	30 Oct 2023
Hibiscus Petroleum Berhad (5199)	BUY	RM3.23	31 Oct 2023
Bursa Malaysia Berhad (1818)	HOLD	RM6.80	01 Nov 2023

APEX <small>... See More</small>	Call	Target Price	Release Date
Plytec Holding Berhad (0289)	BUY	RM0.39	31 Oct 2023

BIMB SECURITIES SDN BHD <small>... See More</small>	Call	Target Price	Release Date
Nestle (Malaysia) Berhad (4707)	HOLD	RM134.20	27 Oct 2023
Hextar Global Berhad (5151)	HOLD	RM0.69	30 Oct 2023

CGS CIMB <small>... See More</small>	Call	Target Price	Release Date
Axis Real Estate Investment Trust (5106)	ADD	RM2.01	30 Oct 2023
Bursa Malaysia Berhad (1818)	HOLD	RM6.90	31 Oct 2023

KENANGA <small>... See More</small>	Call	Target Price	Release Date
Bursa Malaysia Berhad (1818)	MARKET PERFORM	RM6.25	01 Nov 2023
HIL Industries Berhad (8443)	UNDERPERFORM	RM0.87	02 Nov 2023
OM Holdings Limited (5298)	OUTPERFORM	RM2.07	02 Nov 2023

MIDF <small>... See More</small>	Call	Target Price	Release Date
Nestlé (Malaysia) Berhad (4707)	NEUTRAL	RM129.70	30 Oct 2023
Ranhill Utilities Berhad (5272)	BUY	RM0.80	31 Oct 2023
Ranhill Utilities Berhad (5272)	BUY	RM0.80	01 Nov 2023
Capital A Berhad (5099)	NEUTRAL	RM0.90	02 Nov 2023

UOB KAYHIAN <small>... See More</small>	Call	Target Price	Release Date
British American Tobacco (Malaysia) Berhad (4162)	BUY	RM11.50	31 Oct 2023
Bursa Malaysia Berhad (1818)	BUY	RM7.85	01 Nov 2023
Cypark Resources Berhad (5184)	BUY	RM1.29	01 Nov 2023

**Disclaimer:** InveSt does not accept any liability whatsoever for any direct, indirect or consequential losses (including loss of profit) or damages that may arise from the use of information or opinions in this publication. The information and opinions in InveSt are not to be considered as an offer to sell or buy any of the securities discussed. Opinions expressed are subject to change without notice. The Brokers may, from time to time, have interests or positions in the securities mentioned. For the full report on each item listed on this page, please visit [https://www.shareinvestor.com/my/brokers\\_call](https://www.shareinvestor.com/my/brokers_call).



**DEFINITION:** Top 8 stocks with Technical Analysis plus Pattern Matching by 60 pre-defined indicators by the system showing a higher probability of bullish sentiment on the share price.



ShareInvestor WebPro > Screener > Predefined TA Screens > select market BURSA > Most Long Signals > click Scan Results or mouse over each company

## RANHILL UTILITIES BERHAD (5272.MY)

### RANHILL

Price updated at 02 Nov 2023 16:59

Last: <b>0.785</b>	Change: <b>+0.050</b>	Volume: <b>752,680</b>
	Change (%): <b>+6.80</b>	Range: <b>0.735 - 0.820</b>

TA Scanner Results based on historical data up to 02 Nov 2023

Condition	Signal	Explanation
Bollinger Band: Bullish Long Term Volatility Breakout and Trending	Long	1. Close price above upper bollinger band(33,1). 2. Volume above average volume(50). 3. Average volume(50) is above 300,000.
Bollinger Band: Bullish Short Term Volatility Breakout and Trending	Long	1. Close price above upper bollinger band(33,1). 2. Volume above average volume(10). 3. Average volume(10) is above 300,000.
Bollinger Band: High Above Upper Bollinger Band	Neutral	1. High above upper bollinger band(14,2). 2. Average volume(5) is above 100,000.
Candlestick: Bullish Engulfing	Long	Bullish: Engulfing
DM: Bullish Directional Movement	Long	-DI(14) crossed below +DI(14)
Donchian Channels: High Above Upper Donchian Channels	Long	High crossed above the upper Donchian Channel(14,4)
MACD: Bullish MACD Crossover	Long	1. MACD(12,26) diff line crossed above the MACD(12,26) signal line. 2. MACD Histogram(12,26) is above 0.
Parabolic SAR: Bearish Parabolic SAR Reversal	Neutral	1. Parabolic SAR 1 day ago above close price 1 day ago for the last 5 days. 2. Parabolic SAR below close price
Price: New 52 Week High	Long	1. Stock reach a new 52 week high. 2. Average volume(30) is above 50000.
RSI: Short Term RSI 50 Bullish Crossover	Long	1. RSI(20) crossed above 50 within the last 1 day and RSI(20) 1 day ago below 50 for the last 5 days. 2. Volume above average volume(125). 3. Average volume(5) is above 100,000.
Volume: Volume Spike	Long	1. Volume is more than 500% above average volume(10). 2. Volume above 200000. 3. Close price above 0.10
Williams %R: Bearish Williams %R	Short	1. Williams %R(26) between 0 and -20. 2. Average volume(5) is above 100,000.

## DPI HOLDINGS BERHAD (0205.MY)

### DPIH

Price updated at 02 Nov 2023 16:50

Last: <b>0.195</b>	Change: <b>-0.005</b>	Volume: <b>2,860</b>
	Change (%): <b>-2.50</b>	Range: <b>0.190 - 0.205</b>

TA Scanner Results based on historical data up to 02 Nov 2023

Condition	Signal	Explanation
Bollinger Band: Bullish Lower Bollinger Band Support	Long	1. Low 1 day ago below lower bollinger band(20,2). 2. Close above close 1 day ago. 3. Average volume(5) is above 100,000.
Bollinger Band: High Above Upper Bollinger Band	Neutral	1. High above upper bollinger band(14,2). 2. Average volume(5) is above 100,000.
Bollinger Band: Low Below Lower Bollinger Band	Neutral	1. Low below lower bollinger band(14,2). 2. Average volume(5) is above 100,000.
Candlestick: Bullish Engulfing	Long	Bullish: Engulfing
DM: Bullish Directional Movement	Long	-DI(14) crossed below +DI(14)
MACD: Bullish MACD Crossover	Long	1. MACD(12,26) diff line crossed above the MACD(12,26) signal line. 2. MACD Histogram(12,26) is above 0.
RSI: Short Term RSI 50 Bullish Crossover	Long	1. RSI(20) crossed above 50 within the last 1 day and RSI(20) 1 day ago below 50 for the last 5 days. 2. Volume above average volume(125). 3. Average volume(5) is above 100,000.

## PERMAJU INDUSTRIES BERHAD - ICPS 2020/2030 (7080PA.MY)

### PERMAJU-PA

Price updated at 02 Nov 2023 10:31

Last: <b>0.015</b>	Change: -	Volume: -
	Change (%): -	Range: <b>0.015 - 0.015</b>

TA Scanner Results based on historical data up to 02 Nov 2023

Condition	Signal	Explanation
DM: Bullish Directional Movement	Long	-DI(14) crossed below +DI(14)
Donchian Channels: High Above Upper Donchian Channels	Long	High crossed above the upper Donchian Channel(14,4)
MA: Medium Term Bullish Moving Average Crossover	Long	MA(25) crossed above MA(50) within the last 1 day.
MA: Short Term Bullish Moving Average Crossover	Long	MA(10) crossed above MA(15) within the last 1 day.
MACD: Bullish MACD Crossover	Long	1. MACD(12,26) diff line crossed above the MACD(12,26) signal line. 2. MACD Histogram(12,26) is above 0.
Parabolic SAR: Bearish Parabolic SAR Reversal	Neutral	1. Parabolic SAR 1 day ago above close price 1 day ago for the last 5 days. 2. Parabolic SAR below close price
Price: New 52 Week High	Long	1. Stock reach a new 52 week high. 2. Average volume(30) is above 50000.
Stochastic: Fast Stochastic Buy Signal	Long	1. Fast Stochastic(15,5) %K crossed above 20. 2. Fast Stochastic(15,5) %K 1 day ago was below 20 for the last 5 days. 3. Average volume(30) is above 50000

## SEDANIA INNOVATOR BERHAD (0178.MY)

### SEDANIA

Price updated at 02 Nov 2023 16:59

Last: <b>0.195</b>	Change: <b>-0.010</b>	Volume: <b>67,738</b>
	Change (%): <b>-4.88</b>	Range: <b>0.190 - 0.210</b>

TA Scanner Results based on historical data up to 02 Nov 2023

Condition	Signal	Explanation
Bollinger Band: Bullish Long Term Volatility Breakout and Trending	Long	1. Close price above upper bollinger band(33,1). 2. Volume above average volume(50). 3. Average volume(50) is above 300,000.
Bollinger Band: Bullish Short Term Volatility Breakout and Trending	Long	1. Close price above upper bollinger band(33,1). 2. Volume above average volume(10). 3. Average volume(10) is above 300,000.
Bollinger Band: High Above Upper Bollinger Band	Neutral	1. High above upper bollinger band(14,2). 2. Average volume(5) is above 100,000.
CCI: Bearish CCI Overbought And Reversing	Short	1. CCI(26) above 100 and CCI(26) 1 day ago increasing for the last 3 days. 2. CCI(26) below CCI(26) 1 day ago
DM: Bullish Directional Movement	Long	-DI(14) crossed below +DI(14)
Donchian Channels: High Above Upper Donchian Channels	Long	High crossed above the upper Donchian Channel(14,4)
RSI: Short Term RSI 50 Bullish Crossover	Long	1. RSI(20) crossed above 50 within the last 1 day and RSI(20) 1 day ago below 50 for the last 5 days. 2. Volume above average volume(125). 3. Average volume(5) is above 100,000.
Volume: Volume Spike	Long	1. Volume is more than 500% above average volume(10). 2. Volume above 200000. 3. Close price above 0.10

**Disclaimer:** The information on this page is provided as a service to readers. It does not constitute financial advice and/or any investment recommendations. Past performance is not indicative of future results. We assume no liability for damages resulting from or arising out of the use of such information. It would be best if you did your own research to make your personal investment decisions wisely or consult a licenced investment advisor.





**AGESON BERHAD (7145.MY)**

**AGES**

Price updated at 02 Nov 2023 16:59

Last: <b>0.065</b>	Change: <b>-0.010</b>	Volume: <b>352,576</b>
	Change (%): <b>-13.33</b>	Range: <b>0.060 - 0.080</b>

TA Scanner Results based on historical data up to 02 Nov 2023

Condition	Signal	Explanation
Bollinger Band: Bullish Long Term Volatility Breakout and Trending	Long	1. Close price above upper bollinger band(33,1). 2. Volume above average volume(50). 3. Average volume(50) is above 300,000.
Bollinger Band: Bullish Short Term Volatility Breakout and Trending	Long	1. Close price above upper bollinger band(33,1). 2. Volume above average volume(10). 3. Average volume(10) is above 300,000.
Bollinger Band: High Above Upper Bollinger Band	Neutral	1. High above upper bollinger band(14,2). 2. Average volume(5) is above 100,000.
DM: Bullish Directional Movement	Long	-DI(14) crossed below +DI(14)
Donchian Channels: High Above Upper Donchian Channels	Long	High crossed above the upper Donchian Channel(14,4)
MA: Medium Term Bullish Moving Average Crossover	Long	MA(25) crossed above MA(50) within the last 1 day.
MA: Short Term Bullish Moving Average Crossover	Long	MA(10) crossed above MA(15) within the last 1 day.
MACD: Overbought	Short	1. MACD Histogram(12,26,9) reached a new 6 month high. 2. MACD Histogram(12,26,9) has been above 0 for the last 3 weeks.
RSI: Short Term RSI 30 Bullish Crossover	Long	1. RSI(20) crossed above 30 within the last 1 day and RSI(20) 1 day ago below 30 for the last 5 days. 2. Volume above average volume(125). 3. Average volume(5) is above 100,000.
RSI: Short Term RSI 50 Bullish Crossover	Long	1. RSI(20) crossed above 50 within the last 1 day and RSI(20) 1 day ago below 50 for the last 5 days. 2. Volume above average volume(125). 3. Average volume(5) is above 100,000.
Stochastic: Fast Stochastic Buy Signal	Long	1. Fast Stochastic(15,5) %K crossed above 20. 2. Fast Stochastic(15,5) %K 1 day ago was below 20 for the last 5 days. 3. Average volume(30) is above 50000
Williams %R: Bearish Williams %R	Short	1. Williams %R(26) between 0 and -20. 2. Average volume(5) is above 100,000.



**PEGASUS HEIGHTS BERHAD (4464.MY)**

**PHB**

Price updated at 02 Nov 2023 16:58

Last: <b>0.005</b>	Change: <b>-0.005</b>	Volume: <b>908</b>
	Change (%): <b>-50.00</b>	Range: <b>0.005 - 0.010</b>

TA Scanner Results based on historical data up to 02 Nov 2023

Condition	Signal	Explanation
Bollinger Band: Bullish Long Term Volatility Breakout and Trending	Long	1. Close price above upper bollinger band(33,1). 2. Volume above average volume(50). 3. Average volume(50) is above 300,000.
Bollinger Band: Bullish Short Term Volatility Breakout and Trending	Long	1. Close price above upper bollinger band(33,1). 2. Volume above average volume(10). 3. Average volume(10) is above 300,000.
MA: Bullish Price Crossover	Long	1. Close price crossed above MA(40) within the last 1 day. 2. Previous day close price is below the MA(10) for the last 5 days
MACD: Bullish MACD Crossover	Long	1. MACD(12,26) diff line crossed above the MACD(12,26) signal line. 2. MACD Histogram(12,26) is above 0.
Price: New 52 Week High	Long	1. Stock reach a new 52 week high. 2. Average volume(30) is above 50000.
Stochastic: Fast Stochastic Buy Signal	Long	1. Fast Stochastic(15,5) %K crossed above 20. 2. Fast Stochastic(15,5) %K 1 day ago was below 20 for the last 5 days. 3. Average volume(30) is above 50000



**INFOLINE TEC GROUP BERHAD (0253.MY)**

**INFOTEC**

Price updated at 02 Nov 2023 16:55

Last: <b>0.785</b>	Change: <b>-0.005</b>	Volume: <b>25,326</b>
	Change (%): <b>-0.63</b>	Range: <b>0.780 - 0.795</b>

TA Scanner Results based on historical data up to 02 Nov 2023

Condition	Signal	Explanation
Bollinger Band: Bullish Long Term Volatility Breakout and Trending	Long	1. Close price above upper bollinger band(33,1). 2. Volume above average volume(50). 3. Average volume(50) is above 300,000.
Bollinger Band: Bullish Short Term Volatility Breakout and Trending	Long	1. Close price above upper bollinger band(33,1). 2. Volume above average volume(10). 3. Average volume(10) is above 300,000.
Bollinger Band: High Above Upper Bollinger Band	Neutral	1. High above upper bollinger band(14,2). 2. Average volume(5) is above 100,000.
Donchian Channels: High Above Upper Donchian Channels	Long	High crossed above the upper Donchian Channel(14,4)
Volume: 10 Days large value Buy Up trade	Long	1. 150K value Buy Up greater than Sell Down by 20% for 10 days. 2. 50K-100K value Buy Up greater than Sell Down by 20% for 10 days. 3. Average volume(10) is above 1000000
Volume: 5 Days large value Buy Up trade	Long	1. 150K value Buy Up greater than Sell Down by 20% for 5 days. 2. 50K-100K value Buy Up greater than Sell Down by 20% for 5 days. 3. Average volume(10) is above 1000000
Williams %R: Bearish Williams %R	Short	1. Williams %R(26) between 0 and -20. 2. Average volume(5) is above 100,000.



**AGESON BERHAD - ICPS 2020/2030 (7145PA.MY)**

**AGES-PA**

Price updated at 02 Nov 2023 16:53

Last: <b>0.020</b>	Change: -	Volume: <b>14,033</b>
	Change (%): -	Range: <b>0.015 - 0.020</b>

TA Scanner Results based on historical data up to 02 Nov 2023

Condition	Signal	Explanation
Bollinger Band: Bullish Short Term Volatility Breakout and Trending	Long	1. Close price above upper bollinger band(33,1). 2. Volume above average volume(10). 3. Average volume(10) is above 300,000.
Bollinger Band: High Above Upper Bollinger Band	Neutral	1. High above upper bollinger band(14,2). 2. Average volume(5) is above 100,000.
Donchian Channels: High Above Upper Donchian Channels	Long	High crossed above the upper Donchian Channel(14,4)
MA: Medium Term Bullish Moving Average Crossover	Long	MA(25) crossed above MA(50) within the last 1 day.
MA: Short Term Bullish Moving Average Crossover	Long	MA(10) crossed above MA(15) within the last 1 day.
MACD: Overbought	Short	1. MACD Histogram(12,26,9) reached a new 6 month high. 2. MACD Histogram(12,26,9) has been above 0 for the last 3 weeks.
Parabolic SAR: Bearish Parabolic SAR Reversal	Neutral	1. Parabolic SAR 1 day ago above close price 1 day ago for the last 5 days. 2. Parabolic SAR below close price
RSI: Short Term RSI 50 Bullish Crossover	Long	1. RSI(20) crossed above 50 within the last 1 day and RSI(20) 1 day ago below 50 for the last 5 days. 2. Volume above average volume(125). 3. Average volume(5) is above 100,000.
Stochastic: Fast Stochastic Buy Signal	Long	1. Fast Stochastic(15,5) %K crossed above 20. 2. Fast Stochastic(15,5) %K 1 day ago was below 20 for the last 5 days. 3. Average volume(30) is above 50000

**Disclaimer:** The information on this page is provided as a service to readers. It does not constitute financial advice and/or any investment recommendations. Past performance is not indicative of future results. We assume no liability for damages resulting from or arising out of the use of such information. It would be best if you did your own research to make your personal investment decisions wisely or consult a licenced investment advisor.



# BNM KEEPS OPR AT 3% IN LAST MPC MEETING OF 2023

**B**ank Negara Malaysia (BNM) has maintained the overnight policy rate (OPR) at 3% in its Monetary Policy Committee (MPC) meeting on Nov 2. According to the MPC, the advance gross domestic product estimate points to an improvement in economic activity in the third quarter. Growth in 2024 will be driven mainly by resilient domestic expenditure, with some support emanating from the expected recovery in electrical and electronics exports. The MPC remains vigilant to ongoing developments to inform the assessment of the outlook for domestic inflation and growth and will ensure that the monetary policy stance remains conducive to sustainable economic growth amid price stability.



## **IMPLEMENTATION OF TAX ON HIGH-VALUE GOODS STARTING MAY 2024 - MOF**

According to the Ministry of Finance, Malaysia will implement a tax on high-value goods from May 1, 2024. In a written response to Parliament on Nov 1, the ministry stated that it was currently finalising the policy and will announce the tax mechanism, types of goods to be taxed and tax rates once approved by the Cabinet. PM Datuk Seri Anwar Ibrahim had announced in his Budget 2024 speech in October that a tax of 5% to 10% will be introduced for high-value goods. Malaysia expects to bolster its fiscal position by introducing a tax on high-value goods, among other new taxes combined with subsidy cuts.

## **RENT-TO-OWN SCHEME TO BE EXPANDED TO ALLOW B40, M40 GROUPS TO OWN HOMES**

According to Local Government Development Minister Nga Kor Ming, the government will expand the Rent-to-Own scheme to enable more people from the B40 and M40 groups to own homes. Cooperation with financial institutions will be continued to provide attractive and sustainable housing financing packages. The ministry through PR1MA Corporation Malaysia (PR1MA) and Syarikat Perumahan Negara Berhad (SPNB) had been developing housing projects such as the SPNB Housing and PR1MA Housing programmes for the M40 group nationwide. He said this at the winding-up the debate on the Supply Bill 2024 for the ministry in the Dewan Rakyat on October 31. To date, a total of 28,583 SPNB housing units have been completed, 1,024 units are under construction and 531 units are in the planning process.

He added that PR1MA has also built 35,454 affordable housing units, while 14,427 units are in progress and 3,765 units are being planned nationwide as of Oct 15. The government has also agreed to set the standard size for the People's Housing Project (PPR) unit at 750 square feet, with a minimum of three bedrooms and two bathrooms for each

unit. This new direction in the PPR implementation is in line with the government's aim to enhance the living conditions of residents in these housing units.

With this, KPKT will ensure that newly constructed PPRs will be well-integrated with other facilities, including recreational parks, food courts and convenience stores. In addition, to promote home ownership, the ministry has introduced the i-Biaya initiative which is a financing assurance through the Housing Credit Guarantee Scheme (SJKP), specifically for first-time homebuyers, including those without a fixed income or payslips, such as workers in the gig economy.

Through this initiative, the government provides financing assurance of up to RM500,000. This includes the principal financing amount, the Mortgage Reducing Term Assurance (MRTA) guarantee, the Mortgage Reducing Term Takaful (MRTT), legal fees and valuation fees. Throughout the SJKP implementation from 2008 until Sept 30, 2023, a total of 30,841 loan applications, amounting to RM5.85 billion, had been approved and the government, through the 2024 Budget, has proposed an additional RM10 billion in guarantees to benefit 40,000 borrowers.

## **BURSA, DALIAN COMMODITY EXCHANGE INK AGREEMENT FOR SOYBEAN OIL FUTURES SETTLEMENT PRICE**

KUALA LUMPUR (Nov 2): Bursa Malaysia Derivatives Bhd (BMD) and the Dalian Commodity Exchange (DCE) have signed the licensing agreement for the soybean oil futures settlement price – the first product collaboration between a Chinese derivatives exchange, and an Asian exchange based outside of the republic. Under the agreement, the DCE has authorised use of the settlement price of DCE soybean oil futures by BMD as the basis to calculate the cash settlement price of its upcoming new product, the Bursa Malaysia DCE soybean oil futures contract (FSOY). The underlying asset of the FSOY will mirror that of the DCE soybean oil futures.



Bursa Malaysia targets to launch the product in the first quarter of 2024, subject to regulatory approval. The latest collaboration between BMD and the DCE marks a historic milestone in the development of the Asian derivatives market. In a joint statement, both entities stated that it represents the first instance of a Chinese derivatives exchange authorising an Asian exchange to incorporate Chinese commodity futures settlement prices into its product offerings. Simultaneously, adopting foreign commodity futures prices as the basis for calculating cash settlement prices not only sets a precedent for the Malaysian futures market, but also leverages the proven success of the DCE soybean oil futures contract.

The licensing agreement was signed at the 17th China International Oils and Oilseeds Conference in Dalian, China, a landmark event in the global oils and oilseeds industry jointly organised by the DCE and BMD. The settlement price licensing agreement was signed by BMD chairman and Bursa Malaysia Bhd chief executive officer Datuk Muhamad Umar Swift and DCE CEO Yan Shaoming.

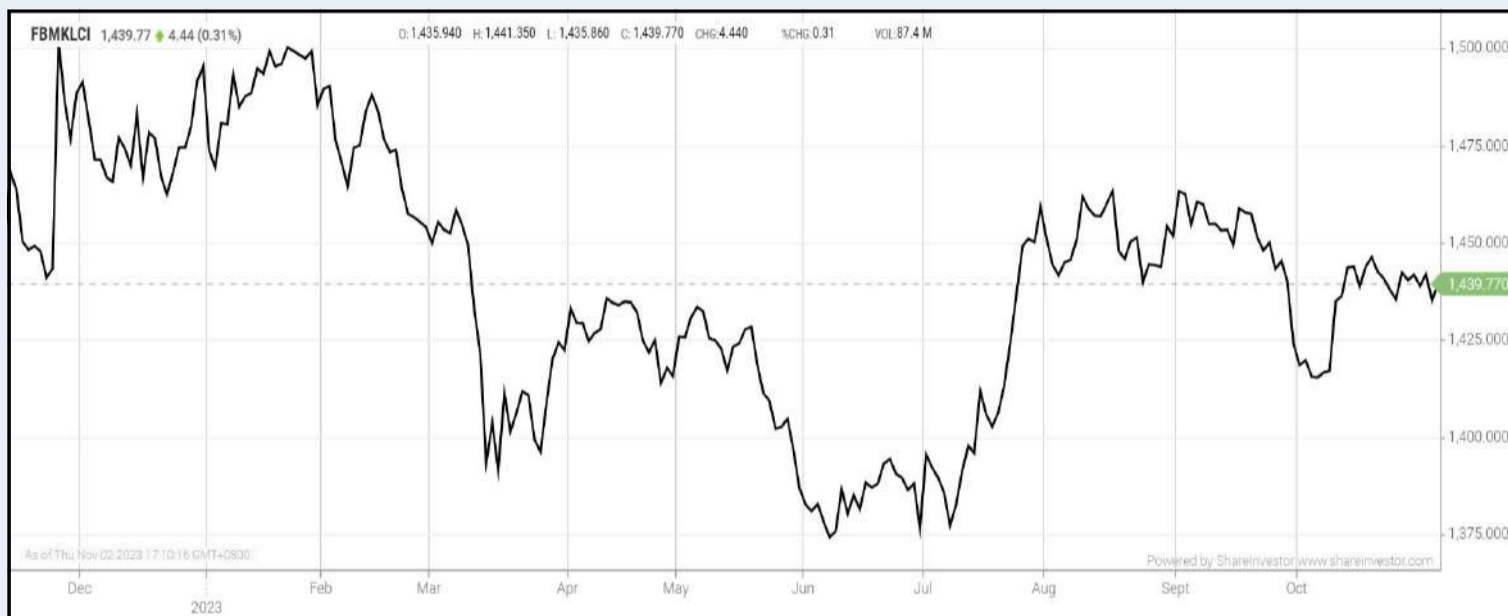
According to Muhamad Umar, as the leading commodity derivatives marketplace in ASEAN, BMD continually develops products to help market participants navigate the complexities of international markets and discover trading opportunities. Through this cooperation, BMD is proud to offer an innovative solution that simplifies market access, and empowers industry players to effectively manage cross-market risks.

The soybean oil futures launched by the DCE in 2006 are widely used as a price reference for China's spot soybean oil trades, while their institutional market participants are industry players who account for 90% of the soybean crushing volume in China. Meanwhile, BMD offers the world's most liquid crude palm oil (CPO) futures contract, and is established as the global centre for CPO price discovery. Thus, the introduction of the FSOY will leverage the strengths of both exchanges to offer market players arbitrage opportunities between soybean oil and palm oil, which are common substitutes.

The FSOY will provide international traders with an alternative avenue to access Chinese soybean oil prices, with the convenience to trade both commodities on the same exchange (BMD), enabling cross-margining and capital efficiencies.

## EYE ON THE MARKETS

On Thursday (02Nov), the Ringgit closed at 4.7530 against the USD and 3.4794 to the Sing Dollar. On Monday (30Oct), the FBM KLCI opened at 1440.04. As at Thursday (02Nov) 5:00pm, the FBM KLCI closed down 0.27 points at 1439.77. Over in US, the overnight Dow Jones Industrial Average closed up 564.50 points (+1.70%) to 33,839.08 whilst the NASDAQ added 232.72 points (+1.78%) to 13,294.19.



KLCI 1 Year Chart

**CHECK OUT  
SHAREINVESTOR  
BROKERS' CALL**

Weekly Buy/Sell/Hold calls from leading Malaysian Brokerages.

[Go To Brokers' Call](#)



## Over 5 trading days



ShareInvestor WebPro ([www.shareinvestor.com/my](http://www.shareinvestor.com/my))

1. Price > Stock Prices
2. Select Market: NASDAQ / NYSE / IDX / SET / HKEX / SGX (One bourse at a time)
3. select Stocks Tab
4. select Ranking Top Gainers or Top Losers (Over 5 Trading Days)
5. Mouse over Column Layout > select Edit Customs > select Name > select Last Done Price > select 5 Days Change > select 52 Weeks High > select 52 Weeks Low > Mouse Over Column Layout > select Custom

### NASDAQ (USD)

#### Top Gainers

Name	Last Done	Change Over 5 Days	52 Weeks High	52 Weeks Low
MERCADOLIBRE INC	1,319.500	+144.500	1,451.560	815.855
BOOKING HOLDINGS INC	2,838.620	+95.930	3,251.709	1,771.320
MONOLITHIC POWER SYSTEM INC	471.720	+67.660	595.980	328.200
ADOBE INC	558.710	+50.590	574.400	278.230
EQUINIX INC	763.190	+43.680	821.630	546.770

#### Top Losers

Name	Last Done	Change Over 5 Days	52 Weeks High	52 Weeks Low
SAREPTA THERAPEUTICS INC	77.760	-33.840	159.890	55.250
FIRST CITIZENS BANCSHARES INC NRTH	1,390.000	-24.470	1,512.070	505.840
PREFORMED LINE PRODUCTS CO	110.280	-22.400	184.820	78.525
ENPHASE ENERGY INC	78.920	-17.260	339.920	76.060
VISTEON CORPORATION	111.300	-16.680	171.660	113.820

### NYSE (USD)

#### Top Gainers

Name	Last Done	Change Over 5 Days	52 Weeks High	52 Weeks Low
BERKSHIRE HATHAWAY INC	530,340.000	+20,215.000	566,569.970	426,136.000
NVR INC	5,698.910	+272.090	6,525.000	4,027.040
CHIPOTLE MEXICAN GRILL	2,035.370	+147.780	2,175.010	1,344.050
AUTOZONE INC	2,546.020	+99.850	2,750.000	2,277.880
FAIR ISAAC CORP	900.690	+70.970	940.100	427.090

#### Top Losers

Name	Last Done	Change Over 5 Days	52 Weeks High	52 Weeks Low
MARKEL GROUP INC	1,301.300	-159.840	1,560.000	1,186.560
PAYCOM SOFTWARE INC	162.660	-82.280	374.040	146.880
KINSALE CAPITAL GROUP INC	344.350	-81.870	457.730	250.895
TEXAS PACIFIC LAND CORPORATION	1,797.800	-58.430	2,739.000	1,266.210
HUMANA INC	481.400	-31.970	571.300	423.290

### IDX (Rupiah)

#### Top Gainers

Name	Last Done	Change Over 5 Days	52 Weeks High	52 Weeks Low
PETRINDO JAYA KREASI TBK	5,350.000	+1,770.000	5,675.000	240.000
DCI INDONESIA TBK	34,500.000	+1,500.000	38,000.000	32,850.000
DIAN SWASTATIKA SENTOSA TBK	51,000.000	+950.000	56,050.000	33,950.000
MAHA PROPERTI INDONESIA TBK	2,960.000	+840.000	4,750.000	1,245.000
JEMBO CABLE CO	3,300.000	+460.000	4,950.000	2,840.000

#### Top Losers

Name	Last Done	Change Over 5 Days	52 Weeks High	52 Weeks Low
GUDANG GARAM TBK	22,600.000	-3,025.000	30,050.000	16,500.000
UNITED TRACTORS	23,725.000	-2,450.000	31,700.000	22,200.000
METROPOLITAN KENTJ	26,975.000	-1,700.000	46,200.000	16,950.000
INDO TAMBANGRAYA MEGAH TBK	25,225.000	-1,625.000	44,650.000	22,125.000
INDOINTERNET TBK	17,850.000	-1,125.000	21,250.000	16,500.000

### SET (Thai Baht)

#### Top Gainers

Name	Last Done	Change Over 5 Days	52 Weeks High	52 Weeks Low
NEW	109.000	+25.250	210.000	65.000
DELTA	84.250	+12.000	119.500	59.600
AEONTS	156.000	+8.000	208.000	145.000
EGCO	126.000	+8.000	178.500	114.500
JTS	40.250	+7.750	61.000	23.200

#### Top Losers

Name	Last Done	Change Over 5 Days	52 Weeks High	52 Weeks Low
OHTL	454.000	-24.000	546.000	450.000
PTTEP	161.500	-7.500	195.000	134.500
INSURE	116.000	-6.000	350.000	116.000
BCT	55.000	-5.500	62.000	48.000
BKI	298.000	-4.000	321.000	272.000

### HKEX (HKD)

#### Top Gainers

Name	Last Done	Change Over 5 Days	52 Weeks High	52 Weeks Low
NOAH HOLDINGS PRIVATE WEALTH AND AS	187.200	+169.180	187.200	17.500
BEIGENE LTD	109.800	+10.300	170.500	93.200
EVEREST MEDICINES LTD	31.200	+9.100	32.200	6.910
LAEKNA INC	25.150	+8.850	26.450	10.320
SICHUAN KELUN-BIOTECH BIOPHARMACEUT	82.000	+8.000	89.600	60.600

#### Top Losers

Name	Last Done	Change Over 5 Days	52 Weeks High	52 Weeks Low
YUM CHINA HOLDINGS INC	350.000	-62.400	514.500	326.800
YSB INC	19.080	-26.170	64.500	18.440
BYD COMPANY LIMITED	232.000	-10.400	280.600	165.100
BYD COMPANY LIMITED	217.000	-8.800	255.800	199.900
TRIP COM GROUP LTD	260.600	-8.800	330.200	190.600

### SGX (SGD)

#### Top Gainers

Name	Last Done	Change Over 5 Days	52 Weeks High	52 Weeks Low
JARDINE C&C	29.100	+0.880	35.580	27.250
JMH USD	40.980	+0.770	54.890	38.660
IFAST	6.730	+0.600	6.960	4.020
VENTURE	11.950	+0.430	18.750	11.360
CITYDEV	6.380	+0.240	8.285	6.120

#### Top Losers

Name	Last Done	Change Over 5 Days	52 Weeks High	52 Weeks Low
POWERMATIC DATA	2.350	-0.490	3.019	2.311
DBS	32.660	-0.480	35.855	30.300
UOB	26.930	-0.350	31.400	26.820
PLATOCAPITAL	2.060	-0.220	2.880	0.805
NIO Inc. USD OV	7.480	-0.180	15.780	7.260

# SOME REFLECTIONS ON AN ESOS



Devanesan  
Evanson

**Chief Executive  
Officer, Minority  
Shareholders Watch  
Group**

**S**tock-based compensation such as employee share option schemes (ESOS) is widely used to reward, motivate and retain directors and employees for their contributions to a company's performance. Proponents believe stock options can effectively align the interests of managers, employees and shareholders.

At the same time, opponents argue that the mechanism of ESOS is flawed and highly contentious. They argue that executives can make a fortune from options when shares go up in value. But when share prices fall, investors lose out while executives are no worse off as they can choose not to exercise the options. Worse still, the incentive to keep share prices moving upward so that options stay in the money may encourage some executives to focus exclusively on the near term and ignore shareholders' longer-term interests. Options can



even tempt top managers to manipulate numbers to meet short-term targets. If so, that hardly reinforces the link between top managers and shareholders.

## **ESOS OPTIONS GRANTED, THEN IMPAIRMENTS AND PROVISIONS MADE**

The ESOS of a local listed company serves as an interesting case study. In December 2022, the Company granted close to 50 million new ESOS options to eligible directors and employees at 38 sen per share. About 80% of the new ESOS options were granted to its chief executive officer/executive director. Another 4% to the other five directors including four independent and non-executive directors.

Six months later, the Company announced massive impairment with hundreds of millions impaired and provisioned from its balance sheet in the last quarter of its 18-month financial period ended 30 April 2023 (FPE2023). This resulted in hundreds of millions of losses recorded during the financial period. The sum included a one-off provision for potential liability due to delays in existing projects and impairments for outstanding receivables and intangible assets for key projects which the Board attributed to disruptions caused by the COVID-19 pandemic. The Company announced the change of its financial year end from 30 October 2022 to 30 April 2023 in early January 2023 to 'allow for better availability of resources and improvement management of audit and annual reporting.'

Notably, this was the first time it was in the red since it went public over a decade ago. In its Annual Report 2023, the Board stressed that the impairments and provisions were 'timely and pragmatic to reflect the Company's financial position'. Assets are tested for impairment on a regular basis to prevent overstatement on the balance sheet. Assets such as receivables, intangibles and fixed assets are more likely to be subject to impairment. When an asset's value is written down (impaired) on the balance sheet, a loss is recorded in the income statement.

## **TIMING OPPORTUNISM OR PURE COINCIDENCE**

Its annual report stated that all the eligible directors and employees fully accepted the ESOS options by the end of January 2023. Some directors exercised their options at 38 sen per share during the FPE2023. These ESOS options were without a vesting period. The temporal proximity between the grant of ESOS options and impairments raises questions on whether the Board and Options Committee were aware of the possibility of impairments when they assessed the eligibility of employees and directors when granting the ESOS options. It is good practice to disclose to shareholders the criteria and KPIs used to grant options to directors and key employees.

To be fair, the Options Committee could have been unaware of the imminent impairment when it granted the ESOS options, especially given the resignation of the external auditor. Its former external auditor resigned on 24 October 2022 due to 'disagreement on unreasonable audit fees.' A new external auditor was appointed six months later.

MSWG queried the Board on the above during the Company's AGM. The Board clarified that no concern of subsequent impairments was raised to the Board before granting the ESOS options to its directors and employees. The ESOS was granted in December 2022, and the impairment assessment had yet to be performed at that time. The allocation of ESOS was at the discretion of the Options Committee based on the standard criteria set under by-laws, and the Audit Committee subsequently verified the list of recipients. The Options Committee comprised its former chairman, the CEO and an employee. Generally, the directors involved would abstain from the deliberation of their own remuneration at committee and board levels.

## **THE PAST, PRESENT AND FUTURE**

In fact, concerns abounded months back over its financial health given its stretched balance sheet, rising contract assets and intangible



assets, and persistently negative operating cash flow. As crises loomed, its share prices were beaten to a multi-year low. At one point, shares of the Company changed hands at 27.5 sen in mid-2022 before recovering to 90 sen currently.

Amid these concerns, the CEO of the Company reassured the investing public that these concerns had arisen from a general misunderstanding of its business model. The negative cash flow was attributed to its concession-based projects which require intensive capital expenditure upfront. Investors were told that the cash flow would turn positive once the concession assets were completed and subsequently would generate stable and reliable income in the years to come. Besides, the Company was confident that no additional capital was required to complete its existing projects.

Notwithstanding the repeated assurances, the commercial operation dates of its key projects were again deferred. As it faced the cash crunch issue, shares were placed out to new shareholders, with revamps ensuing at the board and management level. Records showed that four of six directors who received the ESOS options left the Board after the revamps. Then, huge impairments and provisions were announced; the rest is history.

It is worth noting that the impairments and provisions are non-cash and potentially reversible, subject to ongoing negotiations of receivables and reduced liquidated ascertained damages, should delayed projects commence operations earlier than expected. Impairments and provisions should be provided to accurately reflect a company's financial position; board and management should always be prudent in their estimations and judgments. This means being more cautious and conservative to mitigate any major risks that would affect the business.

Ultimately, significant impairments of assets have a negative effect on the balance sheet and dampen investors' confidence in a company. At the end of the day, shareholders are on the receiving end of these negative developments. It may seem that the CEO had profited

tremendously from the exercise of ESOS options at a price that is far lower than the market price amid massive losses posted by the Company. However, credit is also due for the efforts in steering the Company out of recent crises and a subsequent recovery in share price within a year. It appears the dust has settled for the Company after experiencing a challenging year. For now, it is on track to complete its remaining key projects and is starting to recognise incomes from some concession assets.

New investors who invested in the Company since last year might reap abundant returns with a strong recovery in share price. However, for long-term shareholders, their investing journey is nothing short of a roller coaster ride with volatile share price performance and the absence of dividends in recent years.

**Lim Cian Yai**  
**Manager, Corporate Monitoring**

*This article appeared in the The Observer, a weekly newsletter published by The Minority Shareholders Watch Group (MSWG) and reproduced here with their permission. Do follow MSWG's Twitter account at @MSWGMalaysia and share your thought on their tweets from time to time.*

**Invest** ISSUE 176  
 FRIDAY 7th SEPTEMBER 2023

**PLUS**  
**MARKET SENTIMENTS**  
 National Energy Transition Roadmap, New Industrial Master Plan To Boost Malaysia's Investment Opportunities - BNM

**Gan Yee Hin**  
 Executive Director and CEO  
 Southern Core Builders Berhad

**“SSBB Defines The Future Of Construction”**  
 (page 22-28)

**MSWG Shareholders Stand To Gain With More Women Directors And IQS On Board** (page 36-39)

Learn how to identify Hot Stocks using Technical Analysis (TA) and Fundamental Analysis (FA)

Scan me

**SIGN UP FOR Invest NOW IT'S FREE!!!**

[Click here](#)

Get market moving news and analyses. Regular columns include **Behind The Action** and **From The Observer**

**Leaderboard • Shariah Hot Stocks • Shariah Momentum Up Stocks • Non Shariah Hot Stocks • Up Trending Stocks • Growth Stocks • Dividend Stocks • Long Companies • Insider Activity • Investor Relations • Regional Markets**

Via email, every Friday.



**DEFINITION:** Insider Activity shows the trades made by substantial shareholders or directors of the company. Purchases by the directors and company share buyback may indicate the share price is undervalued and brings confidence to the price trend of the share price.



ShareInvestor WebPro > Fundamental > Insider Trades > click Search tab > Select Bursa > click Stock name > scroll up and leave at <Select Counter> Type Date Range for Announcement Date > click Search

Notice Period is 22th Oct - 28th Oct 2023

Effective Change Date	Stock Name	Buyer/ Seller Name [Classification]	Bought / (Sold) ['000]		No. of Shares After Trade ['000]	
			Total	% Held	Total	% Held
24 OCT 2023 - 24 OCT 2023	ABMB	EMPLOYEES PROVIDENT FUND BOARD [SSH]	-299		160,100	10.342
20 OCT 2023 - 23 OCT 2023	ADVPKG	MR PETER LING EE KONG [DIR/CEO]	49		10,132	12.455
20 OCT 2023 - 23 OCT 2023	ADVPKG	MR PETER LING EE KONG [SSH]	49		10,132	12.455
20 SEP 2023 - 20 SEP 2023	ADVPKG	MR ANDREW LING YEW CHUNG [DIR/CEO]	60		300	0.369
23 OCT 2023 - 23 OCT 2023	AEM	MORGAN STANLEY [SSH]	137,534		137,534	6.357
23 OCT 2023 - 23 OCT 2023	AEM	MITSUBISHI UFJ FINANCIAL GROUP INC [SSH]	137,534		137,534	6.357
25 OCT 2023 - 25 OCT 2023	AHEALTH	APEX HOLDINGS (PTE) LTD [SSH]	28		296,805	41.323
25 OCT 2023 - 25 OCT 2023	AHEALTH	DR KEE KIRK CHIN [DIR/CEO]	28		305,109	42.479
25 OCT 2023 - 25 OCT 2023	AHEALTH	DR KEE KIRK CHIN [SSH]	28		305,109	42.479
25 OCT 2023 - 25 OCT 2023	AHEALTH	DR KEE LOO [SSH]	28		296,805	41.323
25 OCT 2023 - 25 OCT 2023	AHEALTH	MADAM YANG LIEW FANG [SSH]	28		296,805	41.323
25 OCT 2023 - 25 OCT 2023	AHEALTH	MR KEE KIRK CHUEN [DIR/CEO]	28		298,211	41.519
25 OCT 2023 - 25 OCT 2023	AHEALTH	MR KEE KIRK CHUEN [SSH]	28		298,211	41.519
25 OCT 2023 - 25 OCT 2023	AHEALTH	MR KEE TAH PENG @ HEE TECK PENG [SSH]	28		296,805	41.323
25 OCT 2023 - 25 OCT 2023	AHEALTH	XEPA HOLDINGS PTE LTD [SSH]	28		296,805	41.323
25 OCT 2023 - 25 OCT 2023	AHEALTH	XEPA HOLDINGS SDN. BHD. [SSH]	28		292,769	40.762
23 OCT 2023 - 23 OCT 2023	AHEALTH	APEX HOLDINGS (PTE) LTD [SSH]	108		296,777	41.32
23 OCT 2023 - 23 OCT 2023	AHEALTH	DR KEE KIRK CHIN [DIR/CEO]	108		305,082	42.476
23 OCT 2023 - 23 OCT 2023	AHEALTH	DR KEE KIRK CHIN [SSH]	108		305,082	42.476
23 OCT 2023 - 23 OCT 2023	AHEALTH	DR KEE LOO [SSH]	108		296,777	41.32
23 OCT 2023 - 23 OCT 2023	AHEALTH	MADAM YANG LIEW FANG [SSH]	108		296,777	41.32
23 OCT 2023 - 23 OCT 2023	AHEALTH	MR KEE KIRK CHUEN [DIR/CEO]	108		298,183	41.516
23 OCT 2023 - 23 OCT 2023	AHEALTH	MR KEE KIRK CHUEN [SSH]	108		298,183	41.516
23 OCT 2023 - 23 OCT 2023	AHEALTH	MR KEE TAH PENG @ HEE TECK PENG [SSH]	108		296,777	41.32
23 OCT 2023 - 23 OCT 2023	AHEALTH	XEPA HOLDINGS PTE LTD [SSH]	108		296,777	41.32
23 OCT 2023 - 23 OCT 2023	AHEALTH	XEPA HOLDINGS SDN. BHD. [SSH]	108		292,741	40.758
24 OCT 2023 - 24 OCT 2023	AIRPORT	EMPLOYEES PROVIDENT FUND BOARD [SSH]	1,746		141,622	8.488
23 OCT 2023 - 23 OCT 2023	AIRPORT	EMPLOYEES PROVIDENT FUND BOARD [SSH]	1,103		139,876	8.383
24 OCT 2023 - 24 OCT 2023	AIRPORT	KUMPULAN WANG PERSARAAN (DIPERBADANKAN) [SSH]	-500		112,683	6.753
20 OCT 2023 - 20 OCT 2023	AIRPORT	EMPLOYEES PROVIDENT FUND BOARD [SSH]	1,116		138,772	8.317
19 OCT 2023 - 19 OCT 2023	AIRPORT	EMPLOYEES PROVIDENT FUND BOARD [SSH]	1,626		137,656	8.25
18 OCT 2023 - 18 OCT 2023	AIRPORT	EMPLOYEES PROVIDENT FUND BOARD [SSH]	754		136,030	8.153
20 OCT 2023 - 20 OCT 2023	ALLIANZ	EMPLOYEES PROVIDENT FUND BOARD [SSH]	-21		12,427	6.983
19 OCT 2023 - 19 OCT 2023	ALLIANZ	EMPLOYEES PROVIDENT FUND BOARD [SSH]	-5		12,448	6.994
18 OCT 2023 - 18 OCT 2023	ALLIANZ	EMPLOYEES PROVIDENT FUND BOARD [SSH]	-9		12,452	6.997
27 OCT 2023 - 27 OCT 2023	APB	MR YAP SWEE SANG [DIR/CEO]	-5,000		993	0.896
20 OCT 2023 - 20 OCT 2023	AXIATA	EMPLOYEES PROVIDENT FUND BOARD [SSH]	100		1,619,544	17.644
19 OCT 2023 - 19 OCT 2023	AXIATA	EMPLOYEES PROVIDENT FUND BOARD [SSH]	390		1,619,444	17.643
26 OCT 2023 - 26 OCT 2023	AXREIT	LEMBAGA TABUNG HAJI [SSH]	800		90,945	5.224
25 OCT 2023 - 25 OCT 2023	AXREIT	LEMBAGA TABUNG HAJI [SSH]	500		90,145	5.178
24 OCT 2023 - 24 OCT 2023	AXREIT	EMPLOYEES PROVIDENT FUND BOARD [SSH]	-800		280,424	16.107
23 OCT 2023 - 23 OCT 2023	AXREIT	EMPLOYEES PROVIDENT FUND BOARD [SSH]	-1,400		281,224	16.153
24 OCT 2023 - 24 OCT 2023	AXREIT	LEMBAGA TABUNG HAJI [SSH]	300		89,645	5.149
23 OCT 2023 - 23 OCT 2023	AXREIT	LEMBAGA TABUNG HAJI [SSH]	300		89,345	5.132
20 OCT 2023 - 20 OCT 2023	AXREIT	EMPLOYEES PROVIDENT FUND BOARD [SSH]	353		282,624	16.233
19 OCT 2023 - 19 OCT 2023	AXREIT	EMPLOYEES PROVIDENT FUND BOARD [SSH]	101		282,272	16.213
20 OCT 2023 - 20 OCT 2023	AXREIT	KUMPULAN WANG PERSARAAN (DIPERBADANKAN) [SSH]	-60		182,051	10.456
20 OCT 2023 - 20 OCT 2023	AXREIT	LEMBAGA TABUNG HAJI [SSH]	300		89,045	5.114
19 OCT 2023 - 19 OCT 2023	AXREIT	LEMBAGA TABUNG HAJI [SSH]	300		88,745	5.097
23 OCT 2023 - 25 OCT 2023	BAHVEST	INNOSABAH CAPITAL HOLDINGS SDN BHD [SSH]	7,836		165,579	13.36
25 OCT 2023 - 25 OCT 2023	BAUTO	PRUDENTIAL PLC [SSH]	-521		61,607	5.285
24 OCT 2023 - 24 OCT 2023	BAUTO	EMPLOYEES PROVIDENT FUND BOARD [SSH]	-2,167		127,870	10.969
23 OCT 2023 - 23 OCT 2023	BAUTO	EMPLOYEES PROVIDENT FUND BOARD [SSH]	1,125		130,037	11.155
23 OCT 2023 - 23 OCT 2023	BAUTO	PRUDENTIAL PLC [SSH]	-600		62,128	5.33
20 OCT 2023 - 20 OCT 2023	BAUTO	EMPLOYEES PROVIDENT FUND BOARD [SSH]	1,489		128,912	11.058
20 OCT 2023 - 20 OCT 2023	BAUTO	PRUDENTIAL PLC [SSH]	-720		62,728	5.381
19 OCT 2023 - 19 OCT 2023	BAUTO	EMPLOYEES PROVIDENT FUND BOARD [SSH]	1,046		127,423	10.931
19 OCT 2023 - 19 OCT 2023	BAUTO	PRUDENTIAL PLC [SSH]	-857		63,448	5.443
18 OCT 2023 - 18 OCT 2023	BAUTO	EMPLOYEES PROVIDENT FUND BOARD [SSH]	3,877		126,377	10.841
25 OCT 2023 - 25 OCT 2023	BIMB	AMANAHRAYA TRUSTEES BERHAD-AMANAH SAHAM BUMIPUTERA [SSH]	-145		145,046	6.4
24 OCT 2023 - 24 OCT 2023	BIMB	EMPLOYEES PROVIDENT FUND BOARD [SSH]	200		367,045	16.195
24 OCT 2023 - 24 OCT 2023	BIMB	AMANAHRAYA TRUSTEES BERHAD-AMANAH SAHAM BUMIPUTERA [SSH]	-231		145,191	6.406
23 OCT 2023 - 23 OCT 2023	BIMB	EMPLOYEES PROVIDENT FUND BOARD [SSH]	70		366,845	16.186
20 OCT 2023 - 20 OCT 2023	BIMB	EMPLOYEES PROVIDENT FUND BOARD [SSH]	213		366,775	16.183

Notice Period is 22th Oct - 28th Oct 2023

Effective Change Date	Stock Name	Buyer/ Seller Name [Classification]	Bought / (Sold) ['000]		No. of Shares After Trade ['000]	
			Total	% Held	Total	% Held
19 OCT 2023 - 19 OCT 2023	BIMB	EMPLOYEES PROVIDENT FUND BOARD [SSH]	116		366,563	16.173
18 OCT 2023 - 18 OCT 2023	BIMB	AMANAHRAYA TRUSTEES BERHAD-AMANAH SAHAM BUMIPUTERA [SSH]	-40		145,422	6.416
20 OCT 2023 - 20 OCT 2023	BIPORT	EMPLOYEES PROVIDENT FUND BOARD [SSH]	-450		23,562	5.122
19 OCT 2023 - 19 OCT 2023	BIPORT	EMPLOYEES PROVIDENT FUND BOARD [SSH]	-78		24,012	5.22
25 OCT 2023 - 26 OCT 2023	BJFOOD	BERJAYA CORPORATION BERHAD [SSH]	2,000		1,006,525	57.375
23 OCT 2023 - 24 OCT 2023	BJFOOD	BERJAYA CORPORATION BERHAD [SSH]	1,102		1,004,525	57.261
19 OCT 2023 - 20 OCT 2023	BJFOOD	BERJAYA CORPORATION BERHAD [SSH]	3,649		1,003,423	57.199
23 OCT 2023 - 23 OCT 2023	BURSA	EMPLOYEES PROVIDENT FUND BOARD [SSH]	1,287		103,279	12.762
20 OCT 2023 - 20 OCT 2023	BURSA	EMPLOYEES PROVIDENT FUND BOARD [SSH]	360		101,992	12.603
24 OCT 2023 - 24 OCT 2023	CCK	MR KUEH CHUNG PENG [DIR/CEO]	310		16,888	2.718
23 OCT 2023 - 23 OCT 2023	CDB	EMPLOYEES PROVIDENT FUND BOARD [SSH]	272		1,121,385	9.559
20 OCT 2023 - 20 OCT 2023	CDB	EMPLOYEES PROVIDENT FUND BOARD [SSH]	245		1,121,112	9.556
19 OCT 2023 - 19 OCT 2023	CDB	EMPLOYEES PROVIDENT FUND BOARD [SSH]	292		1,120,867	9.554
24 OCT 2023 - 24 OCT 2023	CGB	MR CHEW HIAN TAT [DIR/CEO]	343		50,423	28.95
24 OCT 2023 - 24 OCT 2023	CGB	MR CHEW HIAN TAT [SSH]	343		50,423	28.95
23 OCT 2023 - 23 OCT 2023	CHEETAH	MORGAN STANLEY [SSH]	2		29,211	6.008
23 OCT 2023 - 23 OCT 2023	CHEETAH	MITSUBISHI UFJ FINANCIAL GROUP INC [SSH]	2		29,211	6.008
23 OCT 2023 - 23 OCT 2023	CIMB	EMPLOYEES PROVIDENT FUND BOARD [SSH]	-2,935		1,605,411	15.05
20 OCT 2023 - 20 OCT 2023	CIMB	EMPLOYEES PROVIDENT FUND BOARD [SSH]	-11,790		1,608,346	15.08
20 OCT 2023 - 20 OCT 2023	CIMB	KUMPULAN WANG PERSARAAN (DIPERBADANKAN) [SSH]	-3,200		701,615	6.58
19 OCT 2023 - 19 OCT 2023	CIMB	EMPLOYEES PROVIDENT FUND BOARD [SSH]	-28,517		1,620,136	15.19
19 OCT 2023 - 19 OCT 2023	CIMB	KUMPULAN WANG PERSARAAN (DIPERBADANKAN) [SSH]	-1,400		704,815	6.61
18 OCT 2023 - 18 OCT 2023	CIMB	EMPLOYEES PROVIDENT FUND BOARD [SSH]	8,360		1,648,653	15.46
17 OCT 2023 - 17 OCT 2023	CIMB	EMPLOYEES PROVIDENT FUND BOARD [SSH]	5,512		1,640,293	15.38
25 OCT 2023 - 25 OCT 2023	CITAGLB	KDYMM YDP AGONG AL-SULTAN ADULLAH RI'AYATUD-DIN AL-MUSTAFA BILLAH SHAH [SSH]	742		38,430	9.203
24 OCT 2023 - 24 OCT 2023	CITAGLB	KDYMM YDP AGONG AL-SULTAN ADULLAH RI'AYATUD-DIN AL-MUSTAFA BILLAH SHAH [SSH]	1,212		37,688	9.025
23 OCT 2023 - 23 OCT 2023	CITAGLB	KDYMM YDP AGONG AL-SULTAN ADULLAH RI'AYATUD-DIN AL-MUSTAFA BILLAH SHAH [SSH]	621		36,476	8.735
20 OCT 2023 - 20 OCT 2023	CITAGLB	KDYMM YDP AGONG AL-SULTAN ADULLAH RI'AYATUD-DIN AL-MUSTAFA BILLAH SHAH [SSH]	2,591		35,856	8.586
26 OCT 2023 - 26 OCT 2023	CLMT	KUMPULAN WANG PERSARAAN (DIPERBADANKAN) [SSH]	114		256,112	9.37
24 OCT 2023 - 24 OCT 2023	CLMT	EMPLOYEES PROVIDENT FUND BOARD [SSH]	589		399,468	14.614
23 OCT 2023 - 23 OCT 2023	CLMT	EMPLOYEES PROVIDENT FUND BOARD [SSH]	216		398,879	14.593
20 OCT 2023 - 20 OCT 2023	CLMT	EMPLOYEES PROVIDENT FUND BOARD [SSH]	783		398,663	14.585
23 OCT 2023 - 23 OCT 2023	CLMT	KUMPULAN WANG PERSARAAN (DIPERBADANKAN) [SSH]	56		255,998	9.366
19 OCT 2023 - 19 OCT 2023	CLMT	EMPLOYEES PROVIDENT FUND BOARD [SSH]	211		397,881	14.556
20 OCT 2023 - 20 OCT 2023	CLMT	KUMPULAN WANG PERSARAAN (DIPERBADANKAN) [SSH]	74		255,942	9.363
18 OCT 2023 - 18 OCT 2023	CLMT	EMPLOYEES PROVIDENT FUND BOARD [SSH]	584		397,670	14.548
25 OCT 2023 - 26 OCT 2023	CTOS	WASATCH ADVISORS LP [SSH]	1,229		131,099	5.675
24 OCT 2023 - 24 OCT 2023	CTOS	WASATCH ADVISORS LP [SSH]	116		129,871	5.622
23 OCT 2023 - 23 OCT 2023	CTOS	WASATCH ADVISORS LP [SSH]	640		129,755	5.617
23 OCT 2023 - 23 OCT 2023	CTOS	WASATCH ADVISORS LP [SSH]	640		129,755	5.617
20 OCT 2023 - 20 OCT 2023	CTOS	WASATCH ADVISORS LP [SSH]	1,968		129,115	5.589
19 OCT 2023 - 19 OCT 2023	CTOS	WASATCH ADVISORS LP [SSH]	323		127,147	5.504
23 OCT 2023 - 24 OCT 2023	CYBERE	TAN SRI DATUK DR RAFIAH BINTI SALIM [DIR/CEO]	283		283	0.017
20 OCT 2023 - 23 OCT 2023	CYPARK	PERTUBUHAN KESELAMATAN SOSIAL [SSH]	1,957		54,829	6.859
24 OCT 2023 - 24 OCT 2023	D&O	EMPLOYEES PROVIDENT FUND BOARD [SSH]	243		68,940	5.567
23 OCT 2023 - 23 OCT 2023	D&O	EMPLOYEES PROVIDENT FUND BOARD [SSH]	359		68,698	5.548
20 OCT 2023 - 20 OCT 2023	D&O	EMPLOYEES PROVIDENT FUND BOARD [SSH]	286		68,338	5.519
18 OCT 2023 - 18 OCT 2023	D&O	EMPLOYEES PROVIDENT FUND BOARD [SSH]	200		68,053	5.496
19 OCT 2023 - 19 OCT 2023	D&O	EMPLOYEES PROVIDENT FUND BOARD [SSH]	200		67,853	5.48
19 OCT 2023 - 20 OCT 2023	DAYANG	DATIN WONG SIEW HONG [SSH]	1,000		148,873	12.859
19 OCT 2023 - 20 OCT 2023	DAYANG	DATUK LING SUK KIONG [DIR/CEO]	1,000		148,873	12.859
19 OCT 2023 - 20 OCT 2023	DAYANG	DATUK LING SUK KIONG [SSH]	1,000		148,873	12.859
19 OCT 2023 - 20 OCT 2023	DAYANG	MR JOE LING SIEW LOUNG @ LIN SHOU LONG [DIR/CEO]	1,000		148,873	12.859
19 OCT 2023 - 20 OCT 2023	DAYANG	MR JOE LING SIEW LOUNG @ LIN SHOU LONG [SSH]	1,000		148,873	12.859
26 OCT 2023 - 26 OCT 2023	DIALOG	KUMPULAN WANG PERSARAAN (DIPERBADANKAN) [SSH]	143		563,120	9.98
24 OCT 2023 - 24 OCT 2023	DIALOG	EMPLOYEES PROVIDENT FUND BOARD [SSH]	501		843,590	14.95
23 OCT 2023 - 23 OCT 2023	DIALOG	EMPLOYEES PROVIDENT FUND BOARD [SSH]	354		843,089	14.94
24 OCT 2023 - 24 OCT 2023	DIALOG	KUMPULAN WANG PERSARAAN (DIPERBADANKAN) [SSH]	206		562,977	9.98
20 OCT 2023 - 20 OCT 2023	DIALOG	EMPLOYEES PROVIDENT FUND BOARD [SSH]	305		842,735	14.94

**Disclaimer:** The Information in Insider Activity is extracted from [www.shareinvestor.com/fundamental/insider\\_trades](http://www.shareinvestor.com/fundamental/insider_trades). The information on this page is provided as a service to readers. It does not constitute financial advice and/or any investment recommendations. We assume no liability for damages resulting from or arising out of the use of such information. Whilst every effort is made to ensure accuracy, the information presented is not the official record of shareholder filings. Readers are advised to read the original filings on the Bursa Malaysia website at [www.bursamalaysia.com](http://www.bursamalaysia.com)



**STROM**  
SWISS TIMEPIECES & JEWELLERY



StromWatch Asia  
Tele : +65.9817.3378  
Email : ll.stromasia@gmail.com  
[WWW.STROMWATCH.SWISS](http://WWW.STROMWATCH.SWISS)

Notice Period is 22th Oct – 28th Oct 2023

Effective Change Date	Stock Name	Buyer/ Seller Name [Classification]	Bought / (Sold) ('000)		No. of Shares After Trade ('000)	
			Total	Total	% Held	% Held
23 OCT 2023 - 23 OCT 2023	DIALOG	KUMPULAN WANG PERSARAAN (DIPERBADANKAN) [SSH]	146	562,771	9.97	
19 OCT 2023 - 19 OCT 2023	DIALOG	EMPLOYEES PROVIDENT FUND BOARD [SSH]	500	842,430	14.93	
18 OCT 2023 - 18 OCT 2023	DIALOG	EMPLOYEES PROVIDENT FUND BOARD [SSH]	300	841,930	14.92	
23 OCT 2023 - 23 OCT 2023	DLADY	CITIGROUP NOMINEES (TEMPATAN) SDN BHD EMPLOYEES PROVIDENT FUND BOARD [SSH]	-0.1	5,659	8.843	
20 OCT 2023 - 20 OCT 2023	DLADY	CITIGROUP NOMINEES (TEMPATAN) SDN BHD EMPLOYEES PROVIDENT FUND BOARD [SSH]	-4	5,660	8.843	
19 OCT 2023 - 19 OCT 2023	DLADY	CITIGROUP NOMINEES (TEMPATAN) SDN BHD EMPLOYEES PROVIDENT FUND BOARD [SSH]	-2	5,663	8.849	
18 OCT 2023 - 18 OCT 2023	DLADY	CITIGROUP NOMINEES (TEMPATAN) SDN BHD EMPLOYEES PROVIDENT FUND BOARD [SSH]	-39	5,666	8.853	
24 OCT 2023 - 24 OCT 2023	DSOONIC	URUSHARTA JAMAAH SDN. BHD. [SSH]	-120	248,187	8.825	
24 OCT 2023 - 24 OCT 2023	ECONBHD	EMPLOYEES PROVIDENT FUND BOARD [SSH]	-800	104,639	7.382	
18 OCT 2023 - 18 OCT 2023	ECONBHD	EMPLOYEES PROVIDENT FUND BOARD [SSH]	-1,356	105,439	7.438	
23 OCT 2023 - 23 OCT 2023	EIB	MR WONG YEW CHOO [SSH]	6,000	18,881	5.048	
26 OCT 2023 - 26 OCT 2023	EITA	MR LIM JOO SWEE [DIR/CEO]	-400	9,132	10.551	
25 OCT 2023 - 25 OCT 2023	EITA	MR LIM JOO SWEE [DIR/CEO]	-100	9,532	11.013	
24 OCT 2023 - 24 OCT 2023	EITA	MR LEE PENG SIAN [DIR/CEO]	-230	11,973	4.603	
24 OCT 2023 - 24 OCT 2023	EITA	MR LIM JOO SWEE [DIR/CEO]	-283	9,632	11.129	
23 OCT 2023 - 23 OCT 2023	EITA	MR LEE PENG SIAN [DIR/CEO]	-369	12,203	4.691	
20 OCT 2023 - 20 OCT 2023	EITA	MR LEE PENG SIAN [DIR/CEO]	-1,800	2,167	2.505	
20 OCT 2023 - 20 OCT 2023	EITA	MR LEE PENG SIAN [DIR/CEO]	-210	12,572	4.833	
24 OCT 2023 - 24 OCT 2023	ESCERAM	MR WONG FOOK LIN [DIR/CEO]	24,258	69,338	10.328	
24 OCT 2023 - 24 OCT 2023	ESCERAM	MR WONG FOOK LIN [SSH]	24,258	69,338	10.328	
19 OCT 2023 - 19 OCT 2023	ESCERAM	MISS TAN SAN LI [DIR/CEO]	26,300	27,100	4.225	
19 OCT 2023 - 19 OCT 2023	ESCERAM	MR TAN BOON SING [DIR/CEO]	5,000	29,956	4.67	
28 AUG 2023 - 02 OCT 2023	EURO	DATO' SRI LIM TECK BOON [DIR/CEO]	-28,600	609,343	47.461	
28 AUG 2023 - 02 OCT 2023	EURO	DATO' SRI LIM TECK BOON [SSH]	-28,600	609,343	47.461	
28 AUG 2023 - 02 OCT 2023	EURO	DATO' LIM CHAW TENG [SSH]	-28,600	607,559	47.322	
28 AUG 2023 - 02 OCT 2023	EURO	S.P.A. FURNITURE (M) SDN. BHD. [SSH]	-28,600	607,559	47.322	
23 OCT 2023 - 23 OCT 2023	EVD	MR MAH SEONG HUAK [DIR/CEO]	-7,000	1,163,000	47.04	
23 OCT 2023 - 23 OCT 2023	FAJAR	TAN SRI DATUK TA KIN YAN [SSH]	200	90,892	12.256	
23 OCT 2023 - 23 OCT 2023	FAJAR	DATO' SRI KUJAN KHIAN LENG [DIR/CEO]	36,643	110,745	14.933	
23 OCT 2023 - 23 OCT 2023	FAJAR	TAN SRI DATO' SRI KUJAN PENG CHING @ KUJAN PENG SOON [DIR/CEO]	36,643	110,745	14.933	
23 OCT 2023 - 23 OCT 2023	FAJAR	TAN SRI KUJAN PENG CHING @ KUJAN PENG SOON [SSH]	36,643	110,745	14.933	
20 OCT 2023 - 20 OCT 2023	FAJAR	TAN SRI DATUK TA KIN YAN [SSH]	200	90,692	12.229	
19 OCT 2023 - 20 OCT 2023	FBBHD	MR NG KIAN BOON [DIR/CEO]	-4,600	185,428	85.846	
23 OCT 2023 - 23 OCT 2023	FBBHD	MR NG KIAN BOON [DIR/CEO]	-1,000	184,428	85.383	
23 OCT 2023 - 23 OCT 2023	FBBHD	MR NG KIAN BOON [SSH]	-1,000	184,428	85.383	
19 OCT 2023 - 20 OCT 2023	FBBHD	MR NG KIAN BOON [DIR/CEO]	-4,600	185,428	85.846	
19 OCT 2023 - 20 OCT 2023	FBBHD	MR NG KIAN BOON [SSH]	-4,600	185,428	85.846	
25 OCT 2023 - 25 OCT 2023	FFB	ABRDN HOLDINGS LIMITED (FORMERLY KNOWN AS ABERDEEN ASSET MANAGEMENT PLC) [SSH]	465	111,697	5.967	
25 OCT 2023 - 25 OCT 2023	FFB	ABRDN MALAYSIA SDN BHD [SSH]	465	110,353	5.895	
25 OCT 2023 - 25 OCT 2023	FFB	ABRDN PLC [SSH]	465	111,697	5.967	
24 OCT 2023 - 24 OCT 2023	FFB	EMPLOYEES PROVIDENT FUND BOARD [SSH]	281	159,910	8.543	
24 OCT 2023 - 24 OCT 2023	FFB	ABRDN HOLDINGS LIMITED (FORMERLY KNOWN AS ABERDEEN ASSET MANAGEMENT PLC) [SSH]	177	111,232	5.942	
24 OCT 2023 - 24 OCT 2023	FFB	ABRDN MALAYSIA SDN BHD [SSH]	177	109,888	5.87	
24 OCT 2023 - 24 OCT 2023	FFB	ABRDN PLC [SSH]	177	111,232	5.942	
23 OCT 2023 - 23 OCT 2023	FFB	EMPLOYEES PROVIDENT FUND BOARD [SSH]	382	160,039	8.549	
23 OCT 2023 - 23 OCT 2023	FFB	ABRDN HOLDINGS LIMITED (FORMERLY KNOWN AS ABERDEEN ASSET MANAGEMENT PLC) [SSH]	610	111,054	5.933	
23 OCT 2023 - 23 OCT 2023	FFB	ABRDN MALAYSIA SDN BHD [SSH]	610	109,710	5.861	
23 OCT 2023 - 23 OCT 2023	FFB	ABRDN PLC [SSH]	610	111,054	5.933	
20 OCT 2023 - 20 OCT 2023	FFB	EMPLOYEES PROVIDENT FUND BOARD [SSH]	50	160,087	8.552	
20 OCT 2023 - 20 OCT 2023	FFB	ABRDN HOLDINGS LIMITED (FORMERLY KNOWN AS ABERDEEN ASSET MANAGEMENT PLC) [SSH]	100	110,444	5.9	
20 OCT 2023 - 20 OCT 2023	FFB	ABRDN MALAYSIA SDN BHD [SSH]	100	109,100	5.828	
20 OCT 2023 - 20 OCT 2023	FFB	ABRDN PLC [SSH]	100	110,444	5.9	
19 OCT 2023 - 19 OCT 2023	FFB	EMPLOYEES PROVIDENT FUND BOARD [SSH]	256	160,457	8.572	
19 OCT 2023 - 19 OCT 2023	FFB	ABRDN HOLDINGS LIMITED (FORMERLY KNOWN AS ABERDEEN ASSET MANAGEMENT PLC) [SSH]	411	110,344	5.895	
19 OCT 2023 - 19 OCT 2023	FFB	ABRDN MALAYSIA SDN BHD [SSH]	411	109,000	5.823	
19 OCT 2023 - 19 OCT 2023	FFB	ABRDN PLC [SSH]	411	110,344	5.895	
18 OCT 2023 - 18 OCT 2023	FFB	EMPLOYEES PROVIDENT FUND BOARD [SSH]	81	160,201	8.558	
23 OCT 2023 - 23 OCT 2023	FOCUS	MORGAN STANLEY [SSH]	241,226	618,467	9.706	
23 OCT 2023 - 23 OCT 2023	FOCUS	MITSUBISHI UFJ FINANCIAL GROUP INC [SSH]	241,226	618,467	9.706	
25 OCT 2023 - 25 OCT 2023	FRONTKN	MR OOI KENG THYE [SSH]	-1,850	182,664	11.628	
24 OCT 2023 - 24 OCT 2023	GAMUDA	EMPLOYEES PROVIDENT FUND BOARD (EPF BOARD) [SSH]	-4,086	308,494	11.43	
23 OCT 2023 - 23 OCT 2023	GAMUDA	EMPLOYEES PROVIDENT FUND BOARD (EPF BOARD) [SSH]	1,062	312,181	11.57	
20 OCT 2023 - 20 OCT 2023	GAMUDA	EMPLOYEES PROVIDENT FUND BOARD (EPF BOARD) [SSH]	7,649	311,119	11.53	
19 OCT 2023 - 19 OCT 2023	GAMUDA	EMPLOYEES PROVIDENT FUND BOARD (EPF BOARD) [SSH]	2,202	303,470	11.25	
18 OCT 2023 - 18 OCT 2023	GAMUDA	EMPLOYEES PROVIDENT FUND BOARD (EPF BOARD) [SSH]	6,101	301,268	11.17	
24 OCT 2023 - 24 OCT 2023	GASMSIA	EMPLOYEES PROVIDENT FUND BOARD [SSH]	-785	81,676	6.361	
23 OCT 2023 - 23 OCT 2023	GASMSIA	EMPLOYEES PROVIDENT FUND BOARD [SSH]	-174	82,461	6.422	
20 OCT 2023 - 20 OCT 2023	GASMSIA	EMPLOYEES PROVIDENT FUND BOARD [SSH]	-600	82,635	6.435	
19 OCT 2023 - 19 OCT 2023	GASMSIA	EMPLOYEES PROVIDENT FUND BOARD [SSH]	19	83,236	6.482	
18 OCT 2023 - 18 OCT 2023	GASMSIA	EMPLOYEES PROVIDENT FUND BOARD [SSH]	-185	83,217	6.481	
24 OCT 2023 - 24 OCT 2023	GCB	EMPLOYEES PROVIDENT FUND BOARD [SSH]	337	61,168	5.208	
23 OCT 2023 - 23 OCT 2023	GCB	EMPLOYEES PROVIDENT FUND BOARD [SSH]	500	60,831	5.179	
19 OCT 2023 - 19 OCT 2023	GCB	EMPLOYEES PROVIDENT FUND BOARD [SSH]	375	60,331	5.137	
18 OCT 2023 - 18 OCT 2023	GCB	EMPLOYEES PROVIDENT FUND BOARD [SSH]	67	59,955	5.105	
19 OCT 2023 - 19 OCT 2023	GENP	EMPLOYEES PROVIDENT FUND BOARD [SSH]	50	113,481	12.649	
19 OCT 2023 - 19 OCT 2023	GENTING	MADAM KOID SWEE LIAN [DIR/CEO]	60	190	0.005	
24 OCT 2023 - 24 OCT 2023	HARNLEN	LNH ENTERPRISE SDN. BHD. [SSH]	-4,180	119,455	21.148	

Notice Period is 22th Oct – 28th Oct 2023

Effective Change Date	Stock Name	Buyer/ Seller Name [Classification]	Bought / (Sold) ('000)		No. of Shares After Trade ('000)	
			Total	Total	% Held	% Held
24 OCT 2023 - 24 OCT 2023	HARNLEN	MR LOW KOK YAW [DIR/CEO]	-4,180	305,204	54.034	
24 OCT 2023 - 24 OCT 2023	HARNLEN	MR LOW KOK YAW [SSH]	-4,180	305,204	54.034	
24 OCT 2023 - 24 OCT 2023	HARNLEN	MR LOW KOK YONG [DIR/CEO]	-4,180	306,200	54.211	
24 OCT 2023 - 24 OCT 2023	HARNLEN	MR LOW KOK YONG [SSH]	-4,180	306,200	54.211	
24 OCT 2023 - 24 OCT 2023	HARNLEN	MR LOW KUECK SHIN [DIR/CEO]	-4,180	293,517	51.965	
24 OCT 2023 - 24 OCT 2023	HARNLEN	MR LOW KUECK SHIN [SSH]	-4,180	293,387	51.942	
24 OCT 2023 - 24 OCT 2023	HARNLEN	MR LOW KUEK KONG [DIR/CEO]	-4,180	293,137	51.898	
24 OCT 2023 - 24 OCT 2023	HARNLEN	MR LOW KUEK KONG [SSH]	-4,180	293,137	51.898	
24 OCT 2023 - 24 OCT 2023	HARNLEN	MR LOW KWEK LEE [DIR/CEO]	-4,180	293,347	51.935	
24 OCT 2023 - 24 OCT 2023	HARNLEN	MR LOW KWEK LEE [SSH]	-4,180	293,347	51.935	
24 OCT 2023 - 24 OCT 2023	HARNLEN	MR LOW QUEK KIONG [DIR/CEO]	-4,180	309,584	54.81	
24 OCT 2023 - 24 OCT 2023	HARNLEN	MR LOW QUEK KIONG [SSH]	-4,180	309,584	54.81	
24 OCT 2023 - 24 OCT 2023	HARNLEN	PUAN SRI DATIN CHAN PUI LEORN [DIR/CEO]	-4,180	306,231	54.216	
24 OCT 2023 - 24 OCT 2023	HARNLEN	PUAN SRI DATIN CHAN PUI LEORN [SSH]	-4,180	306,231	54.216	
24 OCT 2023 - 24 OCT 2023	HARNLEN	TAN SRI LOW NAM HUI [SSH]	-4,180	292,347	51.758	
19 OCT 2023 - 19 OCT 2023	HARNLEN	MR LOW QUEK KIONG [DIR/CEO]	200	313,764	55.55	
19 OCT 2023 - 19 OCT 2023	HARNLEN	MR LOW QUEK KIONG [SSH]	200	313,764	55.55	
19 OCT 2023 - 19 OCT 2023	HARNLEN-WB	MR LOW QUEK KIONG [DIR/CEO]	310	14,867	16.639	
25 OCT 2023 - 25 OCT 2023	HHRG	DATO' HNG CHOON SENG [DIR/CEO]	17,645	292,220	33.751	
25 OCT 2023 - 25 OCT 2023	HHRG	DATO' HNG CHOON SENG [SSH]	17,645	292,220	33.751	
25 OCT 2023 - 25 OCT 2023	HHRG	GH CONSORTIUM SDN BHD [SSH]	17,645	258,987	29.913	
25 OCT 2023 - 25 OCT 2023	HHRG	MR HO WHYE CHONG [DIR/CEO]	-17,645	44,989	5.197	
25 OCT 2023 - 25 OCT 2023	HHRG	MR HO WHYE CHONG [SSH]	-17,645	44,989	5.197	
18 OCT 2023 - 18 OCT 2023	HIBISCS	DATO' SRI ROUSHAN ARUMUGAM [DIR/CEO]	-15,390	15,490	1.924	
24 OCT 2023 - 24 OCT 2023	HLBANK	EMPLOYEES PROVIDENT FUND BOARD [SSH]	1,328	202,828	9.72	
23 OCT 2023 - 23 OCT 2023	HLBANK	EMPLOYEES PROVIDENT FUND BOARD [SSH]	1,278	201,500	9.657	
20 OCT 2023 - 20 OCT 2023	HLBANK	EMPLOYEES PROVIDENT FUND BOARD [SSH]	-500	200,222	9.596	
19 OCT 2023 - 19 OCT 2023	HLBANK	EMPLOYEES PROVIDENT FUND BOARD [SSH]	2,043	200,722	9.619	
18 OCT 2023 - 18 OCT 2023	HLBANK	EMPLOYEES PROVIDENT FUND BOARD [SSH]	-2,142	198,679	9.522	
27 OCT 2023 - 27 OCT 2023	HUBLINE	BNDM INCORPORATED HOLDINGS SDN. BHD. [SSH]	-17,000	796,201	18.56	
27 OCT 2023 - 27 OCT 2023	HUBLINE	DATO RICHARD WEE LIANG HUAT @ RICHARD WEE LIANG CHIAT [DIR/CEO]	-17,000	796,273	18.562	
27 OCT 2023 - 27 OCT 2023	HUBLINE	DATO RICHARD WEE LIANG HUAT @ RICHARD WEE LIANG CHIAT [SSH]	-17,000	796,273	18.562	
20 OCT 2023 - 23 OCT 2023	IGBB	TAN CHIN NAM SDN BHD ("TCNSB") [SSH]	10	657,272	48.724	
20 OCT 2023 - 23 OCT 2023	IGBCR	TAN CHIN NAM SENDIRIAN BERHAD ("TCNSB") [SSH]	150	1,659,452	70.152	
24 OCT 2023 - 24 OCT 2023	IGBREIT	EMPLOYEES PROVIDENT FUND BOARD ("EPF BOARD") [SSH]	1,860	423,838	11.768	
25 OCT 2023 - 25 OCT 2023	IGBREIT	ELIZABETH TAN HUI NING [DIR/CEO]	57	4,811	0.134	
23 OCT 2023 - 23 OCT 2023	IGBREIT	EMPLOYEES PROVIDENT FUND BOARD ("EPF BOARD") [SSH]	1,651	421,978	11.716	
19 OCT 2023 - 19 OCT 2023	IGBREIT	EMPLOYEES PROVIDENT FUND BOARD ("EPF BOARD") [SSH]	3,000	420,327	11.67	
24 OCT 2023 - 24 OCT 2023	IHH	EMPLOYEES PROVIDENT FUND BOARD [SSH]	-2,600	944,637	10.726	
23 OCT 2023 - 23 OCT 2023	IHH	EMPLOYEES PROVIDENT FUND BOARD [SSH]	2,036	947,237	10.756	
20 OCT 2023 - 20 OCT 2023	IHH	EMPLOYEES PROVIDENT FUND BOARD [SSH]	1,725	945,201	10.732	
19 OCT 2023 - 19 OCT 2023	IHH	EMPLOYEES PROVIDENT FUND BOARD [SSH]	4,091	943,476	10.713	
18 OCT 2023 - 18 OCT 2023	IHH	EMPLOYEES PROVIDENT FUND BOARD [SSH]	-25	939,385	10.666	
26 OCT 2023 - 26 OCT 2023	IJM	KUMPULAN WANG PERSARAAN (DIPERBADANKAN) [SSH]	1,758	327,029	9.327	
20 OCT 2023 - 20 OCT 2023	IJM	EMPLOYEES PROVIDENT FUND BOARD [SSH]	150	590,156	16.832	



Notice Period is 22th Oct - 28th Oct 2023

Effective Change Date	Stock Name	Buyer/ Seller Name [Classification]	Bought / (Sold) ('000)		No. of Shares After Trade ('000)	
			Total	Total	% Held	
25 OCT 2023 - 26 OCT 2023	L&PBHD	MISS OOI HOOI KIANG [DIR/CEO]	25	25,095	4.481	
24 OCT 2023 - 24 OCT 2023	L&PBHD	MISS OOI HOOI KIANG [DIR/CEO]	50	25,070	4.476	
24 OCT 2023 - 24 OCT 2023	L&PBHD	MR ONG KAH HONG [DIR/CEO]	50	25,670	4.584	
23 OCT 2023 - 23 OCT 2023	LAMBO	mitsubishi ufj financial group inc [SSH]	93,710	188,822	12.26	
23 OCT 2023 - 23 OCT 2023	LAMBO	MORGAN STANLEY [SSH]	93,710	188,822	12.26	
23 OCT 2023 - 25 OCT 2023	LAYHONG	DATO' YAP HOONG CHAI [DIR/CEO]	-200	278,359	37.599	
23 OCT 2023 - 23 OCT 2023	LAYHONG	DATO' YEAP WENG HONG [DIR/CEO]	-500	8,312	1.123	
23 OCT 2023 - 25 OCT 2023	LHI	AFFINITY ASIA PACIFIC FUND IV (NO.2) L.P. [SSH]	-3,841	308,528	8.453	
23 OCT 2023 - 25 OCT 2023	LHI	AFFINITY ASIA PACIFIC FUND IV L.P. [SSH]	-3,841	308,528	8.453	
23 OCT 2023 - 25 OCT 2023	LHI	CLARINDEN INVESTMENTS PTE LTD [SSH]	-3,841	308,528	8.453	
23 OCT 2023 - 25 OCT 2023	LHI	CONCORDANT INVESTMENTS PTE LTD [SSH]	-3,841	308,528	8.453	
23 OCT 2023 - 23 OCT 2023	LIHEN	MR CHUA LEE SENG [DIR/CEO]	65	231,371	42.846	
23 OCT 2023 - 23 OCT 2023	LIHEN	MR CHUA LEE SENG [SSH]	65	231,371	42.846	
25 OCT 2023 - 25 OCT 2023	LUXCHEM	KOSSAN HOLDINGS (M) SDN. BHD. [SSH]	6,087	55,287	5.168	
25 OCT 2023 - 25 OCT 2023	LUXCHEM	MR LIM KUANG WANG [SSH]	6,087	55,287	5.168	
25 OCT 2023 - 25 OCT 2023	LUXCHEM	MR LIM KUANG YONG [SSH]	6,087	55,287	5.168	
25 OCT 2023 - 25 OCT 2023	LUXCHEM	MR LIM LENG BUNG [SSH]	6,087	55,287	5.168	
25 OCT 2023 - 25 OCT 2023	LUXCHEM	TAN SRI DATO' LIM KUANG SIA [SSH]	6,087	85,620	8.004	
24 OCT 2023 - 24 OCT 2023	MALAKOF	EMPLOYEES PROVIDENT FUND BOARD [SSH]	-334	491,774	10.062	
23 OCT 2023 - 23 OCT 2023	MALAKOF	EMPLOYEES PROVIDENT FUND BOARD [SSH]	-1,071	492,108	10.069	
20 OCT 2023 - 20 OCT 2023	MALAKOF	EMPLOYEES PROVIDENT FUND BOARD [SSH]	-269	493,179	10.091	
19 OCT 2023 - 19 OCT 2023	MALAKOF	EMPLOYEES PROVIDENT FUND BOARD [SSH]	-308	493,448	10.097	
18 OCT 2023 - 18 OCT 2023	MALAKOF	EMPLOYEES PROVIDENT FUND BOARD [SSH]	-257	493,756	10.103	
20 OCT 2023 - 20 OCT 2023	MATANG	MR ANG KIAN YOU [SSH]	1,000	207,298	8.676	
24 OCT 2023 - 24 OCT 2023	MAXIS	EMPLOYEES PROVIDENT FUND BOARD ('EPF BOARD') [SSH]	70	856,835	10.94	
23 OCT 2023 - 23 OCT 2023	MAXIS	EMPLOYEES PROVIDENT FUND BOARD ('EPF BOARD') [SSH]	181	856,765	10.939	
20 OCT 2023 - 20 OCT 2023	MAXIS	EMPLOYEES PROVIDENT FUND BOARD ('EPF BOARD') [SSH]	500	856,584	10.937	
19 OCT 2023 - 19 OCT 2023	MAXIS	EMPLOYEES PROVIDENT FUND BOARD ('EPF BOARD') [SSH]	200	856,084	10.931	
18 OCT 2023 - 18 OCT 2023	MAXIS	EMPLOYEES PROVIDENT FUND BOARD ('EPF BOARD') [SSH]	50	855,884	10.928	
25 OCT 2023 - 25 OCT 2023	MAYBANK	AMANAHRAYA TRUSTEES BERHAD - AMANAH SAHAM BUMIPUTERA [SSH]	-834	3,727,466	30.907	
24 OCT 2023 - 24 OCT 2023	MAYBANK	EMPLOYEES PROVIDENT FUND BOARD [SSH]	995	1,610,707	13.356	
24 OCT 2023 - 24 OCT 2023	MAYBANK	AMANAHRAYA TRUSTEES BERHAD - AMANAH SAHAM BUMIPUTERA [SSH]	-3,000	3,728,301	30.914	
23 OCT 2023 - 23 OCT 2023	MAYBANK	EMPLOYEES PROVIDENT FUND BOARD [SSH]	3,568	1,609,712	13.347	
20 OCT 2023 - 20 OCT 2023	MAYBANK	EMPLOYEES PROVIDENT FUND BOARD [SSH]	1,346	1,606,144	13.318	
19 OCT 2023 - 19 OCT 2023	MAYBANK	EMPLOYEES PROVIDENT FUND BOARD [SSH]	400	1,604,799	13.307	
19 OCT 2023 - 19 OCT 2023	MAYBANK	AMANAHRAYA TRUSTEES BERHAD - AMANAH SAHAM BUMIPUTERA [SSH]	-3,902	3,731,301	30.939	
18 OCT 2023 - 18 OCT 2023	MAYBANK	EMPLOYEES PROVIDENT FUND BOARD [SSH]	690	1,604,399	13.303	
23 OCT 2023 - 23 OCT 2023	MBMR	EMPLOYEES PROVIDENT FUND BOARD [SSH]	30	25,392	6.496	
24 OCT 2023 - 26 OCT 2023	MFCB	CAM PROPERTY (MALAYSIA) SDN BHD [SSH]	28	200,694	21.288	
24 OCT 2023 - 26 OCT 2023	MFCB	CAMASIA LIMITED [SSH]	28	202,180	21.446	
24 OCT 2023 - 26 OCT 2023	MFCB	GOH NAN KIOH [DIR/CEO]	28	328,259	34.819	
24 OCT 2023 - 26 OCT 2023	MFCB	LAJU RIANG SDN BHD [SSH]	28	200,694	21.288	
24 OCT 2023 - 26 OCT 2023	MFCB	MR GOH NAN KIOH [SSH]	28	328,259	34.819	
24 OCT 2023 - 26 OCT 2023	MFCB	RUBBER THREAD INDUSTRIES (M) SDN BERHAD [SSH]	28	200,694	21.288	
03 OCT 2023 - 03 OCT 2023	MFLOUR	AZLIN BINTI ARSHAD [SSH]	24,871	73,793	7.21	
25 OCT 2023 - 25 OCT 2023	MICROLN	RHB TRUSTEES BERHAD [SSH]	8,928	163,386	15.236	
24 OCT 2023 - 24 OCT 2023	MISC	EMPLOYEES PROVIDENT FUND BOARD [SSH]	746	568,746	12.741	
23 OCT 2023 - 23 OCT 2023	MISC	EMPLOYEES PROVIDENT FUND BOARD [SSH]	19	568,000	12.725	
20 OCT 2023 - 20 OCT 2023	MISC	EMPLOYEES PROVIDENT FUND BOARD [SSH]	279	567,981	12.724	
19 OCT 2023 - 19 OCT 2023	MISC	EMPLOYEES PROVIDENT FUND BOARD [SSH]	167	567,702	12.718	
18 OCT 2023 - 18 OCT 2023	MISC	EMPLOYEES PROVIDENT FUND BOARD [SSH]	-1,050	567,535	12.714	
25 OCT 2023 - 25 OCT 2023	MJPERAK	G CAPITAL BERHAD [SSH]	151	26,978	9.485	
25 OCT 2023 - 25 OCT 2023	MJPERAK	GUNUNG RESOURCES SDN BHD [SSH]	151	26,978	9.485	
23 OCT 2023 - 23 OCT 2023	MNC	MITSUBISHI UFJ FINANCIAL GROUP INC [SSH]	19,749	19,749	8.419	
23 OCT 2023 - 23 OCT 2023	MNC	MORGAN STANLEY [SSH]	19,749	19,749	8.419	
24 OCT 2023 - 24 OCT 2023	MRDIY	EMPLOYEES PROVIDENT FUND BOARD [SSH]	766	511,725	5.421	
20 OCT 2023 - 20 OCT 2023	MRDIY	EMPLOYEES PROVIDENT FUND BOARD [SSH]	1,300	510,959	5.413	
19 OCT 2023 - 19 OCT 2023	MRDIY	EMPLOYEES PROVIDENT FUND BOARD [SSH]	572	509,659	5.399	
23 OCT 2023 - 23 OCT 2023	MYEG	KUMPULAN WANG PERSARAAN (DIPERBADANKAN) [SSH]	2,500	556,678	7.463	
23 OCT 2023 - 24 OCT 2023	MYNEWS	JAG CAPITAL HOLDINGS SDN BHD [SSH]	28,740	103,940	13.85	
26 OCT 2023 - 26 OCT 2023	NATGATE	DATO' SERI WONG SIEW HAI [DIR/CEO]	-15	6,135	0.296	
23 OCT 2023 - 23 OCT 2023	NATGATE	DATO' SERI WONG SIEW HAI [DIR/CEO]	20	6,150	0.297	
25 OCT 2023 - 25 OCT 2023	NCT	MR CHIAU HAW CHOON [SSH]	14,500	138,045	8.968	
24 OCT 2023 - 24 OCT 2023	NESTLE	EMPLOYEES PROVIDENT FUND BOARD [SSH]	46	22,327	9.521	
23 OCT 2023 - 23 OCT 2023	NESTLE	EMPLOYEES PROVIDENT FUND BOARD [SSH]	9	22,281	9.502	
20 OCT 2023 - 20 OCT 2023	NESTLE	EMPLOYEES PROVIDENT FUND BOARD [SSH]	29	22,272	9.498	
19 OCT 2023 - 19 OCT 2023	NESTLE	EMPLOYEES PROVIDENT FUND BOARD [SSH]	26	22,242	9.485	
18 OCT 2023 - 18 OCT 2023	NESTLE	EMPLOYEES PROVIDENT FUND BOARD [SSH]	12	22,217	9.474	
23 OCT 2023 - 23 OCT 2023	NETX	MITSUBISHI UFJ FINANCIAL GROUP INC [SSH]	51,806	51,806	5.598	
23 OCT 2023 - 23 OCT 2023	NETX	MORGAN STANLEY [SSH]	51,806	51,806	5.598	
20 OCT 2023 - 20 OCT 2023	NEXGRAM	TRAVIX DESIGN & RENOVATION SDN BHD [SSH]	-3,000	35,259	5.434	
26 OCT 2023 - 26 OCT 2023	OFI	DATUK SERI SON CHEN CHUAN [DIR/CEO]	300	109,357	45.565	
26 OCT 2023 - 26 OCT 2023	OFI	DATUK SERI SON CHEN CHUAN [SSH]	300	109,357	45.565	
23 OCT 2023 - 23 OCT 2023	OFI	DATUK SERI SON CHEN CHUAN [DIR/CEO]	40	109,057	45.44	
23 OCT 2023 - 23 OCT 2023	OFI	DATUK SERI SON CHEN CHUAN [SSH]	40	109,057	45.44	
20 OCT 2023 - 20 OCT 2023	OFI	DATUK SERI SON CHEN CHUAN [DIR/CEO]	195	109,017	45.424	
20 OCT 2023 - 20 OCT 2023	OFI	DATUK SERI SON CHEN CHUAN [SSH]	195	109,017	45.424	
24 OCT 2023 - 24 OCT 2023	ORIENT	EMPLOYEES PROVIDENT FUND BOARD [SSH]	705	49,661	8.005	
23 OCT 2023 - 23 OCT 2023	ORIENT	EMPLOYEES PROVIDENT FUND BOARD [SSH]	65	48,955	7.891	

Notice Period is 22th Oct - 28th Oct 2023

Effective Change Date	Stock Name	Buyer/ Seller Name [Classification]	Bought / (Sold) ('000)		No. of Shares After Trade ('000)	
			Total	Total	% Held	
20 OCT 2023 - 20 OCT 2023	ORIENT	EMPLOYEES PROVIDENT FUND BOARD [SSH]	444	48,890	7.881	
19 OCT 2023 - 19 OCT 2023	ORIENT	EMPLOYEES PROVIDENT FUND BOARD [SSH]	37	48,446	7.809	
18 OCT 2023 - 18 OCT 2023	ORIENT	EMPLOYEES PROVIDENT FUND BOARD [SSH]	1,000	48,409	7.803	
20 OCT 2023 - 20 OCT 2023	OVH	MR CHANG VUN LUNG [SSH]	8,939	29,461	7.015	
20 OCT 2023 - 20 OCT 2023	OVH	MR KENNY RONALD NGALIN [DIR/CEO]	-18,939	27,022	6.435	
20 OCT 2023 - 20 OCT 2023	OVH	MR KENNY RONALD NGALIN [SSH]	-18,939	27,022	6.435	
27 OCT 2023 - 27 OCT 2023	P&O	MR CHAN THYE SENG [DIR/CEO]	4,000	170,470	62.38	
27 OCT 2023 - 27 OCT 2023	P&O	MR CHAN THYE SENG [SSH]	4,000	43,251	62.38	
24 OCT 2023 - 24 OCT 2023	PADINI	EMPLOYEES PROVIDENT FUND BOARD [SSH]	166	36410	5.534	
23 OCT 2023 - 23 OCT 2023	PADINI	EMPLOYEES PROVIDENT FUND BOARD [SSH]	21	36243	5.509	
20 OCT 2023 - 20 OCT 2023	PADINI	EMPLOYEES PROVIDENT FUND BOARD [SSH]	366	36222	5.506	
19 OCT 2023 - 19 OCT 2023	PADINI	EMPLOYEES PROVIDENT FUND BOARD [SSH]	200	35,857	5.45	
18 OCT 2023 - 18 OCT 2023	PADINI	EMPLOYEES PROVIDENT FUND BOARD [SSH]	91	35,656	5.42	
24 OCT 2023 - 24 OCT 2023	PANAMY	EMPLOYEES PROVIDENT FUND BOARD [SSH]	-3	7,603	12.516	
23 OCT 2023 - 23 OCT 2023	PANAMY	EMPLOYEES PROVIDENT FUND BOARD [SSH]	-9	7,606	12.521	
20 OCT 2023 - 20 OCT 2023	PANAMY	EMPLOYEES PROVIDENT FUND BOARD [SSH]	-7	7,614	12.535	
19 OCT 2023 - 19 OCT 2023	PANAMY	EMPLOYEES PROVIDENT FUND BOARD [SSH]	-2	7,622	12.547	
18 OCT 2023 - 18 OCT 2023	PANAMY	EMPLOYEES PROVIDENT FUND BOARD [SSH]	-4	7,624	12.551	
26 OCT 2023 - 26 OCT 2023	PANSAR	HIGHLINE SHIPPING SDN BHD [SSH]	815	31,489	6.704	
26 OCT 2023 - 26 OCT 2023	PANTECH	PUAN NOORAINI BINTI MOHD YASIN [DIR/CEO]	-10	66	0.007	
24 OCT 2023 - 24 OCT 2023	PBBANK	EMPLOYEES PROVIDENT FUND BOARD [SSH]	1,431	3,023,272	15.58	
23 OCT 2023 - 23 OCT 2023	PBBANK	EMPLOYEES PROVIDENT FUND BOARD [SSH]	6,700	3,021,841	15.57	
20 OCT 2023 - 20 OCT 2023	PBBANK	EMPLOYEES PROVIDENT FUND BOARD [SSH]	3,239	3,015,141	15.53	
19 OCT 2023 - 19 OCT 2023	PBBANK	EMPLOYEES PROVIDENT FUND BOARD [SSH]	3,600	3,011,902	15.52	
18 OCT 2023 - 18 OCT 2023	PBBANK	EMPLOYEES PROVIDENT FUND BOARD [SSH]	3,356	3,008,302	15.5	
17 OCT 2023 - 17 OCT 2023	PBBANK	EMPLOYEES PROVIDENT FUND BOARD [SSH]	2,410	3,004,946	15.48	
23 OCT 2023 - 23 OCT 2023	PCHEM	EMPLOYEES PROVIDENT FUND BOARD ('EPF BOARD') [SSH]	500	930,936	11.637	
20 OCT 2023 - 20 OCT 2023	PCHEM	EMPLOYEES PROVIDENT FUND BOARD ('EPF BOARD') [SSH]	330	930,503	11.631	
19 OCT 2023 - 19 OCT 2023	PCHEM	EMPLOYEES PROVIDENT FUND BOARD ('EPF BOARD') [SSH]	420	930173	11.627	
20 OCT 2023 - 20 OCT 2023	PDZ	SANICHI TECHNOLOGY BERHAD [SSH]	-14,000	64000	11.009	
24 OCT 2023 - 24 OCT 2023	PENTA	EMPLOYEES PROVIDENT FUND BOARD [SSH]	219	52148	7.331	
23 OCT 2023 - 23 OCT 2023	PENTA	EMPLOYEES PROVIDENT FUND BOARD [SSH]	77	51929	7.3	
24 OCT 2023 - 24 OCT 2023	PENTA	KUMPULAN WANG PERSARAAN (DIPERBADANKAN) [SSH]	255	37047	5.209	
20 OCT 2023 - 20 OCT 2023	PENTA	EMPLOYEES PROVIDENT FUND BOARD [SSH]	69	51852	7.29	
19 OCT 2023 - 19 OCT 2023	PENTA	EMPLOYEES PROVIDENT FUND BOARD [SSH]	316	51783	7.28	
18 OCT 2023 - 18 OCT 2023	PENTA	EMPLOYEES PROVIDENT FUND BOARD [SSH]	22	51468	7.235	
23 OCT 2023 - 23 OCT 2023	PERMAJU	MITSUBISHI UFJ FINANCIAL GROUP INC [SSH]	98,853	98853	5.081	
23 OCT 2023 - 23 OCT 2023	PERMAJU	MORGAN STANLEY [SSH]	98,853	98853	5.081	
24 OCT 2023 - 24 OCT 2023	PETDAG	EMPLOYEES PROVIDENT FUND BOARD ('EPF BOARD') [SSH]	200	120596	12.139	
23 OCT 2023 - 23 OCT 2023	PETDAG	EMPLOYEES PROVIDENT FUND BOARD ('EPF BOARD') [SSH]	175	120396	12.119	
20 OCT 2023 - 20 OCT 2023	PETDAG	EMPLOYEES PROVIDENT FUND BOARD ('EPF BOARD') [SSH]	300	120222	12.101	
19 OCT 2023 - 19 OCT 2023	PETDAG	EMPLOYEES PROVIDENT FUND BOARD ('EPF BOARD') [SSH]	34	119922	12.071	
24 OCT 2023 - 24 OCT 2023	PETGAS	EMPLOYEES PROVIDENT FUND BOARD [SSH]	410	274776	13.886	
23 OCT 2023 - 23 OCT 2023	PETGAS	EMPLOYEES PROVIDENT FUND BOARD [SSH]	500	274366	13.866	
20 OCT 2023 - 20 OCT 2023	PETGAS	EMPLOYEES PROVIDENT FUND BOARD [SSH]	178	273866	13.84	
19 OCT 2023 - 19 OCT 2023	PETGAS	EMPLOYEES PROVIDENT FUND BOARD [SSH]	-108	273688	13.831	
18 OCT 2023 - 18 OCT 2023	PETGAS	EMPLOYEES PROVIDENT FUND BOARD [SSH]	-5	273796	13.837	
26 OCT 2023 - 26 OCT 2023	PLS	EKOVEST BERHAD [SSH]	-233	270825	61.604	
26 OCT 2023 - 26 OCT 2023	PLS	TAN SRI DATO' LIM KANG HOO [DIR/CEO]	-233	270825	61.604	
24 OCT 2023 - 24 OCT 2023	PPB	EMPLOYEES PROVIDENT FUND BOARD [SSH]	439	144256	10.14	
23 OCT 2023 - 23 OCT 2023	PPB	EMPLOYEES PROVIDENT FUND BOARD [SSH]	211	143817	10.109	
20 OCT 2023 - 20 OCT 2023	PPB	EMPLOYEES PROVIDENT FUND BOARD [SSH]	227	143607	10.095	
19 OCT 2023 - 19 OCT 2023	PPB	EMPLOYEES PROVIDENT FUND BOARD [SSH]	376	143379	10.079	
18 OCT 2023 - 18 OCT 2023	PPB	EMPLOYEES PROVIDENT FUND BOARD [SSH]	190	143003	10.052	
20 OCT 2023 - 20 OCT 2023	PPJACK	MADAM LEE KOOI LAN [SSH]	252	376403	48.998	
20 OCT 2023 - 20 OCT 2023	PPJACK	MR LIM BOON HUA [DIR/CEO]	252	376403	48.998	
20 OCT 2023 - 20 OCT 2023	PPJACK	MR LIM BOON HUA [SSH]	252	376403	48.998	
19 OCT 2023 - 19 OCT 2023	PPJACK	MADAM LEE KOOI LAN [SSH]	205	376162	48.965	

Notice Period is 22th Oct - 28th Oct 2023

Effective Change Date	Stock Name	Buyer/ Seller Name [Classification]	Bought / (Sold) ['000]		No. of Shares After Trade ['000]	
			Total	Total	% Held	% Held
24 OCT 2023 - 24 OCT 2023	SCNWOLF	DATO' SRI ANDREW LIM ENG GUAN [SSH]	50	27513	13.841	
20 OCT 2023 - 23 OCT 2023	SCNWOLF	DATO' SRI ANDREW LIM ENG GUAN [SSH]	229	27463	13.816	
23 OCT 2023 - 24 OCT 2023	SEAL	MR CHEN KHAI VOON [SSH]	540	121063	28.834	
23 OCT 2023 - 23 OCT 2023	SERSOL	MITSUBISHI UFJ FINANCIAL GROUP INC [SSH]	3,000	48468	6.626	
23 OCT 2023 - 23 OCT 2023	SERSOL	MORGAN STANLEY [SSH]	3,000	48468	6.626	
26 OCT 2023 - 26 OCT 2023	SFPTECH	MR KEOH BENG HUAT [SSH]	150	1622671	67.611	
26 OCT 2023 - 26 OCT 2023	SFPTECH	MR KEOH BENG HUAT [DIR/CEO]	150	1652671	68.861	
24 OCT 2023 - 24 OCT 2023	SFPTECH	MR KEOH BENG HUAT [SSH]	116	1622521	67.605	
24 OCT 2023 - 24 OCT 2023	SFPTECH	MR KEOH BENG HUAT [DIR/CEO]	116	1652521	68.855	
23 OCT 2023 - 23 OCT 2023	SFPTECH	MR KEOH BENG HUAT [SSH]	95	1622405	67.6	
23 OCT 2023 - 23 OCT 2023	SFPTECH	MR KEOH BENG HUAT [DIR/CEO]	95	1652405	68.85	
23 OCT 2023 - 23 OCT 2023	SIME	EMPLOYEES PROVIDENT FUND BOARD [SSH]	3,184	1025205	15.042	
24 OCT 2023 - 24 OCT 2023	SIME	KUMPULAN WANG PERSARAAN (DIPERBADANKAN) [SSH]	253	535789	7.862	
23 OCT 2023 - 23 OCT 2023	SIME	KUMPULAN WANG PERSARAAN (DIPERBADANKAN) [SSH]	382	535536	7.858	
20 OCT 2023 - 20 OCT 2023	SIME	EMPLOYEES PROVIDENT FUND BOARD [SSH]	2,879	1022021	14.995	
19 OCT 2023 - 19 OCT 2023	SIME	EMPLOYEES PROVIDENT FUND BOARD [SSH]	4,119	1019047	14.952	
20 OCT 2023 - 20 OCT 2023	SIME	KUMPULAN WANG PERSARAAN (DIPERBADANKAN) [SSH]	157	535154	7.852	
18 OCT 2023 - 18 OCT 2023	SIME	EMPLOYEES PROVIDENT FUND BOARD [SSH]	4,508	1014928	14.892	
17 OCT 2023 - 17 OCT 2023	SIME	EMPLOYEES PROVIDENT FUND BOARD [SSH]	1,559	1010421	14.825	
24 OCT 2023 - 24 OCT 2023	SIMEPLT	EMPLOYEES PROVIDENT FUND BOARD [SSH]	211	1020889	14.762	
23 OCT 2023 - 23 OCT 2023	SIMEPLT	EMPLOYEES PROVIDENT FUND BOARD [SSH]	416	1020678	14.759	
24 OCT 2023 - 24 OCT 2023	SIMEPLT	KUMPULAN WANG PERSARAAN (DIPERBADANKAN) [SSH]	98	457610	6.617	
19 OCT 2023 - 20 OCT 2023	SIMEPLT	EMPLOYEES PROVIDENT FUND BOARD [SSH]	693	1020262	14.753	
18 OCT 2023 - 18 OCT 2023	SIMEPLT	EMPLOYEES PROVIDENT FUND BOARD [SSH]	156	1019570	14.743	
26 OCT 2023 - 26 OCT 2023	SIMEPROP	KUMPULAN WANG PERSARAAN (DIPERBADANKAN) [SSH]	1,283	451785	6.643	
24 OCT 2023 - 24 OCT 2023	SIMEPROP	EMPLOYEES PROVIDENT FUND BOARD [SSH]	-3,930	518693	7.627	
23 OCT 2023 - 23 OCT 2023	SIMEPROP	EMPLOYEES PROVIDENT FUND BOARD [SSH]	-2,899	522623	7.684	
20 OCT 2023 - 20 OCT 2023	SIMEPROP	EMPLOYEES PROVIDENT FUND BOARD [SSH]	-5,500	525522	7.728	
23 OCT 2023 - 23 OCT 2023	SIMEPROP	KUMPULAN WANG PERSARAAN (DIPERBADANKAN) [SSH]	1,339	450502	6.624	
19 OCT 2023 - 19 OCT 2023	SIMEPROP	EMPLOYEES PROVIDENT FUND BOARD [SSH]	-1,652	531022	7.808	
18 OCT 2023 - 18 OCT 2023	SIMEPROP	EMPLOYEES PROVIDENT FUND BOARD [SSH]	-2,473	532675	7.832	
23 OCT 2023 - 23 OCT 2023	SKPRES	KUMPULAN WANG PERSARAAN (DIPERBADANKAN) [SSH]	1,425	133747	8.561	
18 OCT 2023 - 18 OCT 2023	SKPRES	EMPLOYEES PROVIDENT FUND BOARD [SSH]	1,019	137397	8.794	
24 OCT 2023 - 24 OCT 2023	SMRT	URUSHARTA JAMAAH SDN. BHD. [SSH]	-130	28355	6.26	
20 OCT 2023 - 20 OCT 2023	SMRT	URUSHARTA JAMAAH SDN. BHD. [SSH]	-140	28485	6.289	
19 OCT 2023 - 19 OCT 2023	SMRT	URUSHARTA JAMAAH SDN. BHD. [SSH]	1,354	28625	6.32	
18 OCT 2023 - 18 OCT 2023	SMRT	URUSHARTA JAMAAH SDN. BHD. [SSH]	2,872	27271	6.021	
19 OCT 2023 - 23 OCT 2023	SOLUTN	ENCIK MOHD SHAHRIN BIN SAPARIN @ ABD RAHMAN [DIR/CEO]	-300	154	0.032	
24 OCT 2023 - 26 OCT 2023	SPRITZER	DATIN CHUA SHOK TIM @ CHUA SIOK HOON [SSH]	163	163443	51.379	
24 OCT 2023 - 26 OCT 2023	SPRITZER	DATO LIM A HENG @ LIM KOK CHEONG [DIR/CEO]	163	163443	51.379	
24 OCT 2023 - 26 OCT 2023	SPRITZER	DATO LIM A HENG @ LIM KOK CHEONG [SSH]	163	163443	51.379	
23 OCT 2023 - 23 OCT 2023	SPRITZER	DATIN CHUA SHOK TIM @ CHUA SIOK HOON [SSH]	57	163280	51.328	
20 OCT 2023 - 20 OCT 2023	SPRITZER	DATIN CHUA SHOK TIM @ CHUA SIOK HOON [SSH]	65	163223	51.31	
20 OCT 2023 - 23 OCT 2023	SPRITZER	DATO LIM A HENG @ LIM KOK CHEONG [DIR/CEO]	122	163280	51.328	
20 OCT 2023 - 23 OCT 2023	SPRITZER	DATO LIM A HENG @ LIM KOK CHEONG [SSH]	122	163280	51.328	
20 OCT 2023 - 20 OCT 2023	SPRITZER	LANGIT MAKMUR SDN. BHD. [SSH]	65	101628	31.947	
20 OCT 2023 - 20 OCT 2023	SPRITZER	UNIKAMPAR CREDIT AND LEASING SDN. BHD. [SSH]	65	135846	42.704	
20 OCT 2023 - 20 OCT 2023	SPRITZER	UNIVELEE SDN. BHD. [SSH]	65	135846	42.704	
20 OCT 2023 - 20 OCT 2023	SPRITZER	YEE LEE CORPORATION BHD. [SSH]	65	101628	31.947	
20 OCT 2023 - 20 OCT 2023	SPRITZER	YEE LEE ORGANIZATION BHD. [SSH]	65	135846	42.704	
20 OCT 2023 - 20 OCT 2023	SPRITZER	YELETA HOLDINGS SDN. BHD. [SSH]	65	135846	42.704	
20 OCT 2023 - 20 OCT 2023	SPRITZER	YOUNG WEI HOLDINGS SDN. BHD. [SSH]	65	135846	42.704	
25 OCT 2023 - 25 OCT 2023	SPSETIA	AMANAHRAYA TRUSTEES BERHAD - AMANAH SAHAM BUMIPUTERA [SSH]	-802	1034838	24.936	
24 OCT 2023 - 24 OCT 2023	SPSETIA	AMANAHRAYA TRUSTEES BERHAD - AMANAH SAHAM BUMIPUTERA [SSH]	-4,230	1035640	24.955	
19 OCT 2023 - 19 OCT 2023	SPSETIA	AMANAHRAYA TRUSTEES BERHAD - AMANAH SAHAM BUMIPUTERA [SSH]	32,267	1039870	25.077	
25 OCT 2023 - 25 OCT 2023	SRIDGE	DATO' KHOO YIK CHOU [DIR/CEO]	42	12774	5.979	
25 OCT 2023 - 25 OCT 2023	SRIDGE	DATO' KHOO YIK CHOU [SSH]	42	12774	5.979	
23 OCT 2023 - 23 OCT 2023	SRIDGE	DATO' KHOO YIK CHOU [DIR/CEO]	3,100	12732	5.96	
23 OCT 2023 - 23 OCT 2023	SRIDGE	DATO' KHOO YIK CHOU [SSH]	3,100	12732	5.96	
23 OCT 2023 - 23 OCT 2023	SRIDGE	DATO' KHOO YIK CHOU [DIR/CEO]	-2,000	9632	4.509	
24 OCT 2023 - 24 OCT 2023	SUNCON	EMPLOYEES PROVIDENT FUND BOARD [SSH]	5	125812	9.758	
23 OCT 2023 - 23 OCT 2023	SUNCON	EMPLOYEES PROVIDENT FUND BOARD [SSH]	593	125806	9.757	
20 OCT 2023 - 20 OCT 2023	SUNCON	EMPLOYEES PROVIDENT FUND BOARD [SSH]	70	125213	9.711	
19 OCT 2023 - 19 OCT 2023	SUNCON	EMPLOYEES PROVIDENT FUND BOARD [SSH]	77	125143	9.706	
18 OCT 2023 - 18 OCT 2023	SUNCON	EMPLOYEES PROVIDENT FUND BOARD [SSH]	214	125067	9.7	
18 OCT 2023 - 18 OCT 2023	SUNREIT	EMPLOYEES PROVIDENT FUND BOARD [SSH]	142	533332	15.573	
23 OCT 2023 - 24 OCT 2023	SUNVIEW	MR CHOW KIAN HUNG [DIR/CEO]	-18,670	164822	35.219	
23 OCT 2023 - 24 OCT 2023	SUNVIEW	MR CHOW KIAN HUNG [SSH]	-18,670	164822	35.219	
23 OCT 2023 - 24 OCT 2023	SUNVIEW	MR ONG HANG PING [DIR/CEO]	-19,870	171769	36.703	
23 OCT 2023 - 24 OCT 2023	SUNVIEW	MR ONG HANG PING [SSH]	-19,870	171769	36.703	
23 OCT 2023 - 23 OCT 2023	SUNVIEW	NEW ENERGY CAPITAL SDN. BHD. [SSH]	-16,270	150816	32.226	
24 OCT 2023 - 24 OCT 2023	SUNWAY	EMPLOYEES PROVIDENT FUND BOARD [SSH]	621	275756	5.56	
23 OCT 2023 - 23 OCT 2023	SUNWAY	EMPLOYEES PROVIDENT FUND BOARD [SSH]	-1,823	275135	5.55	
20 OCT 2023 - 20 OCT 2023	SUNWAY	EMPLOYEES PROVIDENT FUND BOARD [SSH]	-448	273458	5.51	
19 OCT 2023 - 19 OCT 2023	SUNWAY	EMPLOYEES PROVIDENT FUND BOARD [SSH]	-2,159	273611	5.52	
18 OCT 2023 - 18 OCT 2023	SUNWAY	EMPLOYEES PROVIDENT FUND BOARD [SSH]	-4,001	276064	5.57	

Notice Period is 22th Oct - 28th Oct 2023

Effective Change Date	Stock Name	Buyer/ Seller Name [Classification]	Bought / (Sold) ['000]		No. of Shares After Trade ['000]	
			Total	Total	% Held	% Held
24 OCT 2023 - 24 OCT 2023	SUPERLN	MR LIN PO-CHIH [DIR/CEO]	15	4540	2.86	
19 OCT 2023 - 20 OCT 2023	SUPERLN	MR LIN PO-CHIH [DIR/CEO]	25	4525	2.851	
23 OCT 2023 - 23 OCT 2023	SUPERMX	PUAN ROZITA BINTI ABDUL RAHMAN [DIR/CEO]	3	289	0.011	
26 OCT 2023 - 26 OCT 2023	SWSCAP	PUAN SRI DATIN SERI CHAN MEI CHENG [SSH]	1,100	18162	6.602	
26 OCT 2023 - 26 OCT 2023	SWSCAP	TAN SRI DATO' SERI TAN KING TAI @ TAN KHOON HAI [DIR/CEO]	1,100	18162	6.602	
26 OCT 2023 - 26 OCT 2023	SWSCAP	TAN SRI DATO' SERI TAN KING TAI @ TAN KHOON HAI [SSH]	1,100	18162	6.602	
25 OCT 2023 - 25 OCT 2023	TAFI	ARMANI SYNERGY SDN. BHD. [SSH]	243	204064	53.782	
25 OCT 2023 - 25 OCT 2023	TAFI	DATO' SRI ANDREW LIM ENG GUAN [DIR/CEO]	243	213402	56.243	
25 OCT 2023 - 25 OCT 2023	TAFI	DATO' SRI ANDREW LIM ENG GUAN [SSH]	243	213402	56.243	
25 OCT 2023 - 25 OCT 2023	TAFI	DATO' SRI AZLAN BIN AZMI [DIR/CEO]	243	204229	53.825	
25 OCT 2023 - 25 OCT 2023	TAFI	DATO' SRI AZLAN BIN AZMI [SSH]	243	204229	53.825	
25 OCT 2023 - 25 OCT 2023	TAFI	DATO' SRI ONG CHEE KEAN [DIR/CEO]	25	1175	0.31	
25 OCT 2023 - 25 OCT 2023	TAFI	DATO' SRI WONG SZE CHIEN [DIR/CEO]	243	213253	56.204	
25 OCT 2023 - 25 OCT 2023	TAFI	DATO' SRI WONG SZE CHIEN [SSH]	243	213253	56.204	
18 OCT 2023 - 18 OCT 2023	TAKAFUL	EMPLOYEES PROVIDENT FUND BOARD [SSH]	1,175	114916	13.724	
25 OCT 2023 - 26 OCT 2023	TCS	MR OOI GUAN HOE [DIR/CEO]	-288	363	0.084	
23 OCT 2023 - 23 OCT 2023	TENAGA	EMPLOYEES PROVIDENT FUND BOARD [SSH]	234	956849	16.53	
24 OCT 2023 - 24 OCT 2023	TENAGA	KUMPULAN WANG PERSARAAN (DIPERBADANKAN) [SSH]	34	430986	7.44	
23 OCT 2023 - 23 OCT 2023	TENAGA	KUMPULAN WANG PERSARAAN (DIPERBADANKAN) [SSH]	68	430952	7.44	
20 OCT 2023 - 20 OCT 2023	TENAGA	KUMPULAN WANG PERSARAAN (DIPERBADANKAN) [SSH]	300	430884	7.44	
18 OCT 2023 - 18 OCT 2023	TENAGA	EMPLOYEES PROVIDENT FUND BOARD [SSH]	40,166	956615	16.53	
24 OCT 2023 - 24 OCT 2023	TGUAN	PRUDENTIAL PLC [SSH]	-413	19773	5.005	
26 OCT 2023 - 26 OCT 2023	TIMECOM	KUMPULAN WANG PERSARAAN (DIPERBADANKAN) ("KWAP") [SSH]	-61	110073	5.96	
24 OCT 2023 - 24 OCT 2023	TIMECOM	EMPLOYEES PROVIDENT FUND BOARD [SSH]	145	163520	8.854	
25 OCT 2023 - 25 OCT 2023	TIMECOM	KUMPULAN WANG PERSARAAN (DIPERBADANKAN) ("KWAP") [SSH]	-82	110134	5.963	
23 OCT 2023 - 23 OCT 2023	TIMECOM	EMPLOYEES PROVIDENT FUND BOARD [SSH]	214	163375	8.846	
24 OCT 2023 - 24 OCT 2023	TIMECOM	KUMPULAN WANG PERSARAAN (DIPERBADANKAN) ("KWAP") [SSH]	-56	110216	5.968	
20 OCT 2023 - 20 OCT 2023	TIMECOM	EMPLOYEES PROVIDENT FUND BOARD [SSH]	-228	163161	8.835	
23 OCT 2023 - 23 OCT 2023	TIMECOM	KUMPULAN WANG PERSARAAN (DIPERBADANKAN) ("KWAP") [SSH]	-143	110272	5.971	
19 OCT 2023 - 19 OCT 2023	TIMECOM	EMPLOYEES PROVIDENT FUND BOARD [SSH]	-445	163388	8.847	
18 OCT 2023 - 18 OCT 2023	TIMECOM	EMPLOYEES PROVIDENT FUND BOARD [SSH]	-1,188	163833	8.871	
24 OCT 2023 - 24 OCT 2023	TM	KUMPULAN WANG PERSARAAN (DIPERBADANKAN) ("KWAP") [SSH]	-1,000	389345	10.148	
23 OCT 2023 - 23 OCT 2023	TRIVE	MORGAN STANLEY [SSH]	64,206	142896	11.308	
23 OCT 2023 - 23 OCT 2023	TRIVE	MITSUBISHI UFJ FINANCIAL GROUP INC [SSH]	64,206	142896	11.308	
25 OCT 2023 - 25 OCT 2023	UMCCA	DATO' SRI TEE LIP SIN [DIR/CEO]	91	64699	30.843	
25 OCT 2023 - 25 OCT 2023	UMCCA	MR TEE CHENG HUA [DIR/CEO]	91	58547	27.911	
20 OCT 2023 - 20 OCT 2023	UMCCA	DATO' SRI TEE LIP SIN [DIR/CEO]	49	64609	30.8	
20 OCT 2023 - 20 OCT 2023	UMCCA	MR TEE CHENG HUA [DIR/CEO]	49	58456	27.867	
20 OCT 2023 - 20 OCT 2023	UMW	EMPLOYEES PROVIDENT FUND BOARD [SSH]	100	118166	10.114	
19 OCT 2023 - 19 OCT 2023	UMW	EMPLOYEES PROVIDENT FUND BOARD [SSH]	609	118066	10.106	
23 OCT 2023 - 23 OCT 2023	UNIMECH	ENCIK KHAIRILANUAR BIN ABDUL RAHMAN [DIR/CEO]	-34	66	0.045	
19 OCT 2023 - 19 OCT 2023	UOADEV	EMPLOYEES PROVIDENT FUND BOARD ("EPF BOARD") [SSH]	295	305430	12.264	
18 OCT 2023 - 18 OCT 2023	UOADEV	EMPLOYEES PROVIDENT FUND BOARD ("EPF BOARD") [SSH]	362	305136	12.252	
24 OCT 2023 - 24 OCT 2023	UTDPLT	EMPLOYEES PROVIDENT FUND BOARD [SSH]	280	27606	6.655	
23 OCT 2023 - 23 OCT 2023	UTDPLT	EMPLOYEES PROVIDENT FUND BOARD [SSH]	327	27326	6.588	
20 OCT 2023 - 20 OCT 2023	UTDPLT	EMPLOYEES PROVIDENT FUND BOARD [SSH]	6	26999	6.509	
19 OCT 2023 - 19 OCT 2023	UTDPLT	EMPLOYEES PROVIDENT FUND BOARD [SSH]	175	26993	6.508	
18 OCT 2023 - 18 OCT 2023	UTDPLT	EMPLOYEES PROVIDENT FUND BOARD [SSH]	60	26818	6.466	
24 OCT 2023 - 24 OCT 2023	UWC	EMPLOYEES PROVIDENT FUND BOARD [SSH]	25	80622	7.318	
23 OCT 2023 - 23 OCT 2023	UWC	EMPLOYEES PROVIDENT FUND BOARD [SSH]	256	80597	7.316	
20 OCT 2023 - 20 OCT 2023	UWC	EMPLOYEES PROVIDENT FUND BOARD [SSH]	185	80341	7.293	
18 OCT 2023 - 18 OCT 2023	UWC	EMPLOYEES PROVIDENT FUND BOARD [SSH]	208	80156	7.276	
19 OCT 2023 - 19 OCT 2023	VS	EMPLOYEES PROVIDENT FUND BOARD [SSH]	315	261120	6.778	
18 OCT 2023 - 18 OCT 2023	VS	EMPLOYEES PROVIDENT FUND BOARD [SSH]	535	260806	6.769	
26 OCT 2023 - 26 OCT 2023	WIDAD	TAN SRI MUHAMMAD IKMAL OPAT BIN ABDULLAH [SSH]	2,223	1173355	37.894	
25 OCT 2023 - 25 OCT 2023	WIDAD	TAN SRI MUHAMMAD IKMAL OPAT BIN ABDULLAH [SSH]	9,533	1171132	37.822	
20 OCT 2023 - 20 OCT 2023	WIDAD	TAN SRI MUHAMMAD IKMAL OPAT BIN ABDULLAH [SSH]	3,542	1161599	37.513	
25 OCT 2023 - 27 OCT 2023	WOODLAN	DATO' SERI MUN WENG SUM [DIR/CEO]	1	7163	17.907	
25 OCT 2023 - 27 OCT 2023	WOODLAN	DATO' SERI MUN WENG SUM [SSH]	1	7163	17.907	
23 OCT 2023 - 24 OCT 2023	WOODLAN	DATO' SERI MUN WENG SUM [DIR/CEO				





The Board of Directors of **Bintai Kinden Corporation Berhad (BINTAI)** is pleased to announce that its 50.5%-owned subsidiary, Johnson Medical

International Sdn. Bhd, has accepted a sub-contract from Blackfox Engineering Sdn. Bhd appointing Johnson Medical International to provide the sub-contract works for Supply, Delivery, Installation, Testing, Commissioning and Maintenance of Pendant System for a total sub-contract sum of RM 3,500,000.00.



**Bursa Malaysia Berhad (BURSA)** announces RM192.8 million profit after tax, zakat and minority interest for the nine months ended 30 September 2023.



Reference is made to **Ekovest Berhad's (EKOVEST)** announcement on 27 September 2023 whereby the Company had on even date received a letter dated 27 September 2023 from Tan Sri Dato' Lim Kang Hoo, the Group Executive Chairman and a major shareholder of the Company, requesting the Company to consider participating in a reorganisation, rationalisation and merger proposal comprising, amongst others, the proposed acquisition of four parcels of lands measuring approximately 15.82 acres in aggregate, all located along the Johor Bahru–Singapore Rapid Transit System alignment and are intended for potential transit-oriental development.







Further to the Company's announcement made on 25 September 2023, the Board of Directors of **FM Global Logistics Holdings Berhad (FM)** wishes to announce that FMGLV, an indirect wholly-owned subsidiary of the Company, has on 1 November 2023 completed the Acquisition of the entire issued capital of CAC Logistics Services Pte Ltd by FM Global Logistics Ventures Sdn Bhd., an indirect wholly-owned subsidiary of FM for a cash consideration of SGD5,500,000.

[READ MORE](#) 



The Board of Directors of **Gamuda Berhad (GAMUDA)** is pleased to announce that a Joint Venture Agreement has been entered on 30 October 2023 between the following parties, for respective equity interest in UPP Holdings Sdn Bhd and JV Partners.

[READ MORE](#) 





The Board of Directors of **Knusford Berhad (KNUSFOR)** wishes to announce that the Company had on 27 October 2023 entered into a binding heads of merger agreement with Ekovest to exclusively explore and negotiate further on the Proposed Knusford-Ekovest Construction Sdn Bhd Merger via the proposed acquisition by Knusford of the entire equity interest in ECSB from Ekovest for an indicative purchase consideration of RM450 million, which was arrived at on a willing-buyer, willing-seller basis, after taking into account the audited net assets of ECSB as at 30 June 2023.



[READ MORE](#)



On behalf of the Board of Directors of **Steel Hawk Berhad (SKHAWK)**, UOB Kay Hian Securities (M) Sdn Bhd wishes to announce that the Company proposes to undertake a bonus issue of 240,000,000 new ordinary shares in Steel Hawk (Bonus Share(s)) on the basis of 3 Bonus Shares for every 2 existing

Steel Hawk Shares held on an entitlement date to be determined later.

[READ MORE](#)

**Disclaimer:** The information in the Investor Relations page is extracted from individual companies' announcements in [www.bursamalaysia.com](http://www.bursamalaysia.com). The information on this page is provided as a service to readers. We assume no liability for damages resulting from or arising out of the use of such information. Whilst every effort is made to ensure accuracy, the information presented has been simplified for your reading pleasure. Readers are advised to read the original and complete filings on the Bursa Malaysia website at [https://www.bursamalaysia.com/market\\_information/announcements/company\\_announcement](https://www.bursamalaysia.com/market_information/announcements/company_announcement)

**Upcoming IPO**

NAME OF COMPANY	OFFER PERIOD		ISSUE PRICE (Per Ordinary Share)	LISTING SOUGHT	DATE OF LISTING
	OPENING	CLOSING			
PLYTEC HOLDING BERHAD	24 Oct 2023	31 Oct 2023	RM0.35	ACE MARKET	15 Nov 2023