



MARKET SENTIMENTS

DIGITAL-RELATED INVESTMENTS IN MALAYSIA HIT RM110B - MDEC CEO

MALAYSIA'S PPI BACK TO POSITIVE TERRITORY FOR FIRST TIME SINCE JANUARY - DOSM

See more on pages 21-23

ALSO

07 COMPANY SPOTLIGHT
Salutica Berhad

25 MSWG
Of fractional share trading and its affordability

- | | | | | | |
|-----------|----------------------------|-----------|--------------------|-----------|--------------------|
| 04 | LEADERBOARD | 12 | UP TRENDING STOCKS | 19 | LONG COMPANIES |
| 06 | SHARIAH HOT STOCKS | 14 | VALUE STOCKS | 24 | REGIONAL MARKETS |
| 08 | SHARIAH MOMENTUM UP STOCKS | 16 | GROWTH STOCKS | 28 | INSIDER ACTIVITY |
| 10 | NON SHARIAH HOT STOCKS | 17 | DIVIDEND STOCKS | 32 | INVESTOR RELATIONS |
| | | 18 | BROKERS' CALL | | |



SHAREINVESTOR®

Invest with Knowledge

INVESTOR PLATFORMS

Director
Darren Chong
darren.chong@shareinvestor.com

Business Development Manager
Jay Cheong
jay.cheong@shareinvestor.com

Senior Executive
Daniel Wong
daniel.wong@shareinvestor.com

Executive
Farah Azwani
farah.azwani@shareinvestor.com

Executive
Tan Yong Sheng
yongsheng.tan@shareinvestor.com

ADMIN & OPERATIONS

Senior Executive
Watie Nordin
watie.nordin@shareinvestor.com

Executive
Silas Emmanuel Joseph
silas.joseph@shareinvestor.com

INVESTOR RELATIONS

Group Managing Director & Publisher
Edward Stanislaus
edward@shareinvestor.com

Senior Manager
Letticia Wong
letticia.wong@shareinvestor.com

PROCESS AUTOMATION & DATA ANALYTICS

Data Analyst
Nickson Aw

SHAREINVESTOR HOLDINGS BOARD OF DIRECTORS

Chairman	Patrick Daniel
Group CEO	Christopher Lee
Group COO	Lim Dau Hee
Group CFO	Teo Siew May
Group MD	Shanison Lin



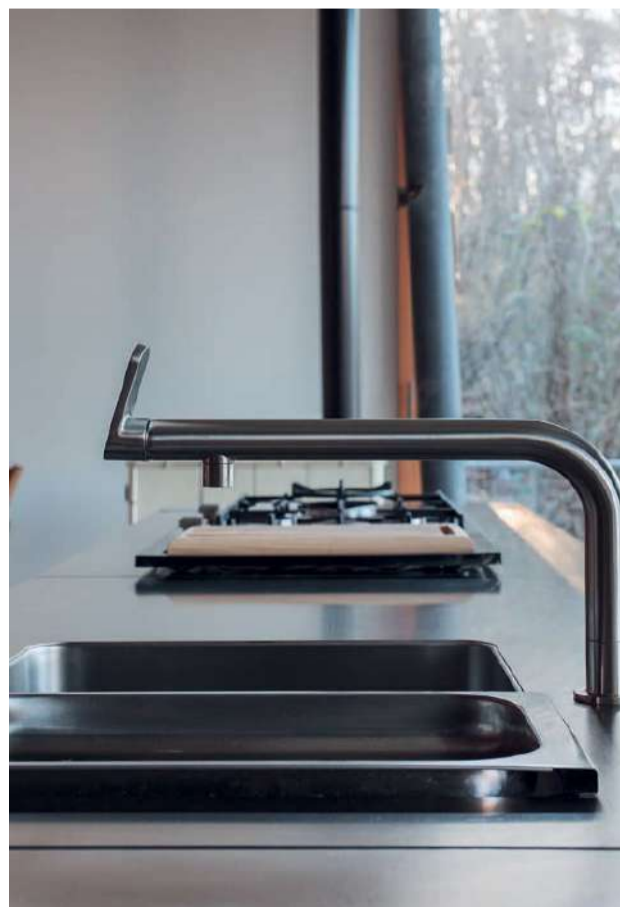
“ GIVE A MAN A FISH AND YOU FEED HIM FOR A DAY; TEACH A MAN TO FISH AND YOU FEED HIM FOR A LIFETIME ”

ShareInvestor Malaysia Sdn. Bhd.
(200001023956) (526564-M)
Unit No. DF2-07-03A, Level 7,
Persoft Tower, 6B Persiaran Tropicana,
47410 Petaling Jaya, Selangor Darul Ehsan.

Hotline : 603 7803 1791
Mobile : 011 6343 8939
Website : www.ShareInvestor.com.my
www.ShareInvestorHoldings.com
www.Facebook.com/ShareInvestorMalaysia

ADVERTISEMENT ENQUIRY

bulthaup takes care of the details so that you can enjoy a harmonious environment.



XTRA

XTRA FURNITURE SDN BHD
The Gardens Mall, Mid Valley City
xtrafurniture.com/bulthaup
fb.com/bulthaupmalaysia

bulthaup



BURSA

IDEA

Research Challenge

9 October - 3 November 2023



Last 1 week

RM10,000 worth of cash prizes to be won!



www.shareinvestor.com - market data at your fingertips



ShareInvestor WebPro (www.shareinvestor.com/my)
Prices > Stock Prices > Bursa > click Stocks tab

1. mouse over Ranking > select Top Active > all Shariah stocks are denoted with an [S] > mouse over Column Layout > select Edit Customs > select Name > select Volume > select Last Done Price > Mouse Over Column Layout > select Custom
2. mouse over Ranking > select Top Turnover > all Shariah stocks are denoted with an [S] > mouse over Column Layout > select Edit Customs > select Name > select Last Done Price > select Value > Mouse Over Column Layout > select Custom
3. mouse over Ranking > select Top Gainers (Over 5 Trading Days) > mouse over Column Layout > select Edit Customs > select Name > select Last Done Price > select 5 Days Change > select 5 Days % Change > Mouse Over Column Layout > select Custom
4. mouse over Ranking > select Top Losers (Over 5 Trading Days)
5. mouse over Ranking > select Top % Gainers (Over 5 Trading Days)
6. mouse over Ranking > select Top % Losers (Over 5 Trading Days)

Shariah Top Actives (as at Yesterday)

Name	Price (RM)	Volume
WIDAD [S]	0.455	882,590.000
UEMS [S]	0.820	651,353.000
LEFORM [S]	0.245	625,013.000
VELESTO [S]	0.260	588,767.000
SCIB [S]	0.540	582,865.000
KANGER [S]	0.140	573,171.000
ASDION [S]	0.100	466,988.000
EKOVEST [S]	0.490	447,693.000
MYEG [S]	0.775	370,428.000
SIMEPROP [S]	0.620	368,754.000

Shariah Top Turnover (as at Yesterday)

Name	Price (RM)	Value (RM)
UEMS [S]	0.820	51,973,685
GAMUDA [S]	4.620	47,677,324
WIDAD [S]	0.455	40,748,261
SCIB [S]	0.540	31,537,971
IHH [S]	5.960	28,958,467
MYEG [S]	0.775	28,759,362
SALUTE [S]	0.715	25,682,148
TENAGA [S]	9.890	23,641,618
SIMEPROP [S]	0.620	22,592,048
EKOVEST [S]	0.490	21,232,377

Top Gainers (over 5 Trading days as at Yesterday)

Name	Price (RM)	Change (RM)
GREATEC	4.520	+0.330
SUNMOW	1.350	+0.250
OFI	1.490	+0.210
SALUTE	0.715	+0.210
LPI	12.000	+0.200
CITAGLB	1.600	+0.190
SAB	3.450	+0.180
BIPORT	5.260	+0.160
GASMSIA	3.270	+0.160
HLFG	17.420	+0.160

Top % Gainers (over 5 Trading days as at Yesterday)

Name	Price (RM)	Change (%)
SALUTE	0.715	+41.58
FSBM	0.375	+38.89
ALRICH	0.040	+33.33
BCMALL	0.020	+33.33
FOCUS	0.020	+33.33
SANICHI	0.020	+33.33
REKATECH	0.065	+30.00
ASDION	0.100	+25.00
REACH	0.050	+25.00
SEACERA	0.280	+24.44

Top Losers (over 5 Trading days as at Yesterday)

Name	Price (RM)	Change (RM)
NESTLE	124.900	-2.600
F&N	25.980	-0.720
BKAWAN	20.500	-0.500
HEXTECH	23.700	-0.500
PCHEM	7.220	-0.260
HAPSENG	5.180	-0.220
PANAMY	17.940	-0.220
KLK	22.200	-0.200
BLDPLNT	10.820	-0.180
HEIM	23.940	-0.180

Top % Losers (over 5 Trading days as at Yesterday)

Name	Price (RM)	Change (%)
MMAG	0.010	-90.00
KGROUP	0.005	-50.00
AEM	0.010	-33.33
AT	0.010	-33.33
COMPUGT	0.010	-33.33
LAMBO	0.015	-25.00
MTRONIC	0.015	-25.00
JOE	0.115	-23.33
KOMARK	0.160	-20.00
ZENTECH	0.020	-20.00



STROM

SWISS TIMEPIECES & JEWELLERY



StromWatch Asia

Tele : +65.9817.3378 Email : ll.stromasia@gmail.com

WWW.STROMWATCH.SWISS



Price & Volume Distribution Charts (as at Yesterday)

Technical Analysis

DEFINITION: Shariah compliant stocks with Technical Analysis showing 5-days & 10-days Moving Average Price below Yesterday's Close over past 3 days and with Volume Spike.

CHART GUIDE: Volume Distribution Chart is a statistical interpretation of the current sentiment on each stock in graphical format. The highest bar categorized as >150k is likely to be traded by institutions or super dealers, while the lowest bar categorized as <15k usually represents retail investors. "Buy Up" refers to more buyers snatching up the lots queued at selling price. "Sell Down" refers to sellers selling their shares to the buying queue



ShareInvestor WebPro > Screener > Market Screener (FA & TA) > select BURSA > add criteria

A. Criteria

- > click Add Criteria
- Technical Analysis Conditions tab select (i) Moving Average Below Close (ii) Volume Spike
- Fundamental Analysis Conditions tab > select (iii) Revenue
- Prices & Other Conditions tab > select (iv) Is Shariah Compliant
- Technical Analysis Conditions tab select (v) Moving Average Below Close
- Prices & Other Conditions tab > select (vi) Last Done Price
- Technical Analysis Conditions tab select (vii) Moving Average Below Close

B. Conditions (Criteria Filters)

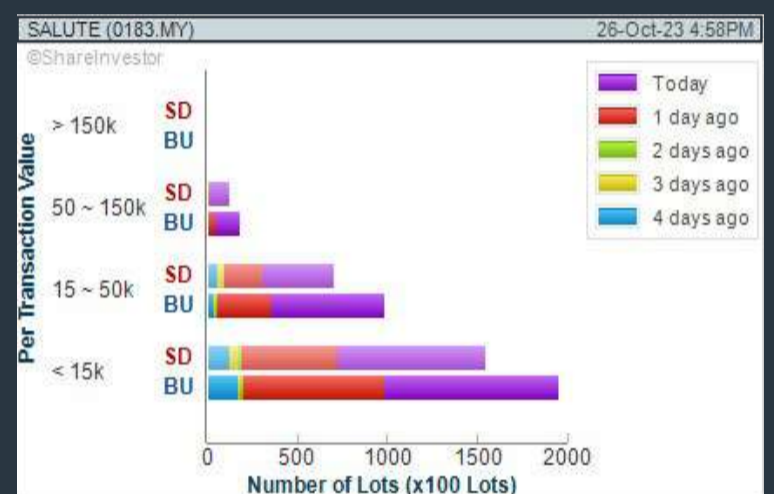
1. Moving Average Below Close - select (MA) type (5) below close price for type (3) days
2. Volume Spike - Volume type (1) greater than type (5) days average
3. Revenue ("000) - select (more than) type (1) for the past select (1) financial year(s)
4. Is Shariah Compliant - select **Yes**
5. Moving Average Below Close - select (MA) type (10) below close price for type (3) days
6. Last Done Price - select (more than) type (0.3)
7. Moving Average Below Close - select (EMA) type (5) below close price for type (3) days

- > click Save Template > Create New Template type (Shariah Hot Stocks) > click Create
- > click Save Template as > select Shariah Hot Stocks > click Save
- > click Screen Now (may take a few minutes)
- > Sort By: Select (Vol) Select (Desc)
- > Mouse over stock name > Charts > click C² Charts or Volume Distribution

SALUTICA BERHAD (0183)

C² Chart

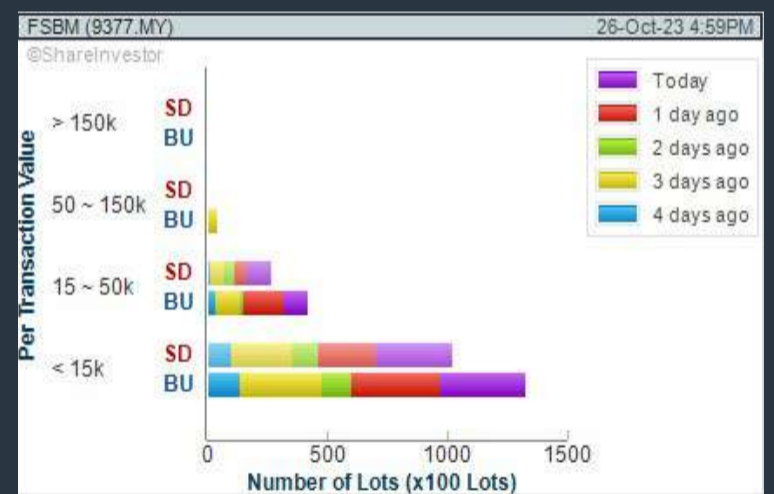
Analysis



FSBM HOLDINGS BERHAD (9377)

C² Chart

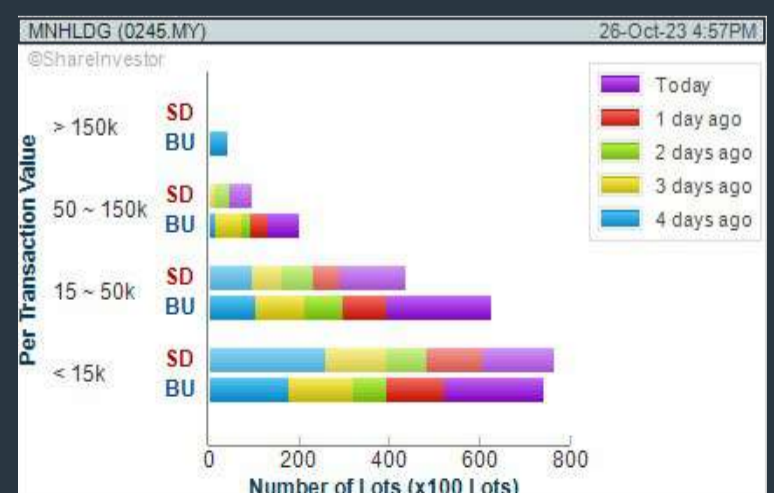
Analysis



MN HOLDINGS BERHAD (0245)

C² Chart

Analysis



Disclaimer: The information on this page is provided as a service to readers. It does not constitute financial advice and/or any investment recommendations. Past performance is not indicative of future results. We assume no liability for damages resulting from or arising out of the use of such information. It would be best if you did your own research to make your personal investment decisions wisely or consult a licenced investment advisor.

COMPANY BACKGROUND

Salutica Berhad via its subsidiary, Salutica Allied Solutions Sdn Bhd, is a vertically integrated electronics manufacturing company. The Company specializes in designing, developing and manufacturing consumer and business electronic products like Bluetooth stereo headsets, smart watches and precision light guides for optical touch screen system. It offers 'one stop' vertically integrated solutions for electronics and plastic manufacturing.



SALUTE SALUTICA BERHAD		Updated at 26 Oct 2023 16:58	
Last (MYR): 0.715 ↑	Change: +0.050	High: 0.755	Remarks: s ?
	Change (%): +7.52	Low: 0.670	
Open	0.675	Yesterday's Close	0.665
Buy Price	0.715	Sell Price	0.720
Buy Volume ('00)	529	Sell Volume ('00)	1,455
Cumulative Volume ('00)	357,598	Cumulative Value	25,682,148

Financial Analysis

Revenue Growth Revenue down sharply in last 2 consecutive years (> 25%)		Profit Growth Increasing losses in latest year (with last 3 unprofitable years)	
Current Ratio The company is well-positioned to cover its short-term obligations with its current assets (ratio between 1.5 to 10) for 3 consecutive years		Debt to Cashflow High debt to cash flow for most recent year	
Net Earnings Margin Company is losing money but net profit margin is improving by 2.5% a year over the past 60 months.		Return on Assets (ROA) Negative ROA for 3 consecutive years	
Return on Equity (ROE) Negative ROE for 3 consecutive years			

Excellent
 Good
 Neutral
 Be Alert
 Watch Out

Historical Financials

Profit & Loss (MYR '000) [Hide Profit & Loss chart](#)

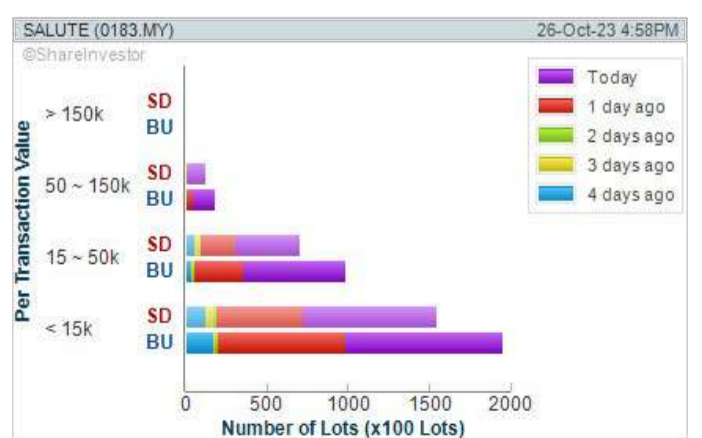


WebPro 9-Days Free Trial Registration (worth RM9) Sign Up Now



Key Statistics with Total Shareholder Returns

Period	Dividend Received	Capital Appreciation	Total Shareholder Return
Short Term Return	5 Days	-	+0.210
	10 Days	-	+0.205
	20 Days	-	+0.195
Medium Term Return	3 Months	-	+0.055
	6 Months	-	-0.275
	1 Year	-	+0.435
Long Term Return	2 Years	-	+0.080
	3 Years	-	+0.295
	5 Years	0.036	+0.205
Annualised Return	Annualised	-	-



Disclaimer: The information on this page is provided as a service to readers. It does not constitute financial advice and/or any investment recommendations. Past performance is not indicative of future results. We assume no liability for damages resulting from or arising out of the use of such information. It would be best if you did your own research to make your personal investment decisions wisely or consult a licenced investment advisor.

Price & Volume Distribution Charts (as at Yesterday)

Technical Analysis

DEFINITION: Shariah compliant stocks with Technical Analysis showing Bullish Momentum and Price Uptrend. The share price closed at the highest price yesterday. The typical price was higher than the previous day's typical price.

CHART GUIDE: Volume Distribution Chart is a statistical interpretation of the current sentiment on each stock in graphical format. The highest bar categorized as >150k is likely to be traded by institutions or super dealers, while the lowest bar categorized as <15k usually represents retail investors. "Buy Up" refers to more buyers snatching up the lots queued at selling price. "Sell Down" refers to sellers selling their shares to the buying queue.



ShareInvestor WebPro > Screener > Market Screener (FA & TA)>select BURSA>add criteria

A. Criteria

- > click Add Criteria
- Fundamental Analysis Conditions tab >select (i) Revenue
- Technical Analysis Conditions tab select (ii) Average Volume
- Prices & Other Conditions tab > select (iii) Last Done Price
- Prices & Other Conditions tab > select (iv) Is Shariah Compliant
- Technical Analysis Conditions tab select (v) RSI Overbought
- Technical Analysis Conditions tab select (vi) Moving Average Below Close
- Technical Analysis Conditions tab select (vii) CCI Overbought

B. Conditions (Criteria Filters)

- Revenue ("000) - select (more than) type (1) for the past select (1) financial year(s)
- Average Volume - type (1) days average volume greater than type (10000) lots
- Last Done Price - select (more than) type (0.3)
- Is Shariah Compliant - select Yes
- RSI Overbought - select RSI 1 above 99 for 1 days
- Moving Average Below Close - select (MA) type (10) below close price for type (1) days
- CCI Overbought - select CCI (2) above (0) for (1) days

- > click Save Template > Create New Template type (Shariah Momentum Up Stocks) > click Create
- > click Save Template as > select Shariah Momentum Up Stocks > click Save
- > click Screen Now (may take a few minutes)
- Sort By: Select (Vol) Select (Desc)
- Mouse over stock name > Charts > click C² Charts tab or Volume Distribution

UEM SUNRISE BERHAD (5148)

C² Chart

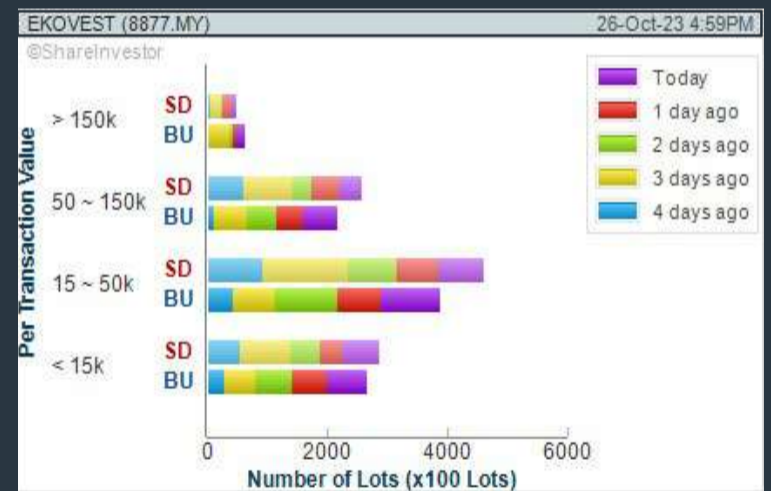
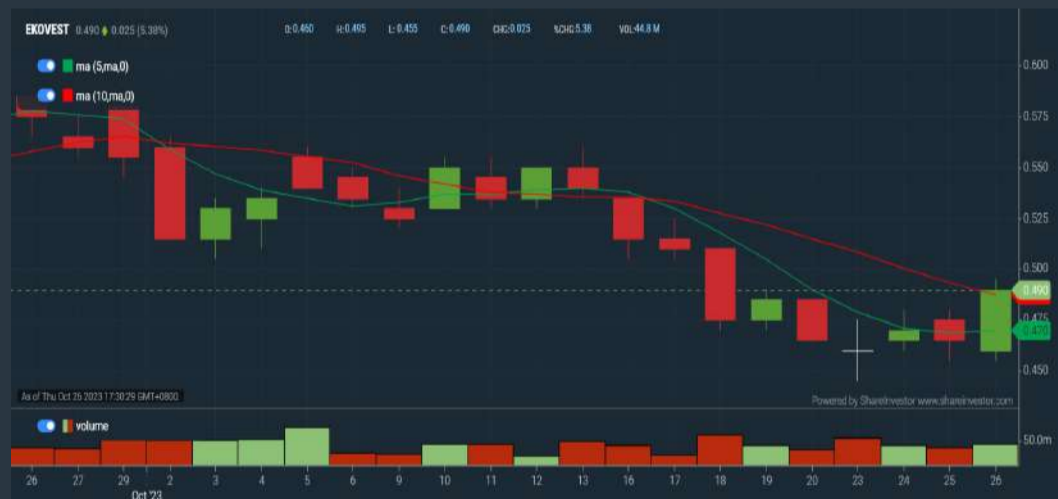
Analysis



EKOVEST BERHAD (8877)

C² Chart

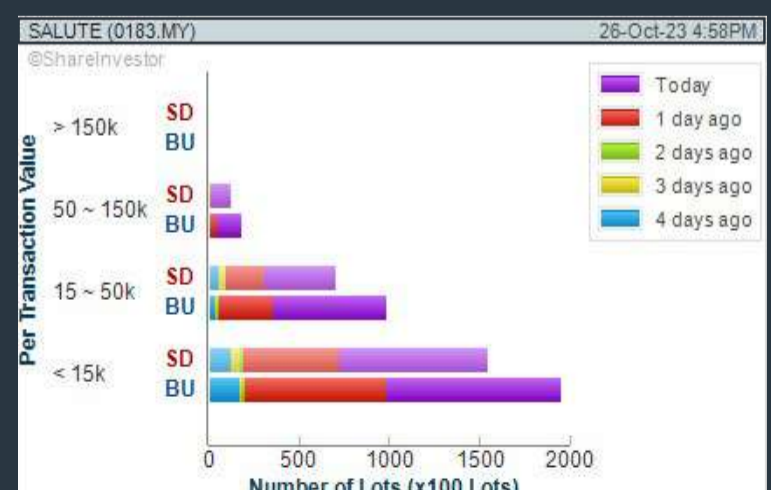
Analysis



SALUTICA BERHAD (0183)

C² Chart

Analysis



Disclaimer: The information on this page is provided as a service to readers. It does not constitute financial advice and/or any investment recommendations. Past performance is not indicative of future results. We assume no liability for damages resulting from or arising out of the use of such information. It would be best if you did your own research to make your personal investment decisions wisely or consult a licenced investment advisor.

SHAREINVESTOR WEBPRO

STOCK MARKET DATA AT YOUR FINGERTIPS

Powerful browser-based market analytics platform.
Access from anywhere



8 Markets Data

- ▶ Get access to data from Bursa, NYSE, Nasdaq, HKEX, SGX, IDX, SET & ASX

Portfolio Management

- ▶ Profit & Loss Summary
- ▶ Stock Alert
- ▶ News & Events filtering
- ▶ Customizable column layout

Fundamental Analysis

Financial Analysis Statement

- ▶ Profit & Loss
- ▶ Balance Sheet
- ▶ Cash Flow Statement
- ▶ More than 20 Financial Ratios
- ▶ Dividend Analysis

Technical Charting

- ▶ C² chart (Customisable & Comprehensive)

Brokers' Call

Intrinsic Value Calculator

FactSheet

- ▶ Key Stock Information
- ▶ Ownership
- ▶ Consensus Estimates
- ▶ Annual Report
- ▶ Historical Price
- ▶ Insider Trades

What's new on WebPro (Stable Release 12.1.0)

In our effort to keep our platform at the forefront of trading technology, we have added on some new features onto our C² Chart in WebPro

ADDITIONAL NEW FEATURES:

- ▶ Anchor selector for AVWAP, PVAT, and PAV indicators
- ▶ Volume profile indicator by date range
- ▶ Moving Average Cross indicator
- ▶ Guppy Multiple Moving Average (GMMA) indicator
- ▶ GoNoGo Trend Signal indicators
- ▶ SignalIQ

So what are you waiting for? Head to our platform today and check out our new trading chart features and indicators. We're confident that you'll love the improvements we've made and that they'll help you become a more successful trader.

Click here to start your 9 days FREE trial
(Valued at RM10)



Price & Volume Distribution Charts (as at Yesterday)

Technical Analysis

DEFINITION: Stocks with Technical Analysis showing 5-days & 10-days Moving Average Price below Close over past 1 days and with Volume Spike

CHART GUIDE: Volume Distribution Chart is a statistical interpretation of the current sentiment on each stock in graphical format. The highest bar categorized as >150k is likely to be traded by institutions or super dealers, while the lowest bar categorized as <15k usually represents retail investors. "Buy Up" refers to more buyers snatching up the lots queued at selling price. "Sell Down" refers to sellers selling their shares to the buying queue.



ShareInvestor WebPro > Screener > Market Screener (FA & TA) > select BURSA > add criteria

A. Criteria

- > click Add Criteria
- Technical Analysis Conditions tab select (i) Moving Average Below Close (ii) Volume Spike
- Fundamental Analysis Conditions tab >select (iii) Revenue
- Prices & Other Conditions tab > select (iv) Is Shariah Compliant
- Technical Analysis Conditions tab select (v) Moving Average Below Close
- Prices & Other Conditions tab > select (vi) Last Done Price
- Technical Analysis Conditions tab select (vii) Moving Average Below Close

B. Conditions (Criteria Filters)

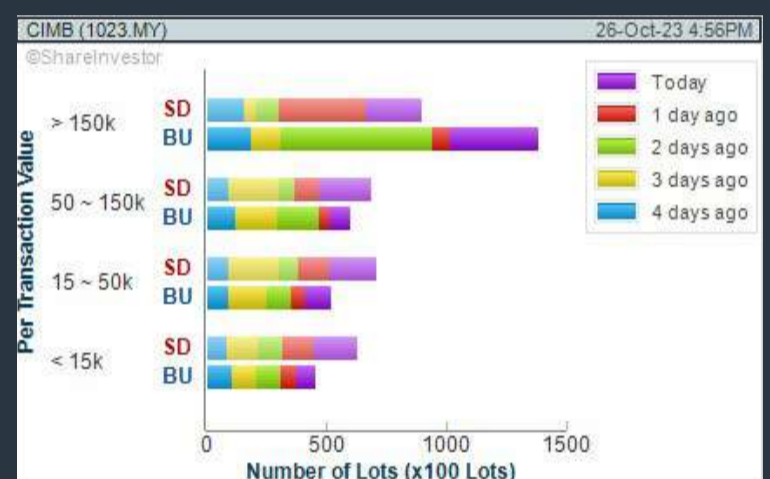
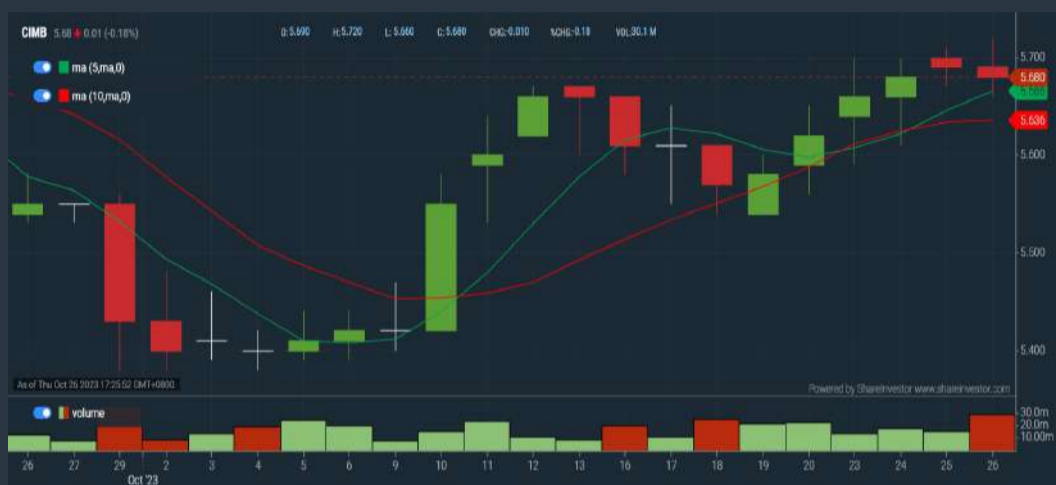
1. Moving Average Below Close - select (MA) type (5) below close price for type (3) days
2. Volume Spike - Volume type (1) greater than type (5) days average
3. Revenue ("000) - select (more than) type (1) for the past select (1) financial year(s)
4. Is Shariah Compliant - select NO
5. Moving Average Below Close - select (MA) type (10) below close price for type (1) days
6. Last Done Price - select (more than) type (0.3)
7. Moving Average Below Close - select (EMA) type (5) below close price for type (1) days

- > click Save Template > Create New Template type (Non-Shariah Hot Stocks) > click Create
- > click Save Template as > select Non-Shariah Hot Stocks > click Save
- > click Screen Now (may take a few minutes)
- Sort By: Select (Vol) Select (Desc)
- Mouse over stock name > Charts > click C² Charts tab or Volume Distribution

CIMB GROUP HOLDINGS BERHAD (1023)

C² Chart

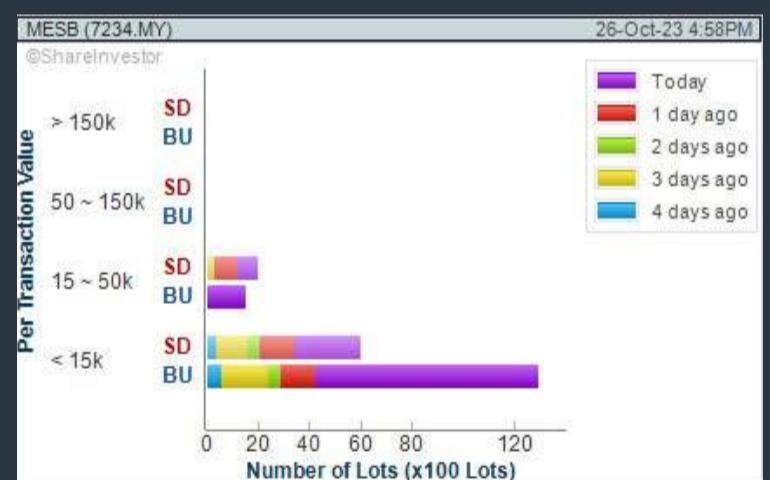
Analysis



MESB BERHAD (7234)

C² Chart

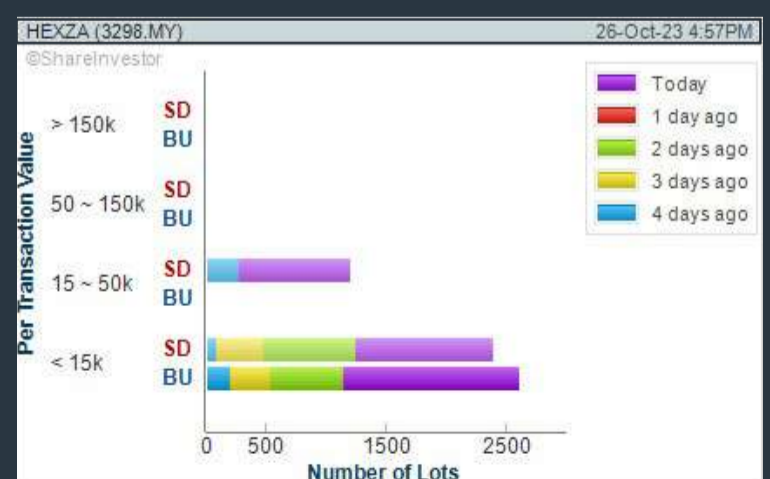
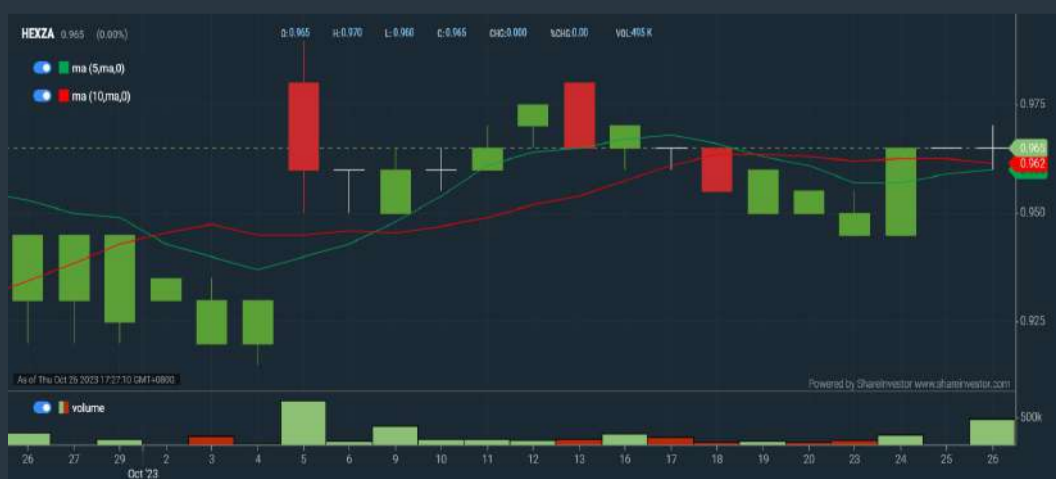
Analysis



HEXZA CORPORATION BERHAD (3298)

C² Chart

Analysis



Disclaimer: The information on this page is provided as a service to readers. It does not constitute financial advice and/or any investment recommendations. Past performance is not indicative of future results. We assume no liability for damages resulting from or arising out of the use of such information. It would be best if you did your own research to make your personal investment decisions wisely or consult a licenced investment advisor.

BURSASTATION

Professional

Stock Scanning

- Technical Analysis (TA) Market Scanner
- Fundamental Analysis (FA) Market Scanner

Monitoring

- Portfolio
- Stock Alerts
- Price Spread Calculator

Market Data

- Equities
- Derivatives

Scan. Chart. Analyse.

Be The Intelligent Investor

Charts

- Intraday Charts
- Interactive Charts
- Historical Charts
- Volume Distribution Charts

Price Movements

- Streaming Prices
- Time & Sales
- Trade Summary Matrix
- Quote Movements
- 5 Levels Market Depth
- Historical Price Download

Fundamentals

- Factsheets
- Financials
- Insider Trades

Brought to you as a collaborative effort by ShareInvestor and Bursa Malaysia, **BursaStation Professional** is designed with you, the user, in mind, as a user-friendly yet full of powerful features that will appeal to investors/traders who need instant access to fundamental, technical, and trading data, anytime, anywhere. **BursaStation Professional** is a state-of-the-art Stock Market Tracker with Charting Software that places in your hands the power to make better investment decisions.

[CLICK HERE TO START YOUR 14-DAYS FREE TRIAL](#)

Price & Volume Distribution Charts (Over 3 trading days as at Yesterday)

Technical Analysis

DEFINITION: Stocks with Technical Analysis showing Bullish Momentum and Price Uptrend

CHART GUIDE: Volume Distribution Chart is a statistical interpretation of the current sentiment on each stock in graphical format. The highest bar categorized as >150k is likely to be traded by institutions or super dealers, while the lowest bar categorized as <15k usually represents retail investors. "Buy Up" refers to more buyers snatching up the lots queued at selling price. "Sell Down" refers to sellers selling their shares to the buying queue.



ShareInvestor WebPro > Screener > Market Screener (FA & TA) > select BURSA > add criteria

A. Criteria

- > click Add Criteria
- Fundamental Analysis Conditions tab > select (i) Revenue
- Technical Analysis Conditions tab select (ii) Moving Average Below Close
- Technical Analysis Conditions tab select (iii) Average Volume
- Prices & Other Conditions tab > select (iv) Last Done Price
- Technical Analysis Conditions tab select (v) Moving Average Below Close
- Technical Analysis Conditions tab select (v) Moving Average Bullish Crossover

B. Conditions

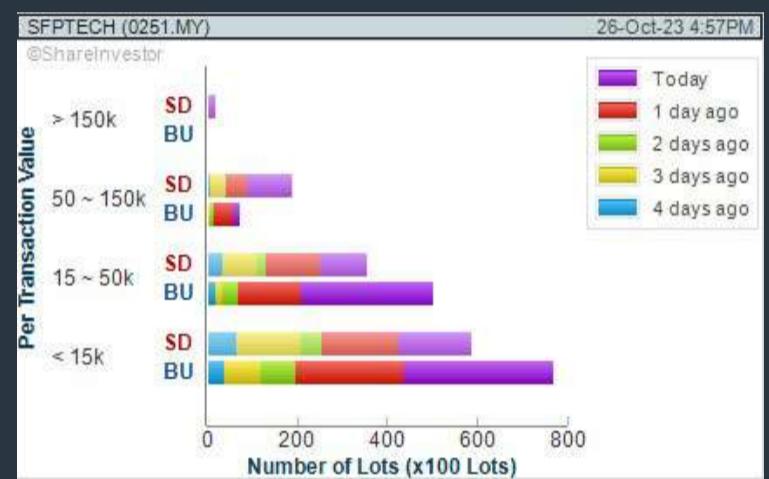
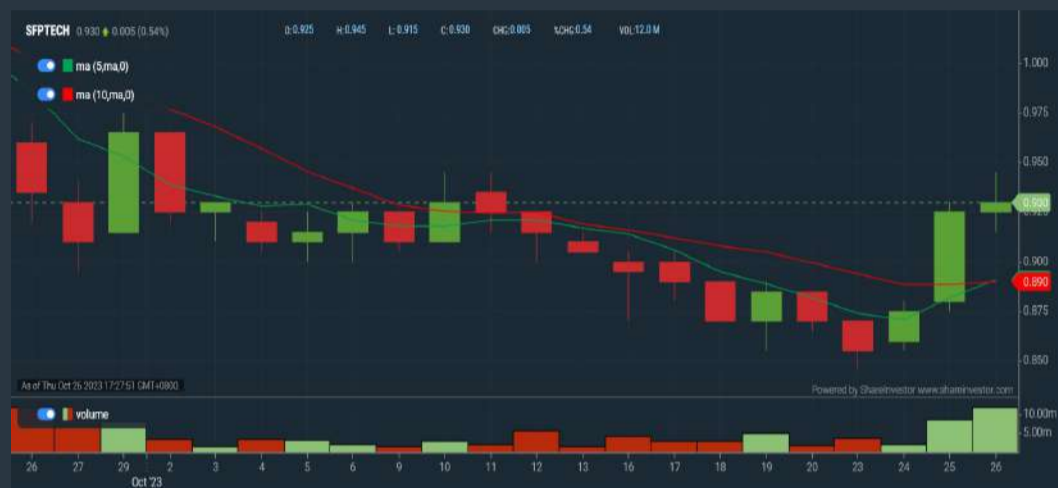
1. Revenue - select (more than) type (1) for the past select (1) financial year(s)
2. Moving Average Below Close - select (MA) type (20) below close price for type (1) days
3. Average Volume - type (5) days average volume type (10000) lots
4. Last Done Price - select (more than) type (0.3)
5. Moving Average Below Close - select (MA) type (10) below close price for type (1) days
6. Moving Average Bullish Crossover - select (MA) type (5) crossed above select (MA) type (10)

> click Save Template > Create New Template type (Non-Shariah Up-Trending Stocks) > click Create Click Save Template As > select Non-Shariah Up Trending Stocks > click Save > click Screen Now (may take a few minutes) Sort By: Select (Vol) Select (Desc) Mouse over stock name > Charts > click C² Charts tab or Volume Distribution

SFP TECH HOLDINGS BERHAD (0251)

C² Chart

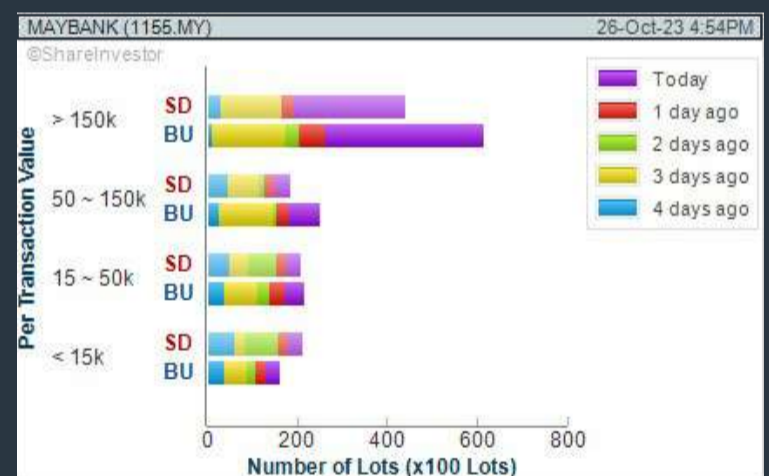
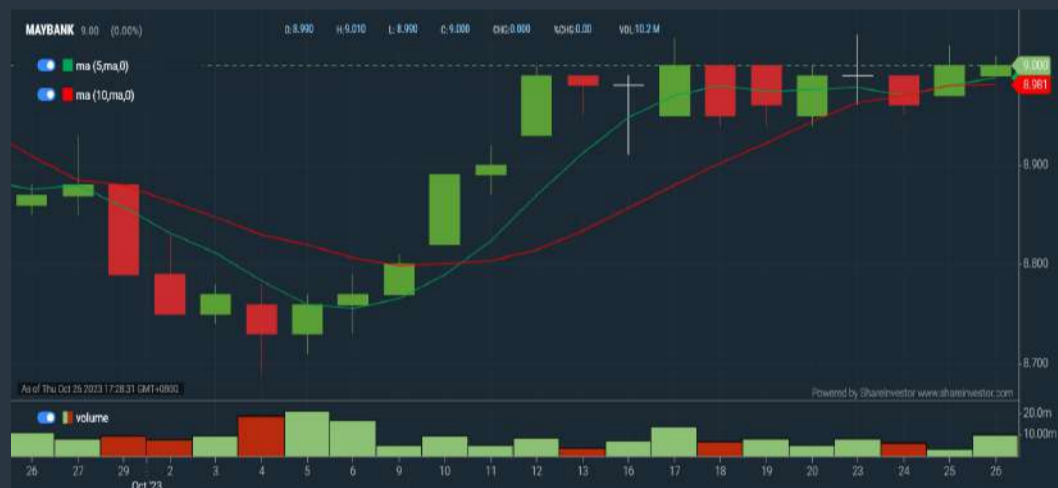
Analysis



MALAYAN BANKING BERHAD (1155)

C² Chart

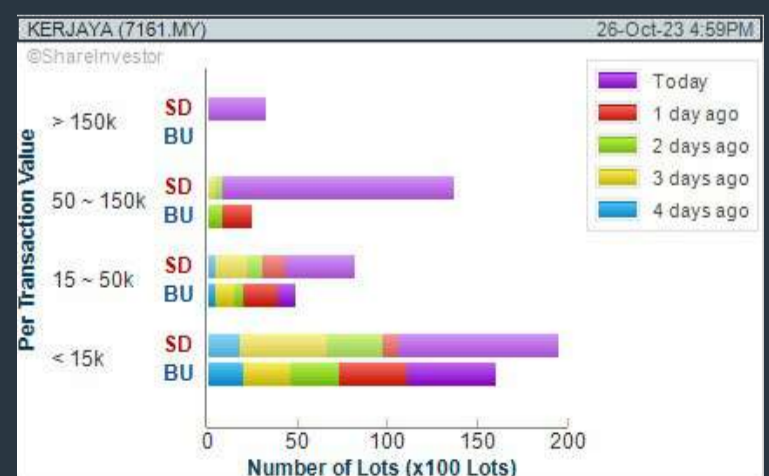
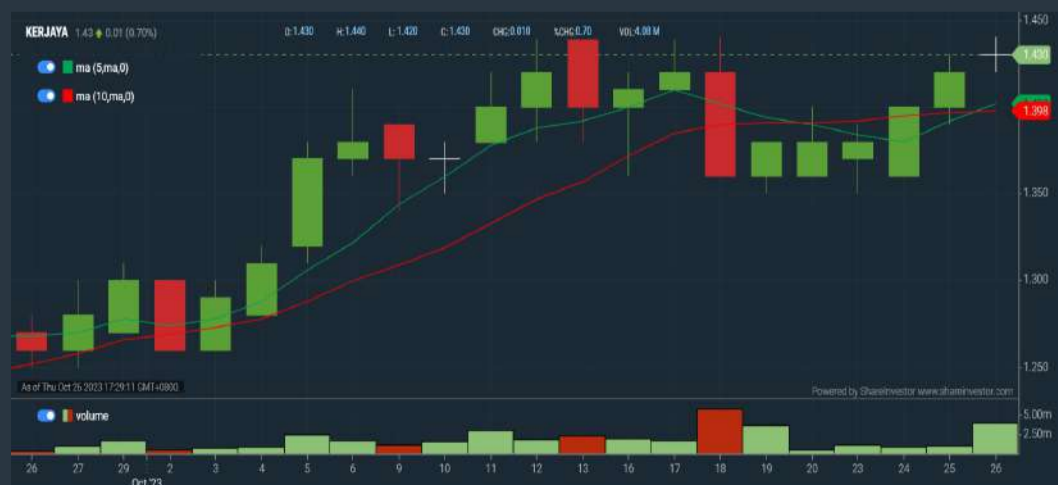
Analysis



KERJAYA PROSPEK GROUP BERHAD (7161)

C² Chart

Analysis



Disclaimer: The information on this page is provided as a service to readers. It does not constitute financial advice and/or any investment recommendations. Past performance is not indicative of future results. We assume no liability for damages resulting from or arising out of the use of such information. It would be best if you did your own research to make your personal investment decisions wisely or consult a licenced investment advisor.

MAKE BETTER TRADING STRATEGIES

with

SHARE INVESTOR STATION



8 Markets Data

- ▶ Get access to data from Bursa, NYSE, Nasdaq, HKEX, SGX, IDX, SET & ASX

Dynamic Chart

- ▶ Candlestick Pattern Recognition
- ▶ 111 Indicators
- ▶ 39 Drawing Tools
- ▶ Performance Comparison Chart

Intraday Data

- ▶ Market Depth
- ▶ Trade Summary Matrix & Chart
- ▶ Times & Sales
- ▶ Intraday Market Ticker

Market Screener

- ▶ 96 criteria ranging from FA, TA, Consensus Estimate
- ▶ Real-time Data

Power Frame

- ▶ Combining few Dynamic Charts together with intraday information in one frame

Technical Analysis

Fundamental Analysis

Financial Analysis Statement

- ▶ Profit & Loss
- ▶ Balance Sheet
- ▶ Cash Flow Statement
- ▶ More than 20 Financial Ratios
- ▶ Dividend Analysis

FactSheet

- ▶ Key Stock Information
- ▶ Ownership
- ▶ Consensus Estimates
- ▶ Annual Report
- ▶ Historical Price
- ▶ Insider Trades

Start your 18 days FREE trial now (Valued at RM82)



Price & Total Shareholder Return (as at Yesterday)

Fundamental Analysis

DEFINITION: Share price of a company trading at a lower price as compared to its fundamentals (FA) such as financial performance and dividend, allowing it to be attractive to value investors.

CHART GUIDE: Total Shareholder Return (TSR) combines share price appreciation and dividend distributions paid to show the total return to the shareholder expressed as a percentage.



ShareInvestor WebPro > Screener > Market Screener (FA & TA) > select BURSA > add criteria

A. Criteria

- > click Add Criteria
- Fundamental Analysis Conditions tab (i) Price Earnings Ratio
- Fundamental Analysis Conditions tab >select (ii) CAGR of Net Earnings
- Fundamental Analysis Conditions tab >select (iii) Net Debt To Equity
- Fundamental Analysis Conditions tab >select (iv) Return On Equity (ROE)

B. Conditions

1. Price Earnings Ratio - select (less than) type (15) times now
2. CAGR of Net Earnings - select (more than) type (10) % for the past type (3) financial year(s)
3. Net Debt To Equity – select (less than) type (1) for the past select (1) financial year(s)
4. Return On Equity (ROE) – select (more than) type (10) % for the past select (1) financial year(s)

- > click Save Template > Create New Template type (Value Stock) > click Create
- > click Save Template as > select Value Companies > click Save
- > click Screen Now (may take a few minutes)
- Sort by: Select (PE Ratio) Select (Ascending)
- > Mouse over stock name > Factsheet > looking for Total Shareholder Return
- > Mouse over stock name > Charts > click C2 Charts tab

SYNERGY HOUSE BERHAD (0279)

C² Chart



Period	Dividend Received	Capital Appreciation	Total Shareholder Return
Short Term Return	5 Days	-0.010	-2.11%
	10 Days	-	-
	20 Days	+0.080	+14.81%
Medium Term Return	3 Months	+0.075	+16.23%

EDELTEQ HOLDINGS BERHAD (0278)

C² Chart



Period	Dividend Received	Capital Appreciation	Total Shareholder Return
Short Term Return	5 Days	-0.030	-3.96%
	10 Days	-0.030	-7.69%
	20 Days	-0.066	-16.12%
Medium Term Return	3 Months	-0.255	-41.13%

SUNMOW HOLDING BERHAD (03050)

C² Chart



Period	Dividend Received	Capital Appreciation	Total Shareholder Return
Short Term Return	5 Days	+0.250	+23.73%
	10 Days	+0.250	+23.73%
	20 Days	+0.250	+23.73%
Medium Term Return	3 Months	-0.250	-16.62%
	6 Months	+0.720	+114.29%
1 Year	+0.400	+42.11%	
Annualised Return	Annualised	-	+42.11%

Disclaimer: The information on this page is provided as a service to readers. It does not constitute financial advice and/or any investment recommendations. Past performance is not indicative of future results. We assume no liability for damages resulting from or arising out of the use of such information. It would be best if you did your own research to make your personal investment decisions wisely or consult a licenced investment advisor.



making places creative



usm.com

XTRA

XTRA FURNITURE SDN BHD
The Gardens Mall, Mid Valley City, Lot S-236 & 237
Lingkar Syed Putra, 59200 Kuala Lumpur
T. +603 2282 9088 | living@xtrafurniture.com | xtrafurniture.com
● XTRAFurniture | ● xtrafurnituremsia

Price & Total Shareholder Return (as at Yesterday)

Fundamental Analysis

DEFINITION: Company revenue is growing and making good quality of earnings with positive Free Cash Flow.

CHART GUIDE: Total Shareholder Return (TSR) combines share price appreciation and distributions paid to show the total return to the shareholder expressed as a percentage.



ShareInvestor WebPro > Screener > Market Screener (FA & TA) > select BURSA > add criteria

A. Criteria

1. Fundamental Analysis Conditions tab > select (i) Free Cash Flow, (ii) Revenue Growth, (iii) Gross Profit (Earnings) Margin, (iv) Quality of Earnings, (v) Total Shareholder Returns, > click Add Criteria
2. Fundamental Analysis Conditions tab > select (vi) Total Shareholder Returns > click Add Criteria

B. Conditions (Criteria Filters)

1. Free Cash Flow - select (more than) type (1) for the past select (1) financial year(s)
2. Revenue Growth - select (more than) type (1) for the past select (1) financial year(s)
3. Gross Profit (Earnings) Margin - select (more than) type (30) % for the past select (1) financial year(s)
4. Quality of Earnings - select (more than) type (1) for the past select (1) financial year(s)
5. Total Shareholder Return - select (more than) type (5) % for the past select (3) financial year(s)
6. Total Shareholder Return - select (more than) type (5) % for the past select (5) financial year(s)

- > click Save Template > Create New Template type (Growth Companies) > click Create
- > click Save Template as > select Growth Companies > click Save
- > click Screen Now (may take a few minutes)
- > Sort By: Select (Revenue Growth) Select (Desc)
- > Mouse over stock name > Factsheet > looking for Total Shareholder Return

SEAL INCORPORATED BERHAD (4286)

C² Chart

Analysis



Period	Dividend Received	Capital Appreciation	Total Shareholder Return
Short Term Return	5 Days	-0.005	-1.00%
	10 Days	-0.015	-2.94%
	20 Days	-0.045	-8.33%
Medium Term Return	3 Months	-0.015	-2.94%
	6 Months	+0.195	+65.00%
	1 Year	+0.270	+120.00%
Long Term Return	2 Years	+0.150	+43.48%
	3 Years	+0.180	+47.76%
	5 Years	+0.195	+50.00%
Annualised Return	Annualised	-	+8.45%

REDTONE DIGITAL BERHAD (0032)

C² Chart

Analysis



Period	Dividend Received	Capital Appreciation	Total Shareholder Return
Short Term Return	5 Days	-	-
	10 Days	+0.020	+2.86%
	20 Days	+0.015	+2.13%
Medium Term Return	3 Months	+0.045	+6.67%
	6 Months	+0.205	+39.81%
	1 Year	+0.240	+50.00%
Long Term Return	2 Years	+0.030	+4.35%
	3 Years	+0.410	+132.26%
	5 Years	0.010	+0.510
Annualised Return	Annualised	-	+26.30%

IGB BERHAD (5606)

C² Chart

Analysis



Period	Dividend Received	Capital Appreciation	Total Shareholder Return
Short Term Return	5 Days	-0.040	-1.93%
	10 Days	-0.029	-0.93%
	20 Days	+0.010	+0.47%
Medium Term Return	3 Months	+0.030	+1.42%
	6 Months	+0.140	+7.00%
	1 Year	+0.600	+30.96%
Long Term Return	2 Years	0.150	+7.21%
	3 Years	0.236	+11.79%
	5 Years	0.583	+17.07%
Annualised Return	Annualised	-	+6.47%

Disclaimer: The information on this page is provided as a service to readers. It does not constitute financial advice and/or any investment recommendations. Past performance is not indicative of future results. We assume no liability for damages resulting from or arising out of the use of such information. It would be best if you did your own research to make your personal investment decisions wisely or consult a licenced investment advisor.

Price & Total Shareholder Return (as at Yesterday)

Fundamental Analysis

DEFINITION: Company is paying out dividend with low or moderate leverage.

CHART GUIDE: Total Shareholder Return (TSR) combines share price appreciation and distributions paid to show the total return to the shareholder expressed as a percentage.



ShareInvestor WebPro > Screener > Market Screener (FA & TA) > select BURSA > add criteria

A. Criteria

- > click Add Criteria
- Fundamental Analysis Conditions tab >select (i) Dividend Yield (Historical)
- Fundamental Analysis Conditions tab >select (ii) Dividend Payout (Historical)
- Fundamental Analysis Conditions tab >select (iii) Total Debt To Equity
- Fundamental Analysis Conditions tab >select (iv) Total Shareholder Returns
- Fundamental Analysis Conditions tab >select (v) Total Shareholder Returns
- Fundamental Analysis Conditions tab / >select (vi) CAGR of Dividend Per Share

• Fundamental Analysis Conditions tab >select (vii) CAGR of Dividend Per Share

B. Conditions (Criteria Filters)

1. Dividend Yield - select (more than) type (1) % for the past select (1) financial year(s)
2. Dividend Payout (Historical) - select (between) type (0.5) to type (1) times for the past select (1) financial year(s)
3. Total Debt to Equity - select (less than) type (1) for the past select (1) financial year(s)
4. Total Shareholder Return - select (more than) type (5) % for the past select (3) financial year(s)
5. Total Shareholder Return - select (more than) type (5) % for the past select (5) financial year(s)

6. CAGR of Dividend Per Share - select (less than) type (30) % for the past select (5) financial year(s)
7. CAGR of Dividend Per Share - select (more than) type (1) % for the past select (5) financial year(s)

- > click Save Template > Create New Template type (Dividend Companies) > click Create
- > click Save Template as > select Dividend Companies > click Save
- > click Screen Now (may take a few minutes)
- > Sort By: Select (Dividend Yield) Select (Desc)
- > Mouse over stock name > Factsheet > looking for Total Shareholder Return

FORMOSA PROSONIC INDUSTRIES (9172)

C² Chart

Analysis



Period	Dividend Received	Capital Appreciation	Total Shareholder Return
Short Term Return	5 Days	-0.020	-0.89%
	10 Days	+0.100	+6.84%
	20 Days	+0.170	+6.25%
Medium Term Return	3 Months	+0.320	+12.45%
	6 Months	+0.230	+8.85%
	1 Year	-0.290	-8.12%
Long Term Return	2 Years	0.200	+6.78%
	3 Years	0.340	+10.62%
	5 Years	0.550	+16.32%
Annualised Return	Annualised	-	+17.75%

KENANGA INVESTMENT BANK BERHAD (6483)

C² Chart

Analysis



Period	Dividend Received	Capital Appreciation	Total Shareholder Return
Short Term Return	5 Days	+0.005	+0.60%
	10 Days	-	-
	20 Days	-0.025	-2.81%
Medium Term Return	3 Months	-0.040	-4.42%
	6 Months	-0.055	-6.96%
	1 Year	-0.010	-1.14%
Long Term Return	2 Years	0.105	+24.81%
	3 Years	0.193	+40.13%
	5 Years	0.237	+77.74%
Annualised Return	Annualised	-	+12.19%

GAS MALAYSIA BERHAD (5209)

C² Chart

Analysis



Period	Dividend Received	Capital Appreciation	Total Shareholder Return
Short Term Return	5 Days	+0.130	+4.14%
	10 Days	+0.110	+3.48%
	20 Days	+0.250	+8.26%
Medium Term Return	3 Months	+0.270	+9.00%
	6 Months	-0.050	-1.51%
	1 Year	+0.040	+1.24%
Long Term Return	2 Years	0.129	+26.89%
	3 Years	0.285	+51.98%
	5 Years	0.558	+94.32%
Annualised Return	Annualised	-	+6.08%

Disclaimer: The information on this page is provided as a service to readers. It does not constitute financial advice and/or any investment recommendations. Past performance is not indicative of future results. We assume no liability for damages resulting from or arising out of the use of such information. It would be best if you did your own research to make your personal investment decisions wisely or consult a licenced investment advisor.

Week: 20 October 2023 - 26 October 2023

More Brokers' Call 

AMINVESTMENT BANK <small>... See More</small>	Call	Target Price	Release Date
Duopharma Biotech Berhad (7148)	BUY	RM1.69	25 Oct 2023
Globetronics Technology Berhad (7022)	HOLD	RM1.36	25 Oct 2023
Sunway Berhad (5211)	BUY	RM2.40	25 Oct 2023

APEX <small>... See More</small>	Call	Target Price	Release Date
Frontken Corporation Berhad (0128)	HOLD	RM3.32	25 Oct 2023

BIMB SECURITIES SDN BHD <small>... See More</small>	Call	Target Price	Release Date
Gamuda Berhad (5398)	BUY	RM5.16	26 Oct 2023
Lotte Chemical Titan Holding Berhad (5284)	BUY	RM1.56	25 Oct 2023
Petronas Gas Berhad (6033)	HOLD	RM15.98	23 Oct 2023

CGS CIMB <small>... See More</small>	Call	Target Price	Release Date
Mah Sing Group Berhad (8583)	ADD	RM1.10	20 Oct 2023

KENANGA <small>... See More</small>	Call	Target Price	Release Date
Axis REIT (5106)	UNDERPERFORM	RM1.55	26 Oct 2023
CelcomDigi Berhad (6947)	OUTPERFORM	RM5.07	26 Oct 2023
Gamuda Berhad (5398)	OUTPERFORM	RM5.45	26 Oct 2023

MIDF <small>... See More</small>	Call	Target Price	Release Date
Axis REIT (5106)	BUY	RM2.07	26 Oct 2023
Gamuda Berhad (5398)	BUY	RM5.38	26 Oct 2023
Malaysia Airports Holdings Berhad (5014)	NEUTRAL	RM7.45	26 Oct 2023
Sunway Berhad (5211)	NEUTRAL	RM1.84	25 Oct 2023

UOB KAYHIAN <small>... See More</small>	Call	Target Price	Release Date
CIMB Group Holdings Berhad (1023)	BUY	RM6.00	25 Oct 2023
Globetronics Technology Berhad (7022)	HOLD	RM1.52	25 Oct 2023
PPB Group Berhad (4065)	BUY	RM17.00	25 Oct 2023

Disclaimer: InveSt does not accept any liability whatsoever for any direct, indirect or consequential losses (including loss of profit) or damages that may arise from the use of information or opinions in this publication. The information and opinions in InveSt are not to be considered as an offer to sell or buy any of the securities discussed. Opinions expressed are subject to change without notice. The Brokers may, from time to time, have interests or positions in the securities mentioned. For the full report on each item listed on this page, please visit https://www.shareinvestor.com/my/brokers_call.

DEFINITION: Top 9 stocks with Technical Analysis plus Pattern Matching by 60 pre-defined indicators by the system showing a higher probability of bullish sentiment on the share price.



ShareInvestor WebPro > Screener > Predefined TA Screens > select market BURSA > Most Long Signals > click Scan Results or mouse over each company

PRIVASIA TECHNOLOGY BERHAD (0123.MY)

PRIVA

Price updated at 26 Oct 2023 16:59

Last: 0.110	Change: -0.005	Volume: 32,861
	Change (%): -4.35	Range: 0.105 - 0.110

TA Scanner Results based on historical data up to 26 Oct 2023

Condition	Signal	Explanation
Bollinger Band: Bullish Long Term Volatility Breakout and Trending	Long	1. Close price above upper bollinger band(33,1). 2. Volume above average volume(50). 3. Average volume(50) is above 300,000.
Bollinger Band: Bullish Short Term Volatility Breakout and Trending	Long	1. Close price above upper bollinger band(33,1). 2. Volume above average volume(10). 3. Average volume(10) is above 300,000.
Bollinger Band: High Above Upper Bollinger Band	Neutral	1. High above upper bollinger band(14,2). 2. Average volume(5) is above 100,000.
DM: Bullish Directional Movement	Long	-DI(14) crossed below +DI(14)
Donchian Channels: High Above Upper Donchian Channels	Long	High crossed above the upper Donchian Channel(14,4)
MA: Bullish Price Crossover	Long	1. Close price crossed above MA(40) within the last 1 day. 2. Previous day close price is below the MA(10) for the last 5 days
MA: Short Term Bullish Moving Average Crossover	Long	MA(10) crossed above MA(15) within the last 1 day.
MACD: Bullish MACD Crossover	Long	1. MACD(12,26) diff line crossed above the MACD(12,26) signal line. 2. MACD Histogram(12,26) is above 0.
Parabolic SAR: Bearish Parabolic SAR Reversal	Neutral	1. Parabolic SAR 1 day ago above close price 1 day ago for the last 5 days. 2. Parabolic SAR below close price
RSI: Short Term RSI 50 Bullish Crossover	Long	1. RSI(20) crossed above 50 within the last 1 day and RSI(20) 1 day ago below 50 for the last 5 days. 2. Volume above average volume(125). 3. Average volume(5) is above 100,000.
Volume: Volume Spike	Long	1. Volume is more than 500% above average volume(10). 2. Volume above 200000. 3. Close price above 0.10

XL HOLDINGS BERHAD (7121.MY)

XL

Price updated at 26 Oct 2023 16:57

Last: 0.835	Change: +0.005	Volume: 26,232
	Change (%): +0.60	Range: 0.825 - 0.835

TA Scanner Results based on historical data up to 26 Oct 2023

Condition	Signal	Explanation
Bollinger Band: Bullish Lower Bollinger Band Support	Long	1. Low 1 day ago below lower bollinger band(20,2). 2. Close above close 1 day ago. 3. Average volume(5) is above 100,000.
Bollinger Band: Low Below Lower Bollinger Band	Neutral	1. Low below lower bollinger band(14,2). 2. Average volume(5) is above 100,000.
Volume: 10 Days large value Buy Up trade	Long	1. 150K value Buy Up greater than Sell Down by 20% for 10 days. 2. 50K-100K value Buy Up greater than Sell Down by 20% for 10 days. 3. Average volume(10) is above 1000000
Volume: 5 Days large value Buy Up trade	Long	1. 150K value Buy Up greater than Sell Down by 20% for 5 days. 2. 50K-100K value Buy Up greater than Sell Down by 20% for 5 days. 3. Average volume(10) is above 1000000
Williams %R: Bullish Williams %R	Long	1. Williams %R(26) between -80 and -100. 2. Average volume(5) is above 100,000.

SEACERA GROUP BERHAD (7073.MY)

SEACERA

Price updated at 26 Oct 2023 16:56

Last: 0.280	Change: +0.005	Volume: 19,309
	Change (%): +1.82	Range: 0.265 - 0.280

TA Scanner Results based on historical data up to 26 Oct 2023

Condition	Signal	Explanation
Bollinger Band: Bullish Long Term Volatility Breakout and Trending	Long	1. Close price above upper bollinger band(33,1). 2. Volume above average volume(50). 3. Average volume(50) is above 300,000.
Bollinger Band: Bullish Short Term Volatility Breakout and Trending	Long	1. Close price above upper bollinger band(33,1). 2. Volume above average volume(10). 3. Average volume(10) is above 300,000.
Bollinger Band: High Above Upper Bollinger Band	Neutral	1. High above upper bollinger band(14,2). 2. Average volume(5) is above 100,000.
Donchian Channels: High Above Upper Donchian Channels	Long	High crossed above the upper Donchian Channel(14,4)
MA: Short Term Bullish Moving Average Crossover	Long	MA(10) crossed above MA(15) within the last 1 day.
RSI: Short Term RSI 50 Bullish Crossover	Long	1. RSI(20) crossed above 50 within the last 1 day and RSI(20) 1 day ago below 50 for the last 5 days. 2. Volume above average volume(125). 3. Average volume(5) is above 100,000.
Volume: Volume Spike	Long	1. Volume is more than 500% above average volume(10). 2. Volume above 200000. 3. Close price above 0.10
Williams %R: Bearish Williams %R	Short	1. Williams %R(26) between 0 and -20. 2. Average volume(5) is above 100,000.

HEXTAR GLOBAL BERHAD (5151.MY)

HEXTAR

Price updated at 26 Oct 2023 16:53

Last: 0.750	Change: -0.010	Volume: 18,910
	Change (%): -1.32	Range: 0.745 - 0.760

TA Scanner Results based on historical data up to 26 Oct 2023

Condition	Signal	Explanation
Bollinger Band: Bullish Lower Bollinger Band Support	Long	1. Low 1 day ago below lower bollinger band(20,2). 2. Close above close 1 day ago. 3. Average volume(5) is above 100,000.
Bollinger Band: High Above Upper Bollinger Band	Neutral	1. High above upper bollinger band(14,2). 2. Average volume(5) is above 100,000.
Bollinger Band: Low Below Lower Bollinger Band	Neutral	1. Low below lower bollinger band(14,2). 2. Average volume(5) is above 100,000.
DM: Bullish Directional Movement	Long	-DI(14) crossed below +DI(14)
MACD: Bullish MACD Crossover	Long	1. MACD(12,26) diff line crossed above the MACD(12,26) signal line. 2. MACD Histogram(12,26) is above 0.
Volume: 10 Days large value Buy Up trade	Long	1. 150K value Buy Up greater than Sell Down by 20% for 10 days. 2. 50K-100K value Buy Up greater than Sell Down by 20% for 10 days. 3. Average volume(10) is above 1000000
Volume: 5 Days large value Buy Up trade	Long	1. 150K value Buy Up greater than Sell Down by 20% for 5 days. 2. 50K-100K value Buy Up greater than Sell Down by 20% for 5 days. 3. Average volume(10) is above 1000000



MAG HOLDINGS BERHAD (0095.MY)

MAG

Price updated at 26 Oct 2023 16:50

Last: 0.205	Change: -	Volume: 88,540
	Change (%): -	Range: 0.205 - 0.210

TA Scanner Results based on historical data up to 26 Oct 2023

Condition	Signal	Explanation
Bollinger Band: Bullish Long Term Volatility Breakout and Trending	Long	1. Close price above upper bollinger band(33,1). 2. Volume above average volume(50). 3. Average volume(50) is above 300,000.
Bollinger Band: Bullish Short Term Volatility Breakout and Trending	Long	1. Close price above upper bollinger band(33,1). 2. Volume above average volume(10). 3. Average volume(10) is above 300,000.
Bollinger Band: High Above Upper Bollinger Band	Neutral	1. High above upper bollinger band(14,2). 2. Average volume(5) is above 100,000.
DM: Bullish Directional Movement	Long	-DI(14) crossed below +DI(14)
Donchian Channels: High Above Upper Donchian Channels	Long	High crossed above the upper Donchian Channel(14,4)
MA: Bullish Price Crossover	Long	1. Close price crossed above MA(40) within the last 1 day. 2. Previous day close price is below the MA(10) for the last 5 days
MA: Short Term Bearish Moving Average Crossover	Short	MA(10) crossed below MA(15) within the last 1 day.
MACD: Bullish MACD Crossover	Long	1. MACD(12,26) diff line crossed above the MACD(12,26) signal line. 2. MACD Histogram(12,26) is above 0.
Parabolic SAR: Bearish Parabolic SAR Reversal	Neutral	1. Parabolic SAR 1 day ago above close price 1 day ago for the last 5 days. 2. Parabolic SAR below close price
RSI: Short Term RSI 50 Bullish Crossover	Long	1. RSI(20) crossed above 50 within the last 1 day and RSI(20) 1 day ago below 50 for the last 5 days. 2. Volume above average volume(125). 3. Average volume(5) is above 100,000.



ADVENTA BERHAD (7191.MY)

ADVENTA

Price updated at 26 Oct 2023 16:52

Last: 0.300	Change: +0.010	Volume: 23,849
	Change (%): +3.45	Range: 0.285 - 0.335

TA Scanner Results based on historical data up to 26 Oct 2023

Condition	Signal	Explanation
RSI: Short Term RSI 30 Bullish Crossover	Long	1. RSI(20) crossed above 30 within the last 1 day and RSI(20) 1 day ago below 30 for the last 5 days. 2. Volume above average volume(125). 3. Average volume(5) is above 100,000.
Stochastic: Fast Stochastic Buy Signal	Long	1. Fast Stochastic(15,5) %K crossed above 20. 2. Fast Stochastic(15,5) %K 1 day ago was below 20 for the last 5 days. 3. Average volume(30) is above 50000
Volume: Consecutive Days Of Increasing Average Volume	Long	1. Average Volume(20) has been increasing over the last 2 weeks. 2. Average volume(20) is above 100000
Williams %R: Bullish Williams %R	Long	1. Williams %R(26) between -80 and -100. 2. Average volume(5) is above 100,000.



MOBILIA HOLDINGS BERHAD (0229.MY)

MOBILIA

Price updated at 26 Oct 2023 15:44

Last: 0.165	Change: -0.010	Volume: 387
	Change (%): -5.71	Range: 0.165 - 0.170

TA Scanner Results based on historical data up to 26 Oct 2023

Condition	Signal	Explanation
DM: Bullish Directional Movement	Long	-DI(14) crossed below +DI(14)



SALUTICA BERHAD (0183.MY)

SALUTE

Price updated at 26 Oct 2023 16:58

Last: 0.715	Change: +0.050	Volume: 357,598
	Change (%): +7.52	Range: 0.670 - 0.755

TA Scanner Results based on historical data up to 26 Oct 2023

Condition	Signal	Explanation
Bollinger Band: Bullish Long Term Volatility Breakout and Trending	Long	1. Close price above upper bollinger band(33,1). 2. Volume above average volume(50). 3. Average volume(50) is above 300,000.
Bollinger Band: Bullish Short Term Volatility Breakout and Trending	Long	1. Close price above upper bollinger band(33,1). 2. Volume above average volume(10). 3. Average volume(10) is above 300,000.
Bollinger Band: High Above Upper Bollinger Band	Neutral	1. High above upper bollinger band(14,2). 2. Average volume(5) is above 100,000.
Donchian Channels: High Above Upper Donchian Channels	Long	High crossed above the upper Donchian Channel(14,4)
RSI: Short Term RSI 50 Bullish Crossover	Long	1. RSI(20) crossed above 50 within the last 1 day and RSI(20) 1 day ago below 50 for the last 5 days. 2. Volume above average volume(125). 3. Average volume(5) is above 100,000.
Volume: Volume Spike	Long	1. Volume is more than 500% above average volume(10). 2. Volume above 200000. 3. Close price above 0.10
Williams %R: Bearish Williams %R	Short	1. Williams %R(26) between 0 and -20. 2. Average volume(5) is above 100,000.



SECUREMETRIC BERHAD (0203.MY)

SMETRIC

Price updated at 26 Oct 2023 16:42

Last: 0.140	Change: +0.005	Volume: 22,955
	Change (%): +3.70	Range: 0.130 - 0.140

TA Scanner Results based on historical data up to 26 Oct 2023

Condition	Signal	Explanation
Bollinger Band: Bullish Lower Bollinger Band Support	Long	1. Low 1 day ago below lower bollinger band(20,2). 2. Close above close 1 day ago. 3. Average volume(5) is above 100,000.
Bollinger Band: Low Below Lower Bollinger Band	Neutral	1. Low below lower bollinger band(14,2). 2. Average volume(5) is above 100,000.
Candlestick: Bullish Harami	Long	Bullish: Harami
MACD: Oversold	Long	1. MACD Histogram(12,26,9) reached a new 6 month low. 2. MACD Histogram(12,26,9) has been below 0 for the last 3 weeks.
Williams %R: Bullish Williams %R	Long	1. Williams %R(26) between -80 and -100. 2. Average volume(5) is above 100,000.

Disclaimer: The information on this page is provided as a service to readers. It does not constitute financial advice and/or any investment recommendations. Past performance is not indicative of future results. We assume no liability for damages resulting from or arising out of the use of such information. It would be best if you did your own research to make your personal investment decisions wisely or consult a licenced investment advisor.

Condition	Signal	Explanation
Donchian Channels: High Above Upper Donchian Channels	Long	High crossed above the upper Donchian Channel(14,4)
MA: Bullish Price Crossover	Long	1. Close price crossed above MA(40) within the last 1 day. 2. Previous day close price is below the MA(10) for the last 5 days
MACD: Bullish MACD Crossover	Long	1. MACD(12,26) diff line crossed above the MACD(12,26) signal line. 2. MACD Histogram(12,26) is above 0.
Parabolic SAR: Bearish Parabolic SAR Reversal	Neutral	1. Parabolic SAR 1 day ago above close price 1 day ago for the last 5 days. 2. Parabolic SAR below close price
RSI: Short Term RSI 50 Bullish Crossover	Long	1. RSI(20) crossed above 50 within the last 1 day and RSI(20) 1 day ago below 50 for the last 5 days. 2. Volume above average volume(125). 3. Average volume(5) is above 100,000.

DIGITAL-RELATED INVESTMENTS IN MALAYSIA HIT RM110B - MDEC CEO

According to Malaysia Digital Economy Corporation (MDEC) chief executive officer Mahadhir Aziz, Malaysia has facilitated RM110 billion in digital-related investments, almost double the target under the Malaysia Digital Economy Blueprint (MyDigital) initiative. Factors such as Singapore's moratorium on new data centres and the shift of data centre investment to Malaysia have helped the country achieve MyDigital's RM70 billion target earlier than 2025. A proposal to increase the overall long-term target from RM70 billion to RM130 billion has been sent to Prime Minister Datuk Seri Anwar Ibrahim.

MDEC's aspiration is for Malaysia to be ASEAN's digital heart, and to be known as the digital tiger of Asia. Following MDEC's recent investment and export mission with the Ministry of Communications and Digital to the United Arab Emirates (UAE), discussions with the emirates' property giant, Damac Group, are still in the early stages, as the group is exploring opportunities to invest in data centre business in this region.

Because of the good relationship between Malaysia and the UAE, Malaysia is the best place for Damac to consider. For any investments, whether it is a small outlay versus big data centre investments, it would take one to three years to be realised.

MALAYSIA'S PPI BACK TO POSITIVE TERRITORY FOR FIRST TIME SINCE JANUARY - DOSM

According to Department of Statistics Malaysia (DOSM) Chief Statistician Datuk Seri Dr Mohd Uzir Mahidin, Malaysia's Producer Price Index (PPI), which measures the prices of goods at the factory gates, returned to positive territory for the first time this year since January, with a marginal y-o-y growth of 0.2% in September, compared to the 2.2% y-o-y contraction recorded in August.

This is the first increase after seven consecutive months of decline recorded from February, due to the higher base effect and higher prices of primary commodities. Notably, the marginal increase was contributed by all sectors except for the manufacturing sector.

The agriculture, forestry and fishing sector increased by 3.2% (August: -1%) due to the increase in animal production (5.7%) and growth of perennial crops (3.3%). The mining sector rose 6.9% after recording a negative 3.8% in the previous month, supported by higher extraction of crude petroleum (8.1%) and natural gas (2.7%). The two utility sectors recorded marginal increases, with the electricity and gas supply sector climbing 0.5% and the water supply rising by 0.9%. Meanwhile, the manufacturing sector remained negative for five consecutive months, recording a negative 0.8% (August: -2.3%), affected by manufacturing of coke and refined petroleum products (-7.1%) and food products (-5.3%).

On a month-to-month basis, Malaysia's PPI went up by 0.9% in September 2023, which was also an improvement compared with the 0.3% in August and 0.2% in July, pointing to three months of consecutive growth from June's 0.3% contraction. September's m-o-m performance was on the back of the growth in mining (5.6%), electricity and gas supply (0.4%), as well as the manufacturing sector, which increased by a slight 0.8% after recording negative changes since May.

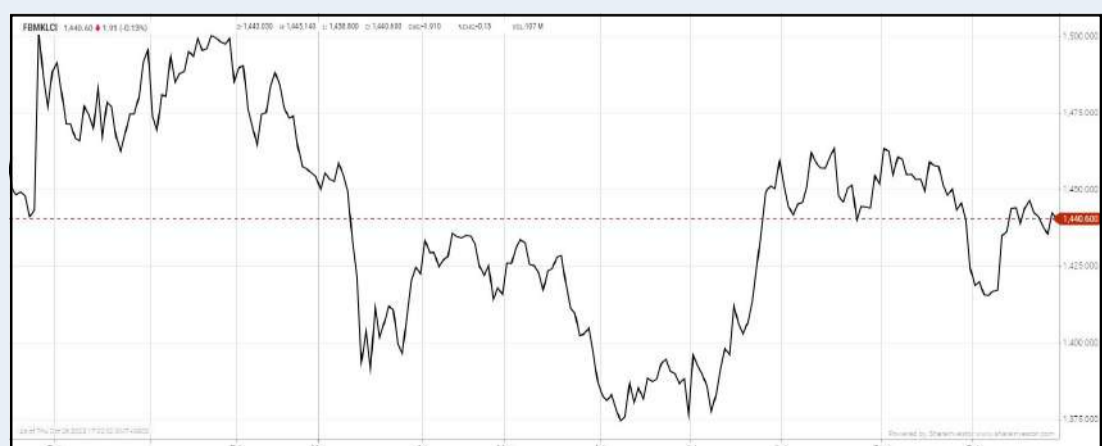
However, this was offset by declines in agriculture, forestry and fishing, and the water supply sectors.

In comparison with some countries, he noted that the US recorded a 2.2% y-o-y growth in September against 2% in August, making it the highest growth since April. Japan's PPI also rose by 2%, slowing from 3.3% in the previous month. China's producer prices continued to decline by 2.5% from a drop of 3% in the previous month. Similarly, India's producer inflation registered a smaller contraction of 0.3%, compared with 0.5% in August.

Overall, Malaysia's PPI decreased by 2.1% in the first nine months of 2023 as compared to last year, due to the volatility of Malaysia's main commodities, particularly palm oil products and crude oil. Looking ahead 12 months, oil prices are projected to average US\$98 per barrel after the OPEC countries extended their voluntary supply cut of crude oil. Meanwhile, according to the Commodity Research Bureau (CRB) Index, overall commodity prices index increased from around 290 in June to 320 in September 2023, mainly driven by the increase in the price of crude oil. Other factors, such as the shortage of agricultural supplies due to the Russia-Ukraine war and adverse weather patterns, are expected to keep price of commodities unstable in 2023.

EYE ON THE MARKETS

On Thursday (26Oct), the Ringgit closed at 4.7870 against the USD and 3.4900 to the Sing Dollar. On Monday (23Oct), the FBM KLCI opened at 1441.73. As at Thursday (26Oct) 5:00pm, the FBM KLCI closed down 1.13 points at 1440.60. Over in US, the overnight Dow Jones Industrial Average closed down 251.63 points (-0.76%) to 32,784.30 whilst the NASDAQ shed 225.62 points (-1.76%) to 12,595.61.



KLCI 1 Year Chart

Over 5 trading days



ShareInvestor WebPro (www.shareinvestor.com/my)

1. Price > Stock Prices
2. Select Market: NASDAQ / NYSE / IDX / SET / HKEX / SGX (One bourse at a time)
3. select Stocks Tab
4. select Ranking Top Gainers or Top Losers (Over 5 Trading Days)
5. Mouse over Column Layout > select Edit Customs > select Name > select Last Done Price > select 5 Days Change > select 52 Weeks High > select 52 Weeks Low > Mouse Over Column Layout > select Custom

NASDAQ (USD)

Top Gainers

Name	Last Done	Change Over 5 Days	52 Weeks High	52 Weeks Low
MICROSTRATEGY	413.450	+71.100	475.092	132.560
FIRST CITIZENS BANCSHARES INC NRTH	1,414.470	+58.700	1,512.070	505.840
MEDPACE HOLDINGS INC	255.880	+26.320	282.730	167.000
OREILLY AUTOMOTIVE INC NEW	921.640	+23.250	975.720	761.645
WILLIS TOWERS WATSON PLC	229.080	+21.720	258.930	195.290

Top Losers

Name	Last Done	Change Over 5 Days	52 Weeks High	52 Weeks Low
ALIGN TECHNOLOGY INC	190.560	-79.320	413.200	172.050
INTUIT INC	479.450	-42.070	558.640	352.630
MONGODB INC	327.330	-30.670	439.000	135.150
SOLAREEDGE TECHNOLOGIES INC	83.410	-30.570	345.800	72.370
MONOLITHIC POWER SYSTEM INC	404.060	-29.690	595.980	320.010

NYSE (USD)

Top Gainers

Name	Last Done	Change Over 5 Days	52 Weeks High	52 Weeks Low
CHEMED CORP	554.240	+42.130	574.660	456.340
NEWMARKET CORP	482.300	+37.430	475.940	288.060
BIGLARI HOLDINGS INC	735.000	+34.710	1,058.500	641.140
FTI CONSULTING INC	216.380	+26.690	205.630	140.090
AMERICAN TOWER CORP	175.060	+14.970	235.570	154.580

Top Losers

Name	Last Done	Change Over 5 Days	52 Weeks High	52 Weeks Low
BERKSHIRE HATHAWAY INC	510,125.000	-875.010	566,569.970	415,639.000
NVR INC	5,426.820	-136.730	6,525.000	4,027.040
TEXAS PACIFIC LAND CORPORATION	1,856.230	-108.790	2,739.000	1,266.210
FAIR ISAAC CORP	829.720	-82.280	940.100	427.090
WEST PHARMACEUTICAL SERVICES INC	327.320	-42.010	415.730	206.190

IDX (Rupiah)

Top Gainers

Name	Last Done	Change Over 5 Days	52 Weeks High	52 Weeks Low
SINAR MAS MULTIARTHA	14,500.000	+1,000.000	15,400.000	10,975.000
GUDANG GARAM TBK	25,625.000	+925.000	30,050.000	16,500.000
PETRINDO JAYA KREASI TBK	3,580.000	+760.000	3,650.000	240.000
PETROSEA	4,200.000	+660.000	5,125.000	2,248.653
AKASHA WIRA INTERNATIONAL TBK	10,850.000	+425.000	14,125.000	6,375.000

Top Losers

Name	Last Done	Change Over 5 Days	52 Weeks High	52 Weeks Low
DCI INDONESIA TBK	33,000.000	-1,675.000	38,000.000	32,850.000
INDO TAMBANGRAYA MEGAH TBK	26,850.000	-1,100.000	45,650.000	22,125.000
DIAN SWATATIKA SENTOSA TBK	50,050.000	-950.000	56,050.000	33,950.000
INDAH KIAT PULP & PAPER	9,500.000	-950.000	11,850.000	6,775.000
PABRIK KERTAS TJIWI KIMIA	7,750.000	-825.000	10,375.000	5,600.000

SET (Thai Baht)

Top Gainers

Name	Last Done	Change Over 5 Days	52 Weeks High	52 Weeks Low
OHTL	478.000	+10.000	610.000	426.000
KWC	269.000	+5.000	299.000	224.000
KBANK	129.500	+3.000	157.500	121.500
PTECH	12.000	+1.700	30.750	7.950
TASCO	18.200	+1.600	21.000	15.600

Top Losers

Name	Last Done	Change Over 5 Days	52 Weeks High	52 Weeks Low
DELTA	72.250	-11.750	119.500	54.800
ADVANC	215.000	-11.000	231.000	183.000
BBL	158.000	-10.500	175.000	142.000
BKI	302.000	-8.000	321.000	272.000
FE	170.000	-7.000	220.000	170.000

HKEX (HKD)

Top Gainers

Name	Last Done	Change Over 5 Days	52 Weeks High	52 Weeks Low
TRIP COM GROUP LTD	269.400	+15.600	330.200	171.700
LI AUTO INC	134.200	+8.800	185.500	52.050
TUHU CAR INC.	32.700	+4.700	33.700	24.900
DPC DASH LTD	66.000	+4.050	77.300	42.000
NETEASE INC	163.600	+3.800	176.300	84.050

Top Losers

Name	Last Done	Change Over 5 Days	52 Weeks High	52 Weeks Low
STANDARD CHARTERED PLC	59.750	-9.700	75.100	46.500
HONG KONG EXCHANGES & CLEARING	273.200	-9.400	382.400	208.200
YSB INC	45.250	-9.100	64.500	19.000
ASYMCHEM LABORATORIES (TIANJIN) CO	102.900	-9.000	140.800	83.850
HONG KONG EXCHANGES & CLEARING	256.000	-8.600	307.600	252.800

SGX (SGD)

Top Gainers

Name	Last Done	Change Over 5 Days	52 Weeks High	52 Weeks Low
IFAST	6.130	+0.530	6.230	3.700
SIA	6.210	+0.160	8.050	5.100
KEPPEL CORP	6.240	+0.146	7.273	4.197
AZEUS	8.800	+0.120	9.190	7.150
ISETAN	2.900	+0.100	3.200	2.800

Top Losers

Name	Last Done	Change Over 5 Days	52 Weeks High	52 Weeks Low
JMH USD	40.210	-0.690	54.890	40.010
UOB	27.280	-0.600	31.400	25.970
JARDINE C&C	28.220	-0.570	35.580	27.250
UOL	5.680	-0.540	7.209	5.600
HONGKONGLAND USD	3.130	-0.290	5.050	3.070

OF FRACTIONAL SHARE TRADING AND ITS AFFORDABILITY



Devanesan
Evanson

**Chief Executive
Officer, Minority
Shareholders Watch
Group**

In June this year, Prime Minister Dato' Seri Anwar bin Ibrahim announced a slew of capital market initiatives, including trading fractional shares on Bursa Malaysia. These are to make share trading on Bursa Malaysia more accessible, affordable, and inclusive for retail investors, particularly young investors.

By allowing retail investors to dabble in fractional shares, Securities Commission Chairman Dato' Seri Dr. Awang Adek Hussin said, individuals particularly the younger generation, will now have increased affordability

and flexibility to trade and invest in the more expensive blue-chip stocks - at a fraction of the standard board lot value.

At the same time, Anwar also announced the reduction in stamp duty rate for shares traded on Bursa Malaysia, from 0.15% to 0.1% of the contract value, subject to a maximum cap of RM1,000 per contract. The stamp duty rate reduction lowers the cost of securities transactions to make the Malaysian stock market more competitive.

BROKERAGE FEES

We welcome the above measures as these make investing more affordable and encourage share investing and trading amongst retail investors, particularly young investors. However, brokerage fees are a cost that may hinder share trading for some retail investors, especially when they buy and sell a small number of shares.

Generally, Malaysian brokerage firms charge minimum brokerage fees of between RM1 and RM28 per transaction, and this varies between broking houses. Assume that the minimum brokerage fee per transaction is RM8, the cost for young investor Mr. X to purchase one share of Nestle (Malaysia) Berhad would be:

Based on the illustration above, upon purchasing one Nestle share, Mr X will immediately make a 7% loss due to the transaction cost. Let's not forget that another round of transactional costs will be incurred when Mr X sells this one share of Nestle. All in all, Mr. X will need to make at least RM18 of gains, i.e., a 14% increase in Nestle's share price, to break even before profiting from it.

CONCLUSION

All in all, the idea of fractional share trading is great, but the brokerage fee charges may render the initiative cost-ineffective unless brokerage

fees are lowered or investors increase their amount of investment. But again, this would raise the concern of affordability.

The cost of transaction alone, without adding the risk involved in share investment and trading, may just put-off young investors from dabbling in shares. After all, the ultimate objective for investors is to grow their wealth. For fractional share trading to succeed, perhaps a smaller amount of brokerage fees can be charged. Low transaction costs may attract retail and young investors to participate in the stock market, leading to a higher volume of transactions.

Elaine Choo
Manager, Corporate Monitoring

This article appeared in the The Observer, a weekly newsletter published by The Minority Shareholders Watch Group (MSWG) and reproduced here with their permission. Do follow MSWG's Twitter account at @MSWGMalaysia and share your thought on their tweets from time to time.



Learn how to identify Hot Stocks using Technical Analysis (TA) and Fundamental Analysis (FA)

SIGN UP FOR Invest NOW IT'S FREE!!!

[Click here](#)

Scan me



Via email, every Friday.

Get market moving news and analyses. Regular columns include **Behind The Action** and **From The Observer**

Leaderboard • Shariah Hot Stocks • Shariah Momentum Up Stocks • Non Shariah Hot Stocks • Up Trending Stocks • Growth Stocks • Dividend Stocks • Long Companies • Insider Activity • Investor Relations • Regional Markets



DEFINITION: Insider Activity shows the trades made by substantial shareholders or directors of the company. Purchases by the directors and company share buyback may indicate the share price is undervalued and brings confidence to the price trend of the share price.



ShareInvestor WebPro > Fundamental > Insider Trades > click Search tab > Select Bursa > click Stock name > scroll up and leave at <Select Counter> Type Date Range for Announcement Date > click Search

Notice Period is 15th Oct - 21st Oct 2023

Effective Change Date	Stock Name	Buyer/ Seller Name [Classification]	Bought / (Sold) ['000]			No. of Shares After Trade ['000]		
			Total	Total	% Held	Total	Total	% Held
16 OCT 2023 - 17 OCT 2023	3A	MR TEO KWEE HOCK [SSH]	1,076	50,760	10.38			
17 OCT 2023 - 17 OCT 2023	ABMB	EMPLOYEES PROVIDENT FUND BOARD [SSH]	-248	160,399	10.361			
13 OCT 2023 - 13 OCT 2023	ABMB	EMPLOYEES PROVIDENT FUND BOARD [SSH]	-150	160,646	10.377			
11 OCT 2023 - 12 OCT 2023	ADVPKG	MR PETER LING EE KONG [DIR/CEO]	12	10,084	12.395			
11 OCT 2023 - 12 OCT 2023	ADVPKG	MR PETER LING EE KONG [SSH]	12	10,084	12.395			
17 OCT 2023 - 17 OCT 2023	AIRPORT	EMPLOYEES PROVIDENT FUND BOARD [SSH]	-90	135,276	8.107			
16 OCT 2023 - 16 OCT 2023	AIRPORT	EMPLOYEES PROVIDENT FUND BOARD [SSH]	1,762	135,366	8.113			
17 OCT 2023 - 17 OCT 2023	AIRPORT	KUMPULAN WANG PERSARAAN (DIPERBADANKAN) [SSH]	-40	113,183	6.783			
13 OCT 2023 - 13 OCT 2023	AIRPORT	EMPLOYEES PROVIDENT FUND BOARD [SSH]	2,177	133,604	8.007			
16 OCT 2023 - 16 OCT 2023	AIRPORT	KUMPULAN WANG PERSARAAN (DIPERBADANKAN) [SSH]	-500	113,223	6.785			
12 OCT 2023 - 12 OCT 2023	AIRPORT	EMPLOYEES PROVIDENT FUND BOARD [SSH]	507	131,427	7.877			
11 OCT 2023 - 11 OCT 2023	AIRPORT	EMPLOYEES PROVIDENT FUND BOARD [SSH]	1,070	130,919	7.846			
17 OCT 2023 - 17 OCT 2023	ALLIANZ	EMPLOYEES PROVIDENT FUND BOARD [SSH]	-24	12,461	7.002			
16 OCT 2023 - 16 OCT 2023	ALLIANZ	EMPLOYEES PROVIDENT FUND BOARD [SSH]	-11	12,485	7.015			
13 OCT 2023 - 13 OCT 2023	ALLIANZ	EMPLOYEES PROVIDENT FUND BOARD [SSH]	-12	12,496	7.021			
16 OCT 2023 - 16 OCT 2023	AMBANK	EMPLOYEES PROVIDENT FUND BOARD [SSH]	-67	343,398	10.374			
11 OCT 2023 - 11 OCT 2023	AMBANK	EMPLOYEES PROVIDENT FUND BOARD [SSH]	5,138	343,465	10.376			
18 OCT 2023 - 18 OCT 2023	AMEREIT	AME DEVELOPMENT SDN BHD [SSH]	-10,000	255,200	48.8			
18 OCT 2023 - 18 OCT 2023	AMEREIT	AME ELITE CONSORTIUM BERHAD [SSH]	-10,000	258,112	49.36			
18 OCT 2023 - 18 OCT 2023	AMEREIT	MR KANG AH CHEE [SSH]	-10,000	282,624	54.05			
18 OCT 2023 - 18 OCT 2023	AMEREIT	MR LEE CHAI [SSH]	-10,000	284,827	54.47			
18 OCT 2023 - 18 OCT 2023	AMEREIT	MR LEE SAI BOON [SSH]	-10,000	267,086	51.08			
18 OCT 2023 - 18 OCT 2023	AMEREIT	MR LIM YOOK KIM [SSH]	-10,000	282,979	54.11			
16 OCT 2023 - 16 OCT 2023	AXIATA	AMANAHRAYA TRUSTEES BERHAD-AMANAH SAHAM BUMIPUTERA [SSH]	5,000	1,110,404	12.097			
19 OCT 2023 - 19 OCT 2023	AXREIT	KUMPULAN WANG PERSARAAN (DIPERBADANKAN) [SSH]	-43	182,111	10.46			
18 OCT 2023 - 18 OCT 2023	AXREIT	KUMPULAN WANG PERSARAAN (DIPERBADANKAN) [SSH]	-121	182,154	10.462			
18 OCT 2023 - 18 OCT 2023	AXREIT	LEMBAGA TABUNG HAJI [SSH]	300	88,445	5.08			
17 OCT 2023 - 17 OCT 2023	AXREIT	KUMPULAN WANG PERSARAAN (DIPERBADANKAN) [SSH]	-123	182,275	10.469			
17 OCT 2023 - 17 OCT 2023	AXREIT	LEMBAGA TABUNG HAJI [SSH]	300	88,145	5.063			
11 OCT 2023 - 11 OCT 2023	AXREIT	EMPLOYEES PROVIDENT FUND BOARD [SSH]	-50	282,171	16.207			
18 OCT 2023 - 18 OCT 2023	BAUTO	PRUDENTIAL PLC [SSH]	-1,819	64,305	5.516			
17 OCT 2023 - 17 OCT 2023	BAUTO	EMPLOYEES PROVIDENT FUND BOARD [SSH]	4,587	122,501	10.512			
17 OCT 2023 - 17 OCT 2023	BAUTO	PRUDENTIAL PLC [SSH]	-618	66,124	5.674			
16 OCT 2023 - 16 OCT 2023	BAUTO	EMPLOYEES PROVIDENT FUND BOARD [SSH]	-1,093	117,914	10.118			
16 OCT 2023 - 16 OCT 2023	BAUTO	PRUDENTIAL PLC [SSH]	-43	66,742	5.727			
13 OCT 2023 - 13 OCT 2023	BAUTO	EMPLOYEES PROVIDENT FUND BOARD [SSH]	-3,407	119,007	10.212			
13 OCT 2023 - 13 OCT 2023	BAUTO	PRUDENTIAL PLC [SSH]	453	66,785	5.731			
12 OCT 2023 - 12 OCT 2023	BAUTO	EMPLOYEES PROVIDENT FUND BOARD [SSH]	-6,625	122,414	10.504			
12 OCT 2023 - 12 OCT 2023	BAUTO	PRUDENTIAL PLC [SSH]	1,516	66,332	5.692			
11 OCT 2023 - 11 OCT 2023	BAUTO	EMPLOYEES PROVIDENT FUND BOARD [SSH]	-4,453	129,039	11.073			
17 OCT 2023 - 17 OCT 2023	BIMB	AMANAHRAYA TRUSTEES BERHAD-AMANAH SAHAM BUMIPUTERA [SSH]	-302	145,462	6.418			
16 OCT 2023 - 16 OCT 2023	BIMB	AMANAHRAYA TRUSTEES BERHAD-AMANAH SAHAM BUMIPUTERA [SSH]	-222	145,765	6.431			
12 OCT 2023 - 12 OCT 2023	BIMB	EMPLOYEES PROVIDENT FUND BOARD [SSH]	1,910	366,447	16.168			
12 OCT 2023 - 12 OCT 2023	BIMB	AMANAHRAYA TRUSTEES BERHAD-AMANAH SAHAM BUMIPUTERA [SSH]	-453	145,986	6.441			
11 OCT 2023 - 11 OCT 2023	BIMB	EMPLOYEES PROVIDENT FUND BOARD [SSH]	-113	364,537	16.084			
16 OCT 2023 - 16 OCT 2023	BIPORT	EQUISAR ASSETS SDN BHD [SSH]	9,200	69,200	15.043			
12 OCT 2023 - 12 OCT 2023	BJLAND	BERJAYA CAPITAL BERHAD [SSH]	-30,772	254,997	5.182			
12 OCT 2023 - 12 OCT 2023	BJLAND	BERJAYA CORPORATION BERHAD [SSH]	-30,772	3,634,056	73.855			
12 OCT 2023 - 12 OCT 2023	BJLAND	BERJAYA GROUP BERHAD [SSH]	-30,772	3,215,956	65.358			
12 OCT 2023 - 12 OCT 2023	BJLAND	BIZURAI BIJAK (M) SDN BHD [SSH]	-30,772	861,683	17.512			
12 OCT 2023 - 12 OCT 2023	BJLAND	JUARA SEJATI SDN BHD [SSH]	-30,772	1,576,357	32.037			
12 OCT 2023 - 12 OCT 2023	BSLCORP	CITA REALITI SDN. BHD. [SSH]	-53,000	103,726	5.374			
12 OCT 2023 - 12 OCT 2023	BSLCORP	MR HO KEE WEE [SSH]	34,000	258,000	13.367			
13 OCT 2023 - 13 OCT 2023	BURSA	EMPLOYEES PROVIDENT FUND BOARD [SSH]	226	101,632	12.558			
12 OCT 2023 - 12 OCT 2023	BURSA	EMPLOYEES PROVIDENT FUND BOARD [SSH]	880	101,406	12.53			
11 OCT 2023 - 11 OCT 2023	BURSA	EMPLOYEES PROVIDENT FUND BOARD [SSH]	192	100,526	12.421			
18 OCT 2023 - 20 OCT 2023	CEB	MISS LIM CHUE WAN [DIR/CEO]	800	800	0.087			
13 OCT 2023 - 13 OCT 2023	CEB	MISS TAN SIK HUI [DIR/CEO]	-49	51	0.005			
16 OCT 2023 - 16 OCT 2023	CIHLDG	DATO' SUKUMARAN S/O RAMASAMY [DIR/CEO]	28	3,867	2.387			
17 OCT 2023 - 17 OCT 2023	CIMB	KUMPULAN WANG PERSARAAN (DIPERBADANKAN) [SSH]	-800	706,215	6.62			
16 OCT 2023 - 16 OCT 2023	CIMB	EMPLOYEES PROVIDENT FUND BOARD [SSH]	-15,347	1,634,782	15.33			

Notice Period is 15th Oct - 21st Oct 2023

Effective Change Date	Stock Name	Buyer/ Seller Name [Classification]	Bought / (Sold) ['000]			No. of Shares After Trade ['000]		
			Total	Total	% Held	Total	Total	% Held
13 OCT 2023 - 13 OCT 2023	CIMB	EMPLOYEES PROVIDENT FUND BOARD [SSH]	380	1,650,129	15.47			
12 OCT 2023 - 12 OCT 2023	CIMB	EMPLOYEES PROVIDENT FUND BOARD [SSH]	603	1,649,749	15.47			
11 OCT 2023 - 11 OCT 2023	CIMB	EMPLOYEES PROVIDENT FUND BOARD [SSH]	3,499	1,649,146	15.46			
19 OCT 2023 - 19 OCT 2023	CLMT	KUMPULAN WANG PERSARAAN (DIPERBADANKAN) [SSH]	55	255,868	9.361			
17 OCT 2023 - 17 OCT 2023	CLMT	EMPLOYEES PROVIDENT FUND BOARD [SSH]	55	397,087	14.527			
18 OCT 2023 - 18 OCT 2023	CLMT	KUMPULAN WANG PERSARAAN (DIPERBADANKAN) [SSH]	152	255,813	9.359			
16 OCT 2023 - 16 OCT 2023	CLMT	EMPLOYEES PROVIDENT FUND BOARD [SSH]	250	397,032	14.525			
17 OCT 2023 - 17 OCT 2023	CLMT	KUMPULAN WANG PERSARAAN (DIPERBADANKAN) [SSH]	55	255,660	9.353			
13 OCT 2023 - 13 OCT 2023	CLMT	EMPLOYEES PROVIDENT FUND BOARD [SSH]	383	396,781	14.516			
16 OCT 2023 - 16 OCT 2023	CLMT	KUMPULAN WANG PERSARAAN (DIPERBADANKAN) [SSH]	67	255,605	9.351			
12 OCT 2023 - 12 OCT 2023	CLMT	EMPLOYEES PROVIDENT FUND BOARD [SSH]	84	396,398	14.502			
13 OCT 2023 - 13 OCT 2023	CLMT	KUMPULAN WANG PERSARAAN (DIPERBADANKAN) [SSH]	103	255,538	9.349			
11 OCT 2023 - 11 OCT 2023	CLMT	EMPLOYEES PROVIDENT FUND BOARD [SSH]	411	396,314	14.499			
16 OCT 2023 - 16 OCT 2023	COMPUGT	MADAM TAN SIEW LI [DIR/CEO]	19,000	118,000	2.145			
18 OCT 2023 - 18 OCT 2023	CTOS	WASATCH ADVISORS LP [SSH]	919	126,824	5.49			
17 OCT 2023 - 17 OCT 2023	CTOS	WASATCH ADVISORS LP [SSH]	597	125,905	5.45			
16 OCT 2023 - 16 OCT 2023	CTOS	WASATCH ADVISORS LP [SSH]	2,345	125,308	5.425			
13 OCT 2023 - 13 OCT 2023	CTOS	WASATCH ADVISORS LP [SSH]	3,073	122,963	5.323			
12 OCT 2023 - 12 OCT 2023	CTOS	WASATCH ADVISORS LP [SSH]	1,074	119,890	5.19			
17 OCT 2023 - 17 OCT 2023	D&O	EMPLOYEES PROVIDENT FUND BOARD [SSH]	177	67,653	5.463			
16 OCT 2023 - 16 OCT 2023	D&O	EMPLOYEES PROVIDENT FUND BOARD [SSH]	268	67,476	5.449			
13 OCT 2023 - 13 OCT 2023	D&O	EMPLOYEES PROVIDENT FUND BOARD [SSH]	103	67,208	5.428			
12 OCT 2023 - 12 OCT 2023	D&O	EMPLOYEES PROVIDENT FUND BOARD [SSH]	290	67,105	5.419			
11 OCT 2023 - 11 OCT 2023	D&O	EMPLOYEES PROVIDENT FUND BOARD [SSH]	58	66,816	5.396			
17 OCT 2023 - 17 OCT 2023	DIALOG	EMPLOYEES PROVIDENT FUND BOARD [SSH]	300	841,630	14.92			
16 OCT 2023 - 16 OCT 2023	DIALOG	EMPLOYEES PROVIDENT FUND BOARD [SSH]	300	841,330	14.91			
13 OCT 2023 - 13 OCT 2023	DIALOG	EMPLOYEES PROVIDENT FUND BOARD [SSH]	300	841,030	14.91			
12 OCT 2023 - 12 OCT 2023	DIALOG	EMPLOYEES PROVIDENT FUND BOARD [SSH]	300	840,730	14.9			
11 OCT 2023 - 11 OCT 2023	DIALOG	EMPLOYEES PROVIDENT FUND BOARD [SSH]	230	840,430	14.89			
17 OCT 2023 - 17 OCT 2023	DLADY	CITIGROUP NOMINEES (TEMPATAN) SDN BHD EMPLOYEES PROVIDENT FUND BOARD [SSH]	-29	5,705	8.914			
16 OCT 2023 - 16 OCT 2023	DLADY	CITIGROUP NOMINEES (TEMPATAN) SDN BHD EMPLOYEES PROVIDENT FUND BOARD [SSH]	-3	5,734	8.959			
13 OCT 2023 - 13 OCT 2023	DLADY	CITIGROUP NOMINEES (TEMPATAN) SDN BHD EMPLOYEES PROVIDENT FUND BOARD [SSH]	-8	5,737	8.964			
12 OCT 2023 - 12 OCT 2023	DLADY	CITIGROUP NOMINEES (TEMPATAN) SDN BHD EMPLOYEES PROVIDENT FUND BOARD [SSH]	-8	5,745	8.977			
11 OCT 2023 - 11 OCT 2023	DLADY	CITIGROUP NOMINEES (TEMPATAN) SDN BHD EMPLOYEES PROVIDENT FUND BOARD [SSH]	-39	5,753	8.989			
10 OCT 2023 - 10 OCT 2023	DLADY	CITIGROUP NOMINEES (TEMPATAN) SDN BHD EMPLOYEES PROVIDENT FUND BOARD [SSH]	-1	5,792	9.051			
13 OCT 2023 - 13 OCT 2023	DPHARMA	EMPLOYEES PROVIDENT FUND BOARD [SSH]	120	79,518	8.266			
17 OCT 2023 - 17 OCT 2023	ECONBHD	EMPLOYEES PROVIDENT FUND BOARD [SSH]	-2,580	106,796	7.534			
18 OCT 2023 - 18 OCT 2023	ECONBHD	KUMPULAN WANG PERSARAAN (DIPERBADANKAN) [SSH]	4,933	74,170	5.232			
18 OCT 2023 - 18 OCT 2023	EDEN	KOPERASI BELIA ISLAM MALAYSIA BERHAD [SSH]	1,384	35,456	7.718			
19 OCT 2023 - 20 OCT 2023	EITA	MISS FU JIA LIK [DIR/CEO]	-1,951	980	1.132			
19 OCT 2023 - 20 OCT 2023	EITA	MR FU MUN WIN [DIR/CEO]	-1,951	980	1.132			
16 OCT 2023 - 19 OCT 2023	EITA	MR LIM JOO SWEE [DIR/CEO]	-3,525	9,915	11.455			
16 OCT 2023 - 17 OCT 2023	EITA	MR LEE PENG SIAN [DIR/CEO]	-191	12,782	4.913			
13 OCT 2023 - 17 OCT 2023	EITA	MR LEE PENG SIAN [DIR/CEO]	-357	3,967	4.584			
12 OCT 2023 - 12 OCT 2023	EITA	MISS FU JIA LIK [DIR/CEO]	-9,963	2,931	3.387			
12 OCT 2023 - 12 OCT 2023	EITA	MR FU MUN WIN [DIR/CEO]	-9,963	2,931	3.387			
12 OCT 2023 - 13 OCT 2023	EITA	MR CHONG YOKE PENG [DIR/CEO]	-751	1,171	1.352			
19 OCT 2023 - 19 OCT 2023	EWINT	TAN SRI DATO' SRI LIEW KEE SIN [DIR/CEO]	-0.3	270,357	11.265			
19 OCT 2023 - 19 OCT 2023	EWINT	TAN SRI DATO' SRI LIEW KEE SIN [SSH]	-0.3	270,357	11.265			
18 OCT 2023 - 18 OCT 2023	EWINT	TAN SRI DATO' SRI LIEW KEE SIN [DIR/CEO]	-170	270,357	11.265			
18 OCT 2023 - 18 OCT 2023	EWINT	TAN SRI DATO' SRI LIEW KEE SIN [SSH]	-170	270,357	11.265			
16 OCT 2023 - 16 OCT 2023	EWINT	TAN SRI DATO' SRI LIEW KEE SIN [DIR/CEO]	-1,000	270,527	11.272			
16 OCT 2023 - 16 OCT 2023	EWINT	TAN SRI DATO' SRI LIEW KEE SIN [SSH]	-1,000	270,527	11.272			
26 SEP 2023 - 26 SEP 2023	FBBHD	MR NG KIAN BOON [DIR/CEO]	-3,200	199,641	92.426			
26 SEP 2023 - 26 SEP 2023	FBBHD	MR NG KIAN BOON [SSH]	-3,200	199,641	92.426			
26 JUL 2023 - 26 JUL 2023	FBBHD	MR NG KIAN BOON [DIR/CEO]	9,720	202,841	93.908			
26 JUL 2023 - 26 JUL 2023	FBBHD	MR NG KIAN BOON [SSH]	9,720	202,841	93.908			
14 JUL 2023 - 14 JUL 2023	FBBHD	MR NG KIAN BOON [DIR/CEO]	-700	193,121	89.408			
14 JUL 2023 - 14 JUL 2023	FBBHD	MR NG KIAN BOON [SSH]	-700	193,121	89.408			
07 JUL 2023 - 07 JUL 2023	FBBHD	MR NG KIAN BOON [DIR/CEO]	-1,500	193,821	89.732			

Notice Period is 15th Oct - 21st Oct 2023

Effective Change Date	Stock Name	Buyer/ Seller Name [Classification]	Bought / (Sold) ('000)		No. of Shares After Trade ('000)	
			Total	% Held	Total	% Held
07 JUL 2023 - 07 JUL 2023	FBBHD	MR NG KIAN BOON [SSH]	-1,500	89.732	193,821	89.732
28 JUN 2023 - 28 JUN 2023	FBBHD	MR NG KIAN BOON [DIR/CEO]	-2,140	90.426	195,321	90.426
28 JUN 2023 - 28 JUN 2023	FBBHD	MR NG KIAN BOON [SSH]	-2,140	90.426	195,321	90.426
19 JUN 2023 - 19 JUN 2023	FBBHD	MR NG KIAN BOON [DIR/CEO]	-2,140	91.417	197,461	91.417
19 JUN 2023 - 19 JUN 2023	FBBHD	MR NG KIAN BOON [SSH]	-2,140	91.417	197,461	91.417
17 MAY 2023 - 17 MAY 2023	FBBHD	MR NG KIAN BOON [DIR/CEO]	4,860	92.408	199,601	92.408
17 MAY 2023 - 17 MAY 2023	FBBHD	MR NG KIAN BOON [SSH]	4,860	92.408	199,601	92.408
12 MAY 2023 - 12 MAY 2023	FBBHD	MR NG KIAN BOON [DIR/CEO]	4,860	90.158	194,741	90.158
12 MAY 2023 - 12 MAY 2023	FBBHD	MR NG KIAN BOON [SSH]	4,860	90.158	194,741	90.158
18 OCT 2023 - 18 OCT 2023	FFB	ABRDN HOLDINGS LIMITED (FORMERLY KNOWN AS ABERDEEN ASSET MANAGEMENT PLC) [SSH]	150	5.873	109,934	5.873
18 OCT 2023 - 18 OCT 2023	FFB	ABRDN MALAYSIA SDN BHD [SSH]	150	5.801	108,590	5.801
18 OCT 2023 - 18 OCT 2023	FFB	ABRDN PLC [SSH]	150	5.873	109,934	5.873
17 OCT 2023 - 17 OCT 2023	FFB	EMPLOYEES PROVIDENT FUND BOARD [SSH]	183	8.554	160,120	8.554
17 OCT 2023 - 17 OCT 2023	FFB	ABRDN HOLDINGS LIMITED (FORMERLY KNOWN AS ABERDEEN ASSET MANAGEMENT PLC) [SSH]	295	5.865	109,784	5.865
17 OCT 2023 - 17 OCT 2023	FFB	ABRDN MALAYSIA SDN BHD [SSH]	295	5.793	108,440	5.793
17 OCT 2023 - 17 OCT 2023	FFB	ABRDN PLC [SSH]	295	5.865	109,784	5.865
16 OCT 2023 - 16 OCT 2023	FFB	EMPLOYEES PROVIDENT FUND BOARD [SSH]	90	8.544	159,937	8.544
16 OCT 2023 - 16 OCT 2023	FFB	ABRDN HOLDINGS LIMITED (FORMERLY KNOWN AS ABERDEEN ASSET MANAGEMENT PLC) [SSH]	164	5.849	109,489	5.849
16 OCT 2023 - 16 OCT 2023	FFB	ABRDN MALAYSIA SDN BHD [SSH]	164	5.777	108,145	5.777
16 OCT 2023 - 16 OCT 2023	FFB	ABRDN PLC [SSH]	164	5.849	109,489	5.849
13 OCT 2023 - 13 OCT 2023	FFB	EMPLOYEES PROVIDENT FUND BOARD [SSH]	278	8.566	160,348	8.566
13 OCT 2023 - 13 OCT 2023	FFB	ABRDN HOLDINGS LIMITED (FORMERLY KNOWN AS ABERDEEN ASSET MANAGEMENT PLC) [SSH]	449	5.84	109,324	5.84
13 OCT 2023 - 13 OCT 2023	FFB	ABRDN MALAYSIA SDN BHD [SSH]	449	5.768	107,980	5.768
13 OCT 2023 - 13 OCT 2023	FFB	ABRDN PLC [SSH]	449	5.84	109,324	5.84
11 OCT 2023 - 11 OCT 2023	FFB	EMPLOYEES PROVIDENT FUND BOARD [SSH]	50	8.572	160,470	8.572
17 OCT 2023 - 17 OCT 2023	GAMUDA	EMPLOYEES PROVIDENT FUND BOARD (EPF BOARD) [SSH]	2,126	10.94	295,167	10.94
16 OCT 2023 - 16 OCT 2023	GAMUDA	EMPLOYEES PROVIDENT FUND BOARD (EPF BOARD) [SSH]	997	10.86	293,041	10.86
13 OCT 2023 - 13 OCT 2023	GAMUDA	EMPLOYEES PROVIDENT FUND BOARD (EPF BOARD) [SSH]	-24,419	10.83	292,044	10.83
12 OCT 2023 - 12 OCT 2023	GAMUDA	EMPLOYEES PROVIDENT FUND BOARD (EPF BOARD) [SSH]	-902	11.73	316,464	11.73
11 OCT 2023 - 11 OCT 2023	GAMUDA	EMPLOYEES PROVIDENT FUND BOARD (EPF BOARD) [SSH]	32	11.77	317,366	11.77
17 OCT 2023 - 17 OCT 2023	GASMSIA	EMPLOYEES PROVIDENT FUND BOARD [SSH]	200	6.495	83,401	6.495
16 OCT 2023 - 16 OCT 2023	GASMSIA	EMPLOYEES PROVIDENT FUND BOARD [SSH]	-356	6.479	83,201	6.479
13 OCT 2023 - 13 OCT 2023	GASMSIA	EMPLOYEES PROVIDENT FUND BOARD [SSH]	-76	6.507	83,557	6.507
12 OCT 2023 - 12 OCT 2023	GASMSIA	EMPLOYEES PROVIDENT FUND BOARD [SSH]	-345	6.513	83,634	6.513
11 OCT 2023 - 11 OCT 2023	GASMSIA	EMPLOYEES PROVIDENT FUND BOARD [SSH]	258	6.54	83,979	6.54
18 OCT 2023 - 18 OCT 2023	GBGAQRS	YM TUNKU ALIZAN BIN RAJA MUHAMMAD ALIAS [DIR/CEO]	35	0.227	1,230	0.227
17 OCT 2023 - 17 OCT 2023	GCB	EMPLOYEES PROVIDENT FUND BOARD [SSH]	30	5.099	59,888	5.099
16 OCT 2023 - 16 OCT 2023	GCB	EMPLOYEES PROVIDENT FUND BOARD [SSH]	29	5.096	59,858	5.096
13 OCT 2023 - 13 OCT 2023	GCB	EMPLOYEES PROVIDENT FUND BOARD [SSH]	150	5.094	59,829	5.094
12 OCT 2023 - 12 OCT 2023	GCB	EMPLOYEES PROVIDENT FUND BOARD [SSH]	100	5.081	59,679	5.081
11 OCT 2023 - 11 OCT 2023	GCB	EMPLOYEES PROVIDENT FUND BOARD [SSH]	33	5.073	59,579	5.073
17 OCT 2023 - 17 OCT 2023	GENP	EMPLOYEES PROVIDENT FUND BOARD [SSH]	4	12.643	113,431	12.643
13 OCT 2023 - 16 OCT 2023	GESHEN	DATIN CHEONG KAI MENG [SSH]	5,172	29.588	35,972	29.588
13 OCT 2023 - 16 OCT 2023	GESHEN	DATUK KEH CHUAN SENG [DIR/CEO]	5,172	29.588	35,972	29.588
13 OCT 2023 - 16 OCT 2023	GESHEN	DATUK KEH CHUAN SENG [SSH]	5,172	29.588	35,972	29.588
13 OCT 2023 - 16 OCT 2023	GESHEN	FRAZEL GROUP SDN BHD [SSH]	5,172	29.588	35,972	29.588
11 OCT 2023 - 11 OCT 2023	GREATC	DATO' OOI BOON CHYE [DIR/CEO]	8	0.017	208	0.017
16 OCT 2023 - 16 OCT 2023	HARNLEN	LNH ENTERPRISE SDN. BHD. [SSH]	1,324	21.888	123,635	21.888
16 OCT 2023 - 16 OCT 2023	HARNLEN	MR LOW KOK YAOW [DIR/CEO]	1,324	54.774	309,384	54.774
16 OCT 2023 - 16 OCT 2023	HARNLEN	MR LOW KOK YAOW [SSH]	1,324	54.774	309,384	54.774
16 OCT 2023 - 16 OCT 2023	HARNLEN	MR LOW KOK YONG [DIR/CEO]	1,324	54.951	310,380	54.951
16 OCT 2023 - 16 OCT 2023	HARNLEN	MR LOW KOK YONG [SSH]	1,324	54.951	310,380	54.951
16 OCT 2023 - 16 OCT 2023	HARNLEN	MR LOW KUECK SHIN [DIR/CEO]	1,324	52.705	297,697	52.705
16 OCT 2023 - 16 OCT 2023	HARNLEN	MR LOW KUECK SHIN [SSH]	1,324	52.682	297,567	52.682
16 OCT 2023 - 16 OCT 2023	HARNLEN	MR LOW KUEK KONG [DIR/CEO]	1,324	52.638	297,317	52.638
16 OCT 2023 - 16 OCT 2023	HARNLEN	MR LOW KUEK KONG [SSH]	1,324	52.638	297,317	52.638
16 OCT 2023 - 16 OCT 2023	HARNLEN	MR LOW KWEK LEE [DIR/CEO]	1,324	52.675	297,527	52.675
16 OCT 2023 - 16 OCT 2023	HARNLEN	MR LOW KWEK LEE [SSH]	1,324	52.675	297,527	52.675
16 OCT 2023 - 16 OCT 2023	HARNLEN	MR LOW QUEK KIONG [DIR/CEO]	1,324	55.514	313,564	55.514
16 OCT 2023 - 16 OCT 2023	HARNLEN	MR LOW QUEK KIONG [SSH]	1,324	55.514	313,564	55.514
16 OCT 2023 - 16 OCT 2023	HARNLEN	PUAN SRI DATIN CHAN PUI LEORN [DIR/CEO]	1,324	54.956	310,411	54.956
16 OCT 2023 - 16 OCT 2023	HARNLEN	PUAN SRI DATIN CHAN PUI LEORN [SSH]	1,324	54.956	310,411	54.956
16 OCT 2023 - 16 OCT 2023	HARNLEN	TAN SRI LOW NAM HUI [SSH]	1,324	52.498	296,527	52.498
12 OCT 2023 - 12 OCT 2023	HARNLEN	LOW NAM HUI UNITED HOLDINGS SDN. BHD. [SSH]	-1,200	23.297	131,591	23.297
12 OCT 2023 - 12 OCT 2023	HARNLEN	MR LOW KOK YAOW [DIR/CEO]	-1,200	54.54	308,060	54.54
12 OCT 2023 - 12 OCT 2023	HARNLEN	MR LOW KOK YAOW [SSH]	-1,200	54.54	308,060	54.54
12 OCT 2023 - 12 OCT 2023	HARNLEN	MR LOW KOK YONG [DIR/CEO]	-1,200	54.717	309,056	54.717
12 OCT 2023 - 12 OCT 2023	HARNLEN	MR LOW KOK YONG [SSH]	-1,200	54.717	309,056	54.717
12 OCT 2023 - 12 OCT 2023	HARNLEN	MR LOW KUECK SHIN [DIR/CEO]	-1,200	52.471	296,373	52.471
12 OCT 2023 - 12 OCT 2023	HARNLEN	MR LOW KUECK SHIN [SSH]	-1,200	52.448	296,243	52.448
12 OCT 2023 - 12 OCT 2023	HARNLEN	MR LOW KUEK KONG [DIR/CEO]	-1,200	52.404	295,993	52.404
12 OCT 2023 - 12 OCT 2023	HARNLEN	MR LOW KUEK KONG [SSH]	-1,200	52.404	295,993	52.404
12 OCT 2023 - 12 OCT 2023	HARNLEN	MR LOW KWEK LEE [DIR/CEO]	-1,200	52.441	296,203	52.441
12 OCT 2023 - 12 OCT 2023	HARNLEN	MR LOW KWEK LEE [SSH]	-1,200	52.441	296,203	52.441
12 OCT 2023 - 12 OCT 2023	HARNLEN	MR LOW QUEK KIONG [DIR/CEO]	-1,200	55.28	312,240	55.28
12 OCT 2023 - 12 OCT 2023	HARNLEN	MR LOW QUEK KIONG [SSH]	-1,200	55.28	312,240	55.28
12 OCT 2023 - 12 OCT 2023	HARNLEN	PUAN SRI DATIN CHAN PUI LEORN [DIR/CEO]	-1,200	54.722	309,087	54.722
12 OCT 2023 - 12 OCT 2023	HARNLEN	PUAN SRI DATIN CHAN PUI LEORN [SSH]	-1,200	54.722	309,087	54.722
12 OCT 2023 - 12 OCT 2023	HARNLEN	TAN SRI LOW NAM HUI [SSH]	-1,200	52.263	295,203	52.263
13 OCT 2023 - 13 OCT 2023	HARNLEN-WB	MR LOW KOK YAOW [DIR/CEO]	1,570	20.26	18,103	20.26

Notice Period is 15th Oct - 21st Oct 2023

Effective Change Date	Stock Name	Buyer/ Seller Name [Classification]	Bought / (Sold) ('000)		No. of Shares After Trade ('000)	
			Total	% Held	Total	% Held
13 OCT 2023 - 13 OCT 2023	HARNLEN-WB	MR LOW KOK YONG [DIR/CEO]	1,570	20.889	18,665	20.889
13 OCT 2023 - 13 OCT 2023	HARNLEN-WB	MR LOW KUECK SHIN [DIR/CEO]	1,570	11.151	9,964	11.151
13 OCT 2023 - 13 OCT 2023	HARNLEN-WB	MR LOW KUEK KONG [DIR/CEO]	1,570	11.151	9,964	11.151
13 OCT 2023 - 13 OCT 2023	HARNLEN-WB	MR LOW KWEK LEE [DIR/CEO]	1,570	11.151	9,964	11.151
13 OCT 2023 - 13 OCT 2023	HARNLEN-WB	MR LOW QUEK KIONG [DIR/CEO]	1,570	16.292	14,557	16.292
13 OCT 2023 - 13 OCT 2023	HARNLEN-WB	PUAN SRI DATIN CHAN PUI LEORN [DIR/CEO]	1,570	20.26	18,103	20.26
16 OCT 2023 - 16 OCT 2023	HEKTAR	HEKTAR BLACK SDN BHD [SSH]	3,059	25.508	128,963	25.508
16 OCT 2023 - 16 OCT 2023	HEVEA	MISS YOONG LI YEN [DIR/CEO]	410	32.842	185,841	32.842
16 OCT 2023 - 16 OCT 2023	HEVEA	MISS YOONG LI YEN [SSH]	410	32.842	185,841	32.842
16 OCT 2023 - 16 OCT 2023	HEVEA	MR YOONG HAU CHUN [DIR/CEO]	410	33.077	187,168	33.077
16 OCT 2023 - 16 OCT 2023	HEVEA	MR YOONG HAU CHUN [SSH]	410	33.077	187,168	33.077
16 OCT 2023 - 16 OCT 2023	HEVEA	MR YOONG TEIN SENG @ YONG KIAN SENG [DIR/CEO]	410	34.747	196,621	34.747
16 OCT 2023 - 16 OCT 2023	HEVEA	MR YOONG TEIN SENG @ YONG KIAN SENG [SSH]	410	34.747	196,621	34.747
16 OCT 2023 - 16 OCT 2023	HEVEA	TENSON HOLDINGS SDN. BHD. [SSH]	410	32.214	182,288	32.214
13 OCT 2023 - 13 OCT 2023	HEVEA	MISS YOONG LI YEN [DIR/CEO]	130	32.77	185,431	32.77
13 OCT 2023 - 13 OCT 2023	HEVEA	MISS YOONG LI YEN [SSH]	130	32.77	185,431	32.77
13 OCT 2023 - 13 OCT 2023	HEVEA	MR YOONG HAU CHUN [DIR/CEO]	130	33.004	186,758	33.004
13 OCT 2023 - 13 OCT 2023	HEVEA	MR YOONG HAU CHUN [SSH]	130	33.004	186,758	33.004
13 OCT 2023 - 13 OCT 2023	HEVEA	MR YOONG TEIN SENG @ YONG KIAN SENG [DIR/CEO]	130	34.674	196,211	34.674
13 OCT 2023 - 13 OCT 2023	HEVEA	MR YOONG TEIN SENG @ YONG KIAN SENG [SSH]	130	34.674	196,211	34.674
13 OCT 2023 - 13 OCT 2023	HEVEA	TENSON HOLDINGS SDN. BHD. [SSH]	130	32.141	181,878	32.141
13 OCT 2023 - 13 OCT 2023	HEXTAR	DATO' ONG CHOO MENG [SSH]	-4,064	66.591	2,581,107	66.591
13 OCT 2023 - 13 OCT 2023	HEXTAR	DATO' ONG SOON HO [DIR/CEO]	-4,064	66.591	2,581,107	66.591
13 OCT 2023 - 13 OCT 2023	HEXTAR	DATO' ONG SOON HO [SSH]	-4,064	66.591	2,581,107	66.591
13 OCT 2023 - 13 OCT 2023	HEXTAR	HEXTAR HOLDINGS SDN. BHD. [SSH]	-4,064	58.614	2,271,912	58.614
19 OCT 2023 - 19 OCT 2023	HHRG	DATO' HNG CHOON SENG [DIR/CEO]	15,961	31.713	274,575	31.713
19 OCT 2023 - 19 OCT 2023	HHRG	DATO' HNG CHOON SENG [SSH]	15,961	31.713	274,575	31.713
19 OCT 2023 - 19 OCT 2023	HHRG	GH CONSORTIUM SDN BHD [SSH]	15,961	27.875	241,342	27.875
19 OCT 2023 - 19 OCT 2023	HHRG	MR HO WHYE CHONG [DIR/CEO]	-15,961	7.235	62,634	7.235
19 OCT 2023 - 19 OCT 2023	HHRG	MR HO WHYE CHONG [SSH]	-15,961	7.235	62,634	7.235
19 OCT 2023 - 19 OCT 2023	HIBISCS	DR KENNETH GERARD PEREIRA [DIR/CEO]	-74,523	9.829	79,123	9.829
19 OCT 2023 - 19 OCT 2023	HIBISCS	DR KENNETH GERARD PEREIRA [SSH]	-74,523	9.829	79,123	9.829
17 OCT 2023 - 17 OCT 2023	HIBISCS	DR KENNETH GERARD PEREIRA [DIR/CEO]	3,000	9.543	192,058	9.543
17 OCT 2023 - 17 OCT 2023	HIBISCS	DR KENNETH GERARD PEREIRA [SSH]	3,000	9.543	192,058	9.543
17 OCT 2023 - 17 OCT 2023	HLBANK	EMPLOYEES PROVIDENT FUND BOARD [SSH]	-1,012	9.624	200,821	9.624
16 OCT 2023 - 16 OCT 2023	HLBANK	EMPLOYEES PROVIDENT FUND BOARD [SSH]	218	9.673	201,833	9.673
12 OCT 2023 - 12 OCT 2023	HLBANK	EMPLOYEES PROVIDENT FUND BOARD [SSH]	-8,171	9.662	201,615	9.662
11 OCT 2023 - 11 OCT 2023	HLBANK	EMPLOYEES PROVIDENT FUND BOARD [SSH]	185	10.054	209,786	10.054
17 OCT 2023 - 17 OCT 2023	HM	MR CHUA EI MING [DIR/CEO]	-5,534	3.97	48,536	3.97
19 OCT 2023 - 19 OCT 2023	IFCAMSC	MR YONG KEANG CHEUN [DIR/CEO]	1,400	36.924	223,465	36.924
19 OCT 2023 - 19 OCT 2023	IFCAMSC	MR YONG KEANG CHEUN [SSH]	1,400	36.924	223,465	36.924
19 OCT 2023 - 19 OCT 2023	IFCAMSC	MR YONG KIAN KEONG [DIR/CEO]	1,400	36.924	223,465	36.924
19 OCT 2023 - 19 OCT 2023	IFCAMSC	MR YONG KIAN KEONG [SSH]	1,400	36.924	223,465	36.924
16 OCT 2023 - 16 OCT 2023	IFCAMSC	MR YONG KEANG CHEUN [DIR/CEO]	1,400	36.692	222,065	36.692
16 OCT 2023 - 16 OCT 2023	IFCAMSC	MR YONG KEANG CHEUN [SSH]	1,400	36.692	222,065	36.692
16 OCT 2023 - 16 OCT 2023	IFCAMSC	MR YONG KIAN KEONG [DIR/CEO]	1,400	36.693	222,065</	

Notice Period is 15th Oct - 21st Oct 2023

Effective Change Date	Stock Name	Buyer/ Seller Name [Classification]	Bought / (Sold) ['000]		No. of Shares After Trade ['000]	
			Total	Total	% Held	% Held
13 OCT 2023 - 16 OCT 2023	IMPIANA	DATIN SRI JOANNE YEW HONG IM [SSH]	249	152,288	18.871	
13 OCT 2023 - 16 OCT 2023	IMPIANA	DATO' SRI LEE HOCK SENG [DIR/CEO]	249	152,288	18.871	
13 OCT 2023 - 16 OCT 2023	IMPIANA	DATO' SRI LEE HOCK SENG [SSH]	249	152,288	18.871	
17 OCT 2023 - 17 OCT 2023	INARI	EMPLOYEES PROVIDENT FUND BOARD [SSH]	-592	378,118	10.1	
16 OCT 2023 - 16 OCT 2023	INARI	EMPLOYEES PROVIDENT FUND BOARD [SSH]	-1,594	378,709	10.116	
13 OCT 2023 - 13 OCT 2023	INARI	EMPLOYEES PROVIDENT FUND BOARD [SSH]	-3,000	380,303	10.158	
12 OCT 2023 - 12 OCT 2023	INARI	EMPLOYEES PROVIDENT FUND BOARD [SSH]	-3,000	383,303	10.238	
11 OCT 2023 - 11 OCT 2023	INARI	EMPLOYEES PROVIDENT FUND BOARD [SSH]	-880	386,303	10.319	
17 OCT 2023 - 17 OCT 2023	IOICORP	EMPLOYEES PROVIDENT FUND BOARD [SSH]	789	693,188	11.174	
16 OCT 2023 - 16 OCT 2023	IOICORP	EMPLOYEES PROVIDENT FUND BOARD [SSH]	279	692,399	11.161	
13 OCT 2023 - 13 OCT 2023	IOICORP	EMPLOYEES PROVIDENT FUND BOARD [SSH]	816	692,120	11.157	
12 OCT 2023 - 12 OCT 2023	IOICORP	EMPLOYEES PROVIDENT FUND BOARD [SSH]	1,521	691,304	11.143	
11 OCT 2023 - 11 OCT 2023	IOICORP	EMPLOYEES PROVIDENT FUND BOARD [SSH]	555	689,783	11.119	
17 OCT 2023 - 17 OCT 2023	IOIPG	EMPLOYEES PROVIDENT FUND BOARD [SSH]	414	389,180	7.068	
16 OCT 2023 - 16 OCT 2023	IOIPG	MR LEE YEOW SENG [DIR/CEO]	500	3,735,766	67.847	
16 OCT 2023 - 16 OCT 2023	IOIPG	MR LEE YEOW SENG [SSH]	500	3,735,766	67.847	
12 OCT 2023 - 12 OCT 2023	IOIPG	EMPLOYEES PROVIDENT FUND BOARD [SSH]	-5,448	389,386	7.072	
11 OCT 2023 - 11 OCT 2023	IOIPG	EMPLOYEES PROVIDENT FUND BOARD [SSH]	-2,143	395,134	7.176	
11 OCT 2023 - 12 OCT 2023	IOIPG	MR LEE YEOW SENG [DIR/CEO]	24,036	3,735,266	67.838	
11 OCT 2023 - 12 OCT 2023	IOIPG	MR LEE YEOW SENG [SSH]	24,036	3,735,266	67.838	
20 OCT 2023 - 20 OCT 2023	ITMAX	TAN SRI DATUK DR AHMAD TAJUDDIN ALI [DIR/CEO]	-200	800	0.078	
17 OCT 2023 - 18 OCT 2023	JADEM	DATO' IR DR. GOH YONG CHEE [SSH]	42,083	91,594	21.055	
17 OCT 2023 - 18 OCT 2023	JADEM	JMR CONSOLIDATED HOLDINGS SDN. BHD. [SSH]	63,256	90,594	20.825	
17 OCT 2023 - 17 OCT 2023	JAG	DATO' NG AIK KEE [SSH]	-200	188,479	30.655	
11 OCT 2023 - 13 OCT 2023	KFIMA	BHR ENTERPRISE SDN BHD [SSH]	11	150,340	53.268	
11 OCT 2023 - 13 OCT 2023	KFIMA	DATIN ROZILAWATI BINTI HAJI BASIR [DIR/CEO]	11	171,130	60.634	
11 OCT 2023 - 13 OCT 2023	KFIMA	DR ROZHAYATI BINTI BASIR [SSH]	11	171,130	60.634	
11 OCT 2023 - 13 OCT 2023	KFIMA	PUAN ROZANA ZETI BINTI BASIR [DIR/CEO]	11	171,130	60.635	
11 OCT 2023 - 13 OCT 2023	KFIMA	PUAN ROZANA ZETI BINTI BASIR [SSH]	11	171,130	60.635	
17 OCT 2023 - 17 OCT 2023	KLK	EMPLOYEES PROVIDENT FUND BOARD [SSH]	55	113,176	10.494	
16 OCT 2023 - 16 OCT 2023	KLK	EMPLOYEES PROVIDENT FUND BOARD [SSH]	-42	113,122	10.489	
13 OCT 2023 - 13 OCT 2023	KLK	EMPLOYEES PROVIDENT FUND BOARD [SSH]	-511	113,163	10.493	
12 OCT 2023 - 12 OCT 2023	KLK	EMPLOYEES PROVIDENT FUND BOARD [SSH]	-209	113,676	10.541	
11 OCT 2023 - 11 OCT 2023	KLK	EMPLOYEES PROVIDENT FUND BOARD [SSH]	504	113,885	10.56	
12 OCT 2023 - 12 OCT 2023	KOSSAN	ABRDN HOLDINGS LIMITED (FORMERLY KNOWN AS ABERDEEN ASSET MANAGEMENT PLC) [SSH]	313	151,366	5.932	
12 OCT 2023 - 12 OCT 2023	KOSSAN	ABRDN MALAYSIA SDN BHD [SSH]	313	148,962	5.838	
12 OCT 2023 - 12 OCT 2023	KOSSAN	ABRDN PLC [SSH]	313	151,366	5.932	
16 OCT 2023 - 18 OCT 2023	LAYHONG	DATO' YAP HOONG CHAI [DIR/CEO]	-550	278,559	37.626	
12 OCT 2023 - 12 OCT 2023	LAYHONG	DATO' YAP HOONG CHAI [DIR/CEO]	-3,600	278,109	37.566	
17 OCT 2023 - 17 OCT 2023	LHI	TAN SRI DATO' LAU ENG GUANG [DIR/CEO]	-1,350	112,382	3.079	
18 OCT 2023 - 18 OCT 2023	LIHEN	MR CHUA LEE SENG [DIR/CEO]	20	231,306	42.834	
18 OCT 2023 - 18 OCT 2023	LIHEN	MR CHUA LEE SENG [SSH]	20	231,306	42.834	
16 OCT 2023 - 17 OCT 2023	LSH	MADAM LIM PAK LIAN [DIR/CEO]	-100	572,962	81.115	
16 OCT 2023 - 17 OCT 2023	LSH	MADAM LIM PAK LIAN [SSH]	-100	572,962	81.115	
17 OCT 2023 - 17 OCT 2023	MALAKOF	EMPLOYEES PROVIDENT FUND BOARD [SSH]	-538	494,013	10.108	
16 OCT 2023 - 16 OCT 2023	MALAKOF	EMPLOYEES PROVIDENT FUND BOARD [SSH]	-362	494,550	10.12	
16 OCT 2023 - 16 OCT 2023	MAXIS	EMPLOYEES PROVIDENT FUND BOARD (EPF BOARD) [SSH]	143	855,834	10.928	
11 OCT 2023 - 11 OCT 2023	MAXIS	EMPLOYEES PROVIDENT FUND BOARD (EPF BOARD) [SSH]	50	852,991	10.891	
18 OCT 2023 - 18 OCT 2023	MAYBANK	AMANAHRAYA TRUSTEES BERHAD - AMANAH SAHAM BUMIPUTERA [SSH]	-2,247	3,735,203	30.971	
17 OCT 2023 - 17 OCT 2023	MAYBANK	EMPLOYEES PROVIDENT FUND BOARD [SSH]	7,941	1,603,709	13.297	
17 OCT 2023 - 17 OCT 2023	MAYBANK	AMANAHRAYA TRUSTEES BERHAD - AMANAH SAHAM BUMIPUTERA [SSH]	-5,007	3,737,450	30.99	
16 OCT 2023 - 16 OCT 2023	MAYBANK	EMPLOYEES PROVIDENT FUND BOARD [SSH]	2,869	1,595,768	13.232	
13 OCT 2023 - 13 OCT 2023	MAYBANK	EMPLOYEES PROVIDENT FUND BOARD [SSH]	1,020	1,592,899	13.208	
12 OCT 2023 - 12 OCT 2023	MAYBANK	EMPLOYEES PROVIDENT FUND BOARD [SSH]	1,387	1,591,880	13.199	
11 OCT 2023 - 11 OCT 2023	MAYBANK	EMPLOYEES PROVIDENT FUND BOARD [SSH]	1,245	1,590,492	13.188	
19 OCT 2023 - 19 OCT 2023	MENANG	MISS LIEW SOOK PIN [DIR/CEO]	380	41,267	7.983	
19 OCT 2023 - 19 OCT 2023	MENANG	MISS LIEW SOOK PIN [SSH]	380	41,267	7.983	
19 OCT 2023 - 19 OCT 2023	MENANG	MR TOH MAY FOOK [DIR/CEO]	380	66,109	12.788	
19 OCT 2023 - 19 OCT 2023	MENANG	MR TOH MAY FOOK [SSH]	380	66,109	12.788	
18 OCT 2023 - 18 OCT 2023	MENANG	MISS LIEW SOOK PIN [DIR/CEO]	2,000	40,887	7.91	
18 OCT 2023 - 18 OCT 2023	MENANG	MISS LIEW SOOK PIN [SSH]	2,000	40,887	7.91	
18 OCT 2023 - 18 OCT 2023	MENANG	MR TOH MAY FOOK [DIR/CEO]	2,000	65,729	12.715	
18 OCT 2023 - 18 OCT 2023	MENANG	MR TOH MAY FOOK [SSH]	2,000	65,729	12.715	
18 OCT 2023 - 20 OCT 2023	MFCB	CAM PROPERTY (MALAYSIA) SDN BHD [SSH]	40	200,666	21.285	
18 OCT 2023 - 20 OCT 2023	MFCB	CAMASIA LIMITED [SSH]	40	202,152	21.443	
18 OCT 2023 - 20 OCT 2023	MFCB	LAJU RIANG SDN BHD [SSH]	40	200,666	21.285	
18 OCT 2023 - 20 OCT 2023	MFCB	MR GOH NAN KIOH [DIR/CEO]	40	328,231	34.816	
18 OCT 2023 - 20 OCT 2023	MFCB	MR GOH NAN KIOH [SSH]	40	328,231	34.816	
18 OCT 2023 - 20 OCT 2023	MFCB	RUBBER THREAD INDUSTRIES (M) SDN BERHAD [SSH]	40	200,666	21.285	
16 OCT 2023 - 16 OCT 2023	MFCB	CAM PROPERTY (MALAYSIA) SDN BHD [SSH]	18	200,626	21.281	
16 OCT 2023 - 16 OCT 2023	MFCB	CAMASIA LIMITED [SSH]	18	202,112	21.439	
16 OCT 2023 - 16 OCT 2023	MFCB	LAJU RIANG SDN BHD [SSH]	18	200,626	21.281	
16 OCT 2023 - 16 OCT 2023	MFCB	MR GOH NAN KIOH [DIR/CEO]	18	328,191	34.812	
16 OCT 2023 - 16 OCT 2023	MFCB	MR GOH NAN KIOH [SSH]	18	328,191	34.812	
16 OCT 2023 - 16 OCT 2023	MFCB	RUBBER THREAD INDUSTRIES (M) SDN BERHAD [SSH]	18	200,626	21.281	
26 SEP 2023 - 26 SEP 2023	MFLOUR	THE ESTATE OF TUN ARSHAD BIN AYUB [SSH]	-17,682	56111	5.48	
13 OCT 2023 - 13 OCT 2023	MINOX	MADAM ALWIZAH AL-YAFII BINTI AHMAD KAMAL [DIR/CEO]	450	450	0.125	
13 OCT 2023 - 13 OCT 2023	MINOX	MADAM LOOI POO POO [DIR/CEO]	-5,400	37,434	10.398	
13 OCT 2023 - 13 OCT 2023	MINOX	MADAM LOOI POO POO [SSH]	-5,400	37,434	10.398	
13 OCT 2023 - 13 OCT 2023	MINOX	MADAM WONG YEN LEE [DIR/CEO]	450	450	0.125	
13 OCT 2023 - 13 OCT 2023	MINOX	MR. CHEONG CHEE SON [DIR/CEO]	-3,840	185,062	51.406	
13 OCT 2023 - 13 OCT 2023	MINOX	MR. NG KUAN HUA [DIR/CEO]	450	450	0.125	
13 OCT 2023 - 13 OCT 2023	MINOX	MR CHEONG CHEE SON [SSH]	-3,840	185,062	51.406	
13 OCT 2023 - 13 OCT 2023	MINOX	MR YEONG AIK CHEONG [DIR/CEO]	450	450	0.125	

Notice Period is 15th Oct - 21st Oct 2023

Effective Change Date	Stock Name	Buyer/ Seller Name [Classification]	Bought / (Sold) ['000]		No. of Shares After Trade ['000]	
			Total	Total	% Held	% Held
17 OCT 2023 - 17 OCT 2023	MISC	EMPLOYEES PROVIDENT FUND BOARD [SSH]	-555	568,585	12.738	
16 OCT 2023 - 16 OCT 2023	MISC	EMPLOYEES PROVIDENT FUND BOARD [SSH]	-301	569,140	12.75	
13 OCT 2023 - 13 OCT 2023	MISC	EMPLOYEES PROVIDENT FUND BOARD [SSH]	20	569441	12.757	
12 OCT 2023 - 12 OCT 2023	MISC	EMPLOYEES PROVIDENT FUND BOARD [SSH]	-371	569421	12.757	
11 OCT 2023 - 11 OCT 2023	MISC	EMPLOYEES PROVIDENT FUND BOARD [SSH]	-175	569791	12.765	
17 OCT 2023 - 17 OCT 2023	MJPERAK	G CAPITAL BERHAD [SSH]	426	26,827	9.432	
17 OCT 2023 - 17 OCT 2023	MJPERAK	GUNUNG RESOURCES SDN BHD [SSH]	426	26,827	9.432	
16 OCT 2023 - 16 OCT 2023	MLAB	FIRST UNITED TECHNOLOGY LTD [SSH]	-810	228,230	15.75	
16 OCT 2023 - 16 OCT 2023	MLAB	NETX HOLDINGS BERHAD [SSH]	-810	228,230	15.75	
12 OCT 2023 - 13 OCT 2023	MLAB	FIRST UNITED TECHNOLOGY LTD [SSH]	-6,295	229,040	15.8	
12 OCT 2023 - 13 OCT 2023	MLAB	NETX HOLDINGS BERHAD [SSH]	-6,295	229,040	15.8	
17 OCT 2023 - 17 OCT 2023	MYEG	KUMPULAN WANG PERSARAAN (DIPERBADANKAN) [SSH]	-2,500	554,178	7.427	
19 OCT 2023 - 19 OCT 2023	NATGATE	DATO' SERI WONG SIEW HAI [DIR/CEO]	20	6,130	0.296	
18 OCT 2023 - 18 OCT 2023	NATGATE	DATO' SERI WONG SIEW HAI [DIR/CEO]	30	6,110	0.295	
16 OCT 2023 - 16 OCT 2023	NATGATE	DATO' SERI WONG SIEW HAI [DIR/CEO]	10	6,080	0.293	
17 OCT 2023 - 17 OCT 2023	NESTLE	EMPLOYEES PROVIDENT FUND BOARD [SSH]	-38	22,205	9.469	
16 OCT 2023 - 16 OCT 2023	NESTLE	EMPLOYEES PROVIDENT FUND BOARD [SSH]	67	22,243	9.485	
13 OCT 2023 - 13 OCT 2023	NESTLE	EMPLOYEES PROVIDENT FUND BOARD [SSH]	204	22,176	9.457	
12 OCT 2023 - 12 OCT 2023	NESTLE	EMPLOYEES PROVIDENT FUND BOARD [SSH]	15	21,972	9.37	
11 OCT 2023 - 11 OCT 2023	NESTLE	EMPLOYEES PROVIDENT FUND BOARD [SSH]	50	21,957	9.363	
18 OCT 2023 - 19 OCT 2023	OFI	DATUK SERI SON CHEN CHUAN [DIR/CEO]	361	108,822	45.343	
18 OCT 2023 - 19 OCT 2023	OFI	DATUK SERI SON CHEN CHUAN [SSH]	361	108,822	45.343	
17 OCT 2023 - 17 OCT 2023	ORIENT	EMPLOYEES PROVIDENT FUND BOARD [SSH]	41	47409	7.642	
16 OCT 2023 - 16 OCT 2023	ORIENT	EMPLOYEES PROVIDENT FUND BOARD [SSH]	-391	47368	7.636	
13 OCT 2023 - 13 OCT 2023	ORIENT	EMPLOYEES PROVIDENT FUND BOARD [SSH]	-444	47759	7.699	
12 OCT 2023 - 12 OCT 2023	ORIENT	EMPLOYEES PROVIDENT FUND BOARD [SSH]	-575	48204	7.77	
11 OCT 2023 - 11 OCT 2023	ORIENT	EMPLOYEES PROVIDENT FUND BOARD [SSH]	-228	48778	7.863	
17 OCT 2023 - 17 OCT 2023	PADINI	EMPLOYEES PROVIDENT FUND BOARD [SSH]	3	35565	5.406	
16 OCT 2023 - 16 OCT 2023	PADINI	EMPLOYEES PROVIDENT FUND BOARD [SSH]	-493	35562	5.405	
13 OCT 2023 - 13 OCT 2023	PADINI	EMPLOYEES PROVIDENT FUND BOARD [SSH]	-900	36055	5.48	
12 OCT 2023 - 12 OCT 2023	PADINI	EMPLOYEES PROVIDENT FUND BOARD [SSH]	-988	36955	5.617	
11 OCT 2023 - 11 OCT 2023	PADINI	EMPLOYEES PROVIDENT FUND BOARD [SSH]	-138	37943	5.767	
17 OCT 2023 - 17 OCT 2023	PANAMY	EMPLOYEES PROVIDENT FUND BOARD [SSH]	-5	7628	12.557	
16 OCT 2023 - 16 OCT 2023	PANAMY	EMPLOYEES PROVIDENT FUND BOARD [SSH]	-5	7633	12.566	
13 OCT 2023 - 13 OCT 2023	PANAMY	EMPLOYEES PROVIDENT FUND BOARD [SSH]	1	7638	12.573	
12 OCT 2023 - 12 OCT 2023	PANAMY	EMPLOYEES PROVIDENT FUND BOARD [SSH]	-10	7637	12.572	
11 OCT 2023 - 11 OCT 2023	PANAMY	EMPLOYEES PROVIDENT FUND BOARD [SSH]	-4	7647	12.589	
16 OCT 2023 - 16 OCT 2023	PBBANK	EMPLOYEES PROVIDENT FUND BOARD [SSH]	3,773	3002535	15.47	
13 OCT 2023 - 13 OCT 2023	PBBANK	EMPLOYEES PROVIDENT FUND BOARD [SSH]	5,977	2998763	15.45	
12 OCT 2023 - 12 OCT 2023	PBBANK	EMPLOYEES PROVIDENT FUND BOARD [SSH]	6,000	2992786	15.42	
11 OCT 2023 - 11 OCT 2023	PBBANK	EMPLOYEES PROVIDENT FUND BOARD [SSH]	6,620	2986786	15.39	
10 OCT 2023 - 10 OCT 2023	PBBANK	EMPLOYEES PROVIDENT FUND BOARD [SSH]	900	2980166	15.35	
13 OCT 2023 - 13 OCT 2023	PERTAMA	ENCIK SABRI BIN AB RAHMAN [DIR/CEO]	-2,600	54226	12.375	
13 OCT 2023 - 13 OCT 2023	PERTAMA	ENCIK SABRI BIN AB RAHMAN [SSH]	-2,600	54226	12.375	
17 OCT 2023 - 17 OCT 2023	PETDAG	EMPLOYEES PROVIDENT FUND BOARD ("EPF BOARD") [SSH]	3	119888	12.068	
16 OCT 2023 - 16 OCT 2023	PETDAG	EMPLOYEES PROVIDENT FUND BOARD ("EPF BOARD") [SSH]	275	119885	12.067	
13 OCT 2023 - 13 OCT 2023	PETDAG	EMPLOYEES PROVIDENT FUND BOARD ("EPF BOARD") [SSH]	14	119610	12.04	
11 OCT 2023 - 11 OCT 2023	PETDAG	EMPLOYEES PROVIDENT FUND BOARD ("EPF BOARD") [SSH]	78	119596	12.038	
17 OCT 2023 - 17 OCT 2023	PETGAS	EMPLOYEES PROVIDENT FUND BOARD [SSH]	-251	273801	13.837	
16 OCT 2023 - 16 OCT 2023	PETGAS	EMPLOYEES PROVIDENT FUND BOARD [SSH]	78	274052	13.85	
13 OCT 2023 - 13 OCT 2023	PETGAS	EMPLOYEES PROVIDENT FUND BOARD [SSH]	-283	273974	13.846	
12 OCT 2023 - 12 OCT 2023	PETGAS	EMPLOYEES PROVIDENT FUND BOARD [SSH]	-317	274257	13.86	
11 OCT 2023 - 11 OCT 2023	PETGAS	EMPLOYEES PROVIDENT FUND BOARD [SSH]	-319	274574	13.876	
19 OCT 2023 - 19 OCT 2023	PINEAPP	MISS LIM				

Notice Period is 15th Oct - 21st Oct 2023

Effective Change Date	Stock Name	Buyer/ Seller Name [Classification]	Bought / (Sold) ('000)		No. of Shares After Trade ('000)	
			Total	Total	% Held	% Held
17 OCT 2023 - 17 OCT 2023	SIMEPROP	EMPLOYEES PROVIDENT FUND BOARD [SSH]	202	535148	7.869	
18 OCT 2023 - 18 OCT 2023	SIMEPROP	KUMPULAN WANG PERSARAAN (DIPERBADANKAN) [SSH]	1,156	448337	6.592	
16 OCT 2023 - 16 OCT 2023	SIMEPROP	EMPLOYEES PROVIDENT FUND BOARD [SSH]	-2,088	534946	7.866	
17 OCT 2023 - 17 OCT 2023	SIMEPROP	KUMPULAN WANG PERSARAAN (DIPERBADANKAN) [SSH]	248	447181	6.575	
13 OCT 2023 - 13 OCT 2023	SIMEPROP	EMPLOYEES PROVIDENT FUND BOARD [SSH]	-795	537034	7.896	
16 OCT 2023 - 16 OCT 2023	SIMEPROP	KUMPULAN WANG PERSARAAN (DIPERBADANKAN) [SSH]	771	446934	6.572	
12 OCT 2023 - 12 OCT 2023	SIMEPROP	EMPLOYEES PROVIDENT FUND BOARD [SSH]	-2,473	537829	7.909	
11 OCT 2023 - 11 OCT 2023	SIMEPROP	EMPLOYEES PROVIDENT FUND BOARD [SSH]	-1,777	540301	7.945	
17 OCT 2023 - 17 OCT 2023	SKPRES	EMPLOYEES PROVIDENT FUND BOARD [SSH]	357	136378	8.729	
18 OCT 2023 - 18 OCT 2023	SKPRES	KUMPULAN WANG PERSARAAN (DIPERBADANKAN) [SSH]	122	132322	8.469	
17 OCT 2023 - 17 OCT 2023	SKPRES	KUMPULAN WANG PERSARAAN (DIPERBADANKAN) [SSH]	1,233	132200	8.462	
13 OCT 2023 - 13 OCT 2023	SKPRES	KUMPULAN WANG PERSARAAN (DIPERBADANKAN) [SSH]	715	130968	8.383	
06 JUL 2023 - 07 JUL 2023	SLVEST	DATIN SERI WONG MEE LENG [SSH]	-15,900	102400	15.34	
06 JUL 2023 - 07 JUL 2023	SLVEST	DATUK SERI CHIAU BENG TEIK [SSH]	-15,900	112043	16.784	
06 JUL 2023 - 07 JUL 2023	SLVEST	DIVINE INVENTIONS SDN. BHD. [SSH]	-15,900	102400	15.34	
06 JUL 2023 - 07 JUL 2023	SLVEST	MR CHIAU HAW CHOON [SSH]	-15,900	102960	15.424	
06 JUL 2023 - 07 JUL 2023	SLVEST	PP CHIN HIN REALTY SDN. BHD. [SSH]	-15,900	102400	15.34	
17 OCT 2023 - 17 OCT 2023	SMRT	URUSHARTA JAMAHAH SDN. BHD. [SSH]	3,841	24399	5.386	
18 OCT 2023 - 18 OCT 2023	SMTRACK	DATUK AZMI BIN OSMAN [DIR/CEO]	8,029	63361	5.181	
18 OCT 2023 - 18 OCT 2023	SMTRACK	DATUK AZMI BIN OSMAN [SSH]	8,029	63361	5.181	
17 OCT 2023 - 19 OCT 2023	SPRITZER	DATIN CHUA SHOK TIM @ CHUA SIOK HOON [SSH]	112	163158	51.29	
17 OCT 2023 - 19 OCT 2023	SPRITZER	DATO LIM A HENG @ LIM KOK CHEONG [DIR/CEO]	112	163158	51.289	
17 OCT 2023 - 19 OCT 2023	SPRITZER	DATO LIM A HENG @ LIM KOK CHEONG [SSH]	112	163158	51.289	
17 OCT 2023 - 19 OCT 2023	SPRITZER	LANGIT MAKAMUR SDN. BHD. [SSH]	112	101563	31.927	
17 OCT 2023 - 19 OCT 2023	SPRITZER	UNIKAMPAR CREDIT AND LEASING SDN. BHD. [SSH]	112	135781	42.683	
17 OCT 2023 - 19 OCT 2023	SPRITZER	UNIVLEE SDN. BHD. [SSH]	112	135781	42.683	
17 OCT 2023 - 19 OCT 2023	SPRITZER	YEE LEE CORPORATION BHD. [SSH]	112	101563	31.927	
17 OCT 2023 - 19 OCT 2023	SPRITZER	YEE LEE ORGANIZATION BHD. [SSH]	112	135781	42.683	
17 OCT 2023 - 19 OCT 2023	SPRITZER	YELETA HOLDINGS SDN. BHD. [SSH]	112	135781	42.683	
17 OCT 2023 - 19 OCT 2023	SPRITZER	YOUNG WEI HOLDINGS SDN. BHD. [SSH]	112	135781	42.683	
13 OCT 2023 - 16 OCT 2023	SPRITZER	DATIN CHUA SHOK TIM @ CHUA SIOK HOON [SSH]	75	163046	51.254	
13 OCT 2023 - 16 OCT 2023	SPRITZER	DATO LIM A HENG @ LIM KOK CHEONG [DIR/CEO]	75	163046	51.254	
13 OCT 2023 - 16 OCT 2023	SPRITZER	DATO LIM A HENG @ LIM KOK CHEONG [SSH]	75	163046	51.254	
13 OCT 2023 - 16 OCT 2023	SPRITZER	LANGIT MAKAMUR SDN. BHD. [SSH]	75	101451	31.892	
13 OCT 2023 - 16 OCT 2023	SPRITZER	UNIKAMPAR CREDIT AND LEASING SDN. BHD. [SSH]	75	135669	42.648	
13 OCT 2023 - 16 OCT 2023	SPRITZER	UNIVLEE SDN. BHD. [SSH]	75	135669	42.648	
13 OCT 2023 - 16 OCT 2023	SPRITZER	YEE LEE CORPORATION BHD. [SSH]	75	101451	31.892	
13 OCT 2023 - 16 OCT 2023	SPRITZER	YEE LEE ORGANIZATION BHD. [SSH]	75	135669	42.648	
13 OCT 2023 - 16 OCT 2023	SPRITZER	YELETA HOLDINGS SDN. BHD. [SSH]	75	135669	42.648	
13 OCT 2023 - 16 OCT 2023	SPRITZER	YOUNG WEI HOLDINGS SDN. BHD. [SSH]	75	135669	42.648	
17 OCT 2023 - 17 OCT 2023	SSB8	TAN SRI DATUK SERI GAN YU CHAI [DIR/CEO]	13,500	1229773	54.113	
17 OCT 2023 - 17 OCT 2023	SSB8	TAN SRI DATUK SERI GAN YU CHAI [SSH]	13,500	1229773	54.113	
18 OCT 2023 - 19 OCT 2023	STAR	MALAYSIAN CHINESE ASSOCIATION [SSH]	442	333912	46.072	
16 OCT 2023 - 17 OCT 2023	STAR	MALAYSIAN CHINESE ASSOCIATION [SSH]	1,125	333471	46.011	
13 OCT 2023 - 13 OCT 2023	STAR	MALAYSIAN CHINESE ASSOCIATION [SSH]	209	332346	45.856	
17 OCT 2023 - 17 OCT 2023	SUNCON	EMPLOYEES PROVIDENT FUND BOARD [SSH]	59	124853	9.683	
16 OCT 2023 - 16 OCT 2023	SUNCON	EMPLOYEES PROVIDENT FUND BOARD [SSH]	-81	124795	9.679	
13 OCT 2023 - 13 OCT 2023	SUNCON	EMPLOYEES PROVIDENT FUND BOARD [SSH]	-62	124875	9.685	
12 OCT 2023 - 12 OCT 2023	SUNCON	EMPLOYEES PROVIDENT FUND BOARD [SSH]	-1,032	124938	9.69	
13 OCT 2023 - 13 OCT 2023	SUNMOW	MR LEE YEW CHEN [DIR/CEO]	222	26416	11.292	
13 OCT 2023 - 13 OCT 2023	SUNMOW	MR LEE YEW CHEN [SSH]	222	26416	11.292	
17 OCT 2023 - 17 OCT 2023	SUNREIT	EMPLOYEES PROVIDENT FUND BOARD [SSH]	345	533190	15.569	
17 OCT 2023 - 17 OCT 2023	SUNWAY	EMPLOYEES PROVIDENT FUND BOARD [SSH]	-2,746	280065	5.65	
16 OCT 2023 - 16 OCT 2023	SUNWAY	EMPLOYEES PROVIDENT FUND BOARD [SSH]	-5,547	282811	5.7	
13 OCT 2023 - 13 OCT 2023	SUNWAY	EMPLOYEES PROVIDENT FUND BOARD [SSH]	-1,380	288359	5.81	
12 OCT 2023 - 12 OCT 2023	SUNWAY	EMPLOYEES PROVIDENT FUND BOARD [SSH]	-8,500	289738	5.84	
11 OCT 2023 - 11 OCT 2023	SUNWAY	EMPLOYEES PROVIDENT FUND BOARD [SSH]	-5,123	298238	6.02	
13 OCT 2023 - 13 OCT 2023	SWIFT	MR LOO HOUI KEAT [DIR/CEO]	150	350043	39.752	
13 OCT 2023 - 13 OCT 2023	SWIFT	MR LOO HOUI KEAT [SSH]	150	350043	39.752	
16 OCT 2023 - 17 OCT 2023	SWSCAP	DATO SIMON TOH BOON WAN [DIR/CEO]	51	6532	2.374	
13 OCT 2023 - 13 OCT 2023	SWSCAP	DATO SIMON TOH BOON WAN [DIR/CEO]	100	6481	2.355	
16 OCT 2023 - 16 OCT 2023	SYNERGY	MR TAN EU TAH [DIR/CEO]	100	370600	74.12	
16 OCT 2023 - 16 OCT 2023	SYNERGY	MR TAN EU TAH [SSH]	100	370600	74.12	
17 OCT 2023 - 18 OCT 2023	TAFI	DATO' SRI ANDREW LIM ENG GUAN [DIR/CEO]	290	213159	56.179	
17 OCT 2023 - 18 OCT 2023	TAFI	DATO' SRI ANDREW LIM ENG GUAN [SSH]	290	213159	56.179	
16 OCT 2023 - 16 OCT 2023	TAFI	DATO' SRI WONG SZE CHIEN [DIR/CEO]	304	213010	56.14	
16 OCT 2023 - 16 OCT 2023	TAFI	DATO' SRI WONG SZE CHIEN [SSH]	304	213010	56.14	
13 OCT 2023 - 13 OCT 2023	TAKAFUL	EMPLOYEES PROVIDENT FUND BOARD [SSH]	632	113741	13.584	
12 OCT 2023 - 12 OCT 2023	TAKAFUL	EMPLOYEES PROVIDENT FUND BOARD [SSH]	47	113109	13.509	
11 OCT 2023 - 11 OCT 2023	TAKAFUL	EMPLOYEES PROVIDENT FUND BOARD [SSH]	1,205	113062	13.503	
17 OCT 2023 - 17 OCT 2023	TENAGA	EMPLOYEES PROVIDENT FUND BOARD [SSH]	2,506	916448	15.84	
18 OCT 2023 - 18 OCT 2023	TENAGA	KHAZANAH NASIONAL BERHAD [SSH]	-54,000	1305620	22.56	
18 OCT 2023 - 18 OCT 2023	TENAGA	KUMPULAN WANG PERSARAAN (DIPERBADANKAN) [SSH]	417	430584	7.44	
16 OCT 2023 - 16 OCT 2023	TENAGA	EMPLOYEES PROVIDENT FUND BOARD [SSH]	3,089	913942	15.79	
13 OCT 2023 - 13 OCT 2023	TENAGA	EMPLOYEES PROVIDENT FUND BOARD [SSH]	-100	910853	15.74	
12 OCT 2023 - 12 OCT 2023	TENAGA	EMPLOYEES PROVIDENT FUND BOARD [SSH]	153	910953	15.74	
11 OCT 2023 - 11 OCT 2023	TENAGA	EMPLOYEES PROVIDENT FUND BOARD [SSH]	150	910800	15.74	
16 OCT 2023 - 17 OCT 2023	TEOSEN	CW LAU & SONS SDN BHD [SSH]	900	162633	55.443	
16 OCT 2023 - 17 OCT 2023	TEOSEN	DATUK LAU JOO HONG [SSH]	900	162633	55.443	
16 OCT 2023 - 17 OCT 2023	TEOSEN	EMERGING GLORY SDN BHD [SSH]	900	162633	55.443	
16 OCT 2023 - 17 OCT 2023	TEOSEN	LEONG HUP (MALAYSIA) SDN BHD [SSH]	900	162633	55.442	
16 OCT 2023 - 17 OCT 2023	TEOSEN	LEONG HUP INTERNATIONAL BERHAD [SSH]	900	162633	55.443	
16 OCT 2023 - 17 OCT 2023	TEOSEN	MR LAU JOO HAN [SSH]	900	162633	55.443	
16 OCT 2023 - 17 OCT 2023	TEOSEN	MR LAU JOO HENG [SSH]	900	162633	55.443	
16 OCT 2023 - 17 OCT 2023	TEOSEN	MR LAU JUI PENG [DIR/CEO]	900	162633	55.443	

Notice Period is 15th Oct - 21st Oct 2023

Effective Change Date	Stock Name	Buyer/ Seller Name [Classification]	Bought / (Sold) ('000)		No. of Shares After Trade ('000)	
			Total	Total	% Held	% Held
16 OCT 2023 - 17 OCT 2023	TEOSEN	MR LAU JUI PENG [SSH]	900	162633	55.443	
14 SEP 2023 - 14 SEP 2023	TGL	MR TOH CHOON KEAT [SSH]	-400	28554	34.198	
17 OCT 2023 - 17 OCT 2023	TGUAN	PRUDENTIAL PLC [SSH]	-43	20186	5.114	
18 OCT 2023 - 18 OCT 2023	TGUAN	DATUK ANG POON SEONG [DIR/CEO]	50	4061	1.028	
17 OCT 2023 - 17 OCT 2023	TIMECOM	EMPLOYEES PROVIDENT FUND BOARD [SSH]	-120	165021	8.935	
18 OCT 2023 - 18 OCT 2023	TIMECOM	MR PATRICK CORSO [DIR/CEO]	-4,000	470490	25.475	
18 OCT 2023 - 18 OCT 2023	TIMECOM	MR PATRICK CORSO [SSH]	-4,000	470490	25.475	
16 OCT 2023 - 16 OCT 2023	TIMECOM	EMPLOYEES PROVIDENT FUND BOARD [SSH]	-416	165141	8.942	
13 OCT 2023 - 13 OCT 2023	TIMECOM	EMPLOYEES PROVIDENT FUND BOARD [SSH]	37	165557	8.964	
16 OCT 2023 - 16 OCT 2023	TIMECOM	KUMPULAN WANG PERSARAAN (DIPERBADANKAN) ("KWAP") [SSH]	126	110415	5.979	
12 OCT 2023 - 12 OCT 2023	TIMECOM	EMPLOYEES PROVIDENT FUND BOARD [SSH]	-356	165520	8.962	
13 OCT 2023 - 13 OCT 2023	TIMECOM	KUMPULAN WANG PERSARAAN (DIPERBADANKAN) ("KWAP") [SSH]	76	110289	5.972	
11 OCT 2023 - 11 OCT 2023	TIMECOM	EMPLOYEES PROVIDENT FUND BOARD [SSH]	-275	165876	8.982	
16 OCT 2023 - 16 OCT 2023	TM	EMPLOYEE PROVIDENT FUND BOARD (EPF BOARD) [SSH]	564	658573	17.166	
17 OCT 2023 - 17 OCT 2023	TM	KUMPULAN WANG PERSARAAN (DIPERBADANKAN) (KWAP) [SSH]	-1,000	390345	10.174	
13 OCT 2023 - 13 OCT 2023	TM	EMPLOYEE PROVIDENT FUND BOARD (EPF BOARD) [SSH]	22	658009	17.151	
12 OCT 2023 - 12 OCT 2023	TM	EMPLOYEE PROVIDENT FUND BOARD (EPF BOARD) [SSH]	2,000	657987	17.15	
18 OCT 2023 - 18 OCT 2023	TOCEAN	ENCIK MUHAMMAD HARIZ BIN MOHD NADZMI [SSH]	-12	12105	18.595	
18 OCT 2023 - 18 OCT 2023	TOCEAN	IBRONI SDN. BHD. [SSH]	-12	12105	18.595	
18 OCT 2023 - 18 OCT 2023	TOCEAN	KUMPULAN KENDERAAN MALAYSIA BERHAD [SSH]	-12	12105	18.596	
18 OCT 2023 - 18 OCT 2023	TOCEAN	NADI CORPORATION SDN. BHD. [SSH]	-12	12105	18.595	
18 OCT 2023 - 18 OCT 2023	TOCEAN	NADICORP HOLDINGS SDN. BHD. [SSH]	-12	12105	18.595	
18 OCT 2023 - 18 OCT 2023	TOCEAN	TRISILCO EQUITY SDN. BHD. [SSH]	-12	12105	18.595	
17 OCT 2023 - 17 OCT 2023	TOCEAN	ENCIK MUHAMMAD HARIZ BIN MOHD NADZMI [SSH]	-1,125	12117	18.614	
17 OCT 2023 - 17 OCT 2023	TOCEAN	IBRONI SDN. BHD. [SSH]	-1,125	12117	18.614	
17 OCT 2023 - 17 OCT 2023	TOCEAN	KUMPULAN KENDERAAN MALAYSIA BERHAD [SSH]	-1,125	12117	18.614	
17 OCT 2023 - 17 OCT 2023	TOCEAN	NADI CORPORATION SDN. BHD. [SSH]	-1,125	12117	18.614	
17 OCT 2023 - 17 OCT 2023	TOCEAN	NADICORP HOLDINGS SDN. BHD. [SSH]	-1,125	12117	18.614	
17 OCT 2023 - 17 OCT 2023	TOCEAN	TRISILCO EQUITY SDN. BHD. [SSH]	-1,125	12117	18.614	
12 OCT 2023 - 12 OCT 2023	TOCEAN	ENCIK MUHAMMAD HARIZ BIN MOHD NADZMI [SSH]	-40	13242	20.342	
12 OCT 2023 - 12 OCT 2023	TOCEAN	IBRONI SDN. BHD. [SSH]	-40	13242	20.342	
12 OCT 2023 - 12 OCT 2023	TOCEAN	KUMPULAN KENDERAAN MALAYSIA BERHAD [SSH]	-40	13242	20.342	
12 OCT 2023 - 12 OCT 2023	TOCEAN	NADI CORPORATION SDN. BHD. [SSH]	-40	13242	20.342	
12 OCT 2023 - 12 OCT 2023	TOCEAN	NADICORP HOLDINGS SDN. BHD. [SSH]	-40	13242	20.342	
12 OCT 2023 - 12 OCT 2023	TOCEAN	TRISILCO EQUITY SDN. BHD. [SSH]	-40	13242	20.342	
16 OCT 2023 - 16 OCT 2023	TWL	DATIN SEK CHIAN NEE [DIR/CEO]	-31,500	1488217	30.554	
16 OCT 2023 - 16 OCT 2023	TWL	DATIN SEK CHIAN NEE [SSH]	-31,500	1488217	30.554	
16 OCT 2023 - 16 OCT 2023	TWL	DATO TAN WEI LIAN [DIR/CEO]	-31,500	1488217	30.554	
16 OCT 2023 - 16 OCT 2023	TWL	DATO TAN WEI LIAN [SSH]	-31,500	1488217	30.554	
16 OCT 2023 - 16 OCT 2023	TWL	MISS TAN LEE CHIN [DIR/CEO]	-31,500	1488217	30.554	
16 OCT 2023 - 16 OCT 2023	TWL	MISS TAN LEE CHIN [SSH]	-31,500	1488217	30.554	
16 OCT 2023 - 16 OCT 2023	TWL	TWL CAPITAL BERHAD [SSH]	-31,500	1488217	30.553	
18 OCT 2023 - 18 OCT 2023	UMCCA	DATO' SRI TEE LIP SIN [DIR/CEO]	96	64560	30.777	
18 OCT 2023 - 18 OCT 2023	UMCCA	MR TEE CHENG HUA [DIR/CEO]	96	58407	27.844	
12 OCT 2023 - 12 OCT 2023	UMW	EMPLOYEES PROVIDENT FUND BOARD [SSH]	6,000	117456	10.054	
11 OCT 2023 - 11 OCT 2023	UMW	EMPLOYEES PROVIDENT FUND BOARD [SSH]	5,927	111456	9.54	
17 OCT 2023 - 17 OCT 2023	UOAEV	EMPLOYEES PROVIDENT FUND BOARD ("EPF BOARD") [SSH]	144	304774	12.238	
12 OCT 2023 - 12 OCT 2023	UOAEV	EMPLOYEES PROVIDENT FUND BOARD ("EPF BOARD") [SSH]	46	304630	12.232	
11 OCT 2023 - 11 OCT 2023	UOAEV	EMPLOYEES PROVIDENT FUND BOARD ("EPF BOARD") [SSH]	68	304584	12.23	
17 OCT 2023 - 17 OCT 2023	UTDPLT	EMPLOYEES PROVIDENT FUND BOARD [SSH]	-18	26759	6.451	
16 OCT 2023 - 16 OCT 2023	UTDPLT	EMPLOYEES PROVIDENT FUND BOARD [SSH]	-30	26776	6.455	
13 OCT 2023 - 13 OCT 2023	UTDPLT					



CapitaLand Malaysia REIT Management Sdn Bhd (CMRM), the manager of **CapitaLand Malaysia Trust (CLMT)**, announced a 52.6% year-on-year increase in net property income of RM58.3 million for the quarter ended 30 September 2023 (3Q 2023). Supported by income contributions from Queensbay Mall and higher revenue contributions from its retail properties, gross revenue for 3Q 2023 saw an uplift of 46.0% year-on-year to RM103.6 million.

[READ MORE](#) 



The Board of Directors of **Dayang Enterprise Holdings Bhd (DEHB)** is pleased to announce that its wholly-owned subsidiary company, Dayang Enterprise Sdn Bhd, has been awarded a Scope expansion to cover Sarawak Gas Area under Contract Amendment for the Provision of Offshore Maintenance, Construction and

Modification Services for PETRONAS Carigali Sdn Bhd a wholly-owned subsidiary of PETRONAS.

[READ MORE](#) 



Gamuda Berhad (GAMUDA) wishes to announce that the Company together with Asia World Engineering & Construction Co. (世久營造探勘工程股份有限公司), a Taiwan-based company has been awarded the Design and Build of Kaohsiung Mass Rapid Transit Metropolitan Line (Yellow Line) Civil Engineering, Package YC01 in Taiwan R.O.C by the Taiwan Kaohsiung City Government’s Mass Rapid Transit Bureau (高雄市政府捷運工程局), a MRT division established under Taiwan Kaohsiung City Government, on 25 October 2023.

[READ MORE](#)



The Board of Directors of **Sarawak Plantation Berhad (SWKPLNT)** wishes to announce that its wholly owned subsidiary, Sarawak Plantation Agriculture Development Sdn. Bhd., had on 25 October 2023 entered into a Masters Agency Agreement, Facilities Agreement and Memorandum of Charge with AmBank Islamic Berhad (AmBI) for an Islamic banking facility of RM40million. On the same date, Sarawak Plantation Berhad had also executed a Guarantee and Indemnity Agreement with AmBI in relation to the said Islamic banking facility up to RM40million.

[READ MORE](#)

Disclaimer: The information in the Investor Relations page is extracted from individual companies’ announcements in www.bursamalaysia.com. The information on this page is provided as a service to readers. We assume no liability for damages resulting from or arising out of the use of such information. Whilst every effort is made to ensure accuracy, the information presented has been simplified for your reading pleasure. Readers are advised to read the original and complete filings on the Bursa Malaysia website at https://www.bursamalaysia.com/market_information/announcements/company_announcement

Upcoming IPO

NAME OF COMPANY	OFFER PERIOD		ISSUE PRICE (Per Ordinary Share)	LISTING SOUGHT	DATE OF LISTING
	OPENING	CLOSING			
PLYTEC HOLDING BERHAD	24 Oct 2023	31 Oct 2023	RM0.35	ACE MARKET	15 Nov 2023