

# Invest

A Weekly e-Publication by [SHAREINVESTOR.com](https://www.shareinvestor.com)

ISSUE

179

FRIDAY  
20 OCTOBER  
2023

Scan/Click QR to Register



Via email, every Friday

## MARKET SENTIMENTS

# MALAYSIA SECURES OVER RM230 BILLION IN FDI COMMITMENTS AS OF SEPT 2023 — ZAFRUL

## CAPITAL MARKETS MALAYSIA LAUNCHES SIMPLIFIED ESG DISCLOSURE GUIDE FOR SMES

See more on pages 22-24

## ALSO

**07** COMPANY SPOTLIGHT  
Harn Len Corporation Berhad

**26** MSWG ESG investing regains focus

**04** LEADERBOARD  
**06** SHARIAH HOT STOCKS  
**08** SHARIAH MOMENTUM UP STOCKS  
**10** NON SHARIAH HOT STOCKS

**12** UP TRENDING STOCKS  
**14** VALUE STOCKS  
**16** GROWTH STOCKS  
**18** DIVIDEND STOCKS  
**19** BROKERS' CALL

**20** LONG COMPANIES  
**25** REGIONAL MARKETS  
**30** INSIDER ACTIVITY  
**34** INVESTOR RELATIONS



# SHAREINVESTOR®

Invest with Knowledge

## INVESTOR PLATFORMS

**Director**  
Darren Chong  
darren.chong@shareinvestor.com

**Business Development Manager**  
Jay Cheong  
jay.cheong@shareinvestor.com

**Senior Executive**  
Daniel Wong  
daniel.wong@shareinvestor.com

**Executive**  
Farah Azwani  
farah.azwani@shareinvestor.com

**Executive**  
Tan Yong Sheng  
yongsheng.tan@shareinvestor.com

## ADMIN & OPERATIONS

**Senior Executive**  
Watie Nordin  
watie.nordin@shareinvestor.com

**Executive**  
Silas Emmanuel Joseph  
silas.joseph@shareinvestor.com

## INVESTOR RELATIONS

**Group Managing Director & Publisher**  
Edward Stanislaus  
edward@shareinvestor.com

**Senior Manager**  
Letticia Wong  
letticia.wong@shareinvestor.com

## PROCESS AUTOMATION & DATA ANALYTICS

**Data Analyst**  
Nickson Aw

## SHAREINVESTOR HOLDINGS BOARD OF DIRECTORS

|                  |                 |
|------------------|-----------------|
| <b>Chairman</b>  | Patrick Daniel  |
| <b>Group CEO</b> | Christopher Lee |
| <b>Group COO</b> | Lim Dau Hee     |
| <b>Group CFO</b> | Teo Siew May    |
| <b>Group MD</b>  | Shanison Lin    |



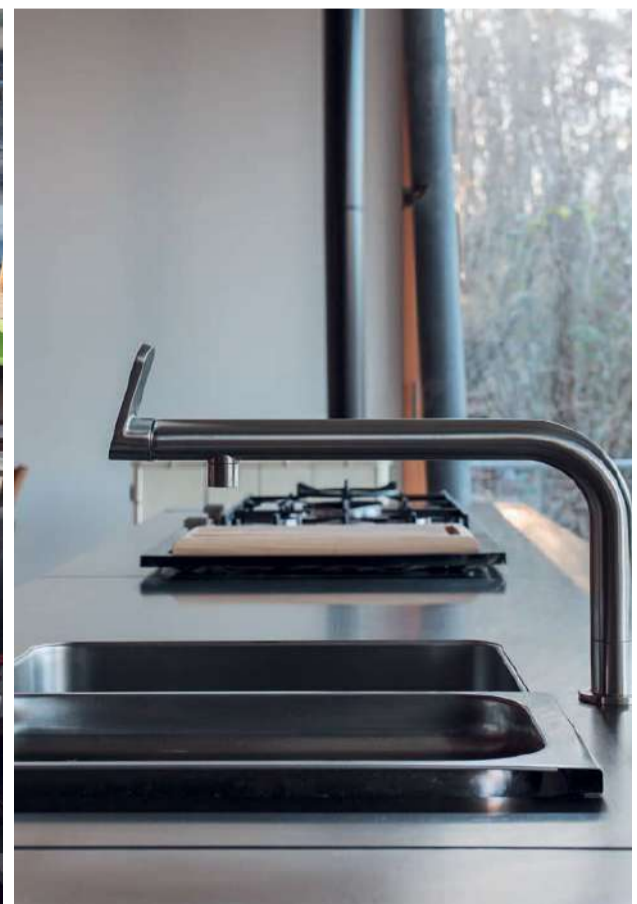
“ GIVE A MAN A FISH AND YOU FEED HIM FOR A DAY; TEACH A MAN TO FISH AND YOU FEED HIM FOR A LIFETIME ”

**ShareInvestor Malaysia Sdn. Bhd.**  
(200001023956) (526564-M)  
Unit No. DF2-07-03A, Level 7,  
Persoft Tower, 6B Persiaran Tropicana,  
47410 Petaling Jaya, Selangor Darul Ehsan.

Hotline : 603 7803 1791  
Mobile : 011 6343 8939  
Website : [www.ShareInvestor.com.my](http://www.ShareInvestor.com.my)  
[www.ShareInvestorHoldings.com](http://www.ShareInvestorHoldings.com)  
[www.Facebook.com/ShareInvestorMalaysia](http://www.Facebook.com/ShareInvestorMalaysia)

**ADVERTISEMENT ENQUIRY**

bulthaup takes care of the details so that you can enjoy a harmonious environment.



**XTRA**

XTRA FURNITURE SDN BHD  
The Gardens Mall, Mid Valley City  
[xtrafurniture.com/bulthaup](http://xtrafurniture.com/bulthaup)  
[fb.com/bulthaupmalaysia](https://fb.com/bulthaupmalaysia)

bulthaup

# 探讨ShareInvestor WebPro 的强大投资APP功能

 **23 Oct 2023 (Mon)**

 **8:30PM - 10:00PM**

## Speaker

**Stella Goh**

Research Analyst,  
WealthFort

**Darren Chong**

Director of Investor Platforms,  
ShareInvestor



**马上报名!**

[www.shareinvestor.com](http://www.shareinvestor.com) - market data at your fingertips



ShareInvestor WebPro ([www.shareinvestor.com/my](http://www.shareinvestor.com/my))

Prices > Stock Prices > Bursa > click Stocks tab

1. mouse over Ranking > select Top Active > all Shariah stocks are denoted with an [S] > mouse over Column Layout > select Edit Customs > select Name > select Volume > select Last Done Price > Mouse Over Column Layout > select Custom
2. mouse over Ranking > select Top Turnover > all Shariah stocks are denoted with an [S] > mouse over Column Layout > select Edit Customs > select Name > select Last Done Price > select Value > Mouse Over Column Layout > select Custom
3. mouse over Ranking > select Top Gainers (Over 5 Trading Days) > mouse over Column Layout > select Edit Customs > select Name > select Last Done Price > select 5 Days Change > select 5 Days % Change > Mouse Over Column Layout > select Custom
4. mouse over Ranking > select Top Losers (Over 5 Trading Days)
5. mouse over Ranking > select Top % Gainers (Over 5 Trading Days)
6. mouse over Ranking > select Top % Losers (Over 5 Trading Days)

### Shariah Top Actives (as at Yesterday)

| Name        | Price (RM) | Volume        |
|-------------|------------|---------------|
| ICON [S]    | 0.110      | 2,054,071.000 |
| WIDAD [S]   | 0.565      | 680,870.000   |
| SCIB [S]    | 0.520      | 544,622.000   |
| MYEG [S]    | 0.790      | 542,747.000   |
| SYSTECH [S] | 0.530      | 500,285.000   |
| KANGER [S]  | 0.115      | 478,883.000   |
| UEMS [S]    | 0.765      | 463,638.000   |
| EKOVEST [S] | 0.485      | 431,583.000   |
| ASDION [S]  | 0.080      | 413,992.000   |
| SEALINK [S] | 0.245      | 403,342.000   |

### Shariah Top Turnover (as at Yesterday)

| Name         | Price (RM) | Value (RM) |
|--------------|------------|------------|
| MYEG [S]     | 0.790      | 43,122,139 |
| KLK [S]      | 22.400     | 42,101,860 |
| AAX [S]      | 2.090      | 40,917,035 |
| WIDAD [S]    | 0.565      | 38,428,138 |
| TENAGA [S]   | 9.980      | 35,848,613 |
| UEMS [S]     | 0.765      | 35,325,533 |
| CAPITALA [S] | 0.885      | 32,710,154 |
| IHH [S]      | 5.950      | 32,202,203 |
| SCIB [S]     | 0.520      | 28,315,903 |
| SYSTECH [S]  | 0.530      | 25,466,119 |

### Top Gainers (over 3 Trading days as at Yesterday)

| Name    | Price (RM) | Change (RM) |
|---------|------------|-------------|
| NESTLE  | 127.500    | +4.500      |
| KLK     | 22.400     | +0.900      |
| F&N     | 26.700     | +0.620      |
| PPB     | 15.360     | +0.580      |
| UTDPLT  | 16.940     | +0.460      |
| BKAWAN  | 21.000     | +0.300      |
| CGB     | 2.990      | +0.300      |
| DSR     | 1.280      | +0.280      |
| HAPSENG | 5.400      | +0.280      |
| PERTAMA | 3.990      | +0.220      |

### Top % Gainers (over 3 Trading days as at Yesterday)

| Name    | Price (RM) | Change (%) |
|---------|------------|------------|
| ASDION  | 0.080      | +128.57    |
| COMPUGT | 0.015      | +50.00     |
| GOCEAN  | 0.015      | +50.00     |
| BPURI   | 0.070      | +40.00     |
| SENDAI  | 0.210      | +35.48     |
| DSR     | 1.280      | +28.00     |
| EATECH  | 0.340      | +25.93     |
| XDL     | 0.025      | +25.00     |
| ZENTECH | 0.025      | +25.00     |
| SMTRACK | 0.030      | +20.00     |

### Top Losers (over 3 Trading days as at Yesterday)

| Name   | Price (RM) | Change (RM) |
|--------|------------|-------------|
| HEIM   | 24.120     | -1.080      |
| HLCAP  | 4.900      | -0.400      |
| APOLLO | 5.110      | -0.390      |
| AEONCR | 11.420     | -0.380      |
| AAX    | 2.090      | -0.360      |
| AJI    | 15.400     | -0.320      |
| MPI    | 26.720     | -0.220      |
| MSM    | 1.210      | -0.190      |
| BURSA  | 6.700      | -0.170      |
| D&O    | 3.250      | -0.150      |

### Top % Losers (over 3 Trading days as at Yesterday)

| Name    | Price (RM) | Change (%) |
|---------|------------|------------|
| JOE     | 0.015      | -90.00     |
| EAH     | 0.005      | -50.00     |
| PHB     | 0.005      | -50.00     |
| MMAG    | 0.010      | -33.33     |
| GOINNO  | 0.250      | -28.57     |
| BCMALL  | 0.015      | -25.00     |
| SANICHI | 0.015      | -25.00     |
| XOX     | 0.015      | -25.00     |
| G3      | 0.020      | -20.00     |
| REACH   | 0.040      | -20.00     |

当Thai SDR遇上

# 孤注一掷

泰国市场探秘：  
被低估的投资机会？

**26**  
LIVE  
OCTOBER  
THURSDAY  
8PM - 9PM

Scan Me



< Speaker

## Price & Volume Distribution Charts (as at Yesterday)

Technical Analysis

**DEFINITION:** Shariah compliant stocks with Technical Analysis showing 5-days & 10-days Moving Average Price below Yesterday's Close over past 3 days and with Volume Spike.

**CHART GUIDE:** Volume Distribution Chart is a statistical interpretation of the current sentiment on each stock in graphical format. The highest bar categorized as >150k is likely to be traded by institutions or super dealers, while the lowest bar categorized as <15k usually represents retail investors. "Buy Up" refers to more buyers snatching up the lots queued at selling price. "Sell Down" refers to sellers selling their shares to the buying queue



ShareInvestor WebPro > Screener > Market Screener (FA & TA) > select BURSA > add criteria

**A. Criteria**

- > click Add Criteria
- Technical Analysis Conditions tab select (i) Moving Average Below Close (ii) Volume Spike
- Fundamental Analysis Conditions tab > select (iii) Revenue
- Prices & Other Conditions tab > select (iv) Is Shariah Compliant
- Technical Analysis Conditions tab select (v) Moving Average Below Close
- Prices & Other Conditions tab > select (vi) Last Done Price
- Technical Analysis Conditions tab select (vii) Moving Average Below Close

**B. Conditions (Criteria Filters)**

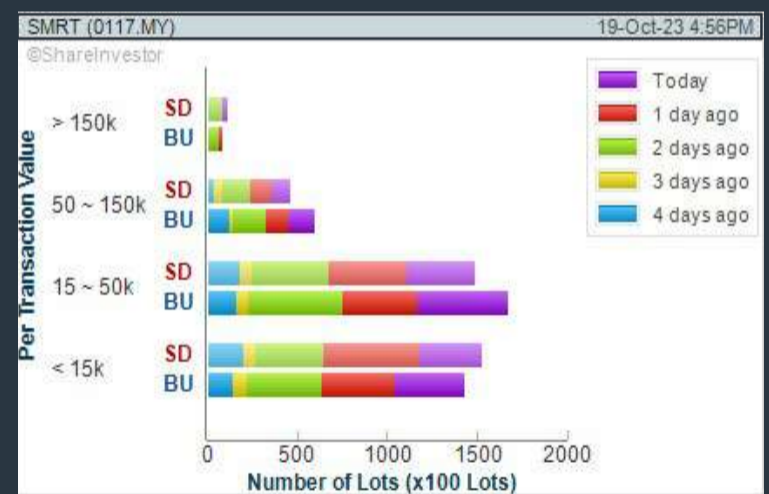
1. Moving Average Below Close - select (MA) type (5) below close price for type (3) days
2. Volume Spike - Volume type (1) greater than type (5) days average
3. Revenue ("000) - select (more than) type (1) for the past select (1) financial year(s)
4. Is Shariah Compliant - select **Yes**
5. Moving Average Below Close - select (MA) type (10) below close price for type (3) days
6. Last Done Price - select (more than) type (0.3)
7. Moving Average Below Close - select (EMA) type (5) below close price for type (3) days

- > click Save Template > Create New Template type (Shariah Hot Stocks) > click Create
- > click Save Template as > select Shariah Hot Stocks > click Save
- > click Screen Now (may take a few minutes)
- > Sort By: Select (Vol) Select (Desc)
- > Mouse over stock name > Charts > click C<sup>2</sup> Charts or Volume Distribution

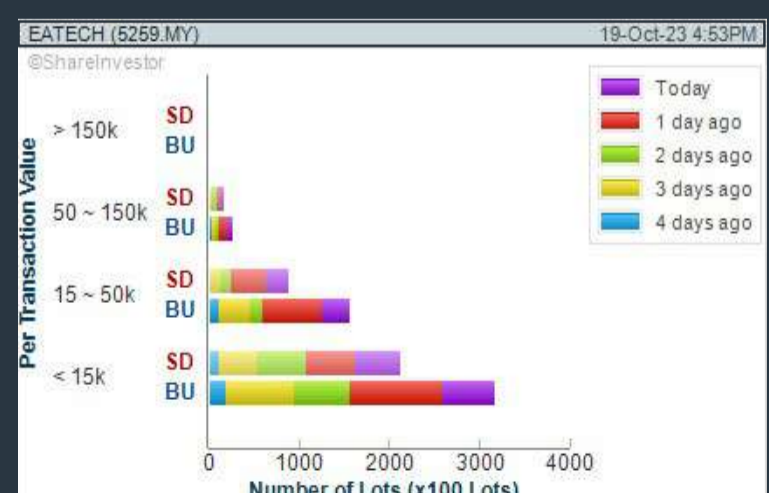
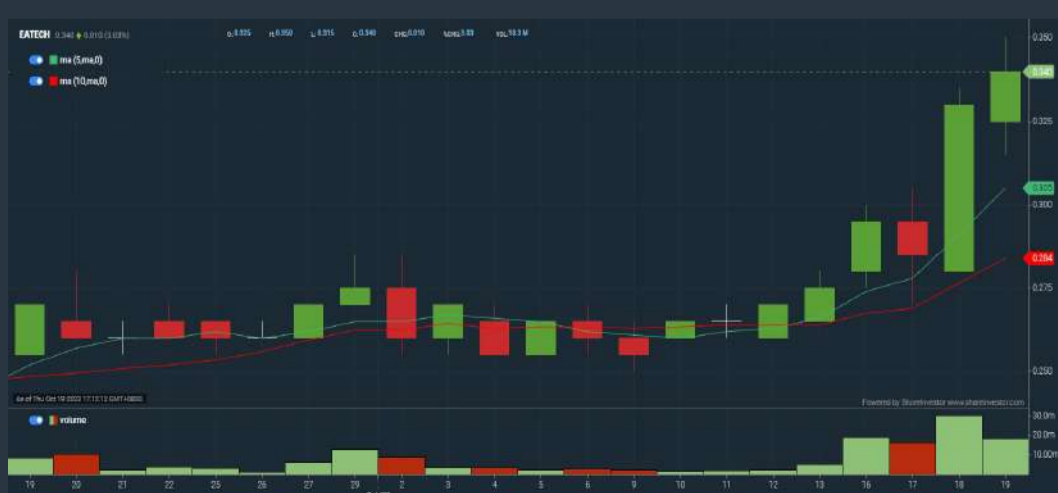
### WIDAD GROUP BERHAD (0162) C<sup>2</sup> Chart



### SMRT HOLDINGS BERHAD (0117) C<sup>2</sup> Chart



### E.A. TECHNIQUE (M) BERHAD (5259) C<sup>2</sup> Chart



**Disclaimer:** The information on this page is provided as a service to readers. It does not constitute financial advice and/or any investment recommendations. Past performance is not indicative of future results. We assume no liability for damages resulting from or arising out of the use of such information. It would be best if you did your own research to make your personal investment decisions wisely or consult a licenced investment advisor.

## COMPANY BACKGROUND

**Harn Len Corporation Berhad** is involved in the cultivation of oil palm plantations. The Company, through its subsidiaries, operates oil palm mills and processes fresh fruit bunches (FFB) into crude palm oil (CPO) and palm kernel (PK). Apart from plantation development and management services, the Company is also involved in property investment and operation of a food and beverage outlet.



**Analysis**

| HARNLEN HARN LEN CORPORATION BHD |                          | Updated at 19 Oct 2023 16:58 |              |
|----------------------------------|--------------------------|------------------------------|--------------|
| Last (MYR): <b>0.770</b> ↑       | Change: <b>+0.005</b>    | High: 0.775                  | Remarks: s ? |
|                                  | Change (%): <b>+0.65</b> | Low: 0.765                   |              |
| Open                             | 0.765                    | Yesterday's Close            | 0.765        |
| Buy Price                        | 0.765                    | Sell Price                   | 0.770        |
| Buy Volume ('00)                 | 1,401                    | Sell Volume ('00)            | 95           |
| Cumulative Volume ('00)          | 58,035                   | Cumulative Value             | 4,468,187    |

### Financial Analysis

|   |  |
|---|--|
| <b>Profit Growth</b><br>Profit down drastically in latest year (< 60%) (with last 2 profitable years) | <b>Debt to Cashflow</b><br>High debt to cash flow for most recent year                   |
| <b>Free Cash Flow</b><br>Negative free cash flow for the most recent year                             | <b>Gross Profit Margin</b><br>Low gross profit margin for 3 years                        |
| <b>Net Earnings Margin</b><br>Low net profit margin for 2 years                                       | <b>Return on Assets (ROA)</b><br>ROA is decreasing by 5% a year over the past 35 months. |
| <b>Return on Equity (ROE)</b><br>ROE is decreasing by 5% a year over the past 35 months.              |  |

Excellent 
 Good 
 Neutral 
 Be Alert 
 Watch Out

### Historical Financials

Profit & Loss (MYR '000) [Hide Profit & Loss chart](#)

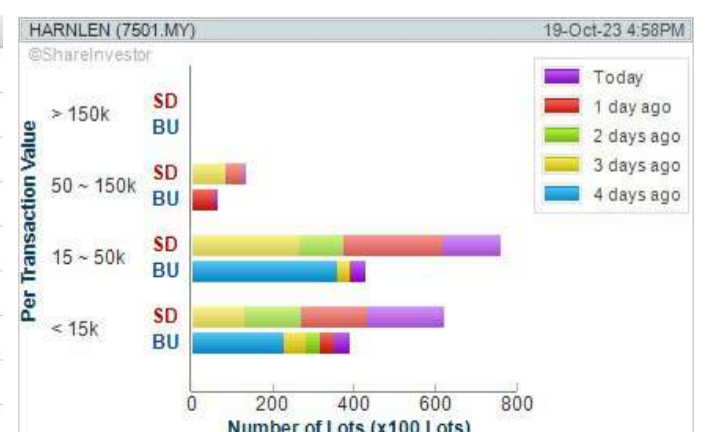


**WebPro 9-Days Free Trial Registration (worth RM9) Sign Up Now**



### Key Statistics with Total Shareholder Returns

| Period             | Dividend Received | Capital Appreciation | Total Shareholder Return |
|--------------------|-------------------|----------------------|--------------------------|
| Short Term Return  | 5 Days            | +0.020               | +2.67 %                  |
|                    | 10 Days           | +0.010               | +1.32 %                  |
|                    | 20 Days           | +0.010               | +1.32 %                  |
| Medium Term Return | 3 Months          | +0.040               | +5.48 %                  |
|                    | 6 Months          | +0.035               | +4.76 %                  |
|                    | 1 Year            | +0.039               | +5.34 %                  |
| Long Term Return   | 2 Years           | +0.401               | +108.67 %                |
|                    | 3 Years           | +0.595               | +340.00 %                |
|                    | 5 Years           | 0.100                | +414.79 %                |
| Annualised Return  | Annualised        | -                    | +38.78 %                 |



**Disclaimer:** The information on this page is provided as a service to readers. It does not constitute financial advice and/or any investment recommendations. Past performance is not indicative of future results. We assume no liability for damages resulting from or arising out of the use of such information. It would be best if you did your own research to make your personal investment decisions wisely or consult a licenced investment advisor.

## Price & Volume Distribution Charts (as at Yesterday)

Technical Analysis

**DEFINITION:** Shariah compliant stocks with Technical Analysis showing Bullish Momentum and Price Uptrend. The share price closed at the highest price yesterday. The typical price was higher than the previous day's typical price.

**CHART GUIDE:** Volume Distribution Chart is a statistical interpretation of the current sentiment on each stock in graphical format. The highest bar categorized as >150k is likely to be traded by institutions or super dealers, while the lowest bar categorized as <15k usually represents retail investors. "Buy Up" refers to more buyers snatching up the lots queued at selling price. "Sell Down" refers to sellers selling their shares to the buying queue.



ShareInvestor WebPro > Screener > Market Screener (FA & TA)>select BURSA>add criteria

**A. Criteria**

- > click Add Criteria
- Fundamental Analysis Conditions tab >select (i) Revenue
- Technical Analysis Conditions tab select (ii) Average Volume
- Prices & Other Conditions tab > select (iii) Last Done Price
- Prices & Other Conditions tab > select (iv) Is Shariah Compliant
- Technical Analysis Conditions tab select (v) RSI Overbought
- Technical Analysis Conditions tab select (vi) Moving Average Below Close
- Technical Analysis Conditions tab select (vii) CCI Overbought

**B. Conditions (Criteria Filters)**

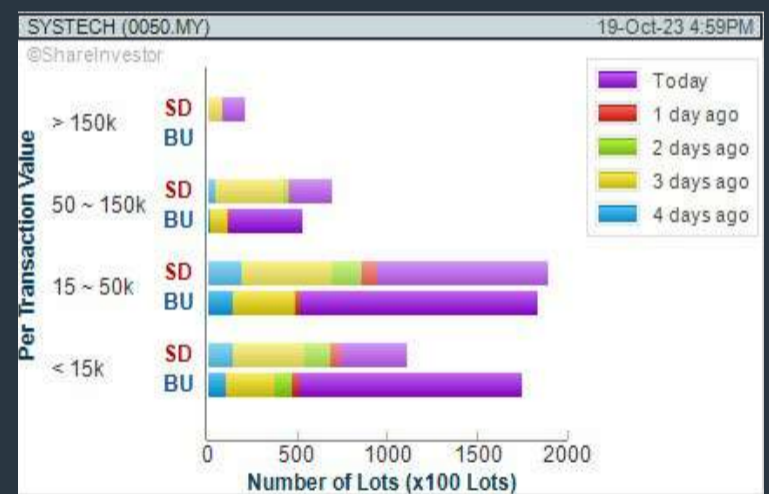
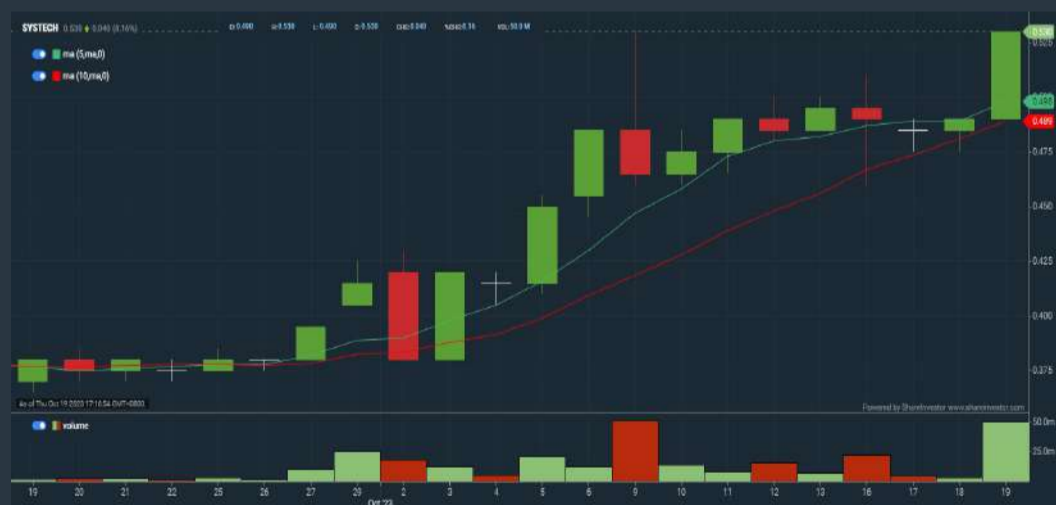
1. Revenue ("000) - select (more than) type (1) for the past select (1) financial year(s)
2. Average Volume - type (1) days average volume greater than type (10000) lots
3. Last Done Price - select (more than) type (0.3)
4. Is Shariah Compliant - select Yes
5. RSI Overbought - select RSI 1 above 99 for 1 days
6. Moving Average Below Close - select (MA) type (10) below close price for type (1) days
7. CCI Overbought - select CCI (2) above (0) for (1) days

- > click Save Template > Create New Template type (Shariah Momentum Up Stocks) > click Create
- > click Save Template as > select Shariah Momentum Up Stocks > click Save
- > click Screen Now (may take a few minutes)
- Sort By: Select (Vol) Select (Desc)
- Mouse over stock name > Charts > click C<sup>2</sup> Charts tab or Volume Distribution

### WIDAD GROUP BERHAD (0162) C<sup>2</sup> Chart



### SYSTECH BERHAD (0050) C<sup>2</sup> Chart



### SMRT HOLDINGS BERHAD (0117) C<sup>2</sup> Chart



**Disclaimer:** The information on this page is provided as a service to readers. It does not constitute financial advice and/or any investment recommendations. Past performance is not indicative of future results. We assume no liability for damages resulting from or arising out of the use of such information. It would be best if you did your own research to make your personal investment decisions wisely or consult a licenced investment advisor.





# STROM

SWISS TIMEPIECES & JEWELLERY



StromWatch Asia

Tele : +65.9817.3378 Email : ll.stromasia@gmail.com

[WWW.STROMWATCH.SWISS](http://WWW.STROMWATCH.SWISS)



## Price & Volume Distribution Charts (as at Yesterday)

Technical Analysis

**DEFINITION:** Stocks with Technical Analysis showing 5-days & 10-days Moving Average Price below Close over past 1 days and with Volume Spike

**CHART GUIDE:** Volume Distribution Chart is a statistical interpretation of the current sentiment on each stock in graphical format. The highest bar categorized as >150k is likely to be traded by institutions or super dealers, while the lowest bar categorized as <15k usually represents retail investors. "Buy Up" refers to more buyers snatching up the lots queued at selling price. "Sell Down" refers to sellers selling their shares to the buying queue.



ShareInvestor WebPro > Screener > Market Screener (FA & TA) > select BURSA > add criteria

**A. Criteria**

- > click Add Criteria
- Technical Analysis Conditions tab select (i) Moving Average Below Close (ii) Volume Spike
- Fundamental Analysis Conditions tab >select (iii) Revenue
- Prices & Other Conditions tab > select (iv) Is Shariah Compliant
- Technical Analysis Conditions tab select (v) Moving Average Below Close
- Prices & Other Conditions tab > select (vi) Last Done Price
- Technical Analysis Conditions tab select (vii) Moving Average Below Close

**B. Conditions (Criteria Filters)**

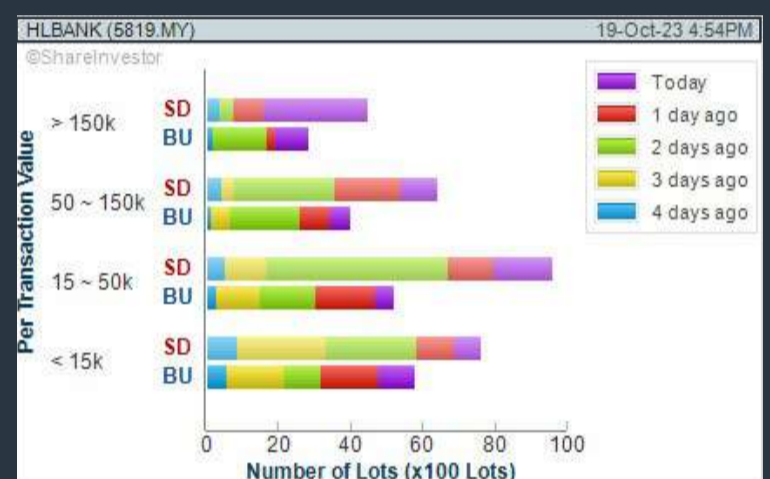
1. Moving Average Below Close - select (MA) type (5) below close price for type (3) days
2. Volume Spike - Volume type (1) greater than type (5) days average
3. Revenue ("000) - select (more than) type (1) for the past select (1) financial year(s)
4. Is Shariah Compliant - select NO
5. Moving Average Below Close - select (MA) type (10) below close price for type (1) days
6. Last Done Price - select (more than) type (0.3)
7. Moving Average Below Close - select (EMA) type (5) below close price for type (1) days

- > click Save Template > Create New Template type (Non-Shariah Hot Stocks) > click Create
- > click Save Template as > select Non-Shariah Hot Stocks > click Save
- > click Screen Now (may take a few minutes)
- Sort By: Select (Vol) Select (Desc)
- Mouse over stock name > Charts > click C<sup>2</sup> Charts tab or Volume Distribution

### HONG LEONG BANK BERHAD (5819)

C<sup>2</sup> Chart

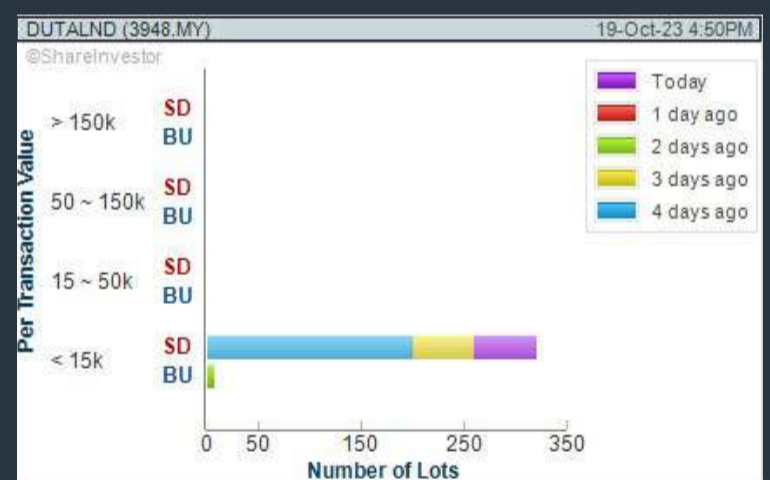
Analysis



### DUTALAND BERHAD (3948)

C<sup>2</sup> Chart

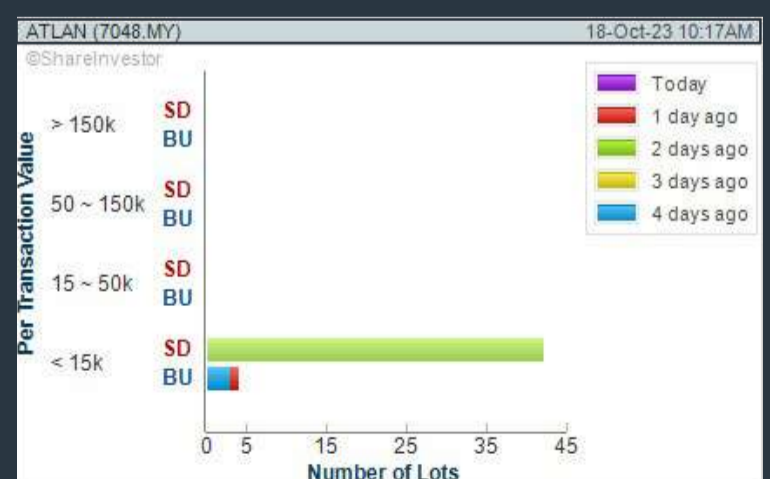
Analysis



### ATLAN HOLDINGS BERHAD (7048)

C<sup>2</sup> Chart

Analysis



**Disclaimer:** The information on this page is provided as a service to readers. It does not constitute financial advice and/or any investment recommendations. Past performance is not indicative of future results. We assume no liability for damages resulting from or arising out of the use of such information. It would be best if you did your own research to make your personal investment decisions wisely or consult a licenced investment advisor.

# SHAREINVESTOR WEBPRO

## STOCK MARKET DATA AT YOUR FINGERTIPS

Powerful browser-based market analytics platform.  
Access from anywhere



### 8 Markets Data

- ▶ Get access to data from Bursa, NYSE, Nasdaq, HKEX, SGX, IDX, SET & ASX

### Portfolio Management

- ▶ Profit & Loss Summary
- ▶ Stock Alert
- ▶ News & Events filtering
- ▶ Customizable column layout

## Fundamental Analysis

### Financial Analysis Statement

- ▶ Profit & Loss
- ▶ Balance Sheet
- ▶ Cash Flow Statement
- ▶ More than 20 Financial Ratios
- ▶ Dividend Analysis

### Technical Charting

- ▶ C<sup>2</sup> chart (Customisable & Comprehensive)

### Brokers' Call

### Intrinsic Value Calculator

### FactSheet

- ▶ Key Stock Information
- ▶ Ownership
- ▶ Consensus Estimates
- ▶ Annual Report
- ▶ Historical Price
- ▶ Insider Trades

## What's new on WebPro (Stable Release 12.1.0)

In our effort to keep our platform at the forefront of trading technology, we have added on some new features onto our C2 Chart in WebPro

### ADDITIONAL NEW FEATURES:

- ▶ Anchor selector for AVWAP, PVAT, and PAV indicators
- ▶ Volume profile indicator by date range
- ▶ Moving Average Cross indicator
- ▶ Guppy Multiple Moving Average (GMMA) indicator
- ▶ GoNoGo Trend Signal indicators
- ▶ SignalIQ

So what are you waiting for? Head to our platform today and check out our new trading chart features and indicators. We're confident that you'll love the improvements we've made and that they'll help you become a more successful trader.

Click here to start your 9 days FREE trial  
(Valued at RM10)



## Price & Volume Distribution Charts (Over 3 trading days as at Yesterday)

Technical Analysis

**DEFINITION:** Stocks with Technical Analysis showing Bullish Momentum and Price Uptrend

**CHART GUIDE:** Volume Distribution Chart is a statistical interpretation of the current sentiment on each stock in graphical format. The highest bar categorized as >150k is likely to be traded by institutions or super dealers, while the lowest bar categorized as <15k usually represents retail investors. "Buy Up" refers to more buyers snatching up the lots queued at selling price. "Sell Down" refers to sellers selling their shares to the buying queue.



ShareInvestor WebPro > Screener > Market Screener (FA & TA) > select BURSA > add criteria

**A. Criteria**

- > click Add Criteria
- Fundamental Analysis Conditions tab > select (i) Revenue
- Technical Analysis Conditions tab select (ii) Moving Average Below Close
- Technical Analysis Conditions tab select (iii) Average Volume
- Prices & Other Conditions tab > select (iv) Last Done Price
- Technical Analysis Conditions tab select (v) Moving Average Below Close
- Technical Analysis Conditions tab select (v) Moving Average Bullish Crossover

**B. Conditions**

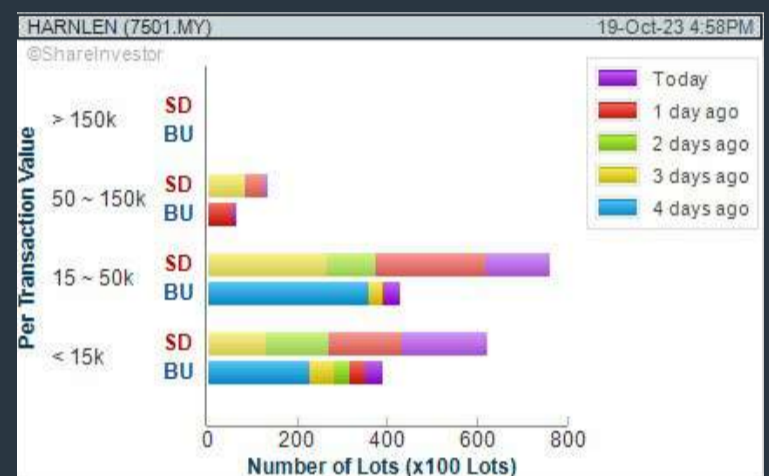
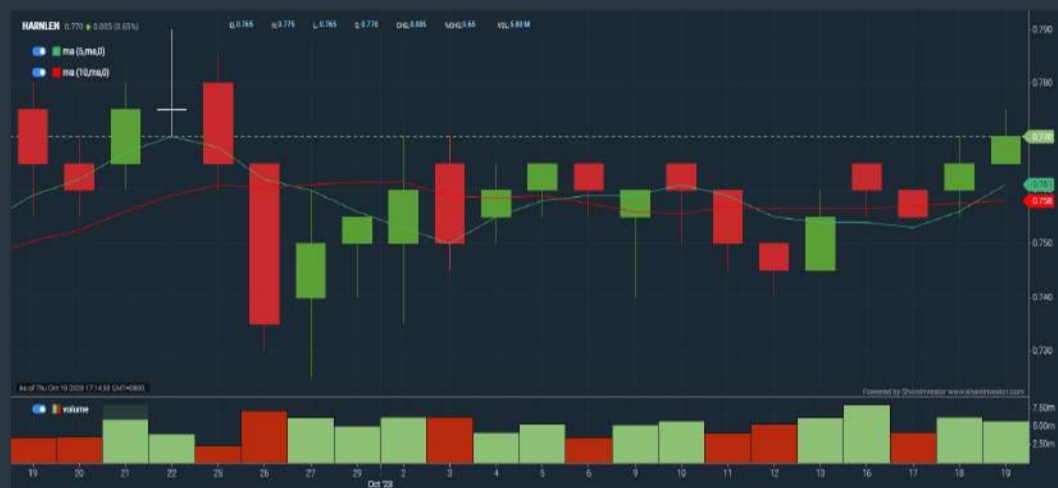
1. Revenue - select (more than) type (1) for the past select (1) financial year(s)
2. Moving Average Below Close - select (MA) type (20) below close price for type (1) days
3. Average Volume - type (5) days average volume type (10000) lots
4. Last Done Price - select (more than) type (0.3)
5. Moving Average Below Close - select (MA) type (10) below close price for type (1) days
6. Moving Average Bullish Crossover - select (MA) type (5) crossed above select (MA) type (10)

> click Save Template > Create New Template type (Non-Shariah Up-Trending Stocks) > click Create Click Save Template As > select Non-Shariah Up Trending Stocks > click Save  
> click Screen Now (may take a few minutes)  
Sort By: Select (Vol) Select (Desc)  
Mouse over stock name > Charts > click C<sup>2</sup> Charts tab or Volume Distribution

### HARN LEN CORPORATION BERHAD (7501)

C<sup>2</sup> Chart

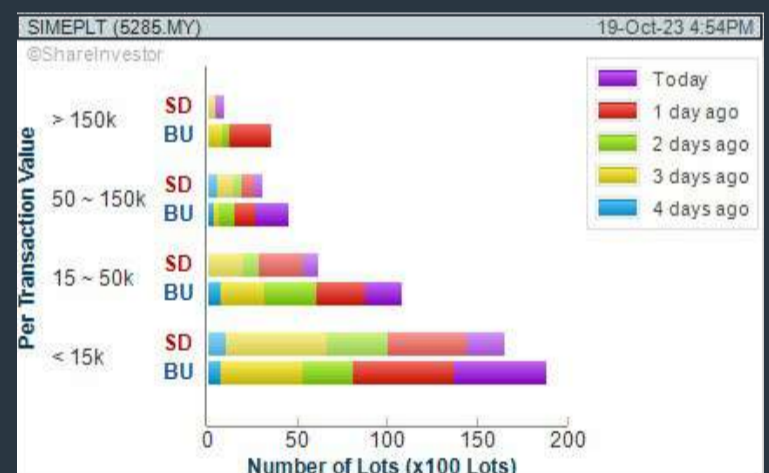
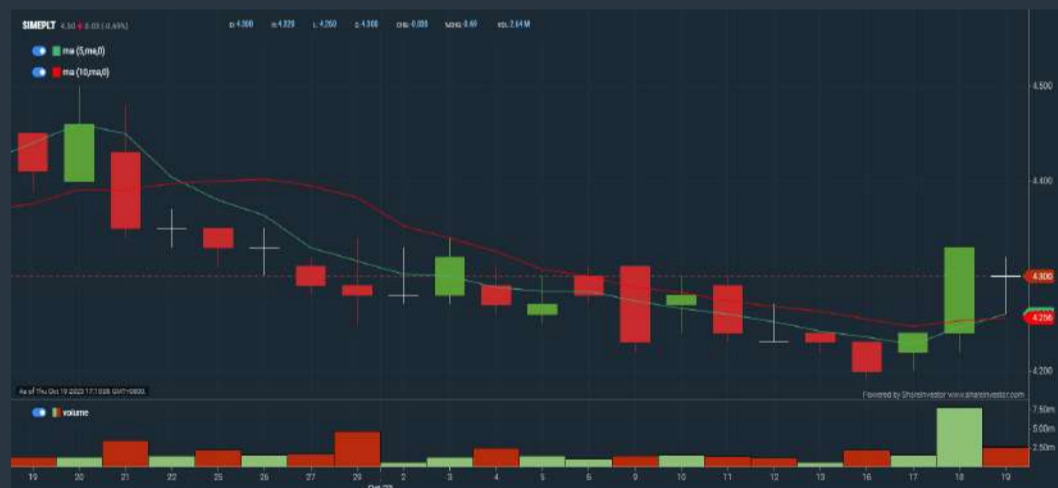
Analysis



### SIME DARBY PLANTATION BERHAD (5285)

C<sup>2</sup> Chart

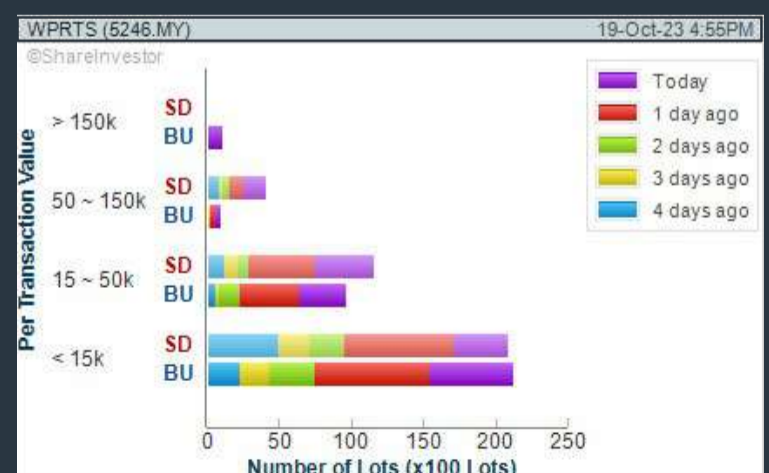
Analysis



### WESTPORTS HOLDINGS BERHAD (5246)

C<sup>2</sup> Chart

Analysis



**Disclaimer:** The information on this page is provided as a service to readers. It does not constitute financial advice and/or any investment recommendations. Past performance is not indicative of future results. We assume no liability for damages resulting from or arising out of the use of such information. It would be best if you did your own research to make your personal investment decisions wisely or consult a licenced investment advisor.

# BURSASTATION Professional



## Stock Scanning

- Technical Analysis (TA) Market Scanner
- Fundamental Analysis (FA) Market Scanner



## Market Data

- Equities
- Derivatives

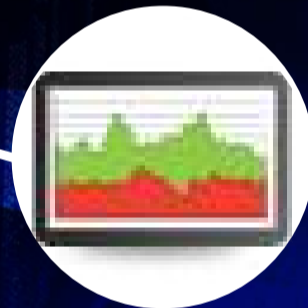
## Monitoring

- Portfolio
- Stock Alerts
- Price Spread Calculator



# Scan. Chart. Analyse.

*Be The Intelligent Investor*

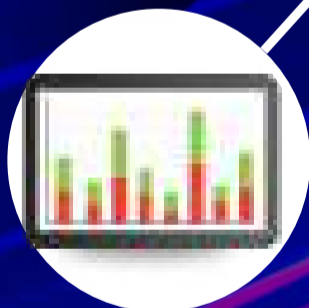


## Price Movements

- Streaming Prices
- Time & Sales
- Trade Summary Matrix
- Quote Movements
- 5 Levels Market Depth
- Historical Price Download

## Charts

- Intraday Charts
- Interactive Charts
- Historical Charts
- Volume Distribution Charts



## Fundamentals

- Factsheets
- Financials
- Insider Trades



Brought to you as a collaborative effort by ShareInvestor and Bursa Malaysia, **BursaStation Professional** is designed with you, the user, in mind, as a user-friendly yet full of powerful features that will appeal to investors/traders who need instant access to fundamental, technical, and trading data, anytime, anywhere. **BursaStation Professional** is a state-of-the-art Stock Market Tracker with Charting Software that places in your hands the power to make better investment decisions.

**CLICK HERE TO START YOUR 14-DAYS FREE TRIAL**

## Price & Total Shareholder Return (as at Yesterday)

Fundamental Analysis

**DEFINITION:** Share price of a company trading at a lower price as compared to its fundamentals (FA) such as financial performance and dividend, allowing it to be attractive to value investors.

**CHART GUIDE:** Total Shareholder Return (TSR) combines share price appreciation and dividend distributions paid to show the total return to the shareholder expressed as a percentage.



ShareInvestor WebPro > Screener > Market Screener (FA & TA) > select BURSA > add criteria

**A. Criteria**

- > click Add Criteria
- Fundamental Analysis Conditions tab (i) Price Earnings Ratio
- Fundamental Analysis Conditions tab >select (ii) CAGR of Net Earnings
- Fundamental Analysis Conditions tab >select (iii) Net Debt To Equity
- Fundamental Analysis Conditions tab >select (iv) Return On Equity (ROE)

**B. Conditions**

1. Price Earnings Ratio - select (less than) type (15) times now
2. CAGR of Net Earnings - select (more than) type (10) % for the past type (3) financial year(s)
3. Net Debt To Equity – select (less than) type (1) for the past select (1) financial year(s)
4. Return On Equity (ROE) – select (more than) type (10) % for the past select (1) financial year(s)

- > click Save Template > Create New Template type (Value Stock) > click Create
- > click Save Template as > select Value Companies > click Save
- > click Screen Now (may take a few minutes)
- Sort by: Select (PE Ratio) Select (Ascending)
- > Mouse over stock name > Factsheet > looking for Total Shareholder Return
- > Mouse over stock name > Charts > click C2 Charts tab

## SYNERGY HOUSE BERHAD (0279)

C<sup>2</sup> Chart



| Period             | Dividend Received | Capital Appreciation | Total Shareholder Return |
|--------------------|-------------------|----------------------|--------------------------|
| Short Term Return  | 5 Days            | +1.00                | +1.45%                   |
|                    | 10 Days           | +1.15                | +2.58%                   |
|                    | 20 Days           | +1.15                | +2.78%                   |
| Medium Term Return | 3 Months          | +1.00                | +1.28%                   |

## EDELTEQ HOLDINGS BERHAD (0278)

C<sup>2</sup> Chart



| Period             | Dividend Received | Capital Appreciation | Total Shareholder Return |
|--------------------|-------------------|----------------------|--------------------------|
| Short Term Return  | 5 Days            | -1.60                | -15.19%                  |
|                    | 10 Days           | -1.40                | -10.67%                  |
|                    | 20 Days           | -1.15                | -25.56%                  |
| Medium Term Return | 3 Months          | -1.30                | -45.62%                  |

## SUNMOW HOLDING BERHAD (03050)

C<sup>2</sup> Chart



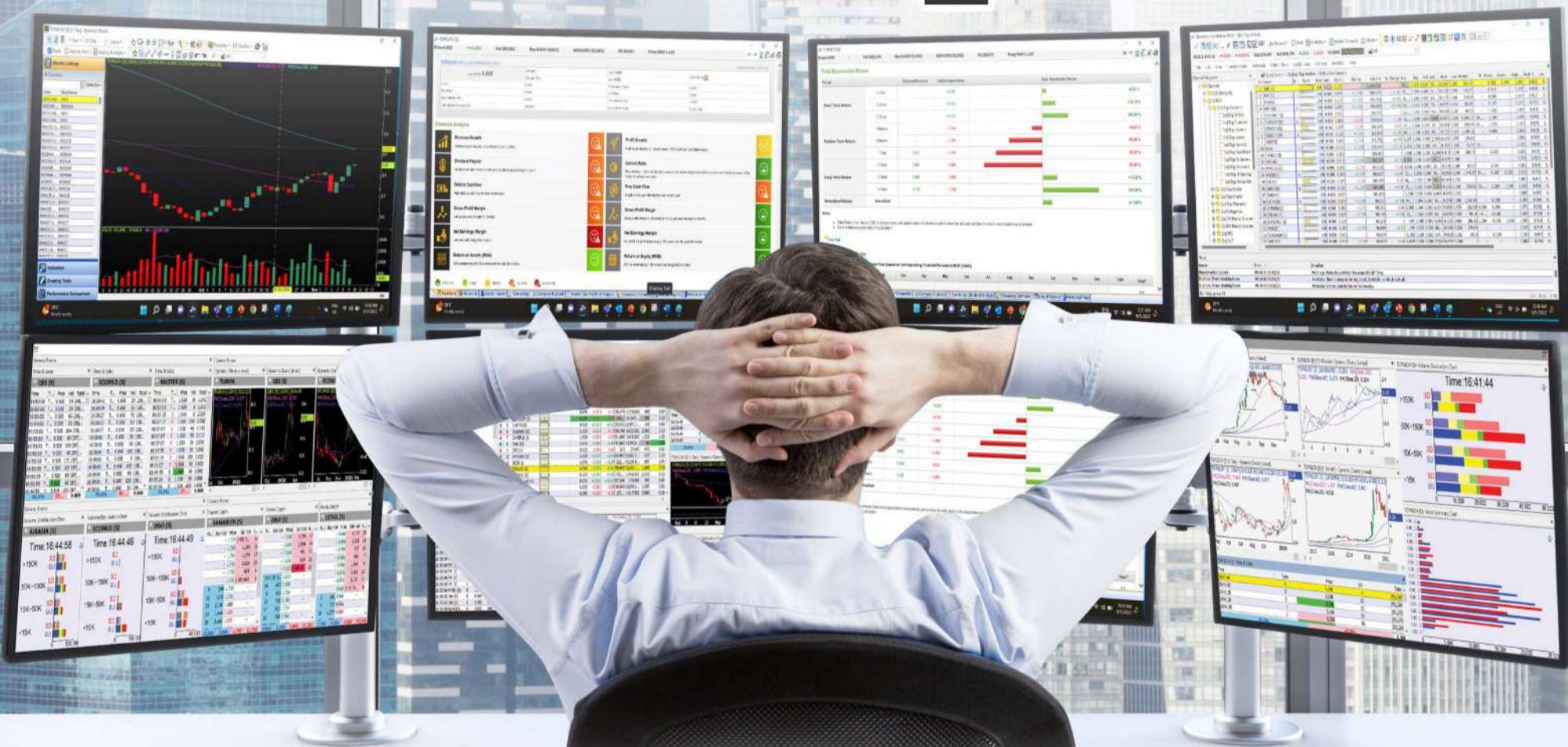
| Period             | Dividend Received | Capital Appreciation | Total Shareholder Return |
|--------------------|-------------------|----------------------|--------------------------|
| Short Term Return  | 5 Days            | -                    | -                        |
|                    | 10 Days           | -                    | -                        |
|                    | 20 Days           | -1.00                | -4.35%                   |
| Medium Term Return | 3 Months          | -1.00                | -4.35%                   |
|                    | 6 Months          | +1.40                | +14.40%                  |
|                    | 1 Year            | +1.00                | +15.79%                  |
| Annualised Return  | Annualised        | -                    | +15.79%                  |

**Disclaimer:** The information on this page is provided as a service to readers. It does not constitute financial advice and/or any investment recommendations. Past performance is not indicative of future results. We assume no liability for damages resulting from or arising out of the use of such information. It would be best if you did your own research to make your personal investment decisions wisely or consult a licenced investment advisor.

# MAKE BETTER TRADING STRATEGIES

with

# SHARE INVESTOR STATION



## 8 Markets Data

- ▶ Get access to data from Bursa, NYSE, Nasdaq, HKEX, SGX, IDX, SET & ASX

## Dynamic Chart

- ▶ Candlestick Pattern Recognition
- ▶ 111 Indicators
- ▶ 39 Drawing Tools
- ▶ Performance Comparison Chart

## Intraday Data

- ▶ Market Depth
- ▶ Trade Summary Matrix & Chart
- ▶ Times & Sales
- ▶ Intraday Market Ticker

## Market Screener

- ▶ 96 criteria ranging from FA, TA, Consensus Estimate
- ▶ Real-time Data

## Power Frame

- ▶ Combining few Dynamic Charts together with intraday information in one frame

## Technical Analysis

## Fundamental Analysis

### Financial Analysis Statement

- ▶ Profit & Loss
- ▶ Balance Sheet
- ▶ Cash Flow Statement
- ▶ More than 20 Financial Ratios
- ▶ Dividend Analysis

### FactSheet

- ▶ Key Stock Information
- ▶ Ownership
- ▶ Consensus Estimates
- ▶ Annual Report
- ▶ Historical Price
- ▶ Insider Trades

Start your 18 days FREE trial now (Valued at RM82)



## Price & Total Shareholder Return (as at Yesterday)

Fundamental Analysis

**DEFINITION:** Company revenue is growing and making good quality of earnings with positive Free Cash Flow.

**CHART GUIDE:** Total Shareholder Return (TSR) combines share price appreciation and distributions paid to show the total return to the shareholder expressed as a percentage.



ShareInvestor WebPro > Screener > Market Screener (FA & TA) > select BURSA > add criteria

**A. Criteria**

1. Fundamental Analysis Conditions tab >select (i) Free Cash Flow, (ii) Revenue Growth, (iii) Gross Profit (Earnings) Margin, (iv) Quality of Earnings, (v) Total Shareholder Returns, > click Add Criteria
2. Fundamental Analysis Conditions tab >select (vi) Total Shareholder Returns > click Add Criteria

**B. Conditions (Criteria Filters)**

1. Free Cash Flow - select (more than) type (1) for the past select (1) financial year(s)
2. Revenue Growth - select (more than) type (1) for the past select (1) financial year(s)
3. Gross Profit (Earnings) Margin - select (more than) type (30) % for the past select (1) financial year(s)
4. Quality of Earnings - select (more than) type (1) for the past select (1) financial year(s)
5. Total Shareholder Return - select (more than) type (5) % for the past select (3) financial year(s)
6. Total Shareholder Return - select (more than) type (5) % for the past select (5) financial year(s)

- > click Save Template > Create New Template type (Growth Companies) > click Create
- > click Save Template as > select Growth Companies > click Save
- > click Screen Now (may take a few minutes)
- > Sort By: Select (Revenue Growth) Select (Desc)
- > Mouse over stock name > Factsheet > looking for Total Shareholder Return

## SEAL INCORPORATED BERHAD (4286)

C<sup>2</sup> Chart

Analysis



| Period             | Dividend Received | Capital Appreciation | Total Shareholder Return |
|--------------------|-------------------|----------------------|--------------------------|
| Short Term Return  | 5 Days            | -0.041               | -7.04%                   |
|                    | 10 Days           | -0.035               | -6.91%                   |
|                    | 20 Days           | -0.075               | -13.76%                  |
| Medium Term Return | 3 Months          | -0.025               | -5.06%                   |
|                    | 6 Months          | -0.155               | -49.21%                  |
|                    | 1 Year            | -0.145               | -49.39%                  |
| Long Term Return   | 2 Years           | -0.130               | -38.24%                  |
|                    | 3 Years           | -0.125               | -44.38%                  |
|                    | 5 Years           | -0.125               | -39.23%                  |
| Annualised Return  | Annualised        | -                    | -43.31%                  |

## EDARAN BERHAD (5036)

C<sup>2</sup> Chart

Analysis



| Period             | Dividend Received | Capital Appreciation | Total Shareholder Return |
|--------------------|-------------------|----------------------|--------------------------|
| Short Term Return  | 5 Days            | -                    | -                        |
|                    | 10 Days           | -0.005               | -0.99%                   |
|                    | 20 Days           | -0.016               | -3.04%                   |
| Medium Term Return | 3 Months          | -                    | -                        |
|                    | 6 Months          | -0.016               | -3.04%                   |
|                    | 1 Year            | -0.005               | -0.91%                   |
| Long Term Return   | 2 Years           | 0.035                | 5.12%                    |
|                    | 3 Years           | 0.053                | 8.68%                    |
|                    | 5 Years           | 0.055                | 8.23%                    |
| Annualised Return  | Annualised        | -                    | +1.22%                   |

## IGB BERHAD (5606)

C<sup>2</sup> Chart

Analysis



| Period             | Dividend Received | Capital Appreciation | Total Shareholder Return |
|--------------------|-------------------|----------------------|--------------------------|
| Short Term Return  | 5 Days            | -0.020               | -0.93%                   |
|                    | 10 Days           | -0.014               | -0.67%                   |
|                    | 20 Days           | -0.020               | -0.93%                   |
| Medium Term Return | 3 Months          | -0.020               | -0.94%                   |
|                    | 6 Months          | -0.100               | -4.08%                   |
|                    | 1 Year            | -0.020               | -0.96%                   |
| Long Term Return   | 2 Years           | 0.150                | 7.48%                    |
|                    | 3 Years           | 0.220                | 10.93%                   |
|                    | 5 Years           | 0.303                | 16.24%                   |
| Annualised Return  | Annualised        | -                    | +6.30%                   |

**Disclaimer:** The information on this page is provided as a service to readers. It does not constitute financial advice and/or any investment recommendations. Past performance is not indicative of future results. We assume no liability for damages resulting from or arising out of the use of such information. It would be best if you did your own research to make your personal investment decisions wisely or consult a licenced investment advisor.





making  
places  
remarkable



usm.com

**XTRA**

XTRA FURNITURE SDN BHD  
The Gardens Mall, Mid Valley City, Lot S-236 & 237  
Lingkar Syed Putra, 59200 Kuala Lumpur  
T. +603 2282 9088 | living@xtrafurniture.com | xtrafurniture.com  
● XTRAFurniture | ● xtrafurnituremsia

## Price & Total Shareholder Return (as at Yesterday)

Fundamental Analysis

**DEFINITION:** Company is paying out dividend with low or moderate leverage.

**CHART GUIDE:** Total Shareholder Return (TSR) combines share price appreciation and distributions paid to show the total return to the shareholder expressed as a percentage.



ShareInvestor WebPro > Screener > Market Screener (FA & TA) > select BURSA > add criteria

**A. Criteria**

- > click Add Criteria
- Fundamental Analysis Conditions tab >select (i) Dividend Yield (Historical)
- Fundamental Analysis Conditions tab >select (ii) Dividend Payout (Historical)
- Fundamental Analysis Conditions tab >select (iii) Total Debt To Equity
- Fundamental Analysis Conditions tab >select (iv) Total Shareholder Returns
- Fundamental Analysis Conditions tab >select (v) Total Shareholder Returns
- Fundamental Analysis Conditions tab / >select (vi) CAGR of Dividend Per Share

- Fundamental Analysis Conditions tab >select (vii) CAGR of Dividend Per Share

**B. Conditions (Criteria Filters)**

1. Dividend Yield - select (more than) type (1) % for the past select (1) financial year(s)
2. Dividend Payout (Historical) - select (between) type (0.5) to type (1) times for the past select (1) financial year(s)
3. Total Debt to Equity – select (less than) type (1) for the past select (1) financial year(s)
4. Total Shareholder Return – select (more than) type (5) % for the past select (3) financial year(s)
5. Total Shareholder Return – select (more than) type (5) % for the past select (5) financial year(s)

6. CAGR of Dividend Per Share – select (less than) type (30) % for the past select (5) financial year(s)
7. CAGR of Dividend Per Share – select (more than) type (1) % for the past select (5) financial year(s)

- > click Save Template > Create New Template type (Dividend Companies) > click Create
- > click Save Template as > select Dividend Companies > click Save
- > click Screen Now (may take a few minutes)
- > Sort By: Select (Dividend Yield) Select (Desc)
- > Mouse over stock name > Factsheet > looking for Total Shareholder Return

## GAS MALAYSIA BERHAD (5209)

C<sup>2</sup> Chart



Analysis

| Period             | Dividend Received | Capital Appreciation | Total Shareholder Return |
|--------------------|-------------------|----------------------|--------------------------|
| Short Term Return  | 5 Days            | -4.63                | -4.58%                   |
|                    | 10 Days           | -4.17                | -4.31%                   |
|                    | 20 Days           | -4.18                | -4.32%                   |
| Medium Term Return | 3 Months          | -4.10                | -4.07%                   |
|                    | 6 Months          | -4.13                | -3.72%                   |
|                    | 1 Year            | -4.23                | -6.61%                   |
| Long Term Return   | 2 Years           | 0.135                | +16.64%                  |
|                    | 3 Years           | 0.295                | +25.28%                  |
|                    | 5 Years           | 0.558                | +30.53%                  |
| Annualised Return  | Annualised        | -                    | +6.47%                   |

## FORMOSA PROSONIC INDUSTRIES (9172)

C<sup>2</sup> Chart



Analysis

| Period             | Dividend Received | Capital Appreciation | Total Shareholder Return |
|--------------------|-------------------|----------------------|--------------------------|
| Short Term Return  | 5 Days            | -4.19                | -4.01%                   |
|                    | 10 Days           | -4.13                | -4.45%                   |
|                    | 20 Days           | -4.14                | -4.02%                   |
| Medium Term Return | 3 Months          | -4.13                | +11.73%                  |
|                    | 6 Months          | -4.13                | -6.62%                   |
|                    | 1 Year            | -4.08                | -3.84%                   |
| Long Term Return   | 2 Years           | 0.200                | -3.09%                   |
|                    | 3 Years           | 0.340                | +10.30%                  |
|                    | 5 Years           | 0.550                | +16.36%                  |
| Annualised Return  | Annualised        | -                    | +11.78%                  |

## KENANGA INVESTMENT BANK BERHAD (6483)

C<sup>2</sup> Chart



Analysis

| Period             | Dividend Received | Capital Appreciation | Total Shareholder Return |
|--------------------|-------------------|----------------------|--------------------------|
| Short Term Return  | 5 Days            | -0.05                | -0.61%                   |
|                    | 10 Days           | -0.09                | -1.15%                   |
|                    | 20 Days           | -0.05                | -2.04%                   |
| Medium Term Return | 3 Months          | -0.04                | -0.67%                   |
|                    | 6 Months          | -0.09                | -0.52%                   |
|                    | 1 Year            | -0.03                | -2.27%                   |
| Long Term Return   | 2 Years           | 0.005                | -3.61%                   |
|                    | 3 Years           | 0.193                | +8.24%                   |
|                    | 5 Years           | 0.237                | +8.77%                   |
| Annualised Return  | Annualised        | -                    | +1.03%                   |

**Disclaimer:** The information on this page is provided as a service to readers. It does not constitute financial advice and/or any investment recommendations. Past performance is not indicative of future results. We assume no liability for damages resulting from or arising out of the use of such information. It would be best if you did your own research to make your personal investment decisions wisely or consult a licenced investment advisor.

Week: 13 October 2023 - 19 October 2023

More Brokers' Call 

| AMINVESTMENT BANK <small>... See More</small> | Call | Target Price | Release Date |
|---|------|--------------|--------------|
| Ancom Nylex Berhad (4758)                     | BUY  | RM1.44       | 18 Oct 2023  |
| Malayan Flour Mills Berhad (3662)             | HOLD | RM0.70       | 16 Oct 2023  |
| Perak Transit Berhad (0186)                   | BUY  | RM1.59       | 13 Oct 2023  |
| Sunway Berhad (5211)                          | BUY  | RM2.42       | 18 Oct 2023  |
| Tenaga Nasional Bhd (5347)                    | BUY  | RM11.50      | 17 Oct 2023  |

| CGS CIMB <small>... See More</small> | Call | Target Price | Release Date |
|--------------------------------------|------|--------------|--------------|
| Sunway Berhad (5211)                 | ADD  | RM2.57       | 17 Oct 2023  |

| KENANGA <small>... See More</small>    | Call           | Target Price | Release Date |
|--|----------------|--------------|--------------|
| Ancom Nylex Berhad (4758)              | OUTPERFORM     | RM1.50       | 19 Oct 2023  |
| IHH Healthcare Berhad (5225)           | OUTPERFORM     | RM7.00       | 18 Oct 2023  |
| Ancom Nylex Berhad (4758)              | OUTPERFORM     | RM1.50       | 18 Oct 2023  |
| IGB REIT (5227)                        | MARKET PERFORM | RM1.66       | 16 Oct 2023  |
| IJM Corporation Berhad Maintain (3336) | OUTPERFORM     | RM2.15       | 13 Oct 2023  |
| RHB Bank Berhad (1066)                 | OUTPERFORM     | RM7.15       | 17 Oct 2023  |

| MIDF <small>... See More</small>       | Call | Target Price | Release Date |
|--|------|--------------|--------------|
| IGB REIT (5227)                        | BUY  | RM1.86       | 16 Oct 2023  |
| IJM Corporation Berhad Maintain (3336) | BUY  | RM2.110      | 13 Oct 2023  |

| UOB KAYHIAN <small>... See More</small> | Call | Target Price | Release Date |
|---|------|--------------|--------------|
| IGB REIT (5227)                         | HOLD | RM1.80       | 16 Oct 2023  |
| Infomina Berhad (0265)                  | BUY  | RM1.94       | 18 Oct 2023  |
| Malayan Flour Mills Berhad (3662)       | BUY  | RM0.77       | 17 Oct 2023  |
| Mr D.I.Y. Group (M) Berhad (5296)       | BUY  | RM2.10       | 18 Oct 2023  |

**Disclaimer:** InveSt does not accept any liability whatsoever for any direct, indirect or consequential losses (including loss of profit) or damages that may arise from the use of information or opinions in this publication. The information and opinions in InveSt are not to be considered as an offer to sell or buy any of the securities discussed. Opinions expressed are subject to change without notice. The Brokers may, from time to time, have interests or positions in the securities mentioned. For the full report on each item listed on this page, please visit [https://www.shareinvestor.com/my/brokers\\_call](https://www.shareinvestor.com/my/brokers_call).

**DEFINITION:** Top 9 stocks with Technical Analysis plus Pattern Matching by 60 pre-defined indicators by the system showing a higher probability of bullish sentiment on the share price.



ShareInvestor WebPro > Screener > Predefined TA Screens > select market BURSA > Most Long Signals > click Scan Results or mouse over each company

## ARB BERHAD (7181.MY)

### ARBB

Price updated at 19 Oct 2023 16:56

|                    |                          |                             |
|--------------------|--------------------------|-----------------------------|
| Last: <b>0.095</b> | Change: <b>-0.005</b>    | Volume: <b>79,501</b>       |
|                    | Change (%): <b>-5.00</b> | Range: <b>0.095 - 0.105</b> |

TA Scanner Results based on historical data up to 19 Oct 2023

| Condition   | Signal  | Explanation  |
|---|---------|--|
| Bollinger Band: Bullish Long Term Volatility Breakout and Trending  | Long    | 1. Close price above upper bollinger band(33,1).<br>2. Volume above average volume(50).<br>3. Average volume(50) is above 300,000. |
| Bollinger Band: Bullish Short Term Volatility Breakout and Trending | Long    | 1. Close price above upper bollinger band(33,1).<br>2. Volume above average volume(10).<br>3. Average volume(10) is above 300,000. |
| Bollinger Band: High Above Upper Bollinger Band                     | Neutral | 1. High above upper bollinger band(14,2).<br>2. Average volume(5) is above 100,000.  |
| DM: Bullish Directional Movement                                    | Long    | -DI(14) crossed below +DI(14)  |
| Donchian Channels: High Above Upper Donchian Channels               | Long    | High crossed above the upper Donchian Channel(14,4)  |
| MA: Short Term Bullish Moving Average Crossover                     | Long    | MA(10) crossed above MA(15) within the last 1 day.   |

## NCT ALLIANCE BERHAD (0056.MY)

### NCT

Price updated at 19 Oct 2023 16:54

|                    |               |                             |
|--------------------|---------------|-----------------------------|
| Last: <b>0.335</b> | Change: -     | Volume: <b>8,030</b>        |
|                    | Change (%): - | Range: <b>0.330 - 0.335</b> |

TA Scanner Results based on historical data up to 19 Oct 2023

| Condition   | Signal | Explanation   |
|---|--------|---|
| Bollinger Band: Bullish Long Term Volatility Breakout and Trending  | Long   | 1. Close price above upper bollinger band(33,1).<br>2. Volume above average volume(50).<br>3. Average volume(50) is above 300,000.  |
| Bollinger Band: Bullish Lower Bollinger Band Support                | Long   | 1. Low 1 day ago below lower bollinger band(20,2).<br>2. Close above close 1 day ago.<br>3. Average volume(5) is above 100,000.   |
| Bollinger Band: Bullish Short Term Volatility Breakout and Trending | Long   | 1. Close price above upper bollinger band(33,1).<br>2. Volume above average volume(10).<br>3. Average volume(10) is above 300,000.  |
| MA: Short Term Bullish Moving Average Crossover                     | Long   | MA(10) crossed above MA(15) within the last 1 day.  |
| RSI: Short Term RSI 50 Bullish Crossover                            | Long   | 1. RSI(20) crossed above 50 within the last 1 day and RSI(20) 1 day ago below 50 for the last 5 days.<br>2. Volume above average volume(125).<br>3. Average volume(5) is above 100,000. |

## MESTRON HOLDINGS BERHAD (0207.MY)

### MESTRON

Price updated at 19 Oct 2023 16:57

|                    |                          |                             |
|--------------------|--------------------------|-----------------------------|
| Last: <b>0.480</b> | Change: <b>+0.005</b>    | Volume: <b>193,644</b>      |
|                    | Change (%): <b>+1.05</b> | Range: <b>0.475 - 0.505</b> |

TA Scanner Results based on historical data up to 19 Oct 2023

| Condition   | Signal  | Explanation   |
|---|---------|---|
| Bollinger Band: Bearish Long Term Volatility Breakout and Trending  | Short   | 1. Close price below lower bollinger band(33,1).<br>2. Volume above average volume(50).<br>3. Average volume(50) is above 300,000.  |
| Bollinger Band: Bearish Short Term Volatility Breakout and Trending | Short   | 1. Close price below lower bollinger band(33,1).<br>2. Volume above average volume(10).<br>3. Average volume(10) is above 300,000.  |
| Bollinger Band: Low Below Lower Bollinger Band                      | Neutral | 1. Low below lower bollinger band(14,2).<br>2. Average volume(5) is above 100,000.  |
| CCI: Bullish CCI Oversold And Reversing                             | Long    | 1. CCI(26) below -100 and CCI(26) 1 day ago decreasing for the last 3 days.<br>2. CCI(26) above CCI(26) 1 day ago   |
| DM: Bearish Directional Movement                                    | Short   | -DI(14) crossed above +DI(14)   |
| Parabolic SAR: Bullish Parabolic SAR Reversal                       | Neutral | 1. Parabolic SAR 1 day ago below close price 1 day ago for the last 5 days.<br>2. Parabolic SAR above close price   |
| RSI: Short Term RSI 50 Bearish Crossover                            | Short   | 1. RSI(20) crossed below 50 within the last 1 day and RSI(20) 1 day ago above 50 for the last 5 days.<br>2. Volume above average volume(125).<br>3. Average volume(5) is above 100,000. |
| Volume: 10 Days large value Buy Up trade                            | Long    | 1. 150K value Buy Up greater than Sell Down by 20% for 10 days.<br>2. 50K-100K value Buy Up greater than Sell Down by 20% for 10 days.<br>3. Average volume(10) is above 1000000        |
| Volume: 5 Days large value Buy Up trade                             | Long    | 1. 150K value Buy Up greater than Sell Down by 20% for 5 days.<br>2. 50K-100K value Buy Up greater than Sell Down by 20% for 5 days.<br>3. Average volume(10) is above 1000000          |
| Williams %R: Bullish Williams %R                                    | Long    | 1. Williams %R(26) between -80 and -100.<br>2. Average volume(5) is above 100,000.  |

## GFM SERVICES BERHAD (0039.MY)

### GFM

Price updated at 19 Oct 2023 16:59

|                    |               |                             |
|--------------------|---------------|-----------------------------|
| Last: <b>0.215</b> | Change: -     | Volume: <b>49,532</b>       |
|                    | Change (%): - | Range: <b>0.205 - 0.220</b> |

TA Scanner Results based on historical data up to 19 Oct 2023

| Condition   | Signal  | Explanation  |
|---|---------|--|
| Bollinger Band: Bullish Long Term Volatility Breakout and Trending  | Long    | 1. Close price above upper bollinger band(33,1).<br>2. Volume above average volume(50).<br>3. Average volume(50) is above 300,000. |
| Bollinger Band: Bullish Short Term Volatility Breakout and Trending | Long    | 1. Close price above upper bollinger band(33,1).<br>2. Volume above average volume(10).<br>3. Average volume(10) is above 300,000. |
| Bollinger Band: High Above Upper Bollinger Band                     | Neutral | 1. High above upper bollinger band(14,2).<br>2. Average volume(5) is above 100,000.  |
| Donchian Channels: High Above Upper Donchian Channels               | Long    | High crossed above the upper Donchian Channel(14,4)  |
| MACD: Bullish MACD Crossover  | Long    | 1. MACD(12,26) diff line crossed above the MACD(12,26) signal line.<br>2. MACD Histogram(12,26) is above 0.                        |
| Parabolic SAR: Bearish Parabolic SAR Reversal                       | Neutral | 1. Parabolic SAR 1 day ago above close price 1 day ago for the last 5 days.<br>2. Parabolic SAR below close price                  |
| Volume: Volume Spike  | Long    | 1. Volume is more than 500% above average volume(10).<br>2. Volume above 200000.<br>3. Close price above 0.10                      |
| Williams %R: Bearish Williams %R                                    | Short   | 1. Williams %R(26) between 0 and -20.<br>2. Average volume(5) is above 100,000.  |

**Disclaimer:** The information on this page is provided as a service to readers. It does not constitute financial advice and/or any investment recommendations. Past performance is not indicative of future results. We assume no liability for damages resulting from or arising out of the use of such information. It would be best if you did your own research to make your personal investment decisions wisely or consult a licenced investment advisor.



**CENTRAL GLOBAL BERHAD (8052.MY)**

**CGB**

Price updated at 19 Oct 2023 16:57

|                    |                          |                             |
|--------------------|--------------------------|-----------------------------|
| Last: <b>2.990</b> | Change: <b>+0.060</b>    | Volume: <b>46,027</b>       |
|                    | Change (%): <b>+2.05</b> | Range: <b>2.830 - 3.040</b> |

TA Scanner Results based on historical data up to 19 Oct 2023

| Condition                                       | Signal  | Explanation  |
|---|---------|--|
| Bollinger Band: High Above Upper Bollinger Band | Neutral | 1. High above upper bollinger band(14,2).<br>2. Average volume(5) is above 100,000.  |
| Price: Consecutive Days Gains                   | Long    | 1. Close price has been increasing over the last 5 days.<br>2. Average volume(5) above 100,000.  |
| Price: New 52 Week High                         | Long    | 1. Stock reach a new 52 week high.<br>2. Average volume(30) is above 50000.  |
| RSI: RSI Overbought                             | Short   | 1. RSI(20) is above 80.<br>2. RSI(20) is increasing for the last 3 days.<br>3. Stock has more than 75 days of historical data.   |
| Volume: 10 Days large value Buy Up trade        | Long    | 1. 150K value Buy Up greater than Sell Down by 20% for 10 days.<br>2. 50K-100K value Buy Up greater than Sell Down by 20% for 10 days.<br>3. Average volume(10) is above 1000000 |
| Volume: 5 Days large value Buy Up trade         | Long    | 1. 150K value Buy Up greater than Sell Down by 20% for 5 days.<br>2. 50K-100K value Buy Up greater than Sell Down by 20% for 5 days.<br>3. Average volume(10) is above 1000000   |
| Williams %R: Bearish Williams %R                | Short   | 1. Williams %R(26) between 0 and -20.<br>2. Average volume(5) is above 100,000.  |



**SEE HUP CONSOLIDATED BHD (7053.MY)**

**SEEHUP**

Price updated at 19 Oct 2023 16:10

|                    |               |                             |
|--------------------|---------------|-----------------------------|
| Last: <b>0.980</b> | Change: -     | Volume: -                   |
|                    | Change (%): - | Range: <b>0.980 - 0.980</b> |

TA Scanner Results based on historical data up to 19 Oct 2023

| Condition   | Signal  | Explanation   |
|---|---------|---|
| Candlestick: Bullish Kicking                          | Long    | Bullish: Kicking  |
| DM: Bullish Directional Movement                      | Long    | -DI(14) crossed below +DI(14)   |
| Donchian Channels: High Above Upper Donchian Channels | Long    | High crossed above the upper Donchian Channel(14,4)   |
| MA: Bullish Price Crossover                           | Long    | 1. Close price crossed above MA(40) within the last 1 day.<br>2. Previous day close price is below the MA(10) for the last 5 days |
| MACD: Bullish MACD Crossover                          | Long    | 1. MACD(12,26) diff line crossed above the MACD(12,26) signal line.<br>2. MACD Histogram(12,26) is above 0.                       |
| Parabolic SAR: Bearish Parabolic SAR Reversal         | Neutral | 1. Parabolic SAR 1 day ago above close price 1 day ago for the last 5 days.<br>2. Parabolic SAR below close price                 |



**EDEN INC. BERHAD (7471.MY)**

**EDEN**

Price updated at 19 Oct 2023 16:50

|                    |                          |                             |
|--------------------|--------------------------|-----------------------------|
| Last: <b>0.180</b> | Change: <b>-0.005</b>    | Volume: <b>4,165</b>        |
|                    | Change (%): <b>-2.70</b> | Range: <b>0.175 - 0.185</b> |

TA Scanner Results based on historical data up to 19 Oct 2023

| Condition  | Signal | Explanation  |
|--|--------|--|
| Bollinger Band: Bullish Long Term Volatility Breakout and Trending | Long   | 1. Close price above upper bollinger band(33,1).<br>2. Volume above average volume(50).<br>3. Average volume(50) is above 300,000. |



**UMW HOLDINGS BERHAD (4588.MY)**

**UMW**

Price updated at 19 Oct 2023 16:59

|                    |               |                             |
|--------------------|---------------|-----------------------------|
| Last: <b>4.810</b> | Change: -     | Volume: <b>13,141</b>       |
|                    | Change (%): - | Range: <b>4.790 - 4.810</b> |

TA Scanner Results based on historical data up to 19 Oct 2023

| Condition   | Signal | Explanation  |
|---|--------|--|
| Bollinger Band: Bullish Long Term Volatility Breakout and Trending  | Long   | 1. Close price above upper bollinger band(33,1).<br>2. Volume above average volume(50).<br>3. Average volume(50) is above 300,000.   |
| Bollinger Band: Bullish Short Term Volatility Breakout and Trending | Long   | 1. Close price above upper bollinger band(33,1).<br>2. Volume above average volume(10).<br>3. Average volume(10) is above 300,000.   |
| MA: Short Term Bullish Moving Average Crossover                     | Long   | MA(10) crossed above MA(15) within the last 1 day.   |
| Volume: 10 Days large value Buy Up trade                            | Long   | 1. 150K value Buy Up greater than Sell Down by 20% for 10 days.<br>2. 50K-100K value Buy Up greater than Sell Down by 20% for 10 days.<br>3. Average volume(10) is above 1000000 |



**AURO HOLDINGS BERHAD (5025.MY)**

**AURO**

Price updated at 19 Oct 2023 16:59

|                    |                          |                             |
|--------------------|--------------------------|-----------------------------|
| Last: <b>0.165</b> | Change: <b>-0.005</b>    | Volume: <b>99,756</b>       |
|                    | Change (%): <b>-2.94</b> | Range: <b>0.165 - 0.175</b> |

TA Scanner Results based on historical data up to 19 Oct 2023

| Condition   | Signal  | Explanation  |
|---|---------|--|
| Bollinger Band: Bullish Long Term Volatility Breakout and Trending  | Long    | 1. Close price above upper bollinger band(33,1).<br>2. Volume above average volume(50).<br>3. Average volume(50) is above 300,000. |
| Bollinger Band: Bullish Short Term Volatility Breakout and Trending | Long    | 1. Close price above upper bollinger band(33,1).<br>2. Volume above average volume(10).<br>3. Average volume(10) is above 300,000. |
| Bollinger Band: High Above Upper Bollinger Band                     | Neutral | 1. High above upper bollinger band(14,2).<br>2. Average volume(5) is above 100,000.  |
| CCI: Bearish CCI Overbought And Reversing                           | Short   | 1. CCI(26) above 100 and CCI(26) 1 day ago increasing for the last 3 days.<br>2. CCI(26) below CCI(26) 1 day ago                   |
| DM: Bullish Directional Movement                                    | Long    | -DI(14) crossed below +DI(14)  |
| Donchian Channels: High Above Upper Donchian Channels               | Long    | High crossed above the upper Donchian Channel(14,4)  |

**Disclaimer:** The information on this page is provided as a service to readers. It does not constitute financial advice and/or any investment recommendations. Past performance is not indicative of future results. We assume no liability for damages resulting from or arising out of the use of such information. It would be best if you did your own research to make your personal investment decisions wisely or consult a licenced investment advisor.

| Condition   | Signal  | Explanation  |
|---|---------|--|
| Bollinger Band: Bullish Short Term Volatility Breakout and Trending | Long    | 1. Close price above upper bollinger band(33,1).<br>2. Volume above average volume(10).<br>3. Average volume(10) is above 300,000. |
| Bollinger Band: Low Below Lower Bollinger Band                      | Neutral | 1. Low below lower bollinger band(14,2).<br>2. Average volume(5) is above 100,000.   |
| DM: Bullish Directional Movement                                    | Long    | -DI(14) crossed below +DI(14)  |
| Volume: Volume Spike  | Long    | 1. Volume is more than 500% above average volume(10).<br>2. Volume above 200000.<br>3. Close price above 0.10                      |

# MALAYSIA SECURES OVER RM230 BILLION IN FDI COMMITMENTS AS OF SEPT 2023 — ZAFRUL

**A**ccording to the Minister of Investment, Trade, and Industry (MITI) Tengku Datuk Seri Zafrul Abdul Aziz, Malaysia has secured a total of RM230.07 billion in foreign direct investment commitments through a series of Trade and Investment Missions held from January to September 2023. This includes RM23.07 billion in investment commitments from Japan, RM170 billion from China, RM24 billion from the Republic of Korea and RM13 billion from Singapore.

In a written parliamentary reply to Datuk Zulkaferi Bin Hanapi (PN-Tanjung Karang), he noted that out of the total investment commitments of RM230.07 billion, 51.38% or RM118.21 billion is expected to be finalized this year. He added that from January to June 2023, Malaysia managed to secure approved investments totalling RM132.6 billion in the service, manufacturing and primary

sectors, involving 2,651 projects. This is expected to create 51,853 job opportunities in the country.

Domestic direct investment (DDI) accounted for 52.2% or RM69.3 billion of the total approved investment driven by investments in the service sector, particularly in real estate and the primary sector. Total FDI contributed 47.8% or RM63.3 billion to approved investments.

Compared with 2022, Malaysia recorded approved investments worth RM267.8 billion in the manufacturing, service and primary sectors, with FDI accounting for 61% or RM163.3 billion of the total investments while DDI represented 39% or RM104.4 billion of the total approved investments.

China is the largest investor with the approval of 91 projects worth RM55.4 billion, followed by the United States (RM29.2 billion), the Netherlands (RM20.4 billion), Singapore (RM13.5 billion) and Japan (RM11.4 billion).

## **CAPITAL MARKETS MALAYSIA LAUNCHES SIMPLIFIED ESG DISCLOSURE GUIDE FOR SMES**

Capital Markets Malaysia (CMM), an affiliate of the Securities Commission Malaysia, has launched the Simplified ESG Disclosure Guide (SEDG) targeted at SMEs within global supply chains. The guide simplifies ESG-related frameworks and provides guidelines on ESG disclosures to SMEs. It is aligned to global, local and government frameworks and reporting standards, including the Global Reporting Initiative, the International Sustainability Standards Board, the Bursa Malaysia Sustainability Reporting Guide and Malaysian Code on Corporate Governance. Consultations were conducted with stakeholders such as large multinational companies, public-listed companies, SMEs and regulators when formulating the guide.

SC executive chairman and CMM chairman Datuk Seri Dr Awang Adek Hussin said that as we collectively transform and elevate Malaysia's economic system through the adoption of international standards and best practices, it is important to ensure that no SME is left behind. To

support inclusive and extensive adoption, CMM will launch the Bahasa Malaysia and Simplified Mandarin versions of the SEDG by end 2023.

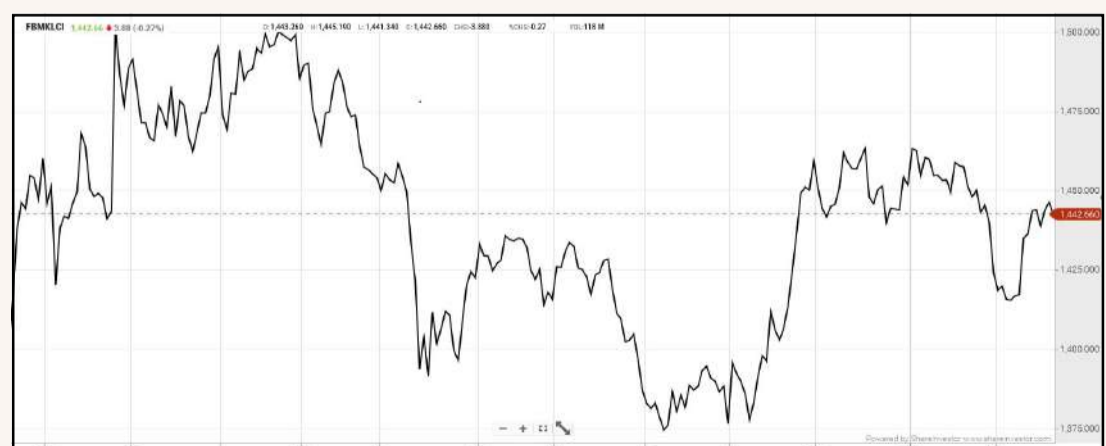
The SEDG comprises 35 priority disclosures that will enable SMEs to respond to disclosure requests from stakeholders. It is categorised into basic, intermediate and advanced levels to cater to different SMEs.

According to CMM general manager Navina Balasingam, the journey of adopting sustainable practices can be daunting for SMEs. As such, CMM's goal is to empower them with a framework that provides straightforward guidance that is structured and practical for SMEs to navigate the process of tracking and reporting their ESG data. CMM has also launched a SEDG Adopter Programme to support SMEs with in-person training, tutorials and workshops nationwide. The reception to the programme has been overwhelming.

Early adopters of the SEDG include banks, multinational companies, and industry associations such as Dewan Perniagaan Melayu Malaysia, the Associated Chinese Chambers of Commerce and Industry of Malaysia, the Malaysian Associated Indian Chambers of Commerce and Industry, and Small and Medium Enterprises Association. CMM plans to launch specialised sectoral disclosure guidance in early 2024. [For more information on the SEDG and to download the Guide, click this link.](#)

## EYE ON THE MARKETS

On Thursday (19Oct), the Ringgit closed at 4.7660 against the USD and 3.4677 to the Sing Dollar. On Monday (16Oct), the FBM KLCI opened at 1445.36. As at Thursday (19Oct) 5:00pm, the FBM KLCI closed down 2.70 points at 1442.66. Over in US, the overnight Dow Jones Industrial Average closed down 250.91 points (-0.75%) to 33,414.17 whilst the NASDAQ shed 128.13 points (-0.96%) to 13,186.17.



KLCI 1 Year Chart



## Over 5 trading days



ShareInvestor WebPro ([www.shareinvestor.com/my](http://www.shareinvestor.com/my))

1. Price > Stock Prices
2. Select Market: NASDAQ / NYSE / IDX / SET / HKEX / SGX (One bourse at a time)
3. select Stocks Tab
4. select Ranking Top Gainers or Top Losers (Over 5 Trading Days)
5. Mouse over Column Layout > select Edit Customs > select Name > select Last Done Price > select 5 Days Change > select 52 Weeks High > select 52 Weeks Low > Mouse Over Column Layout > select Custom

### NASDAQ (USD)

#### Top Gainers

| Name                    | Last Done | Change Over 5 Days | 52 Weeks High | 52 Weeks Low |
|-------------------------|-----------|--------------------|---------------|--------------|
| NETFLIX INC             | 401.770   | +40.570            | 485.000       | 237.730      |
| WINMARK CORPORATION     | 419.330   | +25.660            | 418.580       | 227.050      |
| LULULEMON ATHLETICA INC | 396.190   | +22.250            | 419.860       | 286.575      |
| MICROSTRATEGY           | 342.350   | +18.750            | 475.092       | 132.560      |
| SHOCKWAVE MEDICAL INC   | 203.360   | +18.530            | 320.540       | 172.500      |

#### Top Losers

| Name                        | Last Done | Change Over 5 Days | 52 Weeks High | 52 Weeks Low |
|-----------------------------|-----------|--------------------|---------------|--------------|
| BOOKING HOLDINGS INC        | 2,785.200 | -164.880           | 3,251.709     | 1,750.870    |
| MONOLITHIC POWER SYSTEM INC | 433.750   | -59.290            | 595.980       | 307.870      |
| LAM RESEARCH CORP           | 601.950   | -53.010            | 726.525       | 315.700      |
| MERCADOLIBRE INC            | 1,179.960 | -50.000            | 1,451.560     | 792.457      |
| NVIDIA CORP                 | 421.010   | -48.440            | 502.660       | 116.180      |

### NYSE (USD)

#### Top Gainers

| Name                           | Last Done | Change Over 5 Days | 52 Weeks High | 52 Weeks Low |
|--------------------------------|-----------|--------------------|---------------|--------------|
| TEXAS PACIFIC LAND CORPORATION | 1,965.020 | +102.050           | 2,739.000     | 1,266.210    |
| CHIPOTLE MEXICAN GRILL         | 1,847.630 | +66.150            | 2,175.010     | 1,344.050    |
| FAIR ISAAC CORP                | 919.260   | +26.920            | 922.230       | 400.225      |
| HUMANA INC                     | 522.720   | +22.910            | 571.300       | 423.290      |
| BOSTON BEER CO INC             | 371.460   | +22.220            | 422.750       | 296.270      |

#### Top Losers

| Name                     | Last Done   | Change Over 5 Days | 52 Weeks High | 52 Weeks Low |
|--------------------------|-------------|--------------------|---------------|--------------|
| BERKSHIRE HATHAWAY INC   | 515,549.990 | -7,150.010         | 566,569.970   | 410,112.240  |
| NVR INC                  | 5,563.550   | -332.670           | 6,525.000     | 3,935.000    |
| AUTOZONE INC             | 2,494.660   | -58.040            | 2,750.000     | 2,249.360    |
| WATSCO INC               | 353.970     | -43.040            | 406.080       | 228.610      |
| BIO RAD LABORATORIES INC | 317.260     | -37.800            | 467.950       | 317.260      |

### IDX (Rupiah)

#### Top Gainers

| Name                         | Last Done  | Change Over 5 Days | 52 Weeks High | 52 Weeks Low |
|------------------------------|------------|--------------------|---------------|--------------|
| BARITO RENEWABLES ENERGY TBK | 4,050.000  | +2,160.000         | 4,270.000     | 975.000      |
| BAYAN RESOURCES TBK          | 19,925.000 | +1,375.000         | 24,800.000    | 7,015.000    |
| INDO TAMBANGRAYA MEGAH TBK   | 27,950.000 | +1,100.000         | 45,650.000    | 22,125.000   |
| INDOINTERNET TBK             | 19,725.000 | +875.000           | 21,250.000    | 16,500.000   |
| RODA VIVATEX                 | 14,675.000 | +525.000           | 17,000.000    | 8,700.000    |

#### Top Losers

| Name                              | Last Done  | Change Over 5 Days | 52 Weeks High | 52 Weeks Low |
|-----------------------------------|------------|--------------------|---------------|--------------|
| METROPOLITAN KENTJ                | 29,200.000 | -2,125.000         | 46,200.000    | 16,950.000   |
| INDOSAT(P.T. INDOSAT TBK)         | 9,900.000  | -800.000           | 10,850.000    | 5,275.000    |
| MAHA PROPERTI INDONESIA TBK       | 2,190.000  | -620.000           | 4,750.000     | 595.000      |
| INDOFOOD CBP SUKSES MAKMUR TBK PT | 10,425.000 | -550.000           | 11,925.000    | 9,100.000    |
| AKASHA WIRA INTERNATIONAL TBK     | 10,425.000 | -525.000           | 14,125.000    | 6,375.000    |

### SET (Thai Baht)

#### Top Gainers

| Name  | Last Done | Change Over 5 Days | 52 Weeks High | 52 Weeks Low |
|-------|-----------|--------------------|---------------|--------------|
| CHOTI | 128.000   | +7.500             | 179.000       | 112.000      |
| KWC   | 264.000   | +4.000             | 299.000       | 224.000      |
| SPI   | 67.750    | +2.750             | 80.000        | 55.250       |
| BBIK  | 107.500   | +2.500             | 143.500       | 89.000       |
| PTTEP | 171.500   | +2.500             | 195.000       | 134.500      |

#### Top Losers

| Name   | Last Done | Change Over 5 Days | 52 Weeks High | 52 Weeks Low |
|--------|-----------|--------------------|---------------|--------------|
| OHTL   | 468.000   | -14.000            | 610.000       | 420.000      |
| SCC    | 290.000   | -10.000            | 360.000       | 290.000      |
| MASTER | 46.250    | -8.750             | 91.500        | 44.000       |
| HANA   | 58.000    | -6.750             | 66.250        | 32.750       |
| CBG    | 66.500    | -6.000             | 106.000       | 61.250       |

### HKEX (HKD)

#### Top Gainers

| Name                              | Last Done | Change Over 5 Days | 52 Weeks High | 52 Weeks Low |
|-----------------------------------|-----------|--------------------|---------------|--------------|
| SHIYUE DAOTIAN GROUP CO. LTD.     | 24.700    | +5.860             | 25.950        | 16.600       |
| SUNNY OPTICAL TECHNOLOGY GROUP    | 65.300    | +4.300             | 119.700       | 50.300       |
| SHENZHO INTERNATIONAL GROUP HLDGS | 79.600    | +2.500             | 109.700       | 53.100       |
| CANGGANG RAILWAY LTD              | 12.400    | +1.860             | 12.400        | 1.500        |
| YSB INC                           | 54.350    | +1.250             | 64.500        | 19.000       |

#### Top Losers

| Name                     | Last Done | Change Over 5 Days | 52 Weeks High | 52 Weeks Low |
|--------------------------|-----------|--------------------|---------------|--------------|
| YUM CHINA HOLDINGS INC   | 409.200   | -25.800            | 514.500       | 300.000      |
| TENCENT HOLDINGS LIMITED | 291.200   | -25.400            | 416.600       | 188.213      |
| BAIDU INC                | 107.700   | -23.800            | 166.300       | 73.700       |
| BAIDU INC                | 100.800   | -21.900            | 143.000       | 100.600      |
| TENCENT HOLDINGS LIMITED | 274.000   | -21.800            | 342.000       | 273.600      |

### SGX (SGD)

#### Top Gainers

| Name             | Last Done | Change Over 5 Days | 52 Weeks High | 52 Weeks Low |
|------------------|-----------|--------------------|---------------|--------------|
| UOI              | 6.200     | +0.060             | 6.658         | 6.060        |
| CHEMICAL IND     | 0.640     | +0.050             | 0.775         | 0.565        |
| ASCENT BRIDGE*   | 0.430     | +0.030             | 0.800         | 0.210        |
| BAKER TECHNOLOGY | 0.550     | +0.030             | 0.685         | 0.460        |
| PASTURE HOLDINGS | 0.200     | +0.030             | 0.250         | 0.170        |

#### Top Losers

| Name            | Last Done | Change Over 5 Days | 52 Weeks High | 52 Weeks Low |
|-----------------|-----------|--------------------|---------------|--------------|
| JMH USD         | 40.900    | -3.260             | 54.890        | 40.590       |
| JARDINE C&C     | 28.790    | -2.190             | 35.580        | 27.250       |
| NIO INC. USD OV | 7.820     | -1.160             | 15.780        | 7.420        |
| DBS             | 33.170    | -0.830             | 35.855        | 30.300       |
| UOB             | 27.880    | -0.810             | 31.400        | 25.910       |

# ESG INVESTING REGAINS FOCUS



Devanesan  
Evanson

**Chief Executive  
Officer, Minority  
Shareholders Watch  
Group**

**A**s some global headwinds subside, the environment, social and governance (ESG) space could regain interest among fund managers as a focal investment point. Domestically, the renewable energy (RE) space is seeing unprecedented rapid development and news flow with clarity emerging on how industry players plan to achieve their net-zero carbon goals while also actively working to attract more foreign direct investments (FDIs) to develop the RE industry. The post-pandemic recovery has put ESG in the spotlight with ESG frameworks gradually acquiring centre stage as PLCs acknowledge that ESG compliance does boost long term organisational growth.

## **WE HAVE SEEN SOME POSITIVE DEVELOPMENTS IN THE DOMESTIC ESG SPACE OF LATE:**

### **PETRONAS tackling transition risks:**

In June 2022, national oil corporation PETRONAS established Gentari Sdn Bhd to diversify its income stream to clean energy. By the end of 2022, Gentari achieved 1.6GW of global RE capacity in operations and under development (vs 8.7GW of RE installed capacity in Malaysia for perspective).

### **Sarawak leading the way in SAF:**

Back in May 2023, the Sarawak government unveiled the world's first sustainable aviation fuel (SAF) derived from algae. Tan Sri Abang Johari Tun Openg, Sarawak Premier said there is a large potential and addressable market for SAF given its current supply scarcity, a rebound of long-haul air travel demand and increasing regulatory push towards decarbonising the aviation sector.

### **Growing RE capacity and EV adoption:**

For solar, the government has unveiled the Corporate Green Power Programme (CGPP) with an 800MW quota size, which boasts an estimated solar EPCC (engineering, procurement, construction, and commissioning) opportunities in the range of RM2 billion - RM3 billion if the CGPP is fully allocated. Separately, the Government recently lifted the RE export ban which had been in place since October 2021. Singapore is anticipated to be the main RE export target market given its proximity, scarcity of land and projected increase in energy demand. For electric vehicles (EVs), favourable national policies are expected to push for broader adoption of EVs among Malaysians, coupled with the introduction of EV makes like Tesla to the local market.

## WAY FORWARD FOR ESG

It is believed that ESG is here to stay. Of all, fiduciary duty has been a primary driver for institutional investors to incorporate ESG factors into investment decisions. In a 2021 survey of 805 global institutional investors by RBC Global Asset Management, most respondents (57%) selected fiduciary duty as their top reason for considering ESG factors, followed closely by risk-adjusted returns (52%). In essence, corporate directors and officers have a duty to act in the best interests of the corporation and institutional investors such as pension trustees have an obligation duty to act in the best interests of those whose money they are entrusted with.

On top of that, funds are ramping up their in-house ESG expertise given increasing stakeholder pressure from asset owners as well as the need for technical expertise to analyse the increasingly complex and rapidly evolving ESG standards. In addition, we have seen an increasing level of money being invested in ESG space. Evidently, when the United Nations-backed Principles for Responsible Investment (PRI) was launched in 2006, it had 63 signatories responsible for US\$6.5 trillion in assets under management. But by end-2021, the PRI had racked up an astounding 3,826 signatories managing some US\$121 trillion in assets and the growth continues – a testament that the financial sector is committed to ESG.

In another demonstration of the financial force behind ESG, Mark Carney and partners launched the Glasgow Financial Alliance for Net Zero (GFANZ) in 2021 as a “forum for leading financial institutions to accelerate the transition to a net-zero global economy.” The GFANZ includes separate net-zero pledges for asset managers, asset owners, banks, insurers and service providers that have drawn support from more than 450 financial sector organisations representing US\$130 trillion in assets.

On the other hand, corporations with strong ESG performance tend to incur a lower cost of capital. In other words, they have access to cheaper debt and equity financing because lenders and investors view strong ESG performance as an indicator of lower risk. A 2021 study published in the journal *Critical Perspectives on Accounting* examined the cost of debt in 6,018 cases across 15 European countries over an 11-year period. It was found that firms with stronger ESG disclosures and more robust ESG performance had a lower cost of debt, thus concluding that “as ESG performance increases, the amount of interest that lending institutions are willing to receive for a pound of debt for such firms decreases”.

Meanwhile, consumers demand products to be manufactured sustainably, expecting companies to step up and address sustainability challenges. For instance, a 2021 study by Ernst & Young found that a strong majority of 69% of Canadian consumers expect companies to solve sustainability issues.

Deloitte also found similar results in the US market with 65% of consumers expecting CEOs to do more to progress on societal issues such as reducing carbon emissions, tackling air pollution, and making business supply chains more sustainable. These data make clear that consumers are increasingly driving corporate ESG performance while their rising expectations of corporations suggest that ESG and climate action are now a component of companies’ social licence to operate.

**By MSWG Team**

*This article appeared in the The Observer, a weekly newsletter published by The Minority Shareholders Watch Group (MSWG) and reproduced here with their permission. Do follow MSWG's Twitter account at @MSWGMalaysia and share your thought on their tweets from time to time.*



CHECK OUT  
SHAREINVESTOR  
**BROKERS' CALL**  
Weekly Buy/Sell/Hold calls from leading Malaysian Brokerages.

BUY HOLD SELL

Go To Brokers' Call













**Affin Bank Berhad (AFFIN)** is pleased to announce that Affin Islamic Bank Berhad, a wholly-owned subsidiary of the Bank had on 18 October 2023 fully redeemed its AT1 Sukuk Wakalah of RM300 million in nominal value. The AT1 Sukuk Wakalah was issued on 18 October 2018 under the Sukuk Programme.

[READ MORE](#)

The Board of Directors of **Kinergy Advancement Berhad (KAB)** wishes to disclose further information on the announcement made on 18 October 2023 in respect of the HOA between KABEH with XSDIP, that the Company decided not to proceed with the Definitive Agreements is a result of the performance within the terms of the Definitive Agreements has not met its intended purpose.

[READ MORE](#)



READ MORE 

The Board of Directors of **Malayan Banking Berhad (MAYBANK)** wishes to announce that the Company had on 19 October 2023 entered into a conditional share sale agreement with PNB in relation to the Proposed Acquisition.



READ MORE 

The Board of Directors of **Mi Technovation Berhad (MI)** wishes to announce that Mi Semiconductor Pte. Ltd., a wholly-owned subsidiary of Mi Technovation, had on 19 October 2023, entered into an investment agreement with Xiaoshan Economic and Technological Development Zone Administration Committee to invest in a research, development and manufacturing facility for power module and devices in Xiaoshan, Hangzhou City which amounting to USD30.00 million (equivalent to approximately RM142 million).



**YNH PROPERTY BHD**

The Board of Directors of **YNH Property Berhad (YNHPROP)** wishes to announce that Kar Sin Berhad, the Vendor and Sunway Living Space Sdn Bhd, the Purchaser had on 12 October 2023 mutually agreed to extend the Conditional Period (as defined in the Sale and Purchase Agreement dated 12 May 2023) for a further one (1) month after expiry of the initial extension of two (2) months period, thereby extending the last day of the Conditional Period to 12 November 2023 for YNH to fulfill all Conditions Precedent of the SPA.

READ MORE 