

Invest

A Weekly e-Publication by SHAREINVESTOR.com

ISSUE

177

FRIDAY
06 OCTOBER
2023

Scan/Click QR to Register



Via email, every Friday

MARKET SENTIMENTS

BURSA MALAYSIA LAUNCHES NATIONAL VOLUNTARY CARBON MARKET HANDBOOK

**ASEAN set to become
world's factory and
consumer base:
Tengku Zafrul**

**M'sia set to become
regional renewable energy
industry leader with launch
of Hydrogen Economy and
Technology Roadmap
- Fadillah**

See more on pages 21-25

ALSO

07 COMPANY
SPOTLIGHT
Malaysia Airports

27 MSWG
The
responsibilities of
being a shareholder

- | | | | | | |
|-----------|----------------------------|-----------|--------------------|-----------|--------------------|
| 05 | LEADERBOARD | 12 | UP TRENDING STOCKS | 19 | LONG COMPANIES |
| 06 | SHARIAH HOT STOCKS | 14 | VALUE STOCKS | 26 | REGIONAL MARKETS |
| 08 | SHARIAH MOMENTUM UP STOCKS | 16 | GROWTH STOCKS | 31 | INSIDER ACTIVITY |
| 10 | NON SHARIAH HOT STOCKS | 17 | DIVIDEND STOCKS | 35 | INVESTOR RELATIONS |
| | | 18 | BROKERS' CALL | | |



SHAREINVESTOR®

Invest with Knowledge

INVESTOR PLATFORMS

Director
Darren Chong
darren.chong@shareinvestor.com

Business Development Manager
Jay Cheong
jay.cheong.@shareinvestor.com

Senior Executive
Daniel Wong
daniel.wong@shareinvestor.com

Executive
Farah Azwani
farah.azwani@shareinvestor.com

Executive
Tan Yong Sheng
yongsheng.tan@shareinvestor.com

ADMIN & OPERATIONS

Senior Executive
Watie Nordin
watie.nordin@shareinvestor.com

Executive
Silas Emmanuel Joseph
silas.joseph@shareinvestor.com

INVESTOR RELATIONS

Group Managing Director & Publisher
Edward Stanislaus
edward@shareinvestor.com

Senior Manager
Letticia Wong
letticia.wong@shareinvestor.com

PROCESS AUTOMATION & DATA ANALYTICS

Data Analyst
Nickson Aw

SHAREINVESTOR HOLDINGS BOARD OF DIRECTORS

Chairman	Patrick Daniel
Group CEO	Christopher Lee
Group COO	Lim Dau Hee
Group CFO	Teo Siew May
Group MD	Shanison Lin



“ GIVE A MAN A FISH AND YOU FEED HIM FOR A DAY; TEACH A MAN TO FISH AND YOU FEED HIM FOR A LIFETIME ”

ShareInvestor Malaysia Sdn. Bhd.
(200001023956) (526564-M)
Unit No. DF2-07-03A, Level 7,
Persoft Tower, 6B Persiaran Tropicana,
47410 Petaling Jaya, Selangor Darul Ehsan.

Hotline : 603 7803 1791
Mobile : 011 6343 8939
Website : www.ShareInvestor.com.my
www.ShareInvestorHoldings.com
www.Facebook.com/ShareInvestorMalaysia

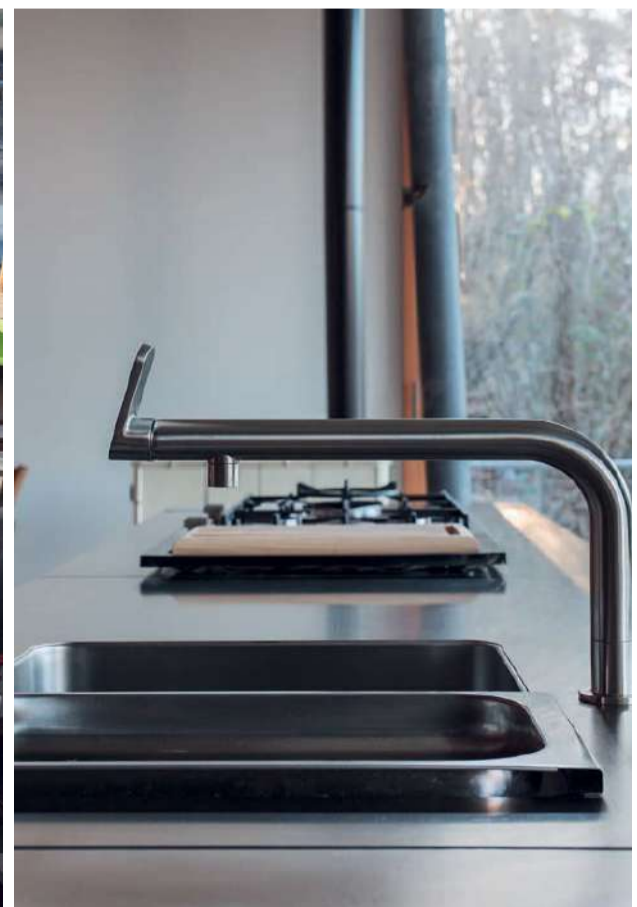
ADVERTISEMENT ENQUIRY

bulthaup takes care of the details so that you can enjoy a harmonious environment.



XTRA

XTRA FURNITURE SDN BHD
The Gardens Mall, Mid Valley City
xtrafurniture.com/bulthaup
fb.com/bulthaupmalaysia



bulthaup

PURNELL

ONLY TOURBILLON



ESCAPE II FORGED CARBON

Purnell Asia

Tel.: +65.9817.3378

Email: sales.sg@purnellwatches.com

Instagram: Purnell_Official

www.purnellwatches.com

PLAY



www.shareinvestor.com - market data at your fingertips



ShareInvestor WebPro (www.shareinvestor.com/my)

Prices > Stock Prices > Bursa > click Stocks tab

1. mouse over Ranking > select Top Active > all Shariah stocks are denoted with an [S] > mouse over Column Layout > select Edit Customs > select Name > select Volume > select Last Done Price > Mouse Over Column Layout > select Custom
2. mouse over Ranking > select Top Turnover > all Shariah stocks are denoted with an [S] > mouse over Column Layout > select Edit Customs > select Name > select Last Done Price > select Value > Mouse Over Column Layout > select Custom
3. mouse over Ranking > select Top Gainers (Over 5 Trading Days) > mouse over Column Layout > select Edit Customs > select Name > select Last Done Price > select 5 Days Change > select 5 Days % Change > Mouse Over Column Layout > select Custom
4. mouse over Ranking > select Top Losers (Over 5 Trading Days)
5. mouse over Ranking > select Top % Gainers (Over 5 Trading Days)
6. mouse over Ranking > select Top % Losers (Over 5 Trading Days)

Shariah Top Actives (as at Yesterday)

Name	Price (RM)	Volume
SCIB [S]	0.495	877,654.000
EKOVEST [S]	0.540	812,083.000
BPLANT [S]	1.400	793,323.000
UEMS [S]	0.785	612,484.000
WIDAD [S]	0.525	482,526.000
MYEG [S]	0.785	408,041.000
MQTECH [S]	0.030	395,147.000
SEALINK [S]	0.230	384,877.000
KGW [S]	0.210	373,026.000
PERDANA [S]	0.230	323,141.000

Shariah Top Turnover (as at Yesterday)

Name	Price (RM)	Value (RM)
BPLANT [S]	1.400	109,021,874
UEMS [S]	0.785	49,101,753
EKOVEST [S]	0.540	44,601,421
SCIB [S]	0.495	43,269,905
IHH [S]	5.820	34,767,824
MYEG [S]	0.785	32,298,914
TENAGA [S]	9.960	29,720,160
PMETAL [S]	4.660	26,567,278
WIDAD [S]	0.525	25,328,390
KLK [S]	21.420	19,990,844

Top Gainers (over 3 Trading days as at Yesterday)

Name	Price (RM)	Change (RM)
RAPID	25.280	+0.560
HEXTECH	24.800	+0.400
HAPSENG	4.800	+0.280
KNUSFOR	0.935	+0.220
SHH	1.200	+0.200
TEOSEN	1.250	+0.170
GAMUDA	4.470	+0.160
QUALITY	1.290	+0.160
BIPORT	5.180	+0.150
TIMWELL	0.630	+0.120

Top % Gainers (over 3 Trading days as at Yesterday)

Name	Price (RM)	Change (%)
EAH	0.010	+100.00
KGROUP	0.010	+100.00
AEM	0.015	+50.00
COMPUGT	0.015	+50.00
JOE	0.015	+50.00
KNM	0.175	+45.83
KANGER	0.100	+42.86
BCMALL	0.020	+33.33
MTRONIC	0.020	+33.33
SPRING	0.220	+33.33

Top Losers (over 3 Trading days as at Yesterday)

Name	Price (RM)	Change (RM)
NESTLE	127.000	-2.000
PANAMY	18.040	-1.100
HLFG	17.300	-0.420
UTDPLT	16.480	-0.420
HLBANK	19.420	-0.360
KOTRA	5.150	-0.360
MASTER	2.740	-0.360
VITROX	7.170	-0.330
CARLSBG	19.700	-0.300
PETDAG	22.400	-0.300

Top % Losers (over 3 Trading days as at Yesterday)

Name	Price (RM)	Change (%)
FOCUS	0.010	-50.00
AT	0.010	-33.33
G3	0.020	-20.00
KAMDAR	0.160	-20.00
TALAMT	0.020	-20.00
AZRB	0.225	-16.67
SCABLE	0.055	-15.38
CME	0.030	-14.29
HANDAL	0.090	-14.29
PDZ	0.030	-14.29

BURSA In-Depth Equity Analysis (IDEA) Research Competition

IDEA

9 October - 3 November 2023

Calling all aspiring researchers,
analysts, and market enthusiasts!

Showcase your aptitude and prowess in
equity analysis and stand a chance to bring
home prizes worth up to RM10,000!

[BursaMalaysia.com](https://www.bursamalaysia.com)



Price & Volume Distribution Charts (as at Yesterday)

Technical Analysis

DEFINITION: Shariah compliant stocks with Technical Analysis showing 5-days & 10-days Moving Average Price below Yesterday's Close over past 3 days and with Volume Spike.

CHART GUIDE: Volume Distribution Chart is a statistical interpretation of the current sentiment on each stock in graphical format. The highest bar categorized as >150k is likely to be traded by institutions or super dealers, while the lowest bar categorized as <15k usually represents retail investors. "Buy Up" refers to more buyers snatching up the lots queued at selling price. "Sell Down" refers to sellers selling their shares to the buying queue



ShareInvestor WebPro > Screener > Market Screener (FA & TA) > select BURSA > add criteria

A. Criteria

- > click Add Criteria
- Technical Analysis Conditions tab select (i) Moving Average Below Close (ii) Volume Spike
- Fundamental Analysis Conditions tab > select (iii) Revenue
- Prices & Other Conditions tab > select (iv) Is Shariah Compliant
- Technical Analysis Conditions tab select (v) Moving Average Below Close
- Prices & Other Conditions tab > select (vi) Last Done Price
- Technical Analysis Conditions tab select (vii) Moving Average Below Close

B. Conditions (Criteria Filters)

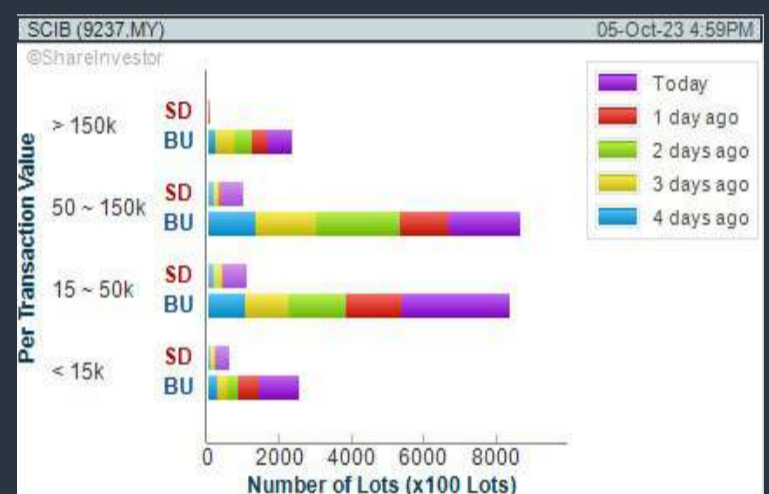
1. Moving Average Below Close - select (MA) type (5) below close price for type (3) days
2. Volume Spike - Volume type (1) greater than type (5) days average
3. Revenue ("000) - select (more than) type (1) for the past select (1) financial year(s)
4. Is Shariah Compliant - select **Yes**
5. Moving Average Below Close - select (MA) type (10) below close price for type (3) days
6. Last Done Price - select (more than) type (0.3)
7. Moving Average Below Close - select (EMA) type (5) below close price for type (3) days

- > click Save Template > Create New Template type (Shariah Hot Stocks) > click Create
- > click Save Template as > select Shariah Hot Stocks > click Save
- > click Screen Now (may take a few minutes)
- > Sort By: Select (Vol) Select (Desc)
- > Mouse over stock name > Charts > click C² Charts or Volume Distribution

SARAWAK CONSOLIDATED IND BERHAD (9237)

C² Chart

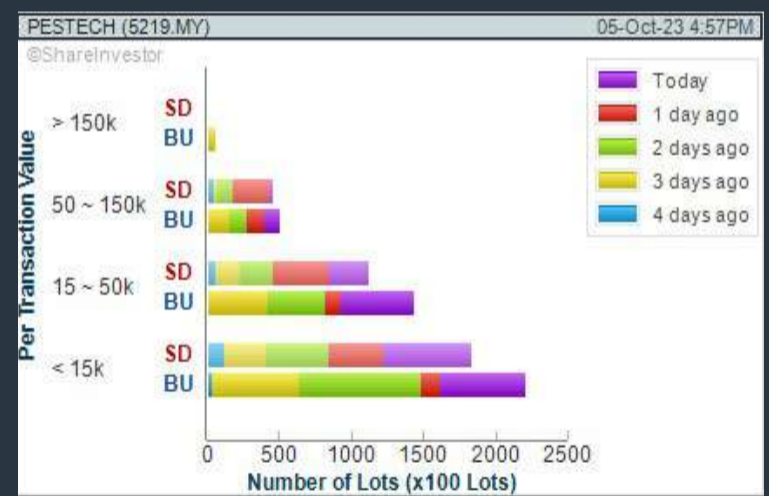
Analysis



PESTECH INTERNATIONAL BERHAD (5219)

C² Chart

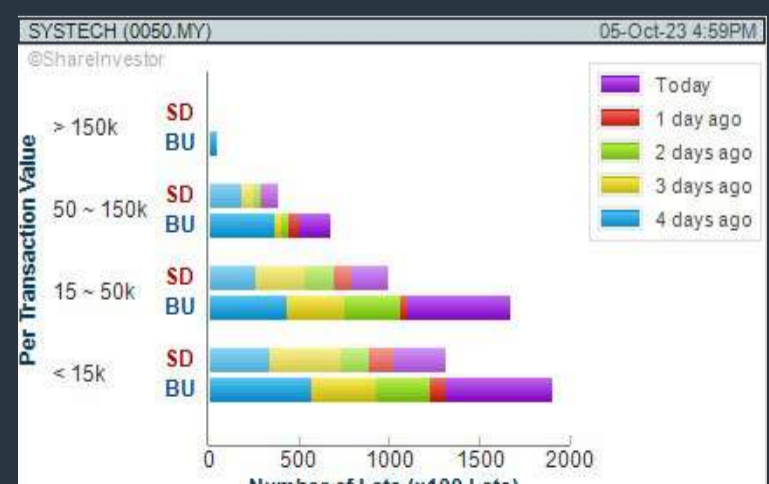
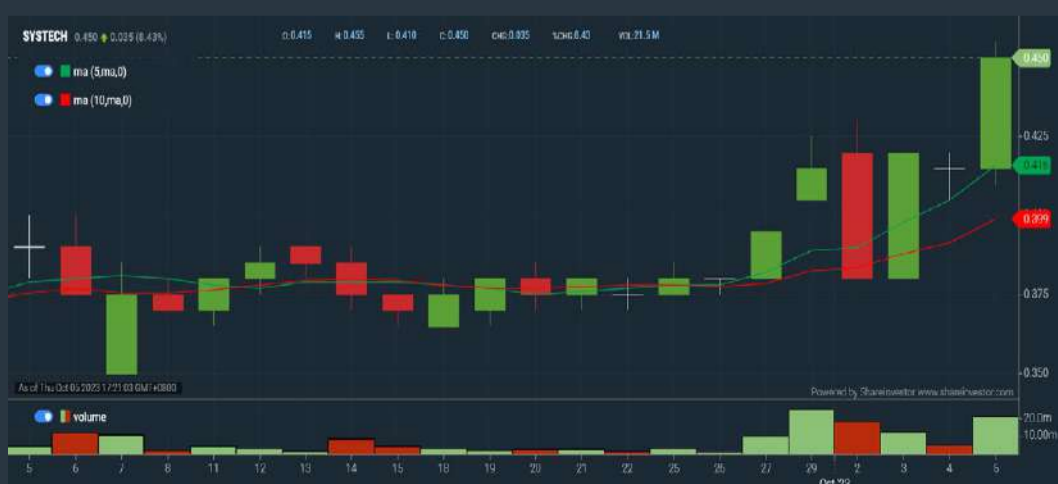
Analysis



SYSTECH BERHAD (0050)

C² Chart

Analysis



Disclaimer: The information on this page is provided as a service to readers. It does not constitute financial advice and/or any investment recommendations. Past performance is not indicative of future results. We assume no liability for damages resulting from or arising out of the use of such information. It would be best if you did your own research to make your personal investment decisions wisely or consult a licenced investment advisor.

COMPANY BACKGROUND

Malaysia Airports is one of the largest airport operator groups in the world-in terms of number of passengers handled-managing 39 airports across Malaysia as well as one international airport in Turkey. Its core business is the management, operation, maintenance and development of airports. Its revenue is derived from aeronautical operations-aircraft landing and parking fees, passenger service charges and other airline



charges-and commercial activities from airport-related services such as duty free shops and other retail outlets, hotel operations and commercial leasing.

AIRPORT MALAYSIA AIRPORTS HOLDINGS BHD				Updated at 05 Oct 2023 16:56
Last (MYR): 7.290 ↓	Change: -0.010	High: 7.330	Remarks: s	
	Change (%): -0.14	Low: 7.250		
Open	7.300	Yesterday's Close	7.300	
Buy Price	7.290	Sell Price	7.300	
Buy Volume ('00)	513	Sell Volume ('00)	139	
Cumulative Volume ('00)	59,570	Cumulative Value	43,372,792	

Financial Analysis

Profit Growth Profit turnaround in most recent year	😊	Piotroski F Score The company has strong financial strength (Piotroski F-Score of 8-9)	😊
Dividend Payout Dividend is decreasing over the past 60 months.	😟	Debt to Cashflow High debt to cash flow for most recent year	😟
Free Cash Flow Positive and increasing free cash flow for at least two years	😊	Gross Profit Margin High gross profit margin of at least 40% for most recent year	😊
Gross Profit Margin Gross profit margin is decreasing by 5% a year over the past 60 months.	😟	Net Earnings Margin Low net profit margin for most recent year	😟
Net Earnings Margin Net profit margin is decreasing by 5% a year over the past 60 months.	😟	Return on Equity (ROE) ROE is improving by 5% a year over the past 36 months.	😊

😊 Excellent 😊 Good 😐 Neutral 😟 Be Alert 😱 Watch Out



Historical Financials

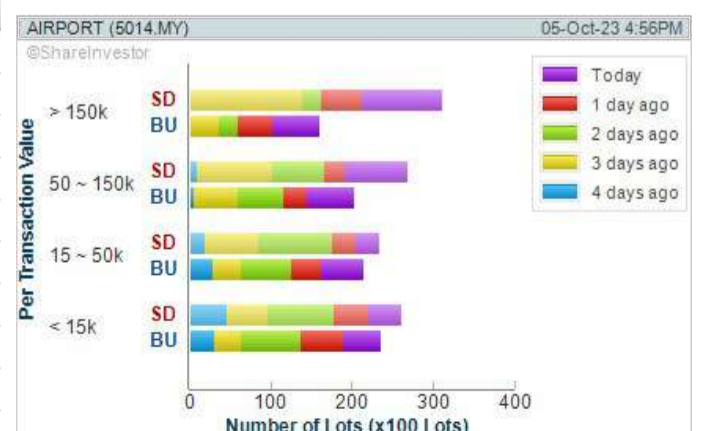


WebPro 9-Days Free Trial Registration (worth RM9) Sign Up Now



Key Statistics with Total Shareholder Returns

Period	Dividend Received	Capital Appreciation	Total Shareholder Return
Short Term Return	5 Days	-	+1.39 %
	10 Days	-	+0.14 %
	20 Days	-	-0.08 %
Medium Term Return	3 Months	-	+5.50 %
	6 Months	-	+8.81 %
	1 Year	-	+27.89 %
Long Term Return	2 Years	-	+7.21 %
	3 Years	-	+65.69 %
	5 Years	0.190	-1.260
Annualised Return	Annualised	-	-2.64 %



Disclaimer: The information on this page is provided as a service to readers. It does not constitute financial advice and/or any investment recommendations. Past performance is not indicative of future results. We assume no liability for damages resulting from or arising out of the use of such information. It would be best if you did your own research to make your personal investment decisions wisely or consult a licenced investment advisor.

Price & Volume Distribution Charts (as at Yesterday)

Technical Analysis

DEFINITION: Shariah compliant stocks with Technical Analysis showing Bullish Momentum and Price Uptrend. The share price closed at the highest price yesterday. The typical price was higher than the previous day's typical price.

CHART GUIDE: Volume Distribution Chart is a statistical interpretation of the current sentiment on each stock in graphical format. The highest bar categorized as >150k is likely to be traded by institutions or super dealers, while the lowest bar categorized as <15k usually represents retail investors. "Buy Up" refers to more buyers snatching up the lots queued at selling price. "Sell Down" refers to sellers selling their shares to the buying queue.



ShareInvestor WebPro > Screener > Market Screener (FA & TA) > select BURSA > add criteria

A. Criteria

- > click Add Criteria
- Fundamental Analysis Conditions tab > select (i) Revenue
- Technical Analysis Conditions tab select (ii) Average Volume
- Prices & Other Conditions tab > select (iii) Last Done Price
- Prices & Other Conditions tab > select (iv) Is Shariah Compliant
- Technical Analysis Conditions tab select (v) RSI Overbought
- Technical Analysis Conditions tab select (vi) Moving Average Below Close
- Technical Analysis Conditions tab select (vii) CCI Overbought

B. Conditions (Criteria Filters)

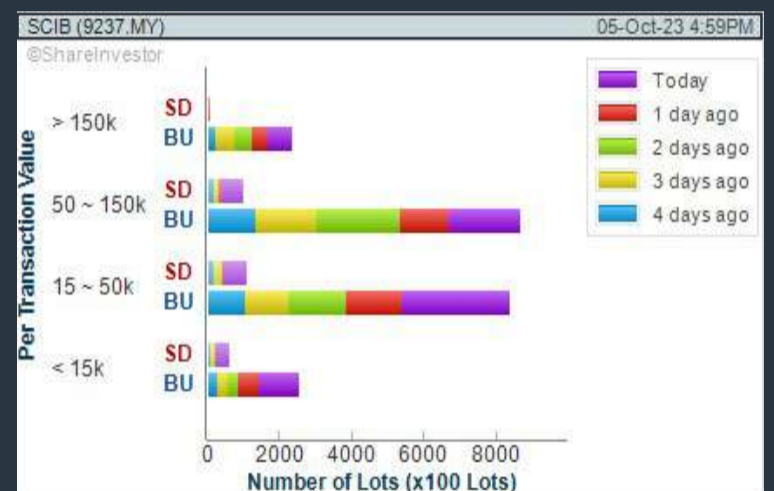
1. Revenue ("000) - select (more than) type (1) for the past select (1) financial year(s)
2. Average Volume - type (1) days average volume greater than type (10000) lots
3. Last Done Price - select (more than) type (0.3)
4. Is Shariah Compliant - select Yes
5. RSI Overbought - select RSI 1 above 99 for 1 days
6. Moving Average Below Close - select (MA) type (10) below close price for type (1) days
7. CCI Overbought - select CCI (2) above (0) for (1) days

- > click Save Template > Create New Template type (Shariah Momentum Up Stocks) > click Create
- > click Save Template as > select Shariah Momentum Up Stocks > click Save
- > click Screen Now (may take a few minutes)
- Sort By: Select (Vol) Select (Desc)
- Mouse over stock name > Charts > click C² Charts tab or Volume Distribution

SARAWAK CONSOLIDATED IND BERHAD (9237)

C² Chart

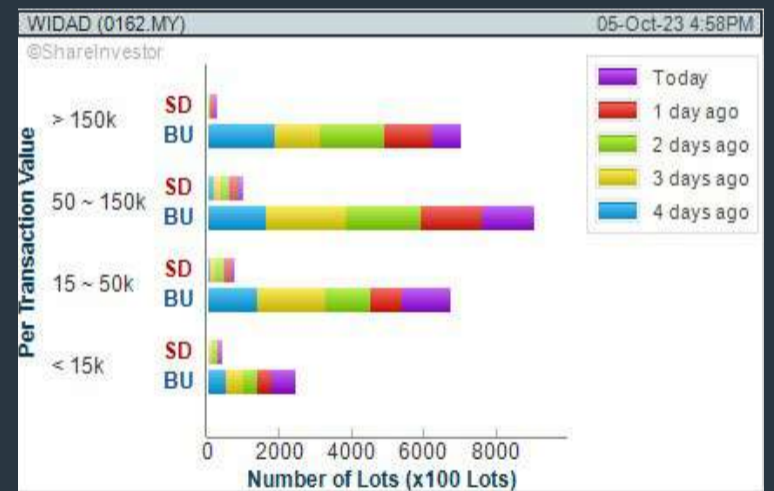
Analysis



WIDAD GROUP BERHAD (0162)

C² Chart

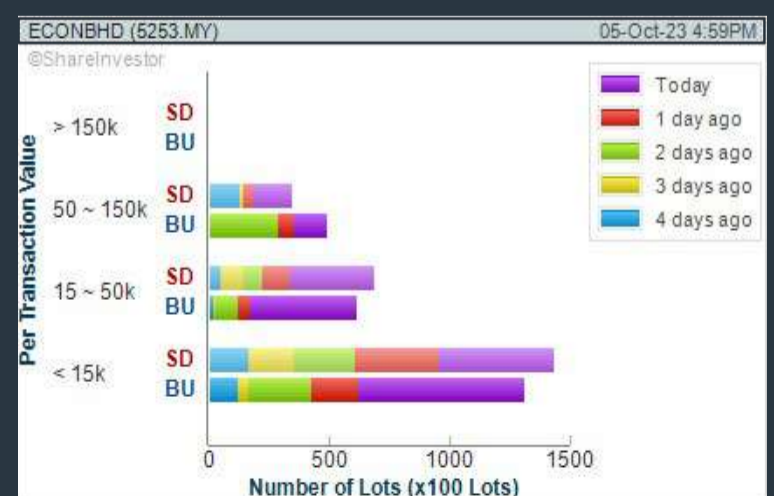
Analysis



ECONPILE HOLDINGS BERHAD (5253)

C² Chart

Analysis



Disclaimer: The information on this page is provided as a service to readers. It does not constitute financial advice and/or any investment recommendations. Past performance is not indicative of future results. We assume no liability for damages resulting from or arising out of the use of such information. It would be best if you did your own research to make your personal investment decisions wisely or consult a licenced investment advisor.

SHAREINVESTOR WEBPRO

STOCK MARKET DATA AT YOUR FINGERTIPS

Powerful browser-based market analytics platform.
Access from anywhere



8 Markets Data

- ▶ Get access to data from Bursa, NYSE, Nasdaq, HKEX, SGX, IDX, SET & ASX

Portfolio Management

- ▶ Profit & Loss Summary
- ▶ Stock Alert
- ▶ News & Events filtering
- ▶ Customizable column layout

Fundamental Analysis

Financial Analysis Statement

- ▶ Profit & Loss
- ▶ Balance Sheet
- ▶ Cash Flow Statement
- ▶ More than 20 Financial Ratios
- ▶ Dividend Analysis

Technical Charting

- ▶ C² chart (Customisable & Comprehensive)

Brokers' Call

Intrinsic Value Calculator

FactSheet

- ▶ Key Stock Information
- ▶ Ownership
- ▶ Consensus Estimates
- ▶ Annual Report
- ▶ Historical Price
- ▶ Insider Trades

What's new on WebPro (Stable Release 12.1.0)

In our effort to keep our platform at the forefront of trading technology, we have added on some new features onto our C² Chart in WebPro

ADDITIONAL NEW FEATURES:

- ▶ Anchor selector for AVWAP, PVAT, and PAV indicators
- ▶ Volume profile indicator by date range
- ▶ Moving Average Cross indicator
- ▶ Guppy Multiple Moving Average (GMMA) indicator
- ▶ GoNoGo Trend Signal indicators
- ▶ SignalIQ

So what are you waiting for? Head to our platform today and check out our new trading chart features and indicators. We're confident that you'll love the improvements we've made and that they'll help you become a more successful trader.

Click here to start your 9 days FREE trial
(Valued at RM10)



Price & Volume Distribution Charts (as at Yesterday)

Technical Analysis

DEFINITION: Stocks with Technical Analysis showing 5-days & 10-days Moving Average Price below Close over past 1 days and with Volume Spike

CHART GUIDE: Volume Distribution Chart is a statistical interpretation of the current sentiment on each stock in graphical format. The highest bar categorized as >150k is likely to be traded by institutions or super dealers, while the lowest bar categorized as <15k usually represents retail investors. "Buy Up" refers to more buyers snatching up the lots queued at selling price. "Sell Down" refers to sellers selling their shares to the buying queue.

SHAREINVESTOR WEBPRO
step-by-step GUIDE

ShareInvestor WebPro > Screener > Market Screener (FA & TA) > select BURSA > add criteria

A. Criteria

- > click Add Criteria
- Technical Analysis Conditions tab select (i) Moving Average Below Close (ii) Volume Spike
- Fundamental Analysis Conditions tab >select (iii) Revenue
- Prices & Other Conditions tab > select (iv) Is Shariah Compliant
- Technical Analysis Conditions tab select (v) Moving Average Below Close
- Prices & Other Conditions tab > select (vi) Last Done Price
- Technical Analysis Conditions tab select (vii) Moving Average Below Close

B. Conditions (Criteria Filters)

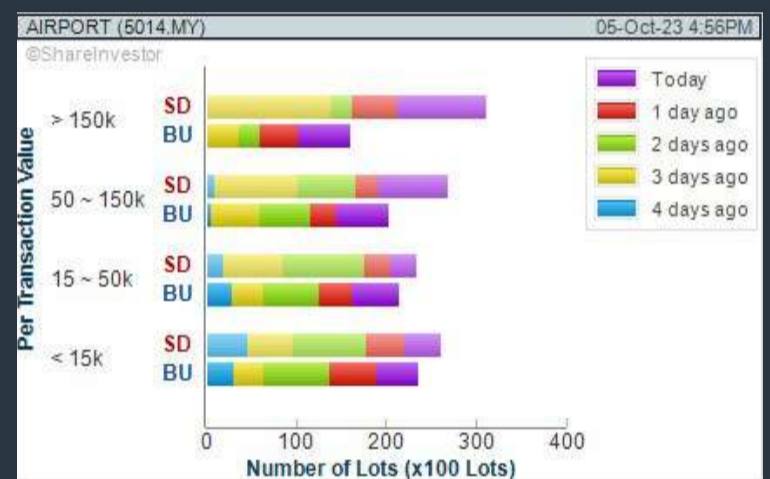
1. Moving Average Below Close - select (MA) type (5) below close price for type (3) days
2. Volume Spike - Volume type (1) greater than type (5) days average
3. Revenue ("000) - select (more than) type (1) for the past select (1) financial year(s)
4. Is Shariah Compliant - select NO
5. Moving Average Below Close - select (MA) type (10) below close price for type (1) days
6. Last Done Price - select (more than) type (0.3)
7. Moving Average Below Close - select (EMA) type (5) below close price for type (1) days

- > click Save Template > Create New Template type (Non-Shariah Hot Stocks) > click Create
- > click Save Template as > select Non-Shariah Hot Stocks > click Save
- > click Screen Now (may take a few minutes)
- Sort By: Select (Vol) Select (Desc)
- Mouse over stock name > Charts > click C² Charts tab or Volume Distribution

MALAYSIA AIRPORTS HOLDINGS BERHAD (5014)

Analysis

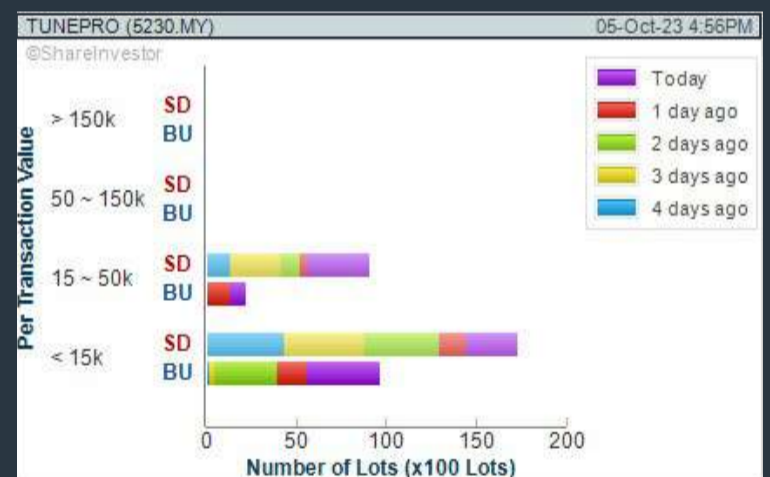
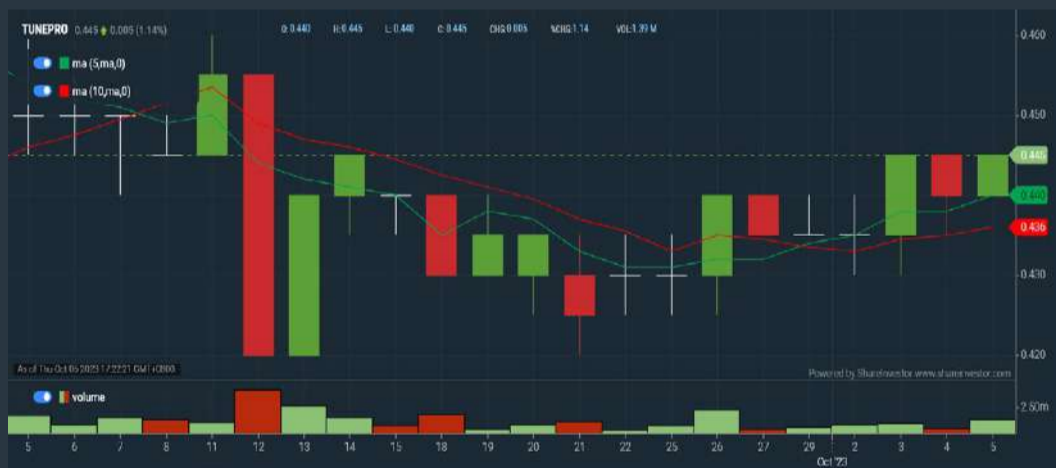
C² Chart



TUNE PROTECT GROUP BERHAD (5230)

Analysis

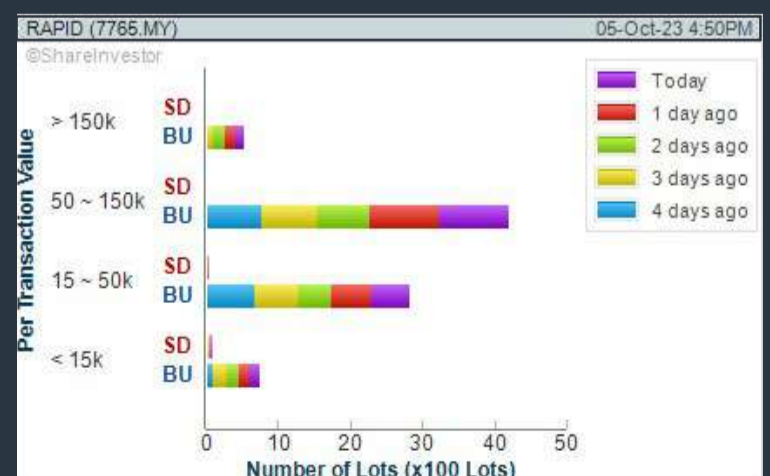
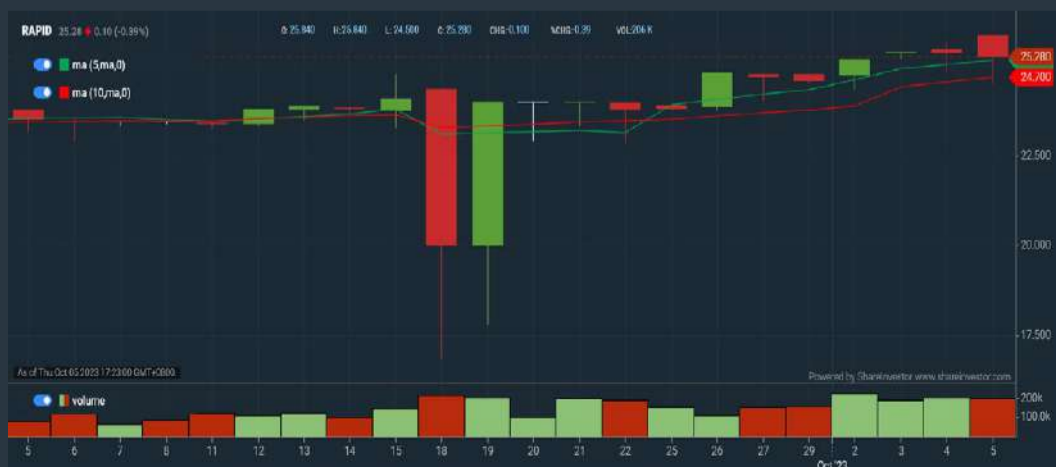
C² Chart



RAPID SYNERGY BERHAD (7765)

Analysis

C² Chart



Disclaimer: The information on this page is provided as a service to readers. It does not constitute financial advice and/or any investment recommendations. Past performance is not indicative of future results. We assume no liability for damages resulting from or arising out of the use of such information. It would be best if you did your own research to make your personal investment decisions wisely or consult a licenced investment advisor.

BURSASTATION

Professional

Stock Scanning

- Technical Analysis (TA) Market Scanner
- Fundamental Analysis (FA) Market Scanner

Monitoring

- Portfolio
- Stock Alerts
- Price Spread Calculator

Market Data

- Equities
- Derivatives

Scan. Chart. Analyse.

Be The Intelligent Investor

Charts

- Intraday Charts
- Interactive Charts
- Historical Charts
- Volume Distribution Charts

Price Movements

- Streaming Prices
- Time & Sales
- Trade Summary Matrix
- Quote Movements
- 5 Levels Market Depth
- Historical Price Download

Fundamentals

- Factsheets
- Financials
- Insider Trades

Brought to you as a collaborative effort by ShareInvestor and Bursa Malaysia, **BursaStation Professional** is designed with you, the user, in mind, as a user-friendly yet full of powerful features that will appeal to investors/traders who need instant access to fundamental, technical, and trading data, anytime, anywhere. **BursaStation Professional** is a state-of-the-art Stock Market Tracker with Charting Software that places in your hands the power to make better investment decisions.

[CLICK HERE TO START YOUR 14-DAYS FREE TRIAL](#)

Price & Volume Distribution Charts (Over 3 trading days as at Yesterday)

Technical Analysis

DEFINITION: Stocks with Technical Analysis showing Bullish Momentum and Price Uptrend

CHART GUIDE: Volume Distribution Chart is a statistical interpretation of the current sentiment on each stock in graphical format. The highest bar categorized as >150k is likely to be traded by institutions or super dealers, while the lowest bar categorized as <15k usually represents retail investors. "Buy Up" refers to more buyers snatching up the lots queued at selling price. "Sell Down" refers to sellers selling their shares to the buying queue.



ShareInvestor WebPro > Screener > Market Screener (FA & TA) > select BURSA > add criteria

A. Criteria

- > click Add Criteria
- Fundamental Analysis Conditions tab > select (i) Revenue
- Technical Analysis Conditions tab select (ii) Moving Average Below Close
- Technical Analysis Conditions tab select (iii) Average Volume
- Prices & Other Conditions tab > select (iv) Last Done Price
- Technical Analysis Conditions tab select (v) Moving Average Below Close
- Technical Analysis Conditions tab select (v) Moving Average Bullish Crossover

B. Conditions

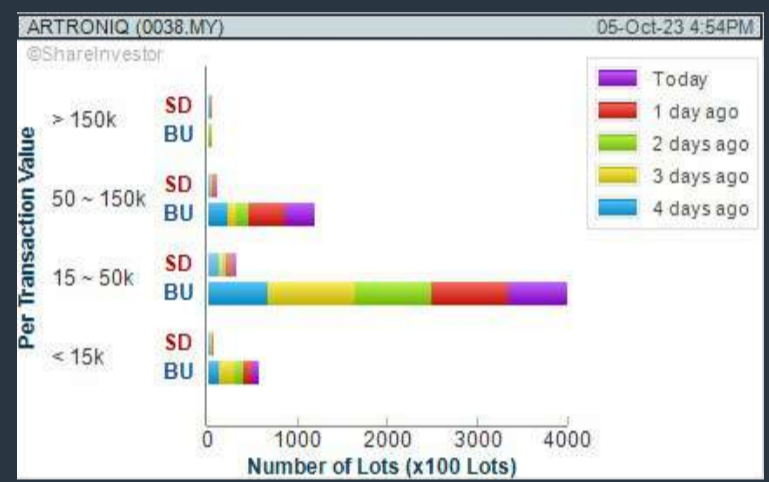
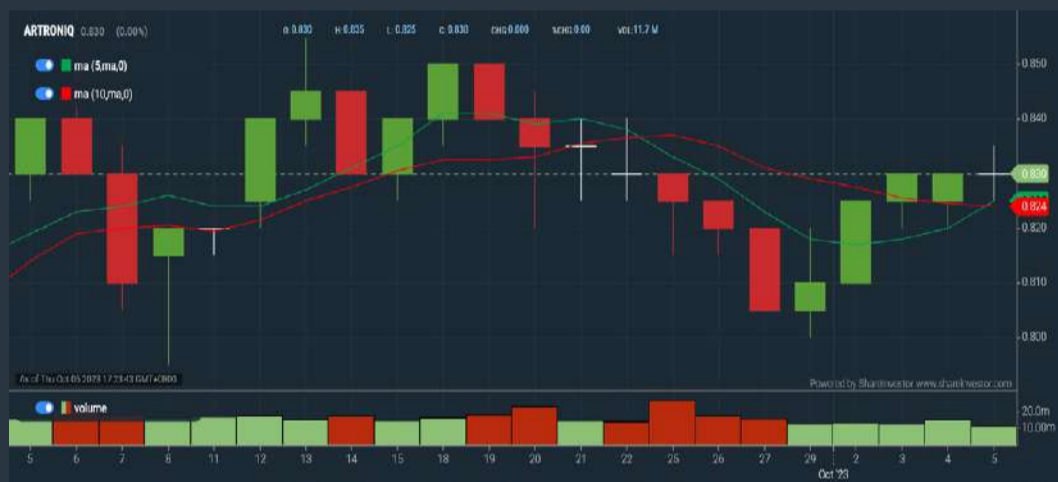
1. Revenue - select (more than) type (1) for the past select (1) financial year(s)
2. Moving Average Below Close - select (MA) type (20) below close price for type (1) days
3. Average Volume - type (5) days average volume type (10000) lots
4. Last Done Price - select (more than) type (0.3)
5. Moving Average Below Close - select (MA) type (10) below close price for type (1) days
6. Moving Average Bullish Crossover - select (MA) type (5) crossed above select (MA) type (10)

> click Save Template > Create New Template type (Non-Shariah Up-Trending Stocks) > click Create Click Save Template As > select Non-Shariah Up Trending Stocks > click Save
> click Screen Now (may take a few minutes)
Sort By: Select (Vol) Select (Desc)
Mouse over stock name > Charts > click C² Charts tab or Volume Distribution

ARTRONIQ BERHAD (0038)

C² Chart

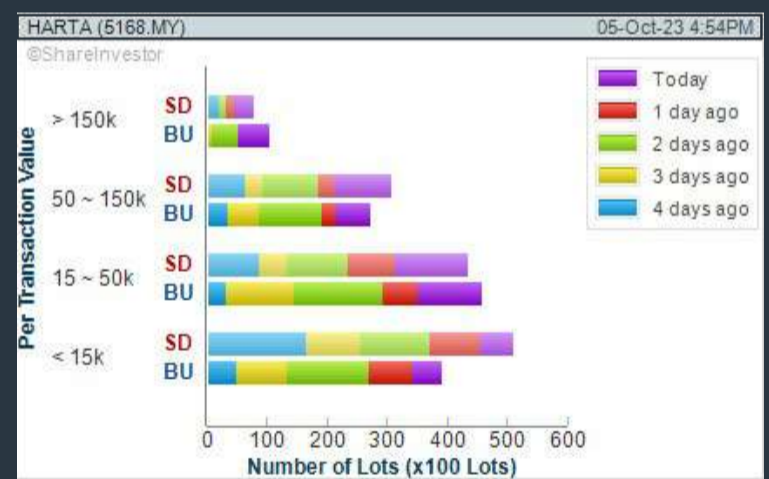
Analysis



HARTALEGA HOLDINGS BERHAD (5168)

C² Chart

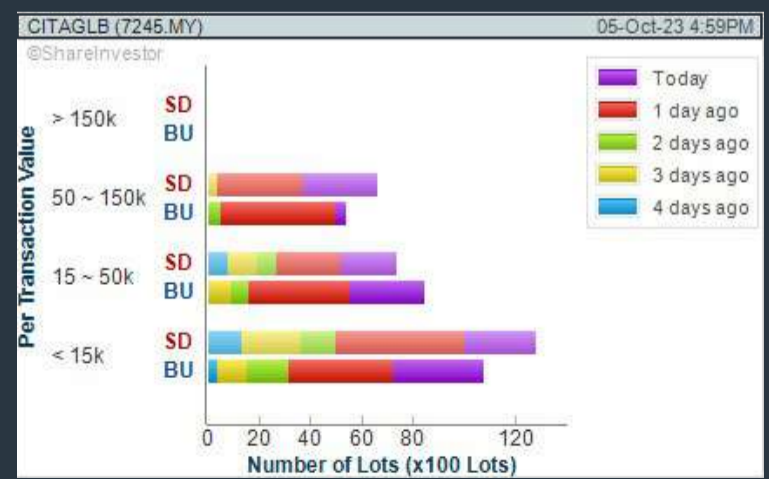
Analysis



CITAGLOBAL BERHAD (7245)

C² Chart

Analysis



Disclaimer: The information on this page is provided as a service to readers. It does not constitute financial advice and/or any investment recommendations. Past performance is not indicative of future results. We assume no liability for damages resulting from or arising out of the use of such information. It would be best if you did your own research to make your personal investment decisions wisely or consult a licenced investment advisor.

MAKE BETTER TRADING STRATEGIES

with

SHARE INVESTOR STATION



8 Markets Data

- ▶ Get access to data from Bursa, NYSE, Nasdaq, HKEX, SGX, IDX, SET & ASX

Dynamic Chart

- ▶ Candlestick Pattern Recognition
- ▶ 111 Indicators
- ▶ 39 Drawing Tools
- ▶ Performance Comparison Chart

Intraday Data

- ▶ Market Depth
- ▶ Trade Summary Matrix & Chart
- ▶ Times & Sales
- ▶ Intraday Market Ticker

Market Screener

- ▶ 96 criteria ranging from FA, TA, Consensus Estimate
- ▶ Real-time Data

Power Frame

- ▶ Combining few Dynamic Charts together with intraday information in one frame

Technical Analysis

Fundamental Analysis

Financial Analysis Statement

- ▶ Profit & Loss
- ▶ Balance Sheet
- ▶ Cash Flow Statement
- ▶ More than 20 Financial Ratios
- ▶ Dividend Analysis

FactSheet

- ▶ Key Stock Information
- ▶ Ownership
- ▶ Consensus Estimates
- ▶ Annual Report
- ▶ Historical Price
- ▶ Insider Trades

**Start your 18 days
FREE trial now
(Valued at RM82)**



Price & Total Shareholder Return (as at Yesterday)

Fundamental Analysis

DEFINITION: Share price of a company trading at a lower price as compared to its fundamentals (FA) such as financial performance and dividend, allowing it to be attractive to value investors.

CHART GUIDE: Total Shareholder Return (TSR) combines share price appreciation and dividend distributions paid to show the total return to the shareholder expressed as a percentage.



ShareInvestor WebPro > Screener > Market Screener (FA & TA) > select BURSA > add criteria

A. Criteria

- > click Add Criteria
- Fundamental Analysis Conditions tab (i) Price Earnings Ratio
- Fundamental Analysis Conditions tab >select (ii) CAGR of Net Earnings
- Fundamental Analysis Conditions tab >select (iii) Net Debt To Equity
- Fundamental Analysis Conditions tab >select (iv) Return On Equity (ROE)

B. Conditions

1. Price Earnings Ratio - select (less than) type (15) times now
2. CAGR of Net Earnings - select (more than) type (10) % for the past type (3) financial year(s)
3. Net Debt To Equity - select (less than) type (1) for the past select (1) financial year(s)
4. Return On Equity (ROE) - select (more than) type (10) % for the past select (1) financial year(s)

- > click Save Template > Create New Template type (Value Stock) > click Create
- > click Save Template as > select Value Companies > click Save
- > click Screen Now (may take a few minutes)
- Sort by: Select (PE Ratio) Select (Ascending)
- > Mouse over stock name > Factsheet > looking for Total Shareholder Return
- > Mouse over stock name > Charts > click C2 Charts tab

SYNERGY HOUSE BERHAD (0279)

C² Chart



Period	Dividend Received	Capital Appreciation	Total Shareholder Return
Short Term Return	5 Days	0	+4.94%
	10 Days	-0.055	+4.88%
	20 Days	-0.035	+6.57%
Medium Term Return	3 Months	-	-

SUNMOW HOLDING BERHAD (03050)

C² Chart



Period	Dividend Received	Capital Appreciation	Total Shareholder Return
Short Term Return	5 Days	-	-
	10 Days	-0.050	-4.35%
	20 Days	-0.100	-8.31%
Medium Term Return	3 Months	-	-
	6 Months	+4.470	+74.60%
	1 Year	+8.150	+16.79%
Annualised Return	Annualised	-	+16.79%

EDELTEQ HOLDINGS BERHAD (0278)

C² Chart



Period	Dividend Received	Capital Appreciation	Total Shareholder Return
Short Term Return	5 Days	-0.050	-11.63%
	10 Days	-0.070	-16.56%
	20 Days	-0.100	-20.83%
Medium Term Return	3 Months	-0.350	-47.95%

Disclaimer: The information on this page is provided as a service to readers. It does not constitute financial advice and/or any investment recommendations. Past performance is not indicative of future results. We assume no liability for damages resulting from or arising out of the use of such information. It would be best if you did your own research to make your personal investment decisions wisely or consult a licenced investment advisor.



making places energizing



usm.com

XTRA

XTRA FURNITURE SDN BHD
The Gardens Mall, Mid Valley City, Lot S-236 & 237
Lingkar Syed Putra, 59200 Kuala Lumpur
T. +603 2282 9088 | living@xtrafurniture.com | xtrafurniture.com
📍 XTRAFurniture | 🌐 xtrafurnituremsia

Price & Total Shareholder Return (as at Yesterday)

Fundamental Analysis

DEFINITION: Company revenue is growing and making good quality of earnings with positive Free Cash Flow.

CHART GUIDE: Total Shareholder Return (TSR) combines share price appreciation and distributions paid to show the total return to the shareholder expressed as a percentage.



ShareInvestor WebPro > Screener > Market Screener (FA & TA) > select BURSA > add criteria

A. Criteria

1. Fundamental Analysis Conditions tab >select (i) Free Cash Flow, (ii) Revenue Growth, (iii) Gross Profit (Earnings) Margin, (iv) Quality of Earnings, (v) Total Shareholder Returns, > click Add Criteria
2. Fundamental Analysis Conditions tab >select (vi) Total Shareholder Returns > click Add Criteria

B. Conditions (Criteria Filters)

1. Free Cash Flow - select (more than) type (1) for the past select (1) financial year(s)
2. Revenue Growth - select (more than) type (1) for the past select (1) financial year(s)
3. Gross Profit (Earnings) Margin - select (more than) type (30) % for the past select (1) financial year(s)
4. Quality of Earnings - select (more than) type (1) for the past select (1) financial year(s)
5. Total Shareholder Return - select (more than) type (5) % for the past select (3) financial year(s)
6. Total Shareholder Return - select (more than) type (5) % for the past select (5) financial year(s)

- > click Save Template > Create New Template type (Growth Companies) > click Create
- > click Save Template as > select Growth Companies > click Save
- > click Screen Now (may take a few minutes)
- > Sort By: Select (Revenue Growth) Select (Desc)
- > Mouse over stock name > Factsheet > looking for Total Shareholder Return

SEAL INCORPORATED BERHAD (4286)

C² Chart

Analysis



Period	Dividend Received	Capital Appreciation	Total Shareholder Return
Short Term Return	5 Days	-0.040	-7.41%
	10 Days	-0.045	-8.26%
	20 Days	-0.055	-11.59%
Medium Term Return	3 Months	+0.045	+9.88%
	6 Months	+0.195	+63.93%
	1 Year	+0.305	+156.41%
Long Term Return	2 Years	+0.155	+48.25%
	3 Years	+0.100	+38.25%
	5 Years	+0.140	+38.89%
Annualised Return	Annualised	-	+6.79%

IGB BERHAD (5606)

C² Chart

Analysis



Period	Dividend Received	Capital Appreciation	Total Shareholder Return
Short Term Return	5 Days	+0.030	+1.41%
	10 Days	-	-
	20 Days	+0.040	+1.89%
Medium Term Return	3 Months	+0.150	+7.46%
	6 Months	+0.133	+6.56%
	1 Year	+0.697	+44.68%
Long Term Return	2 Years	0.550	+31.48%
	3 Years	0.236	+10.04%
	5 Years	0.583	+30.83%
Annualised Return	Annualised	-	+9.02%

PECCA GROUP BERHAD (5271)

C² Chart

Analysis



Period	Dividend Received	Capital Appreciation	Total Shareholder Return
Short Term Return	5 Days	-0.030	-2.48%
	10 Days	-0.040	-3.28%
	20 Days	+0.020	+1.77%
Medium Term Return	3 Months	+0.100	+18.00%
	6 Months	+0.180	+15.89%
	1 Year	+0.310	+35.83%
Long Term Return	2 Years	+0.300	+43.90%
	3 Years	+0.820	+227.78%
	5 Years	0.136	+16.85%
Annualised Return	Annualised	-	+48.05%

Disclaimer: The information on this page is provided as a service to readers. It does not constitute financial advice and/or any investment recommendations. Past performance is not indicative of future results. We assume no liability for damages resulting from or arising out of the use of such information. It would be best if you did your own research to make your personal investment decisions wisely or consult a licenced investment advisor.

Price & Total Shareholder Return (as at Yesterday)

Fundamental Analysis

DEFINITION: Company is paying out dividend with low or moderate leverage.

CHART GUIDE: Total Shareholder Return (TSR) combines share price appreciation and distributions paid to show the total return to the shareholder expressed as a percentage.



ShareInvestor WebPro > Screener > Market Screener (FA & TA) > select BURSA > add criteria

A. Criteria

- > click Add Criteria
- Fundamental Analysis Conditions tab >select (i) Dividend Yield (Historical)
- Fundamental Analysis Conditions tab >select (ii) Dividend Payout (Historical)
- Fundamental Analysis Conditions tab >select (iii) Total Debt To Equity
- Fundamental Analysis Conditions tab >select (iv) Total Shareholder Returns
- Fundamental Analysis Conditions tab >select (v) Total Shareholder Returns
- Fundamental Analysis Conditions tab / >select (vi) CAGR of Dividend Per Share

• Fundamental Analysis Conditions tab >select (vii) CAGR of Dividend Per Share

B. Conditions (Criteria Filters)

1. Dividend Yield - select (more than) type (1) % for the past select (1) financial year(s)
2. Dividend Payout (Historical) - select (between) type (0.5) to type (1) times for the past select (1) financial year(s)
3. Total Debt to Equity - select (less than) type (1) for the past select (1) financial year(s)
4. Total Shareholder Return - select (more than) type (5) % for the past select (3) financial year(s)
5. Total Shareholder Return - select (more than) type (5) % for the past select (5) financial year(s)

6. CAGR of Dividend Per Share - select (less than) type (30) % for the past select (5) financial year(s)
7. CAGR of Dividend Per Share - select (more than) type (1) % for the past select (5) financial year(s)

- > click Save Template > Create New Template type (Dividend Companies) > click Create
- > click Save Template as > select Dividend Companies > click Save
- > click Screen Now (may take a few minutes)
- > Sort By: Select (Dividend Yield) Select (Desc)
- > Mouse over stock name > Factsheet > looking for Total Shareholder Return

FORMOSA PROSONIC INDUSTRIES (9172)

C² Chart



Period	Dividend Received	Capital Appreciation	Total Shareholder Return	
Short Term Return	5 Days	-0.020	-0.74%	
	10 Days	+0.040	+1.50%	
	20 Days	+0.050	+1.88%	
Medium Term Return	3 Months	-0.210	-11.57%	
	6 Months	-0.310	-10.20%	
Long Term Return	1 Year	-0.300	-10.00%	
	2 Years	0.200	-1.310	-27.68%
Annualised Return	3 Years	0.340	+1.200	+102.87%
	5 Years	0.550	+1.250	+124.14%
Annualised Return	Annualised	-	-	+17.52%

GAS MALAYSIA BERHAD (5209)

C² Chart



Period	Dividend Received	Capital Appreciation	Total Shareholder Return	
Short Term Return	5 Days	+0.040	+1.32%	
	10 Days	+0.050	+1.66%	
	20 Days	-	-	
Medium Term Return	3 Months	-0.020	-0.66%	
	6 Months	-0.140	-4.38%	
Long Term Return	1 Year	-0.310	-9.20%	
	2 Years	0.129	+0.370	+18.55%
Annualised Return	3 Years	0.285	+0.330	+22.53%
	5 Years	0.558	+0.190	+26.05%
Annualised Return	Annualised	-	-	+4.74%

KENANGA INVESTMENT BANK BERHAD (6483)

C² Chart



Period	Dividend Received	Capital Appreciation	Total Shareholder Return	
Short Term Return	5 Days	-0.030	-3.37%	
	10 Days	-0.025	-2.82%	
	20 Days	-0.046	-4.97%	
Medium Term Return	3 Months	-0.020	-2.27%	
	6 Months	-0.050	-5.49%	
Long Term Return	1 Year	-0.020	-2.27%	
	2 Years	0.105	-0.430	-25.19%
Annualised Return	3 Years	0.193	+0.170	+52.61%
	5 Years	0.237	+0.140	+52.36%
Annualised Return	Annualised	-	-	+8.79%

Disclaimer: The information on this page is provided as a service to readers. It does not constitute financial advice and/or any investment recommendations. Past performance is not indicative of future results. We assume no liability for damages resulting from or arising out of the use of such information. It would be best if you did your own research to make your personal investment decisions wisely or consult a licenced investment advisor.

Week: 29 September 2023 - 05 October 2023

More Brokers' Call 

AMINVESTMENT BANK <small>... See More</small>	Call	Target Price	Release Date
IOI Corporation Berhad (1961)	HOLD	RM4.00	03 Oct 2023
Kimlun Corporation Berhad (5171)	BUY	RM1.08	03 Oct 2023
MISC Berhad (3816)	HOLD	RM7.79	04 Oct 2023

APEX <small>... See More</small>	Call	Target Price	Release Date
Aurelius Technologies Berhad (5302)	BUY	RM3.22	02 Oct 2023

BIMB SECURITIES SDN BHD <small>... See More</small>	Call	Target Price	Release Date
Boustead Plantations Berhad (5254)	SELL	RM0.65	04 Oct 2023
Gamuda Berhad (5398)	BUY	RM5.16	29 Sep 2023
Sapura Energy Berhad (5218)	HOLD	RM0.06	29 Sep 2023

CGS CIMB <small>... See More</small>	Call	Target Price	Release Date
UEM Sunrise Berhad (5148)	REDUCE	RM0.75	29 Sep 2023

KENANGA <small>... See More</small>	Call	Target Price	Release Date
Bursa Malaysia Berhad (1818)	MARKET PERFORM	RM6.25	05 Oct 2023
Kimlun Corporation Berhad (5171)	OUTPERFORM	RM0.91	03 Oct 2023
Kuala Lumpur Kepong Berhad (2445)	OUTPERFORM	RM24.50	05 Oct 2023
Yinson Holdings Berhad (7293)	OUTPERFORM	RM3.79	02 Oct 2023

MIDF <small>... See More</small>	Call	Target Price	Release Date
Capital A Berhad (5099)	NEUTRAL	RM0.90	29 Sep 2023
Glomac Berhad (5020)	BUY	RM0.47	03 Oct 2023
Kuala Lumpur Kepong Berhad (2445)	BUY	RM24.60	05 Oct 2023

JOB KAYHIAN <small>... See More</small>	Call	Target Price	Release Date
Hap Seng Consolidated Berhad (3034)	BUY	RM6.05	04 Oct 2023
My E.G. Services berhad (0138)	BUY	RM0.960	04 Oct 2023
MyNews Holdings Berhad (5275)	BUY	RM0.665	04 Oct 2023

Disclaimer: InveSt does not accept any liability whatsoever for any direct, indirect or consequential losses (including loss of profit) or damages that may arise from the use of information or opinions in this publication. The information and opinions in InveSt are not to be considered as an offer to sell or buy any of the securities discussed. Opinions expressed are subject to change without notice. The Brokers may, from time to time, have interests or positions in the securities mentioned. For the full report on each item listed on this page, please visit https://www.shareinvestor.com/my/brokers_call.

DEFINITION: Top 9 stocks with Technical Analysis plus Pattern Matching by 60 pre-defined indicators by the system showing a higher probability of bullish sentiment on the share price.



ShareInvestor WebPro > Screener > Predefined TA Screens > select market BURSA > Most Long Signals > click Scan Results or mouse over each company

SEALINK INTERNATIONAL BERHAD (5145.MY)

SEALINK

Price updated at 05 Oct 2023 16:59

Last: 0.230	Change: +0.005	Volume: 384,877
	Change (%): +2.22	Range: 0.215 - 0.240

TA Scanner Results based on historical data up to 05 Oct 2023

Condition	Signal	Explanation
Bollinger Band: Bullish Long Term Volatility Breakout and Trending	Long	1. Close price above upper bollinger band(33,1). 2. Volume above average volume(50). 3. Average volume(50) is above 300,000.
Bollinger Band: Bullish Short Term Volatility Breakout and Trending	Long	1. Close price above upper bollinger band(33,1). 2. Volume above average volume(10). 3. Average volume(10) is above 300,000.
Bollinger Band: High Above Upper Bollinger Band	Neutral	1. High above upper bollinger band(14,2). 2. Average volume(5) is above 100,000.
Donchian Channels: High Above Upper Donchian Channels	Long	High crossed above the upper Donchian Channel(14,4)
MA: Short Term Bullish Moving Average Crossover	Long	MA(10) crossed above MA(15) within the last 1 day.
MACD: Bullish MACD Crossover	Long	1. MACD(12,26) diff line crossed above the MACD(12,26) signal line. 2. MACD Histogram(12,26) is above 0.
Parabolic SAR: Bearish Parabolic SAR Reversal	Neutral	1. Parabolic SAR 1 day ago above close price 1 day ago for the last 5 days. 2. Parabolic SAR below close price
Price: New 52 Week High	Long	1. Stock reach a new 52 week high. 2. Average volume(30) is above 50000.
Williams %R: Bearish Williams %R	Short	1. Williams %R(26) between 0 and -20. 2. Average volume(5) is above 100,000.

EDUSPEC HOLDINGS BERHAD (0107.MY)

EDUSPEC

Price updated at 05 Oct 2023 16:59

Last: 0.065	Change: -0.005	Volume: 173,084
	Change (%): -7.14	Range: 0.060 - 0.075

TA Scanner Results based on historical data up to 05 Oct 2023

Condition	Signal	Explanation
Bollinger Band: Bullish Long Term Volatility Breakout and Trending	Long	1. Close price above upper bollinger band(33,1). 2. Volume above average volume(50). 3. Average volume(50) is above 300,000.
Bollinger Band: Bullish Lower Bollinger Band Support	Long	1. Low 1 day ago below lower bollinger band(20,2). 2. Close above close 1 day ago. 3. Average volume(5) is above 100,000.
Bollinger Band: Bullish Short Term Volatility Breakout and Trending	Long	1. Close price above upper bollinger band(33,1). 2. Volume above average volume(10). 3. Average volume(10) is above 300,000.
Bollinger Band: High Above Upper Bollinger Band	Neutral	1. High above upper bollinger band(14,2). 2. Average volume(5) is above 100,000.
Donchian Channels: High Above Upper Donchian Channels	Long	High crossed above the upper Donchian Channel(14,4)
MA: Short Term Bullish Moving Average Crossover	Long	MA(10) crossed above MA(15) within the last 1 day.

Disclaimer: The information on this page is provided as a service to readers. It does not constitute financial advice and/or any investment recommendations. Past performance is not indicative of future results. We assume no liability for damages resulting from or arising out of the use of such information. It would be best if you did your own research to make your personal investment decisions wisely or consult a licenced investment advisor.

SARAWAK CONSOLIDATED IND BERHAD (9237.MY)

SCIB

Price updated at 05 Oct 2023 16:59

Last: 0.495	Change: +0.020	Volume: 877,654
	Change (%): +4.21	Range: 0.480 - 0.500

TA Scanner Results based on historical data up to 05 Oct 2023

Condition	Signal	Explanation
Bollinger Band: Bullish Long Term Volatility Breakout and Trending	Long	1. Close price above upper bollinger band(33,1). 2. Volume above average volume(50). 3. Average volume(50) is above 300,000.
Bollinger Band: Bullish Short Term Volatility Breakout and Trending	Long	1. Close price above upper bollinger band(33,1). 2. Volume above average volume(10). 3. Average volume(10) is above 300,000.
Bollinger Band: High Above Upper Bollinger Band	Neutral	1. High above upper bollinger band(14,2). 2. Average volume(5) is above 100,000.
MACD: Bullish MACD Crossover	Long	1. MACD(12,26) diff line crossed above the MACD(12,26) signal line. 2. MACD Histogram(12,26) is above 0.
Parabolic SAR: Bearish Parabolic SAR Reversal	Neutral	1. Parabolic SAR 1 day ago above close price 1 day ago for the last 5 days. 2. Parabolic SAR below close price
Volume: 10 Days large value Buy Up trade	Long	1. 150K value Buy Up greater than Sell Down by 20% for 10 days. 2. 50K-100K value Buy Up greater than Sell Down by 20% for 10 days. 3. Average volume(10) is above 1000000
Volume: 5 Days large value Buy Up trade	Long	1. 150K value Buy Up greater than Sell Down by 20% for 5 days. 2. 50K-100K value Buy Up greater than Sell Down by 20% for 5 days. 3. Average volume(10) is above 1000000
Williams %R: Bearish Williams %R	Short	1. Williams %R(26) between 0 and -20. 2. Average volume(5) is above 100,000.

SOLUTION GROUP BERHAD (0093.MY)

SOLUTN

Price updated at 05 Oct 2023 16:59

Last: 0.250	Change: +0.005	Volume: 29,294
	Change (%): +2.04	Range: 0.235 - 0.250

TA Scanner Results based on historical data up to 05 Oct 2023

Condition	Signal	Explanation
Bollinger Band: Bullish Long Term Volatility Breakout and Trending	Long	1. Close price above upper bollinger band(33,1). 2. Volume above average volume(50). 3. Average volume(50) is above 300,000.
Bollinger Band: Bullish Short Term Volatility Breakout and Trending	Long	1. Close price above upper bollinger band(33,1). 2. Volume above average volume(10). 3. Average volume(10) is above 300,000.
Bollinger Band: High Above Upper Bollinger Band	Neutral	1. High above upper bollinger band(14,2). 2. Average volume(5) is above 100,000.
Donchian Channels: High Above Upper Donchian Channels	Long	High crossed above the upper Donchian Channel(14,4)
Parabolic SAR: Bearish Parabolic SAR Reversal	Neutral	1. Parabolic SAR 1 day ago above close price 1 day ago for the last 5 days. 2. Parabolic SAR below close price
Volume: Volume Spike	Long	1. Volume is more than 500% above average volume(10). 2. Volume above 200000. 3. Close price above 0.10



JENTAYU SUSTAINABLES BERHAD (5673.MY)

JSB

Price updated at 05 Oct 2023 16:50

Last: 0.955	Change: +0.005	Volume: 110,949
	Change (%): +0.53	Range: 0.940 - 0.960

TA Scanner Results based on historical data up to 05 Oct 2023

Condition	Signal	Explanation
DM: Bullish Directional Movement	Long	-DI(14) crossed below +DI(14)
RSI: Short Term RSI 50 Bullish Crossover	Long	1. RSI(20) crossed above 50 within the last 1 day and RSI(20) 1 day ago below 50 for the last 5 days. 2. Volume above average volume(125). 3. Average volume(5) is above 100,000.
Volume: 10 Days large value Buy Up trade	Long	1. 150K value Buy Up greater than Sell Down by 20% for 10 days. 2. 50K-100K value Buy Up greater than Sell Down by 20% for 10 days. 3. Average volume(10) is above 1000000
Volume: 5 Days large value Buy Up trade	Long	1. 150K value Buy Up greater than Sell Down by 20% for 5 days. 2. 50K-100K value Buy Up greater than Sell Down by 20% for 5 days. 3. Average volume(10) is above 1000000
Williams %R: Bearish Williams %R	Short	1. Williams %R(26) between 0 and -20. 2. Average volume(5) is above 100,000.



ZEN TECH INTERNATIONAL BERHAD (0094.MY)

ZEN TECH

Price updated at 05 Oct 2023 16:42

Last: 0.020	Change: -	Volume: 70,322
	Change (%): -	Range: 0.020 - 0.025

TA Scanner Results based on historical data up to 05 Oct 2023

Condition	Signal	Explanation
Bollinger Band: High Above Upper Bollinger Band	Neutral	1. High above upper bollinger band(14,2). 2. Average volume(5) is above 100,000.
Donchian Channels: High Above Upper Donchian Channels	Long	High crossed above the upper Donchian Channel(14,4)
MA: Bullish Price Crossover	Long	1. Close price crossed above MA(40) within the last 1 day. 2. Previous day close price is below the MA(10) for the last 5 days
RSI: Short Term RSI 50 Bullish Crossover	Long	1. RSI(20) crossed above 50 within the last 1 day and RSI(20) 1 day ago below 50 for the last 5 days. 2. Volume above average volume(125). 3. Average volume(5) is above 100,000.
Stochastic: Fast Stochastic Buy Signal	Long	1. Fast Stochastic(15,5) %K crossed above 20. 2. Fast Stochastic(15,5) %K 1 day ago was below 20 for the last 5 days. 3. Average volume(30) is above 50000



YLI HOLDINGS BERHAD (7014.MY)

YLI

Price updated at 05 Oct 2023 16:59

Last: 0.375	Change: -	Volume: 53,502
	Change (%): -	Range: 0.370 - 0.420

TA Scanner Results based on historical data up to 05 Oct 2023

Condition	Signal	Explanation
Bollinger Band: High Above Upper Bollinger Band	Neutral	1. High above upper bollinger band(14,2). 2. Average volume(5) is above 100,000.
Donchian Channels: High Above Upper Donchian Channels	Long	High crossed above the upper Donchian Channel(14,4)
MA: Short Term Bullish Moving Average Crossover	Long	MA(10) crossed above MA(15) within the last 1 day.
Parabolic SAR: Bearish Parabolic SAR Reversal	Neutral	1. Parabolic SAR 1 day ago above close price 1 day ago for the last 5 days. 2. Parabolic SAR below close price
Price: New 52 Week High	Long	1. Stock reach a new 52 week high. 2. Average volume(30) is above 50000.
RSI: Short Term RSI 50 Bullish Crossover	Long	1. RSI(20) crossed above 50 within the last 1 day and RSI(20) 1 day ago below 50 for the last 5 days. 2. Volume above average volume(125). 3. Average volume(5) is above 100,000.
Volume: Volume Spike	Long	1. Volume is more than 500% above average volume(10). 2. Volume above 200000. 3. Close price above 0.10



CELCOMDIGI BERHAD (6947.MY)

CDB

Price updated at 05 Oct 2023 16:59

Last: 4.230	Change: -0.060	Volume: 23,979
	Change (%): -1.40	Range: 4.220 - 4.310

TA Scanner Results based on historical data up to 05 Oct 2023

Condition	Signal	Explanation
Bollinger Band: Low Below Lower Bollinger Band	Neutral	1. Low below lower bollinger band(14,2). 2. Average volume(5) is above 100,000.
CCI: Bullish CCI Oversold And Reversing	Long	1. CCI(26) below -100 and CCI(26) 1 day ago decreasing for the last 3 days. 2. CCI(26) above CCI(26) 1 day ago
Volume: 10 Days large value Buy Up trade	Long	1. 150K value Buy Up greater than Sell Down by 20% for 10 days. 2. 50K-100K value Buy Up greater than Sell Down by 20% for 10 days. 3. Average volume(10) is above 1000000
Volume: 5 Days large value Buy Up trade	Long	1. 150K value Buy Up greater than Sell Down by 20% for 5 days. 2. 50K-100K value Buy Up greater than Sell Down by 20% for 5 days. 3. Average volume(10) is above 1000000
Williams %R: Bullish Williams %R	Long	1. Williams %R(26) between -80 and -100. 2. Average volume(5) is above 100,000.

Disclaimer: The information on this page is provided as a service to readers. It does not constitute financial advice and/or any investment recommendations. Past performance is not indicative of future results. We assume no liability for damages resulting from or arising out of the use of such information. It would be best if you did your own research to make your personal investment decisions wisely or consult a licenced investment advisor.



PANTECH GROUP HOLDINGS BERHAD (5125.MY)

PANTECH

Price updated at 05 Oct 2023 16:58

Last: 0.845	Change: +0.005	Volume: 6,556
	Change (%): +0.60	Range: 0.835 - 0.850

TA Scanner Results based on historical data up to 05 Oct 2023

Condition	Signal	Explanation
Bollinger Band: Bullish Lower Bollinger Band Support	Long	1. Low 1 day ago below lower bollinger band(20,2). 2. Close above close 1 day ago. 3. Average volume(5) is above 100,000.

Condition	Signal	Explanation
Bollinger Band: Low Below Lower Bollinger Band	Neutral	1. Low below lower bollinger band(14,2). 2. Average volume(5) is above 100,000.
CCI: Bullish CCI Oversold And Reversing	Long	1. CCI(26) below -100 and CCI(26) 1 day ago decreasing for the last 3 days. 2. CCI(26) above CCI(26) 1 day ago
Candlestick: Bullish Harami	Long	Bullish: Harami
MACD: Oversold	Long	1. MACD Histogram(12,26,9) reached a new 6 month low. 2. MACD Histogram(12,26,9) has been below 0 for the last 3 weeks.

BURSA MALAYSIA LAUNCHES NATIONAL VOLUNTARY CARBON MARKET HANDBOOK

Bursa Malaysia Berhad has launched the national voluntary carbon market (VCM) handbook to guide local professionals and stakeholders in generating carbon credits that adhere to international standards recognised by the Bursa Carbon Exchange. According to Bursa Malaysia chief executive officer Datuk Muhamad Umar Swift, as Malaysia shifts towards becoming a lower carbon economy, the VCM handbook is a relevant guide designed to assist entities keen on participating in carbon market project development and Malaysia's voluntary carbon market. The handbook defines the roles and functions of key entities in Malaysia's carbon market operations, serving as a reference point for market players.

The increasing prominence on carbon offsets and carbon markets globally, has made it imperative that Malaysia acts on the nation's untapped potential by developing its VCM ecosystem and implementing high-quality carbon projects. This VCM handbook is a critical step

in ensuring Malaysia's VCM can truly support the country's net zero journey. He said this at the inaugural Malaysia Carbon Market Forum 2023 on Thursday October 5th, in conjunction with the International Greentech & Eco Products Exhibition and Conference Malaysia (IGEM 2023).

The VCM handbook is a collaborative effort between Bursa Malaysia and the Malaysian Green Technology and Climate Change Corporation (MGTC), which was initiated through a memorandum of collaboration signed on Feb 20, 2023. The VCM handbook was developed in consultation with the Ministry of Natural Resources, Environment and Climate Change (NRECC) and various ecosystem participants.

He also added that one of Malaysia's nature-based projects, the Kuamut Rainforest Conservation Project in Sabah, is nearing its first issuance and that soon enough, our carbon 'supermarket shelves' will be stocked with Malaysian products.

According to NRECC minister Nik Nazmi Nik Ahmad, Bursa Malaysia is getting ready to auction carbon credits from the Kuamut Rainforest Conservation Project. The auction date will be announced once Verra, the world's leading standards setter for climate action and sustainable development, has issued Kuamut's carbon credits. The project is commendable, as it is being verified for a triple gold labelling under Verra's co-benefit standard of climate, community and biodiversity.

He also said that the government needs nature-based solutions (NbS), which can provide up to 30% of the mitigation required by 2030 to keep the 1.5°C target in reach. The VCM would help mobilise public sector finance towards NbS, particularly in the Global South where it is most urgently needed. Many state governments have reached out to his ministry for alignment of carbon policies for forest carbon assets, and the NRECC is doing its best to ensure that these discussions take place.

He reiterated that Malaysia's National Carbon Policy is expected to be ready for implementation this year which will provide, among other things, guidance on carbon trading at the state level.

ASEAN SET TO BECOME WORLD'S FACTORY AND CONSUMER BASE: TENGKU ZAFRUL

According to the Minister Of Investment, Trade And Industry (MITI) Tengku Datuk Seri Zafrul Aziz, ASEAN is the new China and the region is set to become not just the world's factory but also a consumer base. The government is tapping into opportunities arising from the shifting global supply chains.

The 10 nations that make up ASEAN are already home to more than 678 million people, with a combined GDP of about US\$3.7 trillion (RM17.4 trillion) in 2022. As a bloc, ASEAN is the fifth-largest economy in the world. It also had a middle class of roughly 350 million in 2022, representing US\$300 billion of disposable income. He was speaking at the signing of a memorandum of understanding (MoU) on the Second Chance Financing Scheme for SMEs between MIDF and Agensi Kaunseling dan Pengurusan Kredit (AKPK).

Malaysia's SMEs' survival in local supply chains could help them to capitalise on not only ASEAN's growing middle class, but also shifting supply chains to and FDI flowing into the region. It is important to support SMEs, in the context of global supply chains that are shifting to Southeast Asia. The regional economic integration is also a goal that is espoused by the Madani Economy framework.

The government has announced RM60 million in second chance financing opportunities for SMEs in the 12th Malaysia Plan. MIDF and AKPK will provide SMEs that are facing challenges and financial difficulties with financial assistance, advisory services and business guidance.

The MIDF Second Chance Financing Scheme offers financing of up to RM5 million for assets or working capital financing at a rate of 3% per annum. The aim is to enable SMEs to overcome challenges, fuel growth and contribute to the overall economic development of the country.

Sudden shifts in market conditions, unforeseen disruptions, or internal struggles can push promising companies to the brink of failure and

can have far-reaching consequences for a production's entire supply chain, encompassing suppliers, customers, employees and possibly the surrounding communities. Therefore, providing these companies with a financial lifeline which supports their business recovery is crucial in ensuring that supply chains remain intact which in turn, is crucial to the nation's socio-economic development. To that end, the MIDF-AKPK collaboration is an important, holistic 'recovery ecosystem' in terms of supporting troubled companies, particularly the SMEs.

M'SIA SET TO BECOME REGIONAL RENEWABLE ENERGY INDUSTRY LEADER WITH LAUNCH OF HYDROGEN ECONOMY AND TECHNOLOGY ROADMAP - FADILLAH

According to Deputy Prime Minister Datuk Seri Fadillah Yusof, with the launch of Malaysia's Hydrogen Economy and Technology Roadmap (HETR), the country will be pushed to the forefront of the energy transition, and to become a regional leader in the renewable energy (RE) industry. The HETR was launched during the opening ceremony of the 14th International Greentech and Eco-Products Exhibition and Conference Malaysia (IGEM) 2023.

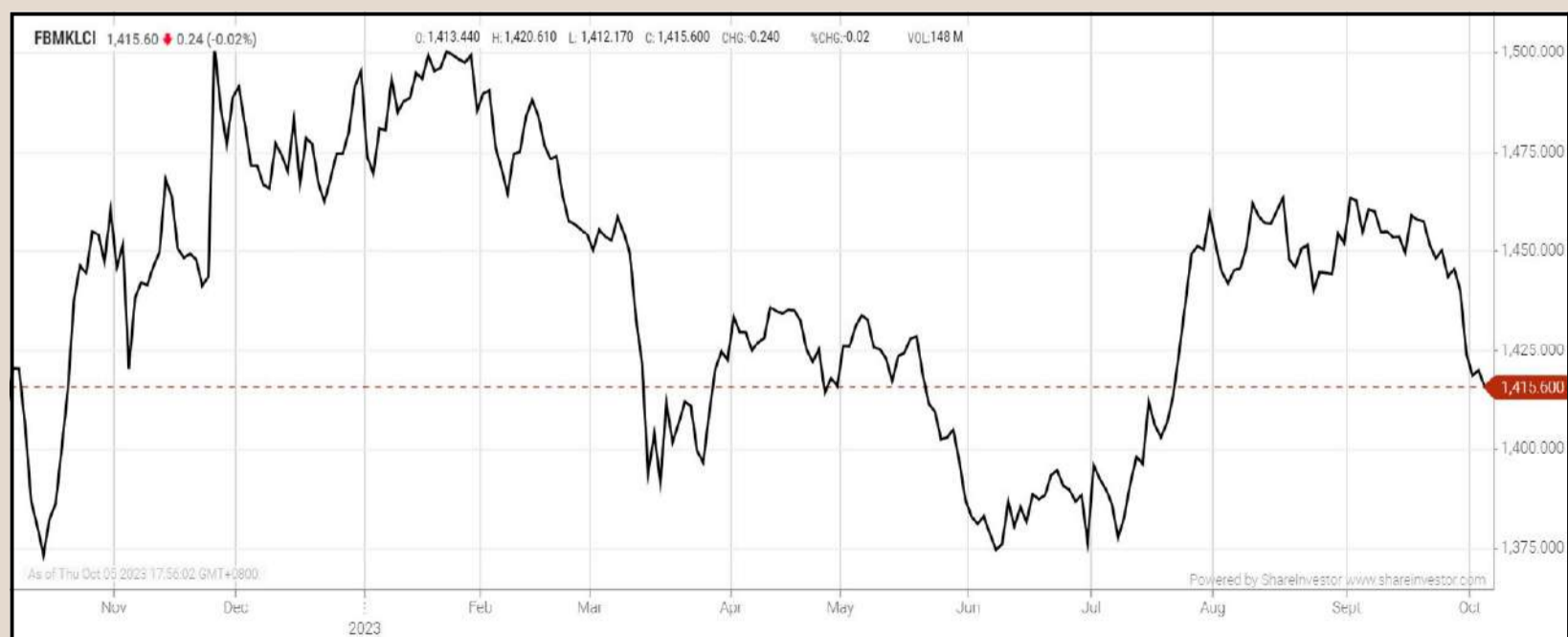
Fadillah, in delivering the opening keynote address on behalf of Prime Minister Datuk Seri Anwar Ibrahim, said the successful implementation of the HETR will enable Malaysia to tap into the global green hydrogen market, estimated to be worth at least US\$189.19 billion (RM824 billion) by 2050. The HETR implementation alone is anticipated to have prospects of generating up to RM12.1 billion in revenue, with an estimated contribution of between RM49 billion and RM61 billion to gross domestic product by 2030, generating over 45,000 job opportunities over the same period.

With the implementation of initiatives under the recently unveiled National Energy Transition Roadmap (NETR) and now, the HETR, Malaysia is set to be at the forefront of becoming a regional leader in the energy transition and renewable energy industry.

The IGEM 2023 is themed “Race Towards Net Zero: Leadership for Climate Action” and could play a decisive leadership role in accelerating and delivering the region’s net zero and energy transition agenda. Organised by the Ministry of Natural Resources, Environment and Climate Change, and co-organised by the Malaysian Green Technology and Climate Change Corporation (MGTC), IGEM is Southeast Asia's leading trade event for green technologies and eco-solutions.

EYE ON THE MARKETS

On Thursday (05Oct), the Ringgit closed at 4.7300 against the USD and 3.4471 to the Sing Dollar. On Monday (02Oct), the FBM KLCI opened at 1424.07. As at Thursday (05Oct) 5:00pm, the FBM KLCI closed down 8.47 points at 1415.60. Over in US, the overnight Dow Jones Industrial Average closed down 9.98 points (-0.03%) to 33,119.57 whilst the NASDAQ shed 16.18 points (-0.12%) to 13,219.83.



KLCI 1 Year Chart

Over 5 trading days



ShareInvestor WebPro (www.shareinvestor.com/my)

1. Price > Stock Prices
2. Select Market: NASDAQ / NYSE / IDX / SET / HKEX / SGX (One bourse at a time)
3. select Stocks Tab
4. select Ranking Top Gainers or Top Losers (Over 5 Trading Days)
5. Mouse over Column Layout > select Edit Customs > select Name > select Last Done Price > select 5 Days Change > select 52 Weeks High > select 52 Weeks Low > Mouse Over Column Layout > select Custom

NASDAQ (USD)

Top Gainers

Name	Last Done	Change Over 5 Days	52 Weeks High	52 Weeks Low
SUPER MICRO COMPUTER INC	287.600	+18.220	357.000	50.280
STRUCTURE THERAPEUTICS INC SPON ADS EACH REP 3 ORD	55.030	+17.560	65.510	20.800
MIRATI THERAPEUTICS INC	62.380	+17.030	101.300	27.300
MARKETAXESS HLDGS INC	225.610	+16.180	399.780	200.010
NVIDIA CORP	446.880	+15.990	502.660	108.130

Top Losers

Name	Last Done	Change Over 5 Days	52 Weeks High	52 Weeks Low
BOOKING HOLDINGS INC	3,018.760	-86.070	3,251.709	1,616.850
MERCADOLIBRE INC	1,214.380	-59.760	1,451.560	754.760
GRUPO AEROPORTUARIO DEL CENTRO NORT SPON ADR EA REP 8 SER B NPV	65.010	-29.990	100.210	51.505
CREDIT ACCEPTANCE CORPORATION	434.140	-32.600	576.050	358.000
ALIGN TECHNOLOGY INC	280.175	-25.145	413.200	172.050

NYSE (USD)

Top Gainers

Name	Last Done	Change Over 5 Days	52 Weeks High	52 Weeks Low
CHIPOTLE MEXICAN GRILL	1,861.580	+29.750	2,175.010	1,344.050
KINSALE CAPITAL GROUP INC	429.750	+10.630	430.000	250.895
EVEREST GROUP LTD	387.080	+15.410	394.735	343.360
FACTSET RESEARCH SYSTEMS	449.190	+11.930	474.130	377.890
MCKESSON CORPORATION	445.800	+3.760	446.950	331.750

Top Losers

Name	Last Done	Change Over 5 Days	52 Weeks High	52 Weeks Low
BERKSHIRE HATHAWAY INC	523,545.050	-7,931.950	566,569.970	393,012.250
TEXAS PACIFIC LAND CORPORATION	1,768.290	-123.170	2,739.000	1,266.210
NVR INC	5,951.680	-110.240	6,525.000	3,816.555
GPO AEROPORTUARIO DEL SURESTE SAB ADS EACH REPR 10 SER B SHS NPV	198.430	-47.280	314.480	165.000
MARKEL GROUP INC	1,463.430	-43.740	1,560.000	1,102.220

IDX (Rupiah)

Top Gainers

Name	Last Done	Change Over 5 Days	52 Weeks High	52 Weeks Low
RODA VIVATEX	15,550.000	+1,650.000	17,000.000	8,625.000
PRIMA ANDALAN MANDIRI TBK	5,500.000	+860.000	7,900.000	4,030.000
METROPOLITAN KENTJ	34,200.000	+750.000	46,200.000	16,950.000
TELEFAST INDONESIA TBK	2,500.000	+705.000	5,500.000	720.000
DCI INDONESIA TBK	34,700.000	+700.000	38,000.000	32,850.000

Top Losers

Name	Last Done	Change Over 5 Days	52 Weeks High	52 Weeks Low
UNITED TRACTORS	26,150.000	-2,150.000	33,750.000	22,200.000
INDO TAMBANGRAYA MEGAH TBK	26,325.000	-2,050.000	45,650.000	22,125.000
PABRIK KERTAS TJIWI KIMIA	8,450.000	-1,450.000	10,375.000	5,600.000
INDAH KIAT PULP & PAPER	10,200.000	-1,150.000	11,850.000	6,775.000
RODA VIVATEX	14,600.000	-950.000	17,000.000	8,675.000

SET (Thai Baht)

Top Gainers

Name	Last Done	Change Over 5 Days	52 Weeks High	52 Weeks Low
SAPPE	89.500	+8.750	100.000	37.000
SCC	305.000	+6.000	360.000	296.000
BBL	168.500	+4.000	175.000	135.500
SKY	38.750	+3.500	39.250	9.586
JMT	49.000	+2.750	71.250	32.500

Top Losers

Name	Last Done	Change Over 5 Days	52 Weeks High	52 Weeks Low
DELTA	85.000	-19.000	119.500	54.800
AEONTS	153.500	-11.500	208.000	150.000
PTTEP	161.500	-9.000	195.000	134.500
CHOTI	122.000	-6.000	179.000	112.000
NEW	82.500	-5.500	210.000	56.000

HKEX (HKD)

Top Gainers

Name	Last Done	Change Over 5 Days	52 Weeks High	52 Weeks Low
CLOUD MUSIC INC	85.850	+6.050	115.200	50.650
XPENG INC	70.000	+5.450	96.300	24.750
MOG DIGITECH HOLDINGS LTD	9.990	+3.990	104.300	3.000
SUN HUNG KAI PROPERTIES LTD	78.250	+3.100	93.700	72.300
AIA GROUP LIMITED	65.950	+3.050	93.650	57.250

Top Losers

Name	Last Done	Change Over 5 Days	52 Weeks High	52 Weeks Low
YUM CHINA HOLDINGS INC	417.800	-15.800	514.500	300.000
TRIP COM GROUP LTD	257.600	-14.600	330.200	159.800
3D MEDICINES INC	6.120	-10.720	131.500	4.680
BEIGENE LTD	101.700	-10.600	170.500	74.900
KEYMED BIOSCIENCES INC	47.700	-7.300	82.850	32.750

SGX (SGD)

Top Gainers

Name	Last Done	Change Over 5 Days	52 Weeks High	52 Weeks Low
NIO INC. USD OV	8.720	+0.420	16.680	7.420
AZEUS	8.760	+0.160	9.190	6.900
VERTEX SPAC	4.900	+0.160	4.980	4.470
HPL	3.640	+0.080	3.990	3.331
PEGASUS SPAC	4.630	+0.080	4.800	4.300

Top Losers

Name	Last Done	Change Over 5 Days	52 Weeks High	52 Weeks Low
JMH USD	45.070	-2.010	54.890	42.600
JARDINE C&C	30.900	-1.580	36.170	27.250
GREAT EASTERN	17.890	-0.310	19.240	16.850
VENTURE	12.050	-0.310	18.750	12.000
KEPPEL CORP	6.530	-0.290	7.460	4.247

THE RESPONSIBILITIES OF BEING A SHAREHOLDER



Devanesan
Evanson

**Chief Executive
Officer, Minority
Shareholders Watch
Group**

A shareholder is a person, company, or institution that owns at least one share of a company's stock. Shareholders own the company, and such ownership comes with certain rights and responsibilities. There are four main responsibilities of being a shareholder, particularly of public listed companies (PLCs).

ENSURE COMPANIES ARE WELL-RUN AND WELL-MANAGED

Shareholders must ensure that companies holistically (rather than individual parts) are well-run and well-managed by the board of directors (the Board) and management. Shareholders should evaluate the state of the companies that they are invested in. They should ask themselves the following questions to facilitate their evaluations:

- Do companies have good processes and systems in place?

- Are the companies adhering to laws and rules where they operate?
- Have the companies integrated economic, social, and governance elements and applied good corporate governance practices in their business?
- What is the top management and employee turnover rate?
- Is the reputation of companies in the market or industry positively viewed?
- Are the companies stable and robust in their top- and bottom-line financial performance where income is mainly generated from core businesses?
- What are the current financial positions of companies?
- Is the current debt level low?
- Are there any red flags in companies' business operations and financial statements?

The abovementioned questions are among the many questions that shareholders can ask to evaluate if companies are well-run and well-managed. On top of that, the annual general meeting is a formal avenue in which shareholders can ask relevant questions to the Board and get a direct response.

VOTE FOR RESOLUTIONS TABLED AT GENERAL MEETINGS

With the shares they own, shareholders are granted voting power to decide the outcome of resolutions tabled at general meetings. It is quite common that shareholders exercise their voting power by voting 'against' resolutions such as re-election or re-appointment of directors, approval of directors' remuneration fees and benefits, if they are not satisfied with the performance of companies. In short, they can 'hire or fire' any directors through resolutions and determine whether they are entitled to the fee and benefits payment. The same goes for other corporate proposals tabled for shareholders' approval at general meetings. For instance, if shareholders deem that the tabled proposal is

not in the best interest of companies and shareholders, they must reject it. Conversely, shareholders will vote to approve proposals that benefit companies and maximise shareholder value.

HELP COMPANIES OVERCOME DIFFICULTIES AND EXPAND AND GROW THEIR BUSINESSES

PLCs comprise shareholders from different classes e.g., founders, institutions, majority, substantial and minority groups, who can provide capital support and plenty of valuable experience and knowledge. Shareholders may impart their experiences, knowledge, and views and provide suggestions to the Board, which the Board and management might want to consider. Participating in fundraising exercises is another straightforward measure where shareholders can help the business expand and grow. Whenever companies do not have enough funds to expand and grow their businesses, they may return to their shareholders for to raise funds. For example, companies undertake rights issues to raise funds from all shareholders, often for business expansion or acquisition purposes. Shareholders should consider participating in a proposal with solid justifications that can expand and grow companies' businesses.

VOTE FOR RESOLUTIONS TABLED AT GENERAL MEETINGS

Each shareholder should have an investing strategy as to when to realise their investment in companies. In this ever-changing environment, many internal and external factors could adversely impact businesses. As such, shareholders must closely monitor their holdings in companies. Apart from financial performance, updates such as business and economic news, domestic and international geopolitical situations, industry trends, etc., can help shareholders make informed decisions based on their investing strategy. In the case of a lack of focus on monitoring their investment, shareholders might have missed some critical elements that may negatively impact their future investment return.

In short, shareholders must take precautionary measures to protect their investments against major losses. During the monitoring exercise, shareholders may find emerging factors that can also positively or negatively impact their investment returns in the future.

CONCLUSION

Amongst all the various stakeholders, shareholders are the most powerful by virtue of having voting rights to determine the performance and future of a company. The clarion call is, therefore, on shareholders to exercise such rights diligently and responsibly. A good start is by attending AGMs and asking pertinent questions of the Board and voting wisely on the tabled resolutions.

Norhisam Sidek
Manager, Corporate Monitoring

This article appeared in the The Observer, a weekly newsletter published by The Minority Shareholders Watch Group (MSWG) and reproduced here with their permission. Do follow MSWG's Twitter account at @MSWGMalaysia and share your thought on their tweets from time to time.

Learn how to identify Hot Stocks using Technical Analysis (TA) and Fundamental Analysis (FA)

Scan me

SIGN UP FOR Invest NOW IT'S FREE!!!

[Click here](#)

Get market moving news and analyses. Regular columns include **Behind The Action** and **From The Observer**

Leaderboard • Shariah Hot Stocks • Shariah Momentum Up Stocks • Non Shariah Hot Stocks • Up Trending Stocks • Growth Stocks • Dividend Stocks • Long Companies • Insider Activity • Investor Relations • Regional Markets

DEFINITION: Insider Activity shows the trades made by substantial shareholders or directors of the company. Purchases by the directors and company share buyback may indicate the share price is undervalued and brings confidence to the price trend of the share price.



ShareInvestor WebPro > Fundamental > Insider Trades > click Search tab > Select Bursa > click Stock name > scroll up and leave at <Select Counter> Type Date Range for Announcement Date > click Search

Notice Period is 24th Sep - 30th Sep 2023

Effective Change Date	Stock Name	Buyer/ Seller Name [Classification]	Bought / (Sold) ['000]		No. of Shares After Trade ['000]	
			Total	% Held	Total	% Held
22 SEP 2023 - 25 SEP 2023	3A	MR TEO KWEE HOCK [SSH]	51		49,084	10.037
27 SEP 2023 - 27 SEP 2023	ACME	MR GOH CHOON LYE [SSH]	-600		47,985	13.056
27 SEP 2023 - 27 SEP 2023	ACME	WWT WELLNESS SOLUTIONS SDN BHD [SSH]	-600		47,985	13.056
25 SEP 2023 - 26 SEP 2023	ACME	MR GOH CHOON LYE [SSH]	-2,100		48,585	13.219
25 SEP 2023 - 26 SEP 2023	ACME	WWT WELLNESS SOLUTIONS SDN BHD [SSH]	-2,100		48,585	13.219
25 SEP 2023 - 25 SEP 2023	AEON	EMPLOYEES PROVIDENT FUND BOARD [SSH]	-1,197		126,312	8.997
22 SEP 2023 - 22 SEP 2023	AEON	EMPLOYEES PROVIDENT FUND BOARD [SSH]	-2,373		127,509	9.082
20 SEP 2023 - 20 SEP 2023	AEON	EMPLOYEES PROVIDENT FUND BOARD [SSH]	-166		130,412	9.289
22 SEP 2023 - 25 SEP 2023	AHEALTH	APEX HOLDINGS (PTE) LTD [SSH]	195		296,618	41.304
22 SEP 2023 - 25 SEP 2023	AHEALTH	DR KEE KIRK CHIN [DIR/CEO]	195		304,922	42.46
22 SEP 2023 - 25 SEP 2023	AHEALTH	DR KEE KIRK CHIN [SSH]	195		304,922	42.46
22 SEP 2023 - 25 SEP 2023	AHEALTH	DR KEE LOO [SSH]	195		296,618	41.304
22 SEP 2023 - 25 SEP 2023	AHEALTH	MADAM YANG LIEW FANG [SSH]	195		296,618	41.304
22 SEP 2023 - 25 SEP 2023	AHEALTH	MR KEE KIRK CHUEN [DIR/CEO]	195		298,024	41.5
22 SEP 2023 - 25 SEP 2023	AHEALTH	MR KEE KIRK CHUEN [SSH]	195		298,024	41.5
22 SEP 2023 - 25 SEP 2023	AHEALTH	MR KEE TAH PENG @ HEE TECK PENG [SSH]	195		296,618	41.304
22 SEP 2023 - 25 SEP 2023	AHEALTH	XEPA HOLDINGS PTE LTD [SSH]	195		296,618	41.304
22 SEP 2023 - 25 SEP 2023	AHEALTH	XEPA HOLDINGS SDN. BHD. [SSH]	195		292,617	40.747
27 SEP 2023 - 27 SEP 2023	AIRPORT	KUMPULAN WANG PERSARAAN (DIPERBADANKAN) [SSH]	131		111,918	6.707
25 SEP 2023 - 25 SEP 2023	AIRPORT	EMPLOYEES PROVIDENT FUND BOARD [SSH]	-1,247		153,914	9.224
22 SEP 2023 - 22 SEP 2023	AIRPORT	EMPLOYEES PROVIDENT FUND BOARD [SSH]	-666		155,161	9.299
21 SEP 2023 - 21 SEP 2023	AIRPORT	EMPLOYEES PROVIDENT FUND BOARD [SSH]	-905		155,827	9.339
22 SEP 2023 - 22 SEP 2023	AIRPORT	KUMPULAN WANG PERSARAAN (DIPERBADANKAN) [SSH]	-74		111,787	6.699
20 SEP 2023 - 20 SEP 2023	AIRPORT	EMPLOYEES PROVIDENT FUND BOARD [SSH]	-2,426		156,732	9.393
25 SEP 2023 - 25 SEP 2023	AMWAY	EMPLOYEES PROVIDENT FUND BOARD [SSH]	-25		10,510	6.393
21 SEP 2023 - 21 SEP 2023	AMWAY	EMPLOYEES PROVIDENT FUND BOARD [SSH]	-3		10,535	6.409
20 SEP 2023 - 20 SEP 2023	AMWAY	EMPLOYEES PROVIDENT FUND BOARD [SSH]	-1		10,537	6.41
21 SEP 2023 - 22 SEP 2023	ANCOMNY	MR LEE CHEUN WEI [DIR/CEO]	150		83,343	8.764
21 SEP 2023 - 22 SEP 2023	ANCOMNY	MR LEE CHEUN WEI [SSH]	150		83,343	8.764
26 SEP 2023 - 26 SEP 2023	APOLLO	AMANAHRAYA TRUSTEES BERHAD-AMANAH SAHAM BUMIPUTERA [SSH]	-165		4,972	6.215
25 SEP 2023 - 25 SEP 2023	APOLLO	AMANAHRAYA TRUSTEES BERHAD-AMANAH SAHAM BUMIPUTERA [SSH]	-85		5,137	6.421
22 SEP 2023 - 22 SEP 2023	APOLLO	AMANAHRAYA TRUSTEES BERHAD-AMANAH SAHAM BUMIPUTERA [SSH]	-161		5,222	6.528
21 SEP 2023 - 21 SEP 2023	APOLLO	AMANAHRAYA TRUSTEES BERHAD-AMANAH SAHAM BUMIPUTERA [SSH]	-114		5,383	6.729
25 SEP 2023 - 25 SEP 2023	ASIAFLE	DATO' LIM SOON HUAT [DIR/CEO]	330		94,242	48.453
25 SEP 2023 - 25 SEP 2023	ASIAFLE	DATO' LIM SOON HUAT [SSH]	330		89,864	46.202
22 SEP 2023 - 22 SEP 2023	AWC	DATO' AHMAD KABEER BIN MOHAMED NAGOOR [DIR/CEO]	4,100		110,373	34.703
22 SEP 2023 - 22 SEP 2023	AWC	DATO' AHMAD KABEER BIN MOHAMED NAGOOR [SSH]	4,100		110,373	34.703
25 SEP 2023 - 25 SEP 2023	AXIATA	AMANAHRAYA TRUSTEES BERHAD-AMANAH SAHAM BUMIPUTERA [SSH]	5,000		1,100,404	11.988
22 SEP 2023 - 22 SEP 2023	AXIATA	EMPLOYEES PROVIDENT FUND BOARD [SSH]	667		1,619,054	17.639
25 SEP 2023 - 25 SEP 2023	BAUTO	EMPLOYEES PROVIDENT FUND BOARD [SSH]	1,382		128,809	11.057
25 SEP 2023 - 25 SEP 2023	BAUTO	PRUDENTIAL PLC [SSH]	46		66,010	5.666
22 SEP 2023 - 22 SEP 2023	BAUTO	EMPLOYEES PROVIDENT FUND BOARD [SSH]	-1,268		127,427	10.939
22 SEP 2023 - 22 SEP 2023	BAUTO	PRUDENTIAL PLC [SSH]	-1,103		65,964	5.663
21 SEP 2023 - 21 SEP 2023	BAUTO	EMPLOYEES PROVIDENT FUND BOARD [SSH]	-2,980		128,695	11.048
20 SEP 2023 - 20 SEP 2023	BAUTO	EMPLOYEES PROVIDENT FUND BOARD [SSH]	-2,774		131,675	11.303
21 SEP 2023 - 21 SEP 2023	BIMB	EMPLOYEES PROVIDENT FUND BOARD [SSH]	-167		364,651	16.089
22 SEP 2023 - 22 SEP 2023	BIPORT	EMPLOYEES PROVIDENT FUND BOARD [SSH]	-3		24,090	5.237
21 SEP 2023 - 21 SEP 2023	BIPORT	EMPLOYEES PROVIDENT FUND BOARD [SSH]	-5		24,093	5.239
20 SEP 2023 - 20 SEP 2023	BIPORT	EMPLOYEES PROVIDENT FUND BOARD [SSH]	-12		24,098	5.239
19 SEP 2023 - 19 SEP 2023	BIPORT	EMPLOYEES PROVIDENT FUND BOARD [SSH]	-4		24,110	5.241
26 SEP 2023 - 26 SEP 2023	BJCORP	TAN SRI DATO' SERI VINCENT TAN CHEE YIOUN [SSH]	-3,000		893,689	16.006
22 SEP 2023 - 25 SEP 2023	BJCORP	TAN SRI DATO' SERI VINCENT TAN CHEE YIOUN [SSH]	-4,298		896,689	16.059
20 SEP 2023 - 20 SEP 2023	BJCORP	TAN SRI DATO' SERI VINCENT TAN CHEE YIOUN [SSH]	-1,727		900,986	16.136
26 SEP 2023 - 26 SEP 2023	BJFOOD	BERJAYA CORPORATION BERHAD [SSH]	29,500		999,774	56.991
22 SEP 2023 - 22 SEP 2023	BJLAND	BERJAYA CORPORATION BERHAD [SSH]	-110,000		3,664,828	74.481
22 SEP 2023 - 22 SEP 2023	BJLAND	BERJAYA GROUP BERHAD [SSH]	-110,000		3,246,728	65.984
22 SEP 2023 - 22 SEP 2023	BJLAND	JUARA SEJATI SDN BHD [SSH]	-110,000		1,607,129	32.662
26 SEP 2023 - 26 SEP 2023	BSLCORP	BC MEDICARE SDN. BHD. [SSH]	5,000		168,318	8.721
26 SEP 2023 - 26 SEP 2023	BSLCORP	BCM ALLIANCE BERHAD [SSH]	5,000		168,318	8.721
26 SEP 2023 - 26 SEP 2023	BSLCORP	CITA REALITI SDN. BHD. [SSH]	42,000		156,726	8.12
25 SEP 2023 - 25 SEP 2023	BURSA	EMPLOYEES PROVIDENT FUND BOARD [SSH]	1,111		97,384	12.033
22 SEP 2023 - 22 SEP 2023	BURSA	EMPLOYEES PROVIDENT FUND BOARD [SSH]	41		96,273	11.896

Notice Period is 24th Sep - 30th Sep 2023

Effective Change Date	Stock Name	Buyer/ Seller Name [Classification]	Bought / (Sold) ['000]		No. of Shares After Trade ['000]	
			Total	% Held	Total	% Held
21 SEP 2023 - 21 SEP 2023	BURSA	EMPLOYEES PROVIDENT FUND BOARD [SSH]	1,185		96,232	11.891
20 SEP 2023 - 20 SEP 2023	BURSA	EMPLOYEES PROVIDENT FUND BOARD [SSH]	914		95,047	11.744
25 SEP 2023 - 25 SEP 2023	CDB	EMPLOYEES PROVIDENT FUND BOARD [SSH]	200		1,124,547	9.586
25 SEP 2023 - 27 SEP 2023	CEPAT	DATIN SERI OOI AH THIN [SSH]	191		120,891	39.13
25 SEP 2023 - 27 SEP 2023	CEPAT	DATO' MAH POOI SOO REALTY SDN. BHD. [SSH]	191		120,891	39.13
25 SEP 2023 - 27 SEP 2023	CEPAT	DATO' SERI MAH KING SENG [DIR/CEO]	191		120,891	39.13
25 SEP 2023 - 27 SEP 2023	CEPAT	DATO' SERI MAH KING SENG [SSH]	191		120,891	39.13
25 SEP 2023 - 27 SEP 2023	CEPAT	MHC PLANTATIONS BHD. [SSH]	191		120,891	39.13
25 SEP 2023 - 27 SEP 2023	CEPAT	TAN SRI DR MAH KING THIAN @ MAH KING THIAM [DIR/CEO]	191		120,891	39.13
25 SEP 2023 - 27 SEP 2023	CEPAT	TAN SRI DR MAH KING THIAN @ MAH KING THIAM [SSH]	191		120,891	39.13
21 SEP 2023 - 21 SEP 2023	CEPAT	DATIN SERI OOI AH THIN [SSH]	67		120,701	39.07
21 SEP 2023 - 21 SEP 2023	CEPAT	DATO' MAH POOI SOO REALTY SDN. BHD. [SSH]	67		120,701	39.07
21 SEP 2023 - 21 SEP 2023	CEPAT	DATO' SERI MAH KING SENG [DIR/CEO]	67		120,701	39.07
21 SEP 2023 - 21 SEP 2023	CEPAT	DATO' SERI MAH KING SENG [SSH]	67		120,701	39.07
21 SEP 2023 - 21 SEP 2023	CEPAT	MHC PLANTATIONS BHD. [SSH]	67		120,701	39.07
21 SEP 2023 - 21 SEP 2023	CEPAT	TAN SRI DR MAH KING THIAN @ MAH KING THIAM [DIR/CEO]	67		120,701	39.07
21 SEP 2023 - 21 SEP 2023	CEPAT	TAN SRI DR MAH KING THIAN @ MAH KING THIAM [SSH]	67		120,701	39.07
25 SEP 2023 - 25 SEP 2023	CGB	MR CHEW HIAN TAT [DIR/CEO]	1,000		49,680	30.718
25 SEP 2023 - 25 SEP 2023	CGB	MR CHEW HIAN TAT [SSH]	1,000		49,680	30.718
25 SEP 2023 - 26 SEP 2023	CHGP	CHIN HIN GROUP BERHAD [SSH]	2,484		325,944	59.227
25 SEP 2023 - 26 SEP 2023	CHGP	DATUK SERI CHIAU BENG TEIK [DIR/CEO]	2,484		325,944	59.227
25 SEP 2023 - 26 SEP 2023	CHGP	DATUK SERI CHIAU BENG TEIK [SSH]	2,484		325,944	59.227
25 SEP 2023 - 26 SEP 2023	CHGP	DIVINE INVENTIONS SDN BHD [SSH]	2,484		325,944	59.227
25 SEP 2023 - 26 SEP 2023	CHGP	MR CHIAU HAW CHOON [DIR/CEO]	2,484		325,944	59.227
25 SEP 2023 - 26 SEP 2023	CHGP	MR CHIAU HAW CHOON [SSH]	2,484		325,944	59.227
25 SEP 2023 - 26 SEP 2023	CHGP	PP CHIN HIN REALTY SDN BHD [SSH]	2,484		325,944	59.227
26 SEP 2023 - 26 SEP 2023	CIMB	KUMPULAN WANG PERSARAAN (DIPERBADANKAN) [SSH]	-32		713,775	6.69
22 SEP 2023 - 22 SEP 2023	CIMB	EMPLOYEES PROVIDENT FUND BOARD [SSH]	-2,997		1,697,499	16.92
21 SEP 2023 - 21 SEP 2023	CIMB	EMPLOYEES PROVIDENT FUND BOARD [SSH]	-8,948		1,700,496	15.94
20 SEP 2023 - 20 SEP 2023	CIMB	EMPLOYEES PROVIDENT FUND BOARD [SSH]	5,526		1,709,444	16.03
27 SEP 2023 - 27 SEP 2023	CLMT	KUMPULAN WANG PERSARAAN (DIPERBADANKAN) [SSH]	199		249,268	9.119
25 SEP 2023 - 25 SEP 2023	CLMT	CMMT INVESTMENT LIMITED [SSH]	24,101		989,551	36.202
25 SEP 2023 - 25 SEP 2023	CLMT	EMPLOYEES PROVIDENT FUND BOARD [SSH]	946		386,788	14.15
25 SEP 2023 - 25 SEP 2023	CLMT	ENCIK MOHD YUSOF BIN HUSSIAN [DIR/CEO]	2		68	0.002
26 SEP 2023 - 26 SEP 2023	CLMT	KUMPULAN WANG PERSARAAN (DIPERBADANKAN) [SSH]	446		249,069	9.112
22 SEP 2023 - 22 SEP 2023	CLMT	EMPLOYEES PROVIDENT FUND BOARD [SSH]	205		385,842	14.301
25 SEP 2023 - 25 SEP 2023	CLMT	KUMPULAN WANG PERSARAAN (DIPERBADANKAN) [SSH]	774		248,623	9.096
21 SEP 2023 - 21 SEP 2023	CLMT	EMPLOYEES PROVIDENT FUND BOARD [SSH]	186		385,638	14.293
22 SEP 2023 - 22 SEP 2023	CLMT	KUMPULAN WANG PERSARAAN (DIPERBADANKAN) [SSH]	167		247,849	9.186
20 SEP 2023 - 20 SEP 2023	CLMT	EMPLOYEES PROVIDENT FUND BOARD [SSH]	812		385,452	14.286
29 SEP 2023 - 29 SEP 2023	CSH	DATO' LIU HAN MING [SSH]	229,500		229,500	16.613
29 SEP 2023 - 29 SEP 2023	CSH	SHENG DAR HOLDING SDN. BHD. [SSH]	229,500		229,500	16.613
21 SEP 2023 - 21 SEP 2023	CTOS	WASATCH ADVISORS LP [SSH]	-402		118,816	5.144
25 SEP 2023 - 25 SEP 2023	CUSCAPI	DATUK JAYAKUMAR A/L PANNEER SELVAM [SSH]	318		140,100	14.827
25 SEP 2023 - 25 SEP 2023	CUSCAPI	DATUK JAYAKUMAR A/L PANNEER SELVAM [DIR/CEO]	318		140,100	14.827
26 SEP 2023 - 26 SEP 2023	CWG	MR LIM KAM SENG [SSH]	222		9,380	5.769
25 SEP 2023 - 25 SEP 2023	CWG	MR LIM KAM SENG [SSH]	333		9,158	5.632
22 SEP 2023 - 22 SEP 2023	CWG	MR LIM KAM SENG [SSH]	666		8,825	5.427
22 SEP 2023 - 22 SEP 2023	CWG	MR LIM KAM SENG [SSH]	666		8,825	5.427
22 SEP 2023 - 22 SEP 2023	CYPARK	DATO' DAUD BIN AHMAD [DIR/CEO]	12,000		50,339	6.309
22 SEP 2023 - 22 SEP 2023	CYPARK	DATO' DAUD BIN AHMAD [DIR/CEO]	12,000		23,500	94.378
22 SEP 2023 - 22 SEP 2023	CYPARK	DATO' DAUD BIN AHMAD [SSH]	12,000		50,339	6.309
25 SEP 2023 - 25 SEP 2023	D&O	MR TAY KHENG CHIONG [DIR/CEO]	31		24,321	1.964
21 SEP 2023 - 21 SEP 2023	D&O	EMPLOYEES PROVIDENT FUND BOARD [SSH]	212		62,817	5.073
20 SEP 2023 - 20 SEP 2023	D&O	EMPLOYEES PROVIDENT FUND BOARD [SSH]	1,067		62,606	5.056
26 SEP 2023 - 26 SEP 2023	DFX	DATUK WIRA LAU CHI CHIANG [DIR/CEO]	-1,500		13,668	1.833
25 SEP 2023 - 25 SEP 2023	DIALOG	EMPLOYEES PROVIDENT FUND BOARD [SSH]	1,200		839,815	14.88
26 SEP 2023 - 26 SEP 2023	DIALOG	KUMPULAN WANG PERSARAAN (DIPERBADANKAN) [SSH]	15		562,625	9.97
25 SEP 2023 - 25 SEP 2023	DIALOG	KUMPULAN WANG PERSARAAN (DIPERBADANKAN) [SSH]	535		562,610	9.97
25 SEP 2023 - 25 SEP 2023	DLADY	CITIGROUP NOMINEES (TEMPATAN) SDN BHD EMPLOYEES PROVIDENT FUND BOARD [SSH]	-6		5,850	9.14

Disclaimer: The Information in Insider Activity is extracted from www.shareinvestor.com/fundamental/insider_trades. The information on this page is provided as a service to readers. It does not constitute financial advice and/or any investment recommendations. We assume no liability for damages resulting from or arising out of the use of such information. Whilst every effort is made to ensure accuracy, the information presented is not the official record of shareholder filings. Readers are advised to read the original filings on the Bursa Malaysia website at www.bursamalaysia.com



STROM
SWISS TIMEPIECES & JEWELLERY



StromWatch Asia
Tele : +65.9817.3378
Email : ll.stromasia@gmail.com
WWW.STROMWATCH.SWISS

Notice Period is 24th Sep – 30th Sep 2023

Effective Change Date	Stock Name	Buyer/ Seller Name [Classification]	Bought / (Sold) ('000)		No. of Shares After Trade ('000)	
			Total	Total	% Held	
22 SEP 2023 - 22 SEP 2023	DLADY	CITIGROUP NOMINEES (TEMPATAN) SDN BHD EMPLOYEES PROVIDENT FUND BOARD [SSH]	-10	5,856	9.15	
21 SEP 2023 - 21 SEP 2023	DLADY	CITIGROUP NOMINEES (TEMPATAN) SDN BHD EMPLOYEES PROVIDENT FUND BOARD [SSH]	-60	5,866	9.165	
20 SEP 2023 - 20 SEP 2023	DLADY	CITIGROUP NOMINEES (TEMPATAN) SDN BHD EMPLOYEES PROVIDENT FUND BOARD [SSH]	-40	5,926	9.259	
25 SEP 2023 - 25 SEP 2023	DPHARMA	EMPLOYEES PROVIDENT FUND BOARD [SSH]	200	77,731	8.081	
22 SEP 2023 - 22 SEP 2023	DPHARMA	EMPLOYEES PROVIDENT FUND BOARD [SSH]	490	77,531	8.059	
21 SEP 2023 - 21 SEP 2023	DPHARMA	EMPLOYEES PROVIDENT FUND BOARD [SSH]	150	77,041	8.01	
20 SEP 2023 - 20 SEP 2023	DPHARMA	EMPLOYEES PROVIDENT FUND BOARD [SSH]	600	76,891	7.993	
22 SEP 2023 - 22 SEP 2023	DPS	DATUK ABDULLAH BIN MOHD TAHA [SSH]	2,816	11,730	8.316	
22 SEP 2023 - 22 SEP 2023	DPS	GOLDPEACE CORPORATION SDN BHD [SSH]	2,816	11,730	8.316	
22 SEP 2023 - 22 SEP 2023	DPS	SUHAIMI BIN HARUN [SSH]	2,816	11,730	8.316	
26 SEP 2023 - 26 SEP 2023	DSOINIC	DATO' SAFIAN BIN MOHD YUNUS [SSH]	-14,500	421,724	14.983	
26 SEP 2023 - 26 SEP 2023	DSOINIC	DATO' SAFIAN BIN MOHD YUNUS [DIR/CEO]	-14,500	421,724	14.983	
26 SEP 2023 - 26 SEP 2023	DSOINIC	DEMI MEKAR SDN BHD [SSH]	-14,500	157,974	5.612	
25 SEP 2023 - 25 SEP 2023	DUFU	LEE SU HUI-FEN ALSO KNOWN AS FLORA SU [SSH]	89	51,937	9.794	
25 SEP 2023 - 25 SEP 2023	DUFU	LEE WEN-JUNG [SSH]	89	52,022	9.81	
25 SEP 2023 - 25 SEP 2023	DUFU	PERFECT COMMERCE SDN. BHD. [SSH]	89	51,737	9.756	
22 SEP 2023 - 22 SEP 2023	DXN	DATIN LEONG BEE LING [SSH]	769	3,394,408	68.092	
22 SEP 2023 - 22 SEP 2023	DXN	DATUK LIM SIOW JIN [DIR/CEO]	769	3,394,408	68.093	
22 SEP 2023 - 22 SEP 2023	DXN	DATUK LIM SIOW JIN [SSH]	769	3,394,408	68.093	
21 SEP 2023 - 21 SEP 2023	DXN	DATIN LEONG BEE LING [SSH]	170	3,393,639	68.077	
21 SEP 2023 - 21 SEP 2023	DXN	DATUK LIM SIOW JIN [DIR/CEO]	170	3,393,639	68.077	
21 SEP 2023 - 21 SEP 2023	DXN	DATUK LIM SIOW JIN [SSH]	170	3,393,639	68.077	
27 SEP 2023 - 27 SEP 2023	E&O	DATUK TEE ENG HO [DIR/CEO]	60,000	897,870	50.41	
27 SEP 2023 - 27 SEP 2023	E&O	DATUK TEE ENG HO [SSH]	60,000	897,586	50.39	
27 SEP 2023 - 27 SEP 2023	E&O	KERJAYA PROSPEK DEVELOPMENT (M) SDN BHD [SSH]	60,000	174,928	9.82	
27 SEP 2023 - 27 SEP 2023	E&O	MR TEE ENG SENG [DIR/CEO]	60,000	897,586	50.39	
27 SEP 2023 - 27 SEP 2023	E&O	MR TEE ENG SENG [SSH]	60,000	897,586	50.39	
22 SEP 2023 - 22 SEP 2023	E&O	KUMPULAN WANG PERSARAAN (DIPERBADANKAN) [SSH]	300	109,524	6.39	
27 SEP 2023 - 27 SEP 2023	E&O-LC	DATUK TEE ENG HO [DIR/CEO]	60,000	545,624	71.96	
27 SEP 2023 - 27 SEP 2023	E&O-LC	MR TEE ENG SENG [DIR/CEO]	60,000	540,391	71.27	
22 SEP 2023 - 22 SEP 2023	EDEN	KOPERASI BELIA ISLAM MALAYSIA BERHAD [SSH]	27,414	27,414	5.967	
26 SEP 2023 - 26 SEP 2023	EITA	MISS FU JIA LIK [DIR/CEO]	-100	13,694	15.822	
26 SEP 2023 - 26 SEP 2023	EITA	MR FU MUN WIN [DIR/CEO]	-100	13,694	15.822	
25 SEP 2023 - 25 SEP 2023	EKOVEST	TAN SRI DATUK SERI LIM KENG CHENG [DIR/CEO]	-12,000	95,057	3.206	
25 SEP 2023 - 26 SEP 2023	ELKDESA	MR TEOH HOCK CHAI @ TEW HOCK CHAI [SSH]	250	190,388	41.861	
25 SEP 2023 - 26 SEP 2023	ELKDESA	MR TEOH HOCK CHAI@TEW HOCK CHAI [DIR/CEO]	250	190,388	41.861	
25 SEP 2023 - 26 SEP 2023	ELKDESA	ZHONGXIN RESOURCES SDN BHD [SSH]	250	172,400	37.906	
22 SEP 2023 - 22 SEP 2023	EMCC	DATIN FADZLULLAILY BINTI YAKOB [DIR/CEO]	316	316	0.028	
22 SEP 2023 - 22 SEP 2023	EMCC	DATIN TEA GUAT NGO [DIR/CEO]	-43,000	619,779	55.59	
22 SEP 2023 - 22 SEP 2023	EMCC	DATIN TEA GUAT NGO [SSH]	-43,000	619,779	55.59	
22 SEP 2023 - 22 SEP 2023	EMCC	DATO' LOW KOK CHUAN [DIR/CEO]	-43,000	619,779	55.59	
22 SEP 2023 - 22 SEP 2023	EMCC	DATO' LOW KOK CHUAN [SSH]	-43,000	619,779	55.59	
22 SEP 2023 - 22 SEP 2023	EMCC	ENCIK LOW KOK HU [SSH]	-43,000	619,779	55.59	
22 SEP 2023 - 22 SEP 2023	EMCC	MISS CHOW LAI MUN [DIR/CEO]	300	300	0.027	
22 SEP 2023 - 22 SEP 2023	EMCC	MR HONG BOON TOH [DIR/CEO]	300	300	0.027	
22 SEP 2023 - 22 SEP 2023	EMCC	MR KENNETH CHAI CHUAN TEONG [DIR/CEO]	300	300	0.027	
22 SEP 2023 - 22 SEP 2023	EMCC	TIRAI ANGERIK SDN BHD [SSH]	-43,000	619,779	55.59	
26 SEP 2023 - 26 SEP 2023	ESKERAM	MISS TAN SAN LI [DIR/CEO]	-26,300	26,300	18.343	
20 SEP 2023 - 22 SEP 2023	ESKERAM	MR TAN BOON SING [DIR/CEO]	5,000	5,000	3.385	
26 SEP 2023 - 26 SEP 2023	EWINT	TAN SRI DATO' SRI LIEW KEE SIN [DIR/CEO]	-2,126	274,127	11.422	
26 SEP 2023 - 26 SEP 2023	EWINT	TAN SRI DATO' SRI LIEW KEE SIN [SSH]	-2,126	274,127	11.422	
25 SEP 2023 - 25 SEP 2023	EWINT	TAN SRI DATO' SRI LIEW KEE SIN [DIR/CEO]	-3,438	276,253	11.511	
25 SEP 2023 - 25 SEP 2023	EWINT	TAN SRI DATO' SRI LIEW KEE SIN [SSH]	-3,438	276,253	11.511	
22 SEP 2023 - 22 SEP 2023	EWINT	TAN SRI DATO' SRI LIEW KEE SIN [DIR/CEO]	-4,407	279,690	11.654	
22 SEP 2023 - 22 SEP 2023	EWINT	TAN SRI DATO' SRI LIEW KEE SIN [SSH]	-4,407	279,690	11.654	
25 SEP 2023 - 25 SEP 2023	F&N	EMPLOYEES PROVIDENT FUND BOARD [SSH]	191	42,516	11.592	
22 SEP 2023 - 22 SEP 2023	F&N	EMPLOYEES PROVIDENT FUND BOARD [SSH]	-16	42,326	11.54	
21 SEP 2023 - 21 SEP 2023	F&N	EMPLOYEES PROVIDENT FUND BOARD [SSH]	-16	42,341	11.544	
20 SEP 2023 - 20 SEP 2023	F&N	EMPLOYEES PROVIDENT FUND BOARD [SSH]	-43	42,358	11.549	
26 SEP 2023 - 26 SEP 2023	FBBHD	MR NG KIAN BOON [DIR/CEO]	-3,200	199,641	92.426	
26 SEP 2023 - 26 SEP 2023	FBBHD	MR NG KIAN BOON [SSH]	-3,200	199,641	92.426	
26 SEP 2023 - 26 SEP 2023	FFB	ABRDN HOLDINGS LIMITED (FORMERLY KNOWN AS ABERDEEN ASSET MANAGEMENT PLC) [SSH]	246	104,292	5.571	
26 SEP 2023 - 26 SEP 2023	FFB	ABRDN MALAYSIA SDN BHD [SSH]	246	102,948	5.5	
26 SEP 2023 - 26 SEP 2023	FFB	ABRDN PLC [SSH]	246	104,292	5.571	
25 SEP 2023 - 25 SEP 2023	FFB	EMPLOYEES PROVIDENT FUND BOARD [SSH]	405	161,154	8.609	
25 SEP 2023 - 25 SEP 2023	FFB	ABRDN HOLDINGS LIMITED (FORMERLY KNOWN AS ABERDEEN ASSET MANAGEMENT PLC) [SSH]	701	104,046	5.558	
25 SEP 2023 - 25 SEP 2023	FFB	ABRDN MALAYSIA SDN BHD [SSH]	701	102,702	5.486	
25 SEP 2023 - 25 SEP 2023	FFB	ABRDN PLC [SSH]	701	104,046	5.558	
22 SEP 2023 - 22 SEP 2023	FFB	EMPLOYEES PROVIDENT FUND BOARD [SSH]	802	161,190	8.611	
22 SEP 2023 - 22 SEP 2023	FFB	ABRDN HOLDINGS LIMITED (FORMERLY KNOWN AS ABERDEEN ASSET MANAGEMENT PLC) [SSH]	2,102	103,346	5.521	
22 SEP 2023 - 22 SEP 2023	FFB	ABRDN MALAYSIA SDN BHD [SSH]	2,036	102,002	5.449	
22 SEP 2023 - 22 SEP 2023	FFB	ABRDN PLC [SSH]	2,102	103,346	5.521	
26 SEP 2023 - 26 SEP 2023	FITTERS	CITA REALITI SDN BHD [SSH]	9,700	251,171	10.728	
20 SEP 2023 - 20 SEP 2023	FOCUSP	DATIN GOH POI EONG [DIR/CEO]	-1,000	235,569	50.989	
20 SEP 2023 - 20 SEP 2023	FOCUSP	DATIN GOH POI EONG [SSH]	-1,000	235,569	50.989	
20 SEP 2023 - 20 SEP 2023	FOCUSP	DATO LIAW CHOON LIANG [DIR/CEO]	-1,000	235,569	50.989	
20 SEP 2023 - 20 SEP 2023	FOCUSP	DATO LIAW CHOON LIANG [SSH]	-1,000	235,569	50.989	
22 SEP 2023 - 25 SEP 2023	FRONTKN	MR OOI KENG THYE [SSH]	-1,415	190,088	12.1	
25 SEP 2023 - 25 SEP 2023	GAMUDA	EMPLOYEES PROVIDENT FUND BOARD (EPF BOARD) [SSH]	-1,750	321,418	11.92	
22 SEP 2023 - 22 SEP 2023	GAMUDA	EMPLOYEES PROVIDENT FUND BOARD (EPF BOARD) [SSH]	-1,029	323,168	11.98	

Notice Period is 24th Sep – 30th Sep 2023

Effective Change Date	Stock Name	Buyer/ Seller Name [Classification]	Bought / (Sold) ('000)		No. of Shares After Trade ('000)	
			Total	Total	% Held	
21 SEP 2023 - 21 SEP 2023	GAMUDA	EMPLOYEES PROVIDENT FUND BOARD (EPF BOARD) [SSH]	-1,385	324,197	12.02	
20 SEP 2023 - 20 SEP 2023	GAMUDA	EMPLOYEES PROVIDENT FUND BOARD (EPF BOARD) [SSH]	-1,047	325,581	12.07	
25 SEP 2023 - 25 SEP 2023	GASMSIA	EMPLOYEES PROVIDENT FUND BOARD [SSH]	-230	83,051	6.468	
22 SEP 2023 - 22 SEP 2023	GASMSIA	EMPLOYEES PROVIDENT FUND BOARD [SSH]	-229	83,281	6.486	
21 SEP 2023 - 21 SEP 2023	GASMSIA	EMPLOYEES PROVIDENT FUND BOARD [SSH]	-233	83,510	6.503	
20 SEP 2023 - 20 SEP 2023	GASMSIA	EMPLOYEES PROVIDENT FUND BOARD [SSH]	153	83,742	6.521	
20 SEP 2023 - 20 SEP 2023	GBGAQRS	EMPLOYEES PROVIDENT FUND BOARD [SSH]	-526	27,537	5.073	
25 SEP 2023 - 25 SEP 2023	GCB	MR TAY HOW SIK @ TAY HOW SICK [DIR/CEO]	9,900	26,149	2.227	
21 SEP 2023 - 21 SEP 2023	GDEX	MR TEONG TECK LEAN [DIR/CEO]	714	2,172,444	39.204	
21 SEP 2023 - 21 SEP 2023	GDEX	MR TEONG TECK LEAN [SSH]	714	2,172,444	39.204	
25 SEP 2023 - 25 SEP 2023	HARNLEN	LNH ENTERPRISE SDN. BHD. [SSH]	-6,540	122,311	21.654	
25 SEP 2023 - 25 SEP 2023	HARNLEN	MR LOW KOK YAOW [DIR/CEO]	-6,540	313,260	55.46	
25 SEP 2023 - 25 SEP 2023	HARNLEN	MR LOW KOK YAOW [SSH]	-6,540	313,260	55.46	
25 SEP 2023 - 25 SEP 2023	HARNLEN	MR LOW KOK YONG [DIR/CEO]	-6,540	314,256	55.637	
25 SEP 2023 - 25 SEP 2023	HARNLEN	MR LOW KOK YONG [SSH]	-6,540	314,256	55.637	
25 SEP 2023 - 25 SEP 2023	HARNLEN	MR LOW KUECK SHIN [DIR/CEO]	-6,540	301,573	53.391	
25 SEP 2023 - 25 SEP 2023	HARNLEN	MR LOW KUECK SHIN [SSH]	-6,540	301,443	53.368	
25 SEP 2023 - 25 SEP 2023	HARNLEN	MR LOW KUEK KONG [DIR/CEO]	-6,540	301,193	53.324	
25 SEP 2023 - 25 SEP 2023	HARNLEN	MR LOW KUEK KONG [SSH]	-6,540	301,193	53.324	
25 SEP 2023 - 25 SEP 2023	HARNLEN	MR LOW KWEK LEE [DIR/CEO]	-6,540	301,403	53.361	
25 SEP 2023 - 25 SEP 2023	HARNLEN	MR LOW KWEK LEE [SSH]	-6,540	301,403	53.361	
25 SEP 2023 - 25 SEP 2023	HARNLEN	MR LOW QUEK KIONG [DIR/CEO]	-6,540	317,440	56.2	
25 SEP 2023 - 25 SEP 2023	HARNLEN	MR LOW QUEK KIONG [SSH]	-6,540	317,440	56.2	
25 SEP 2023 - 25 SEP 2023	HARNLEN	PUAN SRI DATIN CHAN PUI LEORN [DIR/CEO]	-6,540	314,287	55.642	
25 SEP 2023 - 25 SEP 2023	HARNLEN	PUAN SRI DATIN CHAN PUI LEORN [SSH]	-6,540	314,287	55.642	
25 SEP 2023 - 25 SEP 2023	HARNLEN	TAN SRI LOW NAM HUI [SSH]	-6,540	300,403	53.184	
20 SEP 2023 - 20 SEP 2023	HEKTAR	HEKTAR BLACK SDN BHD [SSH]	-250	126,203	25.302	
22 SEP 2023 - 22 SEP 2023	HEXTAR	DATO' ONG CHOO MENG [SSH]	-8,000	2,597,770	67.021	
22 SEP 2023 - 22 SEP 2023	HEXTAR	DATO' ONG SOON HO [DIR/CEO]	-8,000	2,597,770	67.021	
22 SEP 2023 - 22 SEP 2023	HEXTAR	DATO' ONG SOON HO [SSH]	-8,000	2,597,770	67.021	
22 SEP 2023 - 22 SEP 2023	HEXTAR	HEXTAR HOLDINGS SDN. BHD. [SSH]	-8,000	2,288,576	59.044	
27 SEP 2023 - 27 SEP 2023	HIBISCS	DR KENNETH GERARD PEREIRA [DIR/CEO]	500	183,558	9.121	
27 SEP 2023 - 27 SEP 2023	HIBISCS	DR KENNETH GERARD PEREIRA [SSH]	500	183,558	9.121	
25 SEP 2023 - 26 SEP 2023	HIBISCS	DR KENNETH GERARD PEREIRA [DIR/CEO]	1,000	183,058	9.096	
25 SEP 2023 - 26 SEP 2023	HIBISCS	DR KENNETH GERARD PEREIRA [SSH]	1,000	183,058	9.096	
25 SEP 2023 - 25 SEP 2023	HLBANK	EMPLOYEES PROVIDENT FUND BOARD [SSH]	1,087	217,638	10.43	
22 SEP 2023 - 22 SEP 2023	HLBANK	EMPLOYEES PROVIDENT FUND BOARD [SSH]	57	216,551	10.378	
21 SEP 2023 - 21 SEP 2023	HLBANK	EMPLOYEES PROVIDENT FUND BOARD [SSH]	-2,246	216,494	10.375	
20 SEP 2023 - 20 SEP 2023	HLBANK	EMPLOYEES PROVIDENT FUND BOARD [SSH]	-982	218,740	10.483	
25 SEP 2023 - 25 SEP 2023	HONGSENG	AURORA CREST SDN. BHD. [SSH]	179,631	579,631	11.347	
25 SEP 2023 - 25 SEP 2023	HONGSENG	MR CHRISTOPHER CHAN HOOI GUAN [DIR/CEO]	179,631	591,631	11.581	
25 SEP 2023 - 25 SEP 2023	HONGSENG	MR CHRISTOPHER CHAN HOOI GUAN [SSH]	179,631	591,631		

Notice Period is 24th Sep – 30th Sep 2023

Effective Change Date	Stock Name	Buyer/ Seller Name [Classification]	Bought / (Sold) ('000)		No. of Shares After Trade ('000)	
			Total	Total	% Held	% Held
22 SEP 2023 - 22 SEP 2023	IJM	KUMPULAN WANG PERSARAAN (DIPERBADANKAN) [SSH]	370	319,271	9.106	
20 SEP 2023 - 20 SEP 2023	IJM	EMPLOYEES PROVIDENT FUND BOARD [SSH]	80	587,708	16.762	
21 SEP 2023 - 21 SEP 2023	INARI	EMPLOYEES PROVIDENT FUND BOARD [SSH]	350	388,466	10.385	
27 SEP 2023 - 27 SEP 2023	INGENIEU	MR SIN CHIN CHAI [DIR/CEO]	45,228	105,228	7.294	
27 SEP 2023 - 27 SEP 2023	INGENIEU	MR SIN CHIN CHAI [SSH]	45,228	105,228	7.294	
27 SEP 2023 - 27 SEP 2023	INGENIEU	ROBUST POTENTIAL SDN BHD [SSH]	45,228	105,228	7.294	
25 SEP 2023 - 25 SEP 2023	IOICORP	EMPLOYEES PROVIDENT FUND BOARD [SSH]	743	684,385	11.032	
22 SEP 2023 - 22 SEP 2023	IOICORP	EMPLOYEES PROVIDENT FUND BOARD [SSH]	25	683,642	11.02	
20 SEP 2023 - 20 SEP 2023	IOICORP	EMPLOYEES PROVIDENT FUND BOARD [SSH]	111	683,617	11.02	
20 SEP 2023 - 20 SEP 2023	IOIPG	EMPLOYEES PROVIDENT FUND BOARD [SSH]	405	412,510	7.492	
27 SEP 2023 - 27 SEP 2023	ITMAX	MR TAN WEI LUN [DIR/CEO]	20,500	547,600	53.255	
27 SEP 2023 - 27 SEP 2023	ITMAX	MR TAN WEI LUN [SSH]	20,500	547,600	53.255	
27 SEP 2023 - 27 SEP 2023	ITMAX	SENA HOLDINGS SDN BHD [SSH]	20,500	547,600	53.255	
27 SEP 2023 - 27 SEP 2023	ITMAX	TAN SRI DATO' DR TAN BOON HOCK [DIR/CEO]	20,500	547,600	53.255	
27 SEP 2023 - 27 SEP 2023	ITMAX	TAN SRI DATO' DR TAN BOON HOCK [SSH]	20,500	547,600	53.255	
26 SEP 2023 - 27 SEP 2023	ITMAX	DATIN AFINALIZA BINTI ZAINAL ABIDIN [DIR/CEO]	-71,900	109,000	10.6	
26 SEP 2023 - 27 SEP 2023	ITMAX	DATIN AFINALIZA BINTI ZAINAL ABIDIN [SSH]	-71,900	109,000	10.6	
26 SEP 2023 - 27 SEP 2023	ITMAX	GANDA SENSASI SDN BHD [SSH]	-71,900	109,000	10.6	
22 SEP 2023 - 22 SEP 2023	ITMAX	MR MOK JUAN CHEK [DIR/CEO]	-50	162	0.016	
25 SEP 2023 - 27 SEP 2023	ITRONIC	BLUEMOUNT INVESTMENT FUND SPC [SSH]	-681	69,790	9.863	
21 SEP 2023 - 21 SEP 2023	JIANKUN	MADAM TEH HOOI TYUG [SSH]	-2,000	19,022	5.276	
27 SEP 2023 - 27 SEP 2023	JSB	ENCIK JEEFRI BIN MUHAMAD YUSUP [DIR/CEO]	-8,000	20,349	4.843	
26 SEP 2023 - 26 SEP 2023	JSB	DATO' AMIRUDDIN BIN ABDUL SATAR [DIR/CEO]	300	1,800	0.428	
22 SEP 2023 - 22 SEP 2023	JTIASA	GENINE CHAIN LIMITED [SSH]	-342	71,055	7.34	
22 SEP 2023 - 22 SEP 2023	JTIASA	MR CHANG MENG [SSH]	-342	71,055	7.34	
22 SEP 2023 - 22 SEP 2023	JTIASA	MR HO CHEUNG CHOI [SSH]	-342	71,055	7.34	
27 SEP 2023 - 27 SEP 2023	KAWAN	GFG (L) FOUNDATION [SSH]	118,565	118,565	32.78	
27 SEP 2023 - 27 SEP 2023	KAWAN	MADAM KWAN SOK KAY [DIR/CEO]	98,841	118,565	32.78	
27 SEP 2023 - 27 SEP 2023	KAWAN	MADAM KWAN SOK KAY [SSH]	98,841	118,565	32.78	
27 SEP 2023 - 27 SEP 2023	KAWAN	MR GAN THIAM CHAI [DIR/CEO]	19,724	126,257	34.907	
27 SEP 2023 - 27 SEP 2023	KAWAN	MR GAN THIAM CHAI [SSH]	19,724	126,257	34.907	
22 SEP 2023 - 22 SEP 2023	KERJAYA	EMPLOYEES PROVIDENT FUND BOARD [SSH]	600	82,888	6.573	
21 SEP 2023 - 21 SEP 2023	KERJAYA	EMPLOYEES PROVIDENT FUND BOARD [SSH]	800	82,288	6.525	
20 SEP 2023 - 20 SEP 2023	KERJAYA	EMPLOYEES PROVIDENT FUND BOARD [SSH]	429	81,488	6.462	
22 SEP 2023 - 22 SEP 2023	KGB	MR SOO YUIT WENG [DIR/CEO]	30	1,529	0.237	
25 SEP 2023 - 25 SEP 2023	KHIND	CHENG PING KEAT [DIR/CEO]	-650	25,065	59.622	
25 SEP 2023 - 25 SEP 2023	KHIND	KOH GUAT KUAN [SSH]	-650	2,895	6.887	
25 SEP 2023 - 25 SEP 2023	KLK	EMPLOYEES PROVIDENT FUND BOARD [SSH]	142	114,163	10.586	
21 SEP 2023 - 21 SEP 2023	KLK	EMPLOYEES PROVIDENT FUND BOARD [SSH]	-523	114,040	10.575	
20 SEP 2023 - 20 SEP 2023	KLK	EMPLOYEES PROVIDENT FUND BOARD [SSH]	-203	114,564	10.623	
22 SEP 2023 - 22 SEP 2023	LAYHONG	DATO' YAP HOONG CHAI [DIR/CEO]	-850	282,209	38.12	
22 SEP 2023 - 22 SEP 2023	MAGNI	MR TAN POAY SENG [DIR/CEO]	189	118,800	27.41	
26 SEP 2023 - 26 SEP 2023	MAYBANK	AMANAHRAYA TRUSTEES BERHAD - AMANAH SAHAM BUMIPUTERA [SSH]	-5,661	3,757,192	31.154	
25 SEP 2023 - 25 SEP 2023	MAYBANK	EMPLOYEES PROVIDENT FUND BOARD [SSH]	3,000	1,593,178	13.21	
25 SEP 2023 - 25 SEP 2023	MAYBANK	AMANAHRAYA TRUSTEES BERHAD - AMANAH SAHAM BUMIPUTERA [SSH]	-2,603	3,762,853	31.2	
22 SEP 2023 - 22 SEP 2023	MAYBANK	EMPLOYEES PROVIDENT FUND BOARD [SSH]	-3,276	1,590,178	13.185	
22 SEP 2023 - 22 SEP 2023	MAYBANK	AMANAHRAYA TRUSTEES BERHAD - AMANAH SAHAM BUMIPUTERA [SSH]	-1,294	3,765,456	31.222	
21 SEP 2023 - 21 SEP 2023	MAYBANK	EMPLOYEES PROVIDENT FUND BOARD [SSH]	5,661	1,593,454	13.212	
21 SEP 2023 - 21 SEP 2023	MAYBANK	AMANAHRAYA TRUSTEES BERHAD - AMANAH SAHAM BUMIPUTERA [SSH]	-10,300	3,766,750	31.249	
20 SEP 2023 - 20 SEP 2023	MAYBANK	EMPLOYEES PROVIDENT FUND BOARD [SSH]	-3,713	1,587,793	13.172	
22 SEP 2023 - 22 SEP 2023	MENANG	MISS LIEW SOOK PIN [DIR/CEO]	2,629	38,887	7.552	
22 SEP 2023 - 22 SEP 2023	MENANG	MISS LIEW SOOK PIN [SSH]	2,629	38,887	7.552	
22 SEP 2023 - 22 SEP 2023	MENANG	MR TOH MAY FOOK [DIR/CEO]	2,629	63,729	12.376	
22 SEP 2023 - 22 SEP 2023	MENANG	MR TOH MAY FOOK [SSH]	2,629	63,729	12.376	
25 SEP 2023 - 25 SEP 2023	MENANG-WC	MR LEE MIN HUAT [DIR/CEO]	7,750	27,088	13.133	
27 SEP 2023 - 29 SEP 2023	MFCB	CAM PROPERTY (MALAYSIA) SDN BHD [SSH]	42	200,457	21.263	
27 SEP 2023 - 29 SEP 2023	MFCB	CAMASIA LIMITED [SSH]	42	201,942	21.421	
27 SEP 2023 - 29 SEP 2023	MFCB	LAJU RIANG SDN BHD [SSH]	42	200,457	21.263	
27 SEP 2023 - 29 SEP 2023	MFCB	MR GOH NAN KIOH [DIR/CEO]	42	328,022	34.794	
27 SEP 2023 - 29 SEP 2023	MFCB	MR GOH NAN KIOH [SSH]	42	328,022	34.794	
27 SEP 2023 - 29 SEP 2023	MFCB	RUBBER THREAD INDUSTRIES (M) SDN BERHAD [SSH]	42	200,457	21.263	
22 SEP 2023 - 26 SEP 2023	MFCB	CAM PROPERTY (MALAYSIA) SDN BHD [SSH]	102	200,415	21.258	
22 SEP 2023 - 26 SEP 2023	MFCB	CAMASIA LIMITED [SSH]	102	201,900	21.416	
22 SEP 2023 - 26 SEP 2023	MFCB	LAJU RIANG SDN BHD [SSH]	102	200,415	21.258	
22 SEP 2023 - 26 SEP 2023	MFCB	MR GOH NAN KIOH [DIR/CEO]	102	327,980	34.789	
22 SEP 2023 - 26 SEP 2023	MFCB	MR GOH NAN KIOH [SSH]	102	327,980	34.789	
22 SEP 2023 - 26 SEP 2023	MFCB	RUBBER THREAD INDUSTRIES (M) SDN BERHAD [SSH]	102	200,415	21.259	
21 SEP 2023 - 21 SEP 2023	MFCB	PROFESOR DATO' DR TAN HUI MENG [DIR/CEO]	10	3,334	0.353	
25 SEP 2023 - 25 SEP 2023	MISC	EMPLOYEES PROVIDENT FUND BOARD [SSH]	-35	571,384	12.801	
22 SEP 2023 - 22 SEP 2023	MISC	EMPLOYEES PROVIDENT FUND BOARD [SSH]	-1,149	571,419	12.801	
25 SEP 2023 - 25 SEP 2023	MISC	KUMPULAN WANG PERSARAAN (DIPERBADANKAN) (KWAP) [SSH]	218	241,714	5.415	
21 SEP 2023 - 21 SEP 2023	MISC	EMPLOYEES PROVIDENT FUND BOARD [SSH]	-2,384	572,567	12.827	
20 SEP 2023 - 20 SEP 2023	MISC	EMPLOYEES PROVIDENT FUND BOARD [SSH]	-1,777	574,951	12.88	
26 SEP 2023 - 26 SEP 2023	MNRB	AMANAHRAYA TRUSTEES BERHAD-AMANAH SAHAM BUMIPUTERA [SSH]	-250	333,600	42.601	
25 SEP 2023 - 25 SEP 2023	MNRB	AMANAHRAYA TRUSTEES BERHAD-AMANAH SAHAM BUMIPUTERA [SSH]	-200	333,850	42.633	
27 SEP 2023 - 27 SEP 2023	MYEG	KUMPULAN WANG PERSARAAN (DIPERBADANKAN) [SSH]	2,500	553,678	7.414	
25 SEP 2023 - 25 SEP 2023	NATGATE	DATO' SERI WONG SIEW HAI [DIR/CEO]	-15	6,050	0.292	
25 SEP 2023 - 25 SEP 2023	NESTLE	EMPLOYEES PROVIDENT FUND BOARD [SSH]	22	22,074	9.413	
22 SEP 2023 - 22 SEP 2023	NESTLE	EMPLOYEES PROVIDENT FUND BOARD [SSH]	345	22,052	9.404	
21 SEP 2023 - 21 SEP 2023	NESTLE	EMPLOYEES PROVIDENT FUND BOARD [SSH]	26	21,707	9.257	

Notice Period is 24th Sep – 30th Sep 2023

Effective Change Date	Stock Name	Buyer/ Seller Name [Classification]	Bought / (Sold) ('000)		No. of Shares After Trade ('000)	
			Total	Total	% Held	% Held
20 SEP 2023 - 20 SEP 2023	NESTLE	EMPLOYEES PROVIDENT FUND BOARD [SSH]	118	21,682	9.246	
25 SEP 2023 - 25 SEP 2023	ORIENT	EMPLOYEES PROVIDENT FUND BOARD [SSH]	-21	49,957	8.053	
22 SEP 2023 - 22 SEP 2023	ORIENT	EMPLOYEES PROVIDENT FUND BOARD [SSH]	-113	49,978	8.056	
21 SEP 2023 - 21 SEP 2023	ORIENT	EMPLOYEES PROVIDENT FUND BOARD [SSH]	-50	50,091	8.074	
20 SEP 2023 - 20 SEP 2023	ORIENT	EMPLOYEES PROVIDENT FUND BOARD [SSH]	-144	50,141	8.083	
27 SEP 2023 - 27 SEP 2023	OWG	PUAN SRI DATIN SERI DATO' CHEW LEAN HONG [DIR/CEO]	6,149	255,029	58.35	
27 SEP 2023 - 27 SEP 2023	OWG	PUAN SRI DATIN SERI DATO' CHEW LEAN HONG [DIR/CEO]	6,149	21874	17.28	
27 SEP 2023 - 27 SEP 2023	OWG	PUAN SRI DATIN SERI DATO' CHEW LEAN HONG [SSH]	6,149	255053	58.34	
27 SEP 2023 - 27 SEP 2023	OWG	RICH DAD CAFE SDN. BHD. [SSH]	6,149	254958	58.34	
27 SEP 2023 - 27 SEP 2023	OWG	TAN SRI DATO' SERI DATO' KOH CHENG KEONG [DIR/CEO]	6,149	21,874	17.28	
27 SEP 2023 - 27 SEP 2023	OWG	TAN SRI DATO' SERI DATO' KOH CHENG KEONG [DIR/CEO]	6,149	255,029	58.35	
27 SEP 2023 - 27 SEP 2023	OWG	TAN SRI DATO' SERI DATO' KOH CHENG KEONG [SSH]	6,149	255,053	58.34	
25 SEP 2023 - 25 SEP 2023	PA	TAN SRI LAU KUAN KAM [DIR/CEO]	2,020	92,300	6.18	
25 SEP 2023 - 25 SEP 2023	PA	TAN SRI LAU KUAN KAM [SSH]	2,020	92,300	6.18	
25 SEP 2023 - 25 SEP 2023	PADINI	EMPLOYEES PROVIDENT FUND BOARD [SSH]	651	36,459	5.542	
22 SEP 2023 - 22 SEP 2023	PADINI	EMPLOYEES PROVIDENT FUND BOARD [SSH]	2	35,809	5.443	
21 SEP 2023 - 21 SEP 2023	PADINI	EMPLOYEES PROVIDENT FUND BOARD [SSH]	5	35,807	5.443	
20 SEP 2023 - 20 SEP 2023	PADINI	EMPLOYEES PROVIDENT FUND BOARD [SSH]	64	35,802	5.442	
22 SEP 2023 - 22 SEP 2023	PANSAR	HIGHLINE SHIPPING SDN BHD [SSH]	618	29,741	6.332	
25 SEP 2023 - 25 SEP 2023	PBBANK	EMPLOYEES PROVIDENT FUND BOARD [SSH]	4,490	2,979,193	15.35	
22 SEP 2023 - 22 SEP 2023	PBBANK	EMPLOYEES PROVIDENT FUND BOARD [SSH]	-1,000	2,974,702	15.33	
21 SEP 2023 - 21 SEP 2023	PBBANK	EMPLOYEES PROVIDENT FUND BOARD [SSH]	1,880	2,975,702	15.33	
20 SEP 2023 - 20 SEP 2023	PBBANK	EMPLOYEES PROVIDENT FUND BOARD [SSH]	-3,781	2,973,822	15.32	
26 SEP 2023 - 26 SEP 2023	PCCS	CCS CAPITAL SDN. BHD. [SSH]	60	92,508	41.936	
26 SEP 2023 - 26 SEP 2023	PCCS	MADAM TAN KWEE KEE [SSH]	60	102,786	46.596	
26 SEP 2023 - 26 SEP 2023	PCCS	MR CHAN CHOO SING [SSH]	60	102,786	46.596	
26 SEP 2023 - 26 SEP 2023	PCCS	MR CHAN WEE KIANG [DIR/CEO]	60	94,720	42.939	
26 SEP 2023 - 26 SEP 2023	PCCS	MR CHAN WEE KIANG [SSH]	60	94,720	42.939	
22 SEP 2023 - 22 SEP 2023	PCCS	CCS CAPITAL SDN. BHD. [SSH]	100	92,448	41.909	
22 SEP 2023 - 22 SEP 2023	PCCS	MADAM TAN KWEE KEE [SSH]	100	102,726	46.568	
22 SEP 2023 - 22 SEP 2023	PCCS	MR CHAN CHOO SING [SSH]	100	102,726	46.569	
22 SEP 2023 - 22 SEP 2023	PCCS	MR CHAN WEE KIANG [DIR/CEO]	100	94,660	42.912	
22 SEP 2023 - 22 SEP 2023	PCCS	MR CHAN WEE KIANG [SSH]	100	94,660	42.912	
25 SEP 2023 - 25 SEP 2023	PCHEM	EMPLOYEES PROVIDENT FUND BOARD ("EPF BOARD") [SSH]	159	93,621	11.703	
15 SEP 2023 - 15 SEP 2023	PENSONI	DATO' DR LAI KIM TENG [SSH]	13,000	13,000	10.344	
25 SEP 2023 - 25 SEP 2023	PENSONI	MR CHEW CHUON GHEE [DIR/CEO]	-4,000	5,885	4.682	
25 SEP 2023 - 25 SEP 2023	PENSONI	MR NEO CHING YUEN [SSH]	8,296	8,296	6.601	
21 SEP 2023 - 21 SEP 2023	PENSONI	DATO' SERI CHEW WENG KHAK @ CHEW WENG KIAK [DIR/CEO]	-3,000	27,296	21.719	
21 SEP 2023 - 21 SEP 2023	PENSONI	DATO' SERI CHEW WENG KHAK @ CHEW WENG KIAK [SSH]	-3,000	23,296	18.536	
21 SEP 2023 - 21 SEP 2023	PENSONI	MR CHEW CHUON JIN [DIR/CEO]	-3,000	10,915	8.684	
21 SEP 2023 - 21 SEP 2023	PENSONI	MR CHEW CHUON JIN [SSH]	-3,000	10,915	8.684	
27 SEP 2023 - 27 SEP 2023	PENTA	KUMPULAN WANG PERSARAAN (DIPERBADANKAN) [SSH]	374	36,792	5.173	
25 SEP 2023 - 25 SEP 2023	PENTA	EMPLOY				

Notice Period is 24th Sep – 30th Sep 2023

Effective Change Date	Stock Name	Buyer/ Seller Name [Classification]	Bought / (Sold) ('000)		No. of Shares After Trade ('000)	
			Total	Total	% Held	% Held
21 SEP 2023 - 21 SEP 2023	SIMEPLT	AMANAHRAYA TRUSTEES BERHAD - AMANAH SAHAM BUMIPUTERA [SSH]	-325	3173418	45.887	
20 SEP 2023 - 20 SEP 2023	SIMEPLT	EMPLOYEES PROVIDENT FUND BOARD [SSH]	-500	1011691	14.629	
27 SEP 2023 - 27 SEP 2023	SIMEPROP	KUMPULAN WANG PERSARAAN (DIPERBADANKAN) [SSH]	-1,450	447153	6.575	
26 SEP 2023 - 26 SEP 2023	SIMEPROP	AMANAHRAYA TRUSTEES BERHAD - AMANAH SAHAM BUMIPUTERA [SSH]	-1,925	3039062	44.687	
25 SEP 2023 - 25 SEP 2023	SIMEPROP	EMPLOYEES PROVIDENT FUND BOARD [SSH]	-752	556484	8.183	
25 SEP 2023 - 25 SEP 2023	SIMEPROP	AMANAHRAYA TRUSTEES BERHAD - AMANAH SAHAM BUMIPUTERA [SSH]	-2,000	3040986	44.715	
22 SEP 2023 - 22 SEP 2023	SIMEPROP	EMPLOYEES PROVIDENT FUND BOARD [SSH]	-1,318	557235	8.194	
21 SEP 2023 - 21 SEP 2023	SIMEPROP	EMPLOYEES PROVIDENT FUND BOARD [SSH]	3,222	558553	8.213	
22 SEP 2023 - 22 SEP 2023	SIMEPROP	KUMPULAN WANG PERSARAAN (DIPERBADANKAN) [SSH]	-218	448603	6.596	
21 SEP 2023 - 21 SEP 2023	SIMEPROP	AMANAHRAYA TRUSTEES BERHAD - AMANAH SAHAM BUMIPUTERA [SSH]	-2,380	3042986	44.744	
20 SEP 2023 - 20 SEP 2023	SIMEPROP	EMPLOYEES PROVIDENT FUND BOARD [SSH]	1,762	555331	8.166	
25 SEP 2023 - 25 SEP 2023	SKPRES	EMPLOYEES PROVIDENT FUND BOARD [SSH]	464	131743	8.432	
22 SEP 2023 - 22 SEP 2023	SKPRES	EMPLOYEES PROVIDENT FUND BOARD [SSH]	458	131280	8.403	
20 SEP 2023 - 20 SEP 2023	SKPRES	EMPLOYEES PROVIDENT FUND BOARD [SSH]	457	130822	8.373	
26 SEP 2023 - 27 SEP 2023	SMILE	DATIN WONG CHIEN YUE [DIR/CEO]	87	135497	54.103	
26 SEP 2023 - 27 SEP 2023	SMILE	DATIN WONG CHIEN YUE [SSH]	87	135497	54.103	
26 SEP 2023 - 27 SEP 2023	SMILE	DATO DR WONG RUEN YUAN [SSH]	87	135842	54.24	
26 SEP 2023 - 27 SEP 2023	SMILE	DATO DR WONG RUEN YUAN [DIR/CEO]	87	135842	54.24	
26 SEP 2023 - 26 SEP 2023	SMILE	SMILE-LINK RESOURCES (M) SDN. BHD. [SSH]	35	116942	46.694	
21 SEP 2023 - 22 SEP 2023	SMILE	DATIN WONG CHIEN YUE [DIR/CEO]	41	135410	54.068	
21 SEP 2023 - 22 SEP 2023	SMILE	DATIN WONG CHIEN YUE [SSH]	41	135410	54.068	
21 SEP 2023 - 22 SEP 2023	SMILE	DATO DR WONG RUEN YUAN [SSH]	41	135755	54.205	
21 SEP 2023 - 22 SEP 2023	SMILE	DATO DR WONG RUEN YUAN [DIR/CEO]	41	135755	54.205	
22 SEP 2023 - 22 SEP 2023	SMTRACK	DATUK AZMI BIN OSMAN [DIR/CEO]	10,294	55332	4.554	
25 SEP 2023 - 26 SEP 2023	SNTORIA	DATUK CHU BOON TIONG [DIR/CEO]	-1,500	7728	1.26	
25 SEP 2023 - 25 SEP 2023	SPRITZER	DATIN CHUA SHOK TIM @ CHUA SIOK HOON [SSH]	55	162656	50.945	
25 SEP 2023 - 25 SEP 2023	SPRITZER	DATO LIM A HENG @ LIM KOK CHEONG [DIR/CEO]	55	162656	50.945	
25 SEP 2023 - 25 SEP 2023	SPRITZER	DATO LIM A HENG @ LIM KOK CHEONG [SSH]	55	162656	50.945	
27 SEP 2023 - 27 SEP 2023	SPSETIA	KUMPULAN WANG PERSARAAN (DIPERBADANKAN) [SSH]	240	409767	10.022	
26 SEP 2023 - 26 SEP 2023	SPSETIA	KUMPULAN WANG PERSARAAN (DIPERBADANKAN) [SSH]	1,626	409527	10.017	
25 SEP 2023 - 25 SEP 2023	SPSETIA	KUMPULAN WANG PERSARAAN (DIPERBADANKAN) [SSH]	-1,338	407901	9.977	
22 SEP 2023 - 22 SEP 2023	SPSETIA	KUMPULAN WANG PERSARAAN (DIPERBADANKAN) [SSH]	-1,822	409239	10.01	
25 SEP 2023 - 27 SEP 2023	STAR	MALAYSIAN CHINESE ASSOCIATION [SSH]	595	332138	45.827	
22 SEP 2023 - 22 SEP 2023	STAR	MALAYSIAN CHINESE ASSOCIATION [SSH]	836	331543	45.745	
25 SEP 2023 - 25 SEP 2023	SUNCON	EMPLOYEES PROVIDENT FUND BOARD [SSH]	-290	126591	9.818	
22 SEP 2023 - 22 SEP 2023	SUNCON	EMPLOYEES PROVIDENT FUND BOARD [SSH]	195	126881	9.841	
21 SEP 2023 - 21 SEP 2023	SUNCON	EMPLOYEES PROVIDENT FUND BOARD [SSH]	-58	126686	9.825	
20 SEP 2023 - 20 SEP 2023	SUNCON	EMPLOYEES PROVIDENT FUND BOARD [SSH]	-33	126744	9.83	
25 SEP 2023 - 25 SEP 2023	SUNWAY	EMPLOYEES PROVIDENT FUND BOARD [SSH]	-1,097	329818	6.66	
22 SEP 2023 - 22 SEP 2023	SUNWAY	EMPLOYEES PROVIDENT FUND BOARD [SSH]	-1,322	330915	6.68	
21 SEP 2023 - 21 SEP 2023	SUNWAY	EMPLOYEES PROVIDENT FUND BOARD [SSH]	-697	333237	6.73	
20 SEP 2023 - 20 SEP 2023	SUNWAY	EMPLOYEES PROVIDENT FUND BOARD [SSH]	-1,118	334934	6.76	
21 SEP 2023 - 21 SEP 2023	SUNZEN	MR TEO YEK MING [DIR/CEO]	4,528	114074	16.184	
21 SEP 2023 - 21 SEP 2023	SUNZEN	MR TEO YEK MING [SSH]	4,528	114074	16.184	
29 SEP 2023 - 29 SEP 2023	SWSCAP	DATO CHUA HEOK WEE [DIR/CEO]	9,900	69182	25.15	
29 SEP 2023 - 29 SEP 2023	SWSCAP	DATO CHUA HEOK WEE [SSH]	9,900	69182	25.15	
29 SEP 2023 - 29 SEP 2023	SWSCAP	MR CHUA KANG SING [DIR/CEO]	9,900	67000	24.357	
29 SEP 2023 - 29 SEP 2023	SWSCAP	MR CHUA KANG SING [SSH]	9,900	67000	24.357	
29 SEP 2023 - 29 SEP 2023	SWSCAP	MUAR BAN LEE GROUP BERHAD [SSH]	9,900	67000	24.357	
21 SEP 2023 - 21 SEP 2023	TAFI	DATO SRI WONG SZE CHIEN [DIR/CEO]	46	212477	55.999	
21 SEP 2023 - 21 SEP 2023	TAFI	DATO SRI WONG SZE CHIEN [SSH]	46	212477	55.999	
25 SEP 2023 - 25 SEP 2023	TENAGA	EMPLOYEES PROVIDENT FUND BOARD [SSH]	8	906781	15.67	
20 SEP 2023 - 20 SEP 2023	TENAGA	EMPLOYEES PROVIDENT FUND BOARD [SSH]	-1,459	906774	15.67	
27 SEP 2023 - 27 SEP 2023	TEOSEN	CW LAU & SONS SDN BHD [SSH]	169	161333	55	
27 SEP 2023 - 27 SEP 2023	TEOSEN	DATUK LAU JOO HONG [SSH]	169	161333	55	
27 SEP 2023 - 27 SEP 2023	TEOSEN	EMERGING GLORY SDN BHD [SSH]	169	161333	55	
27 SEP 2023 - 27 SEP 2023	TEOSEN	LEONG HUP (MALAYSIA) SDN BHD [SSH]	169	161333	54.999	
27 SEP 2023 - 27 SEP 2023	TEOSEN	LEONG HUP INTERNATIONAL BERHAD [SSH]	169	161333	55	
27 SEP 2023 - 27 SEP 2023	TEOSEN	MR LAU JOO HAN [SSH]	169	161333	55	
27 SEP 2023 - 27 SEP 2023	TEOSEN	MR LAU JOO HENG [SSH]	169	161333	55	
27 SEP 2023 - 27 SEP 2023	TEOSEN	MR LAU JUI PENG [DIR/CEO]	169	161333	55	
27 SEP 2023 - 27 SEP 2023	TEOSEN	MR LAU JUI PENG [SSH]	169	161333	55	
25 SEP 2023 - 26 SEP 2023	TEOSEN	CW LAU & SONS SDN BHD [SSH]	249	161164	54.942	
25 SEP 2023 - 26 SEP 2023	TEOSEN	DATUK LAU JOO HONG [SSH]	249	161164	54.942	
25 SEP 2023 - 26 SEP 2023	TEOSEN	EMERGING GLORY SDN BHD [SSH]	249	161164	54.942	
25 SEP 2023 - 26 SEP 2023	TEOSEN	LEONG HUP (MALAYSIA) SDN BHD [SSH]	249	161164	54.942	
25 SEP 2023 - 26 SEP 2023	TEOSEN	LEONG HUP INTERNATIONAL BERHAD [SSH]	249	161164	54.942	
25 SEP 2023 - 26 SEP 2023	TEOSEN	MR LAU JOO HAN [SSH]	249	161164	54.942	
25 SEP 2023 - 26 SEP 2023	TEOSEN	MR LAU JOO HENG [SSH]	249	161164	54.942	
25 SEP 2023 - 26 SEP 2023	TEOSEN	MR LAU JUI PENG [DIR/CEO]	249	161164	54.942	
25 SEP 2023 - 26 SEP 2023	TEOSEN	MR LAU JUI PENG [SSH]	249	161164	54.942	
22 SEP 2023 - 22 SEP 2023	TEOSEN	CW LAU & SONS SDN BHD [SSH]	100	160915	54.857	
22 SEP 2023 - 22 SEP 2023	TEOSEN	DATUK LAU JOO HONG [SSH]	100	160915	54.857	
22 SEP 2023 - 22 SEP 2023	TEOSEN	EMERGING GLORY SDN BHD [SSH]	100	160915	54.857	
22 SEP 2023 - 22 SEP 2023	TEOSEN	LEONG HUP (MALAYSIA) SDN BHD [SSH]	100	160915	54.857	
22 SEP 2023 - 22 SEP 2023	TEOSEN	LEONG HUP INTERNATIONAL BERHAD [SSH]	100	160915	54.857	
22 SEP 2023 - 22 SEP 2023	TEOSEN	MR LAU JOO HAN [SSH]	100	160915	54.857	
22 SEP 2023 - 22 SEP 2023	TEOSEN	MR LAU JOO HENG [SSH]	100	160915	54.857	

Notice Period is 24th Sep – 30th Sep 2023

Effective Change Date	Stock Name	Buyer/ Seller Name [Classification]	Bought / (Sold) ('000)		No. of Shares After Trade ('000)	
			Total	Total	% Held	% Held
22 SEP 2023 - 22 SEP 2023	TEOSEN	MR LAU JUI PENG [DIR/CEO]	100	160915	54.857	
22 SEP 2023 - 22 SEP 2023	TEOSEN	MR LAU JUI PENG [SSH]	100	160915	54.857	
26 SEP 2023 - 26 SEP 2023	TGUAN	PRUDENTIAL PLC [SSH]	-192	20493	5.192	
27 SEP 2023 - 27 SEP 2023	TIMECOM	KUMPULAN WANG PERSARAAN (DIPERBADANKAN) ("KWAP") [SSH]	44	107193	5.804	
25 SEP 2023 - 25 SEP 2023	TIMECOM	EMPLOYEES PROVIDENT FUND BOARD [SSH]	-571	135437	7.333	
26 SEP 2023 - 26 SEP 2023	TIMECOM	KUMPULAN WANG PERSARAAN (DIPERBADANKAN) ("KWAP") [SSH]	44	107149	5.802	
22 SEP 2023 - 22 SEP 2023	TIMECOM	EMPLOYEES PROVIDENT FUND BOARD [SSH]	-347	136008	7.364	
25 SEP 2023 - 25 SEP 2023	TIMECOM	KUMPULAN WANG PERSARAAN (DIPERBADANKAN) ("KWAP") [SSH]	44	107105	5.799	
21 SEP 2023 - 21 SEP 2023	TIMECOM	EMPLOYEES PROVIDENT FUND BOARD [SSH]	-1,844	136355	7.383	
22 SEP 2023 - 22 SEP 2023	TIMECOM	KUMPULAN WANG PERSARAAN (DIPERBADANKAN) ("KWAP") [SSH]	44	107061	5.797	
20 SEP 2023 - 20 SEP 2023	TIMECOM	EMPLOYEES PROVIDENT FUND BOARD [SSH]	-1,577	138199	7.483	
25 SEP 2023 - 25 SEP 2023	TM	EMPLOYEE PROVIDENT FUND BOARD (EPF BOARD) [SSH]	623	653315	17.029	
26 SEP 2023 - 26 SEP 2023	TM	KUMPULAN WANG PERSARAAN (DIPERBADANKAN) (KWAP) [SSH]	-182	398029	10.375	
22 SEP 2023 - 22 SEP 2023	TM	EMPLOYEE PROVIDENT FUND BOARD (EPF BOARD) [SSH]	1,000	652693	17.012	
25 SEP 2023 - 25 SEP 2023	TM	KUMPULAN WANG PERSARAAN (DIPERBADANKAN) (KWAP) [SSH]	-281	398211	10.38	
22 SEP 2023 - 22 SEP 2023	TM	KUMPULAN WANG PERSARAAN (DIPERBADANKAN) (KWAP) [SSH]	-213	398492	10.387	
26 SEP 2023 - 26 SEP 2023	TTVHB	KHAZANAH NASIONAL BERHAD [SSH]	-13,000	66255	14.157	
26 SEP 2023 - 26 SEP 2023	TTVHB	MALAYSIAN TECHNOLOGY DEVELOPMENT CORPORATION SDN. BHD. [SSH]	-13,000	66255	14.157	
22 SEP 2023 - 22 SEP 2023	TTVHB	KHAZANAH NASIONAL BERHAD [SSH]	-6,000	79255	16.935	
22 SEP 2023 - 22 SEP 2023	TTVHB	MALAYSIAN TECHNOLOGY DEVELOPMENT CORPORATION SDN. BHD. [SSH]	-6,000	79255	16.935	
21 SEP 2023 - 21 SEP 2023	TTVHB	KHAZANAH NASIONAL BERHAD [SSH]	-3,000	85255	18.217	
21 SEP 2023 - 21 SEP 2023	TTVHB	MALAYSIAN TECHNOLOGY DEVELOPMENT CORPORATION SDN. BHD. [SSH]	-3,000	85255	18.217	
20 SEP 2023 - 20 SEP 2023	ULICORP	TAN SRI DATO' LEE YOON KONG [DIR/CEO]	10	86872	39.886	
20 SEP 2023 - 20 SEP 2023	ULICORP	TAN SRI DATO' LEE YOON KONG [SSH]	10	86872	39.886	
26 SEP 2023 - 26 SEP 2023	UMCCA	DATO SRI TEE LIP SIN [DIR/CEO]	16	64457	30.728	
25 SEP 2023 - 25 SEP 2023	UMCCA	MR TEE CHENG HUA [DIR/CEO]	-300	58305	27.795	
22 SEP 2023 - 22 SEP 2023	UMW	EMPLOYEES PROVIDENT FUND BOARD [SSH]	38	87172	7.461	
21 SEP 2023 - 21 SEP 2023	UMW	EMPLOYEES PROVIDENT FUND BOARD [SSH]	161	87134	7.458	
20 SEP 2023 - 20 SEP 2023	UMW	EMPLOYEES PROVIDENT FUND BOARD [SSH]	20	86974	7.445	
25 SEP 2023 - 25 SEP 2023	UOAEV	EMPLOYEES PROVIDENT FUND BOARD ("EPF BOARD") [SSH]	14	304251	12.217	
22 SEP 2023 - 22 SEP 2023	UOAEV	EMPLOYEES PROVIDENT FUND BOARD ("EPF BOARD") [SSH]	19	304236	12.216	
21 SEP 2023 - 21 SEP 2023	UOAEV	EMPLOYEES PROVIDENT FUND BOARD ("EPF BOARD") [SSH]	22	304217	12.216	
25 SEP 2023 - 25 SEP 2023	UTDPLT	EMPLOYEES PROVIDENT FUND BOARD [SSH]	-12	27347	6.593	
22 SEP 2023 - 22 SEP 2023	UTDPLT	EMPLOYEES PROVIDENT FUND BOARD [SSH]	-38	27358	6.596	
21 SEP 2023 - 21 SEP 2023	UTDPLT	EMPLOYEES PROVIDENT FUND BOARD [SSH]	95	27397	6.605	
20 SEP 2023 - 20 SEP 2023	UTDPLT	EMPLOYEES PROVIDENT FUND BOARD [SSH]	28	27302	6.582	
22 SEP 2023 - 22 SEP 2023	UWC	EMPLOYEES PROVIDENT FUND BOARD [SSH]	-90	79828	7.246	
21 SEP 2023 - 21 SEP 2023	UWC	EMPLOYEES PROVIDENT FUND BOARD [SSH]	-91	79918	7.254	
20 SEP 2023 - 20 SEP 2023	UWC	EMPLOYEES PROVIDENT FUND BOARD [SSH]	-314	80009	7.263	
27 SEP 2023 - 27 SEP 2023	VERSATL	MR LIM AH CHAI [SSH]	431	111783	39.908	
27 SEP 2023 - 27 SEP 2023	VERSATL	MR LIM AH CHUAN [SSH]	431	111783	39.908	
27 SEP 2023 - 27 SEP 2023	VERSATL	MR LIM CHOU BU [SSH]	431	111783	39.908	
27 SEP 2023 - 27 SEP 2023	VERSATL	NSK TRADING SDN BHD [SSH]	431	111783	39.908	
25 SEP 2023 - 26 SEP 2023	VERSATL	MR LIM AH CHAI [SSH]	2,360	111352	39.754	
25 SEP 2023 - 26 SEP 2023	VERSATL	MR LIM AH CHUAN [SSH]	2,360	111352	39.754	
25 SEP 2023 - 26 SEP 2023	VERSATL	MR LIM CHOU BU [SSH]				



Pursuant to Rule 9.19(51) of the ACE Market Listing Requirements of Bursa Malaysia Securities Berhad, **Aemulus Holdings Berhad (AEMULUS)** wishes to announce the following thirteenth award of RSP Shares under the Restricted Share Plan.



Further to the Company's announcement made on 30 June 2023, the Board of Directors of **Cypark Resources Berhad (CYPARK)** wishes to update the status of the Memorandum of Understanding.





Malaysia Building Society Berhad (MBSB) marks a new chapter as it announces the finalisation of the acquisition of the entire equity interest of Malaysian Industrial Development Finance Berhad (MIDF) from Permodalan Nasional Berhad (PNB).



The Board of Directors of **Sarawak Consolidated Industries Berhad (SCIB)** wishes to announce that SCIB Concrete Manufacturing Sdn. Bhd., a wholly-owned

subsidiary of SCIB had on 29 September 2023 accepted the Islamic Banking Facilities amounting to RM34,000,000.00 granted by Small Medium Enterprise Development Bank Malaysia Berhad.





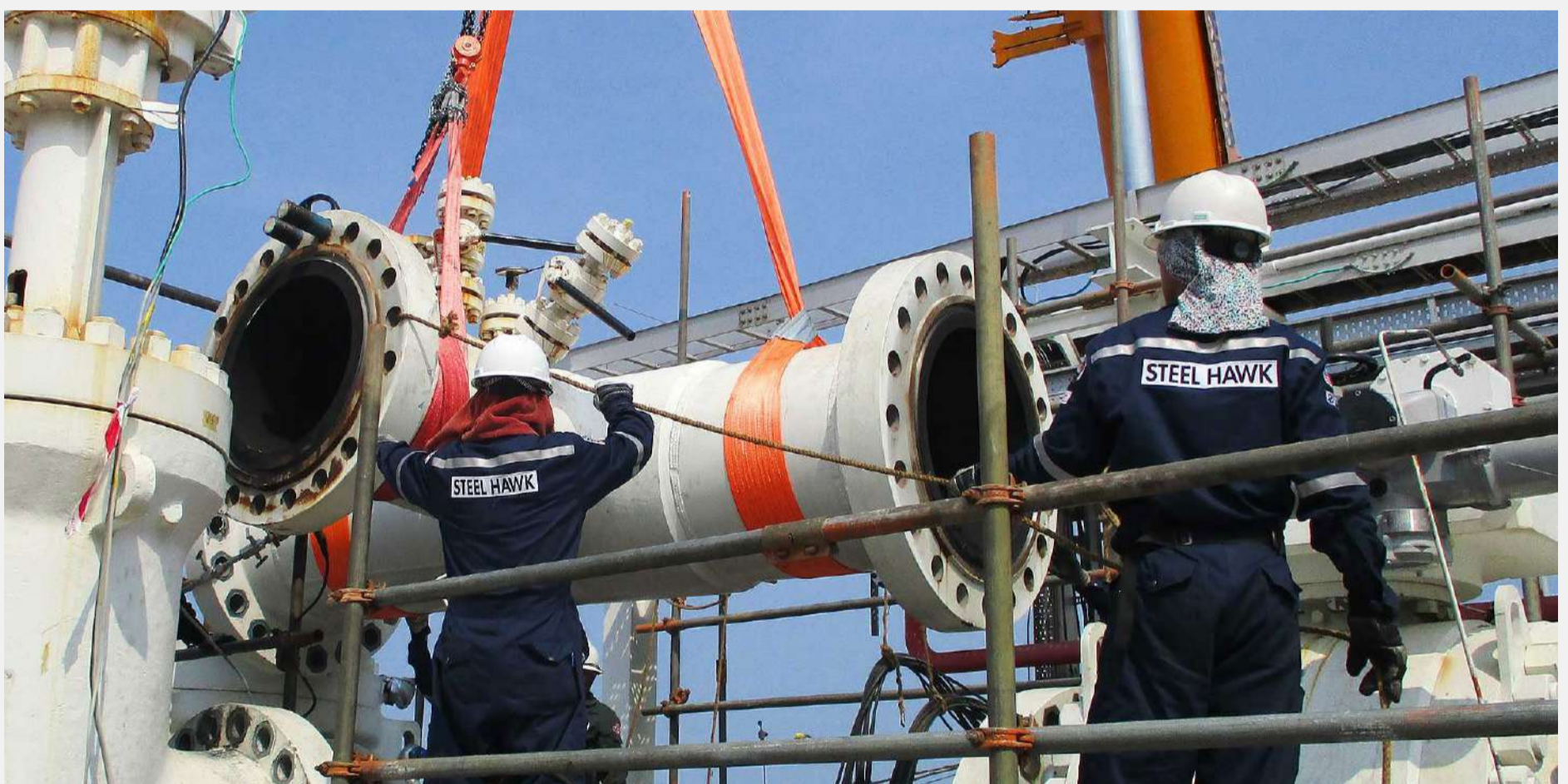
The Board of Directors of **Mi Technovation Berhad (MI)** wishes to announce a major restructuring within the Mi Equipment Group of companies

[READ MORE](#)



On behalf of the Board of **Steel Hawk Berhad (SKHAWK)**, UOBKH wishes to announce that the Company had sought the approval of Bursa Securities for the exemptions from having to extend the Exit Offer and the IA Appointment pursuant to Rules 8.06(1)(c) and 8.06(1)(d) of the LEAP Market Listing Requirements, respectively.

[READ MORE](#)



Upcoming IPO

NAME OF COMPANY	OFFER PERIOD		ISSUE PRICE (Per Ordinary Share)	LISTING SOUGHT	DATE OF LISTING
	OPENING	CLOSING			
SSF HOME GROUP BERHAD	8 Sept 2023	27 Sept 2023	RM0.25	ACE MARKET	12 Oct 2023
MINOX INTERNATIONAL GROUP BERHAD	20 Sept 2023	3 Oct 2023	RM0.25	ACE MARKET	17 Oct 2023

Disclaimer: The information in the Investor Relations page is extracted from individual companies' announcements in www.bursamalaysia.com. The information on this page is provided as a service to readers. We assume no liability for damages resulting from or arising out of the use of such information. Whilst every effort is made to ensure accuracy, the information presented has been simplified for your reading pleasure. Readers are advised to read the original and complete filings on the Bursa Malaysia website at https://www.bursamalaysia.com/market_information/announcements/company_announcement