



SC PLANS TO EMBRACE ISSB'S SUSTAINABILITY STANDARDS

CONSUMER SECTOR TO REMAIN RESILIENT, DRIVEN BY STRONG DEMAND - MIDF

See more on pages 23-25

PLUS

07 COMPANY
SPOTLIGHT
Hong Leong Bank Berhad

27 MSWG
Three Edges In Investing

04	LEADERBOARD	12	UP TRENDING STOCKS	21	LONG COMPANIES
06	SHARIAH HOT STOCKS	14	VALUE STOCKS	26	REGIONAL MARKETS
08	SHARIAH MOMENTUM UP STOCKS	16	GROWTH STOCKS	30	INSIDER ACTIVITY
10	NON SHARIAH HOT STOCKS	18	DIVIDEND STOCKS	34	INVESTOR RELATIONS
		20	BROKERS' CALL		



INVESTOR PLATFORMS

Director
Darren Chong
darren.chong@shareinvestor.com

Business Development Manager
Jay Cheong
jay.cheong.@shareinvestor.com

Senior Executive
Daniel Wong
daniel.wong@shareinvestor.com

Executive
Farah Azwani
farah.azwani@shareinvestor.com

Executive
Tan Yong Sheng
yongsheng.tan@shareinvestor.com

ADMIN & OPERATIONS

Senior Executive
Watie Nordin
watie.nordin@shareinvestor.com

Executive
Silas Emmanuel Joseph
silas.joseph@shareinvestor.com

INVESTOR RELATIONS

Group Managing Director & Publisher
Edward Stanislaus
edward@shareinvestor.com

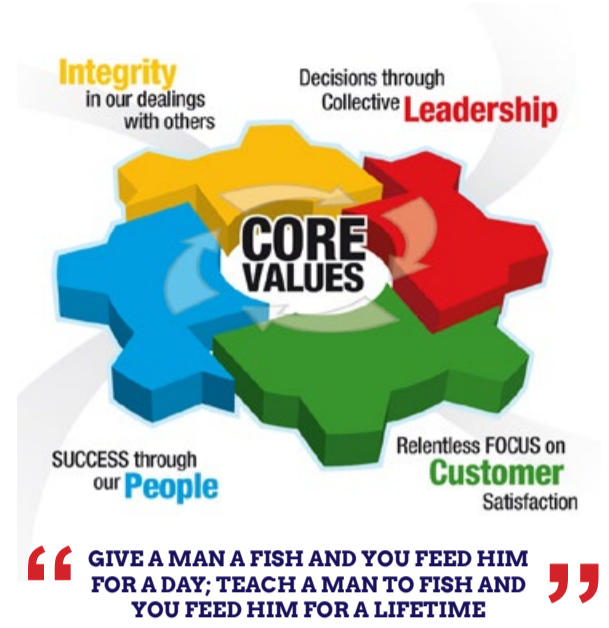
Senior Manager
Letticia Wong
letticia.wong@shareinvestor.com

PROCESS AUTOMATION & DATA ANALYTICS

Data Analyst
Nickson Aw

SHAREINVESTOR HOLDINGS BOARD OF DIRECTORS

- | | |
|------------------|-----------------|
| Chairman | Patrick Daniel |
| Group CEO | Christopher Lee |
| Group COO | Lim Dau Hee |
| Group CFO | Teo Siew May |
| Group MD | Shanison Lin |



ShareInvestor Malaysia Sdn. Bhd.
(200001023956) (526564-M)
Unit No. DF2-07-03A. Level 7,
Persoft Tower, 6B Persiaran Tropicana,
47410 Petaling Jaya, Selangor Darul Ehsan.

Hotline : 603 7803 1791
Mobile : 011 6343 8939
Website : www.ShareInvestor.com.my
www.ShareInvestorHoldings.com
www.Facebook.com/ShareInvestorMalaysia

ADVERTISEMENT ENQUIRY

bulthaup takes care of the details so that you can enjoy a harmonious environment.



XTRA

XTRA FURNITURE SDN BHD
The Gardens Mall, Mid Valley City
xtrafurniture.com/bulthaup
fb.com/bulthaupmalaysia

bulthaup



STROM

SWISS TIMEPIECES & JEWELLERY



StromWatch Asia
Tele : +65.9817.3378 Email : ll.stromasia@gmail.com

WWW.STROMWATCH.SWISS



www.shareinvestor.com - market data at your fingertips



ShareInvestor WebPro (www.shareinvestor.com/my)

Prices > Stock Prices > Bursa > click Stocks tab

1. mouse over Ranking > select Top Active > all Shariah stocks are denoted with an [S] > mouse over Column Layout > select Edit Customs > select Name > select Volume > select Last Done Price > Mouse Over Column Layout > select Custom
2. mouse over Ranking > select Top Turnover > all Shariah stocks are denoted with an [S] > mouse over Column Layout > select Edit Customs > select Name > select Last Done Price > select Value > Mouse Over Column Layout > select Custom
3. mouse over Ranking > select Top Gainers (Over 5 Trading Days) > mouse over Column Layout > select Edit Customs > select Name > select Last Done Price > select 5 Days Change > select 5 Days % Change > Mouse Over Column Layout > select Custom
4. mouse over Ranking > select Top Losers (Over 5 Trading Days)
5. mouse over Ranking > select Top % Gainers (Over 5 Trading Days)
6. mouse over Ranking > select Top % Losers (Over 5 Trading Days)

Shariah Top Actives (as at Yesterday)

Name	Price (RM)	Volume
ICON [S]	0.105	713,808.000
CAPITALA [S]	1.010	659,351.000
EKOVEST [S]	0.525	588,863.000
MRCB [S]	0.455	518,520.000
SCIB [S]	0.470	454,304.000
UEMS [S]	0.685	437,062.000
MQTECH [S]	0.030	433,160.000
WIDAD [S]	0.485	399,787.000
TOPGLOV [S]	0.815	379,494.000
IWCITY [S]	0.655	364,709.000

Shariah Top Turnover (as at Yesterday)

Name	Price (RM)	Value (RM)
TENAGA [S]	9.970	82,054,889
CAPITALA [S]	1.010	65,565,003
INARI [S]	2.840	49,352,307
PCHEM [S]	7.170	31,504,683
TOPGLOV [S]	0.815	31,448,918
EKOVEST [S]	0.525	30,508,848
UEMS [S]	0.685	29,839,222
BAUTO [S]	2.400	27,092,664
AAX [S]	2.570	24,906,215
HIBISCS [S]	1.080	23,975,280

Top Gainers (over 5 Trading days as at Yesterday)

Name	Price (RM)	Change (RM)
UTDPLT	16.460	+0.520
APOLLO	4.910	+0.490
KLK	21.720	+0.380
RAPID	23.840	+0.360
UWC	3.820	+0.240
NESTLE	130.200	+0.200
SUNMOW	1.400	+0.200
MALPAC	1.270	+0.190
RCECAP	2.570	+0.190
BKAWAN	20.380	+0.180

Top % Gainers (over 5 Trading days as at Yesterday)

Name	Price (RM)	Change (%)
KGROUP	0.010	+100.00
PHB	0.010	+100.00
DOLPHIN	0.030	+50.00
JOE	0.015	+50.00
MTRONIC	0.015	+50.00
MMAG	0.015	+50.00
BCMALL	0.020	+33.33
CNOUHUA	0.060	+33.33
LAMBO	0.020	+33.33
NETX	0.100	+33.33

Top Losers (over 5 Trading days as at Yesterday)

Name	Price (RM)	Change (RM)
PANAMY	19.200	-0.740
HEXTECH	23.780	-0.580
MPI	27.820	-0.400
EWINT	0.320	-0.370
LPI	11.500	-0.340
MAYBANK	8.840	-0.330
PMBTECH	3.630	-0.220
BAT	9.750	-0.200
WPRTS	3.230	-0.200
TM	4.970	-0.190

Top % Losers (over 5 Trading days as at Yesterday)

Name	Price (RM)	Change (%)
IQZAN	0.005	-83.33
EWINT	0.320	-53.62
JADI	0.050	-27.54
MLAB	0.015	-25.00
XDL	0.015	-25.00
ZENTECH	0.015	-25.00
CLASSITA	0.065	-18.75
REKATECH	0.050	-16.67
ALAM	0.030	-14.29
PNEPCB	0.060	-14.29

Merdeka Kaw Kaw Promotion

23 Aug 2023 - 17 Sep 2023

Enjoy

31% off

SHAREINVESTOR®
STATION 

SHAREINVESTOR®
WEBPRO 

BURSASTATION
Professional

SUBSCRIBE NOW!

SUBSCRIBE NOW!

Coupon Code:
MYMERDEKA23

Valid for 12-month
subscription

Price & Volume Distribution Charts (as at Yesterday)

Technical Analysis

DEFINITION: Shariah compliant stocks with Technical Analysis showing 5-days & 10-days Moving Average Price below Yesterday's Close over past 3 days and with Volume Spike.

CHART GUIDE: Volume Distribution Chart is a statistical interpretation of the current sentiment on each stock in graphical format. The highest bar categorized as >150k is likely to be traded by institutions or super dealers, while the lowest bar categorized as <15k usually represents retail investors. "Buy Up" refers to more buyers snatching up the lots queued at selling price. "Sell Down" refers to sellers selling their shares to the buying queue



ShareInvestor WebPro > Screener > Market Screener (FA & TA) > select BURSA > add criteria

A. Criteria

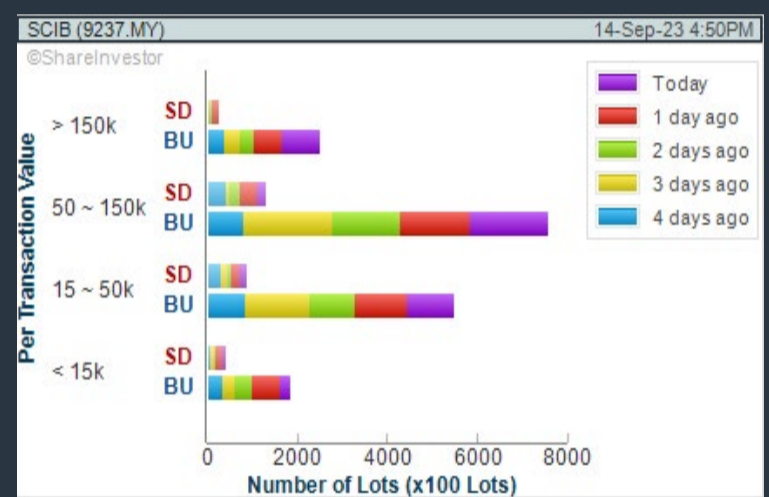
- > click Add Criteria
- Technical Analysis Conditions tab select (i) Moving Average Below Close (ii) Volume Spike
- Fundamental Analysis Conditions tab > select (iii) Revenue
- Prices & Other Conditions tab > select (iv) Is Shariah Compliant
- Technical Analysis Conditions tab select (v) Moving Average Below Close
- Prices & Other Conditions tab > select (vi) Last Done Price
- Technical Analysis Conditions tab select (vii) Moving Average Below Close

B. Conditions (Criteria Filters)

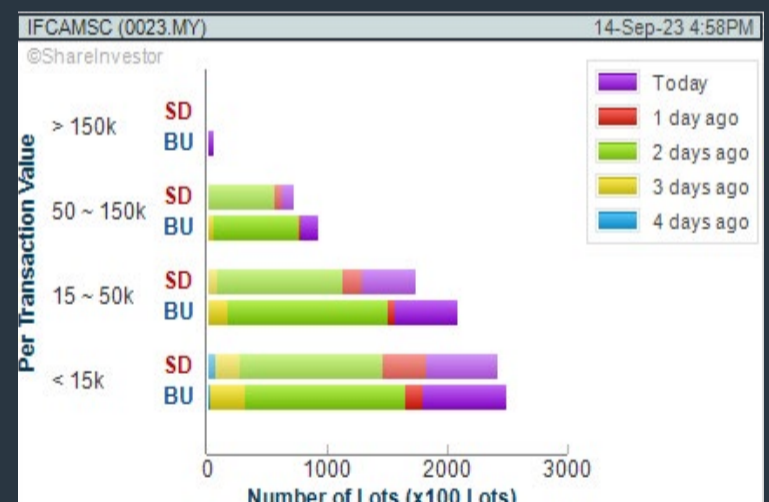
1. Moving Average Below Close - select (MA) type (5) below close price for type (3) days
2. Volume Spike - Volume type (1) greater than type (5) days average
3. Revenue ("000) - select (more than) type (1) for the past select (1) financial year(s)
4. Is Shariah Compliant - select **Yes**
5. Moving Average Below Close - select (MA) type (10) below close price for type (3) days
6. Last Done Price - select (more than) type (0.3)
7. Moving Average Below Close - select (EMA) type (5) below close price for type (3) days

- > click Save Template > Create New Template type (Shariah Hot Stocks) > click Create
- > click Save Template as > select Shariah Hot Stocks > click Save
- > click Screen Now (may take a few minutes)
- > Sort By: Select (Vol) Select (Desc)
- > Mouse over stock name > Charts > click C² Charts or Volume Distribution

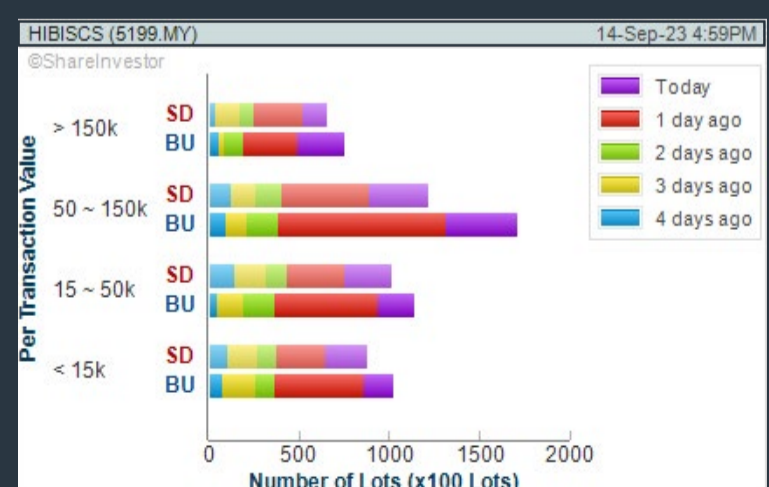
SARAWAK CONSOLIDATED IND BERHAD (9237) C² Chart



IFCA MSC BERHAD (0023) C² Chart



HIBISCUS PETROLEUM BERHAD (5199) C² Chart



Disclaimer: The information on this page is provided as a service to readers. It does not constitute financial advice and/or any investment recommendations. Past performance is not indicative of future results. We assume no liability for damages resulting from or arising out of the use of such information. It would be best if you did your own research to make your personal investment decisions wisely or consult a licenced investment advisor.

COMPANY BACKGROUND

Hong Leong Bank Berhad is a technology-focused financial services company providing banking services to consumers, private banking and corporate banking to business clients in the region.



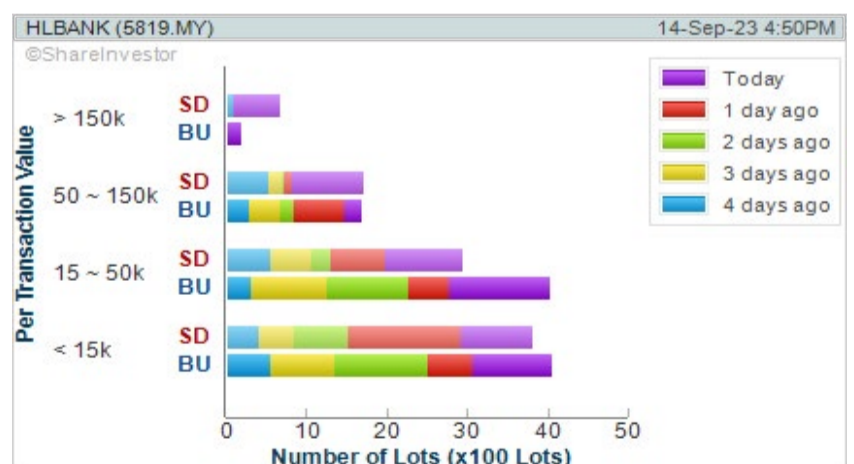
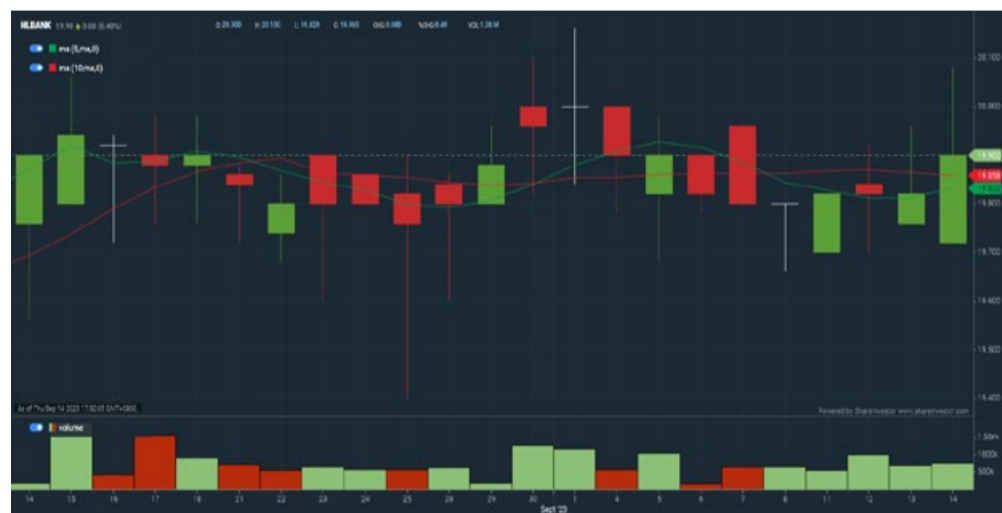
HLBANK HONG LEONG BANK BHD		Updated at 14 Sep 2023 16:50	
Last (MYR): 19.900 ↑	Change: +0.080	High: 20.080	Remarks: s ?
	Change (%): +0.40	Low: 19.720	
Open	19.720	Yesterday's Close	19.820
Buy Price	19.900	Sell Price	19.940
Buy Volume ('00)	103	Sell Volume ('00)	60
Cumulative Volume ('00)	7,463	Cumulative Value	14,866,140

Financial Analysis

Profit Growth Increasing profit in last 3 consecutive years and min growth is 10% (with at least 4 profitable years)	😊	Piotroski F Score The company has above average financial strength (Piotroski F-Score of 6-7)	😊
Dividend Payout Dividend is increasing over the past 60 months.	😊	Current Ratio The company may have difficulty meeting short-term obligations with its current assets for 3 consecutive years	😟
Debt to Cashflow High debt to cash flow for most recent year	😟	Net Earnings Margin Consistently high net profit margin of at least 20% for 3 years	😊
Return on Equity (ROE) ROE above 10% for 2 consecutive years	😊		

😊 Excellent 😊 Good 😐 Neutral 😟 Be Alert 😡 Watch Out

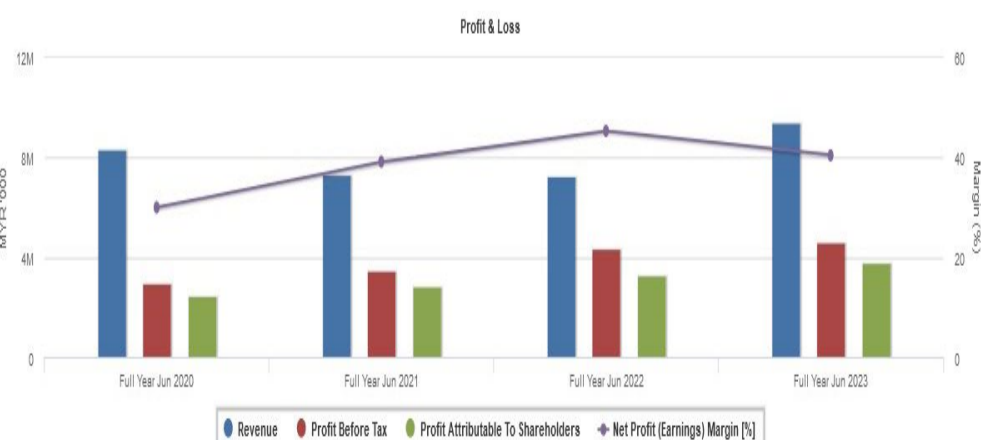
WebPro 9-Days Free Trial Registration (worth RM9) Sign Up Now



Total Shareholder Return

Period	Dividend Received	Capital Appreciation	Total Shareholder Return
Short Term Return	5 Days	+0.080	+0.40 %
	10 Days	-0.050	-0.30 %
	20 Days	-0.020	-0.10 %
Medium Term Return	3 Months	+1.140	+5.60 %
	6 Months	-0.100	-0.50 %
	1 Year	-0.800	-3.96 %
Long Term Return	2 Years	0.532	+2.60 %
	3 Years	0.880	+4.41 %
	5 Years	1.880	+9.32 %
Annualised Return	Annualised	-	+1.64 %

Key Statistics with Total Shareholder Returns



Disclaimer: The information on this page is provided as a service to readers. It does not constitute financial advice and/or any investment recommendations. Past performance is not indicative of future results. We assume no liability for damages resulting from or arising out of the use of such information. It would be best if you did your own research to make your personal investment decisions wisely or consult a licenced investment advisor.

Price & Volume Distribution Charts (as at Yesterday)

Technical Analysis

DEFINITION: Shariah compliant stocks with Technical Analysis showing Bullish Momentum and Price Uptrend. The share price closed at the highest price yesterday. The typical price was higher than the previous day's typical price.

CHART GUIDE: Volume Distribution Chart is a statistical interpretation of the current sentiment on each stock in graphical format. The highest bar categorized as >150k is likely to be traded by institutions or super dealers, while the lowest bar categorized as <15k usually represents retail investors. "Buy Up" refers to more buyers snatching up the lots queued at selling price. "Sell Down" refers to sellers selling their shares to the buying queue.



ShareInvestor WebPro > Screener > Market Screener (FA & TA) > select BURSA > add criteria

A. Criteria

- > click Add Criteria
- Fundamental Analysis Conditions tab > select (i) Revenue
- Technical Analysis Conditions tab select (ii) Average Volume
- Prices & Other Conditions tab > select (iii) Last Done Price
- Prices & Other Conditions tab > select (iv) Is Shariah Compliant
- Technical Analysis Conditions tab select (v) RSI Overbought
- Technical Analysis Conditions tab select (vi) Moving Average Below Close
- Technical Analysis Conditions tab select (vii) CCI Overbought

B. Conditions (Criteria Filters)

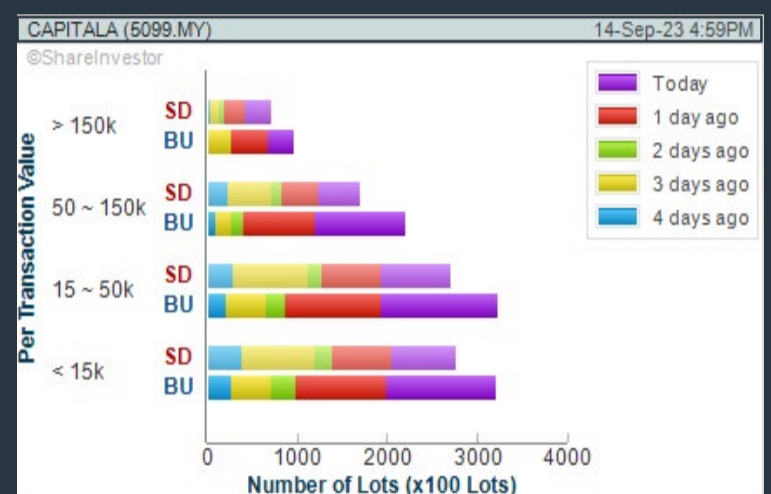
1. Revenue ('000) - select (more than) type (1) for the past select (1) financial year(s)
2. Average Volume - type (1) days average volume greater than type (10000) lots
3. Last Done Price - select (more than) type (0.3)
4. Is Shariah Compliant - select Yes
5. RSI Overbought - select RSI 1 above 99 for 1 days
6. Moving Average Below Close - select (MA) type (10) below close price for type (1) days
7. CCI Overbought - select CCI (2) above (0) for (1) days

- > click Save Template > Create New Template type (Shariah Momentum Up Stocks) > click Create
- > click Save Template as > select Shariah Momentum Up Stocks > click Save
- > click Screen Now (may take a few minutes)
- Sort By: Select (Vol) Select (Desc)
- Mouse over stock name > Charts > click C² Charts tab or Volume Distribution

CAPITAL A BERHAD (5099)

C² Chart

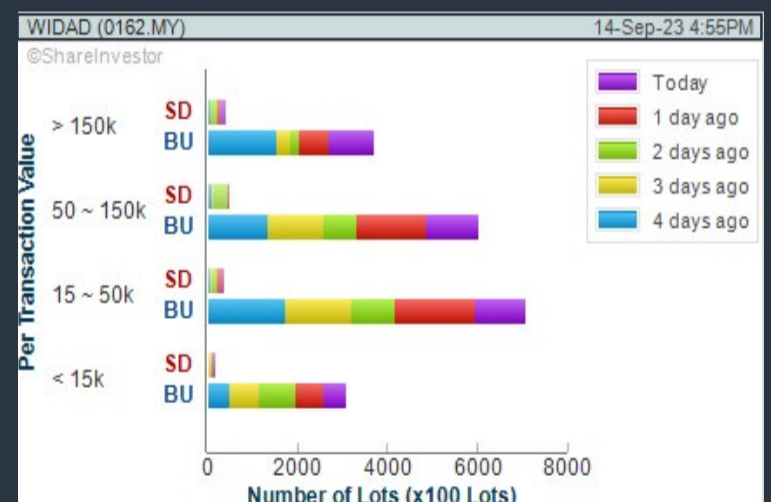
Analysis



WIDAD GROUP BERHAD (0162)

C² Chart

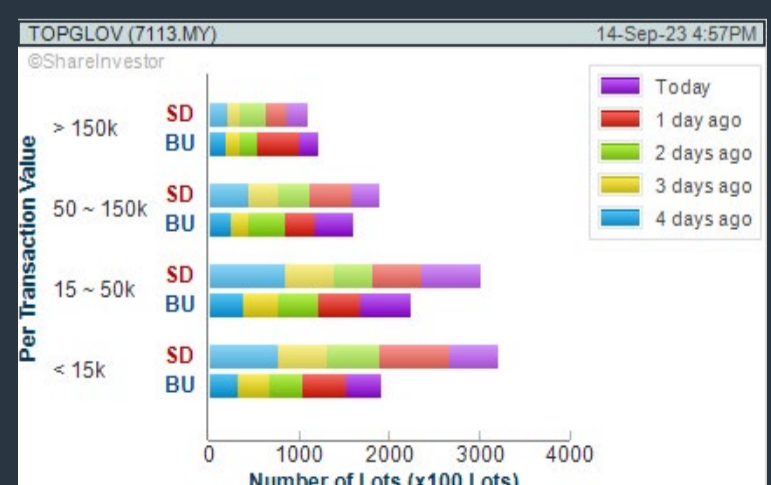
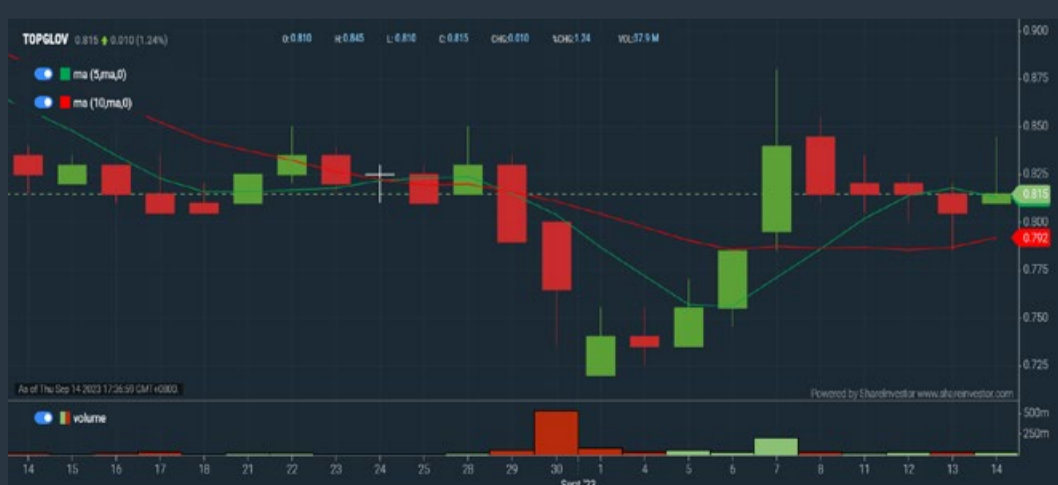
Analysis



TOP GLOVE CORPORATION BERHAD (7113)

C² Chart

Analysis



Disclaimer: The information on this page is provided as a service to readers. It does not constitute financial advice and/or any investment recommendations. Past performance is not indicative of future results. We assume no liability for damages resulting from or arising out of the use of such information. It would be best if you did your own research to make your personal investment decisions wisely or consult a licenced investment advisor.

Finding Gems In The AI Universe

21
LIVE
SEPTEMBER
THURSDAY
8PM - 9PM

**Unlock the Future:
How AI accelerates Data
Centre Boom!**

Scan Me



Speaker >



Dan Chang
Trading Representative

Price & Volume Distribution Charts (as at Yesterday)

Technical Analysis

DEFINITION: Stocks with Technical Analysis showing 5-days & 10-days Moving Average Price below Close over past 1 days and with Volume Spike

CHART GUIDE: Volume Distribution Chart is a statistical interpretation of the current sentiment on each stock in graphical format. The highest bar categorized as >150k is likely to be traded by institutions or super dealers, while the lowest bar categorized as <15k usually represents retail investors. "Buy Up" refers to more buyers snatching up the lots queued at selling price. "Sell Down" refers to sellers selling their shares to the buying queue.



ShareInvestor WebPro > Screener > Market Screener (FA & TA) > select BURSA > add criteria

A. Criteria

- > click Add Criteria
- Technical Analysis Conditions tab select (i) Moving Average Below Close (ii) Volume Spike
- Fundamental Analysis Conditions tab >select (iii) Revenue
- Prices & Other Conditions tab > select (iv) Is Shariah Compliant
- Technical Analysis Conditions tab select (v) Moving Average Below Close
- Prices & Other Conditions tab > select (vi) Last Done Price
- Technical Analysis Conditions tab select (vii) Moving Average Below Close

B. Conditions (Criteria Filters)

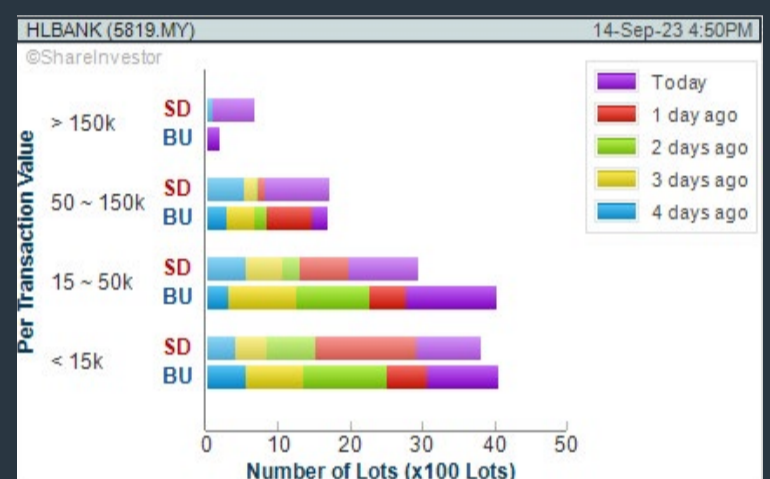
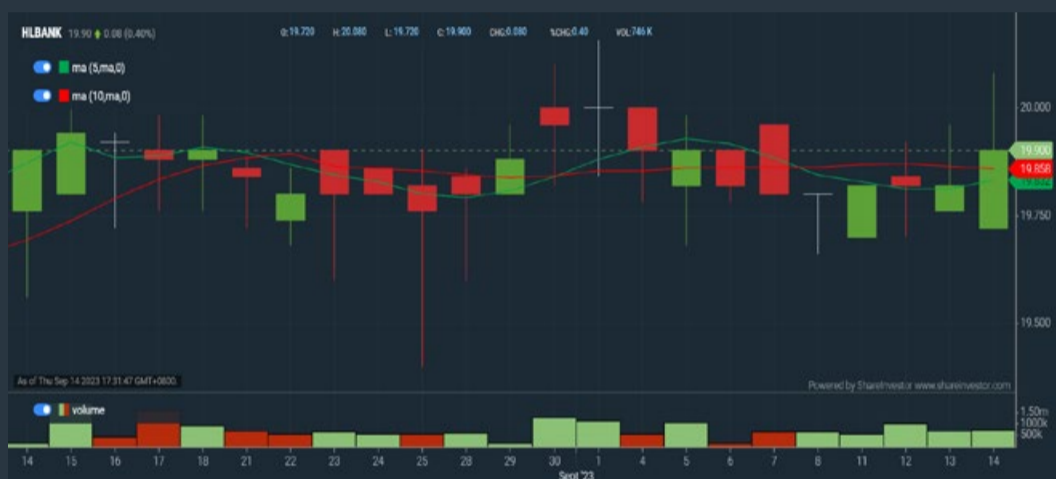
1. Moving Average Below Close - select (MA) type (5) below close price for type (3) days
2. Volume Spike - Volume type (1) greater than type (5) days average
3. Revenue ("000) - select (more than) type (1) for the past select (1) financial year(s)
4. Is Shariah Compliant - select NO
5. Moving Average Below Close - select (MA) type (10) below close price for type (1) days
6. Last Done Price - select (more than) type (0.3)
7. Moving Average Below Close - select (EMA) type (5) below close price for type (1) days

- > click Save Template > Create New Template type (Non-Shariah Hot Stocks) > click Create
- > click Save Template as > select Non-Shariah Hot Stocks > click Save
- > click Screen Now (may take a few minutes)
- Sort By: Select (Vol) Select (Desc)
- Mouse over stock name > Charts > click C² Charts tab or Volume Distribution

HONG LEONG BANK BERHAD (5819)

C² Chart

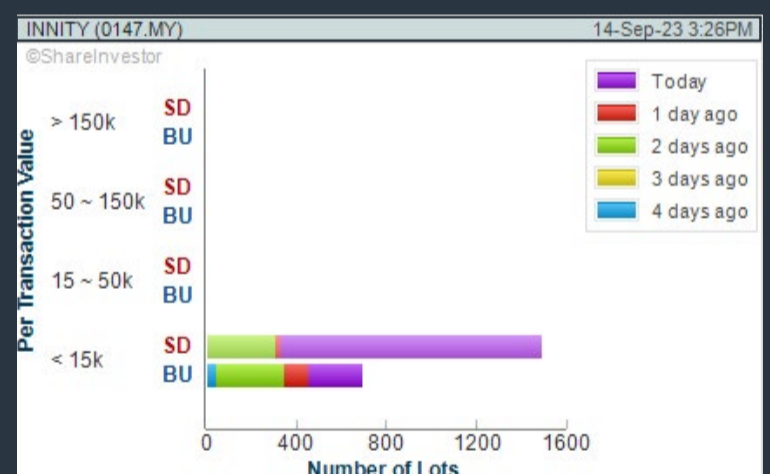
Analysis



INNITY CORPORATION BERHAD (0147)

C² Chart

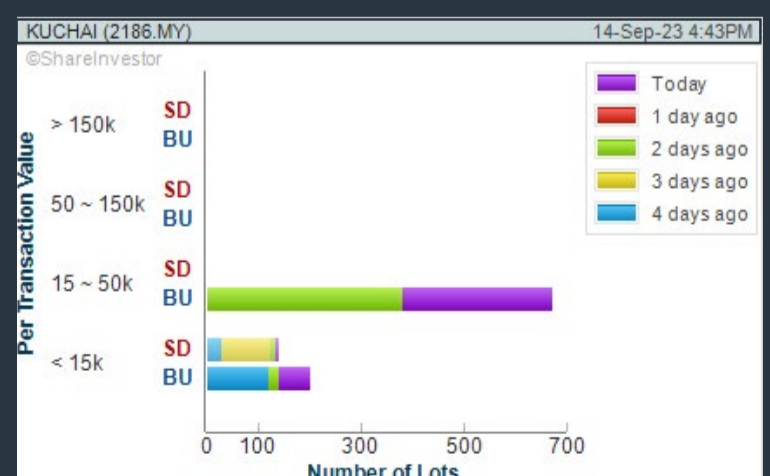
Analysis



KUCHAI DEVELOPMENT BERHAD (2186)

C² Chart

Analysis



Disclaimer: The information on this page is provided as a service to readers. It does not constitute financial advice and/or any investment recommendations. Past performance is not indicative of future results. We assume no liability for damages resulting from or arising out of the use of such information. It would be best if you did your own research to make your personal investment decisions wisely or consult a licenced investment advisor.

Organised by



Sponsored by



Invest | 11

VOTE AND WIN!

13 – 26 SEP 2023

HOW TO WIN

AI?

GOLD?

S&P 500?

Apple
Facebook
Microsoft
Nvidia
Amazon

1

VOTE FOR
YOUR
FAVOURITE
ETF
(x1 chance)

2

COMMENT
WHY YOU
LIKE IT
(x3 chances)

CLICK HERE TO VOTE



50

lucky winners

X

RM 50

worth ETF

Price & Volume Distribution Charts (Over 5 trading days as at Yesterday)

Technical Analysis

DEFINITION: Stocks with Technical Analysis showing Bullish Momentum and Price Uptrend

CHART GUIDE: Volume Distribution Chart is a statistical interpretation of the current sentiment on each stock in graphical format. The highest bar categorized as >150k is likely to be traded by institutions or super dealers, while the lowest bar categorized as <15k usually represents retail investors. "Buy Up" refers to more buyers snatching up the lots queued at selling price. "Sell Down" refers to sellers selling their shares to the buying queue.



ShareInvestor WebPro > Screener > Market Screener (FA & TA) > select BURSA > add criteria

A. Criteria

- > click Add Criteria
- Fundamental Analysis Conditions tab > select (i) Revenue
- Technical Analysis Conditions tab select (ii) Moving Average Below Close
- Technical Analysis Conditions tab select (iii) Average Volume
- Prices & Other Conditions tab > select (iv) Last Done Price
- Technical Analysis Conditions tab select (v) Moving Average Below Close
- Technical Analysis Conditions tab select (v) Moving Average Bullish Crossover

B. Conditions

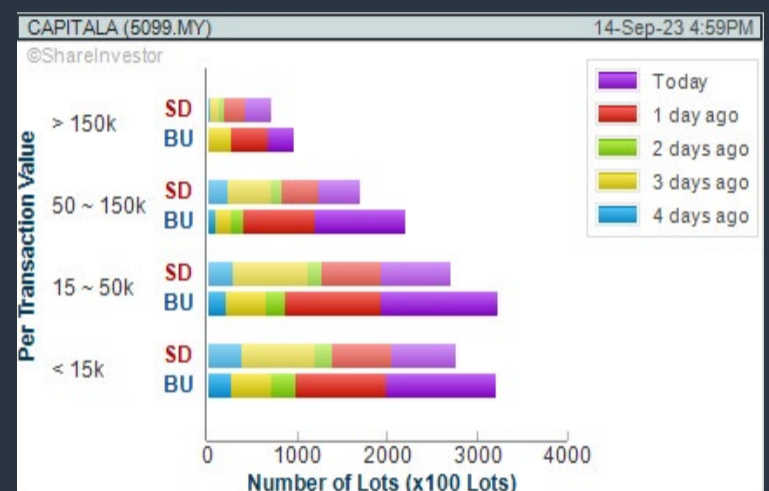
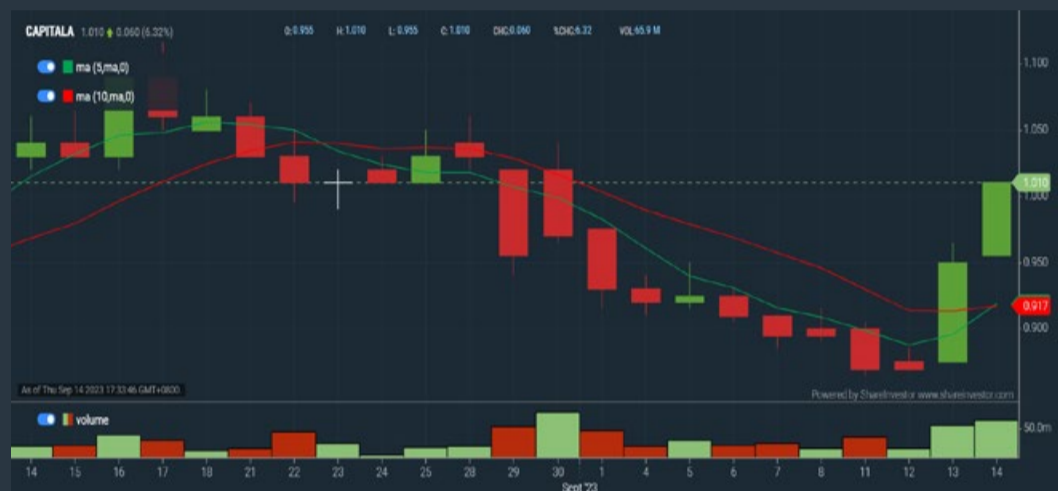
1. Revenue - select (more than) type (1) for the past select (1) financial year(s)
2. Moving Average Below Close - select (MA) type (20) below close price for type (1) days
3. Average Volume - type (5) days average volume type (10000) lots
4. Last Done Price - select (more than) type (0.3)
5. Moving Average Below Close - select (MA) type (10) below close price for type (1) days
6. Moving Average Bullish Crossover - select (MA) type (5) crossed above select (MA) type (10)

> click Save Template > Create New Template type (Non-Shariah Up-Trending Stocks) > click Create Click Save Template As > select Non-Shariah Up Trending Stocks > click Save
> click Screen Now (may take a few minutes)
Sort By: Select (Vol) Select (Desc)
Mouse over stock name > Charts > click C² Charts tab or Volume Distribution

CAPITAL A BERHAD (5099)

C² Chart

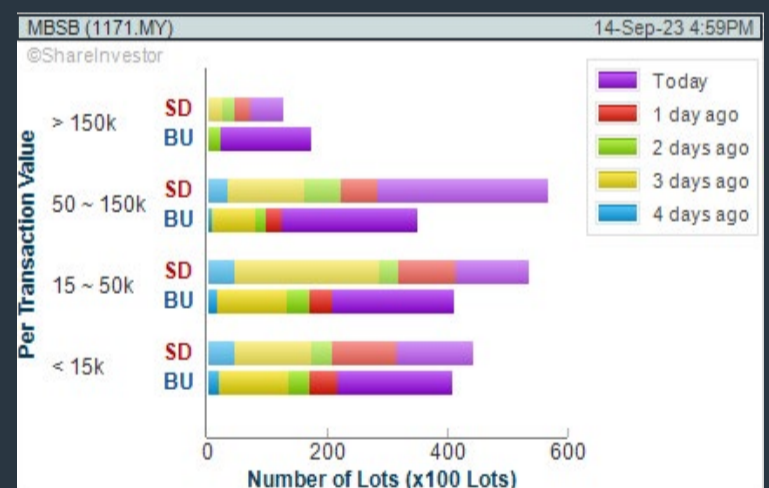
Analysis



MALAYSIA BUILDING SOCIETY BERHAD (1171)

C² Chart

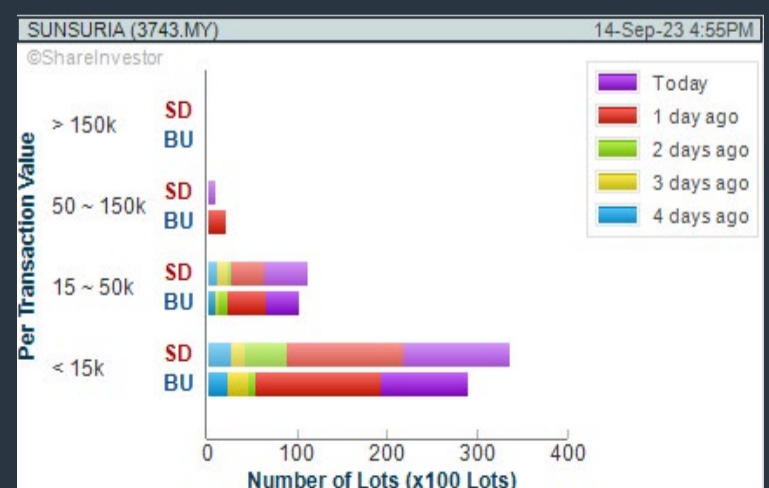
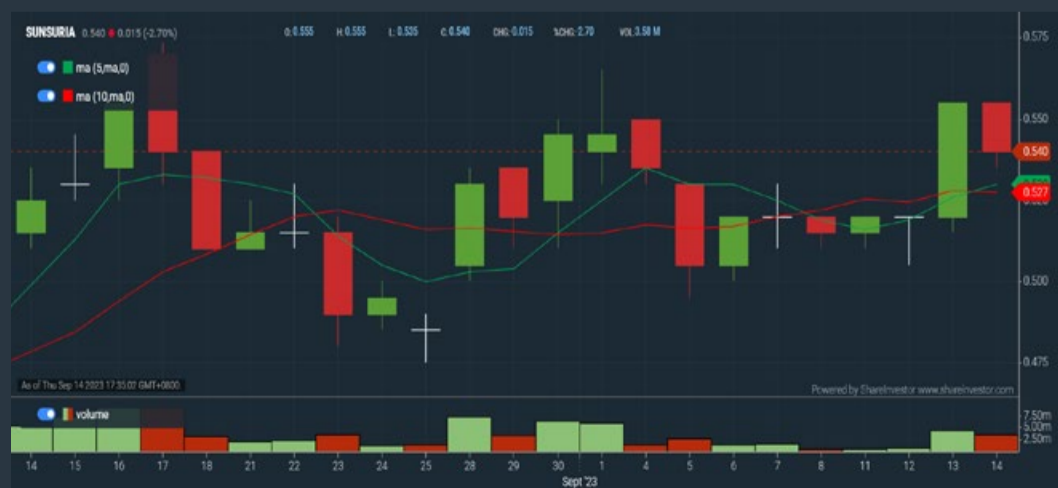
Analysis



SUNSURIA BERHAD (3743)

C² Chart

Analysis



Disclaimer: The information on this page is provided as a service to readers. It does not constitute financial advice and/or any investment recommendations. Past performance is not indicative of future results. We assume no liability for damages resulting from or arising out of the use of such information. It would be best if you did your own research to make your personal investment decisions wisely or consult a licenced investment advisor.

SHAREINVESTOR WEBPRO

STOCK MARKET DATA AT YOUR FINGERTIPS

Powerful browser-based market analytics platform.
Access from anywhere



8 Markets Data

- ▶ Get access to data from Bursa, NYSE, Nasdaq, HKEX, SGX, IDX, SET & ASX

Portfolio Management

- ▶ Profit & Loss Summary
- ▶ Stock Alert
- ▶ News & Events filtering
- ▶ Customizable column layout

Fundamental Analysis

Financial Analysis Statement

- ▶ Profit & Loss
- ▶ Balance Sheet
- ▶ Cash Flow Statement
- ▶ More than 20 Financial Ratios
- ▶ Dividend Analysis

Technical Charting

- ▶ C² chart (Customisable & Comprehensive)

Brokers' Call

Intrinsic Value Calculator

FactSheet

- ▶ Key Stock Information
- ▶ Ownership
- ▶ Consensus Estimates
- ▶ Annual Report
- ▶ Historical Price
- ▶ Insider Trades

What's new on WebPro (Stable Release 12.1.0)

In our effort to keep our platform at the forefront of trading technology, we have added on some new features onto our C2 Chart in WebPro

ADDITIONAL NEW FEATURES:

- ▶ Anchor selector for AVWAP, PVAT, and PAV indicators
- ▶ Volume profile indicator by date range
- ▶ Moving Average Cross indicator
- ▶ Guppy Multiple Moving Average (GMMA) indicator
- ▶ GoNoGo Trend Signal indicators
- ▶ SignalIQ

So what are you waiting for? Head to our platform today and check out our new trading chart features and indicators. We're confident that you'll love the improvements we've made and that they'll help you become a more successful trader.

Click here to start your 9 days FREE trial
(Valued at RM10)



Price & Total Shareholder Return (as at Yesterday)

Fundamental Analysis

DEFINITION: Share price of a company trading at a lower price as compared to its fundamentals (FA) such as financial performance and dividend, allowing it to be attractive to value investors.

CHART GUIDE: Total Shareholder Return (TSR) combines share price appreciation and dividend distributions paid to show the total return to the shareholder expressed as a percentage.



ShareInvestor WebPro > Screener > Market Screener (FA & TA) > select BURSA > add criteria

A. Criteria

- > click Add Criteria
- Fundamental Analysis Conditions tab (i) Price Earnings Ratio
- Fundamental Analysis Conditions tab >select (ii) CAGR of Net Earnings
- Fundamental Analysis Conditions tab >select (iii) Net Debt To Equity
- Fundamental Analysis Conditions tab >select (iv) Return On Equity (ROE)

B. Conditions

1. Price Earnings Ratio - select (less than) type (15) times now
2. CAGR of Net Earnings - select (more than) type (10) % for the past type (3) financial year(s)
3. Net Debt To Equity – select (less than) type (1) for the past select (1) financial year(s)
4. Return On Equity (ROE) – select (more than) type (10) % for the past select (1) financial year(s)

- > click Save Template > Create New Template type (Value Stock) > click Create
- > click Save Template as > select Value Companies > click Save
- > click Screen Now (may take a few minutes)
- Sort by: Select (PE Ratio) Select (Ascending)
- > Mouse over stock name > Factsheet > looking for Total Shareholder Return
- > Mouse over stock name > Charts > click C2 Charts tab

SUNMOW HOLDING BERHAD (03050)

C² Chart



Period	Dividend Received	Capital Appreciation	Total Shareholder Return
Short Term Return	5 Days	+0.200	+16.67%
	10 Days	+0.200	+16.67%
	20 Days	+0.200	+16.67%
Medium Term Return	3 Months	+0.400	+40.00%
	6 Months	+0.750	+115.38%
	1 Year	+0.450	+47.37%
Annualised Return	Annualised	-	+47.37%

EDELTEQ HOLDINGS BERHAD (0278)

C² Chart



Period	Dividend Received	Capital Appreciation	Total Shareholder Return
Short Term Return	5 Days	-0.020	-4.17%
	10 Days	-	-
	20 Days	-0.075	-14.02%
Medium Term Return	3 Months	-0.195	-25.77%

SCGM BERHAD (7247)

C² Chart



Period	Dividend Received	Capital Appreciation	Total Shareholder Return
Short Term Return	5 Days	-0.010	-1.71%
	10 Days	-	-
	20 Days	-0.010	-1.71%
Medium Term Return	3 Months	-0.005	-0.86%
	6 Months	0.005	0.86%
	1 Year	-0.005	-0.74%
Long Term Return	2 Years	0.051	+7.47%
	3 Years	0.125	+14.54%
	5 Years	0.173	+18.85%
Annualised Return	Annualised	-	+5.42%

Disclaimer: The information on this page is provided as a service to readers. It does not constitute financial advice and/or any investment recommendations. Past performance is not indicative of future results. We assume no liability for damages resulting from or arising out of the use of such information. It would be best if you did your own research to make your personal investment decisions wisely or consult a licenced investment advisor.

BURSASTATION

Professional

Stock Scanning

- Technical Analysis (TA) Market Scanner
- Fundamental Analysis (FA) Market Scanner

Monitoring

- Portfolio
- Stock Alerts
- Price Spread Calculator

Market Data

- Equities
- Derivatives

Scan. Chart. Analyse.

Be The Intelligent Investor

Charts

- Intraday Charts
- Interactive Charts
- Historical Charts
- Volume Distribution Charts

Price Movements

- Streaming Prices
- Time & Sales
- Trade Summary Matrix
- Quote Movements
- 5 Levels Market Depth
- Historical Price Download

Fundamentals

- Factsheets
- Financials
- Insider Trades

Brought to you as a collaborative effort by ShareInvestor and Bursa Malaysia, **BursaStation Professional** is designed with you, the user, in mind, as a user-friendly yet full of powerful features that will appeal to investors/traders who need instant access to fundamental, technical, and trading data, anytime, anywhere. **BursaStation Professional** is a state-of-the-art Stock Market Tracker with Charting Software that places in your hands the power to make better investment decisions.

[CLICK HERE TO START YOUR 14-DAYS FREE TRIAL](#)

Price & Total Shareholder Return (as at Yesterday)

Fundamental Analysis

DEFINITION: Company revenue is growing and making good quality of earnings with positive Free Cash Flow.

CHART GUIDE: Total Shareholder Return (TSR) combines share price appreciation and distributions paid to show the total return to the shareholder expressed as a percentage.



ShareInvestor WebPro > Screener > Market Screener (FA & TA) > select BURSA > add criteria

A. Criteria

1. Fundamental Analysis Conditions tab >select (i) Free Cash Flow, (ii) Revenue Growth, (iii) Gross Profit (Earnings) Margin, (iv) Quality of Earnings, (v) Total Shareholder Returns, > click Add Criteria
2. Fundamental Analysis Conditions tab >select (vi) Total Shareholder Returns > click Add Criteria

B. Conditions (Criteria Filters)

1. Free Cash Flow - select (more than) type (1) for the past select (1) financial year(s)
2. Revenue Growth - select (more than) type (1) for the past select (1) financial year(s)
3. Gross Profit (Earnings) Margin - select (more than) type (30) % for the past select (1) financial year(s)
4. Quality of Earnings - select (more than) type (1) for the past select (1) financial year(s)
5. Total Shareholder Return - select (more than) type (5) % for the past select (3) financial year(s)
6. Total Shareholder Return - select (more than) type (5) % for the past select (5) financial year(s)

- > click Save Template > Create New Template type (Growth Companies) > click Create
- > click Save Template as > select Growth Companies > click Save
- > click Screen Now (may take a few minutes)
- > Sort By: Select (Revenue Growth) Select (Desc)
- > Mouse over stock name > Factsheet > looking for Total Shareholder Return

SEAL INCORPORATED BERHAD (4286)

C² Chart

Analysis



Period	Dividend Received	Capital Appreciation	Total Shareholder Return
Short Term Return	5 Days	-0.025	-4.42%
	10 Days	0.010	6.90%
	20 Days	-0.025	-5.24%
Medium Term Return	3 Months	-0.100	-31.71%
	6 Months	+0.245	+83.05%
	1 Year	+0.315	+140.00%
Long Term Return	2 Years	+0.170	+48.95%
	3 Years	+0.105	+36.52%
	5 Years	+0.170	+48.95%
Annualised Return	Annualised	-	+7.85%

HIBISCUS PETROLEUM BERHAD (5199)

C² Chart

Analysis



Period	Dividend Received	Capital Appreciation	Total Shareholder Return
Short Term Return	5 Days	+0.040	+3.85%
	10 Days	+0.125	+13.09%
	20 Days	-0.110	-11.54%
Medium Term Return	3 Months	+0.110	+18.60%
	6 Months	+0.060	+5.88%
	1 Year	+0.010	+6.93%
Long Term Return	2 Years	+0.415	+63.41%
	3 Years	+0.560	+107.68%
	5 Years	+0.070	+6.93%
Annualised Return	Annualised	-	+1.35%

IGB BERHAD (5606)

C² Chart

Analysis



Period	Dividend Received	Capital Appreciation	Total Shareholder Return
Short Term Return	5 Days	-0.020	-1.42%
	10 Days	-0.090	-4.37%
	20 Days	-0.050	-2.38%
Medium Term Return	3 Months	+0.130	+5.44%
	6 Months	+0.260	+19.44%
	1 Year	+0.520	+32.16%
Long Term Return	2 Years	0.150	+9.89%
	3 Years	0.236	+14.837%
	5 Years	0.583	+32.21%
Annualised Return	Annualised	-	+8.35%

Disclaimer: The information on this page is provided as a service to readers. It does not constitute financial advice and/or any investment recommendations. Past performance is not indicative of future results. We assume no liability for damages resulting from or arising out of the use of such information. It would be best if you did your own research to make your personal investment decisions wisely or consult a licenced investment advisor.

MAKE BETTER TRADING STRATEGIES

with

SHARE INVESTOR STATION



8 Markets Data

- ▶ Get access to data from Bursa, NYSE, Nasdaq, HKEX, SGX, IDX, SET & ASX

Dynamic Chart

- ▶ Candlestick Pattern Recognition
- ▶ 111 Indicators
- ▶ 39 Drawing Tools
- ▶ Performance Comparison Chart

Intraday Data

- ▶ Market Depth
- ▶ Trade Summary Matrix & Chart
- ▶ Times & Sales
- ▶ Intraday Market Ticker

Market Screener

- ▶ 96 criteria ranging from FA, TA, Consensus Estimate
- ▶ Real-time Data

Power Frame

- ▶ Combining few Dynamic Charts together with intraday information in one frame

Technical Analysis

Fundamental Analysis

Financial Analysis Statement

- ▶ Profit & Loss
- ▶ Balance Sheet
- ▶ Cash Flow Statement
- ▶ More than 20 Financial Ratios
- ▶ Dividend Analysis

FactSheet

- ▶ Key Stock Information
- ▶ Ownership
- ▶ Consensus Estimates
- ▶ Annual Report
- ▶ Historical Price
- ▶ Insider Trades

**Start your 18 days
FREE trial now
(Valued at RM82)**



Price & Total Shareholder Return (as at Yesterday)

Fundamental Analysis

DEFINITION: Company is paying out dividend with low or moderate leverage.

CHART GUIDE: Total Shareholder Return (TSR) combines share price appreciation and distributions paid to show the total return to the shareholder expressed as a percentage.



ShareInvestor WebPro > Screener > Market Screener (FA & TA) > select BURSA > add criteria

A. Criteria

- > click Add Criteria
- Fundamental Analysis Conditions tab >select (i) Dividend Yield (Historical)
- Fundamental Analysis Conditions tab >select (ii) Dividend Payout (Historical)
- Fundamental Analysis Conditions tab >select (iii) Total Debt To Equity
- Fundamental Analysis Conditions tab >select (iv) Total Shareholder Returns
- Fundamental Analysis Conditions tab >select (v) Total Shareholder Returns
- Fundamental Analysis Conditions tab / >select (vi) CAGR of Dividend Per Share

• Fundamental Analysis Conditions tab >select (vii) CAGR of Dividend Per Share

B. Conditions (Criteria Filters)

1. Dividend Yield - select (more than) type (1) % for the past select (1) financial year(s)
2. Dividend Payout (Historical) - select (between) type (0.5) to type (1) times for the past select (1) financial year(s)
3. Total Debt to Equity - select (less than) type (1) for the past select (1) financial year(s)
4. Total Shareholder Return - select (more than) type (5) % for the past select (3) financial year(s)
5. Total Shareholder Return - select (more than) type (5) % for the past select (5) financial year(s)

6. CAGR of Dividend Per Share - select (less than) type (30) % for the past select (5) financial year(s)
7. CAGR of Dividend Per Share - select (more than) type (1) % for the past select (5) financial year(s)

- > click Save Template > Create New Template type (Dividend Companies) > click Create
- > click Save Template as > select Dividend Companies > click Save
- > click Screen Now (may take a few minutes)
- > Sort By: Select (Dividend Yield) Select (Desc)
- > Mouse over stock name > Factsheet > looking for Total Shareholder Return

JAYCORP BERHAD (7152)

C² Chart



Period	Dividend Received	Capital Appreciation	Total Shareholder Return
Short Term Return	5 Days	-	-
	10 Days	-	+0.31%
	20 Days	-	+1.43%
Medium Term Return	3 Months	+0.015	+2.18%
	6 Months	+0.010	+1.43%
	1 Year	+0.020	+2.90%
Long Term Return	2 Years	0.055	+8.88%
	3 Years	0.170	+26.96%
	5 Years	0.355	+56.67%
Annualised Return	Annualised	-	+18.80%

FORMOSA PROSONIC INDUSTRIES (9172)

C² Chart



Period	Dividend Received	Capital Appreciation	Total Shareholder Return
Short Term Return	5 Days	-	+0.38%
	10 Days	-	+1.86%
	20 Days	-	+1.14%
Medium Term Return	3 Months	-	+8.57%
	6 Months	-	+5.22%
	1 Year	-	+14.19%
Long Term Return	2 Years	0.200	+26.56%
	3 Years	0.340	+38.68%
	5 Years	0.550	+52.25%
Annualised Return	Annualised	-	+18.05%

GAS MALAYSIA BERHAD (5209)

C² Chart



Period	Dividend Received	Capital Appreciation	Total Shareholder Return
Short Term Return	5 Days	-	-1.85%
	10 Days	-	-1.31%
	20 Days	-	-0.55%
Medium Term Return	3 Months	-	-2.90%
	6 Months	-	-3.55%
	1 Year	-	-15.75%
Long Term Return	2 Years	0.177	+11.17%
	3 Years	0.327	+21.04%
	5 Years	0.558	+31.48%
Annualised Return	Annualised	-	+4.21%

Disclaimer: The information on this page is provided as a service to readers. It does not constitute financial advice and/or any investment recommendations. Past performance is not indicative of future results. We assume no liability for damages resulting from or arising out of the use of such information. It would be best if you did your own research to make your personal investment decisions wisely or consult a licenced investment advisor.



making places multifunctional



usm.com

XTRA

XTRA FURNITURE SDN BHD
The Gardens Mall, Mid Valley City, Lot S-236 & 237
Lingkar Syed Putra, 59200 Kuala Lumpur
T. +603 2282 9088 | living@xtrafurniture.com | xtrafurniture.com
● XTRAFurniture | ● xtrafurnituremsia

Week: 8 Sep – 14 Sep 2023

More Brokers' Call 

AMINVESTMENT BANK <small>... See More</small>	Call	Target Price	Release Date
Bermaz Auto Berhad (5248)	BUY	RM3.10	13 Sept 2023
Hektar Real Estate Investment Trust (5121)	BUY	RM0.75	13 Sept 2023
Sunway Berhad (5211)	BUY	RM2.40	13 Sept 2023
UEM Sunrise Berhad (5148)	HOLD	RM0.60	12 Sept 2023

BIMB <small>... See More</small>	Call	Target Price	Release Date
Bermaz Auto Berhad (5248)	BUY	RM2.68	13 Sept 2023

CGS CIMB <small>... See More</small>	Call	Target Price	Release Date
Beshom Holdings Berhad (7668)	HOLD	RM0.99	08 Sept 2023

KENANGA <small>... See More</small>	Call	Target Price	Release Date
AMMB Holdings Berhad (1015)	OUTPERFORM	RM4.80	11 Sept 2023
Bermaz Auto Berhad (5248)	OUTPERFORM	RM3.22	13 Sept 2023
Thong Guan Industries Berhad (7034)	OUTPERFORM	RM3.05	08 Sept 2023

MIDF <small>... See More</small>	Call	Target Price	Release Date
Bermaz Auto Berhad (5248)	BUY	RM3.36	13 Sept 2023
Cahaya Mata Sarawak Berhad (2852)	BUY	RM1.50	12 Sept 2023
Ranhill Utilities Berhad (5272)	BUY	RM0.80	11 Sept 2023
Sunway Berhad (5211)	NEUTRAL	RM1.71	13 Sept 2023

UOB KAY HIAN <small>... See More</small>	Call	Target Price	Release Date
Bermaz Auto Berhad (5248)	BUY	RM2.86	13 Sept 2023
Citaglobal Berhad (7245)	BUY	RM1.69	13 Sept 2023
Cuscapi Berhad (0051)	BUY	RM0.30	13 Sept 2023
Cypark Resources Berhad (5184)	BUY	RM1.00	13 Sept 2023
Hextar Global Berhad (5151)	BUY	RM0.92	12 Sept 2023

Disclaimer: InveSt does not accept any liability whatsoever for any direct, indirect or consequential losses (including loss of profit) or damages that may arise from the use of information or opinions in this publication. The information and opinions in InveSt are not to be considered as an offer to sell or buy any of the securities discussed. Opinions expressed are subject to change without notice. The Brokers may, from time to time, have interests or positions in the securities mentioned. For the full report on each item listed on this page, please visit https://www.shareinvestor.com/my/brokers_call.

DEFINITION: Top 9 stocks with Technical Analysis plus Pattern Matching by 60 pre-defined indicators by the system showing a higher probability of bullish sentiment on the share price.



ShareInvestor WebPro > Screener > Predefined TA Screens > select market BURSA > Most Long Signals > click Scan Results or mouse over each company

BERJAYA LAND BHD (4219.MY)

BJLAND

Price updated at 14 Sep 2023 16:59

Last: 0.275	Change: -0.020	Volume: 172,180
	Change (%): -6.78	Range: 0.275 - 0.300

TA Scanner Results based on historical data up to 14 Sep 2023

Condition	Signal	Explanation
Bollinger Band: Bullish Long Term Volatility Breakout and Trending	Long	"1. Close price above upper bollinger band(33,1). 2. Volume above average volume(50). 3. Average volume(50) is above 300,000."
Bollinger Band: Bullish Short Term Volatility Breakout and Trending	Long	"1. Close price above upper bollinger band(33,1). 2. Volume above average volume(10). 3. Average volume(10) is above 300,000."
Bollinger Band: High Above Upper Bollinger Band	Neutral	"1. High above upper bollinger band(14,2). 2. Average volume(5) is above 100,000."
Candlestick: Indecision Doji	Neutral	Indecision: Doji
DM: Bullish Directional Movement	Long	-DI(14) crossed below +DI(14)
Donchian Channels: High Above Upper Donchian Channels	Long	High crossed above the upper Donchian Channel(14,4)
MACD: Bullish MACD Crossover	Long	"1. MACD(12,26) diff line crossed above the MACD(12,26) signal line. 2. MACD Histogram(12,26) is above 0."
Price: New 52 Week High	Long	"1. Stock reach a new 52 week high. 2. Average volume(30) is above 50000."
Volume: Volume Spike	Long	"1. Volume is more than 500% above average volume(10). 2. Volume above 200000. 3. Close price above 0.10"

BERMAZ AUTO BERHAD (5248.MY)

BAUTO

Price updated at 14 Sep 2023 16:59

Last: 2.400	Change: +0.100	Volume: 113,961
	Change (%): +4.35	Range: 2.310 - 2.410

TA Scanner Results based on historical data up to 14 Sep 2023

Condition	Signal	Explanation
Bollinger Band: Bullish Long Term Volatility Breakout and Trending	Long	"1. Close price above upper bollinger band(33,1). 2. Volume above average volume(50). 3. Average volume(50) is above 300,000."
Bollinger Band: Bullish Lower Bollinger Band Support	Long	"1. Low 1 day ago below lower bollinger band(20,2). 2. Close above close 1 day ago. 3. Average volume(5) is above 100,000."
Bollinger Band: Bullish Short Term Volatility Breakout and Trending	Long	"1. Close price above upper bollinger band(33,1). 2. Volume above average volume(10). 3. Average volume(10) is above 300,000."
Bollinger Band: High Above Upper Bollinger Band	Neutral	"1. High above upper bollinger band(14,2). 2. Average volume(5) is above 100,000."
DM: Bullish Directional Movement	Long	-DI(14) crossed below +DI(14)
Donchian Channels: High Above Upper Donchian Channels	Long	High crossed above the upper Donchian Channel(14,4)
Parabolic SAR: Bearish Parabolic SAR Reversal	Neutral	"1. Parabolic SAR 1 day ago above close price 1 day ago for the last 5 days. 2. Parabolic SAR below close price"
Price: New 52 Week High	Long	"1. Stock reach a new 52 week high. 2. Average volume(30) is above 50000."

TRADEPLUS DWA MALAYSIA MOMENTUM TRACKER (0836EA.MY)

MY-MOMETF

Price updated at 14 Sep 2023 16:30

Last: 0.980	Change: -	Volume: -
	Change (%): -	Range: 0.980 - 0.980

TA Scanner Results based on historical data up to 14 Sep 2023

Condition	Signal	Explanation
Candlestick: Bullish Kicking	Long	Bullish: Kicking
DM: Bullish Directional Movement	Long	-DI(14) crossed below +DI(14)
Donchian Channels: High Above Upper Donchian Channels	Long	High crossed above the upper Donchian Channel(14,4)
MA: Short Term Bullish Moving Average Crossover	Long	MA(10) crossed above MA(15) within the last 1 day.
MACD: Bullish MACD Crossover	Long	"1. MACD(12,26) diff line crossed above the MACD(12,26) signal line. 2. MACD Histogram(12,26) is above 0."
Parabolic SAR: Bearish Parabolic SAR Reversal	Neutral	"1. Parabolic SAR 1 day ago above close price 1 day ago for the last 5 days. 2. Parabolic SAR below close price"

WASCO BERHAD (5142.MY)

WASCO

Price updated at 14 Sep 2023 16:56

Last: 0.980	Change: -0.030	Volume: 13,413
	Change (%): -2.97	Range: 0.975 - 1.000

TA Scanner Results based on historical data up to 14 Sep 2023

Condition	Signal	Explanation
Bollinger Band: Bullish Long Term Volatility Breakout and Trending	Long	"1. Close price above upper bollinger band(33,1). 2. Volume above average volume(50). 3. Average volume(50) is above 300,000."
Bollinger Band: Bullish Short Term Volatility Breakout and Trending	Long	"1. Close price above upper bollinger band(33,1). 2. Volume above average volume(10). 3. Average volume(10) is above 300,000."
Candlestick: Indecision Doji	Neutral	Indecision: Doji
Donchian Channels: High Above Upper Donchian Channels	Long	High crossed above the upper Donchian Channel(14,4)
Volume: 10 Days large value Buy Up trade	Long	"1. 150K value Buy Up greater than Sell Down by 20% for 10 days. 2. 50K-100K value Buy Up greater than Sell Down by 20% for 10 days. 3. Average volume(10) is above 1000000"
Volume: 5 Days large value Buy Up trade	Long	"1. 150K value Buy Up greater than Sell Down by 20% for 5 days. 2. 50K-100K value Buy Up greater than Sell Down by 20% for 5 days. 3. Average volume(10) is above 1000000"
Williams %R: Bearish Williams %R	Short	"1. Williams %R(26) between 0 and -20. 2. Average volume(5) is above 100,000."

Disclaimer: The information on this page is provided as a service to readers. It does not constitute financial advice and/or any investment recommendations. Past performance is not indicative of future results. We assume no liability for damages resulting from or arising out of the use of such information. It would be best if you did your own research to make your personal investment decisions wisely or consult a licenced investment advisor.

Williams %R: Bearish Williams %R	Short	"1. Williams %R(26) between 0 and -20. 2. Average volume(5) is above 100,000."
----------------------------------	-------	---



JAYA TIASA HOLDINGS BHD (4383.MY)

JTIASA

Price updated at 14 Sep 2023 16:59

Last: 0.815	Change: +0.015	Volume: 34,256
	Change (%): +1.88	Range: 0.780 - 0.820

TA Scanner Results based on historical data up to 14 Sep 2023

Condition	Signal	Explanation
Bollinger Band: Bullish Long Term Volatility Breakout and Trending	Long	"1. Close price above upper bollinger band(33,1). 2. Volume above average volume(50). 3. Average volume(50) is above 300,000."
Bollinger Band: Bullish Short Term Volatility Breakout and Trending	Long	"1. Close price above upper bollinger band(33,1). 2. Volume above average volume(10). 3. Average volume(10) is above 300,000."
Candlestick: Bullish Morning Doji Star	Long	Bullish: Morning Doji Star
Volume: 10 Days large value Buy Up trade	Long	"1. 150K value Buy Up greater than Sell Down by 20% for 10 days. 2. 50K-100K value Buy Up greater than Sell Down by 20% for 10 days. 3. Average volume(10) is above 1000000"
Volume: 5 Days large value Buy Up trade	Long	"1. 150K value Buy Up greater than Sell Down by 20% for 5 days. 2. 50K-100K value Buy Up greater than Sell Down by 20% for 5 days. 3. Average volume(10) is above 1000000"



UWC BERHAD (5292.MY)

UWC

Price updated at 14 Sep 2023 16:57

Last: 3.820	Change: +0.110	Volume: 26,511
	Change (%): +2.96	Range: 3.630 - 3.890

TA Scanner Results based on historical data up to 14 Sep 2023

Condition	Signal	Explanation
Bollinger Band: Bullish Long Term Volatility Breakout and Trending	Long	"1. Close price above upper bollinger band(33,1). 2. Volume above average volume(50). 3. Average volume(50) is above 300,000."
Bollinger Band: Bullish Short Term Volatility Breakout and Trending	Long	"1. Close price above upper bollinger band(33,1). 2. Volume above average volume(10). 3. Average volume(10) is above 300,000."
Bollinger Band: High Above Upper Bollinger Band	Neutral	"1. High above upper bollinger band(14,2). 2. Average volume(5) is above 100,000."
Chaikin Volatility: Increasing Chaikin Volatility	Neutral	Chaikin Volatility(10,10) has been increasing for 5 days
Donchian Channels: High Above Upper Donchian Channels	Long	High crossed above the upper Donchian Channel(14,4)
Historical Volatility: Increasing Historical Volatility	Neutral	Historical Volatility(100,365) increasing for the last 10 days
MACD: Bullish MACD Crossover	Long	"1. MACD(12,26) diff line crossed above the MACD(12,26) signal line. 2. MACD Histogram(12,26) is above 0."
Volume: 5 Days large value Buy Up trade	Long	"1. 150K value Buy Up greater than Sell Down by 20% for 5 days. 2. 50K-100K value Buy Up greater than Sell Down by 20% for 5 days. 3. Average volume(10) is above 1000000"
Williams %R: Bearish Williams %R	Short	"1. Williams %R(26) between 0 and -20. 2. Average volume(5) is above 100,000."



COUNTRY VIEW BHD (5049.MY)

CVIEW

Price updated at 14 Sep 2023 11:11

Last: 1.160	Change: -	Volume: -
	Change (%): -	Range: 1.160 - 1.160

TA Scanner Results based on historical data up to 14 Sep 2023

Condition	Signal	Explanation
DM: Bullish Directional Movement	Long	-DI(14) crossed below +DI(14)
Donchian Channels: High Above Upper Donchian Channels	Long	High crossed above the upper Donchian Channel(14,4)
MA: Bullish Price Crossover	Long	"1. Close price crossed above MA(40) within the last 1 day. 2. Previous day close price is below the MA(10) for the last 5 days"
MACD: Bullish MACD Crossover	Long	"1. MACD(12,26) diff line crossed above the MACD(12,26) signal line. 2. MACD Histogram(12,26) is above 0."
Parabolic SAR: Bearish Parabolic SAR Reversal	Neutral	"1. Parabolic SAR 1 day ago above close price 1 day ago for the last 5 days. 2. Parabolic SAR below close price"



MICROLINK SOLUTIONS BHD (0126.MY)

MICROLN

Price updated at 14 Sep 2023 16:50

Last: 0.930	Change: +0.005	Volume: 28,824
	Change (%): +0.54	Range: 0.920 - 0.930

TA Scanner Results based on historical data up to 14 Sep 2023

Condition	Signal	Explanation
MA: Short Term Bullish Moving Average Crossover	Long	MA(10) crossed above MA(15) within the last 1 day.
Volume: 10 Days large value Buy Up trade	Long	"1. 150K value Buy Up greater than Sell Down by 20% for 10 days. 2. 50K-100K value Buy Up greater than Sell Down by 20% for 10 days. 3. Average volume(10) is above 1000000"
Volume: 5 Days large value Buy Up trade	Long	"1. 150K value Buy Up greater than Sell Down by 20% for 5 days. 2. 50K-100K value Buy Up greater than Sell Down by 20% for 5 days. 3. Average volume(10) is above 1000000"
Volume: Consecutive Days Of Increasing Average Volume	Long	"1. Average Volume(20) has been increasing over the last 2 weeks. 2. Average volume(20) is above 100000"



OSK VENTURES INTERNATIONAL BHD (0053.MY)

OSKVI

Price updated at 14 Sep 2023 16:44

Last: 0.525	Change: -0.005	Volume: 168
	Change (%): -0.94	Range: 0.510 - 0.530

TA Scanner Results based on historical data up to 14 Sep 2023

Condition	Signal	Explanation
DM: Bullish Directional Movement	Long	-DI(14) crossed below +DI(14)
Donchian Channels: High Above Upper Donchian Channels	Long	High crossed above the upper Donchian Channel(14,4)
MA: Short Term Bullish Moving Average Crossover	Long	MA(10) crossed above MA(15) within the last 1 day.
MACD: Bullish MACD Crossover	Long	"1. MACD(12,26) diff line crossed above the MACD(12,26) signal line. 2. MACD Histogram(12,26) is above 0."

Disclaimer: The information on this page is provided as a service to readers. It does not constitute financial advice and/or any investment recommendations. Past performance is not indicative of future results. We assume no liability for damages resulting from or arising out of the use of such information. It would be best if you did your own research to make your personal investment decisions wisely or consult a licenced investment advisor.

SC PLANS TO EMBRACE ISSB'S SUSTAINABILITY STANDARDS

According to the Securities Commission Malaysia (SC) chairman Datuk Seri Dr Awang Adek Hussin, the SC is planning to adopt the International Sustainability Standards Board's (ISSB) global standards to ensure that sustainability becomes an integral part of local corporations. At the same time, the SC intends to customise the standard to align with local requirements.

Malaysia is at a juncture in its development of domestic renewable energy sources as well as a carbon market, thus we cannot afford to fall short of the environmental, social and corporate governance (ESG) standards. In his opening address at the Business Foresight Forum 2023 on 13 September, he said that we should make full use of the available opportunities. He also lauded the launch of the centralised sustainability reporting platform for Malaysian firms to disclose their ESG data by Bursa Malaysia and the London Stock Exchange, saying that it was a positive move. The synergies and alignment between the shariah and ESG principles are naturally compatible.

Malaysia is in a unique position to take the lead in sustainable finance by leveraging its expertise in the Islamic capital market (ICM). He said that our regulatory frameworks, such as the Sustainable and Responsible Investment (SRI) Sukuk Framework, SRI-Linked

Sukuk Framework, and Waqf-Featured Fund Framework, reflect our commitment to both the sustainability and ICM agendas. He added that waqf is an innovative solution and social finance catalyst that aligns with this commitment to sustainable practices.

Consumer sector to remain resilient, driven by strong demand - MIDF

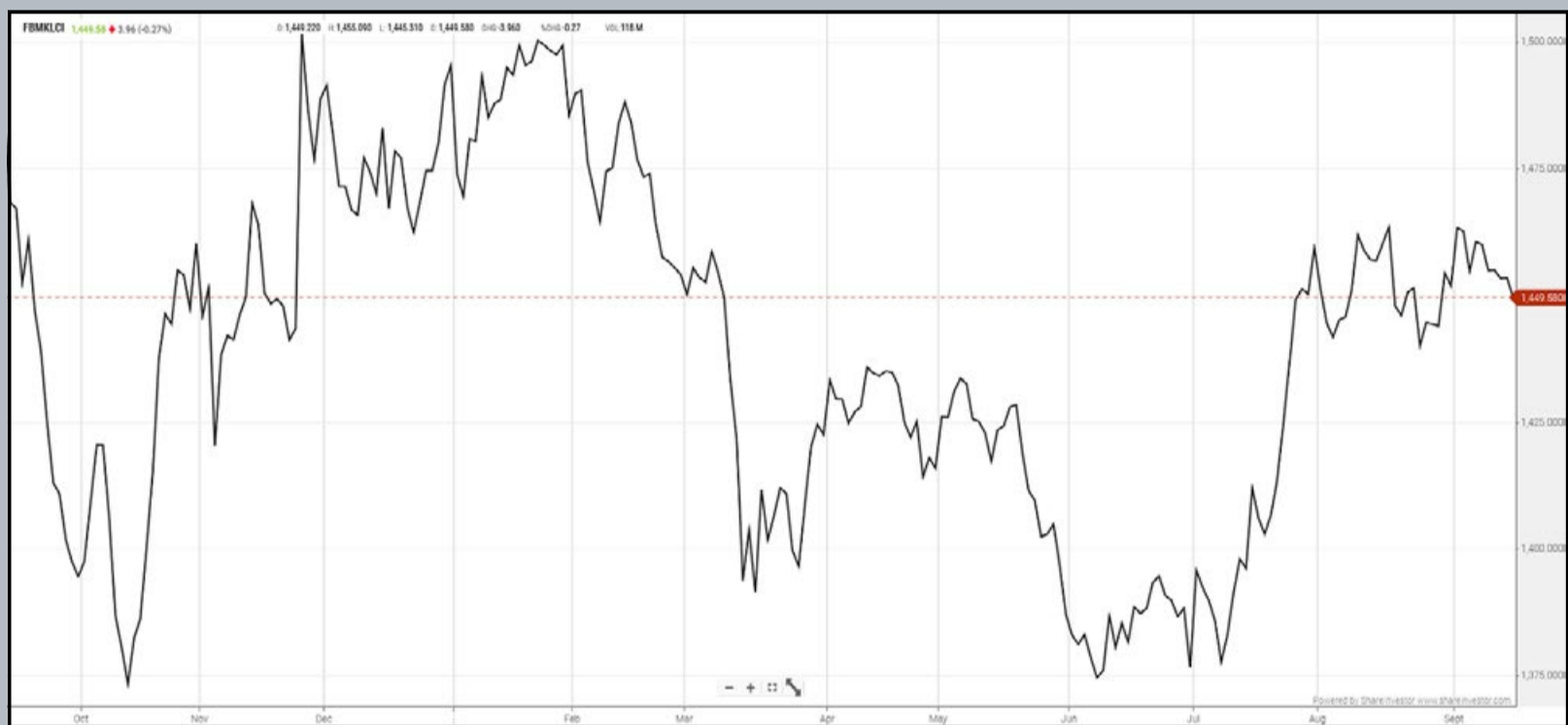
According to MIDF Research in a report on September 14, it remains positive on the outlook of the consumer sector, underpinned by resilient demand for staple-related products, and solid domestic consumption backed by a stable labour market. Robust retail trade, increased tourism activities, and better profit margins for food and beverages (F&B) producers, driven by declining global commodities prices also bodes well for the consumer sector. Normalising soybean meal and corn futures prices suggest lower raw material costs for poultry players, further supporting producers' profit margins.

The research house's top picks are consumer staple-related companies that exhibit resilient demand. It has "buy" calls on QL Resources Bhd at a target price (TP) RM6.75, and Fraser & Neave Holdings Bhd (TP: RM33.50). It favours QL Resources, which is supported by consistent demand for marine and livestock products and F&N because the company is likely to benefit from the rising demand for ready-to-drink beverages, which is being fuelled by an increase in tourist traffic. Most global commodities futures for F&B producers remained below their two-year peak in August 2023. Key raw materials of food producers, such as wheat and crude palm oil (CPO), continued their downward trend during the same period. Looking ahead it foresees decreased raw material costs for food manufacturers due to the lowering of futures prices for key commodities, such as wheat and CPO.

It cited the Department of Statistics Malaysia (DOSM) report on Sept 11 that Malaysia's wholesale and retail trade recorded a sales value of RM139.8 billion in July 2023, up 7.2% year-on-year. This was primarily driven by increased consumer spending in non-specialised stores, F&B and tobacco, automotive fuel, and other goods.

Eye On The Markets

On Thursday (14Sept), the Ringgit closed at 4.6815 against the USD and 3.4404 to the Sing Dollar. On Monday (11Sept), the FBM KLCI opened at 1453.72. As at Thursday (14Sept) 5:00pm, the FBM KLCI closed down 4.14 points at 1449.58. Over in US, the overnight Dow Jones Industrial Average closed up 331.58 points (+0.96%) to 34,907.11 whilst the NASDAQ added 112.47 points (+0.81%) to 13,926.05.



KLCI 1 Year Chart



Learn how to identify Hot Stocks using Technical Analysis (TA) and Fundamental Analysis (FA)

SIGN UP FOR Invest NOW IT'S FREE!!!

[Click here](#)



Via email, every Friday.

Get market moving news and analyses. Regular columns include **Behind The Action** and **From The Observer**

- Leaderboard • Shariah Hot Stocks • Shariah Momentum Up Stocks • Non Shariah Hot Stocks • Up Trending Stocks • Growth Stocks • Dividend Stocks • Long Companies • Insider Activity • Investor Relations • Regional Markets



Over 5 trading days



ShareInvestor WebPro (www.shareinvestor.com/my)

1. Price > Stock Prices
2. Select Market: NASDAQ / NYSE / IDX / SET / HKEX / SGX (One bourse at a time)
3. select Stocks Tab
4. select Ranking Top Gainers or Top Losers (Over 5 Trading Days)
5. Mouse over Column Layout > select Edit Customs > select Name > select Last Done Price > select 5 Days Change > select 52 Weeks High > select 52 Weeks Low > Mouse Over Column Layout > select Custom

NASDAQ (USD)

Top Gainers

Name	Last Done	Change Over 5 Days	52 Weeks High	52 Weeks Low
BOOKING HOLDINGS INC	3,197.560	+54.460	3,251.709	1,616.850
JP MORGAN ETF TRUST INTERNATIONAL VALUE ETF USD	48.591	+43.341	5.350	3.500
CASEY S GENERAL STORES INC	279.960	+40.120	267.950	197.220
FIRST CITIZENS BANCSHARES INC NRTH	1,356.240	+32.470	1,512.070	505.840
CINTAS CORP	523.380	+28.250	518.710	370.930

Top Losers

Name	Last Done	Change Over 5 Days	52 Weeks High	52 Weeks Low
MERCADOLIBRE INC	1,383.430	-52.920	1,451.560	754.760
NETFLIX INC	400.490	-42.650	485.000	211.730
MONOLITHIC POWER SYSTEM INC	479.170	-26.970	595.980	301.690
OLD DOMINION FREIGHT LINE INC	406.980	-25.770	438.050	240.000
SAIA INC	413.390	-24.650	443.850	176.700

NYSE (USD)

Top Gainers

Name	Last Done	Change Over 5 Days	52 Weeks High	52 Weeks Low
BERKSHIRE HATHAWAY INC	561,739.990	+10,335.110	562,480.990	393,012.250
WHITE MOUNTAINS INSURANCE GROUP	1,567.070	+49.490	1,617.000	1,172.000
MARKEL GROUP INC	1,519.650	+48.330	1,519.960	1,064.090
ALPHA METALLURGICAL RESOURCES INC	244.630	+26.580	245.110	116.860
MURPHY USA INC	336.840	+25.580	334.655	231.650

Top Losers

Name	Last Done	Change Over 5 Days	52 Weeks High	52 Weeks Low
NVR INC	6,201.250	-204.560	6,525.000	3,816.555
RH	307.250	-61.300	406.380	227.000
AUTOZONE INC	2,576.100	-43.190	2,750.000	2,050.210
TEXAS PACIFIC LAND CORPORATION	1,793.920	-42.470	2,739.000	1,266.210
BIGLARI HOLDINGS INC	874.000	-37.081	1,058.500	597.000

IDX (Rupiah)

Top Gainers

Name	Last Done	Change Over 5 Days	52 Weeks High	52 Weeks Low
METROPOLITAN KENTJ	35,500.000	+2,725.000	46,200.000	16,950.000
INDAH KIAT PULP & PAPER	10,500.000	+1,025.000	10,850.000	6,775.000
SIANTAR TOP	11,625.000	+1,000.000	16,900.000	6,800.000
PABRIK KERTAS TJIWI KIMIA	8,875.000	+950.000	9,150.000	5,600.000
DIAN SWASTATIKA SENTOSA TBK	50,800.000	+600.000	56,050.000	33,950.000

Top Losers

Name	Last Done	Change Over 5 Days	52 Weeks High	52 Weeks Low
MAHA PROPERTI INDONESIA TBK	1,940.000	-1,840.000	4,750.000	595.000
INDO TAMBANGRAYA MEGAH TBK	29,350.000	-1,400.000	45,650.000	22,125.000
HILLCON TBK	2,490.000	-630.000	4,000.000	1,270.000
INDOSPRING	2,800.000	-620.000	3,750.000	1,855.000
FKS MULTI AGRO TBK	5,450.000	-525.000	7,575.000	5,450.000

SET (Thai Baht)

Top Gainers

Name	Last Done	Change Over 5 Days	52 Weeks High	52 Weeks Low
OHTL	496.000	+18.000	610.000	410.000
ADVANC	221.000	+5.000	228.000	181.500
BH	261.000	+5.000	267.000	203.000
PRI	32.250	+4.000	43.750	18.000
NEW	93.000	+4.000	210.000	56.000

Top Losers

Name	Last Done	Change Over 5 Days	52 Weeks High	52 Weeks Low
AEONTS	167.000	-4.500	208.000	151.500
PSP	8.500	-4.200	13.900	8.050
BKI	314.000	-4.000	321.000	272.000
KYE	295.000	-4.000	331.000	288.000
SPI	65.500	-2.750	80.000	55.250

HKEX (HKD)

Top Gainers

Name	Last Done	Change Over 5 Days	52 Weeks High	52 Weeks Low
MOG DIGITECH HOLDINGS LTD	76.900	+43.400	104.300	2.700
YUM CHINA HOLDINGS INC	434.000	+27.200	514.500	300.000
DPC DASH LTD	70.000	+9.750	70.700	42.000
YSB INC	48.050	+7.100	64.500	19.000
REMEGEN CO LTD	38.000	+4.700	74.800	29.700

Top Losers

Name	Last Done	Change Over 5 Days	52 Weeks High	52 Weeks Low
GAUSH MEDITECH LTD	37.250	-9.950	56.100	35.650
TRIP COM GROUP LTD	281.400	-9.400	330.200	159.800
BILIBILI INC	108.800	-7.700	228.000	66.100
SUN HUNG KAI PROPERTIES LTD	80.800	-7.500	115.900	77.100
SUN HUNG KAI PROPERTIES LTD	75.250	-7.350	93.700	72.300

SGX (SGD)

Top Gainers

Name	Last Done	Change Over 5 Days	52 Weeks High	52 Weeks Low
DBS	34.090	+0.680	35.855	30.300
UOB	28.990	+0.390	31.400	25.910
Venture	13.180	+0.360	18.750	12.600
SGX	9.840	+0.250	9.850	8.160
Powermatic Data	2.950	+0.130	3.019	2.311

Top Losers

Name	Last Done	Change Over 5 Days	52 Weeks High	52 Weeks Low
JMH USD	46.700	-1.220	57.800	42.600
Jardine C&C	31.840	-0.920	36.850	27.250
AIMS Property	0.710	-0.390	1.180	0.710
NSL	0.720	-0.390	1.130	0.705
NIO Inc. USD OV	10.100	-0.320	22.030	7.420

THREE EDGES IN INVESTING



Devanesan
Evanson

**Chief Executive
Officer, Minority
Shareholders Watch
Group**

Charley Ellis once described the three ways in which investors can beat the market: “One is physically difficult, one is intellectually difficult, and one is emotionally difficult.” You can work harder, put in more hours, and outwork everyone else. You can be smarter, see the future differently, and better identify when the market is wrong. You can be better behaved, take a long-term investment approach, and hold on.

To outperform the market, you must know your edge. Your edge will determine your success as an investor. If you play games where other people have the edge and you don’t, you are going to lose. What is your edge over other investors?

Basically, there are three advantages that you could have as an investor.

- 1. Informational advantage**
- 2. Analytical advantage**
- 3. Time horizon advantage**

INFORMATIONAL ADVANTAGE

Informational advantage is when you have information that others don't have. It is the easiest to exploit but the hardest to find. During Warren Buffett's early years in investing, he had huge information advantage over everyone else. He went through Moody's Manuals page by page, thousands of them. He found information that others don't have. Buffett made millions simply by looking for bargains using Benjamin Graham's approach.

Most investors focus on information advantage. But this advantage is the most competitive because the Internet has levelled the playing field for all investors. With the advancement in technology, anybody can uncover information at their fingertips. As a result, information edge has decreased significantly over the years.

ANALYTICAL ADVANTAGE

Analytical edge stems from the ability to interpret publicly available information differently from others. Investors may have the same set of data and numbers, but some will come to different conclusions based on their own independent thinking. This edge is gained through indepth research and deep thinking. Moreover, you need to understand accounting. It's the language of practical business life.

As Charlie Munger said, *"Without numerical fluency, in the part of life most of us inhabit, you are like a one-legged man in an ass-kicking contest."*

Investors with strong analytical skills can generate unique insights – on companies and industries – which then lead to well-thought-out decisions. It also requires the courage to bet against the market and appears wrong for the short term, before being proven right over the longer term.

TIME HORIZON ADVANTAGE

Time horizon advantage refers to the ability to adopt a longer-term investment horizon. It means the willingness to maintain a 3-5-year time horizon when most market participants focus on the next quarter. The

longer you can extend your time horizon, the less competitive the market is because there are less players in the game. The less competitive the market, the higher the probability of making outsized returns.

Investors with a time horizon advantage can exploit market inefficiencies arising from short-term market volatility or temporary market dislocations. Usually, investors swing in the wrong direction: they get excited when prices rise and fearful when things go badly. If you can control your emotion and sit through huge drawdowns, you will get the return you deserve. Note that there is a big difference between “market return” and “investor return”.

Market return, as measured by the S&P 500, was about 10% over the past 20 years. But how many investors can sit still for 20 years and earn 10% compounded annual return? Most would have sold out during downturn or out of panic. In short, investor behaviour derails compounding. To do well in investing over the long term, you must behave well. If you don't have the patience to hold, you are going to do a lot worse than the market.

TO SUM IT UP

In summary, there are three edges that investors can gain in investing. Information advantage is the most competitive because that is where most investors focus on. Analytical edge comes from deep thinking and years of continuous learning. Time horizon advantage is the most difficult because it is about how you behave. Something that is hard to teach. It is a structural advantage given that most investors are short-term oriented. When most investors are playing the short-term game, you should play the long game. Extend your time horizon. Take the less crowded road. Only by looking further out than most investors can you expect to beat them. And it's the most durable edge in investing.

By Jackson Tan

Manager, Corporate Monitoring

DEFINITION: Insider Activity shows the trades made by substantial shareholders or directors of the company. Purchases by the directors and company share buyback may indicate the share price is undervalued and brings confidence to the price trend of the share price.



ShareInvestor WebPro > Fundamental > Insider Trades > click Search tab > Select Bursa > click Stock name > scroll up and leave at <Select Counter> Type Date Range for Announcement Date > click Search

Notice Period is 3rd Sept – 9th Sept 2023

Notice Period is 3rd Sept – 9th Sept 2023

Effective Change Date	Stock Name	Buyer/ Seller Name [Classification]	Bought / (Sold) ['000]	No. of Shares After Trade ['000]	
			Total	Total	% Held
05 SEP 2023 - 06 SEP 2023	3A	MR TEO KWEE HOCK [SSH]	-169	48,606	9.94
01 SEP 2023 - 04 SEP 2023	3A	MR TEO KWEE HOCK [SSH]	-99	48,775	9.974
30 AUG 2023 - 30 AUG 2023	ABMB	EMPLOYEES PROVIDENT FUND BOARD [SSH]	-106	160,796	10.387
06 SEP 2023 - 06 SEP 2023	ADVPKG	MR PETER LING EE KONG [DIR/CEO]	4	9,201	11.395
06 SEP 2023 - 06 SEP 2023	ADVPKG	MR PETER LING EE KONG [SSH]	4	9,201	11.395
05 SEP 2023 - 05 SEP 2023	AEON	EMPLOYEES PROVIDENT FUND BOARD [SSH]	-108	134,784	9.6
04 SEP 2023 - 04 SEP 2023	AEON	EMPLOYEES PROVIDENT FUND BOARD [SSH]	-1,549	134,892	9.608
01 SEP 2023 - 01 SEP 2023	AEON	EMPLOYEES PROVIDENT FUND BOARD [SSH]	-848	136,441	9.718
30 AUG 2023 - 30 AUG 2023	AEON	EMPLOYEES PROVIDENT FUND BOARD [SSH]	-625	137,339	9.782
07 SEP 2023 - 07 SEP 2023	AIRPORT	KUMPULAN WANG PERSARAAN (DIPERBADANKAN) [SSH]	126	111832	6.702
05 SEP 2023 - 05 SEP 2023	AIRPORT	EMPLOYEES PROVIDENT FUND BOARD [SSH]	-734	166925	10.004
06 SEP 2023 - 06 SEP 2023	AIRPORT	KUMPULAN WANG PERSARAAN (DIPERBADANKAN) [SSH]	245	111706	6.694
04 SEP 2023 - 04 SEP 2023	AIRPORT	EMPLOYEES PROVIDENT FUND BOARD [SSH]	-312	167,659	10.048
01 SEP 2023 - 01 SEP 2023	AIRPORT	EMPLOYEES PROVIDENT FUND BOARD [SSH]	-600	167,971	10.067
04 SEP 2023 - 04 SEP 2023	AIRPORT	KUMPULAN WANG PERSARAAN (DIPERBADANKAN) [SSH]	-740	111,461	6.68
30 AUG 2023 - 30 AUG 2023	AIRPORT	EMPLOYEES PROVIDENT FUND BOARD [SSH]	-1,217	168,571	10.103
29 AUG 2023 - 29 AUG 2023	AIRPORT	EMPLOYEES PROVIDENT FUND BOARD [SSH]	-329	169,787	10.176
05 SEP 2023 - 05 SEP 2023	ALLIANZ	EMPLOYEES PROVIDENT FUND BOARD [SSH]	-10	12,695	7.133
06 SEP 2023 - 07 SEP 2023	ANCOMNY	MR CHAN THYE SENG [DIR/CEO]	-274	536	0.056
30 AUG 2023 - 01 SEP 2023	APM	DATO' TAN HENG CHEW [DIR/CEO]	30	104,536	53.473
30 AUG 2023 - 01 SEP 2023	APM	DATO' TAN HENG CHEW [SSH]	30	96,482	49.353
06 SEP 2023 - 06 SEP 2023	APOLLO	AMANAHRAYA TRUSTEES BERHAD-AMANAH SAHAM BUMIPUTERA [SSH]	-100	6,111	7.639
05 SEP 2023 - 05 SEP 2023	APOLLO	AMANAHRAYA TRUSTEES BERHAD-AMANAH SAHAM BUMIPUTERA [SSH]	-100	6,211	7.764
01 SEP 2023 - 01 SEP 2023	APOLLO	AMANAHRAYA TRUSTEES BERHAD-AMANAH SAHAM BUMIPUTERA [SSH]	-271	6,311	7.889
30 AUG 2023 - 01 SEP 2023	ASTEEL	DATO' SRI VICTOR HII LU THIAN [DIR/CEO]	248	105,483	21.754
30 AUG 2023 - 01 SEP 2023	ASTEEL	DATO' SRI VICTOR HII LU THIAN [SSH]	248	70,073	14.451
30 AUG 2023 - 01 SEP 2023	ASTEEL	DATO' HII NGO SING [SSH]	248	61,101	12.602
30 AUG 2023 - 01 SEP 2023	ASTEEL	DATUK IR MICHAEL HII EE SING [SSH]	248	66,624	13.74
30 AUG 2023 - 01 SEP 2023	ASTEEL	DATUK SERI DR HII WI SING [SSH]	248	88,077	18.165
30 AUG 2023 - 01 SEP 2023	ASTEEL	MR ALEXANDER HII LU KWONG [SSH]	248	61,700	12.725
30 AUG 2023 - 01 SEP 2023	ASTEEL	MR ARTHUR HII LU CHOON [SSH]	248	60,430	12.463
30 AUG 2023 - 01 SEP 2023	ASTEEL	MR CHRISTOPHER HII LU MING [DIR/CEO]	248	96,271	19.854
30 AUG 2023 - 01 SEP 2023	ASTEEL	MR CHRISTOPHER HII LU MING [SSH]	248	60,860	12.551
30 AUG 2023 - 01 SEP 2023	ASTEEL	MR FRANCIS HII LU SHENG [SSH]	248	55,561	11.459
05 SEP 2023 - 05 SEP 2023	AXIATA	EMPLOYEES PROVIDENT FUND BOARD [SSH]	-140	1,618,603	17.634
05 SEP 2023 - 05 SEP 2023	BAUTO	EMPLOYEES PROVIDENT FUND BOARD [SSH]	1,136	121,989	10.472
04 SEP 2023 - 04 SEP 2023	BAUTO	EMPLOYEES PROVIDENT FUND BOARD [SSH]	-31	120,854	10.375
01 SEP 2023 - 01 SEP 2023	BAUTO	EMPLOYEES PROVIDENT FUND BOARD [SSH]	-77	120,885	10.378
30 AUG 2023 - 30 AUG 2023	BAUTO	EMPLOYEES PROVIDENT FUND BOARD [SSH]	238	120,962	10.384
30 AUG 2023 - 30 AUG 2023	BAUTO	PRUDENTIAL PLC [SSH]	-580	67,711	5.813
29 AUG 2023 - 29 AUG 2023	BAUTO	EMPLOYEES PROVIDENT FUND BOARD [SSH]	247	120,724	10.364
05 SEP 2023 - 05 SEP 2023	BIMB	EMPLOYEES PROVIDENT FUND BOARD [SSH]	300	366,308	16.162
04 SEP 2023 - 04 SEP 2023	BIMB	EMPLOYEES PROVIDENT FUND BOARD [SSH]	1,184	366,008	16.149
01 SEP 2023 - 01 SEP 2023	BIMB	EMPLOYEES PROVIDENT FUND BOARD [SSH]	-498	364,824	16.097
30 AUG 2023 - 30 AUG 2023	BIMB	EMPLOYEES PROVIDENT FUND BOARD [SSH]	-447	365,322	16.119
29 AUG 2023 - 29 AUG 2023	BIMB	EMPLOYEES PROVIDENT FUND BOARD [SSH]	100	365,769	16.138
05 SEP 2023 - 06 SEP 2023	BINACOM	MR NA BON TIAM [SSH]	-760	39,418	10.151
30 AUG 2023 - 30 AUG 2023	BINACOM	MR NA BON TIAM [SSH]	-1,000	40,178	10.347
05 SEP 2023 - 05 SEP 2023	BIPORT	EMPLOYEES PROVIDENT FUND BOARD [SSH]	-1	24,145	5.248
04 SEP 2023 - 04 SEP 2023	BIPORT	EMPLOYEES PROVIDENT FUND BOARD [SSH]	-0.5	24,146	5.25
28 AUG 2023 - 28 AUG 2023	BIPORT	EMPLOYEES PROVIDENT FUND BOARD [SSH]	-5	24,146	5.25
23 AUG 2023 - 23 AUG 2023	BIPORT	EMPLOYEES PROVIDENT FUND BOARD [SSH]	-100	24,151	5.25
05 SEP 2023 - 07 SEP 2023	BPLANT	ARUSHA ENTERPRISE SDN. BHD. [SSH]	8,165	801,043	35.761
05 SEP 2023 - 07 SEP 2023	BPLANT	BATU KAWAN BERHAD [SSH]	8,165	801,043	35.761
05 SEP 2023 - 07 SEP 2023	BPLANT	CUBIC CRYSTAL CORPORATION [SSH]	8,165	801,043	35.761
05 SEP 2023 - 07 SEP 2023	BPLANT	DATO' LEE HAU HIAN [SSH]	8,165	801,043	35.761
05 SEP 2023 - 07 SEP 2023	BPLANT	DI-YI SDN. BHD. [SSH]	8,165	801,043	35.761
05 SEP 2023 - 07 SEP 2023	BPLANT	GRATEFUL BLESSINGS FOUNDATION [SSH]	8,165	801,043	35.761
05 SEP 2023 - 07 SEP 2023	BPLANT	GRATEFUL BLESSINGS INC. [SSH]	8,165	801,043	35.761

Effective Change Date	Stock Name	Buyer/ Seller Name [Classification]	Bought / (Sold) ['000]	No. of Shares After Trade ['000]	
			Total	Total	% Held
05 SEP 2023 - 07 SEP 2023	BPLANT	HIGH QUEST ANSTALT [SSH]	8,165	801,043	35.761
05 SEP 2023 - 07 SEP 2023	BPLANT	HIGH QUEST HOLDINGS SDN BHD [SSH]	8,165	801,043	35.761
05 SEP 2023 - 07 SEP 2023	BPLANT	KUALA LUMPUR KEPONG BERHAD [SSH]	8,165	801,043	35.761
05 SEP 2023 - 07 SEP 2023	BPLANT	TAN SRI LEE OI HIAN [SSH]	8,165	801,043	35.761
05 SEP 2023 - 07 SEP 2023	BPLANT	WAN HIN INVESTMENTS SDN. BERHAD [SSH]	8,165	801,043	35.761
01 SEP 2023 - 04 SEP 2023	BPLANT	ARUSHA ENTERPRISE SDN. BHD. [SSH]	12,135	792,878	35.396
01 SEP 2023 - 04 SEP 2023	BPLANT	BATU KAWAN BERHAD [SSH]	12,135	792,878	35.396
01 SEP 2023 - 04 SEP 2023	BPLANT	CUBIC CRYSTAL CORPORATION [SSH]	12,135	792,878	35.396
01 SEP 2023 - 04 SEP 2023	BPLANT	DATO' LEE HAU HIAN [SSH]	12,135	792,878	35.396
01 SEP 2023 - 04 SEP 2023	BPLANT	DI-YI SDN. BHD. [SSH]	12,135	792,878	35.396
01 SEP 2023 - 04 SEP 2023	BPLANT	GRATEFUL BLESSINGS FOUNDATION [SSH]	12,135	792,878	35.396
01 SEP 2023 - 04 SEP 2023	BPLANT	GRATEFUL BLESSINGS INC. [SSH]	12,135	792,878	35.396
01 SEP 2023 - 04 SEP 2023	BPLANT	HIGH QUEST ANSTALT [SSH]	12,135	792,878	35.396
01 SEP 2023 - 04 SEP 2023	BPLANT	HIGH QUEST HOLDINGS SDN BHD [SSH]	12,135	792,878	35.396
01 SEP 2023 - 04 SEP 2023	BPLANT	KUALA LUMPUR KEPONG BERHAD [SSH]	12,135	792,878	35.396
01 SEP 2023 - 04 SEP 2023	BPLANT	TAN SRI LEE OI HIAN [SSH]	12,135	792,878	35.396
01 SEP 2023 - 04 SEP 2023	BPLANT	WAN HIN INVESTMENTS SDN. BERHAD [SSH]	12,135	792,878	35.396
05 SEP 2023 - 05 SEP 2023	BRIGHT	AXEL CONNECTION SDN. BHD. [SSH]	10,400	10,400	5.065
05 SEP 2023 - 05 SEP 2023	BRIGHT	MR LYE JUN FEI [DIR/CEO]	10,400	10,400	5.065
05 SEP 2023 - 05 SEP 2023	BRIGHT	MR LYE JUN FEI [SSH]	10,400	10,400	5.065
01 SEP 2023 - 01 SEP 2023	BSLCORP	CITA REALITI SDN. BHD. [SSH]	2	114,721	5.944
05 SEP 2023 - 05 SEP 2023	BURSA	EMPLOYEES PROVIDENT FUND BOARD [SSH]	725	89,974	11.117
04 SEP 2023 - 04 SEP 2023	BURSA	EMPLOYEES PROVIDENT FUND BOARD [SSH]	120	89,249	11.028
01 SEP 2023 - 01 SEP 2023	BURSA	EMPLOYEES PROVIDENT FUND BOARD [SSH]	75	89,129	11.013
30 AUG 2023 - 30 AUG 2023	BURSA	EMPLOYEES PROVIDENT FUND BOARD [SSH]	141	89,054	11.004
29 AUG 2023 - 29 AUG 2023	BURSA	EMPLOYEES PROVIDENT FUND BOARD [SSH]	303	88,913	10.986
06 SEP 2023 - 07 SEP 2023	CAB	MR LOO CHOO GEE [DIR/CEO]	210	5,201	0.742
05 SEP 2023 - 05 SEP 2023	CAB	MR CHUAH AH BEE [DIR/CEO]	200	320,958	45.763
05 SEP 2023 - 05 SEP 2023	CAB	MR CHUAH AH BEE [SSH]	200	320,958	45.763
04 SEP 2023 - 04 SEP 2023	CAB	MR LOO CHOO GEE [DIR/CEO]	-714	4,992	0.712
01 SEP 2023 - 01 SEP 2023	CAB	MR LOO CHOO GEE [DIR/CEO]	-871	5,705	0.813
30 AUG 2023 - 01 SEP 2023	CAB-WB	MR LOO CHOO GEE [DIR/CEO]	-852	1,340	0.573
05 SEP 2023 - 05 SEP 2023	CDB	EMPLOYEES PROVIDENT FUND BOARD [SSH]	689	1,124,726	9.587
04 SEP 2023 - 04 SEP 2023	CDB	EMPLOYEES PROVIDENT FUND BOARD [SSH]	76	1,124,036	9.581
30 AUG 2023 - 30 AUG 2023	CDB	EMPLOYEES PROVIDENT FUND BOARD [SSH]	500	1,123,961	9.581
05 SEP 2023 - 06 SEP 2023	CEPAT	DATIN SERI OOI AH THIN [SSH]	94	120,557	39.02
05 SEP 2023 - 06 SEP 2023	CEPAT	DATO' MAH POOI SOO REALTY SDN. BHD. [SSH]	94	120,557	39.02
05 SEP 2023 - 06 SEP 2023	CEPAT	DATO' SERI MAH KING SENG [DIR/CEO]	94	120,557	39.02
05 SEP 2023 - 06 SEP 2023	CEPAT	DATO' SERI MAH KING SENG [SSH]	94	120,557	39.02
05 SEP 2023 - 06 SEP 2023	CEPAT	MHC PLANTATIONS BHD. [SSH]	94	120,557	39.02
05 SEP 2023 - 06 SEP 2023	CEPAT	TAN SRI DR MAH KING THIAN @ MAH KING THIAM [DIR/CEO]	94	120,557	39.02
05 SEP 2023 - 06 SEP 2023	CEPAT	TAN SRI DR MAH KING THIAN @ MAH KING THIAM [SSH]	94	120,557	39.02
07 SEP 2023 - 07 SEP 2023	CHINHIN	MR CHIAU HAW CHOON [DIR/CEO]	-7,000	768,073	43.408
04 SEP 2023 - 04 SEP 2023	CHINHIN	DIVINE INVENTIONS SDN BHD [SSH]	-7,000	666,700	37.679
04 SEP 2023 - 04 SEP 2023	CHINHIN	MR CHIAU HAW CHOON [SSH]	-7,000	768,073	43.408
04 SEP 2023 - 04 SEP 2023	CHINHIN	PP CHIN HIN REALTY SDN BHD [SSH]	-7,000	666,700	37.679
05 SEP 2023 - 05 SEP 2023	CIMB	EMPLOYEES PROVIDENT FUND BOARD [SSH]	24,040	1,709,824	16.03
06 SEP 2023 - 06 SEP 2023	CIMB	KUMPULAN WANG PERSARAAN (DIPERBADANKAN) [SSH]	573	719,437	6.75
04 SEP 2023 - 04 SEP 2023	CIMB	EMPLOYEES PROVIDENT FUND BOARD [SSH]	6,000	1,685,784	15.81
05 SEP 2023 - 05 SEP 2023	CIMB	KHAZANAH NASIONAL BERHAD [SSH]	-62,000	2,454,307	23.01
05 SEP 2023 - 05 SEP 2023	CIMB	KUMPULAN WANG PERSARAAN (DIPERBADANKAN) [SSH]	1,298	720,009	6.75
01 SEP 2023 - 01 SEP 2023	CIMB	EMPLOYEES PROVIDENT FUND BOARD [SSH]	6,581	1,679,784	15.75
04 SEP 2023 - 04 SEP 2023	CIMB	KUMPULAN WANG PERSARAAN (DIPERBADANKAN) [SSH]	-132	718,711	6.74
01 SEP 2023 - 01 SEP 2023	CIMB	KUMPULAN WANG PERSARAAN (DIPERBADANKAN) [SSH]	1,367	718,843	6.74
30 AUG 2023 - 30 AUG 2023	CIMB	EMPLOYEES PROVIDENT FUND BOARD [SSH]	704	1,673,204	15.69
30 AUG 2023 - 30 AUG 2023	CIMB	KUMPULAN WANG PERSARAAN (DIPERBADANKAN) [SSH]	-120	717,477	6.73
29 AUG 2023 - 29 AUG 2023	CIMB	EMPLOYEES PROVIDENT FUND BOARD [SSH]	2,277	1,672,500	15.68
28 AUG 2023 - 28 AUG 2023	CIMB	EMPLOYEES PROVIDENT FUND BOARD [SSH]	3,778	1,670,223	15.66
25 AUG 2023 - 25 AUG 2023	CIMB	EMPLOYEES PROVIDENT FUND BOARD [SSH]	1,796	1,666,446	15.63

Disclaimer: The Information in Insider Activity is extracted from www.shareinvestor.com/fundamental/insider_trades. The information on this page is provided as a service to readers. It does not constitute financial advice and/or any investment recommendations. We assume no liability for damages resulting from or arising out of the use of such information. Whilst every effort is made to ensure accuracy, the information presented is not the official record of shareholder filings. Readers are advised to read the original filings on the Bursa Malaysia website at www.bursamalaysia.com



PURNELL

**ESCAPE II
ABSOLUTE
SAPPHIRE**



Notice Period is 3rd Sept – 9th Sept 2023

Effective Change Date	Stock Name	Buyer/ Seller Name [Classification]	Bought / (Sold) ['000]		No. of Shares After Trade ['000]	
			Total	Total	% Held	
05 SEP 2023 - 06 SEP 2023	KFIMA	PUAN ROZANA ZETI BINTI BASIR [SSH]	4	171,088	60.62	
30 AUG 2023 - 04 SEP 2023	KFIMA	BHR ENTERPRISE SDN BHD [SSH]	10	150,295	53.252	
30 AUG 2023 - 04 SEP 2023	KFIMA	DATIN ROZILAWATI BINTI HAJI BASIR [DIR/CEO]	10	171,084	60.618	
30 AUG 2023 - 04 SEP 2023	KFIMA	DR ROSHAYATI BINTI BASIR [SSH]	10	171,084	60.619	
30 AUG 2023 - 04 SEP 2023	KFIMA	PUAN ROZANA ZETI BINTI BASIR [DIR/CEO]	10	171,084	60.619	
30 AUG 2023 - 04 SEP 2023	KFIMA	PUAN ROZANA ZETI BINTI BASIR [SSH]	10	171,084	60.619	
07 SEP 2023 - 07 SEP 2023	KIMLUN	MR PANG TIN @ PANG YON TIN [DIR/CEO]	100	163,207	46.187	
01 SEP 2023 - 01 SEP 2023	KLCC	EMPLOYEES PROVIDENT FUND BOARD [SSH]	300	183,623	10.171	
01 SEP 2023 - 01 SEP 2023	KLCC	EMPLOYEES PROVIDENT FUND BOARD [SSH]	300	183,623	10.171	
05 SEP 2023 - 05 SEP 2023	KLK	EMPLOYEES PROVIDENT FUND BOARD [SSH]	-302	115,985	10.755	
04 SEP 2023 - 04 SEP 2023	KLK	EMPLOYEES PROVIDENT FUND BOARD [SSH]	-61	116,286	10.783	
30 AUG 2023 - 30 AUG 2023	KLK	EMPLOYEES PROVIDENT FUND BOARD [SSH]	-215	116,347	10.789	
29 AUG 2023 - 29 AUG 2023	KLK	EMPLOYEES PROVIDENT FUND BOARD [SSH]	-700	116,562	10.808	
05 SEP 2023 - 05 SEP 2023	KOSSAN	ABRDN HOLDINGS LIMITED (FORMERLY KNOWN AS ABERDEEN ASSET MANAGEMENT PLC) [SSH]	475	148,267	5.811	
05 SEP 2023 - 05 SEP 2023	KOSSAN	ABRDN MALAYSIA SDN BHD [SSH]	475	145,862	5.716	
05 SEP 2023 - 05 SEP 2023	KOSSAN	ABRDN PLC [SSH]	475	148,267	5.811	
04 SEP 2023 - 04 SEP 2023	KOSSAN	ABRDN HOLDINGS LIMITED (FORMERLY KNOWN AS ABERDEEN ASSET MANAGEMENT PLC) [SSH]	860	147,793	5.792	
04 SEP 2023 - 04 SEP 2023	KOSSAN	ABRDN MALAYSIA SDN BHD [SSH]	860	145,388	5.698	
04 SEP 2023 - 04 SEP 2023	KOSSAN	ABRDN PLC [SSH]	860	147,793	5.792	
01 SEP 2023 - 01 SEP 2023	KOSSAN	ABRDN HOLDINGS LIMITED (FORMERLY KNOWN AS ABERDEEN ASSET MANAGEMENT PLC) [SSH]	522	146,932	5.758	
01 SEP 2023 - 01 SEP 2023	KOSSAN	ABRDN MALAYSIA SDN BHD [SSH]	522	144,528	5.664	
01 SEP 2023 - 01 SEP 2023	KOSSAN	ABRDN PLC [SSH]	522	146,932	5.758	
05 SEP 2023 - 07 SEP 2023	LAYHONG	DATO' YAP HOONG CHAI [DIR/CEO]	-200	283,459	38.288	
01 SEP 2023 - 01 SEP 2023	LBS	TAN SRI DATO' SRI IR. LIM HOCK SAN JP [DIR/CEO]	100	608,722	39.517	
01 SEP 2023 - 01 SEP 2023	LBS	TAN SRI DATO' SRI IR. LIM HOCK SAN JP [SSH]	100	603,969	39.208	
07 SEP 2023 - 07 SEP 2023	MAGNI	MR TAN POAY SENG [DIR/CEO]	55	118,388	27.31	
04 SEP 2023 - 05 SEP 2023	MAGNI	MR TAN POAY SENG [DIR/CEO]	91	118,333	27.3	
30 AUG 2023 - 30 AUG 2023	MALAKOF	EMPLOYEES PROVIDENT FUND BOARD [SSH]	-762	494,912	10.127	
29 AUG 2023 - 29 AUG 2023	MALAKOF	EMPLOYEES PROVIDENT FUND BOARD [SSH]	-3,969	495,674	10.142	
04 SEP 2023 - 04 SEP 2023	MATANG	HUAREN HOLDINGS SDN BHD [SSH]	1,000	396,842	16.61	
04 SEP 2023 - 04 SEP 2023	MATANG	MALAYSIAN CHINESE ASSOCIATION [SSH]	1,000	418,660	17.523	
30 AUG 2023 - 30 AUG 2023	MATANG	HUAREN HOLDINGS SDN BHD [SSH]	1,184	395,842	16.568	
30 AUG 2023 - 30 AUG 2023	MATANG	MALAYSIAN CHINESE ASSOCIATION [SSH]	1,184	417,660	17.481	
05 SEP 2023 - 05 SEP 2023	MATRIX	EMPLOYEES PROVIDENT FUND BOARD [SSH]	-6,236	58,504	4.675	
04 SEP 2023 - 04 SEP 2023	MATRIX	EMPLOYEES PROVIDENT FUND BOARD [SSH]	-2,266	64,741	5.174	
01 SEP 2023 - 01 SEP 2023	MATRIX	EMPLOYEES PROVIDENT FUND BOARD [SSH]	-5,482	67,007	5.355	
30 AUG 2023 - 30 AUG 2023	MATRIX	EMPLOYEES PROVIDENT FUND BOARD [SSH]	-3,000	72,489	5.793	
30 AUG 2023 - 30 AUG 2023	MAXIS	EMPLOYEES PROVIDENT FUND BOARD (EPF BOARD) [SSH]	-1,429	879,417	11.228	
29 AUG 2023 - 29 AUG 2023	MAXIS	EMPLOYEES PROVIDENT FUND BOARD (EPF BOARD) [SSH]	-228	880,847	11.246	
05 SEP 2023 - 05 SEP 2023	MAYBANK	EMPLOYEES PROVIDENT FUND BOARD [SSH]	3,277	1,584,730	13.147	
05 SEP 2023 - 05 SEP 2023	MAYBANK	AMANAHRAYA TRUSTEES BERHAD - AMANAH SAHAM BUMIPUTERA [SSH]	5,000	3,802,074	31.542	
04 SEP 2023 - 04 SEP 2023	MAYBANK	EMPLOYEES PROVIDENT FUND BOARD [SSH]	2,450	1,581,453	13.12	
01 SEP 2023 - 01 SEP 2023	MAYBANK	EMPLOYEES PROVIDENT FUND BOARD [SSH]	5,211	1,579,003	13.099	
01 SEP 2023 - 01 SEP 2023	MAYBANK	PERMODALAN NASIONAL BERHAD [SSH]	-1,702	817,121	6.779	
01 SEP 2023 - 01 SEP 2023	MAYBANK	YAYASAN PELABURAN BUMIPUTRA [SSH]	-1,702	817,121	6.779	
30 AUG 2023 - 30 AUG 2023	MAYBANK	EMPLOYEES PROVIDENT FUND BOARD [SSH]	-1,000	1,573,792	13.056	
30 AUG 2023 - 30 AUG 2023	MAYBANK	PERMODALAN NASIONAL BERHAD [SSH]	-3,298	818,822	6.793	
30 AUG 2023 - 30 AUG 2023	MAYBANK	YAYASAN PELABURAN BUMIPUTRA [SSH]	-3,298	818,822	6.793	
29 AUG 2023 - 29 AUG 2023	MAYBANK	EMPLOYEES PROVIDENT FUND BOARD [SSH]	3,144	1,574,792	13.064	
05 SEP 2023 - 05 SEP 2023	MBMR	EMPLOYEES PROVIDENT FUND BOARD [SSH]	1,516	26,073	6.67	
04 SEP 2023 - 04 SEP 2023	MBMR	EMPLOYEES PROVIDENT FUND BOARD [SSH]	-958	24,555	6.282	
01 SEP 2023 - 01 SEP 2023	MBMR	EMPLOYEES PROVIDENT FUND BOARD [SSH]	736	25,512	6.527	
30 AUG 2023 - 30 AUG 2023	MBMR	EMPLOYEES PROVIDENT FUND BOARD [SSH]	2,353	24,777	6.339	
29 AUG 2023 - 29 AUG 2023	MBMR	EMPLOYEES PROVIDENT FUND BOARD [SSH]	-135	22,423	5.737	
01 SEP 2023 - 01 SEP 2023	MBRIGHT	DATO' LEE WAI MUN DIMP. JP. [DIR/CEO]	5,100	1,291,670	54.991	
01 SEP 2023 - 01 SEP 2023	MBRIGHT	DATO' LEE WAI MUN DIMP. JP. [SSH]	5,100	1,291,670	54.991	
01 SEP 2023 - 01 SEP 2023	MBRIGHT	LEADING VENTURES SDN. BHD. [SSH]	5,100	1,291,670	54.991	
01 SEP 2023 - 01 SEP 2023	MFLOUR	MR AZHARI ARSHAD [DIR/CEO]	35	31,840	3.12	
05 SEP 2023 - 05 SEP 2023	MISC	EMPLOYEES PROVIDENT FUND BOARD [SSH]	174	575,249	12.887	
04 SEP 2023 - 04 SEP 2023	MISC	EMPLOYEES PROVIDENT FUND BOARD [SSH]	-148	575,075	12.883	
01 SEP 2023 - 01 SEP 2023	MISC	EMPLOYEES PROVIDENT FUND BOARD [SSH]	-3,000	575,223	12.887	
30 AUG 2023 - 30 AUG 2023	MISC	EMPLOYEES PROVIDENT FUND BOARD [SSH]	-1,559	578,223	12.954	
29 AUG 2023 - 29 AUG 2023	MISC	EMPLOYEES PROVIDENT FUND BOARD [SSH]	-336	579,782	12.989	
01 SEP 2023 - 01 SEP 2023	MRCB	LEMBAGA TABUNG HAJI [SSH]	-1,000	248,688	5.567	
05 SEP 2023 - 05 SEP 2023	MRDIY	MR TAN YU YEH [DIR/CEO]	300	4,876,081	51.654	
05 SEP 2023 - 05 SEP 2023	MRDIY	MR TAN YU YEH [SSH]	300	4,876,081	51.654	
01 SEP 2023 - 01 SEP 2023	MSTGOLF	ALL SPORTZ SDN BHD [SSH]	685	434,072	52.88	
01 SEP 2023 - 01 SEP 2023	MSTGOLF	MR LOW KOK POH [DIR/CEO]	805	463,962	56.521	
01 SEP 2023 - 01 SEP 2023	MSTGOLF	MR LOW KOK POH [SSH]	805	463,962	56.521	
01 SEP 2023 - 01 SEP 2023	MSTGOLF	MR NG YAP SIO [DIR/CEO]	795	496,339	60.466	
01 SEP 2023 - 01 SEP 2023	MSTGOLF	MR NG YAP SIO [SSH]	795	496,339	60.466	
04 SEP 2023 - 04 SEP 2023	MYEG	MR WONG THEAN SOON [DIR/CEO]	1,800	2,121,186	28.659	
04 SEP 2023 - 04 SEP 2023	MYEG	MR WONG THEAN SOON [SSH]	1,800	2,121,186	28.659	
05 SEP 2023 - 05 SEP 2023	NCT	MR CHIAU HAW CHOON [SSH]	5,400	123,545	8.172	
04 SEP 2023 - 05 SEP 2023	NCT	DATUK SERI CHIAU BENG TEIK [SSH]	8,440	108,804	7.197	
05 SEP 2023 - 05 SEP 2023	NESTLE	EMPLOYEES PROVIDENT FUND BOARD [SSH]	69	20,238	8.63	
04 SEP 2023 - 04 SEP 2023	NESTLE	EMPLOYEES PROVIDENT FUND BOARD [SSH]	8	20,170	8.601	
01 SEP 2023 - 01 SEP 2023	NESTLE	EMPLOYEES PROVIDENT FUND BOARD [SSH]	0.4	20,160	8.597	

Notice Period is 3rd Sept – 9th Sept 2023

Effective Change Date	Stock Name	Buyer/ Seller Name [Classification]	Bought / (Sold) ['000]		No. of Shares After Trade ['000]	
			Total	Total	% Held	
30 AUG 2023 - 30 AUG 2023	NESTLE	EMPLOYEES PROVIDENT FUND BOARD [SSH]	-38	21,529	9.181	
29 SEP 2023 - 29 SEP 2023	NESTLE	EMPLOYEES PROVIDENT FUND BOARD [SSH]	14	21,566	9.197	
01 SEP 2023 - 04 SEP 2023	NOVAMSC	MR OOI KENG THYE [SSH]	4,959	189,748	15.977	
06 SEP 2023 - 06 SEP 2023	OCB	MR CHEONG POOI LEONG [SSH]	3,000	7,201	7.001	
05 SEP 2023 - 05 SEP 2023	OPCOM	T & J ASSETS HOLDINGS SDN. BHD. [SSH]	-12,838	77,027	20.058	
05 SEP 2023 - 05 SEP 2023	ORIENT	EMPLOYEES PROVIDENT FUND BOARD [SSH]	-50	51,159	8.247	
04 SEP 2023 - 04 SEP 2023	ORIENT	EMPLOYEES PROVIDENT FUND BOARD [SSH]	-102	51,209	8.255	
01 SEP 2023 - 01 SEP 2023	ORIENT	EMPLOYEES PROVIDENT FUND BOARD [SSH]	-397	51,312	8.271	
30 AUG 2023 - 30 AUG 2023	ORIENT	EMPLOYEES PROVIDENT FUND BOARD [SSH]	-231	51,708	8.335	
29 AUG 2023 - 29 AUG 2023	ORIENT	EMPLOYEES PROVIDENT FUND BOARD [SSH]	-133	51,940	8.372	
06 SEP 2023 - 07 SEP 2023	OSKVI	OSK EQUITY HOLDINGS SDN. BHD. [SSH]	55	128,938	65.636	
06 SEP 2023 - 07 SEP 2023	OSKVI	TAN SRI ONG LEONG HUAT @ WONG JOO HWA [DIR/CEO]	55	132,174	67.283	
06 SEP 2023 - 07 SEP 2023	OSKVI	TAN SRI ONG LEONG HUAT @ WONG JOO HWA [SSH]	55	129,401	65.872	
28 AUG 2023 - 28 AUG 2023	OVERSEA	MR TAY BEN SENG BENSON [DIR/CEO]	1,100	2200	0.097	
04 SEP 2023 - 04 SEP 2023	PADINI	EMPLOYEES PROVIDENT FUND BOARD [SSH]	180	35,455	5.389	
01 SEP 2023 - 01 SEP 2023	PADINI	EMPLOYEES PROVIDENT FUND BOARD [SSH]	174	35,275	5.362	
30 AUG 2023 - 30 AUG 2023	PADINI	EMPLOYEES PROVIDENT FUND BOARD [SSH]	212	35,100	5.335	
29 AUG 2023 - 29 AUG 2023	PADINI	EMPLOYEES PROVIDENT FUND BOARD [SSH]	75	34,888	5.303	
01 SEP 2023 - 01 SEP 2023	PARLO	DATUK CHONG LOONG MEN [DIR/CEO]	7,000	39,432	6.559	
01 SEP 2023 - 01 SEP 2023	PARLO	DATUK CHONG LOONG MEN [SSH]	7,000	39,432	6.559	
05 SEP 2023 - 05 SEP 2023	PBBANK	EMPLOYEES PROVIDENT FUND BOARD [SSH]	6,592	2,974,752	15.33	
04 SEP 2023 - 04 SEP 2023	PBBANK	EMPLOYEES PROVIDENT FUND BOARD [SSH]	11,382	2,968,160	15.29	
01 SEP 2023 - 01 SEP 2023	PBBANK	EMPLOYEES PROVIDENT FUND BOARD [SSH]	10,970	2,956,779	15.23	
30 AUG 2023 - 30 AUG 2023	PBBANK	EMPLOYEES PROVIDENT FUND BOARD [SSH]	-1,225	2,945,809	15.18	
29 AUG 2023 - 29 AUG 2023	PBBANK	EMPLOYEES PROVIDENT FUND BOARD [SSH]	1,659	2947034	15.18	
05 SEP 2023 - 05 SEP 2023	PICHEM	EMPLOYEES PROVIDENT FUND BOARD (EPF BOARD) [SSH]	622	934080	11.676	
04 SEP 2023 - 04 SEP 2023	PICHEM	EMPLOYEES PROVIDENT FUND BOARD (EPF BOARD) [SSH]	998	933458	11.668	
01 SEP 2023 - 01 SEP 2023	PICHEM	EMPLOYEES PROVIDENT FUND BOARD (EPF BOARD) [SSH]	1,526	933,492	11.669	
30 AUG 2023 - 30 AUG 2023	PICHEM	EMPLOYEES PROVIDENT FUND BOARD (EPF BOARD) [SSH]	4,869	933,151	11.664	
29 AUG 2023 - 29 AUG 2023	PICHEM	EMPLOYEES PROVIDENT FUND BOARD (EPF BOARD) [SSH]	1,135	929,478	11.618	
07 SEP 2023 - 07 SEP 2023	PENTA	KUMPULAN WANG PERSARAAN (DIPERBADANKAN) [SSH]	-150	36,419	5.12	
04 SEP 2023 - 04 SEP 2023	PENTA	EMPLOYEES PROVIDENT FUND BOARD [SSH]	-100	51,700	7.268	
05 SEP 2023 - 05 SEP 2023	PENTA	KUMPULAN WANG PERSARAAN (DIPERBADANKAN) [SSH]	-100	36,569	5.141	
01 SEP 2023 - 01 SEP 2023	PENTA	EMPLOYEES PROVIDENT FUND BOARD [SSH]	-51	51,799	7.282	
30 AUG 2023 - 30 AUG 2023	PENTA	EMPLOYEES PROVIDENT FUND BOARD [SSH]	-17	51,850	7.289	
06 SEP 2023 - 06 SEP 2023	PERTAMA	ENCIK SABRI BIN AB RAHMAN [DIR/CEO]	-7,534	56,826	12.968	
06 SEP 2023 - 06 SEP 2023	PERTAMA	ENCIK SABRI BIN AB RAHMAN [SSH]	-7,534	56,826	12.968	
05 SEP 2023 - 05 SEP 2023	PERTAMA	CGS INTERNATIONAL HOLDINGS LIMITED [SSH]	13,250	33,250	7.588	
05 SEP 2023 - 05 SEP 2023	PERTAMA	CGS-CIMB HOLDINGS SDN. BHD. [SSH]	13,250	33,250	7.588	
05 SEP 2023 - 05 SEP 2023	PERTAMA	CGS-CIMB SECURITIES SDN. BHD. [SSH]	13,250	33,250	7.588	
04 SEP 2023 - 04 SEP 2023	PETDAG	EMPLOYEES PROVIDENT FUND BOARD (EPF BOARD) [SSH]	-224	120,820	12.162	
01 SEP 2023 - 01 SEP 2023	PETDAG	EMPLOYEES PROVIDENT FUND BOARD (EPF BOARD) [SSH]	-225	120,984	12.178	
30 AUG 2023 - 30 AUG 2023	PETDAG	EMPLOYEES PROVIDENT FUND BOARD (EPF BOARD) [SSH]	-190	123,211	12.402	
05 SEP 2023 - 05 SEP 2023	PETGAS	EMPLOYEES PROVIDENT FUND BOARD [SSH]	114	282,141	14.259	
04 SEP 2023 - 04 SEP 2023	PETGAS	EMPLOYEES PROVIDENT FUND BOARD [SSH]	-4	282027	14.253	
01 SEP 2023 - 01 SEP 2023	PETGAS	EMPLOYEES PROVIDENT FUND BOARD [SSH]	-246	282031	14.253	
30 AUG 2023 - 30 AUG 2023	PETGAS	EMPLOYEES PROVIDENT FUND BOARD [SSH]	194	282277	14.266	
29 AUG 2023 - 29 AUG 2023	PETGAS	EMPLOYEES PROVIDENT FUND BOARD [SSH]	-23	282082	14.256	
05 SEP 2023 - 05 SEP 2023	PMETAL	MR KOON POH KONG [DIR/CEO]	-12,000	171,562	2.082	
05 SEP 2023 - 05 SEP 2023	PPB	EMPLOYEES PROVIDENT FUND BOARD [SSH]	111	144092	10.129	
04 SEP 2023 - 04 SEP 2023	PPB	EMPLOYEES PROVIDENT FUND BOARD [SSH]	-53	143981	10.121	
01 SEP 2023 - 01 SEP 2023	PPB	EMPLOYEES PROVIDENT FUND BOARD [SSH]	-1,491	144014	10.123	
30 AUG 2023 - 30 AUG 2023	PPB	EMPLOYEES PROVIDENT FUND BOARD [SSH]	-15	145505	10.228	
29 AUG 2023 - 29 AUG 2023	PPB	EMPLOYEES PROVIDENT FUND BOARD [SSH]	-300	145520	10.229	
28 AUG 2023 - 28 AUG 2023	PPB	EMPLOYEES PROVIDENT FUND BOARD [SSH]	-21	145820	10.25	
01 SEP 2023 - 01 SEP 2023	PRJACK	MADAM LEE KOOI LAN [SSH]	1,100	370399	48.216	
01 SEP 2023 - 01 SEP 2023	PRJACK	MR LIM BOON HUA [DIR/CEO]	1,100	370399	48.216	
01 SEP 2023 - 01 SEP 2023	PRJACK	MR LIM BOON HUA [SSH]	1,100	370399	48.216	
07 SEP 2023 - 07 SEP 2023	PTRANS	DATIN SRI LIM SOW KENG [SSH]	-3,571	216922	29.673	
07 SEP 2023 - 07 SEP 2023	PTRANS	DATO' SRI CHEONG KONG FITT [DIR/CEO]	-3,571	216922	29.673	
07 SEP 2023 - 07 SEP 2023	PTRANS	DATO' SRI CHEONG KONG FITT [SSH]	-3,571	216922	29.673	
04 SEP 2023 - 04 SEP 2023	PWF	MISS OOI KI WEI [DIR/CEO]	18	1607	0.72	
01 SEP 2023 - 01 SEP 2023	PWF	MISS OOI KI WEI [DIR/CEO]	10	1589	0.72	
05 SEP 2023 - 05 SEP 2023	PWROOT	KUMPULAN WANG PERSARAAN (DIPERBADANKAN) [SSH]	-10	28392	6.135	
05 SEP 2023 - 05 SEP 2023						

Notice Period is 3rd Sept – 9th Sept 2023					
Effective Change Date	Stock Name	Buyer/ Seller Name [Classification]	Bought / (Sold) ['000]	No. of Shares After Trade ['000]	
			Total	Total	% Held
04 SEP 2023 - 04 SEP 2023	RHBBANK	KUMPULAN WANG PERSARAAN (DIPERBADANKAN) [SSH]	-11	250690	5.849
01 SEP 2023 - 01 SEP 2023	RHBBANK	KUMPULAN WANG PERSARAAN (DIPERBADANKAN) [SSH]	-1,693	250701	5.849
08 SEP 2023 - 08 SEP 2023	RHONEMA	DR LIM BAN KEONG [DIR/CEO]	103	86600	39.146
08 SEP 2023 - 08 SEP 2023	RHONEMA	DR LIM BAN KEONG [SSH]	103	86600	39.146
07 SEP 2023 - 07 SEP 2023	RHONEMA	DR LIM BAN KEONG [DIR/CEO]	20	86497	39.099
07 SEP 2023 - 07 SEP 2023	RHONEMA	DR LIM BAN KEONG [SSH]	20	86497	39.099
06 SEP 2023 - 06 SEP 2023	RHONEMA	DR LIM BAN KEONG [DIR/CEO]	120	86477	39.09
06 SEP 2023 - 06 SEP 2023	RHONEMA	DR LIM BAN KEONG [SSH]	120	86477	39.09
28 AUG 2023 - 30 AUG 2023	ROHAS	MADAM CHAN LIEW HOON [SSH]	330	70137	14.839
28 AUG 2023 - 30 AUG 2023	ROHAS	MR SIA BUN CHUN [DIR/CEO]	330	70137	14.839
28 AUG 2023 - 30 AUG 2023	ROHAS	MR SIA BUN CHUN [SSH]	330	70137	14.839
05 SEP 2023 - 05 SEP 2023	SAPIND	MR KOH KOK HOI [SSH]	1	6610	9.082
04 SEP 2023 - 04 SEP 2023	SAPIND	MR KOH KOK HOI [SSH]	2	6609	9.081
01 SEP 2023 - 01 SEP 2023	SAPIND	MR KOH KOK HOI [SSH]	1	6607	9.078
30 AUG 2023 - 30 AUG 2023	SAPIND	MR KOH KOK HOI [SSH]	1	6606	9.077
04 SEP 2023 - 04 SEP 2023	SERNKOU	MR LOO ENG HUA [DIR/CEO]	-40	180	0.017
01 SEP 2023 - 01 SEP 2023	SERNKOU	MR LOW PENG SIAN @ CHUA PENG SIAN [DIR/CEO]	398	297682	27.612
01 SEP 2023 - 01 SEP 2023	SERNKOU	MR LOW PENG SIAN @ CHUA PENG SIAN [SSH]	398	297682	27.612
01 SEP 2023 - 01 SEP 2023	SERSOL	MITSUBISHI UFJ FINANCIAL GROUP INC [SSH]	2,338	45468	6.216
01 SEP 2023 - 01 SEP 2023	SERSOL	MORGAN STANLEY [SSH]	2,338	45468	6.216
30 AUG 2023 - 30 AUG 2023	SERSOL	MITSUBISHI UFJ FINANCIAL GROUP INC [SSH]	3,000	43130	5.896
30 AUG 2023 - 30 AUG 2023	SERSOL	MORGAN STANLEY [SSH]	3,000	43130	5.896
30 AUG 2023 - 01 SEP 2023	SIME	KUMPULAN WANG PERSARAAN (DIPERBADANKAN) [SSH]	1,581	533997	7.835
04 SEP 2023 - 04 SEP 2023	SIMEPLT	EMPLOYEES PROVIDENT FUND BOARD [SSH]	-23	1012297	14.638
29 AUG 2023 - 29 AUG 2023	SIMEPLT	EMPLOYEES PROVIDENT FUND BOARD [SSH]	-500	1012320	14.638
05 SEP 2023 - 05 SEP 2023	SIMEPROP	EMPLOYEES PROVIDENT FUND BOARD [SSH]	-635	544355	8.004
06 SEP 2023 - 06 SEP 2023	SIMEPROP	KUMPULAN WANG PERSARAAN (DIPERBADANKAN) [SSH]	2,010	447109	6.574
04 SEP 2023 - 04 SEP 2023	SIMEPROP	EMPLOYEES PROVIDENT FUND BOARD [SSH]	1,783	544990	8.014
05 SEP 2023 - 05 SEP 2023	SIMEPROP	KUMPULAN WANG PERSARAAN (DIPERBADANKAN) [SSH]	721	445099	6.545
01 SEP 2023 - 01 SEP 2023	SIMEPROP	EMPLOYEES PROVIDENT FUND BOARD [SSH]	1,078	543206	7.988
04 SEP 2023 - 04 SEP 2023	SIMEPROP	KUMPULAN WANG PERSARAAN (DIPERBADANKAN) [SSH]	200	444378	6.534
30 AUG 2023 - 30 AUG 2023	SIMEPROP	EMPLOYEES PROVIDENT FUND BOARD [SSH]	5,523	542129	7.972
29 AUG 2023 - 29 AUG 2023	SIMEPROP	EMPLOYEES PROVIDENT FUND BOARD [SSH]	2,727	536606	7.89
04 SEP 2023 - 04 SEP 2023	SINARAN	MITSUBISHI UFJ FINANCIAL GROUP INC [SSH]	11,556	84904	9.279
04 SEP 2023 - 04 SEP 2023	SINARAN	MORGAN STANLEY [SSH]	11,556	84904	9.279
01 SEP 2023 - 01 SEP 2023	SINARAN	MITSUBISHI UFJ FINANCIAL GROUP INC [SSH]	3,550	73348	8.017
01 SEP 2023 - 01 SEP 2023	SINARAN	MORGAN STANLEY [SSH]	3,550	73348	8.017
06 SEP 2023 - 06 SEP 2023	SKPRES	KUMPULAN WANG PERSARAAN (DIPERBADANKAN) [SSH]	-737	123647	7.914
01 SEP 2023 - 01 SEP 2023	SKPRES	EMPLOYEES PROVIDENT FUND BOARD [SSH]	26	131027	8.386
04 SEP 2023 - 04 SEP 2023	SKPRES	KUMPULAN WANG PERSARAAN (DIPERBADANKAN) [SSH]	-590	124384	7.961
01 SEP 2023 - 01 SEP 2023	SKPRES	KUMPULAN WANG PERSARAAN (DIPERBADANKAN) [SSH]	-1,312	124974	7.999
29 AUG 2023 - 29 AUG 2023	SKPRES	EMPLOYEES PROVIDENT FUND BOARD [SSH]	32	131001	8.385
06 SEP 2023 - 06 SEP 2023	SPRITZER	DATIN CHUA SHOK TIM @ CHUA SIOK HOON [SSH]	223	162601	50.928
06 SEP 2023 - 06 SEP 2023	SPRITZER	DATO LIM A HENG @ LIM KOK CHEONG [DIR/CEO]	223	162601	50.928
06 SEP 2023 - 06 SEP 2023	SPRITZER	DATO LIM A HENG @ LIM KOK CHEONG [SSH]	223	162601	50.928
06 SEP 2023 - 06 SEP 2023	SPSETIA	KUMPULAN WANG PERSARAAN (DIPERBADANKAN) [SSH]	1,076	408153	10.002
01 SEP 2023 - 01 SEP 2023	SPSETIA	KUMPULAN WANG PERSARAAN (DIPERBADANKAN) [SSH]	-211	407078	9.975
07 SEP 2023 - 07 SEP 2023	SRIDGE	DATO' KHOO YIK CHOU [DIR/CEO]	35	11566	5.567
07 SEP 2023 - 07 SEP 2023	SRIDGE	DATO' KHOO YIK CHOU [SSH]	35	11566	5.567
06 SEP 2023 - 06 SEP 2023	SSB8	MR CHAI THAM POH [DIR/CEO]	-1,169	7872	0.347
01 SEP 2023 - 01 SEP 2023	SSB8	MR GAN YEE HIN [DIR/CEO]	500	1489000	65.52
01 SEP 2023 - 01 SEP 2023	SSB8	MR GAN YEE HIN [SSH]	500	1489000	65.52
01 SEP 2023 - 01 SEP 2023	STAR	MALAYSIAN CHINESE ASSOCIATION [SSH]	1,000	329941	45.524
05 SEP 2023 - 05 SEP 2023	SUNCON	EMPLOYEES PROVIDENT FUND BOARD [SSH]	27	126705	9.827
04 SEP 2023 - 04 SEP 2023	SUNCON	EMPLOYEES PROVIDENT FUND BOARD [SSH]	185	126678	9.825
01 SEP 2023 - 01 SEP 2023	SUNCON	EMPLOYEES PROVIDENT FUND BOARD [SSH]	55	126493	9.811
05 SEP 2023 - 05 SEP 2023	SUNWAY	EMPLOYEES PROVIDENT FUND BOARD [SSH]	399	341672	6.9
04 SEP 2023 - 04 SEP 2023	SUNWAY	EMPLOYEES PROVIDENT FUND BOARD [SSH]	-4,008	341273	6.89
01 SEP 2023 - 01 SEP 2023	SUNWAY	EMPLOYEES PROVIDENT FUND BOARD [SSH]	-1,822	345281	6.97
30 AUG 2023 - 30 AUG 2023	SUNWAY	EMPLOYEES PROVIDENT FUND BOARD [SSH]	-3,554	347104	7.01
29 AUG 2023 - 29 SEP 2023	SUNWAY	EMPLOYEES PROVIDENT FUND BOARD [SSH]	-5,786	350657	7.08
05 SEP 2023 - 05 SEP 2023	TAKAFUL	EMPLOYEES PROVIDENT FUND BOARD [SSH]	-63	108496	12.958
04 SEP 2023 - 04 SEP 2023	TAKAFUL	EMPLOYEES PROVIDENT FUND BOARD [SSH]	63	108559	12.965
30 AUG 2023 - 30 AUG 2023	TAKAFUL	EMPLOYEES PROVIDENT FUND BOARD [SSH]	300	108496	12.958
06 SEP 2023 - 06 SEP 2023	TANCO	DATO' SRI ANDREW TAN JUN SUAN [DIR/CEO]	2,500	991035	50.403
06 SEP 2023 - 06 SEP 2023	TANCO	DATO' SRI ANDREW TAN JUN SUAN [SSH]	2,500	991035	50.403
04 SEP 2023 - 04 SEP 2023	TANCO	DATO' SRI ANDREW TAN JUN SUAN [DIR/CEO]	6,000	988535	50.306
04 SEP 2023 - 04 SEP 2023	TANCO	DATO' SRI ANDREW TAN JUN SUAN [SSH]	6,000	988535	50.306
29 AUG 2023 - 29 AUG 2023	TCHONG	EMPLOYEES PROVIDENT FUND BOARD [SSH]	-73	41853	6.421

Notice Period is 3rd Sept – 9th Sept 2023					
Effective Change Date	Stock Name	Buyer/ Seller Name [Classification]	Bought / (Sold) ['000]	No. of Shares After Trade ['000]	
			Total	Total	% Held
29 AUG 2023 - 29 AUG 2023	TECHBND	MR LEE SENG THYE [DIR/CEO]	-13,101	79722	32.296
29 AUG 2023 - 29 AUG 2023	TECHBND	MR LEE SENG THYE [SSH]	-13,101	79722	32.296
29 AUG 2023 - 29 AUG 2023	TECHBND	SONICBOND SDN. BHD. [SSH]	-10,851	79722	32.296
05 SEP 2023 - 05 SEP 2023	TENAGA	EMPLOYEES PROVIDENT FUND BOARD [SSH]	1,720	906097	15.66
04 SEP 2023 - 04 SEP 2023	TENAGA	EMPLOYEES PROVIDENT FUND BOARD [SSH]	10,465	904377	15.63
05 SEP 2023 - 05 SEP 2023	TENAGA	KUMPULAN WANG PERSARAAN (DIPERBADANKAN) [SSH]	113	430072	7.43
01 SEP 2023 - 01 SEP 2023	TENAGA	EMPLOYEES PROVIDENT FUND BOARD [SSH]	3,825	893912	15.45
04 SEP 2023 - 04 SEP 2023	TENAGA	KHAZANAH NASIONAL BERHAD [SSH]	-10,000	1359620	23.49
04 SEP 2023 - 04 SEP 2023	TENAGA	KUMPULAN WANG PERSARAAN (DIPERBADANKAN) [SSH]	388	429959	7.43
30 AUG 2023 - 30 AUG 2023	TENAGA	EMPLOYEES PROVIDENT FUND BOARD [SSH]	6,000	890087	15.38
29 AUG 2023 - 29 AUG 2023	TENAGA	EMPLOYEES PROVIDENT FUND BOARD [SSH]	7,677	884087	15.28
04 SEP 2023 - 04 SEP 2023	TGUAN	DATUK ANG POON SEONG [DIR/CEO]	-130	4001	1.015
30 AUG 2023 - 01 SEP 2023	TGUAN	DATUK ANG POON SEONG [DIR/CEO]	-171	4131	1.048
05 SEP 2023 - 05 SEP 2023	TIMECOM	EMPLOYEES PROVIDENT FUND BOARD [SSH]	274	142401	7.711
06 SEP 2023 - 06 SEP 2023	TIMECOM	KUMPULAN WANG PERSARAAN (DIPERBADANKAN) ("KWAP") [SSH]	-1,000	110769	5.998
04 SEP 2023 - 04 SEP 2023	TIMECOM	EMPLOYEES PROVIDENT FUND BOARD [SSH]	1,197	142128	7.696
05 SEP 2023 - 05 SEP 2023	TIMECOM	KUMPULAN WANG PERSARAAN (DIPERBADANKAN) ("KWAP") [SSH]	-624	111769	6.052
01 SEP 2023 - 01 SEP 2023	TIMECOM	EMPLOYEES PROVIDENT FUND BOARD [SSH]	-654	140930	7.631
04 SEP 2023 - 04 SEP 2023	TIMECOM	KUMPULAN WANG PERSARAAN (DIPERBADANKAN) ("KWAP") [SSH]	-1,000	112392	6.086
30 AUG 2023 - 30 AUG 2023	TIMECOM	EMPLOYEES PROVIDENT FUND BOARD [SSH]	237	141585	7.666
29 AUG 2023 - 29 AUG 2023	TIMECOM	EMPLOYEES PROVIDENT FUND BOARD [SSH]	-464	141348	7.654
05 SEP 2023 - 05 SEP 2023	TM	EMPLOYEE PROVIDENT FUND BOARD (EPF BOARD) [SSH]	3,000	645116	16.879
04 SEP 2023 - 04 SEP 2023	TM	EMPLOYEE PROVIDENT FUND BOARD (EPF BOARD) [SSH]	661	642116	16.801
30 AUG 2023 - 30 AUG 2023	TM	EMPLOYEE PROVIDENT FUND BOARD (EPF BOARD) [SSH]	5	641456	16.783
29 AUG 2023 - 29 AUG 2023	TM	EMPLOYEE PROVIDENT FUND BOARD (EPF BOARD) [SSH]	207	641451	16.783
05 SEP 2023 - 06 SEP 2023	TTVHB	KHAZANAH NASIONAL BERHAD [SSH]	-21,600	88255	18.86
05 SEP 2023 - 06 SEP 2023	TTVHB	MALAYSIAN TECHNOLOGY DEVELOPMENT CORPORATION SDN. BHD. [SSH]	-21,600	88255	18.86
01 SEP 2023 - 04 SEP 2023	TWL	DATIN SEK CHIAN NEE [DIR/CEO]	1,667	1330918	28.839
01 SEP 2023 - 04 SEP 2023	TWL	DATIN SEK CHIAN NEE [SSH]	1,667	1330918	28.839
01 SEP 2023 - 04 SEP 2023	TWL	DATO' TAN WEI LIAN [DIR/CEO]	1,667	1330918	28.838
01 SEP 2023 - 04 SEP 2023	TWL	DATO' TAN WEI LIAN [SSH]	1,667	1330918	28.838
01 SEP 2023 - 04 SEP 2023	TWL	MISS TAN LEE CHIN [DIR/CEO]	1,667	1330918	28.838
01 SEP 2023 - 04 SEP 2023	TWL	MISS TAN LEE CHIN [SSH]	1,667	1330918	28.838
01 SEP 2023 - 04 SEP 2023	TWL	TWL CAPITAL BERHAD [SSH]	1,667	1330918	28.838
06 SEP 2023 - 06 SEP 2023	ULICORP	TAN SRI DATO' LEE YOON KONG [DIR/CEO]	50	86851	39.876
06 SEP 2023 - 06 SEP 2023	ULICORP	TAN SRI DATO' LEE YOON KONG [SSH]	50	86851	39.876
04 SEP 2023 - 04 SEP 2023	ULICORP	MR JOSEPH LEE JOON KIT [DIR/CEO]	40	40	0.018
04 SEP 2023 - 04 SEP 2023	ULICORP	TAN SRI DATO' WIRA LEE YOON WAH [DIR/CEO]	90	87783	40.304
04 SEP 2023 - 04 SEP 2023	ULICORP	TAN SRI DATO' WIRA LEE YOON WAH [SSH]	90	87783	40.304
05 SEP 2023 - 05 SEP 2023	UOADEV	EMPLOYEES PROVIDENT FUND BOARD ("EPF BOARD") [SSH]	-107	265362	10.917
05 SEP 2023 - 05 SEP 2023	UTDPLT	EMPLOYEES PROVIDENT FUND BOARD [SSH]	17	28078	6.769
04 SEP 2023 - 04 SEP 2023	UTDPLT	EMPLOYEES PROVIDENT FUND BOARD [SSH]	-96	28061	6.765
01 SEP 2023 - 01 SEP 2023	UTDPLT	EMPLOYEES PROVIDENT FUND BOARD [SSH]	40	28157	6.788
30 AUG 2023 - 30 AUG 2023	UTDPLT	EMPLOYEES PROVIDENT FUND BOARD [SSH]	-3	28068	6.767
29 AUG 2023 - 29 AUG 2023	UTDPLT	EMPLOYEES PROVIDENT FUND BOARD [SSH]	-209	28071	6.768
05 SEP 2023 - 05 SEP 2023	UWC	EMPLOYEES PROVIDENT FUND BOARD [SSH]	340	78653	7.139
29 AUG 2023 - 29 AUG 2023	UWC	EMPLOYEES PROVIDENT FUND BOARD [SSH]	17	78314	7.109
04 SEP 2023 - 04 SEP 2023	VELESTO	DATUK LING KIEN SING [DIR/CEO]	-2,010	2010	0.024
07 SEP 2023 - 07 SEP 2023	VS	KUMPULAN WANG PERSARAAN [SSH]	2,624	349675	9.097
06 SEP 2023 - 06 SEP 2023	VS	KUMPULAN WANG PERSARAAN [SSH]	337	347051	9.029
01 SEP 2023 - 01 SEP 2023	VS	EMPLOYEES PROVIDENT FUND BOARD [SSH]	2,746	259304	6.746
30 AUG 2023 - 30 AUG 2023	VS	EMPLOYEES PROVIDENT FUND BOARD [SSH]	1,773	256558	6.675
01 SEP 2023 - 01 SEP 2023	VS	KUMPULAN WANG PERSARAAN [SSH]	351	346714	9.021
07 SEP 2023 - 07 SEP 2023	VS-WB	DATUK BEH KIM LING [DIR/CEO]	-500	75316	9.898
04 SEP 2023 - 04 SEP 2023	VS-WB	DATUK BEH KIM LING [DIR/CEO]	-500	75816	9.964
07 SEP 2023 - 07 SEP 2023	WIDAD	WIDAD BUSINESS GROUP SDN. BHD. [SSH]	-5,000	1082857	34.971
06 SEP 2023 - 07 SEP 2023	WIDAD	TAN SRI MUHAMMAD IKMAL OPAT BIN ABDULLAH [SSH]	-4,682	1190674	38.453
01 SEP 2023 - 01 SEP 2023	WIDAD	TAN SRI MUHAMMAD IKMAL OPAT BIN ABDULLAH [SSH]	-5,275	1195356	38.604
01 SEP 2023 - 01 SEP 2023	WIDAD	WIDAD BUSINESS GROUP SDN. BHD. [SSH]	-5,275	1087857	35.132
01 SEP 2023 - 01 SEP 2023	WOODLAN	DATO' SERI MUN WENG SUM [DIR/CEO]	1	7133	17.83
01 SEP 2023 - 01 SEP 2023	WOODLAN	DATO' SERI MUN WENG SUM [SSH]	1	7133	17.83
06 SEP 2023 - 06 SEP 2023	XL	MR NG MIN LIN [DIR/CEO]	2,000	47211	19.096
06 SEP 2023 - 06 SEP 2023	XL	MR NG MIN LIN [SSH]	2,000		



Axiata Group Berhad (AXIATA) is pleased to announce that conditions precedent for Sixth Closing have been fulfilled following which transfer of 85 sites of Transferred Assets was completed on 8 September 2023. The Sixth Closing constitutes final transfer of sites under the Proposed Acquisition of PLDT Tower Assets of which cumulatively with earlier transfers totalling 2,710 sites.

[READ MORE](#)



The Board of Directors of **Awanbiru Technology Berhad (AWANTEC)** wishes to announce that it has approved the merging of the Nomination Committee and Remuneration Committee into a single committee to be known as the Nomination and Remuneration Committee with effect from 12 September 2023. The rationale for the merger of the two (2) Board Committees is aimed to enhance the efficiency and effectiveness of the Board Committees in discharging their duties and responsibilities.

[READ MORE](#)



The Board of Directors of **Cypark Resources Berhad (CYPARK)** wishes to announce that its wholly-owned subsidiary, Cypark Renewable Energy Sdn. Bhd. on 12 September 2023 issued the second tranche of the Perpetual Sukuk Musharakah of RM100 million in nominal value on an unsecured basis from the issuance size of up to RM265 million under its Perpetual Sukuk Musharakah Programme. The proceeds raised from the Tranche 2 Issuance shall be utilised for working capital, capital expenditure, repayment of existing financing/

borrowings, defraying costs and other expenses in relation to the issuance of the Perpetual Sukuk Musharakah Programme.



[READ MORE](#)

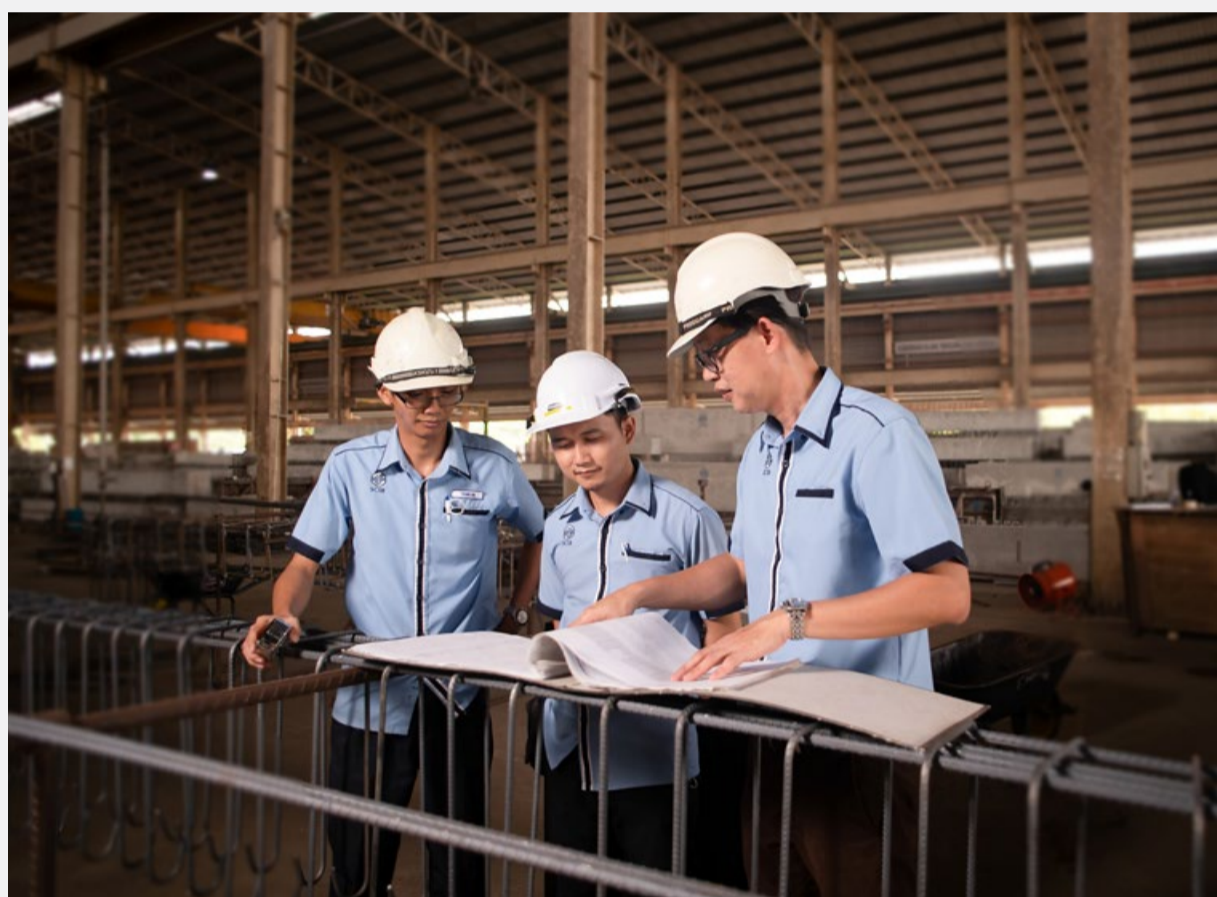


The Board of Directors of **Malaysian Genomics Resource Centre Berhad (MGRC)** is pleased to announce that MGRC Healthcare Sdn Bhd, a wholly owned subsidiary of the Company, has on 11 September 2023, entered into a Strategic Collaboration Agreement with Persatuan Pentas Anak Seni Malaysia to promote their respective products, services and/or events via the Collaboration subject to the terms and conditions of the Collaboration.

[READ MORE](#)



The Board of Directors of **Sarawak Consolidated Industries Berhad (SCIB)** wishes to announce that the Company had on 12 September 2023 entered into a Memorandum of Understanding with PT MRT Jakarta (Perseroda) to assess and study potential partnership with regards to the development of the Transit Oriented Development Area in DKI Jakarta, Indonesia.



[READ MORE](#)

Upcoming IPO

NAME OF COMPANY	OFFER PERIOD		ISSUE PRICE (Per Ordinary Share)	LISTING SOUGHT	DATE OF LISTING
	OPENING	CLOSING			
MERCURY SECURITIES GROUP BERHAD	28 Aug 2023	05 Sept 2023	RM0.25	ACE MARKET	19 Sept 2023
EVERGREEN MAX CASH CAPITAL BERHAD	29 Aug 2023	12 Sept 2023	RM0.24	ACE MARKET	26 Sept 2023
SSF HOME GROUP BERHAD	08 Sept 2023	27 Sept 2023	RM0.25	ACE MARKET	12 Oct 2023

Disclaimer: The information in the Investor Relations page is extracted from individual companies' announcements in www.bursamalaysia.com. The information on this page is provided as a service to readers. We assume no liability for damages resulting from or arising out of the use of such information. Whilst every effort is made to ensure accuracy, the information presented has been simplified for your reading pleasure. Readers are advised to read the original and complete filings on the Bursa Malaysia website at https://www.bursamalaysia.com/market_information/announcements/company_announcement