

Invest

A Weekly e-Publication by SHAREINVESTOR.com

ISSUE

173

FRIDAY
08 SEPTEMBER
2023

Scan/Click QR to Register



Via email, every Friday

Merdeka Kaw Kaw Promotion

23 Aug 2023 - 17 Sep 2023

Enjoy

31% off

SHAREINVESTOR®

STATION

SHAREINVESTOR®

WEBPRO

BURSA STATION

Professional

SUBSCRIBE NOW!

SUBSCRIBE NOW!

Coupon Code:
MYMERDEKA23

Valid for 12-month
subscription

T & C Apply



SC PAVES THE WAY FOR TRADING OF FRACTIONAL SHARES

OVERNIGHT POLICY RATE (OPR) MAINTAINED AT 3% - BNM

DOMESTIC INTERESTS TO BE PROTECTED IN ALL GOVT POLICIES INCLUDING NIMP 2030 - ZAFRUL

(page 20-24)

07 COMPANY SPOTLIGHT Supermax Corporation Berhad

04	LEADERBOARD	12	UP TRENDING STOCKS	18	LONG COMPANIES
06	SHARIAH HOT STOCKS	14	VALUE STOCKS	25	REGIONAL MARKETS
08	SHARIAH MOMENTUM UP STOCKS	15	GROWTH STOCKS	26	INSIDER ACTIVITY
10	NON SHARIAH HOT STOCKS	16	DIVIDEND STOCKS	30	INVESTOR RELATIONS
		17	BROKERS' CALL		



INVESTOR PLATFORMS

Director
Darren Chong
darren.chong@shareinvestor.com

Business Development Manager
Jay Cheong
jay.cheong.@shareinvestor.com

Senior Executive
Daniel Wong
daniel.wong@shareinvestor.com

Executive
Farah Azwani
farah.azwani@shareinvestor.com

Executive
Tan Yong Sheng
yongsheng.tan@shareinvestor.com

ADMIN & OPERATIONS

Senior Executive
Watie Nordin
watie.nordin@shareinvestor.com

Executive
Silas Emmanuel Joseph
silas.joseph@shareinvestor.com

INVESTOR RELATIONS

Group Managing Director & Publisher
Edward Stanislaus
edward@shareinvestor.com

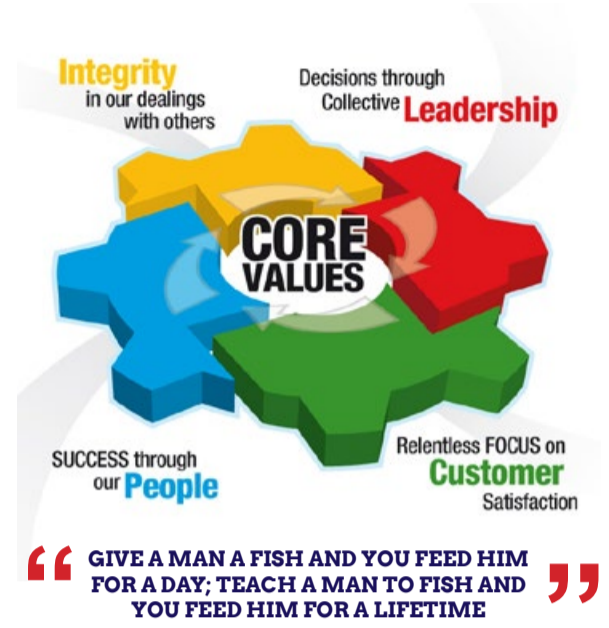
Senior Manager
Letticia Wong
letticia.wong@shareinvestor.com

PROCESS AUTOMATION & DATA ANALYTICS

Data Analyst
Nickson Aw

SHAREINVESTOR HOLDINGS BOARD OF DIRECTORS

- | | |
|------------------|-----------------|
| Chairman | Patrick Daniel |
| Group CEO | Christopher Lee |
| Group COO | Lim Dau Hee |
| Group CFO | Teo Siew May |
| Group MD | Shanison Lin |



ShareInvestor Malaysia Sdn. Bhd.
(200001023956) (526564-M)
Unit No. DF2-07-03A. Level 7,
Persoft Tower, 6B Persiaran Tropicana,
47410 Petaling Jaya, Selangor Darul Ehsan.

Hotline : 603 7803 1791
Mobile : 011 6343 8939
Website : www.ShareInvestor.com.my
www.ShareInvestorHoldings.com
www.Facebook.com/ShareInvestorMalaysia

ADVERTISEMENT ENQUIRY

bulthaup takes care of the details so that you can enjoy a harmonious environment.



XTRA

XTRA FURNITURE SDN BHD
The Gardens Mall, Mid Valley City
xtrafurniture.com/bulthaup
fb.com/bulthaupmalaysia

bulthaup

PURNELL

ONLY TOURBILLON



ESCAPE II
FORGED CARBON

Purnell Asia

Tel.: +65.9817.3378

Email: sales.sg@purnellwatches.com

@ Purnell_Official

www.purnellwatches.com

PLAY



www.shareinvestor.com - market data at your fingertips



ShareInvestor WebPro (www.shareinvestor.com/my)

Prices > Stock Prices > Bursa > click Stocks tab

1. mouse over Ranking > select Top Active > all Shariah stocks are denoted with an [S] > mouse over Column Layout > select Edit Customs > select Name > select Volume > select Last Done Price > Mouse Over Column Layout > select Custom
2. mouse over Ranking > select Top Turnover > all Shariah stocks are denoted with an [S] > mouse over Column Layout > select Edit Customs > select Name > select Last Done Price > select Value > Mouse Over Column Layout > select Custom
3. mouse over Ranking > select Top Gainers (Over 5 Trading Days) > mouse over Column Layout > select Edit Customs > select Name > select Last Done Price > select 5 Days Change > select 5 Days % Change > Mouse Over Column Layout > select Custom
4. mouse over Ranking > select Top Losers (Over 5 Trading Days)
5. mouse over Ranking > select Top % Gainers (Over 5 Trading Days)
6. mouse over Ranking > select Top % Losers (Over 5 Trading Days)

Shariah Top Actives (as at Yesterday)

Name	Price (RM)	Volume
TOPGLOV [S]	0.840	2,134,022.000
CLASSITA [S]	0.080	2,048,296.000
EKOVEST [S]	0.505	735,956.000
AIMFLEX [S]	0.230	686,759.000
MRCB [S]	0.440	532,395.000
JAKS [S]	0.215	473,935.000
CAREPLS [S]	0.295	429,783.000
UEMS [S]	0.715	363,363.000
IWCITY [S]	0.700	315,004.000
SCIB [S]	0.460	287,074.000

Shariah Top Turnover (as at Yesterday)

Name	Price (RM)	Value (RM)
TOPGLOV [S]	0.840	180,138,796
TENAGA [S]	9.870	70,552,363
HARTA [S]	2.130	52,728,106
EKOVEST [S]	0.505	38,435,425
INARI [S]	3.000	27,304,175
UEMS [S]	0.715	26,201,371
IHH [S]	5.910	26,140,085
MRCB [S]	0.440	24,176,774
CAPITALA [S]	0.895	23,373,793
IWCITY [S]	0.700	22,797,816

Top Gainers (over 5 Trading days as at Yesterday)

Name	Price (RM)	Change (RM)
PETDAG	22.800	+0.600
DLADY	22.380	+0.580
AEONCR	11.480	+0.480
COMCORP	1.280	+0.320
AAX	2.450	+0.250
PMBTECH	3.850	+0.240
HARTA	2.130	+0.180
MNRB	1.190	+0.170
AFFIN	2.070	+0.150
TTVHB	1.230	+0.150

Top % Gainers (over 5 Trading days as at Yesterday)

Name	Price (RM)	Change (%)
DGB	0.010	+100.00
KANGER	0.055	+57.14
ALAM	0.035	+40.00
EDUSPEC	0.055	+37.50
SKBSHUT	0.525	+36.36
COMCORP	1.280	+33.33
CSH	0.060	+33.33
FOCUS	0.020	+33.33
KNM	0.115	+27.78
NYLEX	0.370	+27.59

Top Losers (over 5 Trading days as at Yesterday)

Name	Price (RM)	Change (RM)
HEXTECH	24.360	-1.300
PANAMY	19.940	-1.060
AJI	15.600	-0.580
MPI	28.220	-0.580
NESTLE	130.000	-0.500
ALLIANZ	16.000	-0.400
EWINT	0.360	-0.350
COASTAL	1.930	-0.250
FRONTKN	3.280	-0.220
HLFG	18.000	-0.220

Top % Losers (over 5 Trading days as at Yesterday)

Name	Price (RM)	Change (%)
FINTEC	0.005	-50.00
KGROUP	0.005	-50.00
EWINT	0.360	-49.30
LAMBO	0.015	-40.00
MMAG	0.010	-33.33
NEXGRAM	0.015	-25.00
ZELAN	0.035	-22.22
DOLPHIN	0.020	-20.00
WAJA	0.075	-16.67
VSOLAR	0.230	-14.81

SHAREINVESTOR WEBPRO

STOCK MARKET DATA AT YOUR FINGERTIPS

Powerful browser-based market analytics platform.
Access from anywhere



8 Markets Data

- ▶ Get access to data from Bursa, NYSE, Nasdaq, HKEX, SGX, IDX, SET & ASX

Portfolio Management

- ▶ Profit & Loss Summary
- ▶ Stock Alert
- ▶ News & Events filtering
- ▶ Customizable column layout

Fundamental Analysis

Financial Analysis Statement

- ▶ Profit & Loss
- ▶ Balance Sheet
- ▶ Cash Flow Statement
- ▶ More than 20 Financial Ratios
- ▶ Dividend Analysis

Technical Charting

- ▶ C² chart (Customisable & Comprehensive)

Brokers' Call

Intrinsic Value Calculator

FactSheet

- ▶ Key Stock Information
- ▶ Ownership
- ▶ Consensus Estimates
- ▶ Annual Report
- ▶ Historical Price
- ▶ Insider Trades

What's new on WebPro (Stable Release 12.1.0)

In our effort to keep our platform at the forefront of trading technology, we have added on some new features onto our C² Chart in WebPro

ADDITIONAL NEW FEATURES:

- ▶ Anchor selector for AVWAP, PVAT, and PAV indicators
- ▶ Volume profile indicator by date range
- ▶ Moving Average Cross indicator
- ▶ Guppy Multiple Moving Average (GMMA) indicator
- ▶ GoNoGo Trend Signal indicators
- ▶ SignalIQ

So what are you waiting for? Head to our platform today and check out our new trading chart features and indicators. We're confident that you'll love the improvements we've made and that they'll help you become a more successful trader.

Click here to start your 9 days FREE trial
(Valued at RM10)



Price & Volume Distribution Charts (as at Yesterday)

Technical Analysis

DEFINITION: Shariah compliant stocks with Technical Analysis showing 5-days & 10-days Moving Average Price below Yesterday's Close over past 3 days and with Volume Spike.

CHART GUIDE: Volume Distribution Chart is a statistical interpretation of the current sentiment on each stock in graphical format. The highest bar categorized as >150k is likely to be traded by institutions or super dealers, while the lowest bar categorized as <15k usually represents retail investors. "Buy Up" refers to more buyers snatching up the lots queued at selling price. "Sell Down" refers to sellers selling their shares to the buying queue



ShareInvestor WebPro > Screener > Market Screener (FA & TA)>select BURSA>add criteria

A. Criteria

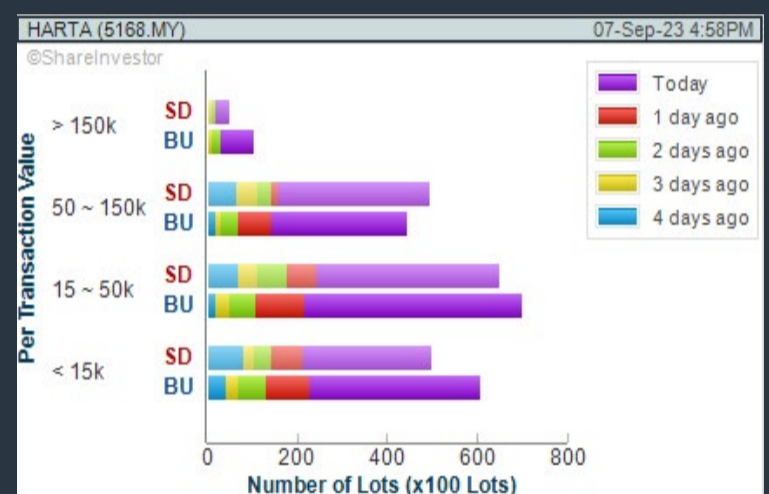
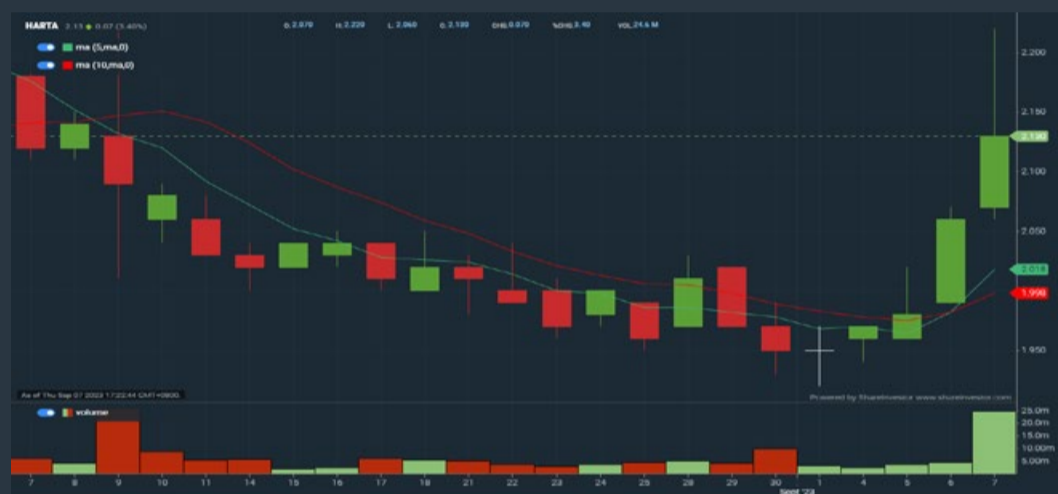
- > click Add Criteria
- Technical Analysis Conditions tab select (i) Moving Average Below Close (ii) Volume Spike
- Fundamental Analysis Conditions tab >select (iii) Revenue
- Prices & Other Conditions tab > select (iv) Is Shariah Compliant
- Technical Analysis Conditions tab select (v) Moving Average Below Close
- Prices & Other Conditions tab > select (vi) Last Done Price
- Technical Analysis Conditions tab select (vii) Moving Average Below Close

B. Conditions (Criteria Filters)

1. Moving Average Below Close - select (MA) type (5) below close price for type (3) days
2. Volume Spike - Volume type (1) greater than type (5) days average
3. Revenue ("000) - select (more than) type (1) for the past select (1) financial year(s)
4. Is Shariah Compliant - select **Yes**
5. Moving Average Below Close - select (MA) type (10) below close price for type (3) days
6. Last Done Price - select (more than) type (0.3)
7. Moving Average Below Close - select (EMA) type (5) below close price for type (3) days

- > click Save Template > Create New Template type (Shariah Hot Stocks) > click Create
- > click Save Template as > select Shariah Hot Stocks > click Save
- > click Screen Now (may take a few minutes)
- > Sort By: Select (Vol) Select (Desc)
- > Mouse over stock name > Charts > click C² Charts or Volume Distribution

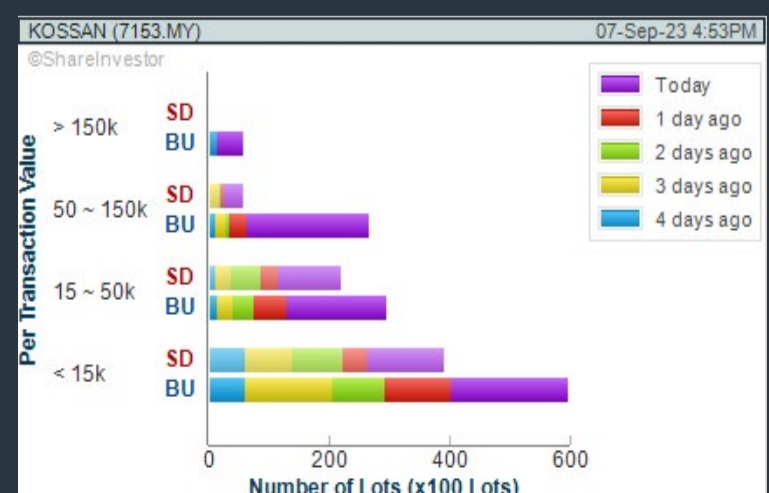
HARTALEGA HOLDINGS BERHAD (5168) C² Chart



PHARMANIAGA BERHAD (7081) C² Chart



KOSSAN RUBBER INDUSTRIES BERHAD (7153) C² Chart



Disclaimer: The information on this page is provided as a service to readers. It does not constitute financial advice and/or any investment recommendations. Past performance is not indicative of future results. We assume no liability for damages resulting from or arising out of the use of such information. It would be best if you did your own research to make your personal investment decisions wisely or consult a licenced investment advisor.

COMPANY BACKGROUND

Supermax Corporation Berhad, a latex glove conglomerate is an international manufacturer, distributor and marketer of high quality medical gloves. The Company has manufacturing plants based in Malaysia equipped with state-of-the-art machinery, energy-saving biomass systems and a research and development centre. It manufactures its own brands and has distribution centres cum corporate offices with over 1,200 independent distributors around the world.



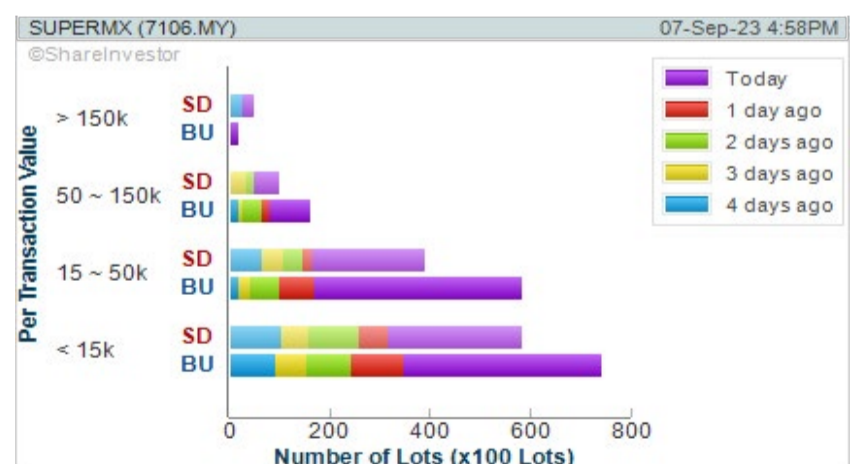
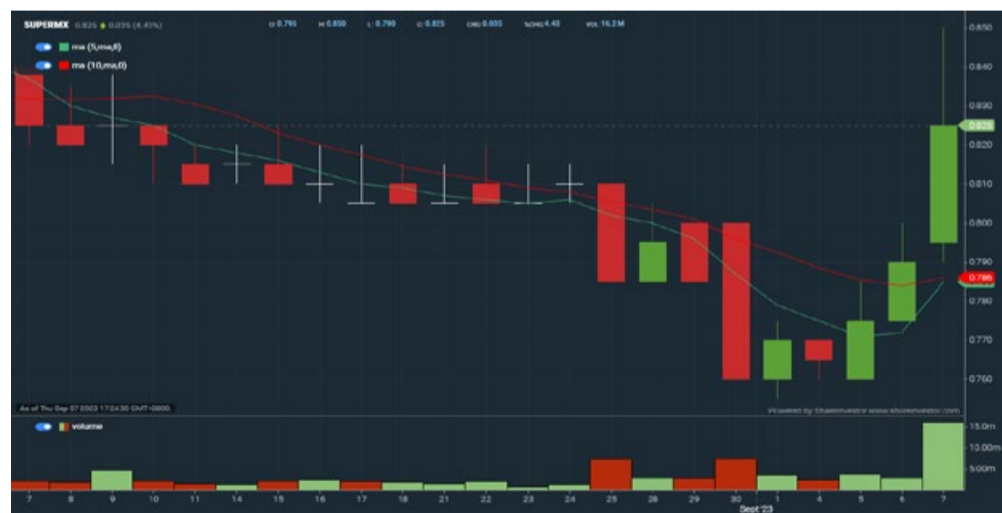
SUPERMX SUPERMAX CORPORATION BHD		Updated at 07 Sep 2023 16:58	
Last (MYR): 0.825 ↑	Change: +0.035	High: 0.850	Remarks: s ?
	Change (%): +4.43	Low: 0.790	
Open	0.795	Yesterday's Close	0.790
Buy Price	0.825	Sell Price	0.830
Buy Volume ('00)	711	Sell Volume ('00)	1,489
Cumulative Volume ('00)	161,540	Cumulative Value	13,404,149

Financial Analysis

Revenue Growth Revenue down sharply in last 2 consecutive years (> 25%)	🚩	Profit Growth Profit to loss in most recent year	🚩
Piotroski F Score The company has below average financial strength (Piotroski F-Score of 3-4)	🚩	Dividend Payout No dividend paid in most recent year but dividends paid in prior years	🚩
Cash Ratio Good cash ratio of at least 0.8 for 3 consecutive years	😊	Current Ratio The company is well-positioned to cover its short-term obligations with its current assets (ratio between 1.5 to 10) for 3 consecutive years	😊
Debt to Cashflow The company has negative cash flow from operations in most recent year	🚩	Free Cash Flow Negative free cash flow for two years or more	🚩
Net Earnings Margin Company is losing money and margin is not improving	🚩	Return on Assets (ROA) Negative ROA for most recent year	🚩
Return on Assets (ROA) ROA is decreasing by 10% a year over the past 36 months	🚩	Return on Equity (ROE) Negative ROE for most recent year	🚩
Return on Equity (ROE) ROE is decreasing by 10% a year over the past 36 months	🚩		

😊 Excellent 😊 Good 😐 Neutral 🚩 Be Alert 🚩 Watch Out

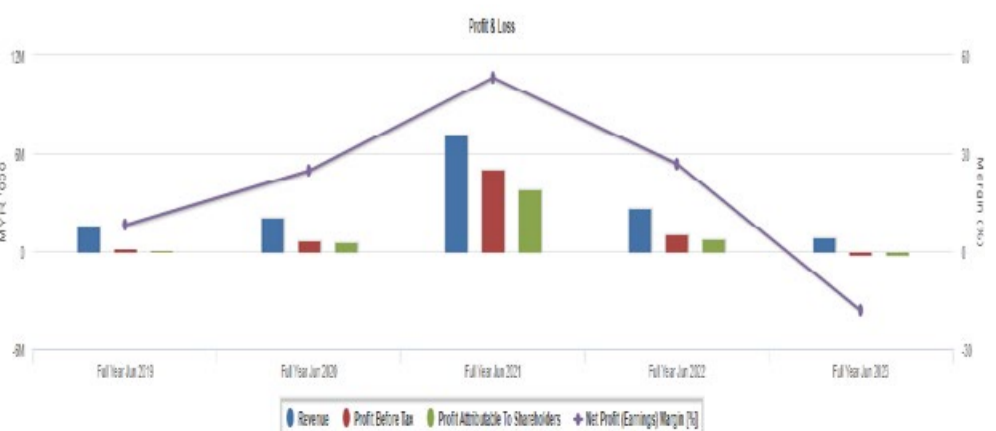
WebPro 9-Days Free Trial Registration (worth RM9) Sign Up Now



Total Shareholder Return

Period	Dividend Received	Capital Appreciation	Total Shareholder Return
Short Term Return	5 Days	+0.05	+6.1%
	10 Days	+0.01	+1.2%
	20 Days	-	-
Medium Term Return	3 Months	-0.15	-18.0%
	6 Months	+0.05	+6.1%
	1 Year	+0.01	+1.2%
Long Term Return	2 Years	-0.20	-24.4%
	3 Years	-0.30	-36.6%
	5 Years	-0.40	-48.8%
Annualized Return	-	-	+1.01%

Key Statistics with Total Shareholder Returns



Disclaimer: The information on this page is provided as a service to readers. It does not constitute financial advice and/or any investment recommendations. Past performance is not indicative of future results. We assume no liability for damages resulting from or arising out of the use of such information. It would be best if you did your own research to make your personal investment decisions wisely or consult a licenced investment advisor.

Price & Volume Distribution Charts (as at Yesterday)

Technical Analysis

DEFINITION: Shariah compliant stocks with Technical Analysis showing Bullish Momentum and Price Uptrend. The share price closed at the highest price yesterday. The typical price was higher than the previous day's typical price.

CHART GUIDE: Volume Distribution Chart is a statistical interpretation of the current sentiment on each stock in graphical format. The highest bar categorized as >150k is likely to be traded by institutions or super dealers, while the lowest bar categorized as <15k usually represents retail investors. "Buy Up" refers to more buyers snatching up the lots queued at selling price. "Sell Down" refers to sellers selling their shares to the buying queue.



ShareInvestor WebPro > Screener > Market Screener (FA & TA) > select BURSA > add criteria

A. Criteria

- > click Add Criteria
- Fundamental Analysis Conditions tab > select (i) Revenue
- Technical Analysis Conditions tab select (ii) Average Volume
- Prices & Other Conditions tab > select (iii) Last Done Price
- Prices & Other Conditions tab > select (iv) Is Shariah Compliant
- Technical Analysis Conditions tab select (v) RSI Overbought
- Technical Analysis Conditions tab select (vi) Moving Average Below Close
- Technical Analysis Conditions tab select (vii) CCI Overbought

B. Conditions (Criteria Filters)

1. Revenue ("000) - select (more than) type (1) for the past select (1) financial year(s)
2. Average Volume - type (1) days average volume greater than type (10000) lots
3. Last Done Price - select (more than) type (0.3)
4. Is Shariah Compliant - select Yes
5. RSI Overbought - select RSI 1 above 99 for 1 days
6. Moving Average Below Close - select (MA) type (10) below close price for type (1) days
7. CCI Overbought - select CCI (2) above (0) for (1) days

- > click Save Template > Create New Template type (Shariah Momentum Up Stocks) > click Create
- > click Save Template as > select Shariah Momentum Up Stocks > click Save
- > click Screen Now (may take a few minutes)
- Sort By: Select (Vol) Select (Desc)
- Mouse over stock name > Charts > click C² Charts tab or Volume Distribution

TOP GLOVE CORPORATION BERHAD (7113)

C² Chart

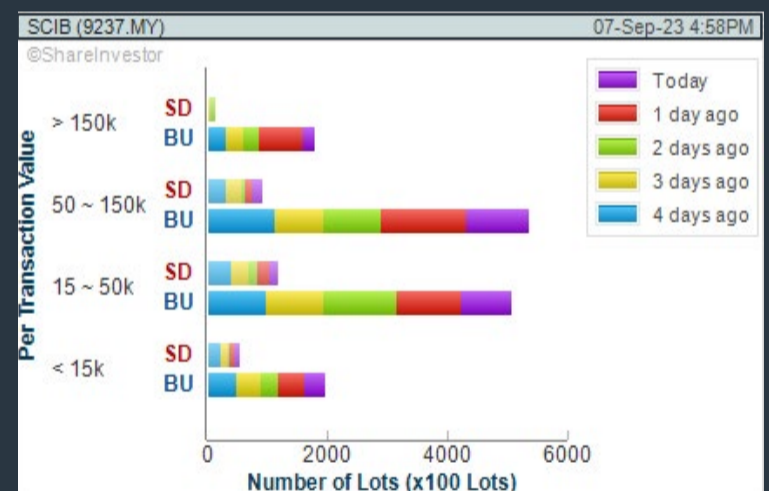
Analysis



SARAWAK CONSOLIDATED IND BERHAD (9237)

C² Chart

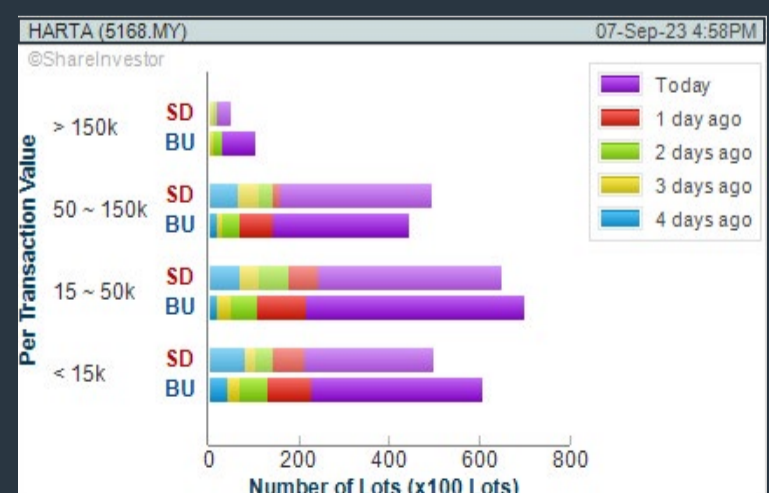
Analysis



HARTALEGA HOLDINGS BERHAD (5168)

C² Chart

Analysis



Disclaimer: The information on this page is provided as a service to readers. It does not constitute financial advice and/or any investment recommendations. Past performance is not indicative of future results. We assume no liability for damages resulting from or arising out of the use of such information. It would be best if you did your own research to make your personal investment decisions wisely or consult a licenced investment advisor.

BURSASTATION

Professional



Stock Scanning

- Technical Analysis (TA) Market Scanner
- Fundamental Analysis (FA) Market Scanner



Market Data

- Equities
- Derivatives

Monitoring

- Portfolio
- Stock Alerts
- Price Spread Calculator

Scan. Chart. Analyse.

Be The Intelligent Investor



Price Movements

- Streaming Prices
- Time & Sales
- Trade Summary Matrix
- Quote Movements
- 5 Levels Market Depth
- Historical Price Download

Charts

- Intraday Charts
- Interactive Charts
- Historical Charts
- Volume Distribution Charts



Fundamentals

- Factsheets
- Financials
- Insider Trades



Brought to you as a collaborative effort by ShareInvestor and Bursa Malaysia, **BursaStation Professional** is designed with you, the user, in mind, as a user-friendly yet full of powerful features that will appeal to investors/traders who need instant access to fundamental, technical, and trading data, anytime, anywhere. **BursaStation Professional** is a state-of-the-art Stock Market Tracker with Charting Software that places in your hands the power to make better investment decisions.

CLICK HERE TO START YOUR 14-DAYS FREE TRIAL

Price & Volume Distribution Charts (as at Yesterday)

Technical Analysis

DEFINITION: Stocks with Technical Analysis showing 5-days & 10-days Moving Average Price below Close over past 1 days and with Volume Spike

CHART GUIDE: Volume Distribution Chart is a statistical interpretation of the current sentiment on each stock in graphical format. The highest bar categorized as >150k is likely to be traded by institutions or super dealers, while the lowest bar categorized as <15k usually represents retail investors. "Buy Up" refers to more buyers snatching up the lots queued at selling price. "Sell Down" refers to sellers selling their shares to the buying queue.



ShareInvestor WebPro > Screener > Market Screener (FA & TA) > select BURSA > add criteria

A. Criteria

- > click Add Criteria
- Technical Analysis Conditions tab select (i) Moving Average Below Close (ii) Volume Spike
- Fundamental Analysis Conditions tab >select (iii) Revenue
- Prices & Other Conditions tab > select (iv) Is Shariah Compliant
- Technical Analysis Conditions tab select (v) Moving Average Below Close
- Prices & Other Conditions tab > select (vi) Last Done Price
- Technical Analysis Conditions tab select (vii) Moving Average Below Close

B. Conditions (Criteria Filters)

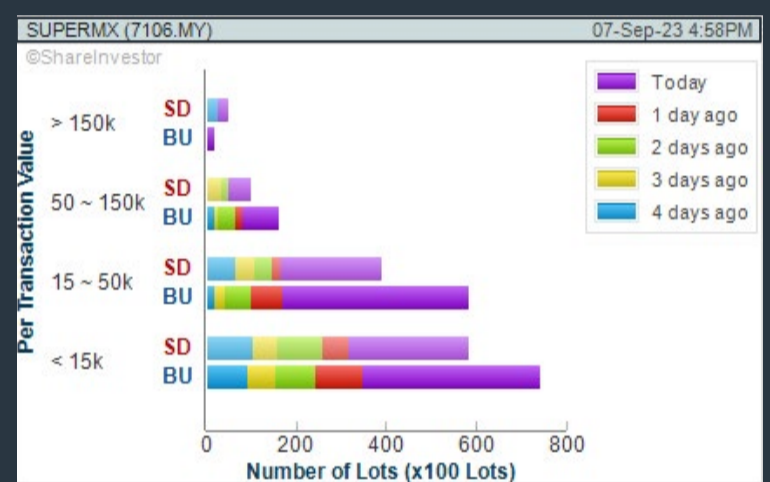
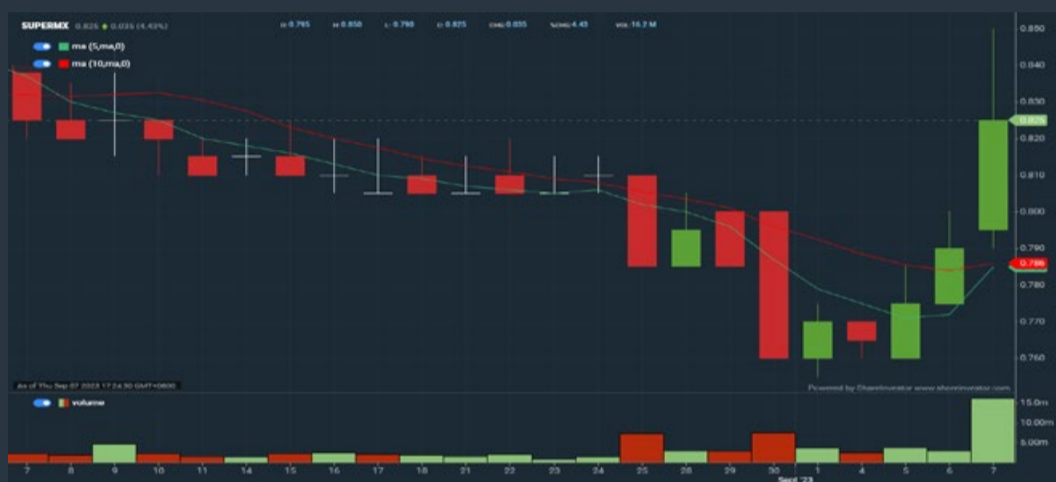
1. Moving Average Below Close - select (MA) type (5) below close price for type (3) days
2. Volume Spike - Volume type (1) greater than type (5) days average
3. Revenue ("000) - select (more than) type (1) for the past select (1) financial year(s)
4. Is Shariah Compliant - select NO
5. Moving Average Below Close - select (MA) type (10) below close price for type (1) days
6. Last Done Price - select (more than) type (0.3)
7. Moving Average Below Close - select (EMA) type (5) below close price for type (1) days

- > click Save Template > Create New Template type (Non-Shariah Hot Stocks) > click Create
- > click Save Template as > select Non-Shariah Hot Stocks > click Save
- > click Screen Now (may take a few minutes)
- Sort By: Select (Vol) Select (Desc)
- Mouse over stock name > Charts > click C² Charts tab or Volume Distribution

SUPERMAX CORPORATION BERHAD (7106)

C² Chart

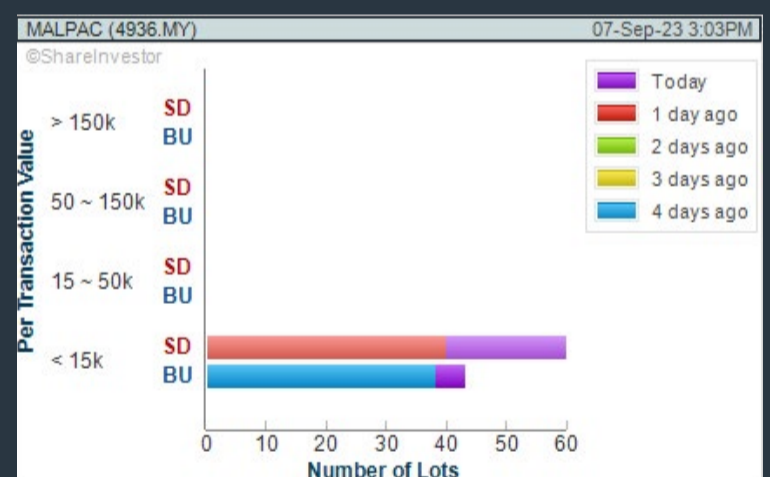
Analysis



MALPAC HOLDINGS BERHAD (4936)

C² Chart

Analysis



Disclaimer: The information on this page is provided as a service to readers. It does not constitute financial advice and/or any investment recommendations. Past performance is not indicative of future results. We assume no liability for damages resulting from or arising out of the use of such information. It would be best if you did your own research to make your personal investment decisions wisely or consult a licenced investment advisor.

SHAREINVESTOR MARKET DATA PLATFORMS



SHAREINVESTOR STATION
Advanced Charting Software
(8 Markets)



SHAREINVESTOR WEBPRO
Browser-Based Market Data
Analytics Platform



BURSA STATION
Advanced Charting Software
(Bursa Malaysia Only)

MAKE BETTER TRADING STRATEGIES

with
SHARE INVESTOR
STATION



8 Markets Data

- ▶ Get access to data from Bursa, NYSE, Nasdaq, HKEX, SGX, IDX, SET & ASX

Dynamic Chart

- ▶ Candlestick Pattern Recognition
- ▶ 111 Indicators
- ▶ 39 Drawing Tools
- ▶ Performance Comparison Chart

Intraday Data

- ▶ Market Depth
- ▶ Trade Summary Matrix & Chart
- ▶ Times & Sales
- ▶ Intraday Market Ticker

Market Screener

- ▶ 96 criteria ranging from FA, TA, Consensus Estimate
- ▶ Real-time Data

Power Frame

- ▶ Combining few Dynamic Charts together with intraday information in one frame

Technical Analysis

Fundamental Analysis

Financial Analysis Statement

- ▶ Profit & Loss
- ▶ Balance Sheet
- ▶ Cash Flow Statement
- ▶ More than 20 Financial Ratios
- ▶ Dividend Analysis

FactSheet

- ▶ Key Stock Information
- ▶ Ownership
- ▶ Consensus Estimates
- ▶ Annual Report
- ▶ Historical Price
- ▶ Insider Trades

**Start your 18 days
 FREE trial now
 (Valued at RM82)**



Price & Volume Distribution Charts (Over 5 trading days as at Yesterday)

Technical Analysis

DEFINITION: Stocks with Technical Analysis showing Bullish Momentum and Price Uptrend

CHART GUIDE: Volume Distribution Chart is a statistical interpretation of the current sentiment on each stock in graphical format. The highest bar categorized as >150k is likely to be traded by institutions or super dealers, while the lowest bar categorized as <15k usually represents retail investors. "Buy Up" refers to more buyers snatching up the lots queued at selling price. "Sell Down" refers to sellers selling their shares to the buying queue.



ShareInvestor WebPro > Screener > Market Screener (FA & TA) > select BURSA > add criteria

A. Criteria

- > click Add Criteria
- Fundamental Analysis Conditions tab > select (i) Revenue
- Technical Analysis Conditions tab select (ii) Moving Average Below Close
- Technical Analysis Conditions tab select (iii) Average Volume
- Prices & Other Conditions tab > select (iv) Last Done Price
- Technical Analysis Conditions tab select (v) Moving Average Below Close
- Technical Analysis Conditions tab select (v) Moving Average Bullish Crossover

B. Conditions

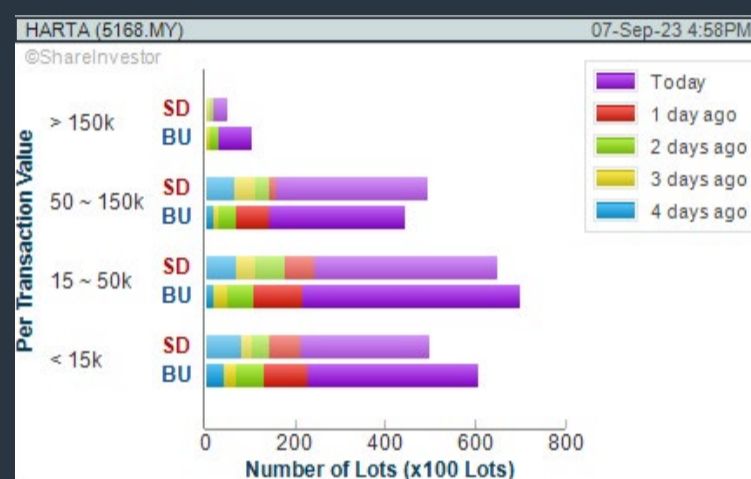
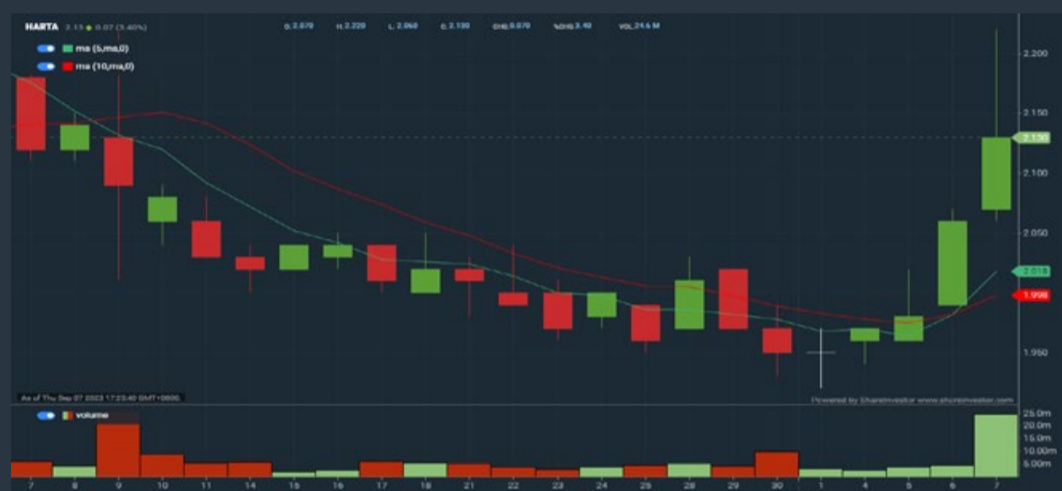
1. Revenue - select (more than) type (1) for the past select (1) financial year(s)
2. Moving Average Below Close - select (MA) type (20) below close price for type (1) days
3. Average Volume - type (5) days average volume type (10000) lots
4. Last Done Price - select (more than) type (0.3)
5. Moving Average Below Close - select (MA) type (10) below close price for type (1) days
6. Moving Average Bullish Crossover - select (MA) type (5) crossed above select (MA) type (10)

> click Save Template > Create New Template type (Non-Shariah Up-Trending Stocks) > click Create Click Save Template As > select Non-Shariah Up Trending Stocks > click Save
> click Screen Now (may take a few minutes)
Sort By: Select (Vol) Select (Desc)
Mouse over stock name > Charts > click C² Charts tab or Volume Distribution

HARTALEGA HOLDINGS BERHAD (5168)

C² Chart

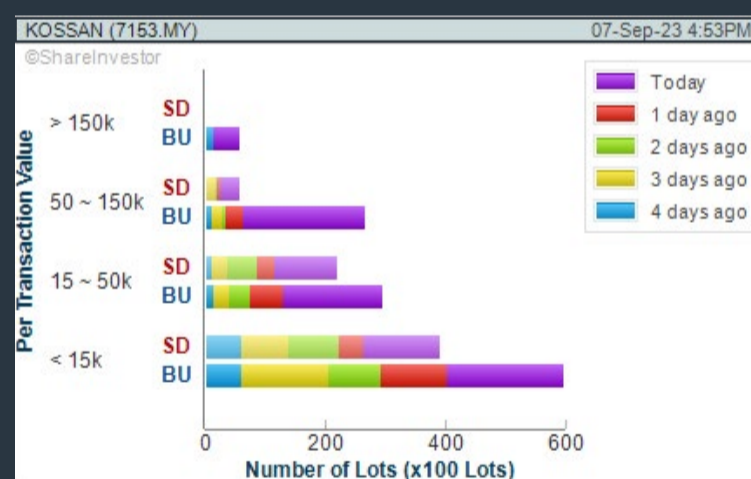
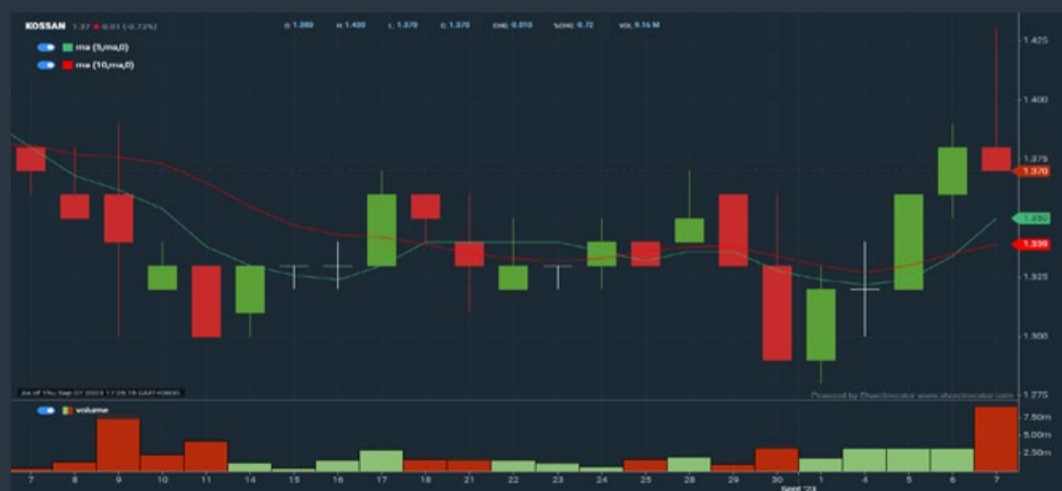
Analysis



KOSSAN RUBBER INDUSTRIES BERHAD (7153)

C² Chart

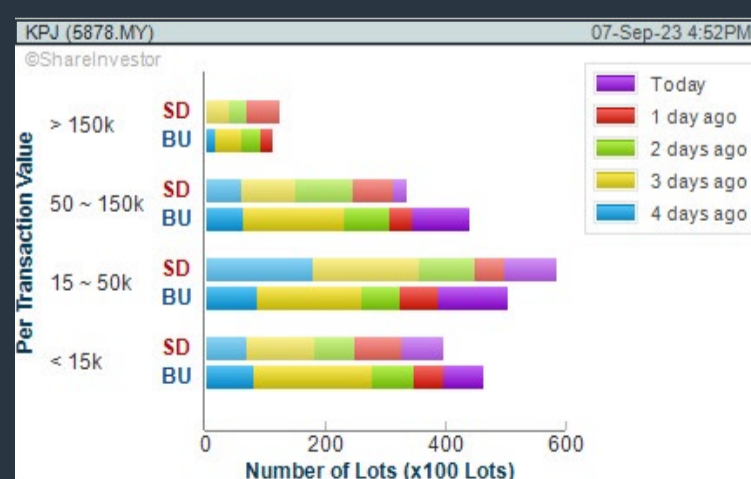
Analysis



KPJ HEALTHCARE BERHAD (5878)

C² Chart

Analysis



Disclaimer: The information on this page is provided as a service to readers. It does not constitute financial advice and/or any investment recommendations. Past performance is not indicative of future results. We assume no liability for damages resulting from or arising out of the use of such information. It would be best if you did your own research to make your personal investment decisions wisely or consult a licenced investment advisor.



making places energizing



usm.com

XTRA

XTRA FURNITURE SDN BHD
The Gardens Mall, Mid Valley City, Lot S-236 & 237
Lingkar Syed Putra, 59200 Kuala Lumpur
T. +603 2282 9088 | living@xtrafurniture.com | xtrafurniture.com
XTRAFurniture | xtrafurnituremsia

Price & Total Shareholder Return (as at Yesterday)

Fundamental Analysis

DEFINITION: Share price of a company trading at a lower price as compared to its fundamentals (FA) such as financial performance and dividend, allowing it to be attractive to value investors.

CHART GUIDE: Total Shareholder Return (TSR) combines share price appreciation and dividend distributions paid to show the total return to the shareholder expressed as a percentage.



ShareInvestor WebPro > Screener > Market Screener (FA & TA) > select BURSA > add criteria

A. Criteria

- > click Add Criteria
- Fundamental Analysis Conditions tab (i) Price Earnings Ratio
- Fundamental Analysis Conditions tab >select (ii) CAGR of Net Earnings
- Fundamental Analysis Conditions tab >select (iii) Net Debt To Equity
- Fundamental Analysis Conditions tab >select (iv) Return On Equity (ROE)

B. Conditions

1. Price Earnings Ratio - select (less than) type (15) times now
2. CAGR of Net Earnings - select (more than) type (10) % for the past type (3) financial year(s)
3. Net Debt To Equity – select (less than) type (1) for the past select (1) financial year(s)
4. Return On Equity (ROE) – select (more than) type (10) % for the past select (1) financial year(s)

- > click Save Template > Create New Template type (Value Stock) > click Create
- > click Save Template as > select Value Companies > click Save
- > click Screen Now (may take a few minutes)
- Sort by: Select (PE Ratio) Select (Ascending)
- > Mouse over stock name > Factsheet > looking for Total Shareholder Return
- > Mouse over stock name > Charts > click C2 Charts tab

EDELTEQ HOLDINGS BERHAD (0278)

C² Chart



Period	Dividend Received	Capital Appreciation	Total Shareholder Return
Short Term Return	5 Days	+0.015	+3.28%
	10 Days	-	-
	20 Days	-0.060	-11.21%
Medium Term Return	3 Months	-0.255	-34.93%

SUNMOW HOLDING BERHAD (03050)

C² Chart



Period	Dividend Received	Capital Appreciation	Total Shareholder Return
Short Term Return	5 Days	-	-
	10 Days	-	-
	20 Days	-0.100	-7.66%
Medium Term Return	3 Months	+0.210	+21.21%
	6 Months	+0.550	+64.62%
	1 Year	+0.750	+67.92%
Annualised Return	Annualised	-	+25.32%

SCGM BERHAD (7247)

C² Chart



Period	Dividend Received	Capital Appreciation	Total Shareholder Return
Short Term Return	5 Days	+0.015	+2.81%
	10 Days	+0.005	+0.85%
	20 Days	0.010	1.61%
Medium Term Return	3 Months	+0.010	+1.72%
	6 Months	-0.010	-1.67%
	1 Year	-0.075	-3.75%
Long Term Return	2 Years	0.051	+6.83%
	3 Years	0.126	+13.19%
	5 Years	0.173	+13.33%
Annualised Return	Annualised	-	+10.47%

Disclaimer: The information on this page is provided as a service to readers. It does not constitute financial advice and/or any investment recommendations. Past performance is not indicative of future results. We assume no liability for damages resulting from or arising out of the use of such information. It would be best if you did your own research to make your personal investment decisions wisely or consult a licenced investment advisor.

Price & Total Shareholder Return (as at Yesterday)

Fundamental Analysis

DEFINITION: Company revenue is growing and making good quality of earnings with positive Free Cash Flow.

CHART GUIDE: Total Shareholder Return (TSR) combines share price appreciation and distributions paid to show the total return to the shareholder expressed as a percentage.



ShareInvestor WebPro > Screener > Market Screener (FA & TA) > select BURSA > add criteria

A. Criteria

1. Fundamental Analysis Conditions tab >select (i) Free Cash Flow, (ii) Revenue Growth, (iii) Gross Profit (Earnings) Margin, (iv) Quality of Earnings, (v) Total Shareholder Returns, > click Add Criteria
2. Fundamental Analysis Conditions tab >select (vi) Total Shareholder Returns > click Add Criteria

B. Conditions (Criteria Filters)

1. Free Cash Flow - select (more than) type (1) for the past select (1) financial year(s)
2. Revenue Growth - select (more than) type (1) for the past select (1) financial year(s)
3. Gross Profit (Earnings) Margin - select (more than) type (30) % for the past select (1) financial year(s)
4. Quality of Earnings - select (more than) type (1) for the past select (1) financial year(s)
5. Total Shareholder Return - select (more than) type (5) % for the past select (3) financial year(s)
6. Total Shareholder Return - select (more than) type (5) % for the past select (5) financial year(s)

- > click Save Template > Create New Template type (Growth Companies) > click Create
- > click Save Template as > select Growth Companies > click Save
- > click Screen Now (may take a few minutes)
- > Sort By: Select (Revenue Growth) Select (Desc)
- > Mouse over stock name > Factsheet > looking for Total Shareholder Return

SEAL INCORPORATED BERHAD (4286)

C² Chart

Analysis



Period	Dividend Received	Capital Appreciation	Total Shareholder Return
Short Term Return	5 Days	-0.010	-1.72%
	10 Days	+0.025	+4.69%
	20 Days	-0.010	+1.79%
Medium Term Return	3 Months	+0.125	+21.09%
	6 Months	+0.210	+38.00%
	1 Year	+0.360	+71.41%
Long Term Return	2 Years	+0.175	+44.30%
	3 Years	+0.220	+51.65%
	5 Years	+0.190	+50.00%
Annualised Return	Annualised	-	+5.45%

HIBISCUS PETROLEUM BERHAD (5199)

C² Chart

Analysis



Period	Dividend Received	Capital Appreciation	Total Shareholder Return
Short Term Return	5 Days	+0.005	+0.99%
	10 Days	+0.005	+0.99%
	20 Days	+0.005	+0.84%
Medium Term Return	3 Months	+0.145	+15.65%
	6 Months	-0.020	-1.65%
	1 Year	+0.000	+0.00%
Long Term Return	2 Years	+0.305	+30.40%
	3 Years	+0.500	+39.29%
	5 Years	+0.100	+10.42%
Annualised Return	Annualised	-	+2.00%

IGB BERHAD (5606)

C² Chart

Analysis



Period	Dividend Received	Capital Appreciation	Total Shareholder Return
Short Term Return	5 Days	+0.000	+0.27%
	10 Days	+0.000	+0.30%
	20 Days	+0.000	+0.42%
Medium Term Return	3 Months	+0.203	+10.43%
	6 Months	+0.267	+22.65%
	1 Year	+0.503	+27.20%
Long Term Return	2 Years	0.193	+8.85%
	3 Years	0.279	+15.24%
	5 Years	0.903	+62.30%
Annualised Return	Annualised	-	+7.87%

Disclaimer: The information on this page is provided as a service to readers. It does not constitute financial advice and/or any investment recommendations. Past performance is not indicative of future results. We assume no liability for damages resulting from or arising out of the use of such information. It would be best if you did your own research to make your personal investment decisions wisely or consult a licenced investment advisor.

Price & Total Shareholder Return (as at Yesterday)

Fundamental Analysis

DEFINITION: Company is paying out dividend with low or moderate leverage.

CHART GUIDE: Total Shareholder Return (TSR) combines share price appreciation and distributions paid to show the total return to the shareholder expressed as a percentage.



ShareInvestor WebPro > Screener > Market Screener (FA & TA) > select BURSA > add criteria

A. Criteria

- > click Add Criteria
- Fundamental Analysis Conditions tab >select (i) Dividend Yield (Historical)
- Fundamental Analysis Conditions tab >select (ii) Dividend Payout (Historical)
- Fundamental Analysis Conditions tab >select (iii) Total Debt To Equity
- Fundamental Analysis Conditions tab >select (iv) Total Shareholder Returns
- Fundamental Analysis Conditions tab >select (v) Total Shareholder Returns
- Fundamental Analysis Conditions tab / >select (vi) CAGR of Dividend Per Share

- Fundamental Analysis Conditions tab >select (vii) CAGR of Dividend Per Share

B. Conditions (Criteria Filters)

1. Dividend Yield - select (more than) type (1) % for the past select (1) financial year(s)
2. Dividend Payout (Historical) - select (between) type (0.5) to type (1) times for the past select (1) financial year(s)
3. Total Debt to Equity - select (less than) type (1) for the past select (1) financial year(s)
4. Total Shareholder Return - select (more than) type (5) % for the past select (3) financial year(s)
5. Total Shareholder Return - select (more than) type (5) % for the past select (5) financial year(s)

6. CAGR of Dividend Per Share - select (less than) type (30) % for the past select (5) financial year(s)
7. CAGR of Dividend Per Share - select (more than) type (1) % for the past select (5) financial year(s)

- > click Save Template > Create New Template type (Dividend Companies) > click Create
- > click Save Template as > select Dividend Companies > click Save
- > click Screen Now (may take a few minutes)
- > Sort By: Select (Dividend Yield) Select (Desc)
- > Mouse over stock name > Factsheet > looking for Total Shareholder Return

JAYCORP BERHAD (7152)

C² Chart



Analysis

Period	Dividend Received	Capital Appreciation	Total Shareholder Return
Short Term Return	5 Days	-0.005	+0.21%
	10 Days	-0.010	+1.43%
	20 Days	-0.015	+2.76%
Medium Term Return	3 Months	+0.020	+2.90%
	6 Months	-	-
Long Term Return	1 Year	+0.025	+3.65%
	2 Years	0.055	+1.88%
	3 Years	0.170	+53.04%
	5 Years	0.355	+130.33%
	Annualised Return	Annualised	-

FORMOSA PROSONIC INDUSTRIES (9172)

C² Chart



Analysis

Period	Dividend Received	Capital Appreciation	Total Shareholder Return
Short Term Return	5 Days	-0.020	-1.11%
	10 Days	0.040	+1.67%
	20 Days	-0.010	+4.28%
Medium Term Return	3 Months	-0.270	+1.20%
	6 Months	-0.320	-10.67%
Long Term Return	1 Year	-0.300	-11.55%
	2 Years	0.200	-20.89%
	3 Years	0.340	+102.61%
	5 Years	0.500	+132.31%
	Annualised Return	Annualised	-

GAS MALAYSIA BERHAD (5209)

C² Chart



Analysis

Period	Dividend Received	Capital Appreciation	Total Shareholder Return
Short Term Return	5 Days	-	-
	10 Days	-	-
	20 Days	+0.020	+1.87%
Medium Term Return	3 Months	-0.020	-0.86%
	6 Months	-0.100	-4.00%
Long Term Return	1 Year	-0.500	-14.00%
	2 Years	0.177	+18.21%
	3 Years	0.327	+22.36%
	5 Years	0.500	+24.04%
	Annualised Return	Annualised	-

Disclaimer: The information on this page is provided as a service to readers. It does not constitute financial advice and/or any investment recommendations. Past performance is not indicative of future results. We assume no liability for damages resulting from or arising out of the use of such information. It would be best if you did your own research to make your personal investment decisions wisely or consult a licenced investment advisor.

Week: 1 Sep – 7 Sep 2023

More Brokers' Call 

AMINVESTMENT BANK <small>... See More</small>	Call	Target Price	Release Date
Lagenda Properties Berhad (7179)	BUY	RM1.79	06 Sept 2023
Malayan Banking Berhad (1155)	BUY	RM10.00	01 Sept 2023
Power Root Berhad (7237)	BUY	RM2.67	05 Sept 2023

APEX <small>... See More</small>	Call	Target Price	Release Date
Yenher Holdings Berhad (5300)	BUY	RM1.03	01 Sept 2023

CGS CIMB <small>... See More</small>	Call	Target Price	Release Date
7-Eleven Malaysia Holdings Berhad (5250)	HOLD	RM2.10	06 Sept 2023

KENANGA <small>... See More</small>	Call	Target Price	Release Date
Inari Amertron Berhad (0166)	OUTPERFORM	RM4.17	01 Sept 2023
OM Holdings Limited (5298)	OUTPERFORM	RM2.07	07 Sept 2023
Tan Chong Motor Holdings Berhad (4405)	UNDERPERFORM	RM0.80	01 Sept 2023
Tenaga Nasional Bhd (5347)	OUTPERFORM	RM11.15	05 Sept 2023

MALACCA SECURITIES <small>... See More</small>	Call	Target Price	Release Date
Asia File Corporation Bhd (7129)	BUY	RM2.16	01 Sept 2023

MIDF <small>... See More</small>	Call	Target Price	Release Date
Eco World Development Group Berhad (8206)	NEUTRAL	RM1.02	07 Sept 2023
Sarawak Plantation Berhad (5135)	NEUTRAL	RM2.200	06 Sept 2023
Spritzer Bhd (7103)	BUY	RM1.85	05 Sept 2023
UOA Development Berhad (5200)	NEUTRAL	RM1.65	07 Sept 2023

JOB KAY HIAN <small>... See More</small>	Call	Target Price	Release Date
MCE Holdings Berhad (7004)	BUY	RM2.01	05 Sept 2023
MI Technovation Berhad (5286)	BUY	RM1.91	06 Sept 2023
P.I.E. Industrial berhad (7095)	BUY	RM3.62	06 Sept 2023
TH Plantations Berhad (5112)	BUY	RM0.70	04 Sept 2023

DEFINITION: Top 9 stocks with Technical Analysis plus Pattern Matching by 60 pre-defined indicators by the system showing a higher probability of bullish sentiment on the share price.



ShareInvestor WebPro > Screener > Predefined TA Screens > select market BURSA > Most Long Signals > click Scan Results or mouse over each company

NOVA MSC BHD (0026.MY)

NOVAMSC

Price updated at 07 Sep 2023 16:58

Last: 0.115	Change: -0.005	Volume: 26,647
	Change (%): -4.17	Range: 0.110 - 0.120

TA Scanner Results based on historical data up to 07 Sep 2023

Condition	Signal	Explanation
Bollinger Band: Bullish Long Term Volatility Breakout and Trending	Long	"1. Close price above upper bollinger band(33,1). 2. Volume above average volume(50). 3. Average volume(50) is above 300,000."
Bollinger Band: Bullish Lower Bollinger Band Support	Long	"1. Low 1 day ago below lower bollinger band(20,2). 2. Close above close 1 day ago. 3. Average volume(5) is above 100,000."
Bollinger Band: Bullish Short Term Volatility Breakout and Trending	Long	"1. Close price above upper bollinger band(33,1). 2. Volume above average volume(10). 3. Average volume(10) is above 300,000."
Bollinger Band: High Above Upper Bollinger Band	Neutral	"1. High above upper bollinger band(14,2). 2. Average volume(5) is above 100,000."
DM: Bullish Directional Movement	Long	-DI(14) crossed below +DI(14)
Donchian Channels: High Above Upper Donchian Channels	Long	High crossed above the upper Donchian Channel(14,4)
MACD: Bullish MACD Crossover	Long	"1. MACD(12,26) diff line crossed above the MACD(12,26) signal line. 2. MACD Histogram(12,26) is above 0."
Parabolic SAR: Bearish Parabolic SAR Reversal	Neutral	"1. Parabolic SAR 1 day ago above close price 1 day ago for the last 5 days. 2. Parabolic SAR below close price"
Volume: Volume Spike	Long	"1. Volume is more than 500% above average volume(10). 2. Volume above 200000. 3. Close price above 0.10"

SERSOL BERHAD (0055.MY)

SERSOL

Price updated at 07 Sep 2023 16:48

Last: 0.145	Change: -	Volume: 4,284
	Change (%): -	Range: 0.140 - 0.150

TA Scanner Results based on historical data up to 07 Sep 2023

Condition	Signal	Explanation
Bollinger Band: Bullish Lower Bollinger Band Support	Long	"1. Low 1 day ago below lower bollinger band(20,2). 2. Close above close 1 day ago. 3. Average volume(5) is above 100,000."
Candlestick: Bullish Engulfing	Long	Bullish: Engulfing
MA: Bullish Price Crossover	Long	"1. Close price crossed above MA(40) within the last 1 day. 2. Previous day close price is below the MA(10) for the last 5 days"
Stochastic: Fast Stochastic Buy Signal	Long	"1. Fast Stochastic(15,5) %K crossed above 20. 2. Fast Stochastic(15,5) %K 1 day ago was below 20 for the last 5 days. 3. Average volume(30) is above 50000"

Disclaimer: The information on this page is provided as a service to readers. It does not constitute financial advice and/or any investment recommendations. Past performance is not indicative of future results. We assume no liability for damages resulting from or arising out of the use of such information. It would be best if you did your own research to make your personal investment decisions wisely or consult a licenced investment advisor.

SAPURA ENERGY BERHAD (5218.MY)

SAPNRG

Price updated at 07 Sep 2023 16:58

Last: 0.060	Change: -	Volume: 203,535
	Change (%): -	Range: 0.055 - 0.060

TA Scanner Results based on historical data up to 07 Sep 2023

Condition	Signal	Explanation
Bollinger Band: Bullish Long Term Volatility Breakout and Trending	Long	"1. Close price above upper bollinger band(33,1). 2. Volume above average volume(50). 3. Average volume(50) is above 300,000."
Bollinger Band: Bullish Short Term Volatility Breakout and Trending	Long	"1. Close price above upper bollinger band(33,1). 2. Volume above average volume(10). 3. Average volume(10) is above 300,000."
Bollinger Band: High Above Upper Bollinger Band	Neutral	"1. High above upper bollinger band(14,2). 2. Average volume(5) is above 100,000."
CCI: Bearish CCI Overbought And Reversing	Short	"1. CCI(26) above 100 and CCI(26) 1 day ago increasing for the last 3 days. 2. CCI(26) below CCI(26) 1 day ago"
Donchian Channels: High Above Upper Donchian Channels	Long	High crossed above the upper Donchian Channel(14,4)
MACD: Bullish MACD Crossover	Long	"1. MACD(12,26) diff line crossed above the MACD(12,26) signal line. 2. MACD Histogram(12,26) is above 0."
Parabolic SAR: Bearish Parabolic SAR Reversal	Neutral	"1. Parabolic SAR 1 day ago above close price 1 day ago for the last 5 days. 2. Parabolic SAR below close price"
Price: New 52 Week High	Long	"1. Stock reach a new 52 week high. 2. Average volume(30) is above 50000."
Williams %R: Bearish Williams %R	Short	"1. Williams %R(26) between 0 and -20. 2. Average volume(5) is above 100,000."

PROLEXUS BHD (8966.MY)

PRLEXUS

Price updated at 07 Sep 2023 16:55

Last: 0.375	Change: -0.015	Volume: 7,451
	Change (%): -3.85	Range: 0.365 - 0.390

TA Scanner Results based on historical data up to 07 Sep 2023

Condition	Signal	Explanation
Bollinger Band: High Above Upper Bollinger Band	Neutral	"1. High above upper bollinger band(14,2). 2. Average volume(5) is above 100,000."
Chaikin Volatility: Increasing Chaikin Volatility	Neutral	Chaikin Volatility(10,10) has been increasing for 5 days
DM: Bullish Directional Movement	Long	-DI(14) crossed below +DI(14)
Donchian Channels: High Above Upper Donchian Channels	Long	High crossed above the upper Donchian Channel(14,4)
RSI: Short Term RSI 50 Bullish Crossover	Long	"1. RSI(20) crossed above 50 within the last 1 day and RSI(20) 1 day ago below 50 for the last 5 days. 2. Volume above average volume(125). 3. Average volume(5) is above 100,000."
Volume: Consecutive Days Of Increasing Average Volume	Long	"1. Average Volume(20) has been increasing over the last 2 weeks. 2. Average volume(20) is above 100000"
Volume: Volume Spike	Long	"1. Volume is more than 500% above average volume(10). 2. Volume above 200000. 3. Close price above 0.10"
Williams %R: Bearish Williams %R	Short	"1. Williams %R(26) between 0 and -20. 2. Average volume(5) is above 100,000."
Williams %R: Bearish Williams %R	Short	"1. Williams %R(26) between 0 and -20. 2. Average volume(5) is above 100,000."

CAPITALAND MALAYSIA TRUST (5180.MY)

CLMT

Price updated at 07 Sep 2023 16:50

Last: 0.550	Change: +0.005	Volume: 18,540
	Change (%): +0.92	Range: 0.540 - 0.550

TA Scanner Results based on historical data up to 07 Sep 2023

Condition	Signal	Explanation
Bollinger Band: Bullish Long Term Volatility Breakout and Trending	Long	"1. Close price above upper bollinger band(33,1). 2. Volume above average volume(50). 3. Average volume(50) is above 300,000."
Bollinger Band: Bullish Short Term Volatility Breakout and Trending	Long	"1. Close price above upper bollinger band(33,1). 2. Volume above average volume(10). 3. Average volume(10) is above 300,000."
Candlestick: Bullish Harami Cross	Long	Bullish: Harami Cross
Candlestick: Indecision Doji	Neutral	Indecision: Doji
Chaikin Volatility: Increasing Chaikin Volatility	Neutral	Chaikin Volatility(10,10) has been increasing for 5 days
MA: Short Term Bullish Moving Average Crossover	Long	MA(10) crossed above MA(15) within the last 1 day.
Volume: 10 Days large value Buy Up trade	Long	"1. 150K value Buy Up greater than Sell Down by 20% for 10 days. 2. 50K-100K value Buy Up greater than Sell Down by 20% for 10 days. 3. Average volume(10) is above 1000000"

CIMB GROUP HOLDINGS BERHAD (1023.MY)

CIMB

Price updated at 07 Sep 2023 16:59

Last: 5.740	Change: +0.020	Volume: 46,631
	Change (%): +0.35	Range: 5.700 - 5.750

TA Scanner Results based on historical data up to 07 Sep 2023

Condition	Signal	Explanation
Bollinger Band: Bullish Long Term Volatility Breakout and Trending	Long	"1. Close price above upper bollinger band(33,1). 2. Volume above average volume(50). 3. Average volume(50) is above 300,000."
Bollinger Band: Bullish Short Term Volatility Breakout and Trending	Long	"1. Close price above upper bollinger band(33,1). 2. Volume above average volume(10). 3. Average volume(10) is above 300,000."
Candlestick: Bullish Engulfing	Long	Bullish: Engulfing
MA: Short Term Bullish Moving Average Crossover	Long	MA(10) crossed above MA(15) within the last 1 day.
Williams %R: Bearish Williams %R	Short	"1. Williams %R(26) between 0 and -20. 2. Average volume(5) is above 100,000."

BUMI ARMADA BERHAD (5210.MY)

ARMADA

Price updated at 07 Sep 2023 16:59

Last: 0.535	Change: -0.005	Volume: 271,569
	Change (%): -0.93	Range: 0.530 - 0.545

TA Scanner Results based on historical data up to 07 Sep 2023

Condition	Signal	Explanation
Bollinger Band: Bullish Long Term Volatility Breakout and Trending	Long	"1. Close price above upper bollinger band(33,1). 2. Volume above average volume(50). 3. Average volume(50) is above 300,000."
Bollinger Band: Bullish Short Term Volatility Breakout and Trending	Long	"1. Close price above upper bollinger band(33,1). 2. Volume above average volume(10). 3. Average volume(10) is above 300,000."

NETX HOLDINGS BHD (0020.MY)

NETX

Price updated at 07 Sep 2023 16:45

Last: 0.075	Change: -0.005	Volume: 6,245
	Change (%): -6.25	Range: 0.075 - 0.080

TA Scanner Results based on historical data up to 07 Sep 2023

Condition	Signal	Explanation
Bollinger Band: Bullish Long Term Volatility Breakout and Trending	Long	"1. Close price above upper bollinger band(33,1). 2. Volume above average volume(50). 3. Average volume(50) is above 300,000."
Bollinger Band: Bullish Short Term Volatility Breakout and Trending	Long	"1. Close price above upper bollinger band(33,1). 2. Volume above average volume(10). 3. Average volume(10) is above 300,000."
Bollinger Band: High Above Upper Bollinger Band	Neutral	"1. High above upper bollinger band(14,2). 2. Average volume(5) is above 100,000."
DM: Bullish Directional Movement	Long	-DI(14) crossed below +DI(14)
Donchian Channels: High Above Upper Donchian Channels	Long	High crossed above the upper Donchian Channel(14,4)

MTOUCHE TECHNOLOGY BHD (0092.MY)

MTOUCHE

Price updated at 07 Sep 2023 16:45

Last: 0.045	Change: -0.005	Volume: 8,418
	Change (%): -10.00	Range: 0.045 - 0.045

TA Scanner Results based on historical data up to 07 Sep 2023

Condition	Signal	Explanation
Bollinger Band: Bullish Short Term Volatility Breakout and Trending	Long	"1. Close price above upper bollinger band(33,1). 2. Volume above average volume(10). 3. Average volume(10) is above 300,000."
Bollinger Band: High Above Upper Bollinger Band	Neutral	"1. High above upper bollinger band(14,2). 2. Average volume(5) is above 100,000."
DM: Bullish Directional Movement	Long	-DI(14) crossed below +DI(14)
Donchian Channels: High Above Upper Donchian Channels	Long	High crossed above the upper Donchian Channel(14,4)
MACD: Bullish MACD Crossover	Long	"1. MACD(12,26) diff line crossed above the MACD(12,26) signal line. 2. MACD Histogram(12,26) is above 0."

Disclaimer: The information on this page is provided as a service to readers. It does not constitute financial advice and/or any investment recommendations. Past performance is not indicative of future results. We assume no liability for damages resulting from or arising out of the use of such information. It would be best if you did your own research to make your personal investment decisions wisely or consult a licenced investment advisor.

Bollinger Band: High Above Upper Bollinger Band	Neutral	"1. High above upper bollinger band(14,2). 2. Average volume(5) is above 100,000."
Candlestick: Bullish Harami	Long	Bullish: Harami
Volume: 10 Days large value Buy Up trade	Long	"1. 150K value Buy Up greater than Sell Down by 20% for 10 days. 2. 50K-100K value Buy Up greater than Sell Down by 20% for 10 days. 3. Average volume(10) is above 1000000"
Volume: 5 Days large value Buy Up trade	Long	"1. 150K value Buy Up greater than Sell Down by 20% for 5 days. 2. 50K-100K value Buy Up greater than Sell Down by 20% for 5 days. 3. Average volume(10) is above 1000000"
Volume: Consecutive Days Of Increasing Average Volume	Long	"1. Average Volume(20) has been increasing over the last 2 weeks. 2. Average volume(20) is above 100000"

SC PAVES THE WAY FOR TRADING OF FRACTIONAL SHARES

The Securities Commission Malaysia (SC) has issued the revised Guidelines on Market Conduct and Business Practices for Stockbroking Companies and Licensed Representatives (SBC Guidelines). The revised guidelines, which take effect on Thursday September 9, 2023, outline the requirements that would allow stockbroking companies to offer fractional share trading services for shares listed on Bursa Malaysia. A fractional share is a portion of a stock that is less than one standard board lot.

Trading of fractional shares was one of the capital market initiatives announced by YAB Prime Minister Dato' Seri Anwar bin Ibrahim earlier in June this year to make share trading on Bursa Malaysia more accessible, affordable and inclusive for the retail investors, particularly the young investors. The revised guidelines reflect the SC's continued commitment to enhance market vibrancy and promote greater retail

participation in the Malaysian stock market.

According to SC Chairman Dato' Seri Dr. Awang Adek Hussin, he said that allowing retail investors to trade in fractional shares, individuals particularly the younger generation, will now have increased affordability and flexibility to trade and invest in the more expensive blue-chip stocks, at a fraction of the standard board lot value. In addition, the introduction of fractional share trading would allow retail investors to diversify their portfolio, whilst creating a more inclusive capital market for all Malaysians.

He added that to support the orderly development of the capital market, it is important for stockbroking companies to have the necessary controls and systems to safeguard the interest of the investors. Among the key requirements under the guidelines is the need for stockbroking companies to implement adequate systems, policies, and procedures. This is to ensure fair treatment of customers' orders, price transparency, and proper supervision of the fractional share trading service. **The updated SBC Guidelines is available here.**

Overnight Policy Rate (OPR) maintained at 3% - BNM

At its meeting on Thursday September 8, the Monetary Policy Committee (MPC) of Bank Negara Malaysia (BNM) decided to maintain the Overnight Policy Rate (OPR) at 3.00 percent. The global economy continues to expand, driven by resilient domestic demand supported by strong labour market conditions.

Global growth, however, remains weighed down by persistently elevated core inflation and higher interest rates. Global trade is also affected by rotation of spending from goods to services, and the ongoing electrical and electronics (E&E) downcycle. The slower-than-expected growth in China also weighed on the global economy.

Globally, headline inflation continued to moderate. While core inflation in advanced economies is slowing down, it remains above historical averages. For most central banks, the monetary policy stance is likely to remain tight. The growth outlook remains subject to downside risks, mainly from a slower momentum in major economies, higher-than-

anticipated inflation outturns, an escalation of geopolitical tensions, and a sharp tightening in financial market conditions.

In the second quarter of the year, growth of the Malaysian economy was affected by slower external demand and a decline in commodity production. Moving forward, growth will continue to be driven by resilient domestic expenditure amid the challenging external environment. Continued employment and wage growth, particularly in the domestic-oriented sectors, remain supportive of household spending. Tourist arrivals and spending are expected to improve further. Investment activity would be supported by continued progress of multi-year infrastructure projects, and implementation of catalytic initiatives under the recently announced national master plans. Domestic financial conditions also remain conducive to financial intermediation amid sustained credit growth. These factors will continue to underpin the growth momentum going into 2024. While the growth outlook is subject to downside risks stemming from weaker-than-expected external demand and larger and protracted declines in commodity production, upside risks mainly emanate from stronger-than-expected tourism activity, a stronger recovery from the E&E downcycle, and faster implementation of existing and new projects.

In line with expectations, headline and core inflation have continued to ease amid the more moderate cost conditions. This moderating trend would likely continue in 2H2023, partly reflecting the higher base from 2H2022 and continued easing momentum of price increases. Risks to the inflation outlook remain highly subject to changes to domestic policy on subsidies and price controls, global commodity prices and financial market developments, as well as the degree of persistence in core inflation.

At the current OPR level, the monetary policy stance remains supportive of the economy and is consistent with the current assessment of the inflation and growth prospects. The MPC remains vigilant to ongoing developments to inform the assessment on the outlook of domestic inflation and growth. The MPC will ensure that the monetary policy stance remains conducive to sustainable economic growth amid price stability.

Domestic interests to be protected in all govt policies including NIMP 2030 - Zafrul

According to minister Tengku Datuk Seri Zafrul Abdul Aziz, the Ministry of Investment, Trade and Industry (Miti) will safeguard domestic interests in all policies, including the New Industrial Master Plan 2030 (NIMP 2030). Despite the implementation of the policy of liberalisation, domestic direct investments (DDI) have continued to dominate in terms of approved investments.

In response to concerns that foreign capital would dominate in local equity holdings as a result of the NIMP 2030, he said that in the 10-year period from 2012 to 2021, approved DDI amounted to RM1.3 trillion, or 64% of the total investments approved. He explained that the liberalisation of the manufacturing sector began as far back as June 17, 2003, when 100% foreign ownership in new manufacturing companies were permitted under the Second Industrial Master Plan (IMP 2). In other words, the liberalisation was not created by NIMP 2030; the policy of liberalisation has existed since IMP 2.

With regards to concerns over economic liberalisation given to Tesla, he said Tesla's entry into Malaysia is via the Battery Electric Vehicle Global Leaders Initiative (BEV GLI) programme, which is designed to attract exclusive electric vehicle (EV) makers to invest here. Tesla's presence will foster the confidence of other original equipment manufacturers to make Malaysia into their regional hub for EV technology. This will have a positive spillover effect on the national economy. We have already seen the entry of Tesla accelerating the transition to EVs in China, Hong Kong and Norway. When this happens, many local small and medium enterprises (SMEs) would benefit from participating in the EV ecosystem.

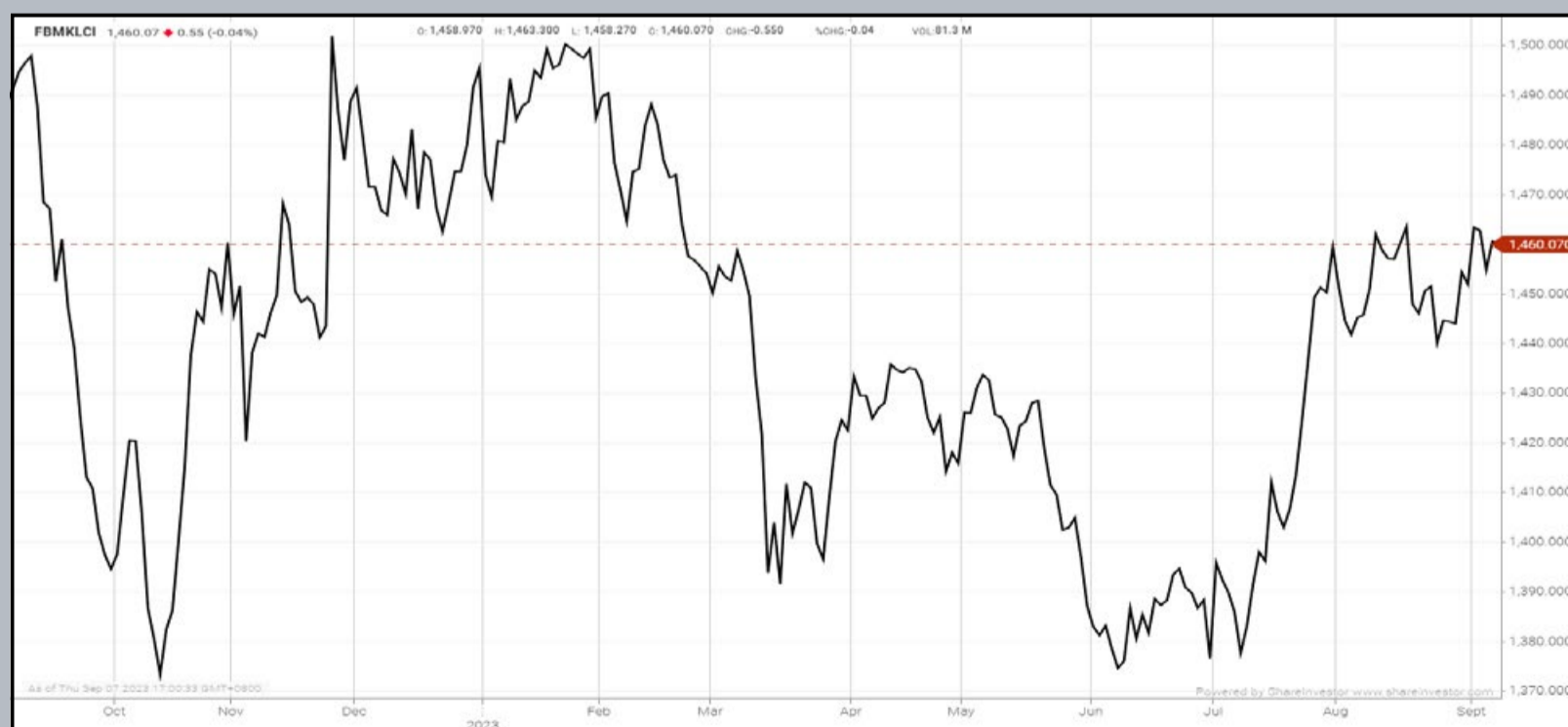
Elaborating further, he said that Tesla's presence in Malaysia is not just about selling cars. Many conditions have been imposed on it. The company is required to instal a large number of DC (direct current) fast chargers, many of which can also be used by other marques besides Tesla. It also must employ and train locals, with at least 80% of the company's workforce being Malaysians. Tesla is also required

to collaborate with at least 10 higher education, or technical and vocational education and training (TVET) centres, for knowledge transfer. Furthermore, the company must work with at least 10 local companies and use local contractors for the local charging network, to ensure that Malaysia benefits widely from its presence.

Tengku Zafrul explained that the NIMP 2030 targets to raise the manufacturing sector’s value to almost RM588 billion by 2030, to create 600,000 job opportunities, and increase the median salary for the sector to at least RM4,510 per month. He concluded by asking if such a strategy is not progressive for Malaysia, what then is progressive?

Eye On The Markets

On Thursday (07Sept), the Ringgit closed at 4.6785 against the USD and 3.4277 to the Sing Dollar. On Monday (04Sept), the FBM KLCI opened at 1464.07. As at Thursday (07Sept) 5:00pm, the FBM KLCI closed down 4.00 points at 1460.07. Over in US, the overnight Dow Jones Industrial Average closed up 57.54.33 points (+0.17%) to 34,500.73 whilst the NASDAQ shed 123.64 points (-0.89%) to 13,748.83.



KLCI 1 Year Chart

Over 5 trading days



ShareInvestor WebPro (www.shareinvestor.com/my)

1. Price > Stock Prices
2. Select Market: NASDAQ / NYSE / IDX / SET / HKEX / SGX (One bourse at a time)
3. select Stocks Tab
4. select Ranking Top Gainers or Top Losers (Over 5 Trading Days)
5. Mouse over Column Layout > select Edit Customs > select Name > select Last Done Price > select 5 Days Change > select 52 Weeks High > select 52 Weeks Low > Mouse Over Column Layout > select Custom

NASDAQ (USD)

Top Gainers

Name	Last Done	Change Over 5 Days	52 Weeks High	52 Weeks Low
MERCADOLIBRE INC	1,436.350	+63.990	1,448.230	754.760
SCHNITZER STEEL	29.720	+19.640	33.515	29.910
MORNINGSTAR INC	251.480	+18.810	259.280	163.280
LULULEMON ATHLETICA INC	398.990	+17.730	406.940	277.500
AEROVIRONMENT INC	113.080	+15.030	124.330	74.910

Top Losers

Name	Last Done	Change Over 5 Days	52 Weeks High	52 Weeks Low
FIRST CITIZENS BANCSHARES INC NRTH	1,323.770	-36.630	1,512.070	505.840
COCA-COLA CONSOLIDATED INC	662.390	-36.510	745.530	405.030
IDEXX LABORATORIES INC	477.210	-34.200	564.735	317.060
ALIGN TECHNOLOGY INC	340.930	-33.970	413.200	172.050
NVIDIA CORP	462.410	-31.140	502.660	108.130

NYSE (USD)

Top Gainers

Name	Last Done	Change Over 5 Days	52 Weeks High	52 Weeks Low
AUTOZONE INC	2,572.210	+29.820	2,750.000	2,050.210
NVR INC	6,405.810	+28.480	6,525.000	3,816.555
CHIPOTLE MEXICAN GRILL	1,966.840	+40.200	2,175.010	1,344.050
PENUMBRA INC	289.530	+25.030	348.670	144.760
VAIL RESORTS INC	245.500	+19.180	269.500	201.910

Top Losers

Name	Last Done	Change Over 5 Days	52 Weeks High	52 Weeks Low
BERKSHIRE HATHAWAY INC	548,930.000	-1,069.990	557,026.990	393,012.250
WHITE MOUNTAINS INSURANCE GROUP	1,517.580	-71.110	1,617.000	1,172.000
METTLER-TOLEDO INTERNATIONAL INC	1,162.070	-51.410	1,615.970	1,065.550
TEXAS PACIFIC LAND CORPORATION	1,836.390	-48.360	2,739.000	1,266.210
DILLARDS INC	322.960	-22.160	417.860	254.490

IDX (Rupiah)

Top Gainers

Name	Last Done	Change Over 5 Days	52 Weeks High	52 Weeks Low
METROPOLITAN KENTJ	32,775.000	+4,825.000	46,200.000	16,950.000
DIAN SWASTATIKA SENTOSA TBK	50,200.000	+2,200.000	56,050.000	33,950.000
INDO TAMBANGRAYA MEGAH TBK	30,750.000	+1,825.000	45,650.000	22,125.000
UNITED TRACTORS	27,150.000	+1,150.000	36,200.000	22,200.000
AMMAN MINERAL INTERNASIONAL TBK	5,400.000	+870.000	5,425.000	1,700.000

Top Losers

Name	Last Done	Change Over 5 Days	52 Weeks High	52 Weeks Low
SIANTAR TOP	10,625.000	-1,025.000	16,900.000	6,800.000
GOLDEN ENERGY MINES TBK	6,325.000	-950.000	8,100.000	5,700.000
LIPPO GENERAL INSURANCE	5,400.000	-425.000	7,025.000	4,900.000
AKASHA WIRA INTERNATIONAL TBK	10,875.000	-375.000	14,125.000	6,375.000
MAHA PROPERTI INDONESIA TBK	3,780.000	-340.000	4,750.000	595.000

SET (Thai Baht)

Top Gainers

Name	Last Done	Change Over 5 Days	52 Weeks High	52 Weeks Low
PTTEP	167.000	+8.500	195.000	134.500
MOSHI	60.000	+4.500	62.000	31.250
STA	16.900	+2.300	26.000	12.100
BBIK	117.500	+2.000	143.500	89.000
ILM	24.200	+1.900	24.300	16.000

Top Losers

Name	Last Done	Change Over 5 Days	52 Weeks High	52 Weeks Low
HTC	17.400	-19.850	42.500	17.200
SAPPE	83.500	-16.500	100.000	37.000
OHTL	478.000	-12.000	610.000	410.000
TOPP	153.000	-7.000	172.000	150.500
CBG	81.750	-4.250	106.000	61.250

HKEX (HKD)

Top Gainers

Name	Last Done	Change Over 5 Days	52 Weeks High	52 Weeks Low
DPC DASH LTD	60.250	+11.050	66.600	42.000
GAUSH MEDITECH LTD	47.200	+5.750	56.100	37.300
KE HOLDINGS INC	46.250	+5.600	55.800	24.750
JENSCARE SCIENTIFIC CO LTD	42.950	+4.450	94.700	26.000
STAR CM HOLDINGS LIMITED	29.000	+4.250	132.000	23.350

Top Losers

Name	Last Done	Change Over 5 Days	52 Weeks High	52 Weeks Low
TRIP COM GROUP LTD	290.800	-18.600	330.200	159.800
YSB INC	40.950	-11.500	64.500	19.000
YUM CHINA HOLDINGS INC	406.800	-11.200	514.500	300.000
BEIJING LUZHU BIOTECHNOLOGY CO LTD	30.750	-10.450	42.000	16.140
PRUDENTIAL	89.800	-8.400	136.500	68.750

SGX (SGD)

Top Gainers

Name	Last Done	Change Over 5 Days	52 Weeks High	52 Weeks Low
JMH USD	47.920	+0.360	57.800	42.600
Shangri-La HKD	5.720	+0.320	8.400	4.300
Fuxing China	0.500	+0.210	0.760	0.240
Azeus	8.800	+0.180	9.190	6.700
UOB	28.600	+0.160	31.400	25.910

Top Losers

Name	Last Done	Change Over 5 Days	52 Weeks High	52 Weeks Low
Jardine C&C	32.760	-0.660	36.850	27.250
Venture	12.820	-0.290	18.750	12.600
UOL	6.430	-0.210	7.209	5.925
Sembcorp Ind	5.150	-0.200	6.100	2.744
Haw Par	9.880	-0.150	11.380	8.980

DEFINITION: Insider Activity shows the trades made by substantial shareholders or directors of the company. Purchases by the directors and company share buyback may indicate the share price is undervalued and brings confidence to the price trend of the share price.



ShareInvestor WebPro > Fundamental > Insider Trades > click Search tab > Select Bursa > click Stock name > scroll up and leave at <Select Counter> Type Date Range for Announcement Date > click Search

Notice Period is 27th August - 02nd September 2023

Effective Change Date	Stock Name	Buyer/ Seller Name [Classification]	Bought / (Sold) ['000]	No. of Shares After Trade ['000]	
			Total	Total	% Held
28 AUG 2023 - 28 AUG 2023	1TECH	MR KOH KEAN MUM [SSH]	1,495	10,467	13.602
29 AUG 2023 - 30 AUG 2023	3A	MR TEO KWEE HOCK [SSH]	883	48,874	9.994
28 AUG 2023 - 28 AUG 2023	AEON	EMPLOYEES PROVIDENT FUND BOARD [SSH]	-93	137,964	9.826
25 AUG 2023 - 25 AUG 2023	AEON	EMPLOYEES PROVIDENT FUND BOARD [SSH]	-0.2	138,057	9.833
24 AUG 2023 - 24 AUG 2023	AEON	EMPLOYEES PROVIDENT FUND BOARD [SSH]	-1,021	138,057	9.833
23 AUG 2023 - 23 AUG 2023	AEON	EMPLOYEES PROVIDENT FUND BOARD [SSH]	-603	139,078	9.906
30 AUG 2023 - 30 AUG 2023	AIRPORT	KUMPULAN WANG PERSARAAN (DIPERBADANKAN) [SSH]	-1,174	112,201	6.724
28 AUG 2023 - 28 AUG 2023	AIRPORT	EMPLOYEES PROVIDENT FUND BOARD [SSH]	-441	170,116	10.195
29 AUG 2023 - 29 AUG 2023	AIRPORT	KUMPULAN WANG PERSARAAN (DIPERBADANKAN) [SSH]	-96	113,375	6.794
25 AUG 2023 - 25 AUG 2023	AIRPORT	EMPLOYEES PROVIDENT FUND BOARD [SSH]	-9,836	170,557	10.222
28 AUG 2023 - 28 AUG 2023	AIRPORT	KUMPULAN WANG PERSARAAN (DIPERBADANKAN) [SSH]	-112	113,471	6.8
25 AUG 2023 - 25 AUG 2023	AIRPORT	KUMPULAN WANG PERSARAAN (DIPERBADANKAN) [SSH]	-120	113,583	6.807
23 AUG 2023 - 23 AUG 2023	AIRPORT	EMPLOYEES PROVIDENT FUND BOARD [SSH]	-1,000	172,043	10.311
25 AUG 2023 - 25 AUG 2023	ALLIANZ	EMPLOYEES PROVIDENT FUND BOARD [SSH]	137	12,704	7.138
25 AUG 2023 - 25 AUG 2023	AMBank	EMPLOYEES PROVIDENT FUND BOARD [SSH]	2,662	331,504	10.009
28 AUG 2023 - 28 AUG 2023	AME-WA	MR CHANG TIAN KWANG [DIR/CEO]	194	500	0.357
25 AUG 2023 - 25 AUG 2023	AMWAY	EMPLOYEES PROVIDENT FUND BOARD [SSH]	-234	10,568	6.429
24 AUG 2023 - 24 AUG 2023	AMWAY	EMPLOYEES PROVIDENT FUND BOARD [SSH]	-8	10,801	6.571
23 AUG 2023 - 23 AUG 2023	AMWAY	EMPLOYEES PROVIDENT FUND BOARD [SSH]	-219	10,810	6.576
28 AUG 2023 - 29 AUG 2023	ANCOMNY	DATO' SIEW KA WEI [DIR/CEO]	94	21,986	21.211
28 AUG 2023 - 28 AUG 2023	APOLLO	AMANAHRAYA TRUSTEES BERHAD-AMANAH SAHAM BUMIPUTERA [SSH]	-11	6,582	8.228
24 AUG 2023 - 24 AUG 2023	APOLLO	AMANAHRAYA TRUSTEES BERHAD-AMANAH SAHAM BUMIPUTERA [SSH]	-27	6,593	8.241
24 AUG 2023 - 24 AUG 2023	ASTEEL	DATUK IR MICHAEL HII EE SING [SSH]	350	66,376	13.689
25 AUG 2023 - 25 AUG 2023	AXREIT	EMPLOYEES PROVIDENT FUND BOARD [SSH]	-386	282,803	16.243
28 AUG 2023 - 29 AUG 2023	BAHVEST	INNOSABAH CAPITAL HOLDINGS SDN BHD [SSH]	3,143	145,297	11.72
28 AUG 2023 - 28 AUG 2023	BAHVEST	MR CHONG TZU KHEN [DIR/CEO]	50	1,550	0.124
29 AUG 2023 - 29 AUG 2023	BAUTO	PRUDENTIAL PLC [SSH]	-300	68,291	5.863
28 AUG 2023 - 28 AUG 2023	BAUTO	EMPLOYEES PROVIDENT FUND BOARD [SSH]	411	120,477	10.343
28 AUG 2023 - 28 AUG 2023	BAUTO	PRUDENTIAL PLC [SSH]	-300	68,591	5.888
25 AUG 2023 - 25 AUG 2023	BAUTO	EMPLOYEES PROVIDENT FUND BOARD [SSH]	806	120,066	10.307
25 AUG 2023 - 25 AUG 2023	BAUTO	PRUDENTIAL PLC [SSH]	-493	68,891	5.914
24 AUG 2023 - 24 AUG 2023	BAUTO	EMPLOYEES PROVIDENT FUND BOARD [SSH]	763	119,252	10.237
24 AUG 2023 - 24 AUG 2023	BAUTO	PRUDENTIAL PLC [SSH]	-310	69,385	5.957
23 AUG 2023 - 23 AUG 2023	BAUTO	EMPLOYEES PROVIDENT FUND BOARD [SSH]	625	118,489	10.172
28 AUG 2023 - 28 AUG 2023	BIMB	EMPLOYEES PROVIDENT FUND BOARD [SSH]	50	365,669	16.134
25 AUG 2023 - 25 AUG 2023	BIMB	EMPLOYEES PROVIDENT FUND BOARD [SSH]	500	365,619	16.132
24 AUG 2023 - 24 AUG 2023	BIMB	EMPLOYEES PROVIDENT FUND BOARD [SSH]	300	365,119	16.11
23 AUG 2023 - 23 AUG 2023	BIMB	EMPLOYEES PROVIDENT FUND BOARD [SSH]	100	364,819	16.096
28 AUG 2023 - 28 AUG 2023	BINACOM	MR NA BON TIAM [SSH]	-1,500	41,178	10.605
24 AUG 2023 - 24 AUG 2023	BINACOM	MR NA BON TIAM [SSH]	-4,000	42,678	10.991
29 AUG 2023 - 29 AUG 2023	BIPORT	EMPLOYEES PROVIDENT FUND BOARD [SSH]	-5	24,146	5.25
24 AUG 2023 - 24 AUG 2023	BIPORT	EMPLOYEES PROVIDENT FUND BOARD [SSH]	-100	24,151	5.25
28 AUG 2023 - 28 AUG 2023	BJFOOD	BERJAYA CORPORATION BERHAD [SSH]	23,000	950,274	54.169
28 AUG 2023 - 28 AUG 2023	BJFOOD	BERJAYA GROUP BERHAD [SSH]	23,000	950,274	54.169
28 AUG 2023 - 30 AUG 2023	BPLANT	ARUSHA ENTERPRISE SDN. BHD. [SSH]	41,544	780,744	34.855
28 AUG 2023 - 30 AUG 2023	BPLANT	BATU KAWAN BERHAD [SSH]	41,544	780,744	34.855
28 AUG 2023 - 30 AUG 2023	BPLANT	CUBIC CRYSTAL CORPORATION [SSH]	41,544	780,744	34.855
28 AUG 2023 - 30 AUG 2023	BPLANT	DATO' LEE HAU HIAN [SSH]	41,544	780,744	34.855
28 AUG 2023 - 30 AUG 2023	BPLANT	DI-YI SDN. BHD. [SSH]	41,544	780,744	34.855
28 AUG 2023 - 30 AUG 2023	BPLANT	GRATEFUL BLESSINGS FOUNDATION [SSH]	41,544	780,744	34.855
28 AUG 2023 - 30 AUG 2023	BPLANT	GRATEFUL BLESSINGS INC. [SSH]	41,544	780,744	34.855
28 AUG 2023 - 30 AUG 2023	BPLANT	HIGH QUEST ANSTALT [SSH]	41,544	780,744	34.855
28 AUG 2023 - 30 AUG 2023	BPLANT	HIGH QUEST HOLDINGS SDN BHD [SSH]	41,544	780,744	34.855
28 AUG 2023 - 30 AUG 2023	BPLANT	KUALA LUMPUR KEPONG BERHAD [SSH]	41,544	780,744	34.855
28 AUG 2023 - 30 AUG 2023	BPLANT	TAN SRI LEE OI HIAN [SSH]	41,544	780,744	34.855
28 AUG 2023 - 30 AUG 2023	BPLANT	WAN HIN INVESTMENTS SDN. BERHAD [SSH]	41,544	780,744	34.855
24 AUG 2023 - 24 AUG 2023	BSLCORP	CITA REALITI SDN. BHD. [SSH]	-3,800	114,720	5.944
28 AUG 2023 - 28 AUG 2023	BURSA	EMPLOYEES PROVIDENT FUND BOARD [SSH]	733	88,610	10.949
25 AUG 2023 - 25 AUG 2023	BURSA	EMPLOYEES PROVIDENT FUND BOARD [SSH]	154	87,877	10.858

Notice Period is 27th August - 02nd September 2023

Effective Change Date	Stock Name	Buyer/ Seller Name [Classification]	Bought / (Sold) ['000]	No. of Shares After Trade ['000]	
			Total	Total	% Held
25 AUG 2023 - 25 AUG 2023	BURSA	EMPLOYEES PROVIDENT FUND BOARD [SSH]	154	87,877	10.858
24 AUG 2023 - 24 AUG 2023	BURSA	EMPLOYEES PROVIDENT FUND BOARD [SSH]	295	87,723	10.839
23 AUG 2023 - 23 AUG 2023	BURSA	EMPLOYEES PROVIDENT FUND BOARD [SSH]	438	87,428	10.803
30 AUG 2023 - 30 AUG 2023	CAREPLS	MADAM NG SHU SI [SSH]	200	123,412	21.216
30 AUG 2023 - 30 AUG 2023	CAREPLS	MR LIM KWEE SHYAN [DIR/CEO]	200	123,994	21.316
30 AUG 2023 - 30 AUG 2023	CAREPLS	MR LIM KWEE SHYAN [SSH]	200	123,994	21.316
30 AUG 2023 - 30 AUG 2023	CCK	LAU LIONG KII [DIR/CEO]	-750	56,427	9.082
28 AUG 2023 - 29 AUG 2023	CEPAT	DATIN SERI OOI AH THIN [SSH]	56	120,464	38.99
28 AUG 2023 - 29 AUG 2023	CEPAT	DATO' MAH POOI SOO REALTY SDN. BHD. [SSH]	56	120,464	38.99
28 AUG 2023 - 29 AUG 2023	CEPAT	DATO' SERI MAH KING SENG [DIR/CEO]	56	120,464	38.99
28 AUG 2023 - 29 AUG 2023	CEPAT	DATO' SERI MAH KING SENG [SSH]	56	120,464	38.99
28 AUG 2023 - 29 AUG 2023	CEPAT	MHC PLANTATIONS BHD. [SSH]	56	120,464	38.99
28 AUG 2023 - 29 AUG 2023	CEPAT	TAN SRI DR MAH KING THIAN @ MAH KING THIAM [DIR/CEO]	56	120,464	38.99
28 AUG 2023 - 29 AUG 2023	CEPAT	TAN SRI DR MAH KING THIAN @ MAH KING THIAM [SSH]	56	120,464	38.99
24 AUG 2023 - 25 AUG 2023	CEPAT	DATIN SERI OOI AH THIN [SSH]	75	120,408	38.97
24 AUG 2023 - 25 AUG 2023	CEPAT	DATO' MAH POOI SOO REALTY SDN. BHD. [SSH]	75	120,408	38.97
24 AUG 2023 - 25 AUG 2023	CEPAT	DATO' SERI MAH KING SENG [DIR/CEO]	75	120,408	38.97
24 AUG 2023 - 25 AUG 2023	CEPAT	DATO' SERI MAH KING SENG [SSH]	75	120,408	38.97
24 AUG 2023 - 25 AUG 2023	CEPAT	MHC PLANTATIONS BHD. [SSH]	75	120,408	38.97
24 AUG 2023 - 25 AUG 2023	CEPAT	TAN SRI DR MAH KING THIAN @ MAH KING THIAM [DIR/CEO]	75	120,408	38.97
24 AUG 2023 - 25 AUG 2023	CEPAT	TAN SRI DR MAH KING THIAN @ MAH KING THIAM [SSH]	75	120,408	38.97
29 AUG 2023 - 29 AUG 2023	CHHB	PUAN SRI TAN BEE HONG [SSH]	-2,000	164,024	55.276
29 AUG 2023 - 29 AUG 2023	CHHB	TAN SRI LEE KIM TIONG @ LEE KIM YEW [SSH]	-2,000	164,024	55.276
23 AUG 2023 - 23 AUG 2023	CIMB	EMPLOYEES PROVIDENT FUND BOARD [SSH]	3,534	1,663,310	15.6
28 AUG 2023 - 28 AUG 2023	CITAGLB	TAN SRI DATO' SRI DR (DR.) MOHAMAD NORZA BIN ZAKARIA [SSH]	1,420	143,144	34.279
28 AUG 2023 - 28 AUG 2023	CITAGLB	TAN SRI DATO' SRI DR MOHAMAD NORZA BIN ZAKARIA [DIR/CEO]	1,420	143,144	34.279
30 AUG 2023 - 30 AUG 2023	CLMT	KUMPULAN WANG PERSARAAN (DIPERBADANKAN) [SSH]	244	244,242	9.052
25 AUG 2023 - 25 AUG 2023	CLOUDPT	ERA JASAKITA SDN BHD [SSH]	200	281,404	52.935
25 AUG 2023 - 25 AUG 2023	CLOUDPT	MR CHOONG WAI HOONG [DIR/CEO]	200	324,476	61.037
25 AUG 2023 - 25 AUG 2023	CLOUDPT	MR CHOONG WAI HOONG [SSH]	200	324,476	61.037
25 AUG 2023 - 25 AUG 2023	CLOUDPT	MR YEW CHOONG CHEONG [DIR/CEO]	200	324,476	61.037
25 AUG 2023 - 25 AUG 2023	CLOUDPT	MR YEW CHOONG CHEONG [SSH]	200	324,476	61.037
29 AUG 2023 - 30 AUG 2023	CTOS	ABRDN HOLDINGS LIMITED (FORMERLY KNOWN AS ABERDEEN ASSET MANAGEMENT PLC) [SSH]	1,664	130,440	5.647
29 AUG 2023 - 30 AUG 2023	CTOS	ABRDN MALAYSIA SDN BHD [SSH]	1,664	128,721	5.572
29 AUG 2023 - 30 AUG 2023	CTOS	ABRDN PLC [SSH]	1,664	130,440	5.647
25 AUG 2023 - 25 AUG 2023	DAYANG	DATIN WONG SIEW HONG [SSH]	-100	148,873	12.859
25 AUG 2023 - 25 AUG 2023	DAYANG	DATUK LING SUK KIONG [DIR/CEO]	-100	148,873	12.859
25 AUG 2023 - 25 AUG 2023	DAYANG	DATUK LING SUK KIONG [SSH]	-100	148,873	12.859
25 AUG 2023 - 25 AUG 2023	DAYANG	MR JOE LING SIEW LOUNG @ LIN SHOU LONG [DIR/CEO]	-100	148,873	12.859
25 AUG 2023 - 25 AUG 2023	DAYANG	MR JOE LING SIEW LOUNG @ LIN SHOU LONG [SSH]	-100	148,873	12.859
30 AUG 2023 - 30 AUG 2023	DIALOG	KUMPULAN WANG PERSARAAN (DIPERBADANKAN) [SSH]	5,204	561,919	9.96
28 AUG 2023 - 28 AUG 2023	DIALOG	EMPLOYEES PROVIDENT FUND BOARD [SSH]	546	831,043	14.73
29 AUG 2023 - 29 AUG 2023	DIALOG	KUMPULAN WANG PERSARAAN (DIPERBADANKAN) [SSH]	139	556,715	9.87
25 AUG 2023 - 25 AUG 2023	DIALOG	EMPLOYEES PROVIDENT FUND BOARD [SSH]	-17	830,498	14.72
28 AUG 2023 - 28 AUG 2023	DIALOG	KUMPULAN WANG PERSARAAN (DIPERBADANKAN) [SSH]	780	556,576	9.87
25 AUG 2023 - 25 AUG 2023	DLADY	CITIGROUP NOMINEES (TEMPATAN) SDN BHD EMPLOYEES PROVIDENT FUND BOARD [SSH]	-117	6,104	9.538
24 AUG 2023 - 24 AUG 2023	DLADY	CITIGROUP NOMINEES (TEMPATAN) SDN BHD EMPLOYEES PROVIDENT FUND BOARD [SSH]	-12	6,221	9.721
23 AUG 2023 - 23 AUG 2023	DLADY	CITIGROUP NOMINEES (TEMPATAN) SDN BHD EMPLOYEES PROVIDENT FUND BOARD [SSH]	-8	6,233	9.739
22 AUG 2023 - 22 AUG 2023	DLADY	CITIGROUP NOMINEES (TEMPATAN) SDN BHD EMPLOYEES PROVIDENT FUND BOARD [SSH]	-12	6,241	9.751
28 AUG 2023 - 28 AUG 2023	DPHARMA	EMPLOYEES PROVIDENT FUND BOARD [SSH]	-210	79,831	8.299
25 AUG 2023 - 25 AUG 2023	DPHARMA	EMPLOYEES PROVIDENT FUND BOARD [SSH]	-32	80,041	8.321
24 AUG 2023 - 24 AUG 2023	DPHARMA	EMPLOYEES PROVIDENT FUND BOARD [SSH]	-1,195	80,041	8.321
23 AUG 2023 - 23 AUG 2023	DPHARMA	EMPLOYEES PROVIDENT FUND BOARD [SSH]	-947	81,236	8.445
30 AUG 2023 - 30 AUG 2023	E&O	BILLFORD HOLDINGS LIMITED [SSH]	-7,000	86,015	5.52

Disclaimer: The Information in Insider Activity is extracted from www.shareinvestor.com/fundamental/insider_trades. The information on this page is provided as a service to readers. It does not constitute financial advice and/or any investment recommendations. We assume no liability for damages resulting from or arising out of the use of such information. Whilst every effort is made to ensure accuracy, the information presented is not the official record of shareholder filings. Readers are advised to read the original filings on the Bursa Malaysia website at www.bursamalaysia.com



STROM
SWISS TIMEPIECES & JEWELLERY



StromWatch Asia
Tele : +65.9817.3378
Email : ll.stromasia@gmail.com
WWW.STROMWATCH.SWISS

Notice Period is 27th August - 02nd September 2023

Effective Change Date	Stock Name	Buyer/ Seller Name [Classification]	Bought / (Sold) ['000]	No. of Shares After Trade ['000]	
			Total	Total	% Held
24 AUG 2023 - 24 AUG 2023	SIMEPLT	EMPLOYEES PROVIDENT FUND BOARD [SSH]	-5	1012822	14.645
22 AUG 2023 - 22 AUG 2023	SIMEPLT	EMPLOYEES PROVIDENT FUND BOARD [SSH]	-293	1012827	14.645
30 AUG 2023 - 30 AUG 2023	SIMEPROP	KUMPULAN WANG PERSARAAN (DIPERBADANKAN) [SSH]	910	444178	6.531
28 AUG 2023 - 28 AUG 2023	SIMEPROP	EMPLOYEES PROVIDENT FUND BOARD [SSH]	-8,889	533879	7.85
29 AUG 2023 - 29 AUG 2023	SIMEPROP	KUMPULAN WANG PERSARAAN (DIPERBADANKAN) [SSH]	2,090	443268	6.518
28 AUG 2023 - 28 AUG 2023	SIMEPROP	KUMPULAN WANG PERSARAAN (DIPERBADANKAN) [SSH]	375	441178	6.487
24 AUG 2023 - 24 AUG 2023	SIMEPROP	EMPLOYEES PROVIDENT FUND BOARD [SSH]	-3,000	542767	7.981
25 AUG 2023 - 25 AUG 2023	SIMEPROP	KUMPULAN WANG PERSARAAN (DIPERBADANKAN) [SSH]	493	440803	6.482
23 AUG 2023 - 23 AUG 2023	SIMEPROP	EMPLOYEES PROVIDENT FUND BOARD [SSH]	1,029	545767	8.025
29 AUG 2023 - 30 AUG 2023	SINARAN	LAMBO GROUP BERHAD [SSH]	-32,000	180956	19.777
29 AUG 2023 - 30 AUG 2023	SINARAN	ORIENTED MEDIA HOLDINGS LIMITED [SSH]	-32,000	118279	12.927
28 AUG 2023 - 28 AUG 2023	SKPRES	EMPLOYEES PROVIDENT FUND BOARD [SSH]	169	130969	8.383
29 AUG 2023 - 29 AUG 2023	SKPRES	KUMPULAN WANG PERSARAAN (DIPERBADANKAN) [SSH]	15	126286	8.083
25 AUG 2023 - 25 AUG 2023	SKPRES	EMPLOYEES PROVIDENT FUND BOARD [SSH]	40	130800	8.372
28 AUG 2023 - 28 AUG 2023	SKPRES	KUMPULAN WANG PERSARAAN (DIPERBADANKAN) [SSH]	635	126271	8.082
24 AUG 2023 - 24 AUG 2023	SKPRES	EMPLOYEES PROVIDENT FUND BOARD [SSH]	92	130760	8.369
25 AUG 2023 - 25 AUG 2023	SKPRES	KUMPULAN WANG PERSARAAN (DIPERBADANKAN) [SSH]	92	125636	8.041
23 AUG 2023 - 23 AUG 2023	SKPRES	EMPLOYEES PROVIDENT FUND BOARD [SSH]	97	130668	8.364
28 AUG 2023 - 28 AUG 2023	SMRT	MR MAHA RAMANATHAN PALAN [DIR/CEO]	100	300	0.067
29 AUG 2023 - 29 AUG 2023	SPSETIA	KUMPULAN WANG PERSARAAN (DIPERBADANKAN) [SSH]	-49	407289	9.981
28 AUG 2023 - 28 AUG 2023	SPSETIA	KUMPULAN WANG PERSARAAN (DIPERBADANKAN) [SSH]	102	407338	9.983
25 AUG 2023 - 25 AUG 2023	SSB8	MR CHAI THAM POH [DIR/CEO]	-3,000	9040	0.398
28 AUG 2023 - 28 AUG 2023	STAR	TONG KOOI ONG [SSH]	-379	38950	5.374
24 AUG 2023 - 24 AUG 2023	STAR	TONG KOOI ONG [SSH]	-10	39329	5.426
25 AUG 2023 - 25 AUG 2023	SUNCON	EMPLOYEES PROVIDENT FUND BOARD [SSH]	-18	126438	9.806
28 AUG 2023 - 28 AUG 2023	SUNWAY	EMPLOYEES PROVIDENT FUND BOARD [SSH]	-5,777	356443	7.19
25 AUG 2023 - 25 AUG 2023	SUNWAY	EMPLOYEES PROVIDENT FUND BOARD [SSH]	-4,253	362221	7.31
24 AUG 2023 - 24 AUG 2023	SUNWAY	EMPLOYEES PROVIDENT FUND BOARD [SSH]	-5,621	365891	7.38
23 AUG 2023 - 23 AUG 2023	SUNWAY	EMPLOYEES PROVIDENT FUND BOARD [SSH]	-3,765	371513	7.5
25 AUG 2023 - 25 AUG 2023	SWSCAP	DATO' CHUA HEOK WEE [DIR/CEO]	5,573	59282	21.551
25 AUG 2023 - 25 AUG 2023	SWSCAP	DATO' CHUA HEOK WEE [SSH]	5,573	59282	21.551
25 AUG 2023 - 25 AUG 2023	SWSCAP	MR CHUA KANG SING [DIR/CEO]	5,573	57100	20.758
25 AUG 2023 - 25 AUG 2023	SWSCAP	MR CHUA KANG SING [SSH]	5,573	57100	20.758
25 AUG 2023 - 25 AUG 2023	SWSCAP	MUAR BAN LEE GROUP BERHAD [SSH]	5,573	57100	20.758
29 AUG 2023 - 29 AUG 2023	TAFI	ARMANI SYNERGY SDN. BHD. [SSH]	50	203761	53.702
29 AUG 2023 - 29 AUG 2023	TAFI	DATO' SRI ANDREW LIM ENG GUAN [DIR/CEO]	50	212809	56.087
29 AUG 2023 - 29 AUG 2023	TAFI	DATO' SRI ANDREW LIM ENG GUAN [SSH]	50	212809	56.087
29 AUG 2023 - 29 AUG 2023	TAFI	DATO' SRI AZLAN BIN AZMI [DIR/CEO]	50	203926	53.745
29 AUG 2023 - 29 AUG 2023	TAFI	DATO' SRI AZLAN BIN AZMI [SSH]	50	203926	53.745
29 AUG 2023 - 29 AUG 2023	TAFI	DATO' SRI WONG SZE CHIEN [DIR/CEO]	50	212179	55.921
29 AUG 2023 - 29 AUG 2023	TAFI	DATO' SRI WONG SZE CHIEN [SSH]	50	212179	55.921
01 SEP 2023 - 01 SEP 2023	TANCO	DATO' SRI ANDREW TAN JUN SUAN [DIR/CEO]	5,000	982535	50.001
01 SEP 2023 - 01 SEP 2023	TANCO	DATO' SRI ANDREW TAN JUN SUAN [SSH]	5,000	982535	50.001
01 SEP 2023 - 01 SEP 2023	TANCO	TJN CAPITAL SDN BHD [SSH]	5,000	780059	39.697
30 AUG 2023 - 30 AUG 2023	TANCO	DATO' SRI ANDREW TAN JUN SUAN [DIR/CEO]	1,000	977535	49.798
30 AUG 2023 - 30 AUG 2023	TANCO	DATO' SRI ANDREW TAN JUN SUAN [SSH]	1,000	977535	49.798
30 AUG 2023 - 30 AUG 2023	TANCO	TJN CAPITAL SDN BHD [SSH]	1,000	775059	39.483

Notice Period is 27th August - 02nd September 2023

Effective Change Date	Stock Name	Buyer/ Seller Name [Classification]	Bought / (Sold) ['000]	No. of Shares After Trade ['000]	
			Total	Total	% Held
25 AUG 2023 - 25 AUG 2023	TCHONG	EMPLOYEES PROVIDENT FUND BOARD [SSH]	-0.5	41926	6.432
28 AUG 2023 - 28 AUG 2023	TENAGA	EMPLOYEES PROVIDENT FUND BOARD [SSH]	5,273	876410	15.14
25 AUG 2023 - 25 AUG 2023	TENAGA	EMPLOYEES PROVIDENT FUND BOARD [SSH]	681	871137	15.05
24 AUG 2023 - 24 AUG 2023	TENAGA	EMPLOYEES PROVIDENT FUND BOARD [SSH]	1,159	870388	15.04
23 AUG 2023 - 23 AUG 2023	TENAGA	EMPLOYEES PROVIDENT FUND BOARD [SSH]	932	869229	15.02
30 AUG 2023 - 30 AUG 2023	TIMECOM	KUMPULAN WANG PERSARAAN (DIPERBADANKAN) ("KWAP") [SSH]	-98	113392	6.14
28 AUG 2023 - 28 AUG 2023	TIMECOM	EMPLOYEES PROVIDENT FUND BOARD [SSH]	0.4	141812	7.679
29 AUG 2023 - 29 AUG 2023	TIMECOM	KUMPULAN WANG PERSARAAN (DIPERBADANKAN) ("KWAP") [SSH]	-177	113490	6.145
25 AUG 2023 - 25 AUG 2023	TIMECOM	EMPLOYEES PROVIDENT FUND BOARD [SSH]	-32	141812	7.679
28 AUG 2023 - 28 AUG 2023	TIMECOM	KUMPULAN WANG PERSARAAN (DIPERBADANKAN) ("KWAP") [SSH]	-88	113667	6.155
24 AUG 2023 - 24 AUG 2023	TIMECOM	EMPLOYEES PROVIDENT FUND BOARD [SSH]	-600	141844	7.68
23 AUG 2023 - 23 AUG 2023	TIMECOM	EMPLOYEES PROVIDENT FUND BOARD [SSH]	-31	142444	7.713
25 AUG 2023 - 25 AUG 2023	TM	EMPLOYEE PROVIDENT FUND BOARD (EPF BOARD) [SSH]	303	641244	16.778
24 AUG 2023 - 24 AUG 2023	TM	EMPLOYEE PROVIDENT FUND BOARD (EPF BOARD) [SSH]	32	640704	16.764
23 AUG 2023 - 23 AUG 2023	TM	EMPLOYEE PROVIDENT FUND BOARD (EPF BOARD) [SSH]	2,846	640672	16.763
24 AUG 2023 - 24 AUG 2023	UMW	EMPLOYEES PROVIDENT FUND BOARD [SSH]	-783	86221	7.38
24 AUG 2023 - 24 AUG 2023	UMW	SIME DARBY ENTERPRISE SDN BHD [SSH]	714,813	714813	61.184
23 AUG 2023 - 23 AUG 2023	UMW	EMPLOYEES PROVIDENT FUND BOARD [SSH]	-1,667	87004	7.447
25 AUG 2023 - 25 AUG 2023	UOADEV	EMPLOYEES PROVIDENT FUND BOARD ("EPF BOARD") [SSH]	-1,219	265469	10.921
23 AUG 2023 - 23 AUG 2023	UOADEV	EMPLOYEES PROVIDENT FUND BOARD ("EPF BOARD") [SSH]	18	265469	10.921
25 AUG 2023 - 25 AUG 2023	UTDPLT	EMPLOYEES PROVIDENT FUND BOARD [SSH]	-15	28280	6.818
23 AUG 2023 - 23 AUG 2023	UTDPLT	EMPLOYEES PROVIDENT FUND BOARD [SSH]	-400	28280	6.818
28 AUG 2023 - 28 AUG 2023	UWC	EMPLOYEES PROVIDENT FUND BOARD [SSH]	97	78297	7.107
25 AUG 2023 - 25 AUG 2023	UWC	EMPLOYEES PROVIDENT FUND BOARD [SSH]	118	78200	7.098
24 AUG 2023 - 24 AUG 2023	UWC	EMPLOYEES PROVIDENT FUND BOARD [SSH]	23	78082	7.088
23 AUG 2023 - 23 AUG 2023	UWC	EMPLOYEES PROVIDENT FUND BOARD [SSH]	79	78059	7.086
30 AUG 2023 - 30 AUG 2023	VS	KUMPULAN WANG PERSARAAN [SSH]	227	346363	9.011
23 AUG 2023 - 23 AUG 2023	VSOLAR	MORGAN STANLEY [SSH]	8,776	8776	5.446
29 AUG 2023 - 29 AUG 2023	WIDAD	TAN SRI MUHAMMAD IKMAL OPAT BIN ABDULLAH [SSH]	-2,000	1200631	38.774
25 AUG 2023 - 25 AUG 2023	WIDAD	TAN SRI MUHAMMAD IKMAL OPAT BIN ABDULLAH [SSH]	-7,494	1202631	38.839
25 AUG 2023 - 25 AUG 2023	WIDAD	WIDAD BUSINESS GROUP SDN. BHD. [SSH]	-8,100	1093132	35.303
29 AUG 2023 - 29 AUG 2023	WPRTS	KUMPULAN WANG PERSARAAN (DIPERBADANKAN) [SSH]	-233	229951	6.743
24 AUG 2023 - 24 AUG 2023	WPRTS	EMPLOYEES PROVIDENT FUND BOARD [SSH]	60	306767	8.996
23 AUG 2023 - 23 AUG 2023	WPRTS	EMPLOYEES PROVIDENT FUND BOARD [SSH]	116	306707	8.994
23 AUG 2023 - 23 AUG 2023	XINHWA	MR ENG PENG LAM @ NG PENG LAM [SSH]	4,980	142033	55.556
23 AUG 2023 - 23 AUG 2023	XINHWA	MR NG AIK CHUAN [SSH]	4,980	146680	57.374
23 AUG 2023 - 23 AUG 2023	XINHWA	MR NG YAM PIN [SSH]	4,980	142033	55.556
23 AUG 2023 - 23 AUG 2023	XINHWA	NF CAPITAL MANAGEMENT SDN. BHD. [SSH]	4,980	142033	55.556
30 AUG 2023 - 30 AUG 2023	YINSON	KUMPULAN WANG PERSARAAN (DIPERBADANKAN) [SSH]	-2,000	185221	6.372
28 AUG 2023 - 28 AUG 2023	YINSON	EMPLOYEES PROVIDENT FUND BOARD [SSH]	74	474167	16.313
29 AUG 2023 - 29 AUG 2023	YINSON	KUMPULAN WANG PERSARAAN (DIPERBADANKAN) [SSH]	-1,711	187221	6.441
25 AUG 2023 - 25 AUG 2023	YINSON	EMPLOYEES PROVIDENT FUND BOARD [SSH]	-4	474093	16.31
28 AUG 2023 - 28 AUG 2023	YINSON	KUMPULAN WANG PERSARAAN (DIPERBADANKAN) [SSH]	-500	188932	6.5
24 AUG 2023 - 24 AUG 2023	YINSON	EMPLOYEES PROVIDENT FUND BOARD [SSH]	-160	474097	16.311
23 AUG 2023 - 23 AUG 2023	YINSON	EMPLOYEES PROVIDENT FUND BOARD [SSH]	-1,044	474257	16.316

Disclaimer: The Information in Insider Activity is extracted from www.shareinvestor.com/fundamental/insider_trades. The information on this page is provided as a service to readers. It does not constitute financial advice and/or any investment recommendations. We assume no liability for damages resulting from or arising out of the use of such information. Whilst every effort is made to ensure accuracy, the information presented is not the official record of shareholder filings. Readers are advised to read the original filings on the Bursa Malaysia website at www.bursamalaysia.com

**CHECK OUT
SHAREINVESTOR
BROKERS' CALL**

Weekly Buy/Sell/Hold calls from leading Malaysian Brokerages.

[Go To Brokers' Call](#)



CapitaLand Malaysia REIT Management Sdn. Bhd., the manager of CapitaLand Malaysia Trust (CLMT), is pleased to announce that MTrustee Berhad, the Trustee of CLMT, has entered into a sale and purchase agreement for the sale of 3 Damansara Office Tower to Lagenda Harta Sdn. Bhd. a wholly owned subsidiary of Lagenda Properties Berhad, for a sale consideration of RM52.0 million.

[READ MORE](#)



The Board of Directors of **Dayang Enterprise Holdings Bhd (DEHB)** is pleased to announce that its wholly-owned subsidiary company, Dayang Enterprise Sdn Bhd, has been awarded contract extension for the Provision of Topside Major Maintenance Services for Sarawak Shell Berhad / Sabah Shell Petroleum Company (Package A) from Sarawak Shell Berhad / Sabah Shell Petroleum Company.

[READ MORE](#)



HSS Engineers Berhad (HSSEB) wishes to announce that on 6 September 2023, HSS Technologies Sdn Bhd, a wholly owned subsidiary of HSS Engineers Berhad has entered into a binding Heads of Agreement with ProPick Digital Solutions & Consulting Sdn Bhd for the incorporation of a joint vehicle in Malaysia to provide comprehensive drone services and intellectual technology solutions, focused on data collection, analysis, reporting for diverse industries, specialized infrastructure inspections, and engaging in innovative research and development in drone technology.

[READ MORE](#)



The Board of Directors of **Malaysian Genomics Resource Centre Berhad (MGRC)** is pleased to announce that MGRC Healthcare Sdn Bhd, a wholly owned subsidiary of the Company, has on 6 September 2023, entered into a Strategic Collaboration Agreement with Yayasan Kanser Malaysia to form a partnership aims to elevate cancer awareness and early detection by merging YKM’s community centric educational programmes with MGRC-H advanced genomic and immunotherapy services, including cutting-edge CAR T-Cells and Natural Killer Cells subject to the terms and conditions of the Collaboration

[READ MORE](#)



The Board of Directors of **Nextgreen Global Berhad (NGGB)** wishes to announce that the Company had on 5 September 2023 entered into a Letter of Intent with Marubeni Corporation with the intention to enter into partnership for the Project that Nextgreen upcycles the Empty Fruit Bunch to valuable uses through its subsidiary companies.

[READ MORE](#)

Further to the announcement made on 29 August 2023, the Board of Directors of **Titijaya**



Land Berhad (TITIJYA) wishes to announce additional information in relation to the winding-up order against Renofajar Sdn. Bhd., an indirect wholly-owned subsidiary of Titijaya.

[READ MORE](#)

Upcoming IPO

NAME OF COMPANY	OFFER PERIOD		ISSUE PRICE (Per Ordinary Share)	LISTING SOUGHT	DATE OF LISTING
	OPENING	CLOSING			
MERCURY SECURITIES GROUP BERHAD	28 Aug 2023	05 Sept 2023	RM0.25	ACE MARKET	19 Sept 2023
EVERGREEN MAX CASH CAPITAL BERHAD	29 Aug 2023	12 Sept 2023	RM0.24	ACE MARKET	26 Sept 2023

Disclaimer: The information in the Investor Relations page is extracted from individual companies’ announcements in www.bursamalaysia.com. The information on this page is provided as a service to readers. We assume no liability for damages resulting from or arising out of the use of such information. Whilst every effort is made to ensure accuracy, the information presented has been simplified for your reading pleasure. Readers are advised to read the original and complete filings on the Bursa Malaysia website at https://www.bursamalaysia.com/market_information/announcements/company_announcement