

Invest

A Weekly e-Publication by SHAREINVESTOR.com

ISSUE

172

FRIDAY
01 SEPTEMBER
2023

Scan/Click QR to Register



Via email, every Friday

Merdeka Kaw Kaw Promotion

23 Aug 2023 - 17 Sep 2023

Enjoy

31% off

SHAREINVESTOR®

STATION

SHAREINVESTOR®

WEBPRO

BURSASTATION

Professional

SUBSCRIBE NOW!

SUBSCRIBE NOW!

Coupon Code:
MYMERDEKA23

Valid for 12-month
subscription

T & C Apply



MALAYSIA'S FOOD INFLATION PRESSURE TO REMAIN ELEVATED IN 2HCY2023 – MIDF RESEARCH

MALAYSIA TO LAUNCH HYDROGEN ROADMAP THIS YEAR AS IT SEEKS HYDROGEN INVESTMENTS – NIK NAZMI

(page 20-22)

07 COMPANY SPOTLIGHT
IGB Berhad

24 MSWG
Wooing stock market participation from the younger generation

04 LEADERBOARD

06 SHARIAH HOT STOCKS

08 SHARIAH MOMENTUM UP STOCKS

10 NON SHARIAH HOT STOCKS

12 UP TRENDING STOCKS

14 VALUE STOCKS

15 GROWTH STOCKS

16 DIVIDEND STOCKS

17 BROKERS' CALL

18 LONG COMPANIES

23 REGIONAL MARKETS

28 INSIDER ACTIVITY

32 INVESTOR RELATIONS



INVESTOR PLATFORMS

Director
Darren Chong
darren.chong@shareinvestor.com

Business Development Manager
Jay Cheong
jay.cheong.@shareinvestor.com

Senior Executive
Daniel Wong
daniel.wong@shareinvestor.com

Executive
Farah Azwani
farah.azwani@shareinvestor.com

Executive
Tan Yong Sheng
yongsheng.tan@shareinvestor.com

ADMIN & OPERATIONS

Senior Executive
Watie Nordin
watie.nordin@shareinvestor.com

Executive
Silas Emmanuel Joseph
silas.joseph@shareinvestor.com

INVESTOR RELATIONS

Group Managing Director & Publisher
Edward Stanislaus
edward@shareinvestor.com

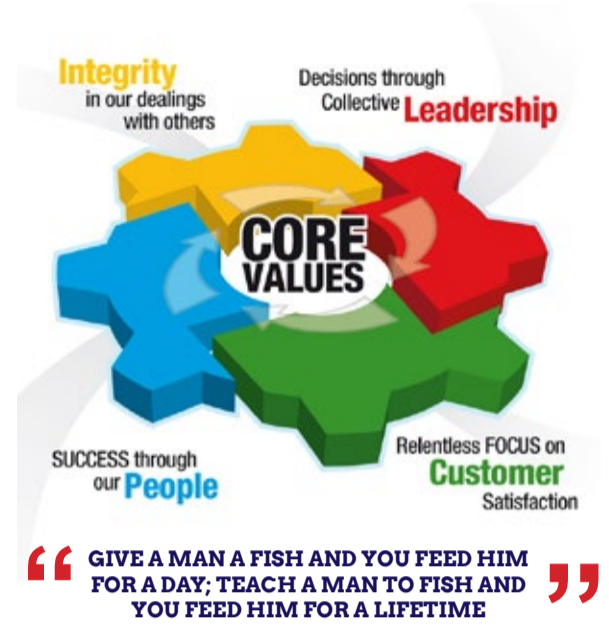
Senior Manager
Letticia Wong
letticia.wong@shareinvestor.com

PROCESS AUTOMATION & DATA ANALYTICS

Data Analyst
Nickson Aw

SHAREINVESTOR HOLDINGS BOARD OF DIRECTORS

- | | |
|------------------|-----------------|
| Chairman | Patrick Daniel |
| Group CEO | Christopher Lee |
| Group COO | Lim Dau Hee |
| Group CFO | Teo Siew May |
| Group MD | Shanison Lin |



ShareInvestor Malaysia Sdn. Bhd.
(200001023956) (526564-M)

Unit No. DF2-07-03A. Level 7,
Persoft Tower, 6B Persiaran Tropicana,
47410 Petaling Jaya, Selangor Darul Ehsan.

Hotline : 603 7803 1791
Mobile : 011 6343 8939
Website : www.ShareInvestor.com.my
www.ShareInvestorHoldings.com
www.Facebook.com/ShareInvestorMalaysia

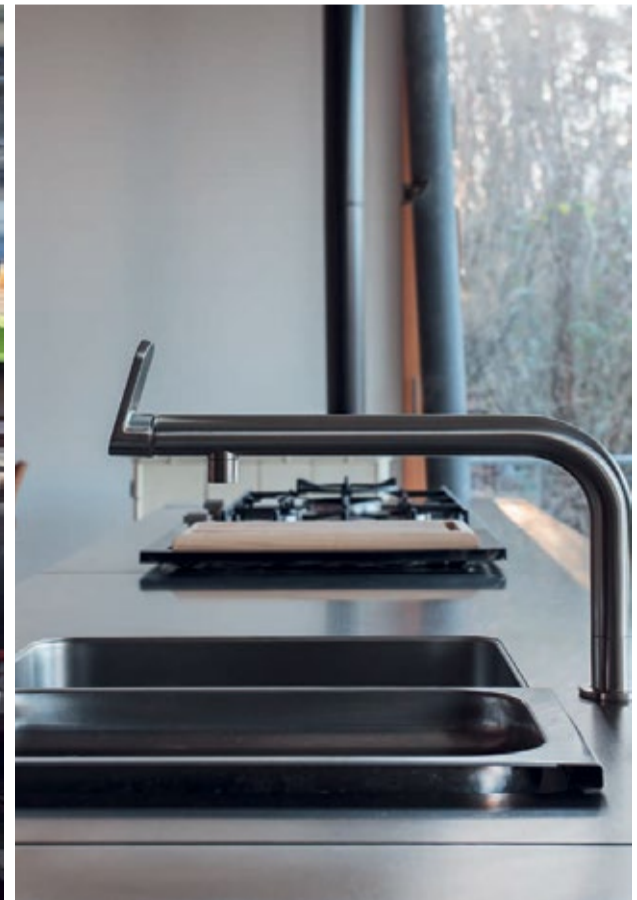
ADVERTISEMENT ENQUIRY

bulthaup takes care of the details so that you can enjoy a harmonious environment.



XTRA

XTRA FURNITURE SDN BHD
The Gardens Mall, Mid Valley City
xtrafurniture.com/bulthaup
fb.com/bulthaupmalaysia



bulthaup



STROM

SWISS TIMEPIECES & JEWELLERY



StromWatch Asia

Tele : +65.9817.3378 Email : ll.stromasia@gmail.com

WWW.STROMWATCH.SWISS



www.shareinvestor.com - market data at your fingertips



ShareInvestor WebPro (www.shareinvestor.com/my)

Prices > Stock Prices > Bursa > click Stocks tab

1. mouse over Ranking > select Top Active > all Shariah stocks are denoted with an [S] > mouse over Column Layout > select Edit Customs > select Name > select Volume > select Last Done Price > Mouse Over Column Layout > select Custom
2. mouse over Ranking > select Top Turnover > all Shariah stocks are denoted with an [S] > mouse over Column Layout > select Edit Customs > select Name > select Last Done Price > select Value > Mouse Over Column Layout > select Custom
3. mouse over Ranking > select Top Gainers (Over 5 Trading Days) > mouse over Column Layout > select Edit Customs > select Name > select Last Done Price > select 5 Days Change > select 5 Days % Change > Mouse Over Column Layout > select Custom
4. mouse over Ranking > select Top Losers (Over 5 Trading Days)
5. mouse over Ranking > select Top % Gainers (Over 5 Trading Days)
6. mouse over Ranking > select Top % Losers (Over 5 Trading Days)

Shariah Top Actives (as at Wednesday)

Name	Price (RM)	Volume
TOPGLOV [S]	0.765	5,356,624.000
EKOVEST [S]	0.540	2,950,726.000
IWCITY [S]	0.765	1,157,865.000
CAPITALA [S]	0.970	790,469.000
TAWIN [S]	0.030	751,077.000
E&O [S]	0.640	678,725.000
VELESTO [S]	0.235	672,063.000
UEMS [S]	0.730	600,097.000
SPSETIA [S]	0.920	552,821.000
MRCB [S]	0.450	517,179.000

Shariah Top Turnover (as at Wednesday)

Name	Price (RM)	Value (RM)
TOPGLOV [S]	0.765	407,437,723
EKOVEST [S]	0.540	153,011,310
PETDAG [S]	22.200	137,658,756
PCHEM [S]	7.120	124,225,276
TENAGA [S]	9.840	111,974,246
IWCITY [S]	0.765	88,356,252
INARI [S]	3.150	82,587,901
CAPITALA [S]	0.970	78,409,609
NESTLE [S]	130.500	75,001,980
DIALOG [S]	2.050	72,531,903

Top Gainers (over 5 Trading days as at Wednesday)

Name	Price (RM)	Change (RM)
MPI	28.800	+1.900
AIRPORT	7.370	+0.470
HAPSENG	4.000	+0.460
MBMR	4.150	+0.460
YTLPOWR	2.140	+0.380
PCHEM	7.120	+0.320
IWCITY	0.765	+0.280
DLADY	21.800	+0.260
ULICORP	1.390	+0.260
DAYANG	1.740	+0.230

Top % Gainers (over 5 Trading days as at Wednesday)

Name	Price (RM)	Change (%)
KGROUP	0.010	+100.00
NEXGRAM	0.020	+100.00
DOLPHIN	0.025	+66.67
SEALINK	0.135	+58.82
IWCITY	0.765	+57.73
AEM	0.015	+50.00
BCMALL	0.015	+50.00
MMAG	0.015	+50.00
TECHNAX	0.015	+50.00
E&O	0.640	+42.22

Top Losers (over 5 Trading days as at Wednesday)

Name	Price (RM)	Change (RM)
HEXTECH	25.660	-2.580
HEIM	23.800	-1.920
KLK	21.540	-0.960
BKAWAN	20.300	-0.720
AEONCR	11.000	-0.540
NESTLE	130.500	-0.400
GENP	5.380	-0.330
CARLSBG	20.200	-0.300
DKSH	4.750	-0.300
PANAMY	21.000	-0.280

Top % Losers (over 5 Trading days as at Wednesday)

Name	Price (RM)	Change (%)
DGB	0.005	-50.00
GOCEAN	0.010	-33.33
JOE	0.010	-33.33
PARKSON	0.255	-30.14
RGB	0.305	-25.61
FOCUS	0.015	-25.00
XOX	0.015	-25.00
DFCITY	0.290	-19.44
HONGSENG	0.045	-18.18
ALAM	0.025	-16.67

SHAREINVESTOR WEBPRO

STOCK MARKET DATA AT YOUR FINGERTIPS

Powerful browser-based market analytics platform.
Access from anywhere



8 Markets Data

- ▶ Get access to data from Bursa, NYSE, Nasdaq, HKEX, SGX, IDX, SET & ASX

Portfolio Management

- ▶ Profit & Loss Summary
- ▶ Stock Alert
- ▶ News & Events filtering
- ▶ Customizable column layout

Fundamental Analysis

Financial Analysis Statement

- ▶ Profit & Loss
- ▶ Balance Sheet
- ▶ Cash Flow Statement
- ▶ More than 20 Financial Ratios
- ▶ Dividend Analysis

Technical Charting

- ▶ C² chart (Customisable & Comprehensive)

Brokers' Call

Intrinsic Value Calculator

FactSheet

- ▶ Key Stock Information
- ▶ Ownership
- ▶ Consensus Estimates
- ▶ Annual Report
- ▶ Historical Price
- ▶ Insider Trades

What's new on WebPro (Stable Release 12.1.0)

In our effort to keep our platform at the forefront of trading technology, we have added on some new features onto our C² Chart in WebPro

ADDITIONAL NEW FEATURES:

- ▶ Anchor selector for AVWAP, PVAT, and PAV indicators
- ▶ Volume profile indicator by date range
- ▶ Moving Average Cross indicator
- ▶ Guppy Multiple Moving Average (GMMA) indicator
- ▶ GoNoGo Trend Signal indicators
- ▶ SignalIQ

So what are you waiting for? Head to our platform today and check out our new trading chart features and indicators. We're confident that you'll love the improvements we've made and that they'll help you become a more successful trader.

Click here to start your 9 days FREE trial
(Valued at RM10)



Price & Volume Distribution Charts (as at Wednesday)

Technical Analysis

DEFINITION: Shariah compliant stocks with Technical Analysis showing 5-days & 10-days Moving Average Price below Yesterday's Close over past 3 days and with Volume Spike.

CHART GUIDE: Volume Distribution Chart is a statistical interpretation of the current sentiment on each stock in graphical format. The highest bar categorized as >150k is likely to be traded by institutions or super dealers, while the lowest bar categorized as <15k usually represents retail investors. "Buy Up" refers to more buyers snatching up the lots queued at selling price. "Sell Down" refers to sellers selling their shares to the buying queue



ShareInvestor WebPro > Screener > Market Screener (FA & TA) > select BURSA > add criteria

A. Criteria

- > click Add Criteria
- Technical Analysis Conditions tab select (i) Moving Average Below Close (ii) Volume Spike
- Fundamental Analysis Conditions tab > select (iii) Revenue
- Prices & Other Conditions tab > select (iv) Is Shariah Compliant
- Technical Analysis Conditions tab select (v) Moving Average Below Close
- Prices & Other Conditions tab > select (vi) Last Done Price
- Technical Analysis Conditions tab select (vii) Moving Average Below Close

B. Conditions (Criteria Filters)

1. Moving Average Below Close - select (MA) type (5) below close price for type (3) days
2. Volume Spike - Volume type (1) greater than type (5) days average
3. Revenue ("000) - select (more than) type (1) for the past select (1) financial year(s)
4. Is Shariah Compliant - select **Yes**
5. Moving Average Below Close - select (MA) type (10) below close price for type (3) days
6. Last Done Price - select (more than) type (0.3)
7. Moving Average Below Close - select (EMA) type (5) below close price for type (3) days

- > click Save Template > Create New Template type (Shariah Hot Stocks) > click Create
- > click Save Template as > select Shariah Hot Stocks > click Save
- > click Screen Now (may take a few minutes)
- > Sort By: Select (Vol) Select (Desc)
- > Mouse over stock name > Charts > click C² Charts or Volume Distribution

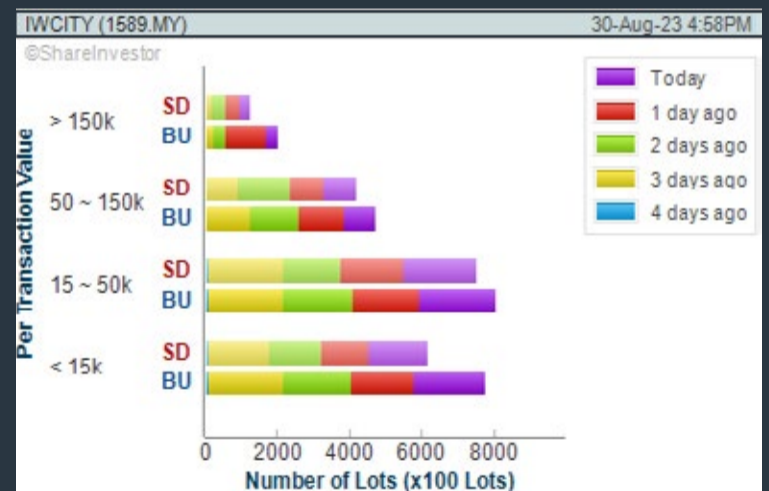
EKOVEST BHD (8877.MY)

C² Chart



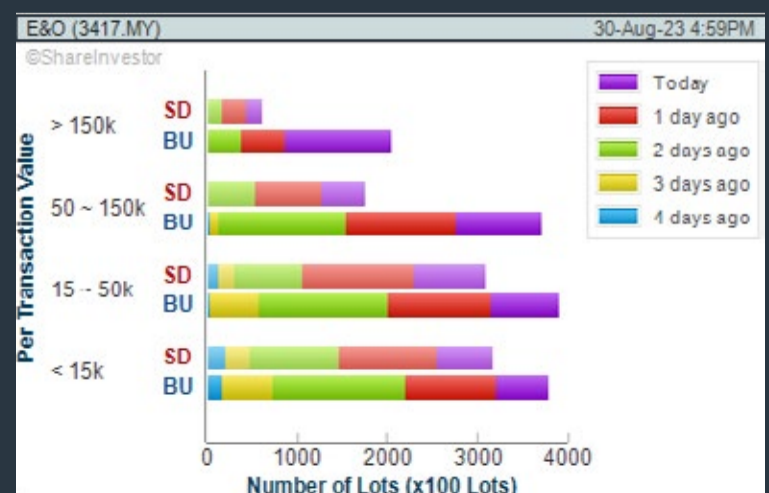
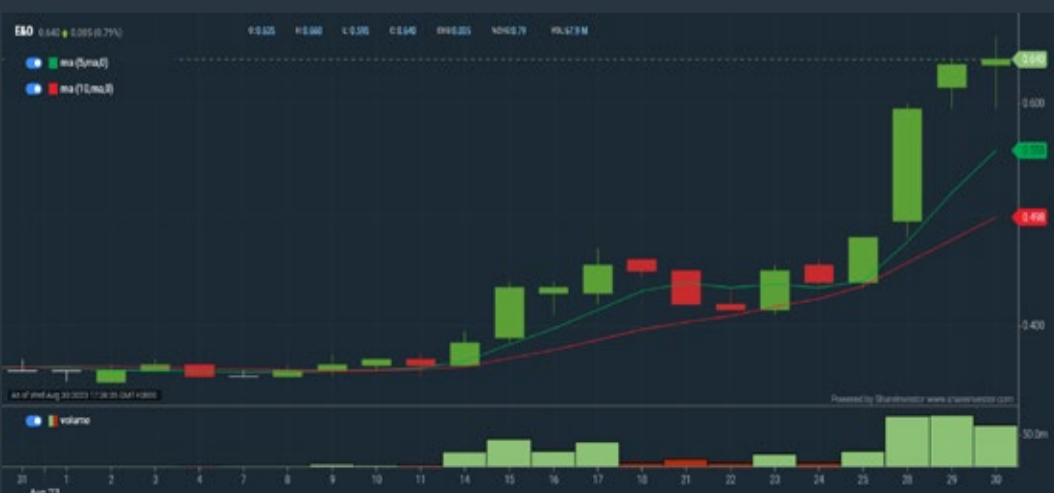
ISKANDAR WATERFRONT CITY BERHAD (1589.MY)

C² Chart



EASTERN & ORIENTAL BHD (3417.MY)

C² Chart



Disclaimer: The information on this page is provided as a service to readers. It does not constitute financial advice and/or any investment recommendations. Past performance is not indicative of future results. We assume no liability for damages resulting from or arising out of the use of such information. It would be best if you did your own research to make your personal investment decisions wisely or consult a licenced investment advisor.

COMPANY BACKGROUND

IGB Berhad is primarily a property company engaged in all aspects of the property industry. Its core business is in retail, commercial, residential, construction and hospitality. The company also has investments in water treatment, information technology and data analytics and education.



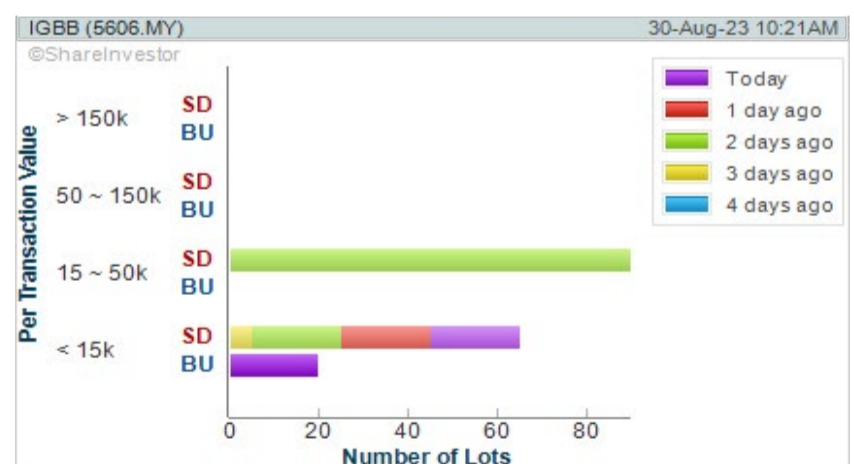
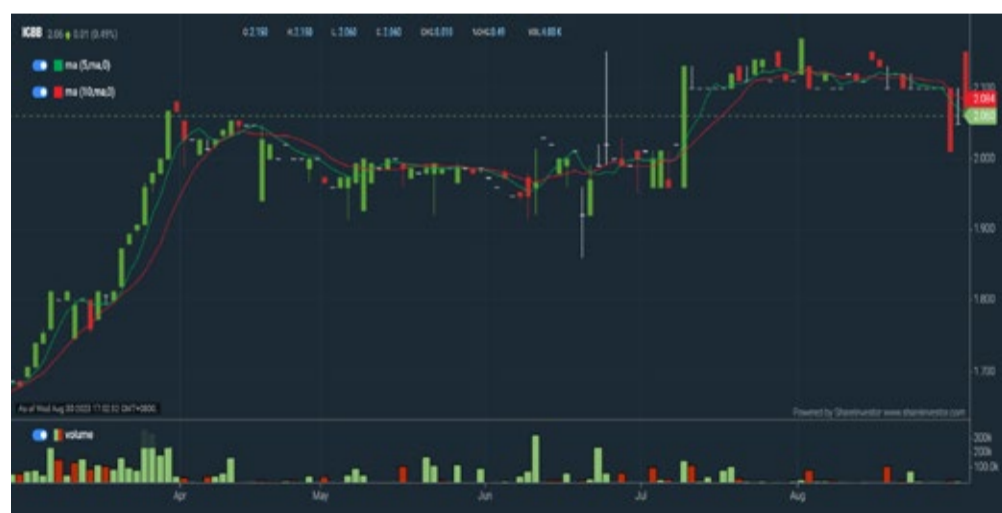
IGBB IGB BERHAD		Updated at 30 Aug 2023 16:50	
Last (MYR): 2.060 ↑	Change: +0.010	High: 2.150	Remarks: s ?
	Change (%): +0.49	Low: 2.060	
Open	2.150	Yesterday's Close	2.050
Buy Price	2.070	Sell Price	2.140
Buy Volume ('00)	20	Sell Volume ('00)	40
Cumulative Volume ('00)	40	Cumulative Value	8,420

Financial Analysis

Profit Growth Profit up and down in last 3 years (with last 3 profitable years)		Piotroski F Score The company has above average financial strength (Piotroski F-Score of 6-7)	
Dividend Payout No dividend paid in most recent year but dividends paid in prior years		Debt to Cashflow High debt to cash flow for most recent year	
Debt to Equity High debt to equity for most recent year		Gross Profit Margin Consistently high gross profit margin of at least 40% for 3 years	

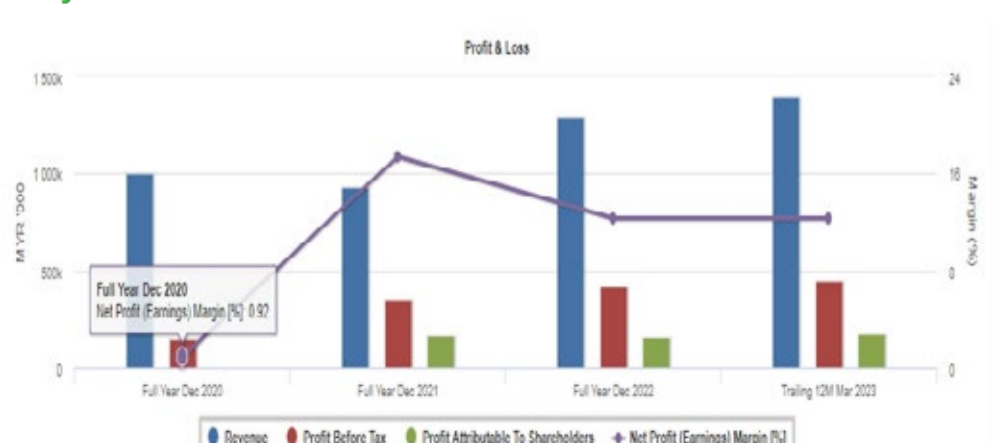
Excellent
 Good
 Neutral
 Be Alert
 Watch Out

[WebPro 9-Days Free Trial Registration \(worth RM9\) Sign Up Now](#)



Period	Dividend Received	Capital Appreciation	Total Shareholder Returns
Short Term Return	5 Days	-3.840	-1.90%
	10 Days	-3.870	-3.29%
	20 Days	-3.110	-5.07%
Medium Term Return	3 Months	-0.300	-4.04%
	6 Months	-0.300	-32.62%
	1 Year	+0.513	+33.15%
Long Term Return	2 Years	0.193	+74.25%
	3 Years	0.278	+531.48%
	5 Years	0.603	+575.69%
Annualised Return	-	-	+46.55%

Key Statistics with Total Shareholder Returns



Disclaimer: The information on this page is provided as a service to readers. It does not constitute financial advice and/or any investment recommendations. Past performance is not indicative of future results. We assume no liability for damages resulting from or arising out of the use of such information. It would be best if you did your own research to make your personal investment decisions wisely or consult a licenced investment advisor.

Price & Volume Distribution Charts (as at Wednesday)

Technical Analysis

DEFINITION: Shariah compliant stocks with Technical Analysis showing Bullish Momentum and Price Uptrend. The share price closed at the highest price yesterday. The typical price was higher than the previous day's typical price.

CHART GUIDE: Volume Distribution Chart is a statistical interpretation of the current sentiment on each stock in graphical format. The highest bar categorized as >150k is likely to be traded by institutions or super dealers, while the lowest bar categorized as <15k usually represents retail investors. "Buy Up" refers to more buyers snatching up the lots queued at selling price. "Sell Down" refers to sellers selling their shares to the buying queue.



ShareInvestor WebPro > Screener > Market Screener (FA & TA)>select BURSA>add criteria

A. Criteria

- > click Add Criteria
- Fundamental Analysis Conditions tab >select (i) Revenue
- Technical Analysis Conditions tab select (ii) Average Volume
- Prices & Other Conditions tab > select (iii) Last Done Price
- Prices & Other Conditions tab > select (iv) Is Shariah Compliant
- Technical Analysis Conditions tab select (v) RSI Overbought
- Technical Analysis Conditions tab select (vi) Moving Average Below Close
- Technical Analysis Conditions tab select (vii) CCI Overbought

B. Conditions (Criteria Filters)

1. Revenue ("000) - select (more than) type (1) for the past select (1) financial year(s)
2. Average Volume - type (1) days average volume greater than type (10000) lots
3. Last Done Price - select (more than) type (0.3)
4. Is Shariah Compliant - select Yes
5. RSI Overbought - select RSI 1 above 99 for 1 days
6. Moving Average Below Close - select (MA) type (10) below close price for type (1) days
7. CCI Overbought - select CCI (2) above (0) for (1) days

- > click Save Template > Create New Template type (Shariah Momentum Up Stocks) > click Create
- > click Save Template as > select Shariah Momentum Up Stocks > click Save
- > click Screen Now (may take a few minutes)
- Sort By: Select (Vol) Select (Desc)
- Mouse over stock name > Charts > click C² Charts tab or Volume Distribution

EKOVEST BHD (8877.MY)

C² Chart

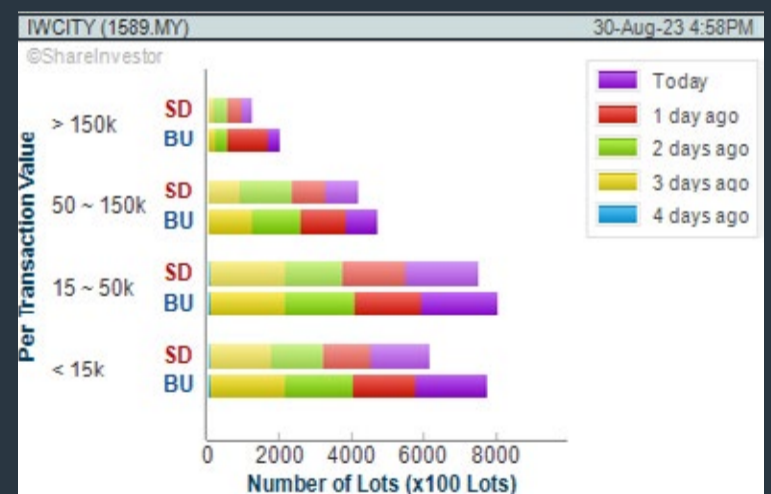
Analysis



ISKANDAR WATERFRONT CITY BERHAD (1589.MY)

C² Chart

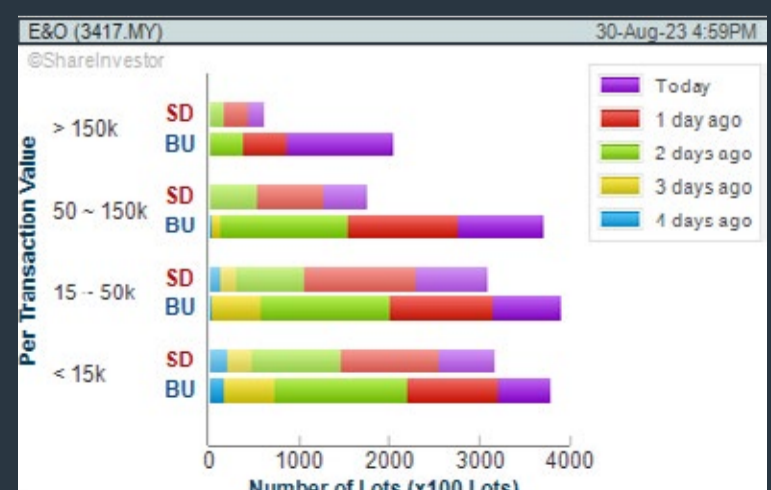
Analysis



EASTERN & ORIENTAL BHD (3417.MY)

C² Chart

Analysis



Disclaimer: The information on this page is provided as a service to readers. It does not constitute financial advice and/or any investment recommendations. Past performance is not indicative of future results. We assume no liability for damages resulting from or arising out of the use of such information. It would be best if you did your own research to make your personal investment decisions wisely or consult a licenced investment advisor.

BURSASTATION

Professional

Stock Scanning

- Technical Analysis (TA) Market Scanner
- Fundamental Analysis (FA) Market Scanner

Monitoring

- Portfolio
- Stock Alerts
- Price Spread Calculator

Market Data

- Equities
- Derivatives

Scan. Chart. Analyse.

Be The Intelligent Investor

Charts

- Intraday Charts
- Interactive Charts
- Historical Charts
- Volume Distribution Charts

Price Movements

- Streaming Prices
- Time & Sales
- Trade Summary Matrix
- Quote Movements
- 5 Levels Market Depth
- Historical Price Download

Fundamentals

- Factsheets
- Financials
- Insider Trades

Brought to you as a collaborative effort by ShareInvestor and Bursa Malaysia, **BursaStation Professional** is designed with you, the user, in mind, as a user-friendly yet full of powerful features that will appeal to investors/traders who need instant access to fundamental, technical, and trading data, anytime, anywhere. **BursaStation Professional** is a state-of-the-art Stock Market Tracker with Charting Software that places in your hands the power to make better investment decisions.

[CLICK HERE TO START YOUR 14-DAYS FREE TRIAL](#)

Price & Volume Distribution Charts (as at Wednesday)

Technical Analysis

DEFINITION: Stocks with Technical Analysis showing 5-days & 10-days Moving Average Price below Close over past 1 days and with Volume Spike

CHART GUIDE: Volume Distribution Chart is a statistical interpretation of the current sentiment on each stock in graphical format. The highest bar categorized as >150k is likely to be traded by institutions or super dealers, while the lowest bar categorized as <15k usually represents retail investors. "Buy Up" refers to more buyers snatching up the lots queued at selling price. "Sell Down" refers to sellers selling their shares to the buying queue.



ShareInvestor WebPro > Screener > Market Screener (FA & TA) > select BURSA > add criteria

A. Criteria

- > click Add Criteria
- Technical Analysis Conditions tab select (i) Moving Average Below Close (ii) Volume Spike
- Fundamental Analysis Conditions tab >select (iii) Revenue
- Prices & Other Conditions tab > select (iv) Is Shariah Compliant
- Technical Analysis Conditions tab select (v) Moving Average Below Close
- Prices & Other Conditions tab > select (vi) Last Done Price
- Technical Analysis Conditions tab select (vii) Moving Average Below Close

B. Conditions (Criteria Filters)

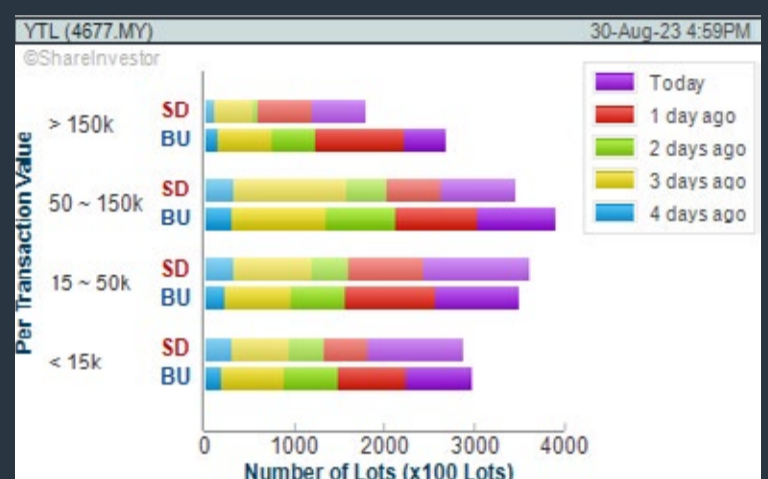
1. Moving Average Below Close - select (MA) type (5) below close price for type (3) days
2. Volume Spike - Volume type (1) greater than type (5) days average
3. Revenue ("000) - select (more than) type (1) for the past select (1) financial year(s)
4. Is Shariah Compliant - select NO
5. Moving Average Below Close - select (MA) type (10) below close price for type (1) days
6. Last Done Price - select (more than) type (0.3)
7. Moving Average Below Close - select (EMA) type (5) below close price for type (1) days

- > click Save Template > Create New Template type (Non-Shariah Hot Stocks) > click Create
- > click Save Template as > select Non-Shariah Hot Stocks > click Save
- > click Screen Now (may take a few minutes)
- Sort By: Select (Vol) Select (Desc)
- Mouse over stock name > Charts > click C² Charts tab or Volume Distribution

YTL CORPORATION BHD (4677.MY)

C² Chart

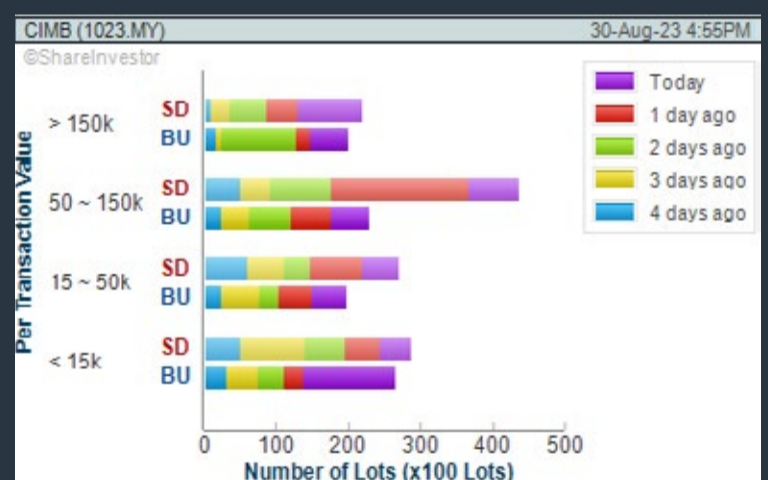
Analysis



CIMB GROUP HOLDINGS BERHAD (1023.MY)

C² Chart

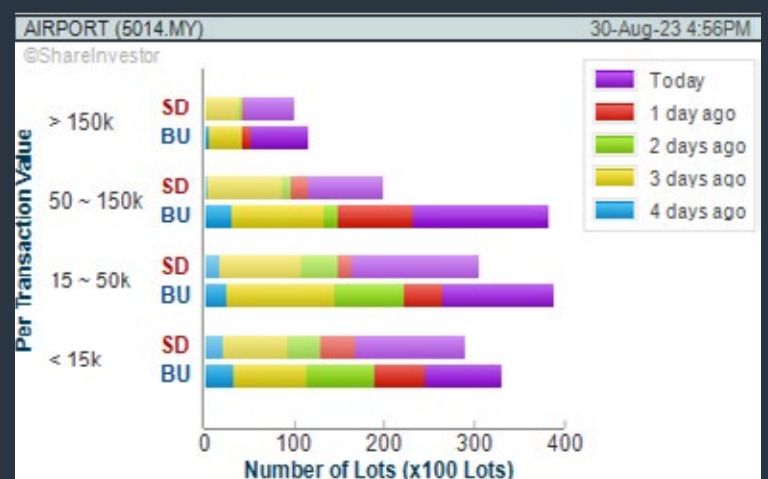
Analysis



MALAYSIA AIRPORTS HOLDINGS BHD (5014.MY)

C² Chart

Analysis



Disclaimer: The information on this page is provided as a service to readers. It does not constitute financial advice and/or any investment recommendations. Past performance is not indicative of future results. We assume no liability for damages resulting from or arising out of the use of such information. It would be best if you did your own research to make your personal investment decisions wisely or consult a licenced investment advisor.

MAKE BETTER TRADING STRATEGIES

with
**SHARE INVESTOR
 STATION**



8 Markets Data

- ▶ Get access to data from Bursa, NYSE, Nasdaq, HKEX, SGX, IDX, SET & ASX

Dynamic Chart

- ▶ Candlestick Pattern Recognition
- ▶ 111 Indicators
- ▶ 39 Drawing Tools
- ▶ Performance Comparison Chart

Intraday Data

- ▶ Market Depth
- ▶ Trade Summary Matrix & Chart
- ▶ Times & Sales
- ▶ Intraday Market Ticker

Market Screener

- ▶ 96 criteria ranging from FA, TA, Consensus Estimate
- ▶ Real-time Data

Power Frame

- ▶ Combining few Dynamic Charts together with intraday information in one frame

Technical Analysis

Fundamental Analysis

Financial Analysis Statement

- ▶ Profit & Loss
- ▶ Balance Sheet
- ▶ Cash Flow Statement
- ▶ More than 20 Financial Ratios
- ▶ Dividend Analysis

FactSheet

- ▶ Key Stock Information
- ▶ Ownership
- ▶ Consensus Estimates
- ▶ Annual Report
- ▶ Historical Price
- ▶ Insider Trades

Start your 18 days
FREE trial now
 (Valued at RM82)



Price & Volume Distribution Charts (Over 5 trading days as at Wednesday)

Technical Analysis

DEFINITION: Stocks with Technical Analysis showing Bullish Momentum and Price Uptrend

CHART GUIDE: Volume Distribution Chart is a statistical interpretation of the current sentiment on each stock in graphical format. The highest bar categorized as >150k is likely to be traded by institutions or super dealers, while the lowest bar categorized as <15k usually represents retail investors. "Buy Up" refers to more buyers snatching up the lots queued at selling price. "Sell Down" refers to sellers selling their shares to the buying queue.



ShareInvestor WebPro > Screener > Market Screener (FA & TA) > select BURSA > add criteria

A. Criteria

- > click Add Criteria
- Fundamental Analysis Conditions tab > select (i) Revenue
- Technical Analysis Conditions tab select (ii) Moving Average Below Close
- Technical Analysis Conditions tab select (iii) Average Volume
- Prices & Other Conditions tab > select (iv) Last Done Price
- Technical Analysis Conditions tab select (v) Moving Average Below Close
- Technical Analysis Conditions tab select (v) Moving Average Bullish Crossover

B. Conditions

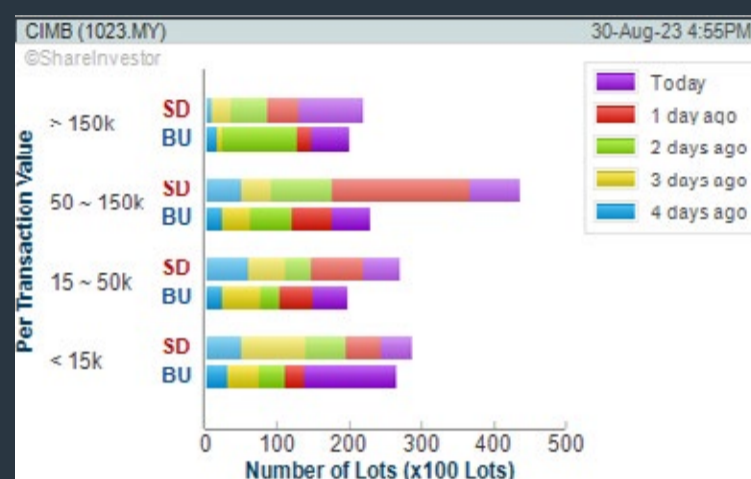
1. Revenue - select (more than) type (1) for the past select (1) financial year(s)
2. Moving Average Below Close - select (MA) type (20) below close price for type (1) days
3. Average Volume - type (5) days average volume type (10000) lots
4. Last Done Price - select (more than) type (0.3)
5. Moving Average Below Close - select (MA) type (10) below close price for type (1) days
6. Moving Average Bullish Crossover - select (MA) type (5) crossed above select (MA) type (10)

> click Save Template > Create New Template type (Non-Shariah Up-Trending Stocks) > click Create Click Save Template As > select Non-Shariah Up Trending Stocks > click Save > click Screen Now (may take a few minutes) Sort By: Select (Vol) Select (Desc) Mouse over stock name > Charts > click C² Charts tab or Volume Distribution

CIMB GROUP HOLDINGS BERHAD (1023.MY)

C² Chart

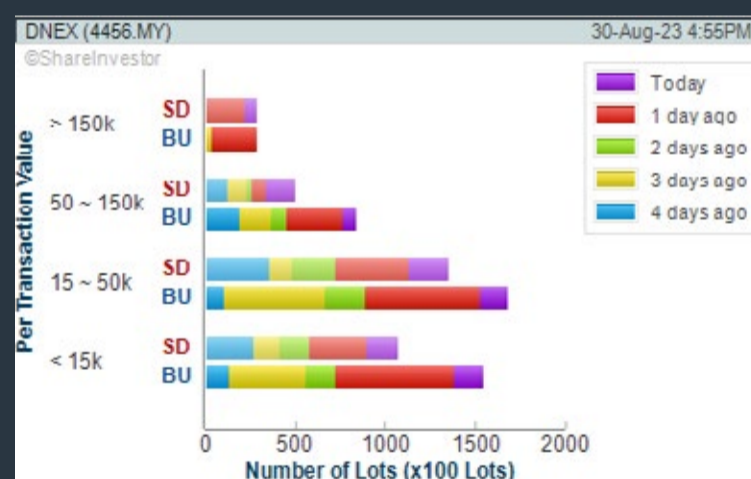
Analysis



DAGANG NEXCHANGE BERHAD (4456.MY)

C² Chart

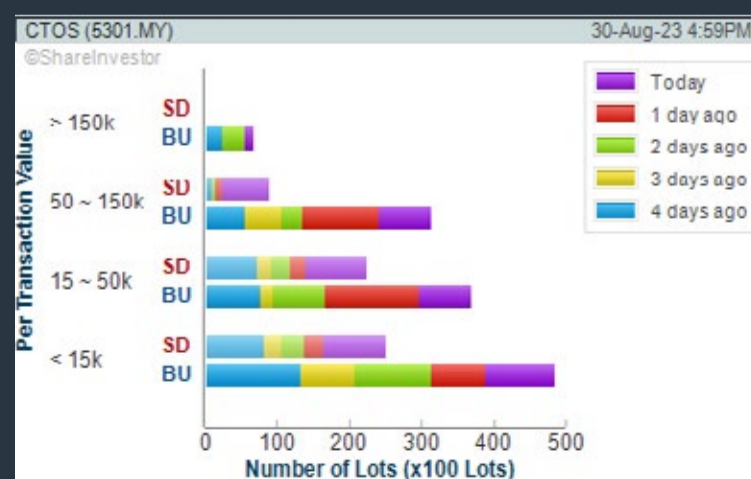
Analysis



CTOS DIGITAL BERHAD (5301.MY)

C² Chart

Analysis



Disclaimer: The information on this page is provided as a service to readers. It does not constitute financial advice and/or any investment recommendations. Past performance is not indicative of future results. We assume no liability for damages resulting from or arising out of the use of such information. It would be best if you did your own research to make your personal investment decisions wisely or consult a licenced investment advisor.



making places creative



usm.com

XTRA

XTRA FURNITURE SDN BHD
The Gardens Mall, Mid Valley City, Lot S-236 & 237
Lingkar Syed Putra, 59200 Kuala Lumpur
T. +603 2282 9088 | living@xtrafurniture.com | xtrafurniture.com
● XTRAFurniture | ● xtrafurnituremsia

Price & Total Shareholder Return (as at Wednesday)

Fundamental Analysis

DEFINITION: Share price of a company trading at a lower price as compared to its fundamentals (FA) such as financial performance and dividend, allowing it to be attractive to value investors.

CHART GUIDE: Total Shareholder Return (TSR) combines share price appreciation and dividend distributions paid to show the total return to the shareholder expressed as a percentage.



ShareInvestor WebPro > Screener > Market Screener (FA & TA) > select BURSA > add criteria

A. Criteria

- > click Add Criteria
- Fundamental Analysis Conditions tab (i) Price Earnings Ratio
- Fundamental Analysis Conditions tab >select (ii) CAGR of Net Earnings
- Fundamental Analysis Conditions tab >select (iii) Net Debt To Equity
- Fundamental Analysis Conditions tab >select (iv) Return On Equity (ROE)

B. Conditions

1. Price Earnings Ratio - select (less than) type (15) times now
2. CAGR of Net Earnings - select (more than) type (10) % for the past type (3) financial year(s)
3. Net Debt To Equity – select (less than) type (1) for the past select (1) financial year(s)
4. Return On Equity (ROE) – select (more than) type (10) % for the past select (1) financial year(s)

- > click Save Template > Create New Template type (Value Stock) > click Create
- > click Save Template as > select Value Companies > click Save
- > click Screen Now (may take a few minutes)
- Sort by: Select (PE Ratio) Select (Ascending)
- > Mouse over stock name > Factsheet > looking for Total Shareholder Return
- > Mouse over stock name > Charts > click C2 Charts tab

EDELTEQ HOLDINGS BERHAD (0278.MY)

C² Chart

Analysis



Period	Dividend Received	Capital Appreciation	Total Shareholder Return
Short Term Return	5 Days	-0.010	-2.13%
	10 Days	-0.075	-14.02%
	20 Days	-0.085	-16.60%

SUNMOW HOLDING BERHAD (03050.MY)

C² Chart

Analysis



Period	Dividend Received	Capital Appreciation	Total Shareholder Return
Short Term Return	5 Days	-	-
	10 Days	-	-
	20 Days	-	-
Medium Term Return	3 Months	+0.320	+36.36%
	6 Months	+0.550	+64.62%
	1 Year	+0.750	+86.32%
Annualised Return	Annualised	-	+26.32%

SCGM BHD (7247.MY)

C² Chart

Analysis



Period	Dividend Received	Capital Appreciation	Total Shareholder Return
Short Term Return	5 Days	-0.095	-0.86%
	10 Days	-0.010	-0.71%
	20 Days	-0.005	-0.60%
Medium Term Return	3 Months	+0.050	+5.58%
	6 Months	-0.095	-14.18%
	1 Year	-0.015	-2.54%
Long Term Return	2 Years	0.051	+2.56%
	3 Years	0.128	+10.86%
	5 Years	0.173	+13.28%
Annualised Return	Annualised	-	+17.43%

Disclaimer: The information on this page is provided as a service to readers. It does not constitute financial advice and/or any investment recommendations. Past performance is not indicative of future results. We assume no liability for damages resulting from or arising out of the use of such information. It would be best if you did your own research to make your personal investment decisions wisely or consult a licenced investment advisor.

Price & Total Shareholder Return (as at Wednesday)

Fundamental Analysis

DEFINITION: Company revenue is growing and making good quality of earnings with positive Free Cash Flow.

CHART GUIDE: Total Shareholder Return (TSR) combines share price appreciation and distributions paid to show the total return to the shareholder expressed as a percentage.



ShareInvestor WebPro > Screener > Market Screener (FA & TA) > select BURSA > add criteria

A. Criteria

1. Fundamental Analysis Conditions tab >select (i) Free Cash Flow, (ii) Revenue Growth, (iii) Gross Profit (Earnings) Margin, (iv) Quality of Earnings, (v) Total Shareholder Returns, > click Add Criteria
2. Fundamental Analysis Conditions tab >select (vi) Total Shareholder Returns > click Add Criteria

B. Conditions (Criteria Filters)

1. Free Cash Flow - select (more than) type (1) for the past select (1) financial year(s)
2. Revenue Growth - select (more than) type (1) for the past select (1) financial year(s)
3. Gross Profit (Earnings) Margin - select (more than) type (30) % for the past select (1) financial year(s)
4. Quality of Earnings - select (more than) type (1) for the past select (1) financial year(s)
5. Total Shareholder Return - select (more than) type (5) % for the past select (3) financial year(s)
6. Total Shareholder Return - select (more than) type (5) % for the past select (5) financial year(s)

- > click Save Template > Create New Template type (Growth Companies) > click Create
- > click Save Template as > select Growth Companies > click Save
- > click Screen Now (may take a few minutes)
- > Sort By: Select (Revenue Growth) Select (Desc)
- > Mouse over stock name > Factsheet > looking for Total Shareholder Return

IGB BERHAD (5606.MY)

C² Chart

Analysis

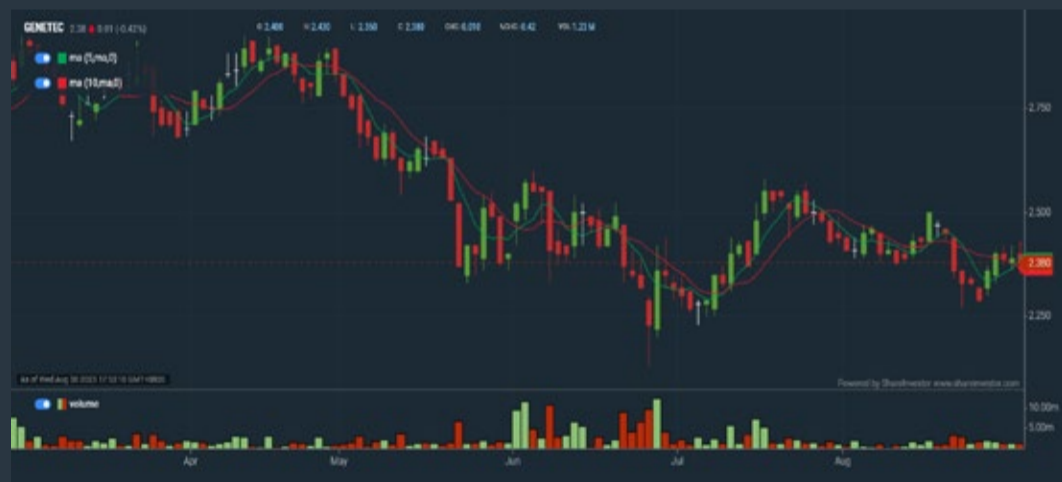


Period	Dividend Received	Capital Appreciation	Total Shareholder Return
Short Term Return	5 Days	0.040	-1.90%
	10 Days	-0.070	-3.29%
	20 Days	-0.110	-6.07%
Medium Term Return	3 Months	-0.000	+4.84%
	6 Months	-0.300	+22.62%
	1 Year	-0.510	+31.16%
Long Term Return	2 Years	0.180	+34.25%
	3 Years	0.270	+50.46%
	5 Years	0.500	+57.28%
Annualised Return	Annualised	-	+8.55%

GENETEC TECHNOLOGY BERHAD (0104.MY)

C² Chart

Analysis



Period	Dividend Received	Capital Appreciation	Total Shareholder Return
Short Term Return	5 Days	-0.050	-2.15%
	10 Days	-0.120	-4.80%
	20 Days	-0.030	-1.34%
Medium Term Return	3 Months	-	-
	6 Months	-0.200	-8.77%
	1 Year	-0.140	-5.66%
Long Term Return	2 Years	-0.012	-0.50%
	3 Years	-	-100.00%
	5 Years	0.050	-104.00%
Annualised Return	Annualised	-	+1.83%

SL INNOVATION CAPITAL BERHAD (03008.MY)

C² Chart

Analysis



Period	Dividend Received	Capital Appreciation	Total Shareholder Return
Short Term Return	5 Days	-	-
	10 Days	-	-
	20 Days	-	-
Medium Term Return	3 Months	-0.255	+74.00%
	6 Months	-0.250	+71.79%
	1 Year	-0.255	+65.40%
Long Term Return	2 Years	-0.255	+65.40%
	3 Years	0.005	+64.80%
	5 Years	0.015	+63.16%
Annualised Return	Annualised	-	+15.26%

Disclaimer: The information on this page is provided as a service to readers. It does not constitute financial advice and/or any investment recommendations. Past performance is not indicative of future results. We assume no liability for damages resulting from or arising out of the use of such information. It would be best if you did your own research to make your personal investment decisions wisely or consult a licenced investment advisor.

Price & Total Shareholder Return (as at Wednesday)

Fundamental Analysis

DEFINITION: Company is paying out dividend with low or moderate leverage.

CHART GUIDE: Total Shareholder Return (TSR) combines share price appreciation and distributions paid to show the total return to the shareholder expressed as a percentage.



ShareInvestor WebPro > Screener > Market Screener (FA & TA) > select BURSA > add criteria

A. Criteria

- > click Add Criteria
- Fundamental Analysis Conditions tab >select (i) Dividend Yield (Historical)
- Fundamental Analysis Conditions tab >select (ii) Dividend Payout (Historical)
- Fundamental Analysis Conditions tab >select (iii) Total Debt To Equity
- Fundamental Analysis Conditions tab >select (iv) Total Shareholder Returns
- Fundamental Analysis Conditions tab >select (v) Total Shareholder Returns
- Fundamental Analysis Conditions tab / >select (vi) CAGR of Dividend Per Share

• Fundamental Analysis Conditions tab >select (vii) CAGR of Dividend Per Share

B. Conditions (Criteria Filters)

1. Dividend Yield - select (more than) type (1) % for the past select (1) financial year(s)
2. Dividend Payout (Historical) - select (between) type (0.5) to type (1) times for the past select (1) financial year(s)
3. Total Debt to Equity - select (less than) type (1) for the past select (1) financial year(s)
4. Total Shareholder Return - select (more than) type (5) % for the past select (3) financial year(s)
5. Total Shareholder Return - select (more than) type (5) % for the past select (5) financial year(s)

6. CAGR of Dividend Per Share - select (less than) type (30) % for the past select (5) financial year(s)
7. CAGR of Dividend Per Share - select (more than) type (1) % for the past select (5) financial year(s)

- > click Save Template > Create New Template type (Dividend Companies) > click Create
- > click Save Template as > select Dividend Companies > click Save
- > click Screen Now (may take a few minutes)
- > Sort By: Select (Dividend Yield) Select (Desc)
- > Mouse over stock name > Factsheet > looking for Total Shareholder Return

JAYCORP BHD (7152.MY)

C² Chart



Analysis

Period	Dividend Received	Capital Appreciation	Total Shareholder Return	
Short Term Return	5 Days	-	-	
	10 Days	-	-	
	20 Days	-	+0.010	+1.44%
Medium Term Return	3 Months	-	+0.095	+0.71%
	6 Months	-	+0.085	+0.71%
	1 Year	-	+0.025	+0.88%
Long Term Return	2 Years	0.355	-0.110	-0.15%
	3 Years	0.170	+0.215	+18.87%
	5 Years	0.355	+0.250	+12.87%
Annualized Return	Annualized	-	-	+18.42%

FORMOSA PROSONIC INDUSTRIES (9172)

C² Chart



Analysis

Period	Dividend Received	Capital Appreciation	Total Shareholder Return	
Short Term Return	5 Days	-	-	
	10 Days	-	+0.120	+4.82%
	20 Days	-	+0.160	+5.37%
Medium Term Return	3 Months	-	-0.200	-16.32%
	6 Months	-	-0.260	-8.67%
	1 Year	-	-0.420	-13.42%
Long Term Return	2 Years	0.230	-1.130	-24.22%
	3 Years	0.340	+1.150	+55.51%
	5 Years	0.320	-1.250	+12.29%
Annualized Return	Annualized	-	-	+17.43%

GAS MALAYSIA BERHAD (5209.MY)

C² Chart



Analysis

Period	Dividend Received	Capital Appreciation	Total Shareholder Return	
Short Term Return	5 Days	-	0.010	0.33%
	10 Days	-	+0.040	+1.32%
	20 Days	-	+0.040	+1.32%
Medium Term Return	3 Months	-	-0.110	-3.48%
	6 Months	-	-0.260	-7.85%
	1 Year	-	-0.370	-10.82%
Long Term Return	2 Years	0.177	-0.240	-18.88%
	3 Years	0.327	-0.200	+21.91%
	5 Years	0.550	-0.140	+23.99%
Annualized Return	Annualized	-	-	+1.30%

Disclaimer: The information on this page is provided as a service to readers. It does not constitute financial advice and/or any investment recommendations. Past performance is not indicative of future results. We assume no liability for damages resulting from or arising out of the use of such information. It would be best if you did your own research to make your personal investment decisions wisely or consult a licenced investment advisor.

Week: 25 Aug – 30 Aug 2023

More Brokers' Call 

AMINVESTMENT BANK <small>... See More</small>	Call	Target Price	Release Date
Sime Darby Property Berhad (5288)	BUY	RM0.82	29 Aug 2023
Suria Capital Holdings Berhad (6521)	HOLD	RM1.40	29 Aug 2023
APEX <small>... See More</small>	Call	Target Price	Release Date
Axiata Group Berhad (6888)	BUY	RM3.27	30 Aug 2023
Tambun Indah Land Berhad (5191)	HOLD	RM0.88	29 Aug 2023
Telekom Malaysia Berhad (4863)	BUY	RM6.31	28 Aug 2023
Kuala Lumpur Kepong Berhad (2445)	HOLD	RM19.20	25 Aug 2023
BIMB <small>... See More</small>	Call	Target Price	Release Date
Press Metal Aluminium Holdings Berhad (8869)	BUY	RM5.43	30 Aug 2023
Velesto Energy Berhad (5243)	BUY	RM0.30	30 Aug 2023
CGS CIMB <small>... See More</small>	Call	Target Price	Release Date
IJM Corporation Berhad (3336)	ADD	RM2.15	28 Aug 2023
YTL Power International Berhad (6742)	ADD	RM2.40	25 Aug 2023
KENANGA <small>... See More</small>	Call	Target Price	Release Date
IHH Healthcare Berhad (5225)	OUTPERFORM	RM7.00	30 Aug 2023
Inari Amertron Berhad (0166)	MARKET PERFORM	RM3.20	30 Aug 2023
MALACCA SECURITIES <small>... See More</small>	Call	Target Price	Release Date
OM Holdings Limited (5298)	BUY	RM1.92	29 Aug 2023
OSK Holdings Berhad (5053)	BUY	RM1.41	30 Aug 2023
MIDF <small>... See More</small>	Call	Target Price	Release Date
Alliance Bank Malaysia Berhad (2488)	BUY	RM3.90	30 Aug 2023
QL Resources Berhad (7084)	BUY	RM6.75	30 Aug 2023
JOB KAY HIAN <small>... See More</small>	Call	Target Price	Release Date
Oppstar Berhad (0275)	BUY	RM2.53	29 Aug 2023
Telekom Malaysia Berhad (4863)	BUY	RM5.88	28 Aug 2023

Disclaimer: InveSt does not accept any liability whatsoever for any direct, indirect or consequential losses (including loss of profit) or damages that may arise from the use of information or opinions in this publication. The information and opinions in InveSt are not to be considered as an offer to sell or buy any of the securities discussed. Opinions expressed are subject to change without notice. The Brokers may, from time to time, have interests or positions in the securities mentioned. For the full report on each item listed on this page, please visit https://www.shareinvestor.com/my/brokers_call.

DEFINITION: Top 9 stocks with Technical Analysis plus Pattern Matching by 60 pre-defined indicators by the system showing a higher probability of bullish sentiment on the share price.



ShareInvestor WebPro > Screener > Predefined TA Screens > select market BURSA > Most Long Signals > click Scan Results or mouse over each company

WESTPORTS HOLDINGS BERHAD (5246.MY)

WPRTS

Price updated at 30 Aug 2023 16:55

Last: 3.500	Change: -0.050	Volume: 12,093
	Change (%): -1.41	Range: 3.500 - 3.550

TA Scanner Results based on historical data up to 30 Aug 2023

Condition	Signal	Explanation
Bollinger Band: High Above Upper Bollinger Band	Neutral	"1. High above upper bollinger band(14,2). 2. Average volume(5) is above 100,000."
DM: Bullish Directional Movement	Long	-DI(14) crossed below +DI(14)
MA: Short Term Bullish Moving Average Crossover	Long	MA(10) crossed above MA(15) within the last 1 day.
RSI: Short Term RSI 50 Bullish Crossover	Long	"1. RSI(20) crossed above 50 within the last 1 day and RSI(20) 1 day ago below 50 for the last 5 days. 2. Volume above average volume(125). 3. Average volume(5) is above 100,000."
Volume: 10 Days large value Buy Up trade	Long	"1. 150K value Buy Up greater than Sell Down by 20% for 10 days. 2. 50K-100K value Buy Up greater than Sell Down by 20% for 10 days. 3. Average volume(10) is above 1000000"
Volume: 5 Days large value Buy Up trade	Long	"1. 150K value Buy Up greater than Sell Down by 20% for 5 days. 2. 50K-100K value Buy Up greater than Sell Down by 20% for 5 days. 3. Average volume(10) is above 1000000"
Williams %R: Bearish Williams %R	Short	"1. Williams %R(26) between 0 and -20. 2. Average volume(5) is above 100,000."

RANHILL UTILITIES BERHAD (5272.MY)

RANHILL

Price updated at 30 Aug 2023 16:57

Last: 0.670	Change: -0.005	Volume: 47,280
	Change (%): -0.74	Range: 0.660 - 0.685

TA Scanner Results based on historical data up to 30 Aug 2023

Condition	Signal	Explanation
Bollinger Band: High Above Upper Bollinger Band	Neutral	"1. High above upper bollinger band(14,2). 2. Average volume(5) is above 100,000."
Donchian Channels: High Above Upper Donchian Channels	Long	High crossed above the upper Donchian Channel(14,4)
Price: New 52 Week High	Long	"1. Stock reach a new 52 week high. 2. Average volume(30) is above 50000."
Volume: 10 Days large value Buy Up trade	Long	"1. 150K value Buy Up greater than Sell Down by 20% for 10 days. 2. 50K-100K value Buy Up greater than Sell Down by 20% for 10 days. 3. Average volume(10) is above 1000000"
Volume: 5 Days large value Buy Up trade	Long	"1. 150K value Buy Up greater than Sell Down by 20% for 5 days. 2. 50K-100K value Buy Up greater than Sell Down by 20% for 5 days. 3. Average volume(10) is above 1000000"
Williams %R: Bearish Williams %R	Short	"1. Williams %R(26) between 0 and -20. 2. Average volume(5) is above 100,000."

Disclaimer: The information on this page is provided as a service to readers. It does not constitute financial advice and/or any investment recommendations. Past performance is not indicative of future results. We assume no liability for damages resulting from or arising out of the use of such information. It would be best if you did your own research to make your personal investment decisions wisely or consult a licenced investment advisor.

EASTERN & ORIENTAL BHD (3417.MY)

E&O

Price updated at 30 Aug 2023 16:59

Last: 0.640	Change: +0.005	Volume: 678,725
	Change (%): +0.79	Range: 0.595 - 0.660

TA Scanner Results based on historical data up to 30 Aug 2023

Condition	Signal	Explanation
Bollinger Band: High Above Upper Bollinger Band	Neutral	"1. High above upper bollinger band(14,2). 2. Average volume(5) is above 100,000."
MA: Long Term Bullish Moving Average Crossover	Long	MA(50) crossed above MA(200) within the last 1 day.
Price: New 52 Week High	Long	"1. Stock reach a new 52 week high. 2. Average volume(30) is above 50000."
RSI: RSI Overbought	Short	"1. RSI(20) is above 80. 2. RSI(20) is increasing for the last 3 days. 3. Stock has more than 75 days of historical data."
Volume: 10 Days large value Buy Up trade	Long	"1. 150K value Buy Up greater than Sell Down by 20% for 10 days. 2. 50K-100K value Buy Up greater than Sell Down by 20% for 10 days. 3. Average volume(10) is above 1000000"
Volume: 5 Days large value Buy Up trade	Long	"1. 150K value Buy Up greater than Sell Down by 20% for 5 days. 2. 50K-100K value Buy Up greater than Sell Down by 20% for 5 days. 3. Average volume(10) is above 1000000"
Volume: Consecutive Days Of Increasing Average Volume	Long	"1. Average Volume(20) has been increasing over the last 2 weeks. 2. Average volume(20) is above 100000"
Williams %R: Bearish Williams %R	Short	"1. Williams %R(26) between 0 and -20. 2. Average volume(5) is above 100,000."

FEDERAL INTERNATIONAL HOLDINGS BERHAD (8605.MY)

FIHB

Price updated at 30 Aug 2023 16:56

Last: 0.570	Change: -0.030	Volume: 6,651
	Change (%): -5.00	Range: 0.570 - 0.580

TA Scanner Results based on historical data up to 30 Aug 2023

Condition	Signal	Explanation
Bollinger Band: Bullish Lower Bollinger Band Support	Long	"1. Low 1 day ago below lower bollinger band(20,2). 2. Close above close 1 day ago. 3. Average volume(5) is above 100,000."
Bollinger Band: High Above Upper Bollinger Band	Neutral	"1. High above upper bollinger band(14,2). 2. Average volume(5) is above 100,000."
Bollinger Band: Low Below Lower Bollinger Band	Neutral	"1. Low below lower bollinger band(14,2). 2. Average volume(5) is above 100,000."
Chaikin Volatility: Increasing Chaikin Volatility	Neutral	Chaikin Volatility(10,10) has been increasing for 5 days
DM: Bullish Directional Movement	Long	-DI(14) crossed below +DI(14)
Donchian Channels: High Above Upper Donchian Channels	Long	High crossed above the upper Donchian Channel(14,4)
MA: Bullish Price Crossover	Long	"1. Close price crossed above MA(40) within the last 1 day. 2. Previous day close price is below the MA(10) for the last 5 days"
RSI: Short Term RSI 50 Bullish Crossover	Long	"1. RSI(20) crossed above 50 within the last 1 day and RSI(20) 1 day ago below 50 for the last 5 days. 2. Volume above average volume(125). 3. Average volume(5) is above 100,000."
Williams %R: Bearish Williams %R	Short	"1. Williams %R(26) between 0 and -20. 2. Average volume(5) is above 100,000."



ZELAN BHD (2283.MY)

ZELAN

Price updated at 30 Aug 2023 16:50

Last: 0.045	Change: -	Volume: 44,272
	Change (%): -	Range: 0.040 - 0.045

TA Scanner Results based on historical data up to 30 Aug 2023

Condition	Signal	Explanation
Accumulation Distribution: Bullish Accumulation Distribution	Long	Accumulation distribution increasing for the last 7 days
Bollinger Band: Bullish Long Term Volatility Breakout and Trending	Long	"1. Close price above upper bollinger band(33,1). 2. Volume above average volume(50). 3. Average volume(50) is above 300,000."
Bollinger Band: Bullish Short Term Volatility Breakout and Trending	Long	"1. Close price above upper bollinger band(33,1). 2. Volume above average volume(10). 3. Average volume(10) is above 300,000."
Bollinger Band: High Above Upper Bollinger Band	Neutral	"1. High above upper bollinger band(14,2). 2. Average volume(5) is above 100,000."
Donchian Channels: High Above Upper Donchian Channels	Long	High crossed above the upper Donchian Channel(14,4)



PUNCAK NIAGA HOLDINGS BHD (6807.MY)

PUNCAK

Price updated at 30 Aug 2023 16:58

Last: 0.320	Change: -	Volume: 26,626
	Change (%): -	Range: 0.320 - 0.335

TA Scanner Results based on historical data up to 30 Aug 2023

Condition	Signal	Explanation
Bollinger Band: Bullish Lower Bollinger Band Support	Long	"1. Low 1 day ago below lower bollinger band(20,2). 2. Close above close 1 day ago. 3. Average volume(5) is above 100,000."
Candlestick: Bullish Engulfing	Long	Bullish: Engulfing
DM: Bullish Directional Movement	Long	-DI(14) crossed below +DI(14)
MA: Bullish Price Crossover	Long	"1. Close price crossed above MA(40) within the last 1 day. 2. Previous day close price is below the MA(10) for the last 5 days"
Volume: Consecutive Days Of Decreasing Average Volume	Short	"1. Average Volume(20) has been decreasing over the last 2 week. 2. Average volume(20) is above 50000"



ACO GROUP BERHAD (0218.MY)

ACO

Price updated at 30 Aug 2023 16:50

Last: 0.225	Change: -	Volume: 5,553
	Change (%): -	Range: 0.225 - 0.230

TA Scanner Results based on historical data up to 30 Aug 2023

Condition	Signal	Explanation
Bollinger Band: High Above Upper Bollinger Band	Neutral	"1. High above upper bollinger band(14,2). 2. Average volume(5) is above 100,000."
DM: Bullish Directional Movement	Long	-DI(14) crossed below +DI(14)
Donchian Channels: High Above Upper Donchian Channels	Long	High crossed above the upper Donchian Channel(14,4)
MA: Long Term Bullish Moving Average Crossover	Long	MA(50) crossed above MA(200) within the last 1 day.
Parabolic SAR: Bearish Parabolic SAR Reversal	Neutral	"1. Parabolic SAR 1 day ago above close price 1 day ago for the last 5 days. 2. Parabolic SAR below close price"



UZMA BHD (7250.MY)

UZMA

Price updated at 30 Aug 2023 16:59

Last: 0.800	Change: +0.010	Volume: 69,040
	Change (%): +1.27	Range: 0.795 - 0.825

TA Scanner Results based on historical data up to 30 Aug 2023

Condition	Signal	Explanation
Bollinger Band: Bullish Long Term Volatility Breakout and Trending	Long	"1. Close price above upper bollinger band(33,1). 2. Volume above average volume(50). 3. Average volume(50) is above 300,000."
Bollinger Band: Bullish Short Term Volatility Breakout and Trending	Long	"1. Close price above upper bollinger band(33,1). 2. Volume above average volume(10). 3. Average volume(10) is above 300,000."
Bollinger Band: High Above Upper Bollinger Band	Neutral	"1. High above upper bollinger band(14,2). 2. Average volume(5) is above 100,000."
Donchian Channels: High Above Upper Donchian Channels	Long	High crossed above the upper Donchian Channel(14,4)
Price: New 52 Week High	Long	"1. Stock reach a new 52 week high. 2. Average volume(30) is above 50000."
Williams %R: Bearish Williams %R	Short	"1. Williams %R(26) between 0 and -20. 2. Average volume(5) is above 100,000."



ZECON BHD (7028.MY)

ZECON

Price updated at 30 Aug 2023 15:21

Last: 0.400	Change: -	Volume: 1,364
	Change (%): -	Range: 0.390 - 0.405

TA Scanner Results based on historical data up to 30 Aug 2023

Condition	Signal	Explanation
Bollinger Band: Bullish Lower Bollinger Band Support	Long	"1. Low 1 day ago below lower bollinger band(20,2). 2. Close above close 1 day ago. 3. Average volume(5) is above 100,000."
Bollinger Band: High Above Upper Bollinger Band	Neutral	"1. High above upper bollinger band(14,2). 2. Average volume(5) is above 100,000."
Donchian Channels: High Above Upper Donchian Channels	Long	High crossed above the upper Donchian Channel(14,4)
MACD: Bullish MACD Crossover	Long	"1. MACD(12,26) diff line crossed above the MACD(12,26) signal line. 2. MACD Histogram(12,26) is above 0."
Parabolic SAR: Bearish Parabolic SAR Reversal	Neutral	"1. Parabolic SAR 1 day ago above close price 1 day ago for the last 5 days. 2. Parabolic SAR below close price"
RSI: Short Term RSI 50 Bullish Crossover	Long	"1. RSI(20) crossed above 50 within the last 1 day and RSI(20) 1 day ago below 50 for the last 5 days. 2. Volume above average volume(125). 3. Average volume(5) is above 100,000."
Volume: Volume Spike	Long	"1. Volume is more than 500% above average volume(10). 2. Volume above 200000. 3. Close price above 0.10"
Williams %R: Bearish Williams %R	Short	"1. Williams %R(26) between 0 and -20. 2. Average volume(5) is above 100,000."

Disclaimer: The information on this page is provided as a service to readers. It does not constitute financial advice and/or any investment recommendations. Past performance is not indicative of future results. We assume no liability for damages resulting from or arising out of the use of such information. It would be best if you did your own research to make your personal investment decisions wisely or consult a licenced investment advisor.

Volume: Volume Spike	Long	"1. Volume is more than 500% above average volume(10). 2. Volume above 200000. 3. Close price above 0.10"
----------------------	------	---

MALAYSIA'S FOOD INFLATION PRESSURE TO REMAIN ELEVATED IN 2H CY 2023 – MIDF RESEARCH

A ccording to MIDF Research, food inflation pressure in Malaysia is expected to remain elevated in the second half of calendar year 2023 as the country, being a net food importer, will be affected negatively amid climate change impacts and external developments on food export policies.

Malaysia's producer price index (PPI) declined 2.3% in July 2023 (June: -4.8%), citing the Department of Statistics Malaysia. Malaysia's producer prices deflated for the sixth consecutive month in July 2023, declining by 2.3% y-o-y. The contraction continued as manufacturing input prices deflated by 2.1% y-o-y, the steepest in three months.

Goods-producing prices for the manufacture of food and the manufacture of coke and refined petroleum were among the key downward factors. Meanwhile, the production cost for agriculture,

forestry and fishing ended one year of contractionary sequence, expanded by 3.6% y-o-y (June 2023: -20.4% y-o-y).

The electricity and gas prices rose at the softest pace in three months at 0.1% y-o-y while inflation for water supply eased to 3.1% y-o-y (June 2023: +3.2% y-o-y). By the processing stage, prices for crude materials dropped by 6.3% y-o-y (June 2023: -18.7% y-o-y), attributable to the decline in prices of non-food materials.

Given the high base effect of commodity prices, the producer's output deflation was within expectations. The contractionary trend of the PPI indicated further moderation in overall inflationary pressure. However, it is worth to monitor the persistent increase in food price pressure.

Malaysia to launch hydrogen roadmap this year as it seeks hydrogen investments – Nik Nazmi

According to the Minister of Natural Resources, Environment and Climate Change Nik Nazmi Nik Ahmad, it would be remiss not to mention green hydrogen's potential as a fuel alternative. Hence Malaysia's upcoming Hydrogen Economy and Technology Roadmap will underline ways for the nation to attract investments to produce this new commodity to become a main green hydrogen export hub by 2027.

The federal government, in collaboration with state governments and utilities like TNB, is excited to explore the prospect of harnessing a new energy carrier and the knock-on economic effects it would bring. The aim is to unlock the hydrogen economy through the NETR (National Energy Transition Roadmap) and the Hydrogen Economy and Technology Roadmap (HETR), targeted to be rolled out later this year. He was speaking at the launch of the Energy Transition Conference 2023.

Malaysia, a key producer of natural gas, has been exploring hydrogen as a new resource considering rising demand for green energy.

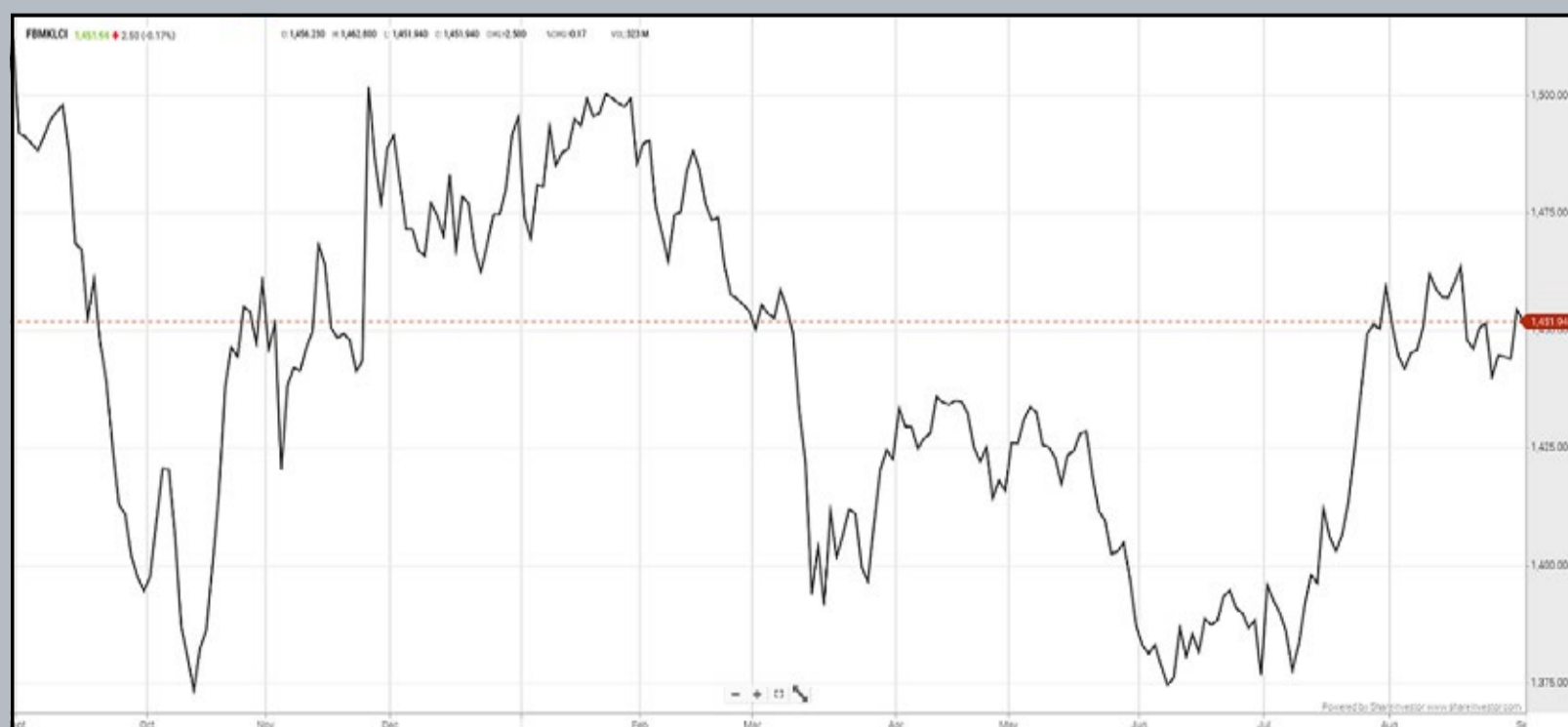
This is due to its gas-like nature, which means it can be stored and transported, unlike other existing raw RE such as solar, hydro and wind. While hydrogen itself does not emit carbon when consumed as a fuel

source, production of the molecules using green energy has been very expensive – said to cost at least US\$250 (RM1,164) per barrel of oil equivalent, as opposed to the selling price of crude oil of about US\$70-per-barrel range at present.

Proponents of hydrogen include national oil and gas company Petronas as well as the Sarawak state government, which intends to utilise its vast hydro electricity generation capacity to support green hydrogen production. The state has also tested its first hydrogen-powered autonomous rapid transit tram this month. National utility outfit TNB is also looking at hydrogen, in a bid to explore hydrogen-fired gas plants.

Eye On The Markets

On Wednesday (30Aug), the Ringgit closed at 4.6455 against the USD and 3.4316 to the Sing Dollar. On Monday (28Aug), the FBM KLCI opened at 1443.67. As at Wednesday (30Aug) 5:00pm, the FBM KLCI closed up 8.27 points at 1451.94. Over in US, the overnight Dow Jones Industrial Average closed down 168.33 points (-0.48%) to 34,721.91 whilst the NASDAQ added 15.66 points (+0.11%) to 14,034.97.



KLCI 1 Year Chart

Over 5 trading days



ShareInvestor WebPro (www.shareinvestor.com/my)

1. Price > Stock Prices
2. Select Market: NASDAQ / NYSE / IDX / SET / HKEX / SGX (One bourse at a time)
3. select Stocks Tab
4. select Ranking Top Gainers or Top Losers (Over 5 Trading Days)
5. Mouse over Column Layout > select Edit Customs > select Name > select Last Done Price > select 5 Days Change > select 52 Weeks High > select 52 Weeks Low > Mouse Over Column Layout > select Custom

NASDAQ (USD)

Top Gainers

Name	Last Done	Change Over 5 Days	52 Weeks High	52 Weeks Low
MERCADOLIBRE INC	1,372.360	+157.050	1,388.390	754.760
BROADCOM INC	922.890	+71.070	923.180	415.068
BOOKING HOLDINGS INC	3,105.030	+62.520	3,251.709	1,616.850
LAM RESEARCH CORP	702.400	+46.470	726.525	299.592
ADITXT INC	55.000	+45.890	1,139.600	7.340

Top Losers

Name	Last Done	Change Over 5 Days	52 Weeks High	52 Weeks Low
VINFAST AUTO LTD	34.710	-14.290	93.000	11.610
HITEK GLOBAL INC	24.680	-9.320	39.796	4.110
FIRST CITIZENS BANCSHARES INC NRTH	1,360.400	-9.060	1,512.070	505.840
NOVOCURE LTD	22.060	-7.940	120.030	18.030
DAILY JOURNAL CO	294.800	-5.720	315.500	236.010

NYSE (USD)

Top Gainers

Name	Last Done	Change Over 5 Days	52 Weeks High	52 Weeks Low
BERKSHIRE HATHAWAY INC	546,725.010	+6,725.010	556,117.000	393,012.250
NVR INC	6,377.330	+307.320	6,474.530	3,816.555
AUTOZONE INC	2,531.330	+77.930	2,750.000	2,050.210
FAIR ISAAC CORP	904.590	+57.680	902.980	389.835
METTLER-TOLEDO INTERNATIONAL INC	1,213.480	+51.520	1,615.970	1,065.550

Top Losers

Name	Last Done	Change Over 5 Days	52 Weeks High	52 Weeks Low
HUMANA INC	461.630	-21.000	571.300	423.290
WORLD WRESTLING ENTERTAINMENT INC	96.550	-17.210	118.040	65.040
DOLLAR GENERAL CORP	138.500	-16.480	261.590	128.480
UNITEDHEALTH GROUP INC	476.580	-11.520	558.100	436.510
MCKESSON CORPORATION	412.320	-11.030	441.000	331.750

IDX (Rupiah)

Top Gainers

Name	Last Done	Change Over 5 Days	52 Weeks High	52 Weeks Low
METROPOLITAN KENTJ	27,950.000	+950.000	46,200.000	16,950.000
NFC INDONESIA TBK	6,250.000	+875.000	13,375.000	4,100.000
PANTAI INDAH KAPUK DUA TBK	3,770.000	+760.000	3,830.000	810.000
JASA MARGA	4,300.000	+740.000	4,460.000	2,770.000
AMMAN MINERAL INTERNASIONAL TBK	4,530.000	+580.000	4,550.000	1,700.000

Top Losers

Name	Last Done	Change Over 5 Days	52 Weeks High	52 Weeks Low
DIAN SWASTATIKA SENTOSA TBK	48,000.000	-3,200.000	56,050.000	31,850.000
TELEFAST INDONESIA TBK	995.000	-755.000	5,900.000	995.000
SIANTAR TOP	11,650.000	-725.000	16,900.000	6,800.000
GUDANG GARAM TBK	24,050.000	-700.000	30,050.000	16,500.000
UNITED TRACTORS	26,000.000	-700.000	36,200.000	22,200.000

SET (Thai Baht)

Top Gainers

Name	Last Done	Change Over 5 Days	52 Weeks High	52 Weeks Low
OHTL	490.000	+16.000	610.000	410.000
KYE	299.000	+9.000	331.000	288.000
KWC	248.000	+8.000	320.000	224.000
JTS	36.250	+6.500	92.250	23.200
CHOTI	132.000	+5.000	179.000	112.000

Top Losers

Name	Last Done	Change Over 5 Days	52 Weeks High	52 Weeks Low
BBIK	115.500	-5.500	143.500	89.000
ADVANC	216.000	-5.000	228.000	181.500
STANLY	189.000	-5.000	226.000	165.500
BGRIM	34.000	-3.000	42.750	30.000
SCC	313.000	-3.000	361.000	300.000

HKEX (HKD)

Top Gainers

Name	Last Done	Change Over 5 Days	52 Weeks High	52 Weeks Low
BYD COMPANY LIMITED (1211.HK)	245.800	+20.000	280.600	161.700
BYD COMPANY LIMITED (81211.HK)	228.800	+19.200	255.800	199.900
HONG KONG EXCHANGES & CLEARING (388.HK)	304.000	+13.800	382.400	208.200
HONG KONG EXCHANGES & CLEARING (80388.HK)	283.200	+13.400	307.600	259.000
BEIJING LUZHU BIOTECHNOLOGY CO LTD	41.200	+11.650	42.000	16.140

Top Losers

Name	Last Done	Change Over 5 Days	52 Weeks High	52 Weeks Low
MOG DIGITECH HOLDINGS LTD	40.000	-58.650	104.300	2.660
STAR CM HOLDINGS LIMITED	24.750	-41.750	132.000	23.350
ENN ENERGY HOLDINGS LTD	61.500	-16.900	127.200	61.100
ORIENT OVERSEAS INT	105.200	-11.800	173.000	92.150
MEITUAN	128.500	-11.500	195.600	109.200

SGX (SGD)

Top Gainers

Name	Last Done	Change Over 5 Days	52 Weeks High	52 Weeks Low
JMH USD	47.560	+1.530	57.800	42.600
Jardine C&C	33.420	+1.180	36.850	27.250
Haw Par	10.030	+0.630	11.380	8.980
UOB	28.440	+0.610	31.400	25.910
DBS	33.300	+0.490	35.855	30.300

Top Losers

Name	Last Done	Change Over 5 Days	52 Weeks High	52 Weeks Low
NIO Inc. USD OV	10.520	-0.570	22.150	7.420
Cortina	3.310	-0.240	4.050	3.280
Digilife Tech	1.960	-0.140	2.880	1.100
Venture	13.110	-0.140	18.750	12.600
Multi-Chem	1.850	-0.110	2.020	1.570

WOOLING STOCK MARKET PARTICIPATION FROM THE YOUNGER GENERATION



Devanesan
Evanson

**Chief Executive
Officer, Minority
Shareholders Watch
Group**

Like it or not, the Malaysian capital market needs an injection of youth interest to remain vibrant and progressive. As revealed by Securities Commission Malaysia (SC) chairman Datuk Seri Dr Awang Adek Hussin, investors aged 45 and below only constitute 7% of total investors in the stock market, with the number of those in the 20 – 30 years bracket expected to be even lower. While only a fraction of investors in the stock market are below the age of 45, most remisiers in the stockbroking industry are aged 50 and above. “The capital market industry now badly requires

injection of new blood both as employees as well as young investors. One worry about the stockbroking industry's future is that young people are not attracted to the industry," he pointed out in a recent event. Doubtlessly, there is a dire need to entice more young people to invest in the Malaysian capital market to ensure its vibrancy going forward. "For those between the age of 20 and 30 years – the true young investors – the number must be very small," reckoned Awang Adek. "We therefore need young executives to attract young investors. They are more technology savvy, and they understand each other better."

THERE IS LITTLE LEFT FOR INVESTING

The low stock market participation from youths is linked to several observations. First, youths have little balance left for savings or investment after spending on necessities. The findings are supported by recent data from the Department of Statistics (DOSM), that as of March 2023, employees aged between 20 and 39 recorded median monthly salaries ranging between RM1,682 and RM3,282*. As of March 2023, about 62.5% (or 4.03 million) of Malaysia's 6.45 million formal employees are aged between 20 and 39 years. (*Employee Wages Statistics (Formal Sector) Report, First Quarter 2023, Department of Statistics Malaysia)

As a comparison, the highest median value across all age groups was posted by employees aged 40 – 49 with RM3,500. For perspective, Bank Negara Malaysia (BNM) stated that the living wage for a single adult in Kuala Lumpur was RM2,700 (in 2018) and RM4,500 for a childless couple. The living wage for a couple with two children would be RM6,500. Besides, as pointed out by the Young Capital Market Survey 2022 conducted by the Securities Commission, most of the income of Malaysian youth is spent on food, household expenses and debt repayment, leaving them little discretionary income for saving or investing.

The survey by SC also found that youths, especially low-income earners,

lacked sufficient surplus for investment after they had set aside cash for emergencies. Malaysian youth prefer to save for emergencies over investing. They tend to only focus on saving for retirement later in their life. Conversely, higher income groups were more inclined to invest their surplus into different asset classes, including equities. On the other hand, they face the societal pressure against them to maintain a good appearance. This means more spending on grooming and maintenance. Besides, with the mantra of YOLO (you only live once) permeating their minds, controlling their expenses by limiting eating out, shopping and travel makes them feel that they cannot enjoy the fruits of their labour. The study was conducted on 1,003 youths aged 18 to 40 years nationwide. 29% of the respondents had a monthly household income of between RM2,000 and RM2,999, followed by 35% with RM3,000 and RM4,999. 17% earn between RM5,000 and RM6,999 a month, with the rest receiving take-home pay of RM7,000 and above.

REAL INVESTMENT EXPOSURE

Meanwhile, to further cultivate the awareness of investing among youths, the SC chairman also announced that stockbroking companies have agreed to introduce an adoption scheme. Under the scheme, each company would adopt a university to plan and work with students and lecturers to promote greater understanding and appreciation of the capital market.

For instance, the company can assist lecturers in crafting a course related to the capital market to be taught to students. “These efforts will enrich students’ learning experience and expose them early to the workings of the capital market while enhancing their employability and reducing their vulnerabilities to financial scams,” suggested Awang Adek. Moreover, participating companies could also assist students in establishing investing clubs to promote greater awareness of investment opportunities in the capital market.

“I hope the MOHE (Ministry of Higher Education) and universities will be receptive to this novel idea as I am sure that this is very much in

line with the wishes of our Prime Minister Datuk Seri Anwar Ibrahim and MOHE to see greater collaborative efforts between university and industry,” stressed the SC chairman. “The proposed adoption scheme will add a new dimension to this collaboration.”


CONCLUSION

While it is vital to rejuvenate the Malaysian capital market with an injection of youth interest to ensure that it remains vibrant and progressive, such an idea will nevertheless be confronted by the challenges of low disposable income as well as the high entry capital required for quality stocks (i.e., blue chip equities). In fact, findings from the survey by SC further revealed that only 3% of the overall youths who participated in the survey possessed a high-risk appetite (i.e., an ability to withstand loss or to put money into an investment), while the balance 97% had a medium-to-low risk appetite. Moreover, 70% of respondents further deemed stocks/shares the riskiest capital market product.

Notwithstanding this, innovative measures such as fractional shares and reduced board lots could go a long way to boost the participation of younger investors, given their limited financial resources and the need to meet their low-risk appetite. They will be able to nibble at good stocks at low outlays.

By MSWG Team

This article appeared in the The Observer, a weekly newsletter published by The Minority Shareholders Watch Group (MSWG) and reproduced here with their permission. Do follow MSWG's Twitter account at @MSWGMalaysia and share your thought on their tweets from time to time.



CHECK OUT
SHAREINVESTOR
BROKERS' CALL
Weekly Buy/Sell/Hold calls from leading Malaysian Brokerages.

Go To Brokers' Call

DEFINITION: Insider Activity shows the trades made by substantial shareholders or directors of the company. Purchases by the directors and company share buyback may indicate the share price is undervalued and brings confidence to the price trend of the share price.



ShareInvestor WebPro > Fundamental > Insider Trades > click Search tab > Select Bursa > click Stock name > scroll up and leave at <Select Counter> Type Date Range for Announcement Date > click Search

Notice Period is 20th August – 26th August 2023

Effective Change Date	Stock Name	Buyer/ Seller Name [Classification]	Bought / (Sold) ['000]	No. of Shares After Trade ['000]	
			Total	Total	% Held
16 AUG 2023 - 16 AUG 2023	ABMB	EMPLOYEES PROVIDENT FUND BOARD [SSH]	-756	160,903	10.394
22 AUG 2023 - 22 AUG 2023	AEON	EMPLOYEES PROVIDENT FUND BOARD [SSH]	-1,050	139,681	9.949
18 AUG 2023 - 18 AUG 2023	AEON	EMPLOYEES PROVIDENT FUND BOARD [SSH]	-2,153	140,731	10.024
17 AUG 2023 - 17 AUG 2023	AEON	EMPLOYEES PROVIDENT FUND BOARD [SSH]	-1,304	144,189	10.27
22 AUG 2023 - 22 AUG 2023	AIRPORT	EMPLOYEES PROVIDENT FUND BOARD [SSH]	-261	173,043	10.371
23 AUG 2023 - 23 AUG 2023	AIRPORT	KUMPULAN WANG PERSARAAN (DIPERBADANKAN) [SSH]	290	113,703	6.814
21 AUG 2023 - 21 AUG 2023	AIRPORT	EMPLOYEES PROVIDENT FUND BOARD [SSH]	198	173,304	10.386
21 AUG 2023 - 21 AUG 2023	AIRPORT	KUMPULAN WANG PERSARAAN (DIPERBADANKAN) [SSH]	33	113,414	6.797
22 AUG 2023 - 22 AUG 2023	ALCOM	ALLEYWAYS SDN. BHD. [SSH]	1,010	9,713	7.231
22 AUG 2023 - 22 AUG 2023	ALLIANZ	EMPLOYEES PROVIDENT FUND BOARD [SSH]	-5	12567	7.061
18 AUG 2023 - 18 AUG 2023	ALLIANZ	EMPLOYEES PROVIDENT FUND BOARD [SSH]	-5	12572	7.064
16 AUG 2023 - 16 AUG 2023	ALLIANZ	EMPLOYEES PROVIDENT FUND BOARD [SSH]	-65	12577	7.067
22 AUG 2023 - 22 AUG 2023	AMBANK	EMPLOYEES PROVIDENT FUND BOARD [SSH]	3,000	328,842	9.929
21 AUG 2023 - 21 AUG 2023	AMBANK	EMPLOYEES PROVIDENT FUND BOARD [SSH]	4,571	325,842	9.838
18 AUG 2023 - 18 AUG 2023	AMBANK	EMPLOYEES PROVIDENT FUND BOARD [SSH]	375	321,271	9.7
21 AUG 2023 - 22 AUG 2023	AME-WA	MR CHANG TIAN KWANG [DIR/CEO]	266	306	0.215
18 AUG 2023 - 18 AUG 2023	AMEREIT	AME ELITE CONSORTIUM BERHAD [SSH]	-839	268,112	51.27
18 AUG 2023 - 18 AUG 2023	AMEREIT	MR KANG AH CHEE [SSH]	-839	292,624	55.96
18 AUG 2023 - 18 AUG 2023	AMEREIT	MR LEE CHAI [SSH]	-839	294,827	56.38
18 AUG 2023 - 18 AUG 2023	AMEREIT	MR LEE SAI BOON [SSH]	-839	277,086	52.99
18 AUG 2023 - 18 AUG 2023	AMEREIT	MR LIM YOOK KIM [SSH]	-839	292,979	56.02
21 AUG 2023 - 21 AUG 2023	AMWAY	EMPLOYEES PROVIDENT FUND BOARD [SSH]	-0.4	11,028	6.709
18 AUG 2023 - 18 AUG 2023	AMWAY	EMPLOYEES PROVIDENT FUND BOARD [SSH]	-5	11,029	6.709
22 AUG 2023 - 23 AUG 2023	ANCOMNY	MR CHAN THYE SENG [DIR/CEO]	-1,094	810	0.085
18 AUG 2023 - 18 AUG 2023	ANCOMNY	MR CHAN THYE SENG [DIR/CEO]	-900	1,904	0.201
22 AUG 2023 - 22 AUG 2023	APOLLO	AMANAHRAYA TRUSTEES BERHAD-AMANAH SAHAM BUMIPUTERA [SSH]	-169	6,620	8.275
21 AUG 2023 - 21 AUG 2023	APOLLO	AMANAHRAYA TRUSTEES BERHAD-AMANAH SAHAM BUMIPUTERA [SSH]	-17	6,789	8.487
17 AUG 2023 - 17 AUG 2023	APOLLO	AMANAHRAYA TRUSTEES BERHAD-AMANAH SAHAM BUMIPUTERA [SSH]	-28	6,806	8.508
22 AUG 2023 - 22 AUG 2023	AXREIT	EMPLOYEES PROVIDENT FUND BOARD [SSH]	-300	283,156	16.263
21 AUG 2023 - 21 AUG 2023	AXREIT	EMPLOYEES PROVIDENT FUND BOARD [SSH]	-75	283,456	16.281
18 AUG 2023 - 18 AUG 2023	AXREIT	EMPLOYEES PROVIDENT FUND BOARD [SSH]	-500	283,531	16.285
17 AUG 2023 - 17 AUG 2023	AXREIT	EMPLOYEES PROVIDENT FUND BOARD [SSH]	-500	284,031	16.314
23 AUG 2023 - 23 AUG 2023	BAUTO	PRUDENTIAL PLC [SSH]	-335	69,695	5.983
22 AUG 2023 - 22 AUG 2023	BAUTO	PRUDENTIAL PLC [SSH]	-697	70,030	6.012
21 AUG 2023 - 21 AUG 2023	BAUTO	EMPLOYEES PROVIDENT FUND BOARD [SSH]	225	117,863	10.118
18 AUG 2023 - 18 AUG 2023	BAUTO	EMPLOYEES PROVIDENT FUND BOARD [SSH]	-20	117,638	10.099
18 AUG 2023 - 18 AUG 2023	BAUTO	PRUDENTIAL PLC [SSH]	-434	70,727	6.072
17 AUG 2023 - 17 AUG 2023	BAUTO	EMPLOYEES PROVIDENT FUND BOARD [SSH]	-1,649	117,658	10.101
17 AUG 2023 - 17 AUG 2023	BAUTO	PRUDENTIAL PLC [SSH]	-300	71,161	6.109
16 AUG 2023 - 16 AUG 2023	BAUTO	EMPLOYEES PROVIDENT FUND BOARD [SSH]	-1,000	119,307	10.242
22 AUG 2023 - 22 AUG 2023	BIMB	EMPLOYEES PROVIDENT FUND BOARD [SSH]	50	364,719	16.092
21 AUG 2023 - 21 AUG 2023	BIMB	EMPLOYEES PROVIDENT FUND BOARD [SSH]	50	364,669	16.09
18 AUG 2023 - 18 AUG 2023	BIMB	EMPLOYEES PROVIDENT FUND BOARD [SSH]	50	364,619	16.087
17 AUG 2023 - 17 AUG 2023	BIMB	EMPLOYEES PROVIDENT FUND BOARD [SSH]	50	364,569	16.085
16 AUG 2023 - 16 AUG 2023	BIMB	EMPLOYEES PROVIDENT FUND BOARD [SSH]	-375	364,519	16.083
22 AUG 2023 - 23 AUG 2023	BINACOM	MR NA BON TIAM [SSH]	-1,209	46,678	12.021
24 AUG 2023 - 24 AUG 2023	BJLAND	BERJAYA CORPORATION BERHAD [SSH]	-221,423	3,775,828	76.737
24 AUG 2023 - 24 AUG 2023	BJLAND	BERJAYA GROUP BERHAD [SSH]	-221,423	3,357,728	68.24
24 AUG 2023 - 24 AUG 2023	BJLAND	TERAS MEWAH SDN BHD [SSH]	-221,423	927,126	18.842
22 AUG 2023 - 22 AUG 2023	BURSA	EMPLOYEES PROVIDENT FUND BOARD [SSH]	351	86,989	10.749
21 AUG 2023 - 21 AUG 2023	BURSA	EMPLOYEES PROVIDENT FUND BOARD [SSH]	50	86,639	10.705
18 AUG 2023 - 18 AUG 2023	BURSA	EMPLOYEES PROVIDENT FUND BOARD [SSH]	308	86,589	10.699
17 AUG 2023 - 17 AUG 2023	BURSA	EMPLOYEES PROVIDENT FUND BOARD [SSH]	605	86,281	10.661
16 AUG 2023 - 16 AUG 2023	BURSA	EMPLOYEES PROVIDENT FUND BOARD [SSH]	624	85,677	10.587
21 AUG 2023 - 22 AUG 2023	CBIP	DATUK LIM CHAI BENG [DIR/CEO]	413	197,795	41.534
21 AUG 2023 - 22 AUG 2023	CBIP	DATUK LIM CHAI BENG [SSH]	413	197,795	41.534
21 AUG 2023 - 22 AUG 2023	CBIP	ZEE CAPITAL SDN BHD [SSH]	413	34,077	7.156
21 AUG 2023 - 22 AUG 2023	CEPAT	DATIN SERI OOI AH THIN [SSH]	150	120,333	38.95
21 AUG 2023 - 22 AUG 2023	CEPAT	DATO' MAH POOI SOO REALTY SDN. BHD. [SSH]	150	120,333	38.95
21 AUG 2023 - 22 AUG 2023	CEPAT	DATO' SERI MAH KING SENG [DIR/CEO]	150	120,333	38.95

Notice Period is 20th August – 26th August 2023

Effective Change Date	Stock Name	Buyer/ Seller Name [Classification]	Bought / (Sold) ['000]	No. of Shares After Trade ['000]	
			Total	Total	% Held
21 AUG 2023 - 22 AUG 2023	CEPAT	DATO' SERI MAH KING SENG [SSH]	150	120,333	38.95
21 AUG 2023 - 22 AUG 2023	CEPAT	MHC PLANTATIONS BHD. [SSH]	150	120,333	38.95
21 AUG 2023 - 22 AUG 2023	CEPAT	TAN SRI DR MAH KING THIAN @ MAH KING THIAM [DIR/CEO]	150	120,333	38.95
21 AUG 2023 - 22 AUG 2023	CEPAT	TAN SRI DR MAH KING THIAN @ MAH KING THIAM [SSH]	150	120,333	38.95
18 AUG 2023 - 18 AUG 2023	CHHB	MR CHUA HEE BOON [DIR/CEO]	160	899	0.303
23 AUG 2023 - 23 AUG 2023	CIMB	KUMPULAN WANG PERSARAAN (DIPERBADANKAN) [SSH]	-550	717,597	6.73
22 AUG 2023 - 22 AUG 2023	CIMB	EMPLOYEES PROVIDENT FUND BOARD [SSH]	3,070	1,659,776	15.56
21 AUG 2023 - 21 AUG 2023	CIMB	EMPLOYEES PROVIDENT FUND BOARD [SSH]	4,609	1,656,706	15.53
18 AUG 2023 - 18 AUG 2023	CIMB	EMPLOYEES PROVIDENT FUND BOARD [SSH]	8,221	1,652,097	15.49
21 AUG 2023 - 21 AUG 2023	CIMB	KUMPULAN WANG PERSARAAN (DIPERBADANKAN) [SSH]	-520	718,147	6.73
17 AUG 2023 - 17 AUG 2023	CIMB	EMPLOYEES PROVIDENT FUND BOARD [SSH]	5,000	1,643,876	15.41
18 AUG 2023 - 18 AUG 2023	CIMB	KUMPULAN WANG PERSARAAN (DIPERBADANKAN) [SSH]	149	718,667	6.74
16 AUG 2023 - 16 AUG 2023	CIMB	EMPLOYEES PROVIDENT FUND BOARD [SSH]	7,020	1,638,876	15.37
17 AUG 2023 - 17 AUG 2023	CLMT	EMPLOYEES PROVIDENT FUND BOARD [SSH]	2,000	378,730	14.037
21 AUG 2023 - 21 AUG 2023	CTOS	ABRDN HOLDINGS LIMITED (FORMERLY KNOWN AS ABERDEEN ASSET MANAGEMENT PLC) [SSH]	112	128,776	5.575
21 AUG 2023 - 21 AUG 2023	CTOS	ABRDN MALAYSIA SDN BHD [SSH]	112	127,057	5.5
21 AUG 2023 - 21 AUG 2023	CTOS	ABRDN PLC [SSH]	112	128,776	5.575
17 AUG 2023 - 17 AUG 2023	CTOS	ABRDN HOLDINGS LIMITED (FORMERLY KNOWN AS ABERDEEN ASSET MANAGEMENT PLC) [SSH]	160	128,664	5.57
17 AUG 2023 - 17 AUG 2023	CTOS	ABRDN MALAYSIA SDN BHD [SSH]	160	126,945	5.495
17 AUG 2023 - 17 AUG 2023	CTOS	ABRDN PLC [SSH]	160	128,664	5.57
01 AUG 2023 - 16 AUG 2023	DATAPRP	TAN SRI MUHAMMAD IKMAL OPAT BIN ABDULLAH [SSH]	-15,525	74,475	10.092
01 AUG 2023 - 16 AUG 2023	DATAPRP	WARDAH COMMUNICATION SDN BHD [SSH]	-15,525	74,475	10.094
01 AUG 2023 - 16 AUG 2023	DATAPRP	WIDAD BUSINESS GROUP SDN BHD [SSH]	-15,525	74,475	10.094
18 AUG 2023 - 18 AUG 2023	DIALOG	EMPLOYEES PROVIDENT FUND BOARD [SSH]	433	830,498	14.72
17 AUG 2023 - 17 AUG 2023	DIALOG	EMPLOYEES PROVIDENT FUND BOARD [SSH]	1,600	830,065	14.71
16 AUG 2023 - 16 AUG 2023	DIALOG	EMPLOYEES PROVIDENT FUND BOARD [SSH]	1,000	828,465	14.68
21 AUG 2023 - 21 AUG 2023	DLADY	CITIGROUP NOMINEES (TEMPATAN) SDN BHD EMPLOYEES PROVIDENT FUND BOARD [SSH]	-26	6,253	9.77
18 AUG 2023 - 18 AUG 2023	DLADY	CITIGROUP NOMINEES (TEMPATAN) SDN BHD EMPLOYEES PROVIDENT FUND BOARD [SSH]	-8	6,279	9.81
16 AUG 2023 - 16 AUG 2023	DLADY	CITIGROUP NOMINEES (TEMPATAN) SDN BHD EMPLOYEES PROVIDENT FUND BOARD [SSH]	-31	6,287	9.823
22 AUG 2023 - 22 AUG 2023	EITA	MR CHONG YOKE PENG [DIR/CEO]	-300	1,922	2.22
23 AUG 2023 - 23 AUG 2023	ELKDESA	MR TEOH HOCK CHAI @ TEW HOCK CHAI [SSH]	130	189,968	41.769
23 AUG 2023 - 23 AUG 2023	ELKDESA	TEOH HOCK CHAI@TEW HOCK CHAI [DIR/CEO]	130	189,968	41.769
23 AUG 2023 - 23 AUG 2023	ELKDESA	ZHONGXIN RESOURCES SDN BHD [SSH]	130	171,980	37.814
22 AUG 2023 - 24 AUG 2023	ESKERAM	MR WONG FOOK LIN [DIR/CEO]	-5,500	49,095	9.132
22 AUG 2023 - 24 AUG 2023	ESKERAM	MR WONG FOOK LIN [SSH]	-5,500	49,095	9.132
18 AUG 2023 - 18 AUG 2023	ESKERAM	MR WONG FOOK LIN [DIR/CEO]	-330	54,595	10.248
18 AUG 2023 - 18 AUG 2023	ESKERAM	MR WONG FOOK LIN [SSH]	-330	54,595	10.248
22 AUG 2023 - 22 AUG 2023	F&N	EMPLOYEES PROVIDENT FUND BOARD [SSH]	-56	42,265	11.523
21 AUG 2023 - 21 AUG 2023	F&N	EMPLOYEES PROVIDENT FUND BOARD [SSH]	-23	42,321	11.539
18 AUG 2023 - 18 AUG 2023	F&N	EMPLOYEES PROVIDENT FUND BOARD [SSH]	-49	42,344	11.545
17 AUG 2023 - 17 AUG 2023	F&N	EMPLOYEES PROVIDENT FUND BOARD [SSH]	5	42,393	11.558
16 AUG 2023 - 16 AUG 2023	F&N	EMPLOYEES PROVIDENT FUND BOARD [SSH]	22	42,387	11.557
21 AUG 2023 - 21 AUG 2023	FFB	EMPLOYEES PROVIDENT FUND BOARD [SSH]	-9,360	161,912	8.65
24 AUG 2023 - 24 AUG 2023	FRONTKN	MR NG CHEE WHYE [DIR/CEO]	-20	294	0.019
21 AUG 2023 - 21 AUG 2023	FSBM	MR YEO ANN SECK [SSH]	3,500	14,000	5.916
18 AUG 2023 - 18 AUG 2023	FSBM	DATO TAN HOCK SAN @ TAN HOCK MING [DIR/CEO]	-105	1	0.001
22 AUG 2023 - 22 AUG 2023	GAMUDA	EMPLOYEES PROVIDENT FUND BOARD (EPF BOARD) [SSH]	-141	341,276	12.81
21 AUG 2023 - 21 AUG 2023	GAMUDA	EMPLOYEES PROVIDENT FUND BOARD (EPF BOARD) [SSH]	124	341,417	12.81
21 AUG 2023 - 24 AUG 2023	GAMUDA	YTM RAJA DATO' SERI ELEENA BINTI ALMARHUM SULTAN AZLAN MUHIBBUDDIN SHAH AL-MAGHFUR-LAH [DIR/CEO]	-1,000	114,419	4.29
17 AUG 2023 - 17 AUG 2023	GAMUDA	EMPLOYEES PROVIDENT FUND BOARD (EPF BOARD) [SSH]	-419	341,293	12.81
16 AUG 2023 - 16 AUG 2023	GAMUDA	EMPLOYEES PROVIDENT FUND BOARD (EPF BOARD) [SSH]	-596	341,711	12.83
22 AUG 2023 - 22 AUG 2023	GASMSIA	EMPLOYEES PROVIDENT FUND BOARD [SSH]	-300	86,214	6.714
25 AUG 2023 - 25 AUG 2023	GCAP	MR LEE POH HIN [SSH]	1,000	39,829	12.304
22 AUG 2023 - 22 AUG 2023	GCAP	MR LEE YEE LONG [SSH]	1,000	37,441	11.566

Disclaimer: The Information in Insider Activity is extracted from www.shareinvestor.com/fundamental/insider_trades. The information on this page is provided as a service to readers. It does not constitute financial advice and/or any investment recommendations. We assume no liability for damages resulting from or arising out of the use of such information. Whilst every effort is made to ensure accuracy, the information presented is not the official record of shareholder filings. Readers are advised to read the original filings on the Bursa Malaysia website at www.bursamalaysia.com

PURNELL

ESCAPE II FORGED CARBON

PLAY



Notice Period is 20th August – 26th August 2023

Effective Change Date	Stock Name	Buyer/ Seller Name [Classification]	Bought / (Sold) ['000]		No. of Shares After Trade ['000]	
			Total	% Held	Total	% Held
21 AUG 2023 - 21 AUG 2023	HANDAL	MR CHAN CHEU LEONG [SSH]	-1,095	17,250	6.47	
22 AUG 2023 - 22 AUG 2023	HARNLEN	MR LOW KOK YAOW [DIR/CEO]	-743	322,807	57.15	
22 AUG 2023 - 22 AUG 2023	HARNLEN	MR LOW KOK YAOW [SSH]	-743	322,807	57.15	
22 AUG 2023 - 22 AUG 2023	HARNLEN	MR LOW KOK YONG [DIR/CEO]	-743	323,802	57.327	
22 AUG 2023 - 22 AUG 2023	HARNLEN	MR LOW KOK YONG [SSH]	-743	323,802	57.327	
22 AUG 2023 - 22 AUG 2023	HARNLEN	MR LOW KUECK SHIN [DIR/CEO]	-743	311,120	55.081	
22 AUG 2023 - 22 AUG 2023	HARNLEN	MR LOW KUECK SHIN [SSH]	-743	310,990	55.058	
22 AUG 2023 - 22 AUG 2023	HARNLEN	MR LOW KUEK KONG [DIR/CEO]	-743	310,990	55.058	
22 AUG 2023 - 22 AUG 2023	HARNLEN	MR LOW KUEK KONG [SSH]	-743	310,990	55.058	
22 AUG 2023 - 22 AUG 2023	HARNLEN	MR LOW KWEK LEE [DIR/CEO]	-743	310,950	55.051	
22 AUG 2023 - 22 AUG 2023	HARNLEN	MR LOW KWEK LEE [SSH]	-743	310,950	55.051	
22 AUG 2023 - 22 AUG 2023	HARNLEN	MR LOW QUEK KIONG [DIR/CEO]	-743	327,987	58.067	
22 AUG 2023 - 22 AUG 2023	HARNLEN	MR LOW QUEK KIONG [SSH]	-743	327,987	58.067	
22 AUG 2023 - 22 AUG 2023	HARNLEN	PUAN SRI DATIN CHAN PUI LEORN [DIR/CEO]	-743	323,834	57.332	
22 AUG 2023 - 22 AUG 2023	HARNLEN	PUAN SRI DATIN CHAN PUI LEORN [SSH]	-743	323,834	57.332	
22 AUG 2023 - 22 AUG 2023	HARNLEN	TAN SRI LOW NAM HUI [SSH]	-743	309,950	54.874	
16 AUG 2023 - 16 AUG 2023	HARNLEN	LNH ENTERPRISE SDN. BHD. [SSH]	743	130,221	23.055	
16 AUG 2023 - 16 AUG 2023	HARNLEN	MR LOW KOK YAOW [DIR/CEO]	743	323,550	57.282	
16 AUG 2023 - 16 AUG 2023	HARNLEN	MR LOW KOK YAOW [SSH]	743	323,550	57.282	
16 AUG 2023 - 16 AUG 2023	HARNLEN	MR LOW KOK YONG [DIR/CEO]	743	324,546	57.459	
16 AUG 2023 - 16 AUG 2023	HARNLEN	MR LOW KOK YONG [SSH]	743	324,546	57.459	
16 AUG 2023 - 16 AUG 2023	HARNLEN	MR LOW KUECK SHIN [DIR/CEO]	743	311,863	55.213	
16 AUG 2023 - 16 AUG 2023	HARNLEN	MR LOW KUECK SHIN [SSH]	743	311,733	55.19	
16 AUG 2023 - 16 AUG 2023	HARNLEN	MR LOW KUEK KONG [DIR/CEO]	743	311,733	55.19	
16 AUG 2023 - 16 AUG 2023	HARNLEN	MR LOW KUEK KONG [SSH]	743	311,733	55.19	
16 AUG 2023 - 16 AUG 2023	HARNLEN	MR LOW KWEK LEE [DIR/CEO]	743	311,693	55.183	
16 AUG 2023 - 16 AUG 2023	HARNLEN	MR LOW KWEK LEE [SSH]	743	311,693	55.183	
16 AUG 2023 - 16 AUG 2023	HARNLEN	MR LOW QUEK KIONG [DIR/CEO]	743	328,730	58.199	
16 AUG 2023 - 16 AUG 2023	HARNLEN	MR LOW QUEK KIONG [SSH]	743	328,730	58.199	
16 AUG 2023 - 16 AUG 2023	HARNLEN	PUAN SRI DATIN CHAN PUI LEORN [DIR/CEO]	743	324,577	57.464	
16 AUG 2023 - 16 AUG 2023	HARNLEN	PUAN SRI DATIN CHAN PUI LEORN [SSH]	743	324,577	57.464	
16 AUG 2023 - 16 AUG 2023	HARNLEN	TAN SRI LOW NAM HUI [SSH]	743	310,693	55.006	
22 AUG 2023 - 22 AUG 2023	HARNLEN-WB	MR LOW KOK YAOW [DIR/CEO]	-780	15,753	17.63	
22 AUG 2023 - 22 AUG 2023	HARNLEN-WB	MR LOW KOK YAOW [SSH]	-780	15,753	17.63	
22 AUG 2023 - 22 AUG 2023	HARNLEN-WB	MR LOW KOK YONG [DIR/CEO]	-780	16,314	18.259	
22 AUG 2023 - 22 AUG 2023	HARNLEN-WB	MR LOW KOK YONG [SSH]	-780	16,314	18.259	
22 AUG 2023 - 22 AUG 2023	HARNLEN-WB	MR LOW KUECK SHIN [DIR/CEO]	-780	7,614	8.521	
22 AUG 2023 - 22 AUG 2023	HARNLEN-WB	MR LOW KUECK SHIN [SSH]	-780	7,614	8.521	
22 AUG 2023 - 22 AUG 2023	HARNLEN-WB	MR LOW KUEK KONG [DIR/CEO]	-780	7,614	8.521	
22 AUG 2023 - 22 AUG 2023	HARNLEN-WB	MR LOW KUEK KONG [SSH]	-780	7,614	8.521	
22 AUG 2023 - 22 AUG 2023	HARNLEN-WB	MR LOW KWEK LEE [DIR/CEO]	-780	7,614	8.521	
22 AUG 2023 - 22 AUG 2023	HARNLEN-WB	MR LOW KWEK LEE [SSH]	-780	7,614	8.521	
22 AUG 2023 - 22 AUG 2023	HARNLEN-WB	MR LOW QUEK KIONG [DIR/CEO]	-780	12,207	13.662	
22 AUG 2023 - 22 AUG 2023	HARNLEN-WB	MR LOW QUEK KIONG [SSH]	-780	12,207	13.662	
22 AUG 2023 - 22 AUG 2023	HARNLEN-WB	PUAN SRI DATIN CHAN PUI LEORN [DIR/CEO]	-780	15,753	17.63	
22 AUG 2023 - 22 AUG 2023	HARNLEN-WB	PUAN SRI DATIN CHAN PUI LEORN [SSH]	-780	15,753	17.63	
16 AUG 2023 - 16 AUG 2023	HARNLEN-WB	LNH ENTERPRISE SDN. BHD. [SSH]	780	2,141	2.396	
16 AUG 2023 - 16 AUG 2023	HARNLEN-WB	MR LOW KOK YAOW [DIR/CEO]	780	16,533	18.503	
16 AUG 2023 - 16 AUG 2023	HARNLEN-WB	MR LOW KOK YAOW [SSH]	780	16,533	18.503	
16 AUG 2023 - 16 AUG 2023	HARNLEN-WB	MR LOW KOK YONG [DIR/CEO]	780	17,095	19.132	
16 AUG 2023 - 16 AUG 2023	HARNLEN-WB	MR LOW KOK YONG [SSH]	780	17,095	19.132	
16 AUG 2023 - 16 AUG 2023	HARNLEN-WB	MR LOW KUECK SHIN [DIR/CEO]	780	8,394	9.394	
16 AUG 2023 - 16 AUG 2023	HARNLEN-WB	MR LOW KUECK SHIN [SSH]	780	8,394	9.394	
16 AUG 2023 - 16 AUG 2023	HARNLEN-WB	MR LOW KUEK KONG [DIR/CEO]	780	8,394	9.394	
16 AUG 2023 - 16 AUG 2023	HARNLEN-WB	MR LOW KUEK KONG [SSH]	780	8,394	9.394	
16 AUG 2023 - 16 AUG 2023	HARNLEN-WB	MR LOW KWEK LEE [DIR/CEO]	780	8,394	9.394	
16 AUG 2023 - 16 AUG 2023	HARNLEN-WB	MR LOW KWEK LEE [SSH]	780	8,394	9.394	
16 AUG 2023 - 16 AUG 2023	HARNLEN-WB	MR LOW QUEK KIONG [DIR/CEO]	780	12,987	14.535	
16 AUG 2023 - 16 AUG 2023	HARNLEN-WB	MR LOW QUEK KIONG [SSH]	780	12,987	14.535	
16 AUG 2023 - 16 AUG 2023	HARNLEN-WB	PUAN SRI DATIN CHAN PUI LEORN [DIR/CEO]	780	16,533	18.503	
16 AUG 2023 - 16 AUG 2023	HARNLEN-WB	PUAN SRI DATIN CHAN PUI LEORN [SSH]	780	16,533	18.503	
23 AUG 2023 - 23 AUG 2023	HCK	HIICHIKOK EQUITIES SDN BHD [SSH]	4,165	291,468	57.047	
23 AUG 2023 - 23 AUG 2023	HCK	TAN SRI HII CHII KOK @ HII CHEE KOK [DIR/CEO]	4,165	293,518	57.448	
23 AUG 2023 - 23 AUG 2023	HCK	TAN SRI HII CHII KOK @ HII CHEE KOK [SSH]	4,165	293,518	57.448	
23 AUG 2023 - 23 AUG 2023	HCK-WA	TAN SRI HII CHII KOK @ HII CHEE KOK [DIR/CEO]	4,165	28,243	23.063	
22 AUG 2023 - 22 AUG 2023	HLBANK	EMPLOYEES PROVIDENT FUND BOARD [SSH]	180	218,768	10.484	
21 AUG 2023 - 21 AUG 2023	HLBANK	EMPLOYEES PROVIDENT FUND BOARD [SSH]	361	218,588	10.476	
18 AUG 2023 - 18 AUG 2023	HLBANK	EMPLOYEES PROVIDENT FUND BOARD [SSH]	120	218,228	10.458	
17 AUG 2023 - 17 AUG 2023	HLBANK	EMPLOYEES PROVIDENT FUND BOARD [SSH]	513	218,108	10.453	
16 AUG 2023 - 16 AUG 2023	HLBANK	EMPLOYEES PROVIDENT FUND BOARD [SSH]	10	217,595	10.428	
22 AUG 2023 - 23 AUG 2023	IGBB	HSBC ASIA HOLDINGS LIMITED (HAHO) [SSH]	3	110,032	8.155	
22 AUG 2023 - 23 AUG 2023	IGBB	HSBC HOLDINGS PLC (HGHQ) [SSH]	3	110,032	8.155	
22 AUG 2023 - 23 AUG 2023	IGBB	HSBC INTERNATIONAL TRUSTEE (HOLDINGS) PTE. LTD. (HTHL) [SSH]	3	110,032	8.155	
22 AUG 2023 - 23 AUG 2023	IGBB	HSBC INTERNATIONAL TRUSTEE LIMITED (HKIT) [SSH]	3	110,032	8.155	
22 AUG 2023 - 23 AUG 2023	IGBB	THE HONGKONG AND SHANGHAI BANKING CORPORATION LIMITED (HBAP) [SSH]	3	110,032	8.155	
18 AUG 2023 - 21 AUG 2023	IGBB	HSBC ASIA HOLDINGS LIMITED (HAHO) [SSH]	73	110,029	8.155	
18 AUG 2023 - 21 AUG 2023	IGBB	HSBC HOLDINGS PLC (HGHQ) [SSH]	73	110,029	8.155	
18 AUG 2023 - 21 AUG 2023	IGBB	HSBC INTERNATIONAL TRUSTEE (HOLDINGS) PTE. LTD. (HTHL) [SSH]	73	110,029	8.155	

Notice Period is 20th August – 26th August 2023

Effective Change Date	Stock Name	Buyer/ Seller Name [Classification]	Bought / (Sold) ['000]		No. of Shares After Trade ['000]	
			Total	% Held	Total	% Held
18 AUG 2023 - 21 AUG 2023	IGBB	HSBC INTERNATIONAL TRUSTEE LIMITED (HKIT) [SSH]	73	110,029	8.155	
18 AUG 2023 - 21 AUG 2023	IGBB	THE HONGKONG AND SHANGHAI BANKING CORPORATION LIMITED (HBAP) [SSH]	73	110,029	8.155	
16 AUG 2023 - 16 AUG 2023	IGBB	HSBC ASIA HOLDINGS LIMITED (HAHO) [SSH]	51	109,956	8.15	
16 AUG 2023 - 16 AUG 2023	IGBB	HSBC HOLDINGS PLC (HGHQ) [SSH]	51	109,956	8.15	
16 AUG 2023 - 16 AUG 2023	IGBB	HSBC INTERNATIONAL TRUSTEE (HOLDINGS) PTE. LTD. (HTHL) [SSH]	51	109,956	8.15	
16 AUG 2023 - 16 AUG 2023	IGBB	HSBC INTERNATIONAL TRUSTEE LIMITED (HKIT) [SSH]	51	109,956	8.15	
16 AUG 2023 - 16 AUG 2023	IGBB	THE HONGKONG AND SHANGHAI BANKING CORPORATION LIMITED (HBAP) [SSH]	51	109,956	8.15	
22 AUG 2023 - 22 AUG 2023	IHH	EMPLOYEES PROVIDENT FUND BOARD [SSH]	34	916,526	10.407	
21 AUG 2023 - 21 AUG 2023	IHH	EMPLOYEES PROVIDENT FUND BOARD [SSH]	2,661	916,493	10.406	
18 AUG 2023 - 18 AUG 2023	IHH	EMPLOYEES PROVIDENT FUND BOARD [SSH]	431	913,832	10.376	
17 AUG 2023 - 17 AUG 2023	IHH	EMPLOYEES PROVIDENT FUND BOARD [SSH]	2,550	913,401	10.371	
16 AUG 2023 - 16 AUG 2023	IHH	EMPLOYEES PROVIDENT FUND BOARD [SSH]	1,505	910,851	10.342	
24 AUG 2023 - 24 AUG 2023	IJM	KUMPULAN WANG PERSARAAN (DIPERBADANKAN) [SSH]	1,000	300,077	8.559	
22 AUG 2023 - 22 AUG 2023	IJM	URUSHARTA JAMAAH SDN BHD [SSH]	-6,798	204,657	5.837	
23 AUG 2023 - 23 AUG 2023	IJM	KUMPULAN WANG PERSARAAN (DIPERBADANKAN) [SSH]	728	299,077	8.53	
21 AUG 2023 - 21 AUG 2023	IJM	KUMPULAN WANG PERSARAAN (DIPERBADANKAN) [SSH]	85	298,349	8.509	
21 AUG 2023 - 21 AUG 2023	IJM	TAN SRI DATO' TAN BOON SENG @ KRISHNAN [DIR/CEO]	100	10,869	0.31	
16 AUG 2023 - 16 AUG 2023	IJM	EMPLOYEES PROVIDENT FUND BOARD [SSH]	-2,000	583,224	16.634	
22 AUG 2023 - 22 AUG 2023	INARI	EMPLOYEES PROVIDENT FUND BOARD [SSH]	56	377,677	10.111	
21 AUG 2023 - 21 AUG 2023	INARI	KUMPULAN WANG PERSARAAN (DIPERBADANKAN) [SSH]	777	353,605	9.467	
17 AUG 2023 - 17 AUG 2023	INARI	EMPLOYEES PROVIDENT FUND BOARD [SSH]	969	377,620	10.11	
18 AUG 2023 - 18 AUG 2023	INARI	KUMPULAN WANG PERSARAAN (DIPERBADANKAN) [SSH]	-1,001	352,828	9.446	
16 AUG 2023 - 16 AUG 2023	INARI	EMPLOYEES PROVIDENT FUND BOARD [SSH]	-463	376,652	10.084	
22 AUG 2023 - 22 AUG 2023	IOICORP	EMPLOYEES PROVIDENT FUND BOARD [SSH]	-1,171	685,662	11.052	
21 AUG 2023 - 21 AUG 2023	IOICORP	EMPLOYEES PROVIDENT FUND BOARD [SSH]	-3,000	686,833	11.071	
18 AUG 2023 - 18 AUG 2023	IOICORP	EMPLOYEES PROVIDENT FUND BOARD [SSH]	100	689,833	11.12	
16 AUG 2023 - 16 AUG 2023	IOICORP	EMPLOYEES PROVIDENT FUND BOARD [SSH]	-636	689,733	11.118	
16 AUG 2023 - 16 AUG 2023	IOIPG	EMPLOYEES PROVIDENT FUND BOARD [SSH]	-2,402	418,516	7.601	
17 AUG 2023 - 18 AUG 2023	IRIS	DR POH SOON SIM [DIR/CEO]	4,450	422,990	12.964	
17 AUG 2023 - 18 AUG 2023	IRIS	DR POH SOON SIM [SSH]	4,450	422,990	12.964	
23 AUG 2023 - 23 AUG 2023	JADEM	DATO' IR DR. GOH YONG CHEE [SSH]	13,600	49,511	11.381	
23 AUG 2023 - 23 AUG 2023	JADEM	JMR CONSOLIDATED HOLDINGS SDN. BHD. [SSH]	13,600	27,338	6.284	
22 AUG 2023 - 22 AUG 2023	JADEM	MR TAN SU HANG [DIR/CEO]	2,550	2,550	0.586	
14 AUG 2023 - 14 AUG 2023	JADEM	DATO' SRI NG SHI ZHI [DIR/CEO]	3,400	3,400	0.782	
23 AUG 2023 - 24 AUG 2023	JIANKUN	MADAM TEH HOOI TYUG [SSH]	-3,728	21,272	5.9	
21 AUG 2023 - 22 AUG 2023	KAB	MR KINGTON TONG KUM LOONG [SSH]	-25,500	211,987	11.72	
21 AUG 2023 - 21 AUG 2023	KERJAYA	EMPLOYEES PROVIDENT FUND BOARD [SSH]	-288	85,192	6.756	
18 AUG 2023 - 18 AUG 2023	KERJAYA	EMPLOYEES PROVIDENT FUND BOARD [SSH]	-1,374	85,480	6.778	
17 AUG 2023 - 17 AUG 2023	KERJAYA	EMPLOYEES PROVIDENT FUND BOARD [SSH]	-1,084	86,854	6.887	
16 AUG 2023 - 16 AUG 2023	KERJAYA	EMPLOYEES PROVIDENT FUND BOARD [SSH]	-608	87,937	6.973	
21 AUG 2023 - 23 AUG 2023	KKB	DATO SRI KHO KAK BENG [DIR/CEO]	13	117,943	40.85	
21 AUG 2023 - 23 AUG 2023	KKB	DATO SRI KHO KAK BENG [SSH]	13	117,455	40.681	
16 AUG 2023 - 16 AUG 2023	KLCC	EMPLOYEES PROVIDENT FUND BOARD [SSH]	134	183,323	10.155	
16 AUG 2023 - 16 AUG 2023	KLCC	EMPLOYEES PROVIDENT FUND BOARD [SSH]	134	183,323	10.155	
15 AUG 2023 - 15 AUG 2023	KLCC	EMPLOYEES PROVIDENT FUND BOARD [SSH]	448	183,189	10.147	
15 AUG 2023 - 15 AUG 2023	KLCC	EMPLOYEES PROVIDENT FUND BOARD [SSH]	448	183,189	10.147	
22 AUG 2023 - 22 AUG 2023	KLK	EMPLOYEES PROVIDENT FUND BOARD [SSH]	-31	118,117	10.953	
17 AUG 2023 - 17 AUG 2023	KLK	EMPLOYEES PROVIDENT FUND BOARD [SSH]	-250	117,980	10.94	
16 AUG 2023 - 16 AUG 2023	KLK	EMPLOYEES PROVIDENT FUND BOARD [SSH]	-174	118,230	10.963	
23 AUG 2023 - 23 AUG 2023	KOSSAN	ABRDN HOLDINGS LIMITED (FORMERLY KNOWN AS ABERDEEN ASSET MANAGEMENT PLC) [SSH]	311	144,465	5.662	
23 AUG 2023 - 23 AUG 2023	KOSSAN	ABRDN MALAYSIA SDN BHD [SSH]	311	142,060	5.567	
23 AUG 2023 - 23 AUG 2023	KOSSAN	ABRDN PLC [SSH]	311	144,465	5.662	
22 AUG 2023 - 22 AUG 2023	KOSSAN	ABRDN HOLDINGS LIMITED (FORMERLY KNOWN AS ABERDEEN ASSET MANAGEMENT PLC) [SSH]	415	144,154	5.649	
22 AUG 2023 - 22 AUG 2023	KOSSAN	ABRDN MALAYSIA SDN BHD [SSH]	415	141,749	5.555	
22 AUG 2023 - 22 AUG 2023	KOSSAN	ABRDN PLC [SSH]	415	144,154	5.649	
21 AUG 2023 - 21 AUG 2023	KOSSAN	ABRDN HOLDINGS LIMITED (FORMERLY KNOWN AS ABERDEEN ASSET MANAGEMENT PLC) [SSH]	760	143,739	5.633	
21 AUG 2023 - 21 AUG 2023	KOSSAN	ABRDN MALAYSIA SDN BHD [SSH]	760	141,334	5.539	
21 AUG 2023 - 21 AUG 2023	KOSSAN	ABRDN PLC [SSH]	760	143,739	5.633	
17 AUG 20						

Notice Period is 20th August – 26th August 2023

Effective Change Date	Stock Name	Buyer/ Seller Name [Classification]	Bought / (Sold) ['000]	No. of Shares After Trade ['000]	
			Total	Total	% Held
18 AUG 2023 - 18 AUG 2023	MAGNI	MR TAN POAY SENG [DIR/CEO]	105	117,757	27.17
17 AUG 2023 - 17 AUG 2023	MATRIX	EMPLOYEES PROVIDENT FUND BOARD [SSH]	-300	80,655	6.445
21 AUG 2023 - 21 AUG 2023	MAXIS	EMPLOYEES PROVIDENT FUND BOARD (EPF BOARD) [SSH]	-5,395	883,112	11.275
18 AUG 2023 - 18 AUG 2023	MAXIS	EMPLOYEES PROVIDENT FUND BOARD (EPF BOARD) [SSH]	-988	888,507	11.344
17 AUG 2023 - 17 AUG 2023	MAXIS	EMPLOYEES PROVIDENT FUND BOARD (EPF BOARD) [SSH]	-368	889,494	11.357
16 AUG 2023 - 16 AUG 2023	MAXIS	EMPLOYEES PROVIDENT FUND BOARD (EPF BOARD) [SSH]	-1,600	889,863	11.362
23 AUG 2023 - 23 AUG 2023	MAYBANK	PERMODALAN NASIONAL BERHAD [SSH]	-4,500	827,621	6.866
23 AUG 2023 - 23 AUG 2023	MAYBANK	YAYASAN PELABURAN BUMIPUTRA [SSH]	-4,500	827,621	6.866
22 AUG 2023 - 22 AUG 2023	MAYBANK	EMPLOYEES PROVIDENT FUND BOARD [SSH]	-2,183	1,563,445	12.97
23 AUG 2023 - 23 AUG 2023	MAYBANK	KUMPULAN WANG PERSARAAN (DIPERBADANKAN) ("KWAP") [SSH]	-623	602,720	5
22 AUG 2023 - 22 AUG 2023	MAYBANK	AMANAHRAYA TRUSTEES BERHAD - AMANAH SAHAM BUMIPUTERA [SSH]	2,870	3,792,050	31.459
21 AUG 2023 - 21 AUG 2023	MAYBANK	EMPLOYEES PROVIDENT FUND BOARD [SSH]	3,406	1,565,628	12.988
22 AUG 2023 - 22 AUG 2023	MAYBANK	KUMPULAN WANG PERSARAAN (DIPERBADANKAN) ("KWAP") [SSH]	-663	603,343	5.005
21 AUG 2023 - 21 AUG 2023	MAYBANK	AMANAHRAYA TRUSTEES BERHAD - AMANAH SAHAM BUMIPUTERA [SSH]	1,000	3,789,180	31.435
18 AUG 2023 - 18 AUG 2023	MAYBANK	EMPLOYEES PROVIDENT FUND BOARD [SSH]	1,513	1,562,222	12.96
17 AUG 2023 - 17 AUG 2023	MAYBANK	AMANAHRAYA TRUSTEES BERHAD - AMANAH SAHAM BUMIPUTERA [SSH]	1,050	3,788,180	31.426
16 AUG 2023 - 16 AUG 2023	MAYBANK	EMPLOYEES PROVIDENT FUND BOARD [SSH]	-5,631	1,560,709	12.948
22 AUG 2023 - 22 AUG 2023	MCEMENT	AMANAHRAYA TRUSTEES BERHAD-AMANAH SAHAM BUMIPUTERA [SSH]	-751	66,249	5.056
17 AUG 2023 - 17 AUG 2023	MCEMENT	AMANAHRAYA TRUSTEES BERHAD-AMANAH SAHAM BUMIPUTERA [SSH]	-436	67,000	5.114
24 AUG 2023 - 24 AUG 2023	MESTRON	DATUK IR MOHD DOM BIN AHMAD [DIR/CEO]	-1,250	1,601	0.407
18 AUG 2023 - 18 AUG 2023	MESTRON	MR LOON CHIN SENG [DIR/CEO]	-25,000	48,674	12.356
18 AUG 2023 - 18 AUG 2023	MESTRON	MR POR TEONG ENG [DIR/CEO]	-25,000	36,051	9.152
21 AUG 2023 - 21 AUG 2023	MISC	EMPLOYEES PROVIDENT FUND BOARD [SSH]	1,142	577,248	12.932
18 AUG 2023 - 18 AUG 2023	MISC	EMPLOYEES PROVIDENT FUND BOARD [SSH]	88	576,105	12.906
17 AUG 2023 - 17 AUG 2023	MISC	EMPLOYEES PROVIDENT FUND BOARD [SSH]	2,000	576,018	12.904
16 AUG 2023 - 16 AUG 2023	MISC	EMPLOYEES PROVIDENT FUND BOARD [SSH]	434	574,018	12.86
22 AUG 2023 - 22 AUG 2023	MNHLDG	DATO' TOH ENG KEAT [DIR/CEO]	150	90,647	22.177
22 AUG 2023 - 22 AUG 2023	MNHLDG	DATO' TOH ENG KEAT [SSH]	150	90,647	22.177
24 AUG 2023 - 24 AUG 2023	MRCB	LEMBAGA TABUNG HAJI [SSH]	-500	249,688	5.589
22 AUG 2023 - 22 AUG 2023	MRCB	LEMBAGA TABUNG HAJI [SSH]	-1,000	250,188	5.6
16 AUG 2023 - 16 AUG 2023	MRDIY	EMPLOYEES PROVIDENT FUND BOARD [SSH]	38	511,317	5.417
25 AUG 2023 - 25 AUG 2023	MYEG	MR WONG THEAN SOON [DIR/CEO]	12,000	2,104,040	28.412
25 AUG 2023 - 25 AUG 2023	MYEG	MR WONG THEAN SOON [SSH]	12,000	2,104,040	28.412
24 AUG 2023 - 24 AUG 2023	MYEG	ASIA INTERNET HOLDINGS SDN BHD [SSH]	-21,200	1,191,554	16.09
24 AUG 2023 - 24 AUG 2023	MYEG	MR WONG THEAN SOON [DIR/CEO]	6,090	2,092,040	28.25
24 AUG 2023 - 24 AUG 2023	MYEG	MR WONG THEAN SOON [SSH]	6,090	2,092,040	28.25
23 AUG 2023 - 23 AUG 2023	MYEG	KUMPULAN WANG PERSARAAN (DIPERBADANKAN) [SSH]	-2,999	551,487	7.447
23 AUG 2023 - 23 AUG 2023	MYEG	MR WONG THEAN SOON [DIR/CEO]	3,000	2,085,950	28.167
23 AUG 2023 - 23 AUG 2023	MYEG	MR WONG THEAN SOON [SSH]	3,000	2,085,950	28.167
22 AUG 2023 - 22 AUG 2023	MYEG	DATO' DR NORRAESAH BINTI HAJI MOHAMAD [DIR/CEO]	-600	52,766	0.713
22 AUG 2023 - 22 AUG 2023	MYEG	MR WONG THEAN SOON [SSH]	3,000	2,082,950	28.127
22 AUG 2023 - 22 AUG 2023	MYEG	WONG THEAN SOON [DIR/CEO]	3,000	2,082,950	28.127
22 AUG 2023 - 22 AUG 2023	NESTLE	EMPLOYEES PROVIDENT FUND BOARD [SSH]	35	21,234	9.055
21 AUG 2023 - 21 AUG 2023	NESTLE	EMPLOYEES PROVIDENT FUND BOARD [SSH]	19	21,201	9.041
18 AUG 2023 - 18 AUG 2023	NESTLE	EMPLOYEES PROVIDENT FUND BOARD [SSH]	-118	21,182	9.033
17 AUG 2023 - 17 AUG 2023	NESTLE	EMPLOYEES PROVIDENT FUND BOARD [SSH]	7	21,298	9.082
16 AUG 2023 - 16 AUG 2023	NESTLE	EMPLOYEES PROVIDENT FUND BOARD [SSH]	-12	21,291	9.079
21 AUG 2023 - 24 AUG 2023	NGGB	DATO' GAN KONG HIOK [SSH]	-5,587	136,248	15.922
22 AUG 2023 - 22 AUG 2023	ORIENT	EMPLOYEES PROVIDENT FUND BOARD [SSH]	-44	52,517	8.466
21 AUG 2023 - 21 AUG 2023	ORIENT	EMPLOYEES PROVIDENT FUND BOARD [SSH]	-110	52,562	8.473
18 AUG 2023 - 18 AUG 2023	ORIENT	EMPLOYEE PROVIDENT FUND BOARD [SSH]	-62	52,672	8.491
17 AUG 2023 - 17 AUG 2023	ORIENT	EMPLOYEE PROVIDENT FUND BOARD [SSH]	-10	52,734	8.501
16 AUG 2023 - 16 AUG 2023	ORIENT	EMPLOYEE PROVIDENT FUND BOARD [SSH]	-49	52,744	8.502
21 AUG 2023 - 21 AUG 2023	PADINI	EMPLOYEES PROVIDENT FUND BOARD [SSH]	-220	34,450	5.236
18 AUG 2023 - 18 AUG 2023	PADINI	EMPLOYEES PROVIDENT FUND BOARD [SSH]	-258	34,670	5.27
17 AUG 2023 - 17 AUG 2023	PADINI	EMPLOYEES PROVIDENT FUND BOARD [SSH]	-600	34,928	5.309
18 AUG 2023 - 18 AUG 2023	PADINI	KUMPULAN WANG PERSARAAN (DIPERBADANKAN) [SSH]	179	51,151	7.775
16 AUG 2023 - 16 AUG 2023	PADINI	EMPLOYEES PROVIDENT FUND BOARD [SSH]	1	35,528	5.4
22 AUG 2023 - 23 AUG 2023	PANSAR	HIGHLINE SHIPPING SDN BHD [SSH]	1,091	28,042	5.97
23 AUG 2023 - 23 AUG 2023	PANTECH	DATO' SRI YAP TIAN LEONG [DIR/CEO]	75	75	0.009
23 AUG 2023 - 23 AUG 2023	PANTECH	PUAN NOORAINI BINTI MOHD YASIN [DIR/CEO]	75	115	0.014
22 AUG 2023 - 22 AUG 2023	PANTECH	MR TAN ANG ANG [DIR/CEO]	100	13,040	1.574
17 AUG 2023 - 17 AUG 2023	PANTECH	MR TO TAI WAI [DIR/CEO]	300	16,593	2.003
22 AUG 2023 - 22 AUG 2023	PBBANK	EMPLOYEES PROVIDENT FUND BOARD [SSH]	586	2,936,590	15.13
21 AUG 2023 - 21 AUG 2023	PBBANK	EMPLOYEES PROVIDENT FUND BOARD [SSH]	1,670	2,936,004	15.13
18 AUG 2023 - 18 AUG 2023	PBBANK	EMPLOYEES PROVIDENT FUND BOARD [SSH]	5,599	2,934,335	15.12
17 AUG 2023 - 17 AUG 2023	PBBANK	EMPLOYEES PROVIDENT FUND BOARD [SSH]	-1,402	2,928,736	15.09
16 AUG 2023 - 16 AUG 2023	PBBANK	EMPLOYEES PROVIDENT FUND BOARD [SSH]	-6,073	2,930,138	15.1
15 AUG 2023 - 15 AUG 2023	PBBANK	EMPLOYEES PROVIDENT FUND BOARD [SSH]	4,169	2,936,211	15.13
22 AUG 2023 - 22 AUG 2023	PCHEM	EMPLOYEES PROVIDENT FUND BOARD (EPF BOARD) [SSH]	0.7	925,791	11.572
21 AUG 2023 - 21 AUG 2023	PCHEM	EMPLOYEES PROVIDENT FUND BOARD (EPF BOARD) [SSH]	1,000	925,791	11.572
18 AUG 2023 - 18 AUG 2023	PCHEM	EMPLOYEES PROVIDENT FUND BOARD (EPF BOARD) [SSH]	1,168	924,791	11.56

Notice Period is 20th August – 26th August 2023

Effective Change Date	Stock Name	Buyer/ Seller Name [Classification]	Bought / (Sold) ['000]	No. of Shares After Trade ['000]	
			Total	Total	% Held
17 AUG 2023 - 17 AUG 2023	PCHEM	EMPLOYEES PROVIDENT FUND BOARD (EPF BOARD) [SSH]	2,775	923,623	11.545
16 AUG 2023 - 16 AUG 2023	PCHEM	EMPLOYEES PROVIDENT FUND BOARD (EPF BOARD) [SSH]	2,378	920,848	11.511
22 AUG 2023 - 22 AUG 2023	PEKAT	MR LOH CHEN YOOK [SSH]	-2,000	53,000	8.217
18 AUG 2023 - 18 AUG 2023	PENTA	EMPLOYEES PROVIDENT FUND BOARD [SSH]	332	51,762	7.28
17 AUG 2023 - 17 AUG 2023	PENTA	EMPLOYEES PROVIDENT FUND BOARD [SSH]	396	51,430	7.23
18 AUG 2023 - 18 AUG 2023	PENTA	KUMPULAN WANG PERSARAAN (DIPERBADANKAN) [SSH]	-498	36,669	5.155
16 AUG 2023 - 16 AUG 2023	PENTA	EMPLOYEES PROVIDENT FUND BOARD [SSH]	496	51,034	7.175
22 AUG 2023 - 22 AUG 2023	PETDAG	EMPLOYEES PROVIDENT FUND BOARD (EPF BOARD) [SSH]	296	123,435	12.425
21 AUG 2023 - 21 AUG 2023	PETDAG	EMPLOYEES PROVIDENT FUND BOARD (EPF BOARD) [SSH]	-57	123,139	12.395
18 AUG 2023 - 18 AUG 2023	PETDAG	EMPLOYEES PROVIDENT FUND BOARD (EPF BOARD) [SSH]	41	123,196	12.401
17 AUG 2023 - 17 AUG 2023	PETDAG	EMPLOYEES PROVIDENT FUND BOARD (EPF BOARD) [SSH]	-85	123,155	12.397
16 AUG 2023 - 16 AUG 2023	PETDAG	EMPLOYEES PROVIDENT FUND BOARD (EPF BOARD) [SSH]	-41	123,240	12.405
22 AUG 2023 - 22 AUG 2023	PETGAS	EMPLOYEES PROVIDENT FUND BOARD [SSH]	-45	281,552	14.229
18 AUG 2023 - 18 AUG 2023	PETGAS	EMPLOYEES PROVIDENT FUND BOARD [SSH]	272	281,597	14.231
17 AUG 2023 - 17 AUG 2023	PETGAS	EMPLOYEES PROVIDENT FUND BOARD [SSH]	500	281,325	14.217
23 AUG 2023 - 23 AUG 2023	PGF	MR TAN MING CHONG [DIR/CEO]	1	129	0.08
22 AUG 2023 - 22 AUG 2023	PPB	EMPLOYEES PROVIDENT FUND BOARD [SSH]	-43	145,929	10.258
21 AUG 2023 - 21 AUG 2023	PPB	EMPLOYEES PROVIDENT FUND BOARD [SSH]	-79	145,992	10.262
18 AUG 2023 - 18 AUG 2023	PPB	EMPLOYEES PROVIDENT FUND BOARD [SSH]	-1,800	146,071	10.268
17 AUG 2023 - 17 AUG 2023	PPB	EMPLOYEES PROVIDENT FUND BOARD [SSH]	-64	147,871	10.394
16 AUG 2023 - 16 AUG 2023	PPB	EMPLOYEES PROVIDENT FUND BOARD [SSH]	-300	147,935	10.399
23 AUG 2023 - 23 AUG 2023	PWORTH	DATO' ABD AZIZ BIN HAJI SHEIKH FADZIR [DIR/CEO]	3,300	17,702	1.183
18 AUG 2023 - 18 AUG 2023	PWROOT	KUMPULAN WANG PERSARAAN (DIPERBADANKAN) [SSH]	587	28,402	6.137
18 AUG 2023 - 21 AUG 2023	QL	CHIA LIK KHAI [DIR/CEO]	-400	2,961	0.122
23 AUG 2023 - 23 AUG 2023	RAMSSOL	MISS LEE MIEW LAN [DIR/CEO]	-100	17,596	14.343
17 AUG 2023 - 17 AUG 2023	RAMSSOL	TAN SRI DR LIM WEE CHAI [SSH]	14,000	18,300	7.459
20 JUL 2023 - 22 AUG 2023	RENEUCO	DATUK MUSTAKIM BIN MAT NUN [DIR/CEO]	-1,434	38,516	6.451
20 JUL 2023 - 22 AUG 2023	RENEUCO	DATUK MUSTAKIM BIN MAT NUN [SSH]	-1,434	38,516	6.451
24 AUG 2023 - 24 AUG 2023	RHBBANK	KUMPULAN WANG PERSARAAN (DIPERBADANKAN) [SSH]	-617	253,594	5.916
21 AUG 2023 - 21 AUG 2023	RHBBANK	EMPLOYEES PROVIDENT FUND BOARD [SSH]	-366	1740216	40.599
22 AUG 2023 - 22 AUG 2023	RHBBANK	KUMPULAN WANG PERSARAAN (DIPERBADANKAN) [SSH]	-185	254211	5.931
17 AUG 2023 - 17 AUG 2023	RHBBANK	EMPLOYEES PROVIDENT FUND BOARD [SSH]	-21	1740581	40.608
16 AUG 2023 - 16 AUG 2023	RHBBANK	EMPLOYEES PROVIDENT FUND BOARD [SSH]	102	1,740,602	40.608
23 AUG 2023 - 23 AUG 2023	SAPIND	MR KOH KOK HOON [SSH]	1	6,589	9.053
22 AUG 2023 - 22 AUG 2023	SAPIND	MR KOH KOK HOON [SSH]	9	6,588	9.052
24 AUG 2023 - 24 AUG 2023	SEAL	MR CHEN KHAI VOON [SSH]	5,928	115,615	30.491
21 AUG 2023 - 21 AUG 2023	SEAL	MR CHEN KHAI VOON [SSH]	45	109,686	28.927
17 AUG 2023 - 17 AUG 2023	SEM	BERJAYA CORPORATION BERHAD [SSH]	18,392	159,346	14.368
17 AUG 2023 - 17 AUG 2023	SEM	BERJAYA GROUP BERHAD [SSH]	18,392	140,436	12.663
17 AUG 2023 - 17 AUG 2023	SEM	BERJAYA LAND BERHAD [SSH]	6,602	92,766	8.364
17 AUG 2023 - 17 AUG 2023	SEM	JUARA SEJATI SDN BHD [SSH]	18,392	125,366	11.304
17 AUG 2023 - 17 AUG 2023	SEM	TERAS MEWAH SDN BHD [SSH]	6,602	92,766	8.364
24 AUG 2023 - 24 AUG 2023	SERNKOU	MR LOW PENG SIAN @ CHUA PENG SIAN [DIR/CEO]	762	296,043	27.46
24 AUG 2023 - 24 AUG 2023	SERNKOU	MR LOW PENG SIAN @ CHUA PENG SIAN [SSH]	762	296,043	27.46
22 AUG 2023 - 22 AUG 2023	SERNKOU	MR LOW PENG SIAN @ CHUA PENG SIAN [DIR/CEO]	427	295,282	27.39
22 AUG 2023 - 22 AUG 2023	SERNKOU	MR LOW PENG SIAN @ CHUA PENG SIAN [SSH]	427	295,282	27.39
21 AUG 2023 - 21 AUG 2023	SERNKOU	MR LOW PENG SIAN @ CHUA PENG SIAN [DIR/CEO]	879	294,855	27.35
21 AUG 2023 - 21 AUG 2023	SERNKOU	MR LOW PENG SIAN @ CHUA PENG SIAN [SSH]	879	294,855	27.35
22 AUG 2023 - 22 AUG 2023	SIME	KUMPULAN WANG PERSARAAN (DIPERBADANKAN) [SSH]	-356	531,795	7.803
18 AUG 2023 - 18 AUG 2023	SIME	KUMPULAN WANG PERSARAAN (DIPERBADANKAN) [SSH]	-436	532151	7.808
17 AUG 2023 - 17 AUG 2023	SIME	KUMPULAN WANG PERSARAAN (DIPERBADANKAN) [SSH]	-248	532587	7.815
18 AUG 2023 - 18 AUG 2023	SIMEPLT	EMPLOYEES PROVIDENT FUND BOARD [SSH]	50	1013119	14.65
16 AUG 2023 - 16 AUG 2023	SIMEPLT	EMPLOYEES PROVIDENT FUND BOARD [SSH]	-198	1013069	14.649
22 AUG 2023 - 22 AUG 2023	SIMEPROP	EMPLOYEES PROVIDENT FUND BOARD [SSH]	-632	544739	8.01
21 AUG 2023 - 21 AUG 2023	SIMEPROP	EMPLOYEES PROVIDENT FUND BOARD [SSH]	-220	545370	8.02
22 AUG 2023 - 22 AUG 2023	SIMEPROP	KUMPULAN WANG PERSARAAN (DIPERBADANKAN) [SSH]	290	440311	6.474
18 AUG 2023 - 18 AUG 2023	SIMEPROP	EMPLOYEES PROVIDENT FUND BOARD [SSH]	250	545590	8.023
21 AUG 2023 - 21 AUG 2023	SIMEPROP	KUMPULAN WANG PERSARAAN (DIPERBADANKAN) [SSH]	733	440021	6.47
17 AUG 2023 - 17 AUG 2023	SIMEPROP	EMPLOYEES PROVIDENT FUND BOARD [SSH]	-5,556	545340	8.019
18 AUG 2023 - 18 AUG 2023	SIMEPROP	KUMPULAN WANG PERSARAAN (DIPERBADANKAN) [SSH]	-5,565	439289	6.459
16 AUG 2023 - 16 AUG 2023	SIMEPROP	EMPLOYEES PROVIDENT FUND BOARD [SSH]	-9,300	550896	8.101
24 AUG 2023 - 24 AUG 2023	SKPRES	KUMPULAN WANG PERSARAAN (DIPERBADANKAN) [SSH]	210	125543	8.035
22 AUG 2023 - 22 AUG 2023	SKPRES	EMPLOYEES PROVIDENT FUND BOARD [SSH]	88	130571	8.357
23 AUG 2023 - 23 AUG 2023	SKPRES	KUMPULAN WANG PERSARAAN (DIPERBADANKAN) [SSH]	223	125333	8.022
21 AUG 2023 - 21 AUG 2023	SKPRES	EMPLOYEES PROVIDENT FUND BOARD [SSH]	51	130483	8.352
22 AUG 2023 - 22 AUG 2023	SKPRES	KUMPULAN WANG PERSARAAN (DIPERBADANKAN) [SSH]	202	125111	8.008
18 AUG 2023 - 18 AUG 2023	SKPRES	EMPLOYEES PROVIDENT FUND BOARD [SSH]	123	130431	8.348
21 AUG 2023 - 21 AUG 2023	SKPRES	KUMPULAN WANG PERSARAAN (DIPERBADANKAN) [SSH]	107	124909	7.995
17 AUG 2023 - 17 AUG 2023	SKPRES	EMPLOYEES PROVIDENT FUND BOARD [SSH]	1,983	130308	8.34
18 AUG 2023					

Notice Period is 20th August - 26th August 2023

Effective Change Date	Stock Name	Buyer/ Seller Name [Classification]	Bought / (Sold) ['000]		No. of Shares After Trade ['000]	
			Total	% Held	Total	% Held
21 AUG 2023 - 21 AUG 2023	SPSETIA	KUMPULAN WANG PERSARAAN (DIPERBADANKAN) [SSH]	-559		407236	9.98
21 AUG 2023 - 21 AUG 2023	SRIDGE	DATO' KHOO YIK CHOU [DIR/CEO]	76		11532	5.551
21 AUG 2023 - 21 AUG 2023	SRIDGE	DATO KHOO YIK CHOU [SSH]	76		11532	5.551
21 AUG 2023 - 21 AUG 2023	SSB8	TAN SRI DATUK SERI GAN YU CHAI [DIR/CEO]	74,949		1241889	54.646
23 AUG 2023 - 23 AUG 2023	STELLA	ABDUL JALIL BIN MOHD ABD GHANI [SSH]	-950		5357	8
23 AUG 2023 - 23 AUG 2023	STELLA	CERDIK CEMPAKA SDN BHD [SSH]	-950		5357	8
23 AUG 2023 - 23 AUG 2023	STELLA	DATO' SERI LEE TIAN HOCK [SSH]	-950		5357	8
23 AUG 2023 - 23 AUG 2023	STELLA	MOHD SUFIAN BIN ABD MURAD [SSH]	-950		5357	8
17 AUG 2023 - 17 AUG 2023	STELLA	CERDIK CEMPAKA SDN BHD [SSH]	-2,000		6307	9.41
17 AUG 2023 - 17 AUG 2023	STELLA	DATO' SERI LEE TIAN HOCK [SSH]	-2,000		6307	9.41
17 AUG 2023 - 17 AUG 2023	STELLA	ENCIK ABDUL JALIL BIN MOHD ABD GHANI [SSH]	-2,000		6307	9.41
17 AUG 2023 - 17 AUG 2023	STELLA	ENCIK MOHD SUFIAN BIN ABD MURAD [SSH]	-2,000		6307	9.41
17 AUG 2023 - 17 AUG 2023	SUNCON	EMPLOYEES PROVIDENT FUND BOARD [SSH]	823		126438	9.806
16 AUG 2023 - 16 AUG 2023	SUNCON	EMPLOYEES PROVIDENT FUND BOARD [SSH]	35		125615	9.742
22 AUG 2023 - 22 AUG 2023	SUNWAY	EMPLOYEES PROVIDENT FUND BOARD [SSH]	-2,462		375278	7.57
21 AUG 2023 - 21 AUG 2023	SUNWAY	EMPLOYEES PROVIDENT FUND BOARD [SSH]	-5,689		377740	7.62
18 AUG 2023 - 18 AUG 2023	SUNWAY	EMPLOYEES PROVIDENT FUND BOARD [SSH]	-2,928		383898	7.75
17 AUG 2023 - 17 AUG 2023	SUNWAY	EMPLOYEES PROVIDENT FUND BOARD [SSH]	-5,846		386826	7.81
16 AUG 2023 - 16 AUG 2023	SUNWAY	EMPLOYEES PROVIDENT FUND BOARD [SSH]	-2,199		392672	7.93
22 AUG 2023 - 22 AUG 2023	SWSCAP	MUAR BAN LEE GROUP BERHAD [SSH]	17,044		51527	18.732
21 AUG 2023 - 21 AUG 2023	SWSCAP	MUAR BAN LEE GROUP BERHAD [SSH]	22,483		34483	12.536
18 AUG 2023 - 18 AUG 2023	TAKAFUL	EMPLOYEES PROVIDENT FUND BOARD [SSH]	150		108196	12.922
17 AUG 2023 - 17 AUG 2023	TAKAFUL	EMPLOYEES PROVIDENT FUND BOARD [SSH]	85		108046	12.904
22 AUG 2023 - 22 AUG 2023	TCHONG	EMPLOYEES PROVIDENT FUND BOARD [SSH]	-105		41927	6.432
21 AUG 2023 - 21 AUG 2023	TENAGA	EMPLOYEES PROVIDENT FUND BOARD [SSH]	-2,636		868298	15
18 AUG 2023 - 18 AUG 2023	TENAGA	EMPLOYEES PROVIDENT FUND BOARD [SSH]	2,149		870934	15.05
17 AUG 2023 - 17 AUG 2023	TENAGA	EMPLOYEES PROVIDENT FUND BOARD [SSH]	2,539		868785	15.01
16 AUG 2023 - 16 AUG 2023	TENAGA	EMPLOYEES PROVIDENT FUND BOARD [SSH]	3,491		866245	14.97
22 AUG 2023 - 22 AUG 2023	TIMECOM	EMPLOYEES PROVIDENT FUND BOARD [SSH]	-937		142475	7.715
23 AUG 2023 - 23 AUG 2023	TIMECOM	KUMPULAN WANG PERSARAAN (DIPERBADANKAN) ("KWAP") [SSH]	-20		113754	6.159
21 AUG 2023 - 21 AUG 2023	TIMECOM	EMPLOYEES PROVIDENT FUND BOARD [SSH]	1,041		143412	7.765
22 AUG 2023 - 22 AUG 2023	TIMECOM	KUMPULAN WANG PERSARAAN (DIPERBADANKAN) ("KWAP") [SSH]	-180		113774	6.16
18 AUG 2023 - 18 AUG 2023	TIMECOM	EMPLOYEES PROVIDENT FUND BOARD [SSH]	-369		142371	7.709
17 AUG 2023 - 17 AUG 2023	TIMECOM	EMPLOYEES PROVIDENT FUND BOARD [SSH]	-457		142739	7.729
18 AUG 2023 - 18 AUG 2023	TIMECOM	KUMPULAN WANG PERSARAAN (DIPERBADANKAN) ("KWAP") [SSH]	-19		113954	6.17
16 AUG 2023 - 16 AUG 2023	TIMECOM	EMPLOYEES PROVIDENT FUND BOARD [SSH]	-475		143196	7.754
22 AUG 2023 - 22 AUG 2023	TM	EMPLOYEE PROVIDENT FUND BOARD (EPF BOARD) [SSH]	64		637826	16.688
23 AUG 2023 - 23 AUG 2023	TM	KUMPULAN WANG PERSARAAN (DIPERBADANKAN) [SSH]	-2,000		409177	10.706
21 AUG 2023 - 21 AUG 2023	TM	EMPLOYEE PROVIDENT FUND BOARD (EPF BOARD) [SSH]	1,194		637763	16.687
18 AUG 2023 - 18 AUG 2023	TM	EMPLOYEE PROVIDENT FUND BOARD (EPF BOARD) [SSH]	1,613		636569	16.655
21 AUG 2023 - 21 AUG 2023	TM	KUMPULAN WANG PERSARAAN (DIPERBADANKAN) [SSH]	-1,000		411177	10.758
17 AUG 2023 - 17 AUG 2023	TM	EMPLOYEE PROVIDENT FUND BOARD (EPF BOARD) [SSH]	645		634955	16.613
16 AUG 2023 - 16 AUG 2023	TM	EMPLOYEE PROVIDENT FUND BOARD (EPF BOARD) [SSH]	1,851		634310	16.596
23 AUG 2023 - 23 AUG 2023	TRIVE	MITSUBISHI UFJ FINANCIAL GROUP INC [SSH]	5,835		78690	6.227
23 AUG 2023 - 23 AUG 2023	TRIVE	MORGAN STANLEY [SSH]	5,835		78690	6.227
22 AUG 2023 - 22 AUG 2023	TRIVE	MORGAN STANLEY [SSH]	72,854		72854	5.766
22 AUG 2023 - 22 AUG 2023	TRIVE	MITSUBISHI UFJ FINANCIAL GROUP INC [SSH]	72,854		72854	5.766
24 AUG 2023 - 24 AUG 2023	UMW	KUMPULAN WANG PERSARAAN (DIPERBADANKAN) (KWAP) [SSH]	-126		106570	9.121
22 AUG 2023 - 22 AUG 2023	UMW	EMPLOYEES PROVIDENT FUND BOARD [SSH]	-157		88671	7.59
21 AUG 2023 - 21 AUG 2023	UMW	EMPLOYEES PROVIDENT FUND BOARD [SSH]	-138		88829	7.603
22 AUG 2023 - 22 AUG 2023	UMW	KUMPULAN WANG PERSARAAN (DIPERBADANKAN) (KWAP) [SSH]	-412		106696	9.132
18 AUG 2023 - 18 AUG 2023	UMW	EMPLOYEES PROVIDENT FUND BOARD [SSH]	-300		88966	7.615

Notice Period is 20th August - 26th August 2023

Effective Change Date	Stock Name	Buyer/ Seller Name [Classification]	Bought / (Sold) ['000]		No. of Shares After Trade ['000]	
			Total	% Held	Total	% Held
21 AUG 2023 - 21 AUG 2023	UMW	KUMPULAN WANG PERSARAAN (DIPERBADANKAN) (KWAP) [SSH]	-800		107108	9.167
17 AUG 2023 - 17 AUG 2023	UMW	EMPLOYEES PROVIDENT FUND BOARD [SSH]	-1,164		89266	7.641
18 AUG 2023 - 18 AUG 2023	UMW	KUMPULAN WANG PERSARAAN (DIPERBADANKAN) (KWAP) [SSH]	-1,000		107908	9.236
16 AUG 2023 - 16 AUG 2023	UMW	EMPLOYEES PROVIDENT FUND BOARD [SSH]	-1,916		90430	7.74
22 AUG 2023 - 22 AUG 2023	UOAEV	EMPLOYEES PROVIDENT FUND BOARD ("EPF BOARD") [SSH]	72		265452	10.92
21 AUG 2023 - 21 AUG 2023	UOAEV	EMPLOYEES PROVIDENT FUND BOARD ("EPF BOARD") [SSH]	35		265380	10.917
18 AUG 2023 - 18 AUG 2023	UOAEV	EMPLOYEES PROVIDENT FUND BOARD ("EPF BOARD") [SSH]	68		265345	10.916
17 AUG 2023 - 17 AUG 2023	UOAEV	EMPLOYEES PROVIDENT FUND BOARD ("EPF BOARD") [SSH]	19		265277	10.913
22 AUG 2023 - 22 AUG 2023	UTDPLT	EMPLOYEES PROVIDENT FUND BOARD [SSH]	-400		28680	6.914
21 AUG 2023 - 21 AUG 2023	UTDPLT	EMPLOYEES PROVIDENT FUND BOARD [SSH]	-31		29080	7.011
18 AUG 2023 - 18 AUG 2023	UTDPLT	EMPLOYEES PROVIDENT FUND BOARD [SSH]	-72		29111	7.018
17 AUG 2023 - 17 AUG 2023	UTDPLT	EMPLOYEES PROVIDENT FUND BOARD [SSH]	-115		29183	7.036
16 AUG 2023 - 16 AUG 2023	UTDPLT	EMPLOYEES PROVIDENT FUND BOARD [SSH]	-105		29298	7.064
22 AUG 2023 - 22 AUG 2023	UWC	EMPLOYEES PROVIDENT FUND BOARD [SSH]	57		77980	7.078
21 AUG 2023 - 21 AUG 2023	UWC	EMPLOYEES PROVIDENT FUND BOARD [SSH]	107		77923	7.073
18 AUG 2023 - 18 AUG 2023	UWC	EMPLOYEES PROVIDENT FUND BOARD [SSH]	173		77806	7.063
10 AUG 2023 - 11 AUG 2023	UWC	DATO' FNG MEOW CHENG [DIR/CEO]	-66		534	0.048
17 AUG 2023 - 17 AUG 2023	UWC	EMPLOYEES PROVIDENT FUND BOARD [SSH]	80		77634	7.047
17 AUG 2023 - 17 AUG 2023	VIS	MADAM ONG HUI PENG [DIR/CEO]	235		235	3.609
17 AUG 2023 - 17 AUG 2023	VIS	MR CHOY NGEEO HOE [DIR/CEO]	705		705	10.826
17 AUG 2023 - 17 AUG 2023	VIS	MR LEE CHONG LENG [DIR/CEO]	470		470	7.217
18 AUG 2023 - 18 AUG 2023	VS	EMPLOYEES PROVIDENT FUND BOARD [SSH]	635		254785	6.629
17 AUG 2023 - 17 AUG 2023	VS	EMPLOYEES PROVIDENT FUND BOARD [SSH]	1,773		254150	6.614
21 AUG 2023 - 21 AUG 2023	VS	DATIN LING SOK MOOI [SSH]	900		201103	5.233
21 AUG 2023 - 21 AUG 2023	VS	DATUK GAN SEM YAM [DIR/CEO]	900		201103	5.234
21 AUG 2023 - 21 AUG 2023	VS	DATUK GAN SEM YAM [SSH]	900		201103	5.234
18 AUG 2023 - 18 AUG 2023	VS	KUMPULAN WANG PERSARAAN [SSH]	81		346136	9.008
16 AUG 2023 - 16 AUG 2023	VS	EMPLOYEES PROVIDENT FUND BOARD [SSH]	1,596		252377	6.568
23 AUG 2023 - 23 AUG 2023	VSOLAR	MITSUBISHI UFJ FINANCIAL GROUP INC [SSH]	8,776		8776	5.446
23 AUG 2023 - 23 AUG 2023	WIDAD	TAN SRI MUHAMMAD IKMAL OPAT BIN ABDULLAH [SSH]	-1,800		1210125	39.081
23 AUG 2023 - 23 AUG 2023	WIDAD	WIDAD BUSINESS GROUP SDN. BHD. [SSH]	-1,800		1101232	35.564
22 AUG 2023 - 22 AUG 2023	WIDAD	TAN SRI MUHAMMAD IKMAL OPAT BIN ABDULLAH [SSH]	-505		1211925	39.139
21 AUG 2023 - 21 AUG 2023	WIDAD	TAN SRI MUHAMMAD IKMAL OPAT BIN ABDULLAH [SSH]	-216		1212430	39.155
18 AUG 2023 - 18 AUG 2023	WIDAD	TAN SRI MUHAMMAD IKMAL OPAT BIN ABDULLAH [SSH]	-2,800		1212646	39.162
22 AUG 2023 - 22 AUG 2023	WPRTS	EMPLOYEES PROVIDENT FUND BOARD [SSH]	100		306591	8.991
21 AUG 2023 - 21 AUG 2023	WPRTS	EMPLOYEES PROVIDENT FUND BOARD [SSH]	100		306140	8.978
17 AUG 2023 - 17 AUG 2023	WPRTS	EMPLOYEES PROVIDENT FUND BOARD [SSH]	46		305819	8.968
16 AUG 2023 - 16 AUG 2023	WPRTS	EMPLOYEES PROVIDENT FUND BOARD [SSH]	50		305633	8.963
23 AUG 2023 - 23 AUG 2023	XINHWA	MR NG AIK CHUAN [DIR/CEO]	2,490		2490	2.249
23 AUG 2023 - 23 AUG 2023	XINHWA	MR NG AIK CHUAN [DIR/CEO]	4,980		146680	57.374
23 AUG 2023 - 23 AUG 2023	XINHWA	MR NG YAM PIN [DIR/CEO]	4,980		142033	55.556
23 AUG 2023 - 23 AUG 2023	XINHWA	MR NG YAM PIN [DIR/CEO]	2,490		2490	2.249
18 AUG 2023 - 18 AUG 2023	YBS	MR LOW HEE CHUNG [DIR/CEO]	60		300	0.117
18 AUG 2023 - 18 AUG 2023	YBS	MR YONG CHAN CHEAH [DIR/CEO]	523		37293	14.555
18 AUG 2023 - 18 AUG 2023	YBS	MR YONG CHAN CHEAH [SSH]	523		37293	14.555
18 AUG 2023 - 18 AUG 2023	YBS	MR YONG SWEE CHUAN [DIR/CEO]	523		37293	14.555
18 AUG 2023 - 18 AUG 2023	YBS	MR YONG SWEE CHUAN [SSH]	523		37293	14.555
21 AUG 2023 - 21 AUG 2023	YENHER	MADAM THEOH MOOI TENG [DIR/CEO]	20		2687	0.895
21 AUG 2023 - 21 AUG 2023	YENHER	MR CHENG MOOH TAT [DIR/CEO]	20		157942	52.647
22 AUG 2023 - 22 AUG 2023	YINSON	EMPLOYEES PROVIDENT FUND BOARD [SSH]	-94		475301	16.352
18 AUG 2023 - 18 AUG 2023	YINSON	EMPLOYEES PROVIDENT FUND BOARD [SSH]	50		475394	16.355
18 AUG 2023 - 18 AUG 2023	ZECON	DATUK HAJI ZAINAL ABIDIN BIN HAJI AHMAD [DIR/CEO]	14,654		64844	43.991
18 AUG 2023 - 18 AUG 2023	ZECON	DATUK HAJI ZAINAL ABIDIN BIN HAJI AHMAD [SSH]	634		64844	39.991

Disclaimer: The Information in Insider Activity is extracted from www.shareinvestor.com/fundamental/insider_trades. The information on this page is provided as a service to readers. It does not constitute financial advice and/or any investment recommendations. We assume no liability for damages resulting from or arising out of the use of such information. Whilst every effort is made to ensure accuracy, the information presented is not the official record of shareholder filings. Readers are advised to read the original filings on the Bursa Malaysia website at www.bursamalaysia.com

SHAREINVESTOR MARKET DATA PLATFORMS



SHAREINVESTOR STATION
Advanced Charting Software
(8 Markets)



SHAREINVESTOR WEBPRO
Browser-Based Market Data
Analytics Platform



BURSASTATION
Advanced Charting Software
(Bursa Malaysia Only)



AwanBiru Technology Berhad (AWANTEC), announced its financial results for the fourth quarter and cumulative 12 months of the

financial year ended June 30, 2023. In Q4 FY2023, Awantec achieved a profit after taxation of RM0.1 million compared to a loss after tax of RM18,000 in the same period last year. This is a testament to the significant progress attained based on the transformation plan formulated in 2021, which includes both growing the Cloud based solutions and services offerings as well as implementing effective cost management.

[READ MORE](#)



Axiata Group Berhad (AXIATA) reports double-digit growth for Year-to-Date and Quarter-on-Quarter Revenue and EBITDA. YTD Revenue and EBITDA growth of 11.7%

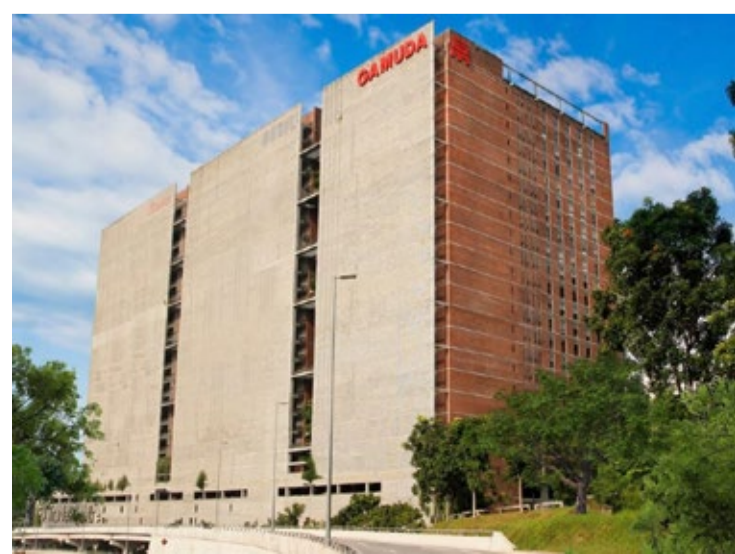
and 12.4% respectively. The Group’s solid underlying performance was led by a 17.8% growth in YTD revenue ex-device contributed by all OpCos except ADA and Ncell, flowing through to EBITDA, which grew by 18.0%. Quarter-on-Quarter growth of revenue of 11.4% and EBITDA of 12.9% is mainly attributed to improved operating environment and healthy performance by most OpCos.

[READ MORE](#)



On behalf of the Board of **Gamuda Berhad (GAMUDA)**, RHB Investment Bank wishes to announce that based on the valid dividend reinvestment forms received by the share registrar of the Company, Gamuda will be issuing 31,163,142 new Gamuda Shares at an issue price of RM3.97 per New Share pursuant to the DRP Application. The New Shares to be issued represent approximately 77.43% of the total number of 40,245,967 New Shares that would have been issued pursuant to the DRP Application had all the entitled shareholders of Gamuda elected to reinvest the electable portion of their FYE 2023 Second Interim Dividend into New Shares.

[READ MORE](#)





Kinergy Advancement Berhad (KAB) (formerly known as Kejuruteraan Asastera Berhad), is pleased to announce that the Group's wholly-owned subsidiary KAB Energy Holdings Sdn Bhd has completed the transfer of all the ordinary shares of PT Inpola Mitra Elektrindo, which owns a mini-hydropower plant, from the vendors to KAB Energy Holdings Sdn Bhd. Arising therefrom, PT IME has become a wholly-owned subsidiary of KAB. Kinergy Advancement Berhad diversifies sustainable energy portfolio with maiden mini-hydropower plant in Indonesia, expanding its reach across Asean.

[READ MORE](#)

Leong Hup International Berhad (LHI), announced its unaudited consolidated financial results for the second 2nd quarter of 2023. The Group registered profit after tax and minority interests of RM65.0 million, an increase of 60.5% from RM40.5 million in the preceding year's corresponding quarter ended 30 June 2022. Revenue of livestock and poultry segment and feedmill segment increased by 4.2% and 8.8% respectively as the Group benefited from the reopening of economies across the region. The increase in livestock and poultry segment was due mainly to higher sales volume of broiler chickens and higher selling price of DOC in Indonesia, higher sales volume of dressed chickens in Philippines and higher average selling price of DOC and higher average selling price and sales volume of eggs in Malaysia. Meanwhile the increase in feedmill segment was due primarily to higher average selling price and sales volume in Vietnam and Philippines as well as higher average selling price in Indonesia.

[READ MORE](#)



SkyWorld Development Berhad (SKYWLD) today announced its unaudited first quarter results for the financial year ending 31 March

2024. For the quarter under review, SkyWorld posted revenue of RM210.8 million and profit before tax of RM59.2 million. In addition, SkyWorld recorded profit after tax of RM41.9 million and a profit after tax attributable to owners of the Company of RM42.0 million. There are no comparative figures as SkyWorld was only listed on the Main Market of Bursa Malaysia Securities Berhad on 10 July 2023. The Q1FYE2024 revenue was mainly derived from the progressive revenue recognition from on-going projects, namely SkySierra Residences, SkyAwani IV Residences, SkyAwani V Residences, EdgeWood Residences, SkyVogue Residences, Curvo Residences as well as from the sales of completed inventories, mainly from SkyMeridien Residences and Bennington Residences.

READ MORE



Upcoming IPO

NAME OF COMPANY	OFFER PERIOD		ISSUE PRICE (Per Ordinary Share)	LISTING SOUGHT	DATE OF LISTING
	OPENING	CLOSING			
MERCURY SECURITIES GROUP BERHAD	28 Aug 2023	05 Sept 2023	RM0.25	ACE MARKET	19 Sept 2023
EVERGREEN MAX CASH CAPITAL BERHAD	29 Aug 2023	12 Sept 2023	RM0.24	ACE MARKET	26 Sept 2023

Disclaimer: The information in the Investor Relations page is extracted from individual companies' announcements in www.bursamalaysia.com. The information on this page is provided as a service to readers. We assume no liability for damages resulting from or arising out of the use of such information. Whilst every effort is made to ensure accuracy, the information presented has been simplified for your reading pleasure. Readers are advised to read the original and complete filings on the Bursa Malaysia website at https://www.bursamalaysia.com/market_information/announcements/company_announcement