

# Invest

A Weekly e-Publication by SHAREINVESTOR.com

ISSUE

# 171

FRIDAY  
25 AUGUST  
2023

Scan/Click QR to Register



Via email, every Friday

# Merdeka Kaw Kaw Promotion

23 Aug 2023 - 17 Sep 2023

Enjoy

# 31% off

SHAREINVESTOR<sup>®</sup>  
**STATION**

SHAREINVESTOR<sup>®</sup>  
**WEBPRO**

**BURSA STATION**  
*Professional*

**SUBSCRIBE NOW!**

**SUBSCRIBE NOW!**

Coupon Code:  
**MYMERDEKA23**

Valid for 12-month  
subscription

T & C Apply





## FINANCIAL PLANNING INDUSTRY TO PLAY PIVOTAL ROLE IN FINANCIAL WELL-BEING OF MALAYSIANS - SC CHAIRMAN

## ECONOMIC GROWTH IN MALAYSIA TO PICK UP IN 2H2023 - BMI

(page 22-25)

### 27 MSWG

Perplexing developments at EA Holdings  
over the restraint to convene EGM

04 LEADERBOARD

06 SHARIAH HOT STOCKS

07 COMPANY SPOTLIGHT

08 SHARIAH MOMENTUM UP  
STOCKS

10 NON SHARIAH HOT STOCKS

12 UP TRENDING STOCKS

14 VALUE STOCKS

16 GROWTH STOCKS

18 DIVIDEND STOCKS

19 BROKERS' CALL

20 LONG COMPANIES

22 MARKET SENTIMENTS

26 REGIONAL MARKETS

27 FROM THE OBSERVER

30 INSIDER ACTIVITY

34 INVESTOR RELATIONS

36 CAREERS AT  
SHAREINVESTOR



**INVESTOR PLATFORMS**

**Director**  
Darren Chong  
darren.chong@shareinvestor.com

**Business Development Manager**  
Jay Cheong  
jay.cheong.@shareinvestor.com

**Senior Executive**  
Daniel Wong  
daniel.wong@shareinvestor.com

**Executive**  
Farah Azwani  
farah.azwani@shareinvestor.com

**Executive**  
Tan Yong Sheng  
yongsheng.tan@shareinvestor.com

**ADMIN & OPERATIONS**

**Senior Executive**  
Watie Nordin  
watie.nordin@shareinvestor.com

**Executive**  
Silas Emmanuel Joseph  
silas.joseph@shareinvestor.com

**INVESTOR RELATIONS**

**Group Managing Director & Publisher**  
Edward Stanislaus  
edward@shareinvestor.com

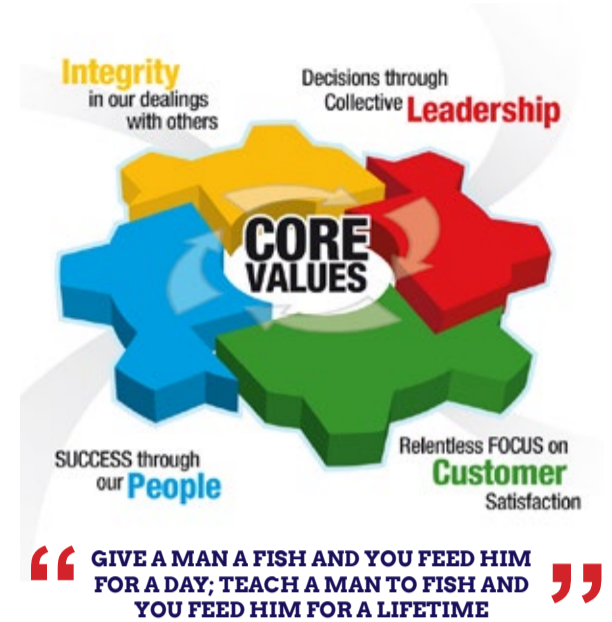
**Senior Manager**  
Letticia Wong  
letticia.wong@shareinvestor.com

**PROCESS AUTOMATION & DATA ANALYTICS**

**Data Analyst**  
Nickson Aw

**SHAREINVESTOR HOLDINGS BOARD OF DIRECTORS**

- |                  |                 |
|------------------|-----------------|
| <b>Chairman</b>  | Patrick Daniel  |
| <b>Group CEO</b> | Christopher Lee |
| <b>Group COO</b> | Lim Dau Hee     |
| <b>Group CFO</b> | Teo Siew May    |
| <b>Group MD</b>  | Shanison Lin    |



**ShareInvestor Malaysia Sdn. Bhd.**  
(200001023956) (526564-M)  
Unit No. DF2-07-03A. Level 7,  
Persoft Tower, 6B Persiaran Tropicana,  
47410 Petaling Jaya, Selangor Darul Ehsan.

Hotline : 603 7803 1791  
Mobile : 011 6343 8939  
Website : [www.ShareInvestor.com.my](http://www.ShareInvestor.com.my)  
[www.ShareInvestorHoldings.com](http://www.ShareInvestorHoldings.com)  
[www.Facebook.com/ShareInvestorMalaysia](http://www.Facebook.com/ShareInvestorMalaysia)

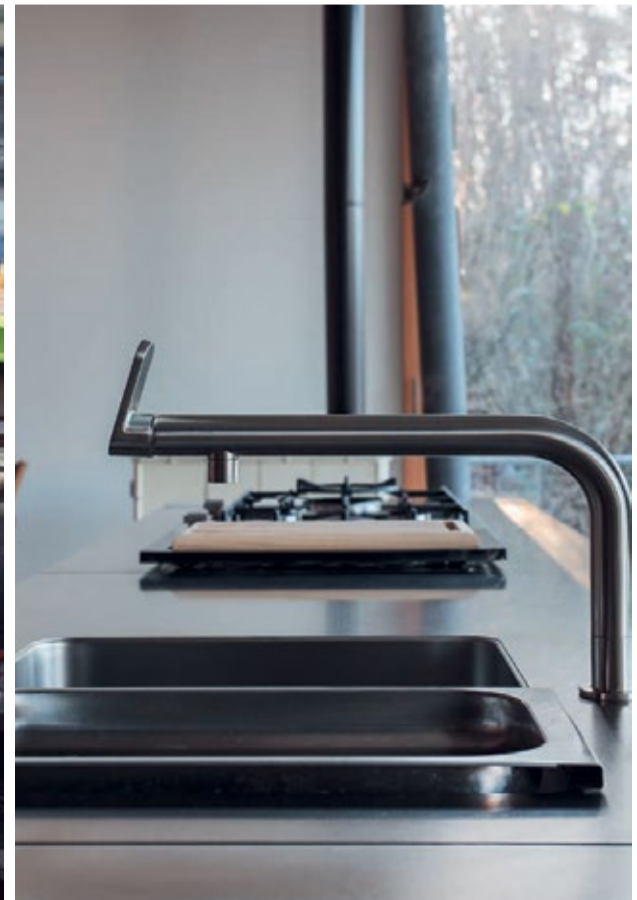
**ADVERTISEMENT ENQUIRY**

bulthaup takes care of the details so that you can enjoy a harmonious environment.



**XTRA**

XTRA FURNITURE SDN BHD  
The Gardens Mall, Mid Valley City  
[xtrafurniture.com/bulthaup](http://xtrafurniture.com/bulthaup)  
[fb.com/bulthaupmalaysia](https://fb.com/bulthaupmalaysia)



bulthaup





**ETF Power Players  
Incentive Programme**

## Strategise your portfolio with ETFs

Start trading in **Bursa-listed Exchange-traded Funds (ETFs)** with a minimum value of **RM20,000\*** and be in the running for valuable cash incentives!

**17 July 2023 - 29 December 2023**

Find out more at:  
[www.bursamarketplace.com/ETFpowerplayers](http://www.bursamarketplace.com/ETFpowerplayers)

**Trade Now!**

*\*Terms and conditions apply*

[www.shareinvestor.com](http://www.shareinvestor.com) - market data at your fingertips



ShareInvestor WebPro ([www.shareinvestor.com/my](http://www.shareinvestor.com/my))  
Prices > Stock Prices > Bursa > click Stocks tab

1. mouse over Ranking > select Top Active > all Shariah stocks are denoted with an [S] > mouse over Column Layout > select Edit Customs > select Name > select Volume > select Last Done Price > Mouse Over Column Layout > select Custom
2. mouse over Ranking > select Top Turnover > all Shariah stocks are denoted with an [S] > mouse over Column Layout > select Edit Customs > select Name > select Last Done Price > select Value > Mouse Over Column Layout > select Custom
3. mouse over Ranking > select Top Gainers (Over 5 Trading Days) > mouse over Column Layout > select Edit Customs > select Name > select Last Done Price > select 5 Days Change > select 5 Days % Change > Mouse Over Column Layout > select Custom
4. mouse over Ranking > select Top Losers (Over 5 Trading Days)
5. mouse over Ranking > select Top % Gainers (Over 5 Trading Days)
6. mouse over Ranking > select Top % Losers (Over 5 Trading Days)

### Shariah Top Actives (as at Yesterday)

Name	Price (RM)	Volume
HONGSENG [S]	0.050	2,684,919.000
SAPNRG [S]	0.050	1,197,297.000
PERDANA [S]	0.215	982,946.000
CNASIA [S]	0.230	825,948.000
VELESTO [S]	0.240	520,801.000
PARKSON [S]	0.335	509,333.000
SYSTECH [S]	0.370	451,369.000
MYEG [S]	0.810	406,486.000
SCIB [S]	0.445	374,070.000
BINACOM [S]	0.345	359,500.000

### Shariah Top Turnover (as at Yesterday)

Name	Price (RM)	Value (RM)
MBMR [S]	4.070	50,832,337
TENAGA [S]	10.000	42,618,905
KLK [S]	22.400	37,789,338
MYEG [S]	0.810	32,976,453
PCHEM [S]	6.850	25,435,012
PERDANA [S]	0.215	22,157,032
CNASIA [S]	0.230	20,013,067
UMW [S]	4.620	19,197,918
SUNWAY [S]	1.910	18,125,870
PARKSON [S]	0.335	17,481,677

### Top Gainers (over 5 Trading days as at Yesterday)

Name	Price (RM)	Change (RM)
PANAMY	21.200	+0.740
RAPID	23.480	+0.640
MBMR	4.070	+0.540
HEXTECH	28.200	+0.520
IMASPRO	5.600	+0.410
MCEMENT	3.850	+0.380
ALLIANZ	16.140	+0.320
EWEIN	1.570	+0.260
HAPSENG	3.520	+0.240
UTDPLT	16.040	+0.240

### Top % Gainers (over 5 Trading days as at Yesterday)

Name	Price (RM)	Change (%)
DGB	0.010	+100.00
KGROUP	0.010	+100.00
DOLPHIN	0.025	+66.67
PARKSON	0.335	+52.27
GOCEAN	0.015	+50.00
JOE	0.015	+50.00
NEXGRAM	0.015	+50.00
CNASIA	0.230	+39.39
REACH	0.040	+33.33
TALAMT	0.020	+33.33

### Top Losers (over 5 Trading days as at Yesterday)

Name	Price (RM)	Change (RM)
HEIM	25.480	-1.100
PETDAG	21.880	-0.840
NESTLE	130.700	-0.800
KSENG	4.330	-0.200
MPI	27.000	-0.200
VITROX	7.710	-0.190
AMBANK	3.670	-0.180
BKAWAN	21.020	-0.180
KLUANG	3.700	-0.170
HARISON	8.500	-0.160

### Top % Losers (over 5 Trading days as at Yesterday)

Name	Price (RM)	Change (%)
IQZAN	0.020	-33.33
TECHNAX	0.010	-33.33
SCBUILD	0.035	-30.00
ZENTECH	0.015	-25.00
HONGSENG	0.050	-23.08
XOXNET	0.025	-16.67
SALUTE	0.560	-14.50
DIGISTA	0.060	-14.29
REKATECH	0.060	-14.29
SAUDEE	0.030	-14.29



# TRADE STOCKS/ETFs NOW

FROM ~~USD8.80~~ **USD3.80**

*But Wait..* There's More!

Trade US Stocks / ETFs & **WIN**

# FREE

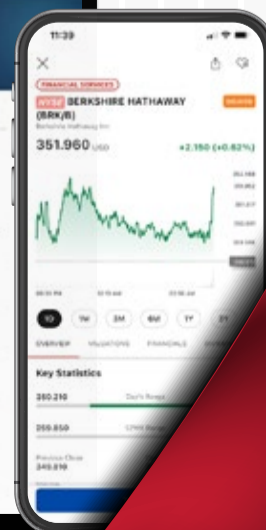
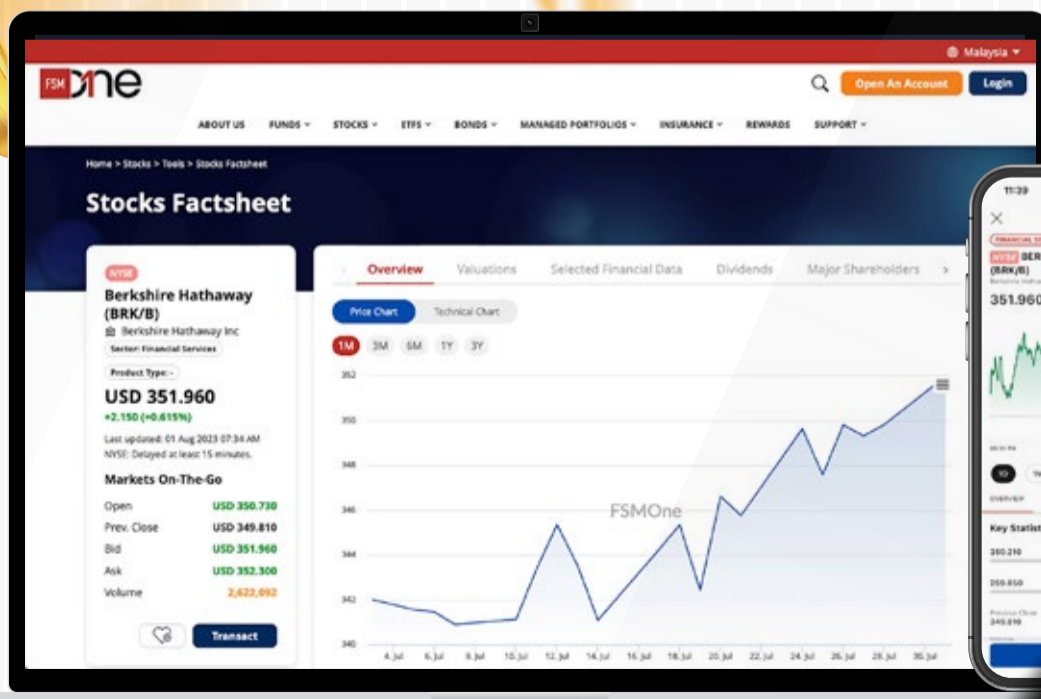
**Popular US Stocks\*!**

1 August 2023 - 31 August 2023

*\*Terms and conditions apply*



Scan for more info on the Campaign



## Price & Volume Distribution Charts (as at Yesterday)

Technical Analysis

**DEFINITION:** Shariah compliant stocks with Technical Analysis showing 5-days & 10-days Moving Average Price below Yesterday's Close over past 3 days and with Volume Spike.

**CHART GUIDE:** Volume Distribution Chart is a statistical interpretation of the current sentiment on each stock in graphical format. The highest bar categorized as >150k is likely to be traded by institutions or super dealers, while the lowest bar categorized as <15k usually represents retail investors. "Buy Up" refers to more buyers snatching up the lots queued at selling price. "Sell Down" refers to sellers selling their shares to the buying queue



ShareInvestor WebPro > Screener > Market Screener (FA & TA) > select BURSA > add criteria

**A. Criteria**

- > click Add Criteria
- Technical Analysis Conditions tab select (i) Moving Average Below Close (ii) Volume Spike
- Fundamental Analysis Conditions tab > select (iii) Revenue
- Prices & Other Conditions tab > select (iv) Is Shariah Compliant
- Technical Analysis Conditions tab select (v) Moving Average Below Close
- Prices & Other Conditions tab > select (vi) Last Done Price
- Technical Analysis Conditions tab select (vii) Moving Average Below Close

**B. Conditions (Criteria Filters)**

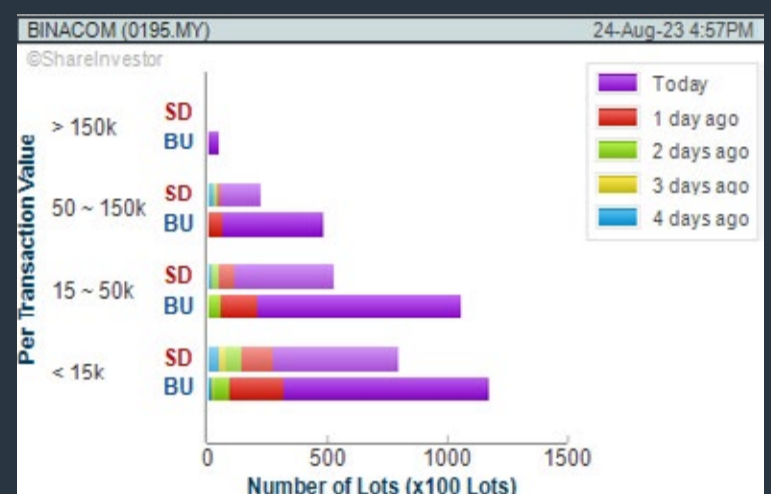
- Moving Average Below Close - select (MA) type (5) below close price for type (3) days
- Volume Spike - Volume type (1) greater than type (5) days average
- Revenue ("000) - select (more than) type (1) for the past select (1) financial year(s)
- Is Shariah Compliant - select **Yes**
- Moving Average Below Close - select (MA) type (10) below close price for type (3) days
- Last Done Price - select (more than) type (0.3)
- Moving Average Below Close - select (EMA) type (5) below close price for type (3) days

- > click Save Template > Create New Template type (Shariah Hot Stocks) > click Create
- > click Save Template as > select Shariah Hot Stocks > click Save
- > click Screen Now (may take a few minutes)
- > Sort By: Select (Vol) Select (Desc)
- > Mouse over stock name > Charts > click C<sup>2</sup> Charts or Volume Distribution

### BINASAT COMMUNICATIONS BERHAD (0195)

C<sup>2</sup> Chart

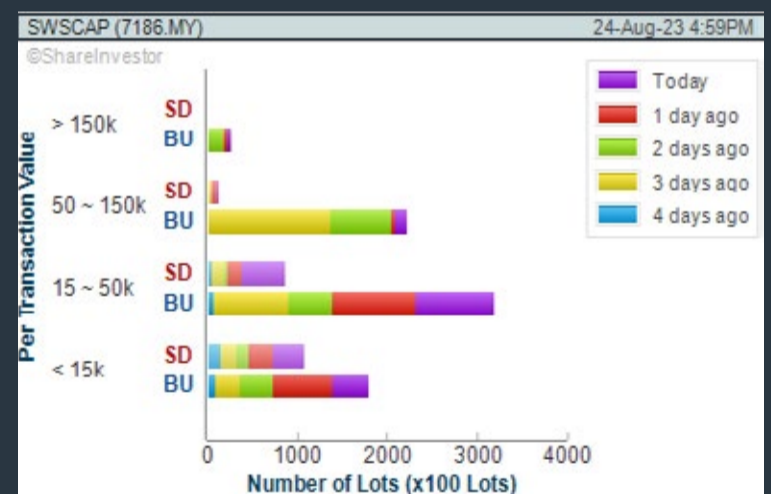
Analysis



### SWS CAPITAL BERHAD (7186)

C<sup>2</sup> Chart

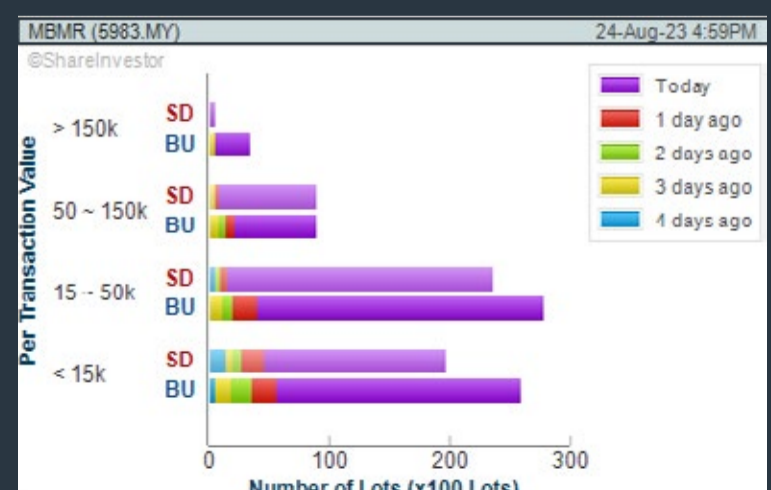
Analysis



### MBM RESOURCES BHD (5983)

C<sup>2</sup> Chart

Analysis



**Disclaimer:** The information on this page is provided as a service to readers. It does not constitute financial advice and/or any investment recommendations. Past performance is not indicative of future results. We assume no liability for damages resulting from or arising out of the use of such information. It would be best if you did your own research to make your personal investment decisions wisely or consult a licenced investment advisor.



## COMPANY BACKGROUND

**Binasat Communications Berhad** is engaged in the provision of support services for VSAT Network Engineering, Mobile and Fiber Network Engineering, Satellite Hub / Teleport and Digital Satellite News Gathering (DSNG).



Analysis

### BINACOM BINASAT COMMUNICATIONS BERHAD

Updated at 24 Aug 2023 16:59

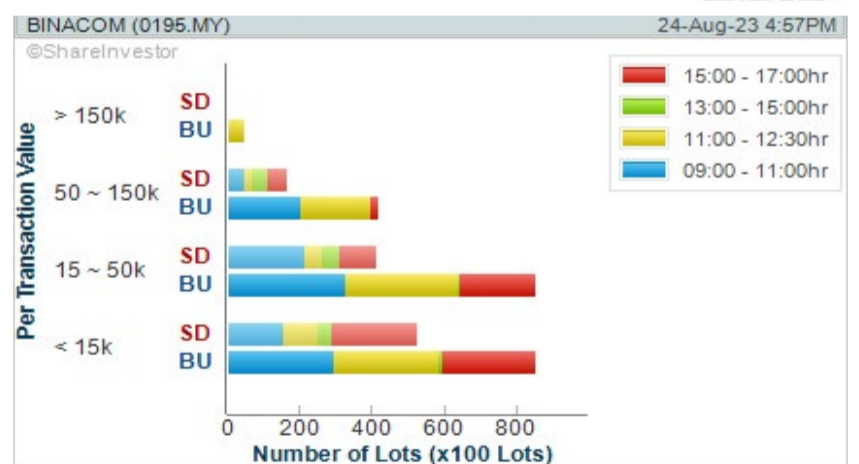
Last (MYR): <b>0.345</b> ↑	Change: +0.030	High: 0.355	Remarks: -
	Change (%): +9.52	Low: 0.315	
Open	0.315	Yesterday's Close	0.315
Buy Price	0.345	Sell Price	0.350
Buy Volume ('00)	252	Sell Volume ('00)	6,226
Cumulative Volume ('00)	359,500	Cumulative Value	12,098,375

### Financial Analysis

<b>Revenue Growth</b> Increasing revenue in last 2 consecutive years	😊	<b>Profit Growth</b> Increasing profit in latest year (with last 2 profitable years)	😊
<b>Piotroski F Score</b> The company has below average financial strength (Piotroski F-Score of 3-4)	😟	<b>Cash Ratio</b> Good cash ratio of at least 0.8 for 3 consecutive years	😊
<b>Current Ratio</b> The company is well-positioned to cover its short-term obligations with its current assets (ratio between 1.5 to 10) for 3 consecutive years	😊	<b>Debt to Cashflow</b> The company has negative cash flow from operations in most recent year	😟
<b>Free Cash Flow</b> Negative free cash flow for two years or more	😟	<b>Gross Profit Margin</b> Low gross profit margin for 3 years	😟

😊 Excellent    😊 Good    😐 Neutral    😟 Be Alert    😞 Watch Out

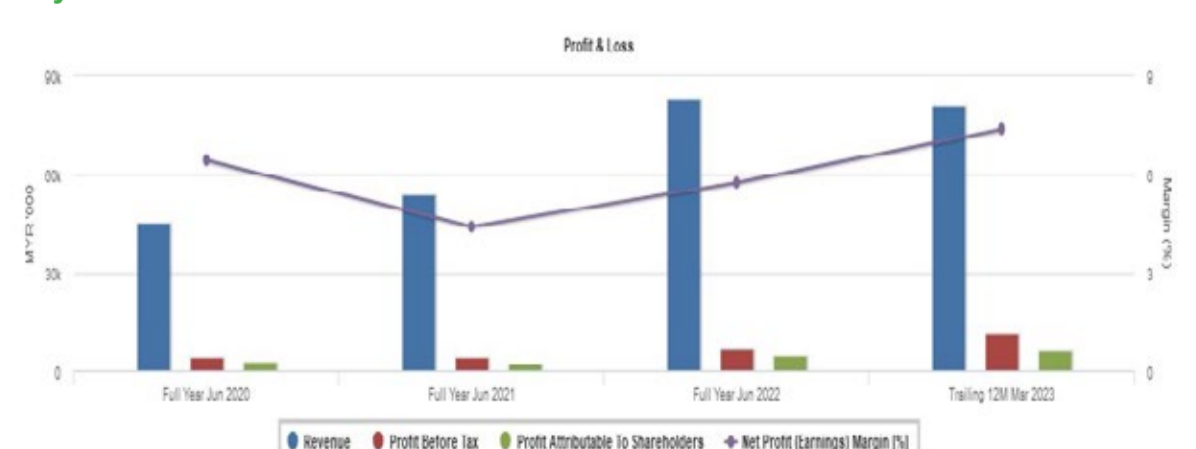
WebPro 9-Days Free Trial Registration (worth RM9) Sign Up Now



### Total Shareholder Return

Period	Dividend Received	Capital Appreciation	Total Shareholder Return
Short Term Return	5 Days	+0.040	+13.11%
	10 Days	+0.000	+21.05%
	20 Days	+0.060	+21.06%
Medium Term Return	3 Months	+0.065	+23.21%
	6 Months	+0.085	+32.69%
	1 Year	+0.100	+44.35%
Long Term Return	2 Years	+0.010	+2.99%
	3 Years	-0.041	-10.62%
	5 Years	0.005	-24.41%
Annualised Return	Annualised	-	-5.44%

### Key Statistics with Total Shareholder Returns



**Disclaimer:** The information on this page is provided as a service to readers. It does not constitute financial advice and/or any investment recommendations. Past performance is not indicative of future results. We assume no liability for damages resulting from or arising out of the use of such information. It would be best if you did your own research to make your personal investment decisions wisely or consult a licenced investment advisor.



## Price & Volume Distribution Charts (as at Yesterday)

Technical Analysis

**DEFINITION:** Shariah compliant stocks with Technical Analysis showing Bullish Momentum and Price Uptrend. The share price closed at the highest price yesterday. The typical price was higher than the previous day's typical price.

**CHART GUIDE:** Volume Distribution Chart is a statistical interpretation of the current sentiment on each stock in graphical format. The highest bar categorized as >150k is likely to be traded by institutions or super dealers, while the lowest bar categorized as <15k usually represents retail investors. "Buy Up" refers to more buyers snatching up the lots queued at selling price. "Sell Down" refers to sellers selling their shares to the buying queue.



ShareInvestor WebPro > Screener > Market Screener (FA & TA)>select BURSA>add criteria

**A. Criteria**

- > click Add Criteria
- Fundamental Analysis Conditions tab >select (i) Revenue
- Technical Analysis Conditions tab select (ii) Average Volume
- Prices & Other Conditions tab > select (iii) Last Done Price
- Prices & Other Conditions tab > select (iv) Is Shariah Compliant
- Technical Analysis Conditions tab select (v) RSI Overbought
- Technical Analysis Conditions tab select (vi) Moving Average Below Close
- Technical Analysis Conditions tab select (vii) CCI Overbought

**B. Conditions (Criteria Filters)**

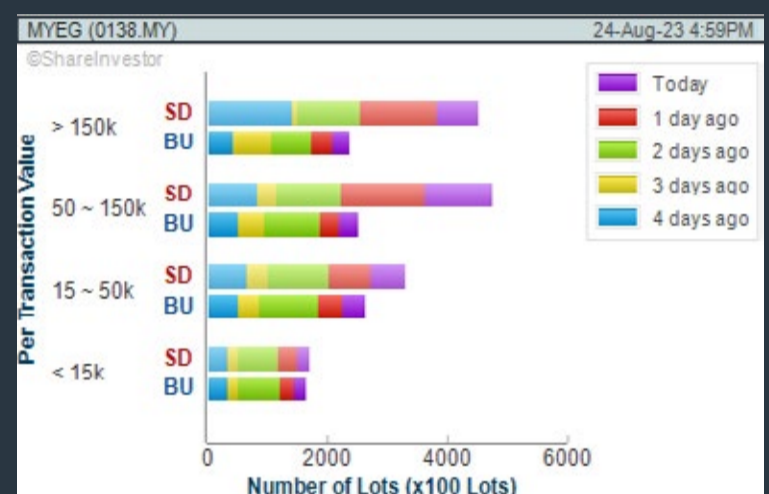
1. Revenue ("000) - select (more than) type (1) for the past select (1) financial year(s)
2. Average Volume - type (1) days average volume greater than type (10000) lots
3. Last Done Price - select (more than) type (0.3)
4. Is Shariah Compliant - select Yes
5. RSI Overbought - select RSI 1 above 99 for 1 days
6. Moving Average Below Close - select (MA) type (10) below close price for type (1) days
7. CCI Overbought - select CCI (2) above (0) for (1) days

- > click Save Template > Create New Template type (Shariah Momentum Up Stocks) > click Create
- > click Save Template as > select Shariah Momentum Up Stocks > click Save
- > click Screen Now (may take a few minutes)
- Sort By: Select (Vol) Select (Desc)
- Mouse over stock name > Charts > click C<sup>2</sup> Charts tab or Volume Distribution

### MY E.G. SERVICES BHD (0138)

C<sup>2</sup> Chart

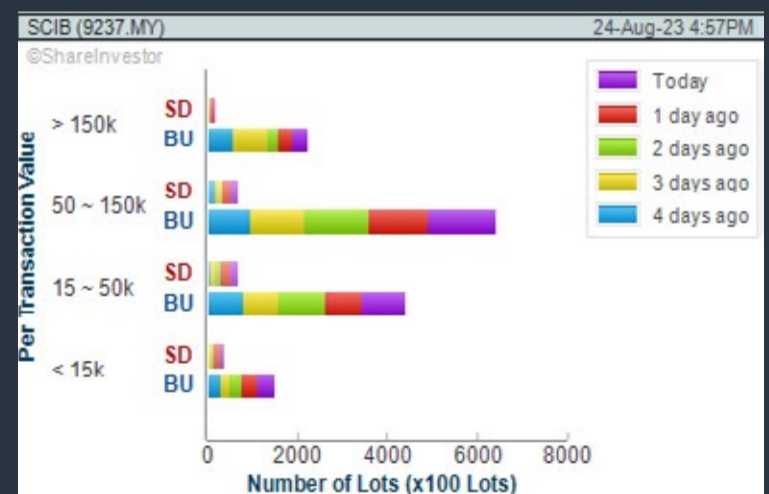
Analysis



### SARAWAK CONSOLIDATED IND BHD (9237)

C<sup>2</sup> Chart

Analysis



### BINASAT COMMUNICATIONS BERHAD (0195)

C<sup>2</sup> Chart

Analysis



**Disclaimer:** The information on this page is provided as a service to readers. It does not constitute financial advice and/or any investment recommendations. Past performance is not indicative of future results. We assume no liability for damages resulting from or arising out of the use of such information. It would be best if you did your own research to make your personal investment decisions wisely or consult a licenced investment advisor.





# BEYOND INFIN<sup>8</sup>



8 AUG 2023 – 31 JAN 2024

**TRADE & WIN  
AMAZING PRIZES**



**FIND OUT MORE**

T&C APPLY



## Price & Volume Distribution Charts (as at Yesterday)

Technical Analysis

**DEFINITION:** Stocks with Technical Analysis showing 5-days & 10-days Moving Average Price below Close over past 1 days and with Volume Spike

**CHART GUIDE:** Volume Distribution Chart is a statistical interpretation of the current sentiment on each stock in graphical format. The highest bar categorized as >150k is likely to be traded by institutions or super dealers, while the lowest bar categorized as <15k usually represents retail investors. "Buy Up" refers to more buyers snatching up the lots queued at selling price. "Sell Down" refers to sellers selling their shares to the buying queue.



ShareInvestor WebPro > Screener > Market Screener (FA & TA) > select BURSA > add criteria

**A. Criteria**

- > click Add Criteria
- Technical Analysis Conditions tab select (i) Moving Average Below Close (ii) Volume Spike
- Fundamental Analysis Conditions tab >select (iii) Revenue
- Prices & Other Conditions tab > select (iv) Is Shariah Compliant
- Technical Analysis Conditions tab select (v) Moving Average Below Close
- Prices & Other Conditions tab > select (vi) Last Done Price
- Technical Analysis Conditions tab select (vii) Moving Average Below Close

**B. Conditions (Criteria Filters)**

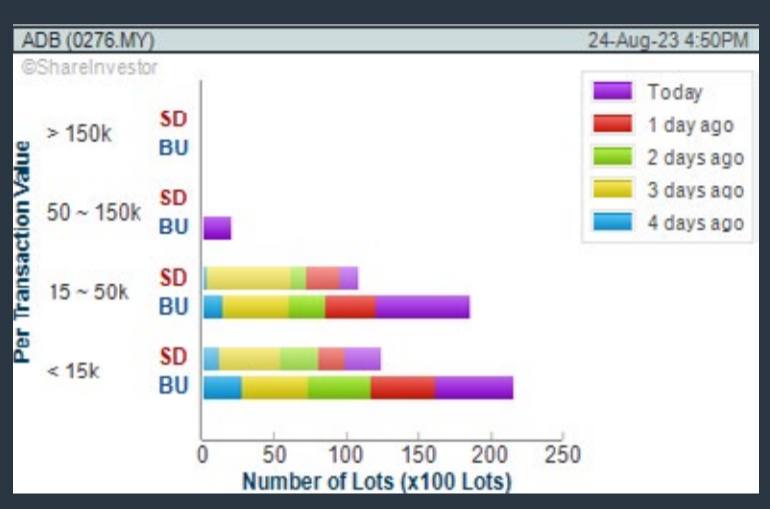
1. Moving Average Below Close - select (MA) type (5) below close price for type (3) days
2. Volume Spike - Volume type (1) greater than type (5) days average
3. Revenue ("000) - select (more than) type (1) for the past select (1) financial year(s)
4. Is Shariah Compliant - select NO
5. Moving Average Below Close - select (MA) type (10) below close price for type (1) days
6. Last Done Price - select (more than) type (0.3)
7. Moving Average Below Close - select (EMA) type (5) below close price for type (1) days

- > click Save Template > Create New Template type (Non-Shariah Hot Stocks) > click Create
- > click Save Template as > select Non-Shariah Hot Stocks > click Save
- > click Screen Now (may take a few minutes)
- Sort By: Select (Vol) Select (Desc)
- Mouse over stock name > Charts > click C<sup>2</sup> Charts tab or Volume Distribution

### AUTOCOUNT DOTCOM BERHAD (0276)

C<sup>2</sup> Chart

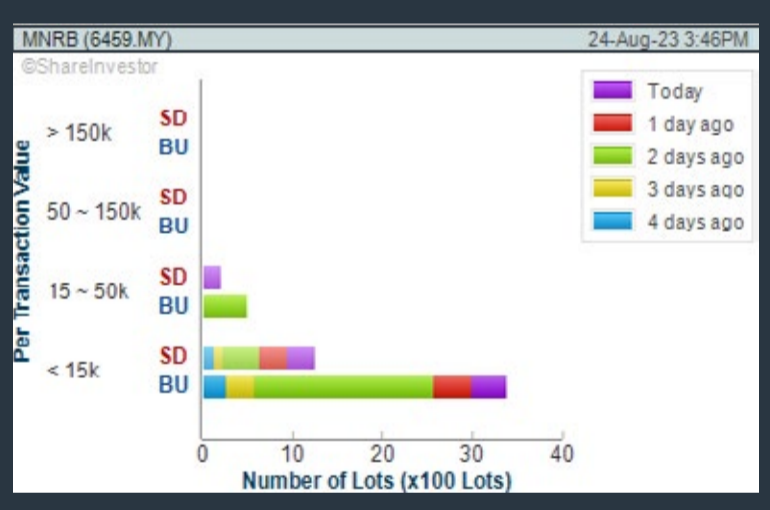
Analysis



### MNRB HOLDINGS BHD (6459)

C<sup>2</sup> Chart

Analysis



### RAPID SYNERGY BHD (7765)

C<sup>2</sup> Chart

Analysis



**Disclaimer:** The information on this page is provided as a service to readers. It does not constitute financial advice and/or any investment recommendations. Past performance is not indicative of future results. We assume no liability for damages resulting from or arising out of the use of such information. It would be best if you did your own research to make your personal investment decisions wisely or consult a licenced investment advisor.





# Foreign Stocks Fiesta



US stocks



SG stocks



HK stocks

Trade & Earn Up to  
RM70\* e-Cash Reward

\*T&C Apply



Open account and trade now



## Price & Volume Distribution Charts (Over 5 trading days as at Yesterday)

Technical Analysis

**DEFINITION:** Stocks with Technical Analysis showing Bullish Momentum and Price Uptrend

**CHART GUIDE:** Volume Distribution Chart is a statistical interpretation of the current sentiment on each stock in graphical format. The highest bar categorized as >150k is likely to be traded by institutions or super dealers, while the lowest bar categorized as <15k usually represents retail investors. "Buy Up" refers to more buyers snatching up the lots queued at selling price. "Sell Down" refers to sellers selling their shares to the buying queue.



ShareInvestor WebPro > Screener > Market Screener (FA & TA) > select BURSA > add criteria

**A. Criteria**

- > click Add Criteria
- Fundamental Analysis Conditions tab > select (i) Revenue
- Technical Analysis Conditions tab select (ii) Moving Average Below Close
- Technical Analysis Conditions tab select (iii) Average Volume
- Prices & Other Conditions tab > select (iv) Last Done Price
- Technical Analysis Conditions tab select (v) Moving Average Below Close
- Technical Analysis Conditions tab select (v) Moving Average Bullish Crossover

**B. Conditions**

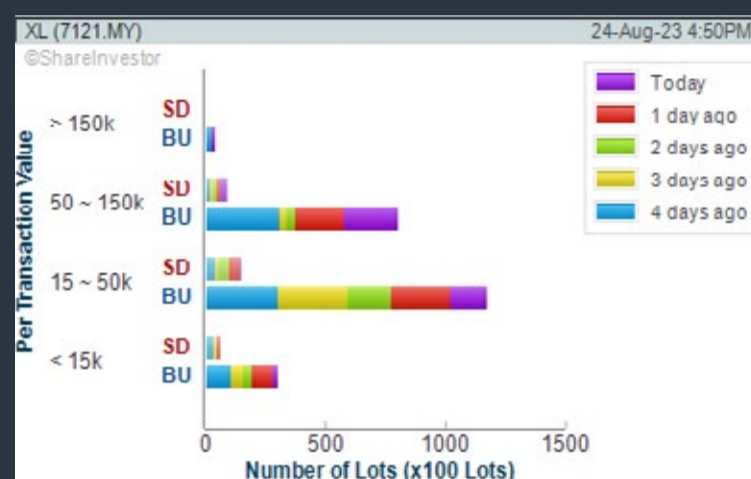
1. Revenue - select (more than) type (1) for the past select (1) financial year(s)
2. Moving Average Below Close - select (MA) type (20) below close price for type (1) days
3. Average Volume - type (5) days average volume type (10000) lots
4. Last Done Price - select (more than) type (0.3)
5. Moving Average Below Close - select (MA) type (10) below close price for type (1) days
6. Moving Average Bullish Crossover - select (MA) type (5) crossed above select (MA) type (10)

> click Save Template > Create New Template type (Non-Shariah Up-Trending Stocks) > click Create Click Save Template As > select Non-Shariah Up Trending Stocks > click Save  
> click Screen Now (may take a few minutes)  
Sort By: Select (Vol) Select (Desc)  
Mouse over stock name > Charts > click C<sup>2</sup> Charts tab or Volume Distribution

### XL HOLDINGS BERHAD (7121)

C<sup>2</sup> Chart

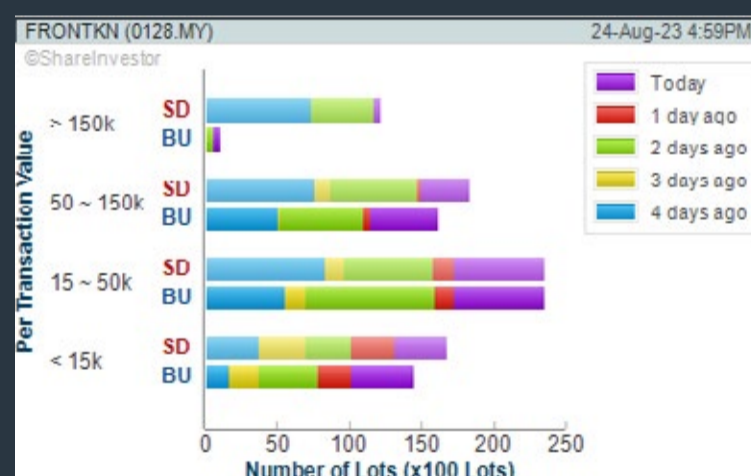
Analysis



### FRONTKEN CORPORATION BHD (0128)

C<sup>2</sup> Chart

Analysis



### ITMAX SYSTEM BERHAD (5309)

C<sup>2</sup> Chart

Analysis



**Disclaimer:** The information on this page is provided as a service to readers. It does not constitute financial advice and/or any investment recommendations. Past performance is not indicative of future results. We assume no liability for damages resulting from or arising out of the use of such information. It would be best if you did your own research to make your personal investment decisions wisely or consult a licenced investment advisor.

Closing Price (RM)	Traded Volume ('000)
1,597,480	94,257,416
23,275,500	15,267,466
16,790	130,285
3,577,590	2,513,050,445
0,790	9,187
0,710	130,735
5,530	15,154
0,795	15,725
3,310	54,348
11,300	5,291

Try out the **Warrant Heatmap**  
See which underlyings are bullish or bearish in the short to medium term



## Price & Total Shareholder Return (as at Yesterday)

Fundamental Analysis

**DEFINITION:** Share price of a company trading at a lower price as compared to its fundamentals (FA) such as financial performance and dividend, allowing it to be attractive to value investors.

**CHART GUIDE:** Total Shareholder Return (TSR) combines share price appreciation and dividend distributions paid to show the total return to the shareholder expressed as a percentage.



ShareInvestor WebPro > Screener > Market Screener (FA & TA) > select BURSA > add criteria

**A. Criteria**

- > click Add Criteria
- Fundamental Analysis Conditions tab (i) Price Earnings Ratio
- Fundamental Analysis Conditions tab >select (ii) CAGR of Net Earnings
- Fundamental Analysis Conditions tab >select (iii) Net Debt To Equity
- Fundamental Analysis Conditions tab >select (iv) Return On Equity (ROE)

**B. Conditions**

1. Price Earnings Ratio - select (less than) type (15) times now
2. CAGR of Net Earnings - select (more than) type (10) % for the past type (3) financial year(s)
3. Net Debt To Equity – select (less than) type (1) for the past select (1) financial year(s)
4. Return On Equity (ROE) – select (more than) type (10) % for the past select (1) financial year(s)

- > click Save Template > Create New Template type (Value Stock) > click Create
- > click Save Template as > select Value Companies > click Save
- > click Screen Now (may take a few minutes)
- Sort by: Select (PE Ratio) Select (Ascending)
- > Mouse over stock name > Factsheet > looking for Total Shareholder Return
- > Mouse over stock name > Charts > click C2 Charts tab

### SUNMOW HOLDING BERHAD (03050)

C<sup>2</sup> Chart

Analysis



Period	Dividend Received	Capital Appreciation	Total Shareholder Return
Short Term Return	5 Days	-	-
	10 Days	-0.100	-7.69%
	20 Days	-0.400	-25.00%
Medium Term Return	3 Months	+0.400	+50.00%
	6 Months	+0.550	+64.62%
	1 Year	+0.250	+26.32%
Annualised Return	Annualised	-	+26.32%

### EDELTEQ HOLDINGS BERHAD (0278.MY)

C<sup>2</sup> Chart

Analysis



Period	Dividend Received	Capital Appreciation	Total Shareholder Return
Short Term Return	5 Days	-0.020	-3.74%
	10 Days	-0.020	-3.74%
	20 Days	-0.105	-16.94%

### SCGM BHD (7247)

C<sup>2</sup> Chart

Analysis



Period	Dividend Received	Capital Appreciation	Total Shareholder Return
Short Term Return	5 Days	-	-
	10 Days	-0.015	-2.50%
	20 Days	-	-
Medium Term Return	3 Months	+0.040	+7.24%
	6 Months	-0.095	-16.80%
	1 Year	-0.090	-15.91%
Long Term Return	2 Years	0.051	+8.68%
	3 Years	0.126	+18.18%
	5 Years	0.173	+19.32%
Annualised Return	Annualised	-	+15.24%

**Disclaimer:** The information on this page is provided as a service to readers. It does not constitute financial advice and/or any investment recommendations. Past performance is not indicative of future results. We assume no liability for damages resulting from or arising out of the use of such information. It would be best if you did your own research to make your personal investment decisions wisely or consult a licenced investment advisor.



**BEYOND INSIGHTS**<sup>®</sup>  
INVESTMENT and TRADING EDUCATION

Discover the Potential  
of U.S. stock market

# Your Path To Sustainable Trading & Investing Results



JOIN US AT THE 3-HOUR  
GLOBAL INVESTING & TRADING  
MADE SIMPLE



Scan to Register



[beyondinsights.info/globalinvesting](https://beyondinsights.info/globalinvesting)



**by Kathlyn toh**

Founder of Beyond insights  
Professional Trader & Investor  
in the US Stock Market.



## Price & Total Shareholder Return (as at Yesterday)

Fundamental Analysis

**DEFINITION:** Company revenue is growing and making good quality of earnings with positive Free Cash Flow.

**CHART GUIDE:** Total Shareholder Return (TSR) combines share price appreciation and distributions paid to show the total return to the shareholder expressed as a percentage.



ShareInvestor WebPro > Screener > Market Screener (FA & TA) > select BURSA > add criteria

**A. Criteria**

1. Fundamental Analysis Conditions tab >select (i) Free Cash Flow, (ii) Revenue Growth, (iii) Gross Profit (Earnings) Margin, (iv) Quality of Earnings, (v) Total Shareholder Returns, > click Add Criteria
2. Fundamental Analysis Conditions tab >select (vi) Total Shareholder Returns > click Add Criteria

**B. Conditions (Criteria Filters)**

1. Free Cash Flow - select (more than) type (1) for the past select (1) financial year(s)
2. Revenue Growth - select (more than) type (1) for the past select (1) financial year(s)
3. Gross Profit (Earnings) Margin - select (more than) type (30) % for the past select (1) financial year(s)
4. Quality of Earnings - select (more than) type (1) for the past select (1) financial year(s)
5. Total Shareholder Return - select (more than) type (5) % for the past select (3) financial year(s)
6. Total Shareholder Return - select (more than) type (5) % for the past select (5) financial year(s)

- > click Save Template > Create New Template type (Growth Companies) > click Create
- > click Save Template as > select Growth Companies > click Save
- > click Screen Now (may take a few minutes)
- > Sort By: Select (Revenue Growth) Select (Desc)
- > Mouse over stock name > Factsheet > looking for Total Shareholder Return

## CLASSIC SCENIC BHD (7202)

C<sup>2</sup> Chart

Analysis



Period	Dividend Received	Capital Appreciation	Total Shareholder Return
Short Term Return	5 Days	-0.000	-0.00%
	10 Days	+0.015	+3.02%
	20 Days	+0.075	+17.24%
Medium Term Return	3 Months	-0.010	-1.92%
	6 Months	-0.250	-32.89%
	1 Year	-0.177	-25.78%
Long Term Return	2 Years	+0.022	+4.52%
	3 Years	0.030	+53.41%
	5 Years	0.110	+67.72%
Annualised Return	Annualised	-	+7.87%

## FOCUS POINT HOLDINGS BERHAD (0157)

C<sup>2</sup> Chart

Analysis

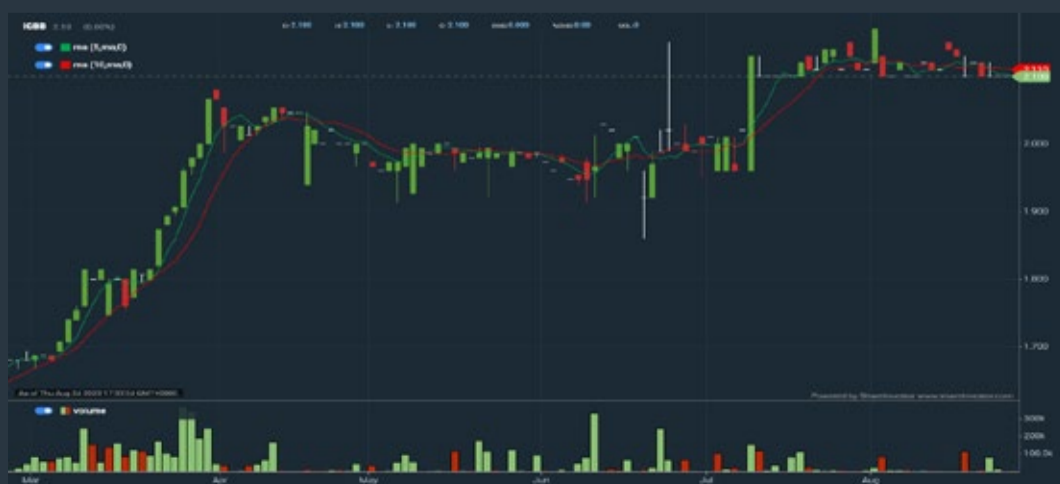


Period	Dividend Received	Capital Appreciation	Total Shareholder Return
Short Term Return	5 Days	-0.020	-2.60%
	10 Days	-0.035	-4.29%
	20 Days	-0.020	-2.60%
Medium Term Return	3 Months	+0.015	+1.86%
	6 Months	-0.140	-16.24%
	1 Year	-0.222	-28.04%
Long Term Return	2 Years	-0.204	-25.62%
	3 Years	-0.405	-50.41%
	5 Years	0.025	+3.14%
Annualised Return	Annualised	-	+0.20%

## IGB BERHAD (5606)

C<sup>2</sup> Chart

Analysis



Period	Dividend Received	Capital Appreciation	Total Shareholder Return
Short Term Return	5 Days	-	-
	10 Days	-0.020	-2.54%
	20 Days	-0.010	-1.27%
Medium Term Return	3 Months	+0.110	+13.89%
	6 Months	-0.407	-50.24%
	1 Year	-0.050	-6.25%
Long Term Return	2 Years	0.190	+23.74%
	3 Years	0.279	+34.72%
	5 Years	0.400	+50.04%
Annualised Return	Annualised	-	+8.38%

**Disclaimer:** The information on this page is provided as a service to readers. It does not constitute financial advice and/or any investment recommendations. Past performance is not indicative of future results. We assume no liability for damages resulting from or arising out of the use of such information. It would be best if you did your own research to make your personal investment decisions wisely or consult a licenced investment advisor.





# making places remarkable



usm.com

# XTRA

XTRA FURNITURE SDN BHD  
The Gardens Mall, Mid Valley City, Lot S-236 & 237  
Lingkaran Syed Putra, 59200 Kuala Lumpur  
T. +603 2282 9088 | living@xtrafurniture.com | xtrafurniture.com  
● XTRAFurniture | ● xtrafurnituremsia

## Price & Total Shareholder Return (as at Yesterday)

Fundamental Analysis

**DEFINITION:** Company is paying out dividend with low or moderate leverage.

**CHART GUIDE:** Total Shareholder Return (TSR) combines share price appreciation and distributions paid to show the total return to the shareholder expressed as a percentage.



ShareInvestor WebPro > Screener > Market Screener (FA & TA) > select BURSA > add criteria

**A. Criteria**

- > click Add Criteria
- Fundamental Analysis Conditions tab >select (i) Dividend Yield (Historical)
- Fundamental Analysis Conditions tab >select (ii) Dividend Payout (Historical)
- Fundamental Analysis Conditions tab >select (iii) Total Debt To Equity
- Fundamental Analysis Conditions tab >select (iv) Total Shareholder Returns
- Fundamental Analysis Conditions tab >select (v) Total Shareholder Returns
- Fundamental Analysis Conditions tab / >select (vi) CAGR of Dividend Per Share

- Fundamental Analysis Conditions tab >select (vii) CAGR of Dividend Per Share

**B. Conditions (Criteria Filters)**

1. Dividend Yield - select (more than) type (1) % for the past select (1) financial year(s)
2. Dividend Payout (Historical) - select (between) type (0.5) to type (1) times for the past select (1) financial year(s)
3. Total Debt to Equity - select (less than) type (1) for the past select (1) financial year(s)
4. Total Shareholder Return - select (more than) type (5) % for the past select (3) financial year(s)
5. Total Shareholder Return - select (more than) type (5) % for the past select (5) financial year(s)

6. CAGR of Dividend Per Share - select (less than) type (30) % for the past select (5) financial year(s)
7. CAGR of Dividend Per Share - select (more than) type (1) % for the past select (5) financial year(s)

- > click Save Template > Create New Template type (Dividend Companies) > click Create
- > click Save Template as > select Dividend Companies > click Save
- > click Screen Now (may take a few minutes)
- > Sort By: Select (Dividend Yield) Select (Desc)
- > Mouse over stock name > Factsheet > looking for Total Shareholder Return

## JAYCORP BHD (7152)

C<sup>2</sup> Chart



Analysis



Period	Dividend Received	Capital Appreciation	Total Shareholder Return
Short Term Return	5 Days	-	-
	10 Days	-0.085	-0.72%
	20 Days	-0.085	-0.72%
Medium Term Return	3 Months	-	-
	6 Months	-0.315	-2.18%
	1 Year	-0.010	+1.45%
Long Term Return	2 Years	0.355	+4.41%
	3 Years	0.170	+1.29%
	5 Years	0.355	+10.35%
Annualized Return	Annualized	-	+10.16%

## FORMOSA PROSONIC INDUSTRIES (9172)

C<sup>2</sup> Chart



Analysis



Period	Dividend Received	Capital Appreciation	Total Shareholder Return
Short Term Return	5 Days	-0.090	-0.42%
	10 Days	-0.130	-5.84%
	20 Days	-0.150	-5.84%
Medium Term Return	3 Months	-0.370	-16.78%
	6 Months	-0.010	-2.55%
	1 Year	-0.000	-12.24%
Long Term Return	2 Years	0.230	+5.78%
	3 Years	0.340	+5.90%
	5 Years	0.520	+10.67%
Annualized Return	Annualized	-	+10.43%

## UCHI TECHNOLOGIES BHD (7100)

C<sup>2</sup> Chart



Analysis



Period	Dividend Received	Capital Appreciation	Total Shareholder Return
Short Term Return	5 Days	-0.010	-0.20%
	10 Days	-0.130	-4.35%
	20 Days	-0.100	-2.85%
Medium Term Return	3 Months	-0.200	-5.40%
	6 Months	-0.450	-14.87%
	1 Year	-0.540	-17.84%
Long Term Return	2 Years	0.230	+2.83%
	3 Years	0.370	+5.42%
	5 Years	0.670	+9.31%
Annualized Return	Annualized	-	+9.36%

**Disclaimer:** The information on this page is provided as a service to readers. It does not constitute financial advice and/or any investment recommendations. Past performance is not indicative of future results. We assume no liability for damages resulting from or arising out of the use of such information. It would be best if you did your own research to make your personal investment decisions wisely or consult a licenced investment advisor.



Week: 18 Aug 2023 - 24 Aug 2023

More Brokers' Call 

AMINVESTMENT BANK <small>... See More</small>	Call	Target Price	Release Date
Cape EMS Berhad (5311)	BUY	RM1.47	23 Aug 2023
Lee Swee Kiat Group Berhad (8079)	BUY	RM1.19	22 Aug 2023
APEX <small>... See More</small>	Call	Target Price	Release Date
Hap Seng Plantations Holdings Berhad (5138)	HOLD	RM1.80	24 Aug 2023
Sarawak Plantation Berhad (5135)	SELL	RM1.80	23 Aug 2023
BIMB <small>... See More</small>	Call	Target Price	Release Date
Sunway Construction Berhad (6777)	BUY	RM1.99	24 Aug 2023
TSH Resources Berhad (9059)	HOLD	RM1.01	24 Aug 2023
CGS CIMB <small>... See More</small>	Call	Target Price	Release Date
AMMB Holdings Berhad (1015)	ADD	RM4.39	21 Aug 2023
Petronas Chemicals Group Berhad (5183)	REDUCE	RM5.70	23 Aug 2023
KENANGA <small>... See More</small>	Call	Target Price	Release Date
Genting Plantations Berhad (2291)	MARKET PERFORM	RM5.50	24 Aug 2023
Hap Seng Plantations Holdings Berhad (5138)	MARKET PERFORM	RM1.80	24 Aug 2023
Hong Leong Industries Berhad (3301)	OUTPERFORM	RM11.40	24 Aug 2023
MALACCA SECURITIES <small>... See More</small>	Call	Target Price	Release Date
Rexit Bhd (0106)	BUY	RM0.92	23 Aug 2023
Supercomnet Technologies Bhd (0001)	BUY	RM1.90	23 Aug 2023
MIDF <small>... See More</small>	Call	Target Price	Release Date
Sime Darby Plantation Berhad (5285)	NEUTRAL	RM4.10	24 Aug 2023
Sunway Construction Group Berhad (5263)	BUY	RM2.09	24 Aug 2023
TSH Resources Berhad (9059)	NEUTRAL	RM0.97	24 Aug 2023
JOB KAY HIAN <small>... See More</small>	Call	Target Price	Release Date
IOI Corporation Berhad (1961)	BUY	RM4.80	23 Aug 2023
Matrix Concepts Holdings Berhad (5236)	BUY	RM1.92	23 Aug 2023

**Disclaimer:** InveSt does not accept any liability whatsoever for any direct, indirect or consequential losses (including loss of profit) or damages that may arise from the use of information or opinions in this publication. The information and opinions in InveSt are not to be considered as an offer to sell or buy any of the securities discussed. Opinions expressed are subject to change without notice. The Brokers may, from time to time, have interests or positions in the securities mentioned. For the full report on each item listed on this page, please visit [https://www.shareinvestor.com/my/brokers\\_call](https://www.shareinvestor.com/my/brokers_call).



**DEFINITION:** Top 10 stocks with Technical Analysis plus Pattern Matching by 60 pre-defined indicators by the system showing a higher probability of bullish sentiment on the share price.



ShareInvestor WebPro > Screener > Predefined TA Screens > select market BURSA > Most Long Signals > click Scan Results or mouse over each company

## PLS PLANTATIONS BERHAD (9695.MY)

### PLS

Price updated at 24 Aug 2023 16:50

Last: <b>0.915</b>	Change: -	Volume: <b>8,500</b>
	Change (%): -	Range: <b>0.910 - 0.925</b>

TA Scanner Results based on historical data up to 24 Aug 2023

Condition	Signal	Explanation
Bollinger Band: Bullish Lower Bollinger Band Support	Long	"1. Low 1 day ago below lower bollinger band(20,2). 2. Close above close 1 day ago. 3. Average volume(5) is above 100,000."
DM: Bullish Directional Movement	Long	-DI(14) crossed below +DI(14)
MA: Bullish Price Crossover	Long	"1. Close price crossed above MA(40) within the last 1 day. 2. Previous day close price is below the MA(10) for the last 5 days"
Stochastic: Fast Stochastic Buy Signal	Long	"1. Fast Stochastic(15,5) %K crossed above 20. 2. Fast Stochastic(15,5) %K 1 day ago was below 20 for the last 5 days. 3. Average volume(30) is above 50000"

## LOTUS KFM BERHAD (8303.MY)

### LOTUS

Price updated at 24 Aug 2023 16:59

Last: <b>0.285</b>	Change: <b>-0.005</b>	Volume: <b>26,027</b>
	Change (%): <b>-1.72</b>	Range: <b>0.280 - 0.295</b>

TA Scanner Results based on historical data up to 24 Aug 2023

Condition	Signal	Explanation
Bollinger Band: Bullish Long Term Volatility Breakout and Trending	Long	"1. Close price above upper bollinger band(33,1). 2. Volume above average volume(50). 3. Average volume(50) is above 300,000."
Bollinger Band: Bullish Short Term Volatility Breakout and Trending	Long	"1. Close price above upper bollinger band(33,1). 2. Volume above average volume(10). 3. Average volume(10) is above 300,000."
Bollinger Band: High Above Upper Bollinger Band	Neutral	"1. High above upper bollinger band(14,2). 2. Average volume(5) is above 100,000."
Donchian Channels: High Above Upper Donchian Channels	Long	High crossed above the upper Donchian Channel(14,4)
Price: New 52 Week High	Long	"1. Stock reach a new 52 week high. 2. Average volume(30) is above 50000."
Williams %R: Bearish Williams %R	Short	"1. Williams %R(26) between 0 and -20. 2. Average volume(5) is above 100,000."

## EDUSPEC HOLDINGS BERHAD (0107.MY)

### EDUSPEC

Price updated at 24 Aug 2023 16:53

Last: <b>0.040</b>	Change: -	Volume: <b>32,175</b>
	Change (%): -	Range: <b>0.035 - 0.040</b>

TA Scanner Results based on historical data up to 24 Aug 2023

Condition	Signal	Explanation
MA: Bullish Price Crossover	Long	"1. Close price crossed above MA(40) within the last 1 day. 2. Previous day close price is below the MA(10) for the last 5 days"
MACD: Bullish MACD Crossover	Long	"1. MACD(12,26) diff line crossed above the MACD(12,26) signal line. 2. MACD Histogram(12,26) is above 0."
Stochastic: Fast Stochastic Buy Signal	Long	"1. Fast Stochastic(15,5) %K crossed above 20. 2. Fast Stochastic(15,5) %K 1 day ago was below 20 for the last 5 days. 3. Average volume(30) is above 50000"

## Y.S.P.SOUTHEAST ASIA HOLDING (7178.MY)

### YSPSAH

Price updated at 24 Aug 2023 16:52

Last: <b>2.500</b>	Change: <b>+0.020</b>	Volume: <b>1,246</b>
	Change (%): <b>+0.81</b>	Range: <b>2.480 - 2.500</b>

TA Scanner Results based on historical data up to 24 Aug 2023

Condition	Signal	Explanation
Bollinger Band: High Above Upper Bollinger Band	Neutral	"1. High above upper bollinger band(14,2). 2. Average volume(5) is above 100,000."
Donchian Channels: High Above Upper Donchian Channels	Long	High crossed above the upper Donchian Channel(14,4)
MA: Medium Term Bullish Moving Average Crossover	Long	MA(25) crossed above MA(50) within the last 1 day.
MA: Short Term Bullish Moving Average Crossover	Long	MA(10) crossed above MA(15) within the last 1 day.
Parabolic SAR: Bearish Parabolic SAR Reversal	Neutral	"1. Parabolic SAR 1 day ago above close price 1 day ago for the last 5 days. 2. Parabolic SAR below close price"
Volume: Volume Spike	Long	"1. Volume is more than 500% above average volume(10). 2. Volume above 200000. 3. Close price above 0.10"
Williams %R: Bearish Williams %R	Short	"1. Williams %R(26) between 0 and -20. 2. Average volume(5) is above 100,000."

## SYSTECH BHD (0050.MY)

### SYSTECH

Price updated at 24 Aug 2023 16:59

Last: <b>0.370</b>	Change: <b>-0.020</b>	Volume: <b>451,369</b>
	Change (%): <b>-5.13</b>	Range: <b>0.355 - 0.410</b>

TA Scanner Results based on historical data up to 24 Aug 2023

Condition	Signal	Explanation
Bollinger Band: Bullish Long Term Volatility Breakout and Trending	Long	"1. Close price above upper bollinger band(33,1). 2. Volume above average volume(50). 3. Average volume(50) is above 300,000."
Bollinger Band: Bullish Short Term Volatility Breakout and Trending	Long	"1. Close price above upper bollinger band(33,1). 2. Volume above average volume(10). 3. Average volume(10) is above 300,000."
Bollinger Band: High Above Upper Bollinger Band	Neutral	"1. High above upper bollinger band(14,2). 2. Average volume(5) is above 100,000."
Candlestick: Bullish Engulfing	Long	Bullish: Engulfing
DM: Bullish Directional Movement	Long	-DI(14) crossed below +DI(14)
Donchian Channels: High Above Upper Donchian Channels	Long	High crossed above the upper Donchian Channel(14,4)
Price: New 52 Week High	Long	"1. Stock reach a new 52 week high. 2. Average volume(30) is above 50000."

**Disclaimer:** The information on this page is provided as a service to readers. It does not constitute financial advice and/or any investment recommendations. Past performance is not indicative of future results. We assume no liability for damages resulting from or arising out of the use of such information. It would be best if you did your own research to make your personal investment decisions wisely or consult a licenced investment advisor.

**MAH SING GROUP BHD (8583.MY)**

**MAHSING**

Price updated at 24 Aug 2023 16:58

Last: <b>0.740</b>	Change: <b>+0.020</b>	Volume: <b>63,118</b>
	Change (%): <b>+2.78</b>	Range: <b>0.720 - 0.745</b>

TA Scanner Results based on historical data up to 24 Aug 2023

Condition	Signal	Explanation
Bollinger Band: Bullish Long Term Volatility Breakout and Trending	Long	"1. Close price above upper bollinger band(33,1). 2. Volume above average volume(50). 3. Average volume(50) is above 300,000."
Candlestick: Bullish Harami	Long	Bullish: Harami
Volume: 10 Days large value Buy Up trade	Long	"1. 150K value Buy Up greater than Sell Down by 20% for 10 days. 2. 50K-100K value Buy Up greater than Sell Down by 20% for 10 days. 3. Average volume(10) is above 1000000"
Volume: 5 Days large value Buy Up trade	Long	"1. 150K value Buy Up greater than Sell Down by 20% for 5 days. 2. 50K-100K value Buy Up greater than Sell Down by 20% for 5 days. 3. Average volume(10) is above 1000000"

**YINSON HOLDINGS BHD (7293.MY)**

**YINSON**

Price updated at 24 Aug 2023 16:59

Last: <b>2.530</b>	Change: <b>-0.070</b>	Volume: <b>9,029</b>
	Change (%): <b>-2.69</b>	Range: <b>2.530 - 2.580</b>

TA Scanner Results based on historical data up to 24 Aug 2023

Condition	Signal	Explanation
Bollinger Band: Bullish Long Term Volatility Breakout and Trending	Long	"1. Close price above upper bollinger band(33,1). 2. Volume above average volume(50). 3. Average volume(50) is above 300,000."
Bollinger Band: Bullish Short Term Volatility Breakout and Trending	Long	"1. Close price above upper bollinger band(33,1). 2. Volume above average volume(10). 3. Average volume(10) is above 300,000."
Candlestick: Bullish Engulfing	Long	Bullish: Engulfing
DM: Bullish Directional Movement	Long	-DI(14) crossed below +DI(14)
Williams %R: Bearish Williams %R	Short	"1. Williams %R(26) between 0 and -20. 2. Average volume(5) is above 100,000."

**SINARAN ADVANCE GROUP BERHAD (5172.MY)**

**SINARAN**

Price updated at 24 Aug 2023 16:48

Last: <b>0.060</b>	Change: <b>-0.005</b>	Volume: <b>6,478</b>
	Change (%): <b>-7.69</b>	Range: <b>0.060 - 0.065</b>

TA Scanner Results based on historical data up to 24 Aug 2023

Condition	Signal	Explanation
Bollinger Band: High Above Upper Bollinger Band	Neutral	"1. High above upper bollinger band(14,2). 2. Average volume(5) is above 100,000."
DM: Bullish Directional Movement	Long	-DI(14) crossed below +DI(14)
Donchian Channels: High Above Upper Donchian Channels	Long	High crossed above the upper Donchian Channel(14,4)
MA: Short Term Bullish Moving Average Crossover	Long	MA(10) crossed above MA(15) within the last 1 day.
RSI: Short Term RSI 50 Bullish Crossover	Long	"1. RSI(20) crossed above 50 within the last 1 day and RSI(20) 1 day ago below 50 for the last 5 days. 2. Volume above average volume(125). 3. Average volume(5) is above 100,000."

**AGMO HOLDINGS BERHAD (0258.MY)**

**AGMO**

Price updated at 24 Aug 2023 16:59

Last: <b>0.635</b>	Change: <b>+0.015</b>	Volume: <b>78,942</b>
	Change (%): <b>+2.42</b>	Range: <b>0.620 - 0.640</b>

TA Scanner Results based on historical data up to 24 Aug 2023

Condition	Signal	Explanation
Bollinger Band: Bullish Long Term Volatility Breakout and Trending	Long	"1. Close price above upper bollinger band(33,1). 2. Volume above average volume(50). 3. Average volume(50) is above 300,000."
Bollinger Band: Bullish Short Term Volatility Breakout and Trending	Long	"1. Close price above upper bollinger band(33,1). 2. Volume above average volume(10). 3. Average volume(10) is above 300,000."
Bollinger Band: High Above Upper Bollinger Band	Neutral	"1. High above upper bollinger band(14,2). 2. Average volume(5) is above 100,000."
Donchian Channels: High Above Upper Donchian Channels	Long	High crossed above the upper Donchian Channel(14,4)
MA: Short Term Bullish Moving Average Crossover	Long	MA(10) crossed above MA(15) within the last 1 day.
MACD: Bullish MACD Crossover	Long	"1. MACD(12,26) diff line crossed above the MACD(12,26) signal line. 2. MACD Histogram(12,26) is above 0."

**PRIVASIA TECHNOLOGY BERHAD (0123.MY)**

**PRIVA**

Price updated at 24 Aug 2023 16:59

Last: <b>0.105</b>	Change: <b>-0.005</b>	Volume: <b>7,429</b>
	Change (%): <b>-4.55</b>	Range: <b>0.105 - 0.110</b>

TA Scanner Results based on historical data up to 24 Aug 2023

Condition	Signal	Explanation
Bollinger Band: Bullish Long Term Volatility Breakout and Trending	Long	"1. Close price above upper bollinger band(33,1). 2. Volume above average volume(50). 3. Average volume(50) is above 300,000."
Bollinger Band: Bullish Short Term Volatility Breakout and Trending	Long	"1. Close price above upper bollinger band(33,1). 2. Volume above average volume(10). 3. Average volume(10) is above 300,000."
Bollinger Band: High Above Upper Bollinger Band	Neutral	"1. High above upper bollinger band(14,2). 2. Average volume(5) is above 100,000."
Chaikin Volatility: Increasing Chaikin Volatility	Neutral	Chaikin Volatility(10,10) has been increasing for 5 days
Donchian Channels: High Above Upper Donchian Channels	Long	High crossed above the upper Donchian Channel(14,4)
MA: Short Term Bullish Moving Average Crossover	Long	MA(10) crossed above MA(15) within the last 1 day.
MACD: Bullish MACD Crossover	Long	"1. MACD(12,26) diff line crossed above the MACD(12,26) signal line. 2. MACD Histogram(12,26) is above 0."
Parabolic SAR: Bearish Parabolic SAR Reversal	Neutral	"1. Parabolic SAR 1 day ago above close price 1 day ago for the last 5 days. 2. Parabolic SAR below close price"
Volume: Volume Spike	Long	"1. Volume is more than 500% above average volume(10). 2. Volume above 200000. 3. Close price above 0.10"

**Disclaimer:** The information on this page is provided as a service to readers. It does not constitute financial advice and/or any investment recommendations. Past performance is not indicative of future results. We assume no liability for damages resulting from or arising out of the use of such information. It would be best if you did your own research to make your personal investment decisions wisely or consult a licenced investment advisor.



# FINANCIAL PLANNING INDUSTRY TO PLAY PIVOTAL ROLE IN FINANCIAL WELL-BEING OF MALAYSIANS - SC CHAIRMAN

**A** ccording to The Securities Commission Malaysia (SC) executive chairman Datuk Seri Dr Awang Adek Hussin, the financial planning industry has grown considerably and played an increasingly pivotal role in the financial well-being of many Malaysians. Between 2015 and 2022, the number of financial planning firms increased by 42%, from 31 to 44 firms as at end-2022, while the number of licensed representatives grew by 145% over the same period to 1,455.

It is important for the financial planning industry to keep up with changing market conditions and investor demands. In his keynote address at the Financial Planning Association of Malaysia (FPAM) Annual Signature Financial Planning Symposium 2023, he said that the financial planning industry must broaden its offerings to meet investors' preference for socially responsible investment (SRI), invest in technology for more personalised services and build a skilled talent pipeline for the future.

Regional and local wealth trends indicate that investors are seeking holistic investment strategies that consider their entire portfolio, rather than focusing on individual products. The evolving service model and access demanded by clients is led by increased demand for personalised advice with deeper investor engagement over the long term. Towards this end, the SC seeks to facilitate and empower firms and consultants to move towards more comprehensive wealth management offering across the capital market and financial sectors in a bid to meet Malaysians' evolving needs.

He urged the industry to take more initiatives to build talent pipeline at their own accord by collaborating closely with universities and other professional associations to enable firms and industry associations to develop courses to mould the next generation of financial planners and ensure a steady stream of high-quality local talents. Through these means, the industry will be able to cultivate the next generation of talent, ensuring the sustainability and continuity of the Malaysian financial planning industry, he said.

Initiatives under the Madani Economy framework are expected to improve investor confidence in the Malaysian economy and attract greater inflows and foreign investors into the domestic capital market. This in turn will provide better opportunities for financial planners to expand their client base as well as enable existing clients to grow their wealth.

The government is also looking at policies to facilitate and attract the setting up of family offices in Malaysia with the aim of attracting a larger pool of investors to support financing for small and medium



enterprises (SMEs) and the new economy. These family offices will require specialist advice in a broad range of investments and services, from traditional investments to tax and estate planning to name a few. Licensed financial planners are uniquely placed to capitalise on this invaluable opportunity to service family offices that will be looking to set up operations in Malaysia.

## **Economic growth in Malaysia to pick up in 2H2023 – BMI**

According to BMI, a Fitch Solutions company, Malaysia's economic recovery over the coming quarters will be slower than it initially expected due to the ongoing impact of weakening global demand and tight monetary conditions. The firm said Malaysia's real GDP growth slowed sharply to 2.9% year-on-year in 2Q2023 from 5.6% 1Q2023, falling below consensus and house expectations. Overall, our forecast for Malaysia's real GDP growth has been revised down to 4.0% in 2023, from 4.2% previously, marking a sharp slowdown from 8.7% in 2022. The new forecast is slightly below consensus estimates of 4.2%.

The weaker-than-expected reading for 2Q2023 leaves its prevailing 2023 growth forecast of 4.2% looking too upbeat, as it suggests that the economy must grow by an average of 4.1% y-o-y in the second half of 2023. However, this will be challenging to attain given the backdrop of weakening global demand and tight monetary conditions.

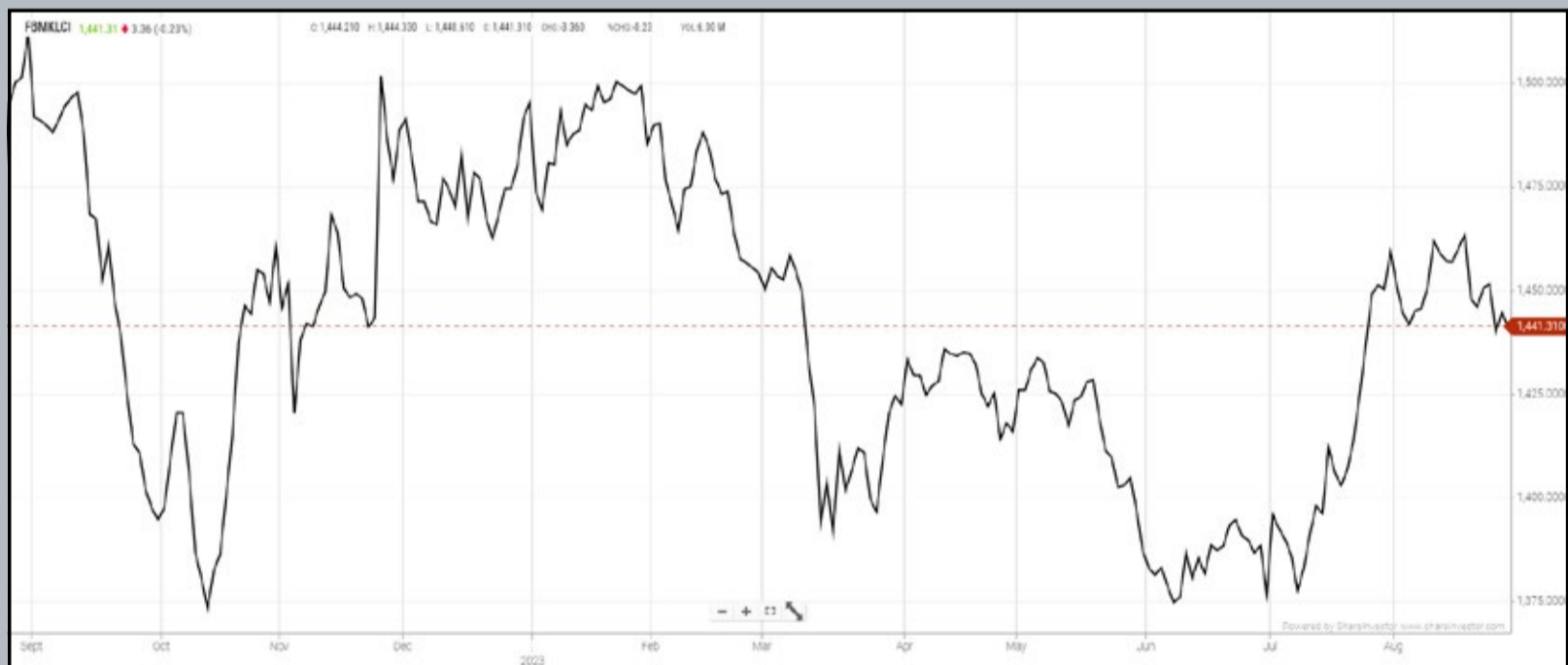
Malaysia's economic resilience was mainly driven by consumption, but this strength is expected to falter as the impact of tight monetary conditions feeds through the economy. Beyond domestic challenges, it maintains the view that weakness in global demand with a forecasted growth of 2.4% across 2023 will keep a lid on Malaysia's export performance this year.

Net exports already removed 0.7 percentage points (pp) off GDP growth in the second quarter, extending the -2.3pp in the first quarter. The year-to-date nominal figures further showed exports contracting by an average of 5% y-o-y in the first seven months of the year, with a sharp contraction of 14% y-o-y in June, although this eased to a contraction of 13% y-o-y in July.

However, two factors - domestic challenges and weakness in global demand - could point to the fact that most of the weakness could now be behind us.

## Eye On The Markets

On Thursday (24Aug), the Ringgit closed at 4.6450 against the USD and 3.4340 to the Sing Dollar. On Monday (21Aug), the FBM KLCI opened at 1446.69. As at Thursday (24Aug) 5:00pm, the FBM KLCI closed down 2.02 points at 1444.67. Over in US, the overnight Dow Jones Industrial Average closed down 373.56 points (-1.08%) to 34,099.42 whilst the NASDAQ shed 257.06 points (-1.87%) to 13,463.97.



KLCI 1 Year Chart

**CHECK OUT  
SHAREINVESTOR  
BROKERS' CALL**

Weekly Buy/Sell/Hold calls from leading Malaysian Brokerages.

[Go To Brokers' Call](#)



## Over 5 trading days



ShareInvestor WebPro ([www.shareinvestor.com/my](http://www.shareinvestor.com/my))

1. Price > Stock Prices
2. Select Market: NASDAQ / NYSE / IDX / SET / HKEX / SGX (One bourse at a time)
3. select Stocks Tab
4. select Ranking Top Gainers or Top Losers (Over 5 Trading Days)
5. Mouse over Column Layout > select Edit Customs > select Name > select Last Done Price > select 5 Days Change > select 52 Weeks High > select 52 Weeks Low > Mouse Over Column Layout > select Custom

### NASDAQ (USD)

#### Top Gainers

Name	Last Done	Change Over 5 Days	52 Weeks High	52 Weeks Low
NVIDIA CORP	471.630	+38.195	481.870	108.130
REGENERON PHARMACEUTICALS INC	831.210	+34.480	847.500	572.220
VINFAST AUTO LTD	49.000	+29.000	46.980	11.610
BROADCOM INC	854.460	+27.360	923.180	415.068
FREEDOM HOLDING CORP	92.970	+23.120	99.500	47.642

#### Top Losers

Name	Last Done	Change Over 5 Days	52 Weeks High	52 Weeks Low
BOOKING HOLDINGS INC	3,026.390	-32.040	3,251.709	1,616.850
ULTA BEAUTY INC	422.740	-23.930	556.600	373.795
FIRST CITIZENS BANCSHARES INC NRTH	1,369.460	-23.140	1,512.070	505.840
ATRIION CORP	464.700	-22.510	705.740	474.700
LANCASTER COLONY CORP	161.640	-20.640	220.650	143.790

### NYSE (USD)

#### Top Gainers

Name	Last Done	Change Over 5 Days	52 Weeks High	52 Weeks Low
BERKSHIRE HATHAWAY INC	537,780.000	+1,963.210	556,117.000	393,012.250
NVR INC	6,070.010	+48.010	6,474.530	3,816.555
FABRINET	158.910	+42.680	163.880	90.190
CHIPOTLE MEXICAN GRILL	1,872.320	+23.120	2,175.010	1,344.050
TRANSDIGM GROUP INC	859.000	+15.230	940.000	499.630

#### Top Losers

Name	Last Done	Change Over 5 Days	52 Weeks High	52 Weeks Low
METTLER-TOLEDO INTERNATIONAL INC	1,161.960	-43.140	1,615.970	1,065.550
DECKERS OUTDOOR CORP	521.780	-35.510	568.470	298.610
DICKS SPORTING GOODS INC	113.550	-30.750	152.608	98.010
MARKEL GROUP INC	1,467.270	-25.610	1,519.960	1,064.090
KEYSIGHT TECHNOLOGIES INC	127.700	-22.350	189.450	125.890

### IDX (Rupiah)

#### Top Gainers

Name	Last Done	Change Over 5 Days	52 Weeks High	52 Weeks Low
RODA VIVATEX	12,925.000	+1,075.000	17,000.000	8,450.000
BAYAN RESOURCES TBK	18,800.000	+1,050.000	24,800.000	6,350.000
INDO TAMBANGRAYA MEGAH TBK	29,150.000	+950.000	45,650.000	22,125.000
PANTAI INDAH KAPUK DUA TBK	3,010.000	+820.000	3,120.000	810.000
AMMAN MINERAL INTERNASIONAL TBK	3,950.000	+650.000	4,020.000	1,700.000

#### Top Losers

Name	Last Done	Change Over 5 Days	52 Weeks High	52 Weeks Low
UNITED TRACTORS	26,700.000	-800.000	36,200.000	22,200.000
GUDANG GARAM TBK	24,750.000	-700.000	30,050.000	16,500.000
AKASHA WIRA INTERNATIONAL TBK	11,350.000	-600.000	14,125.000	6,125.000
SUCACO(SUPREME CABLE MANUFACTURING)	9,525.000	-575.000	11,200.000	7,750.000
PABRIK KERTAS TJIWI KIMIA	7,450.000	-475.000	8,525.000	5,600.000

### SET (Thai Baht)

#### Top Gainers

Name	Last Done	Change Over 5 Days	52 Weeks High	52 Weeks Low
AEONTS	176.000	+18.500	208.000	151.500
SAPPE	95.750	+8.750	95.750	37.000
CBG	85.500	+7.500	107.500	61.250
EA	63.750	+6.250	99.750	51.500
DELTA	110.500	+6.000	119.500	48.800

#### Top Losers

Name	Last Done	Change Over 5 Days	52 Weeks High	52 Weeks Low
OHTL	474.000	-10.000	610.000	365.000
GYT	200.000	-9.000	212.000	173.000
OISHI	51.000	-7.500	59.000	44.000
BBL	166.500	-4.500	175.000	132.500
INTUCH	72.750	-3.500	78.750	68.250

### HKEX (HKD)

#### Top Gainers

Name	Last Done	Change Over 5 Days	52 Weeks High	52 Weeks Low
MOG DIGITECH HOLDINGS LTD	98.650	+7.150	104.300	2.660
MINISO GROUP HLDG LTD	47.200	+7.100	47.750	8.760
BEIGENE LTD	123.200	+6.900	170.500	74.900
TRIP COM GROUP LTD	317.800	+6.600	330.200	159.800
ANTA SPORTS PRODUCTS	87.700	+6.500	125.300	67.850

#### Top Losers

Name	Last Done	Change Over 5 Days	52 Weeks High	52 Weeks Low
STAR CM HOLDINGS LIMITED	66.500	-57.500	132.000	32.550
NOAH HOLDINGS PRIVATE WEALTH AND AS	209.800	-13.000	326.800	200.800
TENCENT HOLDINGS LIMITED	302.400	-9.800	342.000	293.000
YSB INC	49.500	-9.750	64.500	19.000
COSMOPOLITAN INTERNATIONAL HLDGS	1.150	-9.550	17.100	1.020

### SGX (SGD)

#### Top Gainers

Name	Last Done	Change Over 5 Days	52 Weeks High	52 Weeks Low
JMH USD	46.030	+0.430	57.800	42.600
AEM SGD	3.510	+0.260	4.710	2.700
Azeus	8.590	+0.240	8.690	6.700
AEM USD	2.540	+0.220	3.600	2.180
Pegasus SPAC	4.600	+0.200	4.900	4.300

#### Top Losers

Name	Last Done	Change Over 5 Days	52 Weeks High	52 Weeks Low
Jardine C&C	32.240	-0.780	36.850	27.250
NIO Inc. USD OV	11.090	-0.760	22.150	7.420
Great Eastern	17.880	-0.710	19.460	16.850
Haw Par	9.400	-0.330	11.380	8.980
Sembcorp Ind	5.270	-0.310	6.100	2.744

# PERPLEXING DEVELOPMENTS AT EA HOLDINGS OVER THE RESTRAINT TO CONVENE EGM



Devanesan  
Evanson

**Chief Executive  
Officer, Minority  
Shareholders Watch  
Group**

Recently, EA Holdings Berhad (EAH) found itself in the limelight over its announcement of calling an extraordinary general meeting (EGM) convened by a shareholder, Ng Cheng Shin, as 'defective and void.' EAH also urged shareholders to refrain from attending and voting at the EGM scheduled on 22 August 2023.

The calling arose from two Ad Interim Order for Injunction served on the Company in relation to two material litigation. Based on the Ad Interim Order for Injunction (collectively Ad Interim Injunction Orders) dated 1 and 2



August 2023, EAH, who is named defendant in both cases, is prohibited from 'exercising any rights to hold, call and/or requisition for any extraordinary general meeting and/or to pass any resolutions in relation to the Company.'

On 25 July 2023, EAH announced that it received a Special Notice from Ng, a member of the Company who claimed he holds 10% or more of the issued share capital of EAH, to call for an EGM on 22 August 2023 with the intent to move 11 resolutions for the removal and appointment of directors. Ng seeks to remove CEO Mohammad Sobri Saad, chairman Datuk Azahar Rasul, and directors Basir Bachik, Abdul Fattah Mohamed Yatim, Choo Seng Choon, and Wong Wan Rou from the board. At the same time, he seeks to appoint himself, Chin Yew Thong, Dr Adrian Foong Heng Nian, and Dr Teh Chee Chong to the board.

Ng's move to call for an EGM is pursuant to Section 310(b) of the Companies Act 2016 (CA2016). The Act states that an EGM may be convened by either the board of directors or any member(s) of the company holding at least 10% of the issued share capital of a company.

## **POINTS OF CONTENTION**

The current state of events at EAH may baffle EAH's shareholders. Arguably, this EGM is called by Ng, an independent party who is exercising his rights as a shareholder under CA2016. Further, under Section 311 of CA2016, shareholders who hold at least 10% of the paidup capital of a company may require the directors to convene a meeting of members of the company.

Pursuant to this, directors shall call for the meeting within 14 days from the date of the requisition and hold the meeting on a date not more than 28 days after the date of the notice to convene the meeting (refer to Section 312 of CA2016). In convening a meeting requisitioned by the members, the board of directors of the listed company shall assume the responsibility of issuing and disseminating the notice of the meeting as well as making all the necessary preparations for such meeting.

# STERN WARNING

In an announcement dated 10 August 2023, EAH informed shareholders that ‘any intended or purported attempt(s) to hold any extraordinary general meeting(s) in the name of the company is in breach of the said Ad Interim Injunction Orders and any individual(s) attempting such a step may be subject to contempt proceedings.’ Besides, shareholders were urged not to attend and vote at the EGM and that EAH would treat any resolutions purported to be approved at the said EGM as invalid and void in light of the Ad Interim Injunction Orders served on the Company. As such, the Company said it would not hesitate to take legal action against any individual(s) who continue to create unnecessary confusion for the members of the Company and the general public.

# CONCLUSION

Only time will tell how the issues pan out during legal proceedings and the implications for minority shareholders who want to call for an EGM.

**By MSWG Team**

*This article appeared in the The Observer, a weekly newsletter published by The Minority Shareholders Watch Group (MSWG) and reproduced here with their permission. Do follow MSWG's Twitter account at @MSWGMalaysia and share your thought on their tweets from time to time.*



Learn how to identify Hot Stocks using Technical Analysis (TA) and Fundamental Analysis (FA)

**SIGN UP FOR Invest NOW IT'S FREE!!!**

[Click here](#)

Scan me



Via email, every Friday.

Get market moving news and analyses. Regular columns include **Behind The Action** and **From The Observer**

**Leaderboard • Shariah Hot Stocks • Shariah Momentum Up Stocks • Non Shariah Hot Stocks • Up Trending Stocks • Growth Stocks • Dividend Stocks • Long Companies • Insider Activity • Investor Relations • Regional Markets**









**DEFINITION:** Insider Activity shows the trades made by substantial shareholders or directors of the company. Purchases by the directors and company share buyback may indicate the share price is undervalued and brings confidence to the price trend of the share price.



ShareInvestor WebPro > Fundamental > Insider Trades > click Search tab > Select Bursa > click Stock name > scroll up and leave at <Select Counter> Type Date Range for Announcement Date > click Search

Notice Period is 13th Aug – 19th Aug 2023

Effective Change Date	Stock Name	Buyer/ Seller Name [Classification]	Bought / (Sold) ['000]	No. of Shares After Trade ['000]	
			Total	Total	% Held
10 AUG 2023 - 11 AUG 2023	AEMULUS	MR NG SANG BENG [DIR/CEO]	308	124,324	18.573
10 AUG 2023 - 11 AUG 2023	AEMULUS	MR NG SANG BENG [SSH]	308	124,324	18.573
15 AUG 2023 - 15 AUG 2023	AEON	EMPLOYEES PROVIDENT FUND BOARD [SSH]	-61	146,668	10.446
14 AUG 2023 - 14 AUG 2023	AEON	EMPLOYEES PROVIDENT FUND BOARD [SSH]	-1,139	146,729	10.451
11 AUG 2023 - 11 AUG 2023	AEON	EMPLOYEES PROVIDENT FUND BOARD [SSH]	-305	147,868	10.532
10 AUG 2023 - 10 AUG 2023	AEON	EMPLOYEES PROVIDENT FUND BOARD [SSH]	-1,768	148,173	10.554
09 AUG 2023 - 09 AUG 2023	AEON	EMPLOYEES PROVIDENT FUND BOARD [SSH]	-33	149,941	10.68
15 AUG 2023 - 15 AUG 2023	AIRPORT	EMPLOYEES PROVIDENT FUND BOARD [SSH]	-275	173,106	10.375
14 AUG 2023 - 14 AUG 2023	AIRPORT	EMPLOYEES PROVIDENT FUND BOARD [SSH]	-845	173,381	10.391
11 AUG 2023 - 11 AUG 2023	AIRPORT	EMPLOYEES PROVIDENT FUND BOARD [SSH]	-1,955	174,226	10.442
10 AUG 2023 - 10 AUG 2023	AIRPORT	EMPLOYEES PROVIDENT FUND BOARD [SSH]	-1,789	176,181	10.559
09 AUG 2023 - 09 AUG 2023	AIRPORT	EMPLOYEES PROVIDENT FUND BOARD [SSH]	-1,430	177,970	10.666
17 AUG 2023 - 17 AUG 2023	AME	MR KANG AH CHEE [DIR/CEO]	-3,500	114,029	17.842
17 AUG 2023 - 17 AUG 2023	AME	MR KANG AH CHEE [SSH]	-3,500	114,029	17.842
17 AUG 2023 - 17 AUG 2023	AME	MR LEE CHAI [DIR/CEO]	-3,500	116,044	18.158
17 AUG 2023 - 17 AUG 2023	AME	MR LEE CHAI [SSH]	-3,500	116,044	18.158
17 AUG 2023 - 17 AUG 2023	AME	MR LEE SAI BOON [DIR/CEO]	-3,500	39,124	6.121
17 AUG 2023 - 17 AUG 2023	AME	MR LEE SAI BOON [SSH]	-3,500	39,124	6.121
17 AUG 2023 - 17 AUG 2023	AME	MR LIM YOOK KIM [SSH]	-3,500	115,979	18.147
15 AUG 2023 - 15 AUG 2023	AMWAY	EMPLOYEES PROVIDENT FUND BOARD [SSH]	-0.3	11,033	6.712
15 AUG 2023 - 15 AUG 2023	ANCOMNY	MR CHAN THYE SENG [DIR/CEO]	-100	7,689	7.391
15 AUG 2023 - 17 AUG 2023	ANCOMNY	MR CHAN THYE SENG [DIR/CEO]	-821	2,804	0.295
10 AUG 2023 - 10 AUG 2023	ANCOMNY	DATO' SIEW KA WEI [DIR/CEO]	19	182,289	19.202
10 AUG 2023 - 10 AUG 2023	ANCOMNY	DATO' SIEW KA WEI [SSH]	19	182,289	19.202
16 AUG 2023 - 16 AUG 2023	APOLLO	AMANAHRAYA TRUSTEES BERHAD-AMANAH SAHAM BUMIPUTERA [SSH]	-66	6,834	8.543
15 AUG 2023 - 15 AUG 2023	APOLLO	AMANAHRAYA TRUSTEES BERHAD-AMANAH SAHAM BUMIPUTERA [SSH]	-300	6,900	8.625
14 AUG 2023 - 14 AUG 2023	APOLLO	AMANAHRAYA TRUSTEES BERHAD-AMANAH SAHAM BUMIPUTERA [SSH]	-300	7,200	9
11 AUG 2023 - 11 AUG 2023	APOLLO	AMANAHRAYA TRUSTEES BERHAD-AMANAH SAHAM BUMIPUTERA [SSH]	-144	7,500	9.375
10 AUG 2023 - 10 AUG 2023	APOLLO	AMANAHRAYA TRUSTEES BERHAD-AMANAH SAHAM BUMIPUTERA [SSH]	-149	7,644	9.556
11 AUG 2023 - 15 AUG 2023	ASDION	MILLION SAINT CONSULTANCY SDN BHD [SSH]	-5,766	25,163	5.625
10 AUG 2023 - 10 AUG 2023	ASTEEL	DATO' SRI VICTOR HII LU THIAN [DIR/CEO]	700	105,234	21.703
10 AUG 2023 - 10 AUG 2023	ASTEEL	DATO' SRI VICTOR HII LU THIAN [SSH]	700	69,824	14.4
10 AUG 2023 - 10 AUG 2023	ASTEEL	DATUK SERI DR HII WI SING [SSH]	700	87,829	18.114
10 AUG 2023 - 10 AUG 2023	ASTEEL	MR ALEXANDER HII LU KWONG [SSH]	700	61,451	12.674
10 AUG 2023 - 10 AUG 2023	ASTEEL	MR ARTHUR HII LU CHOON [SSH]	700	60,181	12.412
10 AUG 2023 - 10 AUG 2023	ASTEEL	MR CHRISTOPHER HII LU MING [DIR/CEO]	700	96,022	19.803
10 AUG 2023 - 10 AUG 2023	ASTEEL	MR CHRISTOPHER HII LU MING [SSH]	700	60,612	12.5
15 AUG 2023 - 15 AUG 2023	AXREIT	EMPLOYEES PROVIDENT FUND BOARD [SSH]	-23	284,531	16.342
11 AUG 2023 - 11 AUG 2023	AXREIT	EMPLOYEES PROVIDENT FUND BOARD [SSH]	-431	284,554	16.344
10 AUG 2023 - 10 AUG 2023	AXREIT	EMPLOYEES PROVIDENT FUND BOARD [SSH]	-20	284,985	16.369
09 AUG 2023 - 09 AUG 2023	AXREIT	EMPLOYEES PROVIDENT FUND BOARD [SSH]	-13	285,005	16.37
16 AUG 2023 - 16 AUG 2023	BAUTO	PRUDENTIAL PLC [SSH]	-146	71,461	6.135
15 AUG 2023 - 15 AUG 2023	BAUTO	EMPLOYEES PROVIDENT FUND BOARD [SSH]	1,529	120,307	10.328
15 AUG 2023 - 15 AUG 2023	BAUTO	PRUDENTIAL PLC [SSH]	-13	71,607	6.147
14 AUG 2023 - 14 AUG 2023	BAUTO	EMPLOYEES PROVIDENT FUND BOARD [SSH]	-597	118,778	10.197
11 AUG 2023 - 11 AUG 2023	BAUTO	EMPLOYEES PROVIDENT FUND BOARD [SSH]	-398	119,375	10.248
11 AUG 2023 - 11 AUG 2023	BAUTO	PRUDENTIAL PLC [SSH]	-66	71,620	6.148
10 AUG 2023 - 10 AUG 2023	BAUTO	EMPLOYEES PROVIDENT FUND BOARD [SSH]	-185	119,774	10.282
09 AUG 2023 - 09 AUG 2023	BAUTO	EMPLOYEES PROVIDENT FUND BOARD [SSH]	598	119,958	10.298
15 AUG 2023 - 15 AUG 2023	BIMB	EMPLOYEES PROVIDENT FUND BOARD [SSH]	100	364,894	16.1
14 AUG 2023 - 14 AUG 2023	BIMB	EMPLOYEES PROVIDENT FUND BOARD [SSH]	50	364,794	16.095
11 AUG 2023 - 11 AUG 2023	BIMB	EMPLOYEES PROVIDENT FUND BOARD [SSH]	50	364,744	16.093
10 AUG 2023 - 10 AUG 2023	BIMB	EMPLOYEES PROVIDENT FUND BOARD [SSH]	50	364,694	16.091
09 AUG 2023 - 09 AUG 2023	BIMB	EMPLOYEES PROVIDENT FUND BOARD [SSH]	50	364,644	16.089
15 AUG 2023 - 16 AUG 2023	BINACOM	MR NA BON TIAM [SSH]	-1,500	47,887	12.333
11 AUG 2023 - 11 AUG 2023	BJCORP	TAN SRI DATO' SERI VINCENT TAN CHEE YIOUN [SSH]	-8,200	902,714	16.167
14 AUG 2023 - 14 AUG 2023	BJLAND	BERJAYA CAPITAL BERHAD [SSH]	-1,536	286,768	5.828
14 AUG 2023 - 14 AUG 2023	BJLAND	BERJAYA CORPORATION BERHAD [SSH]	-1,536	3,997,250	81.237
14 AUG 2023 - 14 AUG 2023	BJLAND	BERJAYA GROUP BERHAD [SSH]	-1,536	3,579,150	72.74
14 AUG 2023 - 14 AUG 2023	BJLAND	BIZURAI BIJAK (M) SDN BHD [SSH]	-1,536	893,454	18.158

Notice Period is 13th Aug – 19th Aug 2023

Effective Change Date	Stock Name	Buyer/ Seller Name [Classification]	Bought / (Sold) ['000]	No. of Shares After Trade ['000]	
			Total	Total	% Held
14 AUG 2023 - 14 AUG 2023	BJLAND	JUARA SEJATI SDN BHD [SSH]	-1,536	1,718,129	34.918
15 AUG 2023 - 15 AUG 2023	BURSA	EMPLOYEES PROVIDENT FUND BOARD [SSH]	978	85,053	10.509
14 AUG 2023 - 14 AUG 2023	BURSA	EMPLOYEES PROVIDENT FUND BOARD [SSH]	932	84,075	10.389
11 AUG 2023 - 11 AUG 2023	BURSA	EMPLOYEES PROVIDENT FUND BOARD [SSH]	734	83,142	10.273
10 AUG 2023 - 10 AUG 2023	BURSA	EMPLOYEES PROVIDENT FUND BOARD [SSH]	723	82,408	10.183
09 AUG 2023 - 09 AUG 2023	BURSA	EMPLOYEES PROVIDENT FUND BOARD [SSH]	202	81,686	10.093
15 AUG 2023 - 15 AUG 2023	CAB-WB	MR CHUAH AH BEE [DIR/CEO]	-10,000	96,919	41.457
15 AUG 2023 - 16 AUG 2023	CBIP	DATUK LIM CHAI BENG [DIR/CEO]	257	197,382	41.385
15 AUG 2023 - 16 AUG 2023	CBIP	DATUK LIM CHAI BENG [SSH]	257	197,382	41.385
15 AUG 2023 - 16 AUG 2023	CBIP	ZEE CAPITAL SDN BHD [SSH]	257	33,664	7.058
14 AUG 2023 - 14 AUG 2023	CBIP	DATUK LIM CHAI BENG [DIR/CEO]	5	197,125	41.331
11 AUG 2023 - 14 AUG 2023	CBIP	DATUK LIM CHAI BENG [SSH]	48	197,125	41.331
11 AUG 2023 - 14 AUG 2023	CBIP	ZEE CAPITAL SDN BHD [SSH]	48	33,407	7.004
16 AUG 2023 - 17 AUG 2023	CEPAT	DATIN SERI OOI AH THIN [SSH]	70	120,183	38.9
16 AUG 2023 - 17 AUG 2023	CEPAT	DATO' MAH POOI SOO REALTY SDN. BHD. [SSH]	70	120,183	38.9
16 AUG 2023 - 17 AUG 2023	CEPAT	DATO' SERI MAH KING SENG [DIR/CEO]	70	120,183	38.9
16 AUG 2023 - 17 AUG 2023	CEPAT	DATO' SERI MAH KING SENG [SSH]	70	120,183	38.9
16 AUG 2023 - 17 AUG 2023	CEPAT	MHC PLANTATIONS BHD. [SSH]	70	120,183	38.9
16 AUG 2023 - 17 AUG 2023	CEPAT	TAN SRI DR MAH KING THIAN @ MAH KING THIAM [DIR/CEO]	70	120,183	38.9
16 AUG 2023 - 17 AUG 2023	CEPAT	TAN SRI DR MAH KING THIAN @ MAH KING THIAM [SSH]	70	120,183	38.9
14 AUG 2023 - 15 AUG 2023	CEPAT	DATIN SERI OOI AH THIN [SSH]	215	120,112	38.88
14 AUG 2023 - 15 AUG 2023	CEPAT	DATO' MAH POOI SOO REALTY SDN. BHD. [SSH]	215	120,112	38.88
14 AUG 2023 - 15 AUG 2023	CEPAT	DATO' SERI MAH KING SENG [DIR/CEO]	215	120,112	38.88
14 AUG 2023 - 15 AUG 2023	CEPAT	DATO' SERI MAH KING SENG [SSH]	215	120,112	38.88
14 AUG 2023 - 15 AUG 2023	CEPAT	MHC PLANTATIONS BHD. [SSH]	215	120,112	38.88
14 AUG 2023 - 15 AUG 2023	CEPAT	TAN SRI DR MAH KING THIAN @ MAH KING THIAM [DIR/CEO]	215	120,112	38.88
14 AUG 2023 - 15 AUG 2023	CEPAT	TAN SRI DR MAH KING THIAN @ MAH KING THIAM [SSH]	215	120,112	38.88
11 AUG 2023 - 11 AUG 2023	CEPAT	DATIN SERI OOI AH THIN [SSH]	2	119,898	38.81
11 AUG 2023 - 11 AUG 2023	CEPAT	DATO' MAH POOI SOO REALTY SDN. BHD. [SSH]	2	119,898	38.81
11 AUG 2023 - 11 AUG 2023	CEPAT	DATO' SERI MAH KING SENG [DIR/CEO]	2	119,898	38.81
11 AUG 2023 - 11 AUG 2023	CEPAT	DATO' SERI MAH KING SENG [SSH]	2	119,898	38.81
11 AUG 2023 - 11 AUG 2023	CEPAT	MHC PLANTATIONS BHD. [SSH]	2	119,898	38.81
11 AUG 2023 - 11 AUG 2023	CEPAT	TAN SRI DR MAH KING THIAN @ MAH KING THIAM [DIR/CEO]	2	119,898	38.81
11 AUG 2023 - 11 AUG 2023	CEPAT	TAN SRI DR MAH KING THIAN @ MAH KING THIAM [SSH]	2	119,898	38.81
17 AUG 2023 - 17 AUG 2023	CHHB	MR CHUA HEE BOON [DIR/CEO]	110	739	0.249
15 AUG 2023 - 15 AUG 2023	CIMB	EMPLOYEES PROVIDENT FUND BOARD [SSH]	-545	1,631,856	15.3
14 AUG 2023 - 14 AUG 2023	CIMB	EMPLOYEES PROVIDENT FUND BOARD [SSH]	1,561	1,632,400	15.31
11 AUG 2023 - 11 AUG 2023	CIMB	EMPLOYEES PROVIDENT FUND BOARD [SSH]	-888	1,630,840	15.29
10 AUG 2023 - 10 AUG 2023	CIMB	EMPLOYEES PROVIDENT FUND BOARD [SSH]	1,078	1,631,727	15.3
09 AUG 2023 - 09 AUG 2023	CIMB	EMPLOYEES PROVIDENT FUND BOARD [SSH]	2,806	1,630,649	15.29
28 JUL 2023 - 28 JUL 2023	CIMB	KUMPULAN WANG PERSARAAN (DIPERBADANKAN) [SSH]	-3,000	717,131	6.72
14 AUG 2023 - 14 AUG 2023	CLMT	EMPLOYEES PROVIDENT FUND BOARD [SSH]	1,378	376,730	13.963
11 AUG 2023 - 11 AUG 2023	CLMT	EMPLOYEES PROVIDENT FUND BOARD [SSH]	646	375,352	13.912
10 AUG 2023 - 10 AUG 2023	CLMT	EMPLOYEES PROVIDENT FUND BOARD [SSH]	624	374,706	13.888
09 AUG 2023 - 09 AUG 2023	CLMT	EMPLOYEES PROVIDENT FUND BOARD [SSH]	1,052	374,082	13.865
14 AUG 2023 - 14 AUG 2023	CTOS	ABRDN HOLDINGS LIMITED (FORMERLY KNOWN AS ABERDEEN ASSET MANAGEMENT PLC) [SSH]	374	128,504	5.563
14 AUG 2023 - 14 AUG 2023	CTOS	ABRDN MALAYSIA SDN BHD [SSH]	374	126,785	5.489
14 AUG 2023 - 14 AUG 2023	CTOS	ABRDN PLC [SSH]	374	128,504	5.563
11 AUG 2023 - 11 AUG 2023	CTOS	ABRDN HOLDINGS LIMITED (FORMERLY KNOWN AS ABERDEEN ASSET MANAGEMENT PLC) [SSH]	505	128,129	5.547
11 AUG 2023 - 11 AUG 2023	CTOS	ABRDN MALAYSIA SDN BHD [SSH]	505	126,411	5.472
11 AUG 2023 - 11 AUG 2023	CTOS	ABRDN PLC [SSH]	505	128,129	5.547
11 AUG 2023 - 11 AUG 2023	CTOS	WASATCH ADVISORS LP [SSH]	-504	119,883	5.19
10 AUG 2023 - 10 AUG 2023	CTOS	ABRDN HOLDINGS LIMITED (FORMERLY KNOWN AS ABERDEEN ASSET MANAGEMENT PLC) [SSH]	153	127,625	5.525
10 AUG 2023 - 10 AUG 2023	CTOS	ABRDN MALAYSIA SDN BHD [SSH]	153	125,906	5.45
10 AUG 2023 - 10 AUG 2023	CTOS	ABRDN PLC [SSH]	153	127,625	5.525
15 AUG 2023 - 15 AUG 2023	DIALOG	EMPLOYEES PROVIDENT FUND BOARD [SSH]	454	827,465	14.66
09 AUG 2023 - 09 AUG 2023	DIALOG	EMPLOYEES PROVIDENT FUND BOARD [SSH]	13	827,011	14.66

**Disclaimer:** The Information in Insider Activity is extracted from [www.shareinvestor.com/fundamental/insider\\_trades](http://www.shareinvestor.com/fundamental/insider_trades). The information on this page is provided as a service to readers. It does not constitute financial advice and/or any investment recommendations. We assume no liability for damages resulting from or arising out of the use of such information. Whilst every effort is made to ensure accuracy, the information presented is not the official record of shareholder filings. Readers are advised to read the original filings on the Bursa Malaysia website at [www.bursamalaysia.com](http://www.bursamalaysia.com)



**STROM**  
SWISS TIMEPIECES & JEWELLERY



StromWatch Asia  
Tele : +65.9817.3378  
Email : ll.stromasia@gmail.com  
[WWW.STROMWATCH.SWISS](http://WWW.STROMWATCH.SWISS)

Notice Period is 13th Aug - 19th Aug 2023

Effective Change Date	Stock Name	Buyer/ Seller Name [Classification]	Bought / (Sold) ['000]		No. of Shares After Trade ['000]	
			Total	% Held	Total	% Held
14 AUG 2023 - 14 AUG 2023	DLADY	CITIGROUP NOMINEES (TEMPATAN) SDN BHD EMPLOYEES PROVIDENT FUND BOARD [SSH]	-0.1	6,318	9.872	
11 AUG 2023 - 11 AUG 2023	DLADY	CITIGROUP NOMINEES (TEMPATAN) SDN BHD EMPLOYEES PROVIDENT FUND BOARD [SSH]	-2	6,318	9.872	
10 AUG 2023 - 10 AUG 2023	DLADY	CITIGROUP NOMINEES (TEMPATAN) SDN BHD EMPLOYEES PROVIDENT FUND BOARD [SSH]	-25	6,320	9.875	
09 AUG 2023 - 09 AUG 2023	DLADY	CITIGROUP NOMINEES (TEMPATAN) SDN BHD EMPLOYEES PROVIDENT FUND BOARD [SSH]	-5	6,345	9.915	
15 AUG 2023 - 15 AUG 2023	DPHARMA	EMPLOYEES PROVIDENT FUND BOARD [SSH]	-2,160	82,183	8.543	
14 AUG 2023 - 14 AUG 2023	DPHARMA	EMPLOYEES PROVIDENT FUND BOARD [SSH]	-565	84,342	8.768	
11 AUG 2023 - 11 AUG 2023	DPHARMA	EMPLOYEES PROVIDENT FUND BOARD [SSH]	-235	84,908	8.827	
10 AUG 2023 - 10 AUG 2023	DPHARMA	EMPLOYEES PROVIDENT FUND BOARD [SSH]	-3,874	85,143	8.851	
09 AUG 2023 - 09 AUG 2023	DPHARMA	EMPLOYEES PROVIDENT FUND BOARD [SSH]	-5	89,017	9.254	
15 AUG 2023 - 15 AUG 2023	DRBHCORP	EMPLOYEES PROVIDENT FUND BOARD [SSH]	-767	182,357	9.433	
10 AUG 2023 - 10 AUG 2023	DRBHCORP	EMPLOYEES PROVIDENT FUND BOARD [SSH]	-1,454	183,125	9.472	
15 AUG 2023 - 15 AUG 2023	F&N	EMPLOYEES PROVIDENT FUND BOARD [SSH]	18	42,366	11.551	
14 AUG 2023 - 14 AUG 2023	F&N	EMPLOYEES PROVIDENT FUND BOARD [SSH]	-86	42,348	11.546	
11 AUG 2023 - 11 AUG 2023	F&N	EMPLOYEES PROVIDENT FUND BOARD [SSH]	-36	42,434	11.569	
11 AUG 2023 - 11 AUG 2023	FAJAR	TAN SRI DATUK TA KIN YAN [SSH]	100	90,042	12.141	
15 AUG 2023 - 15 AUG 2023	FFB	ABRDN HOLDINGS LIMITED (FORMERLY KNOWN AS ABERDEEN ASSET MANAGEMENT PLC) [SSH]	2,474	97,667	5.217	
15 AUG 2023 - 15 AUG 2023	FFB	ABRDN MALAYSIA SDN. BHD. [SSH]	2,369	96,565	5.159	
15 AUG 2023 - 15 AUG 2023	FFB	ABRDN PLC [SSH]	2,474	97,667	5.217	
15 AUG 2023 - 15 AUG 2023	FFB	EMPLOYEES PROVIDENT FUND BOARD [SSH]	941	162,912	8.703	
14 AUG 2023 - 14 AUG 2023	FFB	ABRDN HOLDINGS LIMITED (FORMERLY KNOWN AS ABERDEEN ASSET MANAGEMENT PLC) [SSH]	709	95,192	5.085	
14 AUG 2023 - 14 AUG 2023	FFB	ABRDN MALAYSIA SDN BHD [SSH]	94,196	94,196	5.032	
14 AUG 2023 - 14 AUG 2023	FFB	ABRDN PLC [SSH]	709	95,192	5.085	
14 AUG 2023 - 14 AUG 2023	FFB	EMPLOYEES PROVIDENT FUND BOARD [SSH]	270	161,971	8.653	
11 AUG 2023 - 11 AUG 2023	FFB	ABRDN HOLDINGS LIMITED (FORMERLY KNOWN AS ABERDEEN ASSET MANAGEMENT PLC) [SSH]	645	94,484	5.047	
11 AUG 2023 - 11 AUG 2023	FFB	ABRDN PLC [SSH]	645	94,484	5.047	
11 AUG 2023 - 11 AUG 2023	FFB	EMPLOYEES PROVIDENT FUND BOARD [SSH]	246	161,701	8.638	
10 AUG 2023 - 10 AUG 2023	FFB	ABRDN HOLDINGS LIMITED (FORMERLY KNOWN AS ABERDEEN ASSET MANAGEMENT PLC) [SSH]	93,839	93,839	5.013	
10 AUG 2023 - 10 AUG 2023	FFB	ABRDN PLC [SSH]	93,839	93,839	5.013	
10 AUG 2023 - 10 AUG 2023	FFB	EMPLOYEES PROVIDENT FUND BOARD [SSH]	190	161,456	8.625	
09 AUG 2023 - 09 AUG 2023	FFB	EMPLOYEES PROVIDENT FUND BOARD [SSH]	241	161,266	8.615	
15 AUG 2023 - 16 AUG 2023	FRONTKN	MR OOI KENG THYE [SSH]	-5,620	201,355	12.817	
15 AUG 2023 - 15 AUG 2023	GAMUDA	EMPLOYEES PROVIDENT FUND BOARD (EPF BOARD) [SSH]	-659	342,307	12.85	
14 AUG 2023 - 14 AUG 2023	GAMUDA	EMPLOYEES PROVIDENT FUND BOARD (EPF BOARD) [SSH]	-106	342,967	12.88	
11 AUG 2023 - 11 AUG 2023	GAMUDA	EMPLOYEES PROVIDENT FUND BOARD (EPF BOARD) [SSH]	580	343,073	12.88	
11 AUG 2023 - 16 AUG 2023	GAMUDA	YTM RAJA DATO' SERI ELEENA BINTI ALMARHUM SULTAN AZLAN MUHIBBUDDIN SHAH AL-MAGHFUR-LAH [DIR/CEO]	-700	115,419	4.33	
10 AUG 2023 - 10 AUG 2023	GAMUDA	EMPLOYEES PROVIDENT FUND BOARD (EPF BOARD) [SSH]	-1,860	342,493	12.86	
09 AUG 2023 - 09 AUG 2023	GAMUDA	EMPLOYEES PROVIDENT FUND BOARD (EPF BOARD) [SSH]	-1,615	344,633	12.94	
15 AUG 2023 - 15 AUG 2023	GLXT	PUAN ANIZA BINTI MD DIN [DIR/CEO]	-800	2,855	0.701	
16 AUG 2023 - 16 AUG 2023	HANDAL	MR SUNILDEEP SINGH DHALIWAL [DIR/CEO]	-16,600	500	0.18	
09 AUG 2023 - 09 AUG 2023	HARNLEN	LNH ENTERPRISE SDN. BHD. [SSH]	-1,400	129,477	22.923	
09 AUG 2023 - 09 AUG 2023	HARNLEN	MR LOW KOK YAOV [DIR/CEO]	-1,400	320,427	56.729	
09 AUG 2023 - 09 AUG 2023	HARNLEN	MR LOW KOK YAOV [SSH]	-1,400	320,427	56.729	
09 AUG 2023 - 09 AUG 2023	HARNLEN	MR LOW KOK YONG [DIR/CEO]	-1,400	321,422	56.906	
09 AUG 2023 - 09 AUG 2023	HARNLEN	MR LOW KOK YONG [SSH]	-1,400	321,422	56.906	
09 AUG 2023 - 09 AUG 2023	HARNLEN	MR LOW KUECK SHIN [DIR/CEO]	-1,400	308,740	54.66	
09 AUG 2023 - 09 AUG 2023	HARNLEN	MR LOW KUECK SHIN [SSH]	-1,400	308,610	54.637	
09 AUG 2023 - 09 AUG 2023	HARNLEN	MR LOW KUEK KONG [DIR/CEO]	-1,400	308,610	54.637	
09 AUG 2023 - 09 AUG 2023	HARNLEN	MR LOW KUEK KONG [SSH]	-1,400	308,610	54.637	
09 AUG 2023 - 09 AUG 2023	HARNLEN	MR LOW KWEK LEE [DIR/CEO]	-1,400	308,570	54.63	
09 AUG 2023 - 09 AUG 2023	HARNLEN	MR LOW KWEK LEE [SSH]	-1,400	308,570	54.63	
09 AUG 2023 - 09 AUG 2023	HARNLEN	MR LOW QUEK KIONG [DIR/CEO]	-1,400	325,607	57.646	
09 AUG 2023 - 09 AUG 2023	HARNLEN	MR LOW QUEK KIONG [SSH]	-1,400	325,607	57.646	
09 AUG 2023 - 09 AUG 2023	HARNLEN	PUAN SRI DATIN CHAN PUI LEORN [DIR/CEO]	-1,400	321,454	56.911	
09 AUG 2023 - 09 AUG 2023	HARNLEN	PUAN SRI DATIN CHAN PUI LEORN [SSH]	-1,400	321,454	56.911	
09 AUG 2023 - 09 AUG 2023	HARNLEN	TAN SRI LOW NAM HUI [SSH]	-1,400	307,570	54.453	
08 AUG 2023 - 09 AUG 2023	HEKTAR	HEKTAR BLACK SDN BHD [SSH]	-256	129,513	25.966	
16 AUG 2023 - 16 AUG 2023	HEXIND	MR SHAM WENG KONG [DIR/CEO]	150	1,000	0.036	
15 AUG 2023 - 15 AUG 2023	HEXIND	MR SHAM WENG KONG [DIR/CEO]	100	850	0.031	
11 AUG 2023 - 11 AUG 2023	HEXIND	DATO' ONG CHOO MENG [SSH]	-6,818	1,588,668	57.826	
11 AUG 2023 - 11 AUG 2023	HEXIND	DATO' ONG SOON HO [SSH]	-6,818	1,572,236	57.228	
11 AUG 2023 - 11 AUG 2023	HEXIND	HEXTAR HOLDINGS SDN BHD [SSH]	-6,818	1,572,236	57.228	
16 AUG 2023 - 16 AUG 2023	HHRG	MR NG CHIN NAM [DIR/CEO]	-500	51,756	6.007	
16 AUG 2023 - 16 AUG 2023	HHRG	MR NG CHIN NAM [SSH]	-500	51,756	6.007	
15 AUG 2023 - 15 AUG 2023	HLBANK	EMPLOYEES PROVIDENT FUND BOARD [SSH]	32	217,585	10.428	
14 AUG 2023 - 14 AUG 2023	HLBANK	EMPLOYEES PROVIDENT FUND BOARD [SSH]	92	217,554	10.426	
11 AUG 2023 - 11 AUG 2023	HLBANK	EMPLOYEES PROVIDENT FUND BOARD [SSH]	224	217,462	10.422	
09 AUG 2023 - 09 AUG 2023	HLBANK	EMPLOYEES PROVIDENT FUND BOARD [SSH]	78	217,238	10.411	
16 AUG 2023 - 16 AUG 2023	ICAP	CITY OF LONDON INVESTMENT MANAGEMENT COMPANY LIMITED [SSH]	339	32,118	22.941	
15 AUG 2023 - 15 AUG 2023	ICAP	CITY OF LONDON INVESTMENT MANAGEMENT COMPANY LIMITED [SSH]	163	31,779	22.7	
15 AUG 2023 - 15 AUG 2023	IHH	EMPLOYEES PROVIDENT FUND BOARD [SSH]	4,039	909,346	10.325	
14 AUG 2023 - 14 AUG 2023	IHH	EMPLOYEES PROVIDENT FUND BOARD [SSH]	192	905,307	10.279	

Notice Period is 13th Aug - 19th Aug 2023

Effective Change Date	Stock Name	Buyer/ Seller Name [Classification]	Bought / (Sold) ['000]		No. of Shares After Trade ['000]	
			Total	% Held	Total	% Held
11 AUG 2023 - 11 AUG 2023	IHH	EMPLOYEES PROVIDENT FUND BOARD [SSH]	608	905,115	10.277	
10 AUG 2023 - 10 AUG 2023	IHH	EMPLOYEES PROVIDENT FUND BOARD [SSH]	8	904,508	10.27	
09 AUG 2023 - 09 AUG 2023	IHH	EMPLOYEES PROVIDENT FUND BOARD [SSH]	59	904,500	10.27	
17 AUG 2023 - 17 AUG 2023	IJM	KUMPULAN WANG PERSARAAN (DIPERBADANKAN) [SSH]	1,399	298,264	8.507	
15 AUG 2023 - 15 AUG 2023	IJM	EMPLOYEES PROVIDENT FUND BOARD [SSH]	1,160	585,224	16.691	
15 AUG 2023 - 15 AUG 2023	IJM	URUSHARTA JAMA'AH SDN BHD [SSH]	247	211,456	6.031	
16 AUG 2023 - 16 AUG 2023	IJM	KUMPULAN WANG PERSARAAN (DIPERBADANKAN) [SSH]	-1,000	296,865	8.467	
14 AUG 2023 - 14 AUG 2023	IJM	EMPLOYEES PROVIDENT FUND BOARD [SSH]	559	584,063	16.658	
15 AUG 2023 - 15 AUG 2023	IJM	KUMPULAN WANG PERSARAAN (DIPERBADANKAN) [SSH]	500	297,865	8.495	
14 AUG 2023 - 14 AUG 2023	IJM	KUMPULAN WANG PERSARAAN (DIPERBADANKAN) [SSH]	-1,000	297,365	8.481	
09 AUG 2023 - 09 AUG 2023	IJM	EMPLOYEES PROVIDENT FUND BOARD [SSH]	-3,000	583,505	16.642	
09 AUG 2023 - 09 AUG 2023	IJM	URUSHARTA JAMA'AH SDN BHD [SSH]	200	211,209	6.024	
11 AUG 2023 - 11 AUG 2023	IMPIANA	DATIN SRI JOANNE YEW HONG IM [SSH]	120,800	120,800	19.9	
11 AUG 2023 - 11 AUG 2023	IMPIANA	DATO' SRI LEE HOCK SENG [SSH]	120,800	120,800	19.9	
17 AUG 2023 - 17 AUG 2023	INARI	KUMPULAN WANG PERSARAAN (DIPERBADANKAN) [SSH]	-851	353,829	9.473	
15 AUG 2023 - 15 AUG 2023	INARI	EMPLOYEES PROVIDENT FUND BOARD [SSH]	-214	377,115	10.096	
16 AUG 2023 - 16 AUG 2023	INARI	KUMPULAN WANG PERSARAAN (DIPERBADANKAN) [SSH]	-635	354,680	9.495	
14 AUG 2023 - 14 AUG 2023	INARI	EMPLOYEES PROVIDENT FUND BOARD [SSH]	-2,000	377,329	10.102	
15 AUG 2023 - 15 AUG 2023	INARI	KUMPULAN WANG PERSARAAN (DIPERBADANKAN) [SSH]	600	355,315	9.512	
11 AUG 2023 - 11 AUG 2023	INARI	EMPLOYEES PROVIDENT FUND BOARD [SSH]	-2,950	379,329	10.156	
14 AUG 2023 - 14 AUG 2023	INARI	DATO' WONG GIAN KUI [DIR/CEO]	-50	82	0.002	
10 AUG 2023 - 10 AUG 2023	INARI	EMPLOYEES PROVIDENT FUND BOARD [SSH]	-50	382,279	10.234	
09 AUG 2023 - 09 AUG 2023	INARI	EMPLOYEES PROVIDENT FUND BOARD [SSH]	-2,764	382,329	10.236	
16 AUG 2023 - 16 AUG 2023	INFOTEC	MR CHOO WEI CHUEN [DIR/CEO]	-1,000	193,894	53.381	
16 AUG 2023 - 16 AUG 2023	INFOTEC	MR CHOO WEI CHUEN [SSH]	-1,000	193,894	53.381	
15 AUG 2023 - 15 AUG 2023	IOICORP	EMPLOYEES PROVIDENT FUND BOARD [SSH]	-93	690,369	11.128	
14 AUG 2023 - 14 AUG 2023	IOICORP	EMPLOYEES PROVIDENT FUND BOARD [SSH]	487	690,461	11.13	
11 AUG 2023 - 11 AUG 2023	IOICORP	EMPLOYEES PROVIDENT FUND BOARD [SSH]	354	689,974	11.122	
10 AUG 2023 - 10 AUG 2023	IOICORP	EMPLOYEES PROVIDENT FUND BOARD [SSH]	549	689,620	11.116	
09 AUG 2023 - 09 AUG 2023	IOICORP	EMPLOYEES PROVIDENT FUND BOARD [SSH]	-610	689,071	11.107	
15 AUG 2023 - 15 AUG 2023	IOIPG	EMPLOYEES PROVIDENT FUND BOARD [SSH]	-1,930	420,918	7.645	
09 MAY 2023 - 09 MAY 2023	IOIPG	DATUK TAN KIM LEONG @ TAN CHONG MIN [DIR/CEO]	-48	114	0.002	
11 AUG 2023 - 11 AUG 2023	IOIPG	EMPLOYEES PROVIDENT FUND BOARD [SSH]	-3,000	422,847	7.68	
09 AUG 2023 - 09 AUG 2023	IOIPG	EMPLOYEES PROVIDENT FUND BOARD [SSH]	-773	425,847	7.734	
15 AUG 2023 - 15 AUG 2023	KERJAYA	EMPLOYEES PROVIDENT FUND BOARD [SSH]	-688	88,545	7.022	
15 JUN 2023 - 15 JUN 2023	KEYASIC	NG GEOK LUI [SSH]	0.4	95,696	6.867	
15 AUG 2023 - 15 AUG 2023	KLK	EMPLOYEES PROVIDENT FUND BOARD [SSH]	-240	118,404	10.979	
14 AUG 2023 - 14 AUG 2023	KLK	EMPLOYEES PROVIDENT FUND BOARD [SSH]	11	118,576	10.995	
11 AUG 2023 - 11 AUG 2023	KLK	EMPLOYEES PROVIDENT FUND BOARD [SSH]	500	118,565	10.994	
10 AUG 2023 - 10 AUG 2023	KLK	EMPLOYEES PROVIDENT FUND BOARD [SSH]	-51	118,065	10.948	
09 AUG 2023 - 09 AUG 2023	KLK	EMPLOYEES PROVIDENT FUND BOARD [SSH]	-157	118,116	10.953	
16 AUG 2023 - 16 AUG 2023	KOSSAN	ABRDN HOLDINGS LIMITED (FORMERLY KNOWN AS ABERDEEN ASSET MANAGEMENT PLC) [SSH]	288	142,755	5.595	
16 AUG 2023 - 16 AUG 2023	KOSSAN	ABRDN MALAYSIA SDN BHD [SSH]	288	140,350	5.5	
16 AUG 2023 - 16 AUG 2023	KOSSAN	ABRDN PLC [SSH]	288	142,755	5.595	
11 AUG 2023 - 14 AUG 2023	KOSSAN	KOSSAN HOLDINGS (M) SDN BHD [SSH]	2,250	1,259,168	49.348	
11 AUG 2023 - 14 AUG 2023	KOSSAN	MR LIM KUANG WANG [SSH]	2,250	1,260,868	49.415	
11 AUG 2023 - 14 AUG 2023	KOSSAN	MR LIM KUANG YONG [SSH]	2,250	1,262,746	49.488	
11 AUG 2023 - 14 AUG 2023	KOSSAN	MR LIM LENG BUNG [SSH]	2,250	1,261,486	49.439	
11 AUG 2023 - 14 AUG 2023	KOSSAN	TAN SRI DATO' LIM KUANG SIA [DIR/CEO]	2,250	1,269,365	49.747	
11 AUG 2023 - 14 AUG 2023	KOSSAN	TAN SRI DATO' LIM KUANG SIA [SSH]	2,250	1,269,365	49.747	
17 AUG 2023 - 17 AUG 2023	LAYHONG	DATO' YAP HOONG CHAI [DIR/CEO]	-50	283,859	38.342	
16 AUG 2023 - 16 AUG 2023	LAYHONG	DATO' YAP HOONG CHAI [DIR/CEO]	-50	283,909	38.349	
16 AUG 2023 - 16 AUG 2023	LBS	TAN SRI DATO' SRI IR. LIM HOCK SAN JP [DIR/CEO]	100	608,122	39.478	
16 AUG 2023 - 16 AUG 2023	LBS	TAN SRI DATO' SRI IR. LIM HOCK SAN JP [SSH]	100	603,369	39.169	
14 AUG 2023 - 14 AUG 2023	LBS	TAN SRI DATO' SRI IR. LIM HOCK SAN JP [DIR/CEO]	100	608,022	39.472	
14 AUG 2023 - 14 AUG 2023	LBS	TAN SRI DATO' SRI IR. LIM HOCK SAN JP [SSH]	100	603,269	39.163	
17 AUG 2023 - 17 AUG 2023	LUXCHEM	MADAM CHIN SONG MOOI [DIR/CEO]	275	457,034	42.723	
17 AUG 2023 - 17 AUG 2023	LUXCHEM	MADAM CHIN SONG MOOI [SSH]	275	457,034	42.723	
17 AUG 2023 - 17 AUG 2023	LUXCHEM	MR TANG YING SEE [DIR/CEO]	275	457,034	42.723	
17 AUG 2023 - 17 AUG 2023	LUXCHEM	MR TANG YING SEE [SSH]	275	457,034	42.723	
16 AUG 2023 - 16 AUG 2023	LUXCHEM	MADAM CHIN SONG MOOI [DIR/CEO]	215	456,759	42.697	
16 AUG 2023 - 16 AUG 2023	LUXCHEM	MADAM CHIN SONG MOOI [SSH]	215	456,759	42.697	
16 AUG 2023 - 16 AUG 2023	LUXCHEM	MR TANG YING SEE [DIR/CEO]	215	456,759	42.697	
16 AUG 2023 - 16 AUG 2023						



Notice Period is 13th Aug - 19th Aug 2023

Effective Change Date	Stock Name	Buyer/ Seller Name [Classification]	Bought / (Sold) ['000]	No. of Shares After Trade ['000]	
			Total	Total	% Held
09 AUG 2023 - 09 AUG 2023	MAXIS	EMPLOYEES PROVIDENT FUND BOARD (EPF BOARD) [SSH]	-3,000	894,916	11.426
17 AUG 2023 - 17 AUG 2023	MAYBANK	KUMPULAN WANG PERSARAAN (DIPERBADANKAN) (KWAP) [SSH]	-1,399	604,006	5.01
16 AUG 2023 - 16 AUG 2023	MAYBANK	AMANAHRAYA TRUSTEES BERHAD - AMANAH SAHAM BUMIPUTERA [SSH]	950	3,787,130	31.418
15 AUG 2023 - 15 AUG 2023	MAYBANK	EMPLOYEES PROVIDENT FUND BOARD [SSH]	-3,964	1,566,339	12.994
15 AUG 2023 - 15 AUG 2023	MAYBANK	AMANAHRAYA TRUSTEES BERHAD - AMANAH SAHAM BUMIPUTERA [SSH]	1,113	3,786,180	31.41
14 AUG 2023 - 14 AUG 2023	MAYBANK	EMPLOYEES PROVIDENT FUND BOARD [SSH]	-3,000	1,570,303	13.027
14 AUG 2023 - 14 AUG 2023	MAYBANK	AMANAHRAYA TRUSTEES BERHAD - AMANAH SAHAM BUMIPUTERA [SSH]	2,621	3,785,067	31.401
11 AUG 2023 - 11 AUG 2023	MAYBANK	EMPLOYEES PROVIDENT FUND BOARD [SSH]	-6,000	1,573,303	13.052
11 AUG 2023 - 11 AUG 2023	MAYBANK	AMANAHRAYA TRUSTEES BERHAD - AMANAH SAHAM BUMIPUTERA [SSH]	700	3,782,446	31.379
10 AUG 2023 - 10 AUG 2023	MAYBANK	EMPLOYEES PROVIDENT FUND BOARD [SSH]	-6,000	1,579,303	13.102
11 AUG 2023 - 11 AUG 2023	MAYBANK	KUMPULAN WANG PERSARAAN (DIPERBADANKAN) (KWAP) [SSH]	800	605,405	5.022
10 AUG 2023 - 10 AUG 2023	MAYBANK	AMANAHRAYA TRUSTEES BERHAD - AMANAH SAHAM BUMIPUTERA [SSH]	1,746	3,781,746	31.373
09 AUG 2023 - 09 AUG 2023	MAYBANK	EMPLOYEES PROVIDENT FUND BOARD [SSH]	-6,000	1,585,303	13.152
09 AUG 2023 - 09 AUG 2023	MAYBANK	PERMODALAN NASIONAL BERHAD [SSH]	-163	832,121	6.903
09 AUG 2023 - 09 AUG 2023	MAYBANK	YAYASAN PELABURAN BUMIPUTRA (YPB) [SSH]	-163	832,121	6.903
15 AUG 2023 - 15 AUG 2023	MBMR	EMPLOYEES PROVIDENT FUND BOARD [SSH]	-983	19,886	5.087
14 AUG 2023 - 14 AUG 2023	MBMR	EMPLOYEES PROVIDENT FUND BOARD [SSH]	-1,072	20,869	5.339
11 AUG 2023 - 11 AUG 2023	MBMR	EMPLOYEES PROVIDENT FUND BOARD [SSH]	-329	21,941	5.613
10 AUG 2023 - 10 AUG 2023	MBMR	EMPLOYEES PROVIDENT FUND BOARD [SSH]	-365	22,270	5.697
09 AUG 2023 - 09 AUG 2023	MBMR	EMPLOYEES PROVIDENT FUND BOARD [SSH]	-72	22,635	5.791
16 AUG 2023 - 16 AUG 2023	MCEMENT	AMANAHRAYA TRUSTEES BERHAD-AMANAH SAHAM BUMIPUTERA [SSH]	-500	67,436	5.147
16 AUG 2023 - 16 AUG 2023	MISC	KUMPULAN WANG PERSARAAN (DIPERBADANKAN) (KWAP) [SSH]	-144	241,375	5.407
15 AUG 2023 - 15 AUG 2023	MISC	KUMPULAN WANG PERSARAAN (DIPERBADANKAN) (KWAP) [SSH]	-68	241,519	5.41
09 AUG 2023 - 09 AUG 2023	MISC	EMPLOYEES PROVIDENT FUND BOARD [SSH]	-663	573,584	12.85
16 AUG 2023 - 18 AUG 2023	MPAY	MR SOON KIAN HENG [DIR/CEO]	-2,200	200	0.023
16 AUG 2023 - 16 AUG 2023	MPSOL	MR CHIN WING WAH [DIR/CEO]	1,000	139,851	62.755
16 AUG 2023 - 16 AUG 2023	MPSOL	MR CHIN WING WAH [SSH]	1,000	139,851	62.755
11 AUG 2023 - 11 AUG 2023	MRDIY	EMPLOYEES PROVIDENT FUND BOARD [SSH]	770	511,280	5.416
10 AUG 2023 - 10 AUG 2023	MRDIY	EMPLOYEES PROVIDENT FUND BOARD [SSH]	254	510,510	5.408
15 AUG 2023 - 15 AUG 2023	NESTLE	EMPLOYEES PROVIDENT FUND BOARD [SSH]	-8	21,303	9.084
14 AUG 2023 - 14 AUG 2023	NESTLE	EMPLOYEES PROVIDENT FUND BOARD [SSH]	4	21,311	9.088
11 AUG 2023 - 11 AUG 2023	NESTLE	EMPLOYEES PROVIDENT FUND BOARD [SSH]	-0.4	21,307	9.086
10 AUG 2023 - 10 AUG 2023	NESTLE	EMPLOYEES PROVIDENT FUND BOARD [SSH]	-16	21,307	9.086
09 AUG 2023 - 09 AUG 2023	NESTLE	EMPLOYEES PROVIDENT FUND BOARD [SSH]	-11	21,323	9.093
17 AUG 2023 - 18 AUG 2023	NGGB	DATO' LIM THIAM HUAT [DIR/CEO]	-2,450	127,062	14.848
17 AUG 2023 - 18 AUG 2023	NGGB	DATO' LIM THIAM HUAT [SSH]	-2,450	127,062	14.848
17 AUG 2023 - 18 AUG 2023	NGGB	MISS LIM KAH YEE [DIR/CEO]	550	103,030	12.04
17 AUG 2023 - 18 AUG 2023	NGGB	MISS LIM KAH YEE [SSH]	550	103,030	12.04
17 AUG 2023 - 18 AUG 2023	NGGB	MISS LIM KAH YEN [DIR/CEO]	550	118,727	13.874
17 AUG 2023 - 18 AUG 2023	NGGB	MISS LIM KAH YEN [SSH]	550	118,727	13.874
15 AUG 2023 - 15 AUG 2023	ORIENT	EMPLOYEE PROVIDENT FUND BOARD [SSH]	-239	52,793	8.51
14 AUG 2023 - 14 AUG 2023	ORIENT	EMPLOYEE PROVIDENT FUND BOARD [SSH]	-313	53,032	8.549
11 AUG 2023 - 11 AUG 2023	ORIENT	EMPLOYEE PROVIDENT FUND BOARD [SSH]	-25	53,345	8.599
10 AUG 2023 - 10 AUG 2023	ORIENT	EMPLOYEE PROVIDENT FUND BOARD [SSH]	-86	53,371	8.603
09 AUG 2023 - 09 AUG 2023	ORIENT	EMPLOYEE PROVIDENT FUND BOARD [SSH]	-33	53,456	8.617
17 AUG 2023 - 17 AUG 2023	PADINI	KUMPULAN WANG PERSARAAN (DIPERBADANKAN) [SSH]	99	50,972	7.748
15 AUG 2023 - 15 AUG 2023	PADINI	EMPLOYEES PROVIDENT FUND BOARD [SSH]	202	35,527	5.4
14 AUG 2023 - 14 AUG 2023	PADINI	EMPLOYEES PROVIDENT FUND BOARD [SSH]	10	35,325	5.369
10 AUG 2023 - 10 AUG 2023	PADINI	EMPLOYEES PROVIDENT FUND BOARD [SSH]	16	35,315	5.368
09 AUG 2023 - 09 AUG 2023	PADINI	EMPLOYEES PROVIDENT FUND BOARD [SSH]	1	35,298	5.365
15 AUG 2023 - 17 AUG 2023	PANSAR	HIGHLINE SHIPPING SDN BHD [SSH]	1,386	26,951	5.738
14 AUG 2023 - 14 AUG 2023	PANTECH	DATIN LEE SOCK KEE [SSH]	75	110,598	13.364
14 AUG 2023 - 14 AUG 2023	PANTECH	DATIN SHUM KAH LIN [SSH]	168	154,831	18.71
14 AUG 2023 - 14 AUG 2023	PANTECH	DATO' CHEW TING LENG [DIR/CEO]	168	154,831	18.71
14 AUG 2023 - 14 AUG 2023	PANTECH	DATO' CHEW TING LENG [SSH]	168	154,831	18.71
14 AUG 2023 - 14 AUG 2023	PANTECH	DATO' GOH TEOH KEAN [DIR/CEO]	75	110,598	13.365
14 AUG 2023 - 14 AUG 2023	PANTECH	DATO' GOH TEOH KEAN [SSH]	75	110,598	13.365
14 AUG 2023 - 14 AUG 2023	PANTECH	MISS NG LEE LEE [DIR/CEO]	150	10,309	1.246
14 AUG 2023 - 14 AUG 2023	PANTECH	MR LIM YOONG XAO [DIR/CEO]	100	102	0.012
14 AUG 2023 - 14 AUG 2023	PANTECH	MR TAN ANG ANG [DIR/CEO]	75	12,940	1.563
09 AUG 2023 - 09 AUG 2023	PAVREIT	EMPLOYEES PROVIDENT FUND BOARD [SSH]	450	393,350	10.78
14 AUG 2023 - 14 AUG 2023	PBBANK	EMPLOYEES PROVIDENT FUND BOARD [SSH]	2,711	2,932,041	15.11
11 AUG 2023 - 11 AUG 2023	PBBANK	EMPLOYEES PROVIDENT FUND BOARD [SSH]	2,027	2,929,330	15.09
10 AUG 2023 - 10 AUG 2023	PBBANK	EMPLOYEES PROVIDENT FUND BOARD [SSH]	-4,264	2,927,303	15.08
09 AUG 2023 - 09 AUG 2023	PBBANK	EMPLOYEES PROVIDENT FUND BOARD [SSH]	-5,559	2,931,566	15.1
15 AUG 2023 - 15 AUG 2023	PCHEM	EMPLOYEES PROVIDENT FUND BOARD (EPF BOARD) [SSH]	2,239	918,470	11.481
14 AUG 2023 - 14 AUG 2023	PCHEM	EMPLOYEES PROVIDENT FUND BOARD (EPF BOARD) [SSH]	498	916,231	11.453
11 AUG 2023 - 11 AUG 2023	PCHEM	EMPLOYEES PROVIDENT FUND BOARD (EPF BOARD) [SSH]	1,062	915,733	11.447
10 AUG 2023 - 10 AUG 2023	PCHEM	EMPLOYEES PROVIDENT FUND BOARD (EPF BOARD) [SSH]	386	914,671	11.433
09 AUG 2023 - 09 AUG 2023	PCHEM	EMPLOYEES PROVIDENT FUND BOARD (EPF BOARD) [SSH]	227	914,286	11.429
17 AUG 2023 - 17 AUG 2023	PENTA	KUMPULAN WANG PERSARAAN (DIPERBADANKAN) [SSH]	-279	37,166	5.225
15 AUG 2023 - 15 AUG 2023	PENTA	EMPLOYEES PROVIDENT FUND BOARD [SSH]	345	50,538	7.105

Notice Period is 13th Aug - 19th Aug 2023

Effective Change Date	Stock Name	Buyer/ Seller Name [Classification]	Bought / (Sold) ['000]	No. of Shares After Trade ['000]	
			Total	Total	% Held
16 AUG 2023 - 16 AUG 2023	PENTA	KUMPULAN WANG PERSARAAN (DIPERBADANKAN) [SSH]	115	37,445	5.264
14 AUG 2023 - 14 AUG 2023	PENTA	EMPLOYEES PROVIDENT FUND BOARD [SSH]	425	50,193	7.056
15 AUG 2023 - 15 AUG 2023	PENTA	KUMPULAN WANG PERSARAAN (DIPERBADANKAN) [SSH]	81	37,330	5.248
11 AUG 2023 - 11 AUG 2023	PENTA	EMPLOYEES PROVIDENT FUND BOARD [SSH]	149	49,769	6.997
14 AUG 2023 - 14 AUG 2023	PENTA	KUMPULAN WANG PERSARAAN (DIPERBADANKAN) [SSH]	52	37,250	5.236
10 AUG 2023 - 10 AUG 2023	PENTA	EMPLOYEES PROVIDENT FUND BOARD [SSH]	130	49,619	6.976
11 AUG 2023 - 11 AUG 2023	PENTA	KUMPULAN WANG PERSARAAN (DIPERBADANKAN) [SSH]	213	37,198	5.229
09 AUG 2023 - 09 AUG 2023	PENTA	EMPLOYEES PROVIDENT FUND BOARD [SSH]	-491	49,489	6.957
15 AUG 2023 - 15 AUG 2023	PETDAG	EMPLOYEES PROVIDENT FUND BOARD (EPF BOARD) [SSH]	-5	123,281	12.409
14 AUG 2023 - 14 AUG 2023	PETDAG	EMPLOYEES PROVIDENT FUND BOARD (EPF BOARD) [SSH]	236	123,286	12.41
11 AUG 2023 - 11 AUG 2023	PETDAG	EMPLOYEES PROVIDENT FUND BOARD (EPF BOARD) [SSH]	8	123,050	12.386
10 AUG 2023 - 10 AUG 2023	PETDAG	EMPLOYEES PROVIDENT FUND BOARD (EPF BOARD) [SSH]	-84	123,042	12.385
09 AUG 2023 - 09 AUG 2023	PETDAG	EMPLOYEES PROVIDENT FUND BOARD (EPF BOARD) [SSH]	-84	123,126	12.394
17 AUG 2023 - 17 AUG 2023	PETGAS	KUMPULAN WANG PERSARAAN (DIPERBADANKAN) (KWAP) [SSH]	54	198,850	10.05
14 AUG 2023 - 14 AUG 2023	PETGAS	EMPLOYEES PROVIDENT FUND BOARD [SSH]	16	280,825	14.192
11 AUG 2023 - 11 AUG 2023	PETGAS	EMPLOYEES PROVIDENT FUND BOARD [SSH]	41	280,809	14.191
11 AUG 2023 - 11 AUG 2023	PETGAS	KUMPULAN WANG PERSARAAN (DIPERBADANKAN) (KWAP) [SSH]	120	198,796	10.047
09 AUG 2023 - 09 AUG 2023	PETGAS	EMPLOYEES PROVIDENT FUND BOARD [SSH]	-100	280,769	14.189
31 MAY 2023 - 31 MAY 2023	PGB	EXPORT-IMPORT BANK OF MALAYSIA BERHAD [SSH]	-750	45,552	7.538
18 MAY 2023 - 18 MAY 2023	PGB	EXPORT-IMPORT BANK OF MALAYSIA BERHAD [SSH]	-208	46,302	7.662
17 MAY 2023 - 17 MAY 2023	PGB	EXPORT-IMPORT BANK OF MALAYSIA BERHAD [SSH]	-112	46,511	7.696
15 MAY 2023 - 16 MAY 2023	PGB	EXPORT-IMPORT BANK OF MALAYSIA BERHAD [SSH]	-180	46,663	7.721
15 AUG 2023 - 15 AUG 2023	PPB	EMPLOYEES PROVIDENT FUND BOARD [SSH]	-300	148,235	10.42
14 AUG 2023 - 14 AUG 2023	PPB	EMPLOYEES PROVIDENT FUND BOARD [SSH]	-63	148,535	10.441
11 AUG 2023 - 11 AUG 2023	PPB	EMPLOYEES PROVIDENT FUND BOARD [SSH]	12	148,598	10.446
10 AUG 2023 - 10 AUG 2023	PPB	EMPLOYEES PROVIDENT FUND BOARD [SSH]	270	148,586	10.445
09 AUG 2023 - 09 AUG 2023	PPB	EMPLOYEES PROVIDENT FUND BOARD [SSH]	-239	148,316	10.426
16 AUG 2023 - 16 AUG 2023	PTRANS	DATIN SRI LIM SOW KENG [SSH]	-31,673	216,922	29.728
16 AUG 2023 - 16 AUG 2023	PTRANS	DATO' SRI CHEONG KONG FITT [DIR/CEO]	-31,673	216,922	29.727
16 AUG 2023 - 16 AUG 2023	PTRANS	DATO' SRI CHEONG KONG FITT [SSH]	-31,673	216,922	29.727
15 AUG 2023 - 15 AUG 2023	PTRANS	CBS LINK SDN BHD [SSH]	-23,394	57,607	7.895
17 AUG 2023 - 17 AUG 2023	PWROOT	KUMPULAN WANG PERSARAAN (DIPERBADANKAN) [SSH]	570	27,816	6.01
14 AUG 2023 - 14 AUG 2023	QL	CHIA SEONG FATT [DIR/CEO]	140	290,691	11.945
14 AUG 2023 - 14 AUG 2023	QL	CHIA SEONG FATT [SSH]	140	290,691	11.945
14 AUG 2023 - 14 AUG 2023	QL	CHIA SEONG POW [DIR/CEO]	140	296,994	12.203
14 AUG 2023 - 14 AUG 2023	QL	CHIA SEONG POW [SSH]	140	296,994	12.203
14 AUG 2023 - 14 AUG 2023	QL	CHIA SONG KUN [DIR/CEO]	140	1,004,652	41.281
14 AUG 2023 - 14 AUG 2023	QL	CHIA SONG KUN [SSH]	140	1,004,652	41.281
11 AUG 2023 - 11 AUG 2023	QL	CHIA SEONG FATT [DIR/CEO]	300	290,551	11.939
11 AUG 2023 - 11 AUG 2023	QL	CHIA SEONG FATT [SSH]	300	290,551	11.939
11 AUG 2023 - 11 AUG 2023	QL	CHIA SEONG POW [DIR/CEO]	300	296,854	12.197
11 AUG 2023 - 11 AUG 2023	QL	CHIA SEONG POW [SSH]	300	296,854	12.197
11 AUG 2023 - 11 AUG 2023	QL	CHIA SONG KUN [DIR/CEO]	300	1,004,512	41.276
11 AUG 2023 - 11 AUG 2023	QL	CHIA SONG KUN [SSH]	300	1,004,512	41.276
17 AUG 2023 - 17 AUG 2023	RAMSSOL	MISS LEE MIEW LAN [DIR/CEO]	-14,000	25,791	10.512
17 AUG 2023 - 17 AUG 2023	RAMSSOL	MISS LEE MIEW LAN [SSH]	-14,000	25,791	10.512
17 MAR 2023 - 23 MAR 2023	REX	DATO' CHEAH TENG LIM [DIR/CEO]	-300	100	0.015
11 AUG 2023 - 11 AUG 2023	RHBBANK	EMPLOYEES PROVIDENT FUND BOARD [SSH]	-1,298	1,740,500	40.606
10 AUG 2023 - 10 AUG 2023	RHBBANK	EMPLOYEES PROVIDENT FUND BOARD [SSH]	-981	1,741,798	40.636
18 AUG 2023 - 18 AUG 2023	RHONEMA	DR LIM BAN KEONG [DIR/CEO]	55	86,357	39.036
18 AUG 2023 - 18 AUG 2023	RHONEMA	DR LIM BAN KEONG [SSH]	55	86,357	39.036
16 AUG 2023 - 16 AUG 2023	SAPIND	MR KOH KOK HOON [SSH]	2	6,579	9.04
15 AUG 2023 - 15 AUG 2023	SAPIND	MR KOH KOK HOON [SSH]	2	6,577	9.037
11 AUG 2023 - 11 AUG 2023	SAPIND	MR KOH KOK HOON [SSH]	9	6,575	9.034
10 AUG 2023 - 10 AUG 2023	SAPIND	MR KOH KOK HOON [SSH]	6	6,566	9.022
11 AUG 2023 - 11 AUG 2023	SCGBHD	CIK FAWIZA BINTI FAIZ [DIR/CEO]	-10,000	191,028	23.879
11 AUG 2023 - 11 AUG 2023	SCGBHD	CIK FAWIZA BINTI FAIZ [SSH]	-10,000	191,028	23.879
11 AUG 2023 - 11 AUG 2023	SCGBHD	SEMANGAT HANDAL SDN. BHD. [SSH]	-10,000	191,028	23.879

Notice Period is 13th Aug - 19th Aug 2023

Effective Change Date	Stock Name	Buyer/ Seller Name [Classification]	Bought / (Sold) ['000]		No. of Shares After Trade ['000]	
			Total	% Held	Total	% Held
14 AUG 2023 - 14 AUG 2023	SIMEPROP	EMPLOYEES PROVIDENT FUND BOARD [SSH]	-9,000	8.239	560346	8.239
11 AUG 2023 - 11 AUG 2023	SIMEPROP	EMPLOYEES PROVIDENT FUND BOARD [SSH]	-6,000	8.372	569346	8.372
14 AUG 2023 - 14 AUG 2023	SIMEPROP	KUMPULAN WANG PERSARAAN (DIPERBADANKAN) [SSH]	591	6.541	444853	6.541
11 AUG 2023 - 11 AUG 2023	SIMEPROP	KUMPULAN WANG PERSARAAN (DIPERBADANKAN) [SSH]	98	6.532	444262	6.532
09 AUG 2023 - 09 AUG 2023	SIMEPROP	EMPLOYEES PROVIDENT FUND BOARD [SSH]	-2,460	8.46	575346	8.46
17 AUG 2023 - 17 AUG 2023	SKPRES	KUMPULAN WANG PERSARAAN (DIPERBADANKAN) [SSH]	1,424	7.974	124576	7.974
11 AUG 2023 - 11 AUG 2023	SKPRES	EMPLOYEES PROVIDENT FUND BOARD [SSH]	1,094	8.214	128326	8.214
10 AUG 2023 - 10 AUG 2023	SKPRES	EMPLOYEES PROVIDENT FUND BOARD [SSH]	322	8.144	127232	8.144
11 AUG 2023 - 11 AUG 2023	SKPRES	KUMPULAN WANG PERSARAAN (DIPERBADANKAN) [SSH]	1,117	7.882	123153	7.882
09 AUG 2023 - 09 AUG 2023	SKPRES	EMPLOYEES PROVIDENT FUND BOARD [SSH]	274	8.123	126910	8.123
16 AUG 2023 - 16 AUG 2023	SNS	DATO' ZULKAPLI BIN AHMAD [DIR/CEO]	-100	0.006	100	0.006
17 AUG 2023 - 17 AUG 2023	SPSETIA	KUMPULAN WANG PERSARAAN (DIPERBADANKAN) [SSH]	-297	9.994	407795	9.994
15 AUG 2023 - 15 AUG 2023	SPSETIA	KUMPULAN WANG PERSARAAN (DIPERBADANKAN) [SSH]	123	10.001	408092	10.001
14 AUG 2023 - 14 AUG 2023	SPSETIA	KUMPULAN WANG PERSARAAN (DIPERBADANKAN) [SSH]	635	9.998	407969	9.998
11 AUG 2023 - 11 AUG 2023	SPSETIA	KUMPULAN WANG PERSARAAN (DIPERBADANKAN) [SSH]	500	9.983	407334	9.983
15 AUG 2023 - 15 AUG 2023	SUNCON	EMPLOYEES PROVIDENT FUND BOARD [SSH]	331	9.74	125580	9.74
14 AUG 2023 - 14 AUG 2023	SUNREIT	EMPLOYEES PROVIDENT FUND BOARD [SSH]	600	15.215	521072	15.215
15 AUG 2023 - 15 AUG 2023	SUNWAY	EMPLOYEES PROVIDENT FUND BOARD [SSH]	-4,490	7.97	394871	7.97
14 AUG 2023 - 14 AUG 2023	SUNWAY	EMPLOYEES PROVIDENT FUND BOARD [SSH]	-2,637	8.06	399339	8.06
11 AUG 2023 - 11 AUG 2023	SUNWAY	EMPLOYEES PROVIDENT FUND BOARD [SSH]	-2,409	8.11	401976	8.11
10 AUG 2023 - 10 AUG 2023	SUNWAY	EMPLOYEES PROVIDENT FUND BOARD [SSH]	-931	8.16	404384	8.16
09 AUG 2023 - 09 AUG 2023	SUNWAY	EMPLOYEES PROVIDENT FUND BOARD [SSH]	-8,627	8.18	405216	8.18
18 AUG 2023 - 18 AUG 2023	SWSCAP	DR LOH YEE FEEI [DIR/CEO]	-682	2.91	8005	2.91
15 AUG 2023 - 15 AUG 2023	SWSCAP	DR LOH YEE FEEI [DIR/CEO]	350	2.86	7865	2.86
17 AUG 2023 - 17 AUG 2023	TAKAFUL	KUMPULAN WANG PERSARAAN (DIPERBADANKAN) [SSH]	400	6.932	58039	6.932
14 AUG 2023 - 14 AUG 2023	TCHONG	EMPLOYEES PROVIDENT FUND BOARD [SSH]	-0.5	6.448	42031	6.448
17 AUG 2023 - 17 AUG 2023	TENAGA	KUMPULAN WANG PERSARAAN (DIPERBADANKAN) [SSH]	-960	7.42	429572	7.42
15 AUG 2023 - 15 AUG 2023	TENAGA	EMPLOYEES PROVIDENT FUND BOARD [SSH]	871	14.91	862754	14.91
14 AUG 2023 - 14 AUG 2023	TENAGA	EMPLOYEES PROVIDENT FUND BOARD [SSH]	2,167	14.89	861884	14.89
11 AUG 2023 - 11 AUG 2023	TENAGA	EMPLOYEES PROVIDENT FUND BOARD [SSH]	4,895	14.86	859717	14.86
14 AUG 2023 - 14 AUG 2023	TENAGA	KUMPULAN WANG PERSARAAN (DIPERBADANKAN) [SSH]	-1,000	7.44	430531	7.44
10 AUG 2023 - 10 AUG 2023	TENAGA	EMPLOYEES PROVIDENT FUND BOARD [SSH]	175	14.77	854822	14.77
09 AUG 2023 - 09 AUG 2023	TENAGA	EMPLOYEES PROVIDENT FUND BOARD [SSH]	-2,928	14.77	854646	14.77
17 AUG 2023 - 17 AUG 2023	TIMECOM	KUMPULAN WANG PERSARAAN (DIPERBADANKAN) ("KWAP") [SSH]	-23	6.171	113973	6.171
15 AUG 2023 - 15 AUG 2023	TIMECOM	EMPLOYEES PROVIDENT FUND BOARD [SSH]	-387	7.779	143671	7.779
16 AUG 2023 - 16 AUG 2023	TIMECOM	KUMPULAN WANG PERSARAAN (DIPERBADANKAN) ("KWAP") [SSH]	-25	6.173	113997	6.173
14 AUG 2023 - 14 AUG 2023	TIMECOM	EMPLOYEES PROVIDENT FUND BOARD [SSH]	55	7.8	144059	7.8
15 AUG 2023 - 15 AUG 2023	TIMECOM	KUMPULAN WANG PERSARAAN (DIPERBADANKAN) ("KWAP") [SSH]	-20	6.174	114022	6.174
11 AUG 2023 - 11 AUG 2023	TIMECOM	EMPLOYEES PROVIDENT FUND BOARD [SSH]	179	7.797	144004	7.797
14 AUG 2023 - 14 AUG 2023	TIMECOM	KUMPULAN WANG PERSARAAN (DIPERBADANKAN) ("KWAP") [SSH]	-500	6.175	114042	6.175
10 AUG 2023 - 10 AUG 2023	TIMECOM	EMPLOYEES PROVIDENT FUND BOARD [SSH]	-125	7.788	143825	7.788
09 AUG 2023 - 09 AUG 2023	TIMECOM	EMPLOYEES PROVIDENT FUND BOARD [SSH]	-150	7.794	143950	7.794
17 AUG 2023 - 17 AUG 2023	TM	KUMPULAN WANG PERSARAAN (DIPERBADANKAN) [SSH]	-1,142	10.784	412177	10.784
15 AUG 2023 - 15 AUG 2023	TM	EMPLOYEE PROVIDENT FUND BOARD (EPF BOARD) [SSH]	28	16.548	632460	16.548
14 AUG 2023 - 14 AUG 2023	TM	EMPLOYEE PROVIDENT FUND BOARD (EPF BOARD) [SSH]	898	16.547	632432	16.547
11 AUG 2023 - 11 AUG 2023	TM	EMPLOYEE PROVIDENT FUND BOARD (EPF BOARD) [SSH]	1,603	16.524	631533	16.524
10 AUG 2023 - 10 AUG 2023	TM	EMPLOYEE PROVIDENT FUND BOARD (EPF BOARD) [SSH]	961	16.482	629930	16.482
09 AUG 2023 - 09 AUG 2023	TM	EMPLOYEE PROVIDENT FUND BOARD (EPF BOARD) [SSH]	15	16.457	628969	16.457

09 AUG 2023 - 09 AUG 2023

Effective Change Date	Stock Name	Buyer/ Seller Name [Classification]	Bought / (Sold) ['000]		No. of Shares After Trade ['000]	
			Total	% Held	Total	% Held
11 AUG 2023 - 11 AUG 2023	TOPVISN	DATUK LIEW HOCK NEAN [DIR/CEO]	12,689	51.04	130456	51.04
11 AUG 2023 - 11 AUG 2023	TOPVISN	DATUK LIEW HOCK NEAN [SSH]	12,689	51.04	130456	51.04
11 AUG 2023 - 11 AUG 2023	TOPVISN	MADAM ANGELA LOO VOON PEI [SSH]	117,767	51.04	130456	51.04
11 AUG 2023 - 11 AUG 2023	TOPVISN	MADAM CAROLYN SOONG YOKE VOON [SSH]	53,390	20.89	53390	20.89
17 AUG 2023 - 17 AUG 2023	UMW	KUMPULAN WANG PERSARAAN (DIPERBADANKAN) (KWAP) [SSH]	440	9.321	108908	9.321
15 AUG 2023 - 15 AUG 2023	UMW	EMPLOYEES PROVIDENT FUND BOARD [SSH]	-2,000	7.904	92346	7.904
16 AUG 2023 - 16 AUG 2023	UMW	KUMPULAN WANG PERSARAAN (DIPERBADANKAN) (KWAP) [SSH]	360	9.284	108468	9.284
14 AUG 2023 - 14 AUG 2023	UMW	EMPLOYEES PROVIDENT FUND BOARD [SSH]	-1,229	8.076	94346	8.076
11 AUG 2023 - 11 AUG 2023	UMW	EMPLOYEES PROVIDENT FUND BOARD [SSH]	-1,538	8.181	95575	8.181
10 AUG 2023 - 10 AUG 2023	UMW	EMPLOYEES PROVIDENT FUND BOARD [SSH]	-1,414	8.312	97114	8.312
09 AUG 2023 - 09 AUG 2023	UMW	EMPLOYEES PROVIDENT FUND BOARD [SSH]	-1,372	8.433	98528	8.433
15 AUG 2023 - 15 AUG 2023	UTDPLT	EMPLOYEES PROVIDENT FUND BOARD [SSH]	-0.4	7.089	29404	7.089
14 AUG 2023 - 14 AUG 2023	UTDPLT	EMPLOYEES PROVIDENT FUND BOARD [SSH]	5	7.089	29404	7.089
11 AUG 2023 - 11 AUG 2023	UTDPLT	EMPLOYEES PROVIDENT FUND BOARD [SSH]	27	7.088	29399	7.088
10 AUG 2023 - 10 AUG 2023	UTDPLT	EMPLOYEES PROVIDENT FUND BOARD [SSH]	-56	7.081	29372	7.081
09 AUG 2023 - 09 AUG 2023	UTDPLT	EMPLOYEES PROVIDENT FUND BOARD [SSH]	-86	7.095	29428	7.095
10 AUG 2023 - 10 AUG 2023	UWC	EMPLOYEES PROVIDENT FUND BOARD [SSH]	43	7.04	77554	7.04
10 AUG 2023 - 11 AUG 2023	UWC	DATO' F'NG MEOW CHENG [DIR/CEO]	-66	0.048	534	0.048
09 AUG 2023 - 09 AUG 2023	UWC	EMPLOYEES PROVIDENT FUND BOARD [SSH]	42	7.036	77511	7.036
18 AUG 2023 - 18 AUG 2023	VS	DATIN LING SOK MOOI [SSH]	100	5.21	200203	5.21
18 AUG 2023 - 18 AUG 2023	VS	DATUK GAN SEM YAM [DIR/CEO]	100	5.21	200203	5.21
18 AUG 2023 - 18 AUG 2023	VS	DATUK GAN SEM YAM [SSH]	100	5.21	200203	5.21
17 AUG 2023 - 17 AUG 2023	VS	KUMPULAN WANG PERSARAAN [SSH]	227	9.006	346055	9.006
17 AUG 2023 - 17 AUG 2023	VS	DATIN LING SOK MOOI [SSH]	1,653	5.207	200103	5.207
17 AUG 2023 - 17 AUG 2023	VS	DATUK GAN SEM YAM [DIR/CEO]	1,653	5.208	200103	5.208
17 AUG 2023 - 17 AUG 2023	VS	DATUK GAN SEM YAM [SSH]	1,653	5.208	200103	5.208
16 AUG 2023 - 16 AUG 2023	VS	KUMPULAN WANG PERSARAAN [SSH]	204	9	345828	9
16 AUG 2023 - 16 AUG 2023	VS	DATUK BEH KIM LING [DIR/CEO]	130	15.034	577702	15.034
16 AUG 2023 - 16 AUG 2023	VS	DATUK BEH KIM LING [SSH]	130	15.034	577702	15.034
15 AUG 2023 - 16 AUG 2023	VS	DATIN LING SOK MOOI [SSH]	1,347	5.165	198450	5.165
15 AUG 2023 - 16 AUG 2023	VS	DATUK GAN SEM YAM [DIR/CEO]	1,347	5.165	198450	5.165
15 AUG 2023 - 16 AUG 2023	VS	DATUK GAN SEM YAM [SSH]	1,347	5.165	198450	5.165
16 AUG 2023 - 16 AUG 2023	VS-WB	DATUK BEH KIM LING [DIR/CEO]	-5,000	10.03	76316	10.03
17 AUG 2023 - 17 AUG 2023	WIDAD	TAN SRI MUHAMMAD IKMAL OPAT BIN ABDULLAH [SSH]	3,050	39.253	1215446	39.253
16 AUG 2023 - 16 AUG 2023	WIDAD	TAN SRI MUHAMMAD IKMAL OPAT BIN ABDULLAH [SSH]	-700	39.154	1212396	39.154
15 AUG 2023 - 15 AUG 2023	WIDAD	TAN SRI MUHAMMAD IKMAL OPAT BIN ABDULLAH [SSH]	1,100	39.177	1213095	39.177
14 AUG 2023 - 14 AUG 2023	WIDAD	TAN SRI MUHAMMAD IKMAL OPAT BIN ABDULLAH [SSH]	-2,097	39.141	1211995	39.141
11 AUG 2023 - 11 AUG 2023	WIDAD	TAN SRI MUHAMMAD IKMAL OPAT BIN ABDULLAH [SSH]	-2,254	39.209	1214092	39.209
17 AUG 2023 - 17 AUG 2023	WPRTS	KUMPULAN WANG PERSARAAN (DIPERBADANKAN) [SSH]	290	6.75	230184	6.75
15 AUG 2023 - 15 AUG 2023	WPRTS	EMPLOYEES PROVIDENT FUND BOARD [SSH]	150	8.961	305583	8.961
14 AUG 2023 - 14 AUG 2023	WPRTS	EMPLOYEES PROVIDENT FUND BOARD [SSH]	61	8.907	303733	8.907
18 AUG 2023 - 18 AUG 2023	XL	DATO' KHOO YIK CHOU [DIR/CEO]	250	0.793	1947	0.793
17 AUG 2023 - 17 AUG 2023	XL	DATO' KHOO YIK CHOU [DIR/CEO]	245	0.698	1697	0.698
16 AUG 2023 - 16 AUG 2023	YINSON	KUMPULAN WANG PERSARAAN (DIPERBADANKAN) [SSH]	-1,064	6.517	189432	6.517
17 AUG 2023 - 17 AUG 2023	ZECON	DATUK HAJI ZAINAL ABIDIN BIN HAJI AHMAD [SSH]	385	39.56	64210	39.56
16 AUG 2023 - 16 AUG 2023	ZECON	DATUK HAJI ZAINAL ABIDIN BIN HAJI AHMAD [DIR/CEO]	385	43.56	64210	43.56
16 AUG 2023 - 16 AUG 2023	ZECON	ENCIK SAZALI BIN MD SALLEH [SSH]	-385	8.396	12376	8.396
16 AUG 2023 - 16 AUG 2023	ZECON	MENTARI HIJAU SDN BHD [SSH]	-385	8.232	121356	8.232

**Disclaimer:** The Information in Insider Activity is extracted from [www.shareinvestor.com/fundamental/insider\\_trades](http://www.shareinvestor.com/fundamental/insider_trades). The information on this page is provided as a service to readers. It does not constitute financial advice and/or any investment recommendations. We assume no liability for damages resulting from or arising out of the use of such information. Whilst every effort is made to ensure accuracy, the information presented is not the official record of shareholder filings. Readers are advised to read the original filings on the Bursa Malaysia website at [www.bursamalaysia.com](http://www.bursamalaysia.com)

## SHAREINVESTOR MARKET DATA PLATFORMS



**SHAREINVESTOR STATION**  
Advanced Charting Software  
(8 Markets)



**SHAREINVESTOR WEBPRO**  
Browser-Based Market Data  
Analytics Platform



**BURSASTATION**  
Advanced Charting Software  
(Bursa Malaysia Only)





**Advance Synergy Berhad (ASB)** wishes to inform Bursa Securities that Captii Limited, our subsidiary which is listed on the SGX, had on 18 August 2023 released their announcement on the notice of payment of interim dividend and record date to the SGX. Further to the financial statements and dividend announcement for the second quarter ended 30 June 2023 released on 11 August 2023, the Board of Directors of Captii Limited wishes to announce that the Company’s Interim tax-exempt (one-tier) dividend will be paid on 20 September 2023. Notice is hereby given that the Share Transfer Books and Register of Members of the Company will be closed on 29 August 2023 for the preparation of dividend warrants.

The Board of Directors of **Boustead Plantations Berhad (BPLANT)** wishes to announce that the controlling shareholders of the Company, BHB and LTAT, have informed the Company that they have entered into a strategic collaboration agreement with KLK on 24 August 2023 in relation to, among others, the following:

- (i) proposed disposal by BHB of a total of 739,199,966 ordinary shares in BPlant, representing 33% and 1 share of the total issued shares of BPlant, to KLK for a cash consideration of RM1,145,759,947.30 or RM1.55 per BPlant Share;
- (ii) proposed mandatory take-over offer to acquire all remaining BPlant Shares not already owned by BHB, LTAT, KLK resulting from the Proposed Disposal at a cash offer price of RM1.55 per BPlant Share; and
- (iii) improving the operational efficiencies and crude palm oil yields of the plantations of BPlant over the long-term







The Board of Directors of **Dayang Enterprise Holdings Bhd (DAYANG)** is pleased to announce that its wholly-owned subsidiary company, Dayang Enterprise Sdn Bhd, has been awarded an extension to the Pan Malaysia Maintenance, Construction and Modification Contract for Years 2018 to 2023 from SEA Hibiscus Sdn Bhd.

The value of the Extended Contract is based on work orders issued by SEA Hibiscus throughout the extended contract duration. The contract extension duration is for approximately one year, five months and fifteen days, effective from 17th July 2023 until 31st December 2024.



**Wellspire Holdings Berhad (WELLS)**, a distributor of consumer-packaged foods in Thailand, through its wholly-owned subsidiary, Wellspire Global

Trading, today signed a strategic cooperation agreement with Khee San Food Industries Sdn Bhd, a subsidiary of Khee San Berhad. Under this agreement, Wellspire will become Khee San's sole and exclusive distributor in Thailand. Wellspire will distribute, import, export, sell and resell Khee San products, namely Fruit Plus and Kiss Me. This strategic cooperation with Khee San is part of Wellspire's plans to cooperate with local companies to penetrate the Thai market via the Wellspire group's well-established distribution channels in the Kingdom.

The partnership with Khee San will combine the Wellspire group's leading infrastructure, distribution channels and marketing expertise in Thailand with Khee San's well-established manufacturing and packaging capabilities in the mass market consumer food and snacks manufacturing industry. The agreement is valid from 23 August 2023 to 22 August 2026 for a period of three years.







ShareInvestor Malaysia is a technology company with offices in the region. The company's services include Online Investor Relations and Corporate Website Design services to public listed companies (B2B); Subscription (SAAS) and Investor Education to retail investors (B2C) and publishing Inve\$t weekly. More information about the company can be found at [www.shareinvestor.com.my](http://www.shareinvestor.com.my). We are looking for a suitably experienced, matured and dynamic candidate to join our Malaysia operations.

# WE'RE HIRING!

Position:

## SALES MANAGER *Investor Relations Division*



### Job Responsibilities:

**Reporting to the Group Managing Director - Investor Relations, you will be responsible for:**

- the full sales cycle from initial client contact to presentation, contract negotiation and closing of sales.
- identifying and acquiring new clients.
- managing existing client accounts and maintain excellent relationships for contract renewals and to up-sell new business solutions.
- meeting and exceeding Quarterly & Annual sales targets and KPIs.
- coordinating internal resources for service delivery and clients' satisfaction to ensure quality of service fulfilment.
- working as part of a dynamic sales team where high performance will be highly rewarded.

### Job Requirements:

- Minimum 3-5 years of working experience in sales with strengths in writing, pitching, negotiating & closing sales.
- Degree/Diploma in any discipline.
- Knowledge in Investor Relations (IR) and/or Public Relations (PR) will be an advantage.
- Independent and career-minded.
- Results oriented and performance driven.
- Possess good interpersonal and communication skills.

### Compensation scheme:

- **Hybrid working arrangement:** Work from home option on certain day/s of each week (but subject to change by management).
- Attractive basic salary and incentive scheme plus entertainment, travelling & mobile phone allowance.
- Annual performance review with opportunity for career advancement.
- Opportunity to collaborate with colleagues from other ASEAN countries and cultures.

If you are interested, please send your updated resume, current and expected salary, and a recent photograph via email to [hr.my@shareinvestor.com](mailto:hr.my@shareinvestor.com) before **30th August 2023**.