



FOREIGN INTEREST IN MALAYSIAN EQUITIES TO IMPROVE IN 2H2023 – BURSA CHAIRMAN

(page 25)

29 MSWG
Harnessing IR power to make informed decisions

- | | | | | | |
|----|----------------------------|----|--------------------|----|-------------------------|
| 04 | LEADERBOARD | 12 | UP TRENDING STOCKS | 25 | MARKET SENTIMENTS |
| 06 | SHARIAH HOT STOCKS | 14 | VALUE STOCKS | 28 | REGIONAL MARKETS |
| 07 | COMPANY SPOTLIGHT | 16 | GROWTH STOCKS | 29 | FROM THE OBSERVER |
| 08 | SHARIAH MOMENTUM UP STOCKS | 18 | DIVIDEND STOCKS | 34 | INSIDER ACTIVITY |
| 10 | NON SHARIAH HOT STOCKS | 20 | BROKERS' CALL | 38 | INVESTOR RELATIONS |
| | | 22 | LONG COMPANIES | 42 | CAREER AT SHAREINVESTOR |



INVESTOR PLATFORMS

Director
Darren Chong
darren.chong@shareinvestor.com

Business Development Manager
Jay Cheong
jay.cheong.@shareinvestor.com

Senior Executive
Daniel Wong
daniel.wong@shareinvestor.com

Executive
Farah Azwani
farah.azwani@shareinvestor.com

Executive
Tan Yong Sheng
yongsheng.tan@shareinvestor.com

ADMIN & OPERATIONS

Senior Executive
Watie Nordin
watie.nordin@shareinvestor.com

Executive
Silas Emmanuel Joseph
silas.joseph@shareinvestor.com

INVESTOR RELATIONS

Group Managing Director & Publisher
Edward Stanislaus
edward@shareinvestor.com

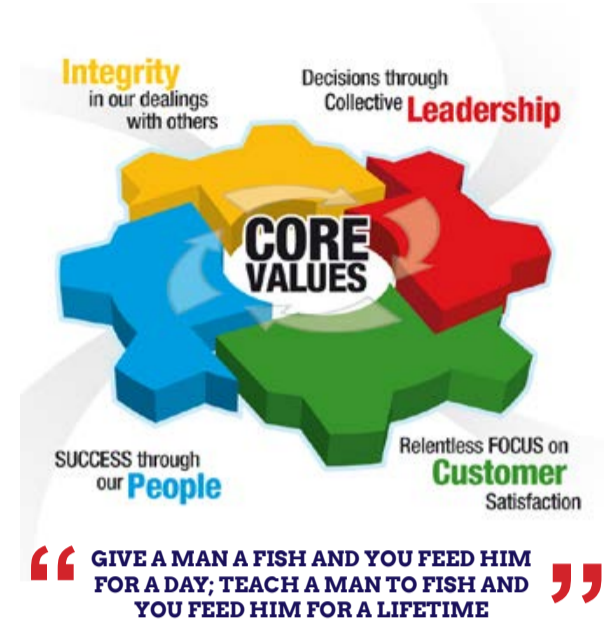
Senior Manager
Letticia Wong
letticia.wong@shareinvestor.com

PROCESS AUTOMATION & DATA ANALYTICS

Data Analyst
Nickson Aw

SHAREINVESTOR HOLDINGS BOARD OF DIRECTORS

- | | |
|------------------|-----------------|
| Chairman | Patrick Daniel |
| Group CEO | Christopher Lee |
| Group COO | Lim Dau Hee |
| Group CFO | Teo Siew May |
| Group MD | Shanison Lin |



ShareInvestor Malaysia Sdn. Bhd.
(200001023956) (526564-M)
Unit No. DF2-07-03A. Level 7,
Persoft Tower, 6B Persiaran Tropicana,
47410 Petaling Jaya, Selangor Darul Ehsan.

Hotline : 603 7803 1791
Mobile : 011 6343 8939
Website : www.ShareInvestor.com.my
www.ShareInvestorHoldings.com
www.Facebook.com/ShareInvestorMalaysia

ADVERTISEMENT ENQUIRY

bulthaup takes care of the details so that you can enjoy a harmonious environment.



XTRA

XTRA FURNITURE SDN BHD
The Gardens Mall, Mid Valley City
xtrafurniture.com/bulthaup
fb.com/bulthaupmalaysia



bulthaup

BURSA FUND PLATFORM

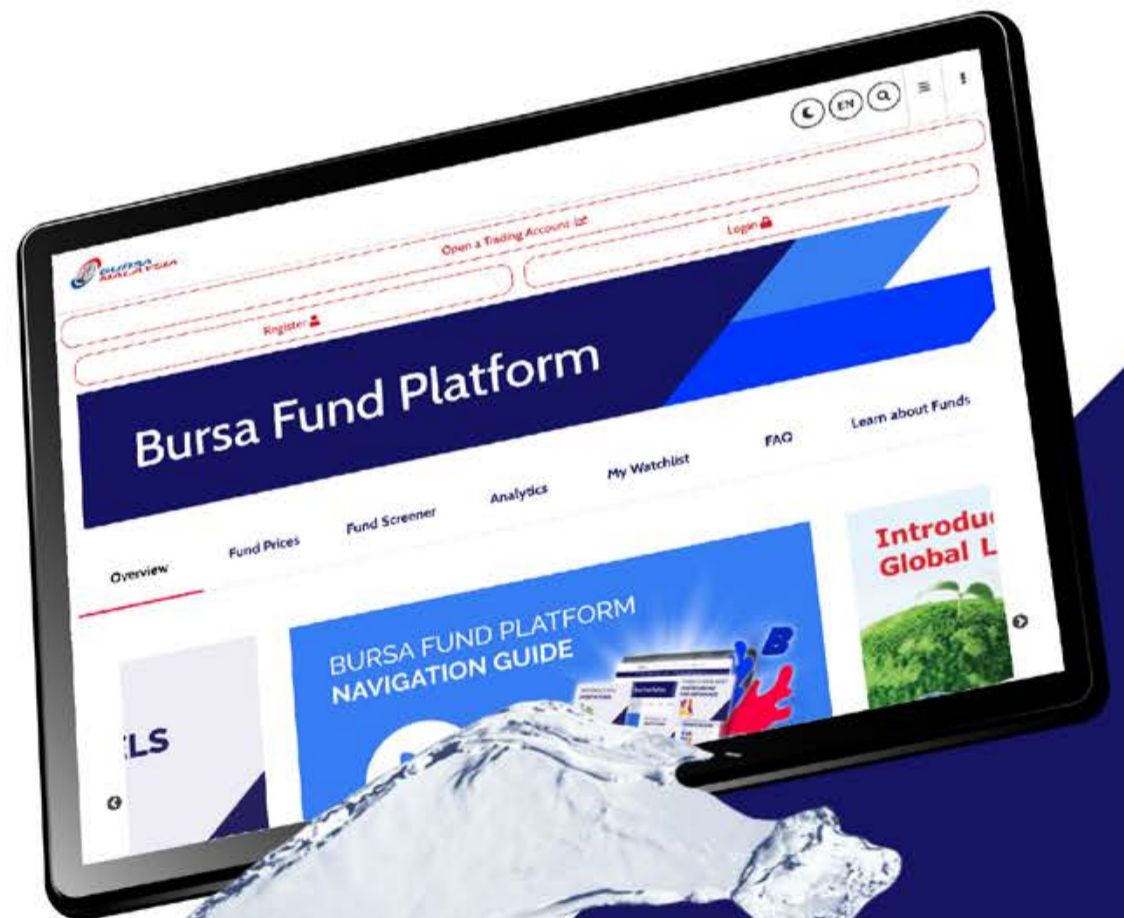
Dive into fund investing with Bursa Fund Platform

Invest with our Participating Fund Managers and stand a chance to win rewards worth up to **RM500***!

1 August 2023 - 29 December 2023

**Terms and conditions apply*

Scan here to learn more:



www.shareinvestor.com - market data at your fingertips



ShareInvestor WebPro (www.shareinvestor.com/my)
Prices > Stock Prices > Bursa > click Stocks tab

1. mouse over Ranking > select Top Active > all Shariah stocks are denoted with an [S] > mouse over Column Layout > select Edit Customs > select Name > select Volume > select Last Done Price > Mouse Over Column Layout > select Custom
2. mouse over Ranking > select Top Turnover > all Shariah stocks are denoted with an [S] > mouse over Column Layout > select Edit Customs > select Name > select Last Done Price > select Value > Mouse Over Column Layout > select Custom
3. mouse over Ranking > select Top Gainers (Over 5 Trading Days) > mouse over Column Layout > select Edit Customs > select Name > select Last Done Price > select 5 Days Change > select 5 Days % Change > Mouse Over Column Layout > select Custom
4. mouse over Ranking > select Top Losers (Over 5 Trading Days)
5. mouse over Ranking > select Top % Gainers (Over 5 Trading Days)
6. mouse over Ranking > select Top % Losers (Over 5 Trading Days)

Shariah Top Actives (as at Yesterday)

Name	Price (RM)	Volume
UEMS [S]	0.490	1,412,011.000
CLASSITA [S]	0.160	1,369,240.000
MRCB [S]	0.375	736,269.000
MUDAJYA [S]	0.185	683,331.000
KOMARK [S]	0.040	474,789.000
WIDAD [S]	0.430	369,511.000
SCIB [S]	0.435	326,476.000
TANCO [S]	0.555	278,079.000
DAY3 [S]	0.455	255,468.000
DNEX [S]	0.455	194,749.000

Shariah Top Turnover (as at Yesterday)

Name	Price (RM)	Value (RM)
UEMS [S]	0.490	71,880,811
INARI [S]	3.090	44,204,321
PCHEM [S]	6.850	29,581,762
MRCB [S]	0.375	28,508,750
TENAGA [S]	9.560	27,890,886
FRONTKN [S]	3.370	26,923,457
CDB [S]	4.500	21,637,559
CLASSITA [S]	0.160	20,697,987
KLK [S]	23.200	19,691,342
GAMUDA [S]	4.320	17,743,237

Top Gainers (over 5 Trading days as at Yesterday)

Name	Price (RM)	Change (RM)
NESTLE	133.000	+1.000
ALLIANZ	14.840	+0.540
BLDPLNT	10.940	+0.400
HLFG	18.540	+0.360
RAPID	22.700	+0.340
BKAWAN	21.400	+0.320
DKSH	5.120	+0.210
APOLLO	4.430	+0.170
MENTIGA	0.600	+0.160
CDB	4.500	+0.120

Top % Gainers (over 5 Trading days as at Yesterday)

Name	Price (RM)	Change (%)
DGB	0.010	+100.00
EAH	0.010	+100.00
AEM	0.015	+50.00
AT	0.015	+50.00
BERTAM	0.120	+50.00
MMAG	0.015	+50.00
CLASSITA	0.160	+39.13
ESKERAM	0.300	+36.36
MENTIGA	0.600	+36.36
TAS	0.270	+35.00

Top Losers (over 5 Trading days as at Yesterday)

Name	Price (RM)	Change (RM)
CARLSBG	21.220	-0.480
BLDPLNT	10.360	-0.460
MPI	28.280	-0.460
CIHLDG	3.300	-0.380
EPMB	0.620	-0.210
ORIENT	6.620	-0.190
TAANN	3.140	-0.170
BAT	10.500	-0.160
PCHEM	7.040	-0.160
CHINHIN	4.320	-0.140

Top % Losers (over 5 Trading days as at Yesterday)

Name	Price (RM)	Change (%)
TOPBLDS	0.005	-75.00
HONGSENG	0.055	-35.29
JOE	0.010	-33.33
TECHNAX	0.010	-33.33
SUNMOW	1.200	-28.57
DAY3	0.455	-26.61
TALAMT	0.015	-25.00
ASDION	0.025	-16.67
MPSOL	0.150	-16.67
TSRCAP	0.225	-16.67



Maximise your investment potential with CFD

Trade Local & Global shares at up to 10 times leverage with CGS-CIMB's Contracts for Difference (CFD)

10X

NYSE & NASDAQ

BURSA

SGX

HKEX

ASX



Explore Contracts For Difference today

T&C Apply

cgs-cimb.com.my

Price & Volume Distribution Charts (as at Yesterday)

Technical Analysis

DEFINITION: Shariah compliant stocks with Technical Analysis showing 5-days & 10-days Moving Average Price below Yesterday's Close over past 3 days and with Volume Spike.

CHART GUIDE: Volume Distribution Chart is a statistical interpretation of the current sentiment on each stock in graphical format. The highest bar categorized as >150k is likely to be traded by institutions or super dealers, while the lowest bar categorized as <15k usually represents retail investors. "Buy Up" refers to more buyers snatching up the lots queued at selling price. "Sell Down" refers to sellers selling their shares to the buying queue



ShareInvestor WebPro > Screener > Market Screener (FA & TA) > select BURSA > add criteria

A. Criteria

- > click Add Criteria
- Technical Analysis Conditions tab select (i) Moving Average Below Close (ii) Volume Spike
- Fundamental Analysis tab > select (iii) Revenue
- Prices & Other Conditions tab > select (iv) Is Shariah Compliant
- Technical Analysis Conditions tab select (v) Moving Average Below Close
- Prices & Other Conditions tab > select (vi) Last Done Price
- Technical Analysis Conditions tab select (vii) Moving Average Below Close

B. Conditions (Criteria Filters)

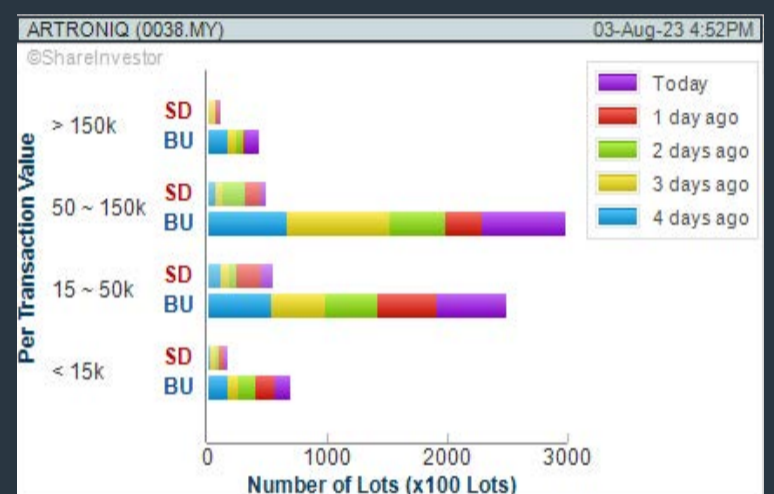
- Moving Average Below Close - select (MA) type (5) below close price for type (3) days
- Volume Spike - Volume type (1) greater than type (5) days average
- Revenue ("000) - select (more than) type (1) for the past select (1) financial year(s)
- Is Shariah Compliant - select **Yes**
- Moving Average Below Close - select (MA) type (10) below close price for type (3) days
- Last Done Price - select (more than) type (0.3)
- Moving Average Below Close - select (EMA) type (5) below close price for type (3) days

- > click Save Template > Create New Template type (Shariah Hot Stocks) > click Create
- > click Save Template as > select Shariah Hot Stocks > click Save
- > click Screen Now (may take a few minutes)
- > Sort By: Select (Vol) Select (Desc)
- > Mouse over stock name > Charts > click C² Charts or Volume Distribution

ARTRONIQ BERHAD (0038)

C² Chart

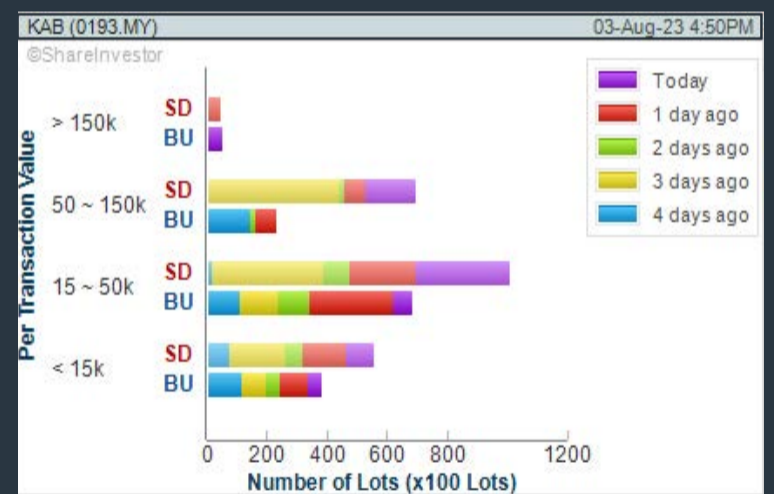
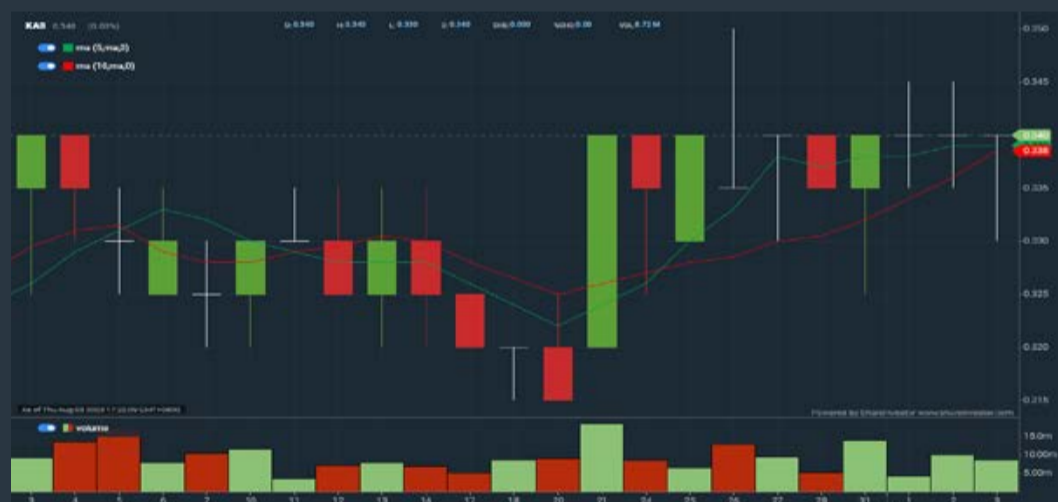
Analysis



KINERGY ADVANCEMENT BERHAD (0193)

C² Chart

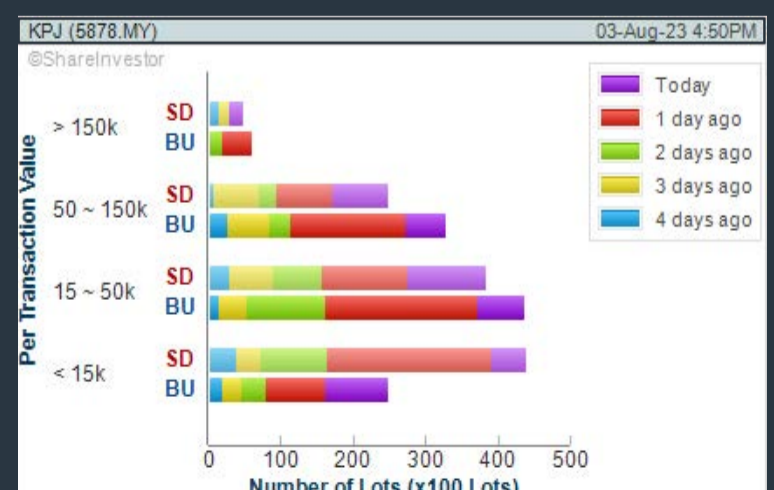
Analysis



KPJ HEALTHCARE BHD (5878)

C² Chart

Analysis



Disclaimer: The information on this page is provided as a service to readers. It does not constitute financial advice and/or any investment recommendations. Past performance is not indicative of future results. We assume no liability for damages resulting from or arising out of the use of such information. It would be best if you did your own research to make your personal investment decisions wisely or consult a licenced investment advisor.

COMPANY BACKGROUND

Inari Amertron Berhad is an electronics manufacturing services (EMS) provider, offering manufacturing services and support to the Radio Frequency, Optoelectronics, Fibre-Optics and Testing & Measurement Equipment sectors. The Company's major undertakings include outsourced semiconductor assembly and test (OSAT), wafer sort, integrated circuit package assembly, together with chip fabrication and quality test. It is also involved in the design and production of testing equipment for semiconductors, fiber optic connectors and wireless microwave telecommunication products.

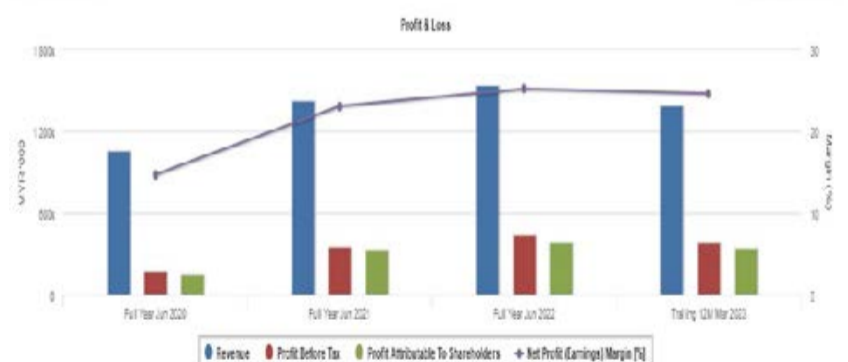


INARI INARI AMERTRON BERHAD		Updated at 03 Aug 2023 16:59	
Last (MYR): 3.090 ↑	Change: +0.050	High: 3.090	Remarks: s [?]
	Change (%): +1.64	Low: 2.980	
Open: 3.020	Yesterday's Close: 3.040		
Buy Price: 3.080	Sell Price: 3.090		
Buy Volume ('00): 5,100	Sell Volume ('00): 213		
Cumulative Volume ('00): 144,308	Cumulative Value: 44,204,321		

Financial Analysis

Revenue Growth Increasing revenue in last 2 consecutive years	😊	Profit Growth Increasing profit in last 2 consecutive years (with last 3 profitable years)	😊
Dividend Payout Dividend is increasing over the past 60 months.	😊	Cash Ratio Good cash ratio of at least 0.8 for 3 consecutive years	😊
Current Ratio The company is well-positioned to cover its short-term obligations with its current assets (ratio between 1.5 to 10) for 3 consecutive years	😊	Free Cash Flow Positive and increasing free cash flow for at least three years	😊
Gross Profit Margin Consistently good gross profit margin of 20%-40% for 3 years	😊	Net Earnings Margin Consistently high net profit margin of at least 20% for 2 years	😊
Return on Assets (ROA) ROA above 10% for 3 consecutive years	😊	Return on Equity (ROE) ROE above 10% for 3 consecutive years	😊

😊 Excellent 😊 Good 😐 Neutral 😟 Be Alert 😱 Watch Out



WebPro 9-Days Free Trial Registration (worth RM9) Sign Up Now



Key Statistics with Total Shareholder Returns

Period	Dividend Received	Capital Appreciation	Total Shareholder Return
Short Term Return	5 Days	-	+0.050 +1.64 %
	10 Days	-	-0.010 -0.32 %
	20 Days	-	+0.380 +12.77 %
Medium Term Return	3 Months	-	+0.720 +23.38 %
	6 Months	-	+0.500 +15.51 %
	1 Year	-	+0.230 +7.44 %
Long Term Return	2 Years	-	-0.410 -12.71 %
	3 Years	0.111	+0.753 +22.85 %
	5 Years	0.118	+0.648 +19.75 %
Annualised Return	Annualised	-	+5.60 %



Disclaimer: The information on this page is provided as a service to readers. It does not constitute financial advice and/or any investment recommendations. Past performance is not indicative of future results. We assume no liability for damages resulting from or arising out of the use of such information. It would be best if you did your own research to make your personal investment decisions wisely or consult a licenced investment advisor.

Price & Volume Distribution Charts (as at Yesterday)

Technical Analysis

DEFINITION: Shariah compliant stocks with Technical Analysis showing Bullish Momentum and Price Uptrend. The share price closed at the highest price yesterday. The typical price was higher than the previous day's typical price.

CHART GUIDE: Volume Distribution Chart is a statistical interpretation of the current sentiment on each stock in graphical format. The highest bar categorized as >150k is likely to be traded by institutions or super dealers, while the lowest bar categorized as <15k usually represents retail investors. "Buy Up" refers to more buyers snatching up the lots queued at selling price. "Sell Down" refers to sellers selling their shares to the buying queue.



ShareInvestor WebPro > Screener > Market Screener (FA & TA) > select BURSA > add criteria

A. Criteria

- > click Add Criteria
- Fundamental Analysis Conditions tab > select (i) Revenue
- Technical Analysis Conditions tab select (ii) Average Volume
- Prices & Other Conditions tab > select (iii) Last Done Price
- Prices & Other Conditions tab > select (iv) Is Shariah Compliant
- Technical Analysis Conditions tab select (v) RSI Overbought
- Technical Analysis Conditions tab select (vi) Moving Average Below Close
- Technical Analysis Conditions tab select (vii) CCI Overbought

B. Conditions (Criteria Filters)

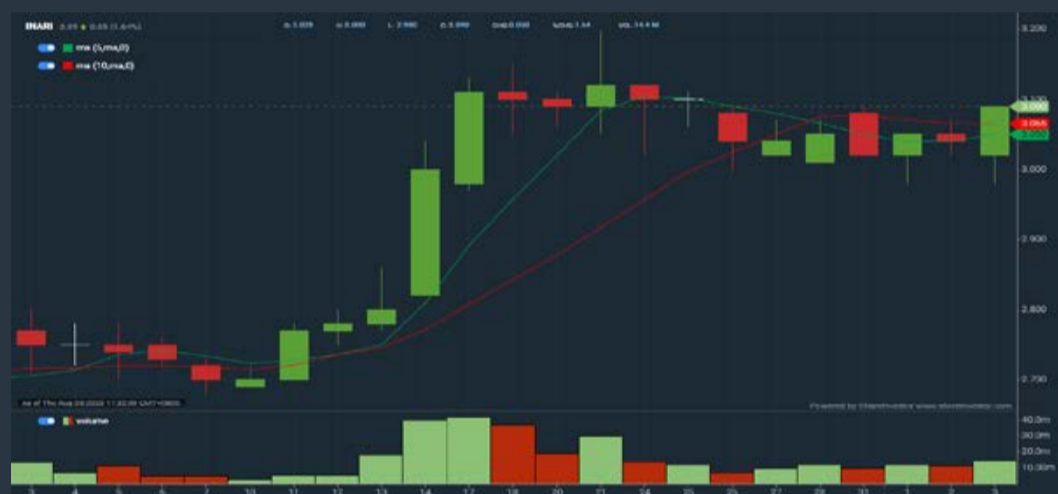
1. Revenue ("000) - select (more than) type (1) for the past select (1) financial year(s)
2. Average Volume - type (1) days average volume greater than type (10000) lots
3. Last Done Price - select (more than) type (0.3)
4. Is Shariah Compliant - select Yes
5. RSI Overbought - select RSI 1 above 99 for 1 days
6. Moving Average Below Close - select (MA) type (10) below close price for type (1) days
7. CCI Overbought - select CCI (2) above (0) for (1) days

- > click Save Template > Create New Template type (Shariah Momentum Up Stocks) > click Create
- > click Save Template as > select Shariah Momentum Up Stocks > click Save
- > click Screen Now (may take a few minutes)
- Sort By: Select (Vol) Select (Desc)
- Mouse over stock name > Charts > click C² Charts tab or Volume Distribution

INARI AMERTRON BERHAD (0166)

C² Chart

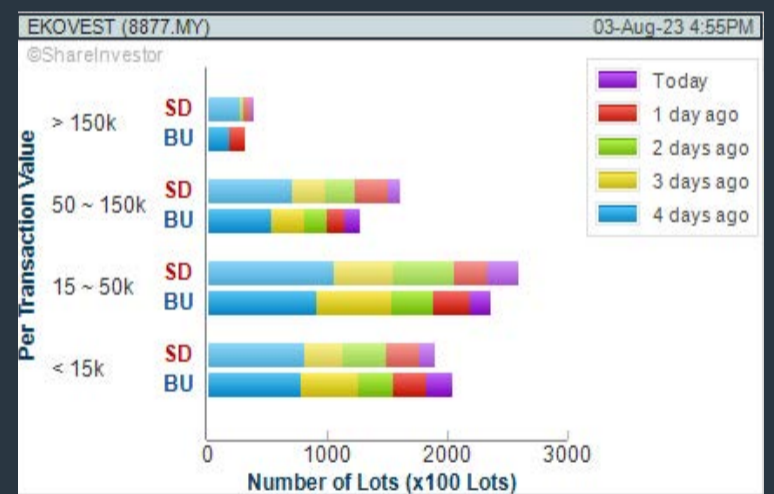
Analysis



EKOVEST BHD (8877)

C² Chart

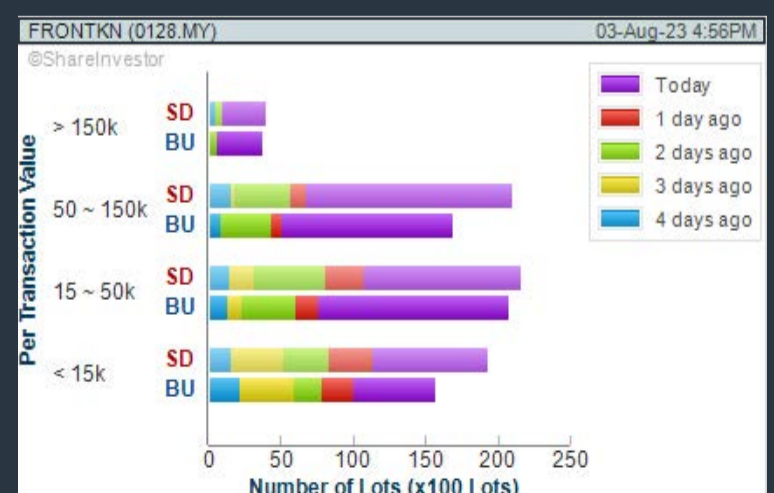
Analysis



FRONTKEN CORPORATION BHD (0128)

C² Chart

Analysis



Disclaimer: The information on this page is provided as a service to readers. It does not constitute financial advice and/or any investment recommendations. Past performance is not indicative of future results. We assume no liability for damages resulting from or arising out of the use of such information. It would be best if you did your own research to make your personal investment decisions wisely or consult a licenced investment advisor.

2-Minutes Video: Best Way for Busy People to Invest!



- ★ Low-cost investing
- ★ Diversified portfolio
- ★ Hassle-free wealth building



Watch now!

Stand a chance to win a trip to Tokyo/Bali/Langkawi by trading ETFs in Bursa Malaysia before 31 October 2023! (T&C applied)

Price & Volume Distribution Charts (as at Yesterday)

Technical Analysis

DEFINITION: Stocks with Technical Analysis showing 5-days & 10-days Moving Average Price below Close over past 1 days and with Volume Spike

CHART GUIDE: Volume Distribution Chart is a statistical interpretation of the current sentiment on each stock in graphical format. The highest bar categorized as >150k is likely to be traded by institutions or super dealers, while the lowest bar categorized as <15k usually represents retail investors. "Buy Up" refers to more buyers snatching up the lots queued at selling price. "Sell Down" refers to sellers selling their shares to the buying queue.



ShareInvestor WebPro > Screener > Market Screener (FA & TA) > select BURSA > add criteria

A. Criteria

- > click Add Criteria
- Technical Analysis Conditions tab select (i) Moving Average Below Close (ii) Volume Spike
- Fundamental Analysis Conditions tab >select (iii) Revenue
- Prices & Other Conditions tab > select (iv) Is Shariah Compliant
- Technical Analysis Conditions tab select (v) Moving Average Below Close
- Prices & Other Conditions tab > select (vi) Last Done Price
- Technical Analysis Conditions tab select (vii) Moving Average Below Close

B. Conditions (Criteria Filters)

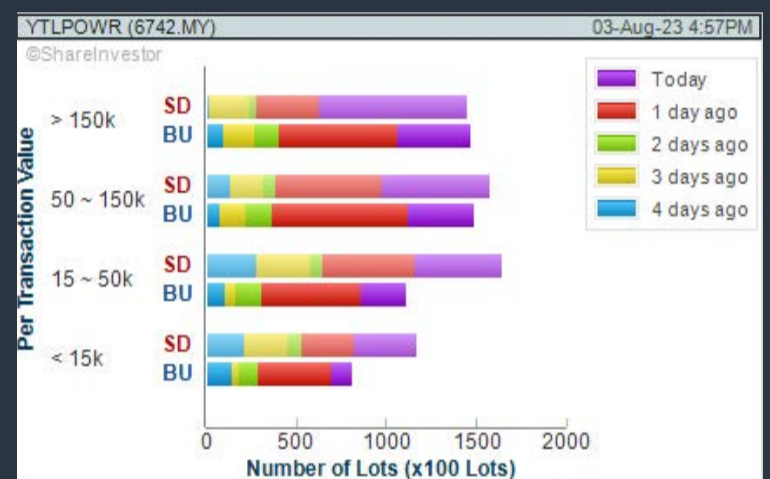
1. Moving Average Below Close - select (MA) type (5) below close price for type (3) days
2. Volume Spike - Volume type (1) greater than type (5) days average
3. Revenue ("000) - select (more than) type (1) for the past select (1) financial year(s)
4. Is Shariah Compliant - select NO
5. Moving Average Below Close - select (MA) type (10) below close price for type (1) days
6. Last Done Price - select (more than) type (0.3)
7. Moving Average Below Close - select (EMA) type (5) below close price for type (1) days

- > click Save Template > Create New Template type (Non-Shariah Hot Stocks) > click Create
- > click Save Template as > select Non-Shariah Hot Stocks > click Save
- > click Screen Now (may take a few minutes)
- Sort By: Select (Vol) Select (Desc)
- Mouse over stock name > Charts > click C² Charts tab or Volume Distribution

YTL POWER INTERNATIONAL BHD (6742)

C² Chart

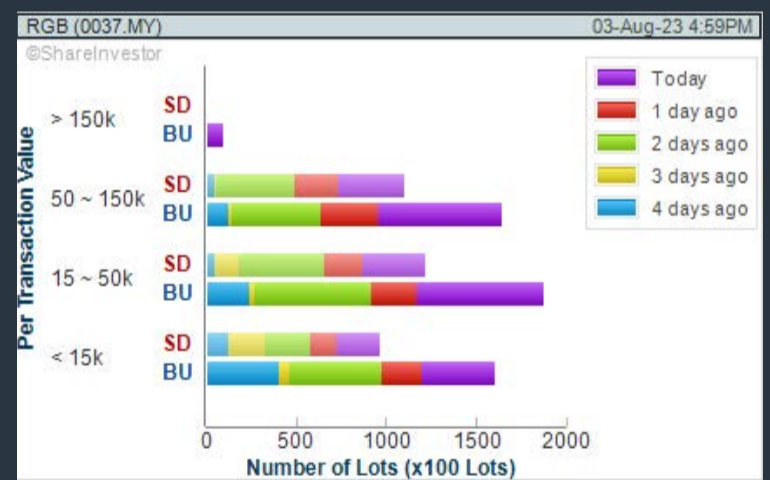
Analysis



RGB INTERNATIONAL BHD (0037)

C² Chart

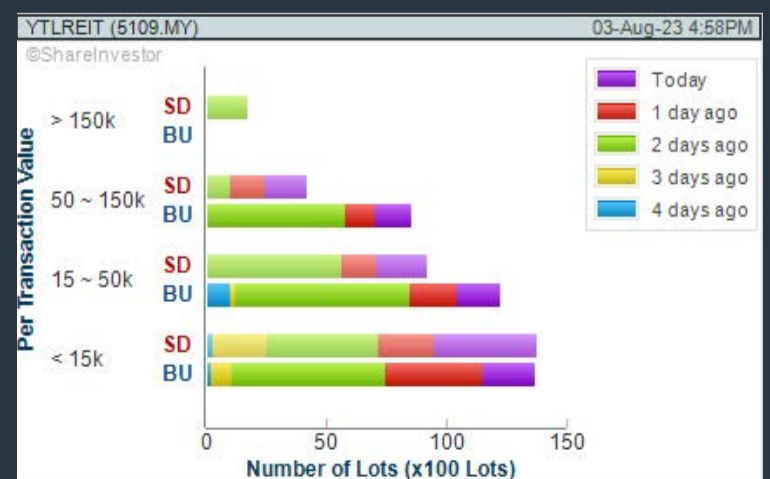
Analysis



YTL HOSPITALITY REIT (5109)

C² Chart

Analysis



Disclaimer: The information on this page is provided as a service to readers. It does not constitute financial advice and/or any investment recommendations. Past performance is not indicative of future results. We assume no liability for damages resulting from or arising out of the use of such information. It would be best if you did your own research to make your personal investment decisions wisely or consult a licenced investment advisor.



TRADE STOCKS/ETFs NOW

FROM ~~USD 8.80~~ **USD 3.80**

But Wait.. There's More!

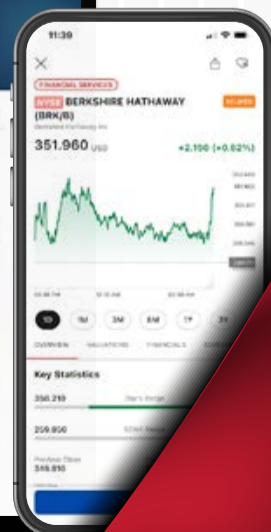
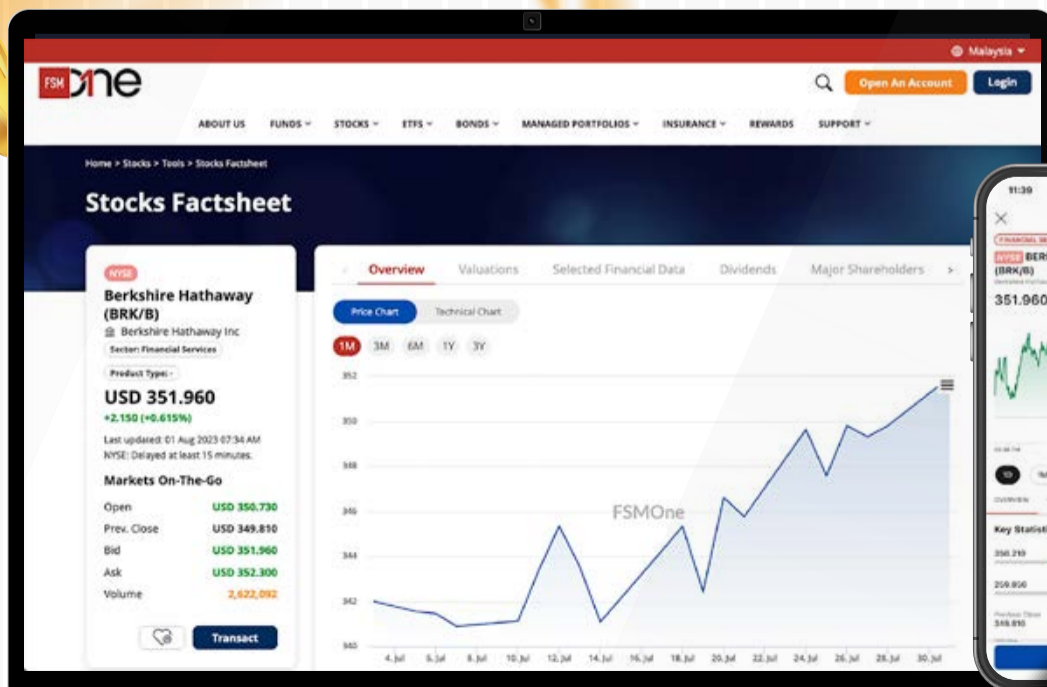
Trade US Stocks / ETFs & **WIN**

FREE

Popular US Stocks*!

1 August 2023 - 31 August 2023

**Terms and conditions apply*



Scan for more info on the Campaign

Price & Volume Distribution Charts (Over 5 trading days as at Yesterday)

Technical Analysis

DEFINITION: Stocks with Technical Analysis showing Bullish Momentum and Price Uptrend

CHART GUIDE: Volume Distribution Chart is a statistical interpretation of the current sentiment on each stock in graphical format. The highest bar categorized as >150k is likely to be traded by institutions or super dealers, while the lowest bar categorized as <15k usually represents retail investors. "Buy Up" refers to more buyers snatching up the lots queued at selling price. "Sell Down" refers to sellers selling their shares to the buying queue.



ShareInvestor WebPro > Screener > Market Screener (FA & TA) > select BURSA > add criteria

A. Criteria

- > click Add Criteria
- Fundamental Analysis Conditions tab > select (i) Revenue
- Technical Analysis Conditions tab select (ii) Moving Average Below Close
- Technical Analysis Conditions tab select (iii) Average Volume
- Prices & Other Conditions tab > select (iv) Last Done Price
- Technical Analysis Conditions tab select (v) Moving Average Below Close
- Technical Analysis Conditions tab select (v) Moving Average Bullish Crossover

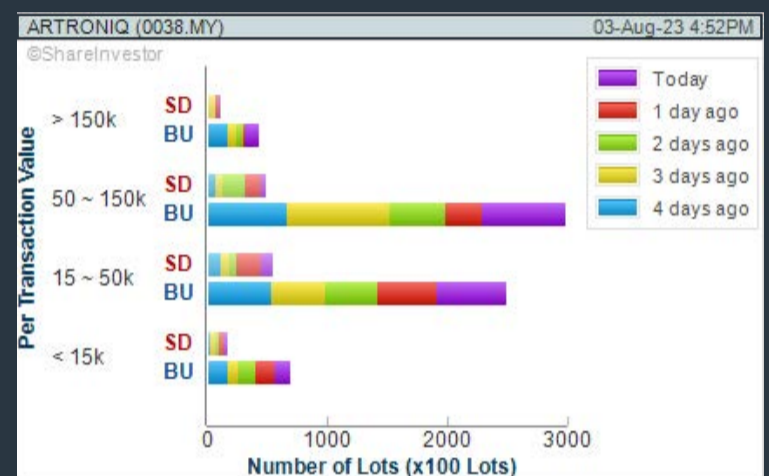
B. Conditions

1. Revenue - select (more than) type (1) for the past select (1) financial year(s)
2. Moving Average Below Close - select (MA) type (20) below close price for type (1) days
3. Average Volume - type (5) days average volume type (10000) lots
4. Last Done Price - select (more than) type (0.3)
5. Moving Average Below Close - select (MA) type (10) below close price for type (1) days
6. Moving Average Bullish Crossover - select (MA) type (5) crossed above select (MA) type (10)

> click Save Template > Create New Template type (Non-Shariah Up-Trending Stocks) > click Create Click Save Template As > select Non-Shariah Up Trending Stocks > click Save
> click Screen Now (may take a few minutes)
Sort By: Select (Vol) Select (Desc)
Mouse over stock name > Charts > click C² Charts tab or Volume Distribution

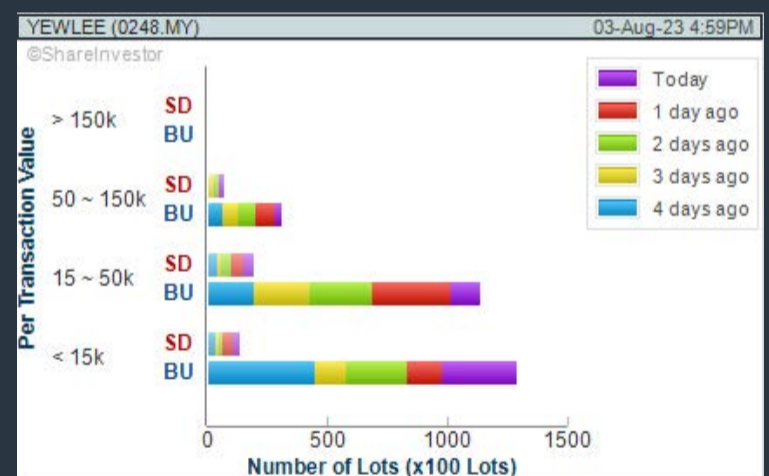
ARTRONIQ BERHAD (0038)

C² Chart



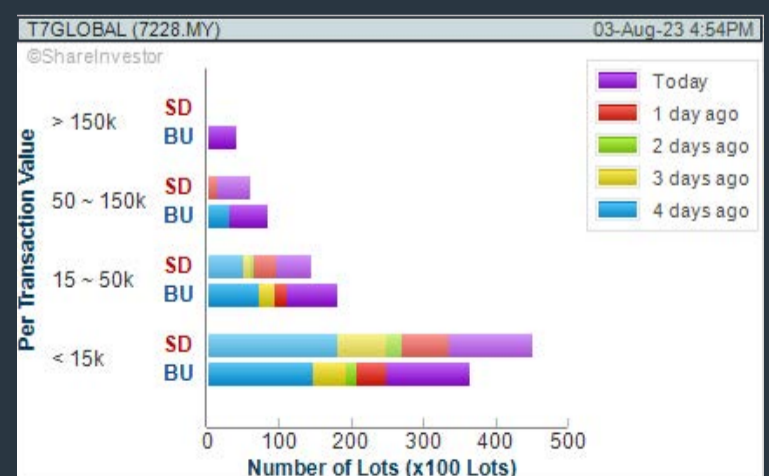
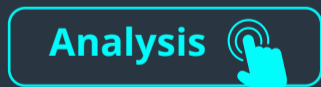
YEW LEE PACIFIC GROUP BERHAD (0248)

C² Chart



T7 GLOBAL BERHAD (7228)

C² Chart



Disclaimer: The information on this page is provided as a service to readers. It does not constitute financial advice and/or any investment recommendations. Past performance is not indicative of future results. We assume no liability for damages resulting from or arising out of the use of such information. It would be best if you did your own research to make your personal investment decisions wisely or consult a licenced investment advisor.

Power up
your investment
journey with us.



Invest through RHBAM MyInvest and stand a chance to win a Proton X50!

With RHBAM MyInvest, it is easier for you to enjoy access to our full suite of funds from anywhere in the world. Build your wealth with us in just a few clicks and you may stand a chance to win a brand-new Proton X50 or Touch 'n Go e-Vouchers.

Terms & Conditions apply.

Grand Prize



1x

Proton X50 1.5T Standard worth RM86,300

Consolation Prize



20x

Touch 'n Go e-Vouchers worth RM500 each

Take your investments further with our Unit Trust benefits.



Diversify your investment portfolio



Flexibility to meet changing investment needs and risk tolerance



Affordable with minimum investment of RM100 in certain funds



Professional management

How to enter and win via RHBAM MyInvest

Requirement	Number of Campaign Entries
Every RM500 subscription per fund	1

Campaign Period: 1 March 2023 - 31 August 2023



Scan here for more information.

Get in touch with RHB Asset Management.

Log on to rhbgroup.com/myinvest



Visuals shown above are for illustration purposes only.

Investment Disclaimer: This campaign advertisement is for general information only. The information is based on certain assumptions, information and conditions available as at the date of this campaign advertisement and may be subject to change at any time without notice. Investors should consider the fees and charges involved. Investors should also note that investment is subject to investment risks, the price of units may go down as well as up. It is possible to lose the principal amount invested. Investors are advised that investments are subject to investment risk and that there can be no guarantee that any investment objectives will be achieved. Investors should conduct their own assessment before investing and seek professional advice, where necessary and should read and understand the contents of the disclosure documents or any relevant

agreement or contract before investing. Investors should not make an investment decision based solely on this document. This campaign advertisement has not been reviewed by the Securities Commission Malaysia.

Price & Total Shareholder Return (as at Yesterday)

Fundamental Analysis

DEFINITION: Share price of a company trading at a lower price as compared to its fundamentals (FA) such as financial performance and dividend, allowing it to be attractive to value investors.

CHART GUIDE: Total Shareholder Return (TSR) combines share price appreciation and dividend distributions paid to show the total return to the shareholder expressed as a percentage.



ShareInvestor WebPro > Screener > Market Screener (FA & TA) > select BURSA > add criteria

A. Criteria

- > click Add Criteria
- Fundamental Analysis Conditions tab (i) Price Earnings Ratio
- Fundamental Analysis Conditions tab >select (ii) CAGR of Net Earnings
- Fundamental Analysis Conditions tab >select (iii) Net Debt To Equity
- Fundamental Analysis Conditions tab >select (iv) Return On Equity (ROE)

B. Conditions

1. Price Earnings Ratio - select (less than) type (15) times now
2. CAGR of Net Earnings - select (more than) type (10) % for the past type (3) financial year(s)
3. Net Debt To Equity – select (less than) type (1) for the past select (1) financial year(s)
4. Return On Equity (ROE) – select (more than) type (10) % for the past select (1) financial year(s)

- > click Save Template > Create New Template type (Value Stock) > click Create
- > click Save Template as > select Value Companies > click Save
- > click Screen Now (may take a few minutes)
- Sort by: Select (PE Ratio) Select (Ascending)
- > Mouse over stock name > Factsheet > looking for Total Shareholder Return
- > Mouse over stock name > Charts > click C2 Charts tab

SUNMOW HOLDING BERHAD (03050.MY)

C² Chart

Analysis

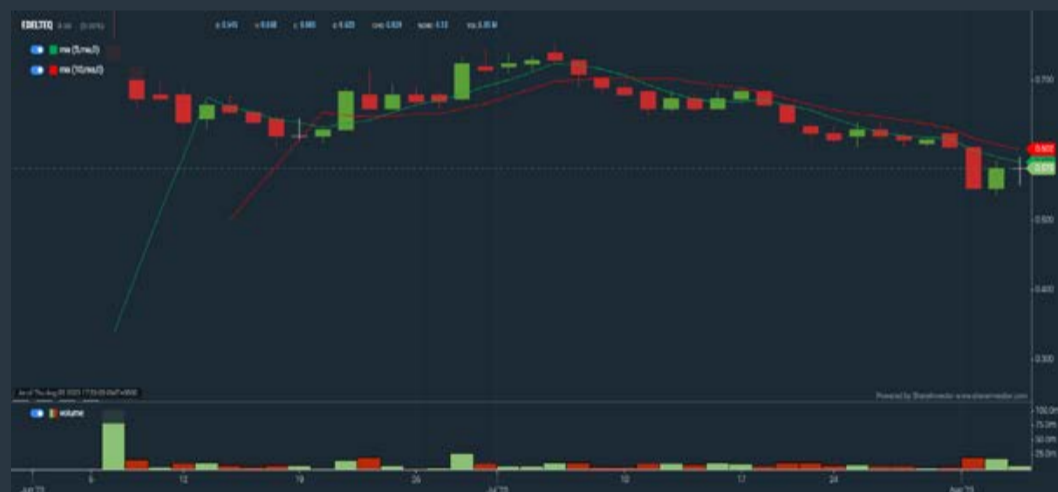


Period		Dividend Received	Capital Appreciation	Total Shareholder Return
Short Term Return	5 Days	-	-0.400	-25.00 %
	10 Days	-	+0.050	+4.35 %
	20 Days	-	+0.100	+9.09 %
Medium Term Return	3 Months	-	+0.570	+90.48 %
	6 Months	-	+0.540	+81.82 %
	1 Year	-	+0.320	+36.36 %
Annualised Return	Annualised	-	-	+36.36 %

EDELTEQ HOLDINGS BERHAD (0278.MY)

C² Chart

Analysis



Period		Dividend Received	Capital Appreciation	Total Shareholder Return
Short Term Return	5 Days	-	-0.045	-7.26 %
	10 Days	-	-0.090	-14.53 %
	20 Days	-	-0.155	-24.23 %

LINGKARAN TRANS KOTA HOLDINGS (6645.MY)

C² Chart

Analysis



Period		Dividend Received	Capital Appreciation	Total Shareholder Return
Short Term Return	5 Days	-	+0.005	+0.99 %
	10 Days	-	-	-
	20 Days	-	-	-
Medium Term Return	3 Months	-	+0.005	+0.99 %
	6 Months	-	-0.010	-1.92 %
	1 Year	-	+0.005	+0.99 %
Long Term Return	2 Years	0.250	+0.179	+129.61 %
	3 Years	0.450	+0.144	+142.30 %
	5 Years	0.950	+0.007	+253.51 %
Annualised Return	Annualised	-	-	+29.73 %

Disclaimer: The information on this page is provided as a service to readers. It does not constitute financial advice and/or any investment recommendations. Past performance is not indicative of future results. We assume no liability for damages resulting from or arising out of the use of such information. It would be best if you did your own research to make your personal investment decisions wisely or consult a licenced investment advisor.



#ISaveinPRS Treats Contest

1 June – 20 December 2023



Boost Your Savings in PRS for your future

As PRS has reached its 10th year milestone,
PPA is rewarding new PRS members with

**10 x Monthly and
10 x Grand PRS Treats prizes.***

You're in for a treat when you start saving in PRS.

[Get Your Treats Now!](#)

* Terms apply

Price & Total Shareholder Return (as at Yesterday)

Fundamental Analysis

DEFINITION: Company revenue is growing and making good quality of earnings with positive Free Cash Flow.

CHART GUIDE: Total Shareholder Return (TSR) combines share price appreciation and distributions paid to show the total return to the shareholder expressed as a percentage.



ShareInvestor WebPro > Screener > Market Screener (FA & TA) > select BURSA > add criteria

A. Criteria

1. Fundamental Analysis Conditions tab >select (i) Free Cash Flow, (ii) Revenue Growth, (iii) Gross Profit (Earnings) Margin, (iv) Quality of Earnings, (v) Total Shareholder Returns, > click Add Criteria
2. Fundamental Analysis Conditions tab >select (vi) Total Shareholder Returns > click Add Criteria

B. Conditions (Criteria Filters)

1. Free Cash Flow - select (more than) type (1) for the past select (1) financial year(s)
2. Revenue Growth - select (more than) type (1) for the past select (1) financial year(s)
3. Gross Profit (Earnings) Margin - select (more than) type (30) % for the past select (1) financial year(s)
4. Quality of Earnings - select (more than) type (1) for the past select (1) financial year(s)
5. Total Shareholder Return - select (more than) type (5) % for the past select (3) financial year(s)
6. Total Shareholder Return - select (more than) type (5) % for the past select (5) financial year(s)

- > click Save Template > Create New Template type (Growth Companies) > click Create
- > click Save Template as > select Growth Companies > click Save
- > click Screen Now (may take a few minutes)
- > Sort By: Select (Revenue Growth) Select (Desc)
- > Mouse over stock name > Factsheet > looking for Total Shareholder Return

CLASSIC SCENIC BHD (7202)

C² Chart

Analysis



Period	Dividend Received	Capital Appreciation	Total Shareholder Return	
Short Term Return	5 Days	-	-	
	10 Days	-	-	
	20 Days	-	+0.05	+1.15%
Medium Term Return	3 Months	-0.105	-	-19.41%
	6 Months	-0.138	-	-31.73%
	1 Year	-0.112	-	-20.43%
Long Term Return	2 Years	-0.145	-	-18.38%
	3 Years	0.030	+0.210	+14.28%
	5 Years	0.140	+0.142	+20.55%
Annualised Return	Annualised	-	+3.81%	

FOCUS POINT HOLDINGS BERHAD (0157)

C² Chart

Analysis



Period	Dividend Received	Capital Appreciation	Total Shareholder Return	
Short Term Return	5 Days	+0.010	-	+1.25%
	10 Days	+0.010	-	+1.25%
	20 Days	+0.030	-	+3.85%
Medium Term Return	3 Months	+0.030	-	+3.85%
	6 Months	-0.161	-	-1.06%
	1 Year	+0.259	-	+8.55%
Long Term Return	2 Years	+0.252	-	+8.27%
	3 Years	-	+0.617	+319.83%
	5 Years	0.035	+0.742	+142.85%
Annualised Return	Annualised	-	+85.53%	

IGB BERHAD (5606)

C² Chart

Analysis



Period	Dividend Received	Capital Appreciation	Total Shareholder Return	
Short Term Return	5 Days	0.010	-	0.47%
	10 Days	-0.020	-	-0.94%
	20 Days	-0.000	-	-0.48%
Medium Term Return	3 Months	-0.140	-	-7.14%
	6 Months	-0.530	-	-21.28%
	1 Year	-0.500	-	-20.00%
Long Term Return	2 Years	0.183	-0.007	-7.34%
	3 Years	0.279	+1.721	+527.20%
	5 Years	0.643	+1.730	+583.86%
Annualised Return	Annualised	-	+61.74%	

Disclaimer: The information on this page is provided as a service to readers. It does not constitute financial advice and/or any investment recommendations. Past performance is not indicative of future results. We assume no liability for damages resulting from or arising out of the use of such information. It would be best if you did your own research to make your personal investment decisions wisely or consult a licenced investment advisor.

SMARTROBIE

Your AI Buddy

Let SMARTRobie watch them for you with our -

PENTAGON ALERT

You can check **GREEN / RED PENTAGON** stocks in your SMARTRobie App

Make a personalised **PENTAGON WATCHLIST** to get alerts!



DOWNLOAD NOW



GET IT ON Google Play

Referral Code



Bonus 100 credits "INVEST23"



Download on the App Store

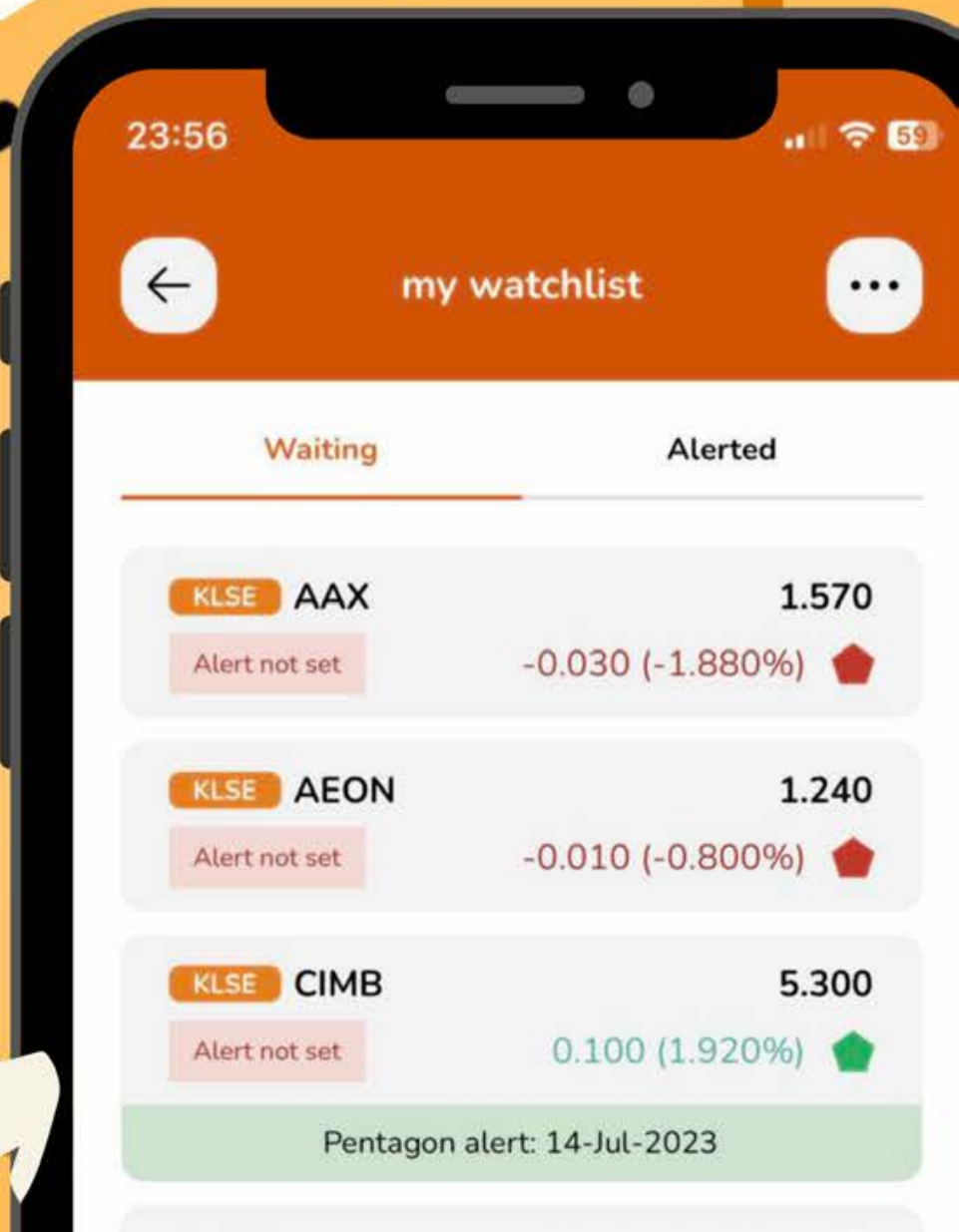
FREE to USE after trading hours!



 Green Pentagon

YOU WILL BE ALERTED

KLSE | HKSE | S&P500 | SGX



Price & Total Shareholder Return (as at Yesterday)

Fundamental Analysis

DEFINITION: Company is paying out dividend with low or moderate leverage.

CHART GUIDE: Total Shareholder Return (TSR) combines share price appreciation and distributions paid to show the total return to the shareholder expressed as a percentage.



ShareInvestor WebPro > Screener > Market Screener (FA & TA) > select BURSA > add criteria

A. Criteria

- > click Add Criteria
- Fundamental Analysis Conditions tab >select (i) Dividend Yield (Historical)
- Fundamental Analysis Conditions tab >select (ii) Dividend Payout (Historical)
- Fundamental Analysis Conditions tab >select (iii) Total Debt To Equity
- Fundamental Analysis Conditions tab >select (iv) Total Shareholder Returns
- Fundamental Analysis Conditions tab >select (v) Total Shareholder Returns
- Fundamental Analysis Conditions tab / >select (vi) CAGR of Dividend Per Share

- Fundamental Analysis Conditions tab >select (vii) CAGR of Dividend Per Share

B. Conditions (Criteria Filters)

1. Dividend Yield - select (more than) type (1) % for the past select (1) financial year(s)
2. Dividend Payout (Historical) - select (between) type (0.5) to type (1) times for the past select (1) financial year(s)
3. Total Debt to Equity - select (less than) type (1) for the past select (1) financial year(s)
4. Total Shareholder Return - select (more than) type (5) % for the past select (3) financial year(s)
5. Total Shareholder Return - select (more than) type (5) % for the past select (5) financial year(s)

6. CAGR of Dividend Per Share - select (less than) type (30) % for the past select (5) financial year(s)
7. CAGR of Dividend Per Share - select (more than) type (1) % for the past select (5) financial year(s)

- > click Save Template > Create New Template type (Dividend Companies) > click Create
- > click Save Template as > select Dividend Companies > click Save
- > click Screen Now (may take a few minutes)
- > Sort By: Select (Dividend Yield) Select (Desc)
- > Mouse over stock name > Factsheet > looking for Total Shareholder Return

JAYCORP BHD (7152)

C² Chart



Analysis



Period		Dividend Received	Capital Appreciation	Total Shareholder Return	
Short Term Return	5 Days	-	-	-	-
	10 Days	-	-0.015	-	-0.72 %
	20 Days	-	-0.015	-	-0.72 %
Medium Term Return	3 Months	-	-	-	-
	6 Months	-	-0.025	-	-3.47 %
	1 Year	-	-0.020	-	-4.51 %
Long Term Return	2 Years	0.055	-0.115	-	-7.41 %
	3 Years	0.170	-0.220	-	-12.11 %
	5 Years	0.355	-0.227	-	-12.26 %
Annualised Return	Annualised	-	-	-	-13.09 %

FORMOSA PROSONIC INDUSTRIES (9172)

C² Chart



Analysis



Period		Dividend Received	Capital Appreciation	Total Shareholder Return	
Short Term Return	5 Days	-	-	-	-
	10 Days	-	-0.020	-	-4.21 %
	20 Days	-	-0.010	-	-1.29 %
Medium Term Return	3 Months	-	-0.000	-	-3.14 %
	6 Months	-	-0.000	-	-25.91 %
	1 Year	-	-0.000	-	-13.47 %
Long Term Return	2 Years	0.200	-0.200	-	-
	3 Years	0.340	-1.200	-	-112.61 %
	5 Years	0.550	-1.130	-	-116.61 %
Annualised Return	Annualised	-	-	-	-16.72 %

GAS MALAYSIA BERHAD (5209)

C² Chart



Analysis



Period		Dividend Received	Capital Appreciation	Total Shareholder Return	
Short Term Return	5 Days	-	-	-	-
	10 Days	-	-	-	-
	20 Days	-	-0.340	-	-1.32 %
Medium Term Return	3 Months	-	-0.350	-	-12.45 %
	6 Months	-	-0.310	-	-8.32 %
	1 Year	-	-0.300	-	-8.28 %
Long Term Return	2 Years	0.177	-0.370	-	-20.00 %
	3 Years	0.327	-0.270	-	-21.87 %
	5 Years	0.683	-0.070	-	-22.92 %
Annualised Return	Annualised	-	-	-	-12.21 %

Disclaimer: The information on this page is provided as a service to readers. It does not constitute financial advice and/or any investment recommendations. Past performance is not indicative of future results. We assume no liability for damages resulting from or arising out of the use of such information. It would be best if you did your own research to make your personal investment decisions wisely or consult a licenced investment advisor.

#Get Started With The
Most Preferred Financial Educator

BEYOND iNSIGHTS[®]
INVESTMENT and TRADING EDUCATION

Discover the Potential of U.S. stock market:

Your path to
sustainable trading &
investing results



Join us at the 3-hours Global Investing &
Trading Made Simple Webinar

<https://beyondinsights.info/globalinvesting>

KATHLYN TOH

Founder of Beyond insights
Professional Trader & Investor
in the US Stock Market.

**SCAN FOR
MORE DETAILS**



Week: 28 Jul 2023 - 3 Aug 2023

More Brokers' Call 

AMINVESTMENT BANK <small>... See More</small>	Call	Target Price	Release Date
Bursa Malaysia Berhad (1818)	HOLD	RM7.20	01 Aug 2023
CIMB Group Holdings Berhad (1023)	BUY	RM6.70	01 Aug 2023
YTL Hospitality REIT (5109)	BUY	RM1.10	01 Aug 2023

APEX <small>... See More</small>	Call	Target Price	Release Date
Frontken Corporation Berhad (0128)	HOLD	RM3.32	02 Aug 2023
Glostrex Berhad (0284)	BUY	RM0.32	31 July 2023
MGB Berhad (7595)	BUY	RM0.87	28 July 2023

BIMB SECURITIES SDN BHD <small>... See More</small>	Call	Target Price	Release Date
OM Holdings Limited (5298)	BUY	RM2.710	01 Aug 2023

CGS CIMB <small>... See More</small>	Call	Target Price	Release Date
Gamuda Berhad (5398)	ADD	RM5.58	31 July 2023

KENANGA <small>... See More</small>	Call	Target Price	Release Date
Bursa Malaysia Berhad (1818)	MARKET PERFORM	RM6.25	01 Aug 2023
Kerjaya Prospek Group Berhad (7161)	OUTPERFORM	RM1.5	02 Aug 2023
OM Holdings Limited (5298)	OUTPERFORM	RM2.07	01 Aug 2023

MALACCA SECURITIES <small>... See More</small>	Call	Target Price	Release Date
OM Holdings Limited (5298)	BUY	RM2.86	01 Aug 2023

MIDF <small>... See More</small>	Call	Target Price	Release Date
AMMB Holdings Berhad (1015)	BUY	RM3.98	03 Aug 2023
Bursa Malaysia Berhad (1818)	BUY	RM7.5	01 Aug 2023
CIMB Group Holdings Berhad (1023)	BUY	RM6.39	01 Aug 2023

JOB KAYHIAN <small>... See More</small>	Call	Target Price	Release Date
Cape EMS Berhad (5311)	BUY	RM1.60	02 Aug 2023
Cengild Medical Berhad (0243)	BUY	RM0.50	02 Aug 2023
Harbour-Link Group Berhad (2062)	BUY	RM1.34	02 Aug 2023



making places energizing



usm.com

XTRA

XTRA FURNITURE SDN BHD
The Gardens Mall, Mid Valley City, Lot S-236 & 237
Lingkar Syed Putra, 59200 Kuala Lumpur
T. +603 2282 9088 | living@xtrafurniture.com | xtrafurniture.com
● XTRAFurniture | ● xtrafurnituremsia

DEFINITION: Top 10 stocks with Technical Analysis plus Pattern Matching by 60 pre-defined indicators by the system showing a higher probability of bullish sentiment on the share price.



ShareInvestor WebPro > Screener > Predefined TA Screens > select market BURSA > Most Long Signals > click Scan Results or mouse over each company

ISKANDAR WATERFRONT CITY BERHAD (1589.MY)

IWCITY

Price updated at 03 Aug 2023 16:57

Last: 0.420	Change: -0.005	Volume: 60,947
	Change (%): -1.18	Range: 0.420 - 0.435

TA Scanner Results based on historical data up to 03 Aug 2023

Condition	Signal	Explanation
Candlestick: Bullish Harami	Long	Bullish: Harami
Volume: 10 Days large value Buy Up trade	Long	"1. 150K value Buy Up greater than Sell Down by 20% for 10 days. 2. 50K-100K value Buy Up greater than Sell Down by 20% for 10 days. 3. Average volume(10) is above 1000000"
Volume: 5 Days large value Buy Up trade	Long	"1. 150K value Buy Up greater than Sell Down by 20% for 5 days. 2. 50K-100K value Buy Up greater than Sell Down by 20% for 5 days. 3. Average volume(10) is above 1000000"
Volume: Consecutive Days Of Increasing Average Volume	Long	"1. Average Volume(20) has been increasing over the last 2 weeks. 2. Average volume(20) is above 100000"

KEY ASIC BHD (0143.MY)

KEYASIC

Price updated at 03 Aug 2023 16:56

Last: 0.085	Change: +0.005	Volume: 57,725
	Change (%): +6.25	Range: 0.075 - 0.085

TA Scanner Results based on historical data up to 03 Aug 2023

Condition	Signal	Explanation
Bollinger Band: Bullish Long Term Volatility Breakout and Trending	Long	"1. Close price above upper bollinger band(33,1). 2. Volume above average volume(50). 3. Average volume(50) is above 300,000."
Bollinger Band: Bullish Short Term Volatility Breakout and Trending	Long	"1. Close price above upper bollinger band(33,1). 2. Volume above average volume(10). 3. Average volume(10) is above 300,000."
Bollinger Band: High Above Upper Bollinger Band	Neutral	"1. High above upper bollinger band(14,2). 2. Average volume(5) is above 100,000."
Candlestick: Indecision Doji	Neutral	Indecision: Doji
Donchian Channels: High Above Upper Donchian Channels	Long	High crossed above the upper Donchian Channel(14,4)
Price: New 52 Week High	Long	"1. Stock reach a new 52 week high. 2. Average volume(30) is above 50000."

UZMA BHD (7250.MY)

UZMA

Price updated at 03 Aug 2023 16:59

Last: 0.745	Change: -0.015	Volume: 26,258
	Change (%): -1.97	Range: 0.745 - 0.765

TA Scanner Results based on historical data up to 03 Aug 2023

Condition	Signal	Explanation
Bollinger Band: High Above Upper Bollinger Band	Neutral	"1. High above upper bollinger band(14,2). 2. Average volume(5) is above 100,000."
Candlestick: Bullish Engulfing	Long	Bullish: Engulfing
Price: New 52 Week High	Long	"1. Stock reach a new 52 week high. 2. Average volume(30) is above 50000."

CITAGLOBAL BERHAD (7245.MY)

CITAGLB

Price updated at 03 Aug 2023 16:59

Last: 1.420	Change: +0.030	Volume: 44,465
	Change (%): +2.16	Range: 1.400 - 1.440

TA Scanner Results based on historical data up to 03 Aug 2023

Condition	Signal	Explanation
Bollinger Band: Bullish Lower Bollinger Band Support	Long	"1. Low 1 day ago below lower bollinger band(20,2). 2. Close above close 1 day ago. 3. Average volume(5) is above 100,000."
Bollinger Band: Bullish Short Term Volatility Breakout and Trending	Long	"1. Close price above upper bollinger band(33,1). 2. Volume above average volume(10). 3. Average volume(10) is above 300,000."
Bollinger Band: High Above Upper Bollinger Band	Neutral	"1. High above upper bollinger band(14,2). 2. Average volume(5) is above 100,000."
Bollinger Band: Low Below Lower Bollinger Band	Neutral	"1. Low below lower bollinger band(14,2). 2. Average volume(5) is above 100,000."
Candlestick: Bullish Engulfing	Long	Bullish: Engulfing
DM: Bullish Directional Movement	Long	-DI(14) crossed below +DI(14)
MACD: Bullish MACD Crossover	Long	"1. MACD(12,26) diff line crossed above the MACD(12,26) signal line. 2. MACD Histogram(12,26) is above 0."
Parabolic SAR: Bearish Parabolic SAR Reversal	Neutral	"1. Parabolic SAR 1 day ago above close price 1 day ago for the last 5 days. 2. Parabolic SAR below close price"

YTL CORPORATION BHD (4677.MY)

YTL

Price updated at 03 Aug 2023 16:59

Last: 1.210	Change: +0.030	Volume: 258,442
	Change (%): +2.54	Range: 1.180 - 1.210

TA Scanner Results based on historical data up to 03 Aug 2023

Condition	Signal	Explanation
Bollinger Band: High Above Upper Bollinger Band	Neutral	"1. High above upper bollinger band(14,2). 2. Average volume(5) is above 100,000."
Candlestick: Bullish Engulfing	Long	Bullish: Engulfing
Donchian Channels: High Above Upper Donchian Channels	Long	High crossed above the upper Donchian Channel(14,4)
Price: New 52 Week High	Long	"1. Stock reach a new 52 week high. 2. Average volume(30) is above 50000."
Williams %R: Bearish Williams %R	Short	"1. Williams %R(26) between 0 and -20. 2. Average volume(5) is above 100,000."

Disclaimer: The information on this page is provided as a service to readers. It does not constitute financial advice and/or any investment recommendations. Past performance is not indicative of future results. We assume no liability for damages resulting from or arising out of the use of such information. It would be best if you did your own research to make your personal investment decisions wisely or consult a licenced investment advisor.

Volume: 10 Days large value Buy Up trade	Long	"1. 150K value Buy Up greater than Sell Down by 20% for 10 days. 2. 50K-100K value Buy Up greater than Sell Down by 20% for 10 days. 3. Average volume(10) is above 1000000"
Volume: 5 Days large value Buy Up trade	Long	"1. 150K value Buy Up greater than Sell Down by 20% for 5 days. 2. 50K-100K value Buy Up greater than Sell Down by 20% for 5 days. 3. Average volume(10) is above 1000000"
Williams %R: Bearish Williams %R	Short	"1. Williams %R(26) between 0 and -20. 2. Average volume(5) is above 100,000."

MAKE BETTER TRADING STRATEGIES

with

SHARE INVESTOR STATION



8 Markets Data

- ▶ Get access to data from Bursa, NYSE, Nasdaq, HKEX, SGX, IDX, SET & ASX

Dynamic Chart

- ▶ Candlestick Pattern Recognition
- ▶ 111 Indicators
- ▶ 39 Drawing Tools
- ▶ Performance Comparison Chart

Intraday Data

- ▶ Market Depth
- ▶ Trade Summary Matrix & Chart
- ▶ Times & Sales
- ▶ Intraday Market Ticker

Market Screener

- ▶ 96 criteria ranging from FA, TA, Consensus Estimate
- ▶ Real-time Data

Power Frame

- ▶ Combining few Dynamic Charts together with intraday information in one frame

Technical Analysis

Fundamental Analysis

Financial Analysis Statement

- ▶ Profit & Loss
- ▶ Balance Sheet
- ▶ Cash Flow Statement
- ▶ More than 20 Financial Ratios
- ▶ Dividend Analysis

FactSheet

- ▶ Key Stock Information
- ▶ Ownership
- ▶ Consensus Estimates
- ▶ Annual Report
- ▶ Historical Price
- ▶ Insider Trades

Start your 18 days
FREE trial now
(Valued at RM82)



 **UAO REITS (5110.MY)**

UOAREIT

Price updated at 03 Aug 2023 16:59

Last: 1.130	Change: -0.010	Volume: 5,349
	Change (%): -0.88	Range: 1.130 - 1.130

TA Scanner Results based on historical data up to 03 Aug 2023

Condition	Signal	Explanation
Bollinger Band: Bullish Long Term Volatility Breakout and Trending	Long	"1. Close price above upper bollinger band(33,1). 2. Volume above average volume(50). 3. Average volume(50) is above 300,000."
Bollinger Band: High Above Upper Bollinger Band	Neutral	"1. High above upper bollinger band(14,2). 2. Average volume(5) is above 100,000."
DM: Bullish Directional Movement	Long	-DI(14) crossed below +DI(14)
Donchian Channels: High Above Upper Donchian Channels	Long	High crossed above the upper Donchian Channel(14,4)
MA: Short Term Bullish Moving Average Crossover	Long	MA(10) crossed above MA(15) within the last 1 day.

 **WELLSPIRE HOLDINGS BERHAD (0271.MY)**

WELLS

Price updated at 03 Aug 2023 16:59

Last: 0.940	Change: +0.015	Volume: 49,000
	Change (%): +1.62	Range: 0.925 - 0.965

TA Scanner Results based on historical data up to 03 Aug 2023

Condition	Signal	Explanation
Bollinger Band: High Above Upper Bollinger Band	Neutral	"1. High above upper bollinger band(14,2). 2. Average volume(5) is above 100,000."
Chaikin Volatility: Increasing Chaikin Volatility	Neutral	Chaikin Volatility(10,10) has been increasing for 5 days
MACD: Bullish MACD Crossover	Long	"1. MACD(12,26) diff line crossed above the MACD(12,26) signal line. 2. MACD Histogram(12,26) is above 0."
Volume: 10 Days large value Buy Up trade	Long	"1. 150K value Buy Up greater than Sell Down by 20% for 10 days. 2. 50K-100K value Buy Up greater than Sell Down by 20% for 10 days. 3. Average volume(10) is above 1000000"
Volume: 5 Days large value Buy Up trade	Long	"1. 150K value Buy Up greater than Sell Down by 20% for 5 days. 2. 50K-100K value Buy Up greater than Sell Down by 20% for 5 days. 3. Average volume(10) is above 1000000"
Williams %R: Bearish Williams %R	Short	"1. Williams %R(26) between 0 and -20. 2. Average volume(5) is above 100,000."

 **PERAK TRANSIT BERHAD (0186.MY)**

PTRANS

Price updated at 03 Aug 2023 16:58

Last: 1.160	Change: +0.040	Volume: 37,048
	Change (%): +3.57	Range: 1.120 - 1.200

TA Scanner Results based on historical data up to 03 Aug 2023

Condition	Signal	Explanation
Bollinger Band: Bullish Long Term Volatility Breakout and Trending	Long	"1. Close price above upper bollinger band(33,1). 2. Volume above average volume(50). 3. Average volume(50) is above 300,000."
Bollinger Band: Bullish Short Term Volatility Breakout and Trending	Long	"1. Close price above upper bollinger band(33,1). 2. Volume above average volume(10). 3. Average volume(10) is above 300,000."

 **PROGRESSIVE IMPACT CORPORATION (7201.MY)**

PICORP

Price updated at 03 Aug 2023 16:44

Last: 0.080	Change: -	Volume: 2,481
	Change (%): -	Range: 0.075 - 0.080

TA Scanner Results based on historical data up to 03 Aug 2023

Condition	Signal	Explanation
Bollinger Band: Bullish Long Term Volatility Breakout and Trending	Long	"1. Close price above upper bollinger band(33,1). 2. Volume above average volume(50). 3. Average volume(50) is above 300,000."
Bollinger Band: Bullish Short Term Volatility Breakout and Trending	Long	"1. Close price above upper bollinger band(33,1). 2. Volume above average volume(10). 3. Average volume(10) is above 300,000."
DM: Bullish Directional Movement	Long	-DI(14) crossed below +DI(14)
MA: Bullish Price Crossover	Long	"1. Close price crossed above MA(40) within the last 1 day. 2. Previous day close price is below the MA(10) for the last 5 days"
Parabolic SAR: Bullish Parabolic SAR Reversal	Neutral	"1. Parabolic SAR 1 day ago below close price 1 day ago for the last 5 days. 2. Parabolic SAR above close price"

 **ANN JOO RESOURCES BHD (6556.MY)**

ANNJOO

Price updated at 03 Aug 2023 16:59

Last: 1.140	Change: -	Volume: 5,674
	Change (%): -	Range: 1.110 - 1.150

TA Scanner Results based on historical data up to 03 Aug 2023

Condition	Signal	Explanation
Bollinger Band: Bullish Long Term Volatility Breakout and Trending	Long	"1. Close price above upper bollinger band(33,1). 2. Volume above average volume(50). 3. Average volume(50) is above 300,000."
Candlestick: Bullish Harami	Long	Bullish: Harami
Volume: Consecutive Days Of Increasing Average Volume	Long	"1. Average Volume(20) has been increasing over the last 2 weeks. 2. Average volume(20) is above 100000"
Volume: Consecutive Days Of Increasing Average Volume	Long	"1. Average Volume(20) has been increasing over the last 2 weeks. 2. Average volume(20) is above 100000"

Disclaimer: The information on this page is provided as a service to readers. It does not constitute financial advice and/or any investment recommendations. Past performance is not indicative of future results. We assume no liability for damages resulting from or arising out of the use of such information. It would be best if you did your own research to make your personal investment decisions wisely or consult a licenced investment advisor.

Bollinger Band: High Above Upper Bollinger Band	Neutral	"1. High above upper bollinger band(14,2). 2. Average volume(5) is above 100,000."
Candlestick: Bullish Engulfing	Long	Bullish: Engulfing
DM: Bullish Directional Movement	Long	-DI(14) crossed below +DI(14)
Donchian Channels: High Above Upper Donchian Channels	Long	High crossed above the upper Donchian Channel(14,4)
MA: Bullish Price Crossover	Long	"1. Close price crossed above MA(40) within the last 1 day. 2. Previous day close price is below the MA(10) for the last 5 days"
MACD: Bullish MACD Crossover	Long	"1. MACD(12,26) diff line crossed above the MACD(12,26) signal line. 2. MACD Histogram(12,26) is above 0."
Parabolic SAR: Bearish Parabolic SAR Reversal	Neutral	"1. Parabolic SAR 1 day ago above close price 1 day ago for the last 5 days. 2. Parabolic SAR below close price"
RSI: Short Term RSI 50 Bullish Crossover	Long	"1. RSI(20) crossed above 50 within the last 1 day and RSI(20) 1 day ago below 50 for the last 5 days. 2. Volume above average volume(125). 3. Average volume(5) is above 100,000."

FOREIGN INTEREST IN MALAYSIAN EQUITIES TO IMPROVE IN 2H2023 – BURSA CHAIRMAN

A ccording to Bursa Malaysia Berhad chairman Tan Sri Abdul Wahid Omar, foreign shareholdings' level in the local bourse is expected to improve in the second half of this year, underpinned by the attractive valuation of the listed equities and the country's solid economic fundamentals. He was speaking at a press conference after announcing Bursa's 2QFY2023 results.

The current valuation of the local equity market remains attractive and presents opportunities for investors, including foreign investors, to reap benefits from the potential upside. His optimism is based on the prospect of peaking interest rates globally, which will likely benefit emerging markets like Malaysia, as this would draw renewed interest and foreign fund inflows to this region.

As interest rates peaked in the US and UK, Europe and other developed economies, towards the end of this year, he has seen a reversal of the flows coming back to emerging markets. For the month of July, RM1.1 billion of net inflows, therefore lowering the net outflow for the year to about RM3 billion. As foreign investors come back into our market, he expects foreign shareholdings to increase from the current 20% level. The country's long-term economic growth prospect will continue to attract foreign investors which is expected to sustain the momentum.

Labour market strengthened in 2022 as unemployment rate dropped - DOSM

According to the Department of Statistics Malaysia (DOSM) Chief statistician Datuk Seri Dr Mohd Uzir Mahidin, the labour market continued to strengthen last year with the unemployment rate dropping to 3.9%. He was referring to the Statistics of the Labour Force, Malaysia 2022 released by the Department of Statistics Malaysia (DOSM) on July 31, 2023.

He said that the positive economic environment throughout last year led to a favourable labour force situation, with the creation of more job opportunities in various industries. The recovery from the economic recession due to the Covid-19 pandemic reached a turning point this year, prompting positive changes and opening up more jobs in various industries. Additionally, the flexi-working concept of working remotely and having flexible working arrangements has become commonplace. This gives more flexibility to employees and a better work-life balance. The unemployment rate in 2022 decreased by 0.7% to 3.9% from 4.6% the previous year, with the number of unemployed persons down by 14% to 630,400 people compared to 733,000 people in 2021. Three states recorded higher unemployment rates than the national level in 2022, namely Sabah at 7.5%, Labuan (7.2%) and Perak (4.6%).

In 2022, the labour force in Malaysia increased by 1.4% to 16.02 million people while the labour force participation rate was recorded at 69.3%. The working population was 15.39 million people in 2022, which

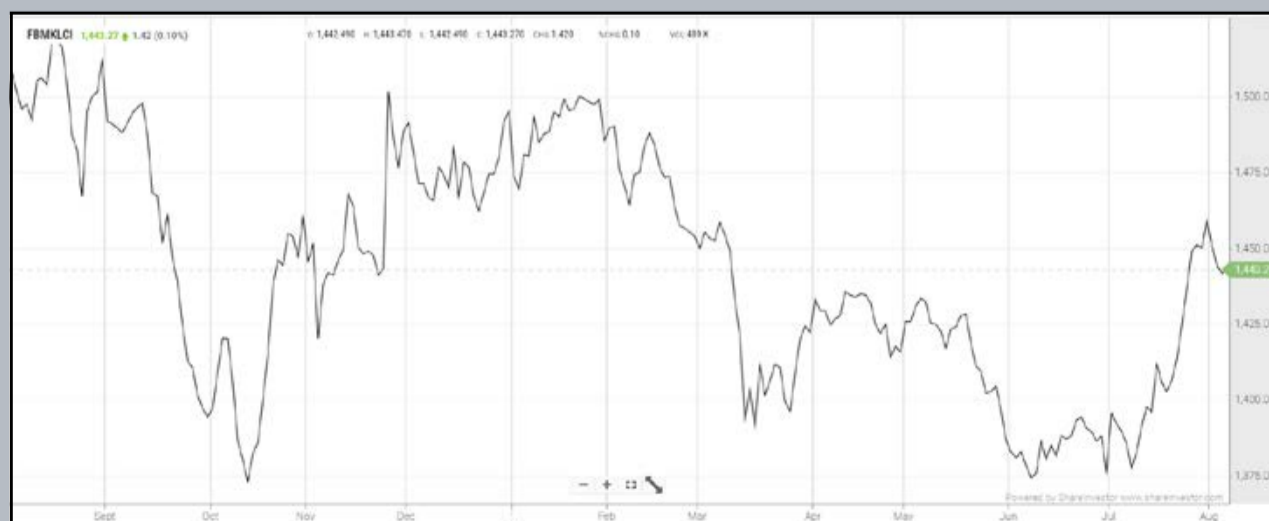
is an increase of 2.2% compared to 15.06 million in 2021. In terms of employment status, the working population category was 78.3% comprising 12.05 million residents while the number of self-employed population was 15.1% with the involvement of 2.33 million people.

The semi-skilled occupation category had the largest composition of total employment at 58.4% or 8.99 million people, followed by the skilled category (29.6%, 4.56 million) and the low-skilled category (12%, 1.84 million).

In summing up the overall labour force situation in 2022, he said that Malaysia's economic growth is projected to moderate this year. The increase in the number of tourist arrivals will continue to boost the recovery in the tourism sub-sector along with the improved market position, especially in the service sector.

EYE ON THE MARKETS

On Thursday (03Aug), the Ringgit closed at 4.5590 against the USD and 3.3920 to the Sing Dollar. On Monday (31July), the FBM KLCI opened at 1451.07. As at Thursday (03Aug) 5:00pm, the FBM KLCI was down 9.22 points at 1441.85. Over in US, the overnight Dow Jones Industrial Average closed down 66.63 points (-0.19%) to 35,215.89 whilst the NASDAQ shed 13.73 points (-0.10%) to 13,959.71.



KLCI 1 Year Chart

Over 5 trading days



ShareInvestor WebPro (www.shareinvestor.com/my)

1. Price > Stock Prices
2. Select Market: NASDAQ / NYSE / IDX / SET / HKEX / SGX (One bourse at a time)
3. select Stocks Tab
4. select Ranking Top Gainers or Top Losers (Over 5 Trading Days)
5. Mouse over Column Layout > select Edit Customs > select Name > select Last Done Price > select 5 Days Change > select 52 Weeks High > select 52 Weeks Low > Mouse Over Column Layout > select Custom

NASDAQ (USD)

Top Gainers					Top Losers				
Name	Last Done	Change Over 5 Days	52 Weeks High	52 Weeks Low	Name	Last Done	Change Over 5 Days	52 Weeks High	52 Weeks Low
MERCADOLIBRE INC	1,323.110	+153.210	1,365.640	754.760	BOOKING HOLDINGS INC	2,839.910	-172.340	3,017.610	1,616.850
FIRST CITIZENS BANCSHARES INC NRTH	1,492.430	+71.630	1,457.980	505.840	EXLSERVICE HLDGS INC	27.760	-117.510	191.175	139.750
ERIE INDEMNITY CO	267.280	+58.740	286.495	199.490	CREDIT ACCEPTANCE CORPORATION	490.110	-57.790	617.440	358.000
REATA PHARMACEUTICALS INC	167.160	+58.610	167.240	18.470	SOLAREEDGE TECHNOLOGIES INC	189.790	-51.960	374.480	190.150
COCA-COLA CONSOLIDATED INC	707.790	+62.880	694.200	405.030	ZEBRA TECHNOLOGIES	249.550	-49.880	356.620	224.865

NYSE (USD)

Top Gainers					Top Losers				
Name	Last Done	Change Over 5 Days	52 Weeks High	52 Weeks Low	Name	Last Done	Change Over 5 Days	52 Weeks High	52 Weeks Low
BERKSHIRE HATHAWAY INC	540,999.990	+7,886.990	540,999.990	393,012.250	HUBSPOT INC	490.000	-66.860	581.400	245.030
TEXAS PACIFIC LAND CORPORATION	1,611.230	+109.340	2,739.000	1,266.210	PAYCOM SOFTWARE INC	296.950	-64.140	402.780	262.115
HUMANA INC	487.150	+36.150	571.300	423.290	METTLER-TOLEDO INTERNATIONAL INC	1,269.110	-55.030	1,615.970	1,065.550
FAIR ISAAC CORP	855.180	+34.860	892.030	389.835	NVR INC	6,248.020	-53.690	6,474.530	3,816.555
SHARKNINJA INC	30.050	+29.689	52.900	30.050	PENUMBRA INC	255.280	-49.570	348.670	139.030

IDX (Rupiah)

Top Gainers					Top Losers				
Name	Last Done	Change Over 5 Days	52 Weeks High	52 Weeks Low	Name	Last Done	Change Over 5 Days	52 Weeks High	52 Weeks Low
DIAN SWASTATIKA SENTOSA TBK	51,025.000	+6,025.000	51,025.000	31,700.000	BAYAN RESOURCES TBK	18,300.000	-2,400.000	24,800.000	6,300.000
SIANTAR TOP	14,300.000	+2,200.000	16,900.000	6,800.000	GUDANG GARAM TBK	25,975.000	-2,150.000	30,050.000	16,500.000
INDOCEMENT TUNGGAL PRAKARSA	11,100.000	+900.000	11,850.000	9,000.000	AKASHA WIRA INTERNATIONAL TBK	11,900.000	-1,975.000	14,125.000	6,050.000
UNITED TRACTORS	27,150.000	+775.000	36,200.000	22,200.000	INDO TAMBANGRAYA MEGAH TBK	27,175.000	-850.000	45,650.000	22,125.000
MAHA PROPERTI INDONESIA TBK	3,960.000	+580.000	4,200.000	595.000	ADIRA DINAMIKA MULTI FINANCE TBK	12,000.000	-700.000	13,250.000	8,075.000

SET (Thai Baht)

Top Gainers					Top Losers				
Name	Last Done	Change Over 5 Days	52 Weeks High	52 Weeks Low	Name	Last Done	Change Over 5 Days	52 Weeks High	52 Weeks Low
OHTL	482.000	+8.000	610.000	320.000	TCCC	26.750	-12.750	40.000	25.000
FORTH	31.250	+4.500	64.000	24.600	BBIK	120.500	-5.000	143.500	72.500
BH	218.000	+4.000	256.000	178.500	KYE	291.000	-5.000	344.000	289.000
DELTA	112.500	+3.000	119.500	48.800	MASTER	73.500	-4.000	91.500	61.250
SSC	36.750	+3.000	42.000	28.000	AEONTS	152.000	-3.000	208.000	151.500

HKEX (HKD)

Top Gainers					Top Losers				
Name	Last Done	Change Over 5 Days	52 Weeks High	52 Weeks Low	Name	Last Done	Change Over 5 Days	52 Weeks High	52 Weeks Low
LI AUTO INC	174.900	+22.000	177.000	52.050	YUM CHINA HOLDINGS INC	441.000	-31.800	514.500	300.000
HONG KONG EXCHANGES & CLEARING	293.600	+11.600	307.600	259.000	PRUDENTIAL	99.700	-9.800	136.500	68.750
NIO INC	115.800	+11.000	175.000	57.600	HANG SENG BANK	109.000	-8.100	135.500	103.800
HONG KONG EXCHANGES & CLEARING	318.600	+10.600	382.400	208.200	NEW HORIZON HEALTH LTD	20.150	-7.800	38.950	12.700
TECHTRONIC INDUSTRIES CO	96.950	+9.500	110.500	68.650	QIFU TECHNOLOGY INC	71.000	-7.750	98.350	50.000

SGX (SGD)

Top Gainers					Top Losers				
Name	Last Done	Change Over 5 Days	52 Weeks High	52 Weeks Low	Name	Last Done	Change Over 5 Days	52 Weeks High	52 Weeks Low
NIO Inc. USD OV	14.940	+1.330	22.150	7.420	JMH USD	47.500	-1.680	57.800	42.600
UOB	29.820	+0.900	31.400	25.910	SIA	7.100	-0.420	8.050	4.990
Keppel Corp	7.290	+0.330	7.460	4.247	Jardine C&C	33.300	-0.250	36.850	27.250
Yongmao	0.800	+0.250	0.800	0.550	Singtel 10	2.410	-0.240	2.810	2.300
IFAST	5.680	+0.220	6.230	3.540	Isetan	2.860	-0.220	3.650	2.800

HARNESSING IR POWER TO MAKE INFORMED DECISIONS



Devanesan
Evanson

**Chief Executive
Officer, Minority
Shareholders Watch
Group**

At a glance, the recent move by Bursa Malaysia Berhad to assume the role of Malaysian Investor Relations Association (MIRA) is a testament to the Exchange acknowledging the need to further enhance public-listed companies' (PLCs) visibility and accessibility to the investment community through more active investor relations (IR) engagements. This also aligns with Bursa Malaysia's objective of becoming the sole point of reference for all IR matters, thus preventing redundancy and duplication of functions.

Consequently, MIRA's operations which commenced in 2007, were discontinued effective 1 July 2023.

After all, Bursa Malaysia has stepped up its advocacy role over the years beyond that of a market regulator and influencer. In recent years, the Exchange has spearheaded several initiatives to enhance PLCs' visibility and accessibility to the investment community through more active IR engagements.

BUILDING INVESTORS' TRUST

In the words of Bursa Malaysia's CEO Datuk Muhamad Umar Swift, IR is a strategic function to importantly communicate a PLC's performance and growth plans in a credible and engaging manner.

"(On its part), the exchange is committed to continue providing PLCs and IR practitioners with the necessary knowledge, training or workshops and other essential resources to effectively engage with their shareholders and wider stakeholder," he enthused.

"From July 2023 onwards, IR practitioners or professionals in Bursa Malaysia listed PLCs – including former MIRA members – can expect further capacity building support and guidance from the exchange to enhance their skills and knowledge." In a nutshell, IR is a vital platform for companies to provide transparent and accurate information to analysts, investors and the public. IR helps the investment community develop a well-rounded understanding of a PLC and its strategies. Furthermore, through effective IR, a company can help achieve a fair market valuation for its shares, create a body of investor support and a climate of favourable opinion.

The result is a loyal shareholder base which gives the PLC the ability to approach its capital management exercises with confidence. Ultimately, this will be reflected in the demand for the company's shares and prices of those shares. Founded in the Malaysian Code of Corporate Governance 2021 (Engagement with stakeholders), it is the function of IR to continuously engage and communicate with stakeholders to build trust and foster understanding between the company and its stakeholders.

By providing transparent and accurate information about a company's financial performance, operations and prospects, an effective IR programme helps promote favourable opinions of the company and improve stock valuation and share price performance. Timely, open and honest communication are prerequisites (even when developments are not so favourable), so existing and potential shareholders can develop a properly informed view of how the company might be expected to perform.

The IR team oversees functions such as coordinating shareholder meetings and press conferences, releasing financial figures, facilitating analyst briefings, organising investor days and roadshows, publishing corporate filings, and managing investors' expectations.

OTHER GOALS OF IR INCLUDE:

- Creating and executing effective communication plans to showcase the company's financial performance and growth potential
- Crafting annual reports, presentation slides and press releases
- Providing financial and non-financial data to potential investors to promote the PLC's value
- Ensuring the accessibility of all financial information and adhering to relevant laws
- Reporting to company executives, i.e. CEO and CFO about the IR team's communications and feedback from investors/investment community.

IN-HOUSE IR VS EXTERNAL IR

There is probably no one-size-fits-all answer as to whether it is better to have an in-house IR team or outsource IR services to an external IR firm. One must consider the type of industry a PLC is in, its size of business, the required reach and a host of other factors including budgetary constraints. An argument in favour of internal IR professionals would be that they are able to know the company inside-out, they are familiar with the inner workings of the PLC and the resulting smoother flow of information would mean quicker lead time for decision making.

On the other hand, an external IR professional or IR agency may boast more support staff and varied expertise. PLCs can then leverage a larger network of investment community contacts to have a wider reach with their IR programme almost from the outset.

When choosing an IR agency or external IR practitioner, it is imperative to first gauge the team and the experience of the individuals managing one's account. Among others, it is necessary to see if they match the company in terms of culture and vision and consider how well the external IR team can work with the management and internal staff.

Besides, cost considerations regarding the overall annual IR budget and monthly retainers would play a key role in deciding whether an IR agency should be used. Other aspects such as the reporting to management, fundraising and general reach among the investment community are also determining factors as to whether having an external IR is the way to go. Above all else, management must understand how the agency works, its reporting style and frequency, deliverables and limitations before deciding whether this route would work for the PLC.

A consideration when choosing an external IR function is continuity or succession planning of the team or individuals who will be servicing the client. Supposedly, if these key people leave the agency, can the existing service standards be upheld? Or will the new account manager be able to meet the client's

expectations, or can they match the previous account manager who has been around for many years and knows the client and its business operations inside-out?

IR INITIATIVES BY BURSA MALAYSIA

Over the years, we have seen Bursa Malaysia carry out notable initiatives to elevate best practices from an IR standpoint. On 28 March 2022, Bursa Malaysia launched the Bursa Research Incentive Scheme (Bursa RISE), which aims to improve the trading velocity and corporate profile of participating PLCs through research coverage and marketing activities.

Carried out by licensed research houses, the programme's goal is to create a better appreciation of the PLC's fundamentals, thus leading to better value recognition for PLCs. The research reports produced under Bursa RISE are available at <https://www.bursamarketplace.com>. The programme also includes the IR and Public Relations (PR) Incentive Programme that provides IR and PR support to participating PLCs to enable better and effective engagement with their stakeholders, shareholders, the investment community, the media and the public.

In essence, Bursa RISE complements and supports the stock exchange's PLC transformation programme, which aims to encourage PLCs to be more transparent in their disclosure and performance, thus allowing investors to gain better insight to facilitate informed investment decision-making. For this initiative, Bursa Malaysia earlier said that the share price performance for the selected 60 participating PLCs had improved due to increased research and profiling, notwithstanding the gloomy general market.

More broadly, the Bursa RISE initiative could have its roots in the Bursa Mid and Small Cap Research Scheme (MidS), which was unveiled in May 2017 to spur the vibrancy of the local bourse with coverage extended to 300 small-to-mid-sized PLCs. Initially, some 100 PLCs with a market capitalisation of between RM200 million and RM2 billion were chosen for the first phase of the scheme.

Besides market capitalisation, the selection of the companies was based on stock liquidity and a free float requirement of at least 15%. Recall that each eligible company then went under the radar of two research houses for two years, whereby one initiation report and at least four financial results reports would be issued to investors. The scheme involved 22 research houses.

In conjunction with the launch, two indices – the FTSE Bursa Malaysia MidS Cap Index and the FTSE Bursa Malaysia MidS Cap Shariah Index – have been introduced to track the performance of the mid and small-cap stocks.

By MSWG Team

DEFINITION: Insider Activity shows the trades made by substantial shareholders or directors of the company. Purchases by the directors and company share buyback may indicate the share price is undervalued and brings confidence to the price trend of the share price.



ShareInvestor WebPro > Fundamental > Insider Trades > click Search tab > Select Bursa > click Stock name > scroll up and leave at <Select Counter> Type Date Range for Announcement Date > click Search

Notice Period is 23th July - 29th July 2023

Effective Change Date	Stock Name	Buyer/ Seller Name [Classification]	Bought / (Sold) ['000]	No. of Shares After Trade ['000]	
			Total	Total	% Held
14 JUN 2023 - 27 JUL 2023	3A	MR TEO KWEE HOCK [SSH]	400	47,991	9.814
25 JUL 2023 - 25 JUL 2023	AEON	EMPLOYEES PROVIDENT FUND BOARD [SSH]	-73	154,536	11.007
24 JUL 2023 - 24 JUL 2023	AEON	EMPLOYEES PROVIDENT FUND BOARD [SSH]	-693	154,609	11.012
21 JUL 2023 - 21 JUL 2023	AEON	EMPLOYEES PROVIDENT FUND BOARD [SSH]	-300	155,302	11.061
20 JUL 2023 - 20 JUL 2023	AEON	EMPLOYEES PROVIDENT FUND BOARD [SSH]	-366	155,602	11.083
18 JUL 2023 - 18 JUL 2023	AEON	EMPLOYEES PROVIDENT FUND BOARD [SSH]	-78	155,968	11.109
27 JUL 2023 - 27 JUL 2023	AIRPORT	KUMPULAN WANG PERSARAAN (DIPERBADANKAN) [SSH]	471	112,662	6.752
25 JUL 2023 - 25 JUL 2023	AIRPORT	EMPLOYEES PROVIDENT FUND BOARD [SSH]	-1,117	191,160	11.457
26 JUL 2023 - 26 JUL 2023	AIRPORT	KUMPULAN WANG PERSARAAN (DIPERBADANKAN) [SSH]	-388	112,192	6.724
24 JUL 2023 - 24 JUL 2023	AIRPORT	EMPLOYEES PROVIDENT FUND BOARD [SSH]	-227	192,277	11.524
21 JUL 2023 - 21 JUL 2023	AIRPORT	EMPLOYEES PROVIDENT FUND BOARD [SSH]	-467	192,504	11.537
20 JUL 2023 - 20 JUL 2023	AIRPORT	EMPLOYEES PROVIDENT FUND BOARD [SSH]	-474	192,971	11.565
18 JUL 2023 - 18 JUL 2023	AIRPORT	EMPLOYEES PROVIDENT FUND BOARD [SSH]	-1,278	193,445	11.594
25 JUL 2023 - 25 JUL 2023	AMBANK	EMPLOYEES PROVIDENT FUND BOARD [SSH]	1,500	319,791	9.671
20 JUL 2023 - 20 JUL 2023	AMBANK	EMPLOYEES PROVIDENT FUND BOARD [SSH]	681	318,291	9.626
18 JUL 2023 - 18 JUL 2023	AMBANK	EMPLOYEES PROVIDENT FUND BOARD [SSH]	21	317,610	9.605
21 JUL 2023 - 21 JUL 2023	AME	MR KANG AH CHEE [DIR/CEO]	-3,000	117,529	18.39
21 JUL 2023 - 21 JUL 2023	AME	MR KANG AH CHEE [SSH]	-3,000	117,529	18.39
21 JUL 2023 - 21 JUL 2023	AME	MR LEE CHAI [DIR/CEO]	-3,000	119,544	18.705
21 JUL 2023 - 21 JUL 2023	AME	MR LEE CHAI [SSH]	-3,000	119,544	18.705
21 JUL 2023 - 21 JUL 2023	AME	MR LEE SAI BOON [DIR/CEO]	-3,000	42,624	6.669
21 JUL 2023 - 21 JUL 2023	AME	MR LEE SAI BOON [SSH]	-3,000	42,624	6.669
21 JUL 2023 - 21 JUL 2023	AME	MR LIM YOOK KIM [SSH]	-3,000	119,479	18.695
25 JUL 2023 - 27 JUL 2023	ANCOMNY	MR CHAN THYE SENG [DIR/CEO]	-901	5,386	0.574
24 JUL 2023 - 24 JUL 2023	ANCOMNY	DATO' SIEW KA WEI [DIR/CEO]	70	182,220	19.421
24 JUL 2023 - 24 JUL 2023	ANCOMNY	DATO' SIEW KA WEI [SSH]	70	182,220	19.421
21 JUL 2023 - 24 JUL 2023	ANCOMNY	MR CHAN THYE SENG [DIR/CEO]	-659	6,287	0.67
18 JUL 2023 - 21 JUL 2023	ANCOMNY	DATO' SIEW KA WEI [DIR/CEO]	-4,992	182,149	19.428
18 JUL 2023 - 21 JUL 2023	ANCOMNY	DATO' SIEW KA WEI [SSH]	-4,992	182,149	19.428
26 JUL 2023 - 26 JUL 2023	APOLLO	AMANAHRAYA TRUSTEES BERHAD-AMANAH SAHAM BUMIPUTERA [SSH]	-68	8,500	10.625
25 JUL 2023 - 25 JUL 2023	APOLLO	AMANAHRAYA TRUSTEES BERHAD-AMANAH SAHAM BUMIPUTERA [SSH]	-50	8,568	10.71
21 JUL 2023 - 21 JUL 2023	ARTRO-NIQ-WA	MR LIAW WAY GIAN [DIR/CEO]	1,280	1,280	0.65
21 JUL 2023 - 21 JUL 2023	AURO	DATO' TAN LIK HOU [DIR/CEO]	450	43,839	7.571
21 JUL 2023 - 21 JUL 2023	AURO	DATO' TAN LIK HOU [SSH]	450	43,839	7.571
25 JUL 2023 - 25 JUL 2023	AXIATA	EMPLOYEES PROVIDENT FUND BOARD [SSH]	3,000	1,613,892	17.583
24 JUL 2023 - 24 JUL 2023	AXIATA	EMPLOYEES PROVIDENT FUND BOARD [SSH]	1,845	1,610,892	17.55
21 JUL 2023 - 21 JUL 2023	AXIATA	EMPLOYEES PROVIDENT FUND BOARD [SSH]	3,030	1,609,048	17.53
20 JUL 2023 - 20 JUL 2023	AXIATA	EMPLOYEES PROVIDENT FUND BOARD [SSH]	772	1,606,018	17.497
18 JUL 2023 - 18 JUL 2023	AXIATA	EMPLOYEES PROVIDENT FUND BOARD [SSH]	2,698	1,605,246	17.488
24 JUL 2023 - 25 JUL 2023	BAUTO	DATO' AMER HAMZAH BIN AHMAD [SSH]	250	177,255	15.203
24 JUL 2023 - 25 JUL 2023	BAUTO	DATO' LEE KOK CHUAN [DIR/CEO]	250	176,714	15.157
24 JUL 2023 - 25 JUL 2023	BAUTO	DATO' LEE KOK CHUAN [SSH]	250	176,714	15.157
24 JUL 2023 - 25 JUL 2023	BAUTO	DYNAMIC MILESTONE SDN BHD [SSH]	250	172,811	14.822
24 JUL 2023 - 24 JUL 2023	BAUTO	PRUDENTIAL PLC [SSH]	46	71,685	6.147
24 JUL 2023 - 25 JUL 2023	BAUTO	TAN SRI DATO' SRI YEOW CHOO SAN [DIR/CEO]	250	176,846	15.168
24 JUL 2023 - 25 JUL 2023	BAUTO	TAN SRI DATO' SRI YEOW CHOO SAN [SSH]	250	176,846	15.168
20 JUL 2023 - 20 JUL 2023	BAUTO	EMPLOYEES PROVIDENT FUND BOARD [SSH]	-1,029	114,106	9.774
18 JUL 2023 - 18 JUL 2023	BAUTO	EMPLOYEES PROVIDENT FUND BOARD [SSH]	-770	115,135	9.857
18 JUL 2023 - 18 JUL 2023	BIMB	EMPLOYEES PROVIDENT FUND BOARD [SSH]	403	362,363	15.988
24 JUL 2023 - 24 JUL 2023	BINACOM	MR NA BON TIAM [SSH]	-436	49,387	12.719
24 JUL 2023 - 24 JUL 2023	BINACOM	DATO' SEOW THIAM FATT [DIR/CEO]	-137	63	0.032
24 JUL 2023 - 24 JUL 2023	BINTAI	DATUK TAY CHOR HAN [DIR/CEO]	3,000	71,339	7.602
24 JUL 2023 - 24 JUL 2023	BINTAI	DATUK TAY CHOR HAN [SSH]	3,000	71,339	7.602
21 JUL 2023 - 21 JUL 2023	BOILERM	MR LEONG YEW CHEONG [SSH]	-6,100	30,166	5.85
26 JUL 2023 - 26 JUL 2023	BORNOIL	DATUK JOSEPH LEE YOK MIN @ AMBROSE [DIR/CEO]	900	1,837,034	15.346
25 JUL 2023 - 27 JUL 2023	BSLCORP	CITA REALITI SDN. BHD. [SSH]	51	118,520	6.141
20 JUL 2023 - 21 JUL 2023	BSLCORP	CITA REALITI SDN. BHD. [SSH]	215	118,469	6.138
24 JUL 2023 - 24 JUL 2023	CATCHA	CATCHA GROUP PTE LTD [SSH]	76,596	135,503	38.486
24 JUL 2023 - 24 JUL 2023	CATCHA	CATCHA INVESTMENTS LTD [SSH]	-47,520	47,520	13.497

Notice Period is 23th July - 29th July 2023

Effective Change Date	Stock Name	Buyer/ Seller Name [Classification]	Bought / (Sold) ['000]	No. of Shares After Trade ['000]	
			Total	Total	% Held
24 JUL 2023 - 24 JUL 2023	CATCHA	DATO JUSTIN LEONG MING LOONG [DIR/CEO]	-2,314	2,314	0.657
24 JUL 2023 - 24 JUL 2023	CATCHA	ICREATIVE ASIA SDN BHD [SSH]	2,652	43,132	12.25
24 JUL 2023 - 24 JUL 2023	CATCHA	MR BRIAN ALEXIS A/L ANTONISAMY [SSH]	2,652	43,132	12.25
24 JUL 2023 - 24 JUL 2023	CATCHA	MR LOH KEN WEI [SSH]	2,652	43,132	12.25
24 JUL 2023 - 24 JUL 2023	CATCHA	MR LUCAS ROBERT ELLIOTT [DIR/CEO]	29,076	183,023	51.983
24 JUL 2023 - 24 JUL 2023	CATCHA	MR LUCAS ROBERT ELLIOTT [SSH]	29,076	183,023	51.983
24 JUL 2023 - 24 JUL 2023	CATCHA	MR MR PATRICK YKIN GROVE [SSH]	29,076	183,023	51.983
24 JUL 2023 - 24 JUL 2023	CATCHA	MR PATRICK YKIN GROVE [DIR/CEO]	29,076	183,023	51.983
24 JUL 2023 - 24 JUL 2023	CATCHA	MR TEE CHOON WEE [SSH]	2,652	43,132	12.25
24 JUL 2023 - 24 JUL 2023	CATCHA	MR VOON TZE KHAY [SSH]	2,652	43,132	12.25
26 JUL 2023 - 26 JUL 2023	CBIP	DATUK LIM CHAI BENG [DIR/CEO]	222	197,077	41.254
26 JUL 2023 - 26 JUL 2023	CBIP	DATUK LIM CHAI BENG [SSH]	222	197,077	41.254
26 JUL 2023 - 26 JUL 2023	CBIP	ZEE CAPITAL SDN BHD [SSH]	222	33,359	6.983
21 JUL 2023 - 25 JUL 2023	CBIP	DATUK LIM CHAI BENG [DIR/CEO]	744	196,855	41.187
21 JUL 2023 - 25 JUL 2023	CBIP	DATUK LIM CHAI BENG [SSH]	744	196,855	41.187
21 JUL 2023 - 25 JUL 2023	CBIP	ZEE CAPITAL SDN BHD [SSH]	744	33,137	6.933
24 JUL 2023 - 24 JUL 2023	CCIB	COPE OPPORTUNITIES IV SDN. BHD. [SSH]	93,458	93,458	19.483
18 JUL 2023 - 18 JUL 2023	CDB	EMPLOYEES PROVIDENT FUND BOARD [SSH]	-198	1,124,259	9.583
27 JUL 2023 - 27 JUL 2023	CIMB	KUMPULAN WANG PERSARAAN (DIPERBADANKAN) [SSH]	1,000	720,131	6.75
25 JUL 2023 - 25 JUL 2023	CIMB	EMPLOYEES PROVIDENT FUND BOARD [SSH]	11,402	1,590,907	14.92
26 JUL 2023 - 26 JUL 2023	CIMB	KUMPULAN WANG PERSARAAN (DIPERBADANKAN) [SSH]	-1,247	719,131	6.74
24 JUL 2023 - 24 JUL 2023	CIMB	EMPLOYEES PROVIDENT FUND BOARD [SSH]	7,479	1,579,505	14.81
25 JUL 2023 - 25 JUL 2023	CIMB	KUMPULAN WANG PERSARAAN (DIPERBADANKAN) [SSH]	1,000	720,378	6.76
21 JUL 2023 - 21 JUL 2023	CIMB	EMPLOYEES PROVIDENT FUND BOARD [SSH]	9,498	1,572,026	14.65
20 JUL 2023 - 20 JUL 2023	CIMB	EMPLOYEES PROVIDENT FUND BOARD [SSH]	2,174	1,562,528	14.65
18 JUL 2023 - 18 JUL 2023	CIMB	EMPLOYEES PROVIDENT FUND BOARD [SSH]	38	1,560,354	14.63
25 JUL 2023 - 25 JUL 2023	CLMT	EMPLOYEES PROVIDENT FUND BOARD [SSH]	800	371,856	13.782
28 JUL 2023 - 28 JUL 2023	CLOUDPT	CHOONG WAI HOONG [DIR/CEO]	500	321,476	60.473
28 JUL 2023 - 28 JUL 2023	CLOUDPT	ERA JASAKITA SDN BHD [SSH]	500	278,404	52.371
28 JUL 2023 - 28 JUL 2023	CLOUDPT	MR CHOONG WAI HOONG [SSH]	500	321,476	60.473
28 JUL 2023 - 28 JUL 2023	CLOUDPT	MR YEW CHOONG CHEONG [SSH]	500	321,476	60.473
28 JUL 2023 - 28 JUL 2023	CLOUDPT	YEW CHOONG CHEONG [DIR/CEO]	500	321,476	60.473
26 JUL 2023 - 26 JUL 2023	CYPARK	DATO' DAUD BIN AHMAD [DIR/CEO]	2,000	35,500	91.826
26 JUL 2023 - 26 JUL 2023	CYPARK	DATO' DAUD BIN AHMAD [SSH]	2,000	44,339	5.654
26 JUL 2023 - 26 JUL 2023	CYPARK	DATO' DAUD BIN AHMAD [SSH]	2,000	44,339	5.654
20 JUL 2023 - 20 JUL 2023	CYPARK	TAN SRI RAZALI BIN ISMAIL [DIR/CEO]	-10,200	12,912	1.651
24 JUL 2023 - 24 JUL 2023	DAY3	BLM HOLDINGS SDN BHD [SSH]	73,920	73,920	15.4
24 JUL 2023 - 24 JUL 2023	DAY3	CLOUD MARSHAL SDN BHD [SSH]	110,880	110,880	23.1
24 JUL 2023 - 24 JUL 2023	DAY3	DAYSRING CAPITAL SDN BHD [SSH]	-12,000	172,800	36
24 JUL 2023 - 24 JUL 2023	DAY3	ENCIK SYED IZMI BIN SYED KAMARUL BAHHRIN [DIR/CEO]	500	500	0.104
24 JUL 2023 - 24 JUL 2023	DAY3	MISS BERNADINE LEE SIEW LING [SSH]	73,920	73,920	15.4
24 JUL 2023 - 24 JUL 2023	DAY3	MISS GAN JHIA JHIA [DIR/CEO]	110,880	110,880	23.1
24 JUL 2023 - 24 JUL 2023	DAY3	MISS GAN JHIA JHIA [SSH]	110,880	110,880	23.1
24 JUL 2023 - 24 JUL 2023	DAY3	MR LEE KING LOON [SSH]	110,880	110,880	23.1
24 JUL 2023 - 24 JUL 2023	DAY3	MR LEONG KOK CHENG [SSH]	110,880	110,880	23.1
24 JUL 2023 - 24 JUL 2023	DAY3	MR PAUL RAYMOND RAJ A/L DAVADASS [DIR/CEO]	-12,000	172,800	36
24 JUL 2023 - 24 JUL 2023	DAY3	MR PAUL RAYMOND RAJ A/L DAVADASS [SSH]	-12,000	172,800	36
24 JUL 2023 - 24 JUL 2023	DAY3	THANOS CAPITAL SDN BHD [SSH]	110,880	110,880	23.1
25 JUL 2023 - 25 JUL 2023	DIALOG	EMPLOYEES PROVIDENT FUND BOARD [SSH]	-1,809	831,225	14.73
24 JUL 2023 - 24 JUL 2023	DIALOG	EMPLOYEES PROVIDENT FUND BOARD [SSH]	-1,299	833,034	14.76
25 JUL 2023 - 25 JUL 2023	DIALOG	KUMPULAN WANG PERSARAAN (DIPERBADANKAN) [SSH]	78	553,668	9.81
21 JUL 2023 - 21 JUL 2023	DIALOG	EMPLOYEES PROVIDENT FUND BOARD [SSH]	-664	834,333	14.79
20 JUL 2023 - 20 JUL 2023	DIALOG	EMPLOYEES PROVIDENT FUND BOARD [SSH]	-1,000	834,997	14.8
25 JUL 2023 - 25 JUL 2023	DLADY	CITIGROUP NOMINEES (TEMPATAN) SDN BHD EMPLOYEES PROVIDENT FUND BOARD [SSH]	-8	6,391	9.986
24 JUL 2023 - 24 JUL 2023	DLADY	CITIGROUP NOMINEES (TEMPATAN) SDN BHD EMPLOYEES PROVIDENT FUND BOARD [SSH]	-0.5	6,399	9.998
21 JUL 2023 - 21 JUL 2023	DLADY	CITIGROUP NOMINEES (TEMPATAN) SDN BHD EMPLOYEES PROVIDENT FUND BOARD [SSH]	-55	6,399	9.999

Disclaimer: The Information in Insider Activity is extracted from www.shareinvestor.com/fundamental/insider_trades. The information on this page is provided as a service to readers. It does not constitute financial advice and/or any investment recommendations. We assume no liability for damages resulting from or arising out of the use of such information. Whilst every effort is made to ensure accuracy, the information presented is not the official record of shareholder filings. Readers are advised to read the original filings on the Bursa Malaysia website at www.bursamalaysia.com

PURNELL

ESCAPE II FORGED CARBON

PLAY



Notice Period is 23th July - 29th July 2023

Effective Change Date	Stock Name	Buyer/ Seller Name [Classification]	Bought / After Trade ['000]	No. of Shares After Trade ['000]	
			Total	Total	% Held
20 JUL 2023 - 20 JUL 2023	DLADY	CITIGROUP NOMINEES (TEMPATAN) SDN BHD EMPLOYEES PROVIDENT FUND BOARD [SSH]	-22	6,454	10.085
25 JUL 2023 - 25 JUL 2023	DRBHC	EMPLOYEES PROVIDENT FUND BOARD [SSH]	-500	188,745	9.763
24 JUL 2023 - 24 JUL 2023	DRBHC	EMPLOYEES PROVIDENT FUND BOARD [SSH]	-500	189,222	9.788
21 JUL 2023 - 21 JUL 2023	DRBHC	EMPLOYEES PROVIDENT FUND BOARD [SSH]	-362	189,722	9.814
20 JUL 2023 - 20 JUL 2023	DRBHC	EMPLOYEES PROVIDENT FUND BOARD [SSH]	-135	190,084	9.832
18 JUL 2023 - 18 JUL 2023	DRBHC	EMPLOYEES PROVIDENT FUND BOARD [SSH]	-1,000	190,219	9.839
26 JUL 2023 - 26 JUL 2023	DSR	MR CHAN KWAI CHEONG [DIR/CEO]	1,200	7,400	2.279
26 JUL 2023 - 26 JUL 2023	DSR	MR NG SOH KIAN [DIR/CEO]	-1,200	109,250	33.639
26 JUL 2023 - 26 JUL 2023	DSR	MR NG SOH KIAN [SSH]	-1,200	109,250	33.639
21 JUL 2023 - 21 JUL 2023	DSR	DATO NG LIAN POH [DIR/CEO]	-1,200	113,350	34.902
21 JUL 2023 - 21 JUL 2023	DSR	DATO NG LIAN POH [SSH]	-1,200	113,350	34.902
21 JUL 2023 - 21 JUL 2023	DSR	MR CHAN KWAI CHEONG [DIR/CEO]	1,200	6,200	1.909
20 JUL 2023 - 20 JUL 2023	DSR	MR NG SOH KIAN [DIR/CEO]	-600	110,450	34.009
20 JUL 2023 - 20 JUL 2023	DSR	MR NG SOH KIAN [SSH]	-600	110,450	34.009
27 JUL 2023 - 27 JUL 2023	ECOFIRS	DATO' TEOH SENG KIAN [DIR/CEO]	-20,000	64,005	5.302
27 JUL 2023 - 27 JUL 2023	ECOFIRS	DATO' TEOH SENG KIAN [SSH]	-20,000	64,005	5.302
27 JUL 2023 - 27 JUL 2023	ECOFIRS	MR TEOH SENG AUN [SSH]	-10,000	61,710	5.112
26 JUL 2023 - 26 JUL 2023	EITA	MR CHIA SEONG POW [DIR/CEO]	-267	19,916	23.01
18 JUL 2023 - 18 JUL 2023	EPMB	DATO' SERI THAIVEEGAN A/L ARUMUGAM [DIR/CEO]	100	100	0.045
20 JUL 2023 - 20 JUL 2023	EWEIN	MR OOI ENG LEONG [SSH]	0.037	132,168	43.824
24 JUL 2023 - 24 JUL 2023	F&N	EMPLOYEES PROVIDENT FUND BOARD [SSH]	41	42,563	11.604
21 JUL 2023 - 21 JUL 2023	F&N	EMPLOYEES PROVIDENT FUND BOARD [SSH]	43	42,521	11.593
20 JUL 2023 - 20 JUL 2023	F&N	EMPLOYEES PROVIDENT FUND BOARD [SSH]	15	42,478	11.581
18 JUL 2023 - 18 JUL 2023	F&N	EMPLOYEES PROVIDENT FUND BOARD [SSH]	70	42,463	11.577
25 JUL 2023 - 25 JUL 2023	FAJAR	TAN SRI DATUK TA KIN YAN [SSH]	83	88,792	11.973
21 JUL 2023 - 21 JUL 2023	FAJAR	TAN SRI DATUK TA KIN YAN [SSH]	47	88,708	11.962
26 JUL 2023 - 26 JUL 2023	FBBHD	MR NG KIAN BOON [DIR/CEO]	9,720	202,841	93.908
26 JUL 2023 - 26 JUL 2023	FBBHD	MR NG KIAN BOON [SSH]	9,720	202,841	93.908
25 JUL 2023 - 25 JUL 2023	FFB	EMPLOYEES PROVIDENT FUND BOARD [SSH]	556	153,042	8.176
24 JUL 2023 - 24 JUL 2023	FFB	EMPLOYEES PROVIDENT FUND BOARD [SSH]	450	152,486	8.146
21 JUL 2023 - 21 JUL 2023	FFB	EMPLOYEES PROVIDENT FUND BOARD [SSH]	586	152,036	8.122
20 JUL 2023 - 20 JUL 2023	FFB	EMPLOYEES PROVIDENT FUND BOARD [SSH]	2,419	151,450	8.091
18 JUL 2023 - 18 JUL 2023	FFB	EMPLOYEES PROVIDENT FUND BOARD [SSH]	2,892	149,031	7.961
25 JUL 2023 - 27 JUL 2023	FITTERS	CITA REALITI SDN BHD [SSH]	470	241,420	10.311
21 JUL 2023 - 21 JUL 2023	FITTERS	CITA REALITI SDN BHD [SSH]	100	240,950	10.291
28 JUL 2023 - 28 JUL 2023	FPGROUP	DATO' ONG CHOON HENG [DIR/CEO]	59,400	188,775	34.655
28 JUL 2023 - 28 JUL 2023	FPGROUP	DATO' ONG CHOON HENG [SSH]	59,400	188,775	34.655
28 JUL 2023 - 28 JUL 2023	FPGROUP	FOUNDPAC HOLDINGS SDN. BHD. [SSH]	30,000	151,800	27.867
28 JUL 2023 - 28 JUL 2023	FPGROUP	MADAM LIM TEAN BENG [SSH]	300	32,589	5.983
28 JUL 2023 - 28 JUL 2023	FPGROUP	MR LEE CHUN WAH [DIR/CEO]	30,300	187,880	34.49
28 JUL 2023 - 28 JUL 2023	FPGROUP	MR LEE CHUN WAH [SSH]	30,300	187,880	34.49
24 JUL 2023 - 25 JUL 2023	GAMUDA	EMPLOYEES PROVIDENT FUND BOARD (EPF BOARD) [SSH]	316	352,019	13.22
24 JUL 2023 - 24 JUL 2023	GAMUDA	EMPLOYEES PROVIDENT FUND BOARD (EPF BOARD) [SSH]	-3,013	351,703	13.21
21 JUL 2023 - 21 JUL 2023	GAMUDA	EMPLOYEES PROVIDENT FUND BOARD (EPF BOARD) [SSH]	-2,830	354,716	13.32
20 JUL 2023 - 20 JUL 2023	GAMUDA	EMPLOYEES PROVIDENT FUND BOARD (EPF BOARD) [SSH]	-2,685	357,545	13.43
18 JUL 2023 - 18 JUL 2023	GAMUDA	EMPLOYEES PROVIDENT FUND BOARD (EPF BOARD) [SSH]	-680	360,231	13.53
18 JUL 2023 - 18 JUL 2023	GASMSIA	EMPLOYEES PROVIDENT FUND BOARD [SSH]	336	85,469	6.656
21 JUL 2023 - 21 JUL 2023	GIIB	MR TAI QISHENG [DIR/CEO]	54	68,486	11.582
21 JUL 2023 - 21 JUL 2023	GIIB	MR TAI QISHENG [SSH]	54	68,486	11.582
26 JUL 2023 - 27 JUL 2023	GTRONIC	MR NG KOK CHOON [DIR/CEO]	-90	60	0.01
25 JUL 2023 - 25 JUL 2023	GTRONIC	MR NG KOK CHOON [DIR/CEO]	100	150	0.02
20 JUL 2023 - 24 JUL 2023	HEKTAR	HEKTAR BLACK SDN BHD [SSH]	-696	130,858	26.236
24 JUL 2023 - 24 JUL 2023	HEXTECH	HEXTAR HOLDINGS SDN. BHD. [SSH]	2,500	11,000	8.55
28 JUL 2023 - 28 JUL 2023	HHRG	MR NG CHIN NAM [DIR/CEO]	-3,100	55,860	6.491
28 JUL 2023 - 28 JUL 2023	HHRG	MR NG CHIN NAM [SSH]	-3,100	55,860	6.491
25 JUL 2023 - 25 JUL 2023	HLBANK	EMPLOYEES PROVIDENT FUND BOARD [SSH]	-427	217,339	10.416
24 JUL 2023 - 24 JUL 2023	HLBANK	EMPLOYEES PROVIDENT FUND BOARD [SSH]	-161	217,766	10.436
21 JUL 2023 - 21 JUL 2023	HLBANK	EMPLOYEES PROVIDENT FUND BOARD [SSH]	-249	217,927	10.444
20 JUL 2023 - 20 JUL 2023	HLBANK	EMPLOYEES PROVIDENT FUND BOARD [SSH]	-14	218,176	10.456
18 JUL 2023 - 18 JUL 2023	HLBANK	EMPLOYEES PROVIDENT FUND BOARD [SSH]	-77	218,190	10.457
27 JUL 2023 - 27 JUL 2023	IGBREIT	KUMPULAN WANG PERSARAAN (DIPERBADANKAN) [SSH]	529	264,735	7.365
18 JUL 2023 - 18 JUL 2023	IGBREIT	EMPLOYEES PROVIDENT FUND BOARD ("EPF BOARD") [SSH]	-108	418,068	11.632
24 JUL 2023 - 24 JUL 2023	IHH	EMPLOYEES PROVIDENT FUND BOARD [SSH]	1,801	905,173	10.278
21 JUL 2023 - 21 JUL 2023	IHH	EMPLOYEES PROVIDENT FUND BOARD [SSH]	20	903,372	10.257
18 JUL 2023 - 18 JUL 2023	IHH	EMPLOYEES PROVIDENT FUND BOARD [SSH]	7	903,351	10.257
27 JUL 2023 - 27 JUL 2023	IJM	KUMPULAN WANG PERSARAAN (DIPERBADANKAN) [SSH]	516	296,365	8.453
27 JUL 2023 - 28 JUL 2023	IJM	TAN SRI DATO' TAN BOON SENG @ KRISHNAN [DIR/CEO]	300	10,469	0.298
25 JUL 2023 - 25 JUL 2023	IJM	EMPLOYEES PROVIDENT FUND BOARD [SSH]	-3,000	605,618	17.273
24 JUL 2023 - 24 JUL 2023	IJM	EMPLOYEES PROVIDENT FUND BOARD [SSH]	-918	608,618	17.359
21 JUL 2023 - 21 JUL 2023	IJM	EMPLOYEES PROVIDENT FUND BOARD [SSH]	-2,411	609,536	17.385
20 JUL 2023 - 20 JUL 2023	IJM	EMPLOYEES PROVIDENT FUND BOARD [SSH]	-6,000	611,947	17.453
18 JUL 2023 - 18 JUL 2023	IJM	EMPLOYEES PROVIDENT FUND BOARD [SSH]	-929	617,947	17.623
25 JUL 2023 - 25 JUL 2023	INARI	EMPLOYEES PROVIDENT FUND BOARD [SSH]	-4,287	397,082	10.631
26 JUL 2023 - 26 JUL 2023	INARI	DATO' DR TAN SENG CHUAN [DIR/CEO]	694	2,056	0.055
24 JUL 2023 - 24 JUL 2023	INARI	EMPLOYEES PROVIDENT FUND BOARD [SSH]	-75	401,369	10.748

Notice Period is 23th July - 29th July 2023

Effective Change Date	Stock Name	Buyer/ Seller Name [Classification]	Bought / After Trade ['000]	No. of Shares After Trade ['000]	
			Total	Total	% Held
21 JUL 2023 - 21 JUL 2023	INARI	EMPLOYEES PROVIDENT FUND BOARD [SSH]	-4,073	401,444	10.75
21 JUL 2023 - 21 JUL 2023	INARI	MR MAI MANG LEE [DIR/CEO]	-632	14,284	0.383
24 JUL 2023 - 24 JUL 2023	INARI	KUMPULAN WANG PERSARAAN (DIPERBADANKAN) [SSH]	100	356,314	9.542
20 JUL 2023 - 20 JUL 2023	INARI	EMPLOYEES PROVIDENT FUND BOARD [SSH]	-1,778	405,517	10.861
21 JUL 2023 - 21 JUL 2023	INARI	KUMPULAN WANG PERSARAAN (DIPERBADANKAN) [SSH]	555	356,214	9.54
18 JUL 2023 - 18 JUL 2023	INARI	EMPLOYEES PROVIDENT FUND BOARD [SSH]	-6,316	407,296	10.908
25 JUL 2023 - 26 JUL 2023	INNATURE	PRUDENTIAL PLC [SSH]	-2,725	38,065	5.393
25 JUL 2023 - 25 JUL 2023	IOICORP	EMPLOYEES PROVIDENT FUND BOARD [SSH]	-156	684,058	11.027
21 JUL 2023 - 21 JUL 2023	IOICORP	EMPLOYEES PROVIDENT FUND BOARD [SSH]	408	684,213	11.029
20 JUL 2023 - 20 JUL 2023	IOICORP	EMPLOYEES PROVIDENT FUND BOARD [SSH]	185	683,806	11.023
18 JUL 2023 - 18 JUL 2023	IOICORP	EMPLOYEES PROVIDENT FUND BOARD [SSH]	208	683,621	11.02
24 JUL 2023 - 24 JUL 2023	JETSON	NEXT PEAK ASSETS LIMITED [SSH]	-4,800	13,700	5.113
21 JUL 2023 - 24 JUL 2023	JETSON	MR KINGTONG TONG KUM LOONG [SSH]	-32,819	13,700	5.113
25 JUL 2023 - 26 JUL 2023	KAB	MR KINGTONG TONG KUM LOONG [SSH]	-61,300	237,487	13.14
25 JUL 2023 - 25 JUL 2023	KAWAN	MR NARESHCHANDRA GORDHANDAS NAGRECHA [SSH]	-130	76,822	21.239
24 JUL 2023 - 24 JUL 2023	KERJAYA	EMPLOYEES PROVIDENT FUND BOARD [SSH]	-963	90,356	7.165
25 JUL 2023 - 25 JUL 2023	KLK	EMPLOYEES PROVIDENT FUND BOARD [SSH]	285	117,660	10.91
24 JUL 2023 - 24 JUL 2023	KLK	EMPLOYEES PROVIDENT FUND BOARD [SSH]	47	117,375	10.884
21 JUL 2023 - 21 JUL 2023	KLK	EMPLOYEES PROVIDENT FUND BOARD [SSH]	-146	117,328	10.879
18 JUL 2023 - 18 JUL 2023	KLK	EMPLOYEES PROVIDENT FUND BOARD [SSH]	50	117,475	10.893
21 JUL 2023 - 21 JUL 2023	KOBAY	MR KOAY WOOL SEONG [DIR/CEO]	11,823	11,823	3.625
26 JUL 2023 - 26 JUL 2023	KOMARK	KEY ALLIANCE GROUP BERHAD [SSH]	-10,000	221,718	19.203
27 JUL 2023 - 27 JUL 2023	KRETAM	DATUK LIM NYUK SANG @ FREDDY LIM [DIR/CEO]	-4,000	1,539,251	66.13
27 JUL 2023 - 27 JUL 2023	KRETAM	DATUK LIM NYUK SANG @ FREDDY LIM [SSH]	-4,000	1,539,251	66.13
27 JUL 2023 - 27 JUL 2023	KRETAM	SANTRAPRISE SDN BHD [SSH]	-20,000	441,858	18.983
21 JUL 2023 - 25 JUL 2023	LAYHONG	DATO' YAP HOONG CHAI [DIR/CEO]	-98	283,959	38.356
21 JUL 2023 - 21 JUL 2023	LBS	TAN SRI DATO' SRI IR. LIM HOCK SAN JP [DIR/CEO]	100	607,622	39.446
21 JUL 2023 - 21 JUL 2023	LBS	TAN SRI DATO' SRI IR. LIM HOCK SAN JP [SSH]	100	602,869	39.137
26 JUL 2023 - 26 JUL 2023	LITRAK	AMANAHRAYA TRUSTEES BERHAD-AMANA SAHAM BUMIPUTERA [SSH]	-300	43,478	7.983
25 JUL 2023 - 25 JUL 2023	LITRAK	AMANAHRAYA TRUSTEES BERHAD-AMANA SAHAM BUMIPUTERA [SSH]	-200	43,778	8.039
21 JUL 2023 - 21 JUL 2023	LOTUS	MR LIM LIAN CHEE [DIR/CEO]	200	286	0.107
26 JUL 2023 - 26 JUL 2023	MAGNA	MISS TAN CHIN YEN [DIR/CEO]	2,615	67,057	16.799
26 JUL 2023 - 26 JUL 2023	MAGNA	MISS TAN CHIN YEN [SSH]	2,615	67,057	16.799
27 JUL 2023 - 27 JUL 2023	MAGNI	MR TAN POAY SENG [DIR/CEO]	45	116,588	26.9
25 JUL 2023 - 27 JUL 2023	MAGNI	TAN SRI DATO' SERI TAN KOK PING [DIR/CEO]	50	102,800	23.71
24 JUL 2023 - 25 JUL 2023	MAGNI	MR TAN POAY SENG [DIR/CEO]	198	116,543	26.89
21 JUL 2023 - 21 JUL 2023	MAGNI	MR TAN POAY SENG [DIR/CEO]	221	116,345	26.84
26 JUL 2023 - 26 JUL 2023	MAHSING	DATUK SERI LEONG YUET MEI [DIR/CEO]	-193	317	0.013
25 JUL 2023 - 25 JUL 2023	MATRIX	EMPLOYEES PROVIDENT FUND BOARD [SSH]	-3,000	102,951	8.227
24 JUL 2023 - 24 JUL 2023	MATRIX	EMPLOYEES PROVIDENT FUND BOARD [SSH]	-750	105,951	8.467
21 JUL 2023 - 21 JUL 2023	MATRIX	EMPLOYEES PROVIDENT FUND BOARD [SSH]	-2,053	106,701	8.527
20 JUL 2023 - 20 JUL 2023	MATRIX	EMPLOYEES PROVIDENT FUND BOARD [SSH]	-2,650	108,754	8.691
18 JUL 2023 - 18 JUL 2023	MATRIX	EMPLOYEES PROVIDENT FUND BOARD [SSH]	-1,850	111,404	8.903
25 JUL 2023 - 25 JUL 2023	MAXIS	EMPLOYEES PROVIDENT FUND BOARD (EPF BOARD) [SSH]	-62	908,280	11.597
24 JUL 2023 - 24 JUL 2023	MAXIS	EMPLOYEES PROVIDENT FUND BOARD (EPF BOARD) [SSH]	-2,157	909,343	11.611
21 JUL 2023 - 21 JUL 2023	MAXIS	EMPLOYEES PROVIDENT FUND BOARD (EPF BOARD) [SSH]	-2,714	911,499	11.638
20 JUL 2023 - 20 JUL 2023	MAXIS	EMPLOYEES PROVIDENT FUND BOARD (EPF BOARD) [SSH]	-1,468	914,213	11.673
18 JUL 2023 - 18 JUL 2023	MAXIS	EMPLOYEES PROVIDENT FUND BOARD (EPF BOARD) [SSH]	-870	915,681	11.692
26 JUL 2023 - 26 JUL 2023	MAYBANK	AMANAHRAYA TRUSTEES BERHAD - AMANA SAHAM BUMIPUTERA [SSH]	-3,000	3,785,870	31.407
26 JUL 2023 - 26 JUL 2023	MAYBANK	PERMODALAN NASIONAL BERHAD [SSH]	-2,000	834,121	6.92
26 JUL 2023 - 26 JUL 2023	MAYBANK	YAYASAN PELABURAN BUMIPUTERA [SSH]	-2,000	834,121	6.92
25 JUL 2023 - 25 JUL 2023	MAYBANK	EMPLOYEES PROVIDENT FUND BOARD [SSH]	7,387	1,603,927	13.306
25 JUL 2023 - 25 JUL 2023	MAYBANK	AMANAHRAYA TRUSTEES BERHAD - AMANA SAHAM BUMIPUTERA [SSH]	-3,548	3,788,870	31.432
25 JUL 2023 - 25 JUL 2023	MAYBANK	PERMODALAN NASIONAL BERHAD [SSH]	-2,998	836,121	6.936
25 JUL 2023 - 25 JUL 2023	MAYBANK	YAYASAN PELABURAN BUMIPUTERA [SSH]	-2,998</		

Notice Period is 23th July - 29th July 2023

Effective Change Date	Stock Name	Buyer/ Seller Name [Classification]	Bought / (Sold) ['000]	No. of Shares After Trade ['000]	
			Total	Total	% Held
21 JUL 2023 - 21 JUL 2023	MBRIGHT	LEADING VENTURES SDN. BHD. [SSH]	438	1,262,641	53.816
20 JUL 2023 - 20 JUL 2023	MCEMENT	AMANAHRAYA TRUSTEES BERHAD-AMANAH SAHAM BUMIPUTERA [SSH]	-7	67,936	5.185
24 JUL 2023 - 24 JUL 2023	MGRG	DATIN SRI JACQUELINE NGU HIA KEE [SSH]	7,000	7,000	5.102
25 JUL 2023 - 25 JUL 2023	MICROLN	TAN SRI JAGANATH DEREK STEVEN SABAPATHY [DIR/CEO]	-7,000	10,118	0.943
25 JUL 2023 - 25 JUL 2023	MISC	EMPLOYEES PROVIDENT FUND BOARD [SSH]	347	569,756	12.764
20 JUL 2023 - 20 JUL 2023	MISC	EMPLOYEES PROVIDENT FUND BOARD [SSH]	-200	569,409	12.756
18 JUL 2023 - 18 JUL 2023	MISC	EMPLOYEES PROVIDENT FUND BOARD [SSH]	175	569,609	12.761
24 JUL 2023 - 24 JUL 2023	MRCB	LEMBAGA TABUNG HAJI [SSH]	-2,000	253,188	5.667
25 JUL 2023 - 25 JUL 2023	MRDIY	EMPLOYEES PROVIDENT FUND BOARD [SSH]	461	507,283	5.377
28 JUL 2023 - 28 JUL 2023	NATGATE	MR LEE KIM SAN [DIR/CEO]	-19	15,671	0.756
26 JUL 2023 - 26 JUL 2023	NATGATE	MR LEE KIM SAN [DIR/CEO]	-100	15,690	0.757
25 JUL 2023 - 25 JUL 2023	NATGATE	DATO' SERI WONG SIEW HAI [DIR/CEO]	-4	6,080	0.293
24 JUL 2023 - 24 JUL 2023	NESTCON	DATUK IR DR. LIM JEE GIN [DIR/CEO]	-750	363,244	53.256
24 JUL 2023 - 24 JUL 2023	NESTCON	DATUK IR DR. LIM JEE GIN [SSH]	-750	363,244	53.256
20 JUL 2023 - 20 JUL 2023	NESTLE	EMPLOYEES PROVIDENT FUND BOARD [SSH]	25	21,490	9.164
18 JUL 2023 - 18 JUL 2023	NESTLE	EMPLOYEES PROVIDENT FUND BOARD [SSH]	23	21,466	9.154
21 JUL 2023 - 21 JUL 2023	NEXGRAM	TRAVIX DESIGN & RENOVATION SDN BHD [SSH]	-500	64,759	9.981
28 JUL 2023 - 28 JUL 2023	NGGB	DATO' LIM THIAM HUAT [DIR/CEO]	1,750	124,112	14.504
28 JUL 2023 - 28 JUL 2023	NGGB	DATO' LIM THIAM HUAT [SSH]	1,750	124,112	14.504
28 JUL 2023 - 28 JUL 2023	NGGB	MISS LIM KAH YEE [DIR/CEO]	1,750	97,080	11.345
28 JUL 2023 - 28 JUL 2023	NGGB	MISS LIM KAH YEE [SSH]	1,750	97,080	11.345
28 JUL 2023 - 28 JUL 2023	NGGB	MISS LIM KAH YEN [DIR/CEO]	1,750	112,777	13.179
28 JUL 2023 - 28 JUL 2023	NGGB	MISS LIM KAH YEN [SSH]	1,750	112,777	13.179
24 JUL 2023 - 24 JUL 2023	ONEGLOVE	ADA CAPITAL INVESTMENTS LIMITED [SSH]	64,001	192,002	45.071
24 JUL 2023 - 24 JUL 2023	ONEGLOVE	DATO' ASMUNI BIN SUDIN [DIR/CEO]	110	330	0.077
24 JUL 2023 - 24 JUL 2023	ONEGLOVE	MR LOW BOK TEK [DIR/CEO]	64,001	192,002	45.071
24 JUL 2023 - 24 JUL 2023	ONEGLOVE	MR LOW BOK TEK [SSH]	64,001	192,002	45.071
24 JUL 2023 - 24 JUL 2023	ONEGLOVE	MR TEONG LIAN AIK [SSH]	15,078	45,235	10.618
24 JUL 2023 - 24 JUL 2023	ONE-GLOVE-WA	DATO' ASMUNI BIN SUDIN [DIR/CEO]	55	55	0.077
24 JUL 2023 - 24 JUL 2023	ONE-GLOVE-WA	MR LOW BOK TEK [DIR/CEO]	32,000	32,000	45.071
27 JUL 2023 - 28 JUL 2023	OPCOM	DATO' ONG CHOO MENG [SSH]	4,208	121,900	31.743
24 JUL 2023 - 26 JUL 2023	OPCOM	DATO' ONG CHOO MENG [SSH]	5,881	117,692	30.647
25 JUL 2023 - 25 JUL 2023	ORIENT	EMPLOYEE PROVIDENT FUND BOARD [SSH]	-51	54,117	8.724
21 JUL 2023 - 21 JUL 2023	ORIENT	EMPLOYEE PROVIDENT FUND BOARD [SSH]	-100	54,168	8.732
20 JUL 2023 - 20 JUL 2023	ORIENT	EMPLOYEE PROVIDENT FUND BOARD [SSH]	-109	54,268	8.748
18 JUL 2023 - 18 JUL 2023	ORIENT	EMPLOYEE PROVIDENT FUND BOARD [SSH]	-65	54,377	8.765
20 JUL 2023 - 20 JUL 2023	PADINI	EMPLOYEES PROVIDENT FUND BOARD [SSH]	740	34,742	5.281
18 JUL 2023 - 18 JUL 2023	PADINI	EMPLOYEES PROVIDENT FUND BOARD [SSH]	22	34,002	5.168
25 JUL 2023 - 25 JUL 2023	PANAMY	EMPLOYEES PROVIDENT FUND BOARD [SSH]	-8	7,712	12.696
21 JUL 2023 - 21 JUL 2023	PANAMY	EMPLOYEES PROVIDENT FUND BOARD [SSH]	-9	7,720	12.709
20 JUL 2023 - 20 JUL 2023	PANAMY	EMPLOYEES PROVIDENT FUND BOARD [SSH]	-3	7,729	12.724
18 JUL 2023 - 18 JUL 2023	PANAMY	EMPLOYEES PROVIDENT FUND BOARD [SSH]	-2	7,732	12.728
24 JUL 2023 - 24 JUL 2023	PANSAR	HIGHLINE SHIPPING SDN BHD [SSH]	1,007	25,565	5.443
21 JUL 2023 - 21 JUL 2023	PANSAR	HIGHLINE SHIPPING SDN BHD [SSH]	916	24,558	5.23
25 JUL 2023 - 25 JUL 2023	PBBANK	EMPLOYEES PROVIDENT FUND BOARD [SSH]	673	2,938,670	15.14
20 JUL 2023 - 20 JUL 2023	PBBANK	EMPLOYEES PROVIDENT FUND BOARD [SSH]	1,938	2,937,998	15.14
18 JUL 2023 - 18 JUL 2023	PBBANK	EMPLOYEES PROVIDENT FUND BOARD [SSH]	750	2,936,060	15.13
25 JUL 2023 - 25 JUL 2023	PCHEM	EMPLOYEES PROVIDENT FUND BOARD ("EPF BOARD") [SSH]	412	898,464	11.231
24 JUL 2023 - 24 JUL 2023	PCHEM	EMPLOYEES PROVIDENT FUND BOARD ("EPF BOARD") [SSH]	358	898,052	11.226
21 JUL 2023 - 21 JUL 2023	PCHEM	EMPLOYEES PROVIDENT FUND BOARD ("EPF BOARD") [SSH]	1,817	897,725	11.222
20 JUL 2023 - 20 JUL 2023	PCHEM	EMPLOYEES PROVIDENT FUND BOARD ("EPF BOARD") [SSH]	2,164	895,938	11.199
18 JUL 2023 - 18 JUL 2023	PCHEM	EMPLOYEES PROVIDENT FUND BOARD ("EPF BOARD") [SSH]	851	893,775	11.172
17 JUL 2023 - 17 JUL 2023	PCHEM	EMPLOYEES PROVIDENT FUND BOARD ("EPF BOARD") [SSH]	1,000	892,924	11.162
21 JUL 2023 - 21 JUL 2023	PEKAT	MR LOH CHEN YOOK [SSH]	10,000	55,000	8.528
25 JUL 2023 - 25 JUL 2023	PENTA	EMPLOYEES PROVIDENT FUND BOARD [SSH]	84	49,480	6.956
24 JUL 2023 - 24 JUL 2023	PENTA	EMPLOYEES PROVIDENT FUND BOARD [SSH]	534	49,397	6.944
25 JUL 2023 - 25 JUL 2023	PENTA	KUMPULAN WANG PERSARAAN (DIPERBADANK-AN) [SSH]	-47	37,303	5.244
21 JUL 2023 - 21 JUL 2023	PENTA	EMPLOYEES PROVIDENT FUND BOARD [SSH]	229	48,863	6.869
24 JUL 2023 - 24 JUL 2023	PENTA	KUMPULAN WANG PERSARAAN (DIPERBADANK-AN) [SSH]	53	37,350	5.25
20 JUL 2023 - 20 JUL 2023	PENTA	EMPLOYEES PROVIDENT FUND BOARD [SSH]	567	48,633	6.837
21 JUL 2023 - 21 JUL 2023	PENTA	KUMPULAN WANG PERSARAAN (DIPERBADANK-AN) [SSH]	158	37,297	5.243
18 JUL 2023 - 18 JUL 2023	PENTA	EMPLOYEES PROVIDENT FUND BOARD [SSH]	-463	48,066	6.757
01 JUN 2023 - 17 JUL 2023	PERTAMA	DATUK AHMAD NAZRI BIN ABDULLAH [DIR/CEO]	-12	31,163	7.168
01 JUN 2023 - 01 JUN 2023	PERTAMA	DATUK AHMAD NAZRI BIN ABDULLAH [SSH]	-2	21,910	5.056
21 JUL 2023 - 21 JUL 2023	PETDAG	EMPLOYEES PROVIDENT FUND BOARD ("EPF BOARD") [SSH]	-12	123,109	12.392
25 JUL 2023 - 25 JUL 2023	PETGAS	EMPLOYEES PROVIDENT FUND BOARD [SSH]	-118	280,634	14.183
24 JUL 2023 - 24 JUL 2023	PETGAS	EMPLOYEES PROVIDENT FUND BOARD [SSH]	-58	280,752	14.189
21 JUL 2023 - 21 JUL 2023	PETGAS	EMPLOYEES PROVIDENT FUND BOARD [SSH]	-77	280,810	14.191
20 JUL 2023 - 20 JUL 2023	PETGAS	EMPLOYEES PROVIDENT FUND BOARD [SSH]	156	280,887	14.195
21 JUL 2023 - 21 JUL 2023	PETGAS	KUMPULAN WANG PERSARAAN (DIPERBADANKAN) ("KWAP") [SSH]	-62	198,676	10.041
18 JUL 2023 - 18 JUL 2023	PETGAS	EMPLOYEES PROVIDENT FUND BOARD [SSH]	68	280,732	14.187
24 JUL 2023 - 24 JUL 2023	PHARMA	EAST NAVIGATORS CAPITAL LTD [SSH]	85,714	85,714	5.947
26 JUL 2023 - 26 JUL 2023	RJBUMI	PUAN HAFIDAH BINTI PAWANCHIK [SSH]	-90	5,098	6.217

Notice Period is 23th July - 29th July 2023

Effective Change Date	Stock Name	Buyer/ Seller Name [Classification]	Bought / (Sold) ['000]	No. of Shares After Trade ['000]	
			Total	Total	% Held
25 JUL 2023 - 25 JUL 2023	POHUAT	MR TAY KIM HUAT [DIR/CEO]	10	70,159	26.478
25 JUL 2023 - 25 JUL 2023	POHUAT	MR TAY KIM HUAT [SSH]	10	70,159	26.478
25 JUL 2023 - 25 JUL 2023	PPB	EMPLOYEES PROVIDENT FUND BOARD [SSH]	70	146,707	10.313
24 JUL 2023 - 24 JUL 2023	PPB	EMPLOYEES PROVIDENT FUND BOARD [SSH]	341	146,637	10.308
20 JUL 2023 - 20 JUL 2023	PPB	EMPLOYEES PROVIDENT FUND BOARD [SSH]	85	146,296	10.284
18 JUL 2023 - 18 JUL 2023	PPB	EMPLOYEES PROVIDENT FUND BOARD [SSH]	34	146,211	10.278
25 JUL 2023 - 25 JUL 2023	PWF	DATIN LAW HOI LEAN [DIR/CEO]	-900	112,656	51
25 JUL 2023 - 25 JUL 2023	PWF	DATIN LAW HOI LEAN [SSH]	-900	112,656	51
25 JUL 2023 - 25 JUL 2023	PWF	DATO' SIAH GIM ENG [DIR/CEO]	-900	112,656	50.99
25 JUL 2023 - 25 JUL 2023	PWF	DATO' SIAH GIM ENG [SSH]	-900	112,656	50.99
25 JUL 2023 - 25 JUL 2023	PWF	MISS OOI KI WEI [DIR/CEO]	-1,100	1,552	0.7
25 JUL 2023 - 25 JUL 2023	RHBBANK	EMPLOYEES PROVIDENT FUND BOARD [SSH]	2,450	1,748,576	40.794
26 JUL 2023 - 26 JUL 2023	RHBBANK	KUMPULAN WANG PERSARAAN (DIPERBADANK-AN) [SSH]	921	253,896	5.923
24 JUL 2023 - 24 JUL 2023	RHBBANK	EMPLOYEES PROVIDENT FUND BOARD [SSH]	2,881	1,746,126	40.737
21 JUL 2023 - 21 JUL 2023	RHBBANK	EMPLOYEES PROVIDENT FUND BOARD [SSH]	404	1,743,246	40.67
20 JUL 2023 - 20 JUL 2023	RHBBANK	EMPLOYEES PROVIDENT FUND BOARD [SSH]	373	1,742,842	40.66
21 JUL 2023 - 21 JUL 2023	RHBBANK	KUMPULAN WANG PERSARAAN (DIPERBADANK-AN) [SSH]	-61	252,975	5.901
18 JUL 2023 - 18 JUL 2023	RHBBANK	EMPLOYEES PROVIDENT FUND BOARD [SSH]	664	1,742,469	40.652
25 JUL 2023 - 25 JUL 2023	SAPIND	MR KOH KOK HOI [SSH]	1	6,508	8.942
24 JUL 2023 - 24 JUL 2023	SAPIND	MR KOH KOK HOI [SSH]	1	6,507	8.941
21 JUL 2023 - 21 JUL 2023	SAPIND	MR KOH KOK HOI [SSH]	12	6,506	8.939
20 JUL 2023 - 20 JUL 2023	SAPIND	MR KOH KOK HOI [SSH]	4	6,494	8.923
27 JUL 2023 - 27 JUL 2023	SAUDEE	MR TAY BEN SENG BENSON [DIR/CEO]	-304	2,180	0.191
26 JUL 2023 - 26 JUL 2023	SAUDEE	MR TAY BEN SENG BENSON [DIR/CEO]	-86	2,484	0.218
25 JUL 2023 - 25 JUL 2023	SAUDEE	MR TAY BEN SENG BENSON [DIR/CEO]	-2,660	2,569	0.225
24 JUL 2023 - 24 JUL 2023	SAUDEE	MR TAY BEN SENG BENSON [DIR/CEO]	-143	5,229	0.459
24 JUL 2023 - 26 JUL 2023	SCIENTX	MR LIM PENG CHEONG [DIR/CEO]	405	845,498	54.511
24 JUL 2023 - 26 JUL 2023	SCIENTX	MR LIM PENG CHEONG [SSH]	405	839,481	54.123
24 JUL 2023 - 26 JUL 2023	SCIENTX	MR LIM PENG JIN [DIR/CEO]	405	891,803	57.496
24 JUL 2023 - 26 JUL 2023	SCIENTX	MR LIM PENG JIN [SSH]	405	891,711	57.49
24 JUL 2023 - 26 JUL 2023	SCIENTX	SCIENTEX INFINITY SDN BHD [SSH]	405	707,487	45.613
21 JUL 2023 - 21 JUL 2023	SCOMIES	SCOMI GROUP BHD [SSH]	-18,182	39,026	8.333
24 JUL 2023 - 24 JUL 2023	SERNKOU	MR LOW PENG SIAN @ CHUA PENG SIAN [DIR/CEO]	1,100	309,165	28.677
24 JUL 2023 - 24 JUL 2023	SERNKOU	MR LOW PENG SIAN @ CHUA PENG SIAN [SSH]	1,100	309,165	28.677
20 JUL 2023 - 20 JUL 2023	SIAB	DATO DR CHANG LIK SEAN [SSH]	1,000	56084	11.454
20 JUL 2023 - 20 JUL 2023	SIME	EMPLOYEES PROVIDENT FUND BOARD [SSH]	1,820	947,526	13.902
25 JUL 2023 - 25 JUL 2023	SIMEPLT	EMPLOYEES PROVIDENT FUND BOARD [SSH]	157	1,013,110	14.649
24 JUL 2023 - 24 JUL 2023	SIMEPLT	EMPLOYEES PROVIDENT FUND BOARD [SSH]	1,046	1,012,953	14.647
21 JUL 2023 - 21 JUL 2023	SIMEPLT	EMPLOYEES PROVIDENT FUND BOARD [SSH]	395	1,011,907	14.632
24 JUL 2023 - 24 JUL 2023	SIMEPLT	KUMPULAN WANG PERSARAAN (DIPERBADANK-AN) [SSH]	-751	457,232	6.611
18 JUL 2023 - 18 JUL 2023	SIMEPLT	EMPLOYEES PROVIDENT FUND BOARD [SSH]	400	1,011,512	14.626
20 JUL 2023 - 20 JUL 2023	SIMEPLT	KUMPULAN WANG PERSARAAN (DIPERBADANK-AN) [SSH]	-1,493	457,983	6.622
27 JUL 2023 - 27 JUL 2023	SIMEPROP	KUMPULAN WANG PERSARAAN (DIPERBADANK-AN) [SSH]	4,460	439,010	6.455
25 JUL 2023 - 25 JUL 2023	SIMEPROP	EMPLOYEES PROVIDENT FUND BOARD [SSH]	-700	595,629	8.758
26 JUL 2023 - 26 JUL 2023	SIMEPROP	KUMPULAN WANG PERSARAAN (DIPERBADANK-AN) [SSH]	2,000	434,550	6.39
21 JUL 2023 - 21 JUL 2023	SIMEPROP	EMPLOYEES PROVIDENT FUND BOARD [SSH]	-1,200	596,329	8.769
20 JUL 2023 - 20 JUL 2023	SIMEPROP	EMPLOYEES PROVIDENT FUND BOARD [SSH]	-4,000	597,529	8.786
18 JUL 2023 - 18 JUL 2023	SIMEPROP	EMPLOYEES PROVIDENT FUND BOARD [SSH]	-500	601,529	8.845
27 JUL 2023 - 27 JUL 2023	SKPRES	KUMPULAN WANG PERSARAAN (DIPERBADANK-AN) [SSH]	15	120,629	7.721
25 JUL 2023 - 25 JUL 2023	SKPRES	EMPLOYEES PROVIDENT FUND BOARD [SSH]	1,356	124,137	7.945
26 JUL 2023 - 26 JUL 2023	SKPRES	KUMPULAN WANG PERSARAAN (DIPERBADANK-AN) [SSH]	216	120,614	7.72
24 JUL 2023 - 24 JUL 2023	SKPRES	EMPLOYEES PROVIDENT FUND BOARD [SSH]	287	122,781	7.859
25 JUL 2023 - 25 JUL 2023	SKPRES	KUMPULAN WANG PERSARAAN (DIPERBADANK-AN) [SSH]	390	120,398	7.706
21 JUL 2023 - 21 JUL 2023	SKPRES	EMPLOYEES PROVIDENT FUND BOARD [SSH]	196	122,494	7.84
24 JUL 2023 - 24 JUL 2023	SKPRES	KUMPULAN WANG PERSARAAN (DIPERBADANK-AN) [SSH]	175	120,009	7.681
20 JUL 2023 - 20 JUL 2023	SKPRES	EMPLOYEES PROVIDENT FUND BOARD [SSH]	1,419	122,299	7.828
21 JUL 2023 - 21 JUL 2023	SKPRES	KUMPULAN WANG PERSARAAN (DIPERBADANK-AN) [SSH]	283	119,834	7.67
18 JUL 2023 - 18 JUL 2023	SKPRES	EMPLOYEES PROVIDENT FUND BOARD [SSH]	2,132	120,880	7.737
24 JUL 2023 - 24 JUL 2023	SLVEST	DATIN SERI WONG MEE LENG [SSH]	-5,776	60,250	9.024
24 JUL 2023 - 24 JUL 2023	SLVEST	DATUK SERI CHIAU BENG TEIK [SSH]	-5,776	69,637	10.43
24 JUL 2023 - 24 JUL 2023	SLVEST	DIVINE INVENTIONS SDN. BHD. [SSH]	-5,776	60,250	9.024
24 JUL 2023 - 24 JUL 2023	SLVEST	MR CHIAU HAW CHOON [SSH]	-5,776	60,250	9.024
24 JUL 2023 - 24 JUL 2023	SLVEST	PP CHIN HIN REALTY SDN. BHD. [SSH]	-5,776	60,250	9.024
20 JUL 2023 - 21 JUL 2023	SLVEST	DATIN SERI WONG MEE LENG [SSH]	-3,958	66,026	9.891
20 JUL 2023 - 21 JUL 2023	SLVEST	DATUK SERI CHIAU BENG TEIK [SSH]	-3,958	75,413	11.297
20 JUL 2023 - 21 JUL 2023	SLVEST	DIVINE INVENTIONS SDN. BHD. [SSH]	-3,958	66,026	9.891
20 JUL 2023 - 21 JUL 2023	SLVEST	MR CHIAU HAW CHOON [SSH]	-4,518	66,026	9.891
20 JUL 2023 - 21 JUL 2023	SLVEST	PP CHIN HIN REALTY SDN. BHD. [SSH]	-3,958	66,026	9.891
26 JUL 2023 - 27 JUL 2023	SMILE	DATIN WONG CHIEN YUE [DIR/CEO]	12	135,253	54.005
26 JUL 2023 - 27 JUL 2023	SMILE	DATIN WONG CHIEN YUE [SSH]	12		

Notice Period is 23th July - 29th July 2023

Effective Change Date	Stock Name	Buyer/ Seller Name [Classification]	Bought / (Sold) ['000]	No. of Shares After Trade ['000]	
			Total	Total	% Held
21 JUL 2023 - 24 JUL 2023	SPRITZER	DATIN CHUA SHOK TIM @ CHUA SIOK HOON [SSH]	73	161928	50.717
21 JUL 2023 - 24 JUL 2023	SPRITZER	DATO LIM A HENG @ LIM KOK CHEONG [DIR/CEO]	73	161928	50.718
21 JUL 2023 - 24 JUL 2023	SPRITZER	DATO LIM A HENG @ LIM KOK CHEONG [SSH]	73	161928	50.718
27 JUL 2023 - 27 JUL 2023	SPSETIA	KUMPULAN WANG PERSARAAN (DIPERBADANKAN) [SSH]	1,643	405814	9.946
25 JUL 2023 - 25 JUL 2023	SPSETIA	EMPLOYEES PROVIDENT FUND BOARD [SSH]	-4,131	200264	4.908
26 JUL 2023 - 26 JUL 2023	SPSETIA	KUMPULAN WANG PERSARAAN (DIPERBADANKAN) [SSH]	1,429	404171	9.905
24 JUL 2023 - 24 JUL 2023	SPSETIA	EMPLOYEES PROVIDENT FUND BOARD [SSH]	348	204394	5.009
25 JUL 2023 - 25 JUL 2023	SPSETIA	KUMPULAN WANG PERSARAAN (DIPERBADANKAN) [SSH]	714	402742	9.87
21 JUL 2023 - 21 JUL 2023	SPSETIA	EMPLOYEES PROVIDENT FUND BOARD [SSH]	-5,718	204046	5.001
24 JUL 2023 - 24 JUL 2023	SPSETIA	KUMPULAN WANG PERSARAAN (DIPERBADANKAN) [SSH]	1,154	402028	9.853
20 JUL 2023 - 20 JUL 2023	SPSETIA	EMPLOYEES PROVIDENT FUND BOARD [SSH]	-6,000	209765	5.141
21 JUL 2023 - 21 JUL 2023	SPSETIA	KUMPULAN WANG PERSARAAN (DIPERBADANKAN) [SSH]	370	400874	9.825
18 JUL 2023 - 18 JUL 2023	SPSETIA	EMPLOYEES PROVIDENT FUND BOARD [SSH]	108	215765	5.288
27 JUL 2023 - 27 JUL 2023	SRIDGE	DATO' KHOO YIK CHOU [DIR/CEO]	42	11415	5.494
27 JUL 2023 - 27 JUL 2023	SRIDGE	DATO' KHOO YIK CHOU [DIR/CEO]	42	11415	5.494
27 JUL 2023 - 27 JUL 2023	SRIDGE	DATO' KHOO YIK CHOU [SSH]	42	11415	5.494
27 JUL 2023 - 27 JUL 2023	SRIDGE	DATO' KHOO YIK CHOU [SSH]	42	11415	5.494
26 JUL 2023 - 26 JUL 2023	SRIDGE	DATO' KHOO YIK CHOU [DIR/CEO]	39	11373	5.474
26 JUL 2023 - 26 JUL 2023	SRIDGE	DATO' KHOO YIK CHOU [SSH]	39	11373	5.474
20 JUL 2023 - 20 JUL 2023	SRIDGE	MR TAN WIN SEN [DIR/CEO]	16	65	0.031
21 JUL 2023 - 21 JUL 2023	SSB8	TAN SRI DATUK SERI GAN YU CHAI [DIR/CEO]	104	1236148	54.394
21 JUL 2023 - 21 JUL 2023	SSB8	TAN SRI DATUK SERI GAN YU CHAI [SSH]	104	1236148	54.394
28 JUL 2023 - 28 JUL 2023	SUCCESS	MISS TAN CHUNG CHIAH [DIR/CEO]	1,298	1298	2.69
24 JUL 2023 - 26 JUL 2023	SUCCESS	MISS TAN CHUNG CHIAH [DIR/CEO]	1,478	4874	2.124
25 JUL 2023 - 25 JUL 2023	SUNMOW	MR KONG CHIONG MIEW [DIR/CEO]	-1,000	102815	43.949
25 JUL 2023 - 25 JUL 2023	SUNMOW	MR KONG CHIONG MIEW [SSH]	-1,000	102815	43.949
25 JUL 2023 - 25 JUL 2023	SUNMOW	MR LEE YEW CHEN [DIR/CEO]	1,000	26194	11.197
25 JUL 2023 - 25 JUL 2023	SUNMOW	MR LEE YEW CHEN [SSH]	1,000	26194	11.197
24 JUL 2023 - 24 JUL 2023	SUNREIT	EMPLOYEES PROVIDENT FUND BOARD [SSH]	500	525153	15.334
20 JUL 2023 - 20 JUL 2023	SUNWAY	EMPLOYEES PROVIDENT FUND BOARD [SSH]	-575	428583	8.65
21 JUL 2023 - 21 JUL 2023	SUPERLN	MR LIN PO-CHIH [DIR/CEO]	20	4494	2.832
25 JUL 2023 - 25 JUL 2023	TAKAFUL	EMPLOYEES PROVIDENT FUND BOARD [SSH]	221	107619	12.853
24 JUL 2023 - 24 JUL 2023	TAKAFUL	EMPLOYEES PROVIDENT FUND BOARD [SSH]	97	107398	12.827
21 JUL 2023 - 21 JUL 2023	TAKAFUL	EMPLOYEES PROVIDENT FUND BOARD [SSH]	195	107302	12.815
20 JUL 2023 - 20 JUL 2023	TAKAFUL	EMPLOYEES PROVIDENT FUND BOARD [SSH]	34	107107	12.792
18 JUL 2023 - 18 JUL 2023	TAKAFUL	EMPLOYEES PROVIDENT FUND BOARD [SSH]	108	107073	12.788
25 JUL 2023 - 25 JUL 2023	TENAGA	EMPLOYEES PROVIDENT FUND BOARD [SSH]	-6,608	872944	15.08
24 JUL 2023 - 24 JUL 2023	TENAGA	EMPLOYEES PROVIDENT FUND BOARD [SSH]	-5,159	879552	15.2
25 JUL 2023 - 25 JUL 2023	TENAGA	KUMPULAN WANG PERSARAAN (DIPERBADANKAN) [SSH]	265	431531	7.45
21 JUL 2023 - 21 JUL 2023	TENAGA	EMPLOYEES PROVIDENT FUND BOARD [SSH]	-2,301	884711	15.29
24 JUL 2023 - 24 JUL 2023	TENAGA	KUMPULAN WANG PERSARAAN (DIPERBADANKAN) [SSH]	249	431267	7.45
20 JUL 2023 - 20 JUL 2023	TENAGA	EMPLOYEES PROVIDENT FUND BOARD [SSH]	-3,163	887012	15.33
18 JUL 2023 - 18 JUL 2023	TENAGA	EMPLOYEES PROVIDENT FUND BOARD [SSH]	-4,322	890175	15.38
25 JUL 2023 - 25 JUL 2023	TIMECOM	EMPLOYEES PROVIDENT FUND BOARD [SSH]	819	140274	7.63
24 JUL 2023 - 24 JUL 2023	TIMECOM	EMPLOYEES PROVIDENT FUND BOARD [SSH]	2,750	139456	7.585
21 JUL 2023 - 21 JUL 2023	TIMECOM	EMPLOYEES PROVIDENT FUND BOARD [SSH]	10	136706	7.435
24 JUL 2023 - 24 JUL 2023	TIMECOM	KUMPULAN WANG PERSARAAN (DIPERBADANKAN) ("KWAP") [SSH]	-413	114742	6.241
20 JUL 2023 - 20 JUL 2023	TIMECOM	EMPLOYEES PROVIDENT FUND BOARD [SSH]	774	136696	7.435
18 JUL 2023 - 18 JUL 2023	TIMECOM	EMPLOYEES PROVIDENT FUND BOARD [SSH]	341	135921	7.393
25 JUL 2023 - 25 JUL 2023	TM	EMPLOYEE PROVIDENT FUND BOARD (EPF BOARD) [SSH]	1,221	609996	15.96
24 JUL 2023 - 24 JUL 2023	TM	EMPLOYEE PROVIDENT FUND BOARD (EPF BOARD) [SSH]	793	608775	15.928
21 JUL 2023 - 21 JUL 2023	TM	EMPLOYEE PROVIDENT FUND BOARD (EPF BOARD) [SSH]	1,955	607982	15.908
20 JUL 2023 - 20 JUL 2023	TM	EMPLOYEE PROVIDENT FUND BOARD (EPF BOARD) [SSH]	314	606027	15.856
18 JUL 2023 - 18 JUL 2023	TM	EMPLOYEE PROVIDENT FUND BOARD (EPF BOARD) [SSH]	181	605714	15.848
26 JUL 2023 - 26 JUL 2023	TOCEAN	ENCIK MUHAMMAD HARIZ BIN MOHD NADZMI [SSH]	-63	16020	24.61
26 JUL 2023 - 26 JUL 2023	TOCEAN	IBRONI SDN. BHD. [SSH]	-63	16020	24.61
26 JUL 2023 - 26 JUL 2023	TOCEAN	KUMPULAN KENDERAAN MALAYSIA BERHAD [SSH]	-63	16020	24.609
26 JUL 2023 - 26 JUL 2023	TOCEAN	NADI CORPORATION SDN. BHD. [SSH]	-63	16020	24.61
26 JUL 2023 - 26 JUL 2023	TOCEAN	NADICORP HOLDINGS SDN. BHD. [SSH]	-63	16020	24.61

Notice Period is 23th July - 29th July 2023

Effective Change Date	Stock Name	Buyer/ Seller Name [Classification]	Bought / (Sold) ['000]	No. of Shares After Trade ['000]	
			Total	Total	% Held
26 JUL 2023 - 26 JUL 2023	TOCEAN	TRISILCO EQUITY SDN. BHD. [SSH]	-63	16020	24.61
25 JUL 2023 - 25 JUL 2023	TOCEAN	ENCIK MUHAMMAD HARIZ BIN MOHD NADZMI [SSH]	-41	16083	24.706
25 JUL 2023 - 25 JUL 2023	TOCEAN	IBRONI SDN. BHD. [SSH]	-41	16083	24.706
25 JUL 2023 - 25 JUL 2023	TOCEAN	KUMPULAN KENDERAAN MALAYSIA BERHAD [SSH]	-41	16083	24.706
25 JUL 2023 - 25 JUL 2023	TOCEAN	NADI CORPORATION SDN. BHD. [SSH]	-41	16083	24.706
25 JUL 2023 - 25 JUL 2023	TOCEAN	NADICORP HOLDINGS SDN. BHD. [SSH]	-41	16083	24.706
25 JUL 2023 - 25 JUL 2023	TOCEAN	TRISILCO EQUITY SDN. BHD. [SSH]	-41	16083	24.706
24 JUL 2023 - 24 JUL 2023	TOCEAN	ENCIK MUHAMMAD HARIZ BIN MOHD NADZMI [SSH]	-13	16124	24.769
24 JUL 2023 - 24 JUL 2023	TOCEAN	IBRONI SDN. BHD. [SSH]	-13	16124	24.769
24 JUL 2023 - 24 JUL 2023	TOCEAN	KUMPULAN KENDERAAN MALAYSIA BERHAD [SSH]	-13	16124	24.768
24 JUL 2023 - 24 JUL 2023	TOCEAN	NADI CORPORATION SDN. BHD. [SSH]	-13	16124	24.769
24 JUL 2023 - 24 JUL 2023	TOCEAN	NADICORP HOLDINGS SDN. BHD. [SSH]	-13	16124	24.769
24 JUL 2023 - 24 JUL 2023	TOCEAN	TRISILCO EQUITY SDN. BHD. [SSH]	-13	16124	24.769
20 JUL 2023 - 20 JUL 2023	TOCEAN	DATO SYED BUDRIZ PUTRA JAMALULLAIL [SSH]	1,000	21000	32.259
20 JUL 2023 - 20 JUL 2023	TOCEAN	DIGITAL PLANNERS SDN BHD [SSH]	1,000	21000	32.259
20 JUL 2023 - 20 JUL 2023	TOCEAN	ENCIK MUHAMMAD HARIZ BIN MOHD NADZMI [SSH]	-1,000	16136	24.788
20 JUL 2023 - 20 JUL 2023	TOCEAN	ENFRASYS CONSULTING SDN BHD [SSH]	1,000	21000	32.259
20 JUL 2023 - 20 JUL 2023	TOCEAN	IBRONI SDN. BHD. [SSH]	-1,000	16136	24.788
20 JUL 2023 - 20 JUL 2023	TOCEAN	KUMPULAN KENDERAAN MALAYSIA BERHAD [SSH]	-1,000	16136	24.787
20 JUL 2023 - 20 JUL 2023	TOCEAN	NADI CORPORATION SDN. BHD. [SSH]	-1,000	16136	24.788
20 JUL 2023 - 20 JUL 2023	TOCEAN	NADICORP HOLDINGS SDN. BHD. [SSH]	-1,000	16136	24.788
20 JUL 2023 - 20 JUL 2023	TOCEAN	SULTAN IDRIS SHAH [SSH]	1,000	21000	32.259
20 JUL 2023 - 20 JUL 2023	TOCEAN	TRISILCO EQUITY SDN. BHD. [SSH]	-1,000	16136	24.788
25 JUL 2023 - 25 JUL 2023	UEMS	URUSHARTA JAMA'AH SDN BHD [SSH]	-4,831	303080	5.992
24 JUL 2023 - 24 JUL 2023	UEMS	URUSHARTA JAMA'AH SDN BHD [SSH]	-5,436	307911	6.087
21 JUL 2023 - 21 JUL 2023	UEMS	URUSHARTA JAMA'AH SDN BHD [SSH]	-1,236	313347	6.194
20 JUL 2023 - 20 JUL 2023	UEMS	URUSHARTA JAMA'AH SDN BHD [SSH]	-3,600	314583	6.219
25 JUL 2023 - 25 JUL 2023	UMW	EMPLOYEES PROVIDENT FUND BOARD [SSH]	275	107046	9.163
24 JUL 2023 - 24 JUL 2023	UMW	EMPLOYEES PROVIDENT FUND BOARD [SSH]	-19	106771	9.139
21 JUL 2023 - 21 JUL 2023	UMW	EMPLOYEES PROVIDENT FUND BOARD [SSH]	-224	106790	9.141
20 JUL 2023 - 20 JUL 2023	UMW	EMPLOYEES PROVIDENT FUND BOARD [SSH]	442	107014	9.16
18 JUL 2023 - 18 JUL 2023	UMW	EMPLOYEES PROVIDENT FUND BOARD [SSH]	-22	106572	9.122
21 JUL 2023 - 21 JUL 2023	UOAEV	EMPLOYEES PROVIDENT FUND BOARD ("EPF BOARD") [SSH]	190	265664	10.929
20 JUL 2023 - 20 JUL 2023	UOAEV	EMPLOYEES PROVIDENT FUND BOARD ("EPF BOARD") [SSH]	918	265474	10.921
25 JUL 2023 - 25 JUL 2023	UTDPLT	EMPLOYEES PROVIDENT FUND BOARD [SSH]	-53	30071	7.25
24 JUL 2023 - 24 JUL 2023	UTDPLT	EMPLOYEES PROVIDENT FUND BOARD [SSH]	11	30124	7.263
21 JUL 2023 - 21 JUL 2023	UTDPLT	EMPLOYEES PROVIDENT FUND BOARD [SSH]	-165	30113	7.26
20 JUL 2023 - 20 JUL 2023	UTDPLT	EMPLOYEES PROVIDENT FUND BOARD [SSH]	-56	30277	7.3
25 JUL 2023 - 25 JUL 2023	UWC	EMPLOYEES PROVIDENT FUND BOARD [SSH]	166	77203	7.008
24 JUL 2023 - 24 JUL 2023	UWC	EMPLOYEES PROVIDENT FUND BOARD [SSH]	131	77037	6.993
18 JUL 2023 - 18 JUL 2023	UWC	EMPLOYEES PROVIDENT FUND BOARD [SSH]	234	76905	6.981
18 JUL 2023 - 18 JUL 2023	VS	EMPLOYEES PROVIDENT FUND BOARD [SSH]	-300	250781	6.527
27 JUL 2023 - 27 JUL 2023	VS-WB	DATUK BEH KIM LING [DIR/CEO]	-1,000	85316	11.212
24 JUL 2023 - 24 JUL 2023	VS-WB	DATUK BEH KIM LING [DIR/CEO]	-1,000	86316	11.343
26 JUL 2023 - 26 JUL 2023	WEG-MANS-WC	MR KEH WEE KIET [DIR/CEO]	-500	42950	31.234
20 JUL 2023 - 20 JUL 2023	WEG-MANS-WC	MR KEH WEE KIET [DIR/CEO]	-175	43450	31.598
26 JUL 2023 - 26 JUL 2023	WIDAD	TAN SRI MUHAMMAD IKMAL OPAT BIN ABDULLAH [SSH]	1,247	1213876	40.04
21 JUL 2023 - 21 JUL 2023	WIDAD	TAN SRI MUHAMMAD IKMAL OPAT BIN ABDULLAH [SSH]	-3,738	1212629	40.269
27 JUL 2023 - 27 JUL 2023	WOODLAN	DATO' SERI MUN WENG SUM [DIR/CEO]	3	7130	17.825
27 JUL 2023 - 27 JUL 2023	WOODLAN	DATO' SERI MUN WENG SUM [SSH]	3	7130	17.825
25 JUL 2023 - 26 JUL 2023	WOODLAN	DATO' SERI MUN WENG SUM [DIR/CEO]	0.7	7128	17.818
25 JUL 2023 - 26 JUL 2023	WOODLAN	DATO' SERI MUN WENG SUM [SSH]	0.7	7128	17.818
28 JUL 2023 - 28 JUL 2023	YENHER	MADAM THEOH MOOI TENG [DIR/CEO]	65	2667	0.889
28 JUL 2023 - 28 JUL 2023	YENHER	MR CHENG MOOH TAT [DIR/CEO]	65	157922	52.641
24 JUL 2023 - 25 JUL 2023	YENHER	MADAM THEOH MOOI TENG [DIR/CEO]	134	2602	0.867
24 JUL 2023 - 25 JUL 2023	YENHER	MR CHENG MOOH TAT [DIR/CEO]	134	157857	52.619
25 JUL 2023 - 25 JUL 2023	YINSON	EMPLOYEES PROVIDENT FUND BOARD [SSH]	-11,414	472416	16.253
26 JUL 2023 - 26 JUL 2023	YINSON	KUMPULAN WANG PERSARAAN (DIPERBADANKAN) [SSH]	-341	190532	6.555
25 JUL 2023 - 25 JUL 2023	YINSON	KUMPULAN WANG PERSARAAN (DIPERBADANKAN) [SSH]	1,306	190873	6.566
24 JUL 2023 - 24 JUL 2023	YTL	UBS GROUP AG [SSH]	-3,662	575250	5.247

Disclaimer: The information in Insider Activity is extracted from www.shareinvestor.com/fundamental/insider_trades. The information on this page is provided as a service to readers. It does not constitute financial advice and/or any investment recommendations. We assume no liability for damages resulting from or arising out of the use of such information. Whilst every effort is made to ensure accuracy, the information presented is not the official record of shareholder filings. Readers are advised to read the original filings on the Bursa Malaysia website at www.bursamalaysia.com

SHAREINVESTOR MARKET DATA PLATFORMS



SHAREINVESTOR STATION
Advanced Charting Software
(8 Markets)



SHAREINVESTOR WEBPRO
Browser-Based Market Data
Analytics Platform



BURSASTATION
Advanced Charting Software
(Bursa Malaysia Only)



Affin Bank Berhad (AFFIN) wishes to announce that it has on 1 August 2023, made an offer of new ordinary

shares in the share capital of Affin to eligible employees of the Company and its subsidiaries (excluding dormant subsidiaries) under Affin's Group Share Grant Scheme.

Subject to the terms and conditions of the by-laws governing the Share Grant Scheme, an eligible employee who accepts the offer shall be entitled to receive new Shares without further payment upon meeting the vesting conditions (which shall include performance targets) as determined by the committee governing the Share Grant Scheme.



The Board of Directors of **Cypark Resources Berhad (CYPARK)** is pleased to announce that the Company has on 1 August 2023 signed a Memorandum Of Business Exploration with RGFC Ventures Sdn Bhd to participate and explore opportunities relating to the development of Renewable Energy power plants, initiatives for solar energy homes particularly through Net-Energy-Metering programmes, including

residential installations, within the State of Selangor, including but not limited to photovoltaic solar power plants, and waste-to-energy power plants. Cypark Resources Berhad and RGFC Ventures Sdn Bhd are also desirous to explore any engineering procurement, construction opportunities within the Environment, Social and Governance essentials within the State of Selangor and to collaborate the execution of the project(s) related to:- i. photovoltaic solar power plants; ii. waste-to-energy power plants; and/or iii. residential renewable energy installations whereby CRB and RGFC will utilise their expertise to collaborate together ensuring the execution of the Projects. CRB and RGFC have agreed to establish a formation of an incorporated Joint Venture Company with 80% shares allocated to CRB and the remaining 20% to RGFC. The JVCO is a special purpose vehicle for both parties to implement the Projects. The Memorandum Of Business Exploration comes into effect on the date of execution and will remain in effect for a period of two years.



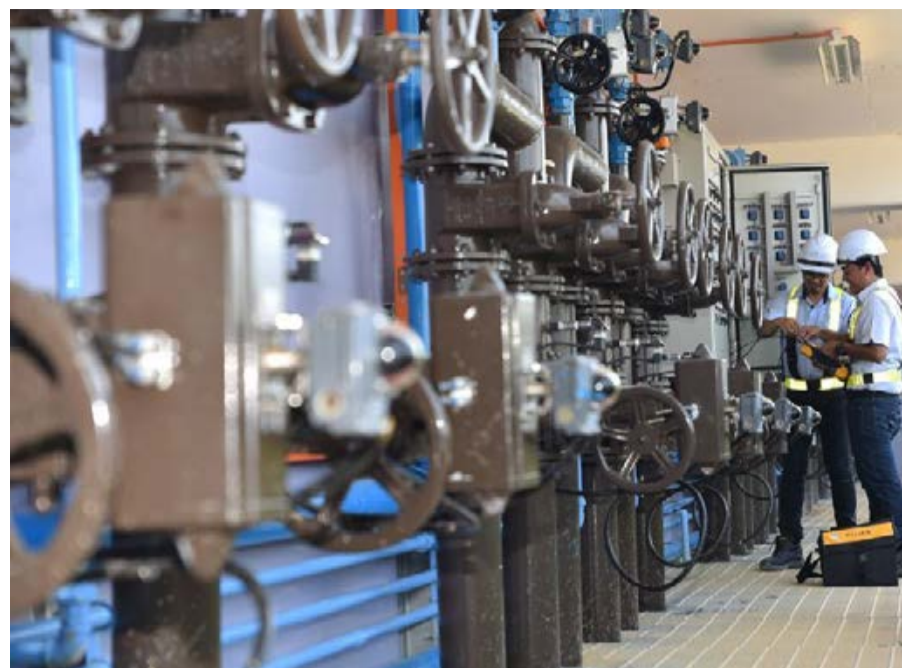
We refer to the financial results for the first half year ended 30 June 2023 released by Heineken N.V. on 31 July 2023 which encapsulates, among others, the following commentary: “In Malaysia, beer volume decreased organically by a mid-single-digit driven by a weak consumer environment. We continued to outperform the market and Heineken® leads in premium growth, up by a double-digit.”

The Board wishes to inform that **HEINEKEN Malaysia Berhad (HEIM)** has scheduled to release its financial report for the second quarter and six months ended 30 June 2023 on Tuesday, 15 August 2023 in accordance with Paragraph 9.22 of the Main Market Listing Requirements of Bursa Malaysia Securities Berhad. Details on the Company’s performance for the said period will be reported thereon. Heineken N.V. is a corporation incorporated in the Netherlands and its shares are traded on the Euronext in Amsterdam. It indirectly holds 51% equity interest in HEINEKEN Malaysia via its wholly-owned subsidiary GAPL Pte Ltd.



Key Highlights:

Revenue growth 6.3% • Net revenue (beia) 6.6% organic growth; per hectolitre 12.7% • Beer volume organic growth -5.6%; Heineken® volume 1.7% growth (excluding Russia 3.7%) • Operating profit growth -22.2%; operating profit (beia) organic growth -8.8% • Net profit growth -8.6%; net profit (beia) organic growth -11.6% • Diluted EPS €2.04; diluted EPS (beia) €2.03 • FY 2023 outlook updated. Operating profit (beia) stable to mid-single-digit organic growth.



Salcon Berhad (SALCON) is pleased to announce that Envitech Sdn Bhd, a 60%-owned subsidiary of Salcon Engineering Berhad, which in turn is a wholly-owned subsidiary of the Company, had on 1 August 2023 accepted the Letter of Award dated 27 July 2023 issued by JURUTERA MTC SDN BHD for the following project:-

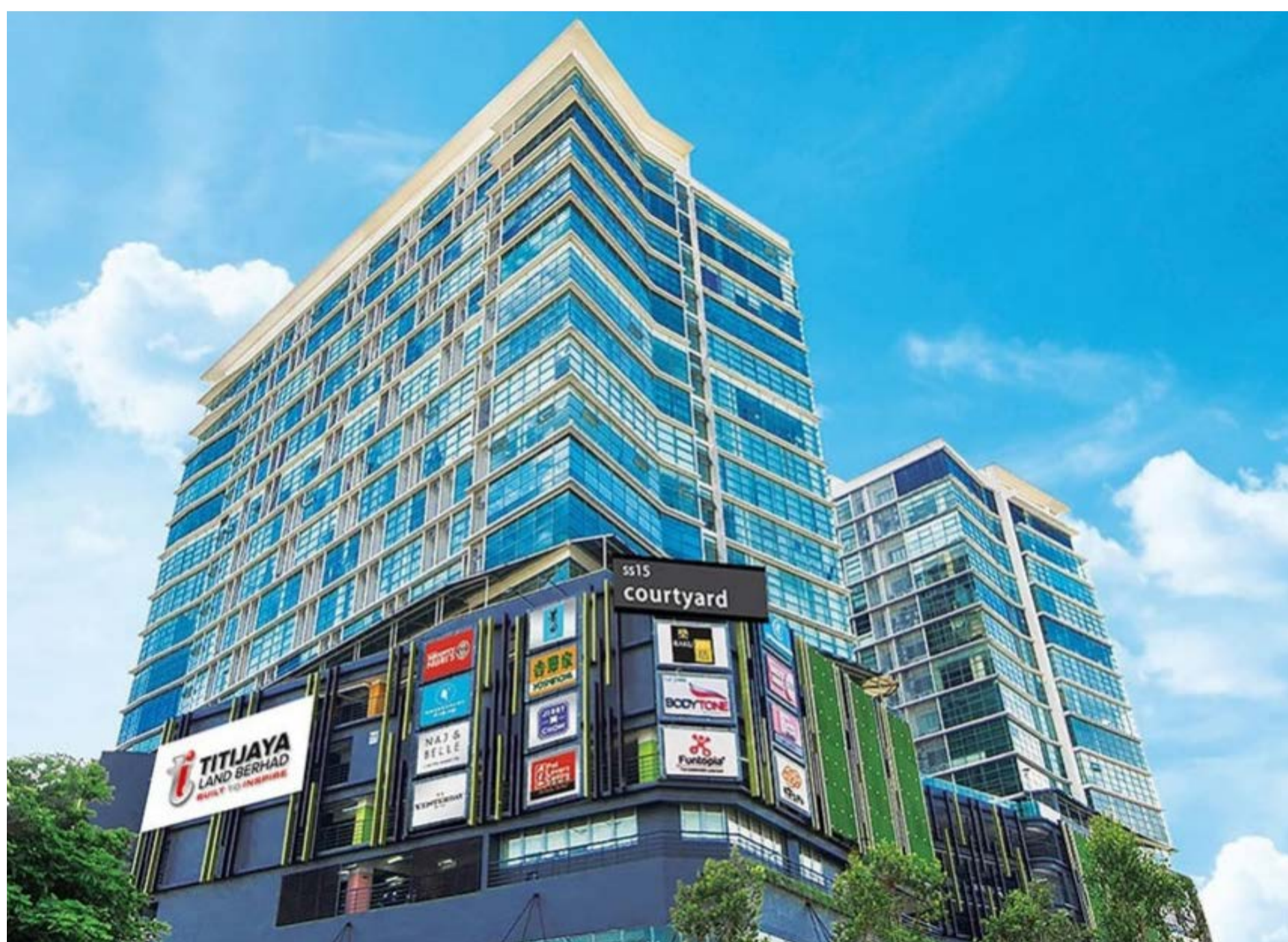
Project	Date of Commencement and Possession	Date of Completion	Contract Sum
Proposed External Main Sewer Reticulation Works to STP5 on Lot 21145, Mukim 13, Bandar Cassia, Batu Kawan, Daerah Seberang Perai Selatan, Pulau Pinang for Messrs Eco Horizon Sdn Bhd (hereinafter referred as “the Project”)	1 August 2023	31 December 2024	RM20,660,000.00



The Board of Titijaya Land Berhad (TITIJYA)

wishes to inform that City Meridian Development Sdn Bhd, a wholly owned subsidiary of the Company had on 31 July

2023 signed a Reclamation and Development Agreement with Penang Development Corporation for the reclamation and development of a site located in front of Lot 12174 Mukim 12 Daerah Barat Daya Penang measuring approximately 20.80 acres



Upcoming IPO

NAME OF COMPANY	OFFER PERIOD		ISSUE PRICE (Per Ordinary Share)	LISTING SOUGHT	DATE OF LISTING
	OPENING	CLOSING			
KGW GROUP BERHAD	30 Jun 2023	18 Jul 2023	RM0.21	ACE MARKET	1 Aug 2023
GLOSTREXT BERHAD	27 Jul 2023	02 Aug 2023	RM0.19	ACE MARKET	15 Aug 2023

Disclaimer: The information in the Investor Relations page is extracted from individual companies' announcements in www.bursamalaysia.com. The information on this page is provided as a service to readers. We assume no liability for damages resulting from or arising out of the use of such information. Whilst every effort is made to ensure accuracy, the information presented has been simplified for your reading pleasure. Readers are advised to read the original and complete filings on the Bursa Malaysia website at https://www.bursamalaysia.com/market_information/announcements/company_announcement



ShareInvestor Malaysia is a technology company with offices in the region. The company's services include Online Investor Relations and Corporate Website Design services to public listed companies (B2B); Subscription (SAAS) and Investor Education to retail investors (B2C) and publishing Inve\$t weekly. More information about the company can be found at www.shareinvestor.com.my. We are looking for a suitably experienced, matured and dynamic candidate to join our Malaysia operations.

WE'RE HIRING!

Position:

SALES MANAGER

Investor Relations Division



Job Responsibilities:

Reporting to the Group Managing Director - Investor Relations, you will be responsible for:

- the full sales cycle from initial client contact to presentation, contract negotiation and closing of sales.
- identifying and acquiring new clients.
- managing existing client accounts and maintain excellent relationships for contract renewals and to up-sell new business solutions.
- meeting and exceeding Quarterly & Annual sales targets and KPIs.
- coordinating internal resources for service delivery and clients' satisfaction to ensure quality of service fulfilment.
- working as part of a dynamic sales team where high performance will be highly rewarded.

Job Requirements:

- Minimum 3-5 years of working experience in sales with strengths in writing, pitching, negotiating & closing sales.
- Degree/Diploma in any discipline.
- Knowledge in Investor Relations (IR) and/or Public Relations (PR) will be an advantage.
- Independent and career-minded.
- Results oriented and performance driven.
- Possess good interpersonal and communication skills.

Compensation scheme:

- **Hybrid working arrangement:** Work from home option on certain day/s of each week (but subject to change by management).
- Attractive basic salary and incentive scheme plus entertainment, travelling & mobile phone allowance.
- Annual performance review with opportunity for career advancement.
- Opportunity to collaborate with colleagues from other ASEAN countries and cultures.

If you are interested, please send your updated resume, current and expected salary, and a recent photograph via email to hr.my@shareinvestor.com before **30th August 2023**.