

Invest

A Weekly e-Publication by SHAREINVESTOR.com

ISSUE

165

FRIDAY
14 JULY
2023

Scan/Click QR to Register



Via email, every Friday

Brand Finance®



Malaysia 100 2023

Brand Value Ranking
& Sector Analysis
- Part II

(page 24-33)

The annual report on the most valuable and strongest Malaysian brands
May 2023

34 Manufacturing sector's sales value increased by 3.3 per cent to RM146.8 billion in May 2023 - DOSM

39 MSWG Being A Contrarian Investor

04	LEADERBOARD	14	VALUE STOCKS	34	MARKET SENTIMENTS
06	SHARIAH HOT STOCKS	16	GROWTH STOCKS	38	REGIONAL MARKETS
07	COMPANY SPOTLIGHT	18	DIVIDEND STOCKS	39	FROM THE OBSERVER
08	SHARIAH MOMENTUM UP STOCKS	20	BROKERS' CALL	42	INSIDER ACTIVITY
10	NON SHARIAH HOT STOCKS	22	LONG COMPANIES	46	INVESTOR RELATIONS
12	UP TRENDING STOCKS	24	Brand Finance Malaysia 100 2023 Part II	49	CAREERS AT SHAREINVESTOR

**INVESTOR PLATFORMS**

Director
Darren Chong
darren.chong@shareinvestor.com

Business Development Manager
Jay Cheong
jay.cheong.@shareinvestor.com

Senior Executive
Daniel Wong
daniel.wong@shareinvestor.com

Executive
Farah Azwani
farah.azwani@shareinvestor.com

Executive
Tan Yong Sheng
yongsheng.tan@shareinvestor.com

ADMIN & OPERATIONS

Senior Executive
Watie Nordin
watie.nordin@shareinvestor.com

Executive
Silas Emmanuel Joseph
silas.joseph@shareinvestor.com

INVESTOR RELATIONS

Group Managing Director & Publisher
Edward Stanislaus
edward@shareinvestor.com

Director
Elizabeth Tan
elizabeth.tan@shareinvestor.com

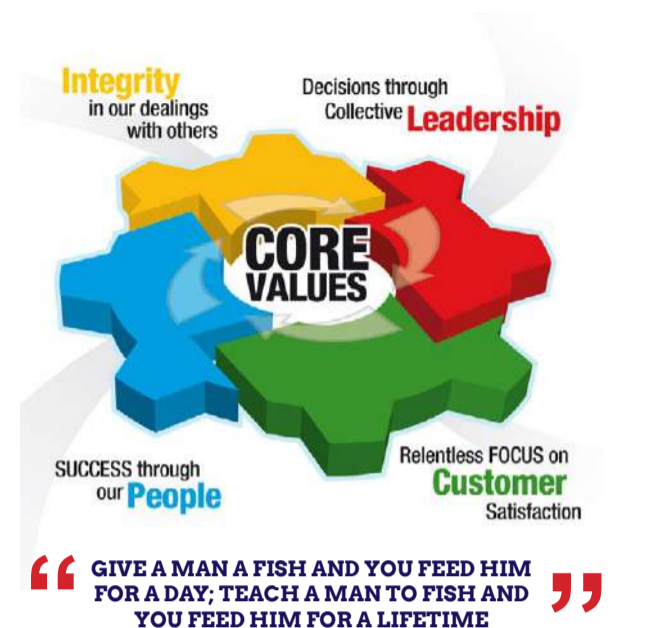
Senior Manager
Letticia Wong
letticia.wong@shareinvestor.com

PROCESS AUTOMATION & DATA ANALYTICS

Data Analyst
Nickson Aw

SHAREINVESTOR HOLDINGS BOARD OF DIRECTORS

Chairman	Patrick Daniel
Group CEO	Christopher Lee
Group COO	Lim Dau Hee
Group CFO	Teo Siew May
Group MD	Shanison Lin



ShareInvestor Malaysia Sdn. Bhd.
(200001023956) (526564-M)

Unit No. DF2-07-03A. Level 7,
Persoft Tower, 6B Persiaran Tropicana,
47410 Petaling Jaya, Selangor Darul Ehsan.

Hotline : 603 7803 1791

Mobile : 011 6343 8939

Website : www.ShareInvestor.com.my

www.ShareInvestorHoldings.com

www.Facebook.com/ShareInvestorMalaysia

ADVERTISEMENT ENQUIRY



MSWG Webinar: CYBER SECURITY FOR FINANCE AND ACCOUNTING PROFESSIONALS

27th July 2023, 09.30am - 12.30pm

Speaker: Mr Raj Kumar

Objectives of the Programme :-

- Understand the importance of financial information and system protection
- Understand the current cyber threat landscape and how it can affect business
- Understand cyber security principles
- Understand the value of cyber risk management

Target Audience :

- CFOs, Finance Managers, Information Security Officers, IT Heads, Risk and Compliance Managers and any Finance Executive interested in gaining knowledge in cyber security.

Please click here for more info

Contact: Ms. Nor Khalidah Tel: 03 - 2732 0010 / 017-630 0754

Email: khalidah@mswg.org.my





Trade CME Futures & Win T'nG eWallet Credits

Unlock the enormous potential of the global futures market.
Stand a chance to win Touch 'n Go eWallet credits with
CGS-CIMB Futures!

Grand Prize worth RM5,000!



Register your
interest with us



**Open a global futures
trading account**

*Not applicable for existing
account holders



Start Trading
on Quick Suite Trading
(QST) or call our
dealing desk



Register now
or visit cgs-cimb.com.my

www.shareinvestor.com - market data at your fingertips



ShareInvestor WebPro (www.shareinvestor.com/my)
Prices > Stock Prices > Bursa > click Stocks tab

1. mouse over Ranking > select Top Active > all Shariah stocks are denoted with an [S] > mouse over Column Layout > select Edit Customs > select Name > select Volume > select Last Done Price > Mouse Over Column Layout > select Custom
2. mouse over Ranking > select Top Turnover > all Shariah stocks are denoted with an [S] > mouse over Column Layout > select Edit Customs > select Name > select Last Done Price > select Value > Mouse Over Column Layout > select Custom
3. mouse over Ranking > select Top Gainers (Over 5 Trading Days) > mouse over Column Layout > select Edit Customs > select Name > select Last Done Price > select 5 Days Change > select 5 Days % Change > Mouse Over Column Layout > select Custom
4. mouse over Ranking > select Top Losers (Over 5 Trading Days)
5. mouse over Ranking > select Top % Gainers (Over 5 Trading Days)
6. mouse over Ranking > select Top % Losers (Over 5 Trading Days)

Shariah Top Actives (as at Yesterday)

Name	Price (RM)	Volume
SCIB [S]	0.465	958,237.000
CLASSITA [S]	0.140	755,183.000
MQTECH [S]	0.020	631,157.000
HONGSENG [S]	0.095	532,420.000
TAWIN [S]	0.045	518,287.000
WIDAD [S]	0.420	420,610.000
MINETEC [S]	0.040	405,188.000
MYEG [S]	0.745	383,306.000
MBSB [S]	0.750	357,079.000
AHB [S]	0.150	301,671.000

Shariah Top Turnover (as at Yesterday)

Name	Price (RM)	Value (RM)
INARI [S]	2.800	50,527,758
TENAGA [S]	9.100	49,124,070
SCIB [S]	0.465	45,517,921
MYEG [S]	0.745	28,363,474
MBSB [S]	0.750	26,920,493
KLK [S]	22.700	26,133,000
TIMECOM [S]	5.240	26,056,528
JSB [S]	0.915	24,621,693
GAMUDA [S]	4.480	24,420,123
EG [S]	1.420	24,399,069

Top Gainers (over 5 Trading days as at Yesterday)

Name	Price (RM)	Change (RM)
DLADY	22.000	+1.200
HEIM	26.600	+0.780
AJI	15.580	+0.680
NESTLE	131.200	+0.600
PERTAMA	3.000	+0.400
KESM	7.490	+0.390
QUALITY	1.200	+0.390
PCHEM	6.310	+0.340
SHANG	2.610	+0.330
UMW	4.080	+0.260

Top % Gainers (over 5 Trading days as at Yesterday)

Name	Price (RM)	Change (%)
PHB	0.010	+100.00
LOTUS	0.235	+56.67
CLASSITA	0.140	+55.56
KAMDAR	0.250	+51.52
MMAG	0.015	+50.00
XOX	0.015	+50.00
QUALITY	1.200	+48.15
PESTECH	0.280	+47.37
CATCHA	0.335	+36.73
NEXGRAM	0.020	+33.33

Top Losers (over 5 Trading days as at Yesterday)

Name	Price (RM)	Change (RM)
HEXTECH	26.700	-0.900
BKAWAN	20.880	-0.420
CHINHIN	4.250	-0.270
AAX	1.600	-0.160
KLK	22.700	-0.140
PMBTECH	3.770	-0.130
APB	2.270	-0.120
F&N	25.080	-0.120
INFOM	1.780	-0.120
ORIENT	6.350	-0.110

Top % Losers (over 5 Trading days as at Yesterday)

Name	Price (RM)	Change (%)
AT	0.005	-50.00
EAH	0.005	-50.00
GOCEAN	0.010	-33.33
JOE	0.010	-33.33
MQTECH	0.020	-33.33
TALAMT	0.010	-33.33
ZENTECH	0.015	-25.00
GCE	0.340	-22.73
SNTORIA	0.055	-15.38
DFCITY	0.315	-14.86

Congratulations SkyWorld[®]

SKYWORLD DEVELOPMENT BERHAD

for the successful listing to the
Main Market of Bursa Securities
on 10th July 2023.

From



SHAREINVESTOR[®]

Online Investor Relations services provider
for Public Listed Companies

<https://www.shareinvestor.com.my/investor-relations.html>

Price & Volume Distribution Charts (as at Yesterday)

Technical Analysis

DEFINITION: Shariah compliant stocks with Technical Analysis showing 5-days & 10-days Moving Average Price below Yesterday's Close over past 3 days and with Volume Spike.

CHART GUIDE: Volume Distribution Chart is a statistical interpretation of the current sentiment on each stock in graphical format. The highest bar categorized as >150k is likely to be traded by institutions or super dealers, while the lowest bar categorized as <15k usually represents retail investors. "Buy Up" refers to more buyers snatching up the lots queued at selling price. "Sell Down" refers to sellers selling their shares to the buying queue



ShareInvestor WebPro > Screener > Market Screener (FA & TA) > select BURSA > add criteria

A. Criteria

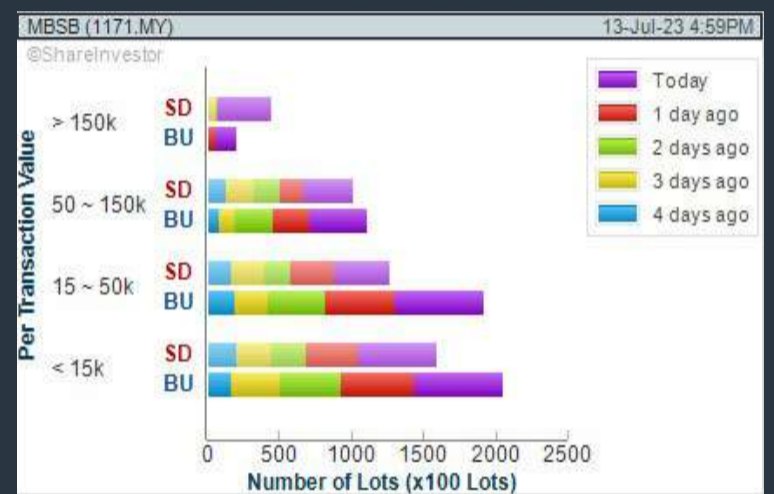
- > click Add Criteria
- Technical Analysis Conditions tab select (i) Moving Average Below Close (ii) Volume Spike
- Fundamental Analysis Conditions tab > select (iii) Revenue
- Prices & Other Conditions tab > select (iv) Is Shariah Compliant
- Technical Analysis Conditions tab select (v) Moving Average Below Close
- Prices & Other Conditions tab > select (vi) Last Done Price
- Technical Analysis Conditions tab select (vii) Moving Average Below Close

B. Conditions (Criteria Filters)

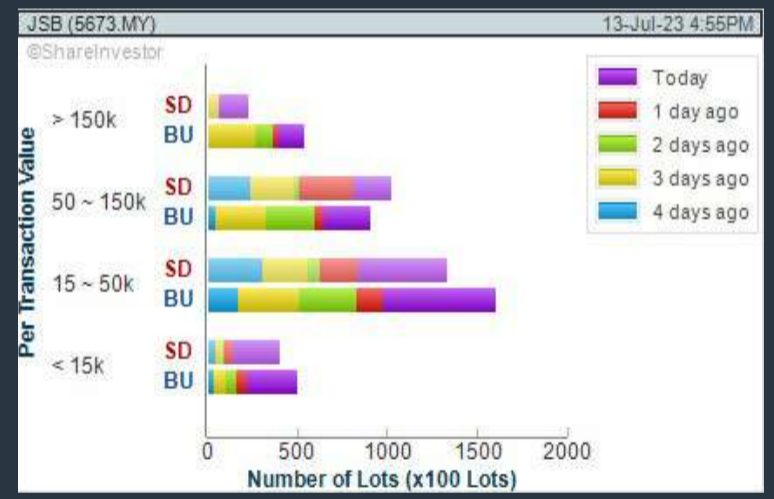
1. Moving Average Below Close - select (MA) type (5) below close price for type (3) days
2. Volume Spike - Volume type (1) greater than type (5) days average
3. Revenue ("000) - select (more than) type (1) for the past select (1) financial year(s)
4. Is Shariah Compliant - select **Yes**
5. Moving Average Below Close - select (MA) type (10) below close price for type (3) days
6. Last Done Price - select (more than) type (0.3)
7. Moving Average Below Close - select (EMA) type (5) below close price for type (3) days

- > click Save Template > Create New Template type (Shariah Hot Stocks) > click Create
- > click Save Template as > select Shariah Hot Stocks > click Save
- > click Screen Now (may take a few minutes)
- > Sort By: Select (Vol) Select (Desc)
- > Mouse over stock name > Charts > click C² Charts or Volume Distribution

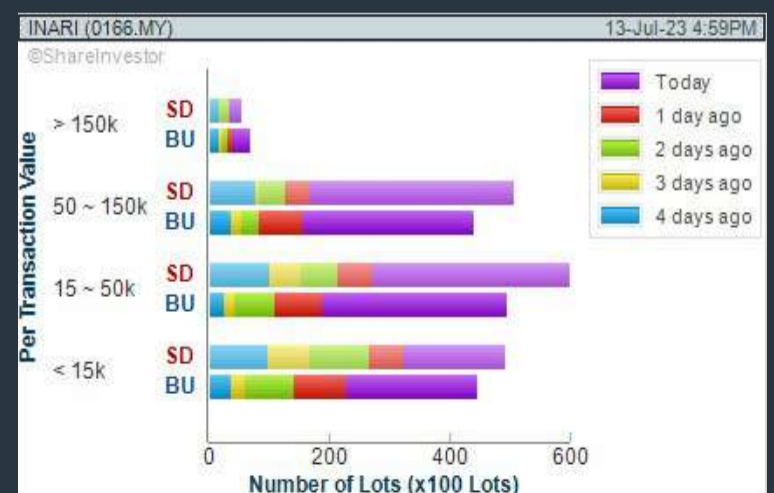
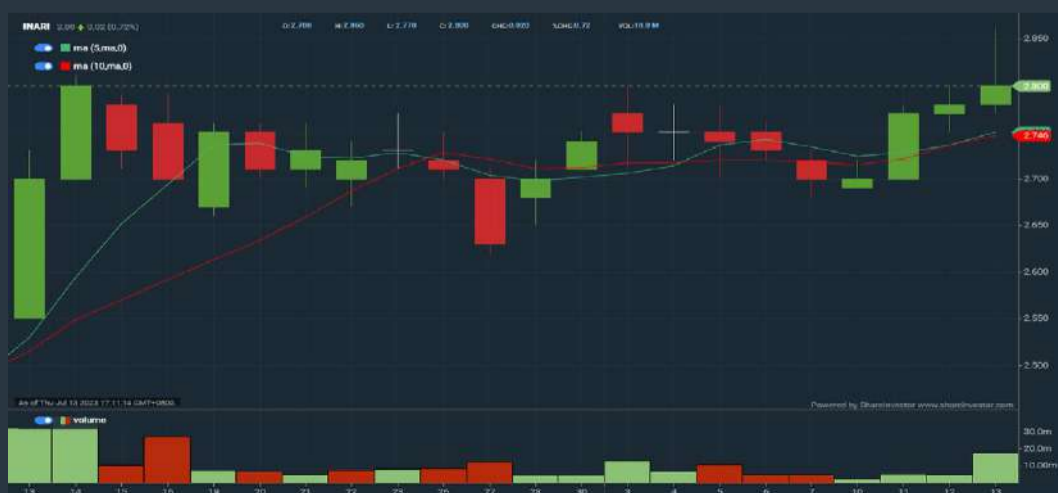
MALAYSIA BUILDING SOCIETY BERHAD (1171) C² Chart



JENTAYU SUSTAINABLES BERHAD (5673) C² Chart



INARI AMERTRON BERHAD (0166) C² Chart



Disclaimer: The information on this page is provided as a service to readers. It does not constitute financial advice and/or any investment recommendations. Past performance is not indicative of future results. We assume no liability for damages resulting from or arising out of the use of such information. It would be best if you did your own research to make your personal investment decisions wisely or consult a licenced investment advisor.

COMPANY BACKGROUND

Pharmaniaga Berhad is engaged in the manufacture of pharmaceuticals and medical devices, sales and marketing as well as the distribution of medical products and hospital equipment. The company is also involved in logistics and distribution. The group operates in three segments – Logistics, Distribution and Manufacturing.



Select Counter: Bursa PHARMA (7081.MY) View

PHARMA PHARMANIAGA BHD Updated at 13 Jul 2023 16:59

Last (MYR): 0.385	Change: -	High: 0.415	Remarks: s ?
Open	Change (%): -	Low: 0.385	Yesterday's Close
Buy Price	0.405	0.385	0.385
Buy Volume ('00)	0.385	Sell Price	0.390
Cumulative Volume ('00)	3,951	Sell Volume ('00)	3,926
	231,099	Cumulative Value	9,292,370

Financial Analysis

	Revenue Growth Revenue down sharply in most recent year (> 25%)			Profit Growth Profit to loss in most recent year	
	Piotroski F Score The company has weak financial strength (Piotroski F-Score of 0-2)			Dividend Payout No dividend paid in most recent year but dividends paid in prior years	
	Debt to Assets High debt to assets for most recent year.			Debt to Cashflow The company has negative cash flow from operations in most recent year.	
	Debt to Equity The company has negative equity in most recent year			Free Cash Flow Negative free cash flow for two years or more	
	Net Earnings Margin Company is losing money but net profit margin is improving slightly over the past 60 months.			Return on Assets (ROA) Negative ROA for most recent year	
	Return on Equity (ROE) ROE is improving by 10% a year over the past 36 months.				

Excellent
 Good
 Neutral
 Be Alert
 Watch Out



Historical Financials



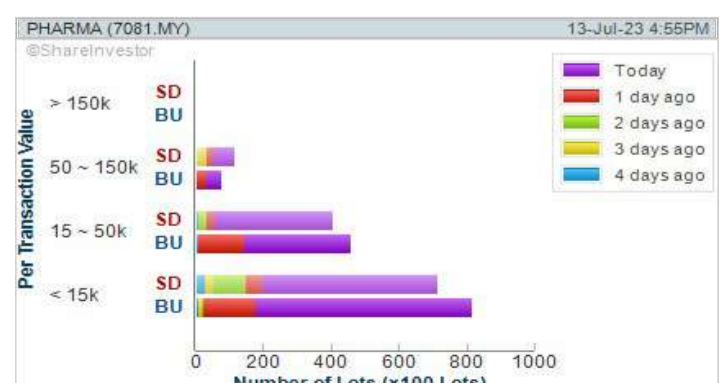
WebPro 9-Days Free Trial Registration (worth RM9) Sign Up Now



Key Statistics with Total Shareholder Returns

Total Shareholder Return

Period	Dividend Received	Capital Appreciation	Total Shareholder Return
Short Term Return	5 Days	+0.025	+5.94%
	10 Days	+0.010	+2.67%
	20 Days	+0.015	+4.05%
Medium Term Return	3 Months	+0.055	+20.31%
	6 Months	-0.150	-28.94%
	1 Year	-0.210	-35.29%
Long Term Return	2 Years	0.085	-48.63%
	3 Years	0.175	+2.94%
	5 Years	0.430	+27.34%
Annualised Return	Annualised	-	+4.95%



Disclaimer: The information on this page is provided as a service to readers. It does not constitute financial advice and/or any investment recommendations. Past performance is not indicative of future results. We assume no liability for damages resulting from or arising out of the use of such information. It would be best if you did your own research to make your personal investment decisions wisely or consult a licenced investment advisor.

Price & Volume Distribution Charts (as at Yesterday)

Technical Analysis

DEFINITION: Shariah compliant stocks with Technical Analysis showing Bullish Momentum and Price Uptrend. The share price closed at the highest price yesterday. The typical price was higher than the previous day's typical price.

CHART GUIDE: Volume Distribution Chart is a statistical interpretation of the current sentiment on each stock in graphical format. The highest bar categorized as >150k is likely to be traded by institutions or super dealers, while the lowest bar categorized as <15k usually represents retail investors. "Buy Up" refers to more buyers snatching up the lots queued at selling price. "Sell Down" refers to sellers selling their shares to the buying queue.



ShareInvestor WebPro > Screener > Market Screener (FA & TA)>select BURSA>add criteria

A. Criteria

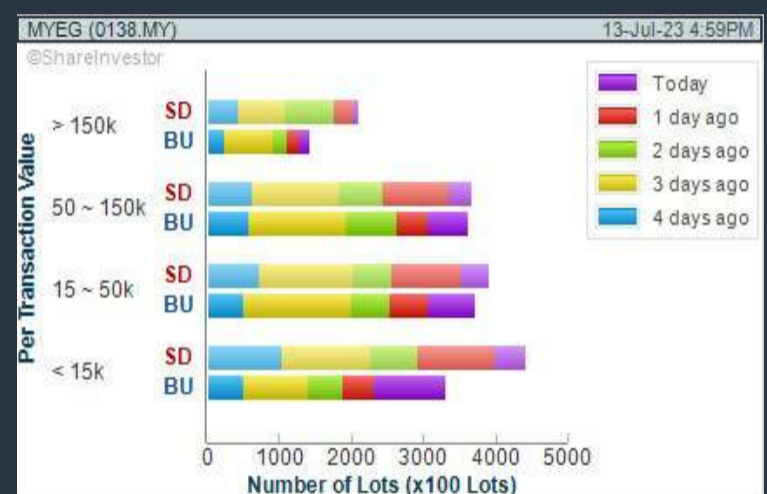
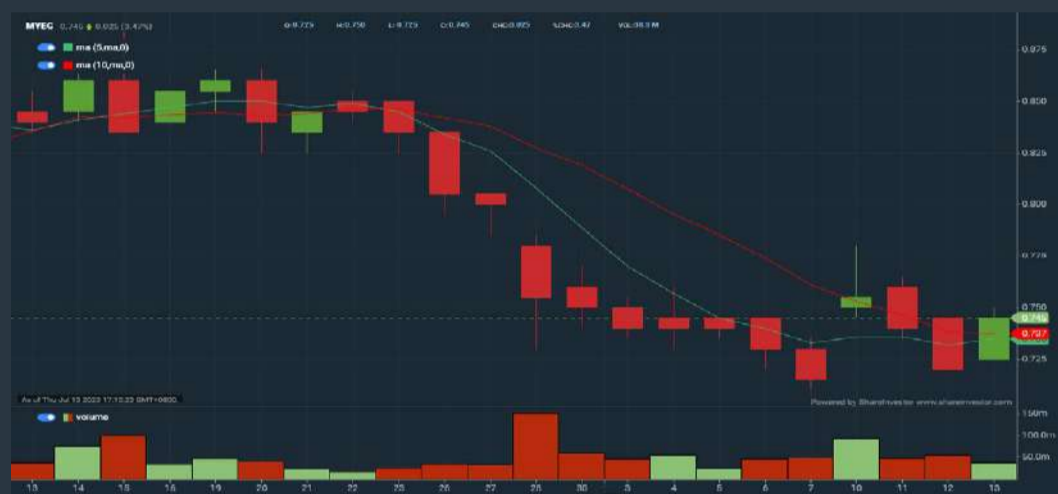
- > click Add Criteria
- Fundamental Analysis Conditions tab >select (i) Revenue
- Technical Analysis Conditions tab select (ii) Average Volume
- Prices & Other Conditions tab > select (iii) Last Done Price
- Prices & Other Conditions tab > select (iv) Is Shariah Compliant
- Technical Analysis Conditions tab select (v) RSI Overbought
- Technical Analysis Conditions tab select (vi) Moving Average Below Close
- Technical Analysis Conditions tab select (vii) CCI Overbought

B. Conditions (Criteria Filters)

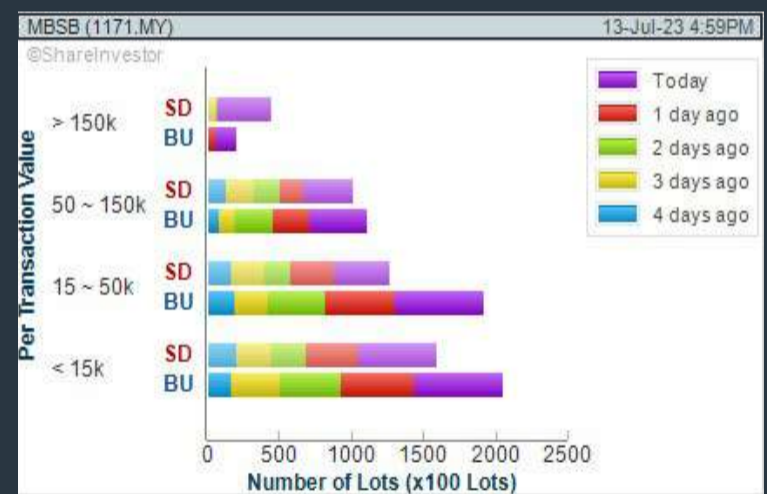
1. Revenue ("000) - select (more than) type (1) for the past select (1) financial year(s)
2. Average Volume - type (1) days average volume greater than type (10000) lots
3. Last Done Price - select (more than) type (0.3)
4. Is Shariah Compliant - select Yes
5. RSI Overbought - select RSI 1 above 99 for 1 days
6. Moving Average Below Close - select (MA) type (10) below close price for type (1) days
7. CCI Overbought - select CCI (2) above (0) for (1) days

- > click Save Template > Create New Template type (Shariah Momentum Up Stocks) > click Create
- > click Save Template as > select Shariah Momentum Up Stocks > click Save
- > click Screen Now (may take a few minutes)
- Sort By: Select (Vol) Select (Desc)
- Mouse over stock name > Charts > click C² Charts tab or Volume Distribution

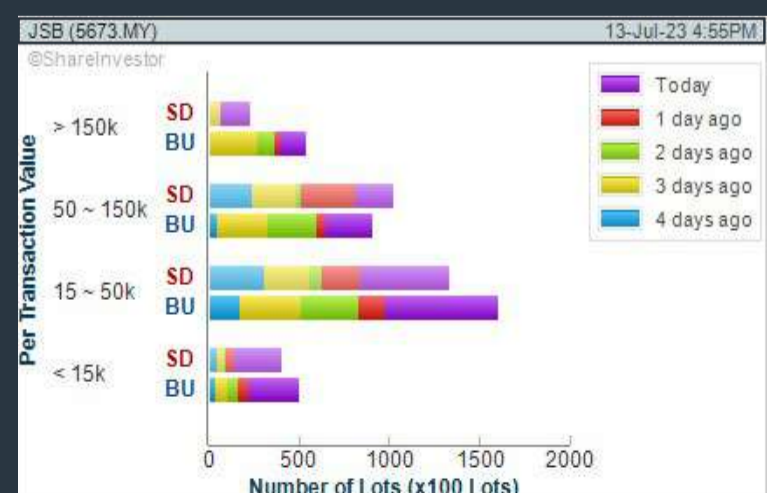
MY E.G. SERVICES BERHAD (0138) C² Chart



MALAYSIA BUILDING SOCIETY BERHAD (1171) C² Chart



JENTAYU SUSTAINABLES BERHAD (5673) C² Chart



Disclaimer: The information on this page is provided as a service to readers. It does not constitute financial advice and/or any investment recommendations. Past performance is not indicative of future results. We assume no liability for damages resulting from or arising out of the use of such information. It would be best if you did your own research to make your personal investment decisions wisely or consult a licenced investment advisor.

ACTIVE TRADING TOURNAMENT 2023

REGISTER NOW & WIN THE PRIZES!

REGISTRATION PRIZES: (2X WINNERS)

1X MACBOOK AIR 13" WORTH RM4,500

1X SAMSUNG 27" CURVED MONITOR
WORTH RM2,100



GRAND PRIZES:

1ST PRIZE: RM12,000

2ND PRIZE: RM6,000

3RD PRIZE: RM3,000



DAILY TOP TRADE PRIZES: (15X WINNERS)

RM120 E-CAPITALAND VOUCHERS

MAKE-A-TRADE PRIZE: (10X WINNERS)

RM60 E-CAPITALAND VOUCHERS FOR 10X LUCKY PARTICIPANTS WHO MAKE AT LEAST 3 TRADES

THE MORE YOU TRADE, THE HIGHER THE CHANCES TO WIN!



Organized by



Main Sponsor



Price & Volume Distribution Charts (as at Yesterday)

Technical Analysis

DEFINITION: Stocks with Technical Analysis showing 5-days & 10-days Moving Average Price below Close over past 1 days and with Volume Spike

CHART GUIDE: Volume Distribution Chart is a statistical interpretation of the current sentiment on each stock in graphical format. The highest bar categorized as >150k is likely to be traded by institutions or super dealers, while the lowest bar categorized as <15k usually represents retail investors. "Buy Up" refers to more buyers snatching up the lots queued at selling price. "Sell Down" refers to sellers selling their shares to the buying queue.



ShareInvestor WebPro > Screener > Market Screener (FA & TA) > select BURSA > add criteria

A. Criteria

- > click Add Criteria
- Technical Analysis Conditions tab select (i) Moving Average Below Close (ii) Volume Spike
- Fundamental Analysis Conditions tab >select (iii) Revenue
- Prices & Other Conditions tab > select (iv) Is Shariah Compliant
- Technical Analysis Conditions tab select (v) Moving Average Below Close
- Prices & Other Conditions tab > select (vi) Last Done Price
- Technical Analysis Conditions tab select (vii) Moving Average Below Close

B. Conditions (Criteria Filters)

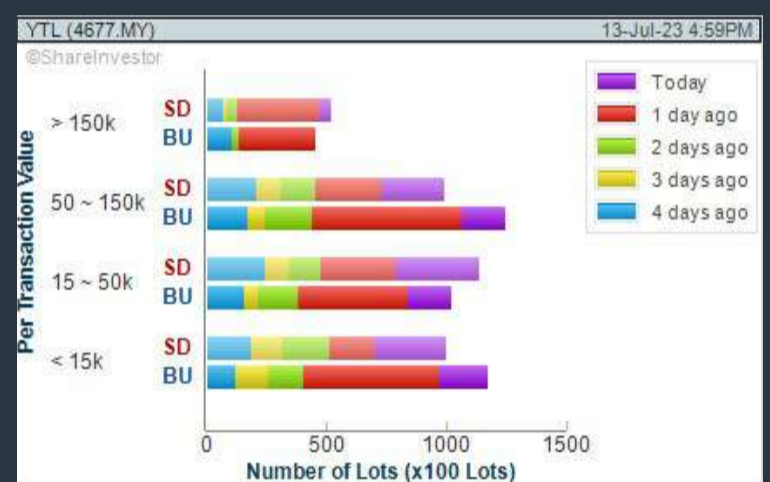
1. Moving Average Below Close - select (MA) type (5) below close price for type (3) days
2. Volume Spike - Volume type (1) greater than type (5) days average
3. Revenue ("000) - select (more than) type (1) for the past select (1) financial year(s)
4. Is Shariah Compliant - select NO
5. Moving Average Below Close - select (MA) type (10) below close price for type (1) days
6. Last Done Price - select (more than) type (0.3)
7. Moving Average Below Close - select (EMA) type (5) below close price for type (1) days

- > click Save Template > Create New Template type (Non-Shariah Hot Stocks) > click Create
- > click Save Template as > select Non-Shariah Hot Stocks > click Save
- > click Screen Now (may take a few minutes)
- Sort By: Select (Vol) Select (Desc)
- Mouse over stock name > Charts > click C² Charts tab or Volume Distribution

YTL CORPORATION BERHAD (4677)

C² Chart

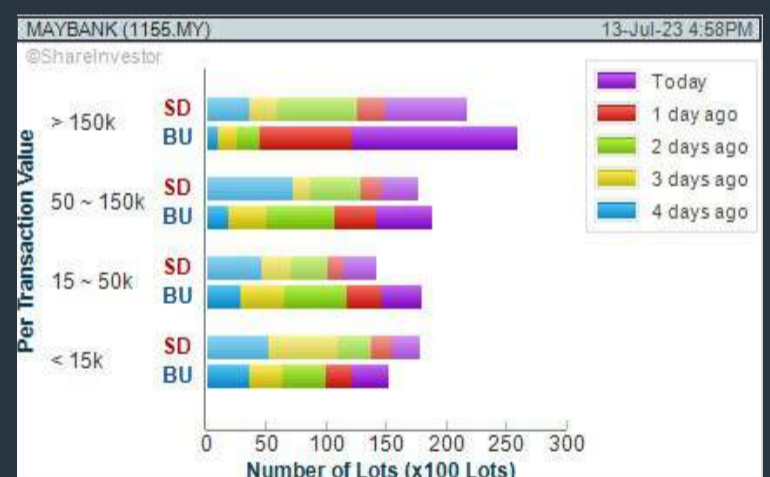
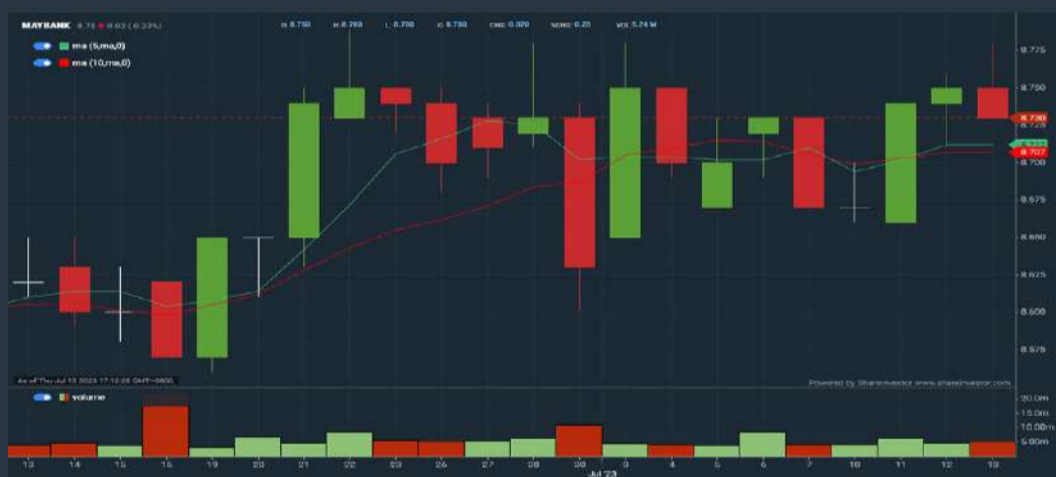
Analysis



MALAYAN BANKING BERHAD (1155)

C² Chart

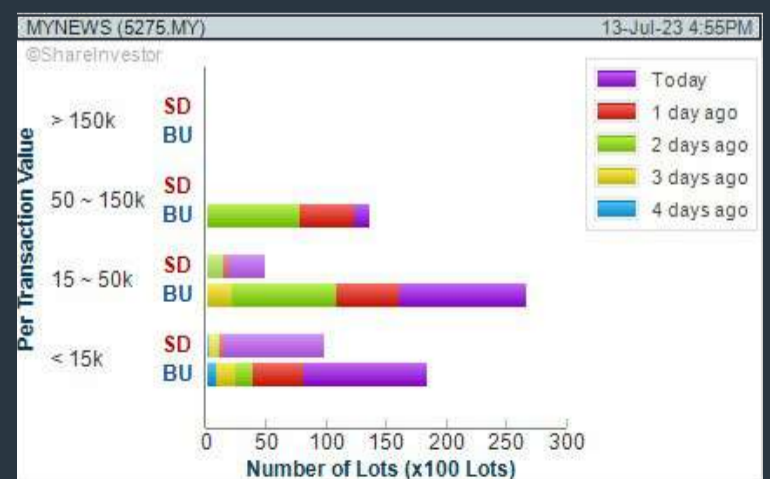
Analysis



MYNEWS HOLDINGS BERHAD (5275)

C² Chart

Analysis



Disclaimer: The information on this page is provided as a service to readers. It does not constitute financial advice and/or any investment recommendations. Past performance is not indicative of future results. We assume no liability for damages resulting from or arising out of the use of such information. It would be best if you did your own research to make your personal investment decisions wisely or consult a licenced investment advisor.

Congratulations



®

ECOMATE HOLDINGS BERHAD**益關控股有限公司****ECOMATE HOLDINGS BERHAD**

to have successfully transferred
listing to MAIN market from
ACE Market on 7th July, 2023

From

**SHAREINVESTOR®**

Online Investor Relations services provider
for Public Listed Companies

<https://www.shareinvestor.com.my/investor-relations.html>

Price & Volume Distribution Charts (Over 5 trading days as at Yesterday)

Technical Analysis

DEFINITION: Stocks with Technical Analysis showing Bullish Momentum and Price Uptrend

CHART GUIDE: Volume Distribution Chart is a statistical interpretation of the current sentiment on each stock in graphical format. The highest bar categorized as >150k is likely to be traded by institutions or super dealers, while the lowest bar categorized as <15k usually represents retail investors. "Buy Up" refers to more buyers snatching up the lots queued at selling price. "Sell Down" refers to sellers selling their shares to the buying queue.



ShareInvestor WebPro > Screener > Market Screener (FA & TA) > select BURSA > add criteria

A. Criteria

- > click Add Criteria
- Fundamental Analysis Conditions tab > select (i) Revenue
- Technical Analysis Conditions tab select (ii) Moving Average Below Close
- Technical Analysis Conditions tab select (iii) Average Volume
- Prices & Other Conditions tab > select (iv) Last Done Price
- Technical Analysis Conditions tab select (v) Moving Average Below Close
- Technical Analysis Conditions tab select (v) Moving Average Bullish Crossover

B. Conditions

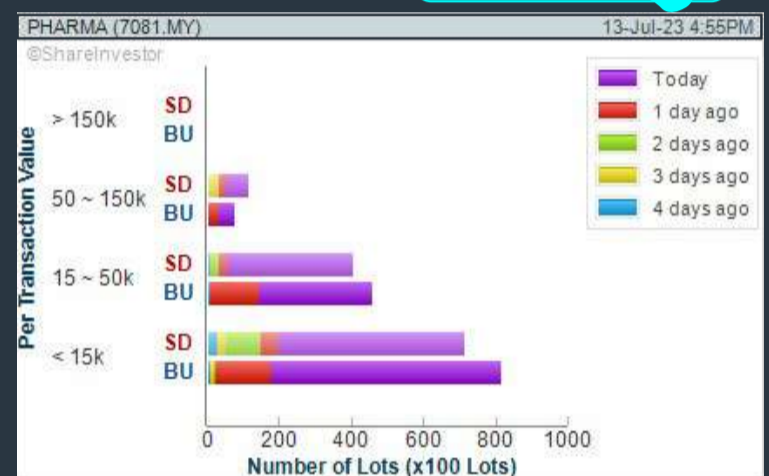
1. Revenue - select (more than) type (1) for the past select (1) financial year(s)
2. Moving Average Below Close - select (MA) type (20) below close price for type (1) days
3. Average Volume - type (5) days average volume type (10000) lots
4. Last Done Price - select (more than) type (0.3)
5. Moving Average Below Close - select (MA) type (10) below close price for type (1) days
6. Moving Average Bullish Crossover - select (MA) type (5) crossed above select (MA) type (10)

> click Save Template > Create New Template type (Non-Shariah Up-Trending Stocks) > click Create Click Save Template As > select Non-Shariah Up Trending Stocks > click Save > click Screen Now (may take a few minutes) Sort By: Select (Vol) Select (Desc) Mouse over stock name > Charts > click C² Charts tab or Volume Distribution

PHARMANIAGA BERHAD (7081)

C² Chart

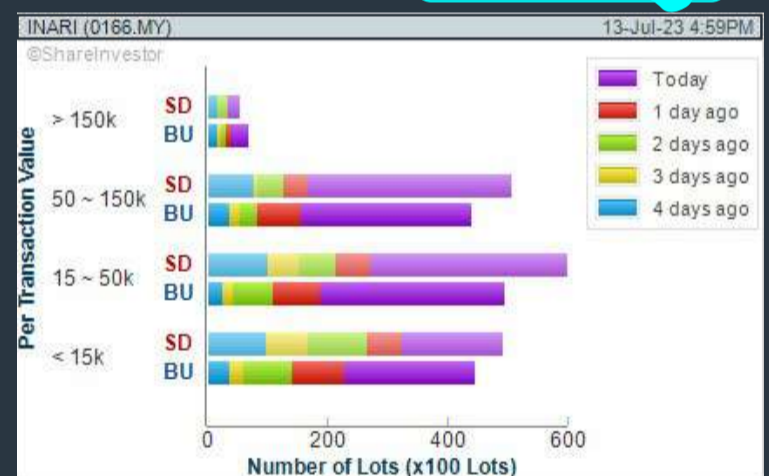
Analysis



INARI AMERTRON BERHAD (0166)

C² Chart

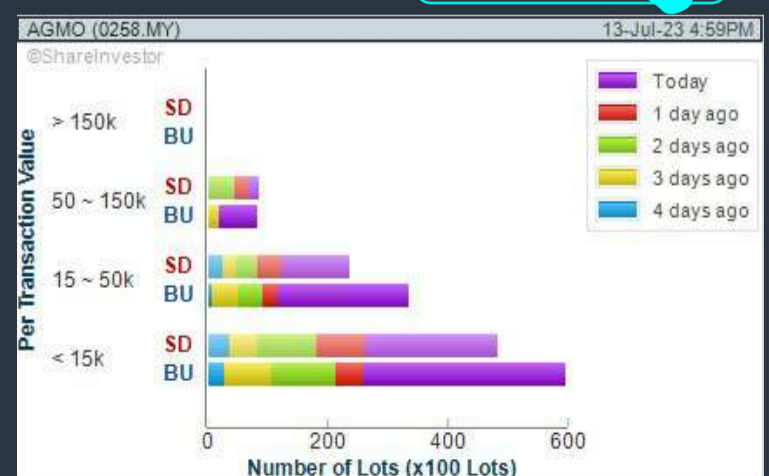
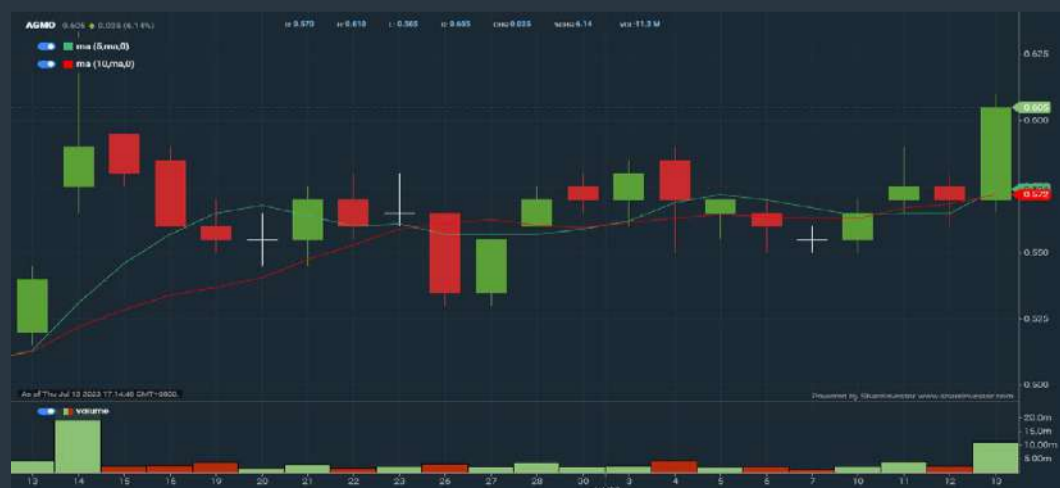
Analysis



AGMO HOLDINGS BERHAD (0258)

C² Chart

Analysis



Disclaimer: The information on this page is provided as a service to readers. It does not constitute financial advice and/or any investment recommendations. Past performance is not indicative of future results. We assume no liability for damages resulting from or arising out of the use of such information. It would be best if you did your own research to make your personal investment decisions wisely or consult a licenced investment advisor.

SHAREINVESTOR WEBPRO

STOCK MARKET DATA AT YOUR FINGERTIPS

Powerful browser-based market analytics platform.
Access from anywhere



8 Markets Data

- ▶ Get access to data from Bursa, NYSE, Nasdaq, HKEX, SGX, IDX, SET & ASX

Portfolio Management

- ▶ Profit & Loss Summary
- ▶ Stock Alert
- ▶ News & Events filtering
- ▶ Customizable column layout

Fundamental Analysis

Financial Analysis Statement

- ▶ Profit & Loss
- ▶ Balance Sheet
- ▶ Cash Flow Statement
- ▶ More than 20 Financial Ratios
- ▶ Dividend Analysis

Technical Charting

- ▶ C² chart (Customisable & Comprehensive)

Brokers' Call

Intrinsic Value Calculator

FactSheet

- ▶ Key Stock Information
- ▶ Ownership
- ▶ Consensus Estimates
- ▶ Annual Report
- ▶ Historical Price
- ▶ Insider Trades

What's new on WebPro (Stable Release 12.1.0)

In our effort to keep our platform at the forefront of trading technology, we have added on some new features onto our C2 Chart in WebPro

ADDITIONAL NEW FEATURES:

- ▶ Anchor selector for AVWAP, PVAT, and PAV indicators
- ▶ Volume profile indicator by date range
- ▶ Moving Average Cross indicator
- ▶ Guppy Multiple Moving Average (GMMA) indicator
- ▶ GoNoGo Trend Signal indicators
- ▶ SignalIQ

So what are you waiting for? Head to our platform today and check out our new trading chart features and indicators. We're confident that you'll love the improvements we've made and that they'll help you become a more successful trader.

Click here to start your 9 days FREE trial
(Valued at RM10)



Price & Total Shareholder Return (as at Yesterday)

Fundamental Analysis

DEFINITION: Share price of a company trading at a lower price as compared to its fundamentals (FA) such as financial performance and dividend, allowing it to be attractive to value investors.

CHART GUIDE: Total Shareholder Return (TSR) combines share price appreciation and dividend distributions paid to show the total return to the shareholder expressed as a percentage.



ShareInvestor WebPro > Screener > Market Screener (FA & TA) > select BURSA > add criteria

A. Criteria

- > click Add Criteria
- Fundamental Analysis Conditions tab (i) Price Earnings Ratio
- Fundamental Analysis Conditions tab >select (ii) CAGR of Net Earnings
- Fundamental Analysis Conditions tab >select (iii) Net Debt To Equity
- Fundamental Analysis Conditions tab >select (iv) Return On Equity (ROE)

B. Conditions

1. Price Earnings Ratio - select (less than) type (15) times now
2. CAGR of Net Earnings - select (more than) type (10) % for the past type (3) financial year(s)
3. Net Debt To Equity – select (less than) type (1) for the past select (1) financial year(s)
4. Return On Equity (ROE) – select (more than) type (10) % for the past select (1) financial year(s)

- > click Save Template > Create New Template type (Value Stock) > click Create
- > click Save Template as > select Value Companies > click Save
- > click Screen Now (may take a few minutes)
- Sort by: Select (PE Ratio) Select (Ascending)
- > Mouse over stock name > Factsheet > looking for Total Shareholder Return
- > Mouse over stock name > Charts > click C2 Charts tab

SUNMOW HOLDING BERHAD (03050)

C² Chart



Period	Dividend Received	Capital Appreciation	Total Shareholder Return
Short Term Return	5 Days	+0.050	+4.55 %
	10 Days	+0.100	+9.52 %
	20 Days	+0.150	+15.00 %
Medium Term Return	3 Months	+0.520	+82.54 %
	6 Months	+0.540	+88.52 %
	1 Year	+0.270	+38.88 %
Annualised Return	Annualised	-	+38.88 %

LINGKARAN TRANS KOTA HOLDINGS (6645)

C² Chart



Period	Dividend Received	Capital Appreciation	Total Shareholder Return
Short Term Return	5 Days	-	-
	10 Days	+0.005	+0.99 %
	20 Days	+0.005	+0.99 %
Medium Term Return	3 Months	+0.005	+0.99 %
	6 Months	-0.005	-0.97 %
	1 Year	+0.074	+16.87 %
Long Term Return	2 Years	0.250	+122.22 %
	3 Years	0.450	+153.30 %
	5 Years	0.950	+286.24 %
Annualised Return	Annualised	-	+31.63 %

SCGM BERHAD (7247)

C² Chart



Period	Dividend Received	Capital Appreciation	Total Shareholder Return
Short Term Return	5 Days	-0.015	-2.64 %
	10 Days	-0.010	-1.71 %
	20 Days	-0.005	-0.86 %
Medium Term Return	3 Months	+0.020	+3.68 %
	6 Months	+0.030	+5.58 %
	1 Year	+0.007	+1.23 %
Long Term Return	2 Years	0.051	+4.68 %
	3 Years	0.126	+13.27 %
	5 Years	0.173	+10.70 %
Annualised Return	Annualised	-	+16.07 %

Disclaimer: The information on this page is provided as a service to readers. It does not constitute financial advice and/or any investment recommendations. Past performance is not indicative of future results. We assume no liability for damages resulting from or arising out of the use of such information. It would be best if you did your own research to make your personal investment decisions wisely or consult a licenced investment advisor.

BURSASTATION Professional



Stock Scanning

- Technical Analysis (TA) Market Scanner
- Fundamental Analysis (FA) Market Scanner



Market Data

- Equities
- Derivatives

Monitoring

- Portfolio
- Stock Alerts
- Price Spread Calculator

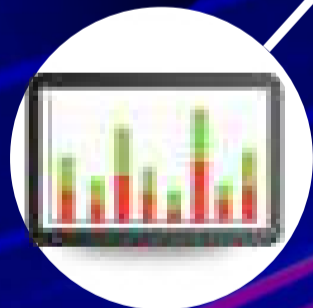


Scan. Chart. Analyse.

Be The Intelligent Investor

Charts

- Intraday Charts
- Interactive Charts
- Historical Charts
- Volume Distribution Charts



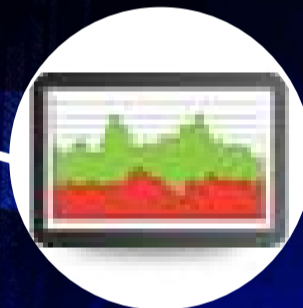
Fundamentals

- Factsheets
- Financials
- Insider Trades



Price Movements

- Streaming Prices
- Time & Sales
- Trade Summary Matrix
- Quote Movements
- 5 Levels Market Depth
- Historical Price Download



Brought to you as a collaborative effort by ShareInvestor and Bursa Malaysia, **BursaStation Professional** is designed with you, the user, in mind, as a user-friendly yet full of powerful features that will appeal to investors/traders who need instant access to fundamental, technical, and trading data, anytime, anywhere. **BursaStation Professional** is a state-of-the-art Stock Market Tracker with Charting Software that places in your hands the power to make better investment decisions.

[CLICK HERE TO START YOUR 14-DAYS FREE TRIAL](#)

Price & Total Shareholder Return (as at Yesterday)

Fundamental Analysis

DEFINITION: Company revenue is growing and making good quality of earnings with positive Free Cash Flow.

CHART GUIDE: Total Shareholder Return (TSR) combines share price appreciation and distributions paid to show the total return to the shareholder expressed as a percentage.



ShareInvestor WebPro > Screener > Market Screener (FA & TA) > select BURSA > add criteria

A. Criteria

1. Fundamental Analysis Conditions tab >select (i) Free Cash Flow, (ii) Revenue Growth, (iii) Gross Profit (Earnings) Margin, (iv) Quality of Earnings, (v) Total Shareholder Returns, > click Add Criteria
2. Fundamental Analysis Conditions tab >select (vi) Total Shareholder Returns > click Add Criteria

B. Conditions (Criteria Filters)

1. Free Cash Flow - select (more than) type (1) for the past select (1) financial year(s)
2. Revenue Growth - select (more than) type (1) for the past select (1) financial year(s)
3. Gross Profit (Earnings) Margin - select (more than) type (30) % for the past select (1) financial year(s)
4. Quality of Earnings - select (more than) type (1) for the past select (1) financial year(s)
5. Total Shareholder Return - select (more than) type (5) % for the past select (3) financial year(s)
6. Total Shareholder Return - select (more than) type (5) % for the past select (5) financial year(s)

- > click Save Template > Create New Template type (Growth Companies) > click Create
- > click Save Template as > select Growth Companies > click Save
- > click Screen Now (may take a few minutes)
- > Sort By: Select (Revenue Growth) Select (Desc)
- > Mouse over stock name > Factsheet > looking for Total Shareholder Return

CLASSIC SCENIC BERHAD (7202)

C² Chart

Analysis



Period	Dividend Received	Capital Appreciation	Total Shareholder Return
Short Term Return	5 Days	+0.010	+2.33%
	10 Days	+0.005	+1.15%
	20 Days	-0.005	-1.12%
Medium Term Return	3 Months	-0.117	-21.01%
	6 Months	-0.353	-44.61%
	1 Year	-0.003	-0.68%
Long Term Return	2 Years	-0.063	-12.62%
	3 Years	0.030	+15.68%
	5 Years	0.140	+21.59%
Annualised Return	Annualised	-	+3.99%

FOCUS POINT HOLDINGS BERHAD (0157)

C² Chart

Analysis



Period	Dividend Received	Capital Appreciation	Total Shareholder Return
Short Term Return	5 Days	+0.040	+5.13%
	10 Days	+0.040	+5.13%
	20 Days	-0.005	-1.58%
Medium Term Return	3 Months	-0.001	-0.12%
	6 Months	-0.077	-10.36%
	1 Year	+0.316	+62.70%
Long Term Return	2 Years	+0.294	+58.01%
	3 Years	+0.693	+112.88%
	5 Years	0.035	+112.43%
Annualised Return	Annualised	-	+6.90%

MEGA FIRST CORPORATION BERHAD (3069)

C² Chart

Analysis

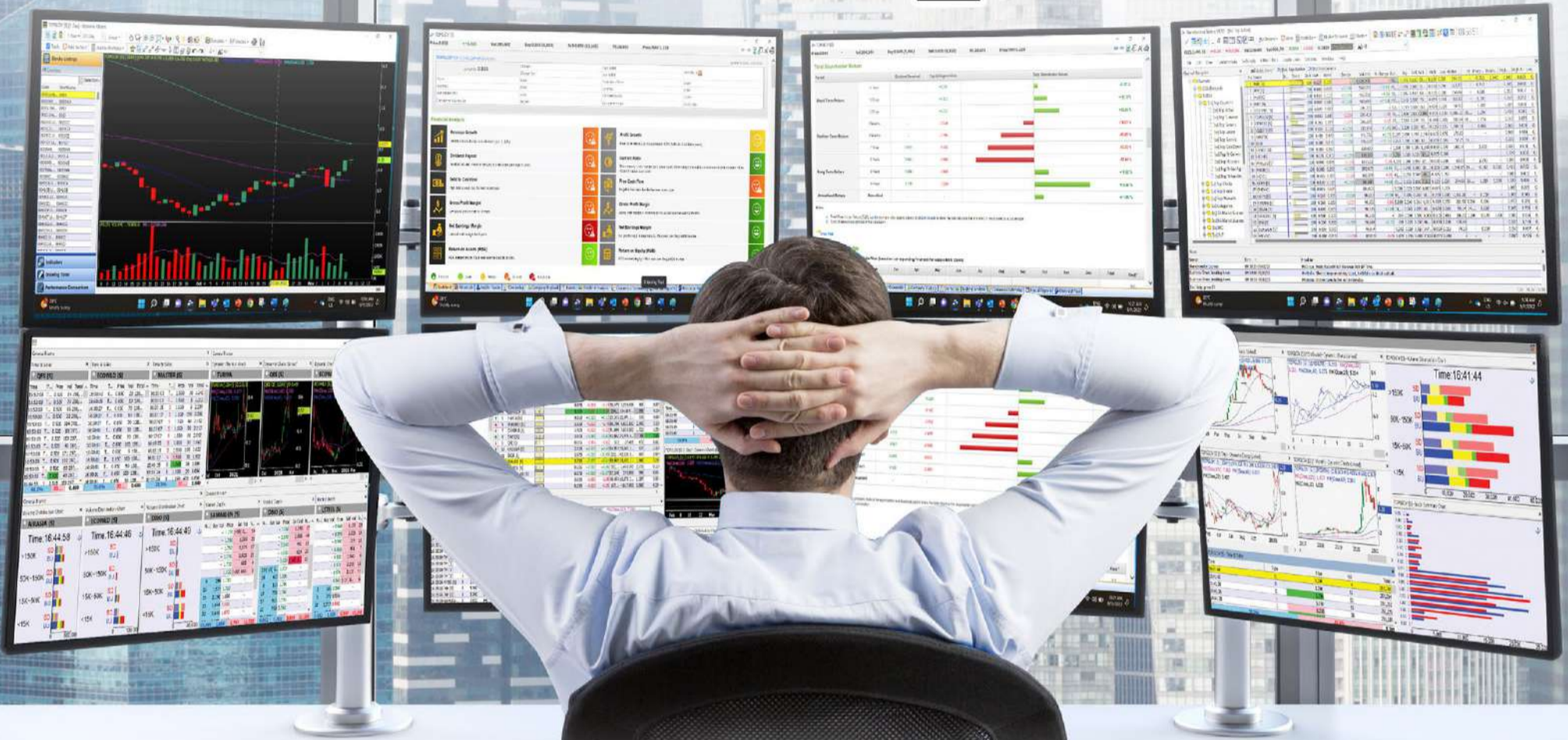


Period	Dividend Received	Capital Appreciation	Total Shareholder Return
Short Term Return	5 Days	+0.120	+3.88%
	10 Days	+0.110	+3.55%
	20 Days	-0.030	-0.94%
Medium Term Return	3 Months	-0.209	-6.82%
	6 Months	-0.139	-5.59%
	1 Year	-0.039	-0.93%
Long Term Return	2 Years	0.068	+6.88%
	3 Years	0.253	+7.71%
	5 Years	0.293	+93.00%
Annualised Return	Annualised	-	+14.65%

Disclaimer: The information on this page is provided as a service to readers. It does not constitute financial advice and/or any investment recommendations. Past performance is not indicative of future results. We assume no liability for damages resulting from or arising out of the use of such information. It would be best if you did your own research to make your personal investment decisions wisely or consult a licenced investment advisor.

MAKE BETTER TRADING STRATEGIES

with
SHARE INVESTOR
STATION



8 Markets Data

- ▶ Get access to data from Bursa, NYSE, Nasdaq, HKEX, SGX, IDX, SET & ASX

Dynamic Chart

- ▶ Candlestick Pattern Recognition
- ▶ 111 Indicators
- ▶ 39 Drawing Tools
- ▶ Performance Comparison Chart

Intraday Data

- ▶ Market Depth
- ▶ Trade Summary Matrix & Chart
- ▶ Times & Sales
- ▶ Intraday Market Ticker

Market Screener

- ▶ 96 criteria ranging from FA, TA, Consensus Estimate
- ▶ Real-time Data

Power Frame

- ▶ Combining few Dynamic Charts together with intraday information in one frame

Technical Analysis

Fundamental Analysis

Financial Analysis Statement

- ▶ Profit & Loss
- ▶ Balance Sheet
- ▶ Cash Flow Statement
- ▶ More than 20 Financial Ratios
- ▶ Dividend Analysis

FactSheet

- ▶ Key Stock Information
- ▶ Ownership
- ▶ Consensus Estimates
- ▶ Annual Report
- ▶ Historical Price
- ▶ Insider Trades

**Start your 18 days
 FREE trial now
 (Valued at RM82)**



Price & Total Shareholder Return (as at Yesterday)

Fundamental Analysis

DEFINITION: Company is paying out dividend with low or moderate leverage.

CHART GUIDE: Total Shareholder Return (TSR) combines share price appreciation and distributions paid to show the total return to the shareholder expressed as a percentage.



ShareInvestor WebPro > Screener > Market Screener (FA & TA) > select BURSA > add criteria

A. Criteria

- > click Add Criteria
- Fundamental Analysis Conditions tab >select (i) Dividend Yield
- Fundamental Analysis Conditions tab >select (ii) Dividend Payout (Historical)
- Fundamental Analysis Conditions tab >select (iii) Total Debt To Equity
- Fundamental Analysis Conditions tab >select (iv) Total Shareholder Returns
- Fundamental Analysis Conditions tab >select (v) Total Shareholder Returns
- Fundamental Analysis Conditions tab / >select (vi) CAGR of Dividend Per Share

• Fundamental Analysis Conditions tab >select (vii) CAGR of Dividend Per Share

B. Conditions (Criteria Filters)

1. Dividend Yield - select (more than) type (1) % for the past select (1) financial year(s)
2. Dividend Payout (Historical) - select (between) type (0.5) to type (1) times for the past select (1) financial year(s)
3. Total Debt to Equity - select (less than) type (1) for the past select (1) financial year(s)
4. Total Shareholder Return - select (more than) type (5) % for the past select (3) financial year(s)
5. Total Shareholder Return - select (more than) type (5) % for the past select (5) financial year(s)

6. CAGR of Dividend Per Share - select (less than) type (30) % for the past select (5) financial year(s)
7. CAGR of Dividend Per Share - select (more than) type (1) % for the past select (5) financial year(s)

- > click Save Template > Create New Template type (Dividend Companies) > click Create
- > click Save Template as > select Dividend Companies > click Save
- > click Screen Now (may take a few minutes)
- > Sort By: Select (Dividend Yield) Select (Desc)
- > Mouse over stock name > Factsheet > looking for Total Shareholder Return

UNITED PLANTATIONS BERHAD (2089)

C² Chart



Period	Dividend Received	Capital Appreciation	Total Shareholder Return
Short Term Return	5 Days	-0.040	-0.25 %
	10 Days	+0.040	+2.21 %
	20 Days	+0.400	+3.16 %
Medium Term Return	3 Months	-0.619	-3.79 %
	6 Months	+0.579	+3.83 %
	1 Year	+1.893	+14.54 %
Long Term Return	2 Years	1.150	+27.16 %
	3 Years	2.000	+41.44 %
	5 Years	4.750	+70.00 %
Annualised Return	Annualised	-	+12.22 %

FORMOSA PROSONIC INDUSTRIES (9172)

C² Chart



Period	Dividend Received	Capital Appreciation	Total Shareholder Return
Short Term Return	5 Days	-	-
	10 Days	-0.050	-2.11 %
	20 Days	-0.030	-1.22 %
Medium Term Return	3 Months	-0.250	-9.36 %
	6 Months	-0.500	-27.11 %
	1 Year	-0.250	-9.36 %
Long Term Return	2 Years	0.200	+7.77 %
	3 Years	0.340	+93.01 %
	5 Years	0.550	+113.67 %
Annualised Return	Annualised	-	+16.40 %

JAYCORP BERHAD (7152)

C² Chart



Period	Dividend Received	Capital Appreciation	Total Shareholder Return
Short Term Return	5 Days	+0.015	+0.72 %
	10 Days	+0.015	+0.72 %
	20 Days	-	-
Medium Term Return	3 Months	-0.005	-0.71 %
	6 Months	-0.025	-3.47 %
	1 Year	-	-
Long Term Return	2 Years	0.055	+7.98 %
	3 Years	0.205	+43.67 %
	5 Years	0.355	+144.19 %
Annualised Return	Annualised	-	+19.55 %

Disclaimer: The information on this page is provided as a service to readers. It does not constitute financial advice and/or any investment recommendations. Past performance is not indicative of future results. We assume no liability for damages resulting from or arising out of the use of such information. It would be best if you did your own research to make your personal investment decisions wisely or consult a licenced investment advisor.

Introducing



GM SUITE

CONNECTING STAKEHOLDERS

by SHAREINVESTOR®

General Meeting Suite (GM Suite), an end-to-end technology system to facilitate hybrid, virtual or physical Annual General Meetings.

THE GOLD STANDARD SOLUTION FOR AGM / EGM



<https://gm-suite.com>

Week: 7 July 2023 – 13 July 2023

More Brokers' Call 

AMINVESTMENT BANK <small>... See More</small>	Call	Target Price	Release Date
Lee Swee Kiat Group Berhad (8079)	BUY	RM1.02	10 Jul 2023
Mah Sing Group Berhad (8583)	BUY	RM0.90	07 Jul 2023
Mega First Corporation Berhad (3069)	BUY	RM3.60	12 Jul 2023
Public Bank Berhad (1295)	BUY	RM4.700	11 Jul 2023

APEX <small>... See More</small>	Call	Target Price	Release Date
Daythree Digital Berhad (0281)	BUY	RM0.38	10 Jul 2023
MYMBN Berhad (0280)	BUY	RM0.30	10 Jul 2023

BIMB SECURITIES SDN BHD <small>... See More</small>	Call	Target Price	Release Date
Mah Sing Group Berhad (8583)	BUY	RM0.82	07 Jul 2023

KENANGA <small>... See More</small>	Call	Target Price	Release Date
Aeon Credit Service (M) Berhad (5139)	OUTPERFORM	RM16.15	11 Jul 2023
Pharmaniaga Berhad (7081)	UNDERFORM	RM0.33	13 Jul 2023
Samaiden Group Berhad (0223)	OUTPERFORM	RM1.24	12 Jul 2023
Star Media Group Berhad (6084)	OUTPERFORM	RM0.56	11 Jul 2023
Velesto Energy Berhad (5243)	UNDERFORM	RM0.19	12 Jul 2023

MIDF <small>... See More</small>	Call	Target Price	Release Date
Cahaya Mata Sarawak Berhad (2852)	BUY	RM1.50	11 Jul 2023
Mah Sing Group Berhad (8583)	BUY	RM0.78	07 Jul 2023

UOB KAYHIAN <small>... See More</small>	Call	Target Price	Release Date
Globaltec Formation Berhad (5220)	BUY	RM0.58	12 Jul 2023
Nylex (Malaysia) Berhad (4944)	BUY	RM0.66	12 Jul 2023
Pertama Digital Berhad (8532)	BUY	RM3.49	12 Jul 2023
Westports Holdings Berhad (5246)	HOLD	RM3.80	12 Jul 2023

Disclaimer: InveSt does not accept any liability whatsoever for any direct, indirect or consequential losses (including loss of profit) or damages that may arise from the use of information or opinions in this publication. The information and opinions in InveSt are not to be considered as an offer to sell or buy any of the securities discussed. Opinions expressed are subject to change without notice. The Brokers may, from time to time, have interests or positions in the securities mentioned. For the full report on each item listed on this page, please visit https://www.shareinvestor.com/my/brokers_call.



Happy Jack sofa designed by Ludovica + Roberto Palomba

Made of Stories

by people who design, craft and live.
Handmade with love in Italy to last generations, since 1912.

poltronafrau.com

Scan to activate the augmented reality experience.



XTRA

X-TRA furniture sdn bhd
The Gardens Mall, Mid Valley City, KL
2nd floor, Lot S236 & 237
xtrafurniture.com



DEFINITION: Top 8 stocks with Technical Analysis plus Pattern Matching by 60 pre-defined indicators by the system showing a higher probability of bullish sentiment on the share price.



ShareInvestor WebPro > Screener > Predefined TA Screens > select market BURSA > Most Long Signals > click Scan Results or mouse over each company

UPA CORPORATION BERHAD (7757.MY)

UPA

Price updated at 13 Jul 2023 16:54

Last: 0.780	Change: +0.007	Volume: 1,620
	Change (%): +0.91	Range: 0.770 - 0.790

TA Scanner Results based on historical data up to 13 Jul 2023

Condition	Signal	Explanation
Bollinger Band: High Above Upper Bollinger Band	Neutral	1. High above upper bollinger band(14,2). 2. Average volume(5) is above 100,000.
Candlestick: Indecision Doji	Neutral	Indecision: Doji
DM: Bullish Directional Movement	Long	-DI(14) crossed below +DI(14)
Donchian Channels: High Above Upper Donchian Channels	Long	High crossed above the upper Donchian Channel(14,4)
MA: Bullish Price Crossover	Long	1. Close price crossed above MA(40) within the last 1 day. 2. Previous day close price is below the MA(10) for the last 5 days
MA: Short Term Bullish Moving Average Crossover	Long	MA(10) crossed above MA(15) within the last 1 day.
MACD: Bullish MACD Crossover	Long	1. MACD(12,26) diff line crossed above the MACD(12,26) signal line. 2. MACD Histogram(12,26) is above 0.
Parabolic SAR: Bearish Parabolic SAR Reversal	Neutral	1. Parabolic SAR 1 day ago above close price 1 day ago for the last 5 days. 2. Parabolic SAR below close price
Price: New 52 Week High	Long	1. Stock reach a new 52 week high. 2. Average volume(30) is above 50000.
RSI: RSI Overbought	Short	1. RSI(20) is above 80. 2. RSI(20) is increasing for the last 3 days. 3. Stock has more than 75 days of historical data.
RSI: Short Term RSI 50 Bullish Crossover	Long	1. RSI(20) crossed above 50 within the last 1 day and RSI(20) 1 day ago below 50 for the last 5 days. 2. Volume above average volume(125). 3. Average volume(5) is above 100,000.
Stochastic: Fast Stochastic Buy Signal	Long	1. Fast Stochastic(15,5) %K crossed above 20. 2. Fast Stochastic(15,5) %K 1 day ago was below 20 for the last 5 days. 3. Average volume(30) is above 50000
Volume: Consecutive Days Of Increasing Average Volume	Long	1. Average Volume(20) has been increasing over the last 2 weeks. 2. Average volume(20) is above 100000
Williams %R: Bearish Williams %R	Short	1. Williams %R(26) between 0 and -20. 2. Average volume(5) is above 100,000.

MESB BERHAD (7234.MY)

MESB

Price updated at 13 Jul 2023 14:58

Last: 0.470	Change: +0.005	Volume: 4,084
	Change (%): +1.08	Range: 0.450 - 0.475

TA Scanner Results based on historical data up to 13 Jul 2023

Condition	Signal	Explanation
Bollinger Band: High Above Upper Bollinger Band	Neutral	1. High above upper bollinger band(14,2). 2. Average volume(5) is above 100,000.
Candlestick: Bullish Engulfing	Long	Bullish: Engulfing
DM: Bullish Directional Movement	Long	-DI(14) crossed below +DI(14)
Donchian Channels: High Above Upper Donchian Channels	Long	High crossed above the upper Donchian Channel(14,4)
MA: Short Term Bullish Moving Average Crossover	Long	MA(10) crossed above MA(15) within the last 1 day.
Volume: Volume Spike	Long	1. Volume is more than 500% above average volume(10). 2. Volume above 200000. 3. Close price above 0.10
Williams %R: Bearish Williams %R	Short	1. Williams %R(26) between 0 and -20. 2. Average volume(5) is above 100,000.

HONG LEONG CAPITAL BERHAD (5274.MY)

HLCAP

Price updated at 13 Jul 2023 16:50

Last: 6.190	Change: -0.010	Volume: 26,228
	Change (%): -0.16	Range: 6.100 - 6.190

TA Scanner Results based on historical data up to 13 Jul 2023

Condition	Signal	Explanation
Bollinger Band: Bullish Lower Bollinger Band Support	Long	1. Low 1 day ago below lower bollinger band(20,2). 2. Close above close 1 day ago. 3. Average volume(5) is above 100,000.
MA: Bullish Price Crossover	Long	1. Close price crossed above MA(40) within the last 1 day. 2. Previous day close price is below the MA(10) for the last 5 days
RSI: Short Term RSI 50 Bullish Crossover	Long	1. RSI(20) crossed above 50 within the last 1 day and RSI(20) 1 day ago below 50 for the last 5 days. 2. Volume above average volume(125). 3. Average volume(5) is above 100,000.
Volume: 10 Days large value Buy Up trade	Long	1. 150K value Buy Up greater than Sell Down by 20% for 10 days. 2. 50K-100K value Buy Up greater than Sell Down by 20% for 10 days. 3. Average volume(10) is above 1000000
Volume: 5 Days large value Buy Up trade	Long	1. 150K value Buy Up greater than Sell Down by 20% for 5 days. 2. 50K-100K value Buy Up greater than Sell Down by 20% for 5 days. 3. Average volume(10) is above 1000000
Volume: Consecutive Days Of Increasing Average Volume	Long	1. Average Volume(20) has been increasing over the last 2 weeks. 2. Average volume(20) is above 100000

THREE-A RESOURCES BERHAD (0012.MY)

3A

Price updated at 13 Jul 2023 16:57

Last: 0.800	Change: -	Volume: 27,282
	Change (%): -	Range: 0.790 - 0.805

TA Scanner Results based on historical data up to 13 Jul 2023

Condition	Signal	Explanation
Bollinger Band: Bullish Lower Bollinger Band Support	Long	1. Low 1 day ago below lower bollinger band(20,2). 2. Close above close 1 day ago. 3. Average volume(5) is above 100,000.
Bollinger Band: Bullish Short Term Volatility Breakout and Trending	Long	1. Close price above upper bollinger band(33,1). 2. Volume above average volume(10). 3. Average volume(10) is above 300,000.
Bollinger Band: High Above Upper Bollinger Band	Neutral	1. High above upper bollinger band(14,2). 2. Average volume(5) is above 100,000.
DM: Bullish Directional Movement	Long	-DI(14) crossed below +DI(14)
Donchian Channels: High Above Upper Donchian Channels	Long	High crossed above the upper Donchian Channel(14,4)
MACD: Bullish MACD Crossover	Long	1. MACD(12,26) diff line crossed above the MACD(12,26) signal line. 2. MACD Histogram(12,26) is above 0.
RSI: Short Term RSI 50 Bullish Crossover	Long	1. RSI(20) crossed above 50 within the last 1 day and RSI(20) 1 day ago below 50 for the last 5 days. 2. Volume above average volume(125). 3. Average volume(5) is above 100,000.
Volume: Volume Spike	Long	1. Volume is more than 500% above average volume(10). 2. Volume above 200000. 3. Close price above 0.10
Williams %R: Bearish Williams %R	Short	1. Williams %R(26) between 0 and -20. 2. Average volume(5) is above 100,000.

NI HSIN GROUP BERHAD - REDEEMABLE CONVERTIBLE PREFERENCE SHARES (7215PA.MY)

HB GLOBAL LIMITED (5187.MY)

NIHSIN-PA

Price updated at 13 Jul 2023 16:54

Last: 0.040	Change: +0.010	Volume: 227,088
	Change (%): +33.33	Range: 0.030 - 0.040

TA Scanner Results based on historical data up to 13 Jul 2023

Condition	Signal	Explanation
Bollinger Band: Bullish Long Term Volatility Breakout and Trending	Long	1. Close price above upper bollinger band(33,1). 2. Volume above average volume(50). 3. Average volume(50) is above 300,000.
Bollinger Band: Bullish Short Term Volatility Breakout and Trending	Long	1. Close price above upper bollinger band(33,1). 2. Volume above average volume(10). 3. Average volume(10) is above 300,000.
Bollinger Band: High Above Upper Bollinger Band	Neutral	1. High above upper bollinger band(14,2). 2. Average volume(5) is above 100,000.
DM: Bullish Directional Movement	Long	-DI(14) crossed below +DI(14)
Donchian Channels: High Above Upper Donchian Channels	Long	High crossed above the upper Donchian Channel(14,4)
MA: Short Term Bullish Moving Average Crossover	Long	MA(10) crossed above MA(15) within the last 1 day.
MACD: Bullish MACD Crossover	Long	1. MACD(12,26) diff line crossed above the MACD(12,26) signal line. 2. MACD Histogram(12,26) is above 0.
Stochastic: Fast Stochastic Sell Signal	Short	1. Fast Stochastic(15,5) %K crossed below 80. 2. Fast Stochastic(15,5) %K 1 day ago was above 80 for the last 5 days. 3. Average volume(30) is above 50000

HBGLOB

Price updated at 13 Jul 2023 16:58

Last: 0.135	Change: -0.005	Volume: 20,603
	Change (%): -3.57	Range: 0.135 - 0.150

TA Scanner Results based on historical data up to 13 Jul 2023

Condition	Signal	Explanation
Bollinger Band: Bullish Long Term Volatility Breakout and Trending	Long	1. Close price above upper bollinger band(33,1). 2. Volume above average volume(50). 3. Average volume(50) is above 300,000.
Bollinger Band: Bullish Short Term Volatility Breakout and Trending	Long	1. Close price above upper bollinger band(33,1). 2. Volume above average volume(10). 3. Average volume(10) is above 300,000.
Bollinger Band: High Above Upper Bollinger Band	Neutral	1. High above upper bollinger band(14,2). 2. Average volume(5) is above 100,000.
Donchian Channels: High Above Upper Donchian Channels	Long	High crossed above the upper Donchian Channel(14,4)
Parabolic SAR: Bearish Parabolic SAR Reversal	Neutral	1. Parabolic SAR 1 day ago above close price 1 day ago for the last 5 days. 2. Parabolic SAR below close price
RSI: Short Term RSI 50 Bullish Crossover	Long	1. RSI(20) crossed above 50 within the last 1 day and RSI(20) 1 day ago below 50 for the last 5 days. 2. Volume above average volume(125). 3. Average volume(5) is above 100,000.
Volume: Volume Spike	Long	1. Volume is more than 500% above average volume(10). 2. Volume above 200000. 3. Close price above 0.10

SHANGRI-LA HOTELS (M) BERHAD (5517.MY)

KENANGA INVESTMENT BANK BERHAD (6483.MY)

SHANG

Price updated at 13 Jul 2023 16:57

Last: 2.610	Change: +0.020	Volume: 8,740
	Change (%): +0.77	Range: 2.490 - 2.650

TA Scanner Results based on historical data up to 13 Jul 2023

Condition	Signal	Explanation
Bollinger Band: High Above Upper Bollinger Band	Neutral	1. High above upper bollinger band(14,2). 2. Average volume(5) is above 100,000.
DM: Bullish Directional Movement	Long	-DI(14) crossed below +DI(14)
Donchian Channels: High Above Upper Donchian Channels	Long	High crossed above the upper Donchian Channel(14,4)
MA: Bullish Price Crossover	Long	1. Close price crossed above MA(40) within the last 1 day. 2. Previous day close price is below the MA(10) for the last 5 days
Parabolic SAR: Bearish Parabolic SAR Reversal	Neutral	1. Parabolic SAR 1 day ago above close price 1 day ago for the last 5 days. 2. Parabolic SAR below close price
RSI: Short Term RSI 30 Bullish Crossover	Long	1. RSI(20) crossed above 30 within the last 1 day and RSI(20) 1 day ago below 30 for the last 5 days. 2. Volume above average volume(125). 3. Average volume(5) is above 100,000.
RSI: Short Term RSI 50 Bullish Crossover	Long	1. RSI(20) crossed above 50 within the last 1 day and RSI(20) 1 day ago below 50 for the last 5 days. 2. Volume above average volume(125). 3. Average volume(5) is above 100,000.

KENANGA

Price updated at 13 Jul 2023 16:57

Last: 0.890	Change: -0.020	Volume: 16,496
	Change (%): -2.20	Range: 0.890 - 0.905

TA Scanner Results based on historical data up to 13 Jul 2023

Condition	Signal	Explanation
Accumulation Distribution: Bullish Accumulation Distribution	Long	Accumulation distribution increasing for the last 7 days
Bollinger Band: Bullish Long Term Volatility Breakout and Trending	Long	1. Close price above upper bollinger band(33,1). 2. Volume above average volume(50). 3. Average volume(50) is above 300,000.
Bollinger Band: Bullish Short Term Volatility Breakout and Trending	Long	1. Close price above upper bollinger band(33,1). 2. Volume above average volume(10). 3. Average volume(10) is above 300,000.
Bollinger Band: High Above Upper Bollinger Band	Neutral	1. High above upper bollinger band(14,2). 2. Average volume(5) is above 100,000.
CCI: Bearish CCI Overbought And Reversing	Short	1. CCI(26) above 100 and CCI(26) 1 day ago increasing for the last 3 days. 2. CCI(26) below CCI(26) 1 day ago
Candlestick: Indecision Doji	Neutral	Indecision: Doji
Volume: 10 Days large value Buy Up trade	Long	1. 150K value Buy Up greater than Sell Down by 20% for 10 days. 2. 50K-100K value Buy Up greater than Sell Down by 20% for 10 days. 3. Average volume(10) is above 1000000
Volume: 5 Days large value Buy Up trade	Long	1. 150K value Buy Up greater than Sell Down by 20% for 5 days. 2. 50K-100K value Buy Up greater than Sell Down by 20% for 5 days. 3. Average volume(10) is above 1000000
Williams %R: Bearish Williams %R	Short	1. Williams %R(26) between 0 and -20. 2. Average volume(5) is above 100,000.

Disclaimer: The information on this page is provided as a service to readers. It does not constitute financial advice and/or any investment recommendations. Past performance is not indicative of future results. We assume no liability for damages resulting from or arising out of the use of such information. It would be best if you did your own research to make your personal investment decisions wisely or consult a licenced investment advisor.

Brand Finance[®]



Malaysia

100

2023

The annual report on the most valuable and strongest Malaysian brands
May 2023

Brand Value Ranking (USDm)

Top 100 most valuable Malaysian brands 1-50

2023 Rank	2022 Rank		Brand	Sector	2023 Brand Value	Brand Value Change	2022 Brand Value	2023 Brand Rating	2022 Brand Rating
1	1	←	PETRONAS	Oil & Gas	12,712	-7%	13,596	AAA	AAA
2	3	↑	Maybank	Banking	3,946	+1%	3,903	AAA	AAA
3	2	↓	Genting	Leisure & Tourism	3,623	-19%	4,493	AAA-	AAA
4	4	←	CIMB	Banking	2,492	+7%	2,333	AA+	AAA-
5	6	↑	Sime Darby	Conglomerates	2,103	-3%	2,177	AA	AA
6	5	↓	Tenaga Nasional	Utilities	1,853	-17%	2,238	AAA-	AAA-
7	7	←	Public Bank	Banking	1,812	-5%	1,905	AAA	AAA
8	9	↑	airasia	Airlines	1,343	-7%	1,444	AAA-	AAA-
9	8	↓	Maxis	Telecoms	1,223	-17%	1,474	AA+	AAA-
10	10	←	TM	Telecoms	1,019	-6%	1,083	AAA-	AAA-
11	11	←	RHB Bank	Banking	🔒	🔒	🔒	🔒	🔒
12	12	←	YTL	Engineering & Construction	🔒	🔒	🔒	🔒	🔒
13	14	↑	Hong Leong Financial	Banking	🔒	🔒	🔒	🔒	🔒
14	13	↓	DiGi	Telecoms	🔒	🔒	🔒	🔒	🔒
15	16	↑	IOI	Conglomerates	🔒	🔒	🔒	🔒	🔒
16	17	↑	Axiata	Telecoms	🔒	🔒	🔒	🔒	🔒
17	15	↓	Celcom	Telecoms	🔒	🔒	🔒	🔒	🔒
18	19	↑	Sunway	Conglomerates	🔒	🔒	🔒	🔒	🔒
19	21	↑	Berjaya	Leisure & Tourism	🔒	🔒	🔒	🔒	🔒
20	27	↑	AmBank	Banking	🔒	🔒	🔒	🔒	🔒
21	24	↑	Gamuda	Engineering & Construction	🔒	🔒	🔒	🔒	🔒
22	31	↑	Batu Kawan	Chemicals	🔒	🔒	🔒	🔒	🔒
23	18	↓	Astro Malaysia	Media	🔒	🔒	🔒	🔒	🔒
24	23	↓	Berjaya Land	Hotels	🔒	🔒	🔒	🔒	🔒
25	35	↑	Bank Rakyat	Banking	🔒	🔒	🔒	🔒	🔒
26	22	↓	MISC	Logistics	🔒	🔒	🔒	🔒	🔒
27	26	↓	KLK	Food	🔒	🔒	🔒	🔒	🔒
28	25	↓	Felda Global Ventures	Food	🔒	🔒	🔒	🔒	🔒
29	28	↓	U Mobile	Telecoms	🔒	🔒	🔒	🔒	🔒
30	30	←	Hap Seng	Conglomerates	🔒	🔒	🔒	🔒	🔒
31	20	↓	Top Glove	Chemicals	🔒	🔒	🔒	🔒	🔒
32	29	↓	IJM	Engineering & Construction	🔒	🔒	🔒	🔒	🔒
33	32	↓	Bank Islam	Banking	🔒	🔒	🔒	🔒	🔒
34	34	←	Dutch Lady Milk	Food	🔒	🔒	🔒	🔒	🔒
35	33	↓	Setia	Real Estate	🔒	🔒	🔒	🔒	🔒
36	51	↑	Alliance Bank	Banking	🔒	🔒	🔒	🔒	🔒
37	39	↑	Scientex	Chemicals	🔒	🔒	🔒	🔒	🔒
38	38	←	100 Plus	Soft Drinks	🔒	🔒	🔒	🔒	🔒
39	44	↑	Malaysia Airlines	Airlines	🔒	🔒	🔒	🔒	🔒
40	40	←	Affin Bank	Banking	🔒	🔒	🔒	🔒	🔒
41	42	↑	TIME dotCom	Telecoms	🔒	🔒	🔒	🔒	🔒
42	47	↑	Eco World	Real Estate	🔒	🔒	🔒	🔒	🔒
43	37	↓	Proton	Automobiles	🔒	🔒	🔒	🔒	🔒
44	41	↓	Padini	Retail	🔒	🔒	🔒	🔒	🔒
45	50	↑	Etiqa	Insurance	🔒	🔒	🔒	🔒	🔒
46	45	↓	Boustead	Conglomerates	🔒	🔒	🔒	🔒	🔒
47	43	↓	Takaful Malaysia	Insurance	🔒	🔒	🔒	🔒	🔒
48	36	↓	Sapura Energy	Oil & Gas	🔒	🔒	🔒	🔒	🔒
49	58	↑	QL Resources	Food	🔒	🔒	🔒	🔒	🔒
50	48	↓	Magnum	Leisure & Tourism	🔒	🔒	🔒	🔒	🔒

Brand Value Ranking (USDm).

Top 100 most valuable Malaysian brands 51-100

2023 Rank	2022 Rank		Brand	Sector	2023 Brand Value	Brand Value Change	2022 Brand Value	2023 Brand Rating	2022 Brand Rating
51	46	↓	Kossan	Chemicals	🔒	🔒	🔒	🔒	🔒
52	53	↑	KPJ Healthcare	Healthcare Facilities	🔒	🔒	🔒	🔒	🔒
53	61	↑	UEM	Conglomerates	🔒	🔒	🔒	🔒	🔒
54	52	↓	Parkson	Retail	🔒	🔒	🔒	🔒	🔒
55	54	↓	Malakoff	Utilities	🔒	🔒	🔒	🔒	🔒
56	49	↓	Hartalega	Chemicals	🔒	🔒	🔒	🔒	🔒
57	57	←	Press Metal	Mining, Metals & Minerals	🔒	🔒	🔒	🔒	🔒
58	56	↓	Mah Sing	Real Estate	🔒	🔒	🔒	🔒	🔒
59	62	↑	UMW	Conglomerates	🔒	🔒	🔒	🔒	🔒
60	74	↑	LPI Capital	Insurance	🔒	🔒	🔒	🔒	🔒
61	60	↓	Gas Malaysia	Utilities	🔒	🔒	🔒	🔒	🔒
62	65	↑	Matrix Concepts	Real Estate	🔒	🔒	🔒	🔒	🔒
63	63	←	MBSB	Banking	🔒	🔒	🔒	🔒	🔒
64	55	↓	Pos Malaysia	Logistics	🔒	🔒	🔒	🔒	🔒
65	59	↓	V.S. Industry	Tech	🔒	🔒	🔒	🔒	🔒
66	77	↑	Bank Muamalat	Banking	🔒	🔒	🔒	🔒	🔒
67	76	↑	FFM Group	Food	🔒	🔒	🔒	🔒	🔒
68	64	↓	Tropicana	Real Estate	🔒	🔒	🔒	🔒	🔒
69	72	↑	Yes	Telecoms	🔒	🔒	🔒	🔒	🔒
70	69	↓	DRB-Hicom	Automobiles	🔒	🔒	🔒	🔒	🔒
71	66	↓	Westports	Commercial Services	🔒	🔒	🔒	🔒	🔒
72	67	↓	IHH	Healthcare Facilities	🔒	🔒	🔒	🔒	🔒
73	71	↓	Malayan Flour Mills	Food	🔒	🔒	🔒	🔒	🔒
74	73	↓	OSK	Conglomerates	🔒	🔒	🔒	🔒	🔒
75	-	New	Dumex	Food	🔒	🔒	🔒	🔒	🔒
76	68	↓	Malaysia Airports	Airports	🔒	🔒	🔒	🔒	🔒
77	75	↓	Pantai	Healthcare Facilities	🔒	🔒	🔒	🔒	🔒
78	78	←	Bursa Malaysia	Exchanges	🔒	🔒	🔒	🔒	🔒
79	81	↑	UOA Development	Real Estate	🔒	🔒	🔒	🔒	🔒
80	79	↓	Dialog	Oil & Gas	🔒	🔒	🔒	🔒	🔒
81	84	↑	Malaysian Reinsurance	Insurance	🔒	🔒	🔒	🔒	🔒
82	82	←	Cahaya Mata Sarawak	Engineering & Construction	🔒	🔒	🔒	🔒	🔒
83	83	←	Unifi	Telecoms	🔒	🔒	🔒	🔒	🔒
84	70	↓	Media Prima	Media	🔒	🔒	🔒	🔒	🔒
85	86	↑	Guan Chong	Food	🔒	🔒	🔒	🔒	🔒
86	85	↓	Bumi Armada	Oil & Gas	🔒	🔒	🔒	🔒	🔒
87	80	↓	Takaful IKHLAS	Insurance	🔒	🔒	🔒	🔒	🔒
88	88	←	MCIS Life	Insurance	🔒	🔒	🔒	🔒	🔒
89	90	↑	Kulim Malaysia	Food	🔒	🔒	🔒	🔒	🔒
90	95	↑	United Plantations	Food	🔒	🔒	🔒	🔒	🔒
91	87	↓	Bonia	Retail	🔒	🔒	🔒	🔒	🔒
92	91	↓	Eastern & Oriental	Real Estate	🔒	🔒	🔒	🔒	🔒
93	92	↓	Wah Seong	Engineering & Construction	🔒	🔒	🔒	🔒	🔒
94	93	↓	MSM	Food	🔒	🔒	🔒	🔒	🔒
95	-	New	Ancom	Chemicals	🔒	🔒	🔒	🔒	🔒
96	98	↑	MMC	Conglomerates	🔒	🔒	🔒	🔒	🔒
97	94	↓	Star Publications (Malaysia)	Media	🔒	🔒	🔒	🔒	🔒
98	100	↑	Tan Chong Motor	Automobiles	🔒	🔒	🔒	🔒	🔒
99	-	New	Masteel	Mining, Metals & Minerals	🔒	🔒	🔒	🔒	🔒
100	97	↓	Cagamas	Commercial Services	🔒	🔒	🔒	🔒	🔒

Sector Analysis.



Sector Analysis.



Banking

The Malaysian banking system remained well-capitalised throughout the second half of 2022 with a total capital ratio of 18.8%, bolstering its capacity to support lending activity and absorb unexpected losses.

Bank earnings continued to recover, with net interest margins (NIMs) sustained by stronger loan growth and higher lending rates, while market valuations of listed banks trended higher but have yet to fully recover to pre-pandemic levels. This is due to investor concerns over lingering uncertainties in the operating environment for banks in 2023.

Banking brands in Malaysia will likely see weaker loan growth in 2023 amid inflationary pressures and slower economic activity. Analysts anticipate a decline in credit demand in Malaysia due to rising interest rates and higher funding costs. It is projected that credit growth could slow to 4-5% in 2023, compared to 6% in 2022. The nation's economy is expected to expand by 3.2% in 2023, significantly lower than the strong post-pandemic recovery of 8.7% in 2022.

The five most valuable banks in Malaysia are **Maybank**, **CIMB**, **Public Bank**, **RHB Bank** and **Hong Leong Financial**. The total brand value of these banking brands amount to \$10 billion, consisting approximately 85% of the total brand value of banking brands in our rankings. A total of 12 banking brands are listed in our rankings with a total brand value of \$11.7 billion. Other than Public Bank, the other four banking brands mentioned saw a marginal increase in brand value ranging from 1% to 7% mainly driven by stronger loan growth and higher lending rates.

On the whole, banking brands in Malaysia continued to perform well in the fourth quarter of 2022's fiscal year, with analysts optimistic on the banking sector's growth even though there remain downside risks amid global headwinds.

Maybank is the most valuable banking brand in Malaysia, having saw its brand value increase by 1% to \$3.95 billion. The brand consequently saw its rank improved by one position to overtake **Genting** and be placed as the second most valuable brand in Malaysia.

Sector Analysis.

The growth in **Maybank**'s brand value was driven by recovered revenue and better revenue forecasts, with the brand's net operating income growing 8.5% to RM27.62 billion (\$6.12 billion) from RM25.45 billion (\$5.64 billion) in 2021. Maybank has rolled out its refined strategy with a focus on achieving five strategic thrusts termed as M25+ in October 2022. To achieve its M25+ aspirations, the brand outlined 12 programmes and allocated an investment of up to RM4.5 billion (\$1 billion).

CIMB, the second most valuable Malaysia banking brand, saw an increase in brand value by 7% to \$2.5 billion. This growth in brand value was driven by strong brand forecasts. CIMB's operating income rose 8% year-on-year to RM19.8 billion (\$4.4 billion), driven by NIMs expansion, fee income and a healthy 7.7% rise in loans – surpassing industry growth/market benchmarks. In 2022, the brand invested almost RM900 million (\$199.4 million) to enhance its digital platforms, which in turn improved their availability rate while reducing downtime incidents. On the ESG front, CIMB mobilised RM27.8 billion (\$6.2 billion) of sustainable finance towards green, social, and sustainable products and services and launched the first-of-its-kind Sustainability-Linked Treasury Programme in Malaysia.

Public Bank maintained its position as the third most valuable banking brand in Malaysia despite a decline in its brand value by 5% to \$1.8 billion. Although the brand's revenue in 2022 improved approximately 9% year-on-year to RM21.4 billion (\$4.7 billion), its brand value was negatively affected by the depreciation of the Malaysian Ringgit against the US Dollar as well

as weaker GDP growth rate forecasted in Malaysia. In line with its digital transformation agenda, Public Bank launched two new secured online payment solutions, DuitNow Online Banking/Wallet in February 2022 and DuitNow QR Cross Border Payment in February 2022.

RHB, Malaysia's 4th most valuable banking brand, saw its brand value increased by 2.7% in 2023, valued at \$991 million. This is due to the brand's growth in brand strength, resilient financial performance in the last financial year and forecasted revenues that are expected to grow steadily. The improved year-on-year financial performance is as a result of higher operating income, with recovery across all segments and markets, further supported by continuous loan growth. With regards to sustainability, the brand has achieved more than RM12 billion (\$2.7 billion) in sustainable financial services, exceeding its year-to-date target by more than 40%. RHB aims to mobilise RM20 billion (\$4.4 billion) in sustainable financial products and services by 2026.

Hong Leong Financial saw its brand value increase by 5% to \$758 million. The brand recorded good financial performance in 2022, with its net interest income seeing an increase of 8% year-on-year to RM3.9 billion (\$0.9 billion). Hong Leong Financial launched several digital initiatives to nurture environmental stewardship among the younger generations and promote a wider adoption of cashless transactions. As part of its sustainability efforts, the brand issued its maiden Green Additional Tier 1 Capital Securities amounting to RM900 million (\$199.4 million) in nominal value. This issuance achieved a milestone of being the first issuance of a green AT1 bond by a bank in Malaysia.

Top 5 Most Valuable Malaysian Banking Brands

© Brand Finance Plc 2023



Sector Analysis.



Oil & Gas

Malaysia's oil and gas sector benefits from its strategic location and strong economic relations with neighboring countries, providing favorable market opportunities. It remains a significant sector, contributing 20% to the country's annual GDP. The industry encompasses upstream, midstream, and machinery and equipment maintenance services. In 2021, the industry approved nine projects valued at RM312.4 million (\$69.2 million).

Malaysia's oil sector saw a profitable year in 2022 due to elevated Brent crude oil pricing. Malaysia's gas industry has benefited from geopolitical factors, such as the increased demand for natural gas due to Europe's phasing out of Russian energy resources. However, challenges loom for the oil and gas sector. Global inflation and the fear of recession in 2023 may lead to slower economic activities, impacting the sector. Furthermore, the rise of environmentally conscious consumers poses a challenge as the sector grapples with reducing reliance on fossil fuels. Despite these challenges, fossil fuels remain the primary energy source in Malaysia.

PETRONAS is the most valuable and strongest brand in the country across all sectors, contributing significantly to Malaysia's GDP. The brand recorded a decline in its brand value by 6.5% to \$12.7 billion in 2023 despite its strong financial performance in 2022. The decline in brand value was mainly due to negative impact arising from the depreciation of the Malaysian Ringgit against the US Dollar, as well as weaker GDP growth rate expected in the nation.

PETRONAS posted its strongest financial performance in 2022, with revenues amounting to RM375.3 billion (\$83.2 billion), a jump of 51% as compared to 2021. This was mainly due to the favourable price impact for major products aligned with higher benchmark prices. Pertaining to ESG, the brand announced its pathway to net-zero carbon emissions by 2050 in November 2022. PETRONAS also recorded greenhouse gas emissions of 46.1 MtCO₂e in 2022 through decarbonisation projects which achieved up to 0.6 MtCO₂e of reduction in emissions. Cumulatively since 2013, PETRONAS has reduced 18.1 MtCO₂e of GHG emissions across its operations. In addition, the brand aims to allocate 20% of its total capital expenditure to scale up decarbonisation and renewables from 2022 to 2026.

Brand Finance® 

Bringing you the best, and then some more

With one of the world's leading reports on Malaysia's most valuable brands at your fingertips, expand your insights with coverage on ASEAN's top brands in our first-ever ASEAN 250 2023 report releasing globally in October 2023.

Alongside this report, Brand Finance proudly presents...

Brand Value Trends: The Importance of Corporate Conduct and Leadership for ASEAN brands

SAVE THE DATE

17 October 2023 | 2.00PM (SGT) | 6.00AM (GMT)

- 1 Recognise** the role senior leaders play in building brand value and brand strength as well as who the top "Brand Guardians" in the region are
- 2 Discover** why analysing the gap between brand perceptions and brand performance is important and which brands do best
- 3 Understand** how corporate conduct and sustainability help build brand value
- 4 Learn** about the factors that drive brand value performance in ASEAN and how you can leverage these
- 5 Find** out the top brands by brand value, brand strength and brand popularity in each sector across ASEAN

✉ Register your interest today at bfs@brandfinance.com

Register now!

About Brand Finance.

Brand Finance is the world's leading brand valuation consultancy.

We bridge the gap between marketing and finance

Brand Finance was set up in 1996 with the aim of 'bridging the gap between marketing and finance'. For more than 25 years, we have helped companies and organisations of all types to connect their brands to the bottom line.

We quantify the financial value of brands

We put thousands of the world's biggest brands to the test every year. Ranking brands across all sectors and countries, we publish over 100 reports annually.

We offer a unique combination of expertise

Our teams have experience across a wide range of disciplines from marketing and market research, to brand strategy and visual identity, to tax and accounting.

We pride ourselves on technical credibility

Brand Finance is a chartered accountancy firm regulated by the Institute of Chartered Accountants in England and Wales, and the first brand valuation consultancy to join the International Valuation Standards Council.

Our experts helped craft the internationally recognised standards on Brand Valuation – ISO 10668 and Brand Evaluation – ISO 20671. Our methodology has been certified by global independent auditors – Austrian Standards – as compliant with both, and received the official approval of the Marketing Accountability Standards Board.



IVSC
MEMBER



Get in Touch.

For business enquiries, please contact:

Alex Haigh

Managing Director, Asia Pacific
a.haigh@brandfinance.com

For media enquiries, please contact:

Andrew Ee

Communications Director, Asia Pacific
a.ee@brandfinance.com

For all other enquiries:

enquiries@brandfinance.com
+44 207 389 9400
www.brandfinance.com



linkedin.com/company/brand-finance



twitter.com/brandfinance



facebook.com/brandfinance



youtube.com/brandfinance

Brand Finance®



Request your own Brand Value Report

A Brand Value Report provides a complete breakdown of the assumptions, data sources, and calculations used to arrive at your brand's value.

Each report includes expert recommendations for growing brand value to drive performance and offers a cost-effective way to gaining a better understanding of your position against peers.

Visit brandirectory.com/request-a-valuation or email enquiries@brandfinance.com



Insight



Strategy



Benchmarking



Education



Communication



Understanding



Brand Valuation Summary



Brand Strength Tracking



Royalty Rates



Cost of Capital Analysis



Customer Research Findings



Competitor Benchmarking

Contents

Benefits

MANUFACTURING SECTOR'S SALES VALUE INCREASED BY 3.3 PER CENT TO RM146.8 BILLION IN MAY 2023 - DOSM

According to the Department of Statistics Malaysia, the sales value of the Manufacturing sector increased by 3.3 per cent in May 2023 after recording a decline of 2.0 per cent in the preceding month. The expansion was bolstered by the strong growth of 17.3 per cent registered in Transport equipment & other manufactures coupled with the continuously increasing trend in Non-metallic mineral products, basic metal & fabricated metal products (8.7%); and Electrical & electronics products (8.2%). On month-on-month comparison, the sales value rebounded to 1.3 per cent as against a negative 7.2 per cent recorded in April 2023.

The sales value of export-oriented industries which represented 71.6 per cent of total sales rebounded marginally by 0.2 per cent in May 2023 after registering a decrease in April 2023. Nonetheless, the domestic-oriented industries sustained positive momentum to record double-digit growth of 12.3 per cent in May 2023 (April 2023: 1.6%). As compared to the previous month, export and domestic-oriented industries advanced by 1.4 per cent and 0.9 per cent respectively after both industries registered a contraction of 7.2 per cent in April 2023.

There were 2.36 million persons engaged in the Manufacturing sector in May 2023, which increased by 2.6 per cent as against 2.30 million persons registered a year ago. The increase was mainly contributed by the Food, beverages & tobacco products (5.9%); Electrical & electronics products (4.2%); and Wood, furniture, paper products & printing (2.5%) sub-sectors. As compared to the preceding month, the number of employees in this sector increased by 6.6 thousand persons to record a marginal increase of 0.3 per cent.

In line with the increase in the number of employees, the salaries & wages paid in the Manufacturing sector rose by 4.0 per cent year-on-year, amounting to RM8.1 billion in May 2023. On a month-on-month comparison, the salaries & wages went up by 1.0 per cent from RM8.0 billion recorded in April 2023. Hence, the average monthly salaries & wages per employee was RM3,438 in May 2023, went up by 1.4 per cent as compared to a year ago while the sales value per employee increased by 0.8 per cent to record RM62,315.

Overall performance for January to May 2023 showed the sales value of the Manufacturing sector amounted to RM741.2 billion, increased by 5.1 per cent as against the same period of the preceding year. During the same period, the number of employees added by 2.6 per cent to record a total of 2.36 million persons while salaries & wages grew by 4.1 per cent to RM40.6 billion. Consequently, during the period, the sales value per employee stood at RM314,636 which posted a growth of 2.5 per cent.

MITI COMMITTED TO CREATING HIGH-VALUE GROWTH ECOSYSTEM TO SUPPORT INVESTORS - ZAFRUL

According to Tengku Datuk Seri Zafrul Abdul Aziz, the Minister of Investment, Trade and Industry (MITI), his ministry is committed to supporting current investors and potential investors by creating a high-value growth ecosystem. As the custodian and promoter of investments in Malaysia, MITI is focused on ensuring Malaysia remains a competitive destination for high-value investments which can deliver sustainable and holistic economic growth.

Speaking at the launch of Volvo Trucks Malaysia's first electric heavy duty prime mover, he said that in recognising global headwinds, MITI is intensifying efforts to increase the nation's resilience and competitiveness, guided by the 12th Malaysia Plan, New Investment Policy (NIP) as well as the New Industrial Master Plan 2030 (NIMP2030).

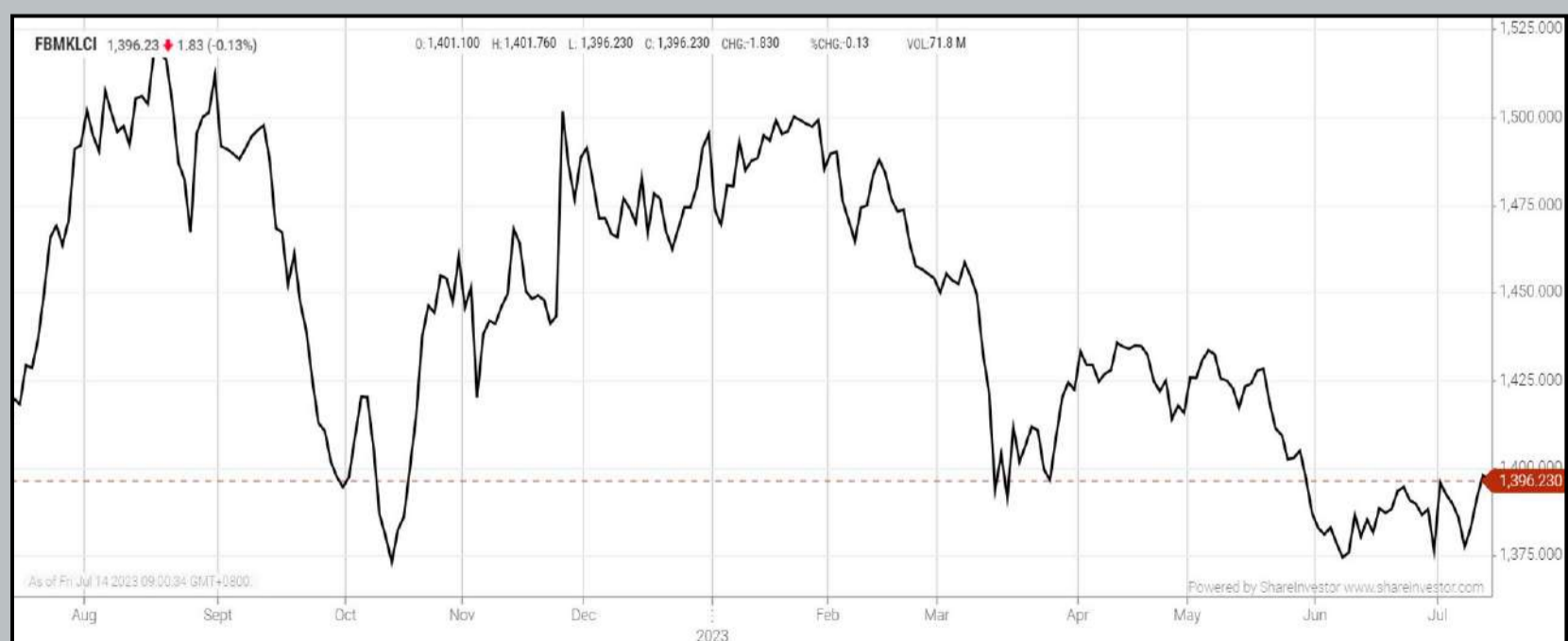
Both NIP and NIMP2030 policies aim to introduce institutional reforms around improving ease of doing business and developing industries to become more complex, high-tech and sustainable, aligned with national aspirations. To achieve this, MITI remains open to constructive feedback and welcomes investors to share their experiences and suggestions on how we can improve the manufacturing and industrial ecosystem in Malaysia. MITI is looking forward to hearing Volvo Trucks Malaysia's inputs on this as a longstanding investor.

To respond to growing digital trends post-pandemic, the National Automotive Policy 2020 (NAP2020) strongly underscores the development of new mobility solutions that are efficient, sustainable, and customer-centric. This includes the promotion of energy-efficient vehicles coupled with connected and autonomous vehicles, namely next-generation vehicles including electric vehicles (EV) as well as Mobility as a Service. Malaysia sees potential in the ASEAN EV market, which is expected to grow to RM11.77 billion by 2027.

In Malaysia, the government is committed to driving the efforts of attracting EV investments and achieving the national target of 15 per cent of the total industry volume for EVs and hybrids by 2030. In this light, it is crucial to develop policies to support investment choices that not only tick the right boxes in terms of creating higher-paying jobs, but also provide long-term, sustainable economic stability.

EYE ON THE MARKETS

On Thursday (13 July), the Ringgit closed at 4.5945 against the USD and 3.4651 to the Sing Dollar. On Monday (10 July), the FBM KLCI opened at 1377.56. As at Thursday (13 July) 5:00pm, the FBM KLCI was up 18.67 points for the week at 1396.23. Over in US, the overnight Dow Jones Industrial Average closed up 47.71 points (+0.14%) to 34,395.14 whilst the NASDAQ added 219.61 points (+1.58%) to 14,138.57.



KLCI 1 Year Chart

Over 5 trading days



ShareInvestor WebPro (www.shareinvestor.com/my)

1. Price > Stock Prices
2. Select Market: NASDAQ / NYSE / IDX / SET / HKEX / SGX (One bourse at a time)
3. select Stocks Tab
4. select Ranking Top Gainers or Top Losers (Over 5 Trading Days)
5. Mouse over Column Layout > select Edit Customs > select Name > select Last Done Price > select 5 Days Change > select 52 Weeks High > select 52 Weeks Low > Mouse Over Column Layout > select Custom

NASDAQ (USD)

Top Gainers

Name	Last Done	Change Over 5 Days	52 Weeks High	52 Weeks Low
BOOKING HOLDINGS INC	2,834.530	+197.620	2,821.460	1,616.850
MICROSTRATEGY	461.830	+85.280	415.000	132.560
MONOLITHIC POWER SYSTEM INC	576.620	+62.130	553.640	301.690
ASML HOLDING NV EURO.09 NY REGISTRY SHS 2012	750.740	+54.000	747.130	363.150
FIRST CITIZENS BANCSHARES INC NRTH	1,311.430	+47.390	1,345.435	505.840

Top Losers

Name	Last Done	Change Over 5 Days	52 Weeks High	52 Weeks Low
PALO ALTO NETWORKS INC	239.010	-14.390	258.880	132.220
SUNCAR TECHNOLOGY GROUP INC	8.180	-13.540	45.730	3.800
ARGENX SE SPON ADR EACH REP 1 ORD SHS	371.420	-11.310	423.991	333.070
MASIMO CORPORATION	147.290	-10.940	198.000	108.885
VIASAT INC	30.740	-10.230	47.350	25.380

NYSE (USD)

Top Gainers

Name	Last Done	Change Over 5 Days	52 Weeks High	52 Weeks Low
NVR INC	6,325.780	+244.580	6,392.260	3,816.555
BERKSHIRE HATHAWAY INC	521,833.000	+213.000	527,367.000	393,012.250
TEXAS PACIFIC LAND CORPORATION	1,436.170	+133.000	2,739.000	1,266.210
WHITE MOUNTAINS INSURANCE GROUP	1,475.050	+94.920	1,560.210	1,172.000
AUTOZONE INC	2,538.180	+68.670	2,750.000	2,050.210

Top Losers

Name	Last Done	Change Over 5 Days	52 Weeks High	52 Weeks Low
CHIPOTLE MEXICAN GRILL	2,048.860	-28.600	2,147.520	1,236.030
UNITEDHEALTH GROUP INC	447.750	-21.610	558.100	436.510
ELI LILLY AND COMPANY	434.700	-17.380	469.870	296.320
GRAINGER W W INC	761.570	-17.320	811.600	441.630
PROGRESSIVE CORP(OHIO)	114.780	-16.890	149.870	109.415

IDX (Rupiah)

Top Gainers

Name	Last Done	Change Over 5 Days	52 Weeks High	52 Weeks Low
BAYAN RESOURCES TBK	18,000.000	+2,000.000	24,800.000	6,300.000
AKASHA WIRA INTERNATIONAL TBK	10,275.000	+1,650.000	10,450.000	5,975.000
DIAN SWASTATIKA SENTOSA TBK	42,500.000	+1,500.000	42,700.000	31,700.000
ADIRA DINAMIKA MULTI FINANCE TBK	12,200.000	+1,350.000	12,550.000	7,900.000
MAHA PROPERTI INDONESIA TBK	3,210.000	+1,040.000	4,200.000	595.000

Top Losers

Name	Last Done	Change Over 5 Days	52 Weeks High	52 Weeks Low
INDO TAMBANGRAYA MEGAH TBK	24,900.000	-700.000	45,650.000	22,125.000
M CASH INTEGRASI TBK	7,975.000	-450.000	12,650.000	5,300.000
PANIN SEKURITAS	1,725.000	-295.000	2,190.000	1,420.000
MASKAPAI REASURANSI INDONESIA TBK	2,030.000	-270.000	6,500.000	1,915.000
DUTA PERTIWI	4,250.000	-230.000	4,950.000	3,640.000

SET (Thai Baht)

Top Gainers

Name	Last Done	Change Over 5 Days	52 Weeks High	52 Weeks Low
SFP	327.000	+75.000	327.000	109.000
KWC	251.000	+11.000	320.000	224.000
KDH	95.250	+7.500	101.000	81.000
DELTA	101.000	+6.000	119.500	31.600
PTTEP	157.000	+6.000	195.000	134.500

Top Losers

Name	Last Done	Change Over 5 Days	52 Weeks High	52 Weeks Low
NEW	95.000	-21.000	210.000	53.250
BH	215.000	-8.000	256.000	175.000
AEONTS	162.500	-7.500	208.000	152.000
OHTL	482.000	-6.000	610.000	316.000
TOPP	153.000	-6.000	172.000	150.500

HKEX (HKD)

Top Gainers

Name	Last Done	Change Over 5 Days	52 Weeks High	52 Weeks Low
YUM CHINA HOLDINGS INC	466.000	+30.000	514.500	300.000
TRIP COM GROUP LTD	294.200	+24.400	321.800	159.800
TENCENT HOLDINGS LIMITED	349.800	+23.000	416.600	188.213
3D MEDICINES INC	124.000	+19.000	131.500	27.700
ZTO EXPRESS (CAYMAN) INC	210.000	+17.400	236.400	123.000

Top Losers

Name	Last Done	Change Over 5 Days	52 Weeks High	52 Weeks Low
FLAT GLASS GROUP CO LTD	22.950	-2.300	30.600	15.500
TI CLOUD INC	9.500	-2.160	14.200	4.650
MEDSCI HEALTHCARE HOLDINGS LTD	9.540	-2.020	13.460	7.600
BEIJING LUZHU BIOTECHNOLOGY CO LTD	31.750	-1.950	40.000	16.140
NEW CITY DEVELOPMENT GROUP LTD	1.090	-1.940	5.300	0.660

SGX (SGD)

Top Gainers

Name	Last Done	Change Over 5 Days	52 Weeks High	52 Weeks Low
DBS	31.870	+1.160	35.855	29.176
JMH USD	49.840	+1.140	57.800	42.600
NIO Inc. USD OV	11.010	+1.040	22.150	7.420
JARDINE C&C	34.210	+0.380	36.850	26.060
IFAST	4.770	+0.320	6.230	3.540

Top Losers

Name	Last Done	Change Over 5 Days	52 Weeks High	52 Weeks Low
PLATOCAPITAL	2.500	-0.380	2.880	0.690
AZEUS	8.500	-0.150	8.650	6.250
NANOFILM	1.200	-0.130	2.470	1.080
KEONG HONG	0.194	-0.101	0.350	0.160
SHANGRI-LA HKD	6.190	-0.090	8.400	4.300

BEING A CONTRARIAN INVESTOR



Devanesan
Evanson

**Chief Executive
Officer, Minority
Shareholders Watch
Group**

Contrarian investing is an investment strategy that goes against prevailing market trends and sentiments.

Contrarian investors, often referred to as contrarians, actively seek opportunities to invest in assets that are undervalued or out of favour with the majority of market participants. They believe that markets are not always efficient and can sometimes overreact, leading to the mispricing of assets. By taking a contrarian approach, these investors aim to profit from such market inefficiencies.

Contrarian investing is rooted in the belief that markets are driven by emotions and herd behaviour, causing prices to deviate from their intrinsic values. Contrarians take advantage of these deviations by buying assets when they are undervalued and selling them when they become overvalued.

They believe that the best time to invest is when there is pessimism and fear in the market, as it often presents attractive buying opportunities.

THE CHARACTERISTICS

Contrarian investors are characterised by their willingness to swim against the current of popular opinion. They possess a strong conviction in their analysis and are willing to withstand short-term market fluctuations. While most investors tend to follow the crowd and chase momentum, contrarians take a more independent and contrarian approach to investing.

Contrarian investors employ various strategies to identify investment opportunities. They often seek assets that have fallen out of favor due to negative news, market downturns, or general pessimism. These assets may be undervalued compared to their intrinsic worth, presenting an opportunity for contrarians to buy them at a lower price.

Contrarians also pay attention to market sentiment indicators, such as investor surveys, research analysts reports, and news headlines. They look for extremes in sentiment, where excessive optimism or pessimism prevails, as these extremes can indicate potential turning points in the market. When sentiment is excessively positive, contrarians may consider selling the asset, while excessively negative sentiment may signal a buying opportunity.

Value investing is a common approach employed by contrarian investors. They search for stocks or other assets that are trading at a significant discount to their intrinsic value.

By conducting fundamental analysis and assessing the underlying value of the asset, contrarians aim to identify investments with a high potential for future appreciation. Contrarian investors are often long-term oriented, focusing on the fundamental prospects of the asset rather than short-term price movements. They have the patience to wait for the market to recognize the true value of their investments, even if it takes time for the sentiment to shift in their favour.

Some well-known contrarian investors include Warren Buffett, Benjamin Graham, and David Dreman. Buffett, often regarded as one of the greatest investors of all time, is known for his contrarian approach to value investing. He famously stated, "Be fearful when others are greedy and greedy when others are fearful," encapsulating the essence of contrarian investing.

Contrarian investing is not without its risks. It requires careful analysis, as going against the prevailing market sentiment can lead to potential losses if the contrarian investor's analysis is flawed or if the market sentiment persists. It also requires a strong psychological mindset, as contrarians must be able to withstand criticism and stay true to their convictions even when the majority of investors disagree with them.

In conclusion, contrarian investing is an investment strategy that involves going against the prevailing market sentiment and seeking opportunities in assets that are undervalued or out of favour.

Contrarian investors believe that markets are not always efficient and can be driven by emotions and herd behaviour. By taking a contrarian approach, investors aim to profit from market inefficiencies and deviations from intrinsic values. Contrarian investors employ various strategies, such as value investing and analysing market sentiment indicators, to identify investment opportunities. While contrarian investing carries risks, successful contrarians like Buffett have demonstrated that a contrarian approach can yield substantial returns over the long term.

This article appeared in the The Observer, a weekly newsletter published by The Minority Shareholders Watch Group (MSWG) and reproduced here with their permission. Do follow MSWG's Twitter account at @MSWGMalaysia and share your thought on their tweets from time to time.

SHAREINVESTOR MARKET DATA PLATFORMS



**SHAREINVESTOR
STATION**
Advanced Charting Software
(8 Markets)



**SHAREINVESTOR
WEBPRO**
Browser-Based Market Data
Analytics Platform



BURSASTATION
Advanced Charting Software
(Bursa Malaysia Only)

DEFINITION: Insider Activity shows the trades made by substantial shareholders or directors of the company. Purchases by the directors and company share buyback may indicate the share price is undervalued and brings confidence to the price trend of the share price.



ShareInvestor WebPro > Fundamental > Insider Trades > click Search tab > Select Bursa > click Stock name > scroll up and leave at <Select Counter> Type Date Range for Announcement Date > click Search

Notice Period is 02nd July - 08th July 2023

Effective Change Date	Stock Name	Buyer/ Seller Name [Classification]	Bought / (Sold) ['000]	No. of Shares After Trade ['000]	
			Total	Total	% Held
06 JUL 2023 - 06 JUL 2023	1TECH	MR TAN YUH PEI [DIR/CEO]	770	27,675	35.964
06 JUL 2023 - 06 JUL 2023	1TECH	MR TAN YUH PEI [SSH]	770	27,675	35.964
04 JUL 2023 - 05 JUL 2023	3A	MR TEO KWEE HOCK [SSH]	183	48,005	9.817
04 JUL 2023 - 04 JUL 2023	ABMB	EMPLOYEES PROVIDENT FUND BOARD [SSH]	100	160,103	10.342
03 JUL 2023 - 03 JUL 2023	ABMB	EMPLOYEES PROVIDENT FUND BOARD [SSH]	-3,626	160,003	10.335
28 JUN 2023 - 28 JUN 2023	ABMB	EMPLOYEES PROVIDENT FUND BOARD [SSH]	200	159,703	10.316
27 JUN 2023 - 27 JUN 2023	ABMB	EMPLOYEES PROVIDENT FUND BOARD [SSH]	200	159,503	10.303
04 JUL 2023 - 04 JUL 2023	AEON	EMPLOYEES PROVIDENT FUND BOARD [SSH]	-663	158,888	11.317
03 JUL 2023 - 03 JUL 2023	AEON	EMPLOYEES PROVIDENT FUND BOARD [SSH]	-0.2	159,551	11.364
06 JUL 2023 - 07 JUL 2023	AGMO	MR TAN AIK KEONG [DIR/CEO]	80	88453	27.216
06 JUL 2023 - 07 JUL 2023	AGMO	MR TAN AIK KEONG [SSH]	80	88453	27.216
04 JUL 2023 - 05 JUL 2023	AGMO	MR WONG THEAN SOON [SSH]	-6,279	17211	5.296
30 JUN 2023 - 03 JUL 2023	AGMO	MR WONG THEAN SOON [SSH]	-11,000	23,490	7.227
06 JUL 2023 - 06 JUL 2023	AIRPORT	KUMPULAN WANG PERSARAAN (DIPERBADANKAN) [SSH]	125	112,985	6.771
04 JUL 2023 - 04 JUL 2023	AIRPORT	EMPLOYEES PROVIDENT FUND BOARD [SSH]	-2,151	213,674	12.806
05 JUL 2023 - 05 JUL 2023	AIRPORT	KUMPULAN WANG PERSARAAN (DIPERBADANKAN) [SSH]	92	112,860	6.764
03 JUL 2023 - 03 JUL 2023	AIRPORT	EMPLOYEES PROVIDENT FUND BOARD [SSH]	-5,184	215,825	12.935
04 JUL 2023 - 04 JUL 2023	AIRPORT	KUMPULAN WANG PERSARAAN (DIPERBADANKAN) [SSH]	127	112,768	6.758
30 JUN 2023 - 30 JUN 2023	AIRPORT	EMPLOYEES PROVIDENT FUND BOARD [SSH]	-1,147	216,371	12.968
28 JUN 2023 - 28 JUN 2023	AIRPORT	EMPLOYEES PROVIDENT FUND BOARD [SSH]	-109	217,517	13.036
27 JUN 2023 - 27 JUN 2023	AIRPORT	EMPLOYEES PROVIDENT FUND BOARD [SSH]	-1,100	217,626	13.043
04 JUL 2023 - 04 JUL 2023	ALLIANZ	EMPLOYEES PROVIDENT FUND BOARD [SSH]	-19	12,845	7.217
03 JUL 2023 - 03 JUL 2023	ALLIANZ	EMPLOYEES PROVIDENT FUND BOARD [SSH]	-18	12,864	7.228
30 JUN 2023 - 30 JUN 2023	ALLIANZ	EMPLOYEES PROVIDENT FUND BOARD [SSH]	-36	12,882	7.238
28 JUN 2023 - 28 JUN 2023	ALLIANZ	EMPLOYEES PROVIDENT FUND BOARD [SSH]	-8	12,918	7.259
27 JUN 2023 - 27 JUN 2023	ALLIANZ	EMPLOYEES PROVIDENT FUND BOARD [SSH]	-9	12,926	7.263
03 JUL 2023 - 03 JUL 2023	AMBANK	EMPLOYEES PROVIDENT FUND BOARD [SSH]	-3,658	317,589	9.605
06 JUL 2023 - 06 JUL 2023	ANCOMNY	CHAN THYE SENG [DIR/CEO]	-11	10,269	1.1
04 JUL 2023 - 04 JUL 2023	ANCOMNY	MR LEE CHEUN WEI [DIR/CEO]	100	76,307	8.171
04 JUL 2023 - 04 JUL 2023	ANCOMNY	MR LEE CHEUN WEI [SSH]	100	76,307	8.171
04 JUL 2023 - 04 JUL 2023	ANCOMNY	DATO' SIEW KA WEI [DIR/CEO]	8	21,886	19.716
30 JUN 2023 - 04 JUL 2023	ANCOMNY	DATO' SIEW KA WEI [DIR/CEO]	32	190,075	20.361
30 JUN 2023 - 04 JUL 2023	ANCOMNY	DATO' SIEW KA WEI [SSH]	32	190,075	20.361
05 JUL 2023 - 05 JUL 2023	APM	DATO' TAN HENG CHEW [DIR/CEO]	50	104,489	53.449
03 JUL 2023 - 03 JUL 2023	AXIATA	EMPLOYEES PROVIDENT FUND BOARD [SSH]	-6,030	1,596,729	17.396
30 JUN 2023 - 30 JUN 2023	AXIATA	EMPLOYEES PROVIDENT FUND BOARD [SSH]	3,000	1,596,729	17.396
28 JUN 2023 - 28 JUN 2023	AXIATA	EMPLOYEES PROVIDENT FUND BOARD [SSH]	1,039	1,593,729	17.363
05 JUL 2023 - 05 JUL 2023	AXTERIA	MR WOO WAI ONN @ FOO WAI ONN [DIR/CEO]	17,200	181,369	25.304
05 JUL 2023 - 05 JUL 2023	AXTERIA	MR WOO WAI ONN @ FOO WAI ONN [SSH]	17,200	181,369	25.304
05 JUL 2023 - 05 JUL 2023	AXTERIA	MR YEE WEI MENG [DIR/CEO]	-17,200	18,867	2.633
05 JUL 2023 - 05 JUL 2023	BAUTO	PRUDENTIAL PLC [SSH]	-12	72,398	6.201
03 JUL 2023 - 03 JUL 2023	BAUTO	EMPLOYEES PROVIDENT FUND BOARD [SSH]	-4,652	116,646	9.99
30 JUN 2023 - 30 JUN 2023	BAUTO	EMPLOYEES PROVIDENT FUND BOARD [SSH]	-1,561	116,687	9.994
28 JUN 2023 - 28 JUN 2023	BAUTO	EMPLOYEES PROVIDENT FUND BOARD [SSH]	-1,054	118,248	10.128
28 JUN 2023 - 28 JUN 2023	BAUTO	DATO' AMER HAMZAH BIN AHMAD [SSH]	20	176,605	15.126
28 JUN 2023 - 28 JUN 2023	BAUTO	DATO' LEE KOK CHUAN [DIR/CEO]	20	176,064	15.079
28 JUN 2023 - 28 JUN 2023	BAUTO	DATO' LEE KOK CHUAN [SSH]	20	176,064	15.079
28 JUN 2023 - 28 JUN 2023	BAUTO	DYNAMIC MILESTONE SDN BHD [SSH]	20	172,161	14.745
28 JUN 2023 - 28 JUN 2023	BAUTO	TAN SRI DATO' SRI YEOH CHOON SAN [DIR/CEO]	20	176,196	15.091
28 JUN 2023 - 28 JUN 2023	BAUTO	TAN SRI DATO' SRI YEOH CHOON SAN [SSH]	20	176,196	15.091
03 JUL 2023 - 03 JUL 2023	BIMB	EMPLOYEES PROVIDENT FUND [SSH]	-1,538	361,108	15.933
28 JUN 2023 - 28 JUN 2023	BIMB	EMPLOYEES PROVIDENT FUND BOARD [SSH]	295	361,108	15.933
27 JUN 2023 - 27 JUN 2023	BIMB	EMPLOYEES PROVIDENT FUND BOARD [SSH]	615	360,813	15.92
26 JUN 2023 - 26 JUN 2023	BINTAI	DATUK NG CHOON KOON [DIR/CEO]	1,000	47,104	5.019
28 JUN 2023 - 28 JUN 2023	BJFOOD	BERJAYA CORPORATION BERHAD [SSH]	-13,000	927,274	52.858
28 JUN 2023 - 28 JUN 2023	BJFOOD	BERJAYA GROUP BERHAD [SSH]	-13,000	927,274	52.858
28 JUN 2023 - 28 JUN 2023	BJFOOD	JUARA SEJATI SDN BHD [SSH]	-13,000	188,271	10.732
30 JUN 2023 - 30 JUN 2023	BJLAND	DATO' SRI ROBIN TAN YEONG CHING [DIR/CEO]	-5,100	13,600	0.276
30 JUN 2023 - 30 JUN 2023	BJLAND	TAN SRI DATO' SRI VINCENT TAN CHEE YIOUN [SSH]	-9,494	246,735	5.014
07 JUL 2023 - 07 JUL 2023	BORNOIL	DATUK JOSEPH LEE YOK MIN @ AMBROSE [DIR/CEO]	199,300	1,832,934	15.419
04 JUL 2023 - 04 JUL 2023	BTM	DATIN SERI NG AH HENG [SSH]	-8,500	64,000	5.093
03 JUL 2023 - 03 JUL 2023	BTM	DATUK WOO THIN CHOY [DIR/CEO]	-39,334	71,849	5.72
03 JUL 2023 - 03 JUL 2023	BTM	DATUK WOO THIN CHOY [SSH]	-39,334	71,849	5.72
03 JUL 2023 - 03 JUL 2023	BTM	MADAM YONG EMMY [DIR/CEO]	-12,096	56,275	4.48

Notice Period is 02nd July - 08th July 2023

Effective Change Date	Stock Name	Buyer/ Seller Name [Classification]	Bought / (Sold) ['000]	No. of Shares After Trade ['000]	
			Total	Total	% Held
28 JUN 2023 - 28 JUN 2023	BTM	MADAM YONG EMMY [DIR/CEO]	-35,714	68,371	5.44
28 JUN 2023 - 28 JUN 2023	BTM	MADAM YONG EMMY [SSH]	-35,714	68,371	5.44
04 JUL 2023 - 04 JUL 2023	CDB	EMPLOYEES PROVIDENT FUND BOARD [SSH]	44	1,124,440	9.585
03 JUL 2023 - 03 JUL 2023	CDB	EMPLOYEES PROVIDENT FUND BOARD [SSH]	291	1,124,396	9.584
03 JUL 2023 - 03 JUL 2023	CEB	FORTRESS CAPITAL ASSET MANAGEMENT (M) SDN. BHD. [SSH]	-132	153,711	16.653
04 JUL 2023 - 05 JUL 2023	CEPAT	DATIN SERI OOI AH THIN [SSH]	89	119,876	38.8
04 JUL 2023 - 05 JUL 2023	CEPAT	DATO' MAH POOI SOO REALTY SDN. BHD. [SSH]	89	119,876	38.8
04 JUL 2023 - 05 JUL 2023	CEPAT	DATO' SERI MAH KING SENG [DIR/CEO]	89	119,876	38.8
04 JUL 2023 - 05 JUL 2023	CEPAT	DATO' SERI MAH KING SENG [SSH]	89	119,876	38.8
04 JUL 2023 - 05 JUL 2023	CEPAT	MHC PLANTATIONS BHD. [SSH]	89	119,876	38.8
04 JUL 2023 - 05 JUL 2023	CEPAT	TAN SRI DR MAH KING THIAN @ MAH KING THIAM [DIR/CEO]	89	119,876	38.8
04 JUL 2023 - 05 JUL 2023	CEPAT	TAN SRI DR MAH KING THIAN @ MAH KING THIAM [SSH]	89	119,876	38.8
30 JUN 2023 - 30 JUN 2023	CEPAT	DATIN SERI OOI AH THIN [SSH]	50	119,787	38.77
30 JUN 2023 - 30 JUN 2023	CEPAT	DATO' MAH POOI SOO REALTY SDN. BHD. [SSH]	50	119,787	38.77
30 JUN 2023 - 30 JUN 2023	CEPAT	DATO' SERI MAH KING SENG [DIR/CEO]	50	119,787	38.77
30 JUN 2023 - 30 JUN 2023	CEPAT	DATO' SERI MAH KING SENG [SSH]	50	119,787	38.77
30 JUN 2023 - 30 JUN 2023	CEPAT	MHC PLANTATIONS BHD. [SSH]	50	119,787	38.77
30 JUN 2023 - 30 JUN 2023	CEPAT	TAN SRI DR MAH KING THIAN @ MAH KING THIAM [DIR/CEO]	50	119,787	38.77
30 JUN 2023 - 30 JUN 2023	CEPAT	TAN SRI DR MAH KING THIAN @ MAH KING THIAM [SSH]	50	119,787	38.77
05 JUL 2023 - 05 JUL 2023	CGB	MR LEE CHEE VUI [DIR/CEO]	4,000	2,826	6.903
03 JUL 2023 - 03 JUL 2023	CGB	GENEVA INSURANCE GROUP (BARBADOS) INC [SSH]	5,000	13,000	8.432
03 JUL 2023 - 05 JUL 2023	CGB	MR LEE CHEE VUI [DIR/CEO]	-1,000	10,782	6.993
03 JUL 2023 - 05 JUL 2023	CGB	MR LEE CHEE VUI [SSH]	-1,000	10,782	6.993
03 JUL 2023 - 03 JUL 2023	CGB	MR LEE SWEE MENG [DIR/CEO]	-20	193	0.125
03 JUL 2023 - 05 JUL 2023	CGB	MR SOO YU CHAI [SSH]	-1,000	8,470	5.641
03 JUL 2023 - 05 JUL 2023	CGB	RYRT HOLDINGS SDN. BHD. [SSH]	-1,000	8,453	5.483
05 JUL 2023 - 05 JUL 2023	CHGP	BKNT RESOURCES SDN BHD [SSH]	-68	34,260	6.226
05 JUL 2023 - 05 JUL 2023	CHGP	DATIN LEE TEOH KEE [SSH]	-68	38,518	7
05 JUL 2023 - 05 JUL 2023	CHGP	DATO' GOH BOON KOON [SSH]	-68	50,603	9.196
05 JUL 2023 - 05 JUL 2023	CHGP	MR GOH BOON LEONG [SSH]	-68	34,560	6.281
03 JUL 2023 - 05 JUL 2023	CHGP	CHIN HIN GROUP BERHAD [SSH]	4,633	312,601	56.804
03 JUL 2023 - 04 JUL 2023	CHGP	DATIN LEE TEOH KEE [SSH]	-405	38,586	7.015
03 JUL 2023 - 05 JUL 2023	CHGP	DATUK SERI CHIAU BENG TEIK [DIR/CEO]	4,633	312,601	56.804
03 JUL 2023 - 05 JUL 2023	CHGP	DATUK SERI CHIAU BENG TEIK [SSH]	4,633	312,601	56.804
03 JUL 2023 - 05 JUL 2023	CHGP	DIVINE INVENTIONS SDN BHD [SSH]	4,633	312,601	56.804
03 JUL 2023 - 05 JUL 2023	CHGP	MR CHIAU HAW CHOON [DIR/CEO]	4,633	312,601	56.804
03 JUL 2023 - 05 JUL 2023	CHGP	MR CHIAU HAW CHOON [SSH]	4,633	312,601	56.804
03 JUL 2023 - 05 JUL 2023	CHGP	PP CHIN HIN REALTY SDN BHD [SSH]	4,633	312,601	56.804
30 JUN 2023 - 30 JUN 2023	CHGP	DATUK CHENG LAI HOCK [DIR/CEO]	319	319	0.058
30 JUN 2023 - 30 JUN 2023	CHHB	PUAN SRI TAN BEE HONG [SSH]	-263	65,730	51.217
30 JUN 2023 - 30 JUN 2023	CHHB-WB	TAN SRI LEE KIM TIONG @ LEE KIM YEW [SSH]	-263	65,730	51.217
05 JUL 2023 - 05 JUL 2023	CIMB	KHAZANAH NASIONAL BERHAD [SSH]	-50,000	2,516,307	23.59
30 JUN 2023 - 30 JUN 2023	CIMB	EMPLOYEES PROVIDENT FUND BOARD [SSH]	5,490	1,515,747	14.21
28 JUN 2023 - 28 JUN 2023	CIMB	EMPLOYEES PROVIDENT FUND BOARD [SSH]	797	1,510,257	14.16
30 JUN 2023 - 30 JUN 2023	CIMB	KUMPULAN WANG PERSARAAN (DIPERBADANKAN) [SSH]	171	718,784	6.74
27 JUN 2023 - 27 JUN 2023	CIMB	EMPLOYEES PROVIDENT FUND BOARD [SSH]	3,000	1,509,487	14.15
26 JUN 2023 - 26 JUN 2023	CIMB	EMPLOYEES PROVIDENT FUND BOARD [SSH]	3,000	1,506,487	14.13
03 JUL 2023 - 03 JUL 2023	CITAGLB	TAN SRI DATO' SRI (DR.) MOHAMAD NORZA BIN ZAKARIA [SSH]	150	164,554	39.411
03 JUL 2023 - 03 JUL 2023	CITAGLB	TAN SRI DATO' SRI MOHAMAD NORZA BIN ZAKARIA [DIR/CEO]	150	164,554	39.411
30 JUN 2023 - 30 JUN 2023	CITAGLB	TAN SRI DATO' SRI (DR.) MOHAMAD NORZA BIN ZAKARIA [SSH]	177	164,404	39.375
30 JUN 2023 - 30 JUN 2023	CITAGLB	TAN SRI DATO' SRI MOHAMAD NORZA BIN ZAKARIA [DIR/CEO]	177	164,404	39.375
07 JUL 2023 - 07 JUL 2023	CLASSITA	MR NG KEOK CHAI [DIR/CEO]	55,658	55,658	4.51
05 JUL 2023 - 07 JUL 2023	CLASSITA	MADAM CHAN SWEE YING [SSH]	263,064	303,089	24.59
26 JUN 2023 - 26 JUN 2023	CLASSITA	DATO' SRI TEE YAM [SSH]	-20,000	29,382	8.34
30 JUN 2023 - 30 JUN 2023	CLMT	EMPLOYEES PROVIDENT FUND BOARD [SSH]	745	371,056	13.752
14 JUN 2023 - 19 JUN 2023	CNOUHUA	MR CHIN KUAN HAOK @ CHEN KOH FOOK [SSH]	2,646	104,383	15.626
03 JUL 2023 - 03 JUL 2023	CTOS	EMPLOYEES PROVIDENT FUND BOARD [SSH]	-2,550	266,659	11.544
05 JUL 2023 - 06 JUL 2023	CUSCAPI	DATUK JAYAKUMAR A/L PANNEER SELVAM [DIR/CEO]	-10,200	195,682	20.71
05 JUL 2023 - 06 JUL 2023	CUSCAPI	DATUK JAYAKUMAR A/L PANNEER SELVAM [SSH]	-10,200	195,682	20.71
05 JUL 2023 - 06 JUL 2023	CUSCAPI	MR WONG THEAN SOON [SSH]	10,200	233,683	24.732

Disclaimer: The Information in Insider Activity is extracted from www.shareinvestor.com/fundamental/insider_trades. The information on this page is provided as a service to readers. It does not constitute financial advice and/or any investment recommendations. We assume no liability for damages resulting from or arising out of the use of such information. Whilst every effort is made to ensure accuracy, the information presented is not the official record of shareholder filings. Readers are advised to read the original filings on the Bursa Malaysia website at www.bursamalaysia.com



STROM
SWISS TIMEPIECES & JEWELLERY



StromWatch Asia
Tele : +65.9817.3378
Email : ll.stromasia@gmail.com
WWW.STROMWATCH.SWISS

Notice Period is 02nd July – 08th July 2023

Effective Change Date	Stock Name	Buyer/ Seller Name [Classification]	Bought / (Sold) ('000)		No. of Shares After Trade ('000)	
			Total	Total	% Held	% Held
05 JUL 2023 - 06 JUL 2023	CUSCAPI	ULTIMATE QUALITY SUCCESS SDN. BHD. [SSH]	-10,200	120,003	12.7	
04 JUL 2023 - 04 JUL 2023	CUSCAPI	ULTIMATE QUALITY SUCCESS SDN. BHD. [SSH]	-7,300	130,203	13.78	
03 JUL 2023 - 04 JUL 2023	CUSCAPI	DATUK JAYAKUMAR A/L PANNEER SELVAM [DIR/CEO]	-15,425	205,882	21.79	
03 JUL 2023 - 04 JUL 2023	CUSCAPI	DATUK JAYAKUMAR A/L PANNEER SELVAM [SSH]	-15,425	205,882	21.79	
03 JUL 2023 - 04 JUL 2023	CUSCAPI	MR WONG THEAN SOON [SSH]	15,425	223,483	23.652	
07 JUL 2023 - 07 JUL 2023	DESTINI	DATO' ABD AZIZ BIN HAJI SHEIKH FADZIR [DIR/CEO]	94,000	113,500	6.823	
06 JUL 2023 - 06 JUL 2023	DIALOG	KUMPULAN WANG PERSARAAN (DIPERBADANKAN) [SSH]	194	553,385	9.8	
03 JUL 2023 - 03 JUL 2023	DIALOG	EMPLOYEES PROVIDENT FUND BOARD [SSH]	-10,273	835,213	14.8	
30 JUN 2023 - 30 JUN 2023	DLADY	CITIGROUP NOMINEES (TEMPATAN) SDN BHD EMPLOYEES PROVIDENT FUND BOARD [SSH]	-13	6,524	10.193	
28 JUN 2023 - 28 JUN 2023	DLADY	CITIGROUP NOMINEES (TEMPATAN) SDN BHD EMPLOYEES PROVIDENT FUND BOARD [SSH]	-5	6,537	10.213	
04 JUL 2023 - 04 JUL 2023	DRBHCOM	EMPLOYEES PROVIDENT FUND BOARD [SSH]	-349	194,171	10.044	
03 JUL 2023 - 03 JUL 2023	DRBHCOM	EMPLOYEES PROVIDENT FUND BOARD [SSH]	-3,538	194,520	10.062	
28 JUN 2023 - 28 JUN 2023	DRBHCOM	EMPLOYEES PROVIDENT FUND BOARD [SSH]	-258	194,520	10.062	
30 JUN 2023 - 03 JUL 2023	DSOMIC	MR CHEW BEN BEN [SSH]	-12,610	141,727	5.009	
04 JUL 2023 - 04 JUL 2023	ECA	MR CHUA LYE HOCK [DIR/CEO]	-25,102	135,166	23.405	
04 JUL 2023 - 04 JUL 2023	ECA	MR CHUA LYE HOCK [SSH]	-25,102	135,166	23.405	
04 JUL 2023 - 04 JUL 2023	ECA	MR KANG EWE KHENG [SSH]	-10,240	68,601	11.879	
04 JUL 2023 - 04 JUL 2023	ECA	MR OOI CHIN SIEW [DIR/CEO]	-17,659	122,734	21.253	
04 JUL 2023 - 04 JUL 2023	ECA	MR OOI CHIN SIEW [SSH]	-17,659	122,734	21.253	
03 JUL 2023 - 03 JUL 2023	ECOFIRS	DATO' TIONG KWING HEE [DIR/CEO]	-250	81,694	6.767	
03 JUL 2023 - 03 JUL 2023	ECOFIRS	DATO' TIONG KWING HEE [SSH]	-250	81,694	6.767	
04 JUL 2023 - 04 JUL 2023	ECONBHD	EMPLOYEES PROVIDENT FUND BOARD [SSH]	181	124,149	8.758	
03 JUL 2023 - 03 JUL 2023	ECONBHD	EMPLOYEES PROVIDENT FUND BOARD [SSH]	200	123,968	8.746	
28 JUN 2023 - 28 JUN 2023	ECONBHD	EMPLOYEES PROVIDENT FUND BOARD [SSH]	200	123,768	8.731	
27 JUN 2023 - 27 JUN 2023	ECONBHD	EMPLOYEES PROVIDENT FUND BOARD [SSH]	200	123,568	8.717	
06 JUL 2023 - 06 JUL 2023	EDUSPEC	DATO' SRI GAN CHOW TEE [DIR/CEO]	2,796	81,605	7.654	
06 JUL 2023 - 06 JUL 2023	EDUSPEC	DATO' SRI GAN CHOW TEE [SSH]	2,796	81,605	7.654	
03 JUL 2023 - 03 JUL 2023	ENGTEX	NG CHOOI GUAN [DIR/CEO]	152	19,456	4.408	
03 JUL 2023 - 03 JUL 2023	ENGTEX	NG YIK SOON [DIR/CEO]	179	9,149	2.073	
03 JUL 2023 - 03 JUL 2023	ENGTEX	NH HOLDINGS SDN BHD [SSH]	2,147	109,478	24.804	
03 JUL 2023 - 03 JUL 2023	ENGTEX	NKG RESOURCES SDN BHD [SSH]	476	24,269	5.498	
03 JUL 2023 - 03 JUL 2023	ENGTEX	PUAN SRI DATIN YAP SENG KUAN [DIR/CEO]	2,622	133,747	30.303	
03 JUL 2023 - 03 JUL 2023	ENGTEX	PUAN SRI DATIN YAP SENG KUAN [SSH]	2,622	133,747	30.303	
03 JUL 2023 - 03 JUL 2023	ENGTEX	TAN SRI DATO' NG HOOK [DIR/CEO]	2,622	133,747	30.303	
03 JUL 2023 - 03 JUL 2023	ENGTEX	TAN SRI DATO' NG HOOK [SSH]	2,622	133,747	30.303	
03 JUL 2023 - 03 JUL 2023	F&N	EMPLOYEES PROVIDENT FUND BOARD [SSH]	14	42,350	11.547	
30 JUN 2023 - 30 JUN 2023	F&N	EMPLOYEES PROVIDENT FUND BOARD [SSH]	2	42,336	11.543	
28 JUN 2023 - 28 JUN 2023	F&N	EMPLOYEES PROVIDENT FUND BOARD [SSH]	4	42,334	11.542	
27 JUN 2023 - 27 JUN 2023	F&N	EMPLOYEES PROVIDENT FUND BOARD [SSH]	4	42,329	11.541	
28 JUN 2023 - 28 JUN 2023	FBBHD	MR NG KIAN BOON [DIR/CEO]	-2,140	195,321	90.426	
28 JUN 2023 - 28 JUN 2023	FBBHD	MR NG KIAN BOON [SSH]	-2,140	195,321	90.426	
04 JUL 2023 - 04 JUL 2023	FFB	EMPLOYEES PROVIDENT FUND BOARD [SSH]	3,088	134,815	7.202	
03 JUL 2023 - 04 JUL 2023	FFB	MR LOI TUAN EE [DIR/CEO]	1,793	809,491	43.244	
03 JUL 2023 - 04 JUL 2023	FFB	MR LOI TUAN EE [SSH]	1,793	809,491	43.244	
05 JUL 2023 - 05 JUL 2023	FRONTKN	MR OOI KENG THYE [SSH]	-3,495	206,974	13.175	
30 JUN 2023 - 30 JUN 2023	FRONTKN	MR OOI KENG THYE [SSH]	-2,656	210,469	13.397	
04 JUL 2023 - 04 JUL 2023	GAMUDA	EMPLOYEES PROVIDENT FUND BOARD (EPF BOARD) [SSH]	-2,103	367,021	13.79	
03 JUL 2023 - 03 JUL 2023	GAMUDA	EMPLOYEES PROVIDENT FUND BOARD (EPF BOARD) [SSH]	-1,836	369,124	13.87	
30 JUN 2023 - 30 JUN 2023	GAMUDA	EMPLOYEES PROVIDENT FUND BOARD (EPF BOARD) [SSH]	-2,448	370,960	13.94	
28 JUN 2023 - 28 JUN 2023	GAMUDA	EMPLOYEES PROVIDENT FUND BOARD (EPF BOARD) [SSH]	-2,654	373,408	14.03	
27 JUN 2023 - 27 JUN 2023	GAMUDA	EMPLOYEES PROVIDENT FUND BOARD (EPF BOARD) [SSH]	-501	376,062	14.13	
28 JUN 2023 - 28 JUN 2023	GASMSIA	EMPLOYEES PROVIDENT FUND BOARD [SSH]	35	80,827	6.294	
27 JUN 2023 - 27 JUN 2023	GASMSIA	EMPLOYEES PROVIDENT FUND BOARD [SSH]	298	80,792	6.292	
05 JUL 2023 - 05 JUL 2023	GENETEC	MR TAN MOON TEIK [DIR/CEO]	-6,500	39,082	5.165	
05 JUL 2023 - 05 JUL 2023	GENETEC	MR TAN MOON TEIK [SSH]	-6,500	39,082	5.165	
07 JUL 2023 - 07 JUL 2023	GIIB	MR TAI QISHENG [DIR/CEO]	746	68,431	11.573	
07 JUL 2023 - 07 JUL 2023	GIIB	MR TAI QISHENG [SSH]	746	68,431	11.573	
05 JUL 2023 - 06 JUL 2023	GUH	DATUK SERI KENNETH H'NG BAK TEE [DIR/CEO]	550	6,244	2.22	
04 JUL 2023 - 04 JUL 2023	GUH	DATUK SERI KENNETH H'NG BAK TEE [DIR/CEO]	548	5,694	2.024	
26 JUN 2023 - 26 JUN 2023	GUH	DATIN SERI JESSICA H'NG HSIEH LING [DIR/CEO]	16,218	18,017	12.807	
26 JUN 2023 - 26 JUN 2023	GUH	DATO HARRY H'NG BAK SEAH [DIR/CEO]	1,249	1,249	0.888	
26 JUN 2023 - 26 JUN 2023	GUH	DATUK SERI KENNETH H'NG BAK TEE [DIR/CEO]	880	2,423	1.723	
26 JUN 2023 - 26 JUN 2023	GUH	TAN SRI DATO' SERI H'NG BOK SAN [DIR/CEO]	26,718	27,093	19.259	
03 JUL 2023 - 03 JUL 2023	GUH-WA	DATUK SERI KENNETH H'NG BAK TEE [DIR/CEO]	-2,423	2,423	1.723	
30 JUN 2023 - 30 JUN 2023	HCK	HIICHIKOK EQUITIES SDN BHD [SSH]	25,840	283,138	56.588	
30 JUN 2023 - 30 JUN 2023	HCK	TAN SRI HII CHII KOK @ HII CHEE KOK [DIR/CEO]	25,840	285,188	56.998	
30 JUN 2023 - 30 JUN 2023	HCK	TAN SRI HII CHII KOK @ HII CHEE KOK [SSH]	25,840	285,188	56.998	
03 JUL 2023 - 04 JUL 2023	HEKTAR	HEKTAR BLACK SDN BHD [SSH]	-290	134,831	27.032	
04 JUL 2023 - 04 JUL 2023	HLBANK	EMPLOYEES PROVIDENT FUND BOARD [SSH]	3	224,083	10.739	
03 JUL 2023 - 03 JUL 2023	HLBANK	EMPLOYEES PROVIDENT FUND BOARD [SSH]	-1,110	224,080	10.739	
30 JUN 2023 - 30 JUN 2023	HLBANK	EMPLOYEES PROVIDENT FUND BOARD [SSH]	25	224,242	10.747	
28 JUN 2023 - 28 JUN 2023	HLBANK	EMPLOYEES PROVIDENT FUND BOARD [SSH]	222	224,217	10.745	
27 JUN 2023 - 27 JUN 2023	HLBANK	EMPLOYEES PROVIDENT FUND BOARD [SSH]	380	223,994	10.735	
05 JUL 2023 - 05 JUL 2023	HSSEB	FLAMINGO WORKS SDN BHD [SSH]	-10,000	90,000	18.146	
05 JUL 2023 - 05 JUL 2023	HSSEB	MADAM SHANTAMALAR A/P C. SIVASUBRAMANIAM [SSH]	-10,000	90,000	18.146	
05 JUL 2023 - 05 JUL 2023	HSSEB	SK CAPITAL MANAGEMENT SDN BHD [SSH]	-10,000	90,000	18.146	
24 MAY 2023 - 24 MAY 2023	IGBCR	MR TAN BOON LEE [DIR/CEO]	-440	18,106	0.771	
06 JUL 2023 - 06 JUL 2023	IGBREIT	KUMPULAN WANG PERSARAAN (DIPERBADANKAN) [SSH]	62	264,156	7.349	
03 JUL 2023 - 03 JUL 2023	IGBREIT	EMPLOYEES PROVIDENT FUND BOARD (EPF BOARD) [SSH]	360	416,622	11.591	
30 JUN 2023 - 30 JUN 2023	IGBREIT	KUMPULAN WANG PERSARAAN (DIPERBADANKAN) [SSH]	41	264,094	7.347	
04 JUL 2023 - 04 JUL 2023	IHH	EMPLOYEES PROVIDENT FUND BOARD [SSH]	100	897,268	10.188	

Notice Period is 02nd July – 08th July 2023

Effective Change Date	Stock Name	Buyer/ Seller Name [Classification]	Bought / (Sold) ('000)		No. of Shares After Trade ('000)	
			Total	Total	% Held	% Held
30 JUN 2023 - 30 JUN 2023	IHH	EMPLOYEES PROVIDENT FUND BOARD [SSH]	567	896,524	10.18	
28 JUN 2023 - 28 JUN 2023	IHH	EMPLOYEES PROVIDENT FUND BOARD [SSH]	400	895,957	10.173	
27 JUN 2023 - 27 JUN 2023	IHH	EMPLOYEES PROVIDENT FUND BOARD [SSH]	100	895,557	10.169	
03 JUL 2023 - 03 JUL 2023	IJM	EMPLOYEES PROVIDENT FUND BOARD [SSH]	-6,245	618,876	17.642	
03 JUL 2023 - 03 JUL 2023	IMPIANA	DATO' HOO YOON HIM [DIR/CEO]	-2,000	4,436	0.893	
06 JUL 2023 - 06 JUL 2023	INARI	KUMPULAN WANG PERSARAAN (DIPERBADANKAN) [SSH]	3,320	354,215	9.489	
04 JUL 2023 - 04 JUL 2023	INARI	EMPLOYEES PROVIDENT FUND BOARD [SSH]	1,179	414,760	11.111	
05 JUL 2023 - 05 JUL 2023	INARI	KUMPULAN WANG PERSARAAN (DIPERBADANKAN) [SSH]	2,000	350,895	9.4	
03 JUL 2023 - 03 JUL 2023	INARI	EMPLOYEES PROVIDENT FUND BOARD [SSH]	-5,829	413,581	11.079	
30 JUN 2023 - 30 JUN 2023	INARI	EMPLOYEES PROVIDENT FUND BOARD [SSH]	709	413,581	11.079	
28 JUN 2023 - 28 JUN 2023	INARI	EMPLOYEES PROVIDENT FUND BOARD [SSH]	257	412,871	11.06	
30 JUN 2023 - 30 JUN 2023	INARI	KUMPULAN WANG PERSARAAN (DIPERBADANKAN) [SSH]	320	348,895	9.346	
27 JUN 2023 - 27 JUN 2023	INARI	EMPLOYEES PROVIDENT FUND BOARD [SSH]	1,106	412,614	11.053	
30 JUN 2023 - 03 JUL 2023	INFOTEC	CHOO WEI CHUEN [SSH]	-3,300	194,894	53.656	
30 JUN 2023 - 03 JUL 2023	INFOTEC	MR CHOO WEI CHUEN [DIR/CEO]	-3,300	194,894	53.656	
04 JUL 2023 - 04 JUL 2023	INGENIEU	MMAG HOLDINGS BERHAD [SSH]	-5,000	176,418	12.749	
03 JUL 2023 - 03 JUL 2023	IOICORP	EMPLOYEES PROVIDENT FUND BOARD [SSH]	-10,956	683,413	11.016	
27 JUN 2023 - 28 JUN 2023	KAB	MR KINGTONG TONG KUM LOONG [SSH]	1,465	369,545	20.44	
05 JUL 2023 - 05 JUL 2023	KAREX	MADAM LAM JIUAN JIUAN [DIR/CEO]	-2,029	281,490	26.721	
05 JUL 2023 - 05 JUL 2023	KAREX	MADAM LAM JIUAN JIUAN [SSH]	-2,029	281,490	26.721	
05 JUL 2023 - 05 JUL 2023	KAREX	MR ALBERT LAM YIU PANG [SSH]	-2,029	281,490	26.72	
04 JUL 2023 - 04 JUL 2023	KLK	EMPLOYEES PROVIDENT FUND BOARD [SSH]	-330	120,202	11.146	
03 JUL 2023 - 03 JUL 2023	KLK	EMPLOYEES PROVIDENT FUND BOARD [SSH]	-1,214	120,533	11.177	
30 JUN 2023 - 30 JUN 2023	KLK	EMPLOYEES PROVIDENT FUND BOARD [SSH]	-97	120,451	11.169	
28 JUN 2023 - 28 JUN 2023	KLK	EMPLOYEES PROVIDENT FUND BOARD [SSH]	-22	120,548	11.178	
27 JUN 2023 - 27 JUN 2023	KLK	EMPLOYEES PROVIDENT FUND BOARD [SSH]	-100	120,570	11.18	
30 JUN 2023 - 30 JUN 2023	KNM	MADAM GAN SIEW LIAT [SSH]	-1,219	249,123	6.16	
05 JUL 2023 - 06 JUL 2023	KOBAY	MR KOAY CHENG LYE [DIR/CEO]	280	122,249	37.478	
03 JUL 2023 - 03 JUL 2023	KOBAY	MR KOAY CHENG LYE [DIR/CEO]	120	121,969	37.393	
03 JUL 2023 - 03 JUL 2023	KOBAY	MR KOAY CHENG LYE [DIR/CEO]	120	121,969	37.393	
05 JUL 2023 - 05 JUL 2023	KOSSAN	ABRDN HOLDINGS LIMITED (FORMERLY KNOWN AS ABERDEEN ASSET MANAGEMENT PLC) [SSH]	41	140,226	5.496	
05 JUL 2023 - 05 JUL 2023	KOSSAN	ABRDN MALAYSIA SDN BHD [SSH]	41	137,821	5.401	
05 JUL 2023 - 05 JUL 2023	KOSSAN	ABRDN PLC [SSH]	41	140,226	5.496	
04 JUL 2023 - 04 JUL 2023	KOSSAN	ABRDN HOLDINGS LIMITED (FORMERLY KNOWN AS ABERDEEN ASSET MANAGEMENT PLC) [SSH]	85	140,185	5.494	
04 JUL 2023 - 04 JUL 2023	KOSSAN	ABRDN MALAYSIA SDN BHD [SSH]	85	137,780	5.4	
04 JUL 2023 - 04 JUL 2023	KOSSAN	ABRDN PLC [SSH]	85	140,185	5.494	
05 JUL 2023 - 05 JUL 2023	KOSSAN	KOSSAN HOLDINGS (M) SDN BHD [SSH]	500	1,250,723	49.017	
05 JUL 2023 - 05 JUL 2023	KOSSAN	MR LIM KUANG WANG [SSH]	500	1,252,423	49.084	
05 JUL 2023 - 05 JUL 2023	KOSSAN	MR LIM KUANG YONG [SSH]	500	1,254,300	49.157	
05 JUL 2023 - 05 JUL 2023	KOSSAN	MR LIM LENG BUNG [SSH]	500	1,253,040	49.108	
05 JUL 2023 - 05 JUL 2023	KOSSAN	TAN SRI DATO' LIM KUANG SIA [DIR/CEO]	500			

Notice Period is 02nd July – 08th July 2023

Effective Change Date	Stock Name	Buyer/ Seller Name [Classification]	Bought / (Sold) ['000]		No. of Shares After Trade ['000]	
			Total	Total	% Held	% Held
30 JUN 2023 - 30 JUN 2023	MBRIGHT	DATO' LEE WAI MUN DIMP. JP. [SSH]	14,680	1,250,476	53.505	
30 JUN 2023 - 30 JUN 2023	MBRIGHT	LEADING VENTURES SDN. BHD. [SSH]	14,680	1,250,476	53.505	
30 JUN 2023 - 30 JUN 2023	MI	MR HENG KOK LIN [DIR/CEO]	70	2,887	0.32	
04 JUL 2023 - 04 JUL 2023	MICROLN	TAN SRI JAGANATH DEREK STEVEN SABAPATHY [DIR/CEO]	-250	17,118	1.596	
30 JUN 2023 - 03 JUL 2023	MICROLN	TAN SRI JAGANATH DEREK STEVEN SABAPATHY [DIR/CEO]	-500	17,368	1.62	
04 JUL 2023 - 04 JUL 2023	MISC	EMPLOYEES PROVIDENT FUND BOARD [SSH]	162	566,088	12.682	
03 JUL 2023 - 03 JUL 2023	MISC	EMPLOYEES PROVIDENT FUND BOARD [SSH]	-7,253	565,927	12.678	
04 JUL 2023 - 04 JUL 2023	MISC	KUMPULAN WANG PERSARAAN (DIPERBADANKAN) (KWAP) [SSH]	-100	241,587	5.412	
30 JUN 2023 - 30 JUN 2023	MISC	EMPLOYEES PROVIDENT FUND BOARD [SSH]	238	565,962	12.679	
03 JUL 2023 - 03 JUL 2023	MISC	KUMPULAN WANG PERSARAAN (DIPERBADANKAN) (KWAP) [SSH]	-170	241,687	5.414	
28 JUN 2023 - 28 JUN 2023	MISC	EMPLOYEES PROVIDENT FUND BOARD [SSH]	-262	565,724	12.674	
30 JUN 2023 - 30 JUN 2023	MISC	KUMPULAN WANG PERSARAAN (DIPERBADANKAN) (KWAP) [SSH]	-30	241,857	5.418	
28 JUN 2023 - 28 JUN 2023	MKH	DATUK CHEN FOOK WAH [DIR/CEO]	-680	238,351	41.279	
28 JUN 2023 - 28 JUN 2023	MKH	DATUK CHEN FOOK WAH [SSH]	-680	238,351	41.279	
03 JUL 2023 - 03 JUL 2023	MNHLDG	DATO' TOH ENG KEAT [DIR/CEO]	500	90,187	22.064	
03 JUL 2023 - 03 JUL 2023	MNHLDG	DATO' TOH ENG KEAT [SSH]	500	90,187	22.064	
05 JUL 2023 - 05 JUL 2023	MPHBCAP	DATO SERI LIM TIONG CHIN [DIR/CEO]	0.1	10,821	1.541	
30 JUN 2023 - 30 JUN 2023	MPHBCAP	DATO SERI LIM TIONG CHIN [DIR/CEO]	50	10,821	1.541	
03 JUL 2023 - 03 JUL 2023	MRDIY	EMPLOYEES PROVIDENT FUND BOARD [SSH]	-3,438	507,873	5.383	
05 JUL 2023 - 05 JUL 2023	MRDIY	MR TAN YU YEH [DIR/CEO]	223	4,874,544	51.671	
05 JUL 2023 - 05 JUL 2023	MRDIY	MR TAN YU YEH [SSH]	223	4,874,544	51.671	
06 JUL 2023 - 06 JUL 2023	MYEG	KUMPULAN WANG PERSARAAN (DIPERBADANKAN) [SSH]	-350	552,414	7.459	
04 JUL 2023 - 04 JUL 2023	MYEG	KUMPULAN WANG PERSARAAN (DIPERBADANKAN) [SSH]	2,242	552,764	7.464	
26 JUN 2023 - 28 JUN 2023	NCT	DATUK SERI CHIAU BENG TEIK [SSH]	1,809	95,814	6.515	
01 JUN 2023 - 01 JUN 2023	NCT	DATUK SERI CHIAU BENG TEIK [SSH]	500	94,005	6.392	
04 JUL 2023 - 04 JUL 2023	NESTLE	EMPLOYEES PROVIDENT FUND BOARD [SSH]	1	21,473	9.157	
30 JUN 2023 - 30 JUN 2023	NESTLE	EMPLOYEES PROVIDENT FUND BOARD [SSH]	11	21,471	9.156	
28 JUN 2023 - 28 JUN 2023	NESTLE	EMPLOYEES PROVIDENT FUND BOARD [SSH]	1	21,461	9.152	
27 JUN 2023 - 27 JUN 2023	NESTLE	EMPLOYEES PROVIDENT FUND BOARD [SSH]	-3	21,459	9.151	
04 JUL 2023 - 04 JUL 2023	NGGB	DATO' GAN KONG HIOK [SSH]	-448	144,303	16.863	
28 JUN 2023 - 30 JUN 2023	NOVAMSC	MR OOI KENG THYE [SSH]	800	184,789	15.578	
26 JUN 2023 - 27 JUN 2023	NOVAMSC	MR OOI KENG THYE [SSH]	3,945	183,989	15.51	
27 JUN 2023 - 27 JUN 2023	ORIENT	EMPLOYEE PROVIDENT FUND BOARD [SSH]	-62	54,996	8.865	
04 JUL 2023 - 04 JUL 2023	PANAMY	EMPLOYEES PROVIDENT FUND BOARD [SSH]	-12	7,755	12.767	
30 JUN 2023 - 30 JUN 2023	PANAMY	EMPLOYEES PROVIDENT FUND BOARD [SSH]	-2	7,767	12.786	
28 JUN 2023 - 28 JUN 2023	PANAMY	EMPLOYEES PROVIDENT FUND BOARD [SSH]	-24	7,769	12.789	
05 JUL 2023 - 05 JUL 2023	PANTECH	DATIN SHUM KAH LIN [SSH]	300	154,663	18.711	
05 JUL 2023 - 05 JUL 2023	PANTECH	DATO' CHEW TING LENG [DIR/CEO]	300	154,663	18.711	
05 JUL 2023 - 05 JUL 2023	PANTECH	DATO' CHEW TING LENG [SSH]	300	154,663	18.711	
04 JUL 2023 - 04 JUL 2023	PANTECH	MR TAN ANG ANG [DIR/CEO]	100	15,865	1.92	
03 JUL 2023 - 03 JUL 2023	PAVREIT	EMPLOYEES PROVIDENT FUND BOARD [SSH]	-10,419	386,274	10.586	
04 JUL 2023 - 04 JUL 2023	PBBANK	EMPLOYEES PROVIDENT FUND BOARD [SSH]	400	2,936,536	15.13	
03 JUL 2023 - 03 JUL 2023	PBBANK	EMPLOYEES PROVIDENT FUND BOARD [SSH]	-7,583	2,936,136	15.13	
03 JUL 2023 - 03 JUL 2023	PCHEM	EMPLOYEES PROVIDENT FUND BOARD ("EPF BOARD") [SSH]	-2,275	889,971	11.125	
30 JUN 2023 - 30 JUN 2023	PCHEM	EMPLOYEES PROVIDENT FUND BOARD ("EPF BOARD") [SSH]	394	889,971	11.125	
06 JUL 2023 - 06 JUL 2023	PELIKAN	MARKTRADE SDN. BHD. [SSH]	-1,400	33,569	5.565	
06 JUL 2023 - 06 JUL 2023	PELIKAN	PBS OFFICE SUPPLIES HOLDING SDN. BHD. [SSH]	-1,400	33,569	5.565	
03 JUL 2023 - 03 JUL 2023	PENTA	EMPLOYEES PROVIDENT FUND BOARD [SSH]	-1,608	48,296	6.79	
03 JUL 2023 - 03 JUL 2023	PETDAG	EMPLOYEES PROVIDENT FUND BOARD ("EPF BOARD") [SSH]	-625	122,984	12.379	
04 JUL 2023 - 04 JUL 2023	PETGAS	EMPLOYEES PROVIDENT FUND BOARD [SSH]	221	281,949	14.249	
03 JUL 2023 - 03 JUL 2023	PETGAS	EMPLOYEES PROVIDENT FUND BOARD [SSH]	-1,788	281,728	14.238	
30 JUN 2023 - 30 JUN 2023	PETGAS	EMPLOYEES PROVIDENT FUND BOARD [SSH]	620	281,727	14.238	
28 JUN 2023 - 28 JUN 2023	PETGAS	EMPLOYEES PROVIDENT FUND BOARD [SSH]	0.5	281,107	14.206	
27 JUN 2023 - 27 JUN 2023	PETGAS	EMPLOYEES PROVIDENT FUND BOARD [SSH]	-13	281,107	14.206	
04 JUL 2023 - 04 JUL 2023	POHKONG	MADAM LIM MEE HWA [SSH]	164	27,964	6.815	
04 JUL 2023 - 04 JUL 2023	POHKONG	MR YEO SENG CHONG [SSH]	164	27,964	6.815	
04 JUL 2023 - 04 JUL 2023	POHKONG	YEOMAN 3-RIGHTS VALUE ASIA FUND VCC [SSH]	164	22,664	5.523	
04 JUL 2023 - 04 JUL 2023	POHKONG	YEOMAN CAPITAL MANAGEMENT PTE LTD [SSH]	164	23,714	5.779	
28 JUN 2023 - 30 JUN 2023	POHUAT	MR TAY KIM HUAT [DIR/CEO]	150	70,120	26.464	
28 JUN 2023 - 30 JUN 2023	POHUAT	MR TAY KIM HUAT [SSH]	150	70,120	26.464	
04 JUL 2023 - 04 JUL 2023	PPB	EMPLOYEES PROVIDENT FUND BOARD [SSH]	35	144,519	10.159	
30 JUN 2023 - 30 JUN 2023	PPB	EMPLOYEES PROVIDENT FUND BOARD [SSH]	544	144,484	10.156	
28 JUN 2023 - 28 JUN 2023	PPB	EMPLOYEES PROVIDENT FUND BOARD [SSH]	49	143,940	10.118	
27 JUN 2023 - 27 JUN 2023	PPB	EMPLOYEES PROVIDENT FUND BOARD [SSH]	573	143,891	10.115	
03 JUL 2023 - 03 JUL 2023	PWROOT	MR LOW JUN LEE [DIR/CEO]	768	58,192	12.725	
03 JUL 2023 - 03 JUL 2023	PWROOT	MR LOW JUN LEE [SSH]	768	58,192	12.725	
04 JUL 2023 - 04 JUL 2023	RHBBANK	EMPLOYEES PROVIDENT FUND BOARD [SSH]	5	1,746,257	40.74	
03 JUL 2023 - 03 JUL 2023	RHBBANK	EMPLOYEES PROVIDENT FUND BOARD [SSH]	-1,025	1,746,252	40.74	
30 JUN 2023 - 30 JUN 2023	RHBBANK	EMPLOYEES PROVIDENT FUND BOARD [SSH]	-104	1,747,276	40.764	
28 JUN 2023 - 28 JUN 2023	RHBBANK	EMPLOYEES PROVIDENT FUND BOARD [SSH]	-1,894	1,747,381	40.766	
27 JUN 2023 - 27 JUN 2023	RHBBANK	EMPLOYEES PROVIDENT FUND BOARD [SSH]	1,238	1,749,274	40.81	
05 JUL 2023 - 05 JUL 2023	SAMAIDEN	IR CHOW PUI HEE [DIR/CEO]	-293	218,023	56.278	
05 JUL 2023 - 05 JUL 2023	SAMAIDEN	IR CHOW PUI HEE [SSH]	-293	218,023	56.278	
05 JUL 2023 - 05 JUL 2023	SAMAIDEN	MR FONG YENG FOON [DIR/CEO]	-293	218,023	56.278	
05 JUL 2023 - 05 JUL 2023	SAMAIDEN	MR FONG YENG FOON [SSH]	-293	218,023	56.278	
05 JUL 2023 - 05 JUL 2023	SAPIND	MR KOH KOK HOUI [SSH]	9	6,482	8.906	
03 JUL 2023 - 03 JUL 2023	SAPIND	MR KOH KOK HOUI [SSH]	7	6,473	8.894	
30 JUN 2023 - 30 JUN 2023	SAPIND	MR KOH KOK HOUI [SSH]	2	6,466	8.884	
04 JUL 2023 - 04 JUL 2023	SAUDEE	MR TAY BEN SENG BENSON [DIR/CEO]	-1,000	19,500	1.71	
03 JUL 2023 - 03 JUL 2023	SAUDEE	MR TAY BEN SENG BENSON [DIR/CEO]	-647	20,500	1.798	
30 JUN 2023 - 30 JUN 2023	SAUDEE	MR TAY BEN SENG BENSON [DIR/CEO]	-8,854	21,147	1.854	
05 JUL 2023 - 05 JUL 2023	SCICOM	SREEKUMAR A/L P NARAYANA PILLAI [SSH]	-2,500	23,519	6.617	

Notice Period is 02nd July – 08th July 2023

Effective Change Date	Stock Name	Buyer/ Seller Name [Classification]	Bought / (Sold) ['000]		No. of Shares After Trade ['000]	
			Total	Total	% Held	% Held
28 JUN 2023 - 30 JUN 2023	SCIENTX	MR LIM PENG CHEONG [DIR/CEO]	373	844,263	54.431	
28 JUN 2023 - 30 JUN 2023	SCIENTX	MR LIM PENG CHEONG [SSH]	373	838,245	54.043	
28 JUN 2023 - 30 JUN 2023	SCIENTX	MR LIM PENG JIN [DIR/CEO]	373	890,567	57.416	
28 JUN 2023 - 30 JUN 2023	SCIENTX	MR LIM PENG JIN [SSH]	373	890,476	57.41	
28 JUN 2023 - 30 JUN 2023	SCIENTX	SCIENTEX INFINITY SDN BHD [SSH]	353	706,252	45.534	
03 JUL 2023 - 04 JUL 2023	SCOMIES	SCOMI GROUP BHD [SSH]	-2,295	57,208	12.216	
27 JUN 2023 - 27 JUN 2023	SEM	BERJAYA CORPORATION BERHAD [SSH]	2,310	140,954	12.698	
27 JUN 2023 - 27 JUN 2023	SEM	BERJAYA GROUP BERHAD [SSH]	2,310	122,044	10.994	
27 JUN 2023 - 27 JUN 2023	SEM	JUARA SEJATI SDN BHD [SSH]	2,310	106,974	9.637	
04 JUL 2023 - 04 JUL 2023	SFPTECH	DATO' HAMZAH BIN MOHD SALLEH [DIR/CEO]	85	1,150	0.048	
28 JUN 2023 - 28 JUN 2023	SFPTECH	DATO' HAMZAH BIN MOHD SALLEH [DIR/CEO]	105	1,065	0.045	
03 JUL 2023 - 03 JUL 2023	SIME	EMPLOYEES PROVIDENT FUND BOARD [SSH]	-5,402	944,859	13.863	
30 JUN 2023 - 30 JUN 2023	SIME	EMPLOYEES PROVIDENT FUND BOARD [SSH]	2,342	944,859	13.863	
26 JUN 2023 - 27 JUN 2023	SIME	EMPLOYEES PROVIDENT FUND BOARD [SSH]	1,411	942,517	13.828	
23 JUN 2023 - 23 JUN 2023	SIME	EMPLOYEES PROVIDENT FUND BOARD [SSH]	1,305	941,106	13.808	
04 JUL 2023 - 04 JUL 2023	SIMEPLT	EMPLOYEES PROVIDENT FUND BOARD [SSH]	296	1,011,112	14.62	
03 JUL 2023 - 03 JUL 2023	SIMEPLT	EMPLOYEES PROVIDENT FUND BOARD [SSH]	-9,947	1,010,817	14.616	
30 JUN 2023 - 30 JUN 2023	SIMEPLT	EMPLOYEES PROVIDENT FUND BOARD [SSH]	500	1,010,670	14.615	
28 JUN 2023 - 28 JUN 2023	SIMEPLT	EMPLOYEES PROVIDENT FUND BOARD [SSH]	150	1,010,170	14.607	
04 JUL 2023 - 04 JUL 2023	SIMEPROP	EMPLOYEES PROVIDENT FUND BOARD [SSH]	300	593,323	8.725	
30 JUN 2023 - 30 JUN 2023	SIMEPROP	EMPLOYEES PROVIDENT FUND BOARD [SSH]	580	593,023	8.72	
28 JUN 2023 - 28 JUN 2023	SIMEPROP	EMPLOYEES PROVIDENT FUND BOARD [SSH]	959	592,443	8.712	
27 JUN 2023 - 27 JUN 2023	SIMEPROP	EMPLOYEES PROVIDENT FUND BOARD [SSH]	1,000	591,484	8.698	
06 JUL 2023 - 06 JUL 2023	SKHAWK	DATO' SHARMAN KRISTY A/L MICHAEL [DIR/CEO]	16,000	51,360	32.1	
06 JUL 2023 - 06 JUL 2023	SKHAWK	DATO' SHARMAN KRISTY A/L MICHAEL [SSH]	16,000	51,360	32.1	
07 JUL 2023 - 07 JUL 2023	SKPRES	MR GAN POH SAN [DIR/CEO]	520	334,207	21.391	
07 JUL 2023 - 07 JUL 2023	SKPRES	MR GAN POH SAN [SSH]	520	334,207	21.391	
04 JUL 2023 - 04 JUL 2023	SKPRES	EMPLOYEES PROVIDENT FUND BOARD [SSH]	-2,916	120,508	7.713	
03 JUL 2023 - 03 JUL 2023	SKPRES	EMPLOYEES PROVIDENT FUND BOARD [SSH]	588	123,425	7.9	
04 JUL 2023 - 04 JUL 2023	SKPRES	KUMPULAN WANG PERSARAAN (DIPERBADANKAN) [SSH]	-84	134,106	8.583	
30 JUN 2023 - 30 JUN 2023	SKPRES	EMPLOYEES PROVIDENT FUND BOARD [SSH]	-255	122,836	7.862	
03 JUL 2023 - 03 JUL 2023	SKPRES	KUMPULAN WANG PERSARAAN (DIPERBADANKAN) [SSH]	1,026	134,190	8.589	
30 JUN 2023 - 30 JUN 2023	SKPRES	KUMPULAN WANG PERSARAAN (DIPERBADANKAN) [SSH]	-1,089	133,165	8.523	
21 JUN 2023 - 21 JUN 2023	SPRITZER	UNIKAMPAR CREDIT AND LEASING SDN. BHD. [SSH]	44,945	134,834	42.231	
21 JUN 2023 - 21 JUN 2023	SPRITZER	UNYEELEE SDN. BHD. [SSH]	44,945	134,834	42.231	
21 JUN 2023 - 21 JUN 2023	SPRITZER	YEE LEE ORGANIZATION BHD. [SSH]	44,945	134,834	42.231	
21 JUN 2023 - 21 JUN 2023	SPRITZER	YELETA HOLDINGS SDN. BHD. [SSH]	44,945	134,834	42.231	
21 JUN 2023 - 21 JUN 2023	SPRITZER	YOUNG WEI HOLDINGS SDN. BHD. [SSH]	44,945	134,834	42.231	
30 JUN 2023 - 30 JUN 2023	SPSETIA	EMPLOYEES PROVIDENT FUND BOARD [SSH]	141	235,138	5.763	
28 JUN 2023 - 28 JUN 2023	SPSETIA	EMPLOYEES PROVIDENT FUND BOARD [SSH]	1,097	234,997	5.759	
30 JUN 2023 - 30 JUN 2023	SPSETIA	KUMPULAN WANG PERSARAAN (DIPERBADANKAN) [SSH]	1,106	39		

Notice Period is 02nd July - 08th July 2023

Effective Change Date	Stock Name	Buyer/ Seller Name [Classification]	Bought / (Sold) ('000)		No. of Shares After Trade ('000)	
			Total	% Held	Total	% Held
30 JUN 2023 - 30 JUN 2023	TAFI	DATO' SRI WONG SZE CHIEN [DIR/CEO]	20	55.756	211554	55.756
30 JUN 2023 - 30 JUN 2023	TAFI	DATO' SRI WONG SZE CHIEN [SSH]	20	55.756	211554	55.756
28 JUN 2023 - 28 JUN 2023	TAFI	ARMANI SYNERGY SDN. BHD. [SSH]	230	53.532	203116	53.532
28 JUN 2023 - 28 JUN 2023	TAFI	DATO' SRI ANDREW LIM ENG GUAN [DIR/CEO]	230	55.917	212164	55.917
28 JUN 2023 - 28 JUN 2023	TAFI	DATO' SRI ANDREW LIM ENG GUAN [SSH]	230	55.917	212164	55.917
28 JUN 2023 - 28 JUN 2023	TAFI	DATO' SRI AZLAN BIN AZMI [DIR/CEO]	230	53.575	203281	53.575
28 JUN 2023 - 28 JUN 2023	TAFI	DATO' SRI AZLAN BIN AZMI [SSH]	230	53.575	203281	53.575
28 JUN 2023 - 28 JUN 2023	TAFI	DATO' SRI WONG SZE CHIEN [DIR/CEO]	230	55.751	211534	55.751
28 JUN 2023 - 28 JUN 2023	TAFI	DATO' SRI WONG SZE CHIEN [SSH]	230	55.751	211534	55.751
30 JUN 2023 - 30 JUN 2023	TAKAFUL	EMPLOYEES PROVIDENT FUND BOARD [SSH]	173	12.731	106598	12.731
04 JUL 2023 - 04 JUL 2023	TANCO	DATO' SRI ANDREW TAN JUN SUAN [DIR/CEO]	4,001	50.233	965635	50.233
04 JUL 2023 - 04 JUL 2023	TANCO	DATO' SRI ANDREW TAN JUN SUAN [SSH]	4,001	50.233	965635	50.233
04 JUL 2023 - 04 JUL 2023	TCHONG	DATO' TAN HENG CHEW [DIR/CEO]	4	49.551	323006	49.551
04 JUL 2023 - 04 JUL 2023	TCHONG	DATO' TAN HENG CHEW [SSH]	4	47.161	307425	47.161
05 JUL 2023 - 05 JUL 2023	TELADAN	MR ROY THEAN CHONG YEW [DIR/CEO]	15	0.008	65	0.008
04 JUL 2023 - 04 JUL 2023	TENAGA	EMPLOYEES PROVIDENT FUND BOARD [SSH]	-2,953	15.78	913170	15.78
03 JUL 2023 - 03 JUL 2023	TENAGA	EMPLOYEES PROVIDENT FUND BOARD [SSH]	-6,275	15.83	915914	15.83
30 JUN 2023 - 30 JUN 2023	TENAGA	EMPLOYEES PROVIDENT FUND BOARD [SSH]	-7,226	15.85	917564	15.85
28 JUN 2023 - 28 JUN 2023	TENAGA	EMPLOYEES PROVIDENT FUND BOARD [SSH]	-6,799	15.98	924789	15.98
30 JUN 2023 - 30 JUN 2023	TENAGA	KUMPULAN WANG PERSARAAN (DIPERBADANKAN) [SSH]	200	7.44	430649	7.44
27 JUN 2023 - 27 JUN 2023	TENAGA	EMPLOYEES PROVIDENT FUND BOARD [SSH]	750	16.1	931589	16.1
06 JUL 2023 - 06 JUL 2023	TIMECOM	KUMPULAN WANG PERSARAAN (DIPERBADANKAN) ("KWAP") [SSH]	1,000	5.855	107655	5.855
05 JUL 2023 - 05 JUL 2023	TIMECOM	KUMPULAN WANG PERSARAAN (DIPERBADANKAN) ("KWAP") [SSH]	843	5.801	106655	5.801
30 JUN 2023 - 30 JUN 2023	TIMECOM	EMPLOYEES PROVIDENT FUND BOARD [SSH]	-289	7.203	132428	7.203
28 JUN 2023 - 28 JUN 2023	TIMECOM	EMPLOYEES PROVIDENT FUND BOARD [SSH]	-43	7.218	132717	7.218
30 JUN 2023 - 30 JUN 2023	TIMECOM	KUMPULAN WANG PERSARAAN (DIPERBADANKAN) ("KWAP") [SSH]	936	5.755	105812	5.755
04 JUL 2023 - 04 JUL 2023	TM	EMPLOYEE PROVIDENT FUND BOARD (EPF BOARD) [SSH]	20	15.838	605313	15.838
03 JUL 2023 - 03 JUL 2023	TM	EMPLOYEE PROVIDENT FUND BOARD (EPF BOARD) [SSH]	-3,793	15.837	605293	15.837
30 JUN 2023 - 30 JUN 2023	TM	EMPLOYEE PROVIDENT FUND BOARD (EPF BOARD) [SSH]	474	15.837	605293	15.837
28 JUN 2023 - 28 JUN 2023	TM	EMPLOYEE PROVIDENT FUND BOARD (EPF BOARD) [SSH]	453	15.825	604820	15.825
27 JUN 2023 - 27 JUN 2023	TM	EMPLOYEE PROVIDENT FUND BOARD (EPF BOARD) [SSH]	10	15.813	604366	15.813
28 JUN 2023 - 28 JUN 2023	UEMS	URUSHARTA JAMA'AH SDN BHD [SSH]	230	6.281	317729	6.281
05 JUL 2023 - 05 JUL 2023	ULICORP	EASTSPRING INVESTMENTS BERHAD [SSH]	-174	5.395	11751	5.395
05 JUL 2023 - 05 JUL 2023	ULICORP	PRUDENTIAL PLC [SSH]	-174	5.395	11751	5.395
03 JUL 2023 - 03 JUL 2023	ULICORP	EASTSPRING INVESTMENTS BERHAD [SSH]	-164	5.475	11925	5.475
03 JUL 2023 - 03 JUL 2023	ULICORP	PRUDENTIAL PLC [SSH]	-164	5.475	11925	5.475
30 JUN 2023 - 30 JUN 2023	ULICORP	EASTSPRING INVESTMENTS BERHAD [SSH]	-155	5.55	12089	5.55
30 JUN 2023 - 30 JUN 2023	ULICORP	PRUDENTIAL PLC [SSH]	-155	5.55	12089	5.55
28 JUN 2023 - 28 JUN 2023	ULICORP	EASTSPRING INVESTMENTS BERHAD [SSH]	-132	5.622	12244	5.622

Notice Period is 02nd July - 08th July 2023

Effective Change Date	Stock Name	Buyer/ Seller Name [Classification]	Bought / (Sold) ('000)		No. of Shares After Trade ('000)	
			Total	% Held	Total	% Held
28 JUN 2023 - 28 JUN 2023	ULICORP	PRUDENTIAL PLC [SSH]	-132	5.622	12244	5.622
30 JUN 2023 - 30 JUN 2023	UMCCA	DATO' SRI TEE LIP SIN [DIR/CEO]	50	30.72	64441	30.72
30 JUN 2023 - 30 JUN 2023	UMCCA	MR TEE CHENG HUA [DIR/CEO]	50	27.938	58605	27.938
04 JUL 2023 - 04 JUL 2023	UMW	EMPLOYEES PROVIDENT FUND BOARD [SSH]	226	9.45	110403	9.45
03 JUL 2023 - 03 JUL 2023	UMW	EMPLOYEES PROVIDENT FUND BOARD [SSH]	5	9.431	110177	9.431
30 JUN 2023 - 30 JUN 2023	UMW	EMPLOYEES PROVIDENT FUND BOARD [SSH]	37	9.43	110172	9.43
28 JUN 2023 - 28 JUN 2023	UMW	EMPLOYEES PROVIDENT FUND BOARD [SSH]	111	9.427	110136	9.427
27 JUN 2023 - 27 JUN 2023	UMW	EMPLOYEES PROVIDENT FUND BOARD [SSH]	152	9.418	110024	9.418
04 JUL 2023 - 04 JUL 2023	UTDPLT	EMPLOYEES PROVIDENT FUND BOARD [SSH]	-195	7.52	31191	7.52
30 JUN 2023 - 30 JUN 2023	UTDPLT	EMPLOYEES PROVIDENT FUND BOARD [SSH]	-97	7.567	31386	7.567
28 JUN 2023 - 28 JUN 2023	UTDPLT	EMPLOYEES PROVIDENT FUND BOARD [SSH]	-162	7.59	31484	7.59
03 JUL 2023 - 03 JUL 2023	UWC	EMPLOYEES PROVIDENT FUND BOARD [SSH]	-3,422	6.908	76103	6.908
30 JUN 2023 - 30 JUN 2023	UWC	EMPLOYEES PROVIDENT FUND BOARD [SSH]	49	6.898	75995	6.898
28 JUN 2023 - 28 JUN 2023	UWC	EMPLOYEES PROVIDENT FUND BOARD [SSH]	33	6.894	75946	6.894
27 JUN 2023 - 27 JUN 2023	UWC	EMPLOYEES PROVIDENT FUND BOARD [SSH]	77	6.891	75913	6.891
05 JUL 2023 - 05 JUL 2023	VOLCANO	MR YEAP GUAN SENG [DIR/CEO]	56	6.458	10656	6.458
05 JUL 2023 - 05 JUL 2023	VOLCANO	MR YEAP GUAN SENG [SSH]	56	6.458	10656	6.458
07 JUL 2023 - 07 JUL 2023	VS	DATUK BEH KIM LING [DIR/CEO]	50	15.03	577472	15.03
30 JUN 2023 - 30 JUN 2023	VS	DATUK BEH KIM LING [SSH]	50	15.03	577472	15.03
03 JUL 2023 - 03 JUL 2023	VS	EMPLOYEES PROVIDENT FUND BOARD [SSH]	-9,178	6.571	251946	6.571
30 JUN 2023 - 30 JUN 2023	VS	EMPLOYEES PROVIDENT FUND BOARD [SSH]	-500	6.571	251946	6.571
03 JUL 2023 - 03 JUL 2023	VS	KUMPULAN WANG PERSARAAN [SSH]	-2,000	9.014	345624	9.014
30 JUN 2023 - 30 JUN 2023	VS-WB	DATUK BEH KIM LING [DIR/CEO]	-15	11.475	87316	11.475
27 JUN 2023 - 28 JUN 2023	VSTECs	VSTECs HOLDINGS (SINGAPORE) LIMITED [SSH]	500	44.047	157053	44.047
27 JUN 2023 - 28 JUN 2023	VSTECs	VSTECs HOLDINGS LIMITED [SSH]	500	44.047	157053	44.047
03 JUL 2023 - 03 JUL 2023	WARISAN	DATO' TAN HENG CHEW [DIR/CEO]	6	54.72	35622	54.72
03 JUL 2023 - 03 JUL 2023	WARISAN	DATO' TAN HENG CHEW [SSH]	6	48.538	31598	48.538
05 JUL 2023 - 06 JUL 2023	WIDAD	TAN SRI MUHAMMAD IKMAL OPAT BIN ABDULLAH [SSH]	-13,181	41.675	1224565	41.675
03 JUL 2023 - 04 JUL 2023	WIDAD	TAN SRI MUHAMMAD IKMAL OPAT BIN ABDULLAH [SSH]	-19,386	42.211	1237746	42.211
03 JUL 2023 - 03 JUL 2023	WIDAD	WIDAD BUSINESS GROUP SDN. BHD. [SSH]	-4,000	37.617	1103032	37.617
30 JUN 2023 - 30 JUN 2023	WIDAD	TAN SRI MUHAMMAD IKMAL OPAT BIN ABDULLAH [SSH]	4,285	42.872	1257132	42.872
06 JUL 2023 - 06 JUL 2023	WPRTS	KUMPULAN WANG PERSARAAN (DIPERBADANKAN) [SSH]	56	6.728	229424	6.728
05 JUL 2023 - 05 JUL 2023	YENHER	MR CHENG MOOH KHENG [DIR/CEO]	100	48.567	145700	48.567
30 JUN 2023 - 30 JUN 2023	YENHER	MADAM THEOH MOOI TENG [DIR/CEO]	30	0.793	2380	0.793
30 JUN 2023 - 30 JUN 2023	YENHER	MR CHENG MOOH TAT [DIR/CEO]	30	52.545	157635	52.545
03 JUL 2023 - 03 JUL 2023	YINSON	EMPLOYEES PROVIDENT FUND BOARD [SSH]	-17,886	16.575	481782	16.575
27 JUN 2023 - 27 JUN 2023	YINSON	EMPLOYEES PROVIDENT FUND BOARD [SSH]	17	16.568	481561	16.568
28 JUN 2023 - 28 JUN 2023	YTL	UBS GROUP AG [SSH]	-7,266	5.489	601841	5.489
04 JUL 2023 - 04 JUL 2023	ZECON	DATUK HAJI ZAINAL ABIDIN BIN HAJI AHMAD [DIR/CEO]	200	43.299	63825	43.299
04 JUL 2023 - 04 JUL 2023	ZECON	DATUK HAJI ZAINAL ABIDIN BIN HAJI AHMAD [SSH]	200	39.299	63825	39.299
04 JUL 2023 - 04 JUL 2023	ZECON	ENCIK ZAINURIN BIN AHMAD [DIR/CEO]	-200	0.543	800	0.543

Disclaimer: The Information in Insider Activity is extracted from www.shareinvestor.com/fundamental/insider_trades. The information on this page is provided as a service to readers. It does not constitute financial advice and/or any investment recommendations. We assume no liability for damages resulting from or arising out of the use of such information. Whilst every effort is made to ensure accuracy, the information presented is not the official record of shareholder filings. Readers are advised to read the original filings on the Bursa Malaysia website at www.bursamalaysia.com

Learn how to identify Hot Stocks using Technical Analysis (TA) and Fundamental Analysis (FA)

SIGN UP FOR Invest NOW

IT'S FREE!!!

[Click here](#)

Scan me

Via email, every Friday.

Get market moving news and analyses. Regular columns include **Behind The Action** and **From The Observer**

Leaderboard • Shariah Hot Stocks • Shariah Momentum Up Stocks • Non Shariah Hot Stocks • Up Trending Stocks • Growth Stocks • Dividend Stocks • Long Companies • Insider Activity • Investor Relations • Regional Markets



The Board of Directors of **Dayang Enterprise Holdings Bhd (DEHB)** is pleased to announce that its wholly-owned subsidiary company, Dayang Enterprise Sdn Bhd, has been awarded a contract amendment and contract extension for the Provision of Procurement, Construction, Installation, Hook-up and Commissioning Services for ROC Oil Siprod/ Infill Drilling Campaign (2019 – 2023) from ROC Oil (Sarawak) Sdn Bhd. The value of the Contract is based on work orders issued by ROC throughout the contract duration. The contract extension duration is approximately one year five months and fifteen days effective from 17th July 2023 until 31st December 2024.



On behalf of the Board of **Ecomate Holdings Berhad (ECOMATE)**, M&A Securities wishes to inform that the listing of and quotation for the entire share capital of Ecomate have been transferred from the ACE Market to the Main Market of Bursa Securities with effect from 9.00 a.m. on Friday, 7 July 2023, marking the completion of the Transfer.



The Board of Directors of **Malaysian Genomics Resource Centre Berhad (MGRC)** is

pleased to announce that MGRC Healthcare Sdn Bhd, a wholly owned subsidiary of the Company, has on 11 July 2023, entered into a Supply Agreement with DLF Engineering Pte Ltd, for the supply of the Genetic Screening Tests, Mesenchymal Stem Cells, NK Cells, Exosomes, Rejuvium and other related products to DLF subject to the terms and conditions of the SA entered into between the Parties.

The Supply Agreement entered will enable MGRCH and DLF will expand the marketability of MGRCH's Products in the healthcare industry of Singapore, and hence is expected to improve the Group's revenue in the future.



SARAWAK CONSOLIDATED INDUSTRIES BERHAD
Reg. No.: 197501003884 (25583-W)

The Board of Directors of **Sarawak Consolidated Industries Berhad (SCIB)** wishes to announce that the Company had on 11 July 2023 entered into a Memorandum of

Understanding with IRIX SDN BHD to participate on the SEA-H2X Cable System (SEA – Hainan – Hong Kong Express) wherein, SCIB shall subscribe up to 30% of the issued capital in IRIX SEA H2X SDN BHD. The Project is a subsea cable connecting Hong Kong SAR China, Hainan China, Philippines, Thailand, Malaysia (Borneo Island) and Singapore.



The Board of Directors of **Wellspire Holdings Berhad (WELLS)** wishes to announce that Wellspire Global Trading Sdn Bhd, a wholly-owned subsidiary of the Company, had on 13 July

2023 entered into an export agency agreement with Cundo Food Co., Ltd, for a period of three years from 13 July 2023 to 12 July 2026. Wellspire Global Trading has been appointed by Cundo as the exclusive distributor of the “Cundo” brand chocolate coating cake products in Malaysia, Singapore and Thailand. Wellspire Global Trading has been authorised to be the sole distributor of the Export Products in Malaysia, Singapore and Thailand for a period of three years, commencing from 13 July 2023 to 12 July 2026. During the term of the Agreement, Wellspire Global Trading has been authorised to have its own downstream distributors to carry out legal commercial activities and marketing promotions for the Export Products in Malaysia, Singapore and Thailand.

Upcoming IPO

NAME OF COMPANY	OFFER PERIOD		ISSUE PRICE (Per Ordinary Share)	LISTING SOUGHT	DATE OF LISTING
	OPENING	CLOSING			
KGW GROUP BERHAD	30 Jun 2023	18 Jul 2023	RM0.21	ACE MARKET	1 Aug 2023
DAYTHREE DIGITAL BERHAD	21 Jun 2023	11 Jul 2023	RM0.30	ACE MARKET	26 Jul 2023
MYMBN BERHAD	30 Jun 2023	10 Jul 2023	RM0.21	ACE MARKET	25 Jul 2023
MST GOLF GROUP BERHAD	28 Jun 2023	07 Jul 2023	RM0.81	MAIN MARKET	20 Jul 2023
DC HEALTHCARE HOLDINGS BERHAD	27 Jun 2023	05 Jul 2023	RM0.25	ACE MARKET	17 Jul 2023

Disclaimer: The information in the Investor Relations page is extracted from individual companies' announcements in www.bursamalaysia.com. The information on this page is provided as a service to readers. We assume no liability for damages resulting from or arising out of the use of such information. Whilst every effort is made to ensure accuracy, the information presented has been simplified for your reading pleasure. Readers are advised to read the original and complete filings on the Bursa Malaysia website at https://www.bursamalaysia.com/market_information/announcements/company_announcement

ShareInvestor is a technology based company with a focus on Internet media and we have operations in Malaysia, Singapore and Thailand.

We are the market leader in providing a combination of market data, analysis and news on various platforms to traders and investors.

Our websites include www.shareinvestor.com and www.bursastation.com.

More information about our products and services can be found at www.shareinvestorholdings.com

We're looking for Drupal Developers who will be in charge of front-end development and back-end/module development. This role requires expertise in PHP, HTML, CSS, JS, and an eye for design aesthetics. The candidates should be familiar and have a passion working with content management systems.

Interested candidates are encouraged to apply with full resume, present and expected salary and a recent photograph. Please send these to hr.my@shareinvestor.com for processing. ShareInvestor regrets that only shortlisted candidates shall be notified.

Drupal Developers (2 vacancies)

Job Responsibilities:

- Active participation in all UI / UX decisions
- Contribute actively to the continuous development and maintenance of development projects
- Enhance Drupal development quality
- Provide solutions to issues and suggestions for improvements.
- Designing and implementing new features to the system
- Ensuring optimal performance

Required Skills:

- At least 3 years of Drupal Theming and Front-End Development experience
- Proficient in PHP, HTML5/XHTML, CSS, Javascript, jQuery, AJAX, XML, Json
- Good Diploma/Degree in Computer Science/Computer Engineering.
- Experience working with Drupal's main modules, such as CTools, Views, Rules, Webform, and so on
- Ability to create custom Drupal modules
- Strong troubleshooting skills to fix bugs

Benefits:

- Career & growth opportunities
- Interesting projects
- Medical Insurance
- Incentives

Ruby on Rails Developer (1 vacancy)

Job Responsibilities:

- Develop quality web-based software modules on schedule with a focus on Ruby and Ruby on Rails applications.
- Explore and utilize the latest web-based technologies.
- Document design specifications, logic concepts and module description.
- Maintain and enhance existing web-based applications.

Required Skills:

- Experience in web-based programming/scripting is essential. Candidate must be able to explain clearly technical aspects of his/her past experiences and projects.
- Passion for programming and desire to learn new languages like Go.
- Good Diploma/Degree in Computer Science/Computer Engineering.
- Able to work well in a team and be able to follow documentation and coding standards.
- Knowledge in any of the following would be an added advantage
 - Ruby and Ruby on Rails Framework
 - Javascript and jQuery library
 - Go
 - Perl

Application Developer (C++/STL) (1 vacancy)

Job Responsibilities

- Deliver quality software modules on schedule.
- Document design specifications, conceptions, module description.
- Maintain and enhance existing applications.

Required Skills:

- Passion for programming and desire to learn.
- Good Diploma/Degree in Computer Science/Computer Engineering.
- Skills in C++ is essential.
- Experience with Visual Studio, networking stack and Golang would be an advantage.
- Proactive, resourceful and self-motivated with strong analytical skills.
- Good interpersonal, written and communication skills.
- Able to work with little supervision.

Junior Market Data Support Specialist

As a Junior Market Data Support Specialist, you will be involved in reviewing, analysing and collecting accurate and timely financial information on listed companies for our market data information services.

Job Responsibilities

- Collect, compute and analyse relevant financial data of listed companies, organise and present them on the company portal, in timely manner, for the consumption by our subscribers and our corporate clients
- Capture corporate events / actions and translate them to adjustments of impacted financial data
- Research, evaluate, propose new solutions or recommendations for adhoc project requirements that are related to the financial data or the financial fundamentals of listed companies
- Provide support to users' queries related to financial information displayed on our platforms
- Perform any other duties assigned from time to time, including rare occasions of working during weekends

Required Skills

- Minimum academic qualification: Diploma in any finance-related discipline
- Knowledge of basic accounting and financial terms is required
- Flair for data precision / accuracy / quality / thoroughness plus strict adherence to structured data process and timeline is a must
- Proficient in Microsoft Excel
- Team player with pleasant personality
- Proficient in English, oral and written.

Fresh graduates are welcome to apply.

Interested candidates are encouraged to apply with full resume, present and expected salary and a recent photograph. Please send these to hr.my@shareinvestor.com for processing. ShareInvestor regrets that only shortlisted candidates shall be notified.