



# BNM'S INTERVENTION IN FOREX MARKET NOT OUT OF THE ORDINARY - RAFIZI

(page 22)

04	LEADERBOARD	12	UP TRENDING STOCKS	22	MARKET SENTIMENTS
06	SHARIAH HOT STOCKS	14	VALUE STOCKS	25	REGIONAL MARKETS
07	COMPANY SPOTLIGHT	16	GROWTH STOCKS	26	FROM THE OBSERVER
08	SHARIAH MOMENTUM UP STOCKS	18	DIVIDEND STOCKS	30	INSIDER ACTIVITY
10	NON SHARIAH HOT STOCKS	19	BROKERS' CALL	33	INVESTOR RELATIONS
		20	LONG COMPANIES	39	CAREERS AT SHAREINVESTOR



**INVESTOR PLATFORMS**

**Director**  
Darren Chong  
darren.chong@shareinvestor.com

**Business Development Manager**  
Jay Cheong  
jay.cheong.@shareinvestor.com

**Senior Executive**  
Daniel Wong  
daniel.wong@shareinvestor.com

**Executive**  
Farah Azwani  
farah.azwani@shareinvestor.com

**Executive**  
Tan Yong Sheng  
yongsheng.tan@shareinvestor.com

**ADMIN & OPERATIONS**

**Senior Executive**  
Watie Nordin  
watie.nordin@shareinvestor.com

**Executive**  
Silas Emmanuel Joseph  
silas.joseph@shareinvestor.com

**INVESTOR RELATIONS**

**Group Managing Director & Publisher**  
Edward Stanislaus  
edward@shareinvestor.com

**Director**  
Elizabeth Tan  
elizabeth.tan@shareinvestor.com

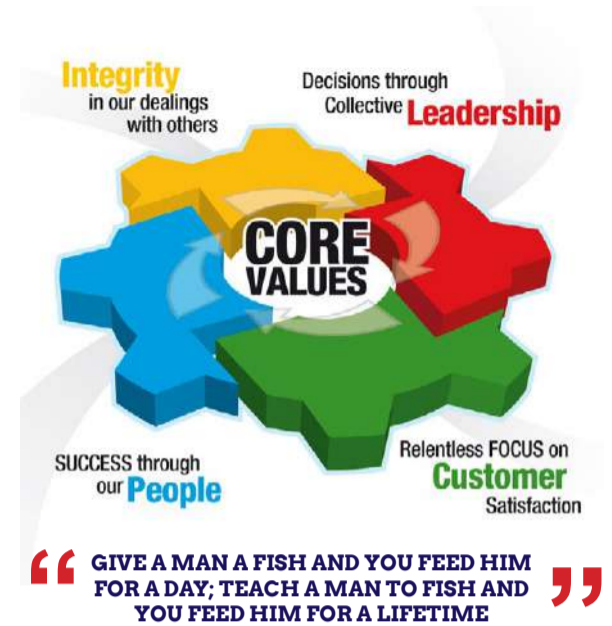
**Senior Manager**  
Letticia Wong  
letticia.wong@shareinvestor.com

**PROCESS AUTOMATION & DATA ANALYTICS**

**Data Analyst**  
Nickson Aw

**SHAREINVESTOR HOLDINGS BOARD OF DIRECTORS**

<b>Chairman</b>	Patrick Daniel
<b>Group CEO</b>	Christopher Lee
<b>Group COO</b>	Lim Dau Hee
<b>Group CFO</b>	Teo Siew May
<b>Group MD</b>	Shanison Lin



**ShareInvestor Malaysia Sdn. Bhd.**  
(200001023956) (526564-M)  
Unit No. DF2-07-03A. Level 7,  
Persoft Tower, 6B Persiaran Tropicana,  
47410 Petaling Jaya, Selangor Darul Ehsan.

Hotline : 603 7803 1791  
Mobile : 011 6343 8939  
Website : [www.ShareInvestor.com.my](http://www.ShareInvestor.com.my)  
[www.ShareInvestorHoldings.com](http://www.ShareInvestorHoldings.com)  
[www.Facebook.com/ShareInvestorMalaysia](http://www.Facebook.com/ShareInvestorMalaysia)

**ADVERTISEMENT ENQUIRY**

**XTRA**

A true icon lasts.  
A true icon evolves.

Since 2002, **Okamura Contessa** has set the standard for seating in office spaces around the world.

Contessa unites the flowing, organic lines and charm of the original with new engineering and functionality. With more color options for the mesh, fabric, and frame. All to meet the demands of the modern work style.

Contessa is the evolution of an icon – for the workplace of today, and of tomorrow.





## HYBRID SEMINAR

# 2023/24 FSMOne Recommended Unit Trusts Seminar



**Topic: Navigate the Waves with a Resilient Vessel**

Mr Kevin Khaw Khai Sheng  
FSMOne Research Analyst



**Topic: 2023 Bull In A China Shop: A Story of Re-Opening and Recovery**

Mr Tan Jee Toon, CFA, Chief Investment Officer, Asia Pacific Equities  
RHB Asset Management Singapore



**Topic: Climbing the Wall of Worry: An Asian Perspective**

Mr Woo Mun Thye, Head of Investment Services  
Principal Asset Management Berhad



**Topic: Asia Poised to Drive Global Growth**

Mr Yap Chee Ken, Head of Investment Services  
Eastspring Investments Berhad



**Topic: Exploring Asia's Fixed Income Landscape: Navigating Opportunities and Risks**

Ms Esther Teo, CFA, Senior Director, Fixed Income  
AHAM Asset Management Berhad



**Topic: Malaysia Equities: The Future belongs to The Optimists**

Mr Tan Gan Leong, Senior Fund Manager  
KAF Investment Funds Berhad



**Topic: Market Outlook for 2H 2023: Investing in Uncertain Times**

Mr Marvin Khor Tze-Chao, Portfolio Manager, Investment  
Kenanga Investors Berhad



**Topic: Discover Themes in A World of Constant Disruption**

Ms Penny Leong, Vice President, Retail Distribution, South East Asia  
Allianz Global Investors  
Investment Manager of the Manulife's Target Fund



**8 JULY 2023 (SAT)**  
8.45AM - 5.20PM



**One World Hotel, PJ**  
JASMINE JUNIOR BALLROOM, LEVEL C



**REGISTER  
FOR FREE!**

Visit [www.fsmone.com.my](http://www.fsmone.com.my) for more info.

[www.shareinvestor.com](http://www.shareinvestor.com) - market data at your fingertips



ShareInvestor WebPro ([www.shareinvestor.com/my](http://www.shareinvestor.com/my))  
Prices > Stock Prices > Bursa > click Stocks tab

1. mouse over Ranking > select Top Active > all Shariah stocks are denoted with an [S] > mouse over Column Layout > select Edit Customs > select Name > select Volume > select Last Done Price > Mouse Over Column Layout > select Custom
2. mouse over Ranking > select Top Turnover > all Shariah stocks are denoted with an [S] > mouse over Column Layout > select Edit Customs > select Name > select Last Done Price > select Value > Mouse Over Column Layout > select Custom
3. mouse over Ranking > select Top Gainers (Over 5 Trading Days) > mouse over Column Layout > select Edit Customs > select Name > select Last Done Price > select 5 Days Change > select 5 Days % Change > Mouse Over Column Layout > select Custom
4. mouse over Ranking > select Top Losers (Over 5 Trading Days)
5. mouse over Ranking > select Top % Gainers (Over 5 Trading Days)
6. mouse over Ranking > select Top % Losers (Over 5 Trading Days)

### Shariah Top Actives (as at Wednesday)

Name	Price (RM)	Volume
BORNOIL [S]	0.015	4,116,431.000
MYEG [S]	0.755	1,525,439.000
FITTERS [S]	0.040	1,170,207.000
SCIB [S]	0.450	775,075.000
CLASSITA [S]	0.095	706,086.000
BAHVEST [S]	0.215	613,605.000
TWL [S]	0.035	453,144.000
JADEM [S]	0.210	331,566.000
DXN [S]	0.715	318,317.000
WIDAD [S]	0.420	298,205.000

### Shariah Top Turnover (as at Wednesday)

Name	Price (RM)	Value (RM)
MYEG [S]	0.755	115,210,779
TENAGA [S]	9.010	80,218,010
SCIB [S]	0.450	34,495,320
GAMUDA [S]	4.480	28,326,066
DXN [S]	0.715	23,194,193
PCHEM [S]	6.090	20,025,852
EDELTEQ [S]	0.725	19,848,028
TOPGLOV [S]	0.815	18,835,252
BAUTO [S]	2.190	17,045,323
PERTAMA [S]	2.790	16,003,341

### Top Gainers (over 5 Trading days as at Wednesday)

Name	Price (RM)	Change (RM)
UTDPLT	15.360	+0.360
KLK	22.160	+0.340
SLIC	0.685	+0.300
EWEIN	1.100	+0.290
INFOM	1.870	+0.290
GAMUDA	4.480	+0.260
APB	2.460	+0.230
HLIND	9.000	+0.200
RAPID	21.380	+0.200
HLBANK	18.900	+0.160

### Top % Gainers (over 5 Trading days as at Wednesday)

Name	Price (RM)	Change (%)
SLIC	0.685	+77.92
BCMALL	0.015	+50.00
EWEIN	1.100	+35.80
IDBTECH	0.200	+33.33
SANICHI	0.020	+33.33
ZENTECH	0.020	+33.33
ALAM	0.025	+25.00
SYNERGY	0.450	+20.00
ORGABIO	0.275	+19.57
SBCCORP	0.435	+19.18

### Top Losers (over 5 Trading days as at Wednesday)

Name	Price (RM)	Change (RM)
DLADY	22.520	-1.480
HEIM	26.120	-0.840
PETDAG	21.940	-0.560
HEXTECH	26.220	-0.360
MPI	28.000	-0.300
ORIENT	6.350	-0.260
CARLSBG	20.480	-0.240
D&O	3.680	-0.230
AEONCR	11.140	-0.220
LPI	11.680	-0.200

### Top % Losers (over 5 Trading days as at Wednesday)

Name	Price (RM)	Change (%)
AT	0.005	-50.00
FINTEC	0.005	-50.00
COMPUGT	0.010	-33.33
JOE	0.010	-33.33
MTRONIC	0.010	-33.33
GIIB	0.090	-30.77
FOCUS	0.015	-25.00
GOCEAN	0.015	-25.00
LAMBO	0.015	-25.00
NETX	0.070	-22.22



# Welcome to **INVEST FAIR** VIRTUAL BOOTHS



**FSM one**  
FSMOne Malaysia  
ENTER ROOM

**BEYOND INSIGHTS**  
Beyond Insights  
ENTER ROOM

**PhillipCapital**  
Your Partner In Finance  
Phillip Capital  
ENTER ROOM

**SMART ROBIE**  
Smart Robie  
ENTER ROOM

**CGSCIMB**  
CGS CIMB  
ENTER ROOM

**MACQUARIE**  
Macquarie  
ENTER ROOM

**RHB Asset Management**  
RHB Asset Management  
ENTER ROOM

**HomilyChart Malaysia**  
HomilyChart Malaysia  
ENTER ROOM

**KLDX**  
Kapital DX Sdn Bhd  
ENTER ROOM

**Luno**  
Luno  
ENTER ROOM

**PPA PRIVATE PENSION ADMINISTRATOR**  
Private Pension Administrator  
ENTER ROOM

**TED OPTIMUS**  
TED Optimus  
ENTER ROOM

Click here for more details 

ORGANISED BY:



SUPPORTED BY:





## Price & Volume Distribution Charts (as at Wednesday)

Technical Analysis

**DEFINITION:** Shariah compliant stocks with Technical Analysis showing 5-days & 10-days Moving Average Price below Yesterday's Close over past 3 days and with Volume Spike.

**CHART GUIDE:** Volume Distribution Chart is a statistical interpretation of the current sentiment on each stock in graphical format. The highest bar categorized as >150k is likely to be traded by institutions or super dealers, while the lowest bar categorized as <15k usually represents retail investors. "Buy Up" refers to more buyers snatching up the lots queued at selling price. "Sell Down" refers to sellers selling their shares to the buying queue



ShareInvestor WebPro > Screener > Market Screener (FA & TA) > select BURSA > add criteria

**A. Criteria**

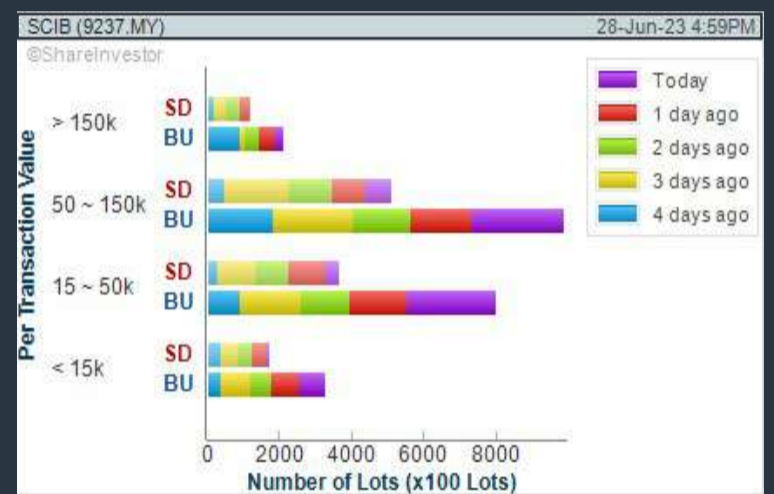
- > click Add Criteria
- Technical Analysis Conditions tab select (i) Moving Average Below Close (ii) Volume Spike
- Fundamental Analysis Conditions tab > select (iii) Revenue
- Prices & Other Conditions tab > select (iv) Is Shariah Compliant
- Technical Analysis Conditions tab select (v) Moving Average Below Close
- Prices & Other Conditions tab > select (vi) Last Done Price
- Technical Analysis Conditions tab select (vii) Moving Average Below Close

**B. Conditions (Criteria Filters)**

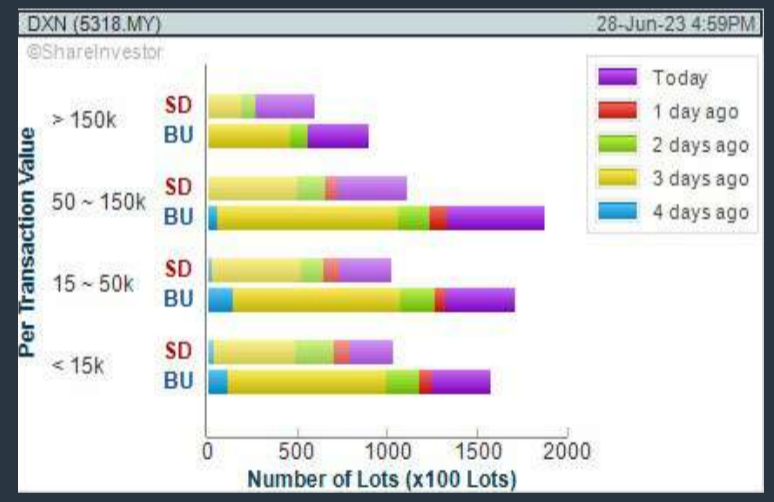
- Moving Average Below Close - select (MA) type (5) below close price for type (3) days
- Volume Spike - Volume type (1) greater than type (5) days average
- Revenue ("000) - select (more than) type (1) for the past select (1) financial year(s)
- Is Shariah Compliant - select **Yes**
- Moving Average Below Close - select (MA) type (10) below close price for type (3) days
- Last Done Price - select (more than) type (0.3)
- Moving Average Below Close - select (EMA) type (5) below close price for type (3) days

- > click Save Template > Create New Template type (Shariah Hot Stocks) > click Create
- > click Save Template as > select Shariah Hot Stocks > click Save
- > click Screen Now (may take a few minutes)
- > Sort By: Select (Vol) Select (Desc)
- > Mouse over stock name > Charts > click C<sup>2</sup> Charts or Volume Distribution

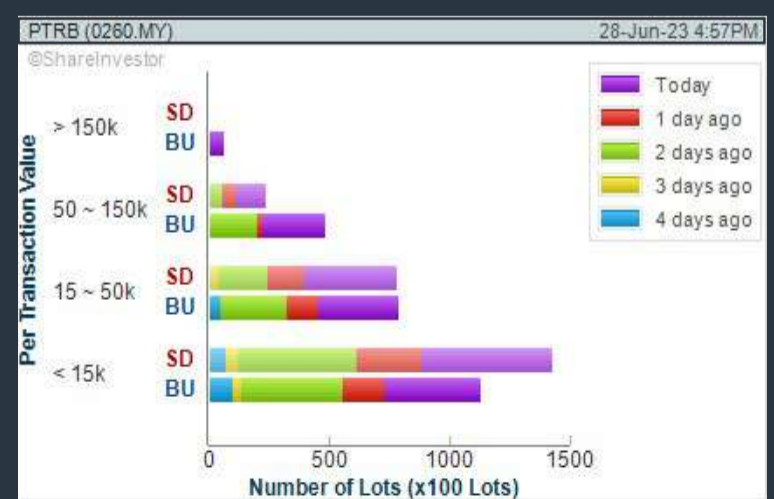
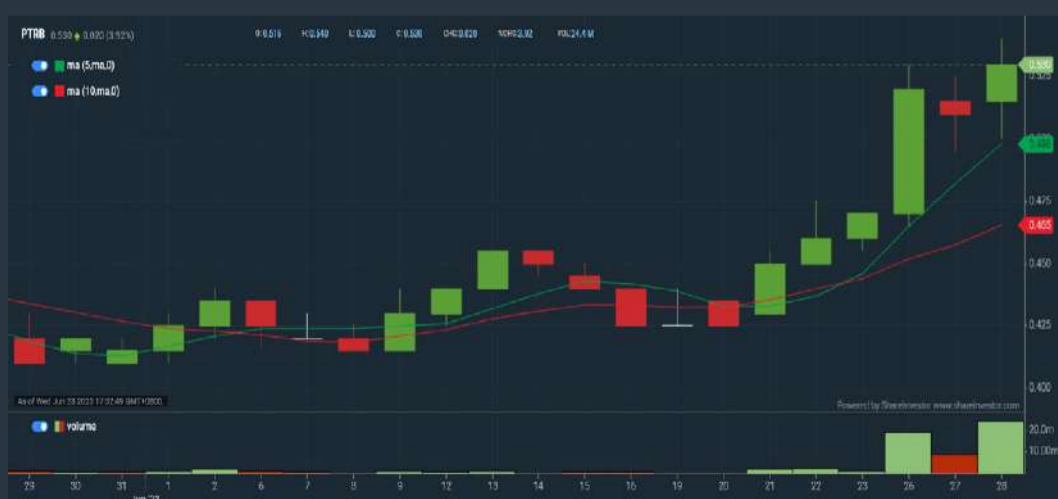
### SARAWAK CONSOLIDATED IND BERHAD (9237) C<sup>2</sup> Chart



### DXN HOLDINGS BERHAD (5318) C<sup>2</sup> Chart



### PT RESOURCES HOLDINGS BERHAD (0260) C<sup>2</sup> Chart



**Disclaimer:** The information on this page is provided as a service to readers. It does not constitute financial advice and/or any investment recommendations. Past performance is not indicative of future results. We assume no liability for damages resulting from or arising out of the use of such information. It would be best if you did your own research to make your personal investment decisions wisely or consult a licenced investment advisor.

## COMPANY BACKGROUND

**Classic Scenic Berhad** is engaged in the manufacture and export of wooden picture frame moulding. The Company operates in Malaysia and primarily exports to North America, Australia, Europe and Japan.



CSCENIC CLASSIC SCENIC BHD			
Last (MYR): <b>0.435</b> ↑	Change: <b>+0.095</b>	High: 0.436	Remarks: -
	Change (%): <b>+1.16</b>	Low: 0.425	
Open	0.430	Yesterday's Close	0.430
Buy Price	0.420	Sell Price	0.435
Buy Volume ('00)	4,994	Sell Volume ('00)	1,412
Cumulative Volume ('00)	2,949	Cumulative Value	126,069

### Financial Analysis

<b>Revenue Growth</b> Increasing revenue in last 2 consecutive years	😊	<b>Profit Growth</b> Increasing profit in last 3 consecutive years (with at least 4 profitable years)	😊
<b>Piotroski F Score</b> The company has above average financial strength (Piotroski F-Score of 6-7)	😊	<b>Dividend Payout</b> No dividend paid in most recent year but dividends paid in prior years	😟
<b>Cash Ratio</b> Good cash ratio of at least 0.8 for 3 consecutive years	😊	<b>Debt to Cashflow</b> No debt in most recent year	😊
<b>Gross Profit Margin</b> High gross profit margin of at least 40% for most recent year	😊	<b>Net Earnings Margin</b> High net profit margin of at least 20% for most recent year	😊

😊 Excellent    😊 Good    😐 Neutral    😟 Be Alert    😱 Watch Out



### Historical Financials

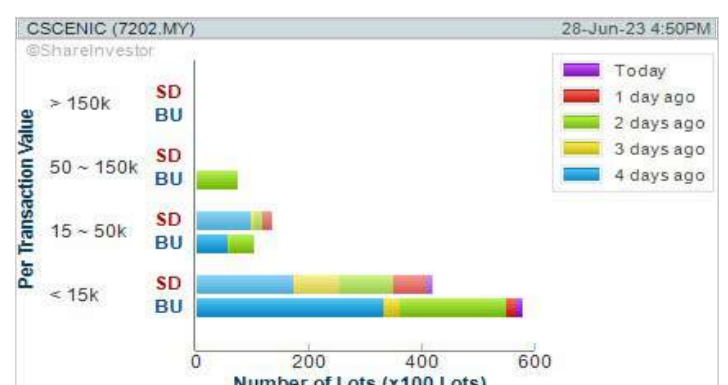


WebPro 9-Days Free Trial Registration (worth RM9) Sign Up Now



### Key Statistics with Total Shareholder Returns

Period	Dividend Received	Capital Appreciation	Total Shareholder Return
Short Term Return	5 Days	-	+2.36 %
	10 Days	-	-
	20 Days	-	-7.45 %
Medium Term Return	3 Months	-	-25.39 %
	6 Months	-	-36.03 %
	1 Year	-	+0.46 %
Long Term Return	2 Years	-	-14.74 %
	3 Years	0.030	+108.52 %
	5 Years	0.140	+20.55 %
Annualised Return	Annualised	-	+3.81 %



**Disclaimer:** The information on this page is provided as a service to readers. It does not constitute financial advice and/or any investment recommendations. Past performance is not indicative of future results. We assume no liability for damages resulting from or arising out of the use of such information. It would be best if you did your own research to make your personal investment decisions wisely or consult a licenced investment advisor.



## Price & Volume Distribution Charts (as at Wednesday)

Technical Analysis

**DEFINITION:** Shariah compliant stocks with Technical Analysis showing Bullish Momentum and Price Uptrend. The share price closed at the highest price yesterday. The typical price was higher than the previous day's typical price.

**CHART GUIDE:** Volume Distribution Chart is a statistical interpretation of the current sentiment on each stock in graphical format. The highest bar categorized as >150k is likely to be traded by institutions or super dealers, while the lowest bar categorized as <15k usually represents retail investors. "Buy Up" refers to more buyers snatching up the lots queued at selling price. "Sell Down" refers to sellers selling their shares to the buying queue.



ShareInvestor WebPro > Screener > Market Screener (FA & TA)>select BURSA>add criteria

**A. Criteria**

- > click Add Criteria
- Fundamental Analysis Conditions tab >select (i) Revenue
- Technical Analysis Conditions tab select (ii) Average Volume
- Prices & Other Conditions tab > select (iii) Last Done Price
- Prices & Other Conditions tab > select (iv) Is Shariah Compliant
- Technical Analysis Conditions tab select (v) RSI Overbought
- Technical Analysis Conditions tab select (vi) Moving Average Below Close
- Technical Analysis Conditions tab select (vii) CCI Overbought

**B. Conditions (Criteria Filters)**

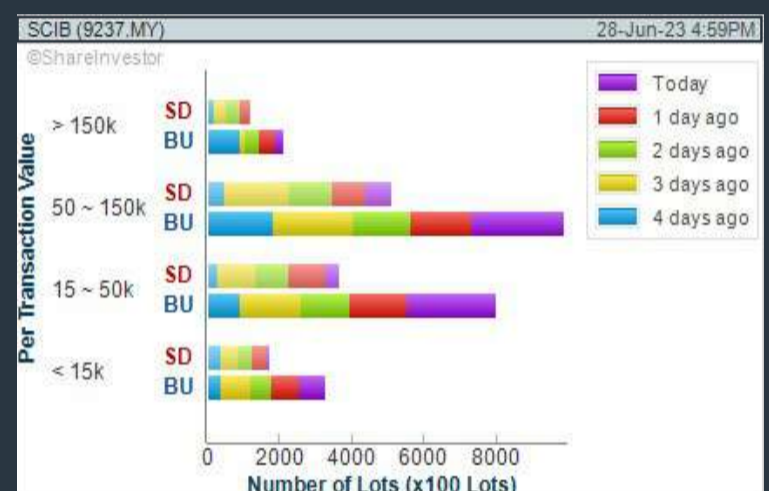
1. Revenue ("000) - select (more than) type (1) for the past select (1) financial year(s)
2. Average Volume - type (1) days average volume greater than type (10000) lots
3. Last Done Price - select (more than) type (0.3)
4. Is Shariah Compliant - select Yes
5. RSI Overbought - select RSI 1 above 99 for 1 days
6. Moving Average Below Close - select (MA) type (10) below close price for type (1) days
7. CCI Overbought - select CCI (2) above (0) for (1) days

- > click Save Template > Create New Template type (Shariah Momentum Up Stocks) > click Create
- > click Save Template as > select Shariah Momentum Up Stocks > click Save
- > click Screen Now (may take a few minutes)
- Sort By: Select (Vol) Select (Desc)
- Mouse over stock name > Charts > click C<sup>2</sup> Charts tab or Volume Distribution

## SARAWAK CONSOLIDATED IND BERHAD (9237)

C<sup>2</sup> Chart

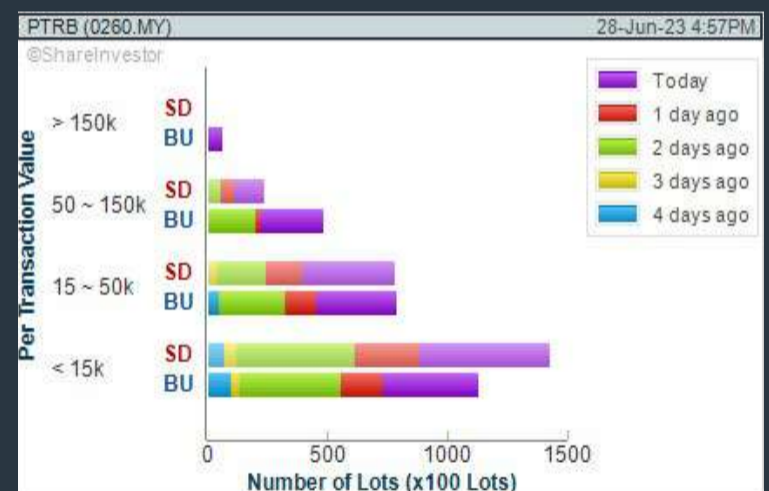
Analysis



## PT RESOURCES HOLDINGS BERHAD (0260)

C<sup>2</sup> Chart

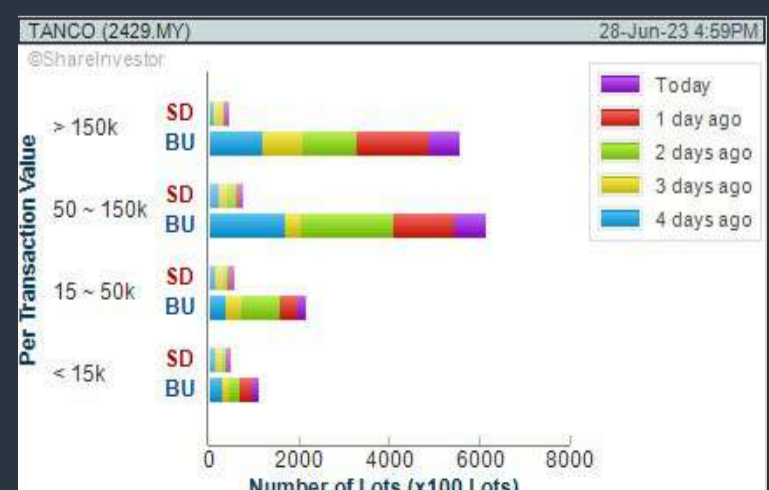
Analysis



## TANCO HOLDINGS BERHAD (2429)

C<sup>2</sup> Chart

Analysis



**Disclaimer:** The information on this page is provided as a service to readers. It does not constitute financial advice and/or any investment recommendations. Past performance is not indicative of future results. We assume no liability for damages resulting from or arising out of the use of such information. It would be best if you did your own research to make your personal investment decisions wisely or consult a licenced investment advisor.



# SHAREINVESTOR WEBPRO

## STOCK MARKET DATA AT YOUR FINGERTIPS

Powerful browser-based market analytics platform.  
Access from anywhere



### 8 Markets Data

- ▶ Get access to data from Bursa, NYSE, Nasdaq, HKEX, SGX, IDX, SET & ASX

### Portfolio Management

- ▶ Profit & Loss Summary
- ▶ Stock Alert
- ▶ News & Events filtering
- ▶ Customizable column layout

## Fundamental Analysis

### Financial Analysis Statement

- ▶ Profit & Loss
- ▶ Balance Sheet
- ▶ Cash Flow Statement
- ▶ More than 20 Financial Ratios
- ▶ Dividend Analysis

### Technical Charting

- ▶ C<sup>2</sup> chart (Customisable & Comprehensive)

### Brokers' Call

### Intrinsic Value Calculator

### FactSheet

- ▶ Key Stock Information
- ▶ Ownership
- ▶ Consensus Estimates
- ▶ Annual Report
- ▶ Historical Price
- ▶ Insider Trades

## What's new on WebPro (Stable Release 12.1.0)

In our effort to keep our platform at the forefront of trading technology, we have added on some new features onto our C<sup>2</sup> Chart in WebPro

### ADDITIONAL NEW FEATURES:

- ▶ Anchor selector for AVWAP, PVAT, and PAV indicators
- ▶ Volume profile indicator by date range
- ▶ Moving Average Cross indicator
- ▶ Guppy Multiple Moving Average (GMMA) indicator
- ▶ GoNoGo Trend Signal indicators
- ▶ SignalIQ

So what are you waiting for? Head to our platform today and check out our new trading chart features and indicators. We're confident that you'll love the improvements we've made and that they'll help you become a more successful trader.

Click here to start your 9 days FREE trial  
(Valued at RM10)





## Price & Volume Distribution Charts (as at Wednesday)

Technical Analysis

**DEFINITION:** Stocks with Technical Analysis showing 5-days & 10-days Moving Average Price below Close over past 1 days and with Volume Spike

**CHART GUIDE:** Volume Distribution Chart is a statistical interpretation of the current sentiment on each stock in graphical format. The highest bar categorized as >150k is likely to be traded by institutions or super dealers, while the lowest bar categorized as <15k usually represents retail investors. "Buy Up" refers to more buyers snatching up the lots queued at selling price. "Sell Down" refers to sellers selling their shares to the buying queue.



ShareInvestor WebPro > Screener > Market Screener (FA & TA) > select BURSA > add criteria

**A. Criteria**

- > click Add Criteria
- Technical Analysis Conditions tab select (i) Moving Average Below Close (ii) Volume Spike
- Fundamental Analysis Conditions tab > select (iii) Revenue
- Prices & Other Conditions tab > select (iv) Is Shariah Compliant
- Technical Analysis Conditions tab select (v) Moving Average Below Close
- Prices & Other Conditions tab > select (vi) Last Done Price
- Technical Analysis Conditions tab select (vii) Moving Average Below Close

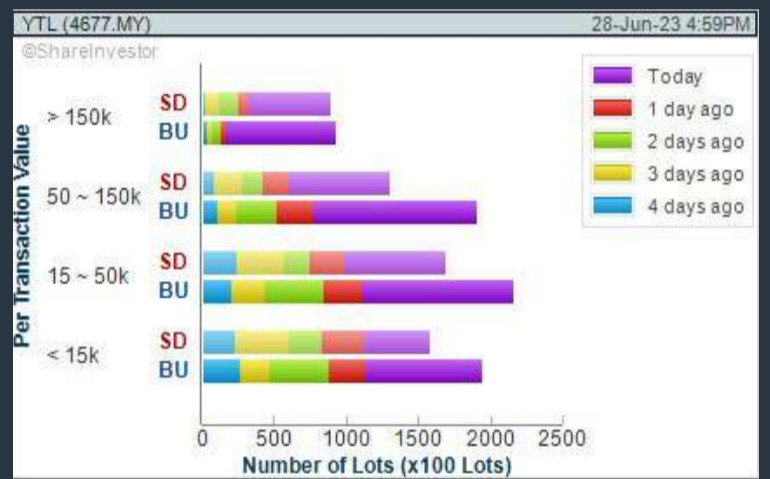
**B. Conditions (Criteria Filters)**

1. Moving Average Below Close - select (MA) type (5) below close price for type (3) days
2. Volume Spike - Volume type (1) greater than type (5) days average
3. Revenue ("000) - select (more than) type (1) for the past select (1) financial year(s)
4. Is Shariah Compliant - select NO
5. Moving Average Below Close - select (MA) type (10) below close price for type (1) days
6. Last Done Price - select (more than) type (0.3)
7. Moving Average Below Close - select (EMA) type (5) below close price for type (1) days

- > click Save Template > Create New Template type (Non-Shariah Hot Stocks) > click Create
- > click Save Template as > select Non-Shariah Hot Stocks > click Save
- > click Screen Now (may take a few minutes)
- Sort By: Select (Vol) Select (Desc)
- Mouse over stock name > Charts > click C<sup>2</sup> Charts tab or Volume Distribution

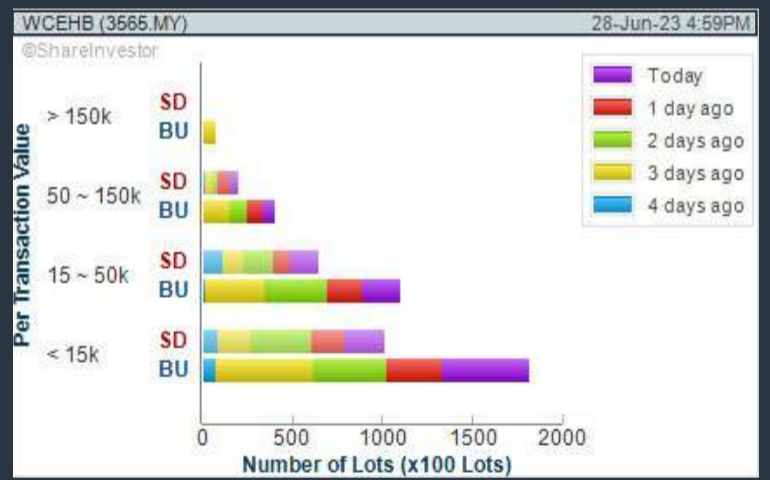
### YTL CORPORATION BERHAD (4677)

C<sup>2</sup> Chart



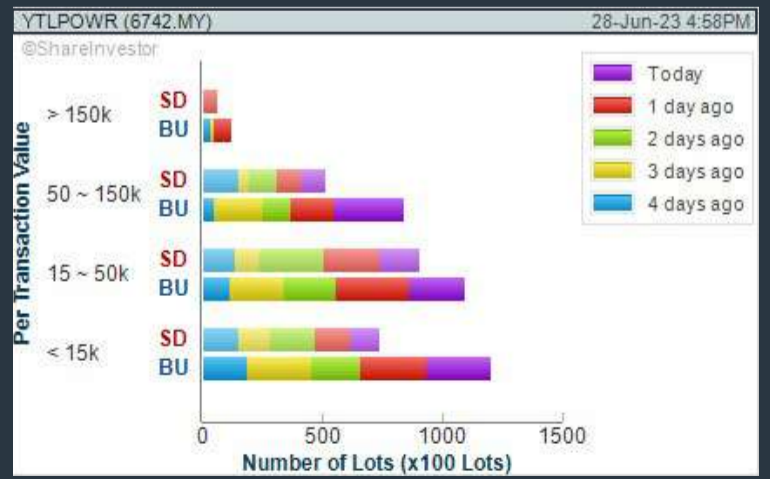
### WCE HOLDINGS BERHAD (3565)

C<sup>2</sup> Chart



### YTL POWER INTERNATIONAL BERHAD (6742)

C<sup>2</sup> Chart



**Disclaimer:** The information on this page is provided as a service to readers. It does not constitute financial advice and/or any investment recommendations. Past performance is not indicative of future results. We assume no liability for damages resulting from or arising out of the use of such information. It would be best if you did your own research to make your personal investment decisions wisely or consult a licenced investment advisor.



# BURSASTATION Professional



## Stock Scanning

- Technical Analysis (TA) Market Scanner
- Fundamental Analysis (FA) Market Scanner



## Market Data

- Equities
- Derivatives

## Monitoring

- Portfolio
- Stock Alerts
- Price Spread Calculator



# Scan. Chart. Analyse.

Be The Intelligent Investor

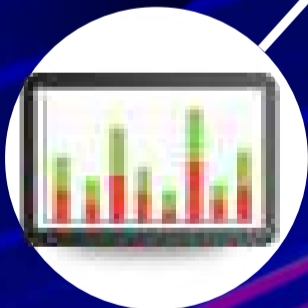


## Price Movements

- Streaming Prices
- Time & Sales
- Trade Summary Matrix
- Quote Movements
- 5 Levels Market Depth
- Historical Price Download

## Charts

- Intraday Charts
- Interactive Charts
- Historical Charts
- Volume Distribution Charts



## Fundamentals

- Factsheets
- Financials
- Insider Trades



Brought to you as a collaborative effort by ShareInvestor and Bursa Malaysia, **BursaStation Professional** is designed with you, the user, in mind, as a user-friendly yet full of powerful features that will appeal to investors/traders who need instant access to fundamental, technical, and trading data, anytime, anywhere. **BursaStation Professional** is a state-of-the-art Stock Market Tracker with Charting Software that places in your hands the power to make better investment decisions.

[CLICK HERE TO START YOUR 14-DAYS FREE TRIAL](#)



## Price & Volume Distribution Charts (Over 5 trading days as at Wednesday)

Technical Analysis

**DEFINITION:** Stocks with Technical Analysis showing Bullish Momentum and Price Uptrend

**CHART GUIDE:** Volume Distribution Chart is a statistical interpretation of the current sentiment on each stock in graphical format. The highest bar categorized as >150k is likely to be traded by institutions or super dealers, while the lowest bar categorized as <15k usually represents retail investors. "Buy Up" refers to more buyers snatching up the lots queued at selling price. "Sell Down" refers to sellers selling their shares to the buying queue.



ShareInvestor WebPro > Screener > Market Screener (FA & TA) > select BURSA > add criteria

**A. Criteria**

- > click Add Criteria
- Fundamental Analysis Conditions tab > select (i) Revenue
- Technical Analysis Conditions tab select (ii) Moving Average Below Close
- Technical Analysis Conditions tab select (iii) Average Volume
- Prices & Other Conditions tab > select (iv) Last Done Price
- Technical Analysis Conditions tab select (v) Moving Average Below Close
- Technical Analysis Conditions tab select (v) Moving Average Bullish Crossover

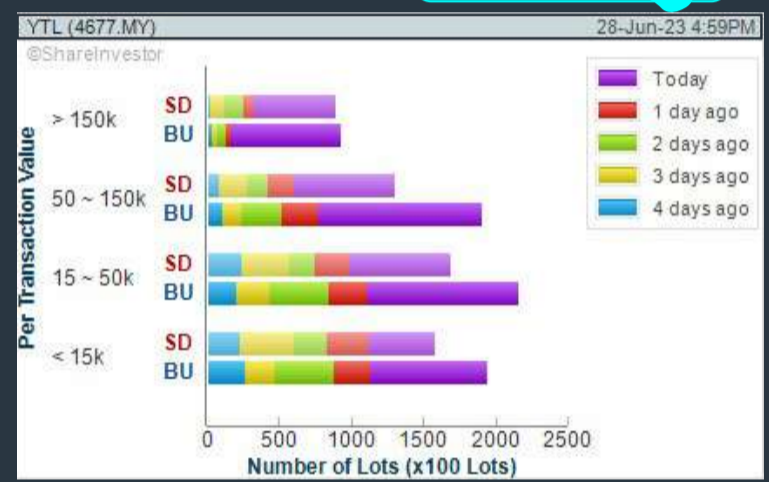
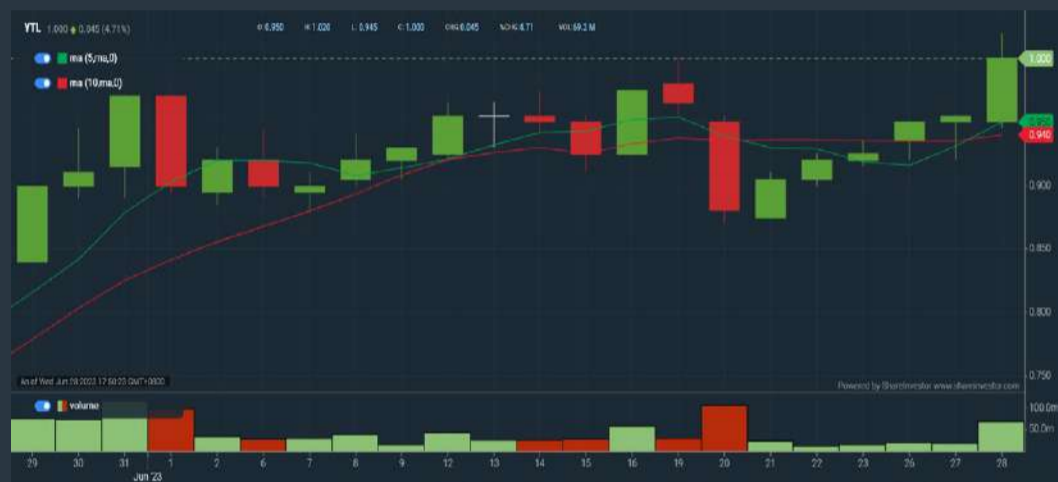
**B. Conditions**

1. Revenue - select (more than) type (1) for the past select (1) financial year(s)
2. Moving Average Below Close - select (MA) type (20) below close price for type (1) days
3. Average Volume - type (5) days average volume type (10000) lots
4. Last Done Price - select (more than) type (0.3)
5. Moving Average Below Close - select (MA) type (10) below close price for type (1) days
6. Moving Average Bullish Crossover - select (MA) type (5) crossed above select (MA) type (10)

> click Save Template > Create New Template type (Non-Shariah Up-Trending Stocks) > click Create Click Save Template As > select Non-Shariah Up Trending Stocks > click Save  
> click Screen Now (may take a few minutes)  
Sort By: Select (Vol) Select (Desc)  
Mouse over stock name > Charts > click C<sup>2</sup> Charts tab or Volume Distribution

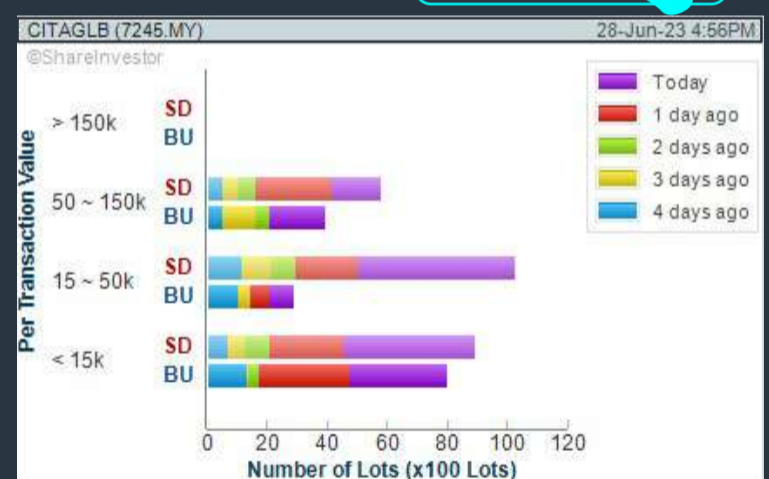
### YTL CORPORATION BERHAD (4677)

C<sup>2</sup> Chart



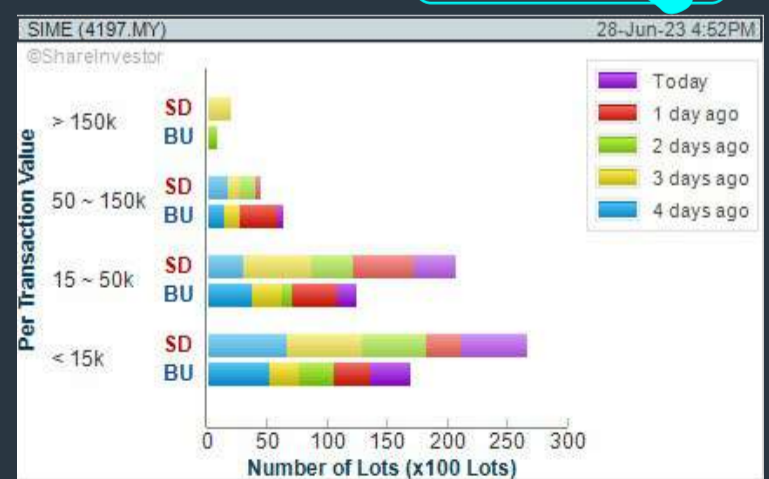
### CITAGLOBAL BERHAD (7245)

C<sup>2</sup> Chart



### SIME DARBY BERHAD (4197)

C<sup>2</sup> Chart



**Disclaimer:** The information on this page is provided as a service to readers. It does not constitute financial advice and/or any investment recommendations. Past performance is not indicative of future results. We assume no liability for damages resulting from or arising out of the use of such information. It would be best if you did your own research to make your personal investment decisions wisely or consult a licenced investment advisor.



# MAKE BETTER TRADING STRATEGIES

with

# SHARE INVESTOR STATION



## 8 Markets Data

- ▶ Get access to data from Bursa, NYSE, Nasdaq, HKEX, SGX, IDX, SET & ASX

## Dynamic Chart

- ▶ Candlestick Pattern Recognition
- ▶ 111 Indicators
- ▶ 39 Drawing Tools
- ▶ Performance Comparison Chart

## Intraday Data

- ▶ Market Depth
- ▶ Trade Summary Matrix & Chart
- ▶ Times & Sales
- ▶ Intraday Market Ticker

## Market Screener

- ▶ 96 criteria ranging from FA, TA, Consensus Estimate
- ▶ Real-time Data

## Power Frame

- ▶ Combining few Dynamic Charts together with intraday information in one frame

## Technical Analysis

## Fundamental Analysis

### Financial Analysis Statement

- ▶ Profit & Loss
- ▶ Balance Sheet
- ▶ Cash Flow Statement
- ▶ More than 20 Financial Ratios
- ▶ Dividend Analysis

### FactSheet

- ▶ Key Stock Information
- ▶ Ownership
- ▶ Consensus Estimates
- ▶ Annual Report
- ▶ Historical Price
- ▶ Insider Trades

**Start your 18 days FREE trial now (Valued at RM82)**





## Price & Total Shareholder Return (as at Wednesday)

Fundamental Analysis

**DEFINITION:** Share price of a company trading at a lower price as compared to its fundamentals (FA) such as financial performance and dividend, allowing it to be attractive to value investors.

**CHART GUIDE:** Total Shareholder Return (TSR) combines share price appreciation and dividend distributions paid to show the total return to the shareholder expressed as a percentage.



ShareInvestor WebPro > Screener > Market Screener (FA & TA) > select BURSA > add criteria

**A. Criteria**

- > click Add Criteria
- Fundamental Analysis Conditions tab (i) Price Earnings Ratio
- Fundamental Analysis Conditions tab >select (ii) CAGR of Net Earnings
- Fundamental Analysis Conditions tab >select (iii) Net Debt To Equity
- Fundamental Analysis Conditions tab >select (iv) Return On Equity (ROE)

**B. Conditions**

1. Price Earnings Ratio - select (less than) type (15) times now
2. CAGR of Net Earnings - select (more than) type (10) % for the past type (3) financial year(s)
3. Net Debt To Equity – select (less than) type (1) for the past select (1) financial year(s)
4. Return On Equity (ROE) – select (more than) type (10) % for the past select (1) financial year(s)

- > click Save Template > Create New Template type (Value Stock) > click Create
- > click Save Template as > select Value Companies > click Save
- > click Screen Now (may take a few minutes)
- Sort by: Select (PE Ratio) Select (Ascending)
- > Mouse over stock name > Factsheet > looking for Total Shareholder Return
- > Mouse over stock name > Charts > click C2 Charts tab

### SUNMOW HOLDING BERHAD (03050)

C<sup>2</sup> Chart



Period	Dividend Received	Capital Appreciation	Total Shareholder Return
Short Term Return	5 Days	+0.065	+5.80 %
	10 Days	+0.050	+5.00 %
	20 Days	+0.170	+19.32 %
Medium Term Return	3 Months	+0.420	+66.67 %
	6 Months	+0.220	+26.51 %
	1 Year	+0.170	+19.32 %
Annualised Return	Annualised	-	+19.32 %

### LINGKARAN TRANS KOTA HOLDINGS (6645)

C<sup>2</sup> Chart



Period	Dividend Received	Capital Appreciation	Total Shareholder Return
Short Term Return	5 Days	-0.005	-0.98 %
	10 Days	-	-
	20 Days	-	-
Medium Term Return	3 Months	+0.020	+4.12 %
	6 Months	-	-
	1 Year	+0.086	+15.03 %
Long Term Return	2 Years	0.250	+420.37 %
	3 Years	0.450	+146.70 %
	5 Years	0.950	+264.82 %
Annualised Return	Annualised	-	+30.94 %

### OMESTI BERHAD (9008)

C<sup>2</sup> Chart



Period	Dividend Received	Capital Appreciation	Total Shareholder Return
Short Term Return	5 Days	-	-
	10 Days	-0.005	+1.52 %
	20 Days	-0.015	+4.69 %
Medium Term Return	3 Months	-0.015	+4.69 %
	6 Months	-0.085	-20.24 %
	1 Year	-0.045	-11.84 %
Long Term Return	2 Years	-0.105	-23.86 %
	3 Years	-0.185	-35.58 %
	5 Years	-0.095	-22.09 %
Annualised Return	Annualised	-	-4.87 %

**Disclaimer:** The information on this page is provided as a service to readers. It does not constitute financial advice and/or any investment recommendations. Past performance is not indicative of future results. We assume no liability for damages resulting from or arising out of the use of such information. It would be best if you did your own research to make your personal investment decisions wisely or consult a licenced investment advisor.



*Introducing*



# GM SUITE

CONNECTING STAKEHOLDERS

by SHARE**INVESTOR**<sup>®</sup>

**General Meeting Suite (GM Suite)**, an end-to-end technology system to facilitate hybrid, virtual or physical Annual General Meetings.

## THE GOLD STANDARD SOLUTION FOR AGM / EGM



<https://gm-suite.com>



## Price & Total Shareholder Return (as at Wednesday)

Fundamental Analysis

**DEFINITION:** Company revenue is growing and making good quality of earnings with positive Free Cash Flow.

**CHART GUIDE:** Total Shareholder Return (TSR) combines share price appreciation and distributions paid to show the total return to the shareholder expressed as a percentage.



ShareInvestor WebPro > Screener > Market Screener (FA & TA) > select BURSA > add criteria

**A. Criteria**

1. Fundamental Analysis Conditions tab >select (i) Free Cash Flow, (ii) Revenue Growth, (iii) Gross Profit (Earnings) Margin, (iv) Quality of Earnings, (v) Total Shareholder Returns, > click Add Criteria
2. Fundamental Analysis Conditions tab >select (vi) Total Shareholder Returns > click Add Criteria

**B. Conditions (Criteria Filters)**

1. Free Cash Flow - select (more than) type (1) for the past select (1) financial year(s)
2. Revenue Growth - select (more than) type (1) for the past select (1) financial year(s)
3. Gross Profit (Earnings) Margin - select (more than) type (30) % for the past select (1) financial year(s)
4. Quality of Earnings - select (more than) type (1) for the past select (1) financial year(s)
5. Total Shareholder Return - select (more than) type (5) % for the past select (3) financial year(s)
6. Total Shareholder Return - select (more than) type (5) % for the past select (5) financial year(s)

- > click Save Template > Create New Template type (Growth Companies) > click Create
- > click Save Template as > select Growth Companies > click Save
- > click Screen Now (may take a few minutes)
- > Sort By: Select (Revenue Growth) Select (Desc)
- > Mouse over stock name > Factsheet > looking for Total Shareholder Return

## CLASSIC SCENIC BERHAD (7202)

C<sup>2</sup> Chart



Analysis



Period		Dividend Received	Capital Appreciation	Total Shareholder Return	
Short Term Return	5 Days	-	+0.010		+2.35 %
	10 Days	-	-		-
	20 Days	-	-0.035		-7.45 %
Medium Term Return	3 Months	-	-0.148		-25.39 %
	6 Months	-	-0.245		-36.03 %
	1 Year	-	+0.002		+0.46 %
Long Term Return	2 Years	-	-0.075		-14.71 %
	3 Years	0.030	+0.212		+108.52 %
	5 Years	0.140	-0.042		+20.55 %
Annualised Return	Annualised	-	-		+3.81 %

## FOCUS POINT HOLDINGS BERHAD (0157)

C<sup>2</sup> Chart



Analysis



Period		Dividend Received	Capital Appreciation	Total Shareholder Return	
Short Term Return	5 Days	-	-0.040		-4.88 %
	10 Days	-	+0.045		+5.12 %
	20 Days	-	+0.035		+4.70 %
Medium Term Return	3 Months	-	-0.113		-12.65 %
	6 Months	-	+0.144		+22.64 %
	1 Year	-	+0.248		+45.62 %
Long Term Return	2 Years	-	+0.244		+45.52 %
	3 Years	-	+0.582		+293.54 %
	5 Years	0.045	+0.693		+848.28 %
Annualised Return	Annualised	-	-		+55.81 %

## MEGA FIRST CORPORATION BERHAD (3069)

C<sup>2</sup> Chart



Analysis



Period		Dividend Received	Capital Appreciation	Total Shareholder Return	
Short Term Return	5 Days	-	-0.050		-2.82 %
	10 Days	-	-0.110		-3.43 %
	20 Days	-	-0.160		-4.91 %
Medium Term Return	3 Months	-	-0.360		-16.46 %
	6 Months	-	-0.270		-8.01 %
	1 Year	-	-0.400		-11.43 %
Long Term Return	2 Years	0.068	-0.410		-9.74 %
	3 Years	0.253	-0.040		+8.78 %
	5 Years	0.293	+1.285		+86.94 %
Annualised Return	Annualised	-	-		+13.33 %

**Disclaimer:** The information on this page is provided as a service to readers. It does not constitute financial advice and/or any investment recommendations. Past performance is not indicative of future results. We assume no liability for damages resulting from or arising out of the use of such information. It would be best if you did your own research to make your personal investment decisions wisely or consult a licenced investment advisor.



Roberto Lazzeroni

# Infinitamente

Limited Edition



## Infinitamente – Finishes

### Models.

- oval table 220x124
- "∞" shaped table 340x120

Base. Made from black Marquinia marble.

Marble top. Made from glossy White Levigliani marble.

Aesthetic details. A polished stainless steel plate with the serial number of the table and the Poltrona Frau logo is applied to the sloping edge of the supporting panel.

Other details. Limited edition series.

Oval tables 220x124: 48pieces.

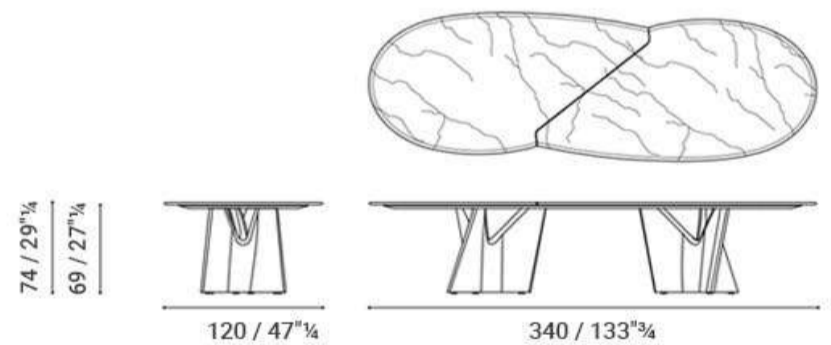
"∞" 340x120 tables: 24pieces.

N.B. Table weight (without packaging).

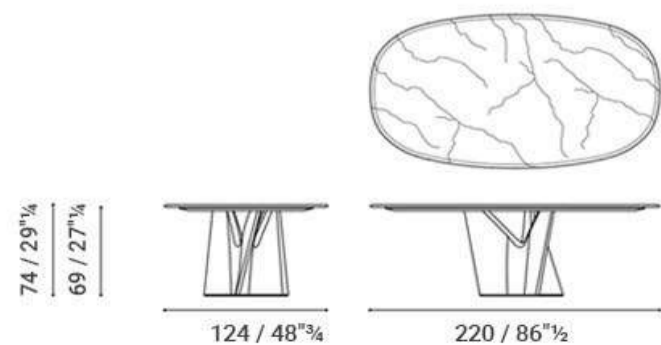
Oval table 220x124: 286.5 kg total (no. 1 base: 126 kg; top: 127 kg; supporting panel: 33.5 kg)

"∞" 340x120 table: 491 kg total

## Infinitamente – Table 340x120



## Infinitamente – Table 220x124



# XTRA

The Gardens Mall, Lot S-236 & 237  
2nd floor, Linkaran Syed Putra, Kuala Lumpur  
T: +6012 6988 309 E: studio@xtrafurniture.com



## Price & Total Shareholder Return (as at Wednesday)

Fundamental Analysis

**DEFINITION:** Company is paying out dividend with low or moderate leverage.

**CHART GUIDE:** Total Shareholder Return (TSR) combines share price appreciation and distributions paid to show the total return to the shareholder expressed as a percentage.



ShareInvestor WebPro > Screener > Market Screener (FA & TA) > select BURSA > add criteria

**A. Criteria**

- > click Add Criteria
- Fundamental Analysis Conditions tab >select (i) Dividend Yield
- Fundamental Analysis Conditions tab >select (ii) Dividend Payout (Historical)
- Fundamental Analysis Conditions tab >select (iii) Total Debt To Equity
- Fundamental Analysis Conditions tab >select (iv) Total Shareholder Returns
- Fundamental Analysis Conditions tab >select (v) Total Shareholder Returns
- Fundamental Analysis Conditions tab / >select (vi) CAGR of Dividend Per Share

• Fundamental Analysis Conditions tab >select (vii) CAGR of Dividend Per Share

**B. Conditions (Criteria Filters)**

1. Dividend Yield - select (more than) type (1) % for the past select (1) financial year(s)
2. Dividend Payout (Historical) - select (between) type (0.5) to type (1) times for the past select (1) financial year(s)
3. Total Debt to Equity - select (less than) type (1) for the past select (1) financial year(s)
4. Total Shareholder Return - select (more than) type (5) % for the past select (3) financial year(s)
5. Total Shareholder Return - select (more than) type (5) % for the past select (5) financial year(s)

6. CAGR of Dividend Per Share - select (less than) type (30) % for the past select (5) financial year(s)
7. CAGR of Dividend Per Share - select (more than) type (1) % for the past select (5) financial year(s)

- > click Save Template > Create New Template type (Dividend Companies) > click Create
- > click Save Template as > select Dividend Companies > click Save
- > click Screen Now (may take a few minutes)
- > Sort By: Select (Dividend Yield) Select (Desc)
- > Mouse over stock name > Factsheet > looking for Total Shareholder Return

## UNITED PLANTATIONS BERHAD (2089)

C<sup>2</sup> Chart



Period	Dividend Received	Capital Appreciation	Total Shareholder Return
Short Term Return	5 Days	+0.360	+2.40 %
	10 Days	+0.260	+1.72 %
	20 Days	-0.120	-0.78 %
Medium Term Return	3 Months	-0.527	-3.32 %
	6 Months	+0.475	+3.19 %
	1 Year	+1.417	+10.16 %
Long Term Return	2 Years	+1.150	+2.070
	3 Years	2.000	+2.940
	5 Years	4.750	+3.698
Annualised Return	Annualised	-	+11.51 %

## FORMOSA PROSONIC INDUSTRIES (9172)

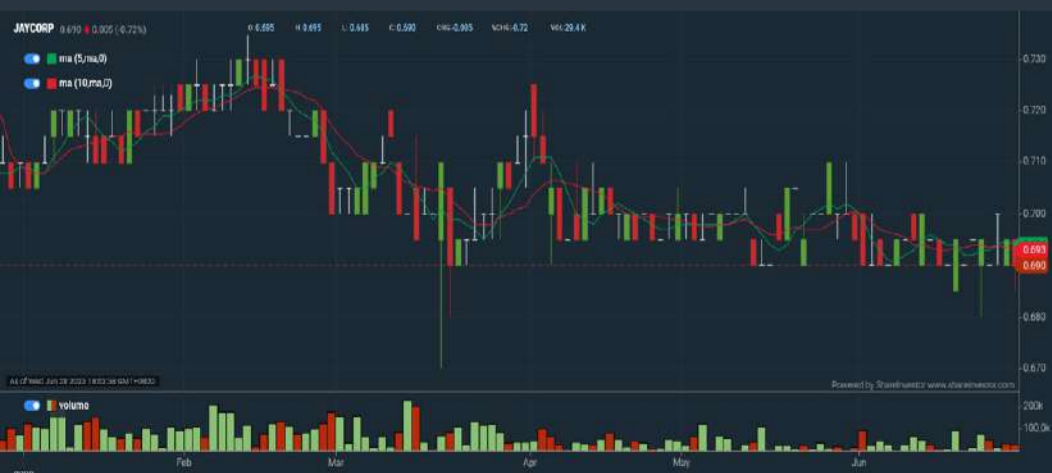
C<sup>2</sup> Chart



Period	Dividend Received	Capital Appreciation	Total Shareholder Return
Short Term Return	5 Days	-0.040	-1.06 %
	10 Days	-0.070	-2.87 %
	20 Days	+0.020	+0.85 %
Medium Term Return	3 Months	-0.620	-20.74 %
	6 Months	-0.880	-27.08 %
	1 Year	-0.410	-14.75 %
Long Term Return	2 Years	0.200	+0.450
	3 Years	0.340	+0.970
	5 Years	0.550	+1.090
Annualised Return	Annualised	-	+17.93 %

## JAYCORP BERHAD (7152)

C<sup>2</sup> Chart



Period	Dividend Received	Capital Appreciation	Total Shareholder Return
Short Term Return	5 Days	-	-
	10 Days	-0.010	-1.43 %
	20 Days	-0.010	-1.43 %
Medium Term Return	3 Months	-0.020	-2.82 %
	6 Months	-0.025	-3.50 %
	1 Year	-	-
Long Term Return	2 Years	0.055	-0.140
	3 Years	0.205	+0.267
	5 Years	0.335	+0.290
Annualised Return	Annualised	-	+21.17 %

**Disclaimer:** The information on this page is provided as a service to readers. It does not constitute financial advice and/or any investment recommendations. Past performance is not indicative of future results. We assume no liability for damages resulting from or arising out of the use of such information. It would be best if you did your own research to make your personal investment decisions wisely or consult a licenced investment advisor.



Week: 23 June 2023 – 29 June 2023

More Brokers' Call 

<b>AMINVESTMENT BANK</b> <small>... See More</small>	Call	Target Price	Release Date
Malaysia Airports Holdings Berhad (5014)	<b>BUY</b>	RM8.04	27 Jun 2023
Tenaga Nasional Berhad (5347)	<b>BUY</b>	RM11.80	26 Jun 2023

<b>APEX</b> <small>... See More</small>	Call	Target Price	Release Date
Kronologi Asia Berhad (0176)	<b>BUY</b>	RM0.64	28 Jun 2023

<b>BIMB SECURITIES SDN BHD</b> <small>... See More</small>	Call	Target Price	Release Date
Gamuda Berhad (5398)	<b>BUY</b>	RM5.16	23 Jun 2023
Sapura Energy Berhad (5218)	<b>BUY</b>	RM0.08	27 Jun 2023

<b>CGS CIMB</b> <small>... See More</small>	Call	Target Price	Release Date
Bermaz Auto Berhad (5248)	<b>ADD</b>	RM3.50	26 Jun 2023
Tenaga Nasional Berhad (5347)	<b>ADD</b>	RM12.00	24 Jun 2023

<b>KENANGA</b> <small>... See More</small>	Call	Target Price	Release Date
Gamuda Berhad (5398)	<b>OUTPERFORM</b>	RM5.15	23 Jun 2023
Genting Malaysia Berhad (4715)	<b>OUTPERFORM</b>	RM3.35	23 Jun 2023
IJM Corporation Berhad (3336)	<b>MARKET PERFORM</b>	RM1.67	27 Jun 2023
Tenaga Nasional Berhad (5347)	<b>OUTPERFORM</b>	RM10.64	26 Jun 2023

<b>MIDF</b> <small>... See More</small>	Call	Target Price	Release Date
Eco World Development Group Berhad (8206)	<b>BUY</b>	RM0.87	23 Jun 2023
Mah Sing Group Berhad (8583)	<b>BUY</b>	RM0.78	28 Jun 2023
YTL Power International Berhad (6742)	<b>BUY</b>	RM1.54	23 Jun 2023

<b>UOB KAYHIAN</b> <small>... See More</small>	Call	Target Price	Release Date
DS Sigma Holdings Berhad (0269)	<b>BUY</b>	RM0.61	27 Jun 2023
Mr D.I.Y. Group (M) Berhad (5296)	<b>BUY</b>	RM1.970	27 Jun 2023
Mr D.I.Y. Group (M) Berhad (5296)	<b>BUY</b>	RM2.15	26 Jun 2023
Sapura Energy Berhad (5218)	<b>HOLD</b>	RM0.04	27 Jun 2023

**Disclaimer:** InveSt does not accept any liability whatsoever for any direct, indirect or consequential losses (including loss of profit) or damages that may arise from the use of information or opinions in this publication. The information and opinions in InveSt are not to be considered as an offer to sell or buy any of the securities discussed. Opinions expressed are subject to change without notice. The Brokers may, from time to time, have interests or positions in the securities mentioned. For the full report on each item listed on this page, please visit [https://www.shareinvestor.com/my/brokers\\_call](https://www.shareinvestor.com/my/brokers_call).



**DEFINITION:** Top 10 stocks with Technical Analysis plus Pattern Matching by 60 pre-defined indicators by the system showing a higher probability of bullish sentiment on the share price.



ShareInvestor WebPro > Screener > Predefined TA Screens > select market BURSA > Most Long Signals > click Scan Results or mouse over each company

## KEY ASIC BERHAD (0143.MY)

### KEYASIC

Price updated at 28 Jun 2023 16:57

Last: <b>0.075</b>	Change: <b>+0.005</b>	Volume: <b>47,431</b>
	Change (%): <b>+7.14</b>	Range: <b>0.070 - 0.075</b>

TA Scanner Results based on historical data up to 28 Jun 2023

Condition	Signal	Explanation
Bollinger Band: Bullish Long Term Volatility Breakout and Trending	Long	1. Close price above upper bollinger band(33,1). 2. Volume above average volume(50). 3. Average volume(50) is above 300,000.
Bollinger Band: Bullish Short Term Volatility Breakout and Trending	Long	1. Close price above upper bollinger band(33,1). 2. Volume above average volume(10). 3. Average volume(10) is above 300,000.
Bollinger Band: High Above Upper Bollinger Band	Neutral	1. High above upper bollinger band(14,2). 2. Average volume(5) is above 100,000.
Candlestick: Indecision Doji	Neutral	Indecision: Doji
Donchian Channels: High Above Upper Donchian Channels	Long	High crossed above the upper Donchian Channel(14,4)
MACD: Bullish MACD Crossover	Long	1. MACD(12,26) diff line crossed above the MACD(12,26) signal line. 2. MACD Histogram(12,26) is above 0.
Parabolic SAR: Bearish Parabolic SAR Reversal	Neutral	1. Parabolic SAR 1 day ago above close price 1 day ago for the last 5 days. 2. Parabolic SAR below close price
Price: New 52 Week High	Long	1. Stock reach a new 52 week high. 2. Average volume(30) is above 50000.
Volume: Consecutive Days Of Increasing Average Volume	Long	1. Average Volume(20) has been increasing over the last 2 weeks. 2. Average volume(20) is above 100000

## KEIN HING INTERNATIONAL BERHAD (7199.MY)

### KEINHIN

Price updated at 28 Jun 2023 16:58

Last: <b>1.290</b>	Change: <b>-0.130</b>	Volume: <b>24,841</b>
	Change (%): <b>-9.15</b>	Range: <b>1.240 - 1.320</b>

TA Scanner Results based on historical data up to 28 Jun 2023

Condition	Signal	Explanation
Bollinger Band: High Above Upper Bollinger Band	Neutral	1. High above upper bollinger band(14,2). 2. Average volume(5) is above 100,000.
DM: Bullish Directional Movement	Long	-DI(14) crossed below +DI(14)
Donchian Channels: High Above Upper Donchian Channels	Long	High crossed above the upper Donchian Channel(14,4)
MA: Bullish Price Crossover	Long	1. Close price crossed above MA(40) within the last 1 day. 2. Previous day close price is below the MA(10) for the last 5 days
RSI: Short Term RSI 50 Bullish Crossover	Long	1. RSI(20) crossed above 50 within the last 1 day and RSI(20) 1 day ago below 50 for the last 5 days. 2. Volume above average volume(125). 3. Average volume(5) is above 100,000.
Volume: Volume Spike	Long	1. Volume is more than 500% above average volume(10). 2. Volume above 200000. 3. Close price above 0.10
Williams %R: Bearish Williams %R	Short	1. Williams %R(26) between 0 and -20. 2. Average volume(5) is above 100,000.

**Disclaimer:** The information on this page is provided as a service to readers. It does not constitute financial advice and/or any investment recommendations. Past performance is not indicative of future results. We assume no liability for damages resulting from or arising out of the use of such information. It would be best if you did your own research to make your personal investment decisions wisely or consult a licenced investment advisor.

## CLASSIC SCENIC BERHAD (7202.MY)

### CSCENIC

Price updated at 28 Jun 2023 16:56

Last: <b>0.435</b>	Change: <b>+0.005</b>	Volume: <b>2,949</b>
	Change (%): <b>+1.16</b>	Range: <b>0.425 - 0.435</b>

TA Scanner Results based on historical data up to 28 Jun 2023

Condition	Signal	Explanation
Candlestick: Bullish Hammer	Long	Bullish: Hammer
MA: Short Term Bullish Moving Average Crossover	Long	MA(10) crossed above MA(15) within the last 1 day.
MACD: Bullish MACD Divergence	Long	1. Close price is decreasing for the last 3 days. 2. MACD(12,26) diff line is increasing for the last 3 days.
Price: New 52 Week Low	Short	1. Stock reach a new 52 week low. 2. Average volume(30) is above 50000.
Volume: 10 Days large value Buy Up trade	Long	1. 150K value Buy Up greater than Sell Down by 20% for 10 days. 2. 50K-100K value Buy Up greater than Sell Down by 20% for 10 days. 3. Average volume(10) is above 1000000
Williams %R: Bullish Williams %R	Long	1. Williams %R(26) between -80 and -100. 2. Average volume(5) is above 100,000.

## UCREST BERHAD (0005.MY)

### UCREST

Price updated at 28 Jun 2023 16:57

Last: <b>0.140</b>	Change: <b>-0.005</b>	Volume: <b>176,879</b>
	Change (%): <b>-3.45</b>	Range: <b>0.135 - 0.155</b>

TA Scanner Results based on historical data up to 28 Jun 2023

Condition	Signal	Explanation
Bollinger Band: High Above Upper Bollinger Band	Neutral	1. High above upper bollinger band(14,2). 2. Average volume(5) is above 100,000.
DM: Bullish Directional Movement	Long	-DI(14) crossed below +DI(14)
Donchian Channels: High Above Upper Donchian Channels	Long	High crossed above the upper Donchian Channel(14,4)
MACD: Bullish MACD Crossover	Long	1. MACD(12,26) diff line crossed above the MACD(12,26) signal line. 2. MACD Histogram(12,26) is above 0.
Price: New 52 Week High	Long	1. Stock reach a new 52 week high. 2. Average volume(30) is above 50000.

## HAP SENG CONSOLIDATED BERHAD (3034.MY)

### HAPSENG

Price updated at 28 Jun 2023 16:58

Last: <b>3.240</b>	Change: <b>-0.010</b>	Volume: <b>19,461</b>
	Change (%): <b>-0.31</b>	Range: <b>3.220 - 3.290</b>

TA Scanner Results based on historical data up to 28 Jun 2023

Condition	Signal	Explanation
Candlestick: Bullish Engulfing	Long	Bullish: Engulfing
RSI: Short Term RSI 30 Bullish Crossover	Long	1. RSI(20) crossed above 30 within the last 1 day and RSI(20) 1 day ago below 30 for the last 5 days. 2. Volume above average volume(125). 3. Average volume(5) is above 100,000.
Stochastic: Fast Stochastic Buy Signal	Long	1. Fast Stochastic(15,5) %K crossed above 20. 2. Fast Stochastic(15,5) %K 1 day ago was below 20 for the last 5 days. 3. Average volume(30) is above 50000
Williams %R: Bullish Williams %R	Long	1. Williams %R(26) between -80 and -100. 2. Average volume(5) is above 100,000.



**SARAWAK CONSOLIDATED IND BERHAD (9237.MY)**

**SCIB**

Price updated at 28 Jun 2023 16:59

Last: <b>0.450</b>	Change: <b>+0.005</b>	Volume: <b>775,075</b>
	Change (%): <b>+1.12</b>	Range: <b>0.440 - 0.450</b>

TA Scanner Results based on historical data up to 28 Jun 2023

Condition	Signal	Explanation
Chaikin Volatility: Decreasing Chaikin Volatility	Neutral	Chaikin Volatility(10,10) has been decreasing for 5 days
Price: New 52 Week High	Long	1. Stock reach a new 52 week high. 2. Average volume(30) is above 50000.
Volume: 10 Days large value Buy Up trade	Long	1. 150K value Buy Up greater than Sell Down by 20% for 10 days. 2. 50K-100K value Buy Up greater than Sell Down by 20% for 10 days. 3. Average volume(10) is above 1000000
Volume: 5 Days large value Buy Up trade	Long	1. 150K value Buy Up greater than Sell Down by 20% for 5 days. 2. 50K-100K value Buy Up greater than Sell Down by 20% for 5 days. 3. Average volume(10) is above 1000000
Volume: Consecutive Days Of Increasing Average Volume	Long	1. Average Volume(20) has been increasing over the last 2 weeks. 2. Average volume(20) is above 100000
Williams %R: Bearish Williams %R	Short	1. Williams %R(26) between 0 and -20. 2. Average volume(5) is above 100,000.

**TURIYA BERHAD (4359.MY)**

**TURIYA**

Price updated at 28 Jun 2023 11:08

Last: <b>0.160</b>	Change: -	Volume: <b>41</b>
	Change (%): -	Range: <b>0.160 - 0.160</b>

TA Scanner Results based on historical data up to 28 Jun 2023

Condition	Signal	Explanation
Bollinger Band: Bullish Lower Bollinger Band Support	Long	1. Low 1 day ago below lower bollinger band(20,2). 2. Close above close 1 day ago. 3. Average volume(5) is above 100,000.
Bollinger Band: High Above Upper Bollinger Band	Neutral	1. High above upper bollinger band(14,2). 2. Average volume(5) is above 100,000.
DM: Bullish Directional Movement	Long	-DI(14) crossed below +DI(14)
Donchian Channels: High Above Upper Donchian Channels	Long	High crossed above the upper Donchian Channel(14,4)
MACD: Bullish MACD Crossover	Long	1. MACD(12,26) diff line crossed above the MACD(12,26) signal line. 2. MACD Histogram(12,26) is above 0.

**AHMAD ZAKI RESOURCES BERHAD (7078.MY)**

**AZRB**

Price updated at 28 Jun 2023 16:59

Last: <b>0.225</b>	Change: <b>+0.035</b>	Volume: <b>155,683</b>
	Change (%): <b>+18.42</b>	Range: <b>0.185 - 0.225</b>

TA Scanner Results based on historical data up to 28 Jun 2023

Condition	Signal	Explanation
Bollinger Band: Bullish Long Term Volatility Breakout and Trending	Long	1. Close price above upper bollinger band(33,1). 2. Volume above average volume(50). 3. Average volume(50) is above 300,000.
Bollinger Band: Bullish Short Term Volatility Breakout and Trending	Long	1. Close price above upper bollinger band(33,1). 2. Volume above average volume(10). 3. Average volume(10) is above 300,000.
Bollinger Band: High Above Upper Bollinger Band	Neutral	1. High above upper bollinger band(14,2). 2. Average volume(5) is above 100,000.

**HIBISCUS PETROLEUM BERHAD (5199.MY)**

**HIBISCS**

Price updated at 28 Jun 2023 16:55

Last: <b>0.870</b>	Change: <b>-0.005</b>	Volume: <b>16,865</b>
	Change (%): <b>-0.57</b>	Range: <b>0.860 - 0.875</b>

TA Scanner Results based on historical data up to 28 Jun 2023

Condition	Signal	Explanation
Bollinger Band: Bullish Lower Bollinger Band Support	Long	1. Low 1 day ago below lower bollinger band(20,2). 2. Close above close 1 day ago. 3. Average volume(5) is above 100,000.
Stochastic: Fast Stochastic Buy Signal	Long	1. Fast Stochastic(15,5) %K crossed above 20. 2. Fast Stochastic(15,5) %K 1 day ago was below 20 for the last 5 days. 3. Average volume(30) is above 50000
Volume: 5 Days large value Buy Up trade	Long	1. 150K value Buy Up greater than Sell Down by 20% for 5 days. 2. 50K-100K value Buy Up greater than Sell Down by 20% for 5 days. 3. Average volume(10) is above 1000000
Williams %R: Bullish Williams %R	Long	1. Williams %R(26) between -80 and -100. 2. Average volume(5) is above 100,000.

**EWEIN BERHAD (7249.MY)**

**EWEIN**

Price updated at 28 Jun 2023 16:59

Last: <b>1.100</b>	Change: <b>+0.010</b>	Volume: <b>108,566</b>
	Change (%): <b>+0.92</b>	Range: <b>1.040 - 1.130</b>

TA Scanner Results based on historical data up to 28 Jun 2023

Condition	Signal	Explanation
Accumulation Distribution: Bullish Accumulation Distribution	Long	Accumulation distribution increasing for the last 7 days
Bollinger Band: High Above Upper Bollinger Band	Neutral	1. High above upper bollinger band(14,2). 2. Average volume(5) is above 100,000.
Price: Consecutive Days Gains	Long	1. Close price has been increasing over the last 5 days. 2. Average volume(5) above 100,000.
Price: New 52 Week High	Long	1. Stock reach a new 52 week high. 2. Average volume(30) is above 50000.
RSI: RSI Overbought	Short	1. RSI(20) is above 80. 2. RSI(20) is increasing for the last 3 days. 3. Stock has more than 75 days of historical data.
Volume: 10 Days large value Buy Up trade	Long	1. 150K value Buy Up greater than Sell Down by 20% for 10 days. 2. 50K-100K value Buy Up greater than Sell Down by 20% for 10 days. 3. Average volume(10) is above 1000000
Williams %R: Bearish Williams %R	Short	1. Williams %R(26) between 0 and -20. 2. Average volume(5) is above 100,000.

**Disclaimer:** The information on this page is provided as a service to readers. It does not constitute financial advice and/or any investment recommendations. Past performance is not indicative of future results. We assume no liability for damages resulting from or arising out of the use of such information. It would be best if you did your own research to make your personal investment decisions wisely or consult a licenced investment advisor.

Candlestick: Bullish Engulfing	Long	Bullish: Engulfing
MA: Short Term Bearish Moving Average Crossover	Short	MA(10) crossed below MA(15) within the last 1 day.
Volume: Consecutive Days Of Increasing Average Volume	Long	1. Average Volume(20) has been increasing over the last 2 weeks. 2. Average volume(20) is above 100000



# BNM'S INTERVENTION IN FOREX MARKET NOT OUT OF THE ORDINARY - RAFIZI

**A** ccording to Economy Minister Rafizi Ramli, intervention in the forex market is a normal and routine matter for Bank Negara Malaysia (BNM), which continuously monitors capital inflows and outflows. There is a need for BNM to monitor the currency rate movements amid certain situations, especially those involving a large amount of Ringgit. An example is when an export firm exports goods and receives the payments in USD, so the currency being retained in Malaysia is not in Ringgit. If the foreign currency amount is large and the situation persists, it will obviously have an impact on the Ringgit.



That is the context for BNM's intervention for the need for detailed knowledge of factors other than global ones that influence currency values. He was speaking at a press conference on Wednesday (June 28) when commenting on BNM's recent statement on its intervention in the forex market.

BNM assistant governor Adnan Zaylani, who is also the Financial Markets Committee (FMC) chairman had said in a statement on Tuesday that BNM would intervene in the forex market to stem currency movements that were deemed excessive. While the value of the Ringgit will continue to remain market-determined, BNM expects that ongoing measures by the government to further strengthen the economy will help ensure that the Ringgit better reflects the country's fundamentals. The FMC said the extent of the recent depreciation of the Ringgit was not reflective of the country's economic fundamentals.

Rafizi said that the moderation of inflation rate to 2.8% in May 2023 was the lowest level since the inflation downtrend that began in September 2022 at 4.5%. The lower May 2023 inflation signals a broad decline across all spending categories, marking a comprehensive price stabilisation. He was optimistic that the inflation rate downtrend would continue based on forecasts and data as well as the domestic and international macroeconomic situations.

## **THE LI RECORDED 108.4 POINTS IN APRIL 2023, REFLECTING MALAYSIA'S CHALLENGING ECONOMIC SCENARIO – DOSM**

The Leading Index (LI) is a predictive tool used to anticipate economic upturns and downturns in an average of four to six months ahead. According to the Department of Statistics Malaysia, the Leading Index for Malaysia declined further to negative 2.7 per cent, registering 108.4 points in April 2023 as against 111.4 points in the preceding year. Decreases were recorded in all of the LI component, which resulted in a softer performance except the Number of Housing Units Approved showed an uptick. Concurrently, the monthly LI dropped 1.6 per cent in



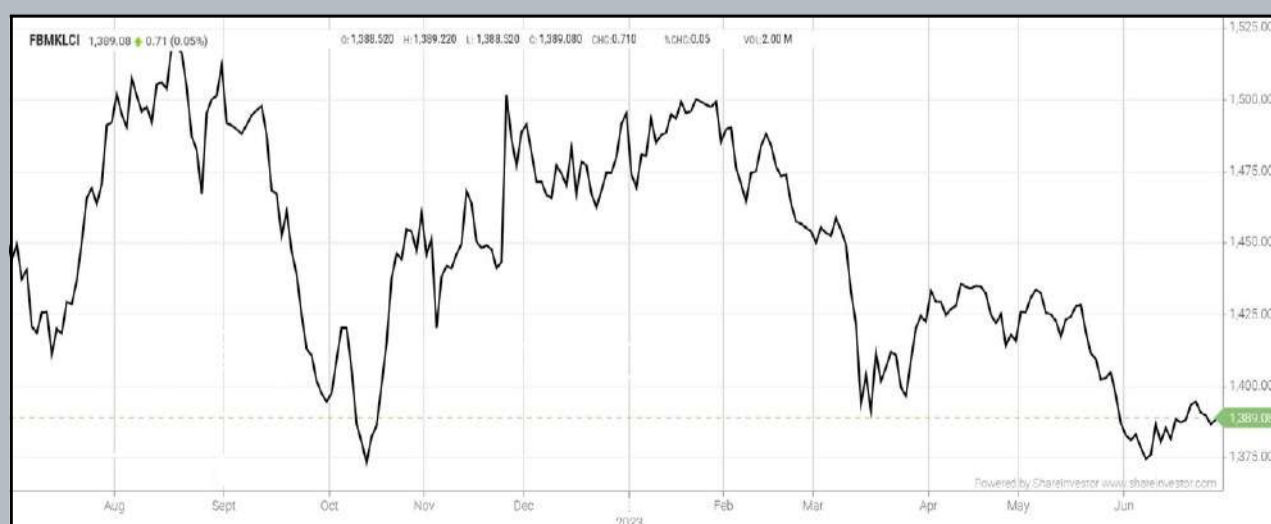
April 2023, as opposed to negative 1.1 per cent in the previous month. Apart from Expected Sales Value in Manufacturing, most components similarly experienced downturns.

The April smoothed LI growth rate remained below the 100.0 points trend for seven consecutive months, reflecting Malaysia's challenging economic outlook in the near term, with global economic conditions adding to the challenges. In terms of the current economic situation, the Coincident Index (CI) registered 121.8 points in April 2023, an increase of 2.2 per cent compared to 119.2 points in the same month of the previous year.

The increase in the Volume Index of Retail Trade (9.5%) contributed significantly to this growth. Meanwhile, the CI decreased by 0.1 per cent month on month, owing to the unfavourable performance of the Industrial Production Index (1.0%).

## EYE ON THE MARKETS

On Wednesday (28 June), the Ringgit closed at 4.6720 against the USD and 3.4568 to the Sing Dollar. On Monday (26 June), the FBM KLCI opened at 1391.55. As at Friday (30 June) 9:00am, the FBM KLCI is down 3.03 points for the week at 1388.52. Over in US, the overnight Dow Jones Industrial Average closed up 269.76 points (+0.80%) to 34,122.42 whilst the NASDAQ shed 0.42 points (-0.02%) to 13,591.33.



KLCI 1 Year Chart

## Over 5 trading days



ShareInvestor WebPro ([www.shareinvestor.com/my](http://www.shareinvestor.com/my))

1. Price > Stock Prices
2. Select Market: NASDAQ / NYSE / IDX / SET / HKEX / SGX (One bourse at a time)
3. select Stocks Tab
4. select Ranking Top Gainers or Top Losers (Over 5 Trading Days)
5. Mouse over Column Layout > select Edit Customs > select Name > select Last Done Price > select 5 Days Change > select 52 Weeks High > select 52 Weeks Low > Mouse Over Column Layout > select Custom

### NASDAQ (USD)

#### Top Gainers

Name	Last Done	Change Over 5 Days	52 Weeks High	52 Weeks Low
FIRST CITIZENS BANCSHARES INC NRTH	1,273.360	+53.830	1,345.435	505.840
OLD DOMINION FREIGHT LINE INC	375.750	+44.840	381.810	240.000
BROADCOM INC	862.570	+40.420	921.780	415.068
CHARTER COMMUNICATIONS INC	362.680	+36.770	496.370	297.660
BOOKING HOLDINGS INC	2,655.910	+31.980	2,786.850	1,616.850

#### Top Losers

Name	Last Done	Change Over 5 Days	52 Weeks High	52 Weeks Low
REGENERON PHARMACEUTICALS INC	708.420	-71.390	837.550	563.820
MERCADOLIBRE INC	1,171.450	-70.060	1,365.640	611.460
ATRION CORP	557.600	-37.600	705.740	500.000
MADRIGAL PHARMACEUTICALS INC	220.210	-23.190	322.670	57.210
NVIDIA CORP	408.220	-22.030	439.900	108.130

### NYSE (USD)

#### Top Gainers

Name	Last Done	Change Over 5 Days	52 Weeks High	52 Weeks Low
BERKSHIRE HATHAWAY INC	512,260.000	+2,260.010	522,000.000	393,012.250
NVR INC	6,295.610	+233.040	6,386.620	3,816.555
CHIPOTLE MEXICAN GRILL	2,110.600	+66.920	2,139.880	1,233.610
GRAINGER W W INC	782.300	+46.370	778.160	441.630
MARKEL GROUP INC	1,372.460	+40.940	1,458.560	1,064.090

#### Top Losers

Name	Last Done	Change Over 5 Days	52 Weeks High	52 Weeks Low
BIGLARI HOLDINGS INC	939.000	-14.430	1,058.500	575.260
THERMO FISHER SCIENTIFIC INC	514.390	-13.920	611.060	475.770
UNIFIRST CORP	156.480	-13.690	205.590	152.840
HERSHEY COMPANY	248.680	-11.630	276.880	211.490
ELEVANCE HEALTH INC	440.100	-9.770	549.520	428.870

### IDX (Rupiah)

#### Top Gainers

Name	Last Done	Change Over 5 Days	52 Weeks High	52 Weeks Low
ADIRA DINAMIKA MULTI FINANCE TBK	11,700.000	+1,500.000	12,400.000	7,900.000
BAYAN RESOURCES TBK	16,000.000	+800.000	24,800.000	6,300.000
DIAN SWASTATIKA SENTOSA TBK	38,000.000	+700.000	40,575.000	31,700.000
MANDALA MULTIFINANCE TBK PT	2,680.000	+640.000	3,030.000	1,340.000
INDOINTERNET TBK	18,750.000	+600.000	25,625.000	17,575.000

#### Top Losers

Name	Last Done	Change Over 5 Days	52 Weeks High	52 Weeks Low
GUDANG GARAM TBK	27,800.000	-925.000	31,950.000	16,500.000
TELEFAST INDONESIA TBK	2,500.000	-660.000	5,900.000	2,310.000
GOLDEN ENERGY MINES TBK	5,800.000	-650.000	8,250.000	5,700.000
NFC INDONESIA TBK	5,000.000	-500.000	13,375.000	4,400.000
NUSANTARA PELABUHAN HANDAL TBK	990.000	-430.000	1,600.000	510.000

### SET (Thai Baht)

#### Top Gainers

Name	Last Done	Change Over 5 Days	52 Weeks High	52 Weeks Low
BTNC	45.500	+21.100	61.000	10.000
TBN	21.300	+3.200	45.250	17.200
TTI	25.000	+3.000	53.000	21.000
HANA	45.750	+2.250	65.000	32.750
NKI	33.250	+2.000	44.500	30.000

#### Top Losers

Name	Last Done	Change Over 5 Days	52 Weeks High	52 Weeks Low
SFP	252.000	-48.000	327.000	108.000
BH	222.000	-10.000	256.000	175.000
BBIK	100.500	-8.500	143.500	57.750
ICC	35.000	-7.750	52.250	29.500
SCC	320.000	-7.000	380.000	300.000

### HKEX (HKD)

#### Top Gainers

Name	Last Done	Change Over 5 Days	52 Weeks High	52 Weeks Low
SWIRE PACIFIC	60.400	+7.050	72.600	42.600
QIFU TECHNOLOGY INC	66.250	+5.700	98.350	50.000
DPC DASH LTD	51.650	+5.150	65.300	42.000
EVEREST MEDICINES LTD	23.300	+4.860	30.000	5.980
NETEASE INC	152.600	+4.100	157.300	84.050

#### Top Losers

Name	Last Done	Change Over 5 Days	52 Weeks High	52 Weeks Low
BYD COMPANY LIMITED	247.800	-16.800	330.000	161.700
NOAH HOLDINGS PRIVATE WEALTH AND AS	217.800	-16.200	326.800	200.800
BYD COMPANY LIMITED	229.200	-14.600	243.800	228.400
CHINA TOURISM GROUP DUTY FREE CORP	107.100	-14.300	280.000	104.800
YUM CHINA HOLDINGS INC	437.600	-13.000	514.500	300.000

### SGX (SGD)

#### Top Gainers

Name	Last Done	Change Over 5 Days	52 Weeks High	52 Weeks Low
JMH USD	51.720	+1.220	57.800	42.600
GOLDEN ENERGY	0.955	+0.729	1.040	0.420
DBS	31.520	+0.170	35.855	29.009
GREAT EASTERN	17.710	+0.160	19.700	16.850
SEMBCORP IND	5.540	+0.160	5.820	2.744

#### Top Losers

Name	Last Done	Change Over 5 Days	52 Weeks High	52 Weeks Low
SHANGRI-LA HKD	5.870	-0.410	8.400	4.300
NIO Inc. USD OV	9.250	-0.310	22.810	7.420
VENTURE	14.890	-0.310	18.750	14.540
UOB	27.720	-0.270	31.400	25.910
OCBC BANK	12.250	-0.260	13.230	11.200



# BEYOND BUFFETT: CRAFTING YOUR UNIQUE INVESTMENT PLAYBOOK



Devanesan  
Evanson

**Chief Executive  
Officer, Minority  
Shareholders Watch  
Group**

In the vast and dynamic world of investing, it is not uncommon to encounter enthusiasts who can recite the wisdom of renowned investors like Warren Buffett, yet struggle to achieve success. Picture this: two investors, both exposed to the same investing principles and philosophies, and both with an equal reverence for investment legends like Buffett. Despite these similarities, one consistently outperforms the other. What sets them apart? It is not as simple as attributing the difference to mere

luck or hard work. Instead, the answer may lie in the often overlooked elements of individuality and adaptability in investing.

## **TAKING INSPIRATION, NOT IMITATION, FROM THE GREATS**

Consider the perspective of Michael Burry, the maverick investor best known for his successful bet against the mid-2000s US housing bubble. While recognizing Buffett's unparalleled acumen, Burry suggests that blindly imitating the strategies of successful investors is far from a guarantee of success. Instead, he emphasizes the necessity of learning from these investing luminaries while also developing a strategy that is suited to one's unique circumstances. "Buffett is unique, and so must any investor be," Burry once said. He noted that Buffett did not mimic his mentor, Benjamin Graham, but instead crafted his own investment approach and philosophy. "If you are going to be a great investor, you have to fit the style to who you are."

Bolstering Burry's viewpoint is none other than the Oracle of Omaha himself. During the 1994 Berkshire Hathaway annual meeting, a shareholder posed a question to Buffett seeking his thoughts on Peter Lynch—a highly successful investor who managed the Magellan Fund at Fidelity Investments from 1977 to 1990 and significantly outperformed the market during that period. Given some overlaps between their investing styles, the shareholder was intrigued as to how Buffett viewed Lynch's investing philosophy in contrast to his own.

Buffett acknowledged the overlaps, but also emphasized a clear distinction: Lynch leaned towards a more diversified investment strategy, holding a broad portfolio of stocks, while Buffett himself favored a more concentrated approach. Buffett remarked that if he tried to adopt Lynch's style, or if Lynch sought to emulate his, they might not have achieved the same level of success.



Importantly, Buffett stressed that there is no single "correct" way to invest, likening it to a journey to "heaven" with no definitive path. His exact words were, "I have said in investing, in the past, that there is more than one way to get to heaven, and there is not a true religion in this, but there are some very useful religions." The takeaway from Buffett's metaphor is the validation of various investment philosophies.

## LAYING THE FOUNDATION

The importance of creating a personalized investment playbook becomes clearer as you delve deeper into the world of investing. Start by immersing yourself in the wisdom of accomplished investors such as Buffett. Delving into their strategies, principles, and philosophies lays a solid foundation for your investment journey. These guides provide you with the ability to grasp the logic and intuition behind successful investment decisions, from understanding market trends to the critical analysis of company financials.

While the wisdom of successful investors can illuminate the path, theoretical understanding alone is not sufficient. A key component of successful investing lies in your ability to introspect and evaluate your unique circumstances that will serve as a compass, guiding you towards an investment approach that meshes with your unique self.

## LEVERAGING YOUR STRENGTHS

Embracing your distinctiveness within the realm of investing is critical, as formulaic approaches often fall short in delivering consistent results. Leverage your strengths, skills, and passions to forge a successful strategy. Do you have a knack for understanding technology companies, or do you feel more comfortable investing in traditional sectors like consumer goods? Identifying your comfort zone and areas of expertise can help you make more informed investment decisions.

Investing is not a static field; it is a dynamic landscape that requires adaptability. Being receptive to market shifts and flexible in your

strategies is essential. The market is an ever-evolving landscape with new sectors and trends emerging frequently. Willingness to learn, staying abreast with the latest market developments, and adapting your approach accordingly is a critical factor in unlocking your investment potential and paving the way for success.

So, as you map out your investing journey, remember that the route to financial success is not a mere replication of someone else's path. It is an intricate trail that you chart, guided by the investment philosophy that resonates with you the most. In this constantly evolving investment arena, may you find your unique way to investment heaven. And remember: in this arena, your individuality is not just your identity—it is your competitive edge.

Stay invested. Stay unique. Stay you.

**Clint Loh**  
**Manager, Corporate Monitoring**

*This article appeared in the The Observer, a weekly newsletter published by The Minority Shareholders Watch Group (MSWG) and reproduced here with their permission. Do follow MSWG's Twitter account at @MSWGMalaysia and share your thought on their tweets from time to time.*



Learn how to identify Hot Stocks using Technical Analysis (TA) and Fundamental Analysis (FA)

**SIGN UP FOR Invest NOW IT'S FREE!!!**

[Click here](#)

Get market moving news and analyses. Regular columns include **Behind The Action** and **From The Observer**

**Leaderboard • Shariah Hot Stocks • Shariah Momentum Up Stocks • Non Shariah Hot Stocks • Up Trending Stocks • Growth Stocks • Dividend Stocks • Long Companies • Insider Activity • Investor Relations • Regional Markets**

Scan me



Via email, every Friday.











**DEFINITION:** Insider Activity shows the trades made by substantial shareholders or directors of the company. Purchases by the directors and company share buyback may indicate the share price is undervalued and brings confidence to the price trend of the share price.



ShareInvestor WebPro > Fundamental > Insider Trades > click Search tab > Select Bursa > click Stock name > scroll up and leave at <Select Counter> Type Date Range for Announcement Date > click Search

Notice Period is 18th June – 24th June 2023

Effective Change Date	Stock Name	Buyer/ Seller Name [Classification]	Bought / (Sold) ['000]	No. of Shares After Trade ['000]	
			Total	Total	% Held
16 JUN 2023 - 19 JUN 2023	3A	MR TEO KWEE HOCK [SSH]	146	47,822	9.779
19 JUN 2023 - 19 JUN 2023	ADVPKG	MR PETER LING EE KONG [DIR/CEO]	5	8,455	10.471
19 JUN 2023 - 19 JUN 2023	ADVPKG	MR PETER LING EE KONG [SSH]	5	8,455	10.471
19 JUN 2023 - 19 JUN 2023	ADVPKG	KSL CAPITAL SDN BHD [SSH]	-0.4	7,335	9.099
19 JUN 2023 - 19 JUN 2023	ADVPKG	MR LIEW KIT [SSH]	-0.4	7,339	9.104
15 JUN 2023 - 16 JUN 2023	ADVPKG	KSL CAPITAL SDN BHD [SSH]	-0.2	7,336	9.099
15 JUN 2023 - 16 JUN 2023	ADVPKG	MR LIEW KIT [SSH]	-0.2	7,340	9.104
21 JUN 2023 - 21 JUN 2023	AIRPORT	KUMPULAN WANG PERSARAAN (DIPERBADANKAN) [SSH]	608	112,441	6.739
19 JUN 2023 - 19 JUN 2023	AIRPORT	EMPLOYEES PROVIDENT FUND BOARD [SSH]	-327	221,218	13.258
16 JUN 2023 - 16 JUN 2023	AIRPORT	EMPLOYEES PROVIDENT FUND BOARD [SSH]	-3,000	221,545	13.278
15 JUN 2023 - 15 JUN 2023	AIRPORT	EMPLOYEES PROVIDENT FUND BOARD [SSH]	-98	224,545	13.457
14 JUN 2023 - 14 JUN 2023	AIRPORT	EMPLOYEES PROVIDENT FUND BOARD [SSH]	-266	224,642	13.463
19 JUN 2023 - 19 JUN 2023	ALLIANZ	EMPLOYEES PROVIDENT FUND BOARD [SSH]	-22	12,979	7.293
16 JUN 2023 - 16 JUN 2023	ALLIANZ	EMPLOYEES PROVIDENT FUND BOARD [SSH]	-25	13,000	7.305
15 JUN 2023 - 15 JUN 2023	ALLIANZ	EMPLOYEES PROVIDENT FUND BOARD [SSH]	-17	13,025	7.319
21 JUN 2023 - 21 JUN 2023	AMEREIT	MR LEE SAI BOON [SSH]	130	276,246	52.91
15 JUN 2023 - 15 JUN 2023	ANCOMNY	DATO' SIEW KA WEI [DIR/CEO]	-2,000	21,878	19.699
14 JUN 2023 - 14 JUN 2023	ANCOMNY	DATO' SIEW KA WEI [DIR/CEO]	-5,000	193,543	20.698
14 JUN 2023 - 14 JUN 2023	ANCOMNY	DATO' SIEW KA WEI [SSH]	-5,000	193,543	20.698
19 JUN 2023 - 19 JUN 2023	ASTRA	DATIN WONG MUH RONG [DIR/CEO]	47	45,401	16.682
19 JUN 2023 - 19 JUN 2023	ASTRA	DATIN WONG MUH RONG [SSH]	47	45,401	16.682
19 JUN 2023 - 19 JUN 2023	AXIATA	EMPLOYEES PROVIDENT FUND BOARD [SSH]	3,000	1,577,243	17.183
16 JUN 2023 - 16 JUN 2023	AXIATA	EMPLOYEES PROVIDENT FUND BOARD [SSH]	2,337	1,574,243	17.151
15 JUN 2023 - 15 JUN 2023	AXIATA	EMPLOYEES PROVIDENT FUND BOARD [SSH]	3,000	1,571,906	17.125
14 JUN 2023 - 14 JUN 2023	AXIATA	EMPLOYEES PROVIDENT FUND BOARD [SSH]	3,000	1,568,906	17.092
15 JUN 2023 - 15 JUN 2023	AXREIT	EMPLOYEES PROVIDENT FUND BOARD [SSH]	281	285,018	16.37
14 JUN 2023 - 14 JUN 2023	AXREIT	EMPLOYEES PROVIDENT FUND BOARD [SSH]	540	284,738	16.354
19 JUN 2023 - 19 JUN 2023	AXTERIA	MR WOO WAI ONN @ FOO WAI ONN [DIR/CEO]	13,300	146,169	20.393
19 JUN 2023 - 19 JUN 2023	AXTERIA	MR WOO WAI ONN @ FOO WAI ONN [SSH]	13,300	146,169	20.393
19 JUN 2023 - 19 JUN 2023	AXTERIA	MR YEE WEI MENG [DIR/CEO]	-13,300	54,067	7.544
19 JUN 2023 - 19 JUN 2023	AXTERIA	MR YEE WEI MENG [SSH]	-13,300	54,067	7.544
20 JUN 2023 - 20 JUN 2023	AZRB	TAN SRI DATO' LAU YIN PIN @ LAU YEN BENG [DIR/CEO]	-100	2,000	0.335
19 JUN 2023 - 19 JUN 2023	BAHVEST	INNOSABAH CAPITAL HOLDINGS SDN BHD [SSH]	3,789	90,683	7.314
21 JUN 2023 - 21 JUN 2023	BARAKAH	DATUK MOHD ZAID BIN IBRAHIM [DIR/CEO]	-1,000	1,200	0.12
19 JUN 2023 - 19 JUN 2023	BAUTO	EMPLOYEES PROVIDENT FUND BOARD [SSH]	-500	122,250	10.47
16 JUN 2023 - 16 JUN 2023	BAUTO	EMPLOYEES PROVIDENT FUND BOARD [SSH]	-264	122,750	10.513
16 JUN 2023 - 16 JUN 2023	BAUTO	DATO' AMER HAMZAH BIN AHMAD [SSH]	100	176,455	15.113
16 JUN 2023 - 16 JUN 2023	BAUTO	DATO' LEE KOK CHUAN [DIR/CEO]	100	175,914	15.066
16 JUN 2023 - 16 JUN 2023	BAUTO	DATO' LEE KOK CHUAN [SSH]	100	175,914	15.066
16 JUN 2023 - 16 JUN 2023	BAUTO	DYNAMIC MILESTONE SDN BHD [SSH]	100	172,011	14.732
16 JUN 2023 - 16 JUN 2023	BAUTO	TAN SRI DATO' SRI YEOW CHOON SAN [DIR/CEO]	100	176,046	15.078
16 JUN 2023 - 16 JUN 2023	BAUTO	TAN SRI DATO' SRI YEOW CHOON SAN [SSH]	100	176,046	15.078
15 JUN 2023 - 15 JUN 2023	BAUTO	EMPLOYEES PROVIDENT FUND BOARD [SSH]	-150	123,014	10.536
14 JUN 2023 - 14 JUN 2023	BAUTO	EMPLOYEES PROVIDENT FUND BOARD [SSH]	-350	123,164	10.549
21 JUN 2023 - 21 JUN 2023	BIG	MISS PRISTINE CHNG SERNH HUI [SSH]	1,989	16,381	25.804
22 JUN 2023 - 22 JUN 2023	BINTAI	DATUK TAY CHOR HAN [DIR/CEO]	3,409	66,339	7.428
22 JUN 2023 - 22 JUN 2023	BINTAI	DATUK TAY CHOR HAN [SSH]	3,409	66,339	7.428
21 JUN 2023 - 22 JUN 2023	BINTAI	DATUK NG CHOON KOON [DIR/CEO]	3,180	42,104	4.714
16 JUN 2023 - 20 JUN 2023	BINTAI	DATUK NG CHOON KOON [DIR/CEO]	6,820	38,924	4.358
16 JUN 2023 - 16 JUN 2023	BJLAND	BERJAYA CAPITAL BERHAD [SSH]	2,556	273,856	5.566
16 JUN 2023 - 16 JUN 2023	BJLAND	BERJAYA CORPORATION BERHAD [SSH]	2,556	3,984,338	80.974
16 JUN 2023 - 16 JUN 2023	BJLAND	BERJAYA GROUP BERHAD [SSH]	2,556	3,566,238	72.477
16 JUN 2023 - 16 JUN 2023	BJLAND	BIZURAI BIJAK SDN BHD [SSH]	2,556	880,542	17.896
16 JUN 2023 - 16 JUN 2023	BJLAND	JUARA SEJATI SDN BHD [SSH]	2,556	1,705,217	34.655
16 JUN 2023 - 19 JUN 2023	BSTEAD	LEMBAGA TABUNG ANGKATAN TENTERA [SSH]	2,175	1,624,478	80.142
16 JUN 2023 - 16 JUN 2023	CARIMIN	MR LIM YEW HOE [DIR/CEO]	200	9,390	4.015
19 JUN 2023 - 19 JUN 2023	CDB	EMPLOYEES PROVIDENT FUND BOARD [SSH]	130	1,125,860	9.597
16 JUN 2023 - 16 JUN 2023	CDB	EMPLOYEES PROVIDENT FUND BOARD [SSH]	-2,170	1,125,730	9.596
15 JUN 2023 - 15 JUN 2023	CDB	EMPLOYEES PROVIDENT FUND BOARD [SSH]	-729	1,127,900	9.614
14 JUN 2023 - 14 JUN 2023	CDB	EMPLOYEES PROVIDENT FUND BOARD [SSH]	-1,026	1,128,629	9.62
15 JUN 2023 - 16 JUN 2023	CEPAT	DATIN SERI OOI AH THIN [SSH]	27	119,528	38.69

Notice Period is 18th June – 24th June 2023

Effective Change Date	Stock Name	Buyer/ Seller Name [Classification]	Bought / (Sold) ['000]	No. of Shares After Trade ['000]	
			Total	Total	% Held
15 JUN 2023 - 16 JUN 2023	CEPAT	DATO' MAH POOI SOO REALTY SDN. BHD. [SSH]	27	119,528	38.69
15 JUN 2023 - 16 JUN 2023	CEPAT	DATO' SERI MAH KING SENG [DIR/CEO]	27	119,528	38.69
15 JUN 2023 - 16 JUN 2023	CEPAT	DATO' SERI MAH KING SENG [SSH]	27	119,528	38.69
15 JUN 2023 - 16 JUN 2023	CEPAT	MHC PLANTATIONS BHD. [SSH]	27	119,528	38.69
15 JUN 2023 - 16 JUN 2023	CEPAT	TAN SRI DR MAH KING THIAN @ MAH KING THIAM [DIR/CEO]	27	119,528	38.69
15 JUN 2023 - 16 JUN 2023	CEPAT	TAN SRI DR MAH KING THIAN @ MAH KING THIAM [SSH]	27	119,528	38.69
15 JUN 2023 - 15 JUN 2023	CGB	MR CHEW HIAN TAT [DIR/CEO]	655	42,165	28.199
15 JUN 2023 - 15 JUN 2023	CGB	MR CHEW HIAN TAT [SSH]	655	42,165	28.199
16 JUN 2023 - 16 JUN 2023	CHGP	DATIN LEE TEOH KEE [SSH]	4,154	38,991	7.125
16 JUN 2023 - 16 JUN 2023	CHGP	DATO' GOH BOON KOON [SSH]	13,693	50,671	9.26
13 JUN 2023 - 13 JUN 2023	CIMB	EMPLOYEES PROVIDENT FUND BOARD [SSH]	3,508	1,502,713	14.09
19 JUN 2023 - 19 JUN 2023	CITAGLB	TAN SRI DATO' SRI (DR.) MOHAMAD NORZA BIN ZAKARIA [SSH]	237	164,228	39.334
19 JUN 2023 - 19 JUN 2023	CITAGLB	TAN SRI DATO' SRI MOHAMAD NORZA BIN ZAKARIA [DIR/CEO]	237	164,228	39.334
16 JUN 2023 - 16 JUN 2023	CITAGLB	TAN SRI DATO' SRI (DR.) MOHAMAD NORZA BIN ZAKARIA [DIR/CEO]	116	163,990	39.277
16 JUN 2023 - 16 JUN 2023	CITAGLB	TAN SRI DATO' SRI (DR.) MOHAMAD NORZA BIN ZAKARIA [SSH]	116	163,990	39.277
19 JUN 2023 - 21 JUN 2023	D&O	PUAN SRI NONADIAH BINTI ABDULLAH [SSH]	-2,000	99,138	8.008
19 JUN 2023 - 21 JUN 2023	D&O	TAN SRI MOHAMMED AZLAN BIN HASHIM [DIR/CEO]	-2,000	99,138	8.008
19 JUN 2023 - 21 JUN 2023	D&O	TAN SRI MOHAMMED AZLAN BIN HASHIM [SSH]	-2,000	99,138	8.008
19 JUN 2023 - 19 JUN 2023	DFX	DATUK WIRA LAU CHI CHIANG [DIR/CEO]	1,376	18,050	2.421
19 JUN 2023 - 19 JUN 2023	DLADY	CITIGROUP NOMINEES (TEMPATAN) SDN BHD EMPLOYEES PROVIDENT FUND BOARD [SSH]	-15	6,542	10.222
15 JUN 2023 - 15 JUN 2023	DLADY	CITIGROUP NOMINEES (TEMPATAN) SDN BHD EMPLOYEES PROVIDENT FUND BOARD [SSH]	-500	6,557	10.245
14 JUN 2023 - 14 JUN 2023	DLADY	CITIGROUP NOMINEES (TEMPATAN) SDN BHD EMPLOYEES PROVIDENT FUND BOARD [SSH]	-50	7,057	11.026
19 JUN 2023 - 19 JUN 2023	DSOINIC	MR CHEW BEN BEN [SSH]	-450	151,877	5.365
19 JUN 2023 - 20 JUN 2023	DUFU	LEE SU HUI-FEN ALSO KNOWN AS FLORA SU [SSH]	134	51,848	19.516
19 JUN 2023 - 20 JUN 2023	DUFU	LEE WEN-JUNG [SSH]	134	51,933	9.793
19 JUN 2023 - 20 JUN 2023	DUFU	PERFECT COMMERCE SDN. BHD. [SSH]	134	51,648	9.739
20 JUN 2023 - 20 JUN 2023	ECOFIRS	DATO' TIONG KWING HEE [DIR/CEO]	-6,309	81,944	6.788
20 JUN 2023 - 20 JUN 2023	ECOFIRS	DATO' TIONG KWING HEE [SSH]	-6,309	81,944	6.788
19 JUN 2023 - 19 JUN 2023	ECONBHD	EMPLOYEES PROVIDENT FUND BOARD [SSH]	100	122,468	8.64
14 JUN 2023 - 14 JUN 2023	ECONBHD	EMPLOYEES PROVIDENT FUND BOARD [SSH]	1,427	122,368	8.633
21 JUN 2023 - 21 JUN 2023	EG	DATO' KANG PANG KIANG [DIR/CEO]	529	66,458	16.041
21 JUN 2023 - 21 JUN 2023	EG	DATO' KANG PANG KIANG [SSH]	529	66,458	16.041
16 JUN 2023 - 16 JUN 2023	EITA	MADAM GOH KIN BEE [SSH]	10	40,330	15.505
16 JUN 2023 - 16 JUN 2023	EITA	MR LIM JOO SWEE [DIR/CEO]	10	40,437	15.546
16 JUN 2023 - 16 JUN 2023	EITA	MR LIM JOO SWEE [SSH]	10	40,437	15.546
19 JUN 2023 - 20 JUN 2023	EMICO	MADAM LIM POH HOON [SSH]	-7,997	29,791	23.93
19 JUN 2023 - 20 JUN 2023	EMICO	MR LIM TECK CHYE [DIR/CEO]	-7,997	29,791	23.93
19 JUN 2023 - 20 JUN 2023	EMICO	MR LIM TECK CHYE [SSH]	-7,997	29,791	23.93
19 JUN 2023 - 20 JUN 2023	EMICO	MR LIM TEIK HIAN [SSH]	-7,997	29,791	23.93
16 JUN 2023 - 16 JUN 2023	F&N	EMPLOYEES PROVIDENT FUND BOARD [SSH]	-131	42,323	11.539
15 JUN 2023 - 15 JUN 2023	F&N	EMPLOYEES PROVIDENT FUND BOARD [SSH]	-4	42,453	11.575
14 JUN 2023 - 14 JUN 2023	F&N	EMPLOYEES PROVIDENT FUND BOARD [SSH]	-251	42,457	11.576
19 JUN 2023 - 19 JUN 2023	FBHHD	MR NG KIAN BOON [DIR/CEO]	-2,140	197,461	91.417
19 JUN 2023 - 19 JUN 2023	FBHHD	MR NG KIAN BOON [SSH]	-2,140	197,461	91.417
14 JUN 2023 - 14 JUN 2023	FFB	EMPLOYEES PROVIDENT FUND BOARD [SSH]	1,091	131,727	7.037
15 JUN 2023 - 16 JUN 2023	FRONTKN	MR OOI KENG THYE [SSH]	-4,300	213,125	13.567
19 JUN 2023 - 19 JUN 2023	GAMUDA	EMPLOYEES PROVIDENT FUND BOARD (EPF BOARD) [SSH]	467	378,564	14.22
16 JUN 2023 - 16 JUN 2023	GAMUDA	EMPLOYEES PROVIDENT FUND BOARD (EPF BOARD) [SSH]	-1,334	378,097	14.21
14 JUN 2023 - 14 JUN 2023	GAMUDA	EMPLOYEES PROVIDENT FUND BOARD (EPF BOARD) [SSH]	-17	379,431	14.26
15 JUN 2023 - 15 JUN 2023	GASMSIA	EMPLOYEES PROVIDENT FUND BOARD [SSH]	254	80,126	6.24
14 JUN 2023 - 14 JUN 2023	GASMSIA	EMPLOYEES PROVIDENT FUND BOARD [SSH]	5	79,872	6.22
14 JUN 2023 - 16 JUN 2023	GREATEC	DATO' SERI WONG SIEW HAI [DIR/CEO]	-6	1,057	0.084
20 JUN 2023 - 20 JUN 2023	GUH	DATUK SERI KENNETH H'NG BAK TEE [DIR/CEO]	300	5,146	1.829
19 JUN 2023 - 19 JUN 2023	GUH	DATUK SERI KENNETH H'NG BAK TEE [DIR/CEO]	200	4,846	1.723

**Disclaimer:** The Information in Insider Activity is extracted from [www.shareinvestor.com/fundamental/insider\\_trades](http://www.shareinvestor.com/fundamental/insider_trades). The information on this page is provided as a service to readers. It does not constitute financial advice and/or any investment recommendations. We assume no liability for damages resulting from or arising out of the use of such information. Whilst every effort is made to ensure accuracy, the information presented is not the official record of shareholder filings. Readers are advised to read the original filings on the Bursa Malaysia website at [www.bursamalaysia.com](http://www.bursamalaysia.com)



**PURNELL**

**ESCAPE II  
ABSOLUTE  
SAPPHIRE**

PLAY



Notice Period is 18th June - 24th June 2023

Effective Change Date	Stock Name	Buyer/ Seller Name [Classification]	Bought / (Sold) ['000]		No. of Shares After Trade ['000]	
			Total	% Held	Total	% Held
20 JUN 2023 - 20 JUN 2023	HCK	HIICHIKOK EQUITIES SDN BHD [SSH]	-2,336		247,923	50.496
20 JUN 2023 - 20 JUN 2023	HCK	TAN SRI HII CHII KOK @ HII CHEE KOK [DIR/CEO]	-2,336		249,973	50.914
20 JUN 2023 - 20 JUN 2023	HCK	TAN SRI HII CHII KOK @ HII CHEE KOK [SSH]	-2,336		249,973	50.914
19 JUN 2023 - 19 JUN 2023	HLBANK	EMPLOYEES PROVIDENT FUND BOARD [SSH]	-597		224,375	10.753
16 JUN 2023 - 16 JUN 2023	HLBANK	EMPLOYEES PROVIDENT FUND BOARD [SSH]	-64		224,972	10.782
15 JUN 2023 - 15 JUN 2023	HLBANK	EMPLOYEES PROVIDENT FUND BOARD [SSH]	-823		225,036	10.785
14 JUN 2023 - 14 JUN 2023	HLBANK	EMPLOYEES PROVIDENT FUND BOARD [SSH]	49		225,858	10.824
16 JUN 2023 - 20 JUN 2023	HLIND	PROF DATO' DR JIM KHOR MUN WEI [DIR/CEO]	10		396	0.124
19 JUN 2023 - 19 JUN 2023	HUBLINE	BILLION POWER SDN. BHD. [SSH]	1,500		345,695	8.058
19 JUN 2023 - 19 JUN 2023	HUBLINE	MADAM LAU SWEE ENG [SSH]	4,500		589,841	13.749
19 JUN 2023 - 19 JUN 2023	HUBLINE	MISS KATRINA LING SHIEK NGEE [DIR/CEO]	4,500		589,841	13.749
19 JUN 2023 - 19 JUN 2023	HUBLINE	MISS KATRINA LING SHIEK NGEE [SSH]	4,500		589,841	13.749
19 JUN 2023 - 19 JUN 2023	HUBLINE	MR BERNARD LING ING TAH [SSH]	4,500		589,841	13.749
19 JUN 2023 - 19 JUN 2023	HUBLINE	MR DENNIS LING LI KUANG [DIR/CEO]	4,500		589,841	13.749
19 JUN 2023 - 19 JUN 2023	HUBLINE	MR DENNIS LING LI KUANG [SSH]	4,500		589,841	13.749
19 JUN 2023 - 19 JUN 2023	HUBLINE	MR ROYSTON LING ING DING [DIR/CEO]	4,500		589,841	13.75
19 JUN 2023 - 19 JUN 2023	HUBLINE	MR ROYSTON LING ING DING [SSH]	4,500		589,841	13.75
15 JUN 2023 - 15 JUN 2023	IGBB	HSBC ASIA HOLDINGS LIMITED (HAHO) [SSH]	36,511		109,532	8.115
15 JUN 2023 - 15 JUN 2023	IGBB	HSBC HOLDINGS PLC (HGQ) [SSH]	36,511		109,532	8.115
15 JUN 2023 - 15 JUN 2023	IGBB	HSBC INTERNATIONAL TRUSTEE (HOLDINGS) PTE. LTD. (HTHL) [SSH]	36,511		109,532	8.115
15 JUN 2023 - 15 JUN 2023	IGBB	HSBC INTERNATIONAL TRUSTEE LIMITED (HKIT) [SSH]	36,511		109,532	8.115
15 JUN 2023 - 15 JUN 2023	IGBB	THE HONGKONG AND SHANGHAI BANKING CORPORATION LIMITED (HBAP) [SSH]	36,511		109,532	8.115
14 JUN 2023 - 14 JUN 2023	IGBB	DATO' SERI ROBERT TAN CHUNG MENG [DIR/CEO]	133,208		407,465	30.188
14 JUN 2023 - 14 JUN 2023	IGBB	MISS ELIZABETH TAN HUI NING [DIR/CEO]	15		46	0.003
14 JUN 2023 - 14 JUN 2023	IGBB	MISS TAN LEI CHENG [DIR/CEO]	8,592		25,775	1.91
14 JUN 2023 - 14 JUN 2023	IGBB	MISS TAN MEI SIAN [DIR/CEO]	457		1,370	0.101
14 JUN 2023 - 14 JUN 2023	IGBB	MR TAN BOON LEE [DIR/CEO]	7,450		41,980	3.11
16 JUN 2023 - 16 JUN 2023	IHH	EMPLOYEES PROVIDENT FUND BOARD [SSH]	129		895,244	10.165
15 JUN 2023 - 15 JUN 2023	IHH	EMPLOYEES PROVIDENT FUND BOARD [SSH]	144		895,115	10.164
14 JUN 2023 - 14 JUN 2023	IHH	EMPLOYEES PROVIDENT FUND BOARD [SSH]	-2,445		894,971	10.162
21 JUN 2023 - 21 JUN 2023	INARI	KUMPULAN WANG PERSARAAN (DIPERBADANKAN) [SSH]	41		347,325	9.304
20 JUN 2023 - 20 JUN 2023	INARI	KUMPULAN WANG PERSARAAN (DIPERBADANKAN) [SSH]	224		347,284	9.303
19 JUN 2023 - 19 JUN 2023	INARI	EMPLOYEES PROVIDENT FUND BOARD [SSH]	45		408,958	10.955
20 JUN 2023 - 20 JUN 2023	INARI	KUMPULAN WANG PERSARAAN (DIPERBADANKAN) [SSH]	224		347,284	9.303
16 JUN 2023 - 16 JUN 2023	INARI	EMPLOYEES PROVIDENT FUND BOARD [SSH]	510		408,914	10.954
14 JUN 2023 - 14 JUN 2023	INARI	EMPLOYEES PROVIDENT FUND BOARD [SSH]	2,467		408,403	10.941
19 JUN 2023 - 19 JUN 2023	INGENIEU	MMAG HOLDINGS BERHAD [SSH]	-1,500		181,418	13.111
20 JUN 2023 - 20 JUN 2023	KAREX	MR GOH MIAH KIAT [DIR/CEO]	105		233,305	22.146
20 JUN 2023 - 20 JUN 2023	KAREX	MR GOH MIAH KIAT [SSH]	105		233,305	22.146
15 JUN 2023 - 15 JUN 2023	KGROU	MR ROY HO YEW KEE [DIR/CEO]	500		225,900	6.142
15 JUN 2023 - 15 JUN 2023	KGROU	MR ROY HO YEW KEE [SSH]	500		225,900	6.142
16 JUN 2023 - 16 JUN 2023	KYM	DATO LIM KHENG YEW [SSH]	300		52,800	34.6
16 JUN 2023 - 16 JUN 2023	KYM	MR LIM TZE THEAN [DIR/CEO]	300		25,350	16.612
16 JUN 2023 - 16 JUN 2023	KYM	MR LIM TZE THEAN [SSH]	300		25,350	16.612
16 JUN 2023 - 16 JUN 2023	KYM	WEST RIVER CAPITAL SDN BHD [SSH]	300		13,500	8.847
19 JUN 2023 - 20 JUN 2023	MAGNI	MR TAN POAY SENG [DIR/CEO]	39		115,138	26.56
19 JUN 2023 - 19 JUN 2023	MAYBANK	EMPLOYEES PROVIDENT FUND BOARD [SSH]	24		1,610,796	13.363
16 JUN 2023 - 16 JUN 2023	MAYBANK	EMPLOYEES PROVIDENT FUND BOARD [SSH]	3,000		1,610,771	13.363
16 JUN 2023 - 16 JUN 2023	MAYBANK	AMANAHRAYA TRUSTEES BERHAD - AMANAH SAHAM BUMIPUTERA [SSH]	-2,772		3,819,654	31.688
15 JUN 2023 - 15 JUN 2023	MAYBANK	EMPLOYEES PROVIDENT FUND BOARD [SSH]	109		1,607,771	13.338
15 JUN 2023 - 15 JUN 2023	MAYBANK	AMANAHRAYA TRUSTEES BERHAD - AMANAH SAHAM BUMIPUTERA [SSH]	-577		3,822,426	31.711
15 JUN 2023 - 15 JUN 2023	MBMR	EMPLOYEES PROVIDENT FUND BOARD [SSH]	-300		31,880	8.156
19 JUN 2023 - 19 JUN 2023	MBRIGHT	DATO' LEE WAI MUN DIMP. JP. [DIR/CEO]	11,700		1,235,796	52.879
19 JUN 2023 - 19 JUN 2023	MBRIGHT	DATO' LEE WAI MUN DIMP. JP. [SSH]	11,700		1,235,796	52.879
19 JUN 2023 - 19 JUN 2023	MBRIGHT	LEADING VENTURES SDN. BHD. [SSH]	11,700		1,235,796	52.879
15 JUN 2023 - 15 JUN 2023	MBRIGHT	DATO' LEE WAI MUN DIMP. JP. [DIR/CEO]	11,700		1,224,096	52.378
15 JUN 2023 - 15 JUN 2023	MBRIGHT	DATO' LEE WAI MUN DIMP. JP. [SSH]	11,700		1,224,096	52.378
15 JUN 2023 - 15 JUN 2023	MBRIGHT	LEADING VENTURES SDN. BHD. [SSH]	11,700		1,224,096	52.378
19 JUN 2023 - 19 JUN 2023	MIECO	MR NG WEI PING [DIR/CEO]	500		12,000	1.2
20 JUN 2023 - 20 JUN 2023	MIKROMB	CARTABAN NOMINEES (TEMPATAN) SDN BHD - RHB TRUSTEE BERHAD FOR KENANGA ISLAMIC ABSOLUTE RETURN FUND [SSH]	97,221		156,140	20.948
19 JUN 2023 - 20 JUN 2023	MINDA	SPECIAL FLAGSHIP HOLDINGS SDN BHD [SSH]	26		856,579	51.016
19 JUN 2023 - 20 JUN 2023	MINDA	TAN SRI DATO' DR PALANIAPPAN A/L RAMANATHAN CHETTIAR [DIR/CEO]	26		856,579	51.016
19 JUN 2023 - 20 JUN 2023	MINDA	TAN SRI DATO' DR PALANIAPPAN A/L RAMANATHAN CHETTIAR [SSH]	26		856,579	51.016
16 JUN 2023 - 16 JUN 2023	MINDA	SPECIAL FLAGSHIP HOLDINGS SDN BHD [SSH]	33		856,553	51.014
16 JUN 2023 - 16 JUN 2023	MINDA	TAN SRI DATO' DR PALANIAPPAN A/L RAMANATHAN CHETTIAR [DIR/CEO]	33		856,553	51.014
16 JUN 2023 - 16 JUN 2023	MINDA	TAN SRI DATO' DR PALANIAPPAN A/L RAMANATHAN CHETTIAR [SSH]	33		856,553	51.014
19 JUN 2023 - 19 JUN 2023	MISC	EMPLOYEES PROVIDENT FUND BOARD [SSH]	-148		566,489	12.691
16 JUN 2023 - 16 JUN 2023	MISC	EMPLOYEES PROVIDENT FUND BOARD [SSH]	-1,155		566,636	12.694
15 JUN 2023 - 15 JUN 2023	MISC	EMPLOYEES PROVIDENT FUND BOARD [SSH]	-1,000		567,792	12.72
16 JUN 2023 - 16 JUN 2023	MMAG	MADAM CHAN SWEE YING [DIR/CEO]	2,454		323,625	13.36
16 JUN 2023 - 16 JUN 2023	MMAG	MADAM CHAN SWEE YING [SSH]	2,454		323,625	13.36
21 JUN 2023 - 21 JUN 2023	MPHBCAP	DATO SERI LIM TIONG CHIN [DIR/CEO]	90		10,754	1.531
20 JUN 2023 - 20 JUN 2023	MPHBCAP	DATO SERI LIM TIONG CHIN [DIR/CEO]	50		10,664	1.519

Notice Period is 18th June - 24th June 2023

Effective Change Date	Stock Name	Buyer/ Seller Name [Classification]	Bought / (Sold) ['000]		No. of Shares After Trade ['000]	
			Total	% Held	Total	% Held
19 JUN 2023 - 19 JUN 2023	MPHBCAP	DATO SERI LIM TIONG CHIN [DIR/CEO]	11		10,614	1.511
20 JUN 2023 - 20 JUN 2023	MRDIY	MR TAN YU YEH [DIR/CEO]	442		4,874,321	51.669
20 JUN 2023 - 20 JUN 2023	MRDIY	MR TAN YU YEH [SSH]	442		4,874,321	51.669
21 JUN 2023 - 21 JUN 2023	MYEG	KUMPULAN WANG PERSARAAN (DIPERBADANKAN) [SSH]	332		550,522	7.434
19 JUN 2023 - 19 JUN 2023	NESTLE	EMPLOYEES PROVIDENT FUND BOARD [SSH]	23		21,474	9.157
16 JUN 2023 - 16 JUN 2023	NESTLE	EMPLOYEES PROVIDENT FUND BOARD [SSH]	-55		21,451	9.147
15 JUN 2023 - 15 JUN 2023	NESTLE	EMPLOYEES PROVIDENT FUND BOARD [SSH]	6		21,505	9.171
14 JUN 2023 - 14 JUN 2023	NESTLE	EMPLOYEES PROVIDENT FUND BOARD [SSH]	-9		21,500	9.168
16 JUN 2023 - 20 JUN 2023	NEXGRAM	MIDLAND SANDS SDN BHD [SSH]	-43,845		55,034	8.482
20 JUN 2023 - 20 JUN 2023	NGGB	DATO' LIM THIAM HUAT [DIR/CEO]	2,350		115,162	13.698
20 JUN 2023 - 20 JUN 2023	NGGB	DATO' LIM THIAM HUAT [SSH]	2,350		115,162	13.698
20 JUN 2023 - 20 JUN 2023	NGGB	MISS LIM KAH YEE [DIR/CEO]	2,350		88,130	10.483
20 JUN 2023 - 20 JUN 2023	NGGB	MISS LIM KAH YEE [SSH]	2,350		88,130	10.483
20 JUN 2023 - 20 JUN 2023	NGGB	MISS LIM KAH YEN [DIR/CEO]	2,350		103,827	12.35
20 JUN 2023 - 20 JUN 2023	NGGB	MISS LIM KAH YEN [SSH]	2,350		103,827	12.35
19 JUN 2023 - 21 JUN 2023	OPCOM	DATO' ONG CHOO MENG [SSH]	9,927		108,570	28.272
16 JUN 2023 - 16 JUN 2023	ORIENT	EMPLOYEE PROVIDENT FUND BOARD [SSH]	-18		55,089	8.88
14 JUN 2023 - 14 JUN 2023	ORIENT	EMPLOYEE PROVIDENT FUND BOARD [SSH]	-29		55,107	8.883
07 JUN 2023 - 07 JUN 2023	OVH	MR KENNY RONALD NGALIN [DIR/CEO]	-105		50,781	12.092
07 JUN 2023 - 07 JUN 2023	OVH	MR KENNY RONALD NGALIN [SSH]	-105		50,781	12.092
15 JUN 2023 - 15 JUN 2023	PCHEM	EMPLOYEES PROVIDENT FUND BOARD ("EPF BOARD") [SSH]	3,852		889,577	11.12
14 JUN 2023 - 14 JUN 2023	PCHEM	EMPLOYEES PROVIDENT FUND BOARD ("EPF BOARD") [SSH]	1,890		885,725	11.072
16 JUN 2023 - 19 JUN 2023	PENERGY	OBYU HOLDINGS SDN. BHD. [SSH]	281		96,239	29.986
16 JUN 2023 - 19 JUN 2023	PENERGY	SHOREFIELD RESOURCES SDN. BHD. [SSH]	281		96,239	29.986
16 JUN 2023 - 19 JUN 2023	PENERGY	SHOREFIELD SDN. BHD. [SSH]	281		96,239	29.986
16 JUN 2023 - 19 JUN 2023	PENERGY	TAN SRI BUSTARI BIN YUSUF [SSH]	281		96,239	29.986
19 JUN 2023 - 19 JUN 2023	PERTAMA	DATUK AHMAD NAZRI BIN ABDULLAH [DIR/CEO]	31,175		31,175	7.2
19 JUN 2023 - 19 JUN 2023	PETGAS	EMPLOYEES PROVIDENT FUND BOARD [SSH]	85		280,977	14.2
16 JUN 2023 - 16 JUN 2023	PETGAS	EMPLOYEES PROVIDENT FUND BOARD [SSH]	445		280,892	14.196
15 JUN 2023 - 15 JUN 2023	PETGAS	EMPLOYEES PROVIDENT FUND BOARD [SSH]	59		280,447	14.173
14 JUN 2023 - 14 JUN 2023	PETGAS	EMPLOYEES PROVIDENT FUND BOARD [SSH]	88		280,388	14.17
19 JUN 2023 - 19 JUN 2023	PMETAL	DATUK YAU AH LAN @ FARA YVONNE ("DATUK YVONNE CHIA") [DIR/CEO]	50		100	0.001
19 JUN 2023 - 19 JUN 2023	PPB	EMPLOYEES PROVIDENT FUND BOARD [SSH]	405		143,310	10.074
16 JUN 2023 - 16 JUN 2023	PPB	EMPLOYEES PROVIDENT FUND BOARD [SSH]	-368		142,904	10.045
15 JUN 2023 - 15 JUN 2023	PPB	EMPLOYEES PROVIDENT FUND BOARD [SSH]	-26		143,273	10.071
14 JUN 2023 - 14 JUN 2023	PPB	EMPLOYEES PROVIDENT FUND BOARD [SSH]	24		143,299	10.073
21 JUN 2023 - 21 JUN 2023	PWORTH	DATUK LIM NYUK SANG @ FREDDY LIM [DIR/CEO]	52,474		328,968	22.004
21 JUN 2023 - 21 JUN 2023	PWORTH	DATUK LIM NYUK SANG @ FREDDY LIM [SSH]	52,474		328,968	22.004
21 JUN 2023 - 21 JUN 2023	PWROOT	MR LOW JUN LEE [DIR/CEO]	2,706		57,425	12.619
21 JUN 2023 - 21 JUN 2023	PWROOT	MR LOW JUN LEE [SSH]	2,706		57,425	12.619
20 JUN 2023 - 20 JUN 2023	PWROOT	MR LOW JUN LEE [DIR/CEO]	1,195		54,719	12.097
20 JUN 2023 - 20 JUN 2023	PWROOT	MR LOW JUN LEE [SSH]	1,195		54,719	12.097
16 JUN 2023 - 16 JUN 2023	PWROOT	MR WONG TAK KEONG [DIR/CEO]	2,476		50,835	11.271
16 JUN 2023 - 16 JUN 2023	PWROOT	MR WONG TAK KEONG [SSH]	2,476		50,835	11.271
21 JUN 2023 - 21 JUN 2023	PW-ROOT-WA	MR LOW JUN LEE [DIR/CEO]	2,706		768	8.613
20 JUN 2023 - 20 JUN 2023	PW-ROOT-WA	MR LOW JUN LEE [DIR/CEO]	1,195		3,474	29.892
16 JUN 2023 - 16 JUN 2023	PW-ROOT-WA	MR WONG TAK KEONG [DIR/CEO]	2,476		896	6.927
20 JUN 2023 - 20 JUN 2023	RGB	TAN SRI NORAZMAN BIN HAMIDUN [DIR/CEO]	-1,500		3,049	0.198
21 JUN 2023 - 21 JUN 2023	RHBBANK	KUMPULAN WANG PERSARAAN (DIPERBADANKAN) [SSH]	699		249,153	5.813
19 JUN 2023 - 19 JUN 2023	RHBBANK	EMPLOYEES PROVIDENT FUND BOARD [SSH]	-1,700		1,753,061	40.899
20 JUN 2023 - 20 JUN 2023	RHBBANK	KUMPULAN WANG PERSARAAN (DIPERBADANKAN) [SSH]	60		248,454	5.796
16 JUN 2023 - 16 JUN 2023	RHBBANK	EMPLOYEES PROVIDENT FUND BOARD [SSH]	-2,000		1,754,761	40.938
15 JUN 2023 - 15 JUN 2023	RHBBANK	EMPLOYEES PROVIDENT FUND BOARD [SSH]	-28		1,756,761	40.985
16 JUN 2023 - 16 JUN 2023	RHBBANK	KUMPULAN WANG PERSARAAN (DIPERBADANKAN) [SSH]	123		248,394	5.795
14 JUN 2023 - 14 JUN 2023	RHBBANK	EMPLOYEES PROVIDENT FUND BOARD [SSH]	-770		1,756,789	40.986
19 JUN 2023 - 19 JUN 2023	SCOMNET	MADAM WU HUEI-CHUNG [DIR/CEO]	10,986		453,120	57.595
19 JUN 2023 - 19 JUN 2023	SCOMNET	MADAM WU HUEI-CHUNG [SSH]	10,986		453,120	57.595
19 JUN 2023 - 19 JUN 2023	SCOMNET	MR HSUEH CHIH-YU [DIR/CEO]	10,986		453,120	57.596
19 JUN 2023 - 19 JUN 2023	SCOMNET	MR HSUEH CHIH-YU [SSH]	10,986		453,120	57.596
19 JUN 2023 - 19 JUN 2023	SCOMNET	MR SHIUE JONG-ZONE A.K.A. JAMES SHIUE [SSH]	10,986		453,120	57.596
19 JUN 2023 - 19 JUN 2023	SCOMNET	MR SHIUE JONG-ZONE A.K.A. JAMES				



Notice Period is 18th June - 24th June 2023

Effective Change Date	Stock Name	Buyer/ Seller Name [Classification]	Bought / (Sold) ['000]		No. of Shares After Trade ['000]	
			Total	% Held	Total	% Held
16 JUN 2023 - 16 JUN 2023	SIMPLT	EMPLOYEES PROVIDENT FUND BOARD [SSH]	174		1,010,020	14.605
19 JUN 2023 - 19 JUN 2023	SIMEPROP	EMPLOYEES PROVIDENT FUND BOARD [SSH]	755		586,484	8.624
16 JUN 2023 - 16 JUN 2023	SIMEPROP	EMPLOYEES PROVIDENT FUND BOARD [SSH]	1,000		585,729	8.613
15 JUN 2023 - 15 JUN 2023	SIMEPROP	EMPLOYEES PROVIDENT FUND BOARD [SSH]	250		584,729	8.598
19 JUN 2023 - 19 JUN 2023	SKPRES	EMPLOYEES PROVIDENT FUND BOARD [SSH]	903		122,396	7.834
16 JUN 2023 - 16 JUN 2023	SKPRES	EMPLOYEES PROVIDENT FUND BOARD [SSH]	500		121,493	7.776
15 JUN 2023 - 15 JUN 2023	SKPRES	EMPLOYEES PROVIDENT FUND BOARD [SSH]	360		120,993	7.744
14 JUN 2023 - 14 JUN 2023	SKPRES	EMPLOYEES PROVIDENT FUND BOARD [SSH]	181		120,633	7.721
15 JUN 2023 - 15 JUN 2023	SLVEST	DATIN SERI WONG MEE LENG [SSH]	-10,800		118,300	17.721
15 JUN 2023 - 15 JUN 2023	SLVEST	DATUK SERI CHIAU BENG TEIK JP [SSH]	-10,800		118,300	17.721
15 JUN 2023 - 15 JUN 2023	SLVEST	DIVINE INVENTIONS SDN. BHD. [SSH]	-10,800		118,300	17.721
15 JUN 2023 - 15 JUN 2023	SLVEST	MR CHIAU HAW CHOON [SSH]	-10,800		118,300	17.721
15 JUN 2023 - 15 JUN 2023	SLVEST	MR CHONG CHUN SHIONG [DIR/CEO]	1,030		20,625	6.856
15 JUN 2023 - 15 JUN 2023	SLVEST	MR LIM CHIN SIU [DIR/CEO]	5,100		208,417	31.221
15 JUN 2023 - 15 JUN 2023	SLVEST	MR LIM CHIN SIU [SSH]	5,100		198,417	31.221
15 JUN 2023 - 15 JUN 2023	SLVEST	MR TAN CHYI BOON [DIR/CEO]	4,100		204,602	30.649
15 JUN 2023 - 15 JUN 2023	SLVEST	MR TAN CHYI BOON [SSH]	4,100		194,602	30.649
15 JUN 2023 - 15 JUN 2023	SLVEST	PP CHIN HIN REALTY SDN. BHD. [SSH]	-10,800		118,300	17.721
16 JUN 2023 - 16 JUN 2023	SMRT	MR MAHA RAMANATHAN PALAN [DIR/CEO]	100		100	0.022
20 JUN 2023 - 20 JUN 2023	SSB8	MR GAN YEE HIN [DIR/CEO]	3,500		1,488,500	65.498
20 JUN 2023 - 20 JUN 2023	SSB8	MR GAN YEE HIN [SSH]	3,500		1,488,500	65.498
16 JUN 2023 - 16 JUN 2023	SUBUR	DATO' TIONG ING [DIR/CEO]	20		2,511	1.333
16 JUN 2023 - 16 JUN 2023	SUNREIT	EMPLOYEES PROVIDENT FUND BOARD [SSH]	354		522,594	15.259
15 JUN 2023 - 15 JUN 2023	SUNREIT	EMPLOYEES PROVIDENT FUND BOARD [SSH]	300		522,241	15.249
15 JUN 2023 - 16 JUN 2023	SUNVIEW	MR NG CHEE YEE [DIR/CEO]	-2,000		13,751	2.938
16 JUN 2023 - 19 JUN 2023	SUNWAY	MADAM SARENA CHEAH YEAN TIH [DIR/CEO]	1,007		3,215,667	64.9
16 JUN 2023 - 19 JUN 2023	SUNWAY	MADAM SARENA CHEAH YEAN TIH [SSH]	1,007		3,215,667	64.9
16 JUN 2023 - 19 JUN 2023	SUNWAY	MR ADRIAN CHEAH YEAN SUN [SSH]	1,007		3,210,340	64.79
16 JUN 2023 - 19 JUN 2023	SUNWAY	MR EVAN CHEAH YEAN SHIN [SSH]	1,007		3,214,596	64.88
16 JUN 2023 - 19 JUN 2023	SUNWAY	PUAN SRI DATIN SERI (DR) SUSAN CHEAH SEOK CHENG [SSH]	1,007		3,219,921	64.99
16 JUN 2023 - 19 JUN 2023	SUNWAY	TAN SRI DATO' SERI DR JEFFREY CHEAH FOOK LING AO [DIR/CEO]	1,007		3,219,921	64.99
16 JUN 2023 - 19 JUN 2023	SUNWAY	TAN SRI DATO' SERI DR JEFFREY CHEAH FOOK LING AO [SSH]	1,007		3,219,921	64.99
21 JUN 2023 - 21 JUN 2023	T7GLOBAL	MR TAN KAY VIN [DIR/CEO]	-3,256		17,027	2.302
21 JUN 2023 - 21 JUN 2023	T7GLOBAL	TAN SRI DATUK SERI TAN KEAN SOON [DIR/CEO]	-6,513		143,718	19.429
21 JUN 2023 - 21 JUN 2023	T7GLOBAL	TAN SRI DATUK SERI TAN KEAN SOON [SSH]	-65,126,676,513		143,718	19.429
19 JUN 2023 - 19 JUN 2023	TAFI	ARMANI SYNERGY SDN. BHD. [SSH]	120		201,656	53.147
19 JUN 2023 - 19 JUN 2023	TAFI	DATO' SRI ANDREW LIM ENG GUAN [DIR/CEO]	120		210,704	55.532
19 JUN 2023 - 19 JUN 2023	TAFI	DATO' SRI ANDREW LIM ENG GUAN [SSH]	120		210,704	55.532
19 JUN 2023 - 19 JUN 2023	TAFI	DATO' SRI AZLAN BIN AZMI [DIR/CEO]	120		201,821	53.19
19 JUN 2023 - 19 JUN 2023	TAFI	DATO' SRI AZLAN BIN AZMI [SSH]	120		201,821	53.19
19 JUN 2023 - 19 JUN 2023	TAFI	DATO' SRI WONG SZE CHIEN [DIR/CEO]	120		210,074	55.366
19 JUN 2023 - 19 JUN 2023	TAFI	DATO' SRI WONG SZE CHIEN [SSH]	120		210,074	55.366
16 JUN 2023 - 16 JUN 2023	TAFI	ARMANI SYNERGY SDN. BHD. [SSH]	229		201,536	53.116
16 JUN 2023 - 16 JUN 2023	TAFI	DATO' SRI ANDREW LIM ENG GUAN [DIR/CEO]	229		210,584	55.501
16 JUN 2023 - 16 JUN 2023	TAFI	DATO' SRI ANDREW LIM ENG GUAN [SSH]	229		210,584	55.501
16 JUN 2023 - 16 JUN 2023	TAFI	DATO' SRI AZLAN BIN AZMI [DIR/CEO]	229		201,701	53.159
16 JUN 2023 - 16 JUN 2023	TAFI	DATO' SRI AZLAN BIN AZMI [SSH]	229		201,701	53.159
16 JUN 2023 - 16 JUN 2023	TAFI	DATO' SRI WONG SZE CHIEN [DIR/CEO]	229		209,954	55.335
16 JUN 2023 - 16 JUN 2023	TAFI	DATO' SRI WONG SZE CHIEN [SSH]	229		209,954	55.335
15 JUN 2023 - 15 JUN 2023	TAFI	ARMANI SYNERGY SDN. BHD. [SSH]	181		201,306	53.055
15 JUN 2023 - 15 JUN 2023	TAFI	DATO' SRI ANDREW LIM ENG GUAN [DIR/CEO]	181		210,355	55.44
15 JUN 2023 - 15 JUN 2023	TAFI	DATO' SRI ANDREW LIM ENG GUAN [SSH]	181		210,355	55.44
15 JUN 2023 - 15 JUN 2023	TAFI	DATO' SRI AZLAN BIN AZMI [DIR/CEO]	181		201,471	53.098
15 JUN 2023 - 15 JUN 2023	TAFI	DATO' SRI AZLAN BIN AZMI [SSH]	181		201,471	53.098
15 JUN 2023 - 15 JUN 2023	TAFI	DATO' SRI WONG SZE CHIEN [DIR/CEO]	181		209,725	55.274
15 JUN 2023 - 15 JUN 2023	TAFI	DATO' SRI WONG SZE CHIEN [SSH]	181		209,725	55.274
22 JUN 2023 - 22 JUN 2023	TANCO	DATO' SRI ANDREW TAN JUN SUAN [DIR/CEO]	1,175		959,134	50.095
22 JUN 2023 - 22 JUN 2023	TANCO	DATO' SRI ANDREW TAN JUN SUAN [SSH]	-70,000		158,902	19.291
22 JUN 2023 - 22 JUN 2023	TANCO	DATO' SRI ANDREW TAN JUN SUAN [SSH]	1,175		959,134	50.095
19 JUN 2023 - 19 JUN 2023	TENAGA	EMPLOYEES PROVIDENT FUND BOARD [SSH]	4		929,771	16.075
16 JUN 2023 - 16 JUN 2023	TENAGA	EMPLOYEES PROVIDENT FUND BOARD [SSH]	171		929,767	16.07
21 JUN 2023 - 21 JUN 2023	TIMECOM	KUMPULAN WANG PERSARAAN (DIPERBADANKAN) ("KWAP") [SSH]	-644		102,740	5.588

Notice Period is 18th June - 24th June 2023

Effective Change Date	Stock Name	Buyer/ Seller Name [Classification]	Bought / (Sold) ['000]		No. of Shares After Trade ['000]	
			Total	% Held	Total	% Held
19 JUN 2023 - 19 JUN 2023	TIMECOM	EMPLOYEES PROVIDENT FUND BOARD [SSH]	-1,576		132,874	7.227
20 JUN 2023 - 20 JUN 2023	TIMECOM	KUMPULAN WANG PERSARAAN (DIPERBADANKAN) ("KWAP") [SSH]	-125		103,384	5.623
16 JUN 2023 - 16 JUN 2023	TIMECOM	EMPLOYEES PROVIDENT FUND BOARD [SSH]	2,320		134,450	7.313
19 JUN 2023 - 19 JUN 2023	TIMECOM	KUMPULAN WANG PERSARAAN (DIPERBADANKAN) ("KWAP") [SSH]	-323		103,508	5.63
15 JUN 2023 - 15 JUN 2023	TIMECOM	EMPLOYEES PROVIDENT FUND BOARD [SSH]	876		132,131	7.187
16 JUN 2023 - 16 JUN 2023	TIMECOM	KUMPULAN WANG PERSARAAN (DIPERBADANKAN) ("KWAP") [SSH]	-157		103,831	5.647
14 JUN 2023 - 14 JUN 2023	TIMECOM	EMPLOYEES PROVIDENT FUND BOARD [SSH]	1,664		131,254	7.139
19 JUN 2023 - 19 JUN 2023	TM	EMPLOYEE PROVIDENT FUND BOARD (EPF BOARD) [SSH]	-218		603,568	15.792
16 JUN 2023 - 16 JUN 2023	TM	EMPLOYEE PROVIDENT FUND BOARD (EPF BOARD) [SSH]	-1,792		603,787	15.798
15 JUN 2023 - 15 JUN 2023	TM	EMPLOYEE PROVIDENT FUND BOARD (EPF BOARD) [SSH]	-4		605,579	15.845
16 JUN 2023 - 16 JUN 2023	TM	KUMPULAN WANG PERSARAAN (DIPERBADANKAN) [SSH]	-1,000		415,238	10.864
14 JUN 2023 - 14 JUN 2023	TM	EMPLOYEE PROVIDENT FUND BOARD (EPF BOARD) [SSH]	-733		605,582	15.845
09 JUN 2023 - 15 JUN 2023	TRC	DATO RICHARD KHOO TENG SAN [DIR/CEO]	200		12,211	2.59
19 JUN 2023 - 19 JUN 2023	UMW	EMPLOYEES PROVIDENT FUND BOARD [SSH]	457		107,756	9.223
16 JUN 2023 - 16 JUN 2023	UMW	EMPLOYEES PROVIDENT FUND BOARD [SSH]	40		107,299	9.184
15 JUN 2023 - 15 JUN 2023	UMW	EMPLOYEES PROVIDENT FUND BOARD [SSH]	13		107,259	9.181
14 JUN 2023 - 14 JUN 2023	UMW	EMPLOYEES PROVIDENT FUND BOARD [SSH]	16		107,246	9.18
19 JUN 2023 - 19 JUN 2023	UTDPLT	EMPLOYEES PROVIDENT FUND BOARD [SSH]	-372		31,659	7.633
16 JUN 2023 - 16 JUN 2023	UTDPLT	EMPLOYEES PROVIDENT FUND BOARD [SSH]	-285		32,032	7.723
15 JUN 2023 - 15 JUN 2023	UTDPLT	EMPLOYEES PROVIDENT FUND BOARD [SSH]	-139		32,817	7.912
14 JUN 2023 - 14 JUN 2023	UTDPLT	EMPLOYEES PROVIDENT FUND BOARD [SSH]	-70		32,955	7.945
24 FEB 2023 - 19 JUN 2023	UZMA	DATUK FARISHA BINTI PAWAN TEH [DIR/CEO]	365		365	0.104
19 JUN 2023 - 19 JUN 2023	VOLCANO	MR YEAP GUAN SENG [DIR/CEO]	10		10,600	6.424
19 JUN 2023 - 19 JUN 2023	VOLCANO	MR YEAP GUAN SENG [SSH]	10		10,600	6.424
16 JUN 2023 - 16 JUN 2023	VOLCANO	MR YEAP GUAN SENG [DIR/CEO]	90		10,590	6.418
16 JUN 2023 - 16 JUN 2023	VOLCANO	MR YEAP GUAN SENG [SSH]	90		10,590	6.418
21 JUN 2023 - 21 JUN 2023	VS	KUMPULAN WANG PERSARAAN [SSH]	600		347,624	9.069
21 JUN 2023 - 22 JUN 2023	VS	MR BEH CHERN WEI [DIR/CEO]	75		123,431	3.22
20 JUN 2023 - 21 JUN 2023	VS	DATUK BEH KIM LING [DIR/CEO]	125		577,372	15.062
20 JUN 2023 - 21 JUN 2023	VS	DATUK BEH KIM LING [SSH]	125		577,372	15.062
16 JUN 2023 - 16 JUN 2023	VS	EMPLOYEES PROVIDENT FUND BOARD [SSH]	475		251,471	6.56
20 JUN 2023 - 20 JUN 2023	VS	DATUK BEH KIM LING [DIR/CEO]	50		577,247	15.059
20 JUN 2023 - 20 JUN 2023	VS	DATUK BEH KIM LING [SSH]	50		577,247	15.059
16 JUN 2023 - 16 JUN 2023	VS	KUMPULAN WANG PERSARAAN [SSH]	2,150		347,024	9.053
14 JUN 2023 - 14 JUN 2023	VS	EMPLOYEES PROVIDENT FUND BOARD [SSH]	454		250,997	6.548
22 JUN 2023 - 22 JUN 2023	VS-WB	DATUK BEH KIM LING [DIR/CEO]	-1,000		87417	11.488
21 JUN 2023 - 22 JUN 2023	VS-WB	MR BEH CHERN WEI [DIR/CEO]	-9,621		200	0.026
20 JUN 2023 - 21 JUN 2023	VS-WB	DATUK BEH KIM LING [DIR/CEO]	-6,712		88,417	11.62
20 JUN 2023 - 20 JUN 2023	VS-WB	DATUK BEH KIM LING [DIR/CEO]	-4,000		95,129	12.502
19 JUN 2023 - 20 JUN 2023	VSTECs	VSTECs HOLDINGS (SINGAPORE) LIMITED [SSH]	127		156,473	43.885
19 JUN 2023 - 20 JUN 2023	VSTECs	VSTECs HOLDINGS LIMITED [SSH]	127		156,473	43.885
15 JUN 2023 - 16 JUN 2023	VSTECs	VSTECs HOLDINGS (SINGAPORE) LIMITED [SSH]	302		156,346	43.849
15 JUN 2023 - 16 JUN 2023	VSTECs	VSTECs HOLDINGS LIMITED [SSH]	302		156,346	43.849
19 JUN 2023 - 20 JUN 2023	WIDAD	TAN SRI MUHAMMAD IKMAL OPAT BIN ABDULLAH [SSH]	2,200		1,244,361	42.619
16 JUN 2023 - 16 JUN 2023	WIDAD	TAN SRI MUHAMMAD IKMAL OPAT BIN ABDULLAH [SSH]	9,690		1,242,161	42.544
21 JUN 2023 - 21 JUN 2023	WPRTS	KUMPULAN WANG PERSARAAN (DIPERBADANKAN) [SSH]	76		229,367	6.727
20 JUN 2023 - 20 JUN 2023	WPRTS	KUMPULAN WANG PERSARAAN (DIPERBADANKAN) [SSH]	11		229,292	6.724
15 JUN 2023 - 15 JUN 2023	WPRTS	EMPLOYEES PROVIDENT FUND BOARD [SSH]	200		310,731	9.112
21 JUN 2023 - 21 JUN 2023	WTHORSE	MR CHENG SOON MONG [DIR/CEO]	-1,013		6,071	2.753
20 JUN 2023 - 20 JUN 2023	YENHER	MR CHENG MOOH KHENG [DIR/CEO]	100		145,600	48.533
21 JUN 2023 - 21 JUN 2023	YINSON	KUMPULAN WANG PERSARAAN (DIPERBADANKAN) [SSH]	95		190,825	6.565
20 JUN 2023 - 20 JUN 2023	YINSON	KUMPULAN WANG PERSARAAN (DIPERBADANKAN) [SSH]	159		190,730	6.562
16 JUN 2023 - 16 JUN 2023	YINSON	EMPLOYEES PROVIDENT FUND BOARD [SSH]	-301		478,941	16.478
15 JUN 2023 - 15 JUN 2023	YTL	UBS GROUP AG [SSH]	5,867		603,344	5.503

**Disclaimer:** The Information in Insider Activity is extracted from [www.shareinvestor.com/fundamental/insider\\_trades](http://www.shareinvestor.com/fundamental/insider_trades). The information on this page is provided as a service to readers. It does not constitute financial advice and/or any investment recommendations. We assume no liability for damages resulting from or arising out of the use of such information. Whilst every effort is made to ensure accuracy, the information presented is not the official record of shareholder filings. Readers are advised to read the original filings on the Bursa Malaysia website at [www.bursamalaysia.com](http://www.bursamalaysia.com)

## SHAREINVESTOR MARKET DATA PLATFORMS



**SHAREINVESTOR STATION**  
Advanced Charting Software  
(8 Markets)



**SHAREINVESTOR WEBPRO**  
Browser-Based Market Data  
Analytics Platform



**BURSASTATION**  
Advanced Charting Software  
(Bursa Malaysia Only)

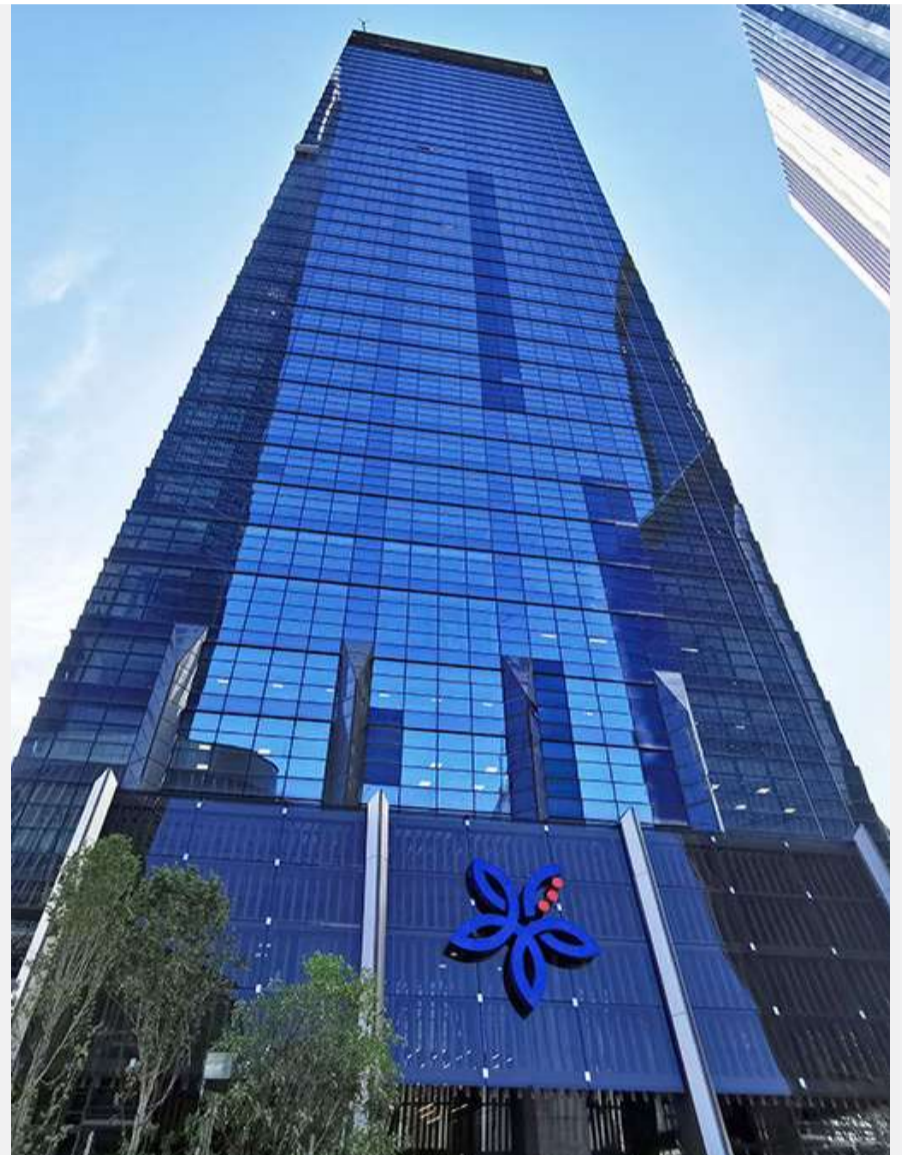




The Board of Directors of **Advance Synergy Berhad (ASB)** wishes to announce that the shareholders had at the 99th AGM held on Tuesday, 27 June 2023 approved all the resolutions as set out in the Notice of the 99th AGM dated 28 April 2023 by way of poll. The results of the poll were duly validated by Coopers Professional Scrutineers Sdn Bhd, the Independent Scrutineers appointed by ASB.



**Affin Bank Berhad (AFFIN)** is pleased to announce that the Bank, had on 23 June 2023 issued RM500,000,000 second series AT1CS under the AT1CS Programme in anticipation of the redemption of the existing AT1CS of RM500,000,000 in nominal value on the first callable date on 31 July 2023. The issuance had attracted overwhelming interest from investors where ABB had received bids in excess of RM500,000,000, representing an oversubscription of 1.31 times. The tenure of the AT1CS issued is perpetual on a non-callable 5 years. The coupon rate for the AT1CS is 5.70% per annum fixed throughout the tenure. The proceeds from the AT1CS shall be utilized for the general banking working capital requirements and business purposes of the Bank. AT1CS issued from the AT1CS Programme will qualify as Basel III-compliant Additional Tier 1 Capital of ABB in accordance with the Capital Adequacy Framework (Capital Components) issued on 2 February 2018 by Bank Negara Malaysia. Affin Hwang Investment Bank Berhad, Maybank Investment Bank Berhad and CIMB Investment Bank Berhad are the Joint Lead Managers for the second issuance of RM500,000,000 AT1CS.







On behalf of the Board of **Bintai Kinden Corporation Berhad (BINTAI)**, M&A Securities is pleased to announce that the Proposed Private Placement of up to 10%

of the issued shares in Bintai has been completed following the listing of 85,314,000 Placement Shares on the Main Market of Bursa Malaysia Securities Berhad.



**BONIA CORPORATION BERHAD**

The Board of **Bonia Corporation Berhad (BONIA)** wishes to provide the following additional information on the Disposal:

### **Detailed Basis and Justification for the Disposal Consideration**

The Disposal Consideration of RM17,597,330.00 was determined at a willing buyer-willing seller basis after arm's length negotiations by reference to the unaudited net assets (NA) of SBG Group as at 30 April 2023 amounting to RM58,657,764.08. The Board also compared the price-to-earnings multiple (PE multiple) of SBG Group with that of the Company and other selected comparable companies which are currently listed on Bursa Securities under 'Consumer Products and Services' sector and are principally engaged in the marketing and distribution of fashionable products such as bags, footwear and accessories. The other selected Comparable Companies are Padini Holdings Berhad, MESB Berhad and Carlo Rino Group Berhad. The following was noted by the Board:

- (i) the PE Multiple of SBG Group is 9.52 times (computed based on SBG Group's net profit attributable to owners of the Company (PATAMI) for the trailing 12-month period ended 31 March 2023);
- (ii) the PE Multiple of Bonia is 6.88 times and the range of PE Multiple of Comparable Companies is 6.06 times to 15.66 times (computed based on PATAMI of respective companies for the trailing 12-month period ended 31 March 2023 or 31 December 2022, where applicable); and

(iii) the median PE Multiple of Comparable Companies is 8.79 times. Hence, the Disposal Consideration which is equivalent to 30% of the unaudited NA of SBG Group as at 30 April 2023 was concluded at premium of PE Multiple of Bonia and median of range of PE Multiple of Comparable Companies, respectively.

**Intended application of the Sale Proceeds**

The sale proceeds of RM17,597,330.00 from the Disposal will be utilised in the following manner:

Purpose	Estimated time frame for utilisation from completion date of the SSA	Amount (RM'000)
Renovation cost of new boutiques	Within 6 months	1,800
General corporate and working capital	Within 24 months	15,797
<b>Total</b>		<b>17,597</b>

The renovation cost relates to the opening of new BONIA and Braun Buffel boutiques at selected prime location. The general corporate and working capital requirements of the Group includes, but not limited to, day-



to-day operating expenses, advertisement and marketing expenses and purchase of inventories in relation to the Group’s business. The breakdown given above is in line with the growth strategy of the Group. The actual amount to be utilised by each component may differ subject to the operating requirements at the time of utilisation. Pending utilisation, the proceeds received will be placed in interest-bearing deposits with financial institutions to earn interest income.





The Board of **Kinergy Advancement Berhad (KAB)** wishes to announce that KABEH and FNSB, had mutually agreed to extend the CP Long Stop Date as stipulated in the Agreement in relation to the Proposed Acquisition to 24

July 2023.



On behalf of the Board of Directors of **KPJ Healthcare**

**Berhad (KPJ)**, Affin Hwang Investment Bank Berhad wishes to announce that the subsidiaries of KPJ propose to enter into 4 separate lease agreements with AmanahRaya Trustees Berhad (ART or Lessor), being the trustee for and on behalf of Al`Aqar Healthcare REIT (Al`Aqar), and Damansara REIT Managers Sdn. Bhd. (DRMSB or Manager), being the manager of Al`Aqar (Lease Agreements), to renew the lease of the Properties (as defined in Section 2 of this announcement) (Proposed Lease Renewal). The Proposed Lease Renewal is a related party transaction pursuant to the Main Market Listing Requirements of Bursa Malaysia Securities Berhad by virtue of the interests of the Interested Directors and Interested Major Shareholder as detailed in Section 7 of this announcement.







The Board of Directors of **Leform Berhad (Leform)** wishes to announce that all the resolutions as set out in the Notice of the Twenty-Eighth Annual General Meeting of the Company held at Sheraton Hotel, Petaling Jaya Lorong Utara C, PJS 52, 46200 Petaling Jaya, Selangor on Tuesday, 27 June 2023 were duly passed by the shareholders of the Company by way of poll. The results of the poll were validated by Quantegic Services Sdn Bhd, the Independent Scrutineer appointed by the Company.



The Board of Directors of **LGMS Berhad (LGMS)** wishes to announce that the shareholders of the Company had at the 2nd Annual General Meeting (AGM) of the Company held on 26 June 2023 approved the appointment of Messrs Crowe Malaysia PLT as Auditors of the Company in place of the retiring auditors, Messrs Baker Tilly Monteiro Heng PLT.





MALAYSIA BUILDING SOCIETY BERHAD (9417-K)

On behalf of the Board of **Malaysia Building Society Berhad (MBSB)**, AmInvestment Bank wishes to announce that Bursa Securities had vide its letter dated 22 June 2023, approved the listing of and quotation for 1,050,828,629 new MBSB Shares to be issued pursuant to the Proposed Acquisition subject to

the, amongst others, following conditions:-

- (i) MBSB and AmInvestment Bank must fully comply with the relevant provisions under the Listing Requirements pertaining to the implementation of the Proposed Acquisition;
- (ii) AmInvestment Bank to inform Bursa Securities upon the completion of the Proposed Acquisition;
- (iii) MBSB / AmInvestment Bank to furnish a certified true copy of the resolution passed by the shareholders approving the Proposed Acquisition;
- (iv) MBSB / AmInvestment Bank must observe and ensure full compliance with the 25% public shareholding spread requirement pursuant to Paragraph 8.02(1) of the Listing Requirements prior to the listing and quotation of the Final Consideration Shares pursuant to the Proposed Acquisition; and
- (v) AmInvestment Bank to furnish Bursa Securities with a written confirmation of its compliance with the terms and conditions of Bursa Securities' approval once the Proposed Acquisition is completed.

## Upcoming IPO

NAME OF COMPANY	OFFER PERIOD		ISSUE PRICE (Per Ordinary Share)	LISTING SOUGHT	DATE OF LISTING
	OPENING	CLOSING			
DAYTHREE DIGITAL BERHAD	21 Jun 2023	11 Jul 2023	RM0.30	ACE MARKET	26 Jul 2023
MST GOLF GROUP BERHAD	28 Jun 2023	07 Jul 2023	RM0.81	MAIN MARKET	20 Jul 2023
DC HEALTHCARE HOLDINGS BERHAD	27 Jun 2023	05 Jul 2023	RM0.25	ACE MARKET	17 Jul 2023
SKYWORLD DEVELOPMENT BERHAD	20 Jun 2023	27 Jun 2023	RM0.80	MAIN MARKET	10 Jul 2023

ShareInvestor is a technology based company with a focus on Internet media and we have operations in Malaysia, Singapore and Thailand.

We are the market leader in providing a combination of market data, analysis and news on various platforms to traders and investors.

Our websites include [www.shareinvestor.com](http://www.shareinvestor.com) and [www.bursastation.com](http://www.bursastation.com).

More information about our products and services can be found at [www.shareinvestorholdings.com](http://www.shareinvestorholdings.com)

**We're looking for Drupal Developers who will be in charge of front-end development and back-end/module development. This role requires expertise in PHP, HTML, CSS, JS, and an eye for design aesthetics. The candidates should be familiar and have a passion working with content management systems.**

Interested candidates are encouraged to apply with full resume, present and expected salary and a recent photograph. Please send these to [hr.my@shareinvestor.com](mailto:hr.my@shareinvestor.com) for processing. ShareInvestor regrets that only shortlisted candidates shall be notified.

## Drupal Developers (2 vacancies)

### Job Responsibilities:

- Active participation in all UI / UX decisions
- Contribute actively to the continuous development and maintenance of development projects
- Enhance Drupal development quality
- Provide solutions to issues and suggestions for improvements.
- Designing and implementing new features to the system
- Ensuring optimal performance

### Required Skills:

- At least 3 years of Drupal Theming and Front-End Development experience
- Proficient in PHP, HTML5/XHTML, CSS, Javascript, jQuery, AJAX, XML, Json
- Good Diploma/Degree in Computer Science/Computer Engineering.
- Experience working with Drupal's main modules, such as CTools, Views, Rules, Webform, and so on
- Ability to create custom Drupal modules
- Strong troubleshooting skills to fix bugs

### Benefits:

- Career & growth opportunities
- Interesting projects
- Medical Insurance
- Incentives

## Ruby on Rails Developer (1 vacancy)

### Job Responsibilities:

- Develop quality web-based software modules on schedule with a focus on Ruby and Ruby on Rails applications.
- Explore and utilize the latest web-based technologies.
- Document design specifications, logic concepts and module description.
- Maintain and enhance existing web-based applications.

### Required Skills:

- Experience in web-based programming/scripting is essential. Candidate must be able to explain clearly technical aspects of his/her past experiences and projects.
- Passion for programming and desire to learn new languages like Go.
- Good Diploma/Degree in Computer Science/Computer Engineering.
- Able to work well in a team and be able to follow documentation and coding standards.
- Knowledge in any of the following would be an added advantage
  - Ruby and Ruby on Rails Framework
  - Javascript and jQuery library
  - Go
  - Perl



## Application Developer (C++/STL) (1 vacancy)

### Job Responsibilities

- Deliver quality software modules on schedule.
- Document design specifications, conceptions, module description.
- Maintain and enhance existing applications.

### Required Skills:

- Passion for programming and desire to learn.
- Good Diploma/Degree in Computer Science/Computer Engineering.
- Skills in C++ is essential.
- Experience with Visual Studio, networking stack and Golang would be an advantage.
- Proactive, resourceful and self-motivated with strong analytical skills.
- Good interpersonal, written and communication skills.
- Able to work with little supervision.

## Junior Market Data Support Specialist

As a Junior Market Data Support Specialist, you will be involved in reviewing, analysing and collecting accurate and timely financial information on listed companies for our market data information services.

### Job Responsibilities

- Collect, compute and analyse relevant financial data of listed companies, organise and present them on the company portal, in timely manner, for the consumption by our subscribers and our corporate clients
- Capture corporate events / actions and translate them to adjustments of impacted financial data
- Research, evaluate, propose new solutions or recommendations for adhoc project requirements that are related to the financial data or the financial fundamentals of listed companies
- Provide support to users' queries related to financial information displayed on our platforms
- Perform any other duties assigned from time to time, including rare occasions of working during weekends

### Required Skills

- Minimum academic qualification: Diploma in any finance-related discipline
- Knowledge of basic accounting and financial terms is required
- Flair for data precision / accuracy / quality / thoroughness plus strict adherence to structured data process and timeline is a must
- Proficient in Microsoft Excel
- Team player with pleasant personality
- Proficient in English, oral and written.

*Fresh graduates are welcome to apply.*

Interested candidates are encouraged to apply with full resume, present and expected salary and a recent photograph. Please send these to [hr.my@shareinvestor.com](mailto:hr.my@shareinvestor.com) for processing. ShareInvestor regrets that only shortlisted candidates shall be notified.