

Invest

A Weekly e-Publication by SHAREINVESTOR.com

ISSUE

157

FRIDAY
19 MAY
2023

Scan/Click QR to Register



Via email, every Friday



Guest of Honour
**YB TUAN MOHD
RAFIZI BIN RAMLI**
Minister of Economy

INVEST FAIR 2023 GROW YOUR MONEY Lahh!

Hall 1, Mid Valley Exhibition Centre, Kuala Lumpur | 3 & 4 June 2023
10am - 9pm

 Christopher Lee CEO and Director, ShareInvestor Group	 Ong Soon Chong Head of ETF & ESG Investment, iVCAP Management Sdn Bhd, (Representing Bursa Malaysia)	 Jerry Lee Portfolio Manager, FSMOne	 Kevin Khaw Research Analyst, FSMOne	 Choong Kum Kie Equity Derivatives Sales, Macquarie Warrants Malaysia	 Kathlyn Toh Founder and Chief Trainer, Beyond Insight	 Martin Wong Co-Founder, TradeVSA System Sdn Bhd	 Ronnie Chai Dealer Representative, CGS-CIMB
 Zarith Najihah Dealer Representative, CGS-CIMB	 Aaron Tang General Manager (APAC), Luno	 Charlie Yuan Ting Jing CFA, CQF - Co-Founder & COO, TED Optimus	 Jeffrey Azizi Jaafar Senior Remisier, Althea Quant	 Michael Chang CIO, RHB Asset Management	 Nick Tan Investor & Co-Founder, Property Talk & Lifestyle Malaysia	 Pn. Nor Akmar Remisier, Team leader, Writer & founder of idea Saham	 Samantha Loh Corporate Engagement and Management Manager, Private Pension Administrator Malaysia (PPA)
 Wayne Leong Managing Director, U Plus Realty Sdn Bhd	 Chong Jin Yoong, CFA President, CFA Society Malaysia	 Devanesan Eyanson Chief Executive Officer - Minority Shareholders Watch Group (MSWG)	 Dr. Renard Siew Head of Sustainability, Yinson Holdings Bhd	 Dr. Matin Ng Chin Liang Deputy CEO, UWC Berhad	 Dr. Zaharuddin Managing Director, Elzar Shariah Solution Sdn Bhd	 Isabelle Zhen Head of Sales, Retail Equity Derivatives, NagaWarrants by Kenanga	 John Huo Founder, VUCA Insights
 Lim Dau Hee COO and Director, ShareInvestor Group	 Neoh Jia Man CFA - Portfolio Manager, TradeView Capital	 Ng Zhu Hann CEO, Tradeview Capital Sdn. Bhd.	 Peter Lim Founder & Head of Research, Trident Analytics Sdn Bhd	 Reggie Founder, The Financial Coconut	 Shanlin Lin Group Managing Director, ShareInvestor	 Tracey Ooi Chief Financial Officer, Sunview Group Berhad	 Aaron Pek Value Investing Substack
 Afif Iza Shahrin Iza Research & Development, SmartSaham	 Anson Tan Founder, BullBearBursa	 Charles Tan Founder, Kopi And Property	 George Poh Director, EE Cameron	 HY Co-founder, DoltDuit	 Kelvin Yap Founder, Round & Surge	 Max Tan Founder, 12Invest	 Mohd Faisal Founder, Mamu Saham x Trading
 Shane Choo Director, WealthFort	 Sheng Founder, Trading Interns	 邱天雄 创办人兼CEO, 通资有限公司	 Royce Teh Professional Trader, Yutaka Shoji	 Yan Yue Founder, MBusiness	 YC Chin Founder, S.W.C 股視天下	 Yih Jia Founder, 坤豹股師	 Zuraida Mohd Zakaria Remisier, Cikgu Saham

ORGANISED BY:



SUPPORTED BY:



REGISTER FOR FREE

Invest

A Weekly e-Publication by SHAREINVESTOR.com

ISSUE

157

FRIDAY
19 MAY
2023

Scan/Click QR to Register



Via email, every Friday

MALAYSIA TO INVEST HEAVILY IN GREEN AND DIGITAL ECONOMY - RAFIZI RAMLI

(page 23)

04	LEADERBOARD	12	UP TRENDING STOCKS	23	MARKET SENTIMENTS
06	SHARIAH HOT STOCKS	14	VALUE STOCKS	27	REGIONAL MARKETS
07	COMPANY SPOTLIGHT	16	GROWTH STOCKS	28	FROM THE OBSERVER
08	SHARIAH MOMENTUM UP STOCKS	18	DIVIDEND STOCKS	31	INSIDER ACTIVITY
10	NON SHARIAH HOT STOCKS	20	BROKERS' CALL	34	INVESTOR RELATIONS
		21	LONG COMPANIES	39	CAREERS AT SHAREINVESTOR



INVESTOR PLATFORMS

Director
Darren Chong
darren.chong@shareinvestor.com

Manager
Heidee Ahmad
heidee.ahmad@shareinvestor.com

Business Development Manager
Jay Cheong
jay.cheong.@shareinvestor.com

Senior Executive
Daniel Wong
daniel.wong@shareinvestor.com

Executive
Farah Azwani
farah.azwani@shareinvestor.com

Executive
Tan Yong Sheng
yongsheng.tan@shareinvestor.com

ADMIN & OPERATIONS

Senior Executive
Watie Nordin
watie.nordin@shareinvestor.com

Executive
Silas Emmanuel Joseph
silas.joseph@shareinvestor.com

INVESTOR RELATIONS

Group Managing Director & Publisher
Edward Stanislaus
edward@shareinvestor.com

Director
Elizabeth Tan
elizabeth.tan@shareinvestor.com

Senior Manager
Letticia Wong
letticia.wong@shareinvestor.com

PROCESS AUTOMATION & DATA ANALYTICS

Data Analyst
Nickson Aw

SHAREINVESTOR HOLDINGS BOARD OF DIRECTORS

Chairman		Patrick Daniel
Group CEO		Christopher Lee
Group COO		Lim Dau Hee
Group CFO		Teo Siew May
Group MD		Shanison Lin



ShareInvestor Malaysia Sdn. Bhd.
(200001023956) (526564-M)
Unit No. DF2-07-03A. Level 7,
Persoft Tower, 6B Persiaran Tropicana,
47410 Petaling Jaya, Selangor Darul Ehsan.

Hotline : 603 7803 1791
Mobile : 011 6343 8939
Website : www.ShareInvestor.com.my
www.ShareInvestorHoldings.com
www.Facebook.com/ShareInvestorMalaysia

ADVERTISEMENT ENQUIRY

XTRA

A true icon lasts.
A true icon evolves.

Since 2002, **Okamura Contessa** has set the standard for seating in office spaces around the world.

Contessa unites the flowing, organic lines and charm of the original with new engineering and functionality. With more color options for the mesh, fabric, and frame. All to meet the demands of the modern work style.

Contessa is the evolution of an icon – for the workplace of today, and of tomorrow.












PURNELL

ONLY TOURBILLON



ESCAPE II
FORGED CARBON

Purnell Asia

Tel.: +65.9817.3378

Email: sales.sg@purnellwatches.com

@ Purnell_Official

www.purnellwatches.com

PLAY



www.shareinvestor.com - market data at your fingertips



ShareInvestor WebPro (www.shareinvestor.com/my)
Prices > Stock Prices > Bursa > click Stocks tab

1. mouse over Ranking > select Top Active > all Shariah stocks are denoted with an [S] > mouse over Column Layout > select Edit Customs > select Name > select Volume > select Last Done Price > Mouse Over Column Layout > select Custom
2. mouse over Ranking > select Top Turnover > all Shariah stocks are denoted with an [S] > mouse over Column Layout > select Edit Customs > select Name > select Last Done Price > select Value > Mouse Over Column Layout > select Custom
3. mouse over Ranking > select Top Gainers (Over 5 Trading Days) > mouse over Column Layout > select Edit Customs > select Name > select Last Done Price > select 5 Days Change > select 5 Days % Change > Mouse Over Column Layout > select Custom
4. mouse over Ranking > select Top Losers (Over 5 Trading Days)
5. mouse over Ranking > select Top % Gainers (Over 5 Trading Days)
6. mouse over Ranking > select Top % Losers (Over 5 Trading Days)

Shariah Top Actives (as at Yesterday)

Name	Price (RM)	Volume
TOPGLOV [S]	1.170	1,089,890.000
VELESTO [S]	0.255	877,203.000
WIDAD [S]	0.430	693,341.000
JADEM [S]	0.240	624,223.000
SUPERMX [S]	0.995	575,140.000
CAREPLS [S]	0.325	511,049.000
HARTA [S]	2.680	426,913.000
TANCO [S]	0.505	365,632.000
BAHVEST [S]	0.120	339,781.000
DNEX [S]	0.450	326,709.000

Shariah Top Turnover (as at Yesterday)

Name	Price (RM)	Value (RM)
TOPGLOV [S]	1.170	125,513,866
HARTA [S]	2.680	107,030,218
TENAGA [S]	9.790	91,058,533
SUPERMX [S]	0.995	56,853,084
KOSSAN [S]	1.520	41,049,213
AIRPORT [S]	7.430	33,279,694
WIDAD [S]	0.430	29,776,620
KLK [S]	22.720	27,640,874
IHH [S]	5.950	27,452,959
VELESTO [S]	0.255	22,814,216

Top Gainers (over 5 Trading days as at Yesterday)

Name	Price (RM)	Change (RM)
RAPID	18.980	+0.740
KLK	22.720	+0.700
TENAGA	9.790	+0.700
HARTA	2.680	+0.500
AAX	1.800	+0.400
BAT	10.980	+0.400
MCEMENT	2.820	+0.380
DLADY	26.140	+0.340
HUMEIND	1.330	+0.320
IMASPRO	6.000	+0.310

Top % Gainers (over 5 Trading days as at Yesterday)

Name	Price (RM)	Change (%)
FINTEC	0.010	+100.00
DGB	0.015	+50.00
MMAG	0.015	+50.00
TWL	0.045	+50.00
MLAB	0.020	+33.33
HUMEIND	1.330	+31.68
SENDAI	0.085	+30.77
AAX	1.800	+28.57
CRG	0.250	+28.21
AHB	0.165	+26.92

Top Losers (over 5 Trading days as at Yesterday)

Name	Price (RM)	Change (RM)
CARLSBG	21.220	-0.480
BLDPLNT	10.360	-0.460
MPI	28.280	-0.460
CIHLDG	3.300	-0.380
EPMB	0.620	-0.210
ORIENT	6.620	-0.190
TAANN	3.140	-0.170
BAT	10.500	-0.160
PCHEM	7.040	-0.160
CHINHIN	4.320	-0.140

Top % Losers (over 5 Trading days as at Yesterday)

Name	Price (RM)	Change (%)
VINVEST	0.070	-64.10
PHB	0.005	-50.00
PJBUMI	0.905	-27.60
BCMALL	0.015	-25.00
FOCUS	0.015	-25.00
SANICHI	0.015	-25.00
SCOMIES	0.015	-25.00
TECHNAX	0.015	-25.00
XOX	0.015	-25.00
SNTORIA	0.050	-23.08

INVEST FAIR® 2023

GROW YOUR MONEY *Lahh!*

Hall 1, Mid Valley Exhibition Centre, Kuala Lumpur
3rd - 4th June 2023 | 10am - 9pm

Join & Win



RM20,000

 worth of prizes

REGISTER FOR FREE



ORGANISED BY:



SUPPORTED BY:



Price & Volume Distribution Charts (as at Yesterday)

Technical Analysis

DEFINITION: Shariah compliant stocks with Technical Analysis showing 5-days & 10-days Moving Average Price below Yesterday's Close over past 3 days and with Volume Spike.

CHART GUIDE: Volume Distribution Chart is a statistical interpretation of the current sentiment on each stock in graphical format. The highest bar categorized as >150k is likely to be traded by institutions or super dealers, while the lowest bar categorized as <15k usually represents retail investors. "Buy Up" refers to more buyers snatching up the lots queued at selling price. "Sell Down" refers to sellers selling their shares to the buying queue



ShareInvestor WebPro > Screener > Market Screener (FA & TA) > select BURSA > add criteria

A. Criteria

- > click Add Criteria
- Technical Analysis Conditions tab select (i) Moving Average Below Close (ii) Volume Spike
- Fundamental Analysis Conditions tab > select (iii) Revenue
- Prices & Other Conditions tab > select (iv) Is Shariah Compliant
- Technical Analysis Conditions tab select (v) Moving Average Below Close
- Prices & Other Conditions tab > select (vi) Last Done Price
- Technical Analysis Conditions tab select (vii) Moving Average Below Close

B. Conditions (Criteria Filters)

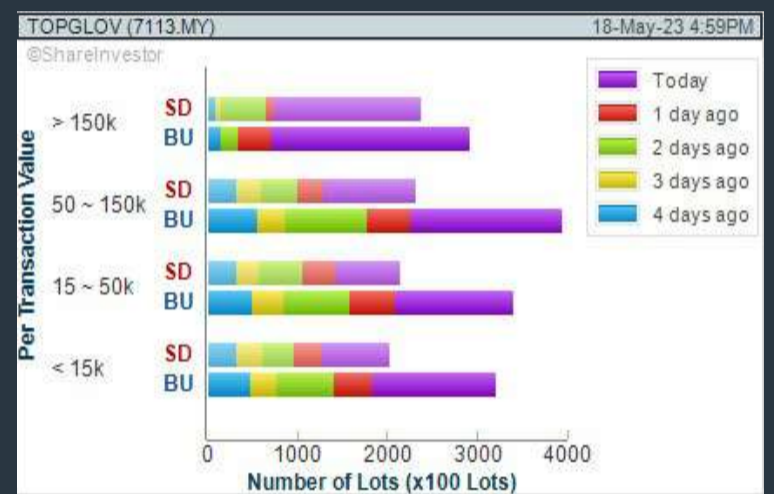
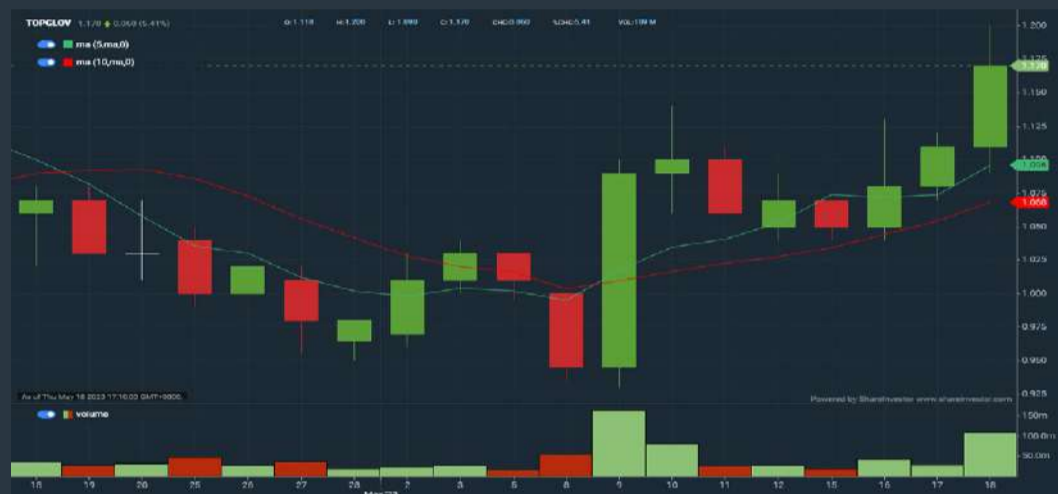
1. Moving Average Below Close - select (MA) type (5) below close price for type (3) days
2. Volume Spike - Volume type (1) greater than type (5) days average
3. Revenue ("000) - select (more than) type (1) for the past select (1) financial year(s)
4. Is Shariah Compliant - select **Yes**
5. Moving Average Below Close - select (MA) type (10) below close price for type (3) days
6. Last Done Price - select (more than) type (0.3)
7. Moving Average Below Close - select (EMA) type (5) below close price for type (3) days

- > click Save Template > Create New Template type (Shariah Hot Stocks) > click Create
- > click Save Template as > select Shariah Hot Stocks > click Save
- > click Screen Now (may take a few minutes)
- > Sort By: Select (Vol) Select (Desc)
- > Mouse over stock name > Charts > click C² Charts or Volume Distribution

TOP GLOVE CORPORATION BERHAD (7113)

C² Chart

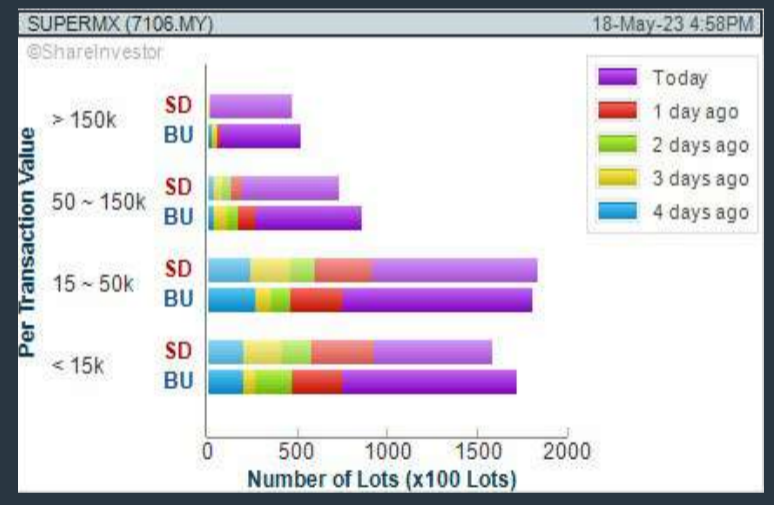
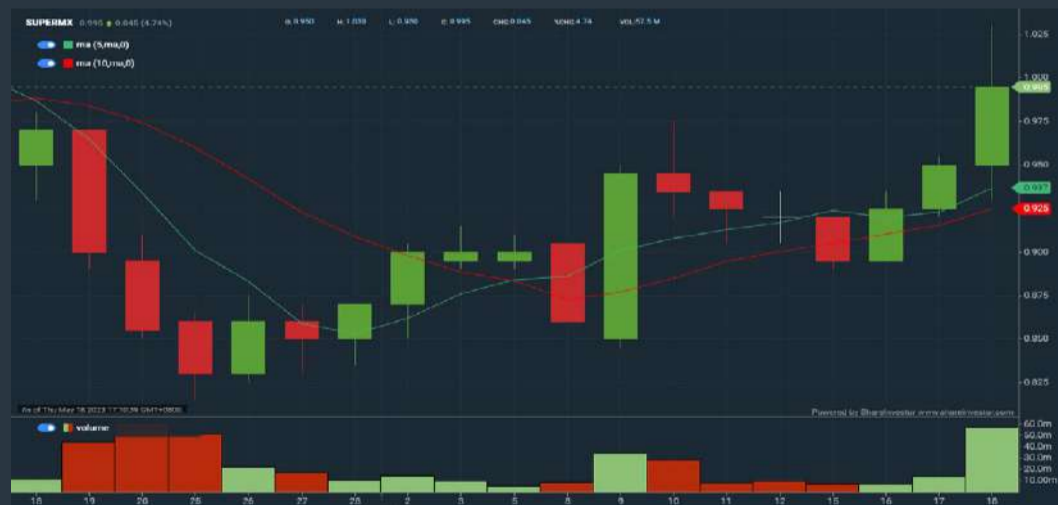
Analysis



SUPERMAX CORPORATION BERHAD (7106)

C² Chart

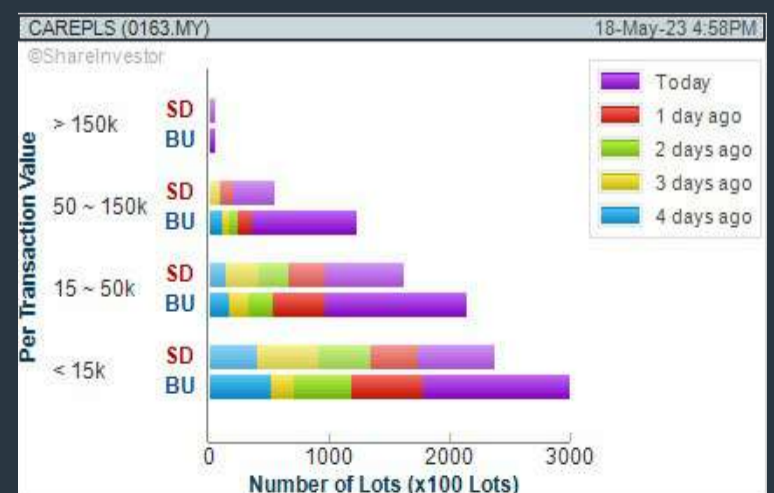
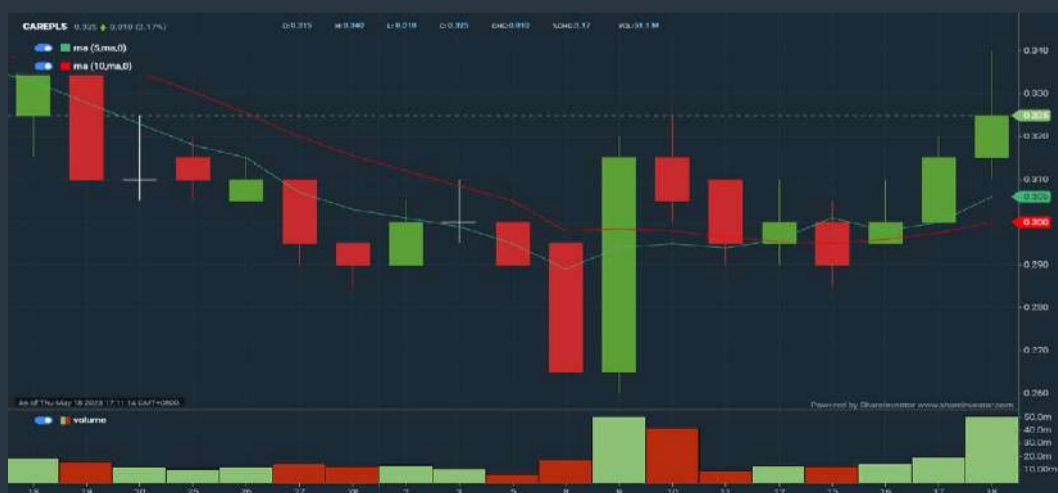
Analysis



CAREPLUS GROUP BERHAD (0163)

C² Chart

Analysis



Disclaimer: The information on this page is provided as a service to readers. It does not constitute financial advice and/or any investment recommendations. Past performance is not indicative of future results. We assume no liability for damages resulting from or arising out of the use of such information. It would be best if you did your own research to make your personal investment decisions wisely or consult a licenced investment advisor.

COMPANY BACKGROUND

Capital A Berhad (formerly known as AirAsia Berhad) is engaged in air transportation services in Malaysia, Indonesia, the Philippines, and internationally under the AirAsia brand. In addition to airlines, the company provides various services through its partner companies, including airline network operations, travel and lifestyle e-commerce platforms, financial and insurance services, logistics services, and lifestyle and entertainment services. The company offers ancillary services such as courier services, cafes, and charter flights.



Select Counter: Bursa CAPITALA (5099.MY) View

CAPITALA CAPITAL A BERHAD Updated at 18 May 2023 16:59

Last (MYR): 0.775	Change: -	High: 0.785	Remarks: s ?
Open	Change (%): -	Low: 0.765	Yesterday's Close: 0.775
Buy Price	0.780	Yesterday's Close	0.775
Buy Volume ('00)	0.775	Sell Price	0.780
Cumulative Volume ('00)	2,962	Sell Volume ('00)	4,903
	67,295	Cumulative Value	5,211,210

Financial Analysis

Profit Growth Losses for past 4 years.	🚩	Piotroski F Score The company has weak financial strength (Piotroski F-Score of 0-2).	🚩
Current Ratio The company may have difficulty meeting short-term obligations with its current assets for 3 consecutive years.	🚩	Debt to Assets High debt to assets for most recent year.	🚩
Debt to Cashflow The company has negative cash flow from operations in most recent year.	🚩	Debt to Equity The company has negative equity in most recent year.	🚩
Free Cash Flow Negative free cash flow for two years or more.	🚩	Gross Profit Margin Gross profit margin is improving by more than 10% a year over the past 60 months.	😊
Net Earnings Margin Company is losing money but net profit margin is improving by more than 10% a year over the past 60 months.	😐	Return on Assets (ROA) Negative ROA for 3 consecutive years.	🚩
Return on Equity (ROE) ROE is decreasing by 10% a year over the past 36 months.	🚩		

😊 Excellent
😄 Good
😐 Neutral
🚩 Be Alert
🚩 Watch Out



Historical Financials

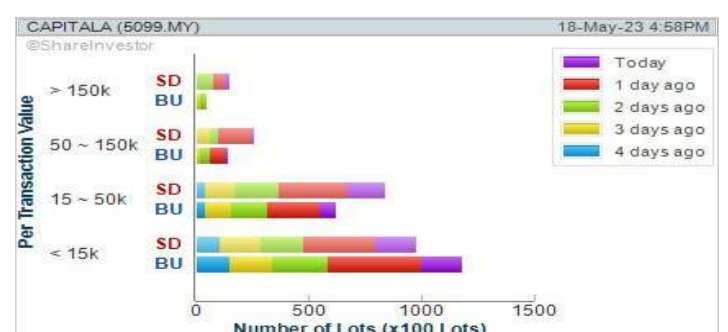


WebPro 9-Days Free Trial Registration (worth RM9) Sign Up Now



Key Statistics with Total Shareholder Returns

Period	Dividend Received	Capital Appreciation	Total Shareholder Returns
Short Term Return	5 Days	+0.015	+1.97%
	10 Days	+0.010	+1.31%
	20 Days	+0.045	+5.15%
Medium Term Return	3 Months	+0.075	+10.21%
	6 Months	+0.195	+25.62%
	1 Year	+0.070	+9.93%
Long Term Return	2 Years	-0.038	-4.87%
	3 Years	+0.020	+3.47%
	5 Years	1.240	+22.42%
Annualised Return	Annualised	-	+4.13%



Disclaimer: The information on this page is provided as a service to readers. It does not constitute financial advice and/or any investment recommendations. Past performance is not indicative of future results. We assume no liability for damages resulting from or arising out of the use of such information. It would be best if you did your own research to make your personal investment decisions wisely or consult a licenced investment advisor.

Price & Volume Distribution Charts (as at Yesterday)

Technical Analysis

DEFINITION: Shariah compliant stocks with Technical Analysis showing Bullish Momentum and Price Uptrend. The share price closed at the highest price yesterday. The typical price was higher than the previous day's typical price.

CHART GUIDE: Volume Distribution Chart is a statistical interpretation of the current sentiment on each stock in graphical format. The highest bar categorized as >150k is likely to be traded by institutions or super dealers, while the lowest bar categorized as <15k usually represents retail investors. "Buy Up" refers to more buyers snatching up the lots queued at selling price. "Sell Down" refers to sellers selling their shares to the buying queue.



ShareInvestor WebPro > Screener > Market Screener (FA & TA)>select BURSA>add criteria

A. Criteria

- > click Add Criteria
- Fundamental Analysis Conditions tab >select (i) Revenue
- Technical Analysis Conditions tab select (ii) Average Volume
- Prices & Other Conditions tab > select (iii) Last Done Price
- Prices & Other Conditions tab > select (iv) Is Shariah Compliant
- Technical Analysis Conditions tab select (v) RSI Overbought
- Technical Analysis Conditions tab select (vi) Moving Average Below Close
- Technical Analysis Conditions tab select (vii) CCI Overbought

B. Conditions (Criteria Filters)

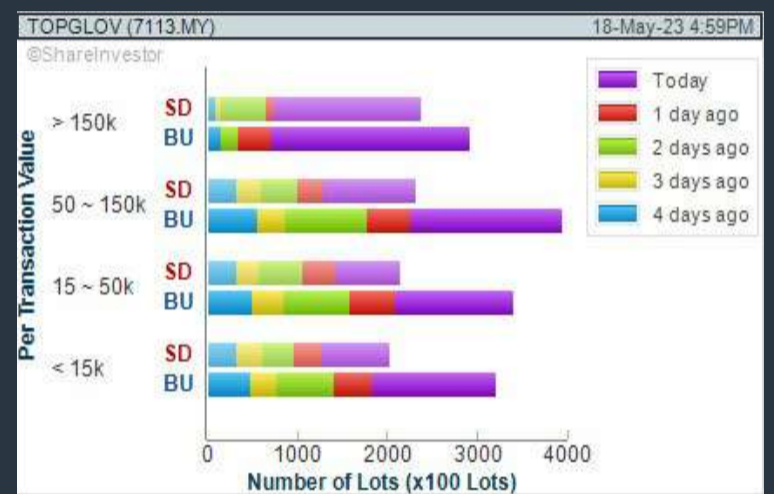
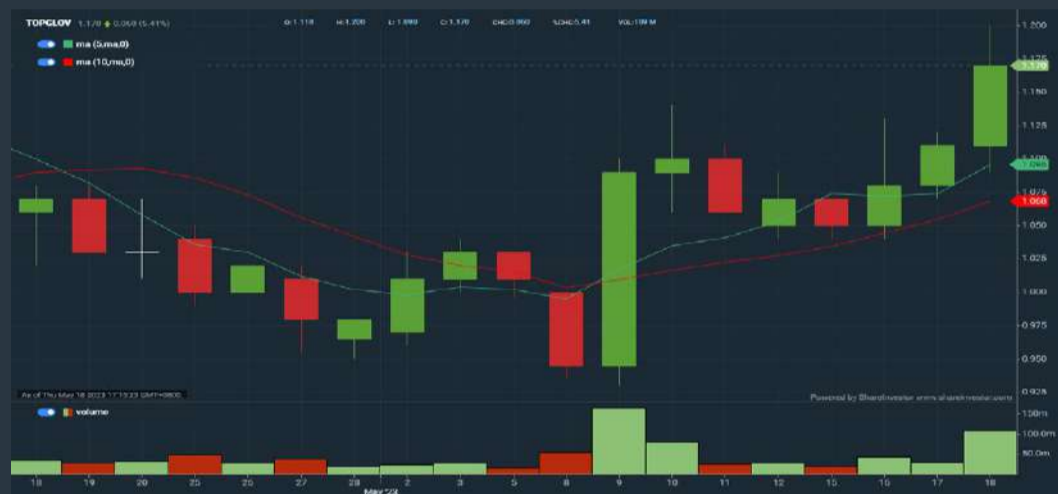
1. Revenue ("000) - select (more than) type (1) for the past select (1) financial year(s)
2. Average Volume - type (1) days average volume greater than type (10000) lots
3. Last Done Price - select (more than) type (0.3)
4. Is Shariah Compliant - select Yes
5. RSI Overbought - select RSI 1 above 99 for 1 days
6. Moving Average Below Close - select (MA) type (10) below close price for type (1) days
7. CCI Overbought - select CCI (2) above (0) for (1) days

- > click Save Template > Create New Template type (Shariah Momentum Up Stocks) > click Create
- > click Save Template as > select Shariah Momentum Up Stocks > click Save
- > click Screen Now (may take a few minutes)
- Sort By: Select (Vol) Select (Desc)
- Mouse over stock name > Charts > click C² Charts tab or Volume Distribution

TOP GLOVE CORPORATION BERHAD (7113)

C² Chart

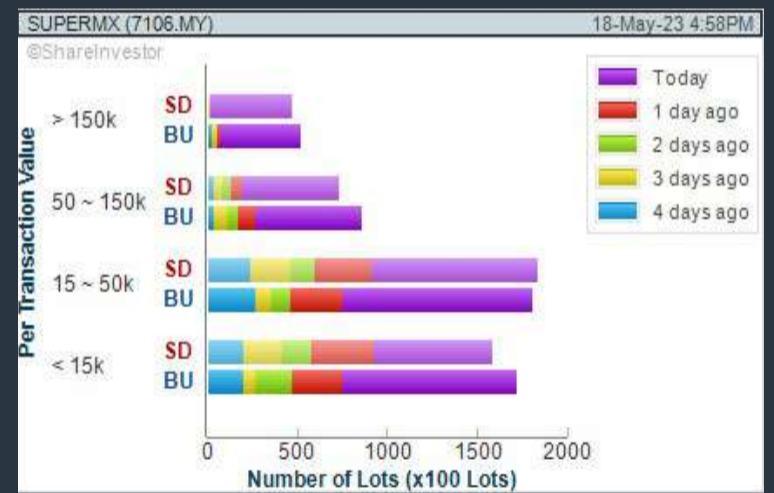
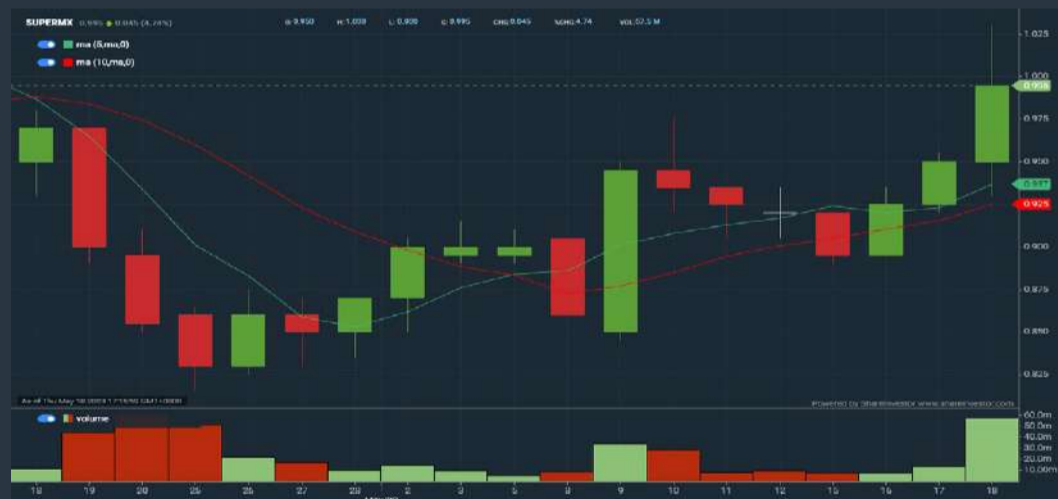
Analysis



SUPERMAX CORPORATION BERHAD (7106)

C² Chart

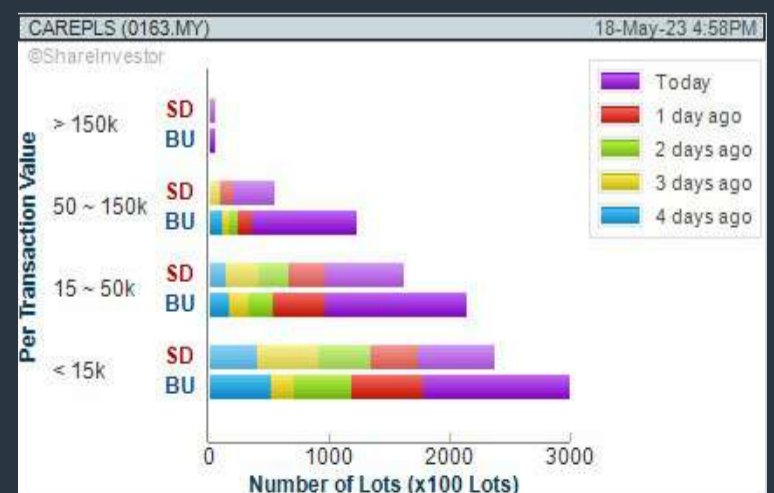
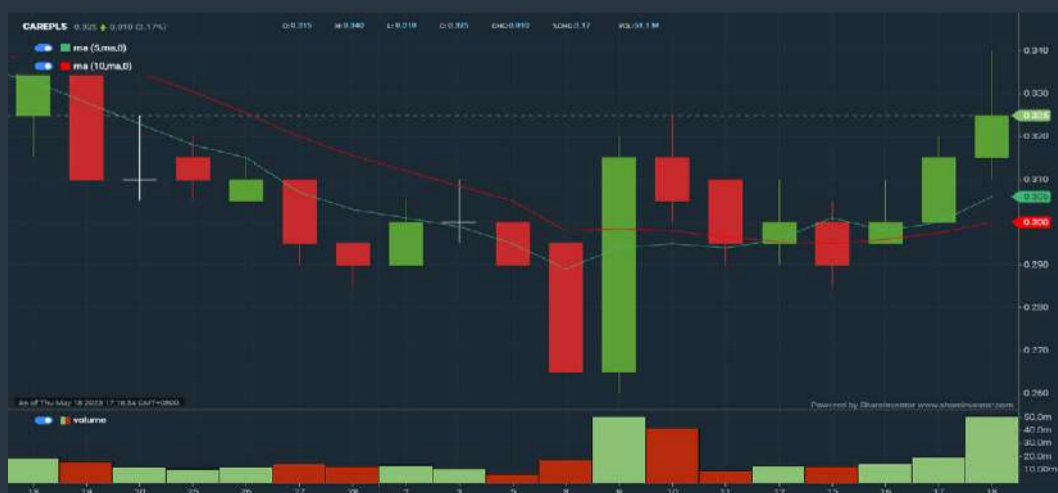
Analysis



CAREPLUS GROUP BERHAD (0163)

C² Chart

Analysis



Disclaimer: The information on this page is provided as a service to readers. It does not constitute financial advice and/or any investment recommendations. Past performance is not indicative of future results. We assume no liability for damages resulting from or arising out of the use of such information. It would be best if you did your own research to make your personal investment decisions wisely or consult a licenced investment advisor.

Make-A-Wish
MALAYSIA

ANNUAL CHARITY GOLF TOURNAMENT
TROPICANA GCR • 25th May 2023

Main Sponsors



**SRI KOTA
SPECIALIST
MEDICAL CENTRE**
The Heart of Healthcare



Southern Acids (M) Berhad

BOOK NOW

Date: **Thursday 25th May 2023**

Time: **1.30pm Tee Off**

Venue: **Tropicana GCR**

Flight cost: **RM5,000 (for 4 golfers)**

TEE OFF FOR HOPE

Since 2010, Make-A-Wish Malaysia has been granting wishes of critically ill children around the country. Funds from this event will help us reach these critically ill children without delay.



SHARE THE POWER OF A WISH

To find out more please call:

Make-A-Wish Malaysia T: (03) 2276 3344 E: info@makeawish.org.my

www.facebook.com/MakeawishMalaysia • www.makeawish.org.my

Price & Volume Distribution Charts (as at Yesterday)

Technical Analysis

DEFINITION: Stocks with Technical Analysis showing 5-days & 10-days Moving Average Price below Close over past 1 days and with Volume Spike

CHART GUIDE: Volume Distribution Chart is a statistical interpretation of the current sentiment on each stock in graphical format. The highest bar categorized as >150k is likely to be traded by institutions or super dealers, while the lowest bar categorized as <15k usually represents retail investors. "Buy Up" refers to more buyers snatching up the lots queued at selling price. "Sell Down" refers to sellers selling their shares to the buying queue.



ShareInvestor WebPro > Screener > Market Screener (FA & TA) > select BURSA > add criteria

A. Criteria

- > click Add Criteria
- Technical Analysis Conditions tab select (i) Moving Average Below Close (ii) Volume Spike
- Fundamental Analysis Conditions tab >select (iii) Revenue
- Prices & Other Conditions tab > select (iv) Is Shariah Compliant
- Technical Analysis Conditions tab select (v) Moving Average Below Close
- Prices & Other Conditions tab > select (vi) Last Done Price
- Technical Analysis Conditions tab select (vii) Moving Average Below Close

B. Conditions (Criteria Filters)

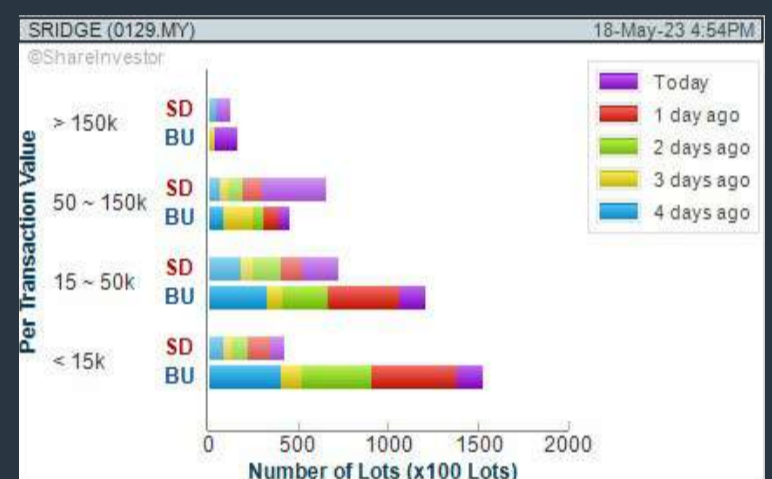
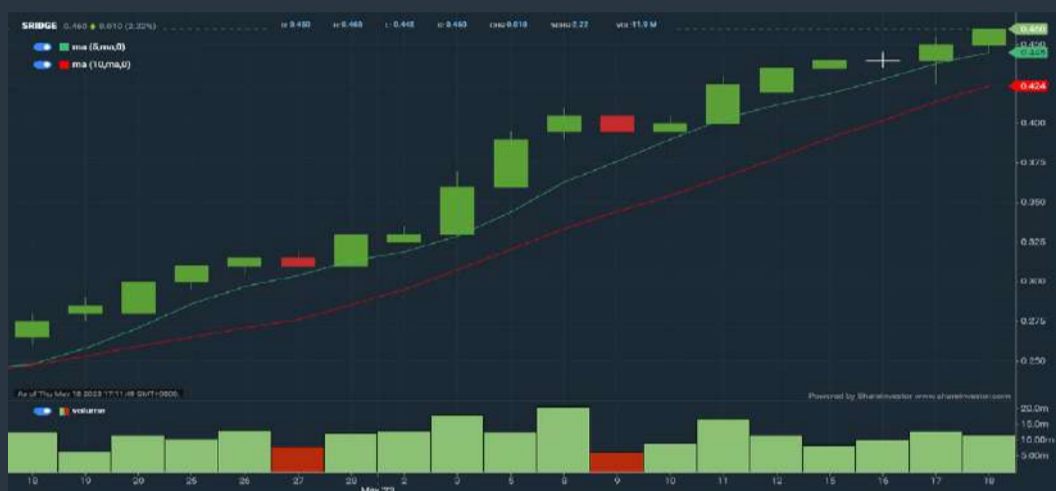
1. Moving Average Below Close - select (MA) type (5) below close price for type (3) days
2. Volume Spike - Volume type (1) greater than type (5) days average
3. Revenue ("000) - select (more than) type (1) for the past select (1) financial year(s)
4. Is Shariah Compliant - select NO
5. Moving Average Below Close - select (MA) type (10) below close price for type (1) days
6. Last Done Price - select (more than) type (0.3)
7. Moving Average Below Close - select (EMA) type (5) below close price for type (1) days

- > click Save Template > Create New Template type (Non-Shariah Hot Stocks) > click Create
- > click Save Template as > select Non-Shariah Hot Stocks > click Save
- > click Screen Now (may take a few minutes)
- Sort By: Select (Vol) Select (Desc)
- Mouse over stock name > Charts > click C² Charts tab or Volume Distribution

SILVER RIDGE HOLDINGS BERHAD (0129)

C² Chart

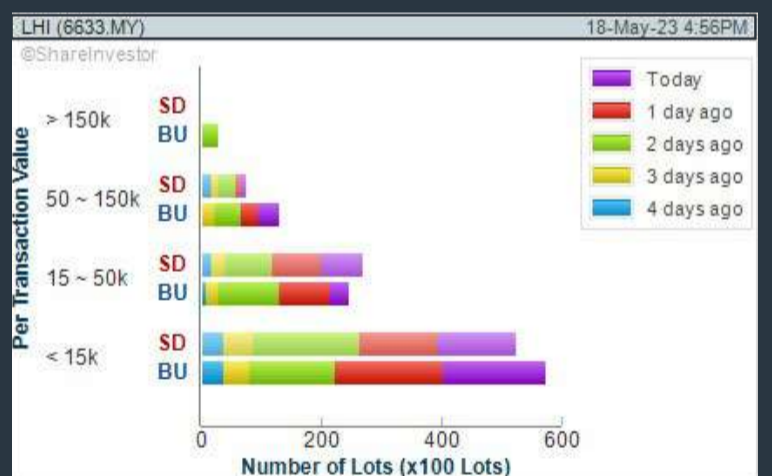
Analysis



LEONG HUP INTERNATIONAL BERHAD (6633)

C² Chart

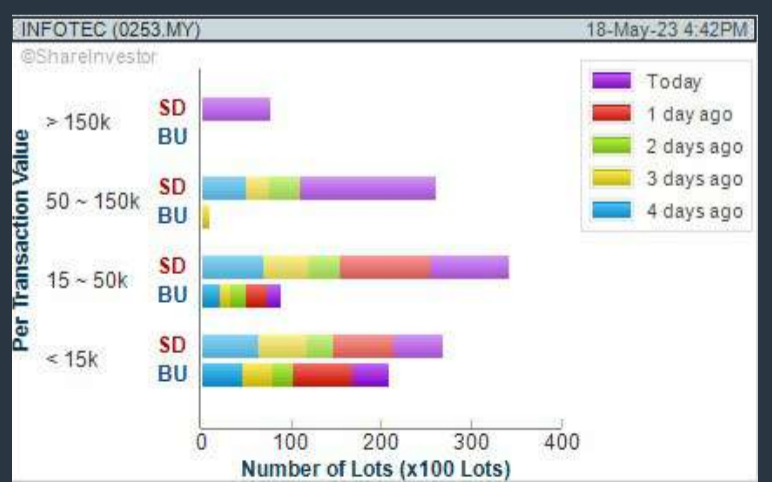
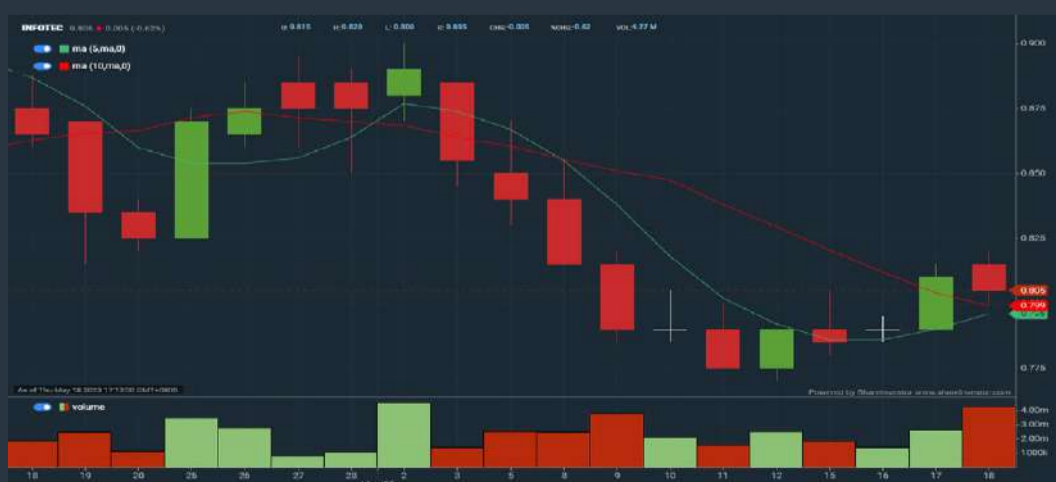
Analysis



INFOLINE TEC GROUP BERHAD (0253)

C² Chart

Analysis



Disclaimer: The information on this page is provided as a service to readers. It does not constitute financial advice and/or any investment recommendations. Past performance is not indicative of future results. We assume no liability for damages resulting from or arising out of the use of such information. It would be best if you did your own research to make your personal investment decisions wisely or consult a licenced investment advisor.

SHARE INVESTOR WEBPRO

STOCK MARKET DATA AT YOUR FINGERTIPS

Powerful browser-based market analytics platform.
Access from anywhere



8 Markets Data

- ▶ Get access to data from Bursa, NYSE, Nasdaq, HKEX, SGX, IDX, SET & ASX

Portfolio Management

- ▶ Profit & Loss Summary
- ▶ Stock Alert
- ▶ News & Events filtering
- ▶ Customizable column layout

Fundamental Analysis

Financial Analysis Statement

- ▶ Profit & Loss
- ▶ Balance Sheet
- ▶ Cash Flow Statement
- ▶ More than 20 Financial Ratios
- ▶ Dividend Analysis

Technical Charting

- ▶ C² chart (Customisable & Comprehensive)

Brokers' Call

Intrinsic Value Calculator

FactSheet

- ▶ Key Stock Information
- ▶ Ownership
- ▶ Consensus Estimates
- ▶ Annual Report
- ▶ Historical Price
- ▶ Insider Trades

What's new on WebPro (Stable Release 12.1.0)

In our effort to keep our platform at the forefront of trading technology, we have added on some new features onto our C2 Chart in WebPro

ADDITIONAL NEW FEATURES:

- ▶ Anchor selector for AVWAP, PVAT, and PAV indicators
- ▶ Volume profile indicator by date range
- ▶ Moving Average Cross indicator
- ▶ Guppy Multiple Moving Average (GMMA) indicator
- ▶ GoNoGo Trend Signal indicators
- ▶ SignalIQ

So what are you waiting for? Head to our platform today and check out our new trading chart features and indicators. We're confident that you'll love the improvements we've made and that they'll help you become a more successful trader.

Click here to start your 9 days FREE trial
(Valued at RM10)



Price & Volume Distribution Charts (Over 5 trading days as at Yesterday)

Technical Analysis

DEFINITION: Stocks with Technical Analysis showing Bullish Momentum and Price Uptrend

CHART GUIDE: Volume Distribution Chart is a statistical interpretation of the current sentiment on each stock in graphical format. The highest bar categorized as >150k is likely to be traded by institutions or super dealers, while the lowest bar categorized as <15k usually represents retail investors. "Buy Up" refers to more buyers snatching up the lots queued at selling price. "Sell Down" refers to sellers selling their shares to the buying queue.



ShareInvestor WebPro > Screener > Market Screener (FA & TA) > select BURSA > add criteria

A. Criteria

- > click Add Criteria
- Fundamental Analysis Conditions tab > select (i) Revenue
- Technical Analysis Conditions tab select (ii) Moving Average Below Close
- Technical Analysis Conditions tab select (iii) Average Volume
- Prices & Other Conditions tab > select (iv) Last Done Price
- Technical Analysis Conditions tab select (v) Moving Average Below Close
- Technical Analysis Conditions tab select (v) Moving Average Bullish Crossover

B. Conditions

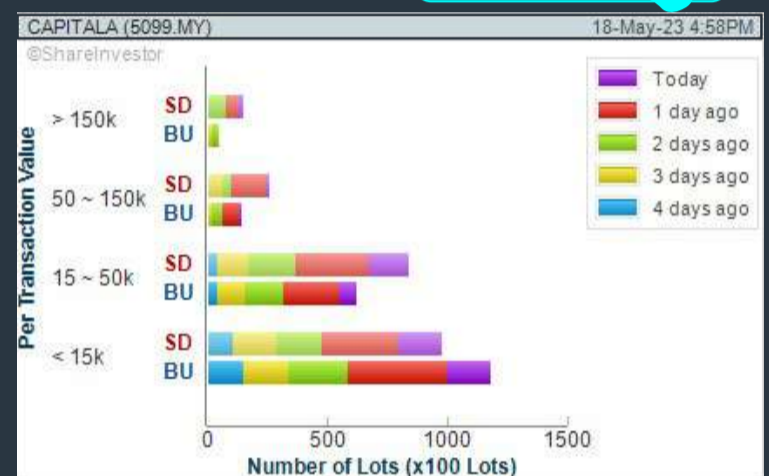
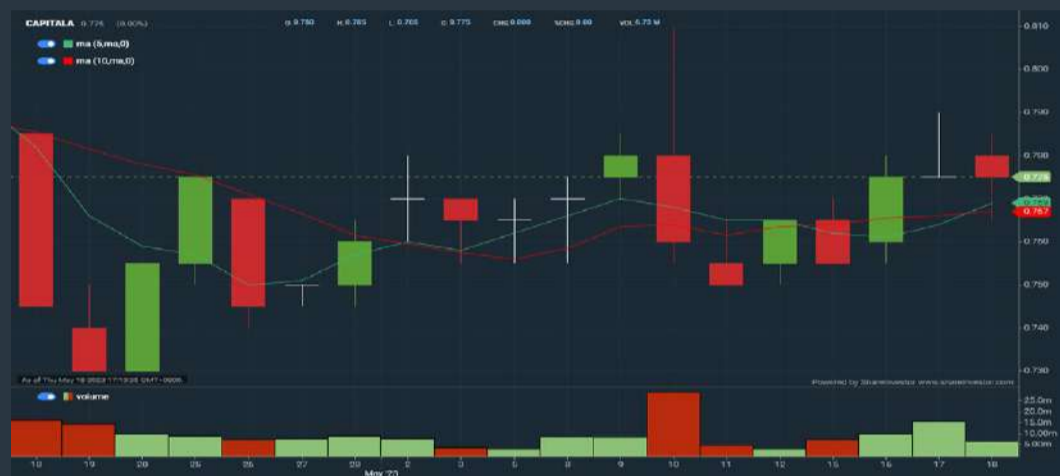
1. Revenue - select (more than) type (1) for the past select (1) financial year(s)
2. Moving Average Below Close - select (MA) type (20) below close price for type (1) days
3. Average Volume - type (5) days average volume type (10000) lots
4. Last Done Price - select (more than) type (0.3)
5. Moving Average Below Close - select (MA) type (10) below close price for type (1) days
6. Moving Average Bullish Crossover - select (MA) type (5) crossed above select (MA) type (10)

> click Save Template > Create New Template type (Non-Shariah Up-Trending Stocks) > click Create Click Save Template As > select Non-Shariah Up Trending Stocks > click Save > click Screen Now (may take a few minutes) Sort By: Select (Vol) Select (Desc) Mouse over stock name > Charts > click C² Charts tab or Volume Distribution

CAPITAL A BERHAD (5099)

C² Chart

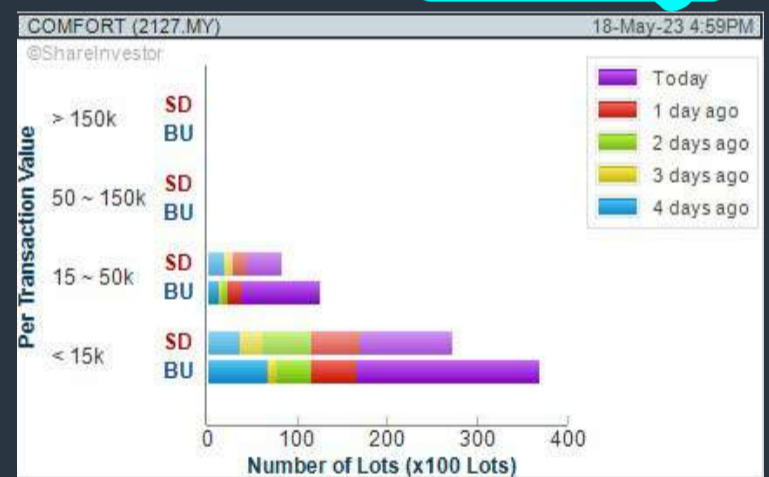
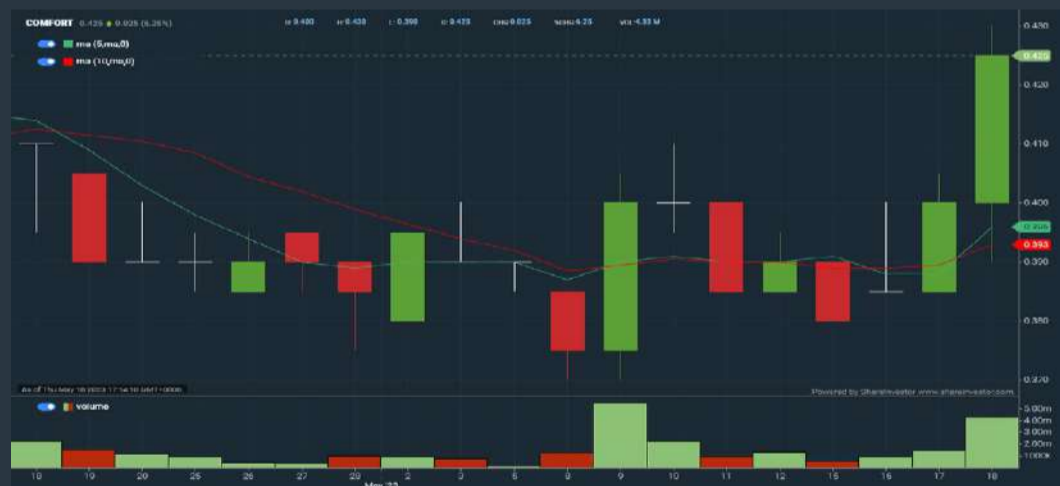
Analysis



COMFORT GLOVES BERHAD (2127)

C² Chart

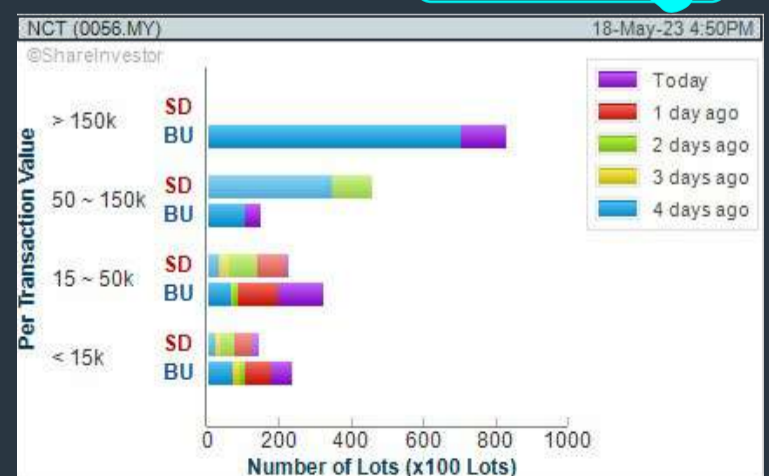
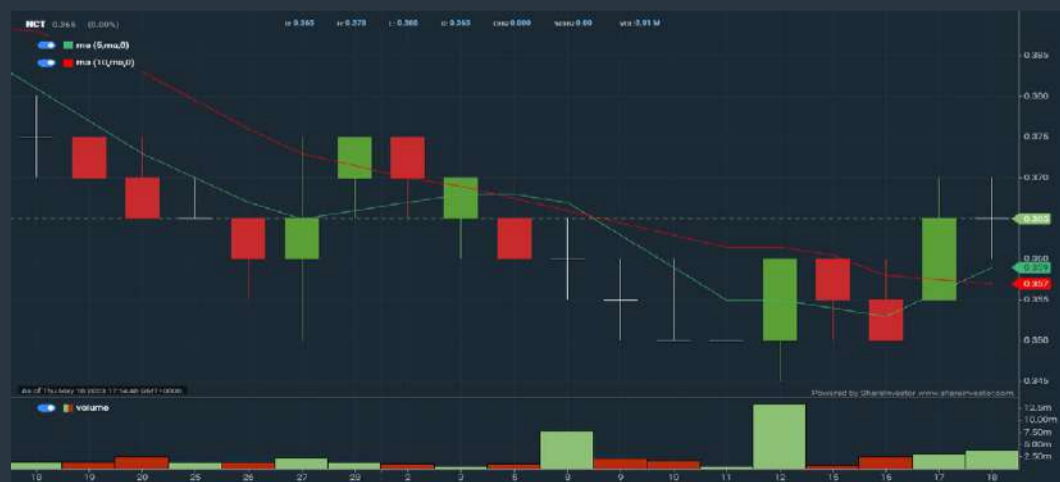
Analysis



NCT ALLIANCE BERHAD (0056)

C² Chart

Analysis



Disclaimer: The information on this page is provided as a service to readers. It does not constitute financial advice and/or any investment recommendations. Past performance is not indicative of future results. We assume no liability for damages resulting from or arising out of the use of such information. It would be best if you did your own research to make your personal investment decisions wisely or consult a licenced investment advisor.

BURSASTATION

Professional

Stock Scanning

- Technical Analysis (TA) Market Scanner
- Fundamental Analysis (FA) Market Scanner

Monitoring

- Portfolio
- Stock Alerts
- Price Spread Calculator

Market Data

- Equities
- Derivatives

Scan. Chart. Analyse.

Be The Intelligent Investor

Charts

- Intraday Charts
- Interactive Charts
- Historical Charts
- Volume Distribution Charts

Price Movements

- Streaming Prices
- Time & Sales
- Trade Summary Matrix
- Quote Movements
- 5 Levels Market Depth
- Historical Price Download

Fundamentals

- Factsheets
- Financials
- Insider Trades

Brought to you as a collaborative effort by ShareInvestor and Bursa Malaysia, **BursaStation Professional** is designed with you, the user, in mind, as a user-friendly yet full of powerful features that will appeal to investors/traders who need instant access to fundamental, technical, and trading data, anytime, anywhere. **BursaStation Professional** is a state-of-the-art Stock Market Tracker with Charting Software that places in your hands the power to make better investment decisions.

[CLICK HERE TO START YOUR 14-DAYS FREE TRIAL](#)

Price & Total Shareholder Return (as at Yesterday)

Fundamental Analysis

DEFINITION: Share price of a company trading at a lower price as compared to its fundamentals (FA) such as financial performance and dividend, allowing it to be attractive to value investors.

CHART GUIDE: Total Shareholder Return (TSR) combines share price appreciation and dividend distributions paid to show the total return to the shareholder expressed as a percentage.



ShareInvestor WebPro > Screener > Market Screener (FA & TA) > select BURSA > add criteria

A. Criteria

- > click Add Criteria
- Fundamental Analysis Conditions tab (i) Price Earnings Ratio
- Fundamental Analysis Conditions tab >select (ii) CAGR of Net Earnings
- Fundamental Analysis Conditions tab >select (iii) Net Debt To Equity
- Fundamental Analysis Conditions tab >select (iv) Return On Equity (ROE)

B. Conditions

1. Price Earnings Ratio - select (less than) type (15) times now
2. CAGR of Net Earnings - select (more than) type (10) % for the past type (3) financial year(s)
3. Net Debt To Equity – select (less than) type (1) for the past select (1) financial year(s)
4. Return On Equity (ROE) – select (more than) type (10) % for the past select (1) financial year(s)

- > click Save Template > Create New Template type (Value Stock) > click Create
- > click Save Template as > select Value Companies > click Save
- > click Screen Now (may take a few minutes)
- Sort by: Select (PE Ratio) Select (Ascending)
- > Mouse over stock name > Factsheet > looking for Total Shareholder Return
- > Mouse over stock name > Charts > click C2 Charts tab

SUNMOW HOLDING BERHAD (03050)

C² Chart



Period	Dividend Received	Capital Appreciation	Total Shareholder Return
Short Term Return	5 Days	+0.020	+3.17%
	10 Days	+0.020	+3.17%
	20 Days	+0.020	+3.17%
Medium Term Return	3 Months	-	-
	6 Months	-0.300	-31.68%
	1 Year	-0.300	-31.68%
Annualised Return	Annualised	-	-31.68%

ALCOM GROUP BERHAD (2674)

C² Chart



Period	Dividend Received	Capital Appreciation	Total Shareholder Return	
Short Term Return	5 Days	-0.015	-1.64%	
	10 Days	-0.010	-1.10%	
	20 Days	-0.015	-1.64%	
Medium Term Return	3 Months	-0.065	-6.74%	
	6 Months	+0.025	+2.69%	
	1 Year	0.025	+0.060	+10.12%
Long Term Return	2 Years	0.025	+2.78%	
	3 Years	0.025	+0.470	+115.12%
	5 Years	0.025	+0.145	+32.52%
Annualised Return	Annualised	-	+4.15%	

SMIS CORPORATION BERHAD (7132)

C² Chart



Period	Dividend Received	Capital Appreciation	Total Shareholder Return
Short Term Return	5 Days	+0.040	+5.06%
	10 Days	+0.020	+2.47%
	20 Days	+0.055	+7.18%
Medium Term Return	3 Months	-0.105	-12.23%
	6 Months	+0.170	+26.76%
	1 Year	+0.215	+34.96%
Long Term Return	2 Years	+0.170	+26.76%
	3 Years	+0.455	+121.33%
	5 Years	+0.250	+53.70%
Annualised Return	Annualised	-	+8.58%

Disclaimer: The information on this page is provided as a service to readers. It does not constitute financial advice and/or any investment recommendations. Past performance is not indicative of future results. We assume no liability for damages resulting from or arising out of the use of such information. It would be best if you did your own research to make your personal investment decisions wisely or consult a licenced investment advisor.

MAKE BETTER TRADING STRATEGIES

with

SHARE INVESTOR STATION



8 Markets Data

- ▶ Get access to data from Bursa, NYSE, Nasdaq, HKEX, SGX, IDX, SET & ASX

Dynamic Chart

- ▶ Candlestick Pattern Recognition
- ▶ 111 Indicators
- ▶ 39 Drawing Tools
- ▶ Performance Comparison Chart

Intraday Data

- ▶ Market Depth
- ▶ Trade Summary Matrix & Chart
- ▶ Times & Sales
- ▶ Intraday Market Ticker

Market Screener

- ▶ 96 criteria ranging from FA, TA, Consensus Estimate
- ▶ Real-time Data

Power Frame

- ▶ Combining few Dynamic Charts together with intraday information in one frame

Technical Analysis

Fundamental Analysis

Financial Analysis Statement

- ▶ Profit & Loss
- ▶ Balance Sheet
- ▶ Cash Flow Statement
- ▶ More than 20 Financial Ratios
- ▶ Dividend Analysis

FactSheet

- ▶ Key Stock Information
- ▶ Ownership
- ▶ Consensus Estimates
- ▶ Annual Report
- ▶ Historical Price
- ▶ Insider Trades

Start your 18 days
FREE trial now
(Valued at RM82)



Price & Total Shareholder Return (as at Yesterday)

Fundamental Analysis

DEFINITION: Company revenue is growing and making good quality of earnings with positive Free Cash Flow.

CHART GUIDE: Total Shareholder Return (TSR) combines share price appreciation and distributions paid to show the total return to the shareholder expressed as a percentage.



ShareInvestor WebPro > Screener > Market Screener (FA & TA) > select BURSA > add criteria

A. Criteria

1. Fundamental Analysis Conditions tab >select (i) Free Cash Flow, (ii) Revenue Growth, (iii) Gross Profit (Earnings) Margin, (iv) Quality of Earnings, (v) Total Shareholder Returns, > click Add Criteria
2. Fundamental Analysis Conditions tab >select (vi) Total Shareholder Returns > click Add Criteria

B. Conditions (Criteria Filters)

1. Free Cash Flow - select (more than) type (1) for the past select (1) financial year(s)
2. Revenue Growth - select (more than) type (1) for the past select (1) financial year(s)
3. Gross Profit (Earnings) Margin - select (more than) type (30) % for the past select (1) financial year(s)
4. Quality of Earnings - select (more than) type (1) for the past select (1) financial year(s)
5. Total Shareholder Return - select (more than) type (5) % for the past select (3) financial year(s)
6. Total Shareholder Return - select (more than) type (5) % for the past select (5) financial year(s)

- > click Save Template > Create New Template type (Growth Companies) > click Create
- > click Save Template as > select Growth Companies > click Save
- > click Screen Now (may take a few minutes)
- > Sort By: Select (Revenue Growth) Select (Desc)
- > Mouse over stock name > Factsheet > looking for Total Shareholder Return

HIBISCUS PETROLEUM BERHAD (5199)

C² Chart

Analysis



Period	Dividend Received	Capital Appreciation	Total Shareholder Return
Short Term Return	5 Days	-	-
	10 Days	-0.015	-1.61%
	20 Days	-0.070	-6.67%
Medium Term Return	3 Months	-0.120	-10.91%
	6 Months	0.010	-1.98%
Long Term Return	1 Year	0.020	-32.89%
	2 Years	0.090	+67.81%
	3 Years	0.035	+70.58%
5 Years	0.035	+0.025	+6.26%
Annualised Return	Annualised	-	+1.23%

CLASSIC SCENIC BERHAD (7202)

C² Chart

Analysis



Period	Dividend Received	Capital Appreciation	Total Shareholder Return
Short Term Return	5 Days	-0.015	-2.73%
	10 Days	-0.005	-0.93%
	20 Days	-0.005	-0.93%
Medium Term Return	3 Months	0.055	-10.06%
	6 Months	0.055	-34.44%
Long Term Return	1 Year	0.055	+26.10%
	2 Years	0.055	+18.71%
	3 Years	0.085	+169.57%
5 Years	0.195	+0.035	+46.00%
Annualised Return	Annualised	-	+7.86%

MEGA FIRST CORPORATION BERHAD (3069)

C² Chart

Analysis



Period	Dividend Received	Capital Appreciation	Total Shareholder Return
Short Term Return	5 Days	-0.030	-0.88%
	10 Days	-0.060	-1.75%
	20 Days	-0.060	-2.33%
Medium Term Return	3 Months	0.030	-7.84%
	6 Months	0.030	-3.63%
Long Term Return	1 Year	0.030	-8.38%
	2 Years	0.105	+0.80%
	3 Years	0.291	+4.410
5 Years	0.361	+1.660	+106.47%
Annualised Return	Annualised	-	+15.57%

Disclaimer: The information on this page is provided as a service to readers. It does not constitute financial advice and/or any investment recommendations. Past performance is not indicative of future results. We assume no liability for damages resulting from or arising out of the use of such information. It would be best if you did your own research to make your personal investment decisions wisely or consult a licenced investment advisor.

Introducing



GM SUITE

CONNECTING STAKEHOLDERS

by SHARE**INVESTOR**[®]

General Meeting Suite (GM Suite), an end-to-end technology system to facilitate hybrid, virtual or physical Annual General Meetings.

THE GOLD STANDARD SOLUTION FOR AGM / EGM



<https://gm-suite.com>

Price & Total Shareholder Return (as at Yesterday)

Fundamental Analysis

DEFINITION: Company is paying out dividend with low or moderate leverage.

CHART GUIDE: Total Shareholder Return (TSR) combines share price appreciation and distributions paid to show the total return to the shareholder expressed as a percentage.



ShareInvestor WebPro > Screener > Market Screener (FA & TA) > select BURSA > add criteria

A. Criteria

- > click Add Criteria
- Fundamental Analysis Conditions tab >select (i) Dividend Yield (Historical)
- Fundamental Analysis Conditions tab >select (ii) Dividend Payout (Historical)
- Fundamental Analysis Conditions tab >select (iii) Total Debt To Equity
- Fundamental Analysis Conditions tab >select (iv) Total Shareholder Returns
- Fundamental Analysis Conditions tab >select (v) Total Shareholder Returns
- Fundamental Analysis Conditions tab / >select (vi) CAGR of Dividend Per Share

• Fundamental Analysis Conditions tab >select (vii) CAGR of Dividend Per Share

B. Conditions (Criteria Filters)

1. Dividend Yield - select (more than) type (1) % for the past select (1) financial year(s)
2. Dividend Payout (Historical) - select (between) type (0.5) to type (1) times for the past select (1) financial year(s)
3. Total Debt to Equity - select (less than) type (1) for the past select (1) financial year(s)
4. Total Shareholder Return - select (more than) type (5) % for the past select (3) financial year(s)
5. Total Shareholder Return - select (more than) type (5) % for the past select (5) financial year(s)

6. CAGR of Dividend Per Share - select (less than) type (30) % for the past select (5) financial year(s)
7. CAGR of Dividend Per Share - select (more than) type (1) % for the past select (5) financial year(s)

- > click Save Template > Create New Template type (Dividend Companies) > click Create
- > click Save Template as > select Dividend Companies > click Save
- > click Screen Now (may take a few minutes)
- > Sort By: Select (Dividend Yield) Select (Desc)
- > Mouse over stock name > Factsheet > looking for Total Shareholder Return

UNITED PLANTATIONS BERHAD (2089)

C² Chart



Period	Dividend Received	Capital Appreciation	Total Shareholder Return
Short Term Return	5 Days	-0.060	-0.37%
	10 Days	+0.300	+2.44%
	20 Days	1.000	+3.86%
Medium Term Return	3 Months	1.000	+9.83%
	6 Months	1.400	+19.92%
	1 Year	1.400	+22.55%
Long Term Return	2 Years	2.550	+36.86%
	3 Years	3.400	+53.81%
	5 Years	6.150	+86.70%
Annualised Return	Annualised	-	+13.30%

JAYCORP BERHAD (7152)

C² Chart



Period	Dividend Received	Capital Appreciation	Total Shareholder Return
Short Term Return	5 Days	-0.005	-0.21%
	10 Days	-	-
	20 Days	-	-
Medium Term Return	3 Months	0.000	-1.38%
	6 Months	0.060	+8.14%
	1 Year	0.060	+9.16%
Long Term Return	2 Years	0.195	+1.84%
	3 Years	0.285	+145.00%
	5 Years	0.435	+152.23%
Annualised Return	Annualised	-	+20.33%

FORMOSA PROSONIC INDUSTRIES (9172)

C² Chart



Period	Dividend Received	Capital Appreciation	Total Shareholder Return
Short Term Return	5 Days	-0.010	-0.38%
	10 Days	-0.020	-0.75%
	20 Days	-0.000	-2.84%
Medium Term Return	3 Months	0.210	-21.70%
	6 Months	0.210	-10.38%
	1 Year	0.210	-10.38%
Long Term Return	2 Years	0.410	+27.86%
	3 Years	0.550	+132.85%
	5 Years	0.790	+128.73%
Annualised Return	Annualised	-	+18.16%

Disclaimer: The information on this page is provided as a service to readers. It does not constitute financial advice and/or any investment recommendations. Past performance is not indicative of future results. We assume no liability for damages resulting from or arising out of the use of such information. It would be best if you did your own research to make your personal investment decisions wisely or consult a licenced investment advisor.

Roberto Lazzeroni

Infinitamente

Limited Edition



Infinitamente – Finishes

Models.

- oval table 220x124
- "∞" shaped table 340x120

Base. Made from black Marquinia marble.

Marble top. Made from glossy White Levigliani marble.

Aesthetic details. A polished stainless steel plate with the serial number of the table and the Poltrona Frau logo is applied to the sloping edge of the supporting panel.

Other details. Limited edition series.

Oval tables 220x124: 48pieces.

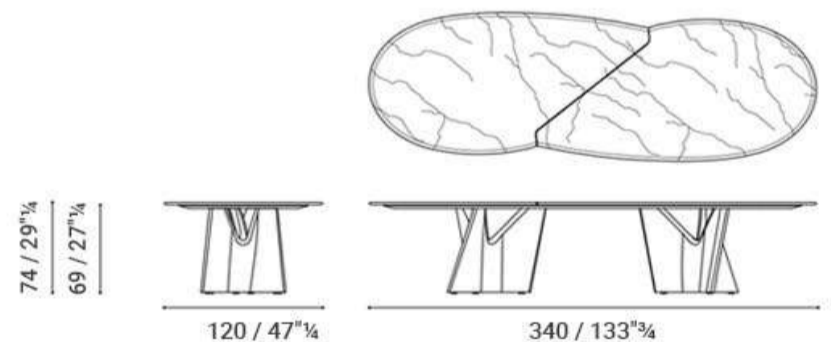
"∞" 340x120 tables: 24pieces.

N.B. Table weight (without packaging).

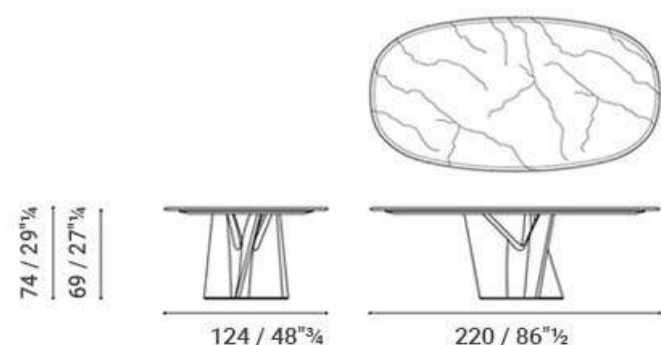
Oval table 220x124: 286.5 kg total (no. 1 base: 126 kg; top: 127 kg; supporting panel: 33.5 kg)

"∞" 340x120 table: 491 kg total

Infinitamente – Table 340x120



Infinitamente – Table 220x124



XTRA

The Gardens Mall, Lot S-236 & 237
2nd floor, Linkaran Syed Putra, Kuala Lumpur
T: +6012 6988 309 E: studio@xtrafurniture.com

Week: 12 May 2023 – 18 May 2023

More Brokers' Call 

AMINVESTMENT BANK <small>... See More</small>	Call	Target Price	Release Date
CIMB Berhad (5064)	BUY	RM6.50	17 May 2023
Sunway Berhad (5211)	BUY	RM2.39	17 May 2023
APEX <small>... See More</small>	Call	Target Price	Release Date
Edeltec Holdings Berhad (0278)	BUY	RM0.35	15 May 2023
Synergy House Berhad (0279)	BUY	RM0.50	18 May 2023
BIMB SECURITIES SDN BHD <small>... See More</small>	Call	Target Price	Release Date
Inari Amertron Berhad (0166)	BUY	RM3.75	12 May 2023
MR D.I.Y. Group (M) Berhad (5296)	BUY	RM2.50	12 May 2023
CGS CIMB <small>... See More</small>	Call	Target Price	Release Date
MR D.I.Y. Group (M) Berhad (5296)	HOLD	RM1.50	12 May 2023
KENANGA <small>... See More</small>	Call	Target Price	Release Date
CapitaLand Malaysia Trust (5180)	MARKET PERFORM	RM0.53	16 May 2023
S P Setia Berhad (8664)	UNDERPERFORM	RM0.38	18 May 2023
SLP Resources Berhad (7248)	MARKET PERFORM	RM1.090	16 May 2023
MALACCA SECURITIES SDN BHD <small>... See More</small>	Call	Target Price	Release Date
Econpile Holdings Berhad (5253)	SELL	RM0.16	15 May 2023
Teo Seng Capital Bhd (7252)	BUY	RM1.34	16 May 2023
MIDF <small>... See More</small>	Call	Target Price	Release Date
Cahaya Mata Sarawak Berhad (2852)	BUY	RM1.55	16 May 2023
S P Setia Berhad (8664)	BUY	RM0.71	18 May 2023
Sunway Berhad (5211)	NEUTRAL	RM1.66	17 May 2023
UOB KAYHIAN <small>... See More</small>	Call	Target Price	Release Date
Oriental Food Industries Holdings Berhad (7107)	BUY	RM1.39	17 May 2023
Public Bank Berhad (1295)	BUY	RM5.10	17 May 2023
Vstecs Berhad (5162)	BUY	RM0.60	17 May 2023

Disclaimer: InveSt does not accept any liability whatsoever for any direct, indirect or consequential losses (including loss of profit) or damages that may arise from the use of information or opinions in this publication. The information and opinions in InveSt are not to be considered as an offer to sell or buy any of the securities discussed. Opinions expressed are subject to change without notice. The Brokers may, from time to time, have interests or positions in the securities mentioned. For the full report on each item listed on this page, please visit https://www.shareinvestor.com/my/brokers_call.

DEFINITION: Top 7 stocks with Technical Analysis plus Pattern Matching by 60 pre-defined indicators by the system showing a higher probability of bullish sentiment on the share price.



ShareInvestor WebPro > Screener > Predefined TA Screens > select market BURSA > Most Long Signals > click Scan Results or mouse over each company

HUME CEMENT INDUSTRIES BERHAD (5000.MY)

HUMEIND

Price updated at 18 May 2023 16:59

Last: 1.330	Change: +0.070	Volume: 106,273
	Change (%): +5.56	Range: 1.190 - 1.410

TA Scanner Results based on historical data up to 18 May 2023

Condition	Signal	Explanation
Bollinger Band: Bullish Lower Bollinger Band Support	Long	1. Low 1 day ago below lower bollinger band(20,2). 2. Close above close 1 day ago. 3. Average volume(5) is above 100,000.
Bollinger Band: Bullish Short Term Volatility Breakout and Trending	Long	1. Close price above upper bollinger band(33,1). 2. Volume above average volume(10). 3. Average volume(10) is above 300,000.
Bollinger Band: High Above Upper Bollinger Band	Neutral	1. High above upper bollinger band(14,2). 2. Average volume(5) is above 100,000.
DM: Bullish Directional Movement	Long	-DI(14) crossed below +DI(14)
Donchian Channels: High Above Upper Donchian Channels	Long	High crossed above the upper Donchian Channel(14,4)
MA: Bullish Price Crossover	Long	1. Close price crossed above MA(40) within the last 1 day. 2. Previous day close price is below the MA(10) for the last 5 days
MA: Short Term Bullish Moving Average Crossover	Long	MA(10) crossed above MA(15) within the last 1 day.
MACD: Bullish MACD Crossover	Long	1. MACD(12,26) diff line crossed above the MACD(12,26) signal line. 2. MACD Histogram(12,26) is above 0.
Price: New 52 Week High	Long	1. Stock reach a new 52 week high. 2. Average volume(30) is above 50000.
RSI: Short Term RSI 50 Bullish Crossover	Long	1. RSI(20) crossed above 50 within the last 1 day and RSI(20) 1 day ago below 50 for the last 5 days. 2. Volume above average volume(125). 3. Average volume(5) is above 100,000.
Volume: 10 Days large value Sell Down trade	Short	1. 150K value Sell Down greater than Buy Up by 20% for 10 days. 2. 50K-100K value Sell Down greater than Buy Up by 20% for 10 days. 3. Average volume(10) is above 1000000
Volume: 5 Days large value Sell Down trade	Short	1. 150K value Sell Down greater than Buy Up by 20% for 5 days. 2. 50K-100K value Sell Down greater than Buy Up by 20% for 5 days. 3. Average volume(10) is above 1000000
Volume: Volume Spike	Long	1. Volume is more than 500% above average volume(10). 2. Volume above 200000. 3. Close price above 0.10

BINASAT COMMUNICATIONS BERHAD (0195.MY)

BINACOM

Price updated at 18 May 2023 16:59

Last: 0.285	Change: +0.020	Volume: 159,518
	Change (%): +7.55	Range: 0.265 - 0.300

TA Scanner Results based on historical data up to 18 May 2023

Condition	Signal	Explanation
Bollinger Band: Bullish Long Term Volatility Breakout and Trending	Long	1. Close price above upper bollinger band(33,1). 2. Volume above average volume(50). 3. Average volume(50) is above 300,000.
Bollinger Band: Bullish Short Term Volatility Breakout and Trending	Long	1. Close price above upper bollinger band(33,1). 2. Volume above average volume(10). 3. Average volume(10) is above 300,000.
Bollinger Band: High Above Upper Bollinger Band	Neutral	1. High above upper bollinger band(14,2). 2. Average volume(5) is above 100,000.

EONMETALL GROUP BERHAD (7217.MY)

EMETALL

Price updated at 18 May 2023 16:56

Last: 0.550	Change: -0.005	Volume: 4,936
	Change (%): -0.90	Range: 0.540 - 0.560

TA Scanner Results based on historical data up to 18 May 2023

Condition	Signal	Explanation
Accumulation Distribution: Bullish Accumulation Distribution	Long	Accumulation distribution increasing for the last 7 days
Bollinger Band: Bullish Long Term Volatility Breakout and Trending	Long	1. Close price above upper bollinger band(33,1). 2. Volume above average volume(50). 3. Average volume(50) is above 300,000.
Bollinger Band: Bullish Lower Bollinger Band Support	Long	1. Low 1 day ago below lower bollinger band(20,2). 2. Close above close 1 day ago. 3. Average volume(5) is above 100,000.
Bollinger Band: Bullish Short Term Volatility Breakout and Trending	Long	1. Close price above upper bollinger band(33,1). 2. Volume above average volume(10). 3. Average volume(10) is above 300,000.
Bollinger Band: High Above Upper Bollinger Band	Neutral	1. High above upper bollinger band(14,2). 2. Average volume(5) is above 100,000.
DM: Bullish Directional Movement	Long	-DI(14) crossed below +DI(14)
MA: Bullish Price Crossover	Long	1. Close price crossed above MA(40) within the last 1 day. 2. Previous day close price is below the MA(10) for the last 5 days
Parabolic SAR: Bearish Parabolic SAR Reversal	Neutral	1. Parabolic SAR 1 day ago above close price 1 day ago for the last 5 days. 2. Parabolic SAR below close price
RSI: Short Term RSI 50 Bullish Crossover	Long	1. RSI(20) crossed above 50 within the last 1 day and RSI(20) 1 day ago below 50 for the last 5 days. 2. Volume above average volume(125). 3. Average volume(5) is above 100,000.
Volume: Volume Spike	Long	1. Volume is more than 500% above average volume(10). 2. Volume above 200000. 3. Close price above 0.10
Williams %R: Bearish Williams %R	Short	1. Williams %R(26) between 0 and -20. 2. Average volume(5) is above 100,000.

Disclaimer: The information on this page is provided as a service to readers. It does not constitute financial advice and/or any investment recommendations. Past performance is not indicative of future results. We assume no liability for damages resulting from or arising out of the use of such information. It would be best if you did your own research to make your personal investment decisions wisely or consult a licenced investment advisor.

Condition	Signal	Explanation
DM: Bullish Directional Movement	Long	-DI(14) crossed below +DI(14)
Donchian Channels: High Above Upper Donchian Channels	Long	High crossed above the upper Donchian Channel(14,4)
MA: Medium Term Bullish Moving Average Crossover	Long	MA(25) crossed above MA(50) within the last 1 day.
Parabolic SAR: Bearish Parabolic SAR Reversal	Neutral	1. Parabolic SAR 1 day ago above close price 1 day ago for the last 5 days. 2. Parabolic SAR below close price
RSI: Short Term RSI 50 Bullish Crossover	Long	1. RSI(20) crossed above 50 within the last 1 day and RSI(20) 1 day ago below 50 for the last 5 days. 2. Volume above average volume(125). 3. Average volume(5) is above 100,000.
Volume: Volume Spike	Long	1. Volume is more than 500% above average volume(10). 2. Volume above 200000. 3. Close price above 0.10
Williams %R: Bearish Williams %R	Short	1. Williams %R(26) between 0 and -20. 2. Average volume(5) is above 100,000.

YTL CORPORATION BERHAD (4677.MY)

YTL

Price updated at 18 May 2023 16:57

Last: 0.740	Change: -0.010	Volume: 360,506
	Change (%): -1.33	Range: 0.725 - 0.750

TA Scanner Results based on historical data up to 18 May 2023

Condition	Signal	Explanation
Bollinger Band: Bullish Long Term Volatility Breakout and Trending	Long	1. Close price above upper bollinger band(33,1). 2. Volume above average volume(50). 3. Average volume(50) is above 300,000.
Bollinger Band: Bullish Short Term Volatility Breakout and Trending	Long	1. Close price above upper bollinger band(33,1). 2. Volume above average volume(10). 3. Average volume(10) is above 300,000.
Bollinger Band: High Above Upper Bollinger Band	Neutral	1. High above upper bollinger band(14,2). 2. Average volume(5) is above 100,000.
Donchian Channels: High Above Upper Donchian Channels	Long	High crossed above the upper Donchian Channel(14,4)
MACD: Bullish MACD Crossover	Long	1. MACD(12,26) diff line crossed above the MACD(12,26) signal line. 2. MACD Histogram(12,26) is above 0.
Parabolic SAR: Bearish Parabolic SAR Reversal	Neutral	1. Parabolic SAR 1 day ago above close price 1 day ago for the last 5 days. 2. Parabolic SAR below close price
Price: New 52 Week High	Long	1. Stock reach a new 52 week high. 2. Average volume(30) is above 50000.
Volume: 5 Days large value Buy Up trade	Long	1. 150K value Buy Up greater than Sell Down by 20% for 5 days. 2. 50K-100K value Buy Up greater than Sell Down by 20% for 5 days. 3. Average volume(10) is above 1000000
Volume: Volume Spike	Long	1. Volume is more than 500% above average volume(10). 2. Volume above 200000. 3. Close price above 0.10
Williams %R: Bearish Williams %R	Short	1. Williams %R(26) between 0 and -20. 2. Average volume(5) is above 100,000.

LGMS BERHAD (0249.MY)

LGMS

Price updated at 18 May 2023 16:58

Last: 1.140	Change: -0.040	Volume: 14,827
	Change (%): -3.39	Range: 1.100 - 1.180

TA Scanner Results based on historical data up to 18 May 2023

Condition	Signal	Explanation
Accumulation Distribution: Bullish Accumulation Distribution	Long	Accumulation distribution increasing for the last 7 days
Bollinger Band: Bullish Lower Bollinger Band Support	Long	1. Low 1 day ago below lower bollinger band(20,2). 2. Close above close 1 day ago. 3. Average volume(5) is above 100,000.
MA: Bullish Price Crossover	Long	1. Close price crossed above MA(40) within the last 1 day. 2. Previous day close price is below the MA(10) for the last 5 days
RSI: Short Term RSI 50 Bullish Crossover	Long	1. RSI(20) crossed above 50 within the last 1 day and RSI(20) 1 day ago below 50 for the last 5 days. 2. Volume above average volume(125). 3. Average volume(5) is above 100,000.
Volume: Consecutive Days Of Increasing Average Volume	Long	1. Average Volume(20) has been increasing over the last 2 weeks. 2. Average volume(20) is above 100000

Disclaimer: The information on this page is provided as a service to readers. It does not constitute financial advice and/or any investment recommendations. Past performance is not indicative of future results. We assume no liability for damages resulting from or arising out of the use of such information. It would be best if you did your own research to make your personal investment decisions wisely or consult a licenced investment advisor.

PARAMOUNT CORPORATION BERHAD (1724.MY)

PARAMON

Price updated at 18 May 2023 16:50

Last: 0.820	Change: -	Volume: 14,802
	Change (%): -	Range: 0.800 - 0.825

TA Scanner Results based on historical data up to 18 May 2023

Condition	Signal	Explanation
Bollinger Band: Bullish Long Term Volatility Breakout and Trending	Long	1. Close price above upper bollinger band(33,1). 2. Volume above average volume(50). 3. Average volume(50) is above 300,000.
Bollinger Band: Bullish Short Term Volatility Breakout and Trending	Long	1. Close price above upper bollinger band(33,1). 2. Volume above average volume(10). 3. Average volume(10) is above 300,000.
Bollinger Band: High Above Upper Bollinger Band	Neutral	1. High above upper bollinger band(14,2). 2. Average volume(5) is above 100,000.
Candlestick: Bullish Engulfing	Long	Bullish: Engulfing
MA: Medium Term Bullish Moving Average Crossover	Long	MA(25) crossed above MA(50) within the last 1 day.
Parabolic SAR: Bullish Parabolic SAR Reversal	Neutral	1. Parabolic SAR 1 day ago below close price 1 day ago for the last 5 days. 2. Parabolic SAR above close price
Volume: Consecutive Days Of Increasing Average Volume	Long	1. Average Volume(20) has been increasing over the last 2 weeks. 2. Average volume(20) is above 100000
Williams %R: Bearish Williams %R	Short	1. Williams %R(26) between 0 and -20. 2. Average volume(5) is above 100,000.

VOLCANO BERHAD (0232.MY)

VOLCANO

Price updated at 18 May 2023 16:58

Last: 0.935	Change: +0.005	Volume: 30,142
	Change (%): +0.54	Range: 0.890 - 0.950

TA Scanner Results based on historical data up to 18 May 2023

Condition	Signal	Explanation
Bollinger Band: Bullish Long Term Volatility Breakout and Trending	Long	1. Close price above upper bollinger band(33,1). 2. Volume above average volume(50). 3. Average volume(50) is above 300,000.
Bollinger Band: Bullish Short Term Volatility Breakout and Trending	Long	1. Close price above upper bollinger band(33,1). 2. Volume above average volume(10). 3. Average volume(10) is above 300,000.
Bollinger Band: High Above Upper Bollinger Band	Neutral	1. High above upper bollinger band(14,2). 2. Average volume(5) is above 100,000.
Donchian Channels: High Above Upper Donchian Channels	Long	High crossed above the upper Donchian Channel(14,4)
MACD: Bullish MACD Crossover	Long	1. MACD(12,26) diff line crossed above the MACD(12,26) signal line. 2. MACD Histogram(12,26) is above 0.
Parabolic SAR: Bearish Parabolic SAR Reversal	Neutral	1. Parabolic SAR 1 day ago above close price 1 day ago for the last 5 days. 2. Parabolic SAR below close price
RSI: Short Term RSI 50 Bullish Crossover	Long	1. RSI(20) crossed above 50 within the last 1 day and RSI(20) 1 day ago below 50 for the last 5 days. 2. Volume above average volume(125). 3. Average volume(5) is above 100,000.
Volume: Volume Spike	Long	1. Volume is more than 500% above average volume(10). 2. Volume above 200000. 3. Close price above 0.10

MALAYSIA TO INVEST HEAVILY IN GREEN AND DIGITAL ECONOMY – RAFIZI RAMLI

According to Economy Minister Rafizi Ramli, Malaysia will invest heavily in the green and digital economy as these were the areas where there is huge growth potential. It is becoming increasingly obvious that investing heavily in the digital and green economy is the right path forward. There is growing evidence around the world that digital technologies contribute to growth, productivity, employment, and poverty reduction – and this is especially important for a country like Malaysia where productivity growth has lagged our peers even before the pandemic. He said this in his keynote address at the National Economic Forum 2023.

He said that after the past few years of political uncertainty, there is now a sense of unity among political parties to set aside differences

and serve the people as priority. The stable majority also gives political will to the unity government to do what is necessary to restructure the economy so that we are no longer reliant on the country's finite advantages of natural resources and low-value manufacturing, and move into high-value work that is more resilient against global headwinds.

He added that Malaysia will reach a significant milestone in the next few years and the nation will transition from an upper-middle income to a high-income nation and will finally break out of the prolonged "middle-income trap". Between 1967 and 1999, Malaysia was one of the fastest-growing economies in modern history, with a sustained annual growth rate of 9%, increasing its gross national income per capita by 14 times. Thereafter, the growth pace slowed, and the growth rate today is lower than rates of any transitional peers 10 years before they achieved high-income status. The once-in-a-lifetime pandemic revealed the structural problems that undergird our economy for a long time. We could no longer talk about economic growth without considering the pace, quality, and sustainability of growth.

The current administration will continue to create an enabling digital ecosystem by preparing the infrastructure, platforms, and frameworks to protect consumers and uplift digital businesses. The Ministry of Economy's emphasis is on open and centralised data which was foundational so that data is widely available and accessible. A government built on open data is more likely to make good, data-backed decisions.

Last year, up to US\$1.1 trillion (RM4.95 trillion) was invested globally into energy transition, with storage, mobility, food and agriculture, and renewables taking up the lion's share. Many of the most exciting investments are a combination of public and private funding, showing once again that the role of government in directing money flows is critical for market creation.

MALAYSIA'S INFLATION IN 2022 INCREASED TO 3.3 PER CENT - DOSM

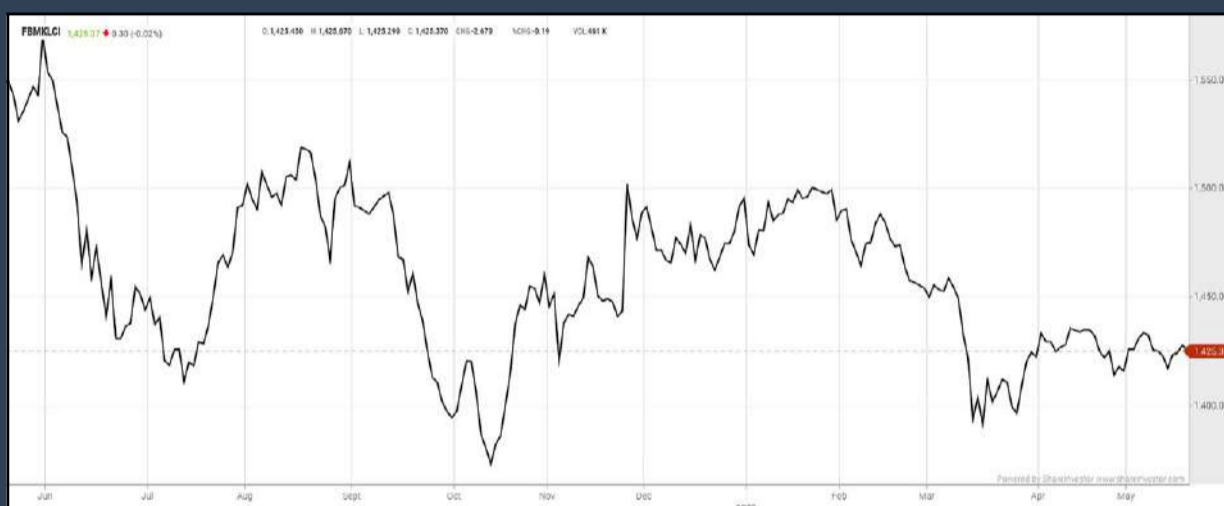
According to the Department of Statistics Malaysia (DOSM) in its latest release dated 17 May 2023, Malaysia's inflation in 2022 increased to 3.3 per cent (2021: 2.5%) with the index points recorded at 127.2 as against 123.1 in the previous year. This increase was driven mainly by Food & Beverages (5.8%); Restaurants & Hotels (5.0%); Transport (4.7%) and Furnishings, Household Equipment & Routine Household Maintenance (3.5%). This was followed by Recreation Services & Culture (2.3%); Miscellaneous Goods & Services (2.0%) and Housing, Water, Electricity, Gas & Other Fuels (1.8%).

The core inflation increased to 3.0% as compared to 0.7% in the previous year. Among the groups that contributed to the increase were Food & Beverages (5.8%); Transport (5.6%); Restaurants & Hotels (5.0%) and Furnishings, Household Equipment & Routine Household Maintenance (3.5%). Inflation without fuel increased by 3.2% in 2022 as compared to 1.2% in 2021. Meanwhile, inflation for income group below RM3,000 increased by 3.3% in 2022 as opposed to 2.2% in 2021. The Food & Beverages group contributed to the highest increase of 5.7% followed by Restaurants & Hotels (5.4%) and Furnishings, Household Equipment & Routine Household Maintenance (3.4%).

All states registered increases in inflation whereas three states showed an increase above the national inflation level of 3.3 per cent in 2022. The highest increase was recorded by the Wilayah Persekutuan Putrajaya (7.3%), Selangor (4.2%) and Johor (3.4%). Wilayah Persekutuan Labuan recorded the lowest increase of 2.4 per cent. For Food & Beverages inflation, Wilayah Persekutuan Putrajaya recorded the highest increase of 7.7 per cent followed by Selangor (7.4%), Johor (6.1%) and Pulau Pinang (6.0%). In 2022, inflation for urban area recorded an increase of 3.6% (2021: 2.4%) while inflation in rural area recorded an increase of 2.6% (2021: 2.6%).

EYE ON THE MARKETS

On Thursday (11May), the Ringgit closed at 4.5355 against the USD and 3.3721 to the Sing Dollar. On Monday (15May), the FBM KLCI opened at 1423.53. As at Friday (19May) 9:00am, the FBM KLCI is up 1.92 points for the week at 1425.45. Over in US, the overnight Dow Jones Industrial Average closed up 115.14 points (+0.34%) to 33,535.91 whilst the NASDAQ gained 188.27 points (+1.51%) to 12,688.84.



KLCI 1 Year Chart



Learn how to identify Hot Stocks using Technical Analysis (TA) and Fundamental Analysis (FA)

SIGN UP FOR Invest NOW IT'S FREE!!!

[Click here](#)

Scan me



Via email, every Friday.

Get market moving news and analyses. Regular columns include **Behind The Action** and **From The Observer**

- Leaderboard • Shariah Hot Stocks • Shariah Momentum Up Stocks • Non Shariah Hot Stocks • Up Trending Stocks • Growth Stocks • Dividend Stocks • Long Companies • Insider Activity • Investor Relations • Regional Markets



Over 5 trading days



ShareInvestor WebPro (www.shareinvestor.com/my)

1. Price > Stock Prices
2. Select Market: NASDAQ / NYSE / IDX / SET / HKEX / SGX (One bourse at a time)
3. select Stocks Tab
4. select Ranking Top Gainers or Top Losers (Over 5 Trading Days)
5. Mouse over Column Layout > select Edit Customs > select Name > select Last Done Price > select 5 Days Change > select 52 Weeks High > select 52 Weeks Low > Mouse Over Column Layout > select Custom

NASDAQ (USD)

Top Gainers

Name	Last Done	Change Over 5 Days	52 Weeks High	52 Weeks Low
BOOKING HOLDINGS INC	2,780.980	+150.160	2,731.750	1,616.850
NATIONAL WESTN LIFE GROUP INC	405.010	+140.640	309.250	166.939
FIRST CITIZENS BANCSHARES INC NRTH	1,321.110	+87.220	1,284.770	505.840
LAM RESEARCH CORP	598.740	+71.260	564.190	299.592
ASML HOLDING NV EURO.09 NY REGISTRY SHS 2012	695.930	+48.420	698.590	363.150

Top Losers

Name	Last Done	Change Over 5 Days	52 Weeks High	52 Weeks Low
SHOCKWAVE MEDICAL INC	276.600	-26.080	320.540	147.120
EQUINIX INC	721.180	-22.260	762.510	494.890
INSULET CORPORATION	302.870	-18.400	335.910	187.070
OREILLY AUTOMOTIVE INC NEW	941.800	-16.460	964.580	562.900
ALNYLAM PHARMACEUTICALS INC	189.870	-16.220	242.970	120.430

NYSE (USD)

Top Gainers

Name	Last Done	Change Over 5 Days	52 Weeks High	52 Weeks Low
BERKSHIRE HATHAWAY INC	504,360.000	+13,177.500	506,000.000	393,012.250
SERVICENOW INC	510.170	+57.600	521.575	337.000
CHIPOTLE MEXICAN GRILL	2,095.870	+50.240	2,096.300	1,196.280
NVR INC	5,883.170	+45.340	5,986.960	3,576.010
METTLER-TOLEDO INTERNATIONAL INC	1,384.430	+36.350	1,615.970	1,065.550

Top Losers

Name	Last Done	Change Over 5 Days	52 Weeks High	52 Weeks Low
AUTOZONE INC	2,648.950	-80.110	2,750.000	1,703.320
WHITE MOUNTAINS INSURANCE GROUP	1,396.110	-25.330	1,560.210	1,164.000
MARKEL CORP	1,350.220	-23.650	1,458.560	1,064.090
DECKERS OUTDOOR CORP	472.510	-18.070	503.480	212.930
SEA LIMITED ADS EACH REP ONE CLASS A ORD SHS	70.160	-16.550	93.700	40.665

IDX (Rupiah)

Top Gainers

Name	Last Done	Change Over 5 Days	52 Weeks High	52 Weeks Low
DCI INDONESIA TBK	37,425.000	+1,575.000	43,250.000	31,975.000
MAP AKTIF ADIPERKASA TBK	5,900.000	+825.000	6,175.000	2,600.000
SUCACO(SUPREME CABLE MANUFACTURING)	9,375.000	+600.000	11,175.000	7,750.000
PETROSEA	5,250.000	+520.000	6,000.000	2,620.000
ASURANSI JIWA SINARMAS MSIG TBK	6,200.000	+400.000	6,500.000	5,175.000

Top Losers

Name	Last Done	Change Over 5 Days	52 Weeks High	52 Weeks Low
INDO TAMBANGRAYA MEGAH TBK	26,300.000	-3,900.000	45,650.000	26,150.000
BAYAN RESOURCES TBK	18,900.000	-1,500.000	24,800.000	4,540.000
UNITED TRACTORS	24,025.000	-1,250.000	36,200.000	23,600.000
GUDANG GARAM TBK	28,700.000	-1,100.000	32,125.000	16,500.000
TELEFAST INDONESIA TBK	2,620.000	-990.000	5,900.000	2,310.000

SET (Thai Baht)

Top Gainers

Name	Last Done	Change Over 5 Days	52 Weeks High	52 Weeks Low
DELTA	87.500	+10.000	115.400	28.700
SAPPE	74.750	+9.000	76.250	30.750
TOPP	159.500	+6.000	179.500	151.000
SCC	339.000	+5.000	382.000	300.000
XO	18.400	+4.100	18.600	11.500

Top Losers

Name	Last Done	Change Over 5 Days	52 Weeks High	52 Weeks Low
OHTL	486.000	-34.000	610.000	316.000
CHOTI	119.500	-15.500	179.000	116.000
INSURE	140.000	-15.000	700.000	130.000
CBG	67.250	-10.500	116.000	67.250
METCO	233.000	-10.000	298.000	224.000

HKEX (HKD)

Top Gainers

Name	Last Done	Change Over 5 Days	52 Weeks High	52 Weeks Low
WEIBO CORPORATION	139.000	+17.000	200.000	81.300
TRIP COM GROUP LTD	269.600	+15.600	321.800	152.300
TENCENT HOLDINGS LIMITED	339.800	+13.400	416.600	188.213
STAR CM HOLDINGS LIMITED	102.000	+11.000	125.800	32.550
BAIDU INC	125.600	+10.000	166.300	73.700

Top Losers

Name	Last Done	Change Over 5 Days	52 Weeks High	52 Weeks Low
MOG DIGITECH HOLDINGS LTD	36.800	-13.650	53.000	1.620
CHINA TOURISM GROUP DUTY FREE CORP	137.300	-12.100	280.000	120.000
ORIENT OVERSEAS INT	150.900	-9.700	284.800	112.000
BEIGENE LTD	138.500	-8.500	170.500	74.900
AKESO INC	37.000	-6.850	52.600	12.560

SGX (SGD)

Top Gainers

Name	Last Done	Change Over 5 Days	52 Weeks High	52 Weeks Low
JARDINE C&C	34.750	+0.550	36.850	26.060
SEMBCORP IND	4.870	+0.290	4.930	2.675
CORTINA	3.880	+0.190	4.545	3.420
KHONG GUAN	1.330	+0.180	1.560	1.150
SIA	6.090	+0.180	6.100	4.990

Top Losers

Name	Last Done	Change Over 5 Days	52 Weeks High	52 Weeks Low
JMH USD	49.600	-1.000	59.480	42.600
DBS	30.440	-0.660	35.855	29.009
VENTURE	15.120	-0.540	18.750	14.960
AEM SGD	3.150	-0.300	4.710	2.700
UOB	27.700	-0.280	31.400	25.910

CORRUPTION IN PLCS



Devanesan
Evanson

**Chief Executive
Officer, Minority
Shareholders Watch
Group**

In January 2023, the global anti-corruption coalition Transparency International revealed that Malaysia's 2022 Corruption Perceptions Index (CPI) score deteriorated to 47 points from 48 points in 2021, where 0 is highly corrupt, and 100 is perceived as very clean. The CPI is the most widely used global corruption ranking in the world. It measures how corrupt each country's public sector is perceived to be, according to experts and businesspeople.

From 53 points in 2019, Malaysia's CPI has fallen 6 points over the past three years. The drop is statistically significant, indicating that the country is heading in the wrong direction regarding fighting corruption, supporting human rights and democracy in the public sector.

According to the Malaysian Anti-corruption Commission (MACC), corruption is the act of giving or receiving any gratification or reward in the form of cash or in-kind of high value for performing a task in relation to his/her positions. There are four main offences stipulated in the MACC Act 2009 (Act 694):

- Soliciting/receiving gratification (bribe) [section 16 & 17(a) MACC Act 2009]
- Offering/giving gratification (bribe) [section 17(b) MACC Act 2009]
- Intending to deceive (false claim) [Section 18 MACC Act 2009]
- Using office or position for gratification (bribe) (abuse of power/ position) [Section 23 MACC Act 2009]

PLCS IN THE NEWS

While we often hear about widespread corruption in government, politics, and the public sectors, graft is also a severe issue plaguing corporate Malaysia. Even as the authorities clamp down on bribery, PLCs continue to be embroiled in corruption cases. This raises concerns about the ethics and integrity of the directors and employees of PLCs.

To name a few, in January 2022, MACC arrested three officers for facilitating its probe into the procurement of six littoral combat ships (LCS) supposedly to be built by Boustead Naval Shipyard Sdn Bhd (BNS), an 82%-subsidiary of Boustead Holdings Berhad.

Fast forward to February 2023, MACC raided the office of M Jets International Sdn Bhd, an 80%-owned subsidiary of MMAG Holdings Berhad, pertaining to a report made to MACC, following which the subsidiary's accounts have been frozen. Subsequently, MMAG suspended the executive functions of two directors of M Jets.

A month later, two directors of Revenue Group Berhad claimed trial at the Sessions Court for dishonestly misappropriating company property in 2018. The directors were arrested by the MACC in January 2023 over an alleged false claim relating to the purchase of thermal printing paper worth more than RM400,000.

Then in April 2022, MACC froze all operational bank accounts of troubled lingerie maker Classita Holdings Berhad (formerly Caely Holdings Bhd) and its subsidiaries in connection with several suspicious transactions linked to the misappropriation of RM30.55

million by its wholly-owned subsidiary Caely (M) Sdn Bhd. The freeze order was lifted eight months after MACC completed its investigation and has filed no charges against the company.

These examples may not be conclusive proof of corruption as investigations may be in various stages of completion. As a rule, one is innocent till charged and found guilty. For PLCs, the impacts are detrimental in the form of reputational losses, financial losses, operational inefficiencies, and the ensuing regulatory punishments for those caught with bribery. PLCs may also be liable for bribery committed by their directors and employees.

WHAT CAN WE DO?

Bursa Malaysia Securities Listing Requirements mandate all PLCs and their subsidiaries to establish and maintain policies and procedures regarding anti-corruption and whistleblowing. These policies are required to be published on their corporate websites. Whistleblowing seeks to enhance corporate governance by helping to foster an environment where integrity and ethical behaviour are preserved, and any improper conduct may be exposed. Whistleblowing is also a risk management tool to prevent wrongdoings within the company. Such policy promotes standards of good corporate governance.

Stakeholders including minority shareholders and employees, are encouraged to report in good faith serious concerns of any improper conduct and wrongdoings that could adversely impact the interest of the PLC and its stakeholders without fear of repercussion via dedicated channels. Besides, listed issuers and their boards are required to periodically assess these policies and procedures' effectiveness, at least once every three years, ensuring that corruption risk is included in the annual risk assessment of the group.

Being a minority shareholder, we should play our part in monitoring and assessing the adequateness of these policies to ensure they are relevant to present times.



CapitaLand Malaysia REIT Management Sdn. Bhd. (CMRM), the manager of **CapitaLand Malaysia Trust (CLMT)**, is pleased to announce today that MTrustee Berhad, the

Trustee of CLMT, has entered into a sale and purchase agreement to acquire a freehold logistics warehouse (the Logistics Property) located at the HicomGlenmarie Industrial Park in Shah Alam, Selangor (the Proposed Acquisition). The purchase price for the Proposed Acquisition is RM39.7 million, negotiated on a willing-buyer willing-seller basis, is in line with the independent market valuation¹ of RM40.4 million commissioned by the Trustee. In tandem with the Proposed Acquisition, CapitaLand Malaysia REIT Management has also executed a Letter of Offer with a reputable international luxury fashion retailer to fully lease the building for ten years. The new lease is expected to commence in the first half of 2024 and will generate a gross rental income of RM3.5 million per annum with an approximate yield of 6.5%, providing CLMT with a stable income stream. The Proposed Acquisition will contribute positively to CLMT's income upon the commencement of the lease in financial year 2024. Under the agreement, CMRM will also undertake a convert-to-suit exercise and transform the Logistics Property into a temperature-controlled distribution centre at an estimated cost of RM14.6 million. Including the purchase price of RM39.7 million, CLMT's total investment outlay of RM54.3 million will be fully funded by bank borrowings. Post-transaction, CLMT's proforma gearing will increase from 44.3% to 44.8%, which remains below the regulatory limit of 50%. The completion of the Proposed Acquisition is expected to take place in the second half of 2023. The Logistics Property is a single-storey detached warehouse with an annexed three-storey office building and a built-up area of 84,755 square feet (sq ft). The Logistics Property is strategically located in Shah Alam, Klang Valley, a region known for its large concentration of logistics facilities and distribution centres. It enjoys excellent connectivity to major transport hubs such as Port Klang and the Kuala Lumpur International Airport via the North Klang Valley Expressway, ELITE Expressway, Guthrie Corridor Expressway and Federal Highway.



KEJURUTERAAB ASASTERA BERHAD

The Board of Directors of **Kejuruteraan Asastera Berhad (KAB)** wishes to announce that KAB Energy Holdings Sdn. Bhd. had on 12 May 2023 entered into a Memorandum of Understanding with PT. CNEC Engineering

Indonesia and Transcend Global Limited (hereinafter referred to collectively as “Parties”).

KAB Energy Holdings is desirous to collaborate with PT CNEC and Transcend Global Limited to undertake future projects that add value to the Parties. These projects include development, construction, joint ownership, operation and maintenance of any asset that the Parties deem as feasible. This collaboration shall provide long-term growth of the SES segment for the Group. KABEH, PT CNEC and TGL have strong intent to create synergies with sharing of resources, expertise and knowledge that can expand reach, openness to innovate, create continuous improvement and sustainable growth.

This MOU forms represents and grants rights among the Parties to explore potential projects. Upon successfully identifying a feasible Project for Collaboration, the Parties will review projects on a case-to-case basis and will mutually agree in good faith on any terms to be finalized in a definitive agreement. The Definitive Agreement once duly executed shall supersede this MOU. 3.2 This MOU shall form an exclusive right among the Parties for a period of 12 months, unless terminated earlier, continue in force until signature of the Definitive Agreements (if sooner) or such other date as the Parties may otherwise agree in writing.

Kejuruteraan Asastera Berhad (KAB) is pleased to announce that the Group's wholly owned subsidiary KAB Energy Holdings Sdn Bhd has inked a Memorandum of Understanding with a subsidiary of China National Nuclear Corporation, PT. CNEC Engineering Indonesia and Transcend Global Limited to establish a joint effort to develop potential sustainable energy solutions projects regionally. PT CNEC, a subsidiary of the CNNC Group, brings extensive expertise in constructing nuclear energy power plants, LNG terminals, fuel tank farms, mining operations, alternative power generation plants, and more. TGL, an investment holding company associated with Regional Green Fund, specialises in investment holding, energy product trading, leasing heavy equipment and machinery, merger and acquisition activities, and investment in high-growth industries. Together, KABEH and PT CNEC will collaborate to identify and develop various Proposed Projects while TGL will assist in conducting financial feasibility studies for shortlisted projects and facilitate the merger and acquisition of the project Special Purpose Vehicles.



Malaysian Genomics Resource Centre Berhad (MGRC) today announced a strategic cooperation agreement with Toticell Limited for the distribution of the Group's products in Bangladesh. Toticell, which is based in Dhaka, Bangladesh, specialises in regenerative healthcare focusing on treatments for musculoskeletal conditions such as arthritis, sports-related injuries and tendinopathies. Under the Strategic Cooperation Agreement, the parties agree to cooperate in the distribution of Malaysian Genomics' cosmeceutical products, genetic screening tests, CAR T-cell therapy services, and other areas of mutual commercial interests. This collaboration with Toticell falls in line with Malaysian Genomics' strategic expansion plan which includes diversifying geographically and globally.

**Teladan Setia Group Berhad (TELADAN)**

has today announced its first quarter results for the period ended 31 March 2023 (1QFY23). Revenue grew by 4.6%

year-on-year to RM61.6 million in 1QFY23 from RM58.9 million in 1QFY22. Revenue for the quarter under review was mainly contributed from the development of Taman Desa Bertam Phase 3A and 3B, Taman Bertam Heights Phase 1B and the newly launched, Taman Desa Bertam Phase 4A. Net profit in 1QFY23 came in lower at RM8.3 million, from RM9.5 million reported last year due to increase in administrative expenses. Teladan Setia's encouraging Q1FY23 financial performance reflects the sustained growth of the property industry following Malaysia's transition towards the endemic phase. The industry has benefitted from the measures introduced by the Malaysian Government in Budget 2023 that were aimed at supporting homeownership. Having said that, we are cautiously optimistic as the industry continues to be challenged by inflationary pressures and high interest rates. In line with the anticipated challenges, the Group has opted for a more prudent approach by rolling out new developments tailored to market needs. The Group is planning to launch properties worth an accumulated GDV of RM1.1 billion in FY23 with completion within the next 2 to 3 years. On a quarter-on-quarter basis, Teladan Setia's revenue grew by 33.8% from RM46.0 million in 4QFY22. The rise in revenue was primarily attributed to the completion of Bali Residences and the ongoing development of Taman Desa Bertam Phase 4 and Taman Bertam Height Phase 1B. Additionally, the Group improved from a RM0.1 million loss in Q4FY22, in line with Q1FY23's notable revenue growth. As at 31 March 2023, Teladan Setia holds one of the largest undeveloped landbank in Melaka at approximately 983.4 acres.



VSTECS Berhad (VSTECS) posted a revenue of RM664.7 million in 1Q FY2023, marking a 3.3% growth compared to the corresponding period of the preceding year (1Q FY2022) when revenue stood at RM643.8 million. The Enterprise Systems and ICT Services segments registered impressive performances, with revenue increasing by 30.6% and 39.7%, respectively. This growth underscores the ongoing upward trend in enterprise spending on infrastructure and digital transformation, as businesses increasingly recognise the critical role of technology in maintaining competitiveness in today's business landscape. The ICT Distribution segment however experienced a revenue decline of 25.2% compared to 1Q FY2022, reflecting consumers' heightened caution towards discretionary spending. Despite this, VSTECS remains focused on adapting to market dynamics and meeting evolving consumer demands. During the quarter, profit after tax grew by 25.0% to reach RM14.8 million, outpacing the revenue growth. This positive result can be attributed to the higher profit margin contribution from the Enterprise Systems and ICT Services segments.

Upcoming IPO

NAME OF COMPANY	OFFER PERIOD		ISSUE PRICE (Per Ordinary Share)	LISTING SOUGHT	DATE OF LISTING
	OPENING	CLOSING			
SYNERGY HOUSE BERHAD	12 May 2023	18 May 2023	RM0.43	ACE MARKET	1 June 2023
RADIUM DEVELOPMENT BERHAD	27 Apr 2023	16 May 2023	RM0.50	MAIN MARKET	31 May 2023
EDELTEQ HOLDINGS BERHAD	09 May 2023	17 May 2023	RM0.24	ACE MARKET	30 May 2023
CLOUDPOINT TECHNOLOGY BERHAD	09 May 2023	15 May 2023	RM0.38	ACE MARKET	29 May 2023
DXN HOLDINGS BERHAD	28 Apr 2023	09 May 2023	RM0.76	MAIN MARKET	19 May 2023

ShareInvestor is a technology based company with a focus on Internet media and we have operations in Malaysia, Singapore and Thailand.

We are the market leader in providing a combination of market data, analysis and news on various platforms to traders and investors.

Our websites include www.shareinvestor.com and www.bursastation.com.

More information about our products and services can be found at www.shareinvestorholdings.com

We're looking for Drupal Developers who will be in charge of front-end development and back-end/module development. This role requires expertise in PHP, HTML, CSS, JS, and an eye for design aesthetics. The candidates should be familiar and have a passion working with content management systems.

Interested candidates are encouraged to apply with full resume, present and expected salary and a recent photograph. Please send these to hr.my@shareinvestor.com for processing. ShareInvestor regrets that only shortlisted candidates shall be notified.

Drupal Developers (2 vacancies)

Job Responsibilities:

- Active participation in all UI / UX decisions
- Contribute actively to the continuous development and maintenance of development projects
- Enhance Drupal development quality
- Provide solutions to issues and suggestions for improvements.
- Designing and implementing new features to the system
- Ensuring optimal performance

Required Skills:

- At least 3 years of Drupal Theming and Front-End Development experience
- Proficient in PHP, HTML5/XHTML, CSS, Javascript, jQuery, AJAX, XML, Json
- Good Diploma/Degree in Computer Science/Computer Engineering.
- Experience working with Drupal's main modules, such as CTools, Views, Rules, Webform, and so on
- Ability to create custom Drupal modules
- Strong troubleshooting skills to fix bugs

Benefits:

- Career & growth opportunities
- Interesting projects
- Medical Insurance
- Incentives

Ruby on Rails Developer (1 vacancy)

Job Responsibilities:

- Develop quality web-based software modules on schedule with a focus on Ruby and Ruby on Rails applications.
- Explore and utilize the latest web-based technologies.
- Document design specifications, logic concepts and module description.
- Maintain and enhance existing web-based applications.

Required Skills:

- Experience in web-based programming/scripting is essential. Candidate must be able to explain clearly technical aspects of his/her past experiences and projects.
- Passion for programming and desire to learn new languages like Go.
- Good Diploma/Degree in Computer Science/Computer Engineering.
- Able to work well in a team and be able to follow documentation and coding standards.
- Knowledge in any of the following would be an added advantage
 - Ruby and Ruby on Rails Framework
 - Javascript and jQuery library
 - Go
 - Perl

Application Developer (C++/STL) (1 vacancy)

Job Responsibilities

- Deliver quality software modules on schedule.
- Document design specifications, conceptions, module description.
- Maintain and enhance existing applications.

Required Skills:

- Passion for programming and desire to learn.
- Good Diploma/Degree in Computer Science/Computer Engineering.
- Skills in C++ is essential.
- Experience with Visual Studio, networking stack and Golang would be an advantage.
- Proactive, resourceful and self-motivated with strong analytical skills.
- Good interpersonal, written and communication skills.
- Able to work with little supervision.

Junior Market Data Support Specialist

As a Junior Market Data Support Specialist, you will be involved in reviewing, analysing and collecting accurate and timely financial information on listed companies for our market data information services.

Job Responsibilities

- Collect, compute and analyse relevant financial data of listed companies, organise and present them on the company portal, in timely manner, for the consumption by our subscribers and our corporate clients
- Capture corporate events / actions and translate them to adjustments of impacted financial data
- Research, evaluate, propose new solutions or recommendations for adhoc project requirements that are related to the financial data or the financial fundamentals of listed companies
- Provide support to users' queries related to financial information displayed on our platforms
- Perform any other duties assigned from time to time, including rare occasions of working during weekends

Required Skills

- Minimum academic qualification: Diploma in any finance-related discipline
- Knowledge of basic accounting and financial terms is required
- Flair for data precision / accuracy / quality / thoroughness plus strict adherence to structured data process and timeline is a must
- Proficient in Microsoft Excel
- Team player with pleasant personality
- Proficient in English, oral and written.

Fresh graduates are welcome to apply.

Interested candidates are encouraged to apply with full resume, present and expected salary and a recent photograph. Please send these to hr.my@shareinvestor.com for processing. ShareInvestor regrets that only shortlisted candidates shall be notified.