

# Invest

A Weekly e-Publication by [SHAREINVESTOR.com](https://shareinvestor.com)

ISSUE  
**155**  
FRIDAY  
05 MAY  
2023

Scan/Click QR to Register



Via email, every Friday

*Introducing*



by **SHAREINVESTOR**<sup>®</sup>

**General Meeting Suite (GM Suite)**, an end-to-end technology system to facilitate hybrid, virtual or physical Annual General Meetings.

## THE GOLD STANDARD SOLUTION FOR AGM/EGM



<https://gm-suite.com>



## BNM RAISES OPR BY 25 BASIS POINTS TO 3.00%

*(page 23)*



04	LEADERBOARD	12	UP TRENDING STOCKS	23	MARKET SENTIMENTS
06	SHARIAH HOT STOCKS	14	VALUE STOCKS	26	REGIONAL MARKETS
07	COMPANY SPOTLIGHT	16	GROWTH STOCKS	27	FROM THE OBSERVER
08	SHARIAH MOMENTUM UP STOCKS	18	DIVIDEND STOCKS	32	INSIDER ACTIVITY
10	NON SHARIAH HOT STOCKS	20	BROKERS' CALL	34	INVESTOR RELATIONS
		21	LONG COMPANIES	37	CAREERS AT SHAREINVESTOR



### INVESTOR PLATFORMS

#### Director

Darren Chong  
darren.chong@shareinvestor.com

#### Manager

Heidee Ahmad  
heidee.ahmad@shareinvestor.com

#### Senior Manager

Sharon Lee  
sharon.lee@shareinvestor.com

#### Senior Executive

Daniel Wong  
daniel.wong@shareinvestor.com

#### Executive

Farah Azwani  
farah.azwani@shareinvestor.com

#### Executive

Tan Yong Sheng  
yongsheng.tan@shareinvestor.com

### ADMIN & OPERATIONS

#### Senior Executive

Watie Nordin  
watie.nordin@shareinvestor.com

#### Executive

Silas Emmanuel Joseph  
silas.joseph@shareinvestor.com

### INVESTOR RELATIONS

#### Group Managing Director & Publisher

Edward Stanislaus  
edward@shareinvestor.com

#### Director

Elizabeth Tan  
elizabeth.tan@shareinvestor.com

#### Senior Manager

Letticia Wong  
letticia.wong@shareinvestor.com

### PROCESS AUTOMATION & DATA ANALYTICS

#### Data Analyst

Nickson Aw

### SHAREINVESTOR HOLDINGS BOARD OF DIRECTORS

Chairman	Patrick Daniel
Group CEO	Christopher Lee
Group COO	Lim Dau Hee
Group CFO	Teo Siew May
Group MD	Shanison Lin



“ GIVE A MAN A FISH AND YOU FEED HIM FOR A DAY; TEACH A MAN TO FISH AND YOU FEED HIM FOR A LIFETIME ”

#### ShareInvestor Malaysia Sdn. Bhd.

(200001023956) (526564-M)

Unit No. DF2-07-03A, Level 7,  
Persoft Tower, 6B Persiaran Tropicana,  
47410 Petaling Jaya, Selangor Darul Ehsan.

Hotline : 603 7803 1791

Mobile : 011 6343 8939

Website : [www.ShareInvestor.com.my](http://www.ShareInvestor.com.my)

[www.ShareInvestorHoldings.com](http://www.ShareInvestorHoldings.com)

[www.Facebook.com/ShareInvestorMalaysia](https://www.Facebook.com/ShareInvestorMalaysia)

ADVERTISEMENT ENQUIRY



## MSWG Seminar : Conducting a Better Annual General Meeting



**11th May 2023, 09.00am - 01.00pm**  
**The Majestic Hotel, Kuala Lumpur**

**Speaker: Mr Devanesan Evanson,**  
**Chief Executive Officer of MSWG**



#### Learning Outcomes :-

Upon completion of the seminar, participants will be aware of:

- What to consider and prepare for when running an effective AGM
- Ways to improve the conduct of AGM and apply best AGM practices
- Suggestions to improve meeting conduct based on MSWG representatives' observation and participation at the AGMs of PLCs
- Director's and shareholders' do's and don'ts before, during and after the AGM

#### Target Audience :

- Company Directors, C-Suite, Management Team, Companies Secretaries

*Please click here for more info*

Contact: Ms. Nor Khalidah Tel: 03 - 2732 0010 / 017-630 0754

Email: [khalidah@mswg.org.my](mailto:khalidah@mswg.org.my)

# DISCOVER & TRADE SINGAPORE STOCKS

to win an iPad Pro and more!\*



## Start Trading Now!

Promotion Period : Now until 31 Jul 2023

\*T&C Apply

[www.shareinvestor.com](http://www.shareinvestor.com) - market data at your fingertips



## ShareInvestor WebPro ([www.shareinvestor.com/my](http://www.shareinvestor.com/my)) Prices > Stock Prices > Bursa > click Stocks tab

1. mouse over Ranking > select Top Active > all Shariah stocks are denoted with an [S] > mouse over Column Layout > select Edit Customs > select Name > select Volume > select Last Done Price > Mouse Over Column Layout > select Custom
2. mouse over Ranking > select Top Turnover > all Shariah stocks are denoted with an [S] > mouse over Column Layout > select Edit Customs > select Name > select Last Done Price > select Value > Mouse Over Column Layout > select Custom
3. mouse over Ranking > select Top Gainers (Over 5 Trading Days) > mouse over Column Layout > select Edit Customs > select Name > select Last Done Price > select 5 Days Change > select 5 Days % Change > Mouse Over Column Layout > select Custom
4. mouse over Ranking > select Top Losers (Over 5 Trading Days)
5. mouse over Ranking > select Top % Gainers (Over 5 Trading Days)
6. mouse over Ranking > select Top % Losers (Over 5 Trading Days)

### Shariah Top Actives (as at Wednesday)

Name	Price (RM)	Volume
BAHVEST [S]	0.215	1,577,572.000
VINVEST [S]	0.210	786,491.000
HONGSENG [S]	0.130	713,593.000
SAUDEE [S]	0.030	685,595.000
TANCO [S]	0.465	528,737.000
KOMARK [S]	0.095	511,901.000
PELIKAN [S]	0.735	452,597.000
MYEG [S]	0.820	423,745.000
WIDAD [S]	0.460	364,715.000
EDEN [S]	0.165	294,494.000

### Shariah Top Turnover (as at Wednesday)

Name	Price (RM)	Value (RM)
BAHVEST [S]	0.215	40,629,323
MYEG [S]	0.820	34,474,494
PELIKAN [S]	0.735	33,797,399
PCHEM [S]	7.240	31,915,530
AIRPORT [S]	7.230	31,319,473
IHH [S]	5.800	28,008,352
TOPGLOV [S]	1.030	27,683,658
MAXIS [S]	4.520	27,467,073
TANCO [S]	0.465	24,674,329
AXIATA [S]	3.040	23,076,777

### Top Gainers (over 5 Trading days as at Wednesday)

Name	Price (RM)	Change (RM)
HEIM	28.740	+0.960
APB	1.490	+0.420
F&N	27.440	+0.340
HLBANK	20.280	+0.220
MAXIS	4.520	+0.220
SHH	1.000	+0.220
TOCEAN	2.030	+0.220
HARISON	9.350	+0.200
PJBUMI	1.050	+0.175
TENAGA	8.980	+0.160

### Top % Gainers (over 5 Trading days as at Wednesday)

Name	Price (RM)	Change (%)
FINTEC	0.010	+100.00
PHB	0.010	+100.00
DOLPHIN	0.015	+50.00
EAH	0.015	+50.00
APB	1.490	+39.25
IVORY	0.090	+38.46
AEM	0.020	+33.33
GOCEAN	0.020	+33.33
ETH	0.230	+31.43
SHH	1.000	+28.21

### Top Losers (over 5 Trading days as at Wednesday)

Name	Price (RM)	Change (RM)
NESTLE	134.900	-1.100
UTDPLT	15.600	-0.856
MPI	28.140	-0.660
BKAWAN	21.300	-0.540
DLADY	25.800	-0.500
HEXTECH	23.000	-0.440
CHINTEK	8.040	-0.400
GREATEC	4.530	-0.260
ATECH	2.500	-0.240
EPMB	0.550	-0.220

### Top % Losers (over 5 Trading days as at Wednesday)

Name	Price (RM)	Change (%)
ZELAN	0.025	-58.33
BAHVEST	0.215	-44.16
AGES	0.030	-33.33
DGB	0.010	-33.33
EPMB	0.550	-28.57
BORNOIL	0.015	-25.00
FOCUS	0.015	-25.00
MTRONIC	0.015	-25.00
MLAB	0.015	-25.00
PRKCORP	0.225	-25.00

**Make-A-Wish**  
MALAYSIA

**ANNUAL CHARITY GOLF TOURNAMENT**  
TROPICANA GCR • 25th May 2023

Main Sponsors



**SRI KOTA  
SPECIALIST  
MEDICAL CENTRE**  
*The Heart of Healthcare*



**Southern Acids (M) Berhad**

**BOOK NOW**

Date: **Thursday 25th May 2023**

Time: **1.30pm Tee Off**

Venue: **Tropicana GCR**

Flight cost: **RM5,000 (for 4 golfers)**

# TEE OFF FOR HOPE

Since 2010, Make-A-Wish Malaysia has been granting wishes of critically ill children around the country. Funds from this event will help us reach these critically ill children without delay.



# SHARE THE POWER OF A WISH

To find out more please call:

Make-A-Wish Malaysia T: (03) 2276 3344 E: info@makeawish.org.my

[www.facebook.com/MakeawishMalaysia](http://www.facebook.com/MakeawishMalaysia) • [www.makeawish.org.my](http://www.makeawish.org.my)

## Price & Volume Distribution Charts (as at Wednesday)

Technical Analysis

**DEFINITION:** Shariah compliant stocks with Technical Analysis showing 5-days & 10-days Moving Average Price below Yesterday's Close over past 3 days and with Volume Spike.

**CHART GUIDE:** Volume Distribution Chart is a statistical interpretation of the current sentiment on each stock in graphical format. The highest bar categorized as >150k is likely to be traded by institutions or super dealers, while the lowest bar categorized as <15k usually represents retail investors. "Buy Up" refers to more buyers snatching up the lots queued at selling price. "Sell Down" refers to sellers selling their shares to the buying queue



ShareInvestor WebPro > Screener > Market Screener (FA & TA) > select BURSA > add criteria

**A. Criteria**

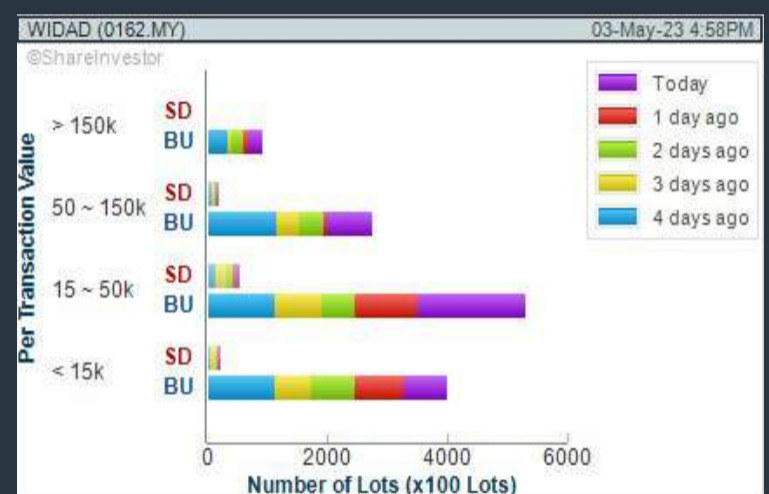
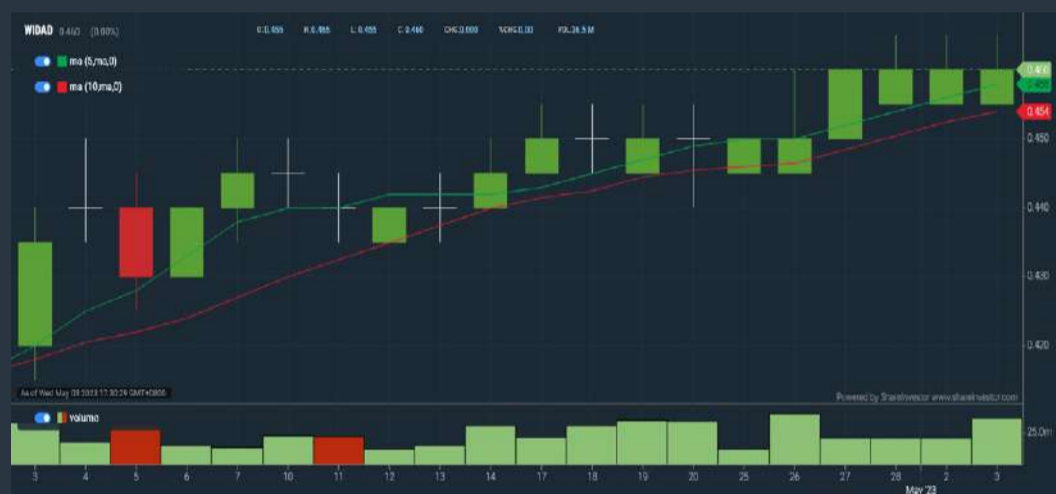
- > click Add Criteria
- Technical Analysis Conditions tab select (i) Moving Average Below Close (ii) Volume Spike
- Fundamental Analysis Conditions tab > select (iii) Revenue
- Prices & Other Conditions tab > select (iv) Is Shariah Compliant
- Technical Analysis Conditions tab select (v) Moving Average Below Close
- Prices & Other Conditions tab > select (vi) Last Done Price
- Technical Analysis Conditions tab select (vii) Moving Average Below Close

**B. Conditions (Criteria Filters)**

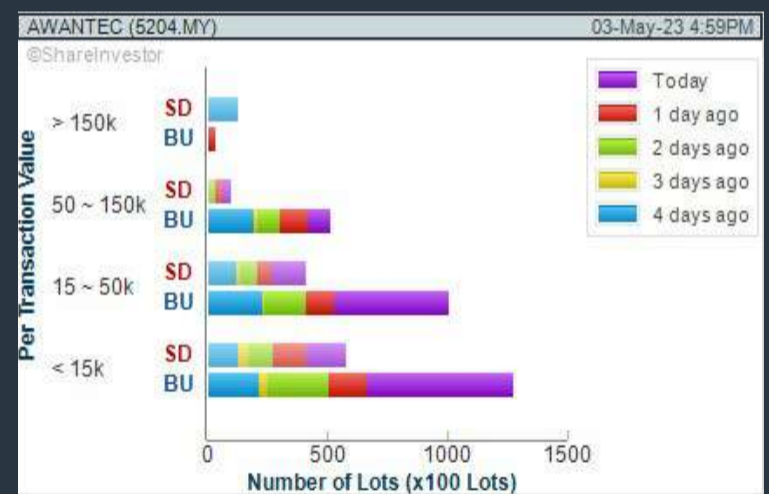
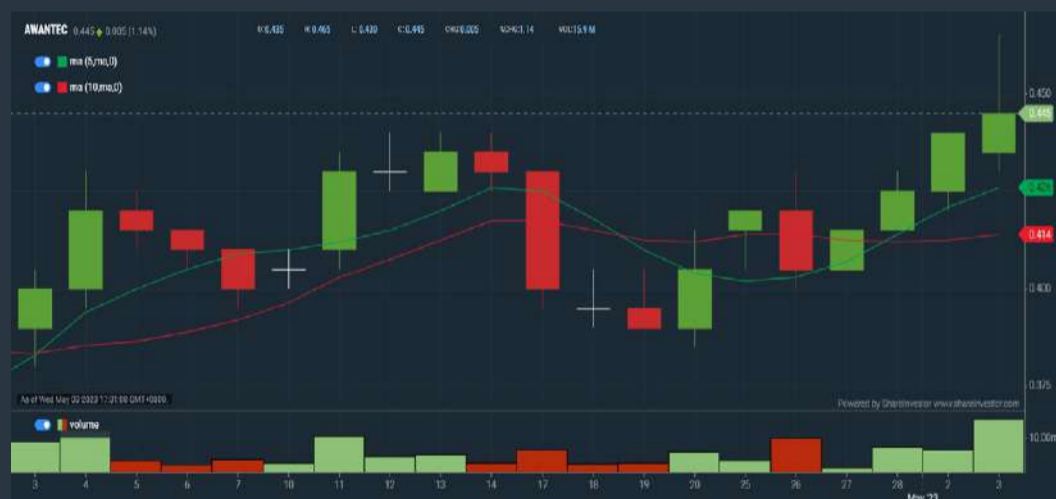
- Moving Average Below Close - select (MA) type (5) below close price for type (3) days
- Volume Spike - Volume type (1) greater than type (5) days average
- Revenue ("000) - select (more than) type (1) for the past select (1) financial year(s)
- Is Shariah Compliant - select **Yes**
- Moving Average Below Close - select (MA) type (10) below close price for type (3) days
- Last Done Price - select (more than) type (0.3)
- Moving Average Below Close - select (EMA) type (5) below close price for type (3) days

- > click Save Template > Create New Template type (Shariah Hot Stocks) > click Create
- > click Save Template as > select Shariah Hot Stocks > click Save
- > click Screen Now (may take a few minutes)
- > Sort By: Select (Vol) Select (Desc)
- > Mouse over stock name > Charts > click C<sup>2</sup> Charts or Volume Distribution

### WIDAD GROUP BERHAD (0162) C<sup>2</sup> Chart



### AWANBIRU TECHNOLOGY BERHAD (5204) C<sup>2</sup> Chart



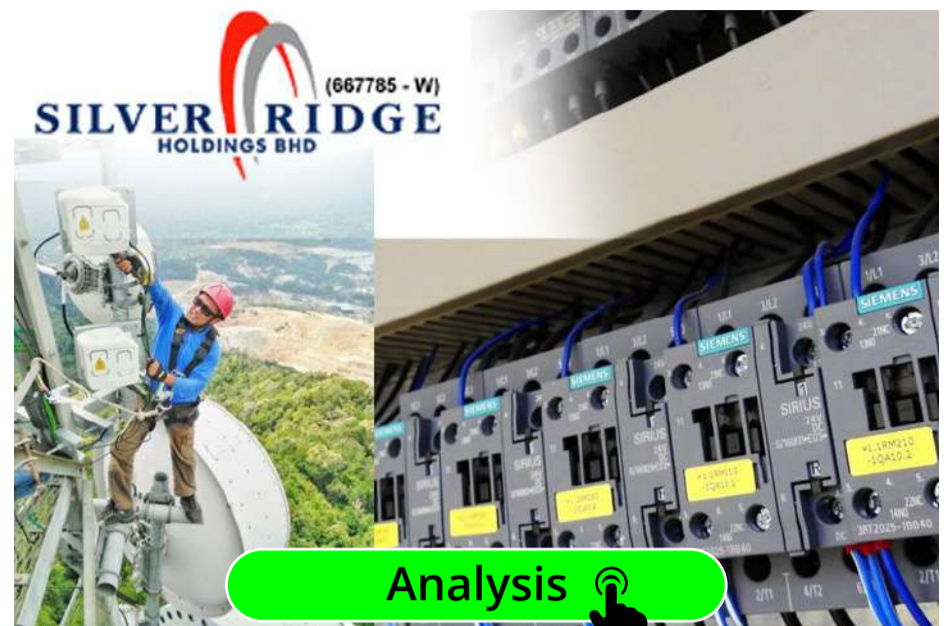
### MAXIS BERHAD (6012) C<sup>2</sup> Chart



**Disclaimer:** The information on this page is provided as a service to readers. It does not constitute financial advice and/or any investment recommendations. Past performance is not indicative of future results. We assume no liability for damages resulting from or arising out of the use of such information. It would be best if you did your own research to make your personal investment decisions wisely or consult a licenced investment advisor.

## COMPANY BACKGROUND

**Silver Ridge Holdings Berhad** is involved in providing telecommunications solutions and software. The company offers a range of telecommunication services, including design, customization, and optimization of next generation network solution as well as telecommunication related software solutions. It also provides network architecture and engineering systems, in-building radio frequency coverage and quality, power load solutions, base station subsystem solutions,



**Analysis**

and multi-service access node system architecture and design.

SRIDGE SILVER RIDGE HOLDINGS BHD			
Last (MYR): <b>0.360</b> ↑	Change: +0.030	High: 0.370	Remarks: -
	Change (%): +9.09	Low: 0.330	
Open: 0.330	Yesterday's Close: 0.330	Soil Price: 0.365	
Buy Price: 0.360	Soil Volume ('00): 302	Cumulative Value: 6,229,949.5	
Buy Volume ('00): 12,773			
Cumulative Volume ('00): 180,985			

### Financial Analysis

<b>Revenue Growth</b> Increasing revenue in last 2 consecutive years	😊 Excellent	<b>Profit Growth</b> Losses for past 4 years	😞 Watch Out
<b>Piotroski F Score</b> The company has weak financial strength (Piotroski F-Score of 0-2)	😞 Watch Out	<b>Debt to Cashflow</b> The company has negative cash flow from operations in most recent year	😞 Watch Out
<b>Free Cash Flow</b> Negative free cash flow for two years or more	😞 Watch Out	<b>Gross Profit Margin</b> Low gross profit margin for 3 years	😞 Watch Out
<b>Net Earnings Margin</b> Company is losing money but net profit margin is improving by 2.5% a year over the past 60 months.	😊 Good	<b>Return on Assets (ROA)</b> Negative ROA for 3 consecutive years	😞 Watch Out
<b>Return on Equity (ROE)</b> Negative ROE for 3 consecutive years	😞 Watch Out	<b>Return on Equity (ROE)</b> ROE is improving by 5% a year over the past 36 months.	😊 Excellent

😊 Excellent    😊 Good    😐 Neutral    😟 Be Alert    😞 Watch Out

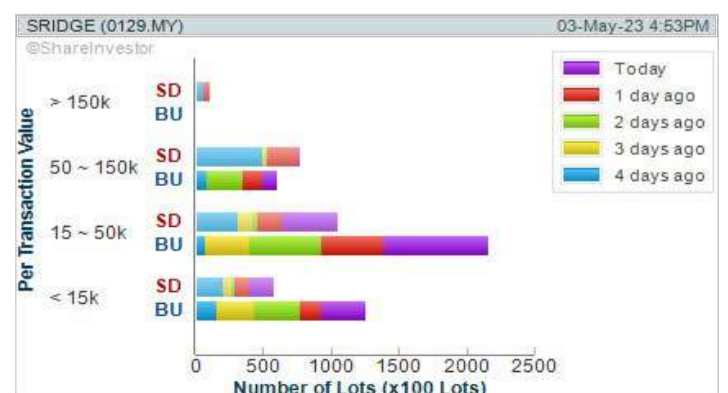


**WebPro 9-Days Free Trial Registration (worth RM9) Sign Up Now**



## Key Statistics with Total Shareholder Returns

Period	Dividend Received	Capital Appreciation	Total Shareholder Return
Short Term Return	5 Days	+0.050	+16.13 %
	10 Days	+0.035	+30.91 %
	20 Days	+0.135	+68.00 %
Medium Term Return	3 Months	+0.150	+68.00 %
	6 Months	+0.105	+75.81 %
	1 Year	+0.105	+118.18 %
Long Term Return	2 Years	-0.589	-81.70 %
	3 Years	-0.025	-6.49 %
	5 Years	+0.140	+53.84 %
Annualised Return	-	-	+16.35 %



**Disclaimer:** The information on this page is provided as a service to readers. It does not constitute financial advice and/or any investment recommendations. Past performance is not indicative of future results. We assume no liability for damages resulting from or arising out of the use of such information. It would be best if you did your own research to make your personal investment decisions wisely or consult a licenced investment advisor.



## Price & Volume Distribution Charts (as at Wednesday)

Technical Analysis

**DEFINITION:** Shariah compliant stocks with Technical Analysis showing Bullish Momentum and Price Uptrend. The share price closed at the highest price yesterday. The typical price was higher than the previous day's typical price.

**CHART GUIDE:** Volume Distribution Chart is a statistical interpretation of the current sentiment on each stock in graphical format. The highest bar categorized as >150k is likely to be traded by institutions or super dealers, while the lowest bar categorized as <15k usually represents retail investors. "Buy Up" refers to more buyers snatching up the lots queued at selling price. "Sell Down" refers to sellers selling their shares to the buying queue.



ShareInvestor WebPro > Screener > Market Screener (FA & TA) > select BURSA > add criteria

**A. Criteria**

- > click Add Criteria
- Fundamental Analysis Conditions tab > select (i) Revenue
- Technical Analysis Conditions tab select (ii) Average Volume
- Prices & Other Conditions tab > select (iii) Last Done Price
- Prices & Other Conditions tab > select (iv) Is Shariah Compliant
- Technical Analysis Conditions tab select (v) RSI Overbought
- Technical Analysis Conditions tab select (vi) Moving Average Below Close
- Technical Analysis Conditions tab select (vii) CCI Overbought

**B. Conditions (Criteria Filters)**

1. Revenue ("000) - select (more than) type (1) for the past select (1) financial year(s)
2. Average Volume - type (1) days average volume greater than type (10000) lots
3. Last Done Price - select (more than) type (0.3)
4. Is Shariah Compliant - select Yes
5. RSI Overbought - select RSI 1 above 99 for 1 days
6. Moving Average Below Close - select (MA) type (10) below close price for type (1) days
7. CCI Overbought - select CCI (2) above (0) for (1) days

- > click Save Template > Create New Template type (Shariah Momentum Up Stocks) > click Create
- > click Save Template as > select Shariah Momentum Up Stocks > click Save
- > click Screen Now (may take a few minutes)
- Sort By: Select (Vol) Select (Desc)
- Mouse over stock name > Charts > click C<sup>2</sup> Charts tab or Volume Distribution

### TOP GLOVE CORPORATION BERHAD (7113)

C<sup>2</sup> Chart

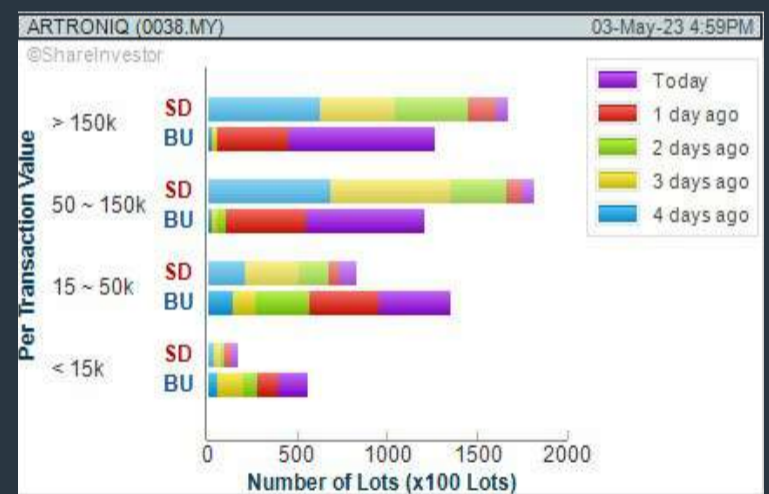
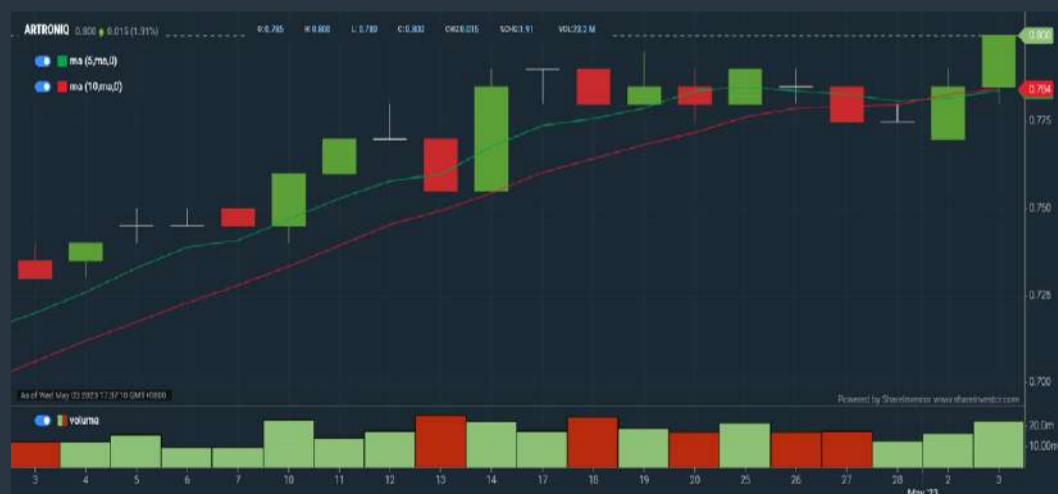
Analysis



### ARTRONIQ BERHAD (0038)

C<sup>2</sup> Chart

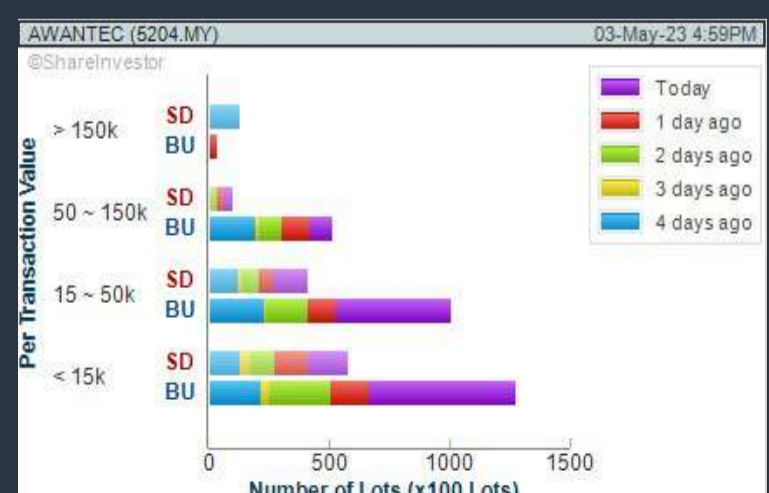
Analysis



### AWANBIRU TECHNOLOGY BERHAD (5204)

C<sup>2</sup> Chart

Analysis



**Disclaimer:** The information on this page is provided as a service to readers. It does not constitute financial advice and/or any investment recommendations. Past performance is not indicative of future results. We assume no liability for damages resulting from or arising out of the use of such information. It would be best if you did your own research to make your personal investment decisions wisely or consult a licenced investment advisor.

# INVEST FAIR® 2023

# GROW YOUR MONEY *Lahh!*

Mid Valley Exhibition Centre

3 & 4 June 2023

10AM - 9PM

## Our Speakers



**Chong Jin Yoong**  
President,  
CFA Society Malaysia



**Dr. Renard Siew**  
Head of Sustainability,  
Yinson Holdings Bhd



**Dr. Zaharuddin**  
Managing Director,  
Elzar Shariah Solution Sdn Bhd



**Peter Lim**  
Founder & Head of Research,  
Trident Analytics Sdn Bhd



**John Huo**  
Founder,  
VUCA insights



**Ng Zhu Hann**  
CEO,  
Tradeview Capital Sdn. Bhd.



**Aaron Tang**  
General Manager - APAC  
Luno



**Samantha Loh**  
Corporate Engagement  
PPA Malaysia



**Kathlyn Toh**  
Founder and Chief Trainer,  
Beyond Insight



**Anson Tan**  
Founder, BullBearBursa



**Max Tan**  
Founder, 12Invest



**Kevin**  
Founder, Round & Surge



**George Poh**  
Director, EE Cameron



**YC Chin**  
Founder, S.W.C 股视天下



**Aaron Pek**  
Founder, Value Investing Substack



**Shane Choo**  
Director, WealthFort



**Yih Jia**  
Founder, 师奶股师



**Cikgu Saham**  
Remisier

**REGISTER FOR FREE**



**SCAN TO REGISTER**

ORGANISED BY:



SUPPORTED BY:



## Price & Volume Distribution Charts (as at Wednesday)

Technical Analysis

**DEFINITION:** Stocks with Technical Analysis showing 5-days & 10-days Moving Average Price below Close over past 1 days and with Volume Spike

**CHART GUIDE:** Volume Distribution Chart is a statistical interpretation of the current sentiment on each stock in graphical format. The highest bar categorized as >150k is likely to be traded by institutions or super dealers, while the lowest bar categorized as <15k usually represents retail investors. "Buy Up" refers to more buyers snatching up the lots queued at selling price. "Sell Down" refers to sellers selling their shares to the buying queue.



ShareInvestor WebPro > Screener > Market Screener (FA & TA) > select BURSA > add criteria

**A. Criteria**

- > click Add Criteria
- Technical Analysis Conditions tab select (i) Moving Average Below Close (ii) Volume Spike
- Fundamental Analysis Conditions tab >select (iii) Revenue
- Prices & Other Conditions tab > select (iv) Is Shariah Compliant
- Technical Analysis Conditions tab select (v) Moving Average Below Close
- Prices & Other Conditions tab > select (vi) Last Done Price
- Technical Analysis Conditions tab select (vii) Moving Average Below Close

**B. Conditions (Criteria Filters)**

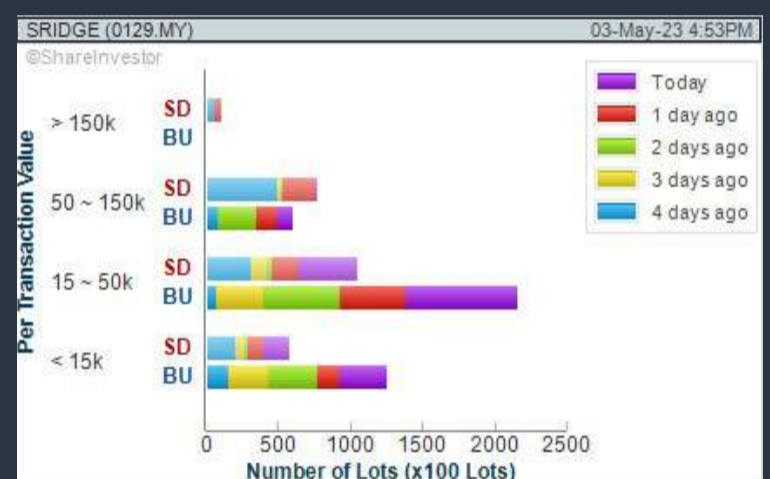
1. Moving Average Below Close - select (MA) type (5) below close price for type (3) days
2. Volume Spike - Volume type (1) greater than type (5) days average
3. Revenue ("000) - select (more than) type (1) for the past select (1) financial year(s)
4. Is Shariah Compliant - select NO
5. Moving Average Below Close - select (MA) type (10) below close price for type (1) days
6. Last Done Price - select (more than) type (0.3)
7. Moving Average Below Close - select (EMA) type (5) below close price for type (1) days

- > click Save Template > Create New Template type (Non-Shariah Hot Stocks) > click Create
- > click Save Template as > select Non-Shariah Hot Stocks > click Save
- > click Screen Now (may take a few minutes)
- Sort By: Select (Vol) Select (Desc)
- Mouse over stock name > Charts > click C<sup>2</sup> Charts tab or Volume Distribution

### SILVER RIDGE HOLDINGS BERHAD (0129)

C<sup>2</sup> Chart

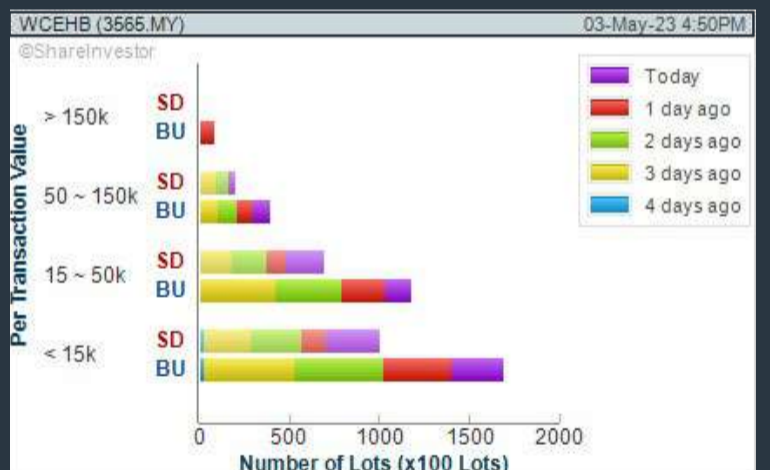
Analysis



### WCE HOLDINGS BERHAD (3565)

C<sup>2</sup> Chart

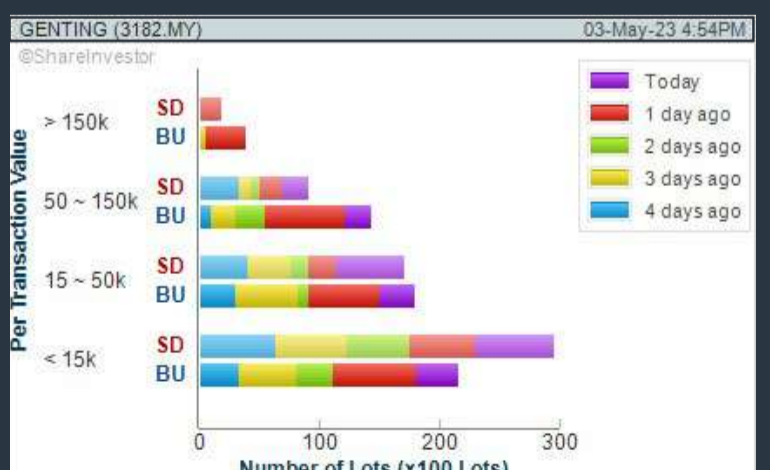
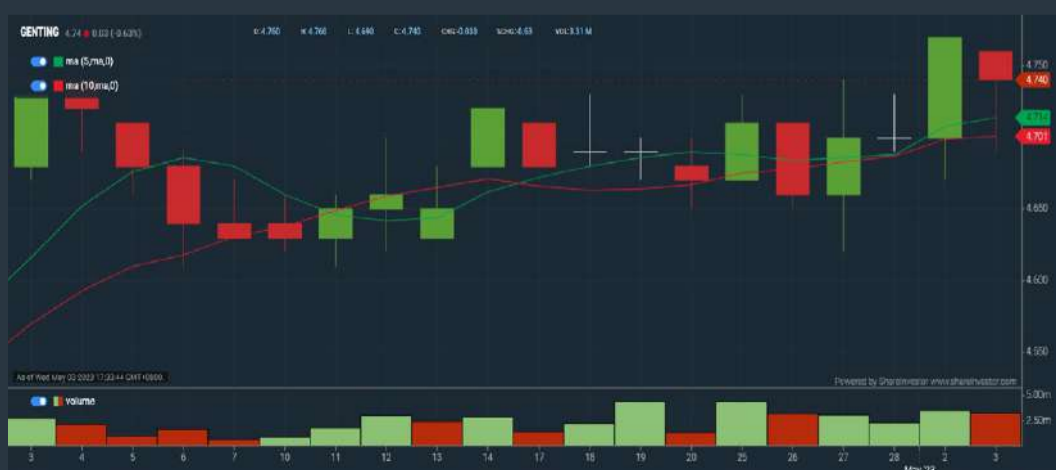
Analysis



### GENTING BERHAD (3182)

C<sup>2</sup> Chart

Analysis



**Disclaimer:** The information on this page is provided as a service to readers. It does not constitute financial advice and/or any investment recommendations. Past performance is not indicative of future results. We assume no liability for damages resulting from or arising out of the use of such information. It would be best if you did your own research to make your personal investment decisions wisely or consult a licenced investment advisor.

# SHARE INVESTOR WEBPRO

## STOCK MARKET DATA AT YOUR FINGERTIPS

Powerful browser-based market analytics platform.  
Access from anywhere



### 8 Markets Data

- ▶ Get access to data from Bursa, NYSE, Nasdaq, HKEX, SGX, IDX, SET & ASX

### Portfolio Management

- ▶ Profit & Loss Summary
- ▶ Stock Alert
- ▶ News & Events filtering
- ▶ Customizable column layout

## Fundamental Analysis

### Financial Analysis Statement

- ▶ Profit & Loss
- ▶ Balance Sheet
- ▶ Cash Flow Statement
- ▶ More than 20 Financial Ratios
- ▶ Dividend Analysis

### Technical Charting

- ▶ C<sup>2</sup> chart (Customisable & Comprehensive)

### Brokers' Call

### Intrinsic Value Calculator

### FactSheet

- ▶ Key Stock Information
- ▶ Ownership
- ▶ Consensus Estimates
- ▶ Annual Report
- ▶ Historical Price
- ▶ Insider Trades

## What's new on WebPro (Stable Release 12.1.0)

In our effort to keep our platform at the forefront of trading technology, we have added on some new features onto our C2 Chart in WebPro

### ADDITIONAL NEW FEATURES:

- ▶ Anchor selector for AVWAP, PVAT, and PAV indicators
- ▶ Volume profile indicator by date range
- ▶ Moving Average Cross indicator
- ▶ Guppy Multiple Moving Average (GMMA) indicator
- ▶ GoNoGo Trend Signal indicators
- ▶ SignalIQ

So what are you waiting for? Head to our platform today and check out our new trading chart features and indicators. We're confident that you'll love the improvements we've made and that they'll help you become a more successful trader.

Click here to start your 9 days FREE trial  
(Valued at RM10)



## Price & Volume Distribution Charts (Over 5 trading days as at Wednesday)

Technical Analysis

**DEFINITION:** Stocks with Technical Analysis showing Bullish Momentum and Price Uptrend

**CHART GUIDE:** Volume Distribution Chart is a statistical interpretation of the current sentiment on each stock in graphical format. The highest bar categorized as >150k is likely to be traded by institutions or super dealers, while the lowest bar categorized as <15k usually represents retail investors. "Buy Up" refers to more buyers snatching up the lots queued at selling price. "Sell Down" refers to sellers selling their shares to the buying queue.



ShareInvestor WebPro > Screener > Market Screener (FA & TA) > select BURSA > add criteria

**A. Criteria**

- > click Add Criteria
- Fundamental Analysis Conditions tab > select (i) Revenue
- Technical Analysis Conditions tab select (ii) Moving Average Below Close
- Technical Analysis Conditions tab select (iii) Average Volume
- Prices & Other Conditions tab > select (iv) Last Done Price
- Technical Analysis Conditions tab select (v) Moving Average Below Close
- Technical Analysis Conditions tab select (v) Moving Average Bullish Crossover

**B. Conditions**

1. Revenue - select (more than) type (1) for the past select (1) financial year(s)
2. Moving Average Below Close - select (MA) type (20) below close price for type (1) days
3. Average Volume - type (5) days average volume type (10000) lots
4. Last Done Price - select (more than) type (0.3)
5. Moving Average Below Close - select (MA) type (10) below close price for type (1) days
6. Moving Average Bullish Crossover - select (MA) type (5) crossed above select (MA) type (10)

> click Save Template > Create New Template type (Non-Shariah Up-Trending Stocks) > click Create Click Save Template As > select Non-Shariah Up Trending Stocks > click Save  
> click Screen Now (may take a few minutes)  
Sort By: Select (Vol) Select (Desc)  
Mouse over stock name > Charts > click C<sup>2</sup> Charts tab or Volume Distribution

## MALAYSIA AIRPORTS HOLDINGS BERHAD (5014)

C<sup>2</sup> Chart

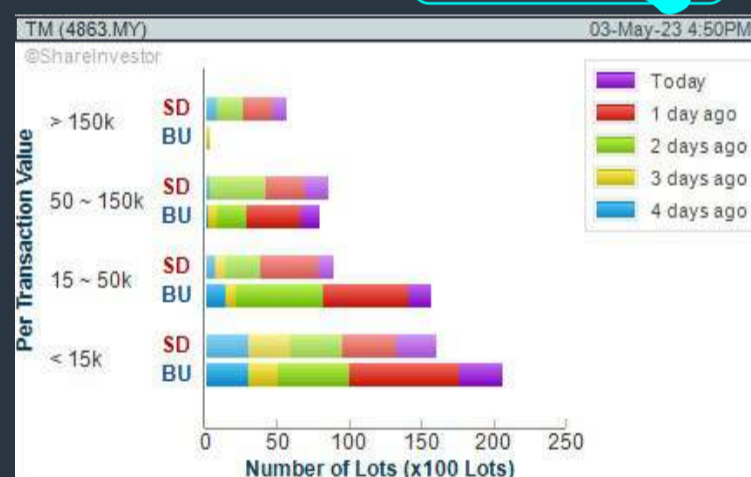
Analysis



## TELEKOM MALAYSIA BERHAD (4863)

C<sup>2</sup> Chart

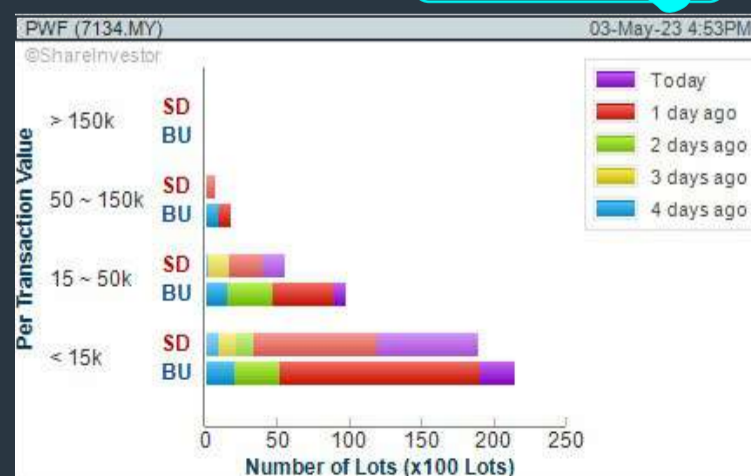
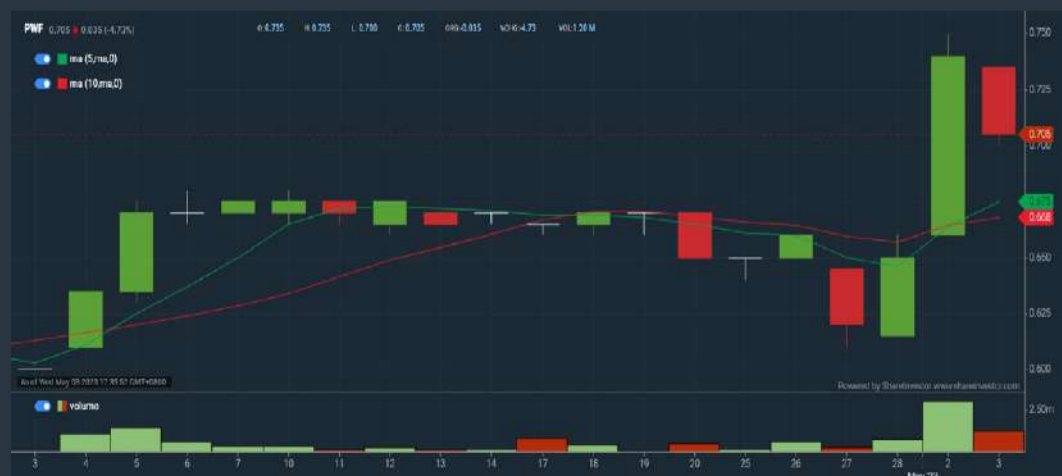
Analysis



## PWF CORPORATION BERHAD (7134)

C<sup>2</sup> Chart

Analysis



**Disclaimer:** The information on this page is provided as a service to readers. It does not constitute financial advice and/or any investment recommendations. Past performance is not indicative of future results. We assume no liability for damages resulting from or arising out of the use of such information. It would be best if you did your own research to make your personal investment decisions wisely or consult a licenced investment advisor.

# Raya Deals

Promo Period: **17 APRIL – 6 MAY 2023**

**GET EXCLUSIVE RAYA DEALS** and promotions now to start growing your investment portfolio.

SHAREINVESTOR  
**STATION**

SHAREINVESTOR  
**WEBPRO**

**BURSA STATION**

UPTO  
**15% OFF** Applicable for  
**12 MONTHS**  
**SUBSCRIPTIONS ONLY**

Coupon code: **RAYADEALS23**

**SUBSCRIBE**

**COMMENT & WIN**

Stand a chance  
to win **3D 2N** stay in  
**Perhentian Island**



**SUBSCRIBE NOW!**



\*Terms and Conditions apply.

## Price & Total Shareholder Return (as at Wednesday)

Fundamental Analysis

**DEFINITION:** Share price of a company trading at a lower price as compared to its fundamentals (FA) such as financial performance and dividend, allowing it to be attractive to value investors.

**CHART GUIDE:** Total Shareholder Return (TSR) combines share price appreciation and dividend distributions paid to show the total return to the shareholder expressed as a percentage.



ShareInvestor WebPro > Screener > Market Screener (FA & TA) > select BURSA > add criteria

**A. Criteria**

- > click Add Criteria
- Fundamental Analysis Conditions tab (i) Price Earnings Ratio
- Fundamental Analysis Conditions tab >select (ii) CAGR of Net Earnings
- Fundamental Analysis Conditions tab >select (iii) Net Debt To Equity
- Fundamental Analysis Conditions tab >select (iv) Return On Equity (ROE)

**B. Conditions**

1. Price Earnings Ratio - select (less than) type (15) times now
2. CAGR of Net Earnings - select (more than) type (10) % for the past type (3) financial year(s)
3. Net Debt To Equity – select (less than) type (1) for the past select (1) financial year(s)
4. Return On Equity (ROE) – select (more than) type (10) % for the past select (1) financial year(s)

- > click Save Template > Create New Template type (Value Stock) > click Create
- > click Save Template as > select Value Companies > click Save
- > click Screen Now (may take a few minutes)
- Sort by: Select (PE Ratio) Select (Ascending)
- > Mouse over stock name > Factsheet > looking for Total Shareholder Return
- > Mouse over stock name > Charts > click C2 Charts tab

### SUNMOW HOLDING BERHAD (03050)

C<sup>2</sup> Chart



Period	Dividend Received	Capital Appreciation	Total Shareholder Return
Short Term Return	5 Days	-	-
	10 Days	-	-
	20 Days	-	-
Medium Term Return	3 Months	-0.030	-4.66 %
	6 Months	-0.030	-33.68 %
	1 Year	-0.030	-33.68 %
Annualised Return	Annualised	-	-33.68 %

### LION POSIM BERHAD (8486)

C<sup>2</sup> Chart



Period	Dividend Received	Capital Appreciation	Total Shareholder Return
Short Term Return	5 Days	-0.025	-5.75 %
	10 Days	-0.025	-5.75 %
	20 Days	-	-
Medium Term Return	3 Months	-0.080	-16.33 %
	6 Months	-0.070	-14.68 %
	1 Year	-0.160	-26.07 %
Long Term Return	2 Years	-0.420	-60.60 %
	3 Years	+0.100	+32.26 %
	5 Years	-0.140	-26.45 %
Annualised Return	Annualised	-	-5.71 %

### ALCOM GROUP BERHAD (2674)

C<sup>2</sup> Chart



Period	Dividend Received	Capital Appreciation	Total Shareholder Return
Short Term Return	5 Days	-0.010	-1.11 %
	10 Days	-0.005	-0.55 %
	20 Days	-	-
Medium Term Return	3 Months	-0.065	-6.67 %
	6 Months	+0.010	+13.75 %
	1 Year	0.025	+8.09 %
Long Term Return	2 Years	-0.220	-17.26 %
	3 Years	0.025	+9.50 %
	5 Years	0.025	+9.10 %
Annualised Return	Annualised	-	+3.17 %

**Disclaimer:** The information on this page is provided as a service to readers. It does not constitute financial advice and/or any investment recommendations. Past performance is not indicative of future results. We assume no liability for damages resulting from or arising out of the use of such information. It would be best if you did your own research to make your personal investment decisions wisely or consult a licenced investment advisor.

# MAKE BETTER TRADING STRATEGIES

with

# SHARE INVESTOR STATION



## 8 Markets Data

- ▶ Get access to data from Bursa, NYSE, Nasdaq, HKEX, SGX, IDX, SET & ASX

## Dynamic Chart

- ▶ Candlestick Pattern Recognition
- ▶ 111 Indicators
- ▶ 39 Drawing Tools
- ▶ Performance Comparison Chart

## Intraday Data

- ▶ Market Depth
- ▶ Trade Summary Matrix & Chart
- ▶ Times & Sales
- ▶ Intraday Market Ticker

## Market Screener

- ▶ 96 criteria ranging from FA, TA, Consensus Estimate
- ▶ Real-time Data

## Power Frame

- ▶ Combining few Dynamic Charts together with intraday information in one frame

## Technical Analysis

## Fundamental Analysis

### Financial Analysis Statement

- ▶ Profit & Loss
- ▶ Balance Sheet
- ▶ Cash Flow Statement
- ▶ More than 20 Financial Ratios
- ▶ Dividend Analysis

### FactSheet

- ▶ Key Stock Information
- ▶ Ownership
- ▶ Consensus Estimates
- ▶ Annual Report
- ▶ Historical Price
- ▶ Insider Trades

**Start your 18 days  
FREE trial now  
(Valued at RM82)**





## Price & Total Shareholder Return (as at Wednesday)

Fundamental Analysis

**DEFINITION:** Company revenue is growing and making good quality of earnings with positive Free Cash Flow.

**CHART GUIDE:** Total Shareholder Return (TSR) combines share price appreciation and distributions paid to show the total return to the shareholder expressed as a percentage.



ShareInvestor WebPro > Screener > Market Screener (FA & TA) > select BURSA > add criteria

**A. Criteria**

1. Fundamental Analysis Conditions tab >select (i) Free Cash Flow, (ii) Revenue Growth, (iii) Gross Profit (Earnings) Margin, (iv) Quality of Earnings, (v) Total Shareholder Returns, > click Add Criteria
2. Fundamental Analysis Conditions tab >select (vi) Total Shareholder Returns > click Add Criteria

**B. Conditions (Criteria Filters)**

1. Free Cash Flow - select (more than) type (1) for the past select (1) financial year(s)
2. Revenue Growth - select (more than) type (1) for the past select (1) financial year(s)
3. Gross Profit (Earnings) Margin - select (more than) type (30) % for the past select (1) financial year(s)
4. Quality of Earnings - select (more than) type (1) for the past select (1) financial year(s)
5. Total Shareholder Return - select (more than) type (5) % for the past select (3) financial year(s)
6. Total Shareholder Return - select (more than) type (5) % for the past select (5) financial year(s)

- > click Save Template > Create New Template type (Growth Companies) > click Create
- > click Save Template as > select Growth Companies > click Save
- > click Screen Now (may take a few minutes)
- > Sort By: Select (Revenue Growth) Select (Desc)
- > Mouse over stock name > Factsheet > looking for Total Shareholder Return

## HIBISCUS PETROLEUM BERHAD (5199)

C<sup>2</sup> Chart

Analysis



Period	Dividend Received	Capital Appreciation	Total Shareholder Return
Short Term Return	5 Days	-0.045	-4.33%
	10 Days	-0.055	-5.24%
	20 Days	-0.065	-6.13%
Medium Term Return	3 Months	-0.145	-12.72%
	6 Months	0.010	+1.01%
Long Term Return	1 Year	0.020	-20.08%
	2 Years	0.080	+58.91%
	3 Years	0.035	+58.08%
	5 Years	0.035	+58.08%
	Annualised Return	Annualised	-

## CLASSIC SCENIC BERHAD (7202)

C<sup>2</sup> Chart

Analysis



Period	Dividend Received	Capital Appreciation	Total Shareholder Return
Short Term Return	5 Days	-	-
	10 Days	-	+0.62%
	20 Days	0.055	-0.89%
Medium Term Return	3 Months	0.055	-25.43%
	6 Months	0.055	-34.98%
Long Term Return	1 Year	0.055	+27.21%
	2 Years	0.055	+0.81%
	3 Years	0.085	+59.42%
	5 Years	0.195	+37.67%
	Annualised Return	Annualised	-

## MEGA FIRST CORPORATION BERHAD (3069)

C<sup>2</sup> Chart

Analysis



Period	Dividend Received	Capital Appreciation	Total Shareholder Return
Short Term Return	5 Days	-	-0.58%
	10 Days	-	-0.87%
	20 Days	0.039	-1.45%
Medium Term Return	3 Months	0.039	-2.84%
	6 Months	0.039	-5.78%
Long Term Return	1 Year	0.039	-8.97%
	2 Years	0.105	-1.37%
	3 Years	0.291	+45.97%
	5 Years	0.361	+126.40%
	Annualised Return	Annualised	-

**Disclaimer:** The information on this page is provided as a service to readers. It does not constitute financial advice and/or any investment recommendations. Past performance is not indicative of future results. We assume no liability for damages resulting from or arising out of the use of such information. It would be best if you did your own research to make your personal investment decisions wisely or consult a licenced investment advisor.



# Italian Masterpieces

Martha rocking chair designed by Roberto Lazzeroni  
Chester Line sofa designed by Poltrona Frau Style & Design Centre

poltronafrau.com



# XTRA

The Gardens Mall, Mid Valley City, Lot S-236 & 237  
2nd flr Linkaran Syed Putra, Kuala Lumpur  
T. +603 2282 9088 | xtra@xtrafurniture.com | xtrafurniture.com  
f XTRAfurniture | @ xtrafurnituremsia



## Price & Total Shareholder Return (as at Wednesday)

Fundamental Analysis

**DEFINITION:** Company is paying out dividend with low or moderate leverage.

**CHART GUIDE:** Total Shareholder Return (TSR) combines share price appreciation and distributions paid to show the total return to the shareholder expressed as a percentage.



ShareInvestor WebPro > Screener > Market Screener (FA & TA) > select BURSA > add criteria

**A. Criteria**

- > click Add Criteria
- Fundamental Analysis Conditions tab >select (i) Dividend Yield (Historical)
- Fundamental Analysis Conditions tab >select (ii) Dividend Payout (Historical)
- Fundamental Analysis Conditions tab >select (iii) Total Debt To Equity
- Fundamental Analysis Conditions tab >select (iv) Total Shareholder Returns
- Fundamental Analysis Conditions tab >select (v) Total Shareholder Returns
- Fundamental Analysis Conditions tab / >select (vi) CAGR of Dividend Per Share

• Fundamental Analysis Conditions tab >select (vii) CAGR of Dividend Per Share

**B. Conditions (Criteria Filters)**

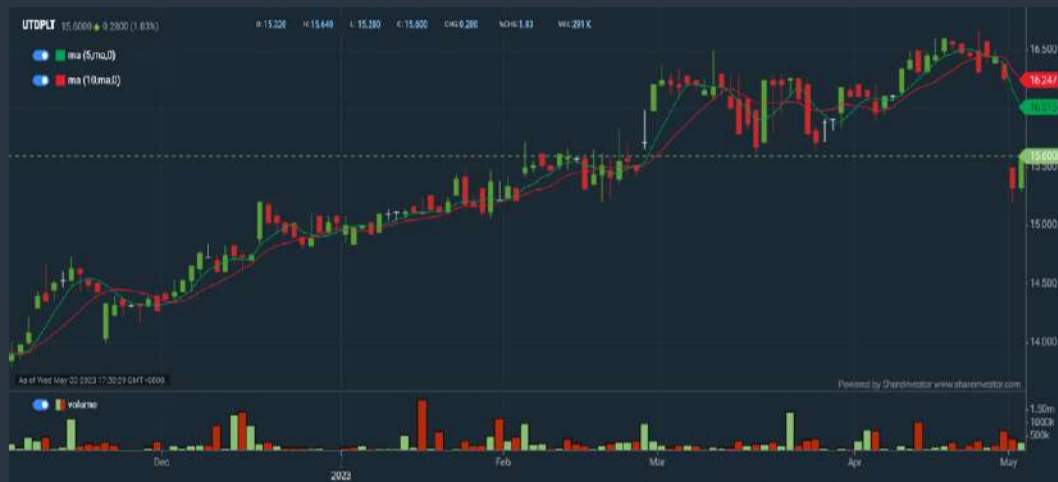
1. Dividend Yield - select (more than) type (1) % for the past select (1) financial year(s)
2. Dividend Payout (Historical) - select (between) type (0.5) to type (1) times for the past select (1) financial year(s)
3. Total Debt to Equity - select (less than) type (1) for the past select (1) financial year(s)
4. Total Shareholder Return - select (more than) type (5) % for the past select (3) financial year(s)
5. Total Shareholder Return - select (more than) type (5) % for the past select (5) financial year(s)

6. CAGR of Dividend Per Share - select (less than) type (30) % for the past select (5) financial year(s)
7. CAGR of Dividend Per Share - select (more than) type (1) % for the past select (5) financial year(s)

- > click Save Template > Create New Template type (Dividend Companies) > click Create
- > click Save Template as > select Dividend Companies > click Save
- > click Screen Now (may take a few minutes)
- > Sort By: Select (Dividend Yield) Select (Desc)
- > Mouse over stock name > Factsheet > looking for Total Shareholder Return

## UNITED PLANTATIONS BERHAD (2089)

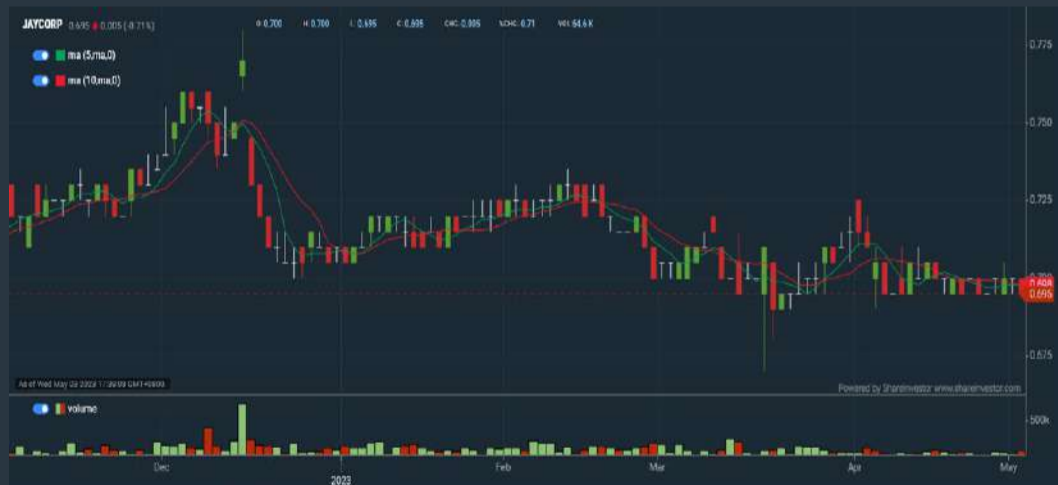
C<sup>2</sup> Chart



Period	Dividend Received	Capital Appreciation	Total Shareholder Return	
Short Term Return	5 Days	1.000	-0.719	+1.72%
	10 Days	1.000	-0.955	+0.27%
	20 Days	1.000	-0.500	+3.09%
Medium Term Return	3 Months	1.000	-0.301	+9.07%
	6 Months	1.400	+1.696	+22.27%
	1 Year	1.400	+0.184	+10.28%
Long Term Return	2 Years	2.550	+1.822	+32.69%
	3 Years	3.400	+4.011	+63.95%
	5 Years	6.150	+3.080	+84.45%
Annualised Return	Annualised	-	-	+12.02%

## JAYCORP BERHAD (7152)

C<sup>2</sup> Chart



Period	Dividend Received	Capital Appreciation	Total Shareholder Return	
Short Term Return	5 Days	-	-	-
	10 Days	-	-0.005	-0.71%
	20 Days	0.020	-0.015	+0.70%
Medium Term Return	3 Months	0.020	-0.025	-0.69%
	6 Months	0.060	-0.020	+5.59%
	1 Year	0.080	-0.040	+5.44%
Long Term Return	2 Years	0.195	-0.160	-2.02%
	3 Years	0.285	+0.295	+165.00%
	5 Years	0.435	+0.220	+157.69%
Annualised Return	Annualised	-	-	+8.93%

## FORMOSA PROSONIC INDUSTRIES (9172)

C<sup>2</sup> Chart



Period	Dividend Received	Capital Appreciation	Total Shareholder Return	
Short Term Return	5 Days	-	-0.020	-0.75%
	10 Days	-	-0.000	-2.92%
	20 Days	0.210	-0.370	-5.28%
Medium Term Return	3 Months	0.210	-0.790	-16.81%
	6 Months	0.210	-0.450	-7.72%
	1 Year	0.210	-0.590	-11.89%
Long Term Return	2 Years	0.410	-0.190	-24.28%
	3 Years	0.550	+1.350	+145.04%
	5 Years	0.790	+1.250	+142.65%
Annualised Return	Annualised	-	-	+19.16%

**Disclaimer:** The information on this page is provided as a service to readers. It does not constitute financial advice and/or any investment recommendations. Past performance is not indicative of future results. We assume no liability for damages resulting from or arising out of the use of such information. It would be best if you did your own research to make your personal investment decisions wisely or consult a licenced investment advisor.

# BURSASTATION

## Professional

### Stock Scanning

- Technical Analysis (TA) Market Scanner
- Fundamental Analysis (FA) Market Scanner

### Monitoring

- Portfolio
- Stock Alerts
- Price Spread Calculator

### Market Data

- Equities
- Derivatives

# Scan. Chart. Analyse.

Be The Intelligent Investor

### Charts

- Intraday Charts
- Interactive Charts
- Historical Charts
- Volume Distribution Charts

### Price Movements

- Streaming Prices
- Time & Sales
- Trade Summary Matrix
- Quote Movements
- 5 Levels Market Depth
- Historical Price Download

### Fundamentals

- Factsheets
- Financials
- Insider Trades

Brought to you as a collaborative effort by ShareInvestor and Bursa Malaysia, **BursaStation Professional** is designed with you, the user, in mind, as a user-friendly yet full of powerful features that will appeal to investors/traders who need instant access to fundamental, technical, and trading data, anytime, anywhere. **BursaStation Professional** is a state-of-the-art Stock Market Tracker with Charting Software that places in your hands the power to make better investment decisions.

[CLICK HERE TO START YOUR 14-DAYS FREE TRIAL](#)

Week: 28 April 2023 – 03 May 2023

More Brokers' Call 

AMINVESTMENT BANK <small>... See More</small>	Call	Target Price	Release Date
Apex Healthcare Berhad (7090)	BUY	RM4.21	02 May 2023
IGB Real Estate Investment Trust (5227)	BUY	RM1.92	28 Apr 2023
Nestle (Malaysia) Berhad (4707)	HOLD	RM132.00	28 Apr 2023

APEX <small>... See More</small>	Call	Target Price	Release Date
Tasco Berhad (5140)	HOLD	RM1.00	28 Apr 2023
United Plantations Berhad (2089)	HOLD	RM17.20	28 Apr 2023

BIMB SECURITIES SDN BHD <small>... See More</small>	Call	Target Price	Release Date
Lotte Chemical Titan Holding Berhad (5284)	BUY	RM1.56	28 Apr 2023
Unisem (M) Berhad (5005)	SELL	RM2.30	28 Apr 2023

KENANGA <small>... See More</small>	Call	Target Price	Release Date
CIMB Group Holdings Berhad (1023)	OUTPERFORM	RM6.55	28 Apr 2023
IGB Real Estate Investment Trust (5227)	MARKET PERFORM	RM1.800	28 Apr 2023
Kelington Group Berhad (0151)	OUTPERFORM	RM1.92	28 Apr 2023

MALACCA SECURITIES SDN BHD <small>... See More</small>	Call	Target Price	Release Date
Kelington Group Berhad (0151)	BUY	RM1.85	28 Apr 2023

MIDF <small>... See More</small>	Call	Target Price	Release Date
Kossan Rubber Industries Berhad (7153)	SELL	RM0.90	28 Apr 2023
Nestlé (Malaysia) Berhad (4707)	NEUTRAL	RM139.50	28 Apr 2023
Ranhill Utilities Berhad (5272)	BUY	RM0.70	03 May 2023
Swift Haulage Berhad (5303)	BUY	RM0.90	03 May 2023

UOB KAYHIAN <small>... See More</small>	Call	Target Price	Release Date
CelcomDigi Berhad (6947)	HOLD	RM4.00	02 May 2023
KYM Holdings Berhad (8362)	BUY	RM0.77	02 May 2023
Prolexus Berhad (8966)	BUY	RM0.63	02 May 2023

**Disclaimer:** InveSt does not accept any liability whatsoever for any direct, indirect or consequential losses (including loss of profit) or damages that may arise from the use of information or opinions in this publication. The information and opinions in InveSt are not to be considered as an offer to sell or buy any of the securities discussed. Opinions expressed are subject to change without notice. The Brokers may, from time to time, have interests or positions in the securities mentioned. For the full report on each item listed on this page, please visit [https://www.shareinvestor.com/my/brokers\\_call](https://www.shareinvestor.com/my/brokers_call).

DEFINITION: Top 9 stocks with Technical Analysis plus Pattern Matching by 60 pre-defined indicators by the system showing a higher probability of bullish sentiment on the share price.



ShareInvestor WebPro > Screener > Predefined TA Screens > select market BURSA > Most Long Signals > click Scan Results or mouse over each company

**SCGM BERHAD (7247.MY)**

**SCGM**

Price updated at 03 May 2023 16:56

Last: <b>0.600</b>	Change: <b>-0.010</b>	Volume: <b>90,733</b>
	Change (%): <b>-1.64</b>	Range: <b>0.575 - 0.680</b>

TA Scanner Results based on historical data up to 03 May 2023

Condition	Signal	Explanation
Bollinger Band: Bullish Long Term Volatility Breakout and Trending	Long	1. Close price above upper bollinger band(33,1). 2. Volume above average volume(50). 3. Average volume(50) is above 300,000.
Bollinger Band: Bullish Short Term Volatility Breakout and Trending	Long	1. Close price above upper bollinger band(33,1). 2. Volume above average volume(10). 3. Average volume(10) is above 300,000.
Bollinger Band: High Above Upper Bollinger Band	Neutral	1. High above upper bollinger band(14,2). 2. Average volume(5) is above 100,000.
DM: Bullish Directional Movement	Long	-DI(14) crossed below +DI(14)
Donchian Channels: High Above Upper Donchian Channels	Long	High crossed above the upper Donchian Channel(14,4)
MA: Bullish Price Crossover	Long	1. Close price crossed above MA(40) within the last 1 day. 2. Previous day close price is below the MA(10) for the last 5 days
MACD: Bullish MACD Crossover	Long	1. MACD(12,26) diff line crossed above the MACD(12,26) signal line. 2. MACD Histogram(12,26) is above 0.
Parabolic SAR: Bearish Parabolic SAR Reversal	Neutral	1. Parabolic SAR 1 day ago above close price 1 day ago for the last 5 days. 2. Parabolic SAR below close price
RSI: Short Term RSI 50 Bullish Crossover	Long	1. RSI(20) crossed above 50 within the last 1 day and RSI(20) 1 day ago below 50 for the last 5 days. 2. Volume above average volume(125). 3. Average volume(5) is above 100,000.
Stochastic: Fast Stochastic Buy Signal	Long	1. Fast Stochastic(15,5) %K crossed above 20. 2. Fast Stochastic(15,5) %K 1 day ago was below 20 for the last 5 days. 3. Average volume(30) is above 50000
Volume: Volume Spike	Long	1. Volume is more than 500% above average volume(10). 2. Volume above 200000. 3. Close price above 0.10
Williams %R: Bearish Williams %R	Short	1. Williams %R(26) between 0 and -20. 2. Average volume(5) is above 100,000.

**SOUTH MALAYSIA INDUSTRIES BERHAD (4375.MY)**

**SMI**

Price updated at 03 May 2023 16:59

Last: <b>0.790</b>	Change: <b>-0.050</b>	Volume: <b>22,081</b>
	Change (%): <b>-5.95</b>	Range: <b>0.790 - 0.990</b>

TA Scanner Results based on historical data up to 03 May 2023

Condition	Signal	Explanation
Candlestick: Bullish Engulfing	Long	Bullish: Engulfing
DM: Bullish Directional Movement	Long	-DI(14) crossed below +DI(14)
MA: Bullish Price Crossover	Long	1. Close price crossed above MA(40) within the last 1 day. 2. Previous day close price is below the MA(10) for the last 5 days
RSI: Short Term RSI 50 Bullish Crossover	Long	1. RSI(20) crossed above 50 within the last 1 day and RSI(20) 1 day ago below 50 for the last 5 days. 2. Volume above average volume(125). 3. Average volume(5) is above 100,000.
Volume: Consecutive Days Of Increasing Average Volume	Long	1. Average Volume(20) has been increasing over the last 2 weeks. 2. Average volume(20) is above 100000

**APB RESOURCES BERHAD (5568.MY)**

**APB**

Price updated at 03 May 2023 16:57

Last: <b>1.490</b>	Change: <b>-0.020</b>	Volume: <b>31,853</b>
	Change (%): <b>-1.32</b>	Range: <b>1.440 - 1.610</b>

TA Scanner Results based on historical data up to 03 May 2023

Condition	Signal	Explanation
Bollinger Band: Bullish Long Term Volatility Breakout and Trending	Long	1. Close price above upper bollinger band(33,1). 2. Volume above average volume(50). 3. Average volume(50) is above 300,000.
Bollinger Band: Bullish Short Term Volatility Breakout and Trending	Long	1. Close price above upper bollinger band(33,1). 2. Volume above average volume(10). 3. Average volume(10) is above 300,000.
Bollinger Band: High Above Upper Bollinger Band	Neutral	1. High above upper bollinger band(14,2). 2. Average volume(5) is above 100,000.
CCI: Bearish CCI Overbought And Reversing	Short	1. CCI(26) above 100 and CCI(26) 1 day ago increasing for the last 3 days. 2. CCI(26) below CCI(26) 1 day ago
Donchian Channels: High Above Upper Donchian Channels	Long	High crossed above the upper Donchian Channel(14,4)
Parabolic SAR: Bearish Parabolic SAR Reversal	Neutral	1. Parabolic SAR 1 day ago above close price 1 day ago for the last 5 days. 2. Parabolic SAR below close price
RSI: Short Term RSI 50 Bullish Crossover	Long	1. RSI(20) crossed above 50 within the last 1 day and RSI(20) 1 day ago below 50 for the last 5 days. 2. Volume above average volume(125). 3. Average volume(5) is above 100,000.
Volume: Volume Spike	Long	1. Volume is more than 500% above average volume(10). 2. Volume above 200000. 3. Close price above 0.10
Williams %R: Bearish Williams %R	Short	1. Williams %R(26) between 0 and -20. 2. Average volume(5) is above 100,000.

**SIAB HOLDINGS BERHAD (0241.MY)**

**SIAB**

Price updated at 03 May 2023 16:46

Last: <b>0.135</b>	Change: <b>-0.005</b>	Volume: <b>13,839</b>
	Change (%): <b>-3.57</b>	Range: <b>0.135 - 0.145</b>

TA Scanner Results based on historical data up to 03 May 2023

Condition	Signal	Explanation
Bollinger Band: Bullish Long Term Volatility Breakout and Trending	Long	1. Close price above upper bollinger band(33,1). 2. Volume above average volume(50). 3. Average volume(50) is above 300,000.
Bollinger Band: Bullish Short Term Volatility Breakout and Trending	Long	1. Close price above upper bollinger band(33,1). 2. Volume above average volume(10). 3. Average volume(10) is above 300,000.
Bollinger Band: High Above Upper Bollinger Band	Neutral	1. High above upper bollinger band(14,2). 2. Average volume(5) is above 100,000.
Donchian Channels: High Above Upper Donchian Channels	Long	High crossed above the upper Donchian Channel(14,4)
MACD: Bullish MACD Crossover	Long	1. MACD(12,26) diff line crossed above the MACD(12,26) signal line. 2. MACD Histogram(12,26) is above 0.
Parabolic SAR: Bearish Parabolic SAR Reversal	Neutral	1. Parabolic SAR 1 day ago above close price 1 day ago for the last 5 days. 2. Parabolic SAR below close price
RSI: Short Term RSI 50 Bullish Crossover	Long	1. RSI(20) crossed above 50 within the last 1 day and RSI(20) 1 day ago below 50 for the last 5 days. 2. Volume above average volume(125). 3. Average volume(5) is above 100,000.
Volume: Volume Spike	Long	1. Volume is more than 500% above average volume(10). 2. Volume above 200000. 3. Close price above 0.10



**APEX EQUITY HOLDINGS BERHAD (5088.MY)**

**APEX**

Price updated at 03 May 2023 16:58

Last: <b>1.300</b>	Change: <b>-0.050</b>	Volume: <b>12,849</b>
	Change (%): <b>-3.70</b>	Range: <b>1.290 - 1.480</b>

TA Scanner Results based on historical data up to 03 May 2023

Condition	Signal	Explanation
Bollinger Band: High Above Upper Bollinger Band	Neutral	1. High above upper bollinger band(14,2). 2. Average volume(5) is above 100,000.
Donchian Channels: High Above Upper Donchian Channels	Long	High crossed above the upper Donchian Channel(14,4)
MACD: Bullish MACD Crossover	Long	1. MACD(12,26) diff line crossed above the MACD(12,26) signal line. 2. MACD Histogram(12,26) is above 0.
Price: New 52 Week High	Long	1. Stock reach a new 52 week high. 2. Average volume(30) is above 50000.
Volume: 10 Days large value Buy Up trade	Long	1. 150K value Buy Up greater than Sell Down by 20% for 10 days. 2. 50K-100K value Buy Up greater than Sell Down by 20% for 10 days. 3. Average volume(10) is above 1000000
Volume: 5 Days large value Buy Up trade	Long	1. 150K value Buy Up greater than Sell Down by 20% for 5 days. 2. 50K-100K value Buy Up greater than Sell Down by 20% for 5 days. 3. Average volume(10) is above 1000000



**PERTAMA DIGITAL BERHAD (8532.MY)**

**PERTAMA**

Price updated at 03 May 2023 16:53

Last: <b>2.740</b>	Change: <b>-0.050</b>	Volume: <b>51,053</b>
	Change (%): <b>-1.79</b>	Range: <b>2.700 - 2.800</b>

TA Scanner Results based on historical data up to 03 May 2023

Condition	Signal	Explanation
Accumulation Distribution: Bullish Accumulation Distribution	Long	Accumulation distribution increasing for the last 7 days
Bollinger Band: High Above Upper Bollinger Band	Neutral	1. High above upper bollinger band(14,2). 2. Average volume(5) is above 100,000.
Price: New 52 Week High	Long	1. Stock reach a new 52 week high. 2. Average volume(30) is above 50000.
Volume: 10 Days large value Buy Up trade	Long	1. 150K value Buy Up greater than Sell Down by 20% for 10 days. 2. 50K-100K value Buy Up greater than Sell Down by 20% for 10 days. 3. Average volume(10) is above 1000000
Volume: 5 Days large value Buy Up trade	Long	1. 150K value Buy Up greater than Sell Down by 20% for 5 days. 2. 50K-100K value Buy Up greater than Sell Down by 20% for 5 days. 3. Average volume(10) is above 1000000
Volume: Consecutive Days Of Decreasing Average Volume	Short	1. Average Volume(20) has been decreasing over the last 2 week. 2. Average volume(20) is above 50000
Williams %R: Bearish Williams %R	Short	1. Williams %R(26) between 0 and -20. 2. Average volume(5) is above 100,000.



**WCE HOLDINGS BERHAD (3565.MY)**

**WCEHB**

Price updated at 03 May 2023 16:58

Last: <b>0.500</b>	Change: -	Volume: <b>111,135</b>
	Change (%): -	Range: <b>0.490 - 0.510</b>

TA Scanner Results based on historical data up to 03 May 2023

Condition	Signal	Explanation
Bollinger Band: High Above Upper Bollinger Band	Neutral	1. High above upper bollinger band(14,2). 2. Average volume(5) is above 100,000.
Price: New 52 Week High	Long	1. Stock reach a new 52 week high. 2. Average volume(30) is above 50000.



**EVERSENDI CORPORATION BERHAD (5205.MY)**

**SENDAI**

Price updated at 03 May 2023 16:42

Last: <b>0.100</b>	Change: <b>-0.010</b>	Volume: <b>1,154</b>
	Change (%): <b>-9.09</b>	Range: <b>0.100 - 0.110</b>

TA Scanner Results based on historical data up to 03 May 2023

Condition	Signal	Explanation
Bollinger Band: High Above Upper Bollinger Band	Neutral	1. High above upper bollinger band(14,2). 2. Average volume(5) is above 100,000.
Candlestick: Bullish Engulfing	Long	Bullish: Engulfing
DM: Bullish Directional Movement	Long	-DI(14) crossed below +DI(14)
Donchian Channels: High Above Upper Donchian Channels	Long	High crossed above the upper Donchian Channel(14,4)
Historical Volatility: Increasing Historical Volatility	Neutral	Historical Volatility(100,365) increasing for the last 10 days
MA: Short Term Bullish Moving Average Crossover	Long	MA(10) crossed above MA(15) within the last 1 day.
Parabolic SAR: Bearish Parabolic SAR Reversal	Neutral	1. Parabolic SAR 1 day ago above close price 1 day ago for the last 5 days. 2. Parabolic SAR below close price
RSI: Short Term RSI 50 Bullish Crossover	Long	1. RSI(20) crossed above 50 within the last 1 day and RSI(20) 1 day ago below 50 for the last 5 days. 2. Volume above average volume(125). 3. Average volume(5) is above 100,000.
Williams %R: Bearish Williams %R	Short	1. Williams %R(26) between 0 and -20. 2. Average volume(5) is above 100,000.



**TIME DOTCOM BERHAD (5031.MY)**

**TIMECOM**

Price updated at 03 May 2023 16:57

Last: <b>5.640</b>	Change: <b>-0.050</b>	Volume: <b>21,868</b>
	Change (%): <b>-0.88</b>	Range: <b>5.620 - 5.710</b>

TA Scanner Results based on historical data up to 03 May 2023

Condition	Signal	Explanation
Bollinger Band: Bullish Short Term Volatility Breakout and Trending	Long	1. Close price above upper bollinger band(33,1). 2. Volume above average volume(10). 3. Average volume(10) is above 300,000.
Bollinger Band: High Above Upper Bollinger Band	Neutral	1. High above upper bollinger band(14,2). 2. Average volume(5) is above 100,000.
Donchian Channels: High Above Upper Donchian Channels	Long	High crossed above the upper Donchian Channel(14,4)
MA: Bullish Price Crossover	Long	1. Close price crossed above MA(40) within the last 1 day. 2. Previous day close price is below the MA(10) for the last 5 days
MA: Short Term Bullish Moving Average Crossover	Long	MA(10) crossed above MA(15) within the last 1 day.
Williams %R: Bearish Williams %R	Short	1. Williams %R(26) between 0 and -20. 2. Average volume(5) is above 100,000.

**Disclaimer:** The information on this page is provided as a service to readers. It does not constitute financial advice and/or any investment recommendations. Past performance is not indicative of future results. We assume no liability for damages resulting from or arising out of the use of such information. It would be best if you did your own research to make your personal investment decisions wisely or consult a licenced investment advisor.

Condition	Signal	Explanation
Volume: 10 Days large value Buy Up trade	Long	1. 150K value Buy Up greater than Sell Down by 20% for 10 days. 2. 50K-100K value Buy Up greater than Sell Down by 20% for 10 days. 3. Average volume(10) is above 1000000
Volume: 5 Days large value Buy Up trade	Long	1. 150K value Buy Up greater than Sell Down by 20% for 5 days. 2. 50K-100K value Buy Up greater than Sell Down by 20% for 5 days. 3. Average volume(10) is above 1000000
Volume: Consecutive Days Of Increasing Average Volume	Long	1. Average Volume(20) has been increasing over the last 2 weeks. 2. Average volume(20) is above 100000

# **BNM RAISES OPR BY 25 BASIS POINTS TO 3.00%**

**B**ank Negara Malaysia's Monetary Policy Committee (MPC) has raised the overnight policy rate (OPR) by another 25 basis points (bps) to 3.00% in a surprise move on Wednesday (3May). The ceiling and floor rates of the corridor of the OPR are correspondingly increased to 3.25 percent and 2.75 percent, respectively.

## **MONETARY STIMULUS WITHDRAWN BASED ON STRENGTH OF ECONOMY**

With the domestic growth prospects remaining resilient, the MPC judges that it is timely to further normalise the degree of monetary accommodation. With this decision, the MPC has withdrawn the monetary stimulus intended to address the Covid-19 crisis in promoting economic recovery. Considering the continued strength of the Malaysian economy, the MPC also recognises the need to ensure that the stance of monetary policy is appropriate to prevent the risk of future financial imbalances. At the current level, the monetary policy stance is slightly accommodative and remains supportive of the economy. The MPC will continue to ensure that the monetary policy stance remains consistent with the outlook of domestic inflation and growth.



## **GLOBAL ECONOMY WEIGHED DOWN BY COST AND INTEREST RATES**

The global economy continues to be driven by resilient domestic demand supported by strong labour market conditions, and a stronger-than-expected rebound of China's economy. Nevertheless, the global economy continues to be weighed down by elevated cost pressures and higher interest rates. Headline inflation continued to moderate, but core inflation has persisted above historical averages.

## **FURTHER EXPANSION IN DOMESTIC ECONOMY**

For most central banks, the monetary policy stance is likely to remain tight. The growth outlook remains subject to downside risks, mainly from an escalation of geopolitical tensions, higher-than-anticipated inflation outturns, and a sharp tightening in financial market conditions including from further stress in the banking sector. For the Malaysian economy, latest developments point towards further expansion in economic activity in the first quarter of 2023 after the strong performance in 2022. While exports are expected to moderate, growth in 2023 will be driven by domestic demand. Household spending remains resilient, underpinned by better labour market conditions as unemployment continues to decline to pre-pandemic levels.

## **TOURIST ARRIVALS, INFRASTRUCTURE AND DOMESTIC FINANCIAL CONDITIONS CONDUCTIVE**

The pickup in tourist arrivals is expected to lift tourism-related activities. Further progress of multi-year infrastructure projects will support investment activity. Domestic financial conditions also remain conducive to financial intermediation, with no signs of excessive tightening affecting consumption and investment activities.

## **CORE INFLATION AT ELEVATED LEVELS**

Risks to the domestic growth outlook are relatively balanced. Upside risks mainly emanate from domestic factors such as stronger-than-expected tourism activity and implementation of projects including

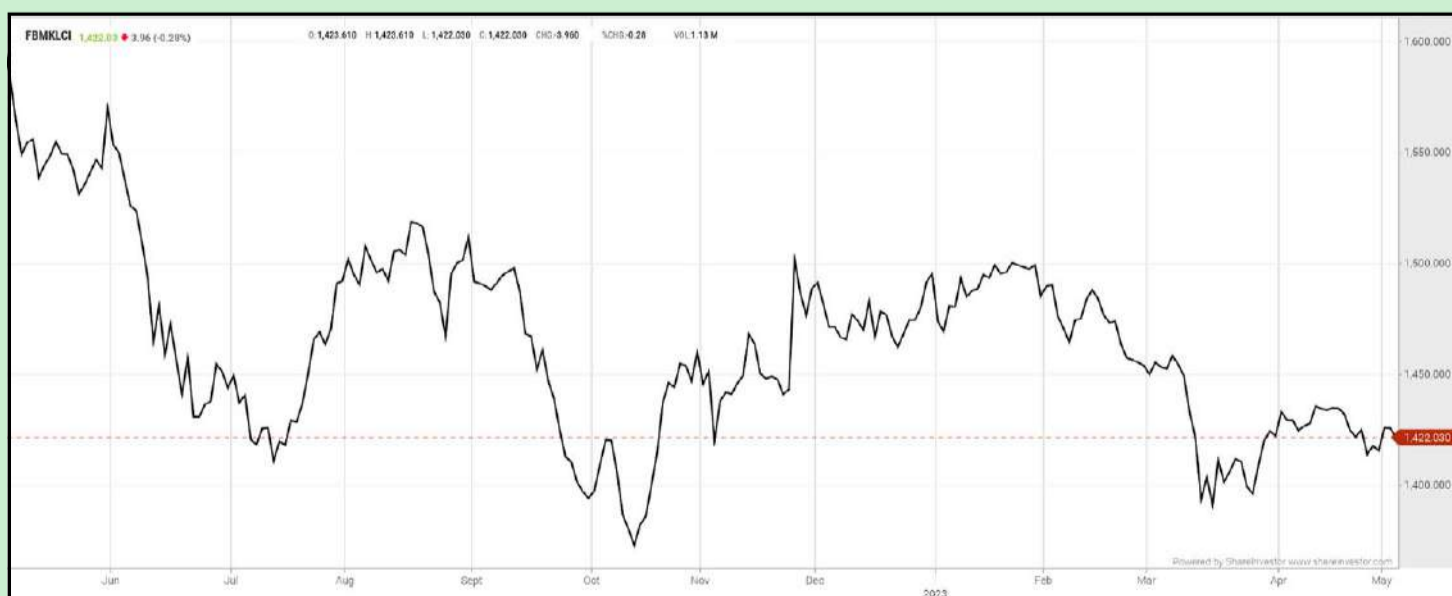
those from the re-tabled Budget 2023, while downside risks stem from weaker-than-expected global growth and more volatile global financial market conditions. As expected, headline inflation trended lower in recent months on account of moderating cost factors. Both headline and core inflation are expected to moderate over the course of 2023, averaging between 2.8% - 3.8%. However, core inflation will remain at elevated levels amid firm demand conditions.

## PRICE CONTROLS, FUEL SUBSIDIES TO HELP CONTAIN INFLATION

Existing price controls and fuel subsidies will continue to partly contain the extent of upward pressures to inflation. The balance of risk to the inflation outlook is tilted to the upside and remains highly subject to any changes to domestic policy including on subsidies and price controls, financial market developments, as well as global commodity prices.

## EYE ON THE MARKETS

On Wednesday (3May), the Ringgit closed at 4.4595 against the USD and 3.3426 to the Sing Dollar. On Tuesday (2May), the FBM KLCI opened at 1416.20. As at Friday (5May) 9:00am, the FBM KLCI is up 7.41 points for the week at 1423.61. Over in US, the overnight Dow Jones Industrial Average closed down 286.50 points (-0.86%) to 33,127.74 whilst the NASDAQ shed 58.93 points (-0.49%) to 11,966.40.



KLCI 1 Year Chart

## Over 5 trading days



ShareInvestor WebPro ([www.shareinvestor.com/my](http://www.shareinvestor.com/my))

1. Price > Stock Prices
2. Select Market: NASDAQ / NYSE / IDX / SET / HKEX / SGX (One bourse at a time)
3. select Stocks Tab
4. select Ranking Top Gainers or Top Losers (Over 5 Trading Days)
5. Mouse over Column Layout > select Edit Customs > select Name > select Last Done Price > select 5 Days Change > select 52 Weeks High > select 52 Weeks Low > Mouse Over Column Layout > select Custom

### NASDAQ (USD)

#### Top Gainers

Name	Last Done	Change Over 5 Days	52 Weeks High	52 Weeks Low
COCA-COLA CONSOLIDATED INC	657.690	+84.070	656.110	405.030
SUPER MICRO COMPUTER INC	136.400	+37.820	119.238	37.010
SAIA INC	291.360	+31.440	306.400	168.030
PREFORMED LINE PRODUCTS CO	149.980	+26.870	130.000	57.708
ASCENDIS PHARMA A/S SPON ADR EACH REP 1 ORD SHS	94.010	+17.030	134.525	61.579

#### Top Losers

Name	Last Done	Change Over 5 Days	52 Weeks High	52 Weeks Low
BOOKING HOLDINGS INC	2,603.570	-35.870	2,731.750	1,616.850
ADOBE INC	335.830	-41.730	451.150	274.730
FIRST CITIZENS BANCSHARES INC NRTH	957.520	-41.580	1,091.990	505.840
CREDIT ACCEPTANCE CORPORATION	438.460	-41.430	648.950	358.000
REGENERON PHARMACEUTICALS INC	753.880	-38.410	837.550	538.010

### NYSE (USD)

#### Top Gainers

Name	Last Done	Change Over 5 Days	52 Weeks High	52 Weeks Low
BIGLARI HOLDINGS INC	914.638	+47.118	922.310	540.330
ELI LILLY AND COMPANY	428.440	+38.090	434.200	283.000
MARTIN MARIETTA MATERIALS INC	389.280	+31.230	386.730	284.990
HUBSPOT INC	448.850	+19.760	431.600	245.030
PENUMBRA INC	301.880	+18.720	306.700	114.865

#### Top Losers

Name	Last Done	Change Over 5 Days	52 Weeks High	52 Weeks Low
BERKSHIRE HATHAWAY INC	489,540.000	-13,339.980	506,000.000	393,012.250
TEXAS PACIFIC LAND CORPORATION	1,381.200	-75.270	2,739.000	1,250.010
CABLE ONE INC	693.980	-64.430	1,464.200	609.850
ESTEE LAUDER COMPANIES INC	201.000	-44.670	284.450	186.470
BLACKROCK INC	631.660	-39.540	785.650	503.124

### IDX (Rupiah)

#### Top Gainers

Name	Last Done	Change Over 5 Days	52 Weeks High	52 Weeks Low
DIAN SWASTATIKA SENTOSA TBK	37,200.000	+3,250.000	46,000.000	27,500.000
GUDANG GARAM TBK	28,075.000	+1,875.000	32,125.000	16,500.000
HILLCON TBK	3,430.000	+780.000	3,500.000	1,270.000
INDOSAT (PT INDOSAT TBK)	7,550.000	+750.000	7,675.000	5,200.000
INDOFOOD CBP SUKSES MAKMUR TBK PT	10,800.000	+550.000	10,850.000	7,200.000

#### Top Losers

Name	Last Done	Change Over 5 Days	52 Weeks High	52 Weeks Low
UNITED TRACTORS	24,500.000	-6,575.000	36,200.000	23,600.000
INDO TAMBANGRAYA MEGAH TBK	31,175.000	-2,425.000	45,650.000	27,200.000
DCI INDONESIA TBK	35,700.000	-2,300.000	43,250.000	31,975.000
BAYAN RESOURCES TBK	21,200.000	-1,750.000	24,800.000	4,250.000
MITRABARA ADIPERDANA TBK	5,500.000	-1,300.000	11,050.000	5,500.000

### SET (Thai Baht)

#### Top Gainers

Name	Last Done	Change Over 5 Days	52 Weeks High	52 Weeks Low
SCC	325.000	+24.000	382.000	300.000
OHTL	496.000	+12.000	610.000	316.000
KYE	300.000	+5.000	367.000	293.000
SCCC	134.000	+3.000	163.000	130.000
MINT	33.250	+2.250	35.750	24.100

#### Top Losers

Name	Last Done	Change Over 5 Days	52 Weeks High	52 Weeks Low
NEW	101.000	-17.000	123.000	51.500
DELTA	76.500	-13.100	115.400	28.700
ALUCON	182.500	-8.000	198.000	171.000
CHOTI	135.500	-8.000	179.000	116.000
MOSHI	42.750	-6.250	56.250	31.250

### HKEX (HKD)

#### Top Gainers

Name	Last Done	Change Over 5 Days	52 Weeks High	52 Weeks Low
YUM CHINA HOLDINGS INC	500.500	+25.900	514.500	290.000
MOG HOLDINGS LTD	43.300	+15.800	43.400	1.620
BEIGENE LTD	159.600	+9.100	170.500	73.800
CLOUD MUSIC INC	76.750	+7.350	115.200	50.650
CHINA GOLD INTERNATIONAL RESOURC CP	44.150	+4.050	47.500	16.940

#### Top Losers

Name	Last Done	Change Over 5 Days	52 Weeks High	52 Weeks Low
CHINA TOURISM GROUP DUTY FREE CORP	153.600	-19.900	280.000	120.000
TRIP COM GROUP LTD	259.800	-16.800	321.800	152.100
STAR CM HOLDINGS LIMITED	96.850	-12.550	125.800	32.550
TENCENT HOLDINGS LIMITED	337.800	-7.200	416.600	188.213
MELBOURNE ENTERPRISES	117.700	-6.300	141.900	97.000

### SGX (SGD)

#### Top Gainers

Name	Last Done	Change Over 5 Days	52 Weeks High	52 Weeks Low
KEPPEL CORP	6.500	+0.370	6.500	4.136
SEMBCORP IND	4.600	+0.330	4.640	2.675
AEM SGD	3.590	+0.310	4.970	2.700
UOL	7.160	+0.310	7.570	5.950
GREAT EASTERN	17.280	+0.280	20.500	16.960

#### Top Losers

Name	Last Done	Change Over 5 Days	52 Weeks High	52 Weeks Low
UOB	28.050	-1.060	31.400	25.910
DBS	32.130	-0.630	35.855	29.009
JARDINE C&C	33.500	-0.420	36.850	26.060
IFAST	4.340	-0.360	6.230	3.540
SAMUDERASHIPPING	1.150	-0.180	1.550	0.705

# AN “UNFAIR YET REASONABLE” PRIVATISATION OFFER FOR BOUSTEAD FROM LTAT



Devanesan  
Evanson

**Chief Executive  
Officer, Minority  
Shareholders Watch  
Group**

**A**s a highly geared holding company whose subsidiaries are mired in a myriad of business challenges from the issues in relation to the RM9.13 billion littoral combatant ships (LCS) contract in Boustead Heavy Industries Corporation Berhad (BHIC) to the Practice Note 17 (PN17)-affected Pharmaniaga Berhad, it is understandable why some minority shareholders would welcome the conditional voluntary takeover offer by the Armed Forces Fund Board (LTAT or the Offeror) to acquire the remaining shares in Boustead Holdings Berhad.

Kenanga Investment Bank Berhad (KIBB), the independent adviser of the Offer, has deemed the offer price of 85.5 sen per share by LTAT as “not fair but reasonable”. The Offer is deemed not fair as this translates to a discount of between 45.3% and 51.7% to the estimated value of Boustead’s sums-of-parts (SOP) valuation of between RM1.563 and RM1.751 per share.

Nevertheless, the adviser recommended Boustead’s shareholders accept the Offer, for it deemed the Offer to be reasonable in that it represents a premium of between 15.64 sen (22.39%) and 23.63 sen (38.19%) over the five-day, one-month, three-month, six-month and one-year volume-weighted average price of Boustead shares – up to and including the last trading day (1 March 2023, prior to the date of the takeover offer notice received by Boustead’s board) – of between 61.87 sen and 69.86 sen. This must probably be the most compelling reason to accept the Offer. As of 27 April, shares of Boustead were traded at 85.5 sen.

Secondly, KIBB further noted that LTAT also does not intend to maintain the listing status of Boustead. As such, the Offeror will not be taking any steps to address any shortfall in the public shareholding spread of Boustead in the event Boustead does not meet the public spread requirement after the closing date. With LTAT’s shareholding in Boustead crossing the critical 75% mark to 75.08% (as of 26 April 2023 as per announcement to Bursa Malaysia), the public shareholding spread of Boustead is now below the 25% threshold required under Paragraph 8.02(1) of the Listing Requirements to maintain a listing status.

Lastly, the reasonableness of the Offer lies in the fact that there is no competing offer or alternative offer for Boustead shares or its business, assets and liabilities.

## BACKGROUND INFORMATION

Based on the outstanding shares of 822.51 million or 40.58% of Boustead, LTAT is expected to spend RM703.25 million in the privatisation exercise. The Offeror has maintained that its takeover offer is not conditional upon any minimum level of acceptance as it already holds more than 50% of the voting shares in Boustead.

However, the Offer is conditional upon the Finance Minister's approval subject to Bank Negara Malaysia's (BNM) recommendation and its approval under Section 87 of the Financial Services Act 2013 (FSA) as well as Section 99 of the Islamic Financial Services Act 2013 (IFSA) to allow the offeror to acquire up to 100% equity interest in Boustead.

Additionally, LTAT said the Offer is conditional upon waiver from the central bank from complying with Section 110 of the FSA and Section 122 of the IFSA in relation to the requirement for LTAT and/or its nominated company to be approved as a financial holding company of Affin Bank Berhad and other relevant licensed entities. "These conditions must be fulfilled within 21 days after the first closing date, as stipulated in the Rules on Take-overs, Mergers and Compulsory Acquisitions issued by the Securities Commission."

Above all else, LTAT explained that the exercise will provide the fund greater flexibility to implement the turnaround plan for Boustead as part of its objective of ensuring the sustainability of the fund for the benefit of Malaysian Armed Forces and veterans in line with LTAT's ongoing transformation plan.

For clarity, the Offer will not result in a mandatory offer by LTAT to acquire all the remaining voting shares in Boustead's various subsidiaries, namely Affin Bank, Boustead Plantations Berhad, BHIC and Pharmaniaga that LTAT does not already hold in view that LTAT already has statutory control over Boustead.

## THE VERDICT

Based on the reasons highlighted previously and without a competing/alternative offer, it makes sense to regard LTAT's offer as an opportunity for Boustead shareholders to cash out at the offer price of 85.5 sen per share. Such a move is also lauded by KIBB and its non-interested directors considering LTAT having no intention to maintain Boustead's listing status.

This itself can be a cause for concern insofar as minority shareholders are concerned, especially with LTAT holding the bulk of the voting shares in Boustead and with no alternative proposal in place. With LTAT's substantial stake (75.08% as of 26 April 2023) in Boustead, any alternative proposal will not be successful unless with the blessing from LTAT.

More broadly, Boustead shareholders may consider this a relief factor for them given that Boustead's 65%-owned BHIC has been struggling with the completion of an RM9.13 billion contract awarded by the Malaysian government in 2011 to build six littoral combatant ships (LCS) whereby none of the vessels has been delivered to-date.

Additionally, the Group owns a 52% stake in Pharmaniaga, which was classified as a PN17-affected listed issuer after it suffered a net loss of RM644.4 million in its 4QFY2022 ended 31 December 2022 amid an RM552.3 million provision for slow-moving COVID-19 vaccine inventory.

Besides, Boustead's high gearing level of 1.28 times based on debts over equity may not sit well with shareholders. As a perspective, its total borrowings amounted to RM6.79 billion, with close to 60% or RM4.04 billion of them being short-term borrowings due in the next 12 months. At the same time, Boustead's total equity amounted to just RM5.3 billion as of 31 December 2022.

On top of that, it is worth noting that its RM1.6 billion Islamic medium-term notes are due for repayment in FY2024, and outstanding perpetual sukuk of RM607 million carries high profit rates ranging from 9.75%

to 11.6% per annum (with a step-up rate of 1% per annum, subject to a maximum of 15% per annum).

Given the Group's volatile earnings in the past five years, coupled with the potentially time-consuming divestment process, obtaining support from financial institutions to refinance its existing debts and redeem the perpetual sukuk could be challenging.

Perhaps a lesson that minority shareholders can learn from this LTAT takeover exercise is that statutory funds or any fund or major shareholders can always opt for the privatisation route as a way out of misery when a PLC continues to find itself in bad financial shape despite numerous resurrection efforts.

Each minority shareholder will have a view as to whether they should accept the offer or wait. And this depends on a myriad of factors, such as whether the share price will ever reach the offer price or, if it does, when it will do so.

Should shareholders choose not to accept the Offer, they might end up holding shares in an unlisted entity if Boustead is delisted from Bursa Malaysia and thus may have limited opportunities to realise their investment in Boustead.

Lastly, given the burgeoning issues Boustead faces, it would take some time to sort things out – maybe more than some time. There are compelling reasons to justify the acceptance of the Offer by minority shareholders. As always, minority shareholders should make their own informed investment decisions according to their respective risk appetites.

*This article appeared in the The Observer, a weekly newsletter published by The Minority Shareholders Watch Group (MSWG) and reproduced here with their permission. Do follow MSWG's Twitter account at @MSWGMalaysia and share your thought on their tweets from time to time.*

## SHAREINVESTOR MARKET DATA PLATFORMS



**SHAREINVESTOR  
STATION**  
Advanced Charting Software  
(8 Markets)



**SHAREINVESTOR  
WEBPRO**  
Browser-Based Market Data  
Analytics Platform



**BURSASTATION**  
Advanced Charting Software  
(Bursa Malaysia Only)









**Axiata Group Berhad (AXIATA)** wishes to announce that Xpand Investments (Labuan) Limited, a wholly owned subsidiary of Axiata held via Axiata Business Services Sdn Bhd, had on 1 May 2023 registered the voluntary liquidation of Suvitech Co., Ltd. pursuant to the Civil and Commercial Code of Thailand.

The voluntary liquidation of Suvitech is normally expected to be completed approximately within three (3) months from the date of registration of the Liquidator with the Department of Business Development of Thailand.

Rationale for the Voluntary Liquidation and Dissolution: Axiata is repositioning and restructuring Axiata Business Services Sdn Bhd to refocus on core products and operating markets. The consolidation of the ABS business and decision to exit the sub-scale Thailand market, led to the voluntary liquidation of Suvitech.



**Leform Berhad (LEFORM)** wishes to announce that LF Engineering Sdn Bhd, a 60%-owned subsidiary company of Leform, had on 2 May 2023, accepted the

Letter of Acceptance from Prebore Piling & Engineering Sdn Bhd for the appointment as Subcontractor to supply and install guardrails for the construction and completion of civil works for Section 2 (SKVE Interchange to SAE Interchange). The sum awarded to LF Engineering for the Subcontract is RM2,885,215.00. The commencement date is 1 July 2023 and is expected to be completed by 10 October 2023.



On behalf of the Board of Directors of **Teladan Setia Group Berhad (TELADAN)**, M & A Securities Sdn Bhd wishes to announce that Teladan proposes to undertake the following:

(i) Proposed transfer of the listing of and quotation for the entire issued share capital of the Company from the ACE Market to the Main Market of Bursa Malaysia Securities Berhad; and

(ii) Proposed amendment to the Constitution of the Company to facilitate the implementation of the Proposed Transfer.

On 16 March 2021, Teladan was listed on the ACE Market of Bursa Securities. Teladan and its subsidiaries, collectively referred to as “Teladan Group” or “Group” have satisfied the requirements for the Proposed Transfer based on the Equity Guidelines issued by the Securities Commission Malaysia and the Main Market Listing

Requirements of Bursa Securities, which include, amongst others, the following: (i) Profit requirements Pursuant to the SC Equity Guidelines, a corporation which is listed on the ACE Market of Bursa Securities may seek a transfer listing to the Main Market of Bursa Securities if it meets the profit requirements of an aggregate profit after tax of at least RM20.0 million for the past 3 to 5 full financial years prior to submission to the SC with a PAT of at least RM6.0 million for the most recent financial year. Teladan Group has satisfied the above profit requirements as the Group’s aggregate adjusted PAT attributable to owners of the Company for the past 3 financial years ended 31 December 2020 to 2022 after adjusting for non-recurring items and items not in the ordinary course of Teladan’s business is RM93.1 million with adjusted PAT attributable to owners of the Company of RM32.3 million for FYE 2022, being the most recent financial year.

NAME OF COMPANY	OFFER PERIOD		ISSUE PRICE (Per Ordinary Share)	LISTING SOUGHT	DATE OF LISTING
	OPENING	CLOSING			
RADIUM DEVELOPMENT BERHAD	27 Apr 2023	16 May 2023	RM0.50	MAIN MARKET	31 May 2023
DXN HOLDINGS BERHAD	28 Apr 2023	09 May 2023	RM0.76	MAIN MARKET	19 May 2023
AUTOCOUNT DOTCOM BERHAD	14 Apr 2023	25 Apr 2023	RM0.33	ACE MARKET	09 May 2023

**Disclaimer:** The information in the Investor Relations page is extracted from individual companies’ announcements in [www.bursamalaysia.com](http://www.bursamalaysia.com). The information on this page is provided as a service to readers. We assume no liability for damages resulting from or arising out of the use of such information. Whilst every effort is made to ensure accuracy, the information presented has been simplified for your reading pleasure. Readers are advised to read the original and complete filings on the Bursa Malaysia website at [https://www.bursamalaysia.com/market\\_information/announcements/company\\_announcement](https://www.bursamalaysia.com/market_information/announcements/company_announcement)



Learn how to identify Hot Stocks using Technical Analysis (TA) and Fundamental Analysis (FA)

**SIGN UP FOR Invest**  
**IT'S FREE!!!**

[Click here](#)

Scan me

Via email, every Friday.

ShareInvestor is a technology based company with a focus on Internet media and we have operations in Malaysia, Singapore and Thailand.

We are the market leader in providing a combination of market data, analysis and news on various platforms to traders and investors.

Our websites include [www.shareinvestor.com](http://www.shareinvestor.com) and [www.bursastation.com](http://www.bursastation.com).

More information about our products and services can be found at [www.shareinvestorholdings.com](http://www.shareinvestorholdings.com)

**We're looking for Drupal Developers who will be in charge of front-end development and back-end/module development. This role requires expertise in PHP, HTML, CSS, JS, and an eye for design aesthetics. The candidates should be familiar and have a passion working with content management systems.**

Interested candidates are encouraged to apply with full resume, present and expected salary and a recent photograph. Please send these to [hr.my@shareinvestor.com](mailto:hr.my@shareinvestor.com) for processing. ShareInvestor regrets that only shortlisted candidates shall be notified.

## Drupal Developers (2 vacancies)

### Job Responsibilities:

- Active participation in all UI / UX decisions
- Contribute actively to the continuous development and maintenance of development projects
- Enhance Drupal development quality
- Provide solutions to issues and suggestions for improvements.
- Designing and implementing new features to the system
- Ensuring optimal performance

### Required Skills:

- At least 3 years of Drupal Theming and Front-End Development experience
- Proficient in PHP, HTML5/XHTML, CSS, Javascript, jQuery, AJAX, XML, Json
- Good Diploma/Degree in Computer Science/Computer Engineering.
- Experience working with Drupal's main modules, such as CTools, Views, Rules, Webform, and so on
- Ability to create custom Drupal modules
- Strong troubleshooting skills to fix bugs

### Benefits:

- Career & growth opportunities
- Interesting projects
- Medical Insurance
- Incentives

## Ruby on Rails Developer (1 vacancy)

### Job Responsibilities:

- Develop quality web-based software modules on schedule with a focus on Ruby and Ruby on Rails applications.
- Explore and utilize the latest web-based technologies.
- Document design specifications, logic concepts and module description.
- Maintain and enhance existing web-based applications.

### Required Skills:

- Experience in web-based programming/scripting is essential. Candidate must be able to explain clearly technical aspects of his/her past experiences and projects.
- Passion for programming and desire to learn new languages like Go.
- Good Diploma/Degree in Computer Science/Computer Engineering.
- Able to work well in a team and be able to follow documentation and coding standards.
- Knowledge in any of the following would be an added advantage
  - Ruby and Ruby on Rails Framework
  - Javascript and jQuery library
  - Go
  - Perl

**Application Developer (C++/STL) (1 vacancy)**

**Job Responsibilities**

- Deliver quality software modules on schedule.
- Document design specifications, conceptions, module description.
- Maintain and enhance existing applications.

**Required Skills:**

- Passion for programming and desire to learn.
- Good Diploma/Degree in Computer Science/Computer Engineering.
- Skills in C++ is essential.
- Experience with Visual Studio, networking stack and Golang would be an advantage.
- Proactive, resourceful and self-motivated with strong analytical skills.
- Good interpersonal, written and communication skills.
- Able to work with little supervision.

**Junior Market Data Support Specialist**

As a Junior Market Data Support Specialist, you will be involved in reviewing, analysing and collecting accurate and timely financial information on listed companies for our market data information services.

**Job Responsibilities**

- Collect, compute and analyse relevant financial data of listed companies, organise and present them on the company portal, in timely manner, for the consumption by our subscribers and our corporate clients
- Capture corporate events / actions and translate them to adjustments of impacted financial data
- Research, evaluate, propose new solutions or recommendations for adhoc project requirements that are related to the financial data or the financial fundamentals of listed companies
- Provide support to users' queries related to financial information displayed on our platforms
- Perform any other duties assigned from time to time, including rare occasions of working during weekends

**Required Skills**

- Minimum academic qualification: Diploma in any finance-related discipline
- Knowledge of basic accounting and financial terms is required
- Flair for data precision / accuracy / quality / thoroughness plus strict adherence to structured data process and timeline is a must
- Proficient in Microsoft Excel
- Team player with pleasant personality
- Proficient in English, oral and written.

*Fresh graduates are welcome to apply.*

Interested candidates are encouraged to apply with full resume, present and expected salary and a recent photograph. Please send these to [hr.my@shareinvestor.com](mailto:hr.my@shareinvestor.com) for processing. ShareInvestor regrets that only shortlisted candidates shall be notified.