

Invest

A Weekly e-Publication by SHAREINVESTOR.com

ISSUE

154

FRIDAY
28 APRIL
2023

Scan/Click QR to Register



Via email, every Friday

Raya Deals

Promo Period: **17 APRIL – 6 MAY 2023**

GET EXCLUSIVE RAYA DEALS and promotions now to start growing your investment portfolio.

SHAREINVESTOR
STATION

UPTO
15%
OFF

Applicable for
12 MONTHS SUBSCRIPTIONS ONLY

Coupon code: **RAYADEALS23**

SHAREINVESTOR
WEBPRO

BURSA STATION

SUBSCRIBE

COMMENT & WIN

Stand a chance
to win **3D 2N** stay in
Perhentian Island



SUBSCRIBE NOW!

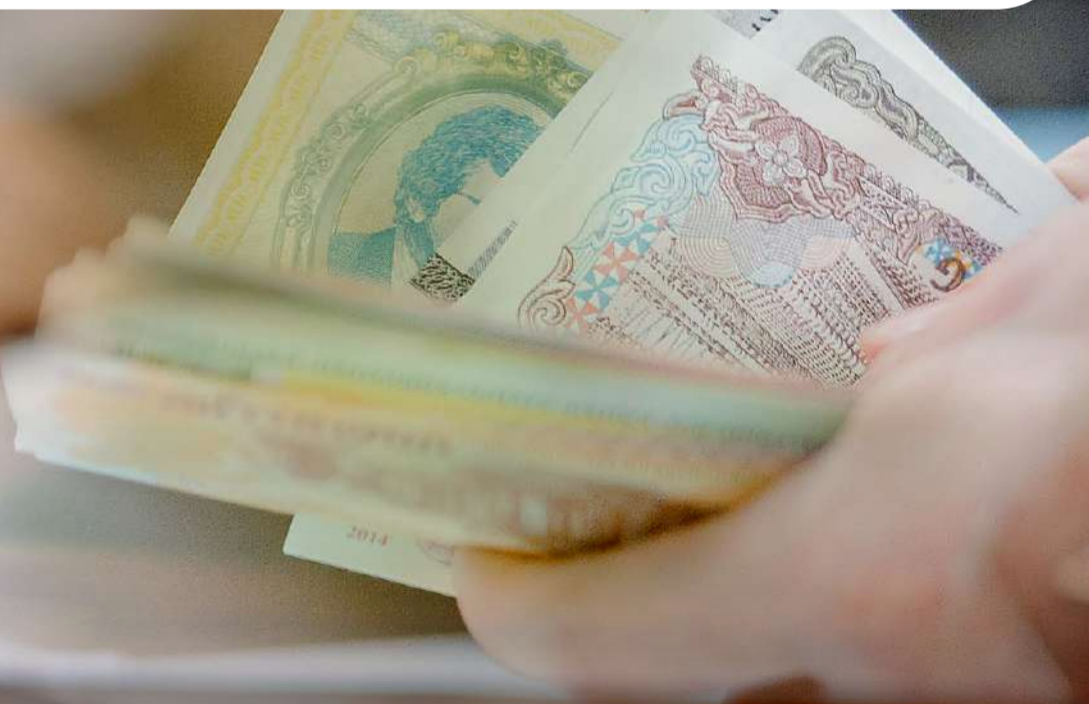


*Terms and Conditions apply.



BURSA'S IPO MOMENTUM EXPECTED TO CONTINUE PARTICULARLY FOR ACE MARKET – BURSA CEO

(page 23)



04	LEADERBOARD	12	UP TRENDING STOCKS	23	MARKET SENTIMENTS
06	SHARIAH HOT STOCKS	14	VALUE STOCKS	27	REGIONAL MARKETS
07	COMPANY SPOTLIGHT	16	GROWTH STOCKS	28	INSIDER ACTIVITY
08	SHARIAH MOMENTUM UP STOCKS	18	DIVIDEND STOCKS	31	INVESTOR RELATIONS
10	NON SHARIAH HOT STOCKS	20	BROKERS' CALL	35	CAREERS AT SHAREINVESTOR
		21	LONG COMPANIES		

**INVESTOR PLATFORMS****Director**

Darren Chong
darren.chong@shareinvestor.com

Manager

Heidee Ahmad
heidee.ahmad@shareinvestor.com

Senior Manager

Sharon Lee
sharon.lee@shareinvestor.com

Senior Executive

Daniel Wong
daniel.wong@shareinvestor.com

Executive

Farah Azwani
farah.azwani@shareinvestor.com

Executive

Tan Yong Sheng
yongsheng.tan@shareinvestor.com

ADMIN & OPERATIONS**Senior Executive**

Watie Nordin
watie.nordin@shareinvestor.com

Executive

Silas Emmanuel Joseph
silas.joseph@shareinvestor.com

INVESTOR RELATIONS**Group Managing Director & Publisher**

Edward Stanislaus
edward@shareinvestor.com

Director

Elizabeth Tan
elizabeth.tan@shareinvestor.com

Senior Manager

Letticia Wong
letticia.wong@shareinvestor.com

PROCESS AUTOMATION & DATA ANALYTICS**Data Analyst**

Nickson Aw

SHAREINVESTOR HOLDINGS BOARD OF DIRECTORS

Chairman	Patrick Daniel
Group CEO	Christopher Lee
Group COO	Lim Dau Hee
Group CFO	Teo Siew May
Group MD	Shanison Lin



“ GIVE A MAN A FISH AND YOU FEED HIM FOR A DAY; TEACH A MAN TO FISH AND YOU FEED HIM FOR A LIFETIME ”

ShareInvestor Malaysia Sdn. Bhd.

(200001023956) (526564-M)

Unit No. DF2-07-03A, Level 7,
Persoft Tower, 6B Persiaran Tropicana,
47410 Petaling Jaya, Selangor Darul Ehsan.

Hotline : 603 7803 1791

Mobile : 011 6343 8939

Website : www.ShareInvestor.com.my

www.ShareInvestorHoldings.com

www.facebook.com/ShareInvestorMalaysia

ADVERTISEMENT ENQUIRY



MSWG Seminar : Conducting a Better Annual General Meeting

11th May 2023, 09.00am - 01.00pm

The Majestic Hotel, Kuala Lumpur



**Speaker: Mr Devanesan Evanson,
Chief Executive Officer of MSWG**

**Learning Outcomes :-**

Upon completion of the seminar, participants will be aware of:

- What to consider and prepare for when running an effective AGM
- Ways to improve the conduct of AGM and apply best AGM practices
- Suggestions to improve meeting conduct based on MSWG representatives' observation and participation at the AGMs of PLCs
- Director's and shareholders' do's and don'ts before, during and after the AGM

Target Audience :

- Company Directors, C-Suite, Management Team, Companies Secretaries

Please click here for more info

Contact: Ms. Nor Khalidah Tel: 03 - 2732 0010 / 017-630 0754

Email: khalidah@mswg.org.my

GATEWAY TO THE FUTURES

when you sign up an account with us now!

kenanga

Kenanga Futures Sdn Bhd

SIGN UP NOW

Stand to win - FIVE (5) FREE TRADES
when you open an account with us now!

That's not all! The more you trade, the more you get! Trade on Chicago Mercantile Exchange (CME) Group products list as below and earn **FREE CASH MARGINS** monthly.

Most Volume Traded during Campaign Period	Cash Margin
Winner	RM 250
Runner-up	RM 150
2nd Runner-up	RM 100

Eligible Products

	<ul style="list-style-type: none"> ✓ Micro E-mini S&P 500 Futures ✓ Micro E-mini Nasdaq 100 Futures ✓ Micro E-mini Dow Futures ✓ Micro E-mini Russell 2000 Futures 		<ul style="list-style-type: none"> ✓ Mini Soybean ✓ Mini Wheat ✓ Soybean ✓ Soybean Oil ✓ Soybean Meal
	<ul style="list-style-type: none"> ✓ Mini Corn 		<ul style="list-style-type: none"> ✓ Micro Silver Futures
	<ul style="list-style-type: none"> ✓ Micro WTI Crude Oil Futures 		<ul style="list-style-type: none"> ✓ E-micro Gold Futures

Cash margin are rewarded based on the top **THREE (3)** highest trades executed (volume / no of lots) during the campaign period as below:

Campaign period: **1st March 2023 – 31st May 2023**

This campaign is open to individuals aged 18 and above only.

View [here](#) for the full Terms & Conditions

Disclaimer:

Listed derivatives products are based on highly leveraged margin trading. These contracts carry a very high degree of risk and trading such instruments may expose investors to substantial losses as well as gains. The price of the products offered may fluctuate higher or lower, and under circumstances an investor may sustain total loss of their investment. As investor should make an appraisal of the risks involved in investing these products and should consult their own legal, financial, tax, accounting and other professional advisors, to ensure that any decision made is suitable with regards to the investor's circumstances and financial positions. This document has been prepared solely for marketing purposes and for the use of the recipient. The above advertisement has not been reviewed by the Securities Commission.

www.shareinvestor.com - market data at your fingertips



ShareInvestor WebPro (www.shareinvestor.com/my)
Prices > Stock Prices > Bursa > click Stocks tab

1. mouse over Ranking > select Top Active > all Shariah stocks are denoted with an [S] > mouse over Column Layout > select Edit Customs > select Name > select Volume > select Last Done Price > Mouse Over Column Layout > select Custom
2. mouse over Ranking > select Top Turnover > all Shariah stocks are denoted with an [S] > mouse over Column Layout > select Edit Customs > select Name > select Last Done Price > select Value > Mouse Over Column Layout > select Custom
3. mouse over Ranking > select Top Gainers (Over 5 Trading Days) > mouse over Column Layout > select Edit Customs > select Name > select Last Done Price > select 5 Days Change > select 5 Days % Change > Mouse Over Column Layout > select Custom
4. mouse over Ranking > select Top Losers (Over 5 Trading Days)
5. mouse over Ranking > select Top % Gainers (Over 5 Trading Days)
6. mouse over Ranking > select Top % Losers (Over 5 Trading Days)

Shariah Top Actives (as at Yesterday)

Name	Price (RM)	Volume
VINVEST [S]	0.200	896,549.000
CLASSITA [S]	0.180	844,905.000
TANCO [S]	0.535	557,271.000
TWL [S]	0.050	451,214.000
VELESTO [S]	0.230	417,320.000
AT [S]	0.010	393,662.000
TOPGLOV [S]	0.980	368,175.000
KRONO [S]	0.580	359,743.000
STAR [S]	0.590	338,813.000
MYEG [S]	0.770	338,170.000

Shariah Top Turnover (as at Yesterday)

Name	Price (RM)	Value (RM)
UNISEM [S]	2.920	54,270,126
TOPGLOV [S]	0.980	35,994,019
TANCO [S]	0.535	28,404,131
MYEG [S]	0.770	26,234,185
SALUTE [S]	0.995	24,935,607
KRONO [S]	0.580	21,749,591
TIMECOM [S]	5.550	20,724,699
STAR [S]	0.590	20,301,084
SUNSURIA [S]	0.640	18,894,919
CDB [S]	4.400	18,548,791

Top Gainers (over 5 Trading days as at Yesterday)

Name	Price (RM)	Change (RM)
HEXTECH	23.500	+0.900
NESTLE	135.300	+0.700
KLK	21.860	+0.420
HEIM	27.780	+0.380
TOCEAN	2.110	+0.300
PETDAG	22.360	+0.240
PJBUMI	0.970	+0.230
BKAWAN	21.840	+0.200
HAPSENG	4.850	+0.180
PPB	16.340	+0.180

Top % Gainers (over 5 Trading days as at Yesterday)

Name	Price (RM)	Change (%)
GOCEAN	0.020	+33.33
MTRONIC	0.020	+33.33
MMAG	0.020	+33.33
PJBUMI	0.970	+31.08
DFX	0.110	+29.41
STAR	0.590	+28.26
SALUTE	0.995	+22.09
EATECH	0.210	+20.00
G3	0.030	+20.00
S&FCAP	0.095	+18.75

Top Losers (over 5 Trading days as at Yesterday)

Name	Price (RM)	Change (RM)
CARLSBG	21.220	-0.480
BLDPLNT	10.360	-0.460
MPI	28.280	-0.460
CIHLDG	3.300	-0.380
EPMB	0.620	-0.210
ORIENT	6.620	-0.190
TAANN	3.140	-0.170
BAT	10.500	-0.160
PCHEM	7.040	-0.160
CHINHIN	4.320	-0.140

Top % Losers (over 5 Trading days as at Yesterday)

Name	Price (RM)	Change (%)
AGES	0.040	-52.94
FINTEC	0.005	-50.00
KGROUP	0.005	-50.00
DGB	0.010	-33.33
EPMB	0.620	-25.30
SERSOL	0.115	-23.33
XDL	0.020	-20.00
ZENTECH	0.020	-20.00
XOXNET	0.025	-16.67
OSKVI	0.460	-14.81

Make-A-Wish
MALAYSIA

ANNUAL CHARITY GOLF TOURNAMENT
TROPICANA GCR • 25th May 2023

Main Sponsors



**SRI KOTA
SPECIALIST
MEDICAL CENTRE**
The Heart of Healthcare



Southern Acids (M) Berhad

BOOK NOW

Date: **Thursday 25th May 2023**

Time: **1.30pm Tee Off**

Venue: **Tropicana GCR**

Flight cost: **RM5,000 (for 4 golfers)**

TEE OFF FOR HOPE

Since 2010, Make-A-Wish Malaysia has been granting wishes of critically ill children around the country. Funds from this event will help us reach these critically ill children without delay.



SHARE THE POWER OF A WISH

To find out more please call:

Make-A-Wish Malaysia T: (03) 2276 3344 E: info@makeawish.org.my

www.facebook.com/MakeawishMalaysia • www.makeawish.org.my

Price & Volume Distribution Charts (as at Yesterday)

Technical Analysis

DEFINITION: Shariah compliant stocks with Technical Analysis showing 5-days & 10-days Moving Average Price below Yesterday's Close over past 3 days and with Volume Spike.

CHART GUIDE: Volume Distribution Chart is a statistical interpretation of the current sentiment on each stock in graphical format. The highest bar categorized as >150k is likely to be traded by institutions or super dealers, while the lowest bar categorized as <15k usually represents retail investors. "Buy Up" refers to more buyers snatching up the lots queued at selling price. "Sell Down" refers to sellers selling their shares to the buying queue



ShareInvestor WebPro > Screener > Market Screener (FA & TA) > select BURSA > add criteria

A. Criteria

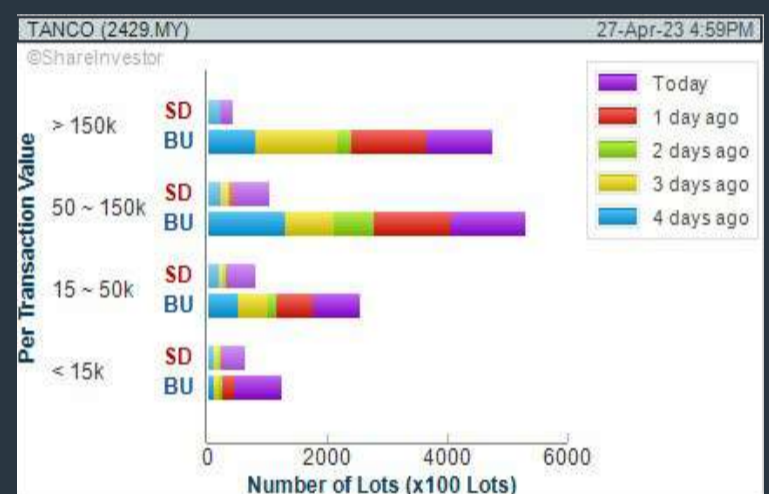
- > click Add Criteria
- Technical Analysis Conditions tab select (i) Moving Average Below Close (ii) Volume Spike
- Fundamental Analysis Conditions tab > select (iii) Revenue
- Prices & Other Conditions tab > select (iv) Is Shariah Compliant
- Technical Analysis Conditions tab select (v) Moving Average Below Close
- Prices & Other Conditions tab > select (vi) Last Done Price
- Technical Analysis Conditions tab select (vii) Moving Average Below Close

B. Conditions (Criteria Filters)

1. Moving Average Below Close - select (MA) type (5) below close price for type (3) days
2. Volume Spike - Volume type (1) greater than type (5) days average
3. Revenue ("000) - select (more than) type (1) for the past select (1) financial year(s)
4. Is Shariah Compliant - select **Yes**
5. Moving Average Below Close - select (MA) type (10) below close price for type (3) days
6. Last Done Price - select (more than) type (0.3)
7. Moving Average Below Close - select (EMA) type (5) below close price for type (3) days

- > click Save Template > Create New Template type (Shariah Hot Stocks) > click Create
- > click Save Template as > select Shariah Hot Stocks > click Save
- > click Screen Now (may take a few minutes)
- > Sort By: Select (Vol) Select (Desc)
- > Mouse over stock name > Charts > click C² Charts or Volume Distribution

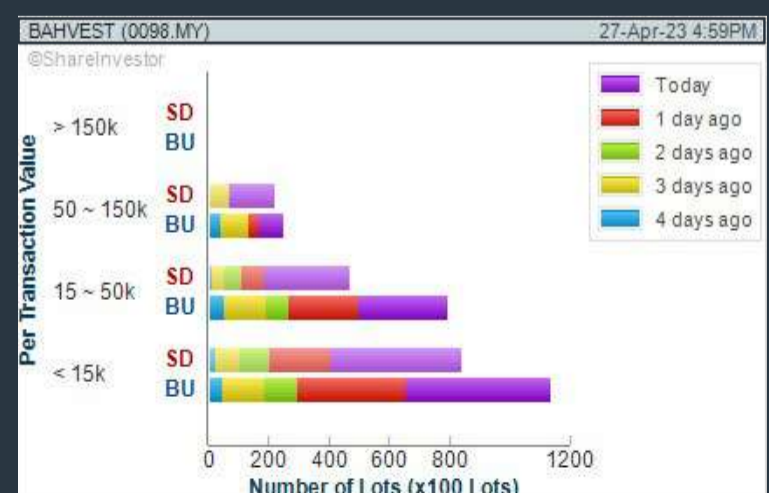
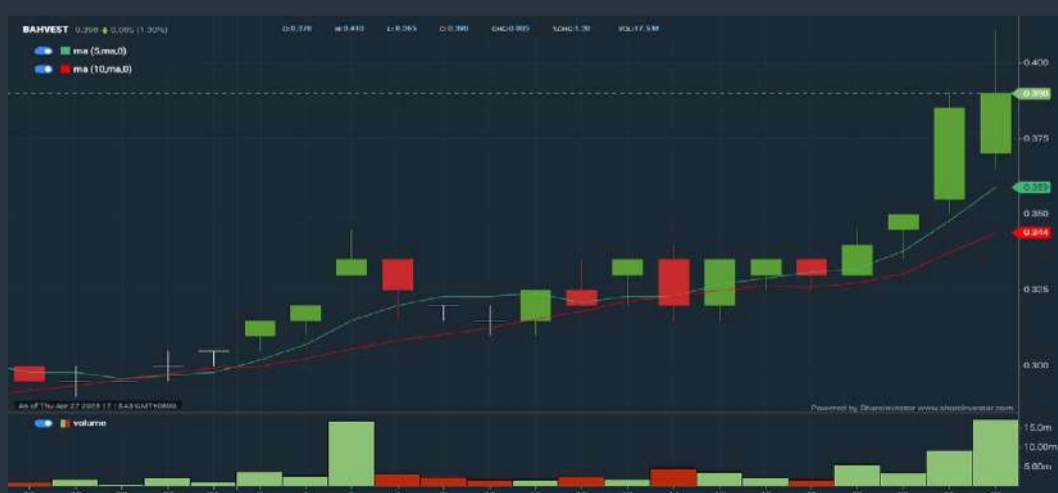
TANCO HOLDINGS BERHAD (2429) C² Chart



KRONOLOGI ASIA BERHAD (0176) C² Chart



BAHVEST RESOURCES BERHAD (0098) C² Chart



Disclaimer: The information on this page is provided as a service to readers. It does not constitute financial advice and/or any investment recommendations. Past performance is not indicative of future results. We assume no liability for damages resulting from or arising out of the use of such information. It would be best if you did your own research to make your personal investment decisions wisely or consult a licenced investment advisor.

COMPANY BACKGROUND

Sunmow Holding Berhad is a construction company listed on the LEAP Market of Bursa Malaysia Securities Berhad with three wholly-owned subsidiaries - Sunmow Construction (SMC), Sunmow Development (SMD), and Sunmow Trading (SMT). SMC offers construction services, including infrastructure, building, and oil and gas support, while SMD focuses on property development. SMT complements the group's business by trading building materials and tools.



Select Counter: Bursa SUNMOW (03050.MY) View

SUNMOW SUNMOW HOLDING BERHAD Updated at 20 Apr 2023 16:29

Last (MYR) 0.630	Change: -	High: 0.630	Remarks: -
Open	Change (%): -	Low: 0.630	
Buy Price	0.630	Yesterday's Close	0.630
Buy Volume ('00)	1,100	Sell Price	0.900
Cumulative Volume ('00)	-	Sell Volume ('00)	259
		Cumulative Value	-

Financial Analysis

Revenue Growth Increasing revenue in last 2 consecutive years		Profit Growth Profit up and down in last 3 years (with last 3 profitable years)	
Piotroski F Score The company has strong financial strength (Piotroski F-Score of 8-5)		Gross Profit Margin Low gross profit margin for 3 years	

Excellent
 Good
 Neutral
 Be Alert
 Watch Out

Company Background

Sunmow Holding Berhad is listed on the LEAP Market of Bursa Malaysia Securities Berhad and has three wholly-owned subsidiaries namely Sunmow Construction (SMC), Sunmow Development (SMD), and Sunmow Trading (SMT). SMC provides a full range of services of construction works, infrastructure construction, building structure, refurbishment, drainage system, road paving works, and our latest venture which is oil and gas support services. It is also the main support for SMD which involved in property development. SMT complements the group's business in maintaining the delivery of quality products through the trading of building materials and tools.



Historical Financials



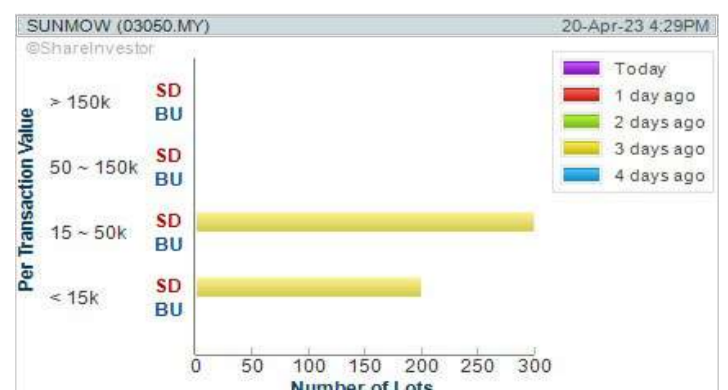
WebPro 9-Days Free Trial Registration (worth RM9) Sign Up Now



Key Statistics with Total Shareholder Returns

Total Shareholder Return

Period	Dividend Received	Capital Appreciation	Total Shareholder Return
Short Term Return	5 Days	-	-
	10 Days	-	-
	20 Days	-	-
Medium Term Return	3 Months	-1.00	-1.01%
	6 Months	-1.30	-3.88%
	1 Year	-1.30	-3.88%
Annualised Return	Annualised	-	-3.88%



Disclaimer: The information on this page is provided as a service to readers. It does not constitute financial advice and/or any investment recommendations. Past performance is not indicative of future results. We assume no liability for damages resulting from or arising out of the use of such information. It would be best if you did your own research to make your personal investment decisions wisely or consult a licenced investment advisor.

Price & Volume Distribution Charts (as at Yesterday)

Technical Analysis

DEFINITION: Shariah compliant stocks with Technical Analysis showing Bullish Momentum and Price Uptrend. The share price closed at the highest price yesterday. The typical price was higher than the previous day's typical price.

CHART GUIDE: Volume Distribution Chart is a statistical interpretation of the current sentiment on each stock in graphical format. The highest bar categorized as >150k is likely to be traded by institutions or super dealers, while the lowest bar categorized as <15k usually represents retail investors. "Buy Up" refers to more buyers snatching up the lots queued at selling price. "Sell Down" refers to sellers selling their shares to the buying queue.



ShareInvestor WebPro > Screener > Market Screener (FA & TA) > select BURSA > add criteria

A. Criteria

- > click Add Criteria
- Fundamental Analysis Conditions tab > select (i) Revenue
- Technical Analysis Conditions tab select (ii) Average Volume
- Prices & Other Conditions tab > select (iii) Last Done Price
- Prices & Other Conditions tab > select (iv) Is Shariah Compliant
- Technical Analysis Conditions tab select (v) RSI Overbought
- Technical Analysis Conditions tab select (vi) Moving Average Below Close
- Technical Analysis Conditions tab select (vii) CCI Overbought

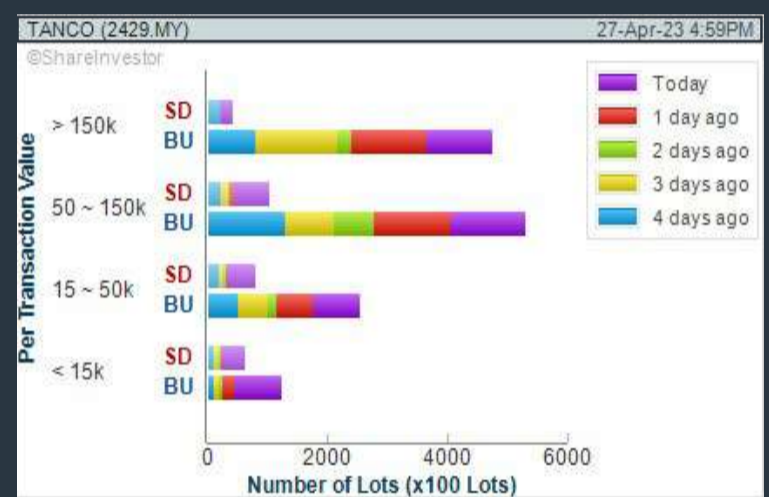
B. Conditions (Criteria Filters)

1. Revenue ("000) - select (more than) type (1) for the past select (1) financial year(s)
2. Average Volume - type (1) days average volume greater than type (10000) lots
3. Last Done Price - select (more than) type (0.3)
4. Is Shariah Compliant - select Yes
5. RSI Overbought - select RSI 1 above 99 for 1 days
6. Moving Average Below Close - select (MA) type (10) below close price for type (1) days
7. CCI Overbought - select CCI (2) above (0) for (1) days

- > click Save Template > Create New Template type (Shariah Momentum Up Stocks) > click Create
- > click Save Template as > select Shariah Momentum Up Stocks > click Save
- > click Screen Now (may take a few minutes)
- Sort By: Select (Vol) Select (Desc)
- Mouse over stock name > Charts > click C² Charts tab or Volume Distribution

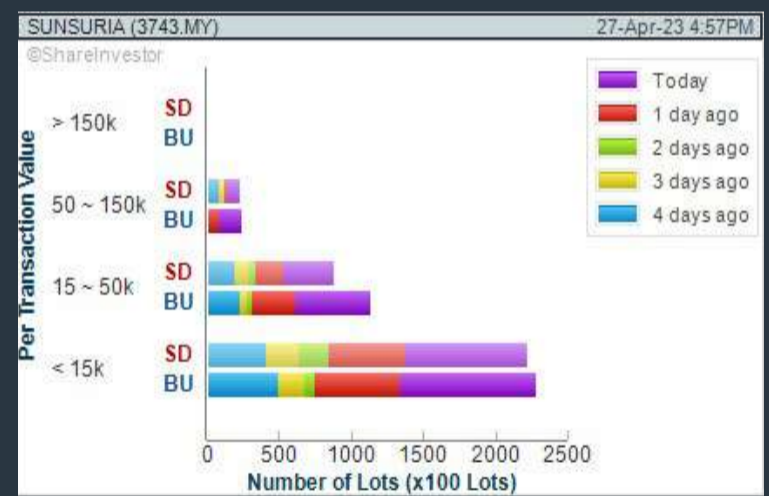
TANCO HOLDINGS BERHAD (2429)

C² Chart



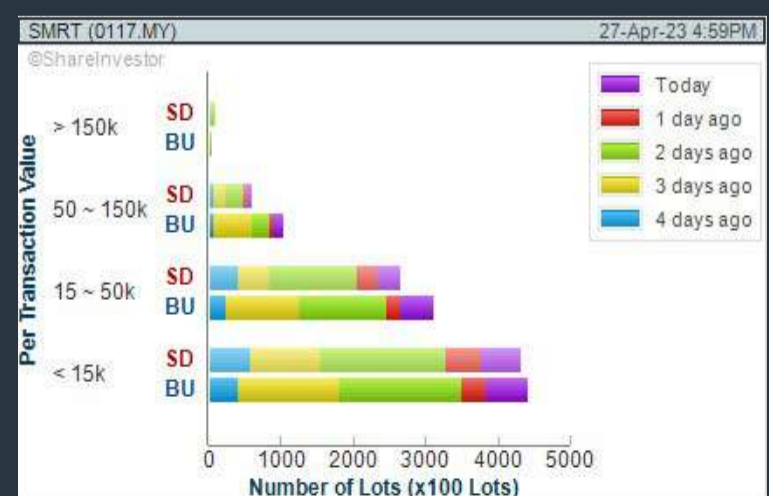
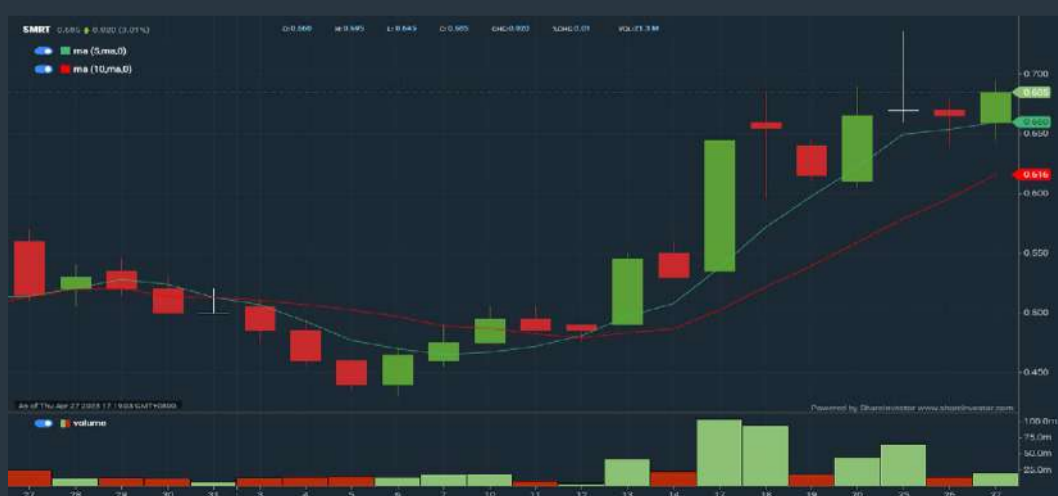
SUNSURIA BERHAD (3743)

C² Chart



SMRT HOLDINGS BERHAD (0117)

C² Chart



Disclaimer: The information on this page is provided as a service to readers. It does not constitute financial advice and/or any investment recommendations. Past performance is not indicative of future results. We assume no liability for damages resulting from or arising out of the use of such information. It would be best if you did your own research to make your personal investment decisions wisely or consult a licenced investment advisor.

INVEST FAIR® 2023

GROW YOUR MONEY *Lahh!*

Mid Valley Exhibition Centre

3 & 4 June 2023

10AM - 9PM

Our Speakers



Chong Jin Yoong
President,
CFA Society Malaysia



Dr. Renard Siew
Head of Sustainability,
Yinson Holdings Bhd



Dr. Zaharuddin
Managing Director,
Elzar Shariah Solution Sdn Bhd



Peter Lim



John Huo
Founder,
VUCA insights



Ng Zhu Hann
CEO,
Tradeview Capital Sdn. Bhd.



Aaron Tang
General Manager - APAC
Luno



Samantha Loh
Corporate Engagement
PPA Malaysia



Kathlyn Toh
Founder and Chief Trainer,
Beyond Insight



Anson Tan
Founder, BullBearBursa



Max Tan
Founder, 12Invest



Kevin
Founder, Round & Surge



George Poh
Director, EE Cameron



YC Chin
Founder, S.W.C 股视天下



Aaron Pek
Founder, Value Investing Substack



Shane Choo
Director, WealthFort



Yih Jia
Founder, 师奶股师



Cikgu Saham
Remisier

REGISTER FOR FREE



SCAN
TO REGISTER

ORGANISED BY:



SUPPORTED BY:



Price & Volume Distribution Charts (as at Yesterday)

Technical Analysis

DEFINITION: Stocks with Technical Analysis showing 5-days & 10-days Moving Average Price below Close over past 1 days and with Volume Spike

CHART GUIDE: Volume Distribution Chart is a statistical interpretation of the current sentiment on each stock in graphical format. The highest bar categorized as >150k is likely to be traded by institutions or super dealers, while the lowest bar categorized as <15k usually represents retail investors. "Buy Up" refers to more buyers snatching up the lots queued at selling price. "Sell Down" refers to sellers selling their shares to the buying queue.



ShareInvestor WebPro > Screener > Market Screener (FA & TA) > select BURSA > add criteria

A. Criteria

- > click Add Criteria
- Technical Analysis Conditions tab select (i) Moving Average Below Close (ii) Volume Spike
- Fundamental Analysis Conditions tab >select (iii) Revenue
- Prices & Other Conditions tab > select (iv) Is Shariah Compliant
- Technical Analysis Conditions tab select (v) Moving Average Below Close
- Prices & Other Conditions tab > select (vi) Last Done Price
- Technical Analysis Conditions tab select (vii) Moving Average Below Close

B. Conditions (Criteria Filters)

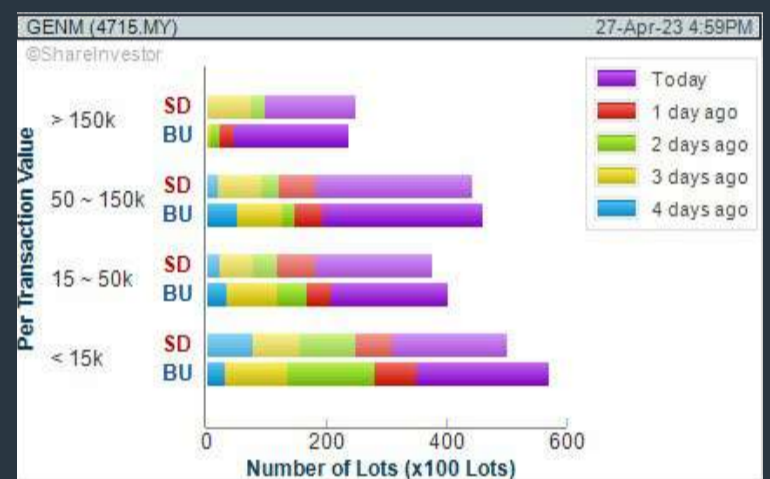
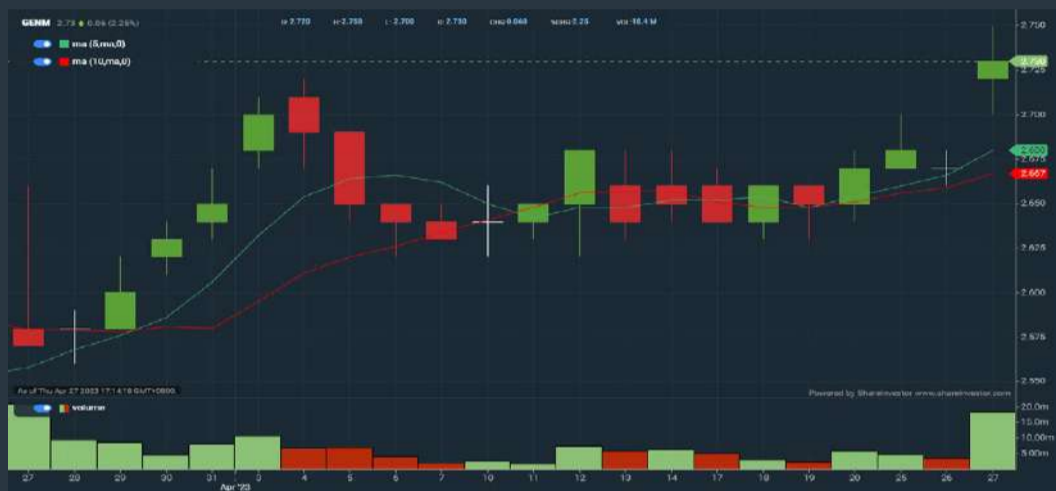
1. Moving Average Below Close - select (MA) type (5) below close price for type (3) days
2. Volume Spike - Volume type (1) greater than type (5) days average
3. Revenue ("000) - select (more than) type (1) for the past select (1) financial year(s)
4. Is Shariah Compliant - select NO
5. Moving Average Below Close - select (MA) type (10) below close price for type (1) days
6. Last Done Price - select (more than) type (0.3)
7. Moving Average Below Close - select (EMA) type (5) below close price for type (1) days

- > click Save Template > Create New Template type (Non-Shariah Hot Stocks) > click Create
- > click Save Template as > select Non-Shariah Hot Stocks > click Save
- > click Screen Now (may take a few minutes)
- Sort By: Select (Vol) Select (Desc)
- Mouse over stock name > Charts > click C² Charts tab or Volume Distribution

GENTING MALAYSIA BERHAD (4715)

C² Chart

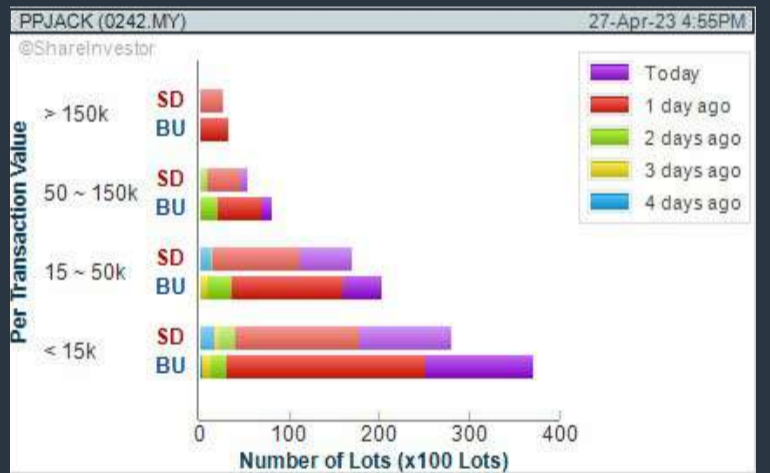
Analysis



PAPAJACK BERHAD (0242)

C² Chart

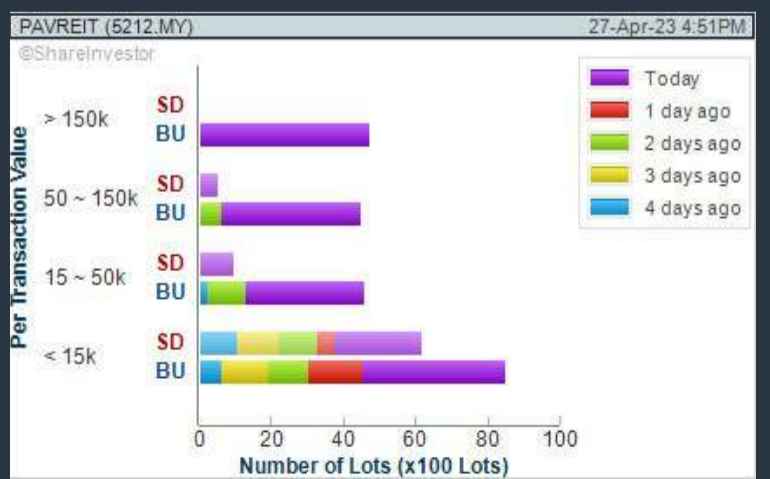
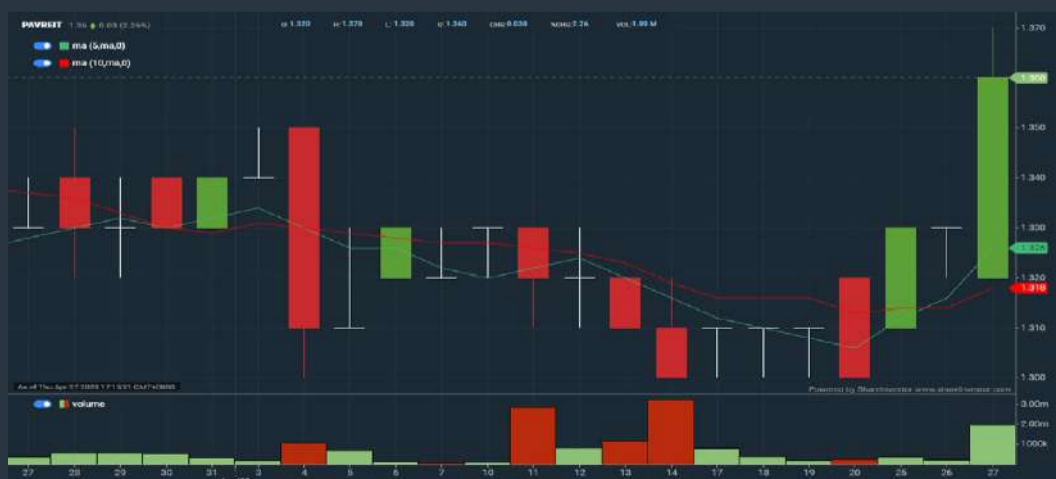
Analysis



PAVILION REAL ESTATE INV TRUST (5212)

C² Chart

Analysis



Disclaimer: The information on this page is provided as a service to readers. It does not constitute financial advice and/or any investment recommendations. Past performance is not indicative of future results. We assume no liability for damages resulting from or arising out of the use of such information. It would be best if you did your own research to make your personal investment decisions wisely or consult a licenced investment advisor.

SHARE INVESTOR WEBPRO

STOCK MARKET DATA AT YOUR FINGERTIPS

Powerful browser-based market analytics platform.
Access from anywhere



8 Markets Data

- ▶ Get access to data from Bursa, NYSE, Nasdaq, HKEX, SGX, IDX, SET & ASX

Portfolio Management

- ▶ Profit & Loss Summary
- ▶ Stock Alert
- ▶ News & Events filtering
- ▶ Customizable column layout

Fundamental Analysis

Financial Analysis Statement

- ▶ Profit & Loss
- ▶ Balance Sheet
- ▶ Cash Flow Statement
- ▶ More than 20 Financial Ratios
- ▶ Dividend Analysis

Technical Charting

- ▶ C² chart (Customisable & Comprehensive)

Brokers' Call

Intrinsic Value Calculator

FactSheet

- ▶ Key Stock Information
- ▶ Ownership
- ▶ Consensus Estimates
- ▶ Annual Report
- ▶ Historical Price
- ▶ Insider Trades

What's new on WebPro (Stable Release 12.1.0)

In our effort to keep our platform at the forefront of trading technology, we have added on some new features onto our C2 Chart in WebPro

ADDITIONAL NEW FEATURES:

- ▶ Anchor selector for AVWAP, PVAT, and PAV indicators
- ▶ Volume profile indicator by date range
- ▶ Moving Average Cross indicator
- ▶ Guppy Multiple Moving Average (GMMA) indicator
- ▶ GoNoGo Trend Signal indicators
- ▶ SignalIQ

So what are you waiting for? Head to our platform today and check out our new trading chart features and indicators. We're confident that you'll love the improvements we've made and that they'll help you become a more successful trader.

Click here to start your 9 days FREE trial
(Valued at RM10)



Price & Volume Distribution Charts (Over 5 trading days as at Yesterday)

Technical Analysis

DEFINITION: Stocks with Technical Analysis showing Bullish Momentum and Price Uptrend

CHART GUIDE: Volume Distribution Chart is a statistical interpretation of the current sentiment on each stock in graphical format. The highest bar categorized as >150k is likely to be traded by institutions or super dealers, while the lowest bar categorized as <15k usually represents retail investors. "Buy Up" refers to more buyers snatching up the lots queued at selling price. "Sell Down" refers to sellers selling their shares to the buying queue.



ShareInvestor WebPro > Screener > Market Screener (FA & TA) > select BURSA > add criteria

A. Criteria

- > click Add Criteria
- Fundamental Analysis Conditions tab > select (i) Revenue
- Technical Analysis Conditions tab select (ii) Moving Average Below Close
- Technical Analysis Conditions tab select (iii) Average Volume
- Prices & Other Conditions tab > select (iv) Last Done Price
- Technical Analysis Conditions tab select (v) Moving Average Below Close
- Technical Analysis Conditions tab select (v) Moving Average Bullish Crossover

B. Conditions

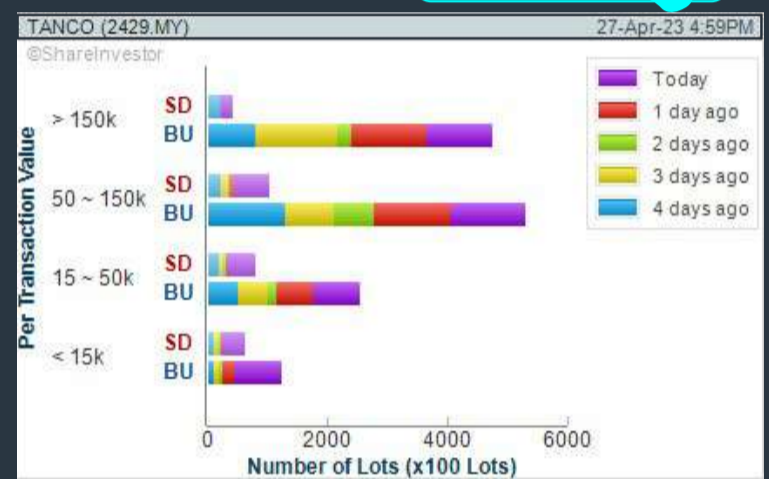
1. Revenue - select (more than) type (1) for the past select (1) financial year(s)
2. Moving Average Below Close - select (MA) type (20) below close price for type (1) days
3. Average Volume - type (5) days average volume type (10000) lots
4. Last Done Price - select (more than) type (0.3)
5. Moving Average Below Close - select (MA) type (10) below close price for type (1) days
6. Moving Average Bullish Crossover - select (MA) type (5) crossed above select (MA) type (10)

> click Save Template > Create New Template type (Non-Shariah Up-Trending Stocks) > click Create Click Save Template As > select Non-Shariah Up Trending Stocks > click Save > click Screen Now (may take a few minutes) Sort By: Select (Vol) Select (Desc) Mouse over stock name > Charts > click C² Charts tab or Volume Distribution

TANCO HOLDINGS BERHAD (2429)

C² Chart

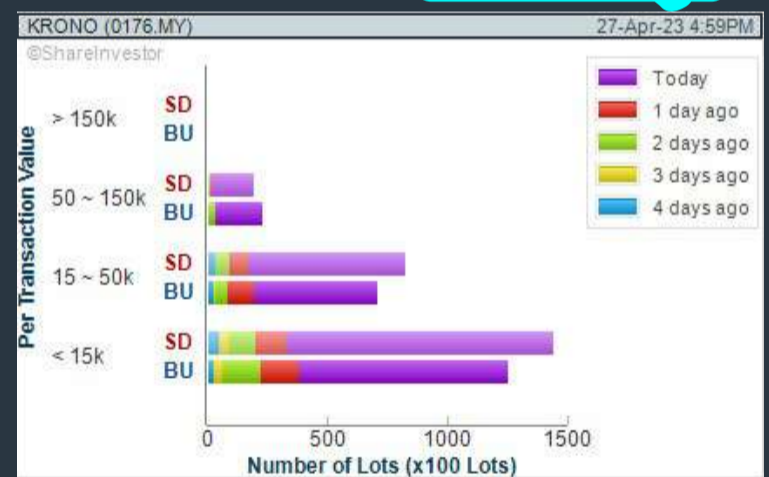
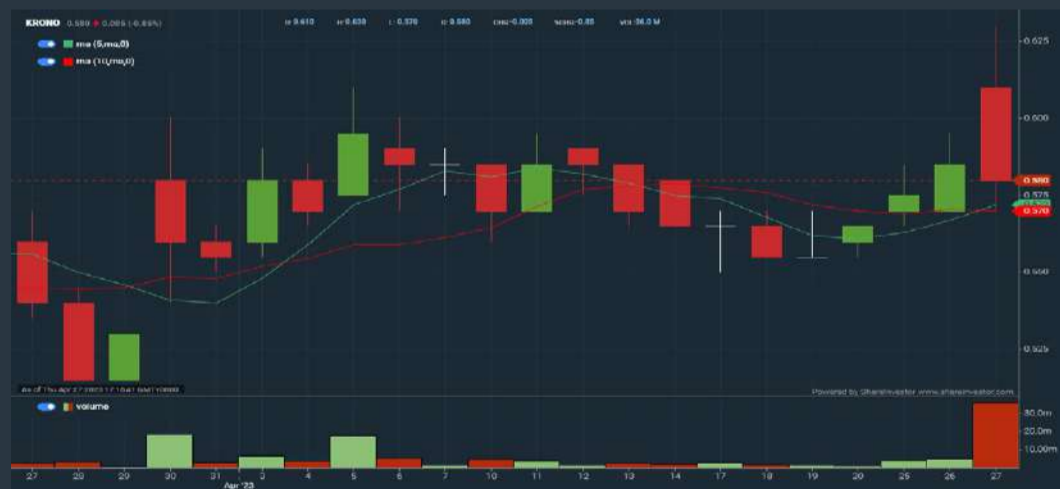
Analysis



KRONOLOGI ASIA BERHAD (0176)

C² Chart

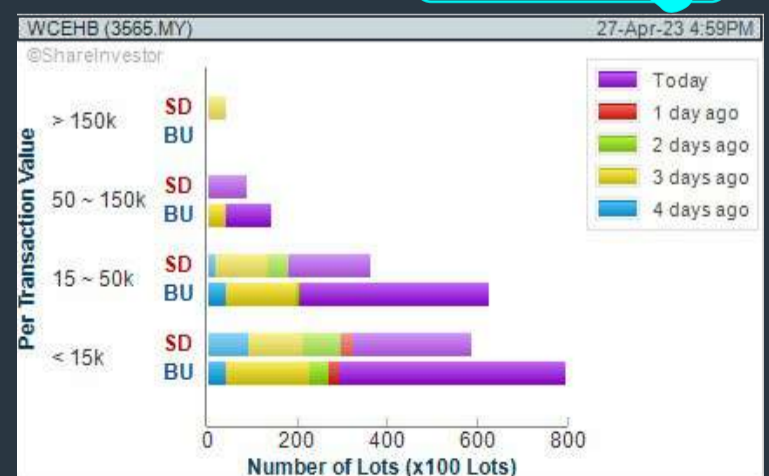
Analysis



WCE HOLDINGS BERHAD (3565)

C² Chart

Analysis



Disclaimer: The information on this page is provided as a service to readers. It does not constitute financial advice and/or any investment recommendations. Past performance is not indicative of future results. We assume no liability for damages resulting from or arising out of the use of such information. It would be best if you did your own research to make your personal investment decisions wisely or consult a licenced investment advisor.

Introducing



GM SUITE

CONNECTING STAKEHOLDERS

by SHAREINVESTOR®

General Meeting Suite (GM Suite), an end-to-end technology system to facilitate hybrid, virtual or physical Annual General Meetings.

THE GOLD STANDARD SOLUTION FOR AGM / EGM



<https://gm-suite.com>

Price & Total Shareholder Return (as at Yesterday)

Fundamental Analysis

DEFINITION: Share price of a company trading at a lower price as compared to its fundamentals (FA) such as financial performance and dividend, allowing it to be attractive to value investors.

CHART GUIDE: Total Shareholder Return (TSR) combines share price appreciation and dividend distributions paid to show the total return to the shareholder expressed as a percentage.



ShareInvestor WebPro > Screener > Market Screener (FA & TA) > select BURSA > add criteria

A. Criteria

- > click Add Criteria
- Fundamental Analysis Conditions tab (i) Price Earnings Ratio
- Fundamental Analysis Conditions tab >select (ii) CAGR of Net Earnings
- Fundamental Analysis Conditions tab >select (iii) Net Debt To Equity
- Fundamental Analysis Conditions tab >select (iv) Return On Equity (ROE)

B. Conditions

1. Price Earnings Ratio - select (less than) type (15) times now
2. CAGR of Net Earnings - select (more than) type (10) % for the past type (3) financial year(s)
3. Net Debt To Equity – select (less than) type (1) for the past select (1) financial year(s)
4. Return On Equity (ROE) – select (more than) type (10) % for the past select (1) financial year(s)

- > click Save Template > Create New Template type (Value Stock) > click Create
- > click Save Template as > select Value Companies > click Save
- > click Screen Now (may take a few minutes)
- Sort by: Select (PE Ratio) Select (Ascending)
- > Mouse over stock name > Factsheet > looking for Total Shareholder Return
- > Mouse over stock name > Charts > click C2 Charts tab

SUNMOW HOLDING BERHAD (03050)

C² Chart

Analysis



Period	Dividend Received	Capital Appreciation	Total Shareholder Return
Short Term Return	5 Days	-	-
	10 Days	-	-
	20 Days	-	-
Medium Term Return	3 Months	-0.020	-3.00 %
	6 Months	-0.320	-33.68 %
	1 Year	-0.320	-33.68 %
Annualised Return	Annualised	-	-33.68 %

LION POSIM BERHAD (8486)

C² Chart

Analysis



Period	Dividend Received	Capital Appreciation	Total Shareholder Return
Short Term Return	5 Days	+0.005	+1.15 %
	10 Days	+0.005	+1.15 %
	20 Days	+0.005	+1.15 %
Medium Term Return	3 Months	-0.085	-12.87 %
	6 Months	-	-
	1 Year	-0.100	-18.52 %
Long Term Return	2 Years	-0.270	-38.03 %
	3 Years	+0.135	+44.26 %
	5 Years	-0.115	-20.72 %
Annualised Return	Annualised	-	-4.54 %

ALCOM GROUP BERHAD (2674)

C² Chart

Analysis



Period	Dividend Received	Capital Appreciation	Total Shareholder Return
Short Term Return	5 Days	+0.005	+0.55 %
	10 Days	+0.015	+1.66 %
	20 Days	-0.005	-0.64 %
Medium Term Return	3 Months	-0.045	-4.66 %
	6 Months	+0.110	+13.58 %
	1 Year	0.025	+8.00 %
Long Term Return	2 Years	0.025	+8.23 %
	3 Years	0.025	+8.00 %
	5 Years	0.025	+8.15 %
Annualised Return	Annualised	-	+3.91 %

Disclaimer: The information on this page is provided as a service to readers. It does not constitute financial advice and/or any investment recommendations. Past performance is not indicative of future results. We assume no liability for damages resulting from or arising out of the use of such information. It would be best if you did your own research to make your personal investment decisions wisely or consult a licenced investment advisor.

MAKE BETTER TRADING STRATEGIES

with

SHARE INVESTOR STATION



8 Markets Data

- ▶ Get access to data from Bursa, NYSE, Nasdaq, HKEX, SGX, IDX, SET & ASX

Dynamic Chart

- ▶ Candlestick Pattern Recognition
- ▶ 111 Indicators
- ▶ 39 Drawing Tools
- ▶ Performance Comparison Chart

Intraday Data

- ▶ Market Depth
- ▶ Trade Summary Matrix & Chart
- ▶ Times & Sales
- ▶ Intraday Market Ticker

Market Screener

- ▶ 96 criteria ranging from FA, TA, Consensus Estimate
- ▶ Real-time Data

Power Frame

- ▶ Combining few Dynamic Charts together with intraday information in one frame

Technical Analysis

Fundamental Analysis

Financial Analysis Statement

- ▶ Profit & Loss
- ▶ Balance Sheet
- ▶ Cash Flow Statement
- ▶ More than 20 Financial Ratios
- ▶ Dividend Analysis

FactSheet

- ▶ Key Stock Information
- ▶ Ownership
- ▶ Consensus Estimates
- ▶ Annual Report
- ▶ Historical Price
- ▶ Insider Trades

**Start your 18 days
FREE trial now
(Valued at RM82)**



Price & Total Shareholder Return (as at Yesterday)

Fundamental Analysis

DEFINITION: Company revenue is growing and making good quality of earnings with positive Free Cash Flow.

CHART GUIDE: Total Shareholder Return (TSR) combines share price appreciation and distributions paid to show the total return to the shareholder expressed as a percentage.



ShareInvestor WebPro > Screener > Market Screener (FA & TA) > select BURSA > add criteria

A. Criteria

1. Fundamental Analysis Conditions tab >select (i) Free Cash Flow, (ii) Revenue Growth, (iii) Gross Profit (Earnings) Margin, (iv) Quality of Earnings, (v) Total Shareholder Returns, > click Add Criteria
2. Fundamental Analysis Conditions tab >select (vi) Total Shareholder Returns > click Add Criteria

B. Conditions (Criteria Filters)

1. Free Cash Flow - select (more than) type (1) for the past select (1) financial year(s)
2. Revenue Growth - select (more than) type (1) for the past select (1) financial year(s)
3. Gross Profit (Earnings) Margin - select (more than) type (30) % for the past select (1) financial year(s)
4. Quality of Earnings - select (more than) type (1) for the past select (1) financial year(s)
5. Total Shareholder Return - select (more than) type (5) % for the past select (3) financial year(s)
6. Total Shareholder Return - select (more than) type (5) % for the past select (5) financial year(s)

- > click Save Template > Create New Template type (Growth Companies) > click Create
- > click Save Template as > select Growth Companies > click Save
- > click Screen Now (may take a few minutes)
- > Sort By: Select (Revenue Growth) Select (Desc)
- > Mouse over stock name > Factsheet > looking for Total Shareholder Return

HIBISCUS PETROLEUM BERHAD (5199)

C² Chart

Analysis

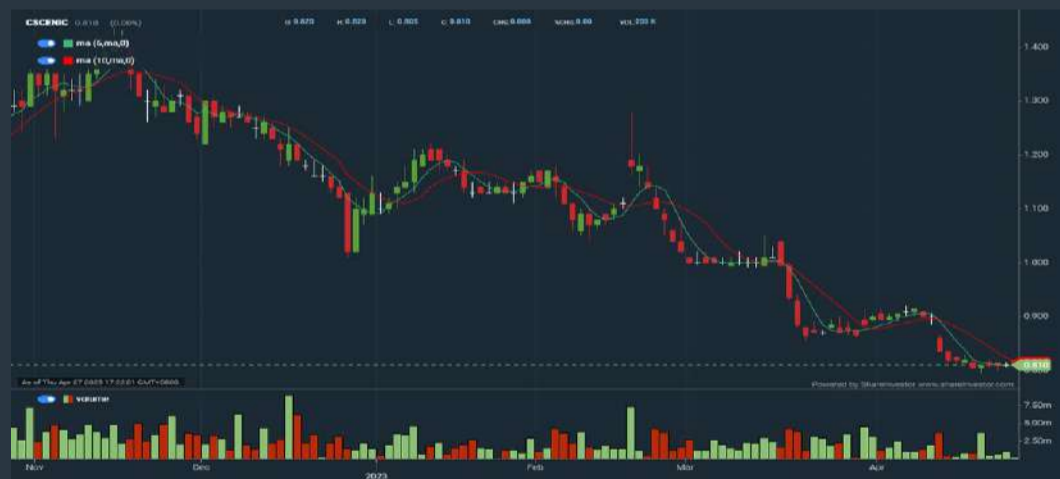


Period		Dividend Received	Capital Appreciation	Total Shareholder Return	
Short Term Return	5 Days	-	-0.040	-	-3.81%
	10 Days	-	-0.070	-	-6.48%
	20 Days	-	+0.015	-	+1.51%
Medium Term Return	3 Months	-	-0.130	-	-11.40%
	6 Months	0.010	+0.075	-	+9.09%
Long Term Return	1 Year	0.020	-0.200	-	-14.88%
	2 Years	0.030	+0.390	-	+87.74%
	3 Years	0.035	+0.585	-	+134.83%
	5 Years	0.035	+0.210	-	+30.52%
	Annualised Return	Annualised	-	-	-

CLASSIC SCENIC BERHAD (7202)

C² Chart

Analysis



Period		Dividend Received	Capital Appreciation	Total Shareholder Return	
Short Term Return	5 Days	-	-	-	-
	10 Days	-	-0.025	-	-2.99%
	20 Days	0.055	-0.055	-	-
Medium Term Return	3 Months	0.055	-0.330	-	-24.12%
	6 Months	0.055	-0.480	-	-32.95%
Long Term Return	1 Year	0.055	+0.125	-	+26.25%
	2 Years	0.055	+0.645	-	+13.07%
	3 Years	0.085	+0.477	-	+68.77%
	5 Years	0.245	+0.660	-	+40.97%
	Annualised Return	Annualised	-	-	-

DAYANG ENTERPRISE HOLDINGS BERHAD (5141)

C² Chart

Analysis



Period		Dividend Received	Capital Appreciation	Total Shareholder Return	
Short Term Return	5 Days	-	-0.040	-	-2.90%
	10 Days	-	-0.060	-	-4.39%
	20 Days	-	-	-	-
Medium Term Return	3 Months	-	-0.000	-	-5.63%
	6 Months	-	+0.170	-	+14.53%
Long Term Return	1 Year	-	+0.470	-	+54.02%
	2 Years	-	-0.010	-	-0.74%
	3 Years	-	+0.170	-	+14.53%
	5 Years	-	+0.690	-	+79.38%
	Annualised Return	Annualised	-	-	-

Disclaimer: The information on this page is provided as a service to readers. It does not constitute financial advice and/or any investment recommendations. Past performance is not indicative of future results. We assume no liability for damages resulting from or arising out of the use of such information. It would be best if you did your own research to make your personal investment decisions wisely or consult a licenced investment advisor.



Italian Masterpieces

Martha rocking chair designed by Roberto Lazzeroni
Chester Line sofa designed by Poltrona Frau Style & Design Centre

poltronafrau.com



XTRA

The Gardens Mall, Mid Valley City, Lot S-236 & 237
2nd flr Linkaran Syed Putra, Kuala Lumpur
T. +603 2282 9088 | xtra@xtrafurniture.com | xtrafurniture.com
f XTRAFurniture | @ xtrafurnituremsia



Price & Total Shareholder Return (as at Yesterday)

Fundamental Analysis

DEFINITION: Company is paying out dividend with low or moderate leverage.

CHART GUIDE: Total Shareholder Return (TSR) combines share price appreciation and distributions paid to show the total return to the shareholder expressed as a percentage.



ShareInvestor WebPro > Screener > Market Screener (FA & TA) > select BURSA > add criteria

A. Criteria

- > click Add Criteria
- Fundamental Analysis Conditions tab >select (i) Dividend Yield
- Fundamental Analysis Conditions tab >select (ii) Dividend Payout (Historical)
- Fundamental Analysis Conditions tab >select (iii) Total Debt To Equity
- Fundamental Analysis Conditions tab >select (iv) Total Shareholder Returns
- Fundamental Analysis Conditions tab >select (v) Total Shareholder Returns
- Fundamental Analysis Conditions tab / >select (vi) CAGR of Dividend Per Share

• Fundamental Analysis Conditions tab >select (vii) CAGR of Dividend Per Share

B. Conditions (Criteria Filters)

1. Dividend Yield - select (more than) type (1) % for the past select (1) financial year(s)
2. Dividend Payout (Historical) - select (between) type (0.5) to type (1) times for the past select (1) financial year(s)
3. Total Debt to Equity - select (less than) type (1) for the past select (1) financial year(s)
4. Total Shareholder Return - select (more than) type (5) % for the past select (3) financial year(s)
5. Total Shareholder Return - select (more than) type (5) % for the past select (5) financial year(s)

6. CAGR of Dividend Per Share - select (less than) type (30) % for the past select (5) financial year(s)
7. CAGR of Dividend Per Share - select (more than) type (1) % for the past select (5) financial year(s)

- > click Save Template > Create New Template type (Dividend Companies) > click Create
- > click Save Template as > select Dividend Companies > click Save
- > click Screen Now (may take a few minutes)
- > Sort By: Select (Dividend Yield) Select (Desc)
- > Mouse over stock name > Factsheet > looking for Total Shareholder Return

JAYCORP BERHAD (7152)

C² Chart



Analysis



Period	Dividend Received	Capital Appreciation	Total Shareholder Return	
Short Term Return	5 Days	-	+0.72%	
	10 Days	-	-	
	20 Days	0.020	-0.005	+2.13%
Medium Term Return	3 Months	0.020	-0.020	-
	6 Months	0.060	-0.015	+6.26%
	1 Year	0.060	-0.030	+6.66%
Long Term Return	2 Years	0.135	0.150	+7.78%
	3 Years	0.285	+0.307	+150.64%
	5 Years	0.435	+0.240	+148.74%
Annualised Return	Annualised	-	+18.80%	

UNITED PLANTATIONS BERHAD (2089)z

C² Chart



Analysis



Period	Dividend Received	Capital Appreciation	Total Shareholder Return	
Short Term Return	5 Days	-	-0.24%	
	10 Days	-	+0.72%	
	20 Days	-	+0.54%	+3.33%
Medium Term Return	3 Months	-	+1.200	+6.26%
	6 Months	0.400	+2.600	+21.22%
	1 Year	1.250	+0.340	+9.70%
Long Term Return	2 Years	1.560	+2.711	+30.37%
	3 Years	2.400	+5.032	+63.48%
	5 Years	5.150	+4.695	+86.38%
Annualised Return	Annualised	-	+13.26%	

UCHI TECHNOLOGIES BERHAD (7100)

C² Chart



Analysis



Period	Dividend Received	Capital Appreciation	Total Shareholder Return	
Short Term Return	5 Days	-	-0.10%	
	10 Days	-	+0.14%	+4.24%
	20 Days	-	+0.24%	+7.59%
Medium Term Return	3 Months	-	+0.250	+7.84%
	6 Months	0.120	+0.170	+8.87%
	1 Year	0.230	+0.390	+20.33%
Long Term Return	2 Years	0.415	+0.260	+21.23%
	3 Years	0.575	+1.000	+70.15%
	5 Years	0.870	+0.666	+87.44%
Annualised Return	Annualised	-	+10.86%	

Disclaimer: The information on this page is provided as a service to readers. It does not constitute financial advice and/or any investment recommendations. Past performance is not indicative of future results. We assume no liability for damages resulting from or arising out of the use of such information. It would be best if you did your own research to make your personal investment decisions wisely or consult a licenced investment advisor.

BURSASTATION

Professional

Stock Scanning

- Technical Analysis (TA) Market Scanner
- Fundamental Analysis (FA) Market Scanner

Monitoring

- Portfolio
- Stock Alerts
- Price Spread Calculator

Market Data

- Equities
- Derivatives

Scan. Chart. Analyse.

Be The Intelligent Investor

Charts

- Intraday Charts
- Interactive Charts
- Historical Charts
- Volume Distribution Charts

Price Movements

- Streaming Prices
- Time & Sales
- Trade Summary Matrix
- Quote Movements
- 5 Levels Market Depth
- Historical Price Download

Fundamentals

- Factsheets
- Financials
- Insider Trades

Brought to you as a collaborative effort by ShareInvestor and Bursa Malaysia, **BursaStation Professional** is designed with you, the user, in mind, as a user-friendly yet full of powerful features that will appeal to investors/traders who need instant access to fundamental, technical, and trading data, anytime, anywhere. **BursaStation Professional** is a state-of-the-art Stock Market Tracker with Charting Software that places in your hands the power to make better investment decisions.

[CLICK HERE TO START YOUR 14-DAYS FREE TRIAL](#)

Week: 21 April 2023 – 27 April 2023

More Brokers' Call 

AMINVESTMENT BANK <small>... See More</small>	Call	Target Price	Release Date
Bumi Armada Berhad (5210)	BUY	RM0.86	26 Apr 2023
LPI Capital Berhad (8621)	HOLD	RM12.70	25 Apr 2023
Pavilion Real Estate Investment Trust (5212)	BUY	RM1.62	25 Apr 2023
RHB Bank Berhad (1066)	BUY	RM6.70	26 Apr 2023

APEX <small>... See More</small>	Call	Target Price	Release Date
Gadang Holdings Berhad (9261)	HOLD	RM0.27	27 Apr 2023

BIMB SECURITIES SDN BHD <small>... See More</small>	Call	Target Price	Release Date
Nestle (Malaysia) Berhad (4707)	HOLD	RM139.00	26 Apr 2023

CGS CIMB <small>... See More</small>	Call	Target Price	Release Date
HPP Holdings Berhad (0228)	HOLD	RM0.32	25 Apr 2023

KENANGA <small>... See More</small>	Call	Target Price	Release Date
HPP Holdings Berhad (0228)	OUTPERFORM	RM0.440	25 Apr 2023
LGMS Berhad (0249)	OUTPERFORM	RM1.50	27 Apr 2023
Nestlé (Malaysia) Berhad (4707)	UNDERPERFORM	RM121.18	26 Apr 2023
Pavilion Real Estate Investment Trust (5212)	OUTPERFORM	RM1.47	25 Apr 2023

MIDF <small>... See More</small>	Call	Target Price	Release Date
Bumi Armada Berhad (5210)	BUY	RM0.80	26 Apr 2023
Nestlé (Malaysia) Berhad (4707)	NEUTRAL	RM139.50	26 Apr 2023
Pavilion Real Estate Investment Trust (5212)	BUY	RM1.63	25 Apr 2023
Ranhill Utilities Berhad (5272)	BUY	RM0.70	26 Apr 2023

UOB KAYHIAN <small>... See More</small>	Call	Target Price	Release Date
HSS Engineers Berhad (0185)	BUY	RM0.60	26 Apr 2023
NTPM Holdings Berhad (5066)	BUY	RM0.58	26 Apr 2023
SNS Network Technology Berhad (0259)	BUY	RM0.315	26 Apr 2023

Disclaimer: InveSt does not accept any liability whatsoever for any direct, indirect or consequential losses (including loss of profit) or damages that may arise from the use of information or opinions in this publication. The information and opinions in InveSt are not to be considered as an offer to sell or buy any of the securities discussed. Opinions expressed are subject to change without notice. The Brokers may, from time to time, have interests or positions in the securities mentioned. For the full report on each item listed on this page, please visit https://www.shareinvestor.com/my/brokers_call.

DEFINITION: Top 9 stocks with Technical Analysis plus Pattern Matching by 60 pre-defined indicators by the system showing a higher probability of bullish sentiment on the share price.



ShareInvestor WebPro > Screener > Predefined TA Screens > select market BURSA > Most Long Signals > click Scan Results or mouse over each company

GENETEC TECHNOLOGY BERHAD (0104.MY)

GENETEC

Price updated at 27 Apr 2023 16:59

Last: 2.880	Change: +0.020	Volume: 6,641
	Change (%): +0.70	Range: 2.830 - 2.890

TA Scanner Results based on historical data up to 27 Apr 2023

Condition	Signal	Explanation
Bollinger Band: Bullish Long Term Volatility Breakout and Trending	Long	1. Close price above upper bollinger band(33,1). 2. Volume above average volume(50). 3. Average volume(50) is above 300,000.
Bollinger Band: Bullish Short Term Volatility Breakout and Trending	Long	1. Close price above upper bollinger band(33,1). 2. Volume above average volume(10). 3. Average volume(10) is above 300,000.
Candlestick: Bullish Engulfing	Long	Bullish: Engulfing
DM: Bullish Directional Movement	Long	-DI(14) crossed below +DI(14)
Volume: 10 Days large value Buy Up trade	Long	1. 150K value Buy Up greater than Sell Down by 20% for 10 days. 2. 50K-100K value Buy Up greater than Sell Down by 20% for 10 days. 3. Average volume(10) is above 1000000

AXIATA GROUP BERHAD (6888.MY)

AXIATA

Price updated at 27 Apr 2023 16:58

Last: 3.000	Change: +0.020	Volume: 20,949
	Change (%): +0.67	Range: 2.960 - 3.020

TA Scanner Results based on historical data up to 27 Apr 2023

Condition	Signal	Explanation
Bollinger Band: Low Below Lower Bollinger Band	Neutral	1. Low below lower bollinger band(14,2). 2. Average volume(5) is above 100,000.
CCI: Bullish CCI Oversold And Reversing	Long	1. CCI(26) below -100 and CCI(26) 1 day ago decreasing for the last 3 days. 2. CCI(26) above CCI(26) 1 day ago
DM: Bearish Directional Movement	Short	-DI(14) crossed above +DI(14)
MACD: Bearish MACD Crossover	Short	1. MACD(12,26) diff line crossed below the MACD(12,26) signal line. 2. MACD Histogram(12,26) is below 0.
Volume: 10 Days large value Buy Up trade	Long	1. 150K value Buy Up greater than Sell Down by 20% for 10 days. 2. 50K-100K value Buy Up greater than Sell Down by 20% for 10 days. 3. Average volume(10) is above 1000000
Volume: 5 Days large value Buy Up trade	Long	1. 150K value Buy Up greater than Sell Down by 20% for 5 days. 2. 50K-100K value Buy Up greater than Sell Down by 20% for 5 days. 3. Average volume(10) is above 1000000
Williams %R: Bullish Williams %R	Long	1. Williams %R(26) between -80 and -100. 2. Average volume(5) is above 100,000.

Disclaimer: The information on this page is provided as a service to readers. It does not constitute financial advice and/or any investment recommendations. Past performance is not indicative of future results. We assume no liability for damages resulting from or arising out of the use of such information. It would be best if you did your own research to make your personal investment decisions wisely or consult a licenced investment advisor.

KIM TECK CHEONG CONSOLIDATED BERHAD (0180.MY)

KTC

Price updated at 27 Apr 2023 16:59

Last: 0.245	Change: -0.005	Volume: 15,172
	Change (%): -2.00	Range: 0.240 - 0.250

TA Scanner Results based on historical data up to 27 Apr 2023

Condition	Signal	Explanation
Bollinger Band: Bullish Lower Bollinger Band Support	Long	1. Low 1 day ago below lower bollinger band(20,2). 2. Close above close 1 day ago. 3. Average volume(5) is above 100,000.
Bollinger Band: Low Below Lower Bollinger Band	Neutral	1. Low below lower bollinger band(14,2). 2. Average volume(5) is above 100,000.
CCI: Bullish CCI Oversold And Reversing	Long	1. CCI(26) below -100 and CCI(26) 1 day ago decreasing for the last 3 days. 2. CCI(26) above CCI(26) 1 day ago
Candlestick: Bullish Harami	Long	Bullish: Harami
Williams %R: Bullish Williams %R	Long	1. Williams %R(26) between -80 and -100. 2. Average volume(5) is above 100,000.

MEDIA PRIMA BERHAD (4502.MY)

MEDIA

Price updated at 27 Apr 2023 16:54

Last: 0.440	Change: -	Volume: 10,354
	Change (%): -	Range: 0.435 - 0.450

TA Scanner Results based on historical data up to 27 Apr 2023

Condition	Signal	Explanation
Bollinger Band: Bullish Long Term Volatility Breakout and Trending	Long	1. Close price above upper bollinger band(33,1). 2. Volume above average volume(50). 3. Average volume(50) is above 300,000.
Bollinger Band: Bullish Short Term Volatility Breakout and Trending	Long	1. Close price above upper bollinger band(33,1). 2. Volume above average volume(10). 3. Average volume(10) is above 300,000.
Bollinger Band: High Above Upper Bollinger Band	Neutral	1. High above upper bollinger band(14,2). 2. Average volume(5) is above 100,000.
Donchian Channels: High Above Upper Donchian Channels	Long	High crossed above the upper Donchian Channel(14,4)
MA: Short Term Bullish Moving Average Crossover	Long	MA(10) crossed above MA(15) within the last 1 day.
Volume: Consecutive Days Of Increasing Average Volume	Long	1. Average Volume(20) has been increasing over the last 2 weeks. 2. Average volume(20) is above 100000
Williams %R: Bearish Williams %R	Short	1. Williams %R(26) between 0 and -20. 2. Average volume(5) is above 100,000.

PUNCAK NIAGA HOLDINGS BERHAD (6807.MY)

PUNCAK

Price updated at 27 Apr 2023 16:55

Last: 0.240	Change: -0.005	Volume: 1,887
	Change (%): -2.04	Range: 0.235 - 0.240

TA Scanner Results based on historical data up to 27 Apr 2023

Condition	Signal	Explanation
Bollinger Band: Bullish Long Term Volatility Breakout and Trending	Long	1. Close price above upper bollinger band(33,1). 2. Volume above average volume(50). 3. Average volume(50) is above 300,000.
Bollinger Band: Bullish Short Term Volatility Breakout and Trending	Long	1. Close price above upper bollinger band(33,1). 2. Volume above average volume(10). 3. Average volume(10) is above 300,000.
MA: Medium Term Bullish Moving Average Crossover	Long	MA(25) crossed above MA(50) within the last 1 day.



G CAPITAL BERHAD (7676.MY)

GCAP

Price updated at 27 Apr 2023 16:34

Last: 0.430	Change: +0.005	Volume: 1,190
	Change (%): +1.18	Range: 0.415 - 0.430

TA Scanner Results based on historical data up to 27 Apr 2023

Condition	Signal	Explanation
MA: Bullish Price Crossover	Long	1. Close price crossed above MA(40) within the last 1 day. 2. Previous day close price is below the MA(10) for the last 5 days
Volume: 10 Days large value Buy Up trade	Long	1. 150K value Buy Up greater than Sell Down by 20% for 10 days. 2. 50K-100K value Buy Up greater than Sell Down by 20% for 10 days. 3. Average volume(10) is above 1000000
Volume: 5 Days large value Buy Up trade	Long	1. 150K value Buy Up greater than Sell Down by 20% for 5 days. 2. 50K-100K value Buy Up greater than Sell Down by 20% for 5 days. 3. Average volume(10) is above 1000000
Williams %R: Bullish Williams %R	Long	1. Williams %R(26) between -80 and -100. 2. Average volume(5) is above 100,000.



PENTAMASTER CORPORATION BERHAD (7160.MY)

PENTA

Price updated at 27 Apr 2023 16:53

Last: 4.920	Change: +0.200	Volume: 11,626
	Change (%): +4.24	Range: 4.690 - 4.940

TA Scanner Results based on historical data up to 27 Apr 2023

Condition	Signal	Explanation
Bollinger Band: Bullish Lower Bollinger Band Support	Long	1. Low 1 day ago below lower bollinger band(20,2). 2. Close above close 1 day ago. 3. Average volume(5) is above 100,000.
Bollinger Band: Low Below Lower Bollinger Band	Neutral	1. Low below lower bollinger band(14,2). 2. Average volume(5) is above 100,000.
CCI: Bullish CCI Oversold And Reversing	Long	1. CCI(26) below -100 and CCI(26) 1 day ago decreasing for the last 3 days. 2. CCI(26) above CCI(26) 1 day ago
Candlestick: Bullish Harami	Long	Bullish: Harami
MA: Short Term Bearish Moving Average Crossover	Short	MA(10) crossed below MA(15) within the last 1 day.
Williams %R: Bullish Williams %R	Long	1. Williams %R(26) between -80 and -100. 2. Average volume(5) is above 100,000.



MATANG BERHAD (0189.MY)

MATANG

Price updated at 27 Apr 2023 16:59

Last: 0.090	Change: -	Volume: 25,081
	Change (%): -	Range: 0.090 - 0.090

TA Scanner Results based on historical data up to 27 Apr 2023

Condition	Signal	Explanation
Bollinger Band: Bullish Long Term Volatility Breakout and Trending	Long	1. Close price above upper bollinger band(33,1). 2. Volume above average volume(50). 3. Average volume(50) is above 300,000.
Bollinger Band: Bullish Short Term Volatility Breakout and Trending	Long	1. Close price above upper bollinger band(33,1). 2. Volume above average volume(10). 3. Average volume(10) is above 300,000.



PAPPAJACK BERHAD (0242.MY)

PPJACK

Price updated at 27 Apr 2023 16:57

Last: 0.635	Change: -	Volume: 34,427
	Change (%): -	Range: 0.630 - 0.650

TA Scanner Results based on historical data up to 27 Apr 2023

Condition	Signal	Explanation
Bollinger Band: High Above Upper Bollinger Band	Neutral	1. High above upper bollinger band(14,2). 2. Average volume(5) is above 100,000.
Donchian Channels: High Above Upper Donchian Channels	Long	High crossed above the upper Donchian Channel(14,4)
MACD: Bullish MACD Crossover	Long	1. MACD(12,26) diff line crossed above the MACD(12,26) signal line. 2. MACD Histogram(12,26) is above 0.
Price: New 52 Week High	Long	1. Stock reach a new 52 week high. 2. Average volume(30) is above 50000.
Volume: Volume Spike	Long	1. Volume is more than 500% above average volume(10). 2. Volume above 200000. 3. Close price above 0.10
Williams %R: Bearish Williams %R	Short	1. Williams %R(26) between 0 and -20. 2. Average volume(5) is above 100,000.



PRG HOLDINGS BERHAD (7168.MY)

PRG

Price updated at 27 Apr 2023 16:58

Last: 0.235	Change: -	Volume: 142,548
	Change (%): -	Range: 0.220 - 0.240

TA Scanner Results based on historical data up to 27 Apr 2023

Condition	Signal	Explanation
Bollinger Band: Bullish Long Term Volatility Breakout and Trending	Long	1. Close price above upper bollinger band(33,1). 2. Volume above average volume(50). 3. Average volume(50) is above 300,000.
Bollinger Band: Bullish Short Term Volatility Breakout and Trending	Long	1. Close price above upper bollinger band(33,1). 2. Volume above average volume(10). 3. Average volume(10) is above 300,000.
Bollinger Band: High Above Upper Bollinger Band	Neutral	1. High above upper bollinger band(14,2). 2. Average volume(5) is above 100,000.
Donchian Channels: High Above Upper Donchian Channels	Long	High crossed above the upper Donchian Channel(14,4)
Williams %R: Bearish Williams %R	Short	1. Williams %R(26) between 0 and -20. 2. Average volume(5) is above 100,000.

Disclaimer: The information on this page is provided as a service to readers. It does not constitute financial advice and/or any investment recommendations. Past performance is not indicative of future results. We assume no liability for damages resulting from or arising out of the use of such information. It would be best if you did your own research to make your personal investment decisions wisely or consult a licenced investment advisor.

Condition	Signal	Explanation
Bollinger Band: High Above Upper Bollinger Band	Neutral	1. High above upper bollinger band(14,2). 2. Average volume(5) is above 100,000.
RSI: Short Term RSI 50 Bullish Crossover	Long	1. RSI(20) crossed above 50 within the last 1 day and RSI(20) 1 day ago below 50 for the last 5 days. 2. Volume above average volume(125). 3. Average volume(5) is above 100,000.

BURSA'S IPO MOMENTUM EXPECTED TO CONTINUE PARTICULARLY FOR ACE MARKET – BURSA CEO

According to Bursa Malaysia Berhad chief executive officer Datuk Muhamad Umar Swift, the initial public offering (IPO) momentum on Bursa Malaysia is expected to continue for the remainder of the year given the pipeline of submissions particularly for the ACE Market. Several IPO applications were approved and pending listing. Bursa Malaysia's IPO pipeline across all three markets remains healthy. Ten listings were recorded as of March 31, 2023 versus five IPOs during the same period last year. A total amount of approximately RM992.5 million was raised from January to March this year, bringing a market capitalisation of RM3.5 billion upon listing.

Among the ten listed companies in the first quarter (1Q) of 2023, two were listed on the Main Market, one on the LEAP Market, and the remaining seven companies were listed on the ACE Market. In 1Q 2022, two companies were listed on the Main Market, two on the ACE Market and one on the LEAP Market. The Covid-19 pandemic had a significant impact on numerous companies and industries throughout the country and region. However, as the economy has reopened and moved towards normalisation, many companies have recovered, and some have sought listing. This trend is anticipated to continue throughout 2023.

Bursa Malaysia's regulatory framework and ecosystem for the local capital market continued to offer a vibrant and supportive environment for issuers to fulfil companies' capital-raising needs. The exchange's ACE Market one-stop centre has made accessing the public equity capital market more efficient particularly for small and medium enterprises (SMEs) and growing companies with significant potential.

Based on the bourse's engagements, it was found that one of the main challenges that companies face when seeking to go public is compliance with licensing or regulatory requirements prior to submitting their listing application. To address this, Bursa Malaysia has been working on raising awareness among growing companies to plan ahead for listing preparations and ensure that they are adequately equipped for going public. This will also ensure that the corporate governance factor is instilled prior to the process.

For 2023, a total of 39 IPOs are expected en route to listing on Bursa Malaysia.

LEADING INDEX INCREASED 0.6 PER CENT TO 111.6 POINTS IN FEBRUARY 2023, SIGNALLING AN OPTIMISTIC ECONOMY IN THE NEAR TERM - DOSM

According to the Department of Statistics Malaysia in its Economic Indicators Report released on April 20, the annual change of Leading Index (LI) rebounded by registering a growth of 0.6 per cent to attain

111.6 points from 110.9 points in February 2022. The growth was underpinned significantly by the good performances in the Number of Housing Units Approved, Real Imports of Other Basic Precious & Other Non-ferrous Metals and Number of New Companies Registered. The trend is in line with the monthly change of LI which posted a growth of 2.9 per cent in February 2023 as against a negative 1.5 per cent in the previous month. Almost all components showed increases attributed mainly by the Number of New Companies Registered (1.0%).

Looking at the smoothed long-term trend in February 2023, LI recorded better index points compared to the previous month which was 99.41 points (January 2023 : 98.61 points). Although it remained below the trend of 100.0 points, the economic outlook is expected to improve in the near term supported by domestic demand and resilient policy measures under Budget 2023.

As for the current economic position, the Coincident Index (CI) recorded an increase of 4.5 per cent year-on-year to 119.5 points in January 2023 compared to 114.3 points in January 2022. The incline was mainly contributed by the Volume Index of Retail Trade. However, the monthly change of CI recorded a decrease of 0.7 per cent, attributed by Real Salaries & Wages, Manufacturing (0.3%) and Industrial Production Index (0.3%).

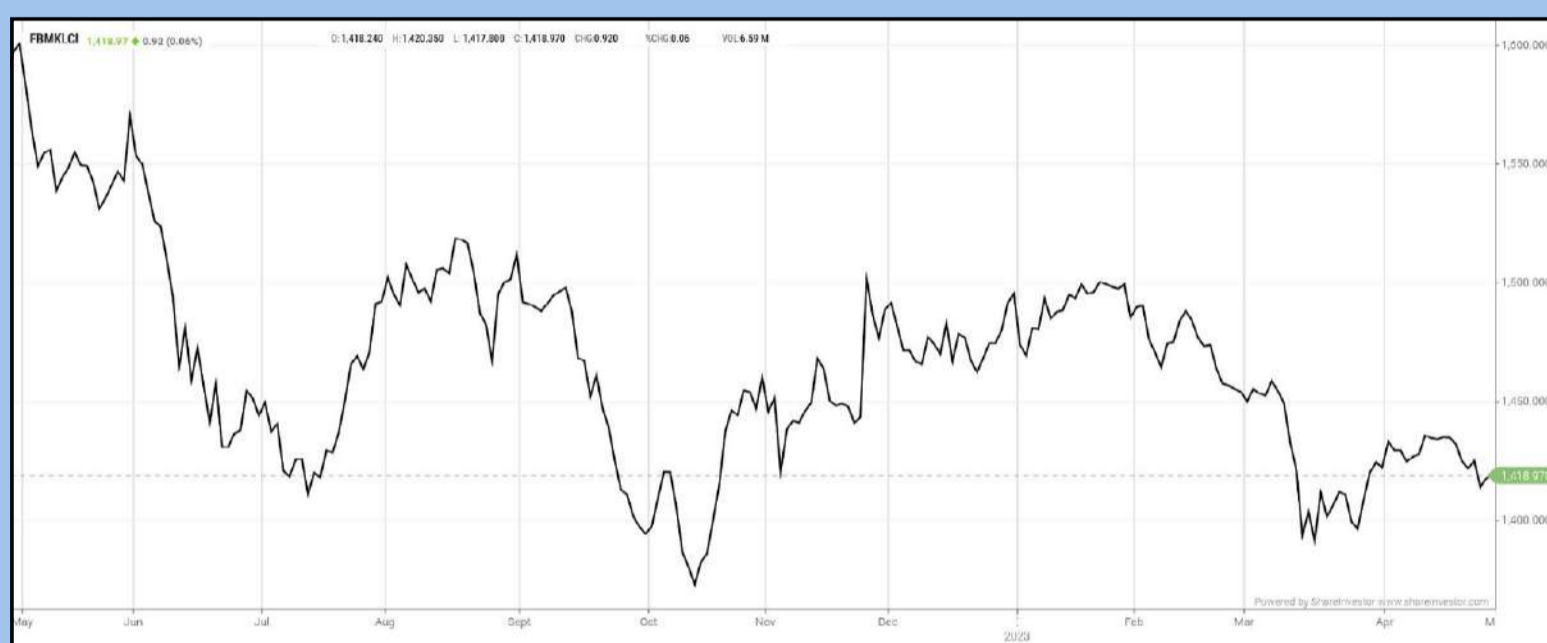
The Diffusion Index for LI showed an improvement in February 2023 to 57.1 per cent compared to 28.6 per cent in January 2023. The Diffusion Index for CI also recorded an increase of 66.7 per cent.

BURSA TO CLOSE ON MAY 1 AND 4 IN CONJUNCTION WITH LABOUR DAY AND WESAK DAY HOLIDAYS

Bursa Malaysia and its subsidiaries will be closed next Monday (May 1) and Thursday (May 4), in conjunction with the Labour Day and Wesak Day Holidays. The Exchange and its subsidiaries will resume operations next Tuesday, Wednesday and Friday.

EYE ON THE MARKETS

On Thursday (27Apr), the Ringgit closed at 4.4610 against the USD and 3.3407 to the Sing Dollar. On Tuesday (25Apr), the FBM KLCI opened at 1422.27. As at Friday (28Apr) 9:00am, the FBM KLCI is down 4.03 points for the week at 1418.24. Over in US, the overnight Dow Jones Industrial Average closed up 524.29 points (+1.57%) to 33,826.16 whilst the NASDAQ gained 287.89 points (+2.43%) to 12,142.24.



KLCI 1 Year Chart

SHAREINVESTOR MARKET DATA PLATFORMS



SHAREINVESTOR STATION
Advanced Charting Software
(8 Markets)



SHAREINVESTOR WEBPRO
Browser-Based Market Data
Analytics Platform



BURSASTATION
Advanced Charting Software
(Bursa Malaysia Only)

Over 5 trading days



ShareInvestor WebPro (www.shareinvestor.com/my)

1. Price > Stock Prices
2. Select Market: NASDAQ / NYSE / IDX / SET / HKEX / SGX (One bourse at a time)
3. select Stocks Tab
4. select Ranking Top Gainers or Top Losers (Over 5 Trading Days)
5. Mouse over Column Layout > select Edit Customs > select Name > select Last Done Price > select 5 Days Change > select 52 Weeks High > select 52 Weeks Low > Mouse Over Column Layout > select Custom

NASDAQ (USD)

Top Gainers

Name	Last Done	Change Over 5 Days	52 Weeks High	52 Weeks Low
CHURCHILL DOWNS INC	287.270	+31.400	264.110	172.750
SHOCKWAVE MEDICAL INC	287.690	+27.790	320.540	113.360
META PLATFORMS INC	238.560	+25.490	224.300	88.090
MICROSTRATEGY	318.640	+23.930	427.435	132.560
COCA-COLA CONSOLIDATED INC	573.620	+18.690	656.110	405.030

Top Losers

Name	Last Done	Change Over 5 Days	52 Weeks High	52 Weeks Low
ENPHASE ENERGY INC	164.180	-60.610	339.920	128.670
ASPEN TECHNOLOGY INC	174.900	-59.860	263.590	148.930
IMPINJ INC	82.470	-54.450	144.900	39.740
MERCADOLIBRE INC	1,244.920	-48.850	1,337.750	600.685
BOOKING HOLDINGS INC	2,639.440	-21.330	2,721.850	1,616.850

NYSE (USD)

Top Gainers

Name	Last Done	Change Over 5 Days	52 Weeks High	52 Weeks Low
BERKSHIRE HATHAWAY INC	499,700.020	+3,295.040	505,949.440	393,012.250
CHIPOTLE MEXICAN GRILL	2,036.260	+236.260	2,047.310	1,196.280
HUBBELL INC	266.990	+35.880	265.500	170.210
HUMANA INC	525.280	+34.970	571.300	410.870
WATSCO INC	345.160	+33.350	345.160	232.590

Top Losers

Name	Last Done	Change Over 5 Days	52 Weeks High	52 Weeks Low
TEXAS PACIFIC LAND CORPORATION	1,456.470	-103.270	2,739.000	1,250.010
NVR INC	5,799.520	-93.190	5,986.960	3,576.010
METTLER-TOLEDO INTERNATIONAL INC	1,456.580	-82.980	1,615.970	1,065.550
MSCI INC	464.290	-82.290	572.500	376.410
WHITE MOUNTAINS INSURANCE GROUP	1,452.160	-72.840	1,560.210	1,035.310

IDX (Rupiah)

Top Gainers

Name	Last Done	Change Over 5 Days	52 Weeks High	52 Weeks Low
BAYAN RESOURCES TBK	22,950.000	+2,150.000	24,800.000	4,195.000
GUDANG GARAM TBK	26,200.000	+1,500.000	32,125.000	16,500.000
AKASHA WIRA INTERNATIONAL TBK	8,875.000	+1,475.000	9,175.000	3,990.000
HILLCON TBK	2,650.000	+940.000	2,660.000	1,270.000
HEXINDO ADIPERKASA	5,725.000	+500.000	7,650.000	4,990.000

Top Losers

Name	Last Done	Change Over 5 Days	52 Weeks High	52 Weeks Low
SIANTAR TOP	7,075.000	-325.000	9,450.000	6,800.000
MD PICTURES TBK	1,820.000	-280.000	3,100.000	610.000
ASTRA AGRO LESTARI TBK	7,650.000	-225.000	13,150.000	7,600.000
INDIKA ENERGY TBK	2,600.000	-200.000	3,420.000	2,000.000
JEMBO CABLE CO	4,710.000	-170.000	6,125.000	3,600.000

SET (Thai Baht)

Top Gainers

Name	Last Done	Change Over 5 Days	52 Weeks High	52 Weeks Low
OHTL	496.000	+8.000	610.000	316.000
NEW	119.000	+7.000	123.000	49.000
SCC	311.000	+6.000	382.000	300.000
ADVANC	214.000	+4.000	225.000	181.500
SCB	103.500	+3.750	119.000	89.750

Top Losers

Name	Last Done	Change Over 5 Days	52 Weeks High	52 Weeks Low
DELTA	748.000	-212.000	1,154.000	287.000
INSURE	132.000	-16.000	700.000	45.000
TISCO	90.750	-9.000	104.000	86.000
HANA	41.000	-6.250	65.000	32.750
BBIK	91.250	-5.750	143.500	56.000

HKEX (HKD)

Top Gainers

Name	Last Done	Change Over 5 Days	52 Weeks High	52 Weeks Low
BYD COMPANY LIMITED	236.000	+8.400	333.000	161.700
SWIRE PACIFIC	61.850	+3.400	72.600	42.600
SHANGHAI HAOHAI BIOLOGICAL TECH CO	44.000	+2.700	47.700	20.400
KUAISHOU TECHNOLOGY	51.350	+2.350	91.500	31.750
CSSC OFFSHORE & MARINE ENGINEERING	11.960	+2.060	11.980	5.000

Top Losers

Name	Last Done	Change Over 5 Days	52 Weeks High	52 Weeks Low
YUM CHINA HOLDINGS INC	474.600	-24.200	509.000	290.000
TRIP COM GROUP LTD	276.600	-15.000	321.800	152.100
ORIENT OVERSEAS INT	157.200	-13.200	284.800	112.000
TENCENT HOLDINGS LIMITED	345.000	-12.000	416.600	188.213
HONG KONG EXCHANGES & CLEARING	326.400	-11.800	404.200	208.200

SGX (SGD)

Top Gainers

Name	Last Done	Change Over 5 Days	52 Weeks High	52 Weeks Low
PROPNEX	2.010	+0.975	2.170	1.240
JARDINE C&C	33.920	+0.580	36.850	26.060
PLATOCAPITAL	1.800	+0.200	2.100	0.690
TJ DARENTANG USD	2.220	+0.180	2.370	0.925
HOTEL ROYAL	2.050	+0.140	2.946	1.910

Top Losers

Name	Last Done	Change Over 5 Days	52 Weeks High	52 Weeks Low
NIO Inc. USD OV	7.750	-0.860	25.350	7.650
GREAT EASTERN	17.000	-0.710	20.620	16.960
UOB	29.110	-0.610	31.400	25.910
JMH USD	48.470	-0.570	59.480	42.600
CITYDEV	6.910	-0.550	8.579	6.880

DEFINITION: Insider Activity shows the trades made by substantial shareholders or directors of the company. Purchases by the directors and company share buyback may indicate the share price is undervalued and brings confidence to the price trend of the share price.



ShareInvestor WebPro > Fundamental > Insider Trades > click Search tab > Select Bursa > click Stock name > scroll up and leave at <Select Counter> Type Date Range for Announcement Date > click Search

Notice Period is 16 April - 22 April 2023

Effective Change Date	Stock Name	Buyer/ Seller Name [Classification]	Bought / (Sold) / ('000)		
			Total	No. of Shares After Trade ('000)	% Held
19 APR 2023 - 19 APR 2023	AIRPORT	KUMPULAN WANG PERSARAAN (DIPERBADANKAN) [SSH]	219	100,184	6.038
17 APR 2023 - 17 APR 2023	AIRPORT	EMPLOYEES PROVIDENT FUND BOARD [SSH]	-100	249,569	15.042
18 APR 2023 - 18 APR 2023	AIRPORT	KUMPULAN WANG PERSARAAN (DIPERBADANKAN) [SSH]	104	99,966	6.025
14 APR 2023 - 14 APR 2023	AIRPORT	EMPLOYEES PROVIDENT FUND BOARD [SSH]	-100	249,669	15.048
13 APR 2023 - 13 APR 2023	AIRPORT	EMPLOYEES PROVIDENT FUND BOARD [SSH]	-381	249,769	15.054
12 APR 2023 - 12 APR 2023	AIRPORT	EMPLOYEES PROVIDENT FUND BOARD [SSH]	-519	250,150	15.077
17 APR 2023 - 17 APR 2023	AMBANK	EMPLOYEES PROVIDENT FUND BOARD [SSH]	350	317,084	9.588
14 APR 2023 - 14 APR 2023	AMBANK	EMPLOYEES PROVIDENT FUND BOARD [SSH]	400	316,734	9.577
13 APR 2023 - 13 APR 2023	AMBANK	EMPLOYEES PROVIDENT FUND BOARD [SSH]	200	316,334	9.565
18 APR 2023 - 18 APR 2023	AMEREIT	AME ELITE CONSORTIUM BERHAD [SSH]	-364	266,459	51.12
18 APR 2023 - 18 APR 2023	AMEREIT	MR KANG AH CHEE [SSH]	-364	290,971	55.82
18 APR 2023 - 18 APR 2023	AMEREIT	MR LEE CHAI [SSH]	-364	293,174	56.25
18 APR 2023 - 18 APR 2023	AMEREIT	MR LEE SAI BOON [SSH]	-364	275,303	52.82
18 APR 2023 - 18 APR 2023	AMEREIT	MR LIM YOOK KIM [SSH]	-364	291,326	55.89
17 APR 2023 - 19 APR 2023	ASDION	MILLION SAINT CONSULTANCY SDN BHD [SSH]	-1,849	73,926	16.896
17 APR 2023 - 17 APR 2023	ASDION	KINGDOM SAGA SDN BHD [SSH]	5,000	97,221	22.22
17 APR 2023 - 17 APR 2023	AXIATA	EMPLOYEES PROVIDENT FUND BOARD [SSH]	170	1,547,503	16.859
14 APR 2023 - 14 APR 2023	AXIATA	EMPLOYEES PROVIDENT FUND BOARD [SSH]	-658	1,547,333	16.857
13 APR 2023 - 13 APR 2023	AXIATA	EMPLOYEES PROVIDENT FUND BOARD [SSH]	-497	1,547,990	16.865
12 APR 2023 - 12 APR 2023	AXIATA	EMPLOYEES PROVIDENT FUND BOARD [SSH]	-48	1,548,487	16.87
19 APR 2023 - 19 APR 2023	AXREIT	KUMPULAN WANG PERSARAAN (DIPERBADANKAN) [SSH]	195	182,287	10.47
14 APR 2023 - 14 APR 2023	AXREIT	KUMPULAN WANG PERSARAAN (DIPERBADANKAN) [SSH]	30	182,092	10.459
14 APR 2023 - 14 APR 2023	AXREIT	LEMBAGA TABUNG HAJI [SSH]	23	87,616	5.032
13 APR 2023 - 13 APR 2023	AXREIT	KUMPULAN WANG PERSARAAN (DIPERBADANKAN) [SSH]	15	182,062	10.457
13 APR 2023 - 13 APR 2023	AXREIT	LEMBAGA TABUNG HAJI [SSH]	11	87,593	5.031
12 APR 2023 - 12 APR 2023	AXREIT	KUMPULAN WANG PERSARAAN (DIPERBADANKAN) [SSH]	62	182,047	10.456
18 APR 2023 - 18 APR 2023	AZRB	TAN SRI DATO' SRI HAJI WAN ZAKI BIN HAJI WAN MUDA [DIR/CEO]	-214	326,526	54.75
18 APR 2023 - 18 APR 2023	AZRB	TAN SRI DATO' SRI HAJI WAN ZAKI BIN HAJI WAN MUDA [SSH]	-214	326,526	54.75
17 APR 2023 - 17 APR 2023	BAUTO	PRUDENTIAL PLC [SSH]	-92	73,386	6.288
14 APR 2023 - 14 APR 2023	BAUTO	EMPLOYEES PROVIDENT FUND BOARD [SSH]	-138	130,420	11.175
14 APR 2023 - 14 APR 2023	BAUTO	PRUDENTIAL PLC [SSH]	-187	73,479	6.296
13 APR 2023 - 13 APR 2023	BAUTO	EMPLOYEES PROVIDENT FUND BOARD [SSH]	-262	130,559	11.187
13 APR 2023 - 13 APR 2023	BAUTO	PRUDENTIAL PLC [SSH]	-700	73,665	6.312
20 APR 2023 - 20 APR 2023	BORNOIL	DATUK JOSEPH LEE YOK MIN @ AMBROSE [DIR/CEO]	2,500	1,574,964	16.217
17 APR 2023 - 17 APR 2023	BORNOIL	DATUK JOSEPH LEE YOK MIN @ AMBROSE [DIR/CEO]	-91,073	1,572,464	16.191
17 APR 2023 - 17 APR 2023	BORNOIL	DATUK JOSEPH LEE YOK MIN @ AMBROSE [DIR/CEO]	-91,073	1,572,464	16.191
18 APR 2023 - 18 APR 2023	BPURI	DATUK MATTHEW TEE KAI WOON [DIR/CEO]	144,621	615,251	18.259
18 APR 2023 - 18 APR 2023	BPURI	DATUK MATTHEW TEE KAI WOON [SSH]	144,621	615,251	18.259
18 APR 2023 - 18 APR 2023	BPURI	MR CHAI CHAN TONG [DIR/CEO]	377,911	801,205	23.777
18 APR 2023 - 18 APR 2023	BPURI	MR CHAI CHAN TONG [SSH]	377,911	801,205	23.777
18 APR 2023 - 18 APR 2023	BPURI	MR OOI HEE KAH [DIR/CEO]	57,143	114,143	3.387
18 APR 2023 - 18 APR 2023	BPURI	TAN SRI DATUK TEE HOCK SENG JP [DIR/CEO]	256,279	615,251	18.258
18 APR 2023 - 18 APR 2023	BPURI	TAN SRI DATUK TEE HOCK SENG JP [SSH]	256,279	615,251	18.258
14 APR 2023 - 14 APR 2023	BSTEAD	LEMBAGA TABUNG ANGKATAN TENTERA [SSH]	217	1,527,285	75.347
18 APR 2023 - 18 APR 2023	CCK	MR KUEH CHUNG PENG [DIR/CEO]	200	16,578	2.668
17 APR 2023 - 17 APR 2023	CDB	EMPLOYEES PROVIDENT FUND BOARD [SSH]	-1,397	1,170,189	9.975
14 APR 2023 - 14 APR 2023	CDB	EMPLOYEES PROVIDENT FUND BOARD [SSH]	-454	1,171,586	9.987
13 APR 2023 - 13 APR 2023	CDB	EMPLOYEES PROVIDENT FUND BOARD [SSH]	248	1,172,040	9.991
12 APR 2023 - 12 APR 2023	CDB	EMPLOYEES PROVIDENT FUND BOARD [SSH]	-1,727	1,171,792	9.988
14 APR 2023 - 14 APR 2023	CGB	MR LEE CHEE VUI [DIR/CEO]	945	11,448	7.761
14 APR 2023 - 14 APR 2023	CGB	MR LEE CHEE VUI [SSH]	945	11,448	7.761
14 APR 2023 - 14 APR 2023	CHGP	DATIN LEE TEOH KEE [SSH]	-120	36,004	6.999
18 APR 2023 - 20 APR 2023	CHINHN	DATUK SERI CHIAU BENG TEIK JP [DIR/CEO]	1,860	1,041,019	58.834
18 APR 2023 - 20 APR 2023	CHINHN	DATUK SERI CHIAU BENG TEIK JP [SSH]	1,860	1,041,019	58.834
13 APR 2023 - 17 APR 2023	CHINHN	DATUK SERI CHIAU BENG TEIK JP [DIR/CEO]	1,135	1,039,159	58.729
13 APR 2023 - 17 APR 2023	CHINHN	DATUK SERI CHIAU BENG TEIK JP [SSH]	1,135	1,039,159	58.729
19 APR 2023 - 19 APR 2023	CIHLDG	MR FUNG HEEN CHOON [SSH]	32	10,590	6.54
14 APR 2023 - 14 APR 2023	CIMB	KUMPULAN WANG PERSARAAN (DIPERBADANKAN) [SSH]	108	712,431	6.68

Notice Period is 16 April - 22 April 2023

Effective Change Date	Stock Name	Buyer/ Seller Name [Classification]	Bought / (Sold) / ('000)		
			Total	No. of Shares After Trade ('000)	% Held
13 APR 2023 - 13 APR 2023	CIMB	EMPLOYEES PROVIDENT FUND BOARD [SSH]	5,018	1,446,122	13.56
12 APR 2023 - 12 APR 2023	CIMB	EMPLOYEES PROVIDENT FUND BOARD [SSH]	4,000	1,441,104	13.51
17 APR 2023 - 17 APR 2023	CLMT	EMPLOYEES PROVIDENT FUND BOARD [SSH]	-195	367,498	13.754
13 APR 2023 - 14 APR 2023	CNOUHUA	MR CHIN KUAN HAOK @ CHEN KOH FOOK [SSH]	1,557	90,245	13.51
19 APR 2023 - 19 APR 2023	CYL	MR CHEN YAT LEE [DIR/CEO]	45	34,026	34.026
19 APR 2023 - 19 APR 2023	CYL	MR CHEN YAT LEE [SSH]	45	34,026	34.026
17 APR 2023 - 17 APR 2023	DIALOG	KUMPULAN WANG PERSARAAN (DIPERBADANKAN) [SSH]	111	552,626	9.79
14 APR 2023 - 14 APR 2023	DLADY	CITIGROUP NOMINEES (TEMPATAN) SDN BHD EMPLOYEES PROVIDENT FUND BOARD [SSH]	-3	7,053	11.021
13 APR 2023 - 13 APR 2023	DLADY	CITIGROUP NOMINEES (TEMPATAN) SDN BHD EMPLOYEES PROVIDENT FUND BOARD [SSH]	-10	7,056	11.025
12 APR 2023 - 12 APR 2023	DLADY	CITIGROUP NOMINEES (TEMPATAN) SDN BHD EMPLOYEES PROVIDENT FUND BOARD [SSH]	-1	7,066	11.041
17 APR 2023 - 17 APR 2023	DRBHC	EMPLOYEES PROVIDENT FUND BOARD [SSH]	-149	195,954	10.136
13 APR 2023 - 13 APR 2023	DRBHC	EMPLOYEES PROVIDENT FUND BOARD [SSH]	-203	196,102	10.144
17 APR 2023 - 17 APR 2023	ENGAH	MR CHUA IT CHIT [DIR/CEO]	27	505	0.428
14 APR 2023 - 14 APR 2023	ENGAH	MR CHUA IT CHIT [DIR/CEO]	15	478	0.404
17 APR 2023 - 17 APR 2023	F&N	EMPLOYEES PROVIDENT FUND BOARD [SSH]	-175	46,921	12.793
14 APR 2023 - 14 APR 2023	F&N	EMPLOYEES PROVIDENT FUND BOARD [SSH]	-1	47,095	12.84
13 APR 2023 - 13 APR 2023	F&N	EMPLOYEES PROVIDENT FUND BOARD [SSH]	37	47,096	12.841
12 APR 2023 - 12 APR 2023	F&N	EMPLOYEES PROVIDENT FUND BOARD [SSH]	22	47,059	12.83
17 APR 2023 - 17 APR 2023	FFB	EMPLOYEES PROVIDENT FUND BOARD [SSH]	1,000	120,353	6.476
12 APR 2023 - 12 APR 2023	FFB	EMPLOYEES PROVIDENT FUND BOARD [SSH]	450	119,353	6.422
17 APR 2023 - 17 APR 2023	FITTERS	MR HO JIEN SHIUNG [SSH]	92,308	146,111	6.241
17 APR 2023 - 17 APR 2023	FITTERS	MR HOO SWEE GUAN [DIR/CEO]	76,923	76,923	6.657
17 APR 2023 - 17 APR 2023	FITTERS	MR HOO SWEE GUAN [DIR/CEO]	115,385	115,425	4.928
19 APR 2023 - 19 APR 2023	FOCUSP	PERBADANAN NASIONAL BERHAD [SSH]	17,678	61,873	13.392
17 APR 2023 - 17 APR 2023	FOCUSP	PERBADANAN NASIONAL BERHAD [SSH]	-3,195	44,195	13.392
14 APR 2023 - 14 APR 2023	FOCUSP	PERBADANAN NASIONAL BERHAD [SSH]	-121	47,390	14.361
17 APR 2023 - 17 APR 2023	GAMUDA	EMPLOYEES PROVIDENT FUND BOARD (EPF BOARD) [SSH]	-539	390,180	14.67
14 APR 2023 - 14 APR 2023	GAMUDA	EMPLOYEES PROVIDENT FUND BOARD (EPF BOARD) [SSH]	-460	390,719	14.69
13 APR 2023 - 13 APR 2023	GAMUDA	EMPLOYEES PROVIDENT FUND BOARD (EPF BOARD) [SSH]	-808	391,179	14.71
12 APR 2023 - 12 APR 2023	GAMUDA	EMPLOYEES PROVIDENT FUND BOARD (EPF BOARD) [SSH]	50	391,987	14.74
14 APR 2023 - 14 APR 2023	GCAP	MR LEE POH HIN [SSH]	1,100	37,437	11.673
14 APR 2023 - 14 APR 2023	GCAP	MR LEE YEE LONG [SSH]	1,100	35,261	10.995
14 APR 2023 - 14 APR 2023	GCAP	PERCETAKAN SANWA INDUSTRIES SDN BHD [SSH]	1,000	18,000	5.613
17 APR 2023 - 17 APR 2023	GLOMAC	SHAPADU CAPITAL SDN. BHD. [SSH]	22	87,786	11.438
17 APR 2023 - 17 APR 2023	HCK	TAN SRI HII CHII KOK @ HII CHEE KOK [DIR/CEO]	150	243,719	52.967
17 APR 2023 - 17 APR 2023	HCK	TAN SRI HII CHII KOK @ HII CHEE KOK [SSH]	150	243,719	52.967
17 APR 2023 - 18 APR 2023	HEKTAR	HEKTAR BLACK SDN BHD [SSH]	-1,750	139,813	28.03
13 APR 2023 - 14 APR 2023	HEKTAR	HEKTAR BLACK SDN BHD [SSH]	-1,200	141,563	28.381
18 APR 2023 - 18 APR 2023	HEXTAR	DATO' ONG CHOO MENG [SSH]	-63,492	2,605,770	67.227
18 APR 2023 - 18 APR 2023	HEXTAR	DATO' ONG CHOO MENG [SSH]	1,614,845	2,669,262	68.865
18 APR 2023 - 18 APR 2023	HEXTAR	DATO' ONG SOON HO [DIR/CEO]	-63,492	2,669,262	68.865
18 APR 2023 - 18 APR 2023	HEXTAR	DATO' ONG SOON HO [DIR/CEO]	-63,492	2,605,770	67.227
18 APR 2023 - 18 APR 2023	HEXTAR	DATO' ONG SOON HO [SSH]	-63,492	2,669,262	68.865
18 APR 2023 - 18 APR 2023	HEXTAR	DATO' ONG SOON HO [SSH]	-63,492	2,605,770	67.227
18 APR 2023 - 18 APR 2023	HEXTAR	HEXTAR HOLDINGS SDN. BHD. [SSH]	-63,492	2,358,776	60.855
18 APR 2023 - 18 APR 2023	HEXTAR	HEXTAR HOLDINGS SDN. BHD. [SSH]	1,614,845	2,422,268	62.493
18 APR 2023 - 18 APR 2023	HEXTAR	MADAM LEE CHOOI KENG [DIR/CEO]	2,873	4,310	0.111
17 APR 2023 - 17 APR 2023	HIBISCS	DATUK MICHAEL TANG VEE MUN [SSH]	-130	218,920	10.879
17 APR 2023 - 17 APR 2023	HLBANK	EMPLOYEES PROVIDENT FUND BOARD [SSH]	7	214,563	10.283
14 APR 2023 - 14 APR 2023	HLBANK	EMPLOYEES PROVIDENT FUND BOARD [SSH]	-27	214,556	10.282
13 APR 2023 - 13 APR 2023	HLBANK	EMPLOYEES PROVIDENT FUND BOARD [SSH]	70	214,583	10.284
12 APR 2023 - 12 APR 2023	HLBANK	EMPLOYEES PROVIDENT FUND BOARD [SSH]	-16	214,514	10.28
14 APR 2023 - 14 APR 2023	ICON	DATO' SRI HADIAN BIN HASHIM [DIR/CEO]	-3,400	97,216	3.592
11 APR 2023 - 12 APR 2023	IGBB	HSBC ASIA HOLDINGS LIMITED (HAHO) [SSH]	59	72,865	8.094
11 APR 2023 - 12 APR 2023	IGBB	HSBC HOLDINGS PLC (HGHO) [SSH]	59	72,865	8.094
11 APR 2023 - 12 APR 2023	IGBB	HSBC INTERNATIONAL TRUSTEE (HOLDINGS) PTE. LTD. (HTHL) [SSH]	59	72,865	8.094
11 APR 2023 - 12 APR 2023	IGBB	HSBC INTERNATIONAL TRUSTEE LIMITED (HKIT) [SSH]	59	72,865	8.094

Disclaimer: The Information in Insider Activity is extracted from www.shareinvestor.com/fundamental/insider_trades. The information on this page is provided as a service to readers. It does not constitute financial advice and/or any investment recommendations. We assume no liability for damages resulting from or arising out of the use of such information. Whilst every effort is made to ensure accuracy, the information presented is not the official record of shareholder filings. Readers are advised to read the original filings on the Bursa Malaysia website at www.bursamalaysia.com



STROM
SWISS TIMEPIECES & JEWELLERY



StromWatch Asia
Tele : +65.9817.3378
Email : ll.stromasia@gmail.com
WWW.STROMWATCH.SWISS

Notice Period is 16 April – 22 April 2023

Effective Change Date	Stock Name	Buyer/ Seller Name [Classification]	Bought / (Sold) ['000]	No. of Shares After Trade ['000]	
			Total	Total	% Held
11 APR 2023 - 12 APR 2023	IGBB	THE HONGKONG AND SHANGHAI BANKING CORPORATION LIMITED (HBAP) [SSH]	59	72,865	8.094
17 APR 2023 - 17 APR 2023	IHH	EMPLOYEES PROVIDENT FUND BOARD [SSH]	-181	918,141	10.425
14 APR 2023 - 14 APR 2023	IHH	EMPLOYEES PROVIDENT FUND BOARD [SSH]	-10	918,321	10.427
13 APR 2023 - 13 APR 2023	IHH	EMPLOYEES PROVIDENT FUND BOARD [SSH]	-40	918,331	10.427
12 APR 2023 - 12 APR 2023	IHH	EMPLOYEES PROVIDENT FUND BOARD [SSH]	-68	918,371	10.428
13 APR 2023 - 13 APR 2023	IJM	URUSHARTA JAMAHAH SDN BHD [SSH]	-500	208,694	5.941
14 APR 2023 - 14 APR 2023	IJM	KUMPULAN WANG PERSARAAN (DIPERBADANKAN) [SSH]	-132	297,046	8.456
12 APR 2023 - 12 APR 2023	IJM	EMPLOYEES PROVIDENT FUND BOARD [SSH]	700	614,806	17.501
12 APR 2023 - 12 APR 2023	IJM	URUSHARTA JAMAHAH SDN BHD [SSH]	-500	209,194	5.955
14 APR 2023 - 14 APR 2023	IMPIANA	DATO' SERI ISMAIL @ FAROUK BIN ABDULLAH [DIR/CEO]	-300	119,412	25.448
14 APR 2023 - 14 APR 2023	IMPIANA	DATO' SERI ISMAIL @ FAROUK BIN ABDULLAH [SSH]	-300	119,412	25.448
14 APR 2023 - 14 APR 2023	IMPIANA	IMPIANA SDN BHD [SSH]	-300	60,664	12.928
13 APR 2023 - 13 APR 2023	INNATURE	PRUDENTIAL PLC [SSH]	67	40,524	5.741
17 APR 2023 - 17 APR 2023	IOIG	EMPLOYEES PROVIDENT FUND BOARD [SSH]	-670	437,367	7.943
14 APR 2023 - 14 APR 2023	IOIG	EMPLOYEES PROVIDENT FUND BOARD [SSH]	-1,000	438,037	7.955
13 APR 2023 - 13 APR 2023	IOIG	EMPLOYEES PROVIDENT FUND BOARD [SSH]	-680	439,037	7.974
14 APR 2023 - 14 APR 2023	IRIS	DR POH SOON SIM [DIR/CEO]	1,000	418,540	12.827
14 APR 2023 - 14 APR 2023	IRIS	DR POH SOON SIM [SSH]	1,000	418,540	12.827
13 APR 2023 - 13 APR 2023	KERJAYA	EMPLOYEES PROVIDENT FUND BOARD [SSH]	25	90,571	7.182
12 APR 2023 - 12 APR 2023	KERJAYA	EMPLOYEES PROVIDENT FUND BOARD [SSH]	212	90,546	7.18
14 APR 2023 - 18 APR 2023	KKB	DATIN SRI LIEW MOI FAH [SSH]	12	112,680	39.027
14 APR 2023 - 18 APR 2023	KKB	DATO SRI KHO KAK BENG [DIR/CEO]	12	117,930	40.845
14 APR 2023 - 18 APR 2023	KKB	DATO SRI KHO KAK BENG [SSH]	12	117,442	40.676
14 APR 2023 - 18 APR 2023	KKB	KHO KAK BENG HOLDING COMPANY SDN. BHD. [SSH]	12	112,384	38.924
14 APR 2023 - 18 APR 2023	KKB	MADAM KHO POH JOO [SSH]	12	112,576	38.991
14 APR 2023 - 18 APR 2023	KKB	MADAM KHO POH LIN [DIR/CEO]	12	113,602	39.346
14 APR 2023 - 18 APR 2023	KKB	MADAM KHO POH LIN [SSH]	12	113,002	39.138
14 APR 2023 - 18 APR 2023	KKB	MR KHO POK TONG [DIR/CEO]	12	113,229	39.217
14 APR 2023 - 18 APR 2023	KKB	MR KHO POK TONG [SSH]	12	113,229	39.217
17 APR 2023 - 17 APR 2023	KLCC	EMPLOYEES PROVIDENT FUND BOARD [SSH]	20	182,701	10.12
17 APR 2023 - 17 APR 2023	KLCC	EMPLOYEES PROVIDENT FUND BOARD [SSH]	20	182,701	10.12
14 APR 2023 - 14 APR 2023	KLCC	EMPLOYEES PROVIDENT FUND BOARD [SSH]	32	182,681	10.119
14 APR 2023 - 14 APR 2023	KLCC	EMPLOYEES PROVIDENT FUND BOARD [SSH]	32	182,681	10.119
13 APR 2023 - 13 APR 2023	KLCC	EMPLOYEES PROVIDENT FUND BOARD [SSH]	2	182,649	10.117
13 APR 2023 - 13 APR 2023	KLCC	EMPLOYEES PROVIDENT FUND BOARD [SSH]	2	182,649	10.117
12 APR 2023 - 12 APR 2023	KLCC	EMPLOYEES PROVIDENT FUND BOARD [SSH]	6	182,647	10.117
12 APR 2023 - 12 APR 2023	KLCC	EMPLOYEES PROVIDENT FUND BOARD [SSH]	6	182,647	10.117
13 APR 2023 - 13 APR 2023	KLK	EMPLOYEES PROVIDENT FUND BOARD [SSH]	31	122,941	11.4
20 APR 2023 - 20 APR 2023	KRONO	MR EDMOND TAY NAM HIONG [DIR/CEO]	15,787	41,760	5.797
20 APR 2023 - 20 APR 2023	KRONO	MR TAN JECK MIN [DIR/CEO]	44,507	99,637	13.832
13 APR 2023 - 13 APR 2023	KRONO	MR EDMOND TAY NAM HIONG [DIR/CEO]	1,000	25,973	3.605
13 APR 2023 - 13 APR 2023	LAYHONG	DATO' YAP HOONG CHAI [DIR/CEO]	-100	284,508	38.43
17 APR 2023 - 17 APR 2023	LBICAP	DATIN CHAN LAI HAR [SSH]	-170	64,945	58.249
17 APR 2023 - 17 APR 2023	LBICAP	DATIN LOW WEE CHIN [DIR/CEO]	-170	66,307	59.475
17 APR 2023 - 17 APR 2023	LBICAP	DATIN LOW WEE CHIN [SSH]	-170	66,307	59.475
17 APR 2023 - 17 APR 2023	LBICAP	DATO' NG CHIN HENG [DIR/CEO]	-170	66,307	59.468
17 APR 2023 - 17 APR 2023	LBICAP	DATO' NG CHIN HENG [SSH]	-170	66,307	59.468
17 APR 2023 - 17 APR 2023	LBICAP	DATO' NG TIONG SENG [SSH]	-170	65,945	59.146
17 APR 2023 - 17 APR 2023	LBICAP	MISS NG POOI CHENG [SSH]	-170	65,945	59.146
17 APR 2023 - 17 APR 2023	LBICAP	MISS NG POOI MUN [SSH]	-170	66,137	59.475
17 APR 2023 - 17 APR 2023	LBICAP	MISS NG POOI YEE [SSH]	-170	65,945	59.146
17 APR 2023 - 17 APR 2023	LBICAP	MR RAYMOND NG YEW FOONG [DIR/CEO]	-170	65,945	59.144
17 APR 2023 - 17 APR 2023	LBICAP	MR RAYMOND NG YEW FOONG [SSH]	-170	65,945	59.144
17 APR 2023 - 17 APR 2023	LBICAP	NG TIONG SENG CORPORATION SDN. BHD. [SSH]	-170	17,736	15.91
17 APR 2023 - 17 APR 2023	LSH	DATUK LIM KENG GUAN [DIR/CEO]	-322,167	575,001	81.403
17 APR 2023 - 17 APR 2023	LSH	DATUK LIM KENG GUAN [SSH]	-322,167	575,001	81.403
17 APR 2023 - 17 APR 2023	LSH	LIM SEONG HAI HOLDINGS SDN. BHD. [SSH]	-322,167	543,502	76.944
17 APR 2023 - 17 APR 2023	LSH	MADAM LIM PAK LIAN [DIR/CEO]	-322,167	575,001	81.403
17 APR 2023 - 17 APR 2023	LSH	MADAM LIM PAK LIAN [SSH]	-322,167	575,001	81.403
17 APR 2023 - 17 APR 2023	LSH	MR LIM KENG HUN [DIR/CEO]	322,167	575,001	81.403
17 APR 2023 - 17 APR 2023	LSH	MR LIM KENG HUN [SSH]	322,167	575,001	81.403
17 APR 2023 - 17 APR 2023	LSH	TAN SRI DATUK SERI LIM KENG CHENG [DIR/CEO]	-322,167	575,001	81.403
17 APR 2023 - 17 APR 2023	LSH	TAN SRI DATUK SERI LIM KENG CHENG [SSH]	-322,167	575,001	81.403
19 APR 2023 - 19 APR 2023	MAGNI	MR TAN POAY SENG [DIR/CEO]	64	113,880	26.27
17 APR 2023 - 18 APR 2023	MAGNI	MR TAN POAY SENG [DIR/CEO]	67	113,817	26.26
14 APR 2023 - 14 APR 2023	MAGNI	MR TAN POAY SENG [DIR/CEO]	66	113,750	26.24
17 APR 2023 - 17 APR 2023	MATANG	MR ANG KIAN YOU [SSH]	500	203,121	8.502
12 APR 2023 - 12 APR 2023	MATANG	MR ANG KIAN YOU [SSH]	1,623	202,621	8.481
17 APR 2023 - 17 APR 2023	MAXIS	EMPLOYEES PROVIDENT FUND BOARD (EPF BOARD) [SSH]	-1,070	924,233	11.803
14 APR 2023 - 14 APR 2023	MAXIS	EMPLOYEES PROVIDENT FUND BOARD (EPF BOARD) [SSH]	129	925,603	11.821
13 APR 2023 - 13 APR 2023	MAXIS	EMPLOYEES PROVIDENT FUND BOARD (EPF BOARD) [SSH]	155	925,474	11.82
18 APR 2023 - 18 APR 2023	MAYBANK	AMANAHRAYA TRUSTEES BERHAD - AMANAH SAHAM BUMIPUTERA [SSH]	456	3,845,325	31.9
17 APR 2023 - 17 APR 2023	MAYBANK	EMPLOYEES PROVIDENT FUND BOARD [SSH]	-440	1,659,777	13.769
17 APR 2023 - 17 APR 2023	MAYBANK	AMANAHRAYA TRUSTEES BERHAD - AMANAH SAHAM BUMIPUTERA [SSH]	2,061	3,844,870	31.897
14 APR 2023 - 14 APR 2023	MAYBANK	EMPLOYEES PROVIDENT FUND BOARD [SSH]	-3,000	1,660,217	13.773
14 APR 2023 - 14 APR 2023	MAYBANK	AMANAHRAYA TRUSTEES BERHAD - AMANAH SAHAM BUMIPUTERA [SSH]	2,940	3,842,809	31.88
13 APR 2023 - 13 APR 2023	MAYBANK	EMPLOYEES PROVIDENT FUND BOARD [SSH]	-5,239	1,663,217	13.798

Notice Period is 16 April – 22 April 2023

Effective Change Date	Stock Name	Buyer/ Seller Name [Classification]	Bought / (Sold) ['000]	No. of Shares After Trade ['000]	
			Total	Total	% Held
13 APR 2023 - 13 APR 2023	MAYBANK	AMANAHRAYA TRUSTEES BERHAD - AMANAH SAHAM BUMIPUTERA [SSH]	5,900	3,839,870	31.855
12 APR 2023 - 12 APR 2023	MAYBANK	EMPLOYEES PROVIDENT FUND BOARD [SSH]	-2,167	1,668,456	13.841
14 APR 2023 - 14 APR 2023	MBMR	EMPLOYEES PROVIDENT FUND BOARD [SSH]	-50	31,644	8.095
17 APR 2023 - 17 APR 2023	MCEHLDG	TAN SRI ABD RAHMAN BIN MAMAT [DIR/CEO]	50	100	0.16
17 APR 2023 - 17 APR 2023	MISC	EMPLOYEES PROVIDENT FUND BOARD [SSH]	300	593,109	13.287
14 APR 2023 - 14 APR 2023	MISC	EMPLOYEES PROVIDENT FUND BOARD [SSH]	500	592,809	13.281
17 APR 2023 - 17 APR 2023	MISC	KUMPULAN WANG PERSARAAN (DIPERBADANKAN) (KWAP) [SSH]	-35	243,753	5.461
12 APR 2023 - 12 APR 2023	MISC	EMPLOYEES PROVIDENT FUND BOARD [SSH]	503	592,309	13.269
20 APR 2023 - 20 APR 2023	MYEG	ASIA INTERNET HOLDINGS SDN. BHD. [SSH]	2,000	1,360,091	18.366
17 APR 2023 - 17 APR 2023	MYEG	KUMPULAN WANG PERSARAAN (DIPERBADANKAN) [SSH]	-690	555,666	7.503
14 APR 2023 - 14 APR 2023	MYEG	KUMPULAN WANG PERSARAAN (DIPERBADANKAN) [SSH]	-1,455	556,356	7.513
13 APR 2023 - 14 APR 2023	NCT	DATUK SERI CHIAU BENG TEIK [SSH]	4,500	89,905	6.69
17 APR 2023 - 17 APR 2023	NESTLE	EMPLOYEES PROVIDENT FUND BOARD [SSH]	-6	21,164	9.025
14 APR 2023 - 14 APR 2023	NESTLE	EMPLOYEES PROVIDENT FUND BOARD [SSH]	-20	21,170	9.028
13 APR 2023 - 13 APR 2023	NESTLE	EMPLOYEES PROVIDENT FUND BOARD [SSH]	-10	21,190	9.036
12 APR 2023 - 12 APR 2023	NESTLE	EMPLOYEES PROVIDENT FUND BOARD [SSH]	-25	21,199	9.04
18 APR 2023 - 18 APR 2023	NIHSIN	MISS KHOO WUAN RU [DIR/CEO]	100	97,084	18.539
18 APR 2023 - 18 APR 2023	NIHSIN	MR KHOO CHEE KONG [SSH]	100	96,134	18.358
20 APR 2023 - 20 APR 2023	NWP	MR TAN WYE CHUAN [DIR/CEO]	23,405	37,755	6.52
14 APR 2023 - 14 APR 2023	ORIENT	EMPLOYEE PROVIDENT FUND BOARD [SSH]	-44	55,283	8.911
13 APR 2023 - 13 APR 2023	ORIENT	EMPLOYEE PROVIDENT FUND BOARD [SSH]	-34	55,326	8.918
12 APR 2023 - 12 APR 2023	ORIENT	EMPLOYEE PROVIDENT FUND BOARD [SSH]	-10	55,360	8.924
17 APR 2023 - 17 APR 2023	PADINI	KUMPULAN WANG PERSARAAN (DIPERBADANKAN) [SSH]	50	49,926	7.589
14 APR 2023 - 14 APR 2023	PADINI	KUMPULAN WANG PERSARAAN (DIPERBADANKAN) [SSH]	76	49,876	7.581
17 APR 2023 - 17 APR 2023	PANAMY	EMPLOYEES PROVIDENT FUND BOARD [SSH]	-7	7,804	12.847
14 APR 2023 - 14 APR 2023	PBBANK	EMPLOYEES PROVIDENT FUND BOARD [SSH]	500	2,933,295	15.11
12 APR 2023 - 12 APR 2023	PBBANK	EMPLOYEES PROVIDENT FUND BOARD [SSH]	2,000	2,932,795	15.11
14 APR 2023 - 17 APR 2023	PENERGY	OBYU HOLDINGS SDN. BHD. [SSH]	115	95,567	29.777
14 APR 2023 - 17 APR 2023	PENERGY	SHOREFIELD RESOURCES SDN. BHD. [SSH]	115	95,567	29.777
14 APR 2023 - 17 APR 2023	PENERGY	SHOREFIELD SDN. BHD. [SSH]	115	95,567	29.777
14 APR 2023 - 17 APR 2023	PENERGY	TAN SRI BUSTARI BIN YUSUF [SSH]	115	95,567	29.777
17 APR 2023 - 17 APR 2023	PENTA	EMPLOYEES PROVIDENT FUND BOARD [SSH]	-373	46,895	6.593
14 APR 2023 - 14 APR 2023	PENTA	EMPLOYEES PROVIDENT FUND BOARD [SSH]	93	47,268	6.645
12 APR 2023 - 12 APR 2023	PENTA	EMPLOYEES PROVIDENT FUND BOARD [SSH]	-15	47,175	6.632
17 APR 2023 - 17 APR 2023	PETGAS	EMPLOYEES PROVIDENT FUND BOARD [SSH]	-71	282,674	14.286
14 APR 2023 - 14 APR 2023	PETGAS	EMPLOYEES PROVIDENT FUND BOARD [SSH]	8	282,745	14.289
13 APR 2023 - 13 APR 2023	PETGAS	EMPLOYEES PROVIDENT FUND BOARD [SSH]	18	282,738	14.289
12 APR 2023 - 12 APR 2023	PETGAS	EMPLOYEES PROVIDENT FUND BOARD [SSH]	-40	282,720	14.288
17 APR 2023 - 17 APR 2023	PPB	EMPLOYEES PROVIDENT FUND BOARD [SSH]	-50	145,150	10.203
14 APR 2023 - 14 APR 2023	PPB	EMPLOYEES PROVIDENT FUND BOARD [SSH]	-35	145,199	10.207
13 APR 2023 - 13 APR 2023	PPB	EMPLOYEES PROVIDENT FUND BOARD [SSH]	-275	145,234	10.209
12 APR 2023 - 12 APR 2023	PPB	EMPLOYEES PROVIDENT FUND BOARD [SSH]	183	145,510	10.228
17 APR 2023 - 17 APR 2023	PRTASCO	DATO' SRI CHONG KET PEN [DIR/CEO]	-3,105	143,939	29.879
19 APR 2023 - 19 APR 2023	PTRANS	DATO' ONG CHOO MENG [SSH]	4,389	71,784	9.947
19 APR 2023 - 19 APR 2023	PWF	DATIN LAW HOOI LEAN [DIR/CEO]	3,000	111,725	51.2
19 APR 2023 - 19 APR 2023	PWF	DATIN LAW HOOI LEAN [SSH]	3,000	111,725	51.2
19 APR 2023 - 19 APR 2023	PWF	DATO' SIAH GIM ENG [DIR/CEO]	3,000	111,725	51.2
19 APR 2023 - 19 APR 2023	PWF	DATO' SIAH GIM ENG [SSH]	3,000	111,725	51.2
19 APR 2023 - 19 APR 2023	PWF	MR SIAH WOUI KONG [DIR/CEO]	1,500	11,180	5.12
19 APR 2023 - 19 APR 2023	PWF	MR SIAH WOUI YANG [DIR/CEO]	1,500	11,180	5.12
14 APR 2023 - 14 APR 2023	PWROOT	KUMPULAN WANG PERSARAAN (DIPERBADANKAN) [SSH]	-377	26,815	6.292
18 APR 2023 - 18 APR 2023	RCECAP	AMCORP GROUP BERHAD [SSH]	10	428,758	58.505
18 APR 2023 - 18 APR 2023	RCECAP	CEMPAKA EMPAYAR SDN BHD [SSH]	10	428,758	58.505
18 APR 2023 - 18 APR 2023	RCECAP	CLEAR GOAL SDN BHD [SSH]	10	428,758	

Notice Period is 16 April - 22 April 2023

Effective Change Date	Stock Name	Buyer/ Seller Name [Classification]	Bought / (Sold) ['000]	No. of Shares After Trade ['000]	
			Total	Total	% Held
17 APR 2023 - 17 APR 2023	SERNKOU	MR LOW PENG SIAN @ CHUA PENG SIAN [SSH]	4,191	303,615	28.162
14 APR 2023 - 14 APR 2023	SERNKOU	MR LOO ENG HUA [DIR/CEO]	-60	450	0.042
13 APR 2023 - 14 APR 2023	SERNKOU	MR LOW PENG SIAN @ CHUA PENG SIAN [DIR/CEO]	3,353	299,424	27.773
13 APR 2023 - 14 APR 2023	SERNKOU	MR LOW PENG SIAN @ CHUA PENG SIAN [SSH]	3,353	299,424	27.773
12 APR 2023 - 12 APR 2023	SIME	EMPLOYEES PROVIDENT FUND BOARD [SSH]	600	909,244	13.34
11 APR 2023 - 11 APR 2023	SIME	EMPLOYEES PROVIDENT FUND BOARD [SSH]	1,046	908,644	13.331
10 APR 2023 - 10 APR 2023	SIME	EMPLOYEES PROVIDENT FUND BOARD [SSH]	715	907,598	13.316
17 APR 2023 - 17 APR 2023	SIMEPLT	EMPLOYEES PROVIDENT FUND BOARD [SSH]	17	1,002,552	14.497
14 APR 2023 - 14 APR 2023	SIMEPLT	EMPLOYEES PROVIDENT FUND BOARD [SSH]	3,000	1,002,535	14.497
11 APR 2023 - 11 APR 2023	SIMEPLT	EMPLOYEES PROVIDENT FUND BOARD [SSH]	3	999,535	14.453
17 APR 2023 - 17 APR 2023	SIMEPROP	EMPLOYEES PROVIDENT FUND BOARD [SSH]	-1,080	592,011	8.705
14 APR 2023 - 14 APR 2023	SIMEPROP	EMPLOYEES PROVIDENT FUND BOARD [SSH]	-3,000	593,091	8.721
13 APR 2023 - 13 APR 2023	SIMEPROP	EMPLOYEES PROVIDENT FUND BOARD [SSH]	-6,241	596,091	8.765
12 APR 2023 - 12 APR 2023	SIMEPROP	EMPLOYEES PROVIDENT FUND BOARD [SSH]	-1,720	602,332	8.857
17 APR 2023 - 17 APR 2023	SKPRES	EMPLOYEES PROVIDENT FUND BOARD [SSH]	46	107,729	6.895
17 APR 2023 - 17 APR 2023	SPSETIA	EMPLOYEES PROVIDENT FUND BOARD [SSH]	-950	236,097	5.786
14 APR 2023 - 14 APR 2023	SPSETIA	EMPLOYEES PROVIDENT FUND BOARD [SSH]	-1,164	237,047	5.816
13 APR 2023 - 13 APR 2023	SPSETIA	EMPLOYEES PROVIDENT FUND BOARD [SSH]	-1,000	238,211	5.845
12 APR 2023 - 12 APR 2023	SPSETIA	EMPLOYEES PROVIDENT FUND BOARD [SSH]	-1,294	239,211	5.869
13 APR 2023 - 13 APR 2023	STRAITS	ANG TUN YOUNG [SSH]	-150	67,377	7.151
18 APR 2023 - 18 APR 2023	SUCCESS	MADAM PAN KIM FOON [SSH]	155	105,797	46.12
18 APR 2023 - 18 APR 2023	SUCCESS	MISS TAN CHUNG LING [DIR/CEO]	105,797	155	0.068
18 APR 2023 - 18 APR 2023	SUCCESS	MR TAN AH BAH @ TAN AH PING [SSH]	155	105,797	46.12
18 APR 2023 - 18 APR 2023	SUCCESS	TAN AH BAH @ TAN AH PING [DIR/CEO]	155	105,797	46.12
13 APR 2023 - 13 APR 2023	SUNCON	EMPLOYEES PROVIDENT FUND BOARD [SSH]	50	125,090	9.702
12 APR 2023 - 12 APR 2023	SUNCON	EMPLOYEES PROVIDENT FUND BOARD [SSH]	16	125,040	9.698
17 APR 2023 - 17 APR 2023	SUNREIT	EMPLOYEES PROVIDENT FUND BOARD [SSH]	296	521,307	15.22
14 APR 2023 - 14 APR 2023	SUNREIT	EMPLOYEES PROVIDENT FUND BOARD [SSH]	118	521,011	15.21
13 APR 2023 - 13 APR 2023	SUNREIT	EMPLOYEES PROVIDENT FUND BOARD [SSH]	63	520,893	15.21
12 APR 2023 - 12 APR 2023	SUNREIT	EMPLOYEES PROVIDENT FUND BOARD [SSH]	28	520,830	15.21
18 APR 2023 - 18 APR 2023	SUNVIEW	BASIL POWER SDN. BHD. [SSH]	-17,220	37,000	7.906
14 APR 2023 - 14 APR 2023	SUNWAY	EMPLOYEES PROVIDENT FUND BOARD [SSH]	578	420,609	8.6
14 APR 2023 - 17 APR 2023	SUNWAY	ACTIVE EQUITY SDN BHD [SSH]	6,374	2,990,318	61.16
14 APR 2023 - 17 APR 2023	SUNWAY	MADAM SARENA CHEAH YEAN TIH [DIR/CEO]	6,374	3,163,412	64.71
14 APR 2023 - 17 APR 2023	SUNWAY	MADAM SARENA CHEAH YEAN TIH [SSH]	6,374	3,163,412	64.71
14 APR 2023 - 17 APR 2023	SUNWAY	MR ADRIAN CHEAH YEAN SUN [SSH]	6,374	3,158,161	64.6
14 APR 2023 - 17 APR 2023	SUNWAY	MR EVAN CHEAH YEAN SHIN [SSH]	6,374	3,162,356	64.69
14 APR 2023 - 17 APR 2023	SUNWAY	PUAN SRI DATIN SERI (DR) SUSAN CHEAH SEOK CHENG [SSH]	6,374	3,167,605	64.79
14 APR 2023 - 17 APR 2023	SUNWAY	SUNGEI WAY CORPORATION SDN BHD [SSH]	6,374	2,826,368	57.81
14 APR 2023 - 17 APR 2023	SUNWAY	TAN SRI DATO' SERI DR JEFFREY CHEAH FOOK LING AO [DIR/CEO]	6,374	3,167,605	64.79
14 APR 2023 - 17 APR 2023	SUNWAY	TAN SRI DATO' SERI DR JEFFREY CHEAH FOOK LING AO [SSH]	6,374	3,167,605	64.79
12 APR 2023 - 12 APR 2023	SUNWAY	EMPLOYEES PROVIDENT FUND BOARD [SSH]	567	419,871	8.59
14 APR 2023 - 17 APR 2023	SUNWAY-WB	MADAM SARENA CHEAH YEAN TIH [DIR/CEO]	739	470,380	70.28
14 APR 2023 - 17 APR 2023	SUNWAY-WB	TAN SRI DATO' SERI DR JEFFREY CHEAH FOOK LING AO [DIR/CEO]	739	470,941	70.36
19 APR 2023 - 19 APR 2023	SUPERLN	MR LIN PO-CHIH [DIR/CEO]	25	4,415	2.782
18 APR 2023 - 18 APR 2023	SUPERLN	MR LIN PO-CHIH [DIR/CEO]	20	4,390	2.766
19 APR 2023 - 19 APR 2023	SWIFT	MR LOO HOUI KEAT [DIR/CEO]	100	352,220	39.969
19 APR 2023 - 19 APR 2023	SWIFT	MR LOO HOUI KEAT [SSH]	100	352,220	39.969
14 APR 2023 - 14 APR 2023	SWIFT	MR LOO HOUI KEAT [DIR/CEO]	55	352,120	39.958
14 APR 2023 - 14 APR 2023	SWIFT	MR LOO HOUI KEAT [SSH]	55	352,120	39.958
18 APR 2023 - 18 APR 2023	TENAGA	KHAZANAH NASIONAL BERHAD [SSH]	-34,830	1,411,102	24.53
18 APR 2023 - 18 APR 2023	TENAGA	KUMPULAN WANG PERSARAAN (DIPERBADANKAN) [SSH]	202	428,520	7.44
19 APR 2023 - 19 APR 2023	TIMECOM	KUMPULAN WANG PERSARAAN (DIPERBADANKAN) ("KWAP") [SSH]	20	102,639	5.583
17 APR 2023 - 17 APR 2023	TIMECOM	EMPLOYEES PROVIDENT FUND BOARD [SSH]	815	96,747	5.262
18 APR 2023 - 18 APR 2023	TIMECOM	KUMPULAN WANG PERSARAAN (DIPERBADANKAN) ("KWAP") [SSH]	42	102,619	5.581
14 APR 2023 - 14 APR 2023	TIMECOM	EMPLOYEES PROVIDENT FUND BOARD [SSH]	1,466	95,932	5.218
17 APR 2023 - 17 APR 2023	TIMECOM	KUMPULAN WANG PERSARAAN (DIPERBADANKAN) ("KWAP") [SSH]	70	102,578	5.579
13 APR 2023 - 13 APR 2023	TIMECOM	EMPLOYEES PROVIDENT FUND BOARD [SSH]	509	94,466	5.138

Notice Period is 16 April - 22 April 2023

Effective Change Date	Stock Name	Buyer/ Seller Name [Classification]	Bought / (Sold) ['000]	No. of Shares After Trade ['000]	
			Total	Total	% Held
14 APR 2023 - 14 APR 2023	TIMECOM	KUMPULAN WANG PERSARAAN (DIPERBADANKAN) ("KWAP") [SSH]	113	102,508	5.575
12 APR 2023 - 12 APR 2023	TIMECOM	EMPLOYEES PROVIDENT FUND BOARD [SSH]	812	93,958	5.11
17 APR 2023 - 17 APR 2023	TM	EMPLOYEE PROVIDENT FUND BOARD (EPF BOARD) [SSH]	-73	644,937	16.874
17 APR 2023 - 17 APR 2023	TM	KUMPULAN WANG PERSARAAN (DIPERBADANKAN) [SSH]	439	418,760	10.957
13 APR 2023 - 13 APR 2023	TM	EMPLOYEE PROVIDENT FUND BOARD (EPF BOARD) [SSH]	-1,947	645,010	16.876
14 APR 2023 - 14 APR 2023	TM	KUMPULAN WANG PERSARAAN (DIPERBADANKAN) [SSH]	16	418,321	10.946
17 APR 2023 - 17 APR 2023	TOPGLOV	MR LIM HOUI SIN [DIR/CEO]	-1,000	2,922,335	36.496
17 APR 2023 - 17 APR 2023	TOPGLOV	MR LIM HOUI SIN [SSH]	-10,000	2,922,335	36.496
17 APR 2023 - 17 APR 2023	TOPGLOV	MR LIM JIN FENG [SSH]	-10,000	2,822,473	35.248
17 APR 2023 - 17 APR 2023	TOPGLOV	PUAN SRI TONG SIEW BEE [SSH]	-5,000	2,922,535	36.498
17 APR 2023 - 17 APR 2023	TOPGLOV	TAN SRI DR LIM WEE CHAI [DIR/CEO]	-5,000	2,922,535	36.498
17 APR 2023 - 17 APR 2023	TOPGLOV	TAN SRI DR LIM WEE CHAI [SSH]	-5,000	2,922,535	36.498
17 APR 2023 - 17 APR 2023	TRC	DATO RICHARD KHOO TENG SAN [DIR/CEO]	120	11,930	2.53
17 APR 2023 - 17 APR 2023	TWL	DATIN SEK CHIAN NEE [DIR/CEO]	3,525	1,189,017	29.457
17 APR 2023 - 17 APR 2023	TWL	DATIN SEK CHIAN NEE [SSH]	3,525	1,189,017	29.457
17 APR 2023 - 17 APR 2023	TWL	DATO' TAN WEI LIAN [DIR/CEO]	3,525	1,189,017	29.458
17 APR 2023 - 17 APR 2023	TWL	DATO' TAN WEI LIAN [SSH]	3,525	1,189,017	29.458
17 APR 2023 - 17 APR 2023	TWL	MISS TAN LEE CHIN [DIR/CEO]	3,525	1,189,017	29.457
17 APR 2023 - 17 APR 2023	TWL	MISS TAN LEE CHIN [SSH]	3,525	1,189,017	29.457
17 APR 2023 - 17 APR 2023	TWL	TWL CAPITAL BERHAD [SSH]	3,525	1,189,017	29.457
19 APR 2023 - 19 APR 2023	UMCCA	MR HAN KEE JUAN [DIR/CEO]	8	371	0.177
17 APR 2023 - 17 APR 2023	UMCCA	DATO' SRI TEE LIP SIN [DIR/CEO]	4	51,392	24.5
17 APR 2023 - 17 APR 2023	UMCCA	MR TEE CHENG HUA [DIR/CEO]	4	45,561	21.72
17 APR 2023 - 17 APR 2023	UMCCA	PROSPER CAPITAL HOLDINGS SDN BHD [SSH]	4	26,823	12.787
14 APR 2023 - 14 APR 2023	UMW	EMPLOYEES PROVIDENT FUND BOARD [SSH]	-74	108,050	9.249
13 APR 2023 - 13 APR 2023	UMW	EMPLOYEES PROVIDENT FUND BOARD [SSH]	-495	108,124	9.255
12 APR 2023 - 12 APR 2023	UMW	EMPLOYEES PROVIDENT FUND BOARD [SSH]	-243	108,600	9.296
17 APR 2023 - 17 APR 2023	UTDPLT	EMPLOYEES PROVIDENT FUND BOARD [SSH]	34	35,394	8.533
12 APR 2023 - 12 APR 2023	UTDPLT	EMPLOYEES PROVIDENT FUND BOARD [SSH]	-766	35,259	8.501
18 APR 2023 - 18 APR 2023	VELESTO	AMANAHRAYA TRUSTEES BERHAD - AMANAH SAHAM BUMIPUTERA [SSH]	30,000	275,6918	33.557
17 APR 2023 - 17 APR 2023	VS	EMPLOYEES PROVIDENT FUND BOARD [SSH]	150	251,591	6.539
14 APR 2023 - 14 APR 2023	VS	EMPLOYEES PROVIDENT FUND BOARD [SSH]	400	251,441	6.535
13 APR 2023 - 13 APR 2023	VS	EMPLOYEES PROVIDENT FUND BOARD [SSH]	300	251,041	6.524
12 APR 2023 - 12 APR 2023	VS	EMPLOYEES PROVIDENT FUND BOARD [SSH]	200	250,741	6.517
19 APR 2023 - 19 APR 2023	WIDAD	TAN SRI MUHAMMAD IKMAL OPAT BIN ABDULLAH [SSH]	4,390	1,234,594	43.182
18 APR 2023 - 18 APR 2023	WIDAD	WIDAD BUSINESS GROUP SDN. BHD. [SSH]	-129,415	1,107,032	38.72
03 APR 2023 - 18 APR 2023	WIDAD	TAN SRI MUHAMMAD IKMAL OPAT BIN ABDULLAH [SSH]	-147,027	1,230,204	43.028
14 APR 2023 - 14 APR 2023	WPRTS	EMPLOYEES PROVIDENT FUND BOARD [SSH]	467	312,518	9.165
17 APR 2023 - 17 APR 2023	YINSON	EMPLOYEES PROVIDENT FUND BOARD [SSH]	555	488,928	16.822
18 APR 2023 - 18 APR 2023	YINSON	KUMPULAN WANG PERSARAAN (DIPERBADANKAN) [SSH]	1,923	190,518	6.555
18 APR 2023 - 18 APR 2023	YINSON	MADAM BAH KIM LIAN [DIR/CEO]	1,000	63,9921	22.017
18 APR 2023 - 18 APR 2023	YINSON	MADAM BAH KIM LIAN [SSH]	1,000	63,9921	22.017
18 APR 2023 - 18 APR 2023	YINSON	MR LIM HAN WENG [DIR/CEO]	1,000	712,066	24.499
18 APR 2023 - 18 APR 2023	YINSON	MR LIM HAN WENG [SSH]	1,000	712,066	24.499
18 APR 2023 - 18 APR 2023	YINSON	YINSON LEGACY SDN BHD [SSH]	1,000	572,905	19.711
14 APR 2023 - 14 APR 2023	YINSON	EMPLOYEES PROVIDENT FUND BOARD [SSH]	-1,491	488,373	16.803
17 APR 2023 - 17 APR 2023	YINSON	KUMPULAN WANG PERSARAAN (DIPERBADANKAN) [SSH]	-246	188,595	6.489
13 APR 2023 - 13 APR 2023	YINSON	EMPLOYEES PROVIDENT FUND BOARD [SSH]	-2,087	489,864	16.854
14 APR 2023 - 14 APR 2023	YINSON	KUMPULAN WANG PERSARAAN (DIPERBADANKAN) [SSH]	-130	188,841	6.498
12 APR 2023 - 12 APR 2023	YINSON	EMPLOYEES PROVIDENT FUND BOARD [SSH]	-2,681	491,951	16.926
17 APR 2023 - 19 APR 2023	YONGTAI	DATUK WIRA BOO KUANG LOON [DIR/CEO]	3,350	22,300	5.898
17 APR 2023 - 19 APR 2023	YONGTAI	DATUK WIRA BOO KUANG LOON [SSH]	3,350	22,300	5.898
17 APR 2023 - 17 APR 2023	YTLPOWR	EMPLOYEES PROVIDENT FUND BOARD [SSH]	1,076	443,567	5.475

Disclaimer: The Information in Insider Activity is extracted from www.shareinvestor.com/fundamental/insider_trades. The information on this page is provided as a service to readers. It does not constitute financial advice and/or any investment recommendations. We assume no liability for damages resulting from or arising out of the use of such information. Whilst every effort is made to ensure accuracy, the information presented is not the official record of shareholder filings. Readers are advised to read the original filings on the Bursa Malaysia website at www.bursamalaysia.com

Learn how to identify Hot Stocks using Technical Analysis (TA) and Fundamental Analysis (FA)

SIGN UP FOR Invest

IT'S FREE!!!

[Click here](#)

Scan me



Via email, every Friday.



Notice is hereby given that the Thirtieth Annual General Meeting of **KPJ Healthcare Berhad (KPJ)** will be conducted virtually using the remote participation and voting facilities of TIIH Online website at <https://tiih.online> or <https://tiih.com.my> (Domain registration number with MYNIC: D1A282781) on Thursday, 22 June 2023 at 11:00 a.m.



Notice is hereby given the 9th Annual General Meeting of **Leong Hup International Berhad (LHI)**

will be conducted fully virtual through live streaming from the online meeting platform and online remote voting via the Remote Participation and Voting facilities at <https://tiih.online> on Friday, 2 June 2023 at 11.00 a.m.



Notice is hereby given that the Third Annual General Meeting of **Mobilier Holdings Berhad (MOBILIA)** will be held at BEI BOUTIQUE HOTEL, Centro Meeting Hall, Level 3, 8-3, Jalan Abdul Rahman, 84000 Muar, Johor on Friday, 26 May 2023 at 11.00 a.m.



Referring to **Maxis Berhad's (MAXIS)** announcements in relation to the RM10.0 billion Unrated Sukuk Murabahah Programme established by MBSB since 29 June 2016. Maxis wishes to announce that MBSB has today issued two (2) new series of the Sukuk Murabahah amounting to RM900.0 million in nominal value pursuant to the Unrated Sukuk Murabahah Programme, as detailed below:

Issuer	MBSB	
	Eighteenth	Nineteenth
Series Number	Eighteenth	Nineteenth
Issue Size (in nominal value at par)	RM700.0 million	RM200.0 million
Maturity Date	27 April 2028	26 April 2030



Notice is hereby given that the 21st Annual General Meeting of Members of **Naim Holdings Berhad (NAIM)** will be held at Naim Sapphire Condominium Homes, Function Hall, 3rd Floor, Jalan Lintang Selatan, Batu Lintang, 93200 Kuching, Sarawak on Thursday, 25 May 2023 at 10:00 a.m.



Notice is hereby given that the Twenty First Annual General Meeting of **Pentamaster Corporation Berhad (PENTA)** will be held at Level 4, Jadeite Function Room, Amari SPICE Penang, 2, Persiaran Mahsuri, Bayan Baru, 11900 Bayan Lepas, Pulau Pinang on Wednesday, 31 May 2023 at 10:30 a.m.

Disclaimer: The information in the Investor Relations page is extracted from individual companies' announcements in www.bursamalaysia.com. The information on this page is provided as a service to readers. We assume no liability for damages resulting from or arising out of the use of such information. Whilst every effort is made to ensure accuracy, the information presented has been simplified for your reading pleasure. Readers are advised to read the original and complete filings on the Bursa Malaysia website at https://www.bursamalaysia.com/market_information/announcements/company_announcement



Notice is hereby given that the Tenth Annual General Meeting of **Reach Energy Berhad (REACH)** will be conducted on a virtual basis for the purpose of considering and if thought fit, passing with or without modifications the resolutions setting out in this notice.

Meeting Platform : <https://meeting.boardroomlimited.my>
 Day and Date : Tuesday, 13 June 2023 Time : 10.00 a.m.
 Broadcast Venue : Level 12, Menara Symphony, No. 5, Jalan Prof. Khoo Kay Kim, Seksyen 13, 46200 Petaling Jaya, Selangor, Malaysia.

Mode of Communication : 1) Typed text in the Online Meeting Platform. The messaging window facility will be opened concurrently with the Virtual Meeting Portal, one (1) hour before the 10th AGM, that is from 9.00 a.m. on Tuesday, 13 June 2023. 2) Alternatively, you may also submit your questions in advance to info@reachenergy.com.my by 10.00 a.m. on 11 June 2023 (48 hours before the commencement of the 10th AGM).



Notice is hereby given that the 18th Annual General Meeting of **Rimbunan Sawit Berhad (RSAWIT)** will be held at Level 2, North Wing, Menara Rimbunan Hijau, 101, Pusat Suria Permata, Jalan Upper Lanang, 96000 Sibul, Sarawak, Malaysia on Wednesday, 31 May 2023 at 12.00 noon.



Notice is hereby given that the Twentieth Annual General Meeting of **Salcon Berhad (SALCON)** will be conducted on a virtual basis through live streaming from the Broadcast Venue at Tricor Business Centre, Gemilang Room, Unit 29-02, Level 29, Tower A, Vertical Business Suite, Avenue 3, Bangsar South, No. 8, Jalan Kerinchi, 59200 Kuala Lumpur (Broadcast Venue) on Wednesday, 21 June 2023 at 10:30 a.m.

Upcoming IPO

NAME OF COMPANY	OFFER PERIOD		ISSUE PRICE (Per Ordinary Share)	LISTING SOUGHT	DATE OF LISTING
	OPENING	CLOSING			
RADIUM DEVELOPMENT BERHAD	27 Apr 2023	16 May 2023	RM0.50	MAIN MARKET	31 May 2023

Disclaimer: The information in the Investor Relations page is extracted from individual companies' announcements in www.bursamalaysia.com. The information on this page is provided as a service to readers. We assume no liability for damages resulting from or arising out of the use of such information. Whilst every effort is made to ensure accuracy, the information presented has been simplified for your reading pleasure. Readers are advised to read the original and complete filings on the Bursa Malaysia website at https://www.bursamalaysia.com/market_information/announcements/company_announcement

ShareInvestor is a technology based company with a focus on Internet media and we have operations in Malaysia, Singapore and Thailand.

We are the market leader in providing a combination of market data, analysis and news on various platforms to traders and investors.

Our websites include www.shareinvestor.com and www.bursastation.com.

More information about our products and services can be found at www.shareinvestorholdings.com

We're looking for Drupal Developers who will be in charge of front-end development and back-end/module development. This role requires expertise in PHP, HTML, CSS, JS, and an eye for design aesthetics. The candidates should be familiar and have a passion working with content management systems.

Interested candidates are encouraged to apply with full resume, present and expected salary and a recent photograph. Please send these to hr.my@shareinvestor.com for processing. ShareInvestor regrets that only shortlisted candidates shall be notified.

Drupal Developers (2 vacancies)

Job Responsibilities:

- Active participation in all UI / UX decisions
- Contribute actively to the continuous development and maintenance of development projects
- Enhance Drupal development quality
- Provide solutions to issues and suggestions for improvements.
- Designing and implementing new features to the system
- Ensuring optimal performance

Required Skills:

- At least 3 years of Drupal Theming and Front-End Development experience
- Proficient in PHP, HTML5/XHTML, CSS, Javascript, jQuery, AJAX, XML, Json
- Good Diploma/Degree in Computer Science/Computer Engineering.
- Experience working with Drupal's main modules, such as CTools, Views, Rules, Webform, and so on
- Ability to create custom Drupal modules
- Strong troubleshooting skills to fix bugs

Benefits:

- Career & growth opportunities
- Interesting projects
- Medical Insurance
- Incentives

Ruby on Rails Developer (1 vacancy)

Job Responsibilities:

- Develop quality web-based software modules on schedule with a focus on Ruby and Ruby on Rails applications.
- Explore and utilize the latest web-based technologies.
- Document design specifications, logic concepts and module description.
- Maintain and enhance existing web-based applications.

Required Skills:

- Experience in web-based programming/scripting is essential. Candidate must be able to explain clearly technical aspects of his/her past experiences and projects.
- Passion for programming and desire to learn new languages like Go.
- Good Diploma/Degree in Computer Science/Computer Engineering.
- Able to work well in a team and be able to follow documentation and coding standards.
- Knowledge in any of the following would be an added advantage
 - Ruby and Ruby on Rails Framework
 - Javascript and jQuery library
 - Go
 - Perl

Application Developer (C++/STL) (1 vacancy)

Job Responsibilities

- Deliver quality software modules on schedule.
- Document design specifications, conceptions, module description.
- Maintain and enhance existing applications.

Required Skills:

- Passion for programming and desire to learn.
- Good Diploma/Degree in Computer Science/Computer Engineering.
- Skills in C++ is essential.
- Experience with Visual Studio, networking stack and Golang would be an advantage.
- Proactive, resourceful and self-motivated with strong analytical skills.
- Good interpersonal, written and communication skills.
- Able to work with little supervision.

Junior Market Data Support Specialist

As a Junior Market Data Support Specialist, you will be involved in reviewing, analysing and collecting accurate and timely financial information on listed companies for our market data information services.

Job Responsibilities

- Collect, compute and analyse relevant financial data of listed companies, organise and present them on the company portal, in timely manner, for the consumption by our subscribers and our corporate clients
- Capture corporate events / actions and translate them to adjustments of impacted financial data
- Research, evaluate, propose new solutions or recommendations for adhoc project requirements that are related to the financial data or the financial fundamentals of listed companies
- Provide support to users' queries related to financial information displayed on our platforms
- Perform any other duties assigned from time to time, including rare occasions of working during weekends

Required Skills

- Minimum academic qualification: Diploma in any finance-related discipline
- Knowledge of basic accounting and financial terms is required
- Flair for data precision / accuracy / quality / thoroughness plus strict adherence to structured data process and timeline is a must
- Proficient in Microsoft Excel
- Team player with pleasant personality
- Proficient in English, oral and written.

Fresh graduates are welcome to apply.

Interested candidates are encouraged to apply with full resume, present and expected salary and a recent photograph. Please send these to hr.my@shareinvestor.com for processing. ShareInvestor regrets that only shortlisted candidates shall be notified.