

# Invest

A Weekly e-Publication by [SHAREINVESTOR.com](https://www.shareinvestor.com)

ISSUE

**153**

THURSDAY

20 APRIL

2023

Scan/Click QR to Register



Via email, every Friday

## Raya Deals

Promo Period: **17 APRIL – 6 MAY 2023**

**GET EXCLUSIVE RAYA DEALS** and promotions now to start growing your investment portfolio.

SHAREINVESTOR  
**STATION**

UPTO  
**15%**  
OFF

Applicable for  
**12 MONTHS SUBSCRIPTIONS ONLY**

Coupon code: **RAYADEALS23**

SHAREINVESTOR  
**WEBPRO**

**BURSA STATION**

## SUBSCRIBE

## COMMENT & WIN

Stand a chance  
to win **3D 2N** stay in  
**Perhentian Island**



**SUBSCRIBE NOW!**

\*Terms and Conditions apply.



# Invest

A Weekly e-Publication by [SHAREINVESTOR.com](https://www.shareinvestor.com)

ISSUE

**153**

THURSDAY

20 APRIL

2023

Scan/Click QR to Register



Via email, every Friday

## MALAYSIAN REITS' OUTLOOK STILL BRIGHT ON HEALTHY ECONOMIC GROWTH – RHB RESEARCH *(page 22)*



- |    |                            |    |                   |    |                          |
|----|----------------------------|----|-------------------|----|--------------------------|
| 04 | LEADERBOARD                | 14 | VALUE STOCKS      | 25 | REGIONAL MARKETS         |
| 06 | SHARIAH HOT STOCKS         | 16 | GROWTH STOCKS     | 26 | FROM THE OBSERVER        |
| 07 | COMPANY SPOTLIGHT          | 18 | DIVIDEND STOCKS   | 30 | INSIDER ACTIVITY         |
| 08 | SHARIAH MOMENTUM UP STOCKS | 19 | BROKERS' CALL     | 33 | INVESTOR RELATIONS       |
| 10 | NON SHARIAH HOT STOCKS     | 20 | LONG COMPANIES    | 37 | CAREERS AT SHAREINVESTOR |
| 12 | UP TRENDING STOCKS         | 22 | MARKET SENTIMENTS |    |                          |





### INVESTOR PLATFORMS

#### Director

Darren Chong  
darren.chong@shareinvestor.com

#### Manager

Heidee Ahmad  
heidee.ahmad@shareinvestor.com

#### Senior Manager

Sharon Lee  
sharon.lee@shareinvestor.com

#### Senior Executive

Daniel Wong  
daniel.wong@shareinvestor.com

#### Executive

Farah Azwani  
farah.azwani@shareinvestor.com

#### Executive

Tan Yong Sheng  
yongsheng.tan@shareinvestor.com

### ADMIN & OPERATIONS

#### Senior Executive

Watie Nordin  
watie.nordin@shareinvestor.com

#### Executive

Silas Emmanuel Joseph  
silas.joseph@shareinvestor.com

### INVESTOR RELATIONS

#### Group Managing Director & Publisher

Edward Stanislaus  
edward@shareinvestor.com

#### Director

Elizabeth Tan  
elizabeth.tan@shareinvestor.com

#### Senior Manager

Letticia Wong  
letticia.wong@shareinvestor.com

### PROCESS AUTOMATION & DATA ANALYTICS

#### Data Analyst

Nickson Aw

### SHAREINVESTOR HOLDINGS BOARD OF DIRECTORS

Chairman	Patrick Daniel
Group CEO	Christopher Lee
Group COO	Lim Dau Hee
Group CFO	Teo Siew May
Group MD	Shanison Lin



“ GIVE A MAN A FISH AND YOU FEED HIM FOR A DAY; TEACH A MAN TO FISH AND YOU FEED HIM FOR A LIFETIME ”

#### ShareInvestor Malaysia Sdn. Bhd.

(200001023956) (526564-M)

Unit No. DF2-07-03A, Level 7,  
Persoft Tower, 6B Persiaran Tropicana,  
47410 Petaling Jaya, Selangor Darul Ehsan.

Hotline : 603 7803 1791

Mobile : 011 6343 8939

Website : [www.ShareInvestor.com.my](http://www.ShareInvestor.com.my)

[www.ShareInvestorHoldings.com](http://www.ShareInvestorHoldings.com)

[www.Facebook.com/ShareInvestorMalaysia](https://www.Facebook.com/ShareInvestorMalaysia)

ADVERTISEMENT ENQUIRY



## MSWG Seminar : Conducting a Better Annual General Meeting

**11th May 2023, 09.00am - 01.00pm**  
**The Majestic Hotel, Kuala Lumpur**



**Speaker: Mr Devanesan Evanson,**  
**Chief Executive Officer of MSWG**



#### Learning Outcomes :-

Upon completion of the seminar, participants will be aware of:

- What to consider and prepare for when running an effective AGM
- Ways to improve the conduct of AGM and apply best AGM practices
- Suggestions to improve meeting conduct based on MSWG representatives' observation and participation at the AGMs of PLCs
- Director's and shareholders' do's and don'ts before, during and after the AGM

#### Target Audience :

- Company Directors, C-Suite, Management Team, Companies Secretaries

*Please click here for more info*

Contact: Ms. Nor Khalidah Tel: 03 - 2732 0010 / 017-630 0754

Email: [khalidah@mswg.org.my](mailto:khalidah@mswg.org.my)






**SELAMAT  
HARI RAYA**

*Aidilfitri*

**Maaf Zahir & Batin**  
1444H/2023M



From all of us at



**SHAREINVESTOR<sup>®</sup>**  
MALAYSIA

[www.shareinvestor.com](http://www.shareinvestor.com) - market data at your fingertips



## ShareInvestor WebPro ([www.shareinvestor.com/my](http://www.shareinvestor.com/my)) Prices > Stock Prices > Bursa > click Stocks tab

1. mouse over Ranking > select Top Active > all Shariah stocks are denoted with an [S] > mouse over Column Layout > select Edit Customs > select Name > select Volume > select Last Done Price > Mouse Over Column Layout > select Custom
2. mouse over Ranking > select Top Turnover > all Shariah stocks are denoted with an [S] > mouse over Column Layout > select Edit Customs > select Name > select Last Done Price > select Value > Mouse Over Column Layout > select Custom
3. mouse over Ranking > select Top Gainers (Over 5 Trading Days) > mouse over Column Layout > select Edit Customs > select Name > select Last Done Price > select 5 Days Change > select 5 Days % Change > Mouse Over Column Layout > select Custom
4. mouse over Ranking > select Top Losers (Over 5 Trading Days)
5. mouse over Ranking > select Top % Gainers (Over 5 Trading Days)
6. mouse over Ranking > select Top % Losers (Over 5 Trading Days)

### Shariah Top Actives (as at Yesterday)

Name	Price (RM)	Volume
FITTERS [S]	0.050	963,971.000
PHARMA [S]	0.390	805,641.000
HONGSENG [S]	0.125	802,238.000
MYEG [S]	0.820	721,299.000
VINVEST [S]	0.200	718,565.000
SNS [S]	0.265	670,596.000
SALUTE [S]	1.160	651,053.000
SUPERMX [S]	0.900	442,981.000
DATAPRP [S]	0.210	383,407.000
WIDAD [S]	0.450	351,317.000

### Shariah Top Turnover (as at Yesterday)

Name	Price (RM)	Value (RM)
SALUTE [S]	1.160	81,675,586
TENAGA [S]	8.870	69,523,167
MYEG [S]	0.820	59,655,335
SUPERMX [S]	0.900	40,557,333
PCHEM [S]	7.210	33,956,698
PMETAL [S]	5.050	33,834,938
PHARMA [S]	0.390	33,209,171
TOPGLOV [S]	1.030	29,000,161
SUNVIEW [S]	0.755	23,607,709
IHH [S]	5.850	22,885,817

### Top Gainers (over 5 Trading days as at Yesterday)

Name	Price (RM)	Change (RM)
BLDPLNT	10.780	+0.760
SALUTE	1.160	+0.395
RAPID	17.900	+0.340
CEB	1.510	+0.200
CIHLDG	3.680	+0.190
HLBANK	20.220	+0.180
ORIENT	6.810	+0.170
UTDPLT	16.780	+0.160
UCHITEC	3.450	+0.150
AJI	15.900	+0.140

### Top % Gainers (over 5 Trading days as at Yesterday)

Name	Price (RM)	Change (%)
PASUKGB	0.215	+115.00
AT	0.010	+100.00
VSOLAR	0.010	+100.00
SALUTE	1.160	+51.63
CLOUD	0.060	+50.00
FOCUS	0.020	+33.33
GOCEAN	0.020	+33.33
TALAMT	0.020	+33.33
TECHNAX	0.020	+33.33
IVORY	0.065	+30.00

### Top Losers (over 5 Trading days as at Yesterday)

Name	Price (RM)	Change (RM)
NESTLE	135.000	-1.400
HEXTECH	22.620	-0.420
KLK	21.520	-0.380
MPI	28.540	-0.340
PETDAG	21.900	-0.340
HLFG	18.080	-0.320
HAPSENG	4.720	-0.300
AMTEL	0.650	-0.290
AYER	6.840	-0.260
BIPORT	5.000	-0.250

### Top % Losers (over 5 Trading days as at Yesterday)

Name	Price (RM)	Change (%)
JERASIA	0.005	-88.89
FINTEC	0.005	-50.00
PHB	0.005	-50.00
COMPUGT	0.010	-33.33
AMTEL	0.650	-30.85
ONEGLOVE	0.290	-28.40
MTOUCHE	0.040	-27.27
MMAG	0.015	-25.00
SANICHI	0.015	-25.00
SEALINK	0.090	-25.00



**Make-A-Wish**  
MALAYSIA

ANNUAL CHARITY GOLF TOURNAMENT  
TROPICANA GCR • 25th May 2023

Main Sponsors



**SRI KOTA  
SPECIALIST  
MEDICAL CENTRE**  
*The Heart of Healthcare*



**Southern Acids (M) Berhad**

**BOOK NOW**

Date: **Thursday 25th May 2023**

Time: **1.30pm Tee Off**

Venue: **Tropicana GCR**

Flight cost: **RM5,000 (for 4 golfers)**

## TEE OFF FOR HOPE

Since 2010, Make-A-Wish Malaysia has been granting wishes of critically ill children around the country. Funds from this event will help us reach these critically ill children without delay.



## SHARE THE POWER OF A WISH

To find out more please call:

Make-A-Wish Malaysia T: (03) 2276 3344 E: info@makeawish.org.my

[www.facebook.com/MakeawishMalaysia](https://www.facebook.com/MakeawishMalaysia) • [www.makeawish.org.my](http://www.makeawish.org.my)



## Price & Volume Distribution Charts (as at Yesterday)

Technical Analysis

**DEFINITION:** Shariah compliant stocks with Technical Analysis showing 5-days & 10-days Moving Average Price below Yesterday's Close over past 3 days and with Volume Spike.

**CHART GUIDE:** Volume Distribution Chart is a statistical interpretation of the current sentiment on each stock in graphical format. The highest bar categorized as >150k is likely to be traded by institutions or super dealers, while the lowest bar categorized as <15k usually represents retail investors. "Buy Up" refers to more buyers snatching up the lots queued at selling price. "Sell Down" refers to sellers selling their shares to the buying queue



ShareInvestor WebPro > Screener > Market Screener (FA & TA) > select BURSA > add criteria

**A. Criteria**

- > click Add Criteria
- Technical Analysis Conditions tab select (i) Moving Average Below Close (ii) Volume Spike
- Fundamental Analysis Conditions tab > select (iii) Revenue
- Prices & Other Conditions tab > select (iv) Is Shariah Compliant
- Technical Analysis Conditions tab select (v) Moving Average Below Close
- Prices & Other Conditions tab > select (vi) Last Done Price
- Technical Analysis Conditions tab select (vii) Moving Average Below Close

**B. Conditions (Criteria Filters)**

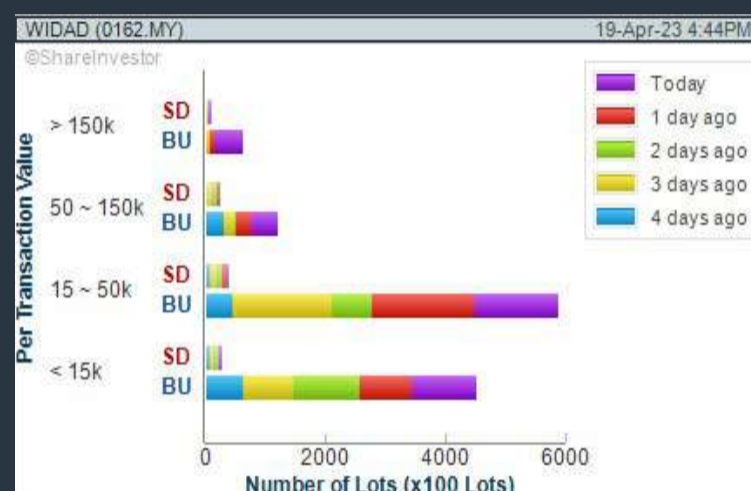
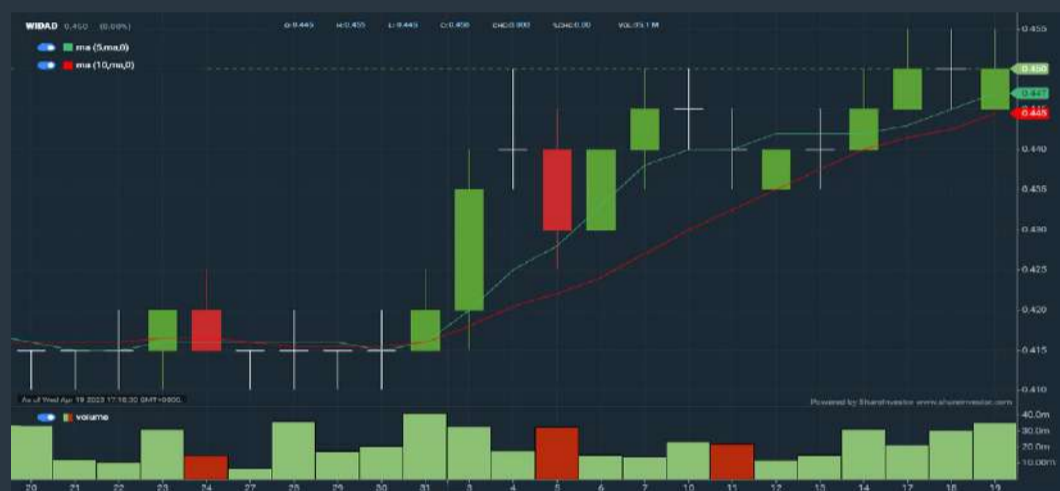
- Moving Average Below Close - select (MA) type (5) below close price for type (3) days
- Volume Spike - Volume type (1) greater than type (5) days average
- Revenue ("000) - select (more than) type (1) for the past select (1) financial year(s)
- Is Shariah Compliant - select **Yes**
- Moving Average Below Close - select (MA) type (10) below close price for type (3) days
- Last Done Price - select (more than) type (0.3)
- Moving Average Below Close - select (EMA) type (5) below close price for type (3) days

- > click Save Template > Create New Template type (Shariah Hot Stocks) > click Create
- > click Save Template as > select Shariah Hot Stocks > click Save
- > click Screen Now (may take a few minutes)
- > Sort By: Select (Vol) Select (Desc)
- > Mouse over stock name > Charts > click C<sup>2</sup> Charts or Volume Distribution

### WIDAD GROUP BERHAD (0162)

C<sup>2</sup> Chart

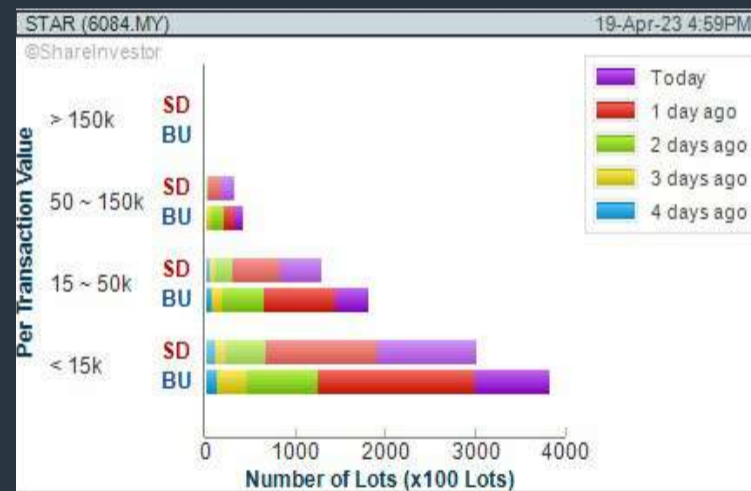
Analysis



### STAR MEDIA GROUP BERHAD (6084)

C<sup>2</sup> Chart

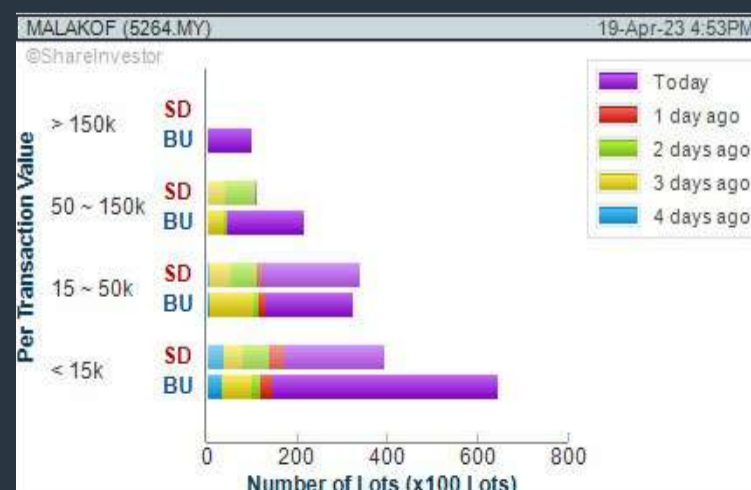
Analysis



### MALAKOFF CORPORATION BERHAD (5264)

C<sup>2</sup> Chart

Analysis



**Disclaimer:** The information on this page is provided as a service to readers. It does not constitute financial advice and/or any investment recommendations. Past performance is not indicative of future results. We assume no liability for damages resulting from or arising out of the use of such information. It would be best if you did your own research to make your personal investment decisions wisely or consult a licenced investment advisor.

## COMPANY BACKGROUND

**Cape EMS Berhad** (formerly known as Cape EMS Manufacturing (M) Berhad) is an investment holding company engaged in providing electronics manufacturing services (EMS). The Company also offers die casting and machining, as well as supplies of electronic products through its subsidiaries. It provides complete box build EMS for industrial and consumer electronic products, including wireless communication equipment, smart utility data collection equipment, LED lighting products, digital vending machines, and portable printer power desks. Its consumer



electronic products include household appliances and electronic cigarettes.

CEB CAPE EMS BERHAD		Updated at: 19 Apr 2023 16:58	
Last (MYR): <b>1.510</b> ↑	Change: <b>+0.110</b>	High: 1.540	Remarks: -
	Change (%): <b>+7.86</b>	Low: 1.370	
Open	1.400	Yesterday's Close	1.400
Buy Price	1.510	Sell Price	1.520
Buy Volume ('00)	141	Sell Volume ('00)	615
Cumulative Volume ('00)	94,340	Cumulative Value	13,919,511

### Financial Analysis

<b>Revenue Growth</b> Increasing revenue in last 3 consecutive years and min growth is 15% in last 3 years	<b>Profit Growth</b> Increasing profit in last 3 consecutive years and min growth is 10% (with at least 4 profitable years)
<b>Free Cash Flow</b> Negative free cash flow for two years or more	<b>Gross Profit Margin</b> Low gross profit margin for 3 years
<b>Return on Equity (ROE)</b> ROE above 10% for 3 consecutive years	

😊 Excellent
🙂 Good
😐 Neutral
😟 Be Alert
😱 Watch Out

### Historical Financials



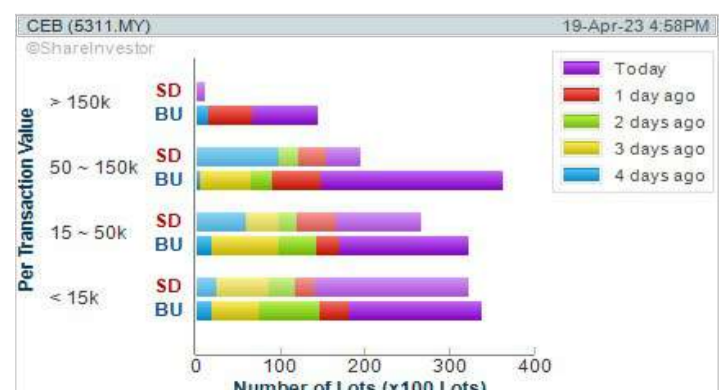
WebPro 9-Days Free Trial Registration (worth RM9) Sign Up Now



## Key Statistics with Total Shareholder Returns

### Total Shareholder Return

Period	Dividend Received	Capital Appreciation	Total Shareholder Return
Short Term Return	5 Days	+0.250	+18.84 %
	10 Days	+0.280	+22.75 %
	20 Days	+0.100	+7.86 %



**Disclaimer:** The information on this page is provided as a service to readers. It does not constitute financial advice and/or any investment recommendations. Past performance is not indicative of future results. We assume no liability for damages resulting from or arising out of the use of such information. It would be best if you did your own research to make your personal investment decisions wisely or consult a licenced investment advisor.



## Price & Volume Distribution Charts (as at Yesterday)

Technical Analysis

**DEFINITION:** Shariah compliant stocks with Technical Analysis showing Bullish Momentum and Price Uptrend. The share price closed at the highest price yesterday. The typical price was higher than the previous day's typical price.

**CHART GUIDE:** Volume Distribution Chart is a statistical interpretation of the current sentiment on each stock in graphical format. The highest bar categorized as >150k is likely to be traded by institutions or super dealers, while the lowest bar categorized as <15k usually represents retail investors. "Buy Up" refers to more buyers snatching up the lots queued at selling price. "Sell Down" refers to sellers selling their shares to the buying queue.



ShareInvestor WebPro > Screener > Market Screener (FA & TA) > select BURSA > add criteria

**A. Criteria**

- > click Add Criteria
- Fundamental Analysis Conditions tab > select (i) Revenue
- Technical Analysis Conditions tab select (ii) Average Volume
- Prices & Other Conditions tab > select (iii) Last Done Price
- Prices & Other Conditions tab > select (iv) Is Shariah Compliant
- Technical Analysis Conditions tab select (v) RSI Overbought
- Technical Analysis Conditions tab select (vi) Moving Average Below Close
- Technical Analysis Conditions tab select (vii) CCI Overbought

**B. Conditions (Criteria Filters)**

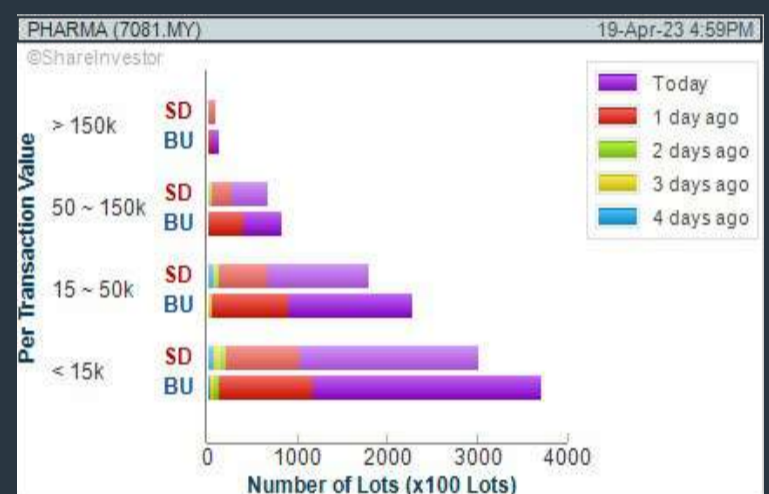
1. Revenue ("000) - select (more than) type (1) for the past select (1) financial year(s)
2. Average Volume - type (1) days average volume greater than type (10000) lots
3. Last Done Price - select (more than) type (0.3)
4. Is Shariah Compliant - select Yes
5. RSI Overbought - select RSI 1 above 99 for 1 days
6. Moving Average Below Close - select (MA) type (10) below close price for type (1) days
7. CCI Overbought - select CCI (2) above (0) for (1) days

- > click Save Template > Create New Template type (Shariah Momentum Up Stocks) > click Create
- > click Save Template as > select Shariah Momentum Up Stocks > click Save
- > click Screen Now (may take a few minutes)
- Sort By: Select (Vol) Select (Desc)
- Mouse over stock name > Charts > click C<sup>2</sup> Charts tab or Volume Distribution

### PHARMANIAGA BERHAD (7081)

C<sup>2</sup> Chart

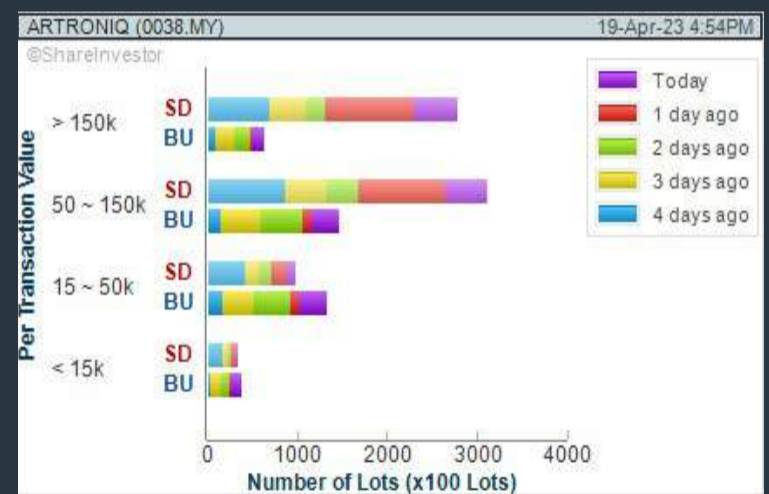
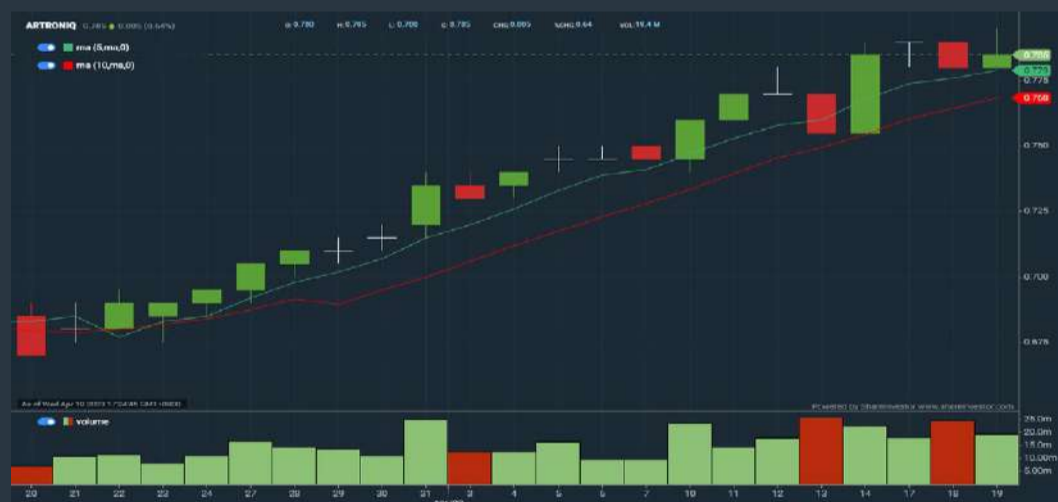
Analysis



### ARTRONIQ BERHAD (0038)

C<sup>2</sup> Chart

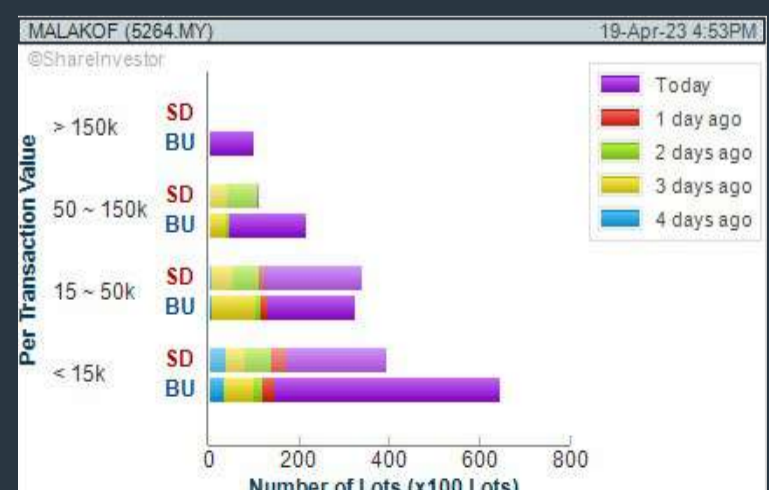
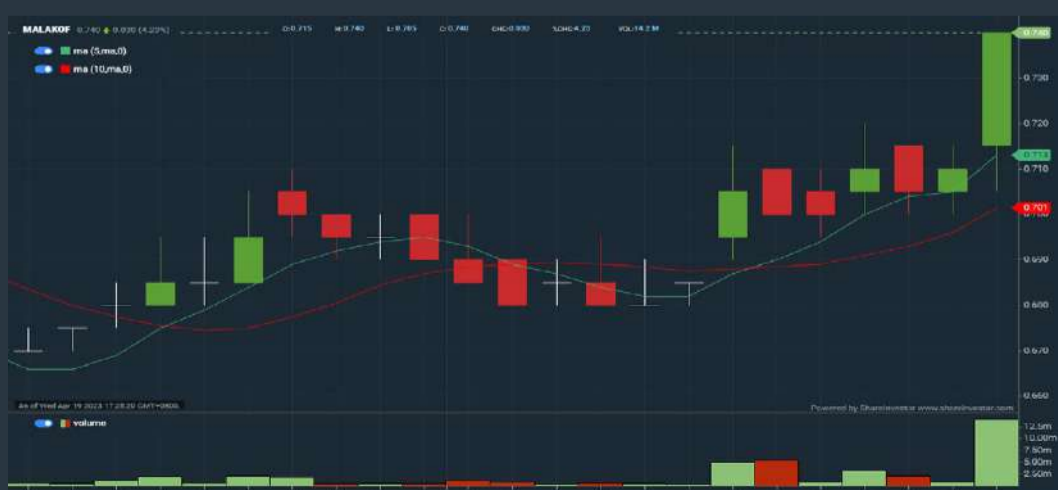
Analysis



### MALAKOFF CORPORATION BERHAD (5264)

C<sup>2</sup> Chart

Analysis



**Disclaimer:** The information on this page is provided as a service to readers. It does not constitute financial advice and/or any investment recommendations. Past performance is not indicative of future results. We assume no liability for damages resulting from or arising out of the use of such information. It would be best if you did your own research to make your personal investment decisions wisely or consult a licenced investment advisor.



# SHARE INVESTOR WEBPRO

## STOCK MARKET DATA AT YOUR FINGERTIPS

Powerful browser-based market analytics platform.  
Access from anywhere



### 8 Markets Data

- ▶ Get access to data from Bursa, NYSE, Nasdaq, HKEX, SGX, IDX, SET & ASX

### Portfolio Management

- ▶ Profit & Loss Summary
- ▶ Stock Alert
- ▶ News & Events filtering
- ▶ Customizable column layout

## Fundamental Analysis

### Financial Analysis Statement

- ▶ Profit & Loss
- ▶ Balance Sheet
- ▶ Cash Flow Statement
- ▶ More than 20 Financial Ratios
- ▶ Dividend Analysis

### Technical Charting

- ▶ C<sup>2</sup> chart (Customisable & Comprehensive)

### Brokers' Call

### Intrinsic Value Calculator

### FactSheet

- ▶ Key Stock Information
- ▶ Ownership
- ▶ Consensus Estimates
- ▶ Annual Report
- ▶ Historical Price
- ▶ Insider Trades

## What's new on WebPro (Stable Release 12.1.0)

In our effort to keep our platform at the forefront of trading technology, we have added on some new features onto our C2 Chart in WebPro

### ADDITIONAL NEW FEATURES:

- ▶ Anchor selector for AVWAP, PVAT, and PAV indicators
- ▶ Volume profile indicator by date range
- ▶ Moving Average Cross indicator
- ▶ Guppy Multiple Moving Average (GMMA) indicator
- ▶ GoNoGo Trend Signal indicators
- ▶ SignalIQ

So what are you waiting for? Head to our platform today and check out our new trading chart features and indicators. We're confident that you'll love the improvements we've made and that they'll help you become a more successful trader.

Click here to start your 9 days FREE trial  
(Valued at RM10)





## Price & Volume Distribution Charts (as at Yesterday)

Technical Analysis

**DEFINITION:** Stocks with Technical Analysis showing 5-days & 10-days Moving Average Price below Close over past 1 days and with Volume Spike

**CHART GUIDE:** Volume Distribution Chart is a statistical interpretation of the current sentiment on each stock in graphical format. The highest bar categorized as >150k is likely to be traded by institutions or super dealers, while the lowest bar categorized as <15k usually represents retail investors. "Buy Up" refers to more buyers snatching up the lots queued at selling price. "Sell Down" refers to sellers selling their shares to the buying queue.



ShareInvestor WebPro > Screener > Market Screener (FA & TA) > select BURSA > add criteria

**A. Criteria**

- > click Add Criteria
- Technical Analysis Conditions tab select (i) Moving Average Below Close (ii) Volume Spike
- Fundamental Analysis Conditions tab >select (iii) Revenue
- Prices & Other Conditions tab > select (iv) Is Shariah Compliant
- Technical Analysis Conditions tab select (v) Moving Average Below Close
- Prices & Other Conditions tab > select (vi) Last Done Price
- Technical Analysis Conditions tab select (vii) Moving Average Below Close

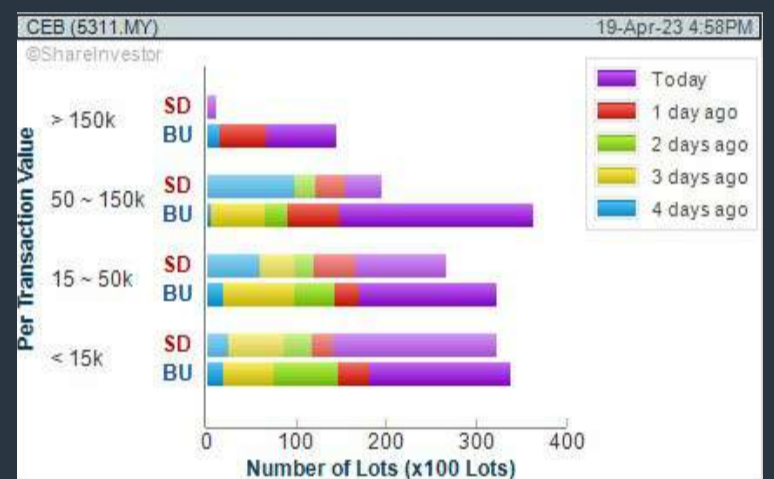
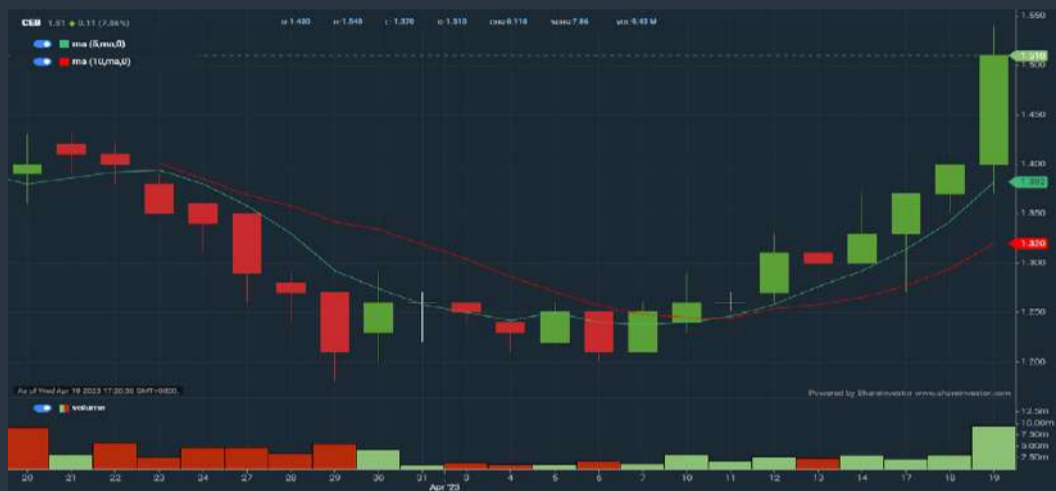
**B. Conditions (Criteria Filters)**

1. Moving Average Below Close - select (MA) type (5) below close price for type (3) days
2. Volume Spike - Volume type (1) greater than type (5) days average
3. Revenue ("000) - select (more than) type (1) for the past select (1) financial year(s)
4. Is Shariah Compliant - select NO
5. Moving Average Below Close - select (MA) type (10) below close price for type (1) days
6. Last Done Price - select (more than) type (0.3)
7. Moving Average Below Close - select (EMA) type (5) below close price for type (1) days

- > click Save Template > Create New Template type (Non-Shariah Hot Stocks) > click Create
- > click Save Template as > select Non-Shariah Hot Stocks > click Save
- > click Screen Now (may take a few minutes)
- Sort By: Select (Vol) Select (Desc)
- Mouse over stock name > Charts > click C<sup>2</sup> Charts tab or Volume Distribution

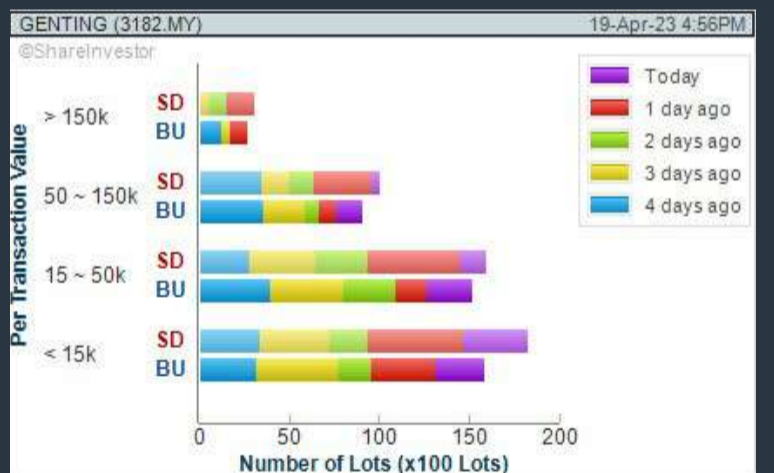
### CAPE EMS BERHAD (5311)

C<sup>2</sup> Chart



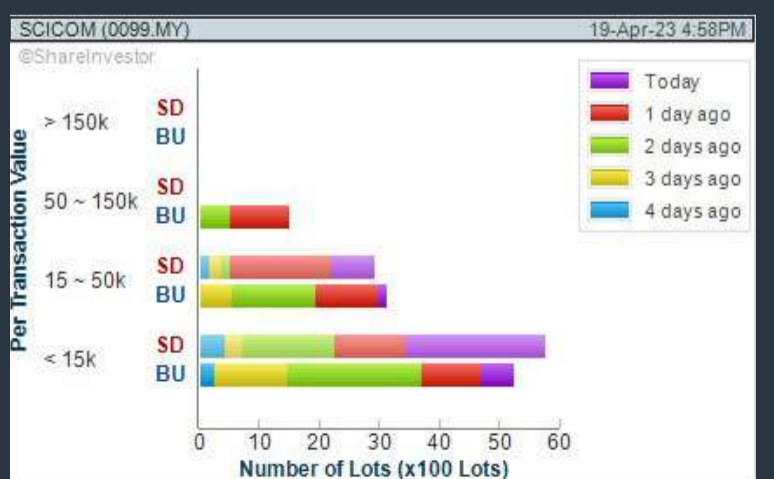
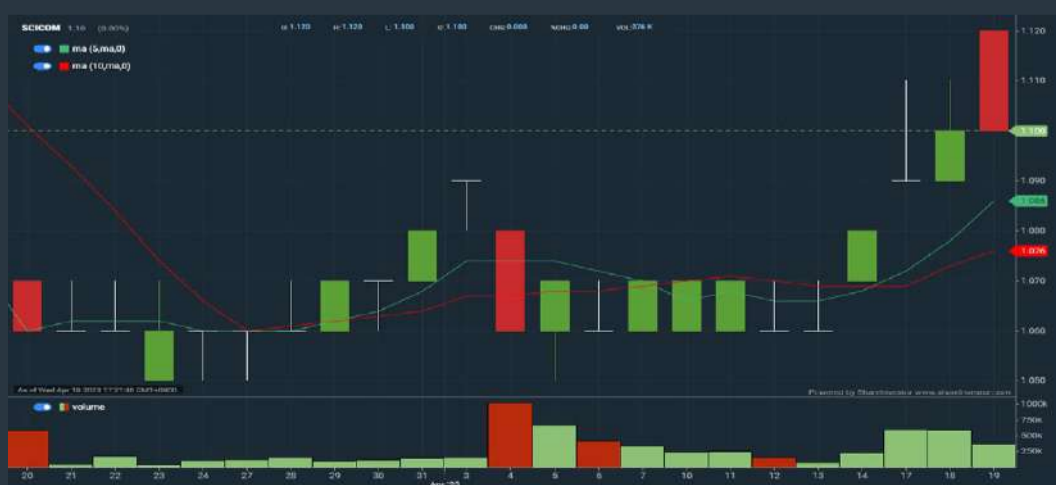
### GENTING BERHAD (3182)

C<sup>2</sup> Chart



### SCICOM (MSC) BERHAD (0099)

C<sup>2</sup> Chart



**Disclaimer:** The information on this page is provided as a service to readers. It does not constitute financial advice and/or any investment recommendations. Past performance is not indicative of future results. We assume no liability for damages resulting from or arising out of the use of such information. It would be best if you did your own research to make your personal investment decisions wisely or consult a licenced investment advisor.



*Introducing*



# GM SUITE

CONNECTING STAKEHOLDERS

by SHAREINVESTOR®

**General Meeting Suite (GM Suite)**, an end-to-end technology system to facilitate hybrid, virtual or physical Annual General Meetings.

## THE GOLD STANDARD SOLUTION FOR AGM / EGM



<https://gm-suite.com>



## Price & Volume Distribution Charts (Over 5 trading days as at Yesterday)

Technical Analysis

**DEFINITION:** Stocks with Technical Analysis showing Bullish Momentum and Price Uptrend

**CHART GUIDE:** Volume Distribution Chart is a statistical interpretation of the current sentiment on each stock in graphical format. The highest bar categorized as >150k is likely to be traded by institutions or super dealers, while the lowest bar categorized as <15k usually represents retail investors. "Buy Up" refers to more buyers snatching up the lots queued at selling price. "Sell Down" refers to sellers selling their shares to the buying queue.



ShareInvestor WebPro > Screener > Market Screener (FA & TA) > select BURSA > add criteria

**A. Criteria**

- > click Add Criteria
- Fundamental Analysis Conditions tab > select (i) Revenue
- Technical Analysis Conditions tab select (ii) Moving Average Below Close
- Technical Analysis Conditions tab select (iii) Average Volume
- Prices & Other Conditions tab > select (iv) Last Done Price
- Technical Analysis Conditions tab select (v) Moving Average Below Close
- Technical Analysis Conditions tab select (v) Moving Average Bullish Crossover

**B. Conditions**

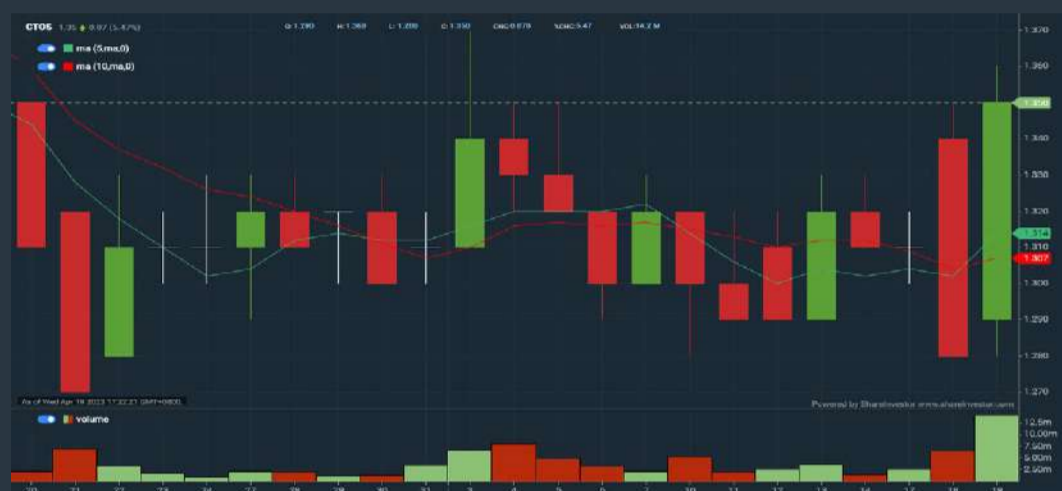
1. Revenue - select (more than) type (1) for the past select (1) financial year(s)
2. Moving Average Below Close - select (MA) type (20) below close price for type (1) days
3. Average Volume - type (5) days average volume type (10000) lots
4. Last Done Price - select (more than) type (0.3)
5. Moving Average Below Close - select (MA) type (10) below close price for type (1) days
6. Moving Average Bullish Crossover - select (MA) type (5) crossed above select (MA) type (10)

> click Save Template > Create New Template type (Non-Shariah Up-Trending Stocks) > click Create Click Save Template As > select Non-Shariah Up Trending Stocks > click Save > click Screen Now (may take a few minutes) Sort By: Select (Vol) Select (Desc) Mouse over stock name > Charts > click C<sup>2</sup> Charts tab or Volume Distribution

### CTOS DIGITAL BERHAD (5301)

C<sup>2</sup> Chart

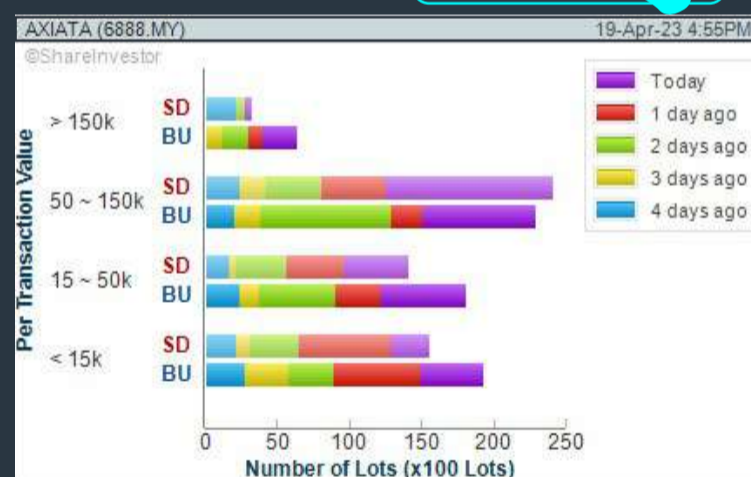
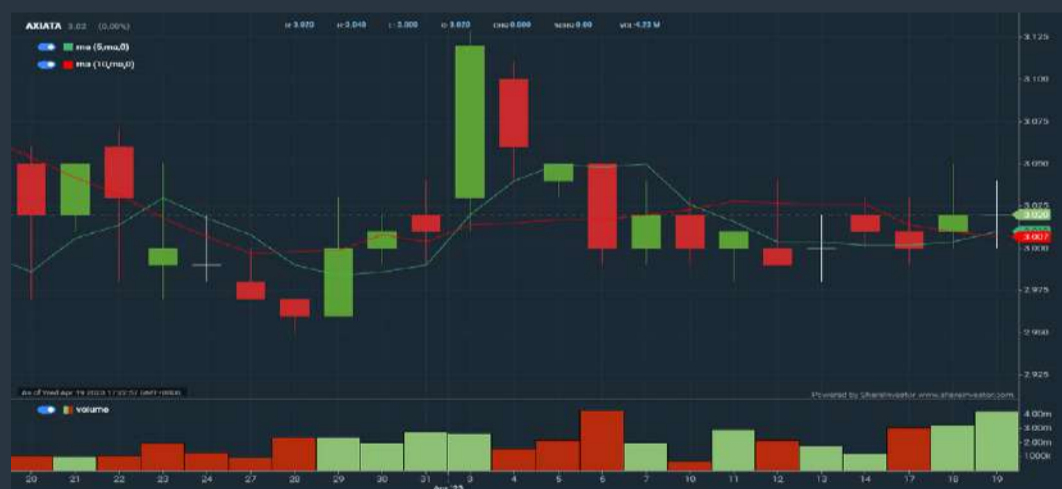
Analysis



### AXIATA GROUP BERHAD (6888)

C<sup>2</sup> Chart

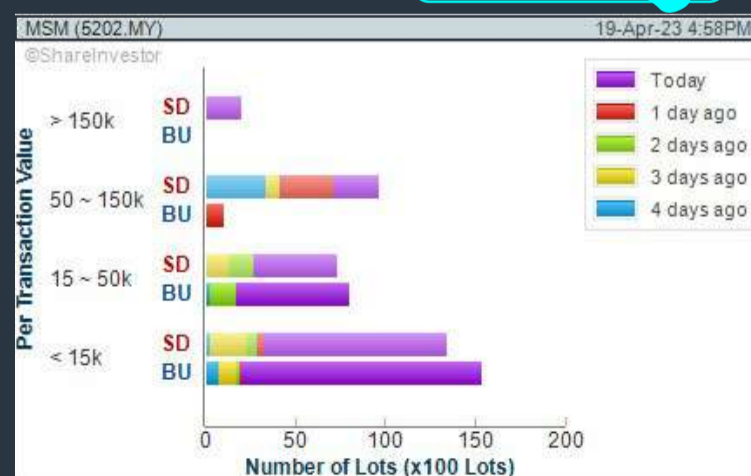
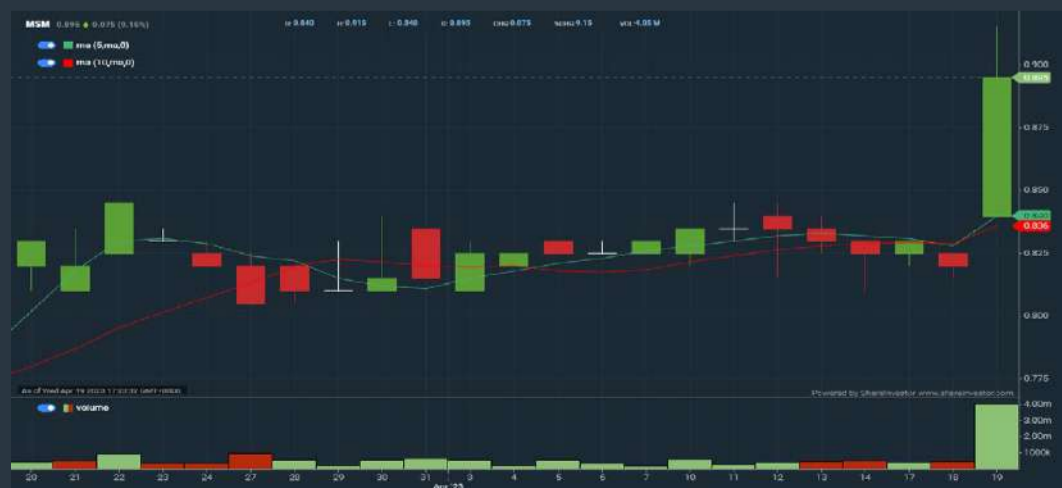
Analysis



### MSM MALAYSIA HOLDINGS BERHAD (5202)

C<sup>2</sup> Chart

Analysis



**Disclaimer:** The information on this page is provided as a service to readers. It does not constitute financial advice and/or any investment recommendations. Past performance is not indicative of future results. We assume no liability for damages resulting from or arising out of the use of such information. It would be best if you did your own research to make your personal investment decisions wisely or consult a licenced investment advisor.



# MAKE BETTER TRADING STRATEGIES

with

# SHARE INVESTOR STATION



## 8 Markets Data

- ▶ Get access to data from Bursa, NYSE, Nasdaq, HKEX, SGX, IDX, SET & ASX

## Dynamic Chart

- ▶ Candlestick Pattern Recognition
- ▶ 111 Indicators
- ▶ 39 Drawing Tools
- ▶ Performance Comparison Chart

## Intraday Data

- ▶ Market Depth
- ▶ Trade Summary Matrix & Chart
- ▶ Times & Sales
- ▶ Intraday Market Ticker

## Market Screener

- ▶ 96 criteria ranging from FA, TA, Consensus Estimate
- ▶ Real-time Data

## Power Frame

- ▶ Combining few Dynamic Charts together with intraday information in one frame

## Technical Analysis

## Fundamental Analysis

### Financial Analysis Statement

- ▶ Profit & Loss
- ▶ Balance Sheet
- ▶ Cash Flow Statement
- ▶ More than 20 Financial Ratios
- ▶ Dividend Analysis

### FactSheet

- ▶ Key Stock Information
- ▶ Ownership
- ▶ Consensus Estimates
- ▶ Annual Report
- ▶ Historical Price
- ▶ Insider Trades

Start your 18 days  
**FREE** trial now  
(Valued at RM82)





## Price & Total Shareholder Return (as at Yesterday)

Fundamental Analysis

**DEFINITION:** Share price of a company trading at a lower price as compared to its fundamentals (FA) such as financial performance and dividend, allowing it to be attractive to value investors.

**CHART GUIDE:** Total Shareholder Return (TSR) combines share price appreciation and dividend distributions paid to show the total return to the shareholder expressed as a percentage.



ShareInvestor WebPro > Screener > Market Screener (FA & TA) > select BURSA > add criteria

**A. Criteria**

- > click Add Criteria
- Fundamental Analysis Conditions tab (i) Price Earnings Ratio
- Fundamental Analysis Conditions tab >select (ii) CAGR of Net Earnings
- Fundamental Analysis Conditions tab >select (iii) Net Debt To Equity
- Fundamental Analysis Conditions tab >select (iv) Return On Equity (ROE)

**B. Conditions**

1. Price Earnings Ratio - select (less than) type (15) times now
2. CAGR of Net Earnings - select (more than) type (10) % for the past type (3) financial year(s)
3. Net Debt To Equity – select (less than) type (1) for the past select (1) financial year(s)
4. Return On Equity (ROE) – select (more than) type (10) % for the past select (1) financial year(s)

- > click Save Template > Create New Template type (Value Stock) > click Create
- > click Save Template as > select Value Companies > click Save
- > click Screen Now (may take a few minutes)
- Sort by: Select (PE Ratio) Select (Ascending)
- > Mouse over stock name > Factsheet > looking for Total Shareholder Return
- > Mouse over stock name > Charts > click C2 Charts tab

## SUNMOW HOLDING BERHAD (03050)

C<sup>2</sup> Chart



Period	Dividend Received	Capital Appreciation	Total Shareholder Return
Short Term Return	5 Days	-	-
	10 Days	-	-
	20 Days	-	-
Medium Term Return	3 Months	-0.020	-3.00 %
	6 Months	-0.320	-33.68 %
	1 Year	-0.305	-32.62 %
Annualised Return	Annualised	-	-32.62 %

## LION POSIM BERHAD (8486)

C<sup>2</sup> Chart



Period	Dividend Received	Capital Appreciation	Total Shareholder Return
Short Term Return	5 Days	-	-
	10 Days	+0.025	+6.10 %
	20 Days	-0.005	-1.14 %
Medium Term Return	3 Months	-0.070	-13.66 %
	6 Months	-0.005	-1.14 %
	1 Year	-0.115	-20.91 %
Long Term Return	2 Years	-0.265	-37.86 %
	3 Years	+0.065	+24.26 %
	5 Years	-0.130	-23.04 %
Annualised Return	Annualised	-	-5.10 %

## ALCOM GROUP BERHAD (2674)

C<sup>2</sup> Chart



Period	Dividend Received	Capital Appreciation	Total Shareholder Return
Short Term Return	5 Days	+0.010	+1.10 %
	10 Days	+0.005	+0.55 %
	20 Days	-0.015	-1.61 %
Medium Term Return	3 Months	-0.040	-4.15 %
	6 Months	+0.115	+14.38 %
	1 Year	0.025	+11.24 %
Long Term Return	2 Years	-0.105	-14.55 %
	3 Years	0.025	+7.07 %
	5 Years	0.025	+20.51 %
Annualised Return	Annualised	-	+3.88 %

**Disclaimer:** The information on this page is provided as a service to readers. It does not constitute financial advice and/or any investment recommendations. Past performance is not indicative of future results. We assume no liability for damages resulting from or arising out of the use of such information. It would be best if you did your own research to make your personal investment decisions wisely or consult a licenced investment advisor.





# Italian Masterpieces

Martha rocking chair designed by Roberto Lazzeroni  
Chester Line sofa designed by Poltrona Frau Style & Design Centre

poltronafrau.com



# XTRA

The Gardens Mall, Mid Valley City, Lot S-236 & 237  
2nd flr Linkaran Syed Putra, Kuala Lumpur  
T. +603 2282 9088 | xtra@xtrafurniture.com | xtrafurniture.com  
f XTRAfurniture | @ xtrafurnituremsia





## Price & Total Shareholder Return (as at Yesterday)

Fundamental Analysis

**DEFINITION:** Company revenue is growing and making good quality of earnings with positive Free Cash Flow.

**CHART GUIDE:** Total Shareholder Return (TSR) combines share price appreciation and distributions paid to show the total return to the shareholder expressed as a percentage.



ShareInvestor WebPro > Screener > Market Screener (FA & TA) > select BURSA > add criteria

**A. Criteria**

1. Fundamental Analysis Conditions tab >select (i) Free Cash Flow, (ii) Revenue Growth, (iii) Gross Profit (Earnings) Margin, (iv) Quality of Earnings, (v) Total Shareholder Returns, > click Add Criteria
2. Fundamental Analysis Conditions tab >select (vi) Total Shareholder Returns > click Add Criteria

**B. Conditions (Criteria Filters)**

1. Free Cash Flow - select (more than) type (1) for the past select (1) financial year(s)
2. Revenue Growth - select (more than) type (1) for the past select (1) financial year(s)
3. Gross Profit (Earnings) Margin - select (more than) type (30) % for the past select (1) financial year(s)
4. Quality of Earnings - select (more than) type (1) for the past select (1) financial year(s)
5. Total Shareholder Return - select (more than) type (5) % for the past select (3) financial year(s)
6. Total Shareholder Return - select (more than) type (5) % for the past select (5) financial year(s)

- > click Save Template > Create New Template type (Growth Companies) > click Create
- > click Save Template as > select Growth Companies > click Save
- > click Screen Now (may take a few minutes)
- > Sort By: Select (Revenue Growth) Select (Desc)
- > Mouse over stock name > Factsheet > looking for Total Shareholder Return

## HIBISCUS PETROLEUM BERHAD (5199)

C<sup>2</sup> Chart

Analysis



Period	Dividend Received	Capital Appreciation	Total Shareholder Return
Short Term Return	5 Days	-0.040	-3.67%
	10 Days	-0.010	-0.94%
	20 Days	+0.135	+14.75%
Medium Term Return	3 Months	-0.010	-0.94%
	6 Months	0.010	+15.22%
Long Term Return	1 Year	0.020	+16.41%
	2 Years	0.090	+64.89%
	5 Years	0.035	+155.29%
Annualised Return	Annualised	-	+5.63%

## CLASSIC SCENIC BERHAD (7202)

C<sup>2</sup> Chart

Analysis

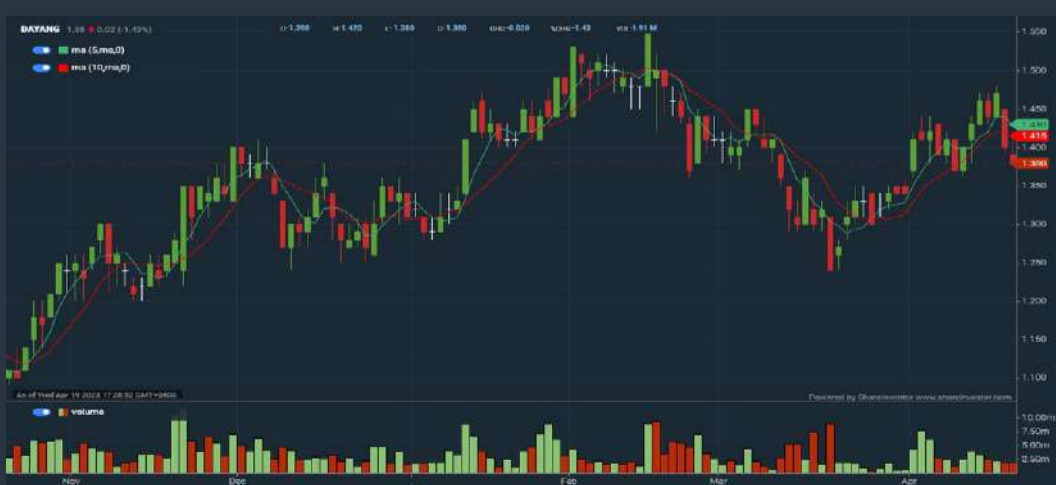


Period	Dividend Received	Capital Appreciation	Total Shareholder Return
Short Term Return	5 Days	0.065	-3.89%
	10 Days	0.055	-3.89%
	20 Days	0.055	-
Medium Term Return	3 Months	0.055	-24.12%
	6 Months	0.055	-28.10%
Long Term Return	1 Year	0.055	+23.57%
	2 Years	0.055	+13.07%
	5 Years	0.085	+155.71%
Annualised Return	Annualised	-	+6.76%

## DAYANG ENTERPRISE HOLDINGS BERHAD (5141)

C<sup>2</sup> Chart

Analysis



Period	Dividend Received	Capital Appreciation	Total Shareholder Return
Short Term Return	5 Days	-	-1.43%
	10 Days	-	-2.13%
	20 Days	-	-6.66%
Medium Term Return	3 Months	-	-2.13%
	6 Months	-	+24.32%
Long Term Return	1 Year	-	+50.00%
	2 Years	-	-3.99%
	5 Years	-	+19.97%
Annualised Return	Annualised	-	+12.76%

**Disclaimer:** The information on this page is provided as a service to readers. It does not constitute financial advice and/or any investment recommendations. Past performance is not indicative of future results. We assume no liability for damages resulting from or arising out of the use of such information. It would be best if you did your own research to make your personal investment decisions wisely or consult a licenced investment advisor.



# BURSASTATION Professional

## Scan. Chart. Analyse.

Be The Intelligent Investor



### Stock Scanning

- Technical Analysis (TA) Market Scanner
- Fundamental Analysis (FA) Market Scanner



### Market Data

- Equities
- Derivatives

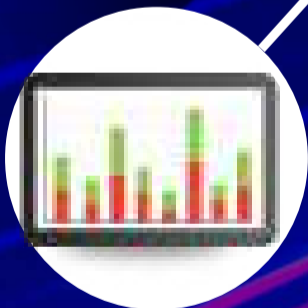
### Monitoring

- Portfolio
- Stock Alerts
- Price Spread Calculator



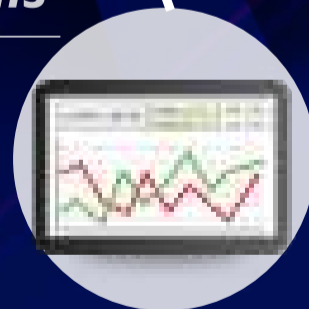
### Charts

- Intraday Charts
- Interactive Charts
- Historical Charts
- Volume Distribution Charts



### Fundamentals

- Factsheets
- Financials
- Insider Trades



### Price Movements

- Streaming Prices
- Time & Sales
- Trade Summary Matrix
- Quote Movements
- 5 Levels Market Depth
- Historical Price Download



Brought to you as a collaborative effort by ShareInvestor and Bursa Malaysia, **BursaStation Professional** is designed with you, the user, in mind, as a user-friendly yet full of powerful features that will appeal to investors/traders who need instant access to fundamental, technical, and trading data, anytime, anywhere. **BursaStation Professional** is a state-of-the-art Stock Market Tracker with Charting Software that places in your hands the power to make better investment decisions.

[CLICK HERE TO START YOUR 14-DAYS FREE TRIAL](#)



## Price & Total Shareholder Return (as at Yesterday)

Fundamental Analysis

**DEFINITION:** Company is paying out dividend with low or moderate leverage.

**CHART GUIDE:** Total Shareholder Return (TSR) combines share price appreciation and distributions paid to show the total return to the shareholder expressed as a percentage.



ShareInvestor WebPro > Screener > Market Screener (FA & TA) > select BURSA > add criteria

**A. Criteria**

- > click Add Criteria
- Fundamental Analysis Conditions tab >select (i) Dividend Yield
- Fundamental Analysis Conditions tab >select (ii) Dividend Payout (Historical)
- Fundamental Analysis Conditions tab >select (iii) Total Debt To Equity
- Fundamental Analysis Conditions tab >select (iv) Total Shareholder Returns
- Fundamental Analysis Conditions tab >select (v) Total Shareholder Returns
- Fundamental Analysis Conditions tab / >select (vi) CAGR of Dividend Per Share

• Fundamental Analysis Conditions tab >select (vii) CAGR of Dividend Per Share

**B. Conditions (Criteria Filters)**

1. Dividend Yield - select (more than) type (1) % for the past select (1) financial year(s)
2. Dividend Payout (Historical) - select (between) type (0.5) to type (1) times for the past select (1) financial year(s)
3. Total Debt to Equity - select (less than) type (1) for the past select (1) financial year(s)
4. Total Shareholder Return - select (more than) type (5) % for the past select (3) financial year(s)
5. Total Shareholder Return - select (more than) type (5) % for the past select (5) financial year(s)

6. CAGR of Dividend Per Share - select (less than) type (30) % for the past select (5) financial year(s)
7. CAGR of Dividend Per Share - select (more than) type (1) % for the past select (5) financial year(s)

- > click Save Template > Create New Template type (Dividend Companies) > click Create
- > click Save Template as > select Dividend Companies > click Save
- > click Screen Now (may take a few minutes)
- > Sort By: Select (Dividend Yield) Select (Desc)
- > Mouse over stock name > Factsheet > looking for Total Shareholder Return

## JAYCORP BERHAD (7152)

C<sup>2</sup> Chart



Period	Dividend Received	Capital Appreciation	Total Shareholder Return	
Short Term Return	5 Days	-	-0.010	-1.42%
	10 Days	0.020	-0.015	+0.70%
	20 Days	0.020	-	+2.88%
Medium Term Return	3 Months	0.020	-0.020	-
	6 Months	0.060	-0.005	+7.86%
	1 Year	0.060	-0.025	+7.44%
Long Term Return	2 Years	0.135	0.160	+3.92%
	3 Years	0.285	+0.310	+154.55%
	5 Years	0.435	+0.255	+158.62%
Annualised Return	Annualised	-	-	+20.75%

## UNITED PLANTATIONS BERHAD (2089)z

C<sup>2</sup> Chart



Period	Dividend Received	Capital Appreciation	Total Shareholder Return	
Short Term Return	5 Days	-	+0.060	+0.36%
	10 Days	-	+0.060	+2.32%
	20 Days	-	+0.200	+1.70%
Medium Term Return	3 Months	-	+1.360	+8.82%
	6 Months	0.400	+2.000	+18.48%
	1 Year	1.250	+0.795	+12.78%
Long Term Return	2 Years	2.200	+2.646	+36.21%
	3 Years	3.450	+4.087	+70.10%
	5 Years	6.350	+4.565	+89.89%
Annualised Return	Annualised	-	-	+13.65%

## UCHI TECHNOLOGIES BERHAD (7100)

C<sup>2</sup> Chart



Period	Dividend Received	Capital Appreciation	Total Shareholder Return	
Short Term Return	5 Days	-	+0.160	+4.88%
	10 Days	-	+0.220	+6.81%
	20 Days	-	+0.220	+6.81%
Medium Term Return	3 Months	-	+0.200	+6.83%
	6 Months	0.120	+0.190	+9.51%
	1 Year	0.230	+0.410	+20.66%
Long Term Return	2 Years	0.415	+0.340	+24.28%
	3 Years	0.575	+1.120	+72.75%
	5 Years	0.870	+0.912	+71.56%
Annualised Return	Annualised	-	-	+11.40%

**Disclaimer:** The information on this page is provided as a service to readers. It does not constitute financial advice and/or any investment recommendations. Past performance is not indicative of future results. We assume no liability for damages resulting from or arising out of the use of such information. It would be best if you did your own research to make your personal investment decisions wisely or consult a licenced investment advisor.



Week: 14 April 2023 – 19 April 2023

More Brokers' Call 

AMINVESTMENT BANK <small>... See More</small>	Call	Target Price	Release Date
CTOS Digital Berhad (5301)	BUY	RM1.80	18 Apr 2023
Infomina Berhad (0265)	HOLD	RM1.82	14 Apr 2023
Sime Darby Plantation Berhad (5285)	HOLD	RM4.40	17 Apr 2023

BIMB SECURITIES SDN BHD <small>... See More</small>	Call	Target Price	Release Date
Apex Healthcare Berhad (7090)	BUY	RM4.57	16 Apr 2023
MY E.G. Services Berhad (0138)	BUY	RM1.15	13 Apr 2023

CGS CIMB <small>... See More</small>	Call	Target Price	Release Date
Astro Malaysia Holdings Berhad (6399)	ADD	RM0.86	17 Apr 2023

KENANGA <small>... See More</small>	Call	Target Price	Release Date
Ancom Nylex Berhad (4758)	OUTPERFORM	RM1.80	19 Apr 2023
Axis Real Estate Investment Trust (5106)	MARKET PERFORM	RM1.84	19 Apr 2023
CTOS Digital Berhad (5301)	OUTPERFORM	RM 1.80	18 Apr 2023
Sime Darby Plantation Berhad (5285)	UNDERFORM	RM 3.65	17 Apr 2023
Techbond Group Berhad (5289)	OUTPERFORM	RM 0.45	17 Apr 2023

MIDF <small>... See More</small>	Call	Target Price	Release Date
Aeon Co. (M) Berhad (6599)	BUY	RM1.90	13 Apr 2023
Axis Real Estate Investment Trust (5106)	BUY	RM2.060	19 Apr 2023
Sime Darby Plantation Berhad (5285)	BUY	RM5.50	17 Apr 2023

UOB KAYHIAN <small>... See More</small>	Call	Target Price	Release Date
Ancom Nylex Berhad (4758)	BUY	RM1.27	14 Apr 2023
Formosa Prosonic Industries Berhad (9172)	BUY	RM3.11	18 Apr 2023
Tasco Berhad (5140)	BUY	RM1.03	18 Apr 2023
Westports Holdings Berhad (5246)	HOLD	RM3.80	17 Apr 2023

**Disclaimer:** InveSt does not accept any liability whatsoever for any direct, indirect or consequential losses (including loss of profit) or damages that may arise from the use of information or opinions in this publication. The information and opinions in InveSt are not to be considered as an offer to sell or buy any of the securities discussed. Opinions expressed are subject to change without notice. The Brokers may, from time to time, have interests or positions in the securities mentioned. For the full report on each item listed on this page, please visit [https://www.shareinvestor.com/my/brokers\\_call](https://www.shareinvestor.com/my/brokers_call).



**DEFINITION:** Top 9 stocks with Technical Analysis plus Pattern Matching by 60 pre-defined indicators by the system showing a higher probability of bullish sentiment on the share price.



ShareInvestor WebPro > Screener > Predefined TA Screens > select market BURSA > Most Long Signals > click Scan Results or mouse over each company

## PASUKHAS GROUP BERHAD (0177.MY)

### PASUKGB

Price updated at 19 Apr 2023 16:59

Last: <b>0.215</b>	Change: <b>+0.035</b>	Volume: <b>319,292</b>
	Change (%): <b>+19.44</b>	Range: <b>0.190 - 0.235</b>

TA Scanner Results based on historical data up to 19 Apr 2023

Condition	Signal	Explanation
Bollinger Band: Bullish Long Term Volatility Breakout and Trending	Long	1. Close price above upper bollinger band(33,1). 2. Volume above average volume(50). 3. Average volume(50) is above 300,000.
Bollinger Band: Bullish Short Term Volatility Breakout and Trending	Long	1. Close price above upper bollinger band(33,1). 2. Volume above average volume(10). 3. Average volume(10) is above 300,000.
Bollinger Band: High Above Upper Bollinger Band	Neutral	1. High above upper bollinger band(14,2). 2. Average volume(5) is above 100,000.
CCI: Bearish CCI Overbought And Reversing	Short	1. CCI(26) above 100 and CCI(26) 1 day ago increasing for the last 3 days. 2. CCI(26) below CCI(26) 1 day ago
DM: Bullish Directional Movement	Long	-DI(14) crossed below +DI(14)
Donchian Channels: High Above Upper Donchian Channels	Long	High crossed above the upper Donchian Channel(14,4)
MA: Bullish Price Crossover	Long	1. Close price crossed above MA(40) within the last 1 day. 2. Previous day close price is below the MA(10) for the last 5 days
MA: Short Term Bullish Moving Average Crossover	Long	MA(10) crossed above MA(15) within the last 1 day.
MACD: Bullish MACD Crossover	Long	1. MACD(12,26) diff line crossed above the MACD(12,26) signal line. 2. MACD Histogram(12,26) is above 0.
RSI: Short Term RSI 50 Bullish Crossover	Long	1. RSI(20) crossed above 50 within the last 1 day and RSI(20) 1 day ago below 50 for the last 5 days. 2. Volume above average volume(125). 3. Average volume(5) is above 100,000.

## MAXIS BERHAD (6012.MY)

### MAXIS

Price updated at 19 Apr 2023 16:57

Last: <b>4.290</b>	Change: <b>-0.010</b>	Volume: <b>13,967</b>
	Change (%): <b>-0.23</b>	Range: <b>4.260 - 4.300</b>

TA Scanner Results based on historical data up to 19 Apr 2023

Condition	Signal	Explanation
Accumulation Distribution: Bullish Accumulation Distribution	Long	Accumulation distribution increasing for the last 7 days
Bollinger Band: High Above Upper Bollinger Band	Neutral	1. High above upper bollinger band(14,2). 2. Average volume(5) is above 100,000.
CCI: Bearish CCI Overbought And Reversing	Short	1. CCI(26) above 100 and CCI(26) 1 day ago increasing for the last 3 days. 2. CCI(26) below CCI(26) 1 day ago
Price: Consecutive Days Gains	Long	1. Close price has been increasing over the last 5 days. 2. Average volume(5) above 100,000.
Price: New 52 Week High	Long	1. Stock reach a new 52 week high. 2. Average volume(30) is above 50000.
Volume: 10 Days large value Buy Up trade	Long	1. 150K value Buy Up greater than Sell Down by 20% for 10 days. 2. 50K-100K value Buy Up greater than Sell Down by 20% for 10 days. 3. Average volume(10) is above 1000000
Volume: 5 Days large value Buy Up trade	Long	1. 150K value Buy Up greater than Sell Down by 20% for 5 days. 2. 50K-100K value Buy Up greater than Sell Down by 20% for 5 days. 3. Average volume(10) is above 1000000
Williams %R: Bearish Williams %R	Short	1. Williams %R(26) between 0 and -20. 2. Average volume(5) is above 100,000.

## ANNUM BERHAD (5082.MY)

### ANNUM

Price updated at 19 Apr 2023 16:55

Last: <b>0.220</b>	Change: <b>-0.015</b>	Volume: <b>40,296</b>
	Change (%): <b>-6.38</b>	Range: <b>0.220 - 0.235</b>

TA Scanner Results based on historical data up to 19 Apr 2023

Condition	Signal	Explanation
Bollinger Band: Bullish Long Term Volatility Breakout and Trending	Long	1. Close price above upper bollinger band(33,1). 2. Volume above average volume(50). 3. Average volume(50) is above 300,000.
Bollinger Band: Bullish Short Term Volatility Breakout and Trending	Long	1. Close price above upper bollinger band(33,1). 2. Volume above average volume(10). 3. Average volume(10) is above 300,000.
Bollinger Band: High Above Upper Bollinger Band	Neutral	1. High above upper bollinger band(14,2). 2. Average volume(5) is above 100,000.
Donchian Channels: High Above Upper Donchian Channels	Long	High crossed above the upper Donchian Channel(14,4)
RSI: Short Term RSI 50 Bullish Crossover	Long	1. RSI(20) crossed above 50 within the last 1 day and RSI(20) 1 day ago below 50 for the last 5 days. 2. Volume above average volume(125). 3. Average volume(5) is above 100,000.
Volume: Volume Spike	Long	1. Volume is more than 500% above average volume(10). 2. Volume above 200000. 3. Close price above 0.10
Williams %R: Bearish Williams %R	Short	1. Williams %R(26) between 0 and -20. 2. Average volume(5) is above 100,000.

## MEDIA PRIMA BERHAD (4502.MY)

### MEDIA

Price updated at 19 Apr 2023 16:59

Last: <b>0.405</b>	Change: <b>-0.010</b>	Volume: <b>7,373</b>
	Change (%): <b>-2.41</b>	Range: <b>0.400 - 0.420</b>

TA Scanner Results based on historical data up to 19 Apr 2023

Condition	Signal	Explanation
Bollinger Band: High Above Upper Bollinger Band	Neutral	1. High above upper bollinger band(14,2). 2. Average volume(5) is above 100,000.
DM: Bullish Directional Movement	Long	-DI(14) crossed below +DI(14)
Donchian Channels: High Above Upper Donchian Channels	Long	High crossed above the upper Donchian Channel(14,4)
MA: Bullish Price Crossover	Long	1. Close price crossed above MA(40) within the last 1 day. 2. Previous day close price is below the MA(10) for the last 5 days
MACD: Bullish MACD Crossover	Long	1. MACD(12,26) diff line crossed above the MACD(12,26) signal line. 2. MACD Histogram(12,26) is above 0.
Parabolic SAR: Bearish Parabolic SAR Reversal	Neutral	1. Parabolic SAR 1 day ago above close price 1 day ago for the last 5 days. 2. Parabolic SAR below close price
RSI: Short Term RSI 50 Bullish Crossover	Long	1. RSI(20) crossed above 50 within the last 1 day and RSI(20) 1 day ago below 50 for the last 5 days. 2. Volume above average volume(125). 3. Average volume(5) is above 100,000.

**Disclaimer:** The information on this page is provided as a service to readers. It does not constitute financial advice and/or any investment recommendations. Past performance is not indicative of future results. We assume no liability for damages resulting from or arising out of the use of such information. It would be best if you did your own research to make your personal investment decisions wisely or consult a licenced investment advisor.





SALUTICA BERHAD (0183.MY)

SALUTE

Price updated at 19 Apr 2023 16:59

Last: <b>1.160</b>	Change: <b>-0.490</b>	Volume: <b>651,053</b>
	Change (%): <b>-29.70</b>	Range: <b>1.160 - 1.680</b>

TA Scanner Results based on historical data up to 19 Apr 2023

Condition	Signal	Explanation
Accumulation Distribution: Bullish Accumulation Distribution	Long	Accumulation distribution increasing for the last 7 days
Bollinger Band: High Above Upper Bollinger Band	Neutral	1. High above upper bollinger band(14,2). 2. Average volume(5) is above 100,000.
MACD: Overbought	Short	1. MACD Histogram(12,26,9) reached a new 6 month high. 2. MACD Histogram(12,26,9) has been above 0 for the last 3 weeks.
Price: Consecutive Days Gains	Long	1. Close price has been increasing over the last 5 days. 2. Average volume(5) above 100,000.
Price: New 52 Week High	Long	1. Stock reach a new 52 week high. 2. Average volume(30) is above 50000.
RSI: RSI Overbought	Short	1. RSI(20) is above 80. 2. RSI(20) is increasing for the last 3 days. 3. Stock has more than 75 days of historical data.
Volume: 10 Days large value Buy Up trade	Long	1. 150K value Buy Up greater than Sell Down by 20% for 10 days. 2. 50K-100K value Buy Up greater than Sell Down by 20% for 10 days. 3. Average volume(10) is above 1000000
Volume: Consecutive Days Of Increasing Average Volume	Long	1. Average Volume(20) has been increasing over the last 2 weeks. 2. Average volume(20) is above 100000
Williams %R: Bearish Williams %R	Short	1. Williams %R(26) between 0 and -20. 2. Average volume(5) is above 100,000.



WCE HOLDINGS BERHAD (3565.MY)

WCEHB

Price updated at 19 Apr 2023 16:50

Last: <b>0.435</b>	Change: <b>-0.010</b>	Volume: <b>19,518</b>
	Change (%): <b>-2.25</b>	Range: <b>0.430 - 0.445</b>

TA Scanner Results based on historical data up to 19 Apr 2023

Condition	Signal	Explanation
Candlestick: Bullish Engulfing	Long	Bullish: Engulfing
Volume: 10 Days large value Buy Up trade	Long	1. 150K value Buy Up greater than Sell Down by 20% for 10 days. 2. 50K-100K value Buy Up greater than Sell Down by 20% for 10 days. 3. Average volume(10) is above 1000000
Volume: 5 Days large value Buy Up trade	Long	1. 150K value Buy Up greater than Sell Down by 20% for 5 days. 2. 50K-100K value Buy Up greater than Sell Down by 20% for 5 days. 3. Average volume(10) is above 1000000
Volume: Consecutive Days Of Increasing Average Volume	Long	1. Average Volume(20) has been increasing over the last 2 weeks. 2. Average volume(20) is above 100000
Williams %R: Bearish Williams %R	Short	1. Williams %R(26) between 0 and -20. 2. Average volume(5) is above 100,000.

**Disclaimer:** The information on this page is provided as a service to readers. It does not constitute financial advice and/or any investment recommendations. Past performance is not indicative of future results. We assume no liability for damages resulting from or arising out of the use of such information. It would be best if you did your own research to make your personal investment decisions wisely or consult a licenced investment advisor.



MENANG CORPORATION (M) BERHAD (1694.MY)

MENANG

Price updated at 19 Apr 2023 16:58

Last: <b>0.700</b>	Change: <b>+0.030</b>	Volume: <b>11,829</b>
	Change (%): <b>+4.48</b>	Range: <b>0.630 - 0.705</b>

TA Scanner Results based on historical data up to 19 Apr 2023

Condition	Signal	Explanation
Bollinger Band: High Above Upper Bollinger Band	Neutral	1. High above upper bollinger band(14,2). 2. Average volume(5) is above 100,000.
Candlestick: Bearish Harami	Short	Bearish: Harami
Donchian Channels: High Above Upper Donchian Channels	Long	High crossed above the upper Donchian Channel(14,4)
MACD: Bullish MACD Crossover	Long	1. MACD(12,26) diff line crossed above the MACD(12,26) signal line. 2. MACD Histogram(12,26) is above 0.
Parabolic SAR: Bearish Parabolic SAR Reversal	Neutral	1. Parabolic SAR 1 day ago above close price 1 day ago for the last 5 days. 2. Parabolic SAR below close price
Price: New 52 Week High	Long	1. Stock reach a new 52 week high. 2. Average volume(30) is above 50000.
Volume: Consecutive Days Of Increasing Average Volume	Long	1. Average Volume(20) has been increasing over the last 2 weeks. 2. Average volume(20) is above 100000
Williams %R: Bearish Williams %R	Short	1. Williams %R(26) between 0 and -20. 2. Average volume(5) is above 100,000.



PUC BERHAD (0007.MY)

PUC

Price updated at 19 Apr 2023 16:59

Last: <b>0.030</b>	Change: <b>-0.005</b>	Volume: <b>9,021</b>
	Change (%): <b>-14.29</b>	Range: <b>0.030 - 0.035</b>

TA Scanner Results based on historical data up to 19 Apr 2023

Condition	Signal	Explanation
Bollinger Band: Bullish Long Term Volatility Breakout and Trending	Long	1. Close price above upper bollinger band(33,1). 2. Volume above average volume(50). 3. Average volume(50) is above 300,000.
Bollinger Band: Bullish Short Term Volatility Breakout and Trending	Long	1. Close price above upper bollinger band(33,1). 2. Volume above average volume(10). 3. Average volume(10) is above 300,000.
Bollinger Band: High Above Upper Bollinger Band	Neutral	1. High above upper bollinger band(14,2). 2. Average volume(5) is above 100,000.
Donchian Channels: High Above Upper Donchian Channels	Long	High crossed above the upper Donchian Channel(14,4)
RSI: Short Term RSI 50 Bullish Crossover	Long	1. RSI(20) crossed above 50 within the last 1 day and RSI(20) 1 day ago below 50 for the last 5 days. 2. Volume above average volume(125). 3. Average volume(5) is above 100,000.



SIME DARBY PLANTATION BERHAD (5285.MY)

SIMEPLT

Price updated at 19 Apr 2023 16:56

Last: <b>4.300</b>	Change: <b>-0.010</b>	Volume: <b>23,408</b>
	Change (%): <b>-0.23</b>	Range: <b>4.280 - 4.350</b>

TA Scanner Results based on historical data up to 19 Apr 2023

Condition	Signal	Explanation
Bollinger Band: High Above Upper Bollinger Band	Neutral	1. High above upper bollinger band(14,2). 2. Average volume(5) is above 100,000.
Candlestick: Bullish Engulfing	Long	Bullish: Engulfing
DM: Bullish Directional Movement	Long	-DI(14) crossed below +DI(14)
Donchian Channels: High Above Upper Donchian Channels	Long	High crossed above the upper Donchian Channel(14,4)
MA: Short Term Bullish Moving Average Crossover	Long	MA(10) crossed above MA(15) within the last 1 day.



# MALAYSIAN REITs' OUTLOOK STILL BRIGHT ON HEALTHY ECONOMIC GROWTH – RHB RESEARCH

According to RHB Research, the outlook remains bright for real estate investment trusts (REITs) with retail and industrial assets, supported by healthy domestic economic growth and rising number of tourists. The management teams of retail REITs had generally guided for improved mid-single-digit rental reversion rates. This is following the strong retail sales momentum in the past year, and the industrial segment should continue to remain stable, due to favourable supply-demand dynamics.

The luxury tax, proposed during the re-tabled 2023 Budget, is expected to be rolled out in the second half of 2023 (2H23). Details were still sparse, but the government was working with industry players to minimise any negative impact of the proposed tax.



The REITs under its coverage, KLCCP Stapled and Pavilion REIT, will be most affected because of their higher-end target market. That said, the net impact should be minimal as retail spending will be supported by the increasing number of tourists this year.

Meanwhile the outlook for industrial REITs remained bright from high demand and acquisition opportunities, but it remained cautious on the office segment. Challenges remained particularly in the office segment which had seen lower occupancy rates from a mismatch in supply and demand.

The retail segment should be boosted by an increasing number of international tourists. However the long-term prospects remain cognisant due to the incoming supply of new malls. The research house maintains Neutral call on the sector as valuations are fair at present.

## TECHNICAL CONSUMER GOODS MARKET IN ASIA-PACIFIC REMAINS STABLE IN 2023 - GfK

According to German market research company GfK's head of market intelligence of APAC Mukund Tripathi, the outlook for the Asia-Pacific market for technical consumer goods (TCG) was expected to remain stable for 2023 due to value seeking consumers despite inflationary pressures and rising costs.

India and Southeast Asian markets, particularly Malaysia, Indonesia, and Vietnam, continue to demonstrate opportunities with stronger growth, continuing the momentum from loosening lockdown restrictions.

Additionally, overall sales of TCG are declining across most regions except for emerging Asia recording year-on-year growth for five consecutive quarters. TCG involving sales of photo products grew alongside the tourism recovery due to the reduction in travel restrictions, especially in Singapore at 33.1% and Malaysia (32.8%).

The gaming industry was also expected to accelerate hardware expenditure and growth in 2023, with Southeast Asia experiencing a high growth rate of 51% in 2021 and 12% in 2022 compared to other regions in Asia-Pacific. Online channels for information technology (IT)



products and office equipment contributed to growing TCG sales.

Meanwhile, sustainability in the TCG sector was a key trend where consumers' monetary concerns influenced buying attitudes.

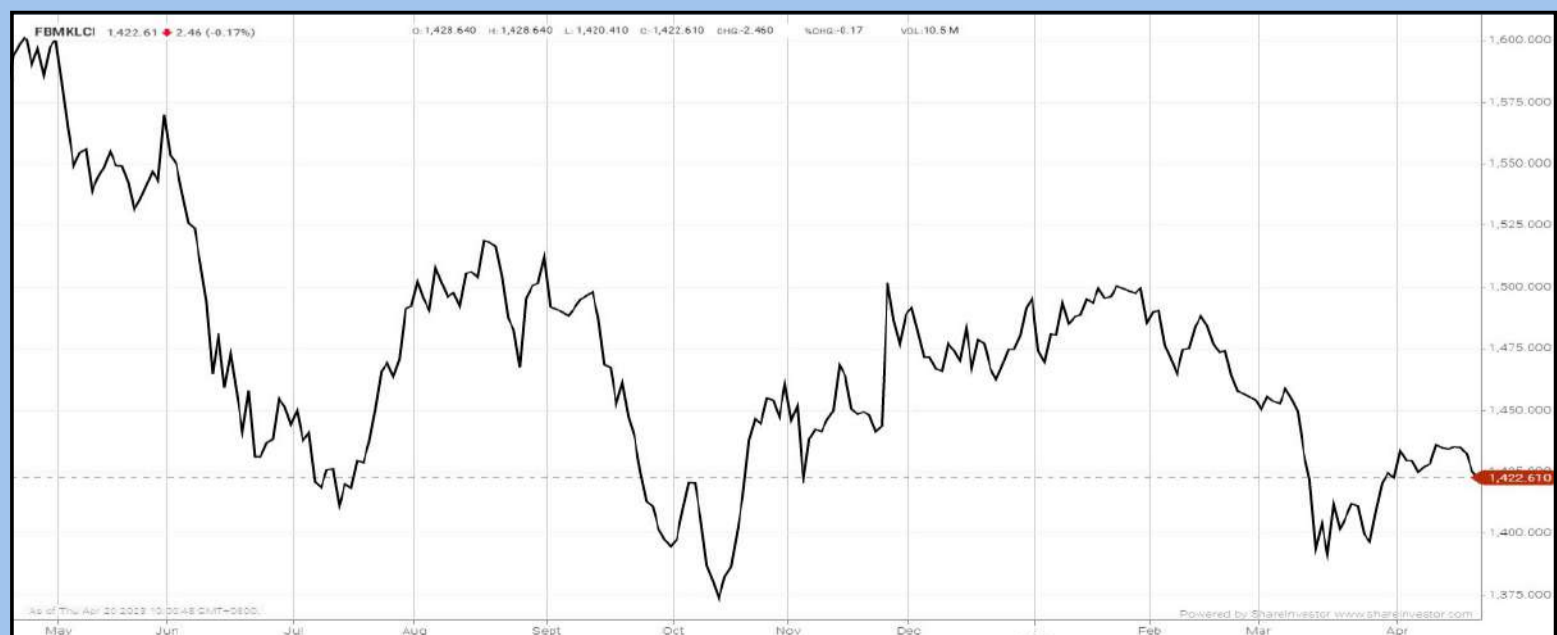
However, brands and manufacturers need to also consider inventory management and pricing pressure to face challenges in 2023. Brands also needed agility in production cycles and innovation in products and marketing to achieve a competitive advantage, which will lead to the conception of smart devices and premium product offerings.

Tourism recovery post-pandemic, the decrease in transportation and shipping costs, and the opening of the Chinese economy will enable growth with product innovation and differentiation that yield higher profits.

**Note From Publisher: Bursa Malaysia will be closed on Friday April 21 and Monday April 24 in conjunction with Hari Raya Aidil Fitri. We wish all our Muslim readers Selamat Hari Raya. And all Malaysians Happy Holidays. Stay safe from Covid 19 infections. Safe travels.**

## EYE ON THE MARKETS

On Wednesday (19Apr), the Ringgit closed at 4.4370 against the USD and 3.3205 to the Sing Dollar. On Monday (17Apr), the FBM KLCI opened at 1427.89. As at Thursday (20Apr) 9:00am, the FBM KLCI is up 0.75 points for the week at 1428.64. Over in US, the overnight Dow Jones Industrial Average closed down 79.62 points (-0.23%) to 33,897.01 whilst the NASDAQ gained 3.81 points (+0.03%) to 12,157.23.



KLCI 1 Year Chart



## Over 5 trading days



ShareInvestor WebPro ([www.shareinvestor.com/my](http://www.shareinvestor.com/my))

1. Price > Stock Prices
2. Select Market: NASDAQ / NYSE / IDX / SET / HKEX / SGX (One bourse at a time)
3. select Stocks Tab
4. select Ranking Top Gainers or Top Losers (Over 5 Trading Days)
5. Mouse over Column Layout > select Edit Customs > select Name > select Last Done Price > select 5 Days Change > select 52 Weeks High > select 52 Weeks Low > Mouse Over Column Layout > select Custom

### NASDAQ (USD)

#### Top Gainers

Name	Last Done	Change Over 5 Days	52 Weeks High	52 Weeks Low
FIRST CITIZENS BANCSHARES INC NRTH	1,063.400	+86.750	1,016.655	505.840
PROMETHEUS BIOSCIENCES INC	193.985	+81.735	193.980	21.500
MERCADOLIBRE INC	1,308.290	+52.250	1,329.490	600.685
MADRIGAL PHARMACEUTICALS INC	293.190	+51.660	315.450	57.153
BOOKING HOLDINGS INC	2,676.280	+129.030	2,677.180	1,616.850

#### Top Losers

Name	Last Done	Change Over 5 Days	52 Weeks High	52 Weeks Low
ASML HOLDING NV EURO.09 NY REGISTRY SHS 2012	623.600	-31.060	698.590	363.150
ATRIION CORP	608.000	-36.390	738.660	534.990
HINGHAM INSTITUTION FOR SAVINGS	198.360	-29.240	347.760	202.350
CDW CORP	165.120	-22.970	215.000	147.910
MESA LABORATORIES INC	167.630	-16.720	249.940	114.205

### NYSE (USD)

#### Top Gainers

Name	Last Done	Change Over 5 Days	52 Weeks High	52 Weeks Low
BERKSHIRE HATHAWAY INC	494,947.980	+4,187.980	526,900.000	393,012.250
NVR INC	5,861.130	+270.910	5,844.560	3,576.010
CHIPOTLE MEXICAN GRILL	1,805.000	+87.110	1,809.660	1,196.280
METTLER-TOLEDO INTERNATIONAL INC	1,598.990	+65.550	1,615.970	1,065.550
WHITE MOUNTAINS INSURANCE GROUP	1,470.280	+59.550	1,560.210	1,030.380

#### Top Losers

Name	Last Done	Change Over 5 Days	52 Weeks High	52 Weeks Low
TEXAS PACIFIC LAND CORPORATION	1,577.560	-158.340	2,739.000	1,250.010
HUMANA INC	492.900	-39.150	571.300	410.870
ELEVANCE HEALTH INC	457.330	-35.660	549.520	440.020
UNITEDHEALTH GROUP INC	486.200	-34.990	558.100	436.510
PUBLIC STORAGE	289.130	-24.020	421.760	270.130

### IDX (Rupiah)

#### Top Gainers

Name	Last Done	Change Over 5 Days	52 Weeks High	52 Weeks Low
TELEFAST INDONESIA TBK	3,640.000	+620.000	5,900.000	2,310.000
JEMBO CABLE CO	4,900.000	+550.000	6,125.000	3,600.000
ASURANSI TUGU PRATAMA INDONESIA TBK	2,450.000	+350.000	3,490.000	1,285.000
SOHO GLOBAL HEALTH TBK	5,375.000	+300.000	6,450.000	5,050.000
TRANSCOAL PACIFIC TBK	7,575.000	+300.000	11,800.000	6,625.000

#### Top Losers

Name	Last Done	Change Over 5 Days	52 Weeks High	52 Weeks Low
INDO TAMBANGRAYA MEGAH TBK	32,250.000	-3,125.000	45,650.000	26,300.000
UNITED TRACTORS	30,500.000	-750.000	36,200.000	23,600.000
ADIRA DINAMIKA MULTI FINANCE TBK	9,925.000	-700.000	10,850.000	7,900.000
DIAN SWASTATIKA SENTOSA TBK	34,000.000	-500.000	46,000.000	27,500.000
SINGARAJA PUTRA TBK	1,750.000	-420.000	2,600.000	188.000

### SET (Thai Baht)

#### Top Gainers

Name	Last Done	Change Over 5 Days	52 Weeks High	52 Weeks Low
DELTA	972.000	+22.000	1,154.000	287.000
BH	243.000	+9.000	248.000	158.500
ALUCON	191.500	+2.500	220.000	171.000
TTI	27.250	+2.450	53.000	23.300
CPALL	64.000	+2.250	73.750	52.750

#### Top Losers

Name	Last Done	Change Over 5 Days	52 Weeks High	52 Weeks Low
BE8	49.250	-7.500	69.750	38.750
INSURE	149.000	-7.500	700.000	39.250
SCC	309.000	-7.000	382.000	307.000
BBIK	101.500	-6.500	143.500	56.000
SCB	100.500	-5.000	121.500	88.000

### HKEX (HKD)

#### Top Gainers

Name	Last Done	Change Over 5 Days	52 Weeks High	52 Weeks Low
ORIENT OVERSEAS INT	169.200	+15.500	284.800	112.000
ASYMCHAM LABORATORIES (TIANJIN) CO	107.300	+7.000	161.857	80.350
BYD COMPANY LIMITED	229.600	+7.000	333.000	161.700
TRIP COM GROUP LTD	294.000	+6.800	321.800	152.100
STAR CM HOLDINGS LIMITED	110.500	+6.200	120.100	32.550

#### Top Losers

Name	Last Done	Change Over 5 Days	52 Weeks High	52 Weeks Low
ANTA SPORTS PRODUCTS	99.450	-12.750	125.300	67.850
ANGELALIGN TECHNOLOGY INC	107.300	-11.400	184.800	64.550
DPC DASH LTD	54.000	-9.600	65.300	45.100
3D MEDICINES INC	67.750	-9.450	84.250	27.700
JD.COM INC	144.200	-8.800	286.000	138.900

### SGX (SGD)

#### Top Gainers

Name	Last Done	Change Over 5 Days	52 Weeks High	52 Weeks Low
JARDINE C&C	33.320	+0.770	36.850	25.450
DBS	32.950	+0.630	35.855	29.009
JMH USD	49.150	+0.360	59.480	42.600
KEPPEL CORP	6.190	+0.340	6.240	4.136
VENTURE	17.570	+0.290	18.750	15.710

#### Top Losers

Name	Last Done	Change Over 5 Days	52 Weeks High	52 Weeks Low
DIGILIFE TECH	2.300	-0.560	2.880	1.100
SHANGRI-LA HKD	7.380	-0.370	8.400	4.300
SOUTHERNALLIANCE	0.685	-0.275	0.980	0.350
NIO inc. USD OV	9.210	-0.180	25.350	8.030
PLATOCAPITAL	1.600	-0.090	2.100	0.690



# DISPUTE RESOLUTION – BOARDROOM OR COURTROOM



Devanesan  
Evanson

**Chief Executive  
Officer, Minority  
Shareholders Watch  
Group**

**A** board is entrusted with the role of ensuring that a company's business and affairs are managed under its direction and oversight. It is responsible for periodically reviewing and approving the company's overall strategies and significant policies. At the same time, board members should discharge their powers in a fiduciary capacity and act in the best interest of the company and its shareholders.

However, there are times when dissenting views are overruled by dominant directors/controlling shareholders to the detriment of minority shareholders' interest. Shutting down debate in the boardroom does not resolve conflicts. Instead, the conflicts seep through the cracks, destroying relationships from within. Then, the differences in opinion and disagreements



escalate into tussles between the boards and shareholder-directors. With rival camps of directors (and sometimes shareholders) jostling for control of the company, drastic actions like removal of directors, filing of legal suits and suspension of directors take place.

## **BOARDROOM OR COURTROOM**

When embroiled in a dispute, directors and shareholders face the decision of whether to resolve the issue through the boardroom or the courtroom. Each option has its advantages and disadvantages, and the decision on which path to take will depend on the specific circumstances of the case. There are now many alternatives to litigation that can pre-empt lawsuits, resolve longstanding disputes, and even produce win-win solutions to bitter fights that would otherwise leave both sides damaged. Resolving disputes through the boardroom is the preferable alternative.

This approach can be particularly advantageous where the parties are keen in maintaining their business relationships. In this scenario, the parties involved work together to find a mutually acceptable solution that can preserve the ongoing relationships necessary for the success of the company. Doing so has its advantages.

First, the parties involved in the dispute can maintain control over the outcome and work together to find a mutually agreeable and acceptable solution.

Second, negotiations within a boardroom keep things confidential and safeguard a company's reputation and business interests.

Third, it helps to preserve relationships and avoids the acrimony and hostility that can result from litigation. Long-term business relationships can be as valuable to a company as long-term personal relationships to peoples' lives.



Lastly, negotiation and mediation are less costly and are easier to execute compared to the expensive and long-drawn-out litigation process.

Power imbalance, bias or conflict of interest may exist on the board if certain domineering directors or shareholders dominate discussions and outcomes. This can undermine the integrity of decision-making and further strain the already strained relationships. If the dispute involves legal claims, breach of conduct or issues that cannot be resolved in the boardroom, it may be necessary to take the matter to court. Shareholders have legal rights and remedies available under corporate law especially the Companies Act 2016. They may need to pursue these options to protect their interests. Such legal action provides a definitive resolution of the dispute and may establish legal precedents that can be useful in future disputes.

## **ANOTHER PERSPECTIVE**

Directors and managers dread protracted litigation as it can damage relationships, tarnish reputations, and cost enormous sums of money, time, and effort. That said, tussles between boards and shareholders can be seen from both positive and negative perspectives. The bright side is that it is evidence of shareholder activism, where shareholders exercise their legal right to have the directors of their choice on the board. Such shareholder activism should be encouraged and supported in a mature capital market, provided that such activism is in the best interest of the company. The downside is that, almost always, the board and management are distracted due to the tussle and ensuing legal actions.

Most companies can ill afford to be engulfed in time-consuming tussles and litigation. With protracted legal battles and ensuing legal actions, most boards and management are distracted, and the company's business and performance suffers.



Minority shareholders, when making their investment decision, must consider the possible deterioration in the company's performance and the distraction caused by any tussle (legal or otherwise). If minority shareholders believe that the group of activist shareholders (who are trying to nominate their representatives to the board or determine some other course of action) have the good intention of bringing about long-term shareholders value enhancement, then minority shareholders should support their action.

At the end of the day, investors are well advised to steer clear of risky companies in the first place. For risk averse investors, it is about erring on the side of caution.

**Lim Cian Yai**  
**Manager, Corporate Monitoring**

*This article appeared in the The Observer, a weekly newsletter published by The Minority Shareholders Watch Group (MSWG) and reproduced here with their permission. Do follow MSWG's Twitter account at @MSWGMalaysia and share your thought on their tweets from time to time.*

CHECK OUT  
SHAREINVESTOR  
**BROKERS'  
CALL**

Weekly Buy/Sell/Hold calls  
from leading Malaysian Brokerages.

[Go To Brokers' Call](#)

BUY HOLD SELL

The advertisement features a hand holding a wooden block labeled 'BUY' in green. Below it are two more wooden blocks labeled 'HOLD' in orange and 'SELL' in red. The background is a dark blue with a faint candlestick chart and the text 'CHECK OUT SHAREINVESTOR BROKERS' CALL' in white. Below the title, it says 'Weekly Buy/Sell/Hold calls from leading Malaysian Brokerages.' and a green button with the text 'Go To Brokers' Call'.



# INSIDER ACTIVITY

THURSDAY APR 20 2023

**DEFINITION:** Insider Activity shows the trades made by substantial shareholders or directors of the company. Purchases by the directors and company share buyback may indicate the share price is undervalued and brings confidence to the price trend of the share price.



ShareInvestor WebPro > Fundamental > Insider Trades > click Search tab > Select Bursa > click Stock name > scroll up and leave at <Select Counter> Type Date Range for Announcement Date > click Search

Notice Period is 09 April - 15 April 2023

Effective Change Date	Stock Name	Buyer/ Seller Name [Classification]	Bought / (Sold) ['000]		No. of Shares After Trade ['000]	
			Total	% Held	Total	% Held
11 APR 2023 - 12 APR 2023	3A	MR TEO KWEE HOCK [SSH]	108	45,338	9.271	
10 APR 2023 - 10 APR 2023	AEON	EMPLOYEES PROVIDENT FUND BOARD [SSH]	185	155,932	11.106	
07 APR 2023 - 07 APR 2023	AEON	EMPLOYEES PROVIDENT FUND BOARD [SSH]	1,167	155,747	11.093	
06 APR 2023 - 06 APR 2023	AEON	EMPLOYEES PROVIDENT FUND BOARD [SSH]	327	154,580	11.01	
05 APR 2023 - 05 APR 2023	AEON	EMPLOYEES PROVIDENT FUND BOARD [SSH]	-39	154,253	10.987	
11 APR 2023 - 11 APR 2023	AIRPORT	EMPLOYEES PROVIDENT FUND BOARD [SSH]	53	250,669	15.108	
07 APR 2023 - 07 APR 2023	AIRPORT	EMPLOYEES PROVIDENT FUND BOARD [SSH]	-340	250,616	15.105	
11 APR 2023 - 11 APR 2023	ALLIANZ	EMPLOYEES PROVIDENT FUND BOARD [SSH]	-23	13,142	7.384	
10 APR 2023 - 10 APR 2023	ALLIANZ	EMPLOYEES PROVIDENT FUND BOARD [SSH]	-21	13,165	7.397	
13 APR 2023 - 13 APR 2023	ANCOMNY	MR CHAN THYE SENG [DIR/CEO]	-60	11021	1.18	
10 APR 2023 - 12 APR 2023	ANCOMNY	DATO' SIEW KA WEI [DIR/CEO]	11	200432	21.464	
10 APR 2023 - 12 APR 2023	ANCOMNY	DATO' SIEW KA WEI [SSH]	11	200432	21.464	
06 APR 2023 - 07 APR 2023	ANCOMNY	MR LEE CHEUN WEI [DIR/CEO]	150	67,040	7.179	
06 APR 2023 - 07 APR 2023	ANCOMNY	MR LEE CHEUN WEI [SSH]	150	67,040	7.179	
05 APR 2023 - 07 APR 2023	ANCOMNY	DATO' SIEW KA WEI [DIR/CEO]	19	200,421	21.462	
05 APR 2023 - 07 APR 2023	ANCOMNY	DATO' SIEW KA WEI [SSH]	19	200,421	21.462	
10 APR 2023 - 12 APR 2023	ASDION	MILLION SAINT CONSULTANCY SDN BHD [SSH]	-7,201	75,775	17.518	
05 APR 2023 - 07 APR 2023	ASDION	MILLION SAINT CONSULTANCY SDN BHD [SSH]	-4,309	82,976	19.183	
14 APR 2023 - 14 APR 2023	ASTINO	ASTINO BERHAD [SSH]	390	2,911	0.58989	
11 APR 2023 - 11 APR 2023	AXIATA	EMPLOYEES PROVIDENT FUND BOARD [SSH]	2,116	1,548,536	16.871	
10 APR 2023 - 10 APR 2023	AXIATA	EMPLOYEES PROVIDENT FUND BOARD [SSH]	214	1,546,420	16.847	
07 APR 2023 - 07 APR 2023	AXIATA	EMPLOYEES PROVIDENT FUND BOARD [SSH]	596	1,546,206	16.845	
09 MAR 2023 - 09 MAR 2023	AXIATA	DR SHRIDHIR SARIPUTTA HANSA WIJAYASURIYA [DIR/CEO]	290	1,554	0.017	
09 MAR 2023 - 09 MAR 2023	AXIATA	MR VIVEK SOOD [DIR/CEO]	290	1,206	0.013	
06 APR 2023 - 06 APR 2023	AXIATA	EMPLOYEES PROVIDENT FUND BOARD [SSH]	-2,684	1,545,610	16.839	
05 APR 2023 - 05 APR 2023	AXIATA	EMPLOYEES PROVIDENT FUND BOARD [SSH]	-1,500	1,548,294	16.868	
12 APR 2023 - 12 APR 2023	AXREIT	KUMPULAN WANG PERSARAAN (DIPERBADANKAN) [SSH]	62	182,047	10.456	
12 APR 2023 - 12 APR 2023	AXREIT	LEMBAGA TABUNG HAJI [SSH]	46	87,582	5.03	
11 APR 2023 - 11 APR 2023	BAUTO	PRUDENTIAL PLC [SSH]	-150	74,365	6.373	
10 APR 2023 - 10 APR 2023	BAUTO	EMPLOYEES PROVIDENT FUND BOARD [SSH]	370	130,821	11.211	
10 APR 2023 - 10 APR 2023	BAUTO	PRUDENTIAL PLC [SSH]	-170	74,515	6.386	
07 APR 2023 - 07 APR 2023	BAUTO	EMPLOYEES PROVIDENT FUND BOARD [SSH]	375	130,451	11.18	
06 APR 2023 - 06 APR 2023	BAUTO	EMPLOYEES PROVIDENT FUND BOARD [SSH]	374	130,075	11.147	
05 APR 2023 - 05 APR 2023	BAUTO	EMPLOYEES PROVIDENT FUND BOARD [SSH]	-228	129,701	11.123	
10 APR 2023 - 10 APR 2023	BIMB	EMPLOYEES PROVIDENT FUND BOARD [SSH]	1,881	358,254	15.965	
07 APR 2023 - 07 APR 2023	BIMB	EMPLOYEES PROVIDENT FUND BOARD [SSH]	2,552	356,373	15.881	
06 APR 2023 - 07 APR 2023	BOILERM	MR ADRIAN CHAIR YONG HUANG [DIR/CEO]	50	505	0.098	
12 APR 2023 - 12 APR 2023	BSL-CORP-WB	MISS LOH MAY ANN [DIR/CEO]	-175	650	0.09	
12 APR 2023 - 13 APR 2023	BSTEAD	LEMBAGA TABUNG ANGKATAN TENTERA [SSH]	3,903	1,527,068	75.337	
10 APR 2023 - 11 APR 2023	BSTEAD	LEMBAGA TABUNG ANGKATAN TENTERA [SSH]	7,060	1,523,165	75.144	
06 APR 2023 - 07 APR 2023	BSTEAD	LEMBAGA TABUNG ANGKATAN TENTERA [SSH]	1,499	1,516,104	74.796	
29 MAR 2023 - 30 MAR 2023	BSTEAD	LEMBAGA TABUNG ANGKATAN TENTERA [SSH]	952	1,501,017	74.052	
27 MAR 2023 - 28 MAR 2023	BSTEAD	LEMBAGA TABUNG ANGKATAN TENTERA [SSH]	986	1,496,226	73.815	
23 MAR 2023 - 24 MAR 2023	BSTEAD	LEMBAGA TABUNG ANGKATAN TENTERA [SSH]	19	1,486,807	73.351	
12 APR 2023 - 12 APR 2023	CAB	MR LOO CHOO GEE [DIR/CEO]	-3,000	6,576	0.938	
12 APR 2023 - 12 APR 2023	CAREPLS	MADAM NG SHU SI [SSH]	475	123,212	21.313	
12 APR 2023 - 12 APR 2023	CAREPLS	MR LIM KWEE SHYAN [DIR/CEO]	354	123,794	21.414	
12 APR 2023 - 12 APR 2023	CAREPLS	MR LIM KWEE SHYAN [SSH]	354	123,794	21.414	
06 APR 2023 - 06 APR 2023	CAREPLS	MADAM NG SHU SI [SSH]	100	122,737	21.231	
06 APR 2023 - 06 APR 2023	CAREPLS	MR LIM KWEE SHYAN [DIR/CEO]	100	122,965	21.271	
06 APR 2023 - 06 APR 2023	CAREPLS	MR LIM KWEE SHYAN [SSH]	100	122,965	21.271	
11 APR 2023 - 11 APR 2023	CDB	EMPLOYEES PROVIDENT FUND BOARD [SSH]	-766	1,173,518	10.003	
10 APR 2023 - 10 APR 2023	CDB	EMPLOYEES PROVIDENT FUND BOARD [SSH]	-296	1,174,284	10.01	
07 APR 2023 - 07 APR 2023	CDB	EMPLOYEES PROVIDENT FUND BOARD [SSH]	-1,592	1,174,580	10.012	
06 APR 2023 - 06 APR 2023	CGB	MR CHEW HIAN TAT [DIR/CEO]	100	40,740	27.95	
06 APR 2023 - 06 APR 2023	CGB	MR CHEW HIAN TAT [SSH]	100	40,740	27.95	
11 APR 2023 - 11 APR 2023	CHGP	DATIN LEE TEOH KEE [SSH]	-250	36,124	7.023	
11 APR 2023 - 11 APR 2023	CHGP	CHIN HIN GROUP BERHAD [SSH]	920	307,492	59.778	
11 APR 2023 - 11 APR 2023	CHGP	DATUK SERI CHIAU BENG TEIK [DIR/CEO]	920	307,492	59.778	
11 APR 2023 - 11 APR 2023	CHGP	DATUK SERI CHIAU BENG TEIK [SSH]	920	307,492	59.778	
11 APR 2023 - 11 APR 2023	CHGP	DIVINE INVENTIONS SDN BHD [SSH]	920	307,492	59.778	
11 APR 2023 - 11 APR 2023	CHGP	MR CHIAU HAW CHOON [DIR/CEO]	920	307,492	59.778	
11 APR 2023 - 11 APR 2023	CHGP	MR CHIAU HAW CHOON [SSH]	920	307,492	59.778	
11 APR 2023 - 11 APR 2023	CHGP	PP CHIN HIN REALTY SDN BHD [SSH]	920	307,492	59.778	
10 APR 2023 - 10 APR 2023	CHHB	MR CHUA HEE BOON [DIR/CEO]	100	351	0.118	

Notice Period is 09 April - 15 April 2023

Effective Change Date	Stock Name	Buyer/ Seller Name [Classification]	Bought / (Sold) ['000]		No. of Shares After Trade ['000]	
			Total	% Held	Total	% Held
10 APR 2023 - 12 APR 2023	CHINHIN	DATUK SERI CHIAU BENG TEIK JP [DIR/CEO]	1,439	1,038,023	58.665	
10 APR 2023 - 12 APR 2023	CHINHIN	DATUK SERI CHIAU BENG TEIK JP [SSH]	1,439	1,038,023	58.665	
11 APR 2023 - 11 APR 2023	CIMB	EMPLOYEES PROVIDENT FUND BOARD [SSH]	384	1,437,104	13.47	
07 APR 2023 - 07 APR 2023	CIMB	EMPLOYEES PROVIDENT FUND BOARD [SSH]	315	1,436,721	13.47	
06 APR 2023 - 06 APR 2023	CIMB	KUMPULAN WANG PERSARAAN (DIPERBADANKAN) [SSH]	151	712,323	6.68	
07 APR 2023 - 07 APR 2023	CNOUHUA	MR CHIN KUAN HOOK @ CHEN KOH FOOK [SSH]	422	88,688	13.277	
10 APR 2023 - 10 APR 2023	CTOS	WASATCH ADVISORS LP [SSH]	24	122,778	5.315	
05 APR 2023 - 05 APR 2023	CTOS	WASATCH ADVISORS LP [SSH]	2,344	122,753	5.314	
03 MAR 2023 - 28 MAR 2023	DATAPRP	TAN SRI MUHAMMAD IKMAL OPAT BIN ABDULLAH [SSH]	-18,518	90,475	13.044	
03 MAR 2023 - 28 MAR 2023	DATAPRP	WARDAH COMMUNICATION SDN BHD [SSH]	-18,518	90,475	13.044	
03 MAR 2023 - 28 MAR 2023	DATAPRP	WIDAB BUSINESS GROUP SDN BHD [SSH]	-18,518	90,475	13.044	
11 APR 2023 - 11 APR 2023	DBHD	JLAND GROUP SDN. BHD. (FORMERLY KNOWN AS ABSOLUTE AMBIENT SDN. BHD.) [SSH]	-7,152	228,747	70	
11 APR 2023 - 11 APR 2023	DBHD	JOHOR CORPORATION [SSH]	-7,152	272,712	83.44	
14 APR 2023 - 14 APR 2023	DIALOG	AU HOLDINGS (L) LTD [SSH]	6,250	436,813	7.74	
14 APR 2023 - 14 APR 2023	DIALOG	AZAM UTAMA SDN. BHD. [SSH]	6,250	436,813	7.74	
14 APR 2023 - 14 APR 2023	DIALOG	KEATEE (L) FOUNDATION [SSH]	6,250	436,813	7.74	
13 APR 2023 - 13 APR 2023	DIALOG	KUMPULAN WANG PERSARAAN (DIPERBADANKAN) [SSH]	205	552,515	9.79	
10 APR 2023 - 10 APR 2023	DLADY	CITIGROUP NOMINEES (TEMPATAN) SDN BHD EMPLOYEES PROVIDENT FUND BOARD [SSH]	-4	7,067	11.043	
06 APR 2023 - 06 APR 2023	DLADY	CITIGROUP NOMINEES (TEMPATAN) SDN BHD EMPLOYEES PROVIDENT FUND BOARD [SSH]	-0.8	7,071	11.049	
07 APR 2023 - 07 APR 2023	DPHARMA	EMPLOYEES PROVIDENT FUND BOARD [SSH]	-154	101,483	10.657	
12 APR 2023 - 12 APR 2023	ECOFIRS	DATO' TIONG KWING HEE [DIR/CEO]	-1,030	89,442	7.409	
12 APR 2023 - 12 APR 2023	ECOFIRS	DATO' TIONG KWING HEE [SSH]	-1,030	89,442	7.409	
06 APR 2023 - 06 APR 2023	EDGENTA	URUSHARTA JAMAHAH SDN BHD [SSH]	600	48,313	5.81	
11 APR 2023 - 12 APR 2023	ELKDESA	MR TEOH HOCK CHAI @ TEW HOCK CHAI [SSH]	250	188,680	41.485	
11 APR 2023 - 12 APR 2023	ELKDESA	MR TEOH HOCK @ HOCK CHAI [DIR/CEO]	250	188,680	41.485	
06 APR 2023 - 07 APR 2023	ELKDESA	MR TEOH HOCK CHAI @ TEW HOCK CHAI [SSH]	180	188,430	41.43	
06 APR 2023 - 07 APR 2023	ELKDESA	MR TEOH HOCK @ HOCK CHAI [DIR/CEO]	180	188,430	41.43	
10 APR 2023 - 10 APR 2023	ENGAH	MR CHUA IT CHIT [DIR/CEO]	49	463	0.392	
11 APR 2023 - 11 APR 2023	F&N	EMPLOYEES PROVIDENT FUND BOARD [SSH]	3	47,038	12.825	
10 APR 2023 - 10 APR 2023	F&N	EMPLOYEES PROVIDENT FUND BOARD [SSH]	0.9	47,034	12.824	
07 APR 2023 - 07 APR 2023	F&N	EMPLOYEES PROVIDENT FUND BOARD [SSH]	2	47,033	12.823	
05 APR 2023 - 05 APR 2023	F&N	EMPLOYEES PROVIDENT FUND BOARD [SSH]	20	47,031	12.823	
11 APR 2023 - 11 APR 2023	FFB	EMPLOYEES PROVIDENT FUND BOARD [SSH]	490	118,903	6.398	
07 APR 2023 - 07 APR 2023	FFB	EMPLOYEES PROVIDENT FUND BOARD [SSH]	122	118,413	6.372	
06 APR 2023 - 06 APR 2023	FFB	EMPLOYEES PROVIDENT FUND BOARD [SSH]	266	118,291	6.366	
11 APR 2023 - 11 APR 2023	FITTERS	MR HO JIEN SHIUNG [SSH]	-6,000	53,804	8.85	
10 APR 2023 - 10 APR 2023	FITTERS	MR HO JIEN SHIUNG [SSH]	15,050	59,804	9.836	
07 APR 2023 - 07 APR 2023	FITTERS	MR HO JIEN SHIUNG [SSH]	12,000	44,754	7.361	
10 APR 2023 - 10 APR 2023	GAMUDA	EMPLOYEES PROVIDENT FUND BOARD (EPF BOARD) [SSH]	150	391,937	14.74	
07 APR 2023 - 07 APR 2023	GAMUDA	EMPLOYEES PROVIDENT FUND BOARD (EPF BOARD) [SSH]	-106	391,787	14.73	
06 APR 2023 - 06 APR 2023	GAMUDA	EMPLOYEES PROVIDENT FUND BOARD (EPF BOARD) [SSH]	14	391,893	14.74	
05 APR 2023 - 05 APR 2023	GAMUDA	EMPLOYEES PROVIDENT FUND BOARD (EPF BOARD) [SSH]	177	391,879	14.74	
11 APR 2023 - 11 APR 2023	GCAP	MR LEE POH HIN [SSH]	200	36,337	11.33	
11 APR 2023 - 11 APR 2023	GCAP	MR LEE YEE LONG [SSH]	200	34,161	10.652	
11 APR 2023 - 11 APR 2023	GCAP	PERCETAKAN SANWA INDUSTRIES SDN BHD [SSH]	200	17,000	5.301	
11 APR 2023 - 11 APR 2023	GREENYB	MR THAM FOO CHOON [DIR/CEO]	-3,000	268,949	49.596	
11 APR 2023 - 11 APR 2023	GREENYB	MR THAM FOO CHOON [SSH]	-3,000	268,949	49.596	
10 APR 2023 - 10 APR 2023	GUH	DATUK SERI KENNETH HNG BAK TEE [DIR/CEO]	347	4,446	1.581	
10 APR 2023 - 10 APR 2023	GUH	TAN SRI DATO' SERI HNG BOK SAN [SSH]	133	750	19.267	
10 APR 2023 - 10 APR 2023	GUH	TAN SRI DATO' SERI HNG BOK SAN [DIR/CEO]	347	54,186	19.267	
24 MAR 2023 - 24 MAR 2023	HANDAL	ENCIK YAMANI HAFEZ BIN MUSA [SSH]	715	52,398	19.64	
24 MAR 2023 - 24 MAR 2023	HANDAL	MR SUNILDEEP SINGH DHALIWAL [SSH]	715	70,980	26.61	
24 MAR 2023 - 24 MAR 2023	HANDAL	SEAOFFSHORE CAPITAL SDN BHD [SSH]	715	52,398	19.64	
24 MAR 2023 - 24 MAR 2023	HANDAL	SEAOFFSHORE EQUITIES SDN BHD [SSH]	715	52,398	19.64	
24 MAR 2023 - 24 MAR 2023	HANDAL	SEAOFFSHORE PRODUCTION SOLUTIONS SDN BHD [SSH]	715	52,398	19.64	
10 APR 2023 - 11 APR 2023	HEKTAR	HEKTAR BLACK SDN BHD [SSH]	-185	142,763	28.622	
10 APR 2023 - 11 APR 2023	HEVEA	MISS YOONG LI YEN [DIR/CEO]	-285	185,301	32.747	
10 APR 2023 - 11 APR 2023	HEVEA	MISS YOONG LI YEN [SSH]	-285	185,301	32.747	
10 APR 2023 - 11 APR 2023	HEVEA	MR YOONG HAU CHUN [DIR/CEO]	-285	186,628	32.981	
10 APR 2023 - 11 APR 2023	HEVEA	MR YOONG HAU CHUN [SSH]	-285	186,628	32.981	
10 APR 2023 - 11 APR 2023	HEVEA	MR YOONG TEIN SENG @ YONG KIAN SENG [DIR/CEO]	-285	196,081	34.651	
10 APR 2023 - 11 APR 2023	HEVEA	MR YOONG TEIN SENG @ YONG KIAN SENG [SSH]	-285	196,081	34.651	
07 APR 2023 - 07 APR 2023	HEVEA	MISS YOONG LI YEN [DIR/CEO]	-13	185,586	32.797	

**Disclaimer:** The information in Insider Activity is extracted from [www.shareinvestor.com/fundamental/insider\\_trades](http://www.shareinvestor.com/fundamental/insider_trades). The information on this page is provided as a service to readers. It does not constitute financial advice and/or any investment recommendations. We assume no liability for damages resulting from or arising out of the use of such information. Whilst every effort is made to ensure accuracy, the information presented is not the official record of shareholder filings. Readers are advised to read the original filings on the Bursa Malaysia website at [www.bursamalaysia.com](http://www.bursamalaysia.com)

PURNELL

ESCAPE II  
ABSOLUTE  
SAPPHIRE

PLAY





Notice Period is 09 April – 15 April 2023

Effective Change Date	Stock Name	Buyer/ Seller Name [Classification]	Bought / (Sold) ['000]	No. of Shares After Trade ['000]	
			Total	Total	% Held
07 APR 2023 - 07 APR 2023	HEVEA	MISS YOONG LI YEN [SSH]	-13	185,586	32.797
07 APR 2023 - 07 APR 2023	HEVEA	MR YOONG HAU CHUN [DIR/CEO]	-13	186,913	33.032
07 APR 2023 - 07 APR 2023	HEVEA	MR YOONG HAU CHUN [SSH]	-13	186,913	33.032
07 APR 2023 - 07 APR 2023	HEVEA	MR YOONG TEIN SENG @ YONG KIAN SENG [DIR/CEO]	-13	196,366	34.701
07 APR 2023 - 07 APR 2023	HEVEA	MR YOONG TEIN SENG @ YONG KIAN SENG [SSH]	-13	196,366	34.701
12 APR 2023 - 12 APR 2023	HEXIND	DATO' ONG CHOO MENG [SSH]	-125,000	1,734,317	63.127
12 APR 2023 - 12 APR 2023	HEXIND	DATO' ONG SOON HO [SSH]	-125,000	1,717,884	62.529
12 APR 2023 - 12 APR 2023	HEXIND	HEXTAR HOLDINGS SDN BHD [SSH]	-125,000	1,717,884	62.529
10 APR 2023 - 10 APR 2023	HEXTECH	DATO' ONG CHOO MENG [DIR/CEO]	-3,100	87,851	68.287
10 APR 2023 - 10 APR 2023	HEXTECH	DATO' ONG CHOO MENG [SSH]	-3,100	87,851	68.287
12 APR 2023 - 12 APR 2023	HHGROUP	MR NG CHIN NAM [DIR/CEO]	-2,000	42,486	5.168
12 APR 2023 - 12 APR 2023	HHGROUP	MR NG CHIN NAM [SSH]	-2,000	42,486	5.168
13 APR 2023 - 13 APR 2023	HHGROUP	MR HO WHYE CHONG [DIR/CEO]	5,000	78,595	9.56
13 APR 2023 - 13 APR 2023	HHGROUP	MR HO WHYE CHONG [SSH]	5,000	78,595	9.56
11 APR 2023 - 13 APR 2023	HIBISCS	DATUK MICHAEL TANG VEE MUN [SSH]	-2,000	219,050	10.885
11 APR 2023 - 11 APR 2023	HLBANK	EMPLOYEES PROVIDENT FUND BOARD [SSH]	-340	214,529	10.281
10 APR 2023 - 10 APR 2023	HLBANK	EMPLOYEES PROVIDENT FUND BOARD [SSH]	-52	214,869	10.297
07 APR 2023 - 07 APR 2023	HLBANK	EMPLOYEES PROVIDENT FUND BOARD [SSH]	-204	214,921	10.3
06 APR 2023 - 06 APR 2023	HLBANK	EMPLOYEES PROVIDENT FUND BOARD [SSH]	134	215,125	10.31
05 APR 2023 - 05 APR 2023	HLBANK	EMPLOYEES PROVIDENT FUND BOARD [SSH]	-2	214,991	10.303
10 APR 2023 - 10 APR 2023	IGBB	HSBC ASIA HOLDINGS LIMITED (HAHO) [SSH]	41	72,806	8.088
10 APR 2023 - 10 APR 2023	IGBB	HSBC HOLDINGS PLC (HGHO) [SSH]	41	72,806	8.088
10 APR 2023 - 10 APR 2023	IGBB	HSBC INTERNATIONAL TRUSTEE (HOLDINGS) PTE. LTD. (HTHL) [SSH]	41	72,806	8.088
10 APR 2023 - 10 APR 2023	IGBB	HSBC INTERNATIONAL TRUSTEE LIMITED (HKIT) [SSH]	41	72,806	8.088
10 APR 2023 - 10 APR 2023	IGBB	THE HONGKONG AND SHANGHAI BANKING CORPORATION LIMITED (HBAP) [SSH]	41	72,806	8.088
05 APR 2023 - 05 APR 2023	IGBREIT	EMPLOYEES PROVIDENT FUND BOARD ("EPF BOARD") [SSH]	100	408,242	11.37
11 APR 2023 - 11 APR 2023	IHH	EMPLOYEES PROVIDENT FUND BOARD [SSH]	-2,405	918,440	10.429
10 APR 2023 - 10 APR 2023	IHH	EMPLOYEES PROVIDENT FUND BOARD [SSH]	-807	920,845	10.456
07 APR 2023 - 07 APR 2023	IHH	EMPLOYEES PROVIDENT FUND BOARD [SSH]	-449	921,652	10.465
06 APR 2023 - 06 APR 2023	IHH	EMPLOYEES PROVIDENT FUND BOARD [SSH]	480	922,101	10.47
05 APR 2023 - 05 APR 2023	IHH	EMPLOYEES PROVIDENT FUND BOARD [SSH]	2,522	921,621	10.465
13 APR 2023 - 13 APR 2023	IJM	KUMPULAN WANG PERSARAAN (DIPERBADANKAN) [SSH]	-15	297,178	8.46
11 APR 2023 - 11 APR 2023	IJM	EMPLOYEES PROVIDENT FUND BOARD [SSH]	300	614,106	17.481
10 APR 2023 - 10 APR 2023	IJM	EMPLOYEES PROVIDENT FUND BOARD [SSH]	300	613,806	17.473
11 APR 2023 - 12 APR 2023	IMPIANA	DATO' SERI ISMAIL @ FAROUK BIN ABDULLAH [DIR/CEO]	-600	119,712	25.512
11 APR 2023 - 12 APR 2023	IMPIANA	DATO' SERI ISMAIL @ FAROUK BIN ABDULLAH [SSH]	-600	119,712	25.512
11 APR 2023 - 12 APR 2023	IMPIANA	IMPIANA SDN BHD [SSH]	-600	60,964	12.992
07 APR 2023 - 07 APR 2023	IMPIANA	DATO' SERI ISMAIL @ FAROUK BIN ABDULLAH [DIR/CEO]	-300	120,312	25.64
07 APR 2023 - 07 APR 2023	IMPIANA	DATO' SERI ISMAIL @ FAROUK BIN ABDULLAH [SSH]	-300	120,312	25.64
07 APR 2023 - 07 APR 2023	IMPIANA	IMPIANA SDN BHD [SSH]	-300	61,564	13.12
07 APR 2023 - 07 APR 2023	INARI	DATO' SRI THONG KOK KHEE [DIR/CEO]	-101	540,553	14.481
07 APR 2023 - 07 APR 2023	INARI	DATO' SRI THONG KOK KHEE [SSH]	-101	540,553	14.481
07 APR 2023 - 07 APR 2023	INNATURE	PRUDENTIAL PLC [SSH]	41	40,458	5.731
11 APR 2023 - 11 APR 2023	IOICORP	EMPLOYEES PROVIDENT FUND BOARD [SSH]	226	687,307	11.074
07 APR 2023 - 07 APR 2023	IOICORP	EMPLOYEES PROVIDENT FUND BOARD [SSH]	121	687,081	11.071
06 APR 2023 - 06 APR 2023	IOICORP	EMPLOYEES PROVIDENT FUND BOARD [SSH]	3,000	686,960	11.069
11 APR 2023 - 11 APR 2023	IOIPG	EMPLOYEES PROVIDENT FUND BOARD [SSH]	38	439,717	7.986
10 APR 2023 - 10 APR 2023	IOIPG	EMPLOYEES PROVIDENT FUND BOARD [SSH]	-86	439,679	7.985
07 APR 2023 - 07 APR 2023	IOIPG	EMPLOYEES PROVIDENT FUND BOARD [SSH]	-319	439,765	7.987
06 APR 2023 - 06 APR 2023	KAB	MR KINGTON TONG KUM LOONG [SSH]	10,000	373,880	20.68
05 APR 2023 - 05 APR 2023	KAB	MR KINGTON TONG KUM LOONG [SSH]	-32,000	363,880	20.13
30 MAR 2023 - 30 MAR 2023	KAB	MR KINGTON TONG KUM LOONG [SSH]	-32,000	395,880	21.9
11 APR 2023 - 11 APR 2023	KERJAYA	EMPLOYEES PROVIDENT FUND BOARD [SSH]	300	90,334	7.163
10 APR 2023 - 10 APR 2023	KERJAYA	EMPLOYEES PROVIDENT FUND BOARD [SSH]	16	90,034	7.14
07 APR 2023 - 07 APR 2023	KGB	MR SOO YUIT WENG [DIR/CEO]	30	1,494	0.232
11 APR 2023 - 11 APR 2023	KLCC	EMPLOYEES PROVIDENT FUND BOARD [SSH]	120	182,641	10.117
11 APR 2023 - 11 APR 2023	KLCC	EMPLOYEES PROVIDENT FUND BOARD [SSH]	120	182,641	10.117
10 APR 2023 - 10 APR 2023	KLCC	EMPLOYEES PROVIDENT FUND BOARD [SSH]	5	182,521	10.11
10 APR 2023 - 10 APR 2023	KLCC	EMPLOYEES PROVIDENT FUND BOARD [SSH]	5	182,521	10.11
07 APR 2023 - 07 APR 2023	KLCC	EMPLOYEES PROVIDENT FUND BOARD [SSH]	17	182,516	10.11
07 APR 2023 - 07 APR 2023	KLCC	EMPLOYEES PROVIDENT FUND BOARD [SSH]	17	182,516	10.11
11 APR 2023 - 11 APR 2023	KLK	EMPLOYEES PROVIDENT FUND BOARD [SSH]	-104	122,911	11.397
05 APR 2023 - 05 APR 2023	KLK	EMPLOYEES PROVIDENT FUND BOARD [SSH]	10	123,085	11.413
10 APR 2023 - 12 APR 2023	LAYHONG	DATO' YAP HOONG CHAI [DIR/CEO]	-87	284,608	38.443
11 APR 2023 - 11 APR 2023	LBS	DATO' WIRA LIM HOCK GUAN JP [DIR/CEO]	7,500	599,030	38.821
11 APR 2023 - 11 APR 2023	LBS	DATO' WIRA LIM HOCK GUAN JP [SSH]	7,500	596,404	38.651
11 APR 2023 - 11 APR 2023	LBS	GATERICH SDN. BHD. [SSH]	7,500	568,273	36.828
11 APR 2023 - 11 APR 2023	LBS	TAN SRI DATO' SRI LIM HOCK SAN JP [DIR/CEO]	7,500	606,432	39.301
11 APR 2023 - 11 APR 2023	LBS	TAN SRI DATO' SRI LIM HOCK SAN JP [SSH]	7,500	601,679	38.993
13 APR 2023 - 13 APR 2023	MAGNI	MR TAN POAY SENG [DIR/CEO]	4	113,684	26.23
10 APR 2023 - 10 APR 2023	MAGNI	MR TAN POAY SENG [DIR/CEO]	200	113,680	26.23
10 APR 2023 - 10 APR 2023	MAXIS	EMPLOYEES PROVIDENT FUND BOARD ("EPF BOARD") [SSH]	539	925,319	11.818
07 APR 2023 - 07 APR 2023	MAXIS	EMPLOYEES PROVIDENT FUND BOARD ("EPF BOARD") [SSH]	418	925,349	11.817
06 APR 2023 - 06 APR 2023	MAXIS	EMPLOYEES PROVIDENT FUND BOARD ("EPF BOARD") [SSH]	200	924,932	11.812
05 APR 2023 - 05 APR 2023	MAXIS	EMPLOYEES PROVIDENT FUND BOARD ("EPF BOARD") [SSH]	-10	924,732	11.81
13 APR 2023 - 13 APR 2023	MAYBANK	KUMPULAN WANG PERSARAAN (DIPERBADANKAN) ("KWAP") [SSH]	-289	608,460	5.048
12 APR 2023 - 12 APR 2023	MAYBANK	AMANAHRAYA TRUSTEES BERHAD - AMANAH SAHAM BUMIPUTERA [SSH]	2,592	3,833,970	31.806
12 APR 2023 - 12 APR 2023	MAYBANK	KUMPULAN WANG PERSARAAN (DIPERBADANKAN) ("KWAP") [SSH]	-1,273	608,749	5.05
11 APR 2023 - 11 APR 2023	MAYBANK	AMANAHRAYA TRUSTEES BERHAD - AMANAH SAHAM BUMIPUTERA [SSH]	1,008	3,831,378	31.785

Notice Period is 09 April – 15 April 2023

Effective Change Date	Stock Name	Buyer/ Seller Name [Classification]	Bought / (Sold) ['000]	No. of Shares After Trade ['000]	
			Total	Total	% Held
11 APR 2023 - 11 APR 2023	MAYBANK	KUMPULAN WANG PERSARAAN (DIPERBADANKAN) ("KWAP") [SSH]	-1,000	610,021	5.061
07 APR 2023 - 07 APR 2023	MAYBANK	AMANAHRAYA TRUSTEES BERHAD - AMANAH SAHAM BUMIPUTERA [SSH]	500	3,830,370	31.776
06 APR 2023 - 06 APR 2023	MAYBANK	EMPLOYEES PROVIDENT FUND BOARD [SSH]	-1,192	1,670,623	13.859
06 APR 2023 - 06 APR 2023	MAYBANK	AMANAHRAYA TRUSTEES BERHAD - AMANAH SAHAM BUMIPUTERA [SSH]	3,000	3,829,870	31.772
05 APR 2023 - 05 APR 2023	MAYBANK	EMPLOYEES PROVIDENT FUND BOARD [SSH]	-655	1,671,815	13.869
10 APR 2023 - 10 APR 2023	MBMR	EMPLOYEES PROVIDENT FUND BOARD [SSH]	28	31,694	8.108
07 APR 2023 - 07 APR 2023	MBMR	EMPLOYEES PROVIDENT FUND BOARD [SSH]	13	31,665	8.101
06 APR 2023 - 06 APR 2023	MBMR	EMPLOYEES PROVIDENT FUND BOARD [SSH]	206	31,652	8.098
05 APR 2023 - 05 APR 2023	MBMR	EMPLOYEES PROVIDENT FUND BOARD [SSH]	-200	31,446	8.045
10 APR 2023 - 10 APR 2023	MICROLN	RHB TRUSTEES BERHAD [SSH]	15,000	84,058	7.838
10 APR 2023 - 12 APR 2023	MIECO	DATO' SRI NG AH CHAI [DIR/CEO]	2,631	629,553	62.955
10 APR 2023 - 12 APR 2023	MIECO	DATO' SRI NG AH CHAI [SSH]	2,631	629,553	62.955
13 APR 2023 - 13 APR 2023	MISC	KUMPULAN WANG PERSARAAN (DIPERBADANKAN) (KWAP) [SSH]	-14	243,788	5.462
12 APR 2023 - 12 APR 2023	MISC	KUMPULAN WANG PERSARAAN (DIPERBADANKAN) (KWAP) [SSH]	-4	243,801	5.462
11 APR 2023 - 11 APR 2023	MISC	KUMPULAN WANG PERSARAAN (DIPERBADANKAN) (KWAP) [SSH]	50	243,805	5.462
06 APR 2023 - 06 APR 2023	MISC	EMPLOYEES PROVIDENT FUND BOARD [SSH]	200	591,806	13.258
07 APR 2023 - 07 APR 2023	MISC	KUMPULAN WANG PERSARAAN (DIPERBADANKAN) (KWAP) [SSH]	-300	243,755	5.461
05 APR 2023 - 05 APR 2023	MISC	EMPLOYEES PROVIDENT FUND BOARD [SSH]	104	591,606	13.254
04 APR 2023 - 04 APR 2023	MISC	EMPLOYEES PROVIDENT FUND BOARD [SSH]	150	591,503	13.251
11 APR 2023 - 12 APR 2023	MMSV	SAW CHONG KEAT [DIR/CEO]	-300	1,742	0.875
14 APR 2023 - 14 APR 2023	MNHLGD	MR LOY SIONG HAY [DIR/CEO]	-4,000	88,252	21.591
14 APR 2023 - 14 APR 2023	MNHLGD	MR LOY SIONG HAY [SSH]	-4,000	88,252	21.591
13 APR 2023 - 13 APR 2023	MNHLGD	DATO' TOH ENG KEAT [DIR/CEO]	-2,000	88,817	21.729
13 APR 2023 - 13 APR 2023	MNHLGD	DATO' TOH ENG KEAT [SSH]	-2,000	88,817	21.729
13 APR 2023 - 13 APR 2023	MNHLGD	MR DANG SIONG DIANG [DIR/CEO]	-2,000	40,166	9.827
13 APR 2023 - 13 APR 2023	MNHLGD	MR DANG SIONG DIANG [SSH]	-2,000	40,166	9.827
12 APR 2023 - 12 APR 2023	MNHLGD	DATO' TOH ENG KEAT [DIR/CEO]	-2,000	90,817	22.218
12 APR 2023 - 12 APR 2023	MNHLGD	DATO' TOH ENG KEAT [SSH]	-2,000	90,817	22.218
11 APR 2023 - 11 APR 2023	MRDIY	EMPLOYEES PROVIDENT FUND BOARD [SSH]	933	507,168	5.376
10 APR 2023 - 10 APR 2023	MRDIY	MANAGECORP LIMITED [SSH]	21,700	4,809,544	50.986
10 APR 2023 - 10 APR 2023	MRDIY	BEE FAMILY LIMITED [SSH]	21,700	4,809,544	50.986
10 APR 2023 - 10 APR 2023	MRDIY	MANAGECORP LIMITED [SSH]	2,700	4,809,544	50.986
10 APR 2023 - 10 APR 2023	MRDIY	MR TAN YU WEI [SSH]	21,700	4,825,744	51.158
10 APR 2023 - 10 APR 2023	MRDIY	MR TAN YU YEH [DIR/CEO]	21,700	4,869,179	51.618
10 APR 2023 - 10 APR 2023	MRDIY	MR TAN YU YEH [SSH]	21,700	4,869,179	51.618
10 APR 2023 - 10 APR 2023	MRDIY	WEI FUTURE CAPITAL (PTC) LTD. [SSH]	21,700	4,809,544	50.986
10 APR 2023 - 10 APR 2023	MRDIY	YEH FAMILY (PTC) LTD. [SSH]	21,700	4,809,544	50.986
13 APR 2023 - 13 APR 2023	MYEG	KUMPULAN WANG PERSARAAN (DIPERBADANKAN) [SSH]	450	557,811	7.532
12 APR 2023 - 12 APR 2023	MYEG	KUMPULAN WANG PERSARAAN (DIPERBADANKAN) [SSH]	281	557,361	7.526
11 APR 2023 - 11 APR 2023	MYEG	MR WONG THEAN SOON [DIR/CEO]	2,000	2,270,260	30.658
11 APR 2023 - 11 APR 2023	MYEG	MR WONG THEAN SOON [SSH]	2,000	2,270,260	30.658
07 APR 2023 - 07 APR 2023	MYEG	KUMPULAN WANG PERSARAAN (DIPERBADANKAN) [SSH]	605	557,079	7.522
06 APR 2023 - 06 APR 2023	MYEG	KUMPULAN WANG PERSARAAN (DIPERBADANKAN) [SSH]	-1,945	556,474	7.514
11 APR 2023 - 11 APR 2023	NESTLE	EMPLOYEES PROVIDENT FUND BOARD [SSH]	-11	21,225	9.051
10 APR 2023 - 10 APR 2023	NESTLE	EMPLOYEES PROVIDENT FUND BOARD [SSH]	-0.4	21,236	9.056
07 APR 2023 - 07 APR 2023	NESTLE	EMPLOYEES PROVIDENT FUND BOARD [SSH]	-0.1	21,236	9.056
05 APR 2023 - 05 APR 2023	NESTLE	EMPLOYEES PROVIDENT FUND BOARD [SSH]	-15	21,236	9.056
04 APR 2023 - 04 APR 2023	NESTLE	EMPLOYEES PROVIDENT FUND BOARD [SSH]	-3	21,251	9.062
10 APR 2023 - 11 APR 2023	NIHSIN	MISS KHOO WUAN RU [DIR/CEO]	133	96,984	18.52
10 APR 2023 - 11 APR 2023	NIHSIN	MR KHOO CHEE KONG [SSH]	133	96,034	18.339
12 APR 2023 - 12 APR 2023	NWP	QUAH SEIK LEE [SSH]	-4,350	43,650	7.538
12 APR 2023 - 12 APR 2023	NWP	MR TAN WYE CHUAN [DIR/CEO]	4,350	14,350	2.478
07 APR 2023 - 10 APR 2023	NWP	MR WU WAI KONG [SSH]	5,000	49,840	8.607
10 APR 2023 - 10 APR 2023	ORIENT	EMPLOYEE PROVIDENT FUND BOARD [SSH]	-2	55,370	8.925
11 APR 2023 - 11 APR 2023	PADINI	KUMPULAN WANG PERSARAAN (DIPERBADANKAN) [SSH]	255	49,801	7.569
07 APR 2023 - 07 APR 2023	PADINI	KUMPULAN WANG PERSARAAN (DIPERBADANKAN) [SSH]	1,000	49,545	7.531
10 APR 2023 - 10 APR 2023	PANAMY	EMPLOYEES PROVIDENT FUND BOARD [SSH]	-0.3	7,811	12.858
07 APR 2023 - 07 APR 2023	PANAMY	EMPLOYEES PROVIDENT FUND BOARD [SSH]	-29	7,811	12.859
12 APR 2023 - 12 APR 2023	PARAMON	MR BENJAMIN TEO JONG HIAN [DIR/CEO]	20	179,781	28.87
12 APR 2023 - 12 APR 2023	PARAMON	MR BENJAMIN TEO JONG HIAN [SSH]	20	179,781	28.87
11 APR 2023 - 11 APR 2023	PBBANK	EMPLOYEES PROVIDENT FUND BOARD [SSH]	490	2,930,795	15.1
06 APR 2023 - 06 APR 2023	PICHEM	EMPLOYEES PROVIDENT FUND BOARD ("EPF BOARD") [SSH]	-245	873,018	10.913
11					

Notice Period is 09 April – 15 April 2023

Effective Change Date	Stock Name	Buyer/ Seller Name [Classification]	Bought / (Sold) ['000]	No. of Shares After Trade ['000]	
			Total	Total	% Held
05 APR 2023 - 05 APR 2023	PETGAS	EMPLOYEES PROVIDENT FUND BOARD [SSH]	-991	283,946	14.35
04 APR 2023 - 04 APR 2023	PETGAS	EMPLOYEES PROVIDENT FUND BOARD [SSH]	-271	284,938	14.4
11 APR 2023 - 11 APR 2023	PPB	EMPLOYEES PROVIDENT FUND BOARD [SSH]	-87	145,327	10.216
10 APR 2023 - 10 APR 2023	PPB	EMPLOYEES PROVIDENT FUND BOARD [SSH]	13	145,414	10.222
07 APR 2023 - 07 APR 2023	PPB	EMPLOYEES PROVIDENT FUND BOARD [SSH]	63	145,401	10.221
06 APR 2023 - 06 APR 2023	PPB	EMPLOYEES PROVIDENT FUND BOARD [SSH]	29	145,338	10.216
05 APR 2023 - 05 APR 2023	PPB	EMPLOYEES PROVIDENT FUND BOARD [SSH]	46	145,309	10.214
07 APR 2023 - 07 APR 2023	PPJACK	MADAM LEE KOOI LAN [SSH]	694	368,570	55.175
07 APR 2023 - 07 APR 2023	PPJACK	MR LIM BOON HUA [DIR/CEO]	694	368,570	55.175
07 APR 2023 - 07 APR 2023	PPJACK	MR LIM BOON HUA [SSH]	694	368,570	55.175
11 APR 2023 - 11 APR 2023	PWF	MISS OOI KI WEI [DIR/CEO]	1,200	1,213	0.58
06 APR 2023 - 07 APR 2023	PWF	MR ONG KIM NAM [DIR/CEO]	-300	100	0.048
22 FEB 2023 - 10 APR 2023	PWORTH	RHB TRUSTEES BERHAD [SSH]	164,474	394,224	26.368
12 APR 2023 - 12 APR 2023	PWROOT	KUMPULAN WANG PERSARAAN (DIPERBADANKAN) [SSH]	-230	27,192	6.381
10 APR 2023 - 10 APR 2023	PWROOT	KUMPULAN WANG PERSARAAN (DIPERBADANKAN) [SSH]	100	27,421	6.435
17 MAR 2023 - 17 MAR 2023	PWROOT	MR WONG TAK KEONG [SSH]	-13	41,224	9.677
12 APR 2023 - 12 APR 2023	RCECAP	AMCORP GROUP BERHAD [SSH]	25	394,808	53.873
12 APR 2023 - 12 APR 2023	RCECAP	CEMPAKA EMPAYAR SDN BHD [SSH]	25	394,808	53.873
12 APR 2023 - 12 APR 2023	RCECAP	CLEAR GOAL SDN BHD [SSH]	25	394,808	53.873
12 APR 2023 - 12 APR 2023	RCECAP	TAN SRI AZMAN HASHIM [SSH]	25	430,204	58.703
10 APR 2023 - 10 APR 2023	RCECAP	AMCORP GROUP BERHAD [SSH]	25	394,783	53.869
10 APR 2023 - 10 APR 2023	RCECAP	CEMPAKA EMPAYAR SDN BHD [SSH]	25	394,783	53.869
10 APR 2023 - 10 APR 2023	RCECAP	CLEAR GOAL SDN BHD [SSH]	25	394,783	53.869
10 APR 2023 - 10 APR 2023	RCECAP	TAN SRI AZMAN HASHIM [SSH]	25	430,179	58.7
06 APR 2023 - 06 APR 2023	RCECAP	AMCORP GROUP BERHAD [SSH]	43	394,758	53.866
06 APR 2023 - 06 APR 2023	RCECAP	CEMPAKA EMPAYAR SDN BHD [SSH]	43	394,758	53.866
06 APR 2023 - 06 APR 2023	RCECAP	CLEAR GOAL SDN BHD [SSH]	43	394,758	53.866
06 APR 2023 - 06 APR 2023	RCECAP	TAN SRI AZMAN HASHIM [SSH]	43	430,154	58.696
11 APR 2023 - 11 APR 2023	RHBBANK	EMPLOYEES PROVIDENT FUND BOARD [SSH]	353	1,714,635	40.369
10 APR 2023 - 10 APR 2023	RHBBANK	EMPLOYEES PROVIDENT FUND BOARD [SSH]	2,296	1,714,281	40.361
07 APR 2023 - 07 APR 2023	RHBBANK	EMPLOYEES PROVIDENT FUND BOARD [SSH]	2,141	1,711,985	40.307
06 APR 2023 - 06 APR 2023	RHBBANK	EMPLOYEES PROVIDENT FUND BOARD [SSH]	2,752	1,709,845	40.257
14 APR 2023 - 14 APR 2023	RHONEMA	DR LIM BAN KEONG [DIR/CEO]	55	86,143	38.939
14 APR 2023 - 14 APR 2023	RHONEMA	DR LIM BAN KEONG [SSH]	55	86,143	38.939
10 APR 2023 - 10 APR 2023	RHONEMA	DR LIM BAN KEONG [DIR/CEO]	190	86,088	38.914
10 APR 2023 - 10 APR 2023	RHONEMA	DR LIM BAN KEONG [SSH]	190	86,088	38.914
13 APR 2023 - 13 APR 2023	SALUTE	MR CHEONG SIEW CHYUAN [SSH]	349	30,600	7.226
12 APR 2023 - 13 APR 2023	SALUTE	MR CHIA CHEE HOONG [DIR/CEO]	-320	980	0.231
11 APR 2023 - 12 APR 2023	SALUTE	MR CHEONG SIEW CHYUAN [SSH]	5,857	30,251	7.143
11 APR 2023 - 12 APR 2023	SALUTE	MR CHEONG SIEW CHYUAN [SSH]	5,657	30,051	7.096
11 APR 2023 - 11 APR 2023	SALUTE	MR CHIA CHEE HOONG [DIR/CEO]	-150	1,300	0.307
10 APR 2023 - 10 APR 2023	SALUTE	MR LOW TENG LUM [DIR/CEO]	-100	330	0.078
12 APR 2023 - 12 APR 2023	SAPIND	MR KOH KOK HOOI [SSH]	47	6,279	8.627
06 APR 2023 - 06 APR 2023	SAPIND	MR KOH KOK HOOI [SSH]	2	6,232	8.563
13 APR 2023 - 13 APR 2023	SERNKOU	MR LOO ENG HUA [DIR/CEO]	-50	510	0.047
12 APR 2023 - 12 APR 2023	SERNKOU	MR LOO ENG HUA [DIR/CEO]	-10	560	0.052
11 APR 2023 - 11 APR 2023	SERNKOU	MR LOO ENG HUA [DIR/CEO]	-10	570	0.053
07 APR 2023 - 07 APR 2023	SERNKOU	MR LOW PENG SIAN @ CHUA PENG SIAN [DIR/CEO]	9,500	296,071	27.462
07 APR 2023 - 07 APR 2023	SERNKOU	MR LOW PENG SIAN @ CHUA PENG SIAN [SSH]	9,500	296,071	27.462
06 APR 2023 - 06 APR 2023	SIGN	CHIN HIN GROUP BERHAD [SSH]	89,700	179,400	30.947
06 APR 2023 - 06 APR 2023	SIGN	DATO' CHE HALIN BIN MOHD HASHIM [DIR/CEO]	3,000	6,000	1.035
06 APR 2023 - 06 APR 2023	SIGN	DATUK SERI CHIAU BENG TEIK JP [DIR/CEO]	89,700	179,400	30.947
06 APR 2023 - 06 APR 2023	SIGN	DATUK SERI CHIAU BENG TEIK JP [SSH]	89,700	179,400	30.947
06 APR 2023 - 06 APR 2023	SIGN	DIVINE INVENTIONS SDN BHD [SSH]	89,700	179,400	30.947
06 APR 2023 - 06 APR 2023	SIGN	GOLDENHOME LIVING CO. LTD [SSH]	23,316	46,631	8.044
06 APR 2023 - 06 APR 2023	SIGN	MR CHIAU HAW CHOON [DIR/CEO]	89,700	179,400	30.947
06 APR 2023 - 06 APR 2023	SIGN	MR CHIAU HAW CHOON [SSH]	89,700	179,400	30.947
06 APR 2023 - 06 APR 2023	SIGN	MR PAN XIAOZHEN [SSH]	23,316	46,631	8.044
06 APR 2023 - 06 APR 2023	SIGN	PP CHIN HIN REALTY SDN BHD [SSH]	89,700	179,400	30.947
06 APR 2023 - 06 APR 2023	SIGN	XIAMEN JIANPAN GROUP CO. LTD [SSH]	23,316	46,631	8.044
07 APR 2023 - 07 APR 2023	SIME	EMPLOYEES PROVIDENT FUND BOARD [SSH]	300	906,883	13.306
07 APR 2023 - 07 APR 2023	SIME	AMANAHRAYA TRUSTEES BERHAD - AMANAH SAHAM BUMIPUTERA [SSH]	4,338	2,565,864	37.647
06 APR 2023 - 06 APR 2023	SIME	AMANAHRAYA TRUSTEES BERHAD - AMANAH SAHAM BUMIPUTERA [SSH]	4,840	2,561,526	37.583
07 APR 2023 - 07 APR 2023	SIMEPLT	EMPLOYEES PROVIDENT FUND BOARD [SSH]	123	999,532	14.453
11 APR 2023 - 11 APR 2023	SIMEPROP	EMPLOYEES PROVIDENT FUND BOARD [SSH]	-5,016	604,052	8.882
10 APR 2023 - 10 APR 2023	SIMEPROP	EMPLOYEES PROVIDENT FUND BOARD [SSH]	-1,185	609,069	8.956
07 APR 2023 - 07 APR 2023	SIMEPROP	EMPLOYEES PROVIDENT FUND BOARD [SSH]	-6,000	610,254	8.974
13 APR 2023 - 13 APR 2023	SKPRES	KUMPULAN WANG PERSARAAN (DIPERBADANKAN) [SSH]	225	130,801	8.372
11 APR 2023 - 11 APR 2023	SKPRES	EMPLOYEES PROVIDENT FUND BOARD [SSH]	105	107,683	6.892
10 APR 2023 - 10 APR 2023	SKPRES	KUMPULAN WANG PERSARAAN (DIPERBADANKAN) [SSH]	95	130,576	8.357
06 APR 2023 - 06 APR 2023	SKPRES	EMPLOYEES PROVIDENT FUND BOARD [SSH]	282	107,578	6.886
10 APR 2023 - 10 APR 2023	SPSETIA	EMPLOYEES PROVIDENT FUND BOARD [SSH]	-486	239,505	5.877
07 APR 2023 - 07 APR 2023	SPSETIA	EMPLOYEES PROVIDENT FUND BOARD [SSH]	-282	239,991	5.889
10 APR 2023 - 10 APR 2023	SRIDGE	DATO' KHOO YIK CHOU [DIR/CEO]	-834	9,721	4.78
07 APR 2023 - 12 APR 2023	STRAITS	ANG TUN YOUNG [SSH]	-7,890	67,527	7.167
11 APR 2023 - 11 APR 2023	SUNCON	EMPLOYEES PROVIDENT FUND BOARD [SSH]	12	125,023	9.697
10 APR 2023 - 10 APR 2023	SUNCON	EMPLOYEES PROVIDENT FUND BOARD [SSH]	176	125,011	9.696
06 APR 2023 - 06 APR 2023	SUNCON	EMPLOYEES PROVIDENT FUND BOARD [SSH]	100	124,835	9.682
05 APR 2023 - 05 APR 2023	SUNCON	EMPLOYEES PROVIDENT FUND BOARD [SSH]	166	124,735	9.674
11 APR 2023 - 11 APR 2023	SUNREIT	EMPLOYEES PROVIDENT FUND BOARD [SSH]	17	520,802	15.21
12 APR 2023 - 12 APR 2023	SUNREIT	KUMPULAN WANG PERSARAAN (DIPERBADANKAN) ('KWAP') [SSH]	-22	197,947	5.78
07 APR 2023 - 07 APR 2023	SUNREIT	EMPLOYEES PROVIDENT FUND BOARD [SSH]	-57	520,785	15.21

Notice Period is 09 April – 15 April 2023

Effective Change Date	Stock Name	Buyer/ Seller Name [Classification]	Bought / (Sold) ['000]	No. of Shares After Trade ['000]	
			Total	Total	% Held
07 APR 2023 - 07 APR 2023	SUNREIT	KUMPULAN WANG PERSARAAN (DIPERBADANKAN) ('KWAP') [SSH]	-15	197,969	5.78
12 APR 2023 - 13 APR 2023	SUNWAY	ACTIVE EQUITY SDN BHD [SSH]	4,000	298,394	61.03
12 APR 2023 - 13 APR 2023	SUNWAY	MADAM SARENA CHEAH YEAN TIH [DIR/CEO]	4,000	3,157,038	64.58
12 APR 2023 - 13 APR 2023	SUNWAY	MADAM SARENA CHEAH YEAN TIH [SSH]	4,000	3,157,038	64.58
12 APR 2023 - 13 APR 2023	SUNWAY	MR ADRIAN CHEAH YEAN SUN [SSH]	4,000	3,151,787	64.47
12 APR 2023 - 13 APR 2023	SUNWAY	MR EVAN CHEAH YEAN SHIN [SSH]	4,000	3,155,982	64.56
12 APR 2023 - 13 APR 2023	SUNWAY	PUAN SRI DATIN SERI (DR) SUSAN CHEAH SEOK CHENG [SSH]	4,000	3,161,230	64.66
12 APR 2023 - 13 APR 2023	SUNWAY	SUNGEI WAY CORPORATION SDN BHD [SSH]	4,000	2,819,993	57.68
12 APR 2023 - 13 APR 2023	SUNWAY	TAN SRI DATO' SERI DR JEFFREY CHEAH FOOK LING AO [DIR/CEO]	4,000	3,161,230	64.66
12 APR 2023 - 13 APR 2023	SUNWAY	TAN SRI DATO' SERI DR JEFFREY CHEAH FOOK LING AO [SSH]	4,000	3,161,230	64.66
05 APR 2023 - 05 APR 2023	SUNWAY	EMPLOYEES PROVIDENT FUND BOARD [SSH]	110	419,304	8.58
13 APR 2023 - 13 APR 2023	SUNWAY-WB	MADAM SARENA CHEAH YEAN TIH [DIR/CEO]	544	469,641	70.17
13 APR 2023 - 13 APR 2023	SUNWAY-WB	TAN SRI DATO' SERI DR JEFFREY CHEAH FOOK LING AO [DIR/CEO]	544	470,202	70.25
10 APR 2023 - 10 APR 2023	SUPERLN	MR LIN PO-CHIH [DIR/CEO]	0.1	4,370	2.753
07 APR 2023 - 07 APR 2023	SYSCORP	MR JACK WILLIEN @ WILLIAM ANAK JINEP [DIR/CEO]	55	87	0.007
11 APR 2023 - 11 APR 2023	TAKAFUL	EMPLOYEES PROVIDENT FUND BOARD [SSH]	104	106,724	12.746
10 APR 2023 - 10 APR 2023	TAMBUN	MR TEH KIAK SENG [DIR/CEO]	64	215,171	48.98
12 APR 2023 - 12 APR 2023	TENAGA	KUMPULAN WANG PERSARAAN (DIPERBADANKAN) [SSH]	67	428,319	7.44
11 APR 2023 - 11 APR 2023	TENAGA	KUMPULAN WANG PERSARAAN (DIPERBADANKAN) [SSH]	32	428,252	7.44
11 APR 2023 - 11 APR 2023	TIMECOM	KUMPULAN WANG PERSARAAN (DIPERBADANKAN) ('KWAP') [SSH]	-1,000	102,395	5.569
13 APR 2023 - 13 APR 2023	TM	KUMPULAN WANG PERSARAAN (DIPERBADANKAN) [SSH]	574	418,305	10.945
11 APR 2023 - 11 APR 2023	TM	EMPLOYEE PROVIDENT FUND BOARD (EPF BOARD) [SSH]	559	646,957	16.927
12 APR 2023 - 12 APR 2023	TM	KUMPULAN WANG PERSARAAN (DIPERBADANKAN) [SSH]	65	417,731	10.93
11 APR 2023 - 11 APR 2023	TM	KUMPULAN WANG PERSARAAN (DIPERBADANKAN) [SSH]	449	417,666	10.928
07 APR 2023 - 07 APR 2023	TOMYPAK	CHOW ZEE NENG [SSH]	-1,045	997,37	23.134
06 APR 2023 - 12 APR 2023	TRC	DATO SR. ABDULL MANAF BIN HJ HASHIM [DIR/CEO]	20	50	0.01
30 MAR 2023 - 07 APR 2023	TRC	DATO RICHARD KHOO TENG SAN [DIR/CEO]	175	11,810	2.51
10 APR 2023 - 11 APR 2023	TWL	DATIN SEK CHIAN NEE [DIR/CEO]	11,770	118,549	29.37
10 APR 2023 - 11 APR 2023	TWL	DATIN SEK CHIAN NEE [SSH]	11,770	118,549	29.37
10 APR 2023 - 11 APR 2023	TWL	DATO' TAN WEI LIAN [DIR/CEO]	11,770	118,549	29.37
10 APR 2023 - 11 APR 2023	TWL	DATO' TAN WEI LIAN [SSH]	11,770	118,549	29.37
10 APR 2023 - 11 APR 2023	TWL	MISS TAN LEE CHIN [DIR/CEO]	11,770	137,666	29.37
10 APR 2023 - 11 APR 2023	TWL	MISS TAN LEE CHIN [SSH]	11,770	118,549	29.37
10 APR 2023 - 11 APR 2023	TWL	TWL CAPITAL BERHAD [SSH]	11,770	118,549	29.37
12 APR 2023 - 12 APR 2023	UMCCA	MR HAN KEE JUAN [DIR/CEO]	28	363	0.173
11 APR 2023 - 11 APR 2023	UMCCA	DATO' SRI TEE LIP SIN [DIR/CEO]	24	51,388	24.498
11 APR 2023 - 11 APR 2023	UMCCA	MR TEE CHENG HUA [DIR/CEO]	24	45,557	21.718
11 APR 2023 - 11 APR 2023	UMCCA	PROSPER CAPITAL HOLDINGS SDN BHD [SSH]	24	26,819	12.785
07 APR 2023 - 07 APR 2023	UMCCA	DATO' SRI TEE LIP SIN [DIR/CEO]	25	51,364	24.486
07 APR 2023 - 07 APR 2023	UMCCA	MR TEE CHENG HUA [DIR/CEO]	25	45,532	21.706
07 APR 2023 - 07 APR 2023	UMCCA	PROSPER CAPITAL HOLDINGS SDN BHD [SSH]	25	26,795	12.773
11 APR 2023 - 11 APR 2023	UMW	EMPLOYEES PROVIDENT FUND BOARD [SSH]	-1,480	108,843	9.316
10 APR 2023 - 10 APR 2023	UMW	EMPLOYEES PROVIDENT FUND BOARD [SSH]	-220	110,323	9.443
07 APR 2023 - 07 APR 2023	UMW	EMPLOYEES PROVIDENT FUND BOARD [SSH]	-248	110,543	9.462
06 APR 2023 - 06 APR 2023	UMW	EMPLOYEES PROVIDENT FUND BOARD [SSH]	-284	110,791	9.483
05 APR 2023 - 05 APR 2023	UMW	EMPLOYEES PROVIDENT FUND BOARD [SSH]	-360	111,075	9.507
11 APR 2023 - 11 APR 2023	UTDPLT	EMPLOYEES PROVIDENT FUND BOARD [SSH]	-26	36,020	8.684
07 APR 2023 - 07 APR 2023	UTDPLT	EMPLOYEES PROVIDENT FUND BOARD [SSH]	-32	36,045	8.69
06 APR 2023 - 06 APR 2023	UTDPLT	EMPLOYEES PROVIDENT FUND BOARD [SSH]	-71	36,076	8.698
05 APR 2023 - 05 APR 2023	UTDPLT	EMPLOYEES PROVIDENT FUND BOARD [SSH]	-674	36,147	8.715
10 APR 2023 - 10 APR 2023	VITROX	MARY YEO CHEW YEN [DIR/CEO]	60	134	0.014
11 APR 2023 - 11 APR 2023	VS	EMPLOYEES PROVIDENT FUND BOARD [SSH]	86	250,541	6.511
11 APR 2023 - 11 APR 2023	VS	KUMPULAN WANG PERSARAAN [SSH]	50	345,187	8.971
12 APR 2023 - 12 APR 2023	VS-WB	DATUK BEH KIM LING [DIR/CEO]	-500	114,758	15.081
06 APR 2023 - 10 APR 2023	WANGZNG	MR HUI CHING CHI [DIR/CEO]	51	97,946	61.77
06 APR 2023 - 10 APR 2023	WANGZNG	MR HUI CHING CHI [SSH]	51	97,946	61.77
12 APR 2023 - 13 APR 2023	WIDAD	TAN SRI MUHAMMAD IKMAL OPAT BIN ABDULLAH [SSH]	220	137,723	48.326
29 MAR 2023 - 11 APR 2023	WIDAD	TAN SRI MUHAMMAD IKMAL OPAT BIN ABDULLAH [SSH]	-1,304	137,702	48.386
29 MAR 2023 - 29 MAR 2023	WIDAD	WIDAD BUSINESS GROUP SDN. BHD. [SSH]	-3,775	123,648	43.447
07 APR 2023 - 07 APR 2023	WIDAD	TAN SRI MUHAMMAD IKMAL OPAT BIN ABDULLAH [SSH]	765	137,831	48.432
07 APR 2023 - 07 APR 2023	WPRTS	EMPLOYEES PROVIDENT FUND BOARD [SSH]	40	312,052	9.151
05 APR 2023 -					





On behalf of the Board of Directors of **Affin Bank Berhad (AFFIN)**, Affin Hwang Investment Bank Berhad wishes to announce that Bursa Securities had, vide its letter dated 17 April 2023, resolved to approve the listing of such number of new Affin Shares, representing up to 5% of the total number of issued Affin Shares, to be issued pursuant to the Proposed SGS on the Main Market of Bursa Securities.



The approval granted by Bursa Securities is subject to the following conditions:

- (i) Affin Hwang IB is required to submit a confirmation to Bursa Securities of full compliance of the Proposed SGS pursuant to Paragraph 6.43(1) of the Main Market Listing Requirements of Bursa Securities and stating the effective date of implementation together with a certified true copy of the resolution passed by the shareholders in general meeting approving the Proposed SGS; and
- (ii) Affin is required to furnish Bursa Securities on a quarterly basis a summary of the total number of Affin Shares listed pursuant to the Proposed SGS as at the end of each quarter together with a detailed computation of the listing fees payable.



The Board of Directors of **Airasia X Berhad (AAX)** wishes to announce that the Company intends to seek shareholders' approval in respect of the Proposed Shareholders' Mandate at the forthcoming 16th Annual General Meeting of the Company. The Circular to Shareholders containing details of the abovementioned proposal will be issued to the shareholders of the Company in due course.



**Axiata Group Berhad (AXIATA)** is pleased to announce that conditions precedent for Fifth Closing have been fulfilled following which transfer of 135 sites of Transferred Assets was completed on 18 April 2023

(cumulatively with First, Second, Third and Fourth Closing totalling 2,625 sites).

**Boustead Holdings Berhad (BSTEAD)** wishes to clarify that any legal agreement or settlement reached between Boustead Holdings Berhad’s subsidiary Boustead Naval Shipyard Sdn Bhd and CAD/CED is part of BNS commercial arrangement with its suppliers. The Company will release the necessary announcements in a timely manner to Bursa Malaysia Securities Berhad should there be any material information which falls under the Main Market Listing Requirements.



On behalf of the Board of **KPJ Healthcare Berhad (KPJ)**, AmInvestment Bank wishes to announce that the parties to the CCLB have agreed to extend the settlement of the Balance Consideration from 15 April 2023 to 31 May 2023.



# FOCUS POINT

The Board of Directors of **Focus Point Holdings Berhad (FOCUSP)** wishes to announce that the Company will be seeking shareholders' approval at the forthcoming Fourteenth Annual General Meeting of Focus Point on the following proposals:-

- (1) Proposed Renewal of RRPT Mandate.
- (2) Proposed Renewal of Share Buy-Back Mandate.

A Circular/Statement to shareholders in relation to the above will be despatched to the shareholders of the Company in due course.



The Board of Directors of **Leong Hup International Berhad (LHI)** wishes to announce that the Company intends to seek the approval of its shareholders on the following proposals at the forthcoming 9th Annual General Meeting of the Company:

- (1) Proposed Renewal of Shareholders' Mandate and Proposed New Shareholders' Mandate for Recurrent Related Party Transactions of a Revenue or Trading Nature; and
- (2) Proposed Renewal of Authority for the Company to Purchase its own Shares.

A Circular/Statement to Shareholders in relation to the above will be issued to the shareholders of the Company in due course.



On behalf of **Malaysia Building Society Berhad (MBSB)**, AmInvestment Bank Berhad wishes to announce that MBSB has received notification from BNM that the MOF has granted approval for the Proposed Transaction. The Proposed Transaction will result in a well-capitalised financial services group which is financially resilient to compete in the market with a stronger balance sheet. Further, it will create a universal banking group with end-to-end banking services comprising consumer banking, commercial & SME banking, development finance, corporate banking, investment banking and asset management, servicing a wider customer base that extends beyond MBSB Bank and MIDF’s pool of existing customers. With the combined strength and expertise of both MBSB Bank and MIDF, the enlarged MBSB group will be able to expand into new and larger customer segments through tailored financing, structuring and advisory solutions to support the business needs and growth of consumer and corporate clients. Further details will be announced upon the execution of the share purchase agreement in respect of the Proposed Transaction.

**Upcoming IPO**

NAME OF COMPANY	OFFER PERIOD		ISSUE PRICE (Per Ordinary Share)	LISTING SOUGHT	DATE OF LISTING
	OPENING	CLOSING			
<b>AUTOCOUNT DOTCOM BERHAD</b>	14 Apr 2023	25 Apr 2023	RM0.33	ACE MARKET	09 May 2023

**Disclaimer:** The information in the Investor Relations page is extracted from individual companies’ announcements in [www.bursamalaysia.com](http://www.bursamalaysia.com). The information on this page is provided as a service to readers. We assume no liability for damages resulting from or arising out of the use of such information. Whilst every effort is made to ensure accuracy, the information presented has been simplified for your reading pleasure. Readers are advised to read the original and complete filings on the Bursa Malaysia website at [https://www.bursamalaysia.com/market\\_information/announcements/company\\_announcement](https://www.bursamalaysia.com/market_information/announcements/company_announcement)



ShareInvestor is a technology based company with a focus on Internet media and we have operations in Malaysia, Singapore and Thailand.

We are the market leader in providing a combination of market data, analysis and news on various platforms to traders and investors.

Our websites include [www.shareinvestor.com](http://www.shareinvestor.com) and [www.bursastation.com](http://www.bursastation.com).

More information about our products and services can be found at [www.shareinvestorholdings.com](http://www.shareinvestorholdings.com)

**We're looking for Drupal Developers who will be in charge of front-end development and back-end/module development. This role requires expertise in PHP, HTML, CSS, JS, and an eye for design aesthetics. The candidates should be familiar and have a passion working with content management systems.**

Interested candidates are encouraged to apply with full resume, present and expected salary and a recent photograph. Please send these to [hr.my@shareinvestor.com](mailto:hr.my@shareinvestor.com) for processing. ShareInvestor regrets that only shortlisted candidates shall be notified.

## Drupal Developers (2 vacancies)

### Job Responsibilities:

- Active participation in all UI / UX decisions
- Contribute actively to the continuous development and maintenance of development projects
- Enhance Drupal development quality
- Provide solutions to issues and suggestions for improvements.
- Designing and implementing new features to the system
- Ensuring optimal performance

### Required Skills:

- At least 3 years of Drupal Theming and Front-End Development experience
- Proficient in PHP, HTML5/XHTML, CSS, Javascript, jQuery, AJAX, XML, Json
- Good Diploma/Degree in Computer Science/Computer Engineering.
- Experience working with Drupal's main modules, such as CTools, Views, Rules, Webform, and so on
- Ability to create custom Drupal modules
- Strong troubleshooting skills to fix bugs

### Benefits:

- Career & growth opportunities
- Interesting projects
- Medical Insurance
- Incentives

## Ruby on Rails Developer (1 vacancy)

### Job Responsibilities:

- Develop quality web-based software modules on schedule with a focus on Ruby and Ruby on Rails applications.
- Explore and utilize the latest web-based technologies.
- Document design specifications, logic concepts and module description.
- Maintain and enhance existing web-based applications.

### Required Skills:

- Experience in web-based programming/scripting is essential. Candidate must be able to explain clearly technical aspects of his/her past experiences and projects.
- Passion for programming and desire to learn new languages like Go.
- Good Diploma/Degree in Computer Science/Computer Engineering.
- Able to work well in a team and be able to follow documentation and coding standards.
- Knowledge in any of the following would be an added advantage
  - Ruby and Ruby on Rails Framework
  - Javascript and jQuery library
  - Go
  - Perl

## Application Developer (C++/STL) (1 vacancy)

### Job Responsibilities

- Deliver quality software modules on schedule.
- Document design specifications, conceptions, module description.
- Maintain and enhance existing applications.

### Required Skills:

- Passion for programming and desire to learn.
- Good Diploma/Degree in Computer Science/Computer Engineering.
- Skills in C++ is essential.
- Experience with Visual Studio, networking stack and Golang would be an advantage.
- Proactive, resourceful and self-motivated with strong analytical skills.
- Good interpersonal, written and communication skills.
- Able to work with little supervision.

## Junior Market Data Support Specialist

As a Junior Market Data Support Specialist, you will be involved in reviewing, analysing and collecting accurate and timely financial information on listed companies for our market data information services.

### Job Responsibilities

- Collect, compute and analyse relevant financial data of listed companies, organise and present them on the company portal, in timely manner, for the consumption by our subscribers and our corporate clients
- Capture corporate events / actions and translate them to adjustments of impacted financial data
- Research, evaluate, propose new solutions or recommendations for adhoc project requirements that are related to the financial data or the financial fundamentals of listed companies
- Provide support to users' queries related to financial information displayed on our platforms
- Perform any other duties assigned from time to time, including rare occasions of working during weekends

### Required Skills

- Minimum academic qualification: Diploma in any finance-related discipline
- Knowledge of basic accounting and financial terms is required
- Flair for data precision / accuracy / quality / thoroughness plus strict adherence to structured data process and timeline is a must
- Proficient in Microsoft Excel
- Team player with pleasant personality
- Proficient in English, oral and written.

*Fresh graduates are welcome to apply.*

Interested candidates are encouraged to apply with full resume, present and expected salary and a recent photograph. Please send these to [hr.my@shareinvestor.com](mailto:hr.my@shareinvestor.com) for processing. ShareInvestor regrets that only shortlisted candidates shall be notified.