

Invest

A Weekly e-Publication by SHAREINVESTOR.com

ISSUE

150

FRIDAY
31 MARCH
2023

Scan/Click QR to Register



Via email, every Friday

MALAYSIAN CAPITAL MARKET REMAINS RESILIENT & ORDERLY - SC

(page 20)

- | | | | | | |
|----|----------------------------|----|-------------------|----|--------------------------|
| 04 | LEADERBOARD | 14 | VALUE STOCKS | 23 | REGIONAL MARKETS |
| 06 | SHARIAH HOT STOCKS | 15 | GROWTH STOCKS | 24 | FROM THE OBSERVER |
| 07 | COMPANY SPOTLIGHT | 16 | DIVIDEND STOCKS | 28 | INSIDER ACTIVITY |
| 08 | SHARIAH MOMENTUM UP STOCKS | 17 | BROKERS' CALL | 32 | INVESTOR RELATIONS |
| 10 | NON SHARIAH HOT STOCKS | 18 | LONG COMPANIES | 35 | CAREERS AT SHAREINVESTOR |
| 12 | UP TRENDING STOCKS | 20 | MARKET SENTIMENTS | | |



INVESTOR PLATFORMS

General Manager
Darren Chong
darren.chong@shareinvestor.com

MARKET DATA SERVICES
(marketdata.my@shareinvestor.com)

Account Manager
Heidee Ahmad
heidee.ahmad@shareinvestor.com

Admin
Watie Nordin
watie.nordin@shareinvestor.com

Community Growth
Tan Yong Sheng
yongsheng.tan@shareinvestor.com

PROCESS AUTOMATION & DATA ANALYTICS

Data Analyst
Nickson Aw

Market Data & Media Coordinator
Silas Emmanuel Joseph

ADS & EVENTS SPONSORSHIP SALES

Manager
Sharon Lee
sharon.lee@shareinvestor.com

Senior Marketing Executive
Daniel Wong
daniel.wong@shareinvestor.com

CORPORATE

Managing Director (Malaysia) & Publisher
Edward Stanislaus
edward@shareinvestor.com

INVESTOR RELATIONS

Director
Elizabeth Tan
elizabeth.tan@shareinvestor.com

Manager
Letticia Wong
letticia.wong@shareinvestor.com

MARKETING COMMUNICATIONS

Marcomm Manager
Danny Ng
danny.ng@shareinvestor.com

Marcomm Executive
Farah Azwani
farah.azwani@shareinvestor.com

CREATIVE & DESIGN

Manager	Andric See
Asst. Manager	Ivy Yap
Sr. Graphic Designer	Anthony Lau
Web Developers	Nurul Atiqah
	Aiman Jasmin
	Izwan Rusli

IT APPS

Project Manager	Amir Yusoff
Sr. Software Engineers	Mohd. Qasem
	Harris Mulyadi
	Mark Leona
Systems Team Lead	Lucky Phan
Sr. Systems Admin	Law Kee Chai
Software Engineers	Lau Teck Wei
	Lian Kok Keong
	Gary Ooi
Technical Architect	Katrina Delrosario

FINANCE, ADMIN & HR

Manager	Shireen Goh
Sr. Accounts Executive	Jessie Ho
Accounts Assistant	Ng Jin Yng

SHAREINVESTOR HOLDINGS

BOARD OF DIRECTORS

Chairman	Patrick Daniel
Group CEO	Christopher Lee
Group COO	Lim Dau Hee
Group CFO	Teo Siew May
Group MD	Shanison Lin



“ GIVE A MAN A FISH AND YOU FEED HIM FOR A DAY; TEACH A MAN TO FISH AND YOU FEED HIM FOR A LIFETIME ”

ShareInvestor Malaysia Sdn. Bhd.
(200001023956) (526564-M)
Unit No. DF2-07-03A, Level 7,
Persoft Tower, 6B Persiaran Tropicana,
47410 Petaling Jaya, Selangor Darul Ehsan.

Hotline : 603 7803 1791
Mobile : 011 6343 8939
Website : www.ShareInvestor.com.my
www.ShareInvestorHoldings.com
www.Facebook.com/ShareInvestorMalaysia

ADVERTISEMENT ENQUIRY

XTRA

Humanscale® **FREEDOM HEADREST**

"THE GOLD STANDARD IN OFFICE SEATING"

as voted by The New York Times





STROM

SWISS TIMEPIECES & JEWELLERY



StromWatch Asia

Tele : +65.9817.3378 Email : ll.stromasia@gmail.com

WWW.STROMWATCH.SWISS



www.shareinvestor.com - market data at your fingertips



ShareInvestor WebPro (www.shareinvestor.com/my) Prices > Stock Prices > Bursa > click Stocks tab

1. mouse over Ranking > select Top Active > all Shariah stocks are denoted with an [S] > mouse over Column Layout > select Edit Customs > select Name > select Volume > select Last Done Price > Mouse Over Column Layout > select Custom
2. mouse over Ranking > select Top Turnover > all Shariah stocks are denoted with an [S] > mouse over Column Layout > select Edit Customs > select Name > select Last Done Price > select Value > Mouse Over Column Layout > select Custom
3. mouse over Ranking > select Top Gainers (Over 5 Trading Days) > mouse over Column Layout > select Edit Customs > select Name > select Last Done Price > select 5 Days Change > select 5 Days % Change > Mouse Over Column Layout > select Custom
4. mouse over Ranking > select Top Losers (Over 5 Trading Days)
5. mouse over Ranking > select Top % Gainers (Over 5 Trading Days)
6. mouse over Ranking > select Top % Losers (Over 5 Trading Days)

Shariah Top Actives (as at Yesterday)

Name	Price (RM)	Volume
SAPNRG [S]	0.035	1,319,670.000
VINVEST [S]	0.230	1,161,819.000
YBS [S]	0.690	1,049,267.000
BINTAI [S]	0.040	817,091.000
MYEG [S]	0.730	580,331.000
FITTERS [S]	0.080	551,919.000
TOPGLOV [S]	0.965	421,569.000
IWCITY [S]	0.425	337,845.000
TANCO [S]	0.455	329,282.000
BSLCPORP [S]	0.045	320,439.000

Shariah Top Turnover (as at Yesterday)

Name	Price (RM)	Value (RM)
YBS [S]	0.690	74,836,833
MYEG [S]	0.730	42,456,083
TOPGLOV [S]	0.965	41,431,001
TENAGA [S]	9.180	38,799,583
MRDIY [S]	1.530	32,648,620
VINVEST [S]	0.230	27,942,375
PMETAL [S]	4.920	25,098,871
TM [S]	4.980	21,973,832
PCHEM [S]	7.130	21,211,451
MBSB [S]	0.670	19,109,987

Top Gainers (over 5 Trading days as at Yesterday)

Name	Price (RM)	Change (RM)
NESTLE	137.400	+2.800
AJI	16.020	+1.160
CHINHIN	4.550	+0.640
PPB	17.120	+0.560
BAT	11.020	+0.520
CARLSBG	21.440	+0.440
AEONCR	11.460	+0.400
F&N	25.860	+0.380
DLADY	26.460	+0.360
ALLIANZ	13.900	+0.340

Top % Gainers (over 5 Trading days as at Yesterday)

Name	Price (RM)	Change (%)
REDIDEA	0.150	+233.33
REACH	0.070	+55.56
MMIS	0.380	+52.00
BCMALL	0.020	+33.33
JOE	0.020	+33.33
TALAMT	0.020	+33.33
XOX	0.020	+33.33
VIZIONE	0.065	+30.00
PRKCORP	0.290	+28.89
LSH	0.800	+23.08

Top Losers (over 5 Trading days as at Yesterday)

Name	Price (RM)	Change (RM)
HEXTECH	23.480	-1.020
AYER	6.700	-0.570
HARISON	8.650	-0.450
TENAGA	9.180	-0.380
KESM	7.050	-0.350
VIS	0.650	-0.350
HEIM	26.800	-0.300
FAREAST	3.550	-0.230
ATECH	2.770	-0.190
DUFU	2.090	-0.150

Top % Losers (over 5 Trading days as at Yesterday)

Name	Price (RM)	Change (%)
AT	0.005	-50.00
BINTAI	0.040	-42.86
LKL	0.140	-40.43
CFM	0.225	-35.71
VIS	0.650	-35.00
CLOUD	0.040	-33.33
FOCUS	0.015	-25.00
MLAB	0.015	-25.00
M&G	0.130	-23.53
SAPNRG	0.035	-22.22

SHARE INVESTOR WEBPRO

STOCK MARKET DATA AT YOUR FINGERTIPS

Powerful browser-based market analytics platform.
Access from anywhere



8 Markets Data

- ▶ Get access to data from Bursa, NYSE, Nasdaq, HKEX, SGX, IDX, SET & ASX

Portfolio Management

- ▶ Profit & Loss Summary
- ▶ Stock Alert
- ▶ News & Events filtering
- ▶ Customizable column layout

Fundamental Analysis

Financial Analysis Statement

- ▶ Profit & Loss
- ▶ Balance Sheet
- ▶ Cash Flow Statement
- ▶ More than 20 Financial Ratios
- ▶ Dividend Analysis

Technical Charting

- ▶ C² chart (Customisable & Comprehensive)

Brokers' Call

Intrinsic Value Calculator

FactSheet

- ▶ Key Stock Information
- ▶ Ownership
- ▶ Consensus Estimates
- ▶ Annual Report
- ▶ Historical Price
- ▶ Insider Trades

What's new on WebPro (Stable Release 12.1.0)

In our effort to keep our platform at the forefront of trading technology, we have added on some new features onto our C2 Chart in WebPro

ADDITIONAL NEW FEATURES:

- ▶ Anchor selector for AVWAP, PVAT, and PAV indicators
- ▶ Volume profile indicator by date range
- ▶ Moving Average Cross indicator
- ▶ Guppy Multiple Moving Average (GMMA) indicator
- ▶ GoNoGo Trend Signal indicators
- ▶ SignalIQ

So what are you waiting for? Head to our platform today and check out our new trading chart features and indicators. We're confident that you'll love the improvements we've made and that they'll help you become a more successful trader.

Click here to start your 9 days FREE trial
(Valued at RM10)



Price & Volume Distribution Charts (as at Yesterday)

Technical Analysis

DEFINITION: Shariah compliant stocks with Technical Analysis showing 5-days & 10-days Moving Average Price below Yesterday's Close over past 3 days and with Volume Spike.

CHART GUIDE: Volume Distribution Chart is a statistical interpretation of the current sentiment on each stock in graphical format. The highest bar categorized as >150k is likely to be traded by institutions or super dealers, while the lowest bar categorized as <15k usually represents retail investors. "Buy Up" refers to more buyers snatching up the lots queued at selling price. "Sell Down" refers to sellers selling their shares to the buying queue



ShareInvestor WebPro > Screener > Market Screener (FA & TA) > select BURSA > add criteria

A. Criteria

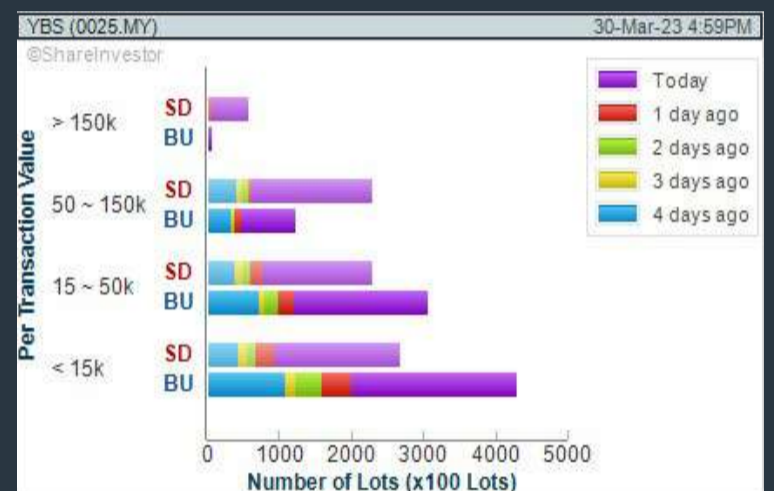
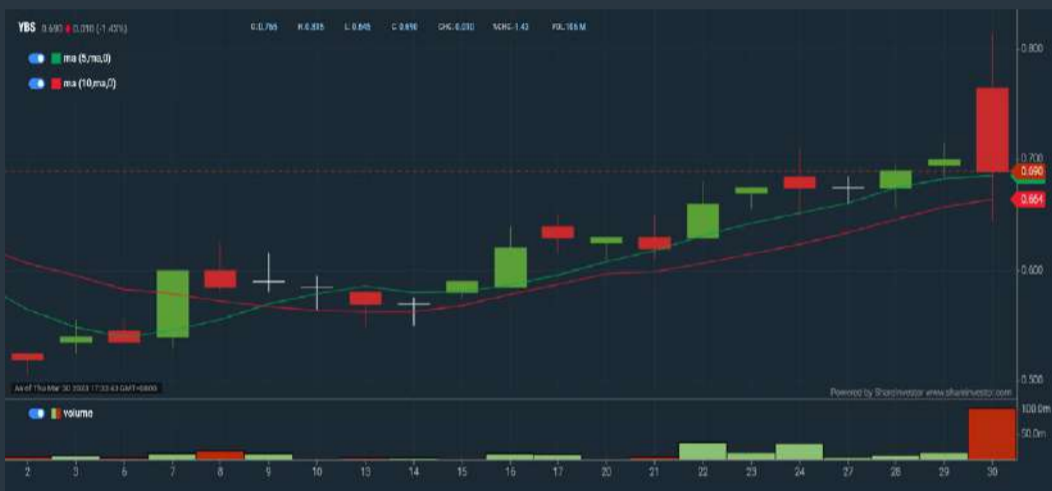
- > click Add Criteria
- Technical Analysis Conditions tab select (i) Moving Average Below Close (ii) Volume Spike
- Fundamental Analysis Conditions tab > select (iii) Revenue
- Prices & Other Conditions tab > select (iv) Is Shariah Compliant
- Technical Analysis Conditions tab select (v) Moving Average Below Close
- Prices & Other Conditions tab > select (vi) Last Done Price
- Technical Analysis Conditions tab select (vii) Moving Average Below Close

B. Conditions (Criteria Filters)

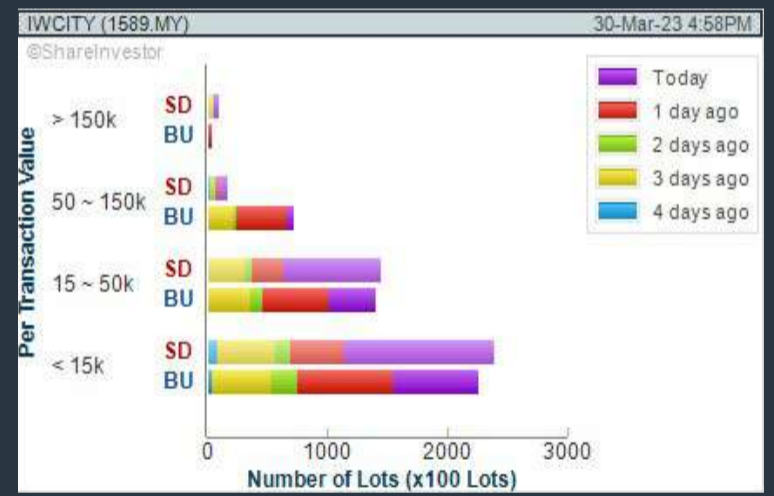
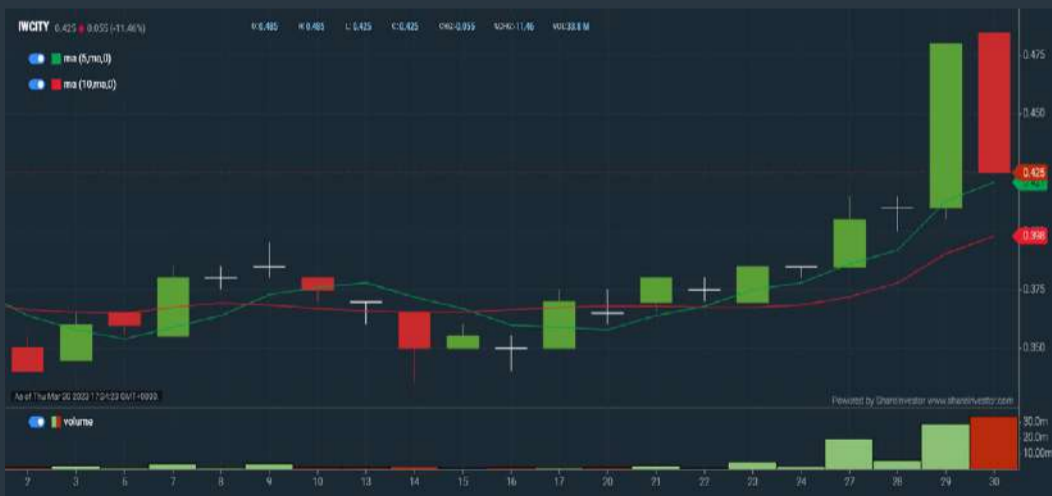
1. Moving Average Below Close - select (MA) type (5) below close price for type (3) days
2. Volume Spike - Volume type (1) greater than type (5) days average
3. Revenue ("000) - select (more than) type (1) for the past select (1) financial year(s)
4. Is Shariah Compliant - select **Yes**
5. Moving Average Below Close - select (MA) type (10) below close price for type (3) days
6. Last Done Price - select (more than) type (0.3)
7. Moving Average Below Close - select (EMA) type (5) below close price for type (3) days

- > click Save Template > Create New Template type (Shariah Hot Stocks) > click Create
- > click Save Template as > select Shariah Hot Stocks > click Save
- > click Screen Now (may take a few minutes)
- > Sort By: Select (Vol) Select (Desc)
- > Mouse over stock name > Charts > click C² Charts or Volume Distribution

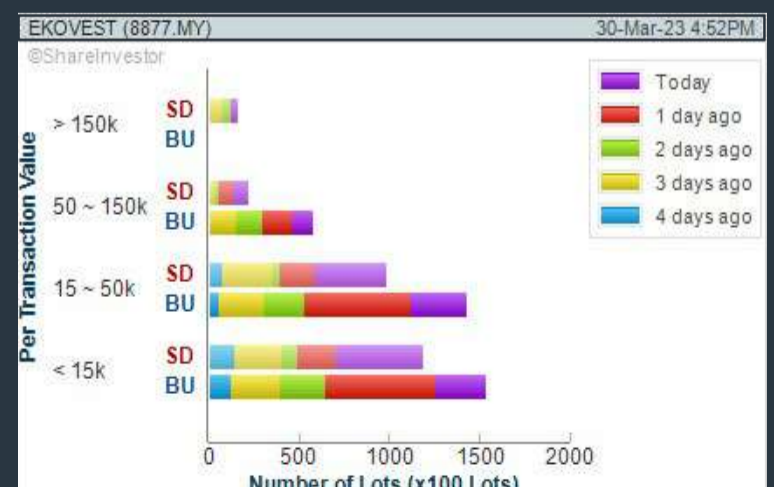
YBS INTERNATIONAL BERHAD (0025) C² Chart



ISKANDAR WATERFRONT CITY BERHAD (1589) C² Chart



EKOVEST BERHAD (8877) C² Chart



Disclaimer: The information on this page is provided as a service to readers. It does not constitute financial advice and/or any investment recommendations. Past performance is not indicative of future results. We assume no liability for damages resulting from or arising out of the use of such information. It would be best if you did your own research to make your personal investment decisions wisely or consult a licenced investment advisor.

COMPANY BACKGROUND

YBS International Berhad (fka LNG Resources Berhad) is principally engaged in high precision mould, high precision metal, plastic components and sub-components assembly. The company's main segments are high precision design and mould fabrication, plastic injection moulding, metal stamping & CNC turning, electronics manufacturing services, connector solutions and paper products.



Analysis

Select Counter: Bursa | YBS (0025.MY) | View

YBS YBS INTERNATIONAL BERHAD Updated at 30 Mar 2023 16:59

Last (MYR): 0.690 ↓	Change: -0.010	High: 0.815	Remarks: -
	Change (%): -1.43	Low: 0.645	
Open	0.765	Yesterday's Close	0.700
Buy Price	0.685	Sell Price	0.690
Buy Volume ('00)	9,782	Sell Volume ('00)	2,593
Cumulative Volume ('00)	1,049,267	Cumulative Value	74,836,833

Financial Analysis

Profit Growth Increasing profit in last 2 consecutive years (with last 3 profitable years)	Current Ratio The company is well-positioned to cover its short-term obligations with its current assets (ratio between 1.5 to 10) for 3 consecutive years
Debt to Cashflow High debt to cash flow for most recent year	Free Cash Flow Negative free cash flow for the most recent year

Excellent
 Good
 Neutral
 Be Alert
 Watch Out



Historical Financials



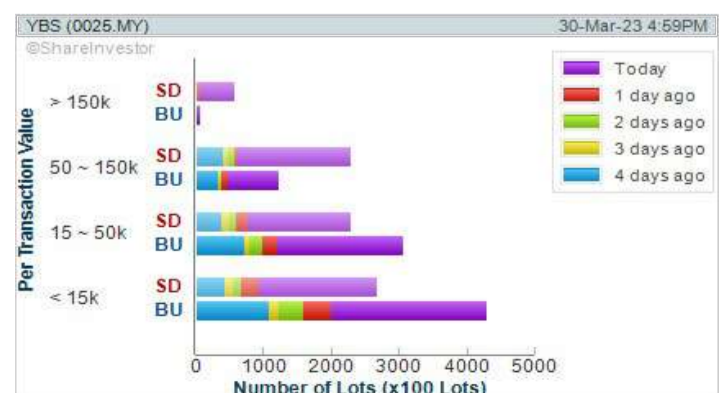
WebPro 9-Days Free Trial Registration (worth RM9) Sign Up Now



Key Statistics with Total Shareholder Returns

Total Shareholder Return

Period	Dividend Received	Capital Appreciation	Total Shareholder Return
Short Term Return	5 Days	+0.030	+4.55%
	10 Days	+0.100	+16.95%
	20 Days	+0.155	+28.97%
Medium Term Return	3 Months	+0.175	+33.98%
	6 Months	-0.015	-2.13%
	1 Year	+0.100	+21.66%
Long Term Return	2 Years	+0.330	+51.87%
	3 Years	+0.605	+119.76%
	5 Years	+0.645	+175.86%
Annualised Return	Annualised	-	+36.81%



Disclaimer: The information on this page is provided as a service to readers. It does not constitute financial advice and/or any investment recommendations. Past performance is not indicative of future results. We assume no liability for damages resulting from or arising out of the use of such information. It would be best if you did your own research to make your personal investment decisions wisely or consult a licenced investment advisor.

Price & Volume Distribution Charts (as at Yesterday)

Technical Analysis

DEFINITION: Shariah compliant stocks with Technical Analysis showing Bullish Momentum and Price Uptrend. The share price closed at the highest price yesterday. The typical price was higher than the previous day's typical price.

CHART GUIDE: Volume Distribution Chart is a statistical interpretation of the current sentiment on each stock in graphical format. The highest bar categorized as >150k is likely to be traded by institutions or super dealers, while the lowest bar categorized as <15k usually represents retail investors. "Buy Up" refers to more buyers snatching up the lots queued at selling price. "Sell Down" refers to sellers selling their shares to the buying queue.



ShareInvestor WebPro > Screener > Market Screener (FA & TA)>select BURSA>add criteria

A. Criteria

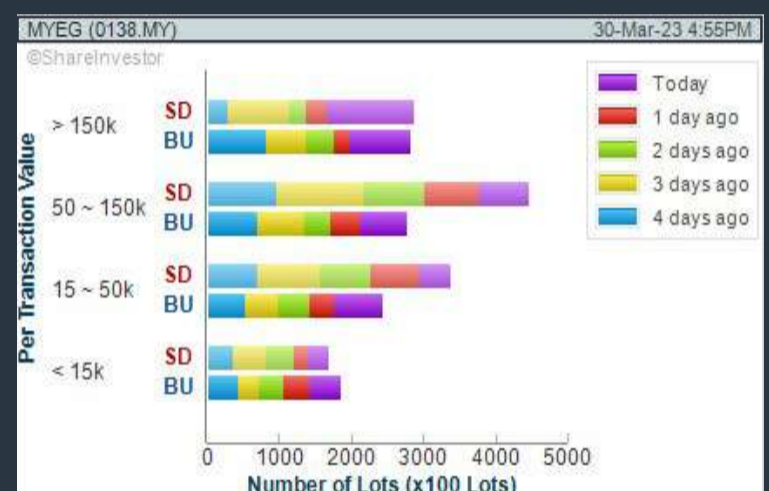
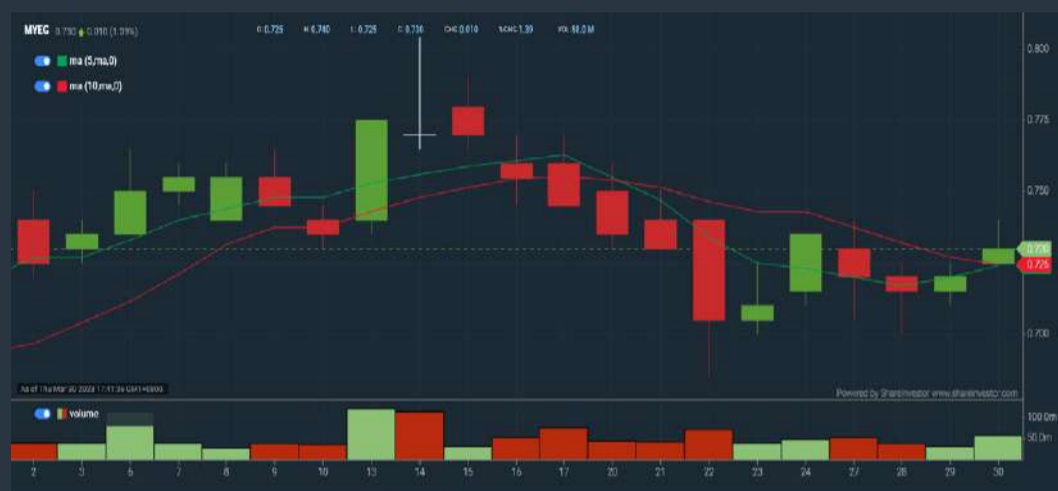
- > click Add Criteria
- Fundamental Analysis Conditions tab >select (i) Revenue
- Technical Analysis Conditions tab select (ii) Average Volume
- Prices & Other Conditions tab > select (iii) Last Done Price
- Prices & Other Conditions tab > select (iv) Is Shariah Compliant
- Technical Analysis Conditions tab select (v) RSI Overbought
- Technical Analysis Conditions tab select (vi) Moving Average Below Close
- Technical Analysis Conditions tab select (vii) CCI Overbought

B. Conditions (Criteria Filters)

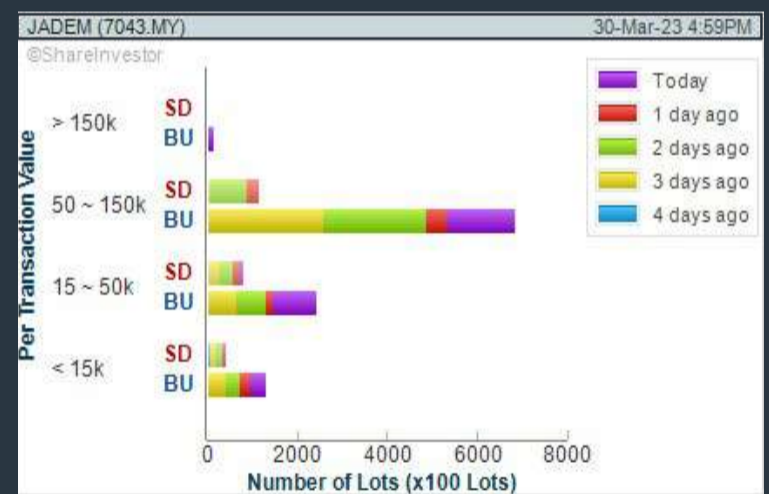
1. Revenue ("000) - select (more than) type (1) for the past select (1) financial year(s)
2. Average Volume - type (1) days average volume greater than type (10000) lots
3. Last Done Price - select (more than) type (0.3)
4. Is Shariah Compliant - select Yes
5. RSI Overbought - select RSI 1 above 99 for 1 days
6. Moving Average Below Close - select (MA) type (10) below close price for type (1) days
7. CCI Overbought - select CCI (2) above (0) for (1) days

- > click Save Template > Create New Template type (Shariah Momentum Up Stocks) > click Create
- > click Save Template as > select Shariah Momentum Up Stocks > click Save
- > click Screen Now (may take a few minutes)
- Sort By: Select (Vol) Select (Desc)
- Mouse over stock name > Charts > click C² Charts tab or Volume Distribution

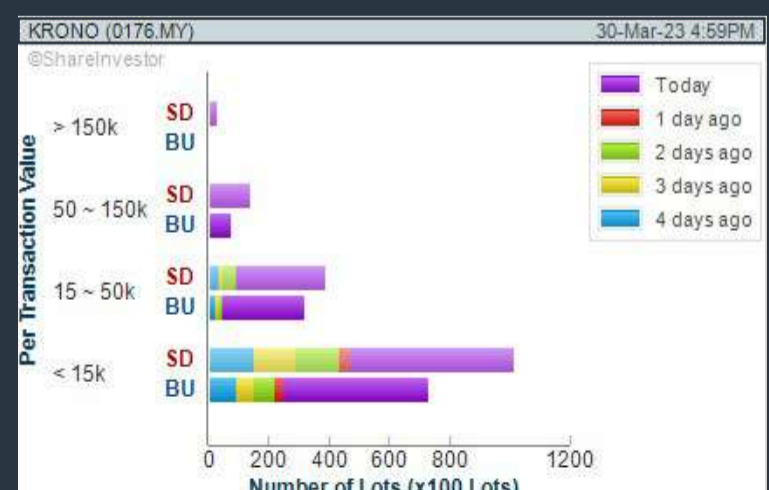
MY E.G. SERVICES BERHAD (0138) C² Chart



JADE MARVEL GROUP BERHAD (7043) C² Chart



KRONOLOGI ASIA BERHAD (0176) C² Chart



Disclaimer: The information on this page is provided as a service to readers. It does not constitute financial advice and/or any investment recommendations. Past performance is not indicative of future results. We assume no liability for damages resulting from or arising out of the use of such information. It would be best if you did your own research to make your personal investment decisions wisely or consult a licenced investment advisor.

MAKE BETTER TRADING STRATEGIES

with

SHARE INVESTOR STATION



8 Markets Data

- ▶ Get access to data from Bursa, NYSE, Nasdaq, HKEX, SGX, IDX, SET & ASX

Dynamic Chart

- ▶ Candlestick Pattern Recognition
- ▶ 111 Indicators
- ▶ 39 Drawing Tools
- ▶ Performance Comparison Chart

Intraday Data

- ▶ Market Depth
- ▶ Trade Summary Matrix & Chart
- ▶ Times & Sales
- ▶ Intraday Market Ticker

Market Screener

- ▶ 96 criteria ranging from FA, TA, Consensus Estimate
- ▶ Real-time Data

Power Frame

- ▶ Combining few Dynamic Charts together with intraday information in one frame

Technical Analysis

Fundamental Analysis

Financial Analysis Statement

- ▶ Profit & Loss
- ▶ Balance Sheet
- ▶ Cash Flow Statement
- ▶ More than 20 Financial Ratios
- ▶ Dividend Analysis

FactSheet

- ▶ Key Stock Information
- ▶ Ownership
- ▶ Consensus Estimates
- ▶ Annual Report
- ▶ Historical Price
- ▶ Insider Trades

Start your 18 days
FREE trial now
(Valued at RM82)



Price & Volume Distribution Charts (as at Yesterday)

Technical Analysis

DEFINITION: Stocks with Technical Analysis showing 5-days & 10-days Moving Average Price below Close over past 1 days and with Volume Spike

CHART GUIDE: Volume Distribution Chart is a statistical interpretation of the current sentiment on each stock in graphical format. The highest bar categorized as >150k is likely to be traded by institutions or super dealers, while the lowest bar categorized as <15k usually represents retail investors. "Buy Up" refers to more buyers snatching up the lots queued at selling price. "Sell Down" refers to sellers selling their shares to the buying queue.



ShareInvestor WebPro > Screener > Market Screener (FA & TA) > select BURSA > add criteria

A. Criteria

- > click Add Criteria
- Technical Analysis Conditions tab select (i) Moving Average Below Close (ii) Volume Spike
- Fundamental Analysis Conditions tab >select (iii) Revenue
- Prices & Other Conditions tab > select (iv) Is Shariah Compliant
- Technical Analysis Conditions tab select (v) Moving Average Below Close
- Prices & Other Conditions tab > select (vi) Last Done Price
- Technical Analysis Conditions tab select (vii) Moving Average Below Close

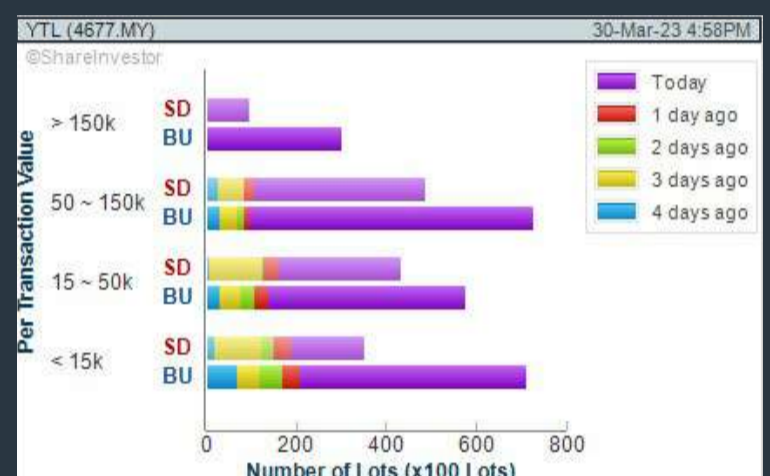
B. Conditions (Criteria Filters)

1. Moving Average Below Close - select (MA) type (5) below close price for type (3) days
2. Volume Spike - Volume type (1) greater than type (5) days average
3. Revenue ("000) - select (more than) type (1) for the past select (1) financial year(s)
4. Is Shariah Compliant - select NO
5. Moving Average Below Close - select (MA) type (10) below close price for type (1) days
6. Last Done Price - select (more than) type (0.3)
7. Moving Average Below Close - select (EMA) type (5) below close price for type (1) days

- > click Save Template > Create New Template type (Non-Shariah Hot Stocks) > click Create
- > click Save Template as > select Non-Shariah Hot Stocks > click Save
- > click Screen Now (may take a few minutes)
- Sort By: Select (Vol) Select (Desc)
- Mouse over stock name > Charts > click C² Charts tab or Volume Distribution

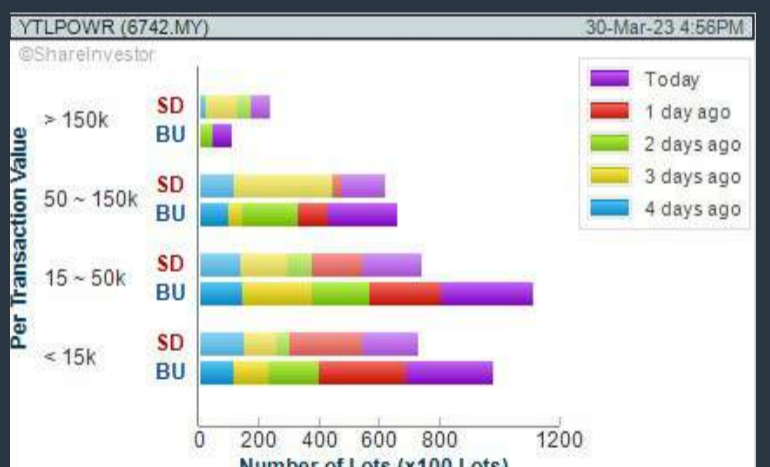
YTL CORPORATION BERHAD (4677)

C² Chart



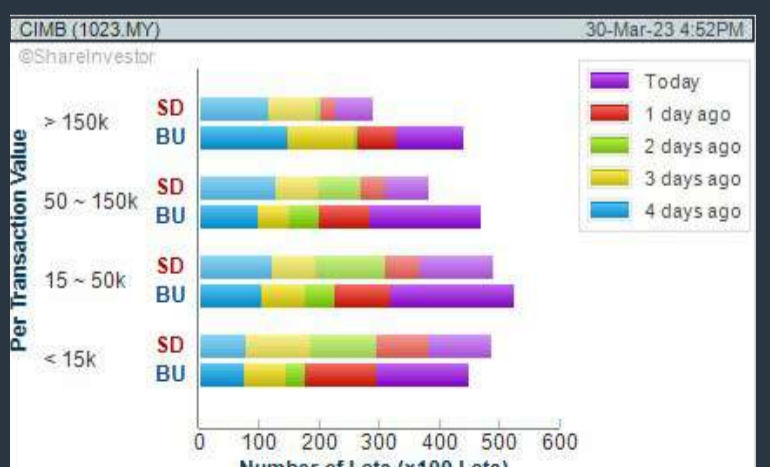
YTL POWER INTERNATIONAL BERHAD (6742)

C² Chart



CIMB GROUP HOLDINGS BERHAD (1023)

C² Chart



Disclaimer: The information on this page is provided as a service to readers. It does not constitute financial advice and/or any investment recommendations. Past performance is not indicative of future results. We assume no liability for damages resulting from or arising out of the use of such information. It would be best if you did your own research to make your personal investment decisions wisely or consult a licenced investment advisor.



Live deliciously.

From the first toast to the final bite, savor every moment with Sub-Zero, the refrigeration specialist, and Wolf, the cooking specialist. Entertain more often with thoughtfully designed, innovative appliances crafted to last for decades of beautiful, memorable meals.



Refrigeration. Cooking.

XTRA

Exclusively available at XTRA FURNITURE SDN BHD,
 The Gardens Mall, Mid Valley City, 2nd Floor Unit, S236 & 237 (isetanside)
kitchen@xtrafurniture.com | xtrafurniture.com | [f](#) XTRAfurniture | [i](#) xtrafurnituremsia

Price & Volume Distribution Charts (Over 5 trading days as at Yesterday)

Technical Analysis

DEFINITION: Stocks with Technical Analysis showing Bullish Momentum and Price Uptrend

CHART GUIDE: Volume Distribution Chart is a statistical interpretation of the current sentiment on each stock in graphical format. The highest bar categorized as >150k is likely to be traded by institutions or super dealers, while the lowest bar categorized as <15k usually represents retail investors. "Buy Up" refers to more buyers snatching up the lots queued at selling price. "Sell Down" refers to sellers selling their shares to the buying queue.



ShareInvestor WebPro > Screener > Market Screener (FA & TA) > select BURSA > add criteria

A. Criteria

- > click Add Criteria
- Fundamental Analysis Conditions tab > select (i) Revenue
- Technical Analysis Conditions tab select (ii) Moving Average Below Close
- Technical Analysis Conditions tab select (iii) Average Volume
- Prices & Other Conditions tab > select (iv) Last Done Price
- Technical Analysis Conditions tab select (v) Moving Average Below Close
- Technical Analysis Conditions tab select (v) Moving Average Bullish Crossover

B. Conditions

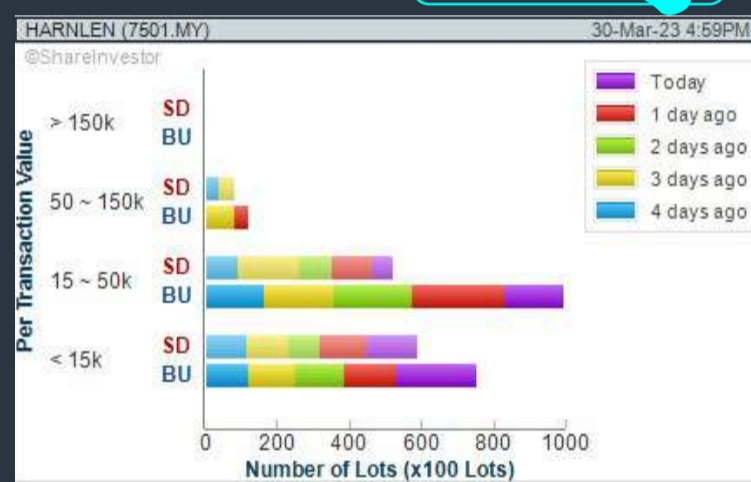
1. Revenue - select (more than) type (1) for the past select (1) financial year(s)
2. Moving Average Below Close - select (MA) type (20) below close price for type (1) days
3. Average Volume - type (5) days average volume type (10000) lots
4. Last Done Price - select (more than) type (0.3)
5. Moving Average Below Close - select (MA) type (10) below close price for type (1) days
6. Moving Average Bullish Crossover - select (MA) type (5) crossed above select (MA) type (10)

> click Save Template > Create New Template type (Non-Shariah Up-Trending Stocks) > click Create Click Save Template As > select Non-Shariah Up Trending Stocks > click Save > click Screen Now (may take a few minutes) Sort By: Select (Vol) Select (Desc) Mouse over stock name > Charts > click C² Charts tab or Volume Distribution

HARN LEN CORPORATION BERHAD (7501)

C² Chart

Analysis



PRESS METAL ALUMINIUM HOLDINGS BERHAD (8869)

C² Chart

Analysis



GENTING MALAYSIA BERHAD (4715)

C² Chart

Analysis



Disclaimer: The information on this page is provided as a service to readers. It does not constitute financial advice and/or any investment recommendations. Past performance is not indicative of future results. We assume no liability for damages resulting from or arising out of the use of such information. It would be best if you did your own research to make your personal investment decisions wisely or consult a licenced investment advisor.

BURSASTATION

Professional

Stock Scanning

- Technical Analysis (TA) Market Scanner
- Fundamental Analysis (FA) Market Scanner

Monitoring

- Portfolio
- Stock Alerts
- Price Spread Calculator

Market Data

- Equities
- Derivatives

Scan. Chart. Analyse.

Be The Intelligent Investor

Charts

- Intraday Charts
- Interactive Charts
- Historical Charts
- Volume Distribution Charts

Price Movements

- Streaming Prices
- Time & Sales
- Trade Summary Matrix
- Quote Movements
- 5 Levels Market Depth
- Historical Price Download

Fundamentals

- Factsheets
- Financials
- Insider Trades

Brought to you as a collaborative effort by ShareInvestor and Bursa Malaysia, **BursaStation Professional** is designed with you, the user, in mind, as a user-friendly yet full of powerful features that will appeal to investors/traders who need instant access to fundamental, technical, and trading data, anytime, anywhere. **BursaStation Professional** is a state-of-the-art Stock Market Tracker with Charting Software that places in your hands the power to make better investment decisions.

[CLICK HERE TO START YOUR 14-DAYS FREE TRIAL](#)

Price & Total Shareholder Return (as at Yesterday)

Fundamental Analysis

DEFINITION: Share price of a company trading at a lower price as compared to its fundamentals (FA) such as financial performance and dividend, allowing it to be attractive to value investors.

CHART GUIDE: Total Shareholder Return (TSR) combines share price appreciation and dividend distributions paid to show the total return to the shareholder expressed as a percentage.



ShareInvestor WebPro > Screener > Market Screener (FA & TA) > select BURSA > add criteria

A. Criteria

- > click Add Criteria
- Fundamental Analysis Conditions tab (i) Price Earnings Ratio
- Fundamental Analysis Conditions tab >select (ii) CAGR of Net Earnings
- Fundamental Analysis Conditions tab >select (iii) Net Debt To Equity
- Fundamental Analysis Conditions tab >select (iv) Return On Equity (ROE)

B. Conditions

1. Price Earnings Ratio - select (less than) type (15) times now
2. CAGR of Net Earnings - select (more than) type (10) % for the past type (3) financial year(s)
3. Net Debt To Equity – select (less than) type (1) for the past select (1) financial year(s)
4. Return On Equity (ROE) – select (more than) type (10) % for the past select (1) financial year(s)

- > click Save Template > Create New Template type (Value Stock) > click Create
- > click Save Template as > select Value Companies > click Save
- > click Screen Now (may take a few minutes)
- Sort by: Select (PE Ratio) Select (Ascending)
- > Mouse over stock name > Factsheet > looking for Total Shareholder Return
- > Mouse over stock name > Charts > click C2 Charts tab

SUNMOW HOLDING BERHAD (03050)

C² Chart

Analysis



Period	Dividend Received	Capital Appreciation	Total Shareholder Return
Short Term Return	5 Days	-	-
	10 Days	-4.020	-3.88%
	20 Days	-4.020	-3.88%
Medium Term Return	3 Months	-4.010	-1.68%
	6 Months	-4.320	-33.68%
1 Year	-4.305	-32.62%	
Annualised Return	Annualised	-	-32.62%

LION POSIM BERHAD (8486)

C² Chart

Analysis



Period	Dividend Received	Capital Appreciation	Total Shareholder Return
Short Term Return	5 Days	-4.030	-6.82%
	10 Days	-4.030	-6.82%
	20 Days	-4.090	-16.00%
Medium Term Return	3 Months	-4.075	-16.46%
	6 Months	-4.025	-6.75%
1 Year	-4.095	-16.81%	
Long Term Return	2 Years	-4.215	-34.40%
	3 Years	-4.120	+41.38%
5 Years	-4.125	33.36%	
Annualised Return	Annualised	-	-6.18%

TECK GUAN PERDANA BERHAD (7439)

C² Chart

Analysis



Period	Dividend Received	Capital Appreciation	Total Shareholder Return
Short Term Return	5 Days	+0.040	+2.30%
	10 Days	+0.020	+1.14%
	20 Days	+0.030	+1.66%
Medium Term Return	3 Months	+0.270	+17.88%
	6 Months	+0.610	+52.14%
1 Year	0.030	+0.400	+31.16%
Long Term Return	2 Years	+0.480	+39.23%
	3 Years	0.030	+0.800
5 Years	0.030	+0.720	+70.75%
Annualised Return	Annualised	-	+11.29%

Disclaimer: The information on this page is provided as a service to readers. It does not constitute financial advice and/or any investment recommendations. Past performance is not indicative of future results. We assume no liability for damages resulting from or arising out of the use of such information. It would be best if you did your own research to make your personal investment decisions wisely or consult a licenced investment advisor.

Price & Total Shareholder Return (as at Yesterday)

Fundamental Analysis

DEFINITION: Company revenue is growing and making good quality of earnings with positive Free Cash Flow.

CHART GUIDE: Total Shareholder Return (TSR) combines share price appreciation and distributions paid to show the total return to the shareholder expressed as a percentage.



ShareInvestor WebPro > Screener > Market Screener (FA & TA) > select BURSA > add criteria

A. Criteria

1. Fundamental Analysis Conditions tab >select (i) Free Cash Flow, (ii) Revenue Growth, (iii) Gross Profit (Earnings) Margin, (iv) Quality of Earnings, (v) Total Shareholder Returns, > click Add Criteria
2. Fundamental Analysis Conditions tab >select (vi) Total Shareholder Returns > click Add Criteria

B. Conditions (Criteria Filters)

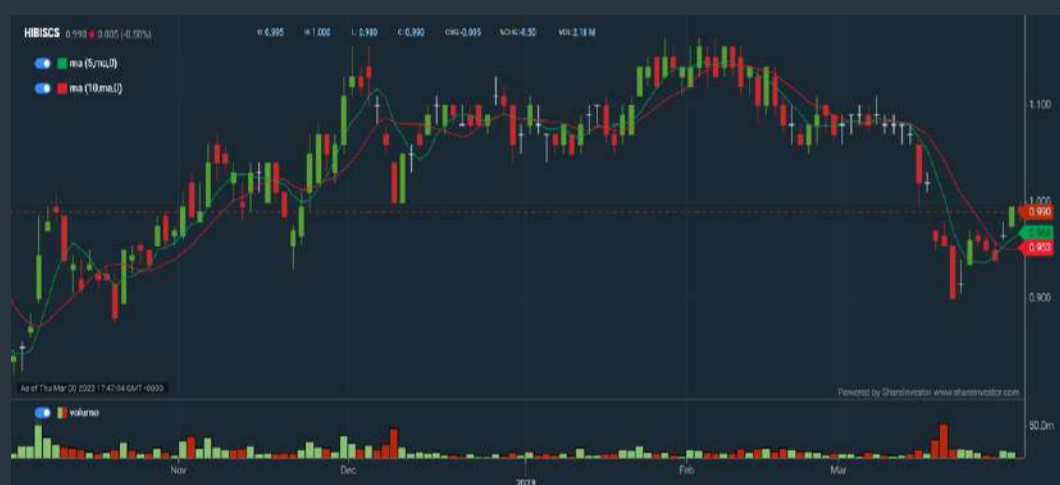
1. Free Cash Flow - select (more than) type (1) for the past select (1) financial year(s)
2. Revenue Growth - select (more than) type (1) for the past select (1) financial year(s)
3. Gross Profit (Earnings) Margin - select (more than) type (30) % for the past select (1) financial year(s)
4. Quality of Earnings - select (more than) type (1) for the past select (1) financial year(s)
5. Total Shareholder Return - select (more than) type (5) % for the past select (3) financial year(s)
6. Total Shareholder Return - select (more than) type (5) % for the past select (5) financial year(s)

- > click Save Template > Create New Template type (Growth Companies) > click Create
- > click Save Template as > select Growth Companies > click Save
- > click Screen Now (may take a few minutes)
- > Sort By: Select (Revenue Growth) Select (Desc)
- > Mouse over stock name > Factsheet > looking for Total Shareholder Return

HIBISCUS PETROLEUM BERHAD (5199)

C² Chart

Analysis



Period	Dividend Received	Capital Appreciation	Total Shareholder Return
Short Term Return	5 Days	+0.000	+3.42%
	10 Days	-0.030	-2.94%
	20 Days	-0.090	-8.33%
Medium Term Return	3 Months	0.010	-8.09%
	6 Months	0.010	+20.48%
	1 Year	0.020	-12.17%
Long Term Return	2 Years	0.030	+58.38%
	3 Years	0.035	+205.97%
	5 Years	0.035	+44.37%
Annualised Return	Annualised	-	+7.62%

CLASSIC SCENIC BERHAD (7202)

C² Chart

Analysis

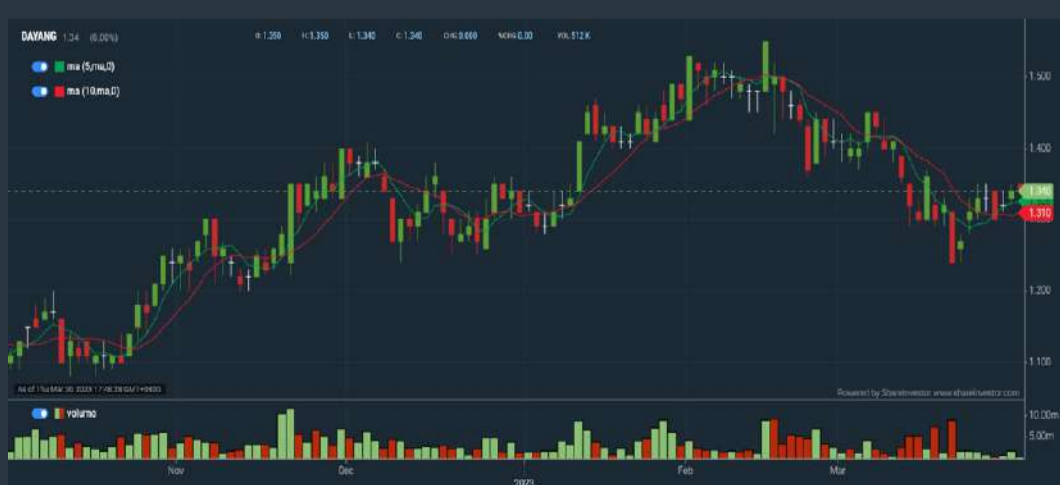


Period	Dividend Received	Capital Appreciation	Total Shareholder Return
Short Term Return	5 Days	+0.015	+1.72%
	10 Days	-0.125	-12.38%
	20 Days	-0.115	-11.50%
Medium Term Return	3 Months	-0.215	-19.55%
	6 Months	-0.365	-28.20%
	1 Year	+0.205	+30.15%
Long Term Return	2 Years	+0.075	+9.26%
	3 Years	0.030	+20.00%
	5 Years	0.160	+49.31%
Annualised Return	Annualised	-	+8.35%

DAYANG ENTERPRISE HOLDINGS BERHAD (5141)

C² Chart

Analysis



Period	Dividend Received	Capital Appreciation	Total Shareholder Return
Short Term Return	5 Days	+0.030	+2.29%
	10 Days	-0.026	-1.47%
	20 Days	-0.079	-5.96%
Medium Term Return	3 Months	-0.010	-0.75%
	6 Months	+0.220	+19.64%
	1 Year	+0.450	+50.16%
Long Term Return	2 Years	-0.120	-8.22%
	3 Years	+0.190	+16.52%
	5 Years	+0.570	+76.88%
Annualised Return	Annualised	-	+11.98%

Disclaimer: The information on this page is provided as a service to readers. It does not constitute financial advice and/or any investment recommendations. Past performance is not indicative of future results. We assume no liability for damages resulting from or arising out of the use of such information. It would be best if you did your own research to make your personal investment decisions wisely or consult a licenced investment advisor.

Price & Total Shareholder Return (as at Yesterday)

Fundamental Analysis

DEFINITION: Company is paying out dividend with low or moderate leverage.

CHART GUIDE: Total Shareholder Return (TSR) combines share price appreciation and distributions paid to show the total return to the shareholder expressed as a percentage.



ShareInvestor WebPro > Screener > Market Screener (FA & TA) > select BURSA > add criteria

A. Criteria

- > click Add Criteria
- Fundamental Analysis Conditions tab >select (i) Dividend Yield (Historical)
- Fundamental Analysis Conditions tab >select (ii) Dividend Payout (Historical)
- Fundamental Analysis Conditions tab >select (iii) Total Debt To Equity
- Fundamental Analysis Conditions tab >select (iv) Total Shareholder Returns
- Fundamental Analysis Conditions tab >select (v) Total Shareholder Returns
- Fundamental Analysis Conditions tab / >select (vi) CAGR of Dividend Per Share

- Fundamental Analysis Conditions tab >select (vii) CAGR of Dividend Per Share

B. Conditions (Criteria Filters)

1. Dividend Yield - select (more than) type (1) % for the past select (1) financial year(s)
2. Dividend Payout (Historical) - select (between) type (0.5) to type (1) times for the past select (1) financial year(s)
3. Total Debt to Equity - select (less than) type (1) for the past select (1) financial year(s)
4. Total Shareholder Return - select (more than) type (5) % for the past select (3) financial year(s)
5. Total Shareholder Return - select (more than) type (5) % for the past select (5) financial year(s)

6. CAGR of Dividend Per Share - select (less than) type (30) % for the past select (5) financial year(s)
7. CAGR of Dividend Per Share - select (more than) type (1) % for the past select (5) financial year(s)

- > click Save Template > Create New Template type (Dividend Companies) > click Create
- > click Save Template as > select Dividend Companies > click Save
- > click Screen Now (may take a few minutes)
- > Sort By: Select (Dividend Yield) Select (Desc)
- > Mouse over stock name > Factsheet > looking for Total Shareholder Return

UNITED PLANTATIONS BERHAD (2089)

C² Chart



Period	Dividend Received	Capital Appreciation	Total Shareholder Return
Short Term Return	5 Days	-0.600	-0.48%
	10 Days	+0.320	+1.98%
	20 Days	-0.660	-0.36%
Medium Term Return	3 Months	+1.250	+8.28%
	6 Months	0.400	+18.04%
	1 Year	1.250	+18.32%
Long Term Return	2 Years	2.200	+36.55%
	3 Years	3.450	+76.46%
	5 Years	6.350	+96.55%
Annualised Return	Annualised	-	+13.76%

JAYCORP BERHAD (7152)

C² Chart



Period	Dividend Received	Capital Appreciation	Total Shareholder Return
Short Term Return	5 Days	+0.015	+2.16%
	10 Days	+0.010	+1.43%
	20 Days	+0.005	+0.71%
Medium Term Return	3 Months	-	-
	6 Months	0.040	+10.29%
	1 Year	0.060	+9.22%
Long Term Return	2 Years	0.165	+1.13%
	3 Years	0.265	+168.60%
	5 Years	0.415	+150.00%
Annualised Return	Annualised	-	+20.11%

UCHI TECHNOLOGIES BERHAD (7100)

C² Chart



Period	Dividend Received	Capital Appreciation	Total Shareholder Return
Short Term Return	5 Days	+0.020	+0.82%
	10 Days	+0.010	+0.31%
	20 Days	-0.040	-1.22%
Medium Term Return	3 Months	0.120	+5.88%
	6 Months	0.120	+6.86%
	1 Year	0.200	+16.67%
Long Term Return	2 Years	0.415	+16.77%
	3 Years	0.575	+100.79%
	5 Years	0.870	+97.79%
Annualised Return	Annualised	-	+14.61%

Disclaimer: The information on this page is provided as a service to readers. It does not constitute financial advice and/or any investment recommendations. Past performance is not indicative of future results. We assume no liability for damages resulting from or arising out of the use of such information. It would be best if you did your own research to make your personal investment decisions wisely or consult a licenced investment advisor.

Week: 24 March 2023 – 30 March 2023

More Brokers' Call 

AMINVESTMENT BANK <small>... See More</small>	Call	Target Price	Release Date
Astro Malaysia Holdings Berhad (6399)	HOLD	RM0.68	28 Mar 2023
Gamuda Berhad (5398)	BUY	RM4.73	28 Mar 2023
Power Root Berhad (7237)	BUY	RM2.67	28 Mar 2023
APEX <small>... See More</small>	Call	Target Price	Release Date
Aurelius Technologies Berhad (5302)	HOLD	RM3.32	29 Mar 2023
Kronologi Asia Berhad (0176)	BUY	RM0.67	30 Mar 2023
BIMB SECURITIES SDN BHD <small>... See More</small>	Call	Target Price	Release Date
Gamuda Berhad (5398)	BUY	RM4.76	28 Mar 2023
CGS CIMB <small>... See More</small>	Call	Target Price	Release Date
Astro Malaysia Holdings Berhad (6399)	ADD	RM0.86	28 Mar 2023
Gamuda Berhad (5398)	ADD	RM4.69	28 Mar 2023
KENANGA <small>... See More</small>	Call	Target Price	Release Date
Gamuda Berhad (5398)	OUTPERFORM	RM5.15	28 Mar 2023
RHB Bank Berhad (1066)	OUTPERFORM	RM7.10	28 Mar 2023
United Malacca Berhad (2593)	MARKET PERFORM	RM5.00	28 Mar 2023
MALACCA SECURITIES SDN BHD <small>... See More</small>	Call	Target Price	Release Date
Kim Loong Resources Berhad (5027)	HOLD	RM1.89	30 Mar 2023
Nova Wellness Group Berhad (0201)	HOLD	RM0.85	27 Mar 2023
MIDF <small>... See More</small>	Call	Target Price	Release Date
Astro Malaysia Holdings Berhad (6399)	BUY	RM0.89	28 Mar 2023
Glomac Berhad (5020)	BUY	RM0.430	30 Mar 2023
UOB KAYHIAN <small>... See More</small>	Call	Target Price	Release Date
Globetronics Technology Berhad (7022)	BUY	RM1.26	29 Mar 2023
Matrix Concepts Holdings Berhad (5236)	BUY	RM1.63	29 Mar 2023
UEM Edgenta Berhad (1368)	BUY	RM1.14	29 Mar 2023

Disclaimer: InveSt does not accept any liability whatsoever for any direct, indirect or consequential losses (including loss of profit) or damages that may arise from the use of information or opinions in this publication. The information and opinions in InveSt are not to be considered as an offer to sell or buy any of the securities discussed. Opinions expressed are subject to change without notice. The Brokers may, from time to time, have interests or positions in the securities mentioned. For the full report on each item listed on this page, please visit https://www.shareinvestor.com/my/brokers_call.

DEFINITION: Top 9 stocks with Technical Analysis plus Pattern Matching by 60 pre-defined indicators by the system showing a higher probability of bullish sentiment on the share price.



ShareInvestor WebPro > Screener > Predefined TA Screens > select market BURSA > Most Long Signals > click Scan Results or mouse over each company

SALUTICA BERHAD (0183.MY)

SALUTE

Price updated at 30 Mar 2023 16:52

Last: 0.285	Change: -0.005	Volume: 6,638
	Change (%): -1.72	Range: 0.280 - 0.290

TA Scanner Results based on historical data up to 30 Mar 2023

Condition	Signal	Explanation
Bollinger Band: Bullish Long Term Volatility Breakout and Trending	Long	1. Close price above upper bollinger band(33,1). 2. Volume above average volume(50). 3. Average volume(50) is above 300,000.
Bollinger Band: Bullish Short Term Volatility Breakout and Trending	Long	1. Close price above upper bollinger band(33,1). 2. Volume above average volume(10). 3. Average volume(10) is above 300,000.
Bollinger Band: High Above Upper Bollinger Band	Neutral	1. High above upper bollinger band(14,2). 2. Average volume(5) is above 100,000.
Chaikin Volatility: Increasing Chaikin Volatility	Neutral	Chaikin Volatility(10,10) has been increasing for 5 days
DM: Bullish Directional Movement	Long	-DI(14) crossed below +DI(14)
Donchian Channels: High Above Upper Donchian Channels	Long	High crossed above the upper Donchian Channel(14,4)
RSI: Short Term RSI 50 Bullish Crossover	Long	1. RSI(20) crossed above 50 within the last 1 day and RSI(20) 1 day ago below 50 for the last 5 days. 2. Volume above average volume(125). 3. Average volume(5) is above 100,000.
Volume: Volume Spike	Long	1. Volume is more than 500% above average volume(10). 2. Volume above 200000. 3. Close price above 0.10

MALAYSIAN RESOURCES CORPORATION BERHAD (1651.MY)

MRCB

Price updated at 30 Mar 2023 16:55

Last: 0.345	Change: -	Volume: 153,226
	Change (%): -	Range: 0.340 - 0.350

TA Scanner Results based on historical data up to 30 Mar 2023

Condition	Signal	Explanation
Bollinger Band: Bullish Long Term Volatility Breakout and Trending	Long	1. Close price above upper bollinger band(33,1). 2. Volume above average volume(50). 3. Average volume(50) is above 300,000.
Bollinger Band: Bullish Short Term Volatility Breakout and Trending	Long	1. Close price above upper bollinger band(33,1). 2. Volume above average volume(10). 3. Average volume(10) is above 300,000.
Bollinger Band: High Above Upper Bollinger Band	Neutral	1. High above upper bollinger band(14,2). 2. Average volume(5) is above 100,000.
Candlestick: Bullish Engulfing	Long	Bullish: Engulfing
Donchian Channels: High Above Upper Donchian Channels	Long	High crossed above the upper Donchian Channel(14,4)
MA: Short Term Bullish Moving Average Crossover	Long	MA(10) crossed above MA(15) within the last 1 day.

CHUAN HUAT RESOURCES BERHAD (7016.MY)

CHUAN

Price updated at 30 Mar 2023 15:13

Last: 0.460	Change: -	Volume: -
	Change (%): -	Range: 0.460 - 0.460

TA Scanner Results based on historical data up to 30 Mar 2023

Condition	Signal	Explanation
DM: Bullish Directional Movement	Long	-DI(14) crossed below +DI(14)

SUNWAY CONSTRUCTION GROUP BERHAD (5263.MY)

SUNCON

Price updated at 30 Mar 2023 16:53

Last: 1.680	Change: -0.020	Volume: 10,667
	Change (%): -1.18	Range: 1.680 - 1.700

TA Scanner Results based on historical data up to 30 Mar 2023

Condition	Signal	Explanation
Bollinger Band: Bullish Long Term Volatility Breakout and Trending	Long	1. Close price above upper bollinger band(33,1). 2. Volume above average volume(50). 3. Average volume(50) is above 300,000.
Bollinger Band: High Above Upper Bollinger Band	Neutral	1. High above upper bollinger band(14,2). 2. Average volume(5) is above 100,000.
Candlestick: Bullish Engulfing	Long	Bullish: Engulfing
Donchian Channels: High Above Upper Donchian Channels	Long	High crossed above the upper Donchian Channel(14,4)
MA: Short Term Bullish Moving Average Crossover	Long	MA(10) crossed above MA(15) within the last 1 day.
Volume: Volume Spike	Long	1. Volume is more than 500% above average volume(10). 2. Volume above 200000. 3. Close price above 0.10
Williams %R: Bearish Williams %R	Short	1. Williams %R(26) between 0 and -20. 2. Average volume(5) is above 100,000.

BOUSTEAD PLANTATIONS BERHAD (5254.MY)

BPLANT

Price updated at 30 Mar 2023 16:54

Last: 0.710	Change: -	Volume: 35,937
	Change (%): -	Range: 0.700 - 0.720

TA Scanner Results based on historical data up to 30 Mar 2023

Condition	Signal	Explanation
Bollinger Band: High Above Upper Bollinger Band	Neutral	1. High above upper bollinger band(14,2). 2. Average volume(5) is above 100,000.
DM: Bullish Directional Movement	Long	-DI(14) crossed below +DI(14)
MA: Short Term Bullish Moving Average Crossover	Long	MA(10) crossed above MA(15) within the last 1 day.
MACD: Bullish MACD Crossover	Long	1. MACD(12,26) diff line crossed above the MACD(12,26) signal line. 2. MACD Histogram(12,26) is above 0.
Parabolic SAR: Bearish Parabolic SAR Reversal	Neutral	1. Parabolic SAR 1 day ago above close price 1 day ago for the last 5 days. 2. Parabolic SAR below close price
RSI: Short Term RSI 50 Bullish Crossover	Long	1. RSI(20) crossed above 50 within the last 1 day and RSI(20) 1 day ago below 50 for the last 5 days. 2. Volume above average volume(125). 3. Average volume(5) is above 100,000.

Disclaimer: The information on this page is provided as a service to readers. It does not constitute financial advice and/or any investment recommendations. Past performance is not indicative of future results. We assume no liability for damages resulting from or arising out of the use of such information. It would be best if you did your own research to make your personal investment decisions wisely or consult a licenced investment advisor.

Donchian Channels: High Above Upper Donchian Channels	Long	High crossed above the upper Donchian Channel(14,4)
MACD: Bullish MACD Crossover	Long	1. MACD(12,26) diff line crossed above the MACD(12,26) signal line. 2. MACD Histogram(12,26) is above 0.
Parabolic SAR: Bearish Parabolic SAR Reversal	Neutral	1. Parabolic SAR 1 day ago above close price 1 day ago for the last 5 days. 2. Parabolic SAR below close price
Volume: Volume Spike	Long	1. Volume is more than 500% above average volume(10). 2. Volume above 200000. 3. Close price above 0.10



SAND NISKO CAPITAL BERHAD
(7943.MY)

SNC

Price updated at 30 Mar 2023 16:33

Last: 0.280	Change: -0.030	Volume: 1,600
	Change (%): -9.68	Range: 0.280 - 0.290

TA Scanner Results based on historical data up to 30 Mar 2023

Condition	Signal	Explanation
Bollinger Band: High Above Upper Bollinger Band	Neutral	1. High above upper bollinger band(14,2). 2. Average volume(5) is above 100,000.
Bollinger Band: Low Below Lower Bollinger Band	Neutral	1. Low below lower bollinger band(14,2). 2. Average volume(5) is above 100,000.
DM: Bullish Directional Movement	Long	-DI(14) crossed below +DI(14)
Donchian Channels: High Above Upper Donchian Channels	Long	High crossed above the upper Donchian Channel(14,4)
MACD: Bullish MACD Crossover	Long	1. MACD(12,26) diff line crossed above the MACD(12,26) signal line. 2. MACD Histogram(12,26) is above 0.
Parabolic SAR: Bearish Parabolic SAR Reversal	Neutral	1. Parabolic SAR 1 day ago above close price 1 day ago for the last 5 days. 2. Parabolic SAR below close price
Price: New 52 Week Low	Short	1. Stock reach a new 52 week low. 2. Average volume(30) is above 50000.
RSI: Short Term RSI 50 Bullish Crossover	Long	1. RSI(20) crossed above 50 within the last 1 day and RSI(20) 1 day ago below 50 for the last 5 days. 2. Volume above average volume(125). 3. Average volume(5) is above 100,000.
Volume: Volume Spike	Long	1. Volume is more than 500% above average volume(10). 2. Volume above 200000. 3. Close price above 0.10



CHIN HIN GROUP BERHAD
(5273.MY)

CHINHIN

Price updated at 30 Mar 2023 16:59

Last: 4.550	Change: +0.310	Volume: 37,236
	Change (%): +7.31	Range: 4.250 - 4.590

TA Scanner Results based on historical data up to 30 Mar 2023

Condition	Signal	Explanation
Bollinger Band: Bullish Long Term Volatility Breakout and Trending	Long	1. Close price above upper bollinger band(33,1). 2. Volume above average volume(50). 3. Average volume(50) is above 300,000.
Bollinger Band: High Above Upper Bollinger Band	Neutral	1. High above upper bollinger band(14,2). 2. Average volume(5) is above 100,000.
CCI: Bearish CCI Overbought And Reversing	Short	1. CCI(26) above 100 and CCI(26) 1 day ago increasing for the last 3 days. 2. CCI(26) below CCI(26) 1 day ago
Donchian Channels: High Above Upper Donchian Channels	Long	High crossed above the upper Donchian Channel(14,4)
MA: Short Term Bullish Moving Average Crossover	Long	MA(10) crossed above MA(15) within the last 1 day.
Parabolic SAR: Bearish Parabolic SAR Reversal	Neutral	1. Parabolic SAR 1 day ago above close price 1 day ago for the last 5 days. 2. Parabolic SAR below close price
Volume: 10 Days large value Buy Up trade	Long	1. 150K value Buy Up greater than Sell Down by 20% for 10 days. 2. 50K-100K value Buy Up greater than Sell Down by 20% for 10 days. 3. Average volume(10) is above 1000000
Volume: 5 Days large value Buy Up trade	Long	1. 150K value Buy Up greater than Sell Down by 20% for 5 days. 2. 50K-100K value Buy Up greater than Sell Down by 20% for 5 days. 3. Average volume(10) is above 1000000
Williams %R: Bearish Williams %R	Short	1. Williams %R(26) between 0 and -20. 2. Average volume(5) is above 100,000.



APOLLO FOOD HOLDINGS BERHAD
(6432.MY)

APOLLO

Price updated at 30 Mar 2023 16:54

Last: 4.060	Change: +0.060	Volume: 371
	Change (%): +1.50	Range: 4.010 - 4.060

TA Scanner Results based on historical data up to 30 Mar 2023

Condition	Signal	Explanation
Bollinger Band: High Above Upper Bollinger Band	Neutral	1. High above upper bollinger band(14,2). 2. Average volume(5) is above 100,000.
CCI: Bearish CCI Overbought And Reversing	Short	1. CCI(26) above 100 and CCI(26) 1 day ago increasing for the last 3 days. 2. CCI(26) below CCI(26) 1 day ago
DM: Bullish Directional Movement	Long	-DI(14) crossed below +DI(14)
Donchian Channels: High Above Upper Donchian Channels	Long	High crossed above the upper Donchian Channel(14,4)
MA: Bullish Price Crossover	Long	1. Close price crossed above MA(40) within the last 1 day. 2. Previous day close price is below the MA(10) for the last 5 days
Parabolic SAR: Bearish Parabolic SAR Reversal	Neutral	1. Parabolic SAR 1 day ago above close price 1 day ago for the last 5 days. 2. Parabolic SAR below close price
RSI: Short Term RSI 50 Bullish Crossover	Long	1. RSI(20) crossed above 50 within the last 1 day and RSI(20) 1 day ago below 50 for the last 5 days. 2. Volume above average volume(125). 3. Average volume(5) is above 100,000.
Volume: Volume Spike	Long	1. Volume is more than 500% above average volume(10). 2. Volume above 200000. 3. Close price above 0.10



GLOBETRONICS TECHNOLOGY BERHAD
(7022.MY)

GTRONIC

Price updated at 30 Mar 2023 16:58

Last: 1.140	Change: -0.020	Volume: 25,113
	Change (%): -1.72	Range: 1.130 - 1.180

TA Scanner Results based on historical data up to 30 Mar 2023

Condition	Signal	Explanation
Bollinger Band: Bullish Long Term Volatility Breakout and Trending	Long	1. Close price above upper bollinger band(33,1). 2. Volume above average volume(50). 3. Average volume(50) is above 300,000.
Bollinger Band: Bullish Short Term Volatility Breakout and Trending	Long	1. Close price above upper bollinger band(33,1). 2. Volume above average volume(10). 3. Average volume(10) is above 300,000.
Bollinger Band: High Above Upper Bollinger Band	Neutral	1. High above upper bollinger band(14,2). 2. Average volume(5) is above 100,000.
CCI: Bearish CCI Overbought And Reversing	Short	1. CCI(26) above 100 and CCI(26) 1 day ago increasing for the last 3 days. 2. CCI(26) below CCI(26) 1 day ago
Donchian Channels: High Above Upper Donchian Channels	Long	High crossed above the upper Donchian Channel(14,4)
Volume: 10 Days large value Buy Up trade	Long	1. 150K value Buy Up greater than Sell Down by 20% for 10 days. 2. 50K-100K value Buy Up greater than Sell Down by 20% for 10 days. 3. Average volume(10) is above 1000000
Volume: 5 Days large value Buy Up trade	Long	1. 150K value Buy Up greater than Sell Down by 20% for 5 days. 2. 50K-100K value Buy Up greater than Sell Down by 20% for 5 days. 3. Average volume(10) is above 1000000

Disclaimer: The information on this page is provided as a service to readers. It does not constitute financial advice and/or any investment recommendations. Past performance is not indicative of future results. We assume no liability for damages resulting from or arising out of the use of such information. It would be best if you did your own research to make your personal investment decisions wisely or consult a licenced investment advisor.

MALAYSIAN CAPITAL MARKET REMAINS RESILIENT & ORDERLY - SC

According to Securities Commission Malaysia chairman Datuk Seri Dr Awang Adek Hussin, the Malaysian capital market remained orderly and continued to finance the economy, with total funds raised hitting a record high of RM179.4 billion and this exceeded the five-year pre-Covid-19 pandemic average of RM121.4 billion. The 2022 performance, led by a record amount of corporate bond and sukuk issuances, was achieved despite increased global market volatility and headwinds. The continued resiliency of the Malaysian capital market highlighted the value of exercising prudence and shared accountability while capitalising on growth prospects that arise. This approach allows the market to better manage risks, preserves overall financial resilience and stability, and supports economic growth.

The SC Annual Report 2022 released earlier this week highlighted the regulator's efforts in promoting market integrity, investor protection,

and the development of the Malaysian capital market. This ensured the capital market's role in financing sustainable development, while facilitating continued innovation to address emerging risks and challenges. Among the key highlights outlined in the report are equity crowdfunding (ECF) and peer-to-peer financing (P2P) platforms continue to facilitate the funding needs of micro, small and medium enterprises (MSME), with the total funds raised recording an increase of 26% from RM1.4 billion in 2021 to RM1.7 billion in 2022. Since their inception, ECF and P2P have helped 7,218 MSME raise over RM4.4 billion. Total funds raised via P2P financing rose to RM1.58 billion in 2022 from RM1.14 billion in 2021. At end-2022, the total number of issuers stood at 6,913 with an 88% increase to 3,732 issuers against 1,886 in 2021.

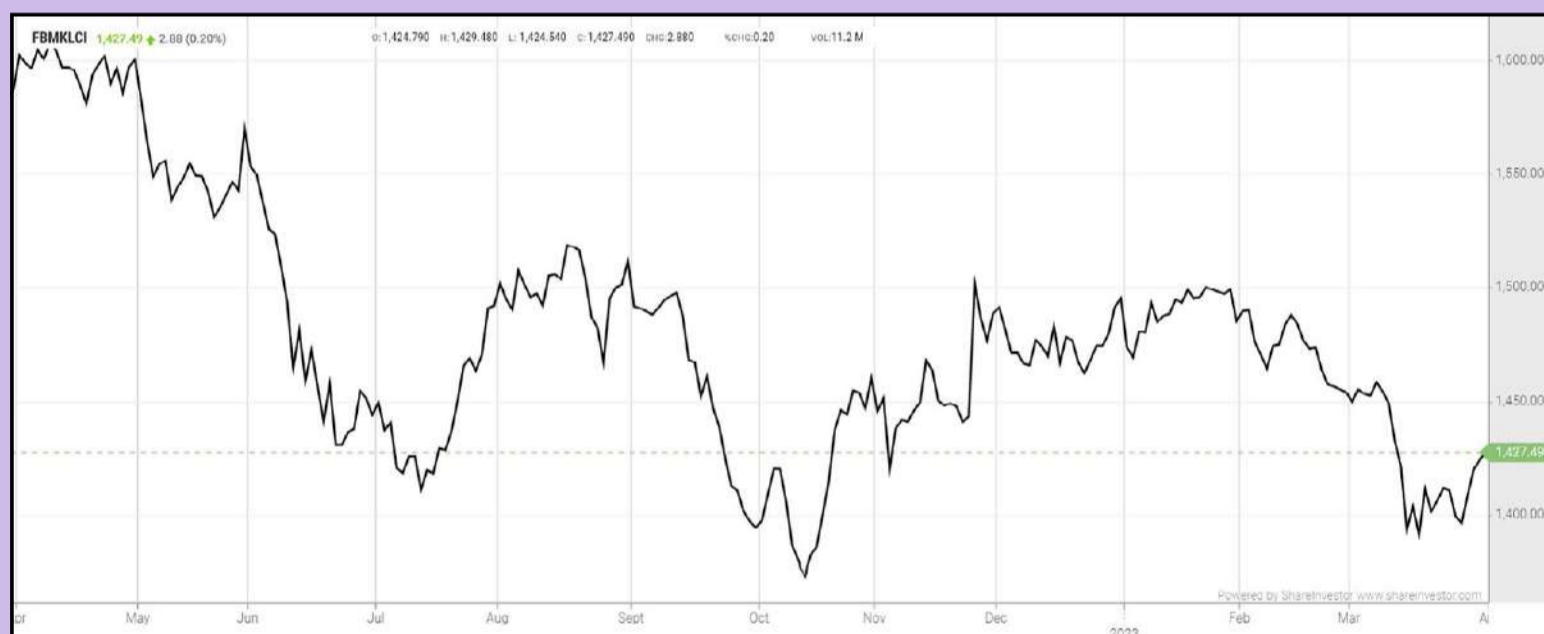
The report also highlighted that the Islamic capital market (ICM) comprising total sukuk outstanding and syariah-compliant equity market capitalisation, saw a marginal increase of 0.6% compared with the previous year. The ICM has increased at a compound annual growth rate (CAGR) of 4.2%, driven by the increase in total sukuk outstanding (9.3% p.a) while syariah-compliant equities remained relative flat (0.1% p.a.). Ongoing efforts to broaden and deepen the ICM were made, including the issuance of the Guidelines on Islamic Capital Market Products and Services to facilitate efficient access to the ICM ecosystem.

The capital market continues to prioritise good corporate governance and sustainability practices. As of March 1, 2023, 30% of the top 100 public listed companies are led by women, and all top 100 public listed companies have at least one woman director on board. To address scams and unlicensed activities, the SC established an internal task force, a proactive measure to ensure that such activities are identified and dealt with in a timely manner. In 2022, 185 websites were blocked, and 304 new entries were added to the SC's Investor Alert List, compared to 143 websites and 134 new entries in 2021.

Moving forward, some of the areas of focus in 2023 include regulatory reforms, enhancing the fundraising ecosystem, advancement of the ESG agenda, facilitation of technology adoption and improving of corporate governance.

EYE ON THE MARKETS

This week, on Friday (31 Mar), the Ringgit opened at 4.4150 against the USD from 4.4290 on Monday (27 Mar). Meanwhile, the Ringgit opened at 3.3254 to the Sing Dollar on Friday (31 Mar). On Monday (27 Mar), the FBM KLCI opened at 1400.95. As at Friday (31 Mar) 10:00am, the FBM KLCI is up 26.45 points for the week at 1427.49. Over in US, the overnight Dow Jones Industrial Average closed up 141.43 points (+0.43%) to 32,859.03 whilst the NASDAQ gained 87.24 points (+0.73%) to 12,013.47.



KLCI 1 Year Chart

**CHECK OUT
SHAREINVESTOR
BROKERS' CALL**

Weekly Buy/Sell/Hold calls from leading Malaysian Brokerages.

[Go To Brokers' Call](#)

Over 5 trading days



ShareInvestor WebPro (www.shareinvestor.com/my)

1. Price > Stock Prices
2. Select Market: NASDAQ / NYSE / IDX / SET / HKEX / SGX (One bourse at a time)
3. select Stocks Tab
4. select Ranking Top Gainers or Top Losers (Over 5 Trading Days)
5. Mouse over Column Layout > select Edit Customs > select Name > select Last Done Price > select 5 Days Change > select 52 Weeks High > select 52 Weeks Low > Mouse Over Column Layout > select Custom

NASDAQ (USD)

Top Gainers

Name	Last Done	Change Over 5 Days	52 Weeks High	52 Weeks Low
FIRST CITIZENS BANCSHARES INC NRTH	933.800	+344.740	959.990	505.840
BOOKING HOLDINGS INC	2,609.760	+71.000	2,630.000	1,616.850
MERCADOLIBRE INC	1,266.800	+75.250	1,275.820	600.685
LULULEMON ATHLETICA INC	358.090	+49.870	410.700	251.510
O'REILLY AUTOMOTIVE INC NEW	841.500	+40.120	873.940	562.900

Top Losers

Name	Last Done	Change Over 5 Days	52 Weeks High	52 Weeks Low
ATRION CORP	623.690	-24.110	766.720	534.990
ZURA BIO LIMITED	15.820	-17.390	37.550	6.850
MONOLITHIC POWER SYSTEM INC	497.790	-12.710	541.390	301.690
SUPER MICRO COMPUTER INC	103.340	-10.660	118.360	34.110
HARMONY BIOSCIENCES HLDGS INC	32.680	-9.120	62.085	29.810

NYSE (USD)

Top Gainers

Name	Last Done	Change Over 5 Days	52 Weeks High	52 Weeks Low
BERKSHIRE HATHAWAY INC	461,780.000	+8,713.890	540,420.000	393,012.250
AUTOZONE INC	2,406.190	+76.790	2,610.050	1,703.320
NVR INC	5,417.110	+62.680	5,549.430	3,576.010
TEXAS PACIFIC LAND CORPORATION	1,694.840	+54.980	2,739.000	1,250.010
METTLER-TOLEDO INTERNATIONAL INC	1,499.740	+48.640	1,609.250	1,065.550

Top Losers

Name	Last Done	Change Over 5 Days	52 Weeks High	52 Weeks Low
UNIFIRST CORP	173.530	-15.200	205.590	154.717
HUMANA INC	488.360	-2.990	571.300	410.870
OXFORD INDUSTRIES INC	102.770	-13.700	123.370	77.805
INSPIRE MEDICAL SYSTEMS INC	238.000	2.770	282.310	142.740
FRANKLIN COVEY CO	36.240	-9.900	54.700	34.000

IDX (Rupiah)

Top Gainers

Name	Last Done	Change Over 5 Days	52 Weeks High	52 Weeks Low
GUDANG GARAM TBK	26,775.000	+2,325.000	32,225.000	16,500.000
TELEFAST INDONESIA TBK	5,350.000	+2,160.000	5,900.000	2,310.000
M CASH INTEGRASI TBK	7,875.000	+1,975.000	14,450.000	5,300.000
NFC INDONESIA TBK	6,675.000	+1,675.000	13,375.000	4,460.000
UNITED TRACTORS	28,975.000	+1,500.000	36,200.000	23,600.000

Top Losers

Name	Last Done	Change Over 5 Days	52 Weeks High	52 Weeks Low
SOLUSI TUNAS PRATAMA TBK PT	36,000.000	-1,850.000	60,650.000	27,500.000
PERDANA BANGUN PUSAKA	1,945.000	-495.000	3,680.000	1,385.000
SIANTAR TOP	7,350.000	-400.000	9,450.000	6,750.000
GRAHA LAYAR PRIMA	2,660.000	-340.000	4,540.000	1,770.000
PT FAJAR SURYA WISESA	6,000.000	-300.000	7,475.000	5,600.000

SET (Thai Baht)

Top Gainers

Name	Last Done	Change Over 5 Days	52 Weeks High	52 Weeks Low
DELTA	1,100.000	+112.000	1,108.000	287.000
PTTEP	151.500	+9.000	195.000	134.500
NSI	160.000	+8.000	215.000	84.000
LRH	44.500	+7.750	45.000	28.000
NEW	112.000	+7.000	123.000	49.000

Top Losers

Name	Last Done	Change Over 5 Days	52 Weeks High	52 Weeks Low
SCC	315.000	-7.000	385.000	307.000
UPF	54.000	-5.000	64.500	52.000
CBG	97.250	-3.250	116.000	80.250
ADVANC	211.000	-3.000	237.000	181.500
SFP	244.000	-3.000	270.000	106.000

HKEX (HKD)

Top Gainers

Name	Last Done	Change Over 5 Days	52 Weeks High	52 Weeks Low
STAR CM HOLDINGS LIMITED	117.900	+17.400	119.500	32.550
BYD COMPANY LIMITED	225.200	+14.200	333.000	161.700
WEIBO CORPORATION	160.900	+12.400	227.800	81.300
SIPAI HEALTH TECHNOLOGY CO LTD	36.800	+12.350	39.050	18.300
ZHEJIANG LEAPMOTOR TECHNOLOGY CO	41.900	+11.800	42.950	17.500

Top Losers

Name	Last Done	Change Over 5 Days	52 Weeks High	52 Weeks Low
NOAH HOLDINGS PRIVATE WEALTH AND AS	270.000	-16.800	326.800	200.800
TRIP COM GROUP LTD	284.000	-15.800	321.800	152.100
YUM CHINA HOLDINGS INC	488.600	-9.600	505.000	290.000
SHENZHOU INTERNATIONAL GROUP HLDGS	77.300	-8.200	113.800	53.100
HANGZHOU TIGERMED CONSULTING CO LTD	75.750	-6.550	115.000	50.400

SGX (SGD)

Top Gainers

Name	Last Done	Change Over 5 Days	52 Weeks High	52 Weeks Low
JARDINE C&C	30.660	+1.670	36.850	24.860
JMH USD	48.520	+0.870	59.480	42.600
UOB	29.840	+0.420	32.390	25.910
SGX	9.340	+0.410	10.130	8.160
NIO Inc. USD OV	9.850	+0.400	25.350	8.030

Top Losers

Name	Last Done	Change Over 5 Days	52 Weeks High	52 Weeks Low
PEGASUS SPAC	4.490	-0.110	4.900	4.300
CROMWELL REIT SGD	2.180	-0.100	3.510	2.090
BUKIT SEMBAWANG	4.130	-0.080	5.075	4.000
CREATIVE	1.420	-0.080	2.500	1.200
HOTUNG INV	1.690	-0.080	2.240	1.570

TOYO VENTURES EARNs IRE OF BURSA MALAYSIA FOR WITHDRAWING THE DECLARED DIVIDEND



Devanesan
Evanson

**Chief Executive
Officer, Minority
Shareholders Watch
Group**

The above headline speaks loud and clear that public listed companies (PLCs) must be mindful and prudent when declaring dividends. They must be careful to ensure that they are able to facilitate the dividend payout exercise. PLCs must ensure that there can be no retraction or withdrawal once a dividend is declared.

Bursa Malaysia Securities Berhad had on 8 March publicly reprimanded Toyo Ventures Holdings Berhad, which had on 31 January 2022, withdrawn its proposed final dividend of

one sen per share after it had been proposed on 30 November 2021. The declaration of the one sen dividend was in respect of the financial period ended 30 September 2021 (FPE2021). The withdrawal by Toyo Ventures contravened paragraph 8.26(1) of the Main Market Listing Requirements (MMLR), which explicitly states that once a dividend has been declared or proposed, a listed issuer must not make any subsequent alteration to the dividend entitlement.

Toyo Ventures is an investment holding company whose subsidiaries are principally involved in the manufacture of printing inks, colour masterbatch, EDM Cut wires, EDM graphite electrodes and the trading of printing consumables and equipment, component automotive refinish system and electrical discharge machining (EDM) tools, and consumables and CNC Machinery.

While the market regulator did not find any of Toyo Ventures' directors to have caused or permitted the breach by the company, it nevertheless highlighted that the directors must maintain appropriate standards of responsibility and accountability in ensuring compliance with the MMLR. "Bursa Malaysia Securities views the breach seriously as the requirement not to make any subsequent alteration to the dividend entitlement is a fundamental obligation of listed companies and of paramount importance in ensuring market certainty and integrity and that the interests of shareholders and investors are not compromised," it further justified," said the regulator in a media release.

HOW DID IT HAPPEN?

To begin with, Toyo Ventures had on 30 November 2021 announced a proposed final single-tier dividend of 1 sen per share for its FPE2021. The company had incurred a net loss of RM13.14 million for its three-month ended 30 September 2021 and an accumulated loss of RM12.92 million for the 15-month FPE2021 when it announced the quarterly result on 30 November 2021 (Q5FPE2021). Despite the loss-making position, Toyo Ventures decided to forge ahead with its proposed

dividend decision as it still had sufficient retained earnings brought forward from previous financial years.

However, the company decided to withdraw its proposed dividend exercise on 31 January 2022 due to insufficient retained earnings. The insufficiency arose from certain adjustments made in its audited financial statements for the 15-month FPE 30 September 2021 which was issued on 31 January 2022. These adjustments should have been taken into account in the Q5FPE2021 or earlier quarters.

In this case, PLCs must be aware of their financial condition before proposing dividends. Sometimes, unaudited figures may not be a good gauge especially when external auditors are not engaged on a quarterly basis to review their numbers. The reliability of the unaudited quarterly results in such instances are only as good as the finance function is.

Smaller PLCs may not want to incur the fees of engaging external auditors to review their numbers quarterly before their results are announced. As such, when provisions are required or impairments are made after the external audit, there can be a material deviation in the reported earnings, resulting in nasty surprises like the need to withdraw proposed dividends due to insufficient retained earnings or on a worst-case scenario, suddenly finding themselves as a Practice Note 17 affected company. It should be noted that Section 131 of the Companies Act 2016 states that a dividend is to be paid out from the company's profits, and the dividend should not be paid if the distribution will cause the company to be insolvent.

RARE BUT NOT UNPRECEDENTED

Toyo Ventures is not the first PLC to have withdrawn a dividend that has been declared or proposed, although such action is more of a rarity than a norm. For the uninitiated, a proposed dividend is recommended by board of directors (BOD) at the end of a financial period. Directors must satisfy that the company will be solvent after the distribution is

made. Some factors to be considered are the level of available cash and cash equivalents, level of retained earnings, future funding needs, and working capital requirements.

Affin Bank Berhad had, during the height of the COVID-19 pandemic (April 2020), intended to revise the quantum of its interim dividend to 5 sen from 7 sen per share in respect of the financial year ended 31 December 2019. The Bank considered the revision a prudent approach towards preserving its capital and liquidity given the prevailing economic situation then. With that, it had sought the approval of Bursa Malaysia Securities for a proposed waiver in respect of the revision of dividend as it is not in compliance with Paragraph 8.26(1) of the MMLR. However, Bursa Malaysia rejected Affin Bank's application for waiver and thus the quantum of dividend reverted to the 7 sen per share proposed earlier.

At the height of the COVID-19 pandemic, major banks like HSBC scrapped their dividends to preserve capital, and so did other global peers, notably the Royal Bank of Scotland and Barclays, which reportedly said they would cancel any outstanding dividend payments. Ironically for Affin Bank, it was the 'odd one out' given that no other Malaysian banks were known to have sought to reduce their proposed dividends. In both Affin Bank's and Toyo Ventures' cases, Bursa Malaysia contended that once a dividend is announced to the exchange, its listing requirements prohibit any alteration to the dividend entitlement declared or proposed to shareholders.

The rationale for such requirements, according to the market regulator, is to safeguard both the investors' and shareholders' interest since dividend entitlement and payment form part of the key considerations in making their investment decision; because investors would have made their informed investment decisions based on the declared dividends.



The Board of Directors of **Gamuda Berhad (GAMUDA)** is pleased to announce its acquisition of Winchester House London, the current UK headquarters of Deutsche Bank AG in the United Kingdom, in partnership with Castleforge Partners Limited, a leading UK-based real estate private equity investor. The Proposed Acquisition is part of Gamuda Land's Quick-Turnaround-Projects strategy, which aims to build a regional portfolio of real estate projects with high internal rate of return, with investment timeframes of 5 years or less. Quick-Turnaround-Project is sector-agnostic and seeks to capitalise on strong demand, proprietary and off-market deals with value-add potential. The QTP strategy is intended to diversify the portfolio, maximise returns on capital, and grow Gamuda Land's geographical presence beyond Malaysia. Subsequent to the Proposed Acquisition, Winchester House London will be refurbished and upgraded into a best-in-class, top-rated environmentally sustainable ESG office space catering to global or multinational financial institutions, legal firms, and mega-tech corporations. Gamuda intends to dispose of this investment, by the 5th year or prior, after locking in strong pre-lease arrangements by quality tenants.



The Board of Directors of **Pentamaster Corporation Berhad (PENTA)** wishes to announce that Pentamaster Technology (M) Sdn. Bhd., a wholly-owned subsidiary of Pentamaster International Limited, which in turn is a subsidiary of Pentamaster Corporation Berhad, has established a wholly foreign-owned limited liability company in Germany, namely Pentamaster Automation (Germany) GmbH.

Pentamaster Automation Germany is a limited liability company established pursuant to the provisions of the German Act on Limited Liability Companies. The application for the Establishment was filed on 21 March 2023 and PAG was subsequently incorporated on 29 March

Disclaimer: The information in the Investor Relations page is extracted from individual companies' announcements in www.bursamalaysia.com. The information on this page is provided as a service to readers. We assume no liability for damages resulting from or arising out of the use of such information. Whilst every effort is made to ensure accuracy, the information presented has been simplified for your reading pleasure. Readers are advised to read the original and complete filings on the Bursa Malaysia website at https://www.bursamalaysia.com/market_information/announcements/company_announcement

2023. The principal activity of PAG involves design and development, production and sales of automated test equipment, factory automation system and other handling solutions as well as providing technical consulting services and other related support services.

The establishment of PAG is part of the Group's expansion plan to broaden its geographical footprint into Europe region and the share capital of PAG is Euro 25,000.



PT Resources Holdings Berhad (PTRB) announced on 28 March 2023 that the Company's revenue increased 32.0% to RM115.4 million for the third quarter ended 31 January 2023 compared with RM87.4 million in the corresponding quarter of the previous financial year.

For the quarter under review, the Company's gross profit gained 58.1% to RM15.3 million compared with RM9.6 million in 3Q FY2022 while profit before tax decreased by 55.4% to RM2.1 million. On a segmental basis, the processing and trading of frozen seafood products business contributed revenue of RM108.8 million in 3Q FY2023 while the trading of other products business contributed revenue of RM6.6 million. By geographical market, Malaysia contributed revenue of RM57.7 million while overseas markets comprising China and Saudi Arabia contributed revenue of RM57.7 million.

For the nine months ended 31 January 2023, the Company's revenue increased 29.3% to RM356.1 million compared with RM275.4 million in 9M FY2022. Gross Profit increased 35.6% to RM42.3 million in 9M FY2023 compared with RM31.2 million in the corresponding period of the previous financial year while PBT increased 7.5% to RM18.3 million compared with RM17.0 million. For the 9M FY2023, there was also an 84.0% increase in administrative expenses to RM23.9 million due to one-off expenses resulting from listing expenses of RM4.0 million, an unrealised loss of RM4.6 million from foreign exchange volatility in 3Q FY2023 and, increase in staff costs of RM1.3 million.



Salcon Berhad (SALCON) wishes to announce that Nusantara Megajuta Sdn Bhd, a wholly-owned subsidiary of Salcon Development Sdn Bhd which in turn is a wholly-owned subsidiary of Salcon has on 24 March 2023 entered into a Joint Venture Agreement with Exsim Kebun Teh Sdn Bhd [formerly known as Exsim Hills (Sabah) Sdn Bhd] to undertake a multiple phased mixed-use development consisting of service apartments and retail units on two pieces of 99 years' leasehold lands owned by Nusantara Megajuta Sdn Bhd upon the terms and conditions stipulated in the JVA.



Sarawak Consolidated Industries Berhad (SCIB) today announced that the Company's wholly owned subsidiary, SCIB Industrialised Building System Sdn. Bhd. has

been awarded an engineering, procurement, construction and commissioning subcontract valued at RM16.8 million from Majestika Sdn. Bhd. Majestika, the main contractor for the project, awarded the EPCC subcontract to SCIBIBS with a duration of 14 months for the construction of a school, Sekolah Kebangsaan Tambay, in Kota Samarahan, Sarawak.

Our strengths and focus on small-to-mid-sized rural infrastructure projects have enabled us to build a strong portfolio that we can leverage on when seeking such projects. SCIB offers EPCC services that are supported by our manufacturing arm, which is the leading precast concrete and IBS manufacturer in East Malaysia. We are actively pursuing projects for dilapidated schools in Sarawak and Sabah, which have been allocated RM920 million. This is on top of bidding for projects in both states, which have been allocated RM5.6 billion and RM6.5 billion respectively under the re-tabled Budget 2023. The Company's share price as of 28 March 2023 is 0.125 sen with a market capitalisation of RM72.8 million. SCIB has an order book of RM388 million as of March 2023.

Disclaimer: The information in the Investor Relations page is extracted from individual companies' announcements in www.bursamalaysia.com. The information on this page is provided as a service to readers. We assume no liability for damages resulting from or arising out of the use of such information. Whilst every effort is made to ensure accuracy, the information presented has been simplified for your reading pleasure. Readers are advised to read the original and complete filings on the Bursa Malaysia website at https://www.bursamalaysia.com/market_information/announcements/company_announcement

ShareInvestor is a technology based company with a focus on Internet media and we have operations in Malaysia, Singapore and Thailand.

We are the market leader in providing a combination of market data, analysis and news on various platforms to traders and investors.

Our websites include www.shareinvestor.com and www.bursastation.com.

More information about our products and services can be found at www.shareinvestorholdings.com

We're looking for Drupal Developers who will be in charge of front-end development and back-end/module development. This role requires expertise in PHP, HTML, CSS, JS, and an eye for design aesthetics. The candidates should be familiar and have a passion working with content management systems.

Interested candidates are encouraged to apply with full resume, present and expected salary and a recent photograph. Please send these to hr.my@shareinvestor.com for processing. ShareInvestor regrets that only shortlisted candidates shall be notified.

Drupal Developers (2 vacancies)

Job Responsibilities:

- Active participation in all UI / UX decisions
- Contribute actively to the continuous development and maintenance of development projects
- Enhance Drupal development quality
- Provide solutions to issues and suggestions for improvements.
- Designing and implementing new features to the system
- Ensuring optimal performance

Required Skills:

- At least 3 years of Drupal Theming and Front-End Development experience
- Proficient in PHP, HTML5/XHTML, CSS, Javascript, jQuery, AJAX, XML, Json
- Good Diploma/Degree in Computer Science/Computer Engineering.
- Experience working with Drupal's main modules, such as CTools, Views, Rules, Webform, and so on
- Ability to create custom Drupal modules
- Strong troubleshooting skills to fix bugs

Benefits:

- Career & growth opportunities
- Interesting projects
- Medical Insurance
- Incentives

Ruby on Rails Developer (1 vacancy)

Job Responsibilities:

- Develop quality web-based software modules on schedule with a focus on Ruby and Ruby on Rails applications.
- Explore and utilize the latest web-based technologies.
- Document design specifications, logic concepts and module description.
- Maintain and enhance existing web-based applications.

Required Skills:

- Experience in web-based programming/scripting is essential. Candidate must be able to explain clearly technical aspects of his/her past experiences and projects.
- Passion for programming and desire to learn new languages like Go.
- Good Diploma/Degree in Computer Science/Computer Engineering.
- Able to work well in a team and be able to follow documentation and coding standards.
- Knowledge in any of the following would be an added advantage
 - Ruby and Ruby on Rails Framework
 - Javascript and jQuery library
 - Go
 - Perl

Application Developer (C++/STL) (1 vacancy)

Job Responsibilities

- Deliver quality software modules on schedule.
- Document design specifications, conceptions, module description.
- Maintain and enhance existing applications.

Required Skills:

- Passion for programming and desire to learn.
- Good Diploma/Degree in Computer Science/Computer Engineering.
- Skills in C++ is essential.
- Experience with Visual Studio, networking stack and Golang would be an advantage.
- Proactive, resourceful and self-motivated with strong analytical skills.
- Good interpersonal, written and communication skills.
- Able to work with little supervision.

Junior Market Data Support Specialist

As a Junior Market Data Support Specialist, you will be involved in reviewing, analysing and collecting accurate and timely financial information on listed companies for our market data information services.

Job Responsibilities

- Collect, compute and analyse relevant financial data of listed companies, organise and present them on the company portal, in timely manner, for the consumption by our subscribers and our corporate clients
- Capture corporate events / actions and translate them to adjustments of impacted financial data
- Research, evaluate, propose new solutions or recommendations for adhoc project requirements that are related to the financial data or the financial fundamentals of listed companies
- Provide support to users' queries related to financial information displayed on our platforms
- Perform any other duties assigned from time to time, including rare occasions of working during weekends

Required Skills

- Minimum academic qualification: Diploma in any finance-related discipline
- Knowledge of basic accounting and financial terms is required
- Flair for data precision / accuracy / quality / thoroughness plus strict adherence to structured data process and timeline is a must
- Proficient in Microsoft Excel
- Team player with pleasant personality
- Proficient in English, oral and written.

Fresh graduates are welcome to apply.

Interested candidates are encouraged to apply with full resume, present and expected salary and a recent photograph. Please send these to hr.my@shareinvestor.com for processing. ShareInvestor regrets that only shortlisted candidates shall be notified.