

Invest

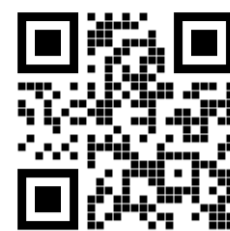
A Weekly e-Publication by SHAREINVESTOR.com

ISSUE

145

FRIDAY
24 FEBRUARY
2023

Scan/Click QR to Register



Via email, every Friday

INFLATION COULD PUSH PROPERTY PRICES UP BY DOUBLE- DIGIT - REHDA

(page 20)



04 LEADERBOARD

06 SHARIAH HOT STOCKS

07 COMPANY SPOTLIGHT

08 SHARIAH MOMENTUM UP
STOCKS

10 NON SHARIAH HOT STOCKS

12 UP TRENDING STOCKS

14 VALUE STOCKS

15 GROWTH STOCKS

16 DIVIDEND STOCKS

17 BROKERS' CALL

18 LONG COMPANIES

20 MARKET SENTIMENTS

24 REGIONAL MARKETS

25 FROM THE OBSERVER

28 INSIDER ACTIVITY

31 INVESTOR RELATIONS

35 CAREERS AT
SHAREINVESTOR



INVESTOR PLATFORMS

General Manager
Darren Chong
darren.chong@shareinvestor.com

MARKET DATA SERVICES
(marketdata.my@shareinvestor.com)

Account Manager
Heidee Ahmad
heidee.ahmad@shareinvestor.com

Admin
Watie Nordin
watie.nordin@shareinvestor.com

Community Growth
Tan Yong Sheng
yongsheng.tan@shareinvestor.com

PROCESS AUTOMATION & DATA ANALYTICS

Data Analyst
Nickson Aw

Market Data & Media Coordinator
Silas Emmanuel Joseph

ADS & EVENTS SPONSORSHIP SALES

Manager
Sharon Lee
sharon.lee@shareinvestor.com

Senior Marketing Executive
Daniel Wong
daniel.wong@shareinvestor.com

CORPORATE

Managing Director (Malaysia) & Publisher
Edward Stanislaus
edward@shareinvestor.com

INVESTOR RELATIONS

Director
Elizabeth Tan
elizabeth.tan@shareinvestor.com

Manager
Letticia Wong
letticia.wong@shareinvestor.com

MARKETING COMMUNICATIONS

Marcomm Manager
Danny Ng
danny.ng@shareinvestor.com

Marcomm Executive
Farah Azwani
farah.azwani@shareinvestor.com

CREATIVE & DESIGN

Manager | Andric See
Asst. Manager | Ivy Yap
Sr. Graphic Designer | Anthony Lau
Web Developers | Nurul Atiqah
Aiman Jasmin
Izwan Rusli

IT APPS

Project Manager | Amir Yusoff
Sr. Software Engineers | Mohd. Qasem
Harris Mulyadi
Mark Leona
Systems Team Lead | Lucky Phan
Sr. Systems Admin | Law Kee Chai
Software Engineers | Lau Teck Wei
Lian Kok Keong
Gary Ooi
Technical Architect | Katrina Delrosario

FINANCE, ADMIN & HR

Manager | Shireen Goh
Sr. Accounts Executive | Jessie Ho
Accounts Assistant | Ng Jin Yng

SHAREINVESTOR HOLDINGS

BOARD OF DIRECTORS

Chairman	Patrick Daniel
Group CEO	Christopher Lee
Group COO	Lim Dau Hee
Group CFO	Teo Siew May
Group MD	Shanison Lin



“ GIVE A MAN A FISH AND YOU FEED HIM FOR A DAY; TEACH A MAN TO FISH AND YOU FEED HIM FOR A LIFETIME ”

ShareInvestor Malaysia Sdn. Bhd.

(200001023956) (526564-M)
Unit No. DF2-07-03A. Level 7,
Persoft Tower, 6B Persiaran Tropicana,
47410 Petaling Jaya, Selangor Darul Ehsan.

Hotline : 603 7803 1791
Mobile : 011 6343 8939
Website : www.ShareInvestor.com.my
www.ShareInvestorHoldings.com
www.Facebook.com/ShareInvestorMalaysia

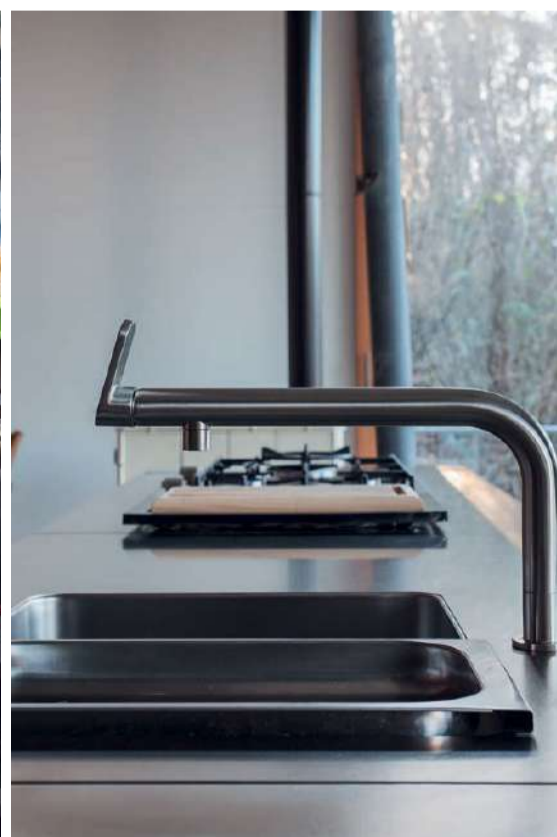
ADVERTISEMENT ENQUIRY

bulthaup takes care of the details so that you can enjoy a harmonious environment.



XTRA

XTRA FURNITURE SDN BHD
The Gardens Mall, Mid Valley City
xtrafurniture.com/bulthaup
fb.com/bulthaupmalaysia



bulthaup



STROM

SWISS TIMEPIECES & JEWELLERY



StromWatch Asia
Tele : +65.9817.3378 Email : ll.stromasia@gmail.com

WWW.STROMWATCH.SWISS



www.shareinvestor.com - market data at your fingertips



ShareInvestor WebPro (www.shareinvestor.com/my) Prices > Stock Prices > Bursa > click Stocks tab

1. mouse over Ranking > select Top Active > all Shariah stocks are denoted with an [S] > mouse over Column Layout > select Edit Customs > select Name > select Volume > select Last Done Price > Mouse Over Column Layout > select Custom
2. mouse over Ranking > select Top Turnover > all Shariah stocks are denoted with an [S] > mouse over Column Layout > select Edit Customs > select Name > select Last Done Price > select Value > Mouse Over Column Layout > select Custom
3. mouse over Ranking > select Top Gainers (Over 5 Trading Days) > mouse over Column Layout > select Edit Customs > select Name > select Last Done Price > select 5 Days Change > select 5 Days % Change > Mouse Over Column Layout > select Custom
4. mouse over Ranking > select Top Losers (Over 5 Trading Days)
5. mouse over Ranking > select Top % Gainers (Over 5 Trading Days)
6. mouse over Ranking > select Top % Losers (Over 5 Trading Days)

Shariah Top Actives (as at Yesterday)

Name	Price (RM)	Volume
HONGSENG [S]	0.150	1,026,794.000
SAPNRG [S]	0.045	936,321.000
DNEX [S]	0.645	881,568.000
MYEG [S]	0.685	762,299.000
ZENTECH [S]	0.030	601,032.000
VELESTO [S]	0.240	450,882.000
BSLCORP [S]	0.105	438,719.000
TOPGLOV [S]	0.785	346,221.000
GAMUDA [S]	4.150	328,046.000
MI [S]	1.990	309,486.000

Shariah Top Turnover (as at Yesterday)

Name	Price (RM)	Value (RM)
PCHEM [S]	7.800	140,495,694
GAMUDA [S]	4.150	138,539,076
DNEX [S]	0.645	58,669,957
MI [S]	1.990	57,102,459
MYEG [S]	0.685	50,988,522
IHH [S]	5.890	48,589,315
TOPGLOV [S]	0.785	27,456,104
PMETAL [S]	5.270	26,367,075
AIRPORT [S]	7.000	24,611,593
IOICORP [S]	3.770	23,049,047

Top Gainers (over 5 Trading days as at Yesterday)

Name	Price (RM)	Change (RM)
HEXTECH	28.000	+1.500
AJI	15.200	+1.180
F&N	27.180	+0.940
CIHLDG	3.530	+0.500
MI	1.990	+0.390
TOYOVEN	1.490	+0.370
ATECH	3.230	+0.320
RAPID	16.780	+0.300
ALLIANZ	13.880	+0.280
EG	1.130	+0.270

Top % Gainers (over 5 Trading days as at Yesterday)

Name	Price (RM)	Change (%)
DOLPHIN	0.015	+50.00
MMAG	0.020	+33.33
TOYOVEN	1.490	+33.04
SMRT	0.310	+31.91
EG	1.130	+31.40
OVERSEA	0.130	+30.00
LSH	0.600	+26.32
GCE	0.400	+25.00
MTRONIC	0.025	+25.00
TECHNAX	0.025	+25.00

Top Losers (over 5 Trading days as at Yesterday)

Name	Price (RM)	Change (RM)
MPI	29.600	-4.140
HEIM	27.000	-2.220
PANAMY	24.500	-1.580
BKAWAN	21.660	-1.440
CARLSBG	23.440	-1.240
PETGAS	16.760	-0.740
KLK	21.400	-0.700
CHINHIN	3.530	-0.690
KEINHIN	1.900	-0.670
SMI	0.780	-0.650

Top % Losers (over 5 Trading days as at Yesterday)

Name	Price (RM)	Change (%)
DGB	0.010	-50.00
FINTEC	0.005	-50.00
SMI	0.780	-45.45
FOCUS	0.015	-40.00
AT	0.010	-33.33
COMPUGT	0.010	-33.33
EAH	0.010	-33.33
EDUSPEC	0.010	-33.33
SCOPE	0.155	-27.91
KEINHIN	1.900	-26.07

SHAREINVESTOR WEBPRO

STOCK MARKET DATA AT YOUR FINGERTIPS

Powerful browser-based market analytics platform.
Access from anywhere



8 Markets Data

- ▶ Get access to data from Bursa, NYSE, Nasdaq, HKEX, SGX, IDX, SET & ASX

Portfolio Management

- ▶ Profit & Loss Summary
- ▶ Stock Alert
- ▶ News & Events filtering
- ▶ Customizable column layout

Fundamental Analysis

Financial Analysis Statement

- ▶ Profit & Loss
- ▶ Balance Sheet
- ▶ Cash Flow Statement
- ▶ More than 20 Financial Ratios
- ▶ Dividend Analysis

Technical Charting

- ▶ C² chart (Customisable & Comprehensive)

Brokers' Call

Intrinsic Value Calculator

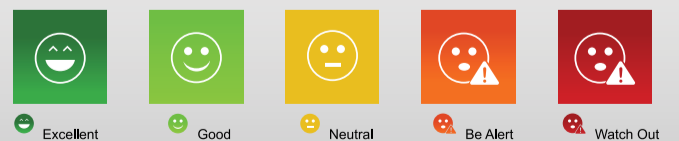
FactSheet

- ▶ Key Stock Information
- ▶ Ownership
- ▶ Consensus Estimates
- ▶ Annual Report
- ▶ Historical Price
- ▶ Insider Trades

Introducing Smiley Grid



- ▶ Smiley Grid makes the Factsheet fast and easy to understand.
- ▶ It is a shortcut where key financial data have now been interpreted for you, and presented in easy-to-understand, colour coded icons



Click here to start your
9 days FREE trial
(Valued at RM10)



Price & Volume Distribution Charts (as at Yesterday)

Technical Analysis

DEFINITION: Shariah compliant stocks with Technical Analysis showing 5-days & 10-days Moving Average Price below Yesterday's Close over past 3 days and with Volume Spike.

CHART GUIDE: Volume Distribution Chart is a statistical interpretation of the current sentiment on each stock in graphical format. The highest bar categorized as >150k is likely to be traded by institutions or super dealers, while the lowest bar categorized as <15k usually represents retail investors. "Buy Up" refers to more buyers snatching up the lots queued at selling price. "Sell Down" refers to sellers selling their shares to the buying queue



ShareInvestor WebPro > Screener > Market Screener (FA & TA) > select BURSA > add criteria

A. Criteria

- > click Add Criteria
- Technical Analysis Conditions tab select (i) Moving Average Below Close (ii) Volume Spike
- Fundamental Analysis Conditions tab > select (iii) Revenue
- Prices & Other Conditions tab > select (iv) Is Shariah Compliant
- Technical Analysis Conditions tab select (v) Moving Average Below Close
- Prices & Other Conditions tab > select (vi) Last Done Price
- Technical Analysis Conditions tab select (vii) Moving Average Below Close

B. Conditions (Criteria Filters)

- Moving Average Below Close - select (MA) type (5) below close price for type (3) days
- Volume Spike - Volume type (1) greater than type (5) days average
- Revenue ("000) - select (more than) type (1) for the past select (1) financial year(s)
- Is Shariah Compliant - select **Yes**
- Moving Average Below Close - select (MA) type (10) below close price for type (3) days
- Last Done Price - select (more than) type (0.3)
- Moving Average Below Close - select (EMA) type (5) below close price for type (3) days

- > click Save Template > Create New Template type (Shariah Hot Stocks) > click Create
- > click Save Template as > select Shariah Hot Stocks > click Save
- > click Screen Now (may take a few minutes)
- > Sort By: Select (Vol) Select (Desc)
- > Mouse over stock name > Charts > click C² Charts or Volume Distribution

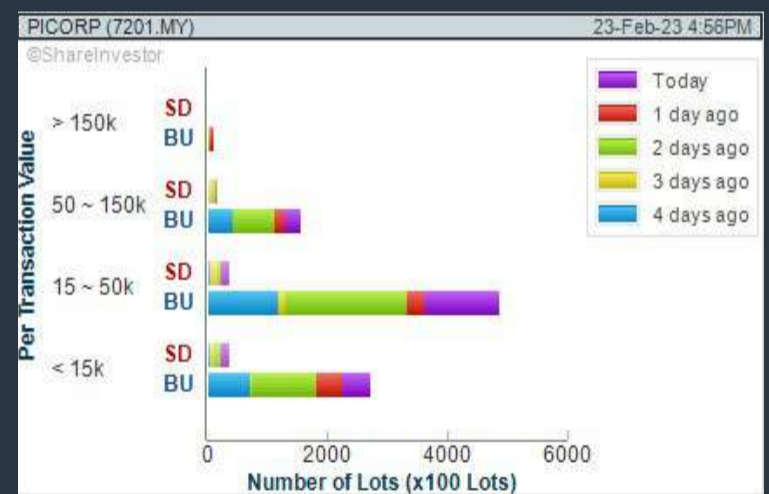
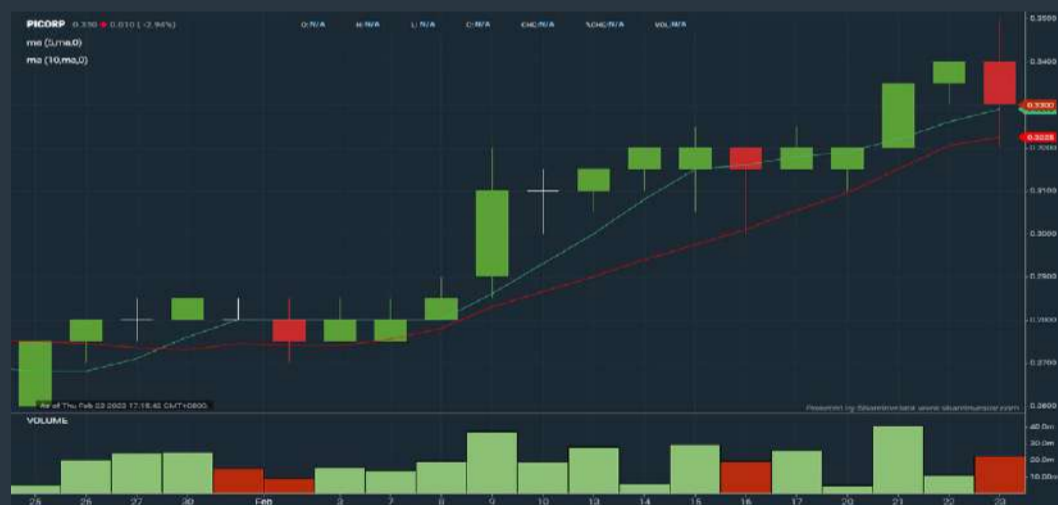
GAMUDA BERHAD (5398)

C² Chart



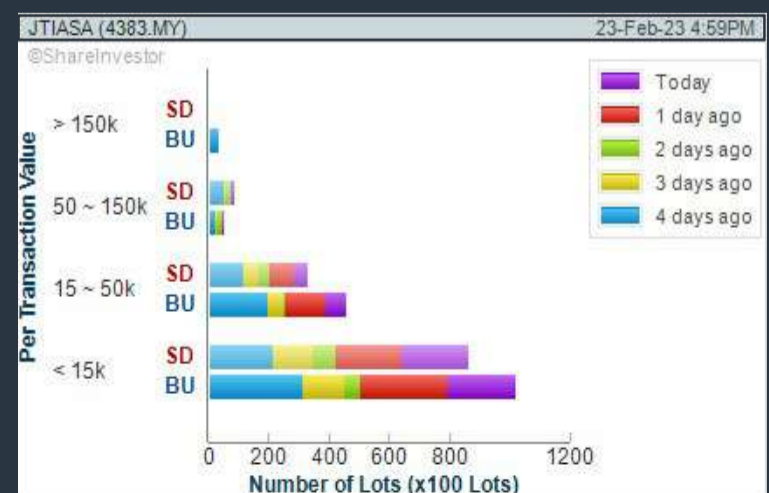
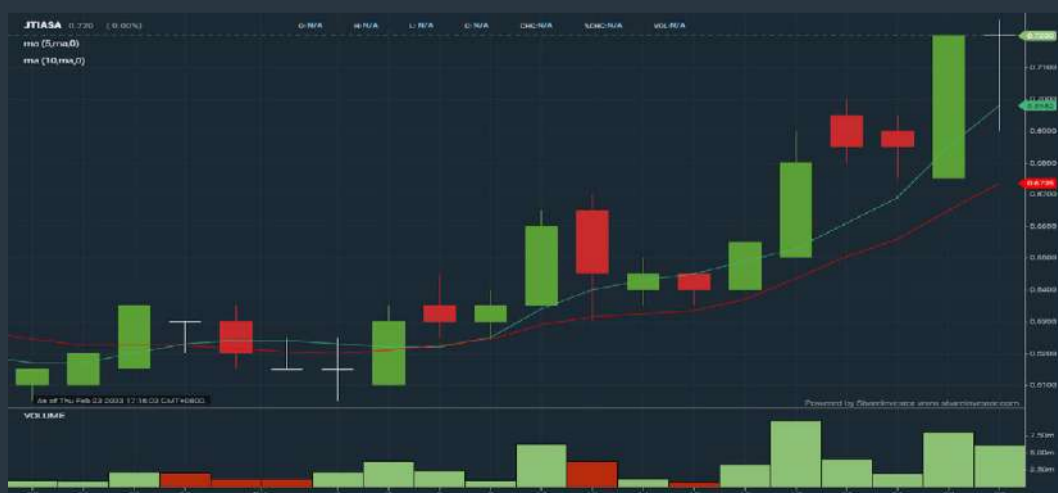
PROGRESSIVE IMPACT CORPORATION (7201)

C² Chart



JAYA TIASA HOLDINGS BERHAD (4383)

C² Chart



Disclaimer: The information on this page is provided as a service to readers. It does not constitute financial advice and/or any investment recommendations. Past performance is not indicative of future results. We assume no liability for damages resulting from or arising out of the use of such information. It would be best if you did your own research to make your personal investment decisions wisely or consult a licenced investment advisor.

COMPANY BACKGROUND

WCE Holdings Berhad primarily operates three business segments: Toll Concession, Construction, and Others, through its subsidiaries.

The Toll Concession segment of the company is responsible for the construction, management, and tolling of highway operations. The Construction segment is involved in construction contracting and project management services, and others segment includes leasing, management services and investment holding.



WCEHB WCE HOLDINGS BERHAD		Updated at: 23 Feb 2023 16:57	
Last (MYR): 0.400 ↑	Change: +0.015	High: 0.400	Remarks: s
	Change (%): +3.90	Low: 0.385	
Open: 0.385		Yesterday's Close: 0.385	
Buy Price: 0.395		Sell Price: 0.400	
Buy Volume ('00): 922		Sell Volume ('00): 2,637	
Cumulative Volume ('00): 74,214		Cumulative Value: 2,941,533.5	

Financial Analysis

Revenue Growth Revenue up and down in past years	Neutral	Profit Growth Increasing losses for last 2 years (with last 3 unprofitable years)	Watch Out
Piotroski F Score The company has weak financial strength (Piotroski F-Score of 0-2)	Be Alert	Cash Ratio Good cash ratio of at least 0.8 for 3 consecutive years	Good
Debt to Assets High debt to assets for most recent year	Be Alert	Debt to Cashflow The company has negative cash flow from operations in most recent year	Watch Out
Debt to Equity High debt to equity for most recent year	Be Alert	Free Cash Flow Negative free cash flow for two years or more	Watch Out
Net Earnings Margin Company is losing money but net profit margin is improving by 5% a year over the past 60 months.	Neutral	Return on Assets (ROA) Negative ROA for 3 consecutive years	Watch Out
Return on Equity (ROE) Negative ROE for 3 consecutive years	Watch Out		

Excellent Good Neutral Be Alert Watch Out

Historical Financials

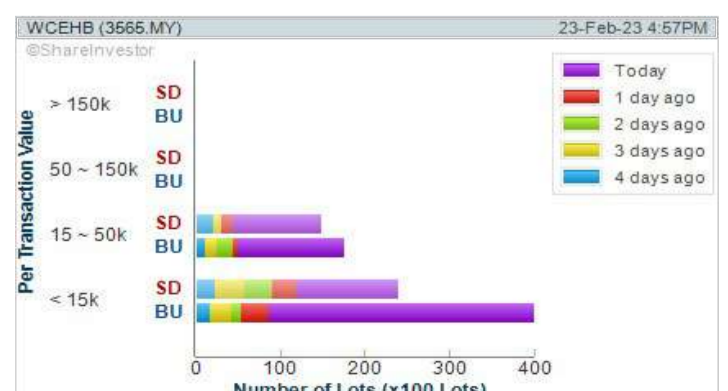


WebPro 9-Days Free Trial Registration
(worth RM9)
Sign Up Now



Key Statistics with Total Shareholder Returns

Period	Dividend Received	Capital Appreciation	Total Shareholder Return
Short Term Return	5 Days	+0.015	+3.90%
	10 Days	+0.010	+2.55%
	20 Days	-	-
Medium Term Return	3 Months	+0.105	+55.55%
	6 Months	+0.145	+56.66%
	1 Year	+0.060	+29.00%
Long Term Return	2 Years	-	-
	3 Years	+0.070	+21.21%
	5 Years	-0.011	-6.44%



Disclaimer: The information on this page is provided as a service to readers. It does not constitute financial advice and/or any investment recommendations. Past performance is not indicative of future results. We assume no liability for damages resulting from or arising out of the use of such information. It would be best if you did your own research to make your personal investment decisions wisely or consult a licenced investment advisor.

Price & Volume Distribution Charts (as at Yesterday)

Technical Analysis

DEFINITION: Shariah compliant stocks with Technical Analysis showing Bullish Momentum and Price Uptrend. The share price closed at the highest price yesterday. The typical price was higher than the previous day's typical price.

CHART GUIDE: Volume Distribution Chart is a statistical interpretation of the current sentiment on each stock in graphical format. The highest bar categorized as >150k is likely to be traded by institutions or super dealers, while the lowest bar categorized as <15k usually represents retail investors. "Buy Up" refers to more buyers snatching up the lots queued at selling price. "Sell Down" refers to sellers selling their shares to the buying queue.



ShareInvestor WebPro > Screener > Market Screener (FA & TA)>select BURSA>add criteria

A. Criteria

- > click Add Criteria
- Fundamental Analysis Conditions tab >select (i) Revenue
- Technical Analysis Conditions tab select (ii) Average Volume
- Prices & Other Conditions tab > select (iii) Last Done Price
- Prices & Other Conditions tab > select (iv) Is Shariah Compliant
- Technical Analysis Conditions tab select (v) RSI Overbought
- Technical Analysis Conditions tab select (vi) Moving Average Below Close
- Technical Analysis Conditions tab select (vii) CCI Overbought

B. Conditions (Criteria Filters)

1. Revenue ("000) - select (more than) type (1) for the past select (1) financial year(s)
2. Average Volume - type (1) days average volume greater than type (10000) lots
3. Last Done Price - select (more than) type (0.3)
4. Is Shariah Compliant - select Yes
5. RSI Overbought - select RSI 1 above 99 for 1 days
6. Moving Average Below Close - select (MA) type (10) below close price for type (1) days
7. CCI Overbought - select CCI (2) above (0) for (1) days

- > click Save Template > Create New Template type (Shariah Momentum Up Stocks) > click Create
- > click Save Template as > select Shariah Momentum Up Stocks > click Save
- > click Screen Now (may take a few minutes)
- Sort By: Select (Vol) Select (Desc)
- Mouse over stock name > Charts > click C² Charts tab or Volume Distribution

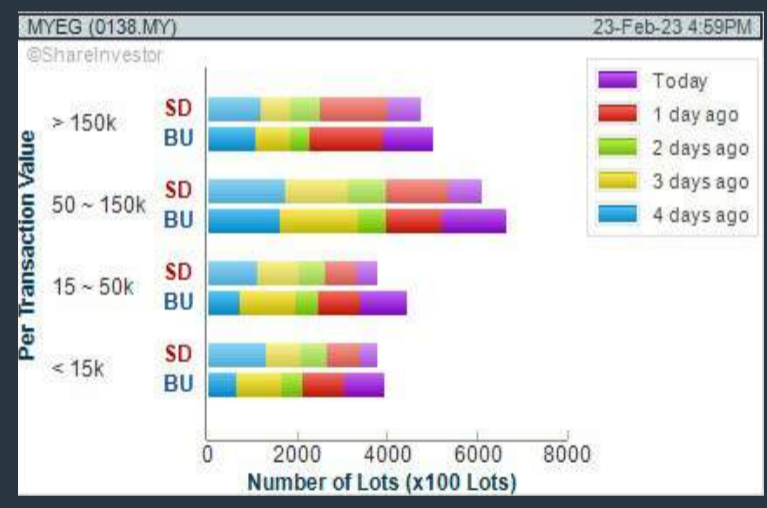
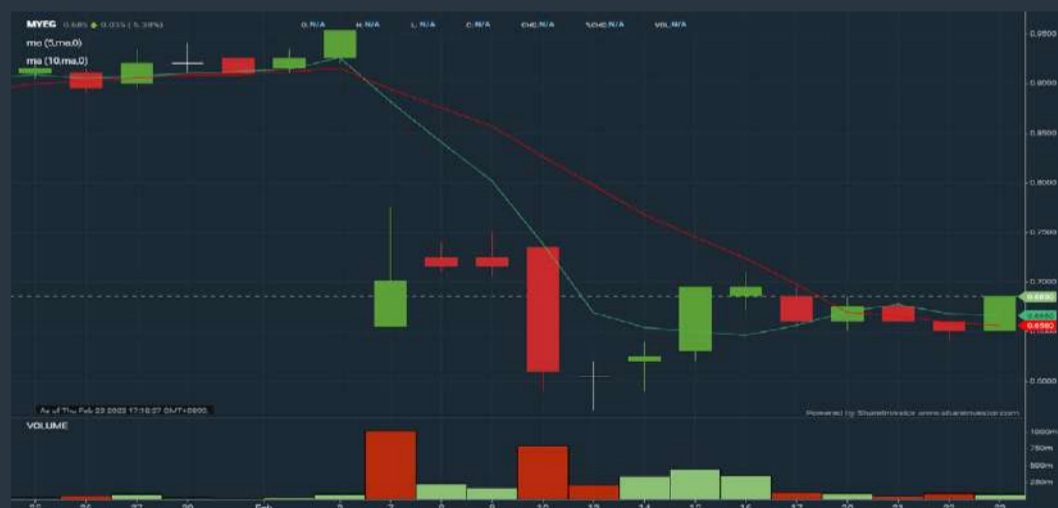
DAGANG NEXCHANGE BERHAD (4456) C² Chart

Analysis



MY E.G. SERVICES BERHAD (0138) C² Chart

Analysis



GAMUDA BERHAD (5398) C² Chart

Analysis



Disclaimer: The information on this page is provided as a service to readers. It does not constitute financial advice and/or any investment recommendations. Past performance is not indicative of future results. We assume no liability for damages resulting from or arising out of the use of such information. It would be best if you did your own research to make your personal investment decisions wisely or consult a licenced investment advisor.

MAKE BETTER TRADING STRATEGIES

with

SHARE INVESTOR STATION



8 Markets Data

- ▶ Get access to data from Bursa, NYSE, Nasdaq, HKEX, SGX, IDX, SET & ASX

Dynamic Chart

- ▶ Candlestick Pattern Recognition
- ▶ 111 Indicators
- ▶ 39 Drawing Tools
- ▶ Performance Comparison Chart

Intraday Data

- ▶ Market Depth
- ▶ Trade Summary Matrix & Chart
- ▶ Times & Sales
- ▶ Intraday Market Ticker

Market Screener

- ▶ 96 criteria ranging from FA, TA, Consensus Estimate
- ▶ Real-time Data

Power Frame

- ▶ Combining few Dynamic Charts together with intraday information in one frame

Technical Analysis

Fundamental Analysis

Financial Analysis Statement

- ▶ Profit & Loss
- ▶ Balance Sheet
- ▶ Cash Flow Statement
- ▶ More than 20 Financial Ratios
- ▶ Dividend Analysis

FactSheet

- ▶ Key Stock Information
- ▶ Ownership
- ▶ Consensus Estimates
- ▶ Annual Report
- ▶ Historical Price
- ▶ Insider Trades

**Start your 18 days
FREE trial now
(Valued at RM82)**



Price & Volume Distribution Charts (as at Yesterday)

Technical Analysis

DEFINITION: Stocks with Technical Analysis showing 5-days & 10-days Moving Average Price below Close over past 1 days and with Volume Spike

CHART GUIDE: Volume Distribution Chart is a statistical interpretation of the current sentiment on each stock in graphical format. The highest bar categorized as >150k is likely to be traded by institutions or super dealers, while the lowest bar categorized as <15k usually represents retail investors. "Buy Up" refers to more buyers snatching up the lots queued at selling price. "Sell Down" refers to sellers selling their shares to the buying queue.



ShareInvestor WebPro > Screener > Market Screener (FA & TA) > select BURSA > add criteria

A. Criteria

- > click Add Criteria
- Technical Analysis Conditions tab select (i) Moving Average Below Close (ii) Volume Spike
- Fundamental Analysis Conditions tab >select (iii) Revenue
- Prices & Other Conditions tab > select (iv) Is Shariah Compliant
- Technical Analysis Conditions tab select (v) Moving Average Below Close
- Prices & Other Conditions tab > select (vi) Last Done Price
- Technical Analysis Conditions tab select (vii) Moving Average Below Close

B. Conditions (Criteria Filters)

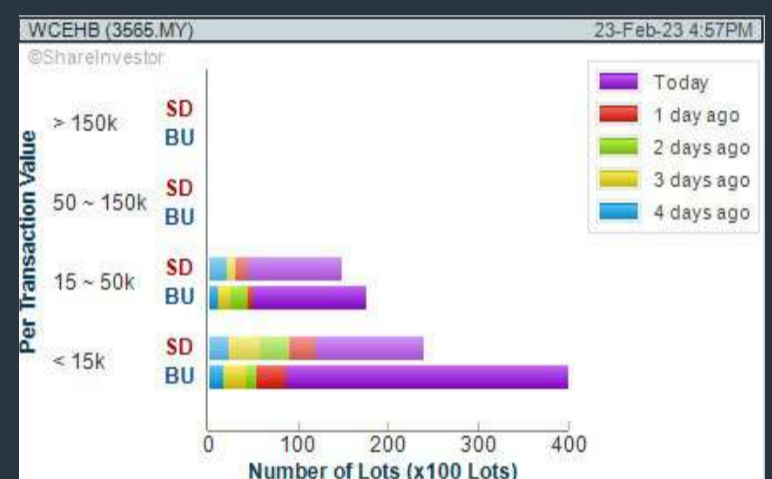
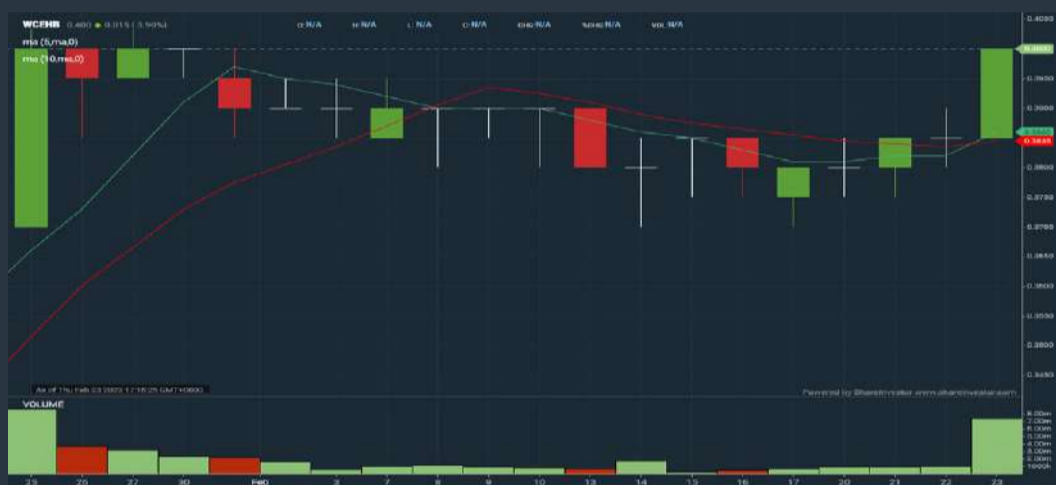
1. Moving Average Below Close - select (MA) type (5) below close price for type (3) days
2. Volume Spike - Volume type (1) greater than type (5) days average
3. Revenue ("000) - select (more than) type (1) for the past select (1) financial year(s)
4. Is Shariah Compliant - select NO
5. Moving Average Below Close - select (MA) type (10) below close price for type (1) days
6. Last Done Price - select (more than) type (0.3)
7. Moving Average Below Close - select (EMA) type (5) below close price for type (1) days

- > click Save Template > Create New Template type (Non-Shariah Hot Stocks) > click Create
- > click Save Template as > select Non-Shariah Hot Stocks > click Save
- > click Screen Now (may take a few minutes)
- Sort By: Select (Vol) Select (Desc)
- Mouse over stock name > Charts > click C² Charts tab or Volume Distribution

WCE HOLDINGS BERHAD (3565)

C² Chart

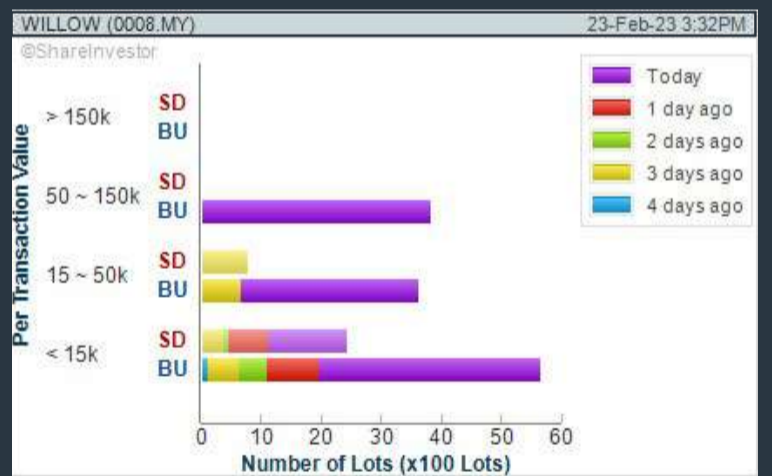
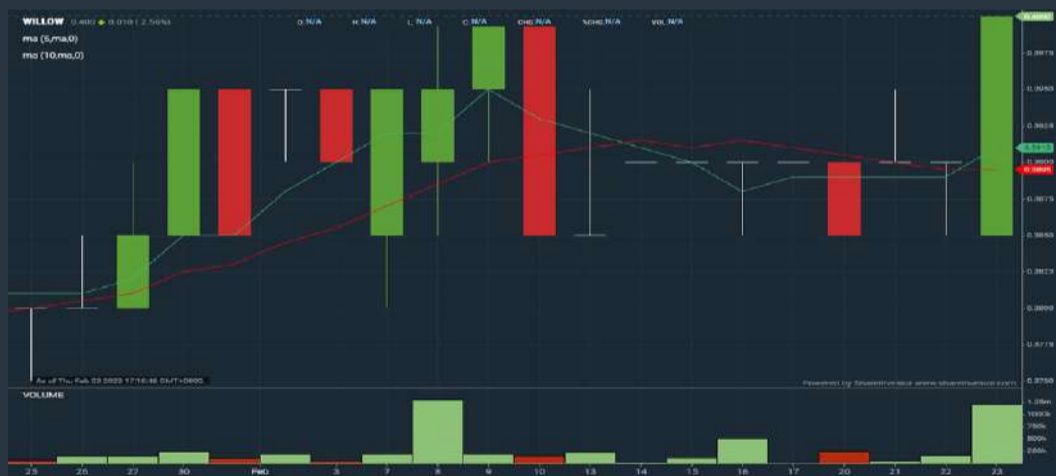
Analysis



WILLOWGLEN MSC BERHAD (0008)

C² Chart

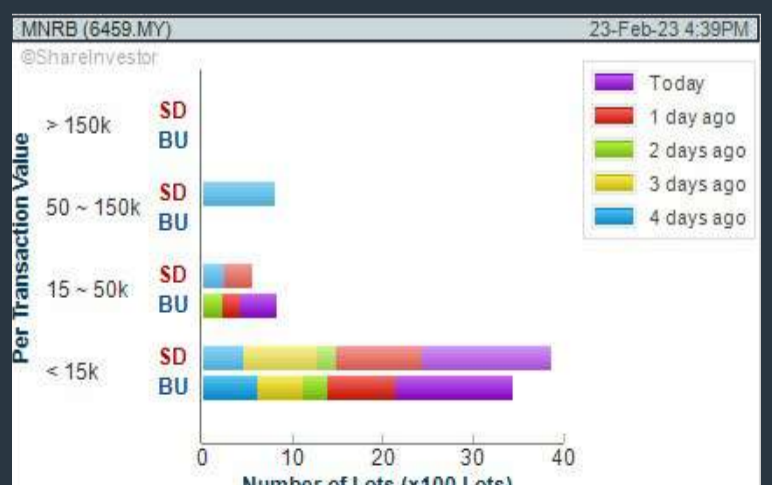
Analysis



MNRB HOLDINGS BERHAD (6459)

C² Chart

Analysis



Disclaimer: The information on this page is provided as a service to readers. It does not constitute financial advice and/or any investment recommendations. Past performance is not indicative of future results. We assume no liability for damages resulting from or arising out of the use of such information. It would be best if you did your own research to make your personal investment decisions wisely or consult a licenced investment advisor.



Italian Masterpieces

Martha rocking chair designed by Roberto Lazzeroni
Chester Line sofa designed by Poltrona Frau Style & Design Centre

poltronafrau.com



XTRA

The Gardens Mall, Mid Valley City, Lot S-236 & 237
2nd flr Linkaran Syed Putra, Kuala Lumpur
T. +603 2282 9088 | xtra@xtrafurniture.com | xtrafurniture.com
f XTRAfurniture | @ xtrafurnituremsia



Price & Volume Distribution Charts (Over 5 trading days as at Yesterday)

Technical Analysis

DEFINITION: Stocks with Technical Analysis showing Bullish Momentum and Price Uptrend

CHART GUIDE: Volume Distribution Chart is a statistical interpretation of the current sentiment on each stock in graphical format. The highest bar categorized as >150k is likely to be traded by institutions or super dealers, while the lowest bar categorized as <15k usually represents retail investors. "Buy Up" refers to more buyers snatching up the lots queued at selling price. "Sell Down" refers to sellers selling their shares to the buying queue.



ShareInvestor WebPro > Screener > Market Screener (FA & TA) > select BURSA > add criteria

A. Criteria

- > click Add Criteria
- Fundamental Analysis Conditions tab > select (i) Revenue
- Technical Analysis Conditions tab select (ii) Moving Average Below Close
- Technical Analysis Conditions tab select (iii) Average Volume
- Prices & Other Conditions tab > select (iv) Last Done Price
- Technical Analysis Conditions tab select (v) Moving Average Below Close
- Technical Analysis Conditions tab select (v) Moving Average Bullish Crossover

B. Conditions

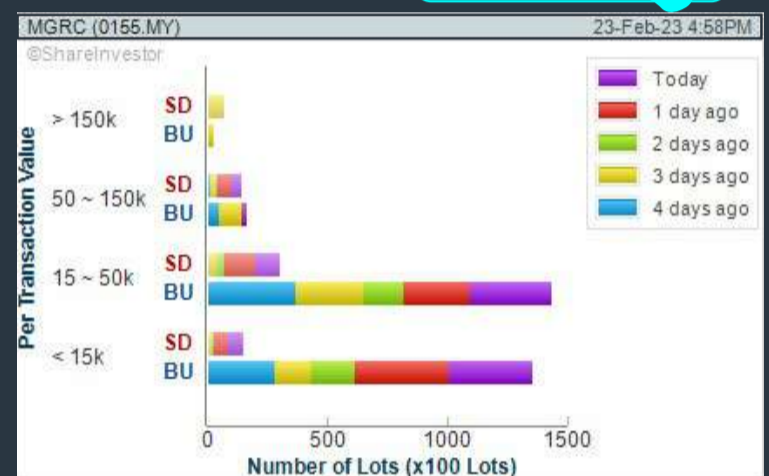
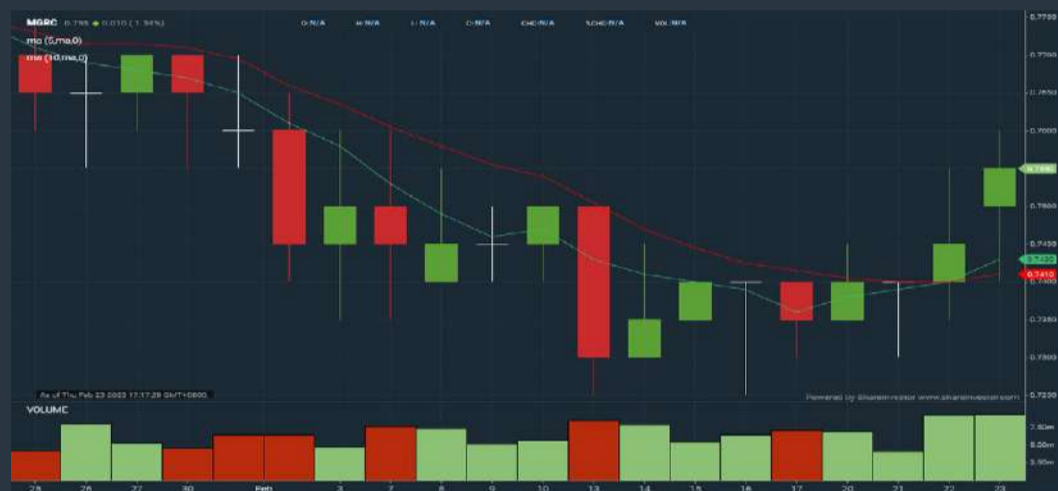
1. Revenue - select (more than) type (1) for the past select (1) financial year(s)
2. Moving Average Below Close - select (MA) type (20) below close price for type (1) days
3. Average Volume - type (5) days average volume type (10000) lots
4. Last Done Price - select (more than) type (0.3)
5. Moving Average Below Close - select (MA) type (10) below close price for type (1) days
6. Moving Average Bullish Crossover - select (MA) type (5) crossed above select (MA) type (10)

> click Save Template > Create New Template type (Non-Shariah Up-Trending Stocks) > click Create Click Save Template As > select Non-Shariah Up Trending Stocks > click Save > click Screen Now (may take a few minutes) Sort By: Select (Vol) Select (Desc) Mouse over stock name > Charts > click C² Charts tab or Volume Distribution

MSIAN GENOMICS RES CENTRE BERHAD (0155)

C² Chart

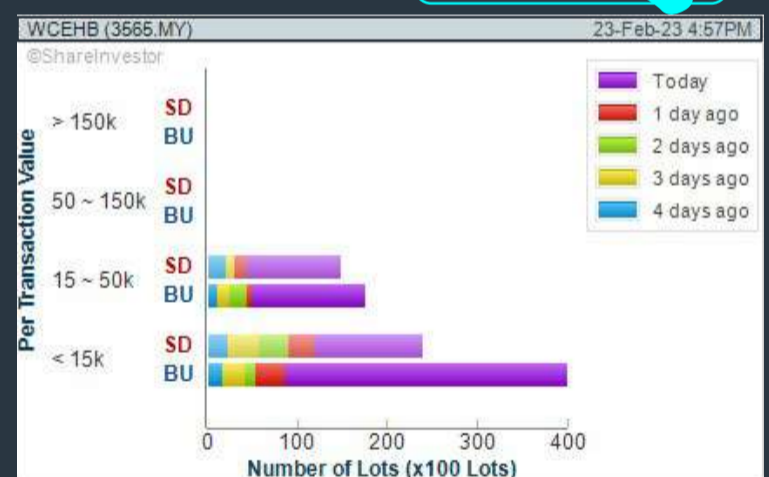
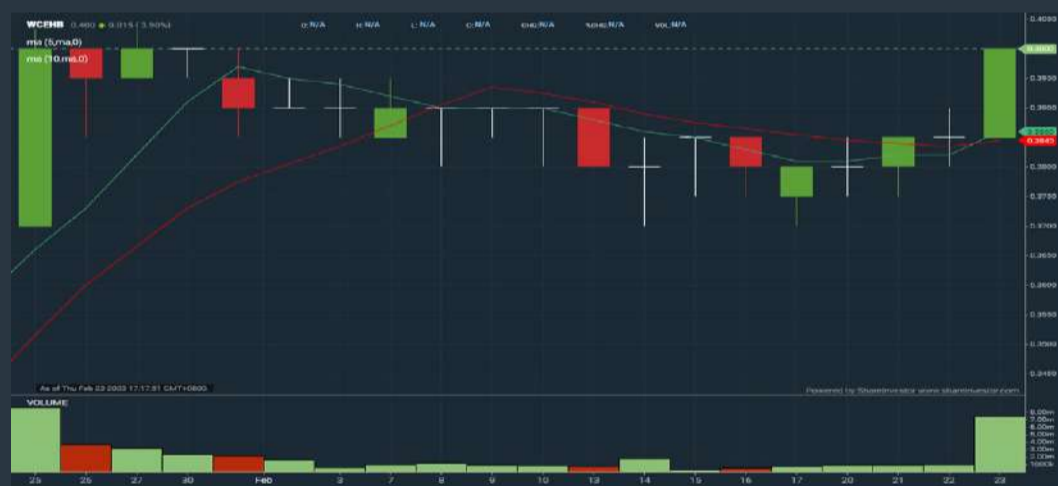
Analysis



WCE HOLDINGS BERHAD (3565)

C² Chart

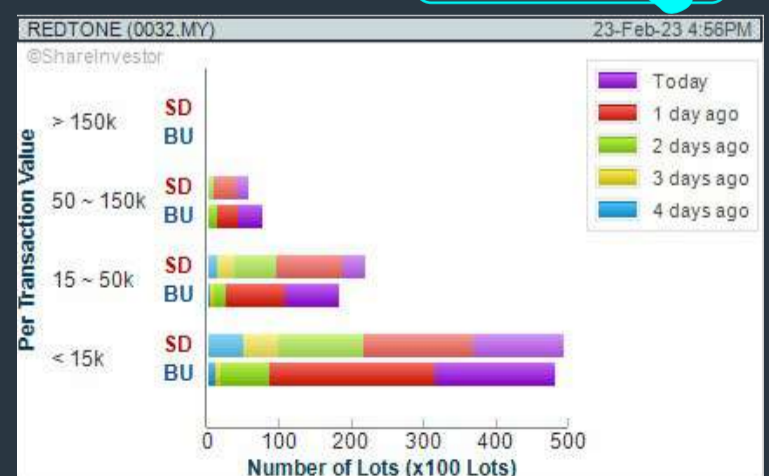
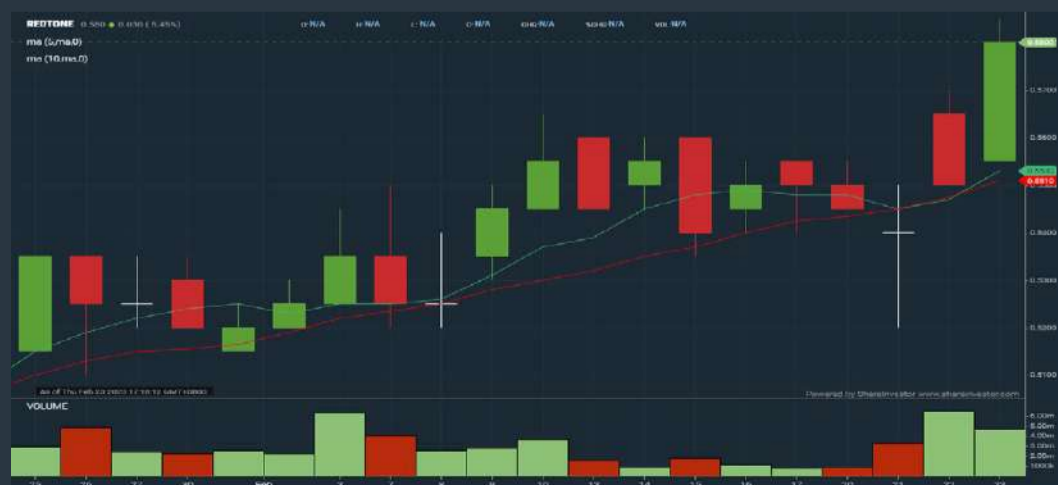
Analysis



REDTONE DIGITAL BERHAD (0032)

C² Chart

Analysis



Disclaimer: The information on this page is provided as a service to readers. It does not constitute financial advice and/or any investment recommendations. Past performance is not indicative of future results. We assume no liability for damages resulting from or arising out of the use of such information. It would be best if you did your own research to make your personal investment decisions wisely or consult a licenced investment advisor.

BURSASTATION

Professional

Stock Scanning

- Technical Analysis (TA) Market Scanner
- Fundamental Analysis (FA) Market Scanner

Monitoring

- Portfolio
- Stock Alerts
- Price Spread Calculator

Market Data

- Equities
- Derivatives

Scan. Chart. Analyse.

Be The Intelligent Investor

Charts

- Intraday Charts
- Interactive Charts
- Historical Charts
- Volume Distribution Charts

Price Movements

- Streaming Prices
- Time & Sales
- Trade Summary Matrix
- Quote Movements
- 5 Levels Market Depth
- Historical Price Download

Fundamentals

- Factsheets
- Financials
- Insider Trades

Brought to you as a collaborative effort by ShareInvestor and Bursa Malaysia, **BursaStation Professional** is designed with you, the user, in mind, as a user-friendly yet full of powerful features that will appeal to investors/traders who need instant access to fundamental, technical, and trading data, anytime, anywhere. **BursaStation Professional** is a state-of-the-art Stock Market Tracker with Charting Software that places in your hands the power to make better investment decisions.

[CLICK HERE TO START YOUR 14-DAYS FREE TRIAL](#)

Price & Total Shareholder Return (as at Yesterday)

Fundamental Analysis

DEFINITION: Share price of a company trading at a lower price as compared to its fundamentals (FA) such as financial performance and dividend, allowing it to be attractive to value investors.

CHART GUIDE: Total Shareholder Return (TSR) combines share price appreciation and dividend distributions paid to show the total return to the shareholder expressed as a percentage.



ShareInvestor WebPro > Screener > Market Screener (FA & TA) > select BURSA > add criteria

A. Criteria

- > click Add Criteria
- Fundamental Analysis Conditions tab (i) Price Earnings Ratio
- Fundamental Analysis Conditions tab >select (ii) CAGR of Net Earnings
- Fundamental Analysis Conditions tab >select (iii) Net Debt To Equity
- Fundamental Analysis Conditions tab >select (iv) Return On Equity (ROE)

B. Conditions

1. Price Earnings Ratio - select (less than) type (15) times now
2. CAGR of Net Earnings - select (more than) type (10) % for the past type (3) financial year(s)
3. Net Debt To Equity – select (less than) type (1) for the past select (1) financial year(s)
4. Return On Equity (ROE) – select (more than) type (10) % for the past select (1) financial year(s)

- > click Save Template > Create New Template type (Value Stock) > click Create
- > click Save Template as > select Value Companies > click Save
- > click Screen Now (may take a few minutes)
- Sort by: Select (PE Ratio) Select (Ascending)
- > Mouse over stock name > Factsheet > looking for Total Shareholder Return
- > Mouse over stock name > Charts > click C2 Charts tab

COMFORT GLOVES BERHAD (2127)

C² Chart



Period	Dividend Received	Capital Appreciation	Total Shareholder Return
Short Term Return	5 Days	-0.020	-4.71 %
	10 Days	-0.045	-10.00 %
	20 Days	-0.050	-10.89 %
Medium Term Return	3 Months	-0.075	-16.62 %
	6 Months	-0.070	-14.74 %
	1 Year	-0.350	-46.36 %
Long Term Return	2 Years	0.110	-76.65 %
	3 Years	0.125	-38.23 %
	5 Years	0.150	-49.45 %
Annualised Return	Annualised	-	-12.76 %

LION POSIM BERHAD (8486)

C² Chart



Period	Dividend Received	Capital Appreciation	Total Shareholder Return
Short Term Return	5 Days	-0.060	-12.12 %
	10 Days	-0.015	-3.33 %
	20 Days	-0.070	-13.86 %
Medium Term Return	3 Months	-0.065	-13.00 %
	6 Months	-0.055	-11.22 %
	1 Year	-0.090	-17.14 %
Long Term Return	2 Years	-0.135	-23.88 %
	3 Years	+0.045	+11.54 %
	5 Years	-0.270	-38.30 %
Annualised Return	Annualised	-	-9.21 %

TECK GUAN PERDANA BERHAD (7439)

C² Chart



Period	Dividend Received	Capital Appreciation	Total Shareholder Return
Short Term Return	5 Days	-0.080	-4.35 %
	10 Days	-0.090	-4.85 %
	20 Days	-0.130	-6.83 %
Medium Term Return	3 Months	+0.520	+41.94 %
	6 Months	+0.560	+46.67 %
	1 Year	0.030	+25.17 %
Long Term Return	2 Years	+0.490	+40.94 %
	3 Years	+0.490	+40.94 %
	5 Years	+0.510	+43.20 %
Annualised Return	Annualised	-	+7.45 %

Disclaimer: The information on this page is provided as a service to readers. It does not constitute financial advice and/or any investment recommendations. Past performance is not indicative of future results. We assume no liability for damages resulting from or arising out of the use of such information. It would be best if you did your own research to make your personal investment decisions wisely or consult a licenced investment advisor.

Price & Total Shareholder Return (as at Yesterday)

Fundamental Analysis

DEFINITION: Company revenue is growing and making good quality of earnings with positive Free Cash Flow.

CHART GUIDE: Total Shareholder Return (TSR) combines share price appreciation and distributions paid to show the total return to the shareholder expressed as a percentage.



ShareInvestor WebPro > Screener > Market Screener (FA & TA) > select BURSA > add criteria

A. Criteria

1. Fundamental Analysis Conditions tab >select (i) Free Cash Flow, (ii) Revenue Growth, (iii) Gross Profit (Earnings) Margin, (iv) Quality of Earnings, (v) Total Shareholder Returns, > click Add Criteria
2. Fundamental Analysis Conditions tab >select (vi) Total Shareholder Returns > click Add Criteria

B. Conditions (Criteria Filters)

1. Free Cash Flow - select (more than) type (1) for the past select (1) financial year(s)
2. Revenue Growth - select (more than) type (1) for the past select (1) financial year(s)
3. Gross Profit (Earnings) Margin - select (more than) type (30) % for the past select (1) financial year(s)
4. Quality of Earnings - select (more than) type (1) for the past select (1) financial year(s)
5. Total Shareholder Return - select (more than) type (5) % for the past select (3) financial year(s)
6. Total Shareholder Return - select (more than) type (5) % for the past select (5) financial year(s)

- > click Save Template > Create New Template type (Growth Companies) > click Create
- > click Save Template as > select Growth Companies > click Save
- > click Screen Now (may take a few minutes)
- > Sort By: Select (Revenue Growth) Select (Desc)
- > Mouse over stock name > Factsheet > looking for Total Shareholder Return

HIBISCUS PETROLEUM BERHAD (5199)

C² Chart

Analysis



Period	Dividend Received	Capital Appreciation	Total Shareholder Return
Short Term Return	5 Days	-0.020	-1.82%
	10 Days	-0.050	-4.42%
	20 Days	-0.060	-6.26%
Medium Term Return	3 Months	0.010	+3.81%
	6 Months	0.120	+13.54%
	1 Year	0.020	-7.56%
Long Term Return	2 Years	0.035	+68.16%
	3 Years	0.035	+31.95%
	5 Years	0.035	+19.25%
Annualised Return	Annualised	-	+3.88%

CLASSIC SCENIC BERHAD (7202)

C² Chart

Analysis



Period	Dividend Received	Capital Appreciation	Total Shareholder Return
Short Term Return	5 Days	+0.020	+1.85%
	10 Days	-0.010	-0.80%
	20 Days	-0.040	-3.81%
Medium Term Return	3 Months	-0.180	-14.06%
	6 Months	-0.070	+8.80%
	1 Year	+0.410	+58.42%
Long Term Return	2 Years	+0.370	+50.68%
	3 Years	0.050	+155.66%
	5 Years	0.190	+81.25%
Annualised Return	Annualised	-	+10.03%

UNITED PLANTATIONS BERHAD (2089)

C² Chart

Analysis



Period	Dividend Received	Capital Appreciation	Total Shareholder Return
Short Term Return	5 Days	-0.029	-0.13%
	10 Days	-0.040	-0.25%
	20 Days	-0.380	-2.46%
Medium Term Return	3 Months	+1.260	+8.64%
	6 Months	0.400	+12.15%
	1 Year	1.250	+19.30%
Long Term Return	2 Years	2.200	+32.74%
	3 Years	3.450	+58.88%
	5 Years	6.350	+82.60%
Annualised Return	Annualised	-	+12.80%

Disclaimer: The information on this page is provided as a service to readers. It does not constitute financial advice and/or any investment recommendations. Past performance is not indicative of future results. We assume no liability for damages resulting from or arising out of the use of such information. It would be best if you did your own research to make your personal investment decisions wisely or consult a licenced investment advisor.

Price & Total Shareholder Return (as at Yesterday)

Fundamental Analysis

DEFINITION: Company is paying out dividend with low or moderate leverage.

CHART GUIDE: Total Shareholder Return (TSR) combines share price appreciation and distributions paid to show the total return to the shareholder expressed as a percentage.



ShareInvestor WebPro > Screener > Market Screener (FA & TA) > select BURSA > add criteria

A. Criteria

- > click Add Criteria
- Fundamental Analysis Conditions tab >select (i) Dividend Yield (Historical)
- Fundamental Analysis Conditions tab >select (ii) Dividend Payout (Historical)
- Fundamental Analysis Conditions tab >select (iii) Total Debt To Equity
- Fundamental Analysis Conditions tab >select (iv) Total Shareholder Returns
- Fundamental Analysis Conditions tab >select (v) Total Shareholder Returns
- Fundamental Analysis Conditions tab / >select (vi) CAGR of Dividend Per Share

• Fundamental Analysis Conditions tab >select (vii) CAGR of Dividend Per Share

B. Conditions (Criteria Filters)

1. Dividend Yield - select (more than) type (1) % for the past select (1) financial year(s)
2. Dividend Payout (Historical) - select (between) type (0.5) to type (1) times for the past select (1) financial year(s)
3. Total Debt to Equity - select (less than) type (1) for the past select (1) financial year(s)
4. Total Shareholder Return - select (more than) type (5) % for the past select (3) financial year(s)
5. Total Shareholder Return - select (more than) type (5) % for the past select (5) financial year(s)

6. CAGR of Dividend Per Share - select (less than) type (30) % for the past select (5) financial year(s)
7. CAGR of Dividend Per Share - select (more than) type (1) % for the past select (5) financial year(s)

- > click Save Template > Create New Template type (Dividend Companies) > click Create
- > click Save Template as > select Dividend Companies > click Save
- > click Screen Now (may take a few minutes)
- > Sort By: Select (Dividend Yield) Select (Desc)
- > Mouse over stock name > Factsheet > looking for Total Shareholder Return

JAYCORP BERHAD (7152)

C² Chart

Analysis



Period	Dividend Received	Capital Appreciation	Total Shareholder Return
Short Term Return	5 Days	-0.010	-1.38%
	10 Days	-0.005	-0.69%
	20 Days	-0.005	-0.69%
Medium Term Return	3 Months	0.040	+4.86%
	6 Months	0.040	+9.42%
	1 Year	0.080	+1.97%
Long Term Return	2 Years	0.185	+5.36%
	3 Years	0.295	+92.15%
	5 Years	0.415	+80.80%
Annualised Return	Annualised	-	+12.57%

UNITED PLANTATIONS BERHAD (2089)

C² Chart

Analysis



Period	Dividend Received	Capital Appreciation	Total Shareholder Return
Short Term Return	5 Days	-0.020	-0.13%
	10 Days	-0.040	+0.25%
	20 Days	-0.080	+2.46%
Medium Term Return	3 Months	-	+8.64%
	6 Months	0.400	+12.15%
	1 Year	1.250	+19.30%
Long Term Return	2 Years	2.200	+32.74%
	3 Years	3.450	+58.88%
	5 Years	6.350	+82.80%
Annualised Return	Annualised	-	+12.80%

UCHI TECHNOLOGIES BERHAD (7100)

C² Chart

Analysis



Period	Dividend Received	Capital Appreciation	Total Shareholder Return
Short Term Return	5 Days	-0.040	-1.23%
	10 Days	-0.080	-1.83%
	20 Days	-0.080	+0.94%
Medium Term Return	3 Months	0.120	+1.52%
	6 Months	0.120	+7.74%
	1 Year	0.230	+12.18%
Long Term Return	2 Years	0.415	+18.46%
	3 Years	0.575	+41.60%
	5 Years	0.870	+44.88%
Annualised Return	Annualised	-	+7.67%

Disclaimer: The information on this page is provided as a service to readers. It does not constitute financial advice and/or any investment recommendations. Past performance is not indicative of future results. We assume no liability for damages resulting from or arising out of the use of such information. It would be best if you did your own research to make your personal investment decisions wisely or consult a licenced investment advisor.

Week: 17 February 2022 – 23 February 2023

More Brokers' Call 

AMINVESTMENT BANK <small>... See More</small>	Call	Target Price	Release Date
Yinson Holdings Berhad (7293)	BUY	RM3.89	21 Feb 2023
Nestle (Malaysia) Berhad (4707)	HOLD	RM119.00	22 Feb 2023

APEX <small>... See More</small>	Call	Target Price	Release Date
MGB Berhad (7595)	BUY	RM0.62	20 Feb 2023
LBS Bina Group Berhad (5789)	BUY	RM0.61	22 Feb 2023
CCK Consolidated Holdings Berhad (7035)	BUY	RM0.83	23 Feb 2023

BIMB SECURITIES SDN BHD <small>... See More</small>	Call	Target Price	Release Date
Sarawak Plantation Berhad (5135)	HOLD	RM2.28	22 Feb 2023
Kawan Food Berhad (7216)	BUY	RM2.60	23 Feb 2023

CGS CIMB <small>... See More</small>	Call	Target Price	Release Date
Malaysian Pacific Industries Berhad (3867)	REDUCE	RM24.00	17 Feb 2023
KPJ Healthcare Berhad (5878)	ADD	RM1.32	20 Feb 2023
Bonia Corporation Berhad (9288)	ADD	RM3.50	21 Feb 2023

KENANGA <small>... See More</small>	Call	Target Price	Release Date
Aeon Co. (M) Berhad (6599)	OUTPERFORM	RM1.80	23 Feb 2023
D&O Green Technologies Berhad (7204)	UNDERFORM	RM3.51	23 Feb 2023

MALACCA SECURITIES SDN BHD <small>... See More</small>	Call	Target Price	Release Date
ELK-Desa Resources Berhad (5228)	HOLD	RM1.53	17 Feb 2023
Rexit Berhad (0106)	BUY	RM0.83	20 Feb 2023
Teo Seng Capital Berhad (7252)	SELL	RM0.67	22 Feb 2023

MIDF <small>... See More</small>	Call	Target Price	Release Date
Aeon Co. (M) Berhad (6599)	BUY	RM1.810	23 Feb 2023

UOB KAYHIAN <small>... See More</small>	Call	Target Price	Release Date
Astro Malaysia Holdings Berhad (6399)	BUY	RM0.75	21 Feb 2023
Sports Toto Berhad (1562)	BUY	RM1.78	22 Feb 2023

Disclaimer: InveSt does not accept any liability whatsoever for any direct, indirect or consequential losses (including loss of profit) or damages that may arise from the use of information or opinions in this publication. The information and opinions in InveSt are not to be considered as an offer to sell or buy any of the securities discussed. Opinions expressed are subject to change without notice. The Brokers may, from time to time, have interests or positions in the securities mentioned. For the full report on each item listed on this page, please visit https://www.shareinvestor.com/my/brokers_call.

DEFINITION: Top 9 stocks with Technical Analysis plus Pattern Matching by 60 pre-defined indicators by the system showing a higher probability of bullish sentiment on the share price.



ShareInvestor WebPro > Screener > Predefined TA Screens > select market BURSA > Most Long Signals > click Scan Results or mouse over each company

AIRASIA X BERHAD (5238.MY)

AAX

Price updated at 23 Feb 2023 16:58

Last: 0.770	Change: -0.060	Volume: 63,667
	Change (%): -7.23	Range: 0.765 - 0.855

TA Scanner Results based on historical data up to 23 Feb 2023

Condition	Signal	Explanation
Bollinger Band: Bullish Long Term Volatility Breakout and Trending	Long	1. Close price above upper bollinger band(33,1). 2. Volume above average volume(50). 3. Average volume(50) is above 300,000.
Bollinger Band: Bullish Lower Bollinger Band Support	Long	1. Low 1 day ago below lower bollinger band(20,2). 2. Close above close 1 day ago. 3. Average volume(5) is above 100,000.
Bollinger Band: Bullish Short Term Volatility Breakout and Trending	Long	1. Close price above upper bollinger band(33,1). 2. Volume above average volume(10). 3. Average volume(10) is above 300,000.
Bollinger Band: High Above Upper Bollinger Band	Neutral	1. High above upper bollinger band(14,2). 2. Average volume(5) is above 100,000.
DM: Bullish Directional Movement	Long	-DI(14) crossed below +DI(14)
Donchian Channels: High Above Upper Donchian Channels	Long	High crossed above the upper Donchian Channel(14,4)
Parabolic SAR: Bearish Parabolic SAR Reversal	Neutral	1. Parabolic SAR 1 day ago above close price 1 day ago for the last 5 days. 2. Parabolic SAR below close price
Price: New 52 Week High	Long	1. Stock reach a new 52 week high. 2. Average volume(30) is above 50000.
Volume: 10 Days large value Buy Up trade	Long	1. 150K value Buy Up greater than Sell Down by 20% for 10 days. 2. 50K-100K value Buy Up greater than Sell Down by 20% for 10 days. 3. Average volume(10) is above 1000000
Volume: 5 Days large value Buy Up trade	Long	1. 150K value Buy Up greater than Sell Down by 20% for 5 days. 2. 50K-100K value Buy Up greater than Sell Down by 20% for 5 days. 3. Average volume(10) is above 1000000
Volume: Volume Spike	Long	1. Volume is more than 500% above average volume(10). 2. Volume above 200000. 3. Close price above 0.10

CITRA NUSA HOLDINGS BERHAD (5104.MY)

CNH

Price updated at 23 Feb 2023 16:02

Last: 0.060	Change: -0.005	Volume: 300
	Change (%): -7.69	Range: 0.060 - 0.060

TA Scanner Results based on historical data up to 23 Feb 2023

Condition	Signal	Explanation
Bollinger Band: Bullish Lower Bollinger Band Support	Long	1. Low 1 day ago below lower bollinger band(20,2). 2. Close above close 1 day ago. 3. Average volume(5) is above 100,000.
DM: Bullish Directional Movement	Long	-DI(14) crossed below +DI(14)
MA: Bullish Price Crossover	Long	1. Close price crossed above MA(40) within the last 1 day. 2. Previous day close price is below the MA(10) for the last 5 days
RSI: Short Term RSI 50 Bullish Crossover	Long	1. RSI(20) crossed above 50 within the last 1 day and RSI(20) 1 day ago below 50 for the last 5 days. 2. Volume above average volume(125). 3. Average volume(5) is above 100,000.
Stochastic: Fast Stochastic Buy Signal	Long	1. Fast Stochastic(15,5) %K crossed above 20. 2. Fast Stochastic(15,5) %K 1 day ago was below 20 for the last 5 days. 3. Average volume(30) is above 50000

LAY HONG BERHAD (9385.MY)

LAYHONG

Price updated at 23 Feb 2023 16:50

Last: 0.270	Change: +0.005	Volume: 23,751
	Change (%): +1.89	Range: 0.265 - 0.275

TA Scanner Results based on historical data up to 23 Feb 2023

Condition	Signal	Explanation
Bollinger Band: Bullish Long Term Volatility Breakout and Trending	Long	1. Close price above upper bollinger band(33,1). 2. Volume above average volume(50). 3. Average volume(50) is above 300,000.
Bollinger Band: Bullish Lower Bollinger Band Support	Long	1. Low 1 day ago below lower bollinger band(20,2). 2. Close above close 1 day ago. 3. Average volume(5) is above 100,000.
Bollinger Band: Bullish Short Term Volatility Breakout and Trending	Long	1. Close price above upper bollinger band(33,1). 2. Volume above average volume(10). 3. Average volume(10) is above 300,000.
Bollinger Band: High Above Upper Bollinger Band	Neutral	1. High above upper bollinger band(14,2). 2. Average volume(5) is above 100,000.
Donchian Channels: High Above Upper Donchian Channels	Long	High crossed above the upper Donchian Channel(14,4)
MACD: Bullish MACD Crossover	Long	1. MACD(12,26) diff line crossed above the MACD(12,26) signal line. 2. MACD Histogram(12,26) is above 0.

XL HOLDINGS BERHAD (7121.MY)

XL

Price updated at 23 Feb 2023 16:56

Last: 0.780	Change: +0.020	Volume: 52,366
	Change (%): +2.63	Range: 0.740 - 0.785

TA Scanner Results based on historical data up to 23 Feb 2023

Condition	Signal	Explanation
Bollinger Band: Bullish Lower Bollinger Band Support	Long	1. Low 1 day ago below lower bollinger band(20,2). 2. Close above close 1 day ago. 3. Average volume(5) is above 100,000.
CCI: Bullish CCI Oversold And Reversing	Long	1. CCI(26) below -100 and CCI(26) 1 day ago decreasing for the last 3 days. 2. CCI(26) above CCI(26) 1 day ago
Candlestick: Bullish Harami	Long	Bullish: Harami
MACD: Bearish MACD Crossover	Short	1. MACD(12,26) diff line crossed below the MACD(12,26) signal line. 2. MACD Histogram(12,26) is below 0.
Volume: 10 Days large value Buy Up trade	Long	1. 150K value Buy Up greater than Sell Down by 20% for 10 days. 2. 50K-100K value Buy Up greater than Sell Down by 20% for 10 days. 3. Average volume(10) is above 1000000
Volume: 5 Days large value Buy Up trade	Long	1. 150K value Buy Up greater than Sell Down by 20% for 5 days. 2. 50K-100K value Buy Up greater than Sell Down by 20% for 5 days. 3. Average volume(10) is above 1000000
Williams %R: Bullish Williams %R	Long	1. Williams %R(26) between -80 and -100. 2. Average volume(5) is above 100,000.

Disclaimer: The information on this page is provided as a service to readers. It does not constitute financial advice and/or any investment recommendations. Past performance is not indicative of future results. We assume no liability for damages resulting from or arising out of the use of such information. It would be best if you did your own research to make your personal investment decisions wisely or consult a licenced investment advisor.



REDTONE DIGITAL BERHAD (0032.MY)

REDTONE

Price updated at 23 Feb 2023 16:56

Last: 0.580	Change: +0.030	Volume: 46,942
	Change (%): +5.45	Range: 0.555 - 0.585

TA Scanner Results based on historical data up to 23 Feb 2023

Condition	Signal	Explanation
Bollinger Band: Bullish Long Term Volatility Breakout and Trending	Long	1. Close price above upper bollinger band(33,1). 2. Volume above average volume(50). 3. Average volume(50) is above 300,000.
Bollinger Band: Bullish Short Term Volatility Breakout and Trending	Long	1. Close price above upper bollinger band(33,1). 2. Volume above average volume(10). 3. Average volume(10) is above 300,000.
Bollinger Band: High Above Upper Bollinger Band	Neutral	1. High above upper bollinger band(14,2). 2. Average volume(5) is above 100,000.
DM: Bullish Directional Movement	Long	-DI(14) crossed below +DI(14)
Donchian Channels: High Above Upper Donchian Channels	Long	High crossed above the upper Donchian Channel(14,4)
Price: New 52 Week High	Long	1. Stock reach a new 52 week high. 2. Average volume(30) is above 50000.



GAMUDA BERHAD (5398.MY)

GAMUDA

Price updated at 23 Feb 2023 16:59

Last: 4.150	Change: -0.090	Volume: 328,046
	Change (%): -2.22	Range: 4.040 - 4.330

TA Scanner Results based on historical data up to 23 Feb 2023

Condition	Signal	Explanation
Bollinger Band: Bullish Long Term Volatility Breakout and Trending	Long	1. Close price above upper bollinger band(33,1). 2. Volume above average volume(50). 3. Average volume(50) is above 300,000.
Bollinger Band: Bullish Short Term Volatility Breakout and Trending	Long	1. Close price above upper bollinger band(33,1). 2. Volume above average volume(10). 3. Average volume(10) is above 300,000.
Bollinger Band: High Above Upper Bollinger Band	Neutral	1. High above upper bollinger band(14,2). 2. Average volume(5) is above 100,000.
Donchian Channels: High Above Upper Donchian Channels	Long	High crossed above the upper Donchian Channel(14,4)
Price: New 52 Week High	Long	1. Stock reach a new 52 week high. 2. Average volume(30) is above 50000.
Williams %R: Bearish Williams %R	Short	1. Williams %R(26) between 0 and -20. 2. Average volume(5) is above 100,000.



PEKAT GROUP BERHAD (0233.MY)

PEKAT

Price updated at 23 Feb 2023 16:59

Last: 0.480	Change: +0.010	Volume: 12,423
	Change (%): +2.13	Range: 0.470 - 0.485

TA Scanner Results based on historical data up to 23 Feb 2023

Condition	Signal	Explanation
Bollinger Band: Bullish Lower Bollinger Band Support	Long	1. Low 1 day ago below lower bollinger band(20,2). 2. Close above close 1 day ago. 3. Average volume(5) is above 100,000.
Bollinger Band: Low Below Lower Bollinger Band	Neutral	1. Low below lower bollinger band(14,2). 2. Average volume(5) is above 100,000.
CCI: Bullish CCI Oversold And Reversing	Long	1. CCI(26) below -100 and CCI(26) 1 day ago decreasing for the last 3 days. 2. CCI(26) above CCI(26) 1 day ago
Candlestick: Bullish Harami	Long	Bullish: Harami
Williams %R: Bullish Williams %R	Long	1. Williams %R(26) between -80 and -100. 2. Average volume(5) is above 100,000.



EASTERN & ORIENTAL BERHAD (3417.MY)

E&O

Price updated at 23 Feb 2023 16:59

Last: 0.315	Change: +0.010	Volume: 79,816
	Change (%): +3.28	Range: 0.300 - 0.315

TA Scanner Results based on historical data up to 23 Feb 2023

Condition	Signal	Explanation
Bollinger Band: Bullish Lower Bollinger Band Support	Long	1. Low 1 day ago below lower bollinger band(20,2). 2. Close above close 1 day ago. 3. Average volume(5) is above 100,000.
Bollinger Band: Low Below Lower Bollinger Band	Neutral	1. Low below lower bollinger band(14,2). 2. Average volume(5) is above 100,000.
Volume: 10 Days large value Buy Up trade	Long	1. 150K value Buy Up greater than Sell Down by 20% for 10 days. 2. 50K-100K value Buy Up greater than Sell Down by 20% for 10 days. 3. Average volume(10) is above 1000000
Volume: 5 Days large value Buy Up trade	Long	1. 150K value Buy Up greater than Sell Down by 20% for 5 days. 2. 50K-100K value Buy Up greater than Sell Down by 20% for 5 days. 3. Average volume(10) is above 1000000
Williams %R: Bullish Williams %R	Long	1. Williams %R(26) between -80 and -100. 2. Average volume(5) is above 100,000.



HENG HUAT RESOURCES GROUP BERHAD (0175.MY)

HHGROUP

Price updated at 23 Feb 2023 16:58

Last: 0.570	Change: +0.010	Volume: 18,056
	Change (%): +1.79	Range: 0.545 - 0.575

TA Scanner Results based on historical data up to 23 Feb 2023

Condition	Signal	Explanation
Bollinger Band: Bullish Long Term Volatility Breakout and Trending	Long	1. Close price above upper bollinger band(33,1). 2. Volume above average volume(50). 3. Average volume(50) is above 300,000.
Bollinger Band: Bullish Short Term Volatility Breakout and Trending	Long	1. Close price above upper bollinger band(33,1). 2. Volume above average volume(10). 3. Average volume(10) is above 300,000.

Disclaimer: The information on this page is provided as a service to readers. It does not constitute financial advice and/or any investment recommendations. Past performance is not indicative of future results. We assume no liability for damages resulting from or arising out of the use of such information. It would be best if you did your own research to make your personal investment decisions wisely or consult a licenced investment advisor.

Condition	Signal	Explanation
Candlestick: Bullish Engulfing	Long	Bullish: Engulfing
Price: New 52 Week High	Long	1. Stock reach a new 52 week high. 2. Average volume(30) is above 50000.

INFLATION COULD PUSH PROPERTY PRICES UP BY DOUBLE-DIGIT - REHDA

A ccording to Real Estate and Housing Developers' Association Malaysia (REHDA) president Datuk NK Tong, inflation and a higher cost of doing business are likely to push property prices up by double-digit this year. On average it will be a double-digit increase in property prices but in the past six months the anticipated price increase has not materialised. This is also reflected in the moderation of construction materials' prices.

Speaking at the Rehda Property Industry Survey 2H2022 and Market Outlook for 2023 media briefing, he said that globally we have been in 40 years of inflationary environment and that it will remain inflationary for a while. That is why there is no choice but to consider price increases. This is also to protect the homeowners whom developers are selling these units to. This is to make sure the developers have enough revenue to complete the project.

According to Rehda's survey, three out of four developers surveyed reported an average increase of 13% in the overall cost of doing business against an average increase of 17% in 1H2022. Meanwhile, 94% of respondents said they are affected by the current economic scenario, and have taken various cost-cutting measures including freezing recruitment, reducing salary, rescheduling the launch of planned projects and reducing the scale of launches.

"Similar to 1H2022, respondents reported that the three main cost components affecting cash flow were material and labour cost, compliance cost (including but not limited to policies, contributions, planning requirements and so forth) and land cost. However, Bank Negara Malaysia is doing a good job in managing inflationary pressure in the country by keeping the overnight policy rate (OPR) relatively stable.

Malaysian interest hikes have been much more moderate. With the economy opening up and the new government being very focused on doing right by the Rakyat, at some point people will have to make a commitment into certain assets that protect themselves against inflation in the long run, one of which will be real estate. An investment in real estate would remain a good hedge against inflation as properties tend to hold better value should inflation remain sticky.

Although the rising OPR may be seen as a headwind, people will eventually recognise that real estate helps protect the value of their assets and to keep up with inflation.

MALAYSIAN BUSINESSES REMAIN OPTIMISTIC ON BUSINESS CONDITION IN 1Q 2023 - DOSM

According to the Department of Statistics Malaysia's (DoSM) latest business tendency statistics report, Malaysian businesses remain optimistic about the business condition in 1Q 2023 with the confidence indicator improving to 3.6 per cent from 3.2 per cent in the previous quarter (4Q 2022). Among the sectors surveyed, services, wholesale

and retail trade and industry sectors stayed optimistic about their future business condition, but the construction sector remained pessimistic with confidence indicator of -18.5 per cent for 1Q 2023 against -29.2 per cent in 4Q 2022.

The confidence indicator for services sector improved to 11.4 per cent in 1Q 2023 from 9.2 per cent in the previous quarter, while for wholesale and retail trade sector, it grew to four per cent from 1.9 per cent in the last quarter. The industry sector also expected favourable business condition in 1Q 2023 with the confidence indicator staying in the positive territory at 1.1 per cent compared with 3.7 per cent in the previous quarter. Moving forward, business perception for the first half of 2023 improved with a net balance of 12.1 per cent against 5.9 per cent for the period of October 2022-March 2023.

FOREIGN FUNDS BACK AS NET BUYERS ON BURSA WITH RM195.3M LAST WEEK – MIDF

According to MIDF Research, foreign funds have returned as net buyers of equities on Bursa Malaysia, with an amount of RM195.3 million last week. Prior to that, foreign investors were net sellers for five consecutive weeks with outflows totalling to RM860.9 million. In its weekly fund flow, the research house said that every trading day last week was a net buying day by foreigners except Friday, which saw an outflow of RM25.9 million. Year-to-date, foreign investors have net sold RM593.3 million.

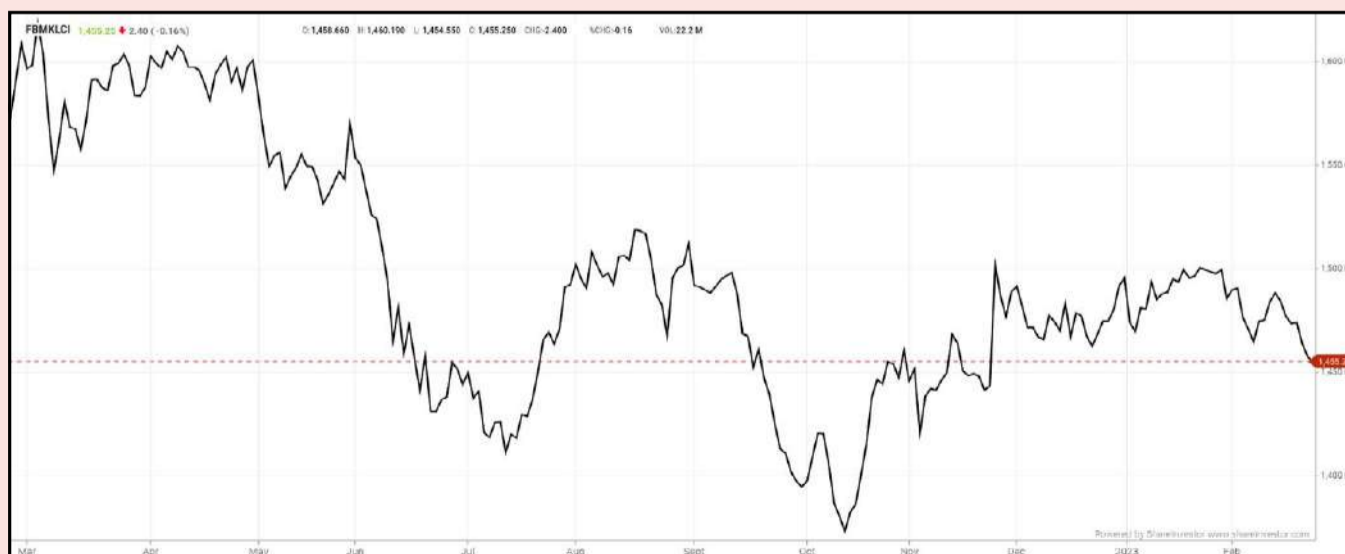
The highest amount of net inflow came on Wednesday to the tune of RM103.2 million while Thursday was the second highest as it amounted to RM74.4 million in terms of net buying. The sectors that saw net foreign inflows last week were healthcare at RM56.5 million, construction at RM41.6 million and financial services at RM40.2 million. Meanwhile, sectors that saw net foreign outflows were plantation at RM18.8 million, utilities at RM12.4 million and property at RM6.4 million.

Local institutions have net sold RM140.2 million worth of Malaysian equities after five consecutive weeks of net buying. Only Tuesday recorded a net inflow of RM16.2 million, while the rest of the week recorded outflows. The heaviest outflow was seen on Wednesday at RM53.2 million. Year-to-date, local institutions have net bought RM819.8 million.

Local retailers were net sellers last week to the tune of RM55.1 million, which is a sharp reversal from the RM263.8 million net bought during the week ended Feb 10. Only Monday and Friday saw net inflows of RM7.0 million and RM40.1 million respectively. Year-to-date, local retailers were net sellers at RM226.6 million. In terms of participation, there was a decrease in average daily trading volume among local retailers (-14.9%), local institutions (-16.0%) and foreign investors (-12.3%).

EYE ON THE MARKETS

This week, on Friday (24Feb), the Ringgit opened at 4.4340 against the USD from 4.4250 on Monday (20Feb). Meanwhile, the Ringgit was 3.3039 to the Sing Dollar on Friday (24Feb). On Monday (20Feb), the FBM KLCI opened at 1474.25. As at Friday (24Feb) 10:00am, the FBM KLCI is down 19.25 points for the week at 1455.00. Over in US, the overnight Dow Jones Industrial Average closed up 108.82 points (+0.33%) to 33,153.91 whilst the NASDAQ gained 83.33 points (+0.72%) to 11,950.40.



KLCI 1 Year Chart

Over 5 trading days



ShareInvestor WebPro (www.shareinvestor.com/my)

1. Price > Stock Prices
2. Select Market: NASDAQ / NYSE / IDX / SET / HKEX / SGX (One bourse at a time)
3. select Stocks Tab
4. select Ranking Top Gainers or Top Losers (Over 5 Trading Days)
5. Mouse over Column Layout > select Edit Customs > select Name > select Last Done Price > select 5 Days Change > select 52 Weeks High > select 52 Weeks Low > Mouse Over Column Layout > select Custom

NASDAQ (USD)

Top Gainers

Name	Last Done	Change Over 5 Days	52 Weeks High	52 Weeks Low
COCA-COLA CONSOLIDATED INC	570.900	+49.690	656.110	405.030
ANSYS INC	294.750	+23.990	333.830	194.230
REGENERON PHARMACEUTICALS INC	759.660	+23.330	800.480	538.010
PALO ALTO NETWORKS INC	188.740	+16.720	213.633	132.220
MERCADOLIBRE INC	1,136.260	+16.620	1,275.820	600.685

Top Losers

Name	Last Done	Change Over 5 Days	52 Weeks High	52 Weeks Low
BOOKING HOLDINGS INC	2,426.490	-35.520	2,556.760	1,616.850
POOL CORPORATION	360.570	-29.130	488.750	278.100
IDEXX LABORATORIES INC	478.350	-28.050	560.920	317.060
NETFLIX INC	323.650	-27.060	397.750	162.710
ALNYLAM PHARMACEUTICALS INC	196.240	-26.550	242.970	117.580

NYSE (USD)

Top Gainers

Name	Last Done	Change Over 5 Days	52 Weeks High	52 Weeks Low
HUBSPOT INC	393.090	+31.160	546.950	245.030
KINSALE CAPITAL GROUP INC	321.440	+29.430	337.115	187.030
FTI CONSULTING INC	180.950	+18.750	190.425	132.360
MARKEL CORP	1,337.600	+15.480	1,519.245	1,064.090
EMCOR GROUP INC	162.120	+13.360	156.670	95.640

Top Losers

Name	Last Done	Change Over 5 Days	52 Weeks High	52 Weeks Low
BERKSHIRE HATHAWAY INC	459,375.000	-7,997.740	544,389.260	393,012.250
TEXAS PACIFIC LAND CORPORATION	1,769.250	-105.270	2,739.000	990.000
CHIPOTLE MEXICAN GRILL	1,522.490	-98.750	1,754.560	1,196.280
WHITE MOUNTAINS INSURANCE GROUP	1,469.280	-70.730	1,560.210	1,017.584
METTLER-TOLEDO INTERNATIONAL INC	1,467.650	-66.860	1,609.250	1,065.550

IDX (Rupiah)

Top Gainers

Name	Last Done	Change Over 5 Days	52 Weeks High	52 Weeks Low
SOLUSI TUNAS PRATAMA TBK PT	41,450.000	+7,450.000	70,975.000	27,500.000
GOWA MAKASSAR TOURISM DEVELOPMENT	15,950.000	+1,450.000	15,950.000	14,500.000
INDO TAMBANGRAYA MEGAH TBK	35,900.000	+500.000	45,650.000	24,275.000
PRODIA WIDYAHUSADA TBK	6,100.000	+400.000	8,100.000	4,910.000
DCI INDONESIA TBK	38,000.000	+375.000	44,975.000	31,975.000

Top Losers

Name	Last Done	Change Over 5 Days	52 Weeks High	52 Weeks Low
METROPOLITAN KENTJ	28,900.000	-1,475.000	46,200.000	16,950.000
INDORAMA SYNTHETICS	4,850.000	-775.000	13,625.000	4,400.000
ASURANSI JIWA SINARMAS MSIG TBK	5,775.000	-525.000	6,500.000	5,050.000
PETROSEA	4,720.000	-505.000	5,775.000	2,550.000
GUDANG GARAM TBK	25,400.000	-475.000	33,575.000	16,500.000

SET (Thai Baht)

Top Gainers

Name	Last Done	Change Over 5 Days	52 Weeks High	52 Weeks Low
FE	200.000	+20.500	246.000	158.500
INSURE	229.000	+9.000	700.000	39.250
CHOTI	176.000	+8.000	179.000	116.000
AEONTS	205.000	+7.500	209.000	152.000
BKI	292.000	+5.000	296.000	263.000

Top Losers

Name	Last Done	Change Over 5 Days	52 Weeks High	52 Weeks Low
SCCC	149.000	-13.000	163.000	144.500
DELTA	968.000	-8.000	996.000	287.000
PTTEP	154.000	-6.000	195.000	127.500
MASTER	75.750	-5.500	86.000	61.250
ADVANC	206.000	-5.000	242.000	181.500

HKEX (HKD)

Top Gainers

Name	Last Done	Change Over 5 Days	52 Weeks High	52 Weeks Low
YUM CHINA HOLDINGS INC	489.400	+15.800	500.000	281.000
3D MEDICINES INC	78.600	+7.400	84.250	27.700
HANG SENG BANK	130.900	+7.200	154.000	108.300
STAR CM HOLDINGS LIMITED	107.900	+6.900	117.100	32.550
SIRNAOMICS LTD	56.400	+5.250	95.600	46.150

Top Losers

Name	Last Done	Change Over 5 Days	52 Weeks High	52 Weeks Low
TECHTRONIC INDUSTRIES CO	74.950	-28.150	141.600	72.700
TENCENT HOLDINGS LIMITED	356.000	-26.600	416.609	188.213
JD.COM INC	187.300	-25.300	291.600	138.900
CHINA TOURISM GROUP DUTY FREE CORP	202.200	-15.800	280.000	120.000
WEIBO CORPORATION	162.200	-10.900	233.000	81.300

SGX (SGD)

Top Gainers

Name	Last Done	Change Over 5 Days	52 Weeks High	52 Weeks Low
KEPPEL CORP	5.400	+0.756	5.800	3.778
JARDINE C&C	29.260	+0.650	36.850	21.540
AZEUS	8.330	+0.330	8.330	5.180
THEHOURGLASS	2.300	+0.220	2.580	1.850
NANOFILM	1.450	+0.140	2.920	1.180

Top Losers

Name	Last Done	Change Over 5 Days	52 Weeks High	52 Weeks Low
JMH USD	49.550	-2.300	60.610	42.600
UOB	29.620	-1.080	32.620	25.910
HAW PAR	10.290	-0.670	11.930	8.980
VENTURE	17.960	-0.480	18.750	15.710
DBS	34.340	-0.460	36.500	29.450

CBP BAN UPLIFTED - A VALUABLE WAKE-UP CALL FOR PLCs TO BE SERIOUS ON ESG



Devanesan
Evanson

**Chief Executive
Officer, Minority
Shareholders Watch
Group**

That the US Customs and Border Protection (CBP) has essentially lifted its Withhold Release Order (WRO) that has prevented palm oil-related products of Sime Darby Plantation Berhad (SDP) from entering the US over the past two years is a victory for the planter and the quest to promote sustainable business model among Malaysian PLCs in general.

Recall that the US CBP had in December 2020 raised the issue of “forced labour” against SDP by slapping the latter with a WRO that essentially prevented the Company’s palm oil products

from entering the US. The decision was based on sufficient, though not conclusive, information or evidence triggered apparently by a petition sent to US CBP in April 2020 by non-governmental organisation (NGO) Liberty Shared. This lasted till 3 Feb this year when US CBP “modified” the WRO to allow SDP to resume exports of its palm oil products to US.

Although commercially, the US is a small market for SDP – having accounted for less than 5% of its revenue in FY2021 – the ban has triggered concerns over SDP’s ESG image, especially with regard to its ESG rating. With that, SDP’s reputation is at stake, with the Company priding itself as the world’s largest producer of certified palm oil. Bans and allegations could potentially dent or even nullify such claims.

BEYOND SDP

Swiftly after the ban by CBP, SDP made a slew of changes in its labour practices and standards. The planter also introduced several industry firsts measures as part of its renewed commitments.

Aside from SDP, glove maker YTY Industry Holdings Sdn Bhd and all its subsidiaries also saw some relief when the US CBP issued a modification to its WRO, which then allowed for the resumption of shipments of its single-use gloves into the US. While the group is in the process of notifying US customers of this positive development and to re-establish its long-standing supply relationship with them, it nevertheless acknowledged that the imposition of the WRO by US CBP has strengthened its commitment to uphold international labour standards in the near future.

Earlier on 9 September 2021, the US CBP similarly modified its forced labour finding on Top Glove Corporation Berhad, which would permit the world’s largest glove maker to resume the importation of disposable gloves made at Top Glove facilities in Malaysia. In hindsight, Top Glove did recognise that the year-long ban by the US customs authorities on Top Glove’s exports to the US has served as a “wake-up call” for the world’s largest medical glove maker to avoid similar predicaments in the future.

Above all else, its management said the ban was a learning experience that had improved the company's ESG markers in addressing claims of forced labour. The experience has prompted Top Glove to take various initiatives towards addressing forced labour concerns by having upgraded hostel facilities for its migrant workers, who account for a majority of its factory workforce and even promised to compensate them for the fee they paid to employment agents in their home countries.

Other big glovemakers, such as Hartalega Holdings Berhad and Kossan Rubber Industries Berhad have also since taken similar action to refund the fees, which labour activists claim would result in debt bondage.

LESSONS LEARNT

On a bigger scale, the environmental, social and governance (ESG) agenda with key focus on sustainability will continue to be at the forefront of how SDP and other PLCs conduct their businesses in the future.

Therefore, the social aspect within the ESG spectrum requires economic sectors with heavy reliance on foreign labour, e.g., manufacturing and plantation, to prioritise on two fronts:

- Doing what is morally right for how we treat others reflects who we are as a company and as a nation;
- Investors and stakeholders nowadays are much more conscious about social justice, corporate governance and corporate malpractice; hence addressing their concerns would augur well for a company's profile, top line, bottom line and reputation. More so, investors may choose to shy away from companies that breach ESG practices.

DEFINITION: Insider Activity shows the trades made by substantial shareholders or directors of the company. Purchases by the directors and company share buyback may indicate the share price is undervalued and brings confidence to the price trend of the share price.



ShareInvestor WebPro > Fundamental > Insider Trades > click Search tab > Select Bursa > click Stock name > scroll up and leave at <Select Counter> Type Date Range for Announcement Date > click Search

Notice Period is 12 February – 18 February 2023

Effective Change Date	Stock Name	Buyer/ Seller Name [Classification]	Bought / (Sold) ['000]	No. of Shares After Trade ['000]	
			Total	Total	% Held
15 Feb 2023 - 15 Feb 2023	3A	MR TEO KWEE HOCK [SSH]	100	44,167	9.032
10 Feb 2023 - 10 Feb 2023	3A	MR TEO KWEE HOCK [SSH]	84	44,067	9.011
14 Feb 2023 - 14 Feb 2023	ABMB	EMPLOYEES PROVIDENT FUND BOARD [SSH]	-34	160,818	10.388
13 Feb 2023 - 13 Feb 2023	ABMB	EMPLOYEES PROVIDENT FUND BOARD [SSH]	-250	160,851	10.39
09 Feb 2023 - 09 Feb 2023	ABMB	EMPLOYEES PROVIDENT FUND BOARD [SSH]	-1,000	161,101	10.406
08 Feb 2023 - 08 Feb 2023	ABMB	EMPLOYEES PROVIDENT FUND BOARD [SSH]	-400	162,101	10.471
10 Feb 2023 - 10 Feb 2023	AEON	EMPLOYEES PROVIDENT FUND BOARD [SSH]	508	155,368	11.066
16 Feb 2023 - 16 Feb 2023	AIRPORT	KUMPULAN WANG PERSARAAN (DIPERBADANKAN) [SSH]	-125	103,308	6.226
14 Feb 2023 - 14 Feb 2023	AIRPORT	EMPLOYEES PROVIDENT FUND BOARD [SSH]	-199	257,322	15.509
15 Feb 2023 - 15 Feb 2023	AIRPORT	KUMPULAN WANG PERSARAAN (DIPERBADANKAN) [SSH]	-88	103,433	6.234
13 Feb 2023 - 13 Feb 2023	AIRPORT	EMPLOYEES PROVIDENT FUND BOARD [SSH]	-237	257,521	15.521
14 Feb 2023 - 14 Feb 2023	AIRPORT	KUMPULAN WANG PERSARAAN (DIPERBADANKAN) [SSH]	-70	103,521	6.239
10 Feb 2023 - 10 Feb 2023	AIRPORT	EMPLOYEES PROVIDENT FUND BOARD [SSH]	-242	257,758	15.535
13 Feb 2023 - 13 Feb 2023	AIRPORT	KUMPULAN WANG PERSARAAN (DIPERBADANKAN) [SSH]	-83	103,591	6.243
10 Feb 2023 - 10 Feb 2023	AIRPORT	KUMPULAN WANG PERSARAAN (DIPERBADANKAN) [SSH]	-84	103,674	6.248
09 Feb 2023 - 09 Feb 2023	ALLIANZ	EMPLOYEES PROVIDENT FUND BOARD [SSH]	-2	13,505	7.588
08 Feb 2023 - 08 Feb 2023	ALLIANZ	EMPLOYEES PROVIDENT FUND BOARD [SSH]	-0.4	13,507	7.59
14 Feb 2023 - 14 Feb 2023	ANCOMNY	MR LEE CHEUN WEI [DIR/CEO]	500	66,500	7.193
14 Feb 2023 - 14 Feb 2023	ANCOMNY	MR LEE CHEUN WEI [SSH]	500	66,500	7.193
10 Feb 2023 - 14 Feb 2023	ANCOMNY	DATO' SIEW KA WEI [SSH]	-500	204,013	22.066
10 Feb 2023 - 14 Feb 2023	ANCOMNY	DATO' SIEW KA WEI [DIR/CEO]	-500	204,013	22.066
10 Feb 2023 - 14 Feb 2023	ANCOMNY	DATO' SIEW KA WEI [DIR/CEO]	39	23,855	20.626
10 Feb 2023 - 14 Feb 2023	ANCOMNY	MR CHAN THYE SENG [DIR/CEO]	-1,286	11,805	1.277
15 Feb 2023 - 15 Feb 2023	APOLLO	AMANAHRAYA TRUSTEES BERHAD-AMANAH SAHAM BUMIPUTERA [SSH]	-14	9,079	11.349
14 Feb 2023 - 14 Feb 2023	APOLLO	AMANAHRAYA TRUSTEES BERHAD-AMANAH SAHAM BUMIPUTERA [SSH]	-47	9,092	11.366
10 Feb 2023 - 10 Feb 2023	APOLLO	AMANAHRAYA TRUSTEES BERHAD-AMANAH SAHAM BUMIPUTERA [SSH]	-25	9,139	11.424
16 Feb 2023 - 17 Feb 2023	ATECH	PIXEL ADVISERS PTE. LTD. [SSH]	-1,126	24,305	6.169
16 Feb 2023 - 17 Feb 2023	ATECH	MR TAN CHONG HIN [SSH]	-1,126	24,305	6.169
16 Feb 2023 - 17 Feb 2023	ATECH	MR TAN CHONG HIN [DIR/CEO]	-1,126	24,305	6.169
13 Feb 2023 - 13 Feb 2023	AURORA	DATIN LIM CHEE TING [DIR/CEO]	1,074	547,911	87.519
13 Feb 2023 - 13 Feb 2023	AURORA	DATIN LIM CHEE TING [SSH]	1,074	98,290	15.7
14 Feb 2023 - 14 Feb 2023	AXREIT	EMPLOYEES PROVIDENT FUND BOARD [SSH]	-570	291,724	16.756
13 Feb 2023 - 13 Feb 2023	AXREIT	EMPLOYEES PROVIDENT FUND BOARD [SSH]	-1,000	292,294	16.788
14 Feb 2023 - 14 Feb 2023	AXTERIA	MR TAN JOO KHONG [DIR/CEO]	-1,000	6,170	0.866
13 Feb 2023 - 13 Feb 2023	AXTERIA	MR WOO WAI ONN @ FOO WAI ONN [DIR/CEO]	121,500	132,869	18.656
13 Feb 2023 - 13 Feb 2023	AXTERIA	MR WOO WAI ONN @ FOO WAI ONN [SSH]	121,500	132,869	18.656
13 Feb 2023 - 13 Feb 2023	AXTERIA	MR YEE WEI MENG [SSH]	23,000	67,367	9.458
13 Feb 2023 - 13 Feb 2023	AXTERIA	MR YEE WEI MENG [DIR/CEO]	23,000	67,367	9.458
15 Feb 2023 - 15 Feb 2023	BAUTO	DATO' AMER HAMZAH BIN AHMAD [SSH]	16	174,803	15.006
15 Feb 2023 - 15 Feb 2023	BAUTO	DATO' SRI YEOH CHOOAN SAN [SSH]	16	174,394	14.971
15 Feb 2023 - 15 Feb 2023	BAUTO	DATO' SRI YEOH CHOOAN SAN [DIR/CEO]	16	174,394	14.971
15 Feb 2023 - 15 Feb 2023	BAUTO	DATO' LEE KOK CHUAN [DIR/CEO]	16	174,037	14.941
15 Feb 2023 - 15 Feb 2023	BAUTO	DATO' LEE KOK CHUAN [SSH]	16	174,037	14.941
15 Feb 2023 - 15 Feb 2023	BAUTO	DYNAMIC MILESTONE SDN BHD [SSH]	16	170,359	14.625
14 Feb 2023 - 14 Feb 2023	BAUTO	EMPLOYEES PROVIDENT FUND BOARD [SSH]	-279	174,412	14.976
13 Feb 2023 - 13 Feb 2023	BAUTO	EMPLOYEES PROVIDENT FUND BOARD [SSH]	-319	174,692	15
10 Feb 2023 - 10 Feb 2023	BAUTO	PRUDENTIAL PLC [SSH]	542	59,955	5.148
09 Feb 2023 - 09 Feb 2023	BAUTO	ABRDN HOLDINGS LIMITED (FORMERLY KNOWN AS ABERDEEN ASSET MANAGEMENT PLC) [SSH]	-459	67,298	5.779
09 Feb 2023 - 09 Feb 2023	BAUTO	ABRDN PLC [SSH]	-459	67,298	5.779
09 Feb 2023 - 09 Feb 2023	BAUTO	ABRDN MALAYSIA SDN BHD [SSH]	-459	66,384	5.7
09 Feb 2023 - 09 Feb 2023	BAUTO	PRUDENTIAL PLC [SSH]	456	59,413	5.102
09 Feb 2023 - 09 Feb 2023	BIMB	EMPLOYEES PROVIDENT FUND BOARD [SSH]	260	340,084	15.155
08 Feb 2023 - 08 Feb 2023	BIMB	EMPLOYEES PROVIDENT FUND BOARD [SSH]	175	339,824	15.144
15 Feb 2023 - 15 Feb 2023	BJFOOD	BERJAYA GROUP BERHAD [SSH]	-48	941,911	53.692
15 Feb 2023 - 15 Feb 2023	BJFOOD	BERJAYA CORPORATION BERHAD [SSH]	-48	941,911	53.692
15 Feb 2023 - 15 Feb 2023	BJFOOD	JUARA SEJATI SDN BHD [SSH]	-48	200,107	11.407
16 Feb 2023 - 16 Feb 2023	CAREPLS	MADAM YEW YEE PENG [DIR/CEO]	-3,109	50,415	8.804
16 Feb 2023 - 16 Feb 2023	CAREPLS	MADAM YEW YEE PENG [SSH]	-3,109	50,415	8.804
16 Feb 2023 - 16 Feb 2023	CAREPLS	THINKING CAP SDN. BHD. [SSH]	-3,109	49,915	8.717
16 Feb 2023 - 16 Feb 2023	CAREPLS	MADAM YEW MEI SZE [SSH]	-3,109	49,915	8.717
16 Feb 2023 - 16 Feb 2023	CAREPLS	MR YEW TZE LEONG [SSH]	-3,109	49,915	8.717
14 Feb 2023 - 14 Feb 2023	CHINHIN	DATUK SERI CHIAU BENG TEIK JP [SSH]	1,000	997,390	56.368
14 Feb 2023 - 14 Feb 2023	CHINHIN	DATUK SERI CHIAU BENG TEIK JP [DIR/CEO]	1,000	997,390	56.368

Disclaimer: The Information in Insider Activity is extracted from www.shareinvestor.com/fundamental/insider_trades. The information on this page is provided as a service to readers. It does not constitute financial advice and/or any investment recommendations. We assume no liability for damages resulting from or arising out of the use of such information. Whilst every effort is made to ensure accuracy, the information presented is not the official record of shareholder filings. Readers are advised to read the original filings on the Bursa Malaysia website at www.bursamalaysia.com

Notice Period is 12 February – 18 February 2023

Effective Change Date	Stock Name	Buyer/ Seller Name [Classification]	Bought / (Sold) ['000]	No. of Shares After Trade ['000]	
			Total	Total	% Held
13 Feb 2023 - 13 Feb 2023	CHINHIN	DATUK SERI CHIAU BENG TEIK JP [DIR/CEO]	2,000	996,390	56.312
13 Feb 2023 - 13 Feb 2023	CHINHIN	DATUK SERI CHIAU BENG TEIK JP [SSH]	2,000	996,390	56.312
17 Feb 2023 - 17 Feb 2023	CHOOBEE	MR SOON CHENG HAI [SSH]	2,565	108,906	55.538
17 Feb 2023 - 17 Feb 2023	CHOOBEE	MR SOON CHENG HAI [DIR/CEO]	2,565	108,906	55.538
17 Feb 2023 - 17 Feb 2023	CHOOBEE	MR SOON CHENG BOON [SSH]	2,565	108,881	55.525
17 Feb 2023 - 17 Feb 2023	CHOOBEE	MR SOON CHENG BOON [DIR/CEO]	2,565	108,881	55.525
17 Feb 2023 - 17 Feb 2023	CHOOBEE	SOON LIAN HUAT HOLDINGS SDN BERHAD [SSH]	2,565	106,506	54.314
14 Feb 2023 - 14 Feb 2023	CIMB	EMPLOYEES PROVIDENT FUND BOARD [SSH]	-850	1,420,030	13.31
13 Feb 2023 - 13 Feb 2023	CIMB	EMPLOYEES PROVIDENT FUND BOARD [SSH]	-3,000	1,420,880	13.32
10 Feb 2023 - 10 Feb 2023	CIMB	EMPLOYEES PROVIDENT FUND BOARD [SSH]	-400	1,423,880	13.35
13 Feb 2023 - 13 Feb 2023	CIMB	KUMPULAN WANG PERSARAAN (DIPERBADANKAN) [SSH]	-114	707,597	6.63
10 Feb 2023 - 10 Feb 2023	CIMB	KUMPULAN WANG PERSARAAN (DIPERBADANKAN) [SSH]	-22	707,711	6.63
09 Feb 2023 - 09 Feb 2023	CIMB	EMPLOYEES PROVIDENT FUND BOARD [SSH]	2,868	1,424,280	13.35
09 Feb 2023 - 09 Feb 2023	CIMB	KUMPULAN WANG PERSARAAN (DIPERBADANKAN) [SSH]	788	707,733	6.63
08 Feb 2023 - 08 Feb 2023	CIMB	EMPLOYEES PROVIDENT FUND BOARD [SSH]	-5,100	1,421,412	13.33
07 Feb 2023 - 07 Feb 2023	CIMB	EMPLOYEES PROVIDENT FUND BOARD [SSH]	2,806	1,426,512	13.38
14 Feb 2023 - 14 Feb 2023	CLMT	EMPLOYEES PROVIDENT FUND BOARD [SSH]	-150	296,460	13.433
13 Feb 2023 - 13 Feb 2023	CLMT	EMPLOYEES PROVIDENT FUND BOARD [SSH]	-500	296,610	13.44
09 Feb 2023 - 09 Feb 2023	CLMT	EMPLOYEES PROVIDENT FUND BOARD [SSH]	-158	297,110	13.463
08 Feb 2023 - 08 Feb 2023	CLMT	EMPLOYEES PROVIDENT FUND BOARD [SSH]	-499	297,268	13.47
13 Feb 2023 - 13 Feb 2023	CRESNDO	MR GOOI SEONG LIM [SSH]	10	197,254	70.594
13 Feb 2023 - 13 Feb 2023	CRESNDO	MR GOOI SEONG LIM [DIR/CEO]	10	197,254	70.594
10 Feb 2023 - 10 Feb 2023	CRESNDO	MR GOOI SEONG LIM [SSH]	50	197,244	70.59
10 Feb 2023 - 10 Feb 2023	CRESNDO	MR GOOI SEONG LIM [DIR/CEO]	50	197,244	70.59
13 Feb 2023 - 13 Feb 2023	CRG	DATO' SRI CHIANG FONG YEE [DIR/CEO]	4	279,970	34.751
13 Feb 2023 - 13 Feb 2023	CRG	DATO' SRI CHIANG FONG YEE [SSH]	4	255,801	31.751
10 Feb 2023 - 10 Feb 2023	CRG	DATO' SRI CHIANG FONG YEE [DIR/CEO]	500	279,966	34.75
10 Feb 2023 - 10 Feb 2023	CRG	DATO' SRI CHIANG FONG YEE [SSH]	500	255,797	31.75
10 Feb 2023 - 10 Feb 2023	CUSCAPI	MR WONG THEAN SOON [SSH]	69,250	208,058	22.02
10 Feb 2023 - 10 Feb 2023	CUSCAPI	ASIA INTERNET HOLDINGS SDN BHD [SSH]	83,250	83,250	8.811
16 Feb 2023 - 16 Feb 2023	CYPARK	MR CHUNG CHEE YANG [SSH]	100	77,411	9.994
14 Feb 2023 - 14 Feb 2023	CYPARK	PERTUBUHAN KESELAMATAN SOSIAL [SSH]	442	49,975	6.452
10 Feb 2023 - 10 Feb 2023	CYPARK	DATO' DAUD BIN AHMAD [DIR/CEO]	2,500	42,339	5.466
10 Feb 2023 - 10 Feb 2023	CYPARK	DATO' DAUD BIN AHMAD [DIR/CEO]	2,500	37,500	75.159
10 Feb 2023 - 10 Feb 2023	CYPARK	DATUK MEGAT ABDUL MUNIR BIN MEGAT ABDULLAH RAFAIE [DIR/CEO]	200	1,306	0.169
10 Feb 2023 - 10 Feb 2023	CYPARK	DATO' DR FREEZAILAH BIN CHE YEOM [DIR/CEO]	200	1,016	0.131
10 Feb 2023 - 10 Feb 2023	CYPARK	ENCIK HEADIR BIN MAHFIDZ [DIR/CEO]	200	827	0.107
10 Feb 2023 - 10 Feb 2023	CYPARK	DATUK ABDUL MALEK BIN ABDUL AZIZ [DIR/CEO]	25	175	0.351
10 Feb 2023 - 10 Feb 2023	CYPARK	DATUK ABDUL MALEK BIN ABDUL AZIZ [DIR/CEO]	25	37	0.005
16 Feb 2023 - 16 Feb 2023	DIALOG	KUMPULAN WANG PERSARAAN (DIPERBADANKAN) [SSH]	339	550,378	9.75
15 Feb 2023 - 15 Feb 2023	DIALOG	KUMPULAN WANG PERSARAAN (DIPERBADANKAN) [SSH]	37	550,039	9.74
13 Feb 2023 - 13 Feb 2023	DIALOG	EMPLOYEES PROVIDENT FUND BOARD [SSH]	168	820,010	14.53
14 Feb 2023 - 14 Feb 2023	DIALOG	KUMPULAN WANG PERSARAAN (DIPERBADANKAN) [SSH]	7	550,002	9.74
10 Feb 2023 - 10 Feb 2023	DIALOG	EMPLOYEES PROVIDENT FUND BOARD [SSH]	157	819,842	14.53
13 Feb 2023 - 13 Feb 2023	DIALOG	KUMPULAN WANG PERSARAAN (DIPERBADANKAN) [SSH]	38	549,995	9.74
09 Feb 2023 - 09 Feb 2023	DIALOG	EMPLOYEES PROVIDENT FUND BOARD [SSH]	826	819,685	14.53
10 Feb 2023 - 10 Feb 2023	DIALOG	KUMPULAN WANG PERSARAAN (DIPERBADANKAN) [SSH]	35	549,958	9.74
14 Feb 2023 - 14 Feb 2023	DIGI	EMPLOYEES PROVIDENT FUND BOARD [SSH]	-798	1,172,000	9.99
13 Feb 2023 - 13 Feb 2023	DIGI	EMPLOYEES PROVIDENT FUND BOARD [SSH]	483	1,172,797	9.997
10 Feb 2023 - 10 Feb 2023	DIGI	EMPLOYEES PROVIDENT FUND BOARD [SSH]	1,167	1,172,314	9.993
09 Feb 2023 - 09 Feb 2023	DIGI	EMPLOYEES PROVIDENT FUND BOARD [SSH]	-112	1,171,147	9.983
08 Feb 2023 - 08 Feb 2023	DIGI	EMPLOYEES PROVIDENT FUND BOARD [SSH]	-241	1,171,260	9.984
14 Feb 2023 - 14 Feb 2023	DRBHCORP	EMPLOYEES PROVIDENT FUND BOARD [SSH]	-351	198,362	10.261
13 Feb 2023 - 13 Feb 2023	DRBHCORP	EMPLOYEES PROVIDENT FUND BOARD [SSH]	-33	198,712	10.279
08 Feb 2023 - 08 Feb 2023	DRBHCORP	EMPLOYEES PROVIDENT FUND BOARD [SSH]	-428	198,746	10.28
09 Feb 2023 - 09 Feb 2023	DSOINIC	URUSHARTA JAMAAH SDN. BHD. [SSH]	-4,714	246,328	8.696
10 Feb 2023 - 10 Feb 2023	ECONBHD	EMPLOYEES PROVIDENT FUND BOARD [SSH]	100	114,775	8.097
09 Feb 2023 - 09 Feb 2023	EG	DATO' TERENCE TEA YEOK KIAN [SSH]	-200	34,508	8.431
16 Feb 2023 - 16 Feb 2023	ENGAH	MR CHUA IT CHIT [DIR/CEO]	42	364	0.308
14 Feb 2023 - 14 Feb 2023	F&N	EMPLOYEES PROVIDENT FUND BOARD [SSH]	-105	48,682	13.273
13 Feb 2023 - 13 Feb 2023	F&N	EMPLOYEES PROVIDENT FUND BOARD [SSH]	-43	48,787	13.301
10 Feb 2023 - 10 Feb 2023	F&N	EMPLOYEES PROVIDENT FUND BOARD [SSH]	-103	48,830	13.313
09 Feb 2023 - 09 Feb 2023	F&N	EMPLOYEES PROVIDENT FUND BOARD [SSH]	-2	48,933	13.341
08 Feb 2023 - 08 Feb 2023	F&N	EMPLOYEES PROVIDENT FUND BOARD [SSH]	22	48,934	13.342

PURNELL

ESCAPE II FORGED CARBON

PLAY



Notice Period is 12 February - 18 February 2023

Effective Change Date	Stock Name	Buyer/ Seller Name [Classification]	Bought / (Sold) ['000]	No. of Shares After Trade ['000]	
			Total	Total	% Held
14 Feb 2023 - 14 Feb 2023	GAMUDA	EMPLOYEES PROVIDENT FUND BOARD (EPF BOARD) [SSH]	-952	395,954	15.11
15 Feb 2023 - 15 Feb 2023	GAMUDA	KUMPULAN WANG PERSARAAN (DIPERBADANKAN) [KWAP] [SSH]	120	142,981	5.46
13 Feb 2023 - 13 Feb 2023	GAMUDA	EMPLOYEES PROVIDENT FUND BOARD (EPF BOARD) [SSH]	-161	396,906	15.14
10 Feb 2023 - 10 Feb 2023	GAMUDA	EMPLOYEES PROVIDENT FUND BOARD (EPF BOARD) [SSH]	255	399,067	15.23
13 Feb 2023 - 13 Feb 2023	GAMUDA	KUMPULAN WANG PERSARAAN (DIPERBADANKAN) [KWAP] [SSH]	-1,142	142,861	5.45
10 Feb 2023 - 10 Feb 2023	GAMUDA	KUMPULAN WANG PERSARAAN (DIPERBADANKAN) [KWAP] [SSH]	180	144,003	5.49
13 Feb 2023 - 13 Feb 2023	HCK	TAN SRI HII CHII KOK @ HII CHEE KOK [SSH]	569	242,069	53.242
13 Feb 2023 - 13 Feb 2023	HCK	TAN SRI HII CHII KOK @ HII CHEE KOK [DIR/CEO]	569	242,069	53.242
13 Feb 2023 - 13 Feb 2023	HCK	HIICHIKOK EQUITIES SDN BHD [SSH]	569	240,169	52.824
08 Feb 2023 - 08 Feb 2023	HEKTAR	HEKTAR BLACK SDN BHD [SSH]	-450	133,642	28.358
14 Feb 2023 - 14 Feb 2023	HLBANK	EMPLOYEES PROVIDENT FUND BOARD [SSH]	-611	206,452	9.894
13 Feb 2023 - 13 Feb 2023	HLBANK	EMPLOYEES PROVIDENT FUND BOARD [SSH]	266	207,063	9.923
10 Feb 2023 - 10 Feb 2023	HLBANK	EMPLOYEES PROVIDENT FUND BOARD [SSH]	1,058	206,797	9.911
09 Feb 2023 - 09 Feb 2023	HLBANK	EMPLOYEES PROVIDENT FUND BOARD [SSH]	-402	205,739	9.86
08 Feb 2023 - 08 Feb 2023	HLBANK	EMPLOYEES PROVIDENT FUND BOARD [SSH]	-682	206,142	9.879
16 Feb 2023 - 16 Feb 2023	HOHUP	TAN SRI DATUK SERI (DR) MAZLAN BIN LAZIM [DIR/CEO]	19	66	0.013
14 Feb 2023 - 14 Feb 2023	HOHUP	TAN SRI DATUK SERI (DR) MAZLAN BIN LAZIM [DIR/CEO]	47	47	0.009
16 Feb 2023 - 16 Feb 2023	IGBREIT	KUMPULAN WANG PERSARAAN (DIPERBADANKAN) [SSH]	-320	264,362	7.363
09 Feb 2023 - 09 Feb 2023	IGBREIT	EMPLOYEES PROVIDENT FUND BOARD ("EPF BOARD") [SSH]	106	409,379	11.402
08 Feb 2023 - 08 Feb 2023	IGBREIT	EMPLOYEES PROVIDENT FUND BOARD ("EPF BOARD") [SSH]	200	409,274	11.399
14 Feb 2023 - 14 Feb 2023	IHH	EMPLOYEES PROVIDENT FUND BOARD [SSH]	237	916,813	10.411
13 Feb 2023 - 13 Feb 2023	IHH	EMPLOYEES PROVIDENT FUND BOARD [SSH]	1,633	916,576	10.408
10 Feb 2023 - 10 Feb 2023	IHH	EMPLOYEES PROVIDENT FUND BOARD [SSH]	1,791	914,943	10.39
09 Feb 2023 - 09 Feb 2023	IHH	EMPLOYEES PROVIDENT FUND BOARD [SSH]	447	913,153	10.37
08 Feb 2023 - 08 Feb 2023	IHH	EMPLOYEES PROVIDENT FUND BOARD [SSH]	361	912,706	10.365
16 Feb 2023 - 16 Feb 2023	IJM	KUMPULAN WANG PERSARAAN (DIPERBADANKAN) [SSH]	1,000	294,100	8.372
10 Feb 2023 - 10 Feb 2023	IJM	URUSHARTA JAMA'AH SDN BHD [SSH]	765	215,090	6.123
15 Feb 2023 - 15 Feb 2023	IMPIANA	DATO' SERI ISMAIL @ FAROUK BIN ABDULLAH [SSH]	-300	123,812	34.295
15 Feb 2023 - 15 Feb 2023	IMPIANA	DATO' SERI ISMAIL @ FAROUK BIN ABDULLAH [DIR/CEO]	-300	123,812	34.295
15 Feb 2023 - 15 Feb 2023	IMPIANA	IMPIANA SDN BHD [SSH]	-300	65,063	18.022
10 Feb 2023 - 10 Feb 2023	IMPIANA	DATO' SERI ISMAIL @ FAROUK BIN ABDULLAH [SSH]	-250	124,112	35.079
10 Feb 2023 - 10 Feb 2023	IMPIANA	DATO' SERI ISMAIL @ FAROUK BIN ABDULLAH [DIR/CEO]	-250	124,112	35.079
10 Feb 2023 - 10 Feb 2023	IMPIANA	IMPIANA SDN BHD [SSH]	-250	65,363	18.474
10 Feb 2023 - 10 Feb 2023	INFOTEC	MISS ALWIZAH AL-YAFII BINTI AHMAD KAMAL [DIR/CEO]	-75	75	0.021
13 Feb 2023 - 13 Feb 2023	INNATURE	PRUDENTIAL PLC [SSH]	-300	39,673	5.62
09 Feb 2023 - 09 Feb 2023	INNATURE	PRUDENTIAL PLC [SSH]	-300	39,973	5.663
09 Feb 2023 - 09 Feb 2023	IOICORP	EMPLOYEES PROVIDENT FUND BOARD [SSH]	1,635	665,110	10.715
08 Feb 2023 - 08 Feb 2023	IOICORP	EMPLOYEES PROVIDENT FUND BOARD [SSH]	2,317	663,475	10.687
09 Feb 2023 - 09 Feb 2023	IOIPG	EMPLOYEES PROVIDENT FUND BOARD [SSH]	-500	440,388	7.998
10 Feb 2023 - 10 Feb 2023	ITRONIC	DATUK CHU BOON TIONG [DIR/CEO]	-2,409	32,566	4.602
13 Jun 2018 - 18 Jun 2018	KAREX	MR GOH SIANG [SSH]	-1,683	346,081	34.525
15 Feb 2023 - 16 Feb 2023	KEINHIN	MADAM YONG ELAINE [DIR/CEO]	-250	63,935	58.71
15 Feb 2023 - 16 Feb 2023	KEINHIN	MR YAP TOON CHOY [SSH]	-250	63,935	58.71
15 Feb 2023 - 16 Feb 2023	KEINHIN	MADAM YONG ELAINE [SSH]	-250	63,935	58.71
15 Feb 2023 - 16 Feb 2023	KEINHIN	MR YAP TOON CHOY [DIR/CEO]	-250	63,935	58.71
14 Feb 2023 - 14 Feb 2023	KLCC	EMPLOYEES PROVIDENT FUND BOARD [SSH]	-90	182,569	10.113
14 Feb 2023 - 14 Feb 2023	KLCC	EMPLOYEES PROVIDENT FUND BOARD [SSH]	-90	182,569	10.113
13 Feb 2023 - 13 Feb 2023	KLCC	EMPLOYEES PROVIDENT FUND BOARD [SSH]	-51	182,659	10.118
13 Feb 2023 - 13 Feb 2023	KLCC	EMPLOYEES PROVIDENT FUND BOARD [SSH]	-51	182,659	10.118
10 Feb 2023 - 10 Feb 2023	KLCC	EMPLOYEES PROVIDENT FUND BOARD [SSH]	-39	182,710	10.121
10 Feb 2023 - 10 Feb 2023	KLCC	EMPLOYEES PROVIDENT FUND BOARD [SSH]	-39	182,710	10.121
09 Feb 2023 - 09 Feb 2023	KLCC	EMPLOYEES PROVIDENT FUND BOARD [SSH]	-16	182,749	10.123
09 Feb 2023 - 09 Feb 2023	KLCC	EMPLOYEES PROVIDENT FUND BOARD [SSH]	-16	182,749	10.123
08 Feb 2023 - 08 Feb 2023	KLCC	EMPLOYEES PROVIDENT FUND BOARD [SSH]	-44	182,765	10.124
08 Feb 2023 - 08 Feb 2023	KLCC	EMPLOYEES PROVIDENT FUND BOARD [SSH]	-44	182,765	10.124
08 Feb 2023 - 08 Feb 2023	KLK	EMPLOYEES PROVIDENT FUND BOARD [SSH]	36	116,478	10.801
14 Feb 2023 - 14 Feb 2023	KPSCB	MR KOH POH SENG [SSH]	7	68,190	46.128
15 Feb 2023 - 15 Feb 2023	LCTITAN	TAN SRI DATUK DR RAFIAH BINTI SALIM [DIR/CEO]	20	72	0.003
14 Feb 2023 - 14 Feb 2023	LCTITAN	TAN SRI DATUK DR RAFIAH BINTI SALIM [DIR/CEO]	10	52	0.002
13 Feb 2023 - 13 Feb 2023	LCTITAN	TAN SRI DATUK DR RAFIAH BINTI SALIM [DIR/CEO]	10	42	0.002
13 Feb 2023 - 13 Feb 2023	LKL	MR ANG KIAN YOU [SSH]	531	4,869	5.011
16 Feb 2023 - 16 Feb 2023	MAGNI	MR TAN POAY SENG [DIR/CEO]	183	112,871	26.04
14 Feb 2023 - 14 Feb 2023	MAGNI	MR TAN POAY SENG [DIR/CEO]	400	112,688	26
13 Feb 2023 - 13 Feb 2023	MATANG	MR ANG KIAN YOU [SSH]	4,001	200,998	8.413
15 Feb 2023 - 15 Feb 2023	MAYBANK	AMANAHRAYA TRUSTEES BERHAD - AMANAH SAHAM BUMIPUTERA [SSH]	2,581	3,919,920	32.519
14 Feb 2023 - 14 Feb 2023	MAYBANK	EMPLOYEES PROVIDENT FUND BOARD [SSH]	-5,352	1,647,688	13.669
14 Feb 2023 - 14 Feb 2023	MAYBANK	AMANAHRAYA TRUSTEES BERHAD - AMANAH SAHAM BUMIPUTERA [SSH]	5,000	3,917,338	32.498
13 Feb 2023 - 13 Feb 2023	MAYBANK	EMPLOYEES PROVIDENT FUND BOARD [SSH]	-6,000	1,653,039	13.713
13 Feb 2023 - 13 Feb 2023	MAYBANK	AMANAHRAYA TRUSTEES BERHAD - AMANAH SAHAM BUMIPUTERA [SSH]	5,000	3,912,338	32.456
10 Feb 2023 - 10 Feb 2023	MAYBANK	AMANAHRAYA TRUSTEES BERHAD - AMANAH SAHAM BUMIPUTERA [SSH]	298	3,907,338	32.415
09 Feb 2023 - 09 Feb 2023	MAYBANK	AMANAHRAYA TRUSTEES BERHAD - AMANAH SAHAM BUMIPUTERA [SSH]	2,844	3,907,040	32.412
16 Feb 2023 - 16 Feb 2023	MAYBULK	DATO' GOH CHENG HUAT [SSH]	60,000	320,000	32
16 Feb 2023 - 16 Feb 2023	MAYBULK	DATO' GOH CHENG HUAT [DIR/CEO]	60,000	320,000	32
14 Feb 2023 - 14 Feb 2023	MBMR	EMPLOYEES PROVIDENT FUND BOARD [SSH]	-96	37,554	9.607
07 Feb 2023 - 07 Feb 2023	MBRIGHT	DATO' LEE WAI MUN DIMP. JP. [DIR/CEO]	194,802	1,189,896	50.92
07 Feb 2023 - 07 Feb 2023	MBRIGHT	DATO' LEE WAI MUN DIMP. JP. [SSH]	194,802	1,189,896	50.92
07 Feb 2023 - 07 Feb 2023	MBRIGHT	LEADING VENTURES SDN. BHD. [SSH]	194,802	1,189,896	50.92
16 Feb 2023 - 16 Feb 2023	MICROLN	TAN SRI DATUK SERI (DR) MAZLAN BIN LAZIM [DIR/CEO]	100	3,300	0.308
10 Feb 2023 - 10 Feb 2023	MICROLN	RHB TRUSTEES BERHAD [SSH]	22,728	83,728	7.808
16 Feb 2023 - 16 Feb 2023	MIKROMB	MR LOW KHEK HENG @ LOW CHOON HUAT [SSH]	-1,833	102,775	17.442
16 Feb 2023 - 16 Feb 2023	MISC	KUMPULAN WANG PERSARAAN (DIPERBADANKAN) (KWAP) [SSH]	-35	243,990	5.466

Notice Period is 12 February - 18 February 2023

Effective Change Date	Stock Name	Buyer/ Seller Name [Classification]	Bought / (Sold) ['000]	No. of Shares After Trade ['000]	
			Total	Total	% Held
13 Feb 2023 - 13 Feb 2023	MISC	EMPLOYEES PROVIDENT FUND BOARD [SSH]	202	591,114	13.243
14 Feb 2023 - 14 Feb 2023	MISC	KUMPULAN WANG PERSARAAN (DIPERBADANKAN) (KWAP) [SSH]	928	244,026	5.467
13 Feb 2023 - 13 Feb 2023	MISC	KUMPULAN WANG PERSARAAN (DIPERBADANKAN) (KWAP) [SSH]	2	243,098	5.446
10 Feb 2023 - 10 Feb 2023	MISC	KUMPULAN WANG PERSARAAN (DIPERBADANKAN) (KWAP) [SSH]	6	243,096	5.446
08 Feb 2023 - 08 Feb 2023	MISC	EMPLOYEES PROVIDENT FUND BOARD [SSH]	-431	590,913	13.238
13 Feb 2023 - 15 Feb 2023	MUHIHAH	PANDANUS ASSOCIATES INC. [SSH]	-1,770	42,076	5.802
13 Feb 2023 - 15 Feb 2023	MUHIHAH	FIL FINANCIAL SERVICES HOLDINGS LIMITED [SSH]	-1,770	42,076	5.802
13 Feb 2023 - 15 Feb 2023	MUHIHAH	FIL LIMITED [SSH]	-1,770	42,076	5.802
13 Feb 2023 - 15 Feb 2023	MUHIHAH	FIL INVESTMENT MANAGEMENT (HONG KONG) LIMITED [SSH]	-1,770	42,026	5.795
15 Feb 2023 - 15 Feb 2023	MYEG	MR WONG THEAN SOON [SSH]	2,000	2,208,072	29.726
15 Feb 2023 - 15 Feb 2023	MYEG	MR WONG THEAN SOON [DIR/CEO]	2,000	2,208,072	29.726
15 Feb 2023 - 15 Feb 2023	MYEG	ASIA INTERNET HOLDINGS SDN. BHD. [SSH]	2,000	1,306,466	17.588
14 Feb 2023 - 14 Feb 2023	MYEG	MY E.G. SERVICES BERHAD [SSH]	2,000	47,595	0.637
10 Feb 2023 - 10 Feb 2023	MYEG	KUMPULAN WANG PERSARAAN (DIPERBADANKAN) [SSH]	-1,506	540,923	7.278
08 Feb 2023 - 08 Feb 2023	MYEG	EMPLOYEES PROVIDENT FUND BOARD [SSH]	-65,984	396,808	5.338
14 Feb 2023 - 14 Feb 2023	NESTLE	EMPLOYEES PROVIDENT FUND BOARD [SSH]	-3	20,787	8.864
13 Feb 2023 - 13 Feb 2023	NESTLE	EMPLOYEES PROVIDENT FUND BOARD [SSH]	0.3	20,790	8.866
10 Feb 2023 - 10 Feb 2023	NESTLE	EMPLOYEES PROVIDENT FUND BOARD [SSH]	9	20,790	8.866
09 Feb 2023 - 09 Feb 2023	NESTLE	EMPLOYEES PROVIDENT FUND BOARD [SSH]	40	20,781	8.862
08 Feb 2023 - 08 Feb 2023	NESTLE	EMPLOYEES PROVIDENT FUND BOARD [SSH]	-2	20,740	8.845
07 Feb 2023 - 07 Feb 2023	NESTLE	EMPLOYEES PROVIDENT FUND BOARD [SSH]	50	20,742	8.845
10 Feb 2023 - 13 Feb 2023	NGGB	DATO' GAN KONG HIOK [SSH]	718	154,101	19.418
09 Feb 2023 - 09 Feb 2023	NYLEX	DATO' SIEW KA WEI [DIR/CEO]	-50	77,376	43.037
09 Feb 2023 - 09 Feb 2023	NYLEX	DATO' SIEW KA WEI [SSH]	-50	77,376	43.037
13 Feb 2023 - 13 Feb 2023	PANAMY	EMPLOYEES PROVIDENT FUND BOARD [SSH]	-38	7,908	13.018
09 Feb 2023 - 09 Feb 2023	PANAMY	EMPLOYEES PROVIDENT FUND BOARD [SSH]	-29	7,946	13.081
08 Feb 2023 - 08 Feb 2023	PANAMY	EMPLOYEES PROVIDENT FUND BOARD [SSH]	-32	7,975	13.129
14 Feb 2023 - 14 Feb 2023	PANTECH	MR TAN ANG ANG [DIR/CEO]	248	15,765	1.913
09 Feb 2023 - 09 Feb 2023	PAVREIT	EMPLOYEES PROVIDENT FUND BOARD [SSH]	-540	303,715	9.939
08 Feb 2023 - 08 Feb 2023	PAVREIT	EMPLOYEES PROVIDENT FUND BOARD [SSH]	-1,106	304,255	9.957
14 Feb 2023 - 14 Feb 2023	PBBANK	EMPLOYEES PROVIDENT FUND BOARD [SSH]	3,000	2,882,807	14.85
13 Feb 2023 - 13 Feb 2023	PBBANK	EMPLOYEES PROVIDENT FUND BOARD [SSH]	2,418	2,879,807	14.84
10 Feb 2023 - 10 Feb 2023	PBBANK	EMPLOYEES PROVIDENT FUND BOARD [SSH]	3,118	2,877,389	14.82
09 Feb 2023 - 09 Feb 2023	PBBANK	EMPLOYEES PROVIDENT FUND BOARD [SSH]	-2,267	2,874,271	14.81
08 Feb 2023 - 08 Feb 2023	PBBANK	EMPLOYEES PROVIDENT FUND BOARD [SSH]	-495	2,876,538	14.82
14 Feb 2023 - 14 Feb 2023	PICHEM	EMPLOYEES PROVIDENT FUND BOARD ("EPF BOARD") [SSH]	2,506	797,597	9.97
13 Feb 2023 - 13 Feb 2023	PICHEM	EMPLOYEES PROVIDENT FUND BOARD ("EPF BOARD") [SSH]	1,994	795,091	9.939
10 Feb 2023 - 10 Feb 2023	PICHEM	EMPLOYEES PROVIDENT FUND BOARD ("EPF BOARD") [SSH]	3,015	793,096	9.914
09 Feb 2023 - 09 Feb 2023	PICHEM	EMPLOYEES PROVIDENT FUND BOARD ("EPF BOARD") [SSH]	313	790,081	9.876
08 Feb 2023 - 08 Feb 2023	PICHEM	EMPLOYEES PROVIDENT FUND BOARD ("EPF BOARD") [SSH]	935	789,768	9.872
14 Feb 2023 - 14 Feb 2023	PELIKAN	MR LOO HOUI KEAT [DIR/CEO]	328	110,968	18.396
14 Feb 2023 - 14 Feb 2023	PELIKAN	MR LOO HOUI KEAT [SSH]	328	110,829	18.373
14 Feb 2023 - 14 Feb 2023	PENTA	EMPLOYEES PROVIDENT FUND BOARD [SSH]	-486	51,047	7.176
13 Feb 2023 - 13 Feb 2023	PENTA	EMPLOYEES PROVIDENT FUND BOARD [SSH]	170	51,532	7.245
10 Feb 2023 - 10 Feb 2023	PENTA	EMPLOYEES PROVIDENT FUND BOARD [SSH]	-17	51,362	7.221
09 Feb 2023 - 09 Feb 2023	PENTA	EMPLOYEES PROVIDENT FUND BOARD [SSH]	-232	51,379	7.223
08 Feb 2023 - 08 Feb 2023	PENTA	EMPLOYEES PROVIDENT FUND BOARD [SSH]	-1,249	51,611	7.256
16 Feb 2023 - 16 Feb 2023	PETGAS	KUMPULAN WANG PERSARAAN (DIPERBADANKAN) ("KWAP") [SSH]	-2	198,721	10.043
10 Feb 2023 - 10 Feb 2023	PETGAS	EMPLOYEES PROVIDENT FUND BOARD [SSH]	260	285,583	14.433
09 Feb 2023 - 09 Feb 2023	PETGAS	EMPLOYEES PROVIDENT FUND BOARD [SSH]	-36	285,323	14.419
08 Feb 2023 - 08 Feb 2023	PETGAS	EMPLOYEES PROVIDENT FUND BOARD [SSH]	-1,473	285,359	14.421
07 Feb 2023 - 08 Feb 2023	PGB	EXPORT-IMPORT BANK OF MALAYSIA BERHAD [SSH]	-858	47,247	7.818
27 Jan 2023 - 02 Feb 2023	PGB	EXPORT-IMPORT BANK OF MALAYSIA BERHAD [SSH]	-72	48,105	7.96
08 Feb 2023 - 08 Feb 2023	POHKONG	MADAM LIM MEE HWA [SSH]	301	27,775	6.769
08 Feb 2023 - 08 Feb 2023	POHKONG	MR YEO SENG CHONG [SSH]	301	27,775	6.769
08 Feb 2023 - 08 Feb 2023	POHKONG	YEOMAN CAPITAL MANAGEMENT PTE LTD [SSH]	301	23,525	5.733
08 Feb 2023 - 08 Feb 2023	POHKONG	YEOMAN 3-RIGHTS VALUE ASIA FUND VCC [SSH]	301	22,500	5.483
14 Feb 2023 - 14 Feb 2023	PPB	EMPLOYEES PROVIDENT FUND BOARD [SSH]	-38	142,295	10.002
13 Feb 2023 - 13 Feb 2023	PPB	EMPLOYEES PROVIDENT FUND BOARD [SSH]	30	142,333	10.005
10 Feb 2023 - 10 Feb 2023	PPB	EMPLOYEES PROVIDENT FUND BOARD [SSH]	209	142,303	10.003
09 Feb 202					

Notice Period is 12 February – 18 February 2023

Effective Change Date	Stock Name	Buyer/ Seller Name [Classification]	Bought / (Sold) ['000]	No. of Shares After Trade ['000]	
			Total	Total	% Held
15 Feb 2023 - 15 Feb 2023	SAUDEE	MR TAY BEN SENG BENSON [DIR/CEO]	-2,495	86,005	7.542
15 Feb 2023 - 15 Feb 2023	SAUDEE	MR TAY BEN SENG BENSON [SSH]	-2,495	86,005	7.542
14 Feb 2023 - 14 Feb 2023	SCGM	MR LEE HOCK MENG [DIR/CEO]	-3,114	8,360	4.341
13 Feb 2023 - 13 Feb 2023	SCGM	DATO' SRI LEE HOCK CHAI [DIR/CEO]	-6,282	2,040	1.059
13 Feb 2023 - 13 Feb 2023	SCGM	DATO' SRI LEE HOCK CHAI [DIR/CEO]	-4,500	8,321	4.321
10 Feb 2023 - 10 Feb 2023	SCGM	DATO' SRI LEE HOCK CHAI [DIR/CEO]	-4,500	8,321	4.321
13 Feb 2023 - 14 Feb 2023	SEM	TAN SRI DATO' SERI VINCENT TAN CHEE YIOUN [SSH]	306	362,741	32.678
10 Feb 2023 - 10 Feb 2023	SEM	TAN SRI DATO' SERI VINCENT TAN CHEE YIOUN [SSH]	254	362,435	32.65
15 Feb 2023 - 15 Feb 2023	SERNKOU	MR LOW PENG SIAN @ CHUA PENG SIAN [DIR/CEO]	-8,700	18,050	15.115
14 Feb 2023 - 14 Feb 2023	SERNKOU	MR LOW PENG SIAN @ CHUA PENG SIAN [DIR/CEO]	-12,300	26,750	22.4
14 Feb 2023 - 14 Feb 2023	SHANG	ABRDN PLC [SSH]	-11	31,776	7.222
14 Feb 2023 - 14 Feb 2023	SHANG	ABRDN HOLDINGS LIMITED (FORMERLY KNOWN AS ABERDEEN ASSET MANAGEMENT PLC) [SSH]	-11	31,776	7.222
15 Feb 2023 - 15 Feb 2023	SIME	AMANAHRAYA TRUSTEES BERHAD - AMANAH SAHAM BUMIPUTERA [SSH]	-1,574	2,654,721	38.951
14 Feb 2023 - 14 Feb 2023	SIME	EMPLOYEES PROVIDENT FUND BOARD [SSH]	3,000	832,012	12.208
14 Feb 2023 - 14 Feb 2023	SIME	AMANAHRAYA TRUSTEES BERHAD - AMANAH SAHAM BUMIPUTERA [SSH]	-5,775	2,656,295	38.974
13 Feb 2023 - 13 Feb 2023	SIME	EMPLOYEES PROVIDENT FUND BOARD [SSH]	1,850	829,012	12.164
13 Feb 2023 - 13 Feb 2023	SIME	AMANAHRAYA TRUSTEES BERHAD - AMANAH SAHAM BUMIPUTERA [SSH]	-2,651	2,662,070	39.059
10 Feb 2023 - 10 Feb 2023	SIME	EMPLOYEES PROVIDENT FUND BOARD [SSH]	20	827,162	12.136
09 Feb 2023 - 09 Feb 2023	SIME	EMPLOYEES PROVIDENT FUND BOARD [SSH]	1,236	827,142	12.136
07 Feb 2023 - 07 Feb 2023	SIME	EMPLOYEES PROVIDENT FUND BOARD [SSH]	423	825,905	12.118
08 Feb 2023 - 08 Feb 2023	SIMEPLT	EMPLOYEES PROVIDENT FUND BOARD [SSH]	185	982,038	14.2
09 Feb 2023 - 09 Feb 2023	SIMEPLT	KUMPULAN WANG PERSARAAN (DIPERBADANKAN) [SSH]	74	462,724	6.691
09 Feb 2023 - 09 Feb 2023	SIMEPROP	EMPLOYEES PROVIDENT FUND BOARD [SSH]	-44	620,373	9.122
08 Feb 2023 - 08 Feb 2023	SIMEPROP	EMPLOYEES PROVIDENT FUND BOARD [SSH]	-824	620,417	9.123
16 Feb 2023 - 16 Feb 2023	SKPRES	KUMPULAN WANG PERSARAAN (DIPERBADANKAN) [SSH]	-137	128,944	8.253
14 Feb 2023 - 14 Feb 2023	SKPRES	EMPLOYEES PROVIDENT FUND BOARD [SSH]	3,000	100,137	6.409
13 Feb 2023 - 13 Feb 2023	SKPRES	EMPLOYEES PROVIDENT FUND BOARD [SSH]	432	97,137	6.217
14 Feb 2023 - 14 Feb 2023	SKPRES	KUMPULAN WANG PERSARAAN (DIPERBADANKAN) [SSH]	-626	129,081	8.262
10 Feb 2023 - 10 Feb 2023	SKPRES	EMPLOYEES PROVIDENT FUND BOARD [SSH]	44	96,705	6.19
08 Feb 2023 - 08 Feb 2023	SKPRES	EMPLOYEES PROVIDENT FUND BOARD [SSH]	168	96,661	6.187
15 Feb 2023 - 15 Feb 2023	SMI	PROLEXUS BERHAD [SSH]	5,303	21,016	10.011
15 Feb 2023 - 15 Feb 2023	SMI	HONSIN APPAREL SDN. BHD. [SSH]	15,713	15,713	7.485
15 Feb 2023 - 15 Feb 2023	SMI	PROLEXUS BERHAD [SSH]	15,713	15,713	7.485
10 Feb 2023 - 10 Feb 2023	SOLID	MR KER MIN CHOO [SSH]	1,542	111,281	21.426
10 Feb 2023 - 10 Feb 2023	SOLID	KER MIN CHOO [DIR/CEO]	1,542	111,281	21.426
13 Feb 2023 - 13 Feb 2023	SPSETIA	EMPLOYEES PROVIDENT FUND BOARD [SSH]	-155	237,189	5.82
09 Feb 2023 - 09 Feb 2023	SPSETIA	EMPLOYEES PROVIDENT FUND BOARD [SSH]	-1,120	237,345	5.824
08 Feb 2023 - 08 Feb 2023	SPSETIA	EMPLOYEES PROVIDENT FUND BOARD [SSH]	-1,091	238,464	5.851
09 Feb 2023 - 09 Feb 2023	SRIDGE	DATO' KHOO YIK CHOU [SSH]	-3,550	12,346	6.242
09 Feb 2023 - 09 Feb 2023	SRIDGE	DATO' KHOO YIK CHOU [DIR/CEO]	-3,550	12,346	6.242
13 Feb 2023 - 13 Feb 2023	SRIDGE-WA	DATO' KHOO YIK CHOU [SSH]	3,884	4,184	39.039
09 Feb 2023 - 09 Feb 2023	SRIDGE-WA	DATO' KHOO YIK CHOU [DIR/CEO]	3,884	4,184	39.039
15 Feb 2023 - 15 Feb 2023	STAR	AMANAHRAYA TRUSTEES BERHAD - AMANAH SAHAM BUMIPUTERA [SSH]	-88	48,312	6.666
14 Feb 2023 - 14 Feb 2023	STAR	AMANAHRAYA TRUSTEES BERHAD - AMANAH SAHAM BUMIPUTERA [SSH]	-300	48,400	6.678
13 Feb 2023 - 13 Feb 2023	STAR	AMANAHRAYA TRUSTEES BERHAD - AMANAH SAHAM BUMIPUTERA [SSH]	-300	48,700	6.719
10 Feb 2023 - 10 Feb 2023	SUNCON	EMPLOYEES PROVIDENT FUND BOARD [SSH]	3	122,546	9.504
09 Feb 2023 - 09 Feb 2023	SUNCON	EMPLOYEES PROVIDENT FUND BOARD [SSH]	300	122,543	9.504
08 Feb 2023 - 08 Feb 2023	SUNCON	EMPLOYEES PROVIDENT FUND BOARD [SSH]	-13	122,243	9.481
09 Feb 2023 - 09 Feb 2023	SUNREIT	EMPLOYEES PROVIDENT FUND BOARD [SSH]	-460	521,839	15.24
08 Feb 2023 - 08 Feb 2023	SUNREIT	EMPLOYEES PROVIDENT FUND BOARD [SSH]	-470	522,299	15.25
14 Feb 2023 - 14 Feb 2023	SUNWAY	EMPLOYEES PROVIDENT FUND BOARD [SSH]	139	414,461	8.48
13 Feb 2023 - 13 Feb 2023	SUNWAY	EMPLOYEES PROVIDENT FUND BOARD [SSH]	18	414,318	8.47
10 Feb 2023 - 10 Feb 2023	SUNWAY	EMPLOYEES PROVIDENT FUND BOARD [SSH]	626	414,696	8.48
09 Feb 2023 - 09 Feb 2023	SUNWAY	EMPLOYEES PROVIDENT FUND BOARD [SSH]	962	412,951	8.45
15 Feb 2023 - 15 Feb 2023	SYF	DATO' SRI NG AH CHAI [SSH]	-33,500	34,596	6.081
15 Feb 2023 - 15 Feb 2023	SYF	DATO' SRI NG AH CHAI [DIR/CEO]	-33,500	34,596	6.081
10 Feb 2023 - 10 Feb 2023	TAFI	DATO' SRI WONG SZE CHIEN [SSH]	158	206,099	54.318
10 Feb 2023 - 10 Feb 2023	TAFI	DATO' SRI WONG SZE CHIEN [DIR/CEO]	158	206,099	54.318
13 Feb 2023 - 13 Feb 2023	TAMBUN	MR TEH KIAK SENG [DIR/CEO]	1,059	213,858	48.68
10 Feb 2023 - 10 Feb 2023	TAMBUN	MR TEH KIAK SENG [DIR/CEO]	1,000	212,800	48.44
14 Feb 2023 - 14 Feb 2023	TENAGA	EMPLOYEES PROVIDENT FUND BOARD [SSH]	-71	925,584	16.09
13 Feb 2023 - 13 Feb 2023	TENAGA	EMPLOYEES PROVIDENT FUND BOARD [SSH]	-500	925,655	16.09
10 Feb 2023 - 10 Feb 2023	TENAGA	EMPLOYEES PROVIDENT FUND BOARD [SSH]	-500	926,155	16.1
13 Feb 2023 - 13 Feb 2023	TENAGA	KUMPULAN WANG PERSARAAN (DIPERBADANKAN) [SSH]	258	422,560	7.35
09 Feb 2023 - 09 Feb 2023	TENAGA	EMPLOYEES PROVIDENT FUND BOARD [SSH]	68	926,655	16.11
08 Feb 2023 - 08 Feb 2023	TENAGA	EMPLOYEES PROVIDENT FUND BOARD [SSH]	83	926,587	16.11
14 Feb 2023 - 14 Feb 2023	THETA	PUAN HASLINAH BINTI HASSAN [SSH]	19,500	19,500	16.53
14 Feb 2023 - 14 Feb 2023	THETA	THREADSTONE CAPITAL SDN. BHD. [SSH]	19,500	19,500	16.53
16 Feb 2023 - 16 Feb 2023	TIMECOM	KUMPULAN WANG PERSARAAN (DIPERBADANKAN) ("KWAP") [SSH]	110	105,785	5.754
14 Feb 2023 - 14 Feb 2023	TIMECOM	EMPLOYEES PROVIDENT FUND BOARD [SSH]	-784	98,871	5.378
13 Feb 2023 - 13 Feb 2023	TIMECOM	EMPLOYEES PROVIDENT FUND BOARD [SSH]	-556	99,655	5.42
14 Feb 2023 - 14 Feb 2023	TIMECOM	KUMPULAN WANG PERSARAAN (DIPERBADANKAN) ("KWAP") [SSH]	-713	105,675	5.748
10 Feb 2023 - 10 Feb 2023	TIMECOM	EMPLOYEES PROVIDENT FUND BOARD [SSH]	668	100,211	5.45
09 Feb 2023 - 09 Feb 2023	TIMECOM	EMPLOYEES PROVIDENT FUND BOARD [SSH]	1,640	99,543	5.414
10 Feb 2023 - 10 Feb 2023	TIMECOM	KUMPULAN WANG PERSARAAN (DIPERBADANKAN) ("KWAP") [SSH]	200	106,387	5.786
08 Feb 2023 - 08 Feb 2023	TIMECOM	EMPLOYEES PROVIDENT FUND BOARD [SSH]	2,042	97,903	5.325
16 Feb 2023 - 16 Feb 2023	TM	KUMPULAN WANG PERSARAAN (DIPERBADANKAN) [SSH]	-154	413,109	10.808

Notice Period is 12 February – 18 February 2023

Effective Change Date	Stock Name	Buyer/ Seller Name [Classification]	Bought / (Sold) ['000]	No. of Shares After Trade ['000]	
			Total	Total	% Held
14 Feb 2023 - 14 Feb 2023	TM	EMPLOYEE PROVIDENT FUND BOARD (EPF BOARD) [SSH]	133	625,532	16.371
15 Feb 2023 - 15 Feb 2023	TM	KUMPULAN WANG PERSARAAN (DIPERBADANKAN) [SSH]	-34	413,263	10.816
13 Feb 2023 - 13 Feb 2023	TM	EMPLOYEE PROVIDENT FUND BOARD (EPF BOARD) [SSH]	1,862	625,399	16.367
10 Feb 2023 - 10 Feb 2023	TM	EMPLOYEE PROVIDENT FUND BOARD (EPF BOARD) [SSH]	1,335	623,537	16.319
13 Feb 2023 - 13 Feb 2023	TM	KUMPULAN WANG PERSARAAN (DIPERBADANKAN) [SSH]	-443	413,297	10.816
09 Feb 2023 - 09 Feb 2023	TM	EMPLOYEE PROVIDENT FUND BOARD (EPF BOARD) [SSH]	-168	622,202	16.284
10 Feb 2023 - 10 Feb 2023	TM	KUMPULAN WANG PERSARAAN (DIPERBADANKAN) [SSH]	-258	413,740	10.828
08 Feb 2023 - 08 Feb 2023	TM	EMPLOYEE PROVIDENT FUND BOARD (EPF BOARD) [SSH]	-217	622,370	16.288
13 Feb 2023 - 13 Feb 2023	TROP	TAN SRI DATO' TAN CHEE SING [DIR/CEO]	10,000	1,125,451	55.108
13 Feb 2023 - 13 Feb 2023	TROP	TAN SRI DATO' TAN CHEE SING [SSH]	30,000	1,123,861	55.03
09 Feb 2023 - 09 Feb 2023	TROP	TAN SRI DATO' TAN CHEE SING [DIR/CEO]	30,000	1,125,451	53.639
14 Feb 2023 - 14 Feb 2023	UEMS	URUSHARTA JAMAHAH SDN BHD [SSH]	41	318,726	6.301
10 Feb 2023 - 10 Feb 2023	UEMS	URUSHARTA JAMAHAH SDN BHD [SSH]	6	318,685	6.3
09 Feb 2023 - 09 Feb 2023	ULICORP	PRUDENTIAL PLC [SSH]	289	12,682	5.823
09 Feb 2023 - 09 Feb 2023	ULICORP	EASTSPRING INVESTMENTS BERHAD [SSH]	289	12,682	5.823
13 Feb 2023 - 13 Feb 2023	UMCCA	MR HAN KEE JUAN [DIR/CEO]	9	285	0.136
09 Feb 2023 - 10 Feb 2023	UMCCA	MR HAN KEE JUAN [DIR/CEO]	16	276	0.132
14 Feb 2023 - 14 Feb 2023	UMW	EMPLOYEES PROVIDENT FUND BOARD [SSH]	-700	121,733	10.42
13 Feb 2023 - 13 Feb 2023	UMW	EMPLOYEES PROVIDENT FUND BOARD [SSH]	-313	122,429	10.479
14 Feb 2023 - 14 Feb 2023	UMW	KUMPULAN WANG PERSARAAN (DIPERBADANKAN) (KWAP) [SSH]	-1,000	106,559	9.121
09 Feb 2023 - 09 Feb 2023	UMW	EMPLOYEES PROVIDENT FUND BOARD [SSH]	-1,150	122,742	10.506
08 Feb 2023 - 08 Feb 2023	UMW	EMPLOYEES PROVIDENT FUND BOARD [SSH]	-706	123,891	10.604
09 Feb 2023 - 09 Feb 2023	UOAEV	EMPLOYEES PROVIDENT FUND BOARD ("EPF BOARD") [SSH]	-87	248,475	10.321
08 Feb 2023 - 08 Feb 2023	UOAEV	EMPLOYEES PROVIDENT FUND BOARD ("EPF BOARD") [SSH]	-57	248,562	10.325
10 Feb 2023 - 10 Feb 2023	UWC	EMPLOYEES PROVIDENT FUND BOARD [SSH]	-137	74,514	6.766
08 Feb 2023 - 08 Feb 2023	UWC	EMPLOYEES PROVIDENT FUND BOARD [SSH]	-163	74,651	6.778
09 Feb 2023 - 09 Feb 2023	VELESTO	YAYASAN PELABURAN BUMIPUTRA [SSH]	-16,148	600,064	7.304
09 Feb 2023 - 09 Feb 2023	VELESTO	PERMODALAN NASIONAL BERHAD [SSH]	-16,148	600,064	7.304
14 Feb 2023 - 14 Feb 2023	VOLCANO	MISS HING POE PYNG [DIR/CEO]	-165	115	0.07
14 Feb 2023 - 14 Feb 2023	VS	EMPLOYEES PROVIDENT FUND BOARD [SSH]	3,081	227,146	5.904
15 Feb 2023 - 15 Feb 2023	VS	DATUK BEH KIM LING [SSH]	200	574,497	14.933
15 Feb 2023 - 15 Feb 2023	VS	DATUK BEH KIM LING [DIR/CEO]	200	574,497	14.933
13 Feb 2023 - 13 Feb 2023	VS	EMPLOYEES PROVIDENT FUND BOARD [SSH]	2,477	224,064	5.824
14 Feb 2023 - 14 Feb 2023	VS	KUMPULAN WANG PERSARAAN [SSH]	60	341,085	8.866
10 Feb 2023 - 10 Feb 2023	VS	EMPLOYEES PROVIDENT FUND BOARD [SSH]	242	221,587	5.76
13 Feb 2023 - 13 Feb 2023	VS	KUMPULAN WANG PERSARAAN [SSH]	328	341,025	8.864
09 Feb 2023 - 09 Feb 2023	VS	EMPLOYEES PROVIDENT FUND BOARD [SSH]	745	221,346	5.753
13 Feb 2023 - 13 Feb 2023	VS	MR CHONG CHIN SIONG [DIR/CEO]	100	760	0.02
10 Feb 2023 - 10 Feb 2023	VS	KUMPULAN WANG PERSARAAN [SSH]	118	340,697	8.856
08 Feb 2023 - 08 Feb 2023	VS	EMPLOYEES PROVIDENT FUND BOARD [SSH]	721	220,601	5.734
16 Feb 2023 - 16 Feb 2023	WIDAD	WIDAD BUSINESS GROUP SDN. BHD. [SSH]	1,695	1,237,088	43.948
02 Feb 2023 - 16 Feb 2023	WIDAD	TAN SRI MUHAMMAD IKMAL OPAT BIN ABDULLAH [SSH]	2,223	1,419,696	50.435
15 Feb 2023 - 15 Feb 2023	WIDAD	TAN SRI MUHAMMAD IKMAL OPAT BIN ABDULLAH [SSH]	3,030	1,417,473	50.356
14 Feb 2023 - 14 Feb 2023	WIDAD	TAN SRI MUHAMMAD IKMAL OPAT BIN ABDULLAH [SSH]	4,658	1,414,443	50.249
13 Feb 2023 - 13 Feb 2023	WIDAD	TAN SRI MUHAMMAD IKMAL OPAT BIN ABDULLAH [SSH]	-2,799	1,409,784	50.083
16 Feb 2023 - 16 Feb 2023	WPRTS	KUMPULAN WANG PERSARAAN (DIPERBADANKAN) [SSH]	8	233,576	6.849
14 Feb 2023 - 14 Feb 2023	WPRTS	EMPLOYEES PROVIDENT FUND BOARD [SSH]	17	307,341	9.013
15 Feb 2023 - 15 Feb 2023	WPRTS	KUMPULAN WANG PERSARAAN (DIPERBADANKAN) [SSH]	76	233,569	6.849
13 Feb 2023 - 13 Feb 2023	WPRTS	EMPLOYEES PROVIDENT FUND BOARD [SSH]	50	307,324	9.012
10 Feb 2023 - 10 Feb 2023	WPRTS	EMPLOYEES PROVIDENT FUND BOARD [SSH]	61	307,274	9.011
13 Feb 2023 - 13 Feb 2023	WPRTS	KUMPULAN WANG PERSARAAN (DIPERBADANKAN) [SSH]	34	233,492	6.847
09 Feb 2023 - 09 Feb 2023	WPRTS	EMPLOYEES PROVIDENT FUND BOARD [SSH]	105	307,213	9.009
10 Feb 2023 - 10 Feb 2023	WPRTS	KUMPULAN WANG PERSARAAN (DIPERBADANKAN) [SSH]	42	233,458	6.846
13 Feb 2023 - 13 Feb 2023	YENHER	MADAM THEOH MOOI TENG [DIR/CEO]	50	2,207	0.735
16 Feb 2023 - 16 Feb 2023	YEWLEE	MR ANG LEE LEONG [DIR/CEO]	2,000	385,205	72.347
16 Feb 2023 - 16 Feb 2023	YEWLEE	MR ANG LEE LEONG [SSH]	2,000	385,205	72.347
16 Feb 2023 - 16 Feb 2023	YEWLEE	MADAM CHEE WAI YING [DIR/CEO]	2,000	341,261	64.094
16 Feb 2023 - 16 Feb 2023	YEWLEE	MADAM CHEE WAI YING [SSH]	2,000	341,261	64.094
16 Feb 2023 - 16 Feb 2023	YEWLEE	MR ANG LEE SENG [SSH]	2,000	339,761	63.812
16 Feb 2023 - 16 Feb 2023	YEWLEE	MR ANG LEE SENG [DIR/CEO]	2,000	339,761	63.812
13 Feb 2023 - 13 Feb 2023	YEWLEE	MR ANG LEE LEONG [DIR/CEO]	1,000	383,205	71.972
13 Feb 2023 - 13 Feb 2023	YEWLEE	MR ANG LEE LEONG [SSH]	1,000	383,205	71.972
13 Feb 2023 - 13 Feb 2023	YEWLEE	MADAM CHEE WAI YING [DIR/CEO]	1,000	339,261	63.718
13 Feb 2023 - 13 Feb 2023	YEWLEE	MADAM CHEE WAI YING [SSH]	1,000	339,261	63.718
13 Feb 2023 - 13					



Pursuant to paragraph 9.19(40) of the Main Market Listing Requirements of Bursa Malaysia Securities Berhad, **Advance Synergy Berhad (ASB)** wishes to inform Bursa Securities that Captii, our subsidiary which is listed on the SGX, had on 22 February 2023 released their announcement on the unaudited full year financial results for the financial year ended 31 December 2022 to the SGX.



Axiata Group Berhad (AXIATA) wishes to announce that Axiata will be seeking its shareholders' approval for shareholders' mandate for recurrent related party transactions of a revenue or trading nature at the forthcoming Annual General Meeting of the Company. A circular on the above will be issued to the shareholders of the Company in due course.



Capitaland Malaysia Trust (CLMT) refers to the announcement dated 31 January 2023 in relation to the proposed change in the control of the management company.

Unless otherwise defined, the definitions set out in the Announcement shall apply herein. The Board of Directors of CMRM, the manager of CLMT, wishes to announce that the registration of the transfer of 100% equity interest in CMRM from CLI to CLI FM has been completed today. Accordingly, CMRM is now a wholly-owned subsidiary of CLI FM, which in turn is a wholly-owned subsidiary of CLI.

FOCUS POINT



On behalf of the Board of Directors of **Focus Point Holdings Berhad (FOCUSP)**, RHB Investment Bank Berhad wishes to announce that the Company proposes to undertake an issuance of up to 131,999,790 Bonus Shares on the basis of 2 Bonus Shares for every 5 existing Focus Point Shares held on the Entitlement Date. Further details of the Proposed Bonus Issue of Shares are set out in the ensuing sections of this Announcement.



Gamuda Berhad (GAMUDA) has made the fourth offer of options under the Employees Share Option Scheme. The details are set out in the table below: -

NO.	DESCRIPTION OF OFFER	FACTS
1.	Date of Offer	22 February 2023
2.	Exercise price of Options offered	RM3.94
3.	Closing market price of Gamuda ordinary shares on date of Offer	RM4.06
4.	Total number of Options offered	Up to 28,507,000 Options
5.	Number of Options offered to the Executive Directors of Gamuda and their Alternate Directors	NIL

NO.	DESCRIPTION OF OFFER	FACTS
6.	Vesting period of the Options offered	Options are vested upon acceptance of the Offer; however shares will be subjected to moratorium over a period of up to 4 years



KEJURUTERAAB ASASTERA BERHAD

Pursuant to Paragraph 10.05(2) of the Main Market Listing Requirement of Bursa Malaysia Securities Berhad, the Board of Directors of **Kejuruteraan Asastera Berhad (KAB)** wish to announce the following additional information: KAB Energy Holdings Sdn. Bhd. [Registration No. 202101013322 (1413621-K)], a wholly-owned subsidiary of KAB had on 12 January 2023 entered into a Share Sales and Purchase Agreement with Petronas Gas Berhad [Registration No. 198301006447 (101671-H)] for the purpose of acquisition of 10 Ordinary Shares in the Regas Terminal (Lahad Datu) Sdn. Bhd. [Registration No. 201101033644 (961779-T)], a wholly-owned subsidiary of PGB, for a total consideration of RM2,080.00 (Ringgit Malaysia: Two Thousand and Eighty) only.



The Board of Directors **KKB Engineering Berhad (KKB)** wishes to announce that the Board has on 23 February 2023:

- (i) recommended a First and Final Single Tier Dividend of 6.0 sen per ordinary share in respect of the financial year ended 31 December 2022, for approval by shareholders at the forthcoming Annual General Meeting of the Company to be held at a later date. The dates of dividend entitlement and payment will be announced at a later date.
- (ii) proposed to seek shareholder mandate for the existing and new RRPT by way of an ordinary resolution at the AGM. A Circular to Shareholders seeking for shareholders' approval on the Proposed Shareholder Mandate is currently being prepared.

The existing shareholder mandate was obtained at the previous AGM of KKB held on 24 May 2022. In accordance with the Main Market Listing Requirements of Bursa Malaysia Securities Berhad, the existing shareholder mandate shall lapse at the conclusion of the AGM, unless renewal is obtained.



Maxis Berhad (MAXIS)
recorded higher revenue in both

mobile and home fibre connectivity. For home fibre, the company achieved a commendable double-digit growth in the revenue and homes connected for the 14 consecutive quarters, making Maxis the second largest fibre retailer and strong challenger in the market. Including its own fibre build, the Company now has access to serve approximately 7 million premises. Maxis closed the financial year ended 31 December 2022 with growth across its consumer and enterprise businesses, staying on track with its convergence strategy.

In comparison to FY2021, the Company posted higher service revenue with a stable EBITDA and Operating Free Cash Flow. Profit After Tax eased due to the Prosperity Tax in 2022. Maxis declared an interim dividend of 5 sen net per share for the quarter, bringing the full year dividend to 20 sen per share.



Upcoming IPO

NAME OF COMPANY	OFFER PERIOD		ISSUE PRICE (Per Ordinary Share)	LISTING SOUGHT	DATE OF LISTING
	OPENING	CLOSING			
OPPSTAR BERHAD	22 Feb 2023	03 Mar 2023	RM0.63	ACE MARKET	15 Mar 2023
CAPE EMS BERHAD	16 Feb 2023	24 Feb 2023	RM0.90	MAIN MARKET	10 Mar 2023

Disclaimer: The information in the Investor Relations page is extracted from individual companies' announcements in www.bursamalaysia.com. The information on this page is provided as a service to readers. We assume no liability for damages resulting from or arising out of the use of such information. Whilst every effort is made to ensure accuracy, the information presented has been simplified for your reading pleasure. Readers are advised to read the original and complete filings on the Bursa Malaysia website at https://www.bursamalaysia.com/market_information/announcements/company_announcement

ShareInvestor is a technology based company with a focus on Internet media and we have operations in Malaysia, Singapore and Thailand.

We are the market leader in providing a combination of market data, analysis and news on various platforms to traders and investors.

Our websites include www.shareinvestor.com and www.bursastation.com.

More information about our products and services can be found at www.shareinvestorholdings.com

We're looking for Drupal Developers who will be in charge of front-end development and back-end/module development. This role requires expertise in PHP, HTML, CSS, JS, and an eye for design aesthetics. The candidates should be familiar and have a passion working with content management systems.

Interested candidates are encouraged to apply with full resume, present and expected salary and a recent photograph. Please send these to hr.my@shareinvestor.com for processing. ShareInvestor regrets that only shortlisted candidates shall be notified.

Drupal Developers (2 vacancies)

Job Responsibilities:

- Active participation in all UI / UX decisions
- Contribute actively to the continuous development and maintenance of development projects
- Enhance Drupal development quality
- Provide solutions to issues and suggestions for improvements.
- Designing and implementing new features to the system
- Ensuring optimal performance

Required Skills:

- At least 3 years of Drupal Theming and Front-End Development experience
- Proficient in PHP, HTML5/XHTML, CSS, Javascript, jQuery, AJAX, XML, Json
- Good Diploma/Degree in Computer Science/Computer Engineering.
- Experience working with Drupal's main modules, such as CTools, Views, Rules, Webform, and so on
- Ability to create custom Drupal modules
- Strong troubleshooting skills to fix bugs

Benefits:

- Career & growth opportunities
- Interesting projects
- Medical Insurance
- Incentives

Ruby on Rails Developer (1 vacancy)

Job Responsibilities:

- Develop quality web-based software modules on schedule with a focus on Ruby and Ruby on Rails applications.
- Explore and utilize the latest web-based technologies.
- Document design specifications, logic concepts and module description.
- Maintain and enhance existing web-based applications.

Required Skills:

- Experience in web-based programming/scripting is essential. Candidate must be able to explain clearly technical aspects of his/her past experiences and projects.
- Passion for programming and desire to learn new languages like Go.
- Good Diploma/Degree in Computer Science/Computer Engineering.
- Able to work well in a team and be able to follow documentation and coding standards.
- Knowledge in any of the following would be an added advantage
 - Ruby and Ruby on Rails Framework
 - Javascript and jQuery library
 - Go
 - Perl

Application Developer (C++/STL) (1 vacancy)

Job Responsibilities

- Deliver quality software modules on schedule.
- Document design specifications, conceptions, module description.
- Maintain and enhance existing applications.

Required Skills:

- Passion for programming and desire to learn.
- Good Diploma/Degree in Computer Science/Computer Engineering.
- Skills in C++ is essential.
- Experience with Visual Studio, networking stack and Golang would be an advantage.
- Proactive, resourceful and self-motivated with strong analytical skills.
- Good interpersonal, written and communication skills.
- Able to work with little supervision.

Junior Market Data Support Specialist

As a Junior Market Data Support Specialist, you will be involved in reviewing, analysing and collecting accurate and timely financial information on listed companies for our market data information services.

Job Responsibilities

- Collect, compute and analyse relevant financial data of listed companies, organise and present them on the company portal, in timely manner, for the consumption by our subscribers and our corporate clients
- Capture corporate events / actions and translate them to adjustments of impacted financial data
- Research, evaluate, propose new solutions or recommendations for adhoc project requirements that are related to the financial data or the financial fundamentals of listed companies
- Provide support to users' queries related to financial information displayed on our platforms
- Perform any other duties assigned from time to time, including rare occasions of working during weekends

Required Skills

- Minimum academic qualification: Diploma in any finance-related discipline
- Knowledge of basic accounting and financial terms is required
- Flair for data precision / accuracy / quality / thoroughness plus strict adherence to structured data process and timeline is a must
- Proficient in Microsoft Excel
- Team player with pleasant personality
- Proficient in English, oral and written.

Fresh graduates are welcome to apply.

Interested candidates are encouraged to apply with full resume, present and expected salary and a recent photograph. Please send these to hr.my@shareinvestor.com for processing. ShareInvestor regrets that only shortlisted candidates shall be notified.