

Invest

A Weekly e-Publication by SHAREINVESTOR.com

ISSUE

124

THURSDAY
15 SEPTEMBER
2022

Scan/Click QR to Register



Via email, every Friday

MALAYSIA UNLIKELY TO GET INTO RECESSION - BURSA CHAIRMAN

(page 21)

- | | | | | | |
|----|----------------------------|----|-------------------|----|--------------------------|
| 03 | LEADERBOARD | 14 | VALUE STOCKS | 27 | REGIONAL MARKETS |
| 05 | SHARIAH HOT STOCKS | 16 | GROWTH STOCKS | 28 | FROM THE OBSERVER |
| 06 | COMPANY SPOTLIGHT | 17 | DIVIDEND STOCKS | 33 | INSIDER ACTIVITY |
| 08 | SHARIAH MOMENTUM UP STOCKS | 18 | BROKERS' CALL | 37 | INVESTOR RELATIONS |
| 10 | NON SHARIAH HOT STOCKS | 19 | LONG COMPANIES | 40 | CAREERS AT SHAREINVESTOR |
| 12 | UP TRENDING STOCKS | 21 | MARKET SENTIMENTS | | |



SHAREINVESTOR®

Invest with Knowledge

CORPORATE

Managing Director (Malaysia) & Publisher
Edward Stanislaus
edward@shareinvestor.com

SALES & MARKETING

Director
Elizabeth Tan
elizabeth.tan@shareinvestor.com

Online IR

Manager
Letticia Wong
letticia.wong@shareinvestor.com

Advertising & Sponsorship Sales

Manager
Sharon Lee
sharon.lee@shareinvestor.com

MARKET DATA ANALYTICS

(marketdata.my@shareinvestor.com)
Account Manager
Heidee Ahmad
heidee.ahmad@shareinvestor.com
Coordinator
Watie Nordin
watie.nordin@shareinvestor.com

MARKET DATA ANALYTICS & EDITORIAL

Market Data & Media Coordinator
Silas Emmanuel Joseph
silas.joseph@shareinvestor.com

MARKET DATA ANALYTICS & EDITORIAL

Market Data Analyst
Nickson Aw
nickson.aw@shareinvestor.com

MARKETING COMMUNICATIONS

Marcomm Manager
Danny Ng
danny.ng@shareinvestor.com
Marcomm Executive
Farah Azwani
farah.azwani@shareinvestor.com

CREATIVE & DESIGN

Manager		Andric See
Asst. Manager		Ivy Yap
Web Developer		Nurul Atiqah
		Aiman Jasmin
		Izwan Rusli

IT APPS

Project Manager		Amir Yusoff
Sr. Software Engineer		Mohd. Qasem
Software Engineer		Lian Kok Keong

FINANCE, ADMIN & HR

Manager		Shireen Goh
Sn. Accounts Executive		Jessie Ho
Accounts Assistant		Ng Jin Yng

SHAREINVESTOR HOLDINGS

Chairman		Patrick Daniel
Group CEO		Christopher Lee
Group COO		Lim Dau Hee
Group CFO		Teo Siew May



ShareInvestor Malaysia Sdn. Bhd. (200001023956) (526564-M)
(Formerly known as SI Portal.com Sdn. Bhd.)
Unit No. DF2-07-03A, Level 7,
Persoft Tower, 6B Persiaran Tropicana,
47410 Petaling Jaya, Selangor Darul Ehsan.

Hotline : 603 7803 1791
Mobile : 011 6343 8939
Fax : 603 7803 1792

Website : www.ShareInvestor.com.my
www.ShareInvestorHoldings.com
www.Facebook.com/ShareInvestorMalaysia

ADVERTISEMENT ENQUIRY

bulthaup takes care of the details so that you can enjoy a harmonious environment.



XTRA

XTRA FURNITURE SDN BHD
The Gardens Mall, Mid Valley City
2nd flr unit 236+237
kitchen@xtrafurniture.com
xtrafurniture.com/bulthaup
fb.com/bulthaupmalaysia

bulthaup

www.shareinvestor.com - market data at your fingertips



ShareInvestor WebPro (www.shareinvestor.com/my)
Prices > Stock Prices > Bursa > click Stocks tab

1. mouse over Ranking > select Top Active > all Shariah stocks are denoted with an [S] > mouse over Column Layout > select Edit Customs > select Name > select Volume > select Last Done Price > Mouse Over Column Layout > select Custom
2. mouse over Ranking > select Top Turnover > all Shariah stocks are denoted with an [S] > mouse over Column Layout > select Edit Customs > select Name > select Last Done Price > select Value > Mouse Over Column Layout > select Custom
3. mouse over Ranking > select Top Gainers (Over 5 Trading Days) > mouse over Column Layout > select Edit Customs > select Name > select Last Done Price > select 5 Days Change > select 5 Days % Change > Mouse Over Column Layout > select Custom
4. mouse over Ranking > select Top Losers (Over 5 Trading Days)
5. mouse over Ranking > select Top % Gainers (Over 5 Trading Days)
6. mouse over Ranking > select Top % Losers (Over 5 Trading Days)

Shariah Top Actives (as at Yesterday)

Name	Price (RM)	Volume
MTRONIC [S]	0.020	3,749,689
VELESTO [S]	0.105	2,437,742
SNS [S]	0.300	1,242,396
TOPGLOV [S]	0.785	616,418
AIMFLEX [S]	0.150	350,765
SFPTECH [S]	1.550	339,432
MYEG [S]	0.845	324,075
TANCO [S]	0.310	291,582
DNEX [S]	0.825	277,718
NWP [S]	0.240	247,963

Shariah Top Turnover (as at Yesterday)

Name	Price (RM)	Value (RM)
PCHEM [S]	8.700	54,212,729
SFPTECH [S]	1.550	52,578,729
TOPGLOV [S]	0.785	48,679,509
SNS [S]	0.300	36,283,869
MYEG [S]	0.845	27,614,629
KLK [S]	22.080	27,204,830
GAMUDA [S]	3.890	26,002,221
HARTA [S]	1.640	25,651,468
VELESTO [S]	0.105	24,765,016
PMETAL [S]	4.620	24,500,153

Top Gainers (over 5 Trading days as at Yesterday)

Name	Price (RM)	Change (RM)
SAM	4.990	+0.580
IMASPRO	4.990	+0.570
RAPID	13.660	+0.520
PMBTECH	4.340	+0.440
HARISON	6.500	+0.370
KOTRA	4.420	+0.320
F&N	22.260	+0.260
SFPTECH	1.550	+0.240
MI	1.340	+0.230
HLCAP	6.250	+0.210

Top % Gainers (over 5 Trading days as at Yesterday)

Name	Price (RM)	Change (%)
CLOUD	0.095	+58.33
GOCEAN	0.015	+50.00
MNC	0.015	+50.00
DESTINI	0.090	+38.46
KHJB	0.280	+36.59
FOCUS	0.020	+33.33
LYC	0.220	+33.33
PASUKGB	0.020	+33.33
SCOMIES	0.020	+33.33
ORGABIO	0.415	+29.69

Top Losers (over 5 Trading days as at Yesterday)

Name	Price (RM)	Change (RM)
NESTLE	130.700	-2.300
PANAMY	25.320	-1.200
BKAWAN	22.220	-0.780
TAANN	3.680	-0.540
PETDAG	21.000	-0.520
PPB	16.460	-0.480
PMETAL	4.620	-0.370
UTDPLT	14.880	-0.320
PCHEM	8.700	-0.300
PETGAS	16.840	-0.260

Top % Losers (over 5 Trading days as at Yesterday)

Name	Price (RM)	Change (%)
MTRONIC	0.020	-66.67
KGROUP	0.005	-50.00
ANZO	0.010	-33.33
AT	0.010	-33.33
DOLPHIN	0.020	-20.00
G3	0.025	-16.67
KOMARK	0.050	-16.67
PMHLDG	0.050	-16.67
SERBADK	0.025	-16.67
TFP	0.050	-16.67

PURNELL

ONLY TOURBILLON



ESCAPE II
ABSOLUTE
SAPPHIRE

Purnell Asia

Tel.: +65.9817.3378

Email: sales.sg@purnellwatches.com

@ Purnell_Official

www.purnellwatches.com



Price & Volume Distribution Charts (as at Yesterday)

Technical Analysis

DEFINITION: Shariah compliant stocks with Technical Analysis showing 5-days & 10-days Moving Average Price below Yesterday's Close over past 3 days and with Volume Spike.

CHART GUIDE: Volume Distribution Chart is a statistical interpretation of the current sentiment on each stock in graphical format. The highest bar categorized as >150k is likely to be traded by institutions or super dealers, while the lowest bar categorized as <15k usually represents retail investors. "Buy Up" refers to more buyers snatching up the lots queued at selling price. "Sell Down" refers to sellers selling their shares to the buying queue



ShareInvestor WebPro > Screener > Market Screener (FA & TA) > select BURSA > add criteria

A. Criteria

- > click Add Criteria
- Technical Analysis Conditions tab select (i) Moving Average Below Close (ii) Volume Spike
- Fundamental Analysis Conditions tab > select (iii) Revenue
- Prices & Other Conditions tab > select (iv) Is Shariah Compliant
- Technical Analysis Conditions tab select (v) Moving Average Below Close
- Prices & Other Conditions tab > select (vi) Last Done Price
- Technical Analysis Conditions tab select (vii) Moving Average Below Close

B. Conditions (Criteria Filters)

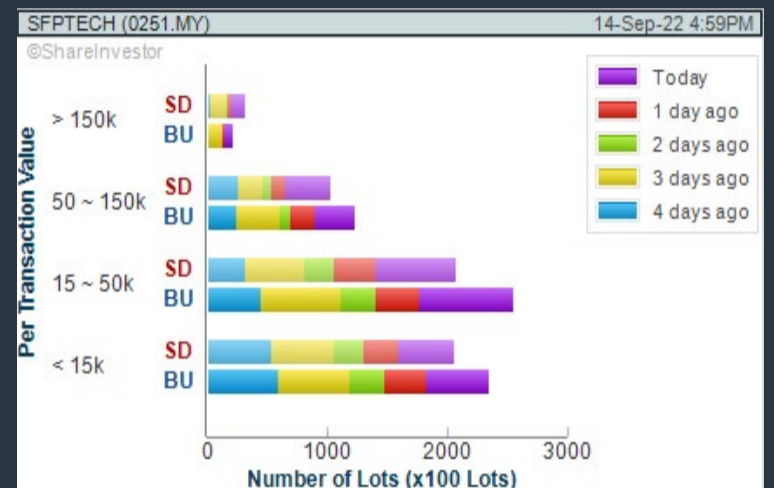
- Moving Average Below Close - select (MA) type (5) below close price for type (3) days
- Volume Spike - Volume type (1) greater than type (5) days average
- Revenue ("000) - select (more than) type (1) for the past select (1) financial year(s)
- Is Shariah Compliant - select **Yes**
- Moving Average Below Close - select (MA) type (10) below close price for type (3) days
- Last Done Price - select (more than) type (0.3)
- Moving Average Below Close - select (EMA) type (5) below close price for type (3) days

- > click Save Template > Create New Template type (Shariah Hot Stocks) > click Create
- > click Save Template as > select Shariah Hot Stocks > click Save
- > click Screen Now (may take a few minutes)
- > Sort By: Select (Vol) Select (Desc)
- > Mouse over stock name > click C² Charts or Volume Distribution

SFP TECH HOLDINGS BERHAD (0251)

C² Chart

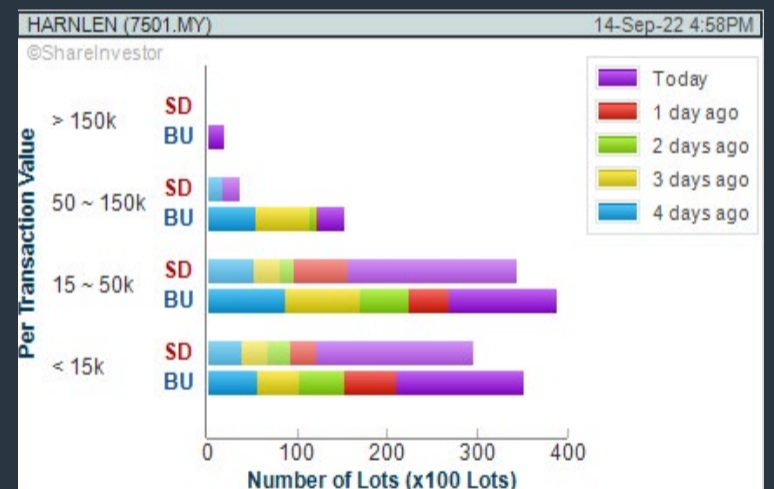
Analysis



HARN LEN CORPORATION BERHAD (7501)

C² Chart

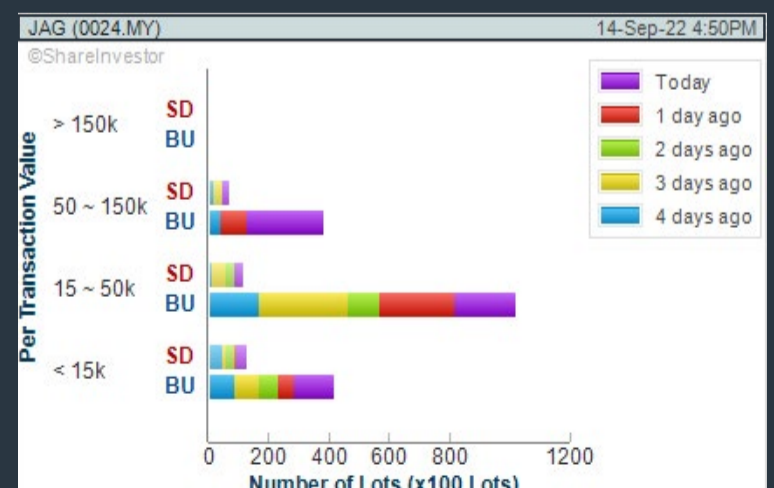
Analysis



JAG BERHAD (0024)

C² Chart

Analysis



Disclaimer: The information on this page is provided as a service to readers. It does not constitute financial advice and/or any investment recommendations. Past performance is not indicative of future results. We assume no liability for damages resulting from or arising out of the use of such information. It would be best if you did your own research to make your personal investment decisions wisely or consult a licenced investment advisor.

COMPANY BACKGROUND

SFP Tech Holdings Berhad is an engineering supporting service provider with automated equipment solutions that provide customized integrated engineering setup solutions. The Company provides integrated factory and automation equipment, precision Computer Numerical Control (CNC) machining, customized sheet metal fabrication, and mechanical and integrated modular assembly. The Company serves the electrical and electronics industry, electronics manufacturing services (EMS), general manufacturing, solar photovoltaic, semiconductor, automotive, and disk drive peripherals. Its subsidiary, SFP Automation (formerly known as EST Exhibit Automation),



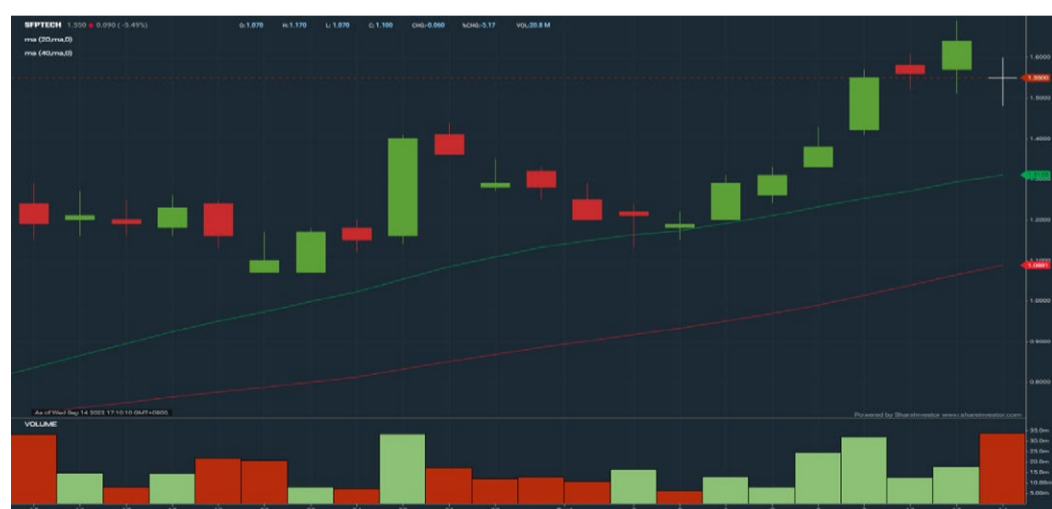
specializes in customized automation engineering solutions and integration to complete factory production lines setup.

SFPTECH SFP TECH HOLDINGS BERHAD		High: 1.600	Remarks: -
Last (MYR): 1.550 ↓	Change: -0.090	Low: 1.480	
	Change (%): -5.49	Yesterday's Close	1.640
Open	1.550	Sell Price	1.560
Buy Price	1.550	Sell Volume ('00)	925
Buy Volume ('00)	1,164	Cumulative Value	52,578,729
Cumulative Volume ('00)	339,432		

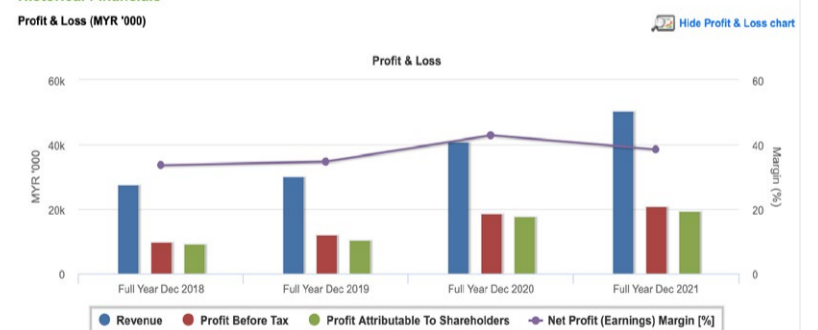
Financial Analysis

Revenue Growth Increasing revenue in last 3 consecutive years and min growth is 15% in last 2 years	Excellent	Profit Growth Increasing profit in last 3 consecutive years and min growth is 10% (with at least 4 profitable years)	Excellent
Piotroski F Score The company has below average financial strength (Piotroski F-Score of 3-4)	Be Alert	Cash Ratio Good cash ratio of at least 0.8 for 2 consecutive years	Good
Current Ratio The company is well-positioned to cover its short-term obligations with its current assets (ratio between 1.5 to 10) for 3 consecutive years	Good	Debt to Cashflow High debt to cash flow for most recent year	Be Alert
Gross Profit Margin Consistently high gross profit margin of at least 40% for 3 years	Good	Net Earnings Margin Consistently high net profit margin of at least 20% for 3 years	Good
Return on Assets (ROA) ROA above 10% for 3 consecutive years	Good	Return on Equity (ROE) ROE above 20% for 3 consecutive years	Good

Excellent Good Neutral Be Alert Watch Out



Historical Financials

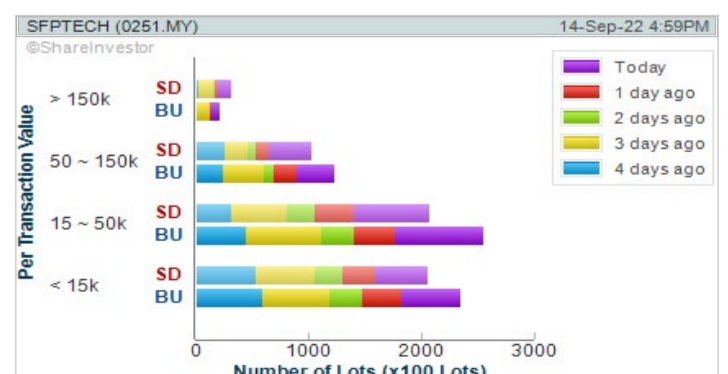


WebPro 9-Days Free Trial Registration (worth RM9) Sign Up Now



Key Statistics with Total Shareholder Returns

Period	Dividend Received	Capital Appreciation	Total Shareholder Return
Short Term Return			
5 Days	0.005	+0.280	+20.54%
10 Days	0.005	+0.270	+21.48%
20 Days	0.005	+0.340	+28.51%



Disclaimer: The information on this page is provided as a service to readers. It does not constitute financial advice and/or any investment recommendations. Past performance is not indicative of future results. We assume no liability for damages resulting from or arising out of the use of such information. It would be best if you did your own research to make your personal investment decisions wisely or consult a licenced investment advisor.

Selamat
HARI
MALAYSIA

16 SEPTEMBER 2022

From all of us at



SHAREINVESTOR[®]

Price & Volume Distribution Charts (as at Yesterday)

Technical Analysis

DEFINITION: Shariah compliant stocks with Technical Analysis showing Bullish Momentum and Price Uptrend. The share price closed at the highest price yesterday. The typical price was higher than the previous day's typical price.

CHART GUIDE: Volume Distribution Chart is a statistical interpretation of the current sentiment on each stock in graphical format. The highest bar categorized as >150k is likely to be traded by institutions or super dealers, while the lowest bar categorized as <15k usually represents retail investors. "Buy Up" refers to more buyers snatching up the lots queued at selling price. "Sell Down" refers to sellers selling their shares to the buying queue.



ShareInvestor WebPro > Screener > Market Screener (FA & TA) > select BURSA > add criteria

A. Criteria

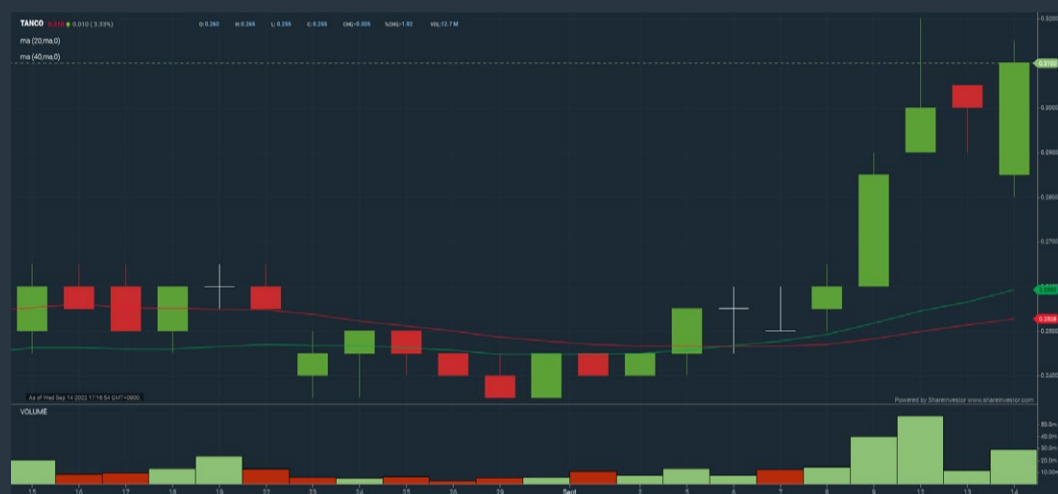
- > click Add Criteria
- Fundamental Analysis Conditions tab > select (i) Revenue
- Technical Analysis Conditions tab select (ii) Average Volume
- Prices & Other Conditions tab > select (iii) Last Done Price
- Prices & Other Conditions tab > select (iv) Is Shariah Compliant
- Technical Analysis Conditions tab select (v) RSI Overbought
- Technical Analysis Conditions tab select (vi) Moving Average Below Close
- Technical Analysis Conditions tab select (vii) CCI Overbought

B. Conditions (Criteria Filters)

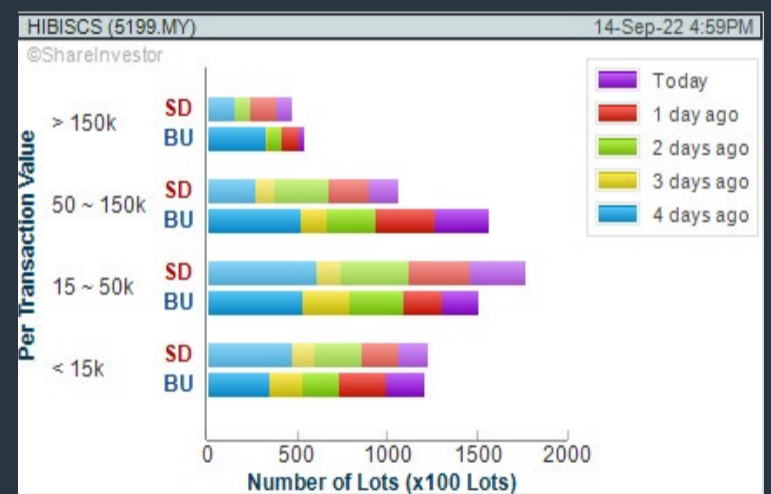
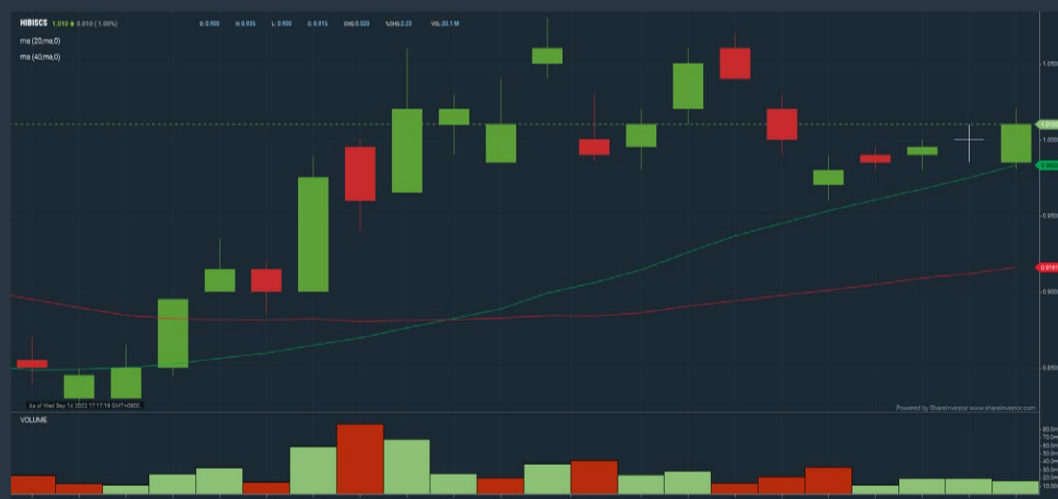
1. Revenue ("000) - select (more than) type (1) for the past select (1) financial year(s)
2. Average Volume - type (1) days average volume greater than type (10000) lots
3. Last Done Price - select (more than) type (0.3)
4. Is Shariah Compliant - select Yes
5. RSI Overbought - select RSI 1 above 99 for 1 days
6. Moving Average Below Close - select (MA) type (10) below close price for type (1) days
7. CCI Overbought - select CCI (2) above (0) for (1) days

- > click Save Template > Create New Template type (Shariah Momentum Up Stocks) > click Create
- > click Save Template as > select Shariah Momentum Up Stocks > click Save
- > click Screen Now (may take a few minutes)
- Sort By: Select (Vol) Select (Desc)
- Mouse over stock name > Charts > click C² Charts tab or Volume Distribution

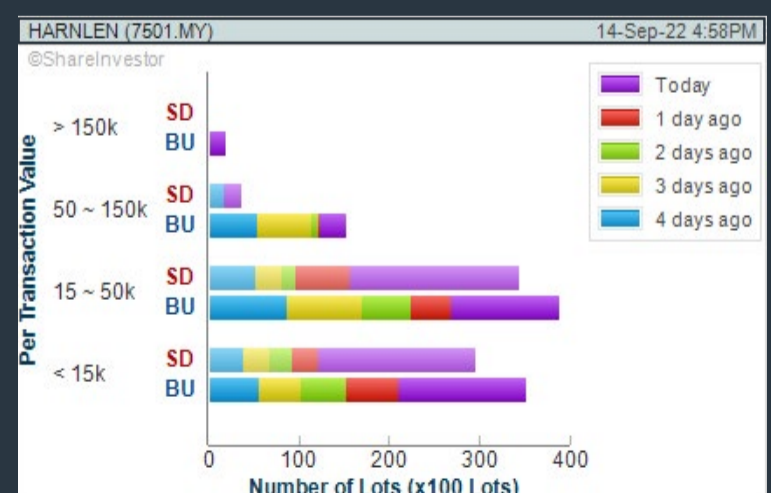
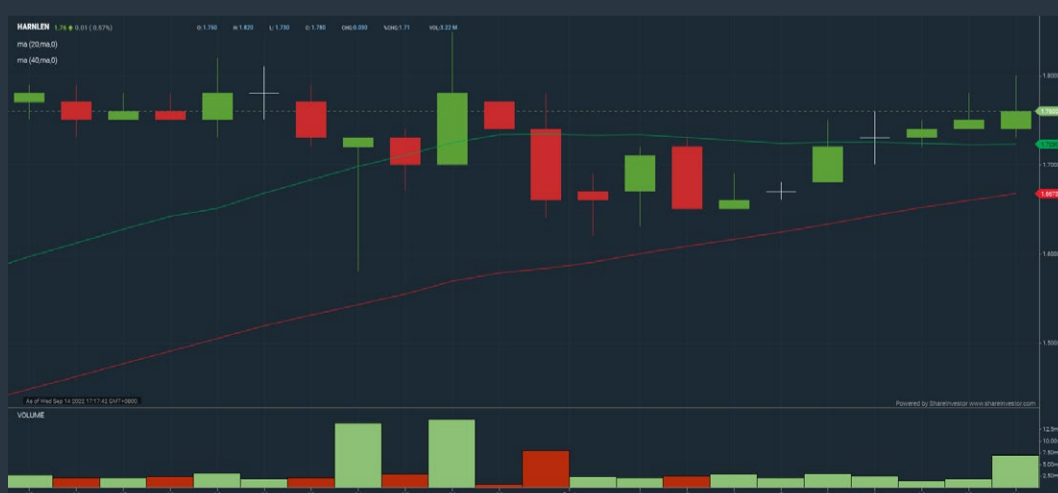
TANCO HOLDINGS BERHAD (2429) C² Chart



HIBISCUS PETROLEUM BERHAD (5199) C² Chart



HARN LEN CORPORATION BERHAD (7501) C² Chart



Disclaimer: The information on this page is provided as a service to readers. It does not constitute financial advice and/or any investment recommendations. Past performance is not indicative of future results. We assume no liability for damages resulting from or arising out of the use of such information. It would be best if you did your own research to make your personal investment decisions wisely or consult a licenced investment advisor.

SHAREINVESTOR
WEBPRO

HARI
MALAYSIA
KAW KAW
PROMOTION

22 August 2022 - 30 September 2022

ENJOY **31%** OFF

when you Subscribe, Renew or Extend

Coupon Code

MYMERDEKA22

SUBSCRIBE NOW

Valid for 12 months subscriptions only

Price & Volume Distribution Charts (as at Yesterday)

Technical Analysis

DEFINITION: Stocks with Technical Analysis showing 5-days & 10-days Moving Average Price below Close over past 1 days and with Volume Spike

CHART GUIDE: Volume Distribution Chart is a statistical interpretation of the current sentiment on each stock in graphical format. The highest bar categorized as >150k is likely to be traded by institutions or super dealers, while the lowest bar categorized as <15k usually represents retail investors. "Buy Up" refers to more buyers snatching up the lots queued at selling price. "Sell Down" refers to sellers selling their shares to the buying queue.



ShareInvestor WebPro > Screener > Market Screener (FA & TA) > select BURSA > add criteria

A. Criteria

- > click Add Criteria
- Technical Analysis Conditions tab select (i) Moving Average Below Close (ii) Volume Spike
- Fundamental Analysis Conditions tab >select (iii) Revenue
- Prices & Other Conditions tab > select (iv) Is Shariah Compliant
- Technical Analysis Conditions tab select (v) Moving Average Below Close
- Prices & Other Conditions tab > select (vi) Last Done Price
- Technical Analysis Conditions tab select (vii) Moving Average Below Close

B. Conditions (Criteria Filters)

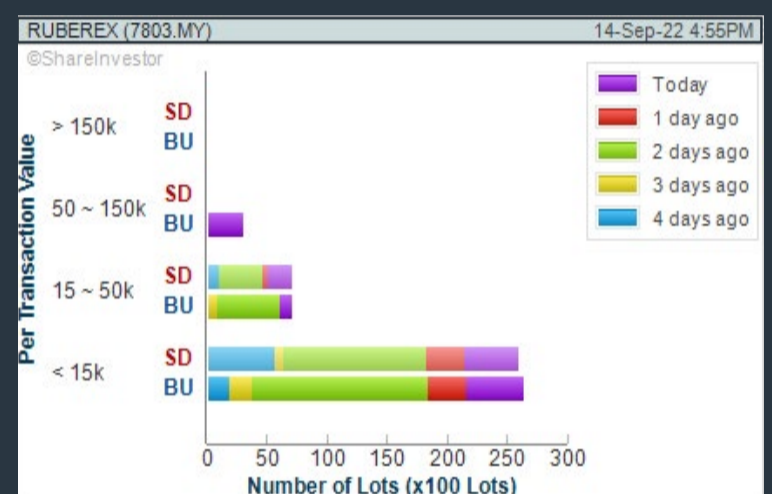
1. Moving Average Below Close - select (MA) type (5) below close price for type (3) days
2. Volume Spike - Volume type (1) greater than type (5) days average
3. Revenue ("000) - select (more than) type (1) for the past select (1) financial year(s)
4. Is Shariah Compliant - select NO
5. Moving Average Below Close - select (MA) type (10) below close price for type (1) days
6. Last Done Price - select (more than) type (0.3)
7. Moving Average Below Close - select (EMA) type (5) below close price for type (1) days

- > click Save Template > Create New Template type (Non-Shariah Hot Stocks) > click Create
- > click Save Template as > select Non-Shariah Hot Stocks > click Save
- > click Screen Now (may take a few minutes)
- Sort By: Select (Vol) Select (Desc)
- Mouse over stock name > Charts > click C² Charts tab or Volume Distribution

RUBBEREX CORPORATION (M) BERHAD (7803)

C² Chart

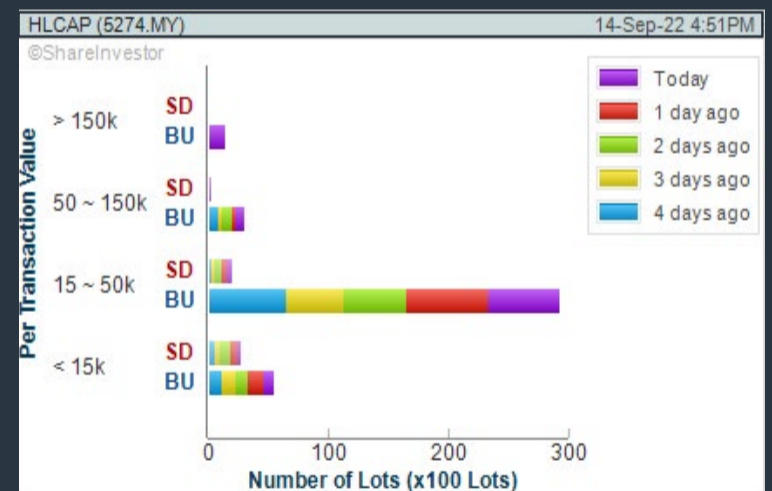
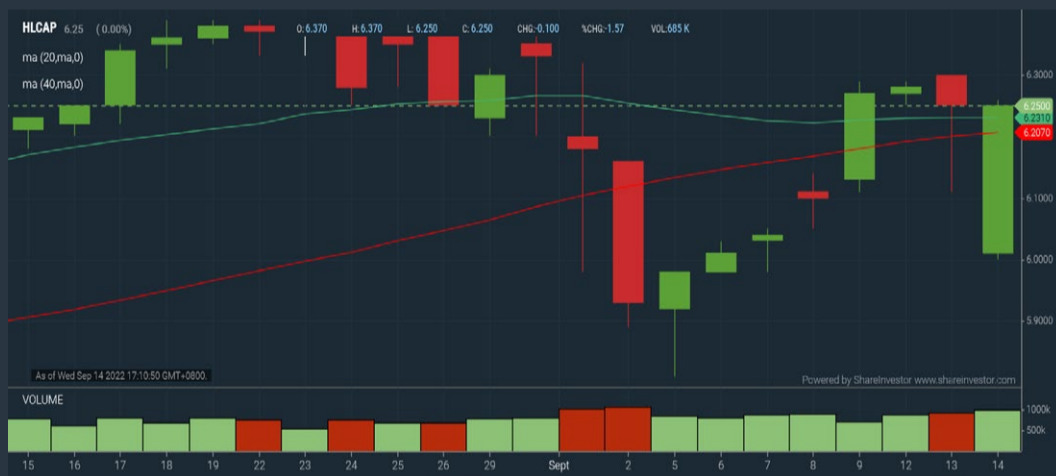
Analysis



HONG LEONG CAPITAL BERHAD (5274)

C² Chart

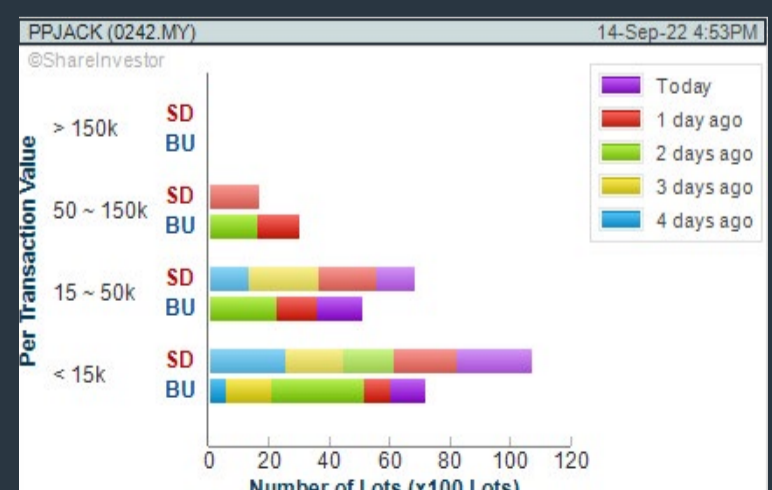
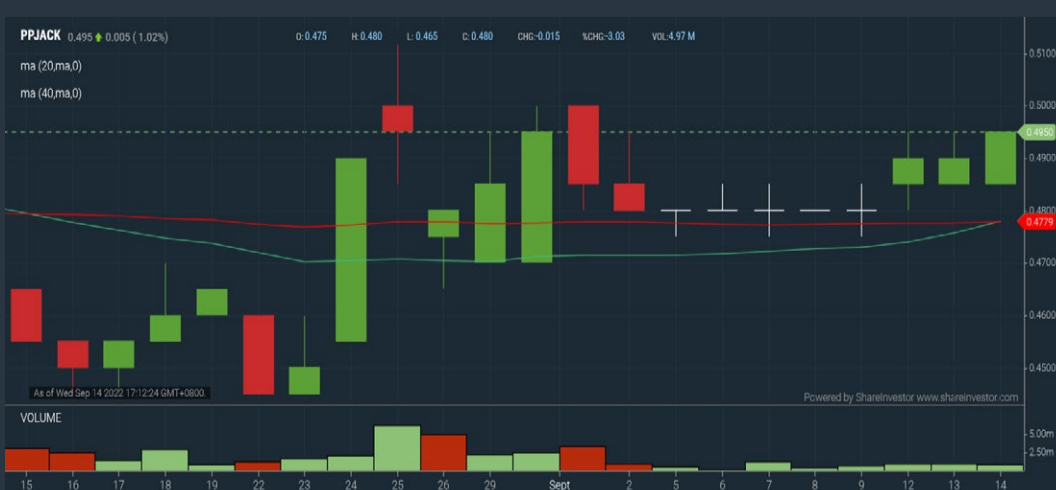
Analysis



PAPPAJACK BERHAD (0242)

C² Chart

Analysis



Disclaimer: The information on this page is provided as a service to readers. It does not constitute financial advice and/or any investment recommendations. Past performance is not indicative of future results. We assume no liability for damages resulting from or arising out of the use of such information. It would be best if you did your own research to make your personal investment decisions wisely or consult a licenced investment advisor.

→ FELIPE
PANTONE



100+10
YEARS OF TRUE EVOLUTION

Color is the essence of light,
and light is the essence of life.

Felipe Pantone



Archibald
Anniversary Limited Edition

Pelle Frau® Impact Less leather

Archibald | designed by Jean-Marie Massaud

XTRA

X-TRA FURNITURE SDN BHD

The Gardens Mall, Mid Valley City, Lot S-236 & 237,
2nd floor, Lingkaran Syed Putra, 59200 Kuala Lumpur
+603 2282 9088 | living@xtrafurniture.com
www.xtrafurniture.com



poltronafrau.com

Price & Volume Distribution Charts (Over 5 trading days as at Yesterday)

Technical Analysis

DEFINITION: Stocks with Technical Analysis showing Bullish Momentum and Price Uptrend

CHART GUIDE: Volume Distribution Chart is a statistical interpretation of the current sentiment on each stock in graphical format. The highest bar categorized as >150k is likely to be traded by institutions or super dealers, while the lowest bar categorized as <15k usually represents retail investors. "Buy Up" refers to more buyers snatching up the lots queued at selling price. "Sell Down" refers to sellers selling their shares to the buying queue.



ShareInvestor WebPro > Screener > Market Screener (FA & TA) > select BURSA > add criteria

A. Criteria

- > click Add Criteria
- Fundamental Analysis Conditions tab > select (i) Revenue
- Technical Analysis Conditions tab select (ii) Moving Average Below Close
- Technical Analysis Conditions tab select (iii) Average Volume
- Prices & Other Conditions tab > select (iv) Last Done Price
- Technical Analysis Conditions tab select (v) Moving Average Below Close
- Technical Analysis Conditions tab select (v) Moving Average Bullish Crossover

B. Conditions

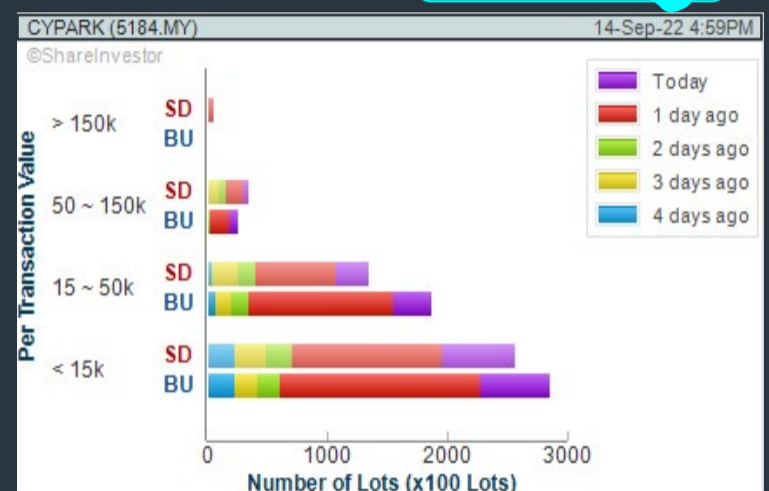
1. Revenue - select (more than) type (1) for the past select (1) financial year(s)
2. Moving Average Below Close - select (MA) type (20) below close price for type (1) days
3. Average Volume - type (5) days average volume type (10000) lots
4. Last Done Price - select (more than) type (0.3)
5. Moving Average Below Close - select (MA) type (10) below close price for type (1) days
6. Moving Average Bullish Crossover - select (MA) type (5) crossed above select (MA) type (10)

> click Save Template > Create New Template type (Non-Shariah Up-Trending Stocks) > click Create Click Save Template As > select Non-Shariah Up Trending Stocks > click Save > click Screen Now (may take a few minutes) Sort By: Select (Vol) Select (Desc) Mouse over stock name > Charts > click C² Charts tab or Volume Distribution

CYPARK RESOURCES BERHAD (5184)

C² Chart

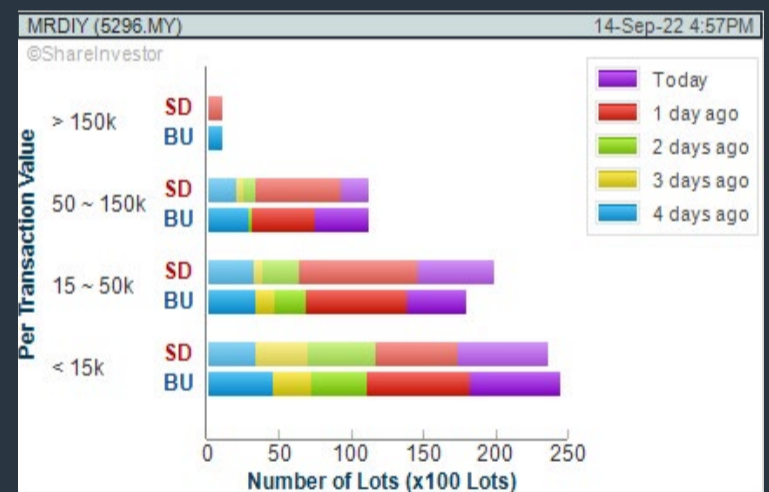
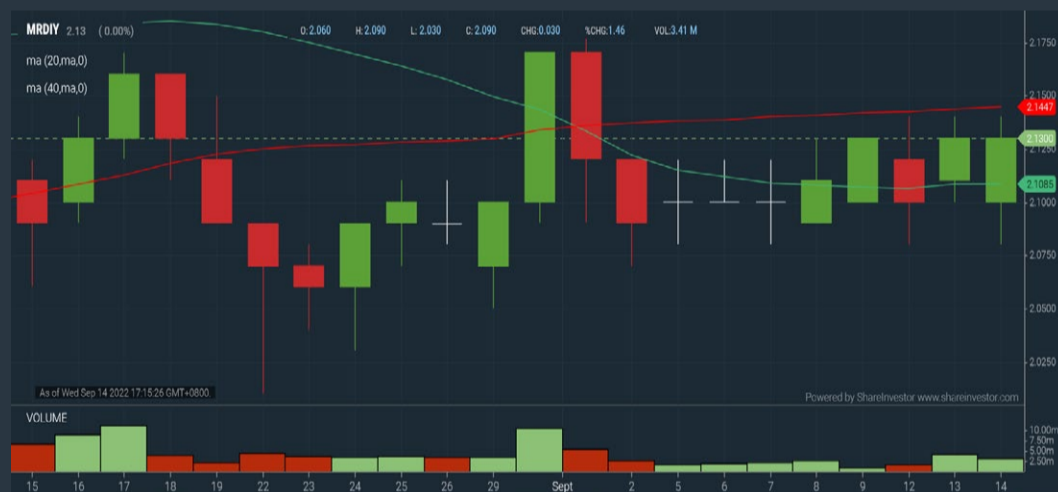
Analysis



MR D.I.Y. GROUP (M) BERHAD (5296)

C² Chart

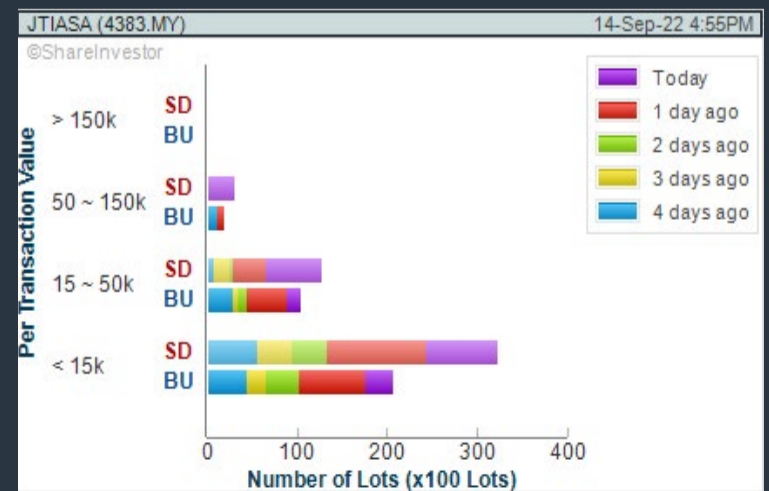
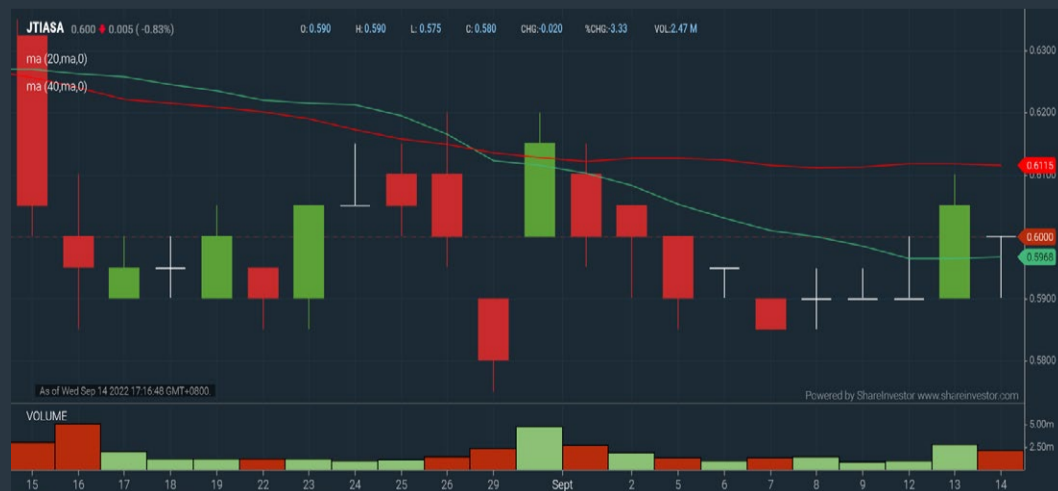
Analysis



JAYA TIASA HOLDINGS BERHAD (4383)

C² Chart

Analysis



Disclaimer: The information on this page is provided as a service to readers. It does not constitute financial advice and/or any investment recommendations. Past performance is not indicative of future results. We assume no liability for damages resulting from or arising out of the use of such information. It would be best if you did your own research to make your personal investment decisions wisely or consult a licenced investment advisor.

SHARE**INVESTOR**
STATION 

**HARI
MALAYSIA
KAW KAW
PROMOTION**

22 August 2022 - 30 September 2022

ENJOY 31% OFF

when you Subscribe, Renew or Extend

Coupon Code

MYMERDEKA22

SUBSCRIBE NOW

Valid for 12 months subscriptions only

Price & Total Shareholder Return (as at Yesterday)

Fundamental Analysis

DEFINITION: Share price of a company trading at a lower price as compared to its fundamentals (FA) such as financial performance and dividend, allowing it to be attractive to value investors.

CHART GUIDE: Total Shareholder Return (TSR) combines share price appreciation and dividend distributions paid to show the total return to the shareholder expressed as a percentage.



ShareInvestor WebPro > Screener > Market Screener (FA & TA) > select BURSA > add criteria

A. Criteria

- > click Add Criteria
- Fundamental Analysis Conditions tab (i) Price Earnings Ratio
- Fundamental Analysis Conditions tab >select (ii) CAGR of Net Earnings
- Fundamental Analysis Conditions tab >select (iii) Net Debt To Equity
- Fundamental Analysis Conditions tab >select (iv) Return On Equity (ROE)

B. Conditions

1. Price Earnings Ratio - select (less than) type (15) times now
2. CAGR of Net Earnings - select (more than) type (10) % for the past type (3) financial year(s)
3. Net Debt To Equity - select (less than) type (1) for the past select (1) financial year(s)
4. Return On Equity (ROE) - select (more than) type (10) % for the past select (1) financial year(s)

- > click Save Template > Create New Template type (Value Stock) > click Create
- > click Save Template as > select Value Companies > click Save
- > click Screen Now (may take a few minutes)
- > Mouse over stock name > Factsheet > looking for Total Shareholder Return
- > Mouse over stock name > Charts > click C2 Charts tab

THREE-A RESOURCES BERHAD (0012)

C² Chart



Analysis

Period	Dividend Received	Capital Appreciation	Total Shareholder Return
Short Term Return	5 Days	-0.020	-2.16 %
	10 Days	+0.010	+1.12 %
	20 Days	+0.045	+5.23 %
Medium Term Return	3 Months	+0.045	+5.23 %
	6 Months	+0.020	+2.26 %
Long Term Return	1 Year	0.030	-4.79 %
	2 Years	0.052	+19.77 %
	3 Years	0.072	+16.69 %
Annualised Return	5 Years	0.110	-9.46 %
	Annualised	-	-1.97 %

AGESON BERHAD (7145)

C² Chart



Analysis

Period	Dividend Received	Capital Appreciation	Total Shareholder Return
Short Term Return	5 Days	-0.050	-12.66 %
	10 Days	-0.145	-29.59 %
	20 Days	-0.220	-38.94 %
Medium Term Return	3 Months	+0.150	+76.92 %
	6 Months	0.091	-20.87 %
Long Term Return	1 Year	-0.890	-72.06 %
	2 Years	-1.688	-83.03 %
	3 Years	-1.701	-83.62 %
Annualised Return	5 Years	-1.698	-83.03 %
	Annualised	-	-29.86 %

ANCOM NYLEX BERHAD (4758)

C² Chart



Analysis

Period	Dividend Received	Capital Appreciation	Total Shareholder Return
Short Term Return	5 Days	-0.035	-3.65 %
	10 Days	-0.005	-0.54 %
	20 Days	-0.085	-8.42 %
Medium Term Return	3 Months	-0.035	-3.65 %
	6 Months	0.218	-19.07 %
Long Term Return	1 Year	+0.412	+80.31 %
	2 Years	+0.653	+240.07 %
	3 Years	+0.774	+512.58 %
Annualised Return	5 Years	+0.715	+340.48 %
	Annualised	-	+34.52 %

Disclaimer: The information on this page is provided as a service to readers. It does not constitute financial advice and/or any investment recommendations. Past performance is not indicative of future results. We assume no liability for damages resulting from or arising out of the use of such information. It would be best if you did your own research to make your personal investment decisions wisely or consult a licenced investment advisor.

BURSASTATION Professional



Stock Scanning

- Technical Analysis (TA) Market Scanner
- Fundamental Analysis (FA) Market Scanner



Market Data

- Equities
- Derivatives

Monitoring

- Portfolio
- Stock Alerts
- Price Spread Calculator



Scan. Chart. Analyse.

Be The Intelligent Investor



Price Movements

- Streaming Prices
- Time & Sales
- Trade Summary Matrix
- Quote Movements
- 5 Levels Market Depth
- Historical Price Download

Charts

- Intraday Charts
- Interactive Charts
- Historical Charts
- Volume Distribution Charts



Fundamentals

- Factsheets
- Financials
- Insider Trades



Brought to you as a collaborative effort by ShareInvestor and Bursa Malaysia, **BursaStation Professional** is designed with you, the user, in mind, as a user-friendly yet full of powerful features that will appeal to investors/traders who need instant access to fundamental, technical, and trading data, anytime, anywhere. **BursaStation Professional** is a state-of-the-art Stock Market Tracker with Charting Software that places in your hands the power to make better investment decisions.

[CLICK HERE TO START YOUR 14-DAYS FREE TRIAL](#)

Price & Total Shareholder Return (as at Yesterday)

Fundamental Analysis

DEFINITION: Company revenue is growing and making good quality of earnings with positive Free Cash Flow.

CHART GUIDE: Total Shareholder Return (TSR) combines share price appreciation and distributions paid to show the total return to the shareholder expressed as a percentage.



ShareInvestor WebPro > Screener > Market Screener (FA & TA) > select BURSA > add criteria

A. Criteria

1. Fundamental Analysis Conditions tab >select (i) Free Cash Flow, (ii) Revenue Growth, (iii) Gross Profit (Earnings) Margin, (iv) Quality of Earnings, (v) Total Shareholder Returns, > click Add Criteria
2. Fundamental Analysis Conditions tab >select (vi) Total Shareholder Returns > click Add Criteria

B. Conditions (Criteria Filters)

1. Free Cash Flow - select (more than) type (1) for the past select (1) financial year(s)
2. Revenue Growth - select (more than) type (1) for the past select (1) financial year(s)
3. Gross Profit (Earnings) Margin - select (more than) type (30) % for the past select (1) financial year(s)
4. Quality of Earnings - select (more than) type (1) for the past select (1) financial year(s)
5. Total Shareholder Return - select (more than) type (5) % for the past select (3) financial year(s)
6. Total Shareholder Return - select (more than) type (5) % for the past select (5) financial year(s)

- > click Save Template > Create New Template type (Growth Companies) > click Create
- > click Save Template as > select Growth Companies > click Save
- > click Screen Now (may take a few minutes)
- > Sort By: Select (Revenue Growth) Select (Desc)
- > Mouse over stock name > Factsheet > looking for Total Shareholder Return

DAGANG NEXCHANGE BERHAD (4456)

C² Chart

Analysis



Period		Dividend Received	Capital Appreciation	Total Shareholder Return	
Short Term Return	5 Days	-	-		-
	10 Days	-	-0.035		-4.07 %
	20 Days	-	-0.070		-7.82 %
Medium Term Return	3 Months	-	-0.085		-9.34 %
	6 Months	0.006	-0.095		-9.67 %
	1 Year	0.006	+0.090		+13.06 %
Long Term Return	2 Years	0.006	+0.625		+315.50 %
	3 Years	0.006	+0.555		+207.78 %
	5 Years	0.011	+0.350		+76.00 %
Annualised Return	Annualised	-	-		+11.97 %

INNOPRISE PLANTATIONS BERHAD (6262)

C² Chart

Analysis



Period		Dividend Received	Capital Appreciation	Total Shareholder Return	
Short Term Return	5 Days	0.070	-0.120		-3.16 %
	10 Days	0.070	-0.120		-3.16 %
	20 Days	0.070	-0.040		+2.00 %
Medium Term Return	3 Months	0.070	-0.160		-5.56 %
	6 Months	0.190	-0.280		-5.17 %
	1 Year	0.250	+0.300		+47.41 %
Long Term Return	2 Years	0.415	+0.462		+87.88 %
	3 Years	0.435	+0.801		+187.56 %
	5 Years	0.495	+0.229		+58.81 %
Annualised Return	Annualised	-	-		+9.69 %

TA ANN HOLDINGS BERHAD (5012)

C² Chart

Analysis



Period		Dividend Received	Capital Appreciation	Total Shareholder Return	
Short Term Return	5 Days	0.150	-0.450		-7.26 %
	10 Days	0.150	-0.310		-4.01 %
	20 Days	0.150	-0.240		-2.30 %
Medium Term Return	3 Months	0.150	-0.880		-16.01 %
	6 Months	0.250	-1.160		-18.80 %
	1 Year	0.500	+0.730		+41.69 %
Long Term Return	2 Years	0.750	+0.900		+64.07 %
	3 Years	0.800	+1.460		+101.80 %
	5 Years	0.900	-		+24.46 %
Annualised Return	Annualised	-	-		+4.47 %

Disclaimer: The information on this page is provided as a service to readers. It does not constitute financial advice and/or any investment recommendations. Past performance is not indicative of future results. We assume no liability for damages resulting from or arising out of the use of such information. It would be best if you did your own research to make your personal investment decisions wisely or consult a licenced investment advisor.

Price & Total Shareholder Return (as at Yesterday)

Fundamental Analysis

DEFINITION: Company is paying out dividend with low or moderate leverage.

CHART GUIDE: Total Shareholder Return (TSR) combines share price appreciation and distributions paid to show the total return to the shareholder expressed as a percentage.



ShareInvestor WebPro > Screener > Market Screener (FA & TA) > select BURSA > add criteria

A. Criteria

- > click Add Criteria
- Fundamental Analysis Conditions tab >select (i) Dividend Yield
- Fundamental Analysis Conditions tab >select (ii) Dividend Payout (Historical)
- Fundamental Analysis Conditions tab >select (iii) Total Debt To Equity
- Fundamental Analysis Conditions tab >select (iv) Total Shareholder Returns
- Fundamental Analysis Conditions tab >select (v) Total Shareholder Returns
- Fundamental Analysis Conditions tab / >select (vi) CAGR of Dividend Per Share

• Fundamental Analysis Conditions tab >select (vii) CAGR of Dividend Per Share

B. Conditions (Criteria Filters)

1. Dividend Yield - select (more than) type (1) % for the past select (1) financial year(s)
2. Dividend Payout (Historical) - select (between) type (0.5) to type (1) times for the past select (1) financial year(s)
3. Total Debt to Equity - select (less than) type (1) for the past select (1) financial year(s)
4. Total Shareholder Return - select (more than) type (5) % for the past select (3) financial year(s)
5. Total Shareholder Return - select (more than) type (5) % for the past select (5) financial year(s)

6. CAGR of Dividend Per Share - select (less than) type (30) % for the past select (5) financial year(s)
7. CAGR of Dividend Per Share - select (more than) type (1) % for the past select (5) financial year(s)

- > click Save Template > Create New Template type (Dividend Companies) > click Create
- > click Save Template as > select Dividend Companies > click Save
- > click Screen Now (may take a few minutes)
- > Sort By: Select (Dividend Yield) Select (Desc)
- > Mouse over stock name > Factsheet > looking for Total Shareholder Return

KIM LOONG RESOURCES BERHAD (5027)

C² Chart



Period		Dividend Received	Capital Appreciation	Total Shareholder Return
Short Term Return	5 Days	-	+0.010	+0.59 %
	10 Days	-	+0.010	+0.59 %
	20 Days	0.050	-	+2.92 %
Medium Term Return	3 Months	0.050	-0.200	-7.85 %
	6 Months	0.050	-0.420	-17.37 %
Long Term Return	1 Year	0.140	+0.235	+25.42 %
	2 Years	0.240	+0.300	+46.62 %
	3 Years	0.270	+0.638	+84.70 %
	5 Years	0.510	+0.507	+84.54 %
Annualised Return	Annualised	-	-	+13.04 %

UNITED PLANTATIONS BERHAD (2089)

C² Chart



Period		Dividend Received	Capital Appreciation	Total Shareholder Return
Short Term Return	5 Days	-	+0.460	+3.22 %
	10 Days	-	+0.180	+1.23 %
	20 Days	-	+0.300	+2.07 %
Medium Term Return	3 Months	-	+0.120	+0.82 %
	6 Months	0.850	-0.158	+4.64 %
Long Term Return	1 Year	1.150	+1.363	+18.76 %
	2 Years	2.000	+1.064	+22.37 %
	3 Years	3.350	+3.060	+54.79 %
	5 Years	6.250	+3.008	+78.78 %
Annualised Return	Annualised	-	-	+12.32 %

ORIENTAL HOLDINGS BERHAD (4006)

C² Chart



Period		Dividend Received	Capital Appreciation	Total Shareholder Return
Short Term Return	5 Days	-	+0.390	+5.86 %
	10 Days	-	+0.260	+3.83 %
	20 Days	-	+0.410	+6.17 %
Medium Term Return	3 Months	0.100	-0.070	+0.42 %
	6 Months	0.300	+0.990	+21.29 %
Long Term Return	1 Year	0.400	+1.910	+44.94 %
	2 Years	0.600	+1.850	+47.12 %
	3 Years	0.900	+0.765	+26.49 %
	5 Years	1.700	+0.874	+41.68 %
Annualised Return	Annualised	-	-	+7.22 %

Disclaimer: The information on this page is provided as a service to readers. It does not constitute financial advice and/or any investment recommendations. Past performance is not indicative of future results. We assume no liability for damages resulting from or arising out of the use of such information. It would be best if you did your own research to make your personal investment decisions wisely or consult a licenced investment advisor.

Week: 09 September - 14 September 2022

More Brokers' Call 

AMINVESTMENT BANK <small>... See More</small>	Call	Target Price	Release Date
Sime Darby Berhad (4197)	BUY	RM2.88	09 Sep 2022
IHH Healthcare Berhad (5225)	HOLD	RM6.89	09 Sep 2022
Bintulu Port Holdings Berhad (5032)	BUY	RM6.05	12 Sep 2022
Mah Sing Group Berhad (8583)	BUY	RM0.86	13 Sep 2022
Bermaz Auto Berhad (5248)	BUY	RM2.25	13 Sep 2022

CGS CIMB <small>... See More</small>	Call	Target Price	Release Date
Kotra Industries Berhad (0002)	ADD	RM4.76	12 Sep 2022

KENANGA <small>... See More</small>	Call	Target Price	Release Date
Uzma Berhad (7250)	OUTPERFORM	RM0.58	13 Sep 2022
Bermaz Auto Berhad (5248)	OUTPERFORM	RM2.30	13 Sep 2022
OCK Group Berhad (0172)	OUTPERFORM	RM0.95	14 Sep 2022
Velesto Energy Berhad (5243)	OUTPERFORM	RM0.16	14 Sep 2022

MIDF <small>... See More</small>	Call	Target Price	Release Date
Bermaz Auto Berhad (5248)	BUY	RM2.36	13 Sep 2022
Mah Sing Group Berhad (8583)	BUY	RM0.74	13 Sep 2022

UOB KAYHIAN <small>... See More</small>	Call	Target Price	Release Date
OM Holdings Limited (5298)	BUY	RM3.53	09 Sep 2022
Vstecs Berhad (5162)	BUY	RM1.24	12 Sep 2022
Eco World Development Group Berhad (8206)	BUY	RM0.86	12 Sep 2022
Malaysia Airports Holdings Berhad (5014)	BUY	RM6.67	13 Sep 2022
Elsoft Research Berhad (0090)	BUY	RM0.905	13 Sep 2022

Disclaimer: InveSt does not accept any liability whatsoever for any direct, indirect or consequential losses (including loss of profit) or damages that may arise from the use of information or opinions in this publication. The information and opinions in InveSt are not to be considered as an offer to sell or buy any of the securities discussed. Opinions expressed are subject to change without notice. The Brokers may, from time to time, have interests or positions in the securities mentioned. For the full report on each item listed on this page, please visit https://www.shareinvestor.com/my/brokers_call.

DEFINITION: Top 9 stocks with Technical Analysis plus Pattern Matching by 60 pre-defined indicators by the system showing a higher probability of bullish sentiment on the share price.



ShareInvestor WebPro > Screener > Predefined TA Screens > select market BURSA > Most Long Signals > click Scan Results or mouse over each company

MUHIBBAH ENGINEERING (M) BERHAD (5703.MY)

MUHIBAH

Price updated at 14 Sep 2022 16:50

Last: 0.450	Change: -0.010	Volume: 3,036
	Change (%): -2.17	Range: 0.440 - 0.450

TA Scanner Results based on historical data up to 14 Sep 2022

Condition	Signal	Explanation
Accumulation Distribution: Bullish Accumulation Distribution	Long	Accumulation distribution increasing for the last 7 days
Bollinger Band: Bullish Long Term Volatility Breakout and Trending	Long	1. Close price above upper bollinger band(33,1). 2. Volume above average volume(50). 3. Average volume(50) is above 300,000.
Bollinger Band: Bullish Short Term Volatility Breakout and Trending	Long	1. Close price above upper bollinger band(33,1). 2. Volume above average volume(10). 3. Average volume(10) is above 300,000.
Bollinger Band: High Above Upper Bollinger Band	Neutral	1. High above upper bollinger band(20,2). 2. Average volume(5) is above 100,000.
Candlestick: Indecision Doji	Neutral	Indecision: Doji
Donchian Channels: High Above Upper Donchian Channels	Long	High crossed above the upper Donchian Channel(14,4)
MA: Medium Term Bullish Moving Average Crossover	Long	MA(25) crossed above MA(50) within the last 1 day.
Williams %R: Bearish Williams %R	Short	1. Williams %R(26) between 0 and -20. 2. Average volume(5) is above 100,000.

CYPARK RESOURCES BERHAD (5184.MY)

CYPARK

Price updated at 14 Sep 2022 16:59

Last: 0.420	Change: -	Volume: 194,985
	Change (%): -	Range: 0.400 - 0.430

TA Scanner Results based on historical data up to 14 Sep 2022

Condition	Signal	Explanation
DM: Bullish Directional Movement	Long	-DI(14) crossed below +DI(14)
Donchian Channels: High Above Upper Donchian Channels	Long	High crossed above the upper Donchian Channel(14,4)
MA: Bullish Price Crossover	Long	1. Close price crossed above MA(40) within the last 1 day. 2. Previous day close price is below the MA(10) for the last 5 days
Parabolic SAR: Bearish Parabolic SAR Reversal	Neutral	1. Parabolic SAR 1 day ago above close price 1 day ago for the last 5 days. 2. Parabolic SAR below close price
RSI: Short Term RSI 50 Bullish Crossover	Long	1. RSI(20) crossed above 50 within the last 1 day and RSI(20) 1 day ago below 50 for the last 5 days. 2. Volume above average volume(125). 3. Average volume(5) is above 100,000.
Volume: 10 Days large value Sell Down trade	Short	1. 150K value Sell Down greater than Buy Up by 20% for 10 days. 2. 50K-100K value Sell Down greater than Buy Up by 20% for 10 days. 3. Average volume(10) is above 1000000
Volume: 5 Days large value Sell Down trade	Short	1. 150K value Sell Down greater than Buy Up by 20% for 5 days. 2. 50K-100K value Sell Down greater than Buy Up by 20% for 5 days. 3. Average volume(10) is above 1000000

IFCA MSC BERHAD (0023.MY)

IFCAMSC

Price updated at 14 Sep 2022 16:54

Last: 0.290	Change: -	Volume: 3,222
	Change (%): -	Range: 0.280 - 0.290

TA Scanner Results based on historical data up to 14 Sep 2022

Condition	Signal	Explanation
Bollinger Band: Bullish Long Term Volatility Breakout and Trending	Long	1. Close price above upper bollinger band(33,1). 2. Volume above average volume(50). 3. Average volume(50) is above 300,000.
Bollinger Band: Bullish Lower Bollinger Band Support	Long	1. Low 1 day ago below lower bollinger band(20,2). 2. Close above close 1 day ago. 3. Average volume(5) is above 100,000.
Bollinger Band: Bullish Short Term Volatility Breakout and Trending	Long	1. Close price above upper bollinger band(33,1). 2. Volume above average volume(10). 3. Average volume(10) is above 300,000.
Bollinger Band: High Above Upper Bollinger Band	Neutral	1. High above upper bollinger band(20,2). 2. Average volume(5) is above 100,000.
DM: Bullish Directional Movement	Long	-DI(14) crossed below +DI(14)
MACD: Bullish MACD Crossover	Long	1. MACD(12,26) diff line crossed above the MACD(12,26) signal line. 2. MACD Histogram(12,26) is above 0.
Parabolic SAR: Bearish Parabolic SAR Reversal	Neutral	1. Parabolic SAR 1 day ago above close price 1 day ago for the last 5 days. 2. Parabolic SAR below close price

SIGNATURE INTERNATIONAL BERHAD (7246.MY)

SIGN

Price updated at 14 Sep 2022 16:57

Last: 1.700	Change: -0.080	Volume: 32,644
	Change (%): -4.49	Range: 1.660 - 1.780

TA Scanner Results based on historical data up to 14 Sep 2022

Condition	Signal	Explanation
Bollinger Band: High Above Upper Bollinger Band	Neutral	1. High above upper bollinger band(20,2). 2. Average volume(5) is above 100,000.
Candlestick: Bullish Engulfing	Long	Bullish: Engulfing
Chaikin Volatility: Increasing Chaikin Volatility	Neutral	Chaikin Volatility(10,10) has been increasing for 5 days
Donchian Channels: High Above Upper Donchian Channels	Long	High crossed above the upper Donchian Channel(14,4)
Price: New 52 Week High	Long	1. Stock reach a new 52 week high. 2. Average volume(30) is above 50000.
Volume: 10 Days large value Buy Up trade	Long	1. 150K value Buy Up greater than Sell Down by 20% for 10 days. 2. 50K-100K value Buy Up greater than Sell Down by 20% for 10 days. 3. Average volume(10) is above 1000000
Volume: 5 Days large value Buy Up trade	Long	1. 150K value Buy Up greater than Sell Down by 20% for 5 days. 2. 50K-100K value Buy Up greater than Sell Down by 20% for 5 days. 3. Average volume(10) is above 1000000
Williams %R: Bearish Williams %R	Short	1. Williams %R(26) between 0 and -20. 2. Average volume(5) is above 100,000.

Disclaimer: The information on this page is provided as a service to readers. It does not constitute financial advice and/or any investment recommendations. Past performance is not indicative of future results. We assume no liability for damages resulting from or arising out of the use of such information. It would be best if you did your own research to make your personal investment decisions wisely or consult a licenced investment advisor.



JKG LAND BERHAD (6769.MY)

JKGLAND

Price updated at 14 Sep 2022 16:44

Last: 0.105	Change: -0.005	Volume: 800
	Change (%): -4.55	Range: 0.105 - 0.105

TA Scanner Results based on historical data up to 14 Sep 2022

Condition	Signal	Explanation
Bollinger Band: Bullish Long Term Volatility Breakout and Trending	Long	1. Close price above upper bollinger band(33,1). 2. Volume above average volume(50). 3. Average volume(50) is above 300,000.
Bollinger Band: Bullish Lower Bollinger Band Support	Long	1. Low 1 day ago below lower bollinger band(20,2). 2. Close above close 1 day ago. 3. Average volume(5) is above 100,000.
DM: Bullish Directional Movement	Long	-DI(14) crossed below +DI(14)
MA: Bullish Price Crossover	Long	1. Close price crossed above MA(40) within the last 1 day. 2. Previous day close price is below the MA(10) for the last 5 days
MACD: Bullish MACD Crossover	Long	1. MACD(12,26) diff line crossed above the MACD(12,26) signal line. 2. MACD Histogram(12,26) is above 0.
Parabolic SAR: Bearish Parabolic SAR Reversal	Neutral	1. Parabolic SAR 1 day ago above close price 1 day ago for the last 5 days. 2. Parabolic SAR below close price



REVENUE GROUP BERHAD (0200.MY)

REVENUE

Price updated at 14 Sep 2022 16:55

Last: 1.020	Change: -0.020	Volume: 18,442
	Change (%): -1.92	Range: 1.000 - 1.030

TA Scanner Results based on historical data up to 14 Sep 2022

Condition	Signal	Explanation
Bollinger Band: Bullish Long Term Volatility Breakout and Trending	Long	1. Close price above upper bollinger band(33,1). 2. Volume above average volume(50). 3. Average volume(50) is above 300,000.
Bollinger Band: Bullish Short Term Volatility Breakout and Trending	Long	1. Close price above upper bollinger band(33,1). 2. Volume above average volume(10). 3. Average volume(10) is above 300,000.
Bollinger Band: High Above Upper Bollinger Band	Neutral	1. High above upper bollinger band(20,2). 2. Average volume(5) is above 100,000.
Candlestick: Indecision Doji	Neutral	Indecision: Doji
Volume: 10 Days large value Buy Up trade	Long	1. 150K value Buy Up greater than Sell Down by 20% for 10 days. 2. 50K-100K value Buy Up greater than Sell Down by 20% for 10 days. 3. Average volume(10) is above 1000000
Volume: 5 Days large value Buy Up trade	Long	1. 150K value Buy Up greater than Sell Down by 20% for 5 days. 2. 50K-100K value Buy Up greater than Sell Down by 20% for 5 days. 3. Average volume(10) is above 1000000
Williams %R: Bearish Williams %R	Short	1. Williams %R(26) between 0 and -20. 2. Average volume(5) is above 100,000



FITTERS DIVERSIFIED BERHAD (9318.MY)

FITTERS

Price updated at 14 Sep 2022 16:55

Last: 0.075	Change: -	Volume: 25,633
	Change (%): -	Range: 0.070 - 0.075

TA Scanner Results based on historical data up to 14 Sep 2022

Condition	Signal	Explanation
Bollinger Band: Bullish Long Term Volatility Breakout and Trending	Long	1. Close price above upper bollinger band(33,1). 2. Volume above average volume(50). 3. Average volume(50) is above 300,000.



SIME DARBY BERHAD (4197.MY)

SIME

Price updated at 14 Sep 2022 16:59

Last: 2.210	Change: -0.030	Volume: 67,794
	Change (%): -1.34	Range: 2.210 - 2.260

TA Scanner Results based on historical data up to 14 Sep 2022

Condition	Signal	Explanation
Bollinger Band: Bullish Lower Bollinger Band Support	Long	1. Low 1 day ago below lower bollinger band(20,2). 2. Close above close 1 day ago. 3. Average volume(5) is above 100,000.
Candlestick: Indecision Doji	Neutral	Indecision: Doji
Volume: 10 Days large value Buy Up trade	Long	"1. 150K value Buy Up greater than Sell Down by 20% for 10 days. 2. 50K-100K value Buy Up greater than Sell Down by 20% for 10 days. 3. Average volume(10) is above 1000000
Volume: 5 Days large value Buy Up trade	Long	1. 150K value Buy Up greater than Sell Down by 20% for 5 days. 2. 50K-100K value Buy Up greater than Sell Down by 20% for 5 days. 3. Average volume(10) is above 1000000
Williams %R: Bullish Williams %R	Long	1. Williams %R(26) between -80 and -100. 2. Average volume(5) is above 100,000.



EP MANUFACTURING BERHAD (7773.MY)

EPMB

Price updated at 14 Sep 2022 16:59

Last: 1.280	Change: +0.020	Volume: 39,982
	Change (%): +1.59	Range: 1.180 - 1.280

TA Scanner Results based on historical data up to 14 Sep 2022

Condition	Signal	Explanation
Bollinger Band: High Above Upper Bollinger Band	Neutral	1. High above upper bollinger band(20,2). 2. Average volume(5) is above 100,000.
CCI: Bearish CCI Overbought And Reversing	Short	1. CCI(26) above 100 and CCI(26) 1 day ago increasing for the last 3 days. 2. CCI(26) below CCI(26) 1 day ago
Volume: 10 Days large value Buy Up trade	Long	1. 150K value Buy Up greater than Sell Down by 20% for 10 days. 2. 50K-100K value Buy Up greater than Sell Down by 20% for 10 days. 3. Average volume(10) is above 1000000
Volume: 5 Days large value Buy Up trade	Long	1. 150K value Buy Up greater than Sell Down by 20% for 5 days. 2. 50K-100K value Buy Up greater than Sell Down by 20% for 5 days. 3. Average volume(10) is above 1000000
Volume: Consecutive Days Of Increasing Average Volume	Long	1. Average Volume(20) has been increasing over the last 2 weeks. 2. Average volume(20) is above 100000
Williams %R: Bearish Williams %R	Short	1. Williams %R(26) between 0 and -20. 2. Average volume(5) is above 100,000.

Disclaimer: The information on this page is provided as a service to readers. It does not constitute financial advice and/or any investment recommendations. Past performance is not indicative of future results. We assume no liability for damages resulting from or arising out of the use of such information. It would be best if you did your own research to make your personal investment decisions wisely or consult a licenced investment advisor.

Bollinger Band: Bullish Short Term Volatility Breakout and Trending	Long	1. Close price above upper bollinger band(33,1). 2. Volume above average volume(10). 3. Average volume(10) is above 300,000.
Bollinger Band: High Above Upper Bollinger Band	Neutral	1. High above upper bollinger band(20,2). 2. Average volume(5) is above 100,000.
Donchian Channels: High Above Upper Donchian Channels	Long	High crossed above the upper Donchian Channel(14,4)
MACD: Bullish MACD Crossover	Long	1. MACD(12,26) diff line crossed above the MACD(12,26) signal line. 2. MACD Histogram(12,26) is above 0.
Stochastic: Fast Stochastic Buy Signal	Long	1. Fast Stochastic(15,5) %K crossed above 20. 2. Fast Stochastic(15,5) %K 1 day ago was below 20 for the last 5 days. 3. Average volume(30) is above 50000

MALAYSIA UNLIKELY TO GET INTO RECESSION - BURSA CHAIRMAN

According to Bursa Malaysia chairman Tan Sri Abdul Wahid Omar, Malaysia is unlikely to enter a recession despite high inflationary pressures worldwide forcing central banks to tighten monetary policy to curb inflation. Apart from the benefits of pragmatic and responsive policies, Malaysia has over the years diversified the structure of the economy to be less dependent on commodities. As the world economies progress towards a full recovery, new challenges have arisen, impacting Malaysia and its major trading partners.

US-China trade tensions and the Ukraine-Russia conflict have also caused commodity prices and logistics costs to skyrocket. This in turn is causing high inflationary pressures globally, forcing central banks to tighten their monetary policy to rein in inflation, with China being the exception. Speaking at the Invest Malaysia: Pivoting for the Future conference, he said this is likely to cause an economic slowdown, and potentially a recession in some countries in 2023. However, in Malaysia, the agriculture and mining sectors now contribute only 14% of the country's gross domestic product (GDP), with the services sector contributing 57% and the manufacturing sector contributing 24.3% of

GDP. The diversity of the trading partners – where Malaysia is not overly dependent on one particular country – adds to the economic resilience.

A very important factor contributing to Malaysia's resilience is the strength and stability of the financial system as Malaysian banks are well capitalised, liquid, better managed, and effectively regulated and supervised by Bank Negara Malaysia. Banks would continue to fulfil their intermediation role by mobilising funds that are channelled into productive sectors of the economy.

These Malaysian banks and financial services companies have significant weighting in both the FBM KLCI and the FTSE4GOOD Bursa Malaysia sustainability index. The seven banking stocks alone – Malayan Banking Bhd (Maybank), Public Bank Bhd, CIMB Group Holdings Bhd, Hong Leong Bank Bhd, RHB Bank Bhd, AMMB Holdings Bhd (AmBank) and Alliance Bank Malaysia Bhd – have a combined market capitalisation of RM325.36 billion or about 20% of total market capitalisation of RM1.65 trillion as at end-June 2022.

He added that the financial system is complemented by well-functioning debt and equity capital markets totalling RM3.5 trillion as of Dec 31, 2021, which were made up of RM1.7 trillion in the debt capital market and RM1.8 trillion in the equity capital market. Furthermore, Malaysia is also home to the world's leading Islamic capital markets totalling RM2.3 trillion, representing almost two-thirds of the total capital market.

On the resilience of the corporate sector, resilience should be redefined as the outcome of a process of transformation or of reinvention – so that we can sustain and 'bounce back', but in a much-improved form than before. This process of 'reinvention', of finding our competitive position within that future, is not only an academic or data-driven exercise, but it requires talent too. It is critical that the next generation of leaders not only step up to the plate, but bring a fresh perspective that serves to change the game. Today's leaders must share their skills and experience with those who possess the youthful energy and will to make this change happen.

MALAYSIA NOT IN ECONOMIC CRISIS DESPITE RINGGIT'S LOW VALUE AGAINST US DOLLAR – TENGKU ZAFRUL

According to Finance Minister Tengku Datuk Seri Zafrul Tengku Abdul Aziz, Malaysia is not experiencing an economic crisis just because the ringgit is trading at a low level against the United States (US) dollar. The ringgit's performance should be viewed holistically, not just in comparison with the US dollar, as the local note has also strengthened against other currencies. While the ringgit has depreciated by 7.5% against the US dollar since the beginning of 2022, many currencies in the region and developed countries have also fallen against the greenback. For example, the Japanese yen has slid 19.2%, the lowest in 24 years; the pound sterling has dropped 14.4%, the lowest in 37 years; and the euro has weakened by 11.7%, the lowest in 20 years. Although the currencies of these countries have declined in value against the US dollar, they – including the European Union and Japan – are not experiencing an economic crisis.

The ringgit has strengthened compared with the currencies of Malaysia's other trading partners. Among others, the ringgit has risen by 14.2% against the Japanese yen, 8.2% versus the pound sterling, 4.5% vis-a-vis the euro, 3.9% compared with the New Zealand dollar, and 7.2% against the South Korean won. The important thing is, as an exporting country, the low ringgit against the US dollar has a positive effect on the country's export revenue. So do not look at just one aspect. Ask Malaysian exporters. They are all happy as their exported products have become more competitive.

Additionally, economic fundamentals that have continued to strengthen are important in determining the robustness of the ringgit. The evidence (that our economy is on a solid footing) is that firstly, Malaysia's gross domestic product (GDP) has grown for three consecutive quarters. The GDP grew by 3.6% in the fourth quarter of 2021, 5% in the first quarter of 2022 and 8.9% in the second quarter.

The country's unemployment rate of 3.7% in July 2022, the lowest since the Covid-19 pandemic hit the country, is further proof that the country is not experiencing an economic crisis. The Industrial Production Index (IPI) rose by 12.5% year-on-year (y-o-y) in July 2022, and the sales value of the wholesale and retail trade surged 41% to RM130.7 billion in the same month. For the first seven months of this year alone, wholesale and retail trade was valued at RM882.1 billion, 19% higher than last year.

The country's exports increased by 38% y-o-y to RM134.1 billion in July. Net foreign investment in the local stock market has amounted to more than RM8 billion and net retail investment has reached RM1.8 billion year-to-date. Inflation rate is also manageable at 2.8% for the first seven months of 2022 due to price control measures, particularly through the provision of subsidies of almost RM80 billion this year. Adding that it makes no sense for some to say, despite these positive indicators, that we are in an economic crisis.

LOCAL INSTITUTIONAL INVESTORS TURN NET BUYERS - FUND INFLOW OF RM121MIL SHOWS SUPPORT FOR BOURSE – CGS-CIMB RESEARCH

According to CGS-CIMB Research, after five consecutive weeks of net selling, local institutional investors finally turned net buyers in the week ended Sept 9. With a net fund inflow of RM121.1mil, the institutional investors provided support for the bourse as local retail investors and foreign investors turned net sellers. Local retail investors net sold RM46mil worth of equities, following four straight weeks of net buying. Meanwhile, foreigners recorded a net fund outflow of RM42.5mil last week, after seven straight weeks of net buying. Year-to-date until Sept 9, foreign investors had net bought RM8.1bil of Malaysian equities. Local retail investors also registered a net fund inflow of RM1.8bil. In contrast, local institutional investors' net selling year-to-date was worth RM10.1bil.

The Research house highlighted that local institutions were net buyers of the industrial and technology sector in the week ended Sept 9.

Local retail investors were net sellers of the technology and industrial products sectors, while foreign investors were net sellers in the industrial products and plantation sectors. It also noted that foreign shareholdings in Malaysian equities fell 0.4 percentage points to 20.2% as at end-July 2022. This compared to 20.6% as at end-June 2022.

Commenting in its strategy note, CGS-CIMB Research said the declining trend in foreign shareholdings started in May 2018, specifically after the 14th General Election or GE14 on May 9, 2018, when Pakatan Harapan won a simple majority in Parliament, heralding the first change in government in Malaysia's history. Since then, the foreign shareholding level has fallen 4.1 percentage points from its peak of 24.2% in March 2018 to a trough of 20.1% in February 2022 due to political uncertainty.

Breaking down by stocks, the research house noted that foreign institutional investors' top-three net buy counters in the week ended Sept 9 were Gamuda Bhd, Telekom Malaysia Bhd (TM) and CIMB Group Holdings Bhd. Meanwhile, the top-three net sell stocks last week were PETRONAS Chemicals Group Bhd (PetChem), MyEG Services Bhd and RHB Bank Bhd. As for local institutional investors, the top-three net buy stocks were PetChem, MyEG and Press Metal Aluminium Holdings Bhd. Their top-three net sell stocks, on the other hand, were Gamuda, TM and Maybank. Retail investors' top-three net buy stocks last week were Genting Bhd, Maybank and Metronic Global Bhd. Their top-three net sell stocks were Press Metal, SFP Tech Holdings Bhd and MyEG.

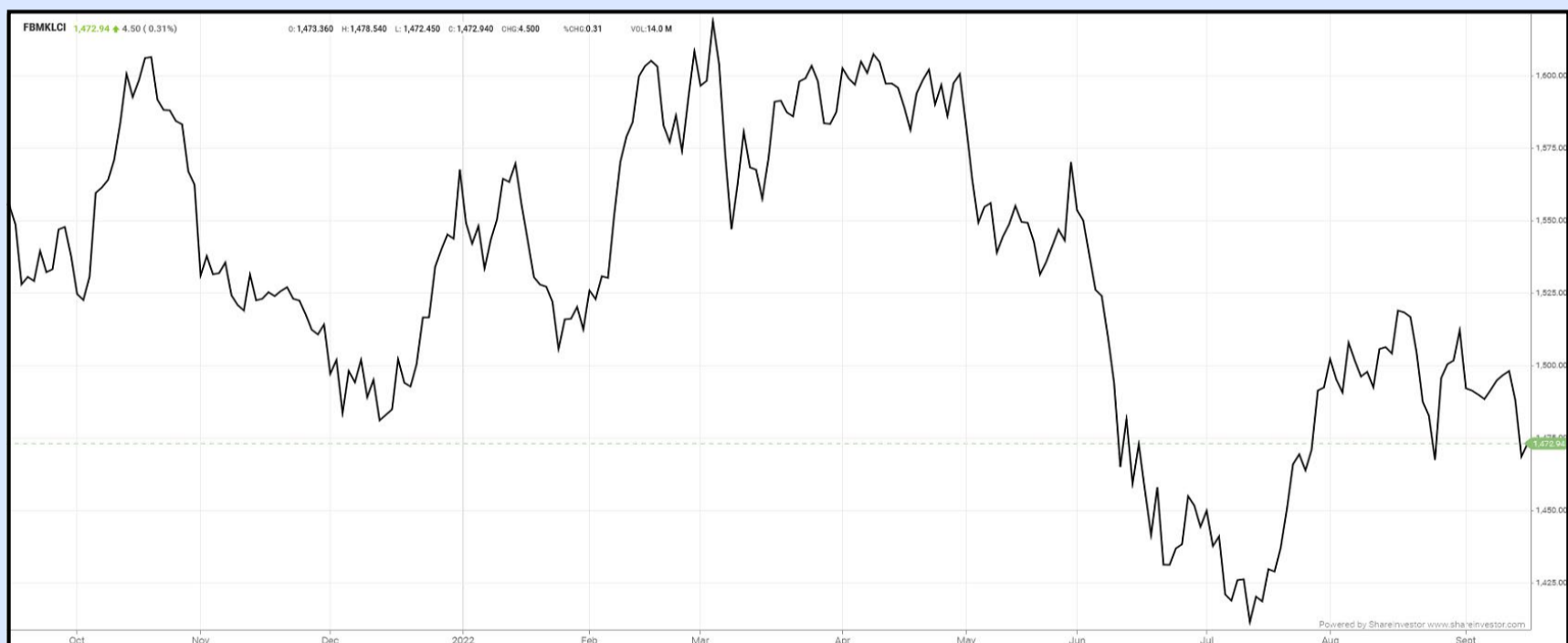
CGS-CIMB Research expects the market direction to stay weak ahead of the Federal Reserve meeting on Sept 20 to 21. It is noteworthy that the benchmark index, the FBM KLCI, rose 0.4% week-on-week (w-o-w), potentially due to improved global market sentiment as rate hike concerns subsided. The top performing sectors last week were industrial (3% w-o-w), transport (2.2% w-o-w) and technology (1.8% w-o-w). The worst-performing sectors last week were real estate investment trust (1.1% drop w-o-w), consumer (0.3% fall w-o-w) and finance (0.3% w-o-w).

Average daily trading volume declined 14.6% w-o-w to 2.4 billion trades, and average daily trading value fell 14.5% w-o-w to RM1.8bil last week.

Retail investors' share of total trading value was 25.9% last week, while that of institutional investors was 47.3%, proprietary investors 15.6% and nominee investors 11.1%.

EYE ON THE MARKETS

This week, on Thursday (15Sept), the Ringgit opened at 4.529 against the USD from 4.4990 on Monday (12Sept). Meanwhile, the Ringgit was 3.2220 to the Sing Dollar on Thursday (15Sept). On Monday (12Sept), the FBM KLCI opened at 1497.66. As at Thursday (15Sept) 10:00am, the FBM KLCI is down 24.74 points for the week at 1472.92. Over in US, the overnight Dow Jones Industrial Average closed up 30.12 points (+0.10%) to 31,135.09 whilst the NASDAQ gained 86.10 points (+0.74%) to 11,719.68.

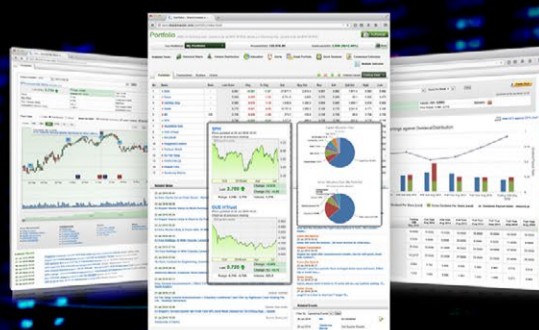


KLCI 1 Year Chart

SHAREINVESTOR MARKET DATA PLATFORMS



SHAREINVESTOR STATION
Advanced Charting Software
(8 Markets)



SHAREINVESTOR WEBPRO
Browser-Based Market Data
Analytics Platform



BURSASTATION
Advanced Charting Software
(Bursa Malaysia Only)

Over 5 trading days



ShareInvestor WebPro (www.shareinvestor.com/my)

1. Price > Stock Prices
2. Select Market: NASDAQ / NYSE / IDX / SET / HKEX / SGX (One bourse at a time)
3. select Stocks Tab
4. select Ranking Top Gainers or Top Losers (Over 5 Trading Days)
5. Mouse over Column Layout > select Edit Customs > select Name > select Last Done Price > select 5 Days Change > select 52 Weeks High > select 52 Weeks Low > Mouse Over Column Layout > select Custom

NASDAQ (USD)

Top Gainers

Name	Last Done	Change Over 5 Days	52 Weeks High	52 Weeks Low
REGENERON PHARMACEUTICALS INC	697.620	+101.180	754.670	538.010
MERCADOLIBRE INC	960.330	+72.640	1,913.770	600.685
BOOKING HOLDINGS INC	1,967.380	+61.360	2,715.660	1,669.340
FIRST CITIZENS BANCSHARES INC NRTH	858.110	+41.240	947.710	598.010
ZSCALER INC	182.980	+35.270	376.110	125.120

Top Losers

Name	Last Done	Change Over 5 Days	52 Weeks High	52 Weeks Low
PALO ALTO NETWORKS INC	182.060	-357.940	640.900	421.548
OREILLY AUTOMOTIVE INC NEW	689.430	-34.980	750.880	562.900
CINTAS CORP	402.890	-25.300	461.440	343.860
BIO-TECHNE CORP	319.670	-23.010	543.850	318.070
COSTCO WHOLESALE CORP	508.000	-21.640	612.270	406.510

NYSE (USD)

Top Gainers

Name	Last Done	Change Over 5 Days	52 Weeks High	52 Weeks Low
AMTD DIGITAL INC SPON ADS EACH REP 0.4 ORD SHS	189.420	+127.074	2,555.300	12.050
TEXAS PACIFIC LAND CORPORATION	1,858.310	+23.820	1,899.010	946.290
SNOWFLAKE INC	197.980	+20.220	405.000	110.265
PIONEER NATURAL RESOURCES CO	251.700	+17.160	288.460	146.395
INSPIRE MEDICAL SYSTEMS INC	205.130	+16.390	286.285	142.740

Top Losers

Name	Last Done	Change Over 5 Days	52 Weeks High	52 Weeks Low
BERKSHIRE HATHAWAY INC	420,499.900	-1,547.100	544,389.260	396,500.000
NVR INC	4,035.830	-97.680	5,982.445	3,576.010
AUTOZONE INC	2,133.010	-60.240	2,362.240	1,552.645
BLACKROCK INC	643.580	-48.340	973.160	575.600
PERMIAN RESOURCES CORPORATION	8.150	-40.130	8.370	7.750

IDX (Rupiah)

Top Gainers

Name	Last Done	Change Over 5 Days	52 Weeks High	52 Weeks Low
NFC INDONESIA TBK.	12,000.000	+3600.000	12,825.000	4,460.000
MITRABARA ADIPERDANA TBK.	10,650.000	+1400.000	10,650.000	3,200.000
DIAN SWASTATIKA SENTOSA TBK	36,025.000	+1325.000	56,400.000	17,475.000
PERDANA BANGUN PUSAKA TBK	2,360.000	+880.000	4,310.000	800.000
TRANSCOAL PACIFIC TBK	9,150.000	+875.000	11,800.000	7,750.000

Top Losers

Name	Last Done	Change Over 5 Days	52 Weeks High	52 Weeks Low
BAYAN RESOURCES TBK.	65,400.000	-1,650.000	85,000.000	14,775.000
BERKAH BETON SADAYA TBK.	4,120.000	-1,130.000	7,450.000	1,260.000
UNITED TRACTORS TBK.	34,000.000	-1,075.000	35,925.000	20,375.000
MNC DIGITAL ENTERTAINMENT TBK.	5,325.000	-575.000	6,475.000	476.000
ASURANSI BINA DANA ARTA TBK.	5,525.000	-525.000	9,275.000	5,450.000

SET (Thai Baht)

Top Gainers

Name	Last Done	Change Over 5 Days	52 Weeks High	52 Weeks Low
DELTA	622.000	+50.000	694.000	287.000
OHTL	454.000	+28.000	468.000	300.000
BBIK	117.000	+13.500	126.500	27.500
DITTO	79.750	+11.750	94.000	15.500
NSI	158.500	+9.500	186.000	78.250

Top Losers

Name	Last Done	Change Over 5 Days	52 Weeks High	52 Weeks Low
INSURE	381.000	-31.000	700.000	22.000
SCC	346.000	-9.000	422.000	346.000
AYUD	46.500	-5.750	55.750	31.000
TIPH	62.500	-4.250	90.000	35.000
EGCO	177.000	-4.000	190.000	160.000

HKEX (HKD)

Top Gainers

Name	Last Done	Change Over 5 Days	52 Weeks High	52 Weeks Low
NIO INC	172.800	+35.400	199.200	100.800
YUM CHINA HOLDINGS INC	404.800	+18.200	478.200	281.000
CLOUD MUSIC INC	82.450	+10.950	205.800	54.100
CHINA TOURISM GROUP DUTY FREE CORP	181.000	+10.400	183.900	120.000
NOAH HOLDINGS PRIVATE WEALTH AND AS	240.000	+10.000	307.800	230.000

Top Losers

Name	Last Done	Change Over 5 Days	52 Weeks High	52 Weeks Low
BILIBILI INC	144.400	-31.900	710.000	125.000
WUXI BIOLOGICS (CAYMAN) INC	50.800	-12.150	127.300	40.300
TENCENT HOLDINGS LIMITED	299.600	-12.000	499.720	288.000
ASYMCEM LABORATORIES (TIANJIN) CO	92.500	-11.100	277.143	88.000
WUXI APTEC CO LTD	69.450	-10.350	189.800	66.950

SGX (SGD)

Top Gainers

Name	Last Done	Change Over 5 Days	52 Weeks High	52 Weeks Low
NIO INC. USD OV	21.880	+4.480	25.350	14.200
JARDINE C&C	34.920	+1.570	35.280	18.930
DBS	33.320	+1.040	37.490	29.180
UOB	27.280	+0.390	33.330	25.280
UOI	6.970	+0.280	7.170	6.545

Top Losers

Name	Last Done	Change Over 5 Days	52 Weeks High	52 Weeks Low
JMH USD	54.060	-0.840	62.100	49.500
FRASERS HTRUST	0.535	-0.165	0.710	0.420
SEMBCORP IND	3.280	-0.150	3.510	1.780
GREAT EASTERN	19.280	-0.110	22.150	19.270
SHANGRI-LA HKD	6.020	-0.110	7.200	5.470

REPEATED BREACHES DESPITE REPRIMANDS AND FINES



Devanesan
Evanson

**Chief Executive
Officer, Minority
Shareholders Watch
Group**

Complying with the applicable legal requirements is a fiduciary duty of directors who sit on the board of companies. More so when they are appointed to the board of publicly listed companies which means more stringent rules and regulations to abide by. Despite this, some boards may not fully understand or appreciate the importance of their obligations with respect to compliance. Worse still, some boards repeatedly disregard the requirement to comply with the rules and properly discharge their duties, despite repeated fines and reprimands.

This is evident in the case of Pasdec Holdings Berhad (Pasdec) which repeatedly committed the same offences in recent years. Pasdec is a Kuantan-based property developer which

counts the Pahang State Government (via Perbadanan Kemajuan Negeri Pahang, PKNP) as one of its major shareholders with a 26.57% stake. On 1 September 2022, Bursa Malaysia Securities has publicly reprimanded Pasdec and seven of its directors for breaches of the Main Market Listing Requirements (MMLR). The seven directors including its executive deputy chairman Dato' Sri Tew Kim Thin and group managing director Tew Kim Kiat, were imposed a total fine of RM468,000. Pasdec is also required to carry out a limited review on the Company's quarterly report submission. In addition, all the seven directors and its relevant personnel are required to attend a training programme in relation to compliance with the MMLR pertaining to financial statements.

THE BREACHES

Pasdec and the seven directors were reprimanded by Bursa Malaysia Securities for their breaches of:

- Paragraph 9.23(1) of the MMLR for failing to issue the annual report that included the audited financial statements (AFS) together with the auditors' and directors' reports for financial year ended 31 December 2019 (AR 2019) within the extended timeframe of 31 July 2020 (2019 Delay Breach). Pasdec had only issued the AR 2019 on 27 October 2020, after a delay of 59 market days (2019 Delay Breach).
- Paragraph 9.35A(1)(a) of the MMLR for failing to ensure that Pasdec's fourth quarterly report for FYE 31 December 2019 (Q4FY2019) announced on 28 February 2020 took into account the adjustments stated in the Company's announcement dated 27 October 2020 (2019 Deviation Breach). Pasdec had reported an unaudited net loss of RM16.362 million for FY2019 in its announcement of Q4FY2019 quarterly result announced on 28 February 2020. However, it report an audited net loss of RM27.502 million in the AFS for FY2019 announced on 27 October 2020. The difference of RM11.14 million represented a variance of 68.1%. The failure to take into account the adjustment was in contravention of Paragraph 9.35A(1)(a) of MMLR that a listed issuer must ensure that each announcement made is factual, clear,

unambiguous, accurate, succinct and contains sufficient information to enable investors to make informed investment decisions.

- Paragraph 16.17A of the MMLR for failing to comply with the enforceable undertaking dated 26 August 2019 provided by Pasdec to Bursa Malaysia Securities pursuant to paragraph 16.29(2) of the MMLR (Undertaking).

Notably, this is not the first time that Pasdec and its directors have been sanctioned for the same offences. Back in November 2020, the Company and Kim Thin (who was then the group managing director of Pasdec) were reprimanded and fined by Bursa Malaysia Securities for the delay in the issuance of Annual Report 2018 as well as their failure to include the adjustment of a 28% profit deviation between the unaudited and audited net profit in FY2017. With that, they had breached Paragraph 9.23(1) and Paragraph 9.16(1)(a)* of the MMLR. Kim Thin was fined RM12,500 over the breaches. Kim Thin was appointed to the Board of Pasdec on 10 October 2017. He has served as the executive deputy chairman of the Company since 1 September 2019.

**Paragraph 9.16(1)(a) dealt with the requirement that a listed issuer must ensure each announcement is factual, clear, unambiguous, accurate, succinct and contains sufficient information to enable investors to make informed investment decisions. This LR was revised in Bursa Malaysia Securities' amendments to MMLR dated 3 June 2019.*

On another occasion, on 22 July 2020, Pasdec and its board of directors were reprimanded by the Securities Commission Malaysia for breaching Section 354(1)(a) of the Capital Markets and Services Act 2007 (CMSA) read together with Section 246(1)(b) of the CMSA and Paragraph 1.06, Chapter 1, Part 1 of the Prospectus Guidelines. The misconduct was related to Pasdec, through its Board of Directors, having authorised the issuance of its Abridged Prospectus which contains information from which there is a material omission in respect of the pending approval from the Ministry of Finance (MoF) for PKNP to subscribe for the PKNP Entitlement at the issue price of 35 sen per rights share; and Pasdec

had failed to ensure the Abridged Prospectus contained the information that the MoF approval for PKNP to subscribe for the PKNP Entitlement was still pending hence rendering the Abridged Prospectus incomplete and inaccurate.

Its 4 non-independent non-executive directors at the material time of the breach were reprimanded and imposed a total penalty of RM84,000, while the 4 independent nonexecutive directors were reprimanded for the breach without a penalty. Pasdec's chief executive officer and chairman of the due diligence working group for the rights issue (at the material time of breach) was also reprimanded and fined for RM94,500.

Other than that, listed issuers should also take note that as per Paragraph 9.19(35) of MMLR, PLCs are required to make immediate announcement to Bursa Malaysia when there is any deviation of 10% or more between the profit or loss after tax and noncontrolling interest stated in the announced unaudited financial statements and the audited financial statements. They must provide an explanation for the deviation and provide a reconciliation for the deviation.

CONCLUSION

Pasdec's repeated failures to issue annual reports on time and provide factually correct information to the investing public suggest that something is not right at the Company and the Board level when it came to timely and continuing disclosure. The sanctions seem to indicate the absence of robust oversight and supervision on the critical disclosures of the Company. It is inevitable that shareholders will form a view as to the directors' ability to perform their roles and duties in accordance with the rules of the stock exchange. It is unsure whether Pasdec's team of fellow professionals such as the company secretary, senior management, and principal adviser (for the rights issue exercise) played their roles in a diligent and professional manner. Maybe, the Board was ill-advised. Whatever the situation, the Board must take steps to ensure that the Board does not breach the MMLR and CMSA.

Furthermore, Practice 1.5 of the Malaysian Code of Corporate Governance also guides that the board to be supported by a suitably qualified and competent company secretary to provide sound governance advice, ensure adherence to rules and procedures, and advocate adoption of corporate governance best practices.

Again, it is unsure what the company secretary's role was in relation to the breaches – whether the company secretary did not provide the correct advice or whether such correct advice was provided, but the Board chose to disregard the advice. Whatever, the actual situation that contributed to the repeated breaches and sanctions, it is timely for the Board to examine itself and its support functions so that it may fulfil its duties and obligations as a responsible corporate citizen. Repeated sanctions do not instil confidence in shareholders.

This article appeared in the The Observer, a weekly newsletter published by The Minority Shareholders Watch Group (MSWG) and reproduced here with their permission. Do follow MSWG's Twitter account at @MSWGMalaysia and share your thought on their tweets from time to time.



Learn how to identify Hot Stocks using Technical Analysis (TA) and Fundamental Analysis (FA)

SIGN UP FOR Invest NOW IT'S FREE!!!

Click here

Scan me



Via email, every Friday.

Get market moving news and analyses. Regular columns include Behind The Action and From The Observer

Leaderboard • Shariah Hot Stocks • Shariah Momentum Up Stocks • Non Shariah Hot Stocks • Up Trending Stocks • Growth Stocks • Dividend Stocks • Long Companies • Insider Activity • Investor Relations • Regional Markets



DEFINITION: Insider Activity shows the trades made by substantial shareholders or directors of the company. Purchases by the directors and company share buyback may indicate the share price is undervalued and brings confidence to the price trend of the share price.



ShareInvestor WebPro > Fundamental > Insider Trades > click Search tab > Select Bursa > click Stock name > scroll up and leave at <Select Counter> Type Date Range for Announcement Date > click Search

Notice Period is 09 September - 14 September 2022

Effective Change Date	Stock Name	Buyer/ Seller Name [Classification]	Bought / (Sold) / '000			No. of Shares After Trade '000	
			Total	Total	% Held	Total	% Held
07 Sep 2022 - 08 Sep 2022	3A	MR TEO KWEE HOCK [SSH]	-109	49,280	10.077		
05 Sep 2022 - 06 Sep 2022	3A	MR TEO KWEE HOCK [SSH]	159	49,388	10.099		
06 Sep 2022 - 06 Sep 2022	ABMB	EMPLOYEES PROVIDENT FUND BOARD [SSH]	-464	160,273	10.353		
05 Sep 2022 - 05 Sep 2022	ABMB	EMPLOYEES PROVIDENT FUND BOARD [SSH]	-202	160,737	10.383		
02 Sep 2022 - 02 Sep 2022	ABMB	EMPLOYEES PROVIDENT FUND BOARD [SSH]	-730	160,939	10.396		
01 Sep 2022 - 01 Sep 2022	ABMB	EMPLOYEES PROVIDENT FUND BOARD [SSH]	-20	161,669	10.443		
30 Aug 2022 - 30 Aug 2022	ABMB	EMPLOYEES PROVIDENT FUND BOARD [SSH]	-1,140	161,689	10.444		
02 Sep 2022 - 02 Sep 2022	ACME	WWT WELLNESS SOLUTIONS SDN BHD [SSH]	217	63,833	17.368		
02 Sep 2022 - 02 Sep 2022	ACME	MR GOH CHOON LYE [SSH]	217	63,833	17.368		
06 Sep 2022 - 08 Sep 2022	ADVENTA	KWEK SIEW LENG [DIR/CEO]	115	115	0.075		
06 Sep 2022 - 06 Sep 2022	AEON	EMPLOYEES PROVIDENT FUND BOARD [SSH]	-65	147,815	10.528		
01 Sep 2022 - 01 Sep 2022	AEON	EMPLOYEES PROVIDENT FUND BOARD [SSH]	-45	147,565	10.51		
30 Aug 2022 - 30 Aug 2022	AEON	EMPLOYEES PROVIDENT FUND BOARD [SSH]	-200	147,610	10.514		
05 Sep 2022 - 05 Sep 2022	AHEALTH	DR KEE KIRK CHIN [DIR/CEO]	140	202,431	42.391		
05 Sep 2022 - 05 Sep 2022	AHEALTH	DR KEE KIRK CHIN [SSH]	140	202,431	42.391		
05 Sep 2022 - 07 Sep 2022	AIMFLEX	DATO' AWANG DAUD BIN AWANG PUTERA [DIR/CEO]	-26,292	115,997	7.897		
05 Sep 2022 - 07 Sep 2022	AIMFLEX	DATO' AWANG DAUD BIN AWANG PUTERA [SSH]	-26,292	115,997	7.897		
30 Aug 2022 - 02 Sep 2022	AIMFLEX	DATO' AWANG DAUD BIN AWANG PUTERA [DIR/CEO]	-28,707	142,289	9.686		
30 Aug 2022 - 02 Sep 2022	AIMFLEX	DATO' AWANG DAUD BIN AWANG PUTERA [SSH]	-28,707	142,289	9.686		
05 Sep 2022 - 05 Sep 2022	AIRPORT	EMPLOYEES PROVIDENT FUND BOARD [SSH]	200	257,910	15.544		
01 Sep 2022 - 01 Sep 2022	AIRPORT	EMPLOYEES PROVIDENT FUND BOARD [SSH]	200	257,710	15.532		
01 Sep 2022 - 01 Sep 2022	ALLIANZ	EMPLOYEES PROVIDENT FUND BOARD [SSH]	2	12,571	7.064		
05 Sep 2022 - 05 Sep 2022	AMBANK	EMPLOYEES PROVIDENT FUND BOARD [SSH]	4,219	357,257	10.787		
02 Sep 2022 - 02 Sep 2022	AMBANK	EMPLOYEES PROVIDENT FUND BOARD [SSH]	514	353,038	10.659		
01 Sep 2022 - 01 Sep 2022	AMBANK	EMPLOYEES PROVIDENT FUND BOARD [SSH]	3,000	352,524	10.643		
30 Aug 2022 - 30 Aug 2022	AMBANK	EMPLOYEES PROVIDENT FUND BOARD [SSH]	1,406	349,524	10.551		
30 Aug 2022 - 30 Aug 2022	AMEDIA	MR TAN CHIA HONG @ GAN CHIA HONG [DIR/CEO]	822	58,828	18.897		
30 Aug 2022 - 30 Aug 2022	AMEDIA	WISE NET RESOURCES HOLDING (M) SDN BHD [SSH]	822	17,227	5.53		
02 Sep 2022 - 06 Sep 2022	ANCOMNY	DATO' SIEW KA WEI [SSH]	40	190,028	21.792		
02 Sep 2022 - 06 Sep 2022	ANCOMNY	DATO' SIEW KA WEI [DIR/CEO]	40	190,028	21.792		
01 Sep 2022 - 01 Sep 2022	ANCOMNY	DATO' SIEW KA WEI [DIR/CEO]	4,037	285,361	26.346		
30 Aug 2022 - 01 Sep 2022	ANCOMNY	DATO' SIEW KA WEI [SSH]	41	189,988	21.788		
01 Jun 2022 - 01 Sep 2022	ANCOMNY	DATO' SIEW KA WEI [DIR/CEO]	41	189,988	21.788		
06 Sep 2022 - 07 Sep 2022	APM	DATO' TAN HENG CHEW [DIR/CEO]	8	104,315	53.36		
06 Sep 2022 - 07 Sep 2022	APM	DATO' TAN HENG CHEW [SSH]	8	96,311	49.265		
30 Aug 2022 - 30 Aug 2022	APM	EMPLOYEES PROVIDENT FUND BOARD [SSH]	-6	10,673	5.46		
06 Sep 2022 - 06 Sep 2022	ASIAFLE	FMR LLC [SSH]	-23	10,385	5.332		
06 Sep 2022 - 06 Sep 2022	ASIAFLE	ABIGAIL P. JOHNSON [SSH]	-23	10,385	5.332		
06 Sep 2022 - 06 Sep 2022	ASIAFLE	FIDELITY MANAGEMENT & RESEARCH COMPANY LLC [SSH]	-23	9,734	4.997		
05 Sep 2022 - 05 Sep 2022	ASIAFLE	DATO' LIM SOON HUAT [SSH]	1	91,001	46.721		
05 Sep 2022 - 05 Sep 2022	ASIAFLE	DATO' LIM SOON HUAT [DIR/CEO]	1	91,001	46.721		
02 Sep 2022 - 05 Sep 2022	ASIAFLE	ABIGAIL P. JOHNSON [SSH]	-556	10,408	5.343		
02 Sep 2022 - 05 Sep 2022	ASIAFLE	FMR LLC [SSH]	-556	10,408	5.343		
02 Sep 2022 - 05 Sep 2022	ASIAFLE	FIDELITY MANAGEMENT & RESEARCH COMPANY LLC [SSH]	-556	9,757	5.009		
02 Sep 2022 - 02 Sep 2022	ASTRO	EMPLOYEES PROVIDENT FUND BOARD ("EPF") [SSH]	-366	333,653	6.399		
01 Sep 2022 - 01 Sep 2022	ASTRO	EMPLOYEES PROVIDENT FUND BOARD ("EPF") [SSH]	-1,228	334,019	6.406		
30 Aug 2022 - 30 Aug 2022	ASTRO	EMPLOYEES PROVIDENT FUND BOARD ("EPF") [SSH]	-256	335,247	6.429		
02 Sep 2022 - 02 Sep 2022	ATTA	DATO' SRI TAJUDIN BIN MD ISA [DIR/CEO]	5	20	0.008		
02 Sep 2022 - 02 Sep 2022	AXREIT	EMPLOYEES PROVIDENT FUND BOARD [SSH]	-10	265,613	16.185		
01 Sep 2022 - 01 Sep 2022	AXREIT	EMPLOYEES PROVIDENT FUND BOARD [SSH]	1,385	265,623	16.186		
02 Sep 2022 - 02 Sep 2022	AXREIT	KUMPULAN WANG PERSARAAN (DIPERBADANKAN) [SSH]	92	179,635	10.946		
30 Aug 2022 - 30 Aug 2022	AXREIT	EMPLOYEES PROVIDENT FUND BOARD [SSH]	-305	264,238	16.102		
08 Sep 2022 - 08 Sep 2022	BAUTO	KUMPULAN WANG PERSARAAN (DIPERBADANKAN) [SSH]	-1,110	59,606	5.131		
06 Sep 2022 - 06 Sep 2022	BAUTO	PRUDENTIAL PLC [SSH]	93	62,736	5.401		
07 Sep 2022 - 07 Sep 2022	BAUTO	KUMPULAN WANG PERSARAAN (DIPERBADANKAN) [SSH]	-624	60,716	5.227		
02 Sep 2022 - 02 Sep 2022	BAUTO	ABERDEEN ASSET MANAGEMENT PLC [SSH]	-221	70,789	6.094		
02 Sep 2022 - 02 Sep 2022	BAUTO	ABERDEEN PLC (FORMERLY KNOWN AS STANDARD LIFE ABERDEEN PLC) [SSH]	-221	70,789	6.094		
02 Sep 2022 - 02 Sep 2022	BAUTO	ABRDN MALAYSIA SDN BHD (FORMERLY KNOWN AS ABERDEEN STANDARD INVESTMENTS (MALAYSIA) SDN BHD) [SSH]	-221	69,224	5.959		
01 Sep 2022 - 01 Sep 2022	BAUTO	ABERDEEN ASSET MANAGEMENT PLC [SSH]	-320	71,010	6.113		

Notice Period is 09 September - 14 September 2022

Effective Change Date	Stock Name	Buyer/ Seller Name [Classification]	Bought / (Sold) / '000			No. of Shares After Trade '000	
			Total	Total	% Held	Total	% Held
01 Sep 2022 - 01 Sep 2022	BAUTO	ABRDN PLC (FORMERLY KNOWN AS STANDARD LIFE ABERDEEN PLC) [SSH]	-320	71,010	6.113		
01 Sep 2022 - 01 Sep 2022	BAUTO	ABRDN MALAYSIA SDN BHD (FORMERLY KNOWN AS ABERDEEN STANDARD INVESTMENTS (MALAYSIA) SDN BHD) [SSH]	-320	69,446	5.979		
01 Sep 2022 - 01 Sep 2022	BAUTO	PRUDENTIAL PLC [SSH]	200	62,643	5.393		
06 Sep 2022 - 06 Sep 2022	BIMB	EMPLOYEES PROVIDENT FUND BOARD [SSH]	13	296,189	13.743		
26 Apr 2022 - 26 Apr 2022	BINTAI	M&A NOMINEES (TEMPATAN) SDN BHD - PLEDGED SECURITIES ACC FOR MAJESTIC SALUTE SDN BHD FOR YEO ENG LAM [SSH]	-12,500	46,037	5.4		
07 Sep 2022 - 08 Sep 2022	BJCORP	TAN SRI DATO' SERI VINCENT TAN CHEE YIOUN [DIR/CEO]	2,530	1,958,808	35.346		
07 Sep 2022 - 08 Sep 2022	BJCORP	TAN SRI DATO' SERI VINCENT TAN CHEE YIOUN [SSH]	2,530	1,931,539	34.854		
05 Sep 2022 - 06 Sep 2022	BJCORP	TAN SRI DATO' SERI VINCENT TAN CHEE YIOUN [DIR/CEO]	4,000	1,956,278	35.3		
05 Sep 2022 - 06 Sep 2022	BJCORP	TAN SRI DATO' SERI VINCENT TAN CHEE YIOUN [SSH]	4,000	1,929,009	34.808		
05 Sep 2022 - 05 Sep 2022	BJFOOD	BERJAYA CORPORATION BERHAD [SSH]	180,301	925,954	52.633		
05 Sep 2022 - 05 Sep 2022	BJFOOD	BERJAYA GROUP BERHAD [SSH]	180,301	925,954	52.633		
05 Sep 2022 - 05 Sep 2022	BJFOOD	JUARA SEJATI SDN BHD [SSH]	28,200	210,650	11.974		
29 Aug 2022 - 06 Sep 2022	BJFOOD	TAN SRI DATO' SERI VINCENT TAN CHEE YIOUN [SSH]	193,101	976,426	55.502		
05 Sep 2022 - 05 Sep 2022	BONIA	MR CHIANG SANG SEM [DIR/CEO]	3	144,872	72.077		
05 Sep 2022 - 05 Sep 2022	BONIA	MR CHIANG SANG SEM [SSH]	3	133,110	66.225		
07 Sep 2022 - 07 Sep 2022	BURSA	KUMPULAN WANG PERSARAAN (DIPERBADANKAN) [SSH]	-74	89,068	11.006		
06 Sep 2022 - 06 Sep 2022	CAMRES	LEE CHIN YEN [DIR/CEO]	1,659	59,040	30.844		
06 Sep 2022 - 06 Sep 2022	CAMRES	MR LEE CHIN YEN [SSH]	1,659	59,040	30.844		
06 Sep 2022 - 06 Sep 2022	CAMRES	LEE POH CHOO [DIR/CEO]	1,659	25,640	13.394		
06 Sep 2022 - 06 Sep 2022	CAMRES	MADAM LEE POH CHOO [SSH]	1,659	25,640	13.394		
06 Sep 2022 - 06 Sep 2022	CAMRES	MADAM LEE POH HONG [SSH]	1,659	25,314	13.224		
06 Sep 2022 - 06 Sep 2022	CAMRES	MADAM LEE POH NAI [SSH]	1,659	21,994	11.49		
06 Sep 2022 - 06 Sep 2022	CAMRES	SUNLEAP INDUSTRIES SDN BHD [SSH]	1,659	21,229	11.09		
06 Sep 2022 - 06 Sep 2022	CAMRES	MR LEE TENG KOK [SSH]	1,659	21,229	11.09		
06 Sep 2022 - 06 Sep 2022	CAMRES	MR LEE TENG HUI [SSH]	1,659	21,229	11.09		
30 Aug 2022 - 30 Aug 2022	CANONE	MR YEOH JIN BENG [DIR/CEO]	5,500	5,650	2.94		
01 Sep 2022 - 01 Sep 2022	CBIP	DATUK LIM CHAI BENG [SSH]	3,800	182,849	38.256		
01 Sep 2022 - 01 Sep 2022	CBIP	DATUK LIM CHAI BENG [DIR/CEO]	3,800	182,849	38.256		
01 Sep 2022 - 02 Sep 2022	CCB	JARDINE CYCLE & CARRIAGE LIMITED [SSH]	478	96,221	95.51		
01 Sep 2022 - 02 Sep 2022	CCB	JARDINE STRATEGIC LIMITED [SSH]	478	96,221	95.51		
01 Sep 2022 - 02 Sep 2022	CCB	JARDINE MATHESON HOLDINGS LIMITED [SSH]	478	96,221	95.51		
01 Sep 2022 - 02 Sep 2022	CCB	JSH ASIAN HOLDINGS LIMITED [SSH]	478	96,221	95.51		
01 Sep 2022 - 02 Sep 2022	CCB	JARDINE STRATEGIC SINGAPORE PTE LTD [SSH]	478	96,221	95.51		
01 Sep 2022 - 02 Sep 2022	CCB	JMH INVESTMENTS LIMITED [SSH]	478	96,221	95.51		
07 Sep 2022 - 07 Sep 2022	CHHB	TAN SRI LEE KIM TIONG @ LEE KIM YEW [SSH]	-600	180,835	60.941		
07 Sep 2022 - 07 Sep 2022	CHHB	TAN SRI LEE KIM TIONG @ LEE KIM YEW [DIR/CEO]	-600	180,835	60.941		
01 Sep 2022 - 01 Sep 2022	CHHB	TAN SRI LEE KIM TIONG @ LEE KIM YEW [SSH]	1,980	181,435	61.143		
01 Sep 2022 - 01 Sep 2022	CHHB	TAN SRI LEE KIM TIONG @ LEE KIM YEW [DIR/CEO]	1,980	181,435	61.143		
02 Sep 2022 - 02 Sep 2022	CHHB	TAN SRI LEE KIM TIONG @ LEE KIM YEW [SSH]	-3,600	179,455	60.476		
02 Sep 2022 - 02 Sep 2022	CHHB	TAN SRI LEE KIM TIONG @ LEE KIM YEW [DIR/CEO]	-3,600	179,455	60.476		
02 Sep 2022 - 02 Sep 2022	CHHB	COUNTRY HEIGHTS INTERNATIONAL SDN BHD [SSH]	-3,600	35,932	12.109		
05 Sep 2022 - 07 Sep 2022	CHINHIN	DATUK SERI CHIAU BENG TEIK JP [DIR/CEO]	7,300	924,708	52.261		
05 Sep 2022 - 07 Sep 2022	CHINHIN	DATUK SERI CHIAU BENG TEIK JP [SSH]	7,300	924,708	52.261		
01 Sep 2022 - 02 Sep 2022	CHINHIN	DATUK SERI CHIAU BENG TEIK JP [DIR/CEO]	4,690	917,408	51.849		
01 Sep 2022 - 02 Sep 2022	CHINHIN	DATUK SERI CHIAU BENG TEIK JP [SSH]	4,690	917,408	51.849		
07 Sep 2022 - 07 Sep 2022	CIMB	KHAZANAH NASIONAL BERHAD [SSH]	-34,355	2,566,307	24.5		
27 Jun 2022 - 27 Jun 2022	CNERGEN	PUAN ALWIZAH AL-YAFI BINTI AHMAD KAMAL [DIR/CEO]	-30	270	0.054		
08 Sep 2022 - 08 Sep 2022	CNOUHUA	MR CHIN KUAN KAOK @ CHEN KOH FOOK [SSH]	670	77,632	11.622		
05 Sep 2022 - 05 Sep 2022	CTOS	EMPLOYEES PROVIDENT FUND BOARD [SSH]	78	147,702	6.394		
05 Sep 2022 - 05 Sep 2022	CVIEW	MR LAW KIT TAT [DIR/CEO]	400	25,219	25.22		
05 Sep 2022 - 05 Sep 2022	CVIEW	PUAN SADIHA BINTI SULEIMAN [SSH]	-400	17,028	17.028		
05 Sep 2022 - 05 Sep 2022	CVIEW	ENCIK MUNAWIR BIN KHADRI [SSH]	-400	6,995	6.995		
05 Sep 2022 - 05 Sep 2022	CVIEW	NEOASAS TEKNIK SDN. BHD. [SSH]	-400	6,995	6.995		
07 Sep 2022 - 07 Sep 2022	CYPARK	MR CHUNG CHEE YANG [SSH]	2,500	34,500	5.859		
05 Sep 2022 - 05 Sep 2022	CYPARK	MR CHUNG CHEE YANG [SSH]	1,000	32,000	5.435		
02 Sep 2022 - 02 Sep 2022	DATAPRP	DATO MOHD RIZAL BIN MOHD JAAFAR [DIR/CEO]	200	2,500	0.371		
30 Aug 2022 - 30 Aug 2022	DAYANG	URUSHARTA JAMAHAH SDN. BHD. [SSH]	-800	79,916	6.9		
07 Sep 2022 - 07 Sep 2022	DLADY	AMANAHRAYA TRUSTEES BERHAD - AMANAH SAHAM BUMIPUTERA [SSH]	8	4,999	7.812		

Disclaimer: The Information in Insider Activity is extracted from www.shareinvestor.com/fundamental/insider_trades. The information on this page is provided as a service to readers. It does not constitute financial advice and/or any investment recommendations. We assume no liability for damages resulting from or arising out of the use of such information. Whilst every effort is made to ensure accuracy, the information presented is not the official record of shareholder filings. Readers are advised to read the original filings on the Bursa Malaysia website at www.bursamalaysia.com



STROM
SWISS TIMEPIECES & JEWELLERY



StromWatch Asia
Tele : +65.9817.3378
Email : ll.stromasia@gmail.com
WWW.STROMWATCH.SWISS

Notice Period is 09 September – 14 September 2022

Effective Change Date	Stock Name	Buyer/ Seller Name [Classification]	Bought / (Sold) / '000		
			Total	Total	% Held
06 Sep 2022 - 06 Sep 2022	DLADY	AMANAHRAYA TRUSTEES BERHAD - AMANAH SAHAM BUMIPUTERA [SSH]	1	4,991	7.8
02 Sep 2022 - 02 Sep 2022	DPHARMA	PERMODALAN NASIONAL BERHAD [SSH]	-268	403,097	42.331
02 Sep 2022 - 02 Sep 2022	DPHARMA	YAYASAN PELABURAN BUMIPUTRA [SSH]	-268	403,097	42.331
01 Sep 2022 - 01 Sep 2022	DPHARMA	PERMODALAN NASIONAL BERHAD [SSH]	-555	403,365	42.36
01 Sep 2022 - 01 Sep 2022	DPHARMA	YAYASAN PELABURAN BUMIPUTRA [SSH]	-555	403,365	42.36
30 Aug 2022 - 30 Aug 2022	DRBHOOM	EMPLOYEES PROVIDENT FUND BOARD [SSH]	-418	206,652	10.689
05 Sep 2022 - 05 Sep 2022	DSOINIC	URUSHARTA JAMAAH SDN. BHD. [SSH]	-39	260,167	9.083
02 Sep 2022 - 02 Sep 2022	DSOINIC	URUSHARTA JAMAAH SDN. BHD. [SSH]	-100	260,206	9.084
02 Sep 2022 - 02 Sep 2022	DSOINIC	MR CHEW BEN BEN [SSH]	-3,000	233,454	8.151
01 Sep 2022 - 01 Sep 2022	DSOINIC	DATUK HAJI ABU HANIFAH BIN NOORDIN [SSH]	4,110	231,308	8.076
30 Aug 2022 - 30 Aug 2022	DSOINIC	URUSHARTA JAMAAH SDN. BHD. [SSH]	-500	260,306	9.088
05 Sep 2022 - 06 Sep 2022	ELKDESA	MR TEOH HOCK HOCK CHAI [DIR/CEO]	142	124,620	41.101
05 Sep 2022 - 06 Sep 2022	ELKDESA	MR TEOH HOCK CHAI @ TEW HOCK CHAI [SSH]	142	124,620	41.101
01 Sep 2022 - 02 Sep 2022	ELKDESA	MR TEOH HOCK CHAI @ TEW HOCK CHAI [SSH]	248	124,478	41.054
01 Sep 2022 - 02 Sep 2022	ELKDESA	MR TEOH HOCK HOCK CHAI [DIR/CEO]	248	124,478	41.054
06 Sep 2022 - 08 Sep 2022	ENGTEX	DATO' LIM KIAM LAM [SSH]	-593	27,479	6.321
06 Sep 2022 - 06 Sep 2022	ENG-TEX-WB	DATIN YAP SENG KUAN [DIR/CEO]	58	35,358	32.413
06 Sep 2022 - 06 Sep 2022	ENG-TEX-WB	DATO' NG HOOK [SSH]	58	35,358	32.412
06 Sep 2022 - 06 Sep 2022	ENG-TEX-WB	DATIN YAP SENG KUAN [SSH]	58	35,358	32.413
06 Sep 2022 - 06 Sep 2022	ENG-TEX-WB	DATO' NG HOOK [DIR/CEO]	58	35,358	32.412
06 Sep 2022 - 08 Sep 2022	ENG-TEX-WB	MR NG CHOOI GUAN [DIR/CEO]	482	7,123	6.53
01 Sep 2022 - 01 Sep 2022	EPMB	ENCIK HAMIDON BIN ABDULLAH [DIR/CEO]	-5,000	69,266	35.06
01 Sep 2022 - 01 Sep 2022	EPMB	ENCIK HAMIDON BIN ABDULLAH [SSH]	-5,000	69,266	35.06
01 Sep 2022 - 01 Sep 2022	EPMB	MUTUAL CONCEPT SDN BHD [SSH]	-5,000	56,754	28.727
05 Sep 2022 - 05 Sep 2022	F&N	EMPLOYEES PROVIDENT FUND BOARD [SSH]	94	48,527	13.231
02 Sep 2022 - 02 Sep 2022	F&N	EMPLOYEES PROVIDENT FUND BOARD [SSH]	73	48,433	13.205
06 Sep 2022 - 06 Sep 2022	FFB	EMPLOYEES PROVIDENT FUND BOARD [SSH]	335	114,329	6.153
05 Sep 2022 - 05 Sep 2022	FFB	EMPLOYEES PROVIDENT FUND BOARD [SSH]	642	113,993	6.135
08 Sep 2022 - 08 Sep 2022	GAMUDA	KUMPULAN WANG PERSARAAN (DIPERBADANKAN) [KWAP] [SSH]	-452	201,944	7.79
06 Sep 2022 - 06 Sep 2022	GAMUDA	EMPLOYEES PROVIDENT FUND BOARD (EPF BOARD) [SSH]	-703	370,840	14.31
05 Sep 2022 - 05 Sep 2022	GAMUDA	EMPLOYEES PROVIDENT FUND BOARD (EPF BOARD) [SSH]	-480	371,542	14.34
06 Sep 2022 - 06 Sep 2022	GAMUDA	KUMPULAN WANG PERSARAAN (DIPERBADANKAN) [KWAP] [SSH]	-232	202,396	7.81
02 Sep 2022 - 02 Sep 2022	GAMUDA	EMPLOYEES PROVIDENT FUND BOARD (EPF BOARD) [SSH]	325	366,370	14.14
01 Sep 2022 - 01 Sep 2022	GAMUDA	EMPLOYEES PROVIDENT FUND BOARD (EPF BOARD) [SSH]	-228	366,045	14.13
02 Sep 2022 - 02 Sep 2022	GAMUDA	KUMPULAN WANG PERSARAAN (DIPERBADANKAN) [KWAP] [SSH]	-400	202,523	7.82
06 Sep 2022 - 07 Sep 2022	GASMSIA	LEMBAGA TABUNG HAJI [SSH]	-2,300	95,691	7.453
02 Sep 2022 - 05 Sep 2022	GASMSIA	LEMBAGA TABUNG HAJI [SSH]	-1,082	97,991	7.632
30 Aug 2022 - 30 Aug 2022	GASMSIA	LEMBAGA TABUNG HAJI [SSH]	-51	99,073	7.716
07 Sep 2022 - 07 Sep 2022	GCAP	DATUK YAP YEE PING [DIR/CEO]	125	13,536	4.221
02 Sep 2022 - 02 Sep 2022	GCAP	MR LEE POH HIN [SSH]	30	32,459	10.121
06 Sep 2022 - 06 Sep 2022	GCB	MR HIA CHENG [DIR/CEO]	2,000	53,889	4.99
06 Sep 2022 - 06 Sep 2022	GCB	MR TAY HOW SIK @ TAY HOW SICK [DIR/CEO]	1,080	14,729	1.364
06 Sep 2022 - 06 Sep 2022	GCB-WB	MR HIA CHENG [DIR/CEO]	2,000	5,263	5.485
08 Sep 2022 - 08 Sep 2022	GENTING	MADAM KOID SWEE LIAN [DIR/CEO]	30	130	0.003
08 Sep 2022 - 09 Sep 2022	GTRONIC	MR NG KWENG CHONG [DIR/CEO]	8	39,634	5.92
05 Sep 2022 - 07 Sep 2022	GTRONIC	MR NG KWENG CHONG [DIR/CEO]	12	39,626	5.92
06 Sep 2022 - 06 Sep 2022	HCK-WA	DATO' DIONG TAK CHONG @ TIONG TAK CHONG [DIR/CEO]	8,871	13,218	7.392
06 Sep 2022 - 07 Sep 2022	HEVEA	MR YOONG TEIN SENG @ YONG KIAN SENG [DIR/CEO]	-53	196,020	34.64
06 Sep 2022 - 07 Sep 2022	HEVEA	MR YOONG TEIN SENG @ YONG KIAN SENG [SSH]	-53	196,020	34.64
06 Sep 2022 - 07 Sep 2022	HEVEA	MR YOONG HAU CHUN [DIR/CEO]	-53	186,568	32.971
06 Sep 2022 - 07 Sep 2022	HEVEA	MR YOONG HAU CHUN [SSH]	-53	186,568	32.971
06 Sep 2022 - 07 Sep 2022	HEVEA	MISS YOONG LI YEN [DIR/CEO]	-53	185,241	32.736
06 Sep 2022 - 07 Sep 2022	HEVEA	MISS YOONG LI YEN [SSH]	-53	185,241	32.736
05 Sep 2022 - 05 Sep 2022	HEVEA	MR YOONG TEIN SENG @ YONG KIAN SENG [DIR/CEO]	-98	196,074	34.65
05 Sep 2022 - 05 Sep 2022	HEVEA	MR YOONG TEIN SENG @ YONG KIAN SENG [SSH]	-98	196,074	34.65
05 Sep 2022 - 05 Sep 2022	HEVEA	MR YOONG HAU CHUN [DIR/CEO]	-98	186,621	32.98
05 Sep 2022 - 05 Sep 2022	HEVEA	MR YOONG HAU CHUN [SSH]	-98	186,621	32.98
05 Sep 2022 - 05 Sep 2022	HEVEA	MISS YOONG LI YEN [DIR/CEO]	-98	185,294	32.746
05 Sep 2022 - 05 Sep 2022	HEVEA	MISS YOONG LI YEN [SSH]	-98	185,294	32.746
01 Sep 2022 - 01 Sep 2022	HEVEA	MR YOONG TEIN SENG @ YONG KIAN SENG [DIR/CEO]	-0.4	196,172	34.667
01 Sep 2022 - 01 Sep 2022	HEVEA	MR YOONG TEIN SENG @ YONG KIAN SENG [SSH]	-0.4	196,172	34.667
01 Sep 2022 - 01 Sep 2022	HEVEA	MR YOONG HAU CHUN [DIR/CEO]	-0.4	186,719	32.997
01 Sep 2022 - 01 Sep 2022	HEVEA	MR YOONG HAU CHUN [SSH]	-0.4	186,719	32.997
01 Sep 2022 - 01 Sep 2022	HEVEA	MISS YOONG LI YEN [DIR/CEO]	-0.4	185,392	32.763
01 Sep 2022 - 01 Sep 2022	HEVEA	MISS YOONG LI YEN [SSH]	-0.4	185,392	32.763
30 Aug 2022 - 02 Sep 2022	HEXTAR	DATO' ONG CHOO MENG [SSH]	-12,500	859,556	66.853
30 Aug 2022 - 02 Sep 2022	HEXTAR	DATO' ONG CHOO MENG [DIR/CEO]	-12,500	859,556	66.853
30 Aug 2022 - 02 Sep 2022	HEXTAR	HEXTAR HOLDINGS SDN. BHD. [SSH]	-12,500	759,424	59.065
30 Aug 2022 - 02 Sep 2022	HEXTAR	DATO' ONG SOON HO [DIR/CEO]	-12,500	759,424	59.065
30 Aug 2022 - 02 Sep 2022	HEXTAR	DATO' ONG SOON HO [SSH]	-12,500	759,424	59.065
28 Mar 2022 - 01 Sep 2022	HIBISCS	DATO' SRI ROUSHAN ARUMUGAM [DIR/CEO]	-210	38,181	1.897
06 Sep 2022 - 06 Sep 2022	HLBANK	EMPLOYEES PROVIDENT FUND BOARD [SSH]	139	218,307	10.462
05 Sep 2022 - 05 Sep 2022	HLBANK	EMPLOYEES PROVIDENT FUND BOARD [SSH]	591	218,168	10.456
02 Sep 2022 - 02 Sep 2022	HLBANK	EMPLOYEES PROVIDENT FUND BOARD [SSH]	858	217,577	10.427
01 Sep 2022 - 01 Sep 2022	HLBANK	EMPLOYEES PROVIDENT FUND BOARD [SSH]	782	216,719	10.386

Notice Period is 09 September – 14 September 2022

Effective Change Date	Stock Name	Buyer/ Seller Name [Classification]	Bought / (Sold) / '000		
			Total	Total	% Held
30 Aug 2022 - 30 Aug 2022	HLBANK	EMPLOYEES PROVIDENT FUND BOARD [SSH]	-774	215,937	10.349
05 Sep 2022 - 05 Sep 2022	HTPADU	DATO' SRI MOHD HILMEY BIN MOD TAIB [SSH]	14	17,983	17.766
05 Sep 2022 - 05 Sep 2022	HTPADU	DATO' SRI MOHD HILMEY BIN MOHD TAIB [DIR/CEO]	14	17,983	17.766
02 Sep 2022 - 05 Sep 2022	HTPADU	DATO' SRI MOHD HILMEY BIN MOHD TAIB [DIR/CEO]	11	17,969	17.752
02 Sep 2022 - 05 Sep 2022	HTPADU	DATO' SRI MOHD HILMEY BIN MOHD TAIB [SSH]	11	17,969	17.752
05 Sep 2022 - 05 Sep 2022	IGBREIT	EMPLOYEES PROVIDENT FUND BOARD ("EPF BOARD") [SSH]	414	411,197	11.476
02 Sep 2022 - 02 Sep 2022	IGBREIT	EMPLOYEES PROVIDENT FUND BOARD ("EPF BOARD") [SSH]	58	410,782	11.464
01 Sep 2022 - 01 Sep 2022	IGBREIT	EMPLOYEES PROVIDENT FUND BOARD ("EPF BOARD") [SSH]	228	410,725	11.463
06 Sep 2022 - 06 Sep 2022	IHH	EMPLOYEES PROVIDENT FUND BOARD [SSH]	2,716	837,667	9.512
05 Sep 2022 - 05 Sep 2022	IHH	EMPLOYEES PROVIDENT FUND BOARD [SSH]	491	834,951	9.482
02 Sep 2022 - 02 Sep 2022	IHH	EMPLOYEES PROVIDENT FUND BOARD [SSH]	998	834,461	9.476
01 Sep 2022 - 01 Sep 2022	IHH	EMPLOYEES PROVIDENT FUND BOARD [SSH]	500	833,462	9.465
30 Aug 2022 - 30 Aug 2022	IHH	EMPLOYEES PROVIDENT FUND BOARD [SSH]	-8	832,962	9.459
06 Sep 2022 - 06 Sep 2022	IJM	URUSHARTA JAMAAH SDN BHD [SSH]	-300	216,132	6.131
05 Sep 2022 - 05 Sep 2022	IJM	EMPLOYEES PROVIDENT FUND BOARD [SSH]	-9	601,074	17.051
07 Sep 2022 - 07 Sep 2022	INARI	KUMPULAN WANG PERSARAAN (DIPERBADANKAN) [SSH]	-159	346,711	9.343
02 Sep 2022 - 02 Sep 2022	ITRONIC	DATUK CHU BOON TIONG [DIR/CEO]	1,500	13,321	3.045
07 Sep 2022 - 09 Sep 2022	IWCITY	MR LIM CHEN HERNG [DIR/CEO]	-490	3,771	0.409
02 Sep 2022 - 06 Sep 2022	IWCITY	MR LIM CHEN HERNG [DIR/CEO]	52	4,261	0.463
08 Sep 2022 - 08 Sep 2022	JADEM	DATO' SRI CHONG WEI CHUAN [DIR/CEO]	-1,500	10,093	3.077
01 Sep 2022 - 02 Sep 2022	JADEM	DATO' SRI CHONG WEI CHUAN [SSH]	-2,650	22,197	6.767
01 Sep 2022 - 02 Sep 2022	JADEM	X INFINITY GROUP BERHAD [SSH]	-2,650	18,805	5.733
01 Sep 2022 - 02 Sep 2022	JADEM	X INFINITY HOLDING SDN BHD [SSH]	-2,650	18,805	5.733
01 Sep 2022 - 02 Sep 2022	JADEM	DATO' KHOO YIK CHOU [DIR/CEO]	-13,096	1,272	0.388
02 Sep 2022 - 02 Sep 2022	KAREX	MADAM GOH YIN [SSH]	518	130,413	12.379
02 Sep 2022 - 02 Sep 2022	KAREX	MADAM GOH YEN YEN [DIR/CEO]	518	123,523	11.725
02 Sep 2022 - 02 Sep 2022	KAREX	MADAM GOH YEN YEN [SSH]	518	123,523	11.725
02 Sep 2022 - 02 Sep 2022	KAREX	MARYEN HOLDINGS LIMITED [SSH]	518	101,460	9.631
02 Sep 2022 - 06 Sep 2022	KKB	DATO' SRI KHO KAK BENG [DIR/CEO]	35	117,754	40.784
02 Sep 2022 - 06 Sep 2022	KKB	DATO' SRI KHO KAK BENG [SSH]	35	117,266	40.615
02 Sep 2022 - 06 Sep 2022	KKB	MADAM KHO POH LIN [DIR/CEO]	35	113,426	39.285
02 Sep 2022 - 06 Sep 2022	KKB	MR KHO POK TONG [DIR/CEO]	35	113,032	39.149
02 Sep 2022 - 06 Sep 2022	KKB	MR KHO POK TONG [SSH]	35	113,032	39.149
02 Sep 2022 - 06 Sep 2022	KKB	MADAM KHO POH LIN [SSH]	35	112,826	39.077
02 Sep 2022 - 06 Sep 2022	KKB	DATIN SRI LIEW MOI FAH [SSH]	35	112,503	38.966
02 Sep 2022 - 06 Sep 2022	KKB	MADAM KHO POH JOO [SSH]	35	112,399	38.93
02 Sep 2022 - 06 Sep 2022	KKB	KHO KAK BENG HOLDING COMPANY SDN. BHD. [SSH]	35	112,207	38.863
06 Sep 2022 - 06 Sep 2022	KLK	EMPLOYEES PROVIDENT FUND BOARD [SSH]	41	112,095	10.397
05 Sep 2022 - 05 Sep 2022	KLK	EMPLOYEES PROVIDENT FUND BOARD [SSH]	163	112,054	10.393
02 Sep 2022 - 02 Sep 2022	KLK	EMPLOYEES PROVIDENT FUND BOARD [SSH]	634	111,891	10.378
01 Sep 2022 - 01 Sep 2022	KLK	EMPLOYEES PROVIDENT FUND BOARD [SSH]	214	111,257	10.319
30 Aug 2022 - 30 Aug 2022	KLK	EMPLOYEES PROVIDENT FUND BOARD [SSH]	-966	111,043	10.299
07 Sep 2022 - 08 Sep 2022	KOSSAN	TAN SRI DATO' LIM KUANG SIA [SSH]	2,400	1,248,740	48.939
07 Sep 2022 - 08 Sep 2022	KOSSAN	TAN SRI DATO' LIM KUANG SIA [DIR/CEO]	2,400	1,248,740	48.939
07 Sep 2022 - 08 Sep 2022	KOSSAN	MR LIM KUANG WANG [SSH]	2,400	1,240,843	48.629
07 Sep 2022 - 08 Sep 2022	KOSSAN	MR LIM KUANG YONG [SSH]	2,400	1,240,739	48.625
07 Sep 2022 - 08 Sep 2022	KOSSAN	MR LIM LENG BUNG [SSH]	2,400	1,239,933	48.593
07 Sep 2022 - 08 Sep 2022	KOSSAN	KOSSAN HOLDINGS (M) SDN BHD [SSH]	2,400	1,238,543	48.539
07 Sep 2022 - 08 Sep 2022	KOSSAN	ESTATE OF LATE MR LIM KWAN HWA [SSH]	2,400	1,238,543	48.539
05 Sep 2022 - 06 Sep 2022	LBS	TAN SRI DATO' SRI LIM HOCK SAN JP [DIR/CEO]	100	598,083	38.359
05 Sep 2022 - 06 Sep 2022	LBS	TAN SRI DATO' SRI LIM HOCK SAN JP [SSH]	100	593,330	38.054
02 Sep 2022 - 02 Sep 2022	LBS	TAN SRI DATO' SRI LIM HOCK SAN JP [DIR/CEO]	80	597,983	38.35
02 Sep 2022 - 02 Sep 2022	LBS	TAN SRI DATO' SRI LIM HOCK SAN JP [SSH]	80	593,230	38.045
06 Sep 2022 - 06 Sep 2022	LKL	MR ANG KIAN YOU [SSH]	291	89,068	9.167
30 Aug 2022 - 30 Aug 2022	MATRIX	EMPLOYEES PROVIDENT FUND BOARD [SSH]	-54	68,079	8.161
06 Sep 2022 - 06 Sep 2022	MAYBANK</				

Notice Period is 09 September – 14 September 2022

Effective Change Date	Stock Name	Buyer/ Seller Name [Classification]	Bought / (Sold) ['000]	No. of Shares After Trade ['000]	
			Total	Total	% Held
08 Sep 2022 - 08 Sep 2022	MYEG	KUMPULAN WANG PERSARAAN (DIPERBADANKAN) [SSH]	-1,000	523,599	7.094
05 Sep 2022 - 05 Sep 2022	MYEG	EMPLOYEES PROVIDENT FUND BOARD [SSH]	3,570	439,632	5.957
05 Sep 2022 - 05 Sep 2022	MYEG	KUMPULAN WANG PERSARAAN (DIPERBADANKAN) [SSH]	396	524,599	7.108
30 Aug 2022 - 30 Aug 2022	MYEG	EMPLOYEES PROVIDENT FUND BOARD [SSH]	5,465	436,252	5.91
08 Sep 2022 - 08 Sep 2022	MYNEWS	MR DANG TAI HOCK [DIR/CEO]	50	397,812	58.317
08 Sep 2022 - 08 Sep 2022	MYNEWS	MR DANG TAI WEN [SSH]	50	397,812	58.317
08 Sep 2022 - 08 Sep 2022	MYNEWS	MR DANG TAI LUK [SSH]	50	397,812	58.317
08 Sep 2022 - 08 Sep 2022	MYNEWS	MR DANG TAI HOCK [SSH]	50	397,812	58.317
08 Sep 2022 - 08 Sep 2022	MYNEWS	MR DANG TAI LUK [DIR/CEO]	50	397,812	58.317
07 Sep 2022 - 07 Sep 2022	MYNEWS	MR DANG TAI HOCK [DIR/CEO]	162	397,763	58.31
07 Sep 2022 - 07 Sep 2022	MYNEWS	MR DANG TAI WEN [SSH]	162	397,763	58.31
07 Sep 2022 - 07 Sep 2022	MYNEWS	MR DANG TAI LUK [SSH]	162	397,763	58.31
07 Sep 2022 - 07 Sep 2022	MYNEWS	MR DANG TAI HOCK [SSH]	162	397,763	58.31
07 Sep 2022 - 07 Sep 2022	MYNEWS	MR DANG TAI LUK [DIR/CEO]	162	397,763	58.31
06 Sep 2022 - 06 Sep 2022	MYNEWS	MR DANG TAI HOCK [DIR/CEO]	99	397,600	58.286
06 Sep 2022 - 06 Sep 2022	MYNEWS	MR DANG TAI WEN [SSH]	99	397,600	58.286
06 Sep 2022 - 06 Sep 2022	MYNEWS	MR DANG TAI LUK [SSH]	99	397,600	58.286
06 Sep 2022 - 06 Sep 2022	MYNEWS	MR DANG TAI HOCK [SSH]	99	397,600	58.286
05 Sep 2022 - 05 Sep 2022	MYNEWS	MR DANG TAI LUK [DIR/CEO]	131	397,501	58.272
05 Sep 2022 - 05 Sep 2022	MYNEWS	MR DANG TAI WEN [SSH]	131	397,501	58.272
05 Sep 2022 - 05 Sep 2022	MYNEWS	MR DANG TAI LUK [SSH]	131	397,501	58.272
05 Sep 2022 - 05 Sep 2022	MYNEWS	MR DANG TAI HOCK [SSH]	131	397,501	58.272
05 Sep 2022 - 05 Sep 2022	MYNEWS	MR DANG TAI LUK [DIR/CEO]	131	397,501	58.272
02 Sep 2022 - 02 Sep 2022	MYNEWS	MR DANG TAI HOCK [DIR/CEO]	14	397,371	58.252
02 Sep 2022 - 02 Sep 2022	MYNEWS	MR DANG TAI WEN [SSH]	14	397,371	58.252
02 Sep 2022 - 02 Sep 2022	MYNEWS	MR DANG TAI LUK [SSH]	14	397,371	58.252
02 Sep 2022 - 02 Sep 2022	MYNEWS	MR DANG TAI HOCK [SSH]	14	397,371	58.252
02 Sep 2022 - 02 Sep 2022	MYNEWS	MR DANG TAI LUK [DIR/CEO]	14	397,371	58.252
05 Sep 2022 - 06 Sep 2022	NCT	DATO' SRI YAP NGAN CHOY [SSH]	2,488	603,580	56.687
05 Sep 2022 - 06 Sep 2022	NCT	DATO' SRI YAP NGAN CHOY [DIR/CEO]	2,488	603,580	56.687
05 Sep 2022 - 06 Sep 2022	NCT	DATO' YAP FOOK CHOY [SSH]	2,488	601,660	56.507
05 Sep 2022 - 06 Sep 2022	NCT	DATO' YAP FOOK CHOY [DIR/CEO]	2,488	601,660	56.507
05 Sep 2022 - 06 Sep 2022	NCT	YBG YAP CONSOLIDATED SDN. BHD. [SSH]	2,488	596,874	56.057
07 Sep 2022 - 07 Sep 2022	NESTCON	ENCIK MOHD NOOR BIN SETAPA [DIR/CEO]	-54	266	0.041
05 Sep 2022 - 05 Sep 2022	NESTCON	ENCIK MOHD NOOR BIN SETAPA [DIR/CEO]	-72	320	0.05
02 Sep 2022 - 02 Sep 2022	NESTCON	ENCIK MOHD NOOR BIN SETAPA [DIR/CEO]	-88	392	0.061
06 Sep 2022 - 06 Sep 2022	NESTLE	EMPLOYEES PROVIDENT FUND BOARD [SSH]	-86	20,983	8.948
02 Sep 2022 - 02 Sep 2022	NESTLE	EMPLOYEES PROVIDENT FUND BOARD [SSH]	-2	21,069	8.985
30 Aug 2022 - 30 Aug 2022	NESTLE	EMPLOYEES PROVIDENT FUND BOARD [SSH]	-14	21,072	8.986
07 Sep 2022 - 07 Sep 2022	NGGB	DATO' LIM THIAM HUAT [DIR/CEO]	3,300	109,672	13.992
07 Sep 2022 - 07 Sep 2022	NGGB	DATO' LIM THIAM HUAT [SSH]	3,300	109,672	13.992
01 Sep 2022 - 01 Sep 2022	NIHSIN	MISS KHOO WUAN RU [DIR/CEO]	230	95,203	18.043
01 Sep 2022 - 01 Sep 2022	NIHSIN	MR KHOO CHEE KONG [SSH]	230	94,253	17.863
05 Sep 2022 - 05 Sep 2022	NIHSIN-PA	MR LER LEONG KEH [DIR/CEO]	3,300	3,300	0.533
07 Sep 2022 - 07 Sep 2022	NWP	DATO' SRI KEE SOON LING [SSH]	-6,293	34,762	6.449
08 Sep 2022 - 08 Sep 2022	OLYMPIA	TAN SRI DATO' YAP YONG SEONG [DIR/CEO]	1,234	539,703	52.735
08 Sep 2022 - 08 Sep 2022	OLYMPIA	TAN SRI DATO' YAP YONG SEONG [SSH]	1,234	539,703	52.735
08 Sep 2022 - 08 Sep 2022	OLYMPIA	DATO' SRI YAP WEE KEAT [DIR/CEO]	1,234	539,692	52.734
08 Sep 2022 - 08 Sep 2022	OLYMPIA	DATO' SRI YAP WEE KEAT [SSH]	1,234	539,692	52.734
08 Sep 2022 - 08 Sep 2022	OLYMPIA	DATUK YAP WEE CHUN [SSH]	1,234	539,647	52.73
08 Sep 2022 - 08 Sep 2022	OLYMPIA	PUAN SRI DATIN LEONG LI NAR [SSH]	1,234	539,647	52.73
08 Sep 2022 - 08 Sep 2022	OLYMPIA	DUTA EQUITIES SDN BHD [SSH]	1,234	359,647	35.14
07 Sep 2022 - 08 Sep 2022	OMESTI	MONTEIRO GERARD CLAIR [DIR/CEO]	-1,218	105,475	19.745
07 Sep 2022 - 08 Sep 2022	OMESTI	MONTEIRO GERARD CLAIR [SSH]	-1,218	105,475	19.745
07 Sep 2022 - 07 Sep 2022	OMESTI	DATUK RAYMOND TAN [SSH]	-1,133	66,582	12.464
07 Sep 2022 - 07 Sep 2022	OMESTI	H2O HOLDINGS SDN BHD [SSH]	-1,133	66,334	12.418
07 Sep 2022 - 07 Sep 2022	OMESTI	DATO' WONG KIT-LEONG [SSH]	-1,133	66,334	12.418
05 Sep 2022 - 05 Sep 2022	ORGABIO	DATO' SERI CHAN KONG YEW [DIR/CEO]	-50	50	0.02
07 Sep 2022 - 07 Sep 2022	PA	DATUK SERI LAU KUAN KAM [DIR/CEO]	150	639	0.534
05 Sep 2022 - 05 Sep 2022	PA	DATUK SERI LAU KUAN KAM [SSH]	6,194	87,781	6.355
05 Sep 2022 - 05 Sep 2022	PA	DATUK SERI LAU KUAN KAM [DIR/CEO]	6,194	87,781	6.355
05 Sep 2022 - 05 Sep 2022	PA	DATUK SERI LAU KUAN KAM [DIR/CEO]	6,194	489	0.408
02 Sep 2022 - 02 Sep 2022	PADINI	EMPLOYEES PROVIDENT FUND BOARD [SSH]	-145	36,764	5.588
06 Sep 2022 - 06 Sep 2022	PBBANK	EMPLOYEES PROVIDENT FUND BOARD [SSH]	2,415	2,898,546	14.93
05 Sep 2022 - 05 Sep 2022	PBBANK	EMPLOYEES PROVIDENT FUND BOARD [SSH]	2,249	2,896,131	14.92
02 Sep 2022 - 02 Sep 2022	PBBANK	EMPLOYEES PROVIDENT FUND BOARD [SSH]	-2,457	2,893,882	14.91
01 Sep 2022 - 01 Sep 2022	PBBANK	EMPLOYEES PROVIDENT FUND BOARD [SSH]	1,725	2,896,339	14.92
30 Aug 2022 - 30 Aug 2022	PBBANK	EMPLOYEES PROVIDENT FUND BOARD [SSH]	-12,242	2,894,614	14.91
06 Sep 2022 - 06 Sep 2022	PCHEM	EMPLOYEES PROVIDENT FUND BOARD ("EPF BOARD") [SSH]	418	673,503	8.419
05 Sep 2022 - 05 Sep 2022	PCHEM	EMPLOYEES PROVIDENT FUND BOARD ("EPF BOARD") [SSH]	329	673,085	8.414
02 Sep 2022 - 02 Sep 2022	PCHEM	EMPLOYEES PROVIDENT FUND BOARD ("EPF BOARD") [SSH]	-769	672,756	8.409
01 Sep 2022 - 01 Sep 2022	PCHEM	EMPLOYEES PROVIDENT FUND BOARD ("EPF BOARD") [SSH]	3,280	673,525	8.419
30 Aug 2022 - 30 Aug 2022	PCHEM	EMPLOYEES PROVIDENT FUND BOARD ("EPF BOARD") [SSH]	-2,155	670,246	8.378
02 Sep 2022 - 02 Sep 2022	PECCA	HUAREN HOLDINGS SDN BHD [SSH]	4,832	47,567	6.327
02 Sep 2022 - 02 Sep 2022	PECCA	MALAYSIAN CHINESE ASSOCIATION [SSH]	4,832	47,567	6.327
06 Sep 2022 - 06 Sep 2022	PELIKAN	MR LOO HOOI KEAT [DIR/CEO]	263	103,038	17.082
06 Sep 2022 - 06 Sep 2022	PELIKAN	MR LOO HOOI KEAT [SSH]	263	102,899	17.059

Notice Period is 09 September – 14 September 2022

Effective Change Date	Stock Name	Buyer/ Seller Name [Classification]	Bought / (Sold) ['000]	No. of Shares After Trade ['000]	
			Total	Total	% Held
02 Sep 2022 - 02 Sep 2022	PELIKAN	MR LOO HOOI KEAT [DIR/CEO]	150	102,775	17.038
02 Sep 2022 - 02 Sep 2022	PELIKAN	MR LOO HOOI KEAT [SSH]	150	102,636	17.015
06 Sep 2022 - 06 Sep 2022	PENTA	EMPLOYEES PROVIDENT FUND BOARD [SSH]	300	57,765	8.121
05 Sep 2022 - 05 Sep 2022	PENTA	EMPLOYEES PROVIDENT FUND BOARD [SSH]	168	57,465	8.079
06 Sep 2022 - 06 Sep 2022	PETGAS	EMPLOYEES PROVIDENT FUND BOARD [SSH]	223	274,196	13.857
07 Sep 2022 - 07 Sep 2022	PETGAS	KUMPULAN WANG PERSARAAN (DIPERBADANKAN) [SSH]	-30	207,267	10.475
02 Sep 2022 - 02 Sep 2022	PETGAS	EMPLOYEES PROVIDENT FUND BOARD [SSH]	-28	273,973	13.846
01 Sep 2022 - 01 Sep 2022	PETGAS	EMPLOYEES PROVIDENT FUND BOARD [SSH]	359	274,001	13.847
30 Aug 2022 - 30 Aug 2022	PETGAS	EMPLOYEES PROVIDENT FUND BOARD [SSH]	38	273,641	13.829
07 Sep 2022 - 07 Sep 2022	PMETAL	MADAM ONG SOO FAN [SSH]	-2,000	669,785	8.129
07 Sep 2022 - 07 Sep 2022	PMETAL	MR KOON POH MING [DIR/CEO]	-2,000	669,785	8.129
07 Sep 2022 - 07 Sep 2022	PMETAL	MR KOON POH MING [SSH]	-2,000	669,785	8.129
07 Sep 2022 - 07 Sep 2022	PMETAL	MR KOON POH WENG [SSH]	-3,000	508,997	6.178
07 Sep 2022 - 07 Sep 2022	PMETAL	MADAM CHAN POH CHOO [SSH]	-3,000	508,997	6.177
07 Sep 2022 - 07 Sep 2022	PMETAL	MR KOON POH WENG [DIR/CEO]	-3,000	508,997	6.178
07 Sep 2022 - 07 Sep 2022	PMETAL	DATO' KOON POH TAT [DIR/CEO]	-3,000	254,907	3.094
05 Sep 2022 - 05 Sep 2022	POHKONG	MADAM LIM MEE HWA [SSH]	125	26,350	6.422
05 Sep 2022 - 05 Sep 2022	POHKONG	MR YEO SENG CHONG [SSH]	125	26,350	6.421
05 Sep 2022 - 05 Sep 2022	POHKONG	YEGOMAN CAPITAL MANAGEMENT PTE LTD [SSH]	125	22,100	5.385
05 Sep 2022 - 05 Sep 2022	POHKONG	YEGOMAN 3-RIGHTS VALUE ASIA FUND VCC [SSH]	125	21,125	5.148
05 Sep 2022 - 05 Sep 2022	POHKONG	YEGOMAN 3-RIGHTS VALUE ASIA FUND VCC [SSH]	125	21,125	5.148
06 Sep 2022 - 06 Sep 2022	PPB	EMPLOYEES PROVIDENT FUND BOARD [SSH]	-68	155,035	10.898
01 Sep 2022 - 01 Sep 2022	PPB	EMPLOYEES PROVIDENT FUND BOARD [SSH]	-70	155,103	10.903
30 Aug 2022 - 30 Aug 2022	PPB	EMPLOYEES PROVIDENT FUND BOARD [SSH]	-413	155,173	10.908
06 Sep 2022 - 06 Sep 2022	PPHB	MULTIPLE ACCOMPLISHMENTS SDN BHD [SSH]	-3,582	17,549	6.612
06 Sep 2022 - 06 Sep 2022	PPHB	MR KOAY TENG LIANG [DIR/CEO]	1,791	1,992	0.751
06 Sep 2022 - 06 Sep 2022	PPHB	MR KOAY TENG KHEONG [DIR/CEO]	1,791	1,880	0.708
07 Sep 2022 - 07 Sep 2022	PWROOT	KUMPULAN WANG PERSARAAN(DIPERBADANKAN) [SSH]	-250	28,962	6.962
06 Sep 2022 - 06 Sep 2022	PWROOT	MR WONG TAK KEONG [SSH]	164	11,928	24.568
06 Sep 2022 - 06 Sep 2022	PWROOT	MR WONG TAK KEONG [DIR/CEO]	164	11,928	24.568
06 Sep 2022 - 06 Sep 2022	QL	EMPLOYEES PROVIDENT FUND BOARD [SSH]	-630	142,850	5.87
02 Sep 2022 - 02 Sep 2022	QL	EMPLOYEES PROVIDENT FUND BOARD [SSH]	13	143,479	5.896
01 Sep 2022 - 01 Sep 2022	QL	EMPLOYEES PROVIDENT FUND BOARD [SSH]	184	143,466	5.895
30 Aug 2022 - 30 Aug 2022	QL	EMPLOYEES PROVIDENT FUND BOARD [SSH]	-1,146	143,282	5.888
07 Sep 2022 - 07 Sep 2022	RCECAP	TAN SRI AZMAN HASHIM [SSH]	16	427,977	58.443
07 Sep 2022 - 07 Sep 2022	RCECAP	CLEAR GOAL SDN BHD [SSH]	16	392,581	53.61
07 Sep 2022 - 07 Sep 2022	RCECAP	AMCORP GROUP BERHAD [SSH]	16	392,581	53.61
07 Sep 2022 - 07 Sep 2022	RCECAP	CEMPAKA EMPAYAR SDN BHD [SSH]	16	392,581	53.61
05 Sep 2022 - 05 Sep 2022	RCECAP	TAN SRI AZMAN HASHIM [SSH]	147	427,961	58.441
05 Sep 2022 - 05 Sep 2022	RCECAP	CLEAR GOAL SDN BHD [SSH]	147	392,565	53.607
05 Sep 2022 - 05 Sep 2022	RCECAP	CEMPAKA EMPAYAR SDN BHD [SSH]	147	392,565	53.607
05 Sep 2022 - 05 Sep 2022	RCECAP	AMCORP GROUP BERHAD [SSH]	147	392,565	53.607
01 Sep 2022 - 01 Sep 2022	RCECAP	TAN SRI AZMAN HASHIM [SSH]	62	427,814	58.421
01 Sep 2022 - 01 Sep 2022	RCECAP	CEMPAKA EMPAYAR SDN BHD [SSH]	62	392,418	53.587
01 Sep 2022 - 01 Sep 2022	RCECAP	CLEAR GOAL SDN BHD [SSH]	62	392,418	53.587
01 Sep 2022 - 01 Sep 2022	RCECAP	AMCORP GROUP BERHAD [SSH]	62	392,418	53.587
02 Sep 2022 - 02 Sep 2022	RESINTC	DATIN GAN JEW [DIR/CEO]	80	102,883	52.561
02 Sep 2022 - 02 Sep 2022	RESINTC	DATO DR TEH KIM POO [SSH]	80	102,883	52.561
02 Sep 2022 - 02 Sep 2022	RESINTC	DATO DR TEH KIM POO [DIR/CEO]	80	102,883	52.561
02 Sep 2022 - 02 Sep 2022	RESINTC	DATIN GAN JEW [SSH]	80	102,883	52.561
02 Sep 2022 - 02 Sep 2022	RESINTC	MR TEH LENG KANG [SSH]	80	13,251	6.77
02 Sep 2022 - 02 Sep 2022	RESINTC	MR TEH LENG KANG [DIR/CEO]	80	13,251	6.77
02 Sep 2022 - 02 Sep 2022	RESINTC	MISS WEI HWEI HONG [SSH]	80	13,251	6.77
02 Sep 2022 - 02 Sep 2022	RESINTC	MISS WEI HWEI HONG [DIR/CEO]	80	13,251	6.77
05 Sep 2022 - 08 Sep 2022	RGTECH	MR TEVANAIGAM RANDY CHITTY [DIR/CEO]	20	2,120	0.404
08 Sep 2022 - 08 Sep 2022	RHBBANK	KUMPULAN WANG PERSARAAN (DIPERBADANKAN) [SSH]	400	223,350	5.302
06 Sep 2022 - 06 Sep 2022	RHBBANK	EMPLOYEES PROVIDENT FUND BOARD [SSH]	-504	1,758,673	41.753
06 Sep 2022 - 06 Sep 2022	RHBBANK	KUMPULAN WANG PERSARAAN (DIPERBADANKAN) [SSH]	500	222,950	5.293
02 Sep 2022 - 02 Sep 2022	RHBBANK	EMPLOYEES PROVIDENT FUND BOARD [SSH]	85	1,759,177	41.765
05 Sep 2022 - 05 Sep 2022	RHBBANK	KUMPULAN WANG PERSARAAN (DIPERBADANKAN) [SSH]	20	222,450	5.281
01 Sep 2022 - 01 Sep 2022	RHBBANK	EMPLOYEES PROVIDENT FUND BOARD [SSH]	1,190	1,759,093	41.763
30 Aug 2022 - 30 Aug 2022	RHBBANK	EMPLOYEES PROVIDENT FUND BOARD [SSH]	-308	1,757,903	41.735
08 Sep 2022 - 08 Sep 2022	SANICHI	DATO' SRI DR PANG CHOW HUAT [DIR/CEO]	30,000	73,631	5.248
08 Sep 2022 - 08 Sep 2022	SANICHI	DATO' SRI DR PANG CHOW HUAT [SSH]	30,000	73,631	5.248
07 Sep 2022 - 07 Sep 2022	SANICHI	DATO' SRI DR PANG CHOW HUAT [DIR/CEO]	30,000	43,631	3.109
01 Sep 2022 - 01 Sep 2022	SAPIND	MR KOH KOK HOOI [SSH]	4	5,237	7.196
06 Sep 2022 - 06 Sep 2022	SCOMNET	MR SHUEH JYH-JEH @ J			

Notice Period is 09 September - 14 September 2022

Effective Change Date	Stock Name	Buyer/ Seller Name [Classification]	Bought / (Sold) ['000]		No. of Shares After Trade ['000]	
			Total	% Held	Total	% Held
02 Sep 2022 - 06 Sep 2022	SENFONG	SUMBER PANJI SDN. BHD. [SSH]	1,722	60.315	313,009	60.315
01 Sep 2022 - 01 Sep 2022	SERNKOU	MR LOW PENG SIAN @ CHUA PENG SIAN [DIR/CEO]	-5,750	45.332	102,760	45.332
05 Sep 2022 - 05 Sep 2022	SIAB	DATO DR CHANG LIK SEAN [SSH]	500	11.454	56,084	11.454
06 Sep 2022 - 06 Sep 2022	SIME	EMPLOYEES PROVIDENT FUND BOARD [SSH]	3,000	9.494	646,537	9.494
05 Sep 2022 - 05 Sep 2022	SIME	EMPLOYEES PROVIDENT FUND BOARD [SSH]	464	9.45	643,537	9.45
05 Sep 2022 - 05 Sep 2022	SIME	AMANAHRAYA TRUSTEES BERHAD - AMANAH SAHAM BUMIPUTERA [SSH]	-10,000	39.809	2,710,953	39.809
02 Sep 2022 - 02 Sep 2022	SIME	EMPLOYEES PROVIDENT FUND BOARD [SSH]	206	9.443	643,073	9.443
02 Sep 2022 - 02 Sep 2022	SIME	AMANAHRAYA TRUSTEES BERHAD - AMANAH SAHAM BUMIPUTERA [SSH]	-10,000	39.956	2,720,953	39.956
30 Aug 2022 - 01 Sep 2022	SIME	EMPLOYEES PROVIDENT FUND BOARD [SSH]	152	9.44	642,867	9.44
07 Sep 2022 - 07 Sep 2022	SIMEPLT	KUMPULAN WANG PERSARAAN (DIPERBADANKAN) [SSH]	159	6.611	457,219	6.611
05 Sep 2022 - 05 Sep 2022	SIMEPLT	EMPLOYEES PROVIDENT FUND BOARD [SSH]	265	13.536	936,148	13.536
05 Sep 2022 - 05 Sep 2022	SIMEPLT	KUMPULAN WANG PERSARAAN (DIPERBADANKAN) [SSH]	7	6.609	457,060	6.609
01 Sep 2022 - 01 Sep 2022	SIMEPROP	EMPLOYEES PROVIDENT FUND BOARD [SSH]	-287	9.087	618,037	9.087
30 Aug 2022 - 30 Aug 2022	SIMEPROP	EMPLOYEES PROVIDENT FUND BOARD [SSH]	-324	9.091	618,324	9.091
08 Sep 2022 - 08 Sep 2022	SKPRES	KUMPULAN WANG PERSARAAN (DIPERBADANKAN) [SSH]	-109	8.605	134,435	8.605
06 Sep 2022 - 06 Sep 2022	SKPRES	EMPLOYEES PROVIDENT FUND BOARD [SSH]	-516	5.364	83,799	5.364
07 Sep 2022 - 07 Sep 2022	SKPRES	KUMPULAN WANG PERSARAAN (DIPERBADANKAN) [SSH]	-345	8.612	134,544	8.612
05 Sep 2022 - 05 Sep 2022	SKPRES	EMPLOYEES PROVIDENT FUND BOARD [SSH]	-54	5.397	84,315	5.397
02 Sep 2022 - 02 Sep 2022	SKPRES	EMPLOYEES PROVIDENT FUND BOARD [SSH]	635	5.4	84,369	5.4
01 Sep 2022 - 01 Sep 2022	SKPRES	EMPLOYEES PROVIDENT FUND BOARD [SSH]	-1,589	5.359	83,734	5.359
02 Sep 2022 - 02 Sep 2022	SKPRES	KUMPULAN WANG PERSARAAN (DIPERBADANKAN) [SSH]	-1,000	8.634	134,890	8.634
30 Aug 2022 - 30 Aug 2022	SKPRES	EMPLOYEES PROVIDENT FUND BOARD [SSH]	-723	5.461	85,323	5.461
07 Sep 2022 - 09 Sep 2022	SMILE	DATO DR. WONG RUEN YUAN [DIR/CEO]	75	53.788	134,689	53.788
07 Sep 2022 - 09 Sep 2022	SMILE	DATO DR. WONG RUEN YUAN [SSH]	75	53.788	134,689	53.788
07 Sep 2022 - 09 Sep 2022	SMILE	DATIN WONG CHIEN YUE [SSH]	75	53.502	134,174	53.502
07 Sep 2022 - 09 Sep 2022	SMILE	DATIN WONG CHIEN YUE [DIR/CEO]	75	53.502	133,974	53.502
30 Aug 2022 - 30 Aug 2022	SMILE	DATO DR. WONG RUEN YUAN [SSH]	58	53.758	134,614	53.758
30 Aug 2022 - 30 Aug 2022	SMILE	DATO DR. WONG RUEN YUAN [DIR/CEO]	58	53.758	134,614	53.758
30 Aug 2022 - 30 Aug 2022	SMILE	DATIN WONG CHIEN YUE [SSH]	58	53.472	134,099	53.472
30 Aug 2022 - 30 Aug 2022	SMILE	DATIN WONG CHIEN YUE [DIR/CEO]	58	53.472	133,899	53.472
30 Aug 2022 - 30 Aug 2022	SMILE	SMILE-LINK RESOURCES (M) SDN BHD [SSH]	58	46.442	116,292	46.442
17 Aug 2022 - 17 Aug 2022	SNTORIA	TWL CAPITAL BERHAD [SSH]	-3,100	5.309	29,607	5.309
02 Sep 2022 - 02 Sep 2022	STRAITS	RITHAUDDIN HUSSEIN JAMALATIFF BIN JAMALUDDIN [SSH]	300	8.357	78,737	8.357
06 Sep 2022 - 06 Sep 2022	SUNWAY	EMPLOYEES PROVIDENT FUND BOARD [SSH]	9	8.32	406,930	8.32
05 Sep 2022 - 05 Sep 2022	SUNWAY	EMPLOYEES PROVIDENT FUND BOARD [SSH]	22	8.32	406,921	8.32
02 Sep 2022 - 02 Sep 2022	SUNWAY	EMPLOYEES PROVIDENT FUND BOARD [SSH]	-90	8.32	406,898	8.32
01 Sep 2022 - 01 Sep 2022	SUNWAY	EMPLOYEES PROVIDENT FUND BOARD [SSH]	-30	8.32	406,987	8.32
06 Sep 2022 - 06 Sep 2022	SWIFT	MR LOO HOOI KEAT [DIR/CEO]	30	38.601	342,022	38.601
06 Sep 2022 - 06 Sep 2022	SWIFT	MR LOO HOOI KEAT [SSH]	30	38.601	342,022	38.601
30 Aug 2022 - 30 Aug 2022	SWIFT	MR LOO HOOI KEAT [SSH]	10	38.593	341,992	38.593
30 Aug 2022 - 30 Aug 2022	SWIFT	MR LOO HOOI KEAT [DIR/CEO]	10	38.593	341,992	38.593
02 Sep 2022 - 02 Sep 2022	SYSCORP	MR JACK WILLIEN @ WILLIAM ANAK JINEP [DIR/CEO]	32	0.003	32	0.003
06 Sep 2022 - 06 Sep 2022	TAKAFUL	EMPLOYEES PROVIDENT FUND BOARD [SSH]	68	11.779	98,624	11.779
02 Sep 2022 - 02 Sep 2022	TAKAFUL	EMPLOYEES PROVIDENT FUND BOARD [SSH]	346	11.771	98,556	11.771
01 Sep 2022 - 01 Sep 2022	TAKAFUL	EMPLOYEES PROVIDENT FUND BOARD [SSH]	500	11.729	98,210	11.729
30 Aug 2022 - 30 Aug 2022	TAKAFUL	EMPLOYEES PROVIDENT FUND BOARD [SSH]	238	11.67	97,710	11.67
08 Sep 2022 - 08 Sep 2022	TIMECOM	KUMPULAN WANG PERSARAAN (DIPERBADANKAN) ('KWAP') [SSH]	99	5.468	100,428	5.468
06 Sep 2022 - 06 Sep 2022	TIMECOM	EMPLOYEES PROVIDENT FUND BOARD [SSH]	-1,202	9.791	179,822	9.791
07 Sep 2022 - 07 Sep 2022	TIMECOM	KUMPULAN WANG PERSARAAN (DIPERBADANKAN) ('KWAP') [SSH]	115	5.463	100,329	5.463
05 Sep 2022 - 05 Sep 2022	TIMECOM	EMPLOYEES PROVIDENT FUND BOARD [SSH]	-461	9.857	181,024	9.857
06 Sep 2022 - 06 Sep 2022	TIMECOM	KUMPULAN WANG PERSARAAN (DIPERBADANKAN) ('KWAP') [SSH]	200	5.457	100,214	5.457
02 Sep 2022 - 02 Sep 2022	TIMECOM	EMPLOYEES PROVIDENT FUND BOARD [SSH]	-80	9.882	181,485	9.882
01 Sep 2022 - 01 Sep 2022	TIMECOM	EMPLOYEES PROVIDENT FUND BOARD [SSH]	-84	9.886	181,565	9.886
30 Aug 2022 - 30 Aug 2022	TIMECOM	EMPLOYEES PROVIDENT FUND BOARD [SSH]	-748	9.891	181,649	9.891
06 Sep 2022 - 06 Sep 2022	TM	EMPLOYEE PROVIDENT FUND BOARD (EPF BOARD) [SSH]	-1,983	18.497	700,620	18.497
07 Sep 2022 - 07 Sep 2022	TM	KUMPULAN WANG PERSARAAN (DIPERBADANKAN) [SSH]	-416	10.404	394,062	10.404
05 Sep 2022 - 05 Sep 2022	TM	EMPLOYEE PROVIDENT FUND BOARD (EPF BOARD) [SSH]	-976	18.55	702,603	18.55
06 Sep 2022 - 06 Sep 2022	TM	KUMPULAN WANG PERSARAAN (DIPERBADANKAN) [SSH]	-475	10.414	394,478	10.414
02 Sep 2022 - 02 Sep 2022	TM	EMPLOYEE PROVIDENT FUND BOARD (EPF BOARD) [SSH]	-358	18.576	703,579	18.576
05 Sep 2022 - 05 Sep 2022	TM	KUMPULAN WANG PERSARAAN (DIPERBADANKAN) [SSH]	322	10.427	394,953	10.427
01 Sep 2022 - 01 Sep 2022	TM	EMPLOYEE PROVIDENT FUND BOARD (EPF BOARD) [SSH]	-36	18.585	703,938	18.585
02 Sep 2022 - 02 Sep 2022	TM	KUMPULAN WANG PERSARAAN (DIPERBADANKAN) [SSH]	-461	10.419	394,631	10.419
30 Aug 2022 - 30 Aug 2022	TM	EMPLOYEE PROVIDENT FUND BOARD (EPF BOARD) [SSH]	-614	18.586	703,973	18.586
07 Sep 2022 - 07 Sep 2022	TOYOVEN	MR LIM GUAN LEE [DIR/CEO]	-100	9.768	11,497	9.768
07 Sep 2022 - 07 Sep 2022	TOYOVEN	MR LIM GUAN LEE [SSH]	-100	9.768	11,497	9.768
02 Sep 2022 - 02 Sep 2022	TRIMODE	DATO' HEW HAN SENG [DIR/CEO]	100	70.662	117,298	70.662

Notice Period is 09 September - 14 September 2022

Effective Change Date	Stock Name	Buyer/ Seller Name [Classification]	Bought / (Sold) ['000]		No. of Shares After Trade ['000]	
			Total	% Held	Total	% Held
02 Sep 2022 - 02 Sep 2022	TRIMODE	DATO' HEW HAN SENG [SSH]	100	70.662	117,298	70.662
02 Sep 2022 - 02 Sep 2022	TRIMODE	DATIN SAM CHOI LAI [SSH]	100	20.474	33,987	20.474
02 Sep 2022 - 02 Sep 2022	TRIMODE	DATIN SAM CHOI LAI [DIR/CEO]	100	20.474	33,987	20.474
22 Jul 2022 - 22 Jul 2022	TRIVE	UBS GROUP AG [SSH]	0.2	6	75,816	6
22 Jul 2022 - 22 Jul 2022	TRIVE	UBS AG [SSH]	0.2	6	75,816	6
22 Jul 2022 - 22 Jul 2022	TRIVE	UBS AG LONDON BRANCH [SSH]	0.2	6	75,816	6
09 Sep 2022 - 09 Sep 2022	TSH	TAN AIK PEN [DIR/CEO]	500	21.794	300,799	21.794
08 Sep 2022 - 08 Sep 2022	TSH	TAN AIK PEN [SSH]	500	21.758	300,299	21.758
08 Sep 2022 - 08 Sep 2022	TSH	TAN AIK PEN [DIR/CEO]	500	21.758	300,299	21.758
07 Sep 2022 - 07 Sep 2022	TSH	TAN AIK PEN [SSH]	500	21.722	299,799	21.722
07 Sep 2022 - 07 Sep 2022	TSH	TAN AIK PEN [DIR/CEO]	500	21.722	299,799	21.722
06 Sep 2022 - 06 Sep 2022	TSH	TAN AIK PEN [SSH]	550	21.686	299,299	21.686
06 Sep 2022 - 06 Sep 2022	TSH	TAN AIK PEN [DIR/CEO]	550	21.686	299,299	21.686
05 Sep 2022 - 05 Sep 2022	TSH	TAN AIK PEN [SSH]	550	21.646	298,749	21.646
05 Sep 2022 - 05 Sep 2022	TSH	TAN AIK PEN [DIR/CEO]	550	21.646	298,749	21.646
02 Sep 2022 - 02 Sep 2022	TSH	TAN AIK PEN [SSH]	550	21.606	298,199	21.606
06 Sep 2022 - 06 Sep 2022	TWL	DATO' TAN WEI LIAN [DIR/CEO]	-103,000	27.73	1,034,360	27.73
06 Sep 2022 - 06 Sep 2022	TWL	TWL CAPITAL BERHAD [SSH]	-103,000	27.729	1,034,360	27.729
06 Sep 2022 - 06 Sep 2022	TWL	MISS TAN LEE CHIN [DIR/CEO]	-103,000	27.729	1,034,360	27.729
06 Sep 2022 - 06 Sep 2022	TWL	DATO' TAN WEI LIAN [SSH]	-103,000	27.73	1,034,360	27.73
06 Sep 2022 - 06 Sep 2022	TWL	MISS TAN LEE CHIN [SSH]	-103,000	27.729	1,034,360	27.729
06 Sep 2022 - 06 Sep 2022	TWL	DATIN SEK CHIAN NEE [SSH]	-103,000	27.73	1,034,360	27.73
06 Sep 2022 - 06 Sep 2022	TWL	DATIN SEK CHIAN NEE [DIR/CEO]	-103,000	27.73	1,034,360	27.73
06 Sep 2022 - 06 Sep 2022	UMW	EMPLOYEES PROVIDENT FUND BOARD [SSH]	27	12.458	145,551	12.458
05 Sep 2022 - 05 Sep 2022	UMW	EMPLOYEES PROVIDENT FUND BOARD [SSH]	53	12.456	145,524	12.456
02 Sep 2022 - 02 Sep 2022	UMW	EMPLOYEES PROVIDENT FUND BOARD [SSH]	93	12.452	145,471	12.452
01 Sep 2022 - 01 Sep 2022	UMW	EMPLOYEES PROVIDENT FUND BOARD [SSH]	56	12.444	145,377	12.444
30 Aug 2022 - 30 Aug 2022	UMW	EMPLOYEES PROVIDENT FUND BOARD [SSH]	89	12.439	145,320	12.439
06 Sep 2022 - 06 Sep 2022	UOAEV	EMPLOYEES PROVIDENT FUND BOARD ('EPF BOARD') [SSH]	19	10.321	248,479	10.321
05 Sep 2022 - 05 Sep 2022	UOAEV	EMPLOYEES PROVIDENT FUND BOARD ('EPF BOARD') [SSH]	138	10.32	248,460	10.32
02 Sep 2022 - 02 Sep 2022	UOAEV	EMPLOYEES PROVIDENT FUND BOARD ('EPF BOARD') [SSH]	150	10.315	248,322	10.315
06 Sep 2022 - 06 Sep 2022	UTDPLT	EMPLOYEES PROVIDENT FUND BOARD [SSH]	-129	9.22	38,242	9.22
06 Sep 2022 - 07 Sep 2022	UTDPLT	MR LOH HANG PAI @ LOW HENG FONG [DIR/CEO]	-10	0.041	170	0.041
02 Sep 2022 - 05 Sep 2022	UTDPLT	MR LOH HANG PAI @ LOW HENG FONG [DIR/CEO]	-20	0.043	180	0.043
02 Sep 2022 - 02 Sep 2022	UTDPLT	EMPLOYEES PROVIDENT FUND BOARD [SSH]	-53	9.251	38,372	9.251
22 Aug 2022 - 26 Aug 2022	UTDPLT	PERBADANAN PEMBANGUNAN PERTANIAN NEGERI PERAK [SSH]	-2,198	5.769	23,932	5.769
01 Sep 2022 - 01 Sep 2022	UTDPLT	EMPLOYEES PROVIDENT FUND BOARD [SSH]	-124	9.264	38,425	9.264
30 Aug 2022 - 30 Aug 2022	UTDPLT	EMPLOYEES PROVIDENT FUND BOARD [SSH]	-150	9.293	38,549	9.293
02 May 2022 - 05 Sep 2022	UTDPLT	MR LOH HANG PAI @ LOW HENG FONG [DIR/CEO]	-20	0.043	180	0.043
05 Sep 2022 - 07 Sep 2022	WANGZNG	MR HUI CHING CHI [DIR/CEO]	139	59.99	95,121	59.99
05 Sep 2022 - 07 Sep 2022	WANGZNG	MR HUI CHING CHI [SSH]	139	59.99	95,121	59.99
01 Sep 2022 - 01 Sep 2022	WANGZNG	MR HUI CHING CHI [SSH]	119	59.9	94,982	59.9
01 Sep 2022 - 01 Sep 2022	WANGZNG	MR HUI CHING CHI [DIR/CEO]	119	59.9	94,982	59.9
06 Sep 2022 - 06 Sep 2022	WIDAD	TAN SRI MUHAMMAD IKMAL OPAT BIN ABDULLAH [SSH]	9,000	51.948	1,429,883	51.948
05 Sep 2022 - 06 Sep 2022	WILLOW	MR WONG AH CHIEW [SSH]	100	56.713	274,994	56.713
05 Sep 2022 - 06 Sep 2022	WILLOW	MR WONG AH CHIEW [DIR/CEO]	100	56.713	274,994	56.713
08 Sep 2022 - 08 Sep 2022	WPRTS	KUMPULAN WANG PERSARAAN (DIPERBADANKAN) [SSH]	75	6.774	230,974	6.774
06 Sep 2022 - 06 Sep 2022	WPRTS	EMPLOYEES PROVIDENT FUND BOARD [SSH]	62	8.41	286,765	8.41
06 Sep 2022 - 06 Sep 2022	WPRTS	KUMPULAN WANG PERSARAAN (DIPERBADANKAN) [SSH]	255	6.772	230,899	6.772
02 Sep 2022 - 02 Sep 2022	WPRTS	EMPLOYEES PROVIDENT FUND BOARD [SSH]	1,000	8.408	286,703	8.408
01 Sep 2022 - 01 Sep 2022	WPRTS	EMPLOYEES PROVIDENT FUND BOARD [SSH]	731	8.378	285,703	8.378
30 Aug 2022 - 30 Aug 2022	WPRTS	EMPLOYEES PROVIDENT FUND BOARD [SSH]	641	8.357	284,972	8.357
07 Sep 2022 - 08 Sep 2022	WTK	MR WONG KIE CHIE [SSH]	402	35.918	168,137	35.918
05 Sep 2022 - 06 Sep 2022	WTK	MR WONG KIE CHIE [SSH]	491	35.832	167,735	35.832
01 Sep 2022 - 02 Sep 2022	WTK	MR WONG KIE CHIE [SSH]	689	35.727	167,243	35.727
08 Sep 2022 - 08 Sep 2022	YINSON	KUMPULAN WANG PERSARAAN (DIPERBADANKAN) [SSH]	-1,000	7.447	216,364	7.447
06 Sep 2022 - 06 Sep 2022	YINSON	KUMPULAN WANG PERSARAAN (DIPERBADANKAN) [SSH]	-862	7.482	217,364	7.482
01 Sep 2022 - 01 Sep 2022	YINSON	EMPLOYEES PROVIDENT FUND BOARD [SSH]	1,001	16.809	488,552	16.809
02 Sep 2022 - 02 Sep 2022	YINSON	KUMPULAN WANG PERSARAAN (DIPERBADANKAN) [SSH]	166	7.509	218,226	7.509
06 Sep 2022 - 06 Sep 2022	YKGI	DATUK IR MICHAEL HII EE SING [SSH]	712	14.54	65,374	14.54
06 Sep 2022 - 06 Sep 2022	YTL	EMPLOYEES PROVIDENT FUND BOARD [SSH]	-2,917	5.683	623,046	



HENGYUAN REFINING COMPANY BERHAD

The Board of Directors
of Hengyuan Refining
Company Berhad
(HENGYUAN) is

pleased to announce the Company's financing plans based on formal agreements executed between the parties:

1. Establishment of an unrated medium term notes programme of up to RM5.0 billion in nominal value, which will be issued in tranches over a tenure of 30 years via bought deal or private placement, with AmInvestment Bank Berhad and Maybank Investment Berhad as the Joint Principal Advisers/Joint Lead Arrangers/Joint Lead Managers and Malaysian Trustees Berhad as the Trustee; and
2. Acceptance of multi-currency revolving credit facilities comprising of (i) USD revolving credit facility of up to USD235.0 million and (ii) MYR revolving credit facility of up to RM250.0 million offered by AmBank (M) Berhad, China Construction Bank Corporation, Labuan Branch and Malayan Banking Berhad.



**ENGINEERS**

HSS ENGINEERS BERHAD

HSS Engineers Berhad (**HSSEB**) wishes to announce that HSS Integrated Sdn Bhd, an associate of HSS Engineers Berhad, accepted “Surat Setuju Terima” from Kerajaan Negeri Kedah Darul Aman appointing HSS Integrated Sdn Bhd as the engineering consultant to provide engineering consultancy and supervision services for the Project. Pursuant to the exclusive teaming arrangement between HSS Integrated Sdn Bhd and HSS Engineering Sdn Bhd, a wholly-owned subsidiary of HSS Engineers Berhad, HSS Integrated Sdn Bhd and HSS Engineering Sdn Bhd will be collaborating exclusively to execute and complete the Services.



KPJ HEALTHCARE BERHAD

The Board of Directors of KPJ Healthcare Berhad (**KPJ**) wishes to announce that the Company’s subsidiary JETA GARDENS (QLD) PTY LTD had, on 12 September 2022, entered into a Contract for Commercial Land and Buildings with JLAND AUSTRALIA PTY LTD for the proposed disposal of 2 parcels of vacant freehold development land in Bethania Queensland Australia. The proposed disposal is to enable KPJ to dispose of its non-core assets as part of the implementation of its transformation plan and costs optimisation.





MALAYAN BANKING BERHAD

The Board of Directors of Malayan Banking Berhad (**MAYBANK**) wishes to announce that the Bank has entered into the following agreements with Permodalan Nasional Berhad:

1. Tenancy Agreement dated 12 September 2022 for the tenancy by Maybank of Level 6 and Levels 43 to 74 (inclusive) of the Office Tower; and
2. Lease Agreement dated 12 September 2022 for the leasing of Menara Maybank to PNB.



The Tenancy Agreement and the Lease Agreement are inter-conditional and are collectively referred to as the Transactions Agreements.

As part of the Bank’s strategic evaluation for its future corporate head office and taking into consideration its ESG ambitions, the Bank had conducted a robust evaluation process since 2019 and had considered strategic options and had chosen to move to Menara Merdeka 118 as it generates the best net present value.

Upcoming IPO

NAME OF COMPANY	OFFER PERIOD		ISSUE PRICE (Per Ordinary Share)	LISTING SOUGHT	DATE OF LISTING
	OPENING	CLOSING			
AME REAL ESTATE INVESTMENT TRUST	17 Aug 2022	24 Aug 2022	RM0.25	MAIN MARKET	20 Sep 2022
PT RESOURCES HOLDINGS BERHAD	30 Aug 2022	12 Sept 2022	RM0.36	ACE MARKET	27 Sept 2022
COSMOS TECHNOLOGY INTERNATIONAL BERHAD	14 Sept 2022	22 Sept 2022	RM0.35	ACE MARKET	6 Octr 2022

Disclaimer: The information in the Investor Relations page is extracted from individual companies’ announcements in www.bursamalaysia.com. The information on this page is provided as a service to readers. We assume no liability for damages resulting from or arising out of the use of such information. Whilst every effort is made to ensure accuracy, the information presented has been simplified for your reading pleasure. Readers are advised to read the original and complete filings on the Bursa Malaysia website at https://www.bursamalaysia.com/market_information/announcements/company_announcement

ShareInvestor is a technology based company with a focus on Internet media and we have operations in Malaysia, Singapore and Thailand.

We are the market leader in providing a combination of market data, analysis and news on various platforms to traders and investors.

Our websites include www.shareinvestor.com and www.bursastation.com.

More information about our products and services can be found at www.shareinvestorholdings.com

We're looking for Drupal Developers who will be in charge of front-end development and back-end/module development. This role requires expertise in PHP, HTML, CSS, JS, and an eye for design aesthetics. The candidates should be familiar and have a passion working with content management systems.

Interested candidates are encouraged to apply with full resume, present and expected salary and a recent photograph. Please send these to hr.my@shareinvestor.com for processing. ShareInvestor regrets that only shortlisted candidates shall be notified.

Drupal Developers (2 vacancies)

Job Responsibilities:

- Active participation in all UI / UX decisions
- Contribute actively to the continuous development and maintenance of development projects
- Enhance Drupal development quality
- Provide solutions to issues and suggestions for improvements.
- Designing and implementing new features to the system
- Ensuring optimal performance

Required Skills:

- At least 3 years of Drupal Theming and Front-End Development experience
- Proficient in PHP, HTML5/XHTML, CSS, Javascript, jQuery, AJAX, XML, Json
- Good Diploma/Degree in Computer Science/Computer Engineering.
- Experience working with Drupal's main modules, such as CTools, Views, Rules, Webform, and so on
- Ability to create custom Drupal modules
- Strong troubleshooting skills to fix bugs

Benefits:

- Career & growth opportunities
- Interesting projects
- Medical Insurance
- Incentives

Ruby on Rails Developer (1 vacancy)

Job Responsibilities:

- Develop quality web-based software modules on schedule with a focus on Ruby and Ruby on Rails applications.
- Explore and utilize the latest web-based technologies.
- Document design specifications, logic concepts and module description.
- Maintain and enhance existing web-based applications.

Required Skills:

- Experience in web-based programming/scripting is essential. Candidate must be able to explain clearly technical aspects of his/her past experiences and projects.
- Passion for programming and desire to learn new languages like Go.
- Good Diploma/Degree in Computer Science/Computer Engineering.
- Able to work well in a team and be able to follow documentation and coding standards.
- Knowledge in any of the following would be an added advantage
 - Ruby and Ruby on Rails Framework
 - Javascript and jQuery library
 - Go
 - Perl

Application Developer (C++/STL) (1 vacancy)

Job Responsibilities

- Deliver quality software modules on schedule.
- Document design specifications, conceptions, module description.
- Maintain and enhance existing applications.

Required Skills:

- Passion for programming and desire to learn.
- Good Diploma/Degree in Computer Science/Computer Engineering.
- Skills in C++ is essential.
- Experience with Visual Studio, networking stack and Golang would be an advantage.
- Proactive, resourceful and self-motivated with strong analytical skills.
- Good interpersonal, written and communication skills.
- Able to work with little supervision.

Graphic Designer (1 vacancy)

Job Responsibilities

- Conceptualise and create visual artwork for inhouse publications, promotional posters, web banners, social media posts, infographics, and other marketing collaterals
- Understand creative directions and objectives
- Experienced in desktop publishing
- Meticulous with housekeeping and good organisational skills to manage design assets

Required Skills

- Diploma / Degree in Advertising/Visual Communications, Graphic Design or equivalent
- Minimum 2 years of Designer experience
- Highly proficient with Adobe CC apps (Adobe InDesign, Illustrator, Photoshop, etc) and Microsoft Office software
- Proven experience in graphic design with a strong portfolio
- Video production and web design experience will be an advantage

Marketing Executive (1 vacancy)

Vacancy Filled

Job Responsibilities

- Assist MarCom Manager in all marketing undertakings
- Coordinating with all relevant parties to ensure timely delivery of projects
- Manage social media assets and digital marketing campaigns
- Execution of online & on-ground events

Required Skills

- Graduate with Degree/Diploma in any Marketing disciplines.
- Minimum 1 year experience
- Excellent command of English and BM, both written and spoken.
- Familiar with digital platforms. (Google, Facebook, YouTube, LinkedIn, Instagram, WhatsApp and Telegram).

Interested candidates are encouraged to apply with full resume, present and expected salary and a recent photograph. Please send these to hr.my@shareinvestor.com for processing. ShareInvestor regrets that only shortlisted candidates shall be notified.